

Standard
BOOK "Q"

2523

41
1

FIELD NOTES

BOOK 2523

OF THE SURVEY OF THE

3rd Guide Meridian East. through Tps. 28 N.
between Ranges 12 and 13 East.

Of the Gila and Salt River Base and Meridian,

in the Territory Arizona

EXECUTED
AS SURVEYED BY

Wm L. White U.S. Assistant United States Deputy Surveyor,

Special Instructions from the Commissioner of the General Land Office

Under ~~his~~ Contract No. _____, dated Oct 2nd 1907 and May 15th 1908

Survey commenced January 10th 1911, 1911

Survey completed January 10th 1911, 1911

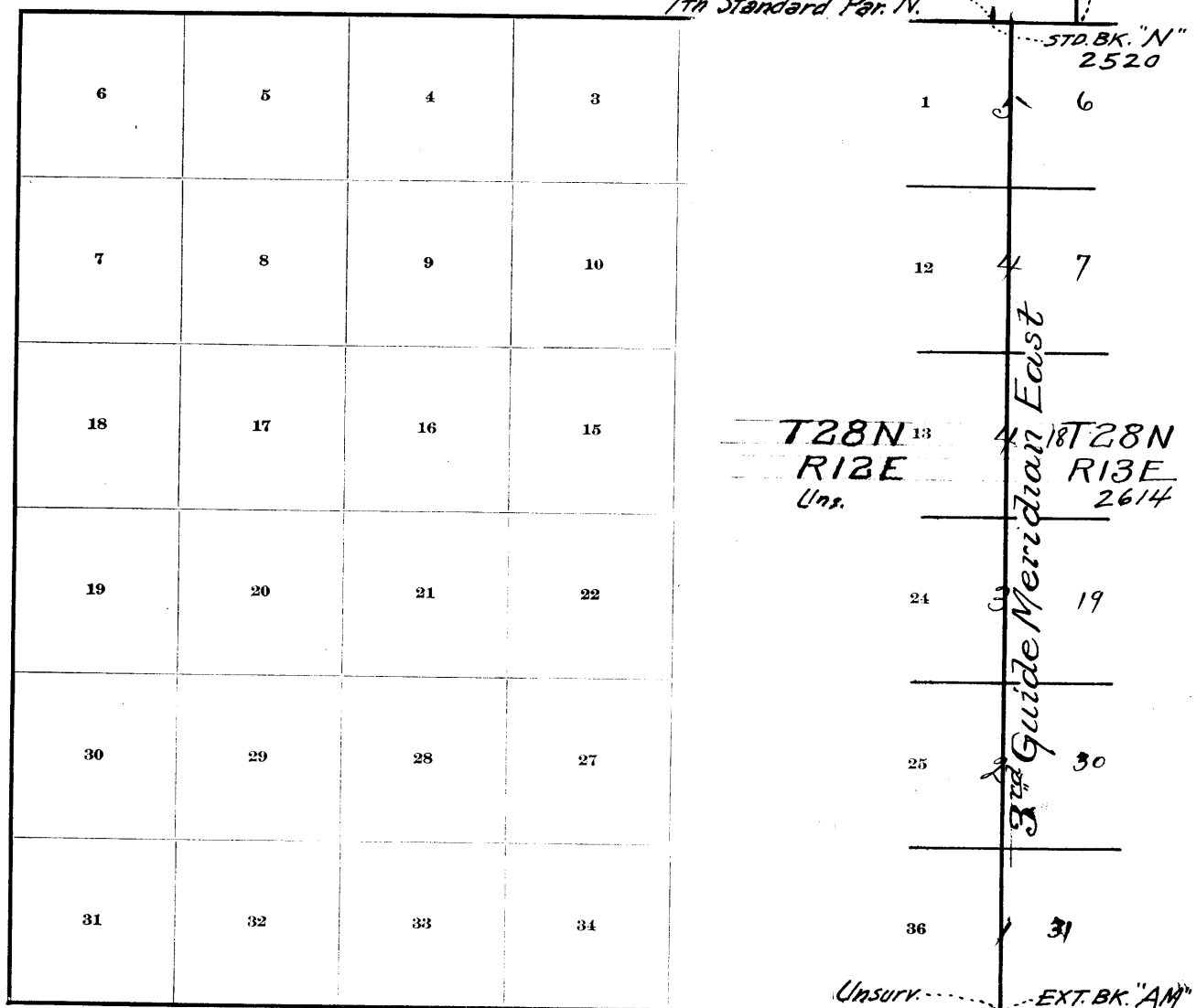
NAMES AND DUTIES OF ASSISTANTS.

<u>T. Y. White</u>	<u>Chairman</u>
<u>Richard L. Shumway</u>	<u>Chairman</u>
<u>George B. Seig</u>	<u>Chairman</u>
<u>Nelson Polacca</u>	<u>Chairman</u>
<u>Harry Keyops</u>	<u>Moundsman</u>
<u>William R. Carson</u>	<u>Flagman</u>

BOOK 2523

INDEX DIAGRAM.

Township _____, Range _____, Unsurv. 36
7th Standard Par. N.



Meanders Page _____

PRELIMINARY OATHS OF ASSISTANTS.

WE, T. J. White, Richard L. Shumway, George B. Seignd and Nelson Polacca

do solemnly swear that we will well and faithfully execute the duties of chainmen; that we will level the chain upon even and uneven ground, and plumb the tally pins, either by sticking or dropping the same; that we will report the true distances to all notable objects, and the true lengths of all lines that we assist in measuring, to the best of our skill and ability, and in accordance with instructions given us, in the survey of

3rd Guide Meridian East, through Tps 28 N. bet. Rs. 12 and 13 E.
G. & S. R. Base & Mer. Arizona.

George B. Seig and T. J. White, Chainmen.
Nelson Polacca and Richard L. Shumway, Chainmen.

Subscribed and sworn to before me this 8th

day of January, 1911



Vau L. White
U.S. Transitman

I, Harry Keyope and

do solemnly swear that ~~we~~ ^{me} will well and truly perform the duties of moundman in the establishment of corners, according to the instructions given ~~us~~ ^{me} to the best of ~~our~~ ^{my} skill and ability, in the survey of

3rd Guide Meridian E. through Tps 28 N. bet. Rs 12 and 13 E.
G. & S. R. Base & Mer., Arizona.

Harry Keyope, Moundman.

Subscribed and sworn to before me this 8th

day of January, 1911



Vau L. White
U.S. Transitman

~~WE, _____ and _____~~

~~do solemnly swear that we will well and truly perform the duties of armen in the establishment of corners and other duties, according to instructions given us, to the best of our skill and ability, in the survey of~~

~~_____ Arman.~~
~~_____ Arman.~~

~~Subscribed and sworn to before me this _____~~

~~day of _____, 19 _____~~



I, William R. Carson, do solemnly swear that I will well and truly perform the duties of flagman according to instructions given me, to the best of my skill and ability, in the survey of

3rd Guide Meridian E. through Tps 28 N bet. Rs 12 and 13 E.
G. & S. R. Base & Mer. Arizona.

William R Carson, Flagman.

Subscribed and sworn to before me this 8th

day of January, 1911



Vau L. White
U.S. Transitman

Survey commenced January 10th 1911 and executed with a W. and L. E. Curley Engineers transit No. 76 with a Burk solar attachment, the horizontal limb being provided with one double vernier reading to single minutes of arc, the verniers of the latitude and declination arcs reading to 0' 30" of arc. I examined the adjustments of the transit and find them perfect and know from recent tests of the solar apparatus by comparing its indications resulting from solar observations made during a.m. and p.m. hours with a meridian determined by observations on Polaris that the instrument is in satisfactory adjustment.

I begin at the Cor. of Twp. 27 and 28 N., R. 12 and 13 E. which I established October 29th 1910, and I described in Standard Book "P" Latitude 35° 46' 14" N., Longitude 111° 00' 32" W.

At 8^h 07^m a.m. l. int. I set off 35° 46' 14" N. on the lat. arc, 22° 00' 1/2" S. on the decl. arc and determine a meridian with the solar, thence I run North Secs. 31 and 36.

Descend N.W. slope over rolling sandy land through sage and greasewood brush undergrowth and bunch grass.

Difference l. h. measurements of 40.00 chs. by two sets of chainmen is 02 lks., position of middle point

By 1st Set. 39.99 Chs.

By 2nd Set 40.01 Chs. the mean of which is

40.00

Set an iron post 3 ft. long, 1 in. in diam. 26 ins. in the ground for 1/4 sec. Cor. marked on brass Cap 45 36 on W. half and 531 on E. half.

Dig pits 18 x 18 x 12 ins N and S. of post. 3 ft. dia. and raise a mound of earth 3 1/2 ft. base 1 1/2 ft. high W. of cor.

42.00

Hook of descent in depression bears N.E. and S.W. drains to the S.W. arc.

Difference l. h. measurements of 80.00 chs. by two sets of chainmen is 04 lks. position of middle point

By 1st Set. 79.98 Chs.

By 2nd Set 80.02 Chs. the mean of which is

80.00

Set an iron post 3 ft. long 3 ins. in diam. 24 ins in the ground for Cor. of secs. 25, 30, 31, and 36. marked on brass Cap T 28 N. in N. half, R 12 E S 25.

BOOK 2523

in N.W. R13E. S30 in N.E., S31 in S.E. and S36 in S.W. quadrants.

Dig pits 18X18X12 ins. in each sec. 5½ ft. dia. and raise a mound of earth 4 ft. base, 2 ft. high W. of cor.

Land rolling.

Soil sandy 3rd rate.

No timber

North Ch. sec 25 and 30.

Across S.E. slope over rolling sandy land, through sage and greasewood brush undergrowth and bunch grass.

Difference bet. measurements of 40.00 Chs. by two sets of chainmen is 0.2 lbs., position of middle point.

By 1st set. 39.99 Chs.

By 2nd set. 40.01 Chs. the mean of which is

40.00 Set an iron post 3 ft. long 1 in. in diam. 26 ins. in the ground for ¼ sec. cor. marked on brass cap '4 S 25 on W. half and S 30 on E. half

Dig pits 18X18X12 ins. N and S. of post. 3 ft. dia. and raise a mound of earth 3½ ft. base, 1½ ft. high W. of cor.

Difference bet. measurements of 80.00 Chs. by two sets of chainmen is 0.2 lbs. position of middle point.

By 1st set. 79.99 Chs.

By 2nd set. 80.01 Chs. the mean of which is

80.00 Set an iron post 3 ft. long, 3 ins. in diam 24 ins. in the ground for cor. of secs. 19, 24, 25 and 30 marked on brass cap T₂₈N. in N. half, R12E S24 in N.W., R13E. S19 in N.E. S30 in S.E. and S25 in S.W. quadrants.

Dig pits 18X18X12 ins. in each sec. 5½ ft. dia. and raise a mound of earth 4 ft. base 2 ft. high W. of cor.

Land rolling

Soil sandy 3rd rate

No timber

North Ch. sees 19 and 24

Around S.E. slope over hilly sandy and stony land through sage and greasewood brush and bunch grass.

7.00 Top of rocky ridge bears N.E. and S.W. desc.
18.00 Top of descent in depression bears N.E. and S.W. drains to the S.W. asc.

Difference bet. measurements of 40.00 Chs by two sets of chainmen is 04 lks. position of middle point.

By 1st Set 40.02 Chs.

By 2nd Set 39.98 Chs. the mean of which is.

40.00 Set an iron post 3 ft. long 1 in. in diam. 26 ins. in the ground for 14 sec. cor. marked on brass Cap. 14 S 24 on W. half and S 19 on E half.

Dig pits 18 x 18 x 12 ins N. and S. of post 3 ft. dist. and raise a mound of earth 3 1/2 ft. base 1 1/2 ft. high. W. of cor.

NOTE At this cor. I set off 22° 01' S. on the decl. arc and at noon observed the sun on the meridian and obtain a reading of 35° 48 1/2' N. on the lat. arc.

78.00 Top of sand ridge bears E. and W. desc. N. slope.

Difference bet. measurements of 80.00 Chs. by two sets of chainmen is 06 lks. position of middle point.

By 1st Set 79.97 Chs.

By 2nd Set 80.03 Chs. the mean of which is.

80.00 Set an iron post 3 ft. long 3 ins. in diam. 24 ins. in the ground for cor. of sees. 13, 18, 19 and 24 marked on brass Cap T 28 N. in N. half, R 12 E S 13 in NW. R 13 E, S 18 in N.E. S 19 in S.E. and S 24 in S.W. quadrant.

Dig pits 18 x 18 x 12 ins. in each sec. 5 1/2 ft. dist. and raise a mound of earth 4 ft. base, 2 ft. high W. of cor.

Land hilly.

Soil sandy and stony 3rd and 4th rate.

No timber

North Ch. sees. 13 and 18.

BOOK 2523

Descend N.W. slope over rolling sandy land through sage and greasewood brush undergrowth and bunch grass.

Difference bet. measurements of 40.00 Chs. by two sets of chainmen is 04 lbs., position of middle point.

By 1st Set 39.98 Chs.

By 2nd Set 40.02 Chs. the mean of which is 40.00 Set an iron post 3 ft. long 1 in. in diam. 26 ins. in the ground for $\frac{1}{4}$ sec. cor. marked on brass cap $\frac{1}{4}$ S 18 on W. half and S 18 on E. half.

Dig pits 18 x 18 x 12 ins. N. and S. of post 3 ft. diam. and raise a mound of earth $3\frac{1}{2}$ ft. base $1\frac{1}{2}$ ft. high W. of cor.

44.00 Foot of descent in depression toward E. and W. drains to the wash. ascend gradually.

Difference bet. measurements of 80.00 Chs. by two sets of chainmen is 04 lbs. position of middle point.

By 1st Set 79.98 Chs.

By 2nd Set 80.02 Chs. the mean of which is 80.00 Set an iron post 3 ft. long 3 in. in diam. 24 ins. in the ground for cor. of secs. 7, 12, 13 and 18. marked on brass cap T 28 N. in N. half, R 12 E S 12 in N.W., R 13 E S 7 in N.E., S 18 in S.E. and S 18 in S.W. quadrants.

Dig pits 18 x 18 x 12 ins. in each sec., $5\frac{1}{2}$ ft. diam. and raise a mound of earth 4 ft. base, 2 ft. high W. of cor.

Land rolling

Soil sandy 3rd rate,

No timber

North bet. secs. 7 and 12.

Ascend S.W. slope over rolling sandy land through sage and greasewood brush and bunch grass.

Difference bet. measurements of 40.00 Chs. by two sets of chainmen is 06 lbs. position of middle point.

By 1st Set 39.97 Chs.

By 2nd Set 40.03 Chs. the mean of which is.

40.00 Set an iron post 3 ft. long 1 in. in diam. 26 ins. in the ground for $\frac{1}{4}$ sec. cor. marked on brass cap $\frac{1}{4}$ S12 on W. half and S7 on E. half. Dig pits 18x18x12 ins. N and S. of post 3 ft. dist. and raise a mound of earth $3\frac{1}{2}$ ft. base $1\frac{1}{2}$ ft. high W. of cor.

BOOK 2523

44.80 Top of sand ridge bears N25°E and S25°W. desc. gently over NW. slope. Difference bet. measurements of 80.00 chs. by two sets of chainmen is 08 lks. position of middle point.

By 1st Set. 79.96 chs.
By 2nd Set 80.04 chs. the mean of which is

80.00 Set an iron post 3 ft. long 3 ins in diam. 24 ins. in the ground for Cor. of sec. 1, 6, 7, and 12 marked on brass cap T28N. in N. half R12E S1 in NW. R13E S6 in NE. S7 in SE. and S12 in SW. quadrant

Dig pits 18x18x12 ins. in each sec. $5\frac{1}{2}$ ft. dist. and raise a mound of earth 4 ft. base, 2 ft. high W. of cor.
Sand rolling.
Soil sandy 3rd rate.
No tin bet

North bet. sec. 1 and 6.
Descend NW. slope over rolling sandy land through sage and greasewood brush undergrowth and bunch grass.

Difference bet. measurements of 40.00 chs. by two sets of chainmen is 05 lks. position of middle point.

By 1st Set. 39.97 $\frac{1}{2}$ chs.
By 2nd Set 40.02 $\frac{1}{2}$ chs. the mean of which is

40.00 Set an iron post 3 ft. long 1 in. in diam. 26 ins. in the ground for $\frac{1}{4}$ sec. cor. marked on brass cap $\frac{1}{4}$ S1 on W. half and S6 on E. half. Dig pits 18x18x12 ins. N and S. of post 3 ft. dist. and raise a mound of earth $3\frac{1}{2}$ ft. base $1\frac{1}{2}$ ft. high W. of cor.

BOOK 2523

Difference between measurements of 77.66 Chs. by two sets of chainmen is 0.8 Chs. position of middle point.

By 1st set 77.70 Chs.

By 2nd set 77.62 Chs. the mean of which is 77.66

Intersect the 7th Standard Parallel North 7.09 Chs. E. of the Stand 1/4 sec. cor. on the S. side, of sec. 36 T 29 N, R 12 E. which I established January 9th 1911, and described in Standard Book "N" Set an iron post 3 ft. long 3 in. in diam. 2 1/2 in. in the ground for closing cor. of Tps. 28 N, R's 12 and 13 E. marked on brass cap. T 29 N, R 12 E, R 13 E. S 31 S 36 in N. half, C.C. T 28 N, in S. half and R 13 E. S 6 in S.E. and R 12 E S 1 in S.W. quadrant.

Dig pits 30 x 24 x 12 ins. crosswise on each line E. and W. 4 ft. and S of post 8 ft. dist. and raise a mound of earth 5 ft. base, 2 1/2 ft. high S. of cor. Land rolling. Soil sandy 3d rate, No. Timber. Jan. 10th, 1911.

Boundaries of Township N° 28 North, Range N° 13 East.
Latitudes, Departures and Closing Errors.

Line designated	True bearing	Distance	LATITUDES		DEPARTURES	
			N.	S.	E.	W.
South boundary	S. 89.58 W.	477.92		.28		477.92
WEST BOUNDARY (3rd Guide Meridian East)	North	477.66	477.66			
NORTH BOUNDARY (7th Std. Par. North)	East	478.03			478.03	
East boundary	South	477.46		477.46		
Convergency					.51	
Totals			477.66	477.74	478.54	477.92
				477.66	477.92	
				0.08		
					0.62	

General Description.

Nowadays 28 N., Ranges 12 and 13 East, are generally high rolling sandy table land, producing an abundant growth of bunch grass.

January 10th 1911

Van L. White
U.S. Manutiman

U.S. TRANSITMAN
FINAL OATHS OF DEPUTY SURVEYOR AND HIS ASSISTANTS.

51
①

LIST OF NAMES.

BOOK 2523

A list of the names of the individuals employed by Van L. White

U.S. Transitman, ~~United States Deputy Surveyor~~, to assist in running, measuring, and

marking the lines and corners described in the foregoing field notes of the survey of 3rd Guide

Meridian E. - through Tps 28 N. bet. Rs. 12 and 13 E.
G. & S. R. Base & Mer. Arizona.

showing the respective capacities in which they acted:

George B. Seig and T. Y. White Chainmen.

Nelson Polacca and Richard L. Shumway Chainmen.

Harry Keyope Moundman.

~~Moundman.~~

~~Asman.~~

~~Asman.~~

William R. Carson Flagman.

FINAL OATH OF ASSISTANTS.

We hereby certify that we assisted Van L. White

Transitman, ~~United States Deputy Surveyor~~, in surveying all

those parts or portions of the 3rd Guide Meridian E. through Tps
28 N. bet. Rs. 12 and 13 E.

of the Gila and

Salt River Base and meridian, Territory of Arizona, which are represented
in the foregoing field notes as having been surveyed by him and under his direction; and that said survey
has been in all respects, to the best of our knowledge and belief, well and faithfully surveyed, and the
corner monuments established, according to the instructions furnished by the ~~United States Surveyor~~

~~General for~~ Commissioner of the General Land Office

George B. Seig and T. Y. White Chainmen.

Nelson Polacca and Richard L. Shumway Chainmen.

~~Moundman.~~

Harry Keyope Moundman.

~~Moundman.~~

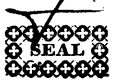
~~Asman.~~

~~Asman.~~

William R. Carson Flagman.

Subscribed and sworn to before me this 10th

day of January, 19 11



Van L. White

U.S. Transitman

52
4
BOOK 2523

TRANSITMAN
FINAL OATH OF UNITED STATES DEPUTY SURVEYOR

I, Van L. White, Transitman, United States Deputy Surveyor, do solemnly swear that, in pursuance of Special Instructions received from the Commissioner of the General Land Office, bearing date of the 2nd day of Oct. 1907 and the 15th day of May, 1908, I have well, faithfully, and truly, in my own proper person, and in strict conformity with the instructions furnished by the Commissioner of the General Land Office, the Manual of Surveying Instructions, and the laws of the United States, surveyed all those parts or portions of the Third Guide Meridian East through Township No. 28 North, between Ranges 12 and 13 East

of the Gila and Salt River Base and meridian, in the Territory of Arizona, which are represented in the foregoing field notes as having been surveyed by me, and under my direction; and I do further solemnly swear that all the corners of said survey have been established and perpetuated in strict accordance with the Manual of Surveying Instructions, and the special written instructions of the Commissioner of the General Land Office and in the specific manner described in the field notes, and that the foregoing are the original field notes of such survey.

Van L. White
United States Deputy Surveyor
Transitman

Subscribed by said Van L. White and sworn to before me }
this 27th day of December, 1912.

Lytton R. Taylor
U.S. Commissioner
at Las Cruces, N.M.



APPROVAL.

OFFICE OF THE UNITED STATES SURVEYOR GENERAL,

Phoenix, Arizona APR 25, 1914

The foregoing field notes of the survey of the
3rd Guide Meridian East thru
Tps. 28 North, between
Ranges 12 and 13 East, of the
Gila and Salt River Base and Meridian, Arizona.

executed by Van L. White U.S. Transitman
under Special Instructions from the Commissioner of General Land Office
his contract No. _____, dated October 2, 1907, and May 15, 1908, having been critically examined, and the necessary corrections and explanations made, the said field notes, and the surveys they describe, are hereby approved.

Frank Ingalls
United States Surveyor General
SURVEYOR-GENERAL OF ARIZONA

I certify that the foregoing transcript of the field notes of the above-described surveys in _____, has been correctly copied from the original notes on file in this office.

United States Surveyor General.