

Subdivisional
BOOK "ZJ"

2614

BOOK 2614

FIELD NOTES

OF THE SURVEY OF THE

Subdivision lines of Tp. 28 N. R. 13 E.

Of the Gila and Salt River Base and Meridian,

in the Territory of Arizona

EXECUTED
AS SURVEYED BY

Wm. L. White, U.S. Measurer, United States Deputy Surveyor,

Special Instructions from the Commissioner of the General Land Office

Under his Contract No. _____, dated Oct 9th 1907 and May 15th 1908

Survey commenced January 11th, 1911

Survey completed January 21st, 1911

NAMES AND DUTIES OF ASSISTANTS.

T. Y. White Chairman

Richard L. Shumway Chairman

George B. Seig Moundman

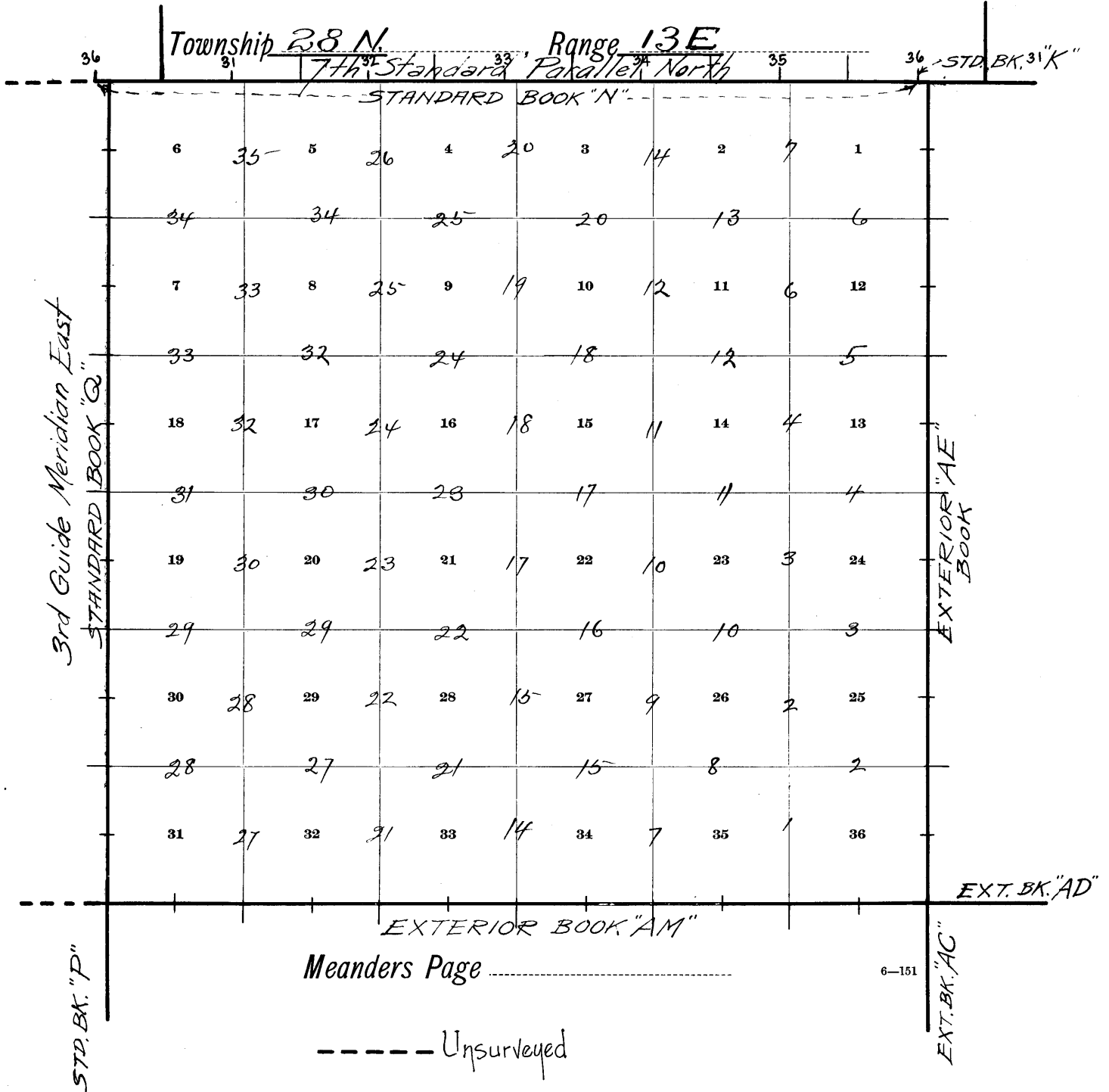
Harry Keyope Moundman

Nelson Polacca Arman

William R. Carson Flagman

BOOK 2614

INDEX DIAGRAM.



PRELIMINARY OATHS OF ASSISTANTS.

WE, T. Y. White and Richard L. Shumway
do solemnly swear that we will well and faithfully execute the duties of chainmen; that we will level the chain upon even and uneven ground, and plumb the tally pins, either by sticking or dropping the same; that we will report the true distances to all notable objects, and the true lengths of all lines that we assist in measuring, to the best of our skill and ability, and in accordance with instructions given us, in the survey of Subdivision lines of Tp 28 N. R. 13 E. of the G. & S. P. B. & M., Arizona.

T. Y. White, Chainman.
Richard L. Shumway, Chainman.

Subscribed and sworn to before me this 8th
day of January, 1911



Van L. White
U.S. Transitman

WE, George B. Seig and Harry Keyser
do solemnly swear that we will well and truly perform the duties of moundmen in the establishment of corners, according to the instructions given us, to the best of our skill and ability, in the survey of Subdivision lines of Tp 28 N. R. 13 E. of the G. & S. P. B. & M., Arizona.

George B. Seig, Moundman.
Harry Keyser, Moundman.

Subscribed and sworn to before me this 8th
day of January, 1911



Van L. White
U.S. Transitman

I, Nelson Polacca
do solemnly swear that ~~we~~ will well and truly perform the duties of axman in the establishment of corners and other duties, according to instructions given ~~me~~ to the best of ~~my~~ skill and ability, in the survey of Subdivision lines of Tp 28 N. R. 13 E. of the G. & S. P. B. & M., Arizona.

Nelson Polacca, Axman.

Subscribed and sworn to before me this 8th
day of January, 1911



Van L. White
U.S. Transitman

I, William R. Carson, do solemnly swear that I will well and truly perform the duties of flagman according to instructions given me, to the best of my skill and ability, in the survey of Subdivision lines of Tp 28 N. R. 13 E. of the G. & S. P. B. & M., Arizona.

William R. Carson, Flagman.

Subscribed and sworn to before me this 8th
day of January, 1911



Van L. White
U.S. Transitman

Survey commenced January 11th 1911, and executed with a W. & L. E. Gurley engineers transit No. 76 with a Bush Solar attachment. The horizontal limb is provided with one double vernier reading to single minutes of arc. The verniers of the latitude and declination arcs reading to 0' 30" of arc.

Examine the adjustments of the transit and find them correct. and know from recent tests of the solar apparatus by comparing its indications resulting from solar observations made during am. and p. m. hours with a meridian established by observations on Polaris, that the instrument is in satisfactory adjustment.

Begin at the cor. of sec. 1, 2, 35 and 36. on S. 1/2 of Twp. which established November 1st 1910. and latitude $35^{\circ} 46' 15''$ N., Longitude $110^{\circ} 55'$ W. described in Exterior Book "AM"

At 7^h 38^m a.m. l.m.c. Jan. 11, 1911. Set off $35^{\circ} 46'$ N. on the lat. arc. $21^{\circ} 48'$ S. on the decl. arc. and determined a meridian with the solar at the above cor., then set down.

No. 01 W. 1/2 sec. 35 and 36.

Over rolling sandy land through scattering sage and greasewood brush undergrowth and bunch grass
40.00 Set an iron post 3 ft. long 1 in. in diam. 26 in. in the ground for cor. of sec. 35 and 36. marked on base of post S 35 on W. half and S 36 on E. half.

Dig pits 18x18x12 in. and S. of post 3 ft. dist. and raise a mound of earth 3 1/2 ft. base, 1/2 ft. high. W. of cor.

48.52 Road bears 76° E. and 36° W.

80.00 Set an iron post 3 ft. long 2 in. in diam. 24 in. in the ground for cor. of sec. 25, 26, 35 and 36. marked on base of post T 28 N. S 26 in N.W., R 13 E. S 25 in N.E. S 36 in S.E. and S 35 in S.W. quadrants. Dig pits 18x18x12 in. in each sec. 5 1/2 ft. dist. and raise a mound of earth 4 ft. base, 2 ft. high. W. of cor.

Land rolling.

Soil sandy 3rd rate.

No timber

BOOK 2014

- N89°58'E. on a random line bet. sec. 25 and 36.
 40.00 Seb. temp. $\frac{1}{4}$ sec. cor.
- 80.02 Intersect E. line of Twp. 8. lks. N. of the cor. of sect. estab. by Sidney E. Huff, July 10, 1919 and described in Exterior Book "AE" 25, 30, 31. and 36. Thence S run
 N89°59' W. on a true line bet. sec. 25 and 36.
 Over level sandy land through sage and greasewood brush undergrowth and bunch grass.
- 40.01 Set an iron post. 3 ft. long 1 in. in diam. 26 ins. in the ground for $\frac{1}{4}$ sec. cor. marked on brass cap. N 525 on N. half and S 36 on S. half.
 Dig pits 18x18x12 ins E. and W. of post. 3 ft. dish. and raise a mound of earth 3 $\frac{1}{2}$ ft. base, 1 $\frac{1}{2}$ ft. high. N. of cor.
- 80.02 The cor. of sec. 25, 26, 35 and 36, heretofore described.
 Land level.
 Soil sandy 2nd and 3rd rate.
 No timber
-
- N0°01' W. bet. sec. 25 and 26.
 Over level sandy land. through sage and greasewood brush undergrowth and bunch grass
- 20.30 Left bank of the De Nebets Wash 25 ft. high bears N30°E. and S30°W. Near undergrowth bears N.E. and S.W.
- 25.75 Right bank of the De Nebets Wash 25 ft. high bears N30°E. and S30°W. Enter undergrowth
- 40.00 Set an iron post. 3 ft. long 1 in. in diam. 26 ins. in the ground for $\frac{1}{4}$ sec. cor. marked on brass cap N 526 on W. half and S 25 on E. half.
 Dig pits 18x18x12 ins N. and S. of post. 3 ft. dish. and raise a mound of earth 3 $\frac{1}{2}$ ft. base. 1 $\frac{1}{2}$ ft. high. W. of cor.
- NOTE On this cor. set off. 21°52' S. on the decl. arc. and at noon observe the sun on the meridian and obtain a reading of. 35°47 $\frac{1}{2}$ ' N. on the lab. arc.
- 59.60 Road bears N40°E. and S40°W., leads to Luff Agency. Near level land bears N.E. and S.W., Enter rolling land. ascend gently S.E. slopes.
- 80.00 Set an iron post. 3 ft. long. 2 ins. in diam. 24 ins. in the ground for cor. of sec. 23, 24, 25 and 26. marked on brass cap. T 28 N. S 23 in N.W., N13E. S24 in N.E. S25 in S.E. and S26 in S.W. quadrants.

Subdivision of ¹⁰ N 28 76, R 13 E.

Chains

Dig pits 18x18x12 ins. in each sec. 5 1/2 ft. dish and raise a mound of earth 4 ft. base, 2 ft. high. W. of cor.

Land level and rolling
Soil sandy and adobe 3rd rate.
No timber

S 89 54' E. on a random line bet. sec. 24 and 25.

40.00 Set temp. 1/4 sec. cor.

80.06 Intersect E. bdy. of ¹⁰ N. 3 lks. S. of the cor. of sec. ^{estab. by Sidney E. Blackman 10, 1912 and described in Exterior 19, 24, 25, and 30, Thence I run Book "AE"}

With on a true line bet. sec. 24 and 25

Overlevel sandy land through sage and greasewood brush undergrowth and bunch grass.

40.03 Set an iron post 3 ft. long 1 in. in diam. 26 ins. in the ground for 1/4 sec. cor. marked on brass cap. 14524 on N. half and S 25 on S. half.

Dig pits 18x18x12 ins E and W. of post 3 ft. dish and raise a mound of earth 3 1/2 ft. base 1 1/2 ft. high W. of cor.

63.50 Road to Luff Agency bears N 35° E. and S 35° W. bear level land bears N.E. and S.W., Enter rolling sandy land bears N.E. and S.W. ascend gentle S.E. slope.

80.06 The cor. of sec. 23, 24, 25 and 26, heretofore described.
Land level and rolling.
Soil sandy 3rd rate.
No timber

N 0° 01' W. bet. sec. 23 and 24,

Ascend S.E. slope over rolling sandy land through sage and greasewood brush undergrowth and bunch grass.

40.00 Set an iron post 3 ft. long 1 in. in diam 26 ins. in the ground for 1/4 sec. cor. marked on brass cap. 14823 on W. half and S 24 on E. half.

Dig pits 18x18x12 ins N. and S. of post 3 ft. dish and raise a mound of earth 3 1/2 ft. base, 1 1/2 ft. high W. of cor.

77.40 Top of sand ridge bears N 60° E. and S 60° W. desc

Subdivision of N. 28 N., R13 E.

BOOK 2614

4 Chain

79.46 Dry ravine course N.E. asc.
 80.00 Set an iron post 3 ft. long 2 ins. in diam. 24 ins. in the ground for cor. of sec. 13, 14, 23, and 24 marked on base cap. T 28 N. 314 in N.W. R13 E. S13 in N.E. S24 in S.E. and S23 in S.W. quadrant. Raise a mound of stone 2 ft. base, 1 1/2 ft. high W. of cor. Pits impracticable.
 Land rolling.
 Soil Sandy 3rd rate.
 No timber

January 11th 1911

1911
 January 17th at 8^h 10^m a.m. incl. D. reb. off. 35° 49' N. at the lat. arc 20° 49' S. on the decl. arc, and determined a meridian with the solar at the cor. of sec. 13, 14, 23 and 24, ^{above described} thence I run
 East at a random line bet. sec. 13 and 24.

40.00 Set temp. 1/4 sec. cor.

80.02 Intersect E. base of Pp. 2 lvs. S. of the cor. of sec. 13, 18, W and S. ^{estab. by Sidney P. Blunt, Jan 10, 1910 and described in Exterior "AE" Book} thence I run
 S 89° 59' W. on a true line bet. sec. 13 and 24,

over level sandy land through sage and greasewood brush undergrowth and bunch grass.

7.95 Road bears N.E. and S.W. Leave level land bears N.E. and S.W.

40.01 Set an iron post 3 ft. long 1 in. in diam. 26 ins. in the ground for 1/4 sec. cor. marked on base cap. 1/4 S13 on N. half and S24 on S. half.

Dig pits 18x18x12 ins E and W. of post 3 ft. dist. and raise a mound of earth 3 1/2 ft. base, 1 1/2 ft. high W. of cor.

41.00 Top of sand ridge 5 ft. above cor. bears N and S. desc.

50.85 Dry ravine 10 lks. wide 2 ft. deep course S 25° E.

61.90 The same ravine course N.E.,

64.20 The same ravine course S.E. asc.

74.00 Top of sand ridge bears N.E. and S.W. desc.

79.00 Dry sand wash, course N.E. asc.

80.02 The cor. of sec. 13, 14, 23 and 24 heretofore described.
 Land level ^{and rolling} soil, sandy 3rd rate. No timber

W 0° 01' W. bet. sec. 13 and 14.

Chains

Around S.E. slope over hilly sandy land through sage and greasewood bush undergrowth and bunch grass

7.00

Top of sand ridge bears N.E. and S.W. desc.

20.80

Deep ravine 20 lbs. wide 1 ft. deep course S 25° E and over rolling land.

40.00

Sch an iron post 3 ft. long 1 in. in diam. 26 ins. in the ground for 1/4 sec. cor marked on brass cap 14 S 14 on W. half and S 13 on E. half.

Dig pits 18 x 18 x 12 ins N. and S. of post. 3 ft. dia. and raise a mound of earth 3 1/2 ft. base, 1 1/2 ft. high. N. of cor.

80.00

Sch an iron post 3 ft. long 2 ins. in diam. 24 ins. in the ground for cor. of sec. 11, 12, 13 and 14, marked on brass cap T 28 N. S 11 in N.W., R 13 E. S. 12 in N.E., S 13 in S.E. and S 14 in S.W. quadrants.

Raise a mound of stones 2 ft base, 1 1/2 ft. high W. of cor. Pits impracticable

Land rolling and hilly.

Soil sandy 3rd rate.

No timber

S 89° 59' E on a random line bet. sec. 12 and 13.

40.00

Sch top 1/4 sec. cor.

80.06

Intersect E. bdy. of Twp. at the cor. of sec. 7, 12, 13 established by Sidney E. Bland Jan 10, 1910 and described in Exterior Book "AE" and W. 1/4 thereof

S 89° 59' W. on a true line bet. sec. 12 and 13

Around S.E. slope over rolling sandy land through scattering sage and greasewood bush undergrowth and bunch grass.

40.03

Sch an iron post 3 ft. long 1 in. in diam. 26 ins. in the ground for 1/4 sec. cor. marked on brass cap 14 S 12 on W. half and S 13 on S. half.

Dig pits 18 x 18 x 12 ins. E and W. of post. 3 ft. dia. and raise a mound of earth 3 1/2 ft. base 1 1/2 ft. high. N. of cor.

80.06

The cor. of sec. 11, 12, 13, and 14, heretofore described.

Land rolling

Soil sandy 3rd rate.

No timber

Subdivision of Twp 28 N., R 13 E.

6

Chain

BOOK 2614

N^o 01' W. Lch. sec. 11 and 12.

Around S.E. slope over rolling sandy land through sage and greasewood bush undergrowth and bunch grass.

29.00 Top of sand ridge bears N.E. and S.W. desc NW. slope over hilly land.

40.00 Set an iron post 3 ft. long 1 in. in diam. 26 ins. in the ground for 1/4 sec. cor. marked on brass cap. S12 on W. half and S12 on E. half

Dig pits 18x18x12 ins. N. and S. of post 3 ft. dia. and raise a mound of earth 3/4 ft. base, 1 1/2 ft. high. W. of cor.

NOTE At this cor. Dsch off. 20° 49 1/2' S. on the decl. arc and at noon observe the sun on the meridian and obtain a reading of 35° 50 1/2' N. on the lat. arc.

74.00 Dry rocky ravine 50 lbs. wide course East. asc.

80.00 Set an iron post 3 ft. long 2 ins. in diam. 24 ins. in the ground for cor. of sec. 1, 2, 11, and 12, marked on brass cap T 28 N. S 2 in NW., R 13 E S 1 in NE. S 12 in SE. and S 11 in SW. quadrants.

Raise a mound of stone 2 ft. base, 1 1/2 ft. high. W. of cor. (Pits impracticable)

Land rolling and hilly.
Soil sandy and stony 3rd and 4th rate.
No timber

N 89° 59' E on a random line lch. sec. 1 and 12.

40.00 Set temp. 1/4 sec. cor.

89.10 Date seth E. lch. of Twp. 5 lbs. No. of the cor. of ^{estab. by Sidney P. Hunt Jan 10, 1910 and described in Exterior Book "AE"} sec. 1, 7 and 12, ^{Chauce Drum}

N 89° 59' W. on a true line lch. sec. 1 and 12.

Over rolling sandy land through sage and greasewood bush undergrowth and bunch grass

11.56 Dry ravine course S.E. asc

40.05 Set an iron post 3 ft. long 1 in. in diam. 26 ins. in the ground for 1/4 sec. cor. marked on brass cap No S 1 on N. half and S 12 on S. half

Raise a mound of stone 2 ft. base, 1 1/2 ft. high. N. of cor. (Pits impracticable)

59.00 Top of sand ridge bears N. and S. desc.

Subdivision of T₂₉N., R₁₃E

Chain

7

77.70 Dry ravine 20 lbs. wide course North and,
 80.10 The cor. of secs. 1, 2, 11, and 12, heretofore described
 Land rolling.
 Soil sandy 3rd rate.
 No timber

N⁰ 01' W. 1/4 sec 1 and 2.

Around S. slope over rolling sandy land through
 sage and greasewood brush undergrowth and
 bunch grass.

38.00 Top of sand ridge bears N.E. and S.W. desc.

40.00 Set an iron post 3 ft. long 1 in. in diam. 26 ins
 in the ground for 1/4 sec. cor. marked on brass
 cap 1/4 S 2 on W. half and S 1 on E. half.
 Dig pits 18x18x12 ins. N and S. of post 3 ft. dia.
 and raise a mound of earth 3 1/2 ft. base, 1 1/2
 ft. high. W. of cor.

77.50 Intersect the 7th Standard Parallel North 5:00
 hrs. East of the standard 1/4 sec. cor. on S. bdy.
 of sec. 35, T₂₉N., R₁₃E. recently estab. by me & described in
 Standard Book "N"
 Set an iron post 3 ft. long 2 ins. in diam. 24 ins.
 in the ground for closing corner of secs. 1 and 2.
 marked on brass cap C.C. T₂₉N., R₁₃E., S₃₅, S₃₆.
 in North half, S₁ in S.E. and S₂ in S.W. quadrant.
 Dig pits 24x18x12 ins. Crosswise on each line
 East W. 3 ft. and S. of post 7 ft. dia. and raise
 a mound of earth 4 ft. base, 2 ft. high. S. of cor.
 Land rolling
 Soil sandy 3rd rate.
 No timber

January 17th 1911

1911
 January 12th 1911 Ab 8^h 38^m a.m. A.M.C. - D. res. off.
 35° 46' N. on the lat. arc. 21° 42 1/2' S. on the decl. arc and
 determine a meridian with the solar. at the cor.
 of secs. 2, 3, 34, and 35 on S. bdy. of T₂₉ recently
 estab. by me & described in Exterior Book "AM", thence I run,
 N⁰ 01' W. 1/4 sec. 34 and 35.
 Over level sandy and adobe land through scattering
 sage and greasewood brush undergrowth.
 25.80 25 ft. bank of the De Veto Wash 25 ft. high.

- bears N 20° E and S 20° W. Leaves undergrowth bears N 20° E and S 20° W.
- 40.00 The point for the 1/4 sec. cor. falls in bottom of Wash where natural causes would insure the destruction of the cor. therefore I continue my line N 0° 01' W.
- 48.75 Right bank of the De Nebeto Wash 25 ft. high bears N 20° E. and S 20° W. Enters undergrowth bears N 20° E and S 20° W.
- 50.00 Set an iron post 3 ft. long, 1 in in diam. 26 in in the ground for witness cor. to the 1/4 sec. cor. marked on brass cap. T 28 N. R 13 E. S 34 in W. half., S 35 in E. half, and W. C. 1/4 in S. half.
Dig pits 18 x 18 x 12 in. N. and S. of post. 3 ft. dish and raise a mound of earth 3 1/2 ft. base 1 1/2 ft. high. W. of cor.
- 80.00 Set an iron post. 3 ft. long, 2 in in diam. 24 in in the ground for cor. of secs. 26, 27, 34 and 35 marked on brass cap. T 28 N S 27 in N.W. R 13 E S 26 in N.E., S 35 in S.E. and S 34 in S.W. quadrant.
Dig pits 18 x 18 x 12 in. in each sec. 5 1/2 ft. dish and raise a mound of earth 4 ft. base, 2 ft. high. W. of cor.
Land level
Soil sandy and adobe 2nd and 3rd rate.
No timber
-
- W 89° 58' E. on a random line bet. secs. 26 and 35 -
- 40.00 Set temp 1/4 sec. cor.
- 79.98 Intersect N and S. line 5 lbs. S. of the cor. of secs. 25, 26, 35, and 36. ^{herebefore described} ~~N~~ ^N Three Drus
S 89° 56' W. on a true line bet. secs. 26 and 35
Cor level sandy and adobe land. through sage and greasewood bush undergrowth and bunch grass
- 12.60 A point from which the De Nebeto Spring bears North 600 chs. dist.
- 12.65 Left bank of the De Nebeto Wash. 20 ft. high. bears N 80° E. and S 80° W. Leaves undergrowth bears N.E. and S.W.
- 22.30 Road to Luff Agency bears N. and S.
- 25.50 Cross stream of alkali water 4 ft. wide, 2 in. deep

Subdivision of N/4 28 N., R 13 E

Chains

9

- in bottom of Wash. Course 380° W.
- 39.79 The point for the 1/4 sec. cor. falls in bottom of wash. where natural causes would insure the destruction of the corner, therefore I continued my line S 89° 56' W.
- 41.60 Right bank of the De Nebeto Wash. 25 ft. high. head N 80° E. and S 80° W., enters undergrowth. Head N.E. and S.W.
- 43.00 Set an iron post 3 ft. long 1 in. in diam. 26 in. in the ground for Witness cor. to the 1/4 sec. cor. marked at brass cap. T 28 N., R 13 E, S 26 in N half S 35 in S. half and W.C. 1/4 in E. half. Dig pit 18x18x12 ins. E. and W. of post. 3 ft. dia. and raise a mound of earth 3 1/2 ft. base, 1 1/2 ft. high. W. of cor.
- 52.00 Dry sand wash 16 lbs. wide 5 ft. deep. Course South ascend gradually.
- 79.98 The cor. of secs. 26, 27, 34 and 35, hereinbefore described. Land level and rolling Soil sandy and adobe 2nd and 3rd rate. No timber

Woodl. W. Sec. 26 and 27.

Ascend S.E. slope over rolling sand hills, through sage and yucca wood brush undergrowth and bunch grass.

- 14.00 Top of sand ridge head N 35° E. and S 35° W. due.
- 30.00 Dry ravine Course N 45° W. arc
- 40.00 Set an iron post 3 ft. long 1 in. in diam. 26 in. in the ground for 1/4 sec. cor. marked at brass cap 1/4 S 27 on W. half and S 26 on E. half. Dig pit 18x18x12 ins. N. and S. of post. 3 ft. dia. and raise a mound of earth 3 1/2 ft. base 1 1/2 ft. high. W. of cor.
- 66.75 Top of sand ridge head N.E. and S.W. due.
- 80.00 Set an iron post 3 ft. long 2 in. in diam. 24 in. in the ground for cor. of secs. 22, 23, 26, and 27, marked at brass cap T 28 N S 22 in N.W., R 13 E S 23 in N.E., S 26 in S.E. and S 27 in S.W. quadrant. Dig pit 18x18x12 ins. in each sec. 5 1/2 ft. dia. and raise a mound of earth 4 ft. base 2 ft. high. W. of cor. Land rolling sand hills, Soil sandy 3rd rate. No timber

Subdivision of Twp 28 N., R 13 E.

BOOK 2614

- N 89° 56' E on a random line bet. sec. 23 and 26.
40.00 Sub temp. $\frac{1}{4}$ sec. cor.
- 79.88 Intersect N. and S. line 5 lks. S. of the cor. of sec. 23, 24, 25 and 26, ^{heretofore described} thence Drun.
S 89° 54' W. on a true line bet. sec. 23 and 26
Around gradually over rolling sandy land, through sage and greasewood brush. Undergrowth and bunch grass.
- 39.94 Sub an iron post 3 ft. long 1 in. in diam. 26 ins. in the ground for $\frac{1}{4}$ sec. cor. marked on brass cap. N 45° 23' on N. half and S 26° on S. half.
Dig pits 18x18x12 ins. E. and W. of post 3 ft. deep and raise a mound of earth $3\frac{1}{2}$ ft. base, $1\frac{1}{2}$ ft. high. W. of cor.
- 48.50 Dry sand wash 50 lks. wide, 3 ft. deep. Course S 20° E
56.80 Road to Luff Agency bears N. and S.
79.88 The cor. of sec. 22, 23, 26, and 27, heretofore described.
Land rolling.
Soil sandy 3rd rate.
No timber
- NOTE. Clouds obscure the sun at noon today rendering an observation for latitude impossible.

- N 0° 01' W. bet. sec. 22 and 23.
Over hilly sandy land through sage and greasewood brush undergrowth and bunch grass.
- 22.00 Top of desert in depression. bears N.E. and S.W. declines to the N.E. asc.
- 37.75 Top of sand ridge bears N.E. and S.W. desc.
- 40.00 Sub an iron post 3 ft. long 1 in. in diam. 26 ins. in the ground for $\frac{1}{4}$ sec. cor. marked on brass cap. N 45° 22' on W. half and S 23° on E half.
Dig pits 18x18x12 ins. N. and S. of post 3 ft. deep and raise a mound of earth $3\frac{1}{2}$ ft. base, $1\frac{1}{2}$ ft. high W. of cor.
- 44.10 Dry ravine 15 lks. wide course east-asc.
- 77.00 Top of ridge bears N.E. and S.W. desc.
- 80.00 Sub an iron post 3 ft. long, 2 ins. in diam. 24 ins. in the ground for cor. of sec. 14, 15, 22, and 23 marked on brass cap. T 28 N 13 E S 14 in N.E. S 23 in S.E. and S 22 in S.W. quadrants.

Raise a mound of stone 2 ft. base, 1 1/2 ft. high. W. of
 Cor. Pit impracticable
 Land hilly.
 Soil sandy 3rd rate.
 No timber

40.00 N 89° 54' E. on a random line bet. sec. 14 and 23.
 Set trap 1/4 sec. Cor.

79.90 Intersect N. and S. line at the cor. of sec. 13, 14,
 23 and 27, ^{herebefore described} thence ~~Drum~~

S 89° 54' W. on a true line bet. sec. 14 and 23
 Ascend S.E. slope over rolling sandy land, through
 scattering sage and greasewood bush undergrowth
 and bunch grass.

39.95 Set an iron post 3 ft. long 1 in. in diam. 26 in. in
 the ground for 1/4 sec. Cor. marked on brass cap. 1/4
 3/4 on N. half and S 23 on S. half.

Dig pits 18x18x12 in. E. and W. of post 3 ft. dia. and
 raise a mound of earth 3 1/2 ft. low, 1 1/2 ft. high N.
 of cor.

49.50 Top of sand ridge bears N.E. and S.W. Leave rolling
 land bears N.E. and S.W. Enter hilly land. desc
 N.W. slope.

56.90 Wood road bears N. and S.

79.90 The cor. of sec. 14, 15, 22 and 23, herebefore described.
 Land rolling and hilly.
 Soil sandy 3rd rate.
 No timber

January 12th 1911

January 18th 1911 Ab. 8^h 10^m a.m. Com. L. Set off 35° 49' 7" ^{on the lat. arc.} 20° 37 1/2' S. on the decl. arc. and determine
 a meridian with the solar at the cor. of sec. 14, 15-
 22, and 23, ^{herebefore described} thence ~~Drum~~

N 90° 01' W. bet. sec. 14 and 15
 Ascend S.E. slope over hilly, stony land through sage
 and greasewood bush undergrowth.

2.00 Top of rocky ridge bears N.E. and S.W. desc.
 5.00 Dig ravine 10 ft. below top of ridge course S.W. asc.
 140.00 Set an iron post 3 ft. long 1 in. in diam. 26 in. in
 the ground for 1/4 sec. cor. marked on brass cap.

BOOK 2614

1/4 S 15 on W. half and S 14 on E half
 Dig pits 18x18x12 ins. N. and S. of post 3 ft. dist. and
 raise a mound of earth 3 1/2 ft. base, 1 1/2 ft. high W. of
 cor.
 71.00 Top of sand ridge bears N 50° E. and S 50° W. desc.
 80.00 Set an iron post 3 ft. long 2 ins. in diam. 24 ins.
 in the ground for cor. of secs. 10, 11, 14 and 15, marked
 on brass cap T 28 N., S 10 in N.W., R 13 E. S 11 in N.E.
 S 14 in S.E. and S 15 in S.W. quadrant.
 Dig pits 18x18x12 ins. in each sec., 5 1/2 ft. dist. and
 raise a mound of earth 4 ft. base 2 ft. high W. of
 cor.
 Land hilly.
 Soil sandy and stony 3rd and 4th rate.
 No timber

N 89° 54' E on a random line bet. sec. 11 and 14.
 140.00 Set temp. 1/4 sec. cor.
 179.86 Intersect N. and S. line 8 lks. S. of the cor. of sec. 11, 12
 13 and 14, ^{hereinbefore described} the well known
 S 89° 51' W. on a true line bet. sec. 11 and 14.
 Around S.E. slope over rolling sandy land through
 sage and greasewood bush undergrowth and bunch
 grass.
 39.73 Set an iron post 3 ft. long 1 in. in diam. 26 ins. in
 the ground for 1/4 sec. cor. marked on brass cap.
 1/4 S 11 on N. half and S 14 on S. half
 Dig pits 18x18x12 ins. E and W. of post 3 ft. dist. and
 raise a mound of earth 3 1/2 ft. base, 1 1/2 ft. high. W. of cor.
 53.85 Wood road bears N. and S.
 65.00 Top of gradual ascent, bears N.E. and S.W. thence
 over nearly level land.
 79.86 The cor. of sec. 10, 11, 14, and 15, hereinbefore described.
 Land rolling.
 Soil sandy 3rd rate.
 No timber

N 0° 01' W. bet. sec. 10 and 11
 Around gentle S.E. slope over rolling sandy land
 through sage and greasewood bush undergrowth

Subdivision of T₂₈N, R₁₃E

Chains

and bunch grass.

22.00 Top of gentle ascent on sand ridge bears N.E. and S.W. desc. N.E. slope

40.00 Set an iron post 3 ft. long 1 in. in diam. 26 in. in the ground for 1/4 sec. cor. marked on brass cap 4 S 10

ow W. half and S 11 ow E. half
Dig pits 18x18x12 ins. N and S. of post. 3 ft. deep and raise a mound of earth 3 1/2 ft. base, 1 1/2 ft. high W. of cor.

80.00 Set an iron post 3 ft. long 2 in. in diam. 24 in. in the ground for cor. of Secs. 2, 3, 10 and 11. marked on brass cap T₂₈N. S₃ in N.W., R₁₃E S₂ in N.E. S₁₁ in S.E. and S₁₀ in S.W. quadrant.

Dig pits 18x18x12 ins. in each. sec. 5 1/2 ft. deep and raise a mound of earth 4 ft. base, 2 ft. high W. of cor.

Land rolling.
Soil sandy 3rd rate.
No timber

NOTE At this cor. Set off 20° 38' S. on the decl. arc and at noon observe the sun on the meridian and obtain a reading of 35° 50 1/2' N. on the lab. arc.

40.00 N 89° 51' E. on a random line bet. sec. 2 and 11
Set temp. 1/4 sec. cor.

79.92 Intersect N and S. line 5 lbs. N. of the cor. of sec. 1, 2, 11 and 12 ^{heretofore described} third drum

S 89° 53' W. on a true line bet. sec. 2 and 11.
Ascend E. slope of ridge over hilly land through sage and greasewood bush, undergrowth and bunch grass.

6.40 Top of ridge bears N and S. desc.
21.00 Dry rocky ravine 50 lbs. wide. courses S.E. asc. gradually over rolling land.

35.45 Wood road bears N and S.

39.96 Set an iron post 3 ft. long 1 in. in diam 26 in. in the ground for 1/4 sec. cor. marked on brass cap 4 S 2 ow N. half and S 11 ow S. half.

Dig pits 18x18x12 ins. E. and W. of post. 3 ft. deep and raise a mound of earth 3 1/2 ft. base, 1 1/2 ft. high. N. of cor.

79.92 The cor. of sec. 2, 3, 10, and 11, heretofore described.

BOOK 2614

Chains

Land rolling and hilly.
Soil sandy and stony 3rd and 4th rate.
No timber

No 01' W. lch. sec. 2 and 3.

Descend gentle N.E. slope over rolling sandy land through sage and greasewood brush undergrowth and bunch grass

40.00 Set an iron post 3 ft. long 1 in. in diam. 26 ins. in the ground for 1/4 sec. cor. marked on brass cap '413 S. on W. half and S 2 on E. half.

Dig pits 18 x 18 x 12 ins. N. and S. of post 3 ft. dia. and raise a mound of earth 3 1/2 ft. base, 1 1/2 ft. high. W. of cor.

77.76 Intersect the 7th Standard Parallel North 4.98 ch E. of the stand 1/4 sec. cor. on S. lch. of sec. 34 recently estab. by me and described in Standard Book "N" 729 N. R 13 E. A set an iron post 3 ft. long 2 ins. in diam 24 ins. in the ground for closing cor. of sec. 2 and 3, marked on brass cap C.T. 49 N. R 13 E. S 34, S 35 in N. half. S 2 in S.E. and S 3 in S.W. quadrant.

Dig pits 24 x 18 x 12 ins. crosswise on each line E. and W. 3 ft. and S. of post. 7 ft. dia. and raise a mound of earth 4 ft. base 2 ft. high. S. of cor.

Land rolling.
Soil sandy 3rd rate.
No timber

January 18th 1911

1911
January 18th at 8^h 08^m a.m. l.m.l. Deb. off. 35° 46' 76. with the lat. arc 21° 32' 1/2 S. on the decl. arc and determine a meridian with the solar at the cor. of sec. 3, 4. 33 and 34 on S. lch. of Twp 28 N. R 13 E. Thence from

No 02' W. lch. sec. 33 and 34.

Over rolling sandy land through sage and greasewood brush undergrowth and bunch grass.

40.00 Set an iron post 3 ft. long 1 in. in diam 26 ins. in the ground for 1/4 sec. cor. marked on brass cap '143 S 3 on W. half and S 34 on E. half.

Dig pits 18 x 18 x 12 ins. N. and S. of post. 3 ft. dia. and raise a mound of earth 3 1/2 ft. base 1 1/2 ft. high.

Subdivision of No 2876., R13E

15

Chain

W. of cor.

- 42.00 Top of sand ridge 10 ft. high bears E. and W. desc.
 59.50 Dry ravine 10 lks. wide course east. asc. gently.
 80.00 Set an iron post 3 ft. long 2 in. in diam. 24 in. in
 the ground for cor. of secs. 27, 28, 33 and 34, marked
 on brass cap T 28 N. S 28 in N.W. R13E S 27 in N.E.
 S 34 in S.E. and S 33 in S.W. quadrants.

Dig pits 18x18x12 in. in each sec. 5 1/2 ft. dish,
 and raise a mound of earth 4 ft. base, 2 ft. high.

W. of cor.

Land rolling.

Soil sandy 3rd rate.

No timber

N 89° 58' E. on a random line bet. secs. 27 and 34

- 40.00 Set temp. 1/4 sec. cor.
 80.02 Intersect N. and S. line 10 lks. N. of the cor. of secs.
 26, 27, 34 and ^{heretofore described} ~~36~~ ^{thence} drum
 N 89° 58' W. on a true line bet. secs. 27 and 34.

Ascend S.E. slope over hilly sandy land through
 sage and greasewood brush undergrowth and
 bunch grass

- 20.00 Top of sand ridge bears N. and S. desc.
 40.01 Set an iron post 3 ft. long, 1 in. in diam. 26 in.
 in the ground for 1/4 sec. cor. marked on brass
 cap 1/4 S 27 on N. half and S 34 on S. half
 Dig pits 18x18x12 in. E. and W. of post 3 ft. dish.
 and raise a mound of earth 3 1/2 ft. base, 1 1/2 ft.
 high. N. of cor.

- 48.00 Dry ravine 15 lks. wide course S 40° W. asc.
 66.00 Top of sand ridge bears N. and S. desc.
 80.02 The cor. of secs. 27, 28, 33 and 34, heretofore described.

Land hilly.

Soil sandy 3rd and 4th rate.

No timber

N 0° 02' W. bet. secs. 27 and 28.

Ascend gradually S.W. slope over hilly sandy land
 through scattering sage and greasewood brush
 undergrowth and bunch grass.

- 40.00 Set an iron post 3 ft. long 1 in. in diam. 26 in. in the ground for $\frac{1}{4}$ sec. cor. marked on brass cap. 448 28 on W. half and S 27 on E half. Dig pits 18x18x12 in. N. and S. of post 3 ft. dish. and raise a mound of earth 3 $\frac{1}{2}$ ft. base, 1 $\frac{1}{2}$ ft. high. W. of cor.
- 42.70 Mch of sand ridge toward N.W. and S.E. desc.
- 45.75 Dig canal 20 lbs. wide 10 ft. deep course S 30° E. asc.
- 76.00 Mch of sand ridge toward N.W. and S.E. desc.
- 80.00 Set an iron post 3 ft. long 2 in. in diam. 24 in. in the ground for cor. of secs. 21, 22, 27 and 28. marked on brass cap T 28 N, S 21 in N.W., R13E. S 22 in N.E. S 27 in S.E. and S 28 in S.W. quadrant. Dig pits 18x18x12 in. in each sec. 5 $\frac{1}{2}$ ft. dish. and raise a mound of earth 4 ft. base, 2 ft. high. W. of cor. Land hilly. Soil sandy 3rd rate. No timber

NOTE At this cor. I set off 21° 33' S. on the decl. arc and at noon observed the sun on the meridian and obtain a reading of 35° 48' N. on the lab. arc

- S 89° 58' E. on a random line bet. secs. 22 and 27.
- 40.00 Set temp. $\frac{1}{4}$ sec. cor.
- 80.08 Intersect N. and S. line 12 lbs. N. of the cor. of secs. 22, 23, 26, and 27, ^{hereinbefore described} thence drain
- N 89° 53' W. on a true line bet. secs. 22 and 27. Ascend N.E. slope over hilly sandy land through sage and greasewood bush undergrowth and bunch grass.
- 11.00 Mch of rocky ridge toward N.W. and S.E. desc.
- 16.50 Mch of descent in depression toward N.W. and S.E. drains to the S.E. cor.
- 40.04 Set an iron post 3 ft. long 1 in. in diam. 26 in. in the ground for $\frac{1}{4}$ sec. cor. marked on brass cap. 448 22 on N. half, and S 27 on S. half. Dig pits 18x18x12 in. E. and W. of post 3 ft. dish. and raise a mound of earth 3 $\frac{1}{2}$ ft. base, 1 $\frac{1}{2}$ ft. high N. of cor.
- 80.08 The cor. of secs 21, 22, 27, and 28, hereinbefore described. Land hilly.

Subdivision of Twp 28 N., R 13 E.

Chain

17

Soil sandy 3rd rate.
No timber

N^o 02' W. bh. sec. 21 and 22

Descend N. slope over hilly sandy land through scattering sage and greasewood brush undergrowth and bunchgrass

40.00 Set an iron post 3 ft. long 1 in. in diam. 26 ind. in the ground for $\frac{1}{4}$ sec. cor. marked on brass cap 4321 on W. half and S22 on E. half.

Dig pits 18x18x12 ind. N. and S. of post 3 ft. dist and raise a mound of earth 3 $\frac{1}{2}$ ft. base, 1 $\frac{1}{2}$ ft. high. W. of cor.

68.50 Dry ravine 20 lbs. wide course N.E. asc.

80.00 Set an iron post 3 ft. long 2 ind. in diam 24 ind. in the ground for cor. of sec. 15, 16, 21, and 22. marked on brass cap. T 28 N., R 13 E. S15 in N.E., S22 in S.E. and S21 in S.W. quadrants. Dig pits 18x18x12 ind. in each sec. 5 ft. dist. and raise a mound of earth 4 ft. base, 2 ft. high. W. of cor.

Land hilly.

Soil sandy 3rd rate.

No timber

N 89° 53' E on a random line bh. sec. 15 and 22.

40.00 Set temp $\frac{1}{4}$ sec. cor.

80.14 Intersect N and S. line 8 lbs. N. of the cor. of sec. 14, 15, 22 and 23, ^{here before described} thened down

N 89° 50' W. on a true line bh. sec. 15 and 22.

Descend W. slope over hilly sandy land through scattering sage and greasewood brush undergrowth.

44.00 Dry ravine course S 65° W. asc.

8.30 Top of rocky ridge bears N.E. and S.W. desc.

24.90 Dry ravine course S.E. asc.

28.00 Top of ridge bears N.W. and S.E. desc.

40.07 Set an iron post 3 ft. long 1 in. in diam 26 ind. in the ground for $\frac{1}{4}$ sec. cor. marked on brass cap. 4315 on N. half and S22 on S. half. Raise a mound of stone 2 ft. base 1 $\frac{1}{2}$ ft. high. W. of cor.

Subdivision of Tp 28 N., R 13 E.

18

Chain

BOOK 2614

Pits unpracticable.

40.50 Dry ravine 30 lbs. wide course North and.

80.14 This cov. of secs. 15, 16, 21, and 22, heretofore described.
Land hilly.Soil sandy, and stony 3rd and 4th rate.
No timberJanuary 13th 1911January 19th 1911 Ch. 8^h 10^m a.m. l.m. l. D set off. 35° 49'
N. on the lat. arc. 20° 25' 1/2" S. on the decl. arc and
determine a meridian with the solar ap. the cov.
of secs. 15, 16, 21 and 22, ^{heretofore described} thened drum
N 0° 0' 2" W. bet. secs. 15 and 16.Ascend S.E. slope of ridge over hilly sandy land
through sage and greasewood bush undergrowth
and bunch grass.

13.60 Top of sand ridge betw NW. and S.E. desc.

24.00 Dry ravine 35 lbs. wide course S 50° E and.

40.00 Set an iron post 3 ft. long 1 in. in diam. 26 in. in
the ground for 1/4 sec. cor. marked on brass cap 1/4
S 16° 0' W. half and S 15° 0' E. half.Dig pits 18x18x12 ins. N. and S. of post 3 ft. deep, and
raise a mound of earth 3 1/2 ft. base 1 1/2 ft. high W.
of cov.

42.30 Top of sand ridge betw NW. and S.E. desc.

46.00 Dry ravine 5 lbs. wide course S.E. and.

51.75 Top of ridge betw NW. and S.E. desc.

52.30 Dry ravine course S.E. and.

80.00 Set an iron post 3 ft. long 2 in. in diam. 24 in.
in the ground for cor. of secs. 9, 10, 15 and 16.
marked on brass cap 7 28 N, 3 9 in NW., R 13 E. S
10 in N.E., S 15 in S.E. and S 16 in S.W. quadrants.Dig pits 18x18x12 ins. in each sec. 5 1/2 ft. deep, and
raise a mound of earth 4 ft. base, 2 ft. high W.
of cov.

Land hilly.

Soil sandy 3rd rate.

No timber

S 89° 50' E. on a random line betw secs. 10 and 15

40.00 Set temp 1/4 sec. cov.

Chain

Subdivision of T₂₈N., R13E.

19

- 80.10 Intersect N. and S. line 3 lks. S. of the cor. of secs. 10, 11, herebefore described
14 and 15, thence Drive
N 89° 51' W, on a true line bet. secs. 10 and 15
Descend N.W. slope over rolling sandy land through sage and greasewood brush undergrowth and bunch grass.
- 40.05 Set an iron post 3 ft. long 1 in. in diam. 26 ins. in the ground for $\frac{1}{4}$ sec. cor. marked on brass cap $\frac{1}{4}$ S 10 on N. half and S 15 on S. half.
Dig pits 18 x 18 x 12 ins. E and W. of post, 3 ft. dish and raise a mound of earth $3\frac{1}{2}$ ft. base, $1\frac{1}{2}$ ft. high N. of cor.
- 57.30 Dry ravine 15 lks. wide course S.E. and.
- 80.10 The cor. of secs. 9, 10, 15, and 16, herebefore described.
Land rolling,
Soil sandy 3rd rate,
No timber

- N 0° 02' W, bet. secs. 9 and 10.
Ascend S.E. slope over rolling sandy land, through scattering sage and greasewood brush undergrowth.
- 40.00 Set an iron post 3 ft. long 1 in. in diam. 26 ins. in the ground for $\frac{1}{4}$ sec. cor. marked on brass cap $\frac{1}{4}$ S 9 on W. half, and S 10 on E. half.
Dig pits 18 x 18 x 12 ins. N. and S. of post, 3 ft. dish, and raise a mound of earth $3\frac{1}{2}$ ft. base, $1\frac{1}{2}$ ft. high W. of cor.
- 79.20 Rise of gradual ascent, thence over rolling land sloped to the east.
- 80.00 Set an iron post 3 ft. long 2 in. in diam. 24 ins. in the ground for cor. of secs. 3, 4, 9, and 10 marked on brass cap, T₂₈N., R13E, S 3 in NE, S 10 in SE and S 9 in SW. quadrant.
Dig pits 18 x 18 x 12 ins. in each sec. $5\frac{1}{2}$ ft. dish, and raise a mound of earth 4 ft. base, 2 ft. high W. of cor.
Land rolling,
Soil sandy 3rd rate,
No timber

NOTE At this cor. I set off 20° 25' S. on the decl. arc and at noon observe the sun on the meridian and obtain a reading of 36° 50' N. on the lab. arc.

BOOK 2614

40,00 S 89° 51' E on a random line bet. sec. 3 and 10.
Set temp. 1/4 sec. cor.

80,12 Intersect N. and S. line 5 lks. N. of the cor. of sec.
2, 3, 10 and 11 ^{herebefore described} Themed Drum

W 89° 49' W. on a true line bet. sec. 3 and 10.

Ascend E. slope over rolling sandy land through sage
and greasewood brush undergrowth and bunch grass.

40,06 Set an iron post 3 ft. long 1 in. in diam 26 ins. in
the ground for 1/4 sec. cor. marked on brass cap 1/4 S 3
on N. half and S 10 on S. half

Dig pits 18 x 18 x 12 ins. E and W. of post 3 ft. dia and
raise a mound of earth 3 1/2 ft. base, 1 1/2 ft. high. N.
of cor.

80,12 The cor. of sec. 3, 4, 9 and 10, herebefore described.

Land rolling
Soil sandy 3rd rate.

No timber

W 0° 02' W. bet. sec. 3 and 4.

Over rolling sandy land through sage and greasewood
brush undergrowth and bunch grass.

40,00 Set an iron post 3 ft. long 1 in. in diam. 26 ins. in
the ground for 1/4 sec. cor. marked on brass cap 1/4
S 4 on W. half and S 3 on E. half.

Dig pits 18 x 18 x 12 ins N and S of post 3 ft. dia and
raise a mound of earth 3 1/2 ft. base 1 1/2 ft. high.
W. of cor.

77,50 Intersect the 7th Standard Parallel North. 4.97

Ch. E. cor. of the Stand 1/4 sec. cor. on the S. side.
^{recently estab. by me and described in Standard Book "N"}
of Sec. 33 T 29 N., R 13 E. N. Set an iron post 3 ft.
long 2 ins. in diam. 24 ins. in the ground for
setting cor. of sec. 3 and 4, marked on brass cap
T 29 N., R 13 E. S 33, S 34 in N. half., S 3 in S.E.
and S 4 in S.W. quadrant.

Dig pits 24 x 18 x 12 ins. Crosswise on each line. E and
W. 3 ft. and S. of post 7 ft. dia. and raise a mound
of earth 4 ft. base, 2 ft. high. S. of cor.

Land rolling.
Soil sandy 3rd rate.

No timber

January 19th 1911

Subdivision of Np 28 N., R 13 E.

Chains

January 14th 1911
At 8^h 39^m a.m. level. Ditch off. 35° 46' N.
on the lat. arc. 21° 28' S. on the decl. arc and determine
a meridian with the solar, on the cor. of rec.
recently estab. by me and described in Exterior Book "AM"
4, 5, 32, and 33. on S. bdy. of Np 1 these Drums
N 0° 03' W. bet. recs 32 and 33.

Ascend S.E. slope over rolling sandy land through
sage and greasewood brush undergrowth.

40.00 Behan iron post 3 ft. long 1 in. in diam 26 ins. in
the ground for 1/4 sec. cor. marked on brass cap. 1/4
S 32 on W. half and S 33 on E half

Dig pits 18 x 18 x 12 ins. N. and S of post. 3 ft. dia. and
raise a mound of earth 3 1/2 ft. base, 1 1/2 ft. high W.
of cor.

80.00 Behan iron post 3 ft. long 2 ins. in diam. 24 ins. in
the ground for cor. of recs. 28, 29, 32, and 33, marked
on brass cap T 28 N. S 29 in N.W. R 13 E. S 28 in N.E.
S 33 in S.E. and S 32 in S.W. quadrants.

Dig pits 18 x 18 x 12 ins. in each sec. 5 1/2 ft. dia. and
raise a mound of earth 4 ft. base 2 ft. high W. of cor.
Land rolling.

Soil sandy 3rd rate.
No timber

N 89° 58' E. on a random line bet. recs. 28 and 33.

40.00 Beh temp. 1/4 sec. cor.

80.02 Intersect N. and S. lines 5 lks. N. of the cor. of recs. 27
28, 33, and 34, ^{heretofore described} these Drums

Mark on a true line bet. recs. 28 and 33.

Ascend S.W. slope over rolling sandy land through sage
and greasewood brush undergrowth and bunch grass

7.00 Dry ravine 10 lks. wide course S 30° E arc.

40.01 Behan iron post 3 ft. long 1 in. in diam. 26 ins. in
the ground for 1/4 sec. cor. marked on brass cap. 1/4 S
28 on N. half and S 33 on S. half.

Dig pits 18 x 18 x 12 ins. E and W. of post 3 ft. dia. and
raise a mound of earth 3 1/2 ft. base, 1 1/2 ft. high N. of cor.

This cor. is situated on peak of ridge, bet. N. and S. desc.

57.00 Dry ravine 10 lks. wide course S.E. arc.

80.02 This cor. of recs. 28, 29, 32, and 33, heretofore described.
Land rolling.

Soil sandy 3rd rate.

No timber

N^o 03' W. bet. sec. 28 and 29.

Around S.E. slope over rolling sandy land through sage and greasewood bush undergrowth and bunch grass.

40.00 Set an iron post 3 ft. long 1 in. in diam. 26 ins. in the ground for 1/4 sec. cor. marked on brass cap 14329 on W. half and S28 on E. half.

Dig pits 18x18x12 ins. N. and S. of post 3 ft. dish. and raise a mound of earth 3 1/2 ft. base, 1 1/2 ft. high W. of cor.

70.00 Note of sand ridge bears, N35°W. and S35°E. desc.

80.00 Set an iron post 3 ft. long 2 in. in diam. 24 ins. in the ground for cor. of sec. 20, 21, 28, and 29 marked on brass cap T28 N. S20 in N.W. R13 E S21 in N.E. S28 in S.E. and S29 in S.W. quadrant.

Dig pits 18x18x12 ins. in each sec. 5 1/2 ft. dish. and raise a mound of earth 4 ft. base, 2 ft. high W. of cor.

Land rolling and hilly.

Soil sandy 3rd rate

No timber

NOTE At this cor I set off 21°23' S. on the decl. arc and at noon observed the sun on the meridian and obtain a reading of 35°48' N. on the lab. arc

Bear out a random line bet. sec. 21 and 28.

40.00 Set temp. 1/4 sec. cor.

80.00 Intersect N. and S. line at the cor. of sec. 21, 22, 27 and 28. ^{herein before described} thence run

Weir out a true line bet. sec. 21 and 28.

Around E. slope over rolling sandy land through scattering sage and greasewood bush undergrowth and bunch grass.

40.00 Set an iron post 3 ft. long 1 in. in diam. 26 ins. in the ground for 1/4 sec. cor. marked on brass cap 14821 on N. half and S28 on S. half

Dig pits 18x18x12 ins. E. and W. of post 3 ft. dish. and raise a mound of earth 3 1/2 ft. base, 1 1/2 ft. high N. of cor.

Subdivision of Twp 28 N., R 13 E.

Chains

- 42.40 Top of sand ridges 10 ft. above 1/4 sec. cor. Feas N and S. due W. slope.
- 76.10 Dry ravine 15 lbs. wide Course S 50° E. asc. gently.
- 80.00 NW cor. of secs. 20, 21, 28, and 29, hereinbefore described. Land rolling and hilly. Soil sandy and stony 3rd and 4th rate. No timber

N 0° 03' W. bet. secs. 20 and 21.

Descend N.E. slope over sandy land through sage and greasewood brush undergrowth and bunch grass

- 3.50 Dry ravine 10 lbs. wide Course S.E. asc.
- 40.00 Set an iron post 3 ft. long 1 in. in diam. 26 ins. in the ground for 1/4 sec. cor. marked on brass cap 14 S above W. half and S 21 on E. half. Dig pits 18 x 18 x 12 ins. N. and S. of post 3 ft. dist. and raise a mound of earth 3 1/2 ft. base, 1 1/2 ft. high W. of cor.

- 80.00 Set an iron post 3 ft. long 2 ins. in diam. 24 ins. in the ground for cor. of secs. 16, 17, 20 and 21. marked on brass cap T 28 N. S 17 in N.W. R 13 E S 16 in N.E. S 21 in S.E. and S 20 in S.W. quadrants. Dig pits 18 x 18 x 12 ins. in each sec. 5 1/2 ft. dist. and raise a mound of earth 4 ft. base, 2 ft. high W. of cor. Land rolling. Soil sandy 3rd rate. No timber

East on a random line bet. secs. 16 and 21

- 40.00 Set trap 1/4 sec. cor.
- 80.04 Intersect N and S. line 5 lbs N. of the cor. of secs. 15, 16, 21, and 22, ^{hereinbefore described} thence Driven N 89° 58' W. on a true line bet. secs. 16 and 21. Ascend S.E. slope over rolling sandy land through scattering sage and greasewood brush undergrowth and bunch grass.
- 40.02 Set an iron post 3 ft. long 1 in. in diam. 26 ins. in the ground for 1/4 sec. cor. marked on brass cap 14 S 16 on N. half. and S 21 on S. half. Dig pits 18 x 18 x 12 ins. E. and W. of post 3 ft. dist.

BOOK 2614

and raise a mound of earth $3\frac{1}{2}$ ft. base, $1\frac{1}{2}$ ft. high.

W. of cor.

80.04 The cor of secs 16, 17, 20, and 21, heretofore described.

Land rolling.

Soil sandy 3rd rate.

No timber

No^o 3^W, bet. secs. 16 and 17.

Ascend S.E. slope over rolling sandy land through sage and greasewood brush undergrowth and bunch grass

4.00 Top of ridge bet. N.E. and S.W. desc N.W. slope

40.00 Set an iron post 3 ft long 1 in. in diam. 26 ins in the ground for $\frac{1}{4}$ sec. cor marked on brass cap '4 S 77 on W. half and S 16 on E. half.Dig pits 18x18x12 ins. N. and S. of post. 3 ft. dist. and raise a mound of earth $3\frac{1}{2}$ ft. base, $1\frac{1}{2}$ ft. high W. of cor.

80.00 Set an iron post 3 ft. long, 2 ins. in diam. 24 ins in the ground for cor. of secs. 8, 9, 16, and 17, marked on brass cap T 28 N., S 8 in N.W., R 13 E. S 9 in N.E. S 16 in S.E. and S 17 in S.W. quadrants.

Dig pits 18x18x12 ins in each sec. $5\frac{1}{2}$ ft. dist. and raise a mound of earth 4 ft. base, 2 ft. high W. of cor.

Land rolling.

Soil sandy 3rd rate.

No timber

January 14th 1911.January 20th 1911
At 9^h 11^m a.m. l.m. to Deb. off. $35^{\circ}50' N.$ on the lat. arc. $20^{\circ}14' S.$ on the decl. arc and determined a meridian with the solar at the cor. of secs. 8, 9, 16 and 17, ^{above described} thence runS $89^{\circ}58'$ E on a random line bet. secs. 9 and 16.40.00 Set temp $\frac{1}{4}$ sec. cor.80.10 Intersect N. and S. line 5 lks. S. of the cor. of secs. 9, 10, 15, and 16, ^{heretofore described} thence run.

Went on a true line bet. secs. 9 and 16.

Ascend S.E. slope over rolling sandy land through sage and greasewood brush undergrowth and bunch grass.

Chains

- 40.05 Set an iron post 3 ft. long 1 in. in diam. 26 ins. in the ground for 1/4 sec. cor. marked on brass cap 1/4 S 90° W. half and 3/4 W S. half.
Dig pits 18x18x12 ins. E and W. of post 3 ft. dish and raise a mound of earth 3 1/2 ft. base, 1 1/2 ft. high N. of cor.
- 69.00 Map of ridges or divides bears N 35° E and S 35° W. desc. gently over N.W. slope.
- 80.10 This cor. of secs. 8, 9, 16 and 17, heretofore described.
Land rolling.
Soil sandy 3rd rate.
No timber

N 0° 03' W. br. sec. 8 and 9.
Over rolling sandy land through sage and greasewood bush undergrowth and bunch grass.

- 40.00 Set an iron post 3 ft. long 1 in. in diam. 26 ins. in the ground for 1/4 sec. cor. marked on brass cap 1/4 S 80° W. half and 3/4 W E. half.
Dig pits 18x18x12 ins N and S. of post 3 ft. dish and raise a mound of earth 3 1/2 ft. base, 1 1/2 ft. high W. of cor.
- 80.00 Set an iron post 3 ft. long 2 ins. in diam. 24 ins. in the ground for cor. of secs. 4, 5, 8 and 9, marked on brass cap T 28 N. S 5 in NW. T 13 E. S 4 in N.E. S 9 in S.E. and S 8 in S.W. quadrants
Dig pits 18x18x12 ins. in each sec. 5 1/2 ft. dish. And raise a mound of earth 4 ft. base, 2 ft. high W. of cor.
Land rolling.
Soil sandy 3rd rate.
No timber

East on a random line bet. sec 4 and 9.

- 40.00 Set temp 1/4 sec. cor.
- 80.10 Intersect N and S. line 8 lvs. N. of the cor. of secs. 3, 4, 9, and 10, ^{heretofore described} thence draw:
N 89° 57' W. on a true line bet. sec 4 and 9.
Ascend E. slope over rolling sandy land through scattering sage and greasewood bush undergrowth

BOOK 2614

- and bunch grass
- 30.00 Not of divide bears N. and S. descend gradually over W. slope.
- 40.05 Set an iron post 3 ft. long 1 in. in diam., 26 in. in the ground for $\frac{1}{4}$ sec. cor. marked out brass cap $\frac{1}{4}$ S 4 on N. half and S 9 on S. half.
Dig pits 18x18x12 ins E. and W. of post, 3 ft. dist. and raise a mound of earth $3\frac{1}{2}$ ft. base, $1\frac{1}{2}$ ft. high. N. of cor.
- NOTE On this cor. I set off $20^{\circ}13'$ S. on the decl. arc and at noon observe the sun on the meridian and obtain a reading of $35^{\circ}50\frac{1}{2}'$ N. on the lat. arc.
- 80.10 The cor. of secs. 4, 5, 8 and 9, hereinbefore described.
Land rolling.
Soil sandy 3rd rate.
No timber.

- $W 0^{\circ}03'$ W. lat. secs. 4 and 5.
Over rolling sandy land through sage and greasewood brush undergrowth and bunch grass.
- 40.00 Set an iron post 3 ft. long, 1 in. in diam., 26 in. in the ground for $\frac{1}{4}$ sec. cor. marked out brass cap $\frac{1}{4}$ S 5 on W. half and S 4 on E. half.
Dig pits 18x18x12 ins. N. and S. of post, 3 ft. dist. and raise a mound of earth $3\frac{1}{2}$ ft. base, $1\frac{1}{2}$ ft. high. W. of cor.
- 77.48 Intersect the 7th Standard Parallel North 4.80 Chs. E. of the Standard $\frac{1}{4}$ sec. cor. on S. l. by. of sec. recently estab. by me and described in Standard Book No. 729 N. R 13 E. A Set an iron post 3 ft. long 2. ins. in diam., 24 in. in the ground for closing cor. of secs. 4 and 5. marked out brass cap 729 N., R 13 E. S 32, S 33. in N. half., S 4 in S.E. and S 5 in S.W. quadrant
Dig pits 24x18x12 ins. crosswise on line E and W. 3 ft. and S. of post, 7 ft. dist. and raise a mound of earth 4 ft. base, 2 ft. high. S. of cor.
Land rolling.
Soil sandy 3rd rate.
No timber

January 20th 1911

Subdivision of Twp 28 N., R 13 E.

Chain

1911
 January 16th at 8^h 39^m a.m. l.m.l. Deb. off. 35° 46' N.
 on the lat. arc. 21° 01 1/2' S. on the decl. arc and determined
 a meridian with the solar at the cor. of secs. 5, 6,
 recently estab. by me and described in ^{Exterior} Book "AM"
 31 and 32 on S. side of Twp. 28 N. thence I run
 N 0° 03' W. 1/4 sec. 31 and 32.

Over rolling sandy land, through sage and greasewood
 brush undergrowth and bunch grass

40.00 Set an iron post 3 ft. long 1 in. in diam. 26 ins. in
 the ground for 1/4 sec. cor. marked w brass cap 14 3
 31 on W. half and S 32 on E. half

Dig pits 18 x 18 x 12 ins N. and S. of post. 3 ft. dish.
 and raise a mound of earth 3 1/2 ft. base, 1 1/2 ft. high W.
 of cor.

67.00 Top of sand ridge bears N 30° E and S 30° W. desc.
 gently.

80.00 Set an iron post 3 ft. long, 2 ins. in diam., 24 ins.
 in the ground for cor. of secs. 29, 30, 31 and 32.
 marked w brass cap. 4 28 N. S 30 in N.W. N 13 E. S.
 29 in N.E. S 32. in S.E. and S 31 in S.W. quadrant.

Dig pits 18 x 18 x 12 ins. in each sec. 5 1/2 ft. dish. and
 raise a mound of earth 4 ft. base, 1 1/2 ft. high W.
 of cor.

Land rolling.
 Soil sandy 3rd rate.
 No timber

N 89° 58' E. on a random line beth. secs. 29 and 32.

140.00 Set temp. 1/4 sec. cor.

79.92 Intersect N. and S. line 3 lks. N of the cor. of sec.
 28, 29, 32 and 31, ^{heretofore described} thence I run.

S 89° 59' W. on a true line beth. secs. 29 and 32.

Around S.E. slope over sandy land through sage
 and greasewood brush undergrowth and bunch grass

35.00 Top of sand ridge bears N 30° E and S 30° W. desc.

39.96 Set an iron post 3 ft. long 1 in. in diam. 26 ins. in
 the ground for 1/4 sec. cor. marked w brass cap.
 14 5 29 on N. half and S 32 on S. half

Dig pits 18 x 18 x 12 ins E and W. of post. 3 ft. dish.
 and raise a mound of earth 3 1/2 ft. base, 1 1/2 ft.
 high W. of cor.

79.92 The cor. of secs. 29, 30, 31 and 32, heretofore described.

BOOK 2614

Land rolling and hilly.
Soil sandy 3rd rate.
No timber

- 40.00 Set temp $\frac{1}{4}$ sec. cor.
- 77.90 Intersect the 3rd Guide Meridian East. 4 lks. S. of the
recently estab. by me and described in Standard Book "D"
Cor. of Secs. 25, 30, 31 and 36, thened True
East on a true line bet. sec. 30 and 31.
Descend S.E. slope over rolling sandy land through
scattering sage and greasewood bush undergrowth
and bunch grass
- 37.90 Set out iron post 3 ft. long 1 in. in diam. 26 ins. in
the ground for $\frac{1}{4}$ sec. cor. marked out brass cap $\frac{1}{4}$
S 30° W. half. and S 31° W. half.
Dig pits 18x18x12 ins. E. and W. of post 3 ft. dist.
and raise a mound of earth $3\frac{1}{2}$ ft. base $1\frac{1}{2}$ ft. high
W. of cor.
- 76.00 Foot of descent in depression bears N.E. and S.W. drains
to the S.W. asc. gently over N.W. slope
- 77.90 The cor. of secs. 29, 30, 31 and 32, heretofore described.
Land rolling.
Soil sandy 3rd rate.
No timber

- N 0° 03' W. bet. sec. 29 and 30.
Descend N.W. slope over rolling sandy land, through
sage and greasewood bush undergrowth, and bunch
grass.
- 1.30 Foot of gradual descent in depression bears N.E. and
S.W., drains to the S.W. ascend gently
- 29.70 Foot of sand ridge bears N 30° E and S 30° W. desc.
- 40.00 Set out iron post 3 ft. long 1 in. in diam. 26 ins. in
the ground for $\frac{1}{4}$ sec. cor. marked out brass cap $\frac{1}{4}$
S 30° W. half and S 29° W. half.
Dig pits 18x18x12 ins. N. and S. of post 3 ft. dist.
and raise a mound of earth $3\frac{1}{2}$ ft. base, $1\frac{1}{2}$ ft. high.
W. of cor.
- 40.50 Foot of descent in depression bears N.E. and S.W.
drains to the S.W. ascend gradually.

Subdivision of Twp 28 N., R 13 E.

Chains

29

80.00 Set an iron post 3 ft. long 2 ins. in diam. 24 ins. in the ground for cor. of secs. 19, 20, 29, and 30, marked on brass cap T 28 N. S 19 in NW., R 13 E. S 20 in NE. S 29 in SE. and S 30 in SW. quadrant.
Dig pits 18 x 18 x 12 ins. in each sec. 5 1/2 ft. dia. and raise a mound of earth 4 ft. base, 2 ft. high. W. of cor.
Land rolling.
Soil sandy 3rd rate.
No timber

N 89° 59' E. on a random line bet. secs. 20 and 29.
40.00 Set temp. 1/4 sec. cor.
79.96 Intersect N. and S. line 5 lks. S. of the cor. of secs. 20, 21, 28, and 29, ^{heretofore described} thence run S 89° 57' W. on a true line bet. secs. 20 and 21.
Ascend N.E. slope over rolling sandy land through scattering sage and greasewood bush undergrowth and bunch grass.

39.98 Set an iron post 3 ft. long 1 in. in diam. 26 ins. in the ground for 1/4 sec. cor. marked on brass cap 14 S 20 on N. half and S 29 on S half.
Dig pits 18 x 18 x 12 ins. E and W. of post 3 ft. dia. and raise a mound of earth 3 1/2 ft. base 1 1/2 ft. high. N. of cor.

55.00 Top of sand ridge bears N.E. and S.W. desc.
79.96 The cor. of secs. 19, 20, 29 and 30, heretofore described.
Land rolling.
Soil sandy 3rd rate.
No timber

NOTE At this cor. I set off 21° 01' S. on the decl. arc and at noon observed the sun on the meridian and obtain a reading of 35° 48' N. on the lat. arc.

Work on a random line bet. secs 19 and 30.
40.00 Set temp. 1/4 sec. cor.
77.84 Intersect the 3rd Guide Meridian East, 5 lks. N. of recently estab. by me and described in Standard Book Co. the cor. of secs. 19, 24, 25 and 30, thence run N 89° 58' E. on a true line bet. secs. 19 and 30.
Descend S.E. slope over rolling sandy land through

BOOK 2614

- sage and greasewood brush undergrowth and bunch grass
- 9.76 Prof of descent in depression toward N and S, drains to the south ascend gently
- 37.84 See an iron post 3 ft. long 1 in. in diam. 26 ins. in the ground for 1/4 sec. cor. marked on brass cap 1/4 S 17° W N. half and S 30° W E half
Dig pits 18 x 18 x 12 ins. E and W. of post 3 ft. dist. and raise a mound of earth 3 1/2 ft. base 1 1/2 ft. high. N. of cor.
- 77.84 The cor. of secs. 19, 20, 29 and 30, hereinbefore described.
Land rolling
Soil sandy 3rd rate.
No timber

- N 0° 03' W. bet. secs. 19 and 20.
Ascend S.E. slope over sandy land through sage and greasewood brush undergrowth and bunch grass.
- 19.50 Prof of sand ridge toward N.E. and S.W. desc
- 26.90 Dry ravine course S.W. asc.
- 40.00 See an iron post 3 ft. long 1 in. in diam. 26 ins. in the ground for 1/4 sec. cor. marked on brass cap 1/4 S 19° W W. half and S 20° W E half.
Dig pits 18 x 18 x 12 ins N. and S. of post 3 ft. dist. and raise a mound of earth 3 1/2 ft. base, 1 1/2 ft. high. W. of cor.
- 57.00 Prof of divide toward N.E. and S.W. desc.
- 80.00 See an iron post 3 ft. long 2 ins. in diam. 24 ins. in the ground for cor. of secs. 17, 18, 19, and 20. marked on brass cap T 28 N. 318 in N.W., R 13 E S 17 in N.E. S 20 in S.E. and S 19 in S.W. quadrants.
Dig pits 18 x 18 x 12 ins. in each sec. 5 1/2 ft. dist. and raise a mound of earth 4 ft. base, 2 ft. high W. of cor.
Land rolling and hilly.
Soil sandy 3rd rate.
No timber

- N 89° 57' E. on a random line bet. secs. 17 and 20.
40.00 See temp. 1/4 sec. cor.

Chain

- 80.00 Intersect. N and S. line 3 lks. N. of the cor. of sec. 16, 17, ^{heretofore described} 20, and 21, thence Drum.
 $89^{\circ}58' W.$ on a true line bet. sec. 17 and 20.
 Ascend gradually, E. slope over rolling sandy land through sage and greasewood brush undergrowth and bunch grass.
- 34.00 Top of ridge bears N and S. line.
- 40.00 Set an iron post 3 ft. long 1 in. in diam. 26 ins. in the ground for $\frac{1}{4}$ sec. cor. marked on brass cap 317 on N. half and 320 on S. half.
 Dig pits $18 \times 18 \times 12$ ins. E and W. of post. 3 ft. dish and raise a mound of earth $3\frac{1}{2}$ ft. base, $1\frac{1}{2}$ ft. high.
 N. of cor.
- 80.00 The cor. of sec. 17, 18, 19 and 20, heretofore described.
 Land rolling.
 Soil sandy 3rd rate.
 No timber

January 16th 1911

- January 21st 1911 Ah. 8th 11^m a.m. L.M. Set off $35^{\circ}49'$ N. on the lat. arc. $20^{\circ}00'$ S. on the decl. arc and determine a meridian with the solar alt. the cor. of sec. 17, 18, 19 and 20, ^{heretofore described} thence Drum.
 $89^{\circ}58' W.$ on a random line bet. sec. 18 and 19.
- 40.00 Set temp. $\frac{1}{4}$ sec. cor.
- 77.74 Intersect. the 3rd Guide Meridian East. 8 lks. S. of the recently estab. by me and described in Standard Book "2" Cor. of sec. 18, 19, and 24, thence Drum.
 $89^{\circ}59' E$ on a true line bet. sec. 18 and 19.
 Ascend W. slope over rolling sandy land through sage and greasewood brush undergrowth and bunch grass.
- 37.74 Set an iron post 3 ft. long 1 in. in diam. 26 ins. in the ground for $\frac{1}{4}$ sec. cor. marked on brass cap 318 on N. half and 319 on S. half.
 Dig pits $18 \times 18 \times 12$ ins. E and W. of post. 3 ft. dish and raise a mound of earth $3\frac{1}{2}$ ft. base, $1\frac{1}{2}$ ft. high.
 N. of cor.
- 77.74 The cor. of sec. 17, 18, 19 and 20, heretofore described.
 Land rolling.
 Soil sandy 3rd rate.
 No timber

- N $0^{\circ}03'$ W. Feb. recs. 17 and 18.
 Descend N.W. slope over rolling sandy land through
 sage and greasewood brush undergrowth and bunch
 grass.
- 40.00 Set an iron post 3 ft. long 1 in. in diam. 26 ins in
 the ground for $\frac{1}{4}$ sec. cor. marked on brass cap 14 S
 18 on W. half and 317 on E. half.
 Dig pits 18x18x12 ins N and S. of post, 3 ft. dist.
 and raise a mound of earth $3\frac{1}{2}$ ft. base, $1\frac{1}{2}$ ft. high.
 W. of cor.
- 80.00 Set an iron post 3 ft. long 2 ins. in diam. 24
 ins. in the ground for cor. of sec. 7, 8, 17 and 18.
 marked on brass cap T 28 N 37 in N.W. R 13 E 38
 in N.E. 517 in S.E. and 318 in S.W. quadrant.
 Dig pits 18x18x12 ins. in each sec. $5\frac{1}{2}$ ft. dist.
 and raise a mound of earth 4 ft. base, 2 ft. high.
 W. of cor.
 Land rolling
 Soil sandy 3rd rate.
 No timber

- N $89^{\circ}58'$ E. on a random line Feb. recs. 8 and 17.
 40.00 Set temp $\frac{1}{4}$ sec. cor.
- 80.12 Intersect N and S. line at the cor. of sec. 8, 9, 16 and 17,
 thence run heretofore described
 S $89^{\circ}58'$ W. on a true line Feb. recs. 8 and 17.
 Descend N.W. slope over rolling sandy land through
 sage and greasewood brush undergrowth and
 bunch grass.
- 40.06 Set an iron post 3 ft. long 1 in. in diam. 26 ins. in
 the ground for $\frac{1}{4}$ sec. cor. marked on brass cap 14 S
 8 on N. half and 317 on S. half.
 Dig pits 18x18x12 ins. E and W. of post 3 ft. dist.
 and raise a mound of earth $3\frac{1}{2}$ ft. base, $1\frac{1}{2}$ ft. high.
 N. of cor.
- 80.12 The cor. of sec. 7, 8, 17 and 18, heretofore described.
 Land rolling.
 Soil sandy 3rd rate.
 No timber

Subdivision of Tp 28 N. R 13 E.

Chain

N 89° 57' W. on a random line bet. sec. 7 and 18.

40.00 Set temp. 1/4 sec. cor.

77.70 Intersect 3rd Guide Meridian East. 5 lbs S. of presently estab. by me and described in Standard Book "Q" the cor. of sec. 7, 12, 13, and 18, thence S. 1/2 W.

S 89° 57' E on a true line bet. sec. 7 and 18.

Descend S E slope over rolling sandy land through sage and greasewood bush undergrowth and bunch grass.

37.70 Set an iron post 3 ft. long, 1 in. in diam. 26 ins. in the ground for 1/4 sec. cor. marked on brass cap 1/4 S 7 on N. half and 3/8 on S. half.

Dig pits 18 x 18 x 12 ins E. and W. of post 3 ft. dist. and raise a mound of earth 3 1/2 ft. base, 1 1/2 ft. high. N. of cor.

NOTE At this cor. I set off. 20° 00' S. on the decl. arc and at noon observe the sun on the meridian and obtain a reading of 35° 50' 47". the lat. arc.

43.00 Depression true N and S. of the cor. of sec. 7, 8, 17 and 18, heretofore described.

77.70 Land rolling. Soil sandy 3rd rate. No timber

N 0° 03' W. bet. sec. 7 and 8.

Over rolling sandy land sloped to the west, through scattering sage and greasewood bush undergrowth and bunch grass.

40.00 Set an iron post 3 ft. long 1 in. in diam. 26 ins. in the ground for 1/4 sec. cor. marked on brass cap 1/4 S 7 on W. half and 3/8 on E. half.

Dig pits 18 x 18 x 12 ins N. and S. of post 3 ft. dist. and raise a mound of earth 3 1/2 ft. base, 1 1/2 ft. high. W. of cor.

80.00 Set an iron post 3 ft long 2 ins. in diam 24 ins. in the ground for cor. of sec. 5, 6, 7 and 8 marked on brass cap T 28 N. 36 in N.W., R 13 E 35 in N.E.

38 in S.E. and 37 in S.W. quadrants.

Dig pits 18 x 18 x 12 ins. in each sec 5 1/2 ft. dist. and raise a mound of earth 4 ft. base, 2 ft. high. W. of cor.

Land rolling. Soil sandy 3rd rate. No timber

BOOK 2614

N 89° 58' E. on a random line bet. sec. 5 and 8

40.00 Set temp 1/4 sec. cor.

80.14 Intersect N. and S. line 6 lks. S. of the cor. of sec. 4
5, 8. and ^{heretofore described} thence Iron

S 89° 56' W. on a true line bet. sec. 5 and 8.

Descend W slope over rolling sandy land through sage and greasewood brush undergrowth and bunch grass

40.07 Set an iron post 3 ft. long 1 in. in diam. 26 ins. in the ground. for 1/4 sec. cor. marked on brass cap N 45 S on N. half and S 8 on S half

Dig pits 18x18x12 ins. E and W. of post 3 ft. deep. and raise a mound of earth 3 1/2 ft. base, 1 1/2 ft. high N. of cor.

80.14 The cor. of sec. 5, 6, 7 and 8, heretofore described.

Land rolling.
Soil sandy 3rd rate.
No timber

N 89° 57' W. on a random line bet. sec. 6 and 7

40.00 Set temp. 1/4 sec. cor.

77.62 Intersect the 3rd Guide Meridian East. 5 lks. N. of the cor. of sec. 1, 6, 7 and 12, ^{recently estab. by me and described in Standard Book "2"} thence Iron

S 89° 59' E. on a true line bet. sec. 6 and 7.

Ascend W. slope over rolling sandy land through sage and greasewood brush undergrowth and bunch grass

34.00 Top of sand ridge bears N. and S. desc.

37.62 Set an iron post 3 ft. long 1 in. in diam. 26 ins. in the ground for 1/4 sec. cor. marked on brass cap N 45 S on N. half and S 7 on S. half

Dig pits 18x18x12 ins. E. and W. of post 3 ft. deep. and raise a mound of earth 3 1/2 ft. base, 1 1/2 ft. high. N. of cor.

58.00 Foot of descent in depression bears N. E. and S. W., drains to the S. W. side.

77.62 The cor. of sec. 5, 6, 7 and 8, heretofore described.

Land rolling.
Soil sandy 3rd rate.
No timber

Subdivision of Twp 28 N., R 13 E.

Chains

35

N 0° 03' W. Sec. 5 and 6.

Over rolling sandy land through scattering sage and greasewood brush undergrowth and bunch grass.

40.00 Set an iron post 3 ft. long 1 in. in diam. 26 ins. in the ground for $\frac{1}{4}$ sec. cor. marked on brass cap 36 on W. half and 35 on E. half.Dig pits 18 x 18 x 12 ins N. and S. of post. 3 ft. dist. and raise a mound of earth 3 $\frac{1}{2}$ ft. base, 1 $\frac{1}{2}$ ft. high W. of cor.77.60 Intersect the 7th Standard Parallel North.4.70 Chk. East. of the Standard $\frac{1}{4}$ sec. cor. on the S. ldy. of sec. 31 T 29 N., R 13 E. ^{recently estab. by me &} described in Standard Book "N"

Set an iron post 3 ft. long 2 in. in diam 24 ins. in the ground for closing corner of secs. 5 and 6. marked on brass cap 29 N. T 13 E. S 31. S 32 in N. half. S 5 in S.E. and S 6 in S.W. quadrants.

Dig pits 24 x 18 x 12 ins. or more on line E and W.

3 ft. and S. of post. 7 ft. dist. and raise a mound of earth 4 ft. base 2 ft. high S. of cor.

Land rolling

Soil sandy 3rd rate

No timber

January 21st 1911

General Description

The land contained in this township is nearly all low-rolling sand hills, which slope in a general direction south east towards the De Nebo Wash, where there is some level land. The soil over the entire township is very sandy, and can practically all be classed as third rate. is covered with a good growth of bunch grass. The land in the De Nebo Valley is capable of producing some varieties of crops with the aid of irrigation. But the land of the hilly portions of the township is entirely too sandy to be of any value for agricultural purposes.

There is no timber in the township and the

BOOK 2614

Des Hebito Spring in sec. 26 furnishes the only water found within the township.

No Mineral or stone of value was found within the township, however there is no doubt, but that coal beds exist at a depth of from 600 to 1000 ft below the surface.

There are no settlers in the township

Jan L. White
U.S. Geologist

U.S. TRANSITMAN
FINAL OATHS OF ~~DEPUTY SURVEYOR~~ AND HIS ASSISTANTS.

161
37

BOOK 2614

LIST OF NAMES.

A list of the names of the individuals employed by Van L. White

U.S. Transitman, ~~United States Deputy Surveyor~~, to assist in running, measuring, and marking the lines and corners described in the foregoing field notes of the survey of Subdivision lines of Tp 28 N. R. 13 E., of the G. & S. R. B. & M., Arizona. showing the respective capacities in which they acted:

- T. G. White, Chainman.
- Richard L. Shumway, Chainman.
- George B. Seig., Moundman.
- Harry Keyope, Moundman.
- Nelson Polacca, Axman.
- William R. Carson, Flagman.

FINAL OATH OF ASSISTANTS.

We hereby certify that we assisted Van L. White

U.S. Transitman, ~~United States Deputy Surveyor~~, in surveying all those parts or portions of the Subdivision lines of Tp 28 N. R. 13 E.

of the Sibe and Salt River Basins Meridian, Territory of Arizona, which are represented in the foregoing field notes as having been surveyed by him and under his direction; and that said survey has been in all respects, to the best of our knowledge and belief, well and faithfully ~~surveyed~~ ^{executed}, and the corner monuments established, according to the instructions furnished by the ~~United States Surveyor~~

- Commissioner of the General Land Office
- T. G. White, Chainman.
- Richard L. Shumway, Chainman.
- George B. Seig, Moundman.
- Harry Keyope, Moundman.
- Nelson Polacca, Axman.
- William R. Carson, Flagman.

Subscribed and sworn to before me this 23 day of January, 1911



Van L. White
U.S. Transitman

BOOK 2614

FINAL OATH OF UNITED STATES ~~DEPUTY SURVEYOR~~ ^{TRANSITMAN}

I, Van L. White, U.S. Transitman, ~~United States Deputy Surveyor~~, do solemnly swear that, in pursuance of "Special Instructions" received from the Commissioner of the General Land Office, bearing date of the 2nd day of Oct 1907 ~~and the 15th day of May, 1908~~, I have well, faithfully, and truly, in my own proper person, and in strict conformity with the instructions furnished by the Commissioner of the General Land Office, the Manual of Surveying Instructions, and the laws of the United States, surveyed all those parts or portions of the Subdivision lines of Township No. 28 North of Range No. 14 East

of the Gila and Salt River Base and Meridian, in the Territory of Arizona, which are represented in the foregoing field notes as having been surveyed by me, and under my direction; and I do further solemnly swear that all the corners of said survey have been established and perpetuated in strict accordance with the Manual of Surveying Instructions, and the special written instructions of the Commissioner of the General Land Office and in the specific manner described in the field notes, and that the foregoing are the original field notes of such survey.

Van L. White
~~United States Deputy Surveyor~~
Transitman

Subscribed by said Van L. White, and sworn to before me }
this 27th day of December, 1912,

Lytton R. Taylor
U.S. Commissioner
at Las Cruces, N.M.



APPROVAL.

OFFICE OF THE UNITED STATES SURVEYOR GENERAL,

Phoenix Arizona, APR 25, 1914

The foregoing field notes of the survey of the Subdivision lines of Township No 28 North, Range No 14 East of the Gila and Salt River Base and Meridian, Arizona

executed by VAN L. WHITE, U.S. Transitman, under Special Instructions from the Commissioner of the General Land Office
~~executed by~~ the Commissioner of the General Land Office
~~under his contract No.~~, dated October 2, 1907 and May 15, 1908, having been critically examined, and the necessary corrections and explanations made, the said field notes, and the surveys they describe, are hereby approved.

Frank S. Ingalls
~~United States Surveyor General~~
SURVEYOR-GENERAL OF ARIZONA

I certify that the foregoing transcript of the field notes of the above-described surveys in _____, has been correctly copied from the original notes on file in this office.

~~United States Surveyor General~~