

BOOK D
Subdivisions BOOK 2682
FIELD NOTES

OF THE SURVEY OF THE

Subdivision lines of

TOWNSHIP 27 NORTH, RANGE 5 WEST

of the Gila & Salt River Base & Meridian,

In the State of ARIZONA

EXECUTED BY

H. N. BRADSTREET, U.S. Transitman

&

WILLIAM B. KIMMEL, U.S. Surveyor

~~In the capacity of U. S. Surveyor~~, under instructions dated October 18, 1912,

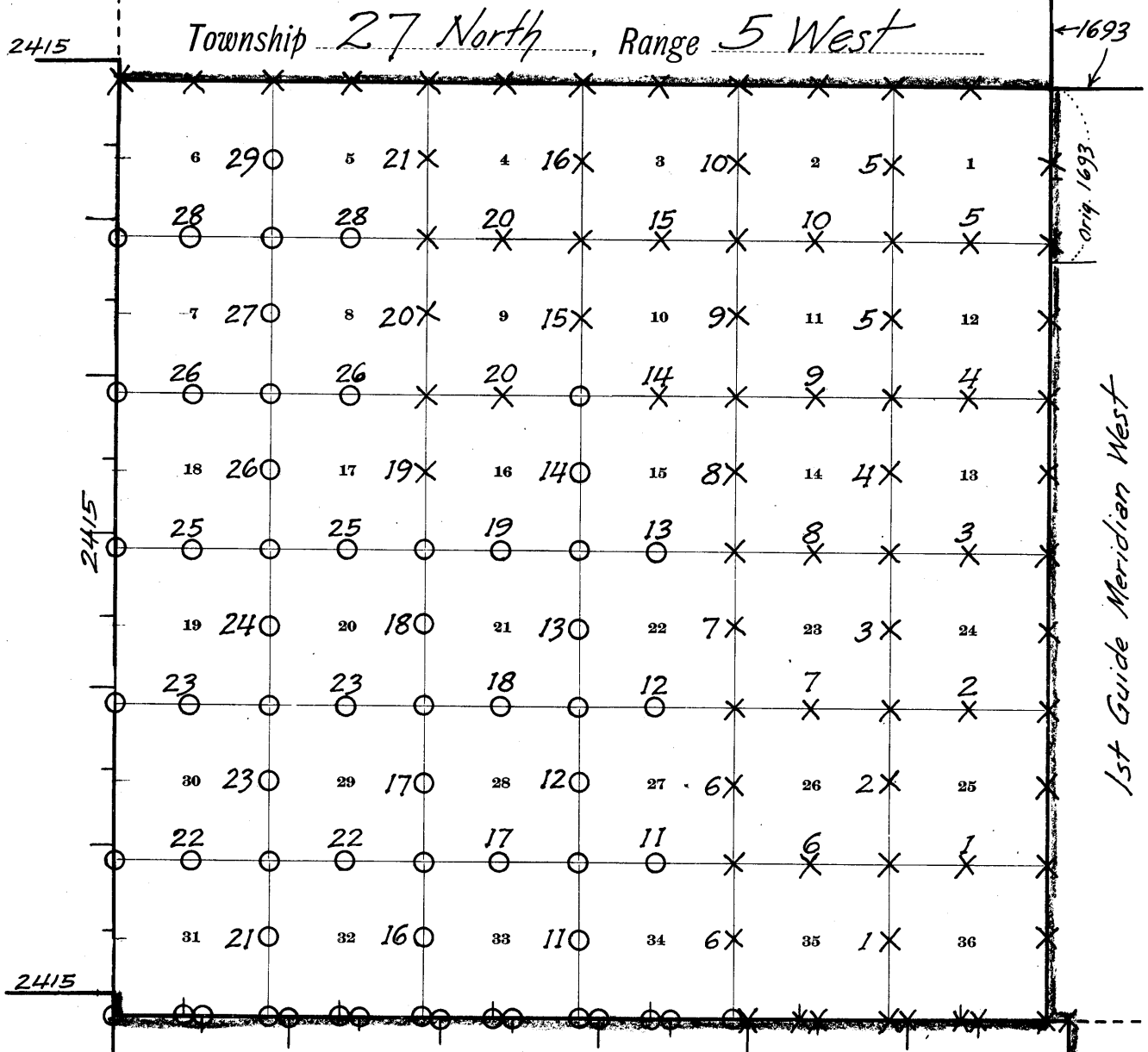
issued by the United States Surveyor General to govern surveys included in
Group No. 24, which were approved by the Commissioner of the General Land
Office, November 5, 1912, pursuant to authority contained in the Act of
Congress dated June 25, 1910.

Survey commenced January 14, 1913

Survey completed " 29, 1913

BOOK 2682

INDEX DIAGRAM.



X. Corners set by W.B. Kimmel
 O. " " " H.N. Bradstreet
 ----- Unsurveyed.
 ————— Book "M" (EXTERIORS)
 ————— " "N" (STANDARD LINES)
 ————— " "O" (RESURV. & RETR'EMENT)

Subdivision of T. 27 N., R. 5 W.

13

Chains	Survey commenced Jan. 14, 1913, and executed with Young and Sons Light Mountain Transits Nos. 7965 and 8541 with Smith Solar Attachments. For description of instrument and certificate of approval, see book "O," page 1. Knowing from recent observation on a true mer. established by observations on Polaris that our instruments are in adjustment, we proceed to the subdivision of T. 27 N., R. 5 W. Note:--Initials "W. B. K." and "H. N. B." in the following notes indicate surveys by William B. Kimmel, U. S. Surveyor, and H. N. Bradstreet, U. S. Transitman, respectively. W. B. K. At the cor. of secs. 35 and 36 on the S. bdy. of the Tp., recently estab. by me, as described in book "M," page 11, I set off 35° 41' N. on the lat. arc; 21° 17' S. on the decl. arc; and at 8 hrs. 30 m., a. m., l. m. t., I determine a meridian with the solar. Thence I run, N. 0° 1' W., bet. secs. 35 and 36. Over rolling land, through scattering timber. Wash, 3 lks. wide, 1 ft. deep, course W. Enter heavy timber, brs. NW. and SE. Asc. SW. slope 75 ft. Top of asc. thence over rolling land. Set an iron post, 3 ft. long, 1 in. in diam., 26 ins. in the ground, for $\frac{1}{4}$ sec. cor., marked on brass cap, 1913; $\frac{1}{4}$ S35 in W. and S36 in E. half; from which A cedar, 14 ins. in diam., brs. S. 63° E., 10 lks. dist., marked $\frac{1}{4}$ S36 BT. A cedar, 10 ins. in diam., brs. S. 75° W., 16 lks. dist., marked $\frac{1}{4}$ S35 BT.Set an iron post, 3 ft. long, 2 ins. in dia., 24 ins. in the ground, for cor. of secs. 25, 26, 35, and 36, marked on brass cap, 1913; T27N R5W in N. half; S26 in NW.; S25 in NE.; S36 in SE.; and S35 in SW. quadrant, from which A cedar, 14 ins. in diam., brs. N. 85 $\frac{1}{4}$ ° E., 76 lks. dist., marked T27N R5W S25 BT. A cedar, 24 ins. in diam., brs. S. 65 $\frac{1}{2}$ ° E., 82 lks. dist., marked T27N R5W S36 BT. A cedar, 34 ins. in diam., brs. S. 25 $\frac{1}{2}$ ° W., 96 lks. dist., marked T27N R5W S35 BT. A cedar, 12 ins. in diam., brs. N. 4 $\frac{1}{2}$ ° W., 265 lks. dist., marked T27N R5W S26 BT. Land, rolling and level. Soil, very rocky, volcanic, 4th rate. Timber, scrub cedar and pinion. <hr/> At the cor. of secs. 25, 26, 35, and 36, I set off 21° 17' S. on the decl. arc; and at noon, I observe the sun on the meridian. The resulting lat. is 35° 42' N., which is slightly higher than the correct lat. East, on a random line, bet. secs. 25 and 36. Set temp. $\frac{1}{4}$ sec. cor. Intersect the E. bdy. of the Tp. (First Guide Meridian West), at the cor. of secs. 25, 30, 31, and 36, recently established by me as described in Book "N," page. 13. Thence, I run West, on a true line, bet. secs. 25 and 36. Over rolling land, through cedar timber. Draw, course S. Asc. SE. slope, 55 ft. Top of asc. Spur ridge, brs. N. and S.; thence along S. slope. Desc. SW. slope, 25 ft. Gulch, 10 lks. wide, course SE. Asc. NE. slope, 80 ft. Top of asc.; thence over rolling land. Spur ridge, brs. NW. and SE.
5.85	
8.50	
18.00	
33.00	
40.00	
80.00	
40.00	
79.84	
2.75	
8.70	
10.00	
17.10	
20.50	
23.00	
24.00	

BOOK 2682

2.

Subdivision of T. 27 N., R. 5 W.

Chains	
25.40	Gulch, 20 lks. wide, course SE. Asc. SE. slope, 220 ft.
36.55	Foot of rim rock, 30 ft. high.
36.75	Top of rim rock, thence over rolling land.
39.92	Set an iron post, 3 ft. long, 1 in. in diam., 26 ins. in the ground, for $\frac{1}{4}$ sec. cor., marked on brass cap, 1913; $\frac{1}{4}$ S25 in N. and S36 in S. half; from which A cedar, 8 ins. in diam., brs. N. $16\frac{1}{4}^{\circ}$ E., 59 lks. dist., marked $\frac{1}{4}$ S25 BT. A cedar, 9 ins. in diam., brs. S. $1\frac{1}{4}^{\circ}$ W., 128 lks. dist., marked $\frac{1}{4}$ S36 BT.
79.84	The cor. of secs. 25, 26, 35, and 36. Land, hilly and mountainous. Soil, volcanic, very rocky, 4th rate. Timber, scrub cedar and pinion. Mountainous land, 15 chs. Jan. 14, 1913.
	----- Jan. 15, 1913, At 8 hrs. 0 m., a. m., l. m. t., I set off $35^{\circ} 42'$ N. on the lat. arc; $21^{\circ} 6'$ S. on the decl. arc; and determine a meridian with the solar, at the cor. of secs. 25, 26, 35, and 36. Thence I run N. $0^{\circ} 1'$ W., bet. secs. 25 and 26. Over rolling land, through heavy timber.
40.00	Set an iron post, 3 ft. long, 1 in. in diam., 26 ins. in the ground for $\frac{1}{4}$ sec. cor., marked on brass cap, 1913; $\frac{1}{4}$ S26 in W. and S25 in E. half, from which A pinion, 18 ins. in diam., brs. S. $17\frac{1}{2}^{\circ}$ E., 142 lks. dist., marked $\frac{1}{4}$ S25 BT. A cedar, 14 ins. in diam., brs. N. $81\frac{1}{2}^{\circ}$ W., 34 lks. dist., marked $\frac{1}{4}$ S26 BT.
80.00	Set an iron post, 3 ft. long, 2 ins. in diam., 24 ins. in the ground, for cor. of secs. 23, 24, 25, and 26, marked on brass cap, 1913; T27N R5W in N. half; S23 in NW.; S24 in NE.; S25 in SE.; and S26 in SW. quadrant; from which A cedar, 18 ins. in diam., brs. N. $88\frac{1}{2}^{\circ}$ E., 47 lks. dist., marked T27N R5W S24 BT. A cedar, 7 ins. in diam., brs. S. 23° E., 22 lks. dist., marked T27 N R5W S25 BT. A pinon, 6 ins. in diam., brs. S. $36\frac{1}{4}^{\circ}$ W., 47 lks. dist., marked T27N R5W S26 BT. A cedar, 16 ins. in diam., brs. N. 53° W., 55 lks. dist., marked T27N R5W S23 BT. Land, level and rolling. Soil, volcanic, very rocky, 4th rate. Timber, scrub cedar and pinion. Note:--The sky was overcast at noon, making an observation for lat. impossible.
	----- East, on a random line, bet. secs. 24 and 25.
40.00	Set temp. $\frac{1}{4}$ sec. cor.
80.02	Intersect the E. bdy. of the Tp., (First Guide Meridian West), 2 lks. N. of the cor. of secs. 19, 24, 25, and 30, recently established by me as described in book "N," page 12. Thence, I run N. $89^{\circ} 59'$ W., on a true line, bet. secs. 24 and 25. Asc. NE. slope through heavy timber.
26.00	Spur ridge, 125 ft. above cor., brs. NW. and SE. Desc. NW. slope 40 ft.
28.80	Gulch, course N. Asc. rocky NE. slope, 200 ft.
40.01	Set an iron post, 3 ft. long, 1 in. in diam., 26 ins. in the ground, for $\frac{1}{4}$ sec. cor., marked on brass cap, 1913; $\frac{1}{4}$ S24 in N. and S25 in S. half; from which A pinion, 9 ins. in diam., brs. N. 40° W., 51 lks. dist., marked $\frac{1}{4}$ S24 B. T. A pinion, 7 ins. in diam., brs. S. 85° E., 36 lks. dist., marked $\frac{1}{4}$ S25 BT.

Chains

52.70 Thence over rolling land.
 Asc. NE. slope, 260 ft.
 65.25 Top of asc. Edge of rim rock, brs. NW. and SE.; thence
 over rolling land.
 80.02 The cor. of secs. 23, 24, 25 and 26.
 Land, mountainous and hilly.
 Soil, volcanic, very rocky, 4th rate.
 Timber, scrub cedar and pinion.
 Mountainous land, 29.00 chs.

Jan. 15, 1913.

Jan. 18, 1913, At 10 hrs. 5 m. a.m. l.m.t., I set off
 35°42½' N. on the lat. arc; 20°32' S. on the decl.
 arc; and determine a meridian with the solar, at the cor.
 of secs. 23, 24, 25 and 26,

Thence I run,
 N. 0 1' W., bet. secs. 23 and 24.
 Over rolling land, through heavy timber.
 16.40 Edge of rim rock, brs. E. and W. Desc. N. slope, 465 ft.
 40.00 Foot of descent. Set an iron post, 3 ft. long, 1 in. diam.,
 26 ins. in the ground, for ¼ sec. cor., marked on
 brass cap, 1913;
 ¼ S23 in W. and
 S24 in E. half; from which
 A cedar, 16 ins. diam., brs. S. 40° E., 12 lks. dist.,
 marked ¼ S24 BT.
 A cedar, 14 ins. diam., brs. N. 57¾° W., 29 lks. dist.,
 marked ¼ S23 BT.

Thence over rolling land.
 48.00 Wash, 8 lks. wide, 3 ft. deep, course E.
 80.00 Set an iron post, 3 ft. long, 2 ins. diam., 24 ins. in
 the ground for cor. of secs. 13, 14, 23 and 24,
 marked on brass cap, 1913;
 T27N R5W in N. half;

S14 in NW.,
 S13 in NE.,
 S24 in SE., and
 S23 in SW. quadrant; from which
 A pinion, 7 ins. diam., brs. N. 63° E., 54 lks. dist.,
 marked T27N R5W S13 BT.
 A pinion, 7 ins. diam., brs. S37° E., 9 lks. dist., marked
 T27N R5W S 24 BT.
 A pinion, 9 ins. diam., brs. S56° W., 60 lks. dist., marked
 T27N R5W S23 BT.
 A pinion, 8 ins. diam., brs. N. 72° W., 84 lks. dist.,
 marked T27N R5W S14 BT.

Land, rolling and mountainous.
 Soil, volcanic, very rocky, 4th rate.
 Timber, scrub cedar and pinion.

NOTE - At this corner I set off 20°31½' S. on the decl. arc;
 and at noon, I observe the
 sun on the meridian. The resulting lat. is 35°43½' N., which
 is slightly less than the correct lat.

40.00 S. 89°59' E., on a random line, bet. secs. 13 and 24.
 79.70 Set temp. ¼ sec. cor. (FIRST GUIDE MERIDIAN WEST)
 Intersect E. bdy. of T₂₇, 9 lks. S. of the cor. of secs.
 13, 18, 19 and 24, recently established by me as described
 in book "N", page 12.

Thence I run
 S. 89°57' W. on a true line, bet. secs. 13 and 24.
 Over rolling land.
 7.20 Enter scattering timber, brs. NE. and SW.
 39.85 Enter heavy timber,
 Set an iron post, 3 ft. long, 1 in. diam., 26 ins. in the
 ground for ¼ sec. cor., marked on brass cap, 1913;
 ¼ S13 in N. and
 S24 in S. half; from which
 A pinion, 20 ins. diam., brs. N. 29½° W., 82 lks. dist., marked
 ¼ S13 BT.
 A cedar, 16 ins. diam., brs. S. 19° W. 17 lks. dist.,
 marked ¼ S24 BT.

BOOK 2682

Subdivision of T. 27 N., R. 5 W.

Chains.

79.70 The cor. of secs. 13, 14, 23 and 24.
Land, level and rolling.
Soil, very rocky, 4th rate.
Timber, scrub cedar and pinion. Jan. 18, 1913.

Jan. 22, 1913. At 9 hrs. a.m., l.m.t., I set off $35^{\circ} 43\frac{1}{2}'$ N. on the lat. arc; $19^{\circ} 40\frac{1}{2}'$ S. on the decl. arc; and determine a meridian with the solar at the cor. of secs. 13, 14, 23 and 24,
Thence I run,
N. $0^{\circ} 1'$ W., bet. secs. 13 and 14.
Over rolling land, through heavy timber.
2.60 Wash, 15 lks. wide, 4 ft. deep, course NE.
10.25 Wash, 20 lks. wide, 5 ft. deep, course NE.
40.00 Set an iron post, 3 ft. long, 1 in. diam, 26 ins. in the ground, for $\frac{1}{4}$ sec. cor., marked on brass cap, 1913; $\frac{1}{4}$ S14 in W. and S13 in E. half; from which
A pinion, 6 ins. diam, brs. S. $60\frac{1}{4}^{\circ}$ E., 51 lks. dist., marked $\frac{1}{4}$ S13 BT.
A pinion, 9 ins. diam, brs. N. $63\frac{1}{4}^{\circ}$ W., 35 lks. dist., marked $\frac{1}{4}$ S14 BT.
72.00 Enter scattering timber, brs. NW. and SE.
80.00 Set an iron post, 3 ft. long, 2 ins. diam, 24 ins. in the ground, for cor. of secs. 11, 12, 13 and 14, marked on brass cap, 1913; T27N R5W in N. half;
S11 in NW.,
S12 in NE.,
S13 in SE., and
S14 in SW. quadrant; from which
A pinion, 8 ins. diam, brs. N. $13\frac{1}{4}^{\circ}$ W., 217 lks. dist., marked T27N R5W S11 BT.
No other trees within limits.
Raise a mound of stone, 2 ft. base, $1\frac{1}{2}$ ft. high, W. of cor. Pits impracticable.
Land, level and rolling.
Soil, volcanic, very rocky, 4th rate.
Timber, scrub cedar and pinion.

40.00 N. $89^{\circ} 57'$ E., on a random line, bet. secs. 12 and 13.
Set temp. $\frac{1}{4}$ sec. cor. (FIRST GUIDE MERIDIAN WEST)
79.64 Intersect E. bdy. of Tp. 2 lks. N. of the cor. of secs. 7, 12, 13 and 18, recently established by me as described in book "N", page 11.
Thence I run
S. $89^{\circ} 58'$ W., on a true line, bet. secs. 12 and 13.
Over rolling land.
23.84 Road, brs. NW. and SE.
39.82 Set an iron post, 3 ft. long, 1 in. diam, 26 ins. in the ground, for $\frac{1}{4}$ sec. cor. marked on brass cap, 1913; $\frac{1}{4}$ S12 in N. and S13 in S. half; from which
A cedar, 6 ins. diam, brs. S. $81\frac{1}{4}^{\circ}$ W., 216 lks. dist., marked $\frac{1}{4}$ S13 BT.
No other trees within limits. Raise a mound of stone, 2 ft. base, $1\frac{1}{2}$ ft. high, N. of cor. Pits impracticable.
41.85 Enter timber, brs. NW. and SE. Asc. NE. slope 60 ft.
47.85 Spur ridge, brs. NW. and SE., descend.
53.75 Gulch, course N. Asc. E. slope 50 ft.
57.65 Spur ridge, brs. N. and S., descend.
79.64 The cor. of secs. 11, 12, 13 and 14.
Land, rolling and hilly.
Soil, volcanic, very rocky, 4th rate, last half mile; 1st half mile, sandy clay formation, 2nd rate.
Timber, scrub cedar and pinion.
Undergrowth, sagebrush.
NOTE - The sky was overcast at noon, making an observation for lat. impossible.
Jan. 22, 1913.

Subdivision of T. 27 N., R. 5 W.

Chains

Jan. 24, 1913. At 8 hrs. 10 m. a.m. l.m.t., I set off 35°44½' N. on the lat. arc; 19°11½' S. on the decl. arc; and determine a mer. with the solar at the cor. of secs. 11, 12, 13, and 14.

Thence I run N. 0°1' W., bet. secs. 11 and 12. Over rolling land, through cedar timber. 2.00 Asc. SE. slope 40 ft. 6.00 Spur ridge, brs. E. and W. Desc. NE. slope 80 ft. 23.90 Leave timber, brs. NW. and SE. Enter greasewood undergrowth, brs. NW. and SE. 28.00 Foot of desc.; thence over rolling land. 35.05 Wash, 8 lks. wide, 3 ft. deep, course NE. 40.00 Set an iron post, 3 ft. long, 1 in. diam, 26 ins. in the ground, for ¼ sec. cor., marked on brass cap, 1913; ¼ S11 in W. and ¼ S12 in E. half; And raise a mound of stone, 2 ft. base, 1½ ft. high, W. of cor. Pits impracticable. Tank, brs. S. 83° E. about 14 chs. dist. 75.36 Road, brs. NW. and SE. 80.00 Set an iron post, 3 ft. long, 2 ins. diam, 24 ins. in the ground, for cor. of secs. 1, 2, 11 and 12, marked on brass cap, 1913; T27N R5W in N. half; S2 in NW., S1 in NE., S12 in SE. and S11 in SW. quadrant; And raise a mound of stone, 2 ft. base, 1½ ft. high, W. of cor. Pits impracticable. Land, rolling and hilly. Soil, volcanic, very rocky, 4th rate. Timber, scrub cedar and pinion. Undergrowth, greasewood.

40.00 N. 89° 58' E., on a random line, bet. secs. 1 and 12. Set temp. ¼ sec. cor. 79.66 Intersect E. bdy. of Tp., (FIRST GUIDE MERIDIAN WEST) 21 lks. S. of the cor. of secs. 1, and 12, reestablished by me this day as described in book "O", page 17. Thence I run S. 89° 49' W. on a true line bet. secs. 1 and 12. Over level land, through greasewood undergrowth. 39.83 Set an iron post, 3 ft. long, 1 in. diam, 26 ins. in the ground for ¼ sec. cor., marked on brass cap, 1913; ¼ S1 in N. and ¼ S12 in S. half; And raise a mound of stone, 2 ft. base, 1½ ft. high, N. of cor. Pits impracticable. 79.66 The cor. of secs. 1, 2, 11 and 12. Land, level. Soil, sandy loam, 2nd rate. Undergrowth, greasewood.

40.00 N. 0°1' W., on a random line, bet. secs. 1 and 2. Set temp. ¼ sec. cor. 69.61 Intersect the N. bdy. of the Tp., 36 lks. E. of the cor. of secs. 1, 2, 35 and 36, established by me this day as described in book, "M", page 19. Thence I run S. 0°19' E., on a true line, bet. secs. 1 and 2. Over level land, through greasewood undergrowth. 29.61 Set an iron post, 3 ft. long, 1 in. diam, 26 ins. in the ground, for ¼ sec. cor., marked on brass cap, 1913; ¼ S2 in W. and ¼ S1 in E. half; And raise a mound of stone, 2 ft. base, 1½ ft. high W. of cor. Pits impracticable. 69.61 The cor. of secs. 1, 2, 11 and 12. Land, level. Soil, sandy clay, 2nd rate.

Subdivision of T. 27 N., R. 5 W.

Chains.

Jan. 19, 1913. At 7 hrs. 58 m. a.m. l.m.t., I set off $35^{\circ}41'$ N. on the lat. arc; $20^{\circ}19'$ S. on the decl. arc; and determine a meridian with the solar at the cor. of secs. 34 and 35, recently estab. by H.N. Bradstreet as described in book "M", page 12.

Thence I run
N. $0^{\circ}1'$ W., bet. secs. 34 and 35
Asc. SW. slope 70 ft. through heavy timber.
16.00 Top of asc. Thence over level land.
40.00 Set an iron post, 3 ft. long, 1 in. diam, 26 ins. in the ground, for $\frac{1}{4}$ sec. cor., marked on brass cap, 1913;
 $\frac{1}{4}$ S34 in W. and
S35 in E. half; from which
A cedar, 8 ins. diam, brs. S. $18\frac{1}{2}^{\circ}$ E., 222 lks. dist., marked $\frac{1}{4}$ S35 BT.
A cedar, 16 ins. diam, brs. S 39° W., 29 lks. dist., marked $\frac{1}{4}$ S34 BT.
50.00 Desc. N. slope 70 ft.
73.35 Draw, 50 lks. wide, course W. thence over rolling land.
80.00 Set an iron post, 3 ft. long, 2 ins. diam, 24 ins. in the ground, for cor. of secs. 26, 27, 34 and 35, marked on brass cap, 1913;
T27N R5W in N. half;
S27 in NW.,
S26 in NE.,
S35 in SE., and
S34 in SW. from which
A cedar, 8 ins. diam, brs. N. 80° E., 39 lks. dist., marked T27N R5W S26 BT.
A cedar, 50 ins. diam, brs. S. 45° E., 112 lks. dist., marked T27N R5W S35 BT.
A cedar, 40 ins. diam, brs. S. $60\frac{1}{2}^{\circ}$ W., 90 lks. dist., marked T27N R5W S34 BT.
A cedar, 9 ins. diam, brs. N. $33\frac{1}{2}^{\circ}$ W., 36 lks. dist., marked T27N R5W S27 BT.
Land, rolling and hilly.
Soil, volcanic, very rocky, 4th rate.
Timber, scrub cedar and pinion.
NOTE—The sky was overcast at noon making an observation for lat. impossible.

40.00 East, on a random line, bet. secs. 26 and 35.
Set temp. $\frac{1}{4}$ sec. cor.
80.06 Intersect N. and S. line, 5 lks. S. of the cor. of secs. 25, 26, 35 and 36,

Thence I run
S. $89^{\circ}58'$ W., on a true line, bet. secs. 26 and 35.
Over rolling land, through heavy timber.
40.03 Set an iron post, 3 ft. long, 1 in. diam, 26 ins. in the ground, for $\frac{1}{4}$ sec. cor., marked on brass cap, 1913;
 $\frac{1}{4}$ S26 in N. and
S35 in S. half; from which
A pinion, 6 ins. diam, brs. N. 63° E., 46 lks. dist., marked $\frac{1}{4}$ S26 BT.
A cedar, 9 ins. diam, brs. S. $52\frac{1}{4}^{\circ}$ E., 32 lks. dist., marked $\frac{1}{4}$ S35 BT.
44.30 Desc. W. slope, 100 ft.
44.40 Top of precipice, 20 ft. high, brs. N. and S.
44.60 Foot of precipice.
56.35 Draw, course, SW.; thence over rolling land.
80.06 The cor. of secs. 26, 27, 34 and 35.
Land, rolling and hilly.
Soil, volcanic, very rocky, 4th rate.
Timber, scrub cedar and pinion.
Jan. 19, 1913.

Jan. 20, 1913. At 8 hrs. 50 m. a.m. l.m.t., I set off $35^{\circ}42'$ N. on the lat. arc; $20^{\circ}07'$ S. on the decl. arc; and determine a meridian with the solar at the cor. of secs. 26, 27, 34 and 35.
Thence I run
N. $0^{\circ}1'$ W., bet. secs. 26 and 27.

Subdivision of T. 27 N., R. 5 W.

7

Chains.	Over rolling land, through heavy timber.
8.00	Leave timber, brs. E. and W.
24.00	Enter heavy timber, brs. NW. and SE.
30.00	Asc. SW. slope 100 ft.
40.00	Set an iron post, 3 ft. long, 1 in. ⁿ diam, 26 ins. in the ground, for $\frac{1}{4}$ sec. cor., marked on brass cap, 1913; $\frac{1}{4}$ S27 in W. and S26 in E. half; from which
	A cedar, 9 ins. ⁿ diam, brs. S. 72° E., 39 lks. dist., marked $\frac{1}{4}$ S26 BT.
	A cedar, 8 ins. ⁿ diam, brs. S. 28° W., 47 lks. dist., marked $\frac{1}{4}$ S27 BT.
51.80	Top of ascent, thence over rolling land.
80.00	Set an iron post, 3 ft. long, 2 ins. ⁿ diam, 24 ins. in the ground, for cor. of secs. 22, 23, 26 and 27, marked on brass cap, 1913; T27N R5W in N. half; S22 in NW., S23 in NE., S26 in SE., and S27 in SW. quadrant; from which
	A pinion, 10 ins. ⁿ diam, brs. N. 76° E., 20 lks. dist., marked T27N R5W S23 BT.
	A cedar, 5 ins. ⁿ diam, brs. S. 81° E., 20 lks. dist., marked T27N R5W S26 BT.
	A pinion, 6 ins. ⁿ diam, brs. S. 25° W., 115 lks. dist., marked T27N R5W S27 BT.
	A pinion, 7 ins. ⁿ diam, brs. N. 71 $\frac{1}{2}$ ° W., 39 lks. dist., marked T27N R5W S22 BT.
	Land, rolling and hilly.
	Soil, volcanic, very rocky, 4th rate.
	Timber, scrub cedar and pinion.
NOTE-	At this corner, I set off 20° 6' S. on the decl. arc; and at noon I observe the sun on the mer. The resulting lat. is 35° 42 $\frac{1}{2}$ ' N., which is slightly less than the correct lat.
40.00	N. 89 58' E., on a random line, bet. secs. 23 and 26. Set temp. $\frac{1}{4}$ sec. cor.
80.16	Intersect N. and S. line, 7 lks. N. of the cor. of secs. 23, 24, 25 and 26,
	Thence I run
	N. 89° 59' W., on a true line, bet. secs. 23 and 26.
40.08	Over rolling land, through cedar timber. Set an iron post, 3 ft. long, 1 in. ⁿ diam, 26 ins. in the ground, for $\frac{1}{4}$ sec. cor., marked on brass cap, 1913; $\frac{1}{4}$ S23 in N. and S26 in S. half; from which
	A cedar, 9 ins. ⁿ diam, brs. N. 1 $\frac{1}{2}$ ° W., 22 lks. dist., marked $\frac{1}{4}$ S23 BT.
	A pinion, 8 ins. ⁿ diam, brs. S. 7 $\frac{1}{2}$ ° W., 20 lks. dist., marked $\frac{1}{4}$ S26 BT.
59.50	Draw, 1 ch. wide, course SE. Asc. NE. slope, 40 ft.
76.00	Top of ascent; thence over level land.
80.16	The cor. of secs. 22, 23, 26 and 27. Land level and rolling. Soil, volcanic, very rocky 4th rate. Timber, scrub cedar and pinion.
	N. 0° 1' W., bet. secs. 22 and 23.
	Over rolling land, through heavy timber.
10.10	Draw, course E.
40.00	Set an iron post, 3 ft. long, 1 in. ⁿ diam, 26 ins. in the ground, for $\frac{1}{4}$ sec. cor., marked on brass cap, 1913; $\frac{1}{4}$ S22 in W., and S23 in E. half; from which
	A cedar, 14 ins. ⁿ diam, brs. S. 72 $\frac{3}{4}$ ° E., 78 lks. dist., marked $\frac{1}{4}$ S23 BT.
	A pinion, 9 ins. ⁿ diam, brs. N. 84 $\frac{1}{2}$ ° W., 48 lks. dist., marked $\frac{1}{4}$ S22 BT.

Jan. 20, 1913.

Chains.

Jan. 21, 1913. At 7 hrs. 55 m. a.m. l.m. t., I set off 35°43' N. on the lat. arc; 19°53' S. on the decl. arc; and determine a meridian with the solar at the $\frac{1}{4}$ cor. bet. secs. 22 and 23, above described, Thence I continue N. 0°1' W., bet. secs. 22 and 23.

80.00 Set an iron post, 3 ft. long, 2 ins. in diam, 24 ins. in the ground, for cor. of secs. 14, 15, 22, and 23, marked on brass cap, 1913; T27N R5W in N. half; S15 in NW., S14 in NE., S23 in SE., and S22 in SW., quadrant; from which

A cedar, 14 ins. in diam, brs. N. 62½° E., 18 lks. dist., marked T27N R5W S14 BT.

A cedar, 8 ins. in diam, brs. S. 47¼° E., 26 lks. dist., marked T27N R5W S23 BT.

A pinion, 6 ins. in diam, brs. S. 82½° W., 23 lks. dist., marked T27N R5W S22 BT.

A pinion, 8 ins. in diam, brs. N. 65¼° W., 62 lks. dist., marked T27N R5W S15 BT.

Land, level and rolling.
Soil, volcanic, very rocky, 4th rate.
Timber, scrub cedar and pinion.

40.00 S. 89°59' E., on a random line, bet. secs. 14 and 23.
80.20 Set temp. $\frac{1}{4}$ sec. cor. Intersect N. and S. line, 14 lks. S. of the cor. of secs. 13, 14, 23 and 24,

Thence I run S. 89°55' W., on a true line, bet. secs. 14 and 23. Over rolling land; through heavy timber.

6.00 Begin gradual asc. of E. slope 650 ft.
6.80 Wash, 30 lks. wide, course NE.
10.80 Wash, 8 lks. wide, 4 ft. deep, course SE. Asc. steep E. slope

40.10 Set an iron post, 3 ft. long, 1 in. in diam, 26 ins. in the ground, for $\frac{1}{4}$ sec. cor., marked on brass cap, 1913; $\frac{1}{4}$ S14 in N. and S23 in S. half; from which

A cedar, 24 ins. in diam, brs. N. 47° W., 21 lks. dist., marked $\frac{1}{4}$ S14 BT.

A pinion, 5 ins. in diam, brs. S. 6° E. 9 lks. dist., marked $\frac{1}{4}$ S23 BT.

44.00 Top of asc.; thence over rolling land,
56.00 Desc. SW. slope 100 ft.
74.00 Foot of desc., thence over rolling land.
80.20 The cor. of secs. 14, 15, 22 and 23. Land, hilly and mountainous. Soil, volcanic, very rocky, 4th rate. Timber, scrub cedar and pinion. Mountainous land, 38 chs.

NOTE: At this corner I set off 19°53' S. on the decl. arc; and at noon I observe the sun on the mer. The resulting lat. is 35°43½' N., which is slightly less than the correct lat.

N. 0°1' W., bet. secs. 14 and 15. Over rolling land, through heavy timber.

4.00 Asc. SW. slope, 95 ft.
18.75 Spur ridge, brs. E. and W. Desc. NW. slope 25 ft.
23.60 Gulch, 50 lks. wide, course SW. Asc. SE. slope 50 ft.
30.00 Top of asc.; thence over rolling land.
40.00 Set an iron post, 3 ft. long, 1 in. in diam, 26 ins. in the ground, for $\frac{1}{4}$ sec. cor., marked on brass cap, 1913; $\frac{1}{4}$ S15 in W. and S14 in E. half; from which

A pinion, 8 ins. in diam, brs. S. 53¼° E., 27 lks. dist., marked $\frac{1}{4}$ S14 BT.

Subdivision of T. 27 N., R. 5 W.

Chains

A pinion, 5 ins. dia., brs. S. 61° W., 9 lks. dist., marked $\frac{1}{4}$ S15 BT.
 47.00 Desc. N. slope 650 ft.
 78.20 Foot of desc.; thence along E. slope.
 80.00 Set an iron post, 3 ft. long, 2 ins. in diam, 24 ins. in the ground, for cor. of secs. 10, 11, 14 and 15., marked on brass cap, 1913;
 T27N R5W in N. half;
 S10 in NW.,
 S11 in NE.,
 S14 in SE., and
 S15 in SW., from which
 A pinion, 12 ins. in diam, brs. N. 86 $\frac{1}{4}$ ° E., 29 lks. dist., marked T27N R5W S11 BT.
 A pinion, 10 ins. in diam, brs. S. 63 $\frac{1}{4}$ ° E., 126 lks. dist., marked T27N R5W S14 BT.
 A cedar, 20 ins. in diam, brs. S. 58° W., 19 lks. dist., marked T27N R5W S15 BT.
 A pinion, 6 ins. in diam, brs. N. 75° W., 57 lks. dist., marked T27N R5W S10 BT.
 Land, hilly and mountainous.
 Soil, volcanic, very rocky, 4th rate.
 Timber, scrub cedar and pinion.
 Mountainous and heavy timbered land, 80 chs.
 Jan. 21, 1913.

Jan. 22, 1913, At 8 hrs. 56 m. a.m. l.m.t., I set off 35° 44 $\frac{1}{2}$ ' N. on the lat. arc; 19° 40 $\frac{1}{2}$ ' S. on the decl. arc; and determine a meridian with the solar at the cor. of secs. 10, 11, 14 and 15, above described.
 Thence I run
 N. 89° 55' E., on a random line, bet. secs. 11 and 14.
 40.00 Set temp. $\frac{1}{4}$ sec. cor.
 80.30 Intersect N. and S. line, 16 lks. N. of the cor. of secs. 11, 12, 13 and 14,

 Thence I run,
 N. 89° 58' W., on a true line, bet. secs. 11 and 14.
 Over rolling land, through scattering timber.
 14.00 Enter heavy timber, brs. N. and S..
 40.15 Set an iron post, 3 ft. long, 1 in. in diam, 26 ins. in the ground, for $\frac{1}{4}$ sec. cor., marked on brass cap, 1913;
 $\frac{1}{4}$ S11 in N. and
 S14 in S. half; from which
 A cedar, 6 ins. in diam, brs. N. 14 $\frac{1}{2}$ ° W., 40 lks. dist., marked $\frac{1}{4}$ S11, BT.
 A cedar, 10 ins. in diam, brs., South 20 lks. dist., marked $\frac{1}{4}$ S14 BT.
 47.40 Draw, course N. Asc. E. slope 75 ft.
 54.00 Spur ridge, brs. NE. and SW.
 56.00 Desc. NW. slope 66 ft.
 70.00 Wash, 8 lks wide, 2 ft. deep, course N. thence over rolling land.
 79.45 Wash, 4 lks. wide, 2 ft. deep, course NW.
 80.30 The cor. of secs. 10, 11, 14 and 15.
 Land, rolling and hilly.
 Soil, volcanic, very rocky, 4th rate.
 Timber, scrub cedar and pinion.
 Jan. 22, 1913.

Jan. 23, 1913. At 9 hrs. 32 m. a.m. l.m.t., I set off 35° 44 $\frac{1}{2}$ ' N. on the lat. arc; 19° 26' S. on the decl. arc; and determine a mer. with the solar at the cor. of secs. 10, 11, 14 and 15.
 Thence I run
 N. 0° 1' W. bet. secs. 10 and 11.
 Over rolling land, through heavy timber.
 10.15 Draw, course NE.
 27.40 Draw, course E.
 34.81 Wash, 5 lks. wide, 1 ft. deep, course NE.
 40.00 Set an iron post, 3 ft. long, 1 in. in diam, 26 ins. in the ground for $\frac{1}{4}$ sec. cor., marked on brass cap, 1913;

Chains.

$\frac{1}{4}$ S10 in W. and
 S11 in E. half; from which
 A pinion, 9 ins.ⁿ diam, brs. S. $74\frac{1}{2}^{\circ}$ E., 20 lks. dist.,
 marked $\frac{1}{4}$ S11 BT.
 A cedar, 6 ins.ⁿ diam, brs. S. 8° W., 35 lks. dist., marked
 $\frac{1}{4}$ S10 BT.
 62.00 Leave heavy timber, enter scattering timber.
 64.00 Desc. NW. slope 35 ft.
 68.00 Draw, course NE.; thence over rolling land.
 80.00 Set an iron post, 3 ft. long, 2 ins.ⁿ diam, 24 ins. in
 the ground, for cor. of secs. 2, 3, 10 and 11, marked
 on brass cap, 1913;
 T27N R5W in N. half;
 S3 in NW.,
 S2 in NE.,
 S11 in SE., and
 S10 ins SW. quadrant; from which
 A pinion, 14 ins.ⁿ diam, brs. N. $10\frac{3}{4}^{\circ}$ E., 126 lks. dist.,
 marked T27N R5W S2 BT.
 A cedar, 10 ins.ⁿ diam, brs. S. $29\frac{3}{4}^{\circ}$ E., 101 lks. dist.,
 marked T27N R5W S11 BT.
 A cedar, 12 ins.ⁿ diam, brs. S. 27° W., 36 lks. dist.,
 marked T27N R5W S10 BT.
 A cedar, 16 ins.ⁿ diam, brs. N. 59° W., 68 lks. dist.,
 marked T27N R5W S3 BT.
 Land, rolling.
 Soil, volcanic, very rocky, 4th rate.
 Timber, scrub cedar and pinion.
 NOTE: At this corner I set off, $19^{\circ}25\frac{1}{2}'$ S. on the decl. arc;
 and at noon I observe the sun
 on the meridian, the resulting lat. is $35^{\circ}45\frac{1}{2}'$ N., which
 is slightly higher than the correct lat.

40.00 S. 89 58' E., on a random line, bet. secs. 2 and 11.
 Set temp. $\frac{1}{4}$ sec. cor.
 80.22 Intersect N. and S. line, 5 lks. S. of the cor. of
 secs. 1, 2, 11 and 12,

 Thence I run,
 West, on a true line, bet. secs. 2 and 11.
 Over rolling land, through greasewood undergrowth.
 3.75 Road, brs. NW. and SE.
 12.00 Asc. NE. slope, 135 ft.
 38.20 Spur ridge, brs. N. and S. Leave undergrowth, enter timber,
 brs. N. and S. Desc. W. slope 65 ft.
 40.11 Set an iron post, 3 ft. long, 1 in.ⁿ diam, 26 ins. in
 the ground, for $\frac{1}{4}$ sec. cor., marked on brass cap, 1913;
 $\frac{1}{4}$ S2 in N. and
 S11 in S. half; from which
 A cedar, 20 ins.ⁿ diam, brs. N. 31° W., 39 lks. dist.,
 marked $\frac{1}{4}$ S2 BT.
 A cedar, 18 ins.ⁿ diam, brs. S. 86° W., 66 lks. dist.,
 marked $\frac{1}{4}$ S11 BT.
 52.20 Draw, course N. Asc. SE. slope 110 ft.,
 68.00 Top of asc.; thence over rolling land.
 80.22 The cor. of secs. 2, 3, 10 and 11.
 Land, rolling and hilly.
 Soil, volcanic, very rocky, 4th rate.
 Timber, scrub cedar and pinion.
 Undergrowth, greasewood.

Jan. 23, 1913.

Jan. 27, 1913.
 N. $0^{\circ}1'$ W., on a random line, bet. secs. 2 and 3.
 40.00 Set temp. $\frac{1}{4}$ sec. cor.
 69.63 Intersect N. bdy. of 8 lks. E. of the cor. of secs. 2, 3,
 34 and 35, recently established by me as described in book "M",
 page 19.
 Thence I run
 S. $0^{\circ}5'$ E., on a true line, bet. secs. 2 and 3.
 Over rolling land, through scattering timber.
 29.63 Set an iron post, 3 ft. long, 1 in.ⁿ diam, 26 ins. in

Subdivision of T. 27 N., R. 5 W.

//

Chains. the ground, for $\frac{1}{4}$ sec. cor. marked on brass cap, 1913;
 $\frac{1}{4}$ S3 in W. and
S. 2 in E. half; from which
A pinion, 7 ins. in diam, brs. N. $24\frac{3}{4}^{\circ}$ E., 80 lks. dist.,
marked $\frac{1}{4}$ S2 BT.
A pinion, 8 ins. in diam, brs. S. $47\frac{1}{2}^{\circ}$ W., 129 lks. dist.,
marked $\frac{1}{4}$ S3 BT.
33.60 Draw, course NE.
35.60 Asc. NW. slope, 60 ft.
59.60 Top of ascent, thence over level land.
69.63 The cor. of secs. 2, 3, 10 and 11.
Land, rolling and hilly.
Soil, volcanic, very rocky, 4th rate.
Timber, scrub cedar and pinion.
Jan. 27, 1913.
W.B.K.

H.N.B.

Jan. 19, 1913.
From the cor. of secs. 33 and 34 on S. bdy of Tp recently established by me
as described in book "M", page 13, I run
N. $0^{\circ}21'$ W., bet. secs. 33 and 34.
Over rolling land,
24.00 Centre of draw, 4 chs. wide, course NW.
38.00 Enter timber, brs. NW. and SE.
40.00 Set an iron post, 3 ft. long, 1 in. in diam, 26 ins. in
the ground, for $\frac{1}{4}$ sec. cor., marked on brass cap, 1913;
 $\frac{1}{4}$ S33 in W. and
S34 in E. half; from which
A cedar limb, 12 ins. in diam, brs. S. $29\frac{3}{4}^{\circ}$ E., 62 lks.
dist., marked $\frac{1}{4}$ S34 BT.
A cedar, 14 ins. in diam, brs. N. $71\frac{1}{4}^{\circ}$ W., 580 lks. dist.,
marked $\frac{1}{4}$ S33 BT.
53.80 Gulch, 50 lks. wide, course NW.
80.00 Set an iron post, 3 ft. long, 2 ins. in diam, 24 ins. in
the ground, for cor. of secs. 27, 28 33 and 34, marked
on brass cap, 1913;
T27N R5W in N. half;
S28 in NW.,
S27 in NE.,
S34 in SE., and
S33 in SW. quadrant, from which
A cedar, 18 ins. in diam, brs. S. 19° E., 282 lks. dist.,
marked T27N R5W S34 BT.
A cedar, 17 ins. in diam, brs. S. $42\frac{3}{4}^{\circ}$ W., 52 lks. dist.,
marked T27N R5W S $^{\circ}$ BT. *No other trees within limits. Pits impracticable. Therefore*
I raise a mound of stone, 2 ft. base, $\frac{1}{2}$ ft. high, W. of cor.
Land, level and rolling.
Soil, rocky 4th rate, gumbo.
Timber, scattering cedar.
Jan. 19, 1913.

Jan. 20, 1913, At 7 hrs. 45 m. a.m. l.m.t., I set off
 $35^{\circ}42'$ N. on the lat. arc; $20^{\circ}06'$ S. on the decl.
arc; and determine a meridian with the solar, at the cor.
of secs. 27, 28, 33 and 34, above described.
Thence I run,
East, on a random line, bet. secs. 27 and 34.
40.00 Set temp. $\frac{1}{4}$ sec. cor.
80.06 Intersect N. and S. line, 7 lks. S. of the cor. of secs.
26, 27, 34 and 35,
Thence I run
S. $89^{\circ}57'$ W., on a true line, bet. secs. 27 and 34.
Over rolling land, thru cedar timber.
4.00 Gulch, 10 lks. wide, course S.
22.00 Gulch, 15 lks. wide, 1 ft. deep, course SW.
37.50 Wash, 10 lks. wide, 2 ft. deep, in bottom of gulch,
40 lks. wide, course SW.
40.03 Set an iron post, 3 ft. long, 1 in. in diam, 26 ins. in
the ground, for $\frac{1}{4}$ sec. cor., marked on brass cap, 1913;
 $\frac{1}{4}$ S27 in N. and
S34 in S. half; from which
A pinion, 8 ins. in diam, brs. N. 19° E., 49 lks. dist.,
marked $\frac{1}{4}$ S27 BT.

Chains

	A pinion, 15 ins. ⁿ diam, brs. S. $8\frac{1}{2}^{\circ}$ E., 93 lks. dist., marked $\frac{1}{4}$ S34 BT.
57.00	Wash, 10 lks. wide, 2 ft. deep, course S.
62.00	Leave timber, brs. N. and S.
80.06	The cor. of secs. 27, 28, 33 and 34. Land, level and rolling. Soil, rocky, 4th rate, gumbo. Timber, cedar and pinion. Heavily timbered land, 60 chs.
	N. $0^{\circ} 2'$ W., bet. secs. 27 and 28. Over rolling land.
2.00	Draw, 40 lks. wide, course W.
16.00	Asc. SW. slope 120 ft.
30.00	Enter timber.
38.00	Top of asc.; thence along W. slope.
40.00	Set an iron post, 3 ft. long, 1 in. ⁿ diam, 26 ins. in the ground, for $\frac{1}{4}$ sec. cor., marked on brass cap, 1913; $\frac{1}{4}$ S28 in W. and S27 in E. half; from which
	A cedar, 15 ins. ⁿ diam, brs. S. $52\frac{3}{4}^{\circ}$ E., 53 lks. dist., marked $\frac{1}{4}$ S27 BT.
	A cedar, 7 ins. ⁿ diam, brs. N. $78\frac{1}{4}^{\circ}$ W., 43 lks. dist., marked $\frac{1}{4}$ S28 BT.
48.00	Desc. NW. slope 60 ft.
57.00	Gulch, 15 lks. wide, 2 ft. deep, course SW.
80.00	Set an iron post, 3 ft. long, 2 ins. ⁿ diam, 24 ins. in the ground, for cor. of sec. 21 and 22, 27 and 28., marked on brass cap, 1913; T27N R5W in N. half; S21 in NW., S22 in NE., S27 in SE., and S28 in SW. quadrant; from which
	A cedar, 12 ins. ⁿ diam, brs. N. $54\frac{1}{2}^{\circ}$ E., 67 lks. dist., marked T27N R5W S22 BT.
	A pinion, 7 ins. ⁿ diam, brs. S. $46\frac{1}{2}^{\circ}$ E., 51 lks. dist., marked T27N R5W S27 BT.
	A pinion, 9 ins. ⁿ diam, brs. S. $21\frac{1}{2}^{\circ}$ W., 28 lks. dist., marked T27N R5W S28 BT.
	A cedar, 10 ins. ⁿ diam, brs. N. $74\frac{1}{2}^{\circ}$ W., 113 lks. dist., marked T27N R5W S21 BT.
	Land, rolling and hilly. Soil, rocky, 4th rate, gumbo. Timber, scrub cedar and pinion.
	N. $89^{\circ} 57'$ E., on a random line, bet. secs. 22 and 27.
40.00	Set temp. $\frac{1}{4}$ sec. cor.
80.25	Intersect N. and S. line, 7 lks. S. of the cor. of secs. 22, 23, 26 and 27.
	Thence I run
	S. $89^{\circ} 54'$ W. on a true line, bet. secs. 22 and 27. Over rolling land, through cedar timber.
20.00	Enter burned timber.
38.00	Leave burned timber.
40.125	Set an iron post, 3 ft. long, 1 in. ⁿ diam, 26 ins. in the ground for $\frac{1}{4}$ sec. cor., marked on brass cap, 1913; $\frac{1}{4}$ S22 in N. and S27 in S. half; from which
	A pinion, 14 ins. ⁿ diam, brs. N. $29\frac{1}{4}^{\circ}$ E., 43 lks. dist., marked $\frac{1}{4}$ S22 BT.
	A cedar, 12 ins. ⁿ diam, brs. S. $20\frac{1}{4}^{\circ}$ E., 38 lks. dist., marked $\frac{1}{4}$ S 27 BT.
45.00	Edge of rim rock. brs. NW. and SE. Desc. SW. slope 300 ft.
70.25	Gulch, 40 lks. wide, course NW.
75.60	Brush fence, brs. NW. and SE.
80.25	The cor. of secs. 21, 22, 27 and 28. Land, rolling and mountainous.

Chains. Soil, rocky, 4th rate, gumbo.
 Timber, scrub cedar and pinion.
 Mountainous and heavily timbered land, 80 chs.
 Jan. 20, 1913.

Jan. 21, 1913, At 8 hrs. 13 m. a. m. l.m.t., I set off
 35°42½' N. on the lat. arc; 19°53' S. on the decl.
 arc; and determine a meridian with the solar at the cor.
 of secs. 21, 22, 27 and 28,
 Thence I run,
 N. 0°2' W., bet. secs. 21 and 22.
 Over rolling land, through heavy timber.
 Gulch, 10 lks. wide, 2 ft. deep, course W.
 Asc. SW. slope, 40 ft.
 Wire fence, brs. E. and W.
 Top of asc. Desc. NW. slope 100 ft.
 Set an iron post, 3 ft. long, 1 in. diam, 26 ins. in
 the ground, for ¼ sec. cor., marked on brass cap, 1913;
 ½ S21 in W. and
 S22 in E. half, from which
 A pinion limb, 6 ins. diam, brs. N. 52½° E., 122 lks.
 dist., marked ½ S22 BT.
 A cedar limb, 6 ins. diam, brs. S. 38½° W., 26 lks. dist.,
 marked ½ S21 BT.
 Bottom of Canyon, heads, 4 chs. E., course W. 2 chs. wide.
 Asc. SW. slope 60 ft.
 Top of asc. Desc. N. slope 70 ft.
 Bottom of canyon, 50 lks. wide, course W.; heads
 2 chs. E. Asc. S. slope 130 ft.
 Top of asc.; thence over rolling land.
 Set an iron post, 3 ft. long, 2 ins. diam, 24 ins. in
 the ground, for cor. of secs. 15, 16, 22 and 23.
 marked on brass cap, 1913;
 T27N R5W in N. half;
 S16 in NW.,
 S15 in NE.,
 S22 in SE., and
 S21 in SW. quadrant; from which
 A pinion, 17 ins. diam, brs. N. 75° E., 86 lks. dist.,
 marked T27N R5W S15 BT.
 A cedar, 11 ins. diam, brs. S. 48½° E., 63 lks. dist.,
 marked T27 N R5W S22 BT.
 A cedar limb, 7 ins. diam, brs. S. 81° W., 6 lks. dist.,
 marked T27N R5W S21 BT.
 A cedar, 6 ins. diam, brs. N. 36½° W., 8 lks. dist.,
 marked T27N R5W S16 BT.
 Land, rolling and hilly.
 Soil, rocky, 4th rate, gumbo.
 Timber, scrub cedar and pinion.
 Heavily timbered land, 70 chs.

NOTE: At this corner, I set off 19°53' S. on the decl. arc;
 and at noon I observe the sun
 on the meridian. The resulting lat. is 35°43½' N., which
 is slightly less than the correct lat.

40.00 N. 89°54' E., on a random line, bet. secs. 15 and 22.
 Set temp. ¼ sec. cor.
 80.30 Intersect N. and S. line, 14 lks. S. of the cor. of
 secs. 14, 15, 22 and 23,
 Thence I run
 S. 89°48' W., on a true line, bet. secs. 15 and 22.
 Over rolling land, through cedar timber.
 Gulch, 6 lks. wide, 2 ft. deep, course NW.
 2.30 Draw, 50 lks. wide, course NW.
 22.00 Enter burned timber, brs. N. and S.
 34.00 Brush fence, brs. NE. and SW. Leave burned timber,
 37.25 brs. NE. and SW.
 40.15 Set an iron post, 3 ft. long, 1 in. diam, 26 ins. in the
 ground, for ¼ sec. cor. marked on brass cap, 1913;

Subdivision of T. 27 N., R. 5 W.

Chains.	<p>$\frac{1}{4}$S15 in N. and S22 in S. half; from which A cedar, 18 ins.ⁱⁿ diam, brs. N. 0° 50' W., 61 lks. dist. marked $\frac{1}{4}$S15 BT. A cedar limb, 8 ins.ⁱⁿ diam, brs. S. 46$\frac{3}{4}$° W., 8 lks. dist., marked $\frac{1}{4}$S22 BT. The cor. of secs. 15, 16, 21 and 22. Land, level and rolling. Soil, rocky, 4th rate, gumbo. Timber, scrub cedar and pinion.</p> <p style="text-align: right;">Jan. 21, 1913.</p>
80.30	
40.00	<p>Jan. 22, 1913, At 9h 30 m. a.m., l.m.t., I set off 35° 43$\frac{1}{2}$' N., on the lat. arc; 19° 40$\frac{1}{2}$' S., on the decl. arc; and determine a meridian with the solar at the cor. of secs. 15, 16, 21 and 22, Thence I run N. 0° 2' W., bet. secs. 15 and 16. Desc. very gradual N. slope, through heavy timber. Set an iron post, 3 ft. long, 1 in.ⁱⁿ diam, 26 ins. in the ground, for $\frac{1}{4}$ sec. cor., marked on brass cap, 1913; $\frac{1}{4}$S16 in W. and S15 in E. half; from which A cedar limb, 10 ins.ⁱⁿ diam, brs. S. 20$\frac{1}{4}$° E., 256 lks. dist., marked $\frac{1}{4}$S15 BT. A cedar limb, 6 ins.ⁱⁿ diam, brs. N. 49$\frac{1}{4}$° W., 158 lks. c dist., marked $\frac{1}{4}$S16 BT. Wire corral, 1 ch. W., in Gulch. Leave timber, brs. E. & W. Intersection of 2 gulches, course NW. and W., forming gulch, 50 lk. wide, 5 ft. deep, course W. Asc. SW slope, 60 ft. Enter timber, brs. E and W. Set an iron post, 3 ft. long, 2 ins.ⁱⁿ diam, 24 ins. in the ground, for cor. of secs. 9, 10, 15 and 16, marked on brass cap, 1913; T27N R5W in N. half; S9 in NW., S10 in NE., S15 in SE., and S116 in SW. quadrant; from which A cedar, 15 ins.ⁱⁿ diam, brs. N. 22$\frac{1}{4}$° E., 120 lks. dist., marked T27N R5W S10 BT. A cedar, 6 ins.ⁱⁿ diam, brs. S. 39$\frac{3}{4}$° E., 141 lks. dist., marked T27N R5W S15 BT. A cedar, 20 ins.ⁱⁿ diam, brs. S 52$\frac{1}{2}$° W., 195 lks. dist., marked T27N R5W S16 BT. A cedar limb, 7 ins.ⁱⁿ diam, brs. N. 54$\frac{1}{2}$° W., 200 lks. dist., marked T27N R5W S9 BT. Land, rolling and hilly. Soil, rocky 4th rate gumbo. Timber, scrub cedar and pinion.</p>
52.00	
52.40	
60.00	
80.00	
NOTE-	The sky was overcast at noon, making an observation for lat. impossible.

H.N.B.

40.00	W.B.K. N. 89 48' E., on a random line, bet. secs. 10 and 15. Set temp. $\frac{1}{4}$ sec. cor.
80.46	Intersect N. and S. line, 19 lks. S. of the cor. of secs. 10, 11, 14 and 15,
3.50	Thence I run S. 89° 40' W., on a true line bet. secs. 10 and 15. Over rolling land, through heavy timber. Spur ridge, brs. N. and S.; thence along broken slope, draining NE.
10.40	Wash, 4 lks. wide, 3 ft. deep, course NW.
16.55	Wash, 15 lks. wide, 5 ft. deep, course NE. Asc. SE. slope 50 ft.
23.95	Spur ridge, brs. N. and S.
25.90	Draw, course S. Asc. E. slope 195 ft.
40.23	Set an iron post, 3 ft. long, 1 in. ⁱⁿ diam, 26 ins. in the ground for $\frac{1}{4}$ sec. cor., marked on brass cap, 1913;

Subdivision of T. 27 N., R. 5 W.

Chains.

44.50 $\frac{1}{4}$ S10 in N. and
 73.50 S15 in S. half; from which
 78.00 A pinion, 15 ins.ⁱⁿdiam, brs. N. $47\frac{1}{2}^{\circ}$ E., 30 lks. dist.,
 80.46 marked $\frac{1}{4}$ S10 BT.
 A pinion, 16 ins.ⁱⁿdiam, brs. S. 8° E., 36 lks. dist.,
 marked $\frac{1}{4}$ S13 BT.
 Continue to asc. E. slope.
 Top of asc. 100 ft. above cor.; thence over rolling land.
 Leave timber, brs. N. and S.
 Enter timber, brs. N. and S.
 The cor. of secs. 9, 10, 15, and 16.
 Land, rolling and mountainous.
 Soil, very rocky, 4th rate, gumbo.
 Timber, scrub cedar and pinion.
 Mountainous land, 20 chs.

Jan. 22, 1913.

28.00 Jan. 27, 1913, At 9 hrs. 10 m. a. m. l.m.t., I set off
 37.05 $35^{\circ}44\frac{1}{2}'$ N. on the lat. arc; $18^{\circ}27\frac{1}{2}'$ S., on the decl.
 40.00 arc; and determine a meridian with the solar, at the cor.
 of secs. 9, 10, 15 and 16,
 Thence I run,
 N. $0^{\circ}2'$ W., bet. secs. 9 and 10.
 Over rolling land, through, scattering timber.
 Desc. NE. slope 90 ft.
 Gulch, course NW. Asc. rocky, SW. slope 105 ft.
 Set an iron post, 3 ft. long, 1 in.ⁱⁿdiam, 26 ins. in
 the ground, for $\frac{1}{4}$ sec. cor., marked on brass cap, 1913;
 $\frac{1}{4}$ S9 in W. and
 S10 in E. half; from which
 A cedar, 24 ins.ⁱⁿdiam, brs. S. 46° E., 182 lks. dist.,
 marked $\frac{1}{4}$ S10 BT.
 A cedar, 20 ins.ⁱⁿdiam, brs. N. 9° W., 140 lks. dist.,
 marked $\frac{1}{4}$ S9 BT.
 43.20 Spur ridge, brs. NW. and SE. Desc. NE. slope 335 ft.
 43.90 Enter heavy timber, brs. NW. and SE.
 55.50 Slope, changes to N.
 70.55 Foot of desc.; draw, course NE.; thence over rolling land.
 80.00 Set an iron post, 3 ft. long, 2 ins.ⁱⁿdiam, 24 ins. in
 the ground, for cor. of secs. 3, 4, 9 and 10, marked
 on brass cap, 1913;
 T27N R5W in N. half;
 S4 in NW.,
 S3 in NE.,
 S10 in SE., and
 S9 in SW. quadrant; from which
 A cedar, 8 ins.ⁱⁿdiam, brs. N. 46° E., 25 lks. dist.,
 marked T27N R5W S3 BT.
 A cedar limb, 7 ins.ⁱⁿdiam, brs. S. $29\frac{1}{2}^{\circ}$ E., 41 lks. dist.,
 marked T27N R5W S10 BT.
 A pinion, 10 ins.ⁱⁿdiam, brs. S. $23\frac{1}{4}^{\circ}$ W, 60 lks. dist.,
 marked T27N R5W S9 BT.
 A pinion, 7 ins.ⁱⁿdiam, brs. N. $41\frac{1}{2}^{\circ}$ W., 88 lks. dist.,
 marked T27N R5W S4 BT.
 Land, rolling and mountainous.
 Soil, volcanic, very rocky, 4th rate.
 Timber, scrub cedar and pinion.
 Mountainous and heavily timbered land, 40 chs.

40.00 N. $89^{\circ}40'$ E., on a random line, bet. secs. 3 and 10.
 80.26 Set temp. $\frac{1}{4}$ sec. cor.
 Intersect N. and S. line, 2 lks. S. of the cor. of
 secs. 2, 3, 10 and 11,
 Thence I run
 S. $89^{\circ}39'$ W., on a true line, bet. secs. 3 and 10,
 Over rolling land, through scattering timber.
 12.00 Draw, course NW.
 35.20 Wash, 4 lks. wide, 2 ft. deep, course NE.
 40.13 Set an iron post, 3 ft. long, 1 in.ⁱⁿdiam, 26 ins. in
 the ground, for $\frac{1}{4}$ sec. cor., marked on brass cap, 1913;
 $\frac{1}{4}$ S3 in N. half;

Chains	
	S10 in S. half; from which A cedar, 10 ins. diam., brs. N. 57° W., 52 lks. dist., marked $\frac{1}{4}$ S3 BT. A cedar, 20 ins. diam., brs. S. 86 $\frac{3}{4}$ ° W., 182 lks. dist., marked $\frac{1}{4}$ S10 BT.
74.00	Enter heavy timber, brs. NE. and SW.
80.26	The cor. of secs. 3, 4, 9 and 10. Land, level and rolling. Soil, volcanic, very rocky, 4th rate. Timber, scrub cedar and pinion.
	<i>NOTE:</i> At this corner, I set off 18° 26' S. on the decl. arc; and at noon I observe the sun on the meridian. The resulting lat. is 35° 45' N, which is slightly less than the correct lat. Jan. 27, 1913.
	Jan. 29, 1913. N. 0° 2' W., on a random line, bet. secs. 3 and 4.
40.00	Set temp. $\frac{1}{4}$ sec. cor.
70.06	Intersect N. bdy. of Tp., 4 lks. W. of the cor. of secs. 3, 4, 33 and 34, recently established by me as described in book "M", page 20. Thence I run South, on a true line, bet. secs. 3 and 4. Over rolling land, through scattering timber.
16.00	Enter heavy timber, brs. NE. and SW.
19.35	Wash, 8 lks. wide, 2 ft. deep, course NE.
30.06	Set an iron post, 3 ft. long, 1 in. diam., 26 ins. in the ground for $\frac{1}{4}$ sec. cor., marked on brass cap, 1913; $\frac{1}{4}$ S4 in W. and S3 in E. half; from which A cedar, 16 ins. diam., brs. N. 37 $\frac{1}{2}$ ° E., 63 lks. dist., marked $\frac{1}{4}$ S3 BT. A cedar, 20 ins. diam., brs. S. 78° W., 16 lks. dist., marked $\frac{1}{4}$ S4 BT.
30.35	Draw, course NE.
54.00	Draw, course NE.
70.06	The cor. of secs. 3, 4, 9 and 10. Land, level and rolling. Soil, volcanic, very rocky, 4th rate. Timber, scrub cedar and pinion. Undergrowth, greasewood. Heavily timbered land, 54 chs.
	Jan. 29, 1913. W.B.K.
	<i>H.N.B.</i> Jan. 23, 1913. At 8 hrs. 6 m. a.m. l.m.t. I set off 35° 41' N. on the lat. arc; 19° 25' S. on the decl. arc; and determine a meridian with the solar at the cor. of secs. 32 and 33, recently established by me as described in book "M", page 14. Thence I run N. 0° 3' W., bet. secs. 32 and 33. Over rolling land.
16.00	Enter heavy timber, brs. E. and W.
37.00	Wash, 10 lks. wide, 3 ft. deep, course NNE.
40.00	Set an iron post, 3 ft. long, 1 in. diam., 26 ins. in the ground for $\frac{1}{4}$ sec. cor., marked on brass cap, 1913; $\frac{1}{4}$ S32 in W. and S33 in E. half; A cedar, 20 ins. diam., brs. S. 38° E., 100 lks. dist., marked $\frac{1}{4}$ S33 BT. A cedar, 20 ins. diam., brs. S. 64 $\frac{1}{4}$ ° W., 353 lks. dist., marked $\frac{1}{4}$ S32 BT.
42.00	Leave timber, brs. E. and W.
43.00	Road, brs. NE. and SW.
69.60	Wire fence, brs. NW. and SE. 2 chs. E., wire fence brs. NNE. and SSW.
74.80	Road, brs. NW. and SE.
75.40	Wash, 75 lks. wide, 3 ft. deep, course NW.
80.00	Set an iron post, 3 ft. long, 2 ins. diam., 24 ins. in the ground, for cor. of secs. 28, 29, 32 and 33, marked on brass cap, 1913; T27N R5W in N. half; S29 in NW.,

Subdivision of T. 27 N., R. 5 W.

Chains.

S28 in NE.,
 S33 in SE., and
 S32 in SW. quadrant;
 And raise a mound of stone, 2 ft. base, 1½ ft. high, W.
 of cor. Pits impracticable.
 Land, level and rolling.
 Soil, rocky, 4th rate, gumbo.
 Timber, scrub cedar and pinion.
Rodger's Ranch House, brs. S. 30°38' E. 15.28 chs. dist.

40.00
79.97

East on a random line, bet. secs. 28 and 33.
 Set temp. ¼ sec. cor.
 Intersect N. and S. line, 5 lks. S. of the cor. of secs.
 27, 28, 33 and 34,

3.00
8.00
34.00
39.985

Thence I run
 S. 89°58' W., on a true line, bet. secs. 28 and 33.
 Over rolling land.
 Draw, 50 lks. wide, course SW.
 Same draw, course NW.
 Same draw, 60 lks. wide, course SW.
 Set an iron post, 3 ft. long, 1 in. diam, 26 ins. in the
 ground, for ¼ sec. cor., marked on brass cap, 1913;
 ¼ S28 in N. and
 S33 in S. half;

46.30
49.70
50.50
60.00
65.60
72.00
75.10
79.97

And raise a mound of stone, 2 ft. base, 1½ ft. high, N.
 of cor. Pits impracticable.
 Wire fence, brs. NW. and SE.
 Wire fence, brs. NE. and SW. Asc. E. slope, 35 ft.
 Top of asc.; thence over rolling land.
 Rodger's Dam, brs. S. 6 chs. dist.
 Wash, 10 lks. wide, 3 ft. deep, course SW.
 Top of precipice, 40 ft. high.
 Wire fence, brs. N. and S.
 The cor. of secs. 28, 29, 32 and 33.
 Land, rolling and hilly.
 Soil, rocky, 4th rate, gumbo.
 No timber.

NOTE

At this corner, I set off 19°25½' S. on the decl. arc;
 and at noon I observe the sun
 on the meridian. The resulting lat. is 35°42' N., which is
 slightly higher than the correct lat.

6.00
8.00
14.00
18.00
30.00
40.00

N. 0°3' W., bet. secs. 28 and 29.
 Over rolling land.
 Asc. S. slope 40 ft.
 Enter timber, brs. E. and W.
 Gulch, 2 chs. wide, course SSW.
 Leave gulch, asc. SW. slope.
 Top of asc.; thence over rolling land.
 Set an iron post, 3 ft. long, 1 in. diam, 26 ins. in the
 ground, for ¼ sec. cor., marked on brass cap, 1913;
 ¼ S29 in W., and
 S28 in E. half; from which

53.90
80.00

A cedar limb, 5 ins. diam, brs. S. 15° E., 119 lks. dist.,
 marked ¼ S28 BT.
 A cedar limb, 7 ins. diam, brs. N. 9¾° W., 42 lks. dist.,
 marked ¼ S29 BT.
 Wire fence, course S. 48° E., and N. 48° W.
 Set an iron post, 3 ft. long, 2 ins. diam, 24 ins. in
 the ground, for cor. of secs. 20, 21, 28 and 29,
 marked on brass cap, 1913;
 T27N R5W in N. half;
 S20 in NW.,
 S21 in NE.,
 S28 in SE. and
 S29 in SW. quadrant; from which
 A cedar, 20 ins. diam, brs. N. 28 E., 298 lks. dist.,
 marked T27N R5W S21 BT.
 A cedar, 8 ins. diam, brs. S. 79¾° W., 173 lks. dist.,
 marked T27N R5W S29 BT.
 A cedar, 15 ins. diam, brs. N. 65¼° W., 166 lks. dist.,
 marked T27N R5W S20 BT.

Subdivision of T. 27 N., R. 5 W.

Chains.

No other trees within limits.
 Raise a mound of stone, 2 ft. base, 1½ ft. high,
 W. of cor. Pits impracticable.
 Land, rolling.
 Soil, rocky, 4th rate.
 Timber, scrub cedar and pinion.

40.00
 79.95

N. 89°58' E., in a random line, bet. secs. 21 and 28.
 Set temp. ¼ sec. cor.
 Intersect N. and S. line, 12 lks. N. of the cor. of
 secs. 21, 22, 27 and 28.

4.00
 24.75
 39.975

Thence I run
 N. 89°57' W., on a true line, bet. secs. 21 and 28.
 Over rolling land, through heavy timber.
 Brush fence, brs. NW. and SE.
 Wire fence brs. N. and S.
 Set an iron post, 3 ft. long, 1 in. diam, 26 ins. in
 the ground, for ¼ sec. cor., marked on brass cap, 1913;
 ¼S21 in N. and
 S28 in S. half; from which
 A cedar, 6 ins. diam, brs. N. 51½° E., 59 lks. dist.,
 marked ¼S21 BT.
 A cedar, 6 ins. diam, brs. S 23½° W., 118 lks. dist.,
 marked ¼S28 BT.

64.00
 79.95

Leave timber, brs. N. and S.
 The cor. of secs. 20, 21, 28 and 29.
 Land, rolling.
 Soil, rocky, 4th rate, gumbo.
 Timber, scrub cedar and pinion.
 Heavily timbered land, 64 chs.

Jan. 23, 1913.

Jan. 25, 1913. At 9 hrs. 15 m. a. m. l.m.t., I set
 off 35°42½' N. on the lat. arc; 18°57½' S. on the
 decl. arc; and determine a meridian with the solar at
 the cor. of secs. 20, 21, 28 and 29,

2.25
 5.00
 25.00
 40.00

Thence I run,
 N. 0°3' W., bet. secs. 20 and 21.
 Over rolling land.
 Wash, 10 lks. wide, 2 ft. deep, course NW.
 Enter timber, brs. E. and W.
 Brush, fence, brs. NE. and SW.
 Set an iron post, 3 ft. long, 1 in. diam, 26 ins. in
 the ground, for ¼ sec. cor., marked on brass cap, 1913;
 ¼S20 in W. and
 S21 in E. half; from which
 A pinion, 7 ins. diam, brs. N. 72½° E., 16 lks. dist.
 marked ¼S21 BT.
 A pinion, 9 ins. diam, brs. S. 77½° W., 48 lks. dist.,
 marked ¼S20 BT.

54.00
 70.00
 78.00
 80.00

Desc. NE. slope 90 ft.
 Foot of desc.; thence over rolling land.
 Leave timber, brs. E. and W.
 Set an iron post, 3 ft. long, 2 ins. diam, 24 ins. in
 the ground, for cor. of secs. 16, 17, 20 and 21,
 marked on brass cap, 1913;
 T27N R5W in N. half;
 S17 in NW.,
 S16 in NE.,
 S21 in SE., and
 S20 in SW. quadrant; from which
 A cedar, 12 ins. diam, brs. N. 67¾° E., 649 lks. dist.,
 marked T27N R5W S16 BT.
 A cedar, 18 ins. diam, brs. S. 5½° E., 40 2 lks. dist.,
 marked T27 N R5W S21 BT.
 A cedar, 8 ins. diam, brs. S. 63° W., 184 lks. dist.,
 marked T27N R5W S20 BT.
 A cedar, 36 ins. diam, brs. N. 40¾° W., 488 lks. dist.,
 marked T27N R5W S17. BT.

Subdivision of T. 27 N., R. 5 W.

Chains

Land, rolling and hilly.
Soil, rocky, 4th rate.
Timber, scrub cedar and pinion.
Heavily timbered land, 70 chs.

NOTE - At this cor. I set off 18°56½' S. on the decl. arc; and at noon I observe the sun on the meridian. The resulting lat. is 35°43½' N., which is slightly less than the correct lat.

40.00
79.68

S. 89°57' E., on a random line, bet. secs. 16 and 21.
Set temp. ¼ sec. cor.
Intersect N. and S. line, at the cor. of secs. 15, 16, 21 and 22,
Thence I run,
N. 89°57' W., on a true line, bet. secs. 16 and 21.
Over rolling land, through cedar timber.

19.00
36.00
39.84

Desc. W. slope 210 ft.
Gulch, 50 lks. wide, course N. Asc. E. slope 100 ft.
Set an iron post, 3 ft. long, 1 in. diam, 26 ins. in the ground, for ¼ sec. cor., marked on brass cap, 1913, ¼ S16 in N. and ¼ S21 in S. half; from which
A pinion, 6 ins. diam, brs. N. 27¼° W., 79 lks. dist., marked ¼ S16 BT.
A cedar, 8 ins. diam, brs. S. 14¼° W., 139 lks. dist., marked ¼ S21 BT.

46.00
72.00
79.68

Top of asc.; thence over rolling land.
Leave timber, brs. NW. and SE. Desc. W. slope 100 ft.
The cor. of secs. 16, 17, 20 and 21.
Land, rolling and hilly.
Soil, rocky, 4th rate, gumbo.
Timber, scrub cedar and pinion.
Heavily timbered land, 52 chs.

Jan. 25, 1913.

H.N.B.

W.B.K.

Jan. 28, 1913. At 8 hrs. 30 m. a.m. l.m.t., I set off 35°43½' N. on the lat. arc; 18°12' S. on the decl. arc; and determine a meridian with the solar, at the cor. of secs. 16, 17, 20 and 21,

10.00
30.00
40.00

Thence I run,
N. 0 3' W., bet. secs. 16 and 17.
Over rolling land.
Enter timber, brs. NW. and SE.
Desc. N. slope 45 ft.
Set an iron post, 3 ft. long, 1 in. diam, 26 ins. in the ground, for ¼ sec. cor., marked on brass cap, 1913, ¼ S17 in W. and ¼ S16 in E. half; from which
A cedar, 8 ins. diam, brs. N. 29° E., 42 lks. dist., marked ¼ S16 BT.
A cedar, 16 ins. diam, brs. S. 49½° W. 74 lks. dist., marked ¼ S17 BT.

44.00
46.00
80.00

Foot of desc.; thence over rolling land.
Leave timber, brs. E. and W.
Set an iron post, 3 ft. long, 2 ins. diam, 24 ins. in the ground, for cor. of secs. 8, 9, 16 and 17.
Marked on brass cap, 1913;
T27N R5W in N. half;
S8 in NW.,
S9 in NE.,
S16 in SE. and
S17 in SW. from which
A cedar, 30 ins. dia., brs. N. 20¼° E., 345 lks. dist., marked T27N R5W S9 BT.
A cedar, 12 ins. dia., brs. S. 33½° E., 297 lks. dist., marked T27N R5W S16 BT. No other trees within limits. Pits impracticable therefore. Also amount of stone, 2 ft. base, 1½ ft. high, W. of cor.
Land, rolling.
Soil, very rocky, volcanic, 4th rate.
Timber, scrub cedar and pinion.

Chains. S. 89° 57' E., on a random line, bet. secs. 9 and 16.
 40.00 Set temp. $\frac{1}{4}$ sec. cor.
 79.74 Intersect N. and S. line, 2 lks. S. of the cor. of secs.
 9, 10, 15 and 16,

Thence I run
 N. 89° 58' W., on a true line, bet. secs. 9 and 16.
 Desc. slight, W. slope, through scattering timber.
 10.00 Desc. becomes precipitous.
 15.00 Bottom of canyon, 1 ch. wide, 130 ft. below cor.
 Asc. E. slope 60 ft.
 22.00 Top of asc.; thence over rolling land.
 30.00 Desc. SW. slope 55 ft.
 39.87 Set an iron post, 3 ft. long, 1 in. diam, 26 ins. in
 the ground, for $\frac{1}{4}$ sec. cor., marked on brass cap, 1913;
 $\frac{1}{4}$ S9 in N. and
 $\frac{1}{4}$ S16 in S. half; from which
 A cedar, 10 ins. diam, brs. N. 73 $\frac{1}{2}$ ° W., 262 lks. dist.,
 marked $\frac{1}{4}$ S9 BT.
 A cedar, 12 ins. diam, brs. S. 15° W., 88 lks. dist.,
 marked $\frac{1}{4}$ S16 BT.
 42.00 Foot of desc.; thence along S. slope.
 71.50 Leave timber, brs. N. and S.
 79.74 The cor. of secs. 8, 9, 16 and 17.
 Land, rolling and mountainous.
 Soil, rocky, 4th rate, gumbo.
 Timber, scrub cedar and pinion.

NOTE: At this corner, I set off 18° 10 $\frac{1}{2}$ ' S on the decl. arc;
 and at noon I observe the sun
 on the meridian. The resulting lat. is 35° 44 $\frac{1}{2}$ ' N., which is
 the correct lat.

N. 0° 3' W. bet. secs. 8 and 9.
 Over rolling land.
 40.00 Set an iron post, 3 ft. long, 1 in. diam, 26 ins. in the
 ground, for $\frac{1}{4}$ sec. cor., marked on brass cap, 1913;
 $\frac{1}{4}$ S8 in W. and
 $\frac{1}{4}$ S9 in E. half; from which
 A cedar limb, 7 ins. diam, brs. N. 81° E., 92 lks. dist.,
 marked $\frac{1}{4}$ S9 BT.
 A pinion, 7 ins. diam, brs. N. 69 $\frac{1}{2}$ ° W., 56 lks. dist.,
 marked $\frac{1}{4}$ S8 BT.
 Enter heavy timber, brs. NW. and SE. Asc. SW. slope
 115 ft.
 56.00 Top of asc.; thence over rolling land.
 70.00 Desc. NE. slope, 80 ft.
 80.00 Set an iron post, 3 ft. long, 2 ins. diam, 24 ins. in
 the ground, for cor. of secs. 4, 5, 8 and 9, marked
 on brass cap, 1913;
 T27N R5W in N. half;
 S5 in NW.,
 S4 in NE.,
 S9 in SE., and
 S8 in SW. quadrant; from which
 A pinion, 8 ins. diam, brs. N. 76° E., 38 lks. dist.,
 marked T27N R5W S4 BT.
 A pinion, 6 ins. diam, brs. S. 44 $\frac{1}{2}$ ° E., 45 lks. dist.,
 marked T27N R5W S9 BT.
 A cedar, 9 ins. diam, brs. S. 16 $\frac{1}{2}$ ° W., 115 lks. dist.,
 marked T27N R5W S8 BT.
 A cedar limb, 8 ins. diam, brs. N. 36° W., 52 lks. dist.,
 marked T27N R5W S5 BT.
 Land, rolling and hilly.
 Soil, volcanic, very rocky, 4th rate.
 Timber, scrub cedar and pinion.

40.00 S. 89° 58' E., on a random line, bet. secs. 4 and 9.
 79.94 Set temp. $\frac{1}{4}$ sec. cor.
 Intersect N. and S. line, at the cor. of secs. 3, 4, 9 and
 10,
 Thence I run
 N. 89° 58' W., on a true line, bet. secs. 4 and 9.

Subdivision of T. 27 N., R. 5 W.

Chains

4.00 Over rolling land, through heavy timber.
 26.00 Leave heavy timber, brs. N. and S.
 29.00 Enter scattering timber, brs. NE. and SW.
 39.97 Draw, course NE.
 Set an iron post, 3 ft. long, 1 in.ⁱⁿdiam, 26 ins. in
 in the ground, for $\frac{1}{4}$ sec. cor., marked on brass cap, 1913;
 $\frac{1}{4}$ S4 in N. and
 S9 in S. half; from which
 A cedar, 12 ins.ⁱⁿdiam, brs. N. 55° E., 39 lks. dist.,
 marked $\frac{1}{4}$ S4 BT.
 A cedar, 6 ins.ⁱⁿdiam, brs. S. 14° W., 9 lks. dist.,
 marked $\frac{1}{4}$ S9 BT.
 54.00 Spur ridge, brs. N. and S. Desc. NW. slope, 45 ft.
 58.50 Gulch, course N. Asc. NE. slope 105 ft.
 79.94 The cor. of secs. 4, 5, 8 and 9.
 Land, rolling and hilly.
 Soil, volcanic, very rocky, 4th rate.
 Timber, scrub cedar and pinion.
 Jan. 28, 1913.

Jan. 29, 1913.
 N. 0° 3' W., on a random line, bet. secs. 4 and 5.
 40.00 Set temp. $\frac{1}{4}$ sec. cor.
 70.12 Intersect N. bdy. of Tp., 10 lks. W. of the cor. of secs.
 32, 33, 4 and 5, recently established by me as described in
 book "M", page 20 .
 Thence I run
 S. 0 2' W. on a true line bet. secs. 4 and 5.
 30.12 Set an iron post, 3 ft. long, 1 in.ⁱⁿdiam, 26 ins. in the
 ground, for $\frac{1}{4}$ sec. cor., marked on brass cap, 1913;
 $\frac{1}{4}$ S5 in W. and
 S4 in E. half;
 And raise a mound of stone, 2 ft. base, 1 $\frac{1}{2}$ ft. high, W.
 of cor. Pits impracticable.
 42.30 Enter heavy timber, brs. E. and W. Asc. NE. slope 190 ft.
 70.12 The cor. of secs. 4, 5, 8 and 9.
 Land, rolling and hilly.
 Soil, volcanic, very rocky, 4th rate.
 Timber, scrub cedar and pinion.
 Undergrowth, greasewood.
 Jan. 29, 1913.
 W.B.K.

H.N.B.
 Jan. 24, 1913. At 8 hrs. 7 m. a.m., 1 m.t., I set off
 35° 41' N. on the lat. arc; 19° 11 $\frac{1}{2}$ ' S. on the decl. arc;
 and determine a meridian with the solar at the cor. of
 secs. 31 and 32, recently established by me as described in book
 "M" page 14 .
 Thence I run
 N. 0° 3' W. bet. secs. 31 and 32.
 Over rolling land.
 40.00 Set an iron post, 3 ft. long, 1 in.ⁱⁿdiam, 26 ins. in
 the ground, for $\frac{1}{4}$ sec. cor., marked on brass cap, 1913;
 $\frac{1}{4}$ S31 in W. and
 S32 in E. half; from which
 A cedar, 15 ins.ⁱⁿdiam, brs. N. 46 $\frac{1}{2}$ ° W., 102 lks. dist.,
 marked $\frac{1}{4}$ S31 BT.
 No other trees within limits. Raise a mound of stone,
 2 ft. base, 1 $\frac{1}{2}$ ft. high, W. of cor. Pits impracticable.
 47.00 Draw, 1 ch. wide, course NW.
 66.00 Draw, 2 chs. wide, course E.
 76.00 Asc. S. slope 30 ft.
 80.00 Set an iron post, 3 ft. long, 2 ins.ⁱⁿdiam, 24 ins. in
 the ground for cor. of secs. 29, 30, 31 and 32, marked
 on brass cap, 1913;
 T27N R5W in N. half;
 S30 in NW.,
 S29 in NE.,
 S32 in SE.,
 S31 in SW. quadrant; from which
 A cedar, 20 ins.ⁱⁿdiam, brs. N. 12° E., 86 lks. dist., marked
 T27N R5W S29 BT.
 A cedar, 12 ins.ⁱⁿdiam, brs. N. 49 $\frac{1}{2}$ ° W., 163 lks. dist.,

Chains.	
	<p>marked T27N R5W S30 BT. No other trees within limits. Raise a mound of stone, 2 ft. base, 1½ ft. high, W. of cor. Pits impracticable. Land, level and rolling. Soil, rocky, 4th rate, gumbo. No timber.</p>
40.00	East, on a random line, bet. secs. 29 and 32.
80.06	Set temp. ¼ sec. cor. Intersect N. and S. line, 5 lks. N. of the cor. of secs. 28, 29, 32 and 33,
2.05	Thence I run N. 89°58' W. on a true line, bet. secs. 29 and 32. Over level land.
4.00	Road, brs. NW. and SE.
40.03	Wash, 100 lks. wide, 4 ft. deep, course NW. Set an iron post, 3 ft. long, 1 in. in diam, 26 ins. in the ground for ¼ sec. cor., marked on brass cap, 1913; ¼ S29 in N. and S32 in S. half;
57.45	And raise a mound of stone, 2 ft. base, 1½ ft. high N. of cor. Pits impracticable.
60.00	Wire fence brs. NW. and SE.
71.00	Asc. NE. slope, 70 ft.
74.00	Top of asc. in saddle. Desc. NW. slope 50 ft.
80.06	Foot of desc. Asc. SE. slope 30 ft. The cor. of secs. 29, 30, 31 and 32. Land, level and rolling. Soil, rocky, 4th rate, gumbo. No timber.
28.00	Knowing that it will be necessary to set closing cors. on the W. bdy. of the Tp., I run West, on a true line, bet. secs. 30 and 31. Along S. slope of ridge, bearing E. and W., through heavy timber.
40.00	Leave timber, brs. NW. and SE. Set an iron post, 3 ft. long, 1 in. in diam, 26 ins. in the ground, for ¼ sec. cor., marked on brass cap 1913; ¼ S30 in N. and S31 in S. half;
64.15	And raise a mound of stone, 2 ft. base, 1½ ft. high, N. of cor. Pits impracticable. Intersect W. bdy. of Tp., 6.01 chs. S. of the old cor. of secs. 25, 30, 31 and 36, which is an iron post, 3 ins. in diam, 12 ins. above ground, marked ^{on} and witnessed as described by the Surveyor General. I change the cor. to refer to secs. 25 and 36 ^{T27N.R.5W.} only by altering the markings on the brass cap and obliterating the markings on the bearing trees SE. of the cor. At the point of intersection, I set an iron post, 3 ft. long, 2 ins. in diam, 24 ins. in the ground, for closing cor. of secs. 30 and 31, ^{T27N.R.5W.} marked on brass cap, 1913; CC, W. of center. T27N in N., and S25, S36, R6W in W. half; S30 in NE., and S31 ^{R5W} in SE. quadrant; from which A cedar, 6 ins. in diam. brs. N. 66¼° E. 422 lks. dist., marked T27N R5W S30 BT. A cedar, 15 ins. in diam, brs. S. 64¼° E. 862 lks. dist., marked T27N R5W S31 BT. Land, level and rolling. Soil, rocky, 4th rate, gumbo. Timber, scrub cedar and pinion.

NOTE: At the cor. of secs. 29, 30, 31 and 32, I set off
 19° 11½' S. on the decl. arc; and at noon
 I observe the sun on the meridian. The
 resulting lat. is 35° 42' N., which is slightly
 higher than the correct lat.
 Thence I run,

Subdivision of T. 27 N., R. 5 W.

Chains

N. 0° 3' W., bet. secs. 29 and 30.
 Asc. S. slope, 100 ft. through cedar timber.
 Top of asc.
 7.00
 10.50 Desc. NE. slope, 160 ft.
 22.65 Wire fence, brs. NW. and SE. Leave timber, brs. E. and W.
 30.60 Wash, 1 ch. wide, 4 ft. deep, course NW.
 36.50 Wire fence, brs. NE. and SW. Thence over level land.
 38.70 Road, Coffman Ranch, to Roger's Ranch, brs. NW. and SE.
 40.00 Set an iron post, 3 ft. long, 1 in. diam, 26 ins. in
 the ground, for $\frac{1}{4}$ sec. cor., marked on brass cap, 1913;
 $\frac{1}{4}$ S30 in W. and
 S29 in E. half;
 And raise a mound of stone, 2 ft. base, 1 $\frac{1}{2}$ ft. high,
 W. of cor. Pits impracticable.
 48.00 Leave level land, asc. S.W. slope, 135 ft.
 52.00 Enter timber, brs. NW. and SE.
 60.00 Top of asc.; thence over rolling land.
 65.25 Brush fence, brs. NW. and SE.
 80.00 Set an iron post, 3 ft. long, 2 ins. diam, 24 ins. in
 the ground, for cor. of secs. 19, 20, 29 and 30,
 marked on brass cap, 1913;
 T27N R5W in N. half;
 S19 in NW.,
 S20 in NE.,
 S29 in SE., and
 S30 in SW. quadrant., from which
 A cedar, 22, ins. diam, brs. N. 54° E., 24 lks. dist.,
 marked T27N R5W S20 BT.
 A cedar, 36 ins. diam, brs. S. 60° E., 235 lks. dist.,
 marked T27N R5W S29 BT.
 A cedar, 20 ins. diam, brs. S. 64 $\frac{3}{4}$ ° W., 279 lks. dist.,
 marked T27N R5W S30 BT.
 A cedar, 20 ins. diam, brs. N. 32° W., 473 lks. dist.,
 marked T27N R5W, S19 BT.
 Land, rolling and hilly.
 Soil, rocky, 4th rate, gumbo.
 Timber, scrub cedar and pinion.
 Heavily timbered land, 35 chs.

Jan. 24, 1913.

Jan. 25, 1913.
 S. 89° 58' E., on a random line, bet. secs. 20 and 29.
 40.00 Set temp. $\frac{1}{4}$ sec. cor.
 80.06 Intersect N. and S. line, 2 lks. S. of the cor. of
 secs. 20, 21, 28 and 29,
 Thence I run
 N. 89° 59' W., on a true line, bet. secs. 20 and 29.
 Over rolling land,
 2.00 Enter timber, brs. N. and S.
 3.50 Brush fence, brs. NE. and SW.
 19.00 Wash, 10 lks. wide, 2 ft. deep course S.
 40.63 Set an iron post, 3 ft. long, 1 in. diam, 26 ins. in
 the ground for $\frac{1}{4}$ sec. cor. marked on brass cap, 1913;
 $\frac{1}{4}$ S20 in N. and
 S29 in S. half; from which
 A cedar, 16 ins. diam, brs. N. 9 $\frac{1}{4}$ ° E., 34 lks. dist.,
 marked $\frac{1}{4}$ S20 BT.
 A pinion, 6 ins. diam, brs. S. 83 $\frac{3}{4}$ ° W. 28 lks. dist.,
 marked $\frac{1}{4}$ S29 BT.
 80.06 The cor. of secs. 19, 20, 29 and 30.
 Land, level and rolling.
 Soil, rocky, 4th rate, gumbo.
 Timber, scrub cedar and pinion.
 Heavily timbered land, 78 chs.

Jan. 25, 1913.

Jan. 27, 1913, At 8 hrs. 23^m, a.m. l.m.t., I set off
 35° 42 $\frac{1}{2}$ ' N. on the lat. arc; 18° 27' S. on the
 decl. arc; and determine a meridian with the solar, at
 the cor. of secs. 19, 20, 29 and 30,
 Thence I run,
 West on a true line, bet. secs. 19 and 30,
 Over rolling land,
 4.00 Enter timber, brs. N. and S.

Subdivision of T. 27 N., R. 5 W.

24

Chains.
8.10 Brush fence, brs. N. and S.
24.00 Leave timber, brs. N. and S. Desc. NW. slope 190 ft.
35.30 Wash, 50 lks. wide, 4 ft. deep, course SW.
40.00 Set an iron post, 3 ft. long, 1 in.ⁱⁿdiam, 26 ins. in the ground, for $\frac{1}{4}$ sec. cor., marked on brass cap,^{1913;} $\frac{1}{4}$ S19 in N. and S30 in S. half;
And raise a mound of stone, 2 ft. base, 1 $\frac{1}{2}$ ft. high, N. of cor. Pits impracticable.
41.00 Enter same wash, course NW.
43.50 Leave wash, course SW.
46.10 Road, Coffman Ranch to Rodgers Ranch, brs. NW. and SE.
64.04 Intersect W. bdy. of Tp. , 600chs. S. of the ^{old} cor. of secs. 19, 24, 25 and 30, which is an iron post, 3 ins.ⁱⁿdiam, 12 ins. above ground, marked ^{an brass cap,} and witnessed as described by the surveyor general.
I change this cor. to refer to secs. 24 and 25 ^{T27N R. 6W.} only, by altering the markings on the brass cap and obliterating the markings on the bearing trees NE. and SE. of the cor.
At the point of intersection, I set an iron post, 3 ft. long, 2 ins.ⁱⁿdiam, 24 ins. in the ground for closing cor. to secs. 19 and 30 ^{T27N R. 5W.} marked on brass cap,^{1913;} CC, W. of center.
T27N in N. and S24, S25, R6W in W. half;
S19 in NE. and S30 ^{R5W} in SE. quadrant, from which
A cedar, 18 ins. dia., brs. N. 34° E., 127 lks. dist., marked T27N R5W S19 BT.
A cedar, 20 ins. dia., brs. S. 51 $\frac{1}{2}$ ° E., 223 lks. dist., marked T27N R5W S30 BT.
Land, rolling and mountainous.
Soil, rocky, 4th rate, gumbo.
Timber, scrub cedar and pinion.
Mountainous land, 10 chs.

6.00 N. 0° 3' W., bet. secs. 19 and 20,
Over rolling land, across draw, course NW.
Leave draw, and enter timber, brs. E. and W. Asc. gradual S. slope.
40.00 Set an iron post, 3 ft. long, 1 in.ⁱⁿdiam, 26 ins. in the ground, for $\frac{1}{4}$ sec. cor., marked on brass cap,^{1913;} $\frac{1}{4}$ S19 in W. and S20 in E. half; from which
A cedar, 18 ins.ⁱⁿdiam, brs. S. 78 $\frac{1}{2}$ ° E., 22 lks. dist., marked $\frac{1}{4}$ S20 BT.
A pinion, 5 ins.ⁱⁿdiam, brs. N. 56 $\frac{1}{2}$ ° W., 25 lks. dist., marked $\frac{1}{4}$ S19 BT.
Thence over rolling land.
80.00 Set an iron post, 3 ft. long, 2 ins.ⁱⁿdiam, 24 ins. in the ground, for cor. of secs. 17, 18, 19 and 20, marked on brass cap,^{1913;} T27N R5W in N. half;
S18 in NW.,
S17 in NE.,
S20 in SE., and
S19 in SW. quadrant; from which
A cedar, 15 ins.ⁱⁿdiam, brs. N. 16° E., 121 lks. dist., marked T27N R5W S17 BT.
A cedar, 10 ins.ⁱⁿdiam, brs. S. 55 $\frac{1}{4}$ ° E., 143 lks. dist., marked T27N R5W S20 BT.
A cedar, 6 ins.ⁱⁿdiam, brs. S. 5 $\frac{1}{2}$ ° W. 36 lks. dist., marked T27N R5W S19 BT.
A cedar, 6 ins.ⁱⁿdiam, brs. N. 66 $\frac{1}{2}$ ° W., 61 lks. dist., marked T27N R5W S18 BT.
Land, level and rolling.
Soil, rocky, 4th rate, gumbo.
Timber, scrub cedar and pinion.
Heavily timbered land, 74 chs.

NOTE - At this corner, I set off 18° 26' S on the decl. arc; and at noon I observe the sun on the meridian. The resulting lat. is 35° 43 $\frac{1}{2}$ ' N., which

Subdivision of T. 27 N., R. 5 W.

Chains. is slightly less than the correct lat.
 Jan. 27, 1913.

Jan. 28, 1913.
 S. 89° 59' E., on a random line, bet. secs. 17 and 20.
 Set temp. $\frac{1}{4}$ sec. cor.
 40.00 Intersect N. and S. line, 14 lks. S. of the cor. of
 80.09 secs. 16, 17, 20 and 21,
 Thence I run
 S. 89° 55' W., on a true line, bet. secs. 17 and 20.
 Over rolling land.
 18.00 Wash, 25 lks. wide, 3 ft. deep, course NW.
 28.00 Enter timber, brs. N. and S.
 40.04 $\frac{1}{2}$ Set an iron post, 3 ft. long, 1 in. ⁱⁿdiam., 26 ins. in
 the ground for $\frac{1}{4}$ sec. cor. marked on brass cap, 1913;
 $\frac{1}{4}$ S17 in N. and
 S20 in S. half; from which
 A cedar, 13 ins. ⁱⁿdiam., brs. N. 13 $\frac{1}{2}$ ° E., 38 lks. dist.,
 marked $\frac{1}{4}$ S17 BT.
 A cedar, 8 ins. ⁱⁿdiam., brs. S. 41 $\frac{1}{4}$ ° E., 47 lks. dist.,
 marked $\frac{1}{4}$ S20 BT.
 80.09 The cor. of secs. 17, 18, 19 and 20.
 Land, rolling.
 Soil, rocky, 4th rate, gumbo.
 Timber, scrub cedar and pinion.
 Heavily timbered land, 50 chs.
 Jan. 28, 1913.

Jan. 27, 1913.
 West, on a true line, bet. secs. 18 and 19.
 Over rolling land.
 8.00 Enter timber, brs. N. and S. Desc. W. slope 165 ft.
 9.00 Brush fence, brs. NE. and SW.
 24.50 Wire fence, brs. N. and S.
 30.00 Foot of desc.; thence over rolling land.
 40.00 Set an iron post, 3 ft. long, 1 in. ⁱⁿdiam., 26 ins. in
 the ground, for $\frac{1}{4}$ sec. cor., marked on brass cap, 1913;
 $\frac{1}{4}$ S18 in N. and
 S19 in S. half; from which
 A cedar, 15 ins. ⁱⁿdiam., brs. N. 51 $\frac{1}{2}$ ° W., 211 lks. dist.,
 marked $\frac{1}{4}$ S18 BT.
 A cedar, 30 ins. ⁱⁿdiam., brs. S19° E., 613 lks. dist.,
 marked $\frac{1}{4}$ S19 BT.
 44.00 Leave timber, brs. NW. and SE.
 64.08 Intersect W. bdy. of Tp., 6.16 chs. S. of the ^{up}cor. of
 secs. 13, 18, 19 and 24, which is an iron post,
 3 ins. ⁱⁿdiam., 12 ins. above ground, marked ^{on brass cap} and
 witnessed as described by the Surveyor General.
 I alter this cor. to refer to secs. 13 and 24 ^{only},
 by changing the markings on the brass cap and
 filling in the pits NE. and SE. of the cor.
 At the point of intersection, I set an iron post,
 3 ft. long, 2 ins. ⁱⁿdiam., 24 ins. in the ground for
 closing cor. of secs. 18 and 19 ^{T27N. R. 5W.} marked on brass cap, 1913;
 CC, W. of center.
 T27N in N. and
 S13, S24, R5W in W. half;
 S18 in NE., and
 S19 ⁱⁿ in SE. quadrant;
 Dig pits 24X18X12 ins. crosswise on each line, N.
 and S., 3 ft. and E. of post, 7 ft. dist.; and raise
 a mound of earth, 4 ft. base, 2 ft. high, E. of cor.
 Land, rolling and hilly.
 Soil, rocky, 4th rate, gumbo.
 Timber, scrub cedar and pinion.
 Jan. 27, 1913.

Jan. 28, 1913, At 9 hrs ⁰ma.m., l.m.t., I set off
 35° 43 $\frac{1}{2}$ ' N. on the lat. arc; 18° 12' S. on the decl.
 arc; and determine a meridian with the solar, at the cor.
 of secs. 17, 18, 19 and 20,
 Thence I run,

Chains.	
	N. $0^{\circ}3'$ W., bet. secs. 17 and 18.
	Over rolling land, through dense timber.
14.00	Desc. NW. slope, 90 ft.
20.00	Gulch, 20 lks. wide, 10 ft. deep, course NW.
	Thence over rolling land.
40.00	Set an iron post, 3 ft. long, 1 in. diam, 26 ins. in the ground, for $\frac{1}{4}$ sec. cor., marked on brass cap, 1913; $\frac{1}{4}$ S18 in W. and S17 in E. half; from which
	A pinion, 8 ins. diam, brs. S. 131° E., 11 lks. dist., marked $\frac{1}{4}$ S17 BT.
	A cedar, 10 ins. diam, brs. N. $45\frac{1}{2}^{\circ}$ W., 89 lks. dist., marked $\frac{1}{4}$ S18 BT.
52.00	Wash, 1 ch. wide, 7 ft. deep, course NW.
53.70	Wire fence, brs. E. and W.
60.50	Wash, 1 ch. wide, 7 ft. deep, course NW.
61.00	Leave timber, brs. E. and W.
70.00	Asc. SW. slope, 80 ft.
76.00	Enter timber, brs. NW. and SE.
80.00	Set an iron post, 3 ft. long, 2 ins. diam, 24 ins. in the ground, for cor. of secs. 7, 8, 17, 18, marked on brass cap, 1913; T27N R5W in N. half; S7 in NW., S8 in NE., S17 in SE., S18 in SW. quadrant; from which
	A pinion, 12 ins. diam, brs. N. $26\frac{3}{4}^{\circ}$ E., 65 lks. dist., marked T27N R5W S8 BT.
	A cedar, 6 ins. diam, brs. S. $89\frac{3}{4}^{\circ}$ E., 21 lks. dist., marked T27N R5W S17 BT.
	A cedar limb, 10 ins. diam, brs. S. $42\frac{1}{2}^{\circ}$ W., 93 lks. dist., marked T27N R5W S18 BT.
	A pinion, 8 ins. diam, brs. N. $55\frac{1}{4}^{\circ}$ W. 35 lks. dist., marked T27N R5W S7 BT.
	Land, rolling and hilly.
	Soil, rocky, 4th rate, gumbo.
	Timber, scrub cedar and pinion.
NOTE:	At this corner, I set off $18^{\circ}10\frac{1}{2}'$ S. on the decl. arc; and at noon I observe the sun on the meridian. The resulting lat. is $35^{\circ}44\frac{1}{2}'$ N., which is the correct lat.
40.00	N. $89^{\circ}55'$ E., on a random line, bet. secs. 8 and 17.
79.79	Set temp. $\frac{1}{4}$ sec. cor. Intersect N. and S. line, 7 lks. N. of the cor. of secs. 8, 9, 16 and 17,
	Thence I run
	S. $89^{\circ}58'$ W., on a true line, bet. secs. 8 and 17.
30.00	Over rolling land, Enter scattering timber, brs. NE. and SW. Asc. E. slope 35 ft.
36.00	Top of asc. Thence over rolling land.
39.895	Set an iron post, 3 ft. long, 1 in. diam, 26 ins. in the ground, for $\frac{1}{4}$ sec. cor., marked on brass cap, 1913; $\frac{1}{4}$ S8 in N. and S17 in S. half; from which
	A cedar, 16 ins. diam, brs. N. $36\frac{1}{2}^{\circ}$ W., 244 lks. dist., marked $\frac{1}{4}$ S8 BT.
	A cedar limb, 8 ins. diam, brs. S. $24\frac{3}{4}^{\circ}$ E., 125 lks. dist., marked $\frac{1}{4}$ S17 BT.
70.00	Desc. steep, rocky, W. slope 100 ft.
79.79	The cor. of secs. 7, 8, 17 and 18. Land, rolling and hilly. Soil, very rocky, 4th rate, gumbo. Timber, scrub cedar and pinion.
	West, on a true line, bet. secs. 7 and 18.
2.00	Desc. W. slope 115. ft.
5.00	Leave timber, brs. N. and S. Foot of desc., thence over rolling land.

Subdivision of T. 27 N., R. 5 W.

Chains.

6.00
30.00
40.00

Wash, 50 lks. wide, 7 ft. deep, course N.
Enter timber, brs. N. and S.
Set an iron post, 3 ft. long, 1 in. diam, 26 ins. in the ground, for 1/4 sec. cor., marked on brass cap, 1913; 1/4 S7 in N. and 1/4 S18 in S. half; from which
A cedar, 15 ins. diam, brs. N. 5 1/4° E., 100 lks. dist., marked 1/4 S7 BT.
A cedar, 24 ins. diam, brs. S. 13 1/4° W., 115 lks. dist., marked 1/4 S18 BT.

51.10
55.25
56.60
64.01

Wire fence, brs. NW. and SE.
Road, brs. NW. and SE.
Road, brs. NNW. and SSE. Joins other road 2 chs. N.
Intersect the W. bdy. of the Tp., 6.34 chs. S. of the old cor. of secs. 7, 12, 13 and 18, which is an iron post, 3 ins. diam, 12 ins. above ground, marked ^{BRASS CAP} and witnessed as described by the Surveyor General.
I alter this cor. to refer to secs. 12 and 13 ^{T27N R6W} only by changing the markings on the brass cap and obliterating the markings on the bearing trees NE. and SE. of the cor.
At the point of intersection, I set an iron post, 3 ft. long, 2 ins. diam, 24 ins. in the ground, for closing cor. of secs. 7 and 12 ^{T27N R5W} marked on brass cap, 1913;
CC, W. of center;
T27N in N. and
S12, S13, R6 W in W. half;
S7 in NE., and
S18, R5W in SE. quadrant; from which
A pinion, 15 ins. diam, brs. N. 40° E., 167 lks. dist., marked T27N R5W S7 BT.
A cedar, 12 ins. diam, brs. S. 70 1/2° E., 179 lks. dist., marked T27N R5W S18 BT.
Land, rolling and hilly.
Soil, sandy 3rd rate.
Timber, scattering cedar and pinion.

Jan. 28, 1913.

18.00
24.00
28.00
40.00

Jan. 29, 1913; At 8 hrs. 50 m. a.m., l.m.t., I set off 35° 44 1/2' N. on the lat. arc; 17° 56' S. on the decl. arc; and determine a meridian with the solar at the cor. of secs. 7, 8, 17 and 18,

Thence I run
N. 0° 3' W., bet. secs. 7 and 8.
Along steep W. slope, through heavy timber.
Gulch, 10 lks. wide, 3 ft. deep, course SW.
Desc. NW. slope, 50 ft. Leave timber, brs. NW. and SE.
Foot of desc; thence over rolling land.
Set an iron post, 3 ft. long, 1 in. diam, 26 ins. in the ground, for 1/4 sec. cor., marked on brass cap, 1913; 1/4 S7 in W. and 1/4 S8 in E. half; from which
A cedar, 6 ins. diam, brs. N. 70 1/2° E., 473 lks. dist., marked 1/4 S8 BT.
A cedar, 18 ins. diam, brs. S. 34° W., 642 lks. dist., marked 1/4 S7 BT.

69.61
70.00
72.00
80.00

Thence over rolling land.
Miner Owen's wind mill brs. N. 42° 52' W.
Miner Owen's stone and log houses br. N. 29° 50' E.
Desc. N. slope, 35 ft.
Foot of desc.; thence over rolling land.
Set an iron post, 3 ft. long, 2 ins. diam, 24 ins. in the ground, for cor. of secs. 5, 6, 7 and 8, marked on brass cap, 1913;
T27N R5W in N. half;
S6 in NW.,

Chains.

S5 in NE.,
 S8 in SE. and
 S7 in SW. quadrant;
 And raise a mound of stone, 2 ft. base, 1½ ft. high, W.
 of cor. Pits impracticable.
 Land, rolling and hilly.
 Soil, rocky 4th rate, gumbo.
 Timber, scrub cedar and pinion.

40.00 N. 89° 58' E., on a random line, bet. secs. 5 and 8.
 Set temp. ¼ sec. cor.
 79.96 Intersect N. and S. line, 12 lks. S. of the cor. of secs.
 4, 5, 8 and 9,

Thence I run
 S. 89° 53' W., on a true line, bet. secs. 5 and 8.
 Over rolling land, through heavy timber.
 Asc. NE. slope, 70 ft.
 4.00 Top of asc.; thence over rolling land.
 14.00 Desc. NW. slope, 170 ft.
 20.00 Enter scattering timber, brs. N. and S.
 31.08 Gulch, course N. Thence over rolling land.
 39.98 Set an iron post, 3 ft. long, 1 in. diam, 26 ins. in the
 ground, for ¼ sec. cor., marked on brass cap, 1913;
 ¼ S5 in N. and
 ¼ S8 in S. half; from which
 A pinion, 9 ins. diam, brs. N. 73° E., 132 lks. dist.,
 marked ¼ S5 BT.
 A pinion, 7 ins. diam, brs. S. 37° E., 83 lks. dist.,
 marked ¼ S8 BT.
 Desc. NW. slope, 225 ft.
 66.00 Foot of desc.; thence over rolling land.
 68.00 Leave scattering timber, brs. NE. and SW.
 79.96 The cor. of secs. 5, 6, 7 and 8.
 Land, rolling and mountainous.
 Soil, rocky 4th rate gumbo.
 Timber, scrub cedar and pinion.
 Mountainous land, 40 chs.

NOTE: - At this corner, I set off 17° 54½' S. on the decl. arc; and
 at noon, I observe the sun on
 the meridian, the resulting lat. is 35° 45½' N., which is
 slightly higher than the correct lat.

West, on a true line, bet. secs. 6 and 7.
 Over rolling land.
 .75 Wash, 20 lks. wide, 3 ft. deep, course NE.
 20.55 Wire fence, brs. NE. and SW.
 20.80 Road, brs. NE. and SW. Asc. SE. slope, 90 ft.
 24.00 Enter timber, brs. N. and S.
 36.00 Top of asc.; thence over rolling land.
 40.00 Set an iron post, 3 ft. long, 1 in. diam, 26 ins. in the
 ground, for ¼ sec. cor., marked on brass cap, 1913;
 ¼ S6 in N. and
 ¼ S7 in S. half; from which
 A cedar, 18 ins. diam, brs. N. 19½° W., 53 lks. dist.,
 marked ¼ S6 BT.
 A cedar, 5 ins. diam, brs. S. 10½° W., 56 lks. dist.,
 marked ¼ S7 BT.
 63.76 Intersect the W. bdy. of the Tp., 6.47 chs. S. of the cor.
 of secs. 1, 6, 7 and 12, which is an iron post, 3 ins.
 diam, 12 ins. above ground, marked ^{ON BRASS CAP} and witnessed as
 described by the Surveyor General.

Chains.

From this cor. , Miner Owen's wind mill brs. N. 33° 33' E. I alter this cor. to refer to secs. 1 and 12^{only}, by changing the markings on the brass cap, and obliterating the markings on the bearing trees NE. and SE. of the cor.

At the point of intersection, I set an iron post, 3 ft. long, 2 ins. ^{indiam}, 24 ins. in the ground, for closing cor. of secs. 6 and 7^{T27N R5W} marked on brass cap, 1913;

CC, W. of center;

T27N in N. and

S1, S12, R6W in W. half;

S6 in NE., and

S7, R5W in SE. quadrant; from which

A cedar, 18 ins. ^{indiam}, brs. N. 79¹/₄° E., 296 lks. dist., marked T27N R5W S6 BT.

A cedar, 30 ins. ^{indiam}, brs. S. 74¹/₄° E., 422 lks. dist., marked T27N R5W S7BT.

Land, rolling and hilly.

Soil, sandy, sandstone formation; subsoil, white alkali.

Timber, scrub cedar and pinion.

40.00

N. 0 3' W., on a random line, bet. secs. 5 and 6.

70.24

Set temp. ¹/₄ sec. cor.

Intersect N. bdy. of Tp., at the cor of secs. 5, 6, 31 and 32, recently estab. by W. B. Kimmel as described in book "M", page 21.

Thence I run

S. 0 3' E., on a true line, bet. secs. 5 and 6.

Over rolling land.

13.54

Wire fence, brs. E. and W. Corral, 8 chs. E.

16.47

Miner Owen's house brs. S. 78° 18' E.

Broken dam, brs. N. 86° E.

Desc. S. slope, 90 ft.

22.50

Foot of desc.; thence over rolling land.

23.25

Wash, 70 lks. wide, 2 ft. deep, course W.

28.40

Road, brs. E. and W.

30.24

Set an iron post, 3 ft. long, 1 in. ^{indiam}, 26 ins. in the ground, for ¹/₄ sec. cor., marked on brass cap, 1913;

¹/₄ S6 in W. and

S5 in E. half;

And raise a mound of stone, 2 ft. base, 1¹/₂ ft. high, W. of cor. Pits impracticable.

Broken dam brs. N. 51° 45' E.

39.00

Wash, 25 lks. wide, 2 ft. deep, course NW.

47.75

Road, brs. NE. and SW.

50.85

Wash, 20 lks. wide, 3 ft. deep, course NW.

68.25

Wash, 20 lks. wide, 4 ft. deep, course NE.

70.24

The cor. of secs. 5, 6, 7 and 8.

Land, rolling and hilly.

Soil, rocky 4th rate on slopes; 3rd rate gumbo on flat.

Jan. 29, 1913.

H.N.B.

General Description.

The land is mountainous and rolling. The mountains are heavily covered with scrub cedar and pinion timber, and the rolling land has scattering cedar.

The soil in the township is mostly gumbo, covered with malpais rocks and boulders. The north eastern cor. has some good sandy loam soil.

Miner Owen, in secs. 5 and 6, is the only settler. The Grand Canyon Sheep Co. own and are using the house in sec. 33 known as Rodger's ranch. There is a tank in sec. 12 and ^{one} in sec. 33, and a windmill in sec. 6.

Herbert
U. S. Transitman
William B. Himmel,
U. S. Surveyor.

65
BOOK 2682

(31)

FOR FINAL OATH OF UNITED STATES SURVEYOR & TRANSITMAN
see Book "L"
(Subdivisions E 1/2 T. 25 N. R. 17 W.)

I, _____, U. S. Surveyor, do solemnly swear that, in pursuance of special instructions received from the U. S. Surveyor General for _____ bearing date of the _____ day of _____, 191____, I have well, faithfully, and truly, in my own proper person, and in strict conformity with said instructions, the Manual of Surveying Instructions, and the laws of the United States, surveyed all those parts or portions of _____ of the _____ Meridian, in the State of _____, which are represented in the foregoing field notes as having been executed by me, and under my direction; and I do further solemnly swear that all the corners of said survey have been established and perpetuated in strict accordance with the Manual of Surveying Instructions, and the special written instructions of the U. S. Surveyor General for _____ and in the specific manner described in the field notes, and that the foregoing are the original field notes of such survey.

U. S. Surveyor.

Subscribed by said _____, and sworn to before me }
this _____ day of _____, 191____



APPROVAL.

OFFICE OF THE UNITED STATES SURVEYOR GENERAL,

Phoenix, Arizona. OCT 5 1914

The foregoing field notes of the survey of *the Subdivision lines of*
Township N° 27 North, Range N° 5 West
of the Gila and Salt River Base and Meridian
Arizona

executed by *William B. Kimmel, U.S. Surveyor & H. N. Bradstreet, U.S. Transitman*
under ~~the~~ ^{their} special instructions dated *October 18, 1912 for Group 24*, having been critically examined, and the necessary corrections and explanations made, the said field notes, and the surveys they describe, are hereby approved.

Frank S. Ingalls
U. S. Surveyor General
of Arizona.

I certify that the foregoing transcript of the field notes of the above-described surveys in _____ has been correctly copied from the original notes on file in this office.