

2686

4-679

2686

156
OCT. 4 - 1913
Accepted - G.L.O. letter "E"
Apr. 29 - 1915

①

BOOK "H"
Subdivisions
FIELD NOTES

BOOK 2686

OF THE SURVEY OF THE

Subdivision lines of

TOWNSHIP 21 NORTH, RANGE 9 WEST

of the Gila & Salt River Base & Meridian,

In the State of ARIZONA

EXECUTED BY

H. N. BRADSTREET, U.S. Transitman

&

WILLIAM B. KIMMEL, U.S. Surveyor

In the capacity of U.S. Surveyor, under instructions dated October 18, 1912,
issued by the United States Surveyor General to govern surveys included in
Group No. 24, which were approved by the Commissioner of the General Land
Office, November 5, 1912, pursuant to authority contained in the Act of
Congress dated June 25, 1910.

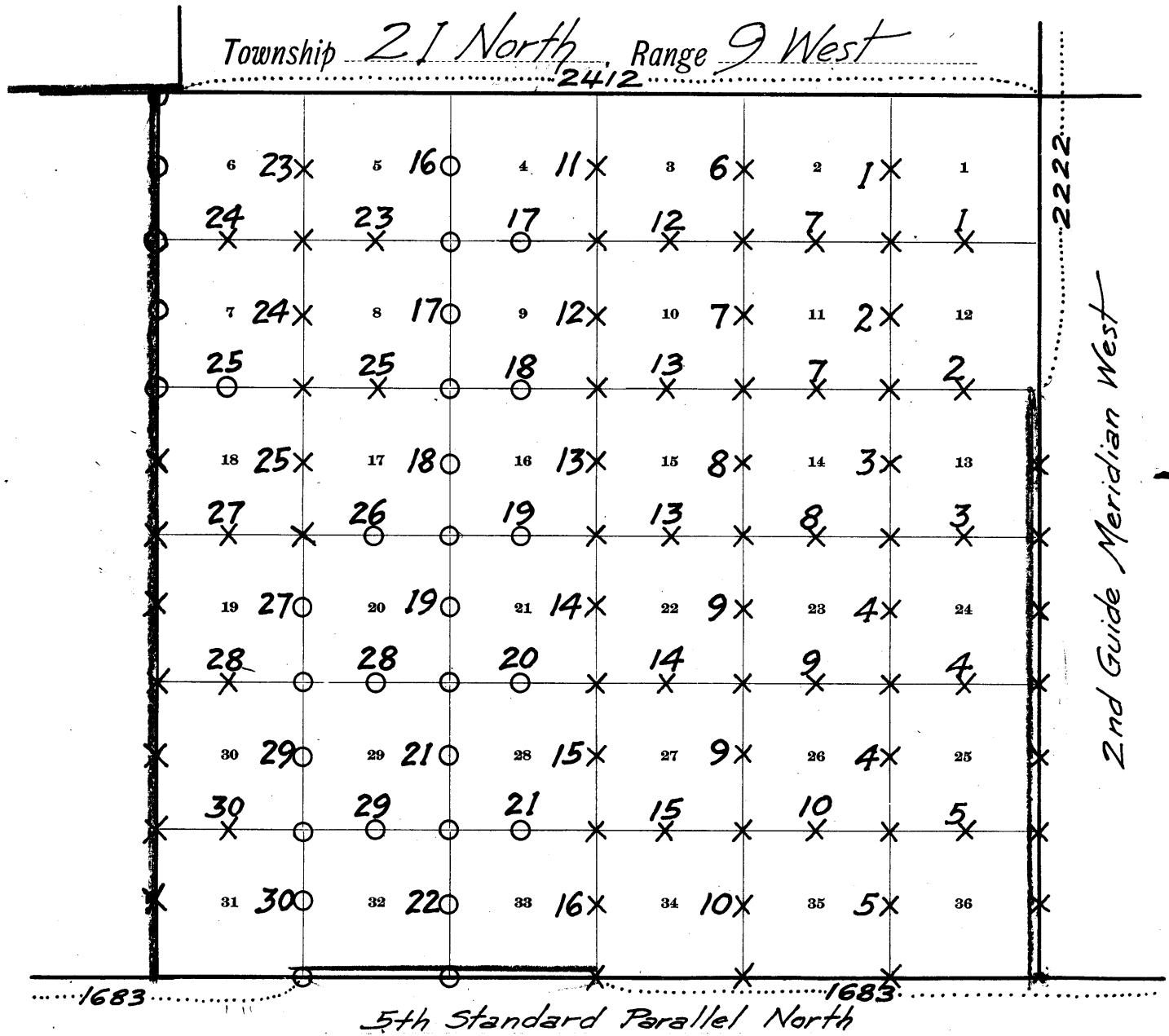
Survey commenced March 11, 1913

Survey completed " 28, 1913

BOOK 2686

INDEX DIAGRAM.

Township *21 North*, Range *9 West*
2412



2222

2nd Guide Meridian West

1683

1683

5th Standard Parallel North

X Corners set by W.B. Kimmel

O " " " H.N. Bradstreet

— Book "M" (Exteriors)

— Book "O" (Resurveys & Retracements)

Subdivision of T. 21 N., R. 9 W.

1B

Chains.

Survey commenced March 11, 1913, and executed with Young & Sons Light Mountain Transits, Nos. 7695 and 8541, with Smith Solar Attachments. For description of instruments and certificate of approval, see book "O", page 1.

Knowing from recent and repeated tests of these instruments on a true meridian, determined by Polaris observations that they are in adjustment, we proceed to the subdivision of T. 21 N., R. 9 W.

NOTE: Initials "W.B.K." and "H.N.B." indicate surveys by W.B. Kimmel, U.S. Surveyor & H.N. Bradstreet, U.S. Transient, respectively.

At 7 hrs. 56 m. a.m. set off 35° 15' N. on the lat. arc; 3° 45' S. on the decl. arc. and determine a meridian with the solar, at the cor. of secs. 1, 2, 35 and 36 on the N. bdy. of the Tp., which is an iron post, 3 ins. diam, 12 ins. above ground, marked and witnessed as described by the Surveyor General.

Thence I run S. 0° 6' E. bet secs. 1 and 2.

Over rolling land, sloping W.

Fence brs. NE. and SW.

Enter scattering timber, brs. NE. and SW.

Set an iron post, 3 ft. long, 1 in. diam, 26 ins. in the ground, for 1/4 sec. cor., marked on brass cap, 1913; 1/4 S2 in W. and

S1 in E. half; from which

A cedar, 30 ins. diam, brs. N. 87° E., 54 lks. dist., marked 1/4 S1 BT.

A cedar, 7 ins. diam, brs. N. 67° W., 45 lks. dist., marked 1/4 S2 BT.

Set an iron post, 3 ft. long, 2 ins. diam, 24 ins. in the ground, for cor. of secs. 1, 2, 11 and 12, marked on brass cap, 1913;

T21N R9W in N. half;

S2 in NW.,

S1 in NE.,

S12 in SE. and

S11 in SW. quadrant; from which

A cedar, 12 ins. diam, brs. N. 25° E., 26 lks. dist., marked T21N R9W S1 BT.

A cedar, 16 ins. diam, brs. S. 57° E., 60 lks. dist., marked T21N R9W S12 BT.

A cedar, 10 ins. diam, brs. S. 61° W., 102 lks. dist., marked T21N R9W, S11 BT.

A cedar limb, 10 ins. diam, brs. N. 13° W., 64 lks. dist., marked T21N R9W S2 BT.

Land, rolling.

Soil, rocky, 2nd to 4th rate.

Timber, cedar.

Undergrowth, scrub oak and buck brush.

East, on a random line, bet. secs. 1 and 12.

Set temp. 1/4 sec. cor.. (2nd Guide Meridian West)

Intersect the E. bdy. of the Tpt, 4 lks. S. of the cor. of secs. 1, 6, 7 and 12, which is an iron post, 3 ins. in diam, 12 ins. above ground, marked and witnessed as described by the Surveyor General.

Thence I run

S. 89° 58' W., on a true line, bet. secs. 1 and 12.

Asc. SE. slope 75 ft., through heavy timber and dense undergrowth.

Ridge, brs. NE. and SW. Desc. W. slope 55 ft.

Draw, course NW.; thence along N. slope.

Draw, course N. Asc. E. slope 125 ft.

Ridge, brs. N. and S. Desc. NW. slope 150 ft.

Set an iron post, 3 ft. long, 1 in. diam, 26 ins. in the ground, for 1/4 sec. cor., marked on brass cap, 1913; 1/4 S1 in N. and

S12 in S. half; from which

A pinion, 8 ins. diam, brs. N. 27° E., 26 lks. dist., marked 1/4 S1 BT.

A pinion, 7 ins. diam, brs. S. 9 1/2° E., 52 lks. dist., marked 1/4 S12 BT.

10.70
18.00
40.00

80.00

40.00
80.26

13.30
19.75
30.45
39.25
40.13

Subdivision of T. 21 N., R. 9 W.

<p>Chains 51.00 57.00 70.25 80.26</p>	<p>Foot of desc. Asc. NE. slope 35 ft. Spur ridge, brs. N. and S. Desc. W. slope 340 ft. Leave heavy timber and dense undergrowth. The cor. of secs. 1, 2, 11 and 12. Land, mountainous and hilly. Soil, rocky, 4th rate. Timber, cedar and pinion, Undergrowth, chaparral, scrub oak and buck brush. NOTE - At this corner, I set off 3° 42' S. on the decl. arc; and at noon, I observe the sun on the meridian. The resulting lat. is 35° 14' N., which is slightly higher than the correct lat.</p>
<p>40.00 53.00 60.25 65.65 77.00 80.00</p>	<p>S. 0° 4' E., bet secs. 11 and 12. Over rolling land, through scattering timber. Set an iron post, 3 ft. long, 1 in. diam, 26 ins. in the ground, for 1/4 sec. cor., marked on brass cap, 1913; 1/4 S11 in W. and 1/4 S12 in E. half; from which A cedar, 40 ins. diam, brs. N. 61° E., 26 lks. dist., marked 1/4 S12 BT. A cedar, 14 ins. diam, brs. N. 71° W., 60 lks. dist., marked 1/4 S11 BT. Leave timber, brs. NW. and SE. Road, brs. NW. and SE. Road, brs. NW. and SE. Enter scattering timber, brs. NW. and SE. Set an iron post, 3 ft. long, 2 ins. diam, 24 ins. in the ground, for cor. of secs. 11, 12, 13 and 14, marked on brass cap, 1913; T21N R9W in N. half; S11 in NW., S12 in NE., S13 in SE. and S14 in SW. quadrant; from which A cedar limb, 9 ins. diam, brs. N. 23° E., 26 lks. dist., marked T21N R9W S12 BT. A cedar limb, 10 ins. diam, brs. S. 9 1/4° E., 245 lks. dist., marked T21N R9W S13 BT. A cedar, 16 ins. diam, brs. S. 14° W., 75 lks. dist., marked T21N R9W S14 BT. A cedar, 14 ins. diam, brs. N. 36° W., 183 lks. dist., marked T21N R9W S11 BT. Land, rolling. Soil, gravelly, 2nd and 3rd rate. Timber, cedar.</p>
<p>40.00 80.36 22.40 40.18 50.00 57.00</p>	<p>N. 89° 58' E., on a random line, bet. secs. 12 and 13. Set temp. 1/4 sec. cor. (2nd Guide Meridian West) Intersect E. bdy. of Tpt, 30 lks. N. of the old cor. of secs. 7, 12, 13 and 18, which is an iron post, 3 ins. diam, 12 ins. above ground, marked ON BRASS CAP and witnessed as described by the Surveyor General. Thence I run N. 89° 49' W., on a true line, bet. secs. 12 and 13. Desc. rocky, SW. slope, 430 ft., through scattering timber and dense undergrowth. Desc. W. slope. Enter heavy timber, brs. NW. and SE. Set an iron post, 3 ft. long, 1 in. diam, 26 ins. in the ground, for 1/4 sec. cor., marked on brass cap, 1913; 1/4 S12 in N. and 1/4 S13 in S. half; from which A cedar, 11 ins. diam, brs. N. 23° W., 43 lks. dist., marked 1/4 S12 BT. A cedar, 11 ins. diam, brs. S. 30° W., 14 lks. dist., marked 1/4 S13 BT. Leave heavy timber, brs. N. and S. Foot of desc. Thence over rolling land. Leave timber, brs. N. and S.</p>

Chains.

75.00
79.90
80.36

Road, brs. N. and S.
Enter timber, brs. N. and S.
The cor. of secs. 11, 12, 13 and 14.
Land, rolling and mountainous.
Soil, rocky gumbo, 2nd to 4th rate.
Timber, cedar and pinion.
Undergrowth, scrub oak and buck brush.

March 11, 1913.

March 14, 1913. At 8 hrs. 5 m. a.m., l.m.t., I set off
35°13' N. on the lat. arc; 2°34½' S. on the decl. arc;
and determine a meridian with the solar, at the cor. of
secs. 11, 12, 13 and 14.

Thence I run

S. 0°6' E. bet. secs. 13 and 14.

Over rolling land, through scattering timber.

40.00

Set an iron post, 3 ft. long, 1 in. diam., 26 ins. in
the ground, for ¼ sec. cor., marked on brass cap, 1913;

½S14 in W. and

½S13 in E. half; from which

A cedar, 8 ins. diam., brs. S. 76° E., 272 lks. dist.,
marked ½S13 BT.

No other trees within limits. Raise a mound of stone
2 ft. base, 1½ ft. high, W. of cor. Pits impracticable.

41.70

Draw, course SW.

44.00

Asc. NW. slope, 75 ft.

62.00

Top of asc.

66.00

Desc. S. slope 135 ft.

79.00

Foot of desc. brs. NW. and SE.

80.00

Set an iron post, 3 ft. long, 2 ins. diam., 24 ins. in the
ground, for cor. of secs. 13, 14, 23 and 24, marked
on brass cap, 1913;

T21N R9W in N. half;

S14 in NW.,

S13 in NE.,

S24 in SE. and

S23 in SW. quadrant; from which

A cedar, 18 ins. diam., brs. N. 81° W., 301 lks. dist.,
marked T21N R9W S14 BT.

No other trees within limits. Raise a mound of stone 2
ft. base, 1½ ft. high, W. of cor. Pits impracticable.

Land, rolling and hilly.

Soil, rocky, 3rd rate.

Timber, scrub cedar and pinion.

Undergrowth, scrub oak, buck brush and greasewood.

40.00

S. 89°49' E. on a random line bet. secs. 13 and 24.

80.40

Set temp. ¼ sec. cor. (2nd Guide Meridian West)

Intersect the E. bdy. of the Tp. 9 lks. N. of the
cor. of secs. 13, 18, 19, and 24, reestablished by meridian
as described in book "O", page 35

Thence I run

N. 89°45' W., on a true line, bet. secs. 13 and 24.

Over rolling land, through scattering timber.

28.40

Leave timber, brs. N. and S.

30.86

Road, brs. NW. and SE.

40.20

Set an iron post, 3 ft. long, 1 in. diam., 26 ins. in
the ground, for ¼ sec. cor., marked on brass cap, 1913;

½S13 in N. and

S24 in S. half

And raise a mound of stone, 2 ft. base, 1½ ft. high,
N. of cor. Pits impracticable.

60.00

Enter timber, brs. NW. and SE.

80.40

The cor. of secs. 13, 14, 23 and 24.

Land, rolling.

Soil, rocky, gumbo, 2nd and 3rd rate.

Timber, scrub cedar.

Undergrowth, scrub oak and greasewood.

NOTE

At this corner, I set off 2°31' S. on the decl. arc;
and at hours, I observe the
sun on the meridian. The resulting lat. is 35°12' N.
which is slightly less than the correct lat. ~~March 14, 1913~~

Subdivision of T. 21 N., R. 9 W.

Chains		
	March 16, 1913. At 7 hrs. 45 m. a.m., l.m.t., I set off 35 ¹ / ₁₂ ' N. on the lat. arc; 1° 47' S. on the decl. arc; and determine a meridian with the solar, at the cor. of secs. 13, 14, 23 and 24.	
	Thence I run	
	S. 0° 6' E. bet. secs. 23 and 24.	
	Over rolling land, through scattering timber.	
17.00	Leave timber, brs. E. and W.	
32.00	Trails, br. N. 10° W., and S. 10° E.	
40.00	Set an iron post, 3 ft. long, 1 in. ^m diam, 26 ins. in the ground for $\frac{1}{4}$ sec. cor., marked on brass cap, 1913; $\frac{1}{4}$ S23 in W. and $\frac{1}{4}$ S24 in E. half;	
	And raise a mound of stone, 2 ft. base, 1 $\frac{1}{2}$ ft. high, W. of cor. Pits impracticable.	
59.25	Trail, brs. NW. and SE.	
80.00	Set an iron post, 3 ft. long, 2 ins. ^m diam, 24 ins. in the ground, for cor. of secs. 23, 24, 25 and 26, marked on brass cap, 1913; T21N R9W in N. half; S23 in NW., S24 in NE., S25 in SE. and S26 in SW. quadrant;	
	And raise a mound of stone, 2 ft. base, 1 $\frac{1}{2}$ ft. high, W. of cor., Pits impracticable.	
	Land, rolling.	
	Soil, gumbo and clay, 2nd to 4th rate, rocky in places.	
	Timber, scattering cedar.	
	<hr/>	
	S. 89° 45' E., on a random line, bet. secs. 24 and 25.	
40.00	Set temp. $\frac{1}{4}$ sec. cor.	
80.30	Intersect E. bdy. of T. (2nd Guide Meridian West) 9 lks. S. of the cor. of secs. 19, 24, 25, and 30, recently reestablished by map, described in book "O", page 35.	
	Thence I run	
	N. 89° 49' W., on a true line, bet. secs. 24 and 25.	
	Over rolling land, through scattering timber.	
3.30	Leave scattering timber, brs. NW. and SW.	
11.90	Wash, 15 lks. wide, 1 $\frac{1}{2}$ ft. deep, course SW.	
14.65	Trails, br. N. and S.	
26.90	Road, brs. NW. and SE.	
31.30	Fence, brs. NE. and SW.	
32.50	Wash, 15 lks. wide, 2 ft. deep, course NW.	
40.00	Rocky ridge, brs. NW. and SE.	
40.15	Set an iron post, 3 ft. long, 1 in. ^m diam, 26 ins. in the ground, for $\frac{1}{4}$ sec. cor., marked on brass cap, 1913; $\frac{1}{4}$ S24 in N. and $\frac{1}{4}$ S25 in S. half; from which	
	A cedar, 18 ins. ^m diam, brs. N. 35 $\frac{1}{4}$ W. 156 lks. dist., marked $\frac{1}{4}$ S24 BT.	
	A cedar, 30 ins. ^m diam, brs. S. 72 $\frac{1}{2}$ W., 229 lks. dist., marked $\frac{1}{4}$ S25 BT.	
43.35	Vacant house, brs. N. 43° E., about 10 chs. dist., Fence brs. NW. and SE.	
	Dam at tank, brs. N. 20° W., about 5 chs. dist.	
	Leave scattering cedar, brs. NW. and SE.	
50.20	Trail, brs. NE. and SW.	
56.30	Wash, 12 lks. wide, 1 ft. deep, course SW.	
77.65	Trail, brs. N. and S.	
80.30	The cor. of secs. 23, 24, 25 and 26.	
	Land, rolling.	
	Soil, clay and gumbo, 2nd to 4th rate, rocky in places.	
	Timber, cedar.	
	<hr/>	
	S. 0° 6' E., bet. secs. 25 and 26.	
	Over level land.	
4.30	Trails, br. NW. and SE.	
6.50	Wash, 10 lks. wide, 1 ft. deep, course SE.	
10.00	Asc. NE. slope 80 ft.	

Subdivision of T. 21 N., R. 9 W.

Chains
 24.00 Top of asc. brs. NW. and SE. Thence over rolling, rocky mesa.
 36.00 Enter scattering timber, brs. NW. and SE.
 40.00 Set an iron post, 3 ft. long, 1 in. diam, 26 ins. in the ground, for $\frac{1}{4}$ sec. cor., marked on brass cap, 1913; $\frac{1}{4}$ S26 in W. and S25 in E. half; from which
 A cedar, 30 ins. diam, brs. S. 24° E., 18 lks. dist., marked $\frac{1}{4}$ S25 BT.
 A cedar, 12 ins. diam, brs. S. 60° W., 7 lks. dist., marked $\frac{1}{4}$ S26 BT.
 42.00 Desc. S. slope, 90 ft.
 62.00 Foot of desc. brs. NW. and SE. Thence over rolling land. Leave timber, brs. NE. and SW.
 80.00 Set an iron post, 3 ft. long, 2 ins. diam, 24 ins. in the ground, for cor. of secs. 25, 26, 35 and 36, marked on brass cap, 1913; T21N R9W in N. half; S26 in NW., S25 in NE., S36 in SE. and S35 in SW. quadrant; from which
 A cedar, 12 ins. diam, brs. N. 33° W., 184 lks. dist., marked T21N R9W S26 BT.
 No other trees within limits. Raise a mound of stone, 2 ft. base, 1½ ft. high, W. of cor. Pits impracticable.
 Land, rolling.
 Soil, very rocky, clay and gumbo, 2nd to 4th rate.
 Timber, cedar.

NOTE:- At this point, I set off 1° 43½' S. on the decl. arc; and at noon, I observe the sun on the meridian. The resulting lat. is 35° 10½' N., which is correct.

40.00 S. 89° 49' E., on a random line, bet. secs. 25 and 36. Set temp. $\frac{1}{4}$ sec. cor.
 80.32 Intersect the E. bdy. of the Tp. (2nd Guide Meridian West) at the cor. of secs. 25, 30, 31 and 36, recently reestablished by means described in book "O", page 34.
 Thence I run
 ✓ N. 89° 49' W., on a true line, bet. secs. 25 and 36.
 Asc. E. slope 50 ft.
 20.30 Ridge, brs. NW. and SE. Thence over rolling land.
 Enter scattering timber, brs. N. and S.
 36.30 Leave scattering timber, brs. N. and S.
 40.16 Set an iron post, 3 ft. long, 1 in. diam, 26 ins. in the ground, for $\frac{1}{4}$ sec. cor., marked on brass cap, 1913; $\frac{1}{4}$ S25 in N. and S36 in S. half;
 And raise a mound of stone, 2 ft. base, 1½ ft. high, N. of cor. Pits impracticable.
 54.30 Desc. W. slope, 100 ft.
 59.30 Foot of desc.; thence over rolling land.
 65.30 Wash, 15 lks. wide, 1 ft. deep, course S.
 66.10 Trails, br. N. and S.
 71.80 Trails, br. N.W. and SE.
 80.32 The cor. of secs. 25, 26, 35 and 36.
 Land, rolling.
 Soil, gumbo, gravelly and rocky; 2nd to 4th rate.
 Timber, scattering cedar.

4.00 S. 0° 6' E., on a true line, bet. secs. 35 and 36. Over rolling land.
 10.00 Trails, br. NW. and SE.
 40.00 Enter scattering cedar, brs. NW. and SE.
 Set an iron post, 3 ft. long, 1 in. diam, 26 ins. in the ground, for $\frac{1}{4}$ sec. cor., marked on brass cap, 1913; $\frac{1}{4}$ S35 in W. and S36 in E. half; from which

Chains.

A cedar, 18 ins.^m diam, brs. N.69° E., 273 lks. dist.,
 marked $\frac{1}{4}$ S36 BT.
 A cedar, 8 ins.^m diam, brs. S.25° W.; 243 lks. dist.,
 marked $\frac{1}{4}$ S35 BT.
 83.17 Intersect the S. bdy. of the Tp. ^(5th Standard Parallel North), at a point from
 which the Standard Corner of secs. 35 and 36, brs. S.
 89° 18' W., 75 lks. dist.,
 This cor. is a sandstone 10 X 5 X 10 ins. above ground,
 marked and witnessed as described by the Surveyor
 General. I obliterate all marks and mark the letters
 A P on top of the stone.
 At the point of intersection, I set an iron post, 3 ft.
 long, 2 ins.^m diam, 24 ins. in the ground, for closing
 cor. of secs. 35 and 36, marked on brass cap, 1913;
 CC, N. of center;
 T21N in N.,
 T20N, S1, S2, in S., and
 R9W in W. half;
 S35 in NW., and
 S36 in NE. quadrant; from which
 A cedar, 6 ins.^m diam, brs. N. 45 $\frac{1}{2}$ ° E., 20 lks. dist.,
 marked T21N R9W S36 BT.
 A cedar, 12 ins.^m diam, brs. N. 43° W., 55 lks. dist.,
 marked T21N R9W S35 BT.
 Land, rolling.
 Soil, gumbo and gravel, 2nd and 4th rate.
 Timber, cedar.
 March 16, 1913.

March 17, 1913. At 8 hrs. 11 m. a.m., l.m.t., I set off
 35° 15' N. on the lat. arc; 1° 23' S. on the decl. arc;
 and determine a mer. with the solar, at the cor. of
 secs. 2, 3, 34 and 35 on the N. bdy. of the Tp.,
 which is an iron post, 3 ins.^m diam, 12 ins. above
 ground, marked ^{on brass cap} and witnessed as described by the
 Surveyor General.
 Thence I run
 S. 0° 4' E., bet. secs. 2 and 3.
 Desc. SW. slope 60 ft.
 8.00 Foot of desc. brs. NW. and SE. Continue over rolling land.
 14.25 Road, brs. E. and W.
 16.80 Wash, 6 lks. wide, 2 ft. deep, course SW.
 40.00 Set an iron post, 3 ft. long, 1 in.^m diam, 26 ins. in
 the ground for $\frac{1}{4}$ sec. cor., marked on brass cap, 1913;
 $\frac{1}{4}$ S3 in W. and
 S2 in E. half;
 And raise a mound of stone, 2 ft. base, 1 $\frac{1}{2}$ ft. high, W.
 of cor. Pits impracticable.
 60.30 Dim road, brs. NW. and SE.
 68.00 Enter rolling land, brs. NW. and SE.
 80.00 Enter scattering timber, brs. NW. and SE.
 Set an iron post, 3 ft. long, 2 ins.^m diam, 24 ins. in
 the ground, for cor. of secs. 2, 3, 10 and 11, marked
 on brass cap, 1913;
 T21N R9W in N. half;
 S3 in NW.,
 S2 in NE.,
 S11 in SE. and
 S10 in SW. quadrant; from which
 A cedar, 7 ins.^m diam, brs. S. 51° W., 69 lks. dist.,
 marked T21N R9W S10 BT.
 No other trees within limits. Raise a mound of stone,
 2 ft. base, 1 $\frac{1}{2}$ ft. high, W. of cor. Pits impracticable.
 Land, level and rolling.
 Soil, clay and gumbo 2nd and 3rd rate.
 Timber, scattering cedar.

40.00 East, on a random line, bet. ^{secs.} 2 and 11,
 Set temp. $\frac{1}{4}$ sec. cor.

Subdivision of T. 21 N., R. 9 W.

Chains
 79.96

 2.20
 7.15
 14.00
 19.70
 22.20
 39.98

 57.60
 72.00
 79.55
 79.96

Intersect N. and S. line, 7 lks. N. of the cor. of secs. 1, 2, 11 and 12, which line is the line of the
 Thence I run
 N. 89° 57' W., on a true line, bet. secs. 2 and 11.
 Over rolling land, through scattering cedar timber.
 Leave timber, brs. NW. and S.
 Road, brs. N. 20° W. and S. 20° E.
 Enter level land, brs. N. and S.
 Trails, brs. N. and S.
 Trails, brs. NE. and SW.
 Set an iron post, 3 ft. long, 1 in. diam, 26 ins. in the ground, for ¼ sec. cor., marked on brass cap, 1913; ¼ S2 in N. and S11 in S. half;
 And raise a mound of stone, 2 ft. base, 1½ ft. high, N. of cor. Pits impracticable.
 Dim road, brs. NW. and SE.
 Leave level land, brs. NW. and SE.
 Enter timber, brs. NW. and SE.
 Land, level.
 Soil, clay and gumbo, 2nd and 3rd rate.
 Timber, scattering cedar.

38.00
 40.00

 46.00
 51.00
 64.00
 76.00
 77.00
 80.00

S. 0° 6' E., bet. secs. 10 and 11.
 Over rolling land, sloping E., through scattering timber.
 Enter heavy timber, brs. NW. and SE.
 Set an iron post, 3 ft. long, 1 in. diam, 26 ins. in the ground, for ¼ sec. cor., marked on brass cap, 1913; ¼ S10 in W. and S11 in E. half; from which
 A cedar, 6 ins. diam, brs. S. 71° E., 68 lks. dist., marked ¼ S11 BT.
 A cedar, 12 ins. diam, brs. S. 89° W., 27 lks. dist., marked ¼ S10 BT.
 Low ridge, brs. E. and W. Desc. S. slope 40 ft.
 Head of draw, course SW. Desc. SW. slope 95 ft.
 Leave heavy, enter scattering timber, brs. E. and W.
 Leave timber, brs. NW. and SE.
 Foot of desc., brs. NW. and SE. Thence over rolling land.
 Set an iron post, 3 ft. long, 2 ins. diam, 24 ins. in the ground, for cor. of secs. 10, 11, 14 and 15. marked on brass cap, 1913; T21N R9W in N. half; S10 in NW., S11 in NE., S14 in SE., and S15 in SW. quadrant;
 And raise a mound of stone, 2 ft. base, 1½ ft. high, W. of cor. Pits impracticable.
 Land, level and rolling.
 Soil, rocky, 3rd and 4th rate.
 Timber, cedar and pinion.

40.00
 79.74

 17.75
 19.10
 33.75
 39.87

S. 89° 57' E., on a random line, bet. secs. 11 and 14.
 Set temp. ¼ sec. cor.
 Intersect N. and S. line, 9 lks. S. of the cor. of secs. 11, 12, 13 and 14,
 Thence I run
 S. 89° 59' W., on a true line, bet. secs. 11 and 14.
 Asc. NE. slope 140 ft., through heavy timber.
 Top of asc. Desc. NW. slope 45 ft.
 Draw, course NE. Asc. NE. slope 40 ft.
 End of asc. Thence over rolling land.
 Set an iron post, 3 ft. long, 1 in. diam, 26 ins. in the ground, for ¼ sec. cor., marked on brass cap, 1913; ¼ S11 in N. and S14 in S. half; from which
 A cedar, 14 ins. diam, brs. N. 20½° E., 25 lks. dist., marked ¼ S11 BT.

Subdivision of T. 21 N. R. 9 W.

Chains	
	A pinion, 10 ins. ^m diam, brs. S. 65 $\frac{1}{2}$ E., 33 lks. dist., marked $\frac{1}{4}$ S14 BT.
46.00	Desc. W. slope, 145 ft.
73.00	Wash, 7 lks. wide, 2 ft. deep, course SW. Thence over rolling land. Leave timber, brs. N. and S.
79.74	The cor. of secs. 10, 11, 14 and 15.
	Land, rolling. Soil, rocky, clay and gumbo, 2nd to 4th rate. Timber, cedar and pinion.
	<i>NOTE:</i> - At this corner I set off, 1 ^o 20' S. on the decl. arc; and at noon, I observe the sun on the meridian. The resulting lat. is 35 ^o 13' N., which is the correct lat.
	<i>S. 0^o 6' E., bet. secs. 14 and 15.</i> Over rolling land.
13.30	Trails, br. NW. and SE.
22.00	Asc. gradually N. slope.
40.00	Set an iron post, 3 ft. long, 1 in. ^m diam, 26 ins. in the ground, for $\frac{1}{4}$ sec. cor., marked on brass cap, 1913; $\frac{1}{4}$ S15 in W. and S14 in E. half;
63.00	And raise a mound of stone, 2 ft. base, 1 $\frac{1}{2}$ ft. high, W. of cor. Pits impracticable.
80.00	Enter scattering timber, brs. NW. and SE.
	Set an iron post, 3 ft. long, 2 ins. ^m diam, 24 ins. in the ground, for cor. of secs. 14, 15, 22 and 23. marked on brass cap, 1913; T21N R9W in N. half;
	S15 in NW.,
	S14 in NE.,
	S23 in SE. and
	S22 in SW. quadrant; from which
	A cedar, 20 ins. ^m diam, brs. N. 11 ^o E., 123 lks. dist., marked T21N R9W S14 BT.
	A cedar, 8 ins. ^m diam, brs. N. 31 ^o W., 94 lks. dist., marked T21N R9W S15 BT.
	No other trees within limits. Raise a mound of stone,
	2 ft. base, 1 $\frac{1}{2}$ ft. high, W. of cor. Pits impracticable.
	Land, rolling.
	Soil, clay and gumbo, 2nd and 3rd rate.
	Timber, cedar.
40.00	N. 89 ^o 59' E. on a random line, bet. secs. 14 and 23.
	Set temp. $\frac{1}{4}$ sec. cor.
79.66	Intersect N. and S. line, 12 lks. S. of the cor. of
	secs. 13, 14, 23 and 24, marked on brass cap, 1913;
	Thence I run
	S. 89 54' W. on a true line bet. secs. 14 and 23.
	Over rolling land, through scattering timber.
	Trail, brs. NW. and SE.
4.25	Low ridge, brs. N. and S.
9.65	Leave timber, brs. N. and S.
13.65	Trails, br. N. and S.
18.00	Trails, br. NW. and SE.
36.00	Set an iron post, 3 ft. long, 1 in. ^m diam, 26 ins. in
39.83	the ground, for $\frac{1}{4}$ sec. cor., marked on brass cap, 1913;
	$\frac{1}{4}$ S14 in N. and
	S23 in S. half;
	And raise a mound of stone, 2 ft. base, 1 $\frac{1}{2}$ ft. high, N.
	of cor. Pits impracticable.
	Trails, brs. NW. and SE.
41.30	Enter timber, brs. NW. and SE.
59.65	The cor. of secs. 14, 15, 22 and 23.
79.66	Land, rolling.
	Soil, clay and gumbo, 2nd to 4th rate, rocky in places.
	Timber, scattering cedar.

Chains

21.60 S. 0° 4' E., bet. secs. 22 and 23.
Over rolling land, through scattering timber.
Wash, 45 lks. wide, 4 ft. deep, course SE. Asc. gradual NE. slope 25 ft.

34.00 Top of low ridge, brs. E. and W.

40.00 Set an iron post, 3 ft. long, 1 in.^m diam, 26 ins. in the ground, for $\frac{1}{4}$ sec. cor., marked on brass cap, 1913;
 $\frac{1}{4}$ S22 in W. and
 $\frac{1}{4}$ S23 in E. half; from which
A cedar limb, 10 ins.^m diam, brs. S. 47 $\frac{1}{4}$ E. 79 lks. dist., marked $\frac{1}{4}$ S23 BT.
A cedar, 18 ins.^m diam, brs. N. 35 $\frac{1}{2}$ W., 57 lks. dist., marked $\frac{1}{4}$ S22 BT.

51.80 Draw, course NE. Asc. NW. slope 80 ft.

62.00 Top of asc. Desc. SW. slope 60 ft.

69.00 Draw, course SE. Asc. NE. slope 25 ft.

80.00 Set an iron post, 3 ft. long, 2 ins.^m diam, 24 ins. in the ground, for cor. of secs. 22, 23, 26 and 27, marked on brass cap, 1913;
T21N R9W in N. half;
S22 in NW.,
S23 in NE.,
S26 in SE. and
S27 in SW. quadrant; from which
A cedar, limb, 10 ins.^m diam brs. N 30 $\frac{3}{4}$ E., 157 lks. dist., marked T21N R9W S23 BT.
A cedar, 18 ins.^m diam, brs. S. 9 $\frac{1}{4}$ E., 70 lks. dist., marked T21N R9W S26 BT.
A cedar limb, 10 ins.^m diam, brs. S. 80° W., 100 lks. dist., marked T21N R9W S27 BT.
A cedar, 14 ins.^m diam, brs. N. 11 $\frac{1}{2}$ W., 70 lks. dist., marked T21N R9W S22 BT.
Land, rolling.
Soil, rocky, clay and gumbo, 2nd to 4th rate.
Timber, cedar.
Undergrowth, buck brush and scrub oak.
March 17, 1913.

40.00 March 18, 1913.
N. 89° 54' E., on a random line, bet. secs. 23 and 26.
Set temp. $\frac{1}{4}$ sec. cor.

79.84 Intersect N. and S. line, 4 lks. N. of the cor. of secs. 23, 24, 25 and 26,
Thence I run
S. 89° 56' W., on a true line, bet. secs. 23 and 26.
Over rolling land, through scattering timber.

2.10 Trails, br. NW. and SE.

2.85 Asc. NE. slope 80 ft.

21.85 Low ridge, brs. NE. and SW. Desc. NW. slope 30 ft.

32.85 Wash, 12 lks. wide, 3 ft. deep, course NE.

39.92 Set an iron post, 3 ft. long, 1 in.^m diam, 26 ins. in the ground, for $\frac{1}{4}$ sec. cor., marked on brass cap, 1913;
 $\frac{1}{4}$ S23 in N. and
S26 in S. half; from which
A cedar, 12 ins.^m diam, brs. N. 48 $\frac{1}{4}$ E., 90 lks. dist., marked $\frac{1}{4}$ S23 BT.
A cedar, 12 ins.^m diam, brs. S. 69 $\frac{1}{4}$ E., 184 lks. dist., marked $\frac{1}{4}$ S26 BT.

43.85 Low ridge, brs. N. and S.

75.60 Draw, course NE.

79.84 The cor. of secs. 22, 23, 26 and 27.
Land, rolling.
Soil, gumbo, rocky, 2nd to 4th rate.
Timber, cedar.
Undergrowth, buck brush and scrub oak.

5.00 S. 0° 6' E., bet. secs. 26 and 27.
Desc. S. slope, 20 ft., through scattering timber.

19.00 Asc. NW. slope 120 ft.

22.00 Top of knoll. Desc. S. slope 20 ft.

40.00 Foot of desc., brs. E. and W. Continue over rolling land, sloping E.
Set an iron post, 3 ft. long, 1 in.^m diam, 26 ins. in the

Subdivision of T.21 N., R.9 W.

<p>Chains</p> <p>50.00</p> <p>55.45</p> <p>64.00</p> <p>72.15</p> <p>80.00</p>	<p>ground, for $\frac{1}{4}$ sec. cor., marked on brass cap, 1913; $\frac{1}{4}$S27 in W. and S26 in E. half; from which A cedar, limb, 5 ins.ⁱⁿ diam., brs. S. 41° E., 77 lks. dist., marked $\frac{1}{4}$S26 BT. A cedar, 8 ins.ⁱⁿ diam., brs. N. 40° W., 20 lks. dist., marked $\frac{1}{4}$S27 BT. Desc. S. slope 40 ft. Enter heavy timber, brs. E. and W. Draw, course E. Asc. rolling N. slope 35 ft. Top of asc. Continue over rolling E. slope. Trails, BR. NW and SE. Set an iron post, 3 ft. long, 2 ins.ⁱⁿ diam., 24 ins. in the ground, for cor. of secs. 26, 27, 34 and 35, marked on brass cap, 1913; T21N R9W in N. half; S27 in NW., S26 in NE., S35 in SE., S34 in SW. quadrant; from which A cedar, 30 ins.ⁱⁿ diam., brs. N. 12$\frac{1}{2}$° E., 274 lks. dist., marked T21N R9W S26 BT. A cedar, 8 ins.ⁱⁿ diam., brs. S. 37$\frac{3}{4}$° E., 170 lks. dist., marked T21N R9W S35 BT. A cedar, 14 ins.ⁱⁿ diam., brs. S. 14$\frac{3}{4}$° W., 151 lks. dist., marked T21N R9W S34 BT. A cedar, 8 ins.ⁱⁿ diam., brs. N. 42$\frac{1}{4}$° W., 91 lks. dist., marked T21N R9W S27 BT. Land, rolling. Soil, rocky, gumbo and clay; 2nd to 4th rate. Timber, cedar and pinion. Undergrowth, buck brush and scrub oak.</p>
<p>NOTE-</p> <p>40.00</p> <p>79.88</p>	<p>At this corner I set off 0° 56$\frac{1}{2}$' S. on the decl. arc; and at noon. I observe the sun on the meridian. The resulting lat. is 35° 10$\frac{1}{2}$' N., which is correct.</p> <p>N. 89° 56' E., on a random line, bet. secs. 26 and 35. Set temp. $\frac{1}{4}$ sec. cor. Intersect N. and S. line, 5 lks. S. of the cor. of secs. 25, 26, 35 and 36, marked on brass cap, 1913.</p>
<p>27.90</p> <p>39.94</p>	<p>Thence I run S. 89° 54' W., on a true line, bet. secs. 26 and 35. Over rolling land. Asc. NE. slope 55 ft. Set an iron post, 3 ft. long, 1 in.ⁱⁿ diam., 26 ins. in the ground, for $\frac{1}{4}$ sec. cor., marked on brass cap, 1913; $\frac{1}{4}$S26 in N. and S35 in S. half; from which A cedar, 30 ins.ⁱⁿ diam., brs. N 77$\frac{3}{4}$° W., 117 lks. dist., A marked $\frac{1}{4}$S26 BT. A cedar, 8 ins.ⁱⁿ diam., brs. S. 30$\frac{3}{4}$° W., 131 lks. dist., marked $\frac{1}{4}$S35 BT.</p>
<p>50.00</p> <p>79.88</p>	<p>Thence over rolling land. Enter timber, brs. NW. and SE. Leave timber, brs. NW. and SE. The cor. of secs. 26, 27, 34 and 35. Land, rolling. Soil, clay and gumbo, 2nd to 4th rate, rocky. Timber, cedar and pinion. Undergrowth, scrub oak.</p>
<p>40.00</p>	<p>S. 0° 6' E., bet. secs. 34 and 35. Over rolling land, through scattering undergrowth. Set an iron post, 3 ft. long, 1 in.ⁱⁿ diam., 26 ins. in the ground, for $\frac{1}{4}$ sec. cor., marked on brass cap, 1913; $\frac{1}{4}$S34 in W. and S35 in E. half; from which A cedar, 20 ins.ⁱⁿ diam., brs. N. 3° E., 299 lks. dist., marked $\frac{1}{4}$S35 BT. A cedar, 14 ins.ⁱⁿ diam., brs. N. 22° W., 253 lks. dist., marked $\frac{1}{4}$S34 BT.</p>

Subdivision of T. 21 N., R. 9 W.

Chains
83.38

(5th Standard Parallel North)
Intersect the S. bdy. of the Tp. at a point from which
the ^{old} Standard Corner of secs. 34 and 35 brs. W. 179 lks.
dist.
This cor. is a stone, 12 X 6 X 12 ins. above ground,
marked and witnessed as described by the Surveyor General.
I obliterate all marks on the stone and place the
letters A P upon it, and destroy the markings on the
bearing trees.
At the point of intersection, I set an iron post, 3
ft. long, 2 ins. in diam, 24 ins. in the ground, for
closing cor. of secs. 34 and 35, marked on brass cap, 1913;
CC, N. of center;
T21N in N.,
T20N S2, S3, in S., and
R9W in W. half;
S34 in NW, and
S35 in NE quadrant; from which
A cedar, 24 ins. in diam, brs. N. 40 1/4 E., 122 lks. dist.,
marked T21N R9W S35 BT.
A cedar, 8 ins. in diam, brs. N. 70 1/2 W., 69 lks. dist.,
marked T21N R9W S34 BT.
Land, rolling.
Soil, clay, rocky, 2nd to 4th rate.
Timber, cedar and pinion.
Undergrowth, scrub oak.

March 18, 1913.

March 19, 1913. At 8 hrs. 57 m. a.m., l.m.t., I set
off 35° 15' N. on the lat. arc; 0° 35' S. on the decl.
arc; and determine a meridian with the solar, at the ^{old} cor.
of secs. 3, 4, 33 and 34. on the N. bdy. of the Tp.,
which is an iron post, 3 ins. in dia.; 12 ins. above ground,
marked ^{on BRASS CAP} and witnessed as described by the Surveyor
General.

Thence I run
S. 0 7' E., bet. secs. 3 and 4.
Over rolling land, through scattering undergrowth.
Set an iron post, 3 ft. long, 1 in. in diam, 26 ins. in
the ground, for 1/4 sec. cor., marked on brass cap, 1913;
1/4 S4 in W. and
S3 in E. half;
Dig pits 18X18X12 ins., N. and S. of post, 3 ft. dist.,
and raise a mound of earth 3 1/2 ft. base, 1 1/2 ft. high,
W. of cor.
Dry tank, brs. S. 65° E.,
Cabin brs. S. 22° E.
Road, brs. NE. to SW.
Wash, 4 lks. wide, 1 ft. deep, course NE.
Asc. N. slope 40 ft.
Along W. slope .
Set an iron post, 3 ft. long, 2 ins. in diam, 24 ins. in
the ground, for cor. of secs. 3, 4, 9 and 10, marked
on brass cap, 1913;
T21N R9W in N. half;
S4 in NW.,
S3 in NE.,
S10 in SE. and
S9 in SW. quadrant;
And raise a mound of stone, 2 ft. base, 1 1/2 ft. high,
W. of cor. Pits impracticable.
Tank, brs. N. 52° E.,
Cabin brs. N. 23° E.
Land, level and rolling.
Soil, sandy loam and gumbo, 2nd and 3rd rate.
Undergrowth, rabbit brush.

40.00

48.75
75.30
76.00
79.60
80.00

40.00
80.12

East, on a random line, bet. secs. 3 and 10.
Set temp. 1/4 sec. cor.
Intersect N. and S. line, 12 lks. S. of the cor. of secs.

Chains

2, 3, 10 and 11, which is the same as the line
 Thence I run
 S. 89° 55' W., on a true line, bet. secs. 3 and 10.
 Over rolling land, through scattering timber.
 18.10 Asc. E. slope, 110 ft.
 30.00 Top of asc.; thence over rolling land.
 32.00 Desc. W. slope, 140 ft.
 40.06 Set an iron post, 3 ft. long, 1 in. diam, 26 ins. in
 the ground, for $\frac{1}{4}$ sec. cor., marked on brass cap, 1913;
 $\frac{1}{4}$ S3 in N. and
 S10 in S. half; from which.
 A cedar, 6 ins. diam, brs. North., 66 lks. dist.,
 marked $\frac{1}{4}$ S3 BT.
 A cedar, 36 ins. diam, brs. S. 3° E., 34 lks. dist.,
 marked $\frac{1}{4}$ S10 BT.
 46.00 Leave scattering timber, brs. NW. and SE. Foot of desc.;
 thence over rolling land.
 52.32 Trail, brs. N. and S.
 72.00 Asc. NE. slope, 40. ft.
 78.12 Top of knoll, extends S. 50 lks.
 80.12 The cor. of secs. 3, 4, 9 and 10.
 Land, rolling and hilly.
 Soil, rocky 3 rd. rate.
 Timber, scrub cedar.
 Undergrowth, rabbit brush and greasewood.

S. 0° 2' E., bet. secs. 9 and 10.
 Over rolling land, through scattering undergrowth.
 15.80 Trail, brs. NW. and SE.
 40.00 Set an iron post, 3 ft. long, 1 in. diam, 26 ins. in
 the ground, for $\frac{1}{4}$ sec. cor., marked on brass cap, 1913;
 $\frac{1}{4}$ S9 in W. and
 S10 in E. half;
 And raise a mound of stone, 2 ft. base, 1 $\frac{1}{2}$ ft. high,
 W. of cor. Pits impracticable.
 60.00 Enter scattering timber, brs. E. and W.
 67.75 Enter heavy timber, brs. E. and W.
 80.00 Set an iron post, 3 ft. long, 2 ins. diam, 24 ins. in
 the ground, for cor. of secs. 9, 10, 15 and 16,
 marked on brass cap, 1913;
 T21N R9W in N. half;
 S9 in NW.,
 S10 in NE.,
 S15 in SE. and
 S16 in SW. quadrant; from which
 A cedar, 18 ins. diam, brs. N. 32 $\frac{1}{2}$ ° E., 174 lks. dist.,
 marked T21N R9W S10 BT.
 A cedar, 20 ins. diam, brs. S. 44° E., 49 lks. dist.,
 marked T21N R9W S15 BT.
 A cedar, 30 ins. diam, brs. S. 60 $\frac{1}{2}$ ° W., 83 lks. dist.,
 marked T21N R9W S16 BT.
 A pinion, 8 ins. diam, brs. N. 50° W., 34 lks. dist.,
 marked T21N R9W S9 BT.
 Land, level and rolling.
 Soil, rocky, 3rd rate.
 Timber, scrub cedar and pinion.
 Undergrowth, rabbit brush, greasewood buck brush and
 scrub oak.
 NOTE - At this corner, I set off, 0° 32 $\frac{1}{2}$ ' S. on the decl. arc;
 and at noon, I observe the sun
 on the meridian. The resulting lat. is 35° 13' N., which
 is correct.

40.00 N. 89° 55' E. on a random line bet. secs. 10 and 15.
 80.10 Set temp. $\frac{1}{4}$ sec. cor.
 Intersect N. and S. line, 21 lks. N. of the cor. of
 secs. 10, 11, 14 and 15, which is the same as the line
 Thence I run

Chains

N. 89° 56' W., on a true line, bet. secs. 10 and 15.
 Over rolling land.
 12.35 Trails, brs. NW. and SE.
 40.05 Set an iron post, 3 ft. long, 1 in.ⁿ diam, 26 ins. in
 the ground, for $\frac{1}{4}$ sec. cor., marked on brass cap, 1913;
 $\frac{1}{4}$ S10 in N. and
 S15 in S. half;
 And raise a mound of stone, 2 ft. base, 1 $\frac{1}{2}$ ft. high, N.
 of cor. Pits impracticable.
 55.60 Enter timber, brs. NW. and SE.
 80.10 The cor. of secs. 9, 10, 15 and 16.
 Land, level and rolling.
 Soil, rocky, 3rd rate.
 Timber, scrub cedar and pinion.
 Undergrowth, buck brush, greasewood, rabbit brush and
 scrub oak.

S. 0° 7' E., bet. secs. 15 and 16.
 Over rolling land, through heavy timber and scattering
 underbrush.
 13.35 Wash, 7 lks. wide, 3 ft. deep, course NE.
 26.00 Asc. NW. slope 60 ft.
 37.00 Spur ridge, brs. NE. and SW. Desc. SE. slope 90 ft.
 40.00 Set an iron post, 3 ft. long, 1 in.ⁿ diam, 26 ins. in
 the ground, for $\frac{1}{4}$ sec. cor. marked on brass cap, 1913;
 $\frac{1}{4}$ S16 in W. and
 S15 in E. half; from which
 A cedar, 8 ins.ⁿ diam, brs. N. 79° E., 29 lks. dist.,
 marked $\frac{1}{4}$ S15 BT.
 A cedar, 16 ins.ⁿ diam, brs. N. 65 $\frac{3}{4}$ ° W., 87 lks. dist.,
 marked $\frac{1}{4}$ S16 BT.
 49.30 Draw, course NE., Asc. NW. slope 35 ft.
 52.00 Slope, changes to N.
 64.00 Top of asc.; thence over rolling land.
 80.00 Set an iron post, 3 ft. long, 2 ins.ⁿ diam, 24 ins. in
 the ground, for cor. of secs. 15, 16, 21 and 22,
 marked on brass cap, 1913;
 T21N R9W in N. half;
 S16 in NW.,
 S15 in NE.,
 S22 in SE. and
 S21 in SW. quadrant; from which
 A cedar, 12 ins.ⁿ diam, brs. N. 48 $\frac{1}{2}$ ° E., 28 lks. dist.,
 marked T21N R9W S15 BT.
 A cedar, 12 ins.ⁿ diam, brs. S. 10° E., 33 lks. dist.,
 marked T21N R9W S22 BT.
 A cedar, 16 ins.ⁿ diam, brs. S. 31° W., 33 lks. dist.,
 marked T21N R9W S21 BT.
 A cedar, 14 ins.ⁿ diam, brs. N. 53° W., 52 lks. dist.,
 marked T21N R9W S16 BT.
 Land, level and rolling.
 Soil, rocky, 3rd rate.
 Timber, scrub cedar and pinion.
 Undergrowth, buck brush, scrub oak and greasewood.

S. 89° 56' E., on a random line, bet. secs. 15 and 22.
 40.00 Set temp. $\frac{1}{4}$ sec. cor.
 80.00 Intersect N. and S. line, 7 lks. S. of the cor. of secs.
 14, 15, 22 and 23,

Thence I run,
 N. 89° 59' W., on a true line, bet. secs. 15 and 22.
 Over rolling land, through scattering cedar timber.
 40.00 Set an iron post, 3 ft. long, 1 in.ⁿ diam, 26 ins. in
 the ground, for $\frac{1}{4}$ sec. cor., marked on brass cap, 1913;
 $\frac{1}{4}$ S15 in N. and
 S22 in S. half; from which
 A cedar limb, 8 ins.ⁿ diam, brs. N. 43 $\frac{1}{2}$ ° W., 105 lks. dist.,
 marked $\frac{1}{4}$ S15 BT.

Chains.	A cedar, 8 ins in diam, brs. S. 18° E., 81 lks. dist., marked $\frac{1}{4}$ S22 BT.
42.00	Leave scattering, center, heavy timber, brs. N. and S.
77.40	Draw, course NE.
80.00	The cor. of secs. 15, 16, 21 and 22. Land, level and rolling. Soil, rocky, 3rd rate. Timber, cedar and pinion. Undergrowth, scrub oak and buck brush.
	<hr/>
	S. 0° 7' E., bet. secs. 21 and 22. Over gently rolling land, through heavy timber and scattering undergrowth. Draw course NE.
6.65	Road, brs. NE. and SW.
28.60	Wash, 35 lks wide, 6 ft. deep, course SE.
31.60	Set an iron post, 3 ft. long, 1 in. in diam, 26 ins. in the ground, for $\frac{1}{4}$ sec. cor., marked on brasscap, 1913;
40.00	$\frac{1}{4}$ S21 in W. and S22 in E. half; from which A cedar, 8 ins in diam, brs. S. 65 $\frac{1}{2}$ ° E., 122 lks. dist., marked $\frac{1}{4}$ S22 BT. A cedar, 22 ins in diam, brs. S. 64 $\frac{1}{4}$ ° W., 200 lks. dist.; marked $\frac{1}{4}$ S21 BT.
	March 19, 1913. March 20, 1913. At 7 hrs. 30 m. a.m., l.m.t., I set off 35° 11 $\frac{1}{2}$ ' N. on the lat. arc; 0° 12 $\frac{1}{2}$ ' S. on the decl. arc; and determine a meridian with the solar, at the $\frac{1}{4}$ sec. cor.; bet. secs. 21 and 22. Thence I continue
	S. 0° 7' E., bet. secs. 21 and 22.
47.10	Draw, course NE. Enter dense undergrowth, brs. E. and W.
71.65	Draw, NW. Asc. NE. slope 90 ft. Leave timber, brs. E. and W.
80.00	Set an iron post, 3 ft. long, 2 ins in diam, 24 ins. in the ground; for cor. of secs. 21, 22, 27 and 28, marked on brasscap, 1913; T21N R9W in N. half; S21 in NW., S22 in NE., S27 in SE. and S28 in SW. quadrant; Andraise a mound of stone, 2 ft. base, 1 $\frac{1}{2}$ ft. high, W. of cor. Pits impracticable. Land, rolling and hilly. Soil, rocky, 3rd rate. Timber, cedar and scattering pinion. Undergrowth, buck brush and scrub oak.
	<hr/>
	S. 89° 59' E., on a random line, bet. secs. 22 and 27. Set temp. $\frac{1}{4}$ sec. cor.
40.00	Intersect N. and S. line, at the cor. of secs. 22, 23, 26 and 27, marked on brasscap, 1913.
79.92	Thence I run, N. 89° 59' W., on a true line, bet. secs. 22 and 27. Over rolling land, through scattering timber and dense undergrowth.
3.00	Draw, course SE. Asc. NE. slope 90 ft.
15.00	Rocky, ridge, brs. N. and S. Desc. SW. slope 75 ft. Enter heavy timber, brs. N. and S.
26.00	Foot of desc. Thence over level land.
39.96	Set an iron post, 3 ft. long, 1 in. in diam, 26 ins. in the ground, for $\frac{1}{4}$ sec. cor., marked on brass cap, 1913; $\frac{1}{4}$ S22 in N. and S27 in S. half; from which A cedar, 12 ins in diam, brs. S. 7° W., 36 lks. dist., marked $\frac{1}{4}$ S27 BT. No other trees within limits. Raise a mound of stone, 2 ft. base, 1 $\frac{1}{2}$ ft. high, N. of cor. Pits impracticable.

Subdivision of T. 21 N., R. 9 W.

Chains

50.00 Asc. E. slope 100 ft.
 54.00 Asc. NE. slope,
 54.00 Spur ridge, brs. N. and S. Desc. SW. slope 40 ft.
 72.00 Draw, course NW. Asc. NE. slope 75 ft.
 75.00 Leave scattering timber, brs. N. and S.
 79.92 The cor. of secs. 21, 22, 27 and 28.
 Land, rolling and hilly.
 Soil, rocky, 4thrate.
 Timber, scrub cedar.
 Undergrowth, buck brush and scrub oak.

6.00 S. 0° 7' E., bet. secs. 27 and 28.
 Over mountainous land, through dense undergrowth.
 Asc. NE. slope 265 ft.
 16.00 Enter scattering timber, brs. E. and W.
 22.80 Spur ridge, brs. E. and W. Desc: SE. slope 50 ft.
 27.35 Draw, course NE. Asc. NW. slope 30 ft.
 40.00 Spur ridge, brs. E. and W. Desc. rocky, SW. slope
 250 ft.
 Set an iron post, 3 ft. long, 1 in.ⁱⁿ diam, 26 ins. in
 the ground, for $\frac{1}{4}$ sec. cor., marked on brass cap, 1913;
 $\frac{1}{4}$ S28 in W. and
 S27 in E. half; from which
 A cedar, 8 ins.ⁱⁿ diam, brs. N. 71 $\frac{1}{4}$ E., 50 lks. dist.,
 marked $\frac{1}{4}$ S27 BT.
 A cedar, 10 ins.ⁱⁿ diam, brs. S. 82 $\frac{1}{2}$ W., 80 lks. dist.,
 marked $\frac{1}{4}$ S28 BT.
 44.15 Draw, course SE. Asc. rocky, NE. slope 70 ft. Enter
 heavy timber, brs. E. and W.
 52.00 Top of asc. Desc. SE. slope 45 ft.
 56.00 Thence along E. slope
 62.00 Desc. SE. slope 75 ft.
 74.00 Foot of desc. Enter scattering timber, brs. E. and W.
 80.00 Set an iron post, 3 ft. long, 2 ins.ⁱⁿ diam, 24 ins. in
 the ground, for cor. of secs. 27, 28, 33 and 34;
 marked on brass cap, 1913;
 T21N R9W in N. half;
 S28 in NW.,
 S27 in NE.,
 S34 in SE. and
 S33 in SW. quadrant; from which
 A pinion, 8 ins.ⁱⁿ diam, brs. N. 65 $\frac{1}{2}$ E., 50 lks. dist.,
 marked T21N R9W S27. BT.
 A pinion, 6 ins.ⁱⁿ diam, brs. S. 56 $\frac{1}{2}$ E., 55 lks. dist.,
 marked T21N R9W S34 BT.
 A pinion, 10 ins.ⁱⁿ diam, brs. S. 40 $\frac{1}{2}$ W., 44 lks. dist.,
 marked T21N R9W S33 BT.
 A pinion, 7 ins.ⁱⁿ diam, brs. N. 85 $\frac{1}{4}$ W., 71 lks. dist.,
 marked T21N R9W S28 BT.
 Land, rolling, hilly and mountainous.
 Soil, very rocky, 4thrate.
 Timber, cedar and pinion.
 Undergrowth, buck brush and scrub oak.

NOTE: At this corner, I set off 0° 9' S. on the decl. arc; and
 and at noon, I observe the sun on
 the meridian. The resulting lat. is 35° 10 $\frac{1}{2}$ ' N., which is
 correct.

40.00 S. 89° 59' E. on a random line, bet. secs. 27 and 34.
 Set temp. $\frac{1}{4}$ sec. cor.
 80.18 Intersect N. and S. line, 11 lks. N. of the cor. of secs.
 26, 27, 34 and 35,
 Thence I run
 N. 89° 54' W., on a true line, bet. secs. 27 and 34.
 Over rolling land, through scattering timber and under-
 growth.
 40.09 Set an iron post, 3 ft. long, 1 in.ⁱⁿ diam, 26 ins. in
 the ground, for $\frac{1}{4}$ sec. cor., marked on brass cap, 1913;

Chains.

80.18	<p> $\frac{1}{4}$S27 in N. and $\frac{1}{4}$S34 in S. half; from which A cedar, 20 ins.^m diam, brs. N. 48° W., 77 lks., dist., marked $\frac{1}{4}$S27 BT. A cedar, 34 ins.^m diam, brs. S. 29° E., 25 lks. dist., marked $\frac{1}{4}$S34 BT. The cor. of secs 27, 28, 33 and 34. Land, gently rolling. Soil, rocky, 3rd rate. Timber, scrub cedar and scattering pinion. Undergrowth, buck brush and scrub oak. </p>
3.80	S. 0° 7' E., bet. secs. 33 and 34.
27.90	Over gently rolling land, through heavy timber and scattering undergrowth.
40.00	Wash, 10 lks. wide, 3 ft. deep, course SE.
	Wash, 35 lks. wide, 5 ft. deep, course E.
	Set an iron post, 3 ft. long, 1 in. ^m diam, 26 ins. in the ground, marked on brass cap, 1913;
	$\frac{1}{4}$ S33 in W. and
	$\frac{1}{4}$ S34 in E. half; from which
41.20	A cedar, 6 ins. ^m diam, brs. N. 8 $\frac{1}{4}$ ° E., 127 lks. dist., marked $\frac{1}{4}$ S34 BT.
58.40	A cedar, 14 ins. ^m diam, brs. N. 34 $\frac{3}{4}$ ° W., 148 lks. dist., marked $\frac{1}{4}$ S33 BT.
66.00	Wash, 3 lks. wide, 2 ft. deep, course E.
	Wash, 4 lks. wide, 1 $\frac{1}{2}$ ft. deep, course NE.
	Asc. gradual NW. slope 30 ft.
84.43	Top of asc. Thence over rolling land. Enter dense undergrowth, brs. E. and W.
	Intersect the S. bdy. of the Tp., at a point from which the Standard Corner of Secs. 33 and 34, brs. N. 89° 53' W. 343 lks. dist.,
	This cor. is a sandstone, 18X10X6 ins., set in a mound of stone, marked and witnessed as described by the Surveyor General. I obliterate the markings on the stone and the markings on the bearing tree and mark the letters A P on the N. face of stone.
	At the point of intersection, I set an iron post, 3 ft. long, 2 ins. ^m diam, 24 ins. in the ground, for closing cor. of secs. 33 and 34, marked on brass cap, 1913;
	CC, N. of center.
	T21N in N.,
	T20N, S3, S4, in S. and
	R9W in W. half;
	S34 in NE., and
	S33 in NW. quadrant; from which
	A cedar, 22 ins. ^m diam, brs. N. 20 $\frac{1}{4}$ ° E., 152 lks. dist., marked T21N R9W S34 BT.
	A cedar, 9 ins. ^m diam, brs. N. 77 $\frac{1}{4}$ ° W., 126 lks. dist., marked T21N R9W S33 BT.
	Land, level and rolling.
	Soil, rocky 4th rate.
	Timber, scrub cedar and pinion.
	Undergrowth, buck brush, scrub oak, and greasewood.
	March 20, 1913.
	W.B.K.
	H.N.B.
	Mar. 20, 1913: At 8hrs. 21m. a.m., 1.m.t., I set off $\sqrt{35^{\circ} 15' N.}$ on the lat. arc; $0^{\circ} 12' S.$ on the decl. arc; and determine a meridian with the solar at the cor. of secs. 4, 5, 32 and 33, on the north bdy. of the Tp., which is an iron post, 3 ins. ^m diam, 12 ins. above ground, marked and witnessed as described by the Surveyor General.
	Thence I run
40.00	S. 0° 8' E., bet. secs. 4 and 5.
	Over rolling land, through scattering timber and undergrowth.
	Set an iron post, 3 ft. long, 1 in. ^m diam, 26 ins. in the ground, for $\frac{1}{4}$ sec. cor., marked on brass cap, 1913;
	$\frac{1}{4}$ S5 in W. and
	S4 in E. half; from which

Chains.

A cedar, 16 ins. diam, brs. S. 43 1/2 E., 6 1/2 lks. dist., marked 1/4 S4 BT.
 A cedar, 16 ins. diam, brs. N. 25 1/2 W., 8 lks. dist., marked 1/4 S5 BT.
 Desc. S. slope 40 ft.
 Leave timber, brs. E. and W.
 44.00 Foot of desc.; thence over level land.
 52.00 Wash, 15 lks. wide, 3 ft. deep, course SE.
 59.00 Set an iron post, 3 ft. long, 2 ins. diam, 24 ins. in the ground, for cor. of secs. 4, 5, 8 and 9, marked on brass cap, 1913;
 80.00 T21N R9W in N. half;
 S5 in NW.,
 S4 in NE.,
 S9 in SE., and
 S8 in SW. quadrant;
 And raise a mound of stone, 2 ft. base, 1 1/2 ft. high, W. of cor. Pits impracticable.
 Land, level and rolling.
 Soil, heavy moist gumbo, rocky in places, 2nd and 3rd rate.
 Timber, scattering scrub cedar.
 Undergrowth, scrub oak.

East, on a random line, bet. secs. 4 and 9.
 40.00 Set temp. 1/4 sec. cor.
 80.06 Intersect the N. and S. line at the cor. of secs. 3, 4, 9 and 10, which is an iron post, marked before described.
 Thence I run
 West, on a true line, bet. secs. 4 and 9.
 Along low ridge, bearing E. and W.
 6.00 Desc. NW. slope, 35 ft.
 15.00 Wash, 5 lks. wide, 1 ft. deep, course NE.
 40.03 Set an iron post, 3 ft. long, 1 in. diam, 26 ins. in the ground, for 1/4 sec. cor., marked on brass cap, 1913;
 1/4 S4 in N. and
 S9 in S. half;
 Dig pits 18 X 18 X 12 ins. E. and W. of post, 3 ft. dist.; and raise a mound of earth 3 1/2 ft. base, 1 1/2 ft. high, N. of cor.
 55.30 Corral fence, brs. NE. and SW.
 57.03 Dam, 2 chs. long, brs. NE. and SW. Extends 20 lks. SW.
 57.86 Corral fence, brs. NW. and SE.
 64.30 Road, brs. NE. and SW.
 80.06 The cor. of secs. 4, 5, 8 and 9.
 Land, level and rolling.
 Soil, black, loam, 2nd rate.
 No timber or undergrowth.

S. 0° 8' E., bet. secs. 8 and 9.
 Over rolling rocky land; through scattering timber.
 10.55 Wash, 30 lks. wide, 2 ft. deep, course NE.
 11.00 Road, brs. NE. and SW. Asc. NW slope 30 ft.
 20.00 Top of asc. Thence over rolling land,
 40.00 Set an iron post, 3 ft. long, 1 in. diam, 26 ins. in the ground, for 1/4 sec. cor., marked on brass cap, 1913;
 1/4 S8 in W. and
 S9 in E. half; from which
 A cedar, 10 ins. diam, brs. S. 25° E., 306 lks. dist., marked 1/4 S9 BT.
 A cedar, 18 ins. diam, brs. S. 75 1/2 W., 181 lks. dist., marked 1/4 S8 BT.
 Enter scattering timber, brs. E. and W.
 44.00 Low ridge, brs. NW. and SE. Desc. SW. slope 35 ft.
 63.00 Foot of desc. Thence over level land,
 79.00 Enter scattering timber, brs. E. and W.
 80.00 Set an iron post, 3 ft. long, 2 ins. diam, 24 ins. in the ground for cor. of secs. 8, 9, 16 and 17, marked on brass cap, 1913;

Chains.

T21N R9W in N. half;
 S8 in NW.
 S9 in NE.,
 S16 in SE. and
 S17 in SW. quadrant; from which
 A cedar, 8 ins. in diam, brs. N. 28 $\frac{1}{2}$ E., 83 lks. dist.,
 marked T21N R9W S9 BT.
 A cedar, 28 ins. in diam, brs. S. 29 $\frac{1}{2}$ E., 18 lks. dist.,
 marked T21N R9W S16 BT.
 A cedar, 19 ins. in diam, brs. S. 20 $\frac{1}{2}$ W., 9 lks. dist.,
 marked T21N R9W S17 BT.
 A cedar, 33 ins. in diam, brs. N. 23 $\frac{1}{2}$ W., 23 lks. dist.,
 marked T21N R9W S8 BT.
 Land, rolling.
 Soil, gumbo, rocky, 3rd and 4th rate.
 Timber, scattering cedar.
 Undergrowth, scrub oak.

NOTE - At this corner, I set off 0° 9' S. on the decl. arc;
 and at noon, I observe the sun
 on the meridian. The resulting lat. is 35° 13' N. which is
 the correct lat.

40.00 East, on a random line, bet. secs. 9 and 16.
 80.15 Set temp. $\frac{1}{4}$ sec. cor.
 Intersect N. and S. line, 13 lks. S. of the cor. of secs.
 9, 10, 15 and 16, which is a true post, heretofore
 described.
 Thence I run
 S. 89° 54' W., on a true line, bet. secs. 9 and 16.
 Asc. SE. slope 245 ft., through heavy timber and dense
 undergrowth.
 30.15 Top of asc. Ridge, brs. NNE. and SSW. Desc. NW. slope,
 185 ft.
 38.00 Leave heavy, enter scattering timber.
 40.07 $\frac{1}{2}$ Set an iron post, 3 ft. long, 1 in. in diam, 26 ins. in
 the ground, for $\frac{1}{4}$ sec. cor., marked on brass cap, 1913;
 S9 in N. and
 S16 in S. half; from which
 A cedar, 14 ins. in diam, brs. N. 45 W., 38 lks. dist.,
 marked S9 BT.
 A cedar, 8 ins. in diam, brs. S. 17 W., 59 lks. dist.,
 marked S16 BT.
 54.00 Enter heavy timber, brs. N. and S. Foot of desc.,
 thence over rolling land.
 62.00 Leave heavy timber, brs. N. and S. Thence over level 1
 land.
 80.15 The cor. of secs. 8, 9, 16 and 17.
 Land, rolling and mountainous.
 Soil, rocky, 4th rate.
 Timber, scrub cedar and pinion.
 Undergrowth, scrub oak.

40.00 S. 0° 8' E., bet. secs. 16 and 17.
 Over level land, through heavy timber.
 Set an iron post, 3 ft. long, 1 in. in diam, 26 ins. in the
 ground, for $\frac{1}{4}$ sec. cor., marked on brass cap, 1913;
 S17 in W. and
 S16 in E. half; from which
 A cedar, 10 ins. in diam, brs. S. 27 $\frac{1}{2}$ E., 87 lks. dist.,
 marked S16 BT.
 A cedar, 14 ins. in diam, brs. N. 77 $\frac{1}{2}$ W., 13 lks. dist.,
 marked S17 BT.

March 20, 1913.
 March 21, 1913. At 8 hrs. 13 m. a.m. l.m.t., I set
 off 35° 12 $\frac{1}{2}$ ' N. on the lat. arc; 0° 11 $\frac{1}{2}$ ' N. on the
 decl. arc; and determine a meridian with the solar, at
 the $\frac{1}{4}$ sec. cor. bet. secs. 16 and 17, above described
 Thence I continue
 S. 0° 8' E., bet. secs. 16 and 17.

Subdivision of T. 21 N. R. 9 W.

19

Chains	
50.00	Asc. NE. slope, through scattering timber, and dense undergrowth.
68.66	Top of asc., 145 ft. above $\frac{1}{4}$ sec. cor. Desc. SE. slope 35 ft.
80.00	Set an iron post, 3 ft. long, 2 ins. in diam, 24 ins. in the ground, for cor. of secs. 16, 17, 20 and 21, marked on brass cap, 1913; T21N R9W in N. half; S17 in NW., S16 in NE., S21 in SE., and S20 in SW. quadrant; from which. A pinion, 5 ins. in diam, brs. N. $47\frac{1}{2}$ E., 26 lks. dist., marked T21N R9W S16 BT. A cedar, 6 in s. in diam, brs. S. $29\frac{1}{4}$ E., 69 lks. dist., marked T21N R9W S21 BT. A pinion, 6 ins. in diam, brs. S. $54\frac{1}{2}$ W., 13 lks. dist., marked T21N R9W S20 BT. A cedar, 9 ins. in diam, brs. N. $37\frac{1}{2}$ W., 28 lks. dist., marked T21N R9W S17 BT. Land, rolling and hilly. Soil, very rocky, limestone formation on slopes; gumbo in flat. Timber, scrub cedar and pinion. Undergrowth, buck brush and scrub cedar.
40.00	N. $89^{\circ} 54' E.$, on a random line, bet. secs. 16 and 21. Set temp $\frac{1}{4}$ sec. cor.
80.38	Intersect N. and S. line, 2 lks. S. of the cor. of secs. 15, 16, 21 and 22, marked on brass cap, 1913. Thence I run S. $89^{\circ} 53' W.$, on a true line, bet. secs. 16 and 21. Over rolling land, through heavy timber.
22.40	Draw, 1 ch. wide, course NE.
38.40	Draw, 2 chs. wide, course NE.
40.19	Set an iron post, 3 ft. long, 1 in. in diam, 26 ins. in the ground, for $\frac{1}{4}$ sec. cor., marked on brass cap, 1913; $\frac{1}{4}$ S16 in N. and S21 in S. half; from which A cedar, 30 ins. in diam, brs. N. $77^{\circ} W.$, 93 lks. dist., marked $\frac{1}{4}$ S16 BT. A cedar, 18 ins. in diam, brs. S. $35\frac{3}{4} W.$, 121 lks. dist., marked $\frac{1}{4}$ S21 BT.
62.40	Leave heavy, enter scattering timber. Asc. SE slope, 40 ft.
68.00	Top of asc., desc. SW slope 35 ft.
72.40	Gulch, 10 lks wide, course SE. Asc. rocky E. slope, 65 ft.
80.38	The cor. of secs. 16, 17, 20 and 21. Land, rolling and hilly. Soil, rocky limestone formation on hills; gumbo, 3rd rate in flat. Timber, scrub cedar and pinion. Undergrowth, scrub oak and buck brush.
NOTE	- At this corner, I set off $0^{\circ} 15' N.$ on the decl. arc; and at 11:30 A.M., at noon. I observe the sun on the meridian, the resulting lat. is $35^{\circ} 12' N.$, which is slightly less than the correct lat.
3.00	S. $0^{\circ} 8' E.$, bet. secs. 20 and 21. Desc. very rocky SE. slope, 35 ft.
12.00	Gulch, 5 lks. wide, course E. Asc. NE. slope, 100 ft.
19.50	Rocky ridge, brs. NW. and SE. Desc. SW slope, 45 ft.
22.70	Bottom of descent, thence along level land.
26.00	Wash, 22 lks. wide, 3 ft. deep, course E.
33.00	Asc. N. slope, 110 ft. Rocky ridge, brs. NW. and SE. Desc. S. slope, 85 ft.

Chains.	
39.50	Gulch, 15 lks. wide, course SE. Asc. NE. slope, 75 ft.
40.00	Set an iron post, 3 ft. long, 1 in. ^{indiam} , 26 ins. in the ground, for $\frac{1}{4}$ sec. cor., marked on brass cap, 1913; $\frac{1}{4}$ S20 in W. and S21 in E. half; from which
	A pinion, 7 ins. ^{indiam} , brs. S. $30\frac{1}{2}$ E., 51 lks. dist., marked $\frac{1}{4}$ S21 BT.
	A pinion, 5 ins. ^{indiam} , brs. S. $35\frac{3}{4}$ W., 32 lks. dist., marked $\frac{1}{4}$ S20 BT.
47.00	Top of asc.; rocky ridge, brs. NW. and SE. Desc. SW. slope 20 ft.
49.50	Gulch, 10 lks. wide, course SE. Asc. NE. slope, 45 ft.
55.00	Top of asc.; desc. SE. slope 155 ft.
69.75	Wash, 9 lks. wide, 2 ft. deep, course SE.
70.00	Foot of desc.; thence along gentle E. slope.
80.00	Set an iron post, 3 ft. long, 2 ins. ^{indiam} , 24 ins. in the ground, for cor. of secs. 20, 21, 28 and 29, marked on brass cap, 1913; T21N R9W in N. half; S20 in NW., S21 in NE., S28 in SE., and S29 in SW. quadrant; from which
	A cedar, 30 ins. ^{indiam} , brs. N. $38\frac{3}{4}$ E., 98 lks. dist., marked T21N R9W S21BT.
	A cedar, 36 ins. ^{indiam} , brs. S. $74\frac{3}{4}$ E., 107 lks. dist., marked T21N R9W S28 BT.
	A cedar, 9 ins. ^{indiam} , brs. S. $62\frac{1}{2}$ W., 74 lks. dist., marked T21N R9W S29 BT.
	A cedar, 24 ins. ^{indiam} , brs. N. $32\frac{1}{2}$ W., 40 lks. dist., marked T21N R9W S20 BT.
	Land, mountainous and hilly.
	Soil, very rocky 3th rate; limestone formation.
	Timber, scrub cedar and pinion.
	Undergrowth, buck brush and scrub oak.
40.00	N. $89^{\circ} 53' E.$, on a random line, bet. secs. 21 and 28. Set temp. $\frac{1}{4}$ sec. cor. March 21, 1913.
	March 22, 1913: At 7hrs. 55m, a.m., l.m.t., I set off $35^{\circ} 11\frac{1}{2}' N.$ on the lat. arc; $74^{\circ} 25' N.$ on the decl. arc; and determine a meridian with the solar at the temp. $\frac{1}{4}$ sec. cor. bet. secs. 21 and 28, Thence I continue
80.33	N. $89^{\circ} 53' E.$, on a random line, bet. secs. 21 and 28. Intersect N. and S. line, 30 lks. N. of the cor. of secs. 21, 22, 27 and 28, which is an iron post, marked on brass cap, 1913.
	Thence I run, N. $89^{\circ} 54' W.$, on a true line, bet. secs. 21 and 28. Over mountainous land, through scattering timber, and dense undergrowth.
7.30	Asc. NE. slope, 95 ft.
20.30	Rocky ridge, brs. N. and S. Desc. NW. slope, 165 ft.
22.00	Cent re of draw, 40 lks. wide, course. NE.
34.00	Asc. NE. slope, 185 ft.
36.00	Rocky ridge, brs. NE. and SW. Desc. slight NW. slope.
40.16	Bottom of desc. Asc. slight NE. slope.
	Set an iron post, 3 ft. long, 1 in. ^{indiam} , 26 ins. in the ground, for $\frac{1}{4}$ sec. cor., marked on brass cap, 1913; $\frac{1}{4}$ S21 in N. and S28 in S. half; from which
	A pinion, 12 ins. ^{indiam} , brs. N. $50\frac{1}{2}$ W., 97 lks. dist., marked $\frac{1}{4}$ S21 BT.
	A pinion, 8 ins. ^{indiam} , brs. S. $18\frac{1}{2}$ W., 68 lks. dist., marked $\frac{1}{4}$ S28 BT.
42.00	Top of asc., thence along N. slope.
60.00	Desc. NW. slope, 50 ft.
75.00	Gulch, 45 lks. wide, 8 ft. deep, course NE. Thence over rolling land.

Subdivision of T. 21 N., R. 9 W.

Chains.	
80.33	<p>The cor. of secs. 20, 21, 28 and 29. Land, mountainous and hilly. Soil, rocky 4th rate. Timber, scrub ce dar and pinion. Undergrowth, buck brush and scrub oak.</p>
V	
	<p>S.0° 8'E., bet. secs. 28 and 29. Over rolling land, through scattering tim ber and under- growth.</p>
5.80	<p>Gulch, 45 lks. wide, 8 ft. deep, course E. Asc. NW. slope, through heavy timber, and dense undergrowth, 170 ft.</p>
18.00	<p>Top of asc.; thence along W. slope.</p>
22.00	<p>Head of gulch, course W. Asc. slight NW. slope, through scattering timber and undergrowth.</p>
29.60	<p>Top of asc.; thence along W. slope.</p>
34.00	<p>Asc. NW. slope, 70 ft.</p>
40.00	<p>Set an iron post, 3 ft. long, 1 in. diam, 26 ins. in the ground, for $\frac{1}{4}$ sec. cor., marked on bras cap, 1913;</p>
	<p>S29 in W. and S28 in E. half;</p>
	<p>And raise a mound of stone, 2 ft. base, 1$\frac{1}{2}$ ft. high, W. of cor. Pits impracticable. <i>No trees available for bearing trees</i></p>
44.00	<p>Top of asc. Rocky ridge, brs. E. and W. Thence over level land.</p>
50.00	<p>Desc. very slight S. slope, 40 ft.</p>
64.00	<p>Desc. steep S. slope, 110 ft.</p>
72.75	<p>Gulch, 26 lks. wide, 4 ft. deep, course SE. Asc. N. slope, 50 ft.</p>
77.00	<p>Ridge, brs. E. and W. Desc. SE. slope, 50 ft.</p>
80.00	<p>Set an iron post, 3 ft. long, 2 ins. diam, 24 ins. in the ground, for cor. of secs. 28, 29, 32, and 33, mark- ed on brass cap, 1913;</p>
	<p>T21N R9W in N. half;</p>
	<p>S29 in NW., S28 in NE., S33 in SE., and S32 in SW. quadrant; from which</p>
	<p>A cedar, 20 ins. diam, brs. N. 36$\frac{1}{2}$ E., 87 lks. dist., marked T21N R9W S28 BT.</p>
	<p>A cedar, 11 ins. diam, brs. S. 14$\frac{3}{4}$ E., 47 lks. dist., marked T.21N R9W S33 BT.</p>
	<p>A cedar, 9 ins. diam, brs. S. 74$\frac{1}{2}$ W., 23 lks. dist., marked T21N R9W S32 BT.</p>
	<p>A cedar, 8 ins. diam, brs. N. 78$\frac{1}{2}$ W., 74 lks. dist., marked T21N R9W S29 BT.</p>
	<p>Land, mountainous and hilly.</p>
	<p>Soil, very rocky 4th rate.</p>
	<p>Timber, scrub cedar and pinion.</p>
	<p>Undergrowth, buck brush and scrub oak.</p>
NOTE-	<p>At this corner, I set off 0° 38$\frac{1}{2}$' N. on the decl. arc; and at the same time, I observe the sun on the mer.; the resulting lat. is 35° 10$\frac{1}{2}$' N. which is the correct.</p>
40.00	<p>S. 89° 54' E., on a random line, bet. secs. 28 and 33. Set temp. $\frac{1}{4}$ sec. cor.</p>
80.44	<p>Intersect N. and S. line, 2 lks. S. of the cor. of secs. 27, 28, 33 and 34, which is the same as the described.</p>
	<p>Thence I run</p>
	<p>N. 89° 55' W., on a true line, bet. secs. 28 and 33. Over rolling land, through heavy timber and scattering undergrowth.</p>
5.70	<p>Wash, 10 lks. wide, 3 ft. deep, course SE.</p>
10.00	<p>Asc. E. slope, 270 ft.</p>
14.00	<p>Enter dense undergrowth and scattering timber.</p>
22.00	<p>Asc. SE. slope.</p>
34.00	<p>Spur ridge, brs. N. and S. Desc. W. slope 50 ft.</p>

Chains.

- 40.22 Set an iron post, 3 ft. long, 1 in.ⁿ diam, 26 ins. in the ground, for $\frac{1}{4}$ sec. cor., marked on brass cap, 1913; $\frac{1}{4}$ S28 in N. and S33 in S. half; from which
 A cedar, 12 ins.ⁿ diam, brs. N.21° E., 104 lks. dist., marked $\frac{1}{4}$ S28 BT.
 A cedar, 17 ins.ⁿ diam, brs. S21 $\frac{1}{2}$ ° E., 11 lks. dist., marked $\frac{1}{4}$ S33 BT.
 Desc. W. slope 170 ft.
- 42.90 Ravine, 1 sh wide, course S. Asc. SE. slope, 190 ft.
- 58.50 Top of asc. Ridge brs. N. and S. Desc. NW. slope 90 ft.
- 66.50 Gulch, 25 lks. wide, course NE. Asc. SE. slope 65 ft.
- 72.50 Low ridge, brs. NE. and SW.
- 79.40 Gulch, 5 lks. wide, course NE.
- 80.44 The cor of secs. 28, 29, 32 and 33.
 Land, mountainous and hilly.
 Soil, very rocky 4th rate, limestone formation.
 Timber, scrub cedar and pinion.
 Undergrowth, buck brush and scrub oak.
-
- ✓ S.0° 8' E., bet. secs. 32 and 33.
 Desc. slight SE. slope, through scattering timber and dense undergrowth.
- 1.00 Gulch, 50 lks. wide; course NE. Asc. NW. slope 30 ft.
- 3.00 Enter heavy timber and undergrowth, brs. E. and W.
- 18.00 Top of asc. Low ridge, brs. E. and W. Desc. SE. slope, 125 ft.
- 26.40 Gulch, 45 lks. wide, 6 ft. deep, course NE. Asc. slight NW. slope.
- 29.00 Low ridge; brs. NE. and SW. Desc. SE slope, 30 ft.
- 34.00 Gulch, 15 lks. wide, course E. Asc. NE. slope of Cross Mountain, 150 ft.
- 40:00 Set an iron post, 3 ft. long, 1 in.ⁿ diam, 26 ins. in the ground, for $\frac{1}{4}$ sec. cor., marked on brass cap, 1913; $\frac{1}{4}$ S32 in W., and S33 in E. half; from which
 A pinion, 10 ins.ⁿ diam, brs. S.47 $\frac{1}{2}$ ° E., 35 lks. dist.?
 marked $\frac{1}{4}$ S33 BT.
 A pinion, 5 ins.ⁿ diam, brs. N.47 $\frac{1}{2}$ ° W., 8 lks. dist., marked $\frac{1}{4}$ S32 BT.
- 46.00 Top of asc.; desc. SE slope, 200. ft., through scattering timber, and dense undergrowth.
- 51.30 Gulch, 8 lks. wide; course SE.
- 57.40 Gulch, 6 lks. wide, course SE.
- 60.75 Gulch, 10 lks. wide, course SE.
- 66.00 Gulch, 5 lks. wide, course SE.
- 67.80 Gulch, 20 lks. wide, course SE. Asc. NE. slope, 25 ft.
- 76.00 Spur ridge, brs. NW. and SE. Desc. steep SW. slope, 160 ft.
- 79.60 Gulch, 8 lks. wide, course SE.
- 89.75 Intersect the S. bdy. of the Tp., at a point from which the old Standard Cor. of secs. 32 and 33 brs. S. 89° 01' W., 365 lks. dist.
 The Standard Cor. is a limestone, 24 X 24 X 24 ins., set on top of a limestone boulder, marked and witnessed as described by the Surveyor General. I destroy all markings, on the stone, and place the letters A P on N. face.
 At the point of intersection, I set an iron post, 3 ft. long, 2 ins.ⁿ diam, 24 ins. in the ground, for closing cor. of secs. 32 and 33, marked on brass cap, 1913;
 CC, N. of centre;
 T21N in N.,
 T20N, S4, S5, in S., and
 R9W in W. half;
 S32 in NW., and
 S33 in NE. quadrant;
 And raise a mound of stone, 2 ft. base, 1 $\frac{1}{2}$ ft. high, N. of cor. Pits impracticable.
 Land, mountainous.

Chains.

Soil, very rocky 4th rate.
 Timber, scrub cedar and pinion.
 Undergrowth, buck brush and scrub oak.
 Mar. 22, 1913.

H.N.B.

W.B.K.

March 21, 1913. At 8hrs. 32m., a.m., l.m.t., I set off 35°15'N. on the lat. arc; 0°11½'N. on the decl. arc; and determine a meridian with the solar at the cor. of secs. 5, 6, 31 and 32, on the N. bdy. of the Tp., which is an iron post, 3 ins. diam, 22 ins. above ground, marked and witnessed as described by the Surveyor General.

Thence I run S. 08'E., bet. secs. 5 and 6. Over gently rolling land, through heavy timber, and scattering undergrowth.

16.00

Desc. rocky SE. slope 30 ft.

22.10

Draw, course E. Thence over rolling land.

40.00

Set an iron post, 3 ft. long, 1 in. diam, 26 ins. in the ground, for ¼ sec. cor., marked on brass cap, 1913; ½ S6 in W., and

½ S5 in E. half; from which A cedar, 20 ins. diam, brs. S. 66½ E., 79 lks. dist., marked ½ S5 BT.

A cedar, 10 ins. diam, brs. S. 20 W., 30 lks. dist., marked ½ S6 BT.

44.00

Enter scattering timber, brs. E. and W.

63.65

Wash, 5 lks. wide, 1 ft. deep, course E.

64.60

Road, brs. E. and W.

80.00

Set an iron post, 3 ft. long, 2 ins. diam, 24 ins. in the ground, for cor. of secs. 5, 6, 7 and 8, marked on brass cap, 1913;

T21N R9W in N. half;

S6 in NW.,

S5 in NE.,

S8 in SE., and

S7 in SW. quadrant; from which

A cedar, 40 ins. diam, brs. N. 64° E., 65 lks. dist., marked T21N R9W S5 BT.

A cedar, 6 ins. diam, brs. S. 7½ E., 144 lks. dist., marked T21N R9W S8 BT.

A cedar, 16 ins. diam, brs. S. 45½ W., 109 lks. dist., marked T21N R9W S7 BT.

A cedar, 36 ins. diam, brs. N. 51 W., 86 lks. dist., marked T21N R9W S6 BT.

Land, level and rolling.

Soil, rocky 4th rate.

Timber, scrub cedar and scattering pinion.

Undergrowth, buck brush and scrub oak.

40.00

East, on a random line, bet. secs. 5 and 8.

80.04

Set temp. ¼ sec. cor.

Intersect N. and S. line, 14 lks. N. of the cor. of secs. 4, 5, 8 and 9, which is an iron post, marked and witnessed as described by the Surveyor General.

Thence I run

N. 89° 54' W., on a true line, bet. secs. 5 and 8.

Over gently rolling land, through scattering undergrowth.

16.00

Asc. E. slope, 40 ft.

22.00

Top of asc., thence over rolling land.

40.02

Set an iron post, 3 ft. long, 1 in. diam, 26 ins. in the ground, for ¼ sec. cor., marked on brass cap, 1913;

½ S5 in N. and

½ S8 in S. half;

And raise a mound of stone, 2 ft. base, 1½ ft. high, N. of cor. Pits impracticable. No bearing trees available.

51.05

Old road, brs. NW. and SE.

62.00

Enter scattering timber, brs. N. and S.

Chains.

78.75 Road, brs. NE. and SW.
 80.04 The cor. of secs. 5, 6, 7 and 8.
 Land, level and rolling.
 Soil, rocky 4th rate.
 Timber, scrub cedar and scattering pinion.
 Undergrowth, buck brush and scrub oak. March 21, 1913.

March 22, 1913. At 8 hrs. 45 m., a.m., l.m.t., I set off
 35° 14' N. on the lat. arc; 0° 35½' N. on the decl. arc;
 and determine a meridian with the solar at the cor. of secs.
 5, 6, 7 and 8.
 Thence I run
 West, on a random line, bet. secs. 6 and 7.
 40.00 Set temp. ¼ sec. cor.
 85.95 Intersect the W. bdy of the Tp., 1 lk. S. of the cor.
 of secs. 1, 6, 7 and 12, established by H. N. Bradstreet, as
 described in book "M", page 33.
 Thence I run
 East, on a true line, bet. secs. 6 and 7.
 Desc. NE. slope, 125 ft., through scattering timber and
 undergrowth.
 16.60 Draw, course SE. Asc. SW. slope 50 ft.
 22.80 Top of asc.; thence over rolling land.
 24.80 Enter heavy timber, brs. NW. and SE.
 34.80 Leave heavy timber, brs. N. and S. Desc. NE. slope 75 ft.
 45.20 Draw, course SE. Thence over rolling land.
 45.95 Set an iron post, 3 ft. long, 1 in. diam., 26 ins. in the
 ground, for ¼ sec. cor., marked on brass cap, 1913;
 ½ S 6 in N. and
 S 7 in S. half; from which
 A cedar, 10 ins. diam., brs. N. 57½ E., 203 ft. dist.,
 marked ½ S 6 BT.
 A cedar, 7 ins. diam., brs. S. 33¾ E., 194 lbs. dist.?
 marked ½ S 7 BT.
 64.80 Desc. SE. slope 40 ft.
 85.95 The cor. of secs. 5, 6, 7 and 8.
 Land, level and rolling.
 Soil, rocky 4th rate.
 Timber, scrub cedar and scattering pinion.
 Undergrowth, buck brush and scrub oak.
 Mar. 22, 1913.

March 21, 1913.
 S. 0° 8' E., bet. secs. 7 and 8.
 Over gently rolling land, through scattering timber
 and undergrowth.
 1.10 Road, brs. NE. and SW.
 26.75 Leave timber, brs. E. and W.
 38.85 Road, brs. NE. and SW.
 40.00 Set an iron post, 3 ft. long, 1 in. diam., 26 ins. in the
 ground, for ¼ sec. cor., marked on brass cap, 1913;
 ½ S 7 in W. and
 S 8 in E. half;
 And raise a mound of stone, 2 ft. base, 1½ ft. high, W.
 of cor. Pits impracticable. *No bearing trees available.*
 80.00 Set an iron post, 3 ft. long, 2 ins. diam., 24 ins. in
 the ground, for cor. of secs. 7, 8, 17 and 18, marked
 on brass cap, 1913;
 T21N R9W in N. half;
 S7 in NW.,
 S8 in NE.,
 S17 in S., and
 S18 in SW. quadrant;
 And raise a mound of stone, 2 ft. base, 1½ ft. high, W.
 of cor. Pits impracticable. *No bearing trees available.*
 Land, rolling.
 Soil, rocky 4th rate.

Subdivision of T. 21 N. R. 9 W.

Chains.

Timber, scrub cedar and scattering pinion.
Undergrowth, scrub oak and buck brush.

NOTE - At this ~~point~~, I set off 0° 15' N. on the decl. arc; and
~~at noon~~, at noon, I observe the sun on
the meridian, the resulting lat. is 35° 13' N., which is the
correct

40.00
79.94

S. 89° 54' E., on a random line, bet. secs. 8 and 17.
Set temp. 1/4 sec. cor.
Intersect N. and S. line, 7 lks. N. of the cor. of secs.
8, 9, 16 and 17,

9.95
39.97

Thence I run
N. 89° 51' W., on a true line, bet. secs. 8 and 17.
Over gently rolling land, through heavy timber and
scattering undergrowth.

60.00
79.94

Leave heavy timber, brs. NW. and SE.
Set an iron post, 3 ft. long, 1 in. diam., 26 ins. in the
ground, for 1/4 sec. cor., marked on brass cap, 1913;
1/4 S 8 in N. and
1/4 S 17 in S. half; from which
A cedar, 22 ins. diam., brs. N. 72 1/2° E., 221 lks. dist.,
marked 1/4 S 8 BT.
A cedar, 34 ins. diam., brs. S. 51° E., 255 lks. dist.,
marked 1/4 S 17 BT.
Leave scattering timber, brs. N. and S.
The cor. of secs. 7, 8, 17 and 18.
Land, level and rolling, drains N.
Soil, sandy loam and gumbo, 2nd and 3rd rate.
Timber, scrub cedar and pinion.
Undergrowth, scrub oak and buck brush.

W.B.K.
Mar. 21, 1913.

40.00
86.32

Mar. 28, 1913. H.N.B.
West, on a random line, bet. secs. 7 and 18.
Set temp. 1/4 sec. cor.
Intersect the W. bdy. of the Tp., 19 lks. N. of the cor.
of secs. 7, 12, 13 and 18, recently established by me as,
described in book "M", page 34.

2.00
6.80
21.00

Thence I run
N. 89° 52' E., on a true line, bet. secs. 7 and 18.
Over rolling land, through heavy timber and scattering
undergrowth.
Desc. E. slope, 25 ft.
Draw course S, asc. W, slope, 35 ft.
Leave heavy timber, enter scattering timber, brs. N. and
S. Continue over gently rolling land.

40.00
46.32

Desc. E. slope, 35 ft. Leave timber, brs. N. and S.
Set an iron post, 3 ft. long, 1 in. diam., 26 ins. in
the ground, for 1/4 sec. cor., marked on brass cap, 1913;
1/4 S 7 in N. and
1/4 S 18 in S. half;

76.00
78.00
86.32

And raise a mound of stone, 2 ft. base, 1 1/2 ft. high, N.
of cor. Pits impracticable. No bearing trees available.
Thence across level land.
Asc. W. slope 30 ft.
Top of asc.; low ridge, brs. N. and S. Desc. E. slope
25 ft.
The cor. of secs. 7, 8, 17 and 18.
Land, level and rolling.
Soil, rocky 4th rate.
No timber, or undergrowth.

H.N.B.
Mar. 28, 1913.

12.00
32.95
40.00

W.B.K. Mar. 21, 1913.
S. 0° 8' E., bet. secs. 17 and 18.
Over gently rolling land, through scattering undergrowth.
Enter scattering timber, brs. E. and W.
Wash, 5 lks. wide, 1 1/2 ft. deep, course NE.
Set an iron post, 3 ft. long, 1 in. diam., 26 ins. in the
ground, for 1/4 sec. cor., marked on brass cap, 1913;
1/4 S 18 in W. and
1/4 S 17 in E. half; from which

Chains.

Acedar, 20 ins.ⁱⁿ diam., brs. N.85 $\frac{1}{2}$ ° E., 89 lks. dist.,
 marked $\frac{1}{4}$ S17 BT.
 A cedar, 16 ins.ⁱⁿ diam., brs. S.5° W., 228 lks. dist.,
 marked $\frac{1}{4}$ S18 BT.
 41.27 Enter heavy timber, brs. E. and W.
 51.45 Wash, 8 lks. wide, 2 ft. deep, course NW.
 62.00 Asc. NW. slope, 250 ft.
 80.00 Set an iron post, 3 ft. long, 2 ins.ⁱⁿ diam, 24 ins. in
 the ground, for cor. of secs. 17, 18, 19 and 20,
 marked on brass cap, 1913;
 T21N R9W in N. half;
 S18 in NW.,
 S17 in NE.,
 S20 in SE., and
 S19 in SW. quadrant; from which
 A pinion, 7 ins.ⁱⁿ diam, brs. N. 61° E., 115 lks. dist.,
 marked T21N R9W S17 BT.
 A pinion, 8 ins.ⁱⁿ diam, brs. S.18° E., 43 lks. dist.,
 marked T21N R9W S20 BT.
 A pinion, 14 ins.ⁱⁿ diam, brs. S.41° W., 85 lks. dist., ma
 marked T21N R9 W S19 BT.
 A pinion, 12 ins.ⁱⁿ diam, brs. N. 25° W., 35 lks. dist.,
 marked T21N R9W S18 BT.
 Land, rolling and mountainous.
 Soil, rocky 4th rate.
 Timber, pinion and scrub cedar .
W.B.K.
Mar. 21, 1913.

Mar. 24, 1913. H.N.B.

40.00 S.89° 51' E., on a random line, bet. secs. 17 and 20.
 79.90 Set temp. $\frac{1}{4}$ sec. cor.
 Intersect N. and S. line, 9 lks. N. of the cor. of secs.
 16, 17, 20 and 21, which is an iron post, see index for
 Thence I run
 N.89° 47' W., on a true line, bet. secs. 17 and 20.
 Over mountainous land, through scattering timber and
 dense undergrowth.
 22.00 Low ridge, brs. N. and S. Desc. NW. slope, 40 ft.
 10.00 Foot of desc.; asc. NE. slope, 40. ft.
 24.00 Top of asc.; desc. NW. slope, 20 ft.
 29.00 Foot of desc.; Enter heavy timber, Asc. NE. slope, 150
 ft.
 39.95 Set an iron post, 3 ft. long, 1 in.ⁱⁿ diam, 26 ins. in
 the ground, for $\frac{1}{4}$ sec. cor., marked on brass cap, 1913;
 $\frac{1}{4}$ S17 in N. and
 S20 in S. half; from which
 A pinion, 10 ins.ⁱⁿ diam, brs. N.40 $\frac{1}{2}$ ° W., 47 lks. dist.,
 marked $\frac{1}{4}$ S17 BT.
 A pinion, 7 ins.ⁱⁿ diam, brs. S35 $\frac{1}{2}$ ° E., 7 lks. dist.,
 marked $\frac{1}{4}$ S20 BT.
 42.00 Top of asc.; desc. NW. slope, 50 ft.
 46.00 Gulch, 5 lks. wide, course NE. Asc. NE. slope, 30 ft.
 48.00 Top of asc., desc. NW. slope, 25 ft.
 54.20 Gulch, 30 lks. wide, course NE. Asc. NE. slope, 380 ft.
 68.00 Rocky point. Desc. NW. slope, 295 ft.
 79.90 The cor. of secs. 17, 18, 19 and 20.
 Land, mountainous and hilly.
 Soil, very rocky 4th rate.
 Timber, scrub cedar and pinion.
 Undergrowth, buck brush and scrub oak.
 NOTE - The sky was overcast at noon, making an observation
 for lat. impossible.

H.N.B.
Mar. 24, 1913.

W.B.K.

Mar. 27, 1913. At 9hrs. 4 m. a.m., l.m.t., I set off
 2° 32 $\frac{1}{2}$ ' N. on the decl. arc; 35° 12' N. on the lat. arc; and
 determine a meridian with the solar at the cor. of secs.
 17, 18, 19 and 20.
 Thence I run
 S.89° 52' W., on a random line, bet. secs. 18 and 19.

Subdivision of T.21 N., R.9 W.

27

Chains.

- 40.00 Set temp. $\frac{1}{4}$ sec. cor.
 86.52 Intersect W. bdy of Tp., 15 lks. S. of the cor. of secs. 13, 18, 19 and 24, recently established by me as described in book "M", page 35.
 Thence I run
 N. $89^{\circ}58'E.$, on a true line, bet. secs. 18 and 19.
 Over rolling rocky land, through heavy timber and dense undergrowth.
 46.52 Set an iron post, 3 ft. long, 1 in.^m diam, 26 ins. in the ground, for $\frac{1}{4}$ sec. cor., marked on brass cap, 1913; $\frac{1}{4}$ S18 in N. and $\frac{1}{4}$ S19 in S. half; from which
 A cedar, 7 ins.^m diam, brs. N. $5^{\circ}E.$, 15 lks. dist., marked $\frac{1}{4}$ S18 BT.
 A cedar, 7 ins.^m diam, brs. S. $24^{\circ}E.$, 20 lks. dist., marked $\frac{1}{4}$ S19 BT.
 59.45 Was a; 30 lks. wide, 12 ft. deep, course NW. Thence over rolling land.
 67.00 Asc. SW. slope, 120 ft.
 77.70 Spur ridge, brs. N. and S. Desc NE. slope, 15 ft.
 79.50 Head of gulch, course N. Asc rocky NW. slope, 150 ft.
 86.52 The cor. of secs. 17, 18, 19 and 20.
 Land, rolling and mountainous.
 Soil, rocky 4th rate.
 Timber, pinion and scrub cedar.
 Undergrowth, scrub oak and buck brush.
 W.B.K.
 Mar. 27, 1913.

H.N.B.

- Mar. 24, 1913: At 2 hrs. 5m. p.m., l.m.t., I set off $35^{\circ}12'N.$ on the lat. arc; $1^{\circ}28'N.$ on the decl. arc; and determine a meridian with the solar at the cor. of secs. 17, 18, 19 and 20,
 Thence I run
 S. $0^{\circ}8'E.$, bet. secs. 19 and 20.
 Along W. slope of mountain, through heavy timber and dense undergrowth.
 6.25 Head of gulch, 5 lks. wide, course SW.
 6.80 Head of gulch, 8 lks. wide, course SW.
 10.00 Head of gulch, 10 lks. wide, course NW. Asc. NW. slope, 120 ft.
 24.00 Top of asc. Rocky ridge, brs. E. and W. Desc. SW. slope, 245 ft., through scattering cedar and dense undergrowth.
 40.00 Set an iron post, 3 ft. long, 1 in.^m diam, 26 ins. in the ground, for $\frac{1}{4}$ sec. cor., marked on brass cap, 1913; $\frac{1}{4}$ S19 in W. and $\frac{1}{4}$ S20 in E. half; from which
 A cedar limb, 8 ins.^m diam, brs. N. $22^{\circ}\frac{1}{2}E.$, 37 lks. dist., marked $\frac{1}{4}$ S20 BT.
 No other trees within limits. Raise a mound of stone, 2 ft. base, $1\frac{1}{2}$ ft. high, W. of cor. Pits impracticable.
 Mar. 24, 1913.
 March 26, 1913. At 8 hrs. 13 m. a.m. l.m.t., I set off $35^{\circ}11\frac{1}{2}'N.$ on the lat. arc; $2^{\circ}9\frac{1}{2}'N.$ on the decl. arc; and determine a meridian with the solar at the $\frac{1}{4}$ sec. cor. bet. secs. 19 and 20, above described.
 Thence I continue
 S. $0^{\circ}8'E.$, bet. secs. 19 and 20.
 46.00 Canyon, 40 lks. wide, course W. Asc NW. slope, 265 ft., through heavy timber and dense undergrowth.
 56.00 Leave heavy, enter scattering timber.
 60.00 Top of asc.; thence across top of mountains.
 66.00 Desc. slight S. slope.
 76.00 Desc. SW. slope, 45 ft.
 80.00 Set an iron post, 3 ft. long, 2 in.^m diam, 24 ins. in the ground, for cor. of secs. 19, 20, 29 and 30, marked on brass cap, 1913;
 T21N R9W in N. half;
 S19 in NW.,
 S20 in NE.,
 S29 in SE., and
 S30 in SW. quadrant; from which

Chains.

A cedar limb, 10 ins.^m diam, brs. N. $17\frac{3}{4}$ E., 129 lks. dist.,
marked T21N R9W S20 BT.
A cedar, 20 ins.^m diam, brs. S. $39\frac{3}{4}$ E., 50 lks. dist.,
marked T21N R9W S29 BT.
A cedar, 28 ins.^m diam, brs. S. $82\frac{1}{2}$ W., 48 lks. dist.,
marked T21N R9W S30 BT. *No other tree within limits. Raise a mound of stone*
Land, mountainous. *2 ft. base, 1 1/2 ft. high W. of cor. Pits impracticable.*
Soil, very rocky 4th rate, limestone formation.
Timber, scrub cedar and pinion.
Undergrowth, buck brush and scrub oak.

40.00 S. $89^{\circ} 47' E.$, on a random line, bet. secs. 20 and 29.
79.91 Set temp. $\frac{1}{4}$ sec. cor.
Intersect N. and S. line, 10 lks. S. of the cor. of
secs. 20, 21, 28 and 29, *marked on brass cap, 1913.*
Thence I run
N. $89^{\circ} 51' W.$, on a true line, bet. secs. 20 and 29.
Asc. slight E. slope, through heavy timber and dense
undergrowth.
10.70 Wash, 15 lks. wide, 4 ft. deep, course SE.
28.00 Asc. NE. slope, 175 ft.
39.955 Set an iron post, 3 ft. long, 1 in.^m diam, 26 ins. in the
ground, for $\frac{1}{4}$ sec. cor., marked on brass cap, 1913;
 $\frac{1}{4}$ S20 in N. and
S29 in S. half;
And raise a mound of stone, 2 ft. base, $1\frac{1}{2}$ ft. high, N.
of cor. Pits impracticable. *No bearing trees available.*
Asc. SE. slope, 50 ft.
45.00 Rocky ridge, brs. N. and S. Desc. SW. slope, 40 ft..
54.00 Gulch, 15 lks. wide, course S Asc. SE. slope, 75 ft.
64.00 Top of asc.; thence along rocky S. slope.
76.00 Desc. SW. slope 20 ft.
79.91 The cor. of secs. 19, 20, 29 and 30.
Land, rolling and mountainous.
Soil, very rocky 4th rate, limestone formation.
Timber, scrub cedar and pinion.
Undergrowth, scrub oak and buck brush.
Mountainous land, 20 chs.

H.N.B.

W.B.K.
40.00 S. $89^{\circ} 58' W.$, on a random line, bet. secs. 19 and 30.
86.53 Set temp. $\frac{1}{4}$ sec. cor.
Intersect W. bdy. of Tp., 24 lks. S. of the cor. of
secs. 19, 24, 25 and 30, *recently established by meas,*
described in book "M", page 35.
Thence I run
S. $89^{\circ} 52' E.$, on a true line bet. secs. 19 and 30.
Asc. gradual W. slope, through heavy timber and dense
undergrowth.
10.00 Foot of mountains, brs. N. and S. Asc. W. slope, 400 ft.
26.90 Rocky ridge, brs. NE. and SW. Desc. SE. slope, 110 ft.
38.25 Draw, course NE. Thence over rolling land.
43.25 Draw, course NW. Asc. SW. slope, 80 ft.
48.53 Set an iron post, 3 ft. long, 1 in.^m diam, 26 ins. in the
ground, for $\frac{1}{4}$ sec. cor., marked on brass cap, 1913;
 $\frac{1}{4}$ S19 in N. and
S30 in S. half; from which
A pinion, 9 ins.^m diam, brs. N. $65\frac{1}{4}$ W., 187 lks. dist.,
marked $\frac{1}{4}$ S19 BT.
A pinion, 8 ins.^m diam, brs. S. $65\frac{3}{4}$ E., 98 lks. dist.,
marked $\frac{1}{4}$ S30 BT.
Continue ascent of SW. slope, 165 ft.
60.50 Top of asc.: thence along rocky S. slope.
68.50 Desc. SE. slope, 120 ft.
79.00 Gulch, 20 lks. wide, course S. Asc. SW. slope, 105 ft.
86.53 The cor. of secs. 19, 20, 29 and 30.
Land, rolling and mountainous.
Soil, very rocky 4th rate, limestone formation.
Timber, scrub cedar and pinion.

Subdivision of T. 21 N. R. 9 W.

Chains.

Undergrowth, buck brush and scrub oak.
Mountainous land, 55 chs.

NOTE: At this corner, I set off $2^{\circ} 12\frac{1}{2}' N.$ on the decl. arc; and ~~at noon~~ at noon I observe the sun on the meridian, the resulting lat. is $35^{\circ} 11\frac{1}{2}' N.$, which is slightly higher than the correct lat.

W.B.K.

H.N.B.

S. $0^{\circ} 8' E.$, bet. secs. 29 and 30.
Desc. SW. slope, 165 ft. through scattering timber and dense undergrowth.
8.00 Foot of desc. Leave timber, brs. E. and W. Thence across draw, course E.
11.00 Enter heavy timber and dense undergrowth, brs. E. and W. Asc. NE. slope, 265 ft.
25.00 Top of asc.; rocky ridge, brs. E. and W. Desc. SE. slope 135 ft.
40.00 Set an iron post, 3 ft. long, 1 in.ⁱⁿ diam, 26 ins. in the ground, for $\frac{1}{4}$ sec. cor., marked on brass cap, 1913; $\frac{1}{4} S30$ in W., and $S29$ in E. half; from which
A pinion, 10 ins.ⁱⁿ diam, brs. N. $59\frac{3}{4}' E.$, 62 lks. dist., marked $\frac{1}{4} S29$ BT.
A pinion, 8 ins.ⁱⁿ diam, brs. S. $53\frac{1}{2}' W.$, 57 lks. dist., marked $\frac{1}{4} S30$ BT.
46.00 Foot of desc.; thence across draw, course NE.
48.00 Leave draw, asc. NE. slope, 345 ft., through heavy timber.
56.00 Leave heavy timber, enter scattering timber.
72.00 Top of asc.; ridge, brs. NE. and SW. Desc. slight SE. slope.
80.00 Set an iron post, 3ft. long, 2 ins.ⁱⁿ diam, 24 ins. in the ground, for cor. of secs. 29, 30, 31 and 32, marked on brass cap, 1913; T21N R9W in N. half; $S30$ in NW., $S29$ in NE., $S32$ in SE., and $S31$ in SW. quadrant; from which
A cedar, 15 ins.ⁱⁿ diam, brs. N. $34\frac{1}{4}' W.$, 37 lks. dist., marked T21N R9W $S30$ BT.
No other trees within limits. Raise a mound of stone, 2 ft. base, $1\frac{1}{2}$ ft. high, W. of cor. Pits impracticable.
Land, mountainous.
Soil, very rocky 4th rate.
Timber, scrub cedar and pinion.
Undergrowth, buck brush and scrub oak.
Mountainous land, 70 chs.

40.00 S. $89^{\circ} 51' E.$, on a random line, bet. secs. 29 and 32.
Set temp. $\frac{1}{4}$ sec. cor.
79.72 Intersect N. and S. line, 7 lks. S. of the cor. of secs. 28, 29, 32 and 33, which is on a line, bet. secs. 29 and 32.
Thence I run
N. $89^{\circ} 54' W.$, on a true line, bet. secs. 29 and 32.
Asc. NE. slope, through scattering timber and dense undergrowth.
4.00 Top of asc.; 35 ft. above cor. Thence over rolling land.
14.00 Asc. NE. slope, 35 ft.
14.00 Top of asc.; desc. NW. slope, 100 ft.
19.20 Gulch, 30 lks. wide, course NE. Asc. SE. slope, 25 ft.
21.70 Low spur ridge, brs. NW. and SE. Desc. SW. slope, 20 ft.
24.00 Gulch, 25 lks. wide, course SE. Asc. NE. slope, 160 ft.
39.86 Set an iron post, 3 ft. long, 1 in.ⁱⁿ diam, 26 ins. in the ground, for $\frac{1}{4}$ sec. cor., marked on brass cap, 1913; $\frac{1}{4} S29$ in N. and $S32$ in S. half; from which
A cedar, 36 ins.ⁱⁿ diam, brs. N. $25\frac{1}{4}' W.$, 45 lks. dist., marked $\frac{1}{4} S29$ BT.

Chains.

79.72 ✓
 A pinion, 9 ins. diam, brs. S. $29\frac{1}{2}^{\circ}$ E., 61 lks. dist., marked $\frac{1}{4}$ S32 BT.
 Thence overrolling land.
 The cor. of secs. 29, 30, 31 and 32.
 Land, rolling and mountainous.
 Soil, very rocky 4th rate.
 Timber, scrub cedar and pinion.
 Undergrowth, scrub oak and buck brush.
 Mountainous land, 36 chs.

H.N.B.

W.B.K.

40.00 ✓
 86.76 ✓
 N. $89^{\circ} 52'$ W., on a random line, bet. secs. 30 and 31.
 Set temp. $\frac{1}{4}$ sec. cor.
 Intersect W. bdy. of Tp., 17 lks. S. of the cor. of secs. 25, 30, 31 and 36, recently established by me as described in book "M", page, 36.
 Thence I run
 ✓ S. $89^{\circ} 45'$ E., on a true line, bet. secs. 30 and 31.
 Asc. W. slope, 90 ft. through scattering timber and dense undergrowth.
 6.50 Top of knoll, desc. SE. slope, 120 ft.
 14.00 Enter heavy timber, brs. N. and S.
 20.00 Desc. E. slope.
 28.65 Draw, course S. Continue over rolling land, sloping S. Leave heavy, enter scattering timber.
 43.35 Wash, 15 lks. wide, 1 ft. deep, course SW. Asc. gradual West slope, 30 ft.
 46.76 ✓ Set an iron post, 3 ft. long, 1 in. diam, 26 ins. in the ground, for $\frac{1}{4}$ sec. cor., marked on brass cap, 1913; $\frac{1}{4}$ S30 in N. and S31 in S. half; from which
 A cedar, 8 ins. diam, brs. N. 74° E., 163 lks. dist., marked $\frac{1}{4}$ S30 BT.
 A cedar, 8 ins. diam, brs. S. 23° E., 118 lks. dist., marked $\frac{1}{4}$ S31 BT.
 60.00 Enter heavy timber and dense undergrowth, brs. N. and S.
 64.00 Asc. W. slope, 575 ft.
 84.50 Ridge, brs. N. and S.
 86.76 ✓ The cor. of secs. 29, 30, 31 and 32.
 Land, rolling and mountainous.
 Soil, very rocky; basalt, gumbo, sandstone and limestone; 4th rate.
 Timber, scrub cedar and pinion.
 Undergrowth, scrub oak and buck brush.

W.B.K.
Mar. 26, 1913.

H.N.B.

March 27, 1913. At 8 hrs. 53 m. a.m., l.m.t., I set off $35^{\circ} 10\frac{1}{2}'$ N. on the lat. arc; $2^{\circ} 33\frac{1}{2}'$ N. on the decl. arc; and determine a meridian with the solar at the cor. of secs. 29, 30, 31 and 32.
 Thence I run
 ✓ S. $0^{\circ} 8'$ E., bet. secs. 31 and 32.
 Asc. NE. slope, 40 ft., through scattering timber and dense undergrowth.
 10.00 Low ridge, brs. E. and W. Desc. SE. slope, 125 ft.
 21.75 Gulch, 20 lks. wide, course SE. Asc. NE. slope, 25 ft.
 25.00 Low ridge, brs. E. and W. Desc. slight SE. slope, 20 ft.
 28.00 Gulch, 15 lks. wide, course NE. Asc. NW. slope, 155 ft.
 40.00 Top of asc.
 Set an iron post, 3 ft. long, 1 in. diam, 26 ins. in the ground, for $\frac{1}{4}$ sec. cor., marked on brass cap, 1913; $\frac{1}{4}$ S31 in W. and S32 in E., half; from which
 A pinion, 10 ins. diam, brs. S. $67\frac{1}{2}^{\circ}$ E., 59 lks. dist., marked $\frac{1}{4}$ S32 BT.
 A pinion, 12 ins. diam, brs. N. $87\frac{1}{2}^{\circ}$ W., 70 lks. dist., marked $\frac{1}{4}$ S31 BT.

Chains.

63.80 Desc. very steep SW. slope, 680 ft.
 67.30 Gulch, 10 lks. wide, course SW.
 71.80 Draw, course SW.
 83.60 Wash, 20 lks. wide, course SE. Asc. slight NE. slope.
 85.40 Desc. SE. slope, 30 ft.
 85.40 Wash, 20 lks. wide, course SW. Asc. slight NW. slope.
 85.48 Intersect the 5th Standard Parallel N. at a point from
 which the ^{old} Standard Cor. of secs. 31 and 32 brs. S. 89°
 46' W., 575 lks. dist.
 This Standard Cor. of secs. 31 and 32 is a stone, 24X12X4
 ins., in a mound of stone, marked and witnessed
 as described by the Surveyor General. I obliterate
 all markings on the stone, and place the letters A P
 on N. face.
 At the point of intersection, I set an iron post,
 3 ft. long, 2 ins. diam., 24 ins. in the ground, for
 closing cor to secs. 31 and 32, marked on brass cap, 1913,
 CC, N. of center.
 T21N in N.,
 T20N, S5, S6, in S. and
 R9W in W. half;
 S31 in NW., and
 S32 in NE. quadrant;
 And raise a mound of stone, 2 ft. base, 1½ ft. high, N.
 of cor. Bits impracticable. *No bearing trees available.*
 Land, mountainous and rolling.
 Soil very rocky 4th rate.
 Timber, scrub cedar and pinion.
 Undergrowth, scrub oak and buck brush.
 Mountainous land, 40 chs. Mar. 27, 1913. H.N.B.

----- Mar. 27, 1913.
 General Description.

Land, mountainous, rolling & level. The N. & E. part of Tp is
 rolling & level, but the SW. portion is very mountainous.
 Cross Mt. is in sec. 32. The Tp. drains mostly to the E. &
 SE. Timber is scrub cedar & pinion. Undergrowth is scrub
 oak, chaparral & buck brush. The soil is gumbo, 2nd to 4th
 rate & contains all sizes of rocks up to massive boulders.
 There is also some limestone & sandstone. No settlers.
 is scrub cedar & pinion. Undergrowth is scrub oak,

Note: I changed all old standard quarter section corners
 on the Fifth Standard Parallel North within this
 range to Angle Points by the same method as herein-
 before described for the old standard section
 corners on said line.

William B. Kimmel.

U. S. Surveyor

Stuart Bradstreet

U. S. Transitman.

Gen. Desc.

Land, mts. roll & lev. The N. & E. part of Tp is roll & lev. but the SW. portion
 is very mts. Cross Mt. is in sec 32. The Tp. drains mostly to the E & SE.
 Timb. is scrub cedar & pinion. Undergrowth is scrub oak, chaparral & buck brush.
 The soil is gumbo 2nd to 4th rate & contains all sizes of rocks up to massive
 boulders. There is also some limestone & sandstone. No settlers.

BOOK 2686

For FINAL OATH OF UNITED STATES SURVEYOR & TRANSITMAN

see Book "L"
(Subdivisions E 1/2 - T. 25 N. R. 17 W.)

I, _____, U. S. Surveyor, do solemnly swear that, in pursuance of special instructions received from the U. S. Surveyor General for _____ bearing date of the _____ day of _____, 191 _____, I have well, faithfully, and truly, in my own proper person, and in strict conformity with said instructions, the Manual of Surveying Instructions, and the laws of the United States, surveyed all those parts or portions of _____ of the _____ Meridian, in the State of _____, which are represented in the foregoing field notes as having been executed by me, and under my direction; and I do further solemnly swear that all the corners of said survey have been established and perpetuated in strict accordance with the Manual of Surveying Instructions, and the special written instructions of the U. S. Surveyor General for _____ and in the specific manner described in the field notes, and that the foregoing are the original field notes of such survey.

U. S. Surveyor.

Subscribed by said _____, and sworn to before me }
this _____ day of _____, 191 _____



APPROVAL.

OFFICE OF THE UNITED STATES SURVEYOR GENERAL,

Phoenix Arizona OCT 5 1914

The foregoing field notes of the survey of _____ the Subdivision lines of _____

Township No. 21 North, Range No. 9 West

of the Gila and Salt River Base and Meridian, Arizona

executed by William B. Kimmel, U.S. Surveyor & H.N. Bradstreet, U.S. Transitman under ~~his~~ ^{their} special instructions dated October 18, 1912 for Group 24/191 _____, having been critically examined, and the necessary corrections and explanations made, the said field notes, and the surveys they describe, are hereby approved.

Frank S. Ingalls
U. S. Surveyor General.
of Arizona

I certify that the foregoing transcript of the field notes of the above described surveys in _____, has been correctly copied from the original notes on file in this office.