

2690

BOOK L

2690

Subdivisions
FIELD NOTES

OF THE SURVEY OF THE

Subdivision lines of

East half TOWNSHIP 25 NORTH, RANGE 17 WEST

of the Gila & Salt River Base & Meridian,

In the State of ARIZONA

EXECUTED BY

H. N. BRADSTREET, U.S. Transitman

&

WILLIAM B. KIMMEL, U.S. Surveyor

In the capacity of U. S. Surveyor, under instructions dated October 18, 1912,

issued by the United States Surveyor General to govern surveys included in
Group No. 24, which were approved by the Commissioner of the General Land

Office, November 5, 1912, pursuant to authority contained in the Act of

Congress dated June 25, 1910

Survey commenced May 22, 1913

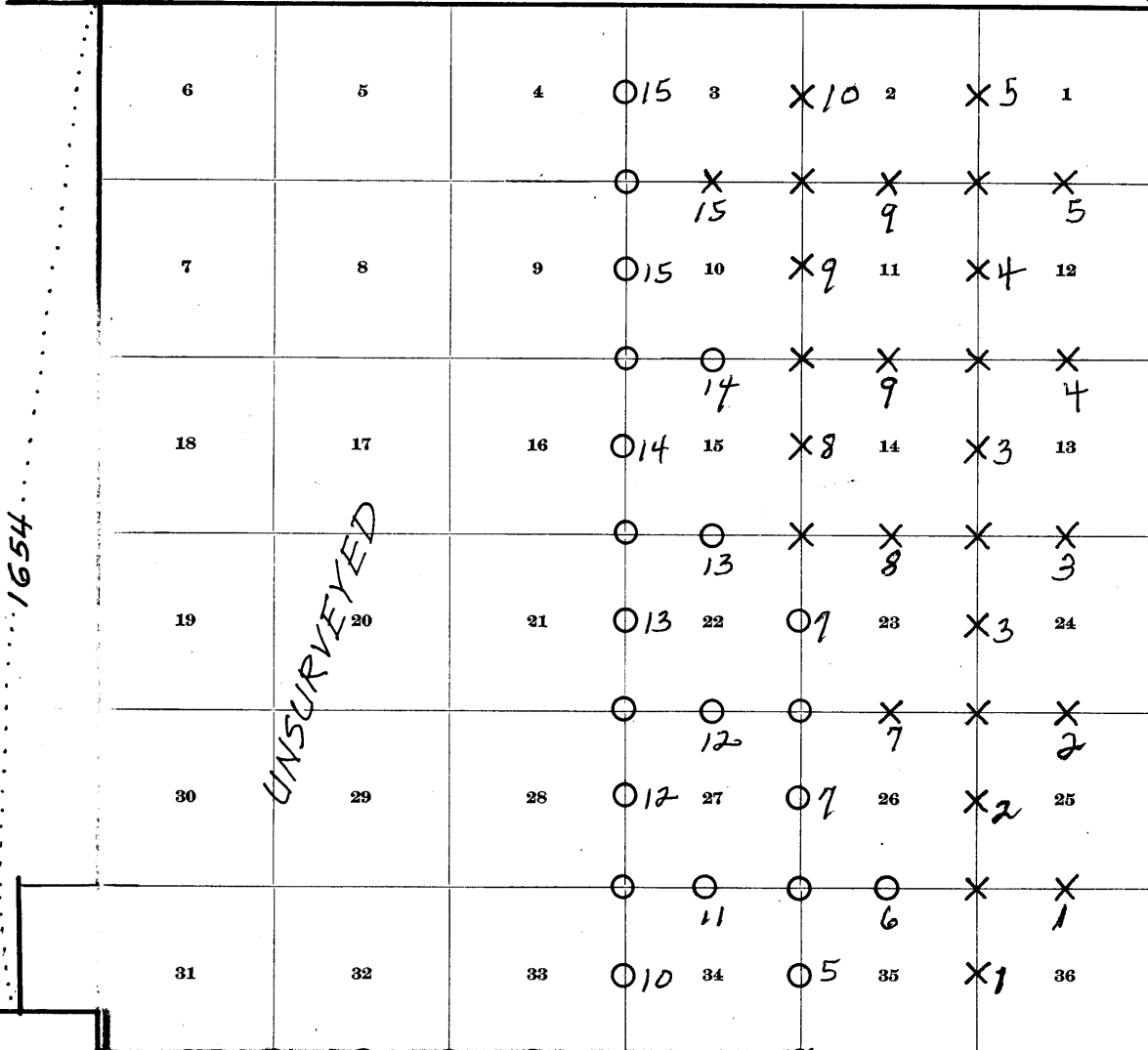
Survey completed " 25, 1913

BOOK 2690

INDEX DIAGRAM.

Township 25 North Range 17 West

2417



UNSURVEYED

RESURVEYED

6th Standard Parallel North

X Corners set by W. B. Kimmel

O " " " H. N. Bradstreet

— Book "O"

Chains.

Survey commenced May 22, 1913, and executed with Young and Sons Light Mountain Transits Nos. 7695 and 8541, with Smith Solar Attachments. For description of Instruments, and certificate of approval, see book "O", page 1. *NOTE: Initials "W.B.K." and "H.N.B." throughout the following notes indicate surveys by W.B. Kimmel, U.S. Surveyor and H.N. Bradstreet, U.S. Transitman, respectively.*

For tests of the adjustment of these transits, see book "O", page 1.

At 8 hrs. 30 m., a.m., l.m.t., I set off $35^{\circ}30\frac{1}{2}'N.$ on the lat. arc; $20^{\circ}22'N.$ on the decl. arc; and determine a meridian with the solar at the reestablished standard cor. of secs. 35 and 36, ON 6TH STANDARD PARALLEL NORTH recently reestablished by me as described in book "O", page 40.

Thence I run N. $0^{\circ}1'W.$, bet. secs. 35 and 36. Over gently rolling land, draining E.

- 11.75 Road, brs. E. and W.
- 13.75 Wash, 75 lks. wide, 1 ft. deep, course E.
- 17.25 Wash, 90 lks. wide, 3 ft. deep, course E.
- 27.80 Trail, brs. E. and W.
- 29.20 Dim road, brs. N. $70^{\circ}E.$, and S. $70^{\circ}W.$

40.00 Set an iron post, 3 ft. long, 1 in. diam, 26 ins. in the ground, for $\frac{1}{4}$ sec. cor., marked on brass cap, 1913; $\frac{1}{4}S35$ in W. and $S36$ in E. half;

Dig pits, 18 X 18 X 12 ins., N. and S. of post, 3 ft. dist., and raise a mound of earth, $3\frac{1}{2}$ ft. base, $1\frac{1}{2}$ ft. high, W. of cor. *No bearing trees within limits.*

80.00 Set an iron post, 3 ft. long, 2 ins. diam, 24 ins. in the ground, for cor. of secs. 25, 26, 35 and 36, marked on brass cap, 1913;

T25N R17W in N. half;
S26 in NW.,
S25 in NE.,
S36 in SE. and
S35 in SE. quadrant;

Dig pits, 18 X 18 X 12 ins., in each sec., $5\frac{1}{2}$ ft. dist.; and raise a mound of earth, 4 ft. base, 2 ft. high, N. of cor. *No bearing trees within limits.*

Land, level and rolling.
Soil, 2nd rate.
Short undergrowth.

40.00 East, on a random line, bet. secs. 25 and 36.
Set temp. $\frac{1}{4}$ sec. cor.

80.08 Intersect E. bdy. of Tp., 11 lks. S. of the ^{OLD} cor. of secs. 25, 30, 31 and 36, which is an iron post, 3 ins. diam, 12 ins. above ground, marked ON BRASS CAP and witnessed as described by the Surveyor General.

Thence I run S. $89^{\circ}55'W.$, on a true line, bet. secs. 25 and 36. Over rolling land.

- 88.25 Wash, 225 lks. wide, 2 ft. deep, course N.
- 14.65 Road, brs. NE. and SW.

40.04 Set an iron post, 3 ft. long, 1 in. diam, 26 ins. in the ground, for $\frac{1}{4}$ sec. cor., marked on brass cap, 1913; $\frac{1}{4}S25$ in N. and $S36$ in S. half;

Dig pits, 18 X 18 X 12 ins., E. and W. of post, 3 ft. dist.; and raise a mound of earth, $3\frac{1}{2}$ ft. base, $1\frac{1}{2}$ ft. high, N. of cor. *No bearing trees within limits.*

80.08 The cor. of secs. 25, 26, 35 and 36.
Land, level and rolling.; draining NE.
Soil, sandy, 2nd rate.

Chains.

Undergrowth, short.

NOTE:- The sky was overcast at noon, making an observation for latitude impossible.

May 22, 1913.

May 23, 1913: At 8 hrs. 23 m., a.m., l.m.t., I set off
 $35^{\circ} 31\frac{1}{2}'$ N. on the lat. arc; $20^{\circ} 33\frac{1}{2}'$ N. on the decl. arc;
 and determine a meridian with the solar at the cor. of secs.
 25, 26, 35 and 36.

Thence I run,
 N. $0^{\circ} 1' W.$, bet. secs. 25 and 26.

Over level land.

40.00 Set an iron post, 3 ft. long, 1 in. in diam, 26 ins. in the
 ground, for $\frac{1}{4}$ sec. cor., marked on brass cap, 1913;
 $\frac{1}{4}$ S26 in W., and
 $\frac{1}{4}$ S25 in E. half;

Dig pits, 18 X 18 X 12 ins., N. and S. of post, 3 ft.
 dist.; and raise a mound of earth, $3\frac{1}{2}$ ft. base, $1\frac{1}{2}$ ft.
 high, W. of cor. *No bearing trees within limits.*

80.00 Set an iron post, 3 ft. long, 2 ins. in diam, 24 ins. in
 the ground, for cor. of secs. 23, 24, 25 and 26,
 marked on brass cap, 1913;

T25N R17W in N. half;

S23 in NW.,

S24 in NE.,

S25 in SE. and

S26 in SW. quadrant;

Dig pits, 18 X 18 X 12 ins., in each sec., $5\frac{1}{2}$ ft. dist;
 and raise a mound of earth, 4 ft. base, 2 ft. high, W.
 of cor. *No bearing trees within limits.*

Land, level.

Soil, sandy, 2nd rate.

Short undergrowth.

40.00 N. $89^{\circ} 55' E.$, on a random line, bet. secs. 24 and 25.
 Set temp. $\frac{1}{4}$ sec. cor.

79.95 Intersect the E. bdy. of the Tp., 623 lks. S. of the old
 Witness cor. to cor. of secs. 19, 24, 25 and 30,
 which is an iron post, 3 ins. in diam, 12 ins. above
 ground, marked on ^{N. BRASS CAP} and witnessed as described by the
 Surveyor General.

Thence I run *from true point for corner.*S. $89^{\circ} 45' W.$, on a true line, bet. secs. 24 and 25.

Over level land, across wash.

1.75 Leave wash, course N.

3.10 Wash, 7 lks. wide, 1 ft. deep, course N.

3.95 Wash, 12 lks. wide, 2 ft. deep, course N.

39.975 Set an iron post, 3 ft. long, 1 in. in diam, 26 ins. in the
 ground, for $\frac{1}{4}$ sec. cor., marked on brass cap, 1913;
 $\frac{1}{4}$ S24 in N. and
 $\frac{1}{4}$ S25 in S. half;

Dig pits, 18 X 18 X 12 ins., E. and W. of post, 3 ft.
 dist.; and raise a mound of earth, $3\frac{1}{2}$ ft. base, $1\frac{1}{2}$ ft.
 high, N. of cor. *No bearing trees within limits.*

79.95 The cor. of secs. 23, 24, 25 and 26.

Land, level.

Soil, sandy, 2nd rate.

Short undergrowth.

Subdivision of East half of T25N, R.17W

Chains.

N. 0° 1' W., bet. secs. 23 and 24.
 Over level land.
 40.00 Set an iron post, 3 ft. long, 1 in.ⁱⁿdiam, 26 ins. in the ground, for ¼ sec. cor., marked on brass cap, 1913; ½ S23 in W. and S24 in E. half;
 Dig pits, 18 X 18 X 12 ins., N. and S. of post, 3 ft. dist., and raise a mound of earth, 3½ ft. base, 1½ ft. high, W. of cor. *No bearing trees within limits.*
 80.00 Set an iron post, 3 ft. long, 2 ins.ⁱⁿdiam, 24 ins. in the ground, for cor. of secs. 13, 14, 23 and 24, marked on brass cap, 1913;
 T25N R17W in N. half;
 S14 in NW.,
 S13 in NE.,
 S24 in SE., and
 S23 in SW. quadrant;
 Dig pits, 18 X 18 X 12 ins., in each sec., 5½ ft. dist.; and raise a mound of earth, 4 ft. base, 2 ft. high, W. of cor. *No bearing trees within limits.*
 Land, level.
 Soil, sandy, 2nd rate.
 Short undergrowth.

NOTE - At this corner, I set off 20° 35' N. on the decl. arc; and at noon —————, I observe the sun on the meridian, the resulting lat. is 35° 33' N., which is slightly less than the correct lat.

40.00 N. 89° 45' E., on a random line, bet. secs. 13 and 24.
 Set temp. ¼ sec. cor.
 79.92 Intersect E. bdy. of Tp., 7 lks. N. of the ^{1st} cor. of secs. 13, 18, 19 and 24, which is an iron post, 3 ins.ⁱⁿdiam, 12 ins. above ground, marked ^{ON BRASS CAP} and witnessed as described by the Surveyor General.
 Thence I run
 S. 89° 48' W., on a true line, bet. secs. 13 and 24.
 Over level land.
 39.96 Set an iron post, 3 ft. long, 1 in.ⁱⁿdiam, 26 ins. in the ground, for ¼ sec. cor., marked on brass cap, 1913; ½ S13 in N. and S24 in S. half;
 Dig pits, 18 X 18 X 12 ins., E. and W. of post, 3 ft. dist., and raise a mound of earth, 3½ ft. base, 1½ ft. high, N. of cor. *No bearing trees within limits.*
 79.92 The cor. of secs. 13, 14, 23 and 24.
 Land, level.
 Soil, sandy, 2nd rate.
 Undergrowth, short.

N. 0° 1' W., bet. secs. 13 and 14.
 Over level land.
 40.00 Set an iron post, 3 ft. long, 1 in.ⁱⁿdiam, 26 ins. in the ground, for ¼ sec. cor., marked on brass cap, 1913; ½ S14 in W. and S13 in E. half;
 Dig pits, 18 X 18 X 12 ins., N. and S. of post, 3 ft. dist.; and raise a mound of earth, 3½ ft. base, 1½ ft. high, W. of cor. *No bearing trees within limits.*
 80.00 Set an iron post, 3 ft. long, 2 ins.ⁱⁿdiam, 24 ins. in the ground, for cor. of secs. 11, 12, 13 and 14, marked on brass cap, 1913;

Chains.

T25N R17 W in N. half;
 S11 in NW.,
 S12 in NE.,
 S13 in SE., and
 S14 in SW. quadrant;
 Dig pits, 18 X 18 X 12 ins., in each sec., 5½ ft. dist.;
 and raise a mound of earth, 4 ft. base, 2 ft. high, W.
 of cor. *No bearing trees within limits.*
 Land, level.
 Soil, sandy, 2nd rate.
 Undergrowth, short.

40.00 N. 89° 48' E., on a random line, bet. secs. 12 and 13.
 79.86 Set temp. ¼ sec. cor.
 Intersect E. bdy. of Tp., 2 lks. S. of the ^{OLD} Cor. of secs.
 7, 12, 13 and 18, which is an iron post, 3 ins. ^{INDIAN} diam,
 12 ins. above ground, marked ^{ON BRASS CAP} and witnessed as describ-
 ed by the Surveyor General.
 Thence I run
 39.93 S. 89° 47' W., on a true line, bet. secs. 12 and 13.
 Over level land.
 Set an iron post, 3 ft. long, 1 in. ^{INDIAN} diam, 26 ins. in the
 ground, for ¼ sec. cor., marked on brass cap, 1913;
 79.86 ¼ S12 in N. and
 S13 in S. half;
 Dig pits, 18 X 18 X 12 ins., E. and W. of post, 3 ft.
 dist.; and raise a mound of earth, 3½ ft. base, 1½ ft.
 high, N. of cor. *No bearing trees within limits.*
 The cor. of secs. 11, 12, 13 and 14.
 Land, level.
 Soil, sandy, 2nd rate.
 Undergrowth, short.

40.00 N. 0° 1' W., bet. secs. 11 and 12.
 Over level land.
 Set an iron post, 3 ft. long, 1 in. ^{INDIAN} diam, 26 ins. in the
 ground, for ¼ sec. cor., marked on brass cap, 1913;
 80.00 ¼ S11 in W. and
 S12 in E. half;
 Dig pits, 18 X 18 X 12 ins., N. and S. of post, 3 ft.
 dist.; and raise a mound of earth, 3½ ft. base, 1½ ft.
 high, W. of cor. *No bearing trees within limits.*
 Set an iron post, 3 ft. long, 2 ins. ^{INDIAN} diam, 24 ins. in
 the ground, for cor. of secs. 1, 2, 11 and 12, mark-
 ed on brass cap, 1913;
 T25 N R17 W in N. half;
 S2 in NW.,
 S1 in NE.,
 S12 in SE., and
 S11 in SW. quadrant;
 Dig pits, 18 X 18 X 12 ins., in each sec., 5½ ft. dist.;
 and raise a mound of earth, 4 ft. base, 2 ft. high, W.
 of cor. *No bearing trees within limits.*
 Land, level.
 Soil, sandy 2nd rate.
 Undergrowth, short.

May 23, 1913.

Subdivision of The E. half of T. 25 N., R. 17 W.

Chains.

May 25, 1913.
 N. 89° 47' E., on a random line, bet. secs. 1 and 12.
 40.00 Set temp. 1/4 sec. cor.
 79.91 Intersect E. bdy. of Tp., 9 lks. S. of the ^{OLD} cor. of secs. 1, 6, 7 and 12, which is an iron post, 3 ins. ^{INDIAN} diam, 12 ins. above ground, marked ^{ON BRASS CAP} and witnessed as described by the Surveyor General.
 Thence I run
 S. 89° 43' W., on a true line, bet. secs. 1 and 12.
 Over level land.
 3.10 Wash, 12 lks. wide, 18 ins. deep, course N.
 30.90 Wash, 9 lks. wide, 1 ft. deep, course N.
 39.955 Set an iron post, 3 ft. long, 1 in. ^{INDIAN} diam, 26 ins. in the ground, for 1/4 sec. cor., marked on brass cap, 1913;
 1/4 S1 in N. and
 1/4 S12 in S. half;
 Dig pits, 18 X 18 X 12 ins., E. and W. of post, 3 ft. dist.; and raise a mound of earth, 3 1/2 ft. base, 1 1/2 ft. high, N. of cor. *No bearing trees within limits.*
 79.91 The cor. of secs. 1, 2, 11 and 12.
 Land, level.
 Soil, gumbo, 3rd rate.
 Undergrowth, short.

NOTE: At the cor. of secs. 1, 2, 11, and 12, I set off 20° 59 1/2' N. on the decl. arc; and at noon - I observe the sun on the meridian, the resulting lat. is 35° 35' N., which is *slightly higher* than the correct lat.

N. 0° 1' W., on a random line, bet. secs. 1 and 2.
 40.00 Set temp. 1/4 sec. cor.
 80.44 Intersect N. bdy. of Tp., 17 lks. E. of the ^{OLD} cor. of secs. 1, 2, 35 and 36, which is an iron post, 3 ins. ^{INDIAN} diam, 12 ins. above ground, marked ^{ON BRASS CAP} and witnessed as described by the Surveyor General.
 Thence I run
 S. 0° 8' E., on a true line, bet. secs. 1 and 2.
 Over level land.
 40.44 Set an iron post, 3 ft. long, 1 in. ^{INDIAN} diam, 26 ins. in the ground, for 1/4 sec. cor., marked on brass cap, 1913;
 1/4 S2 in W., and
 S1 in E. half;
 Dig pits, 18 X 18 X 12 ins., N. and S. of post, 3 ft. dist.; and raise a mound of earth, 3 1/2 ft. base, 1 1/2 ft. high, W. of cor. *No bearing trees within limits.*
 80.44 The cor. of secs. 1, 2, 11 and 12.
 Land, level.
 Soil, gumbo, 3rd rate.
 Undergrowth, short.

W.B.K.
May 25, 1913.

H.N.B.

May 23, 1913: At 9 hrs. ^{0m.} a.m., l.m.t., I set off 35° 30 1/2' N. on the lat. arc; 20° 33 1/2' N. on the decl. arc; and determine a meridian with the solar at the reestablished standard cor. of secs. 34 and 35, on the south Bdy. of the Tp. ^(6TH STANDARD PARALLEL NORTH) which is described in book "O", page 40.
 Thence I run,
 N. 0° 1' W., bet. secs. 34 and 35.
 Along rocky E. slope, of low ridge, brs. N. and S.
 7.00 Gulch, 5 lks. wide, course E. Enter scattering mesquite and cedar.
 9.70 Wash, 8 lks. wide, 1 ft. deep, course SE.

Chains.

12.00 Leave ridge, thence across level land.
 14.65 Wash, 45 lks. wide, 2 ft. deep, course E.
 19.25 Wash, 1 ch. wide, 1 ft. deep, course NE.
 20.00 Leave undergrowth; asc. SE. slope, 40 ft.
 24.00 Top of asc.; desc. NE. slope, 30 ft.
 27.35 Wash, 10 lks. wide, 1 ft. deep, course SE. Asc. SE. slope, 285 ft.
 40.00 Set an iron post, 3 ft. long, 1 in. diam., 26 ins. in the ground, for $\frac{1}{4}$ sec. cor., marked on brass cap, 1913; S34 in W. and S35 in E. half; And raise a mound of stone, 2 ft. base, $1\frac{1}{2}$ ft. high, W. of cor. Pits impracticable. *No bearing trees within limits.*
 43.00 Rocky ridge, brs. E. and W. Desc. N. slope, 325 ft.
 55.75 Gulch, 30 lks. wide, 4 ft. deep, course NE.
 57.00 Gulch, 40 lks. wide, course NW.
 60.00 Foot of desc.; thence along W. slope.
 64.00 Gulch, 10 lks. wide, course W. Asc. SW. slope, 40 ft.
 69.50 End of asc.; spur ridge, extends 4 chs. NW. Desc. NW. slope, 115 ft.
 75.00 Foot of desc.; leave mountain and rocks. Thence over sandy soil.
 80.00 Set an iron post, 3 ft. long, 2 ins. diam., 24 ins. in the ground, for cor. of secs. 26, 27, 34 and 35, marked on brass cap, 1913; T25N R17W in N. half; S27 in NW., S26 in NE., S35 in SE., and S34 in SW. quadrant; And raise a mound of stone, 2 ft. base, $1\frac{1}{2}$ ft. high, W. of cor. Pits impracticable. *No bearing trees within limits.* Land, mountainous and rolling. Soil, rocky 4th rate on mountain; sandy 2nd rate on flat. No timber. Undergrowth, short cedar, cat claw, and mesquite.

NOTE: - At this corner I set off $20^{\circ}35'N.$ on the decl. arc; and at noon ~~the sun on the meridian~~, I observe the sun on the meridian, the resulting lat is $35^{\circ}31\frac{1}{2}'N.$, which is slightly higher than the correct lat.

40.00 East on a random line, bet. secs. 26 and 35.
 Set temp. $\frac{1}{4}$ sec. cor.
 80.12 Intersect N. and S. line, 9 lks. N. of the cor. of secs. 25, 26, 35 and 36,
 Thence I run, N. $89^{\circ}56'W.$, on a true line, bet. secs. 26 and 35. Over gently rolling land, draining N.
 15.35 Road, brs. N. and S.
 40.00 Set an iron post, 3 ft. long, 1 in. diam., 26 ins. in the ground, for $\frac{1}{4}$ sec. cor., marked on brass cap, 1913; S26 in N. and S35 in S. half; And raise a mound of stone, 2 ft. base, $1\frac{1}{2}$ ft. high, N. of cor. Pits impracticable. *No bearing trees within limits.*
 55.10 Road, brs. NW. and SE. Cane Springs to Kingman.
 64.00 Thence along foot of black granite mountains.
 80.12 The cor. of secs. 26, 27, 34 and 35. Land, level and rolling. Soil, sandy loam, 2nd rate. No timber. Undergrowth, sagebrush and cacti.

Subdivision of The E. Half of T. 25 N., R. 17 W. 7

Chains.

N. $0^{\circ} 1' W.$, bet. secs. 26 and 27.
 Over level land, through sagebrush and cacti undergrowth.
 6.40 Wash, 25 lks. wide, 1 ft. deep, course NE.
 19.35 Wash, 20 lks. wide, course NE.
 36.75 Road, Cane Springs to Kingman, brs. NW. and SE.
 40.00 Set an iron post, 3 ft. long, 1 in.ⁱⁿdiam, 26 ins. in
 the ground, for $\frac{1}{4}$ sec. cor., marked on brass cap, 1913;
 $\frac{1}{4}$ S27 in W., and
 S26 in E. half;
 And raise a mound of stone, 2 ft. base, $1\frac{1}{2}$ ft. high,
 W. of cor. Pits impracticable. *No bearing trees within limits.*
 Thence over level land.
 80.00 Set an iron post, 3 ft. long, 2 ins.ⁱⁿdiam, 24 ins. in
 the ground, for cor. of secs. 22, 23, 26 and 27,
 marked on brass cap, 1913;
 T25N R17W in N. half;
 S22 in NW.,
 S23 in NE.,
 S26 in SE. and
 S27 in SW. quadrant;
 And raise a mound of stone, 2 ft. base, $1\frac{1}{2}$ ft. high,
 W. of cor. Pits impracticable. *No bearing trees within limits.*
 Land, level and rolling.
 Soil, sandy loam, 2nd rate.
 No timber.
 Undergrowth, mesquite, sagebrush and cacti.

40.00 S. $89^{\circ} 56' E.$, on a random line, bet. secs. 23 and 26.
 Set temp. $\frac{1}{4}$ sec. cor.
 80.22 Intersect N. and S. line, 7 lks. N. of the cor. of
 secs. 23, 24, 25 and 26,
 Thence I run
 N. $89^{\circ} 53' W.$, on a true line, bet. secs. 23 and 26.
 Over level land, through scattering undergrowth.
 19.65 Old road, brs. N. and S.
 25.70 Old road, brs. N. and S.
 40.11 Set an iron post, 3 ft. long, 1 in.ⁱⁿdiam, 26 ins. in the
 ground, for $\frac{1}{4}$ sec. cor., marked on brass cap, 1913;
 $\frac{1}{4}$ S23 in N. and
 S26 in S. half;
 And raise a mound of stone, 2 ft. base, $1\frac{1}{2}$ ft. high, N.
 of cor. Pits impracticable. *No bearing trees within limits.*
 80.22 The cor. of secs. 22, 23, 26 and 27.
 Land, level.
 Soil, sandy loam, 2nd rate.
 No timber.
 Undergrowth, sagebrush and cacti.

15.00 N. $0^{\circ} 1' W.$, bet. secs. 22 and 23.
 Over level land, through scattering undergrowth.
 17.00 Asc. S. slope of rocky point, 45 ft.
 End of asc. Another small rocky hill brs. N. $57\frac{1}{2}^{\circ} E.$, about
 13 chs. dist.
 Desc. NE. slope, 50 ft.
 19.00 Foot of desc.; thence over level, sandy land.
 40.00 Set an iron post, 3 ft. long, 1 in.ⁱⁿdiam, 26 ins. in the
 ground, for $\frac{1}{4}$ sec. cor., marked on brass cap, 1913;
 $\frac{1}{4}$ S22 in W. and
 S23 in E. half;
 And raise a mound of stone, 2 ft. base, $1\frac{1}{2}$ ft. high, W.
 of cor. Pits impracticable. *No bearing trees within limits.*
 May 23, 1913.
 H.N.B.

Chains.	<p><i>W.B.K.</i></p> <p>May 24, 1913. At 8 hrs. 15 m., a.m., l.m.t., I set off 35° 33' N. on the lat. arc; 20° 45' N. on the decl. arc; and determine a meridian with the solar at the $\frac{1}{4}$ sec. cor. bet. secs. 22 and 23, above described</p> <p>Thence I run N. 0° 1' W., bet. secs. 22 and 23, on $N\frac{1}{2}$ mile. Over level land.</p> <p>55.00 Trail, brs. E. and W.</p> <p>80.00 Set an iron post, 3 ft. long, 2 ins. in diam, 24 ins. in the ground, for cor. of secs. 14, 15, 22 and 23, marked on brass cap, 1913; T25N R17W in N. half; S15 in NW., S14 in NE., S23 in SE., and S22 in SW. quadrant; Dig pits, 18 X 18 X 12 ins., in each sec., $5\frac{1}{2}$ ft. dist.; and raise a mound of earth, 4 ft. base, 2 ft. high, W. of cor. <i>No bearing trees within limits.</i> Land, level. Soil, sandy loam, 2nd rate. Undergrowth, sagebrush.</p>
40.00	<p>S. 89° 53' E., on a random line, bet. secs. 14 and 23.</p> <p>Set temp. $\frac{1}{4}$ sec. cor.</p>
80.40	<p>Intersect N. and S. line, 28 lks. S. of the cor. of secs. 13, 14, 23 and 24,</p>
40.20	<p>Thence I run S. 89° 55' W., on a true line, bet. secs. 14 and 23. Over level land.</p> <p>Set an iron post, 3 ft. long, 1 in. in diam, 26 ins. in the ground, for $\frac{1}{4}$ sec. cor., marked on brass cap, 1913; $\frac{1}{4}$S14 in N. and S23 in S. half; Dig pits, 18 X 18 X 12 ins., E. and W. of post, 3 ft. dist.; and raise a mound of earth, $3\frac{1}{2}$ ft. base, $1\frac{1}{2}$ ft. high, N. of cor. <i>No bearing trees within limits.</i></p>
54.00	<p>Road, brs. N. 10° W., and S. 10° E.</p>
80.40	<p>The cor. of secs. 14, 15, 22 and 23. Land, level. Soil, sandy, 2nd rate. Undergrowth, short sagebrush.</p>
21.30	<p>N. 0° 1' W., bet. secs. 14 and 15. Over level land.</p>
26.80	<p>Wash, 1 ch. wide, 2 ft. deep, course E.</p>
40.00	<p>Wash, 15 lks. wide, 18 ins. deep, course E.</p> <p>Set an iron post, 3 ft. long, 1 in. in diam, 26 ins. in the ground, for $\frac{1}{4}$ sec. cor., marked on brass cap, 1913; $\frac{1}{4}$S15 in W. and S14 in E. half; Dig pits, 18 X 18 X 12 ins., N. and S. of post, 3 ft. dist.; and raise a mound of earth, $3\frac{1}{2}$ ft. base, $1\frac{1}{2}$ ft. high, W. of cor. <i>No bearing trees within limits.</i></p>
80.00	<p>Set an iron post, 3 ft. long, 2 ins. in diam, 24 ins. in the ground, for cor. of secs. 10, 11, 14 and 15, marked on brass cap, 1913; T25N R17W in N. half; S10 in NW., S11 in NE., S14 in SE. and S15 in SW. quadrant;</p>

Subdivision of The East Half of T. 25 N., R. 17 W.

Chains.

Dig pits, 18 X 18 X 12 ins., in each sec., 5 1/2 ft. dist.; and raise a mound of earth, 4 ft. base, 2 ft. high, W. of cor. *No bearing trees within limits.*

Land, level.

Soil, sandy, 2nd rate.

Undergrowth, short sagebrush.

NOTE: - At this corner, I set off 20° 46 1/2' N. on the decl. arc; and at noon — — — — — I observe the sun on the meridian, the resulting lat. is 35° 34' N., which is correct.

N. 89° 55' E., on a random line, bet. secs. 11 and 14.

40.00 Set temp. 1/4 sec. cor.

80.12 Intersect N. and S. line, 2 lks. S. of the cor. of secs. 11, 12, 13 and 14,

Thence I run

S. 89° 54' W., on a true line, bet. secs. 11 and 14.

Over level land.

40.06 Set an iron post, 3 ft. long, 1 in. indian, 26 ins. in the ground, for 1/4 sec. cor., marked on brass cap, 1913; 1/4 S11 in N. and 1/4 S14 in S. half;

Dig pits, 18 X 18 X 12 ins., E. and W. of post, 3 ft. dist.; and raise a mound of earth, 3 1/2 ft. base, 1 1/2 ft. high, N. of cor. *No bearing trees within limits.*

72.45 Road, brs. N. 10° W., and S. 10° E.

80.12 The cor. of secs. 10, 11, 14 and 15.

Land, level.

Soil, sandy 2nd rate.

No timber.

Undergrowth, short sagebrush.

N. 0° 1' W., bet. secs. 10 and 11.

Over level land.

25.00 Road, brs. N. 20° W., and S. 20° E.

40.00 Set an iron post, 3 ft. long, 1 in. indian, 26 ins. in the ground, for 1/4 sec. cor., marked on brass cap, 1913; 1/4 S10 in W. and 1/4 S11 in E. half;

Dig pits, 18 X 18 X 12 ins., N. and S. of post, 3 ft. dist.; and raise a mound of earth, 3 1/2 ft. base, 1 1/2 ft. high, W. of cor. *No bearing trees within limits.*

80.00 Set an iron post, 3 ft. long, 2 ins. indian, 24 ins. in the ground, for cor. of secs. 2, 3, 10 and 11, marked on brass cap, 1913; T25N R17W in N. half;

S3 in NW.,

S2 in NE.,

S11 in SE., and

S10 in SW. quadrant;

Dig pits, 18 X 18 X 12 ins., in each sec., 5 1/2 ft. dist.; and raise a mound of earth, 4 ft. base, 2 ft. high, W. of cor. *No bearing trees within limits.*

Land, level.

Soil, sandy 2nd rate.

Undergrowth, short sagebrush.

No timber.

May 24, 1913.

May 25, 1913: At 8 hrs. 5 m. a.m., l.m.t., I set off 35° 35' N. on the lat. arc; 20° 55 1/2' N. on the decl. arc; and determine a meridian with the solar at the cor. of secs. 2, 3, 10 and 11, above described.

Subdivision of The E. half of T. 25 N., R. 19 W.

Chains.

Thence I run
 N. 89° 54' E., on a random line, bet. secs. 2 and 11.
 40.00 Set temp. $\frac{1}{4}$ sec. cor.
 80.04 Intersect N. and S. line, 7 lks. S. of the cor. of secs.
 1, 2, 11 and 12,
 Thence I run
 S. 89° 51' W., on a true line, bet. secs. 2 and 11.
 Over level land.
 40.02 Set an iron post, 3 ft. long, 1 in. in diam, 26 ins. in the
 ground, for $\frac{1}{4}$ sec. cor., marked on brass cap, 1913;
 $\frac{1}{4}$ S2 in N. and
 S11 in S. half;
 Dig pits, 18 X 18 X 12 ins., E. and W. of post, 3 ft.
 dist.; and raise a mound of earth, $3\frac{1}{2}$ ft. base, $1\frac{1}{2}$ ft.
 high, N. of cor. *No bearing trees within limits.*
 80.04 The cor. of secs. 2, 3, 10 and 11.
 Land, level.
 Soil, sandy, 2nd rate.
 Undergrowth, sagebrush.

May 25, 1913.

May 24, 1913.
 40.00 N. 0° 1' W., on a random line, bet. secs. 2 and 3.
 Set temp. $\frac{1}{4}$ sec. cor.
 80.55 Intersect the N. bdy. of the Tp., 33 lks. E. of the ^{old} cor.
 of secs. 2, 3, 34 and 35, which is an iron post, 3 ins.
 in diam, 12 ins. above ground, marked ^{ON BRASS CAP} and witnessed as
 described by the Surveyor General.
 Thence I run
 S. 0° 15' E., on a true line, bet. secs. 2 and 3.
 Over level land.
 40.55 Set an iron post, 3 ft. long, 1 in. in diam, 26 ins. in the
 ground, for $\frac{1}{4}$ sec. cor., marked on brass cap, 1913;
 $\frac{1}{4}$ S3 in W. and
 S2 in E. half;
 Dig pits, 18 X 18 X 12 ins., N. and S. of post, 3 ft.
 dist.; and raise a mound of earth, $3\frac{1}{2}$ ft. base, $1\frac{1}{2}$ ft.
 high, W. of cor. *No bearing trees within limits.*
 80.55 The cor. of secs. 2, 3, 10 and 11.
 Land, level.
 Soil, sandy, 2nd rate.
 No timber.
 Undergrowth, short sagebrush.

W.B.K.
May. 24, 1913.

H.N.B.
 May 24, 1913. At 9 hrs. 20 m., a.m., l.m.t., I set off
 $35^{\circ} 30\frac{1}{2}'$ N. on the lat. arc; $20^{\circ} 45'$ N. on the decl. arc;
 and determine a meridian with the solar at the point for
 standard cor. of secs. 33 and 34, on S. bdy. of Tp. (6th Standard
 Parallel North) in wash
 N. 0° 2' W., bet. secs. 33 and 34.
 Across wash.
 .50 Leave wash, course S. Thence over overflow land, through
 mesquite undergrowth.
 1.25 The witness cor. to cor. of secs. 33 and 34, recently
 established by me as described in book "O", page 41.
 6.00 Wash, 30 lks. wide, 6 ins. deep, course E.
 11.60 Wash, 40 lks. wide, 6 ins. deep, course NE.
 18.00 Wash, 50 lks. wide, course SE. Leave undergrowth, brs. E.
 and W.
 24.00 Wash, 10 lks. wide, 6 ins. deep, course SE. Asc. SW. slope
 of mountain.
 36.15 Wash, 15 lks. wide, 1 ft. deep, course SW.

Subdivision of T. 25 N., R. 17 W.

Chains.

40.00 Asc. S. slope, 100 ft.
 Set an iron post, 3 ft. long, 1 in. diam, 26 ins. in the ground, for 1/4 sec. cor., marked on brass cap, 1913; 1/4 S33 in W. and 1/4 S34 in E. half;
 And raise a mound of stone, 2 ft. base, 1 1/2 ft. high, W. of cor. Pits impracticable. *No bearing trees within limits.*

42.60 End of asc.; spur ridge, extends 50 lks. SW. Thence along E. slope.

48.00 Asc. SE. slope, 145 ft.

51.00 Ridge, brs. E. and W. Desc. NE. slope, 115 ft.

66.85 Gulch, 6 lks. wide, course NE. Continue desc.

68.30 Canyon, 20 lks. wide, course E. Heads 6 chs. NW. Asc. SE. slope, 150 ft.

74.00 Spur ridge, brs. E. and W. Extends 5 chs. E. Desc. NE. slope, 35 ft.

75.00 Head of gulch, course E. Asc. SE. slope, 120 ft.

80.00 Set an iron post, 3 ft. long, 2 ins. diam, 24 ins. in the ground, for cor. of secs. 27, 28, 33 and 34, marked on brass cap, 1913;
 T25N R17W in N. half;
 S28 in NW.,
 S27 in NE.,
 S34 in SE. and
 S33 in SW. quadrant;
 And raise a mound of stone, 2 ft. base, 1 1/2 ft. high, W. of cor. Pits impracticable. *No bearing trees within limits.*
 Land, mountainous. and rolling.
 Soil, rocky 4th rate on mountain; sandy, 2nd rate on flat.
 No timber.
 Undergrowth, mesquite.

40.00 East, on a random line, bet. secs. 27 and 34.
 Set temp. 1/4 sec. cor.

79.88 Intersect N. and S. line, 29 lks. S. of the cor. of secs. 26, 27, 34 and 35,
 Thence I run
 S. 89° 48' W., on a true line, bet. secs. 27 and 34.
 Over level land.

10.00 Wash, 60 lks. wide, 1 ft. deep, course NE. Asc. SE. slope, over malpais boulders, 115 ft.

14.80 Spur ridge, extends 50 lks. SE. Desc. SW. slope, 90 ft.

20.00 Foot of desc.; thence over level land.

22.50 Wash, 45 lks. wide, 1 ft. deep, course SE. Asc. NE. slope of black granite mountain., 210 ft.

33.00 Gulch, 15 lks. wide, course NE.

39.94 Set an iron post, 3 ft. long, 1 in. diam, 26 ins. in the ground, for 1/4 sec. cor., marked on brass cap, 1913; 1/4 S27 in N. and 1/4 S34 in S. half;
 And raise a mound of stone, 2 ft. base, 1 1/2 ft. high, N. of cor. Pits impracticable. *No bearing trees within limits.*
 Continue to asc. NE. slope 220 ft, over granite boulders.

54.00 Top of asc.; thence along N. slope.

57.50 Desc. NW. slope, 100 ft.

62.70 Gulch, 10 lks. wide, course NW.

66.00 Head of canyon, course N. Asc. NE. slope, 165 ft.

74.80 Ridge, brs. NW. and SE. Continue to asc. SE. slope.

79.88 The cor. of secs. 27, 28, 33 and 34.
 Land, mountainous and rolling.
 Soil, rocky 4th rate on slope; sandy 2nd rate on flat.
 No timber.
 Undergrowth, sagebrush and cacti.

Chains.

NOTE - At this corner, I set off $20^{\circ}46\frac{1}{2}'$ N. on the decl. arc; and at noon —————, I observe the sun on the meridian, the resulting lat. is $35^{\circ}31\frac{1}{2}'$ N., which is slightly higher ————— than the correct lat.

N. 0 2' W., bet. secs. 27 and 28.
 Over mountainous land. Asc. rocky S. slope 40 ft.
 3.00 Spur ridge, brs. E. and W.; extends 4 chs. E. Desc. NE. slope, 140 ft.
 10.00 Canyon, 50 lks. wide, course E. Asc. S. slope, 100 ft.
 13.50 Spur ridge, extends 1 ch. E. Desc. NE slope. 20 ft.
 15.75 Head of canyon, course E. Asc. SE. slope, 80 ft.
 20.60 Spur ridge, brs. E. and W. Extends 10 chs. E. Desc. NE. slope, 300 ft.
 30.00 Gulch, 30 lks. wide, course NE. Asc. NE. slope, 20 ft.
 31.75 Point of spur ridge, extends 1 ch. E. Desc. NE. slope 30 ft.
 34.00 Canyon, 30 lks. wide, course E. Asc. S. slope, 160 ft.
 39.00 Ridge, brs. E. and W. Desc. NE. slope, 80 ft.
 40.00 Set an iron post, 3 ft. long, 1 in. diam, 26 ins. in the ground, for $\frac{1}{4}$ sec. cor., marked on brass cap, 1913; S28 in W. and S27 in E. half;
 And raise a mound of stone, 2 ft. base, $1\frac{1}{2}$ ft. high, W. of cor. Pits impracticable.
 42.00 Canyon 20 lks. wide, course S. Asc. SE slope, 400 ft.
 48.00 Slope changes to SW.
 51.50 Highest point on ridge, brs. N. Desc. N. slope 75 ft.
 66.00 Pass between points on ridge. Asc. S. slope, 50 ft.
 69.00 High, rocky point. Desc. N. slope, 290 ft.
 75.00 Desc. NE. slope.
 80.00 Set an iron post, 3 ft. long, 2 ins. diam, 24 ins. in the ground, for cor. of secs. 21, 22, 27 and 28, marked on brass cap, 1913; T25N R17W in N. half; S21 in NW., S22 in NE., S27 in SE. and S28 in SW. quadrant.;
 And raise a mound of stone, 2 ft. base, $1\frac{1}{2}$ ft. high, W. of cor. Pits impracticable. *No bearing trees within limits.*
 Land, mountainous.
 Soil, rocky 4th rate. Massive boulders.
 No timber.
 Undergrowth, greasewood, and sagebrush.
 May 24, 1913.

May 25, 1913: At 8 hrs. 30 m., a.m., l.m.t., I set off $35^{\circ}32\frac{1}{2}'$ N. on the lat. arc; $20^{\circ}56'$ N. on the decl. arc; and determine a meridian with the solar at the cor. of secs. 21, 22, 27 and 28, above described.
 Thence I run,
 N. $89^{\circ}48'E.$, on a random line, bet. secs. 22 and 27.
 40.00 Set temp. $\frac{1}{4}$ sec. cor.
 80.06 Intersect N. and S. line, 14 lks. N. of the cor. of secs. 22, 23, 26 and 27,
 Thence I run,
 S. $89^{\circ}54'W.$, on a true line, bet. secs. 22 and 27.
 Over level land.
 29.00 Road, brs. NW. and SE.
 40.03 Set an iron post, 3 ft. long, 1 in. diam, 26 ins. in the ground, for $\frac{1}{4}$ sec. cor., marked on brass cap, 1913;

Subdivision of The E. Half of T. 25 N., R. 17 W.

Chains.

$\frac{1}{4}$ S 22 in N. and
 S27 in S. half;
 And raise a mound of stone, 2 ft. base, $1\frac{1}{2}$ ft. high,
 N. of cor. Pits impracticable. *No bearing trees within limits.*
 48.00 Asc. NE. slope; 410 ft.
 80.06 The cor. of secs. 21, 22, 27 and 28.
 Land, level and mountainous.
 Soil, sandy, 2nd rate, and rocky 4th rate.
 No timber.
 Undergrowth, short sagebrush.

N. $0^{\circ}2'$ W., bet. secs. 21 and 22.
 Along ridge, brs. N. and S. Desc. NE. slope, 185 ft.
 6.00 Rocky precipice, 20 ft. high. Cross ridge, brs. NNE. and
 SSW. Desc. NW. slope.
 12.00 Gulch, 5 lks. wide, course W. Asc. slight SW. slope.
 13.25 Low ridge, brs. NW. and SE. Desc. NW. slope, 80 ft.
 19.50 Gulch, 10 lks. wide, course W. Asc. SW. slope, 35 ft.
 22.00 Thence along W. slope.
 27.00 Gulch, 60 lks. wide, 4 ft. deep, course W. Asc. SW. slope,
 65 ft.
 31.00 End of asc.; desc. NW. slope, 160 ft.
 36.00 Desc. N. slope.
 38.50 End of desc.; wash, 30 lks. wide, 2 ft. deep, course E.
 Thence over gently rolling land.
 40.00 Set an iron post, 3 ft. long, 1 in. ⁱⁿdiam, 26 ins. in
 the ground, for $\frac{1}{4}$ sec. cor., marked on brass cap, 1913;
 $\frac{1}{4}$ S21 in W. and
 S22 in E. half;
 And raise a mound of stone, 2 ft. base, $1\frac{1}{2}$ ft. high,
 W. of cor. Pits impracticable. *No bearing trees within limits.*
 56.00 Wash, 30 lks. wide, 2 ft. deep, course NE.
 56.75 Road, Cane Springs to Kingman, brs. NW. and SE.
 60.00 Wash, 1 ch. wide, 2 ft. deep, course NE.
 74.00 Trail, brs. NE. and SW.
 80.00 Set an iron post, 3 ft. long, 2 ins. ⁱⁿdiam, 24 ins. in
 the ground, for cor. of secs. 15, 16, 21 and 22, mark-
 ed on brass cap, 1913;
 T25N R17W in N. half;
 S16 in NW.,
 S15 in NE.,
 S22 in SE. and
 S21 in SW. quadrant;
 And raise a mound of stone, 2 ft. base, $1\frac{1}{2}$ ft high, W.
 of cor. Pits impracticable. *No bearing trees within limits.*
 Land, level and mountainous.
 Soil, rocky 4th rate on mountain; sandy loam, 2nd rate
 on level.
 No timber.
 Undergrowth, mesquite and sagebrush; cacti.

40.00 N. $89^{\circ}54'$ E., on a random line, bet. secs. 15 and 22.
 Set temp. $\frac{1}{4}$ sec. cor.
 80.17 Intersect N. and S. line, 14 lks. N. of the cor. of secs.
 14, 15, 22 and 23,

 Thence I run
 West, on a true line, bet. secs. 15 and 22.
 Over level land.
 40.085 Set an iron post, 3 ft. long, 1 in. ⁱⁿdiam, 26 ins. in the
 ground, for $\frac{1}{4}$ sec. cor., marked on brass cap, 1913;

Chains.

$\frac{1}{4}$ S15 in N. and
 S. 22 in S. half;
 And raise a mound of stone, 2 ft. base, $1\frac{1}{2}$ ft. high,
 N. of cor. Pits impracticable. *No bearing trees within limits.*
 41.40 Enter wash, course N.
 47.15 Leave wash; 2 ft. deep course NE.
 51.15 Wash, 15 lks. wide, 1 ft. deep, course NE.
 80.17 The cor. of secs. 15, 16, 21 and 22.
 Land, level.
 Soil, sandy loam, 2nd rate.
 No timber.
 Undergrowth, sagebrush and cacti.

N. $0^{\circ} 2' W.$, bet. secs. 15 and 16.
 Over level ^{land} through scattering undergrowth.
 40.00 Set an iron post, 3 ft. long, 1 in. ⁱⁿdiam, 26 ins. in
 the ground, for $\frac{1}{4}$ sec. cor., marked on brass cap, 1913;
 $\frac{1}{4}$ S16 in W. and
 S15 in E. half;
 And raise a mound of stone, 2 ft. base, $1\frac{1}{2}$ ft. high, W.
 of cor. Pits impracticable. *No bearing trees within limits.*
 58.00 Enter wash, course N.
 62.00 Leave wash, course NE.
 80.00 Set an iron post, 3 ft. long, 2 ins. ⁱⁿdiam, 24 ins. in
 the ground, for cor. of secs. 9, 10, 15 and 16,
 marked on brass cap, 1913;
 T25N R17W in N. half;
 S9 in NW.,
 S10 in NE.,
 S15 in SE., and
 S16 in SW. quadrant;
 And raise a mound of stone, 2 ft. base, $1\frac{1}{2}$ ft. high,
 W. of cor. Pits impracticable. *No bearing trees within limits.*
 Land, level.
 Soil, sandy loam, 2nd rate.
 No timber.
 Undergrowth, sagebrush.

East, on a random line, bet. secs. 10 and 15.
 40.00 Set temp. $\frac{1}{4}$ sec. cor.
 80.49 Intersect N. and S. line, 7 lks. S. of the cor. of secs.
 10, 11, 14 and 15,

 Thence I run
 S. 89 57' W., on a true line, bet. secs. 10 and 15.
 Over level land.
 40.245 Set an iron post, 3 ft. long, 1 in. ⁱⁿdiam, 26 ins. in the
 ground, for $\frac{1}{4}$ sec. cor., marked on brass cap, 1913;
 $\frac{1}{4}$ S10 in N. and
 S15 in S. half;
 And raise a mound of stone, 2 ft. base, $1\frac{1}{2}$ ft. high, N.
 of cor. Pits impracticable. *No bearing trees within limits.*
 80.49 The cor. of secs. 9, 10, 15 and 16.
 Land, level.
 Soil, sandy loam, 2nd rate.
 No timber.
 Undergrowth, sagebrush and cacti.
 NOTE - At this corner, I set off $20^{\circ} 57\frac{1}{2}' N.$ on the decl. arc;
 and at noon ————— I observe the
 sun on the meridian, the resulting lat. is $35^{\circ} 34' N.$,
 which is correct.

Chains.		
<p>1.00 6.00 38.90 40.00 80.00</p>	<p>N. 0° 2' W., bet. secs. 9 and 10. Over level land. Wash, 60 lks. wide, 2 ft. deep, course N. Leave Wash, course NE. Wash, 15 lks. wide, 2 ft. deep, course NE. Set an iron post, 3 ft. long, 1 in. diam, 26 ins. in the ground, for $\frac{1}{4}$ sec. cor., marked on brass cap, 1913; $\frac{1}{4}$S9 in W. and S10 in E. half; And raise a mound of stone, 2 ft. base, 1$\frac{1}{2}$ ft. high, W. of cor. Pits impracticable. <i>No bearing trees within limits.</i> Set an iron post, 3 ft. long, 2 ins. diam, 24 ins. in the ground, for cor. of secs. 3, 4, 9 and 10, marked on brass cap, 1913; T25N R17W in N. half; S4 in NW., S3 in NE., S10 in SE. and S9 in SW. quadrant; Dig pits, 18 X 18 X 12 ins., in each sec., 5$\frac{1}{2}$ ft. dist.; and raise a mound of earth, 4 ft. base, 2 ft. high, W. of cor. <i>No bearing trees within limits.</i> Land, level. Soil, sandy loam, 2nd rate. No timber. Undergrowth, mesquite and sagebrush.</p>	<p>H.N.B.</p>
<p>40.00 80.31 19.85 40.155 80.31</p>	<p>W.B.K. N. 89° 57' E., on a random line, bet. secs. 3 and 10. Set temp. $\frac{1}{4}$ sec. cor. Intersect N. and S. line, 12 lks. N. of the cor. of secs. 2, 3, 10 and 11, Thence I run N. 89° 58' W., on a true line, bet. secs. 3 and 10. Over level land. Road, brs. N. 15° W., and S. 15° E. Set an iron post, 3 ft. long, 1 in. diam, 26 ins. in the ground, for $\frac{1}{4}$ sec. cor., marked on brass cap, 1913; $\frac{1}{4}$S3 in N. and S10 in S. half; Dig pits, 18 X 18 X 12 ins., E. and W. of post, 3 ft. dist.; and raise a mound of earth, 3$\frac{1}{2}$ ft. base, 1$\frac{1}{2}$ ft. high, N. of cor. <i>No bearing trees within limits.</i> The cor. of secs. 3, 4, 9 and 10, Land, level. Soil, sandy loam, 2nd rate. No timber. Undergrowth, sagebrush.</p>	<p>W.B.K.</p>
<p>40.00 80.28 20.28 40.28</p>	<p>H.N.B. N. 0° 2' W., on a random line, bet. secs. 3 and 4. Set temp. $\frac{1}{4}$ sec. cor. Intersect the N. bdy. of the Tp., 19 lks. W. of the ^{OLD} cor. of secs. 3, 4, 33 and 34, which is an iron post, 3 ins. diam, 12 ins. above ground, marked ^{ON BRASS CAP} and witnessed as described by the Surveyor General. Thence I run S. 0° 6' W., on a true line, bet. secs. 3 and 4. Over level land, through scattering sagebrush. Wash, 3 lks. wide, 6 ins. deep, course NE. Set an iron post, 3 ft. long, 1 in. diam, 26 ins. in the ground, for $\frac{1}{4}$ sec. cor., marked on brass cap, 1913; $\frac{1}{4}$S4 in W. and S3 in E. half;</p>	

Chains.

66.90
80.28

Raise a mound of stone, 2 ft. base, $1\frac{1}{2}$ ft. high, W.
of cor. Pits impracticable. *No bearing tree*
Wash, 60 lks. wide, 3 ft. deep, course NE.
The cor. of secs. 3, 4, 9 and 10.
Land, level.
Soil, sandy loam, 2nd rate.
No timber.
Undergrowth, sagebrush.

H.N.B.
May 25, 1913.

General Description.

Most of the land in the surveyed portion of this Tp. is level, but parts of secs. 22, 27, and 35, and nearly all of sec. 34 is mountainous. Granite formation predominates, but some of the mountains are of volcanic origin. The soil outside of the mountains is sandy loam, 2nd rate. Sagebrush covers most all the land. Land drains NE. in the northern and central part, and E. and SE. in the southern part. There are no settlers, nor is any of the land under cultivation. Cattle feed on the plains.

William B. Kimmel.

U. S. Surveyor

Henry M. Street
U. S. Transitman.

CERTIFICATE OF ASSISTANTS.

Applies to Books "A" "B" "C" "D" "E" "F" "G" and "H"

We, the undersigned, hereby certify upon honor that we assisted, to the best of our skill and ability,
H. N. BRADSTREET, U. S. Transitman
 and WILLIAM B. KIMMEL, U. S. Surveyor, during the periods and in the capacities

stated opposite our several signatures, in surveying all those parts or portions of the subdivision
lines of T. 23 N. - R. 5 W., T. 25 N. - R. 5 W., T. 26 N. - R. 5 W., T. 27 N. - R. 5 W.,
frac'l T. 22 N. - R. 6 W., T. 22 N. - R. 7 W., T. 21 N. - R. 8 W., T. 21 N. - R. 9 W.
and T. 21 - R. 5 W.

of the Gila and Salt River Base and Meridian, in the State of Arizona,
in books "A" "B" "C" "D" "E" "F" "G" and "H"
 which are represented in the ~~foregoing~~ field notes, as having been executed by ~~him~~
~~THEM~~ and under ~~his~~
~~THEIR~~ direc-
 tion; and that said survey has been, in all respects, to the best of our knowledge and belief, well and
 faithfully executed.

NAME.	PERIOD OF SERVICE.		CAPACITY.
	BEGUN.	ENDED.	
<u>Jas. K. Le Troe</u>	<u>Nov. 29, 1912.</u>	<u>Dec. 31, 1912.</u>	<u>Axman</u>
<u>John T. Carmody</u>	<u>Nov. 29, 1912.</u>	<u>Jan. 31, 1913.</u>	<u>Axman</u>
<u>W. J. Tavernier</u>	<u>Nov. 29, 1912.</u>	<u>Jan. 31, 1913.</u>	<u>Chainman</u>
<u>B. E. Gilpin</u>	<u>Nov. 29, 1912.</u>	<u>Jan. 31, 1913.</u>	<u>Chainman</u>
<u>Amely W. W.</u>	<u>Nov. 29, 1912.</u>	<u>Feb. 7, 1913.</u>	<u>Moundman</u>
<u>Alonzo Whitbark</u>	<u>Nov. 29, 1912.</u>	<u>Feb. 13, 1913.</u>	<u>Flagman</u>
<u>William J. Clark</u>	<u>Feb. 19, 1913.</u>	<u>March 15, 1913.</u>	<u>Axman</u>
<u>Charles R. Smith</u>	<u>Dec. 6, 1913.</u>	<u>March 16, 1913.</u>	<u>Flagman</u>
<u>Joseph H. Fadden</u>	<u>Feb. 11, 1913.</u>	<u>March 16, 1913.</u>	<u>Moundman</u>
<u>Heath Sebern</u>	<u>Nov. 27, 1912.</u>	<u>March 23, 1913.</u>	<u>Chainman</u>
<u>Wm. R. Beckus</u>	<u>Feb. 18, 1913.</u>	<u>March 28, 1913.</u>	<u>Axman, Flagman, Chainman</u>
<u>Morris M. Fife</u>	<u>March 18, 1913.</u>	<u>March 28, 1913.</u>	<u>Moundman</u>
<u>Frear C. Simkins</u>	<u>Jan. 2, 1913.</u>	<u>March 28, 1913.</u>	<u>Axman</u>
<u>Harvey J. Butler</u>	<u>Feb. 2, 1913.</u>	<u>March 28, 1913.</u>	<u>Chainman</u>
<u>Clifford Helms</u>	<u>Feb. 6, 1913.</u>	<u>March 28, 1913.</u>	<u>Flagman, Moundman, Chainman</u>

Subscribed and certified to before me on the dates of the final service as shown above.

William B. Kimmel.

U. S. Surveyor.

CERTIFICATE OF ASSISTANTS.
Applies to Books "I," "J," "K" and "L"

We, the undersigned, hereby certify upon honor that we assisted, to the best of our skill and ability,
H. N. BRADSTREET, U.S. Transitman,
and William B. Kimmel, U. S. Surveyor, during the periods and in the capacities
 stated opposite our several signatures, in surveying all those parts or portions of the subdivision
lines of T. 22 N. R. 10 W., T. 23 N. R. 11 N., T. 24 N. R. 11 W.
and T. 25 N. R. 17 W.

of the Gila and Salt River Base and Meridian, in the State of Arizona
 which are represented in the foregoing field notes and notes in Books "I" "J" and "K"
 as having been executed by them and under their direc-
 tion; and that said survey has been, in all respects, to the best of our knowledge and belief, well and
 faithfully executed.

NAME.	PERIOD OF SERVICE.		CAPACITY.
	BEGUN.	ENDED.	
<u>Clyde Stewart</u>	<u>March 25, 1913.</u>	<u>March 31, 1913.</u>	Moundman
<u>Joseph L. Burt</u>	<u>March 19, 1913.</u>	<u>April 29, 1913.</u>	Axman, Chainman.
<u>Ross D. Carpenter</u>	<u>April 11, 1913.</u>	<u>May 10, 1913.</u>	Axman, Chainman.
<u>Frank Pierce</u>	<u>March 25, 1913.</u>	<u>May 12, 1913.</u>	Axman, Chainman.
<u>John Jones</u>	<u>March 18, 1913</u>	<u>May 16, 1913.</u>	Flagman,
<u>Ralph Ortega</u>	<u>May 21, 1913.</u>	<u>May 26, 1913</u>	Flagman,
<u>Thomas West</u>	<u>April 4, 1913.</u>	<u>May 18, 1913.</u>	Moundman,
<u>Hal Grimshaw.</u>	<u>April 4, 1913.</u>	<u>May 26, 1913.</u>	Chainman,
<u>H. Wm. Tompkins</u>	<u>April 4, 1913.</u>	<u>May 26, 1913.</u>	Moundman, Flagman,
<u>Wesley Mullenax</u>	<u>April 4, 1913.</u>	<u>May 26, 1913.</u>	Chainman,
<u>E. L. Mashev</u>	<u>May 20, 1913.</u>	<u>May 26, 1913.</u>	Chainman,
<u>Samuel H. Pelland</u>	<u>Nov. 26, 1912.</u>	<u>May 26, 1913.</u>	Chainman.

Subscribed and certified to before me on the dates of the final service as shown above.

William B. Kimmel.
 U. S. Surveyor.

FINAL OATH OF UNITED STATES SURVEYOR & TRANSITMAN.
Applies to Books A, B, C, D, E, F, G, H, I, J, K and L

We H. N. Bradstreet, U.S. Transitman and William B. Kimmel, U. S. Surveyor, do solemnly swear that, in pursuance of special instructions received from the U. S. Surveyor General for Arizona for Group 24 bearing date of the 18th day of October, 1912, we have well, faithfully, and truly, in ~~our~~ ^{our} own proper persons and in strict conformity with said instructions, the Manual of Surveying Instructions, and the laws of the United States, surveyed all those parts or portions of the subdivision lines of T. 23 N. R. 5 W. T. 25 N. R. 5 W. T. 26 N. R. 5 W. T. 27 N. R. 5 W. Frag. T. 22 N. R. 6 W. T. 22 N. R. 7 W. T. 21 N. R. 8 W. T. 21 N. R. 9 W. T. 22 N. R. 10 W. T. 23 N. R. 11 W. T. 24 N. R. 11 W. and T. 25 N. R. 17 W.

of the Gila and Salt River Base and Meridian, in the State of Arizona, which are represented in the foregoing field notes and notes in Books A, B, C, D, E, F, G, H, I, J and K as having been executed by us and under our direction; and we do further solemnly swear that all the corners of said survey have been established and perpetuated in strict accordance with the Manual of Surveying Instructions, and the special written instructions of the U. S. Surveyor General for Arizona for Group 24 and in the specific manner described in the field notes, and that the foregoing and notes in Books A, B, C, D, E, F, G, H, I, J and K are the original field notes of such survey.

William B. Kimmel
U. S. Surveyor.

Subscribed by said H. N. Bradstreet and sworn to before me } Henry Bradstreet
this 18th day of October, 1912 } U.S. Transitman



Frank S. Ingalls
SURVEYOR-GENERAL OF ARIZONA

Subscribed by said William B. Kimmel, U.S. Surveyor,
this 21 day of July, 1914

APPROVAL. Franklin L. Torrance
U. S. Commissioner District of Arizona.

OFFICE OF THE UNITED STATES SURVEYOR GENERAL,
Phoenix, Arizona OCT 5, 1914

The foregoing field notes of the survey of the Subdivision lines of the East half of Township No 25 North, Range No 17 West of the Gila and Salt River Base and Meridian, Arizona.

executed by William B. Kimmel, U.S. Surveyor and H. N. Bradstreet, U.S. Transitman under ~~the~~ ^{their} special instructions dated October 18, 1912, having been critically examined, and the necessary corrections and explanations made, the said field notes, and the surveys they describe, are hereby approved.

Frank S. Ingalls
U. S. Surveyor General
of Arizona.

I certify that the foregoing transcript of the field notes of the above-described surveys in _____ has been correctly copied from the original notes on file in this office.