

2728

4-679

2728

111

①

Book "I" "

BOOK 2728

Resurvey Subdivisions

FIELD NOTES

OF THE ~~RESURVEY~~ OF THE

Subdivision lines of

Township 11 South Range 23 East

also

Survey and Segregation of 17 Private Land Claims.

Of the Gila and Salt River Base and Meridian,

In the State of Arizona

EXECUTED BY

Thomas B. Matthews,

In the capacity of U. S. Surveyor, under instructions dated May 7, 1913, issued by the United States Surveyor General to govern surveys included in Group No. 25, which were approved by the Commissioner of the General Land Office, May 15, 1913, pursuant to authority contained in the Act of Congress dated June 23, 1913

Resurvey commenced September 22, 1913

Resurvey completed October 30, 1913

Survey of Private Land Claims, commenced Feb. 5 - 1914.
" " " " completed " 11 - "

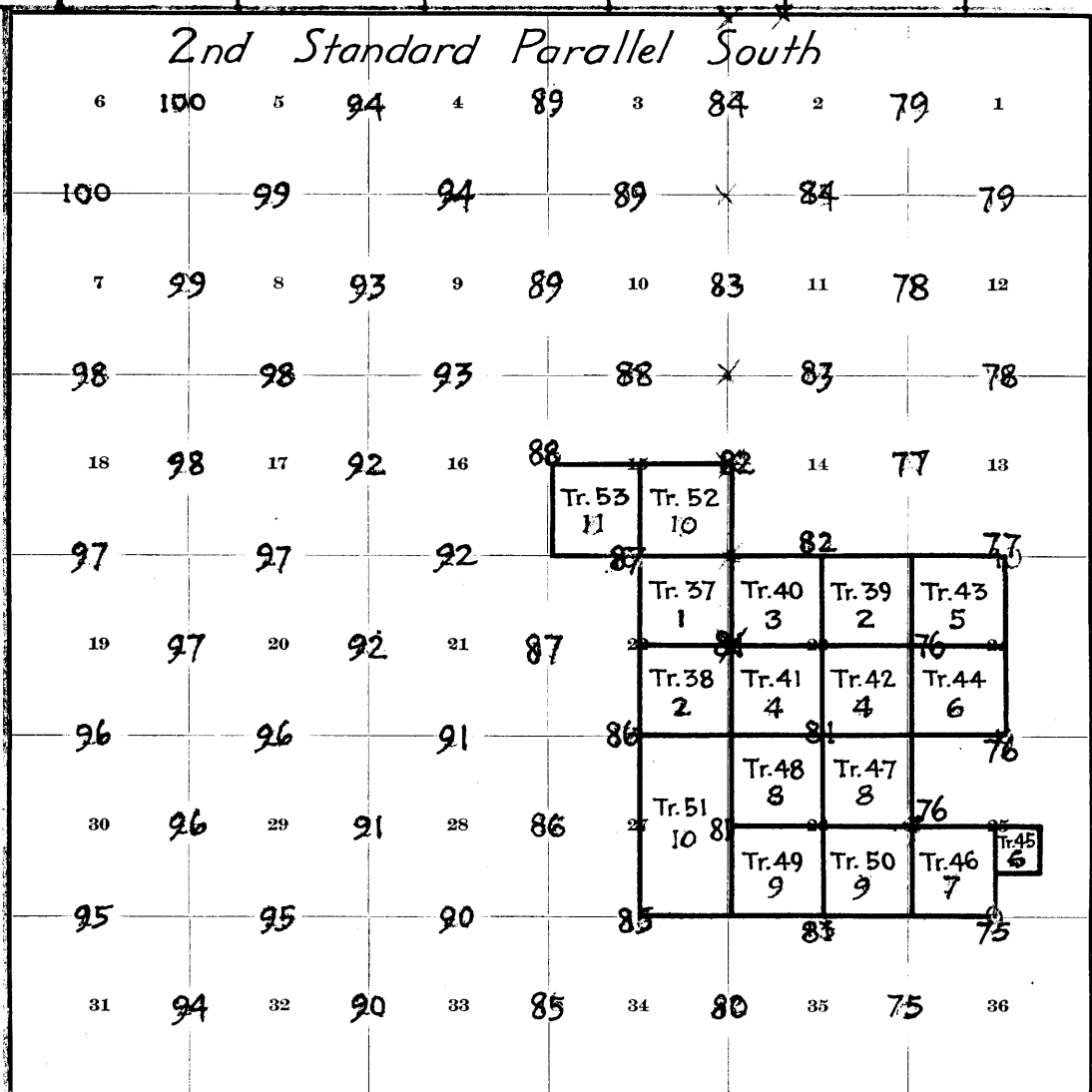
Book "I"

BOOK 2728

INDEX DIAGRAM.

Township 11 South, Range 23 East

2nd Standard Parallel South



6-151

- Notes in Book "A" this Group (25) (2720)
- " " " "C", Group 22 (2715)
- " " " "B", " " (2714)
- Surveyed
- 1-8 Tracts indexed in Red Figures
- Affidavits on Pages 13-74

X See Pk. 2731 for Photo description of these maps

Resurvey of Subdivision lines, and Survey of Private Tracts in Township 11 South, Range 23 East.

13

Chains.

Resurvey commenced Sept. 22, 1913, and executed by Thomas B. Matthews, U.S. Surveyor, with Young and Sons' light mountain transit No. 8480, previously described. I examine the adjustments of the transit, and find them to be correct, and know from recent tests of the solar apparatus, by comparing its indications resulting from solar observations, made during a.m. and p.m. hours, with a meridian established by observation on Polaris, at elongation, that the instrument is in satisfactory adjustment.

Note: Owing to changes in interpretation of instructions relative to survey of private land claims, Tracts Nos. 37 to 53, inclusive, were not surveyed until from Feb. 5th to Feb. 11th, 1914, inclusive, notes of surveys of which tracts are submitted herewith preliminary to notes of resurvey of Subdivision lines in T11 S., R. 23 E.

Tract No. 37, Homestead Entry 016963, March 16, 1912, originally described as the NE $\frac{1}{4}$ of sec. 22, T. 11 S., R. 23 E.

At NE. (No. 1) cor., identical with SE. (No. 4) cor. of Tract No. 52, and NW. (No. 2) cor. of Tract No. 40, as determined by intersection of E. and W., and N. and S. lanes, I set an iron post 3 ft. long, 1 in. in diam., 26 ins. in ground, with a brass cap, marked,
 T 11 S R 23 E in N., and
 1913 in S. half;
 4 TR 52 in NW.,
 S 14 in NE.,
 2 TR 40 in SE., and
 1 TR 37 in SW. quadrant.

From the above described Tract cor., point for cor. of secs. 14, 15, 22 and 23, hereinafter described, brs. S. $89^{\circ} 57'$ W., 308 lks. dist.

Feb. 5th, 1914: At 9h. 0m. a.m., l.m.t., I set off $16^{\circ} 00\frac{1}{2}'$ S. on decl. arc; $32^{\circ} 28'$ on lat. arc, and determine a meridian with the solar at the tract cor. described above.

Thence I run,

S. $89^{\circ} 58'$ W., bet. Tracts 37 and 52.

40.05

NW. (No. 2) cor., identical with SE. (No. 4) cor. of Tract 53, and SW. (No. 3) cor. of Tract 52. Establish this cor. as follows:

Set an iron post 3 ft. long, 1 in. in diam., 26 ins. in the ground, with a brass cap, marked,

T 11 S R 23 E in N., and
 1913 in S. half;
 4 TR 53 in NW.,
 3 TR 52 in NE.,
 2 TR 37 in SE., and
 S 22 in SW. quadrant.

Thence I run,

South, on west bdy of Tract.

40.00

SW. (No. 3) cor., identical with NW. (No. 2) cor. of Tract No. 38. Establish this cor. as follows:

Set an iron post 3 ft. long, 1 in. in diam., 26 ins. in ground, with a brass cap, marked,

T 11 S R 23 E in N.,
 1913 in S., and
 S 22 in W. half,
 3 TR 37 in NE., and
 2 TR 38 in SE. quadrant.

Thence I run,

N. $89^{\circ} 55'$ E., bet. Tracts 37 and 38.

Summary of Subdivision Lines and Survey of Private Tracts
2. in Township 11 South, Range 23 East.

Chains.

39.97 SE. (No. 4) cor., identical with SW. (No. 3) cor. of Tract 40, NW. (No. 2) cor. of Tract 41, and NE. (No. 1) cor. of Tract 38. Establish this cor. as follows:
Set an iron post 3 ft. long, 1 in. in diam., 26 ins. in the ground, with a brass cap, marked,
T 11 S R 23 E in N., and
1913 in S. half;
4 TR 37 in NW.,
3 TR 40 in NE.,
2 TR 41 in SE., and
1 TR 38 in SW. quadrant.

40.00 Thence I run,
N. 0° 07' E., bet. Tracts 37 and 40.
NE. (No. 1) cor., place of beginning, hereinbefore described.

Tract No. 38, Homestead Entry 014203, April 17, 1911, originally described as the SE. $\frac{1}{4}$ of sec. 22, T. 11 S., R. 23 E.

39.97 From NE. (No. 1) cor., described above in notes of Tract 37 at SE. (No. 4) cor., I run,
S. 89° 55' W., bet. Tracts 37 and 38.
NW. (No. 2), identical with SW. (No. 3) cor. of Tract 37, and described in notes of Tract 37 at SW. (No. 3) cor.

40.00 Thence I run,
South, on west bdy. of Tract.
SW. (No. 3) cor., identical with NW. (No. 2) cor. of Tract No. 51. Establish this cor. as follows:
Set an iron post 3 ft. long, 1 in. in diam., 26 ins. in the ground, with a brass cap, marked,
T 11 S R 23 E in N., and
1913 in S. half;
S 22 in NW.,
3 TR 38 in NE.,
2 TR 51 in SE., and
S 27 in SW. quadrant.

39.98 Thence I run,
N. 89° 52' E. bet. Tracts 38 and 51.
SE. (No. 4) cor., identical with SW. (No. 3) cor. of Tract No. 41; NW. (No. 2) cor. of Tract No. 48, and NE. (No. 1) cor. of Tract No. 51. Establish this cor. as follows:

Set an iron post, 3 ft. long, 1 in. in diam., 26 ins. in the ground, with a brass cap, marked,
T 11 S R 23 E in N., and
1913 in S. half;
4 TR 38 in NW.,
3 TR 41 in NE.,
2 TR 48 in SE., and
1 TR 51 in SW. quadrant.

40.00 Thence I run,
N 0° 07' E., bet. Tracts 38 and 41.
NE. (No. 1) cor., place of beginning, hereinbefore described.

Tract No. 39, Homestead Entry 016750, Feb. 19, 1912, originally described as the NE. $\frac{1}{4}$ of sec. 23, T. 11 S., R. 23 East.

At the NE. cor. of Tract No. 39, as determined by intersection of east and west, and north and south line, I set an iron post 3 ft. long, 1 in. in diam., 26 ins. in the ground for cor. No. 2 Tract No. 43, and cor. No. 1 Tract No. 39, with a brass cap, marked,
T 11 S R 23 E S 13 in N., and
1913 in S. half,

Survey of Private Tracts in Township 11 South, Range 23 E. 3.

Chains.	<p style="text-align: center;">2 TR 43 in SE., and 1 TR 39 in SW. quadrant.</p> <p>Thence I run, S. 89° 57' W., on north bdy. of Tract. 3.60 Cor. of secs. 13 and 14, previously reestablished by me, as hereinafter described. Continue measurement on same course on north bdy. of tract, and S. bdy. of sec. 14. 40.35 NW. (No. 2) cor., identical with NE. (No. 1) cor. of Tract No. 40. Establish this cor. as follows: Set an iron post 3 ft. long, 1 in. in diam., 26 ins. in the ground, with a brass cap, marked, T 11 S R 23 E S 14 in N., and 1913 in S. half; 2 TR 39 in SE., and 1 TR 40 in SW. quadrant.</p> <p>Thence I run, S. 0° 09' W., bet. Tracts 39 and 40. 40.00 SW. (No. 3) cor., identical with NW. (No. 2) cor. of Tract No. 42; NE. (No. 1) cor. of Tract No. 41, and SE. (No. 4) cor. of Tract No. 40. Establish this cor. as follows: Set an iron post, 3 ft. long, 1 in. in diam., 26 ins. in ground, with a brass cap, marked, T 11 S R 23 E in N., and 1913 in S. half; 4 TR 40 in NW., 3 TR 39 in NE., 2 TR 43 in SE., and 1 TR 41 in SW. quadrant.</p> <p>Thence I run, N. 89° 56' E., bet. Tracts 39 and 42. 40.16 SE. (No. 4) cor., identical with SW. (No. 3) cor. of Tract 43 NW. (No. 2) cor. of Tract 44, and NE. (No. 1) cor. of Tract 42. Establish this cor. as follows: Set an iron post 3 ft. long, 1 in. in diam., 26 ins. in the ground, with a brass cap, marked, T 11 S R 23 E in N., and 1913 in S. half; 4 TR 39 in NW., 3 TR 43 in NE., 2 TR 44 in SE., and 1 TR 42 in SW. quadrant.</p> <p>Thence I run, N. 0° 23' E., bet. Tracts 39 and 43. 40.00 NE. (No. 1) cor., place of beginning, hereinbefore described. Note: The sun is obscured by clouds at noon, rendering an observation for latitude impossible. Feb. 5, 1914.</p> <hr/> <p>Tract No. 40, Homestead Entry 020634, Jan. 2, 1913, origin- ally described as the NW $\frac{1}{4}$ of sec. 23, T. 11 S., R. 23 East.</p> <hr/> <p>Feb. 6th, 1914: At 9h. 0m. a.m., l.m.t., I set off 15° 41 $\frac{1}{2}$' S. on decl. arc; 32° 28' on lat. arc, and determine a meridian with the solar at NE. (No. 1) cor., described above in notes of Tract No. 39 at NW. (No. 2) cor.</p> <p>Thence I run, S. 89° 57' W. on north bdy. of Tract, and south bdy. of sec. 14. 3.21 $\frac{1}{4}$ sec. cor. of sec. 14, previously reestablished by me, as hereinafter described. Continue measurement on same course. 40.09 NW. (No. 2) cor., identical with NE. (No. 1) cor. of Tract 37, and SE. (No. 4) cor. of Tract 52, described in notes of Tract 37 at NE. (No. 1) cor.</p> <p>Thence I run, S. 0° 07' W., bet. Tracts 37 and 40. 40.00 SW. (No. 3) cor., identical with NW. (No. 2) cor. of Tract 41, NE. (No. 1) cor. of Tract 38, and SE. (No. 4) cor. of Tract 37, described in notes of Tract 37 at SE. (No. 4) cor.</p>
---------	---

4. Survey of Private Tracts in Township 11 S., R. 23 E.

Chains.

40.03 Thence I run,
N. 89° 56' E., bet. Tracts 40 and 41.
SE. (No. 4) cor., identical with SW. (No. 3) cor. of Tract 39;
NW. (No. 2) cor. of Tract 42, and NE. (No. 1) cor. of
Tract 41, described in notes of Tract 39, at SW. (No.
3) cor.

40.00 Thence I run,
N. 0° 09' E., bet. Tracts 39 and 40.
NE. (No. 1) cor. place of beginning, hereinbefore described.

Tract No. 41, Homestead Entry 018399, June 26, 1912, originally described as the SW $\frac{1}{4}$ of sec. 23, T. 11 S., R. 23 E.

40.03 From NE. (No. 1) cor. described above, in notes of Tract 40,
at SE. (No. 4) cor., I run,
S. 89° 59' W., bet. Tracts 40 and 41.
NW. (No. 2) cor., identical with NE. (No. 1) cor. of Tract
38; SE. (No. 4) cor. of Tract 37, and SW. (No. 3) cor.
of Tract 40, described in notes of Tract 37, at SE. (No.
4) cor.

40.00 Thence I run,
S. 0° 07' W., between Tracts 38 and 41.
SW. (No. 3) cor., identical with NW. (No. 2) cor. of Tract 48;
NE. (No. 1) cor. of Tract 51, and SE. (No. 4) cor. of Tract 38, described in notes
of Tract 38 at SE. (No. 4) cor.

39.97 Thence I run,
N. 89° 55' E., bet. Tracts 41 and 48.
SE. (No. 4) cor., identical with SW. (No. 3) cor. of Tract 42;
NW. (No. 2) cor. of Tract 47, and NE. (No. 1) cor. of
Tract 48. Establish this cor. as follows:
Set an iron post 3 ft. long, 1 in. in diam., 26 ins. in
the ground, with a brass cap, marked,
T 11 S R 23 E in N., and
1913 in S. half;
4 TR 41 in NW.,
3 TR 42 in NE.,
2 TR 47 in SE., and
1 TR 48 in SW. quadrant.

40.00 Thence I run,
N. 0° 09' E., bet. Tracts 41 and 42.
NE. (No. 1) cor., place of beginning, hereinbefore de-
scribed.

Tract No. 42, Homestead Entry 016749, Feb. 19, 1912, originally described as the SE $\frac{1}{4}$ of sec. 23, T 11 S., R 23 East.

40.16 From NE. (No. 1) cor., hereinbefore described in notes of
Tract 39, at SE. (No. 4) cor., I run,
S. 89° 56' W. bet. Tracts 39 and 42.
NW. (No. 2) cor., identical with NE. (No. 1) cor. of Tract 41,
SE. (No. 4) cor. of Tract 40, and SW. (No. 3) cor. of
Tract 39, described in notes of Tract 39 at SW. (No. 3)
cor.

40.00 Thence I run,
S. 0° 09' W., bet. tracts 41 and 42.
SW. (No. 3) cor., identical with NW. (No. 2) cor. of Tract
47; NE. (No. 1) cor. of Tract 48, and SE. (No. 4) cor.
of Tract 41, described in notes of Tract 41 at SE. (No.
4) cor.

39.97 Thence I run,
N. 89° 55' E., bet. Tracts 42 and 47.
SE. (No. 4) cor., identical with SW. (No. 3) cor. of Tract 44,
and NE. (No. 1) cor. of Tract 47. Establish this cor. as

Survey of Private Tracts in Township 11 S., R. 23 East. 5.

Chains.

follows:

Set an iron post 3 ft. long, 1 in. in diam., 26 ins. in the ground, with a brass cap, marked, T 11 S R 23 E in N., and 1913 in S. half; 4 TR 42 in NW., 3 TR 44 in NE., S 25 in SE., and 1 TR 47 in SW. quadrant.

Thence I run, N. 0° 23' E., bet. Tracts 42 and 44. NE. (No. 1) cor., place of beginning, hereinbefore described.

40.00

Tract. No. 43, Homestead Entry 016882, March 7, 1912, originally described as the NW. 1/4 of sec. 24, T 11 S., R. 23 E.

At the NE. (No. 1) cor. of Tract 43, as determined by cor. of wire fence, I set an iron post 3 ft. long, 1 in. in diam., 26 ins. in the ground, with a brass cap, marked, T 11 S R 23 E S 13 in N., and 1913 in S. half; S 24 in SE., and 1 TR 43 in SW. quadrant.

Thence I run, N. 89° 52' W., on north bdy. of Tract. N. 89° 52' W., on north bdy. of Tract. 1/4 sec. cor. for sec. 13, previously reestablished by me as hereinafter described. Continue measurement on same course.

3.50

NW. (No. 2) cor., identical with NE. (No. 1) cor. of Tract 39, described in notes of Tract 39, at NE. (No. 1) cor.

40.00

Thence I run, S. 0° 23' W., bet. Tracts 39 and 43. SW. (No. 3) cor., identical with NW. (No. 2) cor. of Tract 44; NE. (No. 1) cor. of Tract 42, and SE. (No. 4) cor. of Tract 39, described in notes of Tract 39, at SE. (No. 4) cor.

40.00

Thence I run, S. 89° 51' E., bet. Tracts 43 and 44. SE. (No. 4) cor., identical with NE. (No. 1) cor. of Tract 44. Establish this cor. as follows: Set an iron post 3 ft. long, 1 in. in diam., 26 ins. in the ground, with a brass cap, marked,

40.02

T 11 S R 23 E in N., S 24 in E., and 1913 in S. half; 4 TR 43 in NW., and 1 TR 44 in SW. quadrant.

Thence I run, N. 0° 21' E., on east bdy. of Tract. NE. (No. 1) cor., place of beginning hereinbefore described.

40.00

Note: The above tract No. 43, overlaps onto the NE. 1/4 of sec. 24, Homestead Entry 016884, March 7, 1912, a dist. of 3.22 chs. at SE. cor., and 3.50 chs. at NE. cor. of Tract, making an area of 13.44 acres in conflict between the two entrymen. G. Canfield, entryman of the NE. 1/4 of sec. 24, insists on conforming to lines of the independent resurvey in the interest of uniformity of property lines, and waives his right to metes and bounds survey by written agreement.

Entryman of the NW. 1/4 of sec. 24 has no improvements involved in this conflict except for a 2 wire fence along east bdy. of Tract No. 43.

6. Survey of Private Tracts in Township 11 South, Range 23 E.

Chains.

Tract No. 44, Homestead Entry, 016883, March 7, 1912, originally described as the SW 1/4 of sec. 24, T. 11 S., R. 23 E.

40.02 From NE. (No. 1) cor., described above in notes of Tract 43, at SE. (No. 4) cor., I run, N. 89° 51' W., between Tracts 43 and 44. NW. (No. 2) cor., identical with NE. (No. 1) cor. of Tract 42, SE. (No. 4) cor. of Tract 39, and SW. (No. 3) cor. of Tract 43 described in notes of Tract 39 at SE. (No. 4) cor. At this cor., I set off 15° 40' S. on decl. arc, and at 12h. 14m. 14secs. p.m., l.m.t., observe the sun on the meridian, and obtain a reading of 32° 27 1/2' on lat. arc.

40.00 Thence I run, S. 0° 23' W., bet. Tracts 42 and 44. SW. (No. 3) cor., identical with NE. (No. 1) cor. of Tract 47, and SE. (No. 4) cor. of Tract 42, described in notes of Tract 42, at SE. (No. 4) cor.

37.01 Thence I run, S. 89° 51' E. on south bdy. of Tract, and north bdy. of sec. 25. 1/4 sec. cor. for sec. 25, previously reestablished by me, as hereinafter described; continue measurement on same course.

40.05 SE. (No. 4) cor. Establish this cor. as follows: Set an iron post, 3 ft. long, 1 in. in diam., 26 ins. in ground, with a brass cap, marked, T 11 S R 23 E in N., and S 25, 1913 in S. half; 4 TR 44 in NW., and S 24 in NE. quadrant.

40.00 Thence I run, N. 0° 21' E., on east bdy. of Tract. NE. (No. 1) cor., place of beginning, hereinbefore described. Note: The above tract No. 44, overlaps over on to the SE. 1/4 of sec. 24, Homestead Entry 018938, Aug. 15, 1912, a dist. of 2.95 chs. at SE. cor., and 3.22 chs. at NE. cor. of Tract, making an area of 12.32 acres in conflict between the two entrymen. A. A. Coats, entryman of the SE. 1/4 of sec. 24, insists on conforming to the lines of the independent resurvey in the interest of uniformity of property lines, and waives his right to metes and bounds survey by written agreement. Entryman of the SW. 1/4 of sec. 24, has no improvements involved in this conflict except for a 2-wire fence along east bdy. of Tract No. 44.

Feb. 6th, 1914.

Tract No. 45, Lieu Selection 507, W. H. McKittrick, approved Aug. 15, 1901, originally described as the NW 1/4 of SE 1/4 of sec. 25, T. 11 S., R. 23 E.

At the NE. (No. 1) cor. of Tract 45, which brs. N. 89° 24' W., 19.86 chs. dist., from the 1/4 sec. cor., bet. secs. 25 and 30 on east bdy. of T. 11 S., R. 23 E., previously reestablished by me, as described in Book "A." of this Group. I set an iron post 3 ft. long, 1 in. in diam., 26 ins. in the ground, with a brass cap, marked, T 11 S R 23 E in N., and 1913 in S. half, S 25 in NE., and 1 TR 45 in SW. quadrant.

Feb. 9th, 1914: At 8h. 30m. a.m., l.m.t., I set off 14° 46' S. on decl. arc; 32° 26 1/2' on lat. arc, and determine a meridian with the solar at the above described Tract cor.

20.08 Thence I run, S. 89° 52' W., on north bdy. of Tract NW. (No. 2) cor., identical with NE. (No. 1) cor. of Tract. 46.

Survey of Private Tracts in Township 11 S., R. 23 East. 7.

Chains.

Established this cor. as follows:
 Set an iron post 3 ft. long, 1 in. in diam., 26 ins. in the ground, with a brass cap, marked,
 T 11 S R 23 E S 25 in N., and
 1913 in S. half;
 2 TR 45 in SE., and
 1 TR 46 in SW. quadrant.

20.03 Thence I run,
 S. 0° 09' W., bet. Tracts 45 and 46.
 SW. (No. 3) cor. Establish this cor. as follows:
 Set an iron post 3 ft. long, 1 in. in diam., 26 ins. in ground, with a brass cap, marked,
 T 11 S R 23 E in N.,
 1913 in S. half;
 2 TR 46 in W. half; 3 TR 45 in NE., and
 S 25 in SE. quadrant.

20.08 Thence I run,
 N. 89° 52' E., on south bdy. of Tract.
 SE. (No. 4) cor. Establish this cor. as follows:
 Set an iron post, 3 ft. long, 1 in. in diam., 26 ins. in ground, with a brass cap, marked,
 T 11 S R 23 E in N., and
 1913 in S. half;
 4 TR 45 in NW., and
 S 25 in SE. quadrant.

20.02 Thence I run,
 N. 0° 09' E., on east bdy. of Tract.
 NE. (No. 1) cor., place of beginning, hereinbefore described.

Tract No. 46, Homestead Entry 016778, Feb. 23, 1912, originally described as the SW. 1/4 of sec. 25, T. 11 S., R. 23 E.

37.47 From NE. (No. 1) cor. described above in notes of Tract 46 at NW. (No. 2) cor., I run,
 N. 89° 56' W., on north bdy. of Tract.
 NW. (No. 2) cor., identical with NE. (No. 1) cor. of Tract 50, and SE. (No. 4) cor. of Tract 47. Establish this cor. as follows:
 Set an iron post 3 ft. long, 1 in. in diam., 26 ins. in the ground, with a brass cap. marked,
 T 11 S R 23 E in N., and
 1913 in S. half;
 4 TR 47 in NW.,
 S 25 in NE.,
 2 TR 46 in SE., and
 1 TR 50 in SW. quadrant.

40.00 Thence I run,
 S. 0° 29' W., bet. Tracts 46 and 50.
 SW. (No. 3) cor., identical with SE. (No. 4) cor. of Tract 50. Establish this cor. as follows:
 Set an iron post 3 ft. long, 1 in. in diam., 26 ins. in ground, with a brass cap, marked,
 T 11 S R 23 E in N., and
 S 36, 1913 in S. half;
 4 TR 50 in NW., and
 3 TR 46 in NE. quadrant.

37.70 Thence I run,
 S. 89° 51' E., on south bdy. of Tract and sec. line bet. secs. 25 and 36.
 SE. (No. 4) cor., identical with 1/4 sec. cor., bet. secs. 25 and 36, previously reestablished by me, as herein-after described, to the marking on brass cap, of which I add
 4 TR 46 in NW. quadrant, and
 T 11 S R 23 E in N. half;

Thence I run,

8. Survey of Private Tracts in Township 11 South, Range 23 E.

Chains.

- 20.03 N.0°09'E. on east bdy of Tract.
SW. (No.3) cor., hereinbefore described. Thence continue measurement on same course, bet. Tracts 45 and 46.
- 40.06 NE. (No.1) cor., place of beginning, hereinbefore described.
-
- Tract No.47, Homestead Entry 020716, Jan.9, 1913, originally described as the NE $\frac{1}{4}$ of sec. 26, T. 11 S., R. 23 E.
-
- 39.97 From NE. (No.1) cor. hereinbefore described in notes of Tract 42 at SE. (No.4) cor., I run, S.89°55'W., between Tracts 42 and 47.
NW. (No.2) cor., identical with NE. (No.1) cor. of Tract 48; SE. (No.4) cor. of Tract 41; SW. (No.3) cor. of Tract 42, described in notes of Tract 41, at SE. (No.4) cor.
- 40.00 Thence I run, S.0°07'W., bet. Tracts 47 and 48.
SW. (No.3) cor., identical with NW. (No.2) cor. of Tract 50; NE. (No.1) cor. of Tract 49, and SE. (No.4) cor. of Tract 48. Establish this cor. as follows:
Set an iron post, 3 ft. long, 1 in. in diam., 26 ins. in the ground, with a brass cap, marked,
T 11 S R 23 E in N., and
1913 in S. half;
4 TR 48 in NW.,
3 TR 47 in NE.,
2 TR 50 in SE., and
1 TR 49 in SW. quadrant.
- 39.74 Thence I run, N.89°56'E., bet. Tracts 47 and 50.
SE. (No.4) cor., identical with NW. (No.2) cor. of Tract 46, and NE. (No.1) cor. of Tract 50, described in notes of Tract 46, at NW. (No.2) cor.
- 40.00 Thence I run, N.0°29'E., on east bdy. of Tract.
NE. (No.1) cor. place of beginning, hereinbefore described.
-
- Tract No.48, Homestead Entry 08923, Feb.7, 1910, originally described as the NW $\frac{1}{4}$ of sec.26, T.11 S., R. 23 E.
-
- 39.97 From NE. (No.1) cor. hereinbefore described in notes of Tract 41, at SE. (No.4) cor., I run, S.89°55'W., bet. Tracts 41 and 48.
NW. (No.2) cor., identical with NE. (No.1) cor. of Tract 51, SE. (No.4) cor. of Tract 38, and SW. (No.3) cor. of Tract 41, described in notes of Tract 38 at SE. (No.4) cor.
- 40.00 Thence I run, S.0°06'W., bet. Tracts 48 and 51.
SW. (No.3) cor., identical with NW. (No.2) cor. of Tract 49. Establish this cor. as follows:
Set an iron post, 3 ft. long, 1 in. in diam., 26 ins. in the ground, with a brass cap, marked,
T 11 S R 23 E in N., and
1913 in S., and
TR 51 in W. half;
3 TR 48 in NE., and
2 TR 49 in SE. quadrant;
- Thence I run, N.89°56'E., bet. Tracts 48 and 49.

Survey of Private Tracts in Township 11 South, Range 23 E. 9.

Chains.

39.96 SE. (No.4) cor., identical with SW. (No.3) cor. of Tract 47; NW. (No.2) cor. of Tract 50, and NE. (No.1) cor. of Tract 49, described in notes of Tract 47 at SW. (No.3) cor.

Thence 1 run, N.0°07' E., bet. Tracts 47 & 48.

40.00 NE. (No.1) cor., place of beginning, hereinbefore described.

Note: Sun is obscured by clouds at noon, rendering an observation for latitude impossible. Feb. 9th, 1914.

Tract No.49, Homestead Entry 08924, Final Certificate, March 17, 1913, originally described as the SW. 1/4 of sec. 26, T. 11 S., R. 23 E.

Feb. 10, 1914: At 8h.0m., a.m., l.m.t., I set off 14° 26 1/2' S. on decl. arc; 32° 26 1/2' on lat. arc, and determine a meridian with the solar at NE. (No.1) cor. described above in notes of Tract 47 at SW. (No.3) cor.

Thence 1 run, S.89°56' W., bet. Tracts 48 and 49.

39.96 NW. (No.2) cor., identical with SW. (No.3) cor. of Tract 48, described in notes of Tract 48, at SW. (No.3) cor.

Thence 1 run, S.0°06' W., bet. Tracts 49 and 51.

40.00 SW. (No.3) cor., identical with SE. (No.4) cor. of Tract 51. Establish this cor. as follows:

Set an iron post 3 ft. long, 1 in. in diam, 26 ins. in the ground, with a brass cap, marked, T 11 S R 23 E in N., and S 35, 1913 in S. half; 4 TR 51 in NW., and 3 TR 49 in NE. quadrant.

Thence 1 run, N.89° 56' E. on south bdy. of Tract, and N. bdy. of sec. 35. 1/4 sec. cor. of sec. 35, previously reestablished by me, as hereinafter described. Continue measurement on same course.

39.96 SE. (No.4) cor., identical with SW. (No.3) cor. of Tract 50. Establish this cor. as follows:

Set an iron post 3 ft. long, 1 in. in diam., 26 ins. in the ground, with a brass cap, marked, T 11 S R 23 E in N., and S 35, 1913 in S. half; 4 TR 49 in NW., and 3 TR 50 in NE. quadrant.

Thence 1 run, N.0°07' E., bet. Tracts 49 and 50.

40.00 NE. (No.1) cor., place of beginning, hereinbefore described.

Tract No.50, Homestead Entry 016713, Feb. 14, 1912, originally described as the SE 1/4 of sec. 26, T. 11 S., R. 23 E.

From NE (No.1) cor. hereinbefore described in notes of Tract 46, at NW. (No.2) cor., I run, S.89°56' W., bet. Tracts 47 and 50.

39.74 NW. (No.2) cor. identical with NE. (No.1) cor. of Tract 49, SE. (No.4) cor. of Tract 48, and SW. (No.3) cor. of Tract 47, described in notes of Tract 47 at SW. (No.3) cor.

Thence 1 run, S.0° 07' W. bet. Tracts 49 and 50.

40.00 SW. (No.3) cor., identical with SE. (No.4) cor. of Tract 49, described in notes of Tract 49 at SE. (No.4) cor.

10. Survey of Private Tracts in Township 11 S., R. 23 East.

Chains.

- 37.16 Thence I run,
N. $89^{\circ}56'$ E., on south bdy. of Tract, and N. bdy. of sec. 35.
Cor. of secs. 35 and 36, previously reestablished by me,
as hereinafter described. Continue measurement on
same course.
- 39.51 SE. (No. 4) cor., identical with SW. (No. 3) cor. of
Tract 46, described in notes of Tracts 46, at SW. (No.
3) cor.
- 40.00 Thence I run,
N. $0^{\circ}29'$ E., bet. Tracts 46 and 50.
NE. (No. 1) cor. place of beginning, hereinbefore described.

Tract No. 51, Lieu Selection 013104, Santa Fe and Pac. R.R.
Co., Patented Jan. 4th, 1912, originally described as
E. $\frac{1}{2}$ of sec. 27, T 11 S., R. 23 E.

- 39.98 From NE. (No. 1) cor. hereinbefore described in notes of
Tract 38, at SE. (No. 4) cor., I run,
S. $89^{\circ}52'$ W., bet. Tracts 38 and 51.
NW. (No. 2) cor., identical with SW. (No. 3) cor. of Tract
38, described in notes of Tract 38, at SW. (No. 3) cor.
- 80.00 Thence I run,
South on west bdy. of Tract.
SW. (No. 3) cor. Establish this cor. as follows:
Set an iron post 3 ft. long, 1 in. in diam., 26 ins. in
the ground, with a brass cap, marked,
T 11 S R 23 E in N., and
S 34, 1913 in S. half;
S 27 in NW., and
3 TR 51 in NE. quadrant.
- 37.22 Thence I run,
N. $89^{\circ}53'$ E. on S. bdy. of Tract and sec. line, bet. secs. 27
and 34.
Cor. of secs. 34 and 35, previously reestablished by me, as
hereinafter described. Continue measurement on same
course.
- 39.96 SE. (No. 4) cor., identical with SW. (No. 3) cor. of Tract
49, described in notes of Tract 49 at SW. (No. 3) cor.
- 40.00 Thence I run,
N. $0^{\circ}06'$ E., bet. Tracts 49 and 51.
SW. (No. 3) cor. of Tract 48, identical with NW. (No. 2)
cor. of Tract 49, described in notes of Tract 48, at
SW. (No. 3) cor. Thence I continue measurement on same
course between Tracts 48 and 51.
- 80.00 NE. (No. 1) cor., place of beginning, hereinbefore de-
scribed.

Feb. 10th, 1914.

Tract No. 52, Homestead Entry 017238, April 15, 1912, or-
iginally described as the SE $\frac{1}{4}$ of sec. 15, T. 11 S., R. 23 E.

Feb. 11th, 1914: At 8h. 0m. a.m., l.m.t., I set off 14°
 $07'$ S. on decl. arc; $32^{\circ}28\frac{1}{2}'$ on lat. arc, and determine
a meridian with the solar.
At the NE. (No. 1) cor. of Tract No. 52, as determined by
cor. of wire fence; establish this corner as follows:
I set an iron post 3 ft. long, 1 in. in diam., 26 ins. in
ground, with a brass cap, marked,
T 11 S R 23 E in N., and
1913 in S. half;
S 14 in NE., and
1 TR 52 in SW. quadrant.

Chains.

- Thence I run,
S. 89° 57' W., on north bdy of Tract.
- 3.15 Intersect $\frac{1}{4}$ sec. cor., between secs. 14 and 15, previously reestablished by me, as hereinafter described, to the markings on the brass cap of which I add TR 52 in S. half. Continue measurement on same course.
- 39.95 NW. (No. 2) cor., identical with NE. (No. 1) cor. of Tract 53. Establish this cor. as follows:
Set an iron post 3 ft. long, 1 in. in diam., 26 ins. in ground, with a brass cap, marked,
T 11 S R 23 E S 15 in N., and
1913 in S. half;
2 TR 52 in SE., and
1 TR 53 in SW. quadrant.
- Thence I run,
S. 0° 01' W., bet. Tracts 52 and 53.
- 40.01 SW. (No. 3) cor., identical with NW. (No. 2) cor. of Tract 37, and SE. (No. 4) cor. of Tract 53, described in notes of Tract 37, at NW. (No. 2) cor.
- Thence I run,
N. 89° 58' E., bet. Tracts 37 and 52.
- 40.05 SE. (No. 4) cor., identical with NW. (No. 2) cor. of Tract 40; and NE. (No. 1) cor. of Tract 37, described in notes of Tract 37 at NE. (No. 1) cor.
- Thence I run,
N. 0° 05' E. on east bdy. of Tract.
- 40.00 NE. (No. 1) cor., place of beginning, hereinbefore described.
-
- Tract No. 53, Homestead Entry 017239, April 15, 1912, originally described as the SW. $\frac{1}{4}$ of sec. 15^m T. 11 S., R. 23 E.
-
- From NE. (No. 1) cor. hereinbefore described in notes of Tract 52 at NW. (No. 2) cor., I run,
S. 89° 57' W., on north bdy. of Tract.
- 40.30 NW. (No. 2) cor. Establish this cor. as follows:
Set an iron post 3 ft. long, 1 in. in diam., 26 ins. in the ground, with a brass cap, marked,
T 11 S R 23 E in N., and
1913 in S. half;
S 15 in NW., and
2 TR 53 in SE. quadrant.
- Thence I run,
S. 0° 17' E. on west bdy. of Tract.
- 40.00 SW. (No. 3) cor. Establish this cor. as follows:
Set an iron post 3 ft. long, 1 in. in diam., 26 ins. in the ground, with a brass cap, marked,
T 11 S R 23 E in N., and
S 22 1913 in S. half;
S 15 in NW., and
3 TR 53 in NE. quadrant.
- Thence I run,
N. 89° 58' E., on south bdy. of Tract and sec. line bet. secs. 15 and 22.
- 36.97 $\frac{1}{4}$ sec. cor. of sec. 22, previously reestablished by me as hereinafter described. Continue measurement on same course.
- 39.97 SE. (No. 4) cor. identical with SW. (No. 3) cor. of Tract 52, and NW. (No. 2) cor. of Tract 37, described in notes of Tract 37 at NW. (No. 2) cor.
- Thence I run,
N. 0° 01' E., bet. Tracts 52 and 53.
- 40.01 NE. (No. 1) cor., place of beginning, hereinbefore described.

Feb. 11th, 1914.

12. Survey of Private Tracts in Township 11 S., R. 23 E.

Chains.

Note: All the other claims in this township in which the interest of settlers or owner has been impaired to any perceptible extent, by reason of resurvey, are covered by owner s or settler s written agreements, as follows:

DEPARTMENT OF THE INTERIOR. UNITED STATES LAND OFFICE.

Phoenix, Arizona.

IN RE RESURVEY OF GROUP 25, -Arizona.

I, LeRoy F. Hardenbrook, being first duly sworn upon my oath state; that I am the same person who made homestead entry of the S.E. 1/4 of sec. 35, Tb. 11 S., R. 27 E., G. & S. R. B. & M.; that I do not desire a special metes and bounds survey of said described land, but agree to conform my claim to the lines of the resurvey thereof; that my postoffice address is Lompoc, Ariz., Arizona.

LeRoy F. Hardenbrook

I HEREBY CERTIFY that the foregoing affidavit was read to affiant in my presence before affiant affixed signature thereto; that affiant is to me personally known; that I verily believe affiant to be the identical person hereinbefore described, and that said affidavit was duly subscribed and sworn to before me this the 21ST day of April, 1914.

Kelley Hardenbrook
 XXXXX Surveyor

NOTARY PUBLIC
 for and for the County of Santa Barbara, State of California

DEPARTMENT OF THE INTERIOR. UNITED STATES LAND OFFICE.

Phoenix, Arizona.

IN RE RESURVEY OF GROUP 25, -Arizona.

I, Harrison M. Estes, being first duly sworn upon my oath state; that I am the same person who made abstract entry of the Lots 143, 142, 141, 140, 139, 138, 137, 136, 135, 134, 133, 132, 131, 130, 129, 128, 127, 126, 125, 124, 123, 122, 121, 120, 119, 118, 117, 116, 115, 114, 113, 112, 111, 110, 109, 108, 107, 106, 105, 104, 103, 102, 101, 100, 99, 98, 97, 96, 95, 94, 93, 92, 91, 90, 89, 88, 87, 86, 85, 84, 83, 82, 81, 80, 79, 78, 77, 76, 75, 74, 73, 72, 71, 70, 69, 68, 67, 66, 65, 64, 63, 62, 61, 60, 59, 58, 57, 56, 55, 54, 53, 52, 51, 50, 49, 48, 47, 46, 45, 44, 43, 42, 41, 40, 39, 38, 37, 36, 35, 34, 33, 32, 31, 30, 29, 28, 27, 26, 25, 24, 23, 22, 21, 20, 19, 18, 17, 16, 15, 14, 13, 12, 11, 10, 9, 8, 7, 6, 5, 4, 3, 2, 1 of W. 1/4 of N. 1/4 of Sec. 17, T. 11 N., R. 23 E., S. 4 D. 1 A., B. 4 M. that I do not desire a special metes and bounds survey of said described land, but agree to conform my claim to the lines of the resurvey thereof; that my postoffice address is Tombson, Ariz.

H. M. Estes

I HEREBY CERTIFY that the foregoing affidavit was read to affiant in my presence before affiant affixed signature thereto; that affiant is to me personally known; that I verily believe affiant to be the identical person hereinbefore described, and that said affidavit was duly subscribed and sworn to before me this the 11 day of Feb., 1914.

Thomas B. Matthews
U. S. Surveyor.

DEPARTMENT OF THE INTERIOR. UNITED STATES LAND OFFICE.

Phoenix, Arizona.

IN RE RESURVEY OF GROUP 25, -Arizona.

I, Melville C. Frost, being first duly sworn upon my oath state; that I am the same person who made

limited entry of the N 1/2 Sec 3
T14N R23E, S4E R. B. & M.;

that I do not desire a special metes and bounds survey of said described land, but agree to conform my claim to the lines of the resurvey thereof; that my postoffice address is Bonita, Ariz.

Melville C. Frost

I HEREBY CERTIFY that the foregoing affidavit was read to affiant in my presence before affiant affixed signature thereto; that affiant is to me personally known; that I verily believe affiant to be the identical person hereinbefore described, and that said affidavit was duly subscribed and sworn to before me this the 6 day of Jul., 1914.

Thomas B. Matthews
U. S. Surveyor.

DEPARTMENT OF THE INTERIOR. UNITED STATES LAND OFFICE.

Phoenix, Arizona.

IN RE RESURVEY OF GROUP 25, -Arizona.

I, Boyd Hart, being first duly sworn upon my oath state; that I am the same person who made homestead entry of the Sec. 3 T. 11 S., R. 23 E., S. 4. R. B. & M.; that I do not desire a special metes and bounds survey of said described land, but agree to conform my claim to the lines of the resurvey thereof; that my postoffice address is Bonita, Ariz.

Boyd Hart

I HEREBY CERTIFY that the foregoing affidavit was read to affiant in my presence before affiant affixed signature thereto; that affiant is to me personally known; that I verily believe affiant to be the identical person hereinbefore described, and that said affidavit was duly subscribed and sworn to before me this the 7 day of Feb., 1914.

Thomas B. Matthews
U. S. Surveyor.

DEPARTMENT OF THE INTERIOR. UNITED STATES LAND OFFICE.

Phoenix, Arizona.

IN RE RESURVEY OF GROUP 25, -Arizona.

I, Mary M. Gillespie, being first duly sworn upon my oath state; that I am the same person who made

homestead entry of the Sec. 4
T11N. R. 23E. E. 1/4 R. B. & M.

that I do not desire a special metes and bounds survey of said described land, but agree to conform my claim to the lines of the resurvey thereof; that my postoffice address is Willcox, Ariz.

Mary M. Gillespie

I HEREBY CERTIFY that the foregoing affidavit was read to affiant in my presence before affiant affixed signature thereto; that affiant is to me personally known; that I verily believe affiant to be the identical person hereinbefore described, and that said affidavit was duly subscribed and sworn to before me this the 6 day of Feb., 1914.

James B. Matthews
U. S. Surveyor.

DEPARTMENT OF THE INTERIOR. UNITED STATES LAND OFFICE.

Phoenix, Arizona.

IN RE RESURVEY OF GROUP 25, -Arizona.

I, Edna Darling, being first duly sworn upon my oath state; that I am the same person who made

homestead entry of the Wagon 4 J.H.D.R. 23 E. G.H.R. B.Y.M;

that I do not desire a special metes and bounds survey of said described land, but agree to conform my claim to the lines of the resurvey thereof; that my postoffice address is Willcox, Ariz.

Edna Darling

I HEREBY CERTIFY that the foregoing affidavit was read to affiant in my presence before affiant affixed signature thereto; that affiant is to me personally known; that I verily believe affiant to be the identical person hereinbefore described, and that said affidavit was duly subscribed and sworn to before me this the 6 day of Feb., 1914.

Thomas B. Matthews
U. S. Surveyor.

DEPARTMENT OF THE INTERIOR. UNITED STATES LAND OFFICE.

Phoenix, Arizona.

IN RE RESURVEY OF GROUP 25, -Arizona.

I, Lanie Gillispie, being first duly sworn upon my oath state; that I am the same person who made homestead entry of the E 1/2 of sec 5 T11N R 23E, S 1/4 R 24W;

that I do not desire a special metes and bounds survey of said described land, but agree to conform my claim to the lines of the resurvey thereof; that my postoffice address is Bonita, Ariz.

Lanie Gillispie

I HEREBY CERTIFY that the foregoing affidavit was read to affiant in my presence before affiant affixed signature thereto; that affiant is to me personally known; that I verily believe affiant to be the identical person hereinbefore described, and that said affidavit was duly subscribed and sworn to before me this the 10 day of Feb., 1914.

James B. Matthews
U. S. Surveyor.

DEPARTMENT OF THE INTERIOR. UNITED STATES LAND OFFICE.

Phoenix, Arizona.

IN RE RESURVEY OF GROUP 25, -Arizona.

I, H. H. Thurman, being first duly sworn upon my oath state; that I am the same person who made heretofore entry of the SW 1/4 of NE 1/4, SE 1/4 of NW 1/4 & E 1/4 of NW 1/4 of sec 7, T11N R23E, M11S, B & M that I do not desire a special metes and bounds survey of said described land, but agree to conform my claim to the lines of the resurvey thereof; that my postoffice address is Bonita, Ariz.

H. H. Thurman

I HEREBY CERTIFY that the foregoing affidavit was read to affiant in my presence before affiant affixed signature thereto; that affiant is to me personally known; that I verily believe affiant to be the identical person hereinbefore described, and that said affidavit was duly subscribed and sworn to before me this the 10 day of Feb., 1914.

Thomas B. Matthews
U. S. Surveyor.

DEPARTMENT OF THE INTERIOR. UNITED STATES LAND OFFICE.

Phoenix, Arizona.

IN RE RESURVEY OF GROUP 25, -Arizona.

I, Earl Gillespie, being first duly sworn upon my oath state; that I am the same person who made homestead entry of the Wagon 10 711 S. R 23 E. G. & P. B. & M.; that I do not desire a special metes and bounds survey of said described land, but agree to conform my claim to the lines of the resurvey thereof; that my postoffice address is Bonita, Ariz.

Earl Gillespie

I HEREBY CERTIFY that the foregoing affidavit was read to affiant in my presence before affiant affixed signature thereto; that affiant is to me personally known; that I verily believe affiant to be the identical person hereinbefore described, and that said affidavit was duly subscribed and sworn to before me this the 6 day of Feb., 1914.

Thomas B. Matthews
U. S. Surveyor.

DEPARTMENT OF THE INTERIOR. UNITED STATES LAND OFFICE.

Phoenix, Arizona

IN RE RESURVEY OF GROUP 25, -Arizona.

I, Thos. W. Gillespie, being first duly sworn upon my oath state; that I am the same person who made homestead entry of the Section 10 T11d R23E Q4R. B77N.; that I do not desire a special metes and bounds survey of said described land, but agree to conform my claim to the lines of the resurvey thereof; that my postoffice address is Tempe, Ariz.

Thos W Gillespie

I HEREBY CERTIFY that the foregoing affidavit was read to affiant in my presence before affiant affixed signature thereto; that affiant is to me personally known; that I verily believe affiant to be the identical person hereinbefore described, and that said affidavit was duly subscribed and sworn to before me this the 6 day of Feb., 1914.

Thomas B. Matthews
U. S. Surveyor.

DEPARTMENT OF THE INTERIOR. UNITED STATES LAND OFFICE.

Phoenix, Arizona.

IN RE RESURVEY OF GROUP 25, Arizona.

I, F.C. Wilkins, being first duly sworn upon my oath state; that I am the same person who made homestead entry of the SW 1/4 of sec 11 T11N R23E S4th R. B. & M.;

that I do not desire a special metes and bounds survey of said described land, but agree to conform my claim to the lines of the resurvey thereof; that my postoffice address is Tempe Arizona

Frank Wilkins

I HEREBY CERTIFY that the foregoing affidavit was read to affiant in my presence before affiant affixed signature thereto; that affiant is to me personally known; that I verily believe affiant to be the identical person hereinbefore described, and that said affidavit was duly subscribed and sworn to before me this the 4 day of Aug, 1914.

Thomas B. Matthews
U. S. Surveyor.

DEPARTMENT OF THE INTERIOR. UNITED STATES LAND OFFICE.

Phoenix, Arizona.

IN RE RESURVEY OF GROUP 25, Arizona.

I, C. J. Fehnel, being first duly sworn upon my oath state; that I am the same person who made senator entry of the NW 1/4 of sec 11 T11N R23E Q4R. B & M; that I do not desire a special metes and bounds survey of said described land, but agree to conform my claim to the lines of the resurvey thereof; that my postoffice address is Tempe, Ariz.

Calvin J. Fehnel

I HEREBY CERTIFY that the foregoing affidavit was read to affiant in my presence before affiant affixed signature thereto; that affiant is to me personally known, that I verily believe affiant to be the identical person hereinbefore described, and that said affidavit was duly subscribed and sworn to before me this the 3 day of Jan 1914.

Thomas B. Matthews
U. S. Surveyor.

DEPARTMENT OF THE INTERIOR. UNITED STATES LAND OFFICE.

Phoenix, Arizona.

IN RE RESURVEY OF GROUP 25, Arizona.

I, J. M. Kirkpatrick, being first duly sworn upon my oath state; that I am the owner by virtue of a legal transfer of SE 1/4 of Section 11, T11N, R23E
CH. R. B. & M.;

that I do not desire a special metes and bounds survey of said described land, but agree to conform my claim to the lines of the resurvey thereof; that my postoffice address is Willcox, Ariz.

J. M. Kirkpatrick

I HEREBY CERTIFY that the foregoing affidavit was read to affiant in my presence before affiant affixed signature thereto; that affiant is to me personally known that I verily believe affiant to be the identical person hereinbefore described, and that said affidavit was duly subscribed and sworn to before me this the 2 day of Feb, 1914.

Thomas B. Matthews
U. S. Surveyor.

DEPARTMENT OF THE INTERIOR. UNITED STATES LAND OFFICE.
Phoenix, Arizona.

IN RE RESURVEY OF GROUP 25, -Arizona.

I, Roy J. Whicker, being first duly sworn upon my oath state; that I am the same person who made homestead entry of the Ex. 12 T. 11 N. R. 23 E. S. 4 R. B. M.;

that I do not desire a special notes and bounds survey of said described land, but agree to conform my claim to the lines of the resurvey thereof; that my postoffice address is Imperial, Calif.

Roy J. Whicker

I HEREBY CERTIFY that the foregoing affidavit was read to affiant in my presence before affiant affixed signature thereto; that affiant is to me personally known; that I verily believe affiant to be the identical person hereinbefore described, and that said affidavit was duly subscribed and sworn to before me this the 6 day of Feb., 1914.

Thomas B. Matthews
U. S. Surveyor.

DEPARTMENT OF THE INTERIOR. UNITED STATES LAND OFFICE.

Phoenix, Arizona.

IN RE RESURVEY OF GROUP 25, -Arizona.

I, Charles W. Wheeler, being first duly sworn upon my oath state; that I am the same person who made homestead entry of the W. 1/4 Sec. 12 T. 11 N., R. 23 E., Co. 4 R., B. & M.;

that I do not desire a special metes and bounds survey of said described land, but agree to conform my claim to the lines of the resurvey thereof; that my postoffice address is Tempe, Ariz.

Charles W. Wheeler

I HEREBY CERTIFY that the foregoing affidavit was read to affiant in my presence before affiant affixed signature thereto; that affiant is to me personally known; that I verily believe affiant to be the identical person hereinbefore described, and that said affidavit was duly subscribed and sworn to before me this the 6 day of Feb., 1914.

Thomas B. Matthews
U. S. Surveyor.

DEPARTMENT OF THE INTERIOR. UNITED STATES LAND OFFICE.

Phoenix, Arizona.

IN RE RESURVEY OF GROUP 25, Arizona.

I, B. McLean, being first duly sworn upon my oath state; that I am the same person who made homestead entry of the the E 1/2 of sec. 13 T. 11 N., R. 23 E., Co. 4 R., B. & M.; that I do not desire a special metes and bounds survey of said described land, but agree to conform my claim to the lines of the resurvey thereof; that my postoffice address is Tombere, Ariz.

Blaine McLean

I HEREBY CERTIFY that the foregoing affidavit was read to affiant in my presence before affiant affixed signature thereto; that affiant is to me personally known that I verily believe affiant to be the identical person hereinbefore described, and that said affidavit was duly subscribed and sworn to before me this the 5 day of Feb., 1914.

Thomas B. Matthews
U. S. Surveyor.

DEPARTMENT OF THE INTERIOR. UNITED STATES LAND OFFICE.

Phoenix, Arizona.

IN RE RESURVEY OF GROUP 25, Arizona.

I, Mr. C. B. Severy, being first duly sworn upon my oath state; that I am the same person who made homestead entry of the SW 1/4 of Sec 15 T11 N18 R23 E Q4 SR. B & M that I do not desire a special metes and bounds survey of said described land, but agree to conform my claim to the lines of the resurvey thereof; that my postoffice address is Tempe, Ariz.

Mr. C. B. Severy

I ~~HEREBY~~ HEREBY CERTIFY that the foregoing affidavit was read to affiant in my presence before affiant affixed signature thereto; that affiant is to me personally known; that I verily believe affiant to be the identical person hereinbefore described, and that said affidavit was duly subscribed and sworn to before me this the 4 day of Feb, 1914.

Thomas B. Matthews
U. S. Surveyor.

DEPARTMENT OF THE INTERIOR. UNITED STATES LAND OFFICE.

Phoenix, Arizona.

IN RE RESURVEY OF GROUP 25, § Arizona.

I, R. A. King, being first duly sworn upon my oath state; that I am the same person who ~~made~~ ^{made} ~~established~~ ~~under~~ ~~entry~~ ^{on} of the William 13 711 D. R. 23 E., C. & G. R., B. & M.; that I do not desire a special metes and bounds survey of ~~group~~ said described land, but agree to conform my claim to the lines of the resurvey thereof; that my postoffice address is Tempe, Ariz.

R. A. King

I HEREBY CERTIFY that the foregoing affidavit was read to affiant in my presence before affiant affixed signature thereto; that affiant is to me personally known; that I verily believe affiant to be the identical person hereinbefore described, and that said affidavit was duly subscribed and sworn to before me this the 12 day of Feb., 1914.

Thomas B. Matthews
U. S. Surveyor.

DEPARTMENT OF THE INTERIOR. UNITED STATES LAND OFFICE.

Phoenix, Arizona.

IN RE RESURVEY OF GROUP 25, -Arizona.

I, Henry Edge, being first duly sworn upon my oath state; that I am the same person who ~~was~~ ^{has} ~~subscribed~~ ^{subscribed} on entry of the E's of the NW 1/4 of sec 21 T11N, R23E.; ^{Chas. R. Byrnes} that I do not desire a special setas and bounds survey of said described land, but agree to conform my claim to the lines of the resurvey thereof; that my postoffice address is Tempe, Ariz.

Henry Edge

I HEREBY CERTIFY that the foregoing affidavit was read to affiant in my presence before affiant affixed signature thereto; that affiant is to me personally known; that I verily believe affiant to be the identical person hereinbefore described, and that said affidavit was duly subscribed and sworn to before me this the 11 day of Feb., 1914.

Thomas B. Matthews
U. S. Surveyor.

DEPARTMENT OF THE INTERIOR. UNITED STATES LAND OFFICE.

Phoenix, Arizona.

IN RE RESURVEY OF GROUP 25,- Arizona.

I, Will V. McGrath, being first duly sworn upon my oath state; that I am the same person who made located entry of the E 2 d E 2 d sec 21 T11N R 23 E - W 4 d R. B. 9 7 1/2; that I do not desire a special metes and bounds survey of said described land, but agree to conform my claim to the lines of the resurvey thereof; that my postoffice address is Tempe, Ariz.

Will V. McGrath

I HEREBY CERTIFY that the foregoing affidavit was read to affiant in my presence before affiant affixed signature thereto; that affiant is to me personally known; that I verily believe affiant to be the identical person hereinbefore described, and that said affidavit was duly subscribed and sworn to before me this the 13 day of Feb., 1914.

Thomas B. Matthews
U.S. Surveyor.

DEPARTMENT OF THE INTERIOR. UNITED STATES LAND OFFICE.

Phoenix, Arizona.

IN RE RESURVEY OF GROUP 25,-Arizona.

I, M. H. Short, being first duly sworn upon my oath state; that I am the same person who made homestead entry of the NW 1/4 of sec 22 T. 11 N. R. 23 E. B. 4 P. B. 4 M.

that I do not desire a special metes and bounds survey of said described land, but agree to conform my claim to the lines of the resurvey thereof; that my post-office address is Tempe, Ariz.

M. H. Short

I HEREBY CERTIFY that the foregoing affidavit was read to affiant in my presence before affiant affixed signature thereto; that affiant is to me personally known; that I verily believe affiant to be the identical person hereinbefore described, and that said affidavit was duly subscribed and sworn to before me this the 12 day of Feb., 1914.

Thomas B. Matthew
U. S. Surveyor.

DEPARTMENT OF THE INTERIOR. UNITED STATES LAND OFFICE.

Phoenix, Arizona.

IN RE RESURVEY OF GROUP 25, -Arizona.

I, M. H. Short, being first duly sworn upon my oath state; that I am the same person who ~~made~~ ^{has} ~~established~~ ^{made} ~~entry~~ ^{entry} of the W^{1/4} of sec 22 T11N. R. 23E. Q4. R. B. & M.

that I do not desire a special metes and bounds survey of said described land, but agree to conform my claim to the lines of the resurvey thereof; that my post-office address is Tempe, Ariz.

M. H. Short

I HEREBY CERTIFY that the foregoing affidavit was read to affiant in my presence before affiant affixed signature thereto; that affiant is to me personally known; that I verily believe affiant to be the identical person hereinbefore described, and that said affidavit was duly subscribed and sworn to before me this the 12 day of Feb., 1914.

Thomas B. Matthews
U. S. Surveyor.

DEPARTMENT OF THE INTERIOR. UNITED STATES LAND OFFICE.

Phoenix, Arizona.

IN RE RESURVEY OF GROUP 25, -Arizona.

I, G. Canfield, being first duly sworn upon my oath state; that I am the same person who made homestead entry of the NE 1/4 sec. 24 T14S R23E Q4R BY M.; that I do not desire a special metes and bounds survey of said described land, but agree to conform my claim to the lines of the resurvey thereof; that my postoffice address is Williams, Ariz.

G. Canfield

I HEREBY CERTIFY that the foregoing affidavit was read to affiant in my presence before affiant affixed signature thereto; that affiant is to me personally known; that I verily believe affiant to be the identical person hereinbefore described, and that said affidavit was duly subscribed and sworn to before me this the 9 day of Feb., 1914.

Thomas B. Matthews
U. S. Surveyor.

DEPARTMENT OF THE INTERIOR. UNITED STATES LAND OFFICE.

Phoenix, Arizona

IN RE RESURVEY OF GROUP 25, -Arizona.

I, Arthur A. Coats, being first duly sworn upon my oath state; that I am the same person who made homestead entry of the N¹/₂ of NE¹/₄ of 25 T.11N., R.23E., S.4T.1R., B.4M.; that I do not desire a special metes and bounds survey of said described land, but agree to conform my claim to the lines of the resurvey thereof; that my postoffice address is M^cAlister, Ariz.

Arthur A. Coats

I HEREBY CERTIFY that the foregoing affidavit was read to affiant in my presence before affiant affixed signature thereto; that affiant is to me personally known; that I verily believe affiant to be the identical person hereinbefore described, and that said affidavit was duly subscribed and sworn to before me this the 6 day of Feb., 1914.

Thomas B. Matthews

Arthur A. Coats

U. S. Surveyor.

*Arthur A. Coats
 Witness
 Thomas B. Matthews*

DEPARTMENT OF THE INTERIOR. UNITED STATES LAND OFFICE.

Phoenix, Arizona

IN RE RESURVEY OF GROUP 25, -Arizona.

I, A. A. Coats, being first duly sworn upon my oath state; that I am the same person who made homestead entry of the SE 1/4 of SW 24 1/2 Sec. R. 23 E. B. 7 M.; that I do not desire a special metes and bounds survey of said described land, but agree to conform my claim to the lines of the resurvey thereof; that my postoffice address is McClater, Ariz.

Arthur A. Coats

I HEREBY CERTIFY that the foregoing affidavit was read to affiant in my presence before affiant affixed signature thereto; that affiant is to me personally known; that I verily believe affiant to be the identical person hereinbefore described, and that said affidavit was duly subscribed and sworn to before me this the 6 day of Feb., 1914.

Thomas B. Matthews
U. S. Surveyor.

DEPARTMENT OF THE INTERIOR. UNITED STATES LAND OFFICE.

Phoenix, Arizona.

IN RE RESURVEY OF GROUP 25, Arizona.

I, Ida M. Collins, being first duly sworn upon my oath state; that I am the owner by virtue of a

legal transfer of the N 1/4 of sec 27 T14N R23E G.T. & R. B. & M.;

that I do not desire a special metes and bounds survey of said described land, but agree to conform my claim to the lines of the resurvey thereof; that my postoffice address

is McClister, Ariz

Ida M Collins

I HEREBY CERTIFY that the foregoing affidavit was read to affiant in my presence before affiant affixed signature thereto; that affiant is to me personally known, that I verily believe affiant to be the identical person hereinbefore described and that said affidavit was duly subscribed and sworn to before me this the 5 day of Feb., 1914.

Thomas B. Matthews
U. S. Surveyor.

DEPARTMENT OF THE INTERIOR. UNITED STATES LAND OFFICE.

Phoenix, Arizona.

IN RE RESURVEY OF GROUP 25, Arizona.

I, A. H. Manzingo, being first duly sworn upon my oath state; that I am the same person who made limited entry of the E 1/2 of NE 1/4 of sec 34 & NW 1/4 of sec 35 T11N, R23E, EA. 1R., B4M.; that I do not desire a special metes and bounds survey of said described land, but agree to conform my claim to the lines of the resurvey thereof; that my postoffice address is McWhiter Ariz.

A. H. Manzingo

I HEREBY CERTIFY that the foregoing affidavit was read to affiant in my presence before affiant affixed signature thereto; that affiant is to me personally known; that I verily believe affiant to be the identical person hereinbefore described, and that said affidavit was duly subscribed and sworn to before me this the 5 day of Feb., 1914.

Thomas B. Matthews
U. S. Surveyor.

DEPARTMENT OF THE INTERIOR. UNITED STATES LAND OFFICE.
Phoenix, Arizona.IN RE RESURVEY OF GROUP 25, Arizona.

I, Ed. J. Mangino, being first duly sworn upon my oath state; that I am the same person who made homestead entry of the E 1/4 Sec 4 of T 10 N 1/4 of R 35 W 1/4 R 23 E 1st R. 1st M. that I do not desire a special notes and bounds survey of said described land, but agree to conform my claim to the lines of the resurvey thereof; that my postoffice address is McWhiter, Ariz.

G. L. Mangino

I HEREBY HEREBY CERTIFY that the foregoing affidavit was read to affiant in my presence before affiant affixed signature thereto; that affiant is to me personally known; that I verily believe affiant to be the identical person hereinbefore described, and that said affidavit was duly subscribed and sworn to before me this the 5 day of Feb., 1914.

Thomas B. Matthews
U. S. Surveyor.

DEPARTMENT OF THE INTERIOR. UNITED STATES LAND OFFICE.

Phoenix, Arizona.

IN RE RESURVEY OF GROUP 25, Arizona.

W. M. Hillier Corporation, being first duly sworn upon my oath state; that ^{we are} I am the owner by virtue of a legal transfer of NE 1/4 of NE 1/4 of Sec 23 T11N R23E Q4R B.9M.; that ^{we} I do not desire a special metes and bounds survey of said described land, but agree to conform my claim to the lines of the resurvey thereof; that my postoffice address is Bakersfield Cal

W. M. Hillier Corporation
W. M. Hillier
 President

I HEREBY CERTIFY that the foregoing affidavit was read to affiant in my presence before affiant affixed signature thereto; that affiant is to me personally known that I verily believe affiant to be the identical person hereinbefore described, and that said affidavit was duly subscribed and sworn to before me this the 2 day of March, 1914.

Thomas B. Matthews
 U. S. Surveyor.

DEPARTMENT OF THE INTERIOR. UNITED STATES LAND OFFICE.

Phoenix, Arizona.

IN RE RESURVEY OF GROUP 25, -Arizona.

I, Vincent V. Smith, being first duly sworn upon my oath state; that I am the same person who made homestead entry of the N. E. 1/4 of sec. 11, Tp. 11 S., R. 23 E., G. & S.R. B. & M. that I do not desire a special metes and bounds survey of said described land, but agree to conform my claim to the lines of the resurvey thereof; that my postoffice address is El Centro, Cal.

Vincent V. Smith

I HEREBY CERTIFY that the foregoing affidavit was read to affiant in my presence before affiant affixed signature thereto; that affiant is to me personally known; that I verily believe affiant to be the identical person hereinbefore described, and that said affidavit was duly subscribed and sworn to before me this the 6th day of April, 1914.

L. O. Kavour
 XXXXX Surveyor.

NOTARY PUBLIC
 In and for Imperial County, State of California.

My Commission Expires March 31, 1915
 My Commission Expires March 31, 1915

DEPARTMENT OF THE INTERIOR. UNITED STATES LAND OFFICE.

PHOENIX, ARIZONA.

IN RE RESURVEY OF GROUP 25, ARIZONA.

We, the undersigned, being first duly sworn upon oath, state; that we are the owners of and are in full possession of the following described land:

The S 1/2 of the SE 1/4 of sec. 10; the SW 1/4 of the SW 1/4 of sec. 11 the SW 1/4 of the NE 1/4, the NW 1/4 of the NW 1/4, the S 1/2 of the NW 1/4, the SW 1/4 and the N 1/2 and SE 1/4 of SE 1/4 of Sec. 14; the N 1/2 of sec. 15; the S 1/2 of the SE 1/4; and the SW 1/4; the S 1/2 and NW 1/4 of NW 1/4 of sec. 24; the NE 1/4 of the NE 1/4 of sec. 23; all of sec. 25; the NE 1/4 and S 1/2 of sec. 26; the SE 1/4 of the NW 1/4 and SW 1/4 of sec. 33; and all of sec. 35, all in Tp. 10 S., R. 22 E., G. & S. R. B & M.

The W 1/2 of the W 1/2 of sec. 28; all of secs. 29, 30, 31, and the N 1/2 of sec. 32, all in Tp. 10 S., R. 23 E., G. & S. R. B & M.

The W 1/2 of sec. 5; the N 1/2, the SE 1/4 and N 1/2 of the SW 1/4 of sec. 6; the N 1/2 and SE 1/4 of the NE 1/4, the SE 1/4 and lots 2, 3, & 4 of sec. 7; the NW 1/4 and S 1/2 of NW 1/4, the SW 1/4 of the SE 1/4 and the SW 1/4 of sec. 8; the W 1/2 of the NE 1/4, the SE 1/4 and W 1/2 of sec. 17; all of secs. 18, 19 & 20, the W 1/2 of the SW 1/4 of sec. 21; the SW 1/4 of sec. 27; all of secs. 28, 29, 30, & 31 and the W 1/2 of the E 1/2 and the W 1/2 of sec. 34, all in Tp. 11, S., R. 23 E., G. & S. R. B & M.

The above described land is a part of what is known as the Sierra Bonita Ranch.

And that we do not desire a special metes and bounds survey of said described land, but agree to conform our claims to the lines of the resurvey thereof; that our post office address is Los Angeles, California.

Elizabeth R. Hooker.
Ida J. Stewart.
E. R. Hooker.
J. M. Hooker.

Subscribed and sworn to before me this 11th day of June, 1914.

Emabelle M. Tupper
Notary Public in and for the county of Los Angeles, state of California.

My commission expires April 12 1914

Resurvey of Subdivision lines of Township 11 S., R. 23 E. 75.

Chains.	
	<p>Sept. 22, 1913: At 9h. 10m. a.m., l.m.t., I set off $0^{\circ} 24'$ N. on decl. arc; $32^{\circ} 25\frac{1}{2}'$ on lat. arc, and determine a meridian with the solar at the cor. of secs. 35 and 36, on south bdy. of Tp., previously reestablished by me, as described in Book "A" of this Group.</p> <p>The magnetic bearing of the meridian thus established at 9h. 20m., a. m., l.m.t., is $N. 12^{\circ} 54' W.$; the angle thus determined gives the magnetic decl. $12^{\circ} 54' E.$</p>
	<p>-----</p> <p>Thence I run, $N. 0^{\circ} 01' W.$, bet. secs. 35 and 36. Over level prairie land.</p>
.20	Telephone line, brs. E. and W.
.60	Wire fence brs. NW. and SE.; thence through pasture parallel to and east of lane.
40.00	Set an iron post 3 ft. long, 1 in. in diam., 26 ins. in ground for reestablished $\frac{1}{4}$ sec. cor., with a brass cap, marked, $\frac{1}{4}$ S 35 in W., S 36 in E., and 1913 in S. half; dig pits $18 \times 18 \times 12$ ins., N. and S. of post 3 ft. dist., and raise mound of earth $3\frac{1}{2}$ ft. base, $1\frac{1}{2}$ ft. high, west of cor.
45.00	Adobe house, brs. west 10 chs. dist.
80.00	Intersect south bdy. of Tract No. 50, 235 lks. $S. 89^{\circ} 56' W.$ of SE. (No. 4) cor., later established by me, as hereinbefore described in notes of Tract 50. At point of intersection, Feb. 10, 1914, I set an iron post 3 ft. long, 2 ins. in diam., 24 ins. in the ground, for reestablished cor. of secs. 35 and 36, with a brass cap, marked, T 11 S R 23 E TR 50 in N., and 1913 in S. half; S 36 in SE., and S 35 in SW. quadrant; dig pits $24 \times 24 \times 12$ ins., in each sec. 6 ft. dist., and raise a mound of earth 4 ft. base, 2 ft. high, S. of cor.
	Land, level. Soil, loose, red sandy loam, medium texture, 12 to 18 ins. deep, on clay subsoil. Good grass. No timber.

	Thence I run, $N. 89^{\circ} 56' E.$, on random line, bet. cor. of secs. 35 and 36.
40.00	Set temp. $\frac{1}{4}$ sec. cor.
80.10	Intersect east bdy. of Tp. 30 lks. N. of cor., of secs. 25, 30, 31 and 36, previously reestablished by me, as described in Book "A" of this Group.
	Thence I run, $N. 89^{\circ} 51' W.$ on true line, bet. secs. 25 and 36. Over level prairie land, through scattering yuccas, 4 to 7 ft. high.
25.00	Leave scattering yuccas, brs. N. and S.
40.05	Set an iron post 3 ft. long, 1 in. in diam., 26 ins. in the ground, for reestablished $\frac{1}{4}$ sec. cor., with a brass cap, marked, S 36 1913 in S. half; $\frac{1}{4}$ S 25 in NE., and at a later date, $\frac{1}{4}$ TR 46 was added in NW. quadrant, as hereinbefore noted in notes of Tract 46. Dig pits $18 \times 18 \times 12$ ins. E. and W. of post 3 ft. dist., and raise a mound of earth $3\frac{1}{2}$ ft. base, $1\frac{1}{2}$ ft. high, N. of cor.
77.75	Thence bet. Tract 46 and sec. 36. SW. (No. 3) cor. of Tract 46, identical with SE. (No. 4) cor.

76. Resurvey of Subdivision lines of Township 11 S. R. 23 E.

Chains.

80.10 of Tract 50, established later, as hereinbefore described in notes of Tract 46.
Thence bet. Tract 50 and sec. 36.
The cor. of secs. 35 and 36, hereinbefore described.
Land, level.
Soil, loose, red sandy loam, medium texture, 12 to 18 ins. deep on clay subsoil.
Good grass.
No timber.

80.00 Thence $\frac{1}{2}$ run,
N. $0^{\circ} 01'$ W., on blank line, through Tracts 50 and 47.
Point for cor. of secs. 23, 24, 25 and 26, on line, bet. Tracts 42 and 47.

40.00 Thence $\frac{1}{2}$ run,
S. $89^{\circ} 51'$ E. on random line.
Set temp. $\frac{1}{4}$ sec. cor.
80.28 Intersect E. bdy. of Tp., at the cor. of secs. 19, 24, 25 and 30, previously reestablished by me, as described in Book "A" of this Group.
Thence $\frac{1}{2}$ run,
N. $89^{\circ} 51'$ W., on true line, bet. secs. 24 and 25.
Over level prairie land.
.30 Wire fence, brs. N. and S. SE. cor. of fence brs. S. 5 lks. dist.
10.00 Wire fence, brs. N. $89\frac{1}{2}^{\circ}$ W., S. $89\frac{1}{2}^{\circ}$ E.; thence along south side of fence.
37.10 SE. (No. 4) cor. of Tract 44 later estab. by me, as hereinbefore described in notes of Tract 44. Thence bet. Tract 44 and sec. 25.
37.19 Cor. of wire fence brs. N. 10 lks. dist.
40.14 Set an iron post 3 ft. long, 1 in. in diam., 26 ins. in ground, for reestablished $\frac{1}{4}$ sec. cor., with a brass cap, marked,

TR 44 in N., and
 $\frac{1}{4}$ S 25 1913 in S. half;
dig pits 18x18x12 ins., E. and W. of post, 3 ft. dist., and raise a mound of earth $3\frac{1}{2}$ ft. base, $1\frac{1}{2}$ ft. high, north of cor.
77.00 Wagon road brs. N. and S.
77.15 SW. (No. 3) cor. of Tract 44, identical with NE. (No. 1) cor. of Tract 47, and SE. (No. 4) cor. of Tract 42, later established by me as hereinbefore described in notes of Tract 42.
Thence on blank line, bet. Tracts 42 and 47.
80.28 Point for cor. of secs. 23, 24, 25 and 26.
Land, level.
Soil, loose, red sandy loam, medium texture, 12 to 18 ins. deep on clay subsoil.
Good grass.
No timber.

80.00 Thence $\frac{1}{2}$ run,
N. $0^{\circ} 01'$ W., on blank line, through Tracts 42 and 39.
Intersect N. bdy. of Tract No. 39, 360 lks. S. $89^{\circ} 57'$ W. of NE. (No. 1) cor. later established by me as hereinbefore described in notes of Tract 39.
At point of intersection, Feb. 5, 1914, I set an iron post 3 ft. long, 2 ins. in diam., 24 ins. in the ground, for reestablished cor. of secs. 13 and 14, with a brass cap, marked,

T 11 S R 23 E in N., and
TR 39 1913 in S. half;
S 14 in NW., and
S 13 in NE. quadrant.

Resurvey of Subdivision lines of Township 11 S., R. 23 E. 77.

Chains.

Dig pits 24x24x12 ins. in each sec. 6 ft. dist., and raise a mound of earth 4 ft. base, 2 ft. high, north of cor.

- The cor. of secs. 13, 18, 19 and 24, on east bdy. of Tp., being plainly visible, I run, S. 89° 52' E., on random line, for said cor.
- 40.00 Set temp. $\frac{1}{4}$ sec. cor.
- 80.20 Intersect east bdy. of Tp. at the cor. of secs. 13, 18, 19 and 24, previously reestablished by me, as described in Book "A" of this Group.
- Thence I run, N. 89° 52' W., on true line, bet. secs. 13 and 24. Through center of lane.
- 30.00 B. McLean's house brs. N. 7 chs. dist. from this point.
- 36.60 Cors. of wire fences, bear N. and S., 50 lks. dist. each. At this point, I later establish NE. (No. 1) cor. of Tract 43, as hereinbefore described in notes of Tract 43.
- Thence bet. Tract 43 and sec. 13.
- 40.10 Set an iron post 3 ft. long, 1 in. in diam., 26 ins. in the ground, for reestablished $\frac{1}{4}$ sec. cor., with a brass cap, marked, $\frac{1}{4}$ S 13 in N., and TR 43 1913 in S. half; dig pits 18x18x12 ins., E. and W. of post 3 ft. dist., and raise a mound of earth $3\frac{1}{2}$ ft. base, $1\frac{1}{2}$ ft. high, N. of cor.
- 76.60 Wagon road, brs. N. and S. At this point, I later establish NW. (No. 2) cor. of Tract 43, identical with NE. (No. 1) cor. of Tract 39, as hereinbefore described in notes of Tract 39. Thence bet. Tract 39 and sec. 13.
- 76.80 Cor. of wire fence, brs. S. 30 lks. dist.
- 80.20 The cor. of secs. 13 and 14, hereinbefore described. Land, level. Soil, loose, red, sandy loam, medium texture, 12 to 18 ins. deep on clay subsoil. Good grass. No timber.

Sept. 22nd, 1913.

- Sept. 23rd, 1913: At 10h. 0m. a.m., l.m.t., I set off 0° 00 $\frac{1}{2}$ ' S. on decl. arc; 32° 28' on lat. arc, and determine a meridian with the solar at the cor. of secs. 13 and 14, hereinbefore described.
- Thence I run, N. 0° 01' W., bet. secs. 13 and 14. Over level prairie land.
- .50 Wire fence, brs. E. and W.
- 21.00 Bank's house brs. E. 150 lks. dist.
- 21.50 Windmill and well brs. west 1 ch.
- 22.00 Wire fence brs. E. and W.
- 40.00 Set an iron post 3 ft. long, 1 in. in diam., 26 ins. in ground for reestablished $\frac{1}{4}$ sec. cor., with a brass cap, marked, $\frac{1}{4}$ S 14 in W., S 13 in E., and 1913 in S. half; dig pits 18x18x12 ins., N. and S. of post 3 ft. dist., and raise a mound of earth $3\frac{1}{2}$ ft. base, $1\frac{1}{2}$ ft. high, W. of cor.
- 60.00 Wire fence brs. E. and W.
- 79.95 Wagon road, brs. E. and W.
- 80.00 Set an iron post 3 ft. long, 2 ins. in diam., 24 ins. in the ground, for reestablished cor. of secs. 11, 12, 13 and

78. Resurvey of Subdivision lines of Township 11 S., E. 23 E.

Chains.

and 14, with a brass cap, marked,
 T 11 S R 23 E in N., and
 1913 in S. half;
 S 11 in NW.,
 S 12 in NE.,
 S 13 in SE., and
 S 14 in SW. quadrant;

dig pits 18x18x12 ins., in each sec. $5\frac{1}{2}$ ft. dist., and
 raise mound of earth 4 ft. base, 2 ft. high, west of
 cor.

Land, level.

Soil, loose red sandy loam, medium texture, 12 to 18 ins.
deep on clay subsoil.

Good grass.

No timber.

-
- 40.00 Thence I run,
 S. $89^{\circ}52'$ E., on random line, bet. secs. 12 and 13.
 Set temp. $\frac{1}{4}$ sec. cor.
- 80.20 Intersect east bdy. of Tp., 5 lks. south of cor. of secs. 7,
 12, 13 and 18, previously reestablished by me, as de-
 scribed in Book "A" of this Group.
- .05 Thence I run,
 N. $89^{\circ}54'$ W., on true line, bet. secs. 12 and 13.
 Over level prairie land.
- 38.50 Wagon road, brs. N. and S.
 Roy J. Wheeler's house brs. N. 3 chs. dist.
- 40.10 Set an iron post 3 ft. long, 1 in. in diam., 26 ins. in
 the ground for reestablished $\frac{1}{4}$ sec. cor., with a brass
 cap, marked,
 $\frac{1}{4}$ S 12 in N., and
 S 13, 1913 in S. half;
 dig pits 18x18x12 ins., E. and W. of post, 3 ft. dist.,
 and raise a mound of earth $3\frac{1}{2}$ ft. base, $1\frac{1}{2}$ ft. high,
 north of cor.
- 42.00 C. W. Whistler's house brs. N. 2 chs. dist.
- 76.00 Wagon road brs. N. and S.
- 76.50 SE. cor. of wire fence, brs. N. 10 lks. dist.; thence parallel
 to, and south of wire fence.
- 80.20 The cor. of secs. 11, 12, 13 and 14, hereinbefore described.
Note: At this cor. I set off $0^{\circ}03'$ S. on decl. arc, and
 at 11h. 52m. 31secs. a.m., l.m.t., observe the sun on
 the meridian, and obtain a reading of $32^{\circ}29'$ on lat.
 arc.
- Land, level.
 Soil, loose, red, sandy loam, medium texture, 12 to 18 ins.
 deep on clay subsoil.
 Good grass.
 No timber.
-

- .10 Thence I run,
 N. $0^{\circ}01'$ W., bet. secs. 11 and 12.
 Over level prairie land.
- 40.00 Wire fence brs. E. and W.
 Set an iron post 3 ft. long, 1 in. in diam., 26 ins. in
 ground, for reestablished $\frac{1}{4}$ sec. cor., with a brass cap,
 marked,
 $\frac{1}{4}$ S 11 in W.,
 S 12 in E., and
 1913 in S. half;
 dig pits 18x18x12 ins. N. and S. of post 3 ft. dist., and
 raise a mound of earth $3\frac{1}{2}$ ft. base, $1\frac{1}{2}$ ft. high, west of
 cor.
- 40.50 Wire fence brs. E. and W.
- 41.00 V. V. Smith's house, brs. E. 125 lks.
- 42.00 Enter cultivated land, brs. E. and W.

Resurvey of Subdivision lines of Township 11 S., R. 23 E. 79.

Chains.

79.75 Wire fence brs.E. and W.; leave cultivated land.
 80.00 Set an iron post 3 ft.long, 2 ins. in diam., 24 ins. in ground, for reestablished cor.of secs. 1,2,11 and 12, with a brass cap, marked,
 T 11 S R 23 E in N., and
 1913 in S.half;
 S 2 in NW.,
 S 1 in NE.,
 S 12 in SE., and
 S 11 in SW. quadrant.
 Dig pits 18x18x12 ins., in each sec. 5½ ft. dist., and raise a mound of earth 4 ft.base, 2 ft.high, west of corner.
 Land, level.
 Soil, loose, red, sandy loam, medium texture, 12 to 18 ins. deep on clay subsoil.
 Good grass.
 No timber.

 Thence I run,
 S.89°54'E. on random line, bet. secs. 1 and 12.

40.00 Set temp.¼ sec.cor.
 80.20 Intersect east bdy.of Tp. of at the cor.of secs. 1,6,7 and 12, previously reestablished by me, as described in Book "A" of this Group.

Thence I run,
 N.89° 54'W. on true line, bet. secs.1 and 12.
 Over level prairie land.

19.50 Wagon road, brs.N. and S.
 40.10 Set an iron post 3 ft.long, 1 in. in diam., 26 ins. in ground, for reestablished ¼ sec.cor., with a brass cap, marked,

 ¼ S 1 in N., and
 S 12, 1913 in S.half;
 dig pits 18x18x12 ins., E.and W.of post, 3 ft. dist., and raise a mound of earth 3½ ft. base, 1½ ft. high, north of cor.

From the above described cor., SE. cor.of wire fence brs. N.50 lks.dist.; thence parallel to and 50 lks. S.of wire fence.

76.00 NE. cor.of wire fence, brs.S.25 lks.dist.
 79.00 Wire fence brs.N. and S.; cor.of wire fence brs.N.50 lks. dist.

79.50 Wagon road brs.N.and S.
 80.20 The cor.of secs.-1,2,11 and 12, hereinbefore described.

Land, level.
 Soil, loose, red, sandy loam, medium texture, 12 to 18 ins.deep on clay subsoil.
 Good grass.
 No timber.

 Thence I run,
 N.0°01'W., bet. secs. 1 and 2.
 Over level prairie land.

40.00 Set an iron post 3 ft.long, 1 in. in diam., 26 ins. in the ground, for reestablished ¼ sec.cor., with a brass cap, marked,

 ¼ S 2 in W.,
 S 1 in E., and
 1913 in S.half;
 dig pits 18x18x12 ins., N. and S.of post 3 ft. dist., and raise a mound of earth 3½ ft. base, 1½ ft. high, W'of cor.

62.00 H. M. Estes' house brs.E. 30 chs.dist.
 80.27 Intersect Second Parallel South, 23.98 chs.S.89° 55' W.
 Stand.

80. Resurvey of Subdivision lines of Township 11 S., R. 23 E.

Chains.

of Standard cor. of secs. 35 and 36, previously reestablished by me, as described in Book "B" of Group 22.
Set an iron post 3 ft. long, 2 ins. in diam., 24 ins. in the ground for reestablished closing cor. of secs. 1 and 2, with a brass cap, marked,

C C S of center,
T 11 S R 23 E S 35 S 36 in N., and
1913 in S. half;
S 1 in SE., and
S 2 in SW. quadrant;

dig pits 18x18x12 ins., crosswise on each line, E. and W. 3 ft., and S. of post 7 ft. dist. and raise a mound of earth 4 ft. base, 2 ft. high, south of cor.

From the above described cor., the point for old closing cor. of secs. 1 and 2, as determined from decayed mesquite stake set in pit, brs. S. 85° W., 46 lks. dist. I destroy all trace of this old cor.

Land, level.

Soil, loose, red, sandy loam, medium texture, 12 to 18 ins. deep on clay subsoil.

Good grass.

No timber.

Sept. 23, 1913.

Oct. 20th, 1913: At 9h. 40m. a.m., l.m.t., I set off 10° 16½' S. on decl. arc; 32° 25½' on lat. arc, and determine a meridian with the solar at the cor. of secs. 2, 3, 34 and 35 on south bdy. of Tp., previously reestablished by me, as described in Book "A" of this Group.

Thence I run,

N. 0° 01' W., bet. secs. 34 and 35.

Over cultivated land.

8.00 Wire fence brs. E. and W.; leave cultivated land, brs. E. and W.; thence over open prairie land, through scattering yuccas 4 to 5 ft. high.

15.00 Leave scattering yuccas, brs. E. and W.

40.00 Set an iron post 3 ft. long, 1 in. in diam., 26 ins. in ground, for reestablished ¼ sec. cor., with a brass cap, marked,

¼ S 34 in W.,
S 35 in E. and
1913 in S. half;

dig pits 18x18x12 ins., N. and S. of post, 3 ft. dist., and raise a mound of earth 3½ ft. base, 1½ ft. high, west of cor.

From the above described cor., corner of wire fence, brs. E. 325 lks. dist.

63.00 A. H. Monzingo's house, brs. E. 5 chs. dist.

79.80 Wire fence, brs. E. and W.; thence across lane.

80.00 Intersect south bdy. of Tract No. 51, 274 lks. S. 89° 53' W. of SE. (No. 4) cor. identical with SW. (No. 3) cor. of Tract 49, later established by me, as hereinbefore described in notes of Tract 49.

At point of intersection, Feb. 10, 1914, I

Set an iron post 3 ft. long, 1 in. in diam., 26 ins. in the ground for reestablished cor. of secs. 34 and 35, with a brass cap, marked,

T 11 S R 23 E TR 51 in N., and
1913 in S. half;
S 35 in SE., and
S 34 in SW. quadrant;

dig pits 24x24x12 ins. in each sec. 6 ft. dist., and raise mound of earth 4 ft. base, 2 ft. high, south of cor.

Land, level.

Soil, loose, red sandy loam, medium texture, 12 to 18 ins. deep on clay subsoil.

Good grass, scattering yuccas 4 to 7 ft. high.

No timber.

Resurvey of Subdivision Lines of Township 11 S. R. 23 E. 81.

Chains.	
	Thence I run, N.89°56'E. on random line.
40.00	Set temp. $\frac{1}{4}$ sec. cor.
79.86	Intersect cor. of secs. 35 and 36 on south bdy. of Tract 50, hereinbefore described.
	Thence I run, S.89° 56' W., on true line, between sec. 35, and Tracts 50, 49 and 51.
	Over level prairie land.
3.25	Wire fence, brs. N. and S.
3.50	Wagon road brs. N. and S.
37.16	SW. (No. 3) cor. of Tract 50, identical with SE. (No. 4) cor. of Tract 49, later established by me as hereinbe- fore described in notes of Tract 49. Thence bet. sec. 35 and Tract 49.
37.50	Wagon road brs. SE. and W.; cor. of wire fence brs. S. 50 lks. dist.; thence along wagon road through lane.
39.93	Set an iron post 3 ft. long, 1 in. in diam., 26 ins. in ground, for reestablished $\frac{1}{4}$ sec. cor., with a brass cap, marked, TR 49 in N., and $\frac{1}{4}$ S 35 in S. half; dig pits 18x18x12 ins., E. and W. of post, 3 ft. dist., and raise mound of earth $3\frac{1}{2}$ ft. base, $1\frac{1}{2}$ ft. high, N. of cor.
76.60	Cor. of wire fence brs. N. S. 50 lks. dist.
77.00	Wagon road, brs. N. and S.
77.12	SW. (No. 3) cor. of Tract 49, identical with SE. (No. 4) cor. of Tract 51, later established by me, as hereinbefore described in notes of Tract 49. Thence bet. sec. 35, and Tract 51.
77.60	Telephone line, brs. N. and S.; cor. of wire fence brs. S. 20 lks. dist.
79.86	The cor. of secs. 34 and 35, hereinbefore described. Land, level. Soil, loose, red sandy loam, medium texture, 12 to 18 ins. deep on clay subsoil. Good grass. No timber.

	Thence I run, N. 0° 01' W. on blank line, through Tract 51.
80.00	Point for cor. of secs. 22, 23, 26 and 27 on line bet. Tracts 38 and 51.

	The point for cor. of secs. 23, 24, 25 and 26, being plainly visible, I run, N. 89° 55' E. on blank line, between Tracts 41 & 42 on the N., and Tracts 48 and 47 on the S.
79.80	Intersect point for cor. of secs. 23, 24, 25 and 26 on line bet. Tracts 42 and 47.

	Note: At the point for cor. of secs. 22, 23, 26 and 27, I set off 10° 19' S. on decl. arc, and at 11h. 44m. 56s. a.m., l.m.t., observe the sun on the meridian, and obtain a reading of 32° 27' on lat. arc.
	Thence I run, N. 0° 01' W., on blank line, through Tracts 38 and 37.
80.00	Point for cor. of secs. 14, 15, 22 and 23, on line bet. Tracts 37 and 52.

82. Resurvey of Subdivision lines of Township 11 S., R. 23 E.

	chains.	
		The cor. of secs. 13, and 14 on north bdy. of Tract 39, being plainly visible, I run, N. 89° 57' E., on random line, for said cor.
40.00		Set temp. $\frac{1}{4}$ sec. cor.
79.92		Intersect cor. of secs. 13, and 14, hereinbefore described. Thence I run, S. 89° 57' W., on true line, bet. secs. 14, and Tracts 39 and 40, parallel to and 50 lks. south of wire fence, over level prairie land.
15.00		Corner of wire fence, brs. N. 50 lks. dist.
36.75		NW. (No. 2) cor. of Tract 39, identical with NE. (No. 1) cor. of Tract 40, later established by me, as hereinbefore described in notes of Tract 39. Thence bet. sec. 14, and Tract 40.
39.96		Set an iron post 3 ft. long, 1 in. in diam., 26 ins. in ground for reestablished $\frac{1}{4}$ sec. cor., with a brass cap, marked, $\frac{1}{4}$ S 14 in N., and TR 40 1913 in S. half; dig pits 18x18x12 ins., E. and W. of post, 3 ft. dist., and raise a mound of earth $3\frac{1}{2}$ ft. base, $1\frac{1}{2}$ ft. high, N. of cor.
40.60		SW. cor. of wire fence, brs. N. 50 lks. dist.; fork of wagon road runs NW.
76.84		NW. (No. 2) cor. of Tract 40, identical with NE. (No. 1) cor. of Tract 37, and SE. (No. 4) cor. of Tract 52, later established by me, as hereinbefore described in notes of Tract 37.
79.92		Thence on blank line, bet. Tracts 37 and 52. The point for cor. of secs. 14, 15, 22 and 23, on line bet. Tracts 37 and 52. Land, level. Soil, loose, red sandy loam, medium texture, 12 to 13 ins. deep on clay subsoil. Good grass. No timber.

40.00		Thence I run, N. 0° 01' W., on blank line, through Tract 52. Intersect N. bdy. of Tract No. 52, 3.15 chs. S. 89° 57' W. of NE. (No. 1) cor., later established by me, as hereinbefore described in notes of Tract 52. At point of intersection, Feb. 11, 1914, I Set an iron post, 3 ft. long, 1 in. in diam., 26 ins. in the ground, for reestablished $\frac{1}{4}$ sec. cor., with a brass cap, marked, $\frac{1}{4}$ S 15 in W., S 14 in E., and TR 52 1913 in S. half; dig pits 18x18x12 ins., N. and S. of post, 3 ft. dist., and raise a mound of earth $3\frac{1}{2}$ ft. base, $1\frac{1}{2}$ ft. high, west of cor.
0.50		Thence I run, N. 0° 01' W. on a true line, bet. secs. 14 and 15.
2.00		Wire fence brs. E. and W.
39.75		Mr. King's house, brs. W. 3 chs. dist.
40.00		Wire fence brs. E. and W. Set an iron post 3 ft. long, 2 ins. in diam., 24 ins. in ground, for reestablished cor. of secs. 10, 11, 14 and 15, with a brass cap, marked, T 11 S R 23 E in N., and 1913 in S. half; S 10 in NW., S 11 in NE., S 14 in SE., and S 15 in SW. quadrant. Dig pits 18x18x12 ins., in each sec. $5\frac{1}{2}$ ft. dist., and raise a mound of earth 4 ft. base, 2 ft. high, west of cor.

Resurvey of Subdivision lines of Township 11 South, R. 23 E. 83.

Chains.

Land, level.
Soil, loose, red sandy loam, medium texture, 12 to 18 ins. deep on clay subsoil.
Good grass.
No timber.

40.00 Thence I run,
80.06 N. 89° 57' E. on random line, bet. secs. 11 and 14.
Set temp. $\frac{1}{4}$ sec. cor.

Intersect cor. of secs. 11, 12, 13 and 14, hereinbefore described.

Thence I run,
37.20 S. 89° 57' W., on true line, bet. secs. 11 and 14.
40.03 Over level prairie land, parallel to and 10 lks. S. of wire fence along wagon road.
Cor. of wire fence, brs. N. 15 lks. dist.
Set an iron post 3 ft. long, 1 in. in diam., 26 ins. in ground, for reestablished $\frac{1}{4}$ sec. cor., with a brass cap, marked,
 $\frac{1}{4}$ S 11 in N., and
S 14 1913 in S. half;
dig pits 18x18x12 ins., E. and W. of post, $\frac{3}{4}$ ft. dist., and raise a mound of earth $3\frac{1}{2}$ ft. base, $1\frac{1}{2}$ ft. high, N. of cor.

76.50 SW. cor. of wire fence, brs. N. 50 lks. dist.
77.00 Wagon road brs. N. and S.
77.50 Telephone line, brs. N. and S. NE. cor. of wire fence, brs. S 25 lks. dist.
80.06 The cor. of secs. 10, 11, 14 and 15, hereinbefore described.
Land, level.
Soil, loose, red sandy loam, medium texture, 12 to 18 ins. deep on clay subsoil.
Good grass.
No timber.

Thence I run,
39.50 N. 0° 01' W., bet. secs. 10 and 11; parallel to and 70 lks. E. of wire fence, over level prairie land.
F. C. Wilkins' house, brs. E. 4 chs. dist.
40.00 T. W. Gillespie's house brs. W. 3 chs. dist.
Set an iron post 3 ft. long, 1 in. in diam., 26 ins. in ground, for reestablished $\frac{1}{4}$ sec. cor., with a brass cap, marked,
 $\frac{1}{4}$ S 10 in W.,
S 11 in E., and
1913 in S. half;
dig pits 18x18x12 ins., N. and S. of post, $\frac{3}{4}$ ft. dist., and raise a mound of earth $3\frac{1}{2}$ ft. base, $1\frac{1}{2}$ ft. high, west of cor.

41.00 C. J. Fehmel's house, brs. E. 5 chs. dist.
79.90 Wagon road, brs. E. and W.
80.00 Set an iron post 3 ft. long, 2 ins. in diam., 24 ins. in the ground for reestablished cor. of secs. 2, 3, 10 and 11, with a brass cap, marked,
T 11 S R 23 E in N., and
1913 in S. half;
S 3 in NW.,
S 2 in NE.,
S 11 in SE., and
S 10 in SW. quadrant.
Dig pits 18x18x12 ins. in each sec. $5\frac{1}{2}$ ft. dist., and raise a mound of earth 4 ft. base, 2 ft. high, west of cor.
Land, level.
Soil, loose, red sandy loam, medium texture, 12 to 18 ins. deep on clay subsoil.

84. Resurvey of Subdivision lines of Township 11 S. R. 23 E.
Chains.

Good grass.
No timber.

40.00 Thence I run,
80.14 N. 89° 57' E., on random line, bet. secs. 2 and 11.
Set temp. $\frac{1}{4}$ sec. cor.
Intersect cor. of secs. 1, 2, 11 and 12, hereinbefore described.

7.00 Thence I run,
37.50 S. 89° 57' W., on true line, bet. secs. 2 and 11.
40.07 Over level prairie land, parallel to and 25 lks. N. of wire fence.

Cor. of wire fence brs. S. 25 lks.
Cor. of wire fence brs. S. 25 lks.
Set an iron post 3 ft. long, 1 in. in diam., 26 ins. in ground for reestablished $\frac{1}{4}$ sec. cor., with a brass cap, marked,
 $\frac{1}{4}$ S 2 in N., and
S 11, 1913 in S. half;
dig pits 18x18x12 ins., E. and W. of post, 3 ft. dist, and raise a mound of earth $3\frac{1}{2}$ ft. base, $1\frac{1}{2}$ ft. high, N. of cor.

76.00 Wire fence brs. N. and S.; cor. of wire fence brs. S. 25 lks., and N. 50 lks. dist.

77.00 Telephone line, brs. N. and S.

79.50 SW. cor. of wire fence, brs. N. 50 lks. dist.

79.75 Wagon road brs. N. and S.

80.14 The cor. of secs. 2, 3, 10 and 11, hereinbefore described.
Land, level.

Soil, loose, red sandy loam, medium texture, 12 to 18 ins. deep on clay subsoil.
Good grass.
No timber.

40.00 Thence I run,
N. 0° 01' W., bet. secs. 2 and 3.
Over level prairie land, along wagon road, through lane.
Set an iron post 3 ft. long, 1 in. in diam., 26 ins. in ground, for reestablished $\frac{1}{4}$ sec. cor., with a brass cap, marked,

$\frac{1}{4}$ S 3 in W.,
S 2 in E., and
1913 in S. half;

dig pits 18x18x12 ins., N. and S. of post, 3 ft. dist., and raise a mound of earth $3\frac{1}{2}$ ft. base, $1\frac{1}{2}$ ft. high, west of cor.

From the above described cor., corner of wire fence brs. west 50 lks. dist.

79.75 Telephone line, brs. E. and W.; cors. of wire fences bear E. and W. 50 lks. dist. each; leave lane.

80.26 Intersect Second Standard Parallel South, 24.16 chs. S. 89° 55' W. of Standard cor. of secs. 34 and 35, previously reestablished by me, as described in Book "B" of Group 22.

Set an iron post 3 ft. long, 2 ins. in diam., 24 ins. in ground for reestablished closing cor. of secs. 2 and 3, with a brass cap, marked,

C C S of center,
T 11 S R 23 E, S 34 S 35 in N., and
1913 in S. half;
S 2 in SE., and
S 3 in SW. quadrant;

dig pits 24x18x12 ins., crosswise on each line, E. and W. 3 ft., and S. of post 7 ft. dist., and raise a mound of earth 4 ft. base, 2 ft. high, S. of cor.
Land, level.

Resurvey of Subdivision lines of Township 11 S., R. 23 E. 85.

Chains.

Soil, loose red, sandy loam, medium texture, 12 to 18 ins. deep on clay subsoil.
Good grass.
No timber.

Oct. 20, 1913.

Oct. 21st, 1913: At 9h. 0m. a.m., l.m.t., I set off $10^{\circ} 37\frac{1}{2}'$ S. on decl. arc; $32^{\circ} 25\frac{1}{2}'$ on lat. arc, and determine a meridian with the solar at the cor. of secs. 3, 4, 33 and 34, on S. bdy of Tp., previously reestablished by me, as described in Book "A" of this Group.

Thence I run,
N. $0^{\circ} 02'$ W., bet. secs. 33 and 34.
Over level prairie land.

1.25 Wagon road, brs. E. and W.
17.00 Wagon road, brs. NW. and SE.
39.70 Wire fence brs. E. and W. SW. cor. of wire fence, brs. W. 70 lks. dist.; thence parallel to and E. of wire fence through pasture.

40.00 Set an iron post 3 ft. long, 1 in. in diam., 26 ins. in the ground for reestablished $\frac{1}{4}$ sec. cor., with a brass cap, marked,
 $\frac{1}{4}$ S 33 in W.,
S 34 in E., and
1913 in S. half;
dig pits 18x18x12 ins., N. and S. of post, 3 ft. dist., and raise a mound of earth $3\frac{1}{2}$ ft. base, $1\frac{1}{2}$ ft. high, west of cor.

79.50 NE. cor. of wire fence, brs. west 70 lks. dist.
80.00 Set an iron post 3 ft. long, 2 ins. in diam., 24 ins. in ground for reestablished cor. of secs. 27, 28, 33 and 34, with a brass cap, marked,
T 11 S R 23 E in N., and
1913 in S. half;
S 28 in NW.,
S 27 in NE.,
S 34 in SE., and
S 33 in SW. quadrant.
dig pits 18x18x12 ins., in each sec. $5\frac{1}{2}$ ft. dist., and raise a mound of earth 4 ft. base, 2 ft. high, west of cor.

Land, level.
Soil, light, sandy loam, medium texture, 12 to 18 ins. deep on clay subsoil.
Good grass.
No timber.

Thence I run,
N. $89^{\circ} 56'$ E., on random line, bet. secs. 27 and 34.

40.00 Set temp. $\frac{1}{4}$ sec. cor.
79.80 Fall 7 lks. S. of cor. of secs. 34 and 35, on S. bdy. of Tract 51, hereinbefore described.

Thence I run,
S. $89^{\circ} 53'$ W., on true line, bet. sec. 34 and Tract 51.
Over level prairie land.

18.00 NW. cor. of wire fence, brs. S. 30 lks. dist.
37.22 SW. (No. 3) cor. of Tract 51, later established by me as hereinbefore described in notes of Tract 51. Thence I run,
S. $89^{\circ} 53'$ W. on true line, bet. secs. 27 and 34.

2.68 Set an iron post 3 ft. long, 1 in. in diam., 26 ins. in the ground, for reestablished $\frac{1}{4}$ sec. cor., with a brass cap, marked,
 $\frac{1}{4}$ S 27 in N., and
S 34, 1913 in S. half;
dig pits 18x18x12 ins., E. and W. of post, 3 ft. dist.,

86. Resurvey of Subdivision lines of Township 11 S., R. 23 E.

Chains.

- and raise a mound of earth $3\frac{1}{2}$ ft. base, $1\frac{1}{2}$ ft. high, north of cor.
- 22.78 Wagon road, brs.NW. and SE.
23.78 Wire fence brs.N.25° W., S.25° E.; thence through pasture.
42.58 The cor.of secs. 27,28, 33 and 34, hereinbefore described.
Land, level and rolling.
Soil, loose, red sandy loam, medium texture, 12 to 18 ins. deep on clay subsoil.
Good grass.
No timber.
-
- Thence I run,
N.0°02'W., bet.secs. 27 and 28.
Over slightly rolling, prairie land.
- 19.00 Wire fence, brs.E. and W.
20.00 Wagon road, brs.E. and W.
23.00 Wire fence, brs.E and W.; also earthen reservoir, brs.W.
4 chs.dist.
23.50 Small shed brs. E. 250 lks.dist.
38.50 Wire fence brs.N.25°W., S.25° E.
38.75 Wagon road, brs.NW. and SE.
40.00 Set an iron post, 3 ft.long, 1 in.in diam., 26 ins. in the ground, for reestablished $\frac{1}{4}$ sec.cor., with a brass cap, marked,
 $\frac{1}{4}$ S 28 in W.,
S 27 in E., and
1913 in S.half;
dig pits 18x18x12 ins., N. and S. of post, 3 ft. dist, and raise a mound of earth $3\frac{1}{2}$ ft. base, $1\frac{1}{2}$ ft. high, west of cor.
- 80.00 Set an iron post 3 ft.long, 2 ins. in diam., 24 ins. in the ground for reestablished cor.of secs.21,22,27 and 28, with a brass cap, marked,
T 11 S R 23 E inN., and
1913 in S.half;
S 21 in NW.,
S 22 in NE.,
S 27 in SE.; and
S 28 inSW. quadrant;
dig pits 18x18x12 ins.,in each sec. $5\frac{1}{2}$ ft. dist., and raise a mound of earth 4 ft.base, 2 ft. high, W.of cor.
Land, level and rolling.
Soil, loose, red sandy loam, medium texture, 12 to 18 ins. deep on clay subsoil.
Good grass.
No timber.
-
- Thence I run,
N.89°53'E., on random line.
- 40.00 Set temp. $\frac{1}{4}$ sec.cor.
79.70 Fall 2 lks.south of point for cor.of secs. 22,23,26 and 27, on line bet. Tracts 38 and 51.
- Thence I run,
S.89°52'W., on blank line, bet. Tracts 38 and 51,
36.99 SW. (No.3) cor. of Tract 38, identical with NW. (No.2) cor. of Tract 51, later established by me as hereinbefore described in notes of Tract 38.
- Thence I run,
S.89°52'W. on true line, bet. secs.22 and 27.
Over level prairie land, through lane.
- 2.86 Set an iron post 3 ft.long, 1 in. in diam., 26 ins. in ground, for reestablished $\frac{1}{4}$ sec.cor., with a brass cap, marked,
 $\frac{1}{4}$ S 22 in N., and
S 27, 1913 in S.half;

Resurvey of Subdivision lines of Township 11 S., R. 23 E. 87.

Chains.

dig pits 18x18x12 ins., E. and W. of post, 3 ft. dist., and raise a mound of earth $3\frac{1}{2}$ ft. base, $1\frac{1}{2}$ ft. high, north of cor.

33.01 Small house brs. N. 5 chs. dist.

40.01 NW. cor. of wire fence, brs. S. 3 lks. dist

42.51 Wagon road, brs. NW. and SE.

42.71 The cor. of secs. 21, 22, 27 and 28, hereinbefore described.
Note: At this cor., I set off $10^{\circ} 40\frac{1}{2}'$ S. on decl. arc, and at 11h. 44m. 45secs. a.m., 1.m.t., observe the sun on the meridian, and obtain a reading of $32^{\circ} 27'$ on lat. arc.
 Land, level.
 Soil, loose, red, sandy loam, medium texture, 12 to 18 ins. deep on clay subsoil.
 Good grass.
 No timber.

Thence I run,
 N. $0^{\circ} 02' W.$, bet. secs. 21 and 22.
 Over level prairie land.

.25 Wagon road, brs. E. and W.

.70 Cors. of wire fences bear E. and W. 50 lks. dist. each; thence through lane, along wagon road.

40.00 Set an iron post 3 ft. long, 1 in. in diam., 26 ins. in ground, for reestablished $\frac{1}{4}$ sec. cor., with a brass cap, marked,
 $\frac{1}{4}$ S 21 in W.,
 S 22 in E., and
 1913 in S. half;
 dig pits 18x18x12 ins., N. and S. of post, 3 ft. dist., and raise a mound of earth $3\frac{1}{2}$ ft. base, $1\frac{1}{2}$ ft. high, W. of cor.

80.00 Set an iron post 3 ft. long, 2 ins. in diam., 24 ins. in ground, for reestablished cor. of secs. 15, 16, 21 and 22, with a brass cap, marked,
 T 11 S R 23 E in N., and
 1913 in S. half;
 S 16 in NW.,
 S 15 in NE.,
 S 22 in SE., and
 S 21 in SW. quadrant;
 dig pits 18x18x12 ins., in each sec. $5\frac{1}{2}$ ft. dist., and raise a mound of earth 4 ft. base, 2 ft. high, west of cor.

Note: Wagon road forks 25 lks. S. of cor.
 Land, level.
 Soil, loose, red sandy loam, medium texture, 12 to 18 ins. deep on clay subsoil.
 Good grass.
 No timber.

The point for cor. of secs. 14, 15, 22 and 23, on line bet. Tracts 37 and 52, being plainly visible, I run,
 N. $89^{\circ} 58' E.$ on random line, for said cor.

79.94 Intersect point for cor. of secs. 14, 15, 22 and 23.
 Thence I run,
 S. $89^{\circ} 58' W.$, on blank line, bet. Tracts 37 and 52.

36.97 NW. (No. 2) cor. of Tract 37, identical with SE. (No. 4) cor. of Tract 53, and SW. (No. 3) cor. of Tract 52, later established by me as hereinbefore described in notes of Tract. 37.
 Thence I run,
 S. $89^{\circ} 58' W.$ on true line on N. bdy. of sec. 22, and S. bdy. of Tract 53.
 Over level prairie land.

88. Resurvey of Subdivision lines of Township 11 S., R. 23 E.

Chains.

- 3.00 Set an iron post 3 ft. long, 1 in. in diam., 26 ins. in the ground, for reestablished $\frac{1}{4}$ sec. cor., with a brass cap, marked,
TR 53 in N., and
 $\frac{1}{4}$ S 22 1913 in S. half;
dig pits 18x18x12 ins., E. and W. of post, 3 ft. dist., and raise a mound of earth $3\frac{1}{2}$ ft. base, $1\frac{1}{2}$ ft. high, north of cor.
Thence parallel to, and 50 lks. north of wire fence.
- 39.97 SW. (No. 3) cor. of Tract 53, later established by me, as hereinbefore described in notes of Tract 53.
Thence bet. secs. 15 and 22, continuing measurement on same course.
- 42.53 Wagon road, brs. N. and S.
42.97 The cor. of secs. 15, 16, 21 and 22, hereinbefore described.
Land, level.
Soil, loose, red sandy loam, medium texture, 12 to 18 ins. deep on clay subsoil.
Good grass.
No timber.
Oct. 21st, 1913.
-
- Oct. 22nd, 1913: At 8h. 10m. a.m., l.m.t., I set off $10^{\circ} 57\frac{1}{2}'$ S. on decl. arc; $32^{\circ} 28'$ on lat. arc, and determine a meridian with the solar at the cor. of secs. 15, 16, 21 and 22, hereinbefore described.
Thence I run,
N. $0^{\circ} 02'$ W., bet. secs. 15 and 16.
Over level prairie land.
Wagon road brs. E. and W.
- 1.00 Wagon road, brs. N. $1^{\circ} 0'$ W., S. $1^{\circ} 0'$ E.
38.50 Set an iron post 3 ft. long, 1 in. in diam., 26 ins. in ground, for reestablished $\frac{1}{4}$ sec. cor., with a brass cap, marked,
40.00 $\frac{1}{4}$ S 16 in W.,
S 15 in E., and
1913 in S. half;
dig pits 18x18x12 ins., N. and S. of post, 3 ft. dist., and raise a mound of earth $3\frac{1}{2}$ ft. base, $1\frac{1}{2}$ ft. high, west of cor.
Note: From the above described cor. the NW. (No. 2) cor. of Tract No. 53, hereinbefore described, brs. N. $89^{\circ} 57'$ E., 283 lks. dist.; also, SW. cor. of wire fence brs. E. 50 lks. dist.; thence parallel to and 50 lks. W. of wire fence, along wagon road.
- 80.00 Set an iron post, 3 ft. long, 2 ins. in diam., 24 ins. in the ground for reestablished cor. of secs. 9, 10, 15 and 16, with a brass cap, marked,
T 11 S R 23 E in N., and
1913 in S. half;
S 9 in NW.,
S 10 in NE.,
S 15 in SE., and
S 16 in SW. quadrant;
dig pits 18x18x12 ins., in each sec. $5\frac{1}{2}$ ft. dist., and raise a mound of earth 4 ft. base, 2 ft. high, west of cor.
Land, level.
Soil, loose, red sandy loam, medium texture, 12 to 18 ins. deep on clay subsoil.
Good grass. No timber.
- 40.00 Thence I run, N. $89^{\circ} 58'$ E. on random line, bet. secs. 10 & 15.
Set temp. $\frac{1}{4}$ sec. cor.
79.76 Fall 4 lks. S. of cor. of secs. 10, 11, 14 and 15, hereinbefore described.
Thence I run, S. $89^{\circ} 56'$ W., on true line, bet. secs. 10 and 15.
Over level prairie land.
- .70 Wire fence brs. N. and S.; cors. of wire fences bear N. and S. 25 lks. dist. each; thence parallel to & 25 lks. S. of wire fence.

RESURVEY OF SUBDIVISION LINES OF TOWNSHIP 11 SOUTH, RANGE "23 E.

39.88 Set an iron post 3 ft. long in diam., 26 ins. in ground, for reestab. $\frac{1}{4}$ sec. cor., with brass cap, marked $\frac{1}{4}$ S 10 in N. & S 15 1913 in S. half; dig pits 18x18x12 ins. E. and W. of post $\frac{1}{3}$ ft. dist. & raise mound of earth $3\frac{1}{2}$ ft. base, $1\frac{1}{2}$ ft. high; N. of cor. sandy loam medium texture 12 to 13 ins.

79.76 Wire fence brs. N. and S. Cor. of wire fence brs. N. 30 lks. dist. Coff. of secs. 9, 10, 15 and 16, hereinbefore described. Land level. Soil, loose, red, sandy loam, medium texture, 12 to 18 ins. deep on clay subsoil. Good grass. No timber.

Thence I run
 N. $0^{\circ} 02'$ W. bet. secs. 9 & 10
 Over level prairie land parallel to & 50 lks. W. of wire fence along wagon road
 Cor. of wire fence bears E. 50 lks. dist.
 38.00 Set an iron post 3 ft. long, 1 in. in dia., 26 ins. in ground for reestab. $\frac{1}{4}$ sec. cor., with a brass cap marked $\frac{1}{4}$ S 9 in W., S 10 in E. & 1913 in S. half. /of post
 40.00 Dig pits 18 x 18 x 12 ins. N. & S. $\frac{1}{3}$ ft. dist. & raise mound of earth $3\frac{1}{2}$ ft. base $1\frac{1}{2}$ ft. high W. of cor.
 57.00 Cor. of wire fence bears E. 50 lks. dist.
 75.00 Earl Gillespie's house bears E. 7 chs. dist.
 79.50 Wagon road bears N.W. & S.E.
 80.00 Set an iron post 3 ft. long, 2 ins. in dia., 24 ins. in ground for reestab. cor. of secs. 3, 4, 9 & 10, with a brass cap marked T 11 S R 23 E in N. & 1913 in S. half, S 4 in N.W., S 3 in N.E., S 10 in S.E. & S 9 in S.W. quadrant.
 Dig pits 18 x 18 x 12 ins. in each sec. $5\frac{1}{2}$ ft. dist. & raise mound of earth 5 ft. base 2 ft. high W. of cor.
 NOTE: At the above described cor. I set off $11^{\circ} 02'$ S. on decl. arc and at 11 h. 44 m.; 36 s., a.m., 1 m.t., observe the sun on the mer. and obtain a reading of $32^{\circ} 29\frac{1}{2}'$ on lat. arc
 Land level
 Soil loose red sandy loam medium texture 12 to 18 ins. deep on clay sub-soil
 Good grass.
 No timber.

The cor. of secs. 2, 3, 10 & 11, being plainly visible, I run
 East on random line bet. secs. 3 & 10
 40.00 Set temp. $\frac{1}{4}$ sec. cor.
 79.78 Intersect cor. of secs. 2, 3; 10 & 11, hereinbefore described.
 Thence I run
 West on true line bet. secs. 3 & 10
 Over level prairie land
 60.50 Wire fence bears N. & S., cor. of wire fence bears N. 15 lks. dist; thence parallel to & S. of land
 39.89 Set an iron post 3 ft. long, 1 in. in dia., 26 ins. in ground for reestab. $\frac{1}{4}$ sec. cor., with a brass cap marked $\frac{1}{4}$ S 3 in N. & S 10 1913 in S. half. /of post
 Dig pits 18 x 18 x 12 ins. E. & W. $\frac{1}{3}$ ft. dist. & raise mound of earth $3\frac{1}{2}$ ft. base $1\frac{1}{2}$ ft. high N. of cor.
 79.30 Wire fence bears N. & S., N.W. cor. of wire fence bears N. 20 lks. dist.
 79.78 The cor. of secs. 3, 4, 9 & 10, hereinbefore described.
 Land level
 Soil loose red sandy loam, medium texture 12 to 18 ins. deep on clay sub-soil
 Good grass
 No timber.

Thence I run
 N. $0^{\circ} 02'$ W. bet. secs. 3 & 4
 Over level prairie land
 .50 Wagon road bears E. & W
 .70 Wire fence bears E. & W., S.W. cor. of wire fence bears W. 10 lks. dist., thence through pasture

90/

RESURVEY OF SUBDIVISION LINES OF TP. 11 S., RANGE 23 EAST, COUNTY OF DEWELP, MISSOURI.

RESURVEY OF SUBDIVISION LINES OF TP. 11 S., RANGE 23 EAST.

- 40.00 Set an iron post 3 ft. long, 1 in. in dia., 26 ins. in ground for reestab. $\frac{1}{4}$ sec. cor., with a brass cap marked S 4 in W. & S 3 in E. & 1913 in S. half. /of post
Dig pits 18 x 18 x 12 ins. N. & S. 3 ft. dist. & raise mound of earth $3\frac{1}{2}$ ft. base $1\frac{1}{2}$ ft. high W. of cor.
- 40.02 Wire fence bears E. & W., cor. of wire fence bears W. 5 lks. dist.
- 41.00 M. C. Hart's house bears E. 3 chs. dist.
- 43.00 Wire fence bears E. & W., cor. of wire fence bears W. 5 lks. dist.
- 79.75 Intersect N.W. cor. of wire fence, telephone line bears E. & W.
- 80.24 Intersect Second Standard Parallel South 23.95 chs. S. 89° 55' W. of Standard Cor. of secs. 33 & 34, previously reestab. by me, as described by me in Book "A" of Group 22.
Set an iron post 3 ft. long, 2 ins. in dia., 24 ins. in ground for reestab. closing cor. of secs. 3 & 4, with a brass cap marked CC S. of center, T 11 S R 23 E S 33 S 34 in N. & 1913 in S. half, S 3 in S.E. & S 4 in S.W. quadrant.
Dig pits 24 x 18 x 12 ins. crosswise on each line E. & W. 3 ft. & S. of post 17 ft. dist.
Raise mound of earth 4 ft. base 2 ft. high S. of cor.
Land level.
Soil loose red sandy loam, medium texture, 12 to 18 ins. deep on clay sub-soil
Good grass
No timber.

Oct. 22nd, 1913.

Oct. 25, 1913:

- Oct. 25, 1913: At 9 h. 0 m., a.m., l.m.t., I set off 12° 02' S. on decl. arc, 32° 25' on lat. arc and determine a mer. with the solar at the cor. of secs. 4, 5, 32 & 33, on S. bdy. of Tp. previously reestab. by me, as described in Book "A" of this group. Thence I run,
N. 0° 02' W. bet. secs. 32 & 33
Over level land through scattering mesquite brush 3 to 4 ft. high
- 15.00 Leave mesquite brush bears E. & W.
- 17.00 Wagon road bears N.W. & S.E.
- 40.00 Set an iron post 3 ft. long, 1 in. in dia., 26 ins. in ground for reestab. $\frac{1}{4}$ sec. cor., with a brass cap marked $\frac{1}{4}$ S 32 in W., S 33 in E. & 1913 in S. half. /of post
Dig pits 18 x 13 x 12 ins. N. & S. 3 ft. dist. & raise mound of earth $3\frac{1}{2}$ ft. base $1\frac{1}{2}$ ft. high W. of cor.
- 77.00 Wagon road bears N.E. & S.W.
- 80.00 Set an iron post 3 ft. long, 2 ins. in dia., 24 ins. in ground for reestab. cor. of secs. 28, 29, 32 & 33, with a brass cap marked T 11 S R 23 E in N. & 1913 in S. half, S 29 in N.W., S 28 in N.E., S 33 in S.E. & S 32 in S.W. quadrant.
Dig pits 13 x 18 x 12 ins. in each sec. 5 $\frac{1}{2}$ ft. dist. & raise mound of earth 4 ft. base 2 ft. high W. of cor.
Land level
Soil loose gravelly sandy loam, medium texture, 12 to 18 ins. deep on clay sub-soil
Good grass, scattering mesquite brush 3 to 4 ft. high on S. end of line
No timber.

- The cor. of secs. 27, 28, 33 & 34, being plainly visible, I run
N. 89° 52' E. on random line for said cor. bet. secs. 28 & 33
- 40.00 Set temp. $\frac{1}{4}$ sec. cor.
- 79.96 Intersect cor. of secs. 27, 28, 33 & 34, hereinbefore described.
Thence I run
S. 89° 52' W. on true line bet. secs 28 & 33
Over slightly rolling prairie land
- 7.70 N.E. cor. of wire fence bears S. 50 lks. dist., thence parallel to & 50 lks. N. of wire fence.

RESURVEY OF SUBDIVISION LINES OF TOWNSHIP 11 S. R. 23 E

21.00 Wire fence bears N. & S., S.W. cor. of wire fence bears S. 50 lks. dist.

37.00 Wagon road bears N.W. & S.E.

39.98 Set an iron post 3 ft. long, 1 in. in dia., 26 ins. in ground for reestab. $\frac{1}{4}$ sec. cor., with a brass cap marked $\frac{1}{4}$ S 28 in N. & S 33 1913 in S. half. /of post
Dig pits 13 x 13 x 12 ins. E. & W. 3 ft. dist. " raise mound of earth $3\frac{1}{2}$ ft. base $1\frac{1}{2}$ ft. high N. of cor.

66.00 Wagon road bears N.E. & S.W.

79.96 The cor. of secs. 28, 29, 32 & 33, hereinbefore described.
Land level & rolling
Soil light sandy loam medium texture, 12 to 18 ins. deep on clay sub-soil
Good grass
No timber.

Thence I run
N. 0° 02' W. bet. secs. 28 & 29
Over slightly rolling prairie land through scattering mesquite brush 1 to 2 ft. high

7.00 Dry wash 1 ch. wide, 7 ft. deep, course N. 75° E., leave scattering mesquite brush

39.25 Wagon road bears N.W. & S.E.

40.00 Set an iron post 3 ft. long, 1 in. in dia., 26 ins. in ground for reestab. $\frac{1}{4}$ sec. cor., with a brass cap marked $\frac{1}{4}$ S 29 in W., S 28 in E. & 1913 in S. half. /of post
Dig pits 13 x 18 x 12 ins. N. & S. 3 ft. dist. " raise mound of earth $3\frac{1}{2}$ ft. base $1\frac{1}{2}$ ft. high W. of cor.
From the above described cor. the old $\frac{1}{4}$ sec. cor., which is a granite stone 6 x 7 x 8 ins., loosely set & marked as described by Surveyor General, bears S. 32 $\frac{1}{2}$ ° W. 70 lks. dist.
I destroy all trace of this old cor.

55.00 Wire fence bears E. & W., S.W. cor. of fence bears W. 1 ch. dist., thence parallel to E. of wire fence

80.00 Set an iron post 3 ft. long, 2 ins. in dia., 24 ins. in ground for reestab. cor. of secs. 20, 21, 28 & 29, with a brass cap marked T 11 S R 23 E in N. & 1913 in S. half, S 20 in N.W., S 21 in N.E., S 28 in S.E. & S 29 in S.W. quadrant.
Dig pits 13 x 13 x 12 ins. in each sec. 5 $\frac{1}{2}$ ft. dist. " raise mound of earth 4 ft. base 2 ft. high W. of cor.
Land level & rolling
Soil loose gravelly sandy loam, medium texture, 12 ins. deep on clay sub-soil
Good grass
Scattering scrub oak trees along wash.

Thence I run
N. 89° 52' E. on random line bet. secs. 21 & 28

40.00 Set temp. $\frac{1}{4}$ sec. cor.

30.02 Fall 7 lks. N. of cor. of secs. 21, 22, 27 & 28, hereinbefore described.

Thence I run
S. 89° 55' W. on true line bet. secs. 21 & 28
Over level prairie land along road parallel to 50 lks. S of

19.00 Wagon road bears N. and S. (wire fence.)

20.25 Cor. of wire fence bears N. 50 lks. dist.

21.00 John McClintack's house bears N. 3 chs. dist.

40.01 Set an iron post 3 ft. long, 1 in. in dia., 26 ins. in ground for reestab. $\frac{1}{4}$ sec. cor., with a brass cap marked $\frac{1}{4}$ S 21 in N. & S 28 1913 in S. half. /of post
Dig pits 13 x 13 x 12 ins. E. & W. 3 ft. dist. & raise mound of earth $3\frac{1}{2}$ ft. base $1\frac{1}{2}$ ft. high N. of cor.

40/25 Intersect cor. of wire fence fence bears N. & S. & W., thence along fence line.

42.00 House bears N. 5 chs. dist.

61.00 S.W. cor. of wire fence

61.30 Shallow dry wash 20 lks. wide, course S.E.

80.02 The cor. of secs. 20, 21, 28 & 29, hereinbefore described.
Note: at 19 ch. point of above described line wagon road bears N. & S.

RESURVEY OF SUBDIVISION LINES OF TOWNSHIP 11 S., R. 23 E.

Note: At the above described cor. I set off $12^{\circ}05'11''$ S. on decl. and at 11 h. 44 m. 19 s., a.m., l.m.t., observe the sun on the mer. and obtain a reading of $32^{\circ}23'$ on lat. arc.
 Land level & rolling
 Soil, loose red sandy loam, medium texture 12 to 18 ins deep on clay sub-soil
 Good grass
 No timber.

 Thence I run
 N. $0^{\circ}02'$ W. bet. secs. 20 & 21
 Over level prairie land
 39.95 Wire fence bears E. & W., S.W. cor. of wire fence bears W. 50 lks. dist., thence parallel to & E. of wire fence.
 40.00 Set an iron post 3 ft. long, 1 in. in dia. 26 ins. in ground for reestab. $\frac{1}{4}$ sec. cor., with a brass cap marked S 20 in W., S 21 in E. & 1913 in S. half. /of post
 Dig pits 18 x 18 x 12 ins. N. & S. \wedge 3 ft. dist. & raise mound of earth $3\frac{1}{2}$ ft. base $1\frac{1}{2}$ ft. high W. of cor.
 50.00 Old abandoned wagon road bears N.W. & S.E.
 79.00 Wire fence bears E. & W.
 80.00 Set an iron post 3 ft. long, 2 ins. in dia. 24 ins. in ground for reestab. cor. off secs. 16, 17, 20 & 21, with a brass cap marked T 11 S R 23 E in N. & 1913 in S. half, S 17 in N.W., S 16 in N.E., S 21 in S.E. & S 20 in S.W. quadrant.
 Dig pits 18 x 18 x 12 ins. in each sec. $5\frac{1}{2}$ ft. dist. & raise mound of earth 4 ft. base 2 ft. high W. of cor.
 Land level
 Soil loose red sandy loam, medium texture, 12 to 18 ins. deep on clay sub-soil
 Good grass.
 No timber

 Thence I run
 N. $89^{\circ}55'$ E. on random line bet. secs. 16 & 21.
 40.00 Set temp. $\frac{1}{4}$ sec. cor.
 79.98 Fall 7 lks. S. of cor. of secs. 15, 16, 21 & 22, hereinbefore described.
 Thence I run
 S. $89^{\circ}52'$ W. on true line bet. secs. 16 & 21
 Over level prairie land
 .50 Wagon road bears S.E. & West, thence along wagon road parallel to & 50 lks. N. of wire fence
 20.00 Wagon road bears N. & S.
 20.50 Intersect N.E. cor. of wire fence bears S. & S. $89^{\circ}30'$ W. thence along N. side of wire fence
 39.99 Set an iron post 3 ft. long, 1 in. in dia., 26 ins. in ground for reestab. $\frac{1}{4}$ sec. cor., with a brass cap marked S 16 in N. & S 21 1913 in S. half. /of post
 Dig pits 18 x 18 x 12 ins. E. & W. \wedge 3 ft. dist. raise mound of earth $3\frac{1}{2}$ ft. base $1\frac{1}{2}$ ft. high N. of cor.
 79.98 The cor. of secs. 16, 17, 20 & 21, hereinbefore described.
 Land level.
 Soil loose red sandy loam, medium texture, 12 to 18 ins. deep on clay sub-soil
 Good grass
 No timber.

Oct. 25th, 1913.

 Oct. 27, 1913:
 Oct. 27th at 10 h. 30 m., a.m., l.m.t., I set off $12^{\circ}44\frac{1}{2}'$ S. on decl. arc, $32^{\circ}23'$ on lat. arc and determine a mer. with the solar at the cor. of secs. 16, 17, 20 & 21, hereinbefore described.
 Thence I run
 N. $0^{\circ}02'$ W. bet. secs. 16 & 17
 Over level prairie land parallel to & 50 lks. E. of wire fence.

RESURVEY OF SUBDIVISION LINES OF T. 11 S., R. 23 EAST. MO. 1898

.50
40.00 Wagon road bears E. & W.
Set an iron post 3 ft. long, 1 in. in dia., 26 ins. in ground for reestab. $\frac{1}{4}$ sec. cor., with a brass cap marked $\frac{1}{4}$ S 17 in W., S 16 in E. & 1913 in S. half. /of post
Dig pits 18 x 18 x 12 ins. N. & S. $\sqrt{3}$ ft. dist. & raise mound of earth $3\frac{1}{2}$ ft. base $1\frac{1}{2}$ ft. high W. of cor.
From the above described cor. N.E. cor. of wire fence bears W. 1 ch. dist.

58.00 Wagon road bears N.W. & S.E.
80.00 Set an iron post 3 ft. long, 2 ins. in dia., 24 ins. in ground for reestab. cor. of secs. 8, 9, 16 & 17, with a brass cap marked T 11 S R 23 E in N. & 1913 in S. half, S 8 in N.W., S 9 in N.E., S 16 in S.E. & S 17 in S.W. quadrant.
Dig pits 18 x 18 x 12 ins. in each sec. $5\frac{1}{2}$ ft. dist. & raise mound of earth 4 ft. base 2 ft. high W. of cor.
Land level
Soil loose red sandy loam, medium texture 12 to 18 ins. deep on clay sub-soil
Good grass
No timber.

40.00 Thence I run
79.82 N. $89^{\circ} 52'$ E. on random line bet. secs. 9 & 16.
Set temp. $\frac{1}{4}$ sec. cor.
Fall 7 lks. N. of cor. of secs. 9, 10, 15 & 16, hereinbefore described.

Thence I run
 $\sqrt{S. 89^{\circ} 55' W.}$ on true line bet. secs. 9 & 16
Over level prairie land
Wagon road bears N. & S.
.50
39.91 Set an iron post 3 ft. long, 1 in. in dia., 26 ins. in ground for reestab. $\frac{1}{4}$ sec. cor., with a brass cap marked $\frac{1}{4}$ S 9 in N. & S 16 1913 in S. half.
Dig pits 18 x 18 x 12 ins. E & W of post $\sqrt{3}$ ft. dist. & raise mound of earth $3\frac{1}{2}$ ft. base $1\frac{1}{2}$ ft. high N. of cor.

79.82 The cor. of secs. 8, 9, 16 & 17, hereinbefore described.
Note: At this cor. I set off $12^{\circ} 46'$ S. on decl. arc, and at 11 h. 44 m., a.m., 1.m.t., observe the sun on the mer. and obtain a reading of $32^{\circ} 29'$ on lat. arc.
Land level
Soil loose red sandy loam, medium texture, 12 to 18 ins. deep on clay sub-soil
Good grass
No timber

40.00 Thence I run
N. $0^{\circ} 02'$ W. bet. secs. 8 & 9
Over level prairie land
Set an iron post 3 ft. long, 1 in. in dia., 26 ins. in ground for reestab. $\frac{1}{4}$ sec. cor., with a brass cap marked $\frac{1}{4}$ S 3 in W., S 9 in E. & 1913 in S. half. /of post
Dig pits 18 x 18 x 12 ins. N. & S. $\sqrt{3}$ ft. dist. & raise mound of earth $3\frac{1}{2}$ ft. base $1\frac{1}{2}$ ft. high W. of cor.

80.00 Set an iron post 3 ft. long, 2 ins. in dia., 24 ins. in ground for reestab. cor. of secs. 4, 5, 8 & 9, with a brass cap marked T 11 S R 23 E in N. & 1913 in S. half, S 5 in N.W., S 4 in N.E., S 9 in S.E. & S 8 in S.W. quadrant
Dig pits 18 x 18 x 12 ins. in each sec. $5\frac{1}{2}$ ft. dist. & raise mound of earth 4 ft. base 2 ft. high W. of cor.
Land level
Soil loose red sandy loam, medium texture, 12 to 18 ins. deep on clay sub-soil
Good grass
No timber.

RESERVEY OF SUBDIVISION LINES OF TOWNSHIP 11 S. 23 E.

Thence I run
 N. 89° 55' E. on random line bet. secs. 4 & 9
 40.00 Set temp. $\frac{1}{4}$ sec. cor.
 79.80 Intersect cor. of secs. 3, 4, 9 & 10, hereinbefore described.

Thence I run
 S. 89° 55' W. on true line bet. secs. 4 & 9
 Over level prairie land
 .50 Wagon road bears N. & S.
 39.90 Set an iron post 3 ft. long, 1 in. in dia., 26 ins. in ground
 for reestablish $\frac{1}{4}$ sec. cor., with a brass cap marked * S 4 in
 N. & S. 9 1913 in S. half /of post
 Dig pits 13 x 18 x 12 ins. E. & W. 3 ft. dist. & raise
 mound of earth $3\frac{1}{2}$ ft. base $1\frac{1}{2}$ ft. high N. of cor.
 79.80 The cor. of secs. 4, 5, 8 & 9, hereinbefore described.
 Land level
 Soil loose red sandy loam, medium texture 12 to 18 ins.
 deep on clay sub-soil
 Good grass
 No timber.

Thence I run
 N. 0° 02' W. bet. secs. 4 & 5
 Over level prairie land
 24.50 Wagon road bears N.W. & S.E.
 30.25 Wire fence bears E. & W. fence cor. bears E. 2 chs. &
 W. 6 chs. dist.
 32.00 Sam'l Gillespie's house bears W. 1 ch. dist. enter ploughed
 field bears E. & W.
 38.00 Wire fence bears E. & W.; leave ploughed land
 40.00 Set an iron post 3 ft. long, 1 in. in dia., 26 ins. in ground
 for reestablish $\frac{1}{4}$ sec. cor., with a brass cap marked * S 5 in
 W., S 4 in E. & 1913 in S. half. /of post
 Dig pits 13 x 13 x 12 ins. N. & S. 3 ft. dist. & raise
 mound of earth $3\frac{1}{2}$ ft. base $1\frac{1}{2}$ ft. high W. of cor.
 42.00 Edna Darling's house bears E. 2 chs. dist.
 46.50 Wagon road bears E. & W.
 72.50 Wagon road bears E. & W.
 80.24 Intersect Second Standard Parallel South 23.66 chs. S.
 89° 55' W. of Standard cor. of secs. 32 & 33, previously
 re-established by me, as described in Book "B" of Group 22.
 Set an iron post 3 ft. long, 2 ins. in dia., 24 ins. in ground
 for reestablish Closing cor. of secs. 4 & 5, with a brass cap
 marked CC S. of center, T 11 S R 23 E S 32 S 33 in N. &
 1913 in S. half, S 4 in S.E. & S 5 in S.W. quadrant.
 Dig pits 24 x 13 x 12 ins. crosswise on each line E & W. 7 ft.
 & S. of post 7 ft. dist. & raise mound of earth 4 ft. base 2
 ft. high S. of cor.
 Land level
 Soil loose red sandy loam, medium texture, 12 to 18 ins.
 deep on clay sub-soil
 Good grass
 No timber.

Oct. 27th, 1913.

Oct. 28, 1913; At 9h. 20m. a.m., 1.m.t., I set off 13° 03' S. on decl. arc, 32° 25' on lat. arc and determine a meridian with the solar at the cor. of secs. 5, 6, 31 & 32, on S. bdy. of Tp., previously re-established by me, as described in Book "A" of this Group. Thence I run,
 N. 0° 03' W. bet. secs. 31 & 32
 Over slightly rolling land through scattering mesquite brush 3 to 4 ft. high
 36.00 Wagon road bears E. & W.
 39.75 Wire fence bears E. & W. S.E. cor. of wire fence bears E. 1 ch. dist.
 40.00 Set an iron post 3 ft. long, 1 in. in dia., 26 ins. in ground for reestablish $\frac{1}{4}$ sec. cor., with a brass cap marked * S 31 in W., S 32 in E. & 1913 in S. half.

RESURVEY OF SUBDIVISION LINES OF TOWNSHIP 11 S., R. 23 E. 19 N.

45.00 Dig pits 18 x 18 x 12 ins. N. & S. ^{of post} 3 ft. dist. & raise mound of earth 3 1/2 ft. base 1 1/2 ft. high W. of cor.

52.00 Wire fence bears N. 15° W., S. 15° E.

59.00 Wagon road bears N.W. & S.E.

68.00 Dry rocky wash 1 ch. wide, 3 ft. deep, course N.E.

80.00 Dry wash 25 lks. wide, 2 ft. deep, course N.E.

80.00 Set an iron post 3 ft. long, 2 1/2 ins. in dia. 24 ins. in ground for reestab. cor. of secs. 29, 30, 31 & 32, with a brass cap marked T 11 S R. 23 E in N. & 1913 in S. half, S 30 in N.W., S 29 in N.E., S 32 in S.E. & S 31 in S.W. quadrant.

Dig pits 18 x 18 x 12 ins. in each sec. 5 1/2 ft. dist. & raise mound of earth 4 ft. base 2 ft. high W. of cor.

Land level & rolling

Soil loose gravelly sandy loam, coarse texture, 12 ins. deep on clay sub-soil

Good grass, scattering mesquite brush 3 to 4 ft. high

Scattering scrub oak & walnut trees along dry wash

40.00 Thence I run N. 89° 56' E. on random line bet. secs. 29 & 32

80.22 Set temp. 1/4 sec. cor.

80.22 Fall 2 lks. S. of cor. of secs. 28, 29, 32 & 33, hereinbefore described.

Thence I run

30.00 S. 89° 55' W. on true line bet. secs. 29 & 32

40.11 Ascending gentle E. slope over level prairie land through scattering mesquite brush 2 to 3 ft. high

40.11 Dry wash 1 ch. wide, 3 ft. deep, course N.E.

40.11 Set an iron post 3 ft. long, 1 in. in dia. 26 ins. in ground for reestab. 1/4 sec. cor., with a brass cap marked S 29 in N. & S 32 1913 in S. half /of post

Dig pits 18 x 18 x 12 ins. E. & W. 3 ft. dist. & raise mound of earth 3 1/2 ft. base 1 1/2 ft. high N. of cor.

From the above described cor. old 1/4 sec. cor., which is a malapais stone 5 x 8 x 7 ins. loosely set in mound of stone, marks nearly obliterated, bears S 70 1/2° W. 106 lks. dist. I destroy all trace of the old cor.

63.500 Dry wash 10 lks. wide, 2 ft. deep, course N.E.

69.00 Wagon road bears N.W. & S.E.

80.22 The cor. of secs. 29, 30, 31 & 32, hereinbefore described.

Note: At this cor. I set off 13° 06' S. on decl. arc, and at 11 h. 43m. 54 s., a.m., 1.m.t., observe the sun on the mer. and obtain a reading of 32° 26' on lat. arc.

Land level & rolling

Soil light gravelly sandy loam, medium texture 12 to 18 ins deep on clay sub-soil

Good grass, scattering mesquite brush 2 to 3 ft. high

Scattering scrub oak & Walnut trees along dry wash

on W. bdy of Tp.

The cor. of secs. 25, 30, 31 & 36, being plainly visible

I run

6.00 S. 89° 57' W. on true line for said cor. bet. secs. 30 & 31

16.00 Ascending gentle E. slope through scattering mesquite brush 2 to 3 ft. high

40.00 Wagon road bears N. & S.

40.00 Wire fence bears N. 25° E., S 25° W., thence through pasture

40.00 Set an iron post 3 ft. long, 1 in. in dia. 26 ins. in ground for reestab. 1/4 sec. cor., with a brass cap marked S 30 in N., & S 31 1913 in S. half. Pits impracticable.

40.75 Raise mound of stone 2 ft. base 2 ft. high N. of cor.

78.87 Old 1/4 sec. cor., which is a mound of stone bears S. 14 lks. I destroy all trace of this old cor.

Intersect W. bdy. of Tp. at the cor. of secs. 25, 30, 31 & 36, previously re-estab. by me, as described in Book "A" of Land level & rolling (this Group.)

Soil thin & rocky

Good grass, scattering mesquite brush 2 to 3 ft. high

No timber.

960 RESURVEY OF SUBDIVISION LINES OF TOWNSHIP 11 S., R. 23 E., D. 1 S.

- From the cor. of secs. 29, 30, 31 & 32, hereinbefore described, I run
 N. 0° 03' W. bet. secs. 29 & 30
 Over level prairie land through scattering mesquite brush 2 to 3 ft. high.
- 5.00 Leave scattering mesquite brush bears E. & W.
 8.00 Wagon road bears N.W. & S.E.
 40.00 Set an iron post 3 ft. long, 1 in. in dia., 26 ins. in ground for reestab. $\frac{1}{4}$ sec. cor., with a brass cap marked $\frac{1}{4}$ S 30 in W., S 29 in E. & 1913 in S. half. /of post
 Dig pits 13 x 18 x 12 ins. N. & S. $\sqrt{3}$ ft. dist. & raise mound of earth $3\frac{1}{2}$ ft. base $1\frac{1}{2}$ ft. high W. of cor.
 80.00 Set an iron post 3 ft. long, 2 ins. in dia., 24 ins. in ground for reestab. cor. of secs. 19, 20, 29 & 30, with a brass cap marked T 11 S R 23 E in N. & 1913 in S. half, S 19 in N.W., S 20 in N.E., S 29 in S.E. & S 30 in S.W. quadrant.
 Dig pits 13 x 13 x 12 ins. in each sec. $5\frac{1}{2}$ ft. dist. & raise mound of earth 4 ft. base 2 ft. high W. of cor.
 Soil dark sandy loam, medium texture, 12 ins. deep on clay sub-soil
 Good grass, scattering mesquite brush on S. end of line
 No timber.
 Land level & rolling
-
- Thence I run
 N. 89° 55' E. on random line bet. secs. 20 & 29
 40.00 Set temp. $\frac{1}{4}$ sec. cor.
 80.32 Intersect cor. of secs. 20, 21, 23 & 29, hereinbefore described
- Thence I run
 S. 89° 55' W. on true line bet. secs. 20 & 29
 Over slightly rolling prairie land
 1.00 N.E. cor. of wire fence bears S. 10 lks. dist., thence parallel to & N. of wire fence
 21.00 Wire fence bears N. & S., S.W. cor. of wire fence bears S. 10 lks. dist.
 40.16 Set an iron post 3 ft. long, 1 in. in dia., 26 ins. in ground for reestab. $\frac{1}{4}$ sec. cor., with a brass cap marked $\frac{1}{4}$ S 20 in N. & S 29 1913 in S. half. /of post
 Dig pits 13 x 13 x 12 ins. E. & W. $\sqrt{3}$ ft. dist. & raise mound of earth $3\frac{1}{2}$ ft. base $1\frac{1}{2}$ ft. high N. of cor.
 From the above described cor. old $\frac{1}{4}$ sec. cor. which is a granite stone 12 x 10 x 6 ins. firmly set & marked as described by Surveyor General, bears N. 88 $\frac{1}{2}$ ° W. 67 lks. dist.
 I destroy all trace of this old cor.
 45.00 Wagon road bears N.W. & S.E.
 80.32 The cor. of secs. 19, 20, 29 & 30, hereinbefore described.
 Land level & rolling
 Soil dark gravelly sandy loam, medium texture, 12 ins. deep on clay sub-soil
 Good grass
 No timber.
-
- Thence I run
 S. 39° 57' W. on random line bet. secs. 19 & 30
 40.00 Set temp. $\frac{1}{4}$ sec. cor.
 78.63 Intersect W. bdy. of Tp. 2 lks. S. of cor. of secs. 19, 24, 25 & 30, previously reestab. by me, & described in Book "A"
 Thence I run. (of this group)
 N. 39° 58' E. on true line bet. secs. 19 & 30
 Over slightly rolling prairie land
 1.50 Wagon road bears N.W. & S.E.
 33.63 Set an iron post 3 ft. long, 1 in. in dia., 26 ins. in ground for reestab. $\frac{1}{4}$ sec. cor., with a brass cap marked $\frac{1}{4}$ S 19 in N. & S 30 1913 in S. half. /of post
 Dig pits 13 x 18 x 12 ins. E. & W. $\sqrt{3}$ ft. dist. & raise mound of earth $3\frac{1}{2}$ ft. base $1\frac{1}{2}$ ft. high N. of cor.
 61.00 Dry wash 10 lks. wide, 2 ft. deep, course N.E.
 78.63 The cor. of secs. 19, 20, 29 & 30, hereinbefore described.

Land level & rolling
Soil light gravelly sandy loam, medium to coarse texture,
12 ins. deep on clay sub-soil
Good grass
No timber.

Thence I run
N. 0° 03' W. bet. secs. 19 & 20
Over slightly rolling prairie land
20.00 Dry wash 15 lks. wide, 2 ft. deep, course N.E.
29.00 Dry wash 10 lks. wide, 2 ft. deep, course N.E.
40.00 Set an iron post 3 ft. long, 1 in. in dia., 26 ins. in ground
for reestab. $\frac{1}{4}$ sec. cor., with a brass cap marked $\frac{1}{4}$ S 19 in
W., S 20 in E. & 19 13 in S. half. /of post
Dig pits 13 x 13 x 12 ins. N. & S. \wedge 3 ft. high & raise
mound of stone covered with earth 4 ft. base 2 ft. high
W. of cor.
70.00 Wagon road bears N.W. & S.E.
80.00 Set an iron post 3 ft. long, 2 ins. in dia., 24 ins. in ground
for reestab. cor. of secs. 17, 18, 19 & 20, with a brass cap
marked T 11 S R 23 E in N. & 19 13 in S. half, S 18 in N.W.,
S 17 in N.E. S 20 in S.E. & S 19 in S.W. quadrant. Pits imprac.
Raise mound of stone 2 ft. base 2 ft. high W. of cor.
Land level & rolling
Soil light gravelly sandy loam, medium texture 12 to 18
ins. deep on clay sub-soil
Good grass
No timber

Thence I run
N. 39° 55' E. on random line bet. secs. 17 & 20
40.00 Set temp. $\frac{1}{4}$ sec. cor.
80.32 Intersect cor. of secs. 16, 17, 20 & 21, hereinbefore de-
scribed.
Thence I run
S. 39° 55' W. on true line bet. secs. 17 & 20
Over level prairie land
.50 Wire fence bears N. & S.
7.00 Dry wash 10 lks. wide, 2 ft. deep, course S.E.
40.16 Set an iron post 3 ft. long, 1 in. in dia., 26 ins. in ground
for reestab. $\frac{1}{4}$ sec. cor., with a brass cap marked $\frac{1}{4}$ S 17 in
N. & S 20 19 13 in S. half. /of post
Dig pits 13 x 13 x 12 ins. E. & W. \wedge 3 ft. dist. & raise
mound of earth $3\frac{1}{2}$ ft. base $1\frac{1}{2}$ ft. high N. of cor.
47.00 Old abandoned wagon road bears N.W. & S.E. old adobe
house bears N. 6 chs. dist.
60.50 N.E. cor. of wire fence bears S. 1 lk. dist., thence along
wire fence
80.25 S.W. cor. of wire fence bears N. 1 lk. dist.
80.32 The cor. of secs. 17, 18, 19 & 20, hereinbefore described.
Land level
Soil light sandy loam, 18 ins. deep on clay sub-soil,
medium texture.
Good grass
No timber.

Oct. 28th, 1913.

Oct. 29th, 1913:
At 10 h. 0 m., a.m., l.m.t., I set off 13° 24 $\frac{1}{2}$ ' S.
on decl. arc, 32° 28' on lat. arc and determine a mer.
with the solar at the cor. of secs. 17, 18, 19 & 20, pre-
hereinbefore described.
Thence I run
S. 39° 58' W. on random line bet. secs. 18 & 19
40.00 Set temp. $\frac{1}{4}$ sec. cor.
78.60 Intersect W. bdy. of Tp. 2 lks. S. of cor. of secs. 13,
18, 19 & 24, previously described by me, in Book "A" of this
Thence I run
N. 39° 59' E. on true line bet. secs. 18 & 19 (group
Over level prairie land

RESURVEY OF SUBDIVISION LINES OF TOWNSHIP 11 S., R. 23 E.

- 38.60 Set an iron post 3 ft. long, 1 in. in dia., 26 ins. in ground for reestab. $\frac{1}{4}$ sec. cor., with a brass cap marked $\frac{1}{4}$ S 18 in N. & S 19 1913 in S. half. /of post
Dig pits 13 x 13 x 12 ins. E. & W. $\frac{1}{3}$ ft. dist. & raise mound of earth $3\frac{1}{2}$ ft. base $1\frac{1}{2}$ ft. high N. of cor.
- 76.00 Wagon road bears N. & S.
- 78.60 The cor. of secs. 17, 18, 19 & 20, hereinbefore described.
Land level
Soil light gravelly sandy loam, medium texture, 12 ins. deep on clay sub-soil
Good grass
No timber.
-
- Thence I run N. $0^{\circ} 03'$ W. bet. secs. 17 & 18
Over level prairie land parallel to & W. of wire fence
- 39.75 Wagon road bears N.W. & S.E.
- 40.00 Set an iron post 3 ft. long, 1 in. in dia., 26 ins. in ground for reestab. $\frac{1}{4}$ sec. cor., with a brass cap marked $\frac{1}{4}$ S 13 in W., S 17 in E & 1913 in S. half. /of post
Dig pits 13 x 13 x 12 ins. N. & S. $\frac{1}{3}$ ft. dist. & raise mound of earth $3\frac{1}{2}$ ft. base $1\frac{1}{2}$ ft. high W. of cor.
- 58.00 Fork in wagon road turns N.W.
- 80.00 Set an iron post 3 ft. long, 2 ins. in dia., 24 ins. in ground for reestab. cor. of secs. 7, 8, 17 & 18, with a brass cap marked T 11 S R 23 E in N. & 1913 in S. half, S 7 in N.W., S 8 in N.E., S 17 in S.E. & S 18 in S.W. quadrant.
Dig pits 13 x 13 x 12 ins. in each sec. $5\frac{1}{2}$ ft. dist. & raise mound of earth 4 ft. base 2 ft. high W. of cor.
Land level
Soil light sandy loam, medium texture, 12 to 13 ins. deep on clay sub-soil
Good grass
No timber.
-
- Thence I run
N. $89^{\circ} 55'$ E. on random line bet. secs. 8 & 17.
- 40.00 Set temp. $\frac{1}{4}$ sec. cor.
- 80.34 Fall 2 lks. N. of cor. of secs. 8, 9, 16 & 17, hereinbefore described.
Thence I run
S. $89^{\circ} 56'$ W. on true line bet. secs. 8 & 17
Over level prairie land.
- 3.00 Wagon road bears N.W. & S.E.
- 19.00 Wire fence bears N. & S. enter scattering mesquite brush 2 to 3 ft. high bears N. & S.
- 35.00 Leave scattering mesquite brush bears N.E. & S.W.
- 40.17 Set an iron post 3 ft. long, 1 in. in dia., 26 ins. in ground for reestablished intersection corner, with a brass cap marked $\frac{1}{4}$ S 8 in N. & S 17 1913 in S. half.
Dig pits 13 x 13 x 12 ins. E. & W. of post, $3\frac{1}{2}$ ft. dist. and raise mound of earth $3\frac{1}{2}$ ft. base $1\frac{1}{2}$ ft. high N. of cor.
- 57.00 Dry wash 10 lks. wide, 1 ft. deep, course S.E.
- 80.00 Wire fence bears N. & S.
- 80.34 The cor. of secs. 7, 8, 17 & 18, hereinbefore described.
- Note: At this cor. $\frac{1}{4}$ set off $13^{\circ} 26'$ S. on decl. arc. and at 11 h. 43 m. 50 s., a.m., l.m.t., observe the sun on the mer and obtain a reading of $32^{\circ} 29'$ on lat. arc.
Land level & rolling
Soil loose red sandy loam, medium texture, 12 to 18 ins. deep on clay sub-soil.
Good grass scattering mesquite brush 2 to 3 ft. high
No timber.
-
- on west bdy. of Tp.
The cor. of secs. 7, 12, 13 & 18, being plainly visible,
I run
N. $89^{\circ} 57'$ W. on true line bet. secs. 7 & 18 for said cor.
Over slightly rolling prairie land.

.20 Wagon road bears N. & S
.75 S.E. cor. of wire fence bears N. 70 lks. dist.
12.00 House belonging to J. F. Stamps bears N. 7 chs. dist.
14.00 Wagon road bears N. & S.
39.75 Wagon road bears N.W. & S.E.
40.00 Set an iron post 3 ft. long, 1 in. in dia. ~~26~~ ²⁶ ins. in ground for reestab. ~~1~~ ¹ sec. cor., with a brass cap marked S 7 in N. & S 18 1913 in S. half. Pits impracticable.
40.52 Raise mound of stone 2 ft. base 2 ft. high N. of cor. Old ~~1~~ ¹ sec. cor., which is a granite stone 10 x 8 x 6 ins. above ground firmly set & marked as described by Surveyor General bears N. 20 lks. dist., I destroy all trace of this old cor. Also cor. of wire fence bears N. 70 lks. dist.
49.00 Wagon road bears N.E. & S.W.
49.50 H. H. Thurman's house bears N. 5 chs. dist.
60.00 S.W. cor. of wire fence bears N. 70 lks. dist.
78.49 Intersect W. bdy. of Tp. at the cor. of secs. 7, 12, 13 & 18, previously reestab. by me, as described in Book "A" of this Land level & rolling (Group).
Soil light, gravelly sandy loam, medium texture, 12 ins. deep on clay sub-soil
Good grass
No timber.

From the cor. of secs. 7, 8, 17 & 18, hereinbefore described, I run
N. 0° 03' W. bet. secs. 7 & 8
Over level prairie land
.50 Wire fence bears N. ~~1~~ ¹° W. & S.E., thence along E. side of wire fence
38.00 Dry shallow wash 20 lks. wide, course S.E.
39.00 Cor. of wire fence bears W. 30 lks. dist.
40.00 Set an iron post 3 ft. long, 1 in. in dia. ~~26~~ ²⁶ ins. in ground for reestab. ~~1~~ ¹ sec. cor., with a brass cap marked S 7 in W., S 8 in E. & 1913 in S. half. /of post
Dig pits 13 x 13 x 12 ins. N. & S. ~~3~~ ³ ft. dist. & raise mound of earth ~~3~~ ³ ft. base ~~1~~ ¹ ft. high W. of cor.
77.00 Wire fence bears N.E. & S.W.
80.00 Set an iron post 3 ft. long, 2 ins. in dia. ~~24~~ ²⁴ ins. in ground for reestab. com. of secs. 5, 6, 7 & 8, with a brass cap marked T 11 S R 23 E in N. & 1913 in S. half, S 6 in N.W., S 5 in N.E., S 8 in S.E. & S 7 in S.W. quadrant.
Dig pits 13 x 13 x 12 ins. in each sec. ~~5~~ ⁵ ft. dist. & raise mound of earth 4 ft. base 2 ft. high W. of cor.
Land level
Soil light, sandy loam, medium texture, 12 to 18 ins. deep on clay sub-soil
Good grass
No timber.
Note: from the above described cor. point for old cor. of secs. 5, 6, 7 & 8, as determined by decayed mesquite stake in S.E. pit, bears N. 19~~1~~ ¹° W. 25 lks. dist. I destroy all trace of this old cor.

Thence I run
40.00 N. 89° 56' E. on random line bet. secs. 5 & 8
Set temp. ~~1~~ ¹ sec. cor.
80.56 Fall 2 lks. S. of cor. of secs. 4, 5, 8 & 9, hereinbefore described
Thence I run
40.08 S. 89° 55' W. on true line bet. secs. 5 & 8
Over level prairie land
Set an iron post 3 ft. long, 1 in. in dia. ~~26~~ ²⁶ ins. in ground for reestab. ~~1~~ ¹ sec. cor., with a brass cap marked S 5 in N. & S 8 1913 in S. half. /of post
Dig pits 13 x 13 x 12 ins. E. & W. ~~3~~ ³ ft. dist. & raise mound of earth ~~3~~ ³ ft. base ~~1~~ ¹ ft. high N. of cor.
59.50 Wagon road bears N.W. & S.E.

RESURVEY OF SUBDIVISION LINES OF TOWNSHIP 11 S., R. 23 E.

- 61.00 Wire fence bears N. 10° W., S. 10° E
 77.00 Wire fence bears N.E. & S.W.
 80:36 The cor: of secs. 5, 6, 7 & 8, hereinbefore described.
 Land level & rolling on clay sub-soil
 Soil loose red sandy loam, medium texture, 12 ins. deep.
 Good grass
 No timber.
 Oct. 29th, 1913.
-
- Oct. 30th, 1913:
 At 10 h. o m., a.m., l.m.t., I set off 13° 44' S.
 on decl. arc, 32° 29 1/2' on lat. arc and determine a mer.
 with the solar at the cor: of secs. 5, 6, 7 & 8, herein-
 before described
 Thence I run
 N. 89° 57' W. on random line bet. secs. 6 & 7
 40.00 Set temp: 1/4 sec: cor.
 78.22 Intersect W. bdy. of Tp: 2 lks: S, of cor. of secs. 1,
 6, 7 and 12, previously reestab. by me, as described in Book "A"
 Thence I run (of this group.
 S. 89° 56' E. on true line bet. secs. 6 & 7
 Over level prairie land
 .30 Wire fence bears N. & S.
 38.17 Wire fence bears N. & S.
 38.22 Set an iron post 3 ft. long, 1 in. in dia., 26 ins. in ground
 for reestab. 1/4 sec. cor. with a brass cap marked S 6 in
 N. & S 7 1913 in S. half /of post
 Dig pits 13 x 13 x 12 ins. E. & W. 3 ft. dist. & raise
 mound of earth 3 1/2 ft. base 1 1/2 ft. high N. of cor.
 45.00 Dry shallow wash 10 lks. wide, course S.E.
 58.00 Wagon road bears N.W. & S.E.
 70.00 Wire fence bears N.W. & S.E.
 78,22 The cor. of secs. 5, 6, 7 & 8, hereinbefore described.
 Land level & rolling
 Soil loose red sandy loam, medium texture, 12 ins. deep
 on clay sub-soil
 Good grass
 No timber.
-
- Thence I run
 N. 0° 03' W. bet. secs 5 & 6
 Over level prairie land
 40.00 Set an iron post 3 ft. long, 1 in. in dia., 26 ins. in ground
 for reestab. 1/4 sec. cor., with a brass cap marked S 6 in
 W., S 5 in 1913 in S. half. /of post
 Dig pits 13 x 13 x 12 ins. in each S. 3 ft. dist. &
 raise mound of earth 3 1/2 ft. base 1 1/2 ft. high W. of cor.
 58.00 Wire fence bears N.W. & S.E.
 60.00 Wagon road bears W. & S.E.
 63.00 Wagon road bears N.E. & S.W.
 77.00 Telephone line bears N. 60° E., S. 60° W.
 80.27 Intersect Second Standard Parallel South 24.02 chs. S. 89°
 55' W of Standard cor. of secs. 31 & 32, previously re-estab-
 lished by me, as described in Book "A" in Book Group "22"
 Set an iron post 3 ft. long, 2 ins. in dia. 24 ins. in ground
 for reestab. Closing Cor: of secs: 5 & 6, with a brass cap
 marked CC S. of center, T 11 S R 23 E S 31 S 32 in N. &
 1913 in S, half, S 5 in S.E. & S 6 in S.W. quadrant.
 Dig pits 24 x 18 x 12 ins. crosswise on each line E. & W. 3 ft.
 S. of post 7 ft. dist. & raise mound of earth 4 ft. base 2
 ft. high S. of cor.
 Land level & rolling
 Soil loose red sandy loam, medium texture, 18 ins. deep
 on clay sub-soil
 Good grass
 No timber.
 Oct. 30th, 1913
-

GENERAL DESCRIPTION

This township consists of level prairie land except for a small rocky hill in S.W. $\frac{1}{4}$ of sec. 30. Soil is mainly loose red sandy loam, of a depth ranging from 12 to 13 ins. which maintains a good growth of grama-grass, which the settlers cut for hay. In favorable years this land produces good crops by dry farming. Good supply of underground water is found at a depth ranging from 20 ft. in sec. 6 to approximately 200 ft. in eastern portion of township. The E. half of township is taken up by settlers, most of whom are engaged in dry farming. The western half of township is practically all occupied by the Sierra Bonita Ranch, headquarters of which are located in the NW $\frac{1}{4}$ of sec. 6. No evidence of original cars. could be found in this township except at such places as are noted herein.

Thomas B. Matthews

U. S. Surveyor.

For FINAL OATH OF UNITED STATES SURVEYOR.

See Book "D"

I, _____, U. S. Surveyor, do solemnly swear that, in pursuance of special instructions received from the U. S. Surveyor General for _____ bearing date of the _____ day of _____, 191____, I have well, faithfully, and truly, in my own proper person, and in strict conformity with said instructions, the Manual of Surveying Instructions, and the laws of the United States, surveyed all those parts or portions of _____ of the _____ Meridian, in the State of _____, which are represented in the foregoing field notes as having been executed by me, and under my direction; and I do further solemnly swear that all the corners of said survey have been established and perpetuated in strict accordance with the Manual of Surveying Instructions, and the special written instructions of the U. S. Surveyor General for _____ and in the specific manner described in the field notes, and that the foregoing are the original field notes of such survey.

U. S. Surveyor.

Subscribed by said _____, and sworn to before me }
 this _____ day of _____, 191____ }



APPROVAL.

OFFICE OF THE UNITED STATES SURVEYOR GENERAL,

Phoenix, Arizona, March 20, 1915

The foregoing field notes of the Resurvey of the Subdivision lines of _____ and SURVEY of PRIVATE TRACTS in _____ Township No. 11 South Range No. 23 East of the _____ Gila and Salt River Base and Meridian in the State of Arizona

executed by Thomas B. Matthews, U.S. Surveyor under his special instructions dated May 7 1913 for Group 25, ~~191~~, having been critically examined, and the necessary corrections and explanations made, the said field notes, and the surveys they describe, are hereby approved.

Frank Ingalls
 U. S. Surveyor General.
 of Arizona

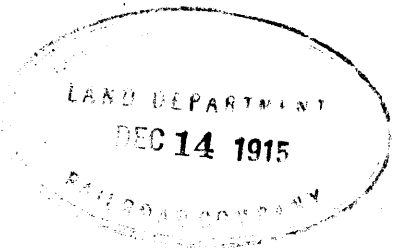
~~I certify that the foregoing transcript of the field notes of the above described surveys in _____, has been correctly copied from the original notes on file in this office.~~

It is hereby agreed to conform to the lines of the re-survey of Township 11 South, Range 23 East, Gila and Salt River Base and Meridian, Arizona, as executed by the General Land Office in 1913, in so far as the following State lands and selections are concerned:

SE $\frac{1}{4}$; E $\frac{1}{2}$ SW $\frac{1}{4}$ and lots 2 and 4,	sec. 1,
NE $\frac{1}{4}$ NW $\frac{1}{4}$, N $\frac{1}{2}$ SE $\frac{1}{4}$; and SE $\frac{1}{4}$ SE $\frac{1}{4}$,	sec. 8,
E $\frac{1}{2}$ and SW $\frac{1}{4}$	sec. 9,
N $\frac{1}{2}$ NW $\frac{1}{4}$	sec. 13,
N $\frac{1}{2}$ NE $\frac{1}{4}$	sec. 14,
E $\frac{1}{2}$ NE $\frac{1}{4}$	sec. 17,
W $\frac{1}{2}$; SE $\frac{1}{4}$; S $\frac{1}{2}$ NE $\frac{1}{4}$ and NW $\frac{1}{4}$ NE $\frac{1}{4}$,	sec. 33,
All of secs. 2, 16, 32 and 36.	

Dated Phoenix, Arizona
December 15, 1915

J. A. Moore
State Land Commissioner



219
104

BOOK 2728

The Santa Fe Pacific Railroad Company, successors in interest to the Atlantic and Pacific Railroad Company, hereby agree to conform the following lieu selections in Township 11 South, Range 23 East, Gila and Salt River Base and Meridian, Arizona, to the lines of the resurvey thereof, as executed by the General Land Office in 1913:

E $\frac{1}{2}$ SW $\frac{1}{4}$, SE $\frac{1}{4}$ NW $\frac{1}{4}$, and Lot 3,	Sec. 5,
SE $\frac{1}{4}$	Sec. 11,
SW $\frac{1}{4}$	Sec. 13,
SE $\frac{1}{4}$ and S $\frac{1}{2}$ NE $\frac{1}{4}$	Sec. 14,
NE $\frac{1}{4}$ NW $\frac{1}{4}$, E $\frac{1}{2}$ SW $\frac{1}{4}$, and Lots 3 and 4,	Sec. 18,
All	Sec. 19,
NE $\frac{1}{4}$ NE $\frac{1}{4}$, W $\frac{1}{2}$, and W $\frac{1}{2}$ SE $\frac{1}{4}$	Sec. 20,
S $\frac{1}{2}$ NW $\frac{1}{4}$, SW $\frac{1}{4}$, and NW $\frac{1}{4}$ SE $\frac{1}{4}$	Sec. 28,
All	Sec. 29,
E $\frac{1}{2}$ NE $\frac{1}{4}$, NW $\frac{1}{4}$ NE $\frac{1}{4}$, E $\frac{1}{2}$ SW $\frac{1}{4}$, and Lots 2, 3, & 4	Sec. 30,
SE $\frac{1}{4}$, E $\frac{1}{2}$ SW $\frac{1}{4}$, and Lot 4	Sec. 31,
E $\frac{1}{2}$ W $\frac{1}{2}$ and W $\frac{1}{2}$ E $\frac{1}{2}$	Sec. 34.

Dated Topeka, Kansas,

December 14, 1915.

SANTA FE PACIFIC RAILROAD COMPANY,

By

Howell Jones
Its Land Commissioner.

Epes Randolph,

By W. E. Leverich & Co.

by J. M. Page

L.V. McCourt & William Riggs,

By W. E. Leverich & Co.

by J. M. Page

M.E. Leverich & Co.,

By

J. M. Page