

(A)

Book "O"  
Subdivisions  
FIELD NOTES

BOOK 2780

OF THE SURVEY OF

PART OF THE

SUBDIVISION LINES,

RETRACEMENT OF NORTH BDY., PART OF SOUTH BDY. &

PART OF THE WEST BOUNDARY,

RESURVEY OF PARTS OF THE NORTH, SOUTH, & WEST BDRS.,

AND RETRACEMENT OF

WEST BDY. OF THE CAMP BOWIE MILITARY RESERVATION,

(ABANDONED), WEST OF FRAC. SEC. 33 of

TOWNSHIP 14 SOUTH, RANGE 28 EAST

Of the Gila and Salt River Base and Meridian,

In the State of Arizona

EXECUTED BY

WILLIAM B. KIMMEL

In the capacity of U. S. Surveyor, under instructions dated December 30, 1913,

issued by the United States Surveyor General to govern surveys included in

Group No. 26, which were approved by the Commissioner of the General Land

Office, January 9, 1914, pursuant to authority contained in the Act of

Congress dated August 1, 1914.

Survey & ReSurvey commenced July 20, 1914

Survey & ReSurvey completed August 16, 1914

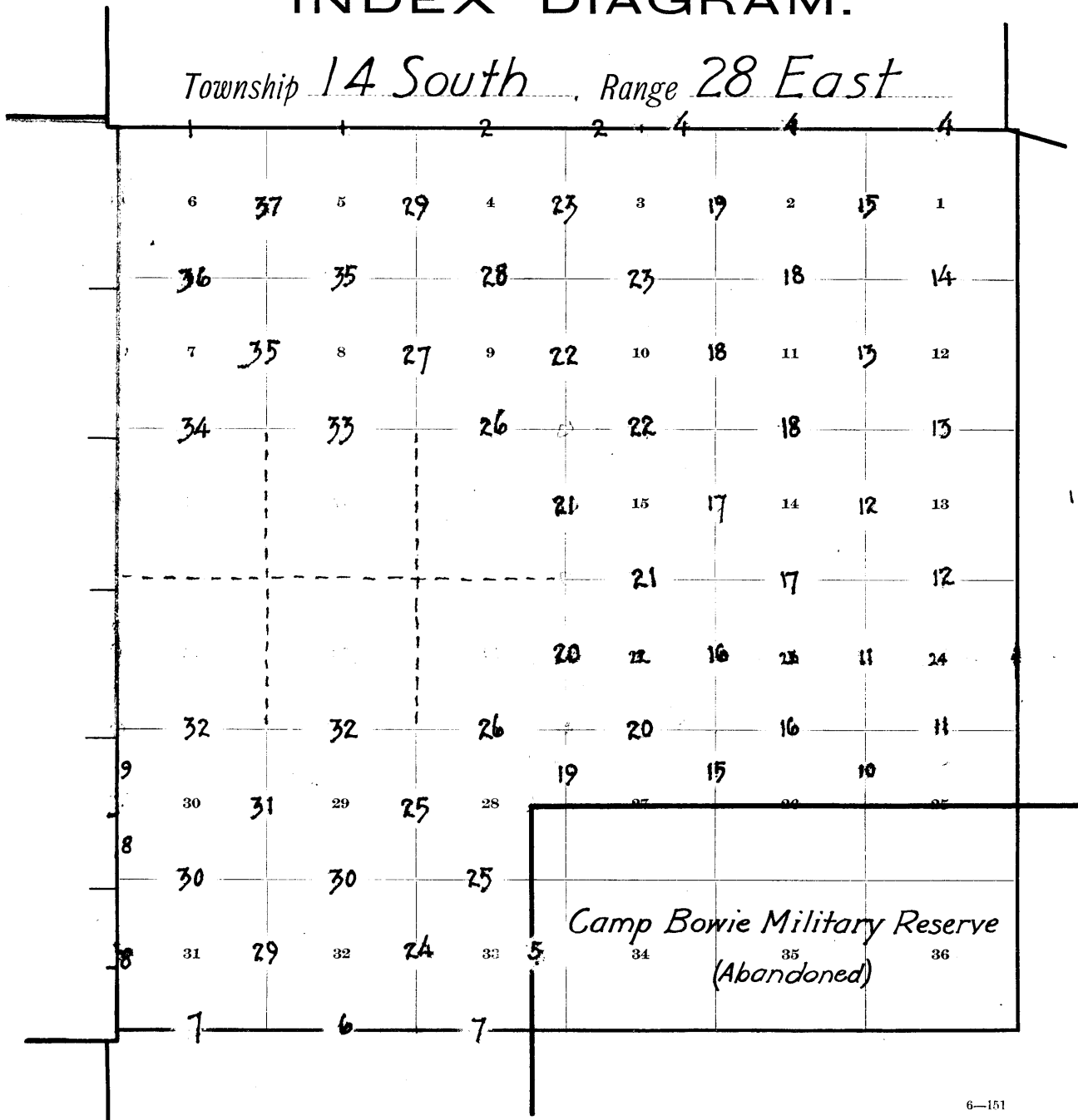
112  
113

# Book "O"

BOOK 2780

## INDEX DIAGRAM.

Township *14 South*, Range *28 East*



6-151

- Notes in Book "A"
- Retacement Notes indexed in Red Figures.
- Surveys & Resurveys indexed in Black Figures.
- - - - - Unsurveyed.

Retracement of the North bdy. of Township 14 South, Range 28 E. 1.

Chains

Survey commenced July 20, 1914, and executed with a Young and Sons' light mountain transit, No. 8541, for description and tests of instrument, see Book "A." July 20, 1914: At 10h. 30m. a.m., l.m.t., I set off 32° 15' N. on the lat. arc; 20° 45' N. on the decl. arc; and determine a meridian with the solar at the SW. cor. of T. 13 S., R. 28 E., originally the cor. to Ts. 13 and 14 S., Rs. 27 and 28 E., but changed by me this day to refer to T. 13 S., R. 28 E. only, as described in Book "N." in my notes of the Resurvey of the East bdy. of T. 13 S., R. 27 E.

Thence I run, East, on a random line, bet. secs. 6 and 31. Ascend NW. slope 30 ft., through scattering timber and dense undergrowth to

- 11.60 Rocky ridge, brs. NE. and SW.; descend SE. slope, 320 ft., to
- 11.00 Gulch, course NE.; ascend NW. slope, 85 ft. to
- 17.50 Spur slopes NE.; descend E. slope, 125 ft. to
- 21.00 Gulch, course NE.; ascend N. slope, 30 ft. to
- 23.00 Spur, slopes NE.; descend SE. slope, 250 ft. to,
- 33.50 Gulch, course NE.; ascend west slope, 150 ft.
- 38.77 Fall 3 lks. south of original 1/4 sec. cor., a cedar post, 4 ins. sq., protruding 2 ft. from a mound of stone, marked 1/4 S on N. face.

Therefore, the true bearing and distance of this half mile is N. 89° 57' E., 38.77 chs.

Note: July 20, 1914: I set off 20° 44' N. on the decl. arc; and at apparent noon, observe the sun on the meridian; the resulting latitude is 32° 15' N., at the original 1/4 sec. cor., bet. secs. 6 and 31, described above, I run,

Thence I run, East, on a random line, bet. secs. 6 and 31, on east half mile.

- 1.20 Spur ridge, brs. NE. and SW.; descend SE. slope, 135 ft. to
- 8.50 Draw, course NE.; ascend NW. slope, 85 ft. to
- 12.75 Spur ridge, slopes N.; descend NE. slope, 175 ft. to
- 23.25 Draw, course N. Continue along N. slope.
- 29.75 Draw, course NE.; ascend NW. slope, 40 ft. to
- 31.50 Spur, slopes NE.; descend E. slope, 100 ft. to
- 39.79 Fall 2 lks. N. of original cor. of secs. 5, 6, 31 and 32, which is a cedar post 4 ins. sq., protruding 3 ft. from a mound of stone, marked and witnessed as described by the Surveyor General.

Therefore, the true course and distance of this half mile is S. 89° 58' E., 39.79 chs.

-----  
East, on a random line, bet. secs. 5 and 32. Descend east slope, 200 ft., through dense undergrowth, to Foot of mountain, bears N. and S.; continue over rolling land.

- 12.00
- 14.70 Wash, 20 lks. wide, 2 ft. deep, course NE.
- 17.60 Wash, 15 lks. wide, 4 ft. deep, course NE.
- 22.90 Wash, 15 lks. wide, 5 ft. deep, course N.
- 26.90 Dim wagon road, brs. NW. and SE.
- 40.04 Fall 5 lks. south of original 1/4 sec. cor., which is a stone 10x4x8 ins., above ground, firmly set, marked and witnessed, as described by the Surveyor General.

Therefore, the true course and distance of this 1/2 mile is N. 89° 56' E., 40.04 chs.

Thence I run, East, on a random line, bet. secs. 5 and 32, on east half mile.

- 7.30 Wagon road, brs. N. and S.
- 11.60 Old wagon road, brs. NE. and SW.
- 22.00 Wash, 45 lks. wide, 2 ft. deep, course N.
- 24.20 Wash, 8 lks. wide, 2 ft. deep, course N.
- 29.00 Wash, 15 lks. wide, 2 ft. deep, course NE.
- 29.80 Wash, 22 lks. wide, 2 ft. deep, course N.

## 2. Retracement of the North bdy. of Township 14 South, Range 28 E.

Chains.

30.65 Wash, 8 lks.wide, 5 ft. deep, course NE.  
 33.75 Wash, 60 lks.wide, 1 ft. deep, course NE.  
 40.14 Fall 2 lks.south of original cor.of secs.4,5,32 and 33,  
 which is a stone 6x6x6 ins. above ground,firmly set,  
 marked and witnessed as described by the Surveyor Gen-  
 eral.  
 Therefore, the true course and distance of this half mile  
 is N.89°58'E., 40.14 chs.  
 July 20, 1914.

July 21, 1914: At lh. 30m. p.m.,1.m.t., I set off 32°  
 15'N.on the lat.arc; 20°32'N. on the decl.arc; and  
 determine a meridian with the solar at the original  
 corner of secs. 4,5,32 and 33, described above.

Thence I run,  
 East, on a random line, bet. secs.4 and 33.  
 Over gently rolling land, through dense undergrowth.  
 5.65 Wash, 12 lks.wide, 3 ft. deep, course NE.  
 26.15 Wash, 8 lks.wide, 2 ft. deep, course NE.  
 38.75 Wash, 6 lks.wide, 2 ft. deep, course NE.  
 40.11 Fall 5 lks.S. of original  $\frac{1}{4}$  sec.cor., which is a stone  
 9x6x9 ins. above ground, firmly set, marked and wit-  
 nessed as described by the Surveyor General.  
 Therefore, the true course and distance of this  $\frac{1}{2}$  mile  
 is N.89° 56'E., 40.11 chs.  
 Thence I run,  
 East, on a random line, bet. secs.4 and 33, on east half  
 mile.  
 20.00 Wash, 12 lks.wide, 18 ins. deep, course NE.  
 40.12 Fall 5 lks.south of original cor. of secs.3,4,33 and 34,  
 which is a stone 7x6x6 ins., above ground, firmly set,  
 marked and witnessed as described by the Survey or Gen-  
 eral.  
 Therefore, the true course and distance of this half mile  
 is N.89° 56'E., 40.12 chs.

East, on a random line, bet. secs.3 and 34.  
 Over gently rolling land, through dense undergrowth.  
 4.55 Old wagon road brs.N.and S.  
 7.05 Old wagon road, brs.NW. and SE.  
 9.40 Wash, 8 lks.wide, 1 ft. deep, course NE.  
 31.35 Wash, 60 lks.wide, 1 ft. deep, course NE.  
 35.90 Wash, 18 lks.wide, 3 ft. deep, course NE.  
 40.12 Intersect original  $\frac{1}{4}$  sec.cor., which is a stone 9x5x6 ins.  
 above ground, firmly set, marked  $\frac{1}{4}$  on N., pits oblit-  
 erated, I raise a mound of stone 2 ft. base, 1 $\frac{1}{2}$  ft.  
 high, north of cor. Pits impracticable.  
 Therefore, the true course and distance of this half  
 mile is east, 40.12 chs.  
 Thence I run,  
 East, on a random line, bet. secs.3 and 34, on east half  
 mile.  
 40.00 No corner found; set temp. cor.for secs. 2,3,34 and 35.  
 July 21, 1914.

July 22, 1914:  
 Continue measurement from original  $\frac{1}{4}$  sec.cor.,bet. secs.  
 3 and 34,  
 East, on a random line, bet. secs.2 and 35.  
 80.01 Fall 9 lks.S. of the point for original  $\frac{1}{4}$  sec.cor., located  
 by measurement, from a stake 2 ins.sq., 5 ins. above  
 ground, marked  $\frac{1}{4}$  S, in indication of E.pit.

Retracement of North bdy. of Township 14 South, Range 28 East. 3

Chains,

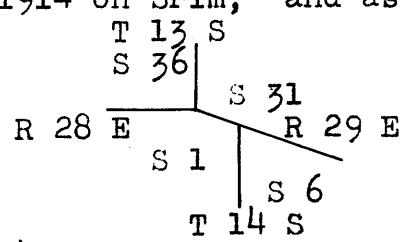
True course and distance of east half mile, bet. secs. 3 and 34, and also of west half mile, between secs. 2 and 35 is therefore N. 89° 56' E., 40.005 chs.

Thence I run,  
East, on a random line, on east half mile, between sec. 2 and 35.

40.11 Fall 2 lks. north of the true point for original corner of secs. 1, 2, 35 and 36, where I uncovered a charred stake, with a stake 2 ins. square, 4 ins. above ground, marks indistinct, in indication of SE. pit. True course and distance of east half mile of line, between secs. 2 and 35 is therefore S. 89° 58' E., 40.11 chs.

40.13 East, on a random line, bet. secs. 1 and 36. Fall 5 lks. N. of the point for original 1/4 sec. cor., where I uncovered charred stake, with a stake 2 ins. square, 6 ins. above ground, marked 1/4 S, in indication E. pit. True course and distance of this 1/2 mile is therefore S. 89° 56' E., 40.13 chs.

40.12 Thence I run,  
East, on a random line, on east half mile. Fall 2 lks. north of original corner of Ts. 13 S., Rs. 28 and 29 E., which is a redwood post 4 ins. sq., 4 ins. above ground, marked and witnessed as described by the Surveyor General. I perpetuate this corner, by setting an iron post 3 ft. long, 3 ins. in diam., 24 ins. in the ground, at the same point, for reestablished cor. of Ts. 13 S., Rs. 28 and 29 E., marked on brass cap 1914 on Srim, and as follows:



Dig pits 30x24x12 ins. on each line, W. and S. 65° E., 4 ft., and north of post, 8 ft. dist., and raise a mound of earth 5 ft. base, 2 1/4 ft. high, north of cor. True course and distance of this half mile, is therefore, S 89° 58' E., 40.12 chs.

July 22, 1914.

Resurvey of part of North bdy. of Township 14 S., R. 28 E.

Aug. 5, 1914:  
From the original 1/4 sec. cor., bet. secs. 3 and 34, hereinfore described, I run,  
N. 89° 56' E., on a true line, on south bdy. of sec. 34, on east half mile.  
Over gently rolling land, through dense undergrowth.

13.40 Wash, 15 lks. wide, 2 ft. deep, course N.  
15.20 Wash, 6 lks. wide, 3 ft. deep, course N.  
24.60 Wagon road brs. NE. and SW.  
39.40 Wagon road brs. N. and S.

4. Resurvey of part of North bdy of Township 14 S., Range 28 E

Chains.

- 40.005 Set an iron post 3 ft. long, 3 ins. in diam., 24 ins. in the ground, for the reestablished cor. of secs. 34 and 35, T.13 S., R.28 E., marked on brass cap, 1914 on S. rim,  
 T 13 S in N.,  
 S 3 S 2 14 S in S., and  
 R 28 E in W.half;  
 S 34 in NW., and  
 S 35 in NE.quadrant;  
 dig pits 24x24x12 ins. in each sec. 6 ft. dist., and raise a mound of earth 4 ft.base, 2 ft. high, north of corner.  
 Land, rolling.  
 Soil, sandy loam and gumbo, 1st and 2nd rate.  
 No timber.  
 Undergrowth, dense greasewood, catclaw and mesquite.  
 Aug. 5, 1914.

-----

- Aug. 4, 1914:  
 N.89° 56' E., on a true line, on south boundary of sec. 35.  
 Over gently rolling land, through dense undergrowth.
- 40.005 The point for original  $\frac{1}{4}$  sec.cor., hereinbefore described, where I set an iron post, 3 ft. long, 1 in. in diam., 26 ins. in the ground, for reestablished  $\frac{1}{4}$  sec.cor., marked on brass cap,  
 1914 on S.rim,  
 $\frac{1}{4}$  S 35 in N., and  
 S 2 on S.half;  
 dig pits 18x18x12 ins., east and west of post, 3 ft. dist., and raise a mound of stone  $3\frac{1}{2}$  ft. base,  $1\frac{1}{2}$  ft. high, north of cor.  
 Thence I run,  
 S.89° 58' E., on a true line, on south bdy. of sec. 35, on east half mile.
- 5.40 Wagon road brs.N. 20° W. and S.20° E.  
 10.05 Telephone line parallel to road.
- 40.11 The point for the original corner of secs. 1,2, 35 and 36, hereinbefore described, where I set an iron post 3 ft.long, 3 ins. in diam., 24 ins. in the ground, for the reestablished cor. of secs. 35 and 36, marked on brass cap,  
 1914 on S.rim,  
 T 13 S in N.,  
 S 2, S 1 T 14 S in S., and  
 R 28 E in W.half;  
 S 35 in NW., and  
 S 36 in NE. quadrant;  
 dig pits 24x24x12 ins. in each sec. 6 ft. dist., and raise a mound of earth 4 ft. base, 2 ft. high, north of cor.  
 Land, rolling.  
 Soil, sandy loam and gumbo, 1st and 2nd rate.  
 No timber.  
 Undergrowth, dense catclaw, mesquite and greasewood.

-----

S.89° 56' E., on a true line, on south bdy.of sec. 36.  
 Over gently rolling land, through dense undergrowth.

Resurvey of part of the N.bdy. of Township 14 South, Range 28 E 5

Chains

36.00 Leave dense, enter scattering undergrowth, brs.NE and SW.  
 40.13 The point for original  $\frac{1}{4}$  sec.cor., hereinbefore described,  
 where I set an iron post 3 ft.long, 1 in. in diam.,  
 26 ins. in the ground, for reestablished  $\frac{1}{4}$  sec.cor.,  
 marked on brass cap,  
     1914 on S.rim,  
      $\frac{1}{4}$  S 36 on N., and  
     S 1 on S.half;  
 dig pits 18x18x12ins., E and W.of post, 3 ft. dist.,  
 and raise a mound of stone 2 ft.base, 1 $\frac{1}{2}$  ft. high.N.  
 of cor.  
 E.Ingraham's house, brs.S.10°W., about 75 lks.dist.  
 Thence I run,  
 S.89°58 E., on a true line, dnt S. bdy. of sec. 36, on east  
 half mile.  
 .84 Ditch 2 ft.wide, 8 ins. deep, brs.NW and SE.  
 40.12 The cor.of Ts.13 S., Rs.28 and 29 E., hereinbefore de-  
 scribed.  
 Land, rolling.  
 Soil, sandy loam and gumbo, 1st and 2nd rate.  
 No timber.  
 Undergrowth, west 36 chs. dense; east 44 chs.scattering  
 greasewood, catclaw and mesquite.  
 Aug. 4, 1914.

-----  
 Retracement of W.bdy.of C. B. M. R. A., west of frac.sec.  
 33, T.14 S., R. 28 East.  
 -----

July 24, 1914:  
 From the closing cor. of frac. secs.28 and 33, T.14 S., R.  
 28 E., within the C.B.M.R.A., which is a stone 9x4x9  
 ins., protruding from a mound of stone, marked  
     C C on E.,  
     P L on W., and  
     1 groove on the S.face, with a mound of  
 stone east of cor., I run,  
 South, on a random line, on west bdy.of frac.sec.33,  
 within Camp Bowie Military Reservation, Abandoned.  
 Descend SW slope, 110 ft., through scattering timber  
 and undergrowth, to  
 4.50 Gulch, course SE.; continue along rolling east slope.  
 10.75 Gulch, course east; ascend north slope.  
 20.00 Ascend NW. slope.  
 29.80 Fall 27 lks.east of cor. No.5, of the Lamartine Placer  
 Claim, Mineral Survey No.2988, which is a stone 14x6x15  
 ins. above ground, firnly set, marked with a X on top,  
 and 5-2988 on E-face, with a mound of stone 10 ft.S.  
 of cor.  
 33.00 Ridge, brs.NE and SW., 380 ft. above gulch; descend SE .  
 slope, 150 ft.  
 39.61 Fall 16 lks.west of 22 mile cor., a stone 8x6x8 ins., pro-  
 truding from a mound of stone, marked  
     P L on W.,  
     22 M on N., and  
     C B A M R on E.face;  
 with a mound of stone north of corner.  
 42.80 Gulch, course E.; ascend N. slope, 50 ft. to  
 45.50 Spur, slopes E.; descend SE. slope, 125 ft., to  
 45.90 Wire fence, brs.E.and W. NW cor.of fence brs. 15 lks..  
 west.  
 52.00 Gulch, course NE.; ascend NW. slope, 560 ft.  
 58.00 Wire fence bears N.1° W., and S.1° E.  
 75.60 Ridge, brs.NE. and SW.; descend south slope, 90 ft.  
 77.19 Fall 31 lks.west of 22 $\frac{1}{2}$  mile cor. a stone 8x7x10 ins., pro-  
 truding from a mound of stone, marked P L on W., and  
     C B A M R on E., and  
     22 $\frac{1}{2}$  M on N.face, with a mound of stone N.of

Retracement of West bdy. of Camp Bowie Military Reservation,

66. Abandoned west of frac. sec. 33, T. 14 S., R. 28 E.

Chains

79.36 cor. set under a wire fence that bears N. and S.  
 Fall 32 lks. west of the closing cor. marking the intersection of the S. bdy. of Tp. 14 S., R. 28 E., with the west bdy of the Camp Bowie Military Reservation, abandoned, a stone 8x6x8 ins., protruding from a mound of stone, marked with 6 grooves on N. S., C C on E., and P L on W. face, with a mound of stone, north of corner. Set under fence that bears N. and S.  
 Therefore, the true course and distance of the west bdy. of the Camp Bowie Military Reservation, abandoned, on the west bdy. of frac. sec. 33, within the Reservation, is S. 0°14' E., 79.36 chs.  
 July 24, 1914.

Retracement of S. bdy. of T. 14 S., R. 28 E., west of the Camp Bowie Military Reservation, abandoned.

July 24, 1914: From the closing cor. marking the intersection of the south bdy. of T. 14 S., R. 28 E., with the west bdy. of the Camp Bowie Military Reservation, abandoned, hereinbefore described, I run,  
 West on a random line on the south bdy. of frac. sec. 33, outside Camp Bowie Military Reservation, abandoned.  
 20.50 No corner found; set temp. 1/4 sec. cor.  
 60.85 Fall 3 lks. north of the original cor. of secs. 32 and 33, which is a stone 8x5x10 ins. above ground, firmly set, marked 2 notches on W., and 4 notches on E. edge, with a mound of stone west of cor.  
 True course and distance of this line is therefore N. 89° 58' E., 60.85 chs.

West on a random line, on the south bdy. of sec. 32. Ascend SE. slope, 255 ft., through scattering timber and undergrowth.  
 1.88 Fall 1 link south of original closing cor. of secs. 4 and 5 T. 15 S., R. 28 E., a stone 7x9x10 ins. above ground, firmly set, marked 4 grooves on E., 2 grooves on W., and C C on S. face, with a mound of stone south of cor.  
 13.40 Ridge, brs. NE. and SW.; ascend NE. slope, 60 ft. to,  
 19.00 Top of ascent; descend west slope, 360 ft.  
 31.00 Draw, course NW.; descend 70 ft., over rolling land, slopes west.  
 39.53 Fall 2 lks. north of original 1/4 sec. cor., a stone 11x8x9 ins. above ground, firmly set, marked 1/4 on N. face; with a mound of stone, north of cor.  
 Therefore, the true course and dist. of this 1/2 mile is S. 89° 58' W., 39.53 chs. July 24, 1914.  
 July 25, 1914:  
 Thence I run,  
 West, on a random line, on south bdy of sec. 32, on west half mile. Continue over rolling land.  
 4.50 Wash, 15 lks. wide, 3 ft. deep, course SW.; continue over over rolling land.  
 6.50 Wash, 20 lks. wide, 3 ft. deep, course south; ascend gradually.  
 13.45 Wagon road, brs. N. and S.  
 14.50 North end of small dry tank.  
 24.50 Ascend east slope.  
 27.00 Ridge, brs. NE and SW., 100 ft. high; descend west slope.  
 30.75 Draw, course SW.; descend along south slope.  
 39.00 Gulch, course SW., 90 ft. below ridge; ascend E. slope, 10 ft. to,  
 40.00 Fall 2 lks. south of original cor. of secs. 31 and 32, which



Retrace't S. bdy. T. 14 S., R. 28 E., west of Camp Bowie MilRes. A. 7  
Chains.

is a stone 18x10x20 ins. above ground, firmly set, marked 5 notches on E. and 1 notch on W' edge, with a mound of stone west of cor.  
Therefore, the true course and dist., of this half mile is N.89° 58' W., 40.00 chs.

- 2.29 West, on a random line, on the south bdy. of sec.31. Ascend east slope, through scattering undergrowth. Intersect original closing cor. of secs.5 and 6, T.15 S., R 28 E., which is a stone 10x5x8 ins above ground, firmly set, marked 5 grooves on E., 1 groove on W., and C Con S. face, with a mound of stone south of corner.
- 4.00 Ridge, brs.N.and S., 50 ft. above cor.; descend west slope, 40 ft. to
- 7.00 Draw, course S.; ascend east slope, 50 ft. to
- 13.00 Enter mesa, brs.N.and S.
- 20.00 Leave mesa, brs.N.and S.; descend west slope, 50 ft.
- 26.00 Small tank of water, about 7 chs.north.
- 28.00 Small dry tank about 2 chs.south,
- 30.25 Draw, course S.; ascend east slope, 30 ft. to
- 34.00 Ridge, brs.N.and S.; descend west slope, 30 ft. to
- 38.80 Draw, course S.; ascend east slope, 50 ft.
- 40.03 Fall 3 lks.south of original  $\frac{1}{4}$  sec.cor., which is a stone 8x4x8 ins. above ground, firmly set, marked  $\frac{1}{2}$  on N. face, with a mound of stone north of cor.  
Therefore, the true course and dist. of this  $\frac{1}{2}$  mile is N.89° 57' W., 40.03 chs.  
Thence I run,  
West, on a random line, on the south bdy. of sec.31, on west half mile.
- 6.00 Ridge, brs.N.and S.; descend west slope, 40 ft. to
- 11.00 Gulch, course south; ascend east slope, 30 ft. to
- 16.00 Ridge brs.NE. and SW.; descend west slope, 40 ft. to
- 27.50 Draw, course SW.; ascend SE. slope, 40 ft. to
- 33.25 Spur, slopes SW.; descend west slope, 50 ft. to
- 39.73 Fall 5 lks.south of the closing corner of T.14 S., R.28 E., (SW.cor. of Tp.), which is a stone 10x8x6 ins. above ground, firmly set, marked with 6 grooves on the N., and E. faces, and C C on the E. face; with a mound of stone NE. of cor. Wire fence brs.N. and S., 3 lks.west of cor.  
The SE. cor. of T.14 S., R.27 E. which is a stone marked and witnessed as described by the Surveyr General, brs.S.0°2'W., 301 lks. from this cor.  
True course and dist. of this half mile is therefore N. 89°56'W., 39.73 chs.

July 25, 1914.

Resurvey of part of the S. bdy. of Tp. 14 S., R. 28 East.

- Aug. 12, 1914:  
From the original cor. of secs.32 and 33, hereinbefore described, I run,  
N.89° 58' E., on a true line, on south bdy. of frac. sec. 33, outside Camp Bowie Military Reservation, abandoned.  
Descend SE. slope, 240 ft., through scattering timber and undergrowth, to
- 13.55 Gulch, course SE.; ascend SW. slope, 90 ft. to
- 19.35 Spur slopes south; descend east slope, 65 ft. to
- 24.10 Head of draw, course S.; ascend SW. slope, 100 ft. to
- 30.35 Spur slopes south; descend SE. slope, 150 ft.

## 8. Resurvey of part of S. bdy. of Township 14 South, Range 28 E.

Chains.

- 40.23 (Proportional distance) Set an iron post 3 ft. long, 1 in. in diam., 6 ins. in the ground, on bedrock, supported by a mound of stone, for reestablished  $\frac{1}{4}$  sec. cor., marked on brass cap,  
     1914 on S. rim,  
      $\frac{1}{4}$  S 33 on N., and  
     S 4 on S. half;  
 raise a mound of stone 2 ft. base,  $1\frac{1}{2}$  ft. high, north of cor. Pits impracticable.
- 41.45 Gulch, course south; ascend west slope, 240 ft. to  
 52.80 Spur slopes south; continue along rolling rocky S. slope.  
 60.85 The closing cor. on the west bdy of Camp Bowie Military Reservation abandoned, hereinbefore described.  
     Aug. 12, 1914.

## Retracement of part of West bdy. of Township 14 South, R. 28 E.

- July 25, 1914:  
 From the closing corner of T. 14 S., R. 28 E. (SW. cor. of Tp) hereinbefore described, I run,  
 North, on a random line on west bdy of sec. 31, T. 14 S., R. 28 E.  
 Along wire fence, over rolling land, slopes west, through scattering undergrowth.
- 3.10 Wash, 20 lks. wide, 3 ft. deep, course SW.  
 37.32 Fall 2 lks. west of original  $\frac{1}{4}$  sec. cor. to sec. 36, T. 14 S., R. 27 E., which is a stone, 3x8x10 ins. above ground, firmly set, marked  $\frac{1}{4}$  on W. face, with a mound of stone west of corner.  
 Therefore the true course and dist. of this line is N. 0° 2' E., 37.32 chs.  
 Thence I run,  
 North, on a random line on north half of west bdy. of sec. 31
- 0.28 Wash, 20 lks. wide, 3 ft. deep, course SW.  
 18.68 Wash, 20 lks. wide, 3 ft. deep, course SW.  
 30.68 Wash, 20 lks. wide, 3 ft. deep, course SW.; ascend south slope.
- 35.68 Wire fence extends west.  
 40.14 Fall 12 lks. west of the original cor. of secs. 25 and 36, T. 14 S., R. 27 E., which is a stone in place 24x18x12 ins. above ground, marked with a X on top, and 5 grooves on N., and 1 groove on S face, with a mound of stone west of corner.  
 Therefore, the true course and dist. of this  $\frac{1}{2}$  mile is N. 0° 10' E., 40.14 chs.

- Thence I run,  
 North, on a random line, bet. secs. 25 and 30.  
 Ascend SW. slope, 490 ft., through scattering undergrowth to  
 Ridge, brs. NW. and SE.; descend NE. slope, 175 ft. to  
 19.25 Gulch, course SE.; ascend SW. slope, 50 ft. to  
 28.10 Spur, slopes east; descend N. slope, 100 ft.  
 31.75 Gulch, course SE.; ascend south slope, 40 ft. to  
 36.50 Spur slopes SE.; descend NE. slope, 30 ft. to  
 37.25 Draw, course SE.; ascend S. slope, 40 ft. to  
 37.75 Fall 12 lks. west of original  $\frac{1}{4}$  sec. cor., which is a stone  
 38.26 8x3x9 ins., above ground, firmly set, marked  $\frac{1}{4}$  on W. face, with a mound of stone west of cor.  
 Therefore, the true course and distance of this  $\frac{1}{2}$  mile is N. 0° 10' E., 38.26 chs.  
 Thence I run,

Retracement of part of W. bdy. of Tp. 14 South, Range 28 E. 9.

Chains.

North, on a random line, bet. secs. 25 and 30, on north half mile.  
 40.00 No corner found, set temp. cor. for secs. 24 and 25, T. 14 S., R. 27 E.  
 July 25, 1914.

-----  
 Resurvey of part of the West bdy. of Twpnship 14 S., R. 28 E.  
 -----

July 27, 1914.  
 From the original  $\frac{1}{4}$  sec. cor., bet. secs. 25 and 30, herein-  
 before described, I run,  
 North, on a true line, bet. secs. 25 and 30, on north half  
 mile.  
 Ascend south slope, through scattering undergrowth.  
 12.75 Draw, course SE.  
 26.25 Ridge, brs. W. and NE., 650 ft. above  $\frac{1}{4}$  sec. cor. Descend  
 NW. slope, 270 ft.; enter scattering timber brs. E and  
 W.  
 31.50 Trail brs. NE. and SW.  
 33.00 Head of gulch, course NW.; ascend along rocky west slope.  
 34.00 Trail brs. NW. and SE.  
 40.00 Set an iron post, 3 ft. long, 3 ins. in diam., 24 ins. in  
 the ground, for the reestablished cor. of secs. 24 and 25  
 marked on brass cap,  
     1914 on S. rim,  
     T 14 S in N., and  
     S 19, S 30 R 28 E in E. half;  
     S 24 in NW., and  
     S 25 R 27 E. in SW. quadrant; from which,  
 An oak, 16 ins. in diam., brs. N. 71° W., 13 lks.  
 dist., marked T 14 S R 27 E S 24 B T.  
 An oak, 12 ins. in diam., brs. S. 58° W., 45 lks.  
 dist., marked T. 14 S R 27 E S 25 B T.  
 Land, mountainous.  
 Soil, rocky, lime formation, 4th rate.  
 Timber, scattering oak, juniper and cedar.  
 Undergrowth, scattering, with patches of dense scrub oak,  
 catclaw and mesquite.  
 July 27, 1914.

-----  
 Note: For survey of the Completion of West bdy. of T.  
 14 S., R. 28 E., and table of latitudes, departures  
 and closing errors, see Book "A."

10 Partial Subdivision of Township 14 South, Range 28 East.

Chains.

Survey commenced July 29, 1914, and executed with a Young and Sons' light mountain transit No. 8541, with Smith solar attachment. For description of instrument, and certificate of approval, see Book "A."

July 28, 1914: At 9h.25m. p.m., l.m.t., at our camp, 12 chs. north of the cor. of secs. 9, 10, 15 and 16; lat. 32° 13 1/2' N.; long. 109° 39 1/2' W.; I observe Polaris, in accordance with the Manual of Instructions, and mark a point in the line thus determined, by a flag set firmly in the ground, about 18 chs. north of my station.

July 29, 1914: At 6h.20m., a.m., l.m.t., I lay off the azimuth of Polaris; 1° 14 1/2' to the West, which is the azimuth corresponding to an hour angle of 7h.38.8m., and set a flag firmly in the ground, about 18 chs. north of the same station.

At this same station, at 6h.30m., a.m., l.m.t., I set off 32° 13 1/2' N. on the lat. arc; 18° 55' N. on the decl. arc; and determine with the solar a meridian, which agrees with the Polaris observation.

At 8h.10m., a.m., l.m.t., I set off 32° 11' N. on the lat. arc; 18° 53' N. on the decl. arc; and determine with the solar a meridian at the closing corner on the N. bdy. of the Camp Bowie Military Reservation, abandoned, of frac. secs. 25 and 26, within the Reservation, which is a stone 12x5x12 ins., above ground, firmly set, marked,

P. L on N.,  
C C on S.,  
1 groove on the E., and  
5 grooves on W. faces, with a mound of stone south of cor.

This closing corner is set 38.80 chs. N. 0° 1' W. of the cor. of secs. 25, 26, 35 and 36; therefore, the dist. to the 1/4 sec. cor. will be 40.00 chs. - 38.80 chs. = 1.20 chs.

Thence I run, N. 0° 1' W., completing line bet. secs 25 and 26.

Over rolling land, through scattering undergrowth.

1.20 Set an iron post 3 ft. long, 1 in. in diam., 26 ins. in the ground, for the 1/4 sec. cor., marked on brass cap, 1914 on S. rim, 1/4 S 26 on W., and S 25 on E. half;

raise a mound of stone, 2 ft. base, 1 1/2 ft. high, west of corner. Pits impracticable.

3.00 Wash, 20 lks. wide, 3 ft. deep, course NE.

12.90 Dig wagon road, brs. E. and W.

16.75 Wash, 30 lks. wide, 2 ft. deep, course NE.

19.00 Ascend SE. slope, 140 ft. to

25.30 Prospect shaft, about 3 chs. west..

28.00 Ridge, brs. NE. and SW.; descend west slope, 80 ft.

39.25 Prospect shaft, about 1 ch. east.

41.20 Set an iron post 3 ft. long, 2 ins. in diam., 24 ins. in the ground, for the cor. of secs. 23, 24, 25 and 26, marked on brass cap,

1914 on S. rim,  
T 14 S S 23 in NW.,  
R 28 E S 24 in NE.,  
S 25 in SE., and  
S 26 in SW. quadrant; from which,  
A cedar, 12 ins. in diam., brs. S. 71 3/4° E., 188 lks. dist., marked T 14 S R 28 E S 25 B T.

No other trees within limits; raise a mound of stone 2 ft. base, 1 1/2 ft. high, west of cor. Pits impracticable.

Land, rolling and mountainous.

Soil, sandy loam, gumbo and rocky, lime formation, 2nd to 4th rate.

No timber.

Undergrowth, scattering with patches of dense mesquite and catclaw.

## Partial Subdivision of Township 14 South, Range 28 East. 11.

## Chains.

- East, on a random line, bet. secs. 24 and 25.  
 40.00 Set temp.  $\frac{1}{4}$  sec. cor.  
 79.90 Intersect the east bdy. of the Tp., 19 lks. S. of the cor. of  
 secs. 19, 24, 25 and 30, which is an iron post 3 ins.  
 in diam., with brass cap, 12 ins. above ground, marked  
 and witnessed as described by the Surveyor General.  
 Thence I run,  
 S.  $89^{\circ}52'$  W., on a true line, bet. secs. 24 and 25.  
 Over rolling land, through scattering undergrowth.  
 16.90 Telephone line, brs. N.  $17^{\circ}$  W., and S.  $17^{\circ}$  E.  
 34.40 Wagon road, brs. N. and SE.  
 36.30 Wash, 160 lks. wide, 4 ft. deep, course NE.  
 39.95 Set an iron post 3 ft. long, 1 in. in diam., 26 ins. in  
 the ground, for  $\frac{1}{4}$  sec. cor., marked on brass cap,  
 1914 on S. rim,  
 $\frac{1}{4}$  S 24 on N., and  
 S 25 on S. half;  
 raise a mound of stone 2 ft. base,  $1\frac{1}{2}$  ft. high, north  
 of corner. Pits impracticable.  
 46.45 Wagon road, brs. N. and S.  
 49.10 Wash, 30 lks. wide, 4 ft. deep, course NE.  
 49.40 Ascend east slope, 155 ft. to  
 60.00 Spur, slopes NE.; continue along north slope.  
 76.00 Descend west slope, 60 ft. to  
 79.90 The cor. of secs. 23, 24, 25 and 26.  
 Land, rolling and mountainous.  
 Soil, sandy loam, gumbo, gravelly, rocky, 1st to 4th rate.  
 No timber.  
 Undergrowth, scattering with patches of dense catclaw  
 and mesquite.
- 
- N.  $0^{\circ}1'$  W., bet. secs. 23 and 24.  
 Descend NW. slope, 130 ft., through scattering undergrowth,  
 to  
 8.00 Foot of ridge, brs. NE. and SW.; continue over rolling  
 land.  
 8.25 Wash, 100 lks. wide, 6 ft. deep, course NE.  
 12.50 Wash, 12 lks. wide, 2 ft. deep, course NE.  
 16.40 Wash, 15 lks. wide, 1 ft. deep, course E.  
 19.80 Wash, 20 lks. wide, 6 ft. deep, course E.  
 20.00 Foot of mountain, brs. E. and W.; ascend S. slope, 500 ft.  
 40.00 Set an iron post 3 ft. long, 1 in. in diam., 8 ins. in  
 the ground, on bedrock, supported by a mound of stone  
 for  $\frac{1}{4}$  sec. cor., marked on brass cap,  
 1914 on S. rim,  
 $\frac{1}{4}$  S 23 on W., and  
 S 24 on E. half;  
 raise a mound of stone 2 ft. base,  $1\frac{1}{2}$  ft. high, west  
 of cor. Pits impracticable.  
 44.00 Spur, slopes east; descend east slope.  
 53.00 Descend N. slope.  
 57.50 Head of draw, course E., 275 ft. below spur; ascend  
 SE. slope, 160 ft. to  
 66.50 Top of ascent; descend.  
 78.00 Head of draw, course E.; ascend 10 ft. to  
 80.00 Set an iron post, 3 ft. long, 2 ins. in diam., 10 ins.  
 in the ground, on bedrock, supported by a mound of  
 stone, for the cor. of secs. 13, 14, 23 and 24, marked  
 on brass cap,  
 1914 on S. rim,  
 T 14 S S 14 in NW.,  
 R 28 E S 13 in NE.,  
 S 24 in SE., and  
 S 23 in SW. quadrant;  
 raise a mound of stone 2 ft. base,  $1\frac{1}{2}$  ft. high, west of  
 cor. Pits impracticable.

## 12. Partial Subdivision of Township 14 South, Range 28 East.

Chains.

Note: July 29, 1914: At this cor., I set off  $18^{\circ}50\frac{1}{2}'$  N. on the decl. arc; and at apparent noon, observe the sun on the meridian; the resulting lat. is  $32^{\circ}13'$  N.

Land, rolling and mountainous.

Soil, rocky, 4th rate,

No timber.

Undergrowth, scattering with patches of dense scrub oak, catclaw and mesquite.

- 40.00 N.  $89^{\circ}52'$  E. on a random line, bet. secs. 13 and 24.  
Set temp.  $\frac{1}{4}$  sec. cor.
- 79.96 Intersect the east bdy of the Tp., 5 lks. north of the cor. of secs. 13, 18, 19 and 24, which is an iron post, 3 ins. in diam., with brass cap, 12 ins. above ground, marked and witnessed as described by the Surveyor General.
- 39.98 Thence I run, S.  $89^{\circ}54'$  W., on a true line, bet. secs. 13 and 24. Over gently rolling land, through scattering undergrowth. Set an iron post,  $\frac{3}{4}$  ft. long, 1 in. in diam., 26 ins. in the ground, for  $\frac{1}{4}$  sec. cor., marked on brass cap, 1914 on S. rim,  $\frac{1}{4}$  S 13 on N., and S 24 on S. half; raise a mound of stone 2 ft. base,  $1\frac{1}{2}$  ft. high, north of corner. Pits impracticable.
- 40.80 Telephone line, brs. N.  $17^{\circ}$  W., and S.  $17^{\circ}$  E.  
50.00 Wash, 25 lks. wide, 3 ft. deep, course NE.  
50.80 Wagon road, brs. N. and S.  
55.00 Foot of mountain, brs. N. and S.; ascend NE. slope.  
66.00 Draw, course NE.; ascend SE. slope, 400 ft. to  
79.96 The cor. of secs. 13, 14, 23 and 24.  
Land, rolling and mountainous.  
Soil, on flat sandy loam, and gumbo, gravelly, 1st to 3rd rate, on mountain, rocky, igneous formation, 4th rate.  
No timber.  
Undergrowth, scattering, with patches of dense mesquite and catclaw.

- 2.00 N.  $0^{\circ}1'$  W., bet. secs. 13 and 14.  
Ascend SE. slope, 10 ft., through scattering undergrowth.  
32.50 Spur, slopes NE.; descend N. slope, 425 ft. to Foot of mountain, brs. NE. and SW.; continue over rolling land; enter dense undergrowth.
- 35.60 Wash, 20 lks. wide, 3 ft. deep, course NE.  
38.35 Dim wagon road, brs. NW. and SE.  
40.00 Set an iron post  $\frac{3}{4}$  ft. long, 1 in. in diam., 26 ins. in the ground, for  $\frac{1}{4}$  sec. cor., marked on brass cap, 1914 on S. rim,  $\frac{1}{4}$  S 14 on W., and S 13 on E. half; raise a mound of stone 2 ft. base,  $1\frac{1}{2}$  ft. high, west of corner. Pits impracticable.
- July 29, 1914
- 55.25 Aug. 3, 1914.  
79.20 Wash, 30 lks. wide, 2 ft. deep, course E.  
80.00 Wagon road, brs. NW. and SE.  
Set an iron post,  $\frac{3}{4}$  ft. long, 2 ins. in diam., 20 ins. in the ground, on hardpan, supported by a mound of stone for the cor. of secs. 11, 12, 13 and 14, marked on brass cap,  
1914 on S. rim,  
T 14 S S 11 in NW.,  
R 28 E S 12 in NE.,

Partial Subdivision of Township 14 South, Range 28 East 13.

Chains.

S 13 in SE., and  
S. 14 in SW. quadrant;  
raise a mound of stone 2 ft. base, 1 1/2 ft. high, west of  
corner. Pits impracticable.

Land, mountainous and rolling.

Soil, on mountain, rocky, 4th rate; balance, sandy loam,  
and gumbo, gravelly, 1st to 3rd rate.

No timber.

Undergrowth, scattering on mountain; balance dense mesquite  
and catclaw.

Aug. 3, 1914.

Aug. 4, 1914. At 7h. a.m., l.m.t., I set off 32° 13' N.  
on the lat. arc; 17° 24 1/2' N. on the decl. arc; and deter-  
mine a meridian with the solar at the cor. of secs. 11,  
12, 13 and 14.

Thence I run,

N. 89° 54' E., on a random line, bet. secs. 12 and 13.

40.00

Set temp. 1/4 sec. cor.

79.92

Intersect the east bdy. of the Tp., 23 lks. south of the  
corner of secs. 7, 12, 13 and 18, which is an iron post  
3 ins. in diam., with brass cap, 12 ins. above ground,  
marked and witnessed as described by the Surveyor Gen-  
eral.

Thence I run,

S. 89° 44' W., on a true line, bet. secs. 12 and 13.

39.96

Over gently rolling land, through dense undergrowth.

Set an iron post 3 ft. long, 1 in. in diam., 26 ins. in  
the ground, for 1/4 sec. cor., marked on brass cap,  
1914 on S. rim,  
1/4 S 12 on N., and  
S 13 on S half;

raise a mound of stone 2 ft. base, 1 1/2 ft. high, north of  
corner. Pits impracticable.

44.50

Wash, 22 lks. wide, 2 ft. deep, course N.

46.70

Wash, 120 lks. wide, 3 ft. deep, course N.

58.70

Wash, 20 lks. wide, 3 ft. deep, course NE.

65.60

Telephone line, brs. N. 17° W., and S. 17° E.

70.40

Wagon road, brs. N. 20° W. and S. 20° E.

79.92

The cor. of secs. 11, 12, 13 and 14.

Land, rolling.

Soil, sandy loam and gumbo, gravelly, 1st and 2nd rate.

No timber.

Undergrowth, dense catclaw, and mesquite.

N. 0° 1' W., bet. secs. 11 and 12.

Over gently rolling land, through scattering undergrowth.

27.25

Wash, 15 lks. wide, 3 ft. deep, course NE.

35.75

Wagon road, brs. N. 20° W., and S. 20° E.

40.00

Set an iron post, 3 ft. long, 1 in. in diam., 26 ins. in  
the ground, for 1/4 sec. cor., marked on brass cap.

1914 on S. rim,  
1/4 S 11 on W., and  
S 12 on E. half;

raise a mound of stone 2 ft. base, 1 1/2 ft. high, west of  
corner. Pits impracticable.

46.18

Telephone line brs. N. 17° W., and S. 19° E.

55.00

Wash, 5 lks. wide, 3 ft. deep, course NE.

59.75

Wash, 10 lks. wide, 2 ft. deep, course NE.

14. Partial Subdivision of Township 14 South, Range 28 East.  
Chains.

80.00 Set an iron post 3 ft. long, 2 ins. in diam., 24 ins. in the ground, for the cor. of secs. 1, 2, 11 and 12, marked on brass cap,

1914 on S. rim,  
T 14 S S 2 in NW.,  
R 28 E S 1 in NE.,  
S 12 in SE., and  
S 11 in SW. quadrant;

raise a mound of stone 2 ft. base,  $1\frac{1}{2}$  ft. high, west of corner.

Pits impracticable.

Land, rolling.

Soil, sandy loam and gumbo, gravelly, 1st and 2nd rate.

No timber.

Undergrowth, dense mesquite and catclaw.

40.00 N.  $89^{\circ} 44'$  E., on a random line, bet. secs. 1 and 12.  
Set temp.  $\frac{1}{4}$  sec. cor.

79.80 Intersect the east bdy. of the Tp., 7 lks. south of the corner of secs. 1, 6, 7 and 12, which is an iron post, 3 ins. in diam., with brass cap, 12 ins. above ground, marked and witnessed, as described by the Surveyor General.

Thence I run,

S.  $89^{\circ} 41'$  W., on a true line, bet. secs. 1 and 12.

Over gently rolling land, through dense undergrowth.

13.00 Wash, 30 lks. wide, 4 ft. deep, course NE.

39.90 Set an iron post 3 ft. long, 1 in. in diam., 26 ins. in the ground, for  $\frac{1}{4}$  sec. cor., marked on brass cap,

1914 on S. rim,  
 $\frac{1}{4}$  S 1 in N., and  
S 12 on S. half;

dig pits, 18x18x12 ins., E. and W. of post, 3 ft. dist., and raise a mound of earth  $3\frac{1}{2}$  ft. base,  $1\frac{1}{2}$  ft. high north of cor.

75.60 Wash, 30 lks. wide, 4 ft. deep, course NW.

79.80 The cor. of secs. 1, 2, 11 and 12.

Land, rolling.

Soil, sandy loam and gumbo, gravelly, 1st and 2nd rate,

No timber.

Undergrowth, dense mesquite and catclaw.



Partial subdivision of T. 14 S., R. 28 E.

Chains

	<p>Knowing from the closing of the E. bdy. of this Tp., that closing cors. will be necessary along the N. bdy.,</p> <p>I run, N. 0° 1' W., bet. secs. 1 and 2.</p> <p>Over gently rolling land, through scattering undergrowth.</p>
18.50	Wash, 6 lks. wide, 2 ft. deep, course NE.
22.00	Wash, 15 lks. wide, 3 ft. deep, course N. 20° W.
40.00	Set an iron post, 3 ft. long, 1 in. in diam., 26 ins. in the ground, for $\frac{1}{4}$ sec. cor., marked on brass cap; 1914 on S. rim, $\frac{1}{2}$ S2 on W. and S1 on E. half; dig pits, 18x18x12 ins. N. and S. of post, 3 ft. dist., and raise a mound of earth $3\frac{1}{2}$ ft. base, $1\frac{1}{2}$ ft. high, W. of cor. Note: At this cor., Aug. 4, 1914: I set off 17° 20' N. on the decl. arc; and at apparent noon, observe the sun on the meridian, the resulting lat. is 32° 14 $\frac{1}{2}$ ' N., which is the correct lat.
52.00	Wash, 15 lks. wide, 2 ft. deep; course NE.
53.50	Wash, 10 lks. wide, 1 ft. deep., course NE.
73.82	Intersect the N. bdy. of the Tp., S. 89° 56' E., 297 lks. from the cor. of secs. 35 and 36, T 13 S., R. 28 E., reestablished by means hereinbefore described in my notes of the resurvey of part of the N. bdy. of this Tp. at point of intersection set an iron post 3 ft. long, 2 ins. in diam., 24 ins. in the ground, for closing cor. of secs. 1 & 2, marked on brass cap; 1914 on S. rim, CC S. of center; T13S S35 S36 in N., T14S in S. and R28E in W. half; S1 in SE. and S2 in SW. quadrant; dig pits, 24x18x12 ins. crosswise on each line, E. and W., 3 ft. and S. of post, 7 ft. dist., and raise a mound of earth, 4 ft. base, 2 ft. high, S. of cor. Land, rolling. Soil, sandy loam and gumbo, gravelly, 1st and 2nd rate. No timber. Undergrowth, dense greasewood, catclaw and mesquite. Aug. 4, 1914.
<hr/>	
	<p>July 30, 1914; at 9h a.m., l.m.t., I set off 32° 11' N. on the lat. arc; 18° 38' N. on the decl. arc; and determine a meridian with the solar at closing cor. on N. bdy. of the C.B.M.R.A. of frac. secs. 26 &amp; 27 within the Reservation, which is a stone, 10x4 ins. protruding 4 ins. from mound of stone, marked, PL on N., CC on S., &amp; 2 grooves on E. face. Mound of stone S. of cor. This cor. being 39.00 chs. N. of W. of cor. of secs. 26, 27, 34 &amp; 35, therefore, the dist. to <math>\frac{1}{4}</math> sec. cor. will be, 40.00 chs. - 39.00 chs. = 1.00 ch. Thence I run, N. 0° 1' W., bet. secs. 26 and 27, completing the mile.</p>
1.00	Through scattering undergrowth, descend N. slope, 50 ft. Set an iron post 3 ft. long, 1 in. in diam., 18 ins. in the ground, on bed rock, supported by a mound of stone, for $\frac{1}{4}$ sec. cor., marked on brass cap; 1914 on S. rim, $\frac{1}{2}$ S27 on W. and S26 on E. half; raise a mound of stone, 2 ft. base, $1\frac{1}{2}$ ft. high, W. of cor., pits impracticable.
1.35	Draw, course NE., ascend SE. slope, 35 ft. and N. slope.
5.60	Spur, slopes NE., descend NW. slope, 140 ft. and N. slope.
17.50	Foot of descent, Wash, 50 lks. wide, Wash, 50 lks. wide, 10 ft. deep, course NE., continue over rolling land.
30.60	Wash, 100 lks. wide, 4 ft. deep, course E.
31.70	Ascend S. slope, 200 ft. to
41.00	Set an iron post 3 ft. long, 2 ins. in diam., 14 ins. in the ground, on bed rock, supported by a mound of stone, marked on brass cap, for the cor. of secs, 22, 23, 26 and 27, marked on brass cap; 1914 on S. rim, T14S S22 in NW., R28E S23 in NE., S26 in SE. and S27 in SW. quadrant; raise a mound of stone, 2

16.

## Partial subdivision of T. 14 S., R. 28 E.

Chains

ft. base,  $1\frac{1}{2}$  ft. high, W. of cor., pits impracticable.  
 Land, mountainous and rolling.  
 Soil, rocky, lime formation, 4th rate.  
 No timber.  
 Undergrowth, scattering mesquite and catclaw.

July 10, 1914.

40.00 East, on a random line, bet. secs. 23 and 26.  
 79.74 Set temp.  $\frac{1}{4}$  sec. cor.,  
 Intersect the N. and S. line, 16 lks. S. of the cor. of  
 secs. 23, 24, 25 and 26.  
 Thence I run  
 S.  $89^{\circ} 53'$  W., on a true line, bet. secs. 23 and 26.  
 35.55 Through scattering undergrowth, descend NW slope, 115 ft. to  
 Enter wash, course NE., continue up wash., continue up  
 10.75 Leave wash, source from SW., average width of wash about  
 60 lks., continue over rolling land.  
 30.00 Ascend SE. slope.  
 39.87 Set an iron post, 3 ft. long, 1 in. in diam., 8 ins. in  
 the ground, on bed rock, supported by a mound of stone,  
 for  $\frac{1}{4}$  sec. cor., marked on brass cap; 1914 on S. rim,  
 $\frac{1}{4}$ S23 on N. and  
 $\frac{1}{4}$ S26 on S. half; raise a mound of stone, 2 ft.  
 base,  $1\frac{1}{2}$  ft. high, N. of cor., pits impracticable.  
 41.50 Spur, slopes SE., 200 ft. above wash, continue over steep,  
 rolling, broken, S. slope.  
 79.74 The cor. of secs. 22, 23, 26 and 27.  
 Land, rolling and mountainous.  
 Soil, rocky, lime formation, 4th rate.  
 No timber,  
 Undergrowth, scattering mesquite and catclaw.

July 30, 1914.

Note; July 30, 1914 at the cor. of secs. 22, 23, 26 and 27,  
 I set off  $18^{\circ} 36'$  N. on the decl. arc; and at apparent  
 noon, observe the sun on the meridian; the resulting  
 lat. is  $32^{\circ} 12'$  N., which is the correct lat.  
 Thence I run  
 N.  $0^{\circ} 1'$  W., bet. secs. 22 and 23.  
 12.00 Through scattering undergrowth, ascend S. slope, 340 ft. to  
 Spur, slopes E., continue along rolling E. slope, long  
 34.00 Top of ridge, in saddle, bears NE. and SW., descend W.  
 slope, 165 ft., center scattering timber.  
 40.00 Set an iron post 3 ft. long, 1 in. in diam., 12 ins. in  
 the ground, on bed rock, supported by a mound of stone,  
 for  $\frac{1}{4}$  sec. cor., marked on brass cap; 1914 on S. rim,  
 $\frac{1}{4}$ S22 on W. and  
 $\frac{1}{4}$ S23 on E. half; from which, an oak, 8 ins. in  
 diam., bears N.  $78^{\circ} E.$ , 35 lks. dist., marked,  $\frac{1}{4}$  S 23 B T .  
 An oak, 14 ins. in diam., bears N.  $55^{\circ} W.$ , 1 lk. dist.,  
 marked,  $\frac{1}{4}$  S 22 B T .  
 43.00 Draw, course W., ascend East slope, 55 ft. to  
 49.75 Spur, slopes NW., descend NW. slope, 265 ft. to  
 60.00 Draw, course NW., ascend SW. slope, 95 ft. to  
 68.00 Spur, slopes W., descend NW. slope, 230 ft. to  
 80.00 Set an iron post 3 ft. long, 2 ins. in diam., 6 ins. in  
 the ground, on bed rock, supported by a mound of stone,  
 for the cor. of secs. 14, 15, 22  
 and 23, marked on brass cap; 1914 on S. rim,  
 T14S S15 in NW.,  
 R28E S14 in NE.,  
 S23 in SE. and  
 S22 in SW. quadrant; raise a mound of stone, 2  
 ft. base,  $1\frac{1}{2}$  ft. high, W. of cor., pits impracticable.  
 Land, mountainous.  
 Soil, rocky, igneous formation, 4th rate.  
 Timber, scattering oak and cedar.  
 Undergrowth, scattering with patches of dense scrub oak,  
 mesquite and catclaw.

July 30, 1914.

Chains

Aug. 3, 1914

- N.  $89^{\circ} 53'$  E., on a random line, bet. secs. 14 and 23.  
 40.00 Set temp.  $\frac{1}{4}$  sec. cor.  
 79.78 Intersect the N. and S. line, 19 lks. S. of the cor. of  
 secs. 13, 14, 23 and 24.  
 Thence I run  
 S.  $89^{\circ} 45'$  W., on a true line, bet. secs. 14 and 23.  
 1.00 Through scattering undergrowth, ascend SE. slope, 10 ft. to  
 Spur ridge, slopes N., descend West slope, 140 ft. to  
 18.30 Draw, course NW., ascend NE. slope, 85 ft. to N. slope.  
 28.00 Spur, slopes N., descend NW. slope, 40 ft. to N. slope.  
 31.80 Gulch, course NE., ascend NE. slope, 225 ft. to N. slope.  
 39.89 Set an iron post 3 ft. long, 1 in. in diam., 26 ins. in  
 the ground, for  $\frac{1}{4}$  sec. cor., marked on brass cap; 1914  
 on S. rim,  
 $\frac{1}{4}$  S14 on N. and  
 $\frac{1}{4}$  S23 on S. half; from which, a cedar limb, 6  
 ins. in diam., bears N.  $39^{\circ}$  E., 180 lks. dist., marked,  
 $\frac{1}{4}$  S 14 B T.  
 An oak, 9 ins. in diam., bears S.  $75^{\circ}$  E., 30 lks. dist.,  
 marked,  $\frac{1}{4}$  S 23 B T.  
 43.00 Spur ridge, bears N. and S., descend NW. slope, 150 ft. to  
 55.00 Gulch, course NE., ascend NE. slope, 180 ft. to N. slope.  
 64.30 Ridge, bears N. and S.; descend NW. slope, 200 ft. to  
 79.78 The cor. of secs. 14, 15, 22 and 23, 200 ft. below ridge.  
 Land, mountainous.  
 Soil, rocky, igneous formation, 4th rate.  
 Timber, scattering Oak, cedar and juniper.  
 Undergrowth, scattering with patches of dense scrub oak,  
 catclaw and mesquite.

Aug. 3, 1914.

July 30, 1914

- N.  $0^{\circ} 1'$  W., bet. secs. 14 and 15.  
 14.00 Through scattering undergrowth, descend NW. slope, 150 ft. to  
 Foot of mountain, bears NE. and SW., 100 ft. below cor.,  
 enter rocky rolling land, slopes NE.  
 16.00 Wash, 20 lks. wide, 3 ft. deep, course NE.  
 17.50 Wash, 30 lks. wide, 3 ft. deep, course NE.  
 25.00 Wash, 40 lks. wide, 4 ft. deep, course NE.  
 33.00 Wash, 25 lks. wide, 2 ft. deep, course NE.  
 33.25 Ascend SE. slope, 60 ft.  
 40.00 Set in iron post 3 ft. long, 1 in. in diam., 8 ins. in  
 the ground, on bed rock, supported by a mound of stone,  
 for  $\frac{1}{4}$  sec. cor., marked on brass cap; 1914 on S. rim,  
 $\frac{1}{4}$  S15 on W. and  
 $\frac{1}{4}$  S14 on E. half; raise a mound of stone, 2  
 ft. base,  $1\frac{1}{2}$  ft. high, W. of cor., pits impracticable.  
 40.50 Spur, slopes E., continue along rolling E. slope, ascend 20 ft. to  
 46.00 Spur, slopes SE., descend high,  
 52.00 Head of draw, course E., ascend S. slope, 175 ft. to  
 59.60 Rocky spur, slopes E., descend high point,  
 descend N. slope.  
 69.00 Draw, course NW., continue descent.  
 74.50 Foot of mountain, bears E. and W., 400 ft. below spur,  
 enter rolling land and dense undergrowth.  
 80.00 Set an iron post, 3 ft. long, 2 ins. in diam., 24 ins. in  
 the ground, for the cor. of secs. 10, 11, 14 and 15,  
 marked on brass cap; 1914 on S. rim,  
 T14S S10 in NW.,  
 R28E S11 in NE.,  
 S14 in SE. and  
 S15 in SW. quadrant; raise a mound of stone  
 2 ft. base,  $1\frac{1}{2}$  ft. high, W. of cor., pits impracticable.  
 Land, mountainous and rolling.  
 Soil, rocky, granite formation, 4th rate.  
 Timber, scattering oak and cedar.  
 Undergrowth, south of 74.50 chs. scattering, north of 5.50 chs.  
 dense scrub oak, catclaw and mesquite.

July 30, 1914.

18 Partial subdivision of T. 14 S., R. 28 E.

Chains  
 Aug. 3 1914  
 N. 89° 45' E., on a random line, bet. secs. 11 and 14.  
 40.00 Set temp.  $\frac{1}{4}$  sec. cor.  
 79.68 Intersect the N. and S. line, 9 lks. S. of the cor. of  
 secs. 11, 12, 13 and 14.  
 Thence I run  
 S. 89° 41' W., on a true line, bet. secs. 11 and 14.  
 Over gently rolling land, through dense undergrowth.  
 1.05 Wagon road, bears NW. and SE.  
 17.50 Wash, 30 lks. wide, 3 ft. deep, course N.  
 25.25 Wash, 10 lks. wide, 1 ft. deep, course N.  
 37.95 Wash, 30 lks. wide, 2 ft. deep, course N.  
 39.84 Set an iron post, 3 ft. long, 1 in. in diam., 26 ins. in  
 the ground, for  $\frac{1}{4}$  sec. cor., marked on brass cap; 1914  
 on S. rim,  
 $\frac{1}{4}$ S11 on N. and  
 S14 on S. half; raise a mound of stone, 2 ft.  
 base,  $1\frac{1}{2}$  ft. high, N. of cor., pits impracticable.  
 48.00 Wash, 40 lks. wide, 4 ft. deep, course NW.  
 57.60 Wash, 10 lks. wide, 2 ft. deep, course NW.  
 63.00 Dim wagon road, bears NW. and SE.  
 79.68 The cor. of secs. 10, 11, 14 and 15.  
 Land, rolling.  
 Soil, sandy loam and gumbo, gravelly, 1st to 3rd rate.  
 No timber.  
 Undergrowth, dense mesquite and catclaw.  
 Aug. 3, 1914.

-----  
 Aug. 4, 1914  
 N. 0° 1' W., bet. secs. 10 and 11.  
 Over gently rolling land, through scattering undergrowth.  
 1.50 Wash, 6 lks. wide, 2 ft. deep, course W.  
 7.35 Dim wagon road, bears NW. and SE.  
 23.35 Wash, 10 lks. wide, 2 ft. deep, course NW.  
 36.50 Wagon road, bears NE. and SW.  
 40.00 Set an iron post 3 ft. long, 1 in. in diam., 26 ins. in  
 the ground, for  $\frac{1}{4}$  sec cor., marked on brass cap; 1914 on  
 S. rim,  
 $\frac{1}{4}$ S10 on W. and  
 S11 on E. half; raise a mound of stone, 2 ft.  
 base,  $1\frac{1}{2}$  ft. high, W. of cor., pits impracticable.  
 80.00 Set an iron post 3 ft. long, 2 ins. in diam., 24 ins. in  
 the ground, for the cor. of secs. 2, 3, 10 and 11,  
 marked on brass cap; 1914 on S. rim,  
 T14S S3 in NW.,  
 R28E S2 in NE.,  
 S11 in SE. and  
 S10 in SW. quadrant; raise a mound of stone, 2 ft.  
 base,  $1\frac{1}{2}$  ft. high, W. of cor., pits impracticable.  
 Land, rolling,  
 Soil, sandy loam and gumbo, gravelly, 1st and 2nd rate.  
 No timber.  
 Undergrowth, dense mesquite and catclaw.  
 Aug. 4, 1914.

-----  
 N. 89° 41' E., on a random line, bet. secs. 2 and 11.  
 40.00 Set temp.  $\frac{1}{4}$  sec. cor.  
 79.64 Intersect the N. and S. line, 5 lks. N. of the cor. of  
 secs. 1, 2, 11 and 12,  
 Thence I run  
 S. 89° 43' W., on a true line, bet. secs. 2 and 11.  
 Over gently rolling land, through dense undergrowth.  
 10.20 Telephone line, bears N. 17° W. and S. 17° E.  
 11.50 Wash, 15 lks. wide, 2 ft. deep, course NE.  
 14.70 Wagon road, bears N. and S.  
 20.40 Wash, 12 lks. wide, 2 ft. deep, course NE.  
 25.35 Wash, 18 lks. wide, 3 ft. deep, course N.  
 31.10 Wash, 10 lks. wide, 3 ft. deep, course N.  
 35.75 Wash, 15 lks. wide, 1 ft. deep, course N.  
 39.82 Set an iron post 3 ft. long, 1 in. in diam., 26 ins. in  
 the ground, for  $\frac{1}{4}$  sec. cor., marked on brass cap; 1914  
 on S. rim,

Partial subdivision of T. 14 S., R. 28 E.

Chains	<p><math>\frac{1}{4}</math>S2 on N. and S11 on S. half; raise a mound of stone, 2 ft. base, <math>1\frac{1}{2}</math> ft. high, N. of cor., pits impracticable.</p> <p>49.15 Wash, 9 lks. wide, 1 ft. deep, course N.</p> <p>79.64 The cor. of secs. 2, 3, 10 and 11. Land, rolling. Soil, sandy loam and gumbo, gravelly, 1st and 2nd rate. No timber. Undergrowth, dense mesquite and catclaw. Aug. 4, 1914.</p>
15.50 40.00	<p>Aug. 5, 1914 N. <math>0^{\circ}</math> 1' W., on a true line, bet. secs. 2 and 3. Over gently rolling land, through dense undergrowth. Wash, 15 lks. wide, 1 ft. deep, course NE. Set an iron post 3 ft. long, 1 in. in diam., 26 ins. in the ground, for <math>\frac{1}{4}</math> sec. cor., marked on brass cap; 1914 on S. rim,</p>
74.21	<p><math>\frac{1}{4}</math>S3 on W. and S2 on E. half; dig pits, 18x18x12 ins. N. and S. of post, 3 ft. dist., and raise a mound of earth <math>3\frac{1}{2}</math> ft. base, <math>1\frac{1}{2}</math> ft. high, W. of cor.</p> <p>Intersect the N. bdy. of the Tp., N. <math>89^{\circ}</math> 56' E., 351 lks. from the cor. of secs. 34 and 35, T. 13 S., R. 28 E., reestablished by me as hereinbefore described in my notes of resurvey of part of N. bdy. of this Tp. at point of intersection set an iron post 3 ft. long, 2 ins. in diam., 24 ins. in the ground, for closing cor. of secs. 2 &amp; 3, marked on brass cap; 1914 on S. rim, CC S. of center; T13S S34 S35 in N., T14S in S. and R28E in W. half; S2 in SE. and S3 in SW. quadrant; dig pits 24x18x12 ins. crosswise on each line, E. and W., 3 ft. and S. of post, 7 ft. dist., and raise a mound of earth 4 ft. base, 2 ft. high, S. of cor.</p> <p>Land, rolling. Soil, sandy loam and gumbo, gravelly, 1st and 2nd rate. No timber, Undergrowth, dense mesquite and catclaw. Aug. 5, 1914.</p>
0.95	<p>July 31, 1914, At 9h.20m. a.m., 1 m.t., I set off <math>32^{\circ}</math> 11' N. from the lat. arc, <math>18^{\circ}</math> 23' N. on the decl. arc &amp; determine the meridian with the solar at true point on N. bdy. of the C.B.M.R.A. for closing cor. of frac. secs. 27 &amp; 28 within the Res., which is 2400 chs. W. of the Wit. cor. to said cor., a stone 12x6x12 ins. above ground, firmly set, &amp; marked on E. on N. CC on S. (not W. CC as described by Surv. Gen.) &amp; 3 grooves on E. face. Mound of stones South. This cor. and being 39.05 chs. N. <math>0^{\circ}</math> 2' W. of cor. of secs. 27, 28, 33 &amp; 34, therefore, dist. to <math>\frac{1}{4}</math> sec. cor. will be, 40.00 chs. - 39.05 chs. = 0.95 chs. Hence I run, N. <math>0^{\circ}</math> 2' W., completing line bet. secs. 27 &amp; 28</p> <p>Along E. slope, through scattering undergrowth. Set an iron post 3 ft. long, 1 in. in diam., 15 ins. in the ground, on bed rock, supported by a mound of stone, for <math>\frac{1}{4}</math> sec. cor., marked on brass cap 1914 on S. rim</p>
0.75 4.00 5.75 6.40 9.00 16.00 17.50 22.00 27.75 31.00	<p><math>\frac{1}{4}</math>S28 on W. and S27 on E. half; raise a mound of stone 2 ft. base, <math>1\frac{1}{2}</math> ft. high, W. of cor., pits impracticable.</p> <p>Descend NE. slope Descend N. slope. Rocky gulch, course E., 75 ft. below <math>\frac{1}{4}</math> sec. cor. on S. slope. Ascend south slope 75 ft. to rocky gulch, ascend along Rocky spur, slopes SE, ascend along rolling E. slope, 60 ft. to Spur, slopes E., 60 ft. high, Draw, course E., ascend 60 ft. to Spur, slopes E., 60 ft. high. Head of draw, course SE., ascend S. slope, 100 ft. to Ridge, bears NE. and SW., descend NW. slope, 265 ft. to descend S. slope.</p>

Chains 40.95	Set an iron post, 3 ft. long, 2 ins. in diam., 24 ins. in the ground, 2000 ft. below ridge, for the cor. of secs. 21, 22, 27 and 28, marked on brass cap; 1914 on S. rim, T14S S21 in NW., R28E S22 in NE., S27 in SE. and S28 in SW. quadrant; raise a mound of stone, 2 ft. base, 1½ ft. high, W. of cor., pits impracticable. Land, mountainous. Soil, rocky, granite formation, 4th rate. Timber, scattering oak and cedar. Undergrowth, scattering scrub oak and catclaw.
40.00	East, on a random line, bet. secs. 22 and 27. Set temp. ¼ sec. cor.
80.12	Intersect the N. and S. line, at the cor. of secs. 22, 23, 26 and 27. Thence I run West, on a true line, bet. secs. 22 and 27. Over rolling, broken, rocky, S. slope, through scattering undergrowth.
40.06	Set an iron post, 3 ft. long, 1 in. in diam., 26 ins. in the ground, for ¼ sec. cor., marked on brass cap; 1914 on S. rim, ½ S22 on N. and S27 on S. half; and raise a mound of stone, 2 ft. base, 1½ ft. high, N. of cor., pits impracticable.
Note: at this cor.	July 31, 1914 set off 18° 21' N. on the decl. arc; and at apparent noon, observe the sun on the meridian; the resulting lat. is 32° 12' N., which is the correct lat.
42.70	Draw, course SE., ascend SE. slope, 370 ft. to
65.40	Ridge, bears NE. and SW., descend NW. slope, descend N. slope.
75.60	Draw, course NW., continue descent.
80.12	The cor. of secs. 21, 22, 27 and 28, 130 ft. below ridge. Land, mountainous. Soil, rocky, granite formation, 4th rate. Timber, scattering oak and cedar. Undergrowth, scattering with patches of dense scrub oak, catclaw and mesquite.
.50	N. 0° 2' W., bet. secs. 21 and 22. Descend N. slope, through scattering undergrowth. Gulch, course NE., descend rolling E. slope.
17.00	Rocky gulch, course NE., 100 ft. below cor., continue over rolling rocky, E. slope.
24.75	Draw, course E.
26.00	Spur, slopes E.
36.00	Gulch, course SE., ascend SW. slope.
40.00	Set an iron post, 3 ft. long, 1 in. in diam., 18 ins. in the ground, on bed rock, supported by a mound of stone, for ¼ sec. cor., marked on brass cap; 1914 on S. rim, ½ S21 on W. and S22 on E. half; raise a mound of stone, 2 ft. base, 1½ ft. high, W. of cor., pits impracticable.
44.50	Spur, slopes E., ascend E. slope.
51.75	Rocky draw, course SE., ascend S. slope.
64.00	Spur, slopes E., 850 ft. above 36 ch. point, descend NE. slope, 25 ft. to
72.25	Draw, course SE., ascend south slope, ascend S. slope.
76.25	Spur, slopes SE., ascend E. slope.
80.00	Set an iron post, 3 ft. long, 2 ins. in diam., 18 ins. in the ground, on bed rock, supported by a mound of stone, for the cor. of secs. 15, 16, 21 and 22, marked on brass cap; 1914 on S. rim, T14S S16 in NW., R28E S15 in NE., S22 in SE. and S21 in SW. quadrant; from which, a cedar, 18

Partial subdivision of T. 14 S., R. 28 E.

Chains

ins. in diam., bears N. 42° E., 105 lks. dist., marked, T 14 S R 28 E S 15 B T ., no other trees available, pits imprac., raise a mound of stone, 2 ft. base, 1½ ft. high, W. of cor., This cor. is 210 ft. above draw at 72.25 ch. point.  
 Land, mountainous.  
 Soil, rocky, granite formation, 4th rate.  
 Timber, scattering oak, cedar and juniper.  
 Undergrowth, scattering with patches of dense scrub oak, catclaw and mesquite.

July 31, 1914.

Aug. 3. 1914, On account of steep, broken, rocky cliffs in the West half of line bet. secs. 15 & 22 over which it is impossible to chain, I set a flag at the cor. of secs. 15, 16, 21 & 22, & proceed to the cor. of secs. 14, 15, 22 & 23,

40.00 Aug. 3, where, at 7h 15m a.m., l.m.t., I set off 32° 12' N. on the lat. arc; 17° 40' N. on the decl. arc; and determine with the solar a meridian at the cor. of secs. 14, 15, 21, 16, From this cor. flag on the cor. of secs. 15, 16, 21 and 22, <sup>being</sup> plainly visible, I run for said cor., S. 89° 56' W., on a random line, bet. secs. 15 and 22.  
 Set temp. ¼ sec. cor., at this temp. cor. I lay off base S. 0° 4' E., 30.00 chs.; vertical angle to flag on the cor. of secs. 15, 16, 21 and 22, is 24°; from the S. end of base, the flag at the cor. of secs. 15, 16, 21 and 22, bears N. 53° 18' W., therefore, the dist. is log. of base + log. tan. of the angle = log. of the dist. required ( 1.477121 + 10.126570 = 1.603691 ) 40.15 chs. which added to 40.00 chs. = 80.15 chs.

80.15 To the cor. of secs. 15, 16, 21 and 22. Thence I run N. 89° 56' E., on a true line bet. secs. 15 and 22. Descend E. slope, over broken cliffs, through scattering undergrowth.

39.65 Gulch, course SE., foot of cliffs, small spring about 75 lks. up the gulch, continue along S. slope, 1180 ft. below sec. cor., chaining dist. from this point.

40.075 Set an iron post 3 ft. long, 1 in. in diam., 12 ins. in the ground, on bed rock, supported by a mound of stone, for ¼ sec. cor.; marked on brass cap; 1914 on S. rim, ½ S15 on N. and ½ S22 on S. half; raise a mound of stone, 2 ft. base, 1½ ft. high, N. of cor. Pits impracticable.

42.00 Descend SE. slope, 260 ft. to  
 64.65 Wash, 75 lks. wide, 6 ft. deep, course N., 200 ft. below 40 ch. point, continue over rocky land; slopes N.

68.15 Old stone chimney, about 4 chs. N.

70.00 Ascend NW. slope, 85 ft. to

80.15 The cor. of secs. 14, 15, 22 and 23, 35 ft. above 70 ch. point.

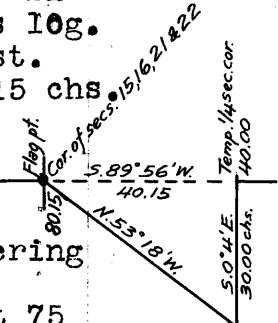
Land, mountainous.  
 Soil, Rocky, granite formation, 4th rate.  
 Timber, scattering oak, cedar and juniper.  
 Undergrowth, scattering with patches of dense scrub oak, mesquite and catclaw.

Aug, 3, 1914.

Aug. 1, 1914 From cor. of secs. 15, 16, 21 & 22 I run, N. 0° 2' W., bet. secs. 15 and 16,

16.00 Ridge, bears NE. and SW., descend steep rocky N. slope.  
 40.00 Point for ¼ sec. cor., falls on sloping rock, impractical to set cor., therefore at

40.24 Set an iron post, 3 ft. long, 1 in. in diam., 14 ins. in the ground, on bed rock, supported by a mound of stone, for witness cor. to the ¼ sec. cor., marked on brass cap; 1914 on S. rim, WC S. of center; ½ S16 on W. and S15 on E. half; from which, a cedar, 28 ins. in diam., bears S. 35° E., 43 lks. dist., marked, WC ¼ S15 B T .





Chains

80.00	<p>An oak, 6 ins. in diam., bears S. 82° W., 122 lks. dist., marked, W<sup>1</sup>/<sub>4</sub>S 16 B T .,</p> <p>Set an iron post, 3 ft. long, 2 ins. in diam., 8 ins. in the ground, on bed rock, supported by a mound of stone, (1480 ft. below ridge) for the cor. of secs. 9, 10, 15 and 16, marked on brass cap; 1914 on S. rim,</p> <p>T14S S9 in NW., R28E S10 in NE., S15 in SE. and S16 in SW. quadrant; from which, an oak, 5 ins. in diam., bears S. 72° W., 42 lks. dist., marked, T 14 S R 28 E S 16 B T ., no other trees available, raise a mound of stone, 2 ft. base, 1½ ft. high, W. of cor., pits impracticable.</p> <p>Land, mountainous. Soil, rocky, granite formation, 4th rate. Timber, scattering oak, cedar and juniper. Undergrowth, scattering with patches of dense scrub oak, mesquite and catclaw.</p> <p style="text-align: right;">Aug. 3, 1914.</p>
40.00	N. 89° 56' E., on a random line, bet. secs. 10 and 15.
80.12	Set, temp. ¼ sec. cor., Aug. 1, 1914.
	Intersect the N. and S. line, 30 lks. S. of the cor. of secs. 10, 11, 14 and 15., Aug. 3, 1914.
	Thence I run
	S. 89° 43' W., on a true line, bet. secs. 10 and 15.
	Over rolling land, through scattering undergrowth.
7.35	Wash, 8 lks. wide, 2 ft. deep, course N.
15.80	Wash, 6 lks. wide, 1 ft. deep, course N.
16.00	Ascend NE. slope., 75 ft. to
23.50	Spur, slopes NW., descend NW. slope, 140 ft. to, descend NW. slope.
38.00	S. end of wire fence, bears N., foot of descent, bears NE. and SW., 140 ft. below spur, continue over rolling land.
40.06	Set an iron post 3 ft. long, 1 in. in diam., 26 ins. in the ground, for. ¼ sec. cor., marked on brass cap 1914 on S. rim
	¼S10 on N. and S15 on S. half; raise a mound of stone 2 ft. base, 1½ ft. high, N. of cor., pits impracticable.
45.00	Ascend rocky, cliffy, rolling N. slope, 150 ft. to
80.12	The cor. of secs. 9, 10; 15 and 16, 1480 ft. below ridge point.
	Land, rolling and mountainous. Soil, on mountains, rocky, granite formation, 4th rate, balance, sandy loam and gumbo, gravelly, 1st to 3rd rate. Timber, scattering oak, cedar and juniper. Undergrowth, scattering with patches of dense scrub oak, mesquite and catclaw.
	Aug. 3, 1914.
	Aug. 5, 1914; at 6h 30m a.m., l.m.t., I set off 32° 13' N. on the lat. arc; 17° 9' N. on the decl. arc; and determine a meridian with the solar at the cor. of secs. 9, 10, 15 and 16,
	Thence I run
	N.0° 2' W., bet. secs. 9 and 10.
	Over broken rocky N. slope, through scattering timber and undergrowth, descend 150 ft. to
8.00	Foot of mountain, bears E. and W., 150 ft. below cor.; continue over rolling land, enter dense undergrowth.
10.00	J.H. Swayzes house, about 8 chs. E.
15.30	Trail, bears NW. and SE.
40.00	Set an iron post 3 ft. long, 1 in. in diam., 26 ins. in the ground, for ¼ sec. cor., marked on brass cap; 1914 on S. rim,
	¼S9 on W. and S10 on E. half; raise a mound of stone 2 ft.



Chains

base, 1½ ft. high, W. of cor., pits impracticable.  
ascend rocky SE. slope, 260 ft. to  
54.00 Rocky spur, slopes NE., descend above 1 cor., descend  
N. slope, 275 ft. to  
71.00 Foot of ridge, bears E. and W., SW. spur, descend spur,  
continue over rolling land.  
72.95 Wagon road, bears E. and W.  
79.40 Wash, 40 lks. wide, 1 ft. deep, course E.  
80.00 Set an iron post 3 ft. long, 2 ins. in diam., 24 ins. in  
the ground, for the cor. of secs. 3, 4, 9 and 10,  
marked on brass cap 1914 on S. rim  
T14S S4 in NW.,  
R28E S3 in NE.,  
S10 in SE. and  
S9 in SW. quadrant; from which a catclaw 6 ins.  
in diam., bears N. 81¾° E., 64 lks. dist., marked T 14  
S R 28 E S 3 B T .  
A hackberry 10 ins. in diam., bears N. 77¾° W., 119 lks.  
dist., marked T 14 S R 28 E S 4 B T ., no other trees  
available, raise a mound of stone 2 ft. base, 1½ ft.  
high, W. of cor., pits impracticable.  
Land, mountainous and rolling.  
Soil, on mountain, rocky, granite formation, 4th rate,  
balance, sandy loam and gumbo, gravelly, 1st. to 3rd  
rate.  
Timber, scattering oak, cedar and juniper.  
Undergrowth, scattering with patches of dense scrub oak,  
mesquite and catclaw.  
Aug. 5, 1914.

N. 89° 43' E., on a random line bet. secs. 3 and 10.  
40.00 Set temp. ¼ sec. cor.  
80.01 Intersect the N. and S. line, 2 lks. N. of the cor. of  
secs. 2, 3, 10 and 11.  
Thence I run  
S. 89° 44' W., on a true line bet. secs. 3 and 10.  
Over gently rolling land, through dense undergrowth.  
18.05 Wash, 20 lks. wide, 2 ft. deep, course NE.  
25.80 Wagon road, bears NE. and SW.  
40.005 Set an iron post 3 ft. long, 1 in. in diam., 26 ins. in  
the ground, for ¼ sec. cor., marked on brass cap 1914  
on S. rim  
¼S3 on N. and  
S10 on S. half; raise a mound of stone 2 ft.  
base, 1½ ft. high, N. of cor., pits impracticable.  
53.80 Wire fence, bears NW. and SE.  
57.20 J.E. Byers tent, bears N. 35° W.  
57.80 Wire fence, bears N. and S.,  
65.40 Wash, 30 lks. wide, 2 ft. deep, course NE.  
67.05 Wash, 30 lks. wide, 2 ft. deep, course N.  
80.01 The cor. of secs. 3, 4, 9 and 10.  
Land, rolling.  
Soil, sandy loam and gumbo, gravelly, 1st and 2nd rate.  
No timber.  
Undergrowth, dense mesquite and catclaw.  
Aug. 5, 1914.

N. 0° 2' W., on a true line bet. secs. 3 and 4.  
Over gently rolling land, through scattering undergrowth.  
9.40 Wire fence, bears E. and W.  
11.25 Wagon road, bears E. and SW.  
14.00 J.E. Byers tent, bears East.  
21.20 Dim wagon road, bears NE. and SW.  
26.00 Wash, 15 lks. wide, 1 ft. deep, course NE.  
40.00 Set an iron post 3 ft. long, 1 in. in diam., 26 ins. in  
the ground, for ¼ sec. cor., marked on brass cap 1914  
on S. rim  
¼S4 on W. and  
S3 on E. half; raise a mound of stone 2 ft.  
base, 1½ ft. high, W. of cor., pits impracticable.

24

Partial subdivision of T. 14 S., R. 28 E.

Chains

43.25  
58.00  
65.25  
69.30  
73.40  
74.46

Wash, 15 lks. wide, 1 ft. deep, course NE.  
 Wash, 30 lks. wide, 3 ft. deep, course NE.  
 Wash, 5 lks. wide, 2 ft. deep, course NE.  
 Wash, 15 lks. wide, 2 ft. deep, course NE.  
 Wash, 9 lks. wide, 1 ft. deep, course E.  
 Intersect the N. bdy. of the Tp., 371 lks. East, of orig. cor. of secs. 33 and 34, T. 13 S., R. 28 E., which as hereinbefore described by me in my notes of retracement of N. bdy. of T. 14 S., R. 28 E., at point of intersection set an iron post 3 ft. long, 2 ins. in diam., 24 ins. in the ground, for closing cor. of secs. 3 & 4, marked on brass cap 1914 on S. rim  
 CC S. of center;  
 T13S S33 S34 in N.,  
 T14S in S. and  
 R28E in W. half;  
 S3 in SE. and  
 S4 in SW. quadrant; raise a mound of stone 2 ft. base, 1½ ft. high, S. of cor., pits impracticable.  
 Land, rolling,  
 Soil, sandy loam and gumbo, gravelly, 1st and 2nd rate.  
 No timber,  
 Undergrowth, dense mesquite and catclaw.

Aug. 5, 1914.

Aug. 13, 1914; at 8h a.m., l.m.t., I set off 32° 09½' N. on lat. arc; 14° 49½' N. on the decl. arc; and determine with the solar a meridian at orig. cor. of secs. 32 and 33, hereinbefore described by me in my notes of retracement of part of the S. bdy. of this T. 14 S.

Thence I run

N. 0° 2' W., bet. secs. 32 and 33.

Ascend SE. slope, through scattering timber and undergrowth.  
Ascend rocky E. slope.

2.00

16.00

27.00

40.00

Head of a draw, course SE., ascends SE. slope.  
Ridge, bears E. and W., 260 ft. above cor., descend N. slope.

Set an iron post 3 ft. long, 1 in. in diam., 14 ins. in the ground, on bed rock, supported by a mound of stone, for ¼ sec. cor., marked on brass cap 1914 on S. rim

¼ S32 on W. and

S33 on E. half; from which an oak 5 ins. in

diam., bears N. 21° W., 78 lks. dist., marked ¼ S 32 B T.,

An oak 12 ins. in diam., bears N. 27° E., 130 lks. dist., marked ¼ S 33 B T.

46.35

Rock gulch, course NE., 460 ft. below ridge, ascend SE. slope, 50 ft. to

50.00

Spur, slopes E., descend NE. slope, 50 ft. to

54.50

Draw, course SE., ascend south slope, 185 ft. to

62.00

Spur, slopes SE., descend NE. slope, 185 ft. to

72.75

Draw, course NE., continue along east slope

74.80

Gulch, course SE., ascend SW. slope, 140 ft. to

80.00

Set an iron post 3 ft. long, 2 ins. in diam., 12 ins. in the ground, on bed rock, supported by a mound of stone, for the cor. of secs. 28, 29, 32 and 33, marked on brass cap 1914 on S. rim

T14S S29 in NW.,

R28E S28 in NE.,

S33 in SE. and

S32 in SW. quadrant; raise a mound of stone 2

ft. base, 1½ ft. high, W. of cor., pits impracticable.

Land, mountainous,

Soil, rocky, lime formation, 4th rate.

Timber, scattering oak.

Undergrowth, scattering with patches of dense scrub oak, mesquite and catclaw.

Aug. 13, 1914.

Knowing from my retracement of the W. bdy. of the C.B.M.R. A., that a closing cor. will be necessary for frac. secs. 28 & 33, outside the Reservation, I run,

Chains	
	East, on a true line, bet. frac. secs. 28 & 33, outside C.B.M.R.A. Through scattering undergrowth, ascend SW slope, 15 ft. to
2.25	Rocky ridge, bears NW. and SE., descend NE. slope, 210 ft. to
12.15	Draw, course SE., continue along South, continue along S. slope.
13.80	Trail, bears NW. and SE.
19.75	Rocky gulch, course S., ascend SW. slope, 125 ft. to
28.00	Spur, slopes SE., descend E. slope, 125 ft. to
33.20	Draw, course S., ascend W. slope, 130 ft. to
40.00	Set an iron post, 3 ft. long, 1 in. in diam., 6 ins. in the ground, on bed rock, supported by a mound of stone, for $\frac{1}{4}$ sec. cor., marked on brass cap; 1914 on S. rim, $\frac{1}{4}$ S28 on N. and $\frac{1}{4}$ S33 on S. half; raise a mound of stone 2 ft. base, $1\frac{1}{2}$ ft. high, N. of cor., pits impracticable.
40.90	Spur ridge, slopes SE., Note: at this point, Aug. 13, 1914; I set off $14^{\circ} 46\frac{1}{2}'$ N. on the decl. arc; and at apparent noon, observe the sun on the meridian; the resulting lat. is $32^{\circ} 11'$ N., which is the correct lat. of this location. descend N. slope, 310 ft. to
54.60	Gulch, course SE., ascend south slope, ascend S. slope.
60.50	Intersect the W. bdy. of the C.B.M.R.A., $N.0^{\circ} 4' E.$ , 64 lks. dist., from the closing cor. of frac. secs. 28 & 33, within the Reservation, hereinbefore, in my notes of, and retracement of part of the West bdy. of the C.B.M.R.A. At point of intersection, I set an iron post, 3 ft. long, 2 1/2 ins. in diam., 24 ins. in the ground, for closing cor. of frac. secs. 28 & 33, outside the Reservation, marked on the brass cap. 1914 on S. rim, brass cap 1914 on S. rim CC W. of center; CBMRA in E. half; T14S S28 in NW. and R28E S33 in SW. Quadrant; from which, a cedar limb, 8 ins. in diam., bears $S. 86\frac{1}{4}^{\circ} W.$ , 195 lks. dist., marked, CC T 14 S R 28 E S 33 B T ., no other trees available, raise a mound of stone, 2 ft. base, $1\frac{1}{2}$ ft. high, W. of cor., pits impracticable. Land, mountainous. Soil, rocky, lime formation, 4th rate. Timber, scattering oak, cedar and juniper. Undergrowth, scattering, with patches of dense scrub oak, mesquite and catclaw.
Aug. 13, 1914.	
<hr style="border-top: 1px dashed black;"/>	
	Aug. 15, 1914; at 8h 15m a.m., l.m.t., I set off $32^{\circ} 10\frac{1}{2}'$ N. on the lat. arc; $14^{\circ} 13'$ N. on the decl. arc; and determine with the solar a meridian at the cor. of secs. 28, 29, 32 and 33.
	Thence I run, N. $0^{\circ} 2' W.$ , bet. secs. 28 and 29.
2.00	Through scattering undergrowth, ascend SW slope, 60 ft. to Rocky ridge, bears NW. and SE., thence along cor., continue along NE. slope.
6.00	Descend E. slope.
14.50	Draw, course E., 90 ft. below ridge,
15.50	Draw, course SE., ascend rocky S. slope, 65 ft. to
18.35	Rocky spur, slopes E., descend N. slope, 30, ft. to
19.50	Draw, course SE., ascend W. slope, 250, ft. to
35.50	Top of ascent, continue along W. slope, continue along W. slope.
38.00	Draw, course SW., ascend S. slope, 360 ft.
40.00	Set an iron post, 3 ft. long, 1 in. in diam., 18 ins. in the ground, on bed rock, supported by a mound of stone, for $\frac{1}{4}$ sec. cor., marked on brass cap; 1914 on S. rim, $\frac{1}{4}$ S29 on W. and $\frac{1}{4}$ S28 on E. half; raise a mound of stone, 2 ft. base, $1\frac{1}{2}$ ft. high, W. of cor., pits impracticable.
49.70	Ridge, bears E. and W., descend N. slope, 200 ft. to
55.70	Draw, course E., ascend SE. slope, 60 ft. to

26 Partial subdivision of T. 14 S., R. 28 E.

Chains

- 59.85 Spur, slopes E., descend NE slope, 80 ft. to E. slope.
- 63.90 Rocky gulch, course SE., ascend south spur, ascend S. slope, 600 ft.
- 79.80 Foot of perpendicular cliff, bears E. and W., 10 ft. high.
- 80.00 Set an iron post 3 ft. long, 2 ins. in diam., 6 ins. in the ground, on bed rock, supported by a mound of stone, 200 ft. above gulch, for the cor. of secs. 20, 21, 28 and 29, marked on brass cap 1914 on S. rim  
 T14S S20 in NW.,  
 R28E S21 in NE.,  
 S28 in SE. and  
 S29 in SW. quadrant; raise a mound of stone 2 ft. base, 1½ ft. high, 10 ft. N. of cor., impracticable to build on the W., pits impracticable.  
 Land, mountainous.  
 Soil, rocky, lime formation, 4th rate.  
 Timber, scattering oak, cedar and juniper.  
 Undergrowth, scattering with patches of dense scrub oak, mesquite and catclaw.

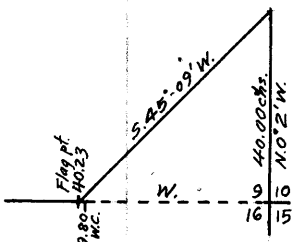
Aug. 15, 1914.

- 40.00 East on a random line bet. secs. 21 and 28. Set temp. ¼ sec. cor. Note Aug 15, 1914; at this pt. I set off 14° 10' N. on decl. arc; and at apparent noon, observe the sun on the meridian; the resulting lat. is 32° 12' N., which is the correct lat.
- 79.74 Intersect the N. and S. line, 49 lks. N. of the cor. of secs. 21, 22, 27 and 28. Thence I run N. 89° 39' W., on a true line bet. secs. 21 and 28. Through scattering undergrowth descend NW. slope 10 ft. to Gulch, course NE., 10 ft. below cor., ascend SE. slope.
- .35 Head of draw, course SE., ascend E. slope.
- 25.50 Spur, slopes NE., ascend NE. slope.
- 38.00 Set an iron post 3 ft. long, 1 in. in diam., 20 ins. in the ground, on bed rock, supported by a mound of stone, for ¼ sec. cor., marked on brass cap 1914 on S. rim  
 S21 on N. and  
 S28 on S. half; from which, a Juniper, 26 ins. in diam., bears N. 24½° W., 141 lks. dist., marked, ¼ S21BT. A juniper, 28 ins. in diam., bears S. 29° W., 39 lks. dist., marked, ¼ S 28 B T.
- 50.00 Rocky ridge, bears NW. and SE., 1260 ft. above gulch at 35 lk. point, descend SW. slope, 50 ft. to
- 60.40 Head of draw, course SE., ascend E. slope, 430 ft. to slope, 430 ft. to
- 74.50 Spur, slopes SE., 400 ft. above draw, continue along broken, chuffy S. slope
- 79.74 The cor. of secs. 20, 21, 28 and 29. Land, mountainous. Soil, rocky, lime formation, 4th rate. Timber, scattering oak, juniper and cedar. Undergrowth, scattering with patches of dense scrub oak, mesquite and catclaw.

Aug. 15, 1914.

Aug. 6, 1914; at 6h 30m a.m., l.m.t., I set off 32° 13' N. on the lat. arc; 16° 53' N. on the decl. arc; and determine a meridian with the solar at the cor. of secs. 9, 10, 15 and 16, Note: From this corner, West, the E½ of line bet. secs. 9 & 16 ascends a NE. slope of broken cliffs, and immense granite boulders, over which it is impossible to chain distances, therefore I obtain measurement by a triangulation, as follows:

From this to chain, set flag on top of high granite boulder on ridge to the West, vertical angle to flag +25°. Lay off base N. 0° 2' W., 40.00 chs.; from N. end of base, flag on top of ridge bears S. 45° 09' W., therefore; the dist. is  $\sin. 45° 11' \times \text{base} + \sin. 44° 51'$ , or  $.70937 \times 40.00 + .70525 = 40.23$  chs.;

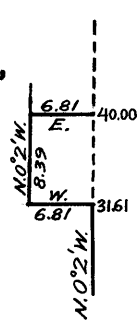


Chains

Flag point on  
 40.23 ^ Top of granite boulder 30 ft. high, on rocky spur ridge, slopes N., Chain distance from this point East 23 lks. to  
 40.00 point for 1/4 sec. cor. at impracticable to set 1/4 sec. cor., therefore fourth E. to  
 39.80 Set an iron post 3 ft. long, 1 in. in diam., 4 ins. in the ground, on bed rock, supported by a mound of stone, for witness cor. to the 1/4 sec. cor., marked on brass cap; 1914 on S. rim, WC W. of center; 1/4 S9 on N. and S16 on S. half; from which, a juniper, 12 ins. in diam., bears S. 55 1/4° W., 68 lks. dist., marked, WC 1/4 S 16 B T .  
 An oak, 8 ins. in diam., bears N. 87° E., 26 lks. dist., marked WC 1/4 S 9 B T, hence from witness cor. continue measurement, West by chain. W.C. is at foot of granite boulder  
 40.23 Top of granite boulder, 1232 ft. above sec. cor. desc. rocky NW.  
 46.00 Descend W. slope. (slope  
 56.12 E. edge of rocky gulch, 200 ft. below 40.23 ch. pt. At this point Aug. 6, 1914; I set off 16° 48' N. on the decl. arc; and at apparent noon, observe the sun on the meridian; the resulting lat. is 32° 13' N., in the correct lat.; stadia across rocky cliffy gulch, course NW., about 100 ft. deep, rod reading 8.190 ft., ratio 1 ft. = 2.00 chs., focal constant 1.025 ft., angle of depression = 8°, the distance is therefore; 8.190 X 2 X .9806 + .016 = 16.08 chs. which added to 56.12 chs. makes 72.20 chs.  
 72.20 Rod point, 200 ft. below 56.12 ch. point, continue along steep, rolling, rocky N. slope.  
 80.00 Set an iron post, 3 ft. long, 2 ins. in diam., 24 ins. in the ground, for the cor. of secs. 8, 9, 16 and 17, marked on brass cap; 1914 on S. rim, T14S S8 in NW., R28E S9 in NE., S16 in SE. and S17 in SW. quadrant; from which, an oak, 4 ins. in diam., bears N. 70° E., 2 lks. dist., marked, T 14 S R 28 E S 9 B T ., An oak, 10 ins. in diam., bears S. 46° E., 22 lks. dist., marked, T 14 S R 28 E S 16 B T ., An oak, 6 ins. in diam., bears S. 48° W., 25 lks. dist., marked, T 14 S R 28 E S 17 B T ., An oak, 10 ins. in diam., bears N. 56° W., 18 lks. dist., marked, T 14 S R 28 E S 8 B T .  
 Land, mountainous,  
 Soil, rocky, granite formation, 4th rate.  
 Timber, Scattering oak, cedar and juniper.  
 Undergrowth, scattering with patches of dense scrub oak, mesquite and catclaw.

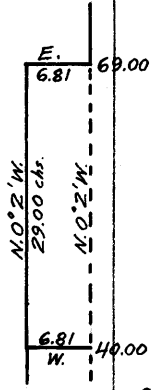
Aug. 11, 1914.

N. 0° 2' W., bet. secs. 8 and 9.  
 Through dense undergrowth and scattering timber, descend steep, rocky, north slope, 180 ft. to  
 9.00 Gulch, course NW., ascend W. slope, 20 ft. to end N. slope.  
 12.50 Rocky point, slopes W., descend NW. to gulch, descend W. slope, 280 ft. to  
 25.35 Canyon, course NE., ascend SE. slope, 20 ft. Aug. 6, 1914. Aug. 7, 1914.  
 27.35 Spur, slopes E., descend NE. slope, 20 ft. to end N. slope.  
 28.00 Gulch, course SE., ascend south slope, 75 ft. to end N. slope.  
 31.61 To a point near the foot of granite cliffs 100 ft. high, bears E. and W. impossible to chain over cliffs, therefore, To pass the cliff set 1 offset as follows:  
 West 681 lks.  
 N. 0° 2' W., 839 lks.  
 East 681 lks., returning to line at  
 40.00 Set an iron post, 3 ft. long, 1 in. in diam., 2 ins. in the ground, on bed rock, supported by a mound of stone, for 1/4 sec. cor., marked on brass cap; 1914 on S. rim,



28 Partial subdivision of T. 14 S., R. 28 E.

Chains



69.00  
76.00  
79.10  
80.00

$\frac{1}{2}$ S8 on W. and  
 S9 on E, half; from which, an oak, 5 ins. in diam.,  
 bears S. 4° W., 77 lks. dist., marked,  $\frac{1}{4}$  S 8 B T .,  
 An oak, 14 ins. in diam., bears S. 79° E., 77 lks. dist.,  
 marked,  $\frac{1}{4}$  S 9 B T . 100 ft. above 31.61 ch. point.  
 granite cliff, 30 ft. high, 80 lks. S.  
 Top of granite peak, bears S. 45° W. about 200 lks. dist.  
 Broken granite cliffs N. and E., slope N. and E., to  
 avoid which cliffs, I offset from sec. line:  
 West, 681 lks.:  
 N. 0° 2' W., 29.00 chs.:  
 East, 681 lks., returning to sec. line at  
 A point on sec. line 700 ft. below  $\frac{1}{4}$  sec. cor.,  
 descend rolling north slope 100 ft. to  
 Foot of mountain, bears NW. and SE., 100 ft. below 31.61  
 point, continue over gently rolling land.  
 Wagon road, bears E. and W.  
 Set an iron post, 3 ft. long, 2 ins. in diam., 24 ins. in  
 the ground, for the cor. of secs. 4, 5, 8 and 9, marked  
 on brass cap; 1914 on S. rim,  
 T14S S5 in NW.,  
 R28E S4 in NE.,  
 S9 in SE. and  
 S8 in SW. quadrant; from which, a catclaw limb,  
 8 ins. in diam., bears S. 29° W., 225 lks. dist.,  
 marked, T 14 S R 28 E S 8 B T ., no other trees available.  
 raise a mound of stone, 2 ft. base,  $1\frac{1}{2}$  ft. high, W. of cor.  
 Land, mountainous and rolling. (Pits impracticable.)  
 Soil, on mountain rocky, granite formation, 4th rate;  
 balance, sandy loam and gumbo, gravelly 1st and 2nd  
 rate.  
 Timber, scattering oak, cedar and juniper.  
 Undergrowth, scattering with patches of dense scrub oak,  
 mesquite and catclaw.

Aug. 6 and 7, 1914.

40.00  
79.78  
  
12.95  
27.25  
30.25  
38.55  
39.89

Aug. 7, 1914; at 9h a.m., l.m.t., I set off 32° 14' N.  
 on the lat. arc; 16° 33 $\frac{1}{2}$ ' N. on the decl. arc; and  
 determined with the solar a meridian at the cor. of secs.  
 4, 5, 8 and 9,  
 Thence I run  
 East, on a random line, bet. secs. 4 and 9.  
 Set temp.  $\frac{1}{4}$  sec. cor.,  
 Intersect the N. and S. line, 12 lks. S. of the cor. of  
 secs. 3, 4, 9 and 10.  
 Thence I run  
 S. 89° 55' W., on a true line, bet. secs. 4 and 9.  
 Over gently rolling land, through dense undergrowth.  
 Wagon road, bears NW. and SE.  
 Wagon road, bears NE. and SW.  
 Wagon road, bears NW. and SE.  
 Wagon road, bears NE. and SW.  
 Set an iron post, 3 ft. long, 1 in. in diam., 26 ins. in  
 the ground, for  $\frac{1}{4}$  sec. cor., marked on brass cap; 1914  
 on S. rim,  
 $\frac{1}{2}$ S4 on N. and  
 S9 on S. half; raise a mound of stone, 2 ft.  
 base,  $1\frac{1}{2}$  ft. high, N. of cor., pits impracticable.  
 L.D. Wilmeths house, bears S. 10° W., 100 ft. about  
 Enter wash, course SE., 18 ins. deep, source W., about  
 50 lks. wide.  
 Leave wash, source NW.  
 L.D. Wilmeths house, bears S. 34° E.  
 Wire fence, bears N. and S.  
 The cor. of secs. 4, 5, 8 and 9.  
 Land, rolling.  
 Soil, sandy loam and gumbo, gravelly, 1st and 2nd rate.  
 No timber.  
 Undergrowth, dense catclaw and mesquite.

Aug. 5 and 7, 1914.

Partial subdivision of T. 14 S., R. 28 E.

Chains

N. 0° 2' W., on a true line, bet. secs. 4 and 5.  
 Over gently rolling land, through dense undergrowth.  
 1.55 Wash, 25 lks. wide, 2 ft. deep, course E.  
 28.00 Wash, 10 lks. wide, 1 ft. deep, course NE.  
 32.50 Wash, 12 lks. wide, 2 ft. deep, course E.  
 40.00 Set an iron post, 3 ft. long, 1 in. in diam., 26 ins. in  
 the ground, for  $\frac{1}{4}$  sec. cor., marked on brass cap; 1914  
 on S. rim,  
 $\frac{1}{2}$ S5 on W. and  
 $\frac{1}{2}$ S4 on E. half; raise a mound of stone 2  
 ft. base,  $1\frac{1}{2}$  ft. high, W. of cor., pits impracticable.  
 41.00 Wash, 40 lks. wide, 2 ft. deep, course NE.  
 47.15 Wash, 75 lks. wide, 4 ft. deep, course E.  
 54.25 Wash, 10 lks. wide, 1 ft. deep, course NE.  
 59.50 Wash, 30 lks. wide, 4 ft. deep, course NE.  
 73.00 Wash, 20 lks. wide, 18 ins. deep, course NE.  
 74.29 Intersect the N. bdy. of the Tp., N. 89° 56' E., 411 lks.  
 dist. from orig. cor. of secs. 32 and 33, T. 13 S., R.  
 28 E., hereinbefore described in my notes of retracement  
 of the North bdy. of T. 14 S., R. 28 E.; at point of  
 intersection set an iron post 3 ft. long, 2 ins. in diam.,  
 24 ins. in the ground, for Closing cor. of secs. 4 & 5,  
 marked on brass cap; 1914 on S. rim,  
 CC S. of center;  
 T13S S32 S33 in N.,  
 T14S in S. and  
 R28E in W. half;  
 S4 in SE. and  
 S5 in SW. quadrant; raise a mound of stone, 2  
 ft. base,  $1\frac{1}{2}$  ft. high, S. of cor., pits impracticable.  
 Land, rolling.  
 Soil, sandy loam and gumbo, gravelly, 1st to 4th rate.  
 No timber.  
 Undergrowth, dense catclaw and mesquite.  
 Aug. 7, 1914.

Aug. 14, 1914; at 7h a.m., l.m.t., I set off 32° 09 $\frac{1}{2}$ ' N.  
 on the lat. arc; 14° 33' N. on the decl. arc; and  
 determine with the solar meridian at the orig. cor. of  
 secs. 31 & 32, hereinbefore described in my notes of  
 retracement of part of the South bdy. of this Tp.  
 Thence I run  
 N. 0° 3' W., bet. secs. 31 and 32.  
 Thru scattering timber & undergrowth, asc. SE slope, 40 ft. to th.  
 4.00 Top of ascent, continue along rolling East slope, slopes  
 E., ascend gradually.  
 24.00 Head of draw, course SE.  
 28.00 Mesa, bears E and W., 100 ft. above 4 ch. point.  
 40.00 Set an iron post 3 ft. long, 1 in. in diam., 26 ins. in  
 the ground, for  $\frac{1}{4}$  sec. cor., marked on brass cap; 1914  
 on S. rim,  
 $\frac{1}{2}$ S31 on W. and  
 $\frac{1}{2}$ S32 on E. half; raise a mound of stone, 2  
 ft. base,  $1\frac{1}{2}$  ft. high, W. of cor., pits impracticable.  
 46.00 A masonry tank, dry, bears N. 27° E.  
 46.90 Low ridge, bears NE. and SW., dim wagon road, bears NE.  
 and SW., descend gradual N. slope, 20 ft.  
 54.00 Dim wagon road, bears NE. and SW.  
 58.00 Draw, course SW., ascend to 12.00 ch. point, ascend  
 SW. slope, 170 ft.  
 63.00 Masonry tank, bears N. 85° E.  
 76.00 Ridge, bears NW. and SE., descend. above draw, descend  
 N. slope, 90 ft. to  
 78.65 Gulch, course E., 30 ft. below ridge, ascend S. slope;  
 79.65 Wire fence, bears E. and W.  
 80.00 Set an iron post, 3 ft. long, 2 ins. in diam., 24 ins. in  
 the ground, for the cor. of secs. 29, 30, 31 and 32,  
 marked on brass cap; 1914 on S. rim,  
 T14S S30 in NW.,  
 R28E S29 in NE.,  
 S32 in SE. and  
 S31 in SW. quadrant; from which, an oak, 5 ins.



Chains

in diam., bears S.  $75\frac{3}{4}^{\circ}$  E., 30 lks. dist., marked, T 14 S R 28 E S 32 B T., no other trees within limits, raise a mound of stone, 2 ft. base,  $1\frac{1}{2}$  ft. high, W. of cor., pits impracticable.  
 A windmill, bears N.  $67^{\circ}$  E.  
 A windmill, bears N.  $58^{\circ}$  W.  
 Land, rolling and mountainous.  
 Soil, rocky, lime formation, 3rd and 4th rate.  
 Timber, scattering, oak, and juniper.  
 Undergrowth, scattering with patches of dense scrub oak, catclaw and mesquite.

Aug. 21, 1911.

40.00 East, on a random line, bet. secs. 29 and 32.  
 79.52 Set temp.  $\frac{1}{4}$  sec. cor.  
 Intersect the N. and S. line, 5 lks. N. of the cor. of secs. 28, 29, 32 and 33., Aug. 13, 1911.  
 Thence I run  
 N.  $89^{\circ} 58'$  W., on a true line, bet. secs. 29 and 32.  
 Descend SW. slope, through scattering timber and undergrowth. Descend SW. slope 60 ft. to  
 8.50 Gulch, course SE., ascend NE. slope., ascend SW. slope.  
 17.60 Head of draw, course NE.  
 28.25 Rocky ridge, bears NW. and SE., 600 ft. above gulch, descend SW. slope., 100 ft. to  
 33.55 Head of draw, course SW., ascend. S. slope, 95 ft.  
 39.76 Set an iron post 3 ft. long, 1 in. in diam., 26 ins. in the ground, for  $\frac{1}{4}$  sec. cor., marked on brass cap; 1914 on S. rim,  
 $\frac{1}{4}$ S29 on N. and  
 S32 on S. half; raise a mound of stone, 2 ft. base,  $1\frac{1}{2}$  ft. high, N. of cor., pits impracticable.  
 41.25 Spur, slopes SW., descend west slope, 400 ft. to  
 54.20 Gulch, course SW., descend SW. slope, 90 ft. to  
 70.40 Old wagon road, bears N. and S.  
 70.50 2 ins. pipe line, bears N. and S.  
 70.75 Gulch, course S., continue along 54.20 ch. point, continue over rolling land, slopes S.  
 75.80 Draw, course S.  
 78.92 Wire fence, bears N. and S.  
 79.00 2 ins. pipe line, bears NW. and SE.  
 79.52 The cor. of secs. 29, 30, 31 and 32.  
 Land, mountainous and rolling.  
 Soil, rocky, lime formation, 3rd and 4th rate.  
 Timber, scattering oak, cedar and juniper.  
 Undergrowth, scattering with patches of dense scrub oak, catclaw and mesquite.

Aug. 17, 1911.

Knowing from the closing on the S. bdy. of this Tp. that closing bars will be necessary along W. bdy. of this Tp., I run  
 West, on a true line, bet. secs. 30 and 31.  
 Over rolling land, slopes S.; through scattering timber and undergrowth.  
 1.60 Wire fence, bears N. and S.  
 2.35 Gulch, course SE., ascend N. slope.  
 14.00 Ascend NE. slope.  
 22.00 Spur ridge, slopes SE., 345 ft. above gulch, continue along rolling S. slope.  
 32.00 Ascend SE. slope., 215 ft.  
 40:00 Set an iron post 3 ft. long, 1 in. in diam., 20 ins. in the ground, on bed rock, supported by a mound of stone, for  $\frac{1}{4}$  sec. cor., marked on brass cap; 1914 on S. rim,  
 $\frac{1}{4}$ S30 on N. and  
 S31 on S. half; from which, an oak, 5 ins. in diam., bears S.  $85^{\circ}$  W., 186 lks. dist., marked,  $\frac{1}{4}$ S31BT.  
 An oak, 8 ins. in diam., bears N.  $66\frac{1}{4}^{\circ}$  W., 224 lks. dist., marked,  $\frac{1}{4}$  S 30 B T. Note: at this cor.,



Partial subdivision of T. 14 S., R. 28 E.

Chains

Aug. 14, 1914; I set off  $14^{\circ} 28'$  N. on the decl. arc; and at apparent noon, observe the sun on the meridian; the resulting lat. is  $32^{\circ} 11'$  N., which is the correct lat.

46.00 Top of ascent, ~~ascend N. slope, 30 ft. to top of mountain~~, continue along rolling S. slope.

50.00 Descend SW. slope.

57.10 Head of draw, course SW., descend S. slope.

68.60 Draw, course S.,

79.44 Intersect the W. bdy. of the Tp. N.  $0^{\circ} 10'$  E., 252 lks. dist. from orig. cor. of secs. 25 and 36, T. 14 S., R. 27 E. hereinbefore described in notes of retracement on W. bdy. of T14S R27E. At point of intersection (520 ft. below 46 ch. point) set an iron post 3 ft. long, 2 in. in diam., 24 ins. in the ground, for closing cor. of secs. 30 & 31, marked on brass cap; 1914 on S. rim, CC E. of center;  
 T14S in N.,  
 R27E S25 S36 in W. and  
 R28E in E. half;  
 S30 in NE. and  
 S31 in SE. quadrant; raise a mound of stone 2 ft. base,  $1\frac{1}{2}$  ft. high, E. of cor., pits impracticable.  
 200 ft. below 46 ch. point.

Land, mountainous and rolling.  
 Soil, rocky, lime formation, 4th rate.  
 Timber, scattering oak and juniper.  
 Undergrowth, scattering with patches of dense scrub oak, mesquite and catclaw.

Aug. 14, 1914.

N.  $0^{\circ} 3'$  W., bet. secs. 29 and 30.  
 Ascend gradually over rolling land, slopes SE., through scattering timber and undergrowth.

.35 2 in. pipe line, bears NW. and SE.

2.80 Wire fence, bears E. and W.

4.75 Windmill, bears S.  $82\frac{1}{2}^{\circ}$  E.,  
 Windmill, bears S.  $76\frac{1}{2}^{\circ}$  W., from which, a small house brs. SE. about 60 ft. dist. and a pump house brs. West, about 10 ft. dist. mill,  
 All of the above belong to the Riggs cattle Co.

12.75 Gulch, course SE., ascend SW. slope, of mountain.

38.00 Spur, slopes S.  $10^{\circ}$  E., ascend along spur ridge.

40.00 Set an iron post, 3 ft. long, 1 in. in diam., 12 ins. in the ground, on bed rock, supported by a mound of stone, for  $\frac{1}{4}$  sec. cor., marked on brass cap; 1914 on S. rim;  
 $\frac{1}{4}$  S30 on W. and  
 S29 on E. half; from which, an oak, 12 ins. in diam., bears S.  $4\frac{1}{2}^{\circ}$  E., 194 lks. dist., marked,  $\frac{1}{4}$  S 29 B T .  
 An oak, 6 ins. in diam., bears S.  $13\frac{1}{2}^{\circ}$  W., 143 lks. dist., marked,  $\frac{1}{4}$  S 30 B T .

50.00 Prospect tunnel, bears N.  $49\frac{1}{2}^{\circ}$  W.  
 A point 385 ft. above sec. cor., leave spur ridge, bears NE., descend NW. slope., 20 ft. to

52.50 Draw, course W., ascend S. slope, 80 ft. to top of mountain.

56.00 Prospect tunnel, bears S.  $39^{\circ}$  W., spur, slopes W., 30 ft. to  
 above draw, descend N. slope., 20 ft. to

58.00 Head of draw, course W., ascend W. slope, 120 ft. to top of mountain.

64.00 Top of ascent, descend N. slope, 15 ft. to top of mountain.

65.30 Draw, course W., ascend SW. slope, 210 ft. to  
 slope, 210 ft. to

78.00 Top of ascent, descend NW. slope, 30 ft. to top of mountain.

80.00 Set an iron post, 3 ft. long, 2 ins. in diam., 24 ins. in the ground, E. of cor. below 46 ch. point, for the cor. of secs. 19, 20, 29 and 30, marked on brass cap; 1914 on S. rim,  
 T14S S19 in NW.,  
 R28E S20 in NE.,  
 S29 in SE. and  
 S30 in SW. quadrant; from which, an oak, 12 ins. in diam., bears N.  $56^{\circ}$  E., 36 lks. dist., marked, T 14 S R 28 E S 20 B T .

Chains	
	<p>An oak, 6 ins. in diam., bears S. <math>68\frac{1}{2}^{\circ}</math> E., 149 lks. dist., marked, T 14 S. R. 28 E/S 29 B T .</p> <p>An oak, 8 ins. in diam., bears S. <math>29\frac{1}{2}^{\circ}</math> W., 53 lks. dist., marked, T 14 S R 28 E S 30 B T .</p> <p>An oak, 10 ins. in diam., bears N. <math>72^{\circ}</math> W., 32 lks. dist., marked, T 14 S R 28 E S 19 B T .</p> <p>Land, mountainous and rolling. Soil, rocky, lime formation, 4th rate. Timber, scattering oak and juniper. Undergrowth, scattering with patches of dense scrub oak, catclaw and mesquite.</p> <p style="text-align: right;">Aug. 14, 1914.</p>
	<p>Aug. 16, 1914; at 8h a.m., l.m.t., I set off <math>32^{\circ} 11\frac{1}{2}'</math> N. on the lat. arc; <math>13^{\circ} 54'</math> N. on the decl. arc; and determine with the solar a meridian at the cor. of secs. 19, 20, 29 and 30.</p> <p>Thence I run S. <math>89^{\circ} 58'</math> E., on a random line, bet. secs. 20 and 29.</p> <p>40.00 Set temp. <math>\frac{1}{4}</math> sec. cor.</p> <p>57.22 Stadia over steep, broken, cliffy S. slope, rod reading 9.390 ft., ratio 1 ft. = 2.00 chs., focal constant 1.025 ft., vertical angle <math>+12^{\circ}</math>, the distance is therefore, <math>9,390 \times 2 \times .9568 + .016 = 18.00</math> chs., which added to 57.22 chs. makes 75.22 chs.</p> <p>75.22 Rocky point.</p> <p>79.58 Intersect the N. and S. line, 14 lks. S. of the cor. of secs. 20, 21, 28 and 29.</p> <p>Thence I run, S. <math>89^{\circ} 56'</math> W., on a true line, bet. secs. 20 and 29.</p> <p>Ascend rocky, cliffy S. slope, through scattering timber &amp; undergrowth. Ascend rocky, cliffy, S. slope, 105 ft. to</p> <p>4.36 Rocky point, slopes S., 105 ft. above cor., continue over rocky, broken, cliffy, S. slope, descending, 250 ft. to</p> <p>22.50 Ridge, the divide bet. Sulphur Springs and San Simon valleys, bears N. and S., 250 ft. below rocky point, descend SW. slope.</p> <p>29.75 Head of draw, course SW.</p> <p>36.00 Draw, course SW., 200 ft. below ridge, asc. SE. slope, 140 ft.</p> <p>39.79 Set an iron post, 3 ft. long, 1 in. in diam., 6 ins. in the ground, on bed rock, supported by a mound of stone, for <math>\frac{1}{4}</math> sec. cor., marked on brass cap; 1914 on S. rim, <math>\frac{1}{4}</math>S20 on N. and S29 on S. half; raise a mound of stone, 2 ft. base, <math>1\frac{1}{2}</math> ft. high, N. of cor., pits impracticable.</p> <p>47.50 Spur ridge, slopes SW., desc. rolling NW. slope, 560 ft. to</p> <p>79.58 Cor. of secs. 19, 20, 29 &amp; 30. Note: at this cor. Aug. 16, 1914, I set off <math>13^{\circ} 50\frac{1}{2}'</math> N. on the decl. arc, &amp; at apparent noon, observe the sun on the mer., the resulting lat. is <math>32^{\circ} 12'</math> N.</p> <p>Land, mountainous. Soil, rocky, lime formation, 4th rate. Timber, scattering, oak, cedar and juniper. Undergrowth, scattering with patches of dense scrub oak, catclaw and mesquite.</p> <p>Aug. 17, 1914; I set off <math>13^{\circ} 40\frac{1}{2}'</math> N. on the decl. arc; and at apparent noon, observe the sun on the meridian; the resulting lat. is <math>32^{\circ} 12'</math> N., which is the correct lat.</p> <p style="text-align: right;">Aug. 16, 1914.</p>
	<p>West on a true line bet. secs. 19 and 30.</p> <p>3.60 Descend NW. slope, through scattering timber and undergrowth. Gulch, course SW., descend S. slope.</p> <p>5.80 Same gulch, course NW., descend N. slope.</p> <p>6.40 Same gulch, course SW., descend S. slope.</p> <p>10.70 Canyon, course SE., 175 ft. below cor., ascend SE. slope.</p> <p>27.15 Head of draw, course SE., ascend NE. slope, enter dense undergrowth, bears N. and S.</p> <p>40.00 Set an iron post, 3 ft. long, 1 in. in diam., 26 ins. in the ground, for <math>\frac{1}{4}</math> sec. cor., marked on brass cap; 1914</p>

Chains

- on S. rim  $\frac{1}{4}$ S19 on N. and S30 on S. half; from which a juniper 18 ins. in diam., bears N. 54° W., 23 lks. dist., marked  $\frac{1}{4}$  S 19 B T .
- An oak 5 ins. in diam., bears S. 89° E., 32 lks. dist., marked  $\frac{1}{4}$  S 30 B T .
- 41.00 Ridge, bears N. and S., 810 ft. above canyon, descend NW. slope, 125 ft. to
- 51.50 Head of draw, course NE., ascend. NE. slope, 170 ft. to
- 62.45 Spur ridge, slopes N., descend. SW. slope.
- 71.70 Descend W. slope.
- 79.02 Intersect the W. bdy. of the Tp., 411 lks. N. of the cor. of secs. 24 and 25, T. 14 S., R. 27 E., reestablish by means hereinafter described in notes of resurvey of part of W. bdy. of T. 14 S., R. 28 E. (At point of intersection, (410 ft. below ridge) I set an iron post 3 ft. long, 2 ins. in diam., 20 ins. in the ground, on bed rock, supported by a mound of stone, for closing corner of secs. 19 and 30, marked on brass cap 1914 on S. rim
- CC E. of center;
- T14S in N.,
- R27E S24 S25 in W. and
- R28E in E. half;
- S19 in NE. and
- S30 in SE. quadrant; from which an oak 8 ins. in diam., bears N. 28 $\frac{3}{4}$ ° E., 165 lks. dist., marked C C T 14 S R 28 E S 19 B T .
- An oak 18 ins. in diam., bears S. 52° E., 201 lks. dist., - marked C C T 14 S R 28 E S 30 B T .

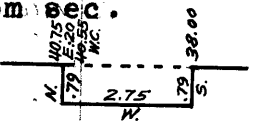
Land, mountainous.  
 Soil, rocky, lime formation, 4th rate.  
 Timber, scattering oak, juniper and cedar.  
 Undergrowth, east 27.15 chs. scattering, west 52 chs. dense scrub oak, catclaw and mesquite.

Aug. 16, 1914.

Aug. 8, 1914; at 10h. 10m. a.m., l.m.t., I set off 32° 13' N. on the lat. arc; 16° 16' N. on the decl. arc; and determine with the solar a meridian at the cor. of secs. 8, 9, 16 and 17.

Thence I run  
 West on a true line bet. secs. 8 and 17.  
 Along rocky N. slope, through scattering timber and undergrowth.

- 2.63 Stadia over sloping cliff, slopes N., bears N. 75° W. and S. 75° E., rod reading 1.120 ft., ratio 1 ft. = 2.00 chs., focal constant 1.025 ft., level, the distance is therefore 1.120 X 2 + .016 = 2.26 chs. which added to 2.63 chs. makes 4.89 chs.
- 4.89 Descend along N. slope, over granite boulders.
- 11.50 Gulch, course N., 70 ft. below cor., ascend NE. slope, 85 ft. to
- 18.00 Top of ascent, descend NW. slope, 40 ft. to
- 19.70 Canyon, course N., ascend rocky N. slope., 300 ft. to
- 38.00 Immense granite boulder, on line, on spur slopes NW., as it is impracticable to, ch over this boulder, I offset from sec. line,  
 South, 79 lks.,  
 West, 275 lks.,  
 North, 79 lks.,  
 East, 20 lks. returning on sec. line to
- 40.55 West side of granite boulder, where I set an iron post 3 ft. long, 1 in. in diam., 12 ins. in the ground, on bed rock, supported by a mound of stone, for wit. cor. to  $\frac{1}{4}$  sec. cor., marked on brass cap 1914 on S. rim  
 WC E. of center;  
 $\frac{1}{4}$ S8 on N. and  
 S17 on S. half; from which a cedar 10 ins.



## Partial subdivision of T. 14 S., R. 28 E.

Chains	
	in diam., bears S. $84\frac{1}{2}^{\circ}$ W., 101 lks. dist., marked W C $\frac{1}{4}$ S 17 B T .
	An oak 8 ins. in diam., bears N. $37^{\circ}$ W., 64 lks. dist., marked W C $\frac{1}{4}$ S 8 B T .
46.00	Descend W. slope, 30 ft. to Draw, course N., 30 ft. <b>Note:</b> at this point, Aug. 8, 1914; I set off $16^{\circ} 14\frac{1}{2}'$ N. on the decl. arc; and at apparent noon, observe the sun on the meridian; the resulting lat. is $32^{\circ} 13'$ N., which is the true lat. of the cor. of secs. 7, 8, 17 and 18.
59.50	Ascend NE. slope, 210 ft. to Ridge, bears N. and S., descend west slope, 360 ft. to
70.25	Gulch, course NW., continue along ridge, continue along steep N. slope.
75.50	Descend W. slope, 55 ft. to
78.75	Head of draw, course N., 30 ft. above 75.50 ch. point, ascend E. slope, 35 ft. to
80.00	Set an iron post 3 ft. long, 2 ins. in diam., 24 ins. in the ground, 30 ft. above draw, for the cor. of secs. 7, 8, 17 and 18, marked on brass cap 1914 on S. rim T14S S7 in NW., R28E S8 in NE., S17 in SE. and S18 in SW. quadrant; from which a cedar 8 ins. in diam., bears N. $67\frac{1}{2}^{\circ}$ W., 113 lks. dist., marked T 14 S R 28 E S 7 B T ., no other trees within limits, raise a mound of stone 2 ft. base, $1\frac{1}{2}$ ft. high, W. of cor., pits impracticable.
	Land, mountainous. Soil, rocky, granite formation, 4th rate. Timber, scattering oak, juniper and cedar. Undergrowth, scattering with patches of dense scrub oak, mesquite and catclaw.
	Aug. 8, 1914.
	Aug. 10, 1914; at 9h a.m., l.m.t., I set off $32^{\circ} 13'$ N. on the lat. arc; $15^{\circ} 42\frac{1}{2}'$ N. on the decl. arc; & determine a meridian with the solar gnomon at the cor. of secs. 7, 8, 17 and 18.
	Thence I run
7.75	West on a true line bet. secs. 7 and 18. through scattering timber & undergrowth. Ascend E. slope, 200 ft. to Spur ridge, slopes NW, descend, 200 ft, above cor., descend SW. slope, 320 ft. to
19.45	Canyon, course NW., ascend E. slope, 120 ft. to head of draw.
24.50	Spur, slopes N. descend W. slope, 100 ft. to head of draw.
29.50	Gulch, course NW., ascend NE. slope, 100 ft. to head of draw.
38.25	Head of draw, course NE., ascend W. slope.
40.00	Set an iron post 3 ft. long, 1 in. in diam., 14 ins. in the ground, on bed rock, supported by a mound of stone, for $\frac{1}{4}$ sec. cor., marked on brass cap 1914 on S. rim $\frac{1}{4}$ S7 on N. and S8 on S. half; from which an oak 8 ins. in diam., bears N. $33^{\circ}$ E., 123 lks. dist., marked $\frac{1}{4}$ S 7 B T .
	An oak 8 ins. in diam., bears S. $23\frac{1}{2}^{\circ}$ E., 226 lks. dist., marked $\frac{1}{4}$ S 18 B T .
46.10	Spur, slopes N., 400 ft. above gulch, descend W. slope, 100 ft. to
49.00	Head of draw, course NW., ascend, above spur, ascend NE. slope, 50 ft. to
53.00	Spur, slopes N., descend W. slope 110 ft. to head of draw.
58.00	Head of draw, course N., ascend NE. slope, ascend NE. slope.
64.00	Head of draw, course NE.,
66.50	Spur, slopes N., 135 ft. above 58 ch. point, descend NW. slope, 400 ft. to
77.75	Gulch, course NW., ascend NE. slope, 10 ft. to head of draw.
78.36	Intersect the W. bdy. of the Tp., 338 lks. North of the cor. of secs. 12 and 13, T. 14 S., R. 27 E. recently established by me as described in Book "A" in notes, of survey of completion of W. bdy. of T. 14 S., R. 28 E.

Partial subdivision of T. 14 S., R. 28 E.

Chains

At point of intersection set an iron post 3 ft. long, 2 ins. in diam., 15 ins. in the ground, on bed rock, supported by a mound of stone, for closing ~~chain~~ for ~~the~~ cor. of secs. 7 and 18, marked on brass cap 1914 on S. rim

CC E. of center;  
T14S in N.,  
R27E S12 S13 in W. and  
R28E in E. half;  
S7 in NE. and  
S18 in SE. quadrant; from which an oak 8 ins. in diam., bears N. 46° E., 36 lks. dist., marked C C T 14 S R 28 E S 7 B T .

An oak 12 ins. in diam., bears S. 79° E., 57 lks. dist., marked C C T 14 S R 28 E S 18 B T .

Land, mountainous.  
Soil, rocky, granite formation, 4th rate.  
Timber, scattering oak, juniper and cedar.  
Undergrowth, scattering with patches of dense scrub oak, mesquite and catclaw.

Aug. 10, 1914.

N. 0° 3' W., bet. secs. 7 and 8.  
Descend along rolling E. slope, through scattering timber and undergrowth.

6.00 Prospect tunnel, about 150 lks. East.  
20.00 Descend NE. slope.  
40.00 Set an iron post 3 ft. long, 1 in. in diam., 12 ins. in the ground, on bed rock, supported by a mound of stone, for  $\frac{1}{4}$  sec. cor., marked on brass cap 1914 on S. rim  $\frac{1}{4}$ S7 on W. and S8 on E. half; raise a mound of stone 2 ft. base,  $1\frac{1}{2}$  ft. high, W. of cor., pits impracticable. Aug. 8, 1914

Note: at this cor. Aug. 8, 1914.  
Aug. 10, 1914; I set off 15° 40' N. on the decl. arc; and at apparent noon, observe the sun on the meridian; the resulting lat. is 32° 13' N., which is the correct lat.

48.00 Foot of mountain, bears NW. and SE., 750 ft. below sec. cor. continue over gently rolling land, through dense undergrowth

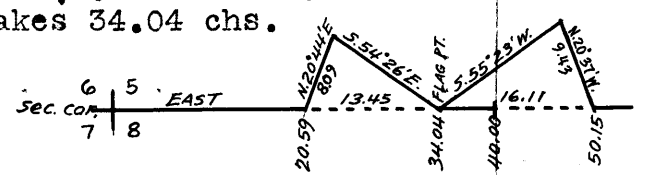
61.85 Wash, course NE., 15 lks. wide, 2 ft. deep.  
71.15 Wash, course NE., 15 lks. wide, 3 ft. deep.  
76.85 Wagon road, bears NE. and SW.  
77.85 Wash, 15 lks. wide, 2 ft. deep, course NE.  
80.00 Set an iron post 3 ft. long, 2 ins. in diam., 24 ins. in the ground, for the cor. of secs. 5, 6, 7 and 8, marked on brass cap 1914 on S. rim  
T14S S6 in NW.,  
R28E S5 in NE.,  
S8 in SE. and  
S7 in SW. quadrant; raise a mound of stone 2 ft. base,  $1\frac{1}{2}$  ft. high, W. of cor., pits impracticable. -  
Land, mountainous and rolling.  
Soil, on mountain, rocky, granite formation, 4th rate; ballance, sandy loam and gumbo, gravelly, 1st to 3rd rate.  
Timber, scattering oak, juniper and cedar.  
Undergrowth, dense scrub oak, catclaw and mesquite.

Aug. 8 and 10, 1914.

East on a random line bet. secs. 5 and 8.

20.59 Pt. of Tr., line flag on granite spur, East, and from Pt. of Tr., measure a base line N. 20° 44' E., 8.09 chs. to a point, whence the flag bears S. 54° 26' E., therefore, the dist., is  $\sin. 35^{\circ}34' : 8.09 :: \sin. 75^{\circ}10' : X$  or  $.96667 X 8.09 \div .58165 = 13.45$  chs. which added to 20.59 chs. makes 34.04 chs.

34.04 Flag on rocky spur,  
40.00 Set temp.  $\frac{1}{4}$  sec cor.



Chains

Pt. for Tr. on line E. of granite ridge, measure a base N. 20° 37' W., 9.43 chs. to a point, from which the flag on granite ridge bears S. 55° 23' W.; therefore, the dist., is  $\sin. 34^\circ 37' : 9.43 :: \sin. 76^\circ : X$  or  $.97030 X 9.43 = .56808 = 16.11$  chs., which added to 34.04 chs. makes 50.15 chs.

50.15 Pt. of Tr.

79.94 Intersect the N. and S. line, 3 lks. S. of the cor. of secs. 4, 5, 8 and 9.

Thence I run

S. 89° 59' W., on a true line bet. secs. 5 and 8.

Overgently rolling land, through dense undergrowth.

4.45 Wagon road, bears NW. and SE.

4.85 Wash, 15 lks. wide, 2 ft. deep, course NE.

31.00 Foot of granite spur, bears NW. and SE., ascend over broken cliffs, impossiable to chain.

45.90 Flag on top of granite spur, bears NW. and SE., 430 ft. above 31.ch. point,

Thence N. 89° 59' E., 593 lks. over broken cliffs to

39.97 Set an iron post 3 ft. long, 1 in. in diam., 20 ins. in the ground, on bed rock, supported by a mound of stone, for  $\frac{1}{4}$  sec. cor., marked on brass cap 1914 on S. rim  $\frac{1}{4}$ S5 on N. and S8 on S. half; from which an oak 15 ins. in diam., bears S. 4° W., 77 lks. dist., marked  $\frac{1}{4}$  S 8 B T ., no other trees available, raise a mound of stone 2 ft. base,  $1\frac{1}{2}$  ft. high, N. of cor., pits impracticable.

45.90 Descend SW. slope, over broken granite cliffs, impossible to chain.

59.35 Foot of spur, bears N. and S., 350 ft. below top of spur, Julian Navarretes house, bears South about 4 chs. dist., enter corn field, bears N. and S., continue over rolling land.

61.60 Wire fence, bears N. and S., leave corn field.

62.00 Wash, 30 lks. wide, 4 ft. deep, course N.

62.50 Ocatillo fence, bears N. and S.

63.60 Wire fence, bears NE. and SW.

67.90 Wagon road, bears NW. and SE.

68.00 Wash, 15 lks. wide, 2 ft. deep, course NE.

73.00 Wagon road, bears NE. and SW.

75.90 Wash, 20 lks. wide, 3 ft. deep, course NE.

79.94 The cor. of secs. 5, 6, 7 and 8.

Land, rolling and mountainous.

Soil, sandy loam and gumbo, gravelly, 1st to 3rd rate, except on spur, which is granite 4th rate.

Timber, scattering oak.

Undergrowth, dense scrub oak, catclaw, mesquite and cacti.

Aug. 10, 1914.

-----

Aug. 11, 1914; at 8h a.m., l.m.t., I set off 32° 14' N. on the dat. arc; 15° 26' N. on the decl. arc; and determine with the solar a meridian at the cor. of secs. 5, 6, 7 and 8.

Thence I run

West on a true line bet. secs. 6 and 7.

Over rolling land, through dense undergrowth.

.15 Wash, 300 lks. wide, 1 ft. deep course NE., (Happy camp wash.)

10.00 Foot of mountain, bears NE. and SW., ascend SE. slope.

19.75 Draw, course SE.

34.00 Ascend E. slope.

40.00 Set an iron post 3 ft. long, 1 in. in diam., 5 ins. in the ground, on bed rock, supported by a mound of stone, for  $\frac{1}{4}$  sec. cor., marked on brass cap 1914 on S. rim  $\frac{1}{4}$ S6 on N. and S7 on S. half; raise a mound of stone 2 ft. base,  $1\frac{1}{2}$  ft. high, N. of cor., pits impracticable.

44.00 Spur, slopes SE., 650 ft. above 10 ch. point, continue along rolling S. slope,

46.80 Head of draw, course SE.

58.00 Descend W. slope, 100 ft. to

Chains

62.15 Draw, course S., ascend SE. slope. point, ascend E. slope.

67.15 Draw, course SE., ascend E. slope.

77.60 Spur, slopes S., 270 ft. above 62.15 ch. point, descend W. slope, 10 ft. to

78.55 Intersect the W. bdy. of the Tp., 335 lks. North of the cor. of secs. 1 and 12, T. 14 S., R. 27 E., recently established by means described in Book "A" in notes, of survey of completion of the West bdy. of T. 14 S. R. 28 E. At point of intersection set an iron post 3 ft. long, 2 ins. in diam., 14 ins. in the ground, on bed rock, supported by a mound of stone, for closing corner for sec. 6 of secs. 6 and 7, marked on brass cap 1914 on S. rim

CC E. of center;  
 T14S in N.,  
 R28E in E. and  
 R27E S1 S12 in W. half;  
 S6 in NE. and  
 S7 in SE. quadrant; from which a cedar limb 8 ins. in diam., bears N. 24° E., 147 lks. dist., marked C C T 14 S R 28 E S 6 B T., no other trees within limits, raise a mound of stone 2 ft. base, 1½ ft. high, E. of cor.

Land, rolling and mountainous.  
 Soil, rocky, granite formation, 4th rate.  
 Timber, scattering oak, cedar and juniper.  
 Undergrowth, east 10 chs. dense, W. 68½ chs. scattering with patches of dense scrub oak, catclaw, mesquite and cacti.

Aug. 11, 1914.

N. 0° 3' W., on a true line bet. secs. 5 and 6.  
 Over rolling land, through dense undergrowth.

.15 Wash, 500 lks. wide, 10 ins. deep, course NE.

10.25 Wash, 15 lks. wide, 2 ft. deep, course NE.

13.75 Wash, 5 lks. wide, 2 ft. deep, course NE.

14.00 Leave dense enter scattering undergrowth, bears NE. and SW.

14.60 Wash, 15 lks. wide, 18 ins. deep, course E.

26.50 Wash, 30 lks. wide, 3 ft. deep, course NE.

40.00 Set an iron post 3 ft. long, 1 in. in diam., 18 ins. in the ground, on bed rock, supported by a mound of stone, for ¼ sec. cor., marked on brass cap 1914 on S. rim  
 ¼ S6 on W. and  
 S5 on E. half; raise a mound of stone 2 ft. base, 1½ ft. high, W. of cor., pits impracticable.

43.00 Descend, NE. slope 100 ft. to

57.10 Draw, course NE., continue over rolling land, slopes E.

62.00 Foot of mountain, bears NE. and SW., ascend along E. slope, 100 ft. to

74.12 Intersect the N. bdy. of the Tp., N. 89° 56' E., 438 lks. dist. from orig. cor. of secs. 31 and 32, T. 13 S., R. 28 E., hereinbefore described in my notes of retracing of N. bdy. of T. 14 S. R. 28 E. and with a view to hereinbefore described, I destroy all marks referring to the secs. on the S.; At point of intersection set an iron post, 3 ft. long, 2 ins. in diam., 24 ins. in the ground, for closing corner of sec. 5 of secs. 5 and 6, marked on brass cap 1914 on S. rim  
 CC S. of center;  
 T13S S31 S32 in N.,  
 R28E in W. and  
 T14S in S. half;  
 S5 in SE. and  
 S6 in SW. quadrant; raise a mound of stone 2 ft. base, 1½ ft. high, S. of cor., pits impracticable.

Land, rolling and mountainous.  
 Soil, rocky, granite formation, 3rd and 4th rate.  
 No timber.  
 Undergrowth, south 14 chs. dense, N. 60 chs. scattering with patches of dense, catclaw, mesquite and cacti.

Aug. 11, 1914

## General Description.

This township contains nearly every variety of land from plains to mountains, and the soil ranges from barren granite rocks to rich sandy loam. The soil on the plains is sandy loam and gumbo, gravelly in places, 1st to 3rd rate, capable of producing abundant crops with irrigation, dry farming is being tried with fairly good success. the soil on the mountains is rocky, 3rd and 4th rate, covered with a thin growth of nutritious grass.

There is a scattering growth of oak, cedar and juniper timber, on the mountains.

There are marble quarries in secs. 28, 29, 32 and 33, very little work having been done on them. The southern part of this township is a lime formation, with several prospect holes, some indication of mineral, the northern part of the township is a granite formation.

There are settlers in secs. 1, 3, 8, 9 and 10. The Riggs cattle company have wells with windmills in secs. 29 and 30, they also have a gasoline engine in pump house in sec. 30, there is a pipe line extending from the wells in a southeasterly direction about 3 miles to the -Z- ranch.

Secs. 16, 17, 18, 19, 20 and 21, did not survey on account of high, rugged mountains, there is no agricultural land in these sections.

*William B. Himmel,*

U.S. Surveyor.



152  
39

For FINAL OATH OF UNITED STATES SURVEYOR.  
See Book " D "

I, \_\_\_\_\_, U. S. Surveyor, do solemnly swear that, in pursuance of special instructions received from the U. S. Surveyor General for \_\_\_\_\_ bearing date of the \_\_\_\_\_ day of \_\_\_\_\_, 191 \_\_\_\_\_, I have well, faithfully, and truly, in my own proper person, and in strict conformity with said instructions, the Manual of Surveying Instructions, and the laws of the United States, surveyed all those parts or portions of \_\_\_\_\_ of the \_\_\_\_\_ Meridian, in the State of \_\_\_\_\_, which are represented in the foregoing field notes as having been executed by me, and under my direction; and I do further solemnly swear that all the corners of said survey have been established and perpetuated in strict accordance with the Manual of Surveying Instructions, and the special written instructions of the U. S. Surveyor General for \_\_\_\_\_ and in the specific manner described in the field notes, and that the foregoing are the original field notes of such survey.

U. S. Surveyor.

Subscribed by said \_\_\_\_\_, and sworn to before me }  
this \_\_\_\_\_ day of \_\_\_\_\_, 191 \_\_\_\_\_



APPROVAL.

OFFICE OF THE UNITED STATES SURVEYOR GENERAL,

Phoenix Arizona June 19 \_\_\_\_\_, 191 5

The foregoing field notes of the survey of \_\_\_\_\_ part of the Subdivision Lines \_\_\_\_\_ Retracement of North bdy., part of the South bdy., and part of the West bdy., Resurvey of parts of the North, South & West bdrs. and Retracement of the West bdy. of the Camp Bowie Military Reservation (Abandoned ) West of frac. sec. 33 of \_\_\_\_\_ Township 14 South Range 28 East \_\_\_\_\_ of the Gila & Salt River Base & Meridian in the State of Arizona

executed by William B. Kimmel U.S. Surveyor \_\_\_\_\_ under his special instructions dated December 30, 1913 for Group 26, ~~##~~ having been critically examined, and the necessary corrections and explanations made, the said field notes, and the retracements and resurveys surveys they describe, are hereby approved.

*Frank S. Ingalls*  
U. S. Surveyor General.  
of Arizona.

~~I certify that the foregoing transcript of the field notes of the above-described surveys in \_\_\_\_\_ has been correctly copied from the original notes on file in this office.~~