

2823

4-679

BOOK "Q"

BOOK 2823

JUN 12 1914

Comp. Ed. 13

①

FIELD NOTES

OF THE ~~RESURVEY~~
OF THE

East, South and West boundaries
of
Township 16 North ~ Range 2 West

of the Gila and Salt River Base & Meridian,

In the State of Arizona

EXECUTED BY

Sidney E. Blout

In the capacity of U. S. Surveyor..., under instructions dated April 28, 1913,
issued by the United States Surveyor General to govern surveys included in
Group No. 20, which were approved by the Commissioner of the General Land
Office, May 10, 1913, pursuant to authority contained in the Act of
~~Congress dated~~ 191

Resurvey commenced August 27, 1913

Resurvey completed September 3, 1913

14
1A

BOOK 2823

2823

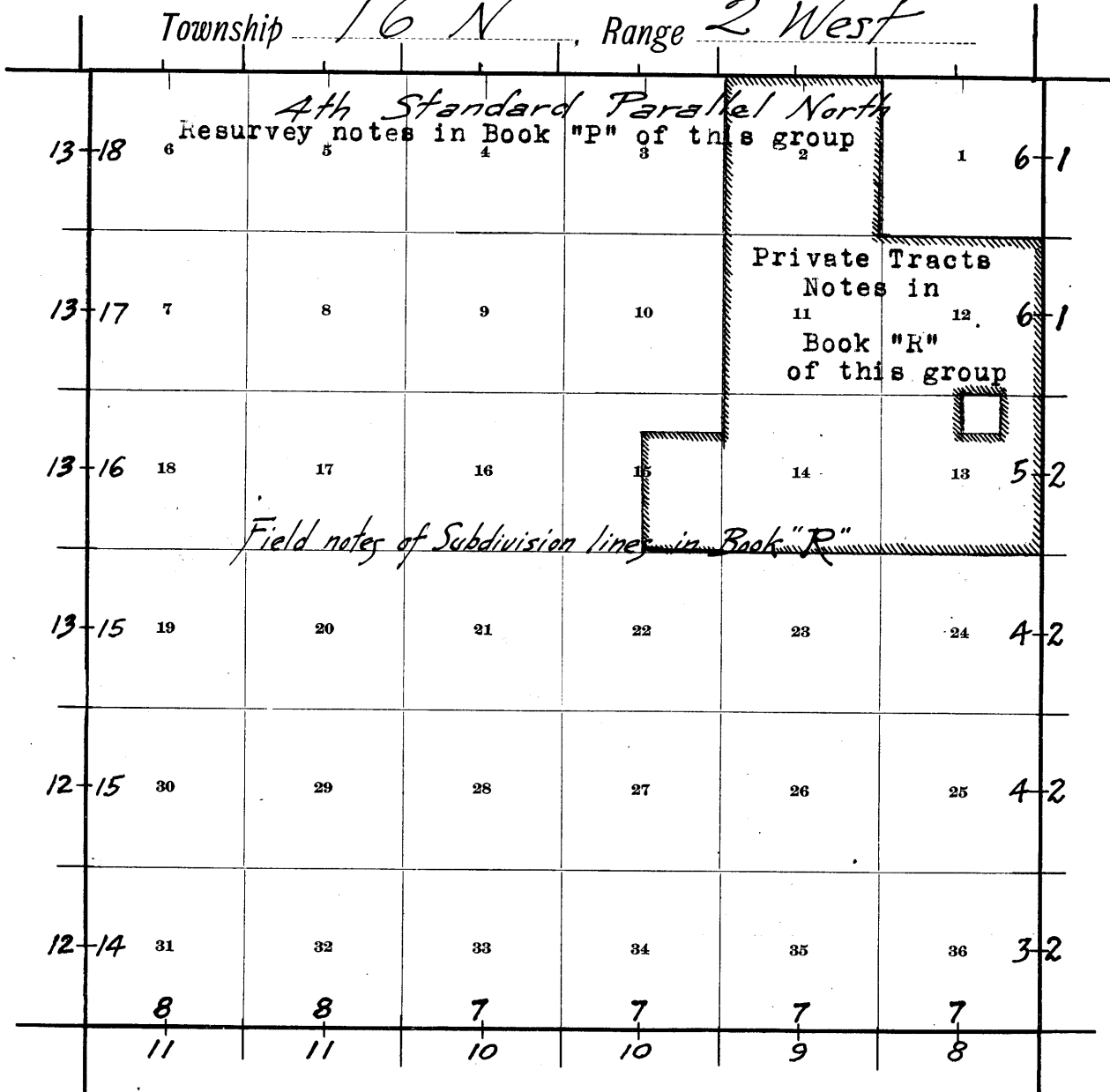
Book "Q"

Group 20

INDEX DIAGRAM.

Resurvey of EAST, SOUTH and WEST boundaries of

Township *16 N*, Range *2 West*



9 : Retracement notes indexed in Red figures

12 : Resurvey notes indexed in Black figures.

Retracement and Resurvey Boundaries of Tp. 16 N., R. 2 W. 1.B

Chains.

Retracement and resurvey of the east, west and south boundaries of T. 16 N., R. 2 W., as described in the field notes in this Book, commenced August 27, 1913, and executed with a Young and Sons' light mountain transit No. 10, with a Smith solar attachment. The horizontal limb being provided with two double verniers, placed opposite to each other, reading to single minutes of arc, which is also the least count of the verniers of the latitude and declination arcs.

I examine the adjustments of the transit, and find them to be correct, and from recent tests of the solar apparatus by comparing its indications resulting from solar observations, made during a.m. and p.m. hours, with a meridian established by observations on Polaris, I know that the instrument is in satisfactory adjustment. All measurements were made with a 5.00 chain steel tape with clinometer for determining the slope angles.

Retracement of the East bdy. of Township 16 N., R. 2 West.

August 27, 1913. At 7h. 01.5m. a.m., l.m.t., at the original closing cor. of Ts. 16 N., Rs. 1 and 2 W. on the 4th. Standard Parallel N., which is a granite stone 24x18x14 ins. set firmly in a mound of stone, marked, C C on S. face, with 6 grooves on E., S. and W. faces, with a mound of stone 2 ft. base, 1½ ft. high, S. of cor.; latitude, 34°49'03"N.; longitude, 112°24'46"W. I set off 34°49'N. on the lat. arc; 10°11'N. on the decl. arc; and determine a meridian with the solar.

Thence I run,

South, on a random line, on east bdy. of sec. 1.

40.28 I make a diligent search for the original ¼ sec. cor., which I fail to find. Continue line and measurement.

80.28 No trace of the original cor. of secs. 1, 6, 7 and 12 can be found after a diligent search. Set temp. cor. at this point.

From the temp. cor. of secs. 1, 6, 7 and 12, I run, South, on a random line on east bdy. of sec. 12.

45.70 Fall 61 lks. east of a pine post 4 ft. long, 4 ins. square, marked ¼ on W. face, with trace of 2 pits. This cor. agrees with the fence lines in the townships on the east and west, and with the fence lines which run south from this point, and which is accepted as marking the township boundary; therefore, I accept this post as marking the point for the original ¼ sec. cor.

True course and dist. of line from this ¼ sec. cor. to the Tp. closing cor. is therefore N. 0°17'E., 125.98 chs.

From above described ¼ sec. cor., I run,

South on a random line on south half of E. bdy. of sec. 12.

40.00 Fall 4 lks. west of a pine post 4 ft. long, 4 ins. sq., marked with 2 notches on S. edges, with trace of 3 pits. This post agrees with the accepted property lines in the townships east and west of the line; therefore, I accept this post as marking the position of the original cor. of secs. 7, 12, 13 and 18.

True course and dist. of south half of east bdy. of sec. 12, is therefore N. 0°3'W., 40.00 chs.

2. Retracement of the East bdy. of Tp. 16 N. R. 2 West.

Chains.

- From the post I run,
South, on a random line on east bdy. of sec. 13.
- 40.02 Fall 4 lks. west of a cedar stake 3 ft. long, 3 ins. sq., loosely set, marked U V $\frac{1}{4}$ on W. face; no trace of pits or mound. Although this cor. cannot be identified as being the original cor., its position agrees with the accepted property lines in the townships on the east and west of the line. Therefore, I accept it as marking the original location of the $\frac{1}{4}$ sec. cor.
True course and dist. of north half of east bdy. of sec. 13 is therefore N. 0° 3' W., 40.02 chs.
From the post just found, I run,
South, on a random line on south half of east bdy. of sec. 13.
- 39.98 Fall 5 lks. west of the evident remains of the original cor. of secs. 13, 18, 19 and 24, which is a stake 2 ins. in diam., broken off at the surface of the ground, and as this stake agrees with the accepted property lines in the townships east and west of the line, as defined by existing fence lines, I accept this stake as marking the point for the original cor. of secs. 13, 18, 19 and 24.
True course and dist. of south half of east bdy. of sec. 13, is therefore N. 0° 3' W., 39.98 chs.
-
- From the point for cor. of secs. 13, 18, 19 and 24, described above, I run,
South, on a random line on east bdy. of sec. 24.
- 39.95 Fall 71 lks. west of the original $\frac{1}{4}$ sec. cor., which is a granite stone 7x6x5 ins., lying in a small depression, marked $\frac{1}{4}$ on lower face. No cor. accessories visible.
True course and dist. of N. half of E. bdy. of sec. 24 is therefore N. 1° 1' W., 39.96 chs.
- From the $\frac{1}{4}$ sec. cor. just found, I run,
South, on a random line on S. half of east bdy. of sec. 24.
- 40.03 Fall 71 lks. west of remains of the original cor. of secs. 19, 24, 25 and 30, which consists of the remains of 3 pits, and as a point midway between the pits agrees with existing property lines in Tp. 16 N., R. 1 W., I accept this point as the original location of the cor. of secs. 19, 24, 25 and 30.
True course and dist. of S. half of E. bdy. of sec. 24, is therefore N. 1° 1' W., 40.04 chs.
Note: At this cor., I set off 10° 06' (N. on the decl. arc; and at apparent noon, observe the sun on the meridian; and obtain a reading of 34° 45' N. on the lat. arc.
-
- From the accepted point for cor. of secs. 19, 24, 25 and 30, described above, I run,
South, on a random line on east bdy. of sec. 25.
- 40.00 No trace of the original $\frac{1}{4}$ sec. cor. can be found. Set temp. $\frac{1}{4}$ sec. cor., and continue line and measurement.
- 80.00 No trace of the original cor. of secs. 25, 30, 31 and 36 can be found after a diligent search. Set temp. sec. cor. at this point.
-
- Continue line and measurement, on east bdy. of sec. 36.
- 120.00 No trace of the original $\frac{1}{4}$ sec. cor. can be found after a diligent search. Set temp. $\frac{1}{4}$ sec. cor., and continue line and measurement.
- 159.53 Fall 286 lks. W. of the original cor. of Ts. 15 and 16 N.,

Retracement of East bdy. of Township 16 North Range 2 West 3

Chains.

Rs.1 and 2 W., which is a granite stone 18x8x6 ins., loosely set in a small mound of stone, marked with 6 notches on N., E., S. and W. edges; no corner accessories visible.

True course and dist. of line from this Tp. cor. to the accepted point for cor. of secs. 19, 24, 25 and 30 is therefore N.1° 1' W., 159.56 chs. Aug. 27, 1913.

I find from my retracement of this bdy. above described that very few of the original cors. are in existence, but that in subsequent retracements of the line, made by local surveyors, presumably at a time when evidence of the original corners could be found, posts marking many of the corners have been set, all corners have been set, and as these corner posts agree with the accepted property lines, and accepted by the settlers, I accept them as the best evidence of the location of the original corners obtainable; therefore, I resurvey the east bdy. of T. 16 N., R. 2 W., reestablishing the defective original corners, and points accepted for corners in their present position, and reestablishing the remaining lost or obliterated corners on true lines between existing corners, at distances proportional to the distances shown on the original plat, described as follows:

Sept. 2, 1913:

The original cor. of Ts. 15 and 16 N., Rs. 1 and 2 W. being being in a dilapidated condition, I destroy said cor., and reestablish it in the same place as follows:

Set an iron post 3 ft. long, 3 ins. in diam., 24 ins. in the ground for cor. of Ts. 15 and 16 N., Rs. 1 and 2 W., marked on brass cap,

1913 in S. rim;

T. 16 N in N.,

R 1 W in E.,

T 15 N in S., and

R 2 W in W. half;

S 36 in NW.,

S 31 in NE.,

S 6 in SE., and

S 1 in SW. quadrant;

raise a mound of stone 2 ft. base, 1½ ft. high, S. of cor. Pits impracticable.

At this cor., at 7h. 00m. a.m., l.m.t., I set off 34° 43' N. on the lat. arc; 8° 03' N. on the decl. arc; and determine a meridian with the solar.

The magnetic bearing of the meridian at 7 a.m., is N. 14° 15' W.; the angle thus determined gives the magnetic decl. 14° 15' E.

Thence I run, as per result of retracement, N. 1° 01' W. on a true line, bet. secs. 31 and 36.

Over rolling, sandy, prairie land.

35.92 Telephone line from Prescott, Arizona to Ash Fork, brs. N. 3½ E. and S. 3½ W.

39.89 (Proportional distance). Set an iron post 3 ft. long, 1 in. in diam., 26 ins. in the ground for reestablished ¼ sec. cor., marked on brass cap,

1913 in S. rim;

¼ S 36 in W. and

S 31 in E. half;

dig pits 18x18x12 ins., N. and S. of post, 3 ft. dist., and raise a mound of earth 3½ ft. base, 1½ ft. high, west of cor.

50.10 Same telephone line, brs. NW. and SE.

79.78 (Proportional distance). Set an iron post 3 ft. long, 3 ins. in diam., 24 ins. in the ground, for reestablished cor. of secs. 25, 30, 31 and 36, marked on brass cap,

T 16 N in N. half;

R 2 W S 25 in NW.,

R 1 W, S 30 in NE.,

S 31 in SE., and

S 36 in SW. quadrants;

Resurvey of East hdy. of Township 16 North, Range 2 West.
Chains.

dig pits 18x18x12 ins., in each sec. $5\frac{1}{2}$ ft. dist., and raise a mound of earth 4 ft. base, 2 ft. high, W. of cor.

Land, rolling prairie south slope.
Soil, light sandy loam, 12 to 18 ins. deep, dry, on gravelly clay subsoil.
Good growth bunch grass.
No timber.

From the cor. of secs. 25, 30, 31 and 36, I run, N. $1^{\circ}01'$ W., on a true line, bet. secs. 25 and 30.
Over rolling, sandy prairie land.

18.25 Old road brs. NW. and SE.
39.89 (Proportional distance). Set an iron post 3 ft. long, 1 in. in diam., 26 ins. in the ground for $\frac{1}{4}$ sec. cor., marked on brass cap,
 $\frac{1}{4}$ S 25 in W. half; and
 $\frac{1}{4}$ S 30 in E. half; 1913 in S. rim;
dig pits 18x18x12 ins., N. and S. of post, 3 ft. dist., and raise a mound of earth $3\frac{1}{2}$ ft. base, $1\frac{1}{2}$ ft. high, west of cor.

79.78 Intersect the point for the original cor. of secs. 19, 24, 25 and 30, hereinbefore described, at which point, I now reestablish the cor. as follows:
Set an iron post 3 ft. long, 3 ins. in diam., 24 ins. in the ground for cor. of secs. 19, 24, 25 and 30, marked on brass cap,
1913 in S. rim,
T 16 N in N. half;
R 2 W S 24 in NW.,
R 1 W S 19 in NE.,
S 30 in SE., and
S 25 in SW. quadrants;
dig pits 18x18x12 ins., in each sec. $5\frac{1}{2}$ ft. dist., and raise a mound of earth 4 ft. base, 2 ft. high, W. of cor. The new pits obliterate the old ones.
Land, high rolling prairie, south slope.
Soil, light gravelly loam, 12 to 14 ins. deep on clay subsoil, dry; light growth bunch grass.
No timber.

From the reestablished cor. of secs. 19, 24, 25 and 30, I run, N. $1^{\circ}01'$ W. on a true line, bet. secs. 19 and 24.
Over high rolling prairie land.

30.00 Top of gravelly ridge, brs. NE. and SW.; descend N. slope.
40.04 Intersect the original $\frac{1}{4}$ sec. cor. hereinbefore described, this cor. being in a state of dilapidation, I destroy, and reestablish it in the same place as follows:
Set an iron post 3 ft. long, 1 in. in diam., 26 ins. in the ground for $\frac{1}{4}$ sec. cor., marked on brass cap,
1913 in S. rim;
 $\frac{1}{4}$ S 24 in W., and
 $\frac{1}{4}$ S 19 in E. half;
raise a mound of stone 2 ft. base, $1\frac{1}{2}$ ft. high, W. of cor. Pits impracticable.

79.98 Road to Jerome Junction, Arizona, brs. NW. and SE.
80.00 Intersect the evident remains of the old cor. of secs. 13, 18, 19 and 24, hereinbefore described, which I now destroy, and in the same place, reestablish the cor. as follows:
Set an iron post 3 ft. long, 3 ins. in diam., 24 ins. in the ground for cor. of secs. 13, 18, 19 and 24, marked on brass cap,
T 16 N in N. half;
R 2 W, S 13 in NW.,
R 1 W, S 18 in NE.,

Resurvey of East bdy. of Township 16 North, Range 2 West. 5.

Chains.

S 19 in SE., and
S 24 in SW. quadrant;
1913 in S.rim.

This cor. falls at the cor. of wire fence, and so near the road that to construct corner accessories would interfere with travel; therefore, I omit the same.

From this cor. C. M. Mutchler's house brs.N.12° 05'W. J. Swiger's house brs.N.2°25'E. & E.B. Mutchler's house brs.N. South 60.00 chs., high rolling prairie land. (19°10'E. Soil, gravelly loam, some stone 12 ins. deep, dry on gravelly clay and stony subsoil.

Good growth bunch grass.
North 20.00 chs. rolling, nearly level.
Soil, medium rich sandy loam, 8 to 12 ins. deep, dry, on clay subsoil.
No timber.

From the reestablished cor. of secs. 13, 18, 19 and 24, I run, N.0°03' W., on a true line, bet. secs. 13 and 18. Over nearly level sandy prairie land, along wire fence, brs. N. and S.

29.15 Road from Jerome Junction, Arizona, to C.M. Muchler's house, brs. NW. and SE.

39.98 Intersect the post accepted as marking the position of the original 1/4 sec. cor., as hereinbefore described. I remove this post, and in the same place, reestablish the cor. as follows:

Set an iron post 3 ft. long, 1 in. in diam., 26 ins. in the ground for 1/4 sec. cor., marked on brass cap, 1913 in S.rim;
1/4 S 13 in W., and
1/4 S 18 in E. half;

dig pits 18x18x12 ins., N. and S. of post, 3 ft. dist., and raise a mound of earth 3 1/2 ft. base, 1 1/2 ft. high, west of cor.

This cor. is situated on wire fence, line brs. west. From this cor., C.M. Muchler's house brs. N. 80°15'W. J. Swiger's house brs. N. 64°35'E., and E.B. Muchler's house brs. S. 39°10'E.

60.00 Cor. of wire fence, brs. west and south.

69.80 Center of the United Verde and Pacific Railroad tract, narrow gauge, brs. N. 86 1/2° E. and S. 86 1/2° W.

70.68 Telegraph line from Jerome Junction to Jerome, Arizona, brs. N. 86 1/2° E. and S. 86 1/2° W.

70.80 Road to Jerome, Junction, Arizona, brs. E. and W.

79.95 Old road to Jerome Junction, brs. NE. and SW.

80.00 Intersect the post accepted for the original cor. of secs. 7, 12, 13 and 18, as hereinbefore described. I remove this post, and in the same place, reestablish the cor. as follows:

Set an iron post 3 ft. long, 3 ins. in diam., 24 ins. in the ground for cor. of secs. 7, 12, 13 and 18, marked, on brass cap,

1913 in S.rim;
T 16 N in N. half;
R 2 W S 12 in NW.,
R 1 W S 7 in NE.,
S 18 in SE., and
S 13 in SW. quadrant;

dig pits 18x18x12 ins., in each sec. 5 1/2 ft. dist., and raise a mound of earth 4 ft. base, 2 ft. high, west of cor.

From this cor., a vacant house brs. N. 34° 45'E.

Land, nearly level, gentle NW. slope.

Soil, rich sandy loam, with some adobe clay, very fine and dry, 12 ins. deep on clay subsoil.

Light growth bunch grass. No timber.

6. Resurvey of the East bdy of Township 16 North Range 2 W
Chains.

- From the reestablished cor. of secs. 7, 12, 13 and 18, I run, N. 0° 03' W., on a true line, on south half, bet. secs. 7 and 12.
- Over level, sandy land, through scattering greasewood brush undergrowth, 2 ft. high.
- 40.00 Intersect the post accepted as the original position of the original $\frac{1}{4}$ sec. cor., as hereinbefore described. I remove this post, and in the same place, reestablish the cor. as follows:
Set an iron post 3 ft. long, 1 in. in diam., 26 ins. in the ground for $\frac{1}{4}$ sec. or., marked on brass cap,
1913 in S. rim;
 $\frac{1}{4}$ S 12 in W., and
S 7 in E. half;
dig pits 18x18x12 ins., N. and S. of post, 3 ft. dist., and raise a mound of earth $3\frac{1}{2}$ ft. base, $1\frac{1}{2}$ ft. high, W. of cor.
- From this cor., a deserted house brs. S. 17° 15' E.
- From the reestablished $\frac{1}{4}$ sec. cor., I run, continuing measurement,
N. 0° 07' E., on a true line on N. $\frac{1}{4}$, bet. secs. 7 and 12. (Proportional distance). Set an iron post 3 ft. long, 3 ins. in diam., 24 ins. in the ground for reestablished cor. of secs. 1, 6, 7 and 12, marked on brass cap,
1913 in S. rim,
T 6 N in N. half;
R 2 W S 1 in NW.,
R 1 W S 6 in NE.,
S 7 in SE., and
S 12 in SW. quadrants;
dig pits 18x18x12 ins. in each sec. $5\frac{1}{2}$ ft. dist., and raise a mound of earth 4 ft. base, 2 ft. high, west of cor.
- Land, level prairie.
Soil, light, sandy loam, soft, dry on clay subsoil, depth of soil about 14 ins.; light growth bunch grass.
No timber.
-
- From the reestablished cor. of secs. 1, 6, 7 and 12, I run, N. 0° 17' E. on a true line, bet. secs. 1 and 6.
- Over nearly level, sandy prairie land, through scattering greasewood brush undergrowth, 2 ft. high.
- 15.72 Old road to Jerome Junction, Arizona, brs. N. 60° E. and S. 60° W.
- 18.90 Branch of the same road brs. N. 50° E. and S. 50° W.
- 41.89 (Proportional distance). Set an iron post 3 ft. long, 1 in. in diam., 26 ins. in the ground for reestablished $\frac{1}{4}$ sec. cor., marked on brass cap,
1913 in S. rim;
 $\frac{1}{4}$ S 1 in W., and
S 6 in E. half;
dig pits 18x18x12 ins., N. and S. of post, 3 ft. dist., and raise a mound of earth $3\frac{1}{2}$ ft. base, $1\frac{1}{2}$ ft. high, west of cor.
- 45.40 Gulch, 10 lks. wide, 3 ft. deep, course N. 70° W.
- 78.50 Foot of granite ridge, brs. N. 60° W. and S. 60° E.; leave rolling sandy land; ascend SW. slope, over hilly, stony land.
- 84.09 Intersect the original closing cor. of Ts. 16 N., Rs. 1 and 2 W., hereinbefore described, from which cor. the original standard cor. of Ts. 17 N., Rs. 1 and 2 W., described by me in Book "P," brs. west 201 lks. dist. S. 78.50 chs. nearly level prairie land, west slope. Soil, light, poor dry sandy loam, 8 to 14 ins. deep on dry clay and marl subsoil.
Light growth bunch grass.
North, 5.60 chs. hilly; no soil. No timber.

Resurvey of East boundary of Township 16 North Range 2 W. 7.

Chains.

At the original closing cor. of Ts.16 N., Rs. 1 and 2 W., I set off 7°57' N. on the decl. arc; and at apparent noon, observe the sun on the meridian, and obtain a reading of 34° 49' N. on the latitude arc.
September 2, 1913.

Retracement of the South bdy. of Township 16 N., R. 2 W.

Aug. 28, 1913. At 7h. 31.2m. a.m., l.m.t., at the original cor. of Ts.15 and 16 N., Rs.1 and 2 W., which is a granite stone 18x8x6 ins., loosely set in a small mound of stone, marked with 6 notches on N., E., S. and W. edges. No cor.accessories visible. Latitude, 34°43' 15"; longitude, 112° 24' 46"W., I set off 34°43' N., on the lat. arc; 9°49½' N. on the decl. arc; and determine a meridian with the solar.

Thence I run, S.89°57'W. (original course) on a random line on south bdy. of sec.36.

40.12 Fall 5 lks. S. of the original ¼ sec. cor., which is a red granite stone 10x5x5 ins., loosely set in a small mound of stone, marked ¼ on S. face. No cor.accessories visible.

True course and dist. of east half of S. bdy. of sec.36 is therefore N.89° 59'W., 40.12 chs.

From the ¼ sec. cor. above described, I run, S.89°57'W. on west half of south bdy. of sec.36.

40.05 Fall 38 lks. south of the original cor. of secs.1,2,35 and 36, which is a granite stone 8x4x3 ins. lying on a small mound of stone, marks nearly obliterated. No corner accessories visible.

True course and dist. of west half of south bdy. of sec. 36 is therefore N.89° 30'W., 40.05 chs.

From the original cor. of secs.1,2,35 and 36, I run, S.89°57'W. on a random line on south bdy. of sec.35.

74.00 Make diligent search for the original ¼ sec. cor., which I fail to find. Set temp. cor., and continue line and measurement.

80.00 Make diligent search for original cor. of secs.2,3,34 and 35, but fail to find any trace of same. Set temp. cor. to said secs.

Continue line and measurement on south bdy. of sec.34.

120.00 Make diligent search for original ¼ sec. cor., but fail to find any trace of same.

Set temp. ¼ sec. cor. at this point, and continue line and measurement.

160.00 Make diligent search for original cor. of secs.3,4,33 and 34, but find no trace of same.

Set temp. cor. to said secs. at this point and measurement.

Continue line and measurement on south bdy. of secs.33.

200.00 Make diligent search for original ¼ sec. cor., but find no trace of same. Set temp. ¼ sec. cor. & continue line and measurement.

240.00 Make diligent search for original cor. of secs.4,5,32 and 33, but find no trace of same.

Set temp. cor. to said secs. at this point.

8. Retracement of South bdy of Township 16 North Range 2 West 1 Chains.

280.00 Continue line and measurement on south bdy. of sec. 32. Make diligent search for original $\frac{1}{4}$ sec. cor., but find no trace of same.
 320.00 Set temp. $\frac{1}{4}$ sec. cor., and continue line and measurement. Make diligent search for original cor. of secs. 5, 6, 31 and 32, but find no trace of same. Set temp. cor. to said secs. at this point,

360.00 Continue line and measurement on south bdy. of sec. 31. Make diligent search for original $\frac{1}{4}$ sec. cor., but find no trace of same.
 412.43 Set temp. $\frac{1}{4}$ sec. cor., and continue line and measurement. Fall 4.08 chs. N. of the original cor. of Ts. 15 and 16 N., Rs. 2 and 3 W., which is a black malpais stone 26x18x14 ins., lying on small mound of stone, marked with 6 notches on 4 edges; marks almost obliterated. True course and dist. of south bdy. of T. 16 N., R. 2 W., from original cor. of secs. 1, 2, 35 and 36 to this Tp. cor. is therefore S. 89° 23' W., 412.45 chs.

Aug. 28, 1913.

I find from the above described retracement of this line, that nearly all the original cors. have become lost or obliterated, and that the few that were found are in a state of dilapidation; therefore, I return to the original cor. of Ts. 15 and 16 N., Rs. 1 and 2 W., and resurvey the south bdy. of T. 16 N., R. 2 W., reconstructing the defective corners in their original positions, and reestablishing the remaining lost or obliterated corners on true lines between existing corners at distances proportional to the distances shown on the original plat, as described in the following notes.

Resurvey of the South bdy. of Township 16 N., Range 2 W.

September 3, 1913: I set off 34° 43' N. on the lat. arc; 7^h 41' N. on the decl. arc; and at 7h.00m. a.m., l.m.t., determine a meridian with the solar at the cor. of Ts. 15 and 16 N., Rs. 1 and 2 W., reestablished by me, as hereinbefore described.
 Thence I run, as per results of retracement, N. 89° 59' W., on a true line, on east half, bet. secs. 1 and 36.
 Over level sandy prairie land.
 2.85 Telephone line to Prescott, Arizona, brs. N. 20° E. and S. 20° W.
 4.50 Center of the S.F.P. & P. Ry. track brs. N. 20° E. and S. 20° W.
 5.10 Telegraph line brs. N. 20° E. and S. 20° W.
 5.60 Road from Jerome junction to Prescott, Arizona, brs. N. 20° E. and S. 20° W.
 9.30 Automobile road from Ash Fork to Prescott, Arizona, brs. NE and SW.
 40.12 Intersect the original $\frac{1}{4}$ sec. cor. hereinbefore described, which I destroy, and reestablish in the same place as follows:
 Set an iron post 3 ft. long, 1 in. in diam., 26 ins. in the ground for $\frac{1}{4}$ sec. cor., marked on brass cap, 1913 in E. rim, $\frac{1}{4}$ S 36 in N., and S 1 in S. half;
 raise a mound of stone 2 ft. base, 1 $\frac{1}{2}$ ft. high, N. of cor. Pits impracticable.
 From the reestablished $\frac{1}{4}$ sec. cor., I run, continuing measurement.

Chains.

- 80.17 N.89°30'W., on a true line, on W. half, bet. secs. 1 and 36. Intersect the original cor. of secs. 1, 2, 35 and 36, hereinbefore described, which I destroy and reestablish in the same place as follows:
Set an iron post 3 ft. long, 3 ins. in diam., 24 ins. in the ground for cor. of secs. 1, 2, 35 and 36, marked on brass cap,
1913 in S. rim;
T 16 N in N.,
T 15 N in S., and
R 2 W in W. half;
S 35 in NW.,
S 36 in NE.,
S 1 in SE., and
S 2 in SW. quadrants;
dig pits 18x18x12 ins., in each sec. 5½ ft. dist., and raise a mound of earth 4 ft. base, 2 ft. high, W. of cor.
Land, rolling prairie.
Soil, light, dry sandy loam, with some gravel, 12 ins. deep on clay subsoil.
Good growth bunch grass.
No timber.
-
- From the reestablished cor. of secs. 1, 2, 35 and 36, I run, S.89°23'W., on a true line, bet. secs. 2 and 35.
Over rolling, sandy, prairie land, slopes to the NW., through scattering greasewood brush undergrowth, 2 ft. high.
- 12.90 Old road to Jerome Junction, Arizona, brs. NE. and SW. Do-
- 20.60 Dry ravine, 12 lks. wide, 3 ft. deep, course NW.; ascend gently over NE. slope of sand ridge.
- 34.00 Top of sandy ridge, brs. NW. and SE. Descend gently.
- 41.39 (Proportional distance) Set an iron post 3 ft. long, 1 in. in diam., 26 ins. in the ground for reestablished ¼ sec. cor., marked on brass cap,
1913 in S. rim,
¼ S 35 in N., and
S 2 in S. half;
dig pits 18x18x12 ins., E. and W. of post, 3 ft. dist., and raise a mound of earth 3½ ft. base, 1½ ft. high, N. of cor.
- 41.60 Dry ravine, 15 lks. wide, 3 ft. deep, course north. Ascend gentle east slope.
- 66.10 Road to Jerome Junction, Arizona, brs. N. and S.
- 82.78 (Proportional distance). Set an iron post 3 ft. long, 3 ins. in diam., 24 ins. in the ground for reestablished cor. of secs. 2, 3, 34 and 35, marked on brass cap,
1913 in S. rim;
T 16 N in N.,
T 15 N in S., and
R 2 W in W. half;
S 34 in NW.,
S 35 in NE.,
S 2 in SE., and
S 3 in SW. quadrants;
dig pits 18x18x12 ins., in each sec. 5½ ft. dist., and raise a mound of earth 4 ft. base, 2 ft. high, W. of cor.
Land, rolling N. slope.
Soil, rich sandy loam, 12 ins. deep, dry on clay subsoil.
Good growth bunch grass.
No timber.
-

10. Resurvey of the South hdy. of Township 16 North Range 2 W.
Chains.

- From the reestablished cor. of secs. 2, 3, 34 and 35, I run, S. 89° 23' W., on a true line, bet. secs. 3 and 34.
Over rolling, sandy prairie land, through scattering greasewood brush undergrowth 3 ft. high.
- 3.97 Long distance telephone line, brs. N. and S.
5.00 Top of sand ridge, brs. N. and S.; descend gentle west slope.
- 20.12 Dry ravine, 10 lks. wide, 3 ft. deep, course N. 30° E.
28.90 Road from Jerome Junction to Prescott, Arizona, brs. N. and S.
- 29.32 Water pipe line from Del Rio to Prescott, Arizona, brs. N. and S.
29.82 Electric Power line from Prescott, to Del Rio, Arizona, brs. N. and S.
- 41.39 (Proportional distance). Set an iron post, 3 ft. long, 1 ins. in diam., 26 ins. in the ground for $\frac{1}{4}$ sec. cor., marked on brass cap,
1913 in S. rim,
 $\frac{1}{4}$ S 34 in N., and
S 3 in S. half;
dig pits 18x18x12 ins., E. and W. of post 3 ft. dist., and raise a mound of earth $3\frac{1}{2}$ ft. base, $1\frac{1}{2}$ ft. high, north of cor.
- 82.78 (Proportional distance) Set an iron post 3 ft. long, 3 ins. in diam., 24 ins. in the ground for reestablished cor. of secs. 3, 4, 33 and 34, marked on brass cap,
1913 in S. rim;
T 16 N in N.,
T 15 N in S., and
R 2 W in W. half;
S 33 in NW.,
S 34 in NE.,
S 3 in SE., and
S 4 in SW. quadrants;
dig pits 18x18x12 ins., in each sec. $5\frac{1}{2}$ ft. dist., and raise a mound of earth 4 ft. base, 2 ft. high, west of cor.
Land, rolling prairie N. slope.
Soil, rich, sandy loam, 12 ins. deep, dry on clay subsoil.
Good growth bunch grass.
No timber.
-
- From the reestablished cor. of secs. 3, 4, 33 and 34, I run, S. 89° 23' W., on a true line, bet. secs. 4 and 33.
Over rolling, sandy prairie land, through scattering greasewood brush undergrowth, 2 ft. high.
- 41.39 (Proportional distance) Set an iron post 3 ft. long, 1 in. in diam., 26 ins. in the ground for reestablished $\frac{1}{4}$ sec. cor., marked on brass cap,
1913 in S. rim;
 $\frac{1}{4}$ S 33 in N., and
S 4 in S. half;
dig pits 18x18x12 ins., E. and W. of post 3 ft. dist., and raise a mound of earth $3\frac{1}{2}$ ft. base, $1\frac{1}{2}$ ft. high, north of cor.
- 53.45 Automobile road from Jerome Junction to Prescott, Arizona, brs. NE. and SW.
82.78 (Proportional distance). Set an iron post 3 ft. long, 3 ins. in diam., 24 ins. in the ground for reestablished cor. of secs. 4, 5, 32 and 33, marked on brass cap,
1913 in S. rim,
T 16 N in N.,
T 15 N in S., and
R 2 W in W. half;
S 32 in NW.,
S 33 in NE.,
S 4 in SE., and
S 5 in SW. quadrant;

Resurvey of the South boundary of Township 16 N., R. 2 West. 11

Chains.

dig pits 18x18x12 ins., in each sec. 5 1/2 ft. dist., and raise a mound of earth 4 ft. base, 2 ft. high, W. of cor. Land, rolling prairie N. slope. Soil, rich soft dry, sandy loam, 12 to 15 ins. deep on clay subsoil. Good growth bunch grass. No timber.

From the reestablished cor. of secs. 4, 5, 32 and 33, I run, S. 89° 23' W., on a true line, bet. secs. 5 and 32. Over rolling, sandy prairie land, through scattering greasewood brush undergrowth, 2 ft. high,

6.66 Top of low sandy ridge, brs. N. 20° E. and S. 20° W.; descend gradually over west slope.

41.39 (Proportional distance). Set an iron post 3 ft. long, 1 in. in diam., 26 ins. in the ground for reestablished 1/4 sec. cor., marked on brass cap,
 19 1/2 in S. rim;
 1/4 S 32 in N., and
 S 5 in S. half;

dig pits 18x18x12 ins., E. and W. of post 3 ft. dist., and raise a mound of earth 3 1/2 ft. base, 1 1/2 ft. high, north of cor.

66.85 Dry ravine, 10 lks. wide, 3 ft. deep, course N. 30° E.
 82.78 (Proportional distance). Set an iron post 3 ft. long, 3 ins. in diam., 24 ins. in the ground for reestablished cor. of secs. 5, 6, 31 and 32, marked on brass cap,
 19 1/2 in S. rim;
 T 16 N in N.,
 T 15 N in S., and
 R 2 W in W. half;
 S 31 in NW.,
 S 32 in NE.,
 S 5 in SE., and
 S 6 in SW. quadrant;

dig pits 18x18x12 ins., in each sec. 5 1/2 ft. dist., and raise a mound of earth 4 ft. base, 2 ft. high, W. of cor. Land, rolling prairie N. slope. Soil, light sandy loam, with some gravel, 8 to 12 ins. deep on clay subsoil. Good growth bunch grass. No timber.

From the reestablished cor. of secs. 5, 6, 31 and 32, I run, S. 89° 23' W., on a true line, bet. secs. 6 and 31. Over rolling, sandy prairie land, slopes to the east, through scattering greasewood brush undergrowth, 2 ft. high.

32.15 Wire fence brs. N. and S.
 34.80 Top of ridge, brs. NE. and SW. Descend over west slope.
 41.39 (Proportional distance). Set an iron post 3 ft. long, 1 in. in diam., 26 ins. in the ground for reestablished 1/4 sec. cor., marked on brass cap,
 19 1/2 in S. rim;
 1/4 S 31 in N., and
 S 6 in S. half;

dig pits 18x18x12 ins., E. and W. of post, 3 ft. dist., and raise a mound of earth 3 1/2 ft. base, 1 1/2 ft. high, N. of cor.

44.60 Dry ravine, 15 lks. wide; course N. 20° W. Ascend gradually.
 57.60 Foot of Table Mountain, brs. N. 45° W. and S. 45° E. Leave rolling sandy land. Ascend NE. slope over stony mountainous land.

81.33 Intersect the original cor. of Ts. 15 and 16 N., Rs. 2 and

12. Resurvey of the South bdy. of Township 16 North, Range 2 W. Chains.

3 W. hereinbefore described, which I now destroy, and reestablish in the same place as follows:
Set an iron post 3 ft. long, 3 ins. in diam., 24 ins. in the ground for cor. of Ts. 15 and 16 N., Rs. 2 and 3 W., marked on brass cap,

1913 in S. rim;
T 16 N in N., R. 2 W. in E.,
T 15 N in S., and
R 3 W in W. half;
S 36 in NW.,
S 31 in NE.,
S 6 in SE., and
S 1 in SW. quadrants;

raise a mound of stone 2 ft. base, $1\frac{1}{2}$ ft. high, S. of cor. Pits impracticable.

East 57.60 chs., rolling prairie land N. slope.

Soil, light, sandy loam, some gravel, 8 to 14 ins. deep; dry, on clay subsoil.

West 23.68 chs., mountainous, slopes steep, covered with loose malpais boulders.

Soil, stony, with some coarse sandy loam. Good growth bunch grass.

No timber.

Note: At this cor., I set off $7^{\circ}35'$ N. on the decl. arc; and at apparent noon, observe the sun on the meridian, and obtain a reading of $34^{\circ}43'$ N. on the latitude arc. September 31, 1913.

Retracement of West bdy. of Township 16 North, Range 2 W.

Aug. 29, 1913. At 8h. 01m. a.m., l.m.t., at the original cor. of Ts. 15 and 16 N., Rs. 2 and 3 W., which is a malpais stone $26 \times 18 \times 14$ ins. lying on a small mound of stone, marked with 6 notches on each of 4 edges, marks almost obliterated; latitude, $34^{\circ}43'15''$ N.; longitude, $112^{\circ}31'06''$ W. I set off $34^{\circ}43'$ N. on the lat. arc; $9^{\circ}27'$ N. on the decl. arc; and determine a meridian with the solar.

Thence I run,

39.88 North, on a random line, on the west bdy. of sec. 31.

Fall 20 lks. east of the original $\frac{1}{4}$ sec. cor., which is a malpais stone $8 \times 6 \times 3$ ins. loosely set in a mound of stone, marked $\frac{1}{4}$ on E. face; no cor. accessories visible.

True course and dist. of south half of west bdy. of sec. 31 is therefore $N. 0^{\circ}17' W.$, 39.88 chs.

From the $\frac{1}{4}$ sec. cor., I run,

40.00 North, on random line, on N. half of west bdy. of sec. 31.

The original cor. of secs. 25, 30, 31 and 36 cannot be found after a diligent search. Set temp. cor. at this point.

80.00 Continue line and measurement on west bdy. of sec. 30.

No trace of the original $\frac{1}{4}$ sec. cor. can be found after a diligent search. Set temp. $\frac{1}{4}$ sec. cor., and continue line and measurement.

120.00 No trace of the original cor. of secs. 19, 24, 25 and 30 can be found after a diligent search. Set temp. cor. at this point.

Retracement of West bdy. of Township 16 North, Range 2 West. 13.

Chains.	
161.00	<p>Continue line and measurement, on west bdy. of sec. 19.</p> <p>Fall 80 lks. west of the original $\frac{1}{4}$ sec. cor.; which is a granite stone 9x5x3 ins. loosely set, marked $\frac{1}{4}$ on E. face; marks almost obliterated. No cor. accessories visible.</p> <p>True course and dist. of west bdy. of T. 16 N., R. 2 W. from $\frac{1}{4}$ sec. cor., bet. secs. 31 and 36 to this cor. is therefore, N. 0° 17' E., 161.00 chs.</p> <p>From the $\frac{1}{4}$ sec. cor., I run,</p>
40.52	<p>North, on a random line, on north half of west bdy. of sec. 19.</p> <p>Fall 50 lks. west of the original cor. of secs. 13, 18, 19 and 24, which is a malpais stone 18x16x5 ins. loosely set, marked with 3 notches on N. and S. edges; marks almost obliterated.</p> <p>No corner accessories visible.</p> <p>True course and dist. of the north half of west bdy. of sec. 19 is therefore, N. 0° 43' E., 40.52 chs.</p>
40.82	<p>From the original cor. of secs. 13, 18, 19 and 24, I run,</p> <p>North, on a random line on west bdy. of sec. 18.</p> <p>Fall 43 lks. west of the original $\frac{1}{4}$ sec. cor., which is a malpais stone 12x12x10 ins., lying on the ground, marked $\frac{1}{4}$ on upper face, with a small mound of stone, west of cor.</p> <p>True course and dist. of south half of west bdy. of sec. 18 is therefore N. 0° 36' E., 40.82 chs.</p> <p>From the $\frac{1}{4}$ sec. cor., I run,</p>
40.95	<p>North, on a random line, on north half of west bdy. of sec. 18.</p> <p>Fall 10 lks. W. of the original cor. of secs. 7, 12, 13 and 18, which is a porphyry stone 12x8x8 ins., loosely set in a small mound of stone, marked with 2 notches on N. and 4 notches on S. edges. No cor. accessories visible.</p> <p>True course and distance of north half of west bdy. of sec. 18 is therefore N. 0° 9' E., 40.95 chs.</p> <p>Clouds obscure the sun at noon today, rendering an observation for latitude impossible.</p> <p>Note: A heavy rain begun falling at 2h. 30m. p.m., preventing further field work on this day.</p> <p style="text-align: right;">August 29, 1913.</p>
40.00	<p>August 30, 1913: At 8h. 00m. a.m., l.m.t., I set off 34° 46$\frac{1}{2}$' N. on the lat. arc; 9° 06' N. on the decl. arc, and determine a meridian with the solar at the original cor. of secs. 7, 12, 13 and 18.</p> <p>Thence I run,</p> <p>North, on a random line on west bdy. of sec. 7.</p> <p>No trace of the original $\frac{1}{4}$ sec. cor. can be found after a diligent search. Set temp. $\frac{1}{4}$ sec. cor., and continue line and measurement.</p>
80.00	<p>No trace of the original cor. of secs. 1, 6, 7 and 12 can be found after a diligent search.</p> <p>Set temp. cor. at this point.</p>
120.00	<p>Continue line and measurement on west bdy. of sec. 6.</p> <p>The original $\frac{1}{4}$ sec. cor. cannot be found after a diligent search. Set temp. $\frac{1}{4}$ sec. cor., and continue line and measurement.</p>
160.15	<p>I make a diligent search for the original closing cor. of Ts. 16 N., Rs. 2 and 3 W., which I fail to find; therefore at this point, I leave flag on line.</p> <p>Note: Clouds obscure the sun at noon today, rendering an observation for latitude impossible.</p>

14. Retracement of West bdy. of Township 16 North Range 2 West.
Chains.

At 1h.30m., p.m., a heavy rain begun falling, which continued the remainder of the afternoon, preventing further field work.

August 30, 1913.

175.09

September 2, 1913: At 5h.00m. p.m., l.m.t., I set off $34^{\circ} 49'$ N. on the lat. arc; $8^{\circ} 53\frac{1}{2}'$ N. on the decl. arc; and determine a meridian with the solar at the flag which I left Aug. 30, 1913, to mark the point for the original closing cor. of Ts. 16 N., Rs. 2 and 3 W. Continue line and measurement, on west bdy. of sec. 6.

Intersect the 4th. Stand. Parallel North, 399 lks. N. $86^{\circ} 36'$ W. of the closing cor. of Ts. 16 N., Rs. 2 and 3 W., reestablished by me, as described in Book "P."

True course and dist. of west bdy. of T. 16 N., R. 2 W. from original cor. of secs. 7, 12, 13 and 18 to this closing corner is therefore N. $1^{\circ} 18'$ E., 174.90 chs.

Sept. 2, 1913.

In the above described retracement of the west bdy. of T. 16 N., R. 2 W., I find that many of the original cors. are lost or obliterated, and that those which were found are all in a dilapidated condition; therefore I return to the reestablished cor. of Ts. 15 and 16 N., Rs. 2 and 3 W., and resurvey this line, reconstructing the defective cors. in their original positions, and reestablishing the remaining lost or obliterated cors. on true lines between the existing cors. at distances proportional to the distances shown on the original plat, as described in the following notes.

Resurvey of the West bdy. of Township 16 North, Range 2 W.

September 3, 1913: At 1h.59.5m. p.m., l.m.t., I set off $34^{\circ} 43'$ N. on the lat. arc; $7^{\circ} 34'$ N. on the decl. arc; and determine a meridian with the solar at the cor. of Ts. 15 and 16 N., Rs. 2 and 3 W., reestablished by me, as hereinbefore described.

Thence I run, as per results of retracement, N. $0^{\circ} 17'$ W., on a true line, on south half, bet. secs. 31 and 36.

Descend N. slope of Table Mountain, over stony land, through scattering greasewood brush undergrowth, 3 ft. high.

6.00 Enter scattering cedar timber, brs. E. and W.

25.00 Foot of steep descent; leave mountainous land and timber, brs. E. and W.; enter rolling, sandy and gravelly land.

39.88 Intersect the original $\frac{1}{4}$ sec. cor. hereinbefore described, which I destroy, and reestablish in the same place as follows:

Set an iron post 3 ft. long, 1 in. in diam., 26 ins. in the ground for $\frac{1}{4}$ sec. cor., marked on brass cap,

1913 in S. rim;

$\frac{1}{4}$ S 36 in W. half; and

S 31 in E. half;

and raise a mound of stone 2 ft. base, $1\frac{1}{2}$ ft. high, west of cor. Pits impracticable.

From the reestablished $\frac{1}{4}$ sec. cor., I run, continuing measurement.

60.65 N. $0^{\circ} 17'$ E. on a true line, on N. half, bet. secs. 31 and 36.

Dry sand wash, 25 lks. wide, 3 ft. deep, in center of flat 10 chs. wide, course east.

65.00 Begin gradual ascent, over south slope of ridge.

66.00 Top of ascent on ridge, brs. E. and W.; thence over nearly level land.

Resurvey of the West bdy. of Township 16 North Range 2 West. 15.

Chains.

72.25 Wire fence, brs.E.and W.
 75.00 Begin gradual descent, over north slope of ridge.
 80.13 (Proportional distance). Set an iron post 3 ft.long, 3
 ins. in diam., 24 ins. in the ground for reestablished
 cor.of secs. 25,30,31 and 36, marked on brass cap,
 1913 in S.rim;
 T 16 N in N.half;
 R 3 W S 25 in NW.,
 R 2 W, S 30 in NE.,
 S 31 in SE., and
 S 36 in SW.quadrants;
 raise a mound of stone 2 ft.base, 1 1/2 ft.high, west of
 cor. Pits impracticable.
 South, 25 chs. mountainous land NE. slope.
 Soil, poor stony loam, 8 ins.deep on clay and volcanic
 rock subsoil.
 Light growth bunch grass.
 North 55 chs. rolling prairie land.
 Soil, light sandy loam with some gravel on clay subsoil.
 Timber, cedar.

From the reestablished cor.of secs. 25,30,31 and 36, I
 run.
 N.0°17'E., on a true line, bet. secs.25 and 30.
 Descend gentle NW. slope, over rolling, sandy land, through
 scattering greasewood brush undergrowth, 3 ft.high.
 .50 Leave rolling land, brs.NE. and SW.; enter level land.
 13.00 Dry sand wash. 70 lks.wide, 2 ft.deep, course NE.
 20.00 Leave level land, brs.N.70°E. and S.70°W.; ascend S.slope,
 over hilly land.
 40.25 (Proportional distance). Set an iron post 3 ft.long, 1
 in. in diam., 26 ins. in the ground for reestablished
 1/4 sec.cor., marked on brass cap,
 1913 in S.rim,
 1/4 S 25 in W., and
 S 30 in E.half;
 raise a mound of stone 2 ft.base, 1 1/2 ft.high, W.of cor.
 Pits impracticable.
 45.00 Top of ridge, brs.NE. and SW. Descend over NW. slope.
 80.50 (Proportional distance). Set an iron post 3 ft.long, 3
 ins. in diam., 24 ins. in the ground for reestablished
 cor.of secs. 19,24,25 and 30, marked on brass cap,
 1913 in S.rim;
 T 16 N in N.half;
 R 3 W S 24 in NW.,
 R 2 W S 19 in NE.,
 S 30 in SE., and
 S 25 in SW.quadrants;
 raise a mound of stone 2 ft.base, 1 1/2 ft.high, W.of cor.
 Pits impracticable.
 South 20 chs. level and rolling bottom land.
 Soil, rich sandy loam, 12 to 20 ins. deep, dry on clay
 subsoil. Light growth bunch grass.
 North 60 chs., hilly prairie land, ridges with light poor
 gravelly loam, 12 ins.deep on clay and stony subsoil.
 No timber.

From the reestablished cor.of secs. 19,24, 25 and 30, I
 run,
 N.0°17' E., on a true line, on south half bet.secs.19 and
 24.
 Over hilly, stony land, through scattering greasewood
 brush undergrowth, 3 ft.high.

16. Resurvey of the West bdy. of Township 16 N., R. 2 West.

Chains.

- 5.00 Top of ridge, brs. NW. and SE. Descend over NE. slope.
 20.50 Dry rocky ravine, 50 lks. wide, course NE. Ascend steep south slope, covered with loose volcanic rock.
 40.00 Top of ridge, brs. N. 70° E. and S. 60° W. Descend.
 40.25 Intersect the original $\frac{1}{4}$ sec. cor. hereinbefore described, which I destroy, and reestablish in the same place as follows:
 Set an iron post 3 ft. long, 1 in. in diam., 26 ins. in the ground for $\frac{1}{4}$ sec. cor., marked on brass cap,
 1913 in S. rim;
 $\frac{1}{4}$ S 24 in W., and
 S 19 in E. half;
 raise a mound of stone 2 ft. base, 1 $\frac{1}{2}$ ft. high, W. of cor. Pits impracticable.
 From the reestablished $\frac{1}{4}$ sec. cor., I run, continuing measurement,
 N. 0° 43' E. on a true line, on north half; bet. secs. 19 and 24.
 47.45 Old wood road, brs. NE. and SW.
 49.85 Dry ravine, 50 lks. wide, course NE.; ascend.
 58.50 Top of ridge, brs. NE. and SW.; descend. Enter scattering cedar timber, brs. NE. and SW.
 69.05 Dry ravine, 20 lks. wide, course NE.; ascend.
 72.50 Top of ridge, brs. NE. and SW. Descend.
 80.77 Intersect the original cor. of secs. 13, 18, 19 and 24, hereinbefore described, which I destroy, and reestablish in the same place as follows:
 Set an iron post 3 ft. long, 3 ins. in diam., 24 ins. in the ground, for cor. of secs. 13, 18, 19 and 24, marked on brass cap,
 1913 in S. rim;
 T 16 N in N. half;
 R 3 W, S 13 in NW.,
 R 2 W S 18 in NE.,
 S 19 in SE., and
 S 24 in SW. quadrants; from which,
 A cedar, 10 ins. in diam., brs. N. 61 $\frac{1}{2}$ ° E., 220 lks. dist., marked T 16 N R 2 W S 18 BT.
 A cedar, 10 ins. in diam., brs. N. 2 $\frac{1}{4}$ ° W., 274 lks. dist., marked T 16 N R 3 W S 13 B T.
 No other trees within limits. Raise a mound of stone 2 ft. base, 1 $\frac{1}{2}$ ft. high, W. of cor. Pits impracticable.
 Land, broken and hilly, prairie land; soil, light, poor stony loam, 4 to 10 ins. deep on clay and shale sub-soil.
 Light growth bunch grass.
 Timber, cedar.
-
- From the reestablished cor. of secs. 13, 18, 19 and 24, I run,
 N. 0° 36' E., on a true line, on south half, bet. secs. 13 and 18.
 Descend N. slope, over stony hilly land, through scattering cedar timber and undergrowth.
 1.70 Dry ravine, 10 lks. wide, course NE. Ascend SE. slope.
 15.00 Top of stony ridge, brs. E. and W. Descend.
 20.45 Wood road brs. NE. and SW.
 38.90 Dry ravine, 15 lks. wide, course east. Ascend.
 40.82 Intersect the original $\frac{1}{4}$ sec. cor. hereinbefore described, which I destroy, and reestablish in the same place as follows:
 I set an iron post 3 ft. long, 1 in. in diam., 26 ins. in the ground for $\frac{1}{4}$ sec. cor., marked on brass cap,
 1913 in S. rim;
 $\frac{1}{4}$ S 13 in W., and
 S 18 in E. half; from which,
 A cedar, 18 ins. in diam., brs. N. 54 $\frac{1}{2}$ ° W., 234 lks. dist., marked $\frac{1}{4}$ S 13 B T., and

Resurvey of the West bdy. of Township 16 North Range 2 West. 17.

Chains.

A cedar, 30 ins. in diam., brs. N. $42\frac{1}{2}^{\circ}$ E., 172 lks. dist., marked $\frac{1}{4}$ S 18 B T.
 From the reestablished $\frac{1}{4}$ sec. cor., I run, continuing measurement, N. $0^{\circ}09'$ E., on a true line, on north half, bet. secs. 13 and 18.

47.80 Top of stony ridge, brs. N. 80° E. and S. 80° W.; descend.
 56.00 Dry ravine, 40 lks. wide, course NE.; ascend.
 76.95 Telephone line from Jerome Junction to Williamson Valley, brs. NW. and SE.
 78.02 Dry ravine, 15 lks. wide, 3 ft. deep, course SE. Ascend.
 81.77 Intersect the original cor. of secs. 7, 12, 13 and 18, hereinbefore described, which I destroy, and reestablish in the same place as follows:
 Set an iron post 3 ft. long, 3 ins. in diam., 24 ins. in the ground, for cor. of secs. 7, 12, 13 and 18, marked on brass cap,
 1913 in S. rim;
 T 16 N in N. half;
 R 3 W, S 12 in NW.,
 R 2 W S 7 in NE.,
 S 18 in SE., and
 S 13 in SW. quadrants;
 No trees within limits; raise a mound of stone 2 ft. base, $1\frac{1}{2}$ ft. high, W. of cor. Pits impracticable.
 Land, hilly ridges, with light poor gravelly and stony loam 4 to 8 ins. deep on clay and decomposing shale subsoil.
 Light growth bunch grass.
 Timber, cedar.

From the reestablished cor. of secs. 7, 12, 13 and 18, I run, N. $1^{\circ}18'$ E., on a true line, bet. secs. 7 and 12. Ascend S. slope of ridge, over hilly land, through scattering cedar timber, and oak brush undergrowth, 4 ft. high.

3.30 Top of stony ridge, brs. E. and W. Descend N. slope.
 24.00 Dry ravine, 10 lks. wide, course NE. Ascend. Leave timber, brs. NE. and SW.
 30.00 Top of ridge, brs. NE. and SW. Descend.
 36.50 Dry ravine, 20 lks. wide, 5 ft. deep, course east; leave hilly land, brs. E. and W. Enter rolling prairie land.
 43.69 (Proportional distance). Set an iron post 3 ft. long, 1 in. in diam., 26 ins. in the ground for reestablished $\frac{1}{4}$ sec. cor., marked on brass cap,
 1913 in S. rim;
 $\frac{1}{4}$ S 12 in W., and
 S 7 in E. half;
 raise a mound of stone 2 ft. base, $1\frac{1}{2}$ ft. high, W. of cor. Pits impracticable.
 87.38 Set an iron post 3 ft. long, 3 ins. in diam., 24 ins. in the ground for reestablished cor. of secs. 1, 6, 7 and 12, marked on brass cap,
 1913 in S. rim;
 T 16 N in N. half;
 R 3 W S 1 in NW.,
 R 2 W S 6 in NE.,
 S 7 in SE., and
 S 12 in SW. quadrants;
 raise a mound of stone 2 ft. base, $1\frac{1}{2}$ ft. high, W. of cor. Pits impracticable.
 8.36.50 chs. hilly land; ridges, with light poor stony loam, 12 ins. deep on clay and decomposed shale subsoil. Light growth bunch grass. North 50.00 chs. rolling prairie land. Soil, light sandy loam, 8 to 12 ins. deep on clay subsoil.
 Good growth bunch grass.
 Timber, scattering cedar.

18. Resurvey of West bdy. of Township 16 North Range 2 West. Chains.

From the reestablished cor. of secs. 1, 6, 7 and 12, I run, N. 1° 18' E. on a true line, bet. secs. 1 and 6. Over rolling, sandy prairie land, through scattering oak brush undergrowth.

1.80 Dry ravine, 10 lks. wide, course NE. Leave rolling land, brs. E. and W. Enter hilly land.

33.00 Top of ridge, brs. NE. and SW. Descend into rocky ravine.

43.00 Dry rocky ravine, course S. 70° E. Ascend over SW. slope of stony ridge.

43.69 (Proportional distance). Set an iron post 3 ft. long, 1 in. in diam., 26 ins. in the ground for reestablished $\frac{1}{4}$ sec. cor., marked on brass cap, 1913 in S. rim; $\frac{1}{4}$ S 1 in W. half; and S 6 in E. half; raise a mound of stone 2 ft. base, 1 $\frac{1}{2}$ ft. high, W. of cor. Pits impracticable.

60.00 Top of ascent on west slope of ridge. Descend over NW. slope.

77.00 Dry ravine, course SW. Ascend. Enter cedar timber, brs. E. and NE.

87.52 Intersect the closing cor. of Ts. 16 N., Rs. 2 and 3 W., reestablished by me, as described in Book "P." Land, rolling and hilly. Soil, light, poor sandy loam, with considerable stone on clay and limestone subsoil, and light growth bunch grass. Timber, cedar.

September 3, 1913.

Boundaries of Township 16 N., R. 2 West. Latitudes, departures, and closing errors.

Line designated.	True bearing.	Dist.	Latitudes.		Departures.	
			N.	S.	E.	W.
South bdy.,	N. 89° 59' W.	40.12	.01			40.12
	N. 89° 30' W.	40.05	.35			40.05
	S. 89° 23' W.	412.45		4.44		412.43
West bdy.,	N. 0° 17' W.	39.88	39.88			.20
	N. 0° 17' E.	161.00	161.00		.80	
	N. 0° 43' E.	40.52	40.52		.51	
	N. 0° 36' E.	40.82	40.82		.43	
	N. 0° 09' E.	40.95	40.95		.11	
	N. 1° 18' E.	174.90	174.85		3.98	
North bdy., (4th. Std. Par. N.)	S. 86° 36' E.	157.16		9.32	156.88	
	N. 89° 33' E.	242.82	1.91		242.80	
	S. 89° 50' E.	81.28		.24	81.28	
	East,	2.01			2.01	
East bdy.,	S. 0° 17' W.	125.98		125.98		.62
	S. 0° 03' E.	120.00		120.00	.10	
	S. 1° 01' E.	239.56		239.51	4.25	
Convergency,					.50	
Totals,			500.29	499.49	493.65	493.42
Error in latitude,			0.80		493.42	
Error in departure,					0.23	

GENERAL DESCRIPTION.

This township is mountainous in western and northwestern parts, rolling in the central and southern parts, and nearly level in the north and east, and with the exception of that portion which is being farmed, the land is prairie land.

Sidney E. Blunt
U.S. Surveyor.

FOR FINAL OATH OF UNITED STATES SURVEYOR.

SEE BOOK "O" OF THIS GROUP.

I, _____, U. S. Surveyor, do solemnly swear that, in pursuance of special instructions received from the U. S. Surveyor General for _____ bearing date of the _____ day of _____, 191____, I have well, faithfully, and truly, in my own proper person, and in strict conformity with said instructions, the Manual of Surveying Instructions, and the laws of the United States, surveyed all those parts or portions of _____ of the _____ Meridian, in the State of _____, which are represented in the foregoing field notes as having been executed by me, and under my direction; and I do further solemnly swear that all the corners of said survey have been established and perpetuated in strict accordance with the Manual of Surveying Instructions, and the special written instructions of the U. S. Surveyor General for _____ and in the specific manner described in the field notes, and that the foregoing are the original field notes of such survey.

U. S. Surveyor.

Subscribed by said _____, and sworn to before me }
 this _____ day of _____, 191____



APPROVAL.

OFFICE OF THE UNITED STATES SURVEYOR GENERAL,

Phoenix Ariz. November 29, 1915

The foregoing field notes of the ~~survey of~~ *retracement and resurvey of the*

East, South and West boundaries of

*Township 16 North - Range 2 West
of the Gila and Salt River Base and Meridian
in the State of Arizona*

executed by *Sidney E. Blout, U.S. Surveyor*

under his special instructions dated *April 28, 1913 for Group 20*, ~~191~~, having been critically examined, and the necessary corrections and explanations made, the said field notes, and the *retracements and resurveys* they describe, are hereby approved.

Frank Ingalls
U. S. Surveyor General.
OF ARIZONA.

I certify that the foregoing transcript of the field notes of the above described surveys in _____, has been correctly copied from the original notes on file in this office.