

2887

4-679

JAN 12 1917

Book "L."

BOOK 2887

(Subdivisions)

FIELD NOTES

OF THE SURVEY OF THE

SUBDIVISION LINES OF

TOWNSHIP 19 NORTH, RANGE 20 WEST,

Of the Gila and Salt River Base and Meridian,

In the State of Arizona.

EXECUTED BY

Guy H. Richardson, U.S. Surveyor,

and

Hugo Price, U.S. Transitman,

~~In the capacity of U.S. Surveyor~~, under instructions dated January 4., 1915,
issued by the United States Surveyor General to govern surveys included in
Group No. 43, which were approved by the Commissioner of the General Land
Office, January 22., 1915.

Survey commenced April 28., 1915.

Survey completed May 12., 1915.

Executed under assignment
Instructions dated Jan. 31-1915

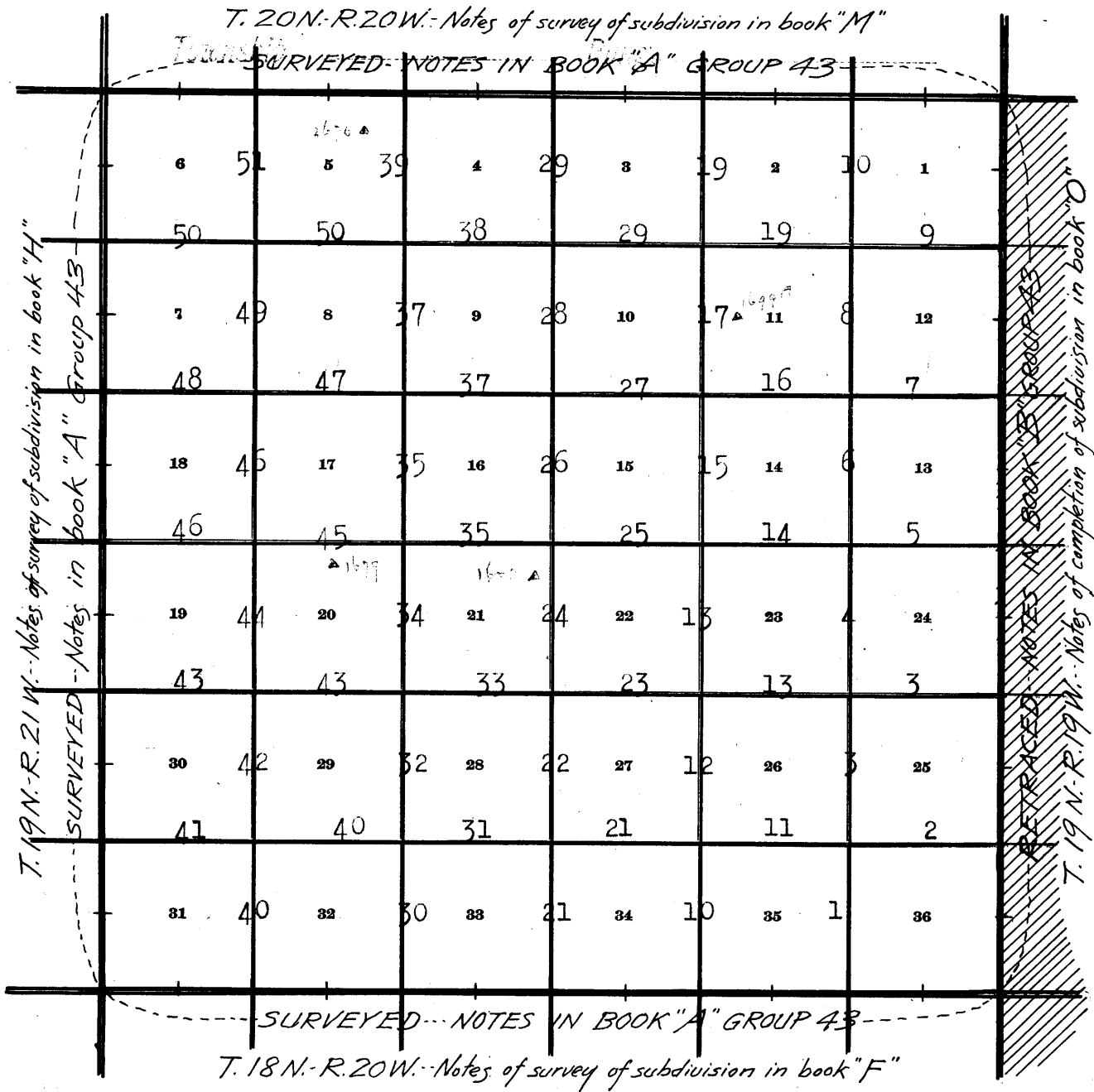
2887

2887

BOOK 2887

BOOK "L" GROUP 43
T. 19 N. - R. 20 W.

INDEX DIAGRAM.



———— Surveys described in field notes of Group 43.

////// Shaded area surveyed as per accepted plats on file.

———— Accepted surveyed lines.

Subdivision of Township 19 North Range 20 West

Chains.

Survey commenced on April 28, 1915, and executed jointly by Guy H. Richardson, U.S. Surveyor, and Hugo Price, U.S. Transitman, with Young & Sons' light mountain transits Nos. 8484 and 8477 respectively. The instruments are provided with Smith solar attachments, and were approved by the Assistant Supervisor of Surveys for Arizona and California on Jan. 31, 1915.

For field test of instruments on a Polaris meridian, see notes of the Subdivision of T. 18 N., R. 20 W., in Book "F."

Lines run by Guy H. Richardson, U.S.S. as follows:

From the cor. of secs. 1, 2, 35 and 36 on the S. bdy. of the Tp. described in Book "A," I run,
 N. 0° 3' W., bet. secs. 35 and 36.
 Over level mesa.

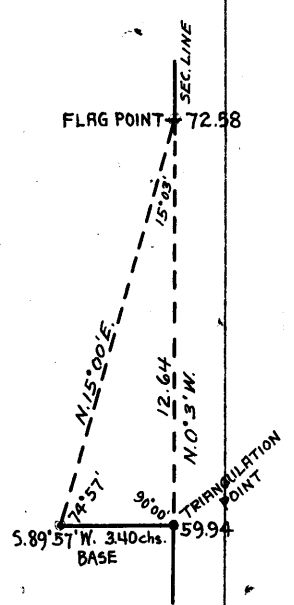
40.00. Set an iron post 3 ft. long, 1 in. in diam., 26 ins. in the ground for $\frac{1}{4}$ sec. cor., with a brass cap, marked

$\frac{1}{4}$ S 35 | S 36
 1915

and raise a mound of stone, 2 ft. base, $1\frac{1}{2}$ ft. high, W. of cor.

59.94 Rim of mesa, brs. E. and W. Discontinue chaining at this point owing to steep descent over cliffs bearing E. and W., and obtain measurement by triangulation; as follows:

Set a flag N. 0° 3' W. of triangulation point.
 From triangulation point, I measure a base S. 89° 57' W., 3.40 chs.
 From west end of base flag brs. N. 15° 00' E.
 The included angles are 90° 0', 74° 57' and 15° 3', and their total is 180° 00'; therefore, dist. on sec. line from triangulation point to flag is obtained by tang. $74^{\circ}57'$ x base or 3.71907×3.40 chs. = 12.64 chs.
 59.94 chs. + 12.64 chs. =

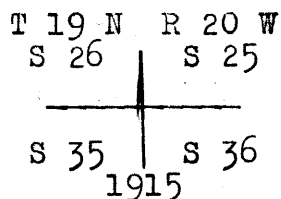


72.58 Flag point. Continue measurement by chaining; descend.
 80.00 300 ft. below flag point, set an iron post 3 ft. long,

2. Subdivision of Township 19 North, Range 20 West.

Chains.

2 ins. in diam., 24 ins. in the ground for cor. of secs. 25, 26, 35 and 36, with a brass cap, marked



and raise a mound of stone, 2 ft. base, $1\frac{1}{2}$ ft. high, W, of cor.

Land, level and rough, mountainous.

Soil, stony, 4th rate. Undergrowth, cactus and catclaw.

S. $89^{\circ}50'$ E., on a random line, bet. secs. 25 and 36.

40.00 Set temp. $\frac{1}{4}$ sec. cor.

80.46 Intersect the E. bdy. of the Tp. 5 lks. N. of old cor. of secs. 25, 30, 31 and 36, described in Book "B."

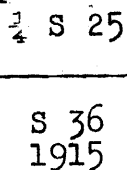
Thence, I run,

N. $89^{\circ}48'$ W., on a true line, bet. secs. 25 and 36.

Ascend over rough, mountainous land.

28.50 Top of rocky spur, slopes N., 468 ft. above sec. cor.; desc.

40.23 Foot of 92 ft. descent, set an iron post, 3 ft. long, 1 in. in diam., 26 ins. in the ground for $\frac{1}{4}$ sec. cor., with a brass cap, marked



and raise a mound of stone, 2 ft. base, $1\frac{1}{2}$ ft. high, N. of cor. Ascend.

60.77 Top of ridge, brs. N. and S. 73 ft. above $\frac{1}{4}$ sec. cor. Descend.

75.46 Draw, course SW., 125 ft. below top of ridge; ascend.

80.46 Cor. of secs. 25, 26, 35 and 36, 50 ft. above draw.

Land, rough, mountainous.

Soil, stony, 4th rate.

Undergrowth, greasewood and cactus.

At the cor. of secs. 25, 26, 35 and 36, at 10h. 0m., a.m., 1.m.t., I set off $13^{\circ}58\frac{1}{2}'$ N. on the decl. arc;

Subdivision of T. 19 N., R. 20 W.

Chains 35° 0' on the lat. arc, and determine a meridian with the solar,

Thence I run

N. 0° 3' W. bet. secs. 25 and 26.

Desc. NW. slope, over rough mountainous land.

34.10 Foot of slope, 442 ft. below sec. cor., wash, course N. 85° W., thence over level land.

40.00 Set an iron post, 3 ft. long, 1 in. in diam., 26 ins. in the ground for 1/4 sec. cor., with a brass cap, marked

1/4 S 26		S 25
1915		

and raise a mound of stone, 2 ft. base, 1 1/2 ft. high, W. of cor.

60.00 Wash, course S. 80° W., asc.

80.00 309 ft. above wash, set an iron post, 3 ft. long, 2 ins. in diam., on surface rock, in a mound of stone, for cor. of secs. 23, 24, 25 and 26, with a brass cap, marked

T 19 N	R 20 W
S 23	S 24
S 26	S 25
1915	

and raise a mound of stone, 2 ft. base, 1 1/2 ft. high, W. of cor.

Land, rough mountainous, and level.

Soil, stony, 4th. rate.

Undergrowth, greasewood, sagebrush and cactus.

April 28, 1915.

April 30, 1915; At the cor. of secs. 23, 24, 25 and 26, at 9h. 0m., a. m., l.m.t., I set off 14° 35 1/2' N. on the decl. arc, and 35° 1' on the lat. arc, and determine a meridian with the solar,

Thence I run

S. 89° 48' E. on a random line bet. secs. 24 and 25.

40.00 Set temp. 1/4 sec. cor.

80.16 Intersect the E. bdy. of the twp. 21 lks. N. of old cor. of secs. 19, 24, 25 and 30, described in Book "B."

Chains Thence I run
 N. 89° 39' W. on a true line bet. secs. 24 and 25.
 Asc. over rolling mountainous land.

1.90 Top of ridge, bears N. 20° W., and S. 20° E., 200 ft,
 above sec. cor., desc.

35.16 Bench, 5 chs. wide, bears N. and S., 570 ft. below top
 of ridge, continue to desc.

40.08 Set an iron post, 3 ft. long, 1 in. in diam., 26 ins. in
 the ground, for 1/4 sec. cor., with a brass cap, marked

1/4 S 24

S 25
 1915

and raise a mound of stone, 2 ft. base, 1 1/2 ft. high,
 N. of cor.

60.16 Draw, course S. 15° W., 540 ft. below bench, asc.

62.16 Mining shaft and hoist 1.50 chs. N. of line.

70.65 Top of spur, slopes S., 282 ft. above draw, desc.

80.16 Cor. of secs. 23, 24, 25 and 26, 200 ft. below top of spur.
 Land, rolling mountainous.
 Soil, stony, 4th. rate.
 Undergrowth, greasewood and cactus.

 Guy H. Richardson, U.S.S.

Lines run by Hugo Price, U.S. Transitman, as follows:

From the cor. of secs. 23, 24, 25 and 26, I
 run
 N. 0° 3' W. bet. secs. 23 and 24.

 Asc. over rolling mountainous land.

4.53 Top of spur, slopes W., 134 ft. above sec. cor., desc.

15.49 Tent house on line.

17.52 Wagon road, bears NW. and SE.

18.72 Gulch, course W., 164 ft. below top of spur., asc.

34.62 Top of spur, slopes W., 90 ft. above gulch

40.00 Set an iron post, 3 ft. long, 1 in. in diam., 20 ins. in
 the ground, to solid rock, in a mound of stone, for
 1/4 sec. cor., with a brass cap, marked

1/4 S 23 | S 24
 1915

Subdivision of Township 19 North, Range 20 West

5.

Chains.

and raise a mound of stone, 2 ft. base, 1 1/2 ft. high, W. of cor. Descend.

44.97 Gulch, course W. 28 ft. below 1/4 sec. cor.; ascend.

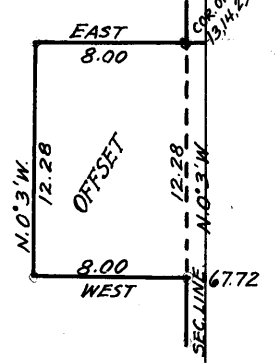
57.71 Top of spur, slopes W., 175 ft. above gulch; descend.

61.23 Wagon road, brs. E. and W.

63.30 Gulch, course W., 70 ft. below top of spur; ascend.

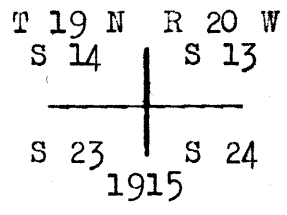
67.72 Chaining measurement on sec. line N. of this point being impracticable owing to cliffs, bearing E. and W. I offset as follows:

West, 8.00 chs. thence
N. 0° 3' W. 12.28 chs. Ascending; thence
East, 8.00 chs. returning to sec.
line at



80.00 A point 400 ft. above gulch,

Set an iron post, 3 ft. long, 2 ins. in diam., 20 ins. in the ground, to solid rock, in a mound of stone, for cor. of secs. 13, 14, 23 and 24, with a brass cap, marked



and raise a mound of stone, 2 ft. base, 1 1/2 ft. high, W. of cor.

April 30, 1915: At this cor. at apparent noon, I set off 14° 37 1/2' N. on the decl. arc, and observe the sun on the meridian for lat. The resulting lat. is 35° 1 1/2' N.

Land, rolling, rough and mountainous.

Soil, stony, 4th rate.

Undergrowth, greasewood, sagebrush and cactus.

No timber or grass.

Hugo Price, U.S.T.

Line run by Guy H. Richardson, U.S.S., as follows:

From the cor. of secs. 13, 14, 23 and 24, I run,

S. 89° 39' E., on a random line, bet. secs. 13 and 24.

40.00 Set temp. 1/4 sec. cor.

80.00 Intersect the East bdy. of the Tp., 12 lks. S. of old cor. of secs. 13, 18, 19 and 24, described in Book "B."

Thence I run,

6. Subdivision of Township 19 North, Range 20 West.

Chains.

N.89°44' W. on a true line, bet. secs.13 and 24.
 Over rough, mountainous land; descend
 5.00 Foot of 85 ft. descent; ascend.
 16.20 Top of 83 ft. ascent, spur, slopes S.20°W.; descend.
 24.34 Draw, course S.30°W., 138 ft. below top of spur; ascend.
 35.00 Top of rocky ridge, brs.N.15°W. and S.15°E. 156 ft. above
 draw; descend.
 40.00 Set an iron post, 3 ft. long, 1 in. in diam., 26 ins. in
 the ground for $\frac{1}{4}$ sec.cor., with a brass cap, marked
 $\frac{1}{4}$ S 13

 S 24
 1915
 and raise a mound of stone, 2 ft. base, 1 $\frac{1}{2}$ ft. high, N.
 of cor,
 66.68 Draw, course SE., 500 ft. below top of ridge; ascend.
 80.00 Cor. of secs.13,14,23 and 24; 215 ft. above draw.
 Land, rough, mountainous.
 Soil, stony, 4th rate.
 Undergrowth, greasewood and cactus.

Guy H. Richardson, U.S.S.

Line run by Hugo Price, U.S.T., as follows:
 From the cor. of secs.13,14,23 and 24, I run,
 N.0°3'W., bet. secs.13 and 14.
 Ascend over rough, mountainous land.
 16.52 Gulch, course SW.; continue to ascend.
 29.35 Top of spur, slopes W., 450 ft. above sec.cor.; descend.
 33.79 Gulch, course W., 125 ft. below top of spur; ascend.
 40.00 Set an iron post, 3 ft. long, 1 in. in diam., on surface
 rock, in a mound of stone, for $\frac{1}{4}$ sec.cor., with a
 brass cap, marked
 $\frac{1}{4}$ S 14 | S 13
 1915
 and raise a mound of stone 2 ft. base, 1 $\frac{1}{2}$ ft. high, W. of
 cor.
 41.47 Top of spur, slopes W., 100 ft. above gulch; descend.
 61.43 Intersect S. side line of patented mining claim (Railroad
 lode) Survey No. 2440 at 7.38 chs. S.39°9'E. of cor. No. 4.

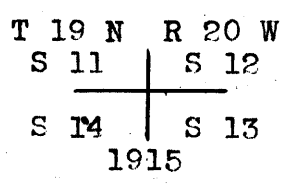
Subdivision of T. 19 N., R. 20 W.

Chains

67.25 Gold Road Gulch, course NW., 604 ft. below top of spur, asc.

75.21 Intersect N. side line of patented mining claim (Billy Bryan lode) Sur. No. 1699A at 67.76 chs. N. 148° 50' W. of cor. No. 2.

80.00 200 ft. above gulch, set an iron post, 3 ft. long, 2 ins. in diam., 20 ins. in the ground to solid rock, in a mound of stone, for cor. of secs. 11, 12, 13 and 14, with a brass cap, marked



and raise a mound of stone, 2 ft. base, 1 1/2 ft. high, W. of cor.

Land rough mountainous.
Soil, stony, 4th. rate.
Undergrowth, greasewood and cactus.
No grass or timber.

April 30, 1915.

May 1, 1915; I commence At the cor. of secs. 11, 12, 13 and 14, and at 9h. Om., a. m., l.m.t., set off 14° 54' N. on the decl. arc, and 35° 2 1/2' on the lat. arc, and determine a meridian with the solar,

Thence I run S. 89° 44' E. on a random line bet. secs. 12 and 13.

40.00 Set temp. 1/4 sec. cor.

79.88 Intersect the E. bdy. of the township 5 lks. N. of old cor. of secs. 7, 12, 13 and 18, described in Book "B."

Thence I run N. 89° 42' W. on a true line bet. secs. 12 and 13.

Asc. over rolling mountainous land.

39.94 410 ft. above sec. cor., set an iron post, 3 ft. long, 1 in. in diam., 18 ins. in the ground, to solid rock, in a mound of stone for 1/4 sec. cor., with a brass cap, marked

Chains	1/4 S 12						
	<p>S 13 1915</p>						
	<p>and raise a mound of stone, 2 ft. base, 1 1/2 ft. high, N. of cor. Continue to asc.</p>						
54.40	Top of ridge, bears N. and S., 283 ft. above 1/4 sec. cor., desc.						
65.24	Gulch, course NW., 380 ft. below top of ridge, asc.						
79.88	Cor. of secs. 11, 12, 13 and 14, 142 ft. above gulch. Land, rolling mountainous. Soil, stony, 4th. rate. Undergrowth, greasewood, sagebrush and cactus. No timber or grass.						

	<p>N. 0° 3' W. bet. secs. 11 and 12. Desc. over rolling mountainous land.</p>						
16.56	Oatman, Gold Roads and Kingman road, bears E. and W.						
31.59	Gulch, course W., 584 ft. below sec. cor., asc.						
37.05	Top of spur, slopes W., 190 ft. above gulch, desc.						
40.00	Set an iron post, 3 ft. long, 1 in. in diam., on surface rock, in a mound of stone, for 1/4 sec. cor., with a brass cap, marked						
	<table style="margin-left: auto; margin-right: auto;"> <tr> <td style="text-align: center;">1/4 S 11</td> <td style="border-left: 1px solid black; border-right: 1px solid black; text-align: center;">S 12</td> </tr> <tr> <td></td> <td style="border-left: 1px solid black; border-right: 1px solid black; text-align: center;">1915</td> </tr> </table>	1/4 S 11	S 12		1915		
1/4 S 11	S 12						
	1915						
	<p>and raise a mound of stone, 2 ft. base, 1 1/2 ft. high, W. of cor.</p>						
44.67	Gulch, course W., 118 ft. below top of spur, asc.						
49.16	Top of spur, slopes W., 94 ft. above gulch, desc.						
56.95	Gulch, course W., 227 ft. below top of spur., asc.						
80.00	444 ft. above gulch, set an iron post, 3 ft. long, 2 ins. in diam., 10 ins. in the ground for cor. of secs. 1, 2, 11 and 12, with a brass cap, marked						
	<p>T 19 N. R 20 W</p> <table style="margin-left: auto; margin-right: auto;"> <tr> <td style="text-align: center;">S 2</td> <td style="border-left: 1px solid black; border-right: 1px solid black; text-align: center;">S 1</td> </tr> <tr> <td style="text-align: center;">S 11</td> <td style="border-left: 1px solid black; border-right: 1px solid black; text-align: center;">S 12</td> </tr> <tr> <td></td> <td style="border-left: 1px solid black; border-right: 1px solid black; text-align: center;">1915</td> </tr> </table>	S 2	S 1	S 11	S 12		1915
S 2	S 1						
S 11	S 12						
	1915						
	<p>and raise a mound of stone, 2 ft. base, 1 1/2 ft. high,</p>						

Subdivision of T. 19 N., R. 20 W.

Chains

W. of cor.

Land, rolling mountainous.

Soil, stony, 4th. rate.

Undergrowth, greasewood, sagebrush and cactus.

Hugo Price, U. S. T.
May 1, 1915.

May 6, 1915; Lines run by Guy H. Richardson, U.S.S., as fol-

lows: From the cor. of secs. 1, 2, 11 and 12, I
run

S. 89° 42' E. on a random line bet. secs. 1 and 12.

40.00 Set temp. 1/4 sec. cor.

80.10 Intersect the E. bdy. of the twp., 7 lks. N. of old cor.
of secs. 1, 6, 7 and 12, described in Book "B."

Thence I run

N. 89° 39' W. on a true line bet. secs. 1 and 12.

Over level and rolling land.

19.50 Head of draw, course S. 75° E., asc.

29.00 Top of ridge, bears N. and S., 207 ft. above draw, desc.

40.05 Set an iron post, 3 ft. long, 1 in. in diam., 26 ins. in
the ground for 1/4 sec. cor., with a brass cap, marked

1/4 S 1

S 12
1915

and raise a mound of stone, 2 ft. base, 1 1/2 ft. high,
N. of cor.

41.10 Cottonwood Canyon, course N. 35° W., 280 ft. below top
of ridge, asc.

55.60 Top of spur, slopes N. 50° W., about 25 chs, 240 ft.
above canyon, desc.

65.10 Head of draw, course N. 65° W., 165 ft. below top of
spur, asc.

75.10 Top of ridge, bears NW. and SE., 45 ft. above draw, desc.

80.10 Cor. of secs. 1, 2, 11 and 12, 85 ft. below top of ridge.
Land, rolling mountainous.

Soil, stony, 4th. rate.

Undergrowth, greasewood and cactus.

Chains N. 0° 3' W. on a random line bet. secs. 1 and 2.
 40.00 Set temp. 1/4 sec. cor.
 80.34 Intersect the N. bdy. of the twp. 5 lks. W. of the cor. of secs. 1, 2, 35 and 36, described in Book "A."
 Thence I run
 S. 0° 1' E. on a true line bet. secs. 1 and 2.
 Desc. over rolling mountainous land.
 16.60 Cottonwood Canyon, course N. 65° W., carries about 10 ins. of water, 180 ft. below sec. cor., asc.
 40.34 Set an iron post, 3 ft. long, 1 in. in diam., 26 ins. in the ground for 1/4 sec. cor., with a brass cap, marked

$$\begin{array}{c} 1/4 \text{ S } 2 \mid \text{ S } 1 \\ \hline 1915. \end{array}$$

 and raise a mound of stone, 2 ft. base, 1 1/2 ft. high, W. of cor.
 51.00 Top of spur, slopes NW., about 20.00 chs. dist., 545 ft. above canyon, desc.
 59.10 Wash, course N. 35° W., 95 ft. below top of spur, asc.
 78.15 Top of ridge, bears NW. and SE., 155 ft. above wash, desc.
 80.34 Cor. of secs. 1, 2, 11 and 12, 47 ft. below top of ridge. Land, rolling mountainous.
 Soil, stony, 4th. rate.
 Undergrowth, greasewood and cactus.

May 6, 1915.

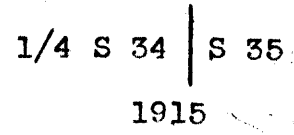
May 1, 1915; At the cor. of secs., 2, 3, 34 and 35, on the S. bdy. of the twp., described in Book "A.", and at 9h., 0m., a. m., l.m.t., set off 14° 54' N. on the decl. arc, and 34° 59' on the lat. arc, and determine a meridian with the solar,
 Thence I run
 N. 0° 3' W. bet. secs. 34 and 35.
 Over rough mountainous land.
 2.50 Road, bears E. and W., asc.
 22.18 Top of ridge, bears NE. and SW, 200 ft. above road, desc.

Chains

33.75 Mining hoist, 2.00 chs. W. of line.

36.00 Road, bears NE. and SW.,

40.00 Set an iron post, 3 ft. long, 1 in. in diam., 26 ins. in the ground for 1/4 sec. cor., with a brass cap, marked

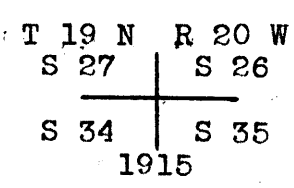


and raise a mound of stone, 2 ft. base, 1 1/2 ft. high, W. of cor.

43.37 Draw, course W., 200 ft. below top of ridge, asc.

75.40 Top of ridge, bears NW. and SE., 500 ft. above draw, desc.

80.00 170 ft. below top of ridge, set an iron post, 3 ft. long, 2 ins. in diam., 24 ins. in the ground for cor. of secs. 26, 27, 34 and 35, with a brass cap, marked



and raise a mound of stone, 2 ft. base, 1 1/2 ft. high, W. of cor.

Land, rolling and mountainous.

Soil, stony, 4th. rate.

Undergrowth, greasewood.

S. 89° 50' E. on a random line bet. secs. 26 and 35.

40.00 Set temp. 1/4 sec. cor.

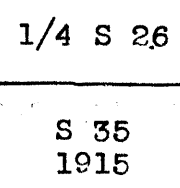
80.10 Intersect N. and S. line 21 lks. N. of the cor. of secs. 25, 26, 35 and 36,

Thence I run

N. 89° 41' W. on a true line bet. secs. 26 and 35.

Desc. over rolling and mountainous land.

40.05 537 ft. below sec. cor. Set an iron post, 3 ft. long, 1 in. in diam., 26 ins. in the ground for 1/4 sec. cor., with a brass cap, marked



Chains and raise a mound of stone, 2 ft. base, 1½ ft. high,
N. of cor.

48.27 Draw, course N. 75° W., asc.

80.10 Cor. of secs. 26, 27, 34 and 35, 340 ft. above draw.

Land, rolling mountainous.

Soil stony, 4th. rate.

Undergrowth, greasewood.

N. 0° 3' W. bet. secs. 26 and 27.

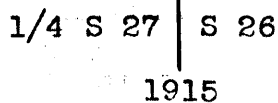
Over rolling mountainous land, desc.

7.00 Draw, course S. 75° W., 195 ft. below sec. cor., asc.

11.00 Top of spur, slopes S. 75° W., 45 ft. above draw, desc.

35.89 Wash, course SW., 400 ft. below top of spur. Ascend.

40.00 Set an iron post, 3 ft. long, 1 in. in diam., 26 ins. in
the ground for ¼ sec. cor., with a brass cap, marked



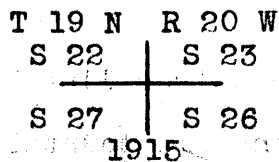
and raise a mound of stone, 2 ft. base, 1½ ft. high,
W. of cor.

45.00 Road, bears N. 40° W. and S. 40° E.

57.74 Intersect S. side line of patented mining claim (Alice Iode)
Sur. No. 2775 at 6.94 chs. S. 78844 E. of Cor. No. 3.

77.95 Intersect N. side line of patented mining claim (Bunker Hill
Iode) Sur. No. 3190 at 4.40 chs. 7862810 E. of cor. No. 1.

80.00 207 ft. ascent, set an iron post, 3 ft. long, 2 ins. in
diam., 24 ins. in the ground for cor. of secs. 22, 23,
26 and 27, with a brass cap, marked



and raise a mound of stone, 2 ft. base, 1½ ft. high,
W. of cor.

Land, rolling mountainous.

Soil, stony, 4th. rate.

Undergrowth, greasewood and cactus.

Subdivision of Township 19 North, Range 20 West. 13.

Chains.

At the cor. of secs. 22, 23, 26 and 27, at apparent noon, I set off 14°56'N. on the decl. arc, and observe the sun on the meridian for lat. The resulting latitude is 35° 1'N.

Thence I run, S. 89°41'E., on a random line, bet. secs. 23 and 26.

40.00 Set temp. 1/4 sec. cor.

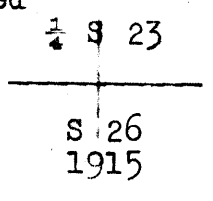
80.18 Intersect N. and S. line, 21 lks. S. of the cor. of secs. 23, 24, 25 and 26.

Thence I run, N. 89°50'W. on a true line, bet. secs. 23 and 26.

Descend over rolling, mountainous land.

21.27 Draw, course S., 320 ft. below sec. cor.; ascend.

40.09 380 ft. above draw, set an iron post, 3 ft. long, 1 in. in diam., 26 ins. in the ground for 1/4 sec. cor., with a brasscap, marked



and raise a mound of stone, 2 ft. base, 1 1/2 ft. high, N. of cor. Descend.

80.18 Cor. of secs. 22, 23, 26 and 27, 525 ft. above 1/4 sec. cor.

Land, rolling and mountainous.

Soil, stony, 4th rate.

Undergrowth, greasewood and cactus.

May 1, 1915.

May 3, 1915: At the cor. of secs. 22, 23, 26 and 27, at 8h. 0m. a.m., l.m.t., I set off 15° 29 1/2' N. on the decl. arc; 35° 1' on the lat. arc, and determine a meridian with the solar.

Thence I run, N. 0° 3' W., bet. secs. 22 and 23.

Over gently rolling land.

15.00 Wash, course S. 20° W.

26.54 Intersect S. side line of patented mining claim (Giant lode) Sur. No. 2704 at 10.66 chs. N. 72° 48 1/2' W. of Cor. No. 3.

14. Subdivision of Township 19 North, Range 20 West.

Chains
30.75 Road brs.NE. and SW.

35.84 Intersect N.side line of patented mining claim (Giant lode)
Sur. No.2704 at 8.54 chs.S. 70°26'E. of cor. No.1.

40.00 Set an iron post, 3 ft.long, 1 in. in diam., 26 ins. in
the ground for $\frac{1}{4}$ sec.cor., with a brass cap, marked

S 22		S 23
1915		

and raise a mound of stone, 2 ft.base, 1 $\frac{1}{2}$ ft. high,W.
of cor. Ascend.

53.10 Top of bench, brs.E.and W., 200 ft. above $\frac{1}{4}$ sec.cor. De-
scend slightly.

54.88 Draw, course S.80°E.; leave bench; ascend,

80.00 292 ft. above draw, set an iron post, 3 ft.long, 2 ins.in
diam.,24 ins. in the ground for cor.of secs.14,15,22
and 23, with a brass cap, marked

T 19 N		R 20 W
S 15		S 14

S 22		S 23
1915		

and raise a mound of stone, 2 ft. base, 1 $\frac{1}{2}$ ft. high,
W.of cor.

Land, rolling and mountainous.
Soil, stony, 4th rate.
Undergrowth, greasewood and cactus.

S.89° 50'E., on a random line, bet. secs.14 and 23.

40.00 Set temp. $\frac{1}{4}$ sec.cor.

79.96 Intersect N.and S line, 18 lks.N.of the cor.of secs.13,14,
23 and 24.

Thence I run,
N.89°43'W., on a true line, bet. secs.14 and 23.
Descend over rough, mountainous land.

39.98 570 ft. below sec.cor., set an iron post, 3 ft.long,1 in.
in diam.,26 ins. in the ground for $\frac{1}{4}$ sec.cor., with a
brass cap, marked

Subdivision of Township 19 North, Range 20 West. 15.

Chains.

$\frac{1}{4}$ S 14

S 23
1915

and raise a mound of stone, 2 ft. base, $1\frac{1}{2}$ ft. high, N. of cor.

47.00 Intersect N. side line of patented mining claim (Rising Sun lode) Sur. No. 2903 at 8.00 chs. S. $50^{\circ}43'$ E. of cor. No. 5. Descend.

63.70 Main street of Oatman, brs. N. and S.
Oasis store, brs. N. $41^{\circ}40'$ E., 1 ch. dist.
Arizona Store Co's. store brs. N. $20^{\circ}18'$ W., 2.08 chs. dist.
W.C. Loren building, brs. N. $47^{\circ}53'$ W., 2.15 chs. dist.

79.76 Intersect S. side line of patented mining claim (Thos. B. Reed lode) Sur. No. 2610 at 2.33 chs. S. $61^{\circ}53'$ E. from Cor. No. 1.

79.96 Cor. of secs. 14, 15, 22 and 23, 85 ft. above $\frac{1}{4}$ sec. cor.
Land, rolling and mountainous.
Soil, stony, 4th rate.
Undergrowth, greasewood and cactus.

May 3, 1915.

May 4, 1915: At the cor. of secs. 14, 15, 22 and 23, at 8h. 0m., a. m., l. m. t., set off $15^{\circ}47'$ N. on the decl. arc; $35^{\circ} 2'$ on the lat. arc, and determine a meridian with the solar.

Thence I run,
N. $0^{\circ}3'$ W., bet. secs. 14 and 15.
Over rolling land.

0.11 Intersect S. side line of patented mining claim (Thos. B. Reed lode) Sur. No. 2610, at 2.10 chs. S. $61^{\circ}53'$ E. of Cor. No. 1.

3.50 Intersect W. end line of patented mining claim (Thos. B. Reed lode) Sur. No. 2610 at 1.17 chs. S. $37^{\circ}55'$ W. of cor. No. 2.

3.77 Intersect E. end line of patented mining claim (Olla Oatman lode) Sur. No. 2610 at 3.41 chs. N. $47^{\circ}47'$ E. of cor.

16. Subdivision of Township 19 North, Range 20 West.

Chains.

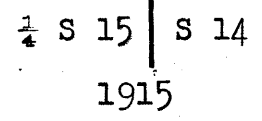
No.6.

9.65 Intersect N.side line of patented mining claim (Olla Oatman lode) Sur.No.2610, at 4.66 chs.N.61°06'W.of cor.

No.5.

20.70 Oatman and Gold Road road, brs.N.35°W. and S.30°E.

40.00 Set an iron post, 3 ft.long, 1 in. in diam., 24 ins. in the ground for $\frac{1}{4}$ sec.cor., with a brass cap, marked

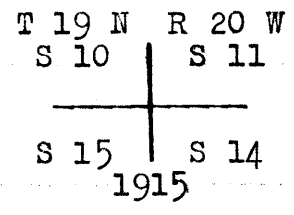


and raise a mound of stone, 2 ft.base, 1 $\frac{1}{2}$ ft. high, W. of cor. Ascend.

51.50 Top of rocky spur, slopes N.20°W., 360 ft. above $\frac{1}{4}$ sec.cor. Descend.

62.27 Draw, course N.65°W., 367 ft. below top of spur; ascend.

80.00 87 ft. above draw, set an iron post, 3 ft.long, 2 ins. in diam., 24 ins. in the ground for cor.of secs.10,11,14 and 15, with a brass cap, marked



and raise a mound of stone, 2 ft.base, 1 $\frac{1}{2}$ ft. high, W. of cor.

Land, rolling and mountainous.

Soil, stony, 4th rate.

Undergrowth, greasewood and cactus.

At the cor. of secs.10,11,14 and 15, at apparent noon, I set off 15°50'N. on the decl.arc, and observe the sun on the meridian for lat. The resulting latitude is 35°02 $\frac{1}{2}$ ' N.

S.89°43'E., on a random line, bet.secs.11 and 14.

40.00 Set temp. $\frac{1}{4}$ sec.cor.

80.26 Intersect N.and S. line 26 lks.S.of the cor.of secs.11,12, 13 and 14. Thence I run,

N.89°54'W., on a true line, bet.secs.11 and 14.

Descend over rolling land.

5.48 Intersect N.side line of patented mining claim (Billy Bryan lode) Sur.No.1699A at 9.06 chs.N.48°50'W.of cor.No.2.

- Chains.
- 11.93 Draw, course N.60°W., 340 ft. below sec.cor.; ascend.
- 14.40 Top of hill, brs.N.60°W. and S 60°E., 17 ft. above draw; descend.
- 19.28 Foot of 40 ft. descent. Intersect S.side line of patented mining claim (Billy Bryan lode) Sur. No.1699 A, at 2.73 chs.S.48°50'E. of Cor.No.4. Ascend over rolling land.
- 36.71 Store brs.N.0°30'W., also U.S.L.M.No.1699A, bears N.23° 53'W. Gold Road Club building, bears N.2°30'W.
- 40.13 Set an iron post, 3 ft.long, 1 in. indiam., 26 ins. in the ground for $\frac{1}{4}$ sec.cor., with a brass cap, marked
 $\frac{1}{4}$ S 11

S 14
1915
and raise a mound of stone, 2 ft.base, $1\frac{1}{2}$ ft. high,N. of cor.
- 45.65 Top of slight ascent, spur slopes N.15°W.; descend.
- 58.00 Draw, course N.75°W., 181 ft. below top of spur;ascend.
- 69.45 Top of spur, slopes N.25°W.,73 ft. above draw; descend.
- 72.89 Foot path, Oatman to Gold Road, brs.N.and S.
- 74.39 Power line, Oatman to Gold Road, brs.N.and S.
- 80.26 Cor.of secs.10,11,14 and 15, 244 ft below top of spur.
Land, rolling and mountainous.
Soil, stony, 4th rate.
Undergrowth, greasewood and cactus.

May 4, 1915.

May 6, 1915: At the cor.of secs. 10,11,14 and 15, at 8h.0m. a.m., 1.m.t., set off $16^{\circ} 21\frac{1}{2}'$ N. on the decl.arc; $35^{\circ} 02\frac{1}{2}'$ on the lat.arc, and determine a meridian with the solar.

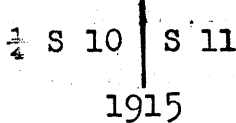
Thence I run,
N.0° 3' W., bet. secs. 10 and 11.
Ascend over rolling and mountainous land.

18 Subdivision of Township 19 North, Range 20 West.

Chains.

14.78 Top of spur slopes W., 110 ft. above sec.cor.; descend.
 29.78 Oatman and Gold Road road, brs.S.85°W. and N.85°E.
 32.70 Power line, Oatman to Gold Road, brs.N.85° E. and S.85°W.
 35.10 Intersect west side line of patented mining claim (Iron Rod lode) Sur.No.2240A, at 52 lks.N.28°24'W. of Cor.No.2.

40.00 Set an iron post, 3 ft.long, 1 in. in diam., 26 ins. in the ground for $\frac{1}{4}$ sec.cor., with a brass cap, marked

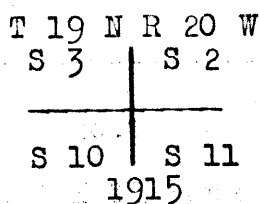


and raise a mound of stone, 2 ft.base, 1 $\frac{1}{2}$ ft. high, W. of cor., 110 ft.below top of spur; thence over rolling land.

From $\frac{1}{4}$ sec.cor., U.S.L.M.No.1699A, brs.N.86° 0'E.

51.46 Power line brs.N.70°W. and S.70°E.
 51.76 Wash, 50 lks.wide, course N.60°W.; ascend.
 57.71 Top of spur, slopes NW. about 15 chs., 34 ft. above wash; descend.
 59.70 Foot of spur, 23 ft. below top; enter level land.
 66.65 Silver Creek Wash, 3 chs.wide, course N.60°W.
 71.52 Intersect N.side line of patented mining claim (Gold Dollar Extension lode) Sur.No.1699A, at 5.85 chs.N.47° 40'W. of cor.No.4.

80.00 Set an iron post, 3 ft.long, 2 ins. in diam., 24 ins. in the ground for cor.of secs. 2,3,10 and 11, with a brass cap, marked



and raise a mound of stone, 2 ft.base, 1 $\frac{1}{2}$ ft. high, W.of cor.

Land, rolling. Soil, stony, 4th rate.

Undergrowth, greasewood and cactus.

Subdivision of Township 19 North Range 20 West 19

Chains.

S.89°54'E., on a random line, bet. secs.2 and 11.

40.00 Set temp. 1/4 sec. cor.

80.18 Intersect N. and S. line, 12 lks. N. of the cor. of secs. 1, 2, 11 and 12, from which cor., Gold Road Club house, brs. S.38°15'W., Gold Road store, brs. S.37°5'W., and U.S. L.M. No. 1699A brs. S.55° 37'W.

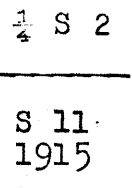
At this sec. cor. at apparent noon, I set off 16°24'N. on the decl. arc, and observe the sun on the meridian for lat. The resulting latitude is 35° 03' N.

Thence I run,

N.89°49'W; on a true line, bet. secs. 2 and 11.

Descend over rough and mountainous land.

40.09 570 ft. below sec. cor., set an iron post, 3 ft. long, 1 in. in diam., 26 ins. in the ground for 1/4 sec. cor., with a brass cap, marked



and raise a mound of stone, 2 ft. base, 1 1/2 ft. high, N. of cor. Continue to descend.

72.18 Wash, course N.85°W., 220 ft. below 1/4 sec. cor.

80.18 Cor. of secs. 2, 3, 10 and 11.

Land, rough and mountainous.

Soil, stony, 4th rate.

Undergrowth, greasewood and cactus.

Guy H. Richardson, U.S.S.

May 6, 1915.

May 10, 1915: Line run by Hugo Price, U.S.T., as follows:

From the cor. of secs. 2, 3, 10 and 11, I run,

N.0° 3'W., on a random line, bet. secs. 2 and 3.

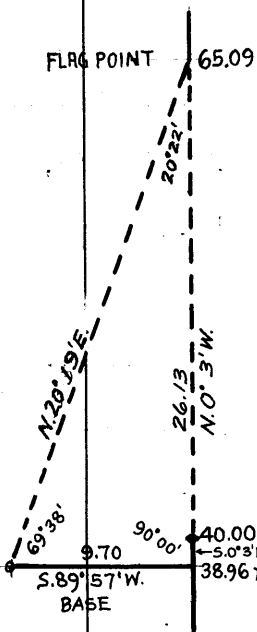
40.00 Set temp. 1/4 sec. cor.

It being impracticable to chain measurement on random

sec. line N.0°3'W. of this point, owing to steep cliffs,

I triangulate as follows:

20 Subdivision of Township 19 North, Range 20 West
Chains.



Establish a triangulation point on random sec.
line 1.04 chs. S.0°3'E. of temp. $\frac{1}{4}$ sec. cor.
Set a flag N.0°3'W. of temp. $\frac{1}{4}$ sec. cor.
From triangulation point lay off a base,
S.89°57'W., 9.70 chs.
From W. end of base flag brs. N.20°19'E.
Included angles are 90°00', 69°38' and 20°22'
the sum of which is 180°00'.

Therefore dist. on random sec. line from triangu-
lation point to flag is obtained by
Tang. 69°38' x base or $2.69371 \times 9.70 = 26.13$
chs. $40.00 - 1.04 \text{ chs.} + 26.13 \text{ chs.} =$

- 65.09 Flag point. Continue measurement by chaining.
- 80.25 Intersect the N. bdy. of the twp. 5' lks. W. of the cor. of
secs. 2, 3, 34 and 35, described in Book "A."
Thence I run,
S.0°1'E., on a true line, bet. secs. 2 and 3.
Over rolling and rough mountainous land. Descend over
steep cliffs.
- 15.16 Flag point. Thence by triangulation measurement hereinbe-
fore described.
- 30.25 (Approximate) Tom Reed pipe line, brs. NE. and SW.
- 40.25 444 ft. below sec. cor., set an iron post, 3 ft. long, 1 in.
in diam., 12 ins. in the ground, to solid rock, in a
mound of stone, for $\frac{1}{4}$ sec. cor., with a brass cap, marked
 $\frac{1}{4}$ S 3 | S 2
1915
and raise a mound of stone, 2 ft. base, $1\frac{1}{2}$ ft. high, W.
of cor.
Thence over gently rolling land, chaining measurement.
- 41.29 Triangulation point.
- 80.25 Cor. of secs. 2, 3, 10 and 11.
Land, rolling, rough and mountainous.
Soil, stony, 4th rate.
Undergrowth, greasewood and cactus.

May 10, 1915.

Chains.

May 3, 1915: At the cor. of secs. 3, 4, 33 and 34, on the S. bdy. of the Tp., described in Book "A," at 8h. 0m. a.m., l.m.t., set off 15° 29½' N. on the decl. arc; 34° 59' on the lat. arc, and determine a meridian with the solar.

Thence I run,

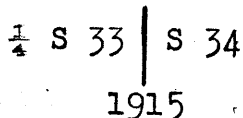
N. 0° 4' W., bet. secs. 33 and 34.

Descend over rolling land.

33.31 Gulch, course W., 150 ft. below sec. cor.

35.41 Road, brs. E. and W.; ascend.

40.00 80 ft. above gulch, set an iron post, 3 ft. long, 1 in. in diam., 20 ins. in the ground, to solid rock, in a mound of stone, for ¼ sec. cor., with a brass cap, marked



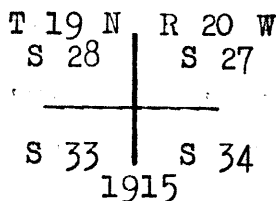
and raise a mound of stone, 2 ft. base, 1½ ft. high, W. of cor. Continue to ascend.

56.30 Top of spur, slopes west, 373 ft. above ¼ sec. cor.; descend.

72.25 Gulch, course W., 530 ft. below top of spur.

75.75 Road brs. NE. and SW.

80.00 Set an iron post, 3 ft. long, 2 ins. in diam., on surface rock, in a mound of stone, for cor. of secs. 27, 28, 33 and 34, with a brass cap, marked



and raise a mound of stone, 2 ft. base, 1½ ft. high, W. of cor.

At this cor. at apparent noon, I set off 15° 32' N. on the decl. arc, and observe the sun on the meridian for lat.

The resulting lat. is 35° 00' N., May 3, 1915.

Land, rolling, rough and mountainous.

Soil, stony, 4th rate.

Undergrowth, greasewood, sagebrush and cactus.

S. 89° 50' E., on a random line, bet. secs. 27 and 34.

40.00 Set temp. ¼ sec. cor.

22 Subdivision of Township 19 North Range 20 West

Chains

80.10 Interséct N. and S. line, 12 lks.N.of the cor.of secs.
26,27,34 and 35.

Thence I run,
N.89°45'W., on a true line, bet. secs.27 and 34.
Over rolling, mountainous land.

1.82 Gulch, course NE.; ascend.

10.80 Top of ridge, brs.N.and S., 283 ft. abòve gulch; descend.

15.78 Gulch, course NW., 170 ft. below top of spur; ascend.

25.75 Top of spur, slopes N., 40 ft. above gulch; descend.

40.05 250 ft. below top of spur, set an iron post, 3 ft. long,
1 in. in diam., on surface rock, in a mound of stone,
for $\frac{1}{4}$ sec.cor., with a brass cap, marked

$\frac{1}{4}$ S 27

S 34
1915

and raise a mound of stone, 2 ft. base, $1\frac{1}{2}$ ft. high,N.
of cor. Continue to descend.

48.00 Foot of 120 ft. descent; ascend.

57.80m Top of butte, brs.N.and S., 107 ft. ascent; descend.

77.83 Wash, course S., 390 ft. below top of butte.
Road in bottom of wash, brs.N.and S.; ascend.

80.10 Cor.of secs. 27,28,33 and 34, 35 ft. above wash.
Land, rolling, rough and mountainous.
Soil, stony, 4th rate.
Undergrowth, greasewood, sagebrush and cactus.
No grass.

May 3, 1915.

May 4, 1915: From the cor.of secs.27,28,33 and 34, I run,
N.0° 4'W., bet. secs. 27 and 28.
Ascend over rolling land.

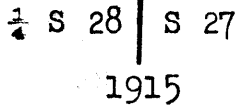
17.60 Top of 55 ft. ascent; descend.

40.00 Fpot of 95 ft. descent, set an iron post, 3 ft. long, 1 in.
in diam., 26 ins. in the ground for $\frac{1}{4}$ sec.cor., with

Subdivision of Township 19 North, Range 20 West. 23.

Chains.

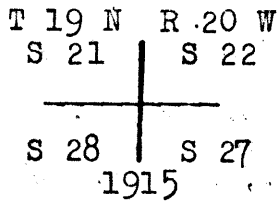
a brass cap, marked



and raise a mound of stone, 2 ft. base, 1 1/2 ft. high, W. of cor. Ascend slightly.

44.50 Road, brs. E. and W.

80.00 Set an iron post, 3 ft. long, 2 ins. in diam., 24 ins. in the ground for cor. of secs. 21, 22, 27 and 28, with a brass cap, marked



and raise a mound of stone 2 ft. base, 1 1/2 ft. high, W. of cor.

Land, rolling.

Soil, stony, 4th rate.

Undergrowth, greasewood, sagebrush and cactus.

S. 89° 45' E., on a random line, bet. secs. 22 and 27.

40.00 Set temp. 1/4 sec. cor.

80.12 Intersect N. and S. line, 14 lks. S. of the cor. of secs. 22, 23, 26 and 27

Thence I run,

N. 89° 51' W., on a true line, bet. secs. 22 and 27.

Over gently rolling land.

3.39 Intersect E. end line of patented mining claim (York Annex lode) Sur. No. 3190 at 1.37 chs. S. 40° 37' W. of cor. No. 4.

13.60 Main street of new Townsite of Oatman, brs. NE. and SW.

18.80 Oatman, Needles and Topock road, brs. NE. and SW.

31.05 Pipe line, brs. N. and S.

31.12 Road brs. N. and S.

36.21 Telephone line brs. N. and S.

39.96 Intersect line 5-6 of patented mining claim (Surprise lode) Sur. No. 2822 at 87 lks., N. 43° 45' E. of cor. No. 6.

40.06 Set an iron post 3 ft. long, 1 in. in diam., on surface rock,

24. Subdivision of Township 19 North Range 20 West

Chains.

in a mound of stone, for $\frac{1}{4}$ sec.cor., with a brass cap,
marked

$\frac{1}{4}$ S 22

S 27
1915

and raise a mound of stone, 2 ft.base, $1\frac{1}{2}$ ft. high, N.of
cor. Ascend.

41.92 Intersect line 1-6 of patented mining claim (Surprise lode)
Sur.No.2822, at 1.50 chs.N.65°16'W.of cor.No.6.

45.60 Top of spur, slopes W. 34 ft. above $\frac{1}{4}$ sec.cor.; descend.

49.45 Pipe line, brs.NE. and SW.

60.25 Gulch, course W., 275 ft. below top of spur; ascend.

63.18 Intersect S.side line of patented mining claim (Surprise
West Extension lode), Sur. No.2822, at 6.82 chs.S.64°
08'E. of Cor.No.2.

64.67 Top of spur, slopes S., 155 ft. above gulch; descend.

80.12 Cor.of secs.21,22,27 and 28, 155 ft. below top of spur.

Land, rolling and nearly level.

Soil, stony, 4th rate.

Undergrowth, greasewood, sagebrush and cactus.

No grass.

May 4, 1915.

May 8, 1915: At the cor.of secs. 21,22,27 and 28, at 8h.

Om., a.m., l.m.t., I set off 16° 55'N.on the decl.arc;
35°1'on the lat.arc; and determine a meridian with the
solar.

Thence I run,

N.0°4'W., bet. secs. 21 and 22.

Ascend over rolling land.

12.60 Intersect S.side line of patented lining claim (Great
Eastern lode) Sur.No.2822 at 4.63 chs.S.56°50'E.of cor.
No.2, marked SW-G E 2 on NE. face and Cor.5 SEGEE on
NW.face.

20.57 Intersect N.side line of patented mining claim (Great East-
ern lode) Sur.No.2822 at 1.56 chs.S.57°11'E.of cor.No.1,
marked NE C GEE 2822 on W.face and NW EGE Cor.No.1 on

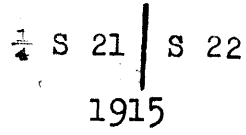
Subdivision of Township 19 North, Range 20 West. 25.

Chains.

S. face.

31.30 Top of spur, slopes E., 270 ft. above sec.cor.; descend.

40.00 Set an iron post, 3 ft. long, 1 in. in diam., 20 ins. in the ground, to solid rock, in a mound of stone, for $\frac{1}{4}$ sec.cor., with a brass cap, marked



and raise a mound of stone, 2 ft. base, $1\frac{1}{2}$ ft. high, W. of cor.

From the $\frac{1}{4}$ sec.cor., U.S.L.M.No.1602 brs.N.19°24'W.

51.83 Oatman and Leland mine road, brs.N.70°E., and S.70°W.

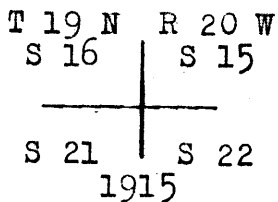
53.63 Oatman and Leland telephone line, brs.N.70°E. and 70°W.

55.74 Intersect side line of patented mining claim (Kansas Girl lode) Sur.No.2449, at 7.26 chs. S.42°08'E.of Cor.No.1. From which cor.,

U.S.L.M., No.1602, brs.N.82°40'W.

68.86 Intersect N.side line of patented mining claim (Mohave lode) Sur.No.2249, at 2.75 chs. N.62°26'W. of cor.No.2, marked M2 2249 on NW. face and K2-2249 on SE. face,

80.00 Set an iron post, 3 ft. long, 2 ins. in diam., on surface rock, in a mound of stone, for cor. of secs.15, 16, 21 and 22, with a brass cap, marked



and raise a mound of stone, 2 ft. base, $1\frac{1}{2}$ ft. high, W. of cor.

Land, rolling.

Soil, stony, 4th rate.

No grass.

Undergrowth, greasewood, sagebrush and cactus.

S.89°51'E., on a random line, bet.secs.15 and 22.

40.00 Set temp. $\frac{1}{4}$ sec.cor.

26. Subdivision of Township 19 North, Range 20 West.

Chains.

- 80.02 Intersect N. and S. line 16 lks. N. of the cor. of secs. 14, 15, 22 and 23. Thence I run,
N. $89^{\circ} 44' W.$ on a true line, bet. secs. 15 and 22.
Ascend over rolling land.
- 9.37 Top of ridge, brs. N. and S., 160 ft. above sec. cor.; descend.
- 36.17 Oatman and Leland mine road, brs. N. $70^{\circ} E.$ and S. $70^{\circ} W.$
- 40.01 334 ft. below top of ridge, set an iron post, 3 ft. long,
1 in. in diam., 18 ins. in the ground to solid rock,
in a mound of stone, for $\frac{1}{4}$ sec. cor., with a brass cap
marked,
 $\frac{1}{4}$ S 15

S 22
1915
- and raise a mound of stone, 2 ft. base, $1\frac{1}{2}$ ft. high, N.
of cor. Continue to descend.
- 49.33 Gulch, course SW., 50 ft. below $\frac{1}{4}$ sec. cor.; ascend.
- 60.58 Top of ridge, brs. N. and S., 380 ft. above gulch; descend.
- 80.02 Cor. of secs. 15, 16, 21 and 22, 225 ft. below top of ridge.
Land, rolling.
Soil, stony, 4th rate.
No grass.
Undergrowth, greasewood, sage brush and cactus.

May 8, 1915.

May 10, 1915: At the cor. of secs. 15, 16, 21 and 22, at
9h. 0m., a.m., 1.m.t., I set off $17^{\circ} 28' N.$ on the decl.
arc; and $35^{\circ} 2'$ on the lat. arc, and determine a meridian
with the solar.

Thence I run,

N. $0^{\circ} 4' W.$, bet. secs. 15 and 16.

Ascend over rolling, mountainous land.

- 15.85 Top of spur, slopes W., 185 ft. above sec. cor.; descend.
- 29.63 Gulch, course SW., 28 ft. below top of spur; ascend.
- 36.04 Top of butte, 61 ft. above gulch; descend.
- 40.00 65 ft. below top of butte, set an iron post, 3 ft. long,
1 in. in diam., on surface rock, in a mound of stone,
for $\frac{1}{4}$ sec. cor., with a brass cap, marked

Subdivision of T. 19 N., R. 20 W.

Chains and raise a mound $\frac{1}{4}$ S 16 to S 15 ft. base, $2\frac{1}{2}$ ft. high, W. of cor., asc. 1915
 60.20 and raise a mound of stone, 2 ft. base, $1\frac{1}{2}$ ft. high, W. of cor. Top of ridge, bears E. and W., 180 ft. above $\frac{1}{4}$ sec. Ascend.
 66.20 Top of ridge, brs. E. & W., 180 ft. above $\frac{1}{4}$ sec. cor. Descend.
 80.00 11 ft. below top of ridge, set an iron post, 3 ft. long, 2' ins. in diam., 22 ins. in the ground to solid rock, in a mound of stone, for cor. of secs. 9, 10, 15 and 16, with a brass cap, marked

T 19 N	R 20 W
S 9	S 10
S 16	S 15
1915	

and raise a mound of stone, 2 ft. base, $1\frac{1}{2}$ ft. high, W. of cor.
 Land, rolling.
 Soil, stony, 4th. rate.
 No grass.
 Undergrowth, greasewood, sagebrush and cactus.

S. 89° 44' E. on a random line bet. secs. 10 and 15.
 40.00 Set temp. $\frac{1}{4}$ sec. cor.
 80.20 Intersect N. and S. line 7 lks. N. of the cor. of secs. 10, 11, 14 and 15.
 Thence I run
 N. 89° 41' W. on a true line bet. secs. 10 and 15.
 Asc. over rolling mountainous land.
 22.20 Top of spur, slopes W., 160 ft. above sec. cor., desc.
 34.43 Telephone line, bears N. and S.
 34.93 Kingman, Oatman and Gold Road road, bears N. and S.
 40.10 216 ft. below top of spur, set an iron post, 3 ft. long, 1 in. in diam., 26 ins. in the ground for $\frac{1}{4}$ sec. cor. with a brass cap, marked

$\frac{1}{4}$ S 10
S 15
1915

and raise a mound of stone, 2 ft. base, $1\frac{1}{2}$ ft. high, N. of cor.

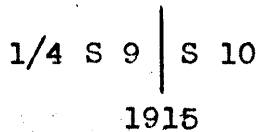
Chains Asc. from 1/4 sec. cor.
 46.60 Top of 40 ft. ascent, desc.
 65.40 Foot of 115 ft. descent, asc.
 80.20 Cor. of secs. 9, 10, 15 and 16, 67 ft. ascent.
 Land, rolling.
 Soil, stony, 4th. rate.
 Undergrowth, greasewood and cactus.

N. 0° 4' W. bet. secs. 9 and 10.

Desc. over rolling land.

34.76 Pipe line, bears NE. and SW.

40.00 200 ft. below sec. cor., set an iron post, 3 ft. long, 1 in. in diam., 16 ins. in the ground to solid rock, in a mound of stone, for 1/4 sec. cor., with a brass cap, marked



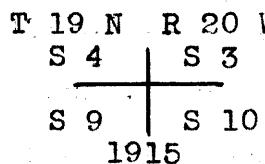
and raise a mound of stone, 2 ft. base, 1 1/2 ft. high, W. of cor. Thence over gently rolling land.

49.98 Wash, 30 lks. wide, course NE.

53.98 Transmission line, bears E. and W.

60.88 Wagon road, bears E. and W.

80.00 Set an iron post, 3 ft. long, 2 ins. in diam., 24 ins. in the ground for cor. of secs. 3, 4, 9 and 10, with a brass cap, marked



and raise a mound of stone, 2 ft. base, 1 1/2 ft. high, W. of cor.

Land, rolling.

Soil, stony, 4th. rate.

No grass.

Undergrowth, greasewood, sagebrush and cactus.

At the cor. of secs. 3, 4, 9 and 10, at apparent noon, I set off 17° 30' N. on the decl. arc, and observe the

Chains.

sun on the meridian for lat. The resulting lat. is 35° 03' N. May 10, 1915.

S. 89° 41' E., on a random line, bet. secs. 3 and 10.

40.00 Set temp. $\frac{1}{4}$ sec. cor.

80.24 Intersect N. and S. line, 5 lks. S. of the cor. of secs. 2, 3, 10 and 11.

Thence I run,

N. 89° 43' W., on a true line, bet. secs. 3 and 10.

Over slightly rolling land.

9.31 Intersect side line of patented mining claim (Gold Dollar Extension lode) Sur. No. 1699A, at 4.29 chs. S. 47° 40' E. of Cor. No. 3.

14.45 Transmission line, brs. NW. and SE.

14.92 Intersect N. end line of patented mining claim (Gold Dollar Extension lode) at 3.78 chs. S. 40° 15' W. of cor. No. 3.

20.25 Center of Silver Creek Wash, 5 chs. wide, course NW.

40.12 Set an iron post 3 ft. long, 1 in. in diam., 26 ins. in the ground for $\frac{1}{4}$ sec. cor., with a brass cap, marked

$\frac{1}{4}$ S 3

S 10
1915

and raise a mound of stone, 2 ft. base, 1 $\frac{1}{2}$ ft. high, N. of cor. Ascend.

45.10 Top of butte, brs. N. and S., 110 ft. above $\frac{1}{4}$ sec. cor.; descend.

65.48 Center of wash, 60 lks. wide, course N. 187 ft. below top of butte. Ascend.

65.48 Tom Reed pipe line, brs. N. and S.

66.67 Road brs. N. and S.

80.24 Cor. of secs. 3, 4, 9 and 10, 160 ft. above wash.

Land, nearly level and rolling.

Soil, stony, 4th rate.

Undergrowth, greasewood, sagebrush and cactus.

May 10, 1915.

May 11, 1915: From the cor. of secs. 3, 4, 9 and 10, I run,

N. 0° 4' W., on a random line, bet. secs. 3 and 4.

40.00 Set temp. $\frac{1}{4}$ sec. cor.

30 Subdivision of Township 19 North, Range 20 West.

Chains.

80.19 Intersect the N.bdy.of the Tp., 12 lks.E.of the cor.of secs.
3,4,33 and 34, described in Book "A."

Thence I run,

S.0°9'E., on a true line, bet. secs.3 and 4.

Ascend over rolling land.

17.60 Top of ridge, brs.E.and W.140 ft.above sec.cor. Descend.

40.19 257 ft. below top of ridge, set an iron post, 3 ft.long,
1 in. in diam., 16 ins.in the ground to solid rock, in a
mound of stone, for $\frac{1}{4}$ sec.cor., with a brass cap, marked

$$\begin{array}{c} \frac{1}{4} S 4 \quad | \quad S 3 \\ 1915 \end{array}$$

and raise a mound of stone, 2 ft.base, $1\frac{1}{2}$ ft.high, W.
of cor. Continue to descend.

60.43 Silver Creek Wash, course W., 118 ft. below $\frac{1}{4}$ sec.cor. ;
ascend.

65.43 Silver Creek road, brs.E.and W.

80.19 Cor.of secs.3,4,9 and 10, 170 ft. above wash.

Land, rolling.

Soil, stony, 4th rate.

Undergrowth, greasewood, sage brush and cactus.

May 11, 1915.

May 4, 1915: At the cor.of secs. 4,5,32 and 33, on the
S.bdy.of the Tp., described in Book "A," at 9h.0m., a.m.,
l.m.t., set off 15°48'N. on the decl.arc; 34°59' on the
lat.arc, and determine a meridian with the solar.

Thence I run,

N.0°4'W., bet. secs.32 and 33; ascend over rolling land.

9.37 Top of spur, slopes W., 93 ft. above sec.cor.; descend.

32.65 Wash, course SW., 244 ft. below top of spur.

40.00 Set an iron post, 3 ft.long, 1 in. in diam., 26 ins. in
the ground for $\frac{1}{4}$ sec.cor., with a brass cap, marked

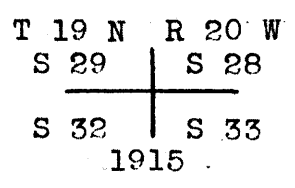
$$\begin{array}{c} \frac{1}{4} S 32 \quad | \quad S 33 \\ 1915 \end{array}$$

and raise a mound of stone, 2 ft. base, $1\frac{1}{2}$ ft. high, W.
of cor.

Chains

41.80 Oatman and Topock road, bears NE. and SW., thence over slightly rolling land.

80.00 Set an iron post, 3 ft. long, 2 ins. in diam., 24 ins. in the ground, for cor. of secs. 28, 29, 32 and 33, with a brass cap, marked



and raise a mound of stone, 2 ft. base, 1 1/2 ft. high, W. of cor.

Land, rolling.

Soil, stony, 4th. rate.

Undergrowth, greasewood, sagebrush and cactus.

No grass.

S. 89° 50' E. on a random line bet. secs. 28 and 33.

40.00 Set temp. 1/4 sec. cor.

80.24 Intersect N. and S. line 7 lks. N. of the cor. of secs. 27, 28, 33 and 34.

Thence I run

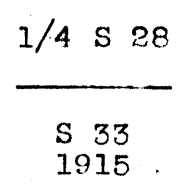
N. 89° 47' W. on a true line bet. secs. 28 and 33.

Over rolling land.

10.00 Top of spur, slopes S., desc.

36.44 Oatman and Topock road, bears NE. and SW., 100 ft. below top of spur. thence over level land.

40.12 Set an iron post, 3 ft. long, 1 in. in diam., 26 ins. in the ground, for 1/4 sec. cor., with a brass cap, marked



and raise a mound of stone, 2 ft. base, 1 1/2 ft. high, N. of cor.

80.24 Cor. of secs. 28, 29, 32 and 33.

Land, rolling.

Soil, stony, 4th. rate.

Chains Undergrowth, greasewood, cactus and sagebrush.
No grass.

May 4, 1915.

May 6, 1915; At the cor. of secs. 28, 29, 32
and 33, at 8h. 0m., a. m., l.m.t., set off $16^{\circ} 22'$
N. on the decl. arc, $35^{\circ} 0'$ on the lat. arc, and
determine a meridian with the solar,

Whence I run

N. $0^{\circ} 4'$ W. bet. secs. 28 and 29.

Over level land.

12.10 Oatman and Needles Ferry road, bears E. and W., old.

23.90 Pipe line, bears E. and W.

32.90 Oatman and Needles telephone line, bears E. and W.

33.90 Oatman and Needles ferry road, bears E. and W., new.

40.00 Set an iron post, 3 ft. long, 1 in. in diam., on surface
rock, in a mound of stone, for $1/4$ sec. cor., with a
brass cap, marked

$\frac{1}{4}$ S 29	S 28
1915	

and raise a mound of stone, 2 ft. base, $1\frac{1}{2}$ ft. high,
W. of cor.

80.00 Set an iron post, 3 ft. long, 2 ins. in diam., 24 ins. in
the ground for cor. of secs. 20, 21, 28 and 29, with a
brass cap, marked

T 19 N . R 20 W	
S 20	S 21
S 29	S 28
1915	

and raise a mound of stone, 2 ft. base, $1\frac{1}{2}$ ft. high,
W. of cor.

Land, level.

Soil, stony, 4th. rate.

Undergrowth, greasewood, sagebrush and cactus.

At the cor. of secs. 20, 21, 28 and 29, at apparent noon,
I set off $16^{\circ} 24'$ N. on the decl. arc, and observe the
sun on the meridian for lat. The resulting latitude is
 $35^{\circ} 1'$ N. May 6, 1915.

Subdivision of Township 19 North, Range 20 West. 33.

Chains.

S.89°47'E., on a random line, bet. secs.21 and 28

40.00 Set temp. 1/4 sec. cor.

80.06 Intersect N. and S. line, 16 lks. N. of the cor. of secs. 21, 22, 27 and 28.

Thence I run,

N.89° 40'W. on a true line, bet. secs. 21 and 28.

Ascend over rolling land.

3.78 Intersect E. side line of patented mining claim (35th. Parallel lode) Sur. No. 1639 at 12.11 chs. N. 8° 20' W. of cor. No. 3.

12.90 Intersect W. side line of patented mining claim (35th Parallel lode) Sur. No. 1639 at 13.47 chs. N. 8° 20' W. of cor. No. 4.

14.25 Top of ridge, brs. N. and S., 338 ft. above sec. cor.; descend.

28.13 Gulch, course S., 375 ft. below top of ridge; ascend.

35.10 Top of butte, brs. N. and S., 196 ft. above gulch; descend.

40.03 40 ft. below top of butte, set an iron post 3 ft. long, 1 in. in diam., 26 ins. in the ground for 1/4 sec. cor., with a brass cap, marked

1/4 S 21

S 28
1915

and raise a mound of stone, 2 ft. base, 1 1/2 ft. high, N. of cor. Continue to descend.

75.06 Telephone line bet. Oatman and Leland mine, brs. N. and S.

76.00 Road brs. N. and S.

80.06 Cor. of secs. 20, 21, 28 and 29, 348 ft. below 1/4 sec. cor. Land, rolling.

Soil, stony, 4th rate.

Undergrowth, greasewood, sagebrush and cactus.

No grass.

May 6, 1915.

Hugo Price, U.S.T.

May 7, 1915: Lines run by Guy H. Richardson, U.S.S. as follows:

From the cor. of secs. 20, 21, 28 and 29, I run,

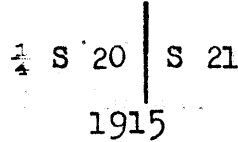
N. 0° 4' W., bet. secs. 20 and 21.

Ascend gradually over rolling land.

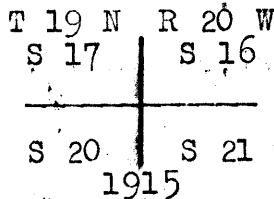
34. Subdivision of Township 19 North Range 20 West.

Chains.

- 17.38 Intersect S. side line of patented mining claim (Vivian lode) Sur.No.1679 at 5.88 chs.N.79°51'W.of cor.No.3.
- 26.62 Intersect N.side line of patented mining claim (Vivian lode) Sur.No.1679 at 7.59 chs.N.79°51'W.of cor.No.2.
- 40.00 180 ft. above sec.cor., set an iron post, 3 ft.long, 1 in. in diam., 26 ins. in the ground for $\frac{1}{4}$ sec.cor., with brass cap, marked



and raise a mound of stone, 2 ft.base, 1 $\frac{1}{2}$ ft. high,W. of cor. Thence over rolling land.



and raise a mound of stone, 2 ft.base, 1 $\frac{1}{2}$ ft.high,W. of cor.

Land, rolling.

Soil, stony, 4th rate.

Undergrowth, greasewood, sagebrush and cactus.

May 7, 1915.

May 8, 1915: At the cor.of secs.16,17,20 and 21, at 9h.0m. a.m., 1.m.t., set off 16°56'N.on the decl.arc; 35°2' on the latitude arc, and determine a meridian with the

Subdivision of Township 19 North, Range 20 West 35

Chains.

solar, and run,

S.89°40'E., on a random line, bet. secs.16 and 21.

40.00 Set temp. sec.cor.

80.10 Intersect N.and S. line, 2 lks.N.of the cor.of secs.15,16, 21 and 22.

Thence I run, N.89°39'W., on a true line; bet. secs.16 and 21.

Descend over rolling land.

21.87 Intersect E. side line of patented mining claim (Dewey lode) Sur.No.1639, at 2.16 chs.N.37°40'W.of cor.No.6.

39.93 Intersect N.end line of patented mining claim (Ben Hur lode) Sur.No.1639 at 0.97 chs.N.71°55'E.of cor.No.3.

40.05 157 ft. below sec.cor., set an iron post 1 in. in diam., 26 ins. in the ground for 1/4 sec.cor., with a brass cap, marked

1/4 S 16

S 21
1915

and raise a mound of stone, 2 ft.base, 1 1/2 ft. high, N. of cor. Thence over rolling land.

46.88 Intersect E.side line of patented mining claim (Eleanor lode) Sur.No.1639, at 9.10 chs.S.43°42'E.of cor.No.4.

Descend slightly.

55.50 Wash, course S. 23°W., 50 lks.wide; ascend.

60.47 Top of spur slopes S., 35 ft. above wash; descend.

76.15 Wash, 1 chain wide, course S., 52 ft. below top of spur; ascend.

80.10 Cor.of secs.16,17,20 and 21, 115 ft. above wash.

Land, rolling.

Soil, stony, 4th rate.

Undergrowth, greasewood, sagebrush and cactus.

N.0°4'W., bet.secs.16 and 17.

Descend over rolling land.

0.70 Intersect N.side line of patented mining claim (Minneapolis lode) Sur.No.2426, at 4.75 chs.N.82°47'W.of cor.No.3.

36. Subdivision of Township 19 North, Range 20 West

Chains.

9.00 Draw, 1 chain wide, course S.65°E., 156 ft. below sec. cor.; ascend.

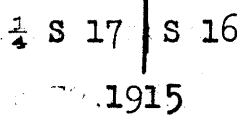
18.50 Top of 165 ft. ascent.

24.00 Begin to descend.

27.20 Intersect W. side line of patented mining claim (Roosevelt lode) Sur.No.2749, at 1.90 chs.N.27°31'W.of cor.No.1.

34.30 Foot of 83 ft. descent; ascend.

40.00 Set an iron post, 3 ft. long, 1 in. in diam., 12 ins. in the ground, to solid rock, in a mound of stone, for 1/4 sec.cor., with a brass cap, marked,



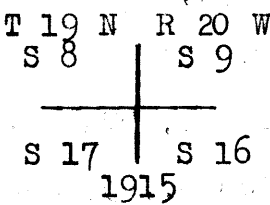
and raise a mound of stone, 2 ft. base, 1 1/2 ft. high, W. of cor.

55.35 Intersect E. side line of patented mining claim (Climax lode) Sur.No.2749, at 3.24 chs.N.34°34'W.of cor.No.4.

73.50 Top of 290 ft. ascent; descend.

79.35 Draw, course N.15°W., 80 ft. descent.

80.00 Set an iron post 3 ft. long, 2 ins. in diam., 24 ins. in the ground for cor. of secs. 8, 9, 16 and 17, with a brass cap, marked



and raise a mound of stone, 2 ft. base, 1 1/2 ft. high, W. of cor.

At this cor., at apparent noon, I set off 16°57 1/2' N. on the decl. arc, and observe the sun on the meridian for latitude. The resulting lat. is 35°2 1/2' N.

May 8, 1915.

Land, rolling.

Soil, stony, 4th rate.

Undergrowth, greasewood, sagebrush and cactus.

Subdivision of Township 19 North, Range 20, West 35

Chains.

- S.89°39'E., on a random line, bet.secs.9 and 16.
- 40.00 Set temp. 1/4 sec.cor.
- 80.04 Intersect cor.of secs.9,10,15 and 16.
- Thence I run,
- N.89°39'W., on a true line, bet. secs.9 and 16.
- Ascend over rolling land.
- 8.44 Top of 135 ft. ascent; descend.
- 40.02 Foot of 135 ft.descent, set an iron post 3 ft.long,1 in. in diam., 26 ins. in the ground for 1/4 sec.cor., with a brass cap, marked,

1/4 S 9

S 16
1915

and raise a mound of stone, 2 ft. base, 1 1/2 ft. high, N. of cor. Ascend.

- 51.80 Top of spur, slopes SW., 180 ft. above 1/4 sec.cor. Descend.
- 60.04 Draw, course S.15°E., 150 ft. below top of spur; ascend.
- 69.75 Top of spur, slopes SW., 215 ft. above draw; descend.
- 80.04 Cor.of secs. 8,9,16 and 17, 245 ft. below top of spur.
- Land, rolling.
- Soil, stony, 4th rate.
- Undergrowth, greasewood, sagebrush and cactus.

Guy H. Richardson, U.S.S.

May 8, 1915.

May 11, 1915: Lines run by Hugo Price, U.S.T., as follows:
 At the cor.of secs.8,9,16 and 17, at 10h. Om., a.m., l.m.t.,
 I set off 17° 44' N., on the decl.arc; 35° 2 1/2' on the lat.arc, and determine a meridian with the solar.

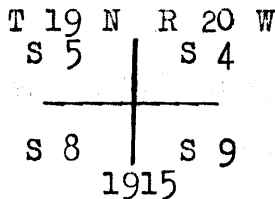
Thence I run,
 N.0°4' W., bet. secs. 8 and 9.
 Over slightly rolling land.

- 40.00 Set an iron post, 3 ft.long, 1 in. in diam., 20 ins. in the ground to solid rock, in a mound of stone, for 1/4 sec.cor., with a brass cap, marked,

1/4 S 8 | S 9
1915

38. Subdivision of Township 19 North, Range 20 West.

- Chains.
- and raise a mound of stone, 2 ft. base, $1\frac{1}{2}$ ft. high, W. of cor.; descend.
 - 53.17 Intersect S. side line, of patented mining claim (Thelma lode) Sur.No.2737, at 3.83 chs. N. $77^{\circ}2\frac{1}{2}'$ W. of cor.No.3.
 - 55.83 Mine road, brs.E.and W.
 - 71.61 Intersect N. side line of patented mining claim (Prince Hamlet lode) Sur. No.2737 at 10.47 chs., N. $75^{\circ}42'$ W. of Cor.No.2.
 - 75.88 Power Transmission line, brs.E.and W.
 - 80.00 Set an iron post, 3 ft. long, 2 ins. in diam., on surface rock, in a mound of stone, for cor. of secs.4,5,8 and 9, with a brass cap, marked



and raise a mound of stone, 2 ft. base, $1\frac{1}{2}$ ft. high, W. of cor., 187 ft. below $\frac{1}{4}$ sec. cor.
Land, level, and gently rolling.
Soil, stony, 4th rate.
Undergrowth, greasewood, sagebrush and cactus.

- S. $89^{\circ}39'$ E., on a random line, bet. secs.4 and 9.
- 40.00 Set temp. $\frac{1}{4}$ sec. cor.
- 80.12 Intersect N. and S. line, 40 lks. S. of the cor. of secs.3,4, 9 and 10.
Thence I run,
N. $89^{\circ}56'$ W., on a true line, bet. secs.4 and 9.
Ascend over rolling land.
- 18.00 Top of spur, slopes N., 245 ft. above sec. cor.; descend.
- 40.06 306 ft. below top of spur, set an iron post, 3 ft. long, 1 in. in diam., 20 ins. in the ground, to solid rock, in a mound of stone, for $\frac{1}{4}$ sec. cor., with a brass cap, marked

$\frac{1}{4}$ S 4

S 9
1915

Subdivision of Township 19 North, Range 20 West. 39

Chains.	
	and raise a mound of stone 2 ft. base, $1\frac{1}{2}$ ft. high, N. of cor. Descend.
52.40	Gulch, course N. with stream of water, 2 ins. deep, and 3 lks. wide, 47 ft. below $\frac{1}{4}$ sec. cor.; ascend.
61.53	Top of butte, brs. N. and S., 172 ft. above gulch; ascend.
66.07	Intersect E. end line of patented mining claim (Combination lode) Sur. No. 2737 at 2.57 chs. N. $14^{\circ}18'$ E. of cor. No. 3.
76.52	Intersect S. side line of patented mining claim (Combination lode) Sur. No. 2737 at 10.13 chs. N. $75^{\circ}42'$ W. of cor. No. 3.
80.12	Cor. of secs. 4, 5, 8 and 9, 208 ft. below top of butte. Land, rolling. Soil, stony, 4th rate. Undergrowth, greasewood, sagebrush and cactus. <p style="text-align: right;">May 11, 1915.</p> <hr style="border-top: 1px dashed black;"/>
	May 12, 1915: From the cor. of secs. 4, 5, 8 and 9, I run, N. $0^{\circ}4'$ W. on a random line, bet. secs. 4 and 5.
40.00	Set temp. $\frac{1}{4}$ sec. cor.
79.99	Intersect the N. bdy. of the Tp., 5 lks. E. of the cor. of secs. 4, 5, 32 and 33, described in Book "A." Thence I run, S. $0^{\circ}6'$ E., on a true line, bet. secs. 4 and 5. Over rolling land.
4.00	Silver Creek Wash, course NW., road in bottom, brs. NW. and SE. Ascend.
39.99	255 ft. above wash, set an iron post, 3 ft. long, 1 in. in diam., 20 ins. in the ground to solid rock, in a mound of stone, for $\frac{1}{4}$ sec. cor., with a brass cap, marked $\begin{array}{c} \frac{1}{4} S 5 S 4 \\ 1915 \end{array}$ and raise a mound of stone, 2 ft. base, $1\frac{1}{2}$ ft. high, W. of cor. Thence over level land.
45.00	Pipe line, brs. E. and W.
55.60	Road brs. E. and W.
66.00	Road, brs. NE. and SW.
71.12	Intersect N. side line of patented mining claim (Combina-

10. Subdivision of Township 19 North, Range 20 West.

Chains.

tion lode) Sur.No.2737, at 6.88 chs.S.75°42'E.of cor.No.1.

79.07

Intersect S.side line of patented mining claim (Combina-
tion lode) Sur.No.2737 at 8.89 chs.S.75°42'E.of cor.No.4.

79.99

Cor.of secs.4,5,8 and 9.

Land,rolling. Soil, stony, 4th rate.

Undergrowth, greasewood, sagebrush and cactus.

Hugo Price, U.S.T.

May 12, 1915.

May 7, 1915: Line run by Guy H. Richardson, U.S.S. as follows:

At the cor. of secs. 5, 6, 31 and 32, on the S. bdy. of the Tp.,

described in Book "A," at 9h.0m., a.m., l.m.t., I set off

16°39'N. on the decl. arc; 34°59' on the lat. arc, and deter-

mine a meridian with the solar. Thence I run,

N.0°5'W. bet. secs. 31 and 32, over level land.

9.60

Wagon road, brs. N.70°W. and S.70°E.

15.00

Wash, 50 lks. wide, course W.

40.00

Set an iron post 3 ft. long, 1 in. in diam., 26 ins. in the
ground for $\frac{1}{4}$ sec. cor., with a brass cap, marked

$\frac{1}{4}$ S 31 | S 32

1915

and raise a mound of stone, 2 ft. base, 1 $\frac{1}{2}$ ft. high, W.

of cor. Ascend slightly.

80.00

70 ft. above $\frac{1}{4}$ sec. cor., set an iron post, 3 ft. long, 2 ins.
in diam., 24 ins. in the ground, for cor. of secs. 29, 30, 31
and 32, with a brass cap, marked

T 19 N R 20 W

S 30 | S 29

S 31 | S 32

1915

and raise a mound of stone, 2 ft. base, 1 $\frac{1}{2}$ ft. high, W. of

cor.

Land, level and slightly rolling.

Soil, sandy and stony, 3rd and 4th rate.

Undergrowth, greasewood, sagebrush and cactus.

Guy H. Richardson, U.S.S.

Lines run by Hugo Price, U.S.T. as follows:

From the cor. of secs. 29, 30, 31 and 32, I run,

S.89°50'E., on a random line, bet. secs. 29 and 32.

Chains.

40.00 Set temp. $\frac{1}{4}$ sec. cor.

80.06 Intersect the cor. of secs. 28, 29, 32 and 33.
 Thence I run
 N. $89^{\circ} 50'$ W. on a true line bet. secs. 29 and 32.
 Over level land.

19.70 Oatman and Needles telephone line, bears NE. and SW.

21.10 Oatman and Needles ferry road, bears NE. and SW.

40.03 Set an iron post, 3 ft. long, 1 in. in diam., 26 ins. in
 the ground for $\frac{1}{4}$ sec. cor., with a brass cap, marked
 $\frac{1}{4}$ S 29

 S 32
 1915
 and raise a mound of stone, 2 ft. base, $1\frac{1}{2}$ ft. high,
 N. of cor.

56.50 Old railroad grade bet. Leland mine and Needles, bears N.
 30° E. and S. 30° W.

80.06 Cor. of secs. 29, 30, 31 and 32.
 Land, level.
 Soil, stony, 4th. rate.
 Undergrowth, greasewood, sagebrush and cactus.
 No grass.

N. $89^{\circ} 50'$ W. on a random line bet. secs. 30 and 31.

40.00 Set temp. $\frac{1}{4}$ sec. cor.

80.75 Intersect the W. bdy. of the twp. 21 lks. S. of the cor.
 of secs. 25, 30, 31 and 36, described in Book "A."
 Thence I run
 S. $89^{\circ} 41'$ E. on a true line bet. secs. 30 and 31.
 Over level land.

6.95 Oatman and Needles ferry road, bears NW. and SE.

14.15 Same road, bears NE. and SW.

40.75 Set an iron post, 3 ft. long, 1 in. in diam., 26 ins. in
 the ground, for $\frac{1}{4}$ sec. cor., with a brass cap, marked
 $\frac{1}{4}$ S 30

 S 31
 1915

Chains and raise a mound of stone, 2 ft. base, 1½ ft. high,
 N. of cor.

80.75 Cor. of secs. 29, 30, 31 and 32.
 Land, level.
 Soil, sandy and stony, 3rd. and 4th. rate.
 Undergrowth, greasewood, sagebrush and cactus.

----- Hugo Price, U.S.T. -----

Lines run by Guy H. Richardson, U.S.S., as follows:
 From the cor. of secs. 29, 30, 31 and 32, I
 run
 N. 0° 5' W. bet. secs. 29 and 30.
 Over level and rolling land.

16.20 Wagon road, bears E. and W.
 29.00 Leave level land, bears E. and W., asc.
 40.00 Set an iron post, 3 ft. long, 1 in. in diam., 10 ins. in
 the ground, to solid rock, in a mound of stone, for
 1/4 sec. cor., with a brass cap, marked

¼ S 30	S 29
1915	

and raise a mound of stone, 2 ft. base, 1½ ft. high,
 W. of cor.

45.60 Top of spur, slopes S. 75° E. 350 ft. above the level
 land, desc.

49.87 Head of draw, course E., 68 ft. below top of spur, asc.
 52.00 Top of spur, slopes S. 70° E., 50 ft. above draw, desc.
 55.96 Draw, course S. 80° E., 56 ft. below top of spur, asc.
 60.40 Top of 70 ft. ascent, desc.
 80.00 Foot of 130 ft. descent, set an iron post, 3 ft. long,
 2 ins. in diam., 24 ins. in the ground for cor. of secs.
 19, 20, 29 and 30, with a brass cap, marked

T 19 N R 20 W	
S 19	S 20
S 30	S 29
1915	

and raise a mound of stone, 2 ft. base, 1½ ft. high,
 W. of cor.

Land, level, rolling and mountainous.

Chains Soil, stony, 4th. rate.
Undergrowth, greasewood, sagebrush and cactus.

S. 89° 50' E. on a random line bet. secs. 20 and 29.
40.00 Set temp. 1/4 sec. cor.
80.16 Intersect N. and S. line 12 lks. N. of the cor. of secs. 20, 21, 28 and 29.
Thence I run
N. 89° 45' W. on a true line bet. secs. 20 and 29.
Over gently rolling land.

40.08 Set an iron post, 3 ft. long, 1 in. in diam., 26 ins. in the ground for 1/4 sec. cor., with a brass cap, marked
1/4 S 20
S 29
1915
and raise a mound of stone, 2 ft. base, 1 1/2 ft. high, N. of cor.
80.16 Cor. of secs. 19, 20, 29 and 30.
Land, slightly rolling.
Soil, stony, 4th. rate.
Undergrowth, greasewood, sagebrush and cactus.
Guy H. Richardson, U.S.S.

Lines run by Hugo Price, U.S.T., as follows:
From the cor. of secs. 19, 20, 29 and 30, I
run
N. 89° 41' W. on a random line bet. secs. 19 and 30.
40.00 Set temp. 1/4 sec. cor.
80.75 Intersect the W. bdy. of the twp., 18 lks. N. of the cor. of secs. 19, 24, 25 and 30, described in Book "A."
Thence I run
S. 89° 49' E. on a true line bet. secs. 19 and 30.
Ascend over rolling land.
40.75 218 ft. below sec. cor., set an iron post, 3 ft. long, 1 in. in diam., on surface rock, in a mound of stone, for 1/4 sec. cor., with a brass cap, marked

Chains

1/4 S 19

S 30
1915

and raise a mound of stone, 2 ft. base, 1 1/2 ft. high,
N. of cor. Continue to ascend over rolling land.

80.75 Cor. of secs. 19, 20, 29 and 30.

Land, rolling.

Soil, stony, 4th. rate.

Undergrowth, greasewood, sagebrush and cactus.

N. 0° 5' W. bet. secs. 19 and 20.

Asc. over rolling land.

2.13 Top of spur, slopes W., 57 ft. above sec. cor., desc.

9.48 Gulch, course W., 120 ft. below top of spur,

24.40 Gulch, course W., asc.

40.00 Set an iron post, 3 ft. long, 1 in. in diam., on surface
rock, in a mound of stone, for 1/4 sec. cor., with a
brass cap, marked

1/4 S 19 | S 20
1915

and raise a mound of stone, 2 ft. base, 1 1/2 ft. high,
W. of cor.

52.60 Top of ridge, bears E. and W., 216 ft. above gulch, desc.

80.00 190 ft. below top of ridge, set an iron post, 3 ft. long,
2 ins. in diam., 18 ins. in the ground, to solid rock,
in a mound of stone, for cor. of secs. 17, 18, 19 and
20, with a brass cap, marked

T 19 N R 20 W
S 18 | S 17
S 19 | S 20
1915

and raise a mound of stone, 2 ft. base, 1 1/2 ft. high,
W. of cor.

Land, rolling.

Soil, stony, 4th. rate.

Undergrowth, greasewood, sagebrush and cactus.

No grass.

Hugo Price, U.S.T.
May 7, 1915.

Chains.

May 10, 1915: Lines run by Guy H. Richardson, U.S.S., as follows:

At the cor. of secs. 17, 18, 19 and 20, at 8h.30m.a.m., 1.m.t., I set off 17°28'N. on the decl. arc; 35°2' on the lat. arc; and determine a meridian with the solar.

Thence I run,

S. 89°45'E., on a random line, bet. secs. 17 and 20.

40.00 Set temp. $\frac{1}{4}$ sec. cor.

79.90 Intersect N. and S. line, 18 lks. S. of the cor. of secs. 16, 17, 20 and 21.

Thence I run,

N. 89°53'W., on a true line, bet. secs. 17 and 20.

Ascend over rolling land.

8.27 Top of 230 ft. ascent; descend.

9.20 U.S.L.M. No. 1679, brs. S. 67° 5'W.

18.87 Intersect W. end line of patented mining claim (Minneapolis lode) Sur. No. 2426, at 1.53 chs. N. 18°01'E. of cor. No. 1.

19.31 Foot of 160 ft. descent. Intersect N. side line of patented mining claim (J.B. Lane lode) Sur. No. 1680, at 2.92 chs. N. 58°35'W. of cor. No. 4. Ascend.

36.62 Top of spur, slopes N/20°W., about 30 chs., 195 ft. ascent; descend.

39.95 Set an iron post 3 ft. long, 1 in. in diam., 9 ins. in the ground, to solid rock, in a mound of stone, with a brass cap, marked,

$\frac{1}{4}$ S 17

S 20
1915

and raise a mound of stone, 2 ft. base, 1 $\frac{1}{2}$ ft. high, N. of cor.

54.39 Draw, 30 lks. wide, course S. 30°W., 300 ft. below top of spur; ascend.

64.34 85 ft. above draw, intersect W. end line of patented mining claim (Leland No. 2 lode) Sur. No. 1680, at 3.93 chs. N. 23°40'E. of cor. No. 2. Descend.

78.50 Center of wash, 3 chs. wide, course S. 65°W., 267 ft. descent; ascend slightly.

46. Subdivision of Township 19 North, Range 20 West.

Chains.

- 79.90 Cor. of secs. 17, 18, 19 and 20, from which
 U.S.L.M. No. 1679 brs. S. 79° 50' E.
 Land, rolling.
 Soil, stony, 4th rate.
 Undergrowth, greasewood, sagebrush and cactus.
-
- N. 89° 49' W., on a random line, bet. secs. 18 and 19.
- 40.00 Set temp. $\frac{1}{4}$ sec. cor.
- 80.60 Intersect W. bdy. of the Tp. 23 lks. S. of the cor. of secs.
 13, 18, 19 and 24, described in Book "A."
 Thence I run,
 S. 89° 39' E. on a true line, bet. secs. 18 and 19.
 Descend over rolling land.
- 5.60 Enter wash, course SW., 70 ft. below sec. cor.
- 20.60 Leave wash; ascend.
- 40.60 Set an iron post, 3 ft. long, 1 in. in diam., 26 ins. in
 the ground for $\frac{1}{4}$ sec. cor., with a brass cap, marked
 $\frac{1}{4}$ S 18
- S 19
 1915
- and raise a mound of stone, 2 ft. base, $1\frac{1}{2}$ ft. high, N. of
 cor.
- 52.88 Top of spur, slopes S., 480 ft. above wash; descend.
- 80.60 Cor. of secs. 17, 18, 19 and 20, 200 ft. below top of spur.
 At this cor., at apparent noon, I set off 17° 30' N. on the
 the decl. arc, and observe the sun on the meridian for
 lat. The resulting lat. is 35° 2' N., May 10, 1915.
 Land, rolling.
 Soil, stony, 4th rate.
 Undergrowth, greasewood, sagebrush and cactus.
-
- N. 0° 5' W., bet. secs. 17 and 18.

Chains

Asc. over rolling land.

15.75 Top of 250 ft. ascent, desc.

19.20 Foot of 36 ft. descent, asc.

21.16 Top of 30 ft. ascent, desc.

28.65 Foot of 238 ft. descent, asc.

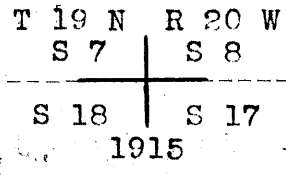
40.00 Set an iron post, 3 ft. long, 1 in. in diam., 26 ins. in the ground, for 1/4 sec. cor., with a brass cap, marked
1/4 S 18 | S 17
1915

and raise a mound of stone, 2 ft. base, 1 1/2 ft. high, W. of cor.

44.00 Top of 144 ft. ascent, thence over rolling land.

61.44 Draw, 50 lks. wide, course N., desc. down draw.

80.00 185 ft. descent, set an iron post, 3 ft. long, 2 ins. in diam., 24 ins. in the ground for cor. of secs. 7, 8, 17 and 18, with a brass cap, marked



and raise a mound of stone, 2 ft. base, 1 1/2 ft. high, W. of cor.

Land, rolling.

Soil, stony, 4th. rate.

Undergrowth, greasewood, sagebrush and cactus.

Guy H. Richardson, U.S.S.
May 10, 1915.

May 11, 1915; Lines run by Hugo Price, U.S.T. as follows:

From the cor. of secs. 7, 8, 17 and 18, and at 9h. 0m., a. m., l.m.t., set off 17° 44' N. on the decl. arc, and 35° 2 1/2' on the lat. arc, and determine a meridian with the solar.

Thence I run

S. 89° 53' E. on a random line bet. secs. 8 and 17.

40.00 Set temp. 1/4 sec. cor.

79.90 Intersect N. and S. line 7 lks. N. of the cor. of secs.

Chains

8, 9, 16 and 17.

Thence I run

N. 89° 50' W. on a true line bet. secs. 8 and 17.

Desc. over rolling land.

39.95 240 ft. below sec. cor., set an iron post, 3 ft. long, 1 in. in diam., on surface rock, in a mound of stone, for 1/4 sec. cor., with a brass cap, marked

1/4 S 8

S 17
1915

and raise a mound of stone, 2 ft. base, 1 1/2 ft. high, N. of cor. Continue to desc.

55.40 Gulch, course N., 83 ft. below 1/4 sec. cor., asc.

58.60 Top of spur, slopes N., 60 ft. above wash, desc.

79.90 Cor. of secs. 7, 8, 17 and 18, 145 ft. below top of spur. Land, rolling.

Soil, stony, 4th. rate.

Undergrowth, greasewood, sagebrush and cactus.

Hugo Price, U.S.T.

Lines run by Guy H. Richardson, U.S.S., as follows:
From the cor. of secs. 7, 8, 17 and 18, I run,
N. 89° 39' W. on a random line bet. secs. 7 and 18.

40.00 Set temp. 1/4 sec. cor.

80.34 Intersect the cor. of secs. 7, 12, 13 and 18, on the W. bdy. of the twp., described in Book "A."

Thence I run

S. 89° 39' E. on a true line bet. secs. 7 and 18.

Asc. over rolling land.

10.35 Top of rocky spur, slopes S. 65° W., 43 ft. above sec. cor., desc.

40.34 550 ft. below top of spur, set an iron post, 3 ft. long, 1 in. in diam., 26 ins. in the ground for 1/4 sec. cor., with a brass cap, marked

1/4 S 7

S 18
1915

and raise a mound of stone, 2 ft. base, 1 1/2 ft. high,

Subdivision of Township 19 North, Range 20 West. 49

Chains.

N. of cor.

50.34 Center of wash, 10 chs. wide, course S. 75° W., thence over rolling land.

79.00 Draw, 50 lks. wide, course N. 20° E.

80.34 Cor. of secs. 7, 8, 17 and 18.

Land, rolling and rough.

Soil, stony, 4th rate.

Undergrowth, greasewood, sagebrush and cactus.

N. 0° 5' W., bet. secs. 7 and 8.

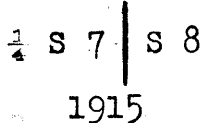
Descend over rolling land.

20.00 Center of wash, 2 chs. wide, course N. 75° W.; ascend.

25.65 Top of bench, brs. E. and W., 70 ft. above wash.

35.00 Draw, course SE., leave bench; ascend SW. slope.

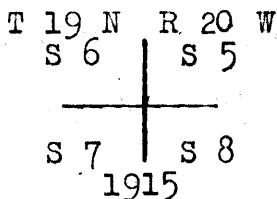
40.00 Set an iron post, 3 ft. long, 1 in. in diam., 26 ins. in the ground for 1/4 sec. cor., with a brass cap, marked



and raise a mound of stone, 2 ft. base, 1 1/2 ft. high, W. of cor.

78.00 Top of spur, slopes S. 75° W., 590 ft. above draw; descend.

80.00 36 ft. below top of spur, set an iron post 3 ft. long, 2 ins. in diam., 24 ins. in the ground for cor. of secs. 5, 6, 7 and 8, with a brass cap, marked,



and raise a mound of stone, 2 ft. base, 1 1/2 ft. high, W. of cor.

At this cor. at apparent noon, I set off 17° 45 1/2' N. on the decl. arc, and observe the sun on the meridian for lat. The resulting latitude is 35° 3' N.

Land, rolling.

Soil, stony, 4th rate.

Undergrowth, greasewood, sagebrush and cactus.
May 11, 1915.

50. Subdivision of Township 19 North, Range 20 West.

- Chains.
- S.89°50'E., on a random line, bet. secs.5 and 8.
- 40.00 Set temp. $\frac{1}{4}$ sec.cor.
- 80.16 Intersect N.and S. line, 16 lks.N.of the cor.of secs.4,5,
8 and 9. Thence I run,
N.89°43'W., on a true line, bet. secs.5 and 8.
Over level, rolling land.
- 9.16 Wash, 20 lks.wide, course N.10°E., road in bottom of wash,
brs.N.10°E. and S.10°W.; ascend.
- 9.82 Intersect E.end line of patented mining claim (Duplex lode)
Sur. No.2737 at 3.30 chs. S.20°53'W. of cor.No.2.
- 37.11 Intersect S.side line of patented mining claim (Hercules
lode) Sur.No.2737 at 2.99 chs. N.69°9'W.of cor.No.2.
- 40.08 Set an iron post 3 ft.long, 1 in.in diam., on surface rock,
in a mound of stone, for $\frac{1}{4}$ sec.cor., with a brass cap,
marked
- $\frac{1}{4}$ S 5
-
- S 8
1915
- and raise a mound of stone, 2 ft.base, 1 $\frac{1}{2}$ ft. high,N,of
cor. Continue to ascend.
- 50.51 Intersect N.side line of patented mining claim (Spez Bona
Extension lode) Sur.No.2737 at 5.64 chs.N.62°01'W.of
Cor.No.1.
- 60.15 Top of spur, slopes N.75°E., about 35.00 chs., 550 ft.
above wash; descend.
- 69.77 Intersect W.end line of patented mining claim (Spez Bona
Extension lode) Sur.No.2737 at 0.17 chs.N.27°59'E.of
cor.No.3.
- 70.00 Foot of 120 ft. descent; ascend.
- 79.00 Top of 130 ft. ascent, spur, slopes S.15°E., about 30 chs.;
descend.
- 80.16 Cor.of secs.5,6,7 and 8, 15 ft. below top of spur.
Land, rolling, mountainous, level.
Soil, stony, 4th rate.
Undergrowth,greasewood, sagebrush, and cactus.

Guy H. Richardson, U.S.S.

May 11, 1915.

Chains

May 12, 1915: Lines run by Hugo Price, U.S.T., as follows:
 At the cor. of secs. 5, 6, 7 and 8, at 9h. 0m., a.m., l.m.t., I
 set off 17° 59' N. on the decl. arc; 35° 31½' on the lat.
 arc; and determine a meridian with the solar, and run,
 N. 89° 39' W., on a random line, bet. secs. 6 and 7.

40.00 Set temp. ¼ sec. cor.

80.12 Intersect the W. bdy. of the Tp., 33 lks. N. of the cor. of
 secs. 1, 6, 7 and 12, described in Book "A."
 Thence I run,
 S. 89° 53' E., on a true line, bet. secs. 6 and 7.
 Ascend over rolling land.

13.60 Top of spur, slopes NW., 340 ft. above sec. cor. Descend.

35.60 Saddle brs. NW. and SE. 320 ft. below top of spur. Ascend.

40.12 140 ft. above saddle, set an iron post, 3 ft. long, 1 in. in
 diam., on surface rock, in a mound of stone, for ¼ sec.
 cor., with a brass cap, marked

¼ S 6

S 7
1915

and raise a mound of stone, 2 ft. base, 1½ ft. high, N.
 of cor. Continue ascent.

45.60 Top of ridge, brs. N. and S., 167 ft. above ¼ sec. cor. De-
 scend.

70.70 Saddle brs. NW. and SE. 250 ft. below top of ridge, Ascend.

80.12 217 ft. above saddle. Cor. of secs. 5, 6, 7 and 8.
 Land, rolling.
 Soil, stony, 4th rate.
 Undergrowth, greasewood, sagebrush and cactus.

N. 0° 5' W. on a random line, bet. secs. 5 and 6.

40.00 Set temp. ¼ sec. cor.

79.91 Intersect the N. bdy. of the Tp., 5 lks. W. of the cor. of
 secs. 5, 6, 31 and 32, described in Book "A."
 Thence I run,
 S. 0° 3' E., on a true line, bet. secs. 5 and 6. Descend.

5.00 Gulch, course west, 40 ft. below sec. cor. Ascend.

52. Subdivision of Township 19 North, Range 20 West.

- Chains.
- 15.13 Intersect E. end line of patented mining claim (Oregon lode) Sur. No. 2669 at 2.90 chs. N. $7^{\circ}51'$ W. of Cor. No. 1.
- 18.44 Intersect S. side line of same claim at 0.45 chs. S. $82^{\circ}09'$ W. of cor. No. 1.
- 35.51 Top of spur, brs. NW. 325 ft. above gulch. Descend.
- 39.91 80 ft. below top of spur. Set an iron post, 3 ft. long, 1 in. in diam., on surface rock in a mound of stone for $\frac{1}{4}$ sec. cor., with a brass cap, marked,
- $\frac{1}{4}$ S 6 | S 5
 1915
- and raise a mound of stone, 2 ft. base, $1\frac{1}{2}$ ft. high, W. of cor. Ascend.
- 47.65 Top of ridge, brs. E. and W. 222 ft. above $\frac{1}{4}$ sec. cor. Descend.
- 54.98 Intersect N. side line of patented mining claim (Atlas lode) Sur. No. 2737 at 6.30 chs. N. $80^{\circ}42\frac{1}{2}'$ W. of cor. No. 1.
- 59.10 Gulch, course west, 70 ft. below top of ridge. Ascend.
- 62.40 Top of spur, brs. west, 110 ft. above gulch. Descend.
- 63.71 Intersect S. side line of patented mining claim (Atlas lode) Sur. No. 2737 at 3.15 chs. N. $82^{\circ}07'$ W. of cor. No. 2.
- 68.60 Gulch, course NW., 50 ft. below top of spur. Ascend.
- 79.91 Cor. of secs. 5, 6, 7 and 8, 130 ft. above gulch.
- Land, rolling.
- Soil, stony, 4th rate.
- Undergrowth, greasewood, sagebrush and cactus.

May 12, 1915.

Hugo Price, U.S.T.

Boundaries of Township 19 North, Range 20 West.
Latitudes, departures, and closing errors.

Line designated.	True bearing.	Dist.	Latitudes.		Departures.	
			N.	S.	E.	W.
South bdy. of Tp.	N. 89° 50' W.	480.88	1.40			480.88
West bdy. of Tp.	North.	480.00	480.00			
North bdy. of Tp.	S. 89° 52' E.	479.75		41.12	479.75	
East bdy. of Tp.	S. 0° 14' W.	41.04		41.04		0.16
	S. 0° 4' E.	39.96		39.96	0.05	
	S. 0° 9' W.	39.93		39.93		0.10
	S. 0° 3' E.	40.04		40.04	0.04	
	S. 0° 4' W.	39.74		39.74		0.05
	S. 0° 10' W.	40.40		40.40		0.12
	S. 0° 20' E.	39.76		39.76	0.23	
	S. 0° 21' E.	40.37		40.37	0.25	
	S. 0° 20' E.	40.46		40.46	0.23	
	S. 0° 16' E.	39.54		39.54	0.19	
	S. 0° 17' W.	40.79		40.79		0.20
S. 0° 4' W.	39.09		39.09		0.05	
Convergency,					0.51	
Totals. -----			481.40	482.24	481.25	481.56
				481.40		481.25
Error in latitude -----				0.84		
Error in departure -----						0.31

GENERAL DESCRIPTION.

This Township is rough and mountainous, throughout, and has mineral indications in all sections. Active mining is being carried on in this township. The mining town of Oatman is located in the SW. $\frac{1}{4}$ of sec. 14, and the NW. $\frac{1}{4}$ of sec. 23. Springs are found in sec. 2 that furnish water for the town of Oatman. The soil throughout is rocky and of very low grade, and the vegetation is scrubby greasewood and sage brush. There is no timber or grass.

CERTIFICATES
FOR ~~FINAL OATH~~ OF UNITED STATES SURVEYOR AND
UNITED STATES TRANSITMAN

see book "C" of this group

I, _____, U. S. Surveyor, do solemnly swear that, in pursuance of special instructions received from the U. S. Surveyor General for _____ bearing date of the _____ day of _____, 191____, I have well, faithfully, and truly, in my own proper person, and in strict conformity with said instructions, the Manual of Surveying Instructions, and the laws of the United States, surveyed all those parts or portions of _____ of the _____ Meridian, in the State of _____, which are represented in the foregoing field notes as having been executed by me, and under my direction; and I do further solemnly swear that all the corners of said survey have been established and perpetuated in strict accordance with the Manual of Surveying Instructions, and the special written instructions of the U. S. Surveyor General for _____ and in the specific manner described in the field notes, and that the foregoing are the original field notes of such survey.

U. S. Surveyor.

Subscribed by said _____, and sworn to before me }
this _____ day of _____, 191____



APPROVAL.

OFFICE OF THE UNITED STATES SURVEYOR GENERAL,

Phoenix, Arizona, February 26, 1917

The foregoing field notes of the survey of the _____

Subdivision Lines of

Township 19 North, Range 20 West,

of the Gila and Salt River Base and Meridian, in the State of Arizona, executed by Guy H. Richardson, U.S. Surveyor, and Hugo Price, U.S. Transitman, under his special instructions dated January 4, 1915, for Group 23, _____, having been critically examined, and the necessary corrections and explanations made, the said field notes, and the surveys they describe, are hereby approved.

U. S. Surveyor General.
of Arizona.

~~I certify that the foregoing transcript of the field notes of the above described surveys in _____, has been correctly copied from the original notes on file in this office.~~