

2888

4-679

BOOK 2888

JAN 12 1917

Book "M."

(Subdivisions)

FIELD NOTES

OF THE SURVEY OF THE

SUBDIVISION LINES OF

TOWNSHIP 20 NORTH, RANGE 20 WEST,

Of the Gila and Salt River Base and Meridian,

In the State of Arizona,

EXECUTED BY

Guy H. Richardson, U. S. Surveyor,

and

Hugo Price, U.S. Transitman,

~~In the capacity of U. S. Surveyor~~, under instructions dated January 4, 1915,

issued by the United States Surveyor General to govern surveys included in

Group No. 43, which were approved by the Commissioner of the General Land

Office, January 22, 1915.

Survey commenced May 18, 1915.

Survey completed June 2, 1915.

Executed under assignment
Instructions dated Jan. 31-1915

2888

2888

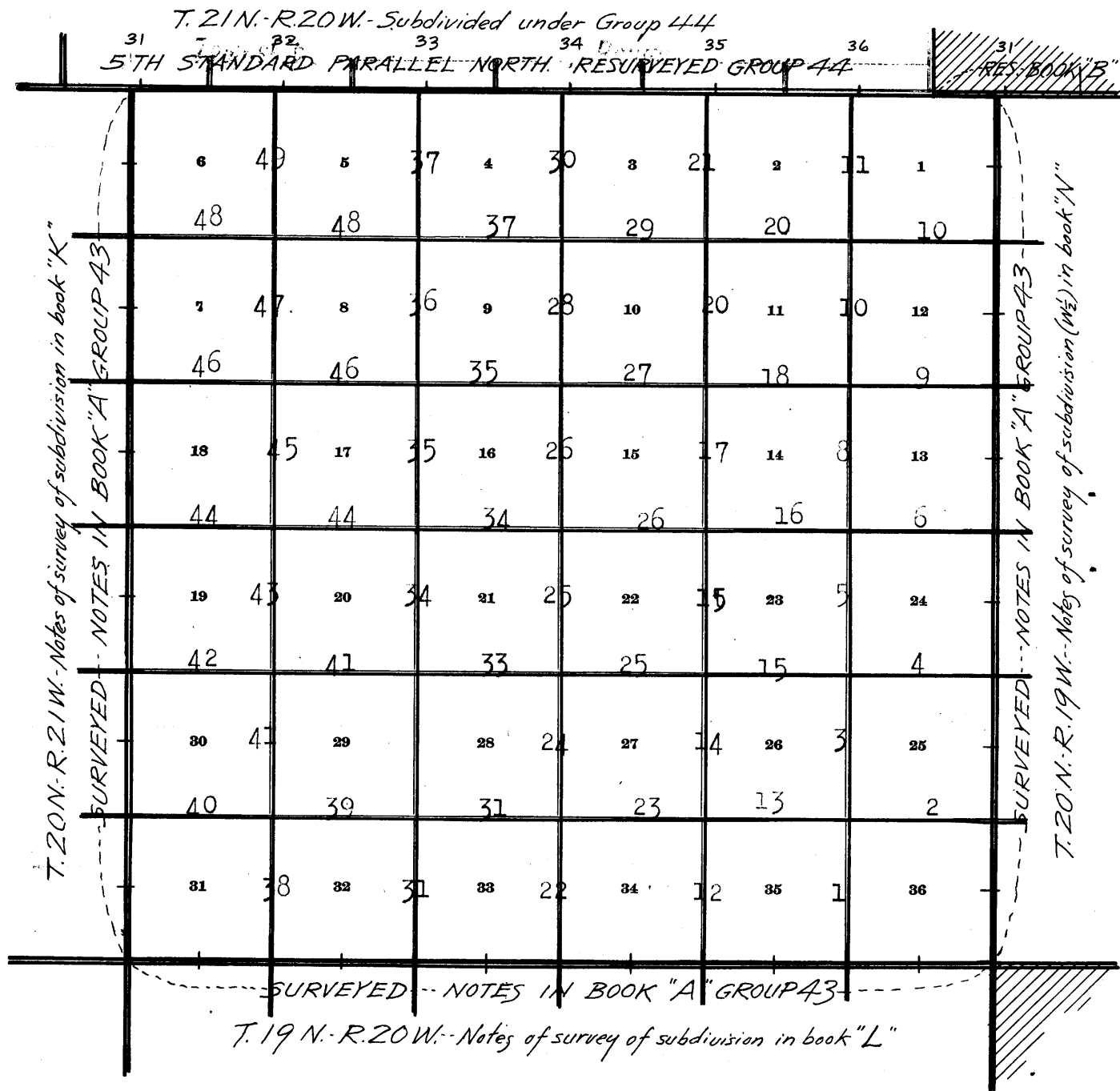
221


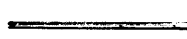

1A

BOOK 2888

BOOK "M" GROUP 43
T. 20 N. - R. 20 W.

INDEX DIAGRAM.



-  Surveys described in field notes of Group 43
-  Surveys described in field notes of Group 44
-  Shaded area surveyed as per accepted plats on file.

Subdivision of Township 20 North, Range 20 West. 1.

Chains.

Survey commenced May 18, 1915, and executed jointly by Guy H. Richardson, U.S. Surveyor, and Hugo Price, U.S. Transitman, with Young and Sons' light mountain transits, Nos. 8484 and 8477 respectively. The instrument are provided with Smith solar attachments, and were approved by the Assistant Supervisor of Surveys for Arizona and California on Jan. 31, 1915. For field test of instrument on a Polaris meridian, see notes of the subdivisions of T. 18 N., R. 20 W., in Book "F."

Lines run by Hugo Price, U.S. Transitman, as follows:

At the cor. of secs. 1, 2, 35 and 36, on the S. bdy. of the Tp..

At 9h. Om., a.m., l.m.t., set off 19°25' N. on the decl. arc; 35° 4' N. on the lat. arc, and determine a meridian with the solar, and run,

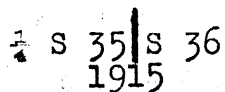
N. 0° 1' W., bet. secs. 35 and 36.

Descend slightly, over rolling land

33.30 Gulch, course W., 68 ft., below sec. cor.; ascend.

37.18 Top of spur, slopes W., 143 ft. above gulch.

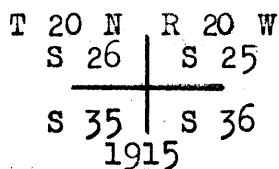
40.00 Set an iron post 3 ft. long, 1 in. in diam., on surface rock, in a mound of stone for 1/4 sec. cor., with a brass cap, marked



and raise a mound of stone, 2 ft. base, 1 1/2 ft. high, W. of cor. Descend.

44.40 Gulch, course SW., 155 ft. below 1/4 sec. cor.; ascend.

80.00 578 ft. above gulch, set an iron post 3 ft. long, 2 ins. in diam., on surface rock, in a mound of stone for cor. of secs. 25, 26, 35 and 36, with a brass cap, marked



and raise a mound of stone, 2 ft. base, 1 1/2 ft. high, W. of cor.

Land, rolling and mountainous.

Soil, stony, 4th rate.

Undergrowth, greasewood and cacti. May 18, 1915.

2. Subdivision of Township 20 North, Range 20 West.

Chains

May 19, 1915: At the cor. of secs. 25, 26, 35 and 36, at 9h. 0m. a.m., l.m.t., I set off 19° 39' N. on the decl. arc; 35° 5' N. on the lat. arc, and determine a meridian with the solar.

On account of high cliffs E. of this cor., it is impracticable to chain measurement; therefore, triangulate as follows:

Set a flag on the random line about 28.00 chs. S. 89° 52' E. from sec. cor. From sec. cor., I lay off a base S. 0° 8' W., 7.89 chs.

From south end of base the flag brs. N. 74° 33' E. The included angles are 90° 00', 74° 25' and 15° 35' and their total is 180° 00', therefore distance on random sec. line from sec. cor. to flag is obtained by $\tan. 74^\circ 25' \times$ base or $3.58562 \times 7.89 =$

28.29 Flag point on line. Continue S. 89° 52' E., chaining measurement.

40.00 Set temp. 1/4 sec. cor.

50.96 Owing to impassible cliffs, I discontinue chaining at this point, and triangulate, as follows:

Set a flag on random line about 22.00 chs. S. 89° 52' E.

From triangulation point I lay off a base S. 8° 56' W., 12.61 chs. From south end of base the flag bears N. 63° 2' E. The included angles are 98° 48', 54° 06' and 27° 06' and their total is 180° 00'; therefore the distance from triangulation point to flag is obtained by $\frac{\sin 54^\circ 06' \times \text{base}}{\sin 27^\circ 06'}$ or $\frac{.81004 \times 12.61}{.45554} = 22.42$ chs. 50.96 chs. + 22.42 chs. =

73.38 Flag point on line. Continue measurement

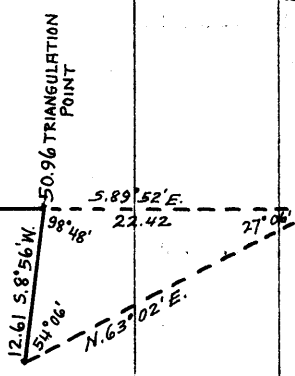
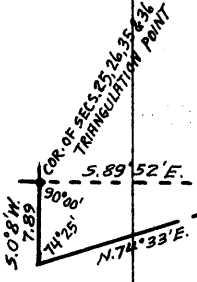
80.18 Intersect the E. bdy. of the Tp., 12 lks. S. of the cor. of secs. 25, 30, 31 and 36, described in Book "A."

Thence I run, N. 89° 57' W., on a true line, bet. secs. 25 and 36.

Ascend over rough mountainous land.

4.80 Flag point. Thence by triangulation measurement hereinbefore described.

29.20 Triangulation point. Top of ridge, bears NE. and SW., 800 ft. above sec. cor., thence over summit of round top



Subdivision of Township 20 North, Range 20 West, 3.

Chains

mountain, continuing measurement by chaining.

40.09 Set an iron post 3 ft. long, 1 in. in diam., on surface rock, in a mound of stone, for 1/4 sec. cor., with a brass cap, marked

1/4 S 25
S 36
1915

and raise a mound of stone, 2 ft. base, 1 1/2 ft. high, N. of cor.

51.90 Flag point. Descend NW. slope, continuing measurement by triangulation hereinbefore described.

80.18 Triangulation point. Cor. of secs. 25, 26, 35 and 36, 380 ft. below top of ridge.

Land, rough, mountainous.

Soil, stony, 4th rate.

Undergrowth, greasewood and cacti.

May 19, 1915.

May 20, 1915: At the cor. of secs. 25, 26, 35 and 36, at 8h. Om., a.m., 1.m.t., set off 19° 51' N. on the decl. arc; 35° 5' on the lat. arc; and determine a meridian with the solar.

Thence I run,

N. 0° 1' W., bet. secs. 25 and 26.

Ascend over rough, mountainous land.

6.68 Top of spur, slopes W., 277 ft. above sec. cor.

Owing to cliffs on sec. line N. of this point, over which chaining is impracticable, I run on offset line as follows:

West, 5.00 chs. Thence

N. 0° 1' W. 40.43 chs. Descending.

33.32 True point for 1/4 sec. cor.

(5.00 chs. E. of this point)

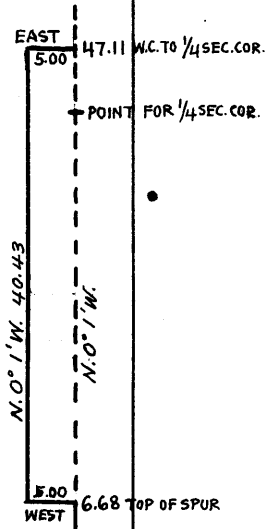
is inaccessible; therefore

continue on offset line

40.43 Thence

East, 5.00 chs. Returning to sec. line at

47.11 390 ft. below top of spur. This point being the nearest



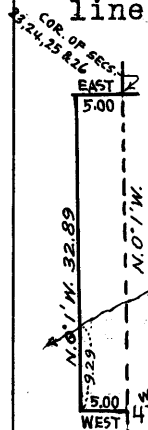
4. Subdivision of Township 20 North Range 20 West

Chains.

practicable point on the sec. line for the establishment of the witness cor. to the 1/4 sec. cor., I set an iron post, 3 ft. long, 1 in. in diam., on surface rock, in a mound of stone, for witness cor. to 1/4 sec. cor., with a brass cap, marked

1/4 S 26 | S 25
WC
1915

and raise a mound of stone, 2 ft. base, 1 1/2 ft. high W. of cor. It being impracticable to chain measurement on sec. line north from this witness cor., I run on offset line as follows:



West, 5.00 chs. Thence

N. 0° 1' W. 32.89 chs. Descending.

9.29 chs. Gulch, course SW., 300 ft. below witness cor. to 1/4 sec. cor.

Thence over level land.

32.89 chs. Thence

East, 5.00 chs. Returning to sec. line at

80.00 Set an iron post 3 ft. long, 2 ins. diam., 24 ins. in the ground for cor. of secs. 23, 24, 25 and 26, with a brass cap, marked

T 20 N | R 20 W
S 23 | S 24

S 26 | S 25
1915

and raise a mound of stone 2 ft. base, 1 1/2 ft. high, W. of cor.

Land, rough, mountainous and level.

Soil, stony, 4th rate.

Undergrowth, greasewood and cactus; no grass.

S. 89° 57' E., on a random line, bet. secs. 24 and 25.

40.00 Set temp. 1/4 sec. cor.

79.70 Intersect the E. bdy. of the Tp., 33 lks. N. of the cor. of secs. 19, 24, 25 and 30, described in Book "A."

Thence I run,

Subdivision of Township 20 North, Range 20 West.

Chains

N.89°43'W., on a true line, bet. secs.24 and 25.

Descend over mountainous land.

20.30 Box canyon, course N., 125 ft. below sec.cor.; ascend.

30.00 Top of spur, slopes E., 220 ft. above canyon; descend.

39.85 Set an iron post 3 ft.long, 1 in. in diam., 20 ins.in the ground, to solid rock, in a mound of stone, for 1/4 sec. cor., with a brass cap, marked

1/4 S 24

S 25
1915

and raise a mound of stone, 2 ft.base, 1 1/2 ft. high, N. of cor.; continue to descend.

44.25 Gulch, course NW., 525 ft. below top of spur; ascend.

51.85 Top of spur, slopes W., 65 ft. above gulch; descend.

63.15 Swale, brs. N.and S., 100 ft.below top of spur; ascend.

79.70 Cor.of secs.23,24,25 and 26, 45 ft. above swale.

Land, mountainous.

Soil, stony, 4th rate.

No grass.

Undergrowth, greasewood and cactus.

May 20, 1915.

May 21, 1915: At the cor. of secs.23,24,25 and 26, at 9h. Om., a.m., l.m.t., set off 20°4'N. on the decl.arc; 35° 6' on the lat.arc, and determine a meridian with the solar.

Thence I run,

N.0°1'W., bet. secs.23 and 24.

Ascend over mountainous land.

4.80 Top of spur, slopes W., 60 ft. above sec.cor.; descend.

14.10 Gulch, course W., 240 ft. below top of spur; ascend.

40.00 250 ft. above gulch, set an iron post 3 ft.long, 1 in.in diam., on surface rock, in a mound of stone, for 1/4 sec. cor., with a brass cap, marked

1/4 S 23 | S 24
1915

6. Subdivision of Township 20 North, Range 20 West.

Chains.

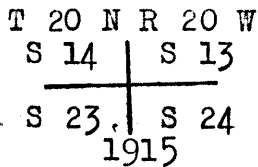
and raise a mound of stone, 2 ft. base, 1½ ft. high, W. of cor. Continue to ascend.

57.65 Top of ridge, 365 ft. above ¼ sec. cor., bears E. and W.; descend.

67.50 Gulch, course W., 435 ft. below top of ridge; ascend.

70.27 Top of spur, slopes W., 75 ft. above gulch; descend.

80.00 180 ft. below top of spur, set an iron post, 3 ft. long, 2 ins. in diam., 20 ins. in the ground to solid rock, in a mound of stone, for cor. of secs. 13, 14, 23 and 24, with a brass cap, marked



and raise a mound of stone, 2 ft. base, 1½ ft. high, W. of cor.

At this cor., at apparent noon, I set off 20° 5½' N. on the decl. arc, and observe the sun on the meridian for latitude. The resulting latitude is 35° 7' N.

Land rolling and mountainous.

Soil, stony, 4th rate.

No grass.

Undergrowth, sage brush, greasewood and cactus.

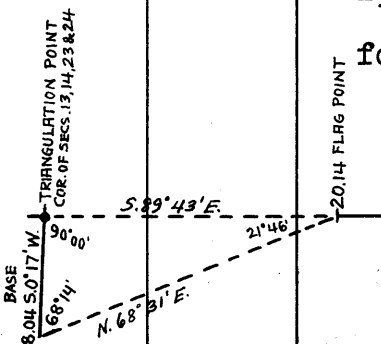
May 21, 1915.

As it is impracticable to chain measurement on random line, bet. secs. 13 and 24, S. 89° 43' E. from cor. of secs. 13, 14, 23 and 24, on account of cliffs, I triangulate as follows:

Set a flag on random sec. line S. 89° 43' E. from sec. cor.
 From sec. cor. lay off a base, S. 0° 17' W., 8.04 chs.
 From S. end of this base flag brs. N. 68° 31' E.
 The included angles are 90° 00', 68° 14' and 21° 46',
 the sum of which is 180° 00'.

Therefore dist. on random sec. line from sec. cor. to flag is obtained by

Tang. 68° 14' x base or 2.50440 x 8.04 = 20.14 chs.



Subdivision of Township 20 North, Range 20 West.

Chains

20.14 Flag point. Thence continue measurement S.89° 43'E.
22.09 Discontinue chaining at this point owing to cliffs on

line, and triangulate as follows:

Leave flag at this point.

Establish a triangulation point on random sec.line
S. 89° 43' E. from the flag.

From triangulation point lay off a base S.0°17'W.,
7.96 chs.

From S. end of base flag brs. N.70°15'W.

The included angles are 90°00', 70°32' and 19°28',
the sum of which is 180° 00'

Therefore dist. on random sec. line from flag to
triangulation point is obtained by,

Tang. 70°32' x base or 2.82914 x 7.96 = 22.52 chs.
22.09 chs. + 22.52 chs. =

44.61 Triangulation point. Point for 1/4 sec. cor. is inaccessible
and this point is unsuitable for establishment of wit-
ness cor. to 1/4 sec. cor. Chaining measurement on random
sec. line S.89°43'E. from this point is impracticable
on account of cliffs; therefore, I make triangulation
as follows:

Set flag on random sec. line, S.89°43'E. from this
triangulation point.

From triangulation point lay off a base S.0°17'W.
7.96 chs.

From South end of base, flag brs. N.42°54'E.

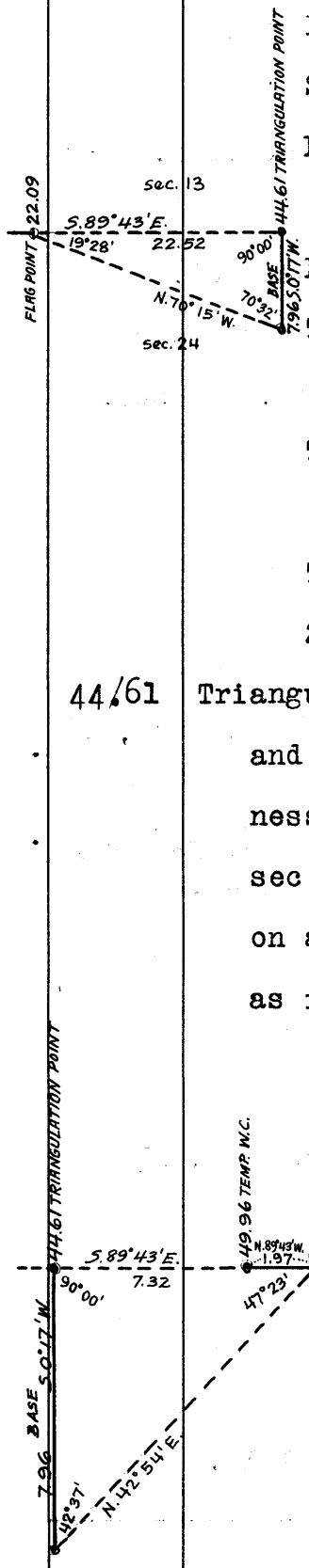
The included angles are 90°00', 42°37' and 47°23',
the sum of which is 180°00'

Therefore dist. on random sec. line from triangu-
lation point to flag is obtained by

Tang. 42°37' x base or 0.92008 x 7.96 = 7.32 chs.
44.61 chs. + 7.32 chs. =

51.93 Flag point. Return on random sec. line, N.89°43'W., a dist.
of 1.97 chs. to

49.96 Set temporary witness cor. to 1/4 sec. cor. Thence continue
measurement

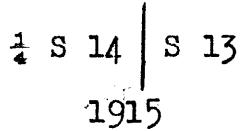


8. Subdivision of Township 20 North, Range 20 West.

Chains.

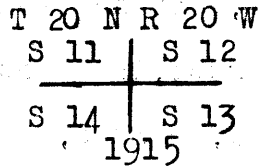
- S.89° 43' E. on random line, bet. secs.13 and 24.
- 79.88 Intersect E.bdy.of Tp., 9 lks.S.of cor.of secs.13,18,19 and 24, described in Book "A."
- Thence I run,
- N.89°47'W., on a true line, bet. secs.13 and 24.
- Ascend over rough, mountainous land.
- 20.75 Top of ridge, bears N.and S., 225 ft. above sec.cor. Descend slightly over summit of ridge.
- 27.95 Flag point of triangulation hereinbefore described.
- 29.92 Set an iron post 3 ft.long, 1 in. in diam., on surface rock, in a mound of stone, for witness cor.to $\frac{1}{4}$ sec. cor., with a brass cap, marked
- $\frac{1}{4}$ S 13
- WC
- S 24
1915
- and raised a mound of stone, 2 ft. base, $1\frac{1}{2}$ ft. high, N. of cor.
- Thence by triangulation measurement hereinbefore described:
- 35.27 Descend over exceptionally rough mountainous land. Triangulation point.
- 39.94 True point for $\frac{1}{4}$ sec.cor. is inaccessible.
- 57.79 Flag point.
- 59.74 Flag point.
- 79.88 Triangulation point. Cor.of secs.13,14,23 and 24, 1140 ft. below top of ridge.
- Land, rough, mountainous.
- Soil, stony, 4th rate.
- Undergrowth, greasewood and cactus.
- May 21, 1915.
-
- May 26, 1915: At the cor.of secs.13,14,23 and 24, at 8h.0m., a.m., l.m.t., set off 21° 01' N. on the decl. arc; 35° 7' on the lat. arc, and determine a meridian with the solar.
- Thence I run,
- N.0° 1' W., bet. secs.13 and 14.
- Ascend gradually over rolling land.

Chains.
40.00 60 ft. above sec.cor., set an iron post, 3 ft.long, 1 in. in diam., 12 ins. in the ground to solid rock,in a mound of stone, for $\frac{1}{4}$ sec.cor., with a brass cap, marked



and raise a mound of stone, 2 ft. base, $1\frac{1}{2}$ ft. high, W. of cor. Continue to ascend over rolling land.

80.00 280 ft. above $\frac{1}{4}$ sec.cor., set an iron post, 3 ft. long, 2 ins. in diam., 15 ins. in the ground, for cor.of secs.11,12,13 and 14, with a brass cap, marked



and raise a mound of stone, 2 ft.base, $1\frac{1}{2}$ ft.high,W.of cor.

Land, rolling. Soil, stony, 4th rate. No grass.

Undergrowth,sage brush,greasewood and cactus.

At the cor.of secs.11,12,13 and 14,at apparent noon,I set off $21^{\circ}03'N$.on the decl.arc,and observe the sun on the meridian for lat. The resulting lat.is $35^{\circ}8'N$.May 26, 1915.

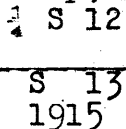
S. $89^{\circ}47'E$.on a random line,bet.secs.12 and 13.

40.00 Set temp. $\frac{1}{4}$ sec.cor.

79.90 Intersect the E.bdy.of the Tp.21 lks.S.of the cor.of secs. 7,12,13 and 18,described in Book "A."Thence I run, N. $89^{\circ}56'W$.on a true line,bet.secs.12 and 13.

Over slightly rolling land.

39.95 Set an iron post 3 ft.long,1 in.in diam.,20 ins.in the ground to solid rock,in a mound of stone for $\frac{1}{4}$ sec.cor., with a brass cap,marked



and raise a mound of stone, 2 ft.base, $1\frac{1}{2}$ ft.high,N.of cor. Ascend.

60.95 Top of spur,slopes N.,300 ft. above $\frac{1}{4}$ sec.cor. Descend.

79.90 Cor.of secs.11,12,13 and 14,360 ft.below top of spur.

Land,rolling. Soil, stony, 4th rate. No grass.

Undergrowth,sage brush,greasewood and cactus. May 26,1915.

10. Subdivision of Township 20 North, Range 20 West.

Chains.

May 27, 1915: At the cor. of secs. 11, 12, 13 and 14, at 9h. Om., a.m., l.m.t., set off $21^{\circ}12'$ N. on the decl. arc; $35^{\circ}7\frac{1}{2}'$ on the lat. arc; and determine a meridian with the solar.

Thence I run,

N. $0^{\circ}01'$ W., bet. secs. 11 and 12.

Ascend over rolling and mountainous land.

9.20 Top of ridge, bears E. and W., 233 ft. above sec. cor.; descend.

21.90 Foot of 158 ft. descent; ascend.

30.45 Top of spur, slopes W., 200 ft. ascend; descend.

40.00 84 ft. below top of spur, set an iron post 3 ft. long, 1 in. in diam., on surface rock, in a mound of stone, for $\frac{1}{4}$ sec. cor., with a brass cap, marked,

$$\begin{array}{c} \frac{1}{4} \text{ S } 11 \quad | \quad \text{S } 12 \\ \hline 1915 \end{array}$$

and raise a mound of stone, 2 ft. base, $1\frac{1}{2}$ ft. high, W. of cor. Ascend.

42.15 Top of spur, slopes W., 35 ft. above $\frac{1}{4}$ sec. cor.; descend.

59.00 Gulch, course NW., 265 ft. below top of spur; ascend.

69.45 Top of spur, slopes W., 100 ft. above gulch; descend.

80.00 250 ft. below top of spur, set an iron post, 3 ft. long, 2 ins. in diam., on surface rock, in a mound of stone, for cor. of secs. 1, 2, 11 and 12, with a brass cap,

marked

$$\begin{array}{c} \text{T } 20 \text{ N } \quad | \quad \text{R } 20 \text{ W} \\ \hline \text{S } 2 \quad | \quad \text{S } 1 \\ \hline \text{S } 11 \quad | \quad \text{S } 12 \\ \hline 1915 \end{array}$$

and raise a mound of stone, 2 ft. base, $1\frac{1}{2}$ ft. high, W. of cor.

Land rolling and mountainous.

Soil, stony, 4th rate. No grass.

Undergrowth, sage brush, greasewood and cactus.
Hugo Price, U.S.T.

Line run by Guy H. Richardson, U.S. Surveyor: From the cor.

of secs. 1, 2, 11 and 12, I run,

S. $89^{\circ}56'$ E. on a random line, bet. secs. 1 and 12.

40.00 Set temp. $\frac{1}{4}$ sec. cor.

Chains

79.80 Intersect the E. bdy. of the twp. 5 lks. N. of the cor. of secs. 1, 6, 7 and 12, described in Book "A,"
 Thence I run
 N. 89° 54' W. on a true line bet. secs. 1 and 12.
 Desc. over rolling, mountainous land.

20.00 Draw, 50 lks. wide, course S. 75° E., 50 ft. below sec. cor., asc.

39.90 115 ft. above draw, set an iron post, 3 ft. long, 1 in. in diam., 26 ins. in the ground for 1/4 sec. cor., with a brass cap, marked

1/4 S 1

S 12
1915

and raise a mound of stone, 2 ft. base, 1 1/2 ft. high, N. of cor. Continue to asc.

60.70 Saddle on top of ridge, bears N. 30° E. and S. 30° W., 245 ft. above 1/4 sec. cor., desc.

79.80 Cor. of secs. 1, 2, 11 and 12, 250 ft. below top of ridge. Land rolling^{and} mountainous.
 Soil, stony, 4th. rate.
 No grass.
 Undergrowth, sagebrush, greasewood and cactus.
 Guy H. Richardson, U.S.S.

Line run by Hugo Price, U. S. Transitman, as follows:

From the cor. of secs. 1, 2, 11 and 12.
 Thence I run.
 N. 0° 1' W. on a true line, bet. secs. 1 and 2.
 Desc. over mountainous land.

4.78 Gulch, course NW., 96 ft. below sec. cor., asc.

25.28 Top of spur, slopes W., 365 ft. above gulch, desc.

40.00 275 ft. below top of spur, set an iron post, 3 ft. long, 1 in. in diam., on surface rock, in a mound of stone, for 1/4 sec. cor., with a brass cap, marked

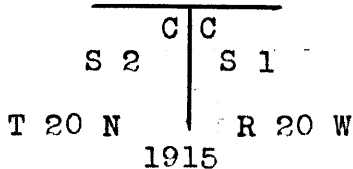
1/4 S 2 | S 1
1915

Chains and raise a mound of stone, 2 ft. base, $1\frac{1}{2}$ ft. high, W. of cor. Thence over rolling land.

43.73 Road, bears E. and W., but little used.

65.72 Intersect the 5th. Standard Parallel N. 5.46 chs. W. of the Standard $\frac{1}{4}$ sec. cor. of sec. 36, T. 21 N., R. 20 W., which is a 1 1/2 inch iron post with brass cap, set in a mound of stone, reestablished under current group 44.

At point of intersection,
Set an iron post, 3 ft. long, 2 ins. in diam., on surface rock, in a mound of stone for closing cor. of secs. 1 and 2, with a brass cap, marked



and raise a mound of stone, 2 ft. base, $1\frac{1}{2}$ ft. high, S. of cor. Land, rolling and mountainous. Soil, stony, 4th rate. No grass. Undergrowth, sage brush, greasewood and cactus. Hugo Price, U.S.T.
May 27, 1915.

May 20, 1915; Lines run by Guy H. Richardson, U. S. Surveyor, as follows:

At the cor. of secs. 2, 3, 24 and 35, on the S. bdy. of the township, described in Book "A," and at 9h. 0m., a. m., l.m.t. set off $19^{\circ} 51\frac{1}{2}'$ N. on the decl. arc, $35^{\circ} 4'$ on the lat. arc, and determine a meridian with the solar

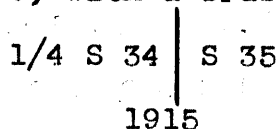
Thence I run

N. $0^{\circ} 1'$ W. bet. secs. 34 and 35.

Desc. over rough mountainous land.

12.10 Box canyon, 2 chs. wide, 2 chs. deep, course W., 118 ft. below sec. cor., asc. along W. slope of Battle ship Mt.

40.00 250 ft. above canyon, set an iron post, 3 ft. long, 1 in. in diam., on surface rock, in a mound of stone, for $\frac{1}{4}$ sec. cor., with a brass cap, marked



and raise a mound of stone, 2 ft. base, $1\frac{1}{2}$ ft. high,

Subdivision of T. 20 N., R. 20 W.

Chains	W. of cor., continue to asc.								
47.35	Top of rocky spur, slopes NW., 195 ft. above 1/4 sec. cor., desc.								
58.62	Top of cliffs, bear E. and W., desc. abruptly.								
80.00	365 ft. below top of spur, set an iron post, 3 ft. long, 2 ins. in diam., 24 ins. in the ground for cor. of secs. 26, 27, 34 and 35, with a brass cap, marked								
	<table border="0"> <tr> <td>T 20 N</td> <td>R 20 W</td> </tr> <tr> <td>S 27</td> <td>S 26</td> </tr> <tr> <td>S 34</td> <td>S 35</td> </tr> <tr> <td colspan="2" style="text-align: center;">1915</td> </tr> </table>	T 20 N	R 20 W	S 27	S 26	S 34	S 35	1915	
T 20 N	R 20 W								
S 27	S 26								
S 34	S 35								
1915									
	and raise a mound of stone, 2 ft. base, 1 1/2 ft. high, W. of cor.								
	Land rough mountainous.								
	Soil, stony, 4th. rate.								
	No grass.								
	Undergrowth, greasewood and cactus.								

	S. 89° 52' E. on a random line bet. secs. 26 and 35.								
40.00	Set temp. 1/4 sec. cor.								
80.10	Intersect cor. of secs, 25, 26, 35 and 36.								
	Thence I run								
	N. 89° 52' W. on a true line bet. secs. 26 and 35.								
	Desc. over mountainous land.								
39.52	Draw, course N. 30° W., 130 ft. below sec. cor., asc.								
40.05	150 ft. above draw, set an iron post, 3 ft. long, 1 in. in diam., 8 ins. in the ground to solid rock, in a mound of stone, for 1/4 sec. cor., with a brass cap, marked								
	<table border="0"> <tr> <td>1/4 S 26</td> </tr> <tr> <td>S 35</td> </tr> <tr> <td colspan="2" style="text-align: center;">1915</td> </tr> </table>	1/4 S 26	S 35	1915					
1/4 S 26									
S 35									
1915									
	and raise a mound of stone, 2 ft. base, 1 1/2 ft. high, N. of cor. Continue to asc.								
46.08	Top of spur, slopes N., 20 chs. 160 ft. above 1/4 sec. cor., desc.								
66.00	Gulch, course N., continue to desc.								
80.10	Cor. of secs. 26, 27, 34 and 35, 900 ft. below top of spur.								

Chains	<p>Land, rolling mountainous.</p> <p>Soil, stony, 4 th. rate.</p> <p>No grass.</p> <p>Undergrowth, greasewood and cactus.</p> <p style="text-align: right;">May 20, 1915.</p> <hr style="border-top: 1px dashed black;"/> <p>May 21, 1915; At the cor. of secs. 26, 27, 34 and 35, at 8h. 0m., a. m., l.m.t., set off 20° 4' N. on the decl. arc, 35° 5' on the lat. arc, and determine a meridian with the solar.</p> <p>Thence I run</p> <p>N. 0° 1' W. bet. secs. 26 and 27.</p> <p>Over rough mountainous land, desc.</p> <p>5.00 Grapevine Canyon, 1 ch. wide, course S. 60° W., carries 10' water, 80 ft. below sec. cor., asc.</p> <p>26.40 Saddle in top of spur, slopes W. about 30 chs., 375 ft. above canyon, desc.</p> <hr style="border-top: 1px dashed black;"/> <p>40.00 400 ft. below top of spur, set an iron post, 3 ft. long, 1 in. in diam., on surface rock, in a mound of stone, for 1/4 sec. cor., with a brass cap, marked</p> <div style="text-align: center;"> <table style="border-collapse: collapse; margin: auto;"> <tr> <td style="padding: 0 10px;">1/4 S 27</td> <td style="border-left: 1px solid black; padding: 0 10px;">S 26</td> </tr> <tr> <td colspan="2" style="text-align: center; padding-top: 5px;">1915</td> </tr> </table> </div> <p>and raise a mound of stone, 2 ft. base, 1½ ft. high, W. of cor. Continue to desc.</p> <p>73.98 Wash, 50 lks. wide, course N. 75° W., 350 ft. below 1/4 sec. cor., asc.</p> <p>80.00 35 ft. above wash, set an iron post, 3 ft. long, 2 ins. in diam., 10 ins. in the ground to solid rock, in a mound of stone, for cor. of secs. 22, 23, 26 and 27, with a brass cap, marked</p> <div style="text-align: center;"> <table style="border-collapse: collapse; margin: auto;"> <tr> <td style="padding: 0 10px;">T 20 N</td> <td style="border-left: 1px solid black; padding: 0 10px;">R 20 W</td> </tr> <tr> <td style="padding: 0 10px;">S 22</td> <td style="border-left: 1px solid black; padding: 0 10px;">S 23</td> </tr> <tr> <td style="border-top: 1px solid black; padding: 0 10px;">S 27</td> <td style="border-left: 1px solid black; border-top: 1px solid black; padding: 0 10px;">S 26</td> </tr> <tr> <td colspan="2" style="text-align: center; padding-top: 5px;">1915</td> </tr> </table> </div> <p>and raise a mound of stone, 2 ft. base, 1½ ft. high, W. of cor.</p> <p>Land rough mountainous.</p>	1/4 S 27	S 26	1915		T 20 N	R 20 W	S 22	S 23	S 27	S 26	1915	
1/4 S 27	S 26												
1915													
T 20 N	R 20 W												
S 22	S 23												
S 27	S 26												
1915													

Chains Soil, stony, 4th. rate.
 No grass.
 Undergrowth, greasewood and cactus.

S. 89° 52' E. on a random line bet. secs. 23 and 26.
 40.00 Set temp. 1/4 sec. cor.
 80.00 Intersect the cor. of secs. 23, 24, 25 and 26.

Thence I run
 N. 89° 52' W. on a true line bet. secs. 23 and 26.
 Desc. over mountainous land.

20.90 Draw, course S. 65° W., 257 ft. below sec. cor., asc.
 40.00 325 ft. above draw, set an iron post, 3 ft. long, 1 in.
 in diam., 26 ins. in the ground for 1/4 sec. cor., with
 a brass cap, marked

1/4 S 23

 S 26
 1915

and raise a mound of stone, 2 ft. base, 1 1/2 ft. high,
 N. of cor. Continue to asc.
 47.25 Top of ridge, bears N. and S. 200 ft. above 1/4 sec. cor.,
 desc.

80.00 Cor. of secs. 22, 23, 26 and 27, 880 ft. below top of
 ridge.

Land rough mountainous.
 Soil, stony, 4th. rate.
 No grass.
 Undergrowth, greasewood and cactus.

May 21, 1915.

May 22, 1915; At the cor. of secs. 22, 23,
 26 and 27, set off at 8h. Om., a. m., l.m.t., set off 20°
 16' N. on the decl. arc, 35° 6' on the lat. arc,
 and determine a meridian with the solar,
 Thence I run
 N. 0° 1' W. bet. secs. 22 and 23.
 Asc. gradually along broken W. slope.

Chains

40.00 70 ft. above sec. cor., set an iron post, 3 ft. long, 1 in. in diam., on surface rock, in a mound of stone, for 1/4 sec. cor., with a brass cap, marked

$$\begin{array}{c} 1/4 \text{ S } 22 \quad | \quad \text{S } 23 \\ \hline 1915 \end{array}$$

1915

and raise a mound of stone, 2 ft. base, 1 1/2 ft. high, W. of cor.

42.00 Wash, 3 chs. wide, course S. 80° W., asc.

64.00 Top of 400 ft. ascent., desc.

80.00 Foot of 200 ft. ascent, Set an iron post, 3 ft. long, 2 ins. in diam., 12 ins. in the ground to solid rock, in a mound of stone, for cor. of secs. 14, 15, 22 and 23, with a brass cap, marked

$$\begin{array}{c} \text{T } 20 \text{ N. } \quad \text{R } 20 \text{ W} \\ \text{S } 15 \quad | \quad \text{S } 14 \\ \hline \text{S } 22 \quad | \quad \text{S } 23 \\ 1915 \end{array}$$

and raise a mound of stone, 2 ft. base, 1 1/2 ft. high, W. of cor.

Land rolling and mountainous.

Soil, stony, 4th. rate.

No grass.

Undergrowth, greasewood and cactus.

S. 89° 52' E. on a random line bet. secs. 14 and 23.

40.00 Set temp. 1/4 sec. cor.

79.94 Intersect N. and S. line 9 lks. S. of the cor. of secs. 13, 14, 23 and 24.

Thence I run

N. 89° 56' W on a true line bet. secs. 14 and 23.

Asc. gradually over rolling land.

28.90 Top of spur, slopes N. about 10 chs. dist. 100 ft. above sec. cor., desc.

33.25 Bottom of canyon, 1 ch. wide, carries 10 ins. water, course SW., 110 ft. below top of spur., asc.

39.97 Set an iron post, 3 ft. long, 1 in. in diam., on surface

Subdivision of Township 20 North, Range 20 West, 17.

Chains.

rock, in a mound of stone, for 1/4 sec.cor., with a brass cap, marked 1/4 S 14

S 23
1915

and raise a mound of stone, 2 ft. base, 1 1/2 ft. high, N. of cor.

From the 1/4 sec.cor. U.S.L.M.No.3006B bears S.57°27'W., 22.86 chs.dist.

65.95 Top of rocky spur, slopes SW., 320 ft. above canyon; descend.

79.94 Cor. of secs. 14, 15, 22 and 23, 230 ft. below top of spur. Land, rolling and mountainous.

Soil, stony, 4th rate. No grass.

Undergrowth, greasewood and cactus.

May 22, 1915.

May 28, 1915: At the cor. of secs. 14, 15, 22 and 23, at 8h.

Om.a.m., 1.m.t., set off 21°22'N. on the decl. arc; 35° 7' on the lat. arc, and determine a meridian with the solar. Thence I run,

N.0°1'W., bet. secs. 14 and 15.

Ascend SW. slope of ridge, over rough, stony land.

40.00 Set an iron post 3 ft. long, 1 in. in diam., 26 ins. in the ground for 1/4 sec.cor., with a brass cap, marked

1/4 S 15 | S 14
1915

and raise a mound of stone, 2 ft. base, 1 1/2 ft. high, W. of cor. Cor. falls on top of ridge, 900 ft. above sec.cor.; ridge brs. N. and S. 30° E. Continue to ascend along top of ridge.

61.90 Top of ridge, brs. S. and NW., 190 ft. above 1/4 sec.cor.; desc.

80.00 600 ft. below top of ridge, set a porphyry stone 24x12x8 ins., 18 ins. in the ground, for cor. of secs. 10, 11, 14 and 15, marked with 4 notches on S. edge, and 2 notches on E. edge, and, raise a mound of stone, 2 ft. base, 1 1/2 ft. high, W. of cor.

Land, rough and mountainous.

Soil, stony, 4th rate. No grass.

Undergrowth, greasewood, cactus and scrub juniper.

18. Subdivision of Township 20 North, Range 20 West.

Chains

S.89°56'E., on a random line, bet. secs. 11 and 14.

21.00

Set temp. witness cor. to $\frac{1}{4}$ sec. cor. It is impracticable to continue chaining on random sec. line S.89°56'E. From this point, therefore I triangulate as follows:

Set flag on random sec. line S.89°56'E., from this point.

Lay off a base N.0°4'E., 20.00 chs. from the cor. of secs. 10, 11, 14 and 15.

From north end of base, flag brs. S.65°26'E.

The included angles are 90°00', 65°30' and 24°30', the sum of which is 180°00'.

Therefore dist. on random sec. line from sec. cor. to flag is obtained by

Tang. 65°30' x base or $2.19430 \times 20.00 = 43.89$ chs.

43.89

Flag point on high ridge, brs. N. and S. Impracticable to continue measurement by chaining; therefore, triangulate as follows:

Establish a triangulation point on random sec. line S.89°56'E. from this flag point.

Lay off a base from this triangulation point, N. 53°31'W., 11.00 chs.

From NW. end of base, flag brs. S.64°54'W.

The included angles are 36°25', 118°25' and 25°10' the sum of which is 180°00'.

Therefore dist. on random sec. line from flag point to triangulation point is obtained by

$$\frac{\text{Sine } 118^\circ 25' \times \text{base}}{\text{sine } 25^\circ 10'} \text{ or } \frac{0.87951 \times 11.00}{0.42525} = 22.75$$
 chs. 43.89 chs. + 22.75 chs. =

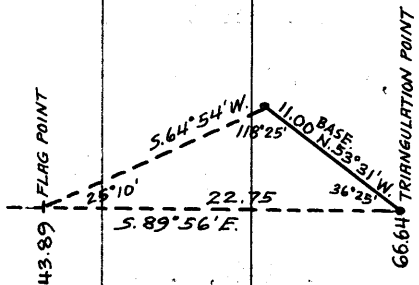
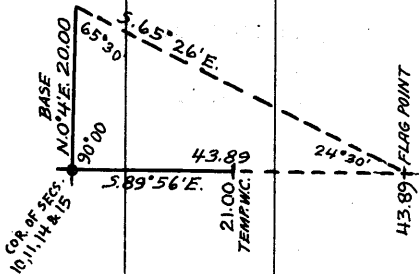
66.64

Triangulation point of triangulation described above. Impracticable to continue measurement by chaining; therefore triangulate as follows:

Leave flag at this point.

Establish a triangulation point S.89°56' E. of this flag, which point is 21 lks. N. of the cor. of secs. 11, 12, 13 and 14.

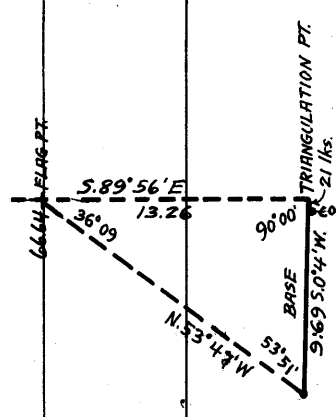
From triangulation point, lay off a base, S.0°4'W., 9.69 chs.



Subdivision of Township 20 North, Range 20 West.

Chains.

From S. end of base the flag brs. N. 53° 47' W.
The included angles are 90° 00', 53° 51', 36° 09', the
sum of which is 180° 00'.



Therefore dist. from flag to triangulation point, or
from

Flag to cor. of secs. 11, 12, 13 and 14 is obtained by
Tang. 53° 51' x base or 1.36883 x 9.69 = 13.26 chs.
66.64 chs. + 13.26 chs. =

79.90 Triangulation point of above described triangulation, 21
lks. N. of cor. of secs. 11, 12, 13 and 14.

From sec. cor., I run,
N. 89° 47' W., on a true line, bet. secs. 11 and 14, measuring
by the triangulations described on random line. Over
rough, mountainous land. Ascend.

13.26 Flag and triangulation point on top of ridge brs. N. 25° W.
and S. 25° E. Descend.

27.00 (Approximate) Ascend.

36.01 Flag point on top of ridge, brs. N. and S. Descend.

39.95 True point for 1/4 sec. cor. is inaccessible. Therefore, at

58.90 This being the nearest practicable point on sec. line, I
Set an iron post, 3 ft. long, 1 in. in diam., on surface rock
in a mound of stone, for witness cor. to 1/4 sec. cor.,
with a brass cap, marked

$\frac{1}{4}$ S 11
 _____ WC
 S 14
 1915

and raise a mound of stone, 2 ft. base, 1 1/2 ft. high, N.
of cor.

79.90 Cor. of secs. 10, 11, 14 and 15.
Land exceptionally rough, and mountainous.

Soil, stony, 4th rate.

No grass.

Undergrowth, greasewood, cactus and scrub juniper.

May 28, 1915.

May 29, 1915: At the cor. of secs. 10, 11, 14 and 15,
at 9h. Om., a.m., l.m.t., set off 21° 32' N. on the

20. Subdivision of Township 20 North, Range 20 West.

Chains.

decl. arc; $35^{\circ} 7\frac{1}{2}'$ on the lat. arc, and determine a meridian with the solar.

Thence I run,

N. $0^{\circ} 1'$ W., bet. secs. 10 and 11.

Descend over rough, mountainous land.

- 1.50 Canyon, 4 chs. wide, 200 ft. deep, course W.; ascend.
 40.00 200 ft. above canyon, set an iron post, 3 ft. long, 1 in. in diam., 26 ins. in the ground for $\frac{1}{4}$ sec. cor., with a brass cap, marked

$$\begin{array}{c} \frac{1}{4} \text{ S } 10 \quad | \quad \text{S } 11 \\ \hline 1915 \end{array}$$

and raise a mound of stone, 2 ft. base, $1\frac{1}{2}$ ft. high, W. of cor.

Descend gradually from $\frac{1}{4}$ sec. cor.

- 80.00 375 ft. below $\frac{1}{4}$ sec. cor., set an iron post, 3 ft. long, 2 ins. in diam., on surface rock, in a mound of stone for cor. of secs. 2, 3, 10 and 11, with a brass cap, marked

$$\begin{array}{c} \text{T } 20 \text{ N } \text{ R } 20 \text{ W} \\ \text{S } 3 \quad | \quad \text{S } 2 \\ \hline \text{S } 10 \quad | \quad \text{S } 11 \\ \hline 1915 \end{array}$$

and raise a mound of stone, 2 ft. base, $1\frac{1}{2}$ ft. high, W. of cor.

Land, rough, mountainous.

Soil, stony, 4th rate.

Undergrowth, scattering sage brush and greasewood.

S. $89^{\circ} 47'$ E., on a random line, bet. secs. 2 and 11.

- 40.00 Set temp. $\frac{1}{4}$ sec. cor.
 79.92 Intersect N. and S. line, 9 lks. N. of the cor. of secs. 1, 2, 11 and 12.

Thence I run,

N. $89^{\circ} 43'$ W. on a true line, bet. secs. 2 and 11.

Descend over rolling land.

Chains

28.83 Draw, course N. 15° W., 340 ft. below sec. cor., asc.

39.96 Set an iron post, 3 ft. long, 1 in. in diam., on surface rock, in a mound of stone, for 1/4 sec. cor., with a brass cap, marked

1/4 S 2

S 11
1915

and raise a mound of stone, 2 ft. base, 1 1/2 ft. high, N. of cor.

42.80 Top of spur, slopes N. 20° W., about 15 chs. 145 ft. above draw, desc.

49.00 Draw, course N. 20° W., 150 ft. below top of spur, asc.

79.92 Cor. of secs. 2, 3, 10 and 11, 190 ft. above draw.

Land rolling.

Soil, stony, 4th. rate.

No grass.

Undergrowth, greasewood and cactus.

At the cor. of secs. 2, 3, 10 and 11, at apparent noon, I set off 21° 33' N. on the lat. arc, and observe the sun on the meridian for lat. The resulting latitude is 35° 8 1/2' N.

N. 0° 1' W. on a true line, bet. secs. 2 and 3.

Over rough mountainous land, desc.

21.37 Box canyon, 5 chs. wide, 200 ft. deep (Secret Pass) 400 ft. below sec. cor., asc.

35.54 Set an iron post, 3 ft. long, 1 in. in diam., on surface rock, in a mound of stone for witness cor. to 1/4 sec. cor. with a brass cap, marked

WC
1/4 S 3 | S 2
1915

and raise a mound of stone, 2 ft. base, 1 1/2 ft. high, W. of cor.

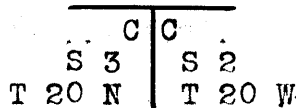
Continue to asc. over steep cliffs, bear E. and W.

Chains

40.00 Point for 1/4 sec. cor. falls on steep cliff rock, unsafe to set post.

65.50 280 ft. above canyon, intersect the 5th. Standard Parallel N., 5.65 chs. W. of the 1/4 cor. of sec. 35, T. 21 N., R. 20 W., which is a 1 inch iron post with brass cap, set in a stone mound, reestablished under current Group No. 44. At point of intersection

Set an iron post, 3 ft. long, 2 ins. in diam., 12 ins. in the ground to solid rock, in a mound of stone, for closing cor. of secs. 2 and 3, with a brass cap, marked



1915.

and raise a mound of stone, 2 ft. base, 1 1/2 ft. high, Land rolling. Soil, stony, 4th rate. No grass. Undergrowth, greasewood and cactus.

Guy H. Richardson, U.S.S.

May 29, 1915.

May 22, 1915; Lines run by Hugo Price, U. S. Transitman. as follows:

At the cor. of secs. 3, 4, 33 and 34, on the S. bdy. of the twp., described in Book 2888, at 8h. Om., a. m., l.m.t., set off 20° 16' N. on the decl. arc, and 35° 4' on the lat. arc, and determine a meridian with the solar,

Thence I run

N. 0° 2' W. bet. secs. 33 and 34.

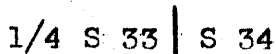
Desc. over rolling mountainous land.

4.88 Gulch,, course W., 55 ft. below sec. cor., asc.

12.74 Top of butte, 200 ft. above gulch, desc.

37.42 Wash, course W. 240 ft. below top of butte.

40.00 Set an iron post, 3 ft. long, 1 in. in diam., 26 ins. in the ground for 1/4 sec. cor., with a brass cap, marked



1915

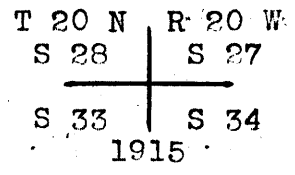
and raise a mound of stone, 2 ft. base, 1 1/2 ft. high, W. of cor., asc.

59.96 Top of spur, slopes W., 40 ft. above 1/4 sec. cor., desc.

Chains

74.85 Wash, course W., 100 ft. below top of spur, asc. slightly.

80.00 Set an iron post, 3 ft. long, 2 ins. in diam., 24 ins. in the ground for cor. of secs. 27, 28, 33 and 34, with a brass cap, marked



and raise a mound of stone, 2 ft. base, 1 1/2 ft. high, W. of cor.

Land rolling mountainous.

Soil, stony, 4th. rate.

Undergrowth, greasewood and cactus.

Hugo Price U.S.T.

Line run by Guy H. Richardson U.S.S. as follows:
S. 89° 52' E. on a random line bet. secs. 27 and 34.

40.00 Set temp. 1/4 sec. cor.

80.22 Intersect N. and S. line 21 lks. N. of the cor. of secs. 26, 27, 34 and 35.

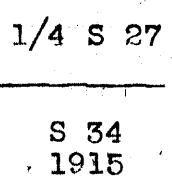
Thence I run

N. 89° 43' W. on a true line bet. secs. 27 and 34.

Over rolling land, desc.

25.22 Gulch, course SW., 95 ft. below sec. cor.

40.11 Set an iron post, 3 ft. long, 1 in. in diam., 26 ins. in the ground for 1/4 sec. cor., with a brass cap, marked



and raise a mound of stone, 2 ft. base, 1 1/2 ft. high, N. of cor., asc.

80.22 95 ft. above 1/4 sec. cor. Cor. of secs. 27, 28, 33 and 34.

Land, rolling.

Soil, stony, 4th. rate.

Undergrowth, greasewood and cactus, no grass.

Guy H. Richardson U.S.S.

Line run by Hugo Price U.S.T. as follows:
 At the cor. of secs. 27, 28, 33 and 34, at apparent noon,
 I set off 20° 18' N. on the decl. arc, and observe the
 sun on the meridian for lat. The resulting latitude is
 35° 5' N., thence I run
 N. 0° 2' W. bet. secs. 27 and 28.
 Over rolling land, asc.

12.64 Power line, bears NW. and SE.

21.10 Top of spur, slopes W., 215 ft. above sec. cor., desc.

30.80 Gulch, course W., 160 ft. below top of spur, asc.

40.00 Set an iron post, 3 ft. long, 1 in. in diam., 26 ins. in
 the ground for 1/4 sec. cor., with a brass cap, marked

1/4 S 28 | S 27
 1915

and raise a mound of stone, 2 ft. base, 1 1/2 ft. high,
 W. of cor.

46.27 Top of spur, slopes W., 18 ft. above 1/4 sec. cor., desc.

72.09 Cor. No. 2 of mining claim No. 3006A. (Ida Load) bears
 S. 83° 41' W., 4.06 chs. dist.

77.26 Cor. No. 1, of same claim, bears S. 39° 50' E., 2.93 chs.
 dist.

80.00 100 ft. below top of spur, set an iron post, 3 ft. long,
 2 ins. in diam., 24 ins. in the ground for cor. of secs.
 21, 22, 27 and 28, with a brass cap, marked

T. 20 N. R. 20 W.
 S 21 | S 22
 S 28 | S 27
 1915

and raise a mound of stone, 2 ft. base, 1 1/2 ft. high,
 W. of cor.

Land rolling.
 Soil, stony, 4th. rate.
 Undergrowth, greasewood and cactus, no grass.

Hugo Price, U.S.T.
 May 22, 1915.

Line run by Guy H. Richardson, U.S.S., as follows:
 From the cor. of secs. 21, 22, 27 and 28,
 I run

Chains S. 89° 43' E. on a random line bet. secs. 22 and 27.

40.00 Set temp. 1/4 sec. cor.

80.02 Intersect N. and S. line 4 lks. S. of the cor. of secs. 22, 23, 26 and 27.

Thence I run

N. 89° 45' W. on a true line bet. secs. 22 and 27.

Over level and gently rolling land, desc.

40.01 90 ft. below sec. cor., set an iron post, 3 ft. long, 1 in. in diam., 26 ins. in the ground for 1/4 sec. cor., with a brass cap, marked

1/4 S 22

S 27
1915

and raise a mound of stone, 2 ft. base, 1 1/2 ft. high, N. of cor.

80.02 Cor. of secs. 21, 22, 27 and 28.

Land, level and rolling.

Soil, sandy and stony, 4th. rate.

Undergrowth, greasewood and cactus.

Guy H. Richardson, U.S.S.

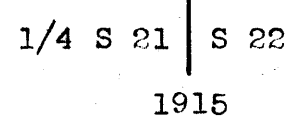
Line run by Hugo Price, U.S.T., as follows:

N. 0° 2' W. bet. secs. 21 and 22.

Over level land.

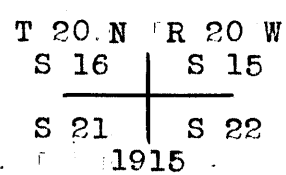
12.40 Road, Bears E. and W.

40.00 Set an iron post, 3 ft. long, 1 in. in diam., 26 ins. in the ground, for 1/4 sec. cor., with a brass cap, marked



and raise a mound of stone, 2 ft. base, 1 1/2 ft. high, W. of cor.

80.00 Set an iron post, 3 ft. long, 2 ins. in diam., 24 ins. in the ground for cor. of secs. 15, 16, 21 and 22, with a brass cap, marked



Chains and raise a mound of stone, 2 ft. base, $1\frac{1}{2}$ ft. high, W. of cor.

Land, level.

Soil, stony, 4th. rate.

No grass.

Undergrowth, greasewood, sagebrush and cactus.

Hugo Price, U.S.T.

Line run by Guy H. Richardson, U.S.S., as follows:

S. $89^{\circ} 45'$ E. on a random line bet. secs. 15 and 22.

40.00 Set temp. $1/4$ sec. cor.

80.08 Intersect the cor. of secs. 14, 15, 22 and 23.

Thence I run.

N. $89^{\circ} 45'$ W. on a true line bet. secs. 15 and 22.

Desc. over gently rolling land.

40.04 150 ft. below sec. cor., set an iron post, 3 ft. long, 1 in. in diam., 12 ins. in the ground to solid rock, in a mound of stone, for $1/4$ sec. cor., with a brass cap, marked

$1/4$ S 15

S 22

1915.

and raise a mound of stone, 2 ft. base, $1\frac{1}{2}$ ft. high,

N. of cor. Continue to desc.

80.08 Cor. of secs. 15, 16, 21 and 22, 150 ft. below $1/4$ sec. cor.

Land, gently rolling.

Soil, stony and sandy, 4th. rate.

Undergrowth, greasewood, sagebrush and cactus.

Guy H. Richardson, U.S.S.

May 22, 1915.

May 28, 1915; Lines run by Hugo Price, U.S.T. as follows:

At the cor. of secs. 15, 16, 21 and 22,

at 9h. 0m., a.m., l.m.t., set off $21^{\circ} 22'$ N. on the

decl. arc, and $35^{\circ} 7'$ on the lat. arc, and determine

a meridian with the solar.

Thence I run

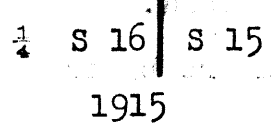
N. $0^{\circ} 2'$ W. bet. secs. 15 and 16.

Subdivision of Township 20 North, Range 20 West. 27.

Chains.

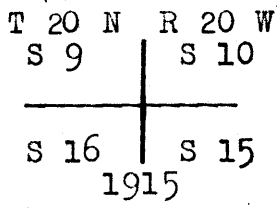
Over gently rolling land.

40.00 Set an iron post, 3 ft. long, 1 in. in diam., 20 ins. in the ground, to solid rock, in a mound of stone, for 1/4 sec. cor., with a brass cap, marked



and raise a mound of stone, 2 ft. base, 1 1/2 ft. high, W. of cor.

80.00 Set an iron post, 3 ft. long, 2 ins. in diam., 24 ins. in the ground for cor. of secs. 9, 10, 15 and 16, with a brass cap, marked



and raise a mound of stone, 2 ft. base, 1 1/2 ft. high, W. of cor.

Land, gently rolling.

Soil, stony, 4th rate.

Undergrowth, greasewood, sagebrush and cactus.

S. 89° 45' E., on a random line, bet. secs. 10 and 15.

40.00 Set temp. 1/4 sec. cor.

50.67 Impracticable to continue measurement by chaining on random sec. line; S. 89° 45' E. of this point;

therefore, triangulate as follows:

Set a flag on random line, S. 89° 45' E. of this triangulation point.

From triangulation point, I lay off a base S. 24° 43' E., 10.00 chs.

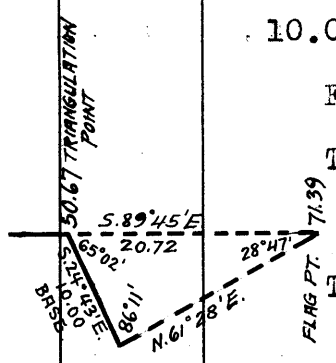
From SE. end of base, flag brs. N. 61° 28' E.

The included angles are 65° 02', 86° 11' and 28° 47', the sum of which is 180° 00'.

Therefore dist. from flag to triangulation point is obtained by

$$\frac{\sin 86^{\circ} 11' \times \text{base}}{\sin 28^{\circ} 47'} \quad \text{or} \quad \frac{0.99778 \times 10.00}{0.48150} = 20.72 \text{ chs.}$$

$$50.67 \text{ chs.} + 20.72 \text{ chs.} =$$



28. Subdivision of Township 20 North, Range 20 West.

- Chains.
- 71.39 Flag point. Continue measurement S.89°45'E.
- 80.24 Intersect N.and S.line 21 lks.S.of the cor.of secs.10,11,
14 and 15. Thence I run,
N.89°54'W.,on a true line,bet.secs.10 and 15.
Over rough,mountainous land.
- 8.85 Flag point. Thence measure by triangulation hereinbefore
described.
- 29.57 Triangulation point. Top of ridge,brs.N.and S.;thence
chaining measurement; descend.
- 40.12 340 ft.below top of ridge, set an iron post,3 ft.long,8
ins.in diam.,12 ins.in the ground to solid rock,in a
mound of stone,for $\frac{1}{4}$ sec.cor., with a brass cap,marked

$$\begin{array}{c} \frac{1}{4} \text{ S } 10 \\ \hline \text{S } 15 \\ 1915 \end{array}$$
and raise a mound of stone, 2 ft.base,1 $\frac{1}{2}$ ft.high,N.of
cor. Continue to descend.
- 80.24 Cor.of secs.9,10,15 and 16,140 ft. below $\frac{1}{4}$ sec.cor.
Land,rough and rolling. Soil, stony,4th rate.
Undergrowth, greasewood and cactus.

N.0°2'W.,bet.secs.9 and 10.
Ascend over rolling land.
- 40.00 50 ft.above sec.cor., set an iron post,3 ft.long,1 in.in
diam.,26 ins.in the ground for $\frac{1}{4}$ sec.cor.,with a brass
cap, marked

$$\begin{array}{c} \frac{1}{4} \text{ S } 9 \mid \text{S } 10 \\ 1915 \end{array}$$
and raise a mound of stone 2 ft.base,1 $\frac{1}{2}$ ft.high,W.of
cor. Continue to ascend.
- 80.00 150 ft.above $\frac{1}{4}$ sec.cor., set an iron post, 3 ft.long,2 ins.
in diam.,on surface rock,in a mound of stone,for cor.of
secs.3,4,9 and 10,with a brass cap,marked

$$\begin{array}{c} \text{T } 20 \text{ S } \text{R } 20 \text{ W} \\ \text{S } 4 \mid \text{S } 3 \\ \hline \text{S } 9 \mid \text{S } 10 \\ 1915 \end{array}$$
and raise a mound of stone, 2 ft.base, 1 $\frac{1}{2}$ ft. high,W.
of cor.
Land, rolling.

Subdivision of Township 20 North, Range 20 West, 29.

Chains.

Soil, stony, 4th rate.

Undergrowth, greasewood and cactus.

At this cor. at apparent noon, I set off 21°33' N. on the decl. arc, and observe the sun on the meridian for lat.; the resulting lat. is 35° 8½' N.

May 28, 1915.

May 29, 1915: At the cor. of secs. 3, 4, 9 and 10, at 9h. 0m., a.m., l.m.t., I set off 21°32' N. on the decl. arc; 35°8½' on the lat. arc, and determine a meridian with the solar.

Thence I run,

S. 89°54' E. on a random line, bet. secs. 3 and 10.

40.00 Set temp. ¼ sec. cor.

41.63 On account of rocks and cliffs on random line E. of this point over which chaining is impracticable, I triangulate from this point as follows:

Set a flag on random sec. line S. 89°54' E. of this triangulation point.

Lay off a base from triangulation point, S. 0°6' W., 7.50 chs.

From south end of base, flag brs. N. 74°41' E.

The included angles are 90°00', 74°35' and 15°25', the sum of which is 180°00'.

Therefore, the dist. on random sec. line from triangulation point to flag is obtained by

Tang. 74°35' x base or 3.62636 x 7.50 = 27.20 chs.

41.63 chs. + 27.20 chs. = 68.83 chs.

68.83 Flag point. Thence continue random line, S. 89°54' E.

80.28 Intersect N. and S. line 5 lks. S. of the cor. of secs. 2, 3, 10 and 11.

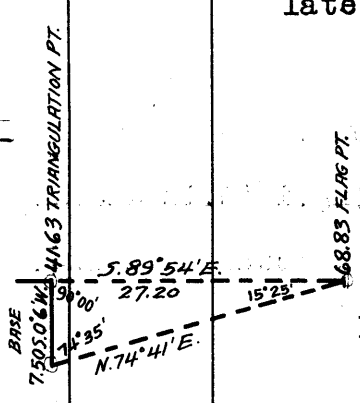
Thence I run,

N. 89°56' W., on a true line, bet. secs. 3 and 10.

Over rough, mountainous land; ascend.

11.45 Flag point on top of ridge, brs. N. and S. Thence measuring by triangulation as hereinbefore described. Descend.

38.65 Triangulation point. Thence continue measurement by chaining.



30. Subdivision of Township 20 North, Range 20 West.

Chains.
40.14 Set an iron post 3 ft. long, 1 in. in diam., 20 ins. in the ground, to solid rock, in a mound of stone, for $\frac{1}{4}$ sec. cor., with a brass cap, marked

$\frac{1}{4}$ S 3

S 10
1915

and raise a mound of stone 2 ft. base, 1 $\frac{1}{2}$ ft. high, N. of cor.
Ascend over rolling land.

68.00 Top of spur, slopes S., 135 ft. above $\frac{1}{4}$ sec. cor.; descend.

80.28 Cor. of secs. 3, 4, 9 and 10, 200 ft. below top of spur.
Land, rolling and mountainous.
Soil, stony, 4th rate.
Undergrowth, greasewood and cactus. No grass.

N. $0^{\circ}2'W.$, on a true line, bet. secs. 3 and 4.
Over rolling land; descend.

15.00 Gulch, course W., 55 ft. below sec. cor.; ascend.

40.00 130 ft. above gulch, set an iron post, 3 ft. long, 1 in. in diam., 18 ins. in the ground to solid rock, in a mound of stone, for $\frac{1}{4}$ sec. cor., with a brass cap, marked

$\frac{1}{4}$ S 4 | S 3
1915

and raise a mound of stone 2 ft. base, 1 $\frac{1}{2}$ ft. high, W. of cor. Continue to ascend.

65.56 190 ft. above $\frac{1}{4}$ sec. cor. Intersect the 5th Standard Parallel N., 5.88 chs. W. of the true point for $\frac{1}{4}$ sec. cor. to sec. 34, T. 21 N., R. 20 W. or 7.38 chs. W. of the witness cor. to said cor., which is a 1 in. iron post, with brass cap, reestablished under current group No. 44. At point of intersection
Set an iron post, 3 ft. long, 2 ins. in diam., on surface rock, in a mound of stone, for closing cor. of secs. 3 and 4, with a brass cap, marked

C | C
S 4 | S 3
T 20 N | R 20 W
1915

and raise a mound of stone, 2 ft. base, 1 $\frac{1}{2}$ ft. high, S. of cor.
Land, rough and rolling. Soil, stony, 4th rate.
Undergrowth, greasewood and cactus.

Hugo Price, U.S.T.
May 29, 1915.

Chains May 24, 1915; Lines run by Guy H. Richardson, U.S.S., as follows:

I commence At the cor. of secs. 4, 5, 32 and 33, on the S. bdy. of the township, described in Book "A," and at 8h. 30m., a. m., l.m.t., I set off 20° 40' N. on the decl. arc, and 35° 4' on the lat. arc, and determine a meridian with the solar,

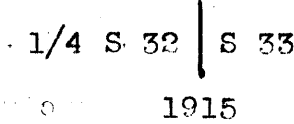
Thence I run

N. 0° 2' W. bet. secs. 32 and 33.

Over rolling land.

29.86 Wash, 3 chs. wide, course N. 65° W.

40.00 Set an iron post, 3 ft. long, 1 in. in diam., 26 ins. in the ground for 1/4 sec. cor., with a brass cap, marked

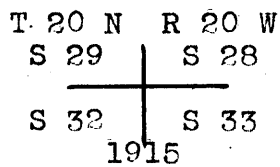


and raise a mound of stone, 2 ft. base, 1 1/2 ft. high, W. of cor.

44.95 Wash, 2 chs. wide, course N. 75° W.

69.14 Wash, 2 chs. wide, course S. 80° W.

80.00 Set an iron post, 3 ft. long, 2 ins. in diam., 15 ins. in the ground to solid rock, in a mound of stone, for cor. of secs. 28, 29, 32 and 33, with a brass cap, marked



and raise a mound of stone, 2 ft. base, 1 1/2 ft. high, W. of cor.

Land rolling.

Soil, stony, 4th. rate.

Undergrowth, greasewood and cactus, no grass.

S. 89° 52' E. on a random line bet. secs. 28 and 33.

40.00 Set temp. 1/4 sec. cor.

79.96 Intersect N. and S. line 21 lks. N. of the cor. of secs. 27, 28, 33 and 34.

Thence I run

N. 89° 43' W. on a true line bet. secs. 28, and 33.

Chains Over rolling land, desc. gradually.

39.96 Enter shallow wash, course W., 95 ft. below sec. cor.

39.98 Set an iron post, 3 ft. long, 1 in. in diam., 26 ins. in the ground for 1/4 sec. cor., with a brass cap, marked

1/4 S 28'

S 33
1915

and raise a mound of stone, 2 ft. base, 1 1/2 ft. high, N. of cor.

49.96 Leave wash, course SW.

79.96 Cor. of secs. 28, 29, 32 and 33.

Land level and rolling.

Soil, stony and sandy, 4th. rate.

Undergrowth, greasewood and cactus.

N. 0° 2' W. bet. secs. 28 and 29.

Over rolling land.

20.95 Wagon road, bears NE. and SW., very little used.

34.95 Wash, 1 ch. wide, course W.

40.00 Set an iron post, 3 ft. long, 1 in. indiam., 14 ins. in the ground to solid rock, in a mound of stone, for 1/4 sec. cor., with a brass cap, marked

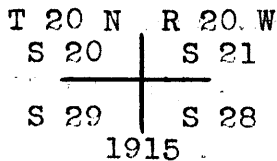
1/4 S 29 | S 28
1915

and raise a mound of stone, 2 ft. base, 1 1/2 ft. high, W. of cor.

44.00 Power line, bears N. 80° W. and S. 80° E.

47.00 Draw, 50 lks, wide, course S. 35° W.

80.00 Set an iron post, 3 ft. long, 2 ins. in diam., 10 ins. in the ground to solid rock, in a mound of stone, for cor. of secs. 20, 21 28 and 29, with a brass cap, marked



and raise a mound of stone, 2 ft. base, 1 1/2 ft. high, W. of cor.

Chains	Land, rolling. Soil, stony, 4th. rate. Undergrowth, greasewood, sagebrush and cactus, and grass.

	At the cor. of secs. 20, 21, 28 and 29, at apparent noon, I set off 20° 41' N. on the decl. arc, and observe the sun on the meridian for lat. The resulting latitude is 35° 6' N.
	Thence I run S. 89° 43' E. on a random line bet. secs. 21 and 28.
40.00	Set temp. 1/4 sec. cor.
79.88	Intersect N. and S. line 2 lks. N. of the cor. of secs. 21, 22, 27 and 28.
	Thence I run N. 89° 42' W. on a true line bet. secs. 21 and 28. Over rolling land.
18.24	Cor. No. 1 of mineral claim, Sur. No. 3006A. (Gladys Lode) bears S. 46° 49' W., 2.24 chs. dist.
28.90	Wagon road, bears N. 15° W. and S. 15° E., not now in use.
38.10	Cor. No. 3, of mineral claim, Sur. No. 3006A. (Mossback Extension lode) bears S. 36° 47' E., 10.46 chs. dist.
39.94	Set an iron post, 3 ft. long, 1 in. in diam., 26 ins. in the ground for 1/4 sec. cor., with a brass cap, marked 1/4 S. 21 S 28 1915 and raise a mound of stone, 2 ft. base, 1 1/2 ft. high, N. of cor., dese.
65.40	Wash, 50 lks. wide, course S. 15° W., 130 ft. below 1/4 sec. cor.
79.88	Cor. of secs. 20, 21, 28 and 29. Land, rolling. Soil, stony, 4th. rate. Undergrowth, greasewood, sagebrush and cactus. No timber or grass.

- Chains N. 0° 2' W. bet. secs. 20 and 21.
Over rolling land, along W. slope of small butte.
- 23.19 Wash, 50 lks. wide, course S. 75° W.
- 40.00 Set an iron post, 3 ft. long, 1 in. in diam., 26 ins. in the ground for 1/4 sec. cor., with a brass cap, marked
- | | | |
|----------|--|------|
| 1/4 S 20 | | S 21 |
| 1915 | | |
- and raise a mound of stone, 2 ft. base, 1½ ft. high, W. of cor.
- 60.00 Wash, 1 ch. wide, course S. 80° W.
- 80.00 Set an iron post, 3 ft. long, 2 ins. in diam., 24 ins. in the ground for cor. of secs. 16, 17, 21 and 22, with a brass cap, marked
- | | | |
|--------|--|--------|
| T 20 N | | R 21 W |
| S 17 | | S 16 |
| ----- | | |
| S 20 | | S 21 |
| 1915 | | |
- and raise a mound of stone, 2 ft. base, 1½ ft. high. W. of cor.
- Land, rolling.
Soil, stony, 4th. rate.
Undergrowth, greasewood, sagebrush and cactus.
No grass or timber.
-
- S. 89° 42' E. on a random line bet. secs. 16 and 21.
- 40.00 Set temp. 1/4 sec. cor.
- 79.92 Intersect N. and S. line 5 lks. N. of the cor. of secs. 15, 16, 21 and 22.
- Thence I run
- N. 89° 40' W. on a true line bet. secs. 16 and 21.
Over rolling land.
- 39.96 Set an iron post, 3 ft. long, 1 in. in diam., 26 ins. in the ground for 1/4 sec. cor., with a brass cap, marked
- | | |
|----------|------|
| 1/4 S 16 | |
| ----- | |
| S 21 | 1915 |
- and raise a mound of stone, 2 ft. base, 1½ ft. high,

Chains

N. of cor. desc.

79.92

115 ft. below 1/4 sec. cor. Cor. of secs. 16, 17, 20 and 21.

Land, rolling.

Soil, stony, 4th. rate.

Undergrowth, greasewood, sagebrush and cactus. No grass.

May 24, 1915.

June 1, 1915; I commence At the cor. of secs. 16, 17, 20 and 21, at 9h. 0m., a. m., l.m.t., set off 21° 59' N. on the decl. arc, and 35° 7' on the lat. arc, and determine a meridian with the solar.

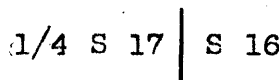
Thence I run

N. 0° 2' W. bet. secs. 16 and 17.

Over rolling land.

40.00

Set an iron post, 3 ft. long, 1 in. in diam., 26 ins. in the ground for 1/4 sec. cor., with a brass cap, marked



1915

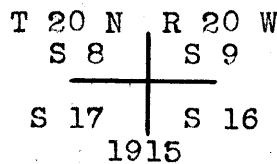
and raise a mound of stone, 3 ft. base, 1 1/2 ft. high, W. of cor. desc.

49.80

Wash, 1 ch. wide, course S. 80° W. 78 ft. below 1/4 sec. cor.

80.00

Set an iron post, 3 ft. long, 2 ins. in diam., 24 ins. in the ground for cor. of secs. 8, 9, 16 and 17, with a brass cap, marked



and raise a mound of stone, 2 ft. base, 1 1/2 ft. high, W. of cor.

Land rolling.

Soil, stony, 4th. rate.

Undergrowth, greasewood, sagebrush and cactus.

40.00

S. 89° 40' E. on a random line bet. secs. 9 and 16.

Set temp. 1/4 sec. cor.

Chains

79.78 Intersect N. and S. line 12 lks. S. of the cor. of secs. 9, 10, 15 and 16.

Thence I run

N. 89° 45' W. on a true line bet. secs. 9 and 16.

Over rolling land.

39.89 Set an iron post, 3 ft. long, 1 in. in diam., 26 ins. in the ground for 1/4 sec. cor., with a brass cap, marked

1/4 S 9

S 16

1915

and raise a mound of stone, 2 ft. base, 1 1/2 ft. high,

N. of cor.

49.93 Wash, 2 chs. wide, course SW.

79.78 Cor. of secs. 8, 9, 16 and 17.

Land rolling.

Soil, stony, 4th. rate.

Undergrowth, greasewood and cactus.

N. 0° 2' W. bet. secs. 8 and 9.

Over rolling land, asc.

40.00 110 ft. above sec. cor., set an iron post, 3 ft. long; 1 in. in diam., 8 ins. in the ground to solid rock, in a mound of stone, for 1/4 sec. cor., with a brass cap, marked

1/4 S 8 | S 9
1915

and raise a mound of stone, 2 ft. base, 1 1/2 ft. high,

W. of cor.

61.35 Draw, carries 10 ins. water, course S. 75° W.

80.00 Set an iron post, 3 ft. long, 2 ins. in diam., 24 ins. in the ground for cor. of secs. 4, 5, 8 and 9, with a brass cap, marked

T-20-N-R-20-W
S 5 | S 4
S 8 | S 9
1915

Subdivision of T. 20 N., R. 20 W.

Chains	<p>and raise a mound of stone, 2 ft. base, 1½ ft. high, W. of cor.</p> <p>Land, rolling.</p> <p>Soil, stony, 4th. rate.</p> <p>Undergrowth, greasewood and cactus.</p> <p>At the cor. of secs. 4, 5, 8 and 9, at apparent noon, I set off 22° 0' N. on the decl. arc, and observe the sun on the meridian for lat. The resulting latitude is 35° 8½' N.</p>
	<p>-----</p> <p>S. 89° 45' E. on a random line bet. secs. 4 and 9.</p>
40.00	Set temp. 1/4 sec. cor.
79.74	<p>Intersect N. and S. line 14 lks. N. of the cor. of secs. 3, 4, 9 and 10.</p> <p>Thence I run</p>
	<p>N. 89° 39' W. on a true line bet. secs. 4 and 9.</p> <p>Desc. over rolling land.</p>
29.90	<p>Wash, 1 ch. wide, course S. 85° W., 45 ft. below sec. cor. asc.</p>
39.87	<p>80 ft. above wash, set an iron post, 3 ft. long, 1 in. in diam., 8 ins. in the ground to solid rock, in a mound of stone, for 1/4 sec. cor., with a brass cap, marked</p> <p style="text-align: center;">1/4 S 4</p>
	<p style="text-align: center;">-----</p> <p style="text-align: center;">S 9 1915</p> <p>and raise a mound of stone, 2 ft. base, 1½ ft. high, N. of cor., desc.</p>
79.74	<p>Cor. of secs. 4, 5, 8 and 9, 137 ft. below 1/4 sec. cor.</p> <p>Land, rolling.</p> <p>Soil, stony, 4th. rate.</p> <p>Undergrowth, greasewood, sagebrush and cactus.</p>
	<p>-----</p> <p>N. 0° 2' W. on a true line, bet. secs. 4 and 5.</p> <p>Desc. over rolling hilly land.</p>
16.46	Wash, 50 lks. wide, course W., 50 ft. below sec. cor.

Chains

30.40 Wash, 1 ch. wide, course S. 80° W., asc.

40.00 40 ft. above wash, set an iron post, 3 ft. long, 1 in. in diam., 6 ins. in the ground to solid rock, in a mound of stone, for 1/4 sec. cor. with a brass cap, marked

$$\begin{array}{c} 1/4 \text{ S } 5 \quad | \quad \text{S } 4 \\ \hline \end{array}$$

1915

and raise a mound of stone, 2 ft. base, 1½ ft. high, W. of cor. Continue to asc.

64.80 40 ft. above 1/4 sec. cor., Intersect the 5th. Standard Parallel N. 5.40 chs. W. of the Std. 1/4 sec. cor. of sec. 33, T. 21 N., R. 20 W., which is a 1 inch iron post, with brass cap, reestablished under current group No. 44.

At point of intersection,

Set an iron post, 3 ft. long, 2 ins. in diam., 24 ins. in the ground for closing cor. of secs. 4 and 5, with a brass cap, marked

$$\begin{array}{c} \text{C} \quad | \quad \text{C} \\ \hline \text{S } 5 \quad | \quad \text{S } 4 \\ \text{T } 20 \text{ N} \quad | \quad \text{R } 20 \text{ W} \\ \hline \end{array}$$

1915

and raise a mound of stone, 2 ft. base, 1½ ft. high, S. of cor.

Land, rolling mountainous.

Soil, stony, 4th. rate.

No timber or grass.

Undergrowth, greasewood and cactus.

Guy H. Richardson, U.S.S.
June 1, 1915.

May 24, 1915; Lines run by Hugo Price, ^{U.S.T.} as follows:

At cor. of secs. 5, 6, 31 and 32, on the S. bdy. of the twp., described in Book 11, and at 8h., Om., a. m., l.m.t. set off 20° 39½' N. on the decl. arc, and 35° 4' on the lat. arc, and determine a meridian with the solar.

Thence I run

N. 0° 3' W. bet. secs. 31 and 32.

Chains Over rolling land, desc.

19.73 Wash, course NW., 175 ft. below sec. cor., thence over gently rolling land.

40.00 Set an iron post, 3 ft. long, 1 in. in diam., 18 ins. in the ground to solid rock, in a mound of stone, for 1/4 sec. cor., with a brass cap, marked

1/4 S 31		S 32
1915		

and raise a mound of stone, 2 ft. base, 1 1/2 ft. high, W. of cor., desc.

64.66 Silver Creek Wash, water 17 lks. wide, 2 ft. deep, course NW., road in wash, bears NW. and SE., 140 ft. below 1/4 sec. cor.

80.00 Set an iron post, 3 ft. long, 2 ins. in diam., 24 ins. in the ground for cor. of secs. 29, 30, 31 and 32, with a brass cap, marked

T 20 N		R 20 W
S 30		S 29

S 31		S 32
1915		

and raise a mound of stone, 2 ft. base, 1 1/2 ft. high, W. of cor.

Land, rolling.

Soil, stony, 4th. rate.

No timber or grass.

Undergrowth, greasewood and cactus.

40.00 S. 89° 52' E. on a random line bet. secs. 29 and 32.

40.00 Set temp. 1/4 sec. cor.

80.04 Intersect N. and S. line 5 lks. N. of the cor. of secs. 28, 29, 32 and 33.

Thence I run

N. 89° 50' W. on a true line bet. secs. 29 and 32.

Over rolling land.

40.02 Set an iron post, 3 ft. long, 1 in. in diam., on surface rock, in a mound of stone, for 1/4 sec. cor., with a brass cap, marked

Chains

1/4 S 29S 32
1915

and raise a mound of stone, 2 ft. base, $1\frac{1}{2}$ ft. high;
N. of cor., desc.

80.04 Cor. of secs. 29, 30, 31 and 32, 160 ft. below 1/4 sec.
cor.

Land, rolling.

Soil, stony, 4th. rate.

No timber or grass.

Undergrowth, greasewood and cactus.

N. $89^{\circ} 52'$ W. on a random line bet. secs. 30 and 31.

40.00 Set temp. 1/4 sec. cor.

79.41 Intersect the W. bdy. of the twp. 5 lks. S. of the cor.
of secs. 25, 30, 31 and 36, described in Book 1111.

Thence I run

S. $89^{\circ} 50'$ E. on a true line bet. secs. 30 and 31.

Asc. over rolling land.

39.41 160 ft. above sec. cor., set an iron post, 3 ft. long,
1 in. in diam., 14 ins. in the ground, to solid rock,
in a mound of stone for 1/4 sec. cor., with a brass
cap, marked

1/4 S 30S 31
1915

and raise a mound of stone, 2 ft. base, $1\frac{1}{2}$ ft. high,
N. of cor. Thence over slightly rolling land.

51.80 Ruth Mine road, bears N. and S., but little used.

53.00 Pipe line to Ruth mine, bears N. and S.

79.41 Cor. of secs. 29, 30, 31 and 32.

Land, rolling.

Soil, stony, 4th. rate.

No timber or grass.

Undergrowth, greasewood, sagebrush and cactus.

Chains	N. 0° 3' W. bet. secs. 29 and 30. Asc. over rolling land.										
40.00	93 ft. above sec. cor., set an iron post, 3 ft. long, 1 in. in diam., 12 ins. in the ground to solid rock, in a mound of stone, for 1/4 sec. cor., with a brass cap, marked <div style="text-align: center;"> <table border="0"> <tr> <td>1/4 S 30</td> <td> </td> <td>S 29</td> </tr> <tr> <td colspan="3" style="text-align: center;">1915</td> </tr> </table> </div> and raise a mound of stone, 2 ft. base, 1½ ft. high, W. of cor., asc.	1/4 S 30		S 29	1915						
1/4 S 30		S 29									
1915											
76.78	Cor. No. 2 of mining claim, Sur. No. 796, (California Moss) bears N. 77° 30' W., 7.65 chs. dist.										
66.90	Power line to Ruth mine, bears E. and W.										
80.00	90 ft. above 1/4 sec. cor., set an iron post, 3 ft. long, 2 ins. in diam., on surface rock, in a mound of stone, for cor. of secs. 19, 20, 29 and 30, with a brass cap, marked <div style="text-align: center;"> <table border="0"> <tr> <td>T 20 N</td> <td>R 20 W</td> </tr> <tr> <td>S 19</td> <td>S 20</td> </tr> <tr> <td colspan="2" style="text-align: center;">+</td> </tr> <tr> <td>S 30</td> <td>S 29</td> </tr> <tr> <td colspan="2" style="text-align: center;">1915</td> </tr> </table> </div> and raise a mound of stone, 2 ft. base, 1½ ft. high, W. of cor. Land, rolling. Soil, stony, 4th. rate. No timber or grass. Undergrowth, greasewood, sagebrush and cactus.	T 20 N	R 20 W	S 19	S 20	+		S 30	S 29	1915	
T 20 N	R 20 W										
S 19	S 20										
+											
S 30	S 29										
1915											
40.00	S. 89° 50' E. on a random line bet. secs. 20 and 29. Set temp. 1/4 sec. cor.										
80.18	Intersect N. and S. line 12 lks. N. of the cor. of secs. 20, 21, 28 and 29. Thence I run N. 89° 45' W. on a true line bet. secs. 20 and 29. Over rolling land.										
40.09	Set an iron post, 3 ft. long, 1 in. in diam., 20 ins. in the ground to solid rock, in a mound of stone, for										

Chains	1/4 sec. cor., with a brass cap, marked 1/4 S 20 S 29 1915 and raise a mound of stone, 2 ft. base, 1 1/2 ft. high, N. of cor., 226 ft. below sec. cor.
63.25	Cor. No. 4, of mining claim, Sur. No. 796, (Cal. Moss) bears N. 17° 30' E., 2.36 chs. dist.
64.94	Wash, course SW.
80.18	Cor. of secs. 19, 20, 29 and 30. Land, rolling. Soil stony, 4th. rate. No timber or grass. Undergrowth, greasewood and cactus.
	N. 89° 50' W. on a random line bet. secs. 19 and 30.
40.00	Set temp. 1/4 sec. cor.
79.16	Intersect the W. bdy. of the twp. 16 lks. S. of the cor. of secs. 19, 24, 25 and 30, described in Book "A" Thence I run S. 89° 43' E. on a true line bet. secs. 19 and 30. Asc. over rolling land.
35.20	Top of spur, slopes S., 340 ft. above sec. cor., desc.
39.16	128 ft. below top of spur, set an iron post, 3 ft. long, 1 in. in diam., on surface rock, in a mound of stone, for 1/4 sec. cor., with a brass cap, marked 1/4 S 19 S 30 1915 and raise a mound of stone, 2 ft. base, 1 1/2 ft. high; N. of cor. continue to desc.
52.85	Road, bears N. and S., but little used, 65 ft. below 1/4 sec. cor..
64.76	Cor. No. 3, of mining claim (California Moss) Minerals Sur- vey No. 182, bears S. 77° 30' E., 7.20 chs. dist.
79.16	Cor. of secs. 19, 20, 29 and 30.

Chains

Land, rolling.
Soil, stony, 4th. rate.
No grass or timber.
Undergrowth, greasewood and cactus.

May 24, 1915.

May 25, 1915; At the cor. of secs. 19, 20, 29 and 30,
at 9h. 0m., a. m., l.m.t., set off 20° 51' N. on the
decl. arc, 35° 6' on the lat. arc, and determine
a meridian with the solar

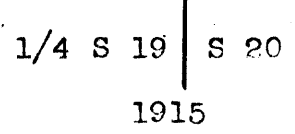
Thence I run

N. 0° 3' W. bet. secs. 19 and 20.

From the cor. of secs. 19, 20, 29 and 30, Cor. No. 3, of
the Ruth mining claim, No. 2213 bears S. 54° 14' W.
16.00 chs. dist.

6.95 Cor. No. 5 of mining claim, (California Moss) Mineral Survey
No. 796, brs. N. 77° 30' W., 495 lks. dist.

40.00 Set an iron post, 3 ft. long, 1 in. in diam., on surface
rock, in a mound of stone, for 1/4 sec. cor., with a
brass cap, marked

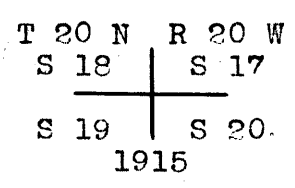


and raise a mound of stone, 2 ft. base, 1 1/2 ft. high,
W. of cor.

From the 1/4 sec. cor. U. S. L. M. No. 1, bears S. 62°
33' W.

From the cor. of secs. 20, 21, 28 and 29, same U. S. L.
M., bears N. 84° 4' W.

80.00 Set an iron post, 3 ft. long, 2 ins. in diam., on surface
rock, in a mound of stone, for cor. of secs. 17, 18,
19 and 20, with a brass cap, marked



and raise a mound of stone, 2 ft. base, 1 1/2 ft. high,
W. of cor.

Chains	Land, rolling. Soil, stony, 4th. rate. No timber or grass growth Undergrowth, greasewood and cactus.
	S. 89° 45' E. on a random line bet. secs. 17 and 20.
40.00	Set temp. 1/4 sec. cor.
80.20	Intersect N. and S. line 10 lks S. of the cor. of secs. 16, 17, 20 and 21. Thence I run N. 89° 49' W. on a true line bet. secs. 17 and 20. Over rolling land, asc. slightly.
40.10	Set an iron post, 3 ft. long, 1 in. in diam., on surface rock, in a mound of stone, for 1/4 sec. cor., with a brass cap, marked 1/4 S 17 S 20 1915 and raise a mound of stone, 2 ft. base, 1 1/2 ft. high, N. of cor., desc.
80.20	Cor. of secs. 17, 18, 19 and 20, 60 ft. below 1/4 sec. cor. Land level and rolling. Soil, stony, 4th. rate. No timber or grass. Undergrowth, greasewood and cactus.
	N. 89° 43' W. on a random line bet. secs. 18 and 19.
40.00	Set temp. 1/4 sec. cor.
79.20	Intersect the NW. bay. of the twp. 10 lks. N. of the cor. of secs. 13, 18, 19 and 24, described in Book "A." Thence I run S. 89° 47' E. on a true line bet. secs. 18 and 19. Over rolling land.
6.33	Gulch, course NW., asc.
39.20	90 ft. above gulch, set an iron post, 3 ft. long, 1 in.

Chains in diam., on surface rock, in a mound of stone for 1/4 sec. cor., with a brass cap, marked

1/4 S 18

S 19
1915

and raise a mound of stone, 2 ft. base, 1 1/2 ft. high, N. of cor. Continue to asc.

79.20 Cor. of secs. 17, 18, 19 and 20, 100 ft. above 1/4 sec. cor.

Land, rolling.
Soil, stony, 4th. rate.
No timber or grass.
Undergrowth, greasewood and cactus.

May. 25, 1915.

June 1, 1915; I commenced At the cor. of secs. 17, 18, 19 and 20, and at 9h. 0m., a. m., l.m.t. I set off 21° 59' N. on the decl. arc, and 35° 7' on the lat. arc, and determine a meridian with the solar.

Thence I run.
N. 0° 3' W. bet. secs. 17 and 18.

Desc. over rolling land.

26.00 Box canyon, course W., 95 ft. deep, 55 ft. below sec. cor. asc.

40.00 Set an iron post, 3 ft. long, 1 in. in diam., 10 ins. in the ground, to solid rock, in a mound of stone, for 1/4 sec. cor., with a brass cap, marked

1/4 S 18 | S 17
1915

and raise a mound of stone, 2 ft. base, 1 1/2 ft. high, W. of cor., 82 ft. above canyon, thence over level land.

80.00 Set an iron post, 3 ft. long, 2 ins. in diam., 18 ins. in the ground, to solid rock, in a mound of stone, for cor. of secs. 7, 8, 17 and 18, with a brass cap, marked

T 20 N R 20 W
S 7 | S 8
S 18 | S 17
1915

Chains	and raise a mound of stone, 2 ft. base, $1\frac{1}{2}$ ft. high, W. of cor. Land, rolling and level. Soil, stony, 4th. rate. No timber or grass. Undergrowth, greasewood and cactus.
	S. $89^{\circ} 49'$ E. on a random line bet. secs. 8 and 17.
40.00	Set temp. $\frac{1}{4}$ sec. cor.
80.24	Intersect N. and S. line 2 lks. S. of the cor. of secs. 8, 9, 16 and 17. Thence I run N. $89^{\circ} 50'$ W. on a trueline bet. secs. 8 and 17. Over level land.
40.12	Set an iron post, 3 ft. long, 1 in. in diam., 20 ins. in the ground, to solid rock, in a mound of stone, for $\frac{1}{4}$ sec. cor., with a brass cap, marked $\frac{1}{4}$ S 8 S 17 1915
	and raise a mound of stone, 2 ft. base, $1\frac{1}{2}$ ft. high, N. of cor.
80.24	Cor. of secs. 7, 8, 17 and 18. Land, level. Soil, stony, 4th. rate. No timber or grass. Undergrowth, greasewood and cactus.
	N. $89^{\circ} 47'$ W. on a random line bet. secs. 7 and 18.
40.00	Set temp. $\frac{1}{4}$ sec. cor.
79.22	Intersect N. bdy. of the twp. 25 lks. N. of the cor. of secs. 7, 12, 13 and 18, Described in Book "A." Thence I run S. $89^{\circ} 58'$ E. on a true line bet. secs. 7 and 18. Over level land.
39.22	Set an iron post, 3 ft. long, 1 in. in diam., 20 ins. in

Chains

the ground, to solid rock, in a mound of stone, for 1/4 sec. cor., with a brass cap, marked

1/4 S 7

S 18
1915

and raise a mound of stone, 2 ft. base, 1 1/2 ft. high, N. of cor.

79.22

Cor. of secs. 7, 8, 17 and 18.

Land, level.

Soil, stony, 4th. rate.

No timber or grass.

Undergrowth, greasewood and cactus.

N. 0° 3' W. bet. secs. 7 and 8.

Asc. over rolling land.

40.00

Set an iron post, 3 ft. long, 1 in. in diam., 18 ins. in the ground, to solid rock, in a mound of stone, for 1/4 sec. cor., with a brass cap, marked

1/4 S 7 | S 8

•1915

and raise a mound of stone, 2 ft. base, 1 1/2 ft. high, W. of cor., 45 ft. above sec. cor., asc.

60.00

Wash, course W., asc.

80.00

29 ft. above wash, set an iron post, 3 ft. long, 2 ins.

in diam., 12 ins. in the ground, to solid rock, in a mound of stone, for cor. of secs. 5, 6, 7 and 8, with a brass cap, marked

T 20 N R 20 W

S 6 | S 5

S 7 | S 8

1915

and raise a mound of stone, 2 ft. base, 1 1/2 ft. high, W. of cor.

Land gently rolling.

Soil, stony, 4th. rate.

No timber or grass.

Undergrowth, greasewood and cactus.

June 1, 1915.

Chains	<p>June 2, 1915; I commence at the cor. of secs. 5, 6, 7 and 8, at 9h. 0m., a. m., l. m. t., set off $22^{\circ} 7' N.$ on the decl. arc, and $35^{\circ} 8\frac{1}{2}'$ on the lat. arc, and determine a meridian with the solar,</p> <p>Thence I run S. $89^{\circ} 50' E.$ on a random line, bet. secs. 5 and 8. Set temp. $\frac{1}{4}$ sec. cor. bet. secs. 5 and 8.</p> <p>40.00</p> <p>80.20 Intersect N. and S. line 2 lks. S. of the cor. of secs. 4, 5, 8 and 9.</p> <p>Thence I run N. $89^{\circ} 51' W.$ on a true line bet. secs. 5 and 8. Desc. over rolling land.</p> <p>40.10 35 ft. below sec. cor., set an iron post, 3 ft. long, 1 in. in diam., on surface rock, in a mound of stone, for $\frac{1}{4}$ sec. cor., with a brass cap, marked</p> <p style="text-align: center;">$\frac{1}{4} S 5$</p> <p style="text-align: center;">S 8 1915</p> <p>and raise a mound of stone, 2 ft. base, $1\frac{1}{2}$ ft. high, N. of cor. Continue to desc.</p> <p>80.20 Cor. of secs. 5, 6, 7 and 8, 140 ft. below $\frac{1}{4}$ sec. cor. Land, rolling. Soil, stony, 4th. rate. No timber or grass. Undergrowth, greasewood and cactus.</p> <hr/> <p>40.00 N. $89^{\circ} 58' W.$ on a random line bet. secs. 6 and 7. Set temp. $\frac{1}{4}$ sec. cor.</p> <p>79.23 Intersect the W. bdy. of the twp. 21 lks. S. of the cor. of secs. 1, 6, 7 and 12, described in Book "A."</p> <p>Thence I run S. $89^{\circ} 49' E.$ on a true line bet. secs. 6 and 7. Over level land.</p> <p>39.23 Set an iron post, 3 ft. long, 1 in. in diam., on surface rock, in a mound of stone, for $\frac{1}{4}$ sec. cor., with a brass cap, marked</p>
--------	---

Chains

1/4 S 6

S 7
1915

and raise a mound of stone, 2 ft. base, 1 1/2 ft. high,
N. of cor.

79.23 Cor. of secs. 5, 6, 7 and 8.

Land, level.

Soil, stony, 4th. rate.

Undergrowth, greasewood and cactus.

At apparent noon, at the cor. of secs. 5, 6, 7 and 8, I
set off 22° 8' N. on the decl. arc, and observe the
sun on the meridian for lat. The resulting latitude is
35° 8 1/2' N.

N. 0° 3' W. on a true line, bet. secs. 5 and 6.

Desc. gradually, over rolling land.

14.57 Wash, course SW, 35 ft. below sec. cor., desc.

40.00 30 ft. below wash, set an iron post, 3 ft. long, 1 in. in
diam., on surface rock, in a mound of stone, for 1/4
sec. cor., with a brass cap, marked

1/4 S 6 | S 5
1915

and raise a mound of stone, 2 ft. base, 1 1/2 ft. high,
W. of cor., asc.

64.63 75 ft. above 1/4 sec. cor., intersect the 5th. Standard
Parallel N., 5.72 chs. W. of the Standard sec. cor. for
sec. 32, T. 21 N., R. 20 W., which is a 1 inch iron
post, with brass cap, reestablished under current Group
No. 44. At point of intersection,

Set an iron post, 3 ft. long, 2 ins. in diam., 20 ins.
in the ground to solid rock, in a mound of stone, for
closing cor. of secs. 5 and 6, with a brass cap, marked

C | C
S 6 | S 5
T 20 N | R 20 W
1915

Chains and raise a mound of stone, 2 ft. base, 1½ ft. high,
 S. of cor.
 Land, rolling.
 Soil, stony, 4th. rate.
 No timber or grass.
 Undergrowth, greasewood and cactus.

Hugo Price, U.S. T.
 June 2, 1915.

Boundaries of T. 20 N., R. 20 W.

Latitudes, departures and closing errors.

Line designated	True bearing	Distance	Latitudes		Departures	
			N	S	E	W
South boundary	N. 89° 52' W	479.75	1.12			479.75
West boundary	North	464.33	464.33			
North boundary	East	444.80			444.80	
North boundary	N. 77° 28" E.	35.18	7.63		34.34	
East boundary	South	473.71		473.71		
Convergency	-----				0.51	
Totals	-----		473.08	473.71	479.65	479.75
Error in lat.	-----			473.08		479.65
				0.63		
Error in dep.	-----					0.10

GENERAL DESCRIPTION

This township is rough and mountainous in the eastern part and rolling and level in the western part. The drainage is in most parts toward the west and the land is generally covered with rock. The soil is very low grade. There is scattering greasewood, sagebrush and cactus throughout and a few scrub junipers on the high ridges. There are no settlers in the township, and no timber. A creek in sec. 31 contains water.

There are some indications of mineral in various sections.

June 2, 1915.

H. S. Surveyor.

274
51

BOOK 2888

CERTIFICATES
FOR ~~FINAL STATE~~ OF UNITED STATES SURVEYOR AND
U.S. TRANSITMAN

see book "C" of this group.

I, _____, U. S. Surveyor, do solemnly swear that, in pursuance
of special instructions received from the U. S. Surveyor General for _____
bearing date of the _____ day of _____, 191____, I have well, faithfully, and truly,
in my own proper person, and in strict conformity with said instructions, the Manual of Surveying
Instructions, and the laws of the United States, surveyed all those parts or portions of _____
_____ of the _____
_____ Meridian, in the State of _____, which are represented in
the foregoing field notes as having been executed by me, and under my direction; and I do further
solemnly swear that all the corners of said survey have been established and perpetuated in strict accord-
ance with the Manual of Surveying Instructions, and the special written instructions of the U. S. Surveyor
General for _____ and in the specific manner described in the field notes, and that
the foregoing are the original field notes of such survey.

U. S. Surveyor.

Subscribed by said _____, and sworn to before me }
this _____ day of _____, 191____



APPROVAL.

OFFICE OF THE UNITED STATES SURVEYOR GENERAL,

Phoenix, Arizona, February 26, 1917

The foregoing field notes of the survey of the _____

Subdivision lines of

Township 20 North, Range 20 West,

of the Gila and Salt River Base and Meridian, in the State of Arizona,

executed by Guy H. Richardson, U.S. Surveyor, and Hugo Price, U.S. Transitman,
under special instructions dated January 4, 1915, for Group 43 having been
critically examined, and the necessary corrections and explanations made, the said field notes, and the
surveys they describe, are hereby approved.

U. S. Surveyor General.
of Arizona.

~~I certify that the foregoing transcript of the field notes of the above described surveys in _____
_____ has been correctly copied from the original notes on file in this office.~~