

(Subdivisions)

BOOK 2940

FIELD NOTES

OF THE SURVEY OF THE

Subdivision Lines and

Meanders of the Left Bank of the Colorado River within

Fractional Township 14 North, Range 20 West.

2940

Of the Gila and Salt River Base and Meridian,

In the State of Arizona.

EXECUTED BY

Otis Ross, U.S. Surveyor

and

John Gonin, U.S. Transitman

2940

~~In the capacity of U.S. Surveyor~~, under instructions dated December 28, 1914,

issued by the United States Surveyor General to govern surveys included in

Group No. 42, which were approved by the Commissioner of the General Land

Office, January 22, 1915.

Survey commenced April 13, 1915.

Survey completed April 23, 1915.

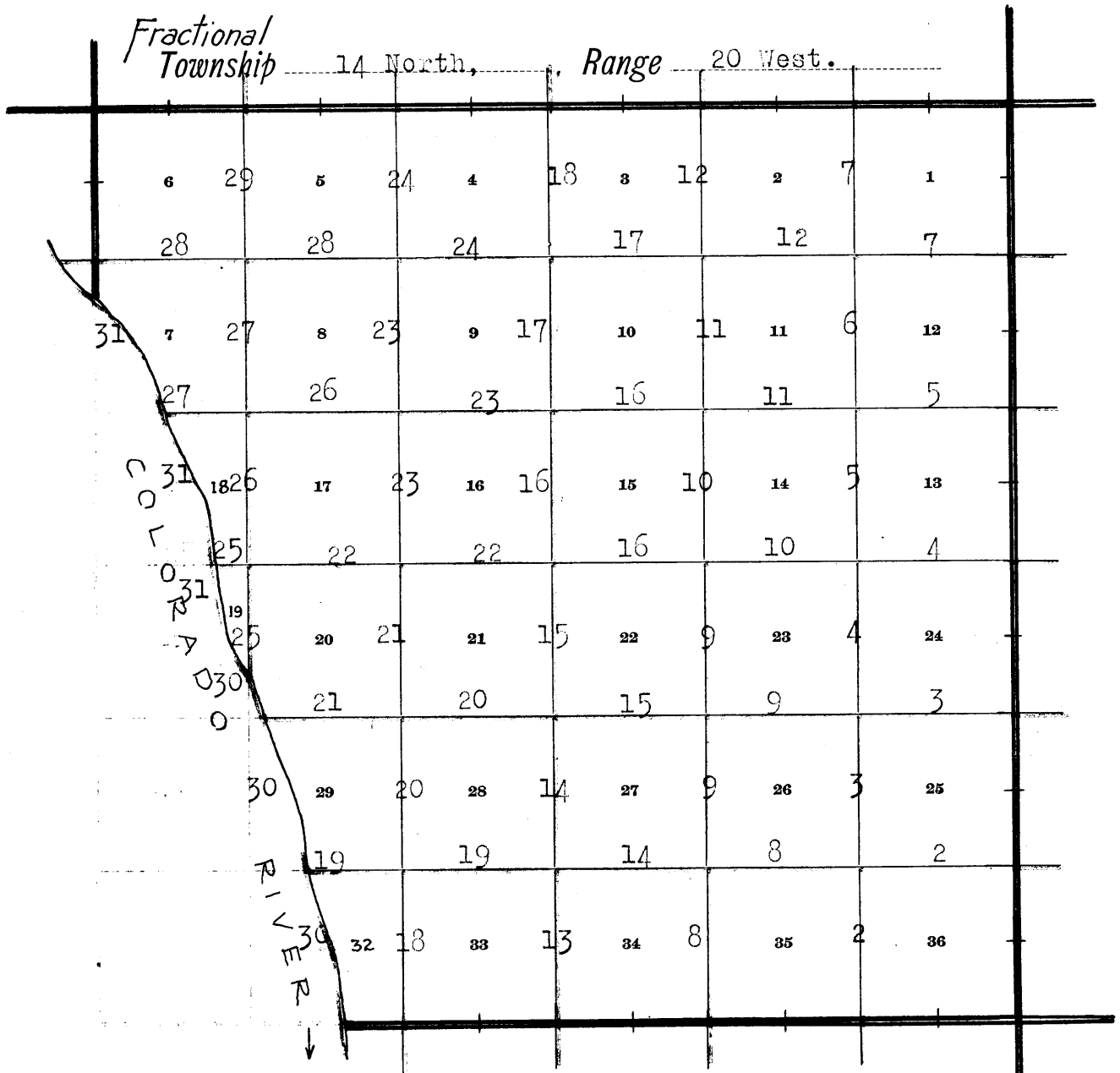
Book "H"

Group 42, Arizona

(Subdivisions & Meanders)

BOOK 1893

INDEX DIAGRAM.



6-151

- Township Exteriors. Notes in Book "A"
- Subdivision and Meander lines surveyed under this Group.

Subdivision of Fractional T. 14 N., R. 20 W.

Chains.

Survey commenced Apr. 13, 1915, and executed jointly by Otis Ross, U. S. Surveyor, and John Gonin, U. S. Transitman, with Young and Sons' light mountain transits, Nos. 8487 and 7636, respectively, with Smith solar attachments. The horizontal limb of each transit is provided with two double verniers placed opposite to each other reading to single minutes of arc, which is also the least count of the latitude and declination arcs.

These transits were approved Apr. 1, 1915, by the Asst. Supervisor of Surveys for Arizona and California, conditional upon satisfactory field performance.

In this and the following Tps. of this group, slope measurements were made, slope angles read with the clinometer, and the correct horizontal distance computed for each item of topography.

In the following field notes, the initials O. R. and J. G. refer to Otis Ross, U. S. Surveyor, and John Gonin, U. S. Transitman, respectively.

We examine the adjustments of the transits, and find them satisfactory; then, to test the solars by comparing their indications, resulting from solar observations made during a.m., and p.m., hours, with a meridian established by observations on Polaris, we proceed as follows:-

At the camp of Albert Smith, Jr., U. S. Surveyor, in sec. 4, frac. T. 13 N., R. 20 W., lat. $34^{\circ} 30\frac{1}{2}' N.$, long. $114^{\circ} 20' 50'' W.$, at 9 hrs. 0 m., a.m., l.m.t., we set off $34^{\circ} 30\frac{1}{2}' N.$ on the lat. arcs; $8^{\circ} 50' N.$ on the decl. arcs; and determine a meridian with each solar, marking a point in each line thus determine by a tack driven in a stake, 5 chs. N. of our stations.

With $8^{\circ} 52\frac{1}{2}' N.$ set off on each decl. arc, at apparent noon, we observe the sun on the meridian with each instrument; the resulting lat. is $34^{\circ} 30\frac{1}{2}' N.$ on both solars.

At 3 hrs. 0 m., p.m., l.m.t., we set off $34^{\circ} 30\frac{1}{2}' N.$ on the lat. arcs; $8^{\circ} 55\frac{1}{2}' N.$ on the decl. arcs; and determine meridians with each transit. These lines coincide with the lines given by the solars at 9 hrs. a.m.

Apr. 13, 1915.

Apr. 14, 1915: At 5 hrs. 56.3 m., p.m., l.m.t., by our watches, which are set to correct local mean time, we observe Polaris at western elongation, in accordance with the Manual of Instructions, and mark points in the lines thus determined on pegs driven in the ground, 5 chs. N. of our stations.

At 7 hrs. a.m., we lay off the azimuth of Polaris, $1^{\circ} 23\frac{1}{2}'$ to the east, and mark a point in these meridians on the pegs driven in the ground, five chains N. of our stations, on which the points set from a.m. and p.m. solars observations fall .3 ins. W. of the true meridian.

The solar apparatus, by p.m. and a.m. observations defines positions for meridians $0^{\circ} 16'' W.$ of the true meridian established by Polaris observations; therefore we conclude that the adjustments of the instruments are satisfactory.

O. R. and J. G.

Chains.	Apr. 14, 1915: J. G. From the cor. of secs. 1, 2, 35 and 36, on the S. bdy. of the Tp., which is an iron post, established by Albert Smith, Jr., U. S. Surveyor, as described in Book "A", I run N.0° 1' W., bet. secs. 35 and 36. Over rolling land, through scattering undergrowth. Wash, 25 lks. wide, course SW. Asc. 65 ft. to Spur, brs. SW. Desc. 25 ft. to Thence over level land. Set an iron post, 3 ft. long, 1 in. diam., 26 ins. in the ground, for $\frac{1}{4}$ sec. cor., marked on brass cap 1915 on S. rim; $\frac{1}{4}$ in N., S36 in E. and S35 in W. half; and raise a mound of stone, 2 ft. base, $1\frac{1}{2}$ ft. high, W. of cor. Pits impracticable. Asc. 40 ft. to Spur, brs. S. 70° W. Desc, 40 ft. to Wash, 30 lks. wide, course S.70° W. Thence over level land. Asc. 55 ft. to Spur, slopes SW. Desc. 85 ft. to Set an iron post, 3 ft. long, 2 ins. diam., 24 ins. in the ground, for cor. of secs. 25, 26, 35 and 36, marked on brass cap 1915 on S. rim; T14N R20W in N. half; S26 in NW., S25 in NE., S36 in SE. and S35 in SW. quadrant; and raise a mound of stone, 2 ft. base, $1\frac{1}{2}$ ft. high, W. of cor. Pits impracticable. Land, level and rolling. Soil, 3rd and 4th rate. No timber. Undergrowth, greasewood and palo verde. Apr. 14, 1915: At this cor., I set off 9° 14 $\frac{1}{2}$ ' N. on the decl. arc; and at apparent noon, I observe the sun on the meridian; the resulting lat. is 34° 31 $\frac{1}{2}$ ' N.
.85	
7.40	
12.50	
40.00	
43.00	
45.00	
70.00	
72.30	
80.00	
40.00	East on a random line, bet. secs. 25 and 36. Set temp. $\frac{1}{4}$ sec. cor.
79.78	Intersect E. bdy. of Tp., 12 lks. N. of the cor. of secs. 25, 30, 31 and 36, which is an iron post, established by O. R., as described in Book "A". Thence I run N.89° 55' W., on a true line, bet. secs. 25 and 36. Over level land, through scattering undergrowth.
24.80	Asc. 35 ft. to
27.80	Spur, brs. SW. Desc. 50 ft. to
30.80	Thence over level land.
39.89	Set an iron post, 3 ft. long, 1 in. diam., 26 ins. in the ground, for $\frac{1}{4}$ sec. cor., marked on brass cap 1915 on S. rim; S25 in N., S36 in S. and $\frac{1}{4}$ in W. half; and raise a mound of stone, 2 ft. base, $1\frac{1}{2}$ ft. high, N. of cor. Pits impracticable. Asc. 30 ft. to
42.30	Spur, slopes SW. Desc. 45 ft. to
45.80	Thence over level land.
64.80	Asc. 15 ft. to
67.20	Spur, slopes SW. Desc. 95 ft. to
75.80	Wash, 30 lks. wide, course WSW.

Book 2840

Subdivision of Fractional T. 14 N., R. 20 W. 3.

Chains, 68.30 79.78	Same wash, 30 lks. wide, course WNW. The cor. of secs. 25, 26, 35 and 36. Land, level and rolling. Soil, 3rd and 4th rate. No timber. Undergrowth, greasewood and palo verde.
.20 10.75 17.20 20.40 31.60 40.00	N.0° 1' W., bet. secs. 25 and 26. Over mountainous land, through scattering undergrowth. Wash, 30 lks. wide, course SW. Asc. 105 ft. to Spur, slopes SW. Desc. 55 ft. to Wash, 20 lks. wide, course SW. Asc. 50 ft. to Spur, slopes SW. Desc. 30 ft. to Wash, 200 lks. wide, course SW. Set an iron post, 3 ft. long, 1 in. diam., 26 ins. in the ground, for $\frac{1}{4}$ sec. cor., marked on brass cap 1915 on S. rim; $\frac{1}{4}$ in N., S25 in E. and S26 in W. half; and raise a mound of stone, 2 ft. base, $1\frac{1}{2}$ ft. high, W. of cor. Pits impracticable. Asc. 30 ft. to
44.50 48.50 53.00 56.30 66.82 80.00	Point of spur, brs. SW. Desc. 45 ft. to Wash, 200 lks. wide, course SW. Asc. 55 ft. to Point of spur, brs. SW. Desc. 45 ft. to Thence over level land. Road, brs. NE. and SW. Set an iron post, 3 ft. long, 2 ins. diam., 24 ins. in the ground, for cor. of secs. 23, 24, 25 and 26, marked on brass cap 1915 on S. rim; T14N R20W in N. half; S23 in NW., S24 in NE., S25 in SE. and S26 in SW. quadrant; and raise a mound of stone, 2 ft. base, $1\frac{1}{2}$ ft. high, W. of cor. Pits impracticable. Land, level and mountainous. Soil, 3rd and 4th rate. No timber. Undergrowth, greasewood and palo verde.
	Apr. 14, 1915.
40.00 79.96	Apr. 15, 1915. S.89° 55' E., on a random line, bet. secs. 24 and 25. Set temp. $\frac{1}{4}$ sec. cor. Intersect E. bdy. of Tp., 7 lks. N. of the cor. of secs. 19, 24, 25 and 30, which is an iron post, established by O. R., as described in Book "A". Thence I run
7.45 39.98	N.89° 52' W., on a true line, bet. secs. 24 and 25. Over rolling land, through scattering undergrowth. Road, brs. NE. and S. 80° W. Set an iron post, 3 ft. long, 1 in. diam., 26 ins. in the ground, for $\frac{1}{4}$ sec. cor., marked on brass cap 1915 on S. rim; S24 in N., S25 in S. and $\frac{1}{4}$ in W. half; and raise a mound of stone, 2 ft. base, $1\frac{1}{2}$ ft. high, N. of cor. Pits impracticable.

4

Subdivision of Fractional T. 14 N., R. 20 W.

Chains.	Asc. slightly to
44.95	Low spur, brs. W. Desc. 30 ft. to
50.00	Thence over rolling land.
79.96	The cor. of secs. 23, 24, 25 and 26.
	Land, rolling.
	Soil, rocky, 3rd and 4th rate.
	No timber.
	Undergrowth, greasewood and palo verde.
	Apr. 15, 1916.
	Apr. 16, 1915.
	N.0° 1' W., bet. secs. 23 and 24.
	Over broken land, through scattering undergrowth.
2.50	Wash, 100 lks. wide, course SW.
9.50	Enter wash, course SW.
14.00	Leave wash, course S. Comes from NE. Asc. 40 ft. to
27.40	Spur, slopes W. Desc. 40 ft. to
35.50	Enter wash, course SW.
39.50	Leave wash, course S. Comes from NE.
40.00	Set an iron post, 3 ft. long, 1 in. diam., 26 ins. in the ground, for $\frac{1}{4}$ sec. cor., marked on brass cap 1915 on S. rim; $\frac{1}{4}$ in N., S24 in E. and S23 in W. half; and raise a mound of stone, 2 ft. base, 1 $\frac{1}{2}$ ft. high, W. of cor. Pits impracticable.
48.75	Wash, 150 lks. wide, course SW. Asc. 75 ft. to
56.50	Point of spur, brs. SW. Desc. 55 ft. to
63.00	Enter wash, course SW.
67.00	Leave wash, course S. Comes from NE.
80.00	Set an iron post, 3 ft. long, 2 ins. diam., 24 ins. in the ground, for cor. of secs. 13, 14, 23 and 24, marked on brass cap 1915 on S. rim; T14N R20W in N. half; S14 in NW., S13 in NE., S24 in SE. and S23 in SW. quadrant; and raise a mound of stone, 2 ft. base, 1 $\frac{1}{2}$ ft. high, W. of cor. Pits impracticable.
	Land, broken.
	Soil, 3rd and 4th rate.
	No timber.
	Undergrowth, greasewood and palo verde.
	S.89° 52' E., on a random line, bet. secs. 13 and 24.
40.00	Set temp. $\frac{1}{4}$ sec. cor.
79.80	Intersect E. bdy. of Tp., 7 lks. S. of the cor. of secs. 13, 18, 19 and 24, which is an iron post, established by O. R., as described in Book "A". Thence I run N.89° 55' W., on a true line, bet. secs. 13 and 24.
	Over rolling land, through scattering undergrowth.
22.80	Wash, 200 lks. wide, course SW.
28.30	Same wash, 200 lks. wide, course NW.
34.30	Same wash, 200 lks. wide, course SW.
39.90	Set an iron post, 3 ft. long, 1 in. diam., 26 ins. in the ground, for $\frac{1}{4}$ sec. cor., marked on brass cap 1915 on S. rim; S13 in N., S24 in S. and $\frac{1}{4}$ in W. half;

Subdivision of Fractional T. 14 N., R. 20 W.

Chains.

79.80 and raise a mound of stone, 2 ft. base, 1½ ft. high,
 N. of cor. Pits impracticable.
 The cor. of secs. 13, 14, 23 and 24.
 Land, rolling.
 Soil, 3rd and 4th rate.
 No timber.
 Undergrowth, greasewood and palo verde.
 Apr. 16, 1915.

Apr. 17, 1915.
 N.0° 1' W., bet. secs. 13 and 14.
 Over rolling land, through scattering undergrowth.
 10.00 Asc. 25 ft. to
 12.50 Spur, brs. W. Desc. slightly.
 19.00 Asc. 25 ft. to
 20.50 Desc. 35 ft. to
 31.40 Wash, 200 lks. wide, course SW. Asc. 50 ft. to
 37.25 Point of spur, brs. SW. Desc. slightly.
 40.00 Set an iron post, 3 ft. long, 1 in. diam., 26 ins. in the
 ground, for ¼ sec. cor., marked on brass cap
 1915 on S. rim;
 ¼ in N.,
 S13 in E. and
 S14 in W. half;
 and raise a mound of stone, 2 ft. base, 1½ ft. high,
 W. of cor. Pits impracticable.
 42.10 Desc. 45 ft. to
 49.20 Asc. 55 ft. to
 53.00 Desc. 50 ft. to
 62.00 Wash, 200 lks. wide, course SW.
 66.25 Wash, 50 lks. wide, course SW.
 70.50 Same wash, 50 lks. wide, course SSE.
 75.00 Same wash, course WSW.
 80.00 Set an iron post, 3 ft. long, 2 ins. diam., 24 ins. in the
 ground, for cor. of secs. 11, 12, 13 and 14, marked on
 brass cap
 1915 on S. rim;
 T14N R20W in N. half;
 S11 in NW.,
 S12 in NE.,
 S13 in SE. and
 S14 in SW. quadrant;
 and raise a mound of stone, 2 ft. base, 1½ ft. high,
 W. of cor. pits impracticable.
 Land, rolling.
 Soil, 3rd and 4th rate.
 No timber.
 Undergrowth, greasewood and palo verde.

40.00 S.89° 55' E., on a random line, bet. secs. 12 and 13.
 Set temp. ¼ sec. cor.
 79.90 Intersect the E. bdy. of Tp., 5 lks. N. of the cor. of secs.
 7, 12, 13 and 18, which is an iron post, established
 by O. R., as described in Book "A".
 Thence I run
 N.89° 53' W., on a true line, bet. secs. 12 and 13.
 Over rolling land, through scattering undergrowth.
 3.20 Asc. 20 ft. to
 7.50 Spur, brs. SW. Desc. 80 ft. to
 29.90 Wash, 200 lks. wide, course SSW.
 33.40 Wash, 200 lks. wide, course SSW.
 39.95 Set an iron post, 3 ft. long, 1 in. diam., 26 ins. in the
 ground, for ¼ sec. cor., marked on brass cap
 1915 on S. rim;

Chains.	<p>S12 in N., S13 in S. and $\frac{1}{4}$ in W. half; and raise a mound of stone, 2 ft. base, $1\frac{1}{2}$ ft. high, N. of cor. Pits impracticable. Asc. slightly. Saddle in spur, slopes SW. Desc. 110 ft. to Wash, 50 lks. wide, course SW. Asc. 20 ft. to Desc. 15 ft. to Asc. 29 ft. to The cor. of secs. 11, 12, 13 and 14. Land, rolling and broken. Soil, 3rd and 4th rate. No timber. Undergrowth, greasewood, palo verde and cacti. Apr. 17, 1915: At this cor., I set off $10^{\circ} 18\frac{1}{2}'$ N. on the decl. arc; and at apparent noon, I observe the sun on the meridian; the resulting lat. is $34^{\circ} 34'$ N. Apr. 17, 1915.</p>
47.50	Saddle in spur, slopes SW. Desc. 110 ft. to
63.90	Wash, 50 lks. wide, course SW. Asc. 20 ft. to
67.50	Desc. 15 ft. to
68.90	Asc. 29 ft. to
79.90	The cor. of secs. 11, 12, 13 and 14. Land, rolling and broken. Soil, 3rd and 4th rate. No timber. Undergrowth, greasewood, palo verde and cacti. Apr. 17, 1915: At this cor., I set off $10^{\circ} 18\frac{1}{2}'$ N. on the decl. arc; and at apparent noon, I observe the sun on the meridian; the resulting lat. is $34^{\circ} 34'$ N. Apr. 17, 1915.
	<p>Apr. 19, 1915: At 9 hrs. 30 m., a.m., l.m.t., I set off $34^{\circ} 34'$ N. on the lat. arc; $10^{\circ} 59'$ N. on the decl. arc; and determine a meridian with the solar at the cor. of secs. 11, 12, 13 and 14. Thence I run N. $0^{\circ} 1'$ W., bet. secs. 11 and 12. Over mountainous land, through scattering undergrowth. Asc. 135 ft. to Point of spur, brs. SW. Desc. 135 ft. to Asc. 35 ft. to Desc. 75 ft. to Asc. 150 ft. Cliff, 20 ft. high. Continue ascent. Point of spur, brs. SW. Desc. 120 ft. Set an iron post, 3 ft. long, 1 in. diam., 26 ins. in the ground, for $\frac{1}{4}$ sec. cor., marked on brass cap 1915 on S. rim; $\frac{1}{4}$ in N., S12 in E. and S11 in W. half; and raise a mound of stone, 2 ft. base, $1\frac{1}{2}$ ft. high, W. of cor. Pits impracticable. Wash, 100 lks. wide, course SW. Asc. 90 ft. to Thence over level land. Desc. 40 ft. to Enter wash, course SW. Leave wash, course S. Comes from NE. Asc. 105 ft. to Point of spur, brs. SE. Desc. 15 ft. to Set an iron post, 3 ft. long, 2 ins. diam., 24 ins. in the ground, for cor. of secs. 1, 2, 11 and 12, marked on brass cap 1915 on S. rim; T14N R20W in N. half; S2 in NW., S1 in NE., S12 in SE. and S11 in SW. quadrant; and raise a mound of stone, 2 ft. base, $1\frac{1}{2}$ ft. high, W. of cor. Pits impracticable. Land, mountainous. Soil, rocky, 4th rate. No timber. Undergrowth, greasewood, palo verde and cacti. Apr. 19, 1915.</p>
9.85	Point of spur, brs. SW. Desc. 135 ft. to
16.30	Asc. 35 ft. to
19.65	Desc. 75 ft. to
24.65	Asc. 150 ft.
29.90	Cliff, 20 ft. high. Continue ascent.
36.55	Point of spur, brs. SW. Desc. 120 ft.
40.00	Set an iron post, 3 ft. long, 1 in. diam., 26 ins. in the ground, for $\frac{1}{4}$ sec. cor., marked on brass cap 1915 on S. rim; $\frac{1}{4}$ in N., S12 in E. and S11 in W. half; and raise a mound of stone, 2 ft. base, $1\frac{1}{2}$ ft. high, W. of cor. Pits impracticable.
45.75	Wash, 100 lks. wide, course SW. Asc. 90 ft. to
49.80	Thence over level land.
52.00	Desc. 40 ft. to
55.00	Enter wash, course SW.
66.75	Leave wash, course S. Comes from NE. Asc. 105 ft. to
72.00	Point of spur, brs. SE. Desc. 15 ft. to
80.00	Set an iron post, 3 ft. long, 2 ins. diam., 24 ins. in the ground, for cor. of secs. 1, 2, 11 and 12, marked on brass cap 1915 on S. rim; T14N R20W in N. half; S2 in NW., S1 in NE., S12 in SE. and S11 in SW. quadrant; and raise a mound of stone, 2 ft. base, $1\frac{1}{2}$ ft. high, W. of cor. Pits impracticable. Land, mountainous. Soil, rocky, 4th rate. No timber. Undergrowth, greasewood, palo verde and cacti. Apr. 19, 1915.

Subdivision of Fractional T. 14 N., R. 20 W. 7.

Chains.

Apr. 20, 1915.
 S.89° 53' E., on a random line, bet. secs. 1 and 12.
 40.00 Set temp. $\frac{1}{4}$ sec. cor.
 79.78 Intersect E. bdy. of Tp., 7 lks. N. of the cor. of secs. 1, 6, 7 and 12, which is an iron post, established by O. R., as described in Book "A".
 Thence I run
 N.89° 50' W., on a true line, bet. secs. 1 and 12.
 Over rolling land, through scattering undergrowth.
 15.30 Wash, 200 lks. wide, course SSW.
 26.80 Wash, 100 lks. wide, course S.
 35.40 Leave rolling land, enter mountainous land. Asc. 170 ft.
 39.89 Set an iron post, 3 ft. long, 1 in. diam., 26 ins. in the ground, for $\frac{1}{4}$ sec. cor., marked on brass cap
 1915 on S. rim;
 S1 in N.,
 S12 in S. and
 $\frac{1}{4}$ in W. half;
 and raise a mound of stone, 2 ft. base, 1 $\frac{1}{2}$ ft. high, N. of cor. Pits impracticable.
 50.60 Point of spur, brs. S. Desc. 160 ft. to
 66.80 Wash, 200 lks. wide, course SW. Asc. 100 ft. to
 75.20 Thence over rolling land.
 79.78 The cor. of secs. 1, 2, 11 and 12.
 Land, rolling and mountainous.
 Soil, rocky, 4th rate.
 No timber.
 Undergrowth, greasewood and palo verde.
 Apr. 20, 1915.

Apr. 19, 1915.
 N.0° 1' W., on a random line, bet. secs. 1 and 2.
 40.00 Set temp. $\frac{1}{4}$ sec. cor.
 79.80 Intersect the N. bdy. of Tp., at the cor. of secs. 1, 2, 35 and 36, which is a stone, established by O. R., as described in Book "A".
 Thence I run
 S.0° 1' E., on a true line, bet. secs. 1 and 2.
 Over mountainous land, through scattering undergrowth.
 Desc. 15 ft. to
 2.30 Wash, 25 lks. wide, course W. Asc. 205 ft. to
 12.80 Ridge, brs. E. and W. Desc. 195 ft. to
 29.30 Enter wash, course S. Comes from NE.
 35.60 Leave wash, course SW. Asc. 80 ft. to
 39.50 Thence over rolling land.
 39.80 Set an iron post, 3 ft. long, 1 in. diam., 26 ins. in the ground, for $\frac{1}{4}$ sec. cor., marked on brass cap
 1915 on S. rim;
 $\frac{1}{4}$ in N.,
 S1 in E. and
 S2 in W. half;
 and raise a mound of stone, 2 ft. base, 1 $\frac{1}{2}$ ft. high, W. of cor. Pits impracticable.
 42.55 Wash, 150 lks. wide, course SW. Asc. 190 ft. to
 55.80 Point of spur, brs.W. Desc. 115 ft. to
 60.70 Asc. 30 ft. to
 69.60 Point of spur, brs. W. Desc. 45 ft. to
 74.25 Asc. 70 ft. to
 78.30 Point of spur, brs. W. Desc. 50 ft. to
 79.80 The cor. of secs. 1, 2, 11 and 12.
 Land, mountainous and rolling.
 Soil, rocky, 4th rate.
 No timber.
 Undergrowth, greasewood and palo verde.
 Apr. 19, 1915: At this cor., I set off 11° $\frac{1}{2}$ ' N. on the decl. arc; and at apparent noon, I observe the sun on the meridian; the resulting lat. is 34° 35' N.
 Apr. 19, 1915.

8

Subdivision of Fractional T. 14 N., R. 20 W.

Chains.	Apr. 14, 1915. At 8 hrs. 50 m., a.m., l.mtt., I set off 34° 30 $\frac{1}{2}$ ' N. on the lat. arc; 9° 12' N. on the decl. arc; and determine a meridian with the solar at the cor. of secs. 2, 3, 34 and 35, on the S. bdy. of the Tp., which is an iron post, established by Albert Smith, Jr., U. S. Surveyor, as described in Book "A". Thence I run N.0° 1' W., bet. secs. 34 and 35. Over rolling land, through scattering undergrowth. Asc. 40 ft. to 8.50 Point of spur, brs. W. Desc. slightly to 13.00 40.00 Set an iron post, 3 ft. long, 1 in. diam., 26 ins. in the ground, for $\frac{1}{4}$ sec. cor., marked on brass cap 1915 on S. rim; $\frac{1}{4}$ in N., S35 in E. and S34 in W. half; and raise a mound of stone, 2 ft. base, 1 $\frac{1}{2}$ ft. high, W. of cor. Pits impracticable. 49.00 Wash, 200 lks. wide, course SW. Asc. 25 ft. to 56.00 Spur, brs. W. Desc. 25 ft. to 67.00 Center of wash, 75 lks. wide, course SW. 80.00 Set an iron post, 3 ft. long, 1 in. diam., 24 ins. in the ground, for cor. of secs. 26, 27, 34 and 35, marked on brass cap 1915 on S. rim; T14N R20W in N. half; S27 in NW., S26 in NE., S35 in SE. and S34 in SW. quadrant; and raise a mound of stone, 2 ft. base, 1 $\frac{1}{2}$ ft. high, W. of cor. Pits impracticable. Land, rolling. Soil, 3rd and 4th rate. No timber. Undergrowth, greasewood and palo verde.
40.00	East on a random line, bet. secs. 26 and 35. Set temp. $\frac{1}{4}$ sec. cor.
80.06	Intersect N. and S. line at the cor. of secs. 25, 26, 35 and 36. Thence I run West on a true line, bet. secs. 26 and 35. Over rolling land, through scattering undergrowth. Desc. slightly to .30 Wash, 30 lks. wide, course WSW. Asc. 40 ft. to 3.75 Thence along S. slope. 10.25 Spur, brs. SW. Desc. 40 ft. to 15.00 Thence over level land. 22.55 Wash, 25 lks. wide, course SW. 40.03 Set an iron post, 3 ft. long, 1 in. diam., 26 ins. in the ground, for $\frac{1}{4}$ sec. cor., marked on brass cap 1915 on S. rim; S26 in N., S35 in S. and $\frac{1}{4}$ in W. half; and raise a mound of stone, 2 ft. base, 1 $\frac{1}{2}$ ft. high, N. of cor. Pits impracticable. 42.85 Wash, 30 lks. wide, course S. 58.65 Wash, 40 lks. wide, course SW. 80.06 The cor. of secs. 26, 27, 34 and 35. Land, level and rolling. Soil, 3rd and 4th rate. No timber. Undergrowth, greasewood, and palo verde.
	Apr. 14, 1915.

Subdivision of Fractional T. 14 N., R. 20 W.

Chains.

Apr. 15, 1915.
 N.0° 1' W., bet. secs. 26 and 27.
 Over rolling land, through dense undergrowth.
 10.30 Wash, 200 lks. wide, course SW.
 30.50 Center of wash, 1 ch. wide, course SW.
 40.00 Set an iron post, 3 ft. long, 1 in. diam., 26 ins. in the
 ground, for $\frac{1}{4}$ sec. cor., marked on brass cap
 1915 on S. rim;
 $\frac{1}{4}$ in N.,
 S26 in E. and
 S27 in W. half;
 and raise a mound of stone, 2 ft. base, $1\frac{1}{2}$ ft. high,
 W. of cor. Pits impracticable.
 49.64 Road, brs. NE. and SW.
 53.40 Center of wash, 2. chs. wide, course SW.
 79.50 Wash, 50 lks. wide, course WSW.
 80.00 Set an iron post, 3 ft. long, 2 ins. diam., 24 ins. in the
 ground, for cor. of secs. 22, 23, 26 and 27, marked on
 brass cap
 1915 on S. rim;
 T14N R20W in N. half;
 S22 in NW.,
 S23 in NE.,
 S26 in SE. and
 S27 in SW. quadrant;
 and raise a mound of stone, 2 ft. base, $1\frac{1}{2}$ ft. high,
 W. of cor. Pits impracticable.
 Land, rolling.
 Soil, 3rd and 4th rate.
 No timber.
 Undergrowth, greasewood and palo verde.
 Apr. 15, 1915: At this cor., I set off 9° 36' N. on the
 decl. arc; and at apparent noon, I observe the sun on
 the meridian; the resulting lat. is 34° 32' N.

40.00 East on a random line, bet. secs. 23 and 26.
 Set temp. $\frac{1}{4}$ sec. cor.
 79.96 Intersect N. and S. line, 7 lks. N. of the cor. of secs.
 23, 24, 25 and 26.
 Thence I run
 N.89° 57' W., on a true line, bet. secs. 23 and 26.
 Over rolling land, through scattering undergrowth.
 5.45 Center of wash, 1 ch. wide, course SW.
 14.45 Enter wash, course W. Comes from NE.
 20.95 Leave wash, course WSW.
 39.98 Set an iron post, 3 ft. long, 1 in. diam., 26 ins. in the
 ground, for $\frac{1}{4}$ sec. cor., marked on brass cap
 1915 on S. rim;
 S23 in N.,
 S26 in S. and
 $\frac{1}{4}$ in W. half;
 and raise a mound of stone, 2 ft. base, $1\frac{1}{2}$ ft. high,
 N. of cor. Pits impracticable.
 78.25 Wash, 50 lks. wide, course WSW.
 79.96 The cor. of secs. 22, 23, 26 and 27.
 Land, rolling.
 Soil, sandy and rocky, 3rd and 4th rate.
 No timber.
 Undergrowth, palo verde and greasewood.
 Apr. 15, 1915.

Apr. 16, 1915.
 N.0° 1' W., bet. secs. 22 and 23.
 Over rolling land, through scattering undergrowth.
 Asc. 15 ft. to
 3.00 Point of spur, brs. W. Desc. slightly to

10

Subdivision of Fractional T. 14 N., R. 20 W.

Chains.	
8.00	Thence over level land.
19.00	Asc. 25 ft. to
21.00	Point of spur, brs. W. Desc. slightly to
26.00	Thence over level land.
39.50	Wash, 25 lks. wide, course SW.
40.00	Set an iron post, 3 ft. long, 1 in. diam., 26 ins. in the ground, for $\frac{1}{4}$ sec. cor., marked on brass cap 1915 on S. rim; $\frac{1}{4}$ in N., S23 in E. and S22 in W. half; and raise a mound of stone, 2 ft. base, $1\frac{1}{2}$ ft. high, W. of cor. Pits impracticable.
62.00	Center of wash, 2 chs. wide, course SW.
80.00	Set an iron post, 3 ft. long, 2 ins. diam., 24 ins. in the ground, for cor. of secs. 14, 15, 22 and 23, marked on brass cap 1915 on S. rim; T14N R20W in N. half; S15 in NW., S14 in NE., S23 in SE. and S22 in SW. quadrant; and raise a mound of stone, 2 ft. base, $1\frac{1}{2}$ ft. high, W. of cor. Pits impracticable. Land, level and rolling. Soil, 3rd and 4th rate. No timber. Undergrowth, greasewood and palo verde.
40.00	S. $89^{\circ} 57'$ E., on a random line, bet. secs. 14 and 23. Set temp. $\frac{1}{4}$ sec. cor.
79.84	Intersect N. and S. line, 4 lks. N. of the cor. of secs. 13, 14, 23 and 24. Thence I run N. $89^{\circ} 55'$ W., on a true line, bet. secs. 14 and 23. Over level land, through scattering undergrowth.
39.92	Set an iron post, 3 ft. long, 1 in. diam., 26 ins. in the ground, for $\frac{1}{4}$ sec. cor., marked on brass cap 1915 on S. rim; S14 in N., S23 in S. and $\frac{1}{4}$ in W. half; and raise a mound of stone, 2 ft. base, $1\frac{1}{2}$ ft. high, N. of cor. Pits impracticable.
79.84	Apr. 16, 1915: At this cor., I set off $9^{\circ} 57\frac{1}{2}'$ N. on the decl. arc; and at apparent noon, I observe the sun on the meridian; the resulting lat. is $34^{\circ} 33'$ N. The cor. of secs. 14, 15, 22 and 23. Land, level. Soil, 3rd and 4th rate. No timber. Undergrowth, greasewood and palo verde. Apr. 16, 1915.
	Apr. 17, 1915: At 8 hrs. 45 m., a.m., l.m.t., I set off $34^{\circ} 33'$ N. on the lat. arc; $10^{\circ} 16'$ N. on the decl. arc; and determine a meridian with the solar at the cor. of secs. 14, 15, 22 and 23. Thence I run N. $0^{\circ} 1'$ W., bet. secs. 14 and 15. Over rolling land, through scattering undergrowth.
9.50	Center of wash, 2 chs. wide, course SW.
40.00	Set an iron post, 3 ft. long, 1 in. diam., 26 ins. in the ground, for $\frac{1}{4}$ sec. cor., marked on brass cap 1915 on S. rim

Chains.

$\frac{1}{4}$ in N.,
 S14 in E. and
 S15 in W. half;
 and raise a mound of stone, 2 ft. base, $1\frac{1}{2}$ ft. high,
 W. of cor. Pits impracticable.
 40.50 Wash, 50 lks. wide, course SW.
 66.50 Center of wash, 3 chs. wide, course SW.
 80.00 Set an iron post, 3 ft. long, 2 ins. diam., 24 ins. in the
 ground, for cor. of secs. 10, 11, 14 and 15, marked
 on brass cap
 1915 on S. rim;
 T14N R20W in N. half;
 S10 in NW.,
 S11 in NE.,
 S14 in SE. and
 S15 in SW. quadrant;
 and raise a mound of stone, 2 ft. base, $1\frac{1}{2}$ ft. high,
 W. of cor. Pits impracticable.
 Land, level and rolling.
 Soil, 3rd and 4th rate.
 No timber.
 Undergrowth, greasewood and palo verde.

S. $89^{\circ} 55'$ E., on a random line, bet. secs. 11 and 14.
 40.00 Set temp. $\frac{1}{4}$ sec. cor.
 79.90 Intersect N. and S. line, 4 lks. S. of the cor. of secs.
 11, 12, 13 and 14.
 Thence I run
 N. $89^{\circ} 57'$ W., on a true line, bet. secs. 11 and 14.
 Over mountainous land, through scattering undergrowth.
 Asc. 20 ft. to
 9.90 Spur, brs. S. Desc. 130 ft. to
 21.90 Thence over rolling land.
 39.95 Set an iron post, 3 ft. long, 1 in. diam., 26 ins. in the
 ground, for $\frac{1}{4}$ sec. cor., marked on brass cap
 1915 on S. rim;
 S11 in N.,
 S14 in S. and
 $\frac{1}{4}$ in W. half;
 and raise a mound of stone, 2 ft. base, $1\frac{1}{2}$ ft. high,
 N. of cor. Pits impracticable.
 54.90 Center of wash, 150 lks. wide, course WSW.
 79.90 The cor. of secs. 10, 11, 14 and 15.
 Land, rolling and mountainous.
 Soil, 3rd and 4th rate.
 No timber.
 Undergrowth, greasewood and palo verde.
 Apr. 17, 1915.

Apr. 20, 1915: At 8 hrs. 55 m., a.m., l.m.t., I set off
 $34^{\circ} 34'$ N. on the lat. arc; $11^{\circ} 19'$ N. on the decl. arc;
 and determine a meridian with the solar at the cor. of
 secs. 10, 11, 14 and 15.
 Thence I run
 N. $0^{\circ} 1'$ W., bet. secs. 10 and 11.
 Over rolling land, through scattering undergrowth.
 5.00 Center of wash, 2 chs. wide, course SW.
 29.00 Asc. 75 ft. to
 38.00 End of spur, brs. SW, Desc. 40 ft.
 40.00 Set an iron post, 3 ft. long, 1 in. diam., 26 ins. in the
 ground, for $\frac{1}{4}$ sec. cor., marked on brass cap
 1915 on S. rim;
 $\frac{1}{4}$ in N.,
 S11 in E. and
 S10 in W. half;

12

Subdivision of Fractional T. 14 N., R. 20 W.

Chains.

and raise a mound of stone, 2 ft. base, $1\frac{1}{2}$ ft. high, W. of cor. Pits impracticable.

43.50 Center of wash, 2 chs. wide, course SW. Asc. 70 ft. to
 52.40 Ridge, brs. E. and W. Desc. 100 ft. to
 62.50 Enter wash, course SW.
 74.00 Leave wash, course SW.
 80.00 Set an iron post, 3 ft. long, 2 ins. diam., 24 ins. in the ground, for cor. of secs. 2, 3, 10 and 11, marked on brass cap

1915 on S. rim;
 T14N R20W in N. half;
 S3 in NW.,
 S2 in NE.,
 S11 in SE. and
 S10 in SW. quadrant;

and raise a mound of stone, 2 ft. base, $1\frac{1}{2}$ ft. high, W. of cor. Pits impracticable.

Land, rolling and mountainous.
 Soil, 3rd and 4th rate.
 No timber.
 Undergrowth, greasewood and palo verde.

Apr. 20, 1915.

Apr. 21, 1915.

40.00 S. $89^{\circ} 57'$ E., on a random line, bet. secs. 2 and 11.
 Set temp. $\frac{1}{4}$ sec. cor.
 79.92 Intersect N. and S. line, 7 lks. N. of the cor. of secs. 1, 2, 11 and 12,.

Thence I run
 N. $89^{\circ} 54'$ W., on a true line, bet. secs. 2 and 11.
 Over mountainous land, through scattering undergrowth.
 Desc. 60 ft. to
 6.70 Wash, 30 lks. wide, course NNW. Asc. 55 ft. to
 13.60 Spur, slopes NW. Desc. 110 ft. to
 32.00 Asc. 210 ft.
 39.96 Set an iron post, 3 ft. long, 1 in. diam., 26 ins. in the ground, for $\frac{1}{4}$ sec. cor., marked on brass cap

1915 on S. rim;
 S2 in N.,
 S11 in S. and
 $\frac{1}{4}$ in W. half;

and raise a mound of stone, 2 ft. base, $1\frac{1}{2}$ ft. high, N. of cor. Pits impracticable.

41.15 Ridge, brs. NE. and SW. Desc. 360 ft. to
 54.90 Enter wash, course SW.
 63.90 Leave wash, course SW. Asc. 65 ft. to
 77.00 Desc. 65 ft. to
 79.92 The cor. of secs. 2, 3, 10 and 11.
 Land, mountainous.
 Soil, rocky, 4th rate.
 No timber.
 Undergrowth, greasewood and palo verde.

Apr. 21, 1915.

Apr. 20, 1915.

40.00 N. $0^{\circ} 1'$ W., on a random line, bet. secs. 2 and 3.
 Set temp. $\frac{1}{4}$ sec. cor.
 79.74 Intersect N. bdy. of Tp., 9 lks. W. of the cor. of secs. 2, 3, 34 and 35, which is an iron post, established by O. R., as described in Book "A".

Thence I run
 S. $0^{\circ} 3'$ W., on a true line, bet. secs. 2 and 3.
 Over mountainous land, through scattering undergrowth.
 Desc. to
 1.00 Wash, course

Chains.
 3.25 Enter wash, course SW.
 7.75 Leave wash, course SW. Asc. 60 ft. to
 10.25 Desc. 55 ft. to
 14.75 Center of wash, 3 chs. wide, course SW. Asc. 95 ft. to
 19.50 Spur, brs. W. Desc. 90 ft. to
 25.55 Center of wash, 75 lks. wide, course W. Asc. 230 ft. to
 35.75 Desc. 205 ft., over cliffs.
 39.74 Set an iron post, 3 ft. long, 1 in. diam., 26 ins. in the
 ground, for $\frac{1}{4}$ sec. cor., marked on brass cap
 1915 on S. rim;
 $\frac{1}{4}$ in N.,,
 S2 in E. and
 S3 in W. half;
 .. and raise a mound of stone, 2 ft. base, $1\frac{1}{2}$ ft. high,
 W. of cor. Pits impracticable.
 Corner falls on point of cliff, 20 ft. high.
 55.00 Center of wash, 75 lks. wide, course WSW. Asc. 130 ft. to
 64.45 Desc. 75 ft. to
 79.74 The cor. of secs. 2, 3, 10 and 11.
 Land, mountainous.
 Soil, rocky, 4th rate.
 No timber.
 Undergrowth, greasewood and palo verde.
 Apr. 20, 1915: At this cor., I set off $11^{\circ} 21\frac{1}{2}'$ N. on the
 decl. arc; and at apparent noon, I observe the sun on
 the meridian; the resulting lat. is $34^{\circ} 35'$ N.
 Apr. 20, 1915.

Apr. 15, 1915: At 7 hrs. 58 m., a.m., l.m.t., I set off
 $34^{\circ} 30\frac{1}{2}'$ N. on the lat. arc; $9^{\circ} 32\frac{1}{2}'$ N. on the decl.
 arc; and determine a meridian with the solar at the cor.
 of secs. 3, 4, 33 and 34, on the S. bdy. of the Tp.,
 which is an iron post, established by Albert Smith, Jr.,
 U. S. Surveyor, as described in Book "A".
 Thence I run
 N. $0^{\circ} 2'$ W., bet. secs. 33 and 34.
 Over level land, through scattering undergrowth.
 17.00 Center of wash, 2 chs. wide, course SW.
 25.00 Asc. 30 ft. to
 30.00 Point of spur, brs. SW. Desc. 30 ft. to
 35.00 Thence over level land.
 40.00 Set an iron post, 3 ft. long, 1 in. diam., 26 ins. in the
 ground, for $\frac{1}{4}$ sec. cor., marked on brass cap
 1915 on S. rim;
 $\frac{1}{4}$ in N.,,
 S34 in E. and
 S33 in W. half;
 and raise a mound of stone, 2 ft. base, $1\frac{1}{2}$ ft. high,
 W. of cor. Pits impracticable.
 57.00 Center of wash, 2 chs. wide, course SW.
 80.00 Point for cor. of secs. 27, 28, 33 and 34 falls in wash,
 course SW. I return to
 79.40 Set an iron post, 3 ft. long, 2 ins. diam., 24 ins. in the
 ground, for witness cor. to cor. of secs. 27, 28, 33
 and 34, marked on brass cap
 1915 on S. rim;
 WC S. of center;
 T14N R20W in N. half;
 S28 in NW.,
 S27 in NE.,
 S34 in SE. and
 S33 in SW. quadrant;
 and raise a mound of stone, 2 ft. base, $1\frac{1}{2}$ ft. high,
 W. of cor. Pits impracticable.
 Land, level and hilly.
 Soil, 3rd and 4th rate.
 No timber.
 Undergrowth, greasewood, and palo verde.

14

Subdivision of Fractional T. 14 N., R. 20 W.

Chains

From the true point for cor. of secs. 27, 28, 33 and 34,
I run
East on a random line, bet. secs. 27 and 34.
40.00 Set temp. $\frac{1}{4}$ sec. cor.
80.06 Intersect N. and S. line at the cor. of secs. 26, 27, 34
and 35.
Thence I run
West on a true line, bet. secs. 27 and 34.
Over rolling land, through scattering undergrowth.
15.00 Enter wash, course W. Comes from NE.
30.00 Leave wash, course WSW.
40.03 Set an iron post, 3 ft. long, 1 in. diam., 26 ins. in the
ground, for $\frac{1}{4}$ sec. cor., marked on brass cap
1915 on S. rim;
S27 in N.,
S34 in S. and
 $\frac{1}{4}$ in W. half;
and raise a mound of stone, 2 ft. base, $1\frac{1}{2}$ ft. high,
N. of cor. Pits impracticable.
76.00 Desc. 15 ft. in to wash to
80.06 The point for cor. of secs. 27, 28, 33 and 34.
Land, rolling.
Soil, 3rd and 4th rate.
No timber.
Undergrowth, greasewood and palo verde.

Apr. 15, 1915.

Apr. 16, 1915: At 8 hrs. 4 m., a.m., l.m.t., I set off
 $34^{\circ} 31\frac{1}{2}'$ N. on the lat. arc; $9^{\circ} 54'$ N. on the decl.
arc; and determine a meridian with the solar at the
point for cor. of secs. 27, 28, 33 and 34.

Thence I run
N. $0^{\circ} 2'$ W., bet. secs. 27 and 28.
Over rolling land, through scattering undergrowth.
Asc. 45 ft. to
7.00 Desc. 20 ft. to
10.75 Wash, 50 lks. wide, course SW. Asc. 25 ft. to
16.25 Thence over level land.
24.25 Desc. 30 ft. to
25.70 Center of wash, 1 ch. wide, course SW. Asc. 40 ft. to
30.80 Thence over level land.
39.20 Desc. 20 ft.
40.00 Set an iron post, 3 ft. long, 1 in. diam., 26 ins. in the
ground, for $\frac{1}{4}$ sec. cor., marked on brass cap
1915 on S. rim;
 $\frac{1}{4}$ in N.,
S27 in E. and
S28 in W. half;
and raise a mound of stone, 2 ft. base, $1\frac{1}{2}$ ft. high,
W. of cor. Pits impracticable.
40.10 Draw, 10 lks. wide, course SW. Asc. 30 ft. to
45.00 Thence over level land.
48.00 Desc. 20 ft.
50.75 Road, brs. NE. and SW.
51.50 Enter wash, course SW.
62.50 Leave wash, course S. Comes from NE.
79.75 Wash, 50 lks. wide, course SW. Asc. 10 ft. to
80.00 Set an iron post, 3 ft. long, 2 ins. diam., 24 ins. in the
ground, for cor. of secs. 21, 22, 27 and 28, marked on
brass cap
1915 on S. rim;
T14N R20W in N. half;
S21 in NW.,
S22 in NE.,
S27 in SE. and
S28 in SW. quadrant;
and raise a mound of stone, 2 ft. base, $1\frac{1}{2}$ ft. high,

Subdivision of Fractional T. 14 N., R. 20 W.

Chains.	<p>W. of cor. Pits impracticable. Land, rolling. Soil, 3rd and 4th rate. No timber. Undergrowth, greasewood and palo verde.</p>
<p>40.00 80.16 40.08 75.55 79.15 80.16</p>	<p>East on a random line, bet. secs. 22 and 27. Set temp. $\frac{1}{4}$ sec. cor. Intersect N. and S. line, 2 lks. S. of the cor. of secs. 22, 23, 26 and 27. Thence I run S. $89^{\circ} 59'$ W., on a true line, bet. secs. 22 and 27. Over rolling land, through scattering undergrowth. Set an iron post, 3 ft. long, 1 in. diam., 26 ins. in the ground, for $\frac{1}{4}$ sec. cor., marked on brass cap 1915 on S. rim; S22 in N., S27 in S. and $\frac{1}{4}$ in W. half; and raise a mound of stone, 2 ft. base, $1\frac{1}{2}$ ft. high, N. of cor. Pits impracticable. Wash, 50 lks. wide, course WSW. Same wash, comes from SE., course SW. The cor. of secs. 21, 22, 27 and 28. Land, rolling. Soil, 3rd and 4th rate. No timber. Undergrowth, greasewood and palo verde.</p>
<p>1.00 4.95 8.40 22.42 40.00 52.94 80.00</p>	<p>O. R. N. $0^{\circ} 2'$ W., bet. secs. 21 and 22. Over rolling land, through scattering undergrowth. Asc. 25 ft. to Spur. slopes SW. Desc. N. slope, 20 ft. to Center of wash, 2 chs. wide, course SW. Asc. 25 ft. to Spur. slopes SW. Desc. slightly to Center of wash, 1 ch. wide, course SW. Set an iron post, 3 ft. long, 1 in. diam., 26 ins. in the ground, for $\frac{1}{4}$ sec. cor., marked on brass cap 1915 on S. rim; $\frac{1}{4}$ in N., S22 in E., and S21 in W. half; and raise a mound of stone, 2 ft. base, $1\frac{1}{2}$ ft. high, W. of cor. Pits impracticable. Center of wash, 150 lks. wide, course SW. Set an iron post, 3 ft. long, 2 ins. diam., 24 ins. in the ground, for cor. of secs. 15, 16, 21 and 22, marked on brass cap 1915 on S. rim; T14N R20W in N. half; S16 in NW., S15 in NE., S22 in SE. and S21 in SW. quadrant; and raise a mound of stone, 2 ft. base, $1\frac{1}{2}$ ft. high, W. of cor. Pits impracticable. Land, rolling. Soil, sandy and gravelly, 4th rate. No timber. Undergrowth greasewood and palo verde. No grass.</p>

J. G.

Chains.	N.89° 59' E., on a random line, bet. secs. 15 and 22.
40.00	Set temp. $\frac{1}{4}$ sec. cor.
80.14	Intersect N. and S. line, 5 lks. S. of the cor. of secs. 14, 15, 22 and 23. Thence I run S.89° 57' W., on a true line, bet. secs. 15 and 22. Over rolling and level land, through scattering undergrowth.
40.07	Set an iron post, 3 ft. long, 1 in. diam., 26 ins. in the ground, for $\frac{1}{4}$ sec. cor., marked on brass cap 1915 on S. rim; S15 in N., S22 in S. and $\frac{1}{4}$ in W. half; and raise a mound of stone, 2 ft. base, $1\frac{1}{2}$ ft. high, N. of cor. Pits impracticable.
80.14	The cor. of secs. 15, 16, 21 and 22. Land, level and rolling. Soil, rocky, 4th rate. No timber. Undergrowth, greasewood, palo verde and sage brush. Apr. 16, 1915.
Apr. 17, 1915.	
N.0° 2' W., bet. secs. 15 and 16. Over level and rolling land, through scattering undergrowth.	
5.00	Center of wash, 1 ch. wide, course SW.
40.00	Set an iron post, 3 ft. long, 1 in. diam., 26 ins. in the ground, for $\frac{1}{4}$ sec. cor., marked on brass cap 1915 on S. rim; $\frac{1}{4}$ in N., S15 in E. and S16 in W. half; and raise a mound of stone, 2 ft. base, $1\frac{1}{2}$ ft. high, W. of cor. Pits impracticable.
80.00	Set an iron post, 3 ft. long, 2 ins. diam., 24 ins. in the ground, for cor. of secs. 9, 10, 15 and 16, marked on brass cap 1915 on S. rim; T14N R20W in N. half; S9 in NW., S10 in NE., S15 in SE. and S16 in SW. quadrant; and raise a mound of stone, 2 ft. base, $1\frac{1}{2}$ ft. high, W. of cor. Pits impracticable. Land, level and rolling. Soil, rocky, 4th rate. No timber. Undergrowth, greasewood, palo verde and sage brush. No grass. Apr. 17, 1915: At this cor., I set off 10° 18 $\frac{1}{2}$ ' N. on the decl. arc; and at apparent noon, I observe the sun on the meridian; the resulting lat. is 34° 34' N. O. R.
40.00	J. G. N.89° 57' E., on a random line, bet. secs. 10 and 15. Set temp. $\frac{1}{4}$ sec. cor.
80.16	Intersect N. and S. line, 9 lks. N. of the cor. of secs. 10, 11, 14 and 15. Thence I run N.89° 59' W., on a true line, bet. secs. 10 and 15. Over rolling and level land, through scattering undergrowth.

Subdivision of Fractional T. 14 N., R. 20 W.

Chains.
 7.00 Center of wash, 2 chs. wide, course SW.
 40.08b Set an iron post, 3 ft. long, 1 in. diam., 26 ins. in the ground, for $\frac{1}{4}$ sec. cor., marked on brass cap
 1915 on S. rim;
 S10 in N.,
 S15 in S. and
 $\frac{1}{4}$ in W. half;
 and raise a mound of stone, 2 ft. base, $1\frac{1}{2}$ ft. high, N. of cor. Pits impracticable.
 80.16 The cor. of secs. 9, 10, 15 and 16.
 Land, level and rolling.
 Soil, 3rd and 4th rate.
 No timber.
 Undergrowth, greasewood and palo verde.
 Apr. 17, 1915.

Apr. 21, 1915: At 8 hrs. 45 m., a.m., l.m.t., I set off $34^{\circ} 34'$ N. on the lat. arc; $11^{\circ} 39\frac{1}{2}'$ N. on the decl. arc; and determine a meridian with the solar at the cor. of secs. 9, 10, 15 and 16.
 Thence I run $N.0^{\circ} 2' W.$, bet. secs. 9 and 10.
 Over level and rolling land, through scattering undergrowth.
 21.00 Center of wash, 3 chs. wide, course SSW.
 34.00 Center of wash, 2 chs. wide, course SW.
 40.00 Set an iron post, 3 ft. long, 1 in. diam., 26 ins. in the ground, for $\frac{1}{4}$ sec. cor., marked on brass cap
 1915 on S. rim;
 $\frac{1}{4}$ in N.,
 S10 in E. and
 S9 in W. half;
 and raise a mound of stone, 2 ft. base, $1\frac{1}{2}$ ft. high, W. of cor. Pits impracticable.
 63.00 Enter wash, course SW.
 76.00 Leave wash, course SW.
 80.00 Set an iron post, 3 ft. long, 2 ins. diam., 24 ins. in the ground, for cor. of secs, 3, 4, 9 and 10, marked on brass cap
 1915 on S. rim;
 T14N R20W in N. half;
 S4 in NW.,
 S3 in NE.,
 S10 in SE. and
 S9 in SW. quadrant;
 and raise a mound of stone, 2 ft. base, $1\frac{1}{2}$ ft. high, W. of cor. Pits impracticable.
 Land, level and rolling.
 Soil, rocky, 4th rate.
 No timber.
 Undergrowth, greasewood and palo verde.
 J. G.
 Apr. 21, 1915.

Apr. 23, 1915.
 S. $89^{\circ} 59'$ E., on a random line, bet. secs. 3 and 10.
 40.00 Set temp. $\frac{1}{4}$ sec. cor.
 80.34 Intersect N. and S. line, 2 lks. S. of the cor. of secs. 2, 3, 10 and 11.
 Thence I run
 West on a true line, bet. secs. 3 and 10.
 Over mountainous land, through scattering undergrowth.
 Asc. to
 1.35 Desc. 100 ft. to

Chains.
 17.75 Wash, course SW. Asc. 135 ft. to
 15.75 Spur, slopes SW. Desc. 75 ft. to
 20.60 Asc. 30 ft. to
 26.60 Spur, slopes SW. Desc. 40 ft. to
 29.60 Wash, 20 lks. wide, course SW. Asc. 90 ft. to
 35.90 Spur, slopes SW. Desc. 330 ft.
 40.17 Impracticable to set an iron post at this point. Set a
 malpais 18 X 12 X 6 ins., 12 ins. in the ground, for
 $\frac{1}{4}$ sec. cor., marked $\frac{1}{4}$ on N. face; and raise a mound of
 stone, 2 ft. base, $1\frac{1}{2}$ ft. high, N. of cor. Pits impracti-
 cable.
 52.55 Foot of desc. Thence over level land.
 60.35 Wash, 50 lks. wide, course SW.
 80.34 The cor. of secs. 3, 4, 9 and 10.
 Land, level and mountainous.
 Soil, rocky, 4th rate.
 No timber.
 Undergrowth, palo verde and greasewood.
 No grass.

O. R.
 Apr. 23, 1915.

Apr. 21, 1915. J. G.
 N.0° 2' W., on a random line, bet. secs. 3 and 4.
 40.00 Set temp. $\frac{1}{4}$ sec. cor.
 79.82 Intersect N. bdy. of Tp., 17 lks. W. of the cor. of secs.
 3, 4, 33 and 34, which is a stone, established by O.
 R., as described in Book "A".
 Thence I run
 S.0° 5' W., on a true line, bet. secs. 3 and 4.
 Over mountainous land, through scattering undergrowth.
 Asc. 155 ft. to
 4.05 Top of ridge, brs. E. and W. Desc. 85 ft. to
 13.90 Asc. 35 ft. to
 16.80 Desc. 365 ft. to
 36.10 Gulch, 50 lks. wide, course SW. Asc. 180 ft.
 39.82 Set an iron post, 3 ft. long, 1 in. diam., 26 ins. in the
 ground, for $\frac{1}{4}$ sec. cor., marked on brass cap
 1915 on S. rim;
 $\frac{1}{4}$ in N.,
 S3 in E. and
 S4 in W. half;
 and raise a mound of stone, 2 ft. base, $1\frac{1}{2}$ ft. high,
 W. of cor. Pits impracticable.
 43.05 Ridge, brs. E. and W. Desc. 215 ft. to
 54.80 Foot of desc.; thence over level land.
 68.80 Center of wash, 3 chs. wide, course SW.
 79.82 The cor. of secs. 3, 4, 9 and 10.
 Land, level and mountainous.
 Soil, rocky; 3rd and 4th rate.
 No timber.
 Undergrowth, greasewood and palo verde.

J. G.
 Apr. 21, 1915.

Apr. 16, 1915. O. R.
 At 8 hrs. 4 m., a.m., l.m.t., I set off 34° 30 $\frac{1}{2}$ ' N. on the
 lat. arc; 9° 54' N. on the decl. arc; and determine a
 meridian with the solar at cor. of secs. 4 & 33 and frac.
 secs. 75 & 32 on S. bdy. of the Tp., which is an iron
 post, established by Albert Smith, Jr., U. S. Surveyor,
 as described in Book "A".
 Thence I run
 N.0° 2' W., bet. sec. 33 and frac. sec. 32.

Subdivision of Fractional T. 14 N., R. 20 W. 19.

Chains.	
5.00	Over bottom land, through dense undergrowth. Road, brs. WSW and ENE.
10.00	Leave bottom land, brs. NW. and SE. Leave dense undergrowth, enter scattering undergrowth. Thence over rolling land.
37.26	Center of wash, 1 ch. wide, course W.
40.00	Set an iron post, 3 ft. long, 1 in. diam., 26 ins. in the ground, for $\frac{1}{4}$ sec. cor., marked on brass cap 1915 on S. rim; $\frac{1}{4}$ in N., S33 in E. and S32 in W. half; and raise a mound of stone, 2 ft. base, $1\frac{1}{2}$ ft. high, W. of cor. Pits impracticable.
80.00	Set an iron post, 3 ft. long, 2 ins. diam., 24 ins. in the ground, for cor. of secs. 28 & 33, & $\frac{1}{4}$ sec. cor. 29 & 32, marked on brass cap, 1915 on S. rim; T14N R20W in N. half; S29 in NW., S28 in NE., S33 in SE. and S32 in SW. quadrant; and raise a mound of stone, 2 ft. base, $1\frac{1}{2}$ ft. high, W. of cor. Pits impracticable. Land, level and rolling. Soil, 2nd and 4th rate, No timber. Undergrowth, greasewood, palo verde, cacti, mesquite and arrow-weed.
40.00	East on a random line, bet. secs. 28 and 33. Set temp. $\frac{1}{4}$ sec. cor.
80.02	Intersect N. and S. line, 68 lks. N. of the witness cor. to cor. of secs. 27, 28, 33 and 34, which is an iron post, set 60 lks. S. $0^{\circ}2'E.$ of true point for cor. of secs. 27, 28, 33 and 34, as hereinbefore described. From the true point for cor. of secs. 27, 28, 33 and 34, I run N. $89^{\circ}57'$ W., on a true line, bet. secs. 28 and 33. Over rolling land, through scattering undergrowth. Desc. slight SW. slope to
40.01	Set an iron post, 3 ft. long, 1 in. diam., 26 ins. in the ground, for $\frac{1}{4}$ sec. cor., marked on brass cap 1915 on S. rim; S28 in N., S33 in S. and $\frac{1}{4}$ in W. half; and raise a mound of stone, 2 ft. base, $1\frac{1}{2}$ ft. high, N. of cor. Pits impracticable.
80.02	Desc. slight SW. slope to The cor. of secs. 28, & 33 & $\frac{1}{4}$ sec. cor. 29 & 32. Land, rolling; drain SW. Soil, 4th rate. No timber. Undergrowth, greasewood, palo verde and sage brush.
28.00	West on a true line, bet. frac. secs. 29 and 32. Desc. gentle SW. slope, through scattering undergrowth. Road, brs. NE. to Yucca, and SW. to Parker.
28.50	Wire fence, brs. NE. and SW. Enter dense undergrowth and bottom land, brs. NW. and SE.
40.00	Set an iron post, 3 ft. long, 1 in. diam., 26 ins. in the ground, for $\frac{1}{4}$ sec. cor., marked on brass cap 1915 on S. rim; S29 in N., S32 in S. and

Chains.	<p>$\frac{1}{4}$ in W. half; dig pits, 18 X 18 X 12 ins., E. and W. of post, 3 ft. dist.; and raise a mound of earth, $3\frac{1}{2}$ ft. base, $1\frac{1}{2}$ ft. high, N. of cor.</p>
44.10	Chas. Hall's House brs. N. 1 ch. dist.
47.76	Set an iron post, 3 ft. long, 1 in. diam., 26 ins. in the ground, on the left bank of the Colorado River, at mean high water mark, for meander cor. of fractional secs. 29 and 32, marked on brass cap 1915 on S. rim; MC W. of center; T14N R20W in N. half; S29 in NE., and S32 in SE. sector; from which A cotton-wood, 14 ins. diam., brs. N. $31\frac{1}{2}^{\circ}$ E., 83 lks. dist., marked T14N R20W S29 MC BT. A cotton-wood, 14 ins. diam., brs. S. 70° E., 80 lks. dist., marked T14N R20W S32 MC BT.
	Land, level and rolling. Soil, sandy and rocky, 2nd and 4th rate. Timber, cotton-wood. Undergrowth, arrow-weed, greasewood, mesquite.
	N. 0° 2' W., bet. sec. 28 and frac. sec. 29. Over rolling land, through scattering undergrowth. Leave rolling, enter bottom land, brs. NE. and SW. Road, brs. NE. and SW.
10.00	
15.00	Wash, course SW.
40.00	Set an iron post, 3 ft. long, 1 in. diam., 26 ins. in the ground, for $\frac{1}{4}$ sec. cor., marked on brass cap 1915 on S. rim; $\frac{1}{4}$ in N., S28 in E. and S29 in W. half; and raise a mound of stone, 2 ft. base, $1\frac{1}{2}$ ft. high, W. of cor. Pits impracticable.
80.00	Set an iron post, 3 ft. long, 2 ins. diam., 24 ins. in the ground, for cor. of secs. 20, 21, 28 & frac. sec. 29, marked on brass cap, 1915 on S. rim; T14N R20W in N. half; S20 in NW., S21 in NE., S28 in SE. and S29 in SW. quadrant; and raise a mound of stone, 2 ft. base, $1\frac{1}{2}$ ft. high, W. of cor. Pits impracticable. Land, level bottom, and rolling. Soil, sandy, 3rd rate. Timber, none. Undergrowth, greasewood, palo verde, and sage brush. Apr. 16, 1915: At this cor., I set off $9^{\circ} 57\frac{1}{2}'$ N. on the decl. arc; and at apparent noon, I observe the sun on the meridian; the resulting lat. is $34^{\circ} 32'$ N.
40.00	S. $89^{\circ} 57'$ E., on a random line, bet. secs. 21 and 28. Set temp. $\frac{1}{2}$ sec. cor.
79.84	Intersect N. and S. line, 7 lks. S. of the cor. of secs. 21, 22, 27 and 28. Thence I run West on a true line, bet. secs. 21 and 28. Over rolling land, through scattering undergrowth.
14.95	Center of wash, 2 chs. wide, course SW.
39.92	Set an iron post, 3 ft. long, 1 in. diam., 26 ins. in the

Chains.	
53.05 79.84	<p>ground, for $\frac{1}{4}$ sec. cor., marked on brass cap 1915 on S. rim; S21 in N., S28 in S. and $\frac{1}{4}$ in W. half; and raise a mound of stone, 2 ft. base, $1\frac{1}{2}$ ft. high, N. of cor. Pits impracticable.</p> <p>Leave rolling land, enter bottom land, brs. NE. and SW. The cor. of secs. 21, and, 28 and frac. secs. 20 and 29. Land, level and rolling. Soil, gravelly and rocky, 4th rate. No timber. Undergrowth, greasewood, palo verde and sage brush. Poor grass.</p> <p style="text-align: right;">Apr. 16, 1915.</p>
40.00 45.00 49.00 72.20	<p>Apr. 17, 1915: At 8 hrs. 55 m., a.m., l.m.t., I set off $34^{\circ} 32'$ N. on the lat. arc; $10^{\circ} 16'$ N. on the decl. arc; and determine a meridian with the solar at the cor. of secs. 21, and, 28 and frac. secs. 20 and 29 Thence I run West on a true line, bet. frac. secs. 20 and 29. Over bottom land, through scattering timber and undergrowth.</p> <p>Set an iron post, 3 ft. long, 1 in. diam., 26 ins. in the ground, for $\frac{1}{4}$ sec. cor., marked on brass cap 1915 on S. rim; S20 in N., S29 in S. and $\frac{1}{4}$ in W. half; dig pits, 18 X 18 X 12 ins., E. and W. of post, 3 ft. dist.; and raise a mound of earth, $3\frac{1}{2}$ ft. base, $1\frac{1}{2}$ ft. high, N. of cor.</p> <p>Enter heavy undergrowth, brs. NW. and SE. Road, brs. NW. to Yucca, and SE. to Parker.</p> <p>Set an iron post, 3 ft. long, 1 in. diam., 26 ins. in the ground, on the left bank of the Colorado River, at mean high water mark, for meander cor. of fractional secs. 20 and 29, marked on brass cap 1915 on S. rim; MC W. of center; T14N R20W in N. half; S20 in NE. and S29 in SE. sector; from which A mesquite, 8 ins. diam., brs. N. 81° E., 28 lks. dist., marked T14N R20W S20 MC BT. A mesquite, 10 ins. diam., brs. S. 58° E., 24 lks. dist., marked T14N R20W S29 MC BT.</p> <p>Land, level and rolling. Soil, sandy loam, 3rd rate. Timber, cotton-wood. Undergrowth, greasewood, mesquite, cat claw and arrow-weed.</p>
18.10	<p>N. $0^{\circ} 2'$ W., bet. sec. 21 and frac. sec. 20. Over bottom land, through scattering undergrowth. Road, brs. NE. and SW.</p>
35.00	<p>Center of wash, 2 chs. wide, course SW. Leave bottom land, brs. NW. and SE. Thence over rolling land.</p>
40.00	<p>Set an iron post, 3 ft. long, 1 in. diam., 26 ins. in the ground, for $\frac{1}{4}$ sec. cor., marked on brass cap 1915 on S. rim; $\frac{1}{4}$ in N., S21 in E. and S20 in W. half;</p>

22 Subdivision of Fractional T. 14 N., R. 20 W.

Chains.

80.00 and raise a mound of stone, 2 ft. base, $1\frac{1}{2}$ ft. high, W. of cor. Pits impracticable.
 Set an iron post, 3 ft. long, 2 ins. diam., 24 ins. in the ground, for cor. of secs. 16, 17 and 21 and frac. sec. 20, marked on brass cap,
 1915 on S. rim;
 T14N R20W in N. half;
 S17 in NW.,
 S16 in NE.,
 S21 in SE. and
 S20 in SW. quadrant;
 and raise a mound of stone, 2 ft. base, $1\frac{1}{2}$ ft. high, W. of cor. Pits impracticable.
 Land, level and rolling.
 Soil, gravelly, 4th rate.
 No timber.
 Undergrowth, greasewood, palo verde and sage brush.

40.00 East on a random line, bet. secs. 16 and 21.
 79.98 Set temp. $\frac{1}{4}$ sec. cor.
 Intersect N. and S. line, 16 lks. N. of the cor. of secs. 15, 16, 21 and 22.
 Thence I run
 N. $89^{\circ} 53'$ W., on a true line, bet. secs. 16 and 21.
 Over rolling land, through scattering undergrowth.
 5.00 Center of wash, 1 ch. wide, course SW.
 39.99 Set an iron post, 3 ft. long, 1 in. diam., 26 ins. in the ground, for $\frac{1}{4}$ sec. cor., marked on brass cap
 1915 on S. rim;
 S16 in N.,
 S21 in S. and
 $\frac{1}{4}$ in W. half;
 and raise a mound of stone, 2 ft. base, $1\frac{1}{2}$ ft. high, N. of cor. Pits impracticable.
 74.55 Road, brs. NW. and SE.
 79.98 The cor. of secs. 16, 17 and 21 and frac. sec. 20.
 Land, level and rolling.
 Soil, gravelly, 4th rate.
 No timber.
 Undergrowth, greasewood, palo verde and sage brush.

40.00 West on a true line, bet. sec. 17 and frac. sec. 20.
 Over rolling land, through scattering undergrowth.
 Set an iron post, 3 ft. long, 1 in. diam., 26 ins. in the ground, for $\frac{1}{4}$ sec. cor., marked on brass cap
 1915 on S. rim;
 S17 in N.,
 S20 in S. and
 $\frac{1}{4}$ in W. half;
 and raise a mound of stone, 2 ft. base, $1\frac{1}{2}$ ft. high, N. of cor. Pits impracticable.
 Thence over broken land.
 80.00 Set an iron post, 3 ft. long, 2 ins. diam., 24 ins. in the ground, for cor. of sec. 17 and frac. secs. 18, 19 and 20, marked on brass cap,
 1915 on S. rim;
 T14N R20W in N. half;
 S18 in NW.,
 S17 in NE.,
 S20 in SE. and
 S19 in SW. quadrant;
 and raise a mound of stone, 2 ft. base, $1\frac{1}{2}$ ft. high, W. of cor. Pits impracticable.
 Land, rolling and broken.
 Soil, rocky, 4th rate.

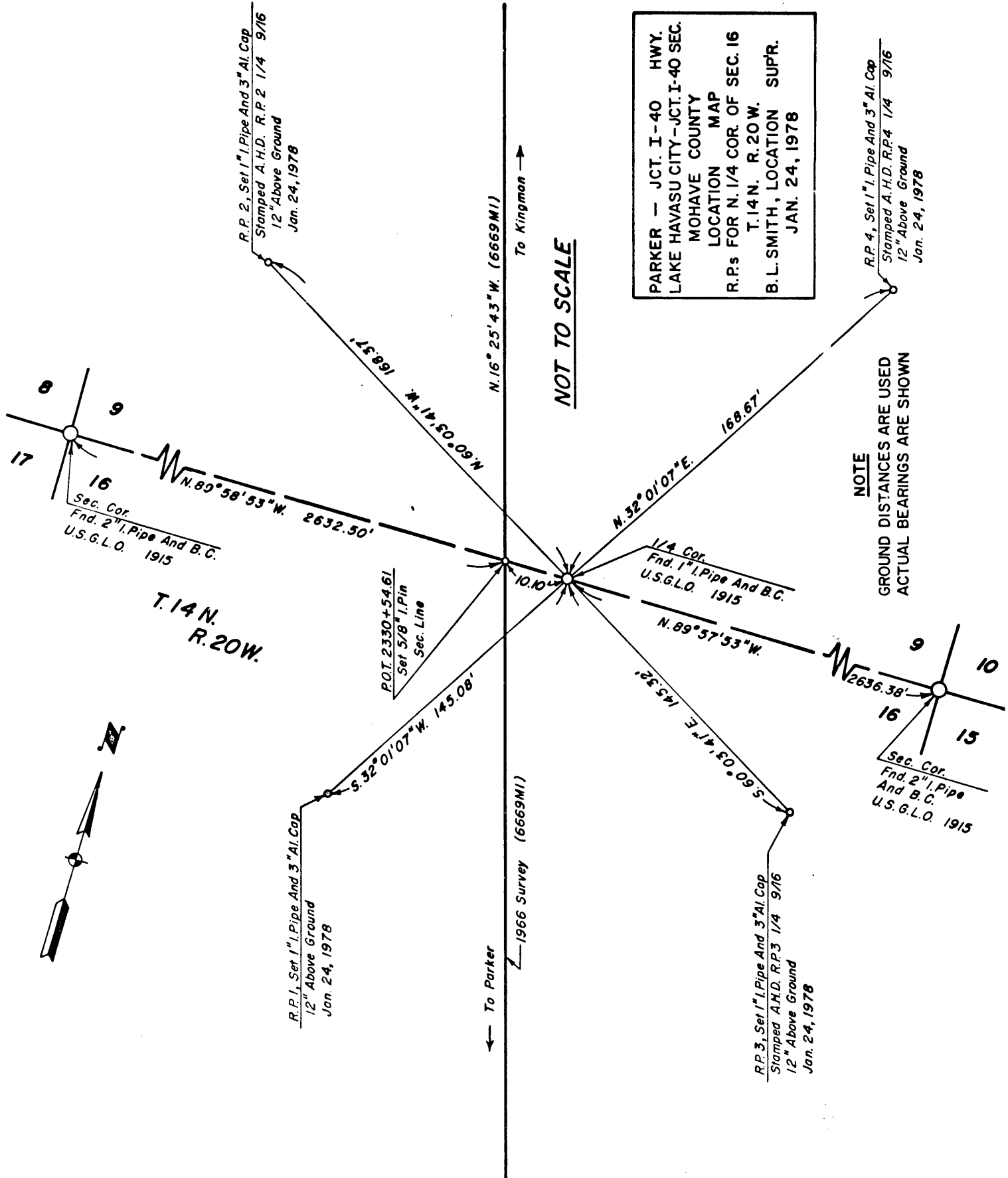
1131/78

Boyd:

Attached is a sketch showing R.P. placement for the N 1/4 S 16, T14N, R20W. The true corner will be buried under 4± feet of fill upon completion of construction.

C. I. Gatten
Sr. Loc. Eng'r
ADOT, Hwy Div.

ARIZONA STATE OFFICE	
BU. LAND MANAGEMENT	
FEB 3 '78	
SD	_____
ASSOC. SD	_____
PCS	_____
RESOURCES	_____
TECH SER	_____
MGM'T SER	_____
PUB. AFF	_____
CF	_____
_____	ACTION
_____	INFO.
_____	SEE ME



PARKER — JCT. I-40 HWY.
LAKE HAVASU CITY — JCT. I-40 SEC.
MOHAVE COUNTY
LOCATION MAP
R.P.s FOR N. 1/4 COR. OF SEC. 16
T. 14 N. R. 20 W.
B. L. SMITH, LOCATION SUP'R.
JAN. 24, 1978

NOT TO SCALE

NOTE
GROUND DISTANCES ARE USED
ACTUAL BEARINGS ARE SHOWN

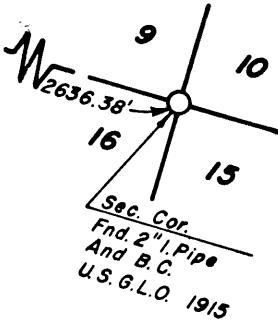
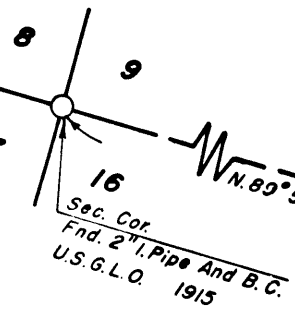


T. 14 N.
R. 20 W.

← To Parker

← 1966 Survey (6669MI)

To Kingman →



R.P. 1, Set 1" I. Pipe And 3" Al. Cap
12" Above Ground
Jan. 24, 1978

R.P. 3, Set 1" I. Pipe And 3" Al. Cap
Stamped A.H.D. R.P. 3 1/4 9/16
12" Above Ground
Jan. 24, 1978

R.P. 2, Set 1" I. Pipe And 3" Al. Cap
Stamped A.H.D. R.P. 2 1/4 9/16
12" Above Ground
Jan. 24, 1978

R.P. 4, Set 1" I. Pipe And 3" Al. Cap
Stamped A.H.D. R.P. 4 1/4 9/16
12" Above Ground
Jan. 24, 1978

P.O.T. 2330+54.61
Set 5/8" I. Pin
Sec. Line

1/4 Cor.
Fnd. 1" I. Pipe And B.C.
U.S.G.L.O. 1915

Sec. Cor.
Fnd. 2" I. Pipe
And B.C.
U.S.G.L.O. 1915

Subdivision of Fractional T. 14 N., R. 20 W. 23.

Chains.

No timber.
Undergrowth, greasewood and palo verde.
No grass.

N.0° 2' W., bet. secs. 16 and 17.
Over rolling and level land, through scattering undergrowth.

20.00 Dim road, brs. NW. and SE.
40.00 Set an iron post, 3 ft. long, 1 in. diam., 26 ins. in the ground, for $\frac{1}{4}$ sec. cor., marked on brass cap
1915 on S. rim;
 $\frac{1}{4}$ in N.,
S16 in E. and
S17 in W. half;
and raise a mound of stone, 2 ft. base, 1 $\frac{1}{2}$ ft. high, W. of cor. Pits impracticable.

80.00 Set an iron post, 3 ft. long, 2 ins. diam., 24 ins. in the ground, for cor. of secs. 8, 9, 16 and 17, marked on brass cap
1915 on S. rim;
T14N R20W in N. half;
S8 in NW.,
S9 in NE.,
S16 in SE. and
S17 in SW. quadrant;
and raise a mound of stone, 2 ft. base, 1 $\frac{1}{2}$ ft. high, W. of cor. Pits impracticable.
Land, level and rolling.
Soil, rocky, 4th rate.
No timber.
Undergrowth, greasewood and palo verde.
No grass.

S.89° 53' E., on a random line, bet. secs. 9 and 16.
40.00 Set temp. $\frac{1}{4}$ sec. cor.
80.00 Intersect N. and S. line, 16 lks. S. of the cor. of secs. 9, 10, 15 and 16,
Thence I run
West on a true line, bet. secs. 9 and 16.
Over rolling land, through scattering undergrowth.

40.00 Set an iron post, 3 ft. long, 1 in. diam., 26 ins. in the ground, for $\frac{1}{4}$ sec. cor., marked on brass cap
1915 on S. rim;
S9 in N.,
S16 in S. and
 $\frac{1}{4}$ in W. half;
and raise a mound of stone, 2 ft. base, 1 $\frac{1}{2}$ ft. high, N. of cor. Pits impracticable.

80.00 The cor. of secs. 8, 9, 16 and 17.
Land, level and rolling.
Soil, rocky, 4th rate.
No timber.
Undergrowth, greasewood, palo verde and mesquite.
No grass.

Apr. 17, 1915.

Apr. 21, 1915.
N.0° 2' W., bet. secs. 8 and 9.
Over broken land, through scattering undergrowth.

12.48 Center of wash, 2 chs. wide, course SW.
24.96 Center of wash, 1 ch. wide, course SW.
40.00 Set an iron post, 3 ft. long, 1 in. diam., 26 ins. in the

24

Subdivision of Fractional T. 14 N., R. 20 W.

Chains.

75.00	ground, for $\frac{1}{4}$ sec. cor., marked on brass cap 1915 on S. rim; $\frac{1}{4}$ in N., S9 in E. and S8 in W. half; and raise a mound of stone, 2 ft. base, $1\frac{1}{2}$ ft. high, W. of cor. Pits impracticable.
80.00	Center of wash, 1 ch. wide, course SW. Set an iron post, 3 ft. long, 2 ins. diam., 24 ins. in the ground, for cor. of secs. 4, 5, 8 and 9, marked on brass cap 1915 on S. rim; T14N R20W in N. half; S5 in NW., S4 in NE., S9 in SE. and S8 in SW. quadrant; and raise a mound of stone, 2 ft. base, $1\frac{1}{2}$ ft. high, W. of cor. Pits impracticable. Land, level and broken. Soil, rocky, 4th rate. No timber. Undergrowth, greasewood, palo verde and sage brush. No grass. Apr. 21, 1915: At this cor., I set off $11^{\circ} 42'$ N. on the dec decl. arc; and at apparent noon, I observe the sun on the meridian; the resulting lat. is $34^{\circ} 35'$ N.
40.00	East on a random line, bet. secs. 4 and 9. Set temp. $\frac{1}{4}$ sec. cor.
80.06	Intersect N. and S. line, at the cor. of secs. 3, 4, 9 and 10. Thence I run West on a true line, bet. secs. 4 and 9. Over rolling land, through scattering undergrowth.
40.03	Set an iron post, 3 ft. long, 1 in. diam., 26 ins. in the ground, for $\frac{1}{4}$ sec. cor., marked on brass cap 1915 on S. rim; S4 in N., S9 in S. and $\frac{1}{4}$ in W. half; and raise a mound of stone, 2 ft. base, $1\frac{1}{2}$ ft. high, N. of cor. Pits impracticable.
55.00	Center of wash, 1 ch. wide, course SW.
80.06	The cor. of secs. 4, 5, 8 and 9. Land, level and rolling. Soil, rocky, 4th rate. No timber. Undergrowth, greasewood, palo verde and sage brush. No grass. O. R. Apr. 21, 1915.
40.00	Apr. 22, 1915: J. G. N. $0^{\circ} 2'$ W., on a random line, bet. secs. 4 and 5. Set temp. $\frac{1}{4}$ sec. cor.
79.71	Intersect N. bdy. of Tp., 22 lks. W. of the cor. of secs. 4, 5, 32 and 33, which is an iron post, established by O. R., as described in Book "A". Thence I run S. $0^{\circ} 7'$ W., on a true line, bet. secs. 4 and 5. Over rolling and level land, through scattering under- growth.
14.65	Road, brs. NNW. to Yucca, and SSE. to Parker.
21.70	Center of wash, 2 chs. wide, course SW.

Subdivision of Fractional T. 14 N., R. 20 W.

25.

Chains.	
39.71	Set an iron post, 3 ft. long, 1 in. diam., 26 ins. in the ground, for $\frac{1}{4}$ sec. cor., marked on brass cap 1915 on S. rim; $\frac{1}{4}$ in N., S4 in E. and S5 in W. half; and raise a mound of stone, 2 ft. base, $1\frac{1}{2}$ ft. high, W. of cor. Pits impracticable.
47.90	Center of wash, 1 ch. wide, course SSW.
62.50	Center of wash, 1 ch. wide, course SW.
65.20	Road, brs. NE. to Yucca, and SW. to Parker.
79.00	Wash, 50 lks. wide, course WSW.
79.71	The cor. of secs. 4, 5, 8 and 9. Land, level and rolling. Soil, 2nd and 3rd rate. No timber. Undergrowth, greasewood, sage brush and palo verde. J. G. Apr. 22, 1915.
	Apr. 17, 1915: O. R. From the cor. of sec. 17 and frac. secs. 18, 19 and 20, I run, S. $0^{\circ} 3'$ E., on a true line, bet. frac. secs. 19 and 20. Over rolling land, through scattering undergrowth.
16.95	Enter bottom land, and dense undergrowth, brs. NW. and SE.
19.75	Road, brs. NW. to Yucca, and SE. to Parker.
40.00	Set an iron post, 3 ft. long, 1 in. diam., 26 ins. in the ground, for $\frac{1}{4}$ sec. cor., marked on brass cap 1915 on S. rim; $\frac{1}{4}$ in N., S20 in E. and S19 in W. half; from which A willow, 6 ins. diam., brs. N. $66\frac{1}{2}^{\circ}$ E., 20 lks. dist., marked $\frac{1}{4}$ S20 BT. A willow, 6 ins. diam., brs. N. $43\frac{1}{2}^{\circ}$ W., 45 lks. dist., marked $\frac{1}{4}$ S19 BT. Apr. 17, 1915.
	Apr. 21, 1915. From the $\frac{1}{4}$ sec. cor. bet. secs. 19 and 20, I continue S. $0^{\circ} 3'$ E.,
57.70	Set an iron post, 3 ft. long, 1 in. diam., 26 ins. in the ground, on the left bank of the Colorado River, at mean high water mark, for meander cor. of fractional secs. 19 and 20, marked on brass cap 1915 on S. rim; MC. S. of center; T14N R20W in N. half; S19 in NW. and S20 in NE. sector; from which A willow, 8 ins. diam., brs. N. 70° E., 24 lks. dist., marked T14N R20W S20 MC BT. A willow, 8 ins. diam., brs. N. 41° W., 15 lks. dist., marked T14N R20W S19 MC BT. Land, level bottom and rolling. Soil, sandy loam, 3rd rate. Timber, cotton-wood and willow. Undergrowth, greasewood, mesquite, willow, cat claw and arrow-weed.
	From the cor. of secs. 17 and frac. secs. 18, 19 and 20, I run West on a true line, bet. frac. secs. 18 and 19. Over rolling land, through scattering undergrowth.
8.50	Leave rolling, enter bottom land, covered with dense undergrowth, brs. NW. and SE.
10.40	Road, brs. N. to Yucca, and S. to Parker.
16.10	Set an iron post, 3 ft. long, 1 in. diam., 26 ins. in the

Chains.

ground, on the left bank of the Colorado River, at mean high water mark, for meander cor. of fractional secs. 18 and 19, marked on brass cap

1915 on S. rim;
MC W. of center;
T14N R20W in N. half;
S18 in NE., and
S19 in SE. sector; from which

A willow, 6 ins. diam., brs. N. $46\frac{1}{2}^{\circ}$ E., 21 lks. dist., marked T14N R20W S18 MC BT.

A willow, 8 ins. diam., brs. S. $35\frac{1}{2}^{\circ}$ E., 20 lks. dist., marked T14N R20W S19 MC BT.

Land, rolling and level bottom.

Soil, sandy, 3rd rate.

Timber, willow and cotton-wood.

Undergrowth, mesquite, palo verde, greasewood, arrow-weed and cacti.

Poor grass.

At 8 hrs 48 m., a.m., l.m.t., I set off $34^{\circ} 33'$ N. on the lat. arc; $11^{\circ} 39\frac{1}{2}'$ N. on the decl. arc; and determine a meridian with the solar at the cor. of sec. 17 and frac. secs. 18, 19 and 20

Thence I run

N. $0^{\circ} 3'$ W., bet. sec. 17 and frac. sec. 18.

Over mountainous land, through scattering undergrowth.

Asc. 135 ft. to

11.03 Spur, slopes SW. Desc. NW. slope 105 ft. to

16.71 Center of wash, 1 ch. wide, course SW. Asc. 40 ft. to

30.00 Desc. 35 ft.

35.00 Road, brs. NE. to Yucca, and SE. to Parker.

40.00 Set an iron post, 3 ft. long, 1 in. diam., 26 ins. in the ground, for $\frac{1}{4}$ sec. cor., marked on brass cap

1915 on S. rim;

$\frac{1}{4}$ in N.,

S17 in E. and

S18 in W. half;

and raise a mound of stone, 2 ft. base, $1\frac{1}{2}$ ft. high, W. of cor. Pits impracticable.

Asc. 55 ft. to

46.80 Desc. to

54.95 Center of wash, 3 chs. wide, course SW. Asc. SE. slope, 90 ft. to

74.90 Spur, slopes SW. Desc. NW. slope, 20 ft. to

80.00 Set an iron post, 3 ft. long, 2 ins. diam., 24 ins. in the ground, for cor. of secs. 8 and 17 and frac. secs. 7 and 18, marked on brass cap,

1915 on S. rim;

T14N R20W in N. half;

S 7 in NW.,

S8 in NE.,

S17 in SE. and

S18 in SW. quadrant;

and raise a mound of stone, 2 ft. base, $1\frac{1}{2}$ ft. high, W. of cor. Pits impracticable.

Land, rolling and mountainous.

Soil, sandy, 3rd rate.

No timber.

Undergrowth, greasewood, palo verde and mesquite.

East on a random line, bet. secs. 8 and 17.

40.00 Set temp. $\frac{1}{4}$ sec. cor.

80.04 Intersect N. and S. line, 12 lks. S. of the cor. of secs. 8, 9, 16 and 17.

Chains.

Thence I run
 S. 89° 55' W., on a true line, bet. secs. 8 and 17.
 Over rolling land, through scattering undergrowth.
 20.10 Center of wash, 3 chs. wide, course SW.
 26.55 Enter wash, course SW.
 39.30 Leave wash, course SW.
 40.02 Set an iron post, 3 ft. long, 1 in. diam., 26 ins. in the
 ground, for $\frac{1}{4}$ sec. cor., marked on brass cap
 1915 on S. rim;
 S8 in N.,
 S17 in S. and
 $\frac{1}{4}$ in W. half;
 and raise a mound of stone, 2 ft. base, $1\frac{1}{2}$ ft. high,
 N. of cor. Pits impracticable.
 47.55 Enter wash, course SW.
 48.55 Road, brs. NE. to Yucca and SW. to Parker.
 66.65 Leave wash, course SW.
 80.04 The cor. of secs. 8 and 17 and frac. secs. 7 and 18.
 Land, rolling.
 Soil, rocky, 4th rate.
 No timber.
 Undergrowth, greasewood, palo verde and sage brush.
 No grass.

O. R.
 Apr. 21, 1915.

Apr. 22, 1915: J. G.
 At 8 hrs. 15 m., a.m., 1.m.t., I set off 34° 34' N. on the
 lat. arc; 11° 59 $\frac{1}{2}$ ' N. on the decl. arc; and determine
 a meridian with the solar at the cor. of secs. 8 and 17
 and frac. secs. 7 and 18
 Thence I run
 West on a true line, bet. frac. secs. 7 and 18.
 Over rolling land, through scattering undergrowth.
 37.50 Gulch, 50 lks. wide, course S.
 40.00 Set an iron post, 3 ft. long, 1 in. diam., 26 ins. in the
 ground, for $\frac{1}{4}$ sec. cor., marked on brass cap
 1915 on S. rim;
 S7 in N.,
 S18 in S. and
 $\frac{1}{4}$ in W. half;
 and raise a mound of stone, 2 ft. base, $1\frac{1}{2}$ ft. high,
 N. of cor. Pits impracticable.
 40.50 Desc. 45 ft. to
 42.28 Set an iron post, 3 ft. long, 1 in. diam., 26 ins. in the
 ground, on the left bank of the Colorado River, 8 ft.
 above water level, for meander cor. of fractional secs.
 7 and 18, marked on brass cap
 1915 on S. rim;
 MC W. of center;
 T14N R20W in N. half;
 S7 in NE. and
 S18 in SE. sector;
 dig a pit, 36 X 36 X 12 ins., 8 ft. E. of post, and
 raise a mound of earth, 4 ft. base, 2 ft. high, E. of
 cor.
 Land, level and rolling.
 Soil, 2nd and 3rd rate.
 No timber.
 Undergrowth, greasewood, and sage brush.

N. 0° 3' W., bet. sec. 8 and frac. sec. 7.
 Over rolling land, through scattering undergrowth.
 40.00 Set an iron post, 3 ft. long, 1 in. diam., 26 ins. in the

Chains.	<p>ground, for $\frac{1}{4}$ sec. cor., marked on brass cap 1915 on S. rim; $\frac{1}{4}$ in N., S8 in E. and S7 in W. half; dig pits, 18 X 18 X 12 ins., N. and S. of post, 3 ft. dist.; and raise a mound of earth, $3\frac{1}{2}$ ft. base, $1\frac{1}{2}$ ft. high, W. of cor.</p>
46.00	Enter wash, course SW.
70.50	Leave wash, course SW.
80.00	Set an iron post, 3 ft. long, 2 ins. diam., 24 ins. in the ground, for cor. of secs. 5, 6, and 8, and frac. sec. 7, brass marked on brass cap, 1915 on S. rim; T14N R20W in N. half; S6 in NW., S5 in NE., S8 in SE. and S7 in SW. quadrant; and raise a mound of stone, 2 ft. base, $1\frac{1}{2}$ ft. high, W. of cor. Pits impracticable.
	Land, rolling. Soil, 2nd and 3rd rate. No timber. Undergrowth, greasewood and sage brush.
40.00	N. $89^{\circ} 55'$ E., on a random line, bet. secs. 5 and 8. Set temp. $\frac{1}{4}$ sec. cor.
79.88	Intersect N. and S. line, 4 lks. N. of the cor. of secs. 4, 5, 8 and 9. Thence I run S. $89^{\circ} 57'$ W., on a true line, bet. secs. 5 and 8. Over rolling and level land, through scattering under- growth.
.55	Wash, 50 lks. wide, course SW.
8.25	Road, brs. N. to Yucca, and S. to Parker.
21.40	Enter wash, course SSW.
36.90	Leave wash, course SSW.
39.94	Set an iron post, 3 ft. long, 1 in. diam., 26 ins. in the ground, for $\frac{1}{4}$ sec. cor., marked on brass cap 1915 on S. rim; S5 in N., S8 in S. and $\frac{1}{4}$ in W. half; and raise a mound of stone, 2 ft. base, $1\frac{1}{2}$ ft. high, N. of cor. Pits impracticable.
41.90	Center of wash, 2 chs. wide, course SSW.
64.40	Enter wash, course S.
72.40	Leave wash, course S.
79.88	The cor. of secs. 5, 6, and 8, and frac. sec. 7. Land, rolling. Soil, 2nd and 3rd rate. No timber. Undergrowth, greasewood and sage brush. Apr. 22, 1915: At this cor., I set off $12^{\circ} 2\frac{1}{2}'$ N. on the decl. arc; and at apparent noon, I observe the sun on the meridian; the resulting lat. is $34^{\circ} 35'$ N.
40.00	West on a random line, bet. sec. 6 and frac. sec. 7. Set temp. $\frac{1}{4}$ sec. cor.
79.08	Intersect W. bdy. of Tp., 36 lks. N. of cor. of sec. 6 and frac. secs. 1, 7 and 12, which is an iron post, established by O. R., as described in Book "A". Thence I run N. $89^{\circ} 45'$ E., on a true line, bet. sec. 6 and frac. sec. 7.

Chains.

1.55 Over rolling land, through scattering undergrowth.
Asc. 50 ft. to

6.20 Desc. 45 ft. to

11.20 Asc. 85 ft. to

24.10 Thence over rolling land.

39.08 Set an iron post, 3 ft. long, 1 in. diam., 26 ins. in the ground, for $\frac{1}{4}$ sec. cor., marked on brass cap
1915 on S. rim;
S6 in N.,
S7 in S. and
 $\frac{1}{4}$ in E. half;
and raise a mound of stone, 2 ft. base, $1\frac{1}{2}$ ft. high, N. of cor. Pits impracticable.

78.60 Center of wash, 80 lks. wide, course SSW.

79.08 The cor. of secs. 5, 6, and 8 and frac.sec.7.
Land, rolling and hilly.
Soil, 2nd and 3rd rate.
No timber.
Undergrowth, greasewood, palo verde and sage brush.

40.00 N.0° 3' W., on a random line, bet. secs. 5 and 6.
Set temp. $\frac{1}{4}$ sec. cor.

79.73 Intersect N. bdy. of Tp., 18 lks. W. of the cor. of secs. 5, 6, 31 and 32, which is an iron post, established by O. R., as described in Book "A".
Thence I run
S.0° 5' W., on a true line, bet. secs. 5 and 6.
Over rolling and level land, through scattering undergrowth.

39.73 Set an iron post, 3 ft. long, 1 in. diam., 26 ins. in the ground, for $\frac{1}{4}$ sec. cor., marked on brass cap
1915 on S. rim;
 $\frac{1}{4}$ in N.,
S5 in E. and
S6 in W. half;
and raise a mound of stone, 2 ft. base, $1\frac{1}{2}$ ft. high, W. of cor. Pits impracticable.

61.50 Center of wash, 1 ch. wide, course SSW.

79.73 The cor. of secs. 5, 6, and 8 and frac.sec.7.
Land, level and rolling.
Soil, 2nd and 3rd rate.
No timber.
Undergrowth, greasewood, palo verde and sage brush.

J. G.
Apr. 22, 1915.

Meanders of the Left Bank of the Colorado River

30

within, Fractional T. 14 N., R. 20 W.

30.

Meanders of the left bank of the Colorado River, up stream.

O. R. Apr. 22, 1915.

I commence at the meander cor. of fracl. secs. 5 and 32, on the S. bdy. of the Tp., which is an iron post, established by Albert Smith, Jr., U. S. Surveyor, as described in Book "A".

At this cor., at 8 hrs. 0 m., a.m., l.m.t., I set off $34^{\circ} 30\frac{1}{2}'$ N. on the lat. arc; $11^{\circ} 59\frac{1}{2}'$ N. on the decl. arc; and determine a meridian with the solar.

Thence I run with meanders in fractional sec. 32.

Over bottom land, through scattering timber and dense undergrowth.

N. $35\frac{1}{2}^{\circ}$ W. 1.40 chs.

N. $12\frac{1}{4}^{\circ}$ W. 25.00 "

N. $12\frac{1}{4}^{\circ}$ W. 16.70 "

N. $11\frac{1}{2}^{\circ}$ W. 29.00 "

N. $13\frac{1}{4}^{\circ}$ W. 10.00 "

To the meander cor. of fracl.

secs. 29 and 32.

Land, river bottom.

Soil, sandy loam, 1st rate.

Timber, scattering willow and cotton-wood.

Undergrowth, dense mesquite, cat claw, willow and arrow-weed.

Thence in fractional sec. 29.

Over bottom land, through scattering timber and dense undergrowth.

N. 35° W. 1.50 chs.

N. 17° W. 4.10 chs.

N. $14\frac{1}{4}^{\circ}$ W. 14.00 "

N. $16\frac{1}{4}^{\circ}$ W. 31.00 "

N. $16\frac{3}{4}^{\circ}$ W. 22.00 "

N. 20° W. 9.30 "

N. 30° W. 2.00 "

To the meander cor. of fracl.

secs. 20 and 29.

Land, river bottom.

Soil, sandy loam, 1st rate.

Timber, scattering willow and cotton-wood.

Undergrowth, mesquite, cat claw and willow.

Apr. 22, 1915: At this cor., I set off $12^{\circ} 2\frac{1}{2}'$ N. on the decl. arc; and at apparent noon, I observe the sun on the meridian; the resulting lat. is $34^{\circ} 32'$ N.

Thence in fractional sec. 20.

Over bottom land, through dense undergrowth, and scattering timber.

N. $47\frac{1}{2}^{\circ}$ W. 1.30 chs.

N. 18° W. 22.40 "

To the meander cor. of fracl.

secs. 19 and 20.

Land, river bottom.

Soil, sandy loam, 1st rate.

Timber, scattering willow and cotton-wood.

Undergrowth, willow, mesquite, arrow-weed and cacti.

No grass.

Apr. 22, 1915.

Meanders of the Left Bank of the Colorado River
within Fractional T. 14 N., R. 20 W.

Chains.

Meanders of the left bank of the Colorado River, up stream.

Apr. 23, 1915: At 8 hrs. 6 m., a.m., l.m.t., I set off
34° 32½' N. on the lat. arc; 12° 19½' N. on the decl.
arc; and determine a meridian with the solar at the
meander cor. of fractional secs. 19 and 20.

Thence I run with meanders in fractional sec. 19.

Over bottom land, through dense undergrowth and scattering
timber.

N.17° W. 8.30 chs.

N.16¼° W. 9.10 "

N.14¾° W. 14.80 "

N.13½° W. 13.90 "

N.17½° W. 14.00 "

To the meander cor. of fract.

secs. 18 and 19.

Land, river bottom.

Soil, sandy, loam, 1st rate.

Timber, willow and cotton-wood.

Undergrowth, mesquite, cat claw, arrow-weed and willow.

Thence in fractional sec. 18.

Over bottom land, through scattering timber and dense
undergrowth.

N.15¾° W. 14.50 chs.

N.17½° W. 7.90 "

N.17½° W. 13.40 "

N.19½° W. 13.40 "

N.20° W. 2.50 "

N.22½° W. 1.80 "

N.22¾° W. .90 "

N. 4° E. .80 "

At end of course, 4 in. iron
post, marked U S G S Bench
Mark, Datum "Y", brs. N.88° 4'
E., 294 lks. dist.

N.18½° W. 12.90 "

N.19° 58' W. 16.06 "

To the meander cor. of fract.

secs. 7 and 18.

Land, river bottom.

Soil, sandy and rocky, 2nd rate.

Timber, willow and cotton-wood.

Undergrowth, arrow-weed, mesquite, cat claw and willow.

Apr. 23, 1915: At this cor., I set off 12° 22½' N. on the
decl. arc; and at apparent noon, I observe the sun on
the meridian; the resulting lat. is 34° 34' N.

O. R.

J. G.

Apr. 23, 1915: At 8 hrs. 4 m., a.m., l.m.t., I set off 34°
34' N. on the lat. arc; 12° 19½' N. on the decl. arc;
and determine a meridian with the solar at the meander
cor. of fractional secs. 7 and 18.

Thence I run with meanders in fractional sec. 7.

Over broken W. slope, bank 30 ft. high, through scattering
timber and undergrowth.

N.17½° W. 12.30 chs. At 5.20 chs., enter bottom land,
and dense undergrowth, brs.
NE. and SW.

N.45½° W. 6.60 " At 5 chs., leave brush; thence
over points of spurs, br. S.
Banks 40 ft. high.

N.30° W. 5.60 "

N.25° W. 13.30 "

N.11° W. 16.40 "

Over steep, broken bluffs, 60
to 100 ft. above water.

Meanders of the Left Bank of the Colorado River

~~Within, Fractional T. 14 N., R. 20 W.~~

Meanders of the left bank of the Colorado River, up stream.

N. 54° 14' W. 20.78 chs. Desc. 90 ft. to 5.00 chs.;
thence over level land to meander cor. of frac. secs. 7,
and 12, on W. bdy. of Twp. described in book "A".

Land, level and hilly.

Soil, 3rd and 4th rate on hills; 1st and 2nd rate on
bottom land.

Timber, scattering cotton-wood.

Undergrowth, mesquite, cat claw and arrow-weed.

J. G.

Apr. 23, 1915.

GENERAL DESCRIPTION.

This township lies at the foot of the Chemehuevis mountains, and is made fractional by the Colorado River, which forms its W. bdy. and also the bdy. between Arizona and California. The entire Tp. drains to the SW. through numerous sandy washes running nearly parallel to the edge of the river bottom, where they nearly all end. The NE. cor. of the Tp., consisting of about 5 secs. lies on the slope of the mountains, and is rough and rocky.

The soil (except on the river bottom) is sandy and rocky, supporting a scant vegetation, of mesquite, greasewood and palo verde.

The soil on the river bottom is a deep silt. The bottoms are from one-quarter to three-quarters of a mile wide, covered with dense undergrowth of mesquite, cat claw, arrow-weed, etd., and most of them are subject to overflow.

Except for the Colorado River, there is no water in this Tp.

The only settlement is in sec. 29, Although there are numerous evidences of mining locations, there are no actual mining operations.

The altitude ranges from about 400 ft. to 1500 ft.

U. S. Surveyor.

U. S. Transition.

164
33

For Certificate of U.S. Surveyor and U.S. Transitman
see page II, book "B" of this Group

FINAL OATH OF UNITED STATES SURVEYOR.

I, _____, U. S. Surveyor, do solemnly swear that, in pursuance
of special instructions received from the U. S. Surveyor General for _____
bearing date of the _____ day of _____, 191 _____, I have well, faithfully, and truly,
in my own proper person, and in strict conformity with said instructions, the Manual of Surveying
Instructions, and the laws of the United States, surveyed all those parts or portions of _____

_____ of the _____
_____ Meridian, in the State of _____, which are represented in
the foregoing field notes as having been executed by me, and under my direction; and I do further
solemnly swear that all the corners of said survey have been established and perpetuated in strict accord-
ance with the Manual of Surveying Instructions, and the special written instructions of the U. S. Surveyor
General for _____ and in the specific manner described in the field notes, and that
the foregoing are the original field notes of such survey.

U. S. Surveyor.

Subscribed by said _____, and sworn to before me }
this _____ day of _____, 191 _____ }



APPROVAL.

OFFICE OF THE UNITED STATES SURVEYOR GENERAL,

Phoenix, Arizona, April 10 _____, 1917.

The foregoing field notes of the survey of the Subdivision lines and
the Meanders of the Left Bank of the Colorado River
within _____ Frac. Township 14 North, Range 20 West,
of the Gila and Salt River Base and Meridian, in the State of Arizona

executed by Otis Ross, U.S. Surveyor and

John Gonin, U.S. Transitman

under special instructions dated December 28, 1914 for Group 42, Arizona, having been
critically examined, and the necessary corrections and explanations made, the said field notes, and the
surveys they describe, are hereby approved.

Surveyor General
of Arizona.

~~I certify that the foregoing transcript of the field notes of the above described surveys in _____
_____ has been correctly copied from the original notes on file in this office.~~