

2990

Book "A"

4-679

BOOK 2100

257

(1)

(Reservation Boundary)

# FIELD NOTES

Retracement and Resurvey

2990

1

of the

BOUNDARIES

of the

ABANDONED DATE CREEK MILITARY RESERVATION IN TOWNSHIPS 10 AND

11 NORTH, RANGE 7 WEST, AND TOWNSHIP 11 NORTH, RANGE 6 WEST,

*Of the Gila and Salt River Base and Meridian,*

*In the State of Arizona.*

EXECUTED BY

Chas. M. Pidgeon,

U. S. Surveyor,

under instructions dated May 17, 1912,  
issued by the Commissioner of the General Land Office.

2990

Retracement

and Re-Survey commenced December 24, 1912

Retracement

and Re-Survey completed January 4, 1913.

BOOK 2800

Book "A"  
Group N<sup>o</sup> 70 - Arizona  
*SEE SPECIAL INDEX DIAGRAM*  
*on page 2 hereof*

# INDEX DIAGRAM.

SEE SPECIAL INDEX

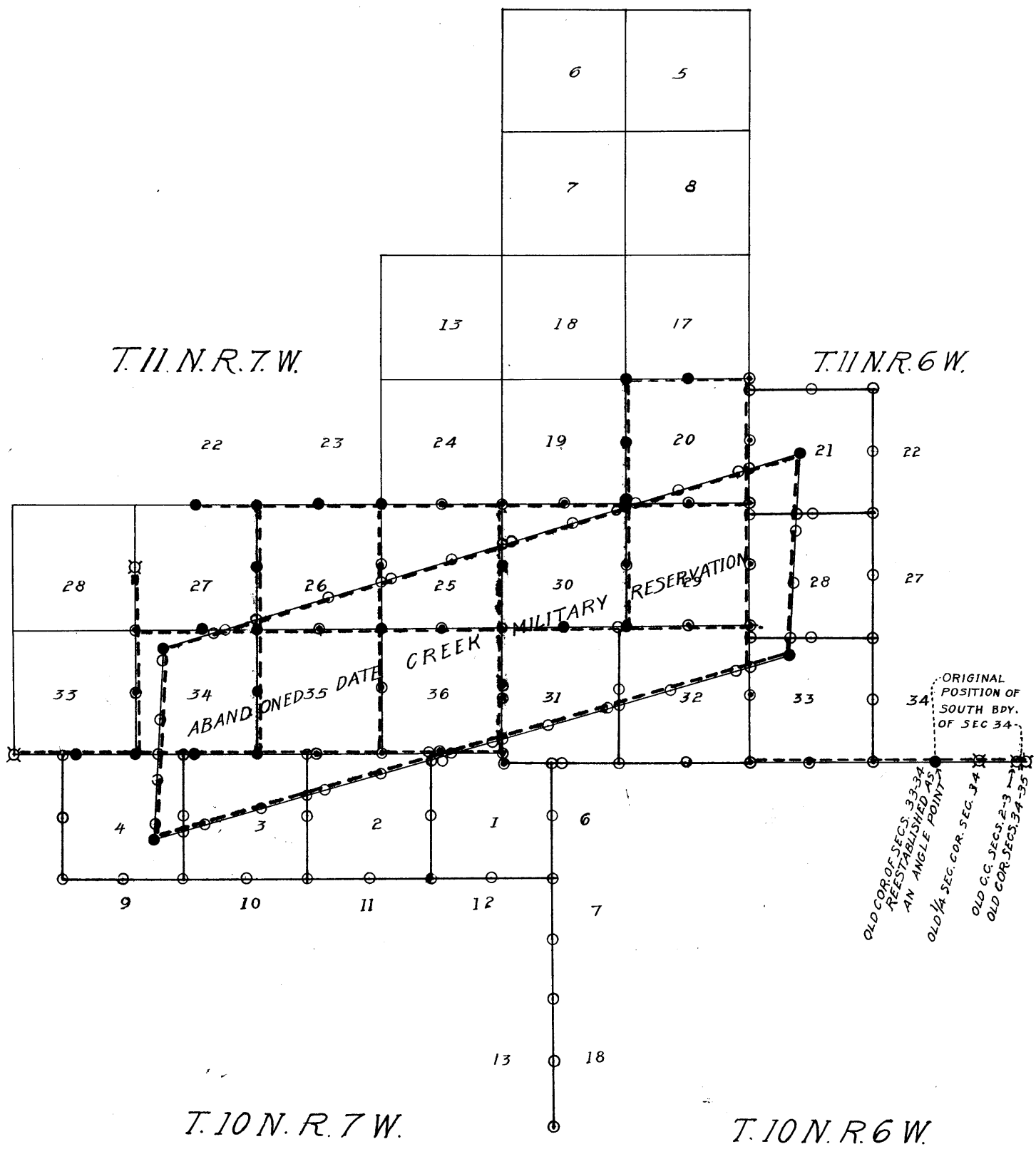
Township ..... , Range .....

6	5	4	3	2	1
7	8	9	10	11	12
18	17	16	15	14	13
19	20	21	22	23	24
30	29	28	27	26	25
31	32	33	34	35	36

# DIAGRAM OF CORNERS GROUP 70 ARIZONA

1A

BOOK 2880

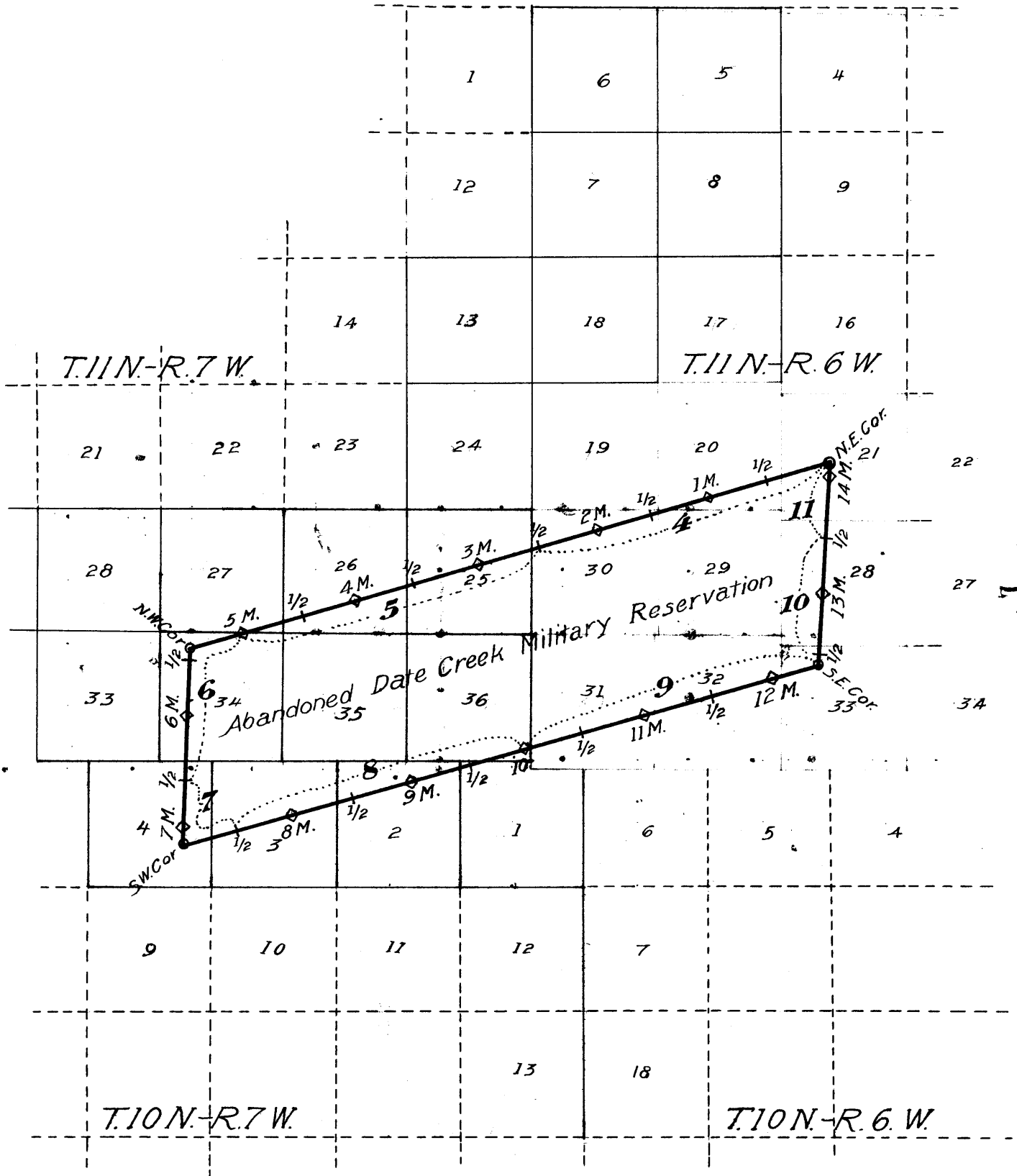


- Original cors. found & reestablished under this group.
- ◻ Original cors. found. No change made in same.
- ⊙ Cors. reestablished by proportion, where old cors. are lost.
- New cors. established under this group.
- Lines surveyed under this group.
- Lines retraced or resurveyed under this group.
- Accepted surveys.

INDEX DIAGRAM - BOOK "A"

GROUP 70 2990  
ARIZONA

BOOK 2990



- 2990 ——— Notes in this book (indexed)
- 2991 ——— Notes in Book "B" of this group
- 2992 ——— Notes in Book "C" of this group
- 2993 ——— Notes in Book "D" of this group
- Accepted Surveys
- - - - - Unserved Lines

Retracement & Resur. of Bdrs. of Abandoned Date Creek Mil. Reservation 3

Chains.

Retracement and Resurvey commenced Dec. 25, 1912, and executed by Charles M. Pidgeon, U.S. Surveyor, with a Lietz light mountain transit. Description of instrument and tests in Book "B."

December 26, 1912.

I locate the east gable of the old hospital from the ruins of adobe walls at Camp Date Creek. At this point, I set off 34° 16' N. on the lat. arc; 23° 20 1/2' S. on the decl. arc, and determine a meridian with the solar at 2h. 6m. p.m., l.m.t.

From this point, Lount's Lookout, a prominent conical peak, brs. N. 33° 51' E.

From the east gable of old hospital, I run N. 48° 54' E. (original bearing) on a random line, to locate the original NE. cor. of the Reservation. At 176.67 chs., an old pine post, 4x4x36 ins. lying in a small clump of brush, brs. N. 87° 39' E., 6.02 chs. dist. It is marked U.S. with other marks, illegible, so I accept it as the original NE. cor. of the Reservation.

Dec. 27, 1912. I destroy the original NE. cor. described above, and reestablish it in same place, as follows:

I set an iron post 3 ft. long, 3 ins. in diam., 24 ins. in the ground, for NE. cor. of Abandoned Date Creek Military Reservation, with brass cap, marked 1912, P L on N. half; with M.R. NE. cor. in SW. quadrant; and raise a mound of stone 3 ft. base, 2 ft. high, SW. of cor., from which,

A granite boulder 6 ft. sq., 3 ft. high, marked B O, brs. E. 10 lks. dist.

East gable of old hospital brs. S. 50° 06' W., 181.40 chs. dist.

Cor. stands in granite formation, on low spur, sloping E.

At 8h. 5m. a.m., l.m.t., at this cor., I set off 34° 17' N. on the lat. arc; 23° 16 1/2' S. on the decl. arc; and determine a meridian with the solar.

Thence I run, retracing the boundaries of the Abandoned Date Creek Military Reservation,

S. 72° 42' W. (original course) on a random line, on N. bdy. of Reservation.

434.65 Fall 2.28 chs. S. 27° E. of a pine post, 4x4x34 ins., marked U.S. on one face, which I take to be the original NW. cor. of Reservation.

The true course and dist. of N. bdy. of Reservation is therefore S. 73° W., 435.02 chs.

Thence I run,

S. 1° 17' W. (original course) on a random line, on W. bdy. of Reservation.

128.21 Fall 97 lks. east of the original SW. cor. of Reservation, which is a pine post 4x4x30 ins. above ground, marked U.S. on four sides.

The true course and dist. of W. bdy. of Reservation is therefore S. 1° 43' W., 128.25 chs.

Thence I run,

N. 72° 42' E., (original course) on a random line, on S. bdy. of Reservation.

430.17 Fall 5.52 chs. N. 27° W. of original SE. cor. of Reservation, which is a decayed pine post, faintly marked on two faces, and falls in granite boulders on rocky spur.

East gable of old hospital at Camp Date Creek, brs. N. 80° 38' W. from this cor.

True course and dist. of S. bdy. of Reservation is therefore N. 73° 26' E. 431.18 chs.

Thence I run,

N. 2° 58' E. on E. bdy. of Reservation on random line, for distance only, the NE. cor. being in sight.

132.45 The reestablished NE. cor. of the Reservation, hereinbefore described,

The true course and dist. of the E. bdy. is therefore N. 2° 58' E., 132.45 chs.

Dec. 27, 1912.

## 4. Resurvey of the North bdy. of Abandoned Date Creek Mil. Reservation

Chains.

- Dec. 30, 1912. I begin at the reestablished NE. cor. of the Reservation, hereinbefore described.
- Thence I run,  
S. 73° W. on north bdy. of Reservation, on 1st mile.  
Over rolling land.
- 17.00 Dry wash, 60 lks. wide, course NW.  
20.60 Dry wash, 60 lks. wide, course SW.  
40.00 Set an iron post, 3 ft. long, 1 in. in diam., 26 ins. in the ground for  $\frac{1}{2}$  mile cor., with brass cap, marked 1912 P L,  $\frac{1}{2}$  M on the N., and M R on S. half; and raise a mound of stone 2 ft. base,  $1\frac{1}{2}$  ft. high, S. of cor. Pits impracticable.
- House of J. H. Howard, brs. S. 20 $\frac{1}{4}$ ° E., 20 chs. dist.  
46.82 Wire fence, brs. N. and S. Ascend.  
54.82 Center line of S. F. P. & P. R. R. brs. N. 17° W., and S. 17° E.  
59.20 Low spur, slopes S. Descend.  
64.40 Wagon road brs. NW. and SE.  
71.90 Dry wash, course SW. 10 lks. wide.  
79.90 Dry wash, course S. 20 lks. wide.  
80.00 Set an iron post, 3 ft. long, 2 ins. in diam., 24 ins. in the ground, for 1M cor., with brass cap, marked 1912, P L 1M on N., and M R on S. half; and raise a mound of stone 2 ft. base,  $1\frac{1}{2}$  ft. high, S. of cor. Pits impracticable.
- Land, rolling and hilly.  
Soil, light sandy loam, much eroded on the slopes, 3rd rate.  
Scattering mesquite on W. half;
- 
- Thence I run,  
S. 73° 00' W., on N. bdy. of Reservation, on 2nd mile.  
Over rolling land, thru. scattering mesquite.
- 15.40 Dry wash, 10 lks. wide, course SW.  
40.00 Set an iron post, 3 ft. long, 1 in. in diam., 26 ins. in the ground for  $1\frac{1}{2}$  M. cor., with brass cap, marked 1912, P L  $1\frac{1}{2}$  M. on N., and M R on S. half; and raise a mound of stone 2 ft. base,  $1\frac{1}{2}$  ft. high, S. of cor. Pits impracticable.
- 46.40 Dry wash, 15 lks. wide, course SW.  
50.00 Dry wash, 15 lks. wide, course S.  
74.90 Cottonwood Creek, 130 lks. wide, 4 ft. deep, course SW.  
80.00 Set an iron post, 3 ft. long, 2 ins. diam., 24 ins. in the ground, for 2M. cor., with brass cap, marked 1912, P L 2M. on N., and M R on S. half; dig pits 36x36x12 ins. on line, NE and SW. of post, 3 ft. dist., and raise a mound of earth 3 ft. base, 2 ft. high, S. of cor.
- Land, rolling.  
Soil, sandy and gravelly, 3rd rate.  
Scattering mesquite.
- 
- Thence I run,  
S. 73° 00' W., on N. bdy. of Reservation, on 3rd mile.  
Ascend over rolling land.
- 40.00 Set an iron post, 3 ft. long, 1 in. in diam., 26 ins. in the ground, for  $2\frac{1}{2}$  M. cor., with brass cap, marked 1912, P L  $2\frac{1}{2}$  M. on N., and M R on S. half; dig pits 18x18x12 ins. on line NE. and SW. of post, 3 ft. dist., and raise a mound of earth 3 ft. base,  $1\frac{1}{2}$  ft. high, S. of cor.

## Resurvey of North bdy. of Abandoned Date Creek Mil. Reservation 5.

Chains.

- 72.00 Enter lave bed, brs. NNW. and SSE.  
 80.00 Set an iron post 3 ft. long, 2 ins. in diam., 14 ins. in the ground, to solid rock, in a mound of stone, for 3M. cor. with brass cap, marked  
 1912,  
 P L 3M on N., and  
 M R on S. half;  
 and raise ammound of stone, 2 ft. base,  $1\frac{1}{2}$  ft. high, S. of cor. Pits impracticable.  
 Land, rolling and level, covered with lava boulders.  
 Soil, sandy loam, 2nd rate, good grazing.  
 Scattering mesquite.

Thence 1 run;

S  $73^{\circ} 00' W.$  on N. bdy. of Reservation, on 4th mile.  
Over rolling land.

- 4.60 SE. edge of canon; descend.  
 7.40 Diversion ditch, 10 lks. wide, 9 ins. deep, course SW.  
 8.30 Creek in bottom of canon, 50 ft. below rim of canon, 10 lks. wide, course SW.  
 40.00 Set an iron post 3 ft. long, 1 in. in diam., 26 ins. in the ground, for  $3\frac{1}{2}$ M. cor., with brass cap, marked  
 1912,  
 P L  $3\frac{1}{2}$ M. on N., and  
 M R on S. half;  
 and raise a mound of stone, 2 ft. base,  $1\frac{1}{2}$  ft. high, S. of cor. Pits impracticable.  
 50.00 East edge of reservoir. extends 4 chs. N. and 8 chs. S., 8 chs. in width.  
 60.00 Road brs. N. and S.  
 78.50 Low spur, extends S.  
 80.00 Set an iron post, 3 ft. long, 2 ins. in diam., 24 ins. in the ground, for 4 mile cor., with brass cap, marked,  
 1912,  
 P L 4M. on N., and  
 M R on S. half;  
 dig pits  $36 \times 36 \times 12$  ins. on line, NE. and SW. of post, 3 ft. dist., and raise a mound of earth  $3\frac{1}{2}$  ft. base, 2 ft. high, S. of cor.  
 From this cor., Fogel's house brs. S.  $33\frac{1}{2}^{\circ} E.$  about 20 chs. dist.  
 Land, rolling mesa, covered with large boulders.  
 Soil, sandy, gravelly loam, 2nd and 3rd rate.  
 Scattering mesquite.  
 At this cor. I set off  $23^{\circ} 08\frac{1}{2}' S.$  on the decl. arc; and at apparent noon, observe the sun on the meridian; the resulting latitude is  $34^{\circ} 16' N.$

Thence I run.

S.  $73^{\circ} 00' W.$ , on N. bdy. of Reservation on 5th. mile.

A scend over rolling land.

- 40.00 Set an iron post, 3 ft. long, 1 in. in diam., 26 ins. in the ground, for  $4\frac{1}{2}$ M cor., with brass cap, marked,  
 1912,  
 P L  $4\frac{1}{2}$ M on N., and  
 M R on S. half;  
 and raise a mound of stone 2 ft. base,  $1\frac{1}{2}$  ft. high, S. of cor. Pits impracticable.  
 46.00 Draw, course SE.  
 60.00 Low spur, slopes SW.  
 79.50 Drywash, drains S.  
 80.00 Set an iron post, 3 ft. long, 2 ins. in diam., 24 ins. in the ground, for 5M. cor., with brass cap, marked,  
 1912,  
 P L 5M. on N., and  
 M R on S. half;  
 and raise a mound of stone 2 ft. base,  $1\frac{1}{2}$  ft. high, S. of cor. Pits impracticable.

## 6. Resurvey of North bdy. of Abandoned Date Creek Mil. Reservation.

Chains.	Land, rolling and hilly. Soil, sandy loam, 3rd rate.	Dec. 30, 1912.
	Dec. 31, 1912. At 8h.10m., a.m., l.m.t., at the 5M. cor. I set off $34^{\circ}15\frac{1}{2}'$ N. on the lat. arc; $23^{\circ}03'$ S. on the decl. arc; and determine a meridian with the solar.	
	Thence I run, S. $73^{\circ}00'$ W. on N. bdy. of reservation, on 6th. mile. Over rolling land.	
2.00	Ascend.	
17.00	Low spur, slopes S. Descend.	
26.90	Dry wash, 15 lks. wide, course SW. Ascend.	
35.02	Intersect the original NW. cor. of Reservation, hereinbefore described. I destroy the old cor., and reestablish the cor. in same place, as follows: Set an iron post, 3 ft. long, 3 ins. in diam., 24 ins. in the ground for NW. cor. of Abandoned Date Creek Military Reservation, with brass cap, marked, 1912, P L, NW. Cor. 2 on NW., and M R on SE. half; and raise a mound of stone, 3 ft. base, 2 ft. high, SE. of cor. Pits impracticable.	
	Lount's Lookout brs. N. $50^{\circ}30'$ E. from this cor. Land, rolling. Soil, sandy loam, 3rd rate. Scattering mesquite and cactus.	Dec. 31, 1912 (to be continued)

## RESURVEY OF WEST BDY. OF THE ABANDONED DATE CREEK MIL. RES.

	Dec. 31, 1912, continued.	
	From the reestablished NW. cor. of the Reservation, de- scribed, I run, S. $1^{\circ}43'$ W., on W. bdy. of Reservation, continuing measure- ment of the 6th. mile. Descend point of spur.	
40.00	(35.02 chs. on N. bdy. + 4.98 chs. on W. bdy.) Set an iron post 3 ft. long, 1 in. in diam., 26 ins. in the ground, for $5\frac{1}{2}$ M. cor., with brass cap, marked 1913, P L $5\frac{1}{2}$ M. on W., and M R on E. half; and raise a mound of stone, 2 ft. base, $1\frac{1}{2}$ ft. high, E. of cor. Pits impracticable.	
60.00	Enter dense mesquite.	
69.50	Dry wash, 15 lks. wide, course SE.	
80.00	Set an iron post 3 ft. long, 2 ins. in diam., 24 ins. in the ground, for 6M cor., with brass cap, marked 1913, P L 6M on W., and M R on E. half; and raise a mound of stone, 2 ft. base, $1\frac{1}{2}$ ft. high, E. of cor. Pits impracticable.	
	Land, rolling and level. Soil, sandy and gravelly, 2nd and 3rd rate. Dense mesquite on S. half.	

	Thence, I run, S. $1^{\circ}43'$ W., on W. bdy. of Reservation on 7th. mile. Through dense brush. Over rolling land.	
7.60	N. bank of Date Creek wash, 10 ft. high. Date Creek, 20 lks. wide, 6 ins. deep, course SW.	
13.50	South bank of Date Creek wash, 6 ft. high. Ascend thru. scattering brush.	
31.00	Top of low spur, slopes W. Descend.	
35.00	Sand wash, course W. Ascend.	
40.00	Set an iron post, 3 ft. long, 1 in. in diam., 26 ins. in	



Resurvey of West Bdy. of Abandoned Date Creek Military Reservation. 7

Chains.

the ground, for 6½M.cor., with brass cap, marked  
1913,  
P L 6½M. on W., and  
M R on E. half;  
and raise a mound of stone, 2 ft. base, 1½ ft. high, E. of  
cor. Pits impracticable.

68.60 Ascend over granite boulders and rough mountainous land.  
Rocky ridge, brs. E and W.

75.90 Top of rocky butte; descend.

79.00 Ravine, course NW. Ascend.

80.00 Set an iron post 3 ft. long, 2 ins. in diam. 24 ins. in  
the ground, for 7M.cor., with brass cap,  
1913,  
P L 7M. on W., and  
M R on E. half;  
and raise a mound of stone, 2 ft. base, 1½ ft. high, E.  
of cor. Pits impracticable.

Land, slightly rolling and mountainous.  
Soil, north half, sandy loam, 2nd rate; south half, rocky,  
3rd and 4th rate.  
Dense brush along Date Creek.

Dec. 31, 1912.

Jan. 1, 1913.

At the 7 mile cor., I set off 22°59'S. on the decl. arc;  
and at apparent noon, observe the sun on the meridian;  
the resulting lat. is 34° 14' N.

Thence, I run,  
S. 1°43' W., on W. bdy. of Reservation on 8th. mile.  
Over mountainous land.

3.27 Intersect the original SW. cor. of Reservation hereinbe-  
fore described. I destroy old cor., and reestablish  
cor. in the same place as follows:  
Set an iron post, 3 ft. long, 3 ins. in diam., 24 ins. in  
the ground, for SW. cor. of Abandoned Date Creek Mili-  
tary Reservation, with brass cap, marked  
1913,  
P L SW. COR. 3 on SW., and  
M R on NE. half;  
and raise a mound of stone 3 ft. base, 2 ft. high, NE. of  
cor.  
Pits impracticable.

Land, mountainous.  
Soil, rocky, 4th rate.

Jan. 1, 1913.

RESURVEY OF SOUTH BDY. OF ABANDONED DATE CREEK MIL. RES.

Jan. 3, 1913: At 3h. 4m. a.m., l.m.t., at the reestablished  
SW cor. of Reservation, described above, I set off 22°  
47½'S. on the decl. arc; 34° 14' N. on the lat. arc, and  
determine a meridian with the solar.

Thence I run,  
N. 73° 26' E. on S. bdy. of the Reservation, continuing meas-  
urement of the 8th mile.  
Over mountainous land.

6.40 Ravine, course NW. Ascend.

18.10 Point of spur, slopes N. Descend.

40.00 (3.27 chs. on W. bdy. + 36.73 chs. on S. bdy.) set an iron  
post 3 ft. long, 1 in. in diam., 26 ins. in the ground,  
for 7½ mile cor., with brass cap, marked,  
1913,  
P L 7½ M. on S., and  
M R on N. half;  
and raise a mound of stone, 2 ft. base, 1½ ft. high, N.  
of cor. Pits impracticable.

40.90 W. edge of deep ravine, brs. NE. and SW. Descend.

51.80 Dry wash in bottom of draw, course NE.. Ascend.

57.00 Wagon road to Congress Junction, brs. N. and S.

## 8. Resurvey of South bdy. of Abandoned Date Creek Military Res.

chains.

80.00 Set an iron post 3 ft. long, 2 ins. in diam., 24 ins. in the ground, for 8M. cor., with brass cap, marked, 1913,  
P L 8 M. on S., and  
M R on N. half;  
and raise a mound of stone 2 ft. base,  $1\frac{1}{2}$  ft. high, N. of cor. Pits impracticable.  
Land, mountainous and rolling.  
Soil, sandy and rocky, 3rd and 4th rate.

-----  
Thence I run,  
N.  $73^{\circ}26'E.$ , on S. bdy. of Reservation on the 9th mile.  
Over mountainous land; ascend.

11.70 Rocky spur, slopes NE. Descend.

24.00 Wash, in ravine, 15 lks. wide, course NE.

32.50 Wash, 10 lks. wide, course NW.

40.00 Set an iron post, 3 ft. long, 1 in. in diam., 26 ins. in the ground, for  $8\frac{1}{2}$ M. cor., with brass cap, marked 1913,

P L  $8\frac{1}{2}$ M. on S., and  
M R on N. half;

and raise a mound of stone, 2 ft. base,  $1\frac{1}{2}$  ft. high, N. of cor. Pits impracticable.

Cor. falls on rocky spur in saddle.

48.00 Dry wash, 10 lks. wide, course NE.

50.50 Dry wash, 10 lks. wide, course NW.

60.00 Dry wash, 10 lks. wide, course NW. Ascend.

78.60 High rocky spur, slopes NW. Descend.

80.00 Set an iron post, 3 ft. long, 2 ins. in diam., 24 ins. in the ground, for 9 M cor., with brass cap, marked 1913,

P L 9M. on S., and  
M R on N. half;

and raise a mound of stone, 2 ft. base,  $1\frac{1}{2}$  ft. high, N. of cor. Pits impracticable.

Land, mountainous and rocky.

Soil, sandy, rocky loam, 3rd rate.

Scattering brush.

-----  
At the 9M. cor., I set off  $22^{\circ}48\frac{1}{2}'S.$  on the decl. arc; and at apparent noon, observe the sun on the meridian; the resulting lat. is  $34^{\circ}14\frac{1}{2}'N.$

Thence I run,

N.  $73^{\circ}26'E.$ , on S. bdy. of Reservation, on the 10th mile.

Over mountainous land, and granite boulders. Descend.

7.50 Dry wash, 15 lks. wide, course N. Ascend.

17.20 Top of low rocky butte; descend.

40.00 Set an iron post, 3 ft. long, 1 in. in diam., 26 ins. in the ground, for  $9\frac{1}{2}$ M. cor., with brass cap, marked 1913,

P L  $9\frac{1}{2}$ M. on S., and  
M R on N. half;

and raise a mound of stone, 2 ft. base,  $1\frac{1}{2}$  ft. high, N. of cor. Pits impracticable.

46.00 West edge of ravine, brs. NW. and SE. Descend.

51.50 Wash, in bottom of ravine, 10 lks. wide, course NW. Ascend.

65.10 Low spur, slopes NW. Descend.

69.00 Dry wash, 12 lks. wide, course NW. Ascend.

80.00 Set an iron post, 3 ft. long, 2 ins. in diam., 24 ins. in the ground, for 10M. cor., with brass cap, marked, 1913,

P L 10M on S., and  
M R on N. half;

and raise a mound of stone 2 ft base,  $1\frac{1}{2}$  ft. high, N. of cor. Pits impracticable.

Land, mountainous and rolling.

Soil, rocky, 4th rate.

Resurvey of S. bdy. of Abandoned Date Creek Military Reservation. 9

Chains

Thence I run,  
 N. 73° 26' E., on S. bdy. of Reservation, on the 11th mile.  
 Ascending thru. scattering mesquite brush.

6.00 Top of spur, in saddle, brs. NW. Descend.

27.50 Sand wash, course NE.

31.30 Same wash, course SE.

33.40 Same wash, course NE.

40.00 Set an iron post 3 ft. long, 1 in. in diam. 26 ins. in the ground for 10½ mile cor., with brass cap. marked 1913,  
 P L 10½M on S., and  
 M R on N. half;  
 and raise a mound of stone, 2 ft. base, 1½ ft. high, N. of cor. Pits impracticable.

Cor. falls on rocky point, sloping N. Descend.

62.50 Sand wash, 15 lks. wide, course NW.

80.00 Set an iron post, 3 ft. long, 2 ins. in diam. 24 ins. in the ground for 11M cor., with brass cap, marked, 1913,  
 P L 11M on S., and  
 M R on N. half;  
 and raise a mound of stone, 2 ft. base, 1½ ft. high, N. of cor.  
 Pits impracticable.  
 Land, mountainous.  
 Soil, scanty and rocky, 4th rate.  
 Scattering mesquite.

Thence I run,  
 N. 73° 26' E. on S. bdy. of Reservation, on the 12th mile.  
 Over mountainous land.

7.20 Descend and enter brushy flat.

25.00 Sand wash, 12 lks. wide, course N. Ascend.

32.00 Saddle on rocky spur, sloping N. Descend.

39.00 Dry wash, 40 lks. wide, course NE. Ascend.

40.00 Set an iron post, 3 ft. long, 1 in. in diam., 26 ins. in the ground, for 11½M. cor., with brass cap, marked, 1913,  
 P L 11½M on S., and  
 M R on N. half;  
 and raise a mound of stone, 2 ft. base, 1½ ft. high, N. of cor. Pits impracticable.

Cor. falls among scattering granite boulders.

72.10 Sand wash, 1.80 chs. wide, course NW. (South fork of Date Creek.)

80.00 Set an iron post, 3 ft. long, 2 ins. in diam., 24 ins. in the ground, for 12M. cor., with brass cap, marked, 1913,  
 P L 12M on S., and  
 M R on N. half;  
 and raise a mound of stone 2 ft. base, 1½ ft. high, N. of cor. Pits impracticable.

Land, mountainous and rolling.  
 Soil, scanty and rocky, 4th rate.  
 Scattering brush.

Jan 3, 1913.

Jan. 4, 1913. At 9h. 2m. am. a.m., l.m.t., I set off 34° 15' N. of the lat. arc; 22° 42' S. on the decl. arc; and determine a meridian with the solar.

Thence I run,  
 N. 73° 26' E., on S. bdy. of Reservation on the 13th mile.  
 Over rolling mesa.

7.10 Wagon road, brs. NW. and SE.

14.10 Wagon road brs. N. 20° W. and S. 20° E.

17.15 S.F.P. & P. Ry. (center of track) brs. N. 19½° W. and S. 19½° E.

33.40 Ascend point of rocky spur.

34.45 Intersect the original SE. cor. of Reservation hereinbefore described. I destroy old cor., and reestablish

## 10. Resurvey of S. bdy. of Abandoned Date Creek Mil. Reservation.

Chains.

cor. in same place as follows:

Set an iron post 3 ft. long, 3 ins. in diam., 24 ins. in the ground, for SE. cor. of Abandoned Date Creek Military Reservation, with brass cap, marked

1913,

P L SE. COR. 4 on SE., and

M R on NW half;

and raise a mound of stone 3 ft. base, 2 ft. high, NW. of cor. Pits impracticable.

East gable of old hospital at Camp Date Creek, brs. N.  $83^{\circ}$  07' W. from this cor.

## RESURVEY OF EAST BDY. OF ABANDONED DATE CREEK MIL. RESERVATION.

From the reestablished SE. cor. of Reservation, described above,

I run,

N.  $2^{\circ}58'$  E. on E. bdy. of Reservation, continuing measurement of 13th mile.

Over rough boulders.

40.00 (34.45 chs. on S. bdy. + 5.55 chs. on E. bdy.) True point for  $12\frac{1}{2}$  mile cor. falls on granite boulder; therefore, it is impracticable to establish cor. at this point.

44.11 Set an iron post 3 ft. long, 1 in. in diam., 26 ins. in the ground, for witness cor. to  $12\frac{1}{2}$  M. cor., with brass cap, marked,

1913,

P L  $12\frac{1}{2}$  M. on E., and

M R W C on W. half;

and raise a mound of stone, 2 ft. base,  $1\frac{1}{2}$  ft. high, W. of cor. Pits impracticable.

40.50 Leave boulders and enter rolling bottom.

58.00 Point of spur, slopes E.

72.00 Scattering brush, brs. NW. and SE.

76.40 Top of low spur, slopes W. Descend.

80.00 Set an iron post, 3 ft. long, 2 ins. in diam., 24 ins. in the ground, for 13 M. cor., with brass cap, marked

1913;

P L 13 M. on E., and

M R on W. half;

dig pits, 36x36x12 ins., on line NE. and SW. post 3 ft. dist., and raise a mound of earth,  $3\frac{1}{2}$  ft. base,  $1\frac{1}{2}$  ft. high, W. of cor.

Stoolfire's house bears S.  $66^{\circ}$  W., from this cor.

Land, rolling.

Soil, sandy loam, 2nd and 3rd rate.

Scattering brush.

Thence, I run,

N.  $2^{\circ}58'$  E., on E. bdy. of Reservation, on the 14th mile.

Over rolling land; descend.

1.10 Dry wash, 6 lks. wide, course SW. Ascend.

2.60 Low spur, slopes SW. Descend.

4.10 Dry wash, 2 lks. wide, course W.

12.00 Enter sandy flat.

17.00 Dry wash, 60 lks. wide, course SW.

19.00 Dry wash, 30 lks. wide, course SW.

30.20 Wire fence, brs. E. and W.

30.93 Pump house, brs. N.  $80^{\circ}$  W.

40.00 Set an iron post, 3 ft. long, 1 in. in diam., 26 ins. in the ground, for 13 $\frac{1}{2}$  M. cor., with brass cap, marked,

1913,

P L 13 $\frac{1}{2}$  M. on E., and

M R on W. half;

and raise a mound of stone 2 ft. base,  $1\frac{1}{2}$  ft. high, W. of cor. Pits impracticable.

51.80 Top of low spur, slopes W. Pump house, brs. S.,  $73^{\circ}$  W.

Resurvey of E. bdy. of the Abandoned Date Creek Military Res. 11.

Chains.

Howard's house brs. N. 84° W. Small reservoir south of house.  
 Continue over rolling land.  
 80.00 Set an iron post, 3 ft. long, 2 ins. in diam., 24 ins. in  
 the ground, for 14M. cor., with brass cap, marked,  
 1913,  
 P L 14M. on E., and  
 M R on W. half;  
 and raise a mound of stone, 2 ft. base, 1½ ft. high, W. of  
 cor. Pits impracticable.  
 Land, rolling and hilly.  
 Soil, sandy and rocky, 3rd rate.

Thence, I run,  
 N. 2° 58' E., on E. bdy. of reservation, on the 15th mile.  
 Over rolling land.  
 6.90 Intersect the reestablished NE. cor. of the Reservation,  
 hereinbefore described.  
 Land, rolling and hilly.  
 Soil, sandy and rocky, 3rd rate.  
 Scattering brush.

Jan. 4, 1913.

GENERAL DESCRIPTION.

The land within the boundaries of the Abandoned Date Creek  
 Military Reservation is rolling in the eastern half, and  
 along Date Creek, Cottonwood Creek, and the north and  
 south forks of Date Creek. The remainder is mountain-  
 ous, and covered with boulders. The soil of the roll-  
 ing land is mostly a sandy loam, suitable for agricultur-  
 al or grazing purposes, 2nd and 3rd rate. Date Creek  
 extends thru. the Reservation from east to west, with  
 running water in some portions, which is utilized for  
 irrigation by the present settlers. There is no timber,  
 and the undergrowth is mainly scattered mesquite brush.  
 There are no indications of mineral.  
 The Santa Fe Prescott & Phoenix Ry. crosses the eastern  
 part of the Reservation, and operates a pump house on  
 Date Creek.

W. B. ...  
 T. B. ...

BOOK 3000

### CERTIFICATE OF ASSISTANTS.

(Same applies to notes describing retracements, resurveys or surveys executed by Chas. M. Pidgeon, U.S. Surveyor, in Books "B," "C" and "D.")

We, the undersigned, hereby certify upon honor that we assisted, to the best of our skill and ability,

Chas. M. Pidgeon, U. S. Surveyor, during the periods and in the capacities stated opposite our several signatures, in ~~surveying~~ <sup>retracing and resurveying</sup> all those parts or portions of the boundaries of the Abandoned Date Creek Military Reservation, the East boundary of Township 11 North, Range 7 West, the South boundary and Subdivision lines of Township 11 North, Range 6 West, and in surveying all those parts or portions of the East bdy. of Township 10 North, Range 7 West, and the South boundary and Subdivision lines of Township 11 North, Range 6 West

of the Gila and Salt River Base <sup>and</sup> Meridian, in the State of Arizona.

which are represented in the foregoing field notes, <sup>and those in books "B," "C" and "D"</sup> as having been executed by him, and under his direction; and that said retracements, resurveys and surveys

have been, in all respects, to the best of our knowledge and belief, well and faithfully executed.

NAME.	PERIOD OF SERVICE.		CAPACITY.
	BEGUN.	ENDED.	
<i>Wang Young</i>	<i>Dec. 23, 1913</i>	<i>Jan. 25, 1913</i>	<i>Chairman</i>
<i>A. P. Ballard,</i>			<i>Groundman</i>
<i>H. J. Billingsley.</i>			<i>Rodman</i>

Subscribed and certified to before me on the dates of the final service as shown above.

*Chas. M. Pidgeon*  
U. S. Surveyor.

14

FINAL OATH OF UNITED STATES SURVEYOR.

(Same applies to notes describing retracements, resurveys or surveys executed by Chas. M. Pidgeon, U.S. Surveyor, in Books "B", "C" and "D")

I, Charles M. Pidgeon, U. S. Surveyor, do solemnly swear that, in pursuance of special instructions received from the ~~U.S. Surveyor General for~~ Commissioner of the General Land Office, bearing date of the 17th day of May, 1912, I have well, faithfully, and truly, in my own proper person, and in strict conformity with said instructions, the Manual of Surveying Instructions, and the laws of the United States, ~~surveyed~~ <sup>retraced and resurveyed</sup> all those parts or portions of the boundaries of the Abandoned Date Creek Military Reservation, the East boundary of Township 11 N., Range 7 West, the South boundary and Subdivision lines of Township 11 North, Range 6 West and surveyed all those parts or portions of the East boundary of Township 10 North, Range 7 West, and the South boundary and Subdivision lines of Township 11 North, Range 6 West of the Gila and Salt River Base and Meridian, in the State of Arizona, which are represented in the foregoing field notes <sup>and those in Books "B", "C" and "D"</sup> as having been executed by me, and under my direction; and I do further solemnly swear that all the corners of said ~~survey have been established~~ <sup>resurveys and surveys have been reestablished, established</sup> and perpetuated in strict accordance with the Manual of Surveying Instructions, and the special written instructions of the ~~U.S. Surveyor General for~~ Commissioner of the General Land Office, <sup>and notes in Books "B", "C" and "D"</sup> and in the specific manner described in the field notes, and that the foregoing <sup>are</sup> the original field notes of such ~~retracements, resurveys and surveys.~~

Chas. M. Pidgeon  
U. S. Surveyor.

Subscribed by said <sup>affirmed</sup> Charles M. Pidgeon and sworn to before me }  
this 22 day of June, 1913

John R. Young, Clerk  
SUPREME COURT OF THE DISTRICT OF COLUMBIA.



APPROVAL.

OFFICE OF THE UNITED STATES SURVEYOR GENERAL,  
Phoenix, Arizona - Aug. 9, 1913.

The foregoing field notes of the ~~retracement and resurvey of the~~  
  
Boundaries of  
The Abandoned Date Creek Military Reservation, situated in  
Townships 10 and 11 North, Ranges 6 and 7 West  
of the Gila and Salt River Base and Meridian  
in the State of Arizona

executed by Chas. M. Pidgeon, U.S. Surveyor.  
under his special instructions ~~dated~~ <sup>dated</sup> from the Commissioner of the General Land Office, dated May 17, 1912, ~~and~~ having been critically examined, and the necessary corrections and explanations made, the said field notes, and the ~~retracements and~~ <sup>retracements and</sup> resurveys they describe, are hereby approved.

Frank D. Smith  
Surveyor General.  
OF ARIZONA.

I certify that the foregoing transcript of the field notes of the above described surveys in ~~has been correctly copied from the original notes on file in this office.~~