

3046

Book "F."

4-679

JUL 21 1918

(Subdivisions)

BOOK 3046

FIELD NOTES

OF THE SURVEY OF THE

SUBDIVISION LINES

OF

TOWNSHIP 2 NORTH, RANGE 18 WEST,

3046

Of the Gila and Salt River Base and Meridian,

In the State of Arizona.

EXECUTED BY

Woodbury Abbey, U. S. Surveyor,

and

Roy J. Gill, U.S. Transitman,

~~In the capacity of U. S. Surveyor~~, under instructions dated December 12., 1914.,

issued by the United States Surveyor General to govern surveys included in

Group No. 39, which were approved by the Commissioner of the General Land

Office, January 7., 1915.

Survey commenced February 13., 1915

Survey completed February 25., 1915.

(18)

Book "F."
(Subdivisions)
Group 39, Arizona.

BOOK 3046

INDEX DIAGRAM.

Township 2 North.		Range 18 West.								
6	27	5	20	4	15	3	11	2	6	1
26		26		20		15		10		6
7	26	8	20	9	15	10	10	11	5	12
25		25		19		14		10		5
18	24	17	19	16	14	15	9	14	4	13
24		24		18		13		9		4
19	23	20	18	21	13	22	8	23	3	24
23		23		17		12		8		3
30	22	29	17	28	12	27	7	26	2	25
22		21		16		12		7		2
31	21	32	16	33	11	34	6	35	1	36

————— Subdivision Lines surveyed under this Group.

————— Township boundaries surveyed under this Group.
Notes in Book "B."

----- Unsurveyed Lines.

Subdivision of T. 2 N., R. 18 W.

Survey commenced Feb. 13, 1915, and executed jointly by Woodbury Abbey, U. S. Surveyor, and Roy J. Gill, U. S. Transitman, on the dates shown on the diagram on page 29 of this book.

A description of the instruments used, with record of approval by the assistant supervisou of surveys and field tests, appeared in Book "B."

All lines were originated and projected from the meridian by fore and back sights and carefully measured angles; a record of the observations by which meridian was determined, following herewith.

The magnetic hearing of the true meridian, at 8h 00m, a.m., l.m.t., is N.14°30'W. The angle thus determined gives the mag. decl. 14°30' E.

OBSERVATIONS FOR MERIDIAN.

Kind	Station	Date 1915	Hour	Lat.	Decl.	Remarks
Polaris W. E.	Camp, near S. bdy. S. 24.	Feb. 13	9h 53m p. m. l. m. t.	33°29½'	88°51'32"	Long.=114°04½' W. Azimuth = 1°22' by Woodbury Abbey.
Solar	<u>34 35</u> 3 2 on S. bdy.	Feb. 15	9h 15m a. m., l. m. t.	33°28'	12°51½' S	by Woodbury Abbey.
Solar	<u>23 24</u> 26 25	Feb. 16	7h 45m a. m. l. m. t.	33°29½'	12°31' S	by Woodbury Abbey.
Solar	<u>22 23</u> 27 26	Feb. 17	7h 45m a. m. l. m. t.	33°29½'	12°10' S	by Woodbury Abbey.
Solar	<u>16 15</u> 21 22	Feb. 18	9h 00m a. m. l. m. t.	33°30½'	11°49' S	by Woodbury Abbey.

I commence at the cor. of secs. 1, 2, 35 and 36, on the S. bdy. of Tp, described in Book "B."

Thence N.0°01'W., bet. secs. 35 and 36, over roughly rolling and broken land, through scattering timber and dense undergrowth.

- Asc. broken SW. alope 280 ft. to
- 12.00 Ridge bears NW. and SE.; desc. NE. slope 110 ft. to
- 18.25 Wash, course E.; asc. 80 ft. on SE. slope to
- 21.00 Spur extends E.; desc. NE. slope 290 ft. to
- 33.00 Gulch, course E.; Asc. S. slope.
- 40.00 Set an iron post, 3 ft. long, 1 in. diam., 12 ins. in the ground and 14 ins. in a mound of stone, for ¼ sec. cor., with brass cap, marked
- ¼ in N.,
- S 35 in W., and
- S 36 in E. half; and
- 1915 in S. rim;

Chains

- and raise a mound of stone, 2 ft. base, $1\frac{1}{2}$ ft. high, W. of cor. Impracticable to set cor. farther in the ground.
- Continue ascent.
- 50.00 Summit, 160 ft. above gulch at 33 ch. pt.; desc. 80 ft. to
- 65.00 Wash, course E.; thence over roughly rolling land.
- 80.00 Set an iron post, 3 ft. long, 2 ins. diam., 12 ins. in the ground, and 12 ins. in a mound of stone, for cor. of secs. 25, 26, 35 and 36, with brass cap, marked
T 2 N S 26 in NW.,
R 18 W S 25 in NE.,
S 36 in SE., and
S 35 in SW. quadrant; and
1915 in S. rim;
- and raise a mound of stone, 2 ft. base, $1\frac{1}{2}$ ft. high, W. of cor. Impracticable to set cor. farther in the ground.
- Land, roughly rolling and broken.
Soil, 4th rate.
Timber, paloverde.
Undergrowth, greasewood and cactus.
-
- 40.00 East, on a random line, bet. secs. 25 and 36.
Set temp. $\frac{1}{4}$ sec. cor.
- 79.90 Intersect E. bdy. of Tp. 6 lks. N. of the cor. of secs. 25, 30, 31 and 36, described in Book "B."
- Thence N. $89^{\circ}57'$ W., on a true line, bet. secs. 25 and 36, over level land, through scattering timber and dense undergrowth.
- 20.00 Leave level land, and asc. NE. slope over roughly rolling land.
- 39.95 Set an iron post, 3 ft. long, 1 in. diam., in a mound of stone, for $\frac{1}{4}$ sec. cor., with brass cap, marked
 $\frac{1}{4}$ S 25 in N., and
S 36 in S. half; and
1915 in S. rim;
- and raise a mound of stone, 2 ft. base, $1\frac{1}{2}$ ft. high, N. of cor. Impracticable to set cor. in the ground.
- 48.00 Ridge, 350 ft. above 20 ch. pt., bears NW. and SE.; desc. 165 ft. on SW. slope to
- 55.90 Draw, course S.; asc. 60 ft. on S. slope to
- 65.00 Spur extends S.; desc. SW. slope 80 ft. to
- 74.90 Wash, course S.; thence along S. slope.
- 79.90 The cor. of secs. 25, 26, 35 and 36.
Land, level for E. 20 chs. and roughly rolling and broken for balance.
Soil, 4th rate.
Timber, ironwood and paloverde.
Undergrowth, greasewood and cactus.
-
- N. $0^{\circ}01'$ W., bet. secs. 25 and 26, over mountainous land, through scattering timber and dense undergrowth.
Asc. 210 ft. to
- 10.90 Low ridge bears NW. and SE.; desc. 340 ft. to
- 30.80 Ft. of descent; asc. 50 ft. to
- 33.70 Spur extends E.; desc. 125 ft. to
- 40.00 Set an iron post, 3 ft. long, 1 in. diam., 26 ins. in the ground, for $\frac{1}{4}$ sec. cor., with brass cap, marked
 $\frac{1}{4}$ in N.,
S 25 in E., and
S 26 in W. half; and
1915 in S. rim;
- and raise a mound of stone, 2 ft. base, $1\frac{1}{2}$ ft. high, W. of cor.

Chains

75.90 Thence over rolling land.
 Wash, 50 lks. wide, course NE.
 79.00 Wash, course NW.
 80.00 Set an iron post, 3 ft. long, 2 ins. diam., 24 ins. in the ground, for cor. of secs. 23, 24, 25 and 26, with brass cap, marked
 T 2 N S 23 in NW.,
 R 18 W S 24 in NE.,
 S 25 in SE., and
 S 26 in SW. quadrant; and
 1915 in S. rim;
 and raise a mound of stone, 2 ft. base, 1½ ft. high, W. of cor.
 Land, mountainous in S. half, and rolling in N.
 Soil, 3rd and 4th rate.
 Timber, paloverde and catclaw.
 Undergrowth, greasewood and cactus.

 40.00 East, on a random line, bet. secs. 24 and 25.
 Set temp. ¼ sec. cor.
 79.98 Intersect E. bdy. of Tp. 6 lks. S. of the cor. of secs. 19, 24, 25 and 30, described in Book "B."

Thence S.89°57'W., on a true line, bet. secs. 24 and 25, over mountainous land, through scattering timber and dense undergrowth.
 Along broken S. slope.
 39.99 Set an iron post, 3 ft. long, 1 in. diam., 26 ins. in the ground, for ¼ sec. cor., with brass cap, marked
 ¼ S 24 in N., and
 S 25 in S. half; and
 1915 in S. rim;
 and raise a mound of stone, 2 ft. base, 1½ ft. high, N. of cor.
 64.40 Asc. 50 ft. to
 68.30 Spur extends SW.; desc. 190 ft. to
 79.98 The cor. of secs. 23, 24, 25 and 26.
 Land, mountainous.
 Soil, 3rd and 4th rate.
 Timber, paloverde and catclaw.
 Undergrowth, greasewood, sage and cactus.

 N.0°01'W., bet. secs. 23 and 24,
 over roughly rolling and broken land, through scattering timber and dense undergrowth.
 Desc. 150 ft. to
 15.00 Ft. of descent; asc. 100 ft. to
 24.00 Low ridge bears NW. and SE.; desc. 100 ft. to
 32.00 Ft. of descent; thence over level land.
 40.00 Set an iron post, 3 ft. long, 1 in. diam., 26 ins. in the ground, for ¼ sec. cor., with brass cap, marked
 ¼ in N.,
 S 23 in W., and
 S 24 in E. half; and
 1915 in S. rim;
 and raise a mound of stone, 2 ft. base, 1½ ft. high, W. of cor.
 42.00 Wash, 100 lks. wide, course W.
 80.00 Set an iron post, 3 ft. long, 2 ins. diam., 24 ins. in the ground, for cor. of secs. 13, 14, 23 and 24, with brass cap, marked
 T 2 N S 14 in NW.,
 R 18 W S 13 in NE.,
 S 24 in SE., and
 S 23 in SW. quadrant; and
 1915 in S. rim;

Subdivision of T. 2 N., R. 18 W.

Chains

	and raise a mound of stone, 2 ft. base, $1\frac{1}{2}$ ft. high, W. of cor. Land, roughly rolling and broken for 3.32 chs. and level for balance. Soil, 2nd and 3rd rate. Timber, paloverde, catclaw and mesquite. Undergrowth, greasewood, sage and cactus.
40.00	East, on a random line, bet. secs. 13 and 24. Set temp. $\frac{1}{4}$ sec. cor.
80.00	Intersect E. bdy. of Tp. at the cor. of secs. 13, 18, 19 and 24, described in Book "B."
	Thence West, on a true line, bet. secs. 13 and 24, over rolling desert, through scattering timber and dense undergrowth.
25.60	Settler's shack bears S. 30° E.
25.60	Office building at mine bears S. 33° W.
40.00	Set an iron post, 3 ft. long, 1 in. diam., 26 ins. in the ground, for $\frac{1}{4}$ sec. cor., with brass cap, marked $\frac{1}{4}$ S 13 in N., and S 24 in S. half; and 1915 in S. rim; and raise a mound of stone, 2 ft. base, $1\frac{1}{2}$ ft. high, N. of cor.
62.00	Road bears NW. and SE.
80.00	The cor. of secs. 13, 14, 23 and 24. Land, rolling desert. Soil, 2nd and 3rd rate. Timber, paloverde and catclaw. Undergrowth, greasewood, cactus and sage.
	N. $0^{\circ} 01'$ W., bet. secs. 13 and 14, over rolling land, through scattering timber and dense undergrowth. Asc. gradual SW. slope.
2.50	Draw, course SW.
31.00	Road bears E. and W.
35.00	Low ridge bears NE. and SW.
37.00	Draw, course SW.
40.00	Set an iron post, 3 ft. long, 1 in. diam., 26 ins. in the ground, for $\frac{1}{4}$ sec. cor., with brass cap, marked $\frac{1}{4}$ in N., S 13 in E., and S 14 in W. half; and 1915 in S. rim; and raise a mound of stone, 2 ft. base, $1\frac{1}{2}$ ft. high, W. of cor.
42.00	Ridge bears NE. and SW.
45.00	Draw, course SW.
50.00	Ridge bears E. and W.
52.00	Wash, 4 chs. wide, course W.; asc. slight S. slope to
80.00	Set an iron post, 3 ft. long, 2 ins. diam., 24 ins. in the ground, for cor. of secs, 11, 12, 13 and 14, with brass cap, marked T 2 N S 11 in NW., R 18 W S 12 in NE., S 13 in SE., and S 14 in SW. quadrant; and 1915 in S. rim; and raise a mound of stone, 2 ft. base, $1\frac{1}{2}$ ft. high, W. of cor. Land, rolling. Soil, 4th rate. Timber, paloverde and ironwood. Undergrowth, greasewood and cactus.

Subdivision of T. 2 N., R. 18 W.

Chains

East, on a random line, bet. secs. 12 and 13.
 40.00 Set temp. $\frac{1}{4}$ sec. cor.
 80.04 Intersect E. bdy. of Tp. 14 lks. S. of the cor. of secs.
 7, 12, 13 and 18, described in Book "B."

Thence S. $89^{\circ}54'W.$, on a true line, bet. secs. 12 and 13,
 over mountainous land, through scattering timber and
 dense undergrowth.
 Along broken SW. slope; desc. 180 ft. to
 19.05 Draw, course SE.; asc. 190 ft. on E. slope to
 24.80 Ridge bears N. and S.; desc. 35 ft. to
 40.02 Set an iron post, 3 ft. long, 1 in. diam., 26 ins. in the
 ground, for $\frac{1}{4}$ sec. cor., with brass cap, marked
 $\frac{1}{4}$ S 12 in N., and
 S 13 in S. half; and
 1915 in S. rim;
 and raise a mound of stone, 2 ft. base, $1\frac{1}{2}$ ft. high,
 N. of cor.
 Desc. W. slope.
 47.00 Wash, course SW.
 55.00 Spur extends S.
 60.00 Wash, course S.; asc. 60 ft. to
 67.00 Spur extends S.; desc. 45 ft. to
 70.00 Wash, course S.; asc. 60 ft. to
 75.00 Spur extends S.; desc. 35 ft. to
 79.30 Wash, course S.; thence along broken S. slope.
 80.04 The cor. of secs. 11, 12, 13 and 14.
 Land, mountainous.
 Soil, 4th rate.
 Timber, paloverde.
 Undergrowth, greasewood and cactus.

N. $0^{\circ}01'W.$, bet. secs. 11 and 12,
 over rough hilly land, through scattering timber and
 undergrowth.
 Asc. 230 ft. to
 22.00 Spur bears SW.; thence over broken land .
 40.00 Set an iron post, 3 ft. long, 1 in. diam., 26 ins. in the
 ground, for $\frac{1}{4}$ sec. cor., with brass cap, marked
 $\frac{1}{4}$ in N.,
 S 11 in W., and
 S 12 in E. half; and
 1915 in S. rim;
 and raise a mound of stone, 2 ft. base, $1\frac{1}{2}$ ft. high,
 W. of cor.
 Asc. 40 ft. to
 41.90 Spur extends W.; desc. 250 ft. to
 55.35 Draw, course W.; asc. 140 ft. to
 64.00 Top of knoll; desc. 200 ft. to
 80.00 Set an iron post, 3 ft. long, 2 ins. diam., 24 ins. in the
 ground, for cor. of secs. 1, 2, 11 and 12, with brass
 cap, marked
 T 2 N S 2 in NW.,
 R 18 W S 1 in NE.,
 S 12 in SE., and
 S 11 in SW. quadrant; and
 1915 in S. rim;
 and raise a mound of stone, 2 ft. base, $1\frac{1}{2}$ ft. high,
 W. of cor.
 Land, broken and hilly desert.
 Soil, 2nd and 3rd rate shale and gravel.
 Timber, paloverde and catclaw.
 Undergrowth, cactus, sage and greasewood.

Chains	
40.00	East, on a random line, bet. secs. 1 and 12.
80.18	Set temp. $\frac{1}{4}$ sec. cor. Intersect E. bdy. of Tp. 10 lks. S. of the cor. of secs. 1, 6, 7 and 12, described in Book "B."
12.60	Thence S.89°56'W., on a true line, bet. secs. 1 and 12, over hilly desert, through scattering timber and undergrowth.
25.90	Desc. 100 ft. to
31.60	Draw, course NW.; asc. 130 ft. to
40.09	Spur extends NW.; desc. 160 ft. to
	Ft. of descent.
	Set an iron post, 3 ft. long, 1 in. diam., 26 ins. in the ground, for $\frac{1}{4}$ sec. cor., with brass cap, marked $\frac{1}{4}$ S 1 in N., and S 12 in S. half; and 1915 in S. rim; and raise a mound of stone, 2 ft. base, $1\frac{1}{2}$ ft. high, N. of cor.
80.18	The cor. of secs. 1, 2, 11 and 12. Land, hilly desert. Soil, gravel and shale, 2nd and 3rd rate. Timber, catclaw and paloverde. Undergrowth, greasewood, sage and cactus.
40.00	N.0°01'W., on a random line, bet. secs. 1 and 2,
80.17	Set temp. $\frac{1}{4}$ sec. cor. Intersect N. bdy. of Tp. 12 lks. W. of the cor. of secs. 1, 2, 35 and 36, described in Book "B."
40.17	Thence S.0°04'W., on a true line, bet. secs. 1 and 2, over hilly desert, through scattering timber and undergrowth.
	Set an iron post, 3 ft. long, 1 in. diam., 26 ins. in the ground, for $\frac{1}{4}$ sec. cor., with brass cap, marked $\frac{1}{4}$ in N., S 1 in E., and S 2 in W. half; and 1915 in S. rim; and raise a mound of stone, 2 ft. base, $1\frac{1}{2}$ ft. high, W. of cor.
48.15	Wash, 50 lks. wide, course W.
80.17	The cor. of secs. 1, 2, 11 and 12. Land, hilly desert. Soil, gravelly; 2nd and 3rd rate. Timber, paloverde and catclaw. Undergrowth, greasewood, sage and cactus.
24.00	From the cor. of secs. 2, 3, 34 and 35, on the S. bdy. of Tp., described in Book "B."
28.40	N.0°01'W., bet. secs. 34 and 35, over mountainous land, through scattering timber and dense undergrowth.
40.00	Asc. 70 ft. to Spur extends W. Set an iron post, 3 ft. long, 1 in. diam., 26 ins. in the ground, for $\frac{1}{4}$ sec. cor., with brass cap, marked $\frac{1}{4}$ in N., S 34 in W., and S 35 in E. half; and 1915 in S. rim; and raise a mound of stone, 2 ft. base, $1\frac{1}{2}$ ft. high, W. of cor. Desc. 90 ft. to

Subdivision of T. 2 N., R. 18 W.

Chains

44.90 Draw, course SE.; asc. 210 ft. to
 54.20 Top of rocky hill; desc. 300 ft. to
 68.40 Draw, course W.; asc. 50 ft. to
 74.30 Summit; desc. 50 ft. to
 80.00 Set an iron post, 3 ft. long, 2 ins. diam., 24 ins. in the
 ground, for cor. of secs. 26, 27, 34 and 35, with brass
 cap, marked
 T 2 N S 27 in NW.,
 R 18 W S 26 in NE.,
 S 35 in SE., and
 S 34 in SW. quadrant; and
 1915 in S. rim;
 and raise a mound of stone, 2 ft. base, 1½ ft. high,
 W. of cor.
 Land, broken and steep rocky hills.
 Soil, 3rd and 4th rate.
 Timber, paloverde and catclaw.
 Undergrowth, greasewood, sage and cactus.

 East, on a random line, bet. secs. 26 and 35.
 40.00 Set temp. ¼ sec. cor.
 80.02 Intersect N. and S. line 6 lks. N. of the cor. of secs.
 25, 26, 35 and 36.

Thence N. 89° 57' W., on a true line, bet. secs. 26 and 35,
 over mountainous land, through scattering timber and
 dense undergrowth.

40.01 Set an iron post, 3 ft. long, 1 in. diam., 26 ins. in the
 ground, for ¼ sec. cor., with brass cap, marked
 ¼ S 26 in N., and
 S 35 in S. half; and
 1915 in S. rim;
 and raise a mound of stone, 2 ft. base, 1½ ft. high,
 N. of cor.

Asc. 55 ft. to
 48.00 Summit; desc. 100 ft. to
 56.00 Ft.; asc. 110 ft. to
 64.00 Summit.
 73.00 Desc. 150 ft. to
 80.02 The cor. of secs. 26, 27, 34 and 35.
 Land, mountainous.
 Soil, 3rd and 4th rate.
 Timber, paloverde and catclaw.
 Undergrowth, greasewood, cactus and sage.

 N. 0° 01' W., bet. secs. 26 and 27,
 over mountainous land, through scattering timber and
 dense undergrowth.

11.30 Wash, 50 lks. wide, course W.; asc. 100 ft. to
 17.50 Spur extends W.; desc. 90 ft. to
 24.75 Draw, course W.; asc. 340 ft. to
 40.00 Set an iron post, 3 ft. long, 1 in. diam., 26 ins. in the
 ground, for ¼ sec. cor., with brass cap, marked
 ¼ in N.,
 S 26 in E., and
 S 27 in W. half; and
 1915 in S. rim;
 and raise a mound of stone, 2 ft. base, 1½ ft. high,
 W. of cor.

Desc. 30 ft. to
 41.00 FT.; asc. 90 ft. to
 44.00 Summit.
 49.00 Desc. 200 ft. to
 58.00 Draw, course E.; asc. 150 ft. to
 64.30 Spur extends NE.; desc. 180 ft. to
 72.00 Ft. of descent.

Chains

80.00 Set an iron post, 3 ft. long, 2 ins. diam., 24 ins. in the ground, for cor. of secs. 22, 23, 26 and 27, with brass cap, marked
 T 2 N S 22 in NW.,
 R 18 W S 23 in NE.,
 S 26 in SE., and
 S 27 in SW. quadrant; and
 1915 in S. rim;
 and raise a mound of stone, 2 ft. base, 1½ ft. high, W. of cor.
 Land, mountainous.
 Soil, 3rd and 4th rate.
 Timber, paloverde and catclaw.
 Undergrowth, greasewood, cactus and sage.

 East, on a random line, bet. secs. 23 and 26.
 40.00 Set temp. ¼ sec. cor.
 79.98 Intersect N. and S. line, 7 lks. N. of the cor. of secs. 23, 24, 25 and 26.

Thence N.89°57'W., on a true line, bet. secs. 23 and 26, over rough broken land, through scattering timber and dense undergrowth.

.50 Wash, 60 lks. wide, course NW.
 39.99 Set an iron post, 3 ft. long, 1 in. diam., 26 ins. in the ground, for ¼ sec. cor., with brass cap, marked
 ¼ S 23 in N., and
 S 26 in S. half; and
 1915 in S. rim;
 and raise a mound of stone, 2 ft. base, 1½ ft. high, N. of cor. Asc. 75 ft. to

53.50 Spur extends NE.; desc. 45 ft. to
 56.80 Draw, course NW.; asc. 80 ft. to
 63.70 Spur extends NE.; desc. 125 ft. to
 69.50 Draw, course N.; asc. 180 ft. to
 79.98 The cor. of secs. 22, 23, 26 and 27.
 Land, rough and broken.
 Soil, 3rd and 4th rate.
 Timber, paloverde and catclaw.
 Undergrowth, greasewood, sage and cactus.

 N.0°01'W., bet. secs. 22 and 23, over rolling mountainous land, through scattering timber and dense undergrowth.

Desc. NE. slope 270 ft. to
 17.00 Wash, course NE.; asc. SE. slope 85 ft. to
 30.00 Spur extends NE.; desc. NW. slope 140 ft. to
 38.00 Draw, course NW.; asc. SW. slope.

40.00 Set an iron post, 3 ft. long, 1 in. diam., 26 ins. in the ground, for ¼ sec. cor., with brass cap, marked
 ¼ in N.,
 S 22 in W., and
 S 23 in E. half; and
 1915 in S. rim;
 and raise a mound of stone, 2 ft. base, 1½ ft. high, W. of cor.

46.50 Spur, 65 ft. above draw, extends W.; desc. 170 ft. on N. slope to

70.00 Wash, course NW.
 75.00 Same wash, course NE.; thence over level land.

80.00 Set an iron post, 3 ft. long, 2 ins. diam., 24 ins. in the ground, for cor. of secs. 14, 15, 22 and 23, with brass cap, marked
 Tn2 N S 15 in NW.,
 R 18 W S 14 in NE.,
 S 23 in SE., and

Subdivision of T. 2 N., R. 18 W.

9

Chains

S 22 in SW. quadrant; and
 1915 in S. rim;
 and raise a mound of stone, 2 ft. base, 1½ ft. high,
 W. of cor.
 Land, rolling mountainous for 75 chs., and level for bal-
 ance.
 Soil, 4th rate.
 Timber, ironwood and paloverde.
 Undergrowth, greasewood and cactus.

40.00 East, on a random line, bet. secs. 14 and 23.
 79.88 Set temp. ¼ sec. cor.
 Intersect N. and S. line 28 lks. N. of the cor. of secs.
 13, 14, 23 and 24.

Thence N.89°48'W., on a true line, bet. secs. 14 and 23,
 over level land, through sacttering timber and dense
 undergrowth.
 .90 Draw, course S.
 37.90 Wash, course NW.
 39.94 Set an iron post, 3 ft. long, 1 in. diam., 26 ins. in the
 ground, for ¼ sec. cor., with brass cap, marked
 ¼ S 14 in N., and
 S 23 in S. half; and
 1915 in S. rim;
 and raise a mound of stone, 2 ft. base, 1½ ft. high,
 N. of cor.

40.40 Wash, course NW.
 59.90 Wash, course NW.
 67.90 Wash, course NW.
 77.40 Wash, course N.
 79.88 The cor. of secs. 14, 15, 22 and 23.
 Land, level.
 Soil, 1st and 2nd rate.
 Timber, ironwood and paloverde.
 Undergrowth, greasewood, mesquite and cactus.

N.0°01'W., bet. secs. 14 and 15,
 over level desert, through scattering timber and dense
 undergrowth.

40.00 Point for ¼ sec. cor. falls at pt. where it would be im-
 practicable to set same; therefore at
 40.35 Set an iron post, 3 ft. long, 1 in. diam., 26 ins. in the
 ground, for witness cor. to ¼ sec. cor., with brass
 cap, marked

¼ in N.,
 S 14 in E.,
 S 15 in W., and
 WC in S. half; and
 1915 in S. rim;
 and raise a mound of stone, 2 ft. base, 1½ ft. high,
 W. of cor.

58.40 Road bears N.85°E. and S.85°W.
 80.00 Set an iron post, 3 ft. long, 2 ins. diam., 24 ins. in the
 ground, for cor. of secs. 10, 11, 14 and 15, with brass
 cap, marked

T 2 N S 10 in NW.,
 R 18 W S 11 in NE.,
 S 14 in SE., and
 S 15 in SW. quadrant; and
 1915 in S. rim;
 and raise a mound of stone, 2 ft. base, 1½ ft. high,
 W. of cor.

Land, nearly level desert, with numerous shallow washes
 Soil, 2nd rate.-- Timber, paloverde, mesquite and catclaw.
 Undergrowth, greasewood, cactus and sage.

Chains

- 40.00 East, on a random line, bet. secs. 11 and 14.
Set temp. $\frac{1}{4}$ sec. cor.
79.96 Intersect N. and S. line 22 lks. N. of the cor. of secs. 11, 12, 13 and 14.
- 39.98 Thence N. $89^{\circ}51'W.$, on a true line, bet. secs. 11 and 14, over hilly desert, through scattering timber and dense undergrowth.
Set an iron post, 3 ft. long, 1 in. diam., 26 ins. in the ground, for $\frac{1}{4}$ sec. cor., with brass cap, marked
 $\frac{1}{4}$ S 11 in N., and
S 14 in S. half, and
1915 in S. rim;
and raise a mound of stone, 2 ft. base, $1\frac{1}{2}$ ft. high, N. of cor.
- 53.55 Road bears N. $10^{\circ}W.$ and S. $10^{\circ}E.$
79.96 The cor. of secs. 10, 11, 14 and 15.
Land, hilly desert.
Soil, gravel and shale; 2nd and 3rd rate.
Timber, paloverde, mesquite and catclaw.
Undergrowth, greasewood, cactus and sage.
-
- 14.00 N. $0^{\circ}01'W.$, bet. secs. 10 and 11,
over hilly desert, through scattering timber and dense undergrowth.
Road bears N. $30^{\circ}E.$, and S. $30^{\circ}W.$
40.00 Set an iron post, 3 ft. long, 1 in. diam., 26 ins. in the ground, for $\frac{1}{4}$ sec. cor., with brass cap, marked
 $\frac{1}{4}$ in N.,
S 10 in W., and
S 11 in E. half; and
1915 in S. rim;
and raise a mound of stone, 2 ft. base, $1\frac{1}{2}$ ft. high, W. of cor.
- 72.00 Asc. 100 ft. to
77.80 Saddle in low ridge bears E. and W.
80.00 Set an iron post, 3 ft. long, 2 ins. diam., 24 ins. in the ground, for cor. of secs. 2, 3, 10 and 11, with brass cap, marked
T 2 N S 3 in NW.,
R 18 W S 2 in NE.,
S 11 in SE., and
S 10 in SW. quadrant; and
1915 in S. rim;
and raise a mound of stone, 2 ft. base, $1\frac{1}{2}$ ft. high, W. of cor.
Land, hilly desert.
Soil, gravelly, with large boulders; 2nd and 3rd rate.
Timber, paloverde and catclaw.
Undergrowth, greasewood, sage and cactus.
-
- 40.00 East, on a random line, bet. secs. 2 and 11.
Set temp. $\frac{1}{4}$ Sec. cor.
79.94 Intersect N. and S. line 6 lks. N. of the cor. of secs. 1, 2, 11 and 12.
- 8.25 Thence N. $89^{\circ}57'W.$, on a true line, bet. secs. 2 and 11,
over broken, hilly desert, through scattering timber and dense undergrowth.
Asc. 75 ft. to
16.00 Spur extends N.; desc. 85 ft. to
24.00 Ft.; thence over broken land.
Asc. 70 ft. to
33.00 Saddle in low ridge bearing NW. and SE.
39.97 Set an iron post, 3 ft. long, 1 in. diam., 26 ins. in the ground, for $\frac{1}{4}$ sec. cor., with brass cap, marked

Subdivision of T. 2 N., R. 18 W.

Chains

$\frac{1}{4}$ S 2 in N., and
 S 11 in S. half, and
 1915 in S. rim;
 and raise a mound of stone, 2 ft. base, $1\frac{1}{2}$ ft. high,
 N. of cor.
 58.50 Desc. 50 ft. to
 64.50 Draw, course NW.; asc. 160 ft. to
 78.50 Spur extends N.; desc. 50 ft. to
 79.94 The cor. of secs. 2, 3, 10 and 11.
 Land, broken and hilly.
 Soil, rocky; 2nd and 3rd rate.
 Timber, paloverde and catclaw.
 Undergrowth, greasewood, cactus and sage.

N.0°01'W., on a random line, bet. secs. 2 and 3.
 40.00 Set temp. $\frac{1}{4}$ sec. cor.
 80.10 Intersect N. bdy. of Tp., 3 lks. E. of the cor. of secs.
 2, 3, 34 and 35, described in Book "B."

Thence S.0°02'E., on a true line, bet. secs. 2 and 3,
 over hilly desert, through scattering timber and dense
 undergrowth.
 Desc. 175 Ft. to
 16.30 Draw, course W.; asc. 50 ft. to
 22.75 Spur extends W.
 40.10 Set an iron post, 3 ft. long, 1 in. diam., 26 ins. in the
 ground, for $\frac{1}{4}$ sec. cor., with brass cap, marked
 $\frac{1}{4}$ in N.,
 S 2 in E., and
 S 3 in W. half; and
 1915 in S. rim;
 and raise a mound of stone, 2 ft. base, $1\frac{1}{2}$ ft. high,
 W. of cor.

48.10 Wash, 70 lks. wide, course W.
 80.10 The cor. of secs. 2, 3, 10 and 11.
 Land, hilly desert.
 Soil, rocky; 2nd and 3rd rate.
 Timber, paloverde and catclaw.
 Undergrowth, greasewood, sage and cactus.

From the cor. of secs. 3, 4, 33 and 34, on S. bdy. of Tp.
 described in Book "B."

N.0°02'W., bet. secs. 33 and 34,
 over mountainous land, through scattering timber and
 dense undergrowth.
 Asc. 110 ft. to
 11.80 Spur extends SW.
 16.00 Asc. 190 ft. to
 26.20 Summit; desc. 60 ft. to
 28.05 Draw, course W.
 32.50 Asc. 50 ft. to
 38.90 Saddle in ridge bearing NW. and SE.; desc.
 40.00 Set an iron post, 3 ft. long, 1 in. diam., 26 ins. in the
 ground, for $\frac{1}{4}$ sec. cor., with brass cap, marked
 $\frac{1}{4}$ in N.,
 S 33 in W., and
 S 34 in E. half; and
 1915 in S. rim;
 and raise a mound of stone, 2 ft. base, $1\frac{1}{2}$ ft. high,
 W. of cor.
 Continue descent.
 80.00 450 ft. below ridge at 38.90 ch. pt.,

Chains

Set an iron post, 3 ft. long, 2 ins. diam., 24 ins. in the ground, for cor. of secs. 27, 28, 33 and 34, with brass cap, marked

T 2 N S 28 in NW.,
R 18 W S 27 in NE.,
S 34 in SE., and
S 33 in SW. quadrant; and
1915 in S. rim;

and raise a mound of stone, 2 ft. base, $1\frac{1}{2}$ ft. high, W. of cor.

Land, mountainous.

Soil, rocky; 3rd and 4th rate.

Timber, paloverde and catclaw.

Undergrowth, greasewood, sage and cactus.

East, on a random line, bet. secs. 27 and 34.

40.00 Set temp. $\frac{1}{4}$ sec. cor.

80.12 Intersect N. and S. line 22 lks. S. of the cor. of secs. 26, 27, 34 and 35.

Thence S. $89^{\circ}51'$ W., on a true line, bet. secs. 27 and 34, over rolling desert, through scattering timber and dense undergrowth.

40.06 Set an iron post, 3 ft. long, 1 in. diam., 26 ins. in the ground, for $\frac{1}{4}$ sec. cor., with brass cap, marked

$\frac{1}{4}$ S 27 in N., and
S 34 in S. half; and
1915 in S. rim;

and raise a mound of stone, 2 ft. base, $1\frac{1}{2}$ ft. high, N. of cor.

80.12 The cor. of secs. 27, 28, 33 and 34.

Land, rolling, and broken.

Soil, gravel and shale; 2nd and 3rd rate.

Timber, paloverde and catclaw.

Undergrowth, greasewood, cactus and sage.

N. $0^{\circ}02'$ W., bet. secs. 27 and 28, over mountainous land, through scattering timber and dense undergrowth.

20.00 Wash, 70 lks. wide, course W.

40.00 Set an iron post, 3 ft. long, 1 in. diam., 26 ins. in the ground, for $\frac{1}{4}$ sec. cor., with brass cap, marked

$\frac{1}{4}$ in N.,
S 27 in E., and
S 28 in W. half; and
1915 in S. rim;

and raise a mound of stone, 2 ft. base, $1\frac{1}{2}$ ft. high, W. of cor.

48.00 Asc. 100 ft. to

52.75 Rocky spur extends SW.; desc. 50 ft. to

63.75 Draw extends SW.; asc. 200 ft. to

72.72 Summit.

78.40 Desc. 25 ft. to

80.00 Set an iron post, 3 ft. long, 2 ins. diam., 24 ins. in the ground, for cor. of secs. 21, 22, 27 and 28, with brass cap, marked

T 2 N S 21 in NW.,
R 18 W S 22 in NE.,
S 27 in SE., and
S 28 in SW. quadrant; and
1915 in S. rim;

and raise a mound of stone, 2 ft. base, $1\frac{1}{2}$ ft. high, W. of cor.

Land, mountainous.

Soil, 3rd and 4th rate.--Timber, paloverde and catclaw.

Undergrowth, greasewood, sage and cactus.

Subdivision of T. 2 N., R. 18 W.

Chains

40.00 East, on a random line, bet. secs. 22 and 27.
 Set temp. $\frac{1}{4}$ sec. cor.
 80.06 Intersect N. and S. line 42 lks. S. of the cor. of secs. 22, 23, 26 and 27.

Thence S. $89^{\circ}42'W.$, on a true line, bet. secs. 22 and 27, over mountainous land, through scattering timber and dense undergrowth.
 Asc. 260 ft. on NE. slope to
 8.50 Ridge bears N. and S.; desc. 210 ft. to
 21.25 Canyon, course N.; asc.
 40.03 Set an iron post, 3 ft. long, 1 in. diam., in a mound of stone, for $\frac{1}{4}$ sec. cor., with brass cap, marked
 $\frac{1}{4}$ S 22 in N., and
 S 27 in S. half; and
 1915 in S. rim;
 and raise a mound of stone, 2 ft. base, $1\frac{1}{2}$ ft. high, N. of cor. Impracticable to set cor. in ground.

42.40 Top of ridge bears NW. and SE.; 350 ft. above canyon.
 Desc. 270 ft. to
 54.40 Bottom of canyon, course S.; asc. 130 ft. to
 60.00 Ridge bears N. and S.; desc. 140 ft. to
 65.50 Bottom of canyon, course S.; asc. 220 ft. to
 75.00 Ridge bears N. and S.; desc. 170 ft. on SW. slope to
 80.06 The cor. of secs. 21, 22, 27 and 28.
 Land, mountainous.
 Soil, 4th rate.
 Timber, paloverde and catclaw.
 Undergrowth, greasewood, catclaw and cactus.

N. $0^{\circ}02'W.$, bet. secs. 21 and 22, over mountainous land, through scattering timber and dense undergrowth.
 Asc. 475 ft. to
 16.40 Main ridge bears NW. and E.; desc. 325 ft. to
 24.75 Draw, course W.; asc. 100 ft. to
 31.00 Spur extends NW.;
 40.00 Set an iron post, 3 ft. long, 1 in. diam., 26 ins. in the ground, for $\frac{1}{4}$ sec. cor., with brass cap, marked
 $\frac{1}{4}$ in N.,
 S 21 in W., and
 S 22 in E. half; and
 1915 in S. rim;
 and raise a mound of stone, 2 ft. base, $1\frac{1}{2}$ ft. high, W. of cor.
 Desc. 250 ft. to
 64.00 Leave mountains; thence over rolling land.
 80.00 Set an iron post, 3 ft. long, 2 ins. diam., 24 ins. in the ground, for cor. of secs. 15, 16, 21 and 22, with brass cap, marked
 T 2 N S 16 in NW.,
 R 18 W S 15 in NE.,
 S 22 in SE., and
 S 21 in SW. quadrant; and
 1915 in S. rim;
 and raise a mound of stone, 2 ft. base, $1\frac{1}{2}$ ft. high, W. of cor.
 Land, mountainous in S. 64 chs., and rolling in N. part.
 Soil, rocky; 3rd and 4th rate.
 Timber, paloverde, and catclaw.
 Undergrowth, greasewood, sage and cactus.

40.00 East, on a random line, bet. secs. 15 and 22.
 Set temp. $\frac{1}{4}$ sec. cor.
 80.11 Intersect N. and S. line 12 lks. S. of the cor. of secs. 14, 15, 22 and 23.

Chains

Thence S.89°55'W., on a true line, bet. secs. 15 and 22, over broken desert, through scattering timber and dense undergrowth.

40.05½ Set an iron post, 3 ft. long, 1 in. diam., 26 ins. in the ground, for ¼ sec. cor., with brass cap, marked
 ¼ S 15 in N., and
 S 22 in S. half; and
 1915 in S. rim;
 and raise a mound of stone, 2 ft. base, 1½ ft. high, N. of cor.

80.11 The cor. of secs. 15, 16, 21 and 22.
 Land, broken.
 Soil, gravel and shale; 2nd and 3rd rate.
 Timber, paloverde and catclaw.
 Undergrowth, greasewood, sage and cactus.

N.0°02'W., bet. secs. 15 and 16, over level desert, through scattering timber and dense undergrowth.

32.00 Across washes, course NW.

40.00 Set an iron post, 3 ft. long, 1 in. diam., 26 ins. in the ground, for ¼ sec. cor., with brass cap, marked
 ¼ in N.,
 S 15 in E., and
 S 16 in W. half; and
 1915 in S. rim;

and raise a mound of stone, 2 ft. base, 1½ ft. high, W. of cor.

80.00 Set an iron post, 3 ft. long, 2 ins. diam., 24 ins. in the ground, for cor. of secs. 9, 10, 15 and 16, with brass cap, marked

T 2 N S 9 in NW.,
 R 18 W S 10 in NE.,
 S 15 in SE., and
 S 16 in SW. quadrant; and
 1915 in S. rim;

and raise a mound of stone, 2 ft. base, 1½ ft. high, W. of cor.

Land, level desert.

Soil, gravel; 2nd rate.

Timber, paloverde, mesquite and catclaw.

Undergrowth, greasewood, sage and cactus.

40.00 East, on a random line, bet. secs. 10 and 15.

Set temp. ¼ sec. cor.

80.10 Intersect N. and S. line 12 lks. S. of the cor. of secs. 10, 11, 14 and 15.

Thence S.89°55'W., on a true line, bet. secs. 10 and 15, over slightly broken level desert, through scattering timber and dense undergrowth.

40.05 Set an iron post, 3 ft. long, 1 in. diam., 26 ins. in the ground, for ¼ sec. cor., with brass cap, marked
 ¼ S 10 in N., and
 S 15 in S. half; and
 1915 in S. rim;

and raise a mound of stone, 2 ft. base, 1½ ft. high, N. of cor.

57.60 Road bears NW. and SE.

80.10 The cor. of secs. 9, 10, 15 and 16.

Land, slightly broken level desert.

Soil, gravel; 2nd rate; some alkali.

Timber, paloverde, catclaw and mesquite.

Undergrowth, greasewood, cactus and sage.

Subdivision of T. 2 N. R. 18 W.

Chains

N.0°02'W., bet. secs. 9 and 10,
 over hilly land, through scattering timber and dense
 undergrowth.

11.20 Road bears E. and W.
 17.10 Enter mountainous land; asc. 340 ft. to
 32.20 Summit; desc.
 40.00 Set an iron post, 3 ft. long, 1 in. diam., 26 ins. in the
 ground, for $\frac{1}{4}$ sec. cor., with brass cap, marked
 $\frac{1}{4}$ in N.,
 S 9 in W., and
 S 10 in E. half; and
 1915 in S. rim;
 and raise a mound of stone, 2 ft. base, $1\frac{1}{2}$ ft. high,
 W. of cor.

49.10 Draw, course W.; 180 ft. below 32.20 ch. pt.
 Asc. 70 ft. to
 52.00 Spur extends NW.; desc. 70 ft. to
 57.55 Draw, course NW.; asc. 100 ft. to
 62.15 Spur extends NW.; desc. 170 ft. to
 72.00 Ft.; thence over hilly land.
 80.00 Set an iron post, 3 ft. long, 2 ins. diam., 24 ins. in the
 ground, for cor. of secs. 3, 4, 9 and 10, with brass
 cap, marked
 T 2 N S 4 in NW.,
 R 18 W S 3 in NE.,
 S 10 in SE., and
 S 9 in SW. quadrant; and
 1915 in S. rim;
 and raise a mound of stone, 2 ft. base, $1\frac{1}{2}$ ft. high,
 W. of cor.

Land, hilly in S. 17 and N. 8 chs., and mountainous in
 balance.
 Soil, 2nd and 3rd rate.
 Timber, paloverde and catclaw.
 Undergrowth, greasewood, sage and cactus.

40.00 East, on a random line, bet. secs. 3 and 10.
 Set temp. $\frac{1}{4}$ sec. cor.
 79.90 Intersect N. and S. line at the cor. of secs. 2, 3, 10
 and 11.

Thence West, on a true line, bet. secs. 3 and 10,
 over mountainous land, through scattering timber and
 dense undergrowth.
 Asc. 135 ft. to
 8.00 Spur extends NW.; desc. 360 ft. to
 31.00 Ft. of descent.
 39.95 Set an iron post, 3 ft. long, 1 in. diam., 26 ins. in the
 ground, for $\frac{1}{4}$ sec. cor., with brass cap, marked
 $\frac{1}{4}$ S 3 in N., and
 S 10 in S. half; and
 1915 in S. rim;
 and raise a mound of stone, 2 ft. base, $1\frac{1}{2}$ ft. high,
 N. of cor.

62.00 Point of spur extends N.; desc. 100 ft. to
 72.00 Ft. of descent.
 79.90 The cor. of secs. 3, 4, 9 and 10.
 Land, mountainous.
 Soil, rocky; 2nd and 3rd rate.
 Timber, paloverde and catclaw.
 Undergrowth, greasewood, sage and cartus.

40.00 N.0°02'W., on a random line, bet. secs. 3 and 4.
 Set temp. $\frac{1}{4}$ sec. cor.
 80.20 Intersect N. bdy of Tp. 3 lks. W. of the cor. of secs.
 3, 4, 33 and 34, described in Book "B".

Chains

Thence S.0°01'E., on a true line, bet. secs. 3 and 4, over hilly desert, through scattering timber and dense undergrowth.

Asc. 60 ft. to

4.45 Summit; desc. 50 ft. to

8.90 Ft.; asc. 165 ft. to

17.65 Top of knoll; desc. 140 ft. to

24.00 Ft. of descent.

40.20 Set an iron post, 3 ft. long, 1 in. diam., 26 ins. in the ground, for 1/4 sec. cor., with brass cap, marked

1/4 in N.,
S 3 in E., and
S 4 in W. half; and
1915 in S. rim;

and raise a mound of stone, 2 ft. base, 1 1/2 ft. high, W. of cor.

80.20 The cor. of secs. 3, 4, 9 and 10.

Land, hilly desert.

Soil, gravelly, with shale; 2nd and 3rd rate.

Timber, paloverde, catclaw and mesquite.

Undergrowth, greasewood, cactus and sage.

From the cor. of secs. 4, 5, 32 and 33, on the S. bdy. of Tp., described in Book "B,"

N.0°02'W., bet. secs. 32 and 33, over mountainous land, through scattering timber and dense undergrowth.

Asc. S. slope 325 ft. to

14.00 Spur extends SW.; desc. NW. slope 325 ft. to

39.00 Wash, course W.; asc. S. slope.

40.00 Set an iron post, 3 ft. long, 1 in. diam., 26 ins. in the ground, for 1/4 sec. cor., with brass cap, marked

1/4 in N.,
S 32 in W., and
S 33 in E. half; and
1915 in S. rim;

and raise a mound of stone, 2 ft. base, 1 1/2 ft. high, W. of cor.

42.00 Spur, 80 ft. above wash at 39 ch.pt., extends W.; desc. 60 ft. on NW. slope to

56.00 Wash, course SW.; asc. S. slope 340 ft. to

63.00 Ridge bears E. and W.; desc. NE. slope 110 ft. to

68.00 Thence along E. slope.

75.00 Spur extends NE.; desc. NW. slope 140 ft. to

80.00 Set an iron post, 3 ft. long, 2 ins. diam., 24 ins. in the ground, for cor. of secs. 28, 29, 32 and 33, with brass cap, marked

T 2 N S 29 in NW.,
R 18 W S 28 in NE.,
S 33 in SE., and
S 32 in SW. quadrant; and
1915 in S. rim;

and raise a mound of stone, 2 ft. base, 1 1/2 ft. high, W. of cor.

Land, mountainous.

Soil, 4th rate.

Timber, paloverde.

Undergrowth, greasewood and cactus.

East, on a random line, bet. secs. 28 and 33.

40.00 Set temp. 1/4 sec. cor.

80.00 Intersect N. and S. line, 14 lks. N. of the cor. of secs. 27, 28, 33 and 34.

Thence N.89°54'W., on a true line, bet. secs. 28 and 33,

Chains

over broken and hilly land, through scattering timber and dense undergrowth.
 40.00 Set an iron post, 3 ft. long, 1 in. diam., 26 ins. in the ground, for $\frac{1}{4}$ sec. cor., with brass cap, marked
 $\frac{1}{4}$ S 28 in N., and
 S 33 in S. half; and
 1915 in S. rim;
 and raise a mound of stone, 2 ft. base, $1\frac{1}{2}$ ft. high, N. of cor.
 Asc. 270 ft. to
 57.90 Spur extends N.; desc. 340 ft. to
 71.40 Draw, course N.; asc. 200 ft. to
 78.40 Spur extends N.; desc. 85 ft. to
 80.00 The cor. of secs. 28, 29, 32 and 33.
 Land, broken and hilly.
 Soil, rocky; 3rd and 4th rate.
 Timber, paloverde and catclaw.
 Undergrowth, greasewood, cactus and sage.

 N.0°02'W., bet. secs. 28 and 29,
 over broken and hilly land, through scattering timber and dense undergrowth.
 Desc. NW. slope 330 ft. to
 24.00 Draw, course NE.
 40.00 Set an iron post, 3 ft. long, 1 in. diam., 26 ins. in the ground, for $\frac{1}{4}$ sec. cor., with brass cap, marked
 $\frac{1}{4}$ in N.,
 S 28 in E., and
 S 29 in W. half; and
 1915 in S. rim;
 and raise a mound of stone, 2 ft. base, $1\frac{1}{2}$ ft. high, W. of cor.
 50.00 Wash, course W.; width, 7 chs.
 57.00 Asc. slight SW. slope.
 80.00 Set an iron post, 3 ft. long, 2 ins. diam., 24 ins. in the ground, for cor. of secs. 20, 21, 28 and 29, with brass cap, marked
 T 2 N S 20 in NW.,
 R 18 W S 21 in NE.,
 S 28 in SE., and
 S 29 in SW. quadrant; and
 1915 in S. rim;
 and raise a mound of stone, 2 ft. base, $1\frac{1}{2}$ ft. high, W. of cor.
 Land, hilly and broken.
 Soil, 4th rate.
 Timber, ironwood and paloverde.
 Undergrowth, greasewood and cactus.

 East, on a random line, bet. secs. 21 and 28.
 40.00 Set temp. $\frac{1}{4}$ sec. cor.
 80.00 Intersect N. and S. line 30 lks. N. of the cor. of secs. 21, 22, 27 and 28.
 Thence N.89°47'W., on a true line, bet. secs. 21 and 28, over mountainous land, through scattering timber and dense undergrowth.
 Desc. 30 ft. on SW. alope to
 4.00 Gulch, course S.; asc. 20 ft. to
 7.50 Spur extends S.; desc. 260 ft. to
 26.00 Wash, 100 lks. wide, course S.; asc. 50 ft. to
 32.00 Spur extends S.; desc. 190 ft. to
 35.00 Wash, course S.; asc. to
 37.00 Spur extends S.; desc.
 40.00 Set an iron post, 3 ft. long, 1 in. diam., 26 ins. in the ground, for $\frac{1}{4}$ sec. cor., with brass cap, marked

Chains

$\frac{1}{4}$ S 21 in N., and
 S 28 in S. half; and
 1915 in S. rim;
 and raise a mound of stone, 2 ft. base, $1\frac{1}{2}$ ft. high,
 N. of cor.
 45.00 Wash, course S.; 25 ft. below spur at 43 ch. pt.;
 Asc. 30 ft. to
 48.00 Spur extends S.; desc. 75 ft. to
 55.00 Wash, course S.; asc. 30 ft. to
 60.00 Spur extends S.; desc. 70 ft. to
 65.50 Wash, course S.
 80.00 The cor. of secs. 20, 21, 28, and 29.
 Land, mountainous.
 Soil, 4th rate.
 Timber, paloverde.
 Undergrowth, cactus.

 N.0°02'W., bet. secs. 20 and 21,
 over mountainous land, through scattering timber and
 dense undergrowth.
 8.00 Asc. 270 ft. to
 20.80 Spur extends SW.; desc. 80. ft. to
 24.10 Draw, course W.; asc. 45 ft. to
 27.00 Spur extends W.; desc. 300 ft. to
 40.00 Set an iron post, 3 ft. long, 1 in. diam., 26 ins. in the
 ground, for $\frac{1}{4}$ sec. cor., with brass cap, marked
 $\frac{1}{4}$ in N.,
 S 20 in W., and
 S 21 in E. half; and
 1915 in S. rim;
 and raise a mound of stone, 2 ft. base, $1\frac{1}{2}$ ft. high,
 W. of cor.
 54.00 Wash, course W.;
 56.00 Asc. 270 ft. to
 65.80 Summit.
 77.20 Desc. 110 ft. to
 80.00 Set an iron post, 3 ft. long, 2 ins. diam., 24 ins. in the
 ground, for cor. of secs. 16, 17, 20 and 21, with brass
 cap, marked
 T 2 N S 17 in NW.,
 R 18 W S 16 in NE.;
 S 21 in SE., and
 S 20 in SW. quadrant; and
 1915 in S. rim;
 and raise a mound of stone, 2 ft. base, $1\frac{1}{2}$ ft. high,
 W. of cor.
 Land, mountainous.
 Soil, rocky; 2rd and 4th rate.
 Timber, paloverde and catclaw.
 Undergrowth, greasewood, cactus and sage.

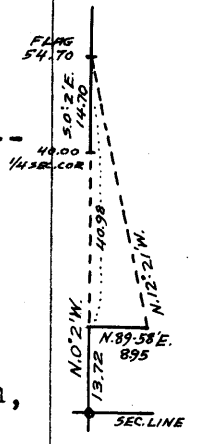
 East, on a random line, bet. secs. 16 and 21.
 40.00 Set temp. $\frac{1}{4}$ sec. cor.
 80.04 Intersect N. and S. line 13 lks. N. of the cor. of secs.
 15, 16, 21 and 22.
 Thence N.89°54'W., on a true line, bet. secs. 16 and 21,
 over mountainous land, through scattering timber and
 dense undergrowth.
 40.02 Set an iron post, 3 ft. long, 1 in. diam., 26 ins. in the
 ground, for $\frac{1}{4}$ sec. cor., with brass cap, marked
 $\frac{1}{4}$ S 16 in N., and
 S 21 in S. half; and
 1915 in S. rim;
 and raise a mound of stone, 2 ft. base, $1\frac{1}{2}$ ft. high,
 N. of cor.

Subdivision of T. 2 N., R. 18 W.

Chains

42.90
73.00
80.04

Draw, course N.; asc. 550 ft. to
Spur extends NW.; desc. 260 ft. to
The cor. of secs. 16, 17, 20 and 21.
Land, mountainous.
Soil, gravel and shale; 2nd and 3rd rate.
Timber, paloverde, and catclaw.
Undergrowth, greasewood, catclaw and sage.



9.75
13.72

N.0°02'W., bet. secs. 16 and 17,
over mountainous land, through scattering timber and
dense undergrowth.
Asc. 160 ft. to
Summit; desc. 30 ft. to
To pass cliffs, over which it is impracticable to chain,
I proceed as follows:
Set a flag on line, N.0°02'W., and measure a base line
at right angles to line, N.89°58'E., 8.95 chs. to a point
whence first flag bears N.12°21'W.; which gives for the
distance on line, $8.95 \times \sin 77^\circ 41' \div \sin 12^\circ 19' = 40.98$
chs.
Dist. from sec. cor. is therefore $13.72 + 40.98 = 54.70$ chs.
I return S.0°02'E., 14.70 chs. to

40.00

Set an iron post, 3 ft. long, 1 in. diam., 26 ins. in the
ground, for $\frac{1}{4}$ sec. cor., with brass cap, marked
 $\frac{1}{4}$ in N.,
S 16 in E., and
S 17 in W. half; and
1915 in S. rim;
and raise a mound of stone, 2 ft. base, $1\frac{1}{2}$ ft. high,
W. of cor.

80.00

Set an iron post, 3 ft. long, 2 ins. diam., 24 ins. in the
ground, for cor. of secs. 8, 9, 16 and 17, with brass
cap, marked
T 2 N S 8 in NW.,
R 18 W S 9 in NE.,
S 16 in SE., and
S 17 in SW. quadrant; and
1915 in S. rim;
and raise a mound of stone, 2 ft. base, $1\frac{1}{2}$ ft. high,
W. of cor.
Land, mountainous.
Soil, rocky; 2nd and 3rd rate.
Timber, paloverde and catclaw.
Undergrowth, greasewood, sage and cactus.

40.00
79.96

East, on a random line, bet. secs. 9 and 16.
Set temp. $\frac{1}{4}$ sec. cor.
Intersect N. and S. line 35 lks. S. of the cor. of secs.
9, 10, 15 and 16.

39.98

Thence S.89°45'W., on a true line, bet. secs. 9 and 16,
over level desert, through scattering timber and dense
undergrowth.
Set an iron post, 3 ft. long, 1 in. diam., 26 ins. in the
ground, for $\frac{1}{4}$ sec. cor., with brass cap, marked
 $\frac{1}{4}$ S 9 in N., and
S 16 in S. half; and
1915 in S. rim;
and raise a mound of stone, 2 ft. base, $1\frac{1}{2}$ ft. high,
N. of cor.

79.96

The cor. of secs. 8, 9, 16 and 17.
Land, level.
Soil, gravelly; 2nd rate.
Timber, paloverde, catclaw and mesquite.
Undergrowth, greasewood, cactus and sage.

Chains

	N.0°02'W., bet. secs. 8 and 9, over level land, through scattering timber and dense undergrowth.
.50	Draw, course NW.
13.90	Road bears NE. and SW.
22.00	Wash, course W.
35.00	Wash, course W.
40.00	Set an iron post, 3 ft. long, 1 in. diam., 26 ins. in the ground, for $\frac{1}{4}$ sec. cor., with brass cap, marked $\frac{1}{4}$ in N., S 8 in W., and S 9 in E. half; and 1915 in S. rim; and raise a mound of stone, 2 ft. base, $1\frac{1}{2}$ ft. high, W. of cor.
65.00	Wash, course W.
70.00	Wash, course NW.
76.50	Road bears NW. and SE.
80.00	Set an iron post, 3 ft. long, 2 ins. diam., 24 ins. in the ground, for cor. of secs. 4, 5, 8 and 9, with brass cap, marked T 2 N S 5 in NW., R 18 W S 4 in NE., S 9 in SE., and S 8 in SW. quadrant; and 1915 in S. rim; and raise a mound of stone, 2 ft. base, $1\frac{1}{2}$ ft. high, W. of cor. Land, level. Soil, 3rd rate. Timber, paloverde and ironwood. Undergrowth, ironwood, paloverde, greasewood and cactus.

	East, on a random line, bet. secs. 4 and 9.
40.00	Set temp. $\frac{1}{4}$ sec. cor.
79.96	Intersect N. and S. line 38 lks. S. of the cor. of secs. 3, 4, 9 and 10.
	Thence S.89°44'W., on a true line, bet. secs. 4 and 9, over rolling land, through scattering timber and dense undergrowth.
15.00	Draw, course NW.
35.00	Draw, course N.
39.98	Set an iron post, 3 ft. long, 1 in. diam., 26 ins. in the ground, for $\frac{1}{4}$ sec. cor., with brass cap, marked $\frac{1}{4}$ S 4 in N., and S 9 in S. half; and 1915 in S. rim; and raise a mound of stone, 2 ft. base, $1\frac{1}{2}$ ft. high, N. of cor.
51.00	Low ridge bears N. and S.
79.96	The cor. of secs. 4, 5, 8 and 9. Land, rolling. Soil, 4th rate. Timber, ironwood and paloverde. Undergrowth, greasewood and cactus.

	N.0°02'W., on a random line, bet. secs. 4 and 5.
40.00	Set temp. $\frac{1}{4}$ sec. cor.
80.48	Intersect N. bdy. of Tp. 16 lks. E. of the cor. of secs. 4, 5, 32 and 33, described in Book "B."
	Thence S.0°09'E., on a true line, bet. secs. 4 and 5, over rolling mountainous land, through scattering timber and dense undergrowth.

Subdivision of T. 2 N., R. 18 W.

Chains

Asc. 200 ft. to
 13.20 Ridge bears E. and W.; desc. on S. slope.
 30.50 Thence on SW. slope.
 40.48 Set an iron post, 3 ft. long, 1 in. diam., 12 ins. in the ground, and 14 ins. in a mound of stone, for $\frac{1}{4}$ sec. cor., with brass cap, marked
 $\frac{1}{4}$ in N.,
 S 4 in E., and
 S 5 in W. half; and
 1915 in S. rim;
 and raise a mound of stone, 2 ft. base, $1\frac{1}{2}$ ft. high, W. of cor.
 72.50 Wash, 640 ft. below ridge at 13.20 ch. pt., extends W.; asc. N. slope 40 ft. to
 78.00 Low spur extends W.; desc. S. slope 30 ft. to
 80.48 The cor. of secs. 4, 5, 8 and 9.
 Land, rolling mountainous.
 Soil, 4th rate.
 Timber, ironwood and paloverde.
 Undergrowth, greasewood and cactus.

 From the cor. of secs. 5, 6, 31 and 32, on S. bdy. of Tp. described in Book "B,"

N.0°03'W., bet. secs. 31 and 32, over gently rolling land, through scattering timber and undergrowth.
 40.00 Set an iron post, 3 ft. long, 1 in. diam., 26 ins. in the ground, for $\frac{1}{4}$ sec. cor., with brass cap, marked
 $\frac{1}{4}$ in N.,
 S 31 in W., and
 S 32 in E. half; and
 1915 in S. rim;
 and raise a mound of stone, 2 ft. base, $1\frac{1}{2}$ ft. high, W. of cor.
 80.00 Set an iron post, 3 ft. long, 2 ins. diam., 24 ins. in the ground, for cor. of secs. 29, 30, 31 and 32, with brass cap, marked
 T 2 N S 30 in NW.,
 R 18 W S 29 in NE.,
 S 32 in SE., and
 S 31 in SW. quadrant; and
 1915 in S. rim;
 and raise a mound of stone, 2 ft. base, $1\frac{1}{2}$ ft. high, W. of cor.
 Land, gently rolling.
 Soil, shale and gravel; 2nd and 3rd rate.
 Timber, paloverde, mesquite and catclaw.
 Undergrowth, greasewood, sage and cactus.

 East, on a random line, bet. secs. 29 and 32.
 40.00 Set temp. $\frac{1}{4}$ sec. cor.
 79.92 Intersect N. and S. line 3 lks. N. of the cor. of secs. 28, 29, 32 and 33.

Thence N.89°59'W., on a true line, bet. secs. 29 and 32, over mountainous land, through scattering timber and dense undergrowth.
 Desc. 220 ft. to
 4.35 Draw, course N.; asc. 270 ft. to
 14.80 Spur extends N.
 36.10 Spur extends NW.
 39.96 Set an iron post, 3 ft. long, 1 in. diam., 26 ins. in the ground, for $\frac{1}{4}$ sec. cor., with brass cap, marked

Chains

$\frac{1}{4}$ S 29 in N., and
 S 32 in S. half; and
 1915 in S. rim;
 and raise a mound of stone, 2 ft. base, $1\frac{1}{2}$ ft. high,
 N. of cor.

41.70 Same spur extends SW.; desc. 680 ft. to

79.92 The cor. of secs. 29, 30, 31 and 32.

Land, mountainous.

Soil, 3rd and 4th rate.

Timber, paloverde, and catclaw.

Undergrowth, greasewood, sage and cactus.

40.00 West, on a random line, bet. secs. 30 and 31.

Set temp. $\frac{1}{4}$ sec. cor.

79.60 Intersect W. bdy. of Tp. 6 lks. S. of the cor. of secs.
 25, 30, 31 and 36, described in Book "B."

Thence S. $89^{\circ}57'E.$, on a true line, bet. secs. 30 and 31,
 over level desert, through scattering timber and dense
 undergrowth.

39.60 Set an iron post, 3 ft. long, 1 in. diam., 26 ins. in the
 ground, for $\frac{1}{4}$ sec. cor., with brass cap, marked

$\frac{1}{4}$ S 30 in N., and

S 31 in S. half; and

1915 in S. rim;

and raise a mound of stone, 2 ft. base, $1\frac{1}{2}$ ft. high,
 N. of cor.

79.60 The cor. of secs. 29, 30, 31 and 32.

Land, level desert.

Soil, gravelly; 2nd rate.

Timber, paloverde and catclaw.

Undergrowth, greasewood, sage and cactus.

N. $0^{\circ}03'W.$, bet. secs. 29 and 30,
 over hilly desert, through scattering timber and dense
 undergrowth.

32.00 Asc.

40.00 Set an iron post, 3 ft. long, 1 in. diam., 26 ins. in the
 ground, for $\frac{1}{4}$ sec. cor., with brass cap, marked

$\frac{1}{4}$ in N.,

S 29 in E., and

S 30 in W. half; and

1915 in S. rim;

and raise a mound of stone, 2 ft. base, $1\frac{1}{2}$ ft. high,
 W. of cor.

42.70 Spur, 210 ft. above 32.00 ch. pt., extends NW.; desc. 150
 ft. to

47.20 Ft. of descent.

80.00 Set an iron post, 3 ft. long, 2 ins. diam., 24 ins. in the
 ground, for cor. of secs. 19, 20, 29 and 30, with brass
 cap, marked

T 2 N S 19 in NW.,

R 18 W S 20 in NE.,

S 29 in SE.; and

S 30 in SW. quadrant; and

1915 in S. rim;

and raise a mound of stone, 2 ft. base, $1\frac{1}{2}$ ft. high,
 W. of cor.

Land, hilly.

Soil, shale and gravel; 2nd rate.

Timber, paloverde and catclaw.

Undergrowth, greasewood, sage and cactus.

Subdivision of T. 2 N., R. 18 W.

Chains

40.00 East, on a random line, bet. secs. 20 and 29.
Set temp $\frac{1}{4}$ sec. cor.
79.86 Intersect N. and S. line 18 lks. S. of the cor. of secs.
20, 21, 28 and 29.

Thence S.89°52'W., on a true line, bet. secs. 20 and 29,
over rolling desert, through dense timber and undergrowth.
39.93 Set an iron post, 3 ft. long, 1 in. diam., 26 ins. in the
ground, for $\frac{1}{4}$ sec. cor., with brass cap, marked
 $\frac{1}{4}$ S 20 in N., and
S 29 in S. half; and
1915 in S. rim;
and raise a mound of stone, 2 ft. base, 1 $\frac{1}{2}$ ft. high,
N. of cor.

79.86 The cor. of secs. 19, 20, 29 and 30.
Land, rolling.
Soil, shale and gravel; 2nd and 3rd rate.
Timber, paloverde and catclaw.
Undergrowth, greasewood, catclaw and cactus.

40.00 West, on a random line, bet. secs. 19 and 30.
Set temp. $\frac{1}{4}$ sec. cor.
79.50 Intersect W. bdy. of Tp. 10 lks. S. of the cor. of secs.
19, 24, 25 and 30, described in Book "B."

Thence S.89°56'E., on a true line, bet. secs. 19 and 30,
over level desert, through scattering timber and dense
undergrowth.
38.00 Main road bears N. and S.
39.50 Set an iron post, 3 ft. long, 1 in. diam., 26 ins. in the
ground, for $\frac{1}{4}$ sec. cor., with brass cap, marked
 $\frac{1}{4}$ S 19 in N., and
S 30 in S. half; and
1915 in S. rim;
and raise a mound of stone, 2 ft. base, 1 $\frac{1}{2}$ ft. high,
N. of cor.

79.50 The cor. of secs. 19, 20, 29 and 30.
Land, level.
Soil, 2nd rate.
Timber, paloverde and catclaw.
Undergrowth, greasewood, sage and cactus.

N.0°03'W., bet. secs. 19 and 20,
over hilly desert, through scattering timber and dense
undergrowth.
40.00 Set an iron post, 3 ft. long, 1 in. diam., 26 ins. in the
ground, for $\frac{1}{4}$ sec. cor., with brass cap, marked
 $\frac{1}{4}$ in N.,
S 19 in W., and
S 20 in E. half; and
1915 in S. rim;
and raise a mound of stone, 2 ft. base, 1 $\frac{1}{2}$ ft. high,
W. of cor.

70.00 Spur extends W.
80.00 Set an iron post, 3 ft. long, 2 ins. diam., 24 ins. in the
ground, for cor. of secs. 17, 18, 19 and 20, with brass
cap, marked
T 2 N S 18 in NW.,
R 18 W S 17 in NE.,
S 20 in SE., and
S 19 in SW. quadrant; and
1915 in S. rim;
and raise a mound of stone, 2 ft. base, 1 $\frac{1}{2}$ ft. high,
W. of cor.
Land, hilly.-- Soil, 2nd rate.--
Timber, paloverde and catclaw.
Undergrowth, greasewood, cactus and sage.

Chains

East, on a random line, bet. secs. 17 and 20.
 40.00 Set temp. $\frac{1}{4}$ sec. cor.
 79.80 Intersect N. and S. line 10 lks. N. of the cor. of secs.
 16, 17, 20 and 21.

Thence N.89°56'W., on a true line, bet. secs. 17 and 20,
 over mountainous land, through scattering timber and
 dense undergrowth.
 Desc. 210 ft. to

10.00 Draw, course N.; asc. 280 ft. to
 17.60 Spur extends N.; desc. 250 ft. to
 35.80 Draw, course NE.

39.90 Set an iron post, 3 ft. long, 1 in. diam., 26 ins. in the
 ground, for $\frac{1}{4}$ sec. cor., with brass cap, marked
 $\frac{1}{4}$ S 17 in N., and
 S 20 in S. half; and
 1915 in S. rim;
 and raise a mound of stone, 2 ft. base, 1 $\frac{1}{2}$ ft. high,
 N. of cor.

Asc. 250 ft. to
 55.00 Spur extends NW.; desc. 290 ft. to

68.25 Draw, course N.; asc. 110 ft. to
 78.00 Spur extends NW.; desc. 50 ft. to
 79.80 The cor. of secs. 17, 18, 19 and 20.

Land, mountainous.
 Soil, rocky; 3rd and 4th rate.
 Timber, paloverde and catclaw.
 Undergrowth, greasewood, sage and cactus.

West, on a random line, bet. secs. 18 and 19.
 40.00 Set temp. $\frac{1}{4}$ sec. cor.
 79.28 Intersect W. bdy. of Tp. 14 lks. S. of the cor. of secs.
 13, 18, 19 and 24, described in Book "B."

Thence S.89°54'E., on a true line, bet. secs. 18 and 19,
 over hilly desert, through scattering timber and under-
 growth.

39.28 Set an iron post, 3 ft. long, 1 in. diam., 26 ins. in the
 ground, for $\frac{1}{4}$ sec. cor., with brass cap, marked
 $\frac{1}{4}$ S 18 in N., and
 S 19 in S. half; and
 1915 in S. rim;
 and raise a mound of stone, 2 ft. base, 1 $\frac{1}{2}$ ft. high,
 N. of cor.

40.80 Road bears N.10°W. and S.10°E.
 71.30 Asc. 154 ft. over mountainous land to

79.28 The cor. of secs. 17, 18, 19 and 20.
 Land, hilly in W. 71.30 chs., and mountainous in E. part.
 Soil, 2nd to 4th rate.
 Timber, paloverde and catclaw.
 Undergrowth, greasewood, sage and cactus.

N.0°03'W., bet. secs. 17 and 18,
 over rolling land, through scattering timber and dense
 undergrowth.

Asc. 40 ft. on SW. slope to
 1.50 Spur extends W.; desc. 130 ft. on N. slope to
 11.00 Draw course NW.

30.00 Wash, course W.
 37.60 Road bears NE. and SW.

40.00 Set an iron post, 3 ft. long, 1 in. diam., 26 ins. in the
 ground, for $\frac{1}{4}$ sec. cor., with brass cap, marked
 $\frac{1}{4}$ in N.,
 S 17 in E., and
 S 18 in W. half; and
 1915 in S. rim;

Subdivision of T. 2 N., R. 18 W.

Chains

and raise a mound of stone, 2 ft. base, 1½ ft. high,
W. of cor.
47.00 Wash, course NW.
70.00 Wash, course W.
80.00 Set an iron post, 3 ft. long, 2 ins. diam., 24 ins. in the
ground, for cor. of secs. 7, 8, 17 and 18, with brass
cap, marked
T 2 N S 7 in NW.,
R 18 W S 8 in NE.,
S 17 in SE., and
S 18 in SW. quadrant; and
1915 in S. rim;
and raise a mound of stone, 2 ft. base, 1½ ft. high,
W. of cor.
Land, rolling.
Soil, 4th rate.
Timber, ironwood and paloverde.
Undergrowth, greasewood and cactus.

40.00 East, on a random line, bet. secs. 8 and 17.
Set temp. ¼ sec. cor.
79.80 Intersect N. and S. line 10 lks. S. of the cor. of secs.
8, 9, 16 and 17.

Thence S.89°56'W., on a true line, bet. secs. 8 and 17,
over level desert, through scattering timber and dense
undergrowth.
36.50 Road bears N.10°E. and S.10°W.
39.90 Set an iron post, 3 ft. long, 1 in. diam., 26 ins. in the
ground, for ¼ sec. cor., with brass cap, marked
¼ S 8 in N., and
S 17 in S. half, and
1915 in S. rim;
and raise a mound of stone, 2 ft. base, 1½ ft. high,
N. of cor.

58.80 Draw, course SW.
79.80 The cor. of secs. 7, 8, 17 and 18.
Land, level.
Soil, 4th rate.
Timber, ironwood and paloverde.
Undergrowth, greasewood and cactus.

40.00 West, on a random line, bet. secs. 7 and 18.
Set temp. ¼ sec. cor.
79.14 Intersect W. bdy. of Tp. 47 lks. S. of the cor. of secs.
7, 12, 13 and 18, described in Book "B."

Thence S.89°40'E., on a true line, bet. secs. 7 and 18,
over level land, through scattering timber and dense
undergrowth.
8.15 Wash, course SW.
34.10 Enter draw, course SW.; line runs up same.
39.14 Set an iron post, 3 ft. long, 1 in. diam., 26 ins. in the
ground, for ¼ sec. cor., with brass cap, marked
¼ S 7 in N., and
S 18 in S. half; and
1915 in S. rim;
and raise a mound of stone, 2 ft. base, 1½ ft. high,
N. of cor.

40.15 Old road bears N. and S.
48.90 Road bears N. and S.
51.15 Leave draw, course, from NE, to W.
79.14 The cor. of secs. 7, 8, 17 and 18.
Land, level.
Soil, 3rd rate.
Timber, ironwood and paloverde.
Undergrowth, greasewood and cactus.

Chains

- N.0°03'W., bet. secs. 7 and 8,
over level land, through scattering timber and dense
undergrowth.
- 40.00 Set an iron post, 3 ft. long, 1 in. diam., 26 ins. in the
ground, for $\frac{1}{4}$ sec. cor., with brass cap, marked
 $\frac{1}{4}$ in N.,
S 7 in W., and
S 8 in E. half; and
1915 in S. rim;
and raise a mound of stone, 2 ft. base, $1\frac{1}{2}$ ft. high,
W. of cor.
- 44.50 Draw, course W.
- 63.00 Draw, course W.
- 80.00 Set an iron post, 3 ft. long, 2 ins. diam., 24 ins. in the
ground, for cor. of secs. 5, 6, 7 and 8, with brass cap,
marked
T 2 N S 6 in NW.,
R 18 W S 5 in NE.,
S 8 in SE., and
S 7 in SW. quadrant; and
1915 in S. rim;
and raise a mound of stone, 2 ft. base, $1\frac{1}{2}$ ft. high,
W. of cor.
- Land, level.
Soil, 3rd rate.
Timber, ironwood and paloverde.
Undergrowth, greasewood and cactus.
-
- East, on a random line, bet. secs. 5 and 8.
- 40.00 Set temp. $\frac{1}{4}$ sec. cor.
- 79.94 Intersect N. and S. line, at the cor. of secs. 4, 5, 8
and 9.
- Thence West, on a true line, bet. secs. 5 and 8,
over level land, through scattering timber and dense
undergrowth.
- 2.70 Road bears NW. and SE.
- 5.00 Wash, course NW.
- 20.00 Wash, course NW.
- 35.00 Wash, course NW.
- 39.97 Set an iron post, 3 ft. long, 1 in. diam., 26 ins. in the
ground, for $\frac{1}{4}$ sec. cor., with brass cap, marked
 $\frac{1}{4}$ S 5 in N., and
S 8 in S. half; and
1915 in S. rim;
and raise a mound of stone, 2 ft. base, $1\frac{1}{2}$ ft. high,
N. of cor.
- 42.30 Road bears NW. and SE.
- 62.00 Draw, course NW.
- 79.94 The cor. of secs. 5, 6, 7 and 8.
Land, level.
Soil, 3rd rate.
Timber, ironwood and paloverde.
Undergrowth, greasewood and cactus.
-
- West, on a random line, bet. secs. 6 and 7.
- 40.00 Set temp. $\frac{1}{4}$ sec. cor.
- 79.38 Intersect W. bdy. of Tp. 36 lks. S. of the cor. of secs.
1, 6, 7 and 12, described in Book "B."
- Thence S.89°45'E., on a true line, bet. secs. 6 and 7,
over level land, through scattering timber and dense
undergrowth.
- 14.40 Wash, course NW.
- 29.63 Road bears N. and S.
- 39.38 Set an iron post, 3 ft. long, 1 in. diam., 26 ins. in the
ground, for $\frac{1}{4}$ sec. cor., with brass cap, marked

Chains

79.38 $\frac{1}{4}$ S 6 in N., and
 S 7 in S. half, and
 1915 in S. rim;
 and raise a mound of stone, 2 ft. base, $1\frac{1}{2}$ ft. high,
 N. of cor.
 The cor. of secs. 5, 6, 7 and 8.
 Land, level.
 Soil, 3rd rate.
 Timber, ironwood and paloverde.
 Undergrowth, greasewood and cactus.

40.00 N.0°03'W., on a random line, bet. secs. 5 and 6.
 Set a temp. $\frac{1}{4}$ sec. cor.
 80.40 Intersect N. bdy. of Tp. 8 lks. E. of the cor. of secs.
 5, 6, 31 and 32, described in Book "B."

Thence S.0°06'E., on a true line, bet. secs. 5 and 6,
 over level land, through scattering timber and dense
 undergrowth.
 5.40 Wash, course NW.
 24.40 Road bears NW. and SE.
 37.80 Wash, course NW.

40.40 Set an iron post, 3 ft. long, 1 in. diam., 26 ins. in the
 ground, for $\frac{1}{4}$ sec. cor., with brass cap, marked
 $\frac{1}{4}$ in N.,
 S 5 in E., and
 S 6 in W. half; and
 1915 in S. rim;
 and raise a mound of stone, 2 ft. base, $1\frac{1}{2}$ ft. high,
 W. of cor.

49.00 Road bears NW. and SE.
 80.40 The cor. of secs. 5, 6, 7 and 8.
 Land, level.
 Soil, 3rd rate.
 Timber, ironwood and paloverde.
 Undergrowth, greasewood and cactus.

GENERAL DESCRIPTION.

This township contains all classes of land, from rough mountainous to level plain, distributed with some degree of evenness over the entire area.

The soil in the mountainous portion is rocky, the level portion containing soil of fair quality; though unsuited to agriculture on account of lack of water. The vegetation consists of desert growth, such as mesquite, paloverde, catclaw, ironwood, greasewood, cactus and sagebrush.

Sec. 13 contains a settler's cabin in the NE., and a mine in the NW. quarter. There is no permanent water.

SUBDIVISIONS OF
TOWNSHIP 2 NORTH, RANGE 18 WEST.

DATE DIAGRAM.

2-20-15	2-20-15	2-20-15	2-20-15	2-20-15	2-20-15	2-20-15
1-15-15	2-24-15	2-25-15	2-25-15	2-25-15	2-25-15	2-18-15
6	5	4	3	2	1	
2-24-15	2-24-15	2-24-15	2-25-15	2-20-15	2-18-15	
1-15-15	2-24-15	2-24-15	2-25-15	2-20-15	2-18-15	2-18-15
7	8	9	10	11	12	
2-24-15	2-24-15	2-24-15	2-20-15	2-18-15	2-18-15	2-18-15
1-15-15	2-24-15	2-24-15	2-20-15	2-18-15	2-18-15	2-15-15
18	17	16	15	14	13	
2-19-15	2-20-15	2-20-15	2-18-15	2-17-15	2-15-15	2-15-15
1-15-15	2-19-15	2-24-15	2-13-15	2-17-15	2-15-15	2-15-15
19	20	21	22	23	24	
2-19-15	2-24-15	2-16-15	2-17-15	2-16-15	2-15-15	2-15-15
1-13-15	2-19-15	2-16-15	2-13-15	2-17-15	2-15-15	2-15-15
30	29	28	27	26	25	
2-17-15	2-17-15	2-17-15	2-17-15	2-15-15	2-15-15	2-15-15
1-13-15	2-19-15	2-16-15	2-13-15	2-15-15	2-15-15	2-15-15
31	32	33	34	35	35	
2-4-15	2-4-15	2-4-15	2-4-15	2-4-15	2-4-15	2-4-15

Lines dated in black were surveyed by Woodbury Abbey,
U. S. Surveyor.

Lines dated in red were surveyed by Roy J. Gill,
U. S. Transitman.

66
Pages 30 + 31 are BLANK

32 For ~~FINAL-GATH~~ CERTIFICATES OF UNITED STATES SURVEYOR.
AND UNITED STATES TRANSITMAN,
See Book "C"

I, _____, U. S. Surveyor, do solemnly swear that, in pursuance of special instructions received from the U. S. Surveyor General for _____ bearing date of the _____ day of _____, 191____, I have well, faithfully, and truly, in my own proper person, and in strict conformity with said instructions, the Manual of Surveying Instructions, and the laws of the United States, surveyed all those parts or portions of _____

_____ of the _____ Meridian, in the State of _____, which are represented in the foregoing field notes as having been executed by me, and under my direction; and I do further solemnly swear that all the corners of said survey have been established and perpetuated in strict accordance with the Manual of Surveying Instructions, and the special written instructions of the U. S. Surveyor General for _____ and in the specific manner described in the field notes, and that the foregoing are the original field notes of such survey.

U. S. Surveyor.

Subscribed by said _____, and sworn to before me }
this _____ day of _____, 191____ }

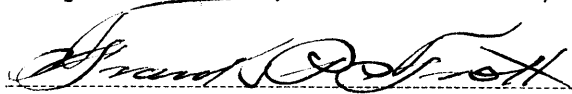


APPROVAL.

OFFICE OF THE UNITED STATES SURVEYOR GENERAL,
Phoenix, Arizona, _____, 1917.

The foregoing field notes of the survey of _____ the _____
Subdivision Lines
of _____
TOWNSHIP 2 NORTH, RANGE 18 WEST,

of the Gila and Salt River Base & Meridian, in the State of Arizona,
executed by Woodbury Abbey, U.S. Surveyor & Roy J. Gill, U.S. Transitman,
under his special instructions dated December 12, 1914, for Group 39, Arizona, having been critically examined, and the necessary corrections and explanations made, the said field notes, and the surveys they describe, are hereby approved.


U. S. Surveyor General.

~~I certify that the foregoing transcript of the field notes of the above described surveys in _____, has been correctly copied from the original notes on file in this office.~~