

3049

135

Book "I"

4-679

JUL 20 1918

(1)

BOOK 3049

(Subdivisions)

FIELD NOTES

OF THE SURVEY OF THE

SUBDIVISION LINES

of

TOWNSHIP 4 NORTH, RANGE 18 WEST.

Of the Gila and Salt River Base and Meridian,

In the State of Arizona.

EXECUTED BY

Woodbury Abbey, U. S. Surveyor,

and

Roy J. Gill, U. S. Transitman,

~~In the capacity of U. S. Surveyor~~, under instructions dated December 12., 1914,
issued by the United States Surveyor General to govern surveys included in
Group No. 39, which were approved by the Commissioner of the General Land
Office, January 7,, 1915.

Survey commenced March 15,, 1915.

Survey completed April 5,, 1915.

3049

3049

136
 (1A)

BOOK 3043-

Book "I."
 Subdivision Lines
 Group 39 - Arizona.

INDEX DIAGRAM.

Township 4 North, Range 18 West.

First Standard Parallel North.										
6	27	5	2	4	10	8	11	2	5	1
26		26		20		16		10		5
7	26	8	20	9	15	10	10	11	4	12
25		25		20		15		9		4
18	25	17	19	16	14	15	9	14	4	13
24		24		19		14		9		3
19	23	20	18	21	14	22	8	23	3	24
23		23		18		13		8		2
30	22	29	18	28	13	27	7	26	2	25
22		22		17		12		7		2
31	21	32	17	33	12	34	6	35	1	36

- Subdivision Lines surveyed under this Group.
- Township boundaries surveyed under this Group.
Notes in Book "B."
- Standard Lines resurveyed under this Group.
Notes on Book "A."
- Accepted Surveys.
- Unsurveyed lines.

Subdivision of T. 4 N., R. 18 W.

1B

Chains

Survey commenced Mar. 15, 1915, and executed jointly by Woodbury Abbey, U. S. Surveyor, and Roy J. Gill, U. S. Transitman, on dates shown on the diagram on page 29 of this book.

A description of the instruments used, with record of approval by the assistant supervisor of surveys and field tests, appears in Book "B".

All lines were originated by deflection from the transit line run from the SE. cor. W. to the SW. cor. of the Tp., during the survey of the S. bdy., described in Book "B;" and from a solar observation at the cor. of secs. 1, 2, 35 and 36, on the S. bdy., a record of which follows herein.

The magnetic bearing of the true meridian, at 8h 00m a. m., l. m. t., is N.14°30'W.; which gives for the mag. decl., 14°30'E.

Solar Observation.

Station, cor. of secs. 1, 2, 35 and 36, on S. bdy. of Tp., Date, and hour, 9h 00m, a.m., l.m.t., Mar. 18, 1915. Lat., 33°38' N. Long., 114°05' W. Decl., 1°11' S. Observer, Woodbury Abbey.

From the cor. of secs. 1, 2, 35 and 36, on S. bdy. of Tp., described in Book "B,"

N.0°01'W., bet. secs. 35 and 36, over broken and hilly desert, through scattering timber and undergrowth.

.50 A large mounment on top of Picache Peak bears S.7°25'W.

U. S. L. M. No. 2949 bears S.58½°W.

Remains of Salazar smelter bears N.68½°W.

7.95 Wash, 100 lks. wide, course NE.

21.45 Spur extends E.

40.00 Set an iron post, 3 ft. long, 1 in. diam., 26 ins. in the ground, for ¼ sec. cor., with brass cap, marked

¼ in N., S 35 in W., and S 36 in E. half; and 1915 in S. rim;

and raise a mound of stone, 2 ft. base, 1½ ft. high, W. of cor.

42.00 Road to old mine bears NE. and SW.

80.00 Set an iron post, 3 ft. long, 2 ins. diam., 24 ins. in the ground, for cor. of secs. 25, 26, 35 and 36, with brass cap, marked

T 4 N S 26 in NW., R 18 W S 25 in NE., S 36 in SE., and S 35 in SW. quadrant; and 1915 in S. rim;

and raise a mound of stone, 2 ft. base, 1½ ft. high, W. of cor.

Land, broken hilly desert.

Soil, rocky; 3rd and 4th rate.

Timber, paloverde and catclaw.

Undergrowth, greasewood, sage and cactus.

Chains

- East, on a random line, bet. secs. 25 and 36,
- 40.00 Set temp. $\frac{1}{4}$ sec. cor.
79.97 Intersect E. bdy. of Tp. at the cor. of secs. 25, 30, 31 and 36, described in Book "B."
- Thence West, on a true line, bet. secs. 25 and 36, over broken and hilly desert, through scattering timber and undergrowth.
- 16.00 Asc. 75 ft. to
24.75 Spur extends N.; desc. 350 ft. to
39.98 $\frac{1}{2}$ Set an iron post, 3 ft. long, 1 in. diam., 26 ins. in the ground, for $\frac{1}{4}$ sec. cor., with brass cap, marked
 $\frac{1}{4}$ S 25 in N., and
S 36 in S. half; and
1915 in S. rim;
and raise a mound of stone, 2 ft. base, $1\frac{1}{2}$ ft. high, N. of cor.
- 50.00 Wash, 9 chs. wide, course N.
54.00 Old road bears NE. and SW.
76.00 Wash, 8 chs. wide, course N.
79.97 The cor. of secs. 25, 26, 35 and 36.
Land, broken and rolling mountainous,
Soil, 3rd and 4th rate.
Timber, paloverde and catclaw.
Undergrowth, sage, cactus and greasewood.
-
- N.0°01'W., bet. secs. 25 and 26,
over hilly desert, through scattering timber and undergrowth.
- 40.00 On small spur extending E.,
Set an iron post, 3 ft. long, 1 in. diam., 26 ins. in the ground, for $\frac{1}{4}$ sec. cor., with brass cap, marked
 $\frac{1}{4}$ in N.,
S 25 in E., and
S 26 in W. half; and
1915 in S. rim;
and raise a mound of stone, 2 ft. base, $1\frac{1}{2}$ ft. high, W. of cor.
- 49.30 Low rocky spur extends E.; desc. 180 ft. to
53.20 Draw, course NE.; asc. 50 ft. to
59.10 Spur extends NE.; desc. 160 ft. to
71.00 Ft. of descent.; thence over broken ground to
80.00 Set an iron post, 3 ft. long, 2 ins. diam., 24 ins. in the ground, for cor. of secs. 23, 24, 25 and 26, with brass cap, marked
T 4 N S 23 in NW.,
R 18 W S 24 in NE.,
S 25 in SE., and
S 26 in SW. quadrant; and
1915 in S. rim;
and raise a mound of stone, 2 ft. base, $1\frac{1}{2}$ ft. high, W. of cor.
Land, broken and hilly desert.
Soil, rocky; 3rd and 4th rate.
Timber, paloverde and catclaw.
Undergrowth, greasewood, sage and cactus.
-
- East, on a random line, bet. secs. 24 and 25.
- 40.00 Set temp. $\frac{1}{4}$ sec. cor.
80.06 Intersect E. bdy. of the Tp. 9 lks. S. of the cor. of secs. 19, 24, 25 and 30, described in Book "B."
- Thence S.89°56'W., on a true line, bet. secs. 24 and 25, over mountainous land, through scattering timber and undergrowth.

Chains

- Desc. 730 ft. on SW. slope to
 32.00 Ft. of descent; thence over broken and hilly desert.
 35.00 Wash, course NW.
 40.03 Set an iron post, 3 ft. long, 1 in. diam., 26 ins. in the
 ground, for $\frac{1}{4}$ sec. cor., with brass cap, marked
 $\frac{1}{4}$ S 24 in N., and
 S 25 in S. half; and
 1915 in S. rim;
 and raise a mound of stone, 2 ft. base, $1\frac{1}{2}$ ft. high,
 N. of cor.
 42.45 Vicksburg road bears NW. and SE.
 80.06 The cor. of secs. 23, 24, 25 and 26.
 Land, mountainous for E. 32 chs. and broken and hilly
 for W. portion.
 Soil, rocky; 3rd and 4th rate.
 Timber, paloverde and ironwood.
 Undergrowth, greasewood and cactus.
-
- N.0°01'W., bet. secs. 23 and 24,
 over hilly desert, through scattering timber and dense
 undergrowth.
 Asc. 100 ft. to
 7.85 Spur extends NE.; desc. 120 ft. to
 21.65 Deep wash, 100 lks. wide, course E.; enter nearly level land.
 40.00 Set an iron post, 3 ft. long, 1 in. diam., 26 ins. in the
 ground, for $\frac{1}{4}$ sec. cor., with brass cap, marked
 $\frac{1}{4}$ in N.,
 S 23 in W., and
 S 24 in E. half; and
 1915 in S. rim;
 and raise a mound of stone, 2 ft. base, $1\frac{1}{2}$ ft. high,
 W. of cor.
 43.60 Vicksburg road bears N.40°W. and S.40°E.
 48.00 Across a succession of shallow washes, extending over an
 area 20 chs wide, course NW.
 80.00 Set an iron post, 3 ft. long, 2 ins. diam., 24 ins. in the
 ground, for cor. of secs. 13, 14, 23 and 24, with brass
 cap, marked
 T 4 N S 14 in NW.,
 R 18 W S 13 in NE.,
 S 24 in SE., and
 S 23 in SW. quadrant; and
 1915 in S. rim;
 and raise a mound of stone, 2 ft. base, $1\frac{1}{2}$ ft. high,
 W. of cor.
 Land, $21\frac{1}{2}$ chs. hilly and broken, and balance nearly level.
 Soil, gravelly; 2nd and 3rd rate.
 Timber, paloverde and ironwood.
 Undergrowth, greasewood, sage and cactus.
-
- East, on a random line, bet. secs. 13 and 24.
 40.00 Set temp. $\frac{1}{4}$ sec. cor.
 79.92 Intersect E. bdy. of Tp. 42 lks. S. of the cor. of secs.
 13, 18, 19 and 24, described in Book "E."
 Thence S.89°42'W., on a true line, bet. secs. 13 and 24,
 over mountainous land, through scattering timber and
 undergrowth.
 Desc. 425 ft. to
 38.00 Draw, course SW.; thence over nearly level land.
 39.96 Set an iron post, 3 ft. long, 1 in. diam., 26 ins. in the
 ground, for $\frac{1}{4}$ sec. cor., with brass cap, marked
 $\frac{1}{4}$ S 13 in N., and,
 S 24 in S. half; and
 1915 in S. rim;
 and raise a mound of stone, 2 ft. base, $1\frac{1}{2}$ ft. high,
 N. of cor.

Chains

79.92 The cor. of secs. 13, 14, 23 and 24.
 Land, 38 chs. mountainous, and balance nearly level.
 Soil, 2nd and 3rd rate.
 Timber, paloverde and catclaw.
 Undergrowth, greasewood, sage and cactus.

N.0°01'W., bet. secs. 13 and 14,
 over hilly desert, through scattering timber and under-
 growth.

24.00 Asc. 330 ft. to
 36.50 Top of flat hill.
 40.00 Set an iron post, 3 ft. long, 1 in. diam., 26 ins. in the
 ground, for $\frac{1}{4}$ sec. cor., with brass cap, marked
 $\frac{1}{4}$ in N.,
 S 13 in E., and
 S 14 in W. half; and
 1915 in S. rim;
 and raise a mound of stone, 2 ft. base, 1 $\frac{1}{2}$ ft. high,
 W. of cor.

49.50 Desc. 230 ft. to
 57.35 Draw, course W.; asc. 70 ft. to
 65.80 Spur extends W.; desc. 200 ft. to
 77.75 Wash, course W.

80.00 Set an iron post, 3 ft. long, 2 ins. diam., 24 ins. in the
 ground, for cor. of secs. 11, 12, 13 and 14, with brass
 cap, marked
 T 4 N S 11 in NW.,
 R 18 W S 12 in NE.,
 S 13 in SE., and
 S 14 in SW. quadrant; and
 1915 in S. rim;
 and raise a mound of stone, 2 ft. base, 1 $\frac{1}{2}$ ft. high,
 W. of cor.

Land, roughly rolling mountainous.
 Soil, rocky; 3rd rate.
 Timber, paloverde and ironwood.
 Undergrowth, greasewood and cactus.

40.00 East, on a random line, bet. secs. 12 and 13,
 Set temp. $\frac{1}{4}$ sec. cor.
 79.97 Intersect E. bdy. of Tp. 37 lks. S. of the cor. of secs.
 7, 12, 13 and 18, described in Book "B."

Thence S.89°44' W., on a true line, bet. secs. 12 and 13,
 over hilly desert, through scattering timber and under-
 growth.

7.40 Spur extends N.
 16.00 Wash, 3 chs. wide, course SW.
 39.98 $\frac{1}{2}$ Set an iron post, 3 ft. long, 1 in. diam., 26 ins. in the
 ground, for $\frac{1}{4}$ sec. cor., with brass cap, marked
 $\frac{1}{4}$ S 12 in N., and
 S 13 in S. half, and
 1915 in S. rim;
 and raise a mound of stone, 2 ft. base, 1 $\frac{1}{2}$ ft. high,
 N. of cor.

79.97 The cor. of secs. 11, 12, 13 and 14.
 Land, hilly desert.
 Soil, 3rd rate.
 Timber, paloverde and catclaw.
 Undergrowth, greasewood, sage and cactus.

N.0°01'W., bet. secs. 11 and 12,
 over mountainous land, through scattering timber and
 dense undergrowth.
 Asc. SW. slope.

Subdivision of T. 4 N., R. 18 W.

Chains

40.00 Set an iron post, 3 ft. long, 1 in. diam., 26 ins. in the ground, for $\frac{1}{4}$ sec. cor., with brass cap, marked
 $\frac{1}{4}$ in N.,
 S 11 in W., and
 S 12 in E. half; and
 1915 in S. rim;
 and raise a mound of stone, 2 ft. base, $1\frac{1}{2}$ ft. high, W. of cor.

41.00 Draw, course SW.

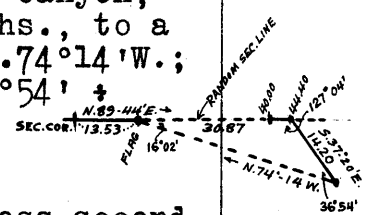
49.00 Wash, course SW.; asc. S. slope.

79.80 Ridge, 750 ft. above draw at 41 ch.pt., bears NE. and SW.; desc. NW. slope.

80.00 Set an iron post, 3 ft. long, 2 ins. diam., 24 ins. in the ground, for cor. of secs. 1, 2, 11 and 12, with brass cap, marked
 T 4 N S 2 in NW.,
 R 18 W S 1 in NE.,
 S 12 in SE., and
 S 11 in SW. quadrant; and
 1915 in S. rim;
 and raise a mound of stone, 2 ft. base, $1\frac{1}{2}$ ft. high, W. of cor.

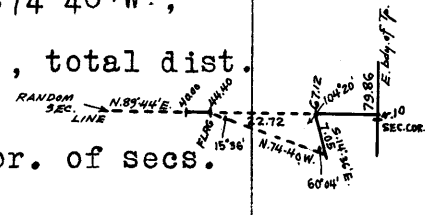
Land, mountainous.
 Soil, 4th rate.
 Timber, paloverde.
 Undergrowth, greasewood, cactus and mesquite.

13.53 N.89°44'E., on a random line, bet. secs. 1 and 12. To obtain distance across deep box canyon, over which it is impracticable to chain, I triangulate as follows:
 Set a flag on line N.89°44'E., on E. side of canyon, whence I measure a base, S.37°20'E., 14.20 chs., to a point whence a flag at 13.53 ch. pt. bears N.74°14'W.; which gives for the distance, $14.20 \times \sin 36°54' + \sin 16°02' = 30.87$ chs.



44.40 I chain back on random line, 4.40 chs. to

40.00 Set temp. $\frac{1}{4}$ sec. cor.
 I return to 44.40 ch. pt., and triangulate across second box canyon as follows:
 Set a flag on line N.89°44'E., to a pt. on E. side of canyon, whence I measure a base, S.14°36'E., 7.05 chs., to a pt. whence flag at 44.40 ch. pt. bears N.74°40'W.; which gives for the distance,
 $7.05 \times \sin 60°04' + \sin 15°36' = 22.72$ chs., total dist. from sec. cor. being



67.12 Triangulation pt.

79.86 Intersect E. bdy. of Tp. 10 lks. N. of the cor. of secs. 1, 6, 7 and 12, described in Book "B!"

Thence S.89°48'W., on a true line, bet. secs. 1 and 12, over mountainous land, through scattering timber and undergrowth.

Asc. 240 ft. on E. slope, to

12.75 Ridge bears N. and S.; right edge of deep box canyon, course N.

35.46 Left edge of same, on ridge bearing NW. and SE., forming the left edge of box canyon, course S.

39.93 Set an iron post, 3 ft. long, 1 in. diam., in a mound of stone, for $\frac{1}{4}$ sec. cor., with brass cap, marked
 $\frac{1}{4}$ S 1 in N., and
 S 12 in S. half; and
 1915 in S. rim;
 and raise a mound of stone, 2 ft. base, $1\frac{1}{2}$ ft. high, N. of cor.. Impracticable to set cor. in the ground.

66.30 Right edge of canyon, on spur extending S.; desc. 220 ft. on SW. slope to

72.85 Wash, course SW.; asc. 55 ft. on SE. slope to

79.60 Ridge bears NE. and SW.

79.86 The cor. of secs. 1, 2, 11 and 12.

Chains

Land, mountainous.
Soil, 4th rate.
Timber, paloverde.
Undergrowth, greasewood and cactus.

N.0°01'W., on a true line, bet. secs. 1 and 2,
over mountainous land, through scattering timber and
undergrowth.

Desc. 190 ft. to

- 12.00 Wash, course W.; asc. 175 ft. to
- 16.25 Spur extends W.; desc. 200 ft. to
- 32.00 Wash, course W.; asc. S. slope.
- 40.00 Set an iron post, 3 ft. long, 1 in. diam., 26 ins. in a mound of stone, for $\frac{1}{4}$ sec. cor., with brass cap, marked $\frac{1}{4}$ in N., S 1 in E., and S 2 in W. half; and 1915 in S. rim; and raise a mound of stone, 2 ft. base, $1\frac{1}{2}$ ft. high, W. of cor.

- 55.50 Thence along broken E. slope.
- 58.75 Asc. SE. slope.
- 61.20 Spur, 460 ft. above wash at 32 ch. pt., extends E.; desc. NW. slope 110 ft. to

- 72.75 Wash, course W.; asc. S. slope.
- 72.94 Intersect 1st St. Par. N., 8.84 chs. W. of the reestablished standard cor. of Ts. 5 N., Rs. 17 and 18 W., described in Book "A:"

At the point of intersection,
At foot of cliff on S. side of Haystack Butte,
Set an iron post, 3 ft. long, 2 ins. diam., 24 ins. in a mound of stone, for closing cor. of secs. 1 and 2, with brass cap, marked

T 5 N R 18 W S 36 in N. half,
CC in S. half,
S 2 T 4 N in SW. and
S 1 R 18 W in SE. quadrant; and
1915 in S. rim;

and raise a mound of stone, 2 ft. base, $1\frac{1}{2}$ ft. high, S. of cor.

Land, mountainous.
Soil, 4th rate.
Timber, paloverde.
Undergrowth, greasewood, cactus and mesquite.

From the cor. of secs. 2, 3, 34 and 35, on S. bdy. of Tp., described in Book "B,"

N.0°01'W., bet. secs. 34 and 35,
over mountainous land, through scattering timber and dense undergrowth.

Desc. N. slope 110 ft. to

- 7.00 Wash, course W.; asc. SW. slope 350 ft. to
- 25.00 Spur extends SW.; desc. NW. slope to
- 28.00 Wash, course SW.; asc. S. slope
- 40.00 Set an iron post, 3 ft. long, 1 in. diam., 26 ins. in a mound of stone, for $\frac{1}{4}$ sec. cor., with brass cap, marked $\frac{1}{4}$ in N., S 34 in W., and S 35 in E. half; and 1915 in S. rim;

and raise a mound of stone, 2 ft. base, $1\frac{1}{2}$ ft. high, W. of cor. Impracticable to set cor. in ground.

- 42.00 Spur extends SW.; asc. SW. slope.
- 44.25 On ridge, 520 ft. above wash at 28 ch. pt.; thence along top of ridge, which bears N. and S.
- 54.00 Desc. NW. slope 640 ft. to

Subdivision of T. 4 N., R. 18 W.

Chains	
80.00	<p>Set an iron post, 3 ft. long, 2 ins. diam., 24 ins. in a mound of stone, for cor. of secs. 26, 27, 34 and 35, with brass cap, marked T 4 N S 27 in NW., R 18 W S 26 in NE., S 35 in SE., and S 34 in SW. quadrant; and 1915 in S. rim; and raise a mound of stone, 2 ft. base, 1½ ft. high, W. of cor. Land, mountainous. Soil, 4th rate. Timber, paloverde. Undergrowth, mesquite, cactus and catclaw.</p>

40.00	East, on a random line, bet. secs. 26 and 35.
79.74	<p>Set temp. ¼ sec. cor. Intersect N. and S. line 30 lks. S. of the cor. of secs. 25, 26, 35 and 36.</p>
21.75	<p>Thence S.89°47'W., on a true line, bet. secs. 26 and 35, over rolling land, through scattering timber and dense undergrowth.</p>
29.75	Wash, course NE.; thence over mountainous land.
37.25	Asc. 30 ft. on slight E. slope to
39.87	Low spur extends N.; desc. 25 ft. on NW. slope to
50.25	<p>Wash, course NE.; asc. E. slope. Set an iron post, 3 ft. long, 1 in. diam., in a mound of stone, for ¼ sec. cor., with brass cap, marked ¼ S 26 in N., and S 35 in S. half, and 1915 in S. rim; and raise a mound of stone, 2 ft. base, 1½ ft. high, N. of cor. Impracticable to set cor. in the ground.</p>
63.75	Spur extends N.; 280 ft. above wash at 37.25 ch. pt.
73.00	Desc. 425 ft. on W. slope to
79.74	<p>Wash, course N.; asc. 240 ft. on E. slope to Ridge bears N. and S.; desc. 160 ft. on NW. slope to The cor. of secs. 26, 27, 34 and 35. Land, rolling for 21.75 chs., and mountainous for balance. Soil, 4th rate. Timber, ironwood and paloverde. Undergrowth, greasewood, mesquite and cactus.</p>

3.00	<p>N.0°01'W., bet. secs. 26 and 27, over mountainous land, through scattering timber and dense undergrowth.</p>
9.00	Desc. 90 ft. to
21.00	Ft. of descent.
27.00	Asc. 115 ft. on SW. slope to
33.00	Spur extends S.; desc. 110 ft. on NW. slope to
40.00	Wash, course NW.
80.00	<p>Set an iron post, 3 ft. long, 1 in. diam., 26 ins. in the ground, for ¼ sec. cor., with brass cap, marked ¼ in N., S 26 in E., and S 27 in W. half; and 1915 in S. rim; and raise a mound of stone, 2 ft. base, 1½ ft. high, W. of cor. Set an iron post, 3 ft. long, 2 ins. diam., 24 ins. in the ground, for cor. of secs. 22, 23, 26 and 27, with brass cap, marked T 4 N S 22 in NW., R 18 W S 23 in NE., S 26 in SE., and</p>

Chains

S 27 in W. quadrant; and
 1915 in S. rim;
 and raise a mound of stone, 2 ft. base, 1½ ft. high,
 W. of cor.
 Land, mountainous.
 Soil, 4th rate.
 Timber, ironwood and paloverde.
 Undergrowth, greasewood, cactus and mesquite.

 East, on a random line, bet. secs. 23 and 26.
 40.00 Set temp. ¼ sec. cor.
 79.85 Intersect N. and S. line 27 lks. S. of the cor. of secs.
 23, 24, 25 and 26.

Thence S.89°48'W., on a true line, bet. secs. 23 and 26,
 over mountainous land, through scattering timber and
 dense undergrowth.
 Asc. 150 ft. to

9.75 Spur extends NE.
 15.90 Draw, course N.; asc. 200 ft. to
 22.15 Spur extends N.; desc. 180 ft. to
 29.00 Draw, course N.; asc.
 39.92½ Set an iron post, 3 ft. long, 1 in. diam., 26 ins. in the
 ground, for ¼ sec. cor., with brass cap, marked
 ¼ S 23 in N., and
 S 26 in S. half; and
 1915 in S. rim;

and raise a mound of stone, 2 ft. base, 1½ ft. high,
 N. of cor.
 41.00 Spur, 300 ft. above draw at 29 ch. pt., extends N.; desc.
 275 ft. to

54.00 Draw, course N.; asc. 220 ft. to
 63.50 Ridge bears N. and S.; desc. 220 ft. to
 72.00 Ft. of descent; thence over rolling land.
 79.85 The cor. of secs. 22, 23, 26 and 27.

Land, mountainous, 72 chs. and rolling in balance.
 Soil, 4th rate.
 Timber, paloverde and catclaw.
 Undergrowth, greasewood, sage and cactus.

 N.0°01'W., bet. secs. 22 and 23,
 over rolling land, through scattering timber and dense
 undergrowth.

33.00 Wash, course NW.
 38.00 Wash, course W.; asc. S. slope.
 40.00 Set an iron post, 3 ft. long, 1 in. diam., 26 ins. in the
 ground, for ¼ sec. cor., with brass cap, marked
 ¼ in N.,
 S 22 in W., and
 S 23 in E. half; and
 1915 in S. rim;
 and raise a mound of stone, 2 ft. base, 1½ ft. high,
 W. of cor.

45.00 Low spur extends W.; desc. N. slope.
 62.70 Phoenix-California road bears E. and W.
 76.00 Wash, 4 chs. wide, course W.

80.50 Set an iron post, 3 ft. long, 2 ins. diam., 24 ins. in
 the ground, for cor. of secs. 14, 15, 22 and 23, with
 brass cap, marked
 T 4 N S 15 in NW.,
 R 18 W S 14 in NE.,
 S 23 in SE., and
 S 22 in SW. quadrant; and
 1915 in S. rim;
 and raise a mound of stone, 2 ft. base, 1½ ft. high,
 W. of cor.

Subdivision of T. 4 N., R. 18 W.

Chains

Land, rolling.
Soil, 4th rate.
Timber, ironwood and paloverde.
Undergrowth, greasewood and cactus.

40.00 East, on a random line, bet. secs. 14 and 23.
Set temp. $\frac{1}{4}$ sec. cor.
79.90 Intersect N. and S. line 25 lks. S. of the cor. of secs. 13, 14, 23 and 24.

12.00 Thence S. $89^{\circ}49'$ W., on a true line, bet. secs. 14 and 23, over slightly broken nearly level desert, through scattering timber and dense undergrowth.

39.95 Across a succession of shallow washes, course NW.
Set an iron post, 3 ft. long, 1 in. diam., 26 ins. in the ground, for $\frac{1}{4}$ sec. cor., with brass cap, marked $\frac{1}{4}$ S 14 in N., and S 23 in S. half; and 1915 in S. rim;

79.90 and raise a mound of stone, 2 ft. base, $1\frac{1}{2}$ ft. high, N. of cor.

The cor. of secs. 14, 15, 22 and 23.
Land, nearly level desert, slightly broken with shallow washes.
Soil, gravelly and rocky; 2nd and 3rd rate.
Timber, paloverde and catclaw.
Undergrowth, greasewood, cactus and sage.

30.00 N. $0^{\circ}01'$ W., bet. secs. 14 and 15, over rolling land, through scattering timber and dense undergrowth.

40.00 Wash, course NW.
Set an iron post, 3 ft. long, 1 in. diam., 26 ins. in the ground, for $\frac{1}{4}$ sec. cor., with brass cap, marked $\frac{1}{4}$ in N., S 14 in E., and S 15 in W. half; and 1915 in S. rim;

50.00 and raise a mound of stone, 2 ft. base, $1\frac{1}{2}$ ft. high, W. of cor.
Wash, course W.; asc. S. slope.

72.25 Spur extends W.; desc. NW. slope.

79.50 Draw, course W.; asc. SW. slope.

80.00 Set an iron post, 3 ft. long, 2 ins. diam., 18 ins. in the ground, and 6 ins. in a mound of stone, for cor. of secs. 10, 11, 14 and 15, with brass cap, marked

T 4 N S 10 in NW.,
R 18 W S 11 in NE.,
S 14 in SE., and
S 15 in SW. quadrant; and
1915 in S. rim;

and raise a mound of stone, 2 ft. base, $1\frac{1}{2}$ ft. high, W. of cor. Impracticable to set cor. farther in the ground.

Land, rolling.
Soil, 4th rate.
Timber, ironwood and paloverde.
Undergrowth, greasewood, cactus and mesquite.

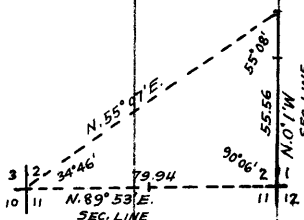
40.00 East, on a random line, bet. secs. 11 and 14.
Set temp. $\frac{1}{4}$ sec. cor.
80.06 Intersect N. and S. line 36 lks. S. of the cor. of secs. 11, 12, 13 and 14.

Chains

Thence S.89°45'W., on a true line, bet. secs. 11 and 14, over mountainous land, through scattering timber and dense undergrowth.
 Desc. gradual SW. slope to
 20.00 Draw, course SE.; asc.
 40.03 Set an iron post, 3 ft. long, 1 in. diam., 26 ins. in a mound of stone, for $\frac{1}{4}$ sec. cor., with brass cap, marked
 $\frac{1}{4}$ S 11 in N., and
 S 14 in S. half; and
 1915 in S. rim;
 and raise a mound of stone, 2 ft. base, $1\frac{1}{2}$ ft. high, N. of cor. Impracticable to set cor. in the ground.
 47.00 Wash, course SW.;
 54.40 Ridge, 600 ft. above draw, at 20 ch. pt., bears N. and S.; desc. 500 ft. on W. slope to
 72.00 Wash, course NW.; asc. 50 ft. on W. slope to
 75.30 Spur extends NW.; desc. 115 ft. to
 80.06 The cor. of secs. 10, 11, 14 and 15.
 Land, mountainous.
 Soil, 4th rate.
 Timber, paloverde.
 Undergrowth, greasewood and cactus.

N.0°01'W., bet. secs. 10 and 11, over mountainous land, through scattering timber and dense undergrowth.
 Asc. 450 ft. on SW. slope to
 32.00 Thence along W. slope to
 34.00 Desc. NW. slope.
 40.00 Set an iron post, 3 ft. long, 1 in. diam., 20 ins. in the ground, and 6 ins. in a mound of stone, for $\frac{1}{4}$ sec. cor., with brass cap, marked
 $\frac{1}{4}$ in N.,
 S 10 in W., and
 S 11 in E. half; and
 1915 in S. rim;
 and raise a mound of stone, 2 ft. base, $1\frac{1}{2}$ ft. high, W. of cor. Impracticable to set cor. farther in the ground.
 45.00 Draw, 230 ft. below 34 ch. pt.; course W.; asc. SW. slope 25 ft. to
 48.00 Spur extends W.; desc. N. slope 175 ft. to
 59.50 Wash, course NW.; asc. 360 ft. on S. slope to
 73.00 Spur extends W.; desc. 180 ft. on N. slope to
 80.00 Set an iron post, 3 ft. long, 2 ins. diam., 24 ins. in the ground, for cor. of secs. 2, 3, 10 and 11, with brass cap, marked
 T 4 N S 3 in NW.,
 R 18 W S 2 in NE.,
 S 11 in SE., and
 S 10 in SW. quadrant; and
 1915 in S. rim;
 and raise a mound of stone, 2 ft. base, $1\frac{1}{2}$ ft. high, W. of cor.
 Land, mountainous.
 Soil, 4th rate.
 Timber, paloverde.
 Undergrowth, greasewood and mesquite.

From the cor. of secs. 2, 3, 10 and 11, I observe the bearing to flag on cor. of secs. 1, 2, 11 and 12 to be N.89°53'E., and bearing to a flag 55.56 chs. N.0°01'W., of the cor. of secs. 1, 2, 11 and 12 to be N.55°07'E.
 I compute the distance from sec. cor. to sec. cor. as follows: $55.56 \times \sin 55^\circ 08' + \sin 34^\circ 46' = 79.94$ chs.



Subdivision of T. 4 N., R. 18 W.

Chains

Therefore a random line run N.89°53'E., bet. secs. 2 and 11, intersects N. and S. line at the cor of secs. 1, 2, 11 and 12, at 79.94 chs.

Thence S.89°53'W., on a true line, bet. secs. 2 and 11, over rough mountainous land, through scattering timber and undergrowth.

39.97 Set an iron post, 3 ft. long, 1 in. diam., 20 ins. in the ground and 6 ins. in a mound of stone, for 1/4 sec. cor., with brass cap, marked

1/4 S 2 in N., and
S 11 in S. half; and
1915 in S. rim;

and raise a mound of stone, 2 ft. base, 1 1/2 ft. high, N. of cor. Impracticable to set cor. farther in the ground.

45.50 Desc. 30 ft. to Wash, course NW.; asc. 75 ft. to
53.50 Spur extends N.; desc. 150 ft. to
65.00 Draw, course NW.; asc. NE. slope to
79.94 The cor. of secs. 2, 3, 10 and 11.

Land, mountainous.
Soil, 4th rate.
Timber, paloverde and ironwood.
Undergrowth, greasewood, cactus and mesquite.

N.0°01'W., on a true line, bet. secs. 2 and 3, over mountainous land, through scattering timber and dense undergrowth.

To obtain distance across extremely rough land, over which it is impracticable to chain with accuracy, I triangulate as follows:

Set a flag on line, N.0°01'W., at a point whence flag on the cor. of secs. 1, 2, 11 and 12 bears S.67°48'E., from which I compute the distance as follows:

Course and distance of base = N.89°53'E., 79.94 chs.
79.94 x sin 22° 19' + sin 67° 47' = 32.79 chs.

32.79 Triangulation pt., on rocky spur, slopes SE.

Thence desc. NE. slope.

40.00 Set an iron post, 3 ft. long, 1 in. diam., 26 ins. in a mound of stone, for 1/4 sec. cor., with brass cap, marked

1/4 in N.,
S 2 in E., and
S 3 in W. half; and
1915 in S. rim;

and raise a mound of stone, 2 ft. base, 1 1/2 ft. high, W. of cor. Impracticable to set cor. in the ground.

45.00 Wash, 340 ft. below spur at 32.79 ch. pt., extends SW.; asc. SW. slope 300 ft. to

66.00 Thence along W. slope.

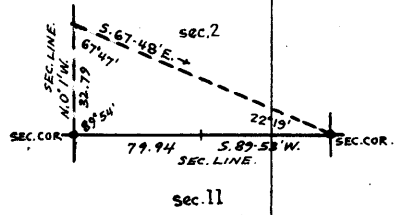
73.01 Intersect 1st St. Par. N. 9.00 chs. W. of the reestablished standard cor. of secs. 35 and 36 described in Book "A."

At pt. of intersection Set an iron post, 3 ft. long, 2 ins. diam., 24 ins. in a mound of stone, for closing cor. of secs. 2 and 3, with brass cap, marked

T 5 N R 18 W S 35 in N. half,
CC in S. half,
T 4 N S 3 in SW., and
R 18 W S 2 in SE., quadrant; and
1915 in S. rim;

and raise a mound of stone, 2 ft. base, 1 1/2 ft. high, S. of cor.

Land, mountainous.
Soil, 4th rate.
Timber, paloverde.
Undergrowth, greasewood, cactus and mesquite.



Chains

From the cor. of secs. 3, 4, 33 and 34, on the S. bdy. of Tp., described in Book "B,"

N.0°02'W., bet. secs. 33 and 34, over mountainous land, through scattering timber and dense undergrowth.
Desc. N. slope.

1.75 Wash, course W.; asc. SW. slope 260 ft. to
19.50 Ridge bears SE. and NW.; desc. 280 ft. to
33.00 Enter wash, course NW.; wagon road bears NW. and SE.
38.00 Leave wash, and asc. slight SW. slope.
40.00 Set an iron post, 3 ft. long, 1 in. diam., 12 ins. in the ground, and 14 ins. in a mound of stone, for $\frac{1}{4}$ sec. cor., with brass cap, marked
 $\frac{1}{4}$ in N.,
 S 33 in W., and
 S 34 in E. half; and
 1915 in S. rim;
and raise a mound of stone, 2 ft. base, $1\frac{1}{2}$ ft. high, W. of cor. Impracticable to set cor. farther in the ground.

42.00 Draw, course W.
70.00 Draw, course W.; asc. SW. slope 175 Ft. to
80.00 Set an iron post, 3 ft. long, 2 ins. diam., 24 ins. in a mound of stone, for cor. of secs. 27, 28, 33 and 34, with brass cap, marked
 T 4 N S 28 in NW.,
 R 18 W S 27 in NE.,
 S 34 in SE., and
 S 33 in SW. quadrant; and
 1915 in S. rim;
and raise a mound of stone, 2 ft. base, $1\frac{1}{2}$ ft. high, W. of cor. Impracticable to set cor. in the ground.
Land, mountainous.
Soil, 4th rate.
Timber, ironwood and paloverde.
Undergrowth, greasewood, catclaw, cactus and mesquite.

40.00 East, on a random line, bet. secs. 27 and 34.
Set temp. $\frac{1}{4}$ sec. cor.
79.94 Intersect N. and S. line 18 lks. N. on the cor. of secs. 26, 27, 34 and 35.

Thence N.89°52'W., on a true line, bet. secs. 27 and 34, over mountainous land, through scattering timber and dense undergrowth.
Asc. 15 ft. to

2.00 Spur extends N.; desc. 50 ft. to
5.00 Wash, course N.; desc. 120 ft. to
8.60 Spur extends N.; desc. 140 ft. to
15.00 Wash, course N.; asc. 260 ft. to
30.00 Spur extends N.; desc. 40 ft. to
35.00 Wash, course N.; asc. 110 ft. to
39.97 Set an iron post, 3 ft. long, 1 in. diam., in a mound of stone, for $\frac{1}{4}$ sec. cor., with brass cap, marked
 $\frac{1}{4}$ S 27 in N., and
 S 34 in S. half; and
 1915 in S. rim;
and raise a mound of stone, 2 ft. base, $1\frac{1}{2}$ ft. high, N. of cor. Impracticable to set cor. in the ground.
Cor. is on spur extending N.; desc. 210 ft. to
55.00 Gulch, course NW.; asc. 240 ft. on NE. slope to
57.50 Ridge bears NW. and SE.; desc. 540 ft. on SW. slope to
79.94 The cor. of secs. 27, 28, 33 and 34.
Land, mountainous.
Soil, 4th rate.
Timber, paloverde.
Undergrowth, greasewood and cactus.

Subdivision of T. 4 N., R. 18 W.

Chains

N.0°02'W., bet. secs. 27 and 28,
over mountainous land, through scattering
timber and dense undergrowth.

To avoid cliffs, over which it is imprac-
ticable to chain, I offset as follows:

West, 38.57 chs.

Thence

N.0°02'W., on offset. (rolling land on offset).

11.00 Wash, course NW.

20.00 Wash, course W.

31.00 Wash, course W.

40.00 Offset East, 38.57 chs. to true line, on which

Set an iron post, 3 ft. long, 1 in. diam., in a mound of
stone, for $\frac{1}{4}$ sec. cor., with brass cap, marked

$\frac{1}{4}$ in N.,
S 27 in E., and
S 28 in W. half, and
1915 in S. rim;

and raise a mound of stone, 2 ft. base, $1\frac{1}{2}$ ft. high,
W. of cor. Impracticable to set cor. in the ground.

Thence N.0°02'W., on true line.

Asc. 130 ft. on S. slope to

44.60 Spur extends W.; desc. N. slope to

78.00 Wash, course NW.; 200 ft. below spur.

80.00 Set an iron post, 3 ft. long, 2 ins. diam., 18 ins. in the
ground, for cor. of secs. 21, 22, 27 and 28, with brass
cap, marked

T 4 N S 21 in NW.,
R 18 W S 22 in NE.,
S 27 in SE., and
S 28 in SW. quadrant; and
1915 in S. rim;

and raise a mound of stone, 2 ft. base, $1\frac{1}{2}$ ft. high,
W. of cor. Impracticable to set cor. farther in the
ground.

Land, mountainous.

Soil, 4th rate.

Timber, ironwood and paloverde.

Undergrowth, greasewood and cactus.

East, on a random line, bet. secs. 22 and 27.

40.00 Set temp. $\frac{1}{4}$ sec. cor.

80.16 Intersect N. and S. line 24 lks. N. of the cor. of secs.
22, 23, 26 and 27.

Thence N.89°50'W., on a true line, bet. secs. 22 and 27,
over rolling land, through scattering timber and dense
undergrowth.

6.00 Wash, course NW.

12.00 Wash, course NW.

40.08 Set an iron post, 3 ft. long, 1 in. diam., 26 ins. in the
ground, for $\frac{1}{4}$ sec. cor., with brass cap, marked

$\frac{1}{4}$ S 22 in N., and,
S 27 in S. half, and
1915 in S. rim;

and raise a mound of stone, 2 ft. base, $1\frac{1}{2}$ ft. high,
N. of cor.

59.00 Draw, course NW.

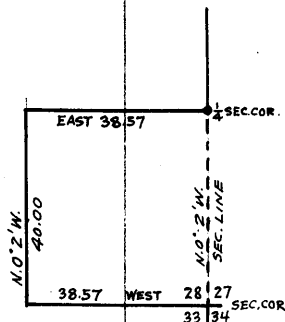
80.16 The cor. of secs. 21, 22, 27 and 28.

Land, rolling.

Soil, 4th rate.

Timber, ironwood and paloverde.

Undergrowth, greasewood and cactus.



Chains

N.0°02'W., bet. secs. 21 and 22,
over rolling land, through scattering timber and dense undergrowth.

2.00 Wash, course W.

25.00 Wash, course W.

40.00 Set an iron post, 3 ft. long, 1 in. diam., 26 ins. in the ground, for $\frac{1}{4}$ sec. cor., with brass cap, marked $\frac{1}{4}$ in N., S 21 in W., and S 22 in E. half; and 1915 in S. rim; and raise a mound of stone, 2 ft. base, $1\frac{1}{2}$ ft. high, W. of cor.

40.50 Wash, course W.

59.10 Phoenix-California road bears E. and W.

80.00 Set an iron post, 3 ft. long, 2 ins. diam., 24 ins. in the ground, for cor. of secs. 15, 16, 21 and 22, with brass cap, marked
T 4 N S 16 in NW.,
R 18 W S 15 in NE.,
S 22 in SE., and
S 21 in SW. quadrant; and
1915 in S. rim;
and raise a mound of stone, 2 ft. base, $1\frac{1}{2}$ ft. high, W. of cor.

Land, rolling.
Soil, 4th rate.
Timber, ironwood and paloverde.
Undergrowth, greasewood, mesquite and cactus.

40.00 East, on a random line, bet. secs. 15 and 22.
Set temp. $\frac{1}{4}$ sec. cor.

79.96 Intersect N. and S. line 35 lks. N. of the cor. of secs. 14, 15, 22 and 23.

Thence N.89°45'W., on a true line, bet. secs. 15 and 22, over nearly level desert, broken with deep washes; through fairly dense timber and undergrowth.

6.00 Deep wash, 100 lks. wide, course NW.

39.98 Set an iron post, 3 ft. long, 1 in. diam., 26 ins. in the ground, for $\frac{1}{4}$ sec. cor., with brass cap, marked $\frac{1}{4}$ S 15 in N., and S 22 in S. half; and 1915 in S. rim; and raise a mound of stone, 2 ft. base, $1\frac{1}{2}$ ft. high, N. of cor.

79.96 The cor. of secs. 15, 16, 21 and 22.
Land, nearly level desert, broken with deep washes.
Soil, gravelly, with small boulders; 2nd and 3rd rate.
Timber, paloverde and catclaw.
Undergrowth, greasewood, sage and cactus.

N.0°02'W., bet. secs. 15 and 16,
over level land, through scattering timber and dense undergrowth.

1.50 Wash, course W.

28.00 Draw, course W.

40.00 Set an iron post, 3 ft. long, 1 in. diam., 26 ins. in the ground, for $\frac{1}{4}$ sec. cor., with brass cap, marked $\frac{1}{4}$ in N., S 15 in E., and S 16 in W. half; and 1915 in S. rim; and raise a mound of stone, 2 ft. base, $1\frac{1}{2}$ ft. high, W. of cor.

75.00 Wash, course W.

Subdivision of T. 4 N., R. 18 W.

Chains

80.00 Set an iron post, 3 ft. long, 2 ins. diam., 24 ins. in the ground, for cor. of secs. 9, 10, 15 and 16, with brass cap, marked
 T 4 N S 9 in NW.,
 R 18 W S 10 in NE.,
 S 15 in SE., and
 S 16 in SW. quadrant; and
 1915 in S. rim;
 and raise a mound of stone, 2 ft. base, 1½ ft. high, W. of cor.
 Land, level.
 Soil, 4th rate.
 Timber, ironwood and paloverde.
 Undergrowth, greasewood and cactus.

 East, on a random line, bet. secs. 10 and 15.
 40.00 Set temp. ¼ sec. cor.
 79.88 Intersect N. and S. line 24 lks. N. of the cor. of secs. 10, 11, 14 and 15.

Thence N.89°50'W., on a true line, bet. secs. 10 and 15, over rolling land, through scattering timber and dense undergrowth.
 Desc. SW. slope.

1.00 Draw, course NW.
 5.00 Same draw, course SW.; asc. SE. slope.
 8.00 Wash, course SW.
 20.00 Low spur extends S.; desc. slight W. slope.
 27.00 Draw, course SW.; asc. SE. slope.
 35.00 Low spur extends S.; desc. W. slope.
 39.94 Set an iron post, 3 ft. long, 1 in. diam., 26 ins. in the ground, for ¼ sec. cor., with brass cap, marked
 ¼ S 10 in N., and
 S 15 in S. half; and
 1915 in S. rim;
 and raise a mound of stone, 2 ft. base, 1½ ft. high, N. of cor.

45.00 Wash, course NW.
 62.00 Wash, course NW.
 79.88 The cor. of secs. 9, 10, 15 and 16.
 Land, rolling.
 Soil, 4th rate.
 Timber, ironwood and paloverde.
 Undergrowth, greasewood, mesquite and cactus.

 N.0°02'W., bet. secs. 9 and 10, over level land, through scattering timber and dense undergrowth.

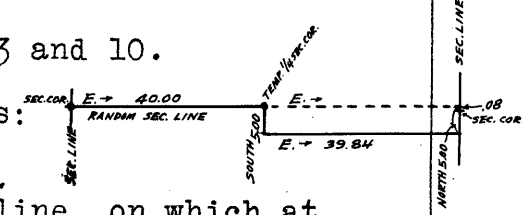
20.00 Wash, course NW.
 22.00 Wash, course W.
 40.00 Set an iron post, 3 ft. long, 1 in. diam., 26 ins. in the ground, for ¼ sec. cor., with brass cap, marked
 ¼ in N.,
 S 9 in W., and
 S 10 in E. half; and
 1915 in S. rim;
 and raise a mound of stone, 2 ft. base, 1½ ft. high, W. of cor.

71.00 Wash, course W.
 76.00 Wash, course W.
 80.00 Set an iron post, 3 ft. long, 2 ins. diam., 24 ins. in the ground, for cor. of secs. 3, 4, 9 and 10, with brass cap, marked
 T 4 N S 4 in NW.,
 R 18 W S 3 in NE.,
 S 10 in SE., and
 S 9 in SW. quadrant; and

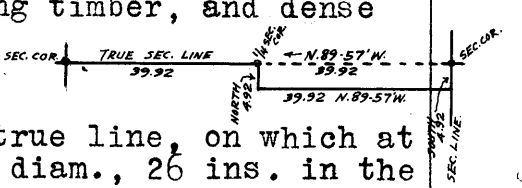
Chains

1915 in S. rim;
 and raise a mound of stone, 2 ft. base, 1½ ft. high,
 W. of cor.
 Land, level.
 Soil, 4th rate.
 Timber, ironwood and paloverde.
 Undergrowth, greasewood and cactus.

40.00 East, on a random line, bet. secs. 3 and 10.
 Set temp. ¼ sec. cor.
 To avoid cliffs, offset as follows:
 South, 5.00 chs.
 Thence East, on offset, 39.84 chs.
 79.84 Offset North, 5.00 chs., to true line, on which at
 Intersect N. and S. line 8 lks. N. of the cor. of secs.
 2, 3, 10 and 11.



Thence N. 89° 57' W., on a true line, bet. secs. 3 and 19;
 Offset South, 4.92 chs., to avoid cliffs.
 Thence N. 89° 57' W., on offset,
 over level land, through scattering timber, and dense
 undergrowth.
 10.00 Wash, course SW.
 18.00 Same wash, course NW.
 39.92 Offset North, 4.92 chs. to true line, on which at
 39.92 Set an iron post, 3 ft. long, 1 in. diam., 26 ins. in the
 ground, for ¼ sec. cor., with brass cap, marked
 ¼ S 3 in N., and
 S 10 in S. half; and
 1915 in S. rim;
 and raise a mound of stone, 2 ft. base, 1½ ft. high,
 N. of cor.



62.00 Wash, course SW.
 79.84 The cor. of secs. 3, 4, 9 and 10.
 Land, on line as run, level.
 Soil, 4th rate.
 Timber, ironwood and paloverde.
 Undergrowth, greasewood and cactus.

N. 0° 02' W., on a true line, bet. secs. 3 and 4,
 over level land, through scattering timber and dense
 undergrowth.
 40.00 Set an iron post, 3 ft. long, 1 in. diam., 26 ins. in the
 ground, for ¼ sec. cor., with brass cap, marked
 ¼ in N.,
 S 3 in E., and
 S 4 in W. half; and
 1915 in S. rim;
 and raise a mound of stone, 2 ft. base, 1½ ft. high,
 W. of cor.
 72.76 Intersect 1st St. Par. N. 8.80 chs. W. of the reestablished
 standard cor. of secs. 34 and 35, described in Book "A."

At point of intersection
 Set an iron post, 3 ft. long, 2 ins. diam., 24 ins. in the
 ground, for closing cor. of secs. 3 and 4, with brass
 cap, marked
 T 5 N R 18 W S 34 in N. half,
 CC in S. half,
 T 4 N S 4 in SW., and
 R 18 W S 3 in SE. quadrant; and
 1915 in S. rim;
 and raise a mound of stone, 2 ft. base, 1½ ft. high,
 S. of cor.
 Land, level.-- Soil, 4th rate.--
 Timber, ironwood and paloverde.--
 Undergrowth, greasewood and cactus.

Subdivision of T. 4 N., R. 18 W.

Chains

From the cor. of secs. 4, 5, 34 and 35, on S. bdy., of Tp., described in Book "B,"

N.0°02'W., bet. secs. 32 and 33,
 over rolling land, through scattering timber and dense undergrowth.

19.60 Old road bears E. and W.
 29.00 Road bears NW. and SE.
 39.00 Wash, course NW.
 40.00 Pt. for $\frac{1}{4}$ sec. cor. falls in wash; therefore at
 41.00 Set an iron post, 3 ft. long, 1 in. diam., 26 ins. in the ground, for witness cor. to $\frac{1}{4}$ sec. cor., with brass cap, marked

$\frac{1}{4}$ in N.,
 WC in S.,
 S 32 in W., and
 S 33 in E. half; and
 1915 in S. rim;

and raise a mound of stone, 2 ft. base, $1\frac{1}{2}$ ft. high, W. of cor.

51.00 Road bears E. and W.
 NW. cor. of mining claim No. 4, (Plomosa), bears S.85°15'W. 3.37 chs. dist.

64.00 Wash, course W.
 80.00 Set an iron post, 3 ft. long, 2 ins. diam., 24 ins. in the ground, for cor. of secs. 28, 29, 32 and 33, with brass cap, marked

T 4 N S 29 in NW.,
 R 18 W S 28 in NE.,
 S 33 in SE., and
 S 32 in SW. quadrant; and
 1915 in S. rim;

and raise a mound of stone, 2 ft. base, $1\frac{1}{2}$ ft. high, W. of cor.

Land, rolling.
 Soil, 4th rate.
 Timber, ironwood and paloverde.
 Undergrowth, greasewood and cactus.

40.00 East; on a random line, bet. secs. 28 and 33.
 80.13 Set temp. $\frac{1}{4}$ sec. cor.
 Intersect N. and S. line 10 lks. S. of the cor. of secs. 27, 28, 33 and 34.

Thence S.89°56'W., on a true line, bet. secs. 28 and 33, over rolling land, through scattering timber and dense undergrowth.

Along S. slope.

1.00 Desc. SW. slope.
 15.00 Wash, course NW.
 22.00 Wash, course N.
 39.75 Draw, course NW.
 40.06 $\frac{1}{2}$ Set an iron post, 3 ft. long, 1 in. diam., 26 ins. in the ground, for $\frac{1}{4}$ sec. cor., with brass cap, marked

$\frac{1}{4}$ S 28 in N., and
 S 33 in S. half, and
 1915 in S. rim;

and raise a mound of stone, 2 ft. base, $1\frac{1}{2}$ ft. high, N. of cor.

41.00 Wash, course N.
 55.00 Draw, course NW.
 80.13 The cor. of secs. 28, 29, 32 and 33.

Land, rolling.
 Soil, 4th rate.
 Timber, ironwood and paloverde.
 Undergrowth, greasewood and cactus.

Chains

- N.0°02'W., bet. secs. 28 and 29,
over slightly broken desert, through scattering timber
and dense undergrowth.
- 4.00 Wash, 4 chs. wide, course W.
- 40.00 Set an iron post, 3 ft. long, 1 in. diam., 26 ins. in the
ground, for $\frac{1}{4}$ sec. cor., with brass cap, marked
 $\frac{1}{4}$ in N.,
S 28 in E., and
S 29 in W. half; and
1915 in S. rim;
and raise a mound of stone, 2 ft. base, $1\frac{1}{2}$ ft. high,
W. of cor.
- 80.00 Set an iron post, 3 ft. long, 2 ins. diam., 24 ins. in the
ground, for cor. of secs. 20, 21, 28 and 29, with brass
cap, marked
T 4 N S 20 in NW.,
R 18 W S 21 in NE.,
S 28 in SE., and
S 29 in SW. quadrant; and
1915 in S. rim;
and raise a mound of stone, 2 ft. base, $1\frac{1}{2}$ ft. high,
W. of cor.
- Land, slightly broken level desert.
Soil, gravelly, with boulders; 2nd and 3rd rate.
Timber, paloverde, mesquite and catclaw.
Undergrowth, greasewood, sage and cactus.
-
- East, on a random line, bet. secs. 21 and 28.
- 40.00 Set temp. $\frac{1}{4}$ sec. cor.
- 80.08 Intersect N. and S. line 12 lks. N. of the cor. of secs.
21, 22, 27 and 28.
- Thence N.89°55'W., on a true line, bet. secs. 21 and 28,
over rolling land, through dense timber and scattering
undergrowth.
- 5.00 Wash, course NW.
- 25.00 Wash, course NW.
- 40.04 Set an iron post, 3 ft. long, 1 in. diam., 26 ins. in the
ground, for $\frac{1}{4}$ sec. cor., with brass cap, marked
 $\frac{1}{4}$ S 21 in N., and
S 28 in S. half; and
1915 in S. rim;
and raise a mound of stone, 2 ft. base, $1\frac{1}{2}$ ft. high,
N. of cor.
- 41.00 Wash, course NW.
- 46.00 Same wash, course SW.
- 55.00 Same wash, course NW.
- 80.08 The cor. of secs. 20, 21, 28 and 29.
Land, rolling.
Soil, 4th rate.
Timber, ironwood and paloverde.
Undergrowth, greasewood and cactus.
-
- N.0°02'W., bet. secs. 20 and 21,
over slightly broken, nearly level desert, through
fairly dense timber and undergrowth.
- 40.00 Set an iron post, 3 ft. long, 1 in. diam., 26 ins. in the
ground, for $\frac{1}{4}$ sec. cor., with brass cap, marked
 $\frac{1}{4}$ in N.,
S 20 in W., and
S 21 in E. half; and
1915 in S. rim;
and raise a mound of stone, 2 ft. base, $1\frac{1}{2}$ ft. high,
W. of cor.
- 41.60 Vicksburg road bears E. and W.
- 78.00 Deep wash, 100 lks. wide, course W.

Subdivision of T. 4 N., R. 18 W.

Chains		
80.00	<p>Set an iron post, 3 ft. long, 2 ins. diam., 24 ins. in the ground, for cor. of secs. 16, 17, 20 and 21, with brass cap, marked</p> <p style="padding-left: 40px;">T 4 N S 17 in NW., R 18 W S 16 in NE., S 21 in SE., and S 20 in SW. quadrant; and 1915 in S. rim;</p> <p>and raise a mound of stone, 2 ft. base, 1½ ft. high, W. of cor.</p> <p>Land, nearly level desert, slightly broken with deep washes. Soil, gravelly, with boulders; 2nd and 3rd rate. Timber, paloverde and catclaw. Undergrowth, greasewood, cactus and sage.</p> <p>-----</p>	
40.00	<p>East, on a random line, bet. secs. 16 and 21.</p>	
80.20	<p>Set temp. ¼ sec. cor. Intersect N. and S. line at the cor. of secs. 15, 16, 21 and 22.</p>	
32.20	<p>Thence West, on a true line, bet. secs. 16 and 21, over level desert, through scattering timber and dense undergrowth.</p>	
40.10	<p>Wash, course S.70°W. Set an iron post, 3 ft. long, 1 in. diam., 26 ins. in the ground, for ¼ sec. cor., with brass cap, marked</p> <p style="padding-left: 40px;">¼ S 16 in N., and S 21 in S. half, and 1915 in S. rim;</p> <p>and raise a mound of stone, 2 ft. base, 1½ ft. high, N. of cor.</p>	
46.20	<p>Same wash, course N.70°W.</p>	
70.20	<p>Wash, course S.80°W.</p>	
80.20	<p>The cor. of secs. 16, 17, 20 and 21. Land, level. Soil, 2nd and 3rd rate. Timber, paloverde and catclaw. Undergrowth, greasewood, sage and cactus.</p> <p>-----</p>	
40.00	<p>North, bet. secs. 16 and 17, over nearly level desert, through scattering timber and undergrowth.</p> <p>Set an iron post, 3 ft. long, 1 in. diam., 26 ins. in the ground, for ¼ sec. cor., with brass cap, marked</p> <p style="padding-left: 40px;">¼ in N., S 16 in E., and S 17 in W. half; and 1915 in S. rim;</p> <p>and raise a mound of stone, 2 ft. base, 1½ ft. high, W. of cor.</p>	
80.00	<p>Set an iron post, 3 ft. long, 2 ins. diam., 24 ins. in the ground, for cor. of secs. 8, 9, 16 and 17, with brass cap, marked</p> <p style="padding-left: 40px;">T 4 N S 8 in NW., R 18 W S 9 in NE., S 16 in SE., and S 17 in SW. quadrant; and 1915 in S. rim;</p> <p>and raise a mound of stone, 2 ft. base, 1½ ft. high, W. of cor.</p> <p>Land, nearly level desert, slightly broken with washes. Soil, rocky; 2nd and 3rd rate. Timber, paloverde and catclaw. Undergrowth, greasewood, cactus and sage.</p> <p>-----</p>	

Chains

40.00 East, on a random line, bet. secs. 9 and 16.
 Set temp. $\frac{1}{4}$ sec. cor.
 80.30 Intersect N. and S. line 5 lks. S. of the cor. of secs.
 9, 10, 15 and 16.

Thence S. $89^{\circ}58'W.$, on a true line, bet. secs. 9 and 16,
 over level desert, through scattering timber and under-
 growth.

40.15 Set an iron post, 3 ft. long, 1 in. diam., 26 ins. in the
 ground, for $\frac{1}{4}$ sec. cor., with brass cap, marked
 $\frac{1}{4}$ S 9 in N., and
 S 16 in S. half; and
 1915 in S. rim;
 and raise a mound of stone, 2 ft. base, $1\frac{1}{2}$ ft. high,
 N. of cor.

64.30 Plomosa-Bouse road bears N. and S.

80.30 The cor. of secs. 8, 9, 16 and 17.
 Land, level desert.
 Soil, rocky; 2nd and 3rd rate.
 Timber, paloverde and catclaw.
 Undergrowth, greasewood, sage and cactus.

 N. $0^{\circ}02'W.$, bet. secs. 8 and 9,
 over level desert, through scattering timber and under-
 growth.

40.00 Set an iron post, 3 ft. long, 1 in. diam., 26 ins. in the
 ground, for $\frac{1}{4}$ sec. cor., with brass cap, marked
 $\frac{1}{4}$ in N.,
 S 8 in W., and
 S 9 in E. half; and
 1915 in S. rim;
 and raise a mound of stone, 2 ft. base, $1\frac{1}{2}$ ft. high,
 W. of cor.

80.00 Set an iron post, 3 ft. long, 2 ins. diam., 24 ins. in the
 ground, for cor. of secs. 4, 5, 8 and 9, with brass cap,
 marked
 T 4 N S 5 in NW.,
 R 18 W S 4 in NE.,
 S 9 in SE., and
 S 8 in SW. quadrant; and
 1915 in S. rim;
 and raise a mound of stone, 2 ft. base, $1\frac{1}{2}$ ft. high,
 W. of cor.

Land, level.
 Soil, gravelly, with boulders; 2nd and 3rd rate.
 Timber, paloverde and catclaw.
 Undergrowth, greasewood, sage and cactus.

 East, on a random line, bet. secs. 4 and 9.
 40.00 Set temp. $\frac{1}{4}$ sec. cor.
 80.40 Intersect N. and S. line, 8 lks. S. of the cor. of secs.
 3, 4, 9 and 10.

Thence S. $89^{\circ}57'W.$, on a true line, bet. secs. 4 and 9,
 over level land, through scattering timber and dense
 undergrowth.

12.50 Wash, course NW.

17.50 Wash, course NW.

40.20 Set an iron post, 3 ft. long, 1 in. diam., 26 ins. in the
 ground, for $\frac{1}{4}$ sec. cor., with brass cap, marked
 $\frac{1}{4}$ S 4 in N., and
 S 9 in S. half, and
 1915 in S. rim;
 and raise a mound of stone, 2 ft. base, $1\frac{1}{2}$ ft. high,
 N. of cor.

72.00 Draw, course NW.

Chains

77.00 Draw, course NW.
 80.40 The cor. of secs. 4, 5, 8 and 9.
 Land, level.
 Soil, 4th rate.
 Timber, ironwood and paloverde.
 Undergrowth, greasewood, mesquite and cactus.

N.0°02'W., on a true line, bet. secs. 4 and 5,
 over level desert, through scattering timber and dense
 undergrowth.
 40.00 Set an iron post, 3 ft. long, 1 in. diam., 26 ins. in the
 ground, for $\frac{1}{4}$ sec. cor., with brass cap, marked
 $\frac{1}{4}$ in N.,
 S 4 in E., and
 S 5 in W. half; and
 1915 in S. rim;
 and raise a mound of stone, 2 ft. base, $1\frac{1}{2}$ ft. high,
 W. of cor.

72.54 Intersect 1st St. Par. N. 9.27 chs. W. of the reestablished
 standard cor. of secs. 33 and 34, described in Book "A."

At point of intersection
 Set an iron post, 3 ft. long, 2 ins. diam., 24 ins. in the
 ground, for closing cor. of secs. 4 and 5, with brass
 cap, marked
 T 5 N R 18 W S 33 in N. half,
 CC in S. half,
 T 4 N S 5 in SW., and
 R 18 W S 4 in SE. quadrant; and
 1915 in S. rim;
 and raise a mound of stone, 2 ft. base, $1\frac{1}{2}$ ft. high,
 S. of cor.
 Land, level desert.
 Soil, rocky; 2nd and 3rd rate.
 Timber, paloverde and catclaw.
 Undergrowth, greasewood and cactus.

From the cor. of secs. 5, 6, 31 and 32, on S. bdy. of Tp.,
 described in Book "B."

N.0°03'W., bet. secs. 31 and 32,
 over nearly level desert, through dense timber and under-
 growth.
 40.00 Set an iron post, 3 ft. long, 1 in. diam., 26 ins. in the
 ground, for $\frac{1}{4}$ sec. cor., with brass cap, marked
 $\frac{1}{4}$ in N.,
 S 31 in W., and
 S 32 in E. half; and
 1915 in S. rim;
 and raise a mound of stone, 2 ft. base, $1\frac{1}{2}$ ft. high,
 W. of cor.

50.50 Old road bears E. and W.

60.70 Road bears E. and W.

80.00 Set an iron post, 3 ft. long, 2 ins. diam., 24 ins. in the
 ground, for cor. of secs. 29, 30, 31 and 32, with brass
 cap, marked
 T 4 N S 30 in NW.,
 R 18 W S 29 in NE.,
 S 32 in SE., and
 S 31 in SW. quadrant; and
 1915 in S. rim;
 and raise a mound of stone, 2 ft. base, $1\frac{1}{2}$ ft. high,
 W. of cor.
 Land, nearly level desert, broken with small washes.
 Soil, 2nd and 3rd rate. Timber, paloverde and catclaw.
 Undergrowth, greasewood, sage and cactus.

Chains

40.00 East, on a random line, bet. secs. 29 and 32.
 Set temp. $\frac{1}{4}$ sec. cor.
 80.00 Intersect N. and S. line 10 lks. N. of the cor. of secs.
 28, 29, 32 and 33.

Thence N. $89^{\circ}56'$ W., on a true line, bet. secs. 29 and 32,
 over slightly broken level desert, through fairly dense
 timber and undergrowth.

36.10 Road bears NW. and SE.

40.00 Set an iron post, 3 ft. long, 1 in. diam., 26 ins. in the
 ground, for $\frac{1}{4}$ sec. cor., with brass cap, marked
 $\frac{1}{4}$ S 29 in N., and
 $\frac{1}{4}$ S 32 in S. half; and
 1915 in S. rim;
 and raise a mound of stone, 2 ft. base, $1\frac{1}{2}$ ft. high,
 N. of cor.

77.80 Road bears N. and S.

80.00 The cor. of secs. 29, 30, 31 and 32.
 Land, slightly broken level desert.
 Soil, gravelly, with boulders; 2nd and 3rd rate.
 Timber, paloverde and catclaw.
 Undergrowth, greasewood, sage and cactus.

40.00 West, on a random line, bet. secs. 30 and 31.

Set temp. $\frac{1}{4}$ sec. cor.
 79.15 Intersect W. bdy. of Tp. 12 lks. N. of the cor. of secs.
 25, 30, 31 and 36, described in Book "B:"

Thence N. $89^{\circ}55'$ E., on a true line, bet. secs. 30 and 31,
 over level land, through scattering timber and dense
 undergrowth.

25.15 Draw, course NW.

39.15 Set an iron post, 3 ft. long, 1 in. diam., 26 ins. in the
 ground, for $\frac{1}{4}$ sec. cor., with brass cap, marked
 $\frac{1}{4}$ S 30 in N., and
 $\frac{1}{4}$ S 31 in S. half, and
 1915 in S. rim;
 and raise a mound of stone, 2 ft. base, $1\frac{1}{2}$ ft. high,
 N. of cor.

44.15 Draw, course NW.

73.15 Draw, course NW.

79.15 The cor. of secs. 29, 30, 31 and 32.
 Land, level.
 Soil, 4th rate.
 Timber, ironwood and paloverde.
 Undergrowth, greasewood and cactus.

N. $0^{\circ}03'$ W., bet. secs. 29 and 30,
 over level desert, through scattering timber and under-
 growth.

23.50 Wash, 2 chs. wide, course NW.

40.00 Set an iron post, 3 ft. long, 1 in. diam., 26 ins. in the
 ground, for $\frac{1}{4}$ sec. cor., with brass cap, marked
 $\frac{1}{4}$ in N.,
 $\frac{1}{4}$ S 29 in E., and
 $\frac{1}{4}$ S 30 in W. half; and
 1915 in S. rim;
 and raise a mound of stone, 2 ft. base, $1\frac{1}{2}$ ft. high,
 W. of cor.

48.20 Shallow wash, 1.50 chs. wide, course W.

69.50 Shallow wash, 100 lks. wide, course W.

80.00 Set an iron post, 3 ft. long, 2 ins. diam., 24 ins. in the
 ground, for cor. of secs. 19, 20, 29 and 30, with brass
 cap, marked
 T 4 N S 19 in NW.,
 R 18 W S 20 in NE.,

Subdivision of T. 4 N., R. 18 W.

Chains

S 29 in SE., and
 S 30 in SW. quadrant; and
 1915 in S. rim;
 and raise a mound of stone, 2 ft. base, 1½ ft. high,
 W. of cor.
 Land, nearly level desert.
 Soil, gravelly, with boulders; 2nd and 3rd rate.
 Timber, paloverde and catclaw.
 Undergrowth, greasewood, sage and cactus.

40.00 East, on a random line, bet. secs. 20 and 29.
 79.94 Set temp. ¼ sec. cor.
 Intersect N. and S. line at the cor. of secs. 20, 21, 28
 and 29.

Thence West, on a true line, bet. secs. 20 and 29,
 over level land, through dense timber and scattering
 undergrowth.

5.00 Wash, course NW.
 18.00 Wash, course NW.
 35.00 Wash, course NW.
 39.97 Set an iron post, 3 ft. long, 1 in. diam., 18 ins. in the
 ground, and 8 ins. in a mound of stone, for ¼ sec. cor.,
 with brass cap, marked
 ¼ S 20 in N., and
 S 29 in S. half, and
 1915 in S. rim;
 and raise a mound of stone, 2 ft. base, 1½ ft. high,
 N. of cor.

51.65 Plomosa road bears N. and S.
 79.94 The cor. of secs. 19, 20, 29 and 30.
 Land, level.
 Soil, 4th rate.
 Timber, ironwood and paloverde.
 Undergrowth, greasewood and cactus.

40.00 West, on a random line, bet. secs. 19 and 30.
 79.19 Set temp. ¼ sec. cor.
 Intersect W. bdy. of Tp. at the cor. of secs. 19, 24, 25
 and 30, described in Book "B."

Thence East, on a true line, bet. secs. 19 and 30,
 over level land, through scattering timber and dense
 undergrowth.

39.20 Wash, course NW.
 39.19 Set an iron post, 3 ft. long, 1 in. diam., 26 ins. in the
 ground, for ¼ sec. cor., with brass cap, marked
 ¼ S 19 in N., and
 S 30 in S. half, and
 1915 in S. rim;
 and raise a mound of stone, 2 ft. base, 1½ ft. high,
 N. of cor.

79.19 The cor. of secs. 19, 20, 29 and 30.
 Land, level.
 Soil, 4th rate.
 Timber, ironwood and paloverde.
 Undergrowth, greasewood and cactus.

N.0°03'W., bet. secs. 19 and 20.
 over slightly broken level desert, through dense timber
 and undergrowth.

10.00 Wash, 6 chs. wide, course W.
 17.00 Vicksburg road bears NE. and SW.

Chains

- 40.00 Set an iron post, 3 ft. long, 1 in. diam., 26 ins. in the ground, for $\frac{1}{4}$ sec. cor., with brass cap, marked
 $\frac{1}{4}$ in N.,
 S 19 in W., and
 S 20 in E. half, and
 1915 in S. rim;
 and raise a mound of stone, 2 ft. base, $1\frac{1}{2}$ ft. high,
 W. of cor.
- 43.00 Deep wash, 2 chs. wide, course SW.
- 80.00 Set an iron post, 3 ft. long, 2 ins. diam., 24 ins. in the ground, for cor. of secs. 17, 18, 19 and 20, with brass cap, marked
 T 4 N S 18 in NW.,
 R 18 W S 17 in NE.,
 S 20 in SE., and
 S 19 in SW. quadrant; and
 1915 in S. rim;
 and raise a mound of stone, 2 ft. base, $1\frac{1}{2}$ ft. high,
 W. of cor.
- Land, slightly broken level desert.
 Soil, gravelly, with boulders; 2nd and 3rd rate.
 Timber, paloverde and catclaw.
 Undergrowth, greasewood, sage and cactus.
-
- 40.00 East, on a random line, bet. secs. 17 and 20.
 Set temp. $\frac{1}{4}$ sec. cor.
- 79.82 Intersect N. and S. line 14 lks. N. of the cor. of secs. 16, 17, 20 and 21.
- Thence N. $89^{\circ}54'$ W., on a true line, bet. secs. 17 and 20, over level desert, through scattering timber and undergrowth.
- 7.30 New road bears N. and S.
- 39.91 Set an iron post, 3 ft. long, 1 in. diam., 26 ins. in the ground, for $\frac{1}{4}$ sec. cor., with brass cap, marked
 $\frac{1}{4}$ S 17 in N., and
 S 20 in S. half, and
 1915 in S. rim;
 and raise a mound of stone, 2 ft. base, $1\frac{1}{2}$ ft. high,
 N. of cor.
- 79.82 The cor. of secs. 17, 18, 19 and 20.
 Land, level.
 Soil, gravelly; 2nd rate.
 Timber, paloverde and catclaw.
 Undergrowth, greasewood and cactus.
-
- 40.00 West, on a random line, bet. secs. 18 and 19.
 Set temp. $\frac{1}{4}$ sec. cor.
- 79.15 Intersect W. bdy. of Tp. at the cor. of secs. 13, 18, 19 and 24, described in Book "B."
- Thence East, on a true line, bet. secs. 18 and 19, over level desert, through scattering timber and undergrowth.
- 39.15 Set an iron post, 3 ft. long, 1 in. diam., 26 ins. in the ground, for $\frac{1}{4}$ sec. cor., with brass cap, marked
 $\frac{1}{4}$ S 18 in N., and
 S 19 in S. half; and
 1915 in S. rim;
 and raise a mound of stone, 2 ft. base, $1\frac{1}{2}$ ft. high,
 N. of cor.
- 77.15 Wash, course S. 80° W.
- 79.15 The cor. of secs. 17, 18, 19 and 20.
 Land, level.
 Soil, gravelly; 2nd rate.
 Timber, paloverde and catclaw.
 Undergrowth, greasewood, sage and cactus.

Subdivision of T. 4 N., R. 18 W.

Chains

N.0°03'W., bet. secs. 17 and 18,
over level desert, through scattering timber and under-
growth.

27.50 Wash, 40 lks. wide, course W.

40.00 Set an iron post, 3 ft. long, 1 in. diam., 26 ins. in the
ground, for $\frac{1}{4}$ sec. cor., with brass cap, marked
 $\frac{1}{4}$ in N.,
S 17 in E., and
S 18 in W. half, and
1915 in S. rim;
and raise a mound of stone, 2 ft. base, 1 $\frac{1}{2}$ ft. high,
W. of cor.

51.00 Wash, 30 lks. wide, course W.

76.00 Deep wash, 2 chs. wide, course W.

80.00 Set an iron post, 3 ft. long, 2 ins. in diam., 24 ins. in the
ground, for cor. of secs. 7, 8, 17 and 18, with brass cap, marked
T 4 N S 7 in NW.,
R 18 W S 8 in NE.,
S 17 in SE., and
S 18 in SW. quadrant; and
1915 in S. rim;
and raise a mound of stone, 2 ft. base, 1 $\frac{1}{2}$ ft. high,
W. of cor.

Land, level.
Soil, rocky; 2nd and 3rd rate.
Timber, paloverde and catclaw.
Undergrowth, greasewood, sage and cactus,

East, on a random line, bet. secs. 8 and 17,
Set temp. $\frac{1}{4}$ sec. cor.

40.00 Intersect N. and S. line, 8 lks. S. of the cor. of secs.
79.68 8, 9, 16 and 17.

Thence S.89°57'W., on a true line, bet. secs. 8 and 17,
over level desert, through scattering timber and under-
growth.

39.84 Set an iron post, 3 ft. long, 1 in. diam., 26 ins. in the
ground, for $\frac{1}{4}$ sec. cor., with brass cap, marked
 $\frac{1}{4}$ S 8 in N., and
S 17 in S. half; and
1915 in S. rim;
and raise a mound of stone, 2 ft. base, 1 $\frac{1}{2}$ ft. high,
N. of cor.

79.68 The cor. of secs. 7, 8, 17 and 18.
Land, level.
Soil, gravelly, with boulders; 2nd and 3rd rate.
Timber, paloverde and catclaw.
Undergrowth, greasewood, cactus and sage.

West, on a random line, bet. secs. 7 and 18.
Set temp. $\frac{1}{4}$ sec. cor.

40.00 Intersect W. bdy. of Tp. 20 lks. N. of the cor. of secs.
79.20 7, 12, 13 and 18, described in Book "B."

Thence N.89°51'E., on a true line, bet. secs. 7 and 18,
over level desert, through scattering timber and under-
growth.

39.20 Set an iron post, 3 ft. long, 1 in. diam., 26 ins. in the
ground, for $\frac{1}{4}$ sec. cor., with brass cap, marked
 $\frac{1}{4}$ S 7 in N., and
S 18 in S. half, and
1915 in S. rim;
and raise a mound of stone, 2 ft. base, 1 $\frac{1}{2}$ ft. high,
N. of cor.

Chains

- 79.20 The cor. of secs. 7, 8, 17 and 18.
Land, level.
Soil, rocky; 2nd and 3rd rate.
Timber, paloverde and catclaw.
Undergrowth, greasewood, sage and cactus.
-
- N.0°03'W., bet. secs 7 and 8,
over level desert, through scattering timber and under-
growth.
- 26.00 Wash, 50 lks. wide, course W.
- 40.00 Set an iron post, 3 ft. long, 1 in. diam., 26 ins. in the
ground, for $\frac{1}{4}$ sec. cor., with brass cap, marked
 $\frac{1}{4}$ in N.,
S 7 in W., and
S 8 in E. half; and
1915 in S. rim;
and raise a mound of stone, 2 ft. base, $1\frac{1}{2}$ ft. high,
W. of cor.
- 80.00 Set an iron post, 3 ft. long, 2 ins. in diam., 24 ins. in
the ground, for cor. of secs. 5, 6, 7 and 8, with brass
cap, marked
T 4 N S 6 in NW.,
R 18 W S 5 in NE.,
S 8 in SE., and
S 7 in SW. quadrant; and
1915 in S. rim;
and raise a mound of stone, 2 ft. base, $1\frac{1}{2}$ ft. high,
W. of cor.
Land, slightly broken nearly level desert.
Soil, gravelly, with boulders; 2nd and 3rd rate.
Timber, paloverde and catclaw.
Undergrowth, greasewood, sage and cactus.
-
- 40.00 East, on a random line, bet. secs. 5 and 8.
Set temp. $\frac{1}{4}$ sec. cor.
- 79.68 Intersect N. and S. line 4 lks. S. of the cor. of secs.
4, 5, 8 and 9.
- Thence S.89°58'W., on a true line, bet. secs. 5 and 8,
over level desert, through scattering timber and under-
growth.
- 39.84 Set an iron post, 3 ft. long, 1 in. diam., 26 ins. in the
ground, for $\frac{1}{4}$ sec. cor., with brass cap, marked
 $\frac{1}{4}$ S 5 in N., and
S 8 in S. half; and
1915 in S. rim;
and raise a mound of stone, 2 ft. base, $1\frac{1}{2}$ ft. high,
N. of cor.
- 79.68 The cor. of secs. 5, 6, 7 and 8.
Land, level.
Soil, gravelly, with boulders; 2nd and 3rd rate.
Timber, paloverde and catclaw.
Undergrowth, greasewood, sage and cactus.
-
- 40.00 West, on a random line, bet. secs. 6 and 7.
Set temp. $\frac{1}{4}$ sec. cor.
- 79.02 Intersect W. bdy. of Tp. 9 lks. N. of the cor. of secs.
1, 6, 7 and 12, described in Book "B."
- Thence N.89°56'E., on a true line, bet. secs. 6 and 7,
over level land, through scattering timber and under-
growth.
- 39.02 Set an iron post, 3 ft. long, 1 in. diam., 26 ins. in the
ground, for $\frac{1}{4}$ sec. cor., with brass cap, marked

Subdivision of T. 4 N., R. 18 W.

Chains

79.02 $\frac{1}{4}$ S 6 in N., and
 $\frac{1}{4}$ S 7 in S. half, and
 1915 in S. rim;
 and raise a mound of stone, 2 ft. base, $1\frac{1}{2}$ ft. high,
 N. of cor.
 The cor. of secs. 5, 6, 7 and 8.
 Land, level.
 Soil, gravelly; 2nd rate.
 Timber, paloverde and catclaw.
 Undergrowth, greasewood, cactus and sage.

8.50 N.0°03'W., on a true line, bet. secs. 5 and 6,
 over level desert, through scattering timber and under-
 growth.
 Wash, 100 lks. wide, course W.
 40.00 Set an iron post, 3 ft. long, 1 in. diam., 26 ins. in the
 ground, for $\frac{1}{4}$ sec. cor., with brass cap, marked
 $\frac{1}{4}$ in N.,
 S 5 in E., and
 S 6 in W. half; and
 1915 in S. rim;
 and raise a mound of stone, 2 ft. base, $1\frac{1}{2}$ ft. high,
 W. of cor.

48.50 Wash, 4 chs. wide, course W.
 72.53 Intersect 1st St. Par. N., 9.27 chs. W. of the standard
 cor. of secs. 32 and 33, reestablished as described in
 Book "A."

At point of intersection
 Set an iron post, 3 ft. long, 2 ins. diam., 24 ins. in the
 ground, for closing cor. of secs. 5 and 6, with brass
 cap, marked
 T 5 N R 18 W S 32 in N. half,
 CC in S. half,
 T 4 N S 6 in SW., and
 R 18 W S 5 in SE. quadrant; and
 1915 in S. rim;
 and raise a mound of stone, 2 ft. base, $1\frac{1}{2}$ ft. high,
 S. of cor.

Land, level.
 Soil, rocky; 2nd and 3rd rate.
 Timber, paloverde and catclaw.
 Undergrowth, greasewood, sage and cactus.

GENERAL DESCRIPTION.

The southeast portion of this township comprising nearly
 half of its area is mountainous; the balance being level
 or rolling. The soil ranges from very poor or none at
 all in the mountainous regions to fair in the level and
 rolling parts. The only vegetation is desert growth
 such as paloverde, mesquite, catclaw, ironwood, grease-
 wood, sage and cactus.
 Some mining has been done, especially in the south part,
 in sections 33 and 34.
 There is no water and there are no settlers.

SUBDIVISIONS OF
TOWNSHIP 4 NORTH, RANGE 18 WEST.

	DATE	DIAGRAM.	DATE	DIAGRAM.	DATE	DIAGRAM.	DATE	DIAGRAM.
4-7-15	4-7-15	4-7-15	4-7-15	4-7-15	4-26-15	3-26-15		
	First	Standard	Parallel	North,	Resurvey			
4-8-15	6	5	4	3	2	1		
4-5-15	4-5-15	4-5-15	3-20-15	3-20-15	3-24-15	3-24-15	3-22-15	
4-8-15	7	8	9	10	11	12		
4-5-15	4-5-15	4-5-15	4-6-15	3-20-15	3-23-15	3-23-15	3-22-15	
4-5-15	18	17	16	15	14	13		
3-25-15	3-24-15	3-24-15	3-24-15	3-18-15	3-18-15	3-19-15	3-22-15	
4-2-15	19	20	21	22	23	24		
3-25-15	3-25-15	3-23-15	3-17-15	3-20-15	3-18-15	3-19-15	3-19-15	
4-2-15	30	29	28	27	26	25		
4-3-15	3-23-15	3-23-15	3-15-15	3-22-15	3-22-15	3-18-15	3-19-15	
4-2-15	31	32	33	34	35	36		
3-9-15	3-9-15	3-9-15	3-12-15	3-12-15	3-12-15	3-12-15	3-19-15	

Lines dated in black were surveyed Woodbury Abbey,
U.S. Surveyor.
Lines dated in red were surveyed by Roy J. Gill,
U. S. Transitman.

For CERTIFICATES
~~FINAL OATH~~ OF UNITED STATES SURVEYOR.
AND UNITED STATES TRANSITMAN,
See Book "C."

I, _____, U. S. Surveyor, do solemnly swear that, in pursuance of special instructions received from the U. S. Surveyor General for _____ bearing date of the _____ day of _____, 191____, I have well, faithfully, and truly, in my own proper person, and in strict conformity with said instructions, the Manual of Surveying Instructions, and the laws of the United States, surveyed all those parts or portions of _____

BOOK 3049

_____ of the _____ Meridian, in the State of _____, which are represented in the foregoing field notes as having been executed by me, and under my direction; and I do further solemnly swear that all the corners of said survey have been established and perpetuated in strict accordance with the Manual of Surveying Instructions, and the special written instructions of the U. S. Surveyor General for _____ and in the specific manner described in the field notes, and that the foregoing are the original field notes of such survey.

U. S. Surveyor.

Subscribed by said _____, and sworn to before me }
this _____ day of _____, 191____



APPROVAL.

OFFICE OF THE UNITED STATES SURVEYOR GENERAL,
Phoenix, Arizona, JUL 20 1918

The foregoing field notes of the survey of the
Subdivision Lines
of
TOWNSHIP 4 NORTH, RANGE 18 WEST,

of the Gila and Salt River Base and Meridian, in the State of Arizona,
executed by Woodbury Abbey, U.S. Surveyor, and Roy J. Hill, U.S. Transitman,
under his special instructions dated December 12, 1914, for Group 39, Arizona, having been critically examined, and the necessary corrections and explanations made, the said field notes, and the surveys they describe, are hereby approved.

Frank O. Frost
U. S. Surveyor General.

I certify that the foregoing transcript of the field notes of the above-described surveys in _____, has been correctly copied from the original notes on file in this office.