

3058

Book "R"

4-679

187

(1)

(Subdivisions)

BOOK 3058

# FIELD NOTES

OF THE SURVEY OF THE

SUBDIVISION LINES

of

TOWNSHIP 3 NORTH, RANGE 6 WEST,

Of the Gila and Salt River Base and Meridian,

In the State of Arizona.

EXECUTED BY

Roy J. Gill and Hans D. Voigt,

U. S. Transitmen,

~~In the capacity of U. S. Surveyor~~, under instructions dated December 12., 1914,  
issued by the United States Surveyor General to govern surveys included in  
Group No. 39, which were approved by the Commissioner of the General Land  
Office, January 7., 1915.

Survey commenced January 19., 1916.

Survey completed January 29., 1916.

3058

3058

BOOK 3058

Book "R"

(Subdivisions )

Group 39 - Arizona.

### INDEX DIAGRAM.

Township 3 North					Range 6 West.					
6	28	5	21	4	16	3	11	2	7	1
27	27		21		16		11		6	
7	27	8	20	9	15	10	11	11	6	12
26	26		20		15		10		5	
18	25	17	19	16	14	15	10	14	5	13
25	24		19		14		9		5	
19	24	20	18	21	13	22	9	23	4	24
24	23		18		13		8		4	
30	23	29	18	28	13	27	8	26	3	25
22	22		17		12		8		3	
31	22	32	17	33	12	34	7	35	3	36

Subdivision lines surveyed under this Group.

Township boundaries surveyed under this Group.  
Notes in Book "B."

Accepted surveys.

SUBDIVISION OF  
TOWNSHIP 3 NORTH, RANGE 6 WEST.

DATE    INDEX.

	1-22-16	1-21-16	1-21-16	1-21-16	1-21-16	1-21-16
1-21-16	6	5	4	3	2	1
1-21-16	1-29-16	1-25-16	1-24-16	1-26-16	1-20-16	1-20-16
1-21-16	7	8	9	10	11	12
1-21-16	1-29-16	1-24-16	1-24-16	1-24-16	1-20-16	1-20-16
1-21-16	18	17	16	15	14	13
1-21-16	1-24-16	1-22-16	1-24-16	1-20-16	1-20-16	1-19-16
1-21-16	19	20	21	22	23	24
1-21-16	1-22-16	1-24-16	1-22-16	1-19-16	1-19-16	1-19-16
1-21-16	30	29	28	27	26	25
1-21-16	1-22-16	1-22-16	1-19-16	1-19-16	1-19-16	1-19-16
1-21-16	31	32	33	34	35	36
1-21-16	1-22-16	1-19-16	1-19-16	1-19-16	1-19-16	1-19-16

5-13-15  
5-13-15  
5-13-15  
5-13-15  
5-13-15  
5-13-15

Accepted Survey.

Lines dated in red were surveyed by Roy J. Gill,  
U. S. Transitman.

Lines dated in green were surveyed by Hans D. Voigt,  
U. S. Transitman.

Lines dated in black were surveyed by Woodbury Abbey,  
U. S. Surveyor.

Subdivision of T.3 N., R.6 W.

Chains

Survey executed by Roy J. Gill, U. S. Transitman, and Hans D. Voigt, U. S. Transitman, using Young and Son's light mountain transits Nos. 8583 and 8293 respectively.

From recent and repeated field tests of the transits and solar attachments, they are known to be in satisfactory adjustment.

During the survey of the township, the transits and solar attachments were maintained in adjustment by frequent tests on a true meridian, determined by observations on Polaris, all necessary adjustments being made.

From the cor. of secs. 1, 2, 35 and 36 on S. bdy. of Tp., as described by the Surveyor General under Group 32. N. 0° 1' W. bet. secs. 35 and 36.

Over gently rolling land, through scattering timber. Wagon road brs. E. and W.

1.20 Set an iron post, 3 ft. long, 1 in. in diam., 26 ins. in the ground, for  $\frac{1}{4}$  sec. cor., with brass cap mkd.

40.00

$\frac{1}{4}$   
S 35:S 36

1916

dig pits, 18 X 18 X 12 ins., N. and S. of post, 3 ft. dist.; and raise a mound of earth,  $3\frac{1}{2}$  ft. base,  $1\frac{1}{2}$  ft. high, W. of cor.

80.00 Set an iron post, 3 ft. long, 2 ins. in diam., 24 ins. in the ground, for cor. of secs. 25, 26, 35 and 36, with brass cap mkd.

T 3 N R 6 W  
S 26:S 25  
S 35:S 36  
1916

and raise a mound of stone, 2 ft. base,  $1\frac{1}{2}$  ft. high, W. of cor.

Land, gently rolling.  
Soil, 2nd rate.  
Timber, scattering palo verde and cat claw.

East on a random line bet. secs. 25 and 36.

40.00 Set temp.  $\frac{1}{4}$  sec. cor.

79.96 Intersect E. bdy. of Tp., 8 lks. S. of cor. of secs. 25; 30, 31 and 36, as described in book "B."

Thence

S. 89° 57' W. on a true line bet. secs. 25 and 36.

Over gently rolling land, through scattering timber.

39.98 Set an iron post, 3 ft. long, 1 in. in diam., 26 ins. in the ground, for  $\frac{1}{4}$  sec. cor., with brass cap mkd.

$\frac{1}{4}$  S 25  
S 36  
1916

dig pits, 18 X 18 X 12 ins., E. and W. of post, 3 ft. dist.; and raise a mound of earth,  $3\frac{1}{2}$  ft. base,  $1\frac{1}{2}$  ft. high, N. of cor.

55.00 End of long butte brs. N. about 10 chs. dist.

79.96 Cor. of secs. 25, 26, 35 and 36.

Land, gently rolling.  
Soil, 2nd rate.  
Timber, scattering palo verde and cat claw.

N. 0° 1' W. bet. secs. 25 and 26.

Over rolling land, through scattering undergrowth.

10.00 Asc. steep S. slope, 464 ft. to

23.08 Top of butte brs. E. and W., desc. N. slope, 333 ft. to

40.00 Enter level land.

Set an iron post, 3 ft. long, 1 in. in diam., 26 ins. in

192

Subdivision of T.3 N., R.6 W.

Chains

the ground, for  $\frac{1}{4}$  sec. cor., with brasscap mkd.  
 $\frac{1}{4}$   
 S 26:S 25

1916  
 and raise a mound of stone, 2 ft. base,  $1\frac{1}{2}$  ft. high,  
 W. of cor.

80.00 Set an iron post, 3 ft. long, 2 ins. in diam., 24 ins. in  
 the ground, for cor. of secs. 23, 24, 25 and 26, with  
 brass cap mkd.

T 3 N R 6 W  
 S 23:S 24  
 S 26:S 25

1916  
 and raise a mound of stone, 2 ft. base,  $1\frac{1}{2}$  ft. high,  
 W. of cor.

Land, rolling and mountainous.  
 Soil, 2nd and 3rd rates.  
 No timber.  
 Undergrowth, cat claw, palo verde, sagebrush and greasewood.

40.00 East on a random line bet. secs. 24 and 25.  
 Set temp.  $\frac{1}{4}$  sec. cor.

79.88 Intersect E. bdy. of Tp., 12 lks. S. of cor. of secs. 19,  
 24, 25 and 30, as described in book "B."

Thence  
 S. 89° 55' W. on a true line bet. secs. 24 and 25.  
 Over rolling land, through scattering undergrowth.

39.94 Set an iron post, 3 ft. long, 1 in. in diam., 26 ins. in  
 the ground, for  $\frac{1}{4}$  sec. cor., with brass cap mkd.

$\frac{1}{4}$  S 24  
 $\frac{1}{4}$  S 25  
 1916

dig pits, 18 X 18 X 12 ins., E. and W. of post, 3 ft.  
 dist.; and raise a mound of earth,  $3\frac{1}{2}$  ft. base,  $1\frac{1}{2}$  ft.  
 high, N. of cor.

79.88 Cor. of secs. 23, 24, 25 and 26.  
 Land, rolling.  
 Soil, 2nd rate.  
 No timber.  
 Undergrowth, palo verde, cat claw, cactus, cholla, greasewood and sagebrush.

N. 0° 1' W. bet. secs. 23 and 24.  
 Over gently rolling land, through scattering timber.  
 Wagon road brs. NE. and SW.

30.50 Set an iron post, 3 ft. long, 1 in. in diam., 26 ins. in  
 the ground, for  $\frac{1}{4}$  sec. cor., with brass cap mkd.

$\frac{1}{4}$   
 S 23:S 24

1916  
 and raise a mound of stone, 2 ft. base,  $1\frac{1}{2}$  ft. high,  
 W. of cor.

41.00 Wash, 30 lks. wide, 5 ft. deep, course, SW.  
 80.00 Set an iron post, 3 ft. long, 2 ins. in diam., 24 ins. in  
 the ground, for cor. of secs. 13, 14, 23 and 24, with  
 brass cap mkd.

T 3 N R 6 W  
 S 14:S 13  
 S 23:S 24  
 1916  
 and raise a mound of stone, 2 ft. base,  $1\frac{1}{2}$  ft. high,  
 W. of cor.

Land, gently rolling.  
 Soil, 2nd rate.

Subdivision of T.3 N., R.6 W.

Chains

Timber, scattering palo verde and cat claw.  
Undergrowth,

40.00 East on a random line bet. secs. 13 and 24.  
Set temp.  $\frac{1}{4}$  sec. cor.  
79.87 Intersect E. bdy. of Tp., 1 lk. S. of cor. of secs. 13,  
18, 19 and 24, as described in book "B."  
Thence  
West on a true line bet. secs. 13 and 24.  
Over gently rolling land, through scattering timber.  
37.47 Wagon road brs. NE. and SW.  
39.93 $\frac{1}{2}$  Set an iron post, 3 ft. long, 1 in. in diam., 26 ins. in  
the ground, for  $\frac{1}{4}$  sec. cor., with brass cap mkd.  
 $\frac{1}{4}$   $\frac{S}{S}$   $\frac{13}{24}$   
1916  
and raise a mound of stone, 2 ft. base, 1 $\frac{1}{2}$  ft. high,  
N. of cor.  
79.87 Cor. of secs. 13, 14, 23 and 24.  
Land, gently rolling.  
Soil, 2nd rate.  
Timber, scattering palo verde and cat claw.

N. 0° 1' W. bet. secs. 13 and 14.  
Over hilly and rolling land, through scattering under-  
growth.  
Asc. 57 ft. to  
6.30 Top of low ridge brs. NE. and SW.  
Desc. 30 ft. to  
12.70 Wash, 25 lks. wide, 2 ft. deep, course, SW.  
17.60 Dim road brs. NE. and SW.  
35.00 Asc. slope of mountains, 35 ft. to  
40.00 Set an iron post, 3 ft. long, 1 in. in diam., 6 ins. in  
the ground, to solid rock, in a mound of stone,  
for  $\frac{1}{4}$  sec. cor., with brass cap mkd.  
 $\frac{1}{4}$   
S 14:S 13  
1916  
and raise a mound of stone, 2 ft. base, 1 $\frac{1}{2}$  ft. high,  
W. of cor.  
46.04 Asc. 56 ft. to  
46.04 Point of spur slopes, SW., desc. N. slope, 28 ft. to  
48.64 Head of wash, 20 lks. wide, course, W., asc. S. slope,  
276 ft. to  
60.94 Top of spur, slopes S. 30° E., desc. NE. slope, over  
two cliffs, 146 ft. to  
80.00 Set an iron post, 3 ft. long, 2 ins. in diam., 16 ins. in  
the ground, to solid rock, in a mound of stone, for  
cor. of secs. 11, 12, 13 and 14, with brass cap mkd.  
T 3 N R 6 W  
 $\frac{S}{S}$   $\frac{11}{12}$   
S 14:S 13  
1916  
and raise a mound of stone, 2 ft. base, 1 $\frac{1}{2}$  ft. high,  
W. of cor.  
Land, mountainous.  
Soil, rocky, 4th rate.  
No timber.  
Undergrowth, cat claw, mesquite, palo verde, cholla,  
cactus, greasewood, sagebrush and ocotillo.

40.00 East on a random line bet. secs. 12 and 13.  
Set temp.  $\frac{1}{4}$  sec. cor.  
79.90 Intersect E. bdy. of Tp., 10 lks. N. of cor. of secs.  
7, 12, 13 and 18, as described in book "B."

6

## Subdivision of T.3 N R.6 W.

chains	
	Thence N. 89° 56' W. on a true line, bet. secs. 12 and 13. Over gently rolling land, through scattering undergrowth.
8.00	Wash, 30 lks. wide, 2 ft. deep, course, S.
16.80	Dim road brs. NW. and SE.
30.80	Wash, 25 lks. wide, 3 ft. deep, course, S.
39.95	Set an iron post, 3 ft. long, 1 in. in diam., 26 ins. in the ground, for $\frac{1}{4}$ sec. cor., with brass cap mkd.
	$\frac{1}{4}$ S 12 S 13 1916
	dig pits, 18 X 18 X 12 ins., E. and W. of post, 3 ft. dist.; and raise a mound of earth, 3 $\frac{1}{2}$ ft. base, 1 $\frac{1}{2}$ ft. high, N. of cor.
40.10	Wash, 30 lks. wide, 3 ft. deep, course, S.
47.70	Road brs. N. and S.
54.90	Asc. 37 ft. to
59.20	Point of butte, slopes, S., desc. W. slope, 63 ft. to
69.10	Wash, near head, 15 lks. wide, course, S. Asc. E. slope, 119 ft. to
79.90	Cor. of secs. 11, 12, 13 and 14. Land, rolling and hilly. Soil, rocky, 4th rate. No timber. Undergrowth, mesquite, palo verde, cactus, cholla, ocotillo, greasewood, sagebrush and cat claw.
	N. 0° 1' W. bet. secs. 11 and 12. Over mountainous land, through scattering timber. Desc. along E. slope, of mountain, 106 ft. to
14.87	Over rolling land, to
24.84	Asc. 107 ft. to
27.87	Crest of spur slopes E., desc. 144 ft. to
40.00	Set an iron post, 3 ft. long, 1 in. in diam., 26 ins. in the ground, for $\frac{1}{4}$ sec. cor., with brass cap mkd.
	$\frac{1}{4}$ S 11: S 12 1916
	and raise a mound of stone, 2 ft. base, 1 $\frac{1}{2}$ ft. high, W. of cor.
75.00	Thence over rolling land, Wash, 45 lks. wide, 10 ft. deep, course, E.
77.30	Wash, 45 lks. wide, 5 ft. deep, course, E.
80.00	Set an iron post, 3 ft. long, 2 ins. in diam., 24 ins. in the ground, for cor. of secs. 1, 2, 11 and 12, with brass cap mkd.
	T. 3 N R. 6 W S 2 : S 1 S 11: S 12 1916
	and raise a mound of stone, 2 ft. base, 1 $\frac{1}{2}$ ft. high, W. of cor.
	Land, rolling and mountainous. Soil, rocky, 3rd and 4th rates. Timber, scattering palo verde and cat claw.
	East, on a random line, bet. secs. 1 and 12. Set temp. $\frac{1}{4}$ sec. cor.
40.00	Intersect E. bdy. of Tp., at cor. of secs. 1, 6, 7 and
79.76	12, as described in book "B". Thence West on a true line bet. secs. 1 and 12. Over gently rolling land, through scattering timber.

Subdivision of T.3 N., R.6 W.

Chains  
39.88

Set an iron post, 3 ft. long, 1 in. in diam., 26 ins. in the ground, for  $\frac{1}{4}$  sec. cor., with brass cap mkd.

$\frac{1}{4}$  S 1  
S 12  
1916

and raise a mound of stone, 2 ft. base,  $1\frac{1}{2}$  ft. high, N. of cor.

54.46  
73.76  
79.76

Wagon road brs. N. and S. to Wickenburg.  
Wash, 110 lks. wide, 4 ft. deep, course, S.  
Cor. of secs. 1, 2, 11 and 12.  
Land, gently rolling.  
Soil, 2nd rate.  
Timber, scattering palo verde and cat claw.

40.00  
79.96

N.  $0^{\circ}$  1' W. on a random line bet. secs. 1 and 2.  
Set temp.  $\frac{1}{4}$  sec. cor.  
Intersect N. bdy. of Tp., 34 lks. E. of cor. of secs. 1, 2, 35 and 36, as described in book "B".  
Thence

S.  $0^{\circ}$  16' E. on a true line bet. secs. 1 and 2.  
Over gently rolling land, through scattering timber.  
Set an iron post, 3 ft. long, 1 in. in diam., 26 ins. in the ground, for  $\frac{1}{4}$  sec. cor., with brass cap mkd.

$\frac{1}{4}$   
S 2 : S 1  
1916

dig pits, 18 X 18 X 12 ins., N. and S. of post, 3 ft. dist.; land raise a mound of earth,  $3\frac{1}{2}$  ft. base,  $1\frac{1}{2}$  ft. high, W. of cor.

65.00  
75.00  
79.96

Wash, 110 lks. wide, 4 ft. deep, course, SW.  
Same wash, course, SE.  
Cor. of secs. 1, 2, 11 and 12.  
Land, gently rolling.  
Soil, 2nd rate.  
Timber, scattering palo verde and cat claw.

40.00

From the cor. of secs. 2, 3, 34 and 35, on S. bdy. of Tp., described by the Surveyor General under Group 32. N.  $0^{\circ}$  1' W. bet. secs. 34 and 35.

Over level mesa land, through scattering undergrowth.  
Set an iron post, 3 ft. long, 1 in. in diam., 26 ins. in the ground, for  $\frac{1}{4}$  sec. cor., with brass cap mkd.

$\frac{1}{4}$   
S 34 : S 35  
1916

and raise a mound of stone, 2 ft. base,  $1\frac{1}{2}$  ft. high, W. of cor.

80.00

Set an iron post, 3 ft. long, 2 ins. in diam., 24 ins. in the ground, for cor. of secs. 26, 27, 34 and 35, with brass cap mkd.

T 3 N R 6 W  
S 27 : S 26  
S 34 : S 35  
1916

and raise a mound of stone, 2 ft. base,  $1\frac{1}{2}$  ft. high, W. of cor.

Land, level.  
Soil, 2nd rate.  
No timber.  
Undergrowth, greasewood, sagebrush, palo verde and cat claw.



Chains	East on a random line bet. secs. 26 and 35.
40.00	Set temp. $\frac{1}{4}$ sec. cor.
80.01	Intersect N. and S. line, 5 lks. S. of cor. of secs. 25, 26, 35 and 36.
	Thence
	S. $89^{\circ} 58'$ W. on a true line bet. secs. 26 and 35.
40.00 $\frac{1}{2}$	Over gently rolling land, through scattering undergrowth. Set an iron post, 3 ft. long, 1 in. in diam., 26 ins. in the ground, for $\frac{1}{4}$ sec. cor., with brass cap mkd.
	$\frac{1}{4} \begin{array}{r} S 26 \\ S 35 \\ 1916 \end{array}$
	and raise a mound of stone, 2 ft. base, $1\frac{1}{2}$ ft. high, N. of cor.
54.50	Road, brs. NW. and SE.
78.80	Wash, 10 lks. wide, 5 ft. deep, course, SE.
80.01	Cor. of secs. 26, 27, 34 and 35.
	Land, gently rolling.
	Soil, gravelly, 3rd rate.
	No timber.
	Undergrowth, greasewood, catclaw, palo verde and sagebrush.
	<hr/>
	N. $0^{\circ} 1'$ W. bet. secs. 26 and 27.
	Over gently rolling land, through scattering timber.
22.50	Wagon road brs. NE. and SW.
25.00	End of long butte brs. E., about 10 chs. dist.
40.00	Set an iron post, 3 ft. long, 1 in. in diam., 26 ins. in the ground, for $\frac{1}{4}$ sec. cor., with brass cap mkd.
	$\frac{1}{4} \begin{array}{r} S 27 \\ S 26 \\ 1916 \end{array}$
	dig pits, 18 X 18 X 12 ins., N. and S. of post, 3 ft. dist.; and raise a mound of earth, $3\frac{1}{2}$ ft. base, $1\frac{1}{2}$ ft. high, W. of cor.
45.00	Wagon road brs. SE. and NW.
80.00	Set an iron post, 3 ft. long, 2 ins. in diam., 24 ins. in the ground, for cor. of secs. 22, 23, 26 and 27, with brass cap mkd.
	$\begin{array}{c} T 3 N R 6 W \\ S 22: S 23 \\ S 27: S 26 \\ 1916 \end{array}$
	and raise a mound of stone, 2 ft. base, $1\frac{1}{2}$ ft. high, W. of cor.
	Land, gently rolling.
	Soil, 2nd rate.
	Timber, scattering palo verde and cat claw.
	<hr/>
	East on a random line bet. secs. 23 and 26.
40.00	Set temp. $\frac{1}{4}$ sec. cor.
80.06	Intersect N. and S. line, 3 lks. S. of cor. of secs. 23, 24, 25 and 26.
	Thence
	S. $89^{\circ} 59'$ W. on a true line bet. secs. 23 and 26.
	Over level and gently rolling land, through scattering timber.
20.00	Wash, 30 lks. wide, 5 ft. deep, course, SW.
26.75	Wagon road brs. NE. and SW.
40.03	Set an iron post, 3 ft. long, 1 in. in diam., 26 ins. in the ground, for $\frac{1}{4}$ sec. cor., with brass cap mkd.
	$\frac{1}{4} \begin{array}{r} S 23 \\ S 26 \\ 1916 \end{array}$

Subdivision of T.3 N., R.6 W.

Chains

and raise a mound of stone, 2 ft. base, 1½ ft. high,  
N. of cor.  
60.00 Wash, 40 lks. wide, 4 ft. deep, course, SW.  
80.06 Cor. of secs. 22, 23, 26 and 27.  
Land, gently rolling.  
Soil, 2nd rate.  
Timber, scattering palo verde and cat claw.

N. 0° 1' W. bet. secs. 22 and 23.  
Over gently rolling land, through scattering undergrowth.  
40.00 Set an iron post, 3 ft. long, 1 in. in diam., 26 ins. in  
the ground, for ¼ sec. cor., with brass cap mkd.

¼  
S 22:S 23

1916  
dig pits, 18 X 18 X 12 ins., N. and S. of post, 3 ft.  
dist.; and raise a mound of earth, 3½ ft. base, 1½ ft.  
high, W. of cor.  
43.40 Wash, 15 lks. wide, 4 ft. deep, course, SW.  
80.00 Set an iron post, 3 ft. long, 2 ins. in diam., 24 ins. in  
the ground, for cor. of secs. 14, 15, 22 and 23, with  
brass cap mkd.

T 3 N R 6 W  
S 15:S 14  
S 22:S 23  
1916

and raise a mound of stone, 2 ft. base, 1½ ft. high,  
W. of cor.  
Land, gently rolling.  
Soil, rocky, 3rd rate.  
No timber.  
Undergrowth, mesquite, palo verde, cactus, cat claw,  
cholla, sagebrush and greasewood.

East on arandom line bet. secs. 14 and 23.  
40.00 Set temp. ¼ sec. cor.  
79.93 Intersect N. and S. line, 1 lk. S. of cor. of secs. 13,  
14, 23 and 24.

Thence  
West on a true line bet. secs. 14 and 23.  
Over rolling and hilly land, through scattering under-  
growth.

Asc. 30 ft. along E. slope, to  
3.70 Point of low spur slopes, SW., desc. 59 ft. to  
8.70 Wash, 25 lks. wide, 4 ft. deep, course, S. 30° W.  
22.50 Dim road brs. SW. and NE.  
25.50 Wash, 20 lks. wide, 5 ft. deep, course, SW.  
35.70 Wash, 15 lks. wide, 4 ft. deep, course, SW.

Thence over gently rolling land, to  
39.96½ Set an iron post, 3 ft. long, 1 in. in diam., 26 ins. in  
the ground, for ¼ sec. cor., with brass cap mkd.

¼ S 14  
¼ S 23  
1916

and raise a mound of stone, 2 ft. base, 1½ ft. high,  
N. of cor.  
Asc. E. slope, 108 ft. to  
52.20 Point of spur slopes SE., desc. W. slope, 147 ft. to  
62.90 Wash, course, S. 30° E.  
79.93 Cor. of secs. 14, 15, 22 and 23.  
Land, gently rolling and hilly.  
Soil, rocky, 3rd rate.  
No timber.  
Undergrowth, palo verde, cat claw, mesquite, sagebrush  
and greasewood.

Chains	
	N. 0° 1' W. bet. secs. 14 and 15. Over hilly and rolling land, through scattering timber.
5.00	Asc. S. slope, 153 ft. to
14.68	Crest of ridge brs. E. and W.; desc. 92 ft. to
24.58	Thence over rolling land, to
34.58	Asc. 55 ft. to
38.90	Crest of low ridge brs. E. and W.; thence over rolling land
40.00	Set an iron post, 3 ft. long, 1 in. in diam., 26 ins. in the ground, for $\frac{1}{4}$ sec. cor., with brass cap mkd.
	$\frac{1}{4}$ S 15:S 14
	1916
	and raise a mound of stone, 2 ft. base, $1\frac{1}{2}$ ft. high, W. of cor.
43.00	Wash, 30 lks. wide, 8 ft. deep, course, W.
45.50	Desc. gradual slope, 55 ft. to
50.00	Over rolling land.
69.75	Wash, 30 lks. wide, 20 ft. deep, course, W.
80.00	Set an iron post, 3 ft. long, 2 ins. in diam., 24 ins. in the ground, for cor. of secs. 10, 11, 14 and 15, with brass cap mkd.
	T 3 N R 6 W S 10:S 11 S 15:S 14 1916
	and raise a mound of stone, 2 ft. base, $1\frac{1}{2}$ ft. high, W. of cor.
	Land, rolling and hilly. Soil, rocky; 3rd and 4th rates. Timber, scattering palo verde and cat claw.
<hr/>	
	East on a random line bet. secs. 11 and 14.
40.00	Set temp. $\frac{1}{4}$ sec. cor.
80.15	Intersect N. and S. line, 18 lks. S. of cor. of secs. 11, 12, 13 and 14.
	Thence
	S. 89° 52' W. on a true line bet. secs. 11 and 14.
	Over mountainous land, through scattering timber.
	Asc. steep slope, over cliffs; 350 ft. to
10.62	Crest of spur slopes S.; desc. 15 ft. to
11.59	Crest of spur slopes, S.; asc. 37 ft. to
15.55	Top of mountain ridge brs. N. and S.; desc. 232 ft. to
25.75	Over rolling land, asc. 74 ft. to
29.65	Crest of spur slopes, S.; desc. 57 ft. to
30.65	Asc. gradual slope, to
35.60	Crest of spur slopes, S.; desc. W. slope, 163 ft. to
40.07 $\frac{1}{2}$	Set an iron post, 3 ft. long, 1 in. in diam., 26 ins. in the ground, for $\frac{1}{4}$ sec. cor., with brass cap mkd.
	$\frac{1}{4}$ S 11 S 14 1916
	and raise a mound of stone, 2 ft. base, $1\frac{1}{2}$ ft. high, N. of cor.
	Desc. W. slope, 189 ft. to
55.15	Wash, 40 lks. wide, 20 ft. deep, course, SW.
	Thence over gently rolling land, to
80.15	Cor. of secs. 10, 11, 14 and 15. Land, rolling and mountainous. Soil, rocky, 3rd and 4th rates. Timber, scattering palo verde and cat claw.

Subdivision of T.3 N. R.6 W.

Chains

N. 0° 1' W. bet. secs. 10 and 11.  
 Over genty rolling land, through scattering timber.

25.97 Wash, 45 lks. wide, 10 ft. deep, course, W.  
 30.95 Wash, 30 lks. wide, 10 ft. deep, course, W.  
 40.00 Set an iron post, 3 ft. long, 1 in. in diam., 26 ins. in  
 the ground, for  $\frac{1}{4}$  sec. cor., with brass cap mkd.

$\frac{1}{4}$   
 S 10:S 11

1916

and raise a mound of stone, 2 ft. base,  $1\frac{1}{2}$  ft. high,  
 W. of cor.

46.90 Wash, 45 lks. wide, 15 ft. deep, course, W.  
 Asc. 178 ft. to  
 61.63 Crest of spur slopes W.; desc. 97 ft. to  
 80.00 Set an iron post, 3 ft. long, 2 in. in diam., 24 ins. in  
 the ground, for cor. of secs. 2, 3, 10 and 11, with  
 brass cap. mkd.

T 3 N R 6 W  
 S 3 :S 2  
 S 10:S 11  
 1916

and raise a mound of stone, 2 ft. base,  $1\frac{1}{2}$  ft. high,  
 W. of cor.

Land, mountainous and rolling.  
 Soil, 3rd and 4th rates.  
 Timber, scattering palo verde and cat claw.

---

East on a random line bet. secs. 2 and 11.  
 40.00 Set temp.  $\frac{1}{4}$  sec. cor.  
 80.14 Intersect N. and S. line, 8 lks. N. of cor. of secs.  
 1, 2, 11 and 12.

Thence  
 N. 89° 57' W. on a true line bet. secs. 2 and 11.  
 Over rolling land, through scattering timber.

1.00 Wash, 45 lks. wide, 5 ft. deep, course, SE.  
 24.83 Asc. E. slope of mountain 343 ft. to  
 35.10 Crest of mountain slopes NW; desc. W. slope of mountain  
 131 ft. to  
 40.07 Set an iron post, 3 ft. long, 1 in. in diam., 26 ins. in  
 the ground, for  $\frac{1}{4}$  sec. cor., with brass cap mkd.

$\frac{1}{4}$  S 2  
 S 11  
 1916

and raise a mound of stone, 2 ft. base,  $1\frac{1}{2}$  ft. high,  
 N. of cor.

54.97 Desc. W. slope, of mountain 69 ft. to  
 64.86 Asc. NE. slope of mountain, 98 ft. to  
 69.16 On side of mountain sloping N.;  
 80.14 Desc. 83 ft. to  
 Cor. of secs. 2, 3, 10 and 11.  
 Land, rolling and mountainous.  
 Soil, rocky 3rd and 4th rates.  
 Timber, scattering palo verde and cat claw.

---

N, 0° 1' W. on a random line bet. secs. 2 and 3.  
 40.00 Set temp.  $\frac{1}{4}$  sec. cor.  
 80.15 Intersect N. bdy. of Tp., 18 lks. E. of cor. of secs.  
 2, 3, 34 and 35, as described in book "B."

Thence  
 S. 0° 9' E. on a true line bet. secs. 2 and 3;  
 Over rolling land, through scattering undergrowth.

31.65 Wash, 18 lks. wide, 4 ft. deep, course, E,  
 40.15 Set an iron post, 3 ft. long, 1 in. in diam., 26 ins. in  
 the ground, for  $\frac{1}{4}$  sec. cor., with brass cap mkd.

Chains

$\frac{1}{4}$   
S 3 :S 2

1916

and raise a mound of stone, 2 ft. base,  $1\frac{1}{2}$  ft. high, W. of cor.

- 51.00 Wash, 20 lks. wide, 3 ft. deep, course, E.
- 55.00 Wash, 25 lks. wide, 3 ft. deep, course, E.
- 55.50 Leave rolling land, brs. E. and W.; asc. N. slope over cliffs, 59 ft. to
- 62.75 Point of spur slopes NE.; desc. S. slope 55 ft. to
- 78.45 Head of wash, course, E.
- 80.15 Cor. of secs. 2, 3, 10 and 11.

Land, rolling and hilly.  
Soil, rocky, 4th rate.  
No timber.  
Undergrowth, cactus, cholla, ocotillos, palo verde, cat claw, sagebrush and greasewood.

---

From the cor. of secs. 3, 4, 33 and 34, on S. bdy. of Tp., as described by the Surveyor General under Group 32.

- 40.00 N.  $0^{\circ} 2'$  W. bet. secs. 33 and 34.  
Over gently rolling land, through scattering timber.  
Set an iron post, 3 ft. long, 1 in. in diam., 26 ins. in the ground, for  $\frac{1}{4}$  sec. cor., with brass cap mkd.

$\frac{1}{4}$   
S 33:S 34

1916

dig pits, 18 X 18 X 12 ins., N. and S. of post, 3 ft. dist.; and raise a mound of earth,  $3\frac{1}{2}$  ft. base,  $1\frac{1}{2}$  ft. high, W. of cor.

- 80.00 Set an iron post, 3 ft. long, 2 ins. in diam., 24 ins. in the ground, for cor. of secs. 27, 28, 33 and 34, with brass cap mkd.

T 3 N R 6 W  
S 28:S 27  
S 33:S 34

1916

and raise a mound of stone, 2 ft. base,  $1\frac{1}{2}$  ft. high, W. of cor.

Land, gently rolling.  
Soil, 2nd rate.  
Timber, scattering palo verde and cat claw.

- 40.00 East on a random line bet. secs. 27 and 34.  
Set temp.  $\frac{1}{4}$  sec. cor.
- 80.06 Intersect N. and S. line, at cor. of secs. 26, 27, 34 and 35.

Thence  
West on a true line bet. secs. 27 and 34.  
Over gently rolling land, through scattering timber.  
Wagon road brs. N. and S.

- 14.00
- 40.03 Set an iron post, 3 ft. long, 1 in. in diam., 26 ins. in the ground, for  $\frac{1}{4}$  sec. cor., with brass cap mkd.

$\frac{1}{4}$  S 27  
S 34

1916

dig pits, 18 X 18 X 12 ins., E. and W. of post, 3 ft. dist.; and raise a mound of earth,  $3\frac{1}{2}$  ft. base,  $1\frac{1}{2}$  ft. high, N. of cor.

- 80.06 Cor. of secs. 27, 28, 33 and 34.  
Land, gently rolling.  
Soil, 2nd rate.  
Timber, scattering palo verde and cat claw.

## Subdivision of T.3 N., R.6 W.

13

Chains	
	N. 0° 2' W. bet. secs. 27 and 28. Over gently rolling land, through scattering undergrowth. Wash, 15 lks. wide, 4 ft. deep, course, SW.
5.00	
40.00	Set an iron post, 3 ft. long, 1 in. in diam., 26 ins. in the ground, for $\frac{1}{4}$ sec. cor., with brass cap mkd. $\frac{1}{4}$ S 28:S 27
	1916 and raise a mound of stone, 2 ft. base, $1\frac{1}{2}$ ft. high, W. of cor.
80.00	Set an iron post, 3 ft. long, 2 ins. in diam., 24 ins. in the ground, for cor. of secs. 21, 22, 27 and 28, with brass cap mkd. T 3 N R 6 W S 21:S 22 S 28:S 27 1916 dig pits, 18 X 18 X 12 ins., in each sec., $5\frac{1}{2}$ ft. dist.; and raise a mound of earth, 4 ft. base, 2 ft. high, W. of cor. Land, gently rolling. Soil, sandy, 2nd rate. No timber. Undergrowth, mesquite, palo verde, cat claw, sagebrush and greasewood.
	East on a random line bet. secs. 22 and 27.
40.00	Set temp. $\frac{1}{4}$ sec. cor.
79.96	Intersect N. and S. line, 4 lks. N. of cor. of secs. 22, 23, 26 and 27. Thence N. 89° 58' W. on a true line bet. secs. 22 and 27. Over gently rolling land, through scattering undergrowth. Dim road brs. NW. and SE.
7.65	
27.45	Wash, 15 lks. wide, 3 ft. deep, course, S.
39.98	Set an iron post, 3 ft. long, 1 in. in diam., 26 ins. in the ground, for $\frac{1}{4}$ sec. cor., with brass cap mkd. $\frac{1}{4}$ S 22 $\frac{1}{4}$ S 27 1916 and raise a mound of stone, 2 ft. base, $1\frac{1}{2}$ ft. high, N. of cor. Thence through dense undergrowth.
74.55	Wash, 10 lks. wide, 4 ft. deep, course, S.
75.56	Wash, 30 lks. wide, 2 ft. deep, course, S.
79.96	Cor. of secs. 21, 22, 27 and 28. Land, gently rolling. Soil, gravelly, 3rd rate. No timber. Undergrowth, dense palo verde, cat claw, mesquite, sagebrush and greasewood.
	N. 0° 2' W. bet. secs. 21 and 22. Over gently rolling land, through dense undergrowth. Wash, course, S. 10° E.
38.10	
40.00	Set an iron post, 3 ft. long, 1 in. in diam., 26 ins. in the ground, for $\frac{1}{4}$ sec. cor., with brass cap mkd. $\frac{1}{4}$ S 21:S 22 1916 and raise a mound of stone, 2 ft. base, $1\frac{1}{2}$ ft. high, W. of cor.

Chains  
80.00

Set an iron post, 3 ft. long, 2 ins. in diam., 24 ins. in the ground, for cor. of secs. 15, 16, 21 and 22, with brass cap mkd.

T. 3 N R. 6 W  
S 16:S 15  
S 21:S 22  
1916

and raise a mound of stone, 2 ft. base, 1½ ft. high, W. of cor.

Land, gently rolling.

Soil, gravelly, 3rd rate.

No timber.

Undergrowth, mesquite, palo verde, cholla, ocotillo, cactus greasewood, cat claw and sagebrush.

40.00  
79.92

East on a random line bet. secs. 15 and 22.

Set temp. ¼ sec. cor.

Intersect N. and S. line, at cor. of secs. 14, 15, 22 and 23.

Thence

West on a true line bet. secs. 15 and 22.

Over rolling and hilly land, through scattering undergrowth.

15.00

Asc. E. slope, 63 ft. to

19.71

Point of spur slopes S.; desc. W. slope, 40 ft. to

26.57

Wash, 50 lks. wide, 4 ft. deep, course, S.

39.00

Wash, 20 lks. wide, 4 ft. deep, course, S.

39.98

Set an iron post, 3 ft. long, 1 in. in diam., 26 ins. in the ground, for ¼ sec. cor., with brass cap mkd.

¼ S 15  
¼ S 22  
1916

and raise a mound of stone, 2 ft. base, 1½ ft. high, N. of cor.

54.40

Wash, 10 lks. wide, 6 ft. deep, course, S.

57.80

Wash, 35 lks. wide, 5 ft. deep, course, SE.

79.92

Cor. of secs. 15, 16, 21 and 22.

Land, rolling and hilly.

Soil, gravelly, 3rd rate.

No timber.

Undergrowth, mesquite, palo verde, cholla, ocotillo, cactus, greasewood, cat claw and sagebrush.

10.00

N. 0° 2' W. bet. secs. 15 and 16.

Over rolling land, through scattering undergrowth.

38.20

Wash, 25 lks. wide, 6 ft. deep, course, S. 20° W.

40.00

Wash, 20 lks. wide, 4 ft. deep, course, SE.

Set an iron post, 3 ft. long, 1 in. in diam., 26 ins. in the ground, for ¼ sec. cor., with brass cap mkd.

¼  
S 16:S 15

1916

and raise a mound of stone, 2 ft. base, 1½ ft. high, W. of cor.

48.50

Wash, 25 lks. wide, 4 ft. deep, course, SE.

65.00

Asc. SW. slope, 154 ft. to

77.98

Point of rocky spur slopes W., desc. NW. slope, 24 ft. to

80.00

Set an iron post, 3 ft. long, 2 ins. in diam., 24 ins. in the ground, for cor. of secs. 9, 10, 15 and 16, with brass cap mkd.

T 3 N R 6 W  
S 9 :S 10  
S 16:S 15  
1916

and raise a mound of stone, 2 ft. base, 1½ ft. high, W. of cor.

Land, rolling.

Subdivision of T.3 N. R.6 W.

Chains

Soil, rocky, 4th rate.  
No timber.  
Undergrowth, mesquite, palo verde, cactus, cholla,  
ocotillos, cat claw, greasewood and sagebrush.

40.00 East on a random line bet. secs. 10 and 15.  
Set temp.  $\frac{1}{4}$  sec. cor.  
79.92 Intersect N. and S. line, 2 lks. N. of cor. of secs.  
10, 11, 14 and 15.  
Thence  
N. 89° 59' W. on a true line bet. secs. 10 and 15.  
Over mountainous land, through scattering timber.  
Asc. 40 ft. to  
10.80 Top of ridge brs. N. and S.; desc. 63 ft. to  
23.82 Wash, 75 lks. wide, 10 ft. deep, course, SE.  
Asc. NE. slope of mountain 193 ft. to  
32.80 Top of mountain brs. NW. and SE.; desc. 124 ft. to  
39.96 Set an iron post, 3 ft. long, 1 in. in diam., 26 ins. in  
the ground, for  $\frac{1}{4}$  sec. cor., with brass cap mkd.

$\frac{1}{4}$  S 10  
S 15  
1916

and raise a mound of stone, 2 ft. base, 1 $\frac{1}{2}$  ft. high,  
N. of cor.

41.27 Desc. NW. slope, 46 ft. to  
61.22 Thence over level and rolling land, to  
73.15 Asc. E. slope of mountain 223 ft. to  
79.92 Top of mountain brs. N. and S.; desc. 196 ft. to  
Cor. of secs. 9, 10, 15 and 16.  
Land, rolling and mountainous,  
Soil, 3rd and 4th rates.  
Timber, scattering palo verde and cat claw.

6.00 N. 0° 2' W. bet. secs. 9 and 10.  
Over mountainous land, through scattering undergrowth.  
Wash, 15 lks. wide, 5 ft. deep, course, SW.  
Asc. steep S. slope, 406 ft. to  
26.51 Point of spur, slopes, W.; desc. N. slope, 23 ft. to  
31.50 Head of wash, course, W., asc. S. slope 30 ft. to  
40.00 Set an iron post, 3 ft. long, 1 in. in diam., 26 ins. in  
the ground, for  $\frac{1}{4}$  sec. cor., with brass cap mkd.

$\frac{1}{4}$   
S 9 : S 10  
1916

and raise a mound of stone, 2 ft. base, 1 $\frac{1}{2}$  ft. high,  
W. of cor.

42.16 Asc. 53 ft. to  
45.00 Point of spur slopes SW.; descend 25 ft. to  
48.00 Asc. 60 ft. to  
58.92 Desc. 260 ft. to  
Head of wash, 20 lks. wide, 5 ft. deep, course, S.; asc.  
S. slope, 784 ft. to  
80.00 Set an iron post, 3 ft. long, 2 ins. in diam., 24 ins. in  
the ground, for cor. of secs. 3, 4, 9 and 10, with  
brass cap mkd.

T 3 N R 6 W  
S 4 : S 3  
S 9 : S 10  
1916

and raise a mound of stone, 2 ft. base, 1 $\frac{1}{2}$  ft. high,  
W. of cor.



Chains	
	<p>Land, mountainous. Soil, rocky, 4th rate. No timber. Undergrowth, cactus, palo verde, cholla, cat claw, ocotillo, greasewood and sagebrush.</p>
40.00	East on a random line bet. secs. 3 and 10. Set temp. $\frac{1}{4}$ sec. cor.
80.12	Intersect N. and S. line, 14 lks. N. of cor. of secs. 2, 3, 10 and 11. Thence N. 89° 54' W. on a true line bet. secs. 3 and 10. Overmountainous land, through scattering undergrowth. Asc. E. slope, 90 ft. to
7.95	Top of spur slopes SE.; desc. W. slope, 23 ft. to
11.83	Head of wash, course, S.; Ascend SE. slope, 526 ft. along side of spur, to
34.96	Top of spur slopes, S. 20° E.; desc. 256 ft. to
40.06	Set an iron post, 3 ft. long, 1 in. in diam., 26 ins. in the ground, for $\frac{1}{4}$ sec. cor., with brass cap mkd.
	$\frac{1}{4} \frac{S \ 3}{S \ 10}$ 1916
	and raise a mound of stone, 2 ft. base, $1\frac{1}{2}$ ft. high, N. of cor.
47.76	Desc. SW. slope, 46 ft. to Wash, 20 lks. wide, 6 ft. deep, course, SE.; asc. SE. slope 465 ft. to
62.82	Top of spur slopes S.; desc. 103 ft. to
68.26	Wash, 20 lks. wide, 5 ft. deep, course, S.; asc. E. slope, 189 ft. to
80.12	Cor. of secs. 3, 4, 9 and 10. Land, mountainous. Soil, stony 4th rate. No timber. Undergrowth, palo verde, cat claw, cactus, cholla, ocotillo, sagebrush and greasewood.
40.00	N. 0° 2' W. on a random line bet. secs. 3 and 4. Set temp. $\frac{1}{4}$ sec. cor.
80.12	Intersect N. bdy. of Tp., 20 lks. E. of cor. of secs. 3, 4, 33 and 34, as described in book "B". Thence S. 0° 11' E. on a true line bet. secs. 3 and 4. Over mountainous land, through scattering undergrowth.
15.12	Wash, 50 lks. wide, 5 ft. deep, course, E. Asc. 184 ft. to
29.00	Wash, 25 lks. wide, 6 ft. deep, course, NE. Asc. 245 ft. to
40.06	Set an iron post, 3 ft. long, 1 in. in diam., 26 ins. in the ground, for $\frac{1}{4}$ sec. cor., with brass cap mkd.
	$S \ 4 : S \ 3$ 1916
	and raise a mound of stone, 2 ft. base, $1\frac{1}{2}$ ft. high, W. of cor.
41.32	Desc. 32 ft. to Asc. N. slope, over cliffs, 253 ft. to
60.10	Top of ridge brs. NW. and SE.; desc. SW. slope, 217 ft. to
67.85	Head of wash, course, W.; asc. N. slope, over cliffs, 230 ft. to
75.35	Top of mountains brs. E. and W.

Subdivision of T.3 N..R.6 W.

Chains  
80.12

Cor. of secs. 3, 4, 9 and 10.  
Land, mountainous.  
Soil, rocky 4th rate.  
No timber.  
Undergrowth, mesquite, palo verde, cat claw, cholla,  
cactus, ocotillo, sagebrush and greasewood.

22.60  
40.00

From the cor. of secs. 4, 5, 32 and 33, on S. bdy. of Tp...,  
as described by the Surveyor General under Group 32.  
N. 0° 2' W. bet. secs. 32 and 33.  
Over rolling land, through scattering undergrowth.  
Wash, 10 lks. wide, 2 ft. deep, course, S. 30° W.

Set an iron post, 3 ft. long, 1 in. in diam., 26 ins. in  
the ground, for  $\frac{1}{4}$  sec. cor., with brass cap mkd.  
 $\frac{1}{4}$   
S 32:S 33

80.00

1916.  
dig pits, 18 X 18 X 12 ins., N. and S. of post, 3 ft.  
dist.; and raise a mound of earth, 3 $\frac{1}{2}$  ft. base, 1 $\frac{1}{2}$  ft.  
high, W. of cor.  
Set an iron post, 3 ft. long, 2 ins. in diam., 24 ins. in  
the ground, for cor. of secs. 28, 29, 32 and 33, with  
brass cap mkd.

T 3 N R 6 W  
S 29:S 28  
S 32:S 33

1916  
and raise a mound of stone, 2 ft. base, 1 $\frac{1}{2}$  ft. high,  
W. of cor.  
Land, rolling.  
Soil, gravelly, 3rd rate.  
No timber.  
Undergrowth, palo verde, cat claw, mesquite, cactus,  
sagebrush and greasewood.

40.00  
79.96

East on a random line bet. secs. 28 and 33.  
Set temp.  $\frac{1}{4}$  sec. cor.  
Intersect N. and S. line, 2 lks. S. of cor. of secs. 27,  
28, 33 and 34.

3.96  
39.98

Thence  
S. 89° 59' W. on a true line bet. secs. 28 and 33.  
Over rolling land, through scattering undergrowth.  
Wash, course, SW.  
Set an iron post, 3 ft. long, 1 in. in diam., 26 ins. in  
the ground, for  $\frac{1}{4}$  sec. cor., with brass cap mkd.

$\frac{1}{4}$  S 28  
S 33  
1916

45.00  
55.76  
65.06  
79.96

dig pits, 18 X 18 X 12 ins., E. and W. of post, 3 ft.  
dist.; and raise a mound of earth, 3 $\frac{1}{2}$  ft. base, 1 $\frac{1}{2}$  ft.  
high, N. of cor.  
Wash, 40 lks. wide, 2 ft. deep, course, S.  
Wash, 12 lks. wide, 4 ft. deep, course, S.  
Wash, 10 lks. wide, 3 ft. deep, course, S.  
Cor. of secs. 28, 29, 32 and 33.  
Land, rolling.  
Soil, 2nd rate.  
No timber.  
Undergrowth, palo verde, mesquite, cat claw, sagebrush,  
and greasewood.

18

## Subdivision of T.3 N., R.6 W.

Chains	
	N. 0° 2' W. bet. secs. 28 and 29. Over rolling land, through scattering undergrowth.
40.00	Set an iron post, 3 ft. long, 1 in. in diam., 26 ins. in the ground, for $\frac{1}{4}$ sec. cor., with brass cap mkd. $\frac{1}{4}$ S 29:S 28.
	1916 and raise a mound of stone, 2 ft. base, $1\frac{1}{2}$ ft. high, W. of cor.
49.00	Wash, 10 lks. wide, 4 ft. deep, course, S. 70° E.
57.40	Wash, 15 lks. wide, 4 ft. deep, course, S. 70° E. Asc. S. slope of butte, 266 ft. to
74.39	Top of spur from butte, slopes W.; desc. N. slope, 25 ft. to
80.00	Set an iron post, 3 ft. long, 2 ins. in diam., 24 ins. in the ground, for cor. of secs. 20, 21, 28 and 29, with brass cap mkd. T 3 N R 6 W S 20:S 21 S 29:S 28 1916 and raise a mound of stone, 2 ft. base, $1\frac{1}{2}$ ft. high, W. of cor. Land rolling and mountainous. Soil, rocky, 4th rate. No timber. Undergrowth, mesquite, cat claw, palo verde, cactus, cholla, ocotillo, greasewood and sagebrush.
	East on a random line bet. secs. 21 and 28.
40.00	Set temp. $\frac{1}{4}$ sec. cor.
80.02	Intersect N. and S. line, at cor. of secs. 21, 22, 27 and 28, with brass cap mkd. Thence West on a true line bet. secs. 21 and 28. Over rolling land, through scattering undergrowth.
28.30	Wash, 35 lks. wide, 3 ft. deep, course, S. 10° W.
29.00	Wash, 20 lks. wide, 2 ft. deep, course, S.
40.01	Set an iron post, 3 ft. long, 1 in. in diam., 26 ins. in the ground, for $\frac{1}{4}$ sec. cor., with brass cap mkd. $\frac{1}{4}$ S 21 S 28 1916 and raise a mound of stone, 2 ft. base, $1\frac{1}{2}$ ft. high, N. of cor. Asc. steep E. slope, 302 ft. to Top of spur slopes S. 10° W. Desc. steep W. slope, 165 ft. to Head of wash, course, SW. Wash, 20 lks. wide, 5 ft. deep, course, NW. Cor. of secs. 20, 21, 28 and 29. Land, rolling and mountainous. Soil, sandy and rocky, 2nd and 4th rates. No timber. Undergrowth, mesquite, cat claw, greasewood, cactus, cholla, ocotillo and sagebrush.
	N. 0° 2' W. bet. secs. 20 and 21. Over rolling and hilly land, through scattering undergrowth.
2.50	Wash, 20 lks. wide, course NW. Asc. 410 ft. to
25.55	Top of mountain ridge bet. W. and SE.; desc. 337 ft. to

Subdivision of T.3 N..R.6 W.

Chains

40.00 Set an iron post, 3 ft. long, 1 in. in diam., on surface rock, in a mound of stone, for 1/4 sec. cor., with brass cap mkd.

1/4  
S 20:S 21

1916

and raise a mound, of stone, 2 ft. base, 1 1/2 ft. high, W. of cor.

54.79 Desc. W. slope, 131 ft. to Bottom of mountain.

Thence over rolling land.

80.00 Set an iron post, 3 ft. long, 2 ins. in diam., 24 ins. in the ground, for cor. of secs. 16, 17, 20 and 21, with brass cap mkd.

T 3 N R 6 W  
S 17:S 16  
S 20:S 21  
1916

and raise a mound, of stone, 2 ft. base, 1 1/2 ft. high, W. of cor.

Land, rolling and mountainous.

Soil, 3rd and 4th rates.

Timber, scattering palo verde and cat claw.

40.00 East on a random line bet. secs. 16 and 21.

Set temp. 1/4 sec. cor.

80.04 Intersect N. and S. line, 4 lks. S. of cor. of secs. 15, 16, 21 and 22.

Thence

S. 89° 58' W. on a true line bet. secs. 16 and 21.

3.75 Wash, 75 lks. wide, 4 ft. deep, course, SE.

33.15 Wash, 110 lks. wide, 4 ft. deep, course, S.

40.02 Set an iron post, 3 ft. long, 1 in. in diam., 26 ins. in the ground, for 1/4 sec. cor., with brass cap mkd.

1/4 S 16  
S 21  
1916

and raise a mound of stone, 2 ft. base, 1 1/2 ft. high, N. of cor.

65.00 Wash, 115 lks. wide, 4 ft. deep, course, S.

80.04 Cor. of secs. 16, 17, 20 and 21.

Land, rolling.

Soil, 2nd and 3rd rates.

Timber, scattering palo verde and cat claw.

N. 0° 2' W. bet. secs. 16 and 17.

Over rolling land, through scattering timber.

40.00 Set an iron post, 3 ft. long, 1 in. in diam., 26 ins. in the ground, for 1/4 sec. cor., with brass cap mkd.

1/4  
S 17:S 16

1916

and raise a mound of stone, 2 ft. base, 1 1/2 ft. high, W. of cor.

41.50 Wash, 75 lks. wide, 15 ft. deep, course, SE.

80.00 Set an iron post, 3 ft. long, 2 ins. in diam., 24 ins. in the ground, for cor. of secs. 8, 9, 16 and 17, with brass cap mkd.

T 3 N R 6 W  
S 8 :S 9  
S 17:S 16  
1916

Subdivision of T.3 N., R.6 W.

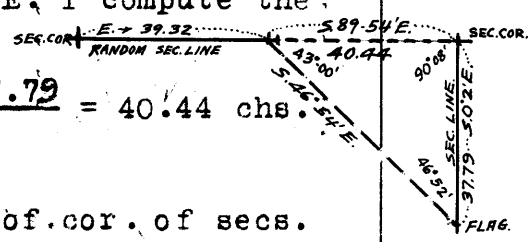
Chains	
	<p>and raise a mound of stone, .2 ft. base, 1½ ft. high, W. of cor.            Land, rolling.            Soil, 2nd and 3rd rates.            Timber, scattering palo verde and cat claw.</p>
40.00	East on a random line bet. secs. 9 and 16. Set temp. ¼ sec. cor.
80.06	Intersect N. and S. line, 8 lks. S. of cor. of secs. 9, 10, 15 and 16. Thence S. 89° 57' W. on a true line bet. secs. 9 and 16. Over rolling land, through scattering timber.
14.08	Wash, 45 lks. wide, 5 ft. deep, course, S.
40.03	Set an iron post, 3 ft. long, 1 in. in diam., 26 ins. in the ground, for ¼ sec. cor., with brass cap mkd.
	$\begin{array}{r} \frac{1}{4} S 9 \\ S 16 \\ 1916 \end{array}$
	and raise a mound of stone, 2 ft. base, 1½ ft. high, N. of cor.
62.20	Wash, 45 lks. wide, 6 ft. deep, course, S.; asc. 36 ft. to
68.85	Top of ridge, brs. N. and S.; desc. 64 ft. to
80.06	Cor. of secs. 8, 9, 16 and 17. Land, rolling and hilly. Soil, 3rd and 4th rates. Timber, scattering palo verde and cat claw.
10.00	N. 0° 2' W. bet. secs. 8 and 9. Over rolling land, through scattering undergrowth. Enter mountainous land, brs. NW. and SW., Asc. S. slope, 274 ft. to
28.00	Top of spur ridge brs. NW. and SE.; desc. N. slope, 133 ft to
40.00	Set an iron post, 3 ft. long, 1 in. in diam., 26 ins. in the ground, for ¼ sec. cor., with brass cap mkd.
	$\begin{array}{r} \frac{1}{4} \\ S 8 : S 9 \\ 1916 \end{array}$
	and raise a mound of stone, 2 ft. base, 1½ ft. high, W. of cor.
47.00	Wash, 15 lks. wide, 5 ft. deep, course, W, Asc. S. slope, 189 ft. to
56.27	Point of spur slopes SE.; desc. N. slope 32 ft. to
61.43	Wash, 20 lks. wide, 6 ft. deep, course, SE. Asc. S. slope, 271 ft. to
72.56	Point of spur slopes SE.; thence along E, slope of spur.
74.50	Head of wash, 90 lks. wide, 40 ft. deep, course, SE. Asc. 185 ft. to
80.00	Set an iron post, 3 ft. long, 2 ins. in diam., 20 ins. in the ground, to solid rock, in a mound of stone, for cor. of secs. 4, 5, 8 and 9, with brass cap mkd.
	$\begin{array}{r} T 3 N R 6 W \\ S 5 : S 4 \\ S 8 : S 9 \\ 1916 \end{array}$
	and raise a mound of stone, .2 ft. base, 1½ ft. high, W. of cor. Land, rolling and mountainous. Soil, rocky, 4th rate. No timber. Undergrowth, scattering mesquite, palo verde, cat claw, cactus, cholla, greasewood and segebrush.

Subdivision of T.3 N., R.6 W.

Chains

40.00  
39.32

East on a random line bet. secs. 4 and 9.  
 Set temp.  $\frac{1}{4}$  sec. cor.  
 To determine distance from this point on mountain range to  
 sec. cor. on mountain range. From this point, flag  
 at the cor. of secs. 3, 4, 9 and 10, brs. S.  $89^{\circ} 54' E.$   
 and a flag set on line S.  $0^{\circ} 2' E.$  of the sec. cor.,  
 37.79 chs. dist. brs. S.  $46^{\circ} 54' E.$  I compute the  
 dist. across as follows;



$$\frac{\sin 46^{\circ} 52'}{\sin 43^{\circ} 00'} \times 37.79 = \frac{.72976 \times 37.79}{.68200} = 40.44 \text{ chs.}$$

79.76

39.32 chs. + 40.44 chs. =  
 Intersect N. and S. line, 7 lks. N. of cor. of secs.  
 3, 4, 9 and 10.

Thence  
 N.  $89^{\circ} 52' W.$  on a true line bet. secs. 4 and 9.  
 Over mountainous land, through scattering undergrowth.  
 Desc. SW. slope, to

22.00  
39.88

Asc. steep SE. slope, to  
 Set an iron post, 3 ft. long, 1 in. in diam., 26 ins. in  
 the ground, for  $\frac{1}{4}$  sec. cor., with brass cap mkd.

$$\frac{1}{4} \frac{S 4}{S 9} \\ 1916$$

and raise a mound of stone, 2 ft. base,  $1\frac{1}{2}$  ft. high,  
 N. of cor.

40.55

Top of spur slopes S.; desc. over steep SW. slope, 510 ft.  
 to

66.12

Wash, 20 lks. wide, 6 ft. deep, course, S.; asc. 113 ft.  
 to

73.56  
74.76  
79.76

Desc. gradual slope to  
 Asc. steep E. slope 77 ft. to  
 Cor. of secs. 4, 5, 8 and 9.

Land, mountainous.  
 Soil, none.  
 Timber none.  
 Undergrowth, very scattering scrub palo verde.

40.00  
80.10

N.  $0^{\circ} 2' W.$  on a random line bet. secs. 4 and 5.  
 Set temp.  $\frac{1}{4}$  sec. cor.  
 Intersect N. bdy. of Tp., 4 lks. E. of cor. of secs.  
 4, 5, 32 and 33, as described in book "B."

Thence  
 S.  $0^{\circ} 4' E.$  on a true line bet. secs. 4 and 5.  
 Over mountainous land, through scattering timber.  
 Asc. NE. slope of mountain 774 ft. to

31.70  
40.05

Top of mountain peak. Desc. 204 ft. to  
 Set an iron post, 3 ft. long, 1 in. in diam., 26 ins. in  
 the ground, for  $\frac{1}{4}$  sec. cor., with brass cap mkd.

$$S 5 : S 4$$

1916

and raise a mound of stone, 2 ft. base,  $1\frac{1}{2}$  ft. high,  
 W. of cor.

48.40  
62.00  
64.00  
68.80

Desc. 254 ft. to  
 Asc. 192 ft. to  
 Top of spur slopes W.; desc. 18 ft. to  
 Asc. 54 ft. to  
 Top of spur slopes W.; desc. S. slope of mountain 391 ft.  
 to

80.10

Cor. of secs. 4, 5, 8 and 9.  
 Land, mountainous.  
 Soil, 3rd and 4th rates.  
 Timber, scattering palo verde and cat claw.

22

Subdivision of T. 3 N., E. 6 W.

Chains		
	From the cor. of secs. 5, 6, 31 and 32, on S. bdy. of Tp., as described by the Surveyor General under Group 32. N. 0° 3' W. bet. secs. 31 and 32.	
17.80	Over rolling mesa land, through scattering undergrowth.	
21.50	Wash, 10 lks. wide, 4 ft. deep, course, SE.	
25.10	Same wash, course, SW.	
26.30	Same wash, course, SE.	
27.20	Same wash, course, SW.	
31.70	Same wash, course, SE.	
40.00	Same wash, course, SW. at bend.	
	Set an iron post, 3 ft. long, 1 in. in diam., 26 ins. in the ground, for $\frac{1}{4}$ sec. cor., with brass cap mkd.	
	$\frac{1}{4}$ S 31:S 32	
	1916	
	and raise a mound of stone, 2 ft. base, 1 $\frac{1}{2}$ ft. high, W. of cor.	
80.00	Set an iron post, 3 ft. long, 2 ins. in diam., 24 ins. in the ground, for cor. of secs. 29, 30, 31 and 32, with brass cap mkd.	
	T 3 N R 6 W S 30:S 29 S 31:S 32	
	1916	
	dig pits, 18 X 18 X 12 ins., in each sec., 5 $\frac{1}{2}$ ft. dist.; and raise a mound of earth, 4 ft. base, 2 ft. high, W. of cor.	
	Land, gently rolling mesa.	
	Soil, gravelly, 3rd rate.	
	No timber.	
	Undergrowth, mesquite, palo verde, cat claw, greasewood and sagebrush.	
	<hr/>	
40.00	East on a random line bet. secs. 29 and 32.	
80.08	Set temp. $\frac{1}{4}$ sec. cor.	
	Intersect N. and S. line, 8 lks. S. of cor. of secs. 28, 29, 32 and 33,	
	Thence	
	S. 89° 57' W. on a true line bet. secs. 29 and 32.	
18.88	Over rolling land, through scattering undergrowth.	
40.04	Wash, 35 lks. wide, 4 ft. deep, course, S.	
	Set an iron post, 3 ft. long, 1 in. in diam., 26 ins. in the ground, for $\frac{1}{4}$ sec. cor., with brass cap mkd.	
	$\frac{1}{4}$ S 29 S 32	
	1916	
	and raise a mound of stone, 2 ft. base, 1 $\frac{1}{2}$ ft. high, N. of cor.	
45.00	Wash, 20 lks. wide, 4 ft. deep, course, S.	
79.18	Wash, 10 lks. wide, 4 ft. deep, course, S.	
80.08	Cor. of secs. 29, 30, 31 and 32.	
	Land, rolling.	
	Soil, gravelly, 3rd rate.	
	No timber.	
	Undergrowth, mesquite, palo verde, cat claw, sagebrush and greasewood.	
	<hr/>	
40.00	West on a random line bet. secs. 30 and 31.	
79.23	Set temp. $\frac{1}{4}$ sec. cor.	
	Intersect W. bdy. of Tp., 2 lks. S. of cor. of secs. 25, 30, 31 and 36, as described in book "B."	
	Thence	
	S. 89° 59' E. on a true line bet. secs. 30 and 31.	

Subdivision of T.3 N. R.6 W.

Chains

Over gently rolling land, through scattering undergrowth.  
 14.23 Wash, 15 lks. wide, 3 ft. deep, course, S.  
 37.75 Wash, 10 lks. wide, 3 ft. deep, course, S.  
 39.23 Set an iron post, 3ft. long, 1 in. in diam., 26 ins. in  
 the ground, for  $\frac{1}{4}$  sec. cor., with brass cap mkd.

$\frac{1}{4}$   $\frac{S}{S}$   $\frac{30}{31}$   
 1916

dig pits, 18 X 18 X 12 ins., E. and W. of post, 3 ft.  
 dist.; and raise a mound of earth,  $3\frac{1}{2}$  ft. base,  $1\frac{1}{2}$  ft.  
 high, N. of cor.

71.83 Wash, 10 lks. wide, 4 ft. deep, course, S.  
 79.23 Cor. of secs. 29, 30, 31 and 32.  
 Land, gently rolling.  
 Soil, gravelly, 3rd rate.  
 No timber.  
 Undergrowth, palo verde, mesquite, cat claw, greasewood  
 cactus and sagebrush.

N.0° 3' W. bet. secs. 29 and 30.

Over gently rolling land, through scattering undergrowth.  
 1.00 Small wash, course, SE.  
 19.14 Wash, 15 lks. wide, 4 ft. deep, course, SW.  
 40.00 Set an iron post, 3 ft. long, 1 in. in diam., 26 ins. in  
 the ground, for  $\frac{1}{4}$  sec. cor., with brass cap mkd.

$\frac{1}{4}$   
 S. 30:S29

1916

and raise a mound of stone, 2 ft. base,  $1\frac{1}{2}$  ft. high,  
 W. of cor.

77.50 Wash, 15 lks. wide, 5 ft. deep, course, S. 70° W.  
 80.00 Set an iron post, 3 ft. long, 2 ins. in diam., 24 ins. in  
 the ground, for cor. of secs. 19, 20, 29 and 30, with  
 brass cap mkd.

T 3 N R 6 W  
S 19:S 20  
 S 30:S 29  
 1916

and raise a mound of stone, 2 ft. base,  $1\frac{1}{2}$  ft. high,  
 W. of cor.

Land, rolling.  
 Soil, 3rd rate.  
 No timber.  
 Undergrowth, mesquite, palo verde, cat claw, ocotillos,  
 greasewood and sagebrush.

East on a random line bet. secs. 20 and 29.

40.00 Set temp.  $\frac{1}{4}$  sec. cor.  
 80.08 Intersect N. and S. line, 14 lks. S. of cor. of secs.  
 20, 21, 28 and 29.

Thence  
 S. 89° 54' W. on a true line bet. secs. 20 and 29.

Desc. NW. slope, 115 ft. to  
 9.85 Wash, 20 lks. wide, 4 ft. deep, course, SW.  
 Desc. 69 ft. to

19.79 Enter rolling land.  
 35.50 Wash, 25 lks. wide, 4 ft. deep, course, S.

40.04 Set an iron post, 3 ft. long, 1 in. in diam., 26 ins. in  
 the ground, for  $\frac{1}{4}$  sec. cor., with brass cap mkd.

$\frac{1}{4}$   $\frac{S}{S}$   $\frac{20}{29}$   
 1916



Chains	and raise a mound of stone, 2 ft. base, 1½ ft. high, N. of cor.
61.20	Wash, 15 lks. wide, 3 ft. deep, course, S.
67.70	Wash, 20 lks. wide, 2 ft. deep, course, S.
68.80	Wash, 15 lks. wide, 3 ft. deep, course, S.
74.80	Wash, 10 lks. wide, 3 ft. deep, course, SW.
80.08	Cor. of secs. 19, 20, 29 and 30. Land, rolling. Soil, 3rd rate. No timber. Undergrowth, mesquite, palo verde, cat claw, cactus, greasewood and sagebrush.
40.00	West on a random line bet. secs. 19 and 30. Set temp. ¼ sec. cor.
79.22	Intersect W. bdy. of Tp., 2 lks. N. of cor. of secs. 19, 24, 25 and 30, as described in book "B." Thence N. 89° 59' E, on a true line bet. secs. 19 and 30. Over gently rolling land, through scattering timber.
25.00	Wash, course, S.
39.22	Set an iron post, 3 ft. long, 1 in. in diam., 26 ins. in the ground, for ¼ sec. cor., with brass cap mkd.
	¼ S 19 S 30 1916
79.22	dig pits, 18 X 18 X 12 ins., E. and W. of post, 3 ft. dist.; and raise a mound of earth, 3½ ft. base, 1½ ft. high, N. of cor. Cor. of secs. 19, 20, 29 and 30. Land, gently rolling. Soil, 2nd rate. Timber, scattering palo verde and cat claw.
40.00	N. 0° 3' W. bet. secs. 19 and 20. Over gently rolling land, through scattering timber. Set an iron post, 3 ft. long, 1 in. in diam., 26 ins. in the ground, for ¼ sec. cor., with brass cap mkd.
	¼ S 19:S 20  1916
80.00	and raise a mound of stone, 2 ft. base, 1½ ft. high, W. of cor. Set an iron post, 3 ft. long, 2 ins. in diam., 24 ins. in the ground, for cor. of secs. 17, 18, 19 and 20, with brass cap mkd.
	T 3 N. R. 6 W S 18:S 17 S 19:S 20 1916
	and raise a mound of stone, 2 ft. base, 1½ ft. high, W. of cor. Land, gently rolling. Soil, 2nd rate. Timber, scattering palo verde and cat claw.
40.00	East on a random line bet. secs. 17 and 20. Set temp. ¼ sec. cor.
80.12	Intersect N. and S. line, at cor. of secs. 16, 17, 20 and 21. Thence

Subdivision of T.3 N., R.6 W.

Chains

40.06 West on a true line bet. secs. 17 and 20.  
 Over gently rolling land, through scattering timber.  
 Set an iron post, 3 ft. long, 1 in. in diam., 26 ins. in  
 the ground, for  $\frac{1}{4}$  sec. cor., with brass cap mkd.

$\frac{1}{4}$  S 17  
S 20  
 1916

and raise a mound of stone, 2 ft. base,  $1\frac{1}{2}$  ft. high,  
 N. of cor.  
 80.12 Cor. of secs. 17, 18, 19 and 20.  
 Land, gently rolling.  
 Soil, 2nd and 3rd rates.  
 Timber, scattering palo verde and cat claw.

40.00 West on a random line bet. secs. 18 and 19.  
 Set temp.  $\frac{1}{4}$  sec. cor.  
 79.12 Intersect W. bdy. of Tp., 2 lks. N. of cor. of secs. 13,  
 18, 19 and 24, as described in book "B."  
 Thence  
 N.  $89^{\circ} 59'$  E. on a true line bet. secs. 18 and 19.  
 Over rolling land, through scattering undergrowth.  
 .32 Wash, 35 lks. wide, 2 ft. deep, course, S.  
 36.00 Wash, 45 lks. wide, 3 ft. deep, course, S.  
 39.12 Set an iron post, 3 ft. long, 1 in. in diam., 26 ins. in  
 the ground, for  $\frac{1}{4}$  sec. cor., with brass cap mkd.

$\frac{1}{4}$  S 18  
S 19  
 1916

and raise a mound of stone, 2 ft. base,  $1\frac{1}{2}$  ft. high,  
 N. of cor.  
 48.00 Wash, 15 lks. wide, 3 ft. deep, course, S.  
 60.30 Wash, 30 lks. wide, 4 ft. deep, course, S.  
 74.70 Wash, 35 lks. wide, 3 ft. deep, course, S.  
 79.12 Cor. of secs. 17, 18, 19 and 20.  
 Land, gently rolling.  
 Soil, 2nd and 3rd rates.  
 No timber,  
 Undergrowth, mesquite, palo verde, cat claw, cholla,  
 greasewood and sagebrush.

36.00 N.  $0^{\circ} 3'$  W. bet. secs. 17 and 18.  
 Over rolling land, through scattering undergrowth.  
 Wash, 40 lks. wide, 2 ft. deep, course, SW.  
 40.00 Set an iron post, 3 ft. long, 1 in. in diam., 6 ins. in  
 the ground, to solid rock, in a mound of stone, for  
 $\frac{1}{4}$  sec. cor., with brass cap mkd.

$\frac{1}{4}$   
 S 18:S 17  
 1916

and raise a mound of stone, 2 ft. base,  $1\frac{1}{2}$  ft. high,  
 W. of cor.  
 51.07 Asc. SE. slope, of mountain 285 ft. to  
 Top of spur slopes SW.; desc. NW. slope, 63 ft. to  
 56.04 Head of wash, course, SW.; asc. SW. slope, 273 ft. to  
 73.34 Top of ridge brs. NW. and SE.; desc. NE. slope, 66 ft. to  
 80.00 Set an iron post, 3 ft. long, 2 ins. in diam., 24 ins.  
 in the ground, for cor. of secs. 7, 8, 17 and 18,  
 with brass cap mkd.

T 3 N R 6 W  
S 7 :S 8  
S 18:S 17  
 1916

Chains

	and raise a mound of stone, 2 ft. base, 1½ ft. high, W. of cor. Land, rolling and mountainous. Soil, rocky, 4th rate. No timber. Undergrowth, mesquite, palo verde, cat claw, cholla, oco- tillo, cactus, greasewood, and sagebrush.
40.00	East on a random line bet. secs. 8 and 17. Set temp. ¼ sec. cor.
80.10	Intersect N. and S. line, 2 lks. S. of cor. of secs. 8 9, 16 and 17. Thence S. 89° 59' W. on a true line bet. secs. 8 and 17. Over rolling land, through scattering undergrowth.
11.60	Wash, 15 lks. wide, 3 ft. deep, course, S.
19.60	Wash, 40 lks. wide, 10 ft. deep, course, S.
30.30	Wash, 35 lks. wide, 12 ft. deep, course, S.
40.05	Set an iron post, 3 ft. long, 1 in. in diam., 26 ins. in the ground for ¼ sec. cor., with brass cap mkd.
	$\frac{1}{4} \frac{S \ 8}{S \ 17}$ 1916
50.20	and raise a mound of stone, 2 ft. base, 1½ ft. high, N. of cor. Wash, 25 lks. wide, 5 ft. deep, course, S.
80.10	Asc. 276 ft. to Cor. of secs. 7, 8, 17 and 18. Land, rolling and hilly. Soil, 4th rate. No timber. Undergrowth, palo verde, mesquite, catclaw, cactus, cholla, ocotillo, sagebrush and greasewood.
40.00	West on a random line bet. secs. 7 and 18. Set temp. ¼ sec. cor.
79.14	Intersect W. bdy. of Tp. 2 lks. N. of cor. of secs. 7, 12, 13 and 18, as described in book "B." Thence N. 89° 59' E. on a true line bet. secs. 7 and 18. Over rolling land, through scattering undergrowth.
8.64	Wash, 40 lks. wide, 6 ft. deep, course, S.
28.64	Wash, 70 lks. wide, 8 ft. deep, course, S.
39.14	Set an iron post, 3 ft. long, 1 in. in diam., 26 ins. in the ground, for ¼ sec. cor., with brass cap mkd.
	$\frac{S \ 7}{S \ 18}$ 1916
59.05	and raise a mound of stone, 2 ft. base, 1½ ft. high, N. of cor. Asc. W. slope over cliffs, 154 ft. to Point of rocky spur slopes, S.; desc. 68 ft. to
65.10	Head of wash, course, S.; asc. SW. slope, 261 ft. to
76.60	Top of ridge brs. NW. and SE.; desc. 78 ft. to
79.14	Cor. of secs. 7, 8, 17 and 18. Land, rolling and hilly. Soil, 4th rate, rocky. No timber. Undergrowth, mesquite, palo verde, cat claw, cholla, oco- tillo, cactus, greasewood and sagebrush.

Subdivision of T.3 N., R.6 W.

Chains

N. 0° 3' W. bet. secs. 7 and 8.  
 Over hilly land, through scattering timber.  
 Asc. 64 ft. to  
 2.84 Top of rocky spur slopes E.  
 Desc. NE. slope of mountain, 294 ft. to  
 24.21 Bottom of descent.  
 Thence over rolling land.  
 40.00 Set an iron post, 3 ft. long, 1 in. in diam., 26 ins. in  
 the ground, for  $\frac{1}{4}$  sec. cor., with brass cap mkd.  

$$\begin{array}{r} \frac{1}{4} \\ S\ 7 : S\ 8 \end{array}$$
  
 1916  
 and raise a mound of stone, 2 ft. base,  $1\frac{1}{2}$  ft. high,  
 W. of cor.  
 55.00 Wash, 75 lks. wide, 15 ft. deep, course, SW.  
 80.00 Set an iron post, 3 ft. long, 2 ins. in diam., 24 ins. in  
 the ground, for cor. of secs. 5, 6, 7 and 8, with  
 brass cap mkd.  

$$\begin{array}{r} T\ 3\ N\ R\ 6\ W \\ S\ 6 : S\ 5 \\ S\ 7 : S\ 8 \end{array}$$
  
 1916  
 and raise a mound of stone, 2 ft. base,  $1\frac{1}{2}$  ft. high,  
 W. of cor.  
 Land, hilly and rolling.  
 Soil, 3rd and 4th rates.  
 Timber, scattering palo verde and cat claw.

East on a random line bet. secs. 5 and 8.  
 40.00 Set temp.  $\frac{1}{4}$  sec. cor.  
 80.06 Intersect N. and S. line, 20 lks. S. of cor. of secs. 4, 5, 8 & 9.  
 Thence  
 S. 89° 51' W. on a true line bet. secs. 5 and 8.  
 Over hilly land, through scattering timber.  
 Desc. 34 ft. to  
 9.87 Asc. 41 ft. to  
 13.86 Crest of ridge brs. N. and S., slopes S.  
 Desc. SW. slope of mountain 475 ft. to  
 40.03 Set an iron post, 3 ft. long, 1 in. in diam., 26 ins. in  
 the ground, for  $\frac{1}{4}$  sec. cor., with brass cap mkd.  

$$\frac{1}{4} \begin{array}{r} S\ 5 \\ S\ 8 \end{array}$$
  
 1916  
 and raise a mound of stone, 2 ft. base,  $1\frac{1}{2}$  ft. high,  
 N. of cor.  
 Thence over rolling land,  
 52.05 Wash, 45 lks. wide, 6 ft. deep, course, SW.  
 65.05 Wash, 75 lks. wide, 6 ft. deep, course, S.  
 80.06 Cor. of secs. 5, 6, 7 and 8.  
 Land, mountainous and rolling.  
 Soil, 3rd and 4th rates.  
 Timber, scattering palo verde and cat claw.

West on a random line bet. secs. 6 and 7.  
 40.00 Set temp.  $\frac{1}{4}$  sec. cor.  
 79.07 Intersect W. bdy. of Tp. 7 lks. N. of cor. of secs.  
 1, 6, 7 and 12, described in book "B."  
 Thence  
 N. 89° 57' E. on a true line bet. secs. 6 and 7.  
 Over hilly land, through scattering undergrowth.  
 Asc. SW. slope, 57 ft. to  
 54.28 Top of spur slopes S., desc. 291 ft. to  
 26.37 Wash, 40 lks. wide, 14 ft. deep, course, SE.  
 37.17 Wash, 20 lks. wide, 5 ft. deep, course, S.  
 39.07

Chains 39.07	Set an iron post, 3 ft. long, 1 in. in diam., 26 ins. in the ground, for $\frac{1}{4}$ sec. cor., with brass cap mkd.
	$\begin{array}{r} \frac{S}{S} \frac{6}{7} \\ 1916 \end{array}$
	and raise a mound of stone, 2 ft. base, 1 $\frac{1}{2}$ ft. high, N. of cor.
47.67	Wash, 25 lks. wide, 4 ft. deep, course, S.
50.97	Wash, 20 lks. wide, 5 ft. deep, course, S.
60.00	Asc. W. slope, 165 ft. to
71.65	Short ridge brs. NW. and SE.
79.07	Cor. of secs. 5, 6, 7 and 8.
	Land, mountainous and rolling.
	Soil, rocky, 4th rate.
	No timber.
	Undergrowth, cholla, cactus, palo verde, cat claw, sagebrush and greasewood.
<hr/>	
40.00	N. 0° 3' W. on a random line bet. secs. 5 and 6.
79.92	Set temp. $\frac{1}{4}$ sec. cor.
	Intersect N. bdy. of Tp. 7 lks. W. of cor. of secs. 5, 6, 31 and 32, as described in book "B."
	Thence
	South on a true line bet. secs. 5 and 6.
	Over mountainous land, through scattering undergrowth.
	Desc. steep S. slope, 482 ft. to
29.94	Wash, 20 lks. wide, 6 ft. deep, course, SW.
39.92	Set an iron post, 3 ft. long, 1 in. in diam., 26 ins. in the ground, for $\frac{1}{4}$ sec. cor., with brass cap mkd.
	$\begin{array}{r} \frac{S}{S} 6 : S 5 \\ 1916 \end{array}$
	and raise a mound of stone, 2 ft. base, 1 $\frac{1}{2}$ ft. high, W. of cor.
54.92	Enter wash, 40 lks. wide, 16 ft. deep, course, from NE. to S.
60.92	Leave same wash, course, SE.
68.90	Wash, 40 lks. wide, 10 ft. deep, course, SE.
79.92	Cor. of secs. 5, 6, 7 and 8.
	Land, mountainous and rolling.
	Soil, rocky, 3rd rate.
	No timber.
	Undergrowth, palo verde cat claw, cactus, sagebrush, cholla, ocotillo and greasewood.

-o- GENERAL DESCRIPTION -o-

This township consists of mountainous and rolling land, of rocky 3rd and 4th rate soil, and small valleys of sandy 2nd rate soil. The main range of mountains runs from the SE. cor. of sec. 11, diagonally toward the NW. cor. of the township, sections 5 and 6 being especially rugged.

The vegetation consists of scrub palo verde, mesquite and cat claw, with greasewood, sagebrush, ocotillos and many varieties of cactus.

There are no settlers.

No water has been developed.

CERTIFICATES  
For ~~FINAL OATH~~ OF UNITED STATES SURVEYOR TRANSITMEN,

See Book "C"

I, \_\_\_\_\_, U. S. Surveyor, do solemnly swear that, in pursuance of special instructions received from the U. S. Surveyor General for \_\_\_\_\_ bearing date of the \_\_\_\_\_ day of \_\_\_\_\_, 191 \_\_\_\_\_, I have well, faithfully, and truly, in my own proper person, and in strict conformity with said instructions, the Manual of Surveying Instructions, and the laws of the United States, surveyed all those parts or portions of \_\_\_\_\_

BOOK 3610

\_\_\_\_\_ of the \_\_\_\_\_ Meridian, in the State of \_\_\_\_\_, which are represented in the foregoing field notes as having been executed by me, and under my direction; and I do further solemnly swear that all the corners of said survey have been established and perpetuated in strict accordance with the Manual of Surveying Instructions, and the special written instructions of the U. S. Surveyor General for \_\_\_\_\_ and in the specific manner described in the field notes, and that the foregoing are the original field notes of such survey.

\_\_\_\_\_  
U. S. Surveyor.

Subscribed by said \_\_\_\_\_, and sworn to before me }  
this \_\_\_\_\_ day of \_\_\_\_\_, 191 \_\_\_\_\_



APPROVAL.

OFFICE OF THE UNITED STATES SURVEYOR GENERAL,  
Phoenix, Arizona, JUL 20 1918

The foregoing field notes of the survey of the  
Subdivision Lines  
of  
TOWNSHIP 3 NORTH, RANGE 6 WEST,  
of the Gila and Salt River Base and Meridian, in the State of Arizona,

executed by Roy J. Gill and Hans D. Voigt, U. S. Transitmen,  
under his special instructions dated Dec. 12, 1914, for Group 39, Arizona, 191 \_\_\_\_\_, having been critically examined, and the necessary corrections and explanations made, the said field notes, and the surveys they describe, are hereby approved.

U. S. Surveyor General.

I certify that the foregoing transcript of the field notes of the above-described surveys in \_\_\_\_\_, has been correctly copied from the original notes on file in this office.