

3086

Book "A"

4-679

BOOK 3086

FIELD NOTES

OF THE SURVEY OF THE

9th. Std. Parallel North, thru Ranges 5, 6, 7, 8, 9, 10 and 11 West,

East boundaries of Townships 37 and 38 North, Range 12 West,

South half of East bdy., and East half of S. bdy. of T. 39 N., R. 12 W., &

Part of Subdivision lines in Township 39 North, Range 12 West,

Of the Gila and Salt River Base and Meridian,

the State of Arizona.

EXECUTED BY

Thomas B. Matthews,

in the capacity of U. S. Surveyor, under Special Instructions dated Sept. 20, 1915,
issued by the United States Surveyor General to govern surveys included in Group
No. 56, which were approved by the Commissioner of the General Land
Office, Oct. 7, 1915, and Assignment Instructions dated Sept. 15, 1915

Survey commenced October 1, 1915

Survey completed December 13, 1915

3086

SEE SPECIAL INDEX DIAGRAM.

~~INDEX DIAGRAM.~~

Township , *Range*

6	5	4	3	2	1
7	8	9	10	11	12
18	17	16	15	14	13
19	20	21	22	23	24
30	29	28	27	26	25
31	32	33	34	35	36

Book "A"

SPECIAL INDEX DIAGRAM

Group 56 Arizona

9th Standard Parallel North & Range Line
Bet. Rs. 11 & 12 W, Through Ts. 37 & 38 N,
Indexed Hereon.

T. 39 N, R. 12 W. Indexed on Page 2.

BOOK 3086

T. 39 N, R. 12 W

23	24
27	25
34	36
35	56

SPECIAL INDEX DIAGRAM
ON PAGE 2.

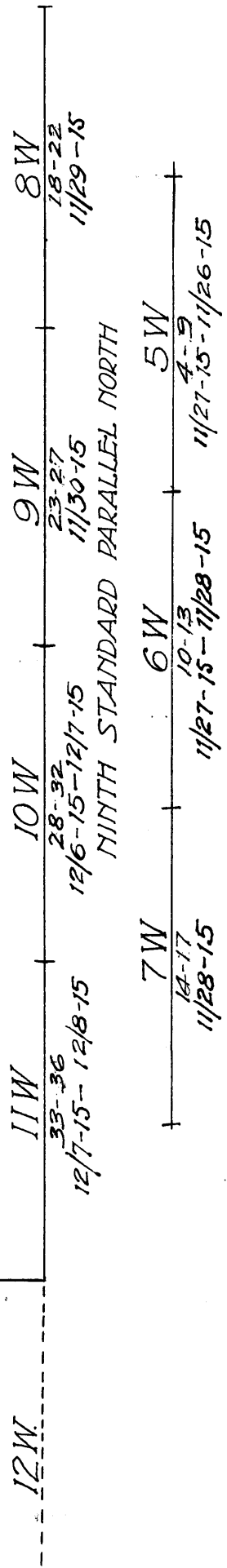
37-40 12/8-15-12/9-15
41-44 12/9-15

38N

BOOK 3086

BOOK 3086

37N



Chains.

Surveys hereinafter described were executed by Thomas B. Matthews, U.S. Surveyor, on dates shown on index diagrams, or in the field notes, using a Young and Sons' light mountain transit No. 8586, equipped with Smith solar attachment. The horizontal limb of the instrument is provided with two double verniers placed opposite to each other, reading to single minutes of arc, which is also the least count of the verniers of the latitude and declination arcs. The instrument was tested on true meridian at Phoenix, Arizona, Sept. 15, 1915, found correct, and approved by the Assistant Supervisor of Surveys for Arizona and California, conditional upon satisfactory field tests.

FIELD TEST OF INSTRUMENT.

October 1, 1915. Examine the adjustments of the transit, and correct all errors; then, to test the solar apparatus by comparing its indications resulting from solar observations made during a. m. and p. m. hours with a meridian determined by observations on Polaris, proceed as follows:

At the cor. of secs. 16, 17, 20 and 21 of T. 41 N., R. 2 W., in latitude $36^{\circ} 56' 44''$ N., longitude, $112^{\circ} 28' 48''$ W.; at 4h. 0m. p. m., l. m. t., set off $36^{\circ} 56\frac{1}{2}'$ N. on the latitude arc; $3^{\circ} 1\frac{1}{2}'$ S. on the decl. arc, and determine a meridian with the solar, and mark same by driving a tack in a stake set in the ground, 5 chs. N. of the instrument.

At 6h. 56m. p. m., l. m. t., observe Polaris at eastern elongation in accordance with the Manual of Instructions, and mark the line thus determined by driving a tack in a stake set in the ground, 5 chs. N. of instrument.

Oct. 2, 1915: At 8h. 0m. a. m., l. m. t., lay off the azimuth of Polaris $1^{\circ} 26'$ to the west. The meridian thus determined coincides with the meridian obtained by the solar observation yesterday.

At 8h. 30m., a. m., l. m. t., set off $36^{\circ} 56\frac{1}{2}'$ N. on the lat. arc; $3^{\circ} 18'$ S. on the decl. arc; the meridian thus determined deviates less than $1'$ of arc from the true meridian determined by observations on Polaris.

The foregoing field test demonstrates that the instrument is in satisfactory adjustment.

The magnetic bearing of the true meridian is found to be N. $16^{\circ} 10' W.$, giving a magnetic declination at this station of $16^{\circ} 10' E.$

In the surveys hereinafter described, all measurements were made with 5 chain steep tape, duly tested with a standard tape, and properly adjusted. Over uneven ground, the clinometer method was used to obtain the necessary correction to be applied.

Throughout the survey of this group, the instrument was maintained in correct adjustment by frequent tests on true meridian all necessary corrections and adjustments being made.

40 Survey of Ninth Standard Parallel North thru Range 5 West.

Chains.

Nov. 21, 1915: At camp about 1½ miles S. of the standard cor. of Ts. 37 N., Rs. 4 and 5 W., in latitude 36°32' N.; long. 112° 47' W., at 3 hrs. 29.1m. a.m., 1.m.t., observe Polaris at western elongation, in accordance with the Manual of Instructions, and mark a point in the line thus determined by a tack driven in a stake in the ground, 5 chs. N. of instrument.

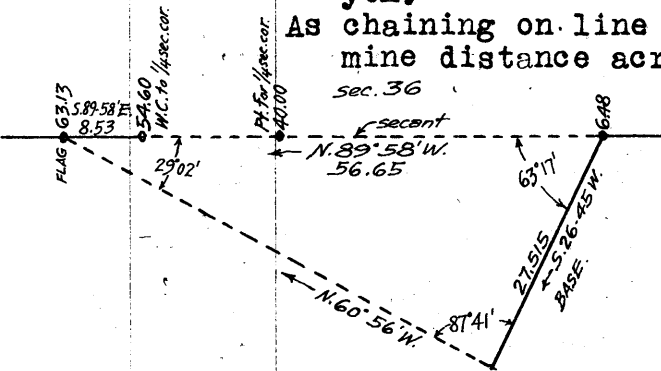
At 8h. Om., a.m., 1.m.t., lay off the azimuth of Polaris, 1°25' to the east, and transfer the meridian thus determined by careful back sights and foresights to the standard cor. of Ts. 37 N., Rs. 4 and 5 W., which is an iron post 3 ins. in diam., 20 ins. above ground, marked and witnessed as described by the surveyor general. From a point 4 lks. S. of said corner, turn 89°58' to the left.

Thence, N. 89° 58' W., on the secant, S. of sec. 36. Over mountainous land, thru. scattering timber and undergrowth.

Ascend 30 ft.

6.48 Top of ridge, bearing N. and S., forming east rim of canyon.

As chaining on line across canyon is impracticable, determine distance across by triangulation, as follows: Set flag on line on top of ridge on W. rim of canyon.



From 6.48 ch. sta. lay off a base S. 26° 45' W., 27.515 chs. (average of measurements by 2 sets of chainmen). From SW. end of base, flag brs. N. 60° 56' W.

Included angles are 87°41', 29°02', and 63° 17', the sum of which is 180° 00'.

Dist. on secant from 6.48 ch. sta. to flag is obtained by $\frac{\text{sine } 87^\circ 41' \times \text{base}}{\text{sine } 29^\circ 02'}$ or $\frac{.99918 \times 27.515}{.48532} = 56.65$ chs., which added to 6.48 chs. gives flag point at 63.13 ch. sta. on secant.

The approximate locations of topographical features within the triangulated portion of line measured from Tp. cor. is given as follows:

Descend 1500 ft. over W. slope.

31.50 Canyon, course N. Ascend 1500 ft.

40.00 True point for standard ¼ sec. cor. of sec. 36 (N. 2 lks. from secant), is inaccessible; therefore, it is impracticable to set post.

63.13 Flag point on secant, from which return on secant, S. 89°58' E., 8.53 chs. by chain measurement to

54.60 The nearest practicable point for establishing witness cor. to standard ¼ sec. cor.; therefore N. 2 lks. from the secant.

Set an iron post, 3 ft. long, 1 in. in diam., 14 ins. in the ground, in a mound of stone, for witness cor. to standard ¼ sec. cor., with brass cap, marked

S C
¼ S 36
WC
1915

from which,

A pine, 10 ins. in diam., brs. N. 79¼° E., 69 lks. dist., marked WC ¼ S 36 SCBT.

A cedar, 18 ins. in diam., brs. N. 33¼° W., 66 lks. dist., marked WC ¼ S 36 SCBT.

63.13 Flag point on top of ridge, brs. NE. and SW. Continue measurement by chaining. Descend 70 ft.

70.16 Wash, 6 lks. wide, course NE. Ascend 25 ft.

71.82 Spur, slopes NE. Descend 20 ft.

75.62 Wash, 5 lks. wide, course NE. Ascend 70 ft.

No difference between measurements of 80.00 chs. by two sets of chainmen.

Chains.

80.00 Set an iron post, 3 ft. long, 3 ins. in diam., 24 ins. in the ground, for standard cor. of secs. 35 and 36, with brass cap, marked

S C
T37N R 5W
S35 | S36

1915

from which,

A cedar, 18 ins. in diam., brs. N. $32\frac{1}{2}^{\circ}$ E., 65 lks. dist., marked T37N R5W S36 SCBT.

A cedar, 14 ins. in diam., brs. N. $69\frac{1}{2}^{\circ}$ W., 70 lks. dist., marked T37N R5W S35 SC BT.

Land, mountainous.

Soil, thin and rocky, 4th rate.

Timber, scattering pine and cedar.

Undergrowth, sage brush.

N. $89^{\circ} 59'$ W., on the secant, thru. sec. 35.

Over mountainous land, thru. scattering timber and undergrowth.

Descend 225 ft.

13.14 Canyon, 10 lks. wide, course NW.

14.53 Wash, 10 lks. wide, course NE. Enters canyon, 1 ch. NE. Ascend 300 ft.

25.29 Spur, slopes S. Descend 50 ft.

32.45 Wash, course SE. Ascend 40 ft.

No difference between measurements of 40.00 chs. by two sets of chainmen.

40.00 South 1 lk. from the secant,

Set an iron post, 3 ft. long, 1 in. in diam., 26 ins. in the ground, for standard $\frac{1}{4}$ sec. cor., with brass cap, marked

S C
S 35

1915

from which,

A cedar, 16 ins. in diam., brs. N. $43\frac{1}{2}^{\circ}$ E., 61 lks. dist., marked SC $\frac{1}{4}$ S35 BT.

A cedar, 17 ins. in diam., brs. N. 32° W., 78 lks. dist., marked SC $\frac{1}{4}$ S35 B T.

Difference between measurements of 80.00 chs. by two sets of chainmen is 4 lks.; position of middle point,

By 1st set, 80.02 chs.,

By 2nd set, 79.98 chs., the mean of which is

80.00 South 2 lks. from the secant,

Set an iron post, 3 ft. long, 3 ins. in diam., 14 ins. in the ground, in a mound of stone, for standard cor. of secs. 34 and 35, with brass cap, marked

S C
T37N R5W
S34 | S35

1915

from which,

A cedar, 10 ins. in diam., brs. N. $56\frac{1}{2}^{\circ}$ E., 72 $\frac{1}{2}$ lks. dist., marked T37N R5W S35 SC BT.

A pine, 8 ins. in diam., brs. N. $71\frac{1}{2}^{\circ}$ W., 42 lks. dist., marked T37N R5W S34 SC BT.

Land, mountainous and rolling,

Soil, thin and rocky, 4th rate.

Timber, pine and cedar.

Undergrowth, sage brush.

November 23, 1915. At 3 hrs. 21 m. a.m., 1 m. t., from a point on the secant, 2 lks. N. of this cor., I observe Polaris

6 10 Ninth Standard Parallel North, thru. Range 5 West.

Chains.

at western elongation, in accordance with the manual of instructions, and mark the line thus determined by a tack in a stake set in the ground, 5 chs.N.of my station.

At 8h.30m. a.m., I lay off the azimuth of Polaris, 1°25' to the east, and from the meridian thus determined, I turn off the azimuth of the secant, 89°59' to the left. The line thus determined coincides with my secant line.

N. 89°59'W., on the secant, thru.sec.34.
Over rolling land, thru.dense timber and scattering undergrowth.

Descend gradually.

37.72 Set flag for triangulation, hereinafter described.
Continue measurement by chaining.
Difference between measurements of 40.00 chs. by two sets of chainmen is 4 lks.; position of middle point,
By 1st set, 40.02 chs.,
By 2nd set, 39.98 chs., the mean of which is

40.00 South 3 lks. from the secant
On E. bank of canyon, brs. NW. and SE.
Set an iron post, 3 ft. long, 1 in. in diam., 26 ins. in the ground, for standard 1/4 sec.cor., with brass cap, marked

S C
1/4 S 34

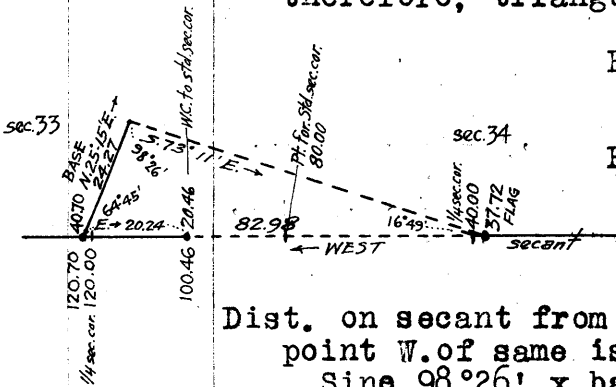
1915

from which,

A cedar, 18 ins. in diam., brs.N.39 3/4°E., 94 lks. dist., marked 1/4 S 34 SC BT.

A pine, 8 ins. in diam., brs.N.59 1/2°W., 14 lks.dist., marked 1/4 S 34 SC BT.

Continuance of chain measurement on line is impracticable; therefore, triangulate as follows:



From a point on the secant, west of the std. 1/4 sec.cor., lay off a base, N.25° 15'E., 24.27 chs.

From NE.end of base, the flag left on secant at 37.72 chs.sta. brs.S.73° 11'E. Included angles are 98°26', 16°49' and 64°45', the sum of which is 180° 00'.

Dist. on secant from 37.72 ch. station to triangulation point W.of same is obtained by

$$\frac{\text{Sine } 98^{\circ}26' \times \text{base}}{\text{sine } 16^{\circ}49'} \text{ or } \frac{.98919 \times 24.27}{.28931} = 82.98 \text{ chs.,}$$

which added to 37.72 chs. gives location of triangulation point at 120.70 ch. sta. or 40.70 ch. sta. on secant in sec.33.

Approximate locations of topographical features of S.bdy. of sec.34 within triangulated portion measured from standard cor.of secs.34 and 35 is given as follows:

Descend 1000 ft.

70.00 Bottom of canyon, course NW. Ascend 500 ft.

77.00 Spur, slopes NW. Descend 550 ft.

80.00 The true point for standard cor.of secs.33 and 34 falls on steep rocky, slope. Impracticable to set cor.at this point.

Land, rolling and mountainous.

Soil, thin and rock, 4th rate.

Timber, pine and cedar.

Undergrowth, sage brush.

West, on the secant, thru. sec.33.

Measuring by triangulation, hereinbefore described.

Ninth Standard Parallel North, thru Range 5 West
Chains.

Over mountainous land, thru scattering timber and undergrowth. Descend steep canyon wall.

5.00 (Approximate) Bottom of Robinson's Canyon, course N. Ascend 500 ft.

40.70 Triangulation point of triangulation hereinbefore described, from which return on secant thru sec. 33, East, measuring by chain, 20.24 chs. to

20.46 Nearest point to cor. point of std. cor. of secs. 33 and 34 practicable for the setting of witness cor. to said cor. S. 2 1/2 lks. from the secant.

Set an iron post, 3 ft. long, 3 ins. in diam., in a mound of stone, on shelf in rim rock, for witness cor. to standard cor. of secs. 33 and 34, with brass cap, marked

S C
T37N R5W
S33 | S34
WC

1915

And raise a mound of stone 2 ft. base, 1 1/2 ft. high, N. of cor. Thence west on secant thru sec. 33, continuing measurement by chaining. Ascend 600 ft.

40.00 S. 3 lks. from the secant, on W. edge of canyon, brs. N. and S. Set an iron post, 3 ft. long, 1 in. in diam., 26 ins. in the ground, for standard 1/4 sec. cor., with brass cap, marked

S C
1/4 S 33

1915

from which,

A cedar, 14 ins. in diam., brs. N. 71 1/2° E., 125 lks. dist., marked SC 1/4 S33 BT.

A cedar, 18 ins. in diam., brs. N. 54 1/2° W., 109 lks. dist., marked SC 1/4 S33 BT.

40.70 Triangulation point. Continue chaining.

47.00 East bank of canyon, brs. NE. and SW. Descend 45 ft.

65.00 Bottom of canyon, course NE. Ascend 45 ft.

80.00 South 2 lks. from the secant. On west bank of canyon, brs. NE. and SW.

Set an iron post, 3 ft. long, 3 ins. in diam., 14 ins. in the ground, in a mound of stone, for standard cor. of secs. 32 and 33, with brass cap, marked

S C
T 37N R5W
S32 | S33

1915

from which,

A cedar, 14 ins. in diam., brs. N. 41° E., 194 lks. dist., marked T 37N R5W S33 SC B T.

A cedar, 12 ins. in diam., brs. N. 29° W., 34 lks. dist., marked T37N R5W S32 SC BT.

Land, mountainous.
Soil, thin and rocky.
Undergrowth, sage brush.
Timber, cedar and pine.

S. 89° 59' W., on a secant, thru sec. 32.
Over rolling land, thru scattering undergrowth.
Descend 100 ft.

9.90 Canyon, 5 lks. wide, course N. Ascend 120 ft.

21.50 Point of spur, slopes S. Descend.

23.00 Enter draw, course S.

8. Ninth Standard Parallel North, thru, Range 5 West.

Chains.

33.00 Leave draw; ascend 35 ft.

37.70 Top of ascent. Thence across level top of ridge, brs.N.and S.

No difference between measurements of 40.00 chs. by two sets of chainmen.

40.00 South 1 lk. from the secant,

Set an iron post 3 ft. long, 1 in. in diam., 26 ins. in the ground, for standard $\frac{1}{4}$ sec. cor., with brass cap, markedS C
 $\frac{1}{4}$ S 32

1915

from which,

A cedar, 12 ins. in diam., brs.N. $47\frac{1}{2}^{\circ}$ E., 179 lks. dist., marked SC $\frac{1}{4}$ S 32 BT.A cedar, 10 ins. in diam., brs.N. $63\frac{3}{4}^{\circ}$ W., 119 lks. dist., marked SC $\frac{1}{4}$ S 32 BT.

45.00 Descend 70 ft.

51.90 Head of gulch, course N. Ascend 35 ft.

55.00 Thence across end of spur, slopes N.

60.00 Descend 140 ft.

68.54 Bottom of draw, 5 chs. wide, course N.

69.75 From this point, Heaton's reservoir brs.S. 3 chs. dist.

73.12 Road brs.NW. and SE. Ascend 80 ft.

77.35 Spur, slopes S. Descend 20 ft.

No difference between measurements of 80.00 chs. by two sets of chainmen.

80.00 Set an iron post, 3 ft. long, 3 ins. in diam., 20 ins. in the ground, in a mound of stone, for standard cor. of secs. 31 and 32, with a brass cap, marked

S C
T37N | R5W
S31 | S32

1915

and raise a mound of stone, 2 ft. base, 2 ft. high, N. of corner.

Land, rolling

Soil, thin and rocky, 4th rate.

No timber.

Undergrowth, greasewood. Short grass.

S. $89^{\circ}59'$ W., on the secant, S. of sec. 31.

Over rolling land, thru. scattering undergrowth.

Descend 15 ft.

1.60 Draw, course SE. Ascend 60 ft.

9.90 Top of ascent, brs.N. and S. Thence over rolling prairie, draining N.

Difference between measurements of 40.00 chs. by two sets of chainmen is 3 lks., position of middle point,

By 1st set, $40.01\frac{1}{2}$ chs.,By 2nd set, $39.98\frac{1}{2}$ chs., the mean of which is

40.00 North 2 lks. from the secant,

Set an iron post, 3 ft. long, 1 in. in diam., 26 ins. in the ground, for standard $\frac{1}{4}$ sec. cor., with brass cap, marked

Ninth Standard Parallel North Through Range 5 West. 8.9

Chains.

S C
1831

1915

And raise a mound of stone 2½ ft. base, 2½ ft. high, N. of cor.

67.50

Bottom of draw, course SE.
 Difference between measurements of 80.00 chs. by two sets of chainmen is 2 lks.; position of middle point

By 1st set, 79.99 chs.

By 2nd set, 80.01 chs.; the mean of which is

80.00

N. 4 lks. from the secant,
 Set an iron post, 3 ft. long, 3 ins. diam., 24 ins. in the ground, for standard cor. of Ts. 37 N., Rs. 5 and 6 W., with brass cap, marked

S C
 T 3 7 N
 R6W R5W
S36 S31

1915

And raise a mound of stone, 2 ft. base, 2 ft. high, N. of cor.

Land, rolling prairie.
 Soil, thin and rocky; 4th rate.
 No timber.
 Undergrowth, white sage and greasewood.
 Gramma grass.

104. Survey of Ninth Standard Parallel North Through Range 6 West.

Chains.

From a point on the secant, 4 lks. S. of the standard cor. of Ts. 37 N., Rs. 5 and 6 W. At this point, I deflect an angle of 4' to the North and run N.89° 58' W., on the secant, S. of sec. 36. Over rolling prairie land, through scattering undergrowth.

30.00 Bottom of draw, 1 ch. wide, course N.
No difference between measurements of 40.00 chs. by two sets of chainmen.

40.00 N. 2 lks. from the secant,
Set an iron post, 3 ft. long, 1 in. diam., 26 ins. in the ground, for standard $\frac{1}{4}$ sec. cor., with brass cap, marked

S C
1/4 S36
1915

Dig pits, 18 X 18 X 12 ins., E. and W. of post, 3 ft. dist.; and raise a mound of earth, 3 $\frac{1}{2}$ ft. base, 1 $\frac{1}{2}$ ft. high, N. of cor.

45.00 Desc. 25 ft.
Draw, course N. Asc.

49.10 Spur, slopes N. Desc. 50 ft.

62.00 Draw, course N. Stock trails in draw, br. N. and S. Asc. 25 ft.

74.00 Spur, slopes N. Desc.
Difference between measurements of 80.00 chs. by two sets of chainmen is 2 lks.; position of middle point.
By 1st set, 79.99 chs.
By 2nd set, 80.01 chs.; the mean of which is

80.00 Set an iron post, 3 ft. long, 3 ins. diam., 14 ins. in the ground, in a mound of stone, for standard cor. of secs. 35 and 36, with brass cap, marked

S C
T37N | R6W
S35 | S36

1915

And raise a mound of stone, 2 ft. base, 1 $\frac{1}{2}$ ft. high, N. of cor.

Land, rolling prairie.
Soil, thin and rocky; 4th rate.
No timber.
Undergrowth, greasewood. Short grass.

N.89° 59' W., on the secant, through sec. 35. Over rolling prairie land, through scattering undergrowth.

15.58 Road, brs. N. and S.

20.00 Desc. 25 ft.

25.00 Draw, 5 chs. wide, course N. Asc. 30 ft.

33.50 Ridge, brs. N. and S. Desc. slightly.
No difference between measurements of 40.00 chs. by two sets of chainmen.

40.00 S. 1 lk. from the secant,
Set a limestone, 10 X 18 X 2 ins., 12 ins. in the ground, for standard $\frac{1}{4}$ sec. cor., marked $\frac{1}{4}$ on N. face; from which

A cedar, 10 ins. diam., brs. N.37° E., 40 lks. dist., marked SC $\frac{1}{4}$ S35. BT.
A cedar, 8 ins. diam., brs. N.75° W., 74 lks. dist., marked SC $\frac{1}{4}$ S35. BT.
(Impossible to set iron post at this point.)
Thence over rolling prairie.

59.30 Desc. 50 ft.

66.76 Draw, 4 chs. wide, course NE. Asc. 35 ft.

Ninth Standard Parallel North Through Range 6 West. 11

Chains.

75.00 Asc. slightly.
 No difference between measurements of 80.00 chs. by two sets of chainmen.
 80.00 S. 2 lks. from the secant,
 Set an iron post, 3 ft. long, 3 ins. diam., 30 ins. in the ground, for standard cor. of secs. 34 and 35, with brass cap marked

S C	
T37N	R6W
S34	S35

1915

From which
 A cedar, 14 ins. diam., brs. N.51 $\frac{3}{4}$ ° E., 225 lks. dist., marked T37N R6W S35 SC. BT.
 A cedar, 16 ins. diam., brs. N.43 $\frac{1}{2}$ ° W., 204 lks. dist., marked T37N R6W S34 SC. BT.

Land, rolling prairie.
 Soil, thin and rocky; 4th rate.
 Timber, cedar.
 Undergrowth, greasewood and sagebrush.

N.89° 59' W., on the secant, through sec. 34.
 Over rolling land, through scattering timber and undergrowth.

Asc. 105 ft.
 9.90 Spur, slopes S. Desc. 15 ft.
 20.87 Gulch, 5 lks. wide, course S. Asc. 110 ft.
 25.00 Stock trails br. NE. and SW.
 34.00 Leave scattering timber, brs. N. and S.
 Difference between measurements of 40.00 chs. by two sets of chainmen is 2 lks.; position of middle point
 By 1st set, 39.99 chs.
 By 2nd set, 40.01 chs.; the mean of which is
 40.00 S. 3 lks. from the secant,
 Set an iron post, 3 ft. long, 1 in. diam., 26 ins. in the ground, for standard $\frac{1}{4}$ sec. cor., with brass cap, marked

S C	
$\frac{1}{4}$ S34	

1915

And raise a mound of stone, 3 ft. base, 2 ft. high, N. of cor.

Desc. 30 ft.
 48.17 Shallow draw, 1 ch. wide, course SE. Asc. 200 ft.
 61.50 Heaton Knolls, br. N. and S. Desc. 350 ft.
 74.65 Gulch, 5 lks. wide, course SE. Asc. 85 ft.
 76.80 Spur, slopes SW. Desc. 20 ft.
 Difference between measurements of 80.00 chs. by two sets of chainmen is 7 lks.; position of middle point
 By 1st set, 80.03 $\frac{1}{2}$ chs.
 By 2nd set, 79.96 $\frac{1}{2}$ chs.; the mean of which is
 80.00 S. 3 lks. from the secant,
 Set an iron post, 3 ft. long, 3 ins. diam., 24 ins. in the ground, for standard cor. of secs. 33 and 34, with brass cap marked

S C	
T37N	R6W
S33	S34

1915

And raise a mound of stone, 2 ft. base, 1 $\frac{1}{2}$ ft. high, N. of cor.

Ninth Standard Parallel North Through Range 6 West.

Chains.

Land, rolling and mountainous.
Soil, thin and gravelly; 3rd rate.
Timber, cedar and pine.
Undergrowth, greasewood and sagebrush.

West on the secant, through sec. 33.
Over rolling prairie, through scattering undergrowth.
Desc. gradually.
19.94 Draw, 20 lks. wide, course NE. Asc. 30 ft.
25.00 Ridge, brs. NE. and SW. Desc. 115 ft.
33.15 Draw, course NE. Asc.
Difference between measurements of 40.00 chs. by two sets
of chainmen is 2 lks.; position of middle point
By 1st set, 40.01 chs.
By 2nd set, 39.99 chs.; the mean of which is
40.00 S. 3 lks. from the secant,
Set an iron post, 3 ft. long, 1 in. diam., 26 ins. in the
ground, for standard $\frac{1}{4}$ sec. cor., with brass cap, marked

S C
 $\frac{1}{4}$ S33

1915

Dig pits, 18 X 18 X 12 ins., E. and W. of post, 3 ft.
dist.; and raise a mound of earth, $3\frac{1}{2}$ ft. base, $1\frac{1}{2}$ ft.
high, N. of cor.
Thence over rolling prairie land.
43.30 Wash, 20 lks. wide, 4 ft. deep, course N.
75.52 Road, brs. NE. and SW.
No difference between measurements of 80.00 chs. by two
sets of chainmen.
80.00 S. 2 lks. from the secant,
Set an iron post, 3 ft. long, 3 ins. diam., 24 ins. in the
ground, for standard cor. of secs. 32 and 33, with brass
cap, marked.

S C
T37N | R6W
S32 | S33

1915

Dig pits, 24 X 18 X 12 ins., crosswise on each line,
E. and W., 3 ft., and N. of post, 7 ft. dist.; and
raise a mound of earth, 4 ft. base, 2 ft. high, N. of
cor.

Land, rolling prairie.
Soil, 18 to 24 ins. deep; gravelly; 3rd rate.
No timber.
Undergrowth, greasewood. Short grass.

S. 89° 59' W., on the secant, through sec. 32.
Over rolling prairie, through scattering undergrowth.
Asc. gradually.
No difference between measurements of 40.00 chs. by two
sets of chainmen.
40.00 S. 1 lks from the secant,
Set an iron post, 3 ft. long, 1 in. diam., 26 ins. in the
ground, for standard $\frac{1}{4}$ sec. cor., with brass cap, marked

S C
 $\frac{1}{4}$ S32

1915

Ninth Standard Parallel North Through Range 6 West. 13

Chains.

Dig pits, 18 X 18 X 12 ins., E. and W. of post, 3 ft. dist.; and raise a mound of earth, 3 1/2 ft. base, 1 1/2 ft. high, N. of cor.

50.25 Spur, slopes E. Desc. 25 ft.

60.00 Thence over rolling prairie land.

Difference between measurements of 80.00 chs. by two sets of chainmen is 1 1/2 lks.; position of middle point

By 1st set, 80.00 1/2 chs.

By 2nd set, 79.99 1/2 chs.; the mean of which is

80.00 Set an iron post, 3 ft. long, 3 ins. diam., 24 ins. in the ground, for standard cor. of secs. 31 and 32, with brass cap, marked

S C	
T37N	R6W
831	832

1915

Dig pits, 24 X 18 X 12 ins., crosswise on each line, E. and W., 3 ft., and N. of post, 7 ft. dist.; and raise a mound of earth, 4 ft. base, 2 ft. high, N. of cor.

Land, rolling prairie.

Soil, 18 to 24 ins. deep; gravelly, 3rd rate .

No timber.

Undergrowth, sagebrush and greasewood. Short grass.

S. 89° 59' W., on the secant, S. of sec. 31.

Over rolling prairie land, through scattering undergrowth.

No difference between measurements of 40.00 chs. by two sets of chainmen.

40.00 N. 2 lks. from the secant.

Set an iron post, 3 ft. long, 1 in. diam., 26 ins. in the ground, for standard 1/4 sec. cor., with brass cap, marked

S C	
1/4	831

1915

Dig pits, 18 X 18 X 12 ins., E. and W. of post, 3 ft. dist.; and raise a mound of earth, 3 1/2 ft. base, 1 1/2 ft. high, N. of cor.

No difference between measurements of 80.00 chs. by two sets of chainmen.

80.00 N. 4 lks. from the secant,

Set an iron post, 3 ft. long, 3 ins. diam., 24 ins. in the ground, for standard cor. of Ts. 37 N., Rs. 6 and 7 W., with brass cap, marked

S C	
T 37 N	
R7W	R6W
836	831

1915

Dig pits, 30 X 24 X 12 ins., crosswise on each line, E. and W., 4 ft.; and N. of post, 8 ft. dist.; and raise a mound of earth, 5 ft. base, 2 1/2 ft. high, N. of cor.

Land, rolling prairie.

Soil, 18 to 24 ins. deep; gravelly; 3rd rate.

No timber.

Undergrowth, sagebrush and greasewood. Short grass.

118 Survey of Ninth Standard Parallel North Through Range 7 West.

Chains.

November 28, 1915. At 3 hrs. 1.5 m., a.m., l.m.t., from a point on the secant, 4 lks. S. of the standard cor. of Ts. 37 N., Rs. 6 and 7 W., hereinbefore described, observe Polaris at western elongation, in accordance with the manual of instructions, and mark the line thus determined by a tack in a stake set in the ground, 5 chs. N. of instrument. At 8 hrs. 45 m., a.m., lay off the azimuth of Polaris, 1° 25' to the east, and from the meridian thus determined, turn off the azimuth of the secant, 89° 58' to the east. The line thus determined intersects a flag located on the secant in sec. 34, R. 6 W. From the same meridian, turn off the azimuth of the secant, 89° 58' to the west.

Thence

N. 89° 58' W., on the secant, S. of sec. 36.

Over rolling prairie, through scattering undergrowth.

No difference between measurements of 40.00 chs. by two sets of chainmen.

40.00

N. 2 lks. from the secant,

Set an iron post, 3 ft. long, 1 in. diam., 26 ins. in the ground, for standard 1/4 sec. cor., with brass cap, marked

S C
1/4 S36
1915

From which

A cedar, 16 ins. diam., brs. N. 24 1/2° W., 400 lks. dist. marked 1/4 S36 BT.

A cedar, 8 ins. diam., brs. N. 10 1/2° W., 51 lks. dist., marked 1/4 S36 BT.

Asc. gradually.

52.00

Low ridge, brs. N. and S. Desc.

80.00

No difference between measurements of 80.00 chs. by two sets of chainmen.

80.00

Set an iron post, 3 ft. long, 3 ins. diam., 24 ins. in the ground, for standard cor. of secs. 35 and 36, with brass cap marked

S C
T37N | R7W
S35 | S36

1915

And raise a mound of stone, 2 ft. base, 1 1/2 ft. high, N. of cor.

Land, rolling prairie.
Soil, 18 to 24 ins. deep; gravelly; 3rd rate.
Timber, scattering cedar.
Undergrowth, greasewood. Short grass.

40.00

N. 89° 59' W., on the secant, through sec. 35.
Over rolling land, through scattering undergrowth.
No difference between measurements of 40.00 chs. by two sets of chainmen.

S. 1 lk. from the secant,

Set an iron post, 3 ft. long, 1 in. diam., 26 ins. in the ground, for standard 1/4 sec. cor., with brass cap, marked

S C
1/4 S35
1915

And raise a mound of stone, 2 1/2 ft. base, 2 ft. high, N. of cor.

Ninth Standard Parallel North Through Range 7 West. 15.

Chains.

Asc. 160 ft.
 60.00 Ridge, brs. N. and S. Desc. gradually.
 No difference between measurements of 80.00 chs. by two sets of chainmen.
 80.00 S. 2 lks. from the secant,
 Set an iron post, 3 ft. long, 3 ins. diam., 24 ins. in the ground, for standard cor. of secs. 34 and 35, with brass cap, marked

S	C
T37N	R7W
S34	S35

1915

And raise a mound of stone, 2 ft. base, 1½ ft. high, N. of cor.

Land, rolling prairie land.
 Soil, thin and rocky; 4th rate.
 No timber.
 Undergrowth, sagebrush and greasewood. Short grass.

N. 89°59' W., on the secant, through sec. 34.
 Over rolling prairie land, through scattering undergrowth.
 Asc. gradually.
 30.00 Desc. 70 ft.
 No difference between measurements of 40.00 chs. by two sets of chainmen.
 40.00 S. 3 lks. from the secant,
 Set an iron post, 3 ft. long, 1 in. diam., 26 ins. in the ground, for standard ¼ sec. cor., with brass cap, marked

S	C
¼S34	

1915

And raise a mound of stone, 2 ft. base, 2 ft. high, N. of cor.
 62.00 Draw, 1 ch. wide, course NE.
 No difference between measurements of 80.00 chs. by two sets of chainmen.
 80.00 S. 3 lks. from the secant,
 Set an iron post, 3 ft. long, 3 ins. diam., 24 ins. in the ground, for standard cor. of secs. 33 and 34, with brass cap, marked

S	C
T37N	R7W
S33	S34

1915

And raise a mound of stone, 2 ft. base, 1½ ft. high, N. of cor.

Land, rolling prairie.
 Soil, thin and rocky; 4th rate.
 No timber.
 Undergrowth, greasewood. Short grass.

West on the secant, through sec. 33.
 Over rolling prairie, through scattering undergrowth.
 No difference between measurements of 40.00 chs. by two sets of chainmen.
 40.00 S. 3 lks. from the secant,

38.

Ninth Standard Parallel North Through Range 7 West.

chains.

Set an iron post, 3 ft. long, 1 in. diam., 26 ins. in the ground, for standard $\frac{1}{4}$ sec. cor., with brass cap, marked

S C
1S33
1915

And raise a mound of stone, 2 ft. base, $1\frac{1}{2}$ ft. high, N. of cor.

Desc. 40 ft.

42.93 Canyon, 1 ch. wide, course N. Asc. 35 ft.

46.60 Ridge, brs. NE. and SW. Desc. 30 ft.

55.00 Thence over rolling prairie.

No difference between measurements of 80.00 chs. by two sets of chainmen.

80.00 S. 2 lks. from the secant,

Set an iron post, 3 ft. long, 3 ins. diam., 24 ins. in the ground, for standard cor. of secs. 32 and 33, with brass cap, marked

S C
T37N | R7W
S32 | S33

1915

Dig pits, 24 X 18 X 12 ins., crosswise on each line, E. and W., 3 ft., and N. of stone, 7 ft. dist.; and raise a mound of earth, 4 ft. base, 2 ft. high, N. of cor.

Land. rolling prairie.

Soil, thin and rocky; 4th rate.

No timber.

Undergrowth, greasewood. Short grass.

S. $89^{\circ}59'$ W., on the secant, through sec. 32. Over rolling prairie, through scattering undergrowth. Desc. gradually.

20.00 Flat canyon, 4 chs. wide, course N.

21;70 Road, brs. N. and S. Asc. 100 ft.

38.50 Ridge, brs. NE. and SW. Desc. 70 ft.

Difference between measurements of 40.00 chs. by two sets of chainmen is 3 lks.; position of middle point

By 1st set, 40.01 $\frac{1}{2}$ chs.

By 2nd set, 39.98 $\frac{1}{2}$ chs.; the mean of which is

40.00 S. 1 lk. from the secant,

Set an iron post, 3 ft. long, 1 in. diam., 26 ins. in the ground, for standard $\frac{1}{4}$ sec. cor., with brass cap, marked

S C
1S32
1915

And raise a mound of stone, 2 ft. base, 2 ft. high, N. of cor.

46.16 Canyon, 5 chs. wide, course N. Asc. 45 ft.

57.85 Top of ascent; desc. 60 ft.

62.68 Canyon, 2 chs. wide, course NE. Asc. 80 ft.

76.70 Spur, slopes N. Desc. 80 ft.

No difference between measurements of 80.00 chs. by two sets of chainmen.

80.00 Set an iron post, 3 ft. long, 3 ins. diam., 24 ins. in the ground, for standard cor. of secs. 31 and 32, with brass cap, marked

Ninth Standard Parallel North Through Range 7 West. 17.

Chains.

S C
T37N | R7W
S31 | S32

1915

And raise a mound of stone, 2 ft. base, 1½ ft. high, N. of cor.

Land, rolling prairie and mountainous.
Soil, thin and rocky; 4th rate.
No timber.
Undergrowth, greasewood. Short grass.

S.89° 59' W., on the secant, S. of sec. 31.
Over rolling and mountainous land, through scattering undergrowth.

Desc.

- 0.75 Canyon, 50 lks. wide, course N. Asc. 100 ft.
 - 5.00 Spur, slopes N. Desc. 100 ft.
 - 10.07 Canyon, 2 chs. wide, course N. Asc. 45 ft.
 - 14.50 Spur, slopes NE. Desc. 45 ft.
 - 22.50 Canyon, course NE. Asc. 20 ft.
 - 25.00 Road, brs. N. and S.
 - 28.20 Small knoll. Desc.
 - 30.00 Thence over rolling prairie.
- No difference between measurements of 40.00 chs. by two sets of chainmen.
- 40.00 N. 2 lks. from the secant,
Set an iron post, 3 ft. long, 1 in. diam., 26 ins. in the ground, for standard ¼ sec. cor., with brass cap, marked

S C
1/4 S31

1915

Dig pits, 18 X 18 X 12 ins., E. and W. of post, 3 ft. dist.; and raise a mound of earth, 3½ ft. base, 1½ ft. high, N. of cor.

Asc. 35 ft.

- 48.00 Small spur, slopes S. Desc.
 - 51.88 Gulch, 75 lks. wide, course SE. Asc. 90 ft.
 - 61.10 Spur, slopes N. Desc. 60 ft.
 - 69.80 Asc. 85 ft.
- No difference between measurements of 80.00 chs. by two sets of chainmen.
- 80.00 N. 4 lks. from the secant,
Set an iron post, 3 ft. long, 3 ins. diam., 24 ins. in the ground, for standard cor. of Ts. 37 N., Rs. 7 and 8 W. with brass cap, marked

S C
T 3 7 N
R8W | R7W
S36 | S31

1915

And raise a mound of stone, 2½ ft. base, 1½ ft. high, N. of cor.

Land, rolling and mountainous.
Soil, thin and rocky; 4th rate.
No timber.
Undergrowth, greasewood. Short grass.

248 Survey of Ninth Standard Parallel North Through Range 8 West.

Chains.

From a point on the secant, 4 lks. S. of the standard cor. of Ts. 37 N., Rs. 7 and 8 W., hereinbefore described, deflect 4' to the right and run N. 89° 58' W., on the secant, S. of sec. 36. Over rolling prairie land, through scattering undergrowth.

9.30 Desc. 65 ft.
17.53 Draw, 2 chs. wide, course SW. Asc. 25 ft.
22.90 Spur, slopes S. Desc.
30.00 Thence over rolling prairie land.
36.80 Road, brs. NW. and SE.
No difference between measurements of 40.00 chs. by two sets of chainmen.
40.00 N. 2 lks. from the secant, Set an iron post, 3 ft. long, 1 in. diam., 12 ins. in the ground, in a mound of stone, for standard $\frac{1}{4}$ sec. cor., with brass cap marked

S C
 $\frac{1}{4}$ S36
1915

And raise a mound of stone, 2 ft. base, 1 $\frac{1}{2}$ ft. high, N. of cor.
80.00 No difference between measurements of 80.00 chs. by two sets of chainmen.
80.00 Set an iron post, 3 ft. long, 3 ins. diam., 24 ins. in the ground, for standard cor. of secs. 35 and 36, with brass cap marked

S C
T37N | R8W
S35 | S36
1915

And raise a mound of stone, 2 ft. base, 1 $\frac{1}{2}$ ft. high, N. of cor.
Land, rolling prairie.
Soil, thin and rocky; 4th rate.
No timber.
Undergrowth, sagebrush. Poor grass.

N. 89° 59' W., on the secant, through sec. 35. Over rolling prairie, through scattering undergrowth:
Asc. 15 ft.
2.30 S. slope of small knoll. Desc.
15.00 Asc. 35 ft.
25.00 Narrow ridge, brs. N. and S. Desc.
30.00 Asc. 20 ft.
No difference between measurements of 40.00 chs. by two sets of chainmen.
40.00 S. 1 lk. from the secant, Set an iron post, 3 ft. long, 1 in. diam., 26 ins. in the ground, for standard $\frac{1}{4}$ sec. cor., with brass cap, marked

S C
 $\frac{1}{4}$ S35
1915

From which
A cedar, 12 ins. diam., brs. N. 13 $\frac{1}{2}$ ° E., 180 lks. dist. marked $\frac{1}{4}$ S35 BT.
A cedar, 12 ins. diam., brs. N. 78 $\frac{1}{2}$ ° W., 155 lks. dist. marked $\frac{1}{4}$ S35 BT.
42.00 Narrow spur, slopes SW. Enter cedar timber, brs. NE. and SW. Desc.

Ninth Standard Parallel North Through Range 8 West 19

Chains.

60.00

Leave timber, brs. N. and S.
No difference between measurements of 80.00 chs. by two sets of chainmen.

80.00

S. 2 lks. from the secant,
Set an iron post, 3 ft. long, 3 ins. diam., 24 ins. in the ground, for standard cor. of secs. 34 and 35, with brass cap, marked

S C
T37N | R8W
S34 | S35

1915

And raise amount of stone, 2 ft. base, 1 1/2 ft. high, N. of cor.

Land, rolling prairie.
Soil, 18 to 20 ins. deep.; gravelly; 3rd rate.
Timber, cedar.
Undergrowth, greasewood. Short grass.

N. 89° 56' W., on the secant, through sec. 34.
Over rolling prairie, through scattering undergrowth.

15.00

Draw, 1 ch. wide, course S. Asc.

22.10

Narrow spur, slopes SW. Desc.

30.00

Asc. 20 ft.

33.20

Spur, slopes SE. Desc.

35.00

Asc.

36.40

Top of small knoll. Desc. 25 ft.

No difference between measurements of 40.00 chs. by two sets of chainmen.

40.00

S. 3 lks. from the secant,
Set an iron post, 3 ft. long, 1 in. diam., 26 ins. in the ground, for standard 1/4 sec. cor., with brass cap, marked

S C
T37N | R8W
S34

1915

Dig pits, 18 X 18 X 12 ins., E. and W. of post, 3 ft. dist.; and raise a mound of earth, 3 1/2 ft. base, 1 1/2 ft. high, N. of cor.

Asc. 65 ft.

55.00

Top of flat knoll. Desc.

60.00

Thence over rolling prairie land.

No difference between measurements of 80.00 chs. by two sets of chainmen.

80.00

S. 3 lks. from the secant,
Set an iron post, 3 ft. long, 3 ins. diam., 24 ins. in the ground, for standard cor. of secs. 33 and 34, with brass cap, marked

S C
T37N | R8W
S33 | S34

1915

Raise a mound of stone, 2 ft. base, 1 1/2 ft. high, N. of cor.

Land, rolling prairie.
Soil, thin and rocky; 4th rate.
No timber.
Undergrowth, greasewood and scrubby cedar. Short grass.

24 20 Ninth Standard Parallel North Through Range 8 West.

chains. West on the secant, through sec. 33.
 Over rolling prairie, through scattering undergrowth.
 16.30 Road, brs. NW. and SE. Asc.
 30.00 Top of small knoll. Desc.
 No difference between measurements of 40.00 chs. by two sets of chainmen.
 40.00 S. 3 lks. from the secant,
 Set an iron post, 3 ft. long, 1 in. diam., 26 ins. in the ground, for standard $\frac{1}{4}$ sec. cor., with brass cap, marked

S C
 $\frac{1}{4}$ S33

1915

And raise a mound of stone, 2 ft. base, 1 $\frac{1}{2}$ ft. high, N. of cor.
 62.70 Spur, slopes NE. Desc. 20 ft.
 63.00 Enter scattering timber, brs. N. and S. Thence over prairie land.
 No difference between measurements of 80.00 chs. by two sets of chainmen.
 80.00 S. 2 lks. from the secant,
 Set an iron post, 3 ft. long, 3 ins. diam., 24 ins. in the ground, for standard cor. of secs. 32 and 33, with brass cap, marked

S C
 T37N | R8W
S32 | S33

1915

From which
 A cedar, 10 ins. diam., brs. N.42 $\frac{1}{2}$ ° E., 177 lks. dist., marked T37N R8W S33 SC BT.
 A cedar, 14 ins. diam., brs. N.21 $\frac{1}{2}$ ° W., 129 lks. dist., marked T37N R8W S32 SC BT.

Land, rolling prairie.
 Soil, thin and rocky; 4th rate.
 Timber, scattering cedar.
 Undergrowth, greasewood. Short grass.

S.89° 59' W., on the secant, through sec. 32.
 Over rolling prairie, through dense timber and scattering undergrowth.
 Asc.
 2.40 Low spur, slopes NW. Desc.
 10.00 Draw, course N. Thence over rolling prairie.
 10.80 Road, brs. N. and S. Asc.
 20.00 Spur, slopes N. Desc.
 30.00 Asc.
 32.40 Low ridge, brs. N. and S. Desc. 40 ft.
 No difference between measurements of 40.00 chs. by two sets of chainmen.
 40.00 S. 1 lk. from the secant,
 Set an iron post, 3 ft. long, 1 in. diam., 26 ins. in the ground, for standard $\frac{1}{4}$ sec. cor., with brass cap, marked

S C
 $\frac{1}{4}$ S32

1915

From which
 A pinion, 14 ins. diam., brs. N.23 $\frac{1}{2}$ ° E., 100 lks. dist., marked SC $\frac{1}{4}$ S32 BT.
 A cedar, 24 ins. diam., brs. N.38° W., 191 lks. dist., marked SC $\frac{1}{4}$ S32 BT.

Ninth Standard Parallel North Through Range 8 West. 221

Chains.
 54.00 Leave timber, brs. N. and S.
 78.50 Desc. 20 ft.
 . No difference between measurements of 80.00 chs. by two sets of chainmen.
 80.00 Set an iron post, 3 ft. long, 3 ins. diam., 24 ins. in the ground, for standard cor. of secs. 31 and 32, with brass cap, marked

S C	
T37N	R8W
S31	S32

1915

And raise a mound of stone, 3 ft. base, 3 ft. high, N. of cor.
 Land, rolling prairie.
 Soil, thin and rocky; 4th rate.
 Timber, cedar and pinion.
 Undergrowth, greasewood. Short grass.

S.89° 59' W., on the secant, S. of sec. 31.
 Over rolling land, through scattering timber and undergrowth.
 Desc. 30 ft.
 1.85 Canyon, 5 lks. wide, course SW. Asc. 30 ft.
 4.30 Spur, slopes S. Desc. 35 ft.
 16.55 Draw, 15 chs. wide, course SE.NW
 20.66 Road, brs. N. and S.
 35.00 Asc. E. slope, 90 ft.
 No difference between measurements of 40.00 chs. by two sets of chainmen.
 40.00 N. 2 lks. from the secant,
 Set an iron post, 3 ft. long, 1 in. diam., 26 ins. in the ground, for standard $\frac{1}{4}$ sec. cor., with brass cap, marked

S C	
<u>$\frac{1}{4}$S31</u>	

1915

From which
 A cedar, 10 ins. diam., brs. N.8° W., 54 lks. dist., marked SC $\frac{1}{4}$ S31.BT.
 A pinion, 12 ins. diam., brs. N.32° W., 85 lks. dist., marked SC $\frac{1}{4}$ S31.BT.

41.70 Spur, slopes S. Desc.
 45.00 Asc. 30 ft.
 50.00 Spur, slopes NE. Desc. 15 ft.
 51.95 Gulch, 5 lks. wide, course NE. Asc. 50 ft.
 57.90 Spur, slopes SW. Desc. 55 ft.
 64.85 Draw, course SW. Asc.
 69.00 Spur, slopes S. Desc.
 70.00 Asc. 25 ft.
 75.00 Spur, slopes S. Desc. 30 ft.
 76.33 Draw, course SE. Asc.
 No difference between measurements of 80.00 chs. by two sets of chainmen.
 80.00 N. 4 lks. from the secant,
 Set an iron post, 3 ft. long, 3 ins. diam., 24 ins. in the ground, for standard cor. of Ts. 37 N., Rs. 8 and 9 W., with brass cap, marked

226.

Ninth Standard Parallel North Through Range 8 West.

Chains.

S	C
T 3 7 N	
R9W	R8W
S36	S31

1915

From which
 A cedar, 24 ins. diam., brs. N.56 $\frac{1}{4}$ ° W., 60 lks. dist.,
 marked T37N R9W S36 SC.BT.
 No other trees within limits. Raise a mound of stone,
 2 ft. base, 1 $\frac{1}{2}$ ft. high, N. of cor.

Land, rolling prairie.
 Soil, thin and rocky; 4th rate.
 Timber, scattering cedar.
 Undergrowth, greasewood. Short grass.

Survey of Ninth Standard Parallel North Through Range 9 West. 237

Chains

From a point on the secant, 4 lks. S. of the standard cor. of Ts. 37 N., Rs. 8 and 9 West, hereinbefore described deflect 4' to the right and run N.89°58'W., on the secant, S. of sec. 36. Over rolling prairie, through scattering undergrowth. Asc. 80 ft.

27.00
32.38
35.00
39.90

Top of small knoll. Desc. 30 ft.
Gulch, 20 lks. wide, course NE. Asc. 30 ft.
Low ridge, brs. N. and S. Desc. 20 ft.
Drain, course NE.

40.00

No difference between measurements of 40.00 chs. by two sets of chainmen.
N. 2 lks. from the secant,
Set an iron post, 3 ft. long, 1 in. diam., 26 ins. in the ground, for standard $\frac{1}{4}$ sec. cor., with brass cap, marked

S C
1/4 S36

1915

And raise a mound of stone, 2 ft. base, 1 1/2 ft. high, N. of cor.

42.50
47.95
52.72
57.60

Draw, 25 lks. wide, course N. Asc. 85 ft.
Sharp spur, slopes N. Desc. 40 ft.
Canyon, 10 chs. wide, course NE. Asc. 110 ft.
Spur, slopes N. Desc.

80.00

No difference between measurements of 80.00 chs. by two sets of chainmen.
Set an iron post, 3 ft. long, 3 ins. diam., 10 ins. in the ground, in a mound of stone, for standard cor. of secs. 35 and 36, with brass cap, marked

S C
T37N | R9W
S35 | S36

1915

And raise a mound of stone, 2 ft. base, 1 1/2 ft. high, N. of cor.

Land, rough and rolling prairie.
Soil, thin and rocky; 4th rate.
No timber.
Undergrowth, greasewood. Short grass.

N.89°59'W., on the secant, through sec. 35. Over rough rolling hills, through scattering undergrowth. Asc. 25 ft.

8.00
16.05
30.00
35.00

Spur, slopes N. Desc. 45 ft.
Draw, 5 lks. wide, course SE. Asc. 40 ft.
Ridge, brs. N. and S. Desc.

40.00

Enter scattering timber, brs. N. and S.
No difference between measurements of 40.00 chs. by two sets of chainmen.
S. 1 lk. from the secant,
Set an iron post, 3 ft. long, 1 in. diam., 26 ins. in the ground, for standard $\frac{1}{4}$ sec. cor., with brass cap marked

S C
1/4 S35

1915

From which
A cedar, 12 ins diam., brs. N.26° E., 400 lks. dist., marked S0 1/4 S35BT.

28

Ninth Standard Parallel North Through Range 9 West.

Chains.

A cedar, 10 ins. diam., brs. N.58° W., 34 lks. dist., marked SC $\frac{1}{2}$ S35 BT.
 Asc. 30 ft.
 55.00 Low ridge, brs. N. and S. Desc.
 80.00 No difference between measurements of 80.00 chs. by two sets of chainmen.
 80.00 S. 2 lks. from the secant,
 Set an iron post, 3 ft. long, 3 ins diam., 24 ins. in the ground, for standard cor. of secs. 34 and 35, with brass cap, marked

S	C
T37N	R9W
S34	S35

1915

From which
 A pinion, 6 ins. diam., brs. N.84 $\frac{1}{2}$ ° E., 200 lks. dist., marked T37N R9W S35 SC BT.
 A cedar, 8 ins diam., brs. N.66° W., 140 lks. dist., marked T37N R9W S34SC BT.

Land, rough rolling hills.
 Soil, thin and rocky; 4th rate.
 Timber, scattering cedar and pinion.
 Undergrowth, greasewood. Short grass.

N.89°59' W., on the secant, through sec. 34.
 Over rough hilly land, through scattering undergrowth.
 Asc.
 25.00 Low ridge, brs. N. and S. Desc.
 30.00 Head of gulch, course N.
 33.00 Desc. 105 ft.
 36.65 Canyon, 4 chs. wide, course NE. Asc. 30 ft.
 No difference between measurements of 40.00 chs. by two sets of chainmen.
 40.00 S. 3 lks. from the secant,
 Set an iron post, 3 ft. long, 1 in. diam., in a mound of stone, for standard $\frac{1}{4}$ sec. cor., with brass cap, marked

S	S
$\frac{1}{4}$ S34	

1915

And raise a mound of stone, 2 ft. base, 1 $\frac{1}{2}$ ft. high, N. of cor.
 43.00 Desc. 15 ft.
 45.80 Road, brs. N. and S.
 45.75 Draw, course N. Asc. 110 ft.
 57.85 Ridge, brs. N. and S. Desc. 40 ft.
 60.00 Enter timber, brs. N. and S.
 70.00 Ridge, brs. N. and S. Desc. 40 ft.
 73.79 Canyon, 1 ch. wide, course N. Asc. 65 ft.
 78.20 Spur, slopes NE. Desc.
 No difference between measurements of 80.00 chs. by two sets of chainmen.
 80.00 S. 3 lks. from the secant,
 Set an iron post, 3 ft. long, 3 ins diam., 12 ins. in the ground, in a mound of stone, for standard cor. of secs. 33 and 34, with brass cap, marked

S	C
T37N	R9W
S33	S34

1915

Ninth Standard Parallel North, thru. Range 9 West.

29.25

Chains.

from which,

- A mountain mahogany, 6 ins. diam., brs.N.9°E., 43 lks.dist., marked T37N R9W S34 SC BT.
- A pinon, 8 ins. in diam., brs.N.23 $\frac{3}{4}$ °W., 96 lks. dist., marked T 37N R9W S33 SC BT.

Land, rough and hilly.
 Soil, thin and rocky, 4th rate.
 Timber, cedar.
 Undergrowth, greasewood; short grass.

West, on the secant, thru. sec.33.

Over rough and rolling land, thru.scattering undergrowth and dense timber.

- 15.00 Ascend 20 ft.
 - 17.50 Low ridge, brs.N.and S. Descend 20 ft.
 - 20.00 Thence over rolling prairie.
- No difference between measurements of 40.00 chs. by two sets of chainmen.

- 40.00 South, 3 lks.from the secant,
 Set an iron post, 3 ft.long, 1 in. in diam., 18 ins. in the ground, in a mound of stone, for standard $\frac{1}{4}$ sec.cor., with brass cap, marked

S C
 $\frac{1}{4}$ S 33

1915

from which,

- A cedar, 30 ins. in diam.. brs.N.51 $\frac{1}{2}$ °E., 60 lks. dist., marked S C $\frac{1}{4}$ S 33 B T.
- A pinon, 6 ins. in diam., brs.N.54 $\frac{1}{2}$ °W., 27 lks. dist., marked SC $\frac{1}{4}$ S 33 B T.

Descend 15 ft.

- 43.00 Draw, 1 ch. wide, course NE. Ascend 15 ft.
 - 65.00 Low ridge, brs.N.and S. Descend 50 ft.
 - 73.00 Draw, 1 ch. wide, course N. Ascend 50 ft.
- No difference between meaurments of 80.00 chs. by two sets of chainmen.

- 80.00 South 2 lks.from the secant,
 Set an iron post, 3 ft.long, 3 ins. indiam., 24 ins. in the ground, for standard cor.of secs. 32 and 33, with brass cap, marked

S C
 T37N | R9W
 S32 | S33

1915

from which,

- A pine, 16 ins. in diam., brs.N.29 $\frac{1}{2}$ °E., 45 lks. dist., marked T37N R9W S 33 SC BT.
- A cedar, 20 ins. in diam., brs. N.21 $\frac{1}{2}$ °W., 160 lks.dist., marked T37N R9W S32 SC BT.

Land, rough and rolling.
 Soil, thin and rocky, 4th rate.
 Timber, cedar and pine.
 Undergrowth, sage brush.
 Short grass.

S.89°59'W., on the secant, thru.sec.32.

Over rolling prairie, thru.dense timber and scattering undergrowth.

No difference between measurements of 40.00 chs.by two sets of chainmen.

- 40.00 South 1 link from the secant,

26 30. Ninth Standard Parallel North, thru. Range 9 West.

Chains.

Set an iron post, 3 ft. long, 1 in. in diam., 26 ins. in the ground, for standard $\frac{1}{4}$ sec. cor., with brass cap, marked

S C
 $\frac{1}{4}$ S 32

1915

from which,

A pinon, 10 ins. in diam., brs. N. 43° E., 54 lks. dist., marked $\frac{1}{4}$ S 32 SQ. BT.

A cedar, 8 ins. in diam., brs. N. 33° W., 83 lks. dist., marked $\frac{1}{4}$ S 32 SQ. BT.

Ascend.

62.50 Spur, slopes N. Descend.

65.00 Thence over rolling prairie.

70.00 No difference between measurements of 80.00 chs. by two sets of chainmen.

80.00 Set an iron post 3 ft. long, 3 ins. in diam., 18 ins. in the ground, in a mound of stone, for standard cor. of secs. 31 and 32, with brass cap, marked

S C
T37N R9W
S31|S32

1915

from which,

A pinon, 18 ins. in diam., brs. N. $41\frac{1}{2}^{\circ}$ E., 190 lks. dist., marked T37N R9W S32 SQ. BT.

A pine, 12 ins. in diam., brs. N. 50° W., 50 lks. dist., marked T37N R9W S31SQ. BT.

Land, rolling.

Soil, thin and very rocky, 4th rate.

Timber, cedar and pinon.

Undergrowth, sagebrush.

s. $89^{\circ}59'$ W., on the secant, south of sec. 31.

Over rolling land, thru dense timber and scattering undergrowth.

Descend.

7.50 Draw, 1 ch. wide, course SE. Ascend 20 ft.

19.00 Descend.

20.99 Draw, 5 lks. wide, course NE. Ascend 55 ft.

27.00 Small ridge, slopes N. Descend 120 ft.

34.00 Top of Hurricane ledge, brs. N. and S.

38.76 Flag point of triangulation, hereinafter described.

Continue chaining.

40.00 True point for standard $\frac{1}{4}$ sec. cor. of sec. 31 falls on inaccessible rock, making it impracticable to set post. No difference between measurement of 41.96 chs. by 2 sets of chainmen.

41.96 North 2 lks. from the secant, nearest point to $\frac{1}{4}$ sec. cor. point, practicable for setting of witness cor.

Set an iron post, 3 ft. long, 1 in. in diam., 18 ins. in the ground, in a mound of stone, for witness cor. to standard $\frac{1}{4}$ sec. cor., with brass cap, marked

S C
 $\frac{1}{4}$ S31 WC

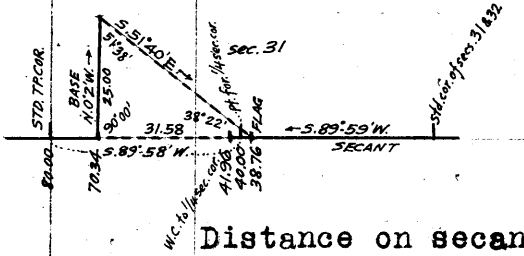
1915

and raise a mound of stone, 3 ft. base, 2 ft. high, N. of cor.

Chaining on secant west of this cor. is impracticable; therefore, discontinue chaining at this point, and triangulate as follows:

Ninth Standard Parallel North, thru, Range 9 West.

Chains



From a point on secant, S. 89° 58' W. of this point lay off a base N. 0° 2' W., 25.00 chs. From N. end of said base, flag left at 38.76 chs. sta. on secant, brs. S. 51° 40' E.

Included angles are 51° 38', 38° 22' and 90° 00', the sum of which is 180° 00'

Distance on secant from flag at 38.76 ch. sta. to Triangulation point is therefore obtained by base x tang, 51° 38' or 25.00 x 1.26319 = 31.58 chs., which added to 38.76 chs. = 70.34 chs. location of triangulation point.

Approximate location of topographical features on secant between witness cor. to standard 1/4 sec. cor., and Triangulation point is given as follows:

- 55.00 Foot of Hurricane ledge, 1000 ft. below top of rim, brs. N. and S. Ascend gentle E. slope; leave timber, brs. N. and S.
- 70.34 Pt. of triangulation hereinbefore described. Continue measurements by chaining. Measurements of 80.00 chs. by two sets of chainmen, are identical.
- 80.00 North 4 lks. from the secant. Set an iron post, 3 ft. long, 3 ins. indiam., 24 ins. in the ground, for standard cor. of Ts. 37 N., Rs. 9 and 10 W., with a brass cap, marked

S C
T 3 7 N
R10W | R9W
S36 | S31

1915

and raise a mound of stone, 3 ft. base, 3 ft. high, N. of cor.

Land, rolling and rough mountainous.
Soil, thin and rocky, 4th rate.
Timber, pinon and cedar.
Undergrowth, sage brush and greasewood.
Thin grass.

28 32. Survey of Ninth Standard Parallel North thru Range 10 West.

Chains.

- December 6, 1915. At 2h.30m. a.m., l.m.t., from a point on the secant, 4 lks.S.of the standard cor.of Ts.37 N.,Rs. 9 and 10 W.,hereinbefore described, observe Polaris at Western elongation, in accordance with the Manual of Instructions, and mark the line thus determined by a tack in a stake set in the ground, 5 chs.N.of instrument.
- At 8h.0m. a.m.,l.m.t., turn off the azimuth of Polaris, $1^{\circ} 25'$ to the east, and from the meridian thus determined, turn off the azimuth of the secant, $89^{\circ} 58'$ to the east. The line thus determined coincides with the secant used thru. Range 9 West. From the same meridian, turn off the azimuth of the secant, $89^{\circ} 58'$ to the west.
- Thence,
N. $89^{\circ} 58'$ W., on the secant, S. of sec. 36.
Over rough, mountainous land, thru scattering timber and undergrowth.
Ascend 115 ft.
- 14.85 Spur, slopes N. Descend.
27.85 Gulch, 5 lks.wide, course NE. Ascend 180 ft.
35.95 Diamond butte, slopes N. Descend.
Difference between measurements of 40.00 chs. by two sets of chainmen is 2 lks.; position of middle point,
By 1st set, 39.99 chs.,
By 2nd set, 40.01 chs., the mean of which is
- 40.00 North 2 lks. from the secant,
Set an iron post, 3 ft. long, 1 in. in diam., 26 ins. in the ground, for standard $\frac{1}{4}$ sec.cor., with brass cap, marked
- S C
1836
1915
- and raise a mound of stone, 2 ft. base, $1\frac{1}{2}$ ft. high, N. of cor.
Ascend 425 ft.
- 71.00 Top of twin knolls. Descend 265.ft.
Difference between measurements of 80.00 chs. by two sets of chainmen is 8 lks.; position of middle point
By 1st set, 79.96 chs.,
By 2nd set, 80.04 chs., the mean of which is
- 80.00 Set an iron post, 3 ft. long, 3 ins. in diam., 24 ins. in the ground, for standard cor.of secs. 35 and 36, with brass cap, marked
- S C
T37N | R10W
S35 | S36
1915
- and raise a mound of stone, 2 ft. base, $1\frac{1}{2}$ ft. high, N. of cor.
Land, rough, mountainous.
Soil, rocky, 4th rate.
Timber, cedar.
Undergrowth, greasewood.
-
- N. $89^{\circ} 59'$ W., on the secant, thru sec. 35.
Over mountainous land, thru scrubby timber and undergrowth.
Descend 860 ft.
- 10.40 Brown's ranch, brs.S. $22^{\circ} 28'$ W.
No difference between measurements of 40.00 chs. by two sets of chainmen.
- 40.00 South, 1 link from the secant,
Set an iron post, 3 ft. long, 1 in. in diam., 26 ins. in the ground, for standard $\frac{1}{4}$ sec.cor., with brass cap, marked

Ninth Standard Parallel North Through Range 10 West. 329

Chains.

S C
1/4 S35
1915

From which
A cedar, 16 ins. diam., brs. N.6° E., 80 lks. dist.,
marked SC 1/4 S35 BT.
A cedar, 16 ins. diam., brs. N.75° W., 116 lks. dist.,
marked SC 1/4 S35 BT.

- 61.10 Wire fence, brs. N. and S.
- 65.00 Wash, 15 lks. wide, course NW. Asc.
- 76.00 Leave timber, brs. N. and S.
- No difference between measurements of 80.00 chs. by two sets of chainmen.
- 80.00 S. 2 lks. from the secant,
Set an iron post, 3 ft. long, 3 ins. diam., 24 ins. in the ground, for standard cor. of secs. 34 and 35, with brass cap, marked

S C
T37N | R10W
S34 | S35

1915

Dig pits, 24 X 18 X 12 ins., crosswise on each line, and W., 3 ft., and N. of stone, 7 ft. dist.; and raise a mound of earth, 4 ft. base, 2 ft. high, N. of cor.

Land, mountainous.
Soil, thin and rocky; 4th rate.
Timber, scrubby cedar.
Undergrowth, greasewood. Short grass.

N.89° 59' W., on the secant, through sec. 34.
Over rolling prairie, through scattering timber and undergrowth.

- 2.90 Road, brs. NW. and SE.
- 7.80 Desc. 20 ft.
- 11.49 Wash, 150 lks. wide, course N. Asc. 55 ft.
- 23.40 Spur, slopes S. Desc.
- 25.00 Asc.
- 33.00 Top of small knoll. Desc. 25 ft.
- 34.85 Gulch, 20 lks. wide, course SE. Thence over rolling prairie.
- No difference between measurements of 40.00 chs. by two sets of chainmen.
- 40.00 S. 3 lks. from the secant,
Set an iron post, 3 ft. long, 1 in. diam., 26 ins. in the ground, for standard 1/4 sec. cor., with brass cap, marked

S C
1/4 S34
1915

From which
A cedar, 24 ins diam., brs. N.79 1/4° E., 87 lks. dist.,
marked SC 1/4 S34 BT.
A cedar, 18 ins. diam., brs. N.26 1/4° W., 52 lks. dist.,
marked SC 1/4 S34 BT.

- 44.10 Road, brs. NE. and SW.
- 70:00 Asc. 95 ft.
- 77.05 Desc. 30 ft.
- No difference between measurements of 80.00 chs. by two sets of chainmen.
- 80.00 S. 3 lks. from the secant,
Set an iron post, 3 ft. long, 3 ins. diam., 24 ins. in the

34.30

Ninth Standard Parallel North Through Range 10 West.

Chains.

ground, for standard cor. of secs. 33 and 34, with brass cap, marked

S C	
T37N	R10W
S33	S34

1915

From which

A pinion, 12 ins. diam., brs. N.26 $\frac{1}{4}$ ° E., 19 lks. dist., marked T37N R10W S34 SC BT.

A pinion, 12 ins. diam., brs. N.83° W., 66 lks. dist., marked T37N R10W S33 SC BT.

Land, rolling.

Soil, thin and rocky; 4th rate.

Timber, scrubby cedar and pinion.

Undergrowth, greasewood. Short grass.

West on the secant, through sec. 33.

Over mountainous land, through scattering timber and undergrowth.

Asc. 75 ft.

4.20 Narrow ridge, slopes S. Desc. 140 ft.

14.05 Wash, 10 lks. wide, course SW. Asc. 55 ft.

20.00 Spur, slopes S. Continue ascent, 120 ft.

25.77 Spur, slopes SW. Brown's ranch brs. S.15° 54' E. Desc. 70 ft.

34.61 Gulch, 20 lks. wide, course SW. Asc.

No difference between measurements of 40.00 chs. by two sets of chainmen.

40.00 S. 3 lks. from the secant,

Set an iron post, 3 ft. long, 1 in. diam., 26 ins. in the ground, for standard $\frac{1}{4}$ sec. cor., with brass cap, marked

S C	
$\frac{1}{4}$ S33	

1915

From which

A cedar, 24 ins. diam., brs. N.82 $\frac{1}{4}$ ° E., 130 lks. dist., marked SC $\frac{1}{4}$ S33 BT.

A cedar, 12 ins. diam., brs. N.31° W., 124 lks. dist., marked SC $\frac{1}{4}$ S33 BT.

Desc. 40 ft.

41.60 Gulch, 30 lks. wide, course SW. Asc. 40 ft.

45.00 Ridge, slopes SW. Desc. 30 ft.

49.03 Gulch, 30 lks. wide, course SE.

50.00 Gulch, 20 lks. wide, course SE. Enters main gulch 20 lks. S. Asc. 25 ft.

51.85 Spur, slopes S. Desc.

55.00 Thence over rolling land.

61.51 Brown's reservoir brs. S.45° 20' W.

No difference between measurements of 80.00 chs. by two sets of chainmen.

80.00 S. 2 lks. from the secant,

Set an iron post, 3 ft. long, 3 ins. diam., 24 ins. in the ground, for standard cor. of secs. 32 and 33, with brass cap, marked

S C	
T37N	R10W
S32	S33

1915

From which

A cedar, 8 ins. diam., brs. N.3 $\frac{1}{2}$ ° E., 295 lks. dist.,

Ninth Standard Parallel North Through Range 10 West. 31

Chains.

marked T37N R10W S33 80.BT.
A cedar, 10 ins. diam., brs. N.64³/₄° W., 129 lks. dist.,
marked T37N R10W S32 80.BT.

Land, mountainous and rolling.
Soil, thin and rocky; 4th rate.
Timber, scrubby cedar and pinion.
Undergrowth, sagebrush. Short grass.

S.89°59'W., on the secant, through sec. 32.
Over rolling prairie, through scattering timber and under-
growth.

- 7.00 Desc. 10 ft.
- 10.00 Draw, 30 lks. wide, course S. Asc.
- 12.37 Thence over rolling prairie.
- 12.37 Brown's reservoir brs. S.22°8'W.
- 40.00 No difference between measurements of 40.00 chs. by two sets of chainmen.
- 40.00 S. 1 lk. from the secant,
Set an iron post, 3 ft. long, 1 in. diam., 26 ins. in the ground, for standard $\frac{1}{4}$ sec. cor., with brass cap, marked

S C
1/4 S32
1915

And raise a mound of stone, 2 ft. base, 1 $\frac{1}{2}$ ft. high, N. of cor.

- 60.00 Leave timber, brs. N. and S.
- 65.10 Road, brs. N. and S.
- 68.90 Road, brs. N. and S.
- 69.90 Road, brs. NW. and SE.
- 80.00 No difference between measurements of 80.00 chs. by two sets of chainmen.
- 80.00 Set an iron post, 3 ft. long, 3 ins. diam., 24 ins. in the ground, for standard cor. of secs. 31 and 32, with brass cap, marked

S C
T37N | R10W
S31 | S32
1915

And raise a mound of stone, 2 ft. base, 1 $\frac{1}{2}$ ft. high, N. of cor.

Land, rolling prairie.
Soil, sandy loam, 18 to 24 ins. deep; 2nd rate.
Timber, scrubby cedar and pinion.
Undergrowth, sagebrush. Short grass.

S.89°59'W., on the secant, S. of sec. 31.
Over rolling land, through scattering timber and under-
growth.

- 0.32 Road, brs. NE. and SW.
- 23.40 Road, brs. N. and S.
- 25.00 Asc. 55 ft.
- 34.50 Spur, slopes S. Desc.
- 37.00 Thence over rolling land.
- Difference between measurements of 40.00 chs. by two sets of chainmen is 5 lks.; position of middle point
By 1st set, 39.97 $\frac{1}{2}$ chs.
By 2nd set, 40.02 $\frac{1}{2}$ chs.; the mean of which is

Ninth Standard Parallel North Through Range 10 West.

Chains.
40.00

N. 2 lks. from the secant,
Set an iron post, 3 ft. long, 1 in. diam., 26 ins. in the
ground, for standard $\frac{1}{4}$ sec. cor., with brass cap, marked

S C
1S31

1915

From which

A cedar, 12 ins. diam., brs. N. $41\frac{1}{2}^\circ$ E., 207 lks. dist.,
marked ~~SCS~~ 1S31 BT.

A cedar, 8 ins. diam., brs. N. $50\frac{3}{4}^\circ$ W., 112 lks. dist.,
marked ~~SCS~~ 1S31 BT.

Desc. 50 ft.

43.93 Draw, 40 lks. wide, course N. Asc. 75 ft.

55.00 Ridge, brs. NE. and SW. Desc. 45 ft.

61.34 Gulch, 30 lks. wide, course N. Asc. 55 ft.

65.00 Ridge, brs. N. and S. Desc. 15 ft.

74.80 Asc. 30 ft.

Difference between measurements of 80.00 chs. by two sets
of chainmen.

80.00 N. 4 lks. from the secant,

Set an iron post, 3 ft. long, 3 ins. diam., 24 ins. in the
ground, for standard cor. of Ts. 37 N., Rs. 10 and 11
W., with brass cap, marked

S C
T 3 7 N
R11W | R10W
S36 | S31

1915

And raise a mound of stone, 2 ft. base, $1\frac{1}{2}$ ft. high, N.
of cor.

Land, rolling and mountainous.

Soil, thin and rocky; 4th rate.

Timber, scrubby pinion and cedar.

Undergrowth, sagebrush. Short grass.

Survey of Ninth Standard Parallel North Through Range 11 West 33

Chains.

From a point on the secant, 4 lks. S. of the standard cor. of Ts. 37 N., Rs. 10 and 11 W., hereinbefore described, deflect 4' to the right, and run N.89°58'W., on the secant, S. of sec. 36. Over rolling prairie, through scattering undergrowth.

20.00
32.88-
38.50

Desc. 90 ft.
Draw, 30 lks. wide, course N. Asc. 50 ft.
Spur, slopes N. Desc. 90 ft.

No difference between measurements of 40.00 chs. by two sets of chainmen.

40.00

N. 2 lks. from the secant, Set an iron post, 3 ft. long, 1 in. diam., 26 ins. in the ground, for standard 1/4 sec. cor., with brass cap, marked

S C
1/4 S36

1915

And raise a mound of stone, 3 ft. base, 2 1/2 ft. high, N. of cor.

44.80
45.92
68.10

Canyon, 10 chs. wide, course N. Asc. 125 ft.
Road, brs. NE. and SW.
Ridge, brs. N. and S. Desc.

Difference between measurements of 80.00 chs. by two sets of chainmen is 6 lks.; position of middle point

By 1st set, 79.97 chs.
By 2nd set, 80.03 chs.; the mean of which is

80.00

Set an iron post, 3 ft. long, 3 ins. diam., in a mound of stone, for standard cor. of secs. 35 and 36, with brass cap marked

S C
T37N | R11W
S35 | S36

1915

And raise a mound of stone, 3 ft. base, 2 ft. high, N. of cor.

Land, rolling.
Soil, thin and rocky; 4th rate.
No timber.
Undergrowth, sagebrush. Short grass.

N.89° 59'W., on the secant, through sec. 35. Over rolling prairie, through scattering undergrowth.

19.00
23.00
33.00

Small drain, course SW. Asc.
Spur, slopes S. Desc.
Draw, 5 lks. wide, course SE.

Difference between measurements of 40.00 chs. by two sets of chainmen is 5 lks.; position of middle point

By 1st set, 39.97 1/2 chs.
By 2nd set, 40.02 1/2 chs.; the mean of which is

40.00

S. 1 lk. from the secant, Set an iron post, 3 ft. long, 1 in. diam., 26 ins. in the ground, for standard 1/4 sec. cor., with brass cap, marked

S C
1/4 S35

1915

And raise a mound of stone, 2 ft. base, 1 1/2 ft. high, N. of cor.

45.00
48.00
50.40

Asc. 15 ft.
Low spur, slopes S. Desc.

Ninth Standard Parallel North, Through Range 11 West.

Chains.	
58.48	Draw, 5 lks. wide, course S.
75.00	Draw, 20 chs. wide, course S.
	Difference between measurements of 80.00 chs. by two sets of chainmen is 3 lks.; position of middle point
	By 1st set, 79.98 $\frac{1}{2}$ chs.
	By 2nd set, 80.01 $\frac{1}{2}$ chs.; the mean of which is
80.00	S. 2 lks. from the secant,
	Set an iron post, 3 ft. long, 3 ins. diam., 24 ins. in the ground, for standard cor. of secs. 34 and 35, with brass cap, marked
	S C T37N R11W <u>S34 S35</u>
	1915
	And raise a mound of stone, 2 ft. base, 1 $\frac{1}{2}$ ft. high, N. of cor.
	Land, rolling prairie.
	Soil, thin and rocky; 4th rate.
	No timber.
	Undergrowth, sagebrush. Short grass.
	N. 89°59' W., on the secant, through sec. 34.
	Over rolling and mountainous land, through scattering undergrowth.
25.00	Asc. 200 ft.
39.00	Spur, slopes SE. Desc. gradually.
	No difference between measurements of 40.00 chs. by two sets of chainmen.
40.00	S. 3 lks. from the secant,
	Set an iron post, 3 ft. long, 1 in. diam., in a mound of stone, for standard $\frac{1}{4}$ sec. cor., with brass cap, marked
	S C <u>S34</u>
	1915
	And raise a mound of stone, 2 ft. base, 2 ft. high, N. of cor.
63.50	Draw, 10 lks. wide, course N. Asc. 25 ft.
70.00	Thence over rolling land.
	No difference between measurements of 80.00 chs. by two sets of chainmen.
80.00	S. 3 lks. from the secant,
	Set an iron post, 3 ft. long, 3 ins. diam., 10 ins. in the ground, in a mound of stone, for standard cor. of secs. 33 and 34, with brass cap, marked
	S C T37N R11W <u>S33 S34</u>
	1915
	And raise a mound of stone, 2 ft. base, 1 $\frac{1}{2}$ ft. high, N. of cor.
	Land, rolling and mountainous.
	Soil, thin and very rocky; 4th rate.
	No timber.
	Undergrowth, greasewood. Short grass.

Ninth Standard Parallel North Through Range 11 West. 35

Chains. West on the secant, through sec. 33.
 Over rolling land, through scattering timber and undergrowth.

20.00 Desc. 30 ft.
 24.48 Draw, 10 lks. wide, course N. Asc. 45 ft.
 30.00 Thence over rolling land.
 No difference between measurements of 40.00 chs. by two sets of chainmen.

40.00 S. 3 lks. from the secant,
 Set an iron post, 3 ft. long, 1 in. diam., 26 ins. in the ground, for standard $\frac{1}{4}$ sec. cor., with brass cap, marked

S C
 $\frac{1}{4}$ S33

1915

From which
 A cedar, 8 ins. diam., brs. N.84 $\frac{1}{4}$ ° E., 153 lks. dist., marked SC $\frac{1}{4}$ S33.BT.
 A cedar, 12 ins. diam., brs. N.62° W., 125 lks. dist., marked SC $\frac{1}{4}$ S33.BT.

50.00 Desc. 65 ft.
 Thence over rolling land.
 No difference between measurements of 80.00 chs. by two sets of chainmen.

80.00 S. 2 lks. from the secant,
 Set an iron post, 3 ft. long, 3 ins. diam., 24 ins. in the ground, for standard cor. of secs. 32 and 33, with brass cap, marked

S C
 T37N | R11W
 S32 | S33

1915

And raise a mound of stone, 2 ft. base, 2 ft. high, N. of cor.

Land, rolling.
 Soil, thin and very rocky; 4th rate.
 Timber, scrubby cedar and pinion.
 Undergrowth, sagebrush. Short grass.

S.89° 59'W., on the secant, through sec. 32.
 Over rolling land, through scattering timber and undergrowth.

2.70 Road, brs. N. and S.
 10.00 Asc. 65 ft.
 20.00 Thence over rolling land.
 No difference between measurements of 40.00 chs. by two sets of chainmen.

40.00 S. 1 lk. from the secant,
 Set an iron post, 3 ft. long, 1 in. diam., in a mound of stone, for standard $\frac{1}{4}$ sec. cor., with brass cap, marked

S C
 $\frac{1}{4}$ S32

1915

And raise a mound of stone, 2 ft. base, 1 $\frac{1}{2}$ ft. high, N. of cor.
 No difference between measurements of 80.00 chs. by two sets of chainmen.

80.00 Set an iron post, 3 ft. long, 3 ins. diam., in a mound of stone, for standard cor. of secs. 31 and 32, with brass cap, marked

Chains.

S C	
T37N	R11W
S31	S32

1915

And raise a mound of stone, 2ft. base, 1 $\frac{1}{2}$ ft. high, N. of cor.

Land rolling.

Soil, thin and very rocky; 4th rate.

Timber, scrubby cedar.

Undergrowth, sagebrush. Short grass.

38.10

S. 89° 59' W., on the secant, S. of sec. 31.
Over rolling prairie, through scattering timber and undergrowth.

Road, brs, NW. and SE.

No difference between measurements of 40.00 chs. by two sets of chainmen.

40.00

N. 2 lks. from the secant,

Set an iron post, 3 ft. long, 1 in. diam., in a mound of stone, for standard $\frac{1}{4}$ sec. cor., with brass cap, marked

S C	
$\frac{1}{4}$ S31	

1915

And raise a mound of stone, 2 $\frac{1}{2}$ ft. base, 2 ft. high, N. of cor.

Desc. 40 ft.

50.00

Asc.

56.60

Spur, slopes N. Desc. 55 ft.

72.41

Draw, 15 chs. wide, course N.

No difference between measurements of 80.00 chs. by two sets of chainmen.

80.00

N. 4 lks. from the secant,

Set an iron post, 3 ft. long, 3 ins. diam., 24 ins. in the ground, for standard cor. of Ts. 37 N., Rs. 11 and 12 W., with brass cap, marked

S C	
T 3 7 N	
R12W	R11W
S36	S31

1915

And raise amount of stone, 2 ft. base, 1 $\frac{1}{2}$ ft. high, N. of cor.

Land, rolling.

Soil, thin and rocky; 4th rate.

Timber, scattering cedar on spurs.

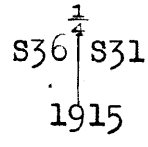
Undergrowth, greasewood and sagebrush. Short grass.

Survey of East Boundary of T. 37 N., R. 12 W.

Chains.

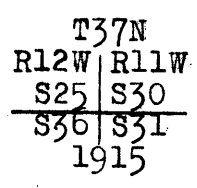
28.65
40.00

From the standard cor. of Ts. 37 N., Rs. 11 and 12 W., on
9th Standard Parallel, North, hereinbefore described,
North bet. secs. 31 and 36.
Over rolling prairie, through scattering sagebrush.
Road, brs. E. and W.
Set an iron post 3 ft. long, 1 in. diam., 26 ins. in the
ground, for $\frac{1}{4}$ sec. cor., with brass cap, marked



65.00
80.00

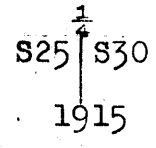
Dig pits, 18 X 18 X 12 ins., N. and S. of post, 3 ft.
dist.; and raise a mound of earth, $3\frac{1}{2}$ ft. base, $1\frac{1}{2}$ ft.
high, W. of cor.
Low spur, slopes W. Desc.
Set an iron post, 3 ft. long, 3 ins. diam., 24 ins. in the
ground, for cor. of secs. 25, 30, 31 and 36, with brass
cap, marked



And raise a mound of stone, $2\frac{1}{2}$ ft. base, 2 ft. high, W.
of cor.
Land, rolling prairie.
Soil, thin and rocky; 4th rate.
No timber.
Undergrowth, greasewood and sagebrush. Short grass.

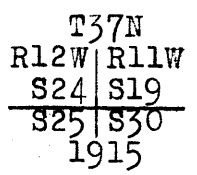
25.00
30.00
40.00

North bet. secs. 25 and 30.
Over rolling prairie, through scattering undergrowth.
Desc. gradually.
Asc. 25 ft.
Top of knoll. Desc. 30 ft.
Set an iron post, 3 ft. long, 1 in. diam., 26 ins. in the
ground, for $\frac{1}{4}$ sec. cor., with brass cap, marked



60.00
70.00
73.87
80.00

And raise a mound of stone, $2\frac{1}{2}$ ft. base, 2 ft. high, W.
of cor.
Thence over rolling land.
Asc. 75 ft.
Spur, slopes W. Desc. 35 ft.
Gulch, 5 lks. wide, course W. Asc. 80 ft.
Set an iron post, 3 ft. long, 3 ins. diam., in a mound of
stone, for cor. of secs. 19, 24, 25 and 30, with brass
cap, marked



And raise a mound of stone, $2\frac{1}{2}$ ft. base, 2 ft. high, W.
of cor.
Land, rolling prairie.
Soil, thin and very rocky; 4th rate.
No timber.
Undergrowth, sagebrush.

42.38

East Boundary of T. 37 N., R. 12 W.

Chains.

Short grass.

North bet. secs. 19 and 24.

Over rolling prairie, through scattering timber and undergrowth.

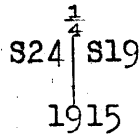
17.00 Desc. 90 ft.

20.00 Asc. 40 ft.

25.00 Thence over rolling land.

36.50 Desc. 75 ft.

40.00 Set an iron post, 3 ft. long, 1 in. diam., 26 ins. in the ground, for $\frac{1}{4}$ sec. cor., with brass cap, marked.



From which

A cedar, 8 ins. diam., brs. N.82° E., 90 lks. dist., marked $\frac{1}{4}$ S19 BT.

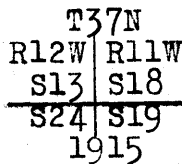
A cedar, 12 ins. diam., brs. S.47 $\frac{1}{2}$ ° W., 42 lks. dist., marked $\frac{1}{4}$ S24 BT.

43.40 Gulch, 8 lks. wide, course W. Asc. 60 ft.

50.00 Ridge, slopes N. Desc. on ridge, 125 ft.

75.65 Gulch, 5 lks. wide, course NW. Asc.

80.00 Set an iron post, 3 ft. long, 3 ins. diam., in a mound of stone, for cor. of secs. 13, 18, 19 and 24, with brass cap, marked



And raise a mound of stone, 2 ft. base, 1 $\frac{1}{2}$ ft. high, W. of cor.

Land, rolling.

Soil, thin and rocky; 4th rate.

Timber, scrubby cedar.

Undergrowth, sagebrush and greasewood. Short grass.

North bet. secs. 13 and 18.

Over rolling land, through scattering undergrowth.

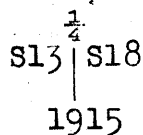
Asc. 70 ft.

5.00 Spur, slopes NW. Desc.

10.00 Thence over rolling prairie.

15.00 Crosby's reservoir brs. S.63 $\frac{1}{4}$ ° W., about 30 chs. dist.

40.00 Set an iron post, 3 ft. long, 1 in. diam., 26 ins. in the ground, for $\frac{1}{4}$ sec. cor., with brass cap, marked



Dig pits, 18 X 18 X 12 ins., N. and S. of post, 3 ft. dist.; and raise a mound of earth, 3 $\frac{1}{2}$ ft. base, 1 $\frac{1}{2}$ ft. high, W. of cor.

80.00 Set an iron post, 3 ft. long, 3 ins. diam., 24 ins. in the ground, for cor. of secs. 7, 12, 13 and 18, with brass cap, marked

East Boundary of T. 37 N., R. 12 W.

39

Chains.

T37N	
R12W	R11W
S12	S 7
S13	S18
1915	

Dig pits, 18 X 18 X 12 ins., in each sec., 5 1/2 ft. dist.; and raise a mound of earth, 4 ft. base, 2 ft. high, W. of cor.

Land, rolling prairie.
Soil, 18 to 24 ins. deep, gravelly; 3rd rate.
No timber.
Undergrowth, sagebrush and greasewood.

13.00
40.00

North bet. secs. 7 and 12.
Over rolling prairie, through scattering undergrowth.
Trails, leading to Wolf hole lake, br. E. and W.
Set an iron post, 3 ft. long, 1 in. diam., 26 ins. in the ground, for 1/4 sec. cor., with brass cap, marked

1/4	
S12	S 7
1915	

80.00

Dig pits, 18 X 18 X 12 ins., N. and S. of post, 3 ft. dist.; and raise a mound of earth, 3 1/2 ft. base, 1 1/2 ft. high, W. of cor.
Set an iron post, 3 ft. long, 3 ins. diam., 24 ins. in the ground, for cor. of secs. 1, 6, 7 and 12, with brass cap, marked

T37N	
R12W	R11W
S 1	S 6
S12	S 7
1915	

Dig pits, 18 X 18 X 12 ins., in each sec., 5 1/2 ft. dist.; and raise a mound of earth, 4ft. base, 2 ft. base, W. of cor.

Land, rolling prairie.
Soil, 18 to 24 ins. deep; sandy; 3rd rate.
No timber.
Undergrowth, greasewood, black brush and sagebrush.
Short grass.

40.00

North bet. secs. 1 and 6.
Over rolling prairie, through scattering undergrowth.
Set an iron post, 3 ft. long, 1 in. diam., 26 ins. in the ground, for 1/4 sec. cor., with brass cap, marked

1/4	
S 1	S 6
1915	

80.00

Dig pits, 18 X 18 X 12 ins., N. and S. of post, 3 ft. dist.; and raise a mound of earth, 3 1/2 ft. base, 1 1/2 ft. high, W. of cor.
Set an iron post, 3 ft. long, 3 ins. diam., 24 ins. in the ground, for cor. of Ts. 37 and 38 N., Rs. 11 and 12 W., with brass cap, marked

40

East Boundary of T. 37 N., R. 12 W.

Chains.

T38N	
R12W	R11W
S36	S31
<hr/>	
S 1	S 6
T37N	
1915	

And raise a mound of stone, 3 ft. base, 3 ft. high, S. of cor.

Land, rolling prairie.

Soil, 24 to 36 ins. deep; 3rd rate.

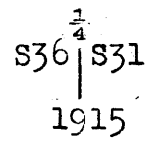
No timber.

Undergrowth, sagebrush. Short grass.

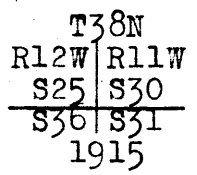
Survey of East Boundary of T. 38 N., R. 12 E.

Chains.

From the cor. of Ts. 37 and 38 N., Rs. 11 and 12 W., here-
 inbefore described,
 North bet. secs. 31 and 36.
 Over rolling prairie land, through scattering undergrowth.
 40.00 Set an iron post, 3 ft. long, 1 in. diam., 26 ins. in the
 ground, for $\frac{1}{4}$ sec. cor., with brass cap, marked



Dig pits, 18 X 18 X 12 ins., N. and S. of post, 3 ft.
 dist.; and raise a mound of earth, $3\frac{1}{2}$ ft. base, $1\frac{1}{2}$ ft.
 high, W. of cor.
 79.90 Stock trails, br. E. and W.
 80.00 Set an iron post, 3 ft. long, 3 ins. diam., 24 ins. in the
 ground, for cor. of secs. 25, 30, 31 and 36, with brass
 cap, marked



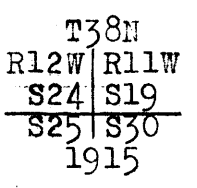
Dig pits, 18 X 18 X 12 ins., in each sec., $5\frac{1}{2}$ ft. dist.;
 and raise a mound of earth, 4 ft. base, 2 ft. high, W.
 of cor.

Land, rolling prairie.
 Soil, sandy loam, 24 to 36 ins. deep; 2nd rate.
 No timber.
 Undergrowth, sagebrush and greasewood, 2 to 3 ft. high.
 Short grass.

North bet. secs. 25 and 30.
 Over level land, through scattering undergrowth.
 40.00 Set an iron post, 3 ft. long, 1 in. diam., 26 ins. in the
 ground, for $\frac{1}{4}$ sec. cor., with brass cap, marked



Dig pits, 18 X 18 X 12 ins., N. and S. of post, 3 ft.
 dist.; and raise a mound of earth, $3\frac{1}{2}$ ft. base, $1\frac{1}{2}$ ft.
 high, W. of cor.
 80.00 Set an iron post, 3 ft. long, 3 ins. diam., 24 ins. in the
 ground, for cor. of secs. 19, 24, 25 and 30, with brass
 cap, marked



Dig pits, 18 X 18 X 12 ins., in each sec., $5\frac{1}{2}$ ft. dist.;
 and raise a mound of earth, 4 ft. base, 2 ft. high, W.
 of cor.

Land, rolling prairie.
 Soil, sandy loam; 24 to 36 ins. deep; 2nd rate.
 No timber.
 Undergrowth, greasewood and sagebrush, 2 to 3 ft. high.
 Short grass.

46 East Boundary of T. 38 N., R. 12 W.

Chains.
7.49 North bet. secs. 19 and 24.
40.00 Over rolling prairie, through scattering undergrowth.
Draw, 5 lks. wide, course W.
Set an iron post, 3 ft. long, 1 in. diam., 26 ins. in the ground, for $\frac{1}{4}$ sec. cor.; with brass cap, marked

$\frac{1}{4}$
 S24 | S19
 1915

68.80 Dig pits, 18 X 18 X 12 ins., N. and S. of post, 3 ft. dist.; and raise a mound of earth, $3\frac{1}{2}$ ft. base, $1\frac{1}{2}$ ft. high, W. of cor.
69.70 Stock trails, br. E. and W.
80.00 Enter scattering timber, brs. E. and W.
Set an iron post, 3 ft. long, 3 ins. diam., 24 ins. in the ground, for cor. of secs. 13, 18, 19 and 24, with brass cap, marked

T38N
 R12W | R11W
 S13 | S18
 S24 | S19
 1915

Dig pits, 18 X 18 X 12 ins., in each sec., $5\frac{1}{2}$ ft. dist.; and raise a mound of earth, 4 ft. base, 2 ft. high, W. of cor.

Land, rolling prairie.
Soil, sandy loam, 24 to 36 ins. deep; 2nd rate.
Timber, scattering cedar.
Undergrowth, scattering greasewood. Short grass.

40.00 North bet. secs. 13 and 18.
Over rolling prairie land, through scattering timber and undergrowth.
Set an iron post, 3 ft. long, 1 in. diam., 26 ins. in the ground, for $\frac{1}{4}$ sec. cor.; with brass cap, marked

$\frac{1}{4}$
 S13 | S18
 1915

80.00 Dig pits, 18 X 18 X 12 ins., N. and S. of post, 3 ft. dist.; and raise a mound of earth, $3\frac{1}{2}$ ft. base, $1\frac{1}{2}$ ft. high, W. of cor.
Set an iron post, 3 ft. long, 3 ins. diam., 24 ins. in the ground, for cor. of secs. 7, 12, 13 and 18, with brass cap, marked

T38N
 R12W | R11W
 S12 | S 7
 S13 | S18
 1915

Dig pits, 18 X 18 X 12 ins., in each sec., $5\frac{1}{2}$ ft. dist.; and raise a mound of earth, 4 ft. base, 2 ft. high, W. of cor.

Land, rolling prairie.
Soil, sandy loam, 24 to 36 ins. deep; 2nd rate.
Timber, scattering cedar.
Undergrowth, greasewood and sagebrush.

East Boundary of T. 38 N., R. 12 W.

43..

Chains.

North bet. secs. 7. and 12.
 Over rolling prairie, through scattering undergrowth.
 15.00 Asc. 50 ft.
 20.00 Spur, slopes W. Desc. 40 ft.
 25.00 Thence over rolling land.
 40.00 Set an iron post 3 ft. long, 1 in. diam., 26 ins. in the ground, for $\frac{1}{4}$ sec. cor., with brass cap, marked

$$\begin{array}{c} \frac{1}{4} \\ S12 \mid S 7 \\ \hline 1915 \end{array}$$

72.15 Dig pits, 18 X 18 X 12 ins., N. and S. of post, 3 ft. dist.; and raise a mound of earth, $3\frac{1}{2}$ ft. base, $1\frac{1}{2}$ ft. high, W. of cor.
 80.00 Road, Wolf Hole to Trumball Mt., brs. NW. and SE.
 Set an iron post, 3 ft. long, 3 ins. diam., 24 ins. in the ground, for cor. of secs. 1, 6, 7 and 12, with brass cap, marked

$$\begin{array}{c} T38N \\ R12W \mid R11W \\ S 1 \mid S 6 \\ \hline S12 \mid S 7 \\ \hline 1915 \end{array}$$

And raise a mound of stone, $2\frac{1}{2}$ ft. base, 2 ft. high, W. of cor.
 Land, rolling prairie.
 Soil, sandy loam, 24 to 36 ins. deep; 2nd rate.
 No timber.
 Undergrowth, greasewood. Short grass.

North bet. secs. 1 and 6.
 Over rolling land, through scattering timber and undergrowth.
 31.80 Asc. 75 ft.
 37.13 Narrow ridge, brs. E. and W. Desc. 25 ft.
 40.00 Draw, 10 lks. wide, course W. Asc. 105 ft.
 Set an iron post, 3 ft. long, 1 in. diam., 26 ins. in the ground, for $\frac{1}{4}$ sec. cor., with brass cap, marked

$$\begin{array}{c} \frac{1}{4} \\ S 1 \mid S 6 \\ \hline 1915 \end{array}$$

From which
 A cedar, 12 ins. diam., brs. S.28 $\frac{1}{2}$ ° E., 87 lks. dist., marked $\frac{1}{4}$ S6 BT.
 A cedar, 18 ins. diam., brs. S.33° W., 84 lks. dist., marked $\frac{1}{4}$ S1 BT.
 56.00 Knoll. Desc. 100 ft.
 73.60 Stock trails, br. E. and W. Asc. 90 ft.
 80.00 Set an iron post, 3 ft. long, 3 ins. diam., in a mound of stone, for cor. of Ts. 38 and 39 N., Rs. 11 and 12 W., with brass cap, marked

$$\begin{array}{c} T39N \\ R12W \mid R11W \\ S36 \mid S31 \\ \hline S 1 \mid S 6 \\ \hline T38N \\ 1915 \end{array}$$

And raise a mound of stone, 2 ft. base, $1\frac{1}{2}$ ft. high, S. of cor.
 Land, rolling and mountainous.

48.8

East Boundary of T. 38 N., R. 12 W.

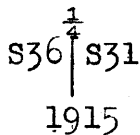
Chains.

Soil, thin and rocky; 4th rate.
Timber, scattering cedar.
Undergrowth, greasewood and sagebrush.
Short grass.

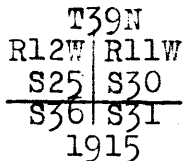
Survey of a Portion of the East Boundary of T. 39 N., R. 12 W. 45

Chains.

From the cor. of Ts. 38 and 39 N., Rs. 11 and 12, herein-
before described,
North bet. secs. 31 and 36.
Over rolling land, through scattering undergrowth.
Asc. 55 ft.
5.00 Top of knoll, brs. N. and S. Desc.
10.00 Asc. 15 ft.
12.50 Ridge, brs. NE. and SW. Desc. 80 ft.
27.50 Enter scattering cedar, brs. E. and W.
39.90 Draw, course NE. Asc.
40.00 Set an iron post, 3 ft. long, 1 in. diam., 26 ins. in the
ground, for $\frac{1}{4}$ sec. cor., with brass cap, marked



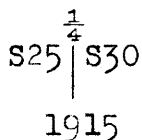
From which
A cedar, 8 ins. diam., brs. S.42 $\frac{1}{4}$ ° E., 245 lks. dist.,
marked $\frac{1}{4}$ S31 BT.
A cedar, 12 ins. diam., brs. N.70 $\frac{1}{2}$ ° W., 128 lks. dist.,
marked $\frac{1}{4}$ S36 BT.
45.00 Desc. 35 ft.
48.46 Draw, 5 lks. wide, course NE. Asc. 25 ft.
51.15 Ridge, brs. NW. and SE. Desc. 25 ft.
71.80 Draw, course NE. Thence over rolling land,
80.00 Set an iron post, 3 ft. long, 3 ins. diam., in a mound of
stone, for cor. of secs. 25, 30, 31 and 36, with brass
cap, marked



From which
A cedar, 11 ins. diam., brs. N.77° E., 229 lks. dist.,
marked T39N R11W S30 BT.
A cedar, 11 ins. diam., brs. S.26° E., 100 lks. dist.,
marked T39N R11W S31 BT.
A cedar, 11 ins. diam., brs. S.54° W., 113 lks. dist.,
marked T39N R12W S36 BT.
A cedar, 11 ins. diam., brs. N.30 $\frac{3}{4}$ ° W., 22 lks. dist.,
marked T39N R12W S25 BT.

Land, rolling and mountainous.
Soil, thin and very rocky; 4th rate.
Timber, cedar and pinion.
Undergrowth, greasewood and sagebrush.

North bet. secs. 25 and 30.
Over rolling land, through scattering timber and undergrowth.
Desc. 75 ft.
33.93 Draw, 25 lks. wide, course NE. Asc. 25 ft.
40.00 Set an iron post, 3 ft. long, 1 in. diam., 26 ins. in the
ground, for $\frac{1}{4}$ sec. cor., with brass cap, marked

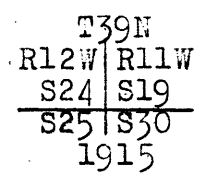


From which
A cedar, 12 ins. diam., brs. S.46° E., 88 lks. dist.,
marked $\frac{1}{4}$ S30 BT.
A cedar, 8 ins. diam., brs. N.29 $\frac{1}{2}$ ° W., 180 lks. dist.,
marked $\frac{1}{4}$ S25 BT.

26. Survey of a Portion of the East Boundary of T. 39 N., R. 12 W.

Chains.
-53.97
57.50
66.45
76.22
80.00

Draw, 1 ch. wide, course E. Asc.
Spur, slopes E. Desc.
Draw, 5 lks. wide, course E. Thence over rolling land.
Draw, 5 lks. wide, course E.
Set an iron post, 3 ft. long, 3 ins. diam., in a mound of stone, for cor. of secs. 19, 24, 25 and 30, with brass cap, marked

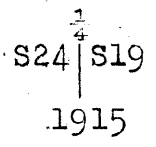


From which
A cedar, 10 ins. diam., brs. N.43½° E., 167 lks. dist., marked T39N R11W S19 BT.
A cedar, 4 ins. diam., brs. S.80¼° E., 26 lks. dist., marked T39N R11W S30 BT.
A cedar, 8 ins. diam., brs. S.27¼° W., 189 lks. dist., marked T39N R12W S25 BT.
A cedar, 12 ins. diam., brs. N.53° W., 95 lks. dist., marked T39N R12W S24 BT.

Land, rolling and mountainous.
Soil, thin and very rocky; 4th rate.
Timber, cedar and pinion.
Undergrowth, greasewood.

12.00
15.00
18.35
40.00

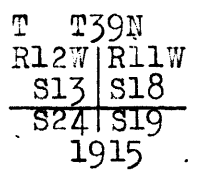
North bet. secs. 19 and 24.
Over rolling and mountainous land, through scattering timber and undergrowth.
Desc. 45 ft.
Draw, 10 lks. wide, course NE. Asc. 50 ft.
Desc. 275 ft.
Set an iron post, 3 ft. long, 1 in. diam., 26 ins. in the ground, for ¼ sec. cor., with brass cap, marked



And raise a mound of stone, 2 ft. base, 1½ ft. high, W. of cor.

49.40
61.10
79.90
80.00

Canyon, course E. Asc. 155 ft.
Spur, slopes SE. Desc. 225 ft.
Canyon, 10 chs. wide, course NE.
Set an iron post, 3 ft. long, 3 ins. diam., 24 ins. in the ground, for cor. of secs. 13, 18, 19 and 24, with brass cap, marked



And raise a mound of stone, 2 ft. base, 1½ ft. high, W. of cor.

Land, rolling and mountainous.
Soil, thin and very rocky; 4th rate.
Timber, scattering cedar.
Undergrowth, greasewood.

Survey of a Portion of the S. Boundary of T. 39 N., R. 12 W. 57

Chains.

From the cor. of Ts. 38 and 39 N., Rs. 11 and 12 W., here-
 inbefore described,
 West on a true line, bet. secs. 1 and 36.
 Over mountainous land, through scattering undergrowth.
 Asc. 25 ft.
 3.00 Spur, slopes S. Desc. 225 ft.
 35:05 Draw, 5 lks. wide, course N. Thence over rolling land.
 37.00 Road, brs. NW. and SE.
 40.00 Set an iron post, 3 ft. long, 1 in. diam., 26 ins. in the
 ground, for $\frac{1}{4}$ sec. cor., with brass cap, marked

$$\begin{array}{r} \frac{1}{4} S36 \\ \hline S1 \\ 1915 \end{array}$$

From which
 A cedar, 8 ins. diam., brs. N.12° W., 189 lks. dist.,
 marked $\frac{1}{4}$ S36 BT.
 A cedar, 12 ins. diam., brs. S.51 $\frac{1}{4}$ ° W., 282 lks. dist.,
 marked $\frac{1}{4}$ S1 BT.
 45.48 Road, St. George, Utah to Mt. Trumbull, brs. N. and S.
 50.40 Leave scattering timber, brs. N. and S.
 80.00 Set an iron post, 3 ft. long, 3 ins. diam., 24 ins. in the
 ground, for cor. of secs. 1, 2, 35 and 36, with brass
 cap, marked

$$\begin{array}{r} T39N R12W \\ S35 | S36 \\ \hline S2 | S1 \\ T38N \\ 1915 \end{array}$$

Dig pits, 18 X 18 X 12 ins., in each sec., 5 $\frac{1}{2}$ ft. dist.;
 and raise a mound of earth, 4 ft. base, 2 ft. high, W.
 of cor.

Land, rolling and mountainous.
 Soil, thin and gravelly; 3rd rate.
 Timber, cedar.
 Undergrowth, greasewood.

West on a true line, bet. secs. 2 and 35.
 Over rolling land, through scattering undergrowth.
 27.50 Road, brs. N. and S.
 28.00 Draw, 15 lks. wide, course N.
 37.90 Ditch, 10 lks. wide, 1 ft. deep, course N.
 40.00 Set an iron post, 3 ft. long, 1 in. diam., 26 ins. in the
 ground, for $\frac{1}{4}$ sec. cor., with brass cap, marked

$$\begin{array}{r} \frac{1}{4} S35 \\ \hline S2 \\ 1915 \end{array}$$

Dig pits, 18 X 18 X 12 ins., E. and W. of post, 3 ft.
 dist.; and raise a mound of earth, 3 $\frac{1}{2}$ ft. base, 1 $\frac{1}{2}$ ft.
 high, N. of cor.
 80.00 Set an iron post, 3 ft. long, 3 ins. diam., 24 ins. in the
 ground, for cor. of secs. 2, 3, 34 and 35, with brass
 cap, marked

$$\begin{array}{r} T39N R12W \\ S34 | S35 \\ \hline S3 | S2 \\ T38N \\ 1915 \end{array}$$

Dig pits, 18 X 18 X 12 ins., in each sec., 5 $\frac{1}{2}$ ft. dist.;
 and raise a mound of stone, 4 ft. base, 2 ft. high, W.
 of cor.

48. Survey of a Portion of the South Boundary of T. 39 N., R. 12 W.

Chains.

Land, rolling prairie.
Soil, red, sandy loam, 24 to 36 ins. deep; 2nd rate.
No timber.
Undergrowth, sagebrush, black brush and greasewood.

40.00 West on a true line, bet. secs. 3 and 34.
Over rolling prairie land, through scattering undergrowth.
Set an iron post, 3 ft. long, 1 in. diam., 20 ins. in the ground, for 1/4 sec. cor., with brass cap, marked

1/4 S34
S 3
1915

72.85 Dig pits, 18 X 18 X 12 ins., E. and W. of post, 3 ft. dist.; and raise a mound of earth, 3 1/2 ft. base, 1 1/2 ft. high, N. of cor.

80.00 Road, brs. NE. and SW.

Set an iron post, 3 ft. long, 3 ins. diam., 24 ins. in the ground, for cor. of secs. 3, 4, 33 and 34, with brass cap, marked

T39N R12W
S33 | S34
S 4 | S 3
T38N
1915

Dig pits, 18 X 18 X 12 ins., in each sec., 5 1/2 ft. dist.; and raise a mound of earth, 4 ft. base, 2 ft. high, W. of cor.

Land, rolling prairie.
Soil, red sandy loam, 24 to 36 ins. deep; 2nd rate.
No timber.
Undergrowth, greasewood and sagebrush.

Boundaries of Subdivided Portion of T. 39 N., R. 12 W.
Latitudes, departures and closing errors.

Line designated	True bearing.	Dist. chs.	Latitudes.		Departures.	
			N. chs.	S. chs.	E. chs.	W. chs.
South Boundary.	West.	240.00				240.00
Subdivisional West Boundary	N.0°2'W	160.00	160.00			.11
	N.0°1'W	80.00	80.00			.02
Subdivisional North Boundary	S.89°59'E	80.08		.02	80.08	
	S.89°58'E	79.98		.05	79.98	
	S.89°57'E	80.32		.07	80.32	
East Boundary.	South	240.00		240.00		
Convergency					.12	
Totals			240.00	240.14	240.50	240.13
				240.00	240.13	
Error in latitude				.14		
Error in departure					.37	

Survey of Partial Subdivision of T. 39 N., R. 12 W.

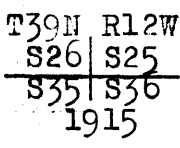
490

Chains.

From the cor. of secs. 1, 2, 35 and 36, on S. bdy. of Tp.,
 hereinbefore described,
 N.0° 1' W., bet. secs. 35 and 36.
 Over rolling land, through scattering undergrowth.
 24.00 Draw, 5 lks. wide, course W.
 40.00 Set an iron post, 3 ft. long, 1 in. diam., 26 ins. in the
 ground, for $\frac{1}{4}$ sec. cor., with brass cap, marked



Dig pits, 18 X 18 X 12 ins., N. and S. of post, 3 ft.
 dist.; and raise a mound of earth, $3\frac{1}{2}$ ft. base, $1\frac{1}{2}$ ft.
 high, W. of cor.
 43.29 Draw, 5 lks. wide, course NW.
 80.00 Set an iron post, 3 ft. long, 2 ins. diam., 24 ins. in the
 ground, for cor. of secs. 25, 26, 35 and 36, with brass
 cap, marked

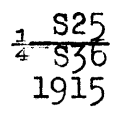


Dig pits, 18 X 18 X 12 ins., in each sec., $5\frac{1}{2}$ ft. dist.;
 and raise a mound of earth, 4 ft. base, 2 ft. high, W.
 of cor.

Land, rolling prairie.
 Soil, sandy; 24 to 36 ins. deep; 2nd rate.
 No timber.
 Undergrowth, greasewood. Short grass.

40.00 East on a random line, bet. secs. 25 and 36.
 80.15 Set temp. $\frac{1}{4}$ sec. cor;
 Intersect E. bdy. of Tp., 6 lks. S. of the cor. of secs.
 25, 30, 31 and 36, which is an iron post, hereinbefore
 described.

Thence
 S.89° 57' W., on a true line, bet. secs. 25 and 36.
 Over rolling and mountainous land, through scattering
 timber and undergrowth.
 10.15 Asc.
 11.65 Ridge, brs. N. and S. Desc. 145 ft.
 40.07 $\frac{1}{2}$ Set an iron post, 3 ft. long, 1 in. diam., 26 ins. in the
 ground, for $\frac{1}{4}$ sec. cor., with brass cap, marked



From which
 A cedar, 18 ins. diam., brs. N.46 $\frac{1}{4}$ ° E., 166 lks. dist.,
 marked $\frac{1}{4}$ S25 BT.
 A cedar, 10 ins. diam., brs. S.42 $\frac{1}{2}$ ° E., 119 lks. dist.,
 marked $\frac{1}{4}$ S36 BT.
 40.20 Draw, 30 lks. wide, course NW. Asc. 25 ft.
 42.85 Spur, slopes NW. Desc. 80 ft.
 50.15 Thence over rolling land.
 71.80 Road, St. George, Utah to Mt. Trumbull, brs. N. and S.
 80.15 The cor. of secs. 25, 26, 35 and 36.

Land, rolling and mountainous.
 Soil, thin and rocky; 4th rate.
 Timber, scattering cedar.
 Undergrowth, greasewood.

Partial Subdivision of T. 39 N., R. 12 W.

Chains.

N.0°1'W., bet. secs. 25 and 26.
 Over rolling prairie, through scattering undergrowth.
 32.20 Road, St. George to Mt. Trumbull, brs. NW. and SE.
 40.00 Set an iron post, 3 ft. long, 1 in. diam., 26 ins. in the
 ground, for $\frac{1}{4}$ sec. cor., with brass cap, marked

$\frac{1}{4}$
 S26 | S25
 1915

Dig pits, 18 X 18 X 12 ins., N. and S. of post, 3 ft.
 dist.; and raise a mound of earth, $3\frac{1}{2}$ ft. base, $1\frac{1}{2}$ ft.
 high, W. of cor.

47.00 Enter dry bed of Wolf Hole Lake, brs. NW. and SE.
 60.05 Wire fence, brs. NW. and SE.
 75.00 Leave dry bed of Wolf Hole Lake, brs. NE. and SW.
 79.90 Ditch, 6 lks. wide, 2 ft. deep, course E.
 80.00 Set an iron post, 3 ft. long, 2 ins. diam., 24 ins. in the
 ground, for cor. of secs. 23, 24, 25 and 26, with brass
 cap, marked

T30N R12W
 S23 | S24
 S26 | S25
 1915

Dig pits, 18 X 18 X 12 ins., in each sec., $5\frac{1}{2}$ ft. dist.;
 and raise a mound of earth, 4 ft. base, 2 ft. high, W.
 of cor.

Land, rolling prairie.
 Soil, sandy loam, 24 to 36 ins. deep; 2nd rate.
 No timber.
 Undergrowth, greasewood and sagebrush.

40.00 N.89°57'E., on a random line, bet. secs. 24 and 25.
 Set temp. $\frac{1}{4}$ sec. cor.
 80.14 Intersect E. bdy. of Tp., 5 lks. N. of the cor. of secs.
 19, 24, 25 and 30, which is an iron post, described
 hereinbefore.

Thence
 S.89°59'W., on a true line, bet. secs. 24 and 25.
 Over rolling land, through scattering timber and undergrowth.

20.15 Asc. 55 ft.
 29.35 Ridge, brs. N. and S. Desc. 230 ft.
 40.07 Set an iron post, 3 ft. long, 1 in. diam., 26 ins. in the
 ground, for $\frac{1}{4}$ sec. cor., with brass cap, marked

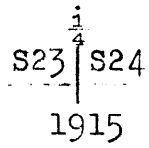
$\frac{1}{4}$ S24
 S25
 1915

60.00 And raise a mound of stone, 2 ft. base, $1\frac{1}{2}$ ft. high, N.
 of cor.
 80.14 Thence over rolling land.
 The cor. of secs. 23, 24, 25 and 26.
 Land, rolling and mountainous.
 Soil, E. $\frac{1}{2}$ thin and rocky; W. $\frac{1}{2}$, gravelly; 3rd rate.
 Timber, scattering cedar.
 Undergrowth, greasewood.
 Short grass.

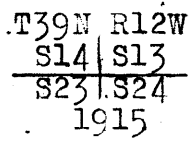
Partial Subdivision of T. 39 N., R. 12 W.

Chains.

N.0° 1' W., bet. secs. 23 and 24.
 Over rolling land, through scattering undergrowth.
 5.00 Asc. 45 ft.
 7.50 Small post corral brs. W. 5 lks. dist. Wire fence, brs.
 E: and W.
 12.00 Ridge, brs. E. and W. Wire fence, brs. NE. and SW. Desc.
 25.00 Draw, course SE.
 35.09 Enter scattering timber, brs. E. and W.
 40.00 Set an iron post, 3 ft. long, 1 in. diam., 26 ins. in the
 ground, for $\frac{1}{4}$ sec. cor., with brass cap, marked



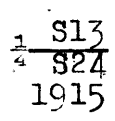
From which
 A cedar, 8 ins. diam., brs. S.18 $\frac{1}{2}$ ° E., 15 lks. dist.,
 marked $\frac{1}{4}$ S24 BT.
 A cedar, 8 ins. diam., brs. S.65 $\frac{1}{2}$ ° W., 77 lks. dist.,
 marked $\frac{1}{4}$ S23 BT.
 Asc. 40 ft.
 50.50 Spur, slopes SW. Desc.
 55.00 Asc. 300 ft.
 76.00 Ridge, brs. NW. and SE. Desc.
 80.00 Set an iron post, 3 ft. long, 2 ins. diam., 24 ins. in the
 ground, for cor. of secs. 13, 14, 23 and 24, with brass
 cap, marked



And raise a mound of stone, 2 ft. base, 1 $\frac{1}{2}$ ft. high, W.
 of cor.
 Land, mountainous and rolling.
 Soil, very thin and rocky; 4th rate.
 Timber, scattering cedar.
 Undergrowth, greasewood.

40.00 N.89° 59' E., on a random line, bet. secs. 13 and 24.
 Set temp. $\frac{1}{4}$ sec. cor.
 80.32 Intersect E. bdy. of Tp., 9 lks. N. of the cor. of secs.
 13, 18, 19 and 24, which is an iron post, hereinbefore
 described.

Thence
 N.89° 57' W., on a true line, bet. secs. 13 and 24.
 Over rolling and mountainous land, through scattering
 timber and undergrowth.
 Asc. 75 ft.
 11.30 Spur, slopes N. Thence along N. slope.
 16.50 Desc. 60 ft.
 21.00 Gulch, course NE. Thence over rolling land.
 21.30 Road, brs. NE. and SW.
 23.00 Sullivan's reservoir brs. S. 10 chs. dist. Asc. 70 ft.
 36.00 Small knoll. Desc.
 39.90 Draw, course SE.
 40.16 Set an iron post, 3 ft. long, 1 in. diam., 26 ins. in the
 ground, for $\frac{1}{4}$ sec. cor., with brass cap, marked



From which
 A cedar, 8 ins. diam., brs. N.46 $\frac{1}{2}$ ° E., 119 lks. dist.,
 marked $\frac{1}{4}$ S13 BT.
 A cedar, 7 ins diam., brs. S.29 $\frac{1}{4}$ ° E., 199 lks. dist.,
 marked $\frac{1}{4}$ S24 BT.

Partial Subdivision of T. 39 N., R. 12 W.

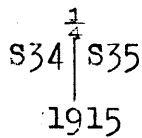
Chains.

Asc. 55 ft.
 44.92 Spur, slopes S. Desc. 45 ft.
 49.87 Wash, 10 lks. wide, 1 ft. deep, course SE. Asc. 135 ft.
 57.60 Spur, slopes SE. Continue ascent.
 78.82 Spur, slopes S. Thence along S. slope.
 80.32 The cor. of secs. 13, 14, 23 and 24.

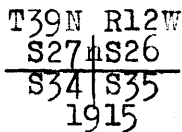
Land, rolling and mountainous.
 Soil, rocky; 4th rate.
 Timber, scrubby cedar.
 Undergrowth, greasewood.

Since the instructions for the survey of this group limit the survey to the best 12 sections, I discontinue the survey in this tier of sections at this point.

From the cor. of secs. 2, 3, 34 and 35, on the S. bdy. of the Tp., which is an iron post, hereinbefore described, N.0° 1' W., bet. secs. 34 and 35.
 Over rolling prairie land, through scattering undergrowth.
 3.30 Ditch, 10 lks. wide, 1 ft. deep, course NW.
 5.30 Ditch, 15 lks. wide, course NW. Asc. 75 ft.
 21.86 Ridge, brs. E. and W. Desc. 55 ft.
 30.00 Thence over rolling land.
 40.00 Set an iron post, 3 ft. long, 1 in. diam., 26 ins. in the ground, for $\frac{1}{4}$ sec. cor., with brass cap, marked



Dig pits, 18 X 18 X 12 ins., N. and S. of post, 3 ft. dist.; and raise a mound of earth, $3\frac{1}{2}$ ft. base, $1\frac{1}{2}$ ft. high, W. of cor.
 50.00 Asc. 25 ft.
 55.00 Top of knoll. Desc.
 60.00 Thence over rolling land.
 80.00 Set an iron post, 3 ft. long, 2 ins. diam., 24 ins. in the ground, for cor. of secs. 26, 27, 34 and 35, with brass cap, marked



And raise a mound of stone, 2 ft. base, $1\frac{1}{2}$ ft. high, W. of cor.
 Land, rolling prairie.
 Soil, sandy loam, rocky in spots; 3rd rate.
 Timber, none.
 Undergrowth, greasewood and sagebrush.

The cor. of secs. 25, 26, 35 and 36 being plainly visible
 East on ~~the~~ line, bet. secs. 26 and 35, for dist. only.
 40.00 Set temp. $\frac{1}{4}$ sec. cor.
 79.97 Intersect ~~the~~ line at the cor. of secs. 25, 26, 35 and 36.
 Thence
 West on a true line, bet. secs. 26 and 35.
 Over rolling land, through scattering undergrowth.

Partial Subdivision of T. 39 N., R. 12 W.

Chains.

- 20.95 Road, brs. N. and S.
- 26.95 Road, brs. N. and S.
- 39.98 $\frac{1}{2}$ Set an iron post, 3 ft. long, 1 in. diam., 26 ins. in the ground, for $\frac{1}{4}$ sec. cor., with brass cap, marked

$\frac{1}{4}$ S26
 $\frac{1}{4}$ S35
 1915

And raise a mound of stone, 2 ft. base, 2 ft. high, N. of cor.

- 79.97 The cor. of secs. 26, 27, 34 and 35.

Land, rolling prairie.
 Soil, rich sandy loam, 2 to 3 ft. deep; 1st rate.
 No timber.
 Undergrowth, greasewood and sagebrush, 2 to 3 ft. high.

N.0° 1'W., bet. secs. 26 and 27.
 Over rolling prairie, through scattering undergrowth and timber.

- 1.90 Road, brs. NE. and SW.
- 2.30 Wash, 10 lks. wide, 3 ft. deep, course NE.
- 40.00 Set an iron post, 3 ft. long, 1 in. diam., 26 ins. in the ground, for $\frac{1}{4}$ sec. cor., with brass cap, marked

$\frac{1}{4}$
 S27 | S26
 1915

And raise a mound of stone, 2 ft. base, 1 $\frac{1}{2}$ ft. high, W. of cor.

- 41.50 Wash, 10 lks. wide, 3 ft. deep, course SE. Asc. 20 ft.
- 53.00 Enter scattering timber, brs. E. and W.
- 55.00 Low ridge, brs. E. and W. Desc. gradually.
- 63.80 Wash, 10 lks. wide, 2 $\frac{1}{2}$ ft. deep, course SE. Thence over rolling land.
- 80.00 Set an iron post, 3 ft. long, 2 ins. diam., 24 ins. in the ground, for cor. of secs. 22, 23, 26 and 27, with brass cap, marked

T39N R12W
 S22 | S23
 S27 | S26
 1915

From which
 A cedar, 16 ins. diam., brs. N.43° E., 113 lks. dist., marked T39N R12W S23 BT.
 A cedar, 12 ins. diam., brs. S.44° E., 58 lks. dist., marked T39N R12W S26 BT.
 A cedar, 7 ins. diam., brs. S.54 $\frac{1}{4}$ ° W., 185 lks. dist., marked T39N R12W S27 BT.
 A cedar, 48 ins. diam., brs. N.2 $\frac{3}{4}$ ° W., 118 lks. dist., marked T39N R12W S22 BT.

Land, rolling prairie.
 Soil, rich, sandy loam, 2 to 3 ft. deep; 1st rate.
 Timber, scrubby cedar.
 Undergrowth, sagebrus and greasewood.

- 40.00 East on a random line, bet. secs. 23 and 26.
- 79.99 Set temp. $\frac{1}{4}$ sec. cor.
 Intersect N. and S. line, 4 lks. N. of the cor. of secs. 23, 24, 25 and 26.

8854

Partial Subdivision of T. 39 N., R. 12 W.

Chains.

Thence
 N.89° 58' W., on a true line, bet. secs. 23 and 26.
 Over rolling prairie, through scattering undergrowth.
 1.58 Wire fence, brs. N. and S. Enter cultivated land.
 4.34 Edw. B. Franklin's house brs. S. 3 chs. dist.
 9.70 Wire fence, brs. N. and S. Leave cultivated land,
 14.48 Road, St. George, Utah to Mr. Trumbull, brs. N. and S.
 15.49 Road, brs. N. and S.
 27.10 Road, St. George, Utah to Parishont, brs. N. and S.
 27.80 Wash, 10 lks. wide, 1 ft. deep, course S.
 39.99½ Set an iron post, 3 ft. long, 1 in. diam., 26 ins. in the
 ground, for ¼ sec. cor., with brass cap, marked

1/4 S23
 1/4 S26
 1915

And raise a mound of stone, 2 ft. base, 1½ ft. high, N.
 of cor.

52.00 Enter scattering timber, brs. N. and S. Asc.
 55.00 Low ridge, brs. N. and S. Desc.
 79.99 The cor. of secs. 22, 23, 26 and 27.

Land, rolling prairie.
 Soil, sandy and rocky; 3rd rate.
 Timber, scrubby cedars.
 Undergrowth, greasewood and sagebrush.

N.0° 1' W., bet. secs. 22 and 23.
 Over rolling prairie, through thick timber and scattering
 undergrowth.
 20.57 Wash, 5 lks. wide, 1 ft. deep, course E.
 40.00 Set an iron post, 3 ft. long, 1 in. diam., 26 ins. in the
 ground, for ¼ sec. cor., with brass cap, marked

1/4
 S22 | S23
 1915

From which
 A cedar, 28 ins. diam., brs. S.16° E., 13 lks. dist.,
 marked 1/4 S23 BT.
 A cedar, 22 ins. diam., brs. S.40° W., 12 lks. dist.,
 marked 1/4 S22 BT.
 80.00 Set an iron post, 3 ft. long, 2 ins. diam., 24 ins. in the
 ground, for cor. of secs. 14, 15, 22 and 23, with brass
 cap, marked

T39N R12W
 S15 | S14
 S22 | S23
 1915

From which
 A cedar, 10 ins. diam., brs. N.47° E., 44 lks. dist.,
 marked T39N R12W S14 BT.
 A cedar, 24 ins. diam., brs. S.78½° E., 96 lks. dist.,
 marked T39N R12W S23 BT.
 A pinion, 12 ins. diam., brs. S.34½° W., 60 lks. dist.,
 marked T39N R12W S22 BT.
 A cedar, 8 ins. diam., brs. N.74½° W., 14 lks. dist.,
 marked T39N R12W S15 BT.

Land, rolling prairie.
 Soil, sandy; 3rd rate.
 Timber, scrubby cedar.
 Undergrowth, greasewood and sagebrush.

Partial Subdivision of T. 39 N., R. 12 W.

Chains.

40.00
79.98

S.89° 58' E., on a random line, bet. secs. 14 and 23.
Set temp. $\frac{1}{4}$ sec. cor.
Intersect ~~the~~ line, at the cor. of secs. 13, 14, 23
and 24.

15.00
39.99

Thence
N.89° 58' W., on a true line, bet. secs. 14 and 23.
Over mountainous land, through scattering undergrowth.
Desc. 350 ft.
Foot of descent, brs. NW. and SE. Enter timber, brs. N.
and S. Thence over rolling land.
Set an iron post, 3 ft. long, 1 in. diam., 26 ins. in the
ground, for $\frac{1}{4}$ sec. cor., with brass cap, marked

$\frac{1}{4}$ S14
 $\frac{1}{4}$ S23
1915

63.50
66.30
68.50
79.98

From which
A cedar, 14 ins. diam., brs. N.11° W., 122 lks. dist.,
marked $\frac{1}{4}$ S14 BT.
A cedar, 8 ins. diam., brs. S.30 $\frac{1}{4}$ ° E., 51 lks. dist.,
marked $\frac{1}{4}$ S23 BT.
Road, brs. N. to St. George, Utah, and S. to Wolf Hole.
Wash, 10 lks. wide, 7 ft. deep, course S.
Wash, 10 lks. wide, 5 ft. deep, course S.
The cor. of secs. 14, 15, 22 and 23.

Land, mountainous and rolling prairie.
Soil, thin and rocky; 4th rate.
Timber, scattering cedar and pinion.
Undergrowth, greasewood and sagebrush.
Short grass.

40.00

From the cor. of secs. 3, 4, 33 and 34, on the S. bdy. of
the Tp., which is an iron post, hereinbefore described,
N.0° 2' W., bet. secs. 33 and 34.
Over rolling land, through scattering undergrowth.
Set an iron post, 3 ft. long, 1 in. diam., 26 ins. in the
ground, for $\frac{1}{4}$ sec. cor., with brass cap, marked

$\frac{1}{4}$
S33 | S34
1915

65.00
67.50
80.00

Dig pits, 18 X 18 X 12 ins., N. and S. of post, 3 ft.
dist.; and raise a mound of earth, 3 $\frac{1}{2}$ ft. base, 1 $\frac{1}{2}$ ft.
high, W. of cor.
Asc. 25 ft.
Ridge, brs. E. and W. Enter thick timber, brs. E. and W.
Desc.
Set an iron post, 3 ft. long, 2 ins. diam., 24 ins. in the
ground, for cor. of secs. 27, 28, 33 and 34, with brass
cap, marked

T39N R12W
S28 | S27
S33 | S34
1915

From which
A cedar, 11 ins. diam., brs. N.34 $\frac{1}{2}$ ° E., 158 lks. dist.,
marked T39N R12W S27 BT.
A cedar, 11 ins. diam., brs. S.59° E., 128 lks. dist.,
marked T39N R12W S34 BT.
A cedar, 11 ins. diam., brs. S.36° W., 141 lks. dist.,
marked T39N R12W S33 BT.
A cedar, 11 ins. diam., brs. N.81 $\frac{1}{2}$ ° W., 109 lks. dist.,
marked T39N R12W S28 BT.

Land, rolling prairie.

Partial Subdivision of T. 39 N., R. 12 W.

66

Chains.

Soil, sandy loam, 24 to 36 ins. deep; 2nd rate.
Timber, cedar.
Undergrowth, greasewood.

40.00 East on a random line, bet. secs. 27 and 34.
Set temp. $\frac{1}{4}$ sec. cor.
80.14 Intersect N. and S. line, at the cor. of secs. 26, 27, 34
and 35.
Thence
West on a true line, bet. secs. 27 and 34.
Over rolling prairie, through scattering undergrowth.
2.90 Road, brs. NE. and SW.
2.99 Draw, 15 lks. wide, course NE.
39.00 Road, brs. NW. and SE.
40.07 Set an iron post, 3 ft. long, 1 in. diam., 26 ins. in the
ground, for $\frac{1}{4}$ sec. cor., with brass cap, marked

$$\begin{array}{r} \frac{1}{4} S27 \\ \frac{1}{4} S34 \\ \hline 1915 \end{array}$$

And raise a mound of stone, 2 ft. base, $1\frac{1}{2}$ ft. high, N. of cor.

45.32 Road, brs. N. and S.
50.00 Enter timber, brs. N. and S. Asc.
65.00 Low ridge, brs. N. and S. Desc. 30 ft.
79.00 Thence over rolling land.
80.14 The cor. of secs. 27, 28, 33 and 34.

Land, rolling prairie.
Soil, sandy loam, 24 to 36 ins. deep; 2nd rate.
Timber, scrubby cedar.
Undergrowth, greasewood.

40.00 N.0°2'W., bet. secs. 27 and 28.
Over rolling land, through scattering undergrowth. and
dense timber.
Set an iron post, 3 ft. long, 1 in. diam., 26 ins. in the
ground, for $\frac{1}{4}$ sec. cor., with brass cap, marked

$$\begin{array}{r} \frac{1}{4} \\ S28 | S27 \\ \hline 1915 \end{array}$$

Dig pits, 18 X 18 X 12 ins., N. and S. of post, 3 ft. dist., and raise a mound of earth, $3\frac{1}{2}$ ft. base, $1\frac{1}{2}$ ft. high, W. of cor.

71.15 Wash, 10 lks. wide, 10 ft. deep, course SE.
71.80 Road, brs. NW. and SE.
80.00 Set an iron post, 3 ft. long, 2 ins. diam., 24 ins. in the
ground, for cor. of secs. 21, 22, 27 and 28, with brass
cap, marked

$$\begin{array}{r} T39N R12W \\ S21 | S22 \\ \hline S28 | S27 \\ \hline 1915 \end{array}$$

From which
A cedar, 10 ins. diam., brs. N.44 $\frac{1}{2}$ ° E., 277 lks. dist.,
marked T39N R12W S22 BT.
A cedar, 9 ins. diam., brs. S. $\frac{1}{2}$ ° E., 426 lks. dist.,
marked T39N R12W S27 BT.
A cedar, 16 ins. diam., brs. S.33°W., 128 lks. dist.,
marked T39N R12W S28 BT.
A cedar, 1

Partial Subdivision of T. 39 N., R. 12 W.

Chains.

A cedar, 10 ins. diam., brs. N.41 $\frac{1}{2}$ ° W., 132 lks. dist., marked T39N R12W S21 BT.

Land, rolling prairie.
Soil, sandy loam; 3rd rate.
Timber, scrubby cedar.
Undergrowth, greasewood and sagebrush.

40.00 East on a random line, bet. secs. 22 and 27.
80.08 Set temp. $\frac{1}{4}$ sec. cor.
Intersect N. and S. line, 2 lks. N. of the cor. of secs. 22, 23, 26 and 27.

Thence N.89°59'W., on a true line, bet. secs. 22 and 27.
Over rolling land, through scattering undergrowth and thick timber.

40.04 Set an iron post, 3 ft. long, 1 in. diam., 26 ins. in the ground, for $\frac{1}{4}$ sec. cor., with brass cap, marked

$\frac{1}{4}$ S22
 $\frac{1}{4}$ S27
1915

From which
A cedar, 24 ins. diam., brs. N.6 $\frac{1}{4}$ ° W., 163 lks. dist., marked $\frac{1}{4}$ S22 BT.
A cedar, 18 ins. diam., brs. S.15 $\frac{3}{4}$ ° W., 93 lks. dist., marked $\frac{1}{4}$ S27 BT.

52.70 Wash, 15 lks. wide, 3 ft. deep, course SE.
64.30 Wash, 15 lks. wide, 2 $\frac{1}{2}$ ft. deep, course S.
70.05 Wash, 10 lks. wide, 2 ft. deep, course SE.
80.08 The cor. of secs. 21, 22, 27 and 28.

Land, rolling prairie.
Soil, sandy; 2nd rate.
Timber, cedar.
Undergrowth, greasewood.

General Description.

The sections surveyed contain the claim of Edw. B. Franklin, whose house is located in the northeastern quarter of sec. 26, and who has improvements in secs. 23, 24, 25 and 26, consisting of corral, fences, cultivated land and ditches.

The land is rolling, draining into Wolf Hole Lake, in secs. 25 and 26, which was dry at this season. Much of this land is covered with a thick growth of scrubby cedar. The remainder is good sandy loam soil, 2nd rate. The undergrowth consists of greasewood and sagebrush.

FIELD ASSISTANTS.

NAMES.	CAPACITY.
L. Culverson,	1st chairman,
Ralph Button,	1st chairman,
F.W. Farnsworth,	1st chairman,
W. T. Barnum,	2nd chairman,
R. J. Farnsworth, Jr.,	Moundsman,
Frank Judd,	Flagman,
Don Cram,	Flagman,

60

BOOK 3086

CERTIFICATE OF UNITED STATES SURVEYOR.

Applies to Books "A" and "B" of this group.

I, Thomas B. Matthews, U. S. Surveyor, hereby certify upon honor that, in pursuance of special instructions received from the U. S. Surveyor General, for Group 56, Arizona, bearing date of the 4th day of May 1915 and 20th day of September 1915, I have well, faithfully, and truly in my own proper person, and in strict conformity with said instructions, the Manual of Surveying Instructions, and the laws of the United States, surveyed all those parts or portions of the 9th. Std. Par. N., thru. Rs. 5, 6, 7, 8, 9, 10 & 11 W., E. bdrs. of Ts. 37 & 38 N., R. 12 W.; S. half of E. bdy. & E. half of S. bdy. of T. 39 N.; part of subdivision lines in T. 39 N., R. 12 W., Fredonia Townsite in T. 41 N., R. 2 W.; subdivision of secs. 16, 17, 19, 21 & 29 in T. 41 N., R. 2 W.; Agricultural Tracts Nos. 37 to 127, both include in same Tp., Cemetery Reserve in same Tp., and the Reservoir Site in same Tp., & of the Gila and Salt River Base Meridian, in the State of Arizona, which are represented in the foregoing field notes, and those in book "B", as having been executed by me, and under my direction; and that all the corners of said survey have been established and perpetuated in strict accordance with the Manual of Surveying Instructions, and the special written instructions of the U. S. Surveyor General, for Group 56, Arizona, and notes in book "B" and in the specific manner described in the field notes, and that the foregoing are the original field notes of such survey.

Thomas B. Matthews
U. S. Surveyor.

APPROVAL.

OFFICE OF THE UNITED STATES SURVEYOR GENERAL,

Phoenix, Arizona, November 2, 1918

The foregoing field notes of the survey of the Ninth Standard Parallel North, thru. Ranges 5, 6, 7, 8, 9, 10 and 11 West, the East boundaries of Townships 37 and 38 North, Range 12 West, the South half of East boundary of Township 39 North, Range 12 West, the East half of South boundary of Township 39 North Range 12 West, and Part of the Subdivision lines of Township 39 North, Range 12 West of the Gila and Salt River Base and Meridian, in the State of Arizona, executed by Thomas B. Matthews, U. S. Surveyor, under his special instructions dated Sept 20, 1915, for Group 56, Arizona, having been critically examined, and the necessary corrections and explanations made, the said field notes, and the surveys they describe, are hereby approved.

Franz P. Frott
U. S. Surveyor General.

I certify that the foregoing transcript of the field notes of the above described surveys in ... has been correctly copied from the original notes on file in this office.