

3210

Book "I."  
4-679

(1)

BOOK 3210

# FIELD NOTES

OF THE SURVEY OF THE

EAST BOUNDARY

and

SUBDIVISION LINES

of

TOWNSHIP 19 NORTH, RANGE 11 WEST,

Of the Gila and Salt River Base and Meridian,

In the State of Arizona.

EXECUTED BY

EUGENE L. HARSHBARGER,

U.S. Transitman,

*In the capacity of U.S. Surveyor, under instructions dated February 20, 1915, issued by the United States Surveyor General to govern surveys included in Group No. 50, which were approved by the Commissioner of the General Land Office, March 2, 1915.*

Survey commenced March 17, 1916.

Survey completed May 3, 1916.

Executed under Assignment  
Instructions dated Nov. 29, 1915.

3210

3210

3210

Book "I."

Group 50 - - Arizona.

BOOK 3210

# INDEX DIAGRAM.

Township 19 North, Range 11 West.

6	41	5	32	4	25	3	18	2	11	1	1	X
41		40		32		24		17		10		
7	40	8	31	9	24	10	17	11	10	12	3	
39		39		30		23		16		9		
18	38	17	29	16	23	15	15	14	8	13	3	
38		37		29		22		15		8		
19	36	20	28	21	21	22	14	23	7	24	2	
36		35		27		21		13		7		
30	34	29	27	28	20	27	13	26	6	25	1	
34		33		26		19		12		5		
31	33	32	26	33	18	34	11	35	5	36	1	

6-151

- \_\_\_\_\_ Surveyed under this group--notes in this book. 3210
- \_\_\_\_\_ " " " " " " Book C. 3204
- \_\_\_\_\_ " " " " " " " D. 3205
- \_\_\_\_\_ " " " " " " " E. 3206
- \_\_\_\_\_ " " " " " " " F. 3207
- \_\_\_\_\_ " " " " " " " G. 3208
- \_\_\_\_\_ " " " " " " " H. 3209
- \_\_\_\_\_ " " " " " " " L. 3213

Survey of E. Bdy., and Subdivisional Lines, T. 19 N., R. 11 W.

Chains

Survey executed on dates shown on diagram on page 45 of this book, by Eugene L. Harshbarger, U. S. Transitman.

The instrument used is described, with record of approval by the assistant supervisor of surveys for Arizona and California, and field tests, in Book A. The adjustments were frequently examined and maintained throughout the work by comparison of the results of solar observations with true meridians determined by observations on Polaris.

The mean magnetic variation is 15°E.

E. bdy., T. 19 N., R. 11 W.

From the cor. of Tps. 18 and 19 N., Rs. 11 W., described in book D:

North, on E. bdy. of sec. 36, over top of mesa.

39.90  
40.00

Draw, course W.  
Set an iron post, 3 ft. long, 1 in. diam., 26 ins. in the ground, for  $\frac{1}{4}$  sec. cor. of sec. 36, with brass cap, marked

1836

1916

and raise a mound of stone, 2 ft. base,  $1\frac{1}{2}$  ft. high, W. of cor.

74.50  
80.00

Desc. into head of gulch, course W.  
Set an iron post, 3 ft. long, 3 ins. diam., 24 ins. in the ground, for cor. of secs. 25 and 36, with brass cap, marked

T19N  
S25  
S36  
R11W

1916

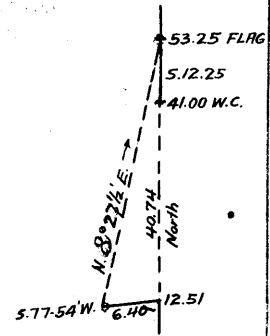
and raise a mound of stone, 2 ft. base,  $1\frac{1}{2}$  ft. high, W. of cor.

Land, slightly rolling mesa.  
Soil, 3rd rate.  
No timber.

North, on E. bdy. of sec. 25, ascending gradually over top of mesa.

12.51

Edge of mesa bears N.80°E. and S.80°W. To obtain distance to bottom of abrupt slope, over cliffs over which it is impracticable to chain, I proceed as follows:  
Measure a base, S.77°54'W., 6.40 chs., to a point whence a flag on line on N. side of Trout Creek bears N.8°27 $\frac{1}{2}$ 'E., which gives for the distance to flag, 6.40 X sin. 69°26 $\frac{1}{2}$ ' + sin. 8°27 $\frac{1}{2}$ ', or 40.74 chs., making distance from sec. cor. 12.51 + 40.74, or 53.25 chs. From this station I chain S., 12.25 chs. to point 1.00 ch. N. of true pt.



Chains

for  $\frac{1}{4}$  sec. cor., where it is impracticable to establish same. Therefore at  
 41.00 Set an iron post, 3 ft. long, 1 in. diam., 26 ins. in the ground, for witness cor. to  $\frac{1}{4}$  sec. cor., with brass cap, marked

$\frac{1}{4}$ S25

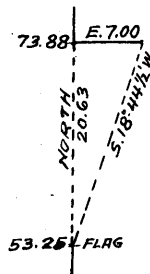
W C  
1916

and raise a mound of stone, 2 ft. base,  $1\frac{1}{2}$  ft. high, W. of cor.

From witness cor., descend 120 ft., on abrupt slope.  
 52.75 Trout Creek, course SW., stream 25 lks. wide, 1 ft. deep, 800 ft. below top of mesa.

53.25 Triangulation point, hereinbefore described.  
 To obtain distance across abrupt cliffs, on N. side of Trout Creek canyon, I proceed as follows:

Set a flag on line, from which I measure a base E., 7.00 chs., to a point whence flag at 53.25 ch. pt. bears S.18°44 $\frac{1}{2}$ 'W., which gives for the distance, 7.00 X tan 71°15 $\frac{1}{2}$ ', or 20.63 chs., making the distance from sec. cor. to flag 53.25 + 20.63, or 73.88 chs.



73.88 Triangulation point, 700 ft. above Trout Creek.  
 Asc. 110 ft., on S. slope.

80.00 Set an iron post, 3 ft. long, 3 ins. diam., 24 ins. in the ground, for cor. of secs. 24 and 25, with brass cap, marked

T19N  
 S24  
 S25  
 R11W

1916

and raise a mound of stone, 2 ft. base,  $1\frac{1}{2}$  ft. high, W. of cor.

Land, mountainous.  
 Soil, very rocky; 4th rate.  
 Timber, paloverde.

16.60 North, on E. bdy. of sec. 24,  
 over mountainous land, through scattering undergrowth.  
 Asc. 190 ft., on S. slope, to edge of mesa E. of line.

40.00 Desc. gradually, on NW. slope, from point of W. edge of mesa.  
 Set an iron post, 3 ft. long, 1 in. diam., 26 ins. in the ground, for  $\frac{1}{4}$  sec. cor. of sec. 24, with brass cap, marked

$\frac{1}{4}$ S24

1916

63.95 and raise a mound of stone, 2 ft. base,  $1\frac{1}{2}$  ft. high, W. of cor.  
 Gulch, course SW., 350 ft. below 16.60 ch. pt. Asc. 330 ft., on SE. slope.

80.00 On spur, sloping E.,  
 Set an iron post, 3 ft. long, 3 ins. diam., 24 ins. in the ground, for cor. of secs. 13 and 24, with brass cap, marked

T19N  
 S13  
 S24  
 R11W

1916

and raise a mound of stone, 2 ft. base,  $1\frac{1}{2}$  ft. high, W. of cor.

E. Bdy. T. 19 N. R. 11 W.

Chains

Land, mountainous.  
Soil, rocky; 4th rate.  
No timber.  
Undergrowth, oak brush and paloverde.

North, on E. bdy. of sec. 13,  
over mountainous land, through scattering timber and  
undergrowth. Desc. 175 ft., on NE. slope.  
6.00 Gulch, course NE. Asc. 270 ft.  
22.80 Top of spur, sloping NE. Desc. 45 ft.  
27.75 Bottom of gulch, course SE. Asc. 85 ft.  
35.00 Top of ridge bearing NE. and SW. Desc.  
40.00 Set an iron post, 3 ft. long, 1 in. diam., 26 ins. in the  
ground, for  $\frac{1}{4}$  sec. cor. of sec. 13, with brass cap,  
marked

$\frac{1}{4}$ S13

1916

and raise a mound of stone, 2 ft. base,  $1\frac{1}{2}$  ft. high,  
W. of cor.

45.30 Fence bears NE. and SW.  
49.20 Bottom of gulch, course N.10°E. Asc. 160 ft.  
63.85 Summit of ascent, on E. slope. Desc. 75 ft.  
71.15 Bottom of gulch, course NE. Asc. 25 ft.  
75.60 Top of small rise, on E. slope.  
80.00 Set an iron post, 3 ft. long, 3 ins. diam., 24 ins. in the  
ground, for cor. of secs. 12 and 13, with brass cap,  
marked

T19N

S12

S13

R11W

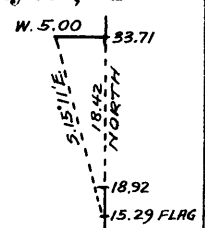
1916

and raise a mound of stone, 2 ft. base,  $1\frac{1}{2}$  ft. high,  
W. of cor. A juniper, 8 ins. diam., bears N.84°W.,  
260 lks. dist., marked T19N R11W S12 BT.

Land, mountainous.  
Soil, 3rd and 4th rate.  
Timber, juniper.  
Undergrowth, oak brush.  
Formation, lava and conglomerate.

North, on E. bdy. of sec. 12,  
over mountainous land, through scattering timber and  
undergrowth.  
15.29 Low divide bears E. and W. Desc. 112 ft.  
18.92 Bottom of canyon, course NW.

To obtain distance to point on N. side of canyon, I  
proceed as follows: Set a flag on line,  
from which I measure a base W., 5.00 chs.,  
to a point whence a flag at 15.29 ch. pt.  
bears S.15°11'E., which gives for the  
distance, 5.00 X cotan 15°11', or 18.42  
chs., making flag 15.29 + 18.42, or 33.71  
chs. N. of sec. cor.



33.71 Triangulation point, 220 ft. above bottom of canyon.  
36.40 Desc. gradually, along N. slope, into draw.  
40.00 Set an iron post, 3 ft. long, 1 in. diam., 26 ins. in the  
ground, for  $\frac{1}{4}$  sec. cor. of sec. 12, with brass cap,  
marked

$\frac{1}{4}$ S12

1916

E. bdy., T. 19 N., R. 11 W.

Chains

- and raise a mound of stone, 2 ft. base,  $1\frac{1}{2}$  ft. high,  
W. of cor.
- 47.00 Bottom of draw, course SE. Asc. 120 ft., on S. slope.  
56.85 Top of ridge bears NE. and SW. Desc. 100 ft.  
69.40 Desc. over cliff 70 ft. high, into canyon.  
71.95 Bottom of canyon, course SE. Asc. over cliff 70 ft. high,  
on N. side.  
77.50 Desc. over cliff 70 ft. high.  
80.00 Set an iron post, 3 ft. long, 3 ins. diam., 24 ins. in the  
ground, for cor. of secs. 1 and 12, with brass cap, marked

T19N
S1
S12
R11W

1916

and raise a mound of stone, 2 ft. base,  $1\frac{1}{2}$  ft. high,  
W. of cor.

Land, mountainous.  
Soil, 2nd to 4th rate.  
Timber, juniper.  
Undergrowth, oak brush.  
Grass, scant.  
Formation, lava.

- 40.00 North, on E. bdy. of sec. 1,  
over mountainous land, through scattering timber and  
undergrowth, on broken NW. slope.  
Set an iron post, 3 ft. long, 1 in. diam., 26 ins. in the  
ground, for  $\frac{1}{4}$  sec. cor. of sec. 1, with brass cap, marked

$\frac{1}{4}$ S1
------------------

1916

- 60.80 and raise a mound of stone, 2 ft. base,  $1\frac{1}{2}$  ft. high,  
W. of cor.  
Bottom of gulch, course SW.  
79.63 Intersect S. bdy. of Tp. 20 N., R. 11 W., 17.90 chs. E.  
of the cor. of secs. 35 and 36, described in book G.

At point of intersection  
Set an iron post, 3 ft. long, 3 ins. diam., 24 ins. in the  
ground, for closing cor. of Tps. 19 N., Rs. 10 and 11 W.,  
with brass cap, marked

T20N	R11W
S36	
S1	S6
R11W	R10W

T19N

C C

1916

and raise a mound of stone, 2 ft. base,  $1\frac{1}{2}$  ft. high,  
S. of cor.

Land, mountainous.  
Soil, 3rd and 4th rate.  
Timber, juniper.  
Undergrowth, oak brush.  
Grass, scant.  
Formation, lava.

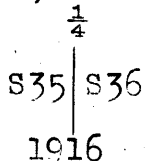
Subdivision of T. 19 N., R. 11 W.

Chains

Beginning at the cor. of secs. 1, 2, 35 and 36, on S. bdy. of Tp., described in book D;

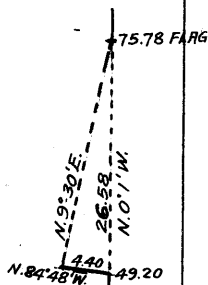
Thence N.0°01'W., bet. secs. 35 and 36, over mountainous land, through scattering undergrowth. Asc. 80 ft., on S. slope.

- 4.60 Summit of ascent. Desc. 120 ft., on N. slope.
- 11.80 Draw, course W. Asc. 640 ft., on abrupt S. slope.
- 39.00 Summit of ascent. Thence over top of mesa.
- 40.00 Set an iron post, 3 ft. long, 1 in. diam., 26 ins. in the ground, for  $\frac{1}{4}$  sec. cor., with brass cap, marked



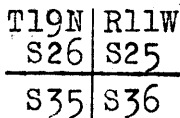
and raise a mound of stone, 2 ft. base, 1 1/2 ft. high, W. of cor.

- 49.20 N. edge of mesa. To obtain distance across perpendicular malpais cliffs, on abrupt N. slope of same, I proceed as follows: Measure a base N.84°48'W., 4.40 chs., to a point whence a flag on line bears N.9°30'E., which gives for the distance 4.40 X sin 85°42' + sin 9°30', or 26.58 chs., making distance from sec. cor. to flag 49.20 + 26.58, or 75.78 chs.



- 75.78 Triangulation point, 300 ft. below top of mesa. Desc. 30 ft.

- 80.00 Set an iron post, 3 ft. long, 2 ins. diam., 24 ins. in the ground, for cor. of secs. 25, 26, 35 and 36, with brass cap, marked

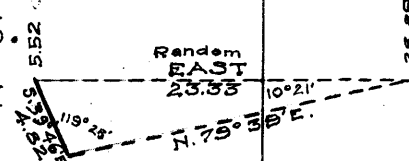


1916

and raise a mound of stone, 2 ft. base, 1 1/2 ft. high, W. of cor.

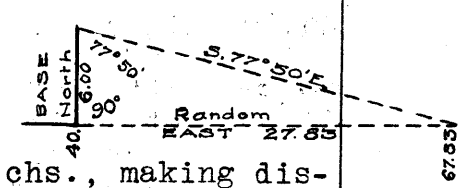
Land, mountainous.  
Soil, rocky; 4th rate.  
No timber.  
Undergrowth, oak brush and paloverde.

- 5.52 East, on a random line, bet. secs. 25 and 36. To obtain distance over very rough slope, over which it is impracticable to chain, I proceed as follows: Measure a base, S.39°46'E., 4.82 chs., to a point whence a flag placed on line bears N.79°39'E., which gives for the distance 4.82 X sin 119°25' + sin 10°21', or 23.37 chs., making distance from sec. cor to flag, 5.52 + 23.37, or 28.89 chs.



- 28.89 Triangulation point; Thence continue with steel tape.
- 40.00 Set temp.  $\frac{1}{4}$  sec. cor.

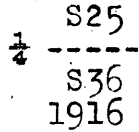
To obtain distance to top of rim rock, over land across which it is impracticable to chain, I proceed as follows: Measure a base North, 6.00 chs., to a point whence flag on line bears S.77°50'E., which gives for the distance, 6.00 X tan 77°50', or 27.83 chs., making distance from sec. cor. to flag, 40.00 + 27.83, or 67.83 chs.



- 67.83 Triangulation point, whence I proceed with steel tape.
- 79.84 Intersect E. bdy. of Tp. 12 lks. N. of the cor. of secs. 25 and 36, hereinbefore described.

Chains

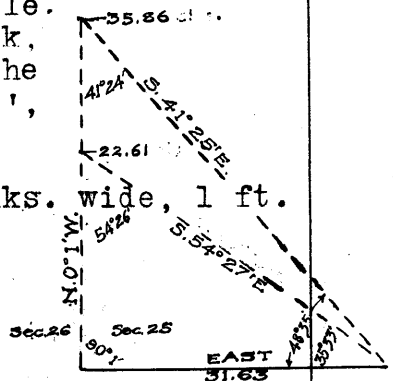
Thence N.89°55'W., on a true line, bet. secs. 25 and 36, over mountainous land, through scattering timber and undergrowth. Desc. 120 ft., over top of mesa.  
 12.00 Edge of mesa bears NE. and SW. Desc. 475 ft., over rim rock and on NW. slope of mesa.  
 39.92 In draw, course NW., Set an iron post, 3 ft. long, 1 in. diam., 26 ins. in the ground, for  $\frac{1}{4}$  sec. cor., with brass cap, marked



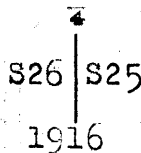
and raise a mound of stone, 2 ft. base,  $1\frac{1}{2}$  ft. high, N. of cor.  
 Asc. 475 ft., over broken NE. slope.  
 76.40 Thence desc. 75 ft., on NW. slope.  
 79.84 The cor. of secs. 25, 26, 35 and 36.

Land, rough, broken, and mountainous.  
 Soil, rocky; 4th rate.  
 Timber, pinyon.  
 Undergrowth, oak brush and chaparral.

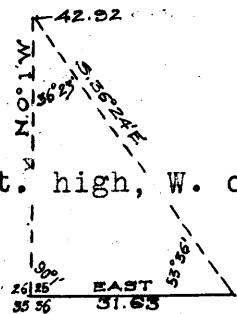
N.0°01'W., bet. secs. 25 and 26, over mountainous land, through scattering undergrowth, descending into Trout Creek Canyon.  
 To obtain distance over precipitous slopes, I send flag-man ahead and establish stations on line at points whence a flag left on random line bet. secs. 25 and 36, 31.63 chs. E. of the sec. cor., is visible.  
 From station 1, on N. side of Trout Creek, flag bears S.54°27'E., which gives for the distance,  $31.63 \times \sin 35°33' + \sin 54°26'$ , or 22.61 chs. From this point I measure S.0°01'E., 3.90 chs., to  
 18.71 Trout Creek, course W., clear stream, 25 lks. wide, 1 ft. deep, 440 ft. below sec. cor.



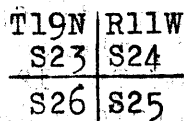
From station 2, flag bears S.41°25'E., which gives for the distance,  $31.63 \times \sin 48°35' + \sin 41°24'$ , or 35.86 chs.  
 35.86 This station is approximately on level with sec. cor., 440 ft. above creek. I measure 4.14 chs. to  
 40.00 Set an iron post, 3 ft. long, 1 in. diam., 26 ins. in the ground, for  $\frac{1}{4}$  sec. cor., with brass cap, marked



and raise a mound of stone, 2 ft. base,  $1\frac{1}{2}$  ft. high, W. of cor.  
 From station 3, flag bears S.36°24'E., which gives for the distance,  $31.63 \times \sin 53°36' + \sin 36°23'$ , or 42.92 chs.



42.92 Top of rim rock bears E. and W., 700 ft. above Creek. Thence across level top of mesa.  
 50.60 Rim rock, 50 ft. high, bears E. and W. Desc. on NW. slope of mesa, 500 ft.  
 74.80 Bottom of gulch, course S.80°W. Asc. 100 ft.  
 80.00 Set an iron post, 3 ft. long, 2 ins. diam., 24 ins. in the ground, for cor. of secs. 23, 24, 25 and 26, with brass cap, marked





Subdivision of T. 19 N., R. 11 W.

Chains

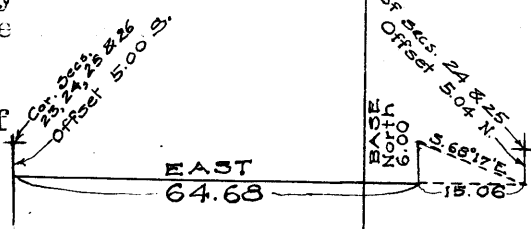
and raise a mound of stone, 2 ft. base, 1 1/2 ft. high, W. of cor.

Land, rough and mountainous. Soil, rocky; 4th rate. No timber. Undergrowth, oak brush. Grass, very scant. Formation, lava and conglomerate.

From point 5.00 chs. S. of the cor. of secs. 23, 24, 25 and 26,

40.00  
64.68

East, on a random line, in sec. 25. Set temp. 1/4 sec. cor., 5.00 chs. N. of transit line. To obtain distance across broken, rocky slope, over which it is impracticable to chain, I proceed as follows: Measure a base, North, 6.00 chs., to a point whence a flag on offset, S. of cor. of secs. 24 and 25 bears S. 68° 17' E., which gives for the distance, 6.00 X tan 68° 17', or 15.06 chs., making total distance to flag 64.68 + 15.06, or 79.74 chs.



79.74

Offset North, 5.00 chs., to a point at which a line due east from the cor. of secs. 23, 24, 25 and 26 intersects E. bdy. of Tp., 4 lks. S. of the cor. of secs. 24 and 25, hereinbefore described. Therefore the bearing of line bet. secs. 24 and 25 is S. 89° 58' W. Thence South, 5.04 chs., to offset line.

15.06  
17.15  
39.87

Thence West, on offset, over broken land. Triangulation point. Ridge bears NE. and SW. Desc. gradually. On true line, 5.02 chs. N. of offset, Set an iron post, 3 ft. long, 1 in. diam., 26 ins. in the ground, for 1/4 sec. cor., with brass cap, marked S24  
1/4 -----  
S25  
1916

72.85

and raise a mound of stone, 2 ft. base, 1 1/2 ft. high, N. of cor. Return to offset line, and continue West. Bottom of gulch, 4 chs. wide, course S. 70° W. Asc. 15 ft. on SE. slope.

73.85

Thence desc. 50 ft.

79.74

A point 5.00 chs. S. of the cor. of secs. 23, 24, 25 and 26. Thence North, 5.00 chs. to cor.

Land, mountainous. Soil, rocky; 4th rate. No timber. Undergrowth, oak brush. Grass, very scant. Formation, lava and conglomerate.

11.20

N. 0° 01' W., bet. secs. 23 and 24, over mountainous land, through scattering undergrowth. Asc. 280 ft., on SW. slope.

18.00

Spur slopes SW. Desc. 35 ft. Bottom of gulch, course SW. Asc. 165 ft., over malpais slide rock.

23.25

Ridge bears NE. and SW. Desc. abruptly, on NW. slope.

Chains

- 40.00 Set an iron post, 3 ft. long, 1 in. diam., 26 ins. in the ground, for  $\frac{1}{4}$  sec. cor., with brass cap, marked
- $\frac{1}{4}$   
S23 | S24  
1916
- and raise a mound of stone, 2 ft. base,  $1\frac{1}{2}$  ft. high, W. of cor.
- 41.10 Bottom of gulch, course NW., 260 ft. below ridge.  
Asc. 70 ft.
- 44.75 Summit of ascent. Desc. 50 ft.
- 51.00 Bottom of gulch, course NW. Asc. 85 ft.
- 57.50 Top of spur, projecting NW. Desc. 240 ft.
- 76.75 Bottom of gulch, course SW. Asc. 60 ft.
- 80.00 Set an iron post, 3 ft. long, 2 ins. diam., 24 ins. in the ground, for cor. of secs. 13, 14, 23 and 24, with brass cap, marked

T19N	R11W
S14	S13
S23	S24

1916

and raise a mound of stone, 2 ft. base,  $1\frac{1}{2}$  ft. high, W. of cor.

Land, mountainous.

Soil, rocky; 3rd and 4th rate.

No timber.

Undergrowth, scrub cedar and greasewood.

Formation, lava.

- 40.00 East, on a random line, bet. secs. 13 and 24.  
Set temp.  $\frac{1}{4}$  sec. cor.
- 79.62 Intersect E. bdy. of Tp. 22 lks. S. of the cor. of secs. 13 and 24, hereinbefore described.
- Thence S.  $89^{\circ}51'$  W., on a true line, bet. secs. 13 and 24, over mountainous land, through scattering timber and undergrowth. Asc. 145 ft.
- 19.50 Ridge bears NE. and SW. Desc. 330 ft.
- 39.81 Set an iron post, 3 ft. long, 1 in. diam., 26 ins. in the ground, for  $\frac{1}{4}$  sec. cor., with brass cap, marked
- S13  
 $\frac{1}{4}$  -----  
S24  
1916
- and raise a mound of stone, 2 ft. base,  $1\frac{1}{2}$  ft. high, N. of cor.  
Asc. 30 ft.
- 43.30 Top of slope. Desc. 200 ft.
- 52.00 Bottom of gulch, course NW. Asc. 20 ft.
- 55.00 Summit of ascent. Desc. 280 ft.
- 75.75 Bottom of gulch, course SW. Asc. 60 ft.
- 79.62 The cor. of secs. 13, 14, 23 and 24.

Land, mountainous.

Soil, rocky clay; 3rd and 4th rate.

Timber, juniper.

Undergrowth, oak brush.

Grass, scant.

Formation, lava.

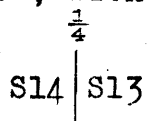
N.  $0^{\circ}01'$  W., bet. secs. 13 and 14,  
over mountainous land, through scattering timber and

Subdivision of T. 19 N., R. 11 W.

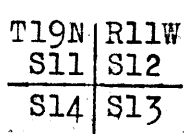
9

Chains

2.75 undergrowth. Asc. 85 ft.  
 6.90 Base of cliff. Asc. 80 ft.  
 40.00 Top of cliff. Asc. gradually, along E. slope.  
 Set an iron post, 3 ft. long, 1 in. diam., 26 ins. in the ground, for  $\frac{1}{4}$  sec. cor., with brass cap, marked



1916  
 and raise a mound of stone, 2 ft. base,  $1\frac{1}{2}$  ft. high, W. of cor.  
 44.50 Summit of ascent, 250 ft. above top of cliff at 6.90 ch. pt. Desc. 320 ft., on NW. slope.  
 80.00 Set an iron post, 3 ft. long, 2 ins. diam., 24 ins. in the ground, for cor. of secs. 11, 12, 13 and 14, with brass cap, marked

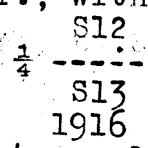


1916  
 and raise a mound of stone, 2 ft. base,  $1\frac{1}{2}$  ft. high, W. of cor.

Land, mountainous.  
 Soil, 3rd rate.  
 Timber, cedar.  
 Undergrowth, oak brush, cactus and Spanish dagger.

40.00 East, on a random line, bet. secs. 12 and 13.  
 79.80 Set temp.  $\frac{1}{4}$  sec. cor.  
 Intersect E. bdy. of Tp. 23 lks. S. of the cor. of secs. 12 and 13, hereinbefore described.

Thence S.89°50'W., on a true line, bet. secs. 12 and 13, over mountainous land, through scattering timber and undergrowth. Desc. gradually.  
 4.00 Low pass, bet. E. and W. slopes. Asc. 130 ft.  
 13.80 Spur projects SE. Desc. 165 ft., on SE. slope.  
 24.50 Low pass, in spur projecting NE. Asc. 240 ft., on E. slope.  
 39.90 On N. end of ridge,  
 Set an iron post, 3 ft. long, 1 in. diam., 26 ins. in the ground, for  $\frac{1}{4}$  sec. cor., with brass cap, marked



1916  
 and raise a mound of stone, 2 ft. base,  $1\frac{1}{2}$  ft. high, N. of cor.  
 Descend.  
 46.70 Desc. over cliff, 50 ft. high,  
 67.10 Bottom of gulch, course NW., 370 ft. below ridge. Continue descent 50 ft.  
 71.00 Top of cliff bearing NE. and SW. Desc. 90 ft.  
 79.80 The cor. of secs. 11, 12, 13 and 14.

Land, mountainous.  
 Soil, stony clay; 3rd and 4th rate.  
 Timber, juniper.  
 Undergrowth, oak brush and crucifixion thorn.  
 Grass, scant.  
 Formation, lava.

Chains

N.0°01'W., bet. secs. 11 and 12, over rough broken land, through scattering timber and undergrowth.

15.00 Gulch, course W., rock walls.

19.50 Thence over limestone formation

31.65 Bottom of gulch, course SSW. Thence along side of gulch, over lava formation.

40.00 Set an iron post, 3 ft. long, 1 in. diam., 26 ins. in the ground, for 1/4 sec. cor., with brass cap, marked

S11 S12

1916

and raise a mound of stone, 2 ft. base, 1 1/2 ft. high, W. of cor.

Leave gulch.

59.95 Trail bears NE. and SW.

69.90 Gulch, course SW. Thence on SE. slope.

80.00 Set an iron post, 3 ft. long, 2 ins. diam., 24 ins. in the ground, for cor. of secs. 1, 2, 11 and 12, with brass cap, marked

T19N R11W

S2 S1

S11 S12

1916

and raise a mound of stone, 2 ft. base, 1 1/2 ft. high, W. of cor.

Land, rough and broken.

Soil, rocky clay; 3rd and 4th rate.

Timber, juniper

Undergrowth, oak brush.

Grass, scant.

Formation, lava and limestone.

40.00

East, on a random line, bet. secs. 1 and 12.

Set temp. 1/4 sec. cor.

To obtain distance over rough, broken

land, over which accurate chaining

is impracticable, proceed as follows:

Measure a base S., 7.485 chs., to a

point whence a flag placed at the

intersection of random line with

Tp. line, 5 lks. S. of the cor. of

secs. 1 and 12, bears N.79°23'E.; which gives for the

distance, 7.485 X tan 79°23', or 39.93 chs. Therefore at

79.93

Intersect E. bdy. of Tp. 5 lks. S. of the cor. of secs. 1 and 12, hereinbefore described.

Thence S.89°58'W., on a true line, bet. secs. 1 and 12,

over mountainous land, through scattering timber and

undergrowth, measuring roughly for topography with tape.

Desc. 100 ft.

9.15

Gulch, course SW.

36.15

Gulch, course SW. Ascend.

39.965

Set an iron post, 3 ft. long, 1 in. diam., 12 ins. in the ground, surrounded by a mound of stone, (impracticable to set post deeper in the ground) for 1/4 sec. cor., with brass cap, marked

S 1

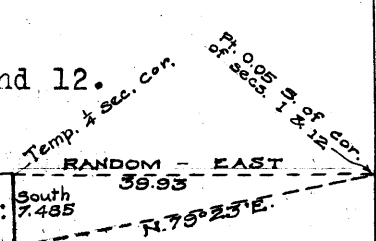
1/4 -----

S12

1916

and raise a mound of stone, 2 ft. base, 1 1/2 ft. high, N. of cor.

A juniper, 8 ins. diam., bears N.2°30'E., 61 lks. dist., marked 1/4 S1 BT. No other trees within limits.

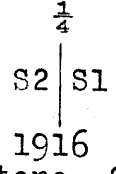


Subdivision of T. 19 N., R. 11 W.

Chains  
 41.00 Leave juniper timber.  
 59.35 Ridge bears NE. and SW., 190 ft. above gulch. Desc. 170 ft.  
 68.00 Bottom of gulch, course SW. Asc. 80 ft.  
 75.00 Low spur, projecting S. Desc. 30 ft.  
 79.93 The cor. of secs. 1, 2, 11 and 12.

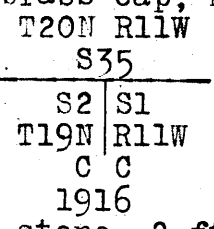
Land, mountainous.  
 Soil, rocky, 3rd and 4th rate.  
 Timber, juniper.  
 Undergrowth, oak brush.

N.0°01'W., on a true line, bet. secs. 1 and 2, over mountainous land, through scattering undergrowth. Asc. 460 ft., over conglomerate formation.  
 18.80 Top of ridge bears NE. and SW. Desc. 220 ft., along broken NW. slope.  
 31.50 Bottom of gulch, course SW. Asc. gradually.  
 36.45 Top of rise. Desc. gradually.  
 40.00 Set an iron post, 3 ft. long, 1 in. diam., 26 ins. in the ground, for  $\frac{1}{4}$  sec. cor., with brass cap, marked



and raise a mound of stone, 2 ft. base,  $1\frac{1}{2}$  ft. high, W. of cor.  
 45.90 Bottom of gulch, course SW., 85 ft. below top of rise. Asc. 455 ft., on broken slope.  
 79.50 Intersect S. bdy. of Tp. 20 N., R. 11 W., 17.74 chs. E. of the cor. of secs. 34 and 35, described in book G.

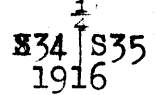
At point of intersection  
 Set an iron post, 3 ft. long, 2 ins. diam., 12 ins. in the ground, surrounded by a mound of stone, (impracticable to set post deeper in the ground) for closing cor. of secs. 1 and 2, with brass cap, marked



and raise a mound of stone, 2 ft. base,  $1\frac{1}{2}$  ft. high, S. of cor.

Land, mountainous.  
 Soil, rocky; 3rd and 4th rate.  
 No timber.  
 Undergrowth, oak brush.

From a point 24 lks. W. of the cor. of secs. 2, 3, 34 and 35, on S. bdy. of Tp., described in book D:  
 N.0°01'W., in sec. 34, over mountainous land, through scattering timber and undergrowth.  
 15.70 Gulch, course NE. Asc. 110 ft.  
 25.50 Ridge bears NE. and SW.  
 38.25 Ridge, bears NW. and SE. Desc. into Trout Creek canyon.  
 40.00 On true line bet. secs. 34 and 35, 24 lks. E. of offset, Set an iron post, 3 ft. long, 1 in. diam., 26 ins. in the ground, for  $\frac{1}{4}$  sec. cor., with brass cap, marked



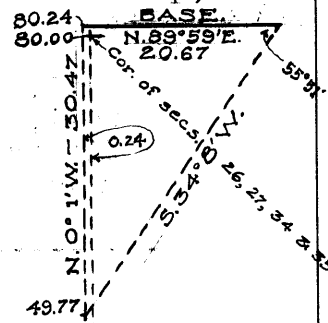
Chains

and raise a mound of stone, 2 ft. base, 1½ ft. high, W. of cor. Continue on offset.

49.77 Leave flag for triangulation over cliffs, on abrupt slope. Measure roughly with tape for topography.

74.30 Trout Creek, clear water, 50 lks. wide, 8 ins. deep, course W., 865 ft. below ridge. Asc. From a point on N. side of creek, measure a base N.89°59'E., 20.67 chs., to a point whence flag left at 49.77 ch. pt. bears S.34°08'W., which gives for the distance, 20.67 X tan 55°51', or 30.47 chs.; making station 49.77 + 30.47, or 80.24 chs. N. of S. bdy. of Tp. Offset 24 lks. E., to true line, and measure S. 24 lks., to

80.00 Set an iron post, 3 ft. long, 2 ins. diam., 24 ins. in the ground, for cor. of secs. 26, 27, 34 and 35, with brass cap, marked



T19N	R11W
S27	S26
S34	S35

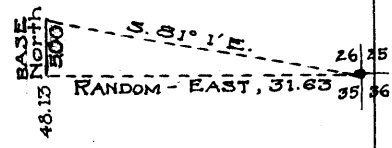
1916

and raise a mound of stone, 2 ft. base, 1½ ft. high, W. of cor.

Land, mountainous.  
 Soil, stony clay; 3rd and 4th rate.  
 Timber, juniper.  
 Undergrowth, oak brush and crucifixion thorn.  
 Grass, scant.  
 Formation, lava.

40.00 East, on a random line, bet. secs. 26 and 35. Set temp. ¼ sec. cor.

48.13 To obtain distance over very rough, broken land, in Trout Creek canyon, I proceed as follows: Measure a base N., 5.24 chs., to a point whence the cor. of secs. 25, 26, 35 and 36 bears S.81°01'E. Continuing random line E., measuring roughly for topography, fall 24 lks. S. of sec. cor. Therefore distance from base line to cor. is 5.00 X tan 81°01', or 31.63 chs., making total length of sec. line 48.13 + 31.63, or 79.76 chs.



From the cor. of secs. 25, 26, 35 and 36, S.89°50'W., on a true line, bet. secs. 35 and 36, over mountainous land, through scattering undergrowth. Desc. 480 ft., on abrupt slope, into Trout Creek canyon.

23.00 Trout Creek, course S., clear stream, 25 lks. wide, 10 ins. deep. Asc.

28.65 Rim rock.

31.63 Top of spur, projecting S., 175 ft. above creek. Desc. 180 ft.

39.63 Draw, course S.

39.88 Set an iron post, 3 ft. long, 1 in. diam., 26 ins. in the ground, for ¼ sec. cor., with brass cap, marked

¼	-----
S35	
1916	

and raise a mound of stone, 2 ft. base, 1½ ft. high, N. of cor.

Asc. 200 ft.  
 49.00 Top of cliff.  
 54.35 Ridge bears NW. and SE.  
 64.00 Desc. 270 ft., onto gulch.

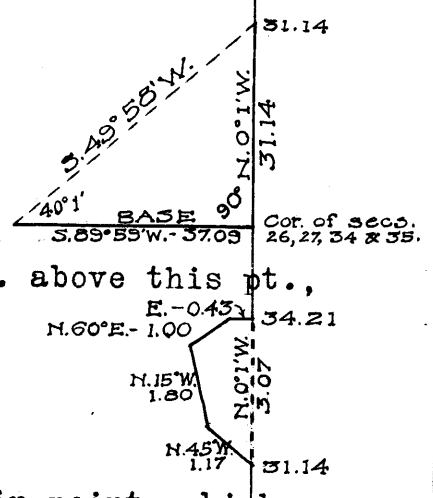
Subdivision of T. 19 N., R. 11 W.

Chains

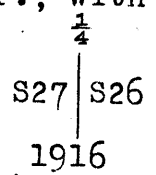
78.40 Bottom of gulch, course S.  
79.76 The cor. of secs. 26, 27, 34 and 35.

Land, mountainous.  
Soil, rocky clay; 3rd and 4th rate.  
No timber.  
Undergrowth, oak brush and crucifixion thorn.  
Grass, scant.  
Formation, lava.

N.0°01'W., bet. secs. 26 and 27,  
over mountainous land, through scattering undergrowth,  
ascending on steep S. slope.  
Set a flag on line S. of rim rock on  
peak, from which a flag 37.09 chs.  
S.89°59'W. of the cor. of secs.  
26, 27, 34 and 35 bears S.49°58'W.,  
which gives for the distance,  
37.09 X tan 40°01', or 31.14 chs.  
Accurate chaining impracticable to this  
point; which is 600 ft. above sec. cor.



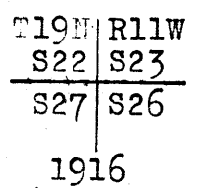
31.14 To pass around rim rock capped peak, 45 ft. above this pt.,  
the top of which is inaccessible, I  
traverse as follows:  
N.45°W., 117 lks.  
N.15°W., 180 lks.  
N.60°E., 100 lks.  
East, 43 lks.,  
to point 3.07 chs. N.0°01'W., of 31.14 chain point, which  
is 31.14 + 3.07, or 34.21 chs. N.0°01'W. of sec. cor.  
34.21 On N. slope of peak, 160 ft. below top. Desc.  
40.00 Set an iron post, 3 ft. long, 1 in. diam., 26 ins. in the  
ground, for 1/4 sec. cor., with brass cap, marked



and raise a mound of stone, 2 ft. base, 1 1/2 ft. high,  
W. of cor.

53.50 Desc. over rim rock.  
61.30 Bottom of gulch, course SW., 675 ft. below top of peak.  
Asc. 275 ft.

80.00 Set an iron post, 3 ft. long, 2 ins. diam., 24 ins. in the  
ground, for cor. of secs. 22, 23, 26 and 27, with brass  
cap, marked



and raise a mound of stone, 2 ft. base, 1 1/2 ft. high,  
W. of cor.

Land, mountainous.  
Soil, rocky; 4th rate.  
No timber.  
Undergrowth, greasewood, cactus, sage brush and scrub  
cedar.

40.00 East, on a random line, bet. secs. 23 and 26.  
79.76 Set temp. 1/4 sec. cor.  
Intersect N. and S. line at the cor. of secs. 23, 24,  
25 and 26.

Thence West, on a true line, bet. secs. 23 and 26,  
over mountainous land, through scattering timber and

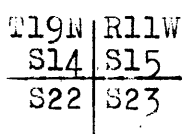




Subdivision of T. 19 N., R. 11 W.

Chains

80.00 Set an iron post, 3 ft. long, 2 ins. diam., 24 ins. in the ground, for cor. of secs. 14, 15, 22 and 23, with brass cap, marked



1916

and raise a mound of stone, 2 ft. base, 1½ ft. high, W. of cor.

Land, mountainous.  
Soil, 3rd rate, clay. Lava formation.  
Timber, a few cottonwood trees along creek.  
Undergrowth, oak brush and chaparral. Grass scant.

40.00 EAST, on a random line, bet. secs. 14 and 23.

79.88 Set temp. ¼ sec. cor.  
Intersect N. and S. line 20 lks. S. of the cor. of secs. 13, 14, 23 and 24.

Thence S.89°51'W., on a true line, bet. secs. 14 and 23, over mountainous land, through scattering timber and undergrowth. Asc. 160 ft.

10.70 Rock ledge, 10 ft. high.

14.40 Top of ridge bears NW. and SE. Rock ledge, 15 ft. high, bears NW. and SE. Desc.

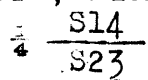
19.20 Desc. over broken malpais cliff.

28.15 Bottom of canyon, course SE., 350 ft. below ridge. Asc.

37.20 Cliff, 40 ft. high.

39.94 On ridge, bearing NE. and SW., 210 ft. above bottom of canyon,

Set an iron post, 3 ft. long, 1 in. diam., 26 ins. in the ground, for ¼ sec. cor., with brass cap, marked



1916

and raise a mound of stone, 2 ft. base, 1½ ft. high, N. of cor.

Desc.

42.10 Rim rock, 50 ft. high.

48.10 Rim rock, 40 ft. high.

54.00 Bottom of canyon, course SE., 480 ft. below ¼ sec. cor. Asc. 100 ft., over cliff.

62.40 Summit. Desc. 40 ft.

72.35 On edge of abrupt SW. slope. Desc. 150 ft., over cliff.

79.88 The cor. of secs. 14, 15, 22 and 23.

Land, mountainous.  
Soil, 3rd rate. Formation, volcanic.  
Timber, juniper.  
Undergrowth, oak brush and crucifixion thorn. Grass, scant.

N.0°01'W., bet. secs. 14 and 15, over mountainous land, through scattering timber and undergrowth. Asc. abruptly, 125 ft.

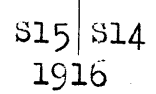
9.03 Triangulation point set in survey of line bet. secs. 22 and 23, hereinbefore described; 200 ft. above stream, on W. slope. I obtain distance to flag on line on NW. side of canyon as follows:

From the cor. of secs. 14, 15, 22 and 23, I measure a base S.89°59'W., 13.78 chs., to a point whence flag bears N.22°51'E., making distance 13.78 x tan 67°8', or 32.67 chs.

32.67 From this point, measure S.0°01'E., 9.00 chs.

23.67 Bottom of canyon, course SW.; 130 ft. below 32.67 ch. pt. Thence N.0°01'W. Asc. 180 ft.

40.00 Set an iron post, 3 ft. long, 1 in. diam., 26 ins. in the ground, for ¼ sec. cor., with brass cap, marked



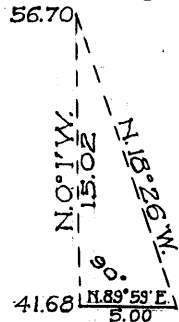
16

Subdivision of T. 19 N., R. 11 W.

Chains

and raise a mound of stone, 2 ft. base, 1 1/2 ft. high, W. of cor.

41.68 I obtain distance across rocky SE. slope as follows: Measure a base N. 89° 59' E., 5.00 chs. to a point whence a flag on line bears N. 18° 26' W.; which gives for the distance, 5.00 x tan 71° 35', or 15.02 chs.; making total distance 41.68 + 15.02, or 56.70 chs.



56.70 Continue measurement with steel tape, descending over rocky cliff 50 ft. high.

80.00 Set an iron post, 3 ft. long, 2 ins. diam., 24 ins. in the ground, for cor. of secs. 10, 11, 14 and 15, with brass cap, marked

T19N	R11W
S10	S11
S15	S14

1916

and raise a mound of stone, 2 ft. base, 1 1/2 ft. high, W. of cor.

Land, mountainous.

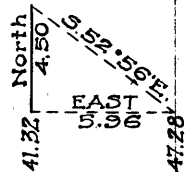
Soil, rocky; 4th rate.

Timber, cedar.

Undergrowth, oak brush and crucifixion thorn.

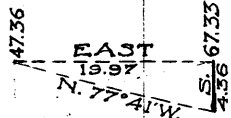
40.00 EAST, on a random line, bet. secs. 11 and 14. Set temp. 1/4 sec. cor.

41.32 I obtain distance across canyon as follows: Measure a base N., 4.50 chs., to a point whence a flag on line bears S. 52° 56' E., which gives for the distance 4.50 x tan 52° 56', or 5.96 chs.; making total distance 41.32 + 5.96, or 47.28 chs.



47.28 Continue measurement with steel tape.

47.36 I obtain distance across second canyon as follows: Leave a flag, and from a station on line E. of same measure a base S., 4.36 chs., to a point whence flag bears N. 77° 41' W., which gives for the distance, 4.36 x tan 77° 41', or 19.97 chs., making total distance from sec. cor., 47.36 + 19.97, or 67.33 chs.



67.33 Continue measurement with steel tape.

80.10 Intersect N. and S. line 20 lks. N. of the cor. of secs. 11, 12, 13 and 14.

Thence N. 89° 51' W., on a true line, bet. secs. 11 and 14, over mountainous land, through scattering timber and undergrowth.

12.77 E. edge of canyon wall. Measure roughly with steel tape for topography. Desc. 100 ft.

17.55 Bottom of canyon, course SW. Asc. 80 ft.

32.65 Summit of ascent. Desc. 110 ft., into second canyon.

36.25 Bottom of canyon, course SE. Stream from Chalk Spring in bottom. Asc. 110 ft.

38.80 W. edge of canyon wall.

40.05 Set an iron post, 3 ft. long, 1 in. diam., 26 ins. in a mound of stone, (impracticable to set post in the ground) for 1/4 sec. cor., with brass cap, marked

S11
S14

1916

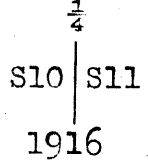
Subdivision of T. 19 N., R. 11 W.

Chains

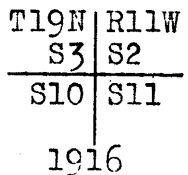
and raise a mound of stone, 2 ft. base, 1½ ft. high,  
N. of cor.  
Desc. 140 ft.  
51.93 Bottom of gulch, course SE. Asc.  
61.20 Asc. over malpais cliff.  
62.40 Summit of ascent, 240 ft. above gulch. Desc. 100 ft.  
80.10 The cor. of secs. 10, 11, 14 and 15.

Land, mountainous.  
Soil, rocky; 4th rate.  
Timber, juniper.  
Undergrowth, oak brush and crucifixion thorn.  
Grass, scant.  
Formation, lava.

N.0°01'W., bet. secs. 10 and 11,  
over mountainous land, through scattering timber and  
undergrowth.  
5.00 Saddle in ridge bearing NW. and SE, Desc. gradually.  
25.00 Draw, course SW.  
40.00 Set an iron post, 3 ft. long, 1 in. diam., 26 ins. in the  
ground, for ¼ sec. cor., with brass cap, marked



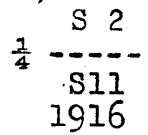
and raise a mound of stone, 2 ft. base, 1½ ft. high,  
W. of cor.  
A juniper, 20 ins. diam., bears N.15°W.,  
marked ¼ S10 BT. No other trees within limits.  
43.00 Spur, projecting SW.  
49.65 Bottom of gulch, course SW. Asc. 400 ft., on SE. slope.  
80.00 Set an iron post, 3 ft. long, 2 ins. diam., 24 ins. in the  
ground, for cor. of secs. 2, 3, 10 and 11, with brass  
cap, marked



and raise a mound of stone, 2 ft. base, 1½ ft. high,  
W. of cor.  
Cor is near top of ridge bearing NE. and SW.  
Land, mountainous.  
Soil, rocky; 4th rate.  
Timber, cedar.  
Undergrowth, oak brush, greasewood and cactus.

East, on a random line, bet. secs. 2 and 11.  
40.00 Set temp. ¼ sec. cor.  
80.18 Intersect N. and S. line 33 lks. N. of the cor. of secs.  
1, 2, 11 and 12.

Thence N.89°46'W., on a true line, bet. secs. 2 and 11,  
over mountainous land, through scattering timber and  
undergrowth. Asc. 90 ft.  
6.40 Spur, projecting SW. Desc. 175 ft.  
30.25 Bottom of gulch, course S. Asc.  
40.09 Set an iron post, 3 ft. long, 1 in. diam., 26 ins. in the  
ground, for ¼ sec. cor., with brass cap, marked



Chains

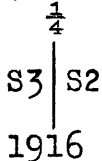
and raise a mound of stone, 2 ft. base, 1½ ft. high, N. of cor.

- 57.30 Spur, projecting S., 320 ft. above gulch. Desc. 150 ft.
- 65.20 Bottom of gulch, course S. Asc. 230 ft.
- 73.10 Spur, projecting SE.
- 80.18 The cor. of secs. 2, 3, 10 and 11.

Land, mountainous.  
 Soil, 3rd and 4th rate.  
 Timber, juniper.  
 Undergrowth, oak brush.  
 Grass, scant.  
 Formation, lava.

N.0°01'W., on a true line, bet. secs. 2 and 3, over mountainous land, through scattering juniper timber and undergrowth. Asc. gradually, 25 ft.

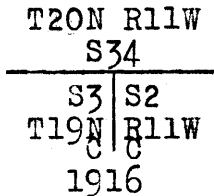
- 5.00 Ridge bears NE. and SW.
- 10.00 Desc. gradually, along NW. slope.
- 21.40 Leave juniper.
- 28.83 Bottom of gulch, course SW., 190 ft. below ridge. Asc. abruptly, 150 ft.
- 39.75 Top of spur bearing NE and SW.
- 40.00 Set an iron post, 3 ft. long, 1 in. diam., 26 ins. in the ground, for ¼ sec. cor., with brass cap, marked



and raise a mound of stone, 2 ft. base, 1½ ft. high, W. of cor.

- 66.90 Desc. 100 ft.,
- Bottom of gulch, course SW.
- 73.93 Bottom of main gulch, course SW. Thence along gulch, through dense scrub oak; ascending.
- 79.24 Intersect S. bdy. of Tp. 20 N., R. 11 W., 18.02 chs. E. of the cor. of secs. 33 and 34, described in book G.

At point of intersection  
 Set an iron post, 3 ft. long, 2 ins. diam., 24 ins. in the ground, for closing cor. of secs. 2 and 3, with brass cap, marked



and raise a mound of stone, 2 ft. base, 1½ ft. high, S. of cor.

Land, mountainous.  
 Soil, 3rd rate.  
 Timber, juniper.  
 Undergrowth, oak brush.  
 Grass, scant.  
 Formation, lava.

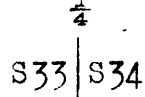
From the cor. of secs. 3, 4, 33 and 34, on S. bdy. of Tp., described in book D;

N.0°02'W., bet. secs. 33 and 34, over mountainous land, through scattering timber and undergrowth.

Subdivision of T. 19 N., R. 11 W.

Chains

8.40 Desc. 65 ft.  
 12.40 Gulch, course NE. Asc. 30 ft.  
 20.60 Spur, projecting NE. Desc. 25 ft.  
 25.55 Small wash, course NE. Asc. 30 ft.  
 32.40 Spur, projecting NE. Desc. 90 ft.  
 40.00 Bottom of wash, course NE. Thence along broad NE. slope.  
 Set an iron post, 3 ft. long, 1 in. diam., 26 ins. in the  
 ground, for  $\frac{1}{4}$  sec. cor., with brass cap, marked

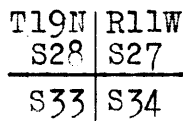


1916

and raise a mound of stone, 2 ft. base,  $1\frac{1}{2}$  ft. high, W. of cor.

Thence across a succession of small gulches, course NE. Desc. 65 ft.

55.35 Gulch, course NE. Asc.  
 65.60 Top of spur, projecting E. Desc. 80 ft.  
 68.30 Bottom of gulch, course NW. Asc. 100 ft.  
 71.30 Top of ridge bears NE. and SW. Desc. 30 ft.  
 77.40 Set an iron post, 3 ft. long, 2 ins. diam., 24 ins. in the  
 80.00 ground, for cor. of secs. 27, 28, 33 and 34, with brass cap, marked



1916

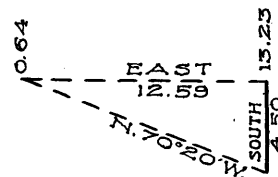
and raise a mound of stone, 2 ft. base,  $1\frac{1}{2}$  ft. high, W. of cor.

Land, mountainous.  
 Soil, 3rd and 4th rate.  
 Timber, cedar and juniper.  
 Undergrowth, oak brush.  
 Grass, scant.  
 Formation, lava.

.64

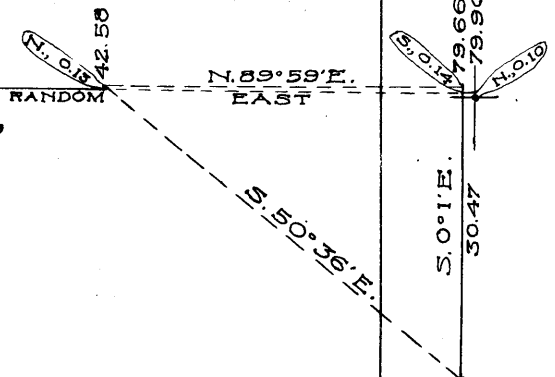
East, on a random line, bet. secs. 27 and 34.

Triangulate across canyon, over which chaining would be very inaccurate, as follows:  
 Leave flag, and from a point on line E. measure a base S. 4.50 chs. to a point whence flag bears N.70°20'W.; which gives for the distance 4.50 X tan 70°20', or 12.59 chs., making distance from sec. cor., .64 + 12.59, or 13.23 chs.



13.23 Continue measurement with steel tape.  
 40.00 Set temp.  $\frac{1}{4}$  sec. cor.

42.58 From a station 13 lks. N. of this pt., a flag 24 lks. N. and 24 lks. W. of the cor. of secs. 26, 27, 34 and 35 bears N.89°59'E., and a flag S.0°01'E., 30.47 chs. from first flag bears S.50°36'E.



The distance from station 13 lks. N. of 42.58 ch. pt. to flag 24 lks. N. and 24 lks. W. of cor. of secs. 26, 27, 34 and 35 is therefore 30.47 X tan 50°35', or 37.08 chs., making point 42.58 + 37.08, or 79.66 chs. E. and 13 + 1, or 14 lks. N. of original line.

79.66 Offset S., 14 lks. to original line, and continue East.  
 79.90 Intersect N. and S. line 10 lks. N. of the cor. of secs. 26, 27, 34 and 35.

79.66  
79.90 - Cor of secs. 26, 27, 34 & 35.

S.0°1'E.  
30.47

Chains

Thence N.89°56'W., on a true line, bet. secs. 27 and 34, over mountainous land, through scattering undergrowth, chaining roughly for topography.

Desc. towards bottom of Trout Creek Canyon.

18.00 Trout Creek, course NW., stream, 40 lks. wide, 7 ins. deep. Asc. abruptly.

39.95 Set an iron post, 3 ft. long, 1 in. diam., 26 ins. in the ground, for 1/4 sec. cor., with brass cap, marked

S27

1/4 -----

S34

1916

and raise a mound of stone, 2 ft. base, 1 1/2 ft. high, N. of cor.

Thence along S. side of ridge bearing E. and W.

47.00 Top of ridge bears SW. and NE., 430 ft. above creek.

54.00 Desc. over malpais rock into canyon, course N.

61.15 Desc. abruptly.

62.15 Bottom of canyon, 190 ft. below 54 ch. pt. Asc. 25 ft.

67.00 Summit of ascent. Desc. 70 ft.

70.35 Bottom of canyon, course N.15°W.

79.90 The cor. of secs. 27, 28, 33 and 34.

Land, mountainous.

Soil, rocky; 4th rate.

No timber.

Undergrowth, greasewood and scrub cedar.

N.0°02'W., bet. secs. 27 and 28, over mountainous land, through scattering timber and undergrowth. Desc. 100 ft., into gulch.

4.55 Bottom of gulch, course E. Asc. 275 ft.

20.00 Summit of ascent, on W. slope. Desc.

25.00 Desc. abruptly.

29.40 Head of gulch, course E., 210 ft. below 20 ch. pt.

Asc. 130 ft.

37.30 Spur, projecting NE. Desc.

40.00 Set an iron post, 3 ft. long, 1 in. diam., 26 ins. in the ground, for 1/4 sec. cor., with brass cap, marked

1/4

S28 | S27

1916

and raise a mound of stone, 2 ft. base, 1 1/2 ft. high, W. of cor.

54.60 Desc. over bank, 10 ft. high.

63.80 Trout Creek, course W., clear stream, 10 lks. wide, 6 ins. deep, 360 ft. below spur.

69.50 Ash Creek, course SE. Thence in Ash Creek canyon.

74.50 Ash Creek, course SW.

80.00 Set an iron post, 3 ft. long, 2 ins. diam., 24 ins. in the ground, for cor. of secs. 21, 22, 27 and 28, with brass cap, marked

T19N | R11W

S21 | S22

S28 | S27

1916

and raise a mound of stone, 2 ft. base, 1 1/2 ft. high, W. of cor.

Land, mountainous.

Soil, rocky; 4th rate.

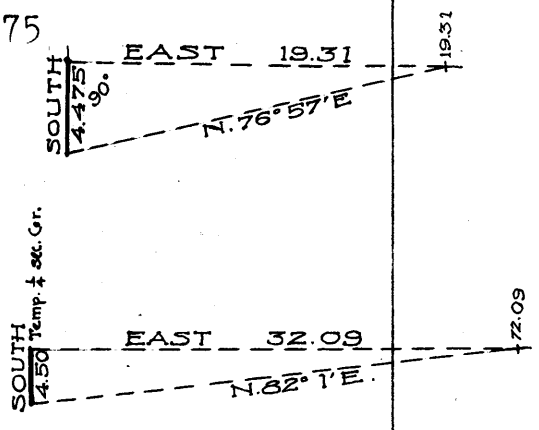
Timber, cottonwood and willow, on stream banks.

Undergrowth, catclaw, cactus and greasewood.

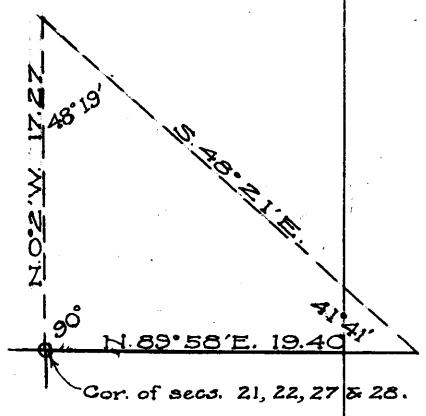
Chains

19.31  
40.00  
72.09  
79.88  
11.80  
31.20  
39;94  
54.10  
60.60  
74.90  
79.88

East, on a random line, bet. secs. 22 and 27.  
 Triangulate across Ash Creek Canyon as follows: Measure a base S., 4.475 chs., to a point whence a flag on line on E. side of canyon bears N.76°57'E.; which gives for the distance,  $4.475 \times \tan 76^\circ 57'$ , or 19.31 chs.  
 Continue measurement with steel tape.  
 Set temp.  $\frac{1}{4}$  sec. cor.  
 Thence triangulate across second canyon as follows: Measure a base S., 4.50 chs., to a point whence a flag on line on E. side of canyon bears N.82°01'E.; which gives for the distance  $4.50 \times \tan 82^\circ 01'$ , or 32.09 chs., making distance from sec. cor. 40.00 + 32.09, or 72.09 chs.  
 Continue measurement with steel tape.  
 Intersect N. and S. line 5 lks. S. of the cor. of secs. 22, 23, 26 and 27.  
 Thence S.89°58'W., on a true line, bet. secs. 22 and 27, over mountainous land, through scattering timber and undergrowth.  
 E. edge of canyon bears N. and S., on spur projecting S. Desc. 290 ft., chaining roughly for topography.  
 Bottom of canyon, course S. Asc. 375 ft.  
 On W. edge of canyon Set an iron post, 3 ft. long, 1 in. diam., 26 ins. in the ground, for  $\frac{1}{4}$  sec. cor., with brass cap, marked  
 S22  
 $\frac{1}{4}$  -----  
 S27  
 1916  
 and raise a mound of stone, 2 ft. base,  $1\frac{1}{2}$  ft. high, N. of cor.  
 Continue ascent.  
 Small gulch, course SE.  
 Ridge bears NE. and SW., 100 ft. above  $\frac{1}{4}$  sec. cor. Desc.  
 Ash Creek, course SW., 425 ft. below ridge. Asc. 35 ft.  
 The cor. of secs. 21, 22, 27 and 28.  
 Land, mountainous.  
 Soil, 3rd and 4th rate.  
 Timber, juniper.  
 Undergrowth, oak brush, crucifixion thorn and cactus.  
 Grass, scant.  
 Formation, lava.

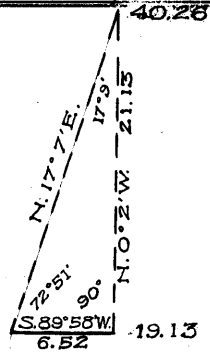


N.0°02'W., bet. secs. 21 and 22, over mountainous land, through scattering timber and undergrowth, on rocky SE. slope.  
 Triangulate to top of cliff, as follows:  
 From a station on line on cliff, a flag 19.40 chs. N.89°58'E. of the cor. of secs. 21, 22, 27 and 28 bears S.48°21'E.; which gives for the distance,  $19.40 \times \tan 41^\circ 41'$ , or 17.27 chs.  
 17.27 Triangulation point, on edge of cliff 100 ft. high, 440 ft. above sec. cor.  
 Continue measurement with steel tape.  
 19.13 Triangulate across Ash Creek Canyon as follows:  
 Measure a base S.89°58'W., 6.52 chs., to a point whence a flag

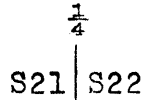


Chains

on line on N. side of canyon bears N.17°07'E. which gives for the distance 6.52 X tan 72°51', or 21.13 chs.; making distance from sec. cor. to flag 19.13 + 21.13, or 40.26 chs. From this point I measure S.0°02'E., 26 lks. to 40.00 ch. pt.



40.00 Set an iron post, 3 ft. long, 1 in. diam., in a mound of stone, on edge of cliff, for 1/4 sec. cor., with brass cap, marked



1916 and raise a mound of stone, 2 ft. base, 1 1/2 ft. high, W. of cor.

36.25 From cor. I measure S.0°02'E., 3.75 chs. Ash Creek, course SE., 400 ft. below 17.27 ch. pt., and 100 ft. below 1/4 sec. cor.

40.26 Continue measurement bet. secs. 21 and 22 with tape. Asc. 280 ft.

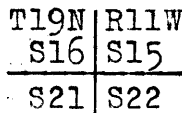
53.30 On point of lava rock. Desc.

63.96 Bottom of gulch, course SW., Ascend, 160 ft.

68.55 Edge of rock ledge, 10 ft. high. Asc. gradually.

70.00 Enter scattering juniper.

80.00 Set an iron post, 3 ft. long, 2 ins. diam., 24 ins. in the ground, for cor. of secs. 15, 16, 21 and 22, with brass cap, marked

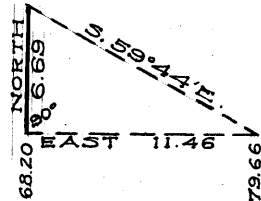


1916 and raise a mound of stone, 2 ft. base, 1 1/2 ft. high, W. of cor.

Land, mountainous.  
Soil, 3rd and 4th rate.  
Timber, juniper.  
Undergrowth, oak brush and crucifixion thorn.  
Grass, scant.  
Formation, lava.

40.00 East, on a random line, bet. secs. 15 and 22. Set temp. 1/4 sec. cor.

68.20 Triangulate across gulch as follows:  
Measure a base N., 6.69 chs., to a point whence a flag on line on E. side of gulch bears S.59°44'E.; which gives for the distance, 6.69 x tan 59°44', or 11.46 chs., making distance from sec. cor. 68.20 + 11.46, or 79.66 chs.



79.66 Continue measurement with steel tape.

79.76 Intersect N. and S. line 20 lks. N. of the cor. of secs. 14, 15, 22 and 23.

Thence N.89°51'W., on a true line, bet. secs. 15 and 22, over mountainous land, through scattering undergrowth.

.10 Measure to bottom of gulch.

2.35 Bottom of gulch, course S.

11.56 Opposite triangulation point. Thence measure with tape.

26.20 Gulch, course SE. Hence bears NE. and SW.

39.88 Set an iron post, 3 ft. long, 1 in. diam., 26 ins. in the ground, for 1/4 sec. cor., with brass cap, marked



Subdivision of T. 19 N., R. 11 W.

Chains

S15  
1/4 -----  
S22  
1916

53.35 and raise a mound of stone, 2 ft. base, 1 1/2 ft. high,  
79.76 N. of cor.  
Enter scattering juniper.  
Leave malpais formation, and thence over sandy soil.  
The cor. of secs. 15, 16, 21 and 22.

Land, mountainous.  
Soil, 3rd and 4th rate.  
Timber, juniper.  
Undergrowth, oak brush and crucifixion thorn.  
Grass, scant.  
Formation, lava.

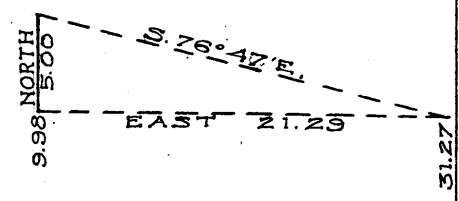
6.80 N. 0° 02' W., bet. secs. 15 and 16,  
23.75 over mountainous land, through scattering timber and  
40.00 undergrowth.  
Desc. 255 ft., over W. edge of cliff, into canyon.  
Bottom of canyon, course SW.  
Set an iron post, 3 ft. long, 1 in. diam., 26 ins. in the  
ground, for 1/4 sec. cor., with brass cap, marked

1/4  
S16 | S15  
1916

43.75 and raise a mound of stone, 2 ft. base, 1 1/2 ft. high,  
W. of cor.  
Malpais cliff, 30 ft. high, 250 ft. above bottom of canyon  
bears E. and W.  
45.75 Desc. over cliff 40 ft. high.  
54.65 Bottom of gulch, course SE. Asc. 430 ft.  
76.15 Top of ridge bears NW. and SE. S. end of rolling topped mesa.  
80.00 Set a lava stone, 18x7x4 ins., 12 ins. in the ground,  
for cor. of secs. 9, 10, 15 and 16, marked with 3 notches  
on E. and 4 on S. edge; and raise a mound of stone,  
2 ft. base, 1 1/2 ft. high, W. of cor. Impracticable to  
set iron post.

Land, mountainous.  
Soil, rocky; 4th rate.  
Timber, juniper.  
Undergrowth, greasewood, oak brush, cactus and cruci-  
fixion thorn.  
Grass, scant.  
Formation, lava.

9.98 East, on a random line, bet. secs. 10 and 15.  
Triangulate across gulch  
as follows:  
Measure a base N., 5.00 chs.,  
to a point whence a flag on  
line on E. side of gulch bears  
S. 76° 47' E.; which gives for  
the distance 5.00 X tan 76° 47'  
or 21.29 chs., making distance  
from sec. cor 9.98 + 21.29, or  
31.27 chs.



31.27 Continue measurement with steel tape.  
40.00 Set temp. 1/4 sec. cor.  
79.92 Intersect N. and S. line 10 lks. S. of the cor. of secs.  
10, 11, 14 and 15.

Thence S. 89° 56' W., on a true line, bet. secs. 10 and 15,  
over mountainous land, through scattering timber and

Chains

undergrowth.  
 7.75 By N. edge of cliff 20 ft. high. Leave scattering cedar  
 timber, and descend 215 ft., into gulch.  
 39.96 Point for  $\frac{1}{4}$  sec. cor. falls in bottom of gulch, from NE.,  
 course W.; therefore at  
 39.76 Set an iron post, 3 ft. long, 1 in. diam., 26 ins. in the  
 ground, for  $\frac{1}{4}$  sec. cor., with brass cap, marked  
 S10  
 WC $\frac{1}{4}$  -----  
 S15  
 1916  
 and raise a mound of stone, 2 ft. base,  $1\frac{1}{2}$  ft. high,  
 N. of cor.  
 Thence along bottom of gulch.  
 43.00 Leave gulch, course SW., and asc. 75 ft.  
 48.65 Opposite triangulation point, on spur sloping N.  
 Measure roughly into gulch, descending 115 ft.  
 57.50 Bottom of same, course SW. Asc. 200 ft., over slide rock.  
 68.00 Edge of cliff. From top proceed over rolling top of mesa.  
 79.92 The cor. of secs. 9, 10, 15 and 16.

Land, mountainous.  
 Soil, 3rd and 4th rate.  
 Timber, cedar and juniper.  
 Undergrowth, oak brush and crucifixion thorn.  
 Grass, scant.  
 Formation, lava.

N.0°02'W., bet. secs. 9 and 10,  
 over mountainous land, through scattering undergrowth.  
 Asc. 100 ft., on gradual slope, on rolling top of mesa.  
 14.90 Summit of ascent. Desc. gradually.  
 32.50 Asc. gradually.  
 40.00 Set an iron post, 3 ft. long, 1 in. diam., 26 ins. in the  
 ground, for  $\frac{1}{4}$  sec. cor., with brass cap, marked  
 $\frac{1}{4}$   
 S9 | S10  
 1916  
 and raise a mound of stone, 2 ft. base,  $1\frac{1}{2}$  ft. high,  
 W. of cor.  
 44.00 Summit of gentle SW. slope.  
 53.50 Asc. 85 ft., on gradual S. slope.  
 67.76 Summit of gradual S. slope. Desc. 125 ft., gradually.  
 80.00 Set an iron post, 3 ft. long, 2 ins. diam., 24 ins. in the  
 ground, for cor. of secs. 3, 4, 9 and 10, with brass  
 cap, marked

T19N	R11W
S4	S3
S9	S10

1916

and raise a mound of stone, 2 ft. base,  $1\frac{1}{2}$  ft. high,  
 W. of cor.

Land, mountainous.  
 Soil, 3rd and 4th rate.  
 No timber.  
 Undergrowth, greasewood, oak brush and crucifixion thorn.  
 Grass, scant.  
 Formation, lava.

40.00 East, on a random line, bet. secs. 3 and 10.  
 Set temp.  $\frac{1}{4}$  sec. cor.  
 79.68 Intersect N. and S. line 18 lks. S. of the cor. of secs.  
 2, 3, 10 and 11.

Subdivision of T. 19 N., R. 11 W.

Chains

Thence S.89°52'W., on a true line, bet. secs. 3 and 10, over mountainous land, through scattering undergrowth. Asc. 30 ft.

3.30 Top of ridge bears NE. and SW. Desc. on steep slope.

10.00 Enter scattering juniper.

20.00 Desc. gradually.

35.00 Foot of descent, 350 ft. below ridge.

39.84 Set an iron post, 3 ft. long, 1 in. diam., 26 ins. in the ground, for  $\frac{1}{4}$  sec. cor., with brass cap, marked

S 3  
 $\frac{1}{4}$  -----  
S10  
1916

and raise a mound of stone, 2 ft. base, 1 $\frac{1}{2}$  ft. high, N. of cor.

45.30 Bottom of gulch, course SW. Stream, 1 lk. wide, 2 ins. deep. Asc.

51.25 Leave juniper bearing N. and S.

66.00 Summit of gradual ascent, 185 ft. above gulch. Thence along N. slope.

79.68 The cor. of secs. 3, 4, 9 and 10.

Land, rolling mountainous.  
Soil, 2nd and 3rd rate.  
Timber, juniper.  
Undergrowth, oak brush, greasewood and crucifixion thorn.  
Grass, scant.  
Formation, lava.

N.0°02'W., on a true line, bet. secs. 3 and 4, over mountainous land, through scattering timber and undergrowth.

3.00 Desc. abruptly.

15.90 Enter scattering juniper.

30.60 Bottom of gulch, course SW.; Stream, 6 lks. wide, 3 ins. deep, 375 ft. below sec. cor. Asc. 80 ft.

40.00 On spur, sloping SE., Set an iron post, 3 ft. long, 1 in. diam., 26 ins. in the ground, for  $\frac{1}{4}$  sec. cor., with brass cap, marked

$\frac{1}{4}$   
S4 | S3  
1916

and raise a mound of stone, 2 ft. base, 1 $\frac{1}{2}$  ft. high, W. of cor.

A juniper, 10 ins. diam., bears N.32°W., 53 lks. dist., marked  $\frac{1}{4}$  S4 BT., and

A juniper, 18 ins. diam., bears S.72°E., 65 lks. dist., marked  $\frac{1}{4}$  S3 BT.

57.25 Top of cliff 100 ft. high, on spur sloping S.

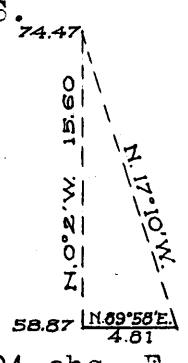
58.87 Triangulate to top of second cliff as follows:

Measure a base N.89°58'E., 4.81 chs., to a point whence a flag on line bears N.17°10'W.; which gives for the distance 4.81 X tan 72°52', or 15.60 chs., making distance from sec. cor. 58.87 + 15.60, or 74.47 chs.

74.47 Continue measurement with steel tape.

79.56 Intersect S. bdy. of T. 20 N., R. 11 W. 18.04 chs. E. of the cor. of secs. 32 and 33, described in book G.

At point of intersection Set an iron post, 3 ft. long, 2 ins. diam., 24 ins. in the ground, for closing cor. of secs. 3 and 4, with brass cap, marked



Chains

T20N R11W  
 S33  
 S4 | S3  
 T19N | R11W  
 C | C  
 1916

and raise a mound of stone, 2 ft. base, 1½ ft. high, S. of cor.

Land, mountainous.

Soil, rocky; 4th rate.

Timber, juniper.

Undergrowth, crucifixion thorn and oak brush.

From the cor. of secs. 4, 5, 32 and 33, on S. bdy. of Tp., described in book D:

N.0°02'W., bet. secs. 32 and 33,

40.00 over roughly rolling land, through scattering undergrowth. Set an iron post, 3 ft. long, 1 in. diam., 26 ins. in the ground, for ¼ sec. cor., with brass cap, marked

¼  
 S32 | S33  
 1916

and raise a mound of stone, 2 ft. base, 1½ ft. high, W. of cor.

A juniper, 11 ins. diam., bears N.49°50'E., 121 lks. dist., marked ¼ S33 BT.

No other bearing trees within limits.

43.65 Bottom of gulch, course N.10°E. Stream, 3 lks. wide, 3 ins. deep, in bottom. Asc. 70 ft.

56.40 Thence across flat.

66.40 Leave same and desc. gradually.

80.00 Set an iron post, 3 ft. long, 2 ins. diam., 24 ins. in the ground, for cor. of secs. 28, 29, 32 and 33, with brass cap, marked

T19N | R11W  
 S29 | S28  
 S32 | S33  
 1916

and raise a mound of stone, 2 ft. base, 1½ ft. high, W. of cor.

Land, roughly rolling.

Soil, 4th rate.

Timber, juniper.

Undergrowth, cactus, scrub oak and crucifixion thorn.

40.00 East, on a random line, bet. secs. 28 and 33.

80.12 Set temp. ¼ sec. cor.

Intersect N. and S. line 7 lks. S. of the cor. of secs. 27, 28, 33 and 34.

Thence S.89°57'W., on a true line, bet. secs. 28 and 33, over mountainous land, through scattering timber and undergrowth. Asc. 25 ft.

2.20 Spur, sloping NE. Desc. gradually,

7.00 Asc. over cliff, 40 ft. face.

12.00 Top of same. Continue ascent over a succession of small cliffs and ledges.

26.50 Top of spur, projecting NE., 310 ft. above 7.00 ch. pt. Desc. through scattering pinyon trees.

39.08 Cliff 55 ft. high.

Chains

40.06 Set an iron post, 3 ft. long, 1 in. diam., 26 ins. in the ground, for  $\frac{1}{4}$  sec. cor., with brass cap, marked  
 $\frac{1}{4}$  -----  
 S28  
 S33  
 1916  
 and raise a mound of stone, 2 ft. base,  $1\frac{1}{2}$  ft. high, N. of cor.

41.30 Desc. over cliff 50 ft. high,

61.10 Gulch, course NW.

77.07 Gulch, course N. Stream 4 lks. wide, 2 ins. deep, in bottom, 700 ft. below 26.50 ch. pt.

80.12 The cor. of secs. 28, 29, 32 and 33.

Land, mountainous.  
 Soil, rocky; 4th rate.  
 Timber, pinyon.  
 Undergrowth, oak brush, mountain mahogany and crucifixion thorn.

N.0°02'W., bet. secs. 28 and 29, over roughly rolling land, through scattering timber and undergrowth. Desc. from small wash, towards Trout Creek.

8.15 Enter bed of Trout Creek, course W. Stream, 40 lks. wide, 10 lks. deep.

14.20 N. bank of Trout Creek. Thence over slightly ascending land.

40.00 Set an iron post, 3 ft. long, 1 in. diam., 26 ins. in the ground, for  $\frac{1}{4}$  sec. cor., with brass cap, marked

$\frac{1}{4}$   
 S29 | S28  
 1916

and raise a mound of stone, 2 ft. base,  $1\frac{1}{2}$  ft. high, W. of cor.

44.30 Desc. gradually.

44.90 Small wash, course NW. Asc. gradually.

80.00 Set an iron post, 3 ft. long, 2 ins. diam., 24 ins. in the ground, for cor. of secs. 20, 21, 28 and 29, with brass cap, marked

T19N	R11W
S20	S21
S29	S28
1916	

and raise a mound of stone, 2 ft. base,  $1\frac{1}{2}$  ft. high, W. of cor.

Land, roughly rolling and gently sloping.  
 Soil, 3rd rate.  
 Timber, juniper.  
 Undergrowth, oak brush, cactus and catclaw.

40.00 East, on a random line, bet. secs. 21 and 28.

80.14 Set temp.  $\frac{1}{4}$  sec. cor.

Intersect N. and S. line 11 lks. S. of the cor. of secs. 21, 22, 27 and 28.

Thence S.89°55'W., on a true line, bet. secs. 21 and 28, over rolling mountainous land, through scattering undergrowth.

8.25 Stream, course SE., 1 lks. wide, 2 ins. deep. Asc. through dense scrub oak.

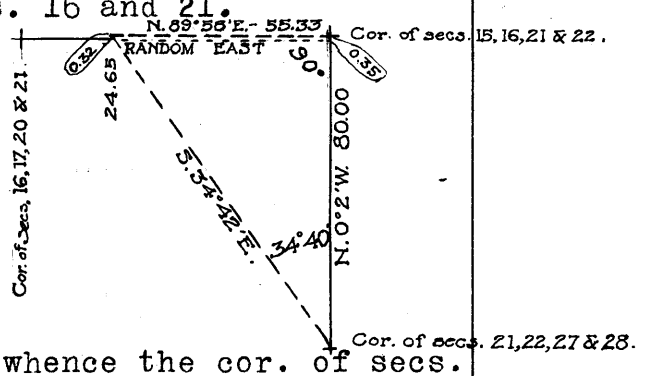


Chains

Land, mountainous.  
 Soil, 3rd rate.  
 Timber, juniper.  
 Undergrowth, oak brush and crucifixion thorn.  
 Grass, scant.  
 Formation, lava.

40.00

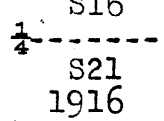
East, on a random line, bet. secs. 16 and 21.  
 Set temp.  $\frac{1}{4}$  sec. cor.  
 Continuing transit line without chaining, fall 35 lks. S. of the cor. of secs. 15, 16, 21 and 22. To obtain distance, triangulate as follows:  
 Return to 24.65 ch. pt. on random, on top of rim rock on edge of mesa, and measure N.0°02'W. 32 lks. to a station whence the cor. of secs. 15, 16, 21 and 22 bears N.89°58'E., and the cor. of secs. 21, 22, 28 and 27 bears S.34°42'E.; which gives for the distance  $80.00 \times \tan 34^\circ 40'$ , or 55.33 chs., making length of sec. line 24.65 + 55.33, or 79.98 chs.



From the cor. of secs. 15, 16, 21 and 22, S.89°45'W., on a true line, bet. secs. 16 and 21, over rough mountainous land, through scattering timber and undergrowth. Measure roughly with chain for topography.

6.00  
28.30  
39.99

Descend abruptly, over canyon wall, into Ash Creek canyon.  
 Bottom of Ash Creek Canyon, course S.10°E. Stream, 10 lks. wide, 6 ins. deep, 375 ft. below sec. cor. Asc.  
 Set an iron post, 3 ft. long, 1 in. diam., 26 ins. in the ground, for  $\frac{1}{4}$  sec. cor., with brass cap, marked



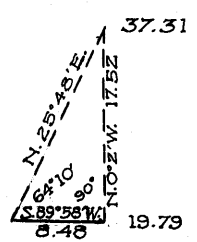
55.33  
55.50  
64.30  
68.50  
79.98

and raise a mound of stone, 2 ft. base,  $1\frac{1}{2}$  ft. high, N. of cor.  
 Opposite triangulation point, on rim rock on E. edge of mesa, 890 ft. above Ash Creek. Thence across narrow spur of mesa.  
 W. edge of spur of mesa. Desc. 135 ft. into gulch.  
 Bottom of gulch, course SE. Asc. 122 ft.  
 Thence over mesa.  
 The cor. of secs. 16, 17, 20 and 21.

Land, mountainous.  
 Soil, 3rd and 4th rate.  
 Timber, juniper, with ash and cottonwood in bottom of canyon.  
 Undergrowth, oak brush.  
 Grass, fair on W. half and scant on E. half.  
 Formation, lava.

19.79

N.0°02'W., bet. secs. 16 and 17, over mountainous land, through scattering timber and undergrowth; over top of mesa.  
 Triangulate to ft. of mesa as follows:  
 Measure a base S.89°58'W., 8.48 chs., to a point whence a flag on line bears N.25°48'E.; which gives for the distance  $8.48 \times \tan 64^\circ 10'$ , or 17.52 chs., making distance from sec. cor.



Chains

19.79 + 17.52, or 37.31 chs.  
 37.31 Ft. of N. slope of mesa. Wash, course N.10°E., 520 ft. below top of mesa. Asc. gradually.  
 40.00 Set an iron post, 3 ft. long, 1 in. diam., 26 ins. in the ground, for  $\frac{1}{4}$  sec. cor., with brass cap, marked

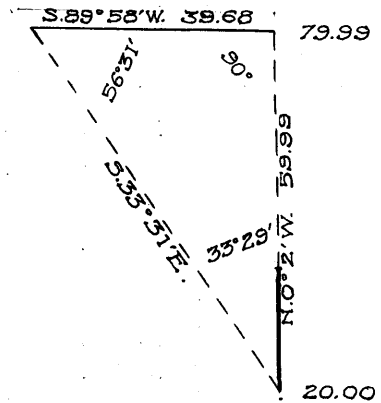
S17	S16
-----	-----

1916

and raise a mound of stone, 2 ft. base,  $1\frac{1}{2}$  ft. high, W. of cor.

Continue N.0°02'W., without chaining, to a point on N. side of gulch. Obtain distance as follows:

Measure a base S.89°58'W., 39.68 chs. to a station whence a flag left at 20.00 ch. pt. on N. and S. line bears S.33°31'E.; which gives for the distance  $39.68 \times \tan 56°31'$ , or 59.99 chs.; making distance from sec. cor. to station on sec. line  $20.00 + 59.99$ , or 79.99 chs.



79.99 Continue measurement with steel tape.

80.00 Set an iron post, 3 ft. long, 2 ins. diam., 24 ins. in stone mound, for cor. of secs. 8, 9, 16 and 17, with brass cap, marked

T19N	R11W
S8	S9
S17	S16

1916

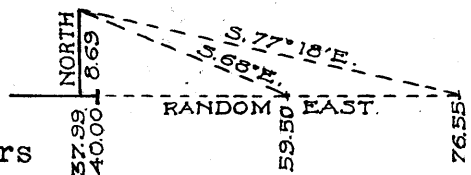
and raise a mound of stone, 2 ft. base,  $1\frac{1}{2}$  ft. high, W. of cor. A juniper, 12 ins. diam., bears S.38°W., 8 lks. dist., marked T19N R11W S17 BT. No other trees within limits. Land, mountainous.

Soil, 3rd and 4th rate.  
 Timber, juniper.  
 Undergrowth, oak brush and crucifixion thorn.  
 Grass, scant.  
 Formation, lava.

40.00 East, on a random line, bet. secs. 9 and 16. Set temp.  $\frac{1}{4}$  sec. cor.

Triangulate to bottom of and across Ash Creek Canyon as follows:

Return to 37.99 ch. pt., and measure a base N., 8.69 chs., to a point whence flag on line in canyon bears S.68°E., and point on mesa E. of canyon bears S.77°18'E.



Dist. to first pt. is therefore  $8.69 \times \tan 68°$ , or 21.51 chs., making point  $37.99 + 21.51$  or 59.50 chs. E. of sec. cor. Dist. to second pt. is  $8.69 \times \tan 77°18'$ , or 38.56 chs., making station  $37.99 + 38.56$ , or 76.55 chs. E. of sec. cor.

76.55 Continue measurement with tape.

79.86 Intersect N. and S. line 40 lks. S. of the cor. of secs. 9, 10, 15 and 16.

Thence S.89°43'W., on a true line, bet. secs. 9 and 16, over mountainous land, through scattering timber and undergrowth; over rolling top of mesa.

3.31 Opposite triangulation point, on W. edge of mesa. Desc. 650 ft. into Ash Creek Canyon.



Subdivision of T. 19 N., R. 11 W.

Chains

- 20.36 Bottom of Ash Creek Canyon, course SE. Stream 6 lks. wide and 4 ins. deep. Asc.
- 39.93 Set an iron post, 3 ft. long, 1 in. diam., 26 ins. in the ground, for  $\frac{1}{4}$  sec. cor., with brass cap, marked  

$\frac{1}{4}$	S 9
	S16
	1916
- 41.87 Top of spur projecting NW., 500 ft. above creek. Desc. 280 ft.
- 60.35 Bottom of gulch, course SW. Asc. 175 ft.
- 65.90 Top of spur projecting SE. Desc. 40 ft.
- 69.70 Bottom of gulch, course SE. Asc. 20 ft.
- 74.85 Desc. into small gulch.
- 79.00 Bottom of gulch, course SE. Asc. 25 ft.
- 79.86 The cor. of secs. 8, 9, 16 and 17.

Land, mountainous.  
 Soil, 3rd and 4th rate.  
 Timber, juniper.  
 Undergrowth, oak brush and crucifixion thorn.  
 Grass, scant.  
 Formation, lava.

N.0°02'W, bet. secs. 8 and 9,  
 over mountainous land, through scattering timber and undergrowth. Desc. 20 ft.

- 1.60 Bottom of small gulch, course SE. Thence along broken SW. slope, ascending.
- 40.00 Set an iron post, 3 ft. long, 1 in. diam., 26 ins. in the ground, for  $\frac{1}{4}$  sec. cor., with brass cap, marked  

$\frac{1}{4}$	S8	S9
	1916	
- 56.00 Ridge bears NW. and SE. 390 ft. above bottom of gulch. Desc. abruptly, 190 ft.
- 64.57 Bottom of gulch, course SE. Asc. 50 ft.
- 68.50 Desc.
- 70.10 Gulch, course E. Asc. 200 ft.
- 80.00 Set an iron post, 3 ft. long, 2 ins. diam., 24 ins. in the ground, for cor. of secs. 4, 5, 8 and 9, with brass cap, marked  

T19N	R11W
S5	S4
S8	S9

from which  
 A juniper, 8 ins. diam., bears S.40°W., 37 lks. dist., marked  $\frac{1}{4}$  S8 BT.  
 No other trees within limits. Raise a mound of stone, 2 ft. base,  $1\frac{1}{2}$  ft. high, W. of cor.

from which  
 A juniper, 18 ins. diam., bears S.25°30'E., 38 lks. dist., marked T19N R11W S9 BT,  
 A juniper, 12 ins. diam., bears S.70°W., 78 lks. dist., marked T19N R11W S8 BT, and  
 A pinyon, 8 ins. diam., bears N.71°W., 128 lks. dist., marked T19N R11W S5 BT.  
 No other bearing trees within limits. Raise a mound of stone, 2 ft. base,  $1\frac{1}{2}$  ft. high, W. of cor.

Land, mountainous.  
 Soil, 3rd rate. Timber, juniper. Undergrowth, oak brush.  
 Grass, scant. Formation, lava.

Chains

East, on a random line, bet. secs. 4 and 9.  
 40.00 Set temp.  $\frac{1}{4}$  sec. cor.  
 80.00 Intersect N. and S. line 26 lks. S. of the cor. of secs.  
 3, 4, 9 and 10.

Thence S.  $89^{\circ}49'W.$ , on a true line, bet. secs. 4 and 9,  
 over mountainous land, through scattering undergrowth.  
 Desc. 480 ft., into Ash Creek Canyon.  
 25.35 Bottom of same, course SW. Small stream in bottom.  
 Asc. 235 ft., through juniper.  
 38.10 Spur, projecting NE. Desc. gradually.  
 40.00 Set an iron post, 3 ft. long, 1 in. diam., 26 ins. in the  
 ground, for  $\frac{1}{4}$  sec. cor., with brass cap, marked

S 4  
 $\frac{1}{4}$  -----  
 S 9  
 1916

from which

A juniper, 20 ins. diam., bears N.  $82^{\circ}E.$ , 51 lks. dist.,  
 marked  $\frac{1}{4}$  S4 BT.

No other trees within limits. Raise a mound of stone,  
 2 ft. base,  $1\frac{1}{2}$  ft. high, N. of cor.

Thence along N. slope.

56.60 Spur, sloping E. Asc. 270 ft.

80.00 The cor. of secs. 4, 5, 8 and 9.

Land, mountainous.

Soil, 3rd and 4th rate.

Timber, ash and cottonwood along creek, and juniper  
and pinyon on slopes.

Undergrowth, oak brush, cactus and crucifixion thorn.

Grass, scant.

Formation, lava.

N.  $0^{\circ}02'W.$ , bet. secs. 4 and 5,  
 over mountainous land, through scattering timber and  
 undergrowth. Desc. 120 ft.  
 4.67 Bottom of gulch, course NE. Thence on E. slope.  
 9.10 Bottom of gulch, course SE. Asc. abruptly, 425 ft.  
 25.15 Top of spur, projecting NE. Desc. 250 ft., on NE. slope.  
 35.90 Bottom of gulch, course SE. Asc. 100 ft.  
 38.70 Summit of ascent, on NE. slope. Desc. abruptly.  
 40.00 Set an iron post, 3 ft. long, 1 in. diam., 26 ins. in the  
 ground, for  $\frac{1}{4}$  sec. cor., with brass cap, marked

$\frac{1}{4}$   
 S5 | S4  
 1916

from which

A pinyon, 8 ins. diam., bears N.  $60^{\circ}W.$ , 91 lks. dist.,  
 marked  $\frac{1}{4}$  S5 BT, and

A juniper, 10 ins. diam., bears N.  $34^{\circ}E.$ , 4 lks. dist.,  
 marked  $\frac{1}{4}$  S4 BT.

Raise a mound of stone, 2 ft. base,  $1\frac{1}{2}$  ft. high,  
 W. of cor.

46.87 Desc. abruptly across head of gulch, course NE.  
 Bottom of gulch, course NE., 285 ft. below 38.70 ch. pt.  
 Asc. 40 ft.

51.00 Summit of slope.

52.25 Desc. abruptly, 150 ft., on NE. slope.

57.90 Bottom of gulch, course NE. Asc. 20 ft.

60.65 Summit of slope. Desc. gradually, 90 ft.

80.00 Intersect S. bdy. of T. 20 N., R. 11 W. 18.00 chs. E.  
of the cor. of secs. 31 and 32, described in book G.

At point of intersection

Set an iron post, 3 ft. long, 2 ins. diam., 24 ins. in the  
 ground, for closing cor. of secs. 4 and 5, with brass  
 cap, marked

Subdivision of T. 19 N., R. 11 W.

Chains

T20N R11W  
S32

S5 | S4  
T19N | R11W  
C | C  
1916

from which  
A juniper, 10 ins. diam., bears S.12°W., 37 lks. dist.,  
marked T19N R11W S5 BT.  
No other bearing trees within limits. Raise a mound  
of stone, 2 ft. base, 1½ ft. high, S. of cor.

Land, mountainous.  
Soil, 4th rate.  
Timber, juniper and pinyon.  
Undergrowth, oak brush.  
Grass, scant.  
Formation, lava.

From the cor. of secs. 5, 6, 31 and 32, on S. bdy. of Tp.,  
described in book D:

N.0°03'W., bet. secs. 31 and 32,  
over broken land, through scattering timber and undergrowth h..  
Desc. 40 ft.

- 2.10 Bottom of gulch, course SE. Asc. 60 ft.
- 7.00 Summit of ascent, on SE. slope. Asc. gradually, along E.  
slope.
- 15.40 Spur, projecting E. Desc. through chaparral; scattering  
juniper timber.
- 40.00 Set an iron post, 3 ft. long, 1 in. diam., 26 ins. in the  
ground, for ¼ sec. cor., with brass cap, marked

S31 | S32  
1916

from which  
A juniper, 10 ins. diam., bears S.59°45'E., 117 lks.  
dist., marked ¼ S32 BT.  
No other trees within limits. Raise a mound of stone, 2  
ft. base, 1½ ft. high, W. of cor.

- 46.15 Stream, 2 lks. wide, course NW., 300 ft. below 15.40 ch. pt.  
Thence along gulch.
- 51.00 Cross same, course NE., and asc. gradually.
- 80.00 Set an iron post, 3 ft. long, 2 ins. diam., 24 ins. in the  
ground, for cor. of secs. 29, 30, 31 and 32, with brass  
cap, marked

T19N | R11W  
S30 | S29  
S31 | S32

1916

and raise a mound of stone, 2 ft. base, 1½ ft. high,  
W. of cor.

Land, broken.  
Soil, 3rd and 4th rate.  
Timber, juniper.  
Undergrowth, chaparral.

- 40.00 East, on a random line, bet. secs. 29 and 32.
- 79.64 Set temp. ¼ sec. cor.  
Intersect N. and S. line 21 lks. N. of the cor. of secs.  
28, 29, 32 and 33.

## Chains

- Thence N.89°51'W., on a true line, bet. secs. 29 and 32, over broken land, through scattering timber and undergrowth; ascending.
- 39.82 Set an iron post, 3 ft. long, 1 in. diam., 26 ins. in the ground, for  $\frac{1}{4}$  sec. cor., with brass cap, marked
- S29  
 $\frac{1}{4}$  -----  
S32  
1916
- and raise a mound of stone, 2 ft. base,  $1\frac{1}{2}$  ft. high, N. of cor.
- 49.40 Spur, projecting NW. Desc. 180 ft., into gulch.
- 59.40 Bottom of gulch, course NW. Stream, 2 lks. wide, 3 ins. deep, course NW. Asc. 100 ft.
- 73.70 Summit, on spur projecting NE. Desc. 135 ft. into gulch.
- 78.00 Bottom of gulch, course NE. Stream, 1 lk. wide, 3 ins. deep. Asc. 30 ft.
- 79.64 The cor. of secs. 29, 30, 31 and 32.
- Land, broken.  
Soil, 3rd and 4th rate.  
Timber, juniper.  
Undergrowth, oak brush, cactus and crucifixion thorn.
- 
- West, on a random line, bet. secs. 30 and 31.
- 40.00 Set temp.  $\frac{1}{4}$  sec. cor.
- 78.55 Intersect W. bdy. of Tp. 15 lks. N. of the cor. of secs. 25, 30, 31 and 36, described in book E.
- Thence N.89°54'E., on a true line, bet. secs. 30 and 31, over mountainous land, through chaparral.  
Asc. 550 ft., along NW. slope.
- 29.20 Spur, projecting NW. Desc. on NE. slope.
- 38.55 Set an iron post, 3 ft. long, 1 in. diam., in a mound of stone, on solid rock, for  $\frac{1}{4}$  sec. cor., with brass cap, marked
- S30  
 $\frac{1}{4}$  -----  
S31  
1916
- and raise a mound of stone, 2 ft. base,  $1\frac{1}{2}$  ft. high, N. of cor.
- 44.45 Bottom of gulch, course NE. Stream, 3 lks. wide, 4 ins. deep, 400 ft. below spur. Asc. 240 ft., on NW. slope.
- 70.60 Point of spur from SW. Desc. 125 ft.
- 78.55 The cor. of secs. 29, 30, 31 and 32.
- Land, mountainous.  
Soil, 3rd and 4th rate.  
No timber.  
Undergrowth, chaparral.
- 
- N.0°03'W., bet. secs. 29 and 30,  
over mountainous land, through chaparral. Desc. 110 ft.
- 4.75 Gulch, course NW. Stream, 1 lk. wide, 2 ins. deep.  
Asc. gradually.
- 6.00 Desc. 70 ft.
- 7.90 Stream, 3 lks. wide, 2 ins. deep, course W. Asc.
- 11.30 Measure a base for triangulation, 13.15 chs., N.89°57'E., leaving flag at E. end of same.
- 19.30 Measure roughly on line for topography. Desc. 105 ft.  
Bottom of Trout Creek Canyon. Stream, 40 lks. wide, 6 ins. deep, course SW. Asc. abruptly on SE. slope, without chaining, over cliffs, to a station whence flag at E. end of base

Chains

hereinbefore described bears S.25°08'E., which gives for the distance 13.15 X tan 64°55', or 28.09 chs.; making distance from sec. cor. 11.30 + 28.09, or 39.39 chs.

39.39  
40.00

Measure N.0°03'W. 61 lks. to Set an iron post, 3 ft. long, 1 in. diam., 26 ins. in the ground, for 1/4 sec. cor., with brass cap, marked

1/4  
S30 | S29

1916

and raise a mound of stone, 2 ft. base, 1 1/2 ft. high, W. of cor. Asc. over slide rock and cliffs, without chaining, to a point whence flag at E. end of base, hereinbefore described, bears S.14°40'E., which gives for the distance, 13.15 X tan 75°23', or 50.42 chs.; making distance from sec. cor. 11.30 + 50.42, or 61.72 chs.

61.72

Triangulation point, on top of ridge bearing N.80°W. and S.80°E., 1140 ft. above Trout Creek.

64.02

Continue measurement with tape, descending 50 ft., to Triangulate across gulch, as follows: Measure a base S.89°57'W., 400 lks. to a point whence a flag on line bears N.13°18'E., which gives for the distance 4.00 X tan 76°39', or 16.86 chs.; making distance from sec. cor., 64.02 + 16.86, or 80.88 chs. Measure 88 lks. S.0°03'E., to point for sec. cor., and a total of 3.00 chs. to

77.88

Bottom of gulch, course SE., 320 ft. below ridge. Return on line N.0°03'W., ascending 50 ft.

80.00

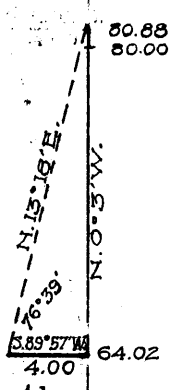
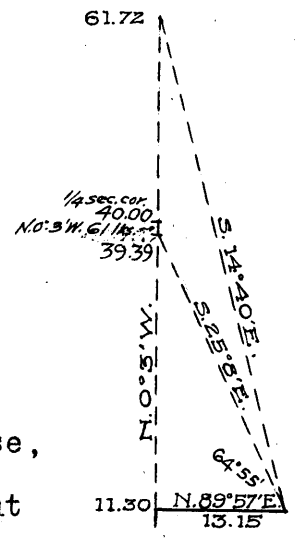
Set an iron post, 3 ft. long, 2 ins. diam., 24 ins. in the ground, for cor. of secs. 19, 20, 29 and 30, with brass cap, marked

T19N | R11W  
S19 | S20  
S30 | S29

1916

and raise a mound of stone, 2 ft. base, 1 1/2 ft. high, W. of cor.

Land, mountainous.  
Soil, 4th rate.  
No timber.  
Undergrowth, chaparral.



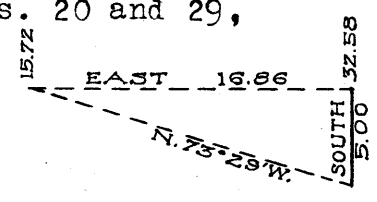
15.72

East, on a random line, bet. secs. 20 and 29, Triangulate over cliffs, as follows:

Leave flag, and from a station on line E., measure a base S., 5.00 chs., to a point whence flag bears N.73°29'W., which gives for the distance 5.00 X tan 73°29', or 16.86 chs., making distance from sec. cor., 15.72 + 16.86, or 32.58 chs.

32.58  
40.00

Continue measurement with steel tape. Set temp. 1/4 sec. cor.



Chains

79.88 Intersect N. and S. line 6 lks. S. of the cor. of secs. 20, 21, 28 and 29.

Thence S.89°57'W., on a true line, bet. secs. 29 and 32, over mountainous land, through scattering timber and undergrowth.

1.30 Gulch, course SW.

24.70 Stream, 3 lks. wide, 3 ins. deep, course SE.

28.40 Asc. gradually, 170 ft.

39.94 Set an iron post, 3 ft. long, 1 in. diam., 26 ins. in the ground, for 1/4 sec. cor., with brass cap, marked

S20

1/4 -----

S29

1916

and raise a mound of stone, 2 ft. base, 1 1/2 ft. high, N. of cor.

66.50 Summit of ascent, 740 ft. above stream. Desc. gradually.

79.88 The cor. of secs. 19, 20, 29 and 30.

Land, mountainous.  
Soil, rocky; 4th rate.  
Timber, juniper.  
Undergrowth, chaparral.

West, on a random line, bet. secs. 19 and 30.

40.00 Set temp. 1/4 sec. cor.

78.45 Intersect W. bdy. of Tp. 6 lks. S. of the cor. of secs. 19, 24, 25 and 30, described in book E.

Thence S.89°57'E., on a true line, bet. secs. 19 and 30, over mountainous land, through scattering timber and undergrowth. Asc. 700 ft.

22.85 Ridge bears NW. and SE. Descend.

38.45 Set an iron post, 3 ft. long, 1 in. diam., 26 ins. in the ground, for 1/4 sec. cor., with brass cap, marked

S19

1/4 -----

S30

1916

and raise a mound of stone, 2 ft. base, 1 1/2 ft. high, N. of cor.

Desc. gradually.

73.45 Gulch, course SE., 470 ft. below top of ridge. Asc. 30 ft.

78.45 The cor. of secs. 19, 20, 29 and 30.

Land, mountainous.  
Soil, 3rd and 4th rate.  
Timber, juniper.  
Undergrowth, oak brush and crucifixion thorn.  
Grass, scant.  
Formation, lava.

N.0°03'W., bet. secs. 19 and 20, over mountainous land, through scattering timber and undergrowth. Asc. 30 ft., on SW. slope.

4.75 Summit. Desc. abruptly.

9.70 Thence over slide rock.

19.60 Bottom of gulch, course S.70°E., 330 ft. below summit. Asc. 200 ft.

28.20 Point of spur from NW.

40.00 Set an iron post, 3 ft. long, 1 in. diam., 26 ins. in the ground, for 1/4 sec. cor., with brass cap, marked

1/4

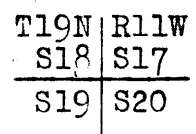
S19 | S20

1916

Subdivision of T. 19 N., R. 11 W.

Chains

- and raise a mound of stone, 2 ft. base, 1½ ft. high, W. of cor.
- Desc. 160 ft., into gulch.
- 46.30 Bottom of gulch, course NE. Asc. 200 ft., over cliffs.
- 54.30 Point of spur from N.80°W. Desc. 320 ft., on abrupt NE slope, over slide rock.
- 72.50 Bottom of gulch, course SE. Stream, ½ lk. wide, 1 in. deep, Asc. gradually, 70 ft.
- 80.00 Set an iron post, 3 ft. long, 2 ins. diam., 24 ins. in the ground, for cor. of secs. 17, 18, 19 and 20, with brass cap, marked

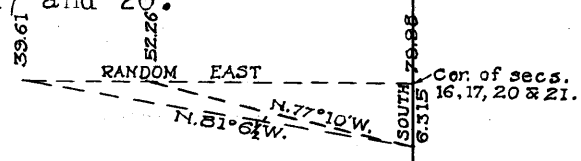


1916

and raise a mound of stone, 2 ft. base, 1½ ft. high, W. of cor.

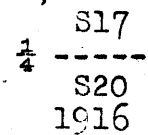
Land, mountainous.  
 Soil, 3rd and 4th rate.  
 Timber, juniper.  
 Undergrowth, oak brush and crucifixion thorn.  
 Grass, scant.  
 Formation, lava.

- 40.00 East, on a random line, bet. secs. 17 and 20.  
 Set temp. ¼ sec. cor.  
 To obtain distance to bottom of gulch and to sec. cor. proceed as follows:  
 Set a flag on line at 39.61 ch. pt., and continue E., chaining roughly for topography. From the cor. of secs. 16, 17, 20 and 21, flag bears W. Measure a base S., 6.315 chs., to a point whence flag bears N.81°06'30"W., and flag W. of bottom of gulch bears N.77°10'W.  
 First distance is therefore 6.315 X tan 81°06'30", or 40.37 chs., making length of line bet. secs. 17 and 20, 39.61 + 40.37, or 79.98 chs.  
 Second distance is 6.315 X tan 77°10', or 27.72 chs.,



From the cor. of secs. 16, 17, 20 and 21,  
 West, on a true line, bet. secs. 17 and 20,  
 over mountainous land, through scattering timber and undergrowth; over mesa.

- 2.30 Rim rock, on W. edge of mesa. Desc. abruptly, over successive cliffs.
- 23.80 Bottom of gulch, course S., 790 ft. below top of mesa.
- 39.99 Set an iron post, 3 ft. long, 1 in. diam., 26 ins. in the ground, for ¼ sec. cor., with brass cap, marked



and raise a mound of stone, 2 ft. base, 1½ ft. high, N. of cor.

- 52.20 Head of gulch, course SE.
- 56.00 Top of spur projecting SE. Desc. along SW. slope.
- 75.15 Bottom of gulch, course S. Stream, 1 lk. wide, 3 ins. deep, course S., 150 ft. below spur. Asc. 35 ft.
- 79.98 The cor. of secs. 17, 18, 19 and 20.

Land, mountainous.  
 Soil, 3rd and 4th rate.  
 Timber, juniper. Undergrowth, oak and crucifixion thorn.  
 Grass, scant. Formation, lava.

Chains

40.00 West, on a random line, bet. secs. 18 and 19.  
 Set temp.  $\frac{1}{4}$  sec. cor.  
 78.44 Intersect W. bdy. of Tp. 22 lks. S. of the cor. of secs.  
 13, 18, 19 and 24, described in book E.  
 Thence S.89°51'E., on a true line, bet. secs. 18 and 19,  
 over rolling land, through scattering timber and under-  
 growth. Desc. gradually, across a succession of small  
 washes.  
 38.44 Set an iron post, 3 ft. long, 1 in. diam., 26 ins. in the  
 ground, for  $\frac{1}{4}$  sec. cor., with brass cap, marked  
 S18  
 $\frac{1}{4}$  -----  
 S19  
 1916  
 from which  
 A juniper, 12 ins. diam., bears S.83°W., 20 lks. dist.,  
 marked  $\frac{1}{4}$  S19 BT, and  
 A juniper, 7 ins. diam., bears N.31°E., 10 lks. dist.,  
 marked  $\frac{1}{4}$  S18 BT.  
 Raise a mound of stone, 2 ft. base, 1 $\frac{1}{2}$  ft. high, N. of cor.  
 52.25 Asc. gradually, 150 ft.  
 73.50 Summit; desc. 20 ft.  
 74.50 Gulch, course SE. Asc. 75 ft.  
 78.44 The cor. of secs. 17, 18, 19 and 20.

Land, rolling.  
 Soil, 2nd rate: clay.  
 Timber, juniper.  
 Undergrowth, greasewood. oak brush and crucifixion thorn.  
 Grass, scant.  
 Formation, lava.

N.0°03'W., bet. secs. 17 and 18,  
 over mountainous land, through scattering timber and  
 undergrowth. Asc. 60 ft.  
 10.00 W. portion of saddle on top of rise bearing NW. and SE.  
 Continue ascent 85 ft.  
 24.60 Saddle in spur projecting W. Desc. 90 ft.  
 31.45 Bottom of gulch, course SW. Stream,  $\frac{1}{2}$  lk. wide, 1 in. deep.  
 40.00 Set an iron post, 3 ft. long, 1 in. diam., in a mound of  
 stone, on malpais outcrop, for  $\frac{1}{4}$  sec. cor., with brass  
 cap, marked

$\frac{1}{4}$   
 S18 | S17  
 1916

from which  
 A juniper, 8 ins. diam., bears S.53°30'W., 17 lks. dist.,  
 marked  $\frac{1}{4}$  S18 BT.  
 No other trees within limits. Raise a mound of stone,  
 2 ft. base, 1 $\frac{1}{2}$  ft. high, W. of cor.  
 41.80 Same gulch, course SE. Asc. gradually, 160 ft.  
 80.00 Set an iron post, 3 ft. long, 2 ins. diam., 24 ins. in the  
 ground, for cor. of secs. 7, 8, 17 and 18, with brass  
 cap, marked

T19N | R11W  
 S7 | S8  
 S18 | S17  
 1916

from which  
 A juniper, 10 ins. diam., bears S.38°E., 20 lks. dist.,  
 marked T19N R11W S17 BT, and  
 A juniper, 8 ins. in diam., bears N.41°45'E., 25 lks. dist.,  
 marked T19N R11W S8 BT.  
 No other trees within limits. Raise a mound of stone,  
 2 ft. base, 1 $\frac{1}{2}$  ft. high, W. of cor.



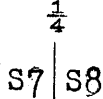


Chains

Asc. 70 ft.  
 46.20 Top of spur projecting SE. Desc. 215 ft.  
 60.85 Bottom of gulch, course SE. Thence on broken S. slope.  
 78.59 The cor. of secs. 7, 8, 17 and 18.

Land, mountainous.  
 Soil, 3rd rate, clay loam.  
 Timber, juniper.  
 Undergrowth, oak brush, Spanish dagger and crucifixion thorn.  
 Grass, fair.  
 Formation, lava.

N.0°03'W., bet. secs. 7 and 8,  
 over mountainous land, through scattering timber and undergrowth.  
 40.00 Set an iron post, 3 ft. long, 1 in. diam., 26 ins. in the ground, for  $\frac{1}{4}$  sec. cor., with brass cap, marked



1916

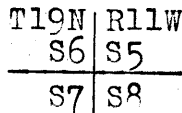
and raise a mound of stone, 2 ft. base,  $1\frac{1}{2}$  ft. high, W. of cor.

48.75 Top of spur projecting SW., 540 ft. above sec. cor. Desc. 85 ft.

64.40 Gulch, course SW. Asc. 230 ft.

77.00 Top of spur projecting SW. Desc. gradually.

80.00 Set an iron post, 3 ft. long, 2 ins. diam., 24 ins. in the ground, for cor. of secs. 5, 6, 7 and 8, with brass cap, marked



1916

and raise a mound of stone, 2 ft. base,  $1\frac{1}{2}$  ft. high, W. of cor.

Land, mountainous.  
 Soil, rocky; 3rd and 4th rate.  
 Timber, pinyon and juniper.  
 Undergrowth, oak brush, mesquite, crucifixion thorn and chaparral.  
 Grass, scant.  
 Formation, lava. Some granite on S. half.

40.00 East, on a random line, bet. secs. 5 and 8.  
 Set temp.  $\frac{1}{4}$  sec. cor.  
 79.72 Intersect N. and S. line 32 lks. S. of the cor. of secs. 4, 5, 8 and 9.

Thence S.89°46'W., on a true line, bet. secs. 5 and 8, over mountainous land, through scattering juniper and pinyon timber and undergrowth. Asc. 285 ft.

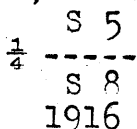
12.75 Summit of ascent. Desc. 25 ft.

19.20 Asc. 60 ft.

20.35 Top of ridge bearing NW. and SE. Leave pinyon timber.

Thence along slopes covered with malpais rock.

39.86 Set an iron post, 3 ft. long, 1 in. diam., 26 ins. in the ground, for  $\frac{1}{4}$  sec. cor., with brass cap, marked



Subdivision of T. 19 N., R. 11 W.

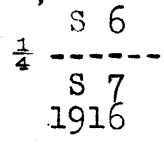
Chains

and raise a mound of stone, 2 ft. base, 1½ ft. high,  
 N. of cor.  
 Desc. 75 ft.  
 Thence asc. 220 ft.  
 45.00 Top of cliff, 30 ft. high. Desc. 320 ft., on steep slope.  
 64.90 The cor. of secs. 5, 6, 7 and 8.  
 79.72

Land, mountainous.  
 Soil, 4th rate.  
 Timber, juniper and pinvon.  
 Undergrowth, oak brush, mountain mahogany and cactus.  
 Grass, scant.  
 Formation, lava.

West, on a random line, bet. secs. 6 and 7.  
 40.00 Set temp. ¼ sec. cor.  
 78.88 Intersect W. bdy. of Tp. 3 lks. S. of the cor. of secs.  
 1, 6, 7 and 12, described in Book E.

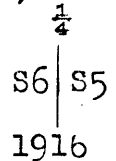
Thence S.89°59'E., on a true line, bet. secs. 6 and 7,  
 over mountainous land, through scattering timber and  
 undergrowth. Desc. 440 ft.  
 24.75 Bottom of gulch, course SE. Stream, 3 lks. wide.  
 Asc. 160 ft.  
 38.88 Set an iron post, 3 ft. long, 1 in. diam., 26 ins. in the  
 ground, for ¼ sec. cor., with brass cap, marked



from which  
 A juniper, 12 ins. diam., bears N.33°W., 61 lks. dist.,  
 marked ¼ S6 BT.  
 No other trees within limits. Raise a mound of stone,  
 2 ft. base, 1½ ft. high, N. of cor.  
 Thence over broken slopes.  
 66.60 Spur, projecting SW.  
 78.88 The cor. of secs. 5, 6, 7 and 8.

Land, mountainous.  
 Soil, 3rd and 4th rate: clay.  
 Timber, juniper.  
 Undergrowth, oak brush, manzanita, mahogany and cruci-  
 fixation thorn.  
 Grass, fair.  
 Formation, lava.

N.0°03'W., on a true line, bet. secs. 5 and 6,  
 over mountainous land, through scattering timber and  
 undergrowth. Asc. 60 ft.  
 5.60 Summit; thence desc. 80 ft. into gulch.  
 10.45 Gulch, course SW. Asc. 430 ft., over malpais rocks.  
 22.43 Top of spur projecting SW. Desc. 225 ft., through dense  
 oak brush.  
 40.00 Set an iron post, 3 ft. long, 1 in. diam., 26 ins. in the  
 ground, for ¼ sec. cor., with brass cap, marked



and raise a mound of stone, 2 ft. base, 1½ ft. high,  
 W. of cor.  
 Asc. very gradually.  
 48.00 Desc. 100 ft., into gulch.  
 51.95 Bottom of same, course SW. Asc. 300 ft.

Chains  
 62.65 Top of spur, projecting W. Desc. 130 ft.  
 79.83 Intersect S. bdy. of Tp. 20 N., R. 11 W. 21.96 chs. W. of  
 the  $\frac{1}{4}$  sec. cor. on S. bdy. of sec. 31, described in book  
 G.

At point of intersection  
 Set an iron post, 3 ft. long, 2 ins. diam., 24 ins. in the  
 ground, for closing cor. of secs. 5 and 6, with brass cap,  
 marked

T20N R11W  
 S31

S6	S5
T19N	R11W
C	C
1916	

from which  
 A juniper, 12 ins. diam., bears S.27°W., 80 lks. dist.,  
 marked T19N R11W S6 BT, and  
 A juniper, 12 ins. diam., bears S.6°E., 34 lks. dist.,  
 marked T19N R11W S5 BT.  
 Raise a mound of stone, 2 ft. base, 1½ ft. high, S. of cor.

Land, mountainous.  
 Soil, 3rd rate; clay.  
 Timber, juniper.  
 Undergrowth, oak brush and crucifixion thorn.  
 Grass, scant.  
 Formation, lava.

Boundaries of T. 19 N., R. 11 W.							
Latitudes, Departures and Closing Errors.							
Line designated	True Course	Dist. chs.	Latitudes		Departures		
			N. chs.	S. chs.	E. chs.	W. chs.	
South Boundary	S.89°54'W.	478.46		.84		478.46	
West Boundary	North	480.00	480.00				
North Boundary	East	478.45			478.45		
East Boundary	South	479.63		479.63			
Convergency					.51		
<b>Totals</b>			480.00	480.47	478.96	478.46	
				480.00	478.46		
Error in latitude				.47			
Error in departure					.50		

This township is rough and mountainous. In the south two thirds the gulches and canyons are characterized by rock walls and ledges varying in height from 10 to 200 ft. The prevailing formation is lava and lava conglomerate. Granite crops out in the SW. and NW. portions.

Permanent water exists in Trout and Ash Creeks, and in Chalk Spring, in the SE.  $\frac{1}{4}$  of sec. 11. Other gulches contain water during portions of the year.

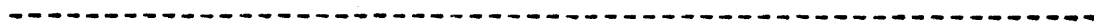
The soil is very rocky, 3rd and 4th rate; and, with the exception of a few very small tracts, unsuited to agriculture.

A scant growth of grass affords indifferent grazing. Scattering cottonwood and ash are found along the streams, and some pinyon, juniper and cedar on the slopes. Undergrowth of oak brush, crucifixion thorn, manzanita, mountain mahogany, Spanish dagger, cactus, yucca, mesquite and greasewood vary from dense to scattering growths.

Indications of iron ore in the form of black hematite were noted, but no other evidence of mineral.

There are no settlers.

The magnetic variation varies from 14° to 16° E., being subject to the effects of much local attraction.



FOR LIST OF ASSISTANTS, SEE BOOK A.

book "I"

Group 50 - - - Arizona.

4-680

BOOK 3210

Township 19 North, Range 11 West.

DATE DIAGRAM

	31	32	33	34	35	36
	6	5	4	3	2	1
	5-2-16	5-3-16	5-3-16	4-20-16	4-19-16	4-19-16
	7	8	9	10	11	12
	4-28-16	4-28-16	5-1-16	4-14-16	4-14-16	4-15-16
	18	17	16	15	14	13
	4-26-16	4-28-16, 4-27-16	4-27-16	4-12-16	4-11-16	4-8-16
	19	20	21	22	23	24
	4-22-16	4-26-16	4-25-16	4-10-16	4-7-16	4-4-16
	30	29	28	27	26	25
	4-24-16	4-24-16	4-25-16	4-6-16	4-5-16, 3-24-16	3-24-16
	31	32	33	34	35	36
	4-22-16	4-24-16	4-6-16	4-5-16	3-20-16	3-17-16

6-2764

Surveys executed on dates shown in red on above diagram, by Eugene L. Marshbarger, U. S. Transitman.

TRANSITMAN  
FOR CERTIFICATE OF UNITED STATES SURVEYOR. SEE BOOK "L".

BOOK 3210

I, \_\_\_\_\_, U. S. Surveyor, hereby certify upon honor that, in pursuance of special instructions received from the U. S. Surveyor General for \_\_\_\_\_ bearing date of the \_\_\_\_\_ day of \_\_\_\_\_, 191\_\_\_\_, I have well, faithfully, and truly in my own proper person, and in strict conformity with said instructions, the Manual of Surveying Instructions, and the laws of the United States, surveyed all those parts or portions of \_\_\_\_\_ of the \_\_\_\_\_ Meridian, in the State of \_\_\_\_\_, which are represented in the foregoing field notes as having been executed by me, and under my direction; and that all the corners of said survey have been established and perpetuated in strict accordance with the Manual of Surveying Instructions, and the special written instructions of the U. S. Surveyor General for \_\_\_\_\_ and in the specific manner described in the field notes, and that the foregoing are the original field notes of such survey.

\_\_\_\_\_  
U. S. Surveyor.

APPROVAL.

OFFICE OF THE UNITED STATES SURVEYOR GENERAL,

Phoenix, Arizona, September 24, \_\_\_\_\_, 1918.

The foregoing field notes of the survey of ~~the east boundary and subdivision~~ lines of Township 19 North, range 11 West, of the Gila and Salt River Base and meridian, in the State of Arizona,

executed by Eugene L. Marshbarger, U. S. Transitman, under ~~the~~ special instructions dated February 20, \_\_\_\_\_, 1915, having been critically examined, and the necessary corrections and explanations made, the said field notes, and the surveys they describe, are hereby approved.

*Frank D. Frost*  
U. S. Surveyor General.

~~I certify that the foregoing transcript of the field notes of the above described surveys in \_\_\_\_\_, has been correctly copied from the original notes on file in this office.~~