

3213

Book "L."

4-679

BOOK 3213

FIELD NOTES

OF THE SURVEY OF THE

SOUTH BOUNDARY, and

PART OF SUBDIVISION LINES, of TOWNSHIP 19 NORTH, RANGE 10 WEST,

RESURVEY of

PART OF THE WEST BOUNDARY, of TOWNSHIP 19 NORTH, RANGE 9 WEST, and

PART OF THE SUBDIVISION LINES, of TOWNSHIP 19 NORTH, RANGE 10 WEST,

RETRACEMENT OF

PART OF THE WEST BOUNDARY, and

PART OF SUBDIVISION LINES,

of

TOWNSHIP 19 NORTH, RANGE 10 WEST,

Of the Gila and Salt River Base and Meridian,

In the State of Arizona.

EXECUTED BY

Harry D. Jackson and Eugene L. Harshbarger, U.S. Transitmen

and

Otis Ross, U.S. Surveyor with corrections by Surveyor Ross of
Transitman Jackson's Resurvey and Survey of Subdivision lines of T. 19 N., R. 10 W
In the capacity of U. S. Surveyor, under instructions dated February 20, 1915 and
S.S.I. dated Sept. 15, 1919.

issued by the United States Surveyor General to govern surveys included in
Group No. 50, which were approved by the Commissioner of the General Land
Office, March 2, 1915, and Sept. 29, 1919.

Survey, Resurvey
& Retracement commenced April 7, 1916 and November 22, 1919.

Survey, Resurvey
& Retracement completed June 4, 1916, and December 6, 1919

Executed under Assignment
Instructions dated Nov. 29, 1915 and Nov. 7, 1919.

3213

3213

184
19

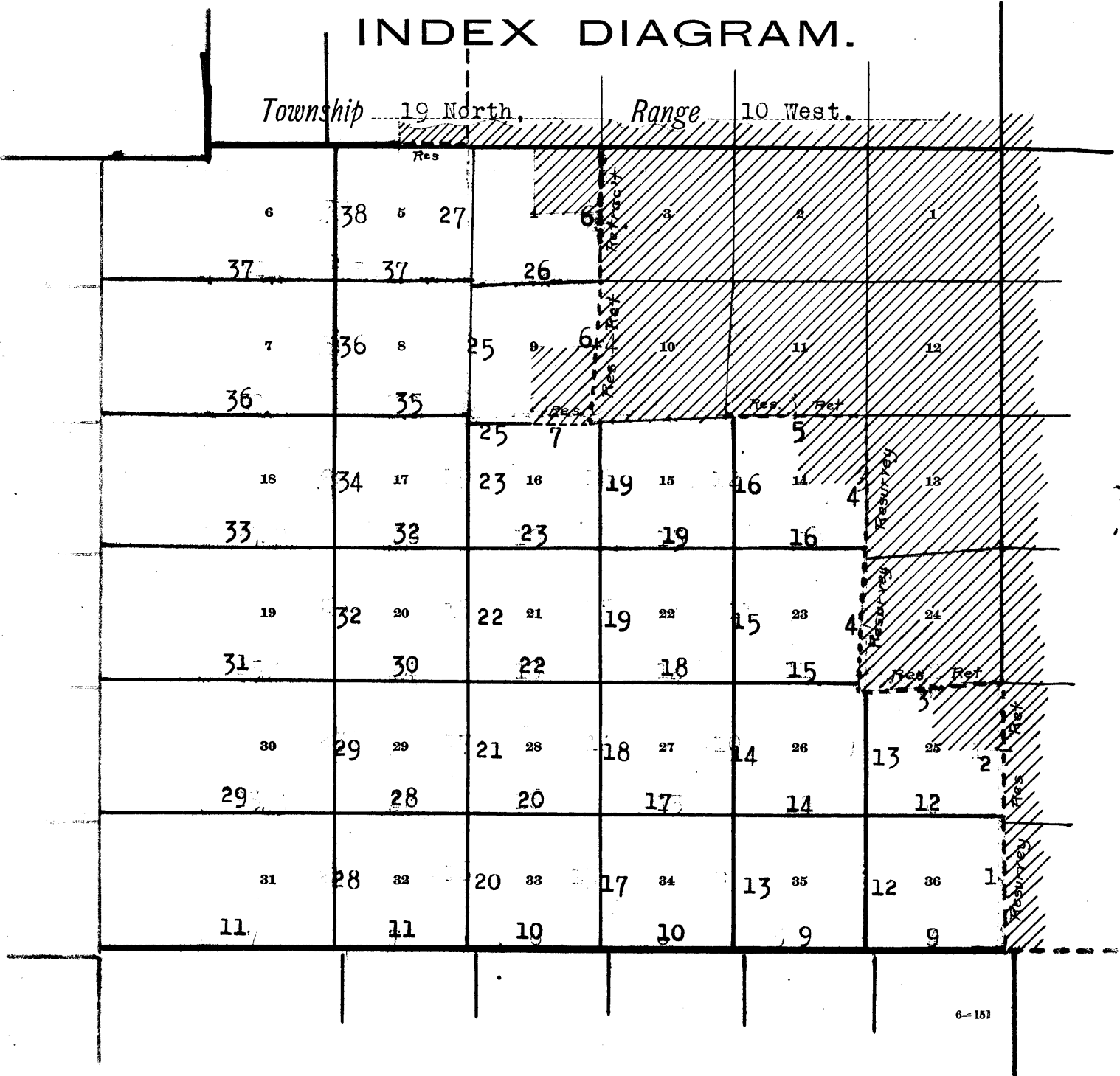
3213

Book "L."

Group 50 - - Arizona.

BOOK 3213

INDEX DIAGRAM.



- Surveyed under this group--notes in this book. 3213
- Retraced or resurveyed under this group--notes in this book.
- Surveyed under this group--notes in Book D. 3205
- Surveyed under this group--notes in Book G. 3208
- Surveyed under this group--notes in Book H. 3209
- Resurveyed under this group--notes in Book I. 3210
- Surveyed under this group--notes in Book J. 3211
- Resurveyed under this group--notes in Book J. 3211
- Surveyed under this group--notes in Book K. 3212
- Previously accepted surveys.
- Unsurveyed.
- //// Areas surveyed as per accepted plats on file.

Chains.

Work executed on dates shown on diagram on page 43 of this book, by Harry D. Jackson and Eugene L. Harshbarger, U.S. Transitmen, and Otis Ross, U.S. Surveyor.

The instruments used by Transitmen Jackson and Harshbarger are described, with record of approval by the assistant supervisor of surveys for Arizona and California, and field tests, in Book "A" of this group. The adjustments were frequently examined and maintained throughout the work by comparison of the results of solar observations with the true meridian determined by observations on Polaris.

The instrument used by Surveyor Ross is described, with record of test and certificate of approval in Book "H" of this group.

The mean magnetic variation is 15°E.

In November and December, 1919, Otis Ross, U.S. Surveyor, destroys some of Transitman Jackson's cors., changes markings and designation of others, and sets certain new cors. in connection with said changes, all to conform to instructions from the surveyor general, dated Sept. 15, 1919.

In the following notes, on the lines described from Transitman Jackson's records, in which Surveyor Ross made changes, all measurements and cor. descriptions affected by said changes are preceded by the initials "O.R." but such measurements are based upon Jackson's records, as Surveyor Ross did not rechain such lines. Where the position of the line is changed, allowance is made in the measurement to topographical features, as recorded by Jackson, on old position, to agree with the new position of line resulting from Surveyor Ross's movement of cors.

Resurvey of portion of West bdy. of Township 19 North, Range 9 West.

Owing to the extremely mountainous and broken surface along the south 2 miles of W. bdy. of T. 19 N., R. 9 W., it is impracticable to retrace said line north from reestablished cor. of Ts. 19 N., Rs. 9 and 10 W., described in Book "J," therefore, from a point 3.82 chs. E. from said cor., or 2 lks. N. from closing cor. of Ts. 18 N., Rs. 9 and 10 W., described in Book "J," retrace, north on offset random line thru secs. 31 and 30, T. 19 N., R. 9 W., making diligent search at points 3.82 chs. W. from record dists. on random line, for the original 1/4 sec. and sec. cors. No trace of original 1/4 sec. cor. of secs. 31 and 36, nor of original cor. of secs. 25, 30, 31 and 36 can be found, but at a point 5.22 chs. W. from 119.37 chain station on offset random line, find the original 1/4 sec. cor. of secs. 25 and 30, hereinafter described, and at a point 5.38 chs. W. from 159.18 ch. point, find the original cor. of secs. 19, 24, 25 and 30, hereinafter described.

The true course and distances on the true line, W. of secs. 31 and 30, are as follows:

- W. bdy. of sec. 31, N. 0° 40' W., 79.58 chs.
- S. 1/4 of W. bdy. of sec. 30, N. 0° 40' W., 39.79 chs., and
- N. 1/2 of W. bdy. of sec. 30, N. 0° 14' W., 39.81 chs.

Return to reestablished cor. of Ts. 19 N., Rs. 9 and 10 W., described in Book "J."

Thence,

- East, on true offset line, in sec. 31.
- Over mountainous land, thru scattering undergrowth.
- Ascend 100 ft. on NW. slope.

3.82 A point 2 lks. N. of closing cor. of Ts. 18 N., Rs. 9 and 10 W., described in Book "J."

2. Resurvey of Portion of West bdy. of Township 19 North, Range 9 West
Chains.

- Thence,
North, on true offset line, thru. sec. 31.
Over mountainous land, thru. scattering undergrowth.
Descend 65 ft. on NW. slope.
- 7.90 Bottom of ravine, course SW. Ascend 55 ft. on SW.
slope.
- 10.60 Spur, projecting W. Descend NW. slope.
- 31.70 Descend over cliff, 60 ft. high.
- 36.40 Bottom of ravine, course W. Stream of running water,
1 lk. wide. Ascend.
- 39.79 Midpoint of true offset line in sec. 31.
Thence,
West on offset line, in sec. 31.
Over mountainous land, thru. scattering undergrowth.
Descend W. slope.
- 4.29 True point for reestablishment for missing $\frac{1}{4}$ sec. cor.
of sec. 31 only, being on true Tp. bdy. N. $0^{\circ}40'$ W.,
from reestablished cor. of Ts. 19 N., Rs. 9 and 10
W., at
- 39.79 On a granite boulder, 5x4x3 ft. above ground, mark a cross
(X) and "1" W. of cross, for reestablished $\frac{1}{4}$ sec. cor. of
sec. 31, and raise a mound of stone, 2 ft. base, $1\frac{1}{2}$ ft. high,
E. of cor.
Thence, Thence,
East, on offset line in sec. 31.
Over mountainous land, thru. scattering undergrowth.
Ascend W. slope.
- 4.29 Midpoint of true offset line thru. sec. 31 (39.79 chs.
N.)
Thence,
North, on true offset line, thru. sec. 31, continuing
measurement from S. end thereof.
Over mountainous land, thru. scattering undergrowth.
Descend.
- 45.30 Bottom of ravine, course W. 540 ft. below spur at 10.60
chain point.
Ascend 50 ft. to
- 50.00 Ascend gradually.
- 67.00 Spur, projecting W. Descend 45 ft. on NW. slope.
- 75.30 Bottom of ravine, course W. Asc. 35 ft. on SW. slope.
- 79.58 A point on true offset line, E. of point for reestab-
lishment of cor. of secs. 30 and 31.
Thence,
West, on offset line, bet. secs. 30 and 31.
Over mountainous land, thru. scattering undergrowth.
Descend SW. slope.
- 4.75 True point for reestablishment of cor. of secs. 30
and 31, being on true Tp. bdy., N. $0^{\circ}40'$ W., from re-
established cor. of Ts. 19 N., Rs. 9 and 10 W., at
- 79.58 Set a granite stone, 16x12x8 ins., 11 ins. in the ground,
for reestablished cor. of secs. 30 and 31, marked with
1 notch on S. edge, and 5 notches on N. edge, and raise a
mound of stone, 2 ft. base, $1\frac{1}{2}$ ft. high, E. of cor.
Land, mountainous.
Soil, rocky, 3rd and 4th rate.
No timber.
Undergrowth, scrub oak and cactus.

- From reestablished cor. of secs. 30 and 31,
East, on offset line, bet. secs. 30 and 31.
Over mountainous land, thru. scattering undergrowth.
Ascend SW. slope.
- 4.75 Intersect true offset line, thru. sec. 31.
Thence,
North, on true offset line, thru. S. $\frac{1}{4}$ of sec. 30.
Over mountainous land, thru. scattering undergrowth.
Ascend SW. slope.
- 3.30 Spur, projecting W. Descend.
- 7.30 Draw, course W. Ascend 100 ft. on SW. slope.
- 17.80 Spur, projecting NW. Descend 100 ft.

Resurvey of portion of West bdy. of Township 19 North, Range 9 W. 3

Chains.

37.70 Ravine, course W. Ascend over rolling land.

39.79 A point on true offset line, E. of original $\frac{1}{4}$ sec. cor. of secs. 25 and 30.
Thence,
West, on offset line, in sec. 30.
Over mountainous land, thru scattering undergrowth.
Descend.

5.22 Intersect the true Tp. bdy., N. $0^{\circ}40'$ W. from reestablished cor. of secs. 30 and 31, at

39.79 The original $\frac{1}{4}$ sec. cor. of secs. 25 and 30, which is a lava stone, 16x10x6 ins. above ground, firmly set, marked "1" on W. face, and witnessed by a mound of stone, 2 ft. base, 1 $\frac{1}{2}$ ft. high, W. of cor. No bearing trees.
Land, mountainous.
Soil, rocky, 3rd and 4th rate.
No timber.
Undergrowth, scrub oak and cactus.

RETRACEMENT-Part of W. bdy. of Township 19 North, Range 9 West.

From original $\frac{1}{4}$ sec. cor. of secs. 25 and 30, hereinbefore described,
East, on offset line, in sec. 30.
Over mountainous land, thru scattering undergrowth.
Ascend.

5.22 Intersect true offset line, thru S. $\frac{1}{2}$ of sec. 30, hereinbefore described.
Thence,
North, on true offset line, thru N. $\frac{1}{2}$ of sec. 30.
Over rolling land, thru scattering undergrowth.

5.16 Fence, hrs. NE and SW.

39.81 A point on true offset line, E. of original cor. of secs. 19, 24, 25 and 30.
Thence,
West, on offset line, bet. secs. 19 and 30.
Over rolling land, thru scattering under scattering undergrowth. Descend.

5.38 Intersect the true Tp. bdy., N. $0^{\circ}14'$ W. from original $\frac{1}{4}$ sec. cor. of secs. 25 and 30; at

39.81 The original cor. of secs. 19, 24, 25 and 30, which is a granite stone, 16x14x8 ins. above ground, firmly set, marked with 4 notches on N. edge, and 2 notches on S. edge, and witnessed by mound of stone, 2 ft. base, 1 $\frac{1}{2}$ ft. high, W. of cor.
Land, rolling.
Soil, rocky, 3rd and 4th rate.
No timber.
Undergrowth, scrub oak and cactus.

RETRACEMENT & RESURVEY--Part of Subdivision lines of T. 19 N., R. 10 W.

RETRACEMENT.

From original cor. of secs. 19, 24, 25 and 30, on E. bdy. of Tp. hereinbefore described,
S. $89^{\circ}53'$ W., on true line, bet. secs. 24 and 25 (E. $\frac{1}{2}$).
Over mountainous land, thru scattering undergrowth.
Descend 314 ft. on SW. slope, over cliffs.

11.90 Wash, 20 lks. wide, course NW: in bottom of canyon.
Ascend 198 ft. on NE. face of cliffs.

18.10 Top of cliffs, bearing NW. and SE. Ascend 106 ft. on NE. slope.

26.30 Spur, sloping NW. Descend 265 ft. on SW. slope.

39.87 Intersect the original $\frac{1}{4}$ sec. cor. of secs. 24 and 25, which is a granite stone in place 3x2x2 ft. above ground, marked "1" on N. face and a cross (x) on top, and

4 Retracement & Resur. - Part of Subdivision of T. 19 N., R. 10 W.

Chains

and witnessed by a mound of stone, 2 ft. base, $1\frac{1}{2}$ ft. high, N. of cor. No bearing trees.

RESURVEY.

From original $\frac{1}{2}$ sec. cor. of secs. 24 and 25, described above,

S. $89^{\circ}57'W.$, on true line, on S. bdy. of sec. 24 (W. $\frac{1}{2}$).

Over mountainous land, thru scattering undergrowth.

.07 Bottom of ravine, course NW. Ascend 192 ft. on NE. slope.

12.39 Spur, sloping NW. Descend 184 ft. on W. slope.

23.66 Bottom of ravine, course NW. Ascend 373 ft. on NE. slope.

39.01 Intersect the closing cor. of secs. 25 and 26, hereinafter described.

39.57 Intersect the reestablished cor. of sec. 24 only (SW. cor.), originally cor. of secs. 23, 24, 25 and 26, but changed by Transitman Jackson after setting closing cor. of secs. 25 and 26, and closing cor. of secs. 23 and 26. This cor. is a volcanic stone, 12x8x6 ins. above ground, firmly set, marked with 2 notches on S. edge, and 1 notch on E. edge, and witnessed by a mound of stone, 2 ft. base, $1\frac{1}{2}$ ft. high, NE. of cor. No bearing trees.

Land, mountainous.

Soil, rocky, 4th rate.

No timber.

Undergrowth, scrub oak and cactus.

From original cor. of secs. 23, 24, 25 and 26,

N. $0^{\circ}06'W.$, on a true line, on W. bdy. of sec. 24 (S. $\frac{1}{2}$).

Over mountainous land, thru scattering undergrowth.

Descend 285 ft. on NW. slope.

29.53 Ravine, course NE. Ascend 100 ft. on SE. slope.

39.33 Intersect the original $\frac{1}{2}$ sec. cor. of secs. 23 and 24, which is a lava stone 24x8x10 ins. above ground, firmly set, marked "1" on W. face, and witnessed by mound of stone, 2 ft. base, $1\frac{1}{2}$ ft. high, W. of cor. No bearing trees.

After setting closing cors. for sec. 23, change this $\frac{1}{2}$ sec. cor. to refer to sec. 24 only, by moving mound of stone, from W. to E. of cor.

N. $0^{\circ}06'E.$, on true line, on W. bdy. of sec. 24 (N. $\frac{1}{2}$).

Over mountainous land, thru scattering undergrowth.

1.20 Top of spur, projecting NE. Descend 80 ft. on NE. slope.

9.10 Ravine, course NE. Ascend 130 ft.

18.40 Spur, projecting NE. Descend 325 ft., on NW. slope.

35.90 Bottom of ravine, course NE. Ascend 50' ft.

39.17 Intersect the original cor. of secs. 13, 14, 23 and 24, which is a lava stone 13x10x8 ins. above ground, firmly set, marked with 3 notches on S. edge, and 1 notch on E. edge, and witnessed by mound of stone, 2 ft. base, $1\frac{1}{2}$ ft. high, W. of cor. After setting closing cor. of secs. 14 and 23, change this cor. to refer to secs. 13 and 24 only, as hereinafter described.

Land, mountainous.

Soil, rocky, 3rd and 4th rate.

No timber.

Undergrowth, scrub oak and cactus.

N. $0^{\circ}53'W.$, on true line, on W. bdy. of sec. 13.

Over mountainous land, thru scattering undergrowth.

Descend 21 ft. on NE. slope, to

2.89 Intersect closing cor. of secs. 14 and 23, hereinafter described. On left rim of Cow Creek Canyon, brs. NW. and SE. Descend 200 ft. on W. wall of canyon.

18.68 Foot of descent brs. NW. and SE. Enter bottom of canyon. Left edge of Cow Creek, brs. E., 50 lks. dist., bears NN. and SE.

Retracement & Resur. - Part of Subdivision of T.19 N., R.10 W. 5

- Chains
- 28.18 Foot of W. wall of canyon, brs. SW. and E. Leave of bottom of canyon. Ascend 55 ft. on S. slope.
- 35.81 End of spur, sloping E. Descend 142 ft. on NE. slope.
- 41.00 Set an iron post, 3 ft. long, 1 in. in diam., 24 ins. in the ground for reestablished $\frac{1}{4}$ sec. cor. of secs. 13 and 14, marked on brass cap.

S14 | S13
1919

- and raise a mound of stone, 2 ft. base, 1 $\frac{1}{2}$ ft. high, W. of cor.
- 52.24 Foot of descent, and left bank of Cow Creek, brs. NW. and SE. Thence across Cow Creek, running water, 2 ft. deep, course NW.
- 53.24 Right edge of Cow Creek, brs. NW. and SE. Ascend 349 ft., over cliffs, bearing E. and W.
- 63.51 Top of cliffs on right rim of Cow Creek Canyon, brs. E. and W.
Ascend gradually over mesa.
- 82.00 Intersect original cor. of secs. 11, 12, 13 and 14, which is a volcanic stone, 10x10x6 ins. above ground, firmly set, marked with 4 notches on S. edge, and 1 notch on E. edge, and witnessed by mound of stone, 2 ft. base, 1 $\frac{1}{2}$ ft. high, W. of cor.
No bearing trees.
Land, mountainous.
Soil, rocky, 4th rate.
No timber.
Undergrowth, scrub cedar and cactus.

RETRACEMENT.

- S. 89°55' W., on a true line, on S. bdy. of sec. 11 (E. $\frac{1}{2}$).
Over level and rolling mesa, thru. scattering undergrowth.
Descend gradually.
- 17.10 Right rim of Cow Creek Canyon, brs. NW. and SE. Thence across canyon, about 300 ft. deep.
- 25.00 (Approximate) Cow Creek, running water, 50 lks. wide, course NW.
- 37.17 Left rim of canyon, brs. NW. and SE. Thence over mesa.
- 41.49 Intersect original $\frac{1}{4}$ sec. cor. of secs. 11 and 14, which is a lava stone, 14x10x5 ins. above ground, firmly set, marked "1" on N. face, and witnessed by mound of stone, 2 ft. base, 1 $\frac{1}{2}$ ft. high, N. of cor.

RESURVEY.

- N. 89°55' W. on true line, on S. bdy. of sec. 11 (W. $\frac{1}{2}$).
Over rolling mesa, thru. scattering undergrowth.
- 40.00 Intersect original cor. of secs. 10, 11, 14 and 15, which is a granite stone, 12x8x5 ins. above ground, firmly set, marked with 4 notches on S. edge, and 2 notches on E. edge, and witnessed by mound of stone 2 ft. base, 1 $\frac{1}{2}$ ft. high, W. of cor. No bearing trees.
After closing cor. of secs. 14 and 15, is set on this line, this cor. is changed to refer to secs. 10 and 11 only, as hereinafter described.
Land, rolling mesa.
Soil, 2nd to 4th rate.
No timber.
Undergrowth, oak brush and cactus.

Chains

RESURVEY.

The original cor. of secs. 9, 10, 15 and 16, is a volcanic stone, 14x10x5 ins. above ground, firmly set, marked with 4 notches on S. edge, and 3 notches on E. edge, and witnessed by a mound of stone, 2 ft. base, 1½ ft. high, W. of cor.

No bearing trees.

After setting closing cor., of secs. 15 and 16, and witness cor. to closing cor. of secs. 9 and 16, change the above described cor. to reestablished cor. of sec. 10 only (SW. cor.) by moving mound of stone from W. to NE. of cor.

"O.R." Preliminary to resurvey of E. ½ of line, bet. secs. 9 and 16, hereinafter described, change Jackson's re-established cor. of sec. 10 (SW. cor.) to reestablished cor. of secs. 9 and 10 by moving the mound of stone from NE. to N. of cor.

Thence, as per Jackson's record.

N. 0° 13' W., on true line, on W. bdy. of sec. 10 (S. ½).

Over rolling land, thru scattering undergrowth.

1.15 "O.R." Intersect the Jackson witness cor. to closing cor. of secs. 9 and 16, which is a granite boulder, 3x2x4 ft. above ground, marked with a cross (x) on top, 3 grooves on W. face, 4 grooves on S. face, and "WCCC" W. of cross (x), and witnessed by a mound of stone W. of cor.

Obliterate the marking on boulder, and destroy the mound of stone.

40.27 Intersect the original ¼ sec. cor. of secs. 9 and 10, which is a volcanic stone, 13x6x8 ins. above ground, firmly set, marked "1" on W. face, and witnessed by a mound of stone, 2 ft. base, 1½ ft. high, W. of cor. No bearing trees. This cor. retains the original designation.

RETRACEMENT.

N. 0° 19' E., on true line, on W. bdy. of sec. 10 (N. ½).

Over rolling mesa, thru scattering undergrowth.

28.45 Left rim of canyon, brs. NW. and SE. Thence across canyon.

32.00 (Approximate) Bottom of canyon, course NW.

36.46 Right rim of canyon, brs. NW. and SE. Thence across rolling mesa.

39.91 Intersect the original cor. of secs. 3, 4, 9 and 10, which is a granite stone, 12x8x6 ins. above ground, firmly set, marked with 5 notches on S. edge, and 3 notches on E. edge, and witnessed by a mound of stone, 2 ft. base, 1½ ft. high, W. of cor. No bearing trees.

After triangulation of line, bet. secs. 4 and 9 determines that closing cor. of said secs. will be required against W. bdy. of sec. 3, change above described sec. cor. to reestablished cor. of secs. 3 and 10 only, by moving mound of stone from W. to E. of cor.

"O.R." Change this cor. back to its original designation and description.

Land, rolling mesa.

Soil, rocky, 4th rate.

No timber.

Undergrowth, scrub oak, cactus and juniper.

From original cor. of secs. 3, 4, 9 and 10,

N. 2° 23' E., on true line, bet. secs. 3 and 4 (S. ½).

Over rolling mesa, thru scattering undergrowth, near rim of canyon, W. of line.

1.11 No trace of closing cor. of secs. 4 and 9, presumed to have been set by Transitman Jackson, can be found in the vicinity, after diligent search.

1.40 Top of cliff, bearing NE and SW. on left rim of Trout Creek Canyon. It being impracticable to continue

Retracement and Resur. of part of Subdivision of T.19 N., R. 10.W. 7

Chains.

- chaining on true line, N. from this point, obtain measurement by offset as follows:
East, on true offset line in sec. 3.
Over rolling mesa, thru scattering undergrowth.
- 10.70 Angle point of offset line.
Thence,
North, on true offset line, in sec. 3, measuring from Angle point.
Over rolling land, thru scattering undergrowth.
- 6.32 Top of cliff, on left rim of Trout Creek Canyon, brs. NE. & SW. Descend 663 ft. over cliffs to
- 34.12 Foot of descent at left edge of Trout Creek, brs. NE. and SW. Thence across running water 250 lks. wide, 2 1/2 ft. deep, course SW.
- 37.52 Right edge of Trout Creek, brs. NE. and SW. Ascend 150 ft. on S. slope, over cliffs on right wall of canyon, to
- 40.38 Angle point of offset line.
Thence,
West, on true offset line, in sec. 3.
Over mountainous land. Ascend 278 ft. on canyon wall.
- 9.02 Point on true sec. line, bet. secs. 3 and 4, N. 2° 23' E. from cor. of secs. 3, 4, 9 and 10, at
- 42.19 Intersect the original 1/4 sec. cor. of secs. 3 and 4, which is a volcanic boulder in place, 8x6x3 ft. above ground, marked with a cross (x) on top, and "1/4" on W. side of cross, and witnessed by mound of stone, 2 ft. base, 1 1/2 ft. high, W. of boulder. No bearing trees.
This cor. is on right rim of Trout Creek Canyon, brs. NE. and SW.
Thence,
North, on true line, bet. secs. 3 and 4 (N. 1/2).
- 40.01 Intersect the original cor. of secs. 3, 4, 33 and 34, on N. bdy. of Tp., which is a volcanic stone, 12x8x6 ins., above ground, firmly set, marked with 3 notches on each of E. and W. faces, and witnessed by a mound of stone, 2 ft. base, 1 1/2 ft. high, W. of cor. No bearing trees.
Land, rolling mesa and canyon walls.
Soil, rocky, 4th rate.
No timber.
Undergrowth, scrub oak, cedar and cactus.

RESURVEY.

- "O.R."
- From reestablished cor. of secs. 9 and 10, hereinbefore described,
West, on true line on S. bdy. of sec. 9, (E. 1/2).
Over rolling mesa, thru scattering undergrowth. Descend 90 ft. on W. slope, to
- 19.90 Head of gulch, course NW.
- 36.00 The Jackson reestablished cor. of secs. 9 and 16, brs. N. 129 lks. dist. Destroy all trace of same.
- 36.18 (39.90 chs. W. of closing cor. of secs. 15 and 16, or midpoint of N. bdy. of sec. 16), Set an iron post, 1 in. in diam., 24 ins. in the ground, for reestablished 1/4 sec. cor. of sec. 16 only, marked on brass cap,

1/2 ———
S 16
1919

- and raise a mound of stone 2 ft. base, 1 1/2 ft. high, S. of cor.
- 40.00 Set an iron post, 3 ft. long, 1 in. in diam., 15 ins. in the ground, supported by a mound of stone, for reestablished 1/4 sec. cor. of sec. 9 only, marked on brass cap,

8 Retracement & Resur. of part of subdivision of T. 19 N., R. 10 W.

Chains.

$$\frac{1}{4} \text{ S } 9$$

1919

and raise a mound of stone, 2 ft. base, 1½ ft. high, N. of cor.

Land rolling.

Soil, gravelly and rocky, 2nd and 3rd rate.

No timber.

Undergrowth, scrub oak and cactus.

The W. ½ of line, bet. secs. 9 and 16 has never been previously surveyed; therefore, discontinue resurvey at this cor. The survey of remainder of the line is hereinafter described.

Survey of South bdy of Township 19 North, Range 10 West. 9

Chains.

From the reestablished cor. of Ts. 19 N., Rs. 9 and 10 W., described in Book "J,"
 West, on a true line, on S. bdy. of sec. 36.
 Over mountainous land, thru scattering undergrowth.
 Descend 375 ft., on abrupt NW. slope.
 12.50 Bottom of canyon, course NW. Strsam, 20 lks. wide. Ascend 250 ft., on E. slope.
 20.75 Spur, projecting NE. Descend 65 ft. on NW. slope.
 22.45 Ravine, course NE. Ascend on steep NE. slope.
 40.00 Set an iron post 3 ft. long, 1 in. in diam., 26 ins. in the ground, for $\frac{1}{4}$ sec. cor. of sec. 36, with brass cap, marked

1/4 S 36

1916

and raise a mound of stone, 2 ft. base, 1 1/2 ft. high, N. of cor.
 60.20 Ridge, brs. N. and S., 750 ft. above ravine. Descend 365 ft. on NW. slope.
 80.00 Set an iron post, 3 ft. long, 3 ins. in diam., 24 ins. in the ground, for cor. of secs. 35 and 36, with brass cap, marked,

T19N	R10W
S35	S36

1916

and raise a mound of stone, 2 ft. base, 1 1/2 ft. high, N. of cor.
 A lava stone, 18x10x6 ins., marked for cor. of secs. 1, 2, 35 and 36, witnessed by a mound of stone on N. side, is 10 lks. N. and 46 lks. W. of cor. Obliterate this monument.
 Land, mountainous.
 Soil, rocky, 4th rate.
 No timber.
 Undergrowth, oak brush, cactus and yucca.

West, on S. bdy. of sec. 35.
 Over mountainous land, thru scattering undergrowth.
 Descend 315 ft., on NW. slope.
 14.90 Bottom of ravine, course NW. Ascend 30 ft. on NE. slope.
 22.90 Spur, projecting NW. Descend on NW. slope.
 40.00 Set an iron post, 3 ft. long, 1 in. in diam., 26 ins. in the ground, for $\frac{1}{4}$ sec. cor. of sec. 35, with brass cap, marked

1/4 S 35

1916

and raise a mound of stone, 2 ft. base, 1 1/2 ft. high, N. of cor.
 49.60 Bottom of ravine, course NW., 380 ft. below spur. Ascend 90 ft. on NE. slope.
 67.60 Spur, projecting NW. Descend 75 ft., on SW. slope.
 80.00 Set an iron post, 3 ft. long, 3 ins. in diam., 24 ins. in the ground, for cor. of secs. 34 and 35, with brass cap, marked

T19N	R10W
S34	S35

1916

and raise a mound of stone, 2 ft. base, 1 1/2 ft. high, N. of cor.
 Land, mountainous.
 Soil, 3rd rate.
 No timber.
 Undergrowth, oak brush, cactus and yucca.

10. Survey of South bdy. of Township 19 North, Range 10 West.

Chains.

- West, on S. bdy. of sec. 34.
Over mountainous land, thru scattering undergrowth.
Descend 60 ft. on SW. slope.
- 11.25 Bottom of gulch, course NE. Stream 20 lks. wide. Ascend
200 ft. on NE. slope.
- 26.65 Ridge, brs. NW. and SE. Descend gradually, on SW. slope.
- 40.00 Set an iron post, 3 ft. long, 1 in. in diam., 26 ins. in
the ground, for $\frac{1}{4}$ sec. cor. of sec. 34, with brass cap,
marked
- 1/4 S 34
1916
- and raise a mound of stone, 2 ft. base, 1 $\frac{1}{2}$ ft. high, N. of
cor.
- 53.75 Bottom of ravine, course NW. 170 ft. below ridge.
Ascend on NE. slope,
- 64.25 Ascend over rim rock, 40 ft. high.
- 64.50 Top of spur, projecting NW., 260 ft. above ravine.
Descend 270 ft. on NW. slope.
- 80.00 Set an iron post, 3 ft. long, 3 ins. in diam., 24 ins. in
the ground, for cor. of secs. 33 and 34, with brass cap,
marked,
- T19N | R10W
S33 | S34
1916
- and raise a mound of stone, 2 ft. base, 1 $\frac{1}{2}$ ft. high, N.
of cor.

Land, mountainous.
Soil, rocky, 4th rate.
No timber.
Undergrowth, oak brush, cactus and yucca.

- West, on S. bdy. of sec. 33.
Over mountainous land, thru scattering undergrowth.
Descend 30 ft. on NW. slope.
- 2.00 Ravine, course NW. Ascend 30 ft. on NE. slope.
- 12.00 Spur, projecting NW. Descend 95 ft. on NW. slope.
- 19.80 Ravine, course NW. Ascend 75 ft. on NE. slope.
- 27.70 Spur, projecting NW. Descend 240 ft. on NW. slope.
- 40.00 Set an iron post, 3 ft. long, 1 in. in diam., 26 ins. in
the ground, for $\frac{1}{4}$ sec. cor. of sec. 33, with brass cap,
marked
- 1/4 S 33
1916
- and raise a mound of stone, 2 ft. base, 1 $\frac{1}{2}$ ft. high, N.
of cor.
- 40.20 Bottom of gulch, course NW. Stream, 10 lks. wide.
Ascend 215 ft. on NE. slope.
- 51.10 Spur, projecting NW. Descend 240 ft. on NW. slope.
- 74.00 Ravine, course N. Stream, 10 lks. wide. Ascend 130 ft. on
NE. slope.
- 80.00 Set an iron post, 3 ft. long, 3 ins. in diam., 24 ins. in
the ground, for cor. of secs. 32 and 33, with brass cap,
marked

T19N | R10W
S32 | S33

1916

and raise a mound of stone, 2 ft. base, 1 $\frac{1}{2}$ ft. high, N. of cor.
Land, mountainous.
Soil, rocky, 4th rate.
No timber.
Undergrowth, oak brush, cactus and yucca.

Survey of S. bdy. of Township 19 North, Range 10 West. 11

Chains
 - West, on S. bdy. of sec. 32.
 Over mountainous land, thru scattering undergrowth.
 Ascend 95 ft. on NE. slope.
 -6.00 Summit of ascent.
 10.80 Descend 70 ft. on SW. slope.
 20.75 Draw, course NW.
 40.00 Set an iron post, 3 ft. long, 1 in. in diam., 26 ins. in the ground, for $\frac{1}{4}$ sec. cor., of sec. 32, with brass cap, marked

1/4 S 32
 1916

and raise a mound of stone, 2 ft. base, 1 1/2 ft. high, N. of cor.

54.75 Spur, projecting NW. Descend 110 ft., on SW. slope.
 67.25 Bottom of ravine, course NW. Ascend 35 ft., on NE. slope.
 80.00 Set an iron post, 3 ft. long, 3 ins. in diam., 24 ins. in the ground, for cor. of secs. 31 and 32, with brass cap, marked,

T19N | R10W
S31 | S32
 1916

and raise a mound of stone, 2 ft. base, 1 1/2 ft. high, N. of cor.

Land, mountainous and rolling.
 Soil, rocky, 2nd to 4th rate.
 No timber.
 Undergrowth, oak brush, cactus and yucca.

West, on S. bdy. of sec. 31.
 Over rolling land, thru scattering undergrowth.
 4.75 Spur, projecting NW. Descend 220 ft., on SW. slope.
 24.75 Ravine, course NW. Ascend on NE. slope.
 40.00 Set an iron post, 3 ft. long, 1 in. in diam., 26 ins. in the ground, for $\frac{1}{4}$ sec. cor. of sec. 31, with brass cap, marked

1/4 S 31
 1916

and raise a mound of stone, 2 ft. base, 1 1/2 ft. high, N. of cor.

43.25 Spur, projecting NW., 115 ft. above ravine. Thence along broken N. slope.
 57.75 Ravine, course NW. Continue on N. slope.
 112.75 Spur, projecting NW. Descend 120 ft., on SW. slope.
 142.76 Intersect E. bdy. of T. 19 N. R. 11 W., 4.56 chs. N. of the cor. of Ts. 18 and 19 N., Rs. 11 W., described in Book "D."

At point of intersection,
 Set an iron post, 3 ft. long, 3 ins. in diam., 24 ins. in the ground, for closing cor. of Ts. 18 and 19 N., Rs. 10 W., with brass cap, marked

T19N | T19N
 S36 | S31 CC
 S 6
 R11W | R10W
 T18N
 1916

and raise a mound of stone, 2 ft. base, 1 1/2 ft. high, E. of cor.
 Land, rolling mesa.
 Soil, 2nd to 4th rate.
 No timber.
 Undergrowth, oak brush, cactus and yucca.

12. Survey of partial Subdivision of Township 19 North, Range 10 W.

Chains.

From the cor. of secs. 35 and 36, on S. bdy. of Tp., hereinbefore described,

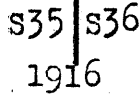
N. 0° 01' W., bet. secs. 35 and 36.

Over mountainous land, thru. scattering undergrowth. Descend 215 ft., on NE. slope.

11.50 Ravine, course W. Ascend 50 ft. on SW. slope.

23.50 Spur, ridge, brs. NW., comes from SE. Descend on NE. slope.

40.00 Set an iron post, 3 ft. long, 1 in. in diam., 26 ins. in the ground, for 1/4 sec. cor., with brass cap, marked



and raise mound of stone, 2 ft. base, 1 1/2 ft. high, W. of cor.

44.80 Ravine, course NW., 430 ft. below ridge. Thence along W. slope.

61.75 Ravine, course SW. Ascend 270 ft. on S. slope.

80.00 Set an iron post 3 ft. long, 2 ins. in diam., 24 ins. in the ground, for cor. of secs. 25, 26, 35 and 36, with brass cap, marked



and raise a mound of stone, 2 ft. base, 1 1/2 ft. high, W. of cor.

Land, mountainous.

Soil, rocky, 3rd and 4th rate.

No timber. Undergrowth, oak brush, cactus and yucca.

East, on true line, bet. secs. 25 and 36.

Over mountainous land, thru. scattering undergrowth. Ascend 65 ft. on NW. slope.

3.40 Ridge, brs. NW. and SE. Descend 35 ft. on NE. slope.

11.35 Head of draw, course NE. Ascend 50 ft. on NW. slope.

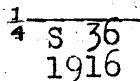
29.30 Head of draw, course N. Ascend 80 ft. on NW. slope.

37.00 Spur, projecting N.

"OR" 39.22 "O.R." Set a sandstone, 18x8x8 ins., 12 ins. in the ground, for 1/4 sec. cor. of sec. 25 only, marked "1/4" on N. face, and raise a mound of stone, 2 ft. base, 1 1/2 ft. high, N. of cor.

40.00 "O.R." The Jackson 1/4 sec. cor. of secs. 25 and 36 is an iron post, 1 in. in diam., 10 ins. above ground, firmly set, properly marked, on brass cap, and witnessed by a mound of stone, N. of cor. This cor. is in ravine, course NW.

Change this cor. to refer to sec. 36 only, by destroying mound of stone, changing marking on brass cap to read



and raise mound of stone, 2 ft. base, 1 1/2 ft. high, S. of cor.

42.00 Ascend 80 ft. on NW. slope.

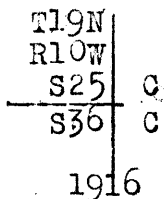
47.10 Spur, projecting NW. Descend 100 ft. on NE. slope.

53.00 Spur, projecting NE. Descend 540 ft., on SE. slope.

79.22 Fall 57 lks. N. 0° 40' W. of the reestablished cor. of secs. 30 and 31, hereinbefore described.

At point of intersection,

Set an iron post, 3 ft. long, 2 ins. in diam., 24 ins. in the ground, for closing cor. of secs. 25 and 36, with brass cap, marked



Survey of partial Subdivision of Township 19 North, Range 10 W. 13

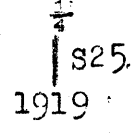
Chains.

and raise a mound of stone, 2 ft. base, 1 1/2 ft. high, W. of cor.
Land, mountainous.
Soil, 3rd and 4th rate.
No timber.
Undergrowth, oak brush, cactus and yucca.

From cor. of secs. 25, 26, 35 and 36,
N. 0° 01' W., bet. secs. 25, and 26.
Over mountainous land, thru. scattering undergrowth.
Descend 95 ft., on NW. slope.

11.25
28.00
"OR" 38.67

Ravine, course NW. Ascend 160 ft. on SW. slope.
Spur, projecting NW. Descend 580 ft. on NW. slope.
"OR." Set an iron post, 3 ft. long, 1 in. in diam., 14 ins. in the ground, supported by a mound of stone, for 1/4 sec. cor. of sec. 25 only, marked on brass cap,



40.00

and raise a mound of stone, 2 ft. base, 1 1/2 ft. high, E. of cor.
"O.R." The Jackson 1/4 sec. cor. of secs. 25 and 26 is an iron post, 1 in. in diam., 10 ins. above ground, firmly set, properly marked on brass cap, and witnessed by a mound of stone, 2 ft. base, 1 1/2 ft. high, W. of cor. Change this cor. to refer to sec. 26 only, by changing marking on brass cap, to read:



54.40

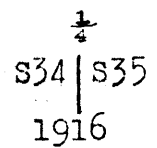
leaving accessory unchanged.
Gulch, course SW. Wash, 200 lks. wide, in bottom.
Ascend 300 ft. on SE. slope.

73.30
78.67

Spur, projecting NE. Descend 50 ft. on NE. slope.
"O.R." Intersect S. bdy. of sec. 24, at 56 lks. N. 89° 57' E. from reestablished cor. of sec. (SW. cor.)
At point of intersection,
Set a volcanic stone, 15x10x8 ins., 11 ins. in the ground, for closing cor. of secs. 25 and 26, marked with one groove on E. face, 2 grooves on W. face, and "CC" on S. face; and raise a mound of stone, 2 ft. base, 1 1/2 ft. high, S. of cor.
Iron post not available.
Land, mountainous.
Soil, rocky, 3rd. and 4th rate.
No timber.
Undergrowth, oak brush, cactus and yucca.

26.00
40.00

From the cor. of secs. 34 and 35, on S. bdy. of Tp., hereinbefore described,
N. 0° 01' W., bet. secs. 34 and 35,
Over mountainous land, thru. scattering undergrowth.
Ascend on gentle SW. slope, 65 ft.
Spur, projecting NW. Descend on NW. slope.
Set an iron post, 3 ft. long, 1 in. in diam., 26 ins. in the ground, for 1/4 sec. cor., with brass cap, marked,



and raise a mound of stone, 2 ft. base, 1 1/2 ft. high, W. of cor.

14 Survey of partial Subdivision of T. 19 N., R. 10 W..

Chains.

44.00 Gulch, course NW., 290 ft. below spur. Stream, 4 lks. wide. Ascend 410 ft. on SW. slope.

64.80 Spur, projecting NW. Thence along W. slope.

68.80 Ravine, course SW. Ascend 300 ft. on S. slope.

80.00 Point for cor. of secs. 26, 27, 34 and 35 falls on a volcanic boulder, 4x4x3 ft. above ground, on which mark a cross (x) at the exact cor. point, with 2 grooves on E. face and 1 groove on S. face, and raise a mound of stone, 2 ft. base, 1 1/2 ft. high, W. of cor.

Land, mountainous.

Soil, rocky, 3rd and 4th rate.

No timber. Undergrowth, oak brush, cactus and yucca.

East, on a random line, bet. secs. 26 and 35.

40.00 Set temp. 1/4 sec. cor.

79.96 Intersect N. and S. line, 9 lks. N. of the cor. of secs. 25, 26, 35 and 36.

Thence N. 89° 56' W., on a true line, bet. secs. 26 and 35.

Over mountainous land, thru scattering undergrowth.

Descend 360 ft. on NE. slope.

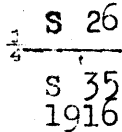
15.65 Ravine, course NE. Ascend 315 ft. on NE. slope.

26.55 Descend 50 ft.

32.50 Ascend 50 ft.

39.98 On spur, projecting NE.,

Set an iron post, 3 ft. long, 1 in. in diam., 26 ins. in the ground, for 1/4 sec. cor., with brass cap, marked



and raise a mound of stone, 2 ft. base, 1 1/2 ft. high, N. of cor.

Descend 135 ft. on NW. slope.

47.30 Head of ravine, course NE. Ascend 280 ft. on NE. slope.

70.80 Spur, projecting SE. Ascend 80 ft. on SE. slope.

79.96 The cor. of secs. 26, 27, 34 and 35.

Land, mountainous.

Soil, rocky, 3rd and 4th rate.

No timber.

Undergrowth, oak brush, cactus and yucca.

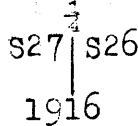
N. 0° 01' W., bet. secs. 26 and 27.

Over mountainous land, thru scattering undergrowth.

Ascend 210 ft. on S. slope.

15.00 Ridge, brs. NE and SW. Descend on NW. slope.

40.00 Set an iron post, 3 ft. long, 1 in. in diam., 26 ins. in the ground, for 1/4 sec. cor., with brass cap, marked



and raise a mound of stone, 2 ft. base, 1 1/2 ft. high, W. of cor.

64.70 Ravine, course NE., 415 ft. below ridge. Ascend on SE. slope.

68.70 Spur, projecting NE., 15 ft. above ravine. Descend gradually on NE. slope.

80.00 Set an iron post, 3 ft. long, 2 ins. in diam., 24 ins. in the ground, for cor. of secs. 22, 23, 26 and 27, with brass cap, marked,

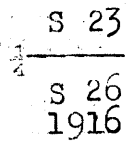


Survey of partial Subdivision of Township 19 North, Range 10 West, 15

Chains.

and raise a mound of stone, 2 ft. base, 1 1/2 ft. high, W. of cor.
Land, mountainous. Soil, rocky, 3rd and 4th rate.
No timber.
Undergrowth, oak brush, cactus and yucca.

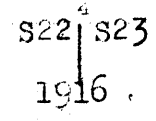
East, on a true line, bet. secs. 23 and 26.
Over mountainous land, thru scattering undergrowth.
Descend 115 ft. on NE. slope.
6.60 Ravine, course NE. Ascend 310 ft. on NW. slope.
22.40 Spur, projecting NE. Descend on NE. slope.
40.00 Set an iron post, 3 ft. long, 1 in. in diam., 26 ins. in the ground, for 1/2 sec. cor., with brass cap, marked



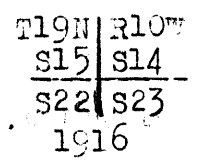
and raise a mound of stone, 2 ft. base, 1 1/2 ft. high, N. of cor.
44.50 Ravine, course NE., 490 ft. below spur. Ascend 190 ft. on NW. slope.
54.00 Spur, projecting NE. Descend 215 ft. on NE. slope.
65.50 Ravine, course NE. Ascend 125 ft., on NW. slope.
71.80 Spur, projecting NE. Descend 70 ft. on NE. slope.
79.38 Intersect W. bdy. of sec. 24, at 1.23 chs. N. 0° 6' W., from original cor. of secs. 23, 24, 25 and 26, which is a volcanic stone, 12x8x6 ins. above ground firmly set, marked with 2 notches on S. edge, and 1 notch on E. edge, and witnessed by a mound of stone 2 ft. base, 2 ft. high, W. of cor. No bearing trees. Change this cor. to refer to sec. 24 only (SW. cor.) by moving mound of stone, from W. to NE. of cor.

At point of intersection,
Set a lava stone, 16x10x6 ins., 11 ins. in the ground, for closing cor. of secs. 23 and 26, marked with 4 grooves on N. face, 2 grooves on S. face, and "CC" on W. face, and raise a mound of stone, 2 ft. base, 1 1/2 ft. high, W. of cor.
No iron post available.
Land, mountainous.
Soil, rocky, 3rd and 4th rate.
No timber.
Undergrowth, oak brush, cactus and yucca.

From cor. of secs. 22, 23, 26 and 27,
N. 0° 01' W., bet. secs. 22 and 23,
Over mountainous land, thru scattering undergrowth.
Ascend gradually on SE. slope.
23.60 Spur, projecting NE. Descend on NE. slope.
40.00 Set an iron post, 3 ft. long, 1 in. in diam., 26 ins. in the ground, for 1/2 sec. cor., with brass cap, marked,



and raise mound of stone, 2 ft. base, 1 1/2 ft. high, W. of cor.
47.60 Bottom of ravine, 450 ft. below spur, course NE.
Thence over roughly rolling land.
80.00 Set an iron post, 3 ft. long, 2 ins. in diam., 24 ins. in the ground, for cor. of secs. 14, 15, 22 and 23, with brass cap, marked



16. survey of Partial Subdivision of T. 19 N., R. 10 W.

Chains.

and raise a mound of stone, 2 ft. base, 1 1/2 ft. high, W. of cor.

Land, mountainous and roughly rolling. Soil, rocky, 3rd and 4th rate. No timber. Undergrowth, oak brush, cactus and yucca.

From cor. of secs. 14, 15, 22 and 23, East, on a true line, bet. secs. 14 and 23. Over mountainous land, thru scattering undergrowth.

- 2.00 Spur, projecting N. Descend 270 ft., on NE. slope.
- 19.00 Bottom of ravine, course NE. Ascend 50 ft. on NW. slope.
- 23.20 Spur, projecting NE. Descend 90 ft.
- 27.00 Ravine, course N. Ascend 170 ft., on NW. slope.
- 29.70 Spur, projecting NE. Descend 180 ft. on SE. slope.
- "OR" 39.08 "O.R." Set an iron post 3 ft. long, 1 in. in diam., 26 ins. in the ground for 1/2 sec. cor. of sec. 14 only, marked on brass cap,

1/2 S 14

1919

and raise a mound of stone, 2 ft. base, 1 1/2 ft. high, N. of cor.

- 40.00 "O.R." The Jackson 1/2 sec. cor. of secs. 14 and 23 is a volcanic stone, 10x5x6 ins. above ground, firmly set, marked "1/2" on N. face, and witnessed by a mound of stone, 2 ft. base, 1 1/2 ft. high, N. of cor.

Change this cor. to refer to sec. 23 only by obliterating marking on N. face of stone, marking "1/2" on S. face, and moving mound of stone from N. to S. of cor.

- 47.80 Bottom of ravine, course NE. Ascend 190 ft. on NW. slope.
- 59.40 Spur, projecting N. Descend 290 ft. on NE. slope.
- 79.08 Intersect W. bdy. of sec. 13, at 2.89 chs. N. 0° 58' W. from original cor. of secs. 13, 14, 23 and 24, which is a lava stone, 13x10x8 ins. above ground, firmly set, marked with 3 notches on S. edge, and 1 notch on E. edge, and witnessed by a mound of stone, 2 ft. base, 1 1/2 ft. high, W. of cor. No bearing trees. Change this cor. to refer to secs. 13 and 24 only, by marking 3 notches on N. edge, and moving mound of stone from W. to E. of cor.

At point of intersection, Set an iron post 3 ft. long, 1 in. in diam., 14 ins. in the ground, supported by a mound of stone, for closing cor. of secs. 14 and 23, marked on brass cap,

T19N	R10W
CC S14	S13
S23	

1916

and raise a mound of stone 2 ft. base, 1 1/2 ft. high, W. of cor.

Land, mountainous. Soil, rocky, 3rd and 4th rate. No timber. Undergrowth, scrub oak, cactus and yucca.

From cor. of secs. 14, 15, 22 and 23, N. 0° 1' W., on true line, bet. secs. 14 and 15. Over nearly level mesa, thru scattering undergrowth.

- "OR" 38.77 "O.R." Set an iron post, 3 ft. long, 1 in. in diam., 26 ins. in the ground, for 1/2 sec. cor. of secs. 14 only, marked on brass cap,

1/2 S14

1919

and raise a mound of stone, 2 ft. base, 1 1/2 ft. high, E. of cor.

Chains.
40.00

"O.R." The Jackson $\frac{1}{4}$ sec. cor. of secs. 14 and 15 is a basalt stone, 12x6x4 ins. above ground, firmly set, marked "C" on W. face, and witnessed by a mound of stone 2 ft. base, 1 $\frac{1}{2}$ ft. high, W. of cor. This cor. now refers to sec. 15 only. No change in marking or accessory required.

73.75
78.77

Trail brs. NW. and SE.
Intersect S. bdy. of sec. 11, at 3.83 chs. S. 89° 55' E. from original cor. of secs. 10, 11, 14 and 15, which is a granite stone, 12x8x5 ins. above ground, firmly set, marked with 4 notches on S. edge, and 2 notches on E. edge, and witnessed by mound of stone, 2 ft. base, 1 $\frac{1}{2}$ ft. high, W. of cor. No bearing trees.

Change this cor. to refer to secs. 10 and 11 only, by marking 4 notches on W. edge of stone, obliterating notches on S. edge, and moving mound of stone from W. to N. of cor.

The original $\frac{1}{4}$ sec. cor. of secs. 11 and 14, hereinbefore described, retains its original designation in order to protect the NE. $\frac{1}{4}$ of sec. 14, which is a previously accepted area, but the original $\frac{1}{4}$ sec. cor. of secs. 10 and 15 now refers to sec. 10 only. No change in marking or accessory required.

At point of intersection,
Set a volcanic stone, 18x10x8 ins., 12 ins. in the ground for closing cor. of secs. 14 and 15, marked with 2 grooves on E. face, 4 grooves on W. face, and "CC" on S. face, and raise a mound of stone, 2 ft. base, 1 $\frac{1}{2}$ ft. high, S. of cor.

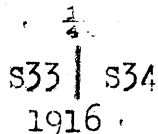
No iron post available.
Land, nearly level mesa.
Soil, 2nd to 4th rate.
No timber.
Undergrowth, oak brush, juniper, cactus and yucca.

From the cor. of secs. 33 and 34, on S. bdy. of Tp., hereinbefore described,

N. 0° 02' W., bet. secs. 33 and 34.
Over mountainous land, thru scattering undergrowth.
Ascend 175 ft., on SW. slope.

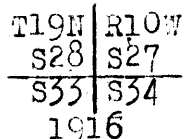
16.50
40.00

Ridge, bearing NW. and SE. Descend on NE. slope.
Set an iron post, 3 ft., long, 1 in. in diam., 26 ins. in the ground, for $\frac{1}{4}$ sec. cor., with brass cap, marked



66.60
80.00

and raise mound of stone, 2 ft. base, 1 $\frac{1}{2}$ ft. high, W. of cor.
Canyon, course NW., 620 ft. below ridge. Stream 20 lks. wide.
Ascend 450 ft. on S. slope.
Set an iron post, 3 ft. long, 2 ins. in diam., 24 ins. in the ground, for cor. of secs. 27, 28, 33 and 34, with brass cap, marked,



and raise a mound of stone, 2 ft. base, 1 $\frac{1}{2}$ ft. high, W. of cor.
Land, mountainous. Soil, rocky, 3rd and 4th rate.
No timber. Undergrowth, oak brush, cactus and yucca.

40.00
79.82

East, on a random line, bet. secs. 27 and 34.
Set temp. $\frac{1}{4}$ sec. cor.
Intersect N. and S. line, 21 lks. S. of the cor. of secs. 26, 27, 34 and 35.

16.75
22.00

Thence S. 89° 51' W., on true line, bet. secs. 27 and 34.
Over mountainous land, thru scattering undergrowth.
Descend 470 ft. on SW. slope.
Bottom of ravine, course SW. Asc. 80 ft. on SE. slope.
Spur, projecting SW. Desc. 170 ft. on SW. slope.

18. Partial Subdivision of Township 19 North, Range 10 West.

Chains.

35.00 Bottom of ravine, course SE. Ascend 70 ft. on SE. slope.
 39.91 On spur, projecting SW.,
 Set an iron post, 3 ft. long, 1 in. in diam., 26 ins. in the
 ground, for $\frac{1}{4}$ sec. cor., with brass cap, marked

$$\begin{array}{r} \frac{1}{4} \text{ S } 27 \\ \hline \text{S } 34 \\ 1916 \end{array}$$

and raise a mound of stone, 2 ft. base, $1\frac{1}{2}$ ft. high, N.
 of cor.

Descend 95 ft. on SW. slope.

49.90 Head of ravine, course S. Ascend 60 ft. on SE. slope.
 59.10 Spur, projecting SW. Descend 100 ft. on SW. slope.
 69.00 Bottom of ravine, course SW. Ascend 60 ft. on SE. slope.
 79.82 The cor. of secs. 27, 28, 33 and 34.

Land, mountainous. Soil, rocky, 3rd and 4th rate.
 No timber. Undergrowth, oak brush, cactus and yucca.

N. $0^{\circ}2'$ W., bet. secs. 27 and 28.

Over mountainous land, thru scattering undergrowth.
 Ascend 60 ft. on SW. slope.

7.30 Spur, projecting NW. Descend 275 ft. on N. slope.
 27.60 Bottom of ravine, course NW. Ascend on SW. slope.
 40.00 Set an iron post 3 ft. long, 1 in. in diam., 26 ins. in the
 ground, for $\frac{1}{4}$ sec. cor., with brass cap, marked

$$\begin{array}{r} \frac{1}{4} \\ \text{S } 28 \text{ } \text{S } 27 \\ \hline 1916 \end{array}$$

and raise a mound of stone, 2 ft. base, $1\frac{1}{2}$ ft. high, W. of cor.

56.80 Ridge, brs. NW. and SE., 330 ft. above ravine. Desc. 380 ft.
 78.70 Bottom of ravine, course NW. Descend gradually on NE. slope.
 80.00 Set an iron post, 3 ft. long, 2 ins. in diam., 24 ins. in
 the ground, for cor. of secs. 21, 22, 27 and 28, with brass
 cap, marked

$$\begin{array}{r} \text{T } 19 \text{ N } \text{R } 10 \text{ W} \\ \hline \text{S } 21 \text{ } \text{S } 22 \\ \hline \text{S } 28 \text{ } \text{S } 27 \\ 1916 \end{array}$$

and raise mound of stone, 2 ft. base, $1\frac{1}{2}$ ft. high, W. of cor.
 Land, mountainous.
 Soil, rocky, 3rd and 4th rate.
 No timber. Undergrowth, oak brush, cactus and yucca.

East, on a random line, bet. secs. 22 and 27.

40.00 Set temp. $\frac{1}{4}$ sec. cor.
 79.86 Intersect N. and S. line, 7 lks. N. of the cor. of secs. 22, 23,
 26 and 27.

Thence, N. $89^{\circ}59'$ W., on a true line, bet. secs. 22 and 27.
 Over mountainous land, thru scattering undergrowth.
 Ascend 40 ft. on NE. slope.

3.90 Spur, projecting NW. Descend 300 ft. on NW. slope.
 23.40 Bottom of ravine, course NW. Ascend 65 ft. on NE. slope.
 37.25 Spur, projecting NW.
 39.93 Set an iron post, 3 ft. long, 1 in. in diam., 26 ins. in
 the ground, for $\frac{1}{4}$ sec. cor., with brass cap, marked

$$\begin{array}{r} \frac{1}{4} \text{ S } 22 \\ \hline \text{S } 27 \\ 1916 \end{array}$$

and raise mound of stone, 2 ft. base, $1\frac{1}{2}$ ft. high, N. of cor.
 Descend gradually, 250 ft.

79.86 The cor. of secs. 21, 22, 27 and 28.
 Land, mountainous. Soil, rocky, 3rd and 4th rate.
 No timber.
 Undergrowth, oak brush, cactus and yucca.

Survey of Partial of Subdivision T. 19 N., R. 10 W. 19

Chains

N.0°02'W., bet. secs. 21 and 22,
 over roughly rolling land, through scattering undergrowth.
 29.70 Ravine, course NW. Asc. gradually, on SW. slope.
 40.00 Set an iron post, 3 ft. long, 1 in. diam., 26 ins. in the
 ground, for $\frac{1}{4}$ sec. cor., with brass cap, marked

S21	S22
-----	-----

1916

and raise a mound of stone, 2 ft. base, $1\frac{1}{2}$ ft. high,
 W. of cor.
 59.30 Ridge bears NW. and SE.
 80.00 Set an iron post, 3 ft. long, 2 ins. diam., 24 ins. in the
 ground, for cor. of secs. 15, 16, 21 and 22, with brass
 cap, marked

T19N	R10W
S16	S15
S21	S22

1916

and raise a mound of stone, 2 ft. base, $1\frac{1}{2}$ ft. high,
 W. of cor.

Land, roughly rolling.
 Soil, 2nd to 4th rate.
 No timber.
 Undergrowth, oak brush, cactus, and yucca.

40.00 East, on a random line, bet. secs. 15 and 22.
 79.86 Set temp. $\frac{1}{4}$ sec. cor.
 Intersect N. and S. line 7 lks. N. of the cor. of secs.
 14, 15, 22 and 23.

Thence N.89°57'W., on a true line, bet. secs. 15 and 22,
 over mountainous land, through scattering undergrowth.
 Desc. gradually, on NW. slope.
 14.45 Ravine, course N. Asc. 120 ft., on NE. slope.
 32.35 Ridge bears NW. and SE. Desc. on SW. slope.
 39.93 Set an iron post, 3 ft. long, 1 in. diam., 26 ins. in the
 ground, for $\frac{1}{4}$ sec. cor., with brass cap, marked

S15
$\frac{1}{4}$
S22
1916

and raise a mound of stone, 2 ft. base, $1\frac{1}{2}$ ft. high,
 N. of cor.
 43.85 Enter scattering growth of juniper. Desc. gradually.
 73.45 Ravine, course NW., 325 ft. below ridge. Asc. gradually.
 79.86 The cor. of secs. 15, 16, 21 and 22.

Land, mountainous.
 Soil, rocky; 3rd and 4th rate.
 Timber, juniper.
 Undergrowth, oak brush, cactus and yucca.

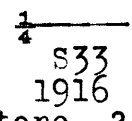
40.00 N.0°02'W., bet. secs. 15 and 16,
 over rolling land, through scattering undergrowth, and
 juniper timber.
 Set an iron post, 3 ft. long, 1 in. diam., 26 ins. in the
 ground, for $\frac{1}{4}$ sec. cor., with brass cap, marked

S16	S15
1916	

Survey of Partial Subdivision, T. 19 N., R. 10 W. 21

Chains

36.00 Ravine, course NW. Asc. 25 ft., on NE. slope.
40.20 Set an iron post, 3 ft. long, 1 in. diam., 26 ins. in the ground, for 1/4 sec. cor., with brass cap, marked S28



and raise a mound of stone, 2 ft. base, 1 1/2 ft. high, N. of cor.

45.30 Desc. over cliff 50 ft. high.
48.65 Bottom of canyon, course NW., 150 ft. below 1/4 sec. cor. Asc.

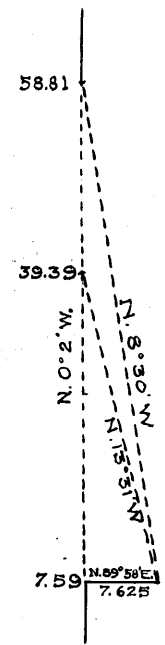
61.20 Asc. over rim rock, bearing NW. and SE.
70.00 Summit of ascent, 440 ft. above canyon.
80.40 The cor. of secs. 28, 29, 32 and 33

Land, rough mountainous.
Soil, 3rd and 4th rate.
Undergrowth, oak brush and cactus.
No timber.
Grass, scant.
Formation, malpais.

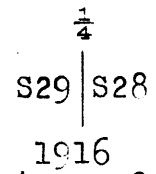
N.0°02'W., bet. secs. 28 and 29, over mountainous land, through scattering undergrowth. Desc. gradually.

7.59 On brink of descent, over a succession of rims, into canyon, running NW.

Triangulate as follows:
Measure a base, N.89°58'E., 7.625 chs., to a point whence a flag on line bears N.13°31'W., and a second flag on line bears N.8°30'W.
Dist. to first flag is therefore 7.625 X cotan 13°29', or 31.80 chs., making dist. from sec. cor., 7.59 + 31.80, or 39.39 chs.



39.39 Measure N.0°02'W., 61 lks. to
40.00 Set an iron post, 3 ft. long, 1 in. diam., 26 ins. in the ground, for 1/4 sec. cor., with brass cap, marked



and raise a mound of stone, 2 ft. base, 1 1/2 ft. high, W. of cor.

Dist. to second flag is 7.625 X cotan 8°28', or 51.22 chs., making total dist. from sec. cor., 7.59 + 51.22, or 58.81 chs.

58.81 Continue measurement with steel tape, through scattering juniper.

80.00 Set a malpais stone, 14x10x5 ins., 6 ins. in the ground, surrounded by a mound of stone, for cor. of secs. 20, 21, 28 and 29, marked with 4 notches on E. and 2 on S. face; and raise a mound of stone, 2 ft. base, 1 1/2 ft. high, W. of cor. Impracticable to set stone deeper in the ground. No iron post available.

A juniper, 20 ins. diam., bears N.86°15'E., 50 lks. dist., marked T19N R10W S21 BT.
A juniper, 6 ins. diam., bears S.25°E., 85 lks. dist., marked T19N R10W S28 BT.
No other trees within limits.

Land, mountainous. Soil, 3rd and 4th rate. Timber, juniper. Undergrowth, oak brush and crucifixion thorn. Grass, scant. Formation, lava.

Chains

40.00 East, on a random line, bet. secs. 21 and 28.
Set temp. 1/4 sec. cor.
79.98 Intersect N. and S. line 9 lks. S. of the cor. of secs. 21, 22, 27 and 28.

Thence S.89°56'W., on a true line, bet. secs. 21 and 28, over rolling land, through scattering timber and undergrowth.

1.15 Gulch, course NW. Asc. 125 ft., gradually.
21.10 Top of spur, projecting NW.
36.00 Top of spur, projecting NW. Desc. gradually, on SW. slope.
39.99 Set an iron post, 3 ft. long, 1 in. diam., 26 ins. in the ground, for 1/4 sec. cor., with brass cap, marked

1/4 S21
S28
1916

and raise a mound of stone, 2 ft. base, 1 1/2 ft. high, N. of cor.

61.75 Bottom of gulch, course NW., 235 ft. below spur.
Asc. 90 ft., on gentle slope.

79.98 The cor. of secs. 20, 21, 28 and 29.

Land, rolling.
Soil, 3rd rate, clay and lava.
Timber, juniper.
Undergrowth, oak brush, yucca and cactus.
Grass, fair.
Formation, malpais.

N.0°02'W., bet. secs. 20 and 21, over mountainous land, through scattering undergrowth and juniper timber. Desc. gradually.

21.93 Edge of rim rock, 60 ft. high, on left side of canyon, course NW. (Measure base, 10 chs. N.41°48'W., for triangulation.) Desc.

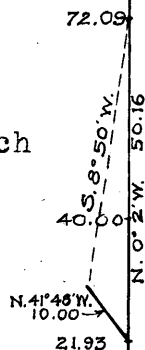
31.10 Bottom of canyon, 390 ft. below sec. cor.

40.00 Set an iron post, 3 ft. long, 1 in. diam., in a mound of stone, (impracticable to set post in the ground) for 1/4 sec. cor., with brass cap, marked

1/4
S20 | S21
1916

and raise a mound of stone, 2 ft. base, 1 1/2 ft. high, W. of cor.

Accurate chaining across canyon impracticable. To obtain distance I triangulate as follows: Set a flag on line on N. side of canyon, from which a flag left at the NW. end of base measured from 21.93 chain point, hereinbefore described, bears S.8°50'W., which gives for the distance, 10.00 x sin 129°22' ÷ sin 8°52', or 50.16 chs.; making total distance on sec. line, 21.93 + 50.16, or 72.09 chs.



72.09 Triangulation point, on edge of rim rock bearing NW. and SE. Continue measurement with steel tape.

80.00 Set an iron post, 3 ft. long, 2 ins. diam., 12 ins. in the ground, for cor. of secs. 16, 17, 20 and 21, with brass cap, marked

T19N | R10W
S17 | S16
S20 | S21
1916

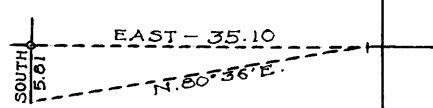
Chains

and raise a mound of stone, 2 ft. base, 1 1/2 ft. high, W. of cor. Impracticable to set post deeper in the ground. Raise a mound of stone, around same.

Land, mountainous. Soil, 3rd rate; clay; Timber, juniper. Undergrowth, oak brush. Grass, scant. Formation, lava.

East, on a random line, bet. secs. 16 and 21.

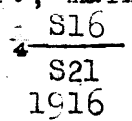
Obtain distance across canyon as follows: Set a flag on line, and measure a base S., 5.81 chs., to a point whence flag bears N.80°36'E., which gives for the distance, 5.81 X tan 80°36', or 35.10 chs.



- 35.10 Continue measurement with steel tape.
- 40.00 Set temp. 1/4 sec. cor.
- 80.18 Intersect N. and S. line 24 lks. N. of the cor. of secs. 15, 16, 21 and 22.

Thence N.89°50'W., on a true line, bet. secs. 16 and 21, over rolling land, through scattering undergrowth and juniper timber.

- 40.09 Set an iron post, 3 ft. long, 1 in. diam., 26 ins. in the ground, for 1/4 sec. cor., marked on brass cap



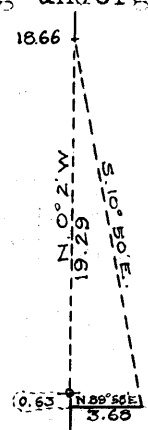
and raise a mound of stone, 2 ft. base, 1 1/2 ft. high, N. of cor.

- 45.08 Opposite triangulation point, on edge of rim rock 50 ft. high, bearing NW. and SE. Juniper growth becomes less dense. Desc. into canyon.
- 60.60 Bottom of same, course NW. Asc. 425 ft.
- 80.18 The cor. of secs. 16, 17, 20 and 21.

Land, mountainous and rolling. Soil, rocky; 3rd and 4th rate. Timber, dense to scattering juniper. Undergrowth, oak brush, cactus, crucifixion thorn, yucca, amole and catclaw.

N.0°02'W., bet. secs. 16 and 17, over mountainous land, through scattering undergrowth and juniper timber.

Accurate measurement on line with tape impracticable. Triangulate as follows: From a point 63 lks. S.0°02'E., of sec. cor., measure a base, N.89°58'E., 3.68 chs., and set a flag. From a station on line this flag bears S.10°50'E., which gives for the distance, 3.68 X cotan 10°48', or 19.29 chs., making station 19.29 - .63, or 18.66 chs. N.0°02'W. of sec. cor. Measure S.0°02'E., 4.50 chs., to

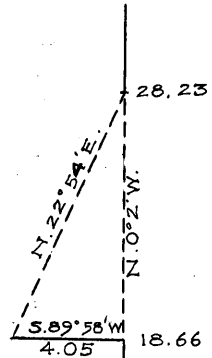


- 14.16 Bottom of gulch, course N.60°W., 490 ft. below sec. cor. Asc. 25 ft., returning N.0°02'W.
- 18.66 Triangulation point, on spur projecting W. Triangulate

Chains

as follows:

Measure a base, S.89°58'W., 4.05 chs., to a point whence a flag on line bears N.22°54'E., which gives for the distance, 4.05 X cotan 22°56', or 9.57 chs., making total distance from sec. cor., 18.66 + 9.57, or 28.23 chs.



- 28.23 Triangulation point, on rocky spur, projecting W. Measure S.0°02'E., 5.79 chs., to
- 22.44 Bottom of gulch, course W.

From 28.23 ch. pt., desc. 195 ft., on abrupt NW. slope, continuing measurement N.0°02'W., with steel tape.

- 39.00 Bottom of Trout Creek Canyon, course SW. Stream, 40 lks. wide, 12 ins. deep. Asc. on abrupt NE. slope.
- 40.00 Set an iron post, 3 ft. long, 1 in. diam., 26 ins. in the ground, for 1/4 sec. cor., with brass cap, marked

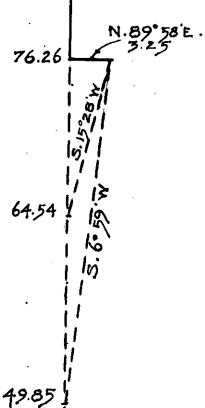
1/4
S17 S16

1916

and raise a mound of stone, 2 ft. base, 1 1/2 ft. high, W. of cor.

- 49.85 Top of spur projecting E., 200 ft. above Trout Creek. Leave flag for triangulation, and project transit line N.0°02'W., without chaining, to a point from which triangulate as follows:

Measure a base N.89°58'E., 3.25 chs., from E. end of which flag bears S.6°59'W., which gives for the distance, 3.25 X cotan 7°01', or 26.41 chs., making dist. from sec. cor., 49.85 + 26.41, or 76.26 chs.



- 76.26 From this station a second flag is set S.0°02'E., which bears S.15°28'W. from E. end of base line, making distance 3.25 X cotan 15°30', or 11.72 chs., which gives for the distance from sec. cor., 76.26 - 11.72, or 64.54 chs. Measure S.0°02'E., 1.54 chs., to

- 63.00 Trout Creek, course SE. Stream, 50 lks. wide, 12 ins. deep. Return N.0°02'W., ascending.

- 64.54 Triangulation point, on rock spur, projecting W. Measure N.0°02'W., 1.46 chs., descending.

- 66.00 Trout Creek, course SW., 40 lks. wide, 14 ins. deep. Asc. 140 ft.

- 76.26 Triangulation point, on spur projecting E. Continue measurement with steel tape. Asc. 95 ft.

- 80.00 Set an iron post, 3 ft. long, 2 ins. diam., 12 ins. in the ground, for cor. of secs. 8, 9, 16 and 17, with brass cap, marked

T19N | R10W
S8 | S9

S17 | S16

1916

and raise a mound of stone, 2 ft. base, 1 1/2 ft. high, W. of cor. Impracticable to set post deeper in the ground. Raise a mound of stone around same.

"O.R." After survey of W. 1/2 of line, bet. secs. 9 and 16, as herein after described, change this cor. to refer to secs. 8 and 17 only, by changing marking on brass cap, to read

T19N R10W S8 S9
S17 S16

1916

No change in accessory required. Land, mountainous, with high rock cliffs. Soil, rocky, 4th rate.

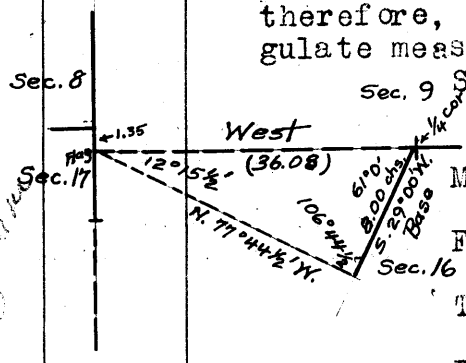
Partial Subdivision of Township 19 North, Range 10 West. 25

Chains.

Timber, juniper on slopes, and cottonwood in creek bottom. Undergrowth, oak brush, catclaw, manzanita, cactus and chaparral.

From reestablished 1/4 sec. cor. of sec. 9, hereinbefore described, set at 40.00 chs. W. from SE. cor. thereof, and at 43.72 chs. W. from NE. cor. of sec. 16, West, on true line, on S. bdy. of sec. 9 (W. 1/2).

.11 Top of cliff, brs. N. and S. on east, or left rim of Trout Creek Canyon, which is about 800 ft. deep, with steep broken walls over which chaining is impracticable; therefore, return to the 1/4 sec. cor. of sec. 9, and triangulate measurement of W. 1/2 of S. bdy. of sec. 9 as follows:



Set flag on E. bdy. of sec. 17 at 135 lks. S. 0° 2' E. from cor. of secs. 8, 9, 16 and 17, and bearing due west from 1/4 sec. cor. of sec. 9. Measure a base from 1/4 sec. cor. of sec. 9, S. 29°00' W., 8.00 chs. From S.W. end of base, the flag brs. N. 77°44 1/2' W.

The included angles are 106°44 1/2', 12°15 1/2' and 61°00', the sum of which is 180°00'.

Dist. from 1/4 sec. cor. of sec. 9 to flag is therefore obtained by

$$\frac{\text{base} \times \sin 106^\circ 44 \frac{1}{2}'}{\sin 12^\circ 15 \frac{1}{2}'} \text{ or } \frac{8.00 \times 95761}{.21232} = 36.08 \text{ chs.}$$

22.00 (Approximate) Trout Creek, course SW., running water, 50 lks. wide, 16 ins. deep. Ascend about 300 ft. on steep broken SE. slope, to

36.08 (39.90 chs. W. from reestablished 1/4 sec. cor. of sec. 16) Intersect E. bdy. of sec. 17, at 135 lks. S. 0° 2' E. from cor. of secs. 8, 9, 16 and 17. Change this cor. to refer to secs. 8 and 17 only, as hereinbefore described.

At point of intersection, set an iron post 3 ft. long, 2 ins. in diam., 14 ins. in the ground, supported by a mound of stone, for cor. of secs. 9 and 16 only, marked on brass cap,

T19N R10W
 S17 | S 9
 S16
 1919

and raise a mound of stone, 2 ft. base, 1 1/2 ft. high, E. of cor.

Land, broken cliffs.
Soil, rocky, 4th rate.
No timber, except some few cottonwood trees along Trout Creek in bottom of canyon.
Undergrowth, scattering scrub oak and cactus.

From cor. of secs. 8 and 17, N. 0° 2' W., on E. bdy. of sec. 8. Over mountainous land, thru. scattering undergrowth. Ascend 80 ft. on SE. slope of W. wall of Trout Creek Canyon.

5.46 Top of spur, sloping E. Descend 362 ft. on NE. slope of canyon wall.

26.32 Bottom of canyon, and center of Trout Creek, running water 20 lks. wide, 12 ins. deep, course SE. Ascend 695 ft. over cliffs on S. slope, on E. wall of canyon.

38.65 (40.00 chs. N. 0° 2' W. from cor. of secs. 9 and 16), Set an iron post, 3 ft. long, 1 in. in diam., 16 ins. in the ground, supported by a mound of stone, for 1/4 sec. cor. of sec. 9 only, marked on brass cap,

1919

26 Partial Subdivision of Township 19 North, Range 10 West.

Chains.

- and raise a mound of stone, 2 ft. base, $1\frac{1}{2}$ ft. high, E. of cor.
- 40.00 Set an iron post, 3 ft. long, 1 in. in diam., 24 ins. in the ground, for $\frac{1}{4}$ sec. cor. of sec. 8 only, marked on brass cap,

$$\begin{array}{c} S\ 8\ \frac{1}{4} \\ | \\ 1919 \end{array}$$

- and raise a mound of stone, 2 ft. base, $1\frac{1}{2}$ ft. high, W. of cor.
- 44.91 Top of spur, from E. rim of canyon, projecting W. Descend 610 ft., over cliffs, on N. slope of same.
- 70.02 Bottom of canyon, and center of Trout Creek, running water, 20 lks. wide, 12 ins. deep, course SW. Ascend 200 ft. on steep SW. slope on W. wall of canyon.
- 78.93 (80.28 chs. N. $0^{\circ}2'$ W. from cor. of secs. 9 and 16), establish cor. of secs. 4 and 9 at this point, as hereinafter described.
- 80.00 Set an iron post 3 ft. long, 2 ins. in diam., 14 ins. in the ground, supported by a mound of stone, for cor. of secs. 5 and 8 only, marked on brass cap,

$$\begin{array}{c} T19N\ R10W \\ \hline S\ 5 \\ \hline S\ 8\ | \\ \hline S\ 4 \\ 1919 \end{array}$$

and raise a mound of stone, 2 ft. base, $1\frac{1}{2}$ ft. high, W. of cor. Land, rough walls of Trout Creek Canyon. Soil, rocky, 4th rate. No timber, except a few cottonwood trees in bottom of canyon. Undergrowth, scrub oak and cactus.

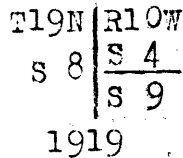
- From original cor. of secs. 3, 4, 9 and 10, hereinbefore described,
West, on true line, bet. secs. 4 and 9.
Over rolling mesa, thru scattering undergrowth.
- 3.57 Point of mesa, brs. NE. and SE., forming left rim of Trout Creek Canyon, and right rim of a smaller canyon, coming from the SE. Leave mesa, and descend on spur, sloping W.
- 25.31 Bottom of canyon, course NW., joining bottom of Trout Creek Canyon, about 12 chs. NW. of line. Ascend 35 ft. on NE. slope.
- 27.80 Top of ascent, brs. NW. and SE. Descend along very broken N. slope.
- 40.00 Set an iron post, 3 ft. long, 1 in. in diam., 18 ins. in the ground, supported by a mound of stone, for $\frac{1}{4}$ sec. cor. of secs. 4 and 9, marked on brass cap,

$$\begin{array}{c} \frac{1}{4} S\ 4 \\ \hline S\ 9 \\ 1919 \end{array}$$

- and raise a mound of stone, 2 ft. base, $1\frac{1}{2}$ ft. high, N. of cor.
- 44.30 Bottom of Trout Creek Canyon, at center of Trout Creek, running water, 20 lks. wide, 3 ins. deep, course SW. This point is 630 ft. below cor. of secs. 3, 4, 9 and 10. Ascend 500 ft. on broken cliffs, facing SE. on right wall of Trout Creek Canyon.
- 74.30 Point of mesa, brs. N. and NE., forming right ridge of Trout Creek canyon, and left rim of smaller canyon, coming from the NW. Descend 90 ft. over cliffs, facing W. to
- 76.25 Intersect E. bdy. of sec. 8 at 107 lks. S. $0^{\circ}2'$ E. from cor. of secs. 5 and 8, hereinbefore described.
At point of intersection,

Chains.

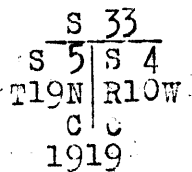
Set an iron post, 3 ft. long, 2 ins. in diam., 18 ins. in the ground, supported by a mound of stone, for cor. of secs. 4 and 9 only, marked on brass cap,



and raise a mound of stone, 2 ft. base, 1½ ft. high, E. of cor.

Land, rough, broken canyon walls.
Soil, rocky, 4th rate.
No timber, except a few cottonwood trees along Trout Creek.
Undergrowth, scrub oak and cactus.

-
- 25.00 From cor. of secs. 5 and 8, N. 0° 2' W., on true line, on E. bdy. of sec. 5. Over mountainous land, thru scattering undergrowth. Ascend 224 ft. on broken SW. slope, on left or E. wall of canyon from the NW.
 - 39.78 Point of mesa, or rim of canyon, brs. NE. and SE. Descend 262 ft. on broken NW. slope of canyon wall.
 - 39.93 Transitman Jackson's ¼ sec. cor. of secs. 4 and 5, brs. W. 41 lks. dist., and is a granite stone, properly set, marked and witnessed.
 - 39.93 Destroy all trace of this cor. (41.00 chs. N. 0° 28' W. from cor. of secs. 4 and 9, or mid-point of W. bdy. of sec. 4), Set a granite stone, 18x10x5 ins., 8 ins. in the ground, for ¼ sec. cor. of sec. 4, marked "1" on E. face, and raise a mound of stone, 2 ft. base, 1½ ft. high, E. of cor.
 - 40.00 Set a granite stone, 16x10x4 ins., 10 ins. in the ground, for ¼ sec. cor. of sec. 5 only, marked "1" on W. face, and raise a mound of stone, 2 ft. base, 1½ ft. high, W. of cor.
 - 43.70 Gulch, course SW., continue along E. wall of canyon. Ascend 46 ft. on broken SW. slope, to
 - 68.70 Gulch, course SW.: continue on canyon wall. Ascend 175 ft. on rocky, broken W. slope.
 - 80.93 (82.00 chs. N. 0° 2' W. from cor. of secs. 4 and 9), Intersect N. bdy. of Tp., 1.74 chs. E. of the original cor. of secs. 4, 5, 32 and 33, which is a granite stone, 10x8x8 ins., above ground, firmly set, marked with 4 notches on E. edge, and 2 notches on W. edge, and witnessed by a mound of stone, 2 ft. base, 1½ ft. high, W. of cor.
- No bearing trees.
Change this cor, to refer to secs. 32 and 33, T. 20 N., R. 10 W. only, by moving mound of stone from W. to N. of cor.
No change made in marking on stone.
At point of intersection,
Set an iron post, 3 ft. long, 2 ins. in diam., 24 ins. in the ground, for closing cor. of secs. 4 and 5, marked on brass cap,



and raise a mound of stone, 2 ft. base, 1½ ft. high, S. of cor.

At a point, 21 lks. W. from above described cor. is a granite stone, 12x12x4 ins. above ground, properly marked and witnessed for closing cor. of secs. 4 and 5. Destroy all trace of this cor.

The NE. quarter of sec. 4, being an accepted surveyed area, the ¼ sec. cor. of secs. 4 and 33 on N. bdy. of Tp. retains its original designation.

Land, rough canyon wall.

X

28. Partial Subdivision of Township 19 North, Range 10 West.

Chains.

Soil, rocky, 4th rate.
No timber.
Undergrowth, scrub oak and cactus.

From the cor. of secs. 31 and 32, on S. bdy. of Tp., hereinbefore described,
N. 0° 03' W., bet. secs. 31 and 32.
Over mountainous land, thru scattering undergrowth,
Descend 100 ft.

- 7.93 Bottom of gulch, course N. 60° W. Ascend 210 ft.
22.57 Top of flat spur, projecting W. Descend gently,
40.00 Set an iron post, 3 ft. long, 1 in. in diam., 26 ins. in the ground, for $\frac{1}{4}$ sec. cor., with brass cap, marked

S31 | S32
1916

and raise a mound of stone, 2 ft. base, $1\frac{1}{2}$ ft. high, W. of cor.

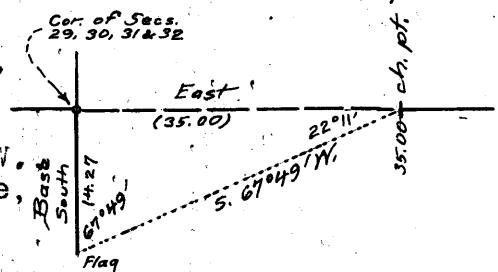
- 60.00 Wash, course W.
65.00 Spur, projecting W. Descend into canyon.
69.00 Descend over rim rock, 70' ft. high, bearing NW and SE.
77.50 Enter dense oak brush.
80.00 75 lks. S of bottom of canyon, 550 ft. below spur,
Set a malpais stone, 24x12x4 ins., 18 ins. in the ground, for cor. of secs. 29, 30, 31 and 32, marked with 5 notches on E. and 1 on S. edge; and raise a mound of stone, 2 ft. base, $1\frac{1}{2}$ ft. high, W. of cor. No iron post available.

Land, mountainous.
Soil, 3rd and 4th rate; clay.
Undergrowth, oak brush.
No timber.
Grass, scant,
Formation, malpais.

East, on a random line, bet. secs. 29 and 32.

Triangulate across canyon as follows:

Measure a base S., 14.27 chs., and set a flag. Establish a station on E. side of canyon, from which flag brs. S. 67° 49' W., which gives for the distance, $14.27 \times \tan. 67^\circ 49'$, or 35.00 chs.



- 35.00 Continue measurement with steel tape.
40.00 Set temp. sec. cor.
80.28 Intersect N. and S. line, 10 lks. N. of the cor. of secs. 28, 29, 32 and 33.
Thence N. 89° 56' W., on true line, bet. secs. 29 and 32.
Over rolling land, thru scattering undergrowth and juniper timber.
40.14 Set an iron post, 3 ft. long, 1 in. in diam., 26 ins. in the ground, for $\frac{1}{4}$ sec. cor., with brass cap, marked

$\frac{1}{4}$ S 29
S 32
1916

and raise a mound of stone, 2 ft. base, $1\frac{1}{2}$ ft. high, N. of cor.

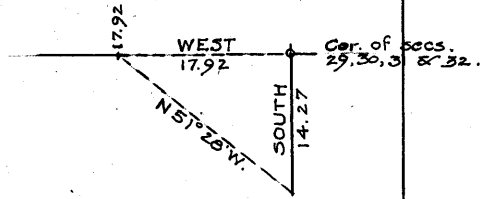
- 45.28 Right edge of canyon, on brink of abrupt descent to SW.
80.28 The cor. of secs. 29, 30, 31 and 32.
Land, rolling on E. side of canyon, and mountainous on slopes of same.
Soil, 4th rate, clay. Timber, juniper.
Undergrowth, oak brush, catclaw, cactus, amole and crucifixion thorn. Grass, scant; formation, malpais.

Chains

West, on a true line, bet. secs. 30 and 31, over mountainous land, through dense undergrowth, ascending on W. side of canyon.

Triangulate as follows:

Set a flag West, and measure a base, S., 14.27 chs., to a point whence flag bears N. 51° 28' W., which gives for the distance, $14.27 \times \tan 51^\circ 28'$, or 17.92 chs.



- 17.92 Rim rock, on W. side of canyon. Continue measurement with steel tape, ascending.
- 22.00 Top of spur, projecting NW., 490 ft. above sec. cor. Desc. gradually.
- 40.00 Set an iron post, 3 ft. long, 1 in. diam., 26 ins. in the ground, for $\frac{1}{4}$ sec. cor., with brass cap, marked S30

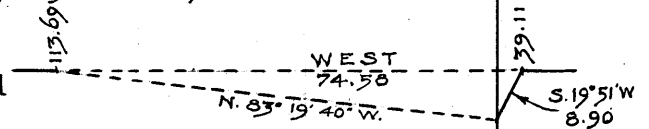
$\frac{1}{4}$
S31
1916

and raise a mound of stone, 2 ft. base, $1\frac{1}{2}$ ft. high, N. of cor.

- 42.50 Desc. abruptly, over rim rock into canyon.
- 64.50 Bottom of canyon, course N. 30° W., 860 ft. below 42.50 chain point. Asc. abruptly.

Accurate chaining being impracticable, triangulate as follows:

Return to 39.11 chain point, and measure a base S. 19° 51' W., 8.90 chs., to a station whence a flag on line on W. side of canyon bears N. 83° 19' 40" W. (angle read to 20" by repetition), which gives for the distance, $8.90 \times \sin 103^\circ 10' 40" + \sin 6^\circ 40' 20"$, or 74.58 chs., making total dist. from sec. cor., 39.11 + 74.58, or 113.69 chs. Measure E., 7.00 chs., to



- 106.69 Top of canyon wall, bearing N. 30° W. and S. 30° E., 885 ft. above bottom of canyon.
- 113.69 Triangulation point. Continue measurement with steel tape. Point is on top of flat divide, 930 ft. above bottom of canyon.
- 143.19 Intersect E. bdy. of T. 19 N., R. 11 W., 4.77 chs. N. of the cor. of secs. 25 and 36, described in book I.

At point of intersection

Set a lava stone, 14x10x4 ins., 9 ins. in the ground, for closing cor. of secs. 30 and 31, marked with 5 grooves on N., 1 groove on S., and CC on E. face; and raise a mound of stone, 2 ft. base, $1\frac{1}{2}$ ft. high, E. of cor. No iron post available.

Land, mountainous.

Soil, clay; 3rd and 4th rate.

No timber.

Undergrowth, oak brush, amole and cactus.

Grass, scant.

Formation, malpais.

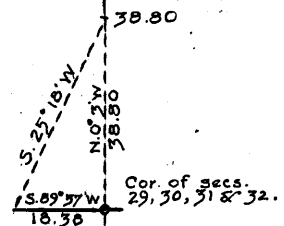
N. 0° 03' W., bet. secs. 29 and 30, over mountainous land, through dense undergrowth. Desc. abruptly, 15 ft.

- .75 Bottom of canyon, course NW. Asc. on abrupt SW. slope, on N. side of canyon. To obtain distance, over ground, across which accurate chaining is impracticable, triangulate as follows:

Partial subdivision, T. 19 N., R. 10 W.

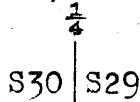
Chains

Measure a base, S.89°57'W., 18.38 chs., and set a flag. From a station on line, N.0°03'W. of sec. cor., flag bears S.25°18'W., which gives for the distance, 18.38 X cotan 25°21', or 38.80 chs.



38.80 Rim rock, on N. edge of canyon, 425 ft. above bottom. Continue measurement with steel tape.

40.00 Set an iron post, 3 ft. long, 1 in. diam., 26 ins. in the ground, for 1/4 sec. cor., with brass cap, marked



1916

and raise a mound of stone, 2 ft. base, 1 1/2 ft. high, W. of cor.

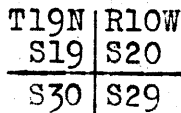
Enter scattering juniper timber, with crucifixion thorn. Leave same.

45.00

60.00 Enter scattering juniper. Leave same.

73.50

80.00 Set an iron post, 3 ft. long, 2 ins. diam., 6 ins. in the ground, surrounded by a mound of stone, (impracticable to set post deeper in the ground) for cor. of secs. 19, 20, 29 and 30, with brass cap, marked



1916

and raise a mound of stone, 2 ft. base, 1 1/2 ft. high, W. of cor.

Land, mountainous and rolling.

Soil, 2nd to 4th rate.

Timber, juniper.

Undergrowth, oak brush, catclaw, crucifixion thorn, cactus, and Spanish dagger.

Grass, scant.

Formation, lava.

East, on a random line, bet. secs. 20 and 29.

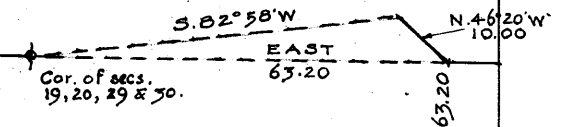
Obtain distance across deep canyon, as follows:

Set a stake on line, on E. side of same, from which measure a base N.46°20'W., 10.00 chs.

From NW. end of base, flag left on sec. cor. bears S.82°58'W.,

which gives for the distance, 10.00 X sin 129°18' ± sin 7°02', or

63.20 chs.



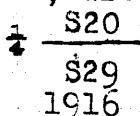
63.20 Continue measurement with steel tape.

80.42 Intersect N. and S. line 6 lks. S. of the cor. of secs. 20, 21, 28 and 29.

Thence S.89°57'W., on a true line, bet. secs. 20 and 29, over rolling land, through scattering undergrowth and juniper timber.

17.22 Opposite triangulation point, on edge of rim rock, on right side of canyon. Desc. abruptly on SW. slope.

40.21 Set an iron post, 3 ft. long, 1 in. diam., 26 ins. in the ground, for 1/4 sec. cor., with brass cap, marked



1916

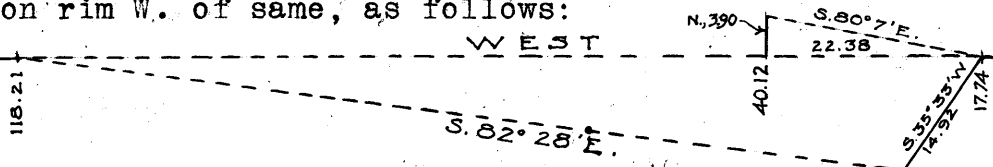
and raise a mound of stone, 2 ft. base, 1 1/2 ft. high, N. of cor.

Chains

46.00 Bottom of canyon, course NW., 570 ft. below rim. Asc. 480 ft., on W. side of same.
80.42 The cor. of secs. 19, 20, 29 and 30.

Land, rolling and mountainous.
Soil, clay; 3rd and 4th rate.
Timber, juniper.
Undergrowth, oak brush, cactus, crucifixion thorn and amole.
Grass, scant.
Formation, malpais.

17.74 West, on a true line, bet. secs. 19 and 30, ascending gradually, along edge of canyon, through scattering undergrowth.
Top of rim rock, on brink of canyon, bears N.20°E. and S.30°W.
Triangulate to bottom of canyon, and to flag on line on rim W. of same, as follows:



40.00 Measure a base S.35°33'W., 14.92 chs., and leave flags at both ends.
From a station on line on E. side of canyon, measure a base N., 3.90 chs., to a point whence the flag on line at 17.74 ch. pt. bears S.80°07'E., which gives for the distance, $3.90 \times \tan 80^\circ 07'$, or 22.38 chs., making station 17.74 + 22.38 chs., or 40.12 chs. W. of sec. cor. Measure E., 12 lks., to

Set an iron post, 3 ft. long, 1 in. diam., 26 ins. in the ground, for $\frac{1}{4}$ sec. cor., with brass cap, marked

S19
 $\frac{1}{4}$
S30
1916

and raise a mound of stone, 2 ft. base, $1\frac{1}{2}$ ft. high, N. of cor.

This point is 520 ft. below rim. Continue measurement for topography, with steel tape, Descending.
49.95 Desc. abruptly over rock wall.

59.54 Trout Creek, course S., 900 ft. below rim. Stream, 50 lks. wide, 10 ins. deep. Asc. steep slope on W. side of canyon, without chaining, to flag previously set, as above described.

From this flag, bearing to flag at SW. end of base line at 17.74 ch. pt., is S.82°28'E., which gives for the distance, $14.92 \times \sin 118^\circ 01' + \sin 7^\circ 32'$, or 100.47 chs.; making total dist. from sec. cor., 17.74 + 100.47, or 118.21 chs.

118.21 Triangulation point, on right rim of canyon. Thence ascend gently.

136.63 Desc. over rim rock 10 ft. high, bearing N.60°W. and S.60°E., and thence along broken SW. slope.

142.81 Intersect E. bdy. of T. 19 N., R. 11 W., 450 lks. N. of the cor. of secs. 24 and 25, described in book I.

At point of intersection

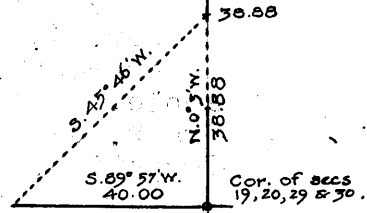
Set a lava stone, 14x12x5 ins., 10 ins. in the ground, for closing cor. of secs. 19 and 30, marked with 4 grooves on N., 2 grooves on S., and CC on E. face; and raise a mound of stone, 2 ft. base, $1\frac{1}{2}$ ft. high, E. of cor. No iron post available.

Land, mountainous. Soil, rocky; 4th rate. Timber, juniper. Undergrowth, oak brush, crucifixion thorn, amole and cactus. Grass, scant.

Chains

N.0°03'W., bet. secs. 19 and 20, over mountainous land, through scattering timber and undergrowth. Desc. 600 ft.

20.17 Bottom of canyon, course N.60°W. Asc. 560 ft., on N. side of same, without chaining; to station on N. side, whence a flag 40.00 chs. S.89°57'W. of the sec. cor., bears S.45°46'W., which gives for the dist., 40.00 X cotan 45°49', or 38.88 chs. from the sec. cor.



38.88 Triangulation point, on spur projecting W. Continue measurement without chaining, on steep NW. slope; very rough and rocky.

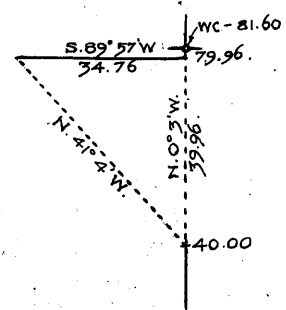
40.00 Set an iron post, 3 ft. long, 1 in. diam., 26 ins. in the ground, for 1/4 sec. cor., with brass cap, marked

S19	S20
-----	-----

1916

and raise a mound of stone, 2 ft. base, 1 1/2 ft. high, W. of cor.

From 1/4 sec. cor., a flag 34.76 chs. S.89°57'W. of a point on line in bottom of Trout Creek Canyon bears N.41°04'W., which gives for the distance, 34.76 X cotan 41°11', or 39.96 chs., making total distance from sec. cor., 40.00 + 39.96, or 79.96 chs.



79.96 Continue measurement with steel tape.

80.00 Trout Creek, course SW., 550 ft. below spur. Stream, 40 lks. wide, 6 ins. deep, Impracticable to set sec. cor. at this point. Therefore at

81.60 Set an iron post, 3 ft. long, 2 ins. diam., 24 ins. in the ground, for witness cor. to cor. of secs. 17, 18, 19 and 20, with brass cap, marked

T19N	R10W
S18	S19
S19	S20

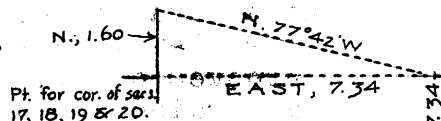
W C
1916

and raise a mound of stone, 2 ft. base, 1 1/2 ft. high, W. of cor.

Land, mountainous.
Soil, rocky; 3rd and 4th rate.
Timber, juniper; very scattering.
Undergrowth, oak brush, and cactus.
Grass, scant.
Formation, malpais.

East, on a random line, bet. secs. 17 and 20.

Triangulate to point on S. side of Canyon as follows:
Establish a station on line, from which a flag 160 lks. N. of the true point for sec. cor. bears N.77°42'W., which gives for the distance, 1.60 X tan 77°42', or 7.34 chs.



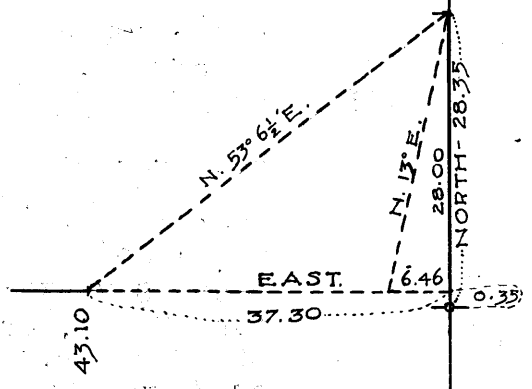
7.34 Continue measurement with steel tape.

43.10 Set temp. witness cor. to 1/4 sec. cor., from which a flag 28.35 chs. N. of the cor. of secs. 16, 17, 20 and 21

Chains

bears N. 53° 06 1/2' E., Projecting transit line E., without chaining, intersect N. and S. line 35 lks. N. of the cor. of secs. 16, 17, 20 and 21. Therefore distance from 43.10 ch. pt. is 28.00 X tan 53° 06 1/2', or 37.30 chs., making total length of line bet. secs. 17 and 20, 43.10 + 37.30, or 80.40 chs.

From a second point on random line, flag bears N. 13° E., which gives for the dist. W of the cor. of secs. 16, 17, 20 and 21, 28.00 X tan 13°, or 6.46 chs.



6.46
37.80
40.20
37.30

From the cor. of secs. 16, 17, 20 and 21, N. 89° 45' W., on a true line, bet. secs. 17 and 20, over rough mountainous land, through scattering timber and undergrowth. Asc. gradually, 45 ft., on NE. slope. Summit of ascent. Desc. 675 ft., into Trout Creek canyon. Enter Trout Creek, course W.; comes from NE. Point for 1/4 sec. cor. falls in Trout Creek. Therefore at Set an iron post, 3 ft. long, 1 in. diam., in a mound of stone on a rocky point, for witness cor. to 1/4 sec. cor. with brass cap, marked

WC 1/4 S17
S20
1916

and raise a mound of stone, 2 ft. base, 1 1/2 ft. high, N. of cor.

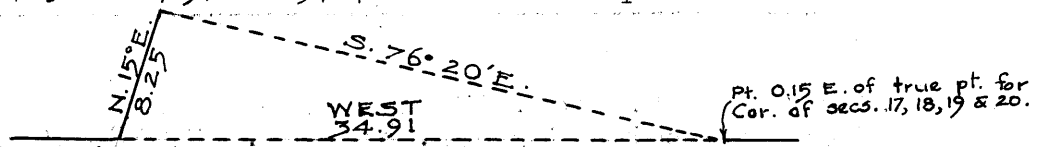
41.40
73.06
80.40

Leave Trout Creek, course NW. Thence over broken slopes on S. side of canyon. Desc. 200 ft.; over precipitous rock bluffs, to Trout Creek. The true point for cor. of secs. 17, 18, 19 and 20, in Trout Creek.

Land, rough mountainous.
Soil, 4th rate.
Timber, juniper.
Undergrowth, oak brush.
Grass, scant.
Formation, malpais and lava conglomerate.

10.65

West, on a true line, bet. secs. 18 and 19, from true point for cor. of secs. 17, 18, 19 and 20, over mountainous land, through scattering timber and undergrowth. From Trout Creek proceed along rough slopes on N. side of Canyon. Bottom of canyon from NW., course SE. to Trout Creek. Asc. on W. side of canyon, without chaining, 700 ft., to a station on W. edge, whence I measure a base N. 15° E., 8.25 chs. From the N. end of base, a flag 15 lks. E. of true pt. for cor. of secs. 17, 18, 19 and 20 bears S. 76° 20' E., which gives for the distance, 8.25 X sin 91° 20' + sin 13° 40', or 34.91 chs., making distance 34.91 - .15, or 34.76 chs. W. of pt. for sec. cor.



34.76
40.00

Triangulation point on W. side of canyon. Continue measurement with steel tape. Set an iron post, 3 ft. long, 1 in. diam., 26 ins. in the ground, for 1/4 sec. cor., with brass cap, marked

34

Partial Subdivision, T. 19 N., R. 10 W.

Chains

S18

1

S19

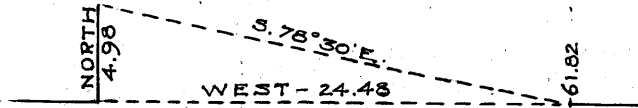
1916

and raise a mound of stone, 2 ft. base, $1\frac{1}{2}$ ft. high, N. of cor.

61.82 Leave flag for triangulation across canyon.

63.80 Desc. over rock wall of same.

76.80 Bottom of same, 340 ft. below rim. Asc. 390 ft., without chaining, to a station from which I measure a base, N., 4.98 chs. From N. end of base, flag at 61.82 ch. pt. bears $S.78^{\circ}30'E.$, which gives for the distance, $4.98 \times \tan 78^{\circ}30'$, or 24.48 chs., making total distance W. of pt. for cor. of secs. 17, 18, 19 and 20, $61.82 + 24.48$, or 86.30 chs.



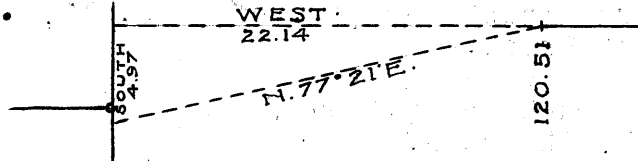
86.30 Triangulation point, from which continue measurement with steel tape.

103.43 Head of gulch, course NW.

120.51 On spur, projecting SW. Leave flag for triangulation, and desc. abruptly, 200 ft., on E. side, of gulch, without chaining.

137.84 (measurement obtained by chaining E. from intersection with W. bdy. of Tp., as hereinafter described)
Bottom of gulch, course SW. Asc. 90 ft., to intersection with E. bdy. of T. 19 N., R. 11 W., 4.53 chs. N. of the cor. of secs. 13 and 24, described in book I.

Measure a base S., 4.97 chs., to a point whence flag left at 120.51 ch. pt. bears $N.77^{\circ}21'E.$, which gives for the distance, $4.97 \times \tan 77^{\circ}21'$, or 22.14 chs., making total length of line bet. secs. 18 and 19, $120.51 + 22.14$, or 142.65 chs.



142.65 At point of intersection with range line, set a malpais stone, 16x6x4 ins., 11 ins. in the ground, for closing cor. of secs. 18 and 19, marked with three grooves on each of N. and S., and CC on E. face; and raise a mound of stone, 2 ft. base, $1\frac{1}{2}$ ft. high, E. of cor.

No iron post available.

Land, mountainous.

Soil, rocky; 3rd and 4th rate.

Timber, juniper.

Undergrowth, oak brush and crucifixion thorn.

Grass, scant.

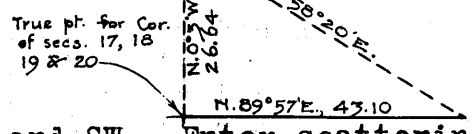
Formation, malpais near top of canyon and conglomerate near bottom.

N. $0^{\circ}03'W.$, bet. secs. 17 and 18, from true point for cor. of secs. 17, 18, 19 and 20. From Trout Creek, asc. 740 ft., on N. side of canyon, without chaining, to a point whence a flag 43.10 chs. N. $89^{\circ}57'E.$ of true pt. for sec. cor. bears $S.58^{\circ}20'E.$, which gives for the distance,

Partial Subdivision, T. 19 N., R. 10 W. 35

Chains

43.10 X cotan 58°17',
 or 26.64 chs.
 26.64 Continue measurement with tape.
 26.80 Top of canyon wall, bearing NE. and SW. Enter scattering
 juniper timber.
 40.00 Set an iron post, 3 ft. long, 1 in. diam., 26 ins. in the
 ground, for $\frac{1}{4}$ sec. cor., with brass cap, marked



S18 | S17
 1916

from which
 A cedar, 8 ins. diam., bears N.84°30'W., 15 lks. dist.,
 marked $\frac{1}{4}$ S18 BT., and
 A cedar, 8 ins. diam., bears S.57°E., 30 lks. dist.,
 marked $\frac{1}{4}$ S17 BT.
 Raise a mound of stone, 2 ft. base, 1½ ft. high,
 W. of cor.
 50.80 Desc. abruptly over rim rock bearing NE. and SW.
 77.00 Bottom of gulch, course SW., 320 ft. below rim rock.
 Asc. 100 ft.

80.00 Set an iron post, 3 ft. long, 2 ins. diam., 24 ins. in the
 ground, for cor. of secs. 7, 8, 17 and 18, with brass
 cap, marked

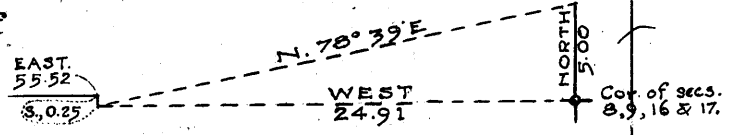
T19N | R10W
 S7 | S8
 S18 | S17

1916

and raise a mound of stone, 2 ft. base, 1½ ft. high,
 W. of cor.

Land, rough mountainous.
 Soil, clay; 3rd and 4th rate.
 Timber, juniper and cedar.
 Undergrowth, oak brush.
 Grass, scant.
 Formation, malpais and lava conglomerate.

40.00 East, on a random line, bet. secs. 8 and 17.
 Set temp. $\frac{1}{4}$ sec. cor.
 55.52 Fall 25 lks. N. of line
 run W. from the cor. of
 secs. (Q.R.), 8 and 17.
 From pt. 25 lks. S. of
 55.52 ch. pt., a flag
 5.00 chs. N. of the cor.
 of secs. (Q.R.), 8 and 17,
 bears N.78°39'E., which gives for the distance, 5.00 X
 tan 78°39', or 24.91 chs., making total length of line
 bet. secs. 8 and 17, 55.52 + 24.91, 80.43 chs.



From cor. of secs. (Q.R.), 8 and 17,
 N.89°49'W., on a true line, bet. secs. 8 and 17,
 over mountainous land, through scattering undergrowth.
 Asc. 410 ft., on W. side of Trout Creek Canyon.
 24.91 Opposite triangulation point, on top of rock rim, bearing
 N. and S. Enter scattering cedar timber. Continue
 ascent:

35.50 Top of divide, bearing N. and S.
 40.21½ Set an iron post, 3 ft. long, 1 in. diam., 26 ins. in the
 ground, for $\frac{1}{4}$ sec. cor., with brass cap, marked

S 8
 1916

Chains

from which

A cedar, 10 ins. diam., bears S.21°45'W., 170 lks. dist., marked 1/4 S17 BT, and

A cedar, 24 ins. diam., bears N.17°E., 111 lks. dist., marked 1/4 S8 BT.

75.05 Raise a mound of stone, 2 ft. base, 1 1/2 ft. high, N. of cor. Bottom of gulch, course SW., 400 ft. below top of divide. Asc. 50 ft.

80.43 The cor. of secs. 7, 8, 17 and 18.

Land, mountainous.
Soil, clay; 3rd and 4th rate.
Timber, cedar.
Undergrowth, oak brush.

West, on a true line, bet. secs. 7 and 18, over rolling mountainous land, through scattering undergrowth and juniper timber. Desc. 165 ft.

15.55 Gulch, course SE. Asc. on abrupt NE. slope.

40.00 Set an iron post, 3 ft. long, 1 in. diam., 26 ins. in the ground, for 1/4 sec. cor., with brass cap, marked

S 7

1/4

S18

1916

and raise a mound of stone, 2 ft. base, 1 1/2 ft. high, N. of cor.

60.80 Summit of ascent, 450 ft. above gulch. Thence over broken land.

79.00 Spur, projecting SE. Desc. gradually, 140 ft., on SW. slope.

116.80 Draw, course SE. Asc. on NE. slope, 50 ft.

125.40 Spur, projecting SW. Desc. gradually, 50 ft.

142.79 Intersect E. bdy. of T. 19 N., R. 11 W., 468 lks. N. of the cor. of secs. 12 and 13, described in book I.

At point of intersection

Set a lava stone, 18x10x3 ins., 12 ins. in the ground, for closing cor. of secs. 7 and 18, marked with 2 grooves on N., 4 on S., and CC on E. face; and raise a mound of stone, 2 ft. base, 1 1/2 ft. high, E. of cor. No iron post available.

Land, rolling mountainous.
Soil, rocky clay; 3rd and 4th rate.
Undergrowth, oak brush.
Timber, juniper.
Grass, scant.
Formation, lava.

N.0°03'W., bet. secs. 7 and 8, over mountainous land, through scattering undergrowth and timber. Asc. 450 ft., on S. slope.

30.20 Summit of ascent. Desc. gradually.

39.00 Wash, course SE. Asc.

40.00 Set an iron post, 3 ft. long, 1 in. diam., 26 ins. in the ground, for 1/4 sec. cor., with brass cap, marked

1/4

S7 | S8

1916

from which

A cedar, 12 ins. diam., bears S.63°E., 42 lks. dist., marked 1/4 S8 BT.

Survey of partial subdivision of Township 19 North, Range 10 West.

Chains.

No other trees within limits. Raise a mound of stone, 2 ft. base, 1 1/2 ft. high, W of cor.

57.00 Top of divide, bearing E. and W., 140 ft. above wash. Descend 370 ft.

76.00 Bottom of gulch, course E. Ascend 25 ft.

80.00 Set an iron post, 3 ft. long, 2 ins. in diam., 24 ins. in the ground, for cor. of secs. 5, 6, 7 and 8, with brass cap; marked

T19N R10W
S 6 S 5
S 7 S 8
1916

from which,

A cedar, 24 ins. in diam., brs. S. 44° W., 22 lks. dist., marked T19N R10W S7 BT.

No other trees within limits. Raise a mound of stone, 2 ft. base, 1 1/2 ft. high, W. of cor.

Land, mountainous.

Soil, rocky, 4th rate.

Timber, cedar.

Undergrowth, oak brush.

40.00 East, on random line, bet. secs. 5 and 8. Set temp. 1/4 sec. cor.

80.44 Intersect N. and S. line, 14 lks. S. of cor. of secs. 5 and 8. Thence

S. 89° 54' W., on true line, bet. secs. 5 and 8.

Over mountainous land, thru scattering undergrowth.

Descend 255 ft., over cliffs on SW slope of E. wall of canyon from N.

6.92 Bottom of canyon, stream of water, 12 lks. wide, 6 ins. deep, course SE.

Ascend 417 ft. over cliffs, facing E. on W. wall of canyon.

22.83 Top of spur, slopes S., forming W. rim of canyon. Descend 287 ft. on SW slope.

40.22 Set an iron post, 3 ft. long, 1 in. in diam., 14 ins. in the ground, supported by a mound of stone, for 1/4 sec. cor. of secs. 5 and 8, marked on brass cap,

1/4 S 5
S 8
1919

and raise a mound of stone, 2 ft. base, 1 1/2 ft. high, N. of cor.

40.27 Jackson's 1/4 sec. cor. of secs. 5 and 8, brs. 50 lks. S. of this point. Destroy all trace of same.

50.36 Bottom of ravine, course SE., with stream of running water, 4 lks. wide, 6 ins. deep.

Ascend 219 ft. on E. slope.

61.11 Rim of mesa, brs. NW. and SE. Thence over rolling mesa. Descend 68 ft. to

80.44 The cor. of secs. 5, 6, 7 and 8. Land, mountainous and rolling.

Soil, rocky, 4th rate.

No timber.

Undergrowth, scrub oak and cactus.

West, on true line, bet. secs. 6 and 7.

Ascending thru scattering juniper and oak brush, over mountainous land.

40.00 Set an iron post, 3 ft. long, 1 in. in diam., 26 ins. in the ground, for 1/4 sec. cor., with brass cap, marked

1/4 S 6
S 7
1916

and raise mound of stone, 2 ft. base, 1 1/2 ft. high, N. of cor.

38 Survey of Partial Subdivision of T. 19 N., R. 10 W.

Chains.

51.30 Top of spur, projecting S., 300 ft. above sec. cor.
Descend 320 ft., on abrupt W. slope.

67.90 Bottom of gulch, course S. 10° E. Ascend 365 ft.

84.75 Spur, projecting S. Descend 50 ft.

91.10 Head of gulch, course S. Ascend 80 ft.

102.75 Spur, projecting S. Descend 170 ft.

110.50 Gulch, course S. 10° W. Ascend abruptly 285 ft.

123.50 Spur, projecting S. Descend 425 ft., on abrupt slope.

142.44 Intersect E. bdy. of Tp. 19 N., R. 11 W., 4.48 chs. N. of the cor. of secs. 1 and 12, described in Book "I."

At point of intersection,
Set a volcanic stone, 18x10x4 ins., 12 ins. in the ground for closing cor. of secs. 6 and 7, marked with 1 groove on N., 5 grooves on S., and "CC" on E. face, and raise a mound of stone, 2 ft. base, 1½ ft. high, E. of cor.

No iron post available.
Land, mountainous.
Soil, clay, 3rd and 4th rate.
Timber, juniper.
Undergrowth, oak brush. Grass, scant.
Formation, malpais.

N. 0° 3' W., on a true line, bet. secs. 5 and 6.
Over mountainous land, thru scattering undergrowth and timber. Ascend 300 ft. on broken slope.

30.40 Top of spur, projecting SE. Descend gently.

49.00 Set an iron post, 3 ft. long, 1 in. in diam., 26 ins. in the ground, for ¼ sec. cor., with brass cap, marked

¼
s 6 | s 5
1916

and raise a mound of stone, 2 ft. base, 1½ ft. high, W. of cor.

44.95 Head of gulch, course SE.; ascend 250 ft.

67.70 Top of ridge, brs. NW. and SE. Descend 215 ft.

81.39 Intersect S. bdy. of T. 20 N., R. 10 W., 127 lks. E. of the cor. of secs. 5, 6, 31 and 32, described in Book "H."

At point of intersection,
Set a volcanic stone, 14x10x4 ins., 9 ins. in the ground for closing cor. of secs. 5 and 6, marked with 5 grooves on E., 1 groove on W., and "CC" on S. face; and raise a mound of stone, 2 ft. base, 1½ ft. high, S. of cor.

Change the ¼ sec. cor. of secs. 5 and 32 on N. bdy. of Tp., to refer to sec. 32 only, by obliterating marking "S5" on brass cap. Change the cor. of secs. 5, 6, 31 and 32 to refer to secs. 31 and 32 only, by obliterating marking "S6 S5" on brass cap, and moving mound of stone from W. to N. of cor.

Change the ¼ sec. cor. of secs. 6 and 31 to refer to sec. 31 only by obliterating marking "S6" on brass cap.

Land, mountainous.
Soil, rocky, 3rd and 4th rate.
Timber, juniper.
Undergrowth, oak brush.

Boundaries of that portion of Township 19 North, Range 10 West, subdivided under this Group.

Table of Latitudes, Departures and Closing Errors.

Line designated.	True course.	Dist.	Latitudes.		Departures.	
			N.	S.	E.	W.
South boundary,	West,	542.76				542.76
West boundary,	North,	475.07	475.07			
North boundary,	East,	62.10			62.10	
	North,	5.90	5.90			
	East,	238.30			238.30	
East boundary, (Subdivisional)	South,	40.01		40.01		
	S. 2°23' W.	42.19		42.15		1.75
	S. 0°19' W.	39.91		39.91		.22
	S. 0°13' E.	40.27		40.27	.15	.20
	East,	80.00			80.00	
	S. 89°55' E.	40.00		.06	40.00	
	N. 89°55' E.	41.49	.06		41.49	
	S. 0°53' E.	82.00		81.99	1.26	
	S. 0°06' W.	39.17		39.17		.07
	S. 0°06' E.	39.33		39.33		.07
	N. 89°57' E.	39.57	.03		39.57	
	N. 89°53' E.	39.87	.08		39.87	
E. bdy. of Tp.,	S. 0°14' E.	39.81		39.81	.16	
	S. 0°40' E.	119.37		119.37	.49	
Convergency,					.46	
<u>Totals,</u>			481.14	482.07	543.92	544.80
				481.14		543.92
<u>Error in latitude,</u>			0.93			
<u>Error in departure,</u>					0.88	

GENERAL DESCRIPTION.

This township is rolling mesa and low mountains, broken by deep canyons, with precipitous sides. Trout Creek, a stream of water from 20 to 50 lks. wide, runs thru. the township in a southwesterly direction. It flows thru. a deep canyon, eroded to a depth of 1000 ft., into which all the drainage of the township empties, some thru. tributary canyons of large size.

The soil is rocky; 3rd and 4th rate, all unsuited to cultivation.

A scant growth of grass affords indifferent grazing. Scattered cottonwood and ash trees are found along Trout Creek, and some pinyon and juniper on the slopes and uplands. Undergrowth of oak brush, crucifixion thorn, manzanita, mountain mahogany, Spanish dagger, cactus, yucca, catclaw, mesquite and greasewood occur in growth varying from dense to scattering.

No indications of valuable minerals were noted.

There are no settlers in the portion of the township surveyed under this group.

JAN 2 1918

CERTIFICATE OF UNITED STATES ~~SURVEYOR~~ ^{TRANSITMAN}

I, Eugene L. Harshbarger, ~~Surveyor~~ ^{Transitman}, U. S. ~~Surveyor~~, hereby certify upon honor that, in pursuance of special instructions received from the U. S. Surveyor General for Group 50, Arizona,

bearing date of the 30th day of February, 1915, I have well, faithfully, and truly in my own proper person, and in strict conformity with said instructions, the Manual of Surveying Instructions, and the laws of the United States, surveyed all those parts or portions of the boundaries and subdivision lines of

TOWNSHIP 19 NORTH, RANGE 11 WEST,

and of

TOWNSHIP 19 NORTH, RANGE 10 WEST,

of the Gila and Salt

River Base and Meridian, in the State of Arizona, which are represented in ~~and those in book "I" of this group and by the date diagrams in this book and book "I"~~ the foregoing field notes ~~as~~ having been executed by me, and under my direction; and that all the corners of said survey have been established and perpetuated in strict accordance with the Manual of Surveying Instructions, and the special written instructions of the U. S. Surveyor General for Group 50, Arizona, and in the specific manner described in the field notes, and that the foregoing are the original field notes of such survey.

Eugene L. Harshbarger

U. S. ~~Surveyor~~ ^{Transitman}

APPROVAL.

OFFICE OF THE UNITED STATES SURVEYOR GENERAL,

....., 191

The foregoing field notes of the survey of

executed by

under his special instructions dated, 191 , having been critically examined, and the necessary corrections and explanations made, the said field notes, and the surveys they describe, are hereby approved.

.....
U. S. Surveyor General.

I certify that the foregoing transcript of the field notes of the above-described surveys in, has been correctly copied from the original notes on file in this office.

.....
U. S. Surveyor General.

Book "L"

Group 50 - - - Arizona

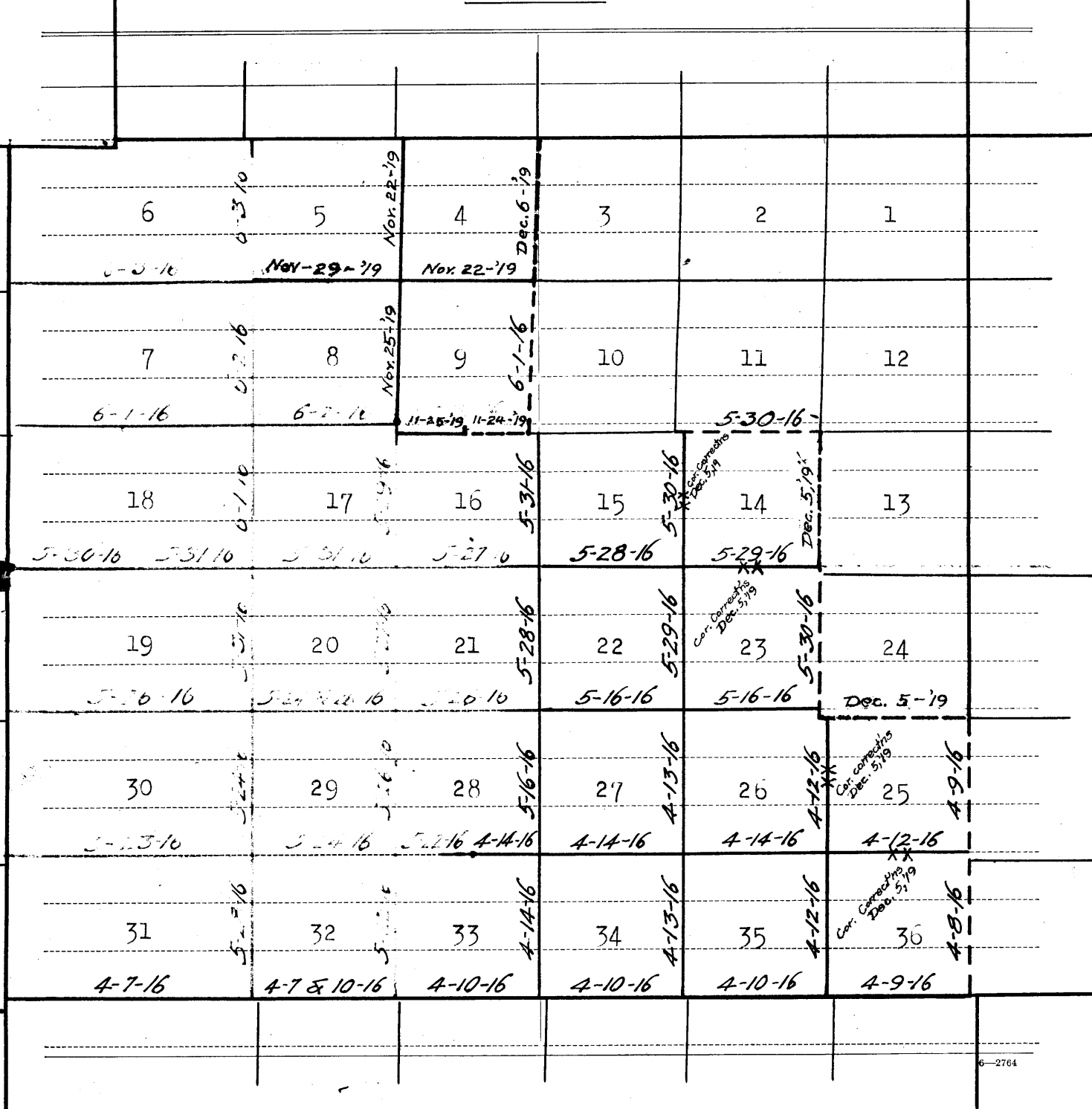
4-680

313

Township 19 North,

Range 10 West.

DATE DIAGRAM



6-2764

Lines surveyed on dates shown in red on full lines and retraced on resurveyed on dates shown in red on dotted lines, on above diagram, by Harry D. Jackson, U.S. Transitman.

Lines surveyed on dates shown in green on above diagram, by Eugene L. Marshbarger, U. S. Transitman.

Lines surveyed on dates shown in blue on full lines, and retraced or resurveyed on dates shown in blue on dotted lines, on above diagram, by Otis Ross, U.S. Surveyor.

Corner corrections made on dates shown in blue, on above diagram, by Otis Ross, U.S. Surveyor.

BOOK 3213

CERTIFICATE OF UNITED STATES ~~SURVEYOR~~ TRANSITMAN.

I, Harry D. Jackson, U. S. Surveyor, hereby certify upon honor that, in pursuance of special instructions received from the U. S. Surveyor General for Group 50

bearing date of the 20th day of February, 1915, I have well, faithfully, and truly in my own proper person, and in strict conformity with said instructions, the Manual of Surveying Instructions, and the laws of the United States, surveyed, retraced or resurveyed all those parts or portions of the boundaries and subdivision lines of

TOWNSHIP 19 NORTH, RANGE 10 WEST,

of the Gila and Salt River Base and Meridian, in the State of Arizona, which are represented in the foregoing field notes, as having been executed by me, and under my direction; and that all the corners of said survey, refacement and resurvey have been established and perpetuated in strict accordance with the Manual of Surveying Instructions, and the special written instructions of the U. S. Surveyor General for Group 50, 1915, and in the specific manner described in the field notes, and that the foregoing are the original field notes of such survey, refacement and resurvey.

[Signature of Harry D. Jackson]

U. S. Surveyor
Transitman.

APPROVAL.

OFFICE OF THE UNITED STATES SURVEYOR GENERAL,

Phoenix, Arizona, September 24, 1918

The foregoing field notes of the survey of the South Boundary and part of the subdivision lines, the resurvey of part of the East Boundary and part of the subdivision lines, and the retracement of part of the East Boundary and part of the subdivision lines of

Township 19 North, Range 10 West,

of the Gila and Salt River Base and Meridian, in the State of Arizona,

executed by Harry D. Jackson, and Eugene L. Harshbarger, U. S. Tran-

sitmen,

under special instructions dated February 20, 1915 having been critically examined, and the necessary corrections and explanations made, the said field notes, and the surveys they describe, are hereby approved.

[Signature of Frank D. Frost]

U. S. Surveyor General.

I certify that the foregoing transcript of the field notes of the above described surveys in has been correctly copied from the original notes on file in this office.

U. S. Surveyor General.

BOOK 46
3213

CERTIFICATE OF UNITED STATES SURVEYOR.

I, Otis Ross, U. S. Surveyor, hereby certify upon honor that, in pursuance of special instructions received from the U. S. Surveyor General, for Group 50, Arizona, bearing date of the 15th day of September, 1919, I have well, faithfully, and truly in my own proper person, and in strict conformity with said instructions, the Manual of Surveying Instructions, and the laws of the United States, ~~surveyed~~ ^{corrected} all those parts or portions of the survey of Subdivision lines of Township 19 North, Range 10 West, and Retraced, Resurveyed and surveyed all those parts or portions of the subdivision lines of Township 19 North, Range 10 West,

of the Gila and Salt River Base and Meridian, in the State of Arizona, which are represented in and by diagram on page 43 hereof the foregoing field notes as having been executed by me, and under my direction; and that all the corners of said survey ^{corrections, retracements, resurveys and surveys} have been established and perpetuated in strict accordance with the Manual of Surveying Instructions, and the special written instructions of the U. S. Surveyor General, for Group 50, Arizona, and in the specific manner described in the field notes, and that the foregoing are the original field notes of such ~~survey~~ ^{corrections, retracements, resurveys and surveys.}

Otis Ross
U. S. Surveyor.

APPROVAL.

OFFICE OF THE UNITED STATES SURVEYOR GENERAL,

Phoenix, Arizona, March 10, 1920

The foregoing field notes of the survey of the South boundary and part of the Subdivision lines of TOWNSHIP 19 NORTH, RANGE 10 WEST, Resurvey of part of the West bdy. of TOWNSHIP 19 NORTH, RANGE 9 WEST, and part of Subdivision lines of TOWNSHIP 19 NORTH, RANGE 10 WEST, Retracement of part of the West bdy. of TOWNSHIP, 19 NORTH, RANGE 9 WEST, and part of the Subdivision lines of TOWNSHIP 19 NORTH, RANGE 10 WEST, and Correction of survey of part of the Subdivision lines of Township 19 North, Range 10 West of the Gila and Salt River Base and Meridian, in the State of Arizona, executed by Harry D. Jackson & Eugene L. Harshbarger, U. S. Transitmen, and Otis Ross, U. S. Surveyor, ^{Arizona} under ~~his~~ special instructions dated February, 20, 1915 & September 15, 1919 for Group 50, having been critically examined, and the necessary corrections and explanations made, the said field notes, and the surveys ^{resurveys, retracements and corrections} they describe, are hereby approved.

Francis P. O'Neil
U. S. Surveyor General.

I certify that the foregoing transcript of the field notes of the above described surveys in _____, ~~has been correctly copied from the original notes on file in this office.~~

~~U. S. Surveyor General~~