

3249

U.S. GEOLOGICAL SURVEY

Book "H"

4-879

BOOK 3249

(Subdivisions)

JAN 1 1915

FIELD NOTES

OF THE SURVEY OF THE

SUBDIVISION LINES

of

TOWNSHIP 26 NORTH, RANGE 18 WEST,

and

TOWNSHIP 26 NORTH, RANGE 19 WEST.

Of the Gila and Salt River Base and Meridian,

In the State of Arizona.

EXECUTED BY

H. G. Bardsley, U. S. Surveyor,

and

Royston C. Durnford, U.S. Transitman.

~~In the capacity of U. S. Surveyor~~, under instructions dated January 7, 1915,

issued by the United States Surveyor General to govern surveys included in

Group No. 45, which were approved by the Commissioner of the General Land

Office, January 26, 1915.

Survey commenced April 26, 1915.

Survey completed May 13, 1915.

Executed under Assignment
Instructions dated Jan. 31, 1915.

3249

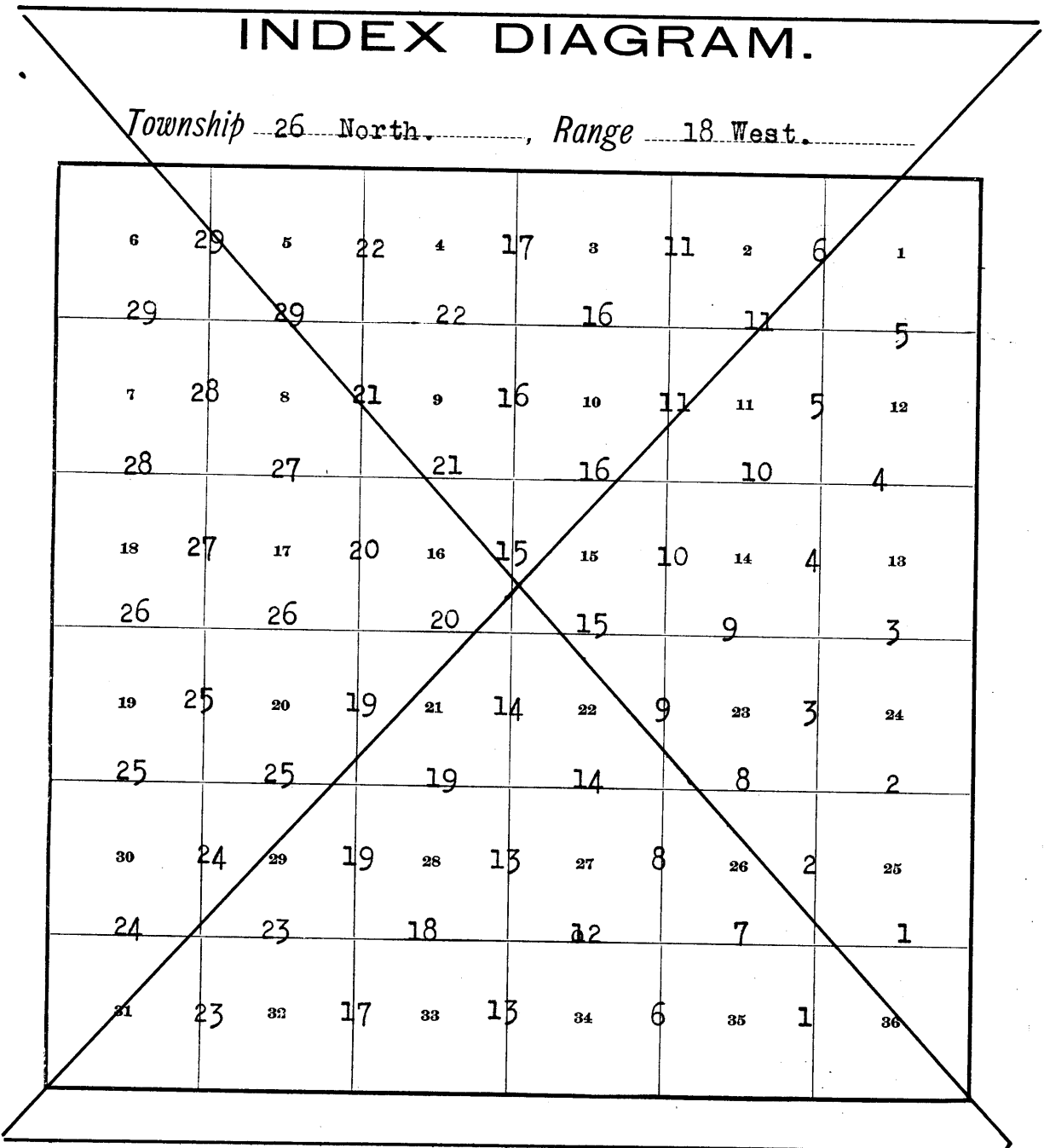
3249

(1)

Book "H"
 (Subdivisions)

Group 45 - - - Arizona.

(SEE SPECIAL INDEX DIAGRAM).



BOOK 3249

Book "H"

Group 45 - - Arizona.





SPECIAL INDEX DIAGRAM.

T. 26 N.-R. 19 W. Indexed on page 2.	T. 26 N.-R. 18 W. Indexed below.
---	-------------------------------------

PART I.

	6	31	5	24	4	19	3	13	2	8	1
	31		31		24		18		13		7
	7	30	8	23	9	18	10	13	11	7	12
	30		29		23		18		12		6
	18	29	17	24	16	17	15	12	14	6	13
	28		28		22		17		11		5
	19	27	20	21	21	16	22	11	23	5	24
	27		27		21		16		10		4
	30	26	29	21	28	15	27	10	26	4	25
	26		25		20		14		9		3
	31	25	32	19	33	15	34	8	35	3	36

T. 26 N.-R. 18 W.

-  Subdivision lines surveyed under this group.
-  Township boundaries surveyed under this group. Notes in Book "A"
-  Township bdrs. retraced or resurveyed under this group. Notes in Book "A"
-  Accepted surveys.

Book "H"

Group 45 - - Arizona.

SPECIAL INDEX DIAGRAM.

PART II.

BOOK 3249

6	61	5	54	4	48	3	43	2	37	1
61		60		53		48		42		37
7	60	8	53	9	47	10	42	11	36	12
59		59		52		47		41		36
18	58	17	52	16	45	15	41	14	36	13
58		57		51		46		40		35
19	57	20	51	21	45	22	40	23	35	24
56		56		50		45		39		34
30	55	29	50	28	44	27	39	26	34	25
55		55		49		44		38		33
31	54	32	49	33	43	34	38	35	33	36

T. 26 N. - R. 19 W.

————— Subdivision lines surveyed under this group.

————— Township boundaries surveyed under this group.
Notes in Book "A"

----- Township boundaries retraced or resurveyed under this group.
Notes in Book "A."

Subdivision of T. 26 N., R. 18 W.

3

Chains.

Survey commenced May 6, 1915, and executed jointly by H. G. Bardsley, U. S. Surveyor, and Royston C. Durnford, U. S. Transitman, with Young and Sons' light mountain transits Nos. 8532 and 8526, respectively, described in Book "A" Dates of execution shown on pages 63 & 65 hereof. In the following field notes, the initials "H. G. B." and "R. C. D." are inserted at the beginning and ending of those portions of the notes describing the surveys executed by H. G. Bardsley, U. S. Surveyor, and R. C. Durnford, U. S. Transitman, respectively. repeated tests of our instruments knowing from recent and repeated tests of our instruments that a meridian established by observations on Polaris at elongation, that they are in adjustment, we proceed as follows:

May 10, 1915. R. C. D.

At 8 hrs. 3 m., a.m., 1. mt., I set off $35^{\circ} 35\frac{1}{2}'$ N. on the lat. arc; $17^{\circ} 27\frac{1}{2}'$ N. on the decl. arc; and determine a meridian with the solar at the reestablished cor. of secs. 1, 2, 35 and 36 on the S. bdy. of the Twp. which is an iron post, described in Book "A" described in Book "B".

Thence, I ran

N. $0^{\circ} 1'$ W., bet. secs. 35 and 36.

Over rolling, mountainous land, through scattering undergrowth.

Desc. 45 ft. to

5.60 Gulch, course E. Asc. 40 ft. to

20.00 Desc. 30 ft. to

25.00 Gulch, course SE. Asc. 900 ft.

40.00 Set an iron post, 3 ft. long, 1 in. diam., 26 ins. in the ground, for $\frac{1}{4}$ sec. cor., marked on brass cap

1915 on S. rim;

$\frac{1}{4}$ S35 in W. and

S36 in E. half;

and raise a mound of stone, 2 ft. base, $1\frac{1}{2}$ ft. high, W. of cor.

Continue asc. to

80.00 Set a granite stone, 24 X 12 X 7 ins., in a mound of stone, for cor. of secs. 25, 26, 35 and 36, marked with 1 notch on E. and S. edges; and raise a mound of stone, 2 ft. base, $1\frac{1}{2}$ ft. high, W. of cor. Site inaccessible.

Land, rolling mountains.

Soil, stony; 4th rate.

No timber.

Undergrowth, cacti.

R. C. D.

H. G. B.

N. $89^{\circ} 58'$ E., on a random line, bet. secs. 25 and 36.

40.00 Set temp. $\frac{1}{4}$ sec. cor.

80.04 Intersect E. bdy. of Twp., at the cor. of secs. 25, 30, 31 and 36, which is an iron post, 3 ins. diam., properly set, marked and witnessed as described by the Surveyor-General.

Thence

S. $89^{\circ} 58'$ W., on a true line, bet. secs. 25 and 36.

Over mountainous land.

Asc. 1255 ft.

40.02 Set an iron post, 3 ft. long, 1 in. diam., 26 ins. in the ground, for $\frac{1}{4}$ sec. cor., marked on brass cap

1915 on S. rim;

$\frac{1}{4}$ S25 in N. and

S36 in S. half;

and raise a mound of stone, 2 ft. base, $1\frac{1}{2}$ ft. high, N. of cor.

60.82 Ridge, brs. NW. and SE. Desc. 265 ft. to

80.04 The cor. of secs. 25, 26, 35 and 36.

Land, mountainous.

Soil, rocky; 4th rate.

4

Subdivision of T. 26 N., R. 18 W.

Chains.

No timber or undergrowth.

H. G. B.

R.C.D.

N.0° 1' W., bet. secs. 25 and 26.

Over mountainous land, through scattering undergrowth.

30.70
40.00

Asc. SW. slope, 645 ft. to

Ridge, brs. NW. and SE. Desc. NE. slope, 300 ft. to

Set an iron post, 3 ft. long, 1 in. diam., 26 ins. in a mound of stone, for $\frac{1}{4}$ sec. cor., marked on brass cap

1915 on S. rim;

$\frac{1}{4}$ S26 in W. and

S25 in E. half;

and raise a mound of stone, 2 ft. base, 1 $\frac{1}{2}$ ft. high,

W. of cor. *Site impracticable.*

May 10, 1915. At this cor., I set off 17° 30' N. on the
Asc. and at apparent noon, I observe the sun on
the meridian; the resulting alt. is 35° 37' N.

44.70
80.00

Asc. 120 ft. to

Spur, brs. NE. Desc. 715 ft. to

Set a granite stone, 24 X 8 X 8 ins., in a mound of stone, for cor. of secs. 23, 24, 25, and 26, marked with 1 notch on E. and 2 notches on S. edge; and raise a mound of stone, 2 ft. base, 1 $\frac{1}{2}$ ft. high, W. of cor. *Site impracticable.*

Land, mountainous.

Soil, rocky; 4th rate.

No timber.

Undergrowth, buck brush.

R. C. D.

May 10, 1915.

May 11, 1915: H. G. B.

40.00
80.08

N.89° 58' E., on a random line, bet. secs. 24 and 25.

Set temp. $\frac{1}{4}$ sec. cor.

Intersect E. bdy. of Tp., 14 lks. S. of the cor. of secs. 19, 24, 25 and 30, which is an iron post, 3 ins. diam. properly set, marked and witnessed as described by the Surveyor-General.

Thence

S.89° 52' W., on a true line, bet. secs. 24 and 25.

40.04

Asc. 350 ft.

Set an iron post, 3 ft. long, 1 in. diam., 26 ins. in the ground, for $\frac{1}{4}$ sec. cor., marked on brass cap

1915 on S. rim;

$\frac{1}{4}$ S24 in N. and

S25 in S. half;

and raise a mound of stone, 2 ft. base, 1 $\frac{1}{2}$ ft. high,

N. of cor. *Site impracticable.*

Continue ascent

57.33

Desc. 25 ft. to

61.33

Asc. 175 ft. to

70.58

Desc. slightly to

72.13

Wash, 10 lks. wide, course NE. Asc. 275 ft. to

80.08

The cor. of secs. 23, 24, 25 and 26.

Land, mountainous.

Soil, stony; 4th rate.

No timber.

Undergrowth, greasewood.

H. G. B.

May 11, 1915.

Chains.

R. C. D.
 May 10, 1915.
 N.0° 1' W., bet. secs. 23 and 24.
 Over high, rolling, mountainous land, through scattering undergrowth.
 Desc. 295 ft. to
 23.30 Gulch, course E. Asc. 415 ft.
 40.00 Set an iron post, 3 ft. long, 1 in. diam., 26 ins in the ground, for $\frac{1}{4}$ sec. cor., marked on brass cap
 1915 on S. rim;
 $\frac{1}{4}$ S23 in W. and
 S24 in E. half;
 and raise a mound of stone, 2 ft. base, 1 $\frac{1}{2}$ ft. high, W. of cor. ~~File in...~~
 May 10, 1915.

May 11, 1915: At 7 hrs. 30 m., a.m., l.m.t., I set off 35° 37 $\frac{1}{2}$ ' N. on the lat. arc; 17° 43 $\frac{1}{2}$ ' N. on the decl. arc; and determine a meridian with the solar at the $\frac{1}{4}$ sec. cor. bet. secs. 23 and 24.
 Thence, ~~...~~
 N.0°1' W., bet. secs. 23 and 24, continuing measurement.
 50.00 Low ridge, slopes NE. Desc. 265 ft. to
 63.85 Asc. 235 ft. to
 77.50 Desc. 25 ft. to
 80.00 Set an iron post, 3 ft. long, 2 ins. diam., 24 ins. in the ground, for cor. of secs. 13, 14, 23 and 24, marked on brass cap
 1915 on S. rim;
 T26N R18W in N. half;
 S14 in NW.,
 S13 in NE.,
 S24 in SE. and
 S23 in SW. quadrant;
 and raise a mound of stone, 2 ft. base, 1 $\frac{1}{2}$ ft. high, W. of cor. ~~File in...~~
 Land, rolling mountains.
 Soil, stony; 4th rate.
 No timber.
 Undergrowth, buck brush.
 May 11, 1915.

May 12, 1915.
 N.89° 52' E., on a random line, bet. secs. 13 and 24.
 40.00 Set temp. $\frac{1}{4}$ sec. cor.
 80.12 Intersect E. bdy. of Tp., 14 lks. N. of the cor. of secs. 13, 18, 19 and 24, which is an iron post, 3 ins. diam. properly set, marked and witnessed as described by the Surveyor-General.
 Thence, ~~...~~
 S.89° 58' W., on a true line, bet. secs. 13 and 24.
 Over rolling, mountainous land, through scattering undergrowth.
 Asc. to
 1.32 Low ridge, slopes SE. Desc. 70 ft. to
 5.22 Asc. 60 ft. to
 10.12 Desc. 105 ft. to
 35.00 Gulch, course SE. Asc. 880 ft.
 40.06 Set an iron post, 3 ft. long, 1 in. diam., 26 ins. in the ground, for $\frac{1}{4}$ sec. cor., marked on brass cap
 1915 on S. rim;
 $\frac{1}{4}$ S13 in N. and
 S24 in S. half;
 and raise a mound of stone, 2 ft. base, 1 $\frac{1}{2}$ ft. high, N. of cor. ~~File in...~~
 Continue ascent.
 77.62 Ridge, brs. N. and S. Desc. 25 ft. to
 80.12 The cor. of secs. 13, 14, 23 and 24.
 Land, rolling mountains.

Subdivision of T. 26 N., R. 18 W.

Chains.

Soil, stony; 4th rate.
 No timber.
 Undergrowth, greasewood and yucca.
 May 12, 1915: At this cor., I set off 18° 01' N. on the
 decl. arc; and at apparent noon, I observe the sun on
 the meridian; the resulting lat. is 35° 34' N.
 May 12, 1915.

May 11, 1915.
 N. 0° 1' W., bet. secs. 13 and 14.
 Over rolling, mountainous land, through scattering under-
 growth.

Asc. slightly to
 Desc. 475 ft.
 6.00 Old, dim road, brs. NE. and SW.
 29.20
 31.90 Asc. 30 ft. to
 35.90 Desc. 305 ft.
 40.00 Set an iron post, 3 ft. long, 1 in. diam., 26 ins. in the
 ground, for $\frac{1}{4}$ sec. cor., marked on brass cap
 1915 on S. rim;
 $\frac{1}{4}$ S14 in W. and
 S13 in E. half;
 and raise a mound of stone, 2 ft. base, 1 $\frac{1}{2}$ ft. high,
 W. of cor. Pits impracticable.

54.65 Asc. 50 ft. to
 61.65 Desc. 220 ft. to
 80.00 Set an iron post, 3 ft. long, 2 ins diam., 24 ins. in the
 ground, for cor. of secs. 11, 12, 13 and 14, marked on
 brass cap
 1915 on S. rim;
 T26N R18W in N. half;
 S11 in NW.,
 S12 in NE.,
 S13 in SE. and
 S14 in SW. quadrant;
 dig pits, 18 X 18 X 12 ins., in each sec., 5 $\frac{1}{2}$ ft. dist.;
 and raise a mound of earth, 4 ft. base, 2 ft. high,
 W. of cor.

Land, rolling mountains.
 Soil, stony; 4th rate.
 No timber.
 Undergrowth, buck brush and yucca.
 May 11, 1915: At this cor., I set off 17° 47' N. on the
 decl. arc; and at apparent noon, I observe the sun on
 the meridian; the resulting lat. is 35° 02' N.
 May 11, 1915.

May 11, 1915.
 N. 89° 58' E., on a random line, bet. secs. 12 and 13.
 40.00 Set temp. $\frac{1}{4}$ sec. cor.
 80.08 Intersect E. bdy. of Tp., at the cor. of secs. 7, 12, 13
 and 18, which is an iron post, 3 ins. diam., properly
 set, marked and witnessed as described by the Surveyor-
 General.

Thence
 S. 89° 58' W., on a true line, bet. secs. 13 and 12.
 Over rolling, mountainous land, through dense undergrowth.
 Asc. 25 ft. to
 1.30 Low ridge, brs. N. and S. Desc. 75 ft. to
 12.20 Gulch, course N. Asc. 100 ft. to
 26.60 Low ridge, brs. N. and S. Desc. 140 ft. to
 40.04 Set an iron post, 3 ft. long, 1 in. diam., 26 ins. in the
 ground, for $\frac{1}{4}$ sec. cor., marked on brass cap
 1915 on S. rim;
 $\frac{1}{4}$ S12 in N. and
 S13 in S. half;

Chains.

and raise a mound of stone, 2 ft. base, $1\frac{1}{2}$ ft. high,
N. of cor. ~~with impracticable~~
Asc. 20 ft. to
42.00 Desc. 90 ft. to
58.00 Gulch, course N. Asc. 105 ft. to
69.80 Low ridge, brs. NE. and SW. Desc. 80 ft. to
79.60 Gulch, course N. Asc. to
80.08 The cor. of secs. 11, 12, 13 and 14.
Land, rolling mountains.
Soil, stony; 4th rate.
No timber.
Undergrowth, rabbit brush and yucca.

May 12, 1915.

May 11, 1915.

N.Q° 1' W., bet. secs. 11 and 12.
Over rolling, mountainous land, through dense undergrowth.
Desc. to
2.30 Wash, course NW. Asc. 30 ft. to
17.50 Desc. 245 ft.
40.00 Set an iron post, 3 ft. long, 1 in. diam., 26 ins. in the
ground, for $\frac{1}{4}$ sec. cor., marked on brass cap
1915 on S. rim;
 $\frac{1}{4}$ S11 in W. and
S12 in E. half;

and raise a mound of stone, 2 ft. base, $1\frac{1}{2}$ ft. high,
W. of cor. ~~with impracticable~~.

Continue descent.

67.40 Wash, course NE Thence over gently rolling land.
80.00 Set an iron post, 3 ft. long, 2 ins. diam., 24 ins. in the
ground, for cor. of secs. 1, 2, 11 and 12, marked on
brass cap

1915 on S. rim;
T26N R18W in N. half;
S2 in NW.,
S1 in NE.,
S12 in SE. and
S11 in SW. quadrant;

dig pits, 18 X 18 X 12 ins., in each sec., $5\frac{1}{2}$ ft. dist.;
and raise a mound of earth, 4 ft. base, 2 ft. high,
W. of cor.

Land, rolling and mountainous.
Soil, gravelly and stony; 3rd rate.
No timber.
Undergrowth, rabbit brush and yucca.

R. C. D.

May 11, 1915.

May 13, 1915: H. G. B.

The cor. of secs. 1, 6, 7 and 12, being plainly visible,
I run for said cor. from last sec. cor.
N.89° 55' E., on a random line, bet. secs. 1 and 12.
40.00 Set temp. $\frac{1}{4}$ sec. cor.
79.78 Intersect E. bdy. of Tp., at the cor. of secs. 1, 6, 7 and
12, which is an iron post, 3 ins. diam., properly set,
marked and witnessed as described by the Surveyor-
General.

Thence

S.89° 55' W., on a true line, bet. secs. 1 and 12.
Over rolling land, through scattering undergrowth.
30.18 Wash, 20 lks. wide, course NE.
39.89 Set an iron post, 3 ft. long, 1 in. diam., 26 ins. in the
ground, for $\frac{1}{4}$ sec. cor., marked on brass cap
1915 on S. rim;
 $\frac{1}{4}$ S1 in N. and
S12 in S. half;

8 Subdivision of T. 26 N., R. 18 W.

Chains.

68.78 and raise a mound of stone, 2 ft. base, 1½ ft. high,
N. of cor. Pits impracticable.
74.90 Wash, 10 lks. wide; course N.
79.78 Wash, 30 lks. wide, course N.15° E.
The cor. of secs. 1, 2, 11 and 12.
Land, rolling.
Soil, stony; 4th rate.
No timber.
Undergrowth, yucca and cacti.

H. G. B.
May 13, 1915.

40.00 May 11, 1915: R. C. D.
N.0° 1' W., on a random line, bet. secs. 1 and 2.
Set temp. ¼ sec. cor.
80.08 Intersect N. bdy. of Tp., 21 lks. E. of the reestablished
cor. of secs. 1, 2, 35 and 36, which is an iron post, duly
scribed in Book "A" and in Book "B".

40.08 Thence, I
S.0° 10' E., on a true line, bet. secs. 1 and 2.
Over gently rolling land, through scattering undergrowth.
Set an iron post, 3 ft. long, 1 in. diam., 26 ins. in the
ground, for ¼ sec. cor., marked on brass cap
1915 on S. rim;
182 in W. and
S1 in E. half;

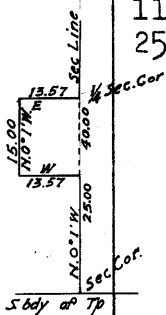
80.08 dig pits, 18 X 18 X 12 ins., N. and S. of post, 3 ft.
dist.; and raise a mound of earth, 3½ ft. base, 1½ ft.
high, W. of cor.
The cor. of secs. 1, 2, 11 and 12.
Land, gently rolling.
Soil, gravelly and stony; 4th rate.
No timber.
Undergrowth, yucca.

R. C. D.
May 11, 1915.

H. G. B.
May 7, 1915: At 8 hrs. 0 m., a.m., l.m.t., I set off
35° 35½' N. on the lat. arc; 16° 38½' N. on the decl.
arc; and determine a meridian with the solar at the re-
established cor. of secs. 2, 3, 34 and 35, on the S. bdy. of
the Tp. which is an iron post described in Book "A" and
in Book "B".

4.00 Thence, I
N.0° 1' W., bet. secs. 34 and 35.
11.10 Over mountainous land, through scattering timber.
25.00 Asc. 110 ft. to
Ridge, brs. E. Desc. 170 ft. to
Wash, 20 lks. wide, course E. Asc. 225 ft. to
Foot of rock wall, 300 ft. high, brs. E. and W. Impossible
to chain on sec. line. I therefore offset as follows:
West, 13.57 chs., desc. slightly.
Thence N.0° 1' W., 15 chs. Desc. 175 ft. to
9.60 chs., asc. 10 ft. to 10.60 chs., desc. 70 ft. to
15 chs.

40.00 Thence East, 13.57 chs. Asc. 215 ft. to 8.50
chs.; thence along N. slope to 13.57 chs., point for
¼ sec. cor.
Set an iron post, 3 ft. long, 1 in. diam., 26 ins. in the
ground, for ¼ sec. cor., marked on brass cap
1915 on S. rim;
1834 in W. and
S35 in E. half;
and raise a mound of stone, 2 ft. base, 1½ ft. high,
W. of cor. Pits impracticable.
At this cor., I set up a large flag.



Subdivision of T. 26 N., R. 18 W.

Chains.

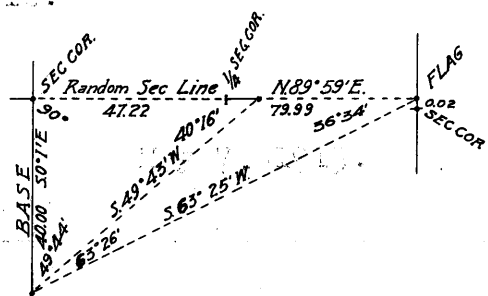
Thence, I continued on the true line, N.0° 1' W., bet. secs. 34 and 35, continuing measurement, Desc. 235 ft. to Wash, 20 lks. wide, course N.60° E. Asc. 70 ft. to Ridge, slopes E. Desc. to Asc. to Ridge, slopes E. Desc. 25 ft. to Wash, 15 lks. wide, course S.40° E. Asc. 75 ft. to Set an iron post, 3 ft. long, 2 ins. diam., 24 ins. in the ground, for cor. of secs. 26, 27, 34 and 35, marked on brass cap

51.40
61.35
64.35
69.35
71.65
80.00

1915 on S. rim;
T26N R18W in N. half;
S27 in NW.,
S26 in NE.,
S35 in SE. and
S34 in SW. quadrant;

and raise a mound of stone, 2 ft. base, 1½ ft. high, W. of cor. This mound is on the true line.

Land, mountainous.
Soil, stony; 4th rate.
Timber, scattering pinion.
Undergrowth, none.



May 10, 1915.

N.89° 59' E., on a random line, bet. secs. 26 and 35. It being impossible to chain this line, I turn 90° angle to the left from the sec. line, bet. secs. 34 and 35, and set a point ahead, from which the flag at the ¼ sec. cor. bet. secs. 34 and 35, brs. S. 49° 43' W. The dist. to this point, on the sec. line, is therefore given by

$$\tan. 49^\circ 44' \times 40.00 = 47.22 \text{ chs.}$$

From this point, I run S.89° 59' W., 7.22 chs. to Set temp. ¼ sec. cor.

40.00

From the 47.22 chs point, I set a flag ahead, on a bearing N.89° 59' E., beside the corner of secs. 25, 26, 35 and 36, from which the flag at the ¼ sec. cor. bet. secs. 34 and 35 brs. S.63° 25' W. The dist. between sec. cors is therefore given by

$$\tan. 63^\circ 26' \times 40.00 = 79.99 \text{ chs.}$$

Intersect N. and S. line, 2 lks. N. of the cor. of secs. 25, 26, 35 and 36.

79.99

Thence, I run West on a true line, bet. secs. 26 and 35. Desc. 375 ft.

Set an iron post, 3 ft. long, 1 in. diam., 26 ins. in the ground, for ¼ sec. cor., marked on brass cap

39.99½

1915 on S. rim;
¼ S26 in N. and
S35 in S. half;

and raise a mound of stone, 2 ft. base, 1½ ft. high, N. of cor. This mound is on the true line.

Continue desc. to The cor. of secs. 26, 27, 34 and 35.

79.99

Land, mountainous.
Soil, rocky; 4th rate.
No timber.

Undergrowth, greasewood.

May 10, 1915: At this cor. I set off 178.50' N. on the true line, and at the end of a on. I placed the iron on the existing true section line. The distance is 178.50'.

May 10, 1915.

S. 10

Subdivision of T. 26 N., R. 18 W.

Chains.

May 8, 1915: At 8 hrs. 0 m., a.m., l.m.t.; I set off $35^{\circ} 36\frac{1}{2}'$ N. on the lat. arc; $16^{\circ} 55'$ N. on the decl. arc; and determine a meridian with the solar at the cor. of secs. 26, 27, 34 and 35.

Thence, I run
 $N.0^{\circ} 1' W.$, bet. secs. 26 and 27.
 Over mountainous land,
 Asc. 640 ft. to
 24.95 Ridge, slopes NE. Desc. 130 ft. to
 29.50 Head of gulch, course NE. Asc. 65 ft. to
 40.00 Ridge, slopes E.
 Set an iron post, 3 ft. long, 1 in. diam., 26 ins. in the ground, for $\frac{1}{4}$ sec. cor., marked on brass cap
 1915 on S. rim;
 $\frac{1}{4}$ S27 in W. and
 S26 in E. half;
 and raise a mound of stone, 2 ft. base, $1\frac{1}{2}$ ft. high, W. of cor. Pit in ground to be made.

Thence along E. slope to
 44.00 Ridge, brs. NW. and SW. Desc. 505 ft. to
 67.00 Wash, 15 lks. wide, course NW. Asc. 30 ft. to
 72.60 Desc. 35 ft. to
 80.00 Set an iron post, 3 ft. long, 2 ins. diam., 24 ins. in the ground, for cor. of secs. 22, 23, 26 and 27, marked on brass cap
 1915 on S. rim;
 T26N R18W in N. half;
 S22 in NW.,
 S23 in NE.,
 S26 in SE. and
 S27 in SW. quadrant;
 and raise a mound of stone, 2 ft. base, $1\frac{1}{2}$ ft. high, W. of cor. Pit in ground to be made.

Land, mountainous.
 Soil, stony; 4th rate.
 No timber or undergrowth.

May 8, 1915.

May 11, 1915.
 East on a random line, bet. secs. 23 and 26.
 40.00 Set temp. $\frac{1}{4}$ sec. cor.
 79.98 Intersect N. and S. line, 12 lks. N. of the cor. of secs. 23, 24, 25 and 26.
 Thence, I run
 $N.89^{\circ} 55' W.$, on a true line, bet. secs. 23 and 26.
 Over mountainous land,
 Asc. 330 ft. to
 11.00 Desc. 170 ft. to
 16.10 Wash, 5 lks. wide, course W. Asc. 920 ft.
 39.99 Set an iron post, 3 ft. long, 1 in. diam., 26 ins. in the ground, for $\frac{1}{4}$ sec. cor., marked on brass cap
 1915 on S. rim;
 $\frac{1}{4}$ S23 in N. and
 S26 in S. half;
 and raise a mound of stone, 2 ft. base, $1\frac{1}{2}$ ft. high, N. of cor. Pit in ground to be made.

Continue ascent
 45.70 Ridge, brs. NW. and SE. Desc. 1070 ft. to
 79.98 The cor. of secs. 22, 23, 26 and 27.
 Land, mountainous.
 Soil, stony; 4th rate.
 No timber or undergrowth.

May 11, 1915: At this cor., I set off $17^{\circ} 45\frac{1}{2}'$ N. on the decl. arc; and at apparent noon, I observe the sun on the meridian; the resulting lat. is $35^{\circ} 57\frac{1}{2}'$ N.

May 11, 1915.

Subdivision of T. 26 N., R. 18 W.

C. 11

Chains.

N.0° 1' W., bet. secs. 22 and 23.
 Over mountainous land, along W. slope.
 Desc. to
 4.95 Gulch, 5 lks. wide, course W. Asc. 160 ft. to
 10.95 Desc. to
 14.45 Gulch, 3 lks. wide, course W.
 19.40 Gulch, 5 lks. wide, course W. Asc. 50 ft. to
 22.80 Desc. 35 ft. to
 26.30 Gulch, 5 lks. wide, course SW. Asc. to
 28.05 Ridge, slopes N.75° W. Desc. 195 ft. to
 35.70 Gulch, 5 lks. wide, course SW. Asc. to
 40.00 Ridge, slopes SW.
 Set an iron post, 3 ft. long, 1 in. diam., 26 ins. in the
 ground, for $\frac{1}{4}$ sec. cor., marked on brass cap
 1915 on S. rim;
 $\frac{1}{4}$ S22 in W. and
 S23 in E. half;
 and raise a mound of stone, 2 ft. base, $1\frac{1}{2}$ ft. high,
 W. of cor. Pits impracticable.
 Desc. 290 ft. to
 50.05 Gulch, 5 lks. wide, course NW. Asc. 20 ft. to
 58.30 Ridge, slopes NW. Desc. 180 ft. to
 66.75 Gulch, 20 lks. wide, course SW. Asc. slightly to
 70.70 Ridge, slopes NW. Desc. 115 ft. to
 77.50 Gulch, 30 lks. wide, course NW. Asc. to
 80.00 Set an iron post, 3 ft. long, 2 ins. diam., 24 ins. in the
 ground, for $\frac{1}{4}$ sec. cor., marked on brass cap
 1915 on S. rim;
 T26N R18W in N. half;
 S15 in NW.,
 S14 in NE.,
 S23 in SE. and
 S22 in SW. quadrant;
 and raise a mound of stone, 2 ft. base, $1\frac{1}{2}$ ft. high,
 W. of cor., Pits impracticable.
 Land, mountainous.
 Soil, stony; 4th rate.
 No timber or undergrowth.

May 2, 1915.

H. G. B.

R. C. D.
 May 12, 1915: At 8 hrs. 4 m., a.m., l.m.t., I set off
 35° 38' N. on the lat. arc; 17° 59' N. on the decl. arc;
 and determine a meridian with the solar at the cor.
 of secs. 14, 15, 22 and 23.
 Thence I run
 S.89° 55' E., on a random line, bet. secs. 14 and 23.
 40 00 Set temp. $\frac{1}{4}$ sec. cor.
 80.06 Intersect N. and S. line, 11 lks. S. of the cor. of secs.
 13, 14, 23 and 24.
 Thence I run
 West on a true line, bet. secs. 14 and 23.
 Over rolling, mountainous land, through scattering under-
 growth.
 Desc. 410 ft. to
 38.00 Gulch, course N. Asc. 165 ft.
 40.03 Set an iron post, 3 ft. long, 1 in. diam., 26 ins. in the
 ground, for $\frac{1}{4}$ sec. cor., marked on brass cap
 1915 on S. rim;
 $\frac{1}{4}$ S14 in N. and
 S23 in S. half;
 and raise a mound of stone, 2 ft. base, $1\frac{1}{2}$ ft. high,
 N. of cor. Pits impracticable
 48.70 Desc. 270 ft. to
 70.26 Gulch, course NW. Asc. to
 80.06 The cor. of secs. 14, 15, 22 and 23.
 Land, rolling mountainous.
 Soil, stony; 4th rate.

12

Subdivision of T. 26 N. R. 18 W.

Chains.

No timber.
Undergrowth, greasewood and yucca.

R. C. D.

H. G. B.

May 12, 1915: At 8 hrs. 0 m., a.m., l.m.t., I set off
35° 38' N. on the lat. arc; 17° 59' N. on the decl.
arc; and determine a meridian with the solar at the
cor. of secs. 14, 15, 22 and 23.

Thence, I run

N.0° 1' W., bet. secs. 14 and 15.

Over rolling land, through scattering undergrowth.

Desc. 90 ft.

24.92 Road, brs. NE. and SW.

25.22 Wash, 30 lks. wide, course N.75° W. Asc. 70 ft. to

37.85 Ridge, brs. E. and W. Desc. 190 ft.

40.00 Set an iron post, 3 ft. long, 1 in. diam., 26 ins. in the
ground, for $\frac{1}{4}$ sec. cor., marked on brass cap

1915 on S. rim;

$\frac{1}{4}$ S15 in W. and

S14 in E. half;

and raise a mound of stone, 2 ft. base, $1\frac{1}{2}$ ft. high,
W. of cor. *Ditto impracticable.*

80.00 Set an iron post, 3 ft. long, 2 ins. diam., 24 ins in the
ground, for cor. of secs. 10, 11, 14 and 15, marked on
brass cap

1915 on S. rim;

T26N R18W in N. half;

S10 in NW.,

S11 in NE.,

S14 in SE. and

S15 in SW. quadrant;

and raise a mound of stone, 2 ft. base, $1\frac{1}{2}$ ft. high,
W. of cor. *Ditto impracticable.*

Land, rolling.

Soil, stony; 4th rate.

No timber.

Undergrowth, greasewood and yucca.

H. G. B.

R. C. D.

East on a random line, bet. secs. 11 and 14.

40.00 Set temp. $\frac{1}{4}$ sec. cor.

79.96 Intersect the corner of secs. 11, 12, 13 and 14. 11, 12, 13
and 14.

Thence, I run

West on a true line, bet. secs. 11 and 14.

Over gently rolling land, through scattering undergrowth.

39.98 Set an iron post, 3 ft. long, 1 in. diam., 26 ins. in the
ground, for $\frac{1}{4}$ sec. cor., marked on brass cap

1915 on S. rim;

$\frac{1}{4}$ S11 in N. and

S14 in S. half;

and raise a mound of stone, 2 ft. base, $1\frac{1}{2}$ ft. high,
N. of cor. *Ditto impracticable.*

73.50 Wash, course N.

79.96 The cor. of secs. 10, 11, 14 and 15.

Land, gently rolling.

Soil, gravelly and stoney; 3rd rate.

No timber.

Undergrowth, rabbit brush and yucca.

R. C. D.

Chains.	
<p>3.00 40.00 40.30 53.00 80.00</p>	<p>H. G. B. N.0° 1' W., bet. secs. 10 and 11. Over level land, through scattering undergrowth. Wash, 30 lks. wide, course NE. Set an iron post, 3 ft. long, 1 in. diam., 26 ins. in the ground, for $\frac{1}{4}$ sec. cor., marked on brass cap 1915 on S. rim; $\frac{1}{4}$S10 in W. and S11 in E. half; and raise a mound of stone, 2 ft. base, $1\frac{1}{2}$ ft. high, W. of cor. Wash, 5 lks. wide, course N.10° E. Center of wash, 1 ch. wide, course N.10° W. Set an iron post, 3 ft. long, 2 ins. diam., 24 ins. in the ground; for cor. of secs. 2, 3, 10 and 11, marked on brass cap 1915 on S. rim; T26N R18W in N. half; S3 in NW., S2 in NE., S11 in SE. and S10 in SW. quadrant; dig pits, 18 X 18 X 12 ins., in each sec., $5\frac{1}{2}$ ft. dist.; and raise a mound of earth, 4 ft. base, 2 ft. high, W. of cor. Land, level. Soil, gravel; 3rd rate. No timber. Undergrowth, greasewood and yucca. May 12, 1915.</p>
<p>40.00 79.94 18.00 39.97 79.94</p>	<p>May 13, 1915. East on a random line, bet. secs. 2 and 11. Set temp. $\frac{1}{4}$ sec. cor. Intersect N. and S. line, 5 lks. N. of the cor. of secs. 1, 2, 11 and 12. Thence, N.89° 58' W., on a true line, bet. secs. 2 and 11. Over level land, through scattering undergrowth. Wash, 20 lks. wide, course N. Set an iron post, 3 ft. long, 1 in. diam., 26 ins. in the ground, for $\frac{1}{4}$ sec. cor., marked on brass cap 1915 on S. rim; $\frac{1}{4}$S2 in N. and S11 in S. half; dig pits, 18 X 18 X 12 ins., E. and W. of post, 3 ft. dist.; and raise a mound of earth, $3\frac{1}{2}$ ft. base, $1\frac{1}{2}$ ft. high, N. of cor. The cor. of secs. 2, 3, 10 and 11. Land, level. Soil, gravel; 3rd rate. No timber. Undergrowth, greasewood, yucca and cacti. May 13, 1915.</p>
<p>40.00 80.08 40.08</p>	<p>May 12, 1915. N.0° 1' W., on a random line, bet. secs. 2 and 3. Set temp. $\frac{1}{4}$ sec. cor. Intersect N. bdy. of Tp., 9 lks. E. of the reestablished cor. of secs. 2, 3, 34 and 35, which is an iron post, described in Book "A." Thence, S.0° 5' E., on a true line, bet. secs. 2 and 3. Over level land, through scattering undergrowth. Set an iron post, 3 ft. long, 1 in. diam., 26 ins. in the ground, for $\frac{1}{4}$ sec. cor., marked on brass cap</p>

Chains.

1915 on S. rim;
 S3 in W. and
 S2 in E. half;
 dig pits, 18 X 18 X 12 ins., N. and S. of post, 3 ft.
 dist.; and raise a mound of earth, 3 1/2 ft. base, 1 1/2 ft.
 high, W. of cor.

80.08 The cor. of secs. 2, 3, 10 and 11.
 Land, level.
 Soil, stony; 3rd rate.
 No timber.
 Undergrowth, greasewood and yucca.

May 12, 1915: At this cor., I set off 1' 1" on the
 cor. and at 1' 1" on the cor. I set off the run on
 the north; the remaining lat. is 1' 10" 1/2
 May 12, 1915.

May 7, 1915.
 It being impossible to triangulate or chain the line bet.
 secs. 33 and 34, from the cor. of secs. 3, 4, 33 and
 34, on the S. bdy. of the Tp., because of impassible,
 vertical cliffs, I commence at the cor. of secs. 26, 27
 34 and 35, and run
 S. 89° 58' W., on a true line, bet. secs. 27 and 34.
 Over mountainous land, through scattering undergrowth.
 It being impossible to chain this line, I set a flag
 ahead, on line, from which the flag at the 1/4 sec. cor.
 bet. secs. 34 and 35 brs. S. 48° 12 1/2' E. The dist. to
 this flag point is given, therefore, by

$$\frac{40.00 \times \sin 48^\circ 12 \frac{1}{2}'}{\sin 41^\circ 49 \frac{1}{2}'} = \frac{40.00 \times .74538}{.66686}$$

44.71 Top of sharp ridge, brs. N. and S. Thence I run
 N. 89° 58' E., 4.71 chs. to
 40.00 Set an iron post, 3 ft. long, 1 in. diam., on solid rock,
 in a mound of stone, for 1/4 sec. cor., marked on brass
 cap

1915 on S. rim;
 S27 in N. and
 S34 in S. half;
 and raise a mound of stone, 2 ft. base, 1 1/2 ft. high,
 N. of cor. Dig in accessible.

I flag the 44.71 ch. point, and set a flag ahead on the
 sec. line, near the point for cor. of secs. 27, 28,
 33 and 34. Vertical angle to this point is 19°. From
 this point, I measure a base S. 0° 2' E., 24.70 chs.,
 from the end of which the flag at the 44.71 ch. point
 brs. N. 59° 59' E. The dist. is therefore given by

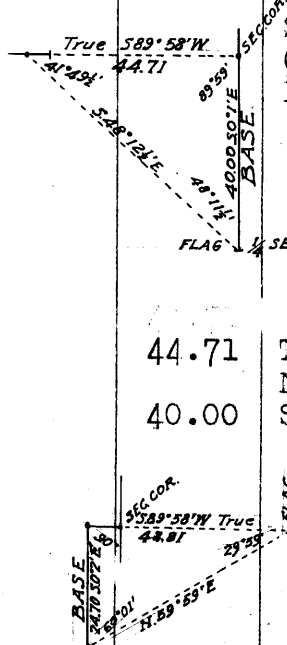
$$\tan 60^\circ 1' \times 24.70 \text{ chs.} = 42.81 \text{ chs.}, \text{ which}$$

added to 44.71 chs., makes 87.52 chs.

87.52 Thence I run
 N. 89° 58' E., 7.52 chs., to
 80.00 Set an iron post, 3 ft. long, 2 ins. diam., 24 ins. in a
 mound of stone, for cor. of secs. 27, 28, 33 and 34,
 marked on brass cap

1915 on S. rim;
 T26N R18W in N. half;
 S28 in NW.,
 S27 in NE.,
 S34 in SE. and
 S33 in SW. quadrant;
 and raise a mound of stone, 2 ft. base, 1 1/2 ft. high,
 W. of cor. Dig in accessible.

Land, mountainous.
 Soil, solid stone.
 Timber, scattering pinion on cliffs.



Chains.

Undergrowth, greasewood.
 May 7, 1915. At ...
 ...
 ...

S.0° 2' E., on a true line, bet. secs. 33 and 34.
 Over mountainous land, through scattering undergrowth.
 Desc. 65 ft. to
 12.50 Wash, 20 lks. wide, course NW. Asc. slightly
 12.84 Two inch pipe line, brs. E. and W.
 13.50 Road, brs. NW. and SE.
 15.00 Desc. 60 ft. to
 18.50 Wash, 10 lks. wide, course NE. Asc. 255 ft.
 19.00 Board fence, brs. E. and W.
 19.50 Board fence, brs. NE. and SW.
 20.00 Spring, brs. E. 1.20 chs. dist.
 40.00 Set an iron post, 3 ft. long, 1 in. diam., 26 ins. in the
 ground, for $\frac{1}{4}$ sec. cor., marked on brass cap
 1915 on S. rim;
 $\frac{1}{4}$ S33 in W. and
 S34 in E. half;
 and raise a mound of stone, 2 ft. base, 1 $\frac{1}{2}$ ft. high,
 W. of cor.
 43.10 Foot of rock wall, brs. NE. and SW. Impossible to
 continue this line beyond this point, because of
 impassable cliffs.
 Land, mountainous.
 Soil, stony; 4th rate.
 No timber.
 Undergrowth, greasewood.

N.0° 2' W., bet. secs. 27 and 28.
 Over mountainous land, through scattering undergrowth.
 Asc. 50 ft. to
 4.75 Desc. 25 ft.
 6.40 Barb wire fence, brs. NE. and SW.
 6.80 Wash, 30 lks. wide, course SW. Asc. 105 ft. to
 11.65 Desc. 20 ft. to
 14.10 Wash 5 lks. wide, course S. 15° W. Asc. 420 ft. to
 28.45 Ridge, brs. E. and W. Desc. 25 ft. to
 30.40 Head of wash, course SW. Asc. 80 ft. to
 34.00 Ridge, brs. E. and W. Desc. 815 ft. to
 40.00 Set an iron post, 3 ft. long, 1 in. diam., 26 ins. in the
 ground, for $\frac{1}{4}$ sec. cor., marked on brass cap
 1915 on S. rim;
 $\frac{1}{4}$ S28 in W. and
 S27 in E. half;
 and raise a mound of stone, 2 ft. base, 1 $\frac{1}{2}$ ft. high,
 W. of cor.
 Continue desc. to
 80.00 Set an iron post, 3 ft. long, 2 ins. diam., 24 ins. in the
 ground, for cor. of secs. 21, 22, 27 and 28, marked on
 brass cap
 1915 on S. rim;
 T26N R18W in N. half;
 S21 in NW.,
 S22 in NE.,
 S27 in SE. and
 S28 in SW. quadrant;
 dig pits, 18 X 18 X 12 ins., in each sec., 5 $\frac{1}{2}$ ft. dist.;
 and raise a mound of earth, 4 ft. base, 2 ft. high,
 W. of cor.
 Land, mountainous.
 Soil, rocky; 4th rate.
 No timber.
 Undergrowth, greasewood and yucca.

May 7, 1915.

14. 16 Subdivision of T. 26 N., R. 18 W.

Chains.

May 11, 1915: At 7 hrs. 30 m., a.m., l.m.t., I set off
 $35^{\circ} 37\frac{1}{2}'$ N. on the lat. arc; $17^{\circ} 43\frac{1}{2}'$ N. on the decl.
 arc; and determine a meridian with the solar at the
 cor. of secs. 21, 22, 27 and 28.

Thence I run
 N. $89^{\circ} 58'$ E., on a random line, bet. secs. 22 and 27.
 40.00 Set temp. $\frac{1}{4}$ sec. cor.
 80.12 Intersect N. and S. line, 16 lks. N. of the cor. of secs.
 22, 23, 26 and 27.

Thence I run
 N. $89^{\circ} 55'$ W., on a true line, bet. secs. 22 and 27.
 Over rolling land, through scattering undergrowth.
 Desc. 85 ft. to
 7.82 Wash, 30 lks. wide, course N. 75° W. Asc. to
 8.72 Ridge, brs. NW. and SE. Desc. 40 ft. to
 11.72 Wash, 30 lks. wide, course NW. Asc. 175 ft. to
 19.77 Desc. 260 ft. to
 29.52 Wash, 5 lks. wide, course N. Asc. slightly to
 35.48 Desc. 215 ft.
 40.06 Set an iron post, 3 ft. long, 1 in. diam., 26 ins. in the
 ground, for $\frac{1}{4}$ sec. cor., marked on brass cap
 1915 on S. rim;
 $\frac{1}{4}$ S22 in N. and
 S27 in S. half;
 and raise a mound of stone, 2 ft. base, $1\frac{1}{2}$ ft. high,
 N. of cor. Pits impracticable.

50.32 Wash, 30 lks. wide, course NW. Asc. 35 ft. to
 52.77 Desc. 50 ft. to
 59.22 Wash, 10 lks. wide, course N. Asc. 35 ft. to
 62.67 Desc. 50 ft. to
 80.12 The cor. of se cs. 21, 22, 27 and 28.
 Land, rolling.
 Soil, stony; 4th rate.
 No timber.
 Undergrowth, greasewood and yucca.

May 11, 1915.

May 7, 1915:
 N. $0^{\circ} 2'$ W., bet. secs. 21 and 22.
 Over rolling land, through scattering undergrowth.
 7.20 Center of wash, 90 lks. wide, course W.
 9.20 Wash, 10 lks. wide, course SW. Asc. to
 20.15 Ridge, brs. E. and W. Desc. 115 ft. to
 30.00 Wash, 30 lks. wide, course W.
 40.00 Set an iron post, 3 ft. long, 1 in. diam., 26 ins. in the
 ground, for $\frac{1}{4}$ sec. cor., marked on brass cap
 1915 on S. rim;
 $\frac{1}{4}$ S21 in W. and
 S22 in E. half;
 and raise a mound of stone, 2 ft. base, $1\frac{1}{2}$ ft. high,
 W. of cor. Pits impracticable.

46.00 Wash, 3 lks. wide, course NW. Asc. 35 ft. to
 50.00 Desc. 100 ft. to
 80.00 Set an iron post, 3 ft. long, 2 ins. diam., 24 ins. in the
 ground, for cor. of secs. 15, 16, 21 and 22, marked on
 brass cap
 1915 on S. rim;
 T26N R18W in N. half;
 S16 in NW.,
 S15 in NE.,
 S22 in SE. and
 S21 in SW. quadrant;
 and raise a mound of stone, 2 ft. base, $1\frac{1}{2}$ ft. high,
 W. of cor. Pits impracticable.

Land, rolling.
 Soil, stony; 3rd rate.
 No timber.
 Undergrowth, greasewood and yucca.

May 7, 1915.

Subdivision of T. 26 N. R. 18 W.

Chains.

May 8, 1915.

S. 89° 55' E., on a random line, bet. secs. 15 and 22.

40.00 Set temp. 1/4 sec. cor.

80.00 Intersect N. and S. line, 12 lks. S. of the cor. of secs. 14, 15, 22 and 23.

Thence

West on a true line, bet. secs. 15 and 22.

Over rolling land, through scattering undergrowth.

Asc. 75 ft. to

10.00 Ridge, (brs. NW. and SE. Desc. 235 ft.

18.15 Road, (brs. NE. and SW.

40.00 Set an iron post, 3 ft. long, 1 in. diam., 26 ins. in the ground, for 1/4 sec. cor., marked on brass cap

1915 on S. rim;

1/4 S15 in N. and

S22 in S. half;

and raise a mound of stone, 2 ft. base, 1 1/2 ft. high, N. of cor. ~~data impracticable.~~

41.00 Wash, 10 lks. wide, course NW. Asc. 160 ft. to

54.80 Ridge, (brs. NW. and SE. Desc. 190 ft. to

76.47 Center of wash, 60 lks. wide, course NW. Asc. to

80.00 The cor. of secs. 15, 16, 21 and 22.

Land, rolling.

Soil, rocky; 4th rate.

No timber.

Undergrowth, greasewood and yucca.

May 8, 1915: At this cor., I set off 120 ft. on the S. side, and 120 ft. on the N. side, and the resulting line is 1/4 sec. cor. ~~data impracticable.~~

May 8, 1915.

May 12, 1915.

N. 0° 2' W., bet. secs. 15 and 16.

Over rolling land, through dense undergrowth.

Desc. to

15.20 Center of wash, 60 lks. wide, course NW. Asc. to

19.60 Desc. 120 ft. to

39.00 Wash, 3 lks. wide, course W. Thence over gently rolling land.

40.00 Set an iron post, 3 ft. long, 1 in. diam., 26 ins. in the ground, for 1/4 sec. cor., marked on brass cap

1915 on S. rim;

1/4 S16 in W. and

S15 in E. half;

dig pits, 18 X 18 X 12 ins., N. and S. of post, 3 ft. dist.; and raise a mound of earth, 3 1/2 ft. base, 1 1/2 ft. high, W. of cor.

77.00 Center of wash, 60 lks. wide, course N. 20° W.

80.00 Set an iron post, 3 ft. long, 2 ins. diam., 24 ins. in the ground, for cor. of secs. 9, 10, 15 and 16, marked on brass cap

1915 on S. rim;

T26N R18W in N. half;

S9 in NW.,

S10 in NE.,

S15 in SE. and

S16 in SW. quadrant;

dig pits, 18 X 18 X 12 ins., in each sec., 5 1/2 ft. dist.; and raise a mound of earth, 4 ft. base, 2 ft. high, W. of cor.

Land, rolling.

Soil, stony; 3rd rate.

No timber.

Undergrowth, yucca.

May 12, 1915.

H. C. B.

Chains.

May 13, 1915: R. C. D.
 East on a random line, bet. secs. 10 and 15.
 40.00 Set temp. $\frac{1}{4}$ sec. cor.
 80.00 Intersect the corner of secs. 10, 11, 14 and 15.
 Thence,
 West on a true line, bet. secs. 10 and 15.
 Over rolling land, through scattering undergrowth.
 40.00 Set an iron post, 3 ft. long, 1 in. diam., 26 ins. in the
 ground, for $\frac{1}{4}$ sec. cor., marked on brass cap
 1915 on S. rim;
 $\frac{1}{4}$ S10 in N. and
 S15 in S. half;
 and raise a mound of stone, 2 ft. base, $1\frac{1}{2}$ ft. high,
 N. of cor.
 80.00 The cor. of secs. 9, 10, 15 and 16.
 Land, rolling.
 Soil, gravelly and stony; 3rd rate.
 No timber.
 Undergrowth, yucca.
 R. C. D.
 May 13, 1915.

H.G. B.
 May 12, 1915.
 N.0° 2' W., bet. secs. 9 and 10.
 Over level land, through scattering undergrowth.
 26.00 Wash, 10 lks. wide, course N.10° W.
 31.00 Wash, 5 lks. wide, course N.15° W.
 40.00 Set an iron post, 3 ft. long, 1 in. diam., 26 ins. in the
 ground, for $\frac{1}{4}$ sec. cor., marked on brass cap
 1915 on S. rim;
 $\frac{1}{4}$ S9 in W. and
 S10 in E. half;
 dig pits, 18 X 18 X 12 ins. N. and S. of post, 3 ft.
 dist.; and raise a mound of earth, $3\frac{1}{2}$ ft. base, $1\frac{1}{2}$ ft.
 high, N. of cor.
 44.85 Road, brs. N.20° E., and S.20° W.
 80.00 Set an iron post, 3 ft. long, 2 ins. diam., 24 ins. in the
 ground, for cor. of secs. 3, 4, 9 and 19, marked on
 brass cap
 1915 on S. rim;
 T26N R18W in N. half;
 S4 in NW.,
 S3 in NE.,
 S10 in SE. and
 S9 in SW. quadrant;
 dig pits, 18 X 18 X 12 ins., in each sec., $5\frac{1}{2}$ ft. dist.;
 and raise a mound of earth, 4 ft. base, 2 ft. high,
 W. of cor.
 Land, level.
 Soil, gravel; 3rd rate.
 No timber.
 Undergrowth, yucca.
 May 12, 1915.

May 13, 1915;
 East on a random line, bet. secs. 3 and 10.
 40.00 Set temp. $\frac{1}{4}$ sec. cor.
 80.02 Intersect N. and S. line at the cor. of secs. 2, 3, 10 and 11.
 Thence,
 West on a true line, bet. secs. 3 and 10.
 Over level land, through dense undergrowth.
 7.80 Wash, 30 lks. wide, course N.
 17.15 Wash, 10 lks. wide, course N.

48. Subdivision of T. 26 N., R. 19 W.

Chains.
 39.97 Set an iron post, 3 ft. long, 1 in. diam., 26 ins. in the ground, for $\frac{1}{4}$ sec. cor., marked on brass cap
 1915 on S. rim;
 $\frac{1}{4}$ S11 in N. and
 S14 in S. half;
 dig pits, 18 X 18 X 12 ins., E. and W. of post, 3 ft. dist.; and raise a mound of earth, $3\frac{1}{2}$ ft. base, $1\frac{1}{2}$ ft. high, N. of cor.
 55.25 Wash, 20 lks. wide, course SE. Asc. 75 ft. to
 61.10 Ridge, brs. NW. and SE. Desc. 65 ft. to
 74.95 Wash, 30 lks. wide, course S.60° E. Asc. 55 ft. to
 79.94 The cor. of secs. 10, 11, 14 and 15.
 Land, rolling.
 Soil, stony; 4th rate.
 No timber.
 Undergrowth, yucca and greasewood.
 May 3, 1915.

Apr. 29, 1915.
 N.0° 1' W., bet. secs. 10 and 11.
 Over rolling land, through scattering undergrowth.
 Desc. 40 ft. to
 7.70 Wash, 15 lks. wide, course S.30° E. Asc. 70 ft. to
 20.25 Desc. to
 20.60 Wash, 5 lks. wide, course S.10° W. Asc. 115 ft. to
 28.05 Ridge, slopes SE. Desc. 60 ft. to
 37.60 Wash, 5 lks. wide, course E. Asc. 185 ft.
 40.00 Set an iron post, 3 ft. long, 1 in. diam., 26 ins. in the ground, for $\frac{1}{4}$ sec. cor., marked on brass cap
 1915 on S. rim;
 $\frac{1}{4}$ S10 in W. and
 S11 in E. half;
 and raise a mound of stone, 2 ft. base, $1\frac{1}{2}$ ft. high, W. of cor. Pits impracticable.
 48.90 Desc. 125 ft. to
 59.60 Wash, 10 lks. wide, course E. Asc. 160 ft. to
 80.00 Set an iron post, 3 ft. long, 2 ins. diam., 24 ins. in the ground, for cor. of secs. 2, 3, 10 and 11, marked on brass cap
 1915 on S. rim;
 T26N R19W in E. half;
 S3 in NW.,
 S2 in NE.,
 S11 in SE. and
 S10 in SW. quadrant;
 and raise a mound of stone, 2 ft. base, $1\frac{1}{2}$ ft. high, W. of cor. Pits impracticable.
 Land, rolling.
 Soil, rocky; 4th rate.
 No timber.
 Undergrowth, greasewood and yucca.
 Apr. 29, 1915.

May 5, 1915
 S.89° 52' E., on a random line, bet. secs. 12 and 14.
 40.00 Set temp. $\frac{1}{4}$ sec. cor.
 79.92 Intersect N. and S. line, 5 lks. N. of the cor. of secs. 11, 12, 13 and 14.
 Thence
 N.89° 50' W., on a true line, bet. secs. 12 and 11.
 Over rolling land, through scattering undergrowth.
 Desc. 90 ft. to
 4.60 Wash, 4 lks. wide, course S.10° W. Asc. 15 ft. to
 5.00 Desc. 25 ft. to
 7.85 Wash, 4 lks. wide, course S.10° E. Asc. 105 ft. to
 15.60 Ridge, brs. NW. and S. Desc. 125 ft. to
 24.40 Wash, 15 lks. wide, course S. Asc. 90 ft. to
 31.25 Ridge, slopes SE. Desc. 65 ft. to

Chains.	<p> $\frac{1}{2}$S14 in N. and S23 in S. half; dig pits, 18 X 18 X 12 ins., E. and W. of post, 3 ft. dist.; and raise a mound of earth, $3\frac{1}{2}$ ft. base, $1\frac{1}{2}$ ft. high, N. of cor. Thence over gently rolling land. 48.50 Gulch, course NE. 79.82 The cor. of secs. 14, 15, 22 and 23. Land, rolling; Soil, gravelly and stony; 4th rate. No timber. Undergrowth, greasewood and yucca. </p> <p style="text-align: right;">R. C. D. May 3, 1915.</p>
5.00 17.50 40.00	<p> Apr. 25, 1915: H. G.B. N.0° 1' W., bet. secs. 14 and 15. Over rolling land, through scattering undergrowth. Asc. 25 ft. to Desc. 25 ft. to Wash, 10 lks. wide, course E. Asc. 60 ft. 40.00 Set an iron post, 3 ft. long, 1 in. diam., 26 ins. in the ground, for $\frac{1}{4}$ sec. cor., marked on brass cap 1915 on S. rim; $\frac{1}{4}$S15 in W. and S14 in E. half; and raise a mound of stone, 2 ft. base, $1\frac{1}{2}$ ft. high, W. of cor. Pits impracticable. </p>
50.35 55.33 66.35 73.00 77.50 80.00	<p> Apr. 25, 1915: At this cor., I set off 14°19' E. on the sect. arc; and at apparent noon, I observe the sun on the meridian; the resulting lat. is 35° 50' N. 50.35 Desc. 40 ft. to 55.33 Wash, 10 lks. wide, course E. 66.35 Wash, 5 lks. wide, course SE. Asc. 120 ft. to 73.00 Desc. 20 ft. to 77.50 Wash, 5 lks. wide, course E. Asc. 30 ft. to 80.00 Set an iron post, 3 ft. long, 2 ins. diam., 24 ins. in the ground, for cor. of secs. 10, 11, 14 and 15, marked on brass cap 1915 on S. rim; T26N R19W in N. half; S10 in NW., S11 in NE., S14 in SE. and S15 in SW. quadrant; and raise a mound of stone, 2 ft. base, $1\frac{1}{2}$ ft. high, W. of cor. Pits impracticable. Land, rolling. Soil, stony; 4th rate. No timber. Undergrowth, greasewood and yucca. </p> <p style="text-align: right;">Apr. 29, 1915.</p>
40.00 79.94	<p> May 3, 1915. S.89° 51' E., on a random line, bet. secs. 11 and 14. 40.00 Set temp. $\frac{1}{4}$ sec. cor. 79.94 Intersect N. and S. line, 2 lks. S. of the cor. of secs. 11, 12, 13 and 14. Thence, N.89° 52' W., on a true line, bet. secs. 11 and 14. Over rolling land, through scattering undergrowth. Asc. to 2.95 Desc. to 11.05 Wash, 15 lks. wide, course SE. Asc. 75 ft. to 24.95 Ridge, (brs) NW. and SE. Desc. 40 ft. to 34.95 Wash, 20 lks. wide, course SE. </p>

Handwritten mark

3.40 Subdivision of T. 26 N., R. 19 W.

Chains.
 ground, for $\frac{1}{4}$ sec. cor., marked on brass cap
 1915 on S. rim;
 $\frac{1}{4}$ S23 in N. and
 S26 in S. half;
 and raise a mound of stone, 2 ft. base, $1\frac{1}{2}$ ft. high,
 N. of cor. *Ditto impracticable.*
 57.80 N. point of ridge, brs. N. and S. Desc. 335 ft. to
 79.82 The cor. of secs. 22, 23, 26 and 27.
 Land, rolling, mountainous.
 Soil, rocky 4th rate.
 No timber.
 Undergrowth, greasewood and yucca.
 R. C. D.
 May 3, 1915.

Apr. 29, 1915: H. G. B.
 N. 09.1' W., bet. secs. 22 and 23.
 Over rolling land, through scattering undergrowth.
 Asc. slightly to
 3.10 Desc. 50 ft. to
 7.20 Wash, 20 lks. wide, course NW. Asc. 50 ft. to
 10.10 Desc. 75 ft. to
 26.45 Wash, 20 lks. wide, course W. Asc. 115 ft.
 40.00 Set an iron post, 3 ft. long, 1 in. diam., 26 ins. in the
 ground, for $\frac{1}{4}$ sec. cor., marked on brass cap
 1915 on S. rim;
 $\frac{1}{4}$ S22 in W. and
 S23 in E. half;
 and raise a mound of stone, 2 ft. base, $1\frac{1}{2}$ ft. high,
 W. of cor. *Ditto impracticable.*
 50.50 Desc. slightly to
 52.50 Wash, 10 lks. wide, course S.10° E. Asc. 235 ft. to
 70.00 Desc. 25 ft. to
 77.50 Wash, 10 lks. wide, course N.80° E. Asc. to
 80.00 Set an iron post, 3 ft. long, 2 ins. diam., 24 ins. in the
 ground, for cor. of secs. 14, 15, 22 and 23, marked on
 brass cap
 1915 on S. rim;
 T26N R19W in N. half;
 S15 in NW.,
 S14 in NE.,
 S23 in SE. and
 S22 in SW. quadrant;
 and raise a mound of stone, 2 ft. base, $1\frac{1}{2}$ ft. high,
 W. of cor. *Ditto impracticable.*
 Land, rolling.
 Soil, stony; 4th rate.
 No timber.
 Undergrowth, yucca and greasewood.
 H. G. B.
 Apr. 29, 1915

May 3, 1915: R. C. D.
 S.89° 51' E., on a random line, bet. secs. 14 and 23.
 40.00 Set temp. $\frac{1}{4}$ sec. cor.
 79.82 Intersect N. and S. line, at the cor. of secs. 13, 14, 23, and
 24.
 Thence
 N.89° 51' W., on a true line, bet. secs. 14 and 23.
 Over heavily rolling land, through scattering undergrowth.
 Desc. 15 ft. to
 5.00 Asc. 75 ft. to
 12.50 Desc. 85 ft. to
 25.00 Asc. 25 ft. to
 35.00 Desc. 15 ft. to
 39.91 Set an iron post, 3 ft. long, 1 in. diam., 26 ins. in the
 ground, for $\frac{1}{4}$ sec. cor., marked on brass cap
 1915 on S. rim;

Subdivision of T. 26 N., R. 19 W.

Chains.

1915 on S. rim;
 1/4 S26 in N. and
 S35 in S. half;
 and raise a mound of stone, 2 ft. base, 1 1/2 ft. high,
 N. of cor. Pits impracticable.
 Asc. 80 ft. to
 Desc. 85 ft. to
 Asc. 65 ft. to
 Low ridge, brs. N. and S. Desc. 110 ft. to
 Center of wash, 60 lks. wide, course SW.
 The cor. of secs. 26, 27, 34 and 35.
 Land, rolling, mountainous.
 Soil, stony; 3rd rate.
 No timber.
 Undergrowth, greasewood and yucca. R. C. D.
 May 5, 1915.

H. G. B.
 Apr. 29, 1915.
 N.0° 1' W., bet. secs. 26 and 27.
 Over rolling land, through scattering undergrowth.
 Asc. 70 ft. to
 Desc. slightly to
 Wash, 50 lks. wide, course SE. Asc. 345 ft.
 Set an iron post, 3 ft. long, 1 in. diam., 26 ins. in the
 ground, for 1/4 sec. cor., marked on brass cap
 1915 on S. rim;
 1/4 S27 in W. and
 S26 in E. half;
 and raise a mound of stone, 2 ft. base, 1 1/2 ft. high,
 W. of cor. Pits impracticable.
 Continue ascent
 Ridge, slopes E. Desc. 230 ft. to
 Wash, 15 lks. wide, course NW. Asc. 15 ft. to
 Desc. 25 ft. to
 Set an iron post, 3 ft. long, 2 ins. diam., 24 ins. in the
 ground, for cor. of secs. 22, 23, 26 and 27, marked on
 brass cap
 1915 on S. rim;
 T26N R19W in N. half;
 S22 in NW.,
 S23 in NE.,
 S26 in SE. and
 S27 in SW. quadrant;
 and raise a mound of stone, 2 ft. base, 1 1/2 ft. high,
 W.. of cor. Pits impracticable.
 Land, rolling.
 Soil, stony; 4th rate.
 No timber.
 Undergrowth, greasewood and yucca. H. G. B.
 Apr. 29, 1915.

R. C. D.
 May 3, 1915.
 S.89° 57' E., on a random line, bet. secs. 23 and 26.
 Set temp. 1/4 sec. cor.
 Intersect N. and S. line, 14 lks. N. of the cor. of secs.
 23, 24, 25 and 26.
 Thence
 N.89° 51' W., on a true line, bet. secs. 23 and 26.
 Over rolling, mountainous land, through scattering under-
 growth.
 Asc. 45 ft. to
 Ridge, brs. NW. and SE. Desc. 140 ft. to
 Gulch, course SE. Asc. 385 ft.
 Set an iron post, 3 ft. long, 1 in. diam., 26 ins. in the

48.35
59.75
66.70
79.50
80.00

10.00
14.50
40.00

47.85
70.00
75.00
80.00

40.00
79.82

3.00
19.32
39.91

6. 38

Subdivision of T. 26 N., R. 19 W.

chains.

55.00 Wash, 10 lks. wide, course SE. Asc. 105 ft. to
 74.80 Ridge, brs. NW. and SE. Desc. to
 79.80 The cor. of secs. 1, 2, 11 and 12.
 Land, rolling.
 Soil, stony; 4th rate.
 No timber.
 Undergrowth, greasewood and yucca.

Apr. 29, 1915: At 9 hrs. 0 m., a.m., l.m.t., I set off
 35° 35½' N. on the lat. arc; 14° 17' N. on the decl.
 arc; and determine a meridian with the solar at the
 reestablished cor. of secs. 2, 3, 34 and 35, on the S. bdy. of
 the T. 26 N. which is an iron post, described in Book DA,
 as described in Book "B".

Thence I run
 N. 0° 1' W., bet. secs. 34 and 35.
 Over level and rolling land, through scattering undergrowth.

29.70 Wash, 30 lks. wide, course SW.
 40.00 Set an iron post, 3 ft. long, 1 in. diam., 26 ins. in the
 ground, for ¼ sec. cor., marked on brass cap
 1915 on S. rim;
 S34 in W. and
 S35 in E. half;

and raise a mound of stone, 2 ft. base, 1½ ft. high,
 W. of cor. Site impracticable.

70.00 Center of wash, 60 lks. wide, course S. 10° E.

79.00 Center of wash, 60 lks. wide, course S. 10° W.

80.00 Set an iron post, 3 ft. long, 2 ins. diam., 24 ins. in the
 ground, for cor. of secs. 26, 27, 34 and 35, marked on
 brass cap

1915 on S. rim;
 T26N R19W in N. half;
 S27 in NW.,
 S26 in NE.,
 S35 in SE. and
 S34 in SW. quadrant;

and raise a mound of stone, 2 ft. base, 1½ ft. high,
 W. of cor. Site impracticable.

Land, level and rolling.
 Soil, stone and gravel; 3rd rate.
 No timber.
 Undergrowth, greasewood and yucca.

H. G. B.
 Apr. 29, 1915.

R. C. D.

May 5, 1915: At 8 hrs. 0 m., a.m., l.m.t., I set off
 35° 30½' N. on the lat. arc; 16° 4½' N. on the decl.
 arc; and determine a meridian with the solar at the
 cor. of secs. 26, 27, 34 and 35.

Thence I run
 S. 89° 57' E., on a random line, bet. secs. 26 and 35.

40.00 Set temp. ¼ sec. cor.

80.00 Intersect the corner of secs. 25, 26, 35 and 36. 25, 26, 35
 and 36.

Thence I run
 N. 89° 57' W., on a true line, bet. secs. 26 and 35.

Over rolling, mountainous land, through scattering under-
 growth.

18.00 Asc. 80 ft. to

25.00 Desc. 40 ft. to

25.00 Asc. 60 ft. to

30.25 Desc. 115 ft. to

40.00 Set an iron post, 3 ft. long, 1 in. diam., 26 ins. in the
 ground, for ¼ sec. cor., marked on brass cap

Chains.

Asc. 105 ft. to
 52.00 Ridge, brs. E. and W. Desc. 95 ft. to
 60.75 Wash, 5 lks. wide, course E.
 63.75 Wash, 10 lks. wide, course S.20° E. Asc. 120 ft. to
 80.00 Set an iron post, 3 ft. long, 2 ins. diam., 24 ins. in the
 ground, for cor. of secs. 1, 2, 11 and 12, marked on
 brass cap
 1915 on S. rim;
 T26N R19W in N. half;
 S2 in NW.,
 S1 in NE.,
 S12 in SE.
 S11 in SW. quadrant;
 and raise a mound of stone, 2 ft. base, 1½ ft. high,
 W. of cor. ~~File impracticable.~~
 Land, rolling.
 Soil, stony; 4th rate.
 No timber.
 Undergrowth, greasewood and yucca.

H. G. B.

May 3, 1915.

R. C. D.
 May 3, 1915.
 S.89° 56' E., on a random line, bet. secs. 1 and 12.
 40.00 Set temp. ¼ sec. cor.
 80.00 Intersect E. bdy. of Tp., 18 lks. N. of the reestablished
 cor. of secs. 1, 6, 7 and 12, which is an iron post, ~~de-~~
~~scribed in Book "A" and in Book "B".~~
 Thence, I run
 N.89° 48' W., on a true line, bet. secs. 1 and 12.
 Over rolling land, through scattering undergrowth.
 Desc. 70 ft. to
 18.40 Wash, course SE. Asc. 135 ft. to
 40.00 Set a granite stone, 18 X 12 X 12 ins., 12 ins. in the
 ground, for ¼ sec. cor., marked ¼ on N. face; and raise
 a mound of stone, 2 ft. base, 1½ ft. high, N. of cor.
~~File impracticable.~~ No iron post available.
 Desc. 40 ft. to
 49.95 Asc. 250 ft. to
 79.00 Low ridge, brs. N. and S. Desc. to
 80.00 The cor. of secs. 1, 2, 11 and 12.
 Land, rolling.
 Soil, gravelly and stony; 3rd rate.
 No timber.
 Undergrowth, yucca, greasewood and cacti.

R. C. D.

May 3, 1915.

May 5, 1915: H. G. B.
 N.0° 1' W., on a random line, bet. secs. 1 and 2.
 40.00 Set temp. ¼ sec. cor.
 79.80 Intersect N. bdy. of Tp., at the reestablished cor. of secs.
 1, 2, 35 and 36, which is an iron post, described in Book
 "A" and in Book "B".
 Thence, I run
 S.0° 1' E., on a true line, bet. secs. 1 and 2.
 Over rolling land, through scattering undergrowth.
 Desc. 15 ft.
 5.20 Wash, 10 lks. wide, course SE. Asc. 190 ft. to
 26.80 Ridge, brs. NW. and SE. Desc. 115 ft.
 39.80 Set an iron post, 3 ft. long, 1 in. diam., 26 ins. in the
 ground, for ¼ sec. cor., marked on brass cap
 1915 on S. rim;
 S2 in W. and
 S1 in E. half;
 and raise a mound of stone, 2 ft. base, 1½ ft. high,
 W. of cor. ~~File impracticable.~~

4.36 Subdivision of T. 26 N., R. 19 W.

Chains.

Apr. 29, 1915.
 N.0° 1' W., bet. secs. 13 and 14.
 Over gently rolling land, through scattering undergrowth.
 Gulch, course E.
 12.40
 40.00 Set an iron post, 3 ft. long, 1 in. diam., 26 ins. in the
 ground, for $\frac{1}{4}$ sec. cor., marked on brass cap
 1915 on S. rim;
 $\frac{1}{4}$ S14 in W. and
 S13 in E. half;
 and raise a mound of stone, 2 ft. base, 1 $\frac{1}{2}$ ft. high,
 W. of cor. Pits impracticable.
 80.00 Set an iron post, 3 ft. long, 2 ins. diam., 24 ins. in the
 ground, for cor. of secs. 11, 12, 13 and 14, marked on
 brass cap
 1915 on S. rim;
 T26N R19W in N. half;
 S11 in NW.,
 S12 in NE.,
 S13 in SE. and
 S14 in SW. quadrant;
 dig pits, 18 X 18 X 12 ins., in each sec., 5 $\frac{1}{2}$ ft. dist.;
 and raise a mound of earth, 4 ft. base, 2 ft. high, W.
 of cor.
 Land, gently rolling.
 Soil, gravelly and stony; 3rd rate.
 No timber.
 Undergrowth, yucca, greasewood and cacti.
 Apr. 29, 1915.

May 8, 1915.
 N.89° 56' E., on a random line, bet. secs. 12 and 13.
 40.00 Set temp. $\frac{1}{4}$ sec. cor.
 79.94 Intersect E. bdy. of Tp., 18 lks. NW of the reestablished
 cor. of secs. 11, 12, 13 and 14, which is spanned by
 a scribed iron post, as by
 scribed in Book 3249 in Book 3249.
 Thence
 N.89° 56' W., on a true line, bet. secs. 1 and 12.
 Over gently rolling land, through scattering undergrowth.
 39.97 Set an iron post, 3 ft. long, 1 in. diam., 26 ins. in the
 ground, for $\frac{1}{4}$ sec. cor., marked on brass cap
 1915 on S. rim;
 $\frac{1}{4}$ S12 in N. and
 S13 in S. half;
 and raise a mound of stone, 2 ft. base, 1 $\frac{1}{2}$ ft. high,
 N. of cor. Pits impracticable.
 79.94 The cor. of secs. 11, 12, 13 and 14.
 Land, gently rolling.
 Soil, gravelly and stony; 3rd rate.
 No timber.
 Undergrowth, greasewood, yucca and cacti.
 R. C. D.
 May 8, 1915.

H. G. B.
 May 8, 1915:
 N.0° 1' W., bet. secs. 11 and 12.
 Over rolling land, through scattering undergrowth.
 Wash, 20 lks. wide, course SE.
 35.95
 40.00 Set an iron post, 3 ft. long, 1 in. diam., 26 ins. in the
 ground, for $\frac{1}{4}$ sec. cor., marked on brass cap
 1915 on S. rim;
 $\frac{1}{4}$ S11 in W. and
 S12 in E. half;
 dig pits, 18 X 18 X 12 ins., N. and S. of post, 3 ft.
 dist.; and raise a mound of earth, 3 $\frac{1}{2}$ ft. base, 1 $\frac{1}{2}$ ft.
 high, W. of cor.

Subdivision of T. 26 N., R. 19 W.

Chains.	<p>Soil, gravelly and stony; 3rd rate. No timber. Undergrowth, greasewood, yucca and cacti.</p> <p>May 3, 1915.</p>
<p>21.00 40.00 74.40 80.00</p>	<p>Apr. 29, 1915. N.0° 1' W., bet. secs. 23 and 24. Over rolling land, through scattering undergrowth. Asc. 165 ft. to Ridge, brs. NE. and SW. Desc. 130 ft. to Set an iron post, 3 ft. long, 1 in. diam., 26 ins. in the ground, for $\frac{1}{4}$ sec. cor., marked on brass cap 1915 on S. rim; $\frac{1}{4}$S23 in W. and S24 in E. half; and raise a mound of stone, 2 ft. base, 1$\frac{1}{2}$ ft. high, W. of cor. Site impracticable. Asc. 200 ft. to Low ridge, brs. NE. and SW. Desc. 60 ft. to Set an iron post, 3 ft. long, 2 ins. diam., 24 ins. in the ground, for cor. of secs. 13, 14, 23 and 24, marked on brass cap 1915 on S. rim; T26N R19W in N. half; S14 in NW., S13 in NE., S24 in SE. and S23 in SW. quadrant; and raise a mound of stone, 2 ft. base, 1$\frac{1}{2}$ ft. high, W. of cor. Site impracticable. Land, rolling. Soil, stony; 4th rate. No timber. Undergrowth, greasewood, yucca and cacti.</p> <p>Apr. 29, 1915.</p>
<p>40.00 79.86 39.93 72.50 79.86</p>	<p>May 3, 1915. N.89° 59' E., on a random line, bet. secs. 13 and 24. Set temp. $\frac{1}{4}$ sec. cor. 79.86 Intersect E. bdy. of Tp., 7 lks. S. of the reestablished cor. of secs. 13, 18, 19 and 24, which is an iron post, described in Book "A." and in Book "B". Thence, I S.89° 56' W., on a true line, bet. secs. 13 and 24. Over gently rolling land, through scattering undergrowth. 39.93 Set an iron post, 3 ft. long, 1 in. diam., 26 ins. in the ground, for $\frac{1}{4}$ sec. cor., marked on brass cap 1915 on S. rim; $\frac{1}{4}$S13 in N. and S24 in S. half; and raise a mound of stone, 2 ft. base, 1$\frac{1}{2}$ ft. high, N. of cor. Site impracticable. 72.50 Low ridge, brs. N. and S. Desc. to 79.86 The cor. of secs. 13, 14, 23 and 24. Land, gently rolling. Soil, gravelly and stony; 3rd rate. No timber. Undergrowth, greasewood, yucca and cacti. May 3, 1915: At this cor., I set off 15' 30" S. on the decl. arc; and at apparent noon, I observe the sun on the meridian, the resulting lat. is 35° 38' N. May 3, 1915.</p>

2. 34

Subdivision of T. 26 N., R. 19W.

Chains.

52.60 Center of wash, 60 lks. wide, 2 ft. deep, course SW.
 66.90 Gulch, course S.
 79.90 The cor. of secs. 25, 26, 35 and 36.
 Land, gently rolling.
 Soil, gravelly and stony; 3rd rate.
 No timber.

Undergrowth, greasewood, yucca and cacti.
 May 2, 1915: Rain prevented an observation of the sun for
 1st. at noon, and any further work to-day.

Apr. 29, 1915.

N.0° 1' W., bet. secs. 25 and 26.
 Over rolling land, through scattering undergrowth.
 Asc. slightly to

24.00

Desc. to

39.26

Wash, course S.20° E.

40.00

Set an iron post, 3 ft. long, 1 in. diam., 26 ins. in the
 ground, for $\frac{1}{4}$ sec. cor., marked on brass cap
 1915 on S. rim;
 $\frac{1}{4}$ S26 in W. and
 S25 in E. half;

and raise a mound of stone, 2 ft. base, 1 $\frac{1}{2}$ ft. high,
 W. of cor. Pits impracticable.

From this cor., Dolan Springs brs. S.58° E.

Asc. 215 ft. to

72.10

Ridge, brs. NW. and SE. Desc. 50 ft. to

80.00

Set an iron post, 3 ft. long, 2 ins. diam., 24 ins. in the
 ground, for cor. of secs. 23, 24, 25 and 26, marked on
 brass cap

1915 on S. rim;
 T26N R19W in N. half;
 S23 in NW.,
 S24 in NE.,
 S25 in SE. and
 S26 in SW. quadrant;

and raise a mound of stone, 2 ft. base, 1 $\frac{1}{2}$ ft. high,
 W. of cor. Pits impracticable.

Land, rolling.

Soil, stony; 4th rate.

No timber.

Undergrowth, greasewood, yucca and cacti.

Apr 29, 1915: The sky was overcast at noon, making an
 observation for 1st. impossible.

Apr. 29, 1915.

May 2, 1915.

S.89° 57' E., on a random line, bet. secs. 24 and 25.

40.00

Set temp. $\frac{1}{4}$ sec. cor.

79.90

Intersect E. bdy. of Tp., 9 lks. S. of the reestablished
 cor. of secs. 19, 24, 25 and 30, which is an iron post de-
 scribed in Book "A" in book "1".

Thence, E. 1/4

S.89° 59' W., on a true line, bet. secs. 24 and 25.

11.50

Over gently rolling land, through scattering undergrowth.

39.95

Traveled road, brs. NW. and SE.

Set an iron post, 3 ft. long, 1 in. diam., 26 ins. in the
 ground, for $\frac{1}{4}$ sec. cor., marked on brass cap

1915 on S. rim;
 $\frac{1}{4}$ S24 in N. and
 S25 in S. half;

and raise a mound of stone, 2 ft. base, 1 $\frac{1}{2}$ ft. high,
 N. of cor. Pits impracticable.

Leave gently rolling land, brs. N. and S. Asc. 145 ft.
 to

79.90

The cor. of secs. 23, 24, 25 and 26.

Land, mountainous and gently rolling.

Chains.

Survey commenced Apr. 26, 1915, and executed jointly by H. G. Bardsley, U. S. Surveyor, and Royston C. Durnford, U. S. Transitman, with Young and Sons' light mountain transits Nos. 8532 and 8526, respectively, described in Book "A." sets. For description of In the following field notes, the initials "H.G.B." and "R.C.D." were inserted at the beginning and ending of those portions of the notes describing the surveys executed by H. G. Bardsley, U. S. Surveyor, & R. C. Durnford, U. S. T., respectively. Knowing from recent and repeated tests of our instruments on a meridian established by observations on Polaris at elongation, that they are in good adjustment, we proceed as follows:

Dates of survey shown on pages 63 and 65 hereof. R. C. D.

Apr. 29, 1915: At 9 hrs. 0 m., a.m., l.m.t., I set off $35^{\circ} 35\frac{1}{2}'$ N. on the lat. arc; $14^{\circ} 17'$ N. on the decl. arc; and determine a meridian with the solar at the established cor. of secs. 1, 2, 35 and 36 on the S. bdy. of the Tps, which is an iron post, described in Book "A." in Book "B".

Thence, I ran N. $0^{\circ} 1'$ W., bet. secs. 35 and 36. Over rolling land, through scattering undergrowth. Dim road, brs. NE. and SW. Center of wash, 80 lks. wide, 2 ft. deep, course SW. Set an iron post, 3 ft. long, 1 in. diam., 26 ins. in the ground, for $\frac{1}{4}$ sec. cor., marked on brass cap
 1915 on S. rim;
 $\frac{1}{4}$ S35 in W. and
 S36 in E. half;
 dig pits, 18 X 18 X 12 ins., N. and S. of post, 3 ft. dist.; and raise a mound of earth, $3\frac{1}{2}$ ft. base, $1\frac{1}{2}$ ft. high, W. of cor.

4.00
35.00
40.00

Enter mountainous land, brs. E. and W. Asc. 100 ft. to Desc. 70 ft. to Set an iron post, 3 ft. long, 2 ins. diam., 24 ins. in the ground, for cor. of secs. 25, 26, 35 and 36, marked on brass cap

50.00
57.00
80.00

1915 on S. rim;
 T26N R19W in N. half;
 S26 in NW.,
 S25 in NE.,
 S36 in SE. and
 S35 in SW. quadrant;
 and raise a mound of stone, 2 ft. base, $1\frac{1}{2}$ ft. high, W. of cor. Pits impracticable.
 Land, rolling and mountainous.
 Soil, gravelly and stony; 3rd rate.
 No timber.
 Undergrowth, yucca, greasewood and cacti.

Apr. 29, 1915.

S. $89^{\circ} 57'$ E., on a random line, bet. secs. 25 and 36. Set temp. $\frac{1}{4}$ sec. cor. Intersect E. bdy. of Tps, at the reestablished cor. of secs. 25, 30, 31 and 36, which is an iron post, described in Book "A." in Book "B".

40.00
79.90

Thence I ran N. $89^{\circ} 57'$ W., on a true line, bet. secs. 25 and 36. Over gently rolling land, through scattering undergrowth. Set an iron post, 3 ft. long, 1 in. diam., 26 ins. in the ground, for $\frac{1}{4}$ sec. cor., marked on brass cap

39.95

1915 on S. rim;
 $\frac{1}{4}$ S25 in N. and
 S36 in S. half;
 and raise a mound of stone, 2 ft. base, $1\frac{1}{2}$ ft. high, N. of cor. Pits impracticable.

Chains.

47.50
80.00

and raise a mound of stone, 2 ft. base, $1\frac{1}{2}$ ft. high,
W. of cor. ~~Disc. Imp. 101010.~~
Wash, 15 lks. wide, course E.
The cor. of secs. 5, 6, 7 and 8.
Land, rolling.
Soil, stony; 4th rate.
No timber.
Undergrowth, greasewood and yucca.

H. G. B.
May 2, 1913.

GENERAL DESCRIPTION.

This township consists of mountainous land in the south-
ern part, sloping northward to rolling and level land.
The drainage is northerly and easterly. A heavy growth
of yuccas covers most of the township, and greasewood and
cacti are abundant. The township is traversed by numer-
ous dim, sand blown roads, which in many places are
invisible. There is a spring in sec. 34, from which a
pipe line leads to a corral in sec. 33. There are no
settlers. Soil is stony, 3rd and 4th rate.

H. G. B.

H. G. B.

Subdivision of T. 26 N., R. 18 W.

Chains.

R. C. D.
 May 3, 1915.
 N. 89° 58' E., on a random line, bet. secs. 5 and 8.
 40.00 Set temp. $\frac{1}{4}$ sec. cor.
 79.80 Intersect N. and S. line, 2 lks. N. of the cor. of secs.
 4, 5, 8 and 9.
 Thence
 S. 89° 59' W., on a true line, bet. secs. 5 and 8.
 Over gently rolling land, through scattering undergrowth.
 39.90 Set an iron post, 3 ft. long, 1 in. diam., 26 ins. in the
 ground, for $\frac{1}{4}$ sec. cor., marked on brass cap
 1915 on S. rim;
 $\frac{1}{4}$ S5 in N. and
 S8 in S. half;
 and raise a mound of stone, 2 ft. base, 1 $\frac{1}{2}$ ft. high,
 N. of cor. *Pits impracticable.*
 75.20 Wash, 30 lks. wide, 1 $\frac{1}{2}$ ft. deep, course SE.
 79.80 The cor. of secs. 5, 6, 7 and 8.
 Land, gently rolling.
 Soil, gravelly and stony; 3rd rate.
 No timber.
 Undergrowth, greasewood, yucca, rabbit brush and cacti.

S. 89° 52' W., on a random line, bet. secs. 6 and 7.
 40.00 Set temp. $\frac{1}{4}$ sec. cor.
 79.12 Intersect W. bdy. of Tp., 14 lks. S. of the reestablished
 cor. of secs. 12, 6, 7 and 12, which is an iron post, described
 in Book "A" described in Book "B".
 Thence
 N. 89° 58' E., on a true line, bet. secs. 6 and 7.
 Over gently rolling land, through scattering undergrowth.
 23.02 Old, dim road, brs. NW. and SE.
 39.12 Set an iron post, 3 ft. long, 1 in. diam., 26 ins. in the
 ground, for $\frac{1}{4}$ sec. cor., marked on brass cap
 1915 on S. rim;
 $\frac{1}{4}$ S6 in N. and
 S7 in S. half;
 and raise a mound of stone, 2 ft. base, 1 $\frac{1}{2}$ ft. high,
 N. of cor. *Pits impracticable.*
 79.12 The cor. of secs. 5, 6, 7 and 8.
 Land, gently rolling.
 Soil, gravelly and stony; 3rd rate.
 No timber.
 Undergrowth, greasewood, yucca and cacti.

R. C. D.
May 3, 1915.

H. G. B.
 May 3, 1915.
 N. 0° 3' W., on a random line, bet. secs. 5 and 6.
 40.00 Set temp. $\frac{1}{4}$ sec. cor.
 80.00 Intersect N. bdy. of Tp., 28 lks. E. of the reestablished
 cor. of secs. 5, 6, 31 and 32, which is an iron post, de-
 scribed in Book "A" Book "B".
 Thence
 S. 0° 15' E., on a true line, bet. secs. 5 and 6.
 Over rolling land, through scattering undergrowth.
 Desc. 80 ft. to
 5.00 Wash, 5 lks. wide, course SE.
 14.25 Wash, 10 lks. wide, course E. Asc. 30 ft. to
 18.25 Ridge, brs. E. and W. Desc. slightly
 40.00 Set an iron post, 3 ft. long, 1 in. diam., 26 ins. in the
 ground, for $\frac{1}{4}$ sec. cor., marked on brass cap
 1915 on S. rim;
 $\frac{1}{4}$ S6 in W. and
 S5 in E. half;

30 25.

Subdivision of T. 26 N., R. 18 W.

Chains.

79.92

The cor. of secs. 7, 8, 17 and 18.
 Land, gently rolling.
 Soil, gravelly and stony; 3rd rate.
 No timber.
 Undergrowth, greasewood, yucca, and white sage.
 May 13, 1915. In this sec. I set off 200 10' 2. on the
 sec. line; and in adjacent sec., I observe the iron on
 the drilling; the resulting lot. is 20' 30' 2.

40.00

79.21

S.89° 52' W., on a random line, bet. secs. 7 and 18.
 Set temp. 1/4 sec. cor.
 Intersect W. bdy. of Tp., at the reestablished cor. of secs.
 7, 12, 13 and 18, which is an iron post, described in
 Book "A." of the "C."

19.50

39.21

Thence,
 N.89° 52' E., on a true line, bet. secs. 7 and 18.
 Over gently rolling land, through scattering undergrowth.
 Dim road, brs. N. and S.
 Set an iron post, 3 ft. long, 1 in. diam., 26 ins. in the
 ground, for 1/4 sec. cor., marked on brass cap
 1915 on S. rim;
 1/4 S7 in N. and
 S18 in S. half;
 dig pits, 18 X 18 X 12 ins., E. and W. of post, 3 ft.
 dist.; and raise a mound of earth, 3 1/2 ft. base, 1 1/2 ft.
 high, N. of cor.

79.21

The cor. of secs. 7, 8, 17 and 18.
 Land, gently rolling.
 Soil, gravelly and stony; 3rd rate.
 No timber.
 Undergrowth, greasewood, yucca, white sage, rabbit brush
 and cacti.

R. C. D.
 May 13, 1915.

30.00

40.00

H. G. B.
 May 8, 1915.
 N.0° 3' W., bet. secs. 7 and 8.
 Over rolling land, through scattering undergrowth.
 Center of wash, 60 lks. wide, course E.
 Set an iron post, 3 ft. long, 1 in. diam., 26 ins. in the
 ground, for 1/4 sec. cor., marked on brass cap
 1915 on S. rim;
 1/4 S7 in W. and
 S8 in E. half;
 dig pits, 18 X 18 X 12 ins., N. and S. of post, 3 ft.
 dist.; and raise a mound of earth, 3 1/2 ft. base, 1 1/2 ft.
 high, W. of cor.

80.00

Set an iron post, 3 ft. long, 2 ins. diam., 24 ins. in the
 ground, for cor. of secs. 5, 6, 7 and 8, marked on
 brass cap
 1915 on S. rim;
 T26N R18W in N. half;
 S6 in NW.,
 S5 in NE.,
 S8 in SE. and
 S7 in SW. quadrant;
 dig pits, 18 X 18 X 12 ins., in each sec., 5 1/2 ft. dist.;
 and raise a mound of earth, 4 ft. base, 2 ft. high,
 W. of cor.

Land, rolling.
 Soil, gravel; 3rd rate.
 No timber.
 Undergrowth, greasewood and yucca.

H. G. B.
 May 8, 1915.

Chains.

42.65 S19 in S. half;
 dig pits, 18 X 18 X 12 ins., E. and W. of post, 3 ft. dist.; and raise a mound of earth, 3½ ft. base, 1½ ft. high, N. of cor.
 79.36 Road, brs. NE. and SW.
 The cor. of secs. 17, 18, 19 and 20.
 Land, gently rolling.
 Soil, gravelly and stony; 3rd rate.
 No timber.
 Undergrowth, greasewood, yucca and sage brush.
 R. C. D.
 May 13, 1915.

11.00 H. G. B.
 31.60 May 3, 1915.
 40.00 N.0° 3' W., bet. secs. 17, and 18.
 Over gently rolling land, through scattering undergrowth.
 Wash, 15 lks. wide, course NW.
 Wash, 10 lks. wide, course NW.
 Set an iron post, 3 ft. long, 1 in. diam., 26 ins. in the ground, for ¼ sec. cor., marked on brass cap
 1915 on S. rim;
 ¼ S18 in W. and
 S17 in E. half;
 dig pits, 18 X 18 X 12 ins., N. and S. of post, 3 ft. dist.; and raise a mound of earth, 3½ ft. base, 1½ ft. high, W. of cor.
 56.10 Road, brs. NE. and SW.
 80.00 Set an iron post, 3 ft. long, 2 ins. diam., 24 ins. in the ground, for cor. of secs. 7, 8, 17 and 18, marked on brass cap
 1915 on S. rim;
 T26N R18W in N. half;
 S7 in NW.,
 S8 in NE.,
 S17 in SE. and
 S18 in SW. quadrant;
 dig pits, 18 X 18 X 12 ins., in each sec., 5½ ft. dist.; and raise a mound of earth, 4 ft. base, 2 ft. high, W. of cor.
 Land, gently rolling.
 Soil, gravel; 3rd rate.
 No timber.
 Undergrowth, greasewood and yucca.
 May 3, 1915.
 H. G. B.

40.00 R. C. D.
 79.92 May 13, 1915.
 N.89° 58' E., on a random line, bet. secs. 8 and 17.
 Set temp. ¼ sec. cor.
 Intersect the corner of secs. 8, 9, 16 and 17. S. of cor. and 17.
 Thence, 1 1/2
 39.96 S.89° 58' W., on a true line, bet. secs. 8 and 17.
 Over gently rolling land, through scattering undergrowth.
 Set an iron post, 3 ft. long, 1 in. diam., 26 ins. in the ground, for ¼ sec. cor., marked on brass cap
 1915 on S. rim;
 ¼ S8 in N. and
 S17 in S. half;
 and raise a mound of stone, 2 ft. base, 1½ ft. high, N. of cor. Pits impracticable.
 55.62 Dim road, brs. NW. and SE.
 61.32 Road, brs. NE. and SW.
 64.42 Wash, course N.

20. 28

Subdivision of T. 26 N., R. 18 W.

Chains.

12.50

Desc. 70 ft. to

35.00

Wash, 10 lks. wide, course N.60° W.

40.00

Set an iron post, 3 ft. long, 1 in. diam., 26 ins. in the ground, for $\frac{1}{4}$ sec. cor., marked on brass cap

1915 on S. rim;

 $\frac{1}{4}$ S19 in W. and

S20 in E. half;

and raise a mound of stone, 2 ft. base, $1\frac{1}{2}$ ft. high, W. of cor.

76.00

Wash, 5 lks. wide, course NW. Asc. 25 ft. to

80.00

Set an iron post, 3 ft. long, 2 ins. diam., 24 ins. in the ground, for cor. of secs. 17, 18, 19 and 20, marked on brass cap

1915 on S. rim;

T26N R18W in W. half;

S18 in NW.,

S17 in NE.,

S20 in SE. and

S19 in SW. quadrant;

and raise a mound of stone, 2 ft. base, $1\frac{1}{2}$ ft. high, W. of cor.

Land, rolling.

Soil, stony; 3rd rate.

No timber.

Undergrowth, greasewood and yucca.

H. G. B.

May 8, 1915.

R. C. D.

May 13, 1915: At 7 hrs. 15 m., a.m., l.m.t., I set off $18^{\circ} 13\frac{1}{2}'$ N. on the decl. arc; $35^{\circ} 38'$ N. on the lat. arc; and determine a meridian with the solar at the cor. of secs. 17, 18, 19 and 20.

Thence

N.89° 58' E., on a random line, bet. secs. 17 and 20.

40.00

Set temp. $\frac{1}{4}$ sec. cor.

79.96

Intersect the corner of secs. 16, 17, 20 and 21, 17, 20

Thence

S.89° 58' W., on a true line, bet. secs. 17 and 20.

Over gently rolling land, through scattering undergrowth.

39.60

Wash, course N.

39.98

Set an iron post, 3 ft. long, 1 in. diam., 26 ins. in the ground, for $\frac{1}{4}$ sec. cor., marked on brass cap

1915 on S. rim;

 $\frac{1}{4}$ S17 in N. and

S20 in S. half;

and raise a mound of stone, 2 ft. base, $1\frac{1}{2}$ ft. high, N. of cor.

79.96

The cor. of secs. 17, 18, 19 and 20.

Land, gently rolling.

Soil, gravelly and stony; 3rd rate.

No timber.

Undergrowth, yucca, greasewood and cacti.

S.89° 58' W., on a random line, bet. secs. 18 and 19.

40.00

Set temp. $\frac{1}{4}$ sec. cor.

79.36

Intersect W. bdy. of Tp., 14 lks. N. of the reestablished cor. of secs. 13, 18, 19 and 24, described in Book "A."

Thence

N.89° 52' E., on a true line, bet. secs. 18 and 19.

Over gently rolling land, through scattering undergrowth.

32.95

Wash, course N.

39.36

Set an iron post, 3 ft. long, 1 in. diam., 26 ins. in the ground, for $\frac{1}{4}$ sec. cor., marked on brass cap

1915 on S. rim;

 $\frac{1}{4}$ S18 in N. and

Chains.

S29 in SE. and
 S30 in SW. quadrant;
 and raise a mound of stone, 2 ft. base, 1½ ft. high,
 W. of cor. Pits impracticable.
 Land, rolling mountains.
 Soil, stony and gravelly; 3rd rate.
 No timber.
 Undergrowth, greasewood, yucca and cacti.

40.00 N.89° 57' E., on a random line, bet. secs. 20 and 29.
 79.90 Set temp. ¼ sec. cor.
 Intersect N. and S. line, 2 lks. N. of the cor. of secs.
 20, 21, 28 and 29.
 Thence
 S.89° 58' W., on a true line, bet. secs. 20 and 29.
 11.90 Over gently rolling land, through scattering undergrowth.
 39.95 Culch, course N.
 Set an iron post, 3 ft. long, 1 in. diam., 26 ins. in the
 ground, for ¼ sec. cor., marked on brass cap
 1915 on S. rim;
 S20 in N. and
 S29 in S. half;
 and raise a mound of stone, 2 ft. base, 1½ ft. high,
 N. of cor.
 79.90 The cor. of secs. 19, 20, 29 and 30.
 Land, gently rolling.
 Soil, stony and gravelly; 3rd rate.
 No timber.
 Undergrowth, yucca, greasewood and cacti.

40.00 S.89° 58' W., on a random line, bet. secs. 19 and 30.
 79.58 Set temp. ¼ sec. cor.
 Intersect W. bdy. of Tp., at the reestablished cor. of secs.
 19, 24, 25 and 30, which is an iron post, described in,
 Book "A. ..."
 Thence
 N.89° 58' E., on a true line, bet. secs. 19 and 30.
 39.58 Over gently rolling land, through scattering undergrowth.
 Set an iron post, 3 ft. long, 1 in. diam., 26 ins. in the
 ground, for ¼ sec. cor., marked on brass cap
 1915 on S. rim;
 S19 in N. and
 S30 in S. half;
 and raise a mound of stone, 2 ft. base, 1½ ft. high,
 N. of cor.
 59.60 Wash, course NW.
 79.58 The cor. of secs. 19, 20, 29 and 30.
 Land, gently rolling.
 Soil, gravelly and stony; 3rd rate.
 No timber.
 Undergrowth, yucca, greasewood and cacti.

R. C. D.
May 7, 1915.

7.60 H. G. B.
 May 8, 1915.
 N.0° 3' W., bet. secs. 19 and 20.
 Over rolling land, through scattering undergrowth.
 Desc. to
 Wash, 5 lks. wide, course W. Asc. 55 ft. to

26

Subdivision of T. 26 N., R. 18 W.

Chains.

	<p>S32 in S. half; and raise a mound of stone, 2 ft. base, $1\frac{1}{2}$ ft. high, N. of cor. 1915</p> <p>Continue desc. to Asc. 60 ft. to 80.00 The cor. of secs. 29, 30, 31 and 32. Land, rolling, mountains. Soil, stony; 4th rate. No timber. Undergrowth, yucca.</p> <p style="text-align: right;">May 7, 1915.</p>
40.00	<p>May 6, 1915. S.89° 58' W., on a random line, bet. secs. 30 and 31. Set temp. $\frac{1}{4}$ sec. cor. 79.62 Intersect W. bdy. of Tp., at the reestablished cor. of secs. 25, 30, 31 and 36, which is an iron post, described in Book "A." 1915</p> <p>Thence 1915 N.89° 58' E., on a true line, bet. secs. 30 and 31. Over rolling land, through scattering undergrowth. 5.00 Road, brs. NE. and SW. 13.90 Road, brs. NW. and SE. 39.62 Set an iron post, 3 ft. long, 1 in. diam., 26 ins. in the ground, for $\frac{1}{4}$ sec. cor., marked on brass cap 1915 on S. rim; $\frac{1}{4}$S30 in N. and S31 in S. half; and raise a mound of stone, 2 ft. base, $1\frac{1}{2}$ ft. high, N. of cor. 1915</p> <p>65.00 Enter mountainous land, brs. N. and S. Asc. 190 ft. to 79.62 The cor. of secs. 29, 30, 31 and 32. Land, rolling and mountainous. Soil, gravelly and stony; 3rd rate. No timber. Undergrowth, greasewood and yucca.</p> <p style="text-align: right;">May 6, 1915.</p>
3.30	<p>May 7, 1915. N.0° 3' W., bet. secs. 29 and 30. Over mountainous land, through scattering undergrowth. Desc. 90 ft. to 10.00 Gulch, course N.60° W. Asc. slightly to 14.75 Desc. 35 ft. to 14.75 Asc. 105 ft. to 20.00 Ridge, brs. NW. and SE. Desc. 215 ft. 38.80 Road, brs. N.80° E., and S.80° W. 40.00 Set an iron post, 3 ft. long, 1 in. diam., 26 ins. in the ground, for $\frac{1}{4}$ sec. cor., marked on brass cap 1915 on S. rim; $\frac{1}{4}$S30 in W. and S29 in E. half; and raise a mound of stone, 2 ft. base, $1\frac{1}{2}$ ft. high, W. of cor. 1915</p> <p>Asc. 50 ft. to 46.95 Desc. 55 ft. to 58.60 Asc. 70 ft. to 62.35 Desc. 75 ft. to 65.80 Wash, course NW. Asc. slightly to 80.00 Set an iron post, 3 ft. long, 2 ins. diam., 24 ins. in the ground, for cor. of secs. 19, 20, 29 and 30, marked on brass cap 1915 on S. rim; T26N R18W in N. half; S19 in NW., S20 in NE.,</p>

Chains.

No timber.
Undergrowth, yucca, rabbit brush, cacti and greasewood.
May 8, 1915.

May 6, 1915: At 8 hrs. 8 m., a.m., l.m.t., I set off 109° 24' E. on
From the reestablished corner of secs. 5, 6, 31 and 32, on
the S. bdy. of the Tp., which is an iron post, described
in Book VA, My. of the Co., which is an iron post,
and a line by T. 26 N., R. 18 W., described in Book "A"; the
bearing is 109° 24' E.

Thence
N. 0° 3' W., bet. secs. 31 and 32.
Over high, rolling, mountainous land, through scattering
undergrowth.

Asc. 195 ft. to
49.30 Ridge, brs. E. and W. Desc. 340 ft. to
23.55 Asc. 85 ft. to
32.70 Low ridge, brs. E. and W. Desc. 430 ft.
40.00 Set an iron post, 3 ft. long, 1 in. diam., 26 ins. in the
ground, for 1/4 sec. cor., marked on brass cap

1915 on S. rim;
1/4 S31 in W. and
S32 in E. half;
and raise a mound of stone, 2 ft. base, 1 1/2 ft. high,
W. of cor.

Continue desc.
56.50 E. point of ledge of rock. Continue desc.
80.00 Set an iron post, 3 ft. long, 2 ins. diam., 24 ins. in the
ground, for cor. of secs. 29, 30, 31 and 32, marked on
brass cap

1915 on S. rim;
T26N R18W in N. half;
S30 in NW.,
S29 in NE.,
S32 in SE. and
S31 in SW. quadrant;
and raise a mound of stone, 2 ft. base, 1 1/2 ft. high,
W. of cor.

Land, high, rolling, mountains.
Soil, stony; 4th rate.
No timber.
Undergrowth, yucca, greasewood and cacti.

May 6, 1915.

May 7, 1915: At 8 hrs. 8 m., a.m., l.m.t., I set off
35° 36 1/2' N. on the lat. arc; 16° 38 1/2' N. on the decl.
arc; and determine a meridian with the solar at the
cor. of secs. 29, 30, 31 and 32.

Thence
N. 89° 58' E., on a random line, bet. secs. 29 and 32.

40.00 Set temp. 1/4 sec. cor.
80.00 Intersect N. and S. line, 2 lks. S. of the cor. of secs.
28, 29, 32 and 33.

Thence
S. 89° 57' W., on a true line, bet. secs. 29 and 32.
Over rolling, mountainous land, through scattering under-
growth.

Desc. 115 ft., along broken N. slope, to
5.00 Asc. 85 ft. to
16.55 Desc. 35 ft. to
19.50 Asc. 50 ft. to
24.05 Desc. 465 ft.
40.00 Set an iron post, 3 ft. long, 1 in. diam., 26 ins. in the
ground, for 1/4 sec. cor., marked on brass cap

1915 on S. rim;
1/4 S29 in N. and

27.

Subdivision of T. 26 N., R. 18 W.

Chains.

	<p>dig pits, 18 X 18 X 12 ins., in each sec., 5½ ft. dist.; and raise a mound of earth, 4 ft. base, 2 ft. high, W. of cor.</p> <p>Land, gently rolling.</p> <p>Soil, stony and gravelly; 3rd rate.</p> <p>No timber.</p> <p>Undergrowth, greasewood, yucca and cacti.</p> <p>At this cor., I set off 16° 10' N. on the lat. arc; and a meridian line, I observe the sun on the meridian; the declination was 18° 14' N. on May 13, 1915.</p> <p>R. C. D.</p>
	<p>H. G. B.</p> <p>May 13, 1915. At 8 hrs. 4 m., a.m., l.m.t., I set off 35° 40' N. on the lat. arc; 18° 14' N. on the decl. arc; and determine a meridian with the solar at the cor. of secs. 4, 5, 8 and 9.</p> <p>Thence I</p> <p>East on a random line, bet. secs. 4 and 9.</p> <p>40.00 Set temp. ¼ sec. cor.</p> <p>80.00 Intersect the corner of secs. 3, 4, 9 and 10. 3, 4, 9 and 10.</p> <p>Thence I</p> <p>West on a true line, bet. secs. 4 and 9.</p> <p>Over level land, through dense undergrowth.</p> <p>6.70 Wash, 30 lks. wide, course N.</p> <p>40.00 Set an iron post, 3 ft. long, 1 in. diam., 26 ins. in the ground, for ¼ sec. cor., marked on brass cap</p> <p>1915 on S. rim;</p> <p>¼ S4 in N. and</p> <p>S9 in S. half;</p> <p>and raise a mound of stone, 2 ft. base, 1½ ft. high, N. of cor. 20 ft. long and 10 ft. wide.</p> <p>41.65 Road, brs. NE. and SW.</p> <p>59.90 Enter wash, course N. 30° E.</p> <p>63.00 Leave wash, course N. 30° E.</p> <p>80.00 The cor. of secs. 4, 5, 8 and 9.</p> <p>Land, level.</p> <p>Soil, gravel; 3rd rate.</p> <p>No timber.</p> <p>Undergrowth, yucca, cacti and greasewood.</p> <p>H. G. B.</p> <p>May 13, 1915.</p>
	<p>May 8, 1915: R. C. D.</p> <p>N. 0° 3' W., on a random line, bet. secs. 4 and 5.</p> <p>40.00 Set temp. ¼ sec. cor.</p> <p>80.06 Intersect N. bdy. of Tp., 12 lks. E. of the reestablished cor. of secs. 4, 5, 8 and 9, which is an iron post, described in Book "A." and in Book "B."</p> <p>Thence, I</p> <p>S. 0° 8' E., on a true line, bet. secs. 4 and 5.</p> <p>Over gently rolling land, through scattering undergrowth.</p> <p>40.06 Set an iron post, 3 ft. long, 1 in. diam., 26 ins. in the ground, for ¼ sec. cor., marked on brass cap</p> <p>1915 on S. rim;</p> <p>¼ S5 in W. and</p> <p>S4 in E. half;</p> <p>and raise a mound of stone, 2 ft. base, 1½ ft. high, W. of cor. 20 ft. long and 10 ft. wide.</p> <p>64.16 Wash, 20 lks. wide, 2 ft. deep, course NE.</p> <p>80.06 The cor. of secs. 4, 5, 8 and 9.</p> <p>Land, gently rolling.</p> <p>Soil, gravelly and stony; 3rd rate.</p>

<p>Chains.</p> <p>80.00</p>	<p>S16 in E. half; dig pits, 18 X 18 X 12 ins., N. and S. of post, 3 ft. dist.; and raise a mound of earth, 3½ ft. base, 1½ ft. high, W. of cor. Set an iron post, 3 ft. long, 2 ins. diam., 24 ins. in the ground, for cor. of secs. 8, 9, 16 and 17, marked on brass cap 1915 on S. rim; T26N R18W in N. half; S8 in NW., S9 in NE., S16 in SE. and S17 in SW. quadrant; and raise a mound of stone, 2 ft. base, 1½ ft. high, W. of cor. Land, rolling. Soil, stony and gravelly; 3rd rate. No timber. Undergrowth, rabbit brush, cacti and yucca. May 8, 1915.</p>
<p>40.00</p> <p>80.00</p> <p>.40</p> <p>40.00</p> <p>53.00</p> <p>80.00</p>	<p>May 13, 1915. N. 89° 57' E., on a random line, bet. secs. 9 and 16. Set temp. ¼ sec. cor. Intersect N. and S. line, 7 lks. N. of the cor. of secs. 9, 10, 15 and 16. Thence West on a true line, bet. secs. 9 and 16. Over gently rolling land, through scattering undergrowth. Center of wash, 60 lks. wide, course NNW. Set an iron post, 3 ft. long, 1 in. diam., 26 ins. in the ground, for ¼ sec. cor., marked on brass cap 1915 on S. rim; ¼ S9 in N. and S16 in S. half; and raise a mound of stone, 2 ft. base, 1½ ft. high, N. of cor. Wash, course N. The cor. of secs. 8, 9, 16 and 17. Land, gently rolling. Soil, gravelly and stony; 3rd rate. No timber. Undergrowth, greasewood, yucca and cacti. May 13, 1915.</p>
<p>40.00</p> <p>49.20</p> <p>56.10</p> <p>70.00</p> <p>80.00</p>	<p>May 8, 1915. N. 0° 3' W., bet. secs. 8 and 9. Over gently rolling land, through scattering undergrowth. Set an iron post, 3 ft. long, 1 in. diam., 26 ins. in the ground, for ¼ sec. cor., marked on brass cap 1915 on S. rim; ¼ S8 in W. and S9 in E. half; and raise a mound of stone, 2 ft. base, 1½ ft. high, W. of cor. Center of wash, 80 lks. wide, 2 ft. deep, course NE. Road, brs. NE. and SW. Old, dim road, brs. NE. and SW. Set an iron post, 3 ft. long, 2 ins. diam., 24 ins. in the ground, for cor. of secs. 4, 5, 8 and 9, marked on brass cap 1915 on S. rim; T26N R18W in N. half; S5 in NW., S4 in NE., S9 in SE. and S8 in SW. quadrant;</p>

22.

Subdivision of T. 26 N., R. 18 W.

Chains.

	<p>35° 37$\frac{1}{2}$' N. on the lat. arc; 16° 55' N. on the decl. arc; and determine a meridian with the solar at the cor. of secs. 20, 21, 28 and 29.</p> <p>Thence</p> <p>N.0° 3' W., bet. secs. 20 and 21.</p> <p>Over gently rolling land, through scattering undergrowth.</p> <p>40.00 Set an iron post, 3 ft. long, 1 in. diam., 26 ins. in the ground, for $\frac{1}{4}$ sec. cor., marked on brass cap</p> <p style="padding-left: 40px;">1915 on S. rim; $\frac{1}{4}$S20 in W. and S21 in E. half;</p> <p>and raise a mound of stone, 2 ft. base, 1$\frac{1}{2}$ ft. high, W. of cor.</p> <p>80.00 Set an iron post, 3 ft. long, 2 ins. diam., 24 ins. in the ground, for cor. of secs. 16, 17, 20 and 21, marked on brass cap</p> <p style="padding-left: 40px;">1915 on S. rim; T26N R18W in N. half; S17 in NW., S16 in NE., S21 in SE. and S20 in SW. quadrant;</p> <p>and raise a mound of stone, 2 ft. base, 1$\frac{1}{2}$ ft. high, W. of cor.</p> <p>Land, gently rolling. Soil, stony and gravelly; 3rd rate. No timber. Undergrowth, yucca, rabbit brush and cacti.</p> <p style="text-align: right;">R. C. D.</p>
40.00	H. G. B.
79.86	N.89° 55' E., on a random line, bet. secs. 16 and 21. Set temp. $\frac{1}{4}$ sec. cor. Intersect N. and S. line, 5 lks. N. of the cor. of secs. 15, 16, 21 and 22.
17.00	Thence
26.25	S.89° 57' W., on a true line, bet. secs. 16 and 21. Over rolling land, through scattering undergrowth. Wash, 10 lks. wide, course NW.
39.93	Wash, 20 lks. wide, course N.20° W. Set an iron post, 3 ft. long, 1 in. diam., 26 ins. in the ground, for $\frac{1}{4}$ sec. cor., marked on brass cap <p style="padding-left: 40px;">1915 on S. rim; $\frac{1}{4}$S16 in N. and S21 in S. half;</p> <p>and raise a mound of stone, 2 ft. base, 1$\frac{1}{2}$ ft. high, N. of cor.</p>
41.30	Road, brs. N. and S.
72.00	Wash, 10 lks. wide, course N.
79.75	Wash, 10 lks. wide, course NW.
79.86	The cor. of secs. 16, 17, 20 and 21. Land, level. Soil, gravel; 3rd rate. No timber. Undergrowth, greasewood and yucca. <p style="text-align: right;">H. G. B.</p>
.30	R. C. D.
4.60	N.0° 3' W., bet. secs. 16 and 17. Over rolling land, through scattering undergrowth. Wash, 15 lks. wide, 1 ft. deep, course NW.
49.00	Dim road, brs. NW. and SE. Set an iron post, 3 ft. long, 1 in. diam., 26 ins. in the ground, for $\frac{1}{4}$ sec. cor., marked on brass cap <p style="padding-left: 40px;">1915 on S. rim; $\frac{1}{4}$S17 in W. and</p>

Subdivision of T. 26 N., R. 18 W.

Chains.

R. C. D.
 May 6, 1915.
 N.0° 3' W., bet. secs. 28 and 29.
 Over mountainous land, through dense undergrowth.
 Desc. 465 ft.
 38.00 Road, brs. NE. and SW.
 40.00 Set an iron post, 3 ft. long, 1 in. diam., 26 ins. in the
 ground, for $\frac{1}{4}$ sec. cor., marked on brass cap
 1915 on S. rim;
 $\frac{1}{4}$ S29 in W. and
 S28 in E. half;
 and raise a mound of stone, 2 ft. base, 1 $\frac{1}{2}$ ft. high,
 W. of cor. *Site impracticable.*
 Leave mountainous land, thence over gently rolling land.
 54.30 Wash, course NW.
 80.00 Set an iron post, 3 ft. long, 2 ins. diam., 24 ins. in the
 ground, for cor. of secs. 20, 21, 28 and 29, marked on
 brass cap
 1915 on S. rim;
 T26N R18W in N. half;
 S20 in NW.,
 S21 in NE.,
 S28 in SE. and
 S29 in SW. quadrant;
 and raise a mound of stone, 2 ft. base, 1 $\frac{1}{2}$ ft. high,
 W. of cor. *Site impracticable.*
 Land, mountainous and gently rolling.
 Soil, stony; 4th rate.
 No timber.
 Undergrowth, greasewood, yucca and cacti.
 R. C. D.
 May 6, 1915.

H. G. B.
 May 12, 1915.
 S.89° 57' E., on a random line, bet. secs. 21 and 28.
 40.00 Set temp. $\frac{1}{4}$ sec. cor.
 79.86 Intersect N. and S. line, 19 lks. S. of the cor. of secs.
 21, 22, 27 and 28.
 Thence, *1200*
 S.89° 55' W., on a true line, bet. secs. 21 and 28.
 Over rolling land, through scattering undergrowth.
 8.00 Wash, 5 lks. wide, course NW.
 10.15 Road, brs. NE. and SW.
 29.00 Wash, 5 lks. wide, course N.
 39.93 Set an iron post, 3 ft. long, 1 in. diam., 26 ins. in the
 ground, for $\frac{1}{4}$ sec. cor., marked on brass cap
 1915 on S. rim;
 $\frac{1}{4}$ S21 in N. and
 S28 in S. half;
 and raise a mound of stone, 2 ft. base, 1 $\frac{1}{2}$ ft. high,
 N. of cor. *Site impracticable.*
 40.75 Wash, 5 lks. wide, course N.
 54.00 Wash, 10 lks. wide, course N.
 56.65 Road, brs. N. and S.
 60.00 Wash, 20 lks. wide, course N.15° W.
 79.86 The cor. of secs. 20, 21, 28 and 29.
 Land, rolling.
 Soil, gravel; 3rd rate.
 No timber.
 Undergrowth, greasewood, yucca and cacti.
 H. G. B.
 May 12, 1915.

R. C. D.
 May 8, 1915: At 8 hrs. 0 m., a.m., l.m.t., I set off

201.

Subdivision of T. 26 N., R. 18 W.

Chains.

S33 in E. half;
and raise a mound of stone, 2 ft. base, $1\frac{1}{2}$ ft. high,
W. of cor. ~~in the~~

46.10 Gulch, course W. Asc. S. slope, 235 ft. to
57.30 Ridge, brs. NW. and SE. Desc. NE. slope, 425 ft. to
80.00 Set an iron post, 3 ft. long, 2 ins. diam., 24 ins. in the
ground, for cor. of secs. 28, 29, 32 and 33, marked on
brass cap

1915 on S. rim;
T26N R18W in N. half;
S29 in NW.,
S28 in NE.,
S33 in SE. and
S32 in SW. quadrant;
and raise a mound of stone, 2 ft. base, $1\frac{1}{2}$ ft. high,
W. of cor. ~~in the~~

Soil, stony; 4th rate.
Land, high, rolling mountains.
Timber, pine.
Undergrowth, yucca.

R. C. D.
May 6, 1915.

H. G. B.
May 10, 1915: At 8 hrs. 0 m., a.m., l.m.t., I set off
 $33^{\circ} 36\frac{1}{2}'$ N. on the lat. arc; $17^{\circ} 27\frac{1}{2}'$ N. on the decl.
arc; and determine a meridian with the solar at the
cor. of secs. 28, 29, 32 and 33.

Thence
N. $89^{\circ} 58'$ E., on a random line, bet. secs. 28 and 33.
40.00 Set temp. $\frac{1}{4}$ sec. cor.
79.86 Intersect N. and S. line, 12 lks. N. of the cor. of secs.
27, 28, 33 and 34.

Thence
N. $89^{\circ} 57'$ W., on a true line, bet. secs. 28 and 33.
Over mountainous land, through scattering undergrowth.
Desc. 140 ft.

14.22 Barbed wire fence, brs. N. 65° E., and S. 65° W.
14.90 Road, brs. NW. and SE.
15.00 Enter corral, brs. NW. and SE. End of pipe line, 10 lks.
S.

16.10 Leave corral, brs. NE. and SW.
17.00 Wash, 30 lks. wide, course NW. Asc. slightly to
27.00 Ridge, slopes N. Desc. to
28.50 Wash, 10 lks. wide, course N. Asc. 105 ft.
39.93 Set an iron post, 3 ft. long, 1 in. diam., 26 ins. in the
ground, for $\frac{1}{4}$ sec. cor., marked on brass cap

1915 on S. rim;
 $\frac{1}{4}$ S28 in N. and
S33 in S. half;
and raise a mound of stone, 2 ft. base, $1\frac{1}{2}$ ft. high,
N. of cor. ~~in the~~

45.00 Desc. 25 ft. to
49.55 Wash, 10 lks. wide, course N. Asc. 10 ft. to
52.30 Desc. 20 ft. to
55.80 Wash, 10 lks. wide, course N. Asc. 25 ft. to
59.80 Desc. 50 ft. to
67.80 Wash, 10 lks. wide, course N. Asc. 145 ft. to
78.10 Desc. to ~~the~~
79.86 The cor. of secs. 28, 29, 32 and 33.

Land, mountainous.
Soil, stony; 4th rate.
No timber.
Undergrowth, yucca.

H. G. B.
May 10, 1915.

Chains.

30.00 Wash, 10 lks. wide, course N.
 40.01 Set an iron post, 3 ft. long, 1 in. diam., 26 ins. in the ground, for $\frac{1}{4}$ sec. cor., marked on brass cap
 1915 on S. rim;
 $\frac{1}{4}$ S3 in N. and
 S10 in S. half;
 dig pits, 18 X 18 X 12 ins., E. and W. of post, 3 ft. dist.; and raise a mound of earth, $3\frac{1}{2}$ ft. base, $1\frac{1}{2}$ ft. high, N. of cor.
 41.40 Wash, 4 lks. wide, course N.
 62.80 Road, brs. NE. and SW.
 80.02 The cor. of secs. 3, 4, 10 and 9.
 Land, level.
 Soil, gravel; 3rd rate.
 No timber.
 Undergrowth, yucca.
 May 12, 1915: At this cor., I set off 180' N. on the
 line, and 40' E. on the
 line, and the distance is 35° 40' E.
 May 13, 1915.

May 12, 1915.
 N.0° 2' W., on a random line, bet. secs. 3 and 4.
 40.00 Set temp. $\frac{1}{4}$ sec. cor.
 80.07 Intersect N. bdy. of Tpt. 9 lks. E. of the reestablished cor.
 of secs. 3, 4, 33 and 34, which is an iron post, described
 in Book "A." in Book "B."
 Thence, I run
 S.0° 6' E., on a true line, bet. secs. 3 and 4.
 Over rolling land, through dense undergrowth.
 8.00 Wash, 5 lks. wide, course SE.
 33.20 Enter wash, course N.30° E.
 38.65 Leave wash, course N.30° E.
 40.07 Set an iron post, 3 ft. long, 1 in. diam., 26 ins. in the ground, for $\frac{1}{4}$ sec. cor., marked on brass cap
 1915 on S. rim;
 $\frac{1}{4}$ S4 in W. and
 S3 in E. half;
 and raise a mound of stone, 2 ft. base, $1\frac{1}{2}$ ft. high,
 W. of cor.
 51.35 Road, brs. N.35° E., and S.35° W.
 80.07 The cor. of secs. 3, 4, 9 and 10.
 Land, rolling.
 Soil, stony; 4th rate.
 No timber.
 Undergrowth, yucca.
 H. G. B.
 May 12, 1915.

R. C. D.
 May 6, 1915: At 7 hrs. 30 m., a.m., 1.m.t., I set off
 35° 35 $\frac{1}{2}$ ' N. on the lat. arc; 16° 21 $\frac{1}{2}$ ' N. on the decl.
 arc; and determine a meridian with the solar at the
 reestablished cor. of secs. 4, 5, 32 and 33, on the S. bdy.
 of the Tpt., which is an iron post, described in Book
 "A." in Book "B."
 Thence, I run
 N.0° 3' W., bet. secs. 32 and 33.
 Over high, rolling, mountainous land, through scattering
 undergrowth.
 Asc. SE. slope, 650 ft.
 17.70 Gulch, course SE. Asc. S. slope to
 26.20 Ridge, brs. E. and W. Desc. 585 ft., through pine timber.
 40.00 Set an iron post, 3 ft. long, 1 in. diam., 26 ins. in the ground, for $\frac{1}{4}$ sec. cor., marked on brass cap
 1915 on S. rim;
 $\frac{1}{4}$ S32 in W. and

Subdivision of T. 26 N., R. 19 W. 43

Chains.
 35.70 Wash, 5 lks. wide, course S.65° E. Asc. 175 ft.
 39.96 Set an iron post, 3 ft. long, 1 in. diam., 26 ins. in the ground, for ¼ sec. cor., marked on brass cap
 1915 on S. rim;
 182 in N. and
 S11 in S. half;
 and raise a mound of stone, 2 ft. base, 1½ ft. high, N. of cor.

46.00 Ridge, brs. NW. and SE. Desc. 50 ft. to
 69.50 Asc. 40 ft. to
 72.45 Ridge, brs. NW. and SE. Desc. 55 ft. to
 77.60 Wash, 10 lks. wide, course SE. Asc. to
 79.92 The cor. of secs. 2, 3, 10 and 11.
 Land, rolling.
 Soil, stony; 4th rate.
 No timber.
 Undergrowth, greasewood and yucca.
 May 5, 1915: At this corner I set off 100° 7' N. on the decl. arc; and at same station, I establish the line on the meridian; the resulting line is 55° 40' E.
 May 5, 1915.

Apr. 28, 1915.
 N.0° 1' W., on a random line, bet. secs. 2 and 3.
 40.00 Set temp. ¼ sec. cor.
 79.60 Intersect N. bdy. of Tp., 14 lks. E. of the reestablished cor. of secs. 2, 3, 34 and 35, which is an iron post, described in Book "A" Book "B"
 Thence, I set
 S.0° 7' E., on a true line, bet. secs. 2 and 3.
 Over rolling land, through scattering undergrowth.
 Asc. 250 ft. to
 26.25 Ridge, slopes NW. Desc. 40 ft. to
 29.70 Wash, 3 lks. wide, course SE. Asc. 125 ft.
 39.60 Set an iron post, 3 ft. long, 1 in. diam., 26 ins. in the ground, for ¼ sec. cor., marked on brass cap
 1915 on S. rim;
 183 in W. and
 S2 in E. half;
 and raise a mound of stone, 2 ft. base, 1½ ft. high, W. of cor.

42.40 Desc. 60 ft. to
 64.80 Wash, 3 lks. wide, course NE. Asc. 135 ft. to
 69.05 Ridge, slopes E. Desc. 175 ft. to
 77.65 Wash, 5 lks. wide, course S.15° E.
 79.60 The cor. of secs. 2, 3, 10 and 11.
 Land, rolling.
 Soil, stony; 4th rate.
 No timber.
 Undergrowth, greasewood and yucca.
 H. C. B.
 Apr. 28, 1915.

Apr. 28, 1915: R. C. D.
 At 7 hrs. 30 m., a.m., l.m.t., I set off 35° 35½' N. on the lat. arc; 13° 57' N. on the decl. arc; and determine a meridian with the solar at the reestablished cor. of secs. 3, 4, 33, and 34, on the S. bdy. of the Tp., which is an iron post, described in Book "A" as described in Book "B".
 Thence, I set
 N.0° 2' W., bet. secs. 33 and 34.
 Over gently rolling land, through scattering undergrowth.
 24.00 Wash, 20 lks. wide, 1 ft. deep, course SW.
 40.00 Set an iron post, 3 ft. long, 1 in. diam., 26 ins. in the ground, for ¼ sec. cor., marked on brass cap
 1915 on S. rim;

244

Subdivision of T. 26 N., R. 19 W.

Chains.

80.00 $\frac{1}{4}$ S33 in W. and
 S34 in E. half;
 and raise a mound of stone, 2 ft. base, $1\frac{1}{2}$ ft. high,
 W. of cor. *Sits impracticable.*
 Set an iron post, 3 ft. long, 2 ins. diam., 24 ins. in the
 ground, for cor. of secs. 27, 28, 33 and 34, marked on
 brass cap
 1915 on S. rim;
 T26N R19W in N. half;
 S28 in NW.,
 S27 in NE.,
 S34 in SE. and
 S33 in SW. quadrant;
 and raise a mound of stone, 2 ft. base, $1\frac{1}{2}$ ft. high,
 W. of cor. *Sits impracticable.*
 Land, gently rolling.
 Soil, gravelly and stony; 3rd rate.
 No timber.
 Undergrowth, greasewood and yucca.

R. C. D.
Apr. 28, 1915.

Apr. 30, 1915: H. G. B.
 At 8 hrs. 30 m., a.m., l.m.t., I set off $35^{\circ} 36\frac{1}{2}'$ N. on
 the lat. arc; $14^{\circ} 35'$ N. on the decl. arc; and determine
 a meridian with the solar at the cor. of secs. 27, 28,
 33 and 34.
 Thence I
 S. $89^{\circ} 57'$ E., on a random line, bet. secs. 27 and 34.
 40.00 Set temp. $\frac{1}{4}$ sec. cor.
 79.98 Intersect N. and S. line, 12 lks. N. of the cor. of secs.
 26, 27, 34 and 35.
 Thence I
 N. $89^{\circ} 52'$ W., on a true line, bet. secs. 27 and 34.
 Over rolling land, through scattering undergrowth.
 Desc. to
 1.00 Wash, 5 lks. wide, course SE. Asc. 330 ft. to
 18.15 Desc. 485 ft.
 39.99 Set an iron post, 3 ft. long, 1 in. diam., 26 ins. in the
 ground, for $\frac{1}{4}$ sec. cor., marked on brass cap
 1915 on S. rim;
 $\frac{1}{4}$ S27 in N. and
 S34 in S. half;
 and raise a mound of stone, 2 ft. base, $1\frac{1}{2}$ ft. high,
 N. of cor. *Sits impracticable.*
 55.90 Wash, 20 lks. wide, course SW.
 68.40 Wash, 20 lks. wide, course SW. Thence over gently rolling
 land, to
 79.98 The cor. of secs. 27, 28, 33 and 34.
 Land, rolling.
 Soil, stony; 4th rate.
 No timber.
 Undergrowth, greasewood and yucca.

H. G. B.
Apr. 30, 1915.

Apr. 28, 1915: R. C. D.
 N. $0^{\circ} 2'$ W., bet. secs. 27 and 28.
 Over gently rolling land, through scattering undergrowth.
 30.00 Center of wash, 60 lks. wide, course SW.
 40.00 Set an iron post, 3 ft. long, 1 in. diam., 26 ins. in the
 ground, for $\frac{1}{4}$ sec. cor., marked on brass cap
 1915 on S. rim;
 $\frac{1}{4}$ S28 in W. and
 S27 in E. half;
 and raise a mound of stone, 2 ft. base, $1\frac{1}{2}$ ft. high,

Chains.

W. of cor. *Site impracticable.*
 77.30 Wash, 40 lks. wide, 3 ft. deep, course SW.
 80.00 Set an iron post, 3 ft. long, 2 ins. diam., 24 ins. in the
 ground, for cor. of secs. 21, 22, 27 and 28, marked on
 brass cap
 1915 on S. rim;
 T26N R19W in N. half;
 S21 in NW.,
 S22 in NE.,
 S27 in SE. and
 S28 in SW. quadrant;
 and raise a mound of stone, 2 ft. base, 1½ ft. high,
 W. of cor. *Site impracticable.*
 Land, gently rolling.
 Soil, gravelly and stony; 3rd rate.
 No timber.
 Undergrowth, greasewood, yucca and cacti.
 Apr. 28, 1915.

May 3, 1915.
 S. 89° 52' E., on a random line, bet. secs. 22 and 27.
 40.00 Set temp. ¼ sec. cor.
 80.12 Intersect ~~the corner~~ of secs. 22, 23, 26 and 27; 22, 23, 26
 and 27.
 Thence, *Site impracticable.*
 N. 89° 52' W., on a true line, bet. secs. 22 and 27.
 Over rolling land, through scattering undergrowth.
 Desc. to
 2.52 Gulch, course N. Asc. 105 ft. to
 15.00 Ridge, brs. N. and S. Mud Springs brs. S. 64° W. Desc.
 285 ft.
 28.12 Mud Springs brs. S. 48° W.
 35.00 Foot of desc.; thence over gently rolling land.
 40.06 Set an iron post, 3 ft. long, 1 in. diam., 26 ins. in the
 ground, for ¼ sec. cor., marked on brass cap
 1915 on S. rim;
 ½ S22 in N. and
 S27 in S. half;
 and raise a mound of stone, 2 ft. base, 1½ ft. high,
 N. of cor. *Site impracticable.*
 72.72 Gulch, course SW.
 80.12 The cor. of secs. 21, 22, 27 and 28.
 Land, rolling.
 Soil, stony; 4th rate.
 No timber.
 Undergrowth, yucca, greasewood and cacti.
 May 3, 1915.

Apr. 28, 1915.
 N. 0° 2' W., bet. secs. 21 and 22.
 Over gently rolling land, through scattering undergrowth, to
 20.00 Asc. 290 ft.
 40.00 Set an iron post, 3 ft. long, 1 in. diam., 26 ins. in the
 ground, for ¼ sec. cor., marked on brass cap
 1915 on S. rim;
 ½ S21 in W. and
 S22 in E. half;
 and raise a mound of stone, 2 ft. base, 1½ ft. high,
 W. of cor. *Site impracticable.*
 51.50 Low ridge, brs. NW. and SE. Desc. along broken E. slope,
 105 ft. to
 75.00 Asc. 30 ft. to
 80.00 Set an iron post, 3 ft. long, 2 ins. diam., 24 ins. in the
 ground, for cor. of secs. 15, 16, 21 and 22, marked on
 brass cap
 1915 on S rim;

Chains.

T26N R19W in N. half;
S16 in NW.,
S15 in NE.,
S22 in SE. and
S21 in SW. quadrant;

and raise a mound of stone, 2 ft. base, 1½ ft. high,
W. of cor. Pits impracticable.
Land, rolling.
Soil, stony; 4th rate.
No timber.
Undergrowth, greasewood, yucca and cacti.

Apr. 28, 1915.

40.00

May 3, 1915.
S.89° 52' E., on a random line, bet. secs. 15 and 22.

80.16

Set temp. ¼ sec. cor.
Intersect N. and S. line, 14 lks. S. of the cor. of secs.
14, 15, 22 and 23.

Thence

40.08

N.89° 58' W., on a true line, bet. secs. 15 and 22.
Over gently rolling land, through scattering undergrowth.
Set an iron post, 3 ft. long, 1 in. diam., 26 ins. in the
ground, for ¼ sec. cor., marked on brass cap

1915 on S. rim;
¼S15 in N. and
S22 in S. half;

and raise a mound of stone, 2 ft. base, 1½ ft. high,
N. of cor. Pits impracticable.

48.00

Desc. 205 ft. to

58.60

Gulch, course S. Asc. 80 ft. to

66.40

Low ridge, brs. N. and S. Desc. 160 ft. to

72.30

Gulch, course S. Asc. 15 ft. to

80.16

The cor. of secs. 16, 15, 21 and 22.

Land, rolling.

Soil, stony; 4th rate.

No timber.

Undergrowth, greasewood, yucca and cacti.

May 3, 1915.

40.00

Apr. 28, 1915.
N.0° 2' W., bet. secs. 15 and 16.
Over rolling land, along broken W. slope, through scatter-
ing undergrowth.

Asc. gradually 275 ft.

Set an iron post, 3 ft. long, 1 ins diam., 26 ins. in the
ground, for ¼ sec. cor., marked on brass cap

1915 on S. rim;
¼S16 in W. and
S15 in E. half;

and raise a mound of stone, 2 ft. base, 1½ ft. high,
W. of cor. Pits impracticable.

Apr. 28, 1915: At this cor., I set off 148 00' N. on the
decl. arc; and at a point 700' N. observe the sun on
the meridian; the resulting lat. is 35° 32' N.

52.35

Continue asc tp
Desc. 40 ft. to

60.00

Asc. slightly to

77.50

Desc. 25 ft. to

79.60

Gulch, course SE. Asc. to

80.00

Set an iron post, 3 ft. long, 2 ins. diam., 24 ins. in the
ground, for cor. of secs. 9, 10, 15 and 16, marked on
brass cap

1915 on S. rim;
T26N R19W in N. half;
S9 in NW.,
S10 in NE.,
S15 in SE. and

Chains..

S16 in SW. quadrant;
 and raise a mound of stone, 2 ft. base, 1½ ft. high,
 W. of cor. *Pits impracticable.*
 Land, rolling.
 Soil, stony; 4th rate.
 No timber.
 Undergrowth, greasewood, yucca and cacti.

R. C. D.
 Apr. 22, 1915.

May 3, 1915: H. G. B.
 S. 89° 58' E., on a random line, bet. secs. 10 and 15.
 40.00 Set temp. ¼ sec. cor.
 80.04 Intersect N. and S. line, 5 lks. S. of the cor. of secs.
 10, 11, 14 and 15.
 Thence
 West on a true line, bet. secs. 10 and 15.
 Over rolling land, through scattering undergrowth.
 Asc. 105 ft. to
 13.20 Ridge, brs. NW. and SE. Desc. 85 ft. to
 31.05 Wash, 15 lks. wide, course SE.
 40.02 Set an iron post, 3 ft. long, 1 in. diam., 26 ins. in the
 ground, for ¼ sec. cor., marked on brass cap
 1915 on S. rim;
 ¼ S10 in N. and
 S15 in S. half;
 and raise a mound of stone, 2 ft. base, 1½ ft. high,
 N. of cor. *Pits impracticable.*
 48.20 Wash, 10 lks. wide, course S. 60° E. Asc. 210 ft. to
 67.75 Ridge, brs. NW. and SE. Desc. 245 ft. to
 80.04 The cor. of secs. 9, 10, 15 and 16.
 Land, rolling.
 Soil, stony; 4th rate.
 No timber.
 Undergrowth, greasewood, yucca and cacti.
 May 3, 1915: At this cor., I set off 15° 32' N. on the
 decl. arc; and at several noon, I observe the sun on
 the meridian: the resulting lat. is 35° 59' E.
 H. G. B.
 May 3, 1915.

Apr. 22, 1915: R. C. D.
 N. 0° 2' W., bet. secs. 9 and 10.
 Over rolling, mountainous land, through scattering under-
 growth.
 Asc. 280 ft. to
 17.60 Ridge, brs. E. and W. Desc. 110 ft. to
 24.35 Asc. 40 ft. to
 29.30 Desc. 170 ft.
 40.00 Set an iron post, 3 ft. long, 1 in. diam., 26 ins. in the
 ground, for ¼ sec. cor., marked on brass cap
 1915 on S. rim;
 ¼ S9 in W. and
 S10 in E. half;
 and raise a mound of stone, 2 ft. base, 1½ ft. high,
 W. of cor. *Pits impracticable.*
 50.00 Asc. 110 ft. to
 64.80 Desc. 90 ft. to
 80.00 Set an iron post, 3 ft. long, 2 ins. diam., 24 ins. in the
 ground, for cor. of secs. 3, 4, 9 and 10, marked on
 brass cap
 1915 on S. rim;
 T26N R19W in N. half;
 S4 in NW.,
 S3 in NE.,
 S10 in SE. and

Chains.

S9 in SW. quadrant;
and raise a mound of stone, 2 ft. base, 1½ ft. high,
W. of cor. Pits impracticable.
Land, rolling, mountainous.
Soil, stony; 4th rate.
No timber.
Undergrowth, greasewood, yucca and cacti.

R. C. D.
Apr. 22, 1915.

May 3, 1915: H. G. B.
East on a random line, bet. secs. 3 and 10.
40.00 Set temp. ¼ sec. cor.
80.00 Intersect N. and S. line, 10 lks. S. of the cor. of secs.
2, 3, 10 and 11.
Thence I run
S. 89° 56' W., on a true line, bet. secs. 3 and 10.
Over heavily rolling land, through scattering undergrowth.
Asc. 130 ft. to
7.50 Ridge, slopes S. Desc. 320 ft. to
38.25 Wash, 10 lks. wide, course N. 65° W. Asc. 50 ft.
40.00 Set an iron post, 3 ft. long, 1 in. diam., 26 ins. in the
ground, for ¼ sec. cor., marked on brass cap
1915 on S. rim;
¼ S3 in N. and
S10 in S. half;
and raise a mound of stone, 2 ft. base, 1½ ft. high,
N. of cor. Pits impracticable.
50.00 Desc. 55 ft. to
73.60 Wash, 5 lks. wide, course N. Asc. 55 ft. to
78.00 Ridge, slopes NE. Desc. slightly to
80.00 The cor. of secs. 3, 4, 9 and 10.
Land, heavily rolling.
Soil, stony; 4th rate.
No timber.
Undergrowth, greasewood and yucca.

H. G. B.
May 3, 1915.

Apr. 22, 1915: R. C. D.
N. 0° 2' W., on a random line, bet. secs. 3 and 4.
40.00 Set temp. ¼ sec. cor.
79.88 Intersect N. bdy. of Tp., 20 lks. E. of the reestablished
cor. of secs. 3, 4, 33 and 34, which is an iron post, described
in Book "A." as described in Book "B".
Thence I run
S. 0° 11' E., on a true line, bet. secs. 3 and 4.
Over rolling mountainous land, through scattering under-
growth.
Asc. 125 ft. to
10.15 Desc. 80 ft. to
25.10 Asc. 80 ft. to
29.90 Desc. 70 ft.
39.88 Set an iron post, 3 ft. long, 1 in. diam., 26 ins. in the
ground, for ¼ sec. cor., marked on brass cap
1915 on S. rim;
¼ S4 in W. and
S3 in E. half;
and raise a mound of stone, 2 ft. base, 1½ ft. high,
W. of cor. Pits impracticable.
41.30 Gulch, course NW. Asc. 175 ft. to
53.65 Desc. 120 ft. to
67.90 Gulch, course W. Asc. 65 ft. to
10.00 the cor. of secs. 3, 4, 9 and 10.
Land, rolling, mountainous.

Chains.

Soil, stony; 4th rate.
No timber.
Undergrowth, greasewood, yucca and cacti.

Apr. 26, 1915.

Apr. 26, 1915: At 8 hrs. 0 m., a.m., l.m.t., I set off
35° 35½' N. on the lat. arc; 13° 19' N. on the decl.
arc; and determine a meridian with the solar at the
reestablished cor. of secs. 28, 29, 32 and 33, which is an
iron post, described in book A. in book 1111.

Thence I run

N.0° 3' W., bet. secs. 32 and 33.

Over gently rolling land, through scattering undergrowth.

35.00

Center of wash, 60 lks. wide, 3 ft. deep, course W.

40.00

Set an iron post, 3 ft. long, 1 in. diam., 26 ins. in the
ground, for ¼ sec. cor., marked on brass cap

1915 on S. rim;

¼S32 in W. and

S33 in E. half;

and raise a mound of stone, 2 ft. base, 1½ ft. high,
W. of cor. Pile impr. to be.

50.00

Asc. 95 ft. to

80.00

Set an iron post, 3 ft. long, 2 ins. diam., 24 ins. in the
ground, for cor. of secs. 28, 29, 32 and 33, marked on
brass cap

1915 on S. rim;

T26N R19W in N. half;

S29 in NW.,

S28 in NE.,

S33 in SE. and

S32 in SW. quadrant;

and raise a mound of stone, 2 ft. base, 1½ ft. high,
W. of cor. Pile impr. to be.

Land, rolling.

Soil, stony and gravelly; 3rd rate.

No timber.

Undergrowth, yucca, greasewood and cacti.

R. C. D.

Apr. 26, 1915.

Apr. 26, 1915: H. G. B.

S.89° 57' E., on a random line, bet. secs. 28 and 33.

40.00

Set temp. ¼ sec. cor.

80.02

Intersect N. and S. line, 7 lks. N. of the cor. of secs.
27, 28, 33 and 34.

Thence I run

N.89° 54' W., on a true line, bet. secs. 28 and 33.

Over rolling land, through scattering undergrowth.

23.80

Center of wash, 60 lks. wide, course SW.

35.00

Center of wash, 75 lks. wide, course S.10° W. Asc. 60 ft.
to

38.90

Ridge, slopes S. Desc. 25 ft.

40.01

Set an iron post, 3 ft. long, 1 in. diam., 26 ins. in the
ground, for ¼ sec. cor., marked on brass cap

1915 on S. rim;

¼S28 in N. and

S33 in S. half;

and raise a mound of stone, 2 ft. base, 1½ ft. high,
N. of cor. Pile impr. to be.

42.90

Wash, 15 lks. wide, course S. Asc. 200 ft. to

63.20

Ridge, slopes S. Desc. 220 ft. to

75.10

Wash, 10 lks. wide, course SW. Asc. 15 ft. to

77.75

Desc. 15 ft. to

80.02

The cor. of secs. 28, 29, 32 and 33.

Land, rolling.

18.50

Subdivision of T. 26 N., R. 19 W.

Chains.

Soil, stony; 4th rate.
No timber.
Undergrowth, greasewood, yucca and cacti.

H. G. B.
Apr. 30, 1915.

40.00

Apr. 20, 1915: R. C. D.
N.0° 3' W., bet. secs. 28 and 29.
Over rolling land, through scattering undergrowth.
Asc. 255 ft., along broken W. slope.
Set an iron post, 3 ft. long, 1 in. diam., 26 ins. in the
ground, for $\frac{1}{4}$ sec. cor., marked on brass cap
1915 on S. rim;
 $\frac{1}{4}$ S29 in W. and
S28 in E. half;

and raise a mound of stone, 2 ft. base, 1 $\frac{1}{2}$ ft. high,
W. of cor. Pits impracticable.

42.50

Low ridge, brs. NW. and SE. Desc. 105 ft. to

71.20

Gulch, course SW. Asc. to

80.00

Set an iron post, 3 ft. long, 2 ins. diam., 24 ins. in the
ground, for cor. of secs. 20, 21, 28 and 29, marked on
brass cap

1915 on S. rim;
T26N R19W in N. half;
S20 in NW.,
S21 in NE.,
S28 in SE. and
S29 in SW. quadrant;

and raise a mound of stone, 2 ft. base, 1 $\frac{1}{2}$ ft. high,
W. of cor. Pits impracticable.

Land, rolling,

Soil, stony; 4th rate.

No timber.

Undergrowth, greasewood, yucca and cacti.

Apr. 30, 1915.

40.00

May 3, 1915: At 7 hrs. 0 m., a.m., l.m.t., I set off
35° 37 $\frac{1}{2}$ ' N. on the lat. arc; 15° 28 $\frac{1}{2}$ ' N. on the decl.
arc; and determine a meridian with the solar at the
cor. of secs. 20, 21, 28 and 29.

Thence, I run

S.89° 54' E., on a random line, bet. secs. 21 and 28.

79.94

Set temp. $\frac{1}{4}$ sec. cor.

Intersect the earlier line of secs. 21, 22, 27 and 28. 21, 22,
27 and 28.

Thence, I run

N.89° 54' W., on a true line, bet. secs. 21 and 28.

15.00

Over gently rolling land, through scattering undergrowth.

22.45

Gulch, course S. Asc. 30 ft. to

24.95

Desc. 15 ft. to

30.00

Asc. 30 ft. to

39.97

Desc. 25 ft. to

Set an iron post, 3 ft. long, 1 in. diam., 26 ins. in the
ground, for $\frac{1}{4}$ sec. cor., marked on brass cap

1915 on S. rim;
 $\frac{1}{4}$ S21 in N. and
S28 in S. half;

and raise a mound of stone, 2 ft. base, 1 $\frac{1}{2}$ ft. high,
N. of cor. Pits impracticable.

45.00

Asc. 15 ft. to

57.45

Desc. 135 ft. to

60.00

Gulch, course SW. Asc. to

79.94

Desc. 40 ft. to

The cor. of secs. 20, 21, 28 and 29.

Land, rolling.

Soil, stony; 4th rate.

Chains.

No timber.
Undergrowth, yucca, greasewood, and cacti.
Apr. 30, 1915.

38.00
40.00

Apr. 30, 1915.
N.0° 3' W., bet. secs. 20 and 21.
Over gently rolling land, through scattering undergrowth.
Gulch, course W.
Set an iron post, 3 ft. long, 1 in. diam., 26 ins. in the ground, for $\frac{1}{4}$ sec. cor., marked on brass cap
1915 on S. rim;
 $\frac{1}{4}$ S20 in W. and
S21 in E. half;
and raise a mound of stone, 2 ft. base, 1 $\frac{1}{2}$ ft. high, W. of cor.

55.00
74.00
80.00

Gulch, course SW.
Same gulch, course SE. Asc. to
Set an iron post, 3 ft. long, 2 ins. diam., 24 ins. in the ground, for cor. of secs. 16, 17, 20 and 21, marked on brass cap
1915 on S. rim;
T26N R19W in N. half;
S17 in NW.,
S16 in NE.,
S21 in SE. and
S20 in SW. quadrant;
and raise a mound of stone, 2 ft. base, 1 $\frac{1}{2}$ ft. high, W. of cor.

Land, rolling.
Soil, stony; 4th rate.
No timber.
Undergrowth, greasewood and yucca.

Apr. 30, 1915. ...
Soil, stony ...
the meridian; the declination ... is 55° 30' E.
Apr. 30, 1915.

40.00
79.94

Apr. 30, 1915.
S.89° 54' E., on a random line, bet. secs. 16 and 21.
Set temp. $\frac{1}{4}$ sec. cor.
Intersect N. and S. line, 2 lks. S. of the cor. of secs. 15, 16, 21 and 22.
Thence

10.20
15.10
39.97

N.89° 55' W., on a true line, bet. secs. 16 and 21.
Over mountainous land, through scattering undergrowth.
Asc. 80 ft. to
Desc. 65 ft. to
Asc. 140 ft.
Set an iron post, 3 ft. long, 1 in. diam., 26 ins. in the ground, for $\frac{1}{4}$ sec. cor., marked on brass cap
1915 on S. rim;
 $\frac{1}{4}$ S16 in W. and
S21 in S. half;
and raise a mound of stone, 2 ft. base, 1 $\frac{1}{2}$ ft. high, N. of cor.

44.25
48.35
61.10
65.95
79.94

Spur, slopes S. Desc. 230 ft.
Little Mountain Spring, brs. S. 2.50 chs. dist.
Asc. 130 ft. to
Spur, slopes S. Desc. 270 ft. to
The cor. of secs. 16, 17, 20 and 21.
Land, mountainous.
Soil, rocky; 3rd rate.
No timber.
Undergrowth, greasewood, yucca and cacti.
Apr. 30, 1915.

20. 52 Subdivision of T. 26 N., R. 19 W.

Chains.

Apr. 26, 1915.
 N. 0° 3' W., bet. secs. 16 and 17.
 Over mountainous land, through scattering undergrowth.
 Asc. 170 ft., along broken W. slope, to
 11.20 Low ridge, brs. E. and W. Desc. 30 ft. to
 14.65 Asc. 180 ft. to
 28.76 Desc. 100 ft. to
 34.20 Asc. 75 ft. to
 40.00 Low spur, slopes W.
 Set an iron post, 3 ft. long, 1 in. diam., 26 ins. in the
 ground, for $\frac{1}{4}$ sec. cor., marked on brass cap
 1915 on S. rim;
 $\frac{1}{4}$ S17 in W. and
 S16 in E. half;
 and raise a mound of stone, 2 ft. base, 1 $\frac{1}{2}$ ft. high,
 W. of cor. *Site impracticable.*
 Desc. 120 ft. to
 59.10 Gulch, course SW. Asc. 135 ft.
 60.90 Graded road, brs. NE. and SW.
 66.50 Desc. 55 ft. to
 69.00 Gulch, course SE.
 79.00 Gulch, course SW. Asc. 45 ft. to
 80.00 Set an iron post, 3 ft. long, 2 ins. diam., 24 ins. in the
 ground, for cor. of secs. 8, 9, 16 and 17, marked on
 brass cap
 1915 on S. rim;
 T26N R19W in N. half;
 S8° in NW.,
 S9 in NE.,
 S16 in SE. and
 S17 in SW. quadrant;
 and raise a mound of stone, 2 ft. base, 1 $\frac{1}{2}$ ft. high,
 W. of cor. *Site impracticable.*
 Land, mountainous.
 Soil, stony; 4th rate.
 No timber.
 Undergrowth, greasewood, yucca and cacti.
 R. C. D.
 Apr. 26, 1915.

May 3, 1915: H. G. B.
 S. 89° 55' E., on a random line, bet. secs. 9 and 16.
 40.00 Set temp. $\frac{1}{4}$ sec. cor.
 80.00 Intersect the corner of secs. 9, 10, 15 and 16. 9, 10, 15
 and 16.
 Thence
 N. 89° 55' W., on a true line, bet. secs. 9 and 16.
 Over mountainous land, through scattering undergrowth.
 Desc. to
 1.45 Center of wash, 60 lks. wide, course SE. Asc. 115 ft. to
 10.25 Desc. slightly to
 11.25 Wash, 5 lks. wide, course N. Asc. 60 ft. to
 21.05 Ridge, brs. N. and S. Desc. 25 ft. to
 23.55 Wash, 5 lks. wide, course NW. Asc. 185 ft. to
 35.55 Ridge, brs. NE. and SW. Desc. 595 ft.
 40.00 Set an iron post, 3 ft. long, 1 in. diam., 26 ins. in the
 ground, for $\frac{1}{4}$ sec. cor., marked on brass cap
 1915 on S. rim;
 $\frac{1}{4}$ S9 in N. and
 S16 in S. half;
 and raise a mound of stone, 2 ft. base, 1 $\frac{1}{2}$ ft. high,
 N. of cor. *Site impracticable.*
 68.25 Wash, 20 lks. wide, course S. Asc. 125 ft.
 70.25 Road, brs. N. and S.
 76.00 Desc. to
 79.70 Wash, 5 lks. wide, course S. Asc. to
 80.00 The cor. of secs. 8, 9, 16 and 17.
 Land, mountainous.
 Soil, rocky; 4th rate.
 No timber.
 Undergrowth, greasewood and yucca.
 H. G. B.
 May 3, 1915.

Chains.

Apr. 20, 1915: R. C. D.
 N.0° 3' W., bet. secs. 8 and 9.
 Over mountainous land, through scattering undergrowth.
 Asc. 295 ft.; along E. slope, to
 21.70 Low ridge, hrs. NE. and SW. Desc. 30 ft. to
 29.60 Asc. 70 ft. to
 34.30 Desc. 65 ft. to
 40.00 Set an iron post, 3 ft. long, 1 in. diam., 26 ins. in the
 ground, for $\frac{1}{4}$ sec. cor., marked on brass cap
 1915 on S. rim;
 $\frac{1}{4}$ S8 in W. and
 S9 in E. half;
 and raise a mound of stone, 2 ft. base, 1 $\frac{1}{2}$ ft. high,
 W. of cor. *Site impracticable.*
 Asc. 55 ft. to
 49.95 Desc. 65 ft. to
 56.50 Gulch, course NE. Asc. 110 ft. to
 69.65 Desc. 80 ft. to
 80.00 Set an iron post, 3 ft. long, 2 ins. diam., 24 ins. in the
 ground, for cor. of secs. 4, 5, 8 and 9, marked on
 brass cap
 1915 on S. rim;
 T26N R19W in N. half;
 S5 in NW.,
 S4 in NE.,
 S9 in SE. and
 S8 in SW. quadrant;
 and raise a mound of stone, 2 ft. base, 1 $\frac{1}{2}$ ft. high,
 W. of cor. *Site impracticable.*
 Land, mountainous.
 Soil, rocky; 4th rate.
 No timber.
 Undergrowth, yucca, greasewood and cacti.

R. C. D.
 Apr. 20, 1915.

May 3, 1915: H. G. B.
 S.89° 55' E., on a random line, bet. secs. 4 and 9.
 40.00 Set temp. $\frac{1}{4}$ sec. cor.
 79.94 Intersect N. and S. line, 2 lks. N. of the cor. of secs.
 3, 4, 9 and 10.
 Thence
 N.89° 54' W., on a true line, bet. secs. 4 and 9.
 Over rolling and mountainous land, through scattering
 undergrowth,
 Desc. 40 ft. to
 7.35 Wash, 5 lks. wide, course N. Asc. 70 ft. to
 14.30 Ridge, slopes S. Desc. 75 ft. to
 20.15 Center of wash, 2 chs. wide, course NW. Asc. 90 ft. to
 30.00 Ridge, slopes N. Desc. 50 ft. to
 34.95 Wash, 5 lks. wide, course NW. Asc. 65 ft.
 39.97 Set an iron post, 3 ft. long, 1 in. diam., 26 ins. in the
 ground, for $\frac{1}{4}$ sec. cor., marked on brass cap
 1915 on S. rim;
 $\frac{1}{4}$ S4 in N. and
 S9 in S. half;
 and raise a mound of stone, 2 ft. base, 1 $\frac{1}{2}$ ft. high,
 N. of cor. *Site impracticable.*
 43.70 Ridge, slopes N. Desc. 95 ft. to
 56.10 Wash, 50 lks. wide, course N. Asc. 150 ft. to
 79.94 The cor. of secs. 4, 5, 8 and 9.
 Land, mountainous.
 Soil, stony; 4th rate.
 No timber.
 Undergrowth, greasewood and yucca.

H. G. B. B.
 May 3, 1915

22.54

Subdivision of T. 26 N., R. 19 W.

Chains.

Apr. 26, 1915: R. C. D.
 N.0° 3' W., on a random line, bet. secs. 4 and 5.
 40.00 Set temp. 1 sec. cor.
 79.90 Intersect N. bdy. of Tp., 10 lks. E. of the reestablished
 cor. of secs. 4, 5, 32 and 33, which is an iron post, de-
 scribed in Book "A." in Book "B".
 Thence, 1 ran
 S.0° 7' E., on a true line, bet. secs. 4 and 5.
 Over rolling land, through scattering undergrowth.
 Desc. 230 ft. to
 15.00 Thence over gently rolling land.
 39.30 Wash, 20 lks. wide, course NE.
 39.90 Set an iron post, 3 ft. long, 1 in. diam., 26 ins. in the
 ground, for 1/4 sec. cor., marked on brass cap
 1915 on S. rim;
 1S5 in W. and
 S4 in E. half;
 and raise a mound of stone, 2 ft. base, 1 1/2 ft. high,
 W. of cor. Site impracticable.
 Leave gently rolling land, asc. 225 ft. to
 50.35 Desc. 175 ft. to
 65.10 Wash, 5 lks. wide, course N.20° E. Asc. 55 ft. to
 74.90 Ridge, slopes NE. Desc. 50 ft. to
 78.40 Wash, 12 lks. wide, course NE. Asc. 25 ft. to
 79.90 The cor. of secs. 4, 5, 8 and 9.
 Land, rolling.
 Soil, stony; 4th rate.
 No timber.
 Undergrowth, greasewood and yucca.

Apr. 26, 1915.

Apr. 27, 1915: At 7 hrs. 30 m., a.m., l.m.t., I set off
 35° 35 1/2' N. on the lat. arc; 13° 38' N. on the decl.
 arc; and determine a meridian with the solar at the
 reestablished cor. of secs. 5, 6, 31 and 32, on the S. bdy. of
 the Tp., described in Book "A." and located as
 described in Book "B".
 Thence, 1 ran
 N.0° 3' W., bet. secs. 31 and 32.
 Over gently rolling land, through scattering undergrowth.
 40.00 Set an iron post, 3 ft. long, 1 in. diam., 26 ins. in the
 ground, for 1/4 sec. cor., marked on brass cap
 1915 on S. rim;
 1/4 S31 in W. and
 S32 in E. half;
 and raise a mound of stone, 2 ft. base, 1 1/2 ft. high,
 W. of cor. Site impracticable.
 48.00 Wash, 30 lks. wide, 20 ins. deep, course SW.
 80.00 Set an iron post, 3 ft. long, 2 ins. diam., 24 ins. in the
 ground, for cor. of secs. 29, 30, 31 and 32, marked on
 brass cap
 1915 on S. rim;
 T26N R19W in N. half;
 S30 in NW.,
 S29 in NE.,
 S32 in SE. and
 S31 in SW. quadrant;
 and raise a mound of stone, 2 ft. base, 1 1/2 ft. high,
 W. of cor. Site impracticable.
 Land, gently rolling.
 Soil, gravelly and stony; 3rd rate.
 No timber.
 Undergrowth, greasewood and yucca.

R. C. D.
Apr. 27, 1915.

Chains.

Apr. 30, 1915: H. G. B.
 S.89° 57' E., on a random line, bet. secs. 29 and 32.
 40.00 Set temp. $\frac{1}{4}$ sec. cor.
 79.94 Intersect N. and S. line, 2 lks. N. of the cor. of secs.
 28, 29, 32 and 33.
 Thence
 N.89° 56' W., on a true line, bet. secs. 29 and 32.
 Over level and rolling land, through scattering undergrowth.
 Desc. 115 ft. to
 18.90 Wash, 5 lks. wide, course SW.
 33.90 Road, brs. N. and S.
 39.97 Set an iron post, 3 ft. long, 1 in. diam., 26 ins. in the
 ground, for $\frac{1}{4}$ sec. cor., marked on brass cap
 1915 on S. rim;
 $\frac{1}{4}$ S29 in N. and
 S32 in S. half;
 and raise a mound of stone, 2 ft. base, 1 $\frac{1}{2}$ ft. high,
 N. of cor. Pits large and small.
 46.50 Center of wash, 80 lks. wide, course S.15° W.
 66.00 Wash, 10 lks. wide, course SW.
 79.94 The cor. of secs. 29, 30, 31 and 32.
 Land, level and rolling.
 Soil, stony; 3rd rate.
 No timber.
 Undergrowth, greasewood and yucca.
 Apr. 30, 1915: The sky was overcast at noon, making an
 observation for lat. impossible.

The cor. of secs. 25, 30, 31 and 36 being plainly visible,
 I run for said cor. from last sec. cor.
 40.00 N.89° 52' W., on a random line, bet. secs. 30 and 31.
 Set temp. $\frac{1}{4}$ sec. cor.
 79.04 Intersect W. bdy. of Tp., at the reestablished cor. of secs.
 25, 30, 31 and 36, which is an iron post, described in
 Book "A" in Book 3249.
 Thence
 S.89° 52' E., on a true line, bet. secs. 30 and 31.
 Over level land, through scattering undergrowth.
 9.05 Wash, 15 lks. wide, course WSW.
 39.04 Set an iron post, 3 ft. long, 1 in. diam., 26 ins. in the
 ground, for $\frac{1}{4}$ sec. cor., marked on brass cap
 1915 on S. rim;
 $\frac{1}{4}$ S30 in N. and
 S31 in S. half;
 and raise a mound of stone, 2 ft. base, 1 $\frac{1}{2}$ ft. high,
 N. of cor.
 60.05 Road, brs. NE. and SW.
 79.04 The cor. of secs. 29, 30, 31 and 32.
 Land, level.
 Soil, stone and gravel; 3rd rate.
 No timber.
 Undergrowth, greasewood and yucca.

H. G. B.
 Apr. 31, 1915.

Apr. 27, 1915: R. C. D.
 N.0° 3' W., bet. secs. 29 and 30.
 Over rolling land, through scattering undergrowth.
 Asc. 55 ft. to
 5.00 Low ridge, brs. NE. and SW. Desc. to
 14.20 Wash, 30 lks. wide, 1 ft. deep, course SW. Thence over
 gently rolling land.
 22.20 Dim road, brs. NE. and SW.
 40.00 Set an iron post, 3 ft. long, 1 in. diam., 26 ins. in the
 ground, for $\frac{1}{4}$ sec. cor., marked on brass cap
 1915 on S. rim;
 $\frac{1}{4}$ S30 in W. and

24.56

Subdivision of T. 26 N., R. 19 W.

Chains.

46.20 S29 in E. half;
and raise a mound of stone, 2 ft. base, 1½ ft. high,
W. of cor. Pits impracticable.

80.00 Dim road, brs. NE. and SW.
Set an iron post, 3 ft. long, 2 ins. diam., 24 ins. in the
ground, for cor. of secs. 19, 20, 29 and 30, marked on
brass cap

1915 on S. rim;
T26N R19W in N. half;
S19 in NW.,
S20 in NE.,
S29 in SE. and
S30 in SW. quadrant;
and raise a mound of stone, 2 ft. base, 1½ ft. high,
W. of cor. Pits impracticable.

Land, rolling.
Soil, stony; 4th rate.
No timber.
Undergrowth, greasewood and yucca.

Apr. 27, 1915.

Apr. 30, 1915.

40.00 S.89° 56' E., on a random line, bet. secs. 20 and 29.
Set temp. ¼ sec. cor.

80.08 Intersect the corner of secs. 20, 21, 28 and 29, 20, 21, 28
and 29.

Thence, 1 ch.
N.89° 56' W., on a true line, bet. secs. 20 and 29.
Over gently rolling land, through scattering undergrowth.
Wash, 30 lks. wide, 2 ft. deep, course S.

28.00 Road, brs. N. and S.

31.60

40.04 Set an iron post, 3 ft. long, 1 in. diam., 26 ins. in the
ground, for ¼ sec. cor., marked on brass cap

1915 on S. rim;
¼ S20 in N. and
S29 in S. half;
and raise a mound of stone, 2 ft. base, 1½ ft. high,
N. of cor. Pits impracticable.

42.80 From this cor., Mountain Spring brs. N.21° E.

57.60 Old road, brs. N. and S.

69.00 Wash, 40 lks. wide, 2 ft. deep, course SW.

74.70 Asc. 90 ft. to
S. point of ledge; desc. 150 ft. to

80.08 The cor. of secs. 19, 20, 29 and 30.
Land, rolling.
Soil, stony; 4th rate.
No timber.
Undergrowth, greasewood and yucca.

40.00 N.89° 52' W., on a random line, bet. secs. 19 and 30.
Set temp. ¼ sec. cor.

79.03 Intersect W. bdy. of Tp., 5 lks. N. of the cor. reestablished
cor. of secs. 19, 24, 25 and 30, which is an iron post,
described in Book "A." and in Book "B."

Thence, 1 ch.
S.89° 54' E., on a true line, bet. secs. 19 and 30.
Over rolling land, through scattering undergrowth.
Center of wash, 1 ch. wide, 2 ft. deep, course SW.

13.05 Old, dim road, brs. NE. and SW.

15.55

39.03 Set an iron post, 3 ft. long, 1 in. diam., 26 ins. in the
ground, for ¼ sec. cor., marked on brass cap

1915 on S. rim;
¼ S19 in N. and
S30 in S. half;
and raise a mound of stone, 2 ft. base, 1½ ft. high,
N. of cor. Pits impracticable.

Chains.

49.00 Asc. 125 ft. to
 63.00 Desc. 60 ft. to
 79.03 The cor. of secs. 19, 20, 29 and 30.
 Land, rolling.
 Soil, stony; 4th rate.
 No timber.
 Undergrowth, greasewood and yucca.
 Apr. 28, 1915: At this cor., I set off 140° 37' 1" on the
 decl. arc; and at subsequent noon, I observed the sun on
 the meridian; the resulting decl. is 55° 37' 1".
 Apr. 30, 1915.

Apr. 27, 1915.
 N.0° 3' W., bet. secs. 19 and 20.
 Over mountainous land, through scattering undergrowth.
 Asc. 220 ft., along W. slope, to
 8.60 Low ridge, brs. NW. and SE.
 Mountain Spring brs. N.60³/₄° E. Desc. 85 ft. to
 14.00 Asc. 20 ft. to
 17.70 Low ridge, brs. NE. and SW. Desc. 110 ft. to
 40.00 Set an iron post, 3 ft. long, 1 in. diam., 26 ins. in the
 ground, for ¹/₄ sec. cor., marked on brass cap
 1915 on S. rim;
¹/₄S19 in W. and
 S20 in E. half;
 and raise a mound of stone, 2 ft. base, 1¹/₂ ft. high,
 W. of cor. This monument is
 Asc. 210 ft. to
 70.00 Thence along W. slope.
 80.00 Set an iron post, 3 ft. long, 2 ins. diam., 24 ins. in the
 ground, for cor. of secs. 17, 18, 19 and 20, marked on
 brass cap
 1915 on S. rim;
 T26N R19W in N. half;
 S18 in NW.,
 S17 in NE.,
 S20 in SE. and
 S19 in SW. quadrant;
 and raise a mound of stone, 2 ft. base, 1¹/₂ ft. high,
 W. of cor. This monument is
 Land, mountainous.
 Soil, stony; 4th rate.
 No timber.
 Undergrowth, greasewood, yucca and cacti.
 Apr. 27, 1915: At this cor., I set off 135° 41' 1" on the
 decl. arc; and at subsequent noon, I observe the sun on
 the meridian; the resulting decl. is 55° 39' 1".
 Apr. 29, 1915.

Apr. 30, 1915.
 S.89° 56' E., on a random line, bet. secs. 17 and 20.
 40.00 Set temp. ¹/₄ sec. cor.
 80.10 **Intersect the corner of secs. 16, 17, 20 and 21.** This is the
 corner of secs. 16, 17, 20 and 21, which is an iron post, described
 Thence, I
 N.89° 56' W., on a true line, bet. secs. 17 and 20.
 Over mountainous land, through scattering undergrowth.
 Desc. ~~to~~
 .70 Gulch, course SE. Asc. 220 ft. to
 9.90 Low ridge, brs. N. and S. Desc. 110 ft. to
 15.35 Asc. 15 ft. to
 18.15 Desc. 200 ft. to
 40.05 Set an iron post, 3 ft. long, 1 in. diam., 26 ins. in the
 ground, for ¹/₄ sec. cor., marked on brass cap
 1915 on S. rim;
¹/₄S17 in N. and

Chains.	
56.05 61.00 72.10 80.10	<p>S20 in S. half; and raise a mound of stone, 2 ft. base, 1½ ft. high, N. of cor. <i>Site impracticable.</i> Old, dim road, brs. N. and S. Asc. 45 ft. to Desc. 55 ft. to Asc. 15 ft. to Desc. 185 ft. to The cor. of secs. 17, 18, 19 and 20. Land, rolling and mountainous. Soil, stony; 4th rate. No timber. Undergrowth, greasewood, yucca and cacti.</p>
40.00 78.95 29.40 38.95	<p>N.89° 54' W., on a random line, bet. secs. 18 and 19. Set temp. ¼ sec. cor. Intersect W. bdy of T. 26 at the reestablished cor. of secs. 13, 18, 19 and 24, which is an iron post, described in <i>Book "A" and in Book "B".</i> Thence, <i>1 1/2</i> S.89° 54' E., on a true line, bet. secs. 18 and 19. Over rolling land, through scattering undergrowth. Desc. 115 ft. to Gulch, course S. Asc. 65 ft. to Set an iron post, 3 ft. long, 1 in. diam., 26 ins. in the ground, for ¼ sec. cor., marked on brass cap 1915 on S. rim; ¼S18 in N. and S19 in S. half; and raise a mound of stone, 2 ft. base, 1½ ft. high, W. of cor. <i>Site impracticable.</i> Desc. slightly to Gulch, course SW. Asc. 165 ft. to The cor. of secs. 17, 18, 19 and 20. Land, rolling. Soil, stony; 4th rate. No timber. Undergrowth, greasewood, yucca and cacti.</p> <p style="text-align: right;">Apr. 30, 1915.</p>
11.70 27.50 40.00 42.60 80.00	<p><i>Apr. 27, 1915.</i> N.0° 3' W., bet. secs. 17 and 18. Over rolling land, through scattering undergrowth. Asc. 60 ft. to Low ridge, brs. NW. and SE. Desc. 145 ft. to Gulch, course NW. Asc. 95 ft. to Set an iron post, 3 ft. long, 1 in. diam., in a mound of stone, for ¼ sec. cor., marked on brass cap 1915 on S. rim; ¼S18 in W. and S17 in E. half; and raise a mound of stone, 2 ft. base, 1½ ft. high, W. of cor. <i>Site impracticable.</i> Desc. to Gulch, course SW. Asc. 150 ft. to Set an iron post, 3 ft. long, 2 ins. diam., 24 ins. in the ground, for cor. of secs. 7, 18, 17 and 18, marked on brass cap 1915 on S. rim; T26N R19W in N. half; S7 in NW., S8 in NE., S17 in SE. and S18 in SW. quadrant; and raise a mound of stone, 2 ft. base, 1½ ft. high, W. of cor. <i>Site impracticable.</i> Land, rolling. Soil, stony; 4th rate.</p>

Subdivision of T. 26 N., R. 19 W.

Chains.

No timber.
Undergrowth, greasewood, yucca and cacti.

R. C. D.
Apr. 27, 1915.

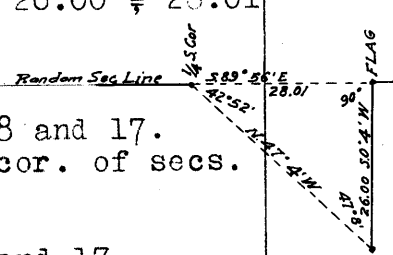
H.G.B.

May 3, 1915: At 7 hrs. 3 m., a.m., l.m.t., I set off 35° 39' N. on the lat. arc; 15° 28½' N. on the decl. arc; and determine a meridian with the solar at the cor. of secs. 7, 8, 17 and 18.

40.00 Thence S.89° 56' E., on a random line, bet. secs. 8 and 17, Set temp. ¼ sec. cor.
It being impossible to chain from this temp. ¼ sec. cor., I set a flag ahead, on the random line, flag the temp. cor., and from the point ahead, measure a base S.0° 4' W., 26.00 chs., from the end of which the flag at the temp. ¼ sec. cor. brs. N.47° 4' W. The dist. on the random line is therefore given by
 $\tan. 47^\circ 8' \times 26.00 \text{ or } 1.07738 \times 26.00 = 28.01$ chs., which added to 40.00 chs., makes

68.01 Thence I continue S.89° 56' E., on a random line, bet. secs. 8 and 17.
80.00 Intersect N. and S. line, 5 lks. N. of the cor. of secs. 8, 9, 16 and 17.

Thence N.89° 54' W., on a true line, bet. secs. 8 and 17. Over mountainous land, through scattering undergrowth.
Desc. to
3.00 Gulch, 10 lks. wide, course S. Asc. 130 ft. to
10.00 Ridge, brs. N. and S.
The approximate topography to the ¼ sec. cor. is as follows:
Desc. 350 ft. to
30.75 Gulch, 15 lks. wide, course SW. Asc. 275 ft. to
40.00 Set an iron post, 3 ft. long, 1 in. diam., 26 ins. in the ground, for ¼ sec. cor., marked on brass cap
1915 on S. rim;
¼S8 in N. and
S17 in S. half;
and raise a mound of stone, 2 ft. base, 1½ ft. high, N. of cor.
45.40 Ridge, brs. NE. and SW. Desc. 305 ft. to
65.00 Gulch, 40 lks. wide, course S.60° W.
70.00 Gulch, 5 lks. wide, course SW. Asc. to
80.00 The cor. of secs. 7, 8, 17 and 18.
Land, mountainous.
Soil, stony; 4th rate.
No timber.
Undergrowth, greasewood.



40.00 N.89° 54' W., on a random line, bet. secs. 7 and 18.
78.92 Set temp. ¼ sec. cor.
Intersect W. bdy. of Tp., 2 lks. N. of the reestablished cor. of secs. 7, 12, 13 and 18, which is an iron post, described in Book "A."

Thence S.89° 55' E., on a true line, bet. secs. 7 and 18. Over rolling land, through scattering undergrowth.
Desc. 145 ft. to
9.10 Wash, 5 lks. wide, course N. 10° W. Asc. 100 ft. to
13.05 Ridge, brs. N. and S. Desc. 200 ft. to
28.20 Wash, 10 lks. wide, course S. Asc. 30 ft. to
34.20 Desc. 25 ft. to
38.20 Wash, 10 lks. wide, course S. Asc. 75 ft.

23.60

Subdivision of T. 26 N., R. 19 W.

Chains.
38.92 Set an iron post, 3 ft. long, 1 in. diam., 26 ins. in the ground, for $\frac{1}{4}$ sec. cor., marked on brass cap
1915 on S rim;
 $\frac{1}{4}$ S7 in N. and
S18 in S. half;
and raise a mound of stone, 2 ft. base, $1\frac{1}{2}$ ft. high, N. of cor. ~~Pits impracticable.~~

49.90 Ridge, brs. NE. and SW. Desc. 70 ft. to
59.85 Wash, 20 lks. wide, course S.
63.85 Wash, 30 lks. wide, course SW. Asc. 110 ft. to
78.20 Ridge, slopes N. Desc. 15 ft. to
78.92 The cor. of secs. 7, 8, 17 and 18.
Land, rolling.
Soil, stony; 4th rate.
No timber.
Undergrowth, greasewood and yucca.

H. G. B.
May 3, 1915.

Apr. 27, 1915: R. C. D.
N.0° 3' W., bet. secs. 7 and 8.
Over rolling and mountainous land, through scattering undergrowth.
Desc. 50 ft. to
10.00 Asc. 610 ft.
40.00 Set an iron post, 3 ft. long, 1 in. diam., 26 ins. in a mound of stone, for $\frac{1}{4}$ sec. cor., marked on brass cap
1915 on S. rim;
 $\frac{1}{4}$ S7 in W. and
S8 in E. half;
and raise a mound of stone, 2 ft. base, $1\frac{1}{2}$ ft. high, W. of cor. ~~Pits impracticable.~~

Continue asc to
77.30 Ridge, brs. E. and W. Desc. slight N. slope to
80.00 Set an iron post, 3 ft. long, 2 ins. diam., in a mound of stone, for cor. of secs, 5, 6, 7 and 8, marked on brass cap
1915 on S. rim;
T26N R19W in N. half;
S6 in NW.,
S5 in NE.,
S8 in SE. and
S7 in SW. quadrant;
and raise a mound of stone, 2 ft. base, $1\frac{1}{2}$ ft. high, W. of cor. ~~Pits impracticable.~~

Land, rolling and mountainous.
Soil, stony; 4th rate.
No timber.
Undergrowth, greasewood, yucca and cacti.

R. C. D.
Apr. 27, 1915.

Apr. 28, 1915: H. G. B.
S.89° 54' E., on a random line, bet. secs. 5 and 8.
40.00 Set temp. $\frac{1}{4}$ sec. cor.
79.92 Intersect N. and S. line, 2 lks. N. of the cor. of secs. 4, 5, 8 and 9.
Thence
N.89° 53' W., on a true line, bet. secs. 5 and 8.
Over mountainous land, through scattering undergrowth.
Desc. 15 ft. to
5.90 Wash, 10 lks. wide, course NE. Asc. 215 ft. to
21.30 Desc. 40 ft. to
27.80 Divide between two gulches, one course N., the other course S. Asc. 180 ft. to
38.20 Desc. 440 ft.
39.96 Set an iron post, 3 ft. long, 1 in. diam., 26 ins. in the

Chains.

61.75	ground, for $\frac{1}{4}$ sec. cor., marked on brass cap 1915 on S. rim; $\frac{1}{4}$ S5 in N. and S8 in S. half; and raise a mound of stone, 2 ft. base, $1\frac{1}{2}$ ft. high, N. of cor. with
68.20	Wash, 5 lks. wide, course N. Asc. 175 ft. to Ridge, slopes N. Desc. 180 ft. to
79.92	The cor. of secs. 5, 6, 7 and 8. Land, mountainous. Soil, stony; 4th rate. No timber. Undergrowth, greasewood and yucca.
40.00	N.89° 55' W., on a random line, bet. secs. 6 and 7. Set temp. $\frac{1}{4}$ sec. cor.
78.80	Intersect W. bdy. of Tp., 7 lks. S. of the reestablished cor. of secs. 1, 6, 7 and 12, which is an iron post, describ- ed in Book "A." in Book "B." Thence 1
5.15	S.89° 52' E., on a true line, bet. secs. 6 and 7. Over mountainous land, through scattering undergrowth. Desc. 190 ft. to
8.10	Wash, 5 lks. wide, course SE. Asc. 35 ft. to
10.85	Ridge, slopes S. Desc. 55 ft. to
23.25	Wash, 15 lks. wide, course S. Asc. 185 ft. to
34.30	Desc. 40 ft. to
38.80	Wash, 5 lks. wide, course SE. Asc. 210 ft. Set an iron post, 3 ft. long, 1 in. diam., 26 ins. in the ground, for $\frac{1}{4}$ sec. cor., marked on brass cap 1915 on S. rim; $\frac{1}{4}$ S6 in N. and S7 in S. half; and raise a mound of stone, 2 ft. base, $1\frac{1}{2}$ ft. high, N. of cor. with
58.43	Desc. 125 ft. to
73.20	Asc. 50 ft. to
78.80	The cor. of secs. 5, 6, 7 and 8. Land, mountainous. Soil, stony; 4th rate. No timber. Undergrowth, greasewood and yucca.
40.00	N.0° 3' W., on a random line, bet. secs. 5 and 6. Set temp. $\frac{1}{4}$ sec. cor.
79.88	Intersect N. bdy. of Tp., 16 lks. E. of the reestablished cor. of secs. 15, 6, 31 and 32, which is an iron post, de- scribed in Book "A." in Book "B." Thence 1
29.90	S.0° 10' E., on a true line, bet. secs. 5 and 6. Over mountainous land, through scattering undergrowth. Asc. 265 ft. to
39.88	W. point of ledge. Desc. 330 ft. Set an iron post, 3 ft. long, 1 in. diam., 26 ins. in the ground, for $\frac{1}{4}$ sec. cor., marked on brass cap 1915 on S. rim; $\frac{1}{4}$ S6 in W. and S5 in E. half; and raise a mound of stone, 2 ft. base, $1\frac{1}{2}$ ft. high, W. of cor. with
64.90	Gulch, course W. Asc. 125 ft. to
79.88	The cor. of secs. 5, 6, 7 and 8. Land, mountainous. Soil, stony; 4th rate. No timber. Undergrowth, greasewood and yucca.

H. G. B.

Apr. 28, 1915.

GENERAL DESCRIPTION.

This township is rough and mountainous, except for the south tier of secs., and a portion of the NE. quarter, which is rolling. The drainage is mostly to the SW.

The vegetation consists of yucca, greasewood, buck brush and cacti. There is no timber.

The soil is sand, gravel and stone; 3rd and 4th rate.

There are springs in secs. 20, 21, 25 and 27. There are no settlers.

J. S. Burdoyer.

U. S. Surveyor.

6 5-8-15	5 5-8-15	4	3	2	1 5-11-15
7 5-13-15	8 5-13-15	9 5-13-15	10 5-13-15	11 5-12-15	12 5-12-15
18 5-13-15	17 5-13-15	FIELD ASSISTANTS. 16 15 <i>T.26N. R.18W.</i>		14 5-12-15	13 5-12-15
19 5-7-15	20 5-7-15	21	22	23	24
30 5-6-15	29 5-7-15	28	27	26	25
31 5-6-15	32 5-6-15	33	34	35 5-10-15	36

Surveys executed on dates shown on diagrams by R.C. Durnford, U.S.T.

6	5	4	3	2	1 5-8-15
7 4-27-15	8 4-26-15	9 4-28-15	10	11	12 5-8-15
18 4-30-15	17 4-30-15	16 15 <i>T.26N. R.19W.</i>		14 5-3-15	13 5-3-15
19 4-30-15	20 4-30-15	21 5-3-15	22 5-3-15	23 5-3-15	24 5-3-15
30 4-27-15	29 4-26-15	28 4-28-15	27	26 5-6-15	25 5-5-15
31 4-27-15	32 4-26-15	33 4-28-15	34	35 4-29-15	36

2-17-15 2-17-15 2-17-15 2-17-15 2-17-15 2-17-15

RESURVEYED.

64

64

CERTIFICATE OF UNITED STATES ~~SURVEYOR~~ TRANSITMAN.

I, Royston C. Durnford, U.S. Transitman, hereby certify upon honor that, in pursuance of special instructions received from the U. S. Surveyor General for Group 45, Arizona, bearing date of the 7th day of January, 1915, I have well, faithfully, and truly in my own proper person, and in strict conformity with said instructions, the Manual of Surveying Instructions, and the laws of the United States, surveyed all those parts or portions of the Subdivision lines of

TOWNSHIP 26 NORTH, RANGE 18 WEST,

and

TOWNSHIP 26 NORTH, RANGE 19 WEST,

of the Gila and Salt

River Base & Meridian, in the State of Arizona, which are represented by the diagrams on the reverse hereof and in the foregoing field notes as having been executed by me, and under my direction; and that all the corners of said survey have been established and perpetuated in strict accordance with the Manual of Surveying Instructions, and the special written instructions of the U. S. Surveyor General for Group 45, Arizona, and in the specific manner described in the field notes, and that the foregoing are the original field notes of such survey.

Royston C. Durnford
U. S. Surveyor
Transitman

APPROVAL.

OFFICE OF THE UNITED STATES SURVEYOR GENERAL,

....., 191

The foregoing field notes of the survey of

executed by
under his special instructions dated, 191 , having been critically examined, and the necessary corrections and explanations made, the said field notes, and the surveys they describe, are hereby approved.

.....
U. S. Surveyor General.

I certify that the foregoing transcript of the field notes of the above-described surveys in
....., has been correctly copied from the original notes on file in this office.

.....
U. S. Surveyor General.

RESURVEYED

	5-5-15	5-5-15	5-5-15	5-6-15	5-6-15	5-6-15
RESURVEYED	4-26-15	4-26-15	4-26-15	4-26-15	4-26-15	4-26-15
	6	5	4	3	2	1
	5-8-15		5-13-15	5-13-15	5-13-15	5-13-15
	7	8	9	10	11	12
	5-8-15		5-12-15			
	18	17	16	15	14	13
	5-8-15	5-8-15	5-12-15	5-8-15		
	19	20	21	22	23	24
	5-8-15		5-12-15	5-11-15	5-11-15	5-11-15
	30	29	28	27	26	25
	4-26-15		5-10-15	5-7-15	5-10-15	5-10-15
	31	32	33	34	35	36
	4-26-15		5-7-15			
			RESURVEYED			

65

ACCEPTED SURVEY

Surveys executed on dates shown on diagrams by H.G. Bardsley, U.S.S.

	4-29-15	4-29-15	4-29-15	4-28-15	4-28-15	4-28-15
RESURVEYED	4-13-15	4-13-15	4-13-15	4-29-15	4-29-15	4-26-15
	6	5	4	3	2	1
	4-28-15	4-28-15	5-3-15	5-3-15	5-5-15	5-5-15
	7	8	9	10	11	12
	5-3-15	5-3-15	5-5-15	5-3-15	5-3-15	5-5-15
	18	17	16	15	14	13
	4-13-15		T.26N.	R.19W.		
	19	20	21	22	23	24
	4-13-15			4-29-15		
	30	29	28	27	26	25
	4-30-15	4-30-15	4-30-15	4-30-15		
	31	32	33	34	35	36
	4-13-15			4-29-15		
				RESURVEYED		

RESURVEYED

66
BOOK 3249

CERTIFICATE OF UNITED STATES SURVEYOR.

I, H. G. Bardsley, U. S. Surveyor, hereby certify upon honor that, in pursuance of special instructions received from the U. S. Surveyor General for Group 45, Arizona, bearing date of the 7th day of January, 1915, I have well, faithfully, and truly in my own proper person, and in strict conformity with said instructions, the Manual of Surveying Instructions, and the laws of the United States, surveyed all those parts or portions of the Subdivision Lines of

TOWNSHIP 26 NORTH, RANGE 18 WEST,

and

TOWNSHIP 26 NORTH, RANGE 19 WEST,

of the Gila and Salt River Base and Meridian, in the State of Arizona, which are represented by the diagrams on the reverse hereof and in the foregoing field notes as having been executed by me, and under my direction; and that all the corners of said survey have been established and perpetuated in strict accordance with the Manual of Surveying Instructions, and the special written instructions of the U. S. Surveyor General for Group 45, Arizona, and in the specific manner described in the field notes, and that the foregoing are the original field notes of such survey.

H. G. Bardsley
U. S. Surveyor.

APPROVAL.

OFFICE OF THE UNITED STATES SURVEYOR GENERAL,

Phoenix, Arizona, March 17, 1919.

The foregoing field notes of the survey of the Subdivision lines of

TOWNSHIP 26 NORTH, RANGE 18 WEST,

and

TOWNSHIP 26 NORTH, RANGE 19 WEST,

of the Gila and Salt River Base and Meridian, in the State of Arizona, executed by H. G. Bardsley, U. S. Surveyor, and Royston C. Durnford, U. S. Transitman, under the special instructions dated January 7, 1915, for Group 45, Arizona, having been critically examined, and the necessary corrections and explanations made, the said field notes, and the surveys they describe, are hereby approved.

Frank P. Frost
U. S. Surveyor General.

~~I certify that the foregoing transcript of the field notes of the above described surveys in~~
~~has been correctly copied from the original notes on file in this office.~~