

3254

MAR 18 1919

Book "M"

4-679

BOOK 3254

(Subdivisions)

# FIELD NOTES

OF THE RETRACEMENT OF

Part of the Boundary of the Hualpai Indian Reservation, within

TOWNSHIP 29 NORTH, RANGE 15 WEST,

of the SURVEY of the

Subdivision lines of that part of

TOWNSHIP 29 NORTH, RANGE 15 WEST,

situated outside the boundary of the HUALPAI INDIAN RESERVATION,

and of the SURVEY of

All of the Subdivision lines of

TOWNSHIP 29 NORTH, RANGE 16 WEST,

Of the Gila and Salt River Base and Meridian,

In the State of Arizona,

## EXECUTED BY

E. J. LANGE, U.S. Surveyor (H.I.R. bdy. & Subs. T. 29N., R. 15 and 16 W.)

D. R. AVERILL, U.S. Transitman, (H. I. R. bdy. & Subs. T. 29 N., Rs. 15 & 16 W.)

S. FRANK WALTERS, U.S. Transitman, (Subs. T. 29N., R. 16 W.)

JAMES C. HOOPER, U.S. Transitman, (Subs. T. 29N., R. 16 W.) and

J. P. Davis, U.S. Surveyor (H. I. R. Bdy.)

~~In the capacity of U. S. Surveyor~~, under instructions dated January 7, 1915,

issued by the United States Surveyor General to govern surveys included in

Group No. 45, which were approved by the Commissioner of the General Land

Office, January 26, 1915.

Retracement & Surveys commenced May 3, 1916.

Retracement & Surveys completed January 13, 1919.

Executed under Assignment

Instructions dated Nov. 29, 1915, Dec. 10, 1915 May 8, 1916 Dec. 7, 1916. and Jan. 2, 1919.

3254

3254

Book "M"

Group 45 - - - Arizona.

SEE SPECIAL INDEX DIAGRAM.

# INDEX DIAGRAM.

*Township* ..... , *Range* .....

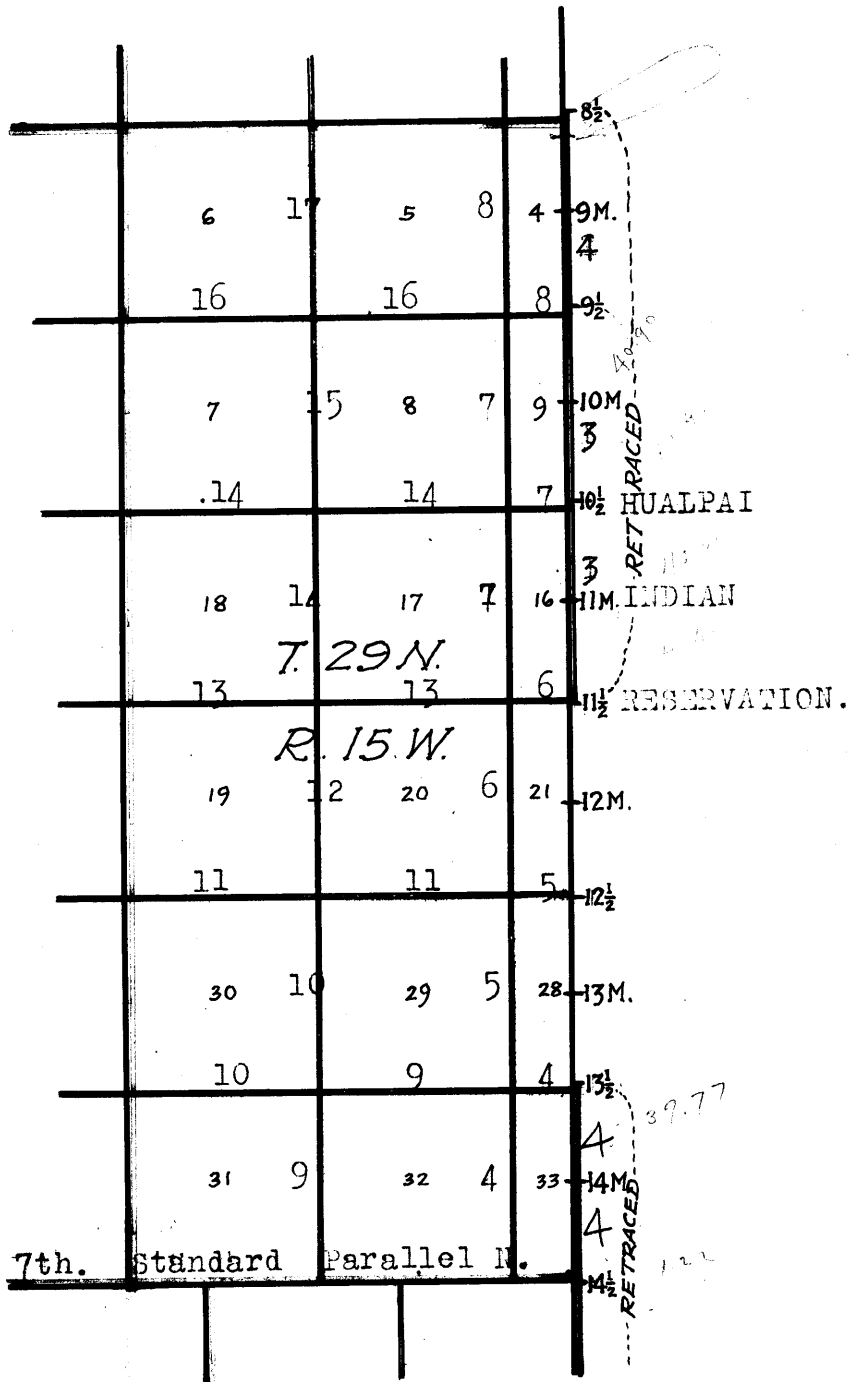
|    |    |    |    |    |    |
|----|----|----|----|----|----|
| 6  | 5  | 4  | 3  | 2  | 1  |
| 7  | 8  | 9  | 10 | 11 | 12 |
| 18 | 17 | 16 | 15 | 14 | 13 |
| 19 | 20 | 21 | 22 | 23 | 24 |
| 30 | 29 | 28 | 27 | 26 | 25 |
| 31 | 32 | 33 | 34 | 35 | 36 |

Group 45 - - - Arizona.

~~SEE~~ SPECIAL INDEX DIAGRAM.

PART I.

|                                                     |                                                  |
|-----------------------------------------------------|--------------------------------------------------|
| <p><i>T. 29N. R. 16W.<br/>Indexed on page 2</i></p> | <p><i>T. 29N. R. 15W.<br/>Indexed below.</i></p> |
|-----------------------------------------------------|--------------------------------------------------|



- Subdivision lines surveyed under this group.
- Township bds. surveyed under this group.  
Notes in book "A"
- Standard lines surveyed under this group.  
Notes in Book "A"
- Hualpai Indian Reservation bdy. retraced.  
Notes in this book.
- Accepted surveys.

Book "M"

Group 45 - - - Arizona.

SPECIAL INDEX DIAGRAM.

PART II.

BOOK 3254

|    |    |      |          |          |       |    |    |    |    |    |
|----|----|------|----------|----------|-------|----|----|----|----|----|
| 6  | 48 | 45   | 41       | 4        | 35    | 3  | 29 | 2  | 24 | 1  |
| 47 |    | 47   |          | 40       |       | 35 |    | 29 |    | 23 |
| 7  | 46 | 8    | 40       | 9        | 34    | 10 | 28 | 11 | 23 | 12 |
| 46 |    | 46   |          | 39       |       | 33 |    | 28 |    | 22 |
| 18 | 45 | 17   | 39       | 16       | 33    | 15 | 27 | 14 | 22 | 13 |
| 45 |    | 44   |          | 38       |       | 32 |    | 27 |    | 21 |
| 19 | 44 | 20   | 38       | 21       | 32    | 22 | 26 | 23 | 21 | 24 |
| 43 |    | 43   |          | 37       |       | 31 |    | 26 |    | 20 |
| 30 | 43 | 29   | 37       | 28       | 31    | 27 | 25 | 26 | 20 | 25 |
| 42 |    | 42   |          | 36       |       | 30 |    | 25 |    | 19 |
| 31 | 41 | 32   | 36       | 33       | 30    | 34 | 24 | 35 | 19 | 36 |
|    |    | 7th. | Standard | Parallel | North |    |    |    |    |    |

T.29N. R.16W.

- Subdivision lines surveyed under this group.
- Township bdrs. surveyed under this group.  
Notes in Book "A"
- Standard lines surveyed under this group.  
Notes in Book "A"

Retracement of part of Hualpai Indian Reservation Boundary, and Subdivision of part of Township 29 North, Range 15 West.

Chains Retracement of Reservation Boundary and survey of subdivision of T. 29 N., R. 15 W., as hereinafter described, executed by E. J. Lange, U. S. Surveyor, D. R. Averill, U. S. Transitman, and J. P. Davis, U. S. Surveyor, on dates shown on diagrams on pages 55, 57, and 59, heretofore, using Young and Sons' light mountain transits Nos. 8524, 8489 and 8532, respectively, described in Book "A". The initials "E.J.L.", "D.R.A.", and "J.P.D.", are inserted at the beginning and ending of those portions of the notes describing the surveys executed by E. J. Lange, U. S. Surveyor, D. R. Averill, U. S. Transitman, and J. P. Davis, U. S. Surveyor, respectively.

Recent and repeated tests of these instruments on a meridian established by observations on Polaris at elongation, demonstrate that they are in good adjustment.

RETRACEMENT: HUALPAI INDIAN RESERVATION BOUNDARY.

**E.J.L.**

Determine the course and distance between the 10½ and 11½ mile cors. on the Hualpai Indian Reservation boundary, as follows:

From a point 78 lks. N. of the 10½ mile cor., which is a rock in place, 30 x 24 x 20 ins. above ground, marked and witnessed as described by the surveyor general, and due north of a flag plainly visible, 39 lks. N. of the 11½ mile cor., I measure a base S. 56° 44' W., 10.17 chs. from the south end of which the flag 39 lks. N. of the 11½ mile cor. brs. S. 6° 23' E. The distance triangulated is given as follows:

$$\frac{10.17}{\sin. 6^{\circ} 23'} = \frac{x}{\sin. 116^{\circ} 53'}$$

or by logarithms,

|                    |   |                              |
|--------------------|---|------------------------------|
| log. 10.17         | = | 1.007321                     |
| log. sin. 116° 53' | = | 9.950330                     |
| colog. sin. 6° 23' | = | 0.953974                     |
|                    |   | <u>1.911625</u> = log. 81.59 |

The distance between the 10½ mile cor. and the 11½ mile cor. is therefore 81.59 - .78 + .39 = 81.20 chs. and the course is north.

In this triangulation, it was impossible to secure a longer base.

The 11½ mile cor. is a stone 14 x 6 x 6 ins. above ground, firmly set, marked and witnessed as described by the surveyor general.

- Land, mountainous.
- Soil, rocky, 4th rate.
- Timber, juniper and pinon.
- Undergrowth, yucca, cactus and sage brush.

E.J.L.

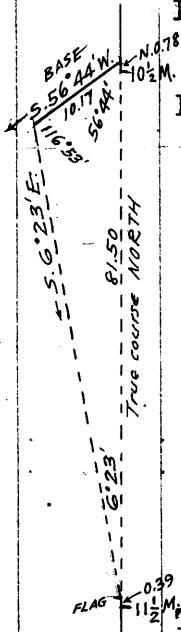
**D.R.A.**

From the 10½ mile cor. hereinbefore described, North on a random line.

Over mountainous land, thru scattering timber and undergrowth.

Ascend 50 ft.

- 5.00 Descend 775 ft.
  - 40.00 Diligent search in this vicinity failed to reveal any trace of the original 10 mile cor.
  - 51.00 Draw, course W. Ascend 250 ft.
  - 75.00 Ridge, brs. E. and W. Descend.
  - 81.81 Intersect the 9½ mile cor., which is a malpais stone 14x 24 x 6 ins. above ground, firmly set, marked and witnessed as described by the surveyor general.
- The true course and distance bet. the 10½ and 9½ mile cors. is therefore N. 81.81 chs.
- Land, mountainous.
  - Soil, rocky, 4th rate.
  - Timber, juniper and pinon.
  - Undergrowth, sage brush.



4 Retracement of Hualpai Indian Reservation boundary, and Subdi-  
vision of part of Township 29 North, Range 15 West.

Chains From the 9½ mile cor., hereinbefore described, north on random line.  
Over mountainous land, thru scattering timber and undergrowth.  
Descend 315 ft.

37.73 Intersect the 9 mile cor., which is a malpais stone, 7 x 10 x 10 ins. above ground, firmly set, marked and witnessed as described by the surveyor general.  
The true course and distance of this half mile is therefore north 37.73 chs.  
From the 9 mile cor.,  
North on random line.

39.91 Over rolling land, thru scattering timber and undergrowth  
Intersect the 8½ mile cor., which is a limestone, 6 x 8 x 8 ins., above ground, firmly set, marked and witnessed as described by the surveyor general.  
The true course and distance of this half mile is therefore north 39.91 chs.  
Land, mountainous and rolling.  
Soil, rocky, 4th rate.  
Timber, scrub cedar and pinon.  
Undergrowth, cactus and scrub oak.

D.R.A.

J.P.D.

From the 14½ mile cor. which is a dolomite stone 8 x 5 x 12 ins. above ground firmly set and marked and witnessed as described by the surveyor general.  
North, on a random line.  
Over mountainous land, through scattering timber and undergrowth. Ascend 125 feet.

3.00 Four strand wire fence, brs. N. 4° W., and S. 4° E.  
12.90 Top of ridge, brs. NE. and W. Desc. 64 ft. on NW. slope.  
22.30 Head of draw, course NE. Ascend gradually over E. slope.  
24.00 Same fence as at 3.00 ch. station, brs. N. 3° E., and S. 3° W.  
26.00 Spur slopes E. Desc. 220 ft. over NW. slope.  
35.00 Head of draw, course NE. Asc. along E. slope.  
39.20 Intersect the 14 mile cor. which is a dolomite stone, 2 x 8 x 18 ins. above ground, firmly set and mkd. and witnessed as described by the surveyor general.  
The true course and distance of this half-mile is therefore North, 39.20 chs.  
Thence North on random line.  
Over mountainous land, ascending over E. slope, thru scattering timber and undergrowth.

39.77 Intersect the 13½ mile cor. which is a stone firmly set and mkd. and witnessed as described by the surveyor general  
The true course and distance of this half mile is therefore North, 39.77 chs.  
Land, mountainous.  
Soil, rocky, 4th rate.  
Timber scattering juniper and pinon.  
Undergrowth cactus, scrub oak, sage brush and greasewood.

J.P.D.

SUBDIVISION: PART OF TOWNSHIP 29 NORTH, RANGE 15 W.

E.J.L.

From the standard cor. of secs. 32 and 33 on the S. bdy. (7th. Standard Parallel North), which is an iron post, described in Book "A".  
N. 0° 3' W., bet. secs. 32 and 33.  
Over mountainous land, thru scattering timber and undergrowth.  
Ascend 115 ft.

19.70 Ridge, brs. NE. and SW. Descend 480 ft.  
40.00 Set an iron post 3 ft. long, 1 in. in diam., in a mound of stone, for ¼ sec. cor., marked on brass cap,

S 32 1/4 S 33

1916

and raise a mound of stone, 2 ft. base, 1½ ft. high, W. of cor.

## Subdivision of Part of T. 29 N., R. 15 W.

## Chains

- 50.00 Spur, slopes N. 20° W., Continue descent.  
 59.55 Ravine, course W. Ascend 55 ft.  
 64.45 Descend 25 ft.  
 69.55 Ascend 100 ft.  
 80.00 Set an iron post, 3 ft. long, 2 ins. in diam., in a mound of stone, for cor. of secs. 28, 29, 32 and 33, marked on brass cap,

|       |      |
|-------|------|
| T29N  | R15W |
| S29   | S28  |
| S32   | S33  |
| 1916. |      |

and raise a mound of stone, 2 ft. base 1½ ft. high, W. of cor.

Land mountainous. Soil, rocky, 4th rate.  
 Timber, juniper. Undergrowth, yucca, cactus,  
 scrub oak, sage brush and greasewood.

-----  
 East, on a true line, bet. secs. 28 and 33.  
 Over mountainous land, thru scattering undergrowth.  
 Ascend 75 ft.

- 1.50 Top of cliff, brs. NW. and SE. Continue ascent.  
 13.00 Ridge, brs. N. and S. Enter timber, brs. N. and S. Descend 225 ft.  
 17.69 Intersect Hualpai Indian Reservation Boundary, 13 lks. S. of the 13½ mile cor., which is a stone, 18 x 12 x 10 ins. above ground, firmly set, marked and witnessed as described by the Surveyor-General.  
 At the point of intersection, set an iron post, 3 ft. long, 2 ins. diam., in a mound of stone, for closing cor. of secs. 28 and 33, marked on brass cap

|      |     |  |
|------|-----|--|
| T29N |     |  |
| R15W |     |  |
| S28  |     |  |
| S33  | HIR |  |
| 1916 |     |  |

And raise a mound of stone, 2 ft. base, 1½ ft. high W. of cor.

Land, mountainous. Soil, rocky, 4th rate.  
 Timber, juniper and pinion. Undergrowth, yucca, scrub oak, sagebrush and greasewood.

-----  
 From the cor. of secs. 28, 29, 32 and 33.  
 N. 0° 3' W., bet. secs. 28 and 29.  
 Over mountainous land, through scattering timber and undergrowth. Asc. 90 ft.

- 7.12 Ridge, brs. NW. and SE. Desc. 390 ft.  
 34.90 Draw, course N. 20° E. Asc. 55 ft.  
 40.00 Set an iron post, 3 ft. long, 1 in. diam., in a mound of stone, for ¼ sec. cor., marked on brass cap

|      |     |
|------|-----|
| S29  | S28 |
| 1916 |     |

And raise a mound of stone, 2 ft. base, 1½ ft. high, W. of cor.

- 42.40 Thence along E. slope.  
 50.35 Desc. 100 ft.  
 53.50 Road, brs. N. 60° W., and S. 60° E.  
 55.00 Draw, course N. 60° W. Asc. 60 ft.  
 65.15 Desc. 165 ft.

- 80.00 Set an iron post, 3 ft. long, 2 ins. diam., 24 ins. in the ground, for cor. of secs. 20, 21, 28 and 29, marked on brass cap

|      |      |
|------|------|
| T29N | R15W |
| S20  | S21  |
| S29  | S28  |
| 1916 |      |

From which: A juniper, 12 ins. diam., brs. N. 82° E., 195 lks. dist., marked T 29 N., R. 15 W S 21 B T.  
 A juniper, 6 ins. diam., brs. S. 78° E., 129 lks. dist., marked T 29 N R 15 W S 28 B T.  
 A juniper, 18 ins. diam., brs. S. 30° W., 106 lks. dist., marked T 29 N R 15 W S 29 B T.  
 A juniper, 20 ins. diam., brs. N. 45° W., 201 lks.

Subdivision of Part of T. 29 N., R. 15 W.

Chains

dist., marked T 29 N R 15 W S 20 B T.  
Land, mountainous. Soil, rocky, sandy loam, 3rd and 4th rates. Timber, pinion and juniper. Undergrowth, yucca, scrub oak and sagebrush.

-----  
East on a true line, bet. secs. 21 and 28.  
Over rolling land, through scattering timber and undergrowth. Asc. 120 ft.

17.78 Intersect Hualpai Indian Reservation Boundary, 13 lks. N. of the 12 1/2 mile cor., which is a stone, 12 x 10 x 8 ins. above ground, firmly set, marked and witnessed as described by the Surveyor-General.  
At the point of intersection, set an iron post, 3 ft. long, 2 ins. diam., 24 ins. in the ground, for closing cor. of secs. 21 and 28, marked on brass cap

T29N  
R15W  
S21  
-----  
CC S28 H I R  
1916

From which: A juniper, 10 ins. diam., brs. N. 15 3/4° W., 46 lks. dist., marked CC T29 N R15W S 21 B T.  
A pinion, 10 ins. diam., brs. S. 17 3/4° W., 55 1/2 lks. dist., marked CC T 29 N R 15 W S 28 B T.  
Land, rolling. Soil, rocky, sandy loam, 3rd and 4th rates. Timber, scrub pinion and juniper. Undergrowth, yucca, scrub oak, sagebrush and greasewood.

-----  
From the cor. of secs. 20, 21, 28 and 29.  
N. 0° 3' W., bet. secs. 20 and 21.  
Over mountainous land, through scattering timber and undergrowth. Desc.

3.90 Draw, course S. 80° W. Asc. 45 ft.  
15.00 Desc.  
17.75 Draw, course S. 20° W. Asc. 465 ft.  
40.00 Set an iron post, 3 ft. long, 1 in. diam., in a mound of stone, for 1/4 sec. cor., marked on brass cap

S20/S21  
1916

And raise a mound of stone, 2 ft. base, 1 1/2 ft. high, W. of cor.

60.00 Ridge, brs. N. 45° W., and S. 45° E. Desc. 130 ft.  
73.50 Cliff, 20 ft. high, brs. NW. and SE. Continue descent.  
80.00 Set an iron post, 3 ft. long, 2 ins. diam., in a mound of stone, for cor. of secs. 16, 17, 20 and 21, marked on brass cap

T29N R15W  
S17 S16  
-----  
S20 S21  
1916

And raise a mound of stone, 2 ft. base, 1 1/2 ft. high, W. of cor.

Land, mountainous. Soil, rocky, sandy loam, 3rd rate. Timber, pinion and juniper. Undergrowth, yucca, cactus, scrub oak and sagebrush.

-----  
East on a true line, bet. secs. 16 and 21.  
Over mountainous land, through scattering timber and undergrowth. Desc. 250 ft.

13.25 Draw, course N. 35° W.  
15.00 Desc. 15 ft.  
17.64 Intersect Hualpai Indian Reservation Boundary, 39 lks. N. of the 11 1/2 mile cor., which is a stone, 14 x 6 x 6 ins. above ground, firmly set, marked and witnessed as described by the Surveyor-General.  
At the point of intersection, set an iron post, 3 ft. long, 2 ins. diam., in a mound of stone, for closing cor. of secs. 16 and 21, marked on brass cap

T29N  
R15W  
S16  
-----  
C C S21 H I R  
1916



Subdivision of Part of T. 29 N., R. 15 W.

Chains And raise a mound of stone, 2 ft. base, 1½ ft. high W. Land, mountainous. Soil, rocky and sandy, 3rd rate. Timber, scattering juniper and pinion. Undergrowth, yucca, cactus, scrub oak and sagebrush.

-----  
 From the cor. of secs. 16, 17, 20 and 21,  
 N. 0° 3' W., bet. secs. 16 and 17.  
 Over mountainous land, thru scattering timber and undergrowth. Desc. 305 ft.  
 19.00 Draw, course W. Asc. 115 ft.  
 28.00 Ridge, brs. N. 70° W., and S. 70° E. Desc. 155 ft.  
 40.00 Set an iron post, 3 ft. long, 1 in. diam., in a mound of stone, for ¼ sec. cor., marked on brass cap

S17 | S16  
 -----  
 1916

And raise a mound of stone, 2 ft. base, 1½ ft. high, W. of cor.  
 47.00 Draw, course W. Asc. 525 ft.  
 65.00 Gulch, course S. 30° W. Continue ascent.  
 80.00 Set an iron post, 3 ft. long, 2 ins. diam., in a mound of stone, for cor. of secs. 8, 9, 16 and 17, marked on brass cap

T29N | R15W  
 S 8 | S 9  
 -----  
 S17 | S16  
 1916

And raise a mound of stone, 2 ft. base, 1½ ft. high, W. of cor.  
 Land, mountainous. Soil, rocky, sandy loam, 2nd, 3rd and 4th rates. Timber, scrub pinion, and juniper. Undergrowth, sagebrush and cactus.

-----  
 East on a true line, bet. secs. 9 and 16.  
 Over mountainous land, through scattering timber and undergrowth. Asc. 125 ft.  
 4.00 Top of cliff, brs. N. and S. Continue ascent.  
 12.00 Desc. gradually.  
 14.33 Set an iron post, 3 ft. long, 2 ins. diam., in a mound of stone, for witness cor. to closing cor. of secs. 9 and 16, marked on brass cap

T29N |  
 R15W |  
 S 9 |  
 WC CC ----- H I R  
 S16 |  
 1916 |

And raise a mound of stone, 2 ft. base, 1½ ft. high, W. of cor.  
 17.66 Intersect Hualpai Indian Reservation Boundary, 82 lks. S. of the 10½ mile cor., which is a stone 30 x 24 x 20 ins. above ground, marked and witnessed as described by the Surveyor-General.  
 The true point for closing cor. of secs. 9 and 16 falls on edge of cliff, brs. N. 80° E., and S. 80° W., where it cannot be established.  
 Land, rolling. Soil, rocky and sandy loam, 3rd rate. Timber, juniper and pinion

E. J. L.

-----  
 D. R. A.  
 From the cor. of secs. 8, 9, 16 and 17.  
 N. 0° 3' W., bet. secs. 8 and 9.  
 Over mountainous land, through scattering timber and undergrowth.  
 Desc. 570 ft.  
 40.00 Set an iron post, 3 ft. long, 1 in. diam., in a mound of stone, for ¼ sec. cor., marked on brass cap

Chains

1  
S 8 | S 9  
1916

And raise a mound of stone, 2 ft. base, 1½ ft. high, W. of cor.

55.00 Asc. 35 ft.

60.00 Desc. 30 ft.

70.00 Asc. 25 ft.

80.00 Set an iron post, 3 ft. long, 2 ins. diam., 20 ins. in the ground, in a mound of stone, for cor. of secs. 4, 5, 8, and 9, marked on brass cap

T29N R15W  
S 5 | S 4  
S 8 | S 9  
1916

And raise a mound of stone, 2 ft. base, 1½ ft. high, W. of cor.

Land, mountainous.

Soil, rocky, 4th rate.

Timber, cedar and pinion.

Undergrowth, yucca, and sagebrush.

-----  
East on a true line, bet. secs. 4 and 9.

Over mountainous land, through scattering timber and undergrowth.

Asc. 630 ft.

14.24 Spur, slopes NW. Desc.

17.57 Intersect Hualpai Indian Reservation Boundary, 2.36 chs. S. of the 9½ mile cor., which is a malpai stone, 18 x 24 x 6 ins. above ground, firmly set, marked and witnessed as described by the Surveyor-General.

At the point of intersection, set an iron post, 3 ft. long, 2 ins. diam., in a mound of stone, for closing cor. of secs. 4 and 9, marked on brass cap

T29N  
R15W  
CC — S 4 | H I R  
S 9  
1916

And raise a mound of stone, 2 ft. base, 1½ ft. high, W. of cor.

Land, Mountainous.

Soil, rocky, 4th rate.

Timber, scrub juniper and pinion.

Undergrowth, scrub oak and sage brush

-----  
From the cor. of secs. 4, 5, 8 and 9.

N. 0° 3' W. on a random line, bet. secs. 4 and 5.

40.00 Set temp. ¼ sec. cor.

80.38 Intersect N. bdy. of Tp. 10 lks. E. of the cor. of secs. 4, 5, 32 and 33, which is an iron post, described in Book "A".

Thence

S. 0° 7' E., on a true line, bet. secs. 4 and 5.

Over mountainous land, through scattering timber and undergrowth.

Desc. 435 ft.

20.40 Asc. 90 ft.

32.40 Desc. 95 ft.

40.38 Set an iron post, 3 ft. long, 1 in. diam., in a mound of

Subdivision of Part of T. 29 N., R. 15 W.

Chains.

stone, for  $\frac{1}{2}$  sec. cor., marked on brass cap

$\frac{1}{2}$   
 S 5 | S 4  
 1916

And raise a mound of stone, 2 ft. base,  $1\frac{1}{2}$  ft. high, W. of cor.

Asc. 110 ft.  
 45.60 Spur, slopes E. Desc. 450 ft.  
 56.90 Road, brs. E. and W.  
 60.40 Wash, course S.40° E. Thence over rolling land.  
 80.38 The cor. of secs. 4, 5, 8 and 9.  
 Land, rolling and mountainous.  
 Soil, rocky, 4th rate.  
 Timber, juniper and pinion.  
 Undergrowth, yucca and sagebrush.

D.R.A.

E.J.L.

From the standard cor. of secs. 31 and 32, on the S. bdy. of the Tp. (Seventh Standard Parallel North), which is an iron post, described in Book "A.", N.0° 3' W., bet. secs. 31 and 32. Over mountainous land, through scattering timber and undergrowth.

Desc. 155 ft.  
 10.00 Draw, course N.50° W. Asc. 125 ft.  
 16.40 Spur, slopes W. Desc. 190 ft.  
 23.75 Draw, course NW. Asc. 300 ft.  
 40.00 Spur, slopes W.

Set an iron post, 3 ft. long, 1 in. diam., in a mound of stone, for  $\frac{1}{2}$  sec. cor., marked on brass cap

$\frac{1}{2}$   
 S31 | S32  
 1916

From which

A pinion, 10 ins. diam., brs. N.33° E., 60 lks. dist., marked  $\frac{1}{2}$ S32 BT.

A pinion, 9 ins. diam., brs. N.62 $\frac{1}{2}$ ° W., 90 lks. dist., marked  $\frac{1}{2}$ S31 BT.

Desc. 370 ft.  
 74.00 Draw, course W. Asc. 230 ft.  
 77.30 Top of cliff, 30 ft. high, brs. E. and W. Continue ascent.  
 80.00 Set an iron post, 3 ft. long, 2 ins. diam., in a mound of stone, for cor. of secs. 29, 30, 31 and 32, marked on brass cap

T29N R15W  
 S30 | S29  
 S31 | S32  
 1916

And raise a mound of stone, 2 ft. base,  $1\frac{1}{2}$  ft. high, W. of cor.

Land, mountainous.  
 Soil, rocky, 4th rate.  
 Timber, pinion and juniper.  
 Undergrowth, sagebrush.

40.00 East on a random line, bet. secs. 29 and 32.  
 80.15 Set temp.  $\frac{1}{2}$  sec. cor.  
 Intersect N. and S. line, 11 lks. N. of the cor. of secs. 28, 29, 32 and 33.  
 Thence

Subdivision of Part of T. 29 N., R. 15 W.

Chsins.

N.89° 55' W., on a true line, bet. secs. 29 and 32.  
Over rolling and mountainous land, through scattering timber  
and undergrowth.

Desc. 190 ft.

0.65 Cliff, 20 ft. high, brs. NW. and SE. Continue descent.

15.25 Asc. 45 ft.

20.20 Desc. 75 ft.

40.00 1/2 Set an iron post, 3 ft. long, 1 in. diam., in a mound of  
stone, for 1/2 sec. cor., marked on brass cap

1/4 S29  
4 S32  
1916

And raise a mound of stone, 2 ft. base, 1 1/2 ft. high, N.  
of cor.

54.15 Leave timber, brs. NE. and SW. Desc. 40 ft.

56.05 Asc. 55 ft.

60.95 Spur, slopes S. Desc. 160 ft.

70.65 Ravine, course S. Asc. 125 ft.

80.13 The cor. of secs. 29, 30, 31 and 32.

Land, rolling and mountainous.

Soil, rocky, sandy loam, 3rd and 4th rates.

Timber, juniper and pinion.

Undergrowth, yucca, cactus and sagebrush.

West on a random line, bet. secs. 30 and 31.

40.00 Set temp. 1/2 sec. cor.

80.00 Intersect W. bdy. of Twp., 12 lks. N. of the cor. of secs.  
25, 30, 31 and 36, which is an iron post, described in  
Book "A."

Thence

N.89° 55' E., on a true line, bet. secs. 30 and 31.

Over mountainous land, through scattering timber and under-  
growth.

Desc.

0.56 Draw, course N.80° E. Asc. 15 ft.

1.90 Thence along N. slope.

10.90 Desc. 215 ft.

30.40 Draw, course N. Asc. 175 ft.

40.06 Set an iron post, 3 ft. long, 1 in. diam., 26 ins. in the  
ground, for 1/4 sec. cor., marked on brass cap

1/4 S30  
4 S31  
1916

And raise a mound of stone, 2 ft. base, 1 1/2 ft. high, N.  
of cor.

Thence along N. slope.

45.05 Draw, course N. Asc. 115 ft.

54.40 Desc. 30 ft.

56.85 Thence along N. slope.

62.35 Spur, slopes N. Desc. 130 ft.

66.95 Draw, course N.45° W. Asc. 325 ft.

80.00 The cor. of secs. 29, 30, 31 and 32.

Land, mountainous.

Soil, rocky, 4th rate.

Timber, pinion and juniper.

Undergrowth, yucca, sagebrush and cactus.

N.0° 3' W., bet. secs. 29 and 30;

Over mountainous land, through scattering undergrowth.

Asc. 230 ft.

17.15 Ridge, brs. N.70° W. and S.70° E. Desc. 665 ft.

40.00 Set an iron post, 3 ft. long, 1 in. diam., in a mound of

## Subdivision of Part of T. 29 N., R. 15 W.

Chains.

stone, for  $\frac{1}{2}$  sec. cor., marked on brass cap
$$\begin{array}{r} \frac{1}{2} \\ \hline S30 | S29 \\ \hline 1916 \end{array}$$
And raise a mound of stone, 2 ft. base, 1 $\frac{1}{2}$  ft. high, W. of cor.

- 40.45 Draw, course W. Road in draw, brs. E. and W. Asc. 480 ft.  
 70.00 Ridge, brs. N.60° E. and S.60° W. Desc. 75 ft.  
 80.00 Set an iron post,  $\frac{3}{4}$  ft. long, 1 in. diam., in a mound of stone, for cor. of secs. 19, 20, 29 and 30, marked on brass cap

$$\begin{array}{r} T29N R15W \\ \hline S19 | S20 \\ \hline S30 | S29 \\ \hline 1916 \end{array}$$
And raise a mound of stone, 2 ft. base, 1 $\frac{1}{2}$  ft. high, W. of cor.

Land, mountainous.

Soil, rocky, sandy clay loam, 3rd and 4th rates.

Timber, scrub pinion and juniper.

Undergrowth, yucca, cactus, sagebrush and greasewood.

- 40.00 S.89° 55' E., on a random line, bet. secs. 20 and 29.  
 Set temp.  $\frac{1}{2}$  sec. cor.

- 80.14 Intersect N. and S. line, 19 lks. S. of the cor. of secs. 20, 21, 28 and 29.

Thence

S.89° 57' W., on a true line, bet. secs. 20 and 29.

Over mountainous land, through scattering timber and undergrowth.

Desc. 45 ft.

- 20.65 Draw, course N.75° W. Road in draw, brs. N.75° W. and S.75° E. Asc. 150 ft.

- 32.65 Spur, slopes N. Desc. 200 ft.

- 40.07 Set an iron post,  $\frac{3}{4}$  ft. long, 1 in. diam., in a mound of stone, for  $\frac{1}{2}$  sec. cor., marked on brass cap

$$\begin{array}{r} \frac{1}{2} S20 \\ \hline \frac{1}{2} S29 \\ \hline 1916 \end{array}$$

From which

A pinion, 10 ins. diam., brs. N.36° E., 40 lks. dist., marked  $\frac{1}{2}$ S20 BT.A juniper, 8 ins. diam., brs. S.68° W., 42 lks. dist., marked  $\frac{1}{2}$ S29 BT.

- 51.15 Draw, course S.60° W. Road in draw, brs. N.60° E. and S.60° W. Asc. 100 ft.

- 74.30 Ridge, brs. N.45° E. and S.45° W. Desc. 75 ft.

- 80.14 The cor. of secs. 19, 20, 29 and 30.

Land, mountainous.

Soil, rocky, 4th rate.

Timber, juniper and pinion.

Undergrowth, yucca, scrub oak and sagebrush.

- 40.00 S.89° 55' W., on a random line, bet. secs. 19 and 30.  
 Set temp.  $\frac{1}{2}$  sec. cor.

- 79.84 Intersect W. bdy. of Tn., at the cor. of secs. 19, 24, 25 and 30, which is an iron post, described in Book "A."

Thence

N.89° 55' E., on a true line, bet. secs. 19 and 30.

Over rolling land, through scattering timber and undergrowth.

Desc.

Subdivision of Part of T. 29 N., R. 15 W.

Chains.

3.35 Draw, course N.15° E. Asc. 400 ft.  
 18.34 Desc. 15 ft.  
 20.35 Draw, course N.20° E. Asc. 135 ft.  
 29.85 Top of cliff, brs. NE. and SW. Continue ascent.  
 31.90 Desc. 115 ft.  
 36.64 Draw, course N.60° E. Asc. 65 ft.  
 39.84 Set an iron post, 3 ft. long, 1 in. diam., in a mound of  
 stone, for  $\frac{1}{4}$  sec. cor., marked on brass cap

$\frac{1}{4}$  S19  
 $\frac{1}{4}$  S30  
 1916

From which

A pinion, 14 ins. diam., brs. N.75° W., 163 lks. dist.,  
marked  $\frac{1}{4}$ S19 BT.

A pinion, 12 ins. diam., brs. S.84° W., 113 lks. dist.,  
marked  $\frac{1}{4}$ S30 BT.

53.50 Ridge, brs. N.60° E. and S.60° W. Desc. 40 ft.  
60.45 Asc. 25 ft.

63.45 Ridge, brs. N.60° E. and S.60° W. Desc. 150 ft.

73.65 Draw, course S.10° E. Asc. 135 ft.

79.84 The cor. of secs. 19, 20, 29 and 30.

Land, rolling and mountainous.

Soil, rocky, sandy loam, 3rd and 4th rates.

Timber, scrub pinion and juniper.

Undergrowth, yucca, cactus, sagebrush and greasewood.

N.0° 3' W., bet. secs. 19 and 20.

Over mountainous land, through scattering timber and under-  
growth.

Desc. 90 ft.

5.30 Draw, course S.45° W. Asc. 160 ft.

14.50 Ridge, brs. N.80° E. and S.80° W. Desc. 225 ft.

25.40 Draw, course S.50° W. Asc. 80 ft.

30.25 Ridge, brs. N.80° E. and S.80° W. Desc. 80 ft.

35.20 Wash, course S.80° W. Asc. 160 ft.

40.00 Set an iron post, 3 ft. long, 1 in. diam., in a mound of  
stone, for  $\frac{1}{4}$  sec. cor., marked on brass cap

$\frac{1}{4}$   
 S19 | S20  
 1916

And raise a mound of stone, 2 ft. base, 1 $\frac{1}{2}$  ft. high, W  
of cor.

47.85 Spur, slopes N.80° E. Desc. 75 ft.

52.80 Wash, course S.80° W. Asc. 145 ft.

59.00 Gulch, course S.80° W. Continue ascent.

64.45 Ridge, brs. S.60° E. and N.60° W. Desc.

72.15 Draw, course N.80° E. Thence over rolling land.

77.00 Wash, course S.80° E.

80.00 Set an iron post, 3 ft. long, 2 ins. diam., in a mound of  
stone, for cor. of secs. 17, 18, 19 and 20, marked on  
brass cap

T29N R15W  
 S18 | S17  
 S19 | S20  
 1916

From which

A pinion, 12 ins. diam., brs. N.68° E., 60 lks. dist.,  
marked T29N R15W S17 BT.

A pinion, 10 ins. diam., brs. S.42° E., 83 lks. dist.,  
marked T29N R15W S20 BT.

A pinion, 8 ins. diam., brs. S.17 $\frac{1}{2}$ ° W., 59 lks. dist.,  
marked T29N R15W S19 BT.

A pinion, 16 ins. diam., brs. N.56° W., 138 lks. dist.,

Subdivision of Part of T. 29 N., R. 15 W.

Chains.

marked T29N R15W S18 20.  
Land, rolling and mountainous.  
Soil, rocky, sandy loam, 3rd rate.  
Timber, scrub pinion and juniper.  
Undergrowth, sagebrush, scrub oak and cactus.

40.00 N.89° 57' E., on a random line, bet. secs. 17 and 20.  
Set temp. 1/4 sec. cor.  
79.90 Intersect N. and S. line, 21 lks. N. of the cor. of secs.  
16, 17, 20 and 21.

Thence  
N.89° 54' W., on a true line, bet. secs. 17 and 20.  
Over mountainous land, through scattering undergrowth.  
Asc. 120 ft.  
6.10 Ridge, brs. N. and S. Desc. 230 ft.  
8.30 Top of cliff, brs. N. and S. Continue descent.  
14.90 Wash, course N.45° W. Asc.  
20.20 Desc. 140 ft.  
26.15 Wash, course N. Asc.  
29.90 Desc. 165 ft.  
39.95 Set an iron post, 3 ft. long, 1 in. diam., in a mound of  
stone, for 1/4 sec. cor., marked on brass cap

1/4 S17  
1/4 S20  
1916

And raise a mound of stone, 2 ft. base, 1 1/2 ft. high, N.  
of cor.

53.65 Draw, course N.  
56.15 Draw, course N.30° W.  
59.75 Asc. 180 ft.  
64.90 Spur, slopes S. Desc. 75 ft.  
70.10 Asc. 90 ft.  
76.90 Desc. 35 ft.  
79.90 The cor. of secs. 17, 18, 19 and 20.

Land, mountainous.  
Soil, rocky, 4th rate.  
No timber.  
Undergrowth, yucca, cactus and sagebrush,

40.00 S.89° 55' W., on a random line, bet. secs. 18 and 19.  
Set temp. 1/4 sec. cor.  
79.80 Intersect W. bdy. of Tp., 21 lks. N. of the cor. of secs.  
13, 18, 19 and 24, which is an iron post, described in  
Book "A.W"

Thence  
N.89° 46' E., on a true line, bet. secs. 18 and 19.  
Over mountainous land, through scattering timber and under-  
growth.  
Asc. 200 ft.  
14.00 Ridge, brs. N. and S. Desc. 180 ft.  
26.60 Draw, course N.30° E. Asc. 240 ft.  
32.40 Top of cliff, brs. N. and S. Continue ascent.  
36.50 Spur, slopes N. Desc. 45 ft.  
39.80 Set an iron post, 3 ft. long, 1 in. diam., in a mound of  
stone, for 1/4 sec. cor., marked on brass cap

1/4 S18  
1/4 S19  
1916

And raise a mound of stone, 2 ft. base, 1 1/2 ft. high, N.  
of cor.

40.05 Draw, course N. Asc. 35 ft.  
45.50 Spur, slopes N.30° E. Desc. 95 ft.

Subdivision of Part of T. 29 N. R. 15 W.

Chains.

49.65 Draw, course N.20° W. Asc. 60 ft.  
 52.00 Spur, slopes N. Desc. 45 ft.  
 59.45 Asc. 170 ft.  
 71.40 Ridge, brs. N. and S. Desc. 110 ft.  
 77.45 Wash, course S.60° E. Asc.  
 79.80 The cor. of secs. 17, 18, 19 and 20.  
 Land, mountainous.  
 Soil, rocky, sandy loam, 3rd rate.  
 Timber, pinion and juniper.  
 Undergrowth, yucca, cactus and sagebrush.

N.0° 3' W., bet. secs. 17 and 18.  
 Over mountainous land, through scattering timber and undergrowth.  
 Asc. 105 ft.

10.60 Ridge, brs. N.75° E. and S.75° W. Desc. 415 ft.  
 33.80 Draw, course N.80° E. Asc. 190 ft.  
 40.00 Set an iron post, 3 ft. long, 1 in. diam., 8 ins. in the ground, in a mound of stone, for 1/4 sec. cor., marked on brass cap

S18 | S17  
 1917

And raise a mound of stone, 2 ft. base, 1 1/2 ft. high, W. of cor.

47.25 Ridge, brs. E. and W. Desc. 85 ft.  
 54.65 Draw, course S.60° W. Asc. 70 ft.  
 59.55 Spur, slopes S.60° W. Desc. 190 ft.  
 73.45 Draw, course N.80° W. Asc. 55 ft.  
 80.00 Set an iron post, 3 ft. long, 2 ins. diam., 6 ins. in the ground, for cor. of secs. 7, 8, 17 and 18, marked on brass cap

T29N R15W  
 S 7 | S 8  
 S18 | S17  
 1916

From which  
 A pinion, 10 ins. diam., brs. N.30 1/2° E., 221 lks. dist., marked T29N R15W S8 BT.  
 A pinion, 10 ins. diam., brs. S.30° E., 121 lks. dist., marked T29N R15W S17 BT.  
 A pinion, 14 ins. diam., brs. S.38° W., 192 lks. dist., marked T29N R15W S18 BT.  
 A pinion, 12 ins. diam., brs. N.20 1/2° W., 138 lks. dist., marked T29N R15W S7 BT.  
 Land, mountainous.  
 Soil, rocky, sandy loam, and clay, 3rd rate.  
 Timber, scrub pinion and juniper.  
 Undergrowth, scrub oak, cactus and sagebrush.

40.00 S.89° 54' E., on a random line, bet. secs. 8 and 17.  
 Set temp. 1/4 sec. cor.  
 79.93 Intersect N. and S. line, at the cor. of secs. 8, 9, 16 and 17.

Thence  
 N.89° 54' W., on a true line, bet. secs. 8 and 17.  
 Over mountainous land, through scattering timber and undergrowth.

29.95 Desc. 515 ft.  
 Asc. 25 ft.  
 34.95 Desc. 65 ft.  
 39.96 Set an iron post, 3 ft. long, 1 in. diam., in a mound of



Subdivision of Part of T. 29 N., R. 15 W.

Chains.

stone, for  $\frac{1}{4}$  sec. cor., marked on brass cap

$\frac{1}{4}$  S 8  
S 17  
1916

And raise a mound of stone, 2 ft. base,  $1\frac{1}{2}$  ft. high, N. of cor.

- 53.35 Asc. 55 ft.
- 68.05 Spur, slopes N.  $15^\circ$  E. Desc. 140 ft.
- 77.55 Draw, course S. Asc. 40 ft.
- 79.93 The cor. of secs. 7, 8, 17 and 18.

Land, mountainous.  
Soil, rocky, 4th rate.  
Timber, juniper and pinion.  
Undergrowth, sagebrush and cactus.

- 40.00 S.  $89^\circ$  46' W., on a random line, bet. secs. 7 and 18.
- Set temp.  $\frac{1}{4}$  sec. cor.

79.70 Intersect W. bdy. of Tp., 5 lks. S. of the cor. of secs. 7, 12, 13 and 18, which is an iron post, described in Book "A."

Thence  
S.  $89^\circ$  48' E., on a true line, bet. secs. 7 and 18.  
Over mountainous land, through scattering undergrowth.

- 21.85 Desc. 305 ft.
- 25.30 Draw, course N.  $45^\circ$  E. Asc. 30 ft.
- 30.95 Desc. 170 ft.
- 39.70 Draw, course S.  $20^\circ$  W. Asc. 110 ft.

Set an iron post, 3 ft. long, 1 in. diam., in a mound of stone, for  $\frac{1}{4}$  sec. cor., marked on brass cap

$\frac{1}{4}$  S 7  
S 18  
1916

And raise a mound of stone, 2 ft. base,  $1\frac{1}{2}$  ft. high, N. of cor.

- 41.70 Spur, slopes S. Desc.
- 50.00 Enter draw, course E. Comes from N.
- 55.00 Leave draw, course SE. Asc. 25 ft.
- 60.00 Spur, slopes S.  $45^\circ$  W. Desc. 20 ft.
- 62.00 Draw, course S. Road in draw, brs. N. to New Water Springs, and S. to Duncan Ranch. Asc. 145 ft.
- 74.00 Spur, slopes S.  $10^\circ$  W. Desc. 50 ft.
- 79.70 The cor. of secs. 7, 8, 17 and 18.

Land, mountainous.  
Soil, rocky and sandy loam, 3rd rate.  
Timber, none.  
Undergrowth, sagebrush, yucca and cactus.

- 12.10 N.  $0^\circ$  3' W., bet. secs. 7 and 8.
- 28.25 Over mountainous land, through scattering timber and undergrowth.
- Asc. 170 ft.
- 37.30 Ridge, brs. N.  $60^\circ$  E. and S.  $60^\circ$  W. Desc. 235 ft.
- 40.00 Draw, course S.  $60^\circ$  W. Road, brs. N.  $60^\circ$  E. and S.  $60^\circ$  W. Asc. 160 ft.

- 37.30 Spur, slopes N.  $80^\circ$  E. Desc. 130 ft.
- 40.00 Set an iron post, 3 ft. long, 1 in. diam., in a mound of stone, for  $\frac{1}{4}$  sec. cor., marked on brass cap

Subdivision of Part of T. 29 N., R. 15 W.

Chains.

1  
S 7 1/2 S 8  
1916

And raise a mound of stone, 2 ft. base, 1 1/2 ft. high, W. of cor.

45.00 Draw, course S. 30° E. Asc. 45 ft.  
54.90 Wash, course S. 60° E. Asc. 275 ft.  
80.00 Set an iron post, 3 ft. long, 2 ins. diam., in a mound of stone, for cor. of secs. 5, 6, 7 and 8, marked on brass cap

T29N R15W  
S 6 S 5  
S 7 S 8  
1916

From which

A pinion, 12 ins. diam., brs. N. 57° E., 82 lks. dist., marked T29N R15W S5 30.

A pinion, 8 ins. diam., brs. N. 42° E., 125 lks. dist., marked T29N R15W S6 30.

No other trees within limits. Raise a mound of stone, 2 ft. base, 1 1/2 ft. high, W. of cor.

Land, mountainous.

Soil, rocky, 3rd and 4th rates.

Timber, pinion and juniper.

Undergrowth, cactus and scrub oak.

40.00 S. 89° 54' E., on a random line, bet. secs. 5 and 8.

80.00 Set temp. 1/2 sec. cor. E.T.L.

Intersect N. and S. line, 11 lks. S. of the cor. of secs. 4, 5, 8 and 9.

Thence

N. 89° 59' W. on a true line, bet. secs. 5 and 8.

Over mountainous land, through scattering timoer and undergrowth.

Desc. 220 ft.

11.50 Road, brs. NE. to New Water Springs and SW. to Duncan Ranch. Asc.

22.30 Spur, slopes SW. Desc. 115 ft.

25.20 Wash, course S. 30° E. Asc. 275 ft.

40.03 Set an iron post, 3 ft. long, 1 in. diam., in a mound of stone, for 1/2 sec. cor.; marked on brass cap.

1 S 5  
4 S 8  
1916

And raise a mound of stone, 2 ft. base, 1 1/2 ft. high, W. of cor. D.R.A.

49.80 Desc. 165 ft.

53.55 Wash, course S. 45° E. Asc. 15 ft.

63.20 Desc. 55 ft.

69.10 Wash, course S. Asc. 160 ft.

75.55 Spur, slopes S. Desc. 45 ft.

80.00 The cor. of secs. 5, 6, 7 and 8.

Land, mountainous.

Soil, rocky, 4th rate.

Timber, pinion and juniper.

Undergrowth, scrub oak and cactus.

40.00 S. 89° 48' W., on a random line, bet. secs. 6 and 7.

79.97 Set temp. 1/2 sec. cor.

Intersect W. bdy. of Tn., 23 lks. S. of the cor. of secs. 1, 6, 7 and 12, which is an iron post, described in Book "A."

Subdivision of Part of T. 29 N., R. 15 W.

Chains.

Thence  
N. 89° 58' E., on a true line, bet. secs. 6 and 7.  
Over mountainous land, through scattering timber and under-  
growth.

0.95  
16.35  
23.10  
33.95  
39.97

Desc.  
Draw, course S. 10° W. Asc. 120 ft.  
Desc. 150 ft.  
Draw, course S. 15° E. Asc. 250 ft.  
Spur, slopes S. 20° W. Desc. 200 ft.  
Set an iron post, 3 ft. long, 1 in. diam., in a mound of  
stone, for 1/4 sec. cor., marked on brass cap

1/4 S 6  
1/4 S 7  
1916

And raise a mound of stone, 2 ft. base, 1 1/2 ft. high, N.  
of cor.

52.60  
59.95  
73.75  
79.97

Wash, course S. 30° E. Asc. 90 ft.  
Ridge, brs. N. and S. Desc. 330 ft.  
Draw, course S. Asc. 180 ft.  
The cor. of secs. 5, 6, 7 and 8.  
Land, mountainous.  
Soil, rocky, 4th rate.  
Timber, scrub pinion and juniper.  
Undergrowth, yucca, cactus and sagebrush.

N. 0° 3' W., on a random line, bet. secs. 5 and 6.

70.00  
80.26  
  
15.25  
40.26

Set temp. 1/4 sec. cor.  
Intersect N. bdy. of Tn., at the cor. of secs. 5, 6, 31 and  
32, which is an iron post, described in Book "A."

Thence  
S. 0° 3' E., on a true line, bet. secs. 5 and 6.  
Over mountainous land, through scattering timber and under-  
growth.

Desc. 95 ft.  
Foot of descent; thence over level land.  
Set an iron post, 3 ft. long, 1 in. diam., 5 ins. in the  
ground, in a mound of stone, for 1/4 sec. cor., marked on  
brass cap

1/4 S 6  
1/4 S 5  
1916

From which  
A juniper, 14 ins. diam., brs. N. 72° E., 41 1/2 lks. dist.,  
marked 1/2 S 5 BT.  
A juniper, 15 ins. diam., brs. N. 50° W., 95 lks. dist.,  
marked 1/2 S 6 BT.

55.00  
62.75  
80.26

Draw, course N. 30° E. Asc. 80 ft.  
Spur, slopes E. Desc. 105 ft.  
The cor. of secs. 5, 6, 7 and 8.  
Land, level and mountainous.  
Soil, rocky, 4th rate.  
Timber, juniper and pinion.  
Undergrowth, scrub oak and cactus.

E.J.L.

Chains.

General Description.

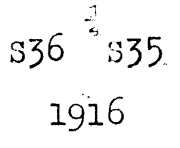
This township is rough mountainous land, draining to the west. The Grand Wash Divide runs east and west through secs. 5 and 6, then in a southerly direction, near the Hualpai Indian Reservation line. There is a scattering growth of juniper and pinion timber, and scrub oak undergrowth. This is good grazing land, except that it is far from water. One road runs north east and south west across the north west corner of the township, leading from G. T. Duncan's Ranch to New Water Spring. Another road through secs. 20, 29 and 30 leads from Duncan's Ranch into the hills, and is used for hauling wood. There are no settlers.

Subdivision lines of Township 29 North, Range 16 West. 19

Chains. Surveys hereinafter described, executed by E. J. Lange, U.S. S., using Young & Sons' transit No. 8524, and S. Frank Walters, D. R. Averill and James C. Hooper, U.S. Transitmen, using Buff solar transit No. 9985 and Young and Sons' light mountain transits Nos. 8489 and 8524, respectively, described in Book "A." Initials "E.J.L.", "S.F.W.", "D.R.A." and "J.C.H." are inserted at the beginning and ending of those portions of the notes describing the respective surveys of E. J. Lange, U.S.S., & S. Frank Walters, D.R. Averill & James C. Hooper, U.S.T. Dates of execution are shown on diagrams on pages 51, 53 and 55 hereof. Recent and repeated tests of the instruments on a meridian established by observations on Polaris at elongation, demonstrate that they are in satisfactory adjustment.

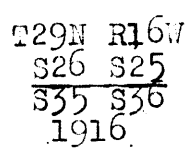
S.F.W.  
From the standard cor. of secs. 35 and 36 on the S. bdy. of the Tp. (7th. Std. Parallel North), described in Book "A," N. 0° 1' W., bet. secs. 35 and 36.

- Over mountainous land, thru. scattering timber and undergrowth.
- Descend 850 ft.
- 6.50 Foot of rim rock, brs. NE. and SW. Continue descent.
- 29.00 Wash, course NW. Ascend 220 ft.
- 40.00 Set an iron post, 3 ft. long, 1 in. in diam., in a mound of stone, for  $\frac{1}{4}$  sec. cor., marked on brass cap,



and raise a mound of stone, 2 ft. base, 1  $\frac{1}{2}$  ft. high, W. of cor.

- 48.00 Spur, slopes W. Descend 475 ft.
- 69.00 Wash, course NW. Ascend 30 ft.
- 77.00 Descend 15 ft.
- 80.00 Set an iron post, 3 ft. long, 2 ins. in diam., in a mound of stone, for cor. of secs. 25, 26, 35 and 36, marked on brass cap,



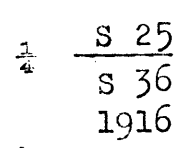
and raise a mound of stone, 2 ft. base, 1  $\frac{1}{2}$  ft. high, W. of cor.

Land, mountainous.  
Soil, rocky, 4th rate.  
Timber, pinon and juniper.  
Undergrowth, yucca and black brush.

- East, on a random line, bet. secs. 25 and 36.
- 40.00 Set temp.  $\frac{1}{4}$  sec. cor.
- 80.36 Intersect E. bdy. of Tp., 16 lks. N. of the cor. of secs. 25, 30, 31 and 36, which is an iron post, described in Book "A."

Thence, N. 89° 53' W., on a true line, bet. secs. 25 and 36. Over mountainous land, thru. scattering timber and undergrowth.

- Ascend 570 ft.
- 34.00 Ridge, brs. N\* and S. Descend 870 ft.
- 40.18 Set an iron post 3 ft. long, 1 in. in diam., in a mound of atone, for  $\frac{1}{4}$  sec. cor., marked on brass cap,



and raise a mound of stone, 2 ft. base, 1  $\frac{1}{2}$  ft. high, N. of cor.

## 20. Subdivision lines of Township 29 North, Range 16 West.

Chains.

72.20 Gulch, course SW. Continue descent.  
 80.36 The cor. of secs. 25, 26, 35 and 36.  
 Land, mountainous.  
 Soil, rocky, 4th rate.  
 Timber, pinon and juniper.  
 Undergrowth, yucca, black brush, scrub oak, Spanish bayonet  
 and cactus.

N. 0° 1' W., bet. secs. 25 and 26.  
 Over mountainous land, thru scattering timber and under-  
 growth.

Ascend 175 ft.  
 14.70 Spur, slopes W. Descend 190 ft.  
 29.30 Ascend 10 ft.  
 33.30 Descend 95 ft.  
 40.00 Set an iron post, 3 ft. long, 1 in. in diam., 26 ins. in  
 the ground, for  $\frac{1}{4}$  sec. cor., marked on brass cap,

S26 | S25

1916

and raise a mound of stone, 2 ft. base,  $1\frac{1}{2}$  ft. high, W. of  
 cor.

54.95 Ascend 25 ft.  
 61.45 Descend 115 ft.  
 73.50 Road brs. E<sup>W</sup> and W.  
 78.50 Wash, course W. Ascend.  
 80.00 Set an iron post 3 ft. long, 2 ins. in diam., 10 ins. in  
 the ground, in a mound of stone, for cor. of secs. 23, 24,  
 25 and 26, marked on brass cap,

T29N R16W

S23 | S24  
 S26 | S25

1916

and raise a mound of stone, 2 ft. base,  $1\frac{1}{2}$  ft. high, W.  
 of cor.

Land, mountainous.  
 Soil, rocky, 4th rate.  
 Timber, pinon and juniper.  
 Undergrowth, black brush, yucca, Spanish bayonet and cactus.

S.F.W.

E.J.L.

S. 89° 53' E., on a random line, bet. secs. 24 and 25.  
 40.00 Set temp.  $\frac{1}{4}$  sec. cor.  
 80.10 Intersect E<sup>W</sup> bdy. of Tp., 7 lks. S. of the cor. of secs. 19,  
 24, 25 and 30, which is an iron post, described in Book  
 "A."

Thence

N. 89° 56' W., on a true line, bet. secs. 24 and 25.  
 Over mountainous land, thru scattering undergrowth.  
 Descend 20 ft.

8.75 Draw, course S. 20° W.; ascend 175 ft.  
 24.50 Spur, slopes SW. Descend 330 ft.  
 40.05 Set an iron post, 3 ft. long, 1 in. in diam., in a mound of  
 stone, for  $\frac{1}{4}$  sec. cor., marked on brass cap,

S 24

S 25

1916

and raise a mound of stone, 2 ft. base,  $1\frac{1}{2}$  ft. high, N. of  
 cpr.

Ascend 190 ft.

Chains.

80.10

The cor. of secs. 23, 24, 25 and 26.  
Land, mountainous.  
Soil, rocky, 4th rate.  
No timber.  
Undergrowth, yucca, cactus, cat claw and greasewood.

E.J.L.

S.F.W.

N.0° 1' W., bet. secs. 23 and 24.  
Over mountainous land, through scattering timber and undergrowth.

Asc. 100 ft.

Desc. 55 ft.

4.75

Wash, course SW. Asc. 1070 ft.

15.00

16.00

Road, brs. NE. and SW. to Duncan Ranch.

39.25

Rim rock and cliffs, br. E. and W.

40.00

Set an iron post, 3 ft. long, 1 in. diam., in a mound of stone, for  $\frac{1}{4}$  sec. cor., marked on brass cap

$\frac{1}{4}$   
S23 | S24  
1916

And raise a mound of stone, 2 ft. base,  $1\frac{1}{2}$  ft. high, W. of cor.

49.50

Rim rock and cliffs, br. E. and W. Continue ascent.

70.00

Top of ascent; desc. 105 ft.

80.00

Set an iron post, 3 ft. long, 2 ins. diam., in a mound of stone, for cor. of secs. 13, 14, 23 and 24, marked on brass cap

T29N. R16W  
S14 | S15  
-----  
S23 | S24  
1916

And raise a mound of stone, 2 ft. base,  $1\frac{1}{2}$  ft. high, W. of cor.

Land, mountainous.

Soil, rocky, 4th rate.

Timber, scattering juniper and pine.

Undergrowth, black brush and yucca.

40.00

S.89° 56' E., on a random line, bet. secs. 13 and 24.

80.00

Set temp.  $\frac{1}{4}$  sec. cor.

Intersect E. bdy. of Td., 37 lks. N. of the cor. of secs. 13, 18, 19 and 24, which is an iron post, described in Book "A."

Thence

N.89° 40' W., on a true line, bet. secs. 13 and 24.

Over mountainous land, through scattering timber and undergrowth.

Desc. 60 ft.

1.00

Gulch, course NW. Asc.

6.20

Desc. 140 ft.

13.75

Wash, course SW. Asc. 720 ft.

14.25

Road, brs. NE. and SW. to Duncan Ranch.

30.00

Cliffs, br. N. and SW. Continue ascent.

40.00

Set an iron post, 3 ft. long, 1 in. diam., in a mound of stone, for  $\frac{1}{4}$  sec. cor., marked on brass cap

$\frac{1}{4}$  S13  
-----  
S24  
1916

And raise a mound of stone, 2 ft. base,  $1\frac{1}{2}$  ft. high, N. of cor.

41.90

Cliffs and rim rock, brs. NE. and SW. Continue ascent.

## Subdivision of T. 29 N., R. 16 W.

Chains.

55.65 Desc. 50 ft.  
 60.55 Asc. 130 ft.  
 69.25 Desc. 140 ft.  
 80.00 The cor. of secs. 13, 14, 23 and 24.  
 Land, mountainous.  
 Soil, rocky, 4th rate.  
 Timber, pine and juniper.  
 Undergrowth, black brush, sagebrush, yucca and Spanish bayonet.

N.0° 1' W. bet. secs. 13 and 14.  
 Over mountainous land, through scattering timber and undergrowth.

4.85 Desc. 75 ft.  
 9.80 Asc. 40 ft.  
 Desc. 90 ft.  
 16.50 Gulch, course E. Asc. 20 ft.  
 21.60 Desc. 60 ft.  
 25.50 Gulch, course SE. Asc. 285 ft.  
 40.00 Set an iron post, 3 ft. long, 1 in. diam., in a mound of stone, for  $\frac{1}{4}$  sec. cor., marked on brass cap

$\frac{1}{4}$   
 S14 | S13  
 1916

And raise a mound of stone, 2 ft. base,  $1\frac{1}{2}$  ft. high, W. of cor.

43.00 Spur, slopes SE. Desc. 360 ft.  
 50.75 Draw, course NE. Asc. 275 ft.  
 72.50 Spur, slopes E. Desc. 135 ft.  
 79.90 Draw, course E. Asc.  
 80.00 Set an iron post, 3 ft. long, 2 ins. diam., in a mound of stone, for cor. of secs. 11, 12, 13 and 14, marked on brass cap

T29N R16W  
 S11 | S12  
 S14 | S13  
 1916

And raise a mound of stone, 2 ft. base,  $1\frac{1}{2}$  ft. high, W. of cor.

Land, mountainous.  
 Soil, rocky, 4th rate.  
 Timber, juniper and pine.  
 Undergrowth, black brush, sagebrush, yucca and Spanish bayonet.

40.00 S.89° 40' E., on a random line, bet. secs. 12 and 13.  
 Set temp.  $\frac{1}{4}$  sec. cor.  
 80.35 Intersect E. bdy. of Tp., at the cor. of secs. 7, 12, 13 and 18, which is an iron post, described in Book "A."

Thence

N.89° 40' W., on a true line, bet. secs. 12 and 13.

Over mountainous land, through scattering timber and undergrowth.

3.50 Desc. 20 ft.  
 11.95 Asc. 50 ft.  
 23.35 Desc. 365 ft.  
 29.35 Draw, course S. Asc. 200 ft.  
 40.17 Spur, slopes S. Desc. 235 ft.  
 Set an iron post, 3 ft. long, 1 in. diam., in a mound of stone, for  $\frac{1}{4}$  sec. cor., marked on brass cap



Chains.

$$\begin{array}{r} \frac{1}{4} \text{ S12} \\ \frac{1}{4} \text{ S13} \\ \hline 1916 \end{array}$$

And raise a mound of stone, 2 ft. base, 1½ ft. high, N. of cor.

- 49.35 Gulch, course S. Asc.
- 51.55 Desc. 50 ft.
- 57.35 Draw, course SE. Asc. 40 ft.
- 62.85 Desc. 20 ft.
- 70.35 Draw, course N.80° E. Thence along N. bank of draw.
- 80.35 The cor. of secs. 11, 12, 13 and 14.

Land, mountainous.  
 Soil, rocky, 4th rate.  
 Timber, juniper and pine.  
 Undergrowth, black brush, yucca and cactus.

S.F.W.

D.R.A.

N.0° 1' W., bet. secs. 11 and 12. Over mountainous land, through scattering timber and undergrowth.

- Asc. 345 ft.
- 14.20 Spur, slopes S.60° W. Desc. 100 ft.
- 24.00 Wash, course W. Asc. 140 ft.
- 40.00 Spur, slopes S.10° E.
- Set an iron post, 3 ft. long, 1 in. diam., in a mound of stone, for ¼ sec. cor., marked on brass cap

$$\begin{array}{r} \frac{1}{4} \\ \text{S11} \mid \text{S12} \\ \hline 1916 \end{array}$$

And raise a mound of stone, 2 ft. base, 1½ ft. high, W. of cor.

- Desc:
- 45.00 Head of gulch, course S.30° E. Asc. 115 ft.
- 48.85 Spur, slopes SE. Desc. 60 ft.
- 54.60 Wash, course SE. Asc. 275 ft.
- 69.00 Ridge, brs. N.60° E. and S.60° W. Desc. 60 ft.
- 80.00 Set an iron post, 3 ft. long, 2 ins. diam., in a mound of stone, for cor. of secs. 1, 2, 11 and 12, marked on brass cap

$$\begin{array}{r} \text{T29N R16W} \\ \text{S 2} \mid \text{S 1} \\ \hline \text{S11} \mid \text{S12} \\ \hline 1916 \end{array}$$

And raise a mound of stone, 2 ft. base, 1½ ft. high, W. of cor.

Land, mountainous.  
 Soil, rocky, 4th rate.  
 Timber, juniper and pinion.  
 Undergrowth, scrub oak and cactus.

- 40 00 S.89° 40' E., on a random line, bet. secs. 1 and 12. Set temp. ¼ sec. cor.
- 80.27 Intersect E. bdy. of Tp., 42 lks. S. of the cor. of secs. 1, 6, 7 and 12, which is an iron post, described in book "A."
- Thence N.89° 58' W., on a true line, bet. secs. 1 and 12. Over mountainous land, through scattering timber and undergrowth.
- Asc. 390 ft.
- 35.25 Desc. 35 ft.

|                                |                                                                                                                                                                                                                                                                                        |
|--------------------------------|----------------------------------------------------------------------------------------------------------------------------------------------------------------------------------------------------------------------------------------------------------------------------------------|
| Chains.<br>40.13 $\frac{1}{2}$ | Set an iron post, 3 ft. long, 1 in. diam., in a mound of stone, for $\frac{1}{4}$ sec. cor., marked on brass cap                                                                                                                                                                       |
|                                | $\frac{1}{4}$ S 1<br>$\frac{1}{4}$ S 12<br>1916                                                                                                                                                                                                                                        |
| 55.25                          | And raise a mound of stone, 2 ft. base, 1 $\frac{1}{2}$ ft. high, N. of cor.                                                                                                                                                                                                           |
| 80.27                          | Ridge, brs. NE. and SW. Desc. 110 ft.<br>The cor. of secs. 1, 2, 11 and 12.<br>Land, mountainous.<br>Soil, rocky, 4th rate.<br>Timber, pinion and juniper.<br>Undergrowth, cat claw and cactus.                                                                                        |
| 40.00                          | N.0° 1' W., on a random line, bet. secs. 1 and 2.<br>Set temp. $\frac{1}{4}$ sec. cor.                                                                                                                                                                                                 |
| 79.88                          | Intersect N. bdy. of Tp., 11 lks. W. of the cor. of secs. 1, 2, 35 and 36, which is an iron post, described in Book "A."<br>Thence<br>S.0° 4' W., on a true line, bet. secs. 1 and 2.<br>Over gently rolling land, through scattering undergrowth and dense timber.                    |
| 39.88                          | Set an iron post, 3 ft. long, 1 in. diam., in a mound of stone, for $\frac{1}{4}$ sec. cor., marked on brass cap                                                                                                                                                                       |
|                                | $\frac{1}{4}$<br>S 2   S 1<br>1916                                                                                                                                                                                                                                                     |
| 79.88                          | And raise a mound of stone, 2 ft. base, 1 $\frac{1}{2}$ ft. high, W. of cor;<br>The cor. of secs. 1, 2, 11 and 12.<br>Land, gently rolling.<br>Soil, rocky, 4th rate.<br>Timber, juniper, cedar and pinion.<br>Undergrowth, cat claw and cactus.                                       |
|                                | D.R.A.                                                                                                                                                                                                                                                                                 |
|                                | S.F.W.                                                                                                                                                                                                                                                                                 |
|                                | From the standard cor. of secs. 34 and 35, on S. bdy. of Tp. (7th, Standard Parallel N.) described in Book "A,"<br>N.0° 1' W., bet. secs. 34 and 35.<br>Over rolling land, through scattering timber and undergrowth.<br>Desc. 40 ft.                                                  |
| 5.00                           | Wash, course N.5° E. Asc. 20 ft.                                                                                                                                                                                                                                                       |
| 20.90                          | Desc. 100 ft.                                                                                                                                                                                                                                                                          |
| 39.80                          | Thence over gently rolling land.                                                                                                                                                                                                                                                       |
| 40.00                          | Set an iron post, 3 ft. long, 1 in. diam., 26 ins. in the ground, for $\frac{1}{4}$ sec. cor., marked on brass cap                                                                                                                                                                     |
|                                | $\frac{1}{4}$<br>S 34   S 35<br>1916                                                                                                                                                                                                                                                   |
| 80.00                          | Dig pits, 18 X 18 X 12 ins., N. and S. of post, 3 ft. dist.; and raise a mound of earth, 3 $\frac{1}{2}$ ft. base, 1 $\frac{1}{2}$ ft. high, W. of cor.<br>Set an iron post, 3 ft. long, 2 ins. diam., 26 ins. in the ground, for cor. of secs. 26, 27, 34 and 35, marked on brass cap |

Subdivision of T. 29 N., R. 16 W.

Chains.

|           |     |
|-----------|-----|
| T29N R16W |     |
| S27       | S26 |
| S34       | S35 |
| 1916      |     |

And raise a mound of stone, 2 ft. base, 1½ ft. high, W. of cor.  
 Land, rolling and gently rolling.  
 Soil, rocky, 3rd and 4th rates.  
 Timber, scattering juniper and pinion.  
 Undergrowth, scrub oak, willow, cat claw and black brush.

40.00  
 80.03  
 15.00  
 21.15  
 35.00  
 40.01½

East on a random line, bet. secs. 26 and 35.  
 Set temp. ¼ sec. cor.  
 Intersect N. and S. line, at the cor. of secs. 25, 26, 35 and 36.  
 Thence  
 West on a true line, bet. secs. 26 and 35.  
 Over mountainous land, through scattering timber and undergrowth.  
 Desc. 125 ft.  
 Wash, course NW. Asc. 35 ft.  
 Desc. 125 ft.  
 Gulch, course NW. Thence over rolling land.  
 Set an iron post, 3 ft. long, 1 in. diam., in a mound of stone, for ¼ sec. cor., marked on brass cap

|      |     |
|------|-----|
| ¼    | S26 |
|      | S35 |
| 1916 |     |

43.00  
 49.35  
 75.00  
 80.03

And raise a mound of stone, 2 ft. base, 1½ ft. high, N. of cor.  
 Gulch, course NE. Asc. 30 ft.  
 Desc. 220 ft.  
 Wash, 4 chs. wide, course N. Asc.  
 The cor. of secs. 26, 27, 34 and 35.  
 Land, rolling and mountainous.  
 Soil, rocky, 4th rate.  
 Timber, pinion and juniper.  
 Undergrowth, black brush, scrub oak, yucca and cat claw.

22.00  
 27.00  
 40.00

N.0° 1' W., bet. secs. 26 and 27.  
 Over gently rolling land, through scattering timber and undergrowth.  
 Desc. 25 ft.  
 Wash, course N.20° W.  
 Set an iron post, 3 ft. long, 1 in. diam., 26 ins. in the ground, for ¼ sec. cor., marked on brass cap

|      |   |     |
|------|---|-----|
| S27  | ↑ | S26 |
| 1916 |   |     |

45.00  
 64.00  
 66.50  
 80.00

And raise a mound of stone, 2 ft. base, 1½ ft. high, W. of cor.  
 Desc. 85 ft.  
 Road, brs. NE. and W. to Duncan Ranch.  
 Wash, course W. Asc. 130 ft.  
 Set an iron post, 3 ft. long, 2 ins. diam., in a mound of stone, for cor. of secs. 22, 23, 26 and 27, marked on brass cap

26

Subdivision of T. 29 N., R. 16 W.

chains.

T29N R16W  
 S22 | S23  
 ---  
 S27 | S26  
 1916

And raise a mound of stone, 2 ft. base, 1½ ft. high, W. of cor.  
 Land, gently rolling and mountainous.  
 Soil, rocky, 3rd and 4th rates.  
 Timber, juniper and pinion.  
 Undergrowth, scrub oak, cat claw, willow, black brush and cactus.

S.F.W.

E.J.L.

40.00 East on a random line, bet. secs. 23 and 26.  
 79.98 Set temp. ¼ sec. cor.  
 Intersect N. and S. line, 9 lks. S. of the cor. of secs. 23, 24, 25 and 26.  
 Thence  
 S.89° 56' W., on a true line, bet. secs. 23 and 26.  
 Over rolling land, through scattering undergrowth.  
 4.00 Draw, course N.80° W. Asc.  
 5.00 Desc. gradually.  
 35.00 Draw, course S.80° W. Road in wash, brs. N.70° E. & S.75° W.  
 39.99 Set an iron post, 3 ft. long, 1 in. diam., in a mound of stone, for ¼ sec. cor., marked on brass cap

S23  
 ¼ S26  
 1916

49.10 And raise a mound of stone, 2 ft. base, 1½ ft. high, N. of cor.  
 60.05 Wash, course S. Asc. 135 ft.  
 68.40 Desc. 20 ft.  
 75.20 Asc. 40 ft.  
 79.25 Spur, slopes S. Desc. 100 ft.  
 79.98 Draw, course S. Asc. 10 ft.  
 The cor. of secs. 22, 23, 26 and 27.  
 Land, rolling.  
 Soil, rocky, 4th rate.  
 No timber.  
 Undergrowth, cat claw and cactus.

E.J.L.

S.F.W.

17.85 N.0° 1' W., bet. secs. 22 and 23.  
 25.00 Over rolling and mountainous land, through scattering undergrowth.  
 40.00 Asc. 145 ft.  
 Desc. 30 ft.  
 Wash, course SW. Asc. 965 ft.  
 Set an iron post, 3 ft. long, 1 in. diam., 26 ins. in the ground, for ¼ sec. cor., marked on brass cap

S22 | S23  
 ---  
 1916

75.30 And raise a mound of stone, 2 ft. base, 1½ ft. high, W. of cor.  
 80.00 Foot of cliffs, brs. E. and W.  
 Set an iron post, 3 ft. long, 2 ins. diam., in a mound of stone, for cor. of secs. 14, 15, 22 and 23, marked on brass cap

T29N R16W  
 S15 | S14  
 ---  
 S22 | S23  
 1916

Subdivision of T. 29 . . R. 16 W.

Chains.

And raise a mound of stone, 2 ft. base, 1½ ft. high, W. of cor.  
 Land, mountainous and rolling.  
 Soil, rocky, 4th rate.  
 No timber.  
 Undergrowth, yucca, black brush, and cactus.

40.00 N.89° 56' E., on a random line, bet. secs. 14 and 23.  
 Set temp. ¼ sec. cor.  
 80.00 Intersect N. and S. line, 5 lks. N. of the cor. of secs. 13, 14, 23 and 24.  
 Thence  
 S.89° 58' W., on a true line, bet. secs. 14 and 23.  
 Over mountainous land, through scattering undergrowth.  
 Asc. 85 ft.  
 4.30 Desc. 530 ft., over cliffs and rim rock.  
 23.00 Gulch, course SW. Asc. 45 ft.  
 33.50 Desc. 180 ft.  
 40.00 Set an iron post, 3 ft. long, 1 in. diam., 26 ins. in the ground, for ¼ sec. cor., marked on brass cap

¼ S14  
 ¼ S23  
 1916

And raise a mound of stone, 2 ft. base, 1½ ft. high, N. of cor.  
 42.50 Wash, course SW. Asc. 150 ft.  
 55.30 Desc. 155 ft.  
 61.00 Wash, course SW. Asc. 630 ft.  
 66.00 Rim rock, brs. NE. and SW. Continue ascent.  
 80.00 The cor. of secs. 14, 15, 22, and 23.  
 Land mountainous.  
 Soil, rocky, 4th rate.  
 No timber.  
 Undergrowth, black brush, yucca and Spanish bayonet.

S.F.W.

D.R.A.

N.0° 1' W., bet. secs. 14 and 15.  
 Over mountainous land, through scattering undergrowth.  
 Asc. 140 ft.  
 4.50 Desc. 190 ft.  
 14.00 Wash, course E. Asc. 130 ft.  
 23.75 Spur, slopes N.50° E. Desc. 170 ft.  
 28.45 Wash, course N.60° E. Asc. 145 ft.  
 32.85 Spur, slopes N.50° E. Desc. 210 ft.  
 36.70 Wash, course E. Asc. 330 ft.  
 40.00 Set an iron post, 3 ft. long, 1 in. diam., in a mound of stone, for ¼ sec. cor., marked on brass cap

¼ S15 | S14  
 1916

And raise a mound of stone, 2 ft. base, 1½ ft. high, W. of cor.  
 50.55 Ridge, brs. E. and W. Desc. 80 ft.  
 63.40 Wash, course E. Asc. 205 ft.  
 77.90 Spur, slopes E. Desc.  
 80.00 Set an iron post, 3 ft. long, 2 ins. diam., in a mound of stone, for cor. of secs. 10, 11, 14 and 15, marked on brass cap

28

## Subdivision of T. 29 N., R. 16 W.

Chains.

T29N R16W  
 S10 | S11  
 S15 | S14  
 1916

And raise a mound of stone, 2 ft. base,  $1\frac{1}{2}$  ft. high, W. of cor.

Land, mountainous.

Soil, rocky, 4th rate.

Timber, none.

Undergrowth, cat claw and cactus.

40.00 N.  $89^{\circ} 58'$  E., on a random line, bet. secs. 11 and 14.  
 Set temp.  $\frac{1}{4}$  sec. cor.  
 80.12 Intersect N. and S. line, 30 lks. N. of the cor. of secs. 11, 12, 13 and 14.  
 Thence  
 N.  $89^{\circ} 49'$  W., on a true line, bet. secs. 11 and 14.  
 Over mountainous land, through scattering undergrowth.  
 Desc. 35 ft.  
 5.75 Wash, course SE. Asc. 250 ft.  
 15.35 Ridge, brs. N.  $5^{\circ}$  E. and S.  $5^{\circ}$  W. Thence along N. slope.  
 20.30 Ridge, brs. N. Desc. 90 ft.  
 30.20 Wash, course N.  $70^{\circ}$  E. Asc. 330 ft.  
 40.06 Set an iron post, 3 ft. long, 1 in. diam., in a mound of stone, for  $\frac{1}{4}$  sec. cor., marked on brass cap

$\frac{1}{4}$  S11  
 S14  
 1916

And raise a mound of stone, 2 ft. base,  $1\frac{1}{2}$  ft. high, N. of cor.

54.15 Ridge, brs. N. and S. Desc. 125 ft.  
 70.25 Asc. 100 ft.  
 80.12 The cor. of secs. 10, 11, 14 and 15.  
 Land, mountainous.  
 Soil, rocky, 4th rate.  
 Timber, none.  
 Undergrowth, cat claw and cactus.

N.  $0^{\circ} 1'$  W., bet. secs. 10 and 11.  
 Over mountainous land, through dense timber and undergrowth.  
 Asc. 360 ft.  
 16.75 Spur, slopes NE. Desc. 285 ft.  
 40.00 Set an iron post, 3 ft. long, 1 in. diam., in a mound of stone, for  $\frac{1}{4}$  sec. cor., marked on brass cap

$\frac{1}{4}$   
 S10 | S11  
 1916

And raise a mound of stone, 2 ft. base,  $1\frac{1}{2}$  ft. high, W. of cor.

50.00 Wash, course N.  $40^{\circ}$  E. Asc. 80 ft.  
 62.90 Ridge, brs. E. and W. Desc. 85 ft.  
 80.00 Set an iron post, 3 ft. long, 2 ins. diam., in a mound of stone, for cor. of secs. 2, 3, 10 and 11, marked on brass cap

T29N R16W  
 S 3 | S 2  
 S10 | S11  
 1916

Subdivision of T. 29 N., R. 16 W.

|                                  |                                                                                                                                                                                                                                                                                                                                                                     |
|----------------------------------|---------------------------------------------------------------------------------------------------------------------------------------------------------------------------------------------------------------------------------------------------------------------------------------------------------------------------------------------------------------------|
| Chains.                          | <p>And raise a mound of stone, 2 ft. base, 1½ ft. high, W. of cor.<br/> Land, mountainous.<br/> Soil, rocky, 4th rate.<br/> Timber, juniper and cedar.<br/> Undergrowth, cat claw and cactus.</p>                                                                                                                                                                   |
| 40.00<br>80.03                   | <p>S.89° 49' E., on a random line, bet. secs. 2 and 11.<br/> Set temp. ¼ sec. cor.<br/> Intersect N. and S. line, 11 lks. S. of the cor. of secs. 1, 2, 11 and 12.</p>                                                                                                                                                                                              |
| 22.25<br>40.01½                  | <p>Thence<br/> N.89° 54' W., on a true line, bet. secs. 2 and 11.<br/> Over mountainous land, through dense timber and undergrowth.<br/> Asc. 75 ft.<br/> Ridge, brs. N. and S. Desc. 125 ft.<br/> Set an iron post, 3 ft. long, 1 in. diam., in a mound of stone, for ¼ sec. cor., marked on brass cap</p>                                                         |
|                                  | <p style="text-align: center;"> <math>\frac{1}{4}</math> S 2<br/> <math>\frac{1}{4}</math> S 11<br/> 1916</p>                                                                                                                                                                                                                                                       |
| 47.75<br>60.10<br>75.10<br>80.03 | <p>And raise a mound of stone, 2 ft. base, 1½ ft. high, W. of cor.<br/> Ridge, brs. N.20° E. and S.20° W. Desc. 45 ft.<br/> Draw, course N.10° W. Asc. 75 ft.<br/> Desc. 45 ft.<br/> The cor. of secs. 2, 3, 10 and 11.<br/> Land, mountainous and rolling.<br/> Soil, rocky, 4th rate.<br/> Timber, juniper and pinion.<br/> Undergrowth, cat claw and cactus.</p> |
| 40.00<br>79.76                   | <p>N.0° 1' W., on a random line, bet. secs. 2 and 3.<br/> Set temp. ¼ sec. cor.<br/> Intersect N. bdy. of Tp., 14 lks. W. of the cor. of secs. 2, 3, 34 and 35, which is an iron post, described in Book "A."</p>                                                                                                                                                   |
| 36.25<br>39.76                   | <p>Thence<br/> S.0° 5' W., on a true line, bet. secs. 2 and 3.<br/> Over rolling land, through dense timber and scattering undergrowth.<br/> Desc. 90 ft.<br/> Gulch, course NW. Asc. 105 ft.<br/> Set an iron post, 3 ft. long, 1 in. diam., in a mound of stone, for ¼ sec. cor., marked on brass cap</p>                                                         |
|                                  | <p style="text-align: center;"> <math>\frac{1}{4}</math><br/> S 3   S 2<br/> 1916</p>                                                                                                                                                                                                                                                                               |
| 58.30<br>79.76                   | <p>And raise a mound of stone, 2 ft. base, 1½ ft. high, W. of cor.<br/> Ridge, brs. E. and W. Desc. 65 ft.<br/> The cor. of secs. 2, 3, 10 and 11.<br/> Land, rolling.<br/> Soil, rocky, 4th rate.<br/> Timber, juniper and cedar.<br/> Undergrowth, yucca and rabbit brush.</p>                                                                                    |
|                                  | <p style="text-align: right;">D.R.A.</p>                                                                                                                                                                                                                                                                                                                            |

Subdivision of T. 29 N., R. 16 W.

Chains. S.F.W.  
 From the standard cor. of secs. 33 and 34, on the S. bdy. of the Tp. (4th. Standard Par. N.), described in Book "A,"  
 N.0° 2' W., bet. secs. 33 and 34.  
 Over rolling and mountainous land, through scattering timber and undergrowth.  
 Asc. 30 ft.  
 8.00 Desc. 560 ft.  
 40.00 Set an iron post, 3 ft. long, 1 in. diam., 14 ins. in the ground, in a mound of stone, for  $\frac{1}{4}$  sec. cor., marked on brass cap

$\frac{1}{4}$   
 S33 | S34  
 1916

From which  
 A pinion, 6 ins. diam., brs. N.24° E., 13 lks. dist., marked  $\frac{1}{4}$ S34 BT.  
 A pinion, 8 ins. diam., brs. S.54° W., 40 lks. dist., marked  $\frac{1}{4}$ S33 BT.

74.75 Wash, course N. Comes from SW. Thence along W. bank of wash.

80.00 Set an iron post, 3 ft. long, 2 ins. diam., 16 ins. in the ground, in a mound of stone, for cor. of secs. 27, 28, 33 and 34, marked on brass cap

T29N R16W  
 S28 | S27  
 S33 | S34  
 1916

And raise a mound of stone, 2 ft. base,  $1\frac{1}{2}$  ft. high, W. of cor.  
 Land, mountainous and rolling.  
 Soil, rocky, 4th rate.  
 Timber, pinion and juniper.  
 Undergrowth, scrub oak, manzanita, black brush and yucca.

40.00 East on a random line, bet. secs. 27 and 34.  
 Set temp.  $\frac{1}{4}$  sec. cor.  
 79.86 Intersect N. and S. line, 5 lks. N. of the cor. of secs. 27, 28, 33 and 34.  
 Thence  
 N.89° 58' W., on a true line, bet. secs. 27 and 34.  
 Over rolling and broken land, through scattering timber and undergrowth.  
 Asc. 160 ft.

16.90 Road, brs. NW. and SE.  
 29.80 Desc. 55 ft.  
 36.50 Wash, course NW. Asc. 30 ft.  
 39.93 Set an iron post, 3 ft. long, 1 in. diam., 26 ins. in the ground, for  $\frac{1}{4}$  sec. cor., marked on brass cap

$\frac{1}{4}$  S27  
 $\frac{1}{4}$  S34  
 1916

And raise a mound of stone, 2 ft. base,  $1\frac{1}{2}$  ft. high, N. of cor.

45.00 Desc. 25 ft.  
 49.95 Asc. 65 ft.  
 59.00 Desc.  
 66.00 Wash, course NE. Asc. 55 ft.  
 74.85 Desc. 40 ft.  
 79.86 The cor. of secs. 27, 28, 33 and 34.  
 Land, rolling and broken  
 Soil, rocky, 4th rate.  
 Timber, pinion and juniper.

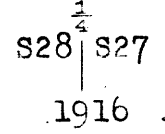


Chains.

Undergrowth, scrub oak, black brush, yucca and cactus.

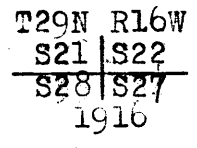
N.0° 2' W., bet. secs. 27 and 28.  
Over rolling land, through scattering timber and undergrowth.

24.80 Along W. bank of wash, course N. Desc. 150 ft.  
Asc. 30 ft.  
34.00 Thence over gently rolling land.  
40.00 Set an iron post, 3 ft. long, 1 in. diam., 14 ins. in the ground, in a mound of stone, for 1/4 sec. cor., marked on brass cap



And raise a mound of stone, 2 ft. base, 1 1/2 ft. high, W. of cor.

45.00 Desc. 105 ft.  
54.50 Wash, course NW. Asc. 15 ft.  
56.00 Thence over gently rolling land.  
70.00 Desc. 70 ft.  
80.00 Set an iron post, 3 ft. long, 2 ins. diam., in a mound of stone, for cor. of secs. 21, 22, 27 and 28, marked on brass cap



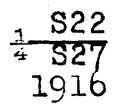
And raise a mound of stone, 2 ft. base, 1 1/2 ft. high, W. of cor.

Land, rolling.  
Soil, rocky, 4th rate.  
Timber, scattering juniper and pinion.  
Undergrowth, scrub oak, yucca, black brush.

40.00 S.89° 58' E., on a random line, bet. secs. 22 and 27.  
Set temp. 1/4 sec. cor.  
79.89 Intersect N. and S. line, 5 lks. S. of the cor. of secs. 22, 23, 26 and 27.

Thence  
West on a true line, bet. secs. 22 and 27.  
Over broken land, through scattering undergrowth.  
Asc. 145 ft.

6.00 Spur, slopes S. Desc. 170 ft.  
20.00 Wash, course SW. Asc.  
30.00 Desc. 70 ft.  
39.94 1/2 Set an iron post, 3 ft. long, 1 in. diam., in a mound of stone, for 1/4 sec. cor., marked on brass cap



And raise a mound of stone, 2 ft. base, 1 1/2 ft. high, N. of cor.

45.00 Asc. 25 ft.  
48.00 Desc. 30 ft.  
55.00 Wash, course NW. Asc.  
63.00 Duncan Ranch House brs. S. 4 chs. dist.

Subdivision of T. 29 N., R. 16 W.

Chains.

70.12 Road, brs. S. 70° E. and NW. Gate in fence, brs. N. and S.  
 79.89 The cor. of secs. 21, 22, 27 and 28.  
 Land, broken.  
 Soil, rocky, 4th rate.  
 Timber, none.  
 Under growth, scrub oak, cat claw, yucca and black brush.

N. 0° 2' W., bet. secs. 21 and 22.  
 Over mountainous land, through scattering undergrowth.  
 Desc. 45 ft.  
 3.00 Wash, course W. Asc. 525 ft.  
 7.30 Road, brs. SE. and W.  
 9.60 Fence, brs. NW. and SE.  
 40.00 Set an iron post, 3 ft. long, 1 in diam., in a mound of  
 stone, for  $\frac{1}{4}$  sec. cor., marked on brass cap

$\frac{1}{4}$   
 S21 | S22  
 1916

And raise a mound of stone, 2 ft. base,  $1\frac{1}{2}$  ft. high, W.  
 of cor.  
 50.15 Spur, slopes SW. Desc. 130 ft.  
 61.50 Gulch, course SW. Asc. 155 ft.  
 74.00 Spur, slopes W. Desc. 25 ft.  
 80.00 Set an iron post, 3 ft. long, 2 ins. diam., in a mound of  
 stone, for cor. of secs. 15, 16, 21 and 22, marked on  
 brass cap

T29N R16W  
 S16 | S15  
 S21 | S22  
 1916

And raise a mound of stone, 2 ft. base,  $1\frac{1}{2}$  ft. high, W.  
 of cor.  
 Land, mountainous.  
 Soil, rocky, 4th rate.  
 No timber.  
 Undergrowth, bayonet, yucca, cat claw and cactus.

East on a random line, bet. secs. 15 and 22.  
 40.00 Set temp.  $\frac{1}{4}$  sec. cor.  
 80.03 Intersect N. and S. line, 16 lks. N. of the cor. of secs.  
 14, 15, 22 and 23.  
 Thence  
 N. 89° 53' W., on a true line, bet. secs. 15 and 22.  
 Over mountainous land, through scattering timber and under-  
 growth.  
 Desc. 180 ft.  
 6.25 Gulch, course S. Asc. 430 ft. over cliffs, br. N. and S.  
 16.65 Desc. 100 ft.  
 28.50 Asc. 100 ft.  
 37.75 Rim rock, brs. NW. and S. Desc. 960 ft.  
 40.01 $\frac{1}{2}$  Set an iron post, 3 ft. long, 1 in. diam., in a mound of  
 stone, for  $\frac{1}{4}$  sec. cor., marked on brass cap

$\frac{1}{4}$  S15  
 S22  
 1916

And raise a mound of stone, 2 ft. base,  $1\frac{1}{2}$  ft. high, N.  
 of cor.  
 54.00 Cliffs, br. N. and S. Continue descent.  
 80.03 The cor. of secs. 15, 16, 21 and 22.  
 Land, mountainous.

Chains.

Soil, rocky, 4th rate.  
 Timber, scattering pinion.  
 Undergrowth, yucca, black brush, Spanish bayonet and cactus.  
 S.F.W.

D.R.A.

4.92  
 11.67  
 19.70  
 40.00

N.0° 2' W., bet. secs. 15 and 16.  
 Over mountainous land, through scattering undergrowth.  
 Desc. 55 ft.  
 Wash, course S.30° W. Asc. 110 ft.  
 Ridge, brs. N.60° W. and S.60° E. Desc. 15 ft.  
 Asc. 300 ft.  
 Set an iron post, 3 ft. long, 1 in. diam., in a mound of stone, for  $\frac{1}{4}$  sec. cor., marked on brass cap.



And raise a mound of stone, 2 ft. base, 1 1/2 ft. high, W. of cor.

I triangulate from this cor. as follows:  
 Set a flag ahead on line, from which I measure a base S.78° 8' E., 30.95 chs., from the E. end of which a flag set at the cor. of secs. 15, 16, 21 and 22, brs. S.29° 19' W. The distance triangulated is given as follows:

$$\frac{30.95}{\sin. 29^\circ 21'} = \frac{X}{\sin. 72^\circ 33'}$$

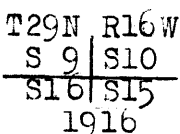
or, by logarithms.

|                     |   |          |
|---------------------|---|----------|
| log. 30.95          | = | 1.490061 |
| log. sin. 72° 33'   | = | 9.979539 |
| colog. sin. 29° 21' | = | 0.309677 |

1.779877 = log. 60.24

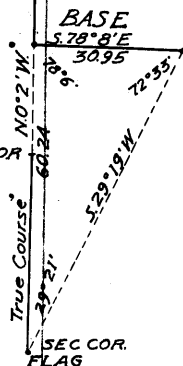
60.24  
 80.00

Top of cliffs, brs. NW. and SE. Continue ascent 110 ft.  
 Set an iron post, 3 ft. long, 2 ins. diam., in a mound of stone, for cor. of secs. 9, 10, 15 and 16, marked on brass cap



And raise a mound of stone, 2 ft. base, 1 1/2 ft. high, W. of cor.

Land, mountainous.  
 Soil, rocky, 4th rate.  
 Timber, none.  
 Undergrowth, yucca and Spanish bayonet.



40.00  
 79.70

S.89° 53' E., on a random line, bet. secs. 10 and 15.  
 Set temp.  $\frac{1}{4}$  sec. cor.  
 Intersect N. and S. line, 30 lks. S. of the cor. of secs. 10, 11, 14 and 15.

Thence

18.45  
 24.25  
 31.55  
 34.00  
 39.85

S.89° 54' W., on a true line, bet. secs. 10 and 15.  
 Over mountainous land, through scattering undergrowth.  
 Asc. 205 ft.  
 Ridge, brs. N.10° W. and S.10° E. Desc. 140 ft.  
 Wash, course N.15° W. Asc. 90 ft.  
 Spur, slopes N. - Desc. 50 ft.  
 Wash, course N. Asc. 40 ft.  
 Set an iron post, 3 ft. long, 1 in. diam., in a mound of stone, for  $\frac{1}{4}$  sec. cor., marked on brass cap

Chains.

$\frac{1}{4}$  S10  
 $\frac{1}{4}$  S15  
1916

And raise a mound of stone, 2 ft. base, 1½ ft. high, N. of cor.

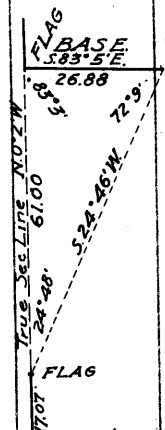
Asc. 40 ft.

- 42.00 Ridge, brs. N. and S. Desc. 80 ft.
- 44.65 Wash, course N.10° E. Asc. 85 ft.
- 49.05 Spur, slopes NW. Desc. 90 ft.
- 54.20 Wash, course NW. Asc. 355 ft.
- 79.70 The cor. of secs. 9, 10, 15 and 16.

Land, mountainous.  
Soil, rocky, 4th rate.  
No timber.  
Undergrowth, cat claw and yucca.

N.0° 2' W., bet. secs. 9 and 10.  
Over mountainous land, through scattering undergrowth.  
Desc. 240 ft.

17.07 Left bank of canyon, course NW. Impossible to chain farther.  
I set a flag ahead on line, and measure a base from it, S.83° 5' E., 26.88 chs. (impossible to get longer base) from the E. end of which a flag at the 17.07 ch. point brs. S.24° 46' W. The distance triangulated is given as follows:



$$\frac{26.88}{\sin. 24^\circ 48'} = \frac{X}{\sin. 72^\circ 9'}$$

or, by logarithms,

|                     |   |                 |
|---------------------|---|-----------------|
| log. 26.88          | = | 1.429429        |
| log. sin. 72° 9'    | = | 9.978574        |
| colog. sin. 24° 48' | = | <u>0.377318</u> |

1.785321 = log. 61.00

which added to 17.07 chs., gives

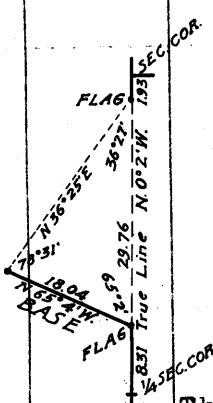
78.07 Triangulation point.

80.00 Set an iron post, 3 ft. long, 2 ins. diam., in a mound of stone, for cor. of secs. 3, 4, 9 and 10, marked on brass cap

T29N R16W  
S 4 | S 3  
S 9 | S10  
1916

And raise a mound of stone, 2 ft. base, 1½ ft. high, W. of cor.

In order to establish the ¼ sec. cor., I set a flag on line as close to the point where the cor. will fall as possible and from it measure a base N.65° 4' W., 18.04 chs., from the W. end of which a flag at the 78.07 ch. point brs. N.36° 25' E. The distance triangulated is given as follows:



$$\frac{18.04}{\sin. 36^\circ 27'} = \frac{X}{\sin. 78^\circ 31'}$$

or, by logarithms,

|                     |   |                 |
|---------------------|---|-----------------|
| log. 18.04          | = | 1.256237        |
| log. sin. 78° 31'   | = | 9.991218        |
| colog. sin. 36° 27' | = | <u>0.226125</u> |

1.473580 = log. 29.76

The distance to this point from the cor. of secs. 9, 10, 15 and 16 is therefore 78.07 - 29.76 = 48.31 chs. I therefore chain S.0° 2' E., 8.31 chs., ascending 140 ft. to

40.00 Set an iron post, 3 ft. long, 1 in. diam., in a mound of stone, for ¼ sec. cor., marked on brass cap

Chains.

S 9 1/4 S 10  
1916

And raise a mound of stone, 2 ft. base, 1 1/2 ft. high, W. of cor.  
Land, mountainous.  
Soil, rocky, 4th rate.  
No timber.  
Undergrowth, cat claw and cactus.

40.00  
79.86

N. 89° 54' E., on a random line, bet. secs. 3 and 10.  
Set temp. 1/4 sec. cor.  
Intersect N. and S. line, 37 lks. N. of the cor. of secs. 2, 3, 10 and 11.

Thence  
N. 89° 50' W., on a true line, bet. secs. 3 and 10.  
Overrolling and mountainous land, through scattering undergrowth and dense timber.

25.00  
39.93

Asc. 55 ft.  
Desc. 190 ft.  
Set an iron post, 3 ft. long, 1 in. diam., in a mound of stone, for 1/4 sec. cor., marked on brass cap

1/4 S 3  
S 10  
1916

And raise a mound of stone, 2 ft. base, 1 1/2 ft. high, N. of cor.

54.90  
65.25  
79.86

Asc. 65 ft.  
Desc. 150 ft.  
The cor. of secs. 3, 4, 9 and 10.  
Land, rolling and mountainous.  
Soil, rocky, 4th rate.  
Timber, cedar and pinion.  
Undergrowth, cat claw and cactus.

D.R.A.

J.C.H.

40.00  
79.96

N. 0° 2' W., on a random line, bet. secs. 3 and 4.  
Set temp. 1/4 sec. cor.  
Intersect N. bdy. of Tp., at the cor. of secs. 3, 4, 33 and 34, which is an iron post, described in Book "A."

Thence  
S. 0° 2' E., on a true line, bet. secs. 3 and 4.  
Over mountainous land, through scattering undergrowth.  
Asc. 790 ft.

39.96

Set an iron post, 3 ft. long, 1 in. diam., 4 ins. in the ground, in a mound of stone, for 1/4 sec. cor., marked on brass cap

S 4 1/4 S 3  
1916

From which  
A pinion, 8 ins. diam., brs. S. 35 1/2° E., 105 lks. dist., marked 1/4 S 3 BT.

No other trees within limits. Raise a mound of stone, 3 1/2 ft. base, 3 ft. high, W. of cor.

62.10  
63.09  
69.32  
79.96

Desc.  
Gulch, course NW. Asc. 610 ft.  
Enter scattering timber, brs. E. and W.  
The cor. of secs. 3, 4, 9 and 10.  
Land, mountainous.  
Soil, rocky, 4th rate.

Chains.

Timber, scattering pinion and juniper.  
Undergrowth, cat claw and cactus.

J.C.H.

E.J.L.

From the standard cor. of secs. 32 and 33, on the S. bdy. of the Tp., (7th. Standard Par. N.), described in Book "A."

N.0° 3' W., bet. secs. 32 and 33.

Over mountainous land, through dense timber and undergrowth.

Desc. 585 ft.

13.60 Spur, slopes NW. Continue descent.

40.00 Set an iron post, 3 ft. long, 1 in. diam., 6 ins. in the ground, in a mound of stone, for  $\frac{1}{4}$  sec. cor., marked on brass cap

$\frac{1}{4}$   
S32 | S33  
1916

And raise a mound of stone, 2 ft. base,  $1\frac{1}{2}$  ft. high, W. of cor.

Desc. 315 ft.

69.70 Draw, course N.20° E. Continue descent.

80.00 Set an iron post, 3 ft. long, 2 ins. diam., in a mound of stone, for cor. of secs. 28, 29, 32 and 33, marked on brass cap

T29N R16W  
S29 | S28  
S32 | S33  
1916

And raise a mound of stone, 2 ft. base,  $1\frac{1}{2}$  ft. high, W. of cor.

Land, mountainous.

Soil, rocky, 4th rate, 1st. half mile; last half mile, 2nd rate.

Timber, pinion and juniper.

Undergrowth, scrub oak.

E.J.L.

S.F.W.

East on a random line, bet. secs. 28 and 33.

40.00 Set temp.  $\frac{1}{4}$  sec. cor.

80.04 Intersect N. and S. line, 21 lks. N. of the cor. of secs. 27, 28, 33 and 34.

Thence

N.89° 51' W., on a true line, bet. secs. 28 and 33.

Over broken land, through scattering timber and undergrowth.

Asc. 55 ft.

2.70 Desc. 70 ft.

9.75 Wash, course N.20° E. Asc. 140 ft.

18.50 Desc. 75 ft.

24.35 Asc. 30 ft.

26.30 Desc. 45 ft.

34.25 Wash, course N. Asc.

40.02 Set an iron post, 3 ft. long, 1 in. diam., 20 ins. in the ground, in a mound of stone, for  $\frac{1}{4}$  sec. cor., marked on brass cap

$\frac{1}{4}$  S28  
S33  
1916

And raise a mound of stone, 2 ft. base,  $1\frac{1}{2}$  ft. high, N. of cor.

47.00 Wash, course N. Asc. 45 ft.

53.00 Desc. 35 ft.

60.00 Asc. 165 ft.

80.04 The cor. of secs. 28, 29, 32 and 33.

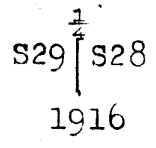
Subdivision of T. 29 N., R. 16 W.

chains.

Land, broken.  
Soil, rocky, 4th rate.  
Timber, scattering pinion and juniper.  
Undergrowth, yucca, scrub oak and black brush.

40.00

N.0° 3' W., bet. secs. 28 and 29.  
Over broken land, through scattering timber and undergrowth.  
Desc. 290 ft.  
Set an iron post, 3 ft. long, 1 in. diam., 10 ins. in the ground, in a mound of stone, for  $\frac{1}{4}$  sec. cor., marked on brass cap



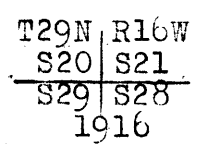
And raise a mound of stone, 2 ft. base, 1 1/2 ft. high, W. of cor.

55.00

Thence over gently rolling land.

80.00

Set an iron post, 3 ft. long, 2 ins. diam., 16 ins. in the ground, in a mound of stone, for cor. of secs. 20, 21, 28 and 29, marked on brass cap



And raise a mound of stone, 2 ft. base, 1 1/2 ft. high, W. of cor.

Land, broken and gently rolling.  
Soil, rocky, 4th rate.  
Timber, juniper.  
Undergrowth, yucca and black brush.

40.00

S.89° 51' E., on a random line, bet. secs. 21 and 28.  
Set temp.  $\frac{1}{4}$  sec. cor.

79.96

Intersect N. and S. line, 5 lks. S. of the cor. of secs. 21, 22, 27 and 28,  
Thence

N.89° 53' W., on a true line, bet. secs. 21 and 28.  
Over broken land, through scattering undergrowth.  
Asc. 20 ft.

4.00

Thence over gently rolling land.

10.00

Desc. 30 ft.

16.00

Wash, course N. Asc. 135 ft.

29.80

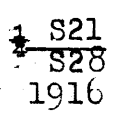
Desc. 80 ft.

39.60

Wash, course NW. Asc. 115 ft.

39.98

Set an iron post, 3 ft. long, 1 in. diam., in a mound of stone, for  $\frac{1}{4}$  sec. cor., marked on brass cap



And raise a mound of stone, 2 ft. base, 1 1/2 ft. high, N. of cor.

49.85

Desc. 70 ft.

58.50

Wash, course N. Asc. 100 ft.

68.60

Desc. 20 ft.

74.60

Asc. 30 ft.

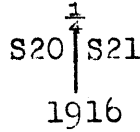
79.96

The cor. of secs. 20, 21, 28 and 29.

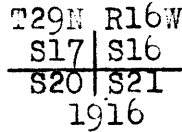
Chains.

Land, broken and gently rolling.  
Soil, rocky, 4th rate.  
Timber, none.  
Undergrowth, yucca, and black brush.

21.00 M.0° 3' W., bet. secs. 20 and 21.  
31.10 Over broken land, through scattering undergrowth.  
40.00 Desc. 80 ft.  
Wash, course NW. Thence over gently rolling land.  
Road, brs. NW. and SE.  
Set an iron post, 3 ft. long, 1 in. diam., 10 ins. in the ground, in a mound of stone, for  $\frac{1}{4}$  sec. cor., marked on brass cap

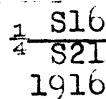


52.00 And raise a mound of stone, 2 ft. base, 1 1/2 ft. high, W. of cor.  
65.00 Desc. 165 ft.  
80.00 Wash, 3 chs. wide, course NW. Thence over gently rolling land.  
Set an iron post, 3 ft. long, 2 ins. diam., 26 ins. in the ground, for cor. of secs. 16, 17, 20 and 21, marked on brass cap



And raise a mound of stone, 2 ft. base, 1 1/2 ft. high, W. of cor.  
Land, broken and gently rolling.  
Soil, rocky, 4th rate.  
No timber.  
Undergrowth, yucca and black brush.

40.00 S.89° 53' E., on a random line, bet. secs. 16 and 21.  
80.10 Set temp.  $\frac{1}{4}$  sec. cor.  
Intersect N and S. line, 44 lks. S. of the cor. of secs. 15, 16, 21 and 22.  
Thence  
S.89° 48' W., on a true line, bet. secs. 16 and 21.  
Over mountainous land, through scattering undergrowth.  
Desc. 100 ft.  
2.00 Gulch, course W. Asc.  
3.00 Desc. 315 ft.  
17.35 Fence, brs. N. and S.  
40.05 Set an iron post, 3 ft. long, 1 in. diam., 10 ins. in the ground, in a mound of stone, for  $\frac{1}{4}$  sec. cor., marked on brass cap



45.00 And raise a mound of stone, 2 ft. base, 1 1/2 ft. high, N. of cor.  
46.50 Asc. 15 ft.  
54.80 Desc. 100 ft.  
59.70 Asc. 70 ft.  
76.00 Desc. 270 ft.  
80.10 Gulch, course SW. Asc.  
The cor. of secs. 16, 17, 20 and 21.  
Land, mountainous.  
Soil, rocky, 4th rate.

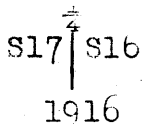


Chains.

No timber.  
Undergrowth, yucca, cat claw and Spanish bayonet.

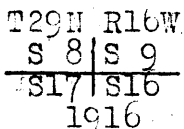
13.30  
20.00  
32.05  
40.00

N.0° 3' W., bet. secs. 16 and 17.  
Over mountainous land, through scattering undergrowth.  
Asc. 220 ft.  
Desc. 90 ft.  
Gulch, course W. Asc. 155 ft.  
Desc. 125 ft.  
Set an iron post, 3 ft. long, 1 in. diam., 10 ins. in the ground, in a mound of stone, for  $\frac{1}{4}$  sec. cor., marked on brass cap



54.00  
75.00  
80.00

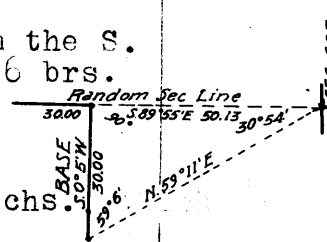
And raise a mound of stone, 2 ft. base, 1 1/2 ft. high, W. of cor.  
Gulch, course W. Asc. 560 ft.  
Spur, slopes E. Desc. 195 ft.  
Set an iron post, 3 ft. long, 2 ins. diam., in a mound of stone, for cor. of secs. 8, 9, 16 and 17, marked on brass cap



And raise a mound of stone, 2 ft. base, 1 1/2 ft. high, W. of cor.  
Land, mountainous.  
Soil, rocky, 4th rate.  
No timber.  
Undergrowth, black brush, yucca and Spanish bayonet.

30.00  
40.00

The cor. of secs. 9, 10, 15 and 16 being plainly visible, I run for said cor. from last sec. cor. S.89° 55' E., on a random line, bet. secs. 9 and 16. From this point, I triangulate as follows: I measure a base, S.0° 5' W., 30.00 chs., from the S. end of which the cor. of secs. 9, 10, 15 and 16 brs. N.59° 11' E.



80.13

Set temp.  $\frac{1}{4}$  sec. cor. The distance triangulated is found as follows: 30.00 X tan. 59° 6' = 30.00 X 1.67088 = 50.13 chs. added to 30.00 chs., gives. Intersect N. and S. line, at the cor. of secs. 9, 10, 15 and 16.

40.06 1/2

Thence N.89° 55' W., on a true line, bet. secs. 9 and 16. Over mountainous land, through scattering timber and undergrowth.

50.15  
73.95  
80.13

Desc. about 1200 ft., over cliffs.  
Set a granite stone, 8 X 10 X 16 ins., 12 ins. in the ground, for  $\frac{1}{4}$  sec. cor., marked  $\frac{1}{2}$  on N. face; and raise a mound of stone, 2 ft. base, 1 1/2 ft. high, N. of cor.  
Spur, slopes S.75° W. Desc. 300 ft.  
Draw, course N.20° W. Asc. 75 ft.  
The cor. of secs. 8, 9, 16 and 17.  
Land, mountainous.  
Soil, rocky, 2nd and 4th rates.  
Timber, pinion.  
Undergrowth, cholla, yucca, sagebrush and cactus.

S.F.W.

40

Subdivision of T. 29 N., R. 16 W.

Chains. D.R.A.  
 N.0° 3' W., bet. secs. 8 and 9.  
 Over mountainous land, through scattering undergrowth.  
 Desc. 335 ft.  
 17.00 Wash, course W. Asc. 70 ft.  
 25.00 Thence over rolling land.  
 40.00 Set an iron post, 3 ft. long, 1 in. diam., in a mound of  
 stone, for  $\frac{1}{4}$  sec. cor., marked on brass cap

S 8 $\frac{1}{4}$  S 9  
 1916

And raise a mound of stone, 2 ft. base, 1 $\frac{1}{2}$  ft. high, W.  
 of cor.  
 42.00 Desc. 30 ft.  
 47.00 Wash, 2 chs. wide, course NW. Asc. 90 ft.  
 68.00 Spur, slopes W. Desc. 285 ft.  
 80.00 Set an iron post, 3 ft. long, 2 ins. diam., 10 ins. in the  
 ground, in a mound of stone, for cor. of secs. 4, 5, 8  
 and 9, marked on brass cap

T29N R16W  
 S 5 S 4  
 S 8 S 9  
 1916

And raise a mound of stone, 3 ft. base, 2 ft. high, W.  
 of cor.  
 Land, mountainous and rolling.  
 Soil, rocky, 4th rate.  
 No timber.  
 Undergrowth, black brush, yucca, cactus, Spanish bayonet  
 and cat claw.

D.R.A.

J.C.H.

From the cor. of secs. 4, 5, 8 and 9, a flag set 1.67 chs.  
 W. of the cor. of secs. 3, 4, 9 and 10, brs. S.89° 44'  
 E. and from a point 40.00 chs. N.0° 17' E. of the cor.  
 of secs. 4, 5, 8 and 9, the same flag brs. S.62° 48' E.  
 The distance triangulated is given as follows:

$$\frac{40.00}{\sin. 26^\circ 56'} = \frac{X}{\sin. 63^\circ 5'}$$

or, by logarithms,

log. 40.00 = 1.602060  
 log. sin. 63° 5' = 9.950202  
 colog. sin. 26° 56' = 0.343946

1.896208 = log. 78.74,

which, added to 1.67 chs., gives 80.41 chs. for the  
 length of the line between secs. 4 and 9.

S.89° 44' E., on a random line, bet. secs. 4 and 9.

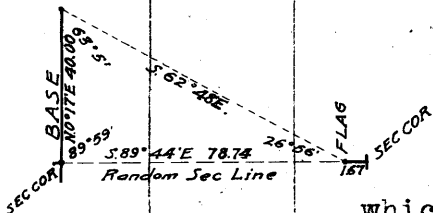
40.00 Set temp.  $\frac{1}{4}$  sec. cor.  
 80.41 Intersect N. and S. line, at the cor. of secs. 3, 4, 9 and  
 10.

Thence  
 N.89° 44' W., on a true line, bet. secs. 4 and 9.  
 Over mountainous land, through scattering timber and under-  
 growth.

Desc. 1265 ft.  
 39.40 Wash, course N. Asc. 40 ft.  
 40.20 $\frac{1}{2}$  Set an iron post, 3 ft. long, 1 in. diam., 26 ins. in a  
 mound of stone, for  $\frac{1}{4}$  sec. cor., marked on brass cap

S 4  
 $\frac{1}{4}$  S 9  
 1916

And raise a mound of stone, 3 ft. base, 2 ft. high, N.  
 of cor.

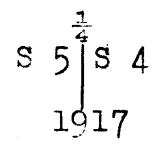


Subdivision of T. 29 N., R. 16 W.

Chains.

57.20 Ridge, brs. N. and S. Desc. 485 ft.  
 80.41 The cor. of secs. 4, 5, 8 and 9.  
 Land, mountainous.  
 Soil, rocky, 4th rate.  
 Timber, pinion.  
 Undergrowth, Spanish bayonet, yucca and rabbit brush.

40.00 N.0° 3' W., on a random line, bet. secs. 4 and 5.  
 Set temp.  $\frac{1}{4}$  sec. cor.  
 79.86 Intersect N. bdy. of Tp., 46 lks. W. of the cor. of secs.  
 4, 5, 32 and 33, which is an iron post, described in  
 Book "A."  
 Thence  
 S.0° 17' W., on a true line, bet. secs. 4 and 5.  
 Over rolling land, through scattering undergrowth.  
 Asc. 25 ft.  
 2.60 Desc. 40 ft.  
 27.65 Wash, course NW. Asc. 70 ft.  
 28.96 Spur, slopes NW. Desc.  
 34.10 Asc. 30 ft.  
 39.10 Thence over rolling land.  
 39.86 Set an iron post, 3 ft. long, 1 in. diam., 8 ins. in the  
 ground, in a mound of stone, for  $\frac{1}{4}$  sec. cor., marked on  
 brass cap



And raise a mound of stone, 3 ft. base, 2 ft. high, W.  
 of cor.  
 49.30 Desc. 25 ft.  
 54.99 Wash, course NW. Thence over gently rolling land.  
 79.86 The cor. of secs. 4, 5, 8 and 9.  
 Land, rolling and gently rolling.  
 Soil, rocky, 4th rate.  
 No timber.  
 Undergrowth, yucca, cactus and Spanish dagger.

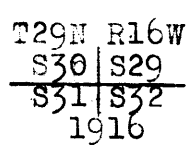
J.C.H.

S.F.W.

From the standard cor. of secs. 31 and 32, on the S. bdy.  
 of the Tp., (7th. Standard Par. N.), described in Book  
 "A."  
 N.0° 3' W., bet. secs. 31 and 32.  
 Over rolling land, through scattering timber and undergrowth.  
 Desc. gradually, 120 ft.  
 27.90 Wash, course N.15° W. Thence over gently rolling land.  
 40.00 Set an iron post, 3 ft. long, 1 in. diam., 20 ins. in the  
 ground, in a mound of stone, for  $\frac{1}{4}$  sec. cor., marked on  
 brass cap



And raise a mound of stone, 2 ft. base, 1 $\frac{1}{2}$  ft. high, W.  
 of cor.  
 80.00 Set an iron post, 3 ft. long, 2 ins. diam., in a mound of  
 stone, for cor. of secs. 29, 30, 31 and 32, marked on  
 brass cap



Chains.

|       |                                                                                                                                                                                                                              |
|-------|------------------------------------------------------------------------------------------------------------------------------------------------------------------------------------------------------------------------------|
|       | <p>And raise a mound of stone, 2 ft. base, 1½ ft. high, W. of cor.</p> <p>Land, rolling and gently rolling.</p> <p>Soil, rocky, 4th rate.</p> <p>Timber, scattering juniper.</p> <p>Undergrowth, yucca and rabbit brush.</p> |
| 40.00 | East on a random line, bet. secs. 29 and 32.                                                                                                                                                                                 |
| 79.84 | Set temp. ¼ sec. cor.                                                                                                                                                                                                        |
|       | Intersect N. and S. line, 16 lks. S. of the cor. of secs. 28, 29, 32 and 33.                                                                                                                                                 |
|       | Thence                                                                                                                                                                                                                       |
|       | S. 89° 53' W., on a true line, bet. secs. 29 and 32.                                                                                                                                                                         |
|       | Over gently rolling land, through scattering timber and undergrowth.                                                                                                                                                         |
| 20.00 | Wash, course N. Asc. 45 ft.                                                                                                                                                                                                  |
| 23.00 | Desc. 50 ft.                                                                                                                                                                                                                 |
| 30.00 | Thence over gently rolling land.                                                                                                                                                                                             |
| 39.92 | Set an iron post, 3 ft. long, 1 in. diam., in a mound of stone, for ¼ sec. cor., marked on brass cap                                                                                                                         |
|       | $\begin{array}{r} \frac{1}{4} S29 \\ \frac{1}{4} S32 \\ \hline 1916 \end{array}$                                                                                                                                             |
|       | <p>And raise a mound of stone, 2 ft. base, 1½ ft. high, N. of cor.</p>                                                                                                                                                       |
| 42.00 | Wash, course NW.                                                                                                                                                                                                             |
| 79.84 | The cor. of secs. 29, 30, 31 and 32.                                                                                                                                                                                         |
|       | Land, rolling and gently rolling.                                                                                                                                                                                            |
|       | Soil, rocky, 4th rate.                                                                                                                                                                                                       |
|       | Timber, juniper.                                                                                                                                                                                                             |
|       | Undergrowth, yucca, and black brush.                                                                                                                                                                                         |
| 40.00 | West on a random line, bet. secs. 30 and 31.                                                                                                                                                                                 |
| 79.92 | Set temp. ¼ sec. cor.                                                                                                                                                                                                        |
|       | Intersect W. bdy. of Tp., at the cor. of secs. 25, 30, 31 and 36, which is an iron post, described in Book "A."                                                                                                              |
|       | Thence                                                                                                                                                                                                                       |
|       | East on a true line, bet. secs. 30 and 31.                                                                                                                                                                                   |
|       | Over gently rolling land, through scattering undergrowth.                                                                                                                                                                    |
| 26.95 | Wash, course N. Asc.                                                                                                                                                                                                         |
| 27.90 | Desc. 40 ft.                                                                                                                                                                                                                 |
| 33.90 | Thence over gently rolling land.                                                                                                                                                                                             |
| 39.92 | Set an iron post, 3 ft. long, 1 in. diam., 26 ins. in the ground, for ¼ sec. cor., marked on brass cap                                                                                                                       |
|       | $\begin{array}{r} \frac{1}{4} S30 \\ \frac{1}{4} S31 \\ \hline 1916 \end{array}$                                                                                                                                             |
|       | <p>And raise a mound of stone, 2 ft. base, 1½ ft. high, N. of cor.</p>                                                                                                                                                       |
| 51.90 | Desc. 30 ft.                                                                                                                                                                                                                 |
| 55.90 | Thence over gently rolling land.                                                                                                                                                                                             |
| 73.90 | Desc. 10 ft.                                                                                                                                                                                                                 |
| 77.90 | Wash, course N.                                                                                                                                                                                                              |
| 79.92 | The cor. of secs. 29, 30, 31 and 32.                                                                                                                                                                                         |
|       | Land, rolling and gently rolling.                                                                                                                                                                                            |
|       | Soil, rocky, 4th rate.                                                                                                                                                                                                       |
|       | No timber.                                                                                                                                                                                                                   |
|       | Undergrowth, yucca and cactus.                                                                                                                                                                                               |

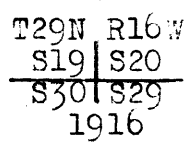
Subdivision of T. 29 N., R. 16 W.

Chains.

N.0° 3' W., bet. secs. 29 and 30.  
 Over rolling and gently rolling land, through scattering undergrowth.  
 Desc. 30 ft.  
 7.97 Wash, course N.15° W.  
 32.00 Desc. 15 ft.  
 33.96 Wash, course N.20° W.  
 40.00 Set an iron post, 3 ft. long, 1 in. diam., 26 ins. in the ground, for  $\frac{1}{4}$  sec. cor., marked on brass cap

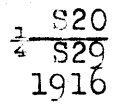


And raise a mound of stone, 2 ft. base,  $1\frac{1}{2}$  ft. high, W. of cor.  
 80.00 Set an iron post, 3 ft. long, 2 ins. diam., 24 ins. in the ground, for cor. of secs. 19, 20, 29 and 30, marked on brass cap



And raise a mound of stone, 2 ft. base,  $1\frac{1}{2}$  ft. high, W. of cor.  
 Land, rolling and gently rolling.  
 Soil, rocky, 3rd rate.  
 No timber.  
 Undergrowth, yucca and cactus.

40.00 N.89° 53' E., on a random line, bet. secs. 20 and 29.  
 Set temp.  $\frac{1}{4}$  sec. cor.  
 79.79 Intersect N. and S. line, 2 lks. S. of the cor. of secs. 20, 21, 28 and 29.  
 Thence  
 S.89° 52' W., on a true line, bet. secs. 20 and 29.  
 Over gently rolling land, through scattering undergrowth.  
 23.25 Wash, course NW. Asc. 20 ft.  
 28.00 Desc. 20 ft.  
 39.89 $\frac{1}{2}$  Set an iron post, 3 ft. long, 1 in. diam., 10 ins. in the ground, in a mound of stone, for  $\frac{1}{4}$  sec. cor., marked on brass cap



And raise a mound of stone, 2 ft. base,  $1\frac{1}{2}$  ft. high, N. of cor.  
 45.00 Wash, course N. Thence over gently rolling land.  
 79.79 The cor. of secs. 19, 20, 29 and 30.  
 Land, rolling and gently rolling.  
 Soil, rocky, 4th rate.  
 No timber.  
 Undergrowth, yucca and black brush.

40.00 West on a random line, bet. secs. 19 and 30.  
 Set temp.  $\frac{1}{4}$  sec. cor.  
 79.82 Intersect W. bdy. of Tp., 9 lks. S. of the cor. of secs. 19, 24, 25 and 30, which is an iron post, described in Book "A."  
 Thence  
 S.89° 56' E., on a true line, bet. secs. 19 and 30.  
 Over level land, through scattering undergrowth.  
 39.82 Set an iron post, 3 ft. long, 1 in. diam., 12 ins. in the

Chains.

ground, in a mound of stone, for  $\frac{1}{4}$  sec. cor., marked on brass cap

$\frac{1}{4}$  S19  
S30  
1916

And raise a mound of stone, 2 ft. base,  $1\frac{1}{2}$  ft. high, N. of cor.

79.82 The cor. of secs. 19, 20, 29 and 30.  
Land, level.  
Soil, rocky, 4th rate.  
No timber.  
Undergrowth, yucca, cactus and black brush.

N.0° 3' W., bet. secs. 19 and 20.

Over level land, through scattering undergrowth.

40.00 Set an iron post, 3 ft. long, 1 in. diam., 14 ins. in the ground, in a mound of stone, for  $\frac{1}{4}$  sec. cor., marked on brass cap

S19 | S20  
1916

And raise a mound of stone, 2 ft. base,  $1\frac{1}{2}$  ft. high, W. of cor.

64.50 Road, brs. NW. and SW.

70.00 Desc. 75 ft.

80.00 Set an iron post, 3 ft. long, 2 ins. diam., 26 ins. in the ground, for cor. of secs. 17, 18, 19 and 20, marked on brass cap

T29N R16W  
S18 | S17  
S19 | S20  
1916

And raise a mound of stone, 2 ft. base,  $1\frac{1}{2}$  ft. high, W. of cor.

Land, level.

Soil, rocky, 4th rate.

No timber.

Undergrowth, yucca, cactus and black brush.

N.89° 52' E., on a random line, bet. secs. 17 and 20.

40.00 Set temp.  $\frac{1}{4}$  sec. cor.

79.83 Intersect N. and S. line, 5 lks. S. of the cor. of secs. 16, 17, 20 and 21.

Thence

S.89° 50' W., on a true line, bet. secs. 17 and 20.

Over mountainous land, through scattering undergrowth.

Desc.

12.00 Enter wash, course NW.

15.00 Leave wash, course NW. Asc. 140 ft.

19.75 Desc. 85 ft.

28.00 Wash, course NW. Asc. 160 ft.

39.91 $\frac{1}{2}$  Set an iron post, 3 ft. long, 1 in. diam., 8 ins. in the ground, in a mound of stone, for  $\frac{1}{4}$  sec. cor., marked on brass cap

$\frac{1}{4}$  S17  
S20  
1916.

And raise a mound of stone, 2 ft. base,  $1\frac{1}{2}$  ft. high, N. of cor.

44.90 Desc. 35 ft.

60.00 Thence over gently rolling land.

Subdivision of T. 29 N., R. 16 W.

Chains.  
79.83

The cor. of secs. 17, 18, 19 and 20.  
Land, mountainous and gently rolling.  
Soil, rocky, 4th rate.  
Timber, none.  
Undergrowth, yucca and black brush.

40.00  
79.79

N. 89° 56' W., on a random line, bet. secs. 18 and 19.  
Set temp.  $\frac{1}{4}$  sec. cor.  
Intersect W. bdy. of Tp., 9 lks. S. of the cor. of secs. 13, 18, 19 and 24, which is an iron post, described in Book "A."

5.05  
39.79

Thence  
S. 89° 52' E., on a true line, bet. secs. 18 and 19.  
Over level land, through scattering undergrowth.  
Wash, course N.  
Set an iron post, 3 ft. long, 1 in. diam., in a mound of stone, for  $\frac{1}{2}$  sec. cor., marked on brass cap

$\frac{1}{4}$  S18  
 $\frac{1}{4}$  S19  
1916

And raise a mound of stone, 2 ft. base,  $1\frac{1}{2}$  ft. high, N. of cor.

69.80  
79.79

Desc. 45 ft.  
The cor. of secs. 17, 18, 19 and 20.  
Land, level.  
Soil, rocky, 3rd and 4th rates.  
No timber.  
Undergrowth, yucca and black brush.

10.00  
15.00  
40.00

N. 0° 3' W., bet. secs. 17 and 18.  
Over rolling land, through scattering undergrowth.  
Desc.  
Wash, course W. Asc. 40 ft.  
Thence over gently rolling land.  
Set an iron post, 3 ft. long, 1 in. diam., 26 ins. in the ground, for  $\frac{1}{4}$  sec. cor., marked on brass cap

$\frac{1}{4}$   
S18 | S17  
1916

And raise a mound of stone, 2 ft. base,  $1\frac{1}{2}$  ft. high, W. of cor.

70.00  
80.00

Desc. 100 ft.  
Set an iron post, 3 ft. long, 2 ins. diam., in a mound of stone, for cor. of secs. 7, 8, 17 and 18, marked on brass cap

T29N R16W  
S 7 | S 8  
S18 | S17  
1916

And raise a mound of stone, 2 ft. base,  $1\frac{1}{2}$  ft. high, W. of cor.

Land, rolling and gently rolling.  
Soil, rocky, 4th rate.  
Timber, none.  
Undergrowth, yucca, black brush and cactus.

46

Subdivision of T. 29 N., R. 16 W.

Chains.

N. 89° 50' E., on a random line, bet. secs. 8 and 17.  
 40.00 Set temp.  $\frac{1}{4}$  sec. cor.  
 79.86 Intersect N. and S. line, 28 lks. N. of the cor. of secs.  
 8, 9, 16 and 17.

Thence

N. 89° 58' W., on a true line, bet. secs. 8 and 17.  
 Over mountainous land, through scattering undergrowth.  
 Asc. 75 ft.

4.50 Desc. 605 ft.

38.50 Asc. 10 ft.

39.93 Set an iron post, 3 ft. long, 1 in. diam., in a mound of  
stone, for  $\frac{1}{4}$  sec. cor., marked on brass cap
$$\frac{1}{4} \frac{S 8}{S 17}$$
 1916

And raise a mound of stone, 2 ft. base,  $1\frac{1}{2}$  ft. high, N.  
of cor.

Desc. 45 ft.

48.00 Wash, course NW. Asc. 185 ft.

71.00 Desc. 65 ft.

76.50 Wash, course N. Asc. 25 ft.

79.86 The cor. of secs. 7, 8, 17 and 18.

Land, mountainous.

Soil, rocky, 4th rate.

No timber.

Undergrowth, black brush, yucca and Spanish bayonet.

N. 89° 52' W., on a random line, bet. secs. 7 and 18.  
 40.00 Set temp.  $\frac{1}{4}$  sec. cor.

79.74 Intersect W. bdy. of Tp., 5 lks. S. of the cor. of secs.  
7, 12, 13 and 18, an iron post, described in Book "A."

Thence

S. 89° 50' E., on a true line, bet. secs. 7 and 18.

Over broken land, through scattering undergrowth.

Asc. 30 ft.

4.75 Desc. 15 ft.

13.75 Wash, course NW. Asc. 40 ft.

29.75 Desc. 35 ft.

34.75 Asc. 30 ft.

39.74 Set an iron post, 3 ft. long, 1 in. diam., 10 ins. in the  
ground, in a mound of stone, for  $\frac{1}{4}$  sec. cor., marked on  
brass cap
$$\frac{1}{4} \frac{S 7}{S 18}$$
 1916

And raise a mound of stone, 2 ft. base,  $1\frac{1}{2}$  ft. high, N.  
of cor.

Thence over gently rolling land.

57.75 Desc. 10 ft.

59.75 Asc. 15 ft.

66.75 Thence over gently rolling land.

71.75 Desc. 135 ft.

79.74 The cor. of secs. 7, 8, 17 and 18.

Land, rolling and broken.

Soil, rocky, 4th rate.

No timber.

Undergrowth, yucca, cactus and black brush.

N. 0° 3' W., bet. secs. 7 and 8.

Over broken land, through scattering undergrowth.

Desc. 160 ft.

30.00 Wash, course NE. Asc. 45 ft.

33.75 Desc. 80 ft.



Chains.

40.00 Set an iron post, 3 ft. long, 1 in. diam., 26 ins. in the ground, for  $\frac{1}{4}$  sec. cor., marked on brass cap

S 7 $\frac{1}{4}$  S 8  
1916

And raise a mound of stone, 2 ft. base, 1 $\frac{1}{2}$  ft. high, W. of cor.

42.00 Wash, 5 chs. wide, course N7. Asc. 120 ft.

54.80 Desc. 105 ft.

64.55 Gulch, course W. Asc. 105 ft.

70.40 Desc. 15 ft.

74.40 Asc. 35 ft.

77.85 Desc. 15 ft.

80.00 Set an iron post, 3 ft. long, 2 ins diam., in a mound of stone, for cor. of secs. 5, 6, 7 and 8, marked on brass cap

T29N R16W  
S 6 S 5  
S 7 S 8  
1916

And raise a mound of stone, 2 ft. base, 1 $\frac{1}{2}$  ft. high, W. of cor.

Land, broken.

Soil, rocky, 4th rate.

Timber, none.

Undergrowth, black brush, yucca, cactus, Spanish bayonet and greasewood.

S.F.W.

S.F.W. & J.C.H.

S.89° 58' E., on a random line, bet. secs. 5 and 8.

40.00 Set temp.  $\frac{1}{4}$  sec. cor.

79.64 Intersect N. and S. line, 7 lks. N. of the cor. of secs. 4, 5, 8 and 9.

Thence

N.89° 55' W., on a true line, bet. secs. 5 and 8

Over broken land, through scattering undergrowth.

Desc. 30 ft.

18.15 Wash, 2 chs. wide, course N. Asc.

24.70 Desc. 110 ft.

39.82 (J.C.H.) Set an iron post, 3 ft. long, 1 in. diam., in a mound of stone, for  $\frac{1}{4}$  sec. cor., marked on brass cap

$\frac{1}{4}$  S 5  
S 8  
1916

And raise a mound of stone, 2 ft. base, 1 $\frac{1}{2}$  ft. high, N. of cor.

45.00 Asc. 35 ft.

48.45 Desc. 75 ft.

63.15 Gulch, course N. Asc. 10 ft.

66.90 Desc. 140 ft.

79.64 The cor. of secs. 5, 6, 7 and 8.

Land, broken.

Soil, rocky, 4th rate.

No timber.

Undergrowth, black brush, yucca, Spanish bayonet, cactus and greasewood.

S.F.W. & J.C.H.

S.F.W.

N.89° 50' W., on a random line, bet. secs. 6 and 7.

40.00 Set temp.  $\frac{1}{4}$  sec. cor.

79.71 Intersect W. bdy. of Tp., 19 lks. N. of the cor. of secs. 1, 6, 7 and 12, which is an iron post, described in

Chains.

Book "A."

Thence

S. 89° 58' E., on a true line, bet. secs. 6 and 7.

Over broken land, through scattering undergrowth.

Desc. 80 ft.

39.71 Set an iron post, 3 ft. long, 1 in. diam., 12 ins. in the ground in a mound of stone, for  $\frac{1}{4}$  sec. cor., marked on brass cap

$\frac{1}{4}$  S 6  
S 7  
1916

And raise a mound of stone, 2 ft. base,  $1\frac{1}{2}$  ft. high, N of cor.

Asc. 40 ft.

44.70 Road, brs. N. and S.

46.45 Desc. 255 ft.

74.70 Wash, 2 chs. wide, course N. Asc. 120 ft.

79.71 The cor. of secs. 5, 6, 7 and 8.

Land, broken.

Soil, rocky, 4th rate.

No timber.

Undergrowth, black brush, yucca, greasewood, Spanish bayonet and cactus.

N. 0° 3' W., on a random line, bet. secs. 5 and 6.

40.00 Set temp.  $\frac{1}{4}$  sec. cor.

80.07 Intersect N. bdy. of Tp., at the cor. of secs. 5, 6, 31 and 32, which is an iron post, described in Book "A."

Thence

S. 0° 3' E., on a true line, bet. secs. 5 and 6.

Over broken land, through scattering undergrowth.

Asc. 50 ft.

6.20 Desc. 20 ft.

14.50 Wash, course N. Asc. 60 ft.

20.05 Desc. 25 ft.

25.05 Asc. 25 ft.

30.00 Desc. 15 ft.

35.00 Asc. 85 ft.

40.07 Set an iron post, 3 ft. long, 1 in. diam., in a mound of stone, for  $\frac{1}{4}$  sec. cor., marked on brass cap

S 6  $\frac{1}{4}$  S 5  
1916

And raise a mound of stone, 2 ft. base,  $1\frac{1}{2}$  ft. high, W of cor.

49.70 Desc. 105 ft.

57.00 Gulch, course NW. Asc. 75 ft.

67.20 Desc. 115 ft.

70.25 Asc. 85 ft.

80.07 The cor. of secs. 5, 6, 7 and 8.

Land, broken.

Soil, rocky, 4th rate.

No timber.

Undergrowth, black brush, yucca, greasewood, bayonet and cactus.

S.F.W.

General Description.

The Grand Wash Cliffs cut across the north east corner of the township. They are very high, steep and rough, breaking to the west and south, and are a continuation of the rim of the Grand Canyon of the Colorado River. A large, dry wash, which might be designated Grape Vine Wash, since it is the head of Grape Vine Canyon, is the main drainage course of the township and drains west and north. The south western part is worthless, growing only cactus, yucca trees and a small black brush, probably a species of chaparral brush. In the extreme southern part, there is scattering juniper and pinion timber. The northeastern part, or the portion lying on the mesa, back from the cliffs, is broken and heavy rolling mountains, but there is a very fair stand of native grass and is good grazing. The north western part consists of heavy rolling hills of sand and rocks, covered with yucca trees and cactus, with very little grass. A road traverses the township east and west, leading north east from Grass Springs to New Water and west to Patterson's Wells. The only water in the township is Grass Springs, a developed spring in the NW.  $\frac{1}{4}$  of sec. 27, held by G. T. Duncan, a cattle man, who also has a house, barn and corrals at the spring. Duncan is the only settler in the township.

BOOK 3254

Book "M"

Group 45 - - - Arizona.

~ DATE DIAGRAM ~

Surveys executed on dates shown on this diagram by James C. Hooper, U.S. Transitman.

| NAMES. |         |                 | CAPACITY |    |    |
|--------|---------|-----------------|----------|----|----|
| 4-9-17 | 4-9-17  | 4-9-17          | 4-10-17  |    |    |
| 6      | 5       | 4               | 3        | 2  | 1  |
|        | 4-18-17 | 4-19-17         |          |    |    |
| 7      | 8       | 9               | 10       | 11 | 12 |
| 18     | 17      | 16              | 15       | 14 | 13 |
|        |         | T. 29N. R. 16W. |          |    |    |
| 19     | 20      | 21              | 22       | 23 | 24 |
| 30     | 29      | 28              | 27       | 26 | 25 |
| 31     | 32      | 33              | 34       | 35 | 36 |

7th Standard Parallel North

52

52

BOOK 3254

TRANSITMAN.

CERTIFICATE OF UNITED STATES SURVEYOR.

I, James C. Hooper, U.S. Transitman, do hereby certify upon honor that, in pursuance of special instructions received from the U. S. Surveyor General for Group 45, Arizona, bearing date of the 7th day of January, 1915, I have well, faithfully, and truly in my own proper person, and in strict conformity with said instructions, the Manual of Surveying Instructions, and the laws of the United States, surveyed all those parts or portions of the Subdivision lines of

TOWNSHIP 29 NORTH, RANGE 16 WEST,

of the Gila and Salt River Base and Meridian, in the State of Arizona, which are represented by the diagrams on the reverse hereof and in the foregoing field notes as having been executed by me, and under my direction; and that all the corners of said survey have been established and perpetuated in strict accordance with the Manual of Surveying Instructions, and the special written instructions of the U. S. Surveyor General for Group 45, Arizona, and in the specific manner described in the field notes, and that the foregoing are the original field notes of such survey.

James C. Hooper
U.S. Transitman

APPROVAL.

OFFICE OF THE UNITED STATES SURVEYOR GENERAL,

, 191

The foregoing field notes of the survey of

executed by
under his special instructions dated
critically examined, and the necessary corrections and explanations made, the said field notes, and the surveys they describe, are hereby approved.

U. S. Surveyor General.

I certify that the foregoing transcript of the field notes of the above-described surveys in
has been correctly copied from the original notes on file in this office.

U. S. Surveyor General.

BOOK 3254

Book "M"

Group 45 - - - Arizona.

~ DATE DIAGRAM ~

Surveys executed on dates shown on this diagram by S. Frank Walters, U.S. Transitman.

CAPACITY

|        |              |              |               |               |               |               |
|--------|--------------|--------------|---------------|---------------|---------------|---------------|
|        | 6<br>5-15-16 | 5<br>5-15-16 | 4             | 3             | 2             | 1             |
|        | 7<br>5-4-16  | 8<br>5-9-16  | 9<br>10-23-17 | 10            | 11            | 12<br>5-23-16 |
|        | 18<br>5-4-16 | 17<br>5-5-16 | 16<br>5-9-16  | 15<br>5-10-16 | 14<br>5-23-16 | 13<br>5-22-16 |
|        | 19<br>5-4-16 | 20<br>5-5-16 | 21<br>5-6-16  | 22<br>5-8-16  | 23<br>5-13-16 | 24            |
| 4-4-16 | 30<br>5-3-16 | 29<br>5-5-16 | 28<br>5-6-16  | 27<br>5-8-16  | 26<br>5-11-16 | 25<br>5-12-16 |
| 4-4-16 | 31<br>5-3-16 | 32           | 33<br>5-6-16  | 34<br>5-8-16  | 35<br>5-11-16 | 36            |

7th. Standard Parallel North.

54

54

TRANSITMAN.  
CERTIFICATE OF UNITED STATES ~~SURVEYOR~~

BOOK 3254

I, S. Frank Walters, U. S. Transitman, do hereby certify upon honor that, in pursuance of special instructions received from the U. S. Surveyor General for Group 45, Arizona, bearing date of the 7th day of January, 1915, I have well, faithfully, and truly in my own proper person, and in strict conformity with said instructions, the Manual of Surveying Instructions, and the laws of the United States, surveyed all those parts or portions of the Subdivision Lines of

TOWNSHIP 29 NORTH, RANGE 16 WEST,

of the Gila and Salt

River Base and Meridian, in the State of Arizona, which are represented by the diagram on the reverse hereof and in the foregoing field notes as having been executed by me, and under my direction; and that all the corners of said survey have been established and perpetuated in strict accordance with the Manual of Surveying Instructions, and the special written instructions of the U. S. Surveyor General for Group 45, Arizona, and in the specific manner described in the field notes, and that the foregoing are the original field notes of such survey.

*S. Frank Walters*  
U. S. ~~Surveyor~~  
Transitman.

APPROVAL.

OFFICE OF THE UNITED STATES SURVEYOR GENERAL,

....., 191

The foregoing field notes of the survey of .....

executed by .....

under his special instructions dated ....., 191 , having been critically examined, and the necessary corrections and explanations made, the said field notes, and the surveys they describe, are hereby approved.

.....  
U. S. Surveyor General.

I certify that the foregoing transcript of the field notes of the above-described surveys in ....., has been correctly copied from the original notes on file in this office.

.....  
U. S. Surveyor General.

|    |    |    |    |
|----|----|----|----|
| 6  | 5  | 4  | 3  |
| 7  | 8  | 9  | 10 |
| 18 | 17 | 16 | 15 |
| 19 | 20 | 21 | 22 |
| 30 | 29 | 28 | 27 |
| 31 | 32 | 33 | 34 |

6-2-16 6-2-16  
 6-1-16 6-1-16  
 6-1-16 6-1-16  
 6-1-16 6-1-16  
 6-5-16 6-5-16  
 6-2-16 6-2-16  
 RETRACTED

Book "M"  
 Group 45 - - - Arizona.

~DATE DIAGRAM~  
 FIELD ASSISTANTS  
 surveys executed on dates shown on these diagrams by D.R. Averill, U.S. Transitman.

T.29N. R.15W.

7th. Stand. Parallel North

|    |    |    |    |    |    |
|----|----|----|----|----|----|
| 6  | 5  | 4  | 3  | 2  | 1  |
| 7  | 8  | 9  | 10 | 11 | 12 |
| 18 | 17 | 16 | 15 | 14 | 13 |
| 19 | 20 | 21 | 22 | 23 | 24 |
| 30 | 29 | 28 | 27 | 26 | 25 |
| 31 | 32 | 33 | 34 | 35 | 36 |

7th Standard Parallel North



56

56

BOOK 3254

CERTIFICATE OF UNITED STATES ~~SURVEYOR~~ <sup>TRANSITMAN</sup>

I, D. R. Averill, U. S. ~~Surveyor~~ <sup>Transitman</sup>, hereby certify upon honor that, in pursuance of special instructions received from the U. S. Surveyor General for Group 45, Arizona, bearing date of the 7th day of January, 1915, I have well, faithfully, and truly in my own proper person, and in strict conformity with said instructions, the Manual of Surveying Instructions, and the laws of the United States, ~~surveyed~~ <sup>retraced</sup> all those parts or portions of the Hualpai Indian Reservation Bdy., and surveyed all those parts or portions of the Subdivision lines of

TOWNSHIP 29 NORTH, RANGE 15 WEST, and

TOWNSHIP 29 NORTH, RANGE 16 WEST,

of the Gila and Salt

River Base and Meridian, in the State of Arizona, which are represented by the diagram on the reverse hereof and in the foregoing field notes as having been executed by me, and under my direction; and that all the corners of said survey have been established and perpetuated in strict accordance with the Manual of Surveying Instructions, and the special written instructions of the U. S. Surveyor General for Group 45, Arizona, and in the specific manner described in the field notes, and that the foregoing are the original field notes of such survey.

*D. R. Averill*  
 U. S. Transitman.

APPROVAL.

OFFICE OF THE UNITED STATES SURVEYOR GENERAL,

....., 191

The foregoing field notes of the survey of .....

executed by .....

under his special instructions dated ....., 191 , having been critically examined, and the necessary corrections and explanations made, the said field notes, and the surveys they describe, are hereby approved.

.....  
U. S. Surveyor General.

I certify that the foregoing transcript of the field notes of the above-described surveys in ....., has been correctly copied from the original notes on file in this office.

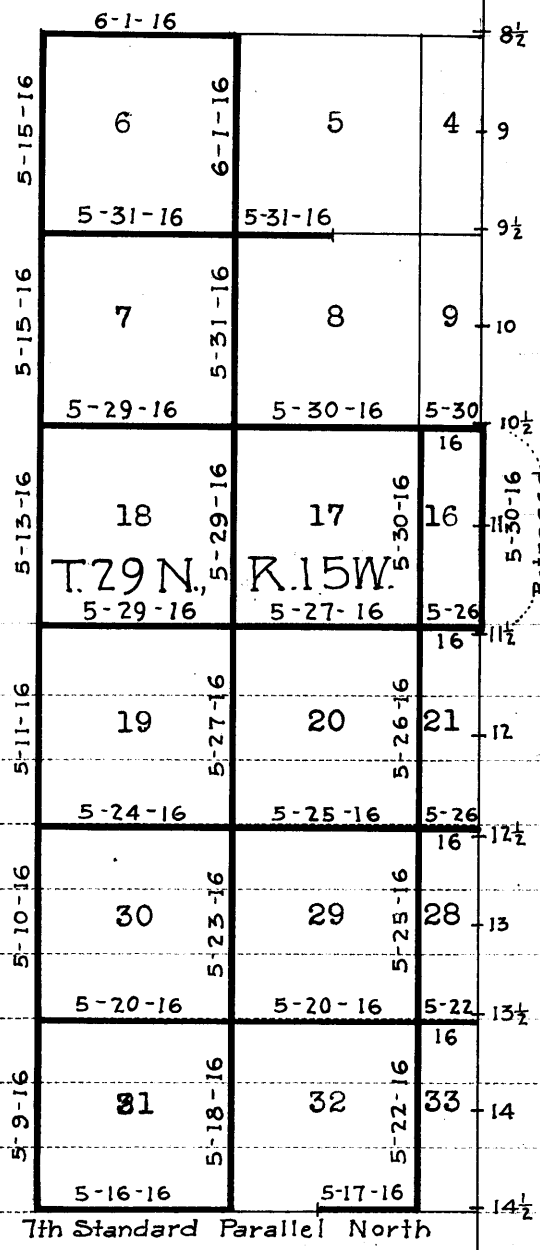
.....  
U. S. Surveyor General.

BOOK 2254

Book "M"

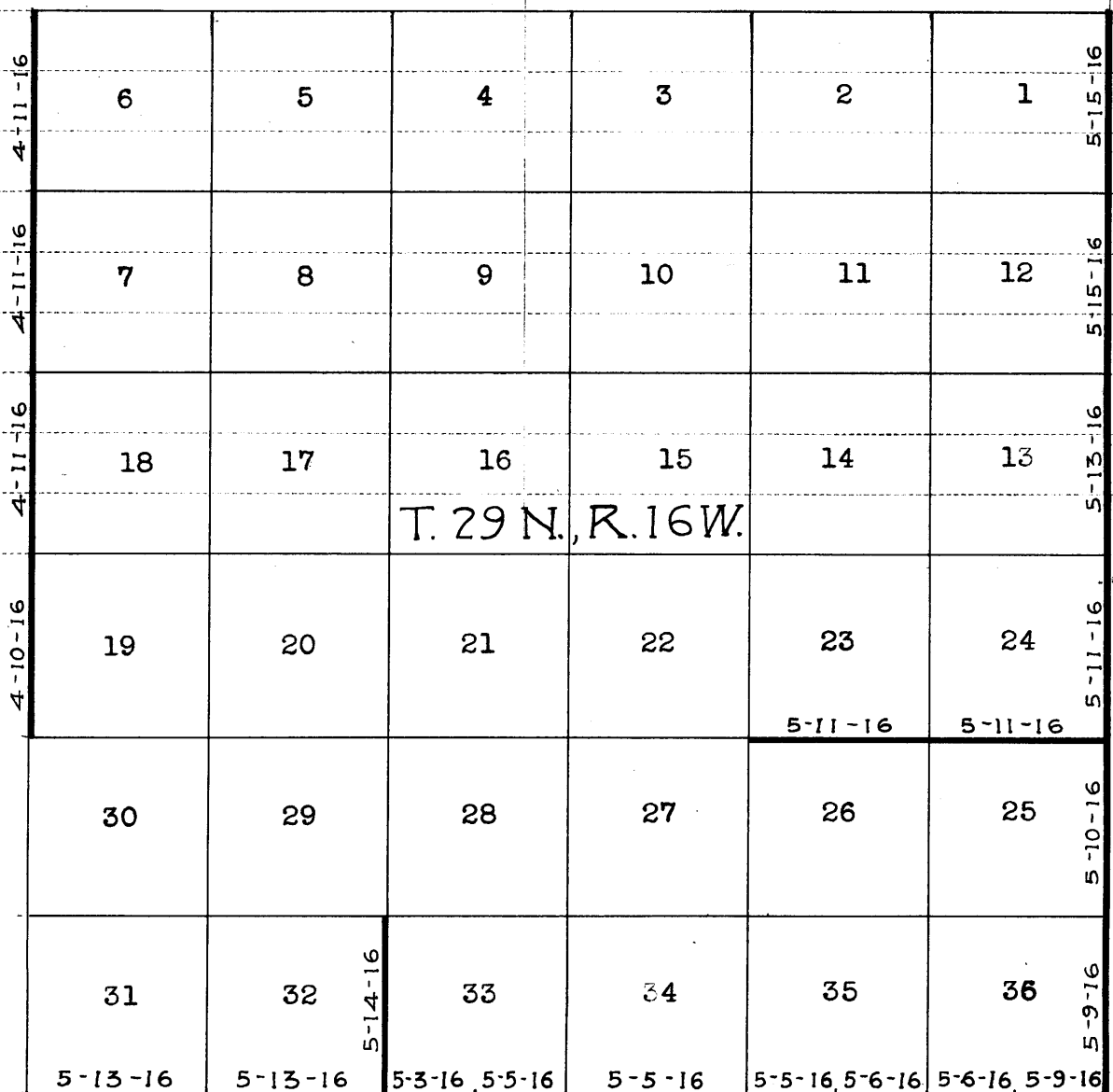
Group 45 Arizona.

DATE DIAGRAM



HUALPAI INDIAN RESERVATION

Surveys executed on dates shown on this diagram by E. J. Lange U.S. Surveyor.



CERTIFICATE OF UNITED STATES SURVEYOR.

BOOK 3254

I, E. J. Lange, U. S. Surveyor, hereby certify upon honor that, in pursuance of special instructions received from the U. S. Surveyor General, for Group 45 Arizona bearing date of the 7th day of January, 1915, I have well, faithfully, and truly in my own proper person, and in strict conformity with said instructions, the Manual of Surveying Instructions, and the laws of the United States, retraced all those parts or portions of the Hualpai Indian Reservation Bdy., and Surveyed all those parts or portions oth the Subdivision lines of Township 29 North, Range 15 West and Township 29 North, Range 16 West of the Gila and Salt River Base and Meridian, in the State of Arizona, which are represented by the diagram on the reverse hereof and in the foregoing field notes as having been executed by me, and under my direction; and that all the corners of said survey have been established and perpetuated in strict accordance with the Manual of Surveying Instructions, and the special written instructions of the U. S. Surveyor General, for Group 45 Arizona and in the specific manner described in the field notes, and that the foregoing are the original field notes of such retracement and survey.

E. J. Lange U. S. Surveyor.

APPROVAL.

OFFICE OF THE UNITED STATES SURVEYOR GENERAL,

....., 191

The foregoing field notes of the survey of .....

executed by ..... under his special instructions dated ....., 191, having been critically examined, and the necessary corrections and explanations made, the said field notes, and the surveys they describe, are hereby approved.

..... U. S. Surveyor General.

I certify that the foregoing transcript of the field notes of the above-described surveys in ..... has been correctly copied from the original notes on file in this office.

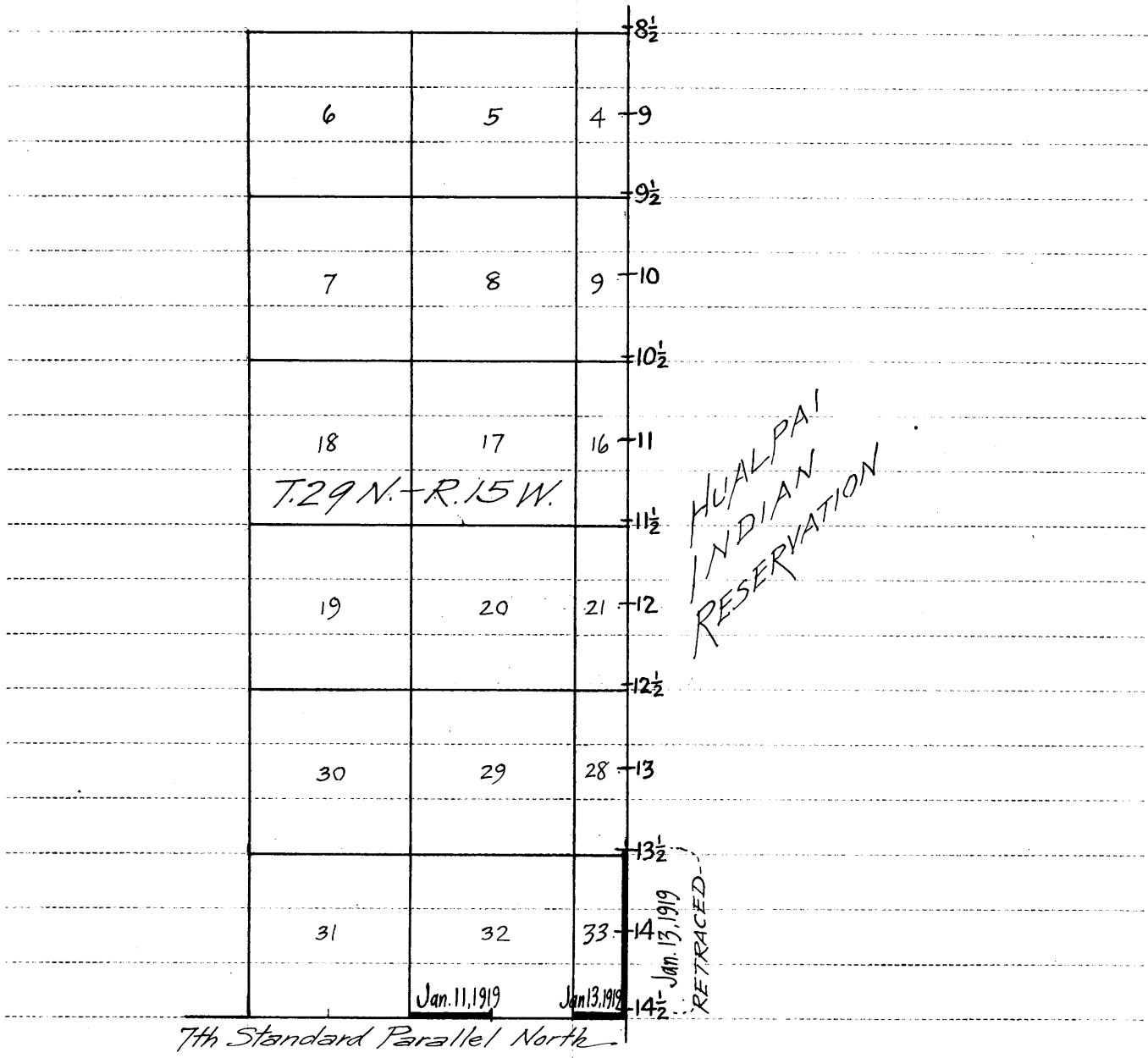
..... U. S. Surveyor General.

Book " M "

Group 45 Arizona.

DATE DIAGRAM

Surveys executed on dates shown on this diagram by J.P.Davis, U.S.S.



60

BOOK 325A

CERTIFICATE OF UNITED STATES SURVEYOR.

I, J. P. Davis, U. S. Surveyor, hereby certify upon honor that, in pursuance of special instructions received from the U. S. Surveyor General, for Group 45 Arizona

bearing date of the 7th day of January, 1915, I have well, faithfully, and truly

in my own proper person, and in strict conformity with said instructions, the Manual of Surveying Instructions, and the laws of the United States, <sup>RETRACED</sup> ~~surveyed~~ all those parts or portions of the Hualpai Indian Reservation boundary in

TOWNSHIP 29 NORTH RANGE 15 WEST

of the Gila and Salt River Base and Meridian, in the State of Arizona, which are represented in

the foregoing field notes as having been executed by me, and under my direction; and that all the corners of said ~~survey~~ <sup>retracement</sup> have been established and perpetuated in strict accordance with the Manual of Surveying Instructions, and the special written instructions of the U. S. Surveyor General, for Group 45, Arizona

and in the specific manner described in the field notes, and that the foregoing are the original field notes of such ~~survey~~ retracement.

J. P. Davis

U. S. Surveyor.

APPROVAL.

OFFICE OF THE UNITED STATES SURVEYOR GENERAL,

Phoenix Arizona

191

The foregoing field notes of the ~~survey of~~ Retracement of part of the West bdy. of the Hualpai Indian Reservation within Township 29 North, Range 15 West of the Survey of that part of the Subdivision lines of Township 29 North, Range 15 West situated outside the Hualpai Indian Reservation, and of the Survey of all of the Subdivision lines of Township 29 North, Range 16 West, of the Gila and Salt River Base and Meridian, in the State of Arizona, executed by E. J. Lange and J. P. Davis, U.S. Surveyors executed by and D. R. Averill, S. Frank Walters and James C. Hooper, U.S. Transitmen.

under ~~his~~ special instructions dated Jan. 7, 1915 for Group 45, Arizona, ~~was~~ having been critically examined, and the necessary corrections and explanations made, the said field notes, and the <sup>retracements &</sup> surveys they describe, are hereby approved.

Frank D. Frost

U. S. Surveyor General.

~~I certify that the foregoing transcript of the field notes of the above described surveys in~~ ~~has been correctly copied from the original notes on file in this office.~~