

3258

Book "Q"

4-679

(Subdivisions)

BOOK 3258

# FIELD NOTES

## OF THE RETRACEMENT

of part of the boundary of the

Hualpai Indian Reservation in Township 26 North, Range 14 West,

and of the SURVEY of the

Subdivision Lines of that portion of Township 26 North, Range 14 West,

of the Gila and Salt River Base and Meridian, in the State of Arizona,

which is outside the boundary of the HUALPAI INDIAN RESERVATION

and of the SURVEY of

the COMPLETION of the Subdivision lines of

TOWNSHIP 26 NORTH, RANGE 15 WEST

of the Gila and Salt River Base and Meridian, in the State of

Arizona, ~~which is outside the boundary of the Hualpai Indian Reser-~~

~~vation.~~

EXECUTED BY

S. Frank Walters and James C. Hooper.

U.S. Transitmen

~~In the capacity of U.S. Transitmen, under instructions dated January 7, 1915,~~

issued by the United States Surveyor General to govern surveys included in

Group No. 45, which were approved by the Commissioner of the General Land

Office, January 26, 1915.

Retracement & Surveys commenced January 2, 1917.

Retracement & Surveys completed July 7, 1917.

Executed under Assignment  
Instructions dated Dec. 7, 1916.

3258

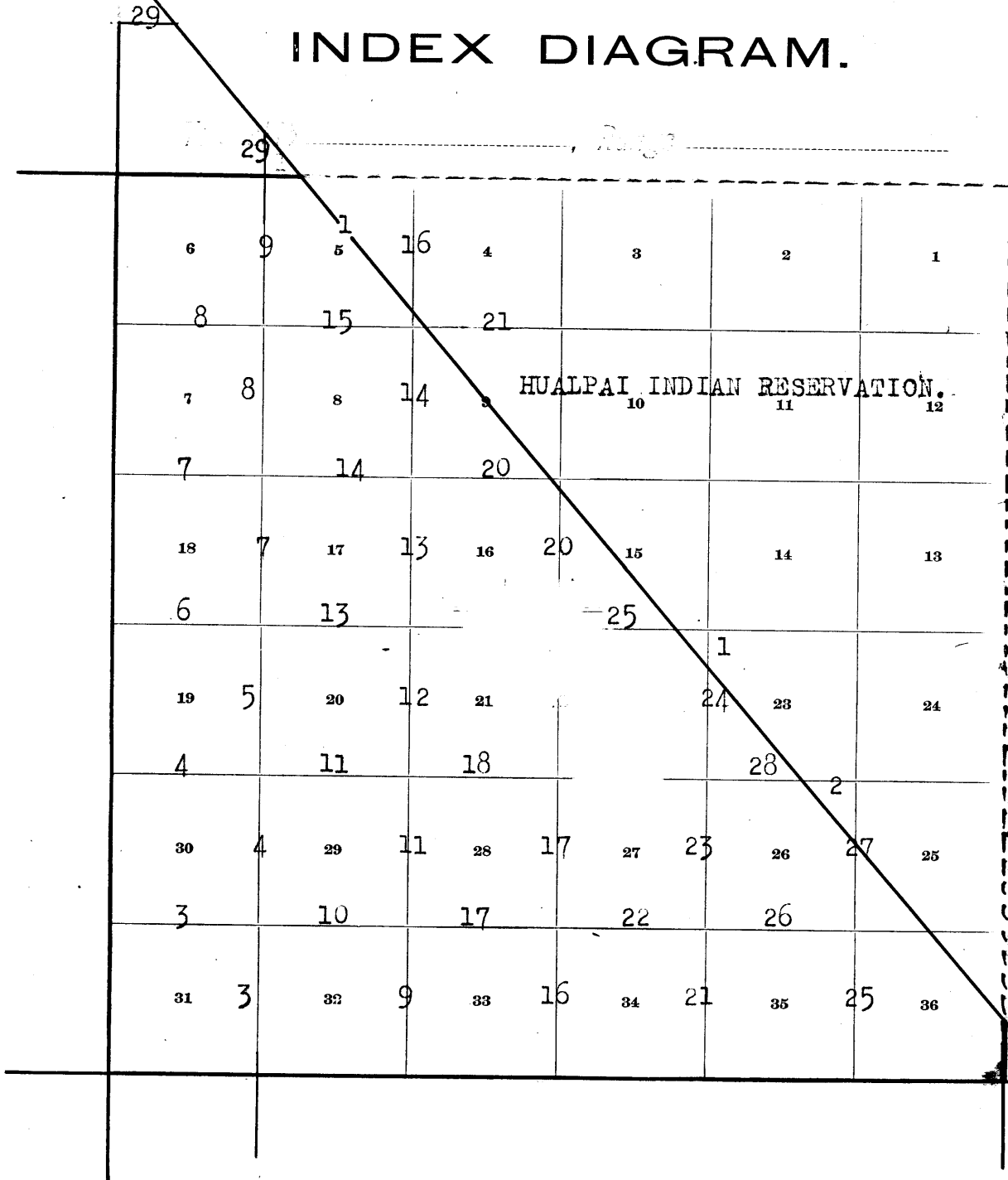
3258

BOOK 3258

Book "Q"

Group 45 - --Arizona.

~ SEE SPECIAL INDEX DIAGRAM ~



Subdivision lines surveyed under this group.

Township boundaries surveyed under this group.  
Notes in Book "A."

Hualpai Indian Reservation boundary retraced under  
this Group. Notes in this Book.

Accepted surveys.

Unsurveyed.

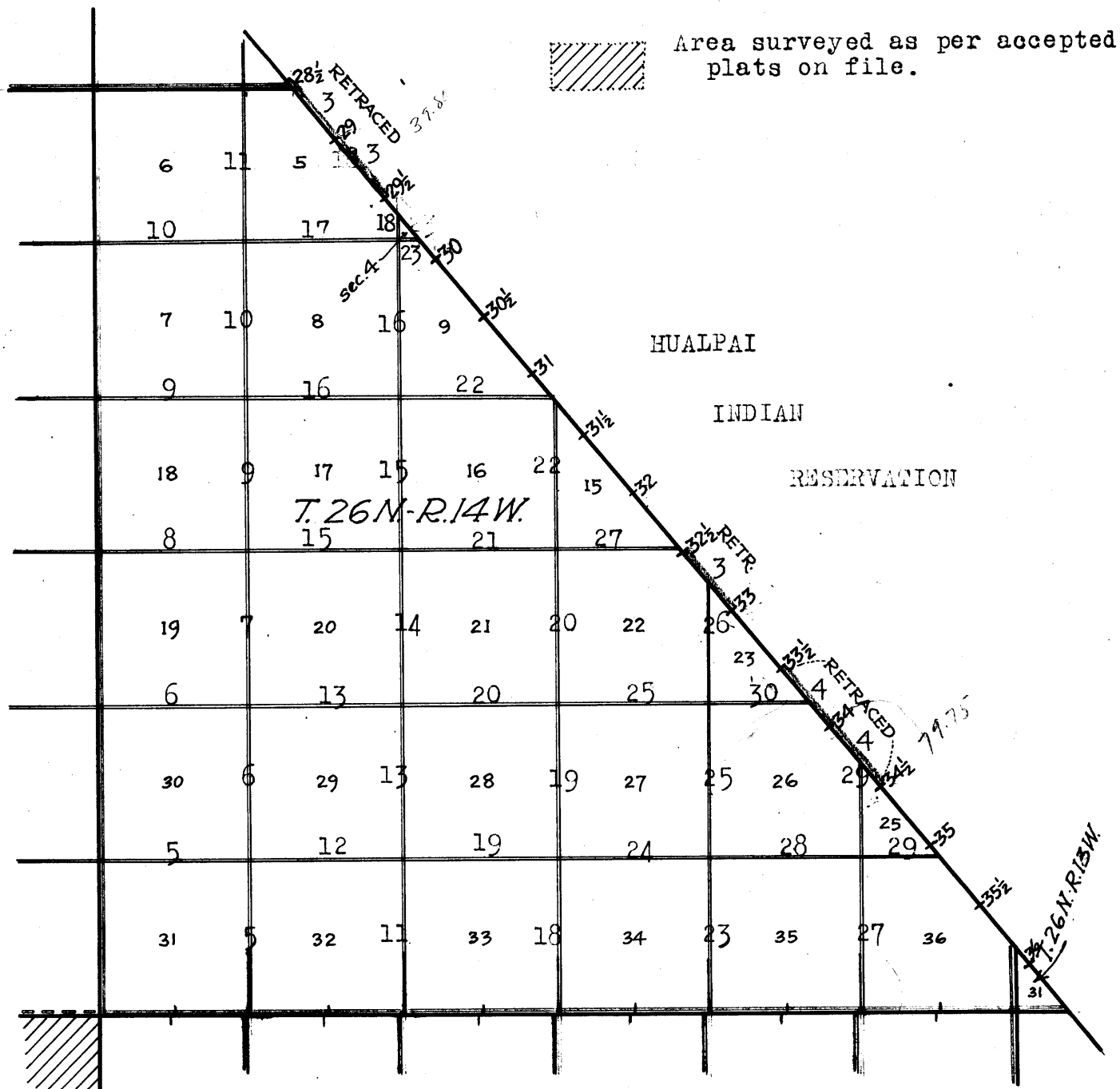
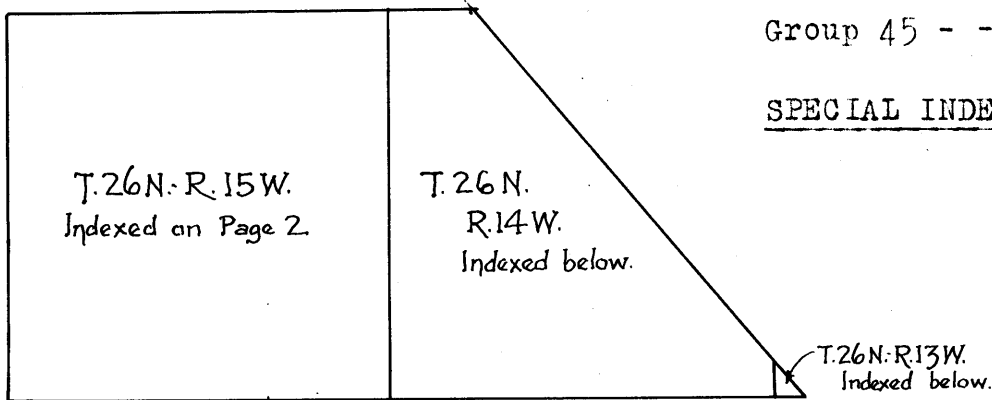
BOOK 3258

Book "Q"

Group 45 - - Arizona.

SPECIAL INDEX DIAGRAM.

PART I.



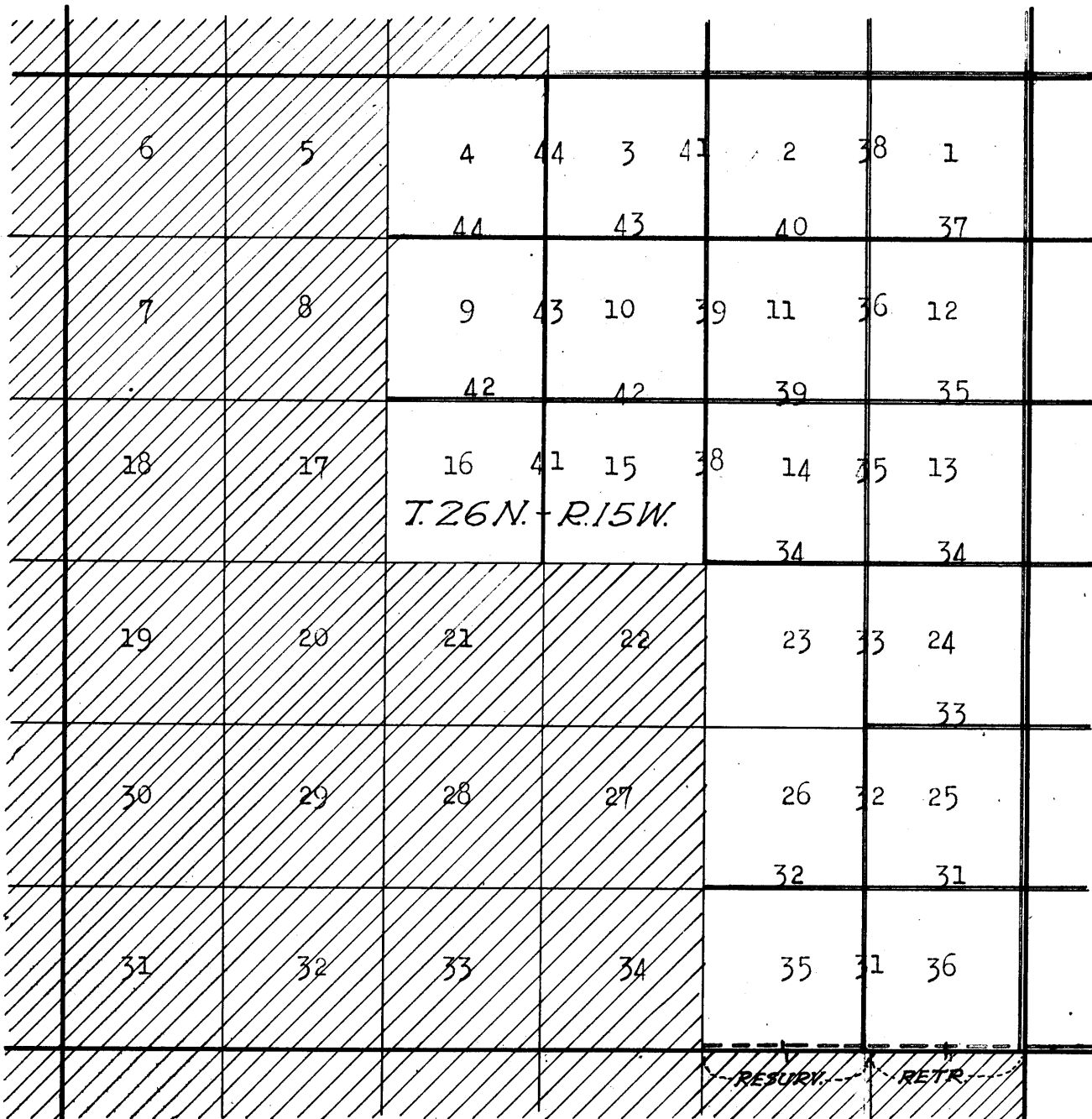
- Subdivision lines surveyed under this group.
- Township boundaries surveyed under this group. Notes in Book "A"
- Township bdrs. retraced or resurveyed under this group. Notes in Book "A."
- Hualpai Indian Reservation boundary retraced. Notes in this Book.
- Accepted surveys.

Book "Q"  
Group 45 - - - Arizona.

SPECIAL INDEX DIAGRAM.

PART II.

BOOK 3258



- Subdivision lines surveyed under this group.
- ===== Township boundaries surveyed under this group.  
Notes in Book "A"
- Township boundaries retraced or resurveyed under this group.  
Notes in Book "A".
- Accepted surveys.
- ////// Area surveyed as per accepted plats on file.

Retracement of  
Part of Hualpai Indian Reservation boundary, and  
Survey of part of Subdivision lines of Township 26 N., R. 14 W.

3

Chains.

Retracements and surveys, hereinafter described, executed by S. Frank Walters and James C. Hooper, U.S. Transitman, on dates shown on diagrams on pages 47 and 49 hereof, using Buff solar transit No. 9985, and Young and Sons' light mountain transit No. 8489, respectively, described in Book "A."

Recent and repeated tests of the instruments on a meridian established by observations on Polaris at elongation demonstrate that they are in satisfactory adjustment. Initials "S.F.W." and "J.C.H." are inserted at the beginning and ending of those portions of the notes describing the respective surveys by S. Frank Walters and James C. Hooper, U.S. Transitmen.

RETRACEMENT- PART OF HUALPAI INDIAN RESERVATION BOUNDARY.

J.C.H.

From the 28 $\frac{1}{2}$  mile cor., which is a limestone, 6x12x8 ins. above ground, firmly set, marked and witnessed as described by the surveyor-general,

S.40°E., on a random line.

Over rolling and mountainous land, thru scattering timber and undergrowth.

Ascend 340 ft.

36.65 Ridge, brs. E. and W. descend.

39.85 Fall 8 lks. S. 50° W. of the 29 mile cor., which is a sandstone, 6x8x12 ins. above ground, firmly set, marked and witnessed as described by the surveyor-general.

The true course and distance of this half mile is therefore S.40°7'E., 39.85 chs.

From the 29 mile cor.,

S.40°E., on a random line.

Descend 200 ft.

24.00 Wash, 20 lks. wide, course SW. Ascend.

26.95 Descend 65 ft.

39.80 Fall 16 lks. S. 50° W. of the 29 $\frac{1}{2}$  mile cor., which is a malpais stone, 16x12x14 ins. above ground, firmly set, marked and witnessed as described by the surveyor general.

The true course and distance of this half mile is therefore S.40°14'E., 39.80 chs.

Land, mountainous and rolling.

Soil, rocky, 4th rate.

Timber, pinon, pine and juniper.

Undergrowth, scrub oak.

From the 32 $\frac{1}{2}$  mile cor., which is a sandstone, 8x12x12 ins. above ground, firmly set, marked and witnessed as described by the surveyor general,

S.40°E., on a random line.

Over mountainous land, through dense timber and undergrowth.

Ascend 105 ft.

7.25 Ridge, brs. E. and W. Descend 445 ft.

39.56 Fall 22 lks. N. 50° E. of the 33 mile cor., which is a limestone, 8x12x8 ins. above ground, firmly set, marked and witnessed as described by the surveyor general.

The true course and distance of this half mile is therefore S.39°41'E., 39.56 chs.

Land, mountainous.

Soil, rocky, 4th rate.

Timber, pinon pine and juniper.

Undergrowth, scrub oak and manzanita.

From the 33 $\frac{1}{2}$  mile cor., which is a limestone, 8x12x12 ins. above ground, firmly set, marked and witnessed as described by the surveyor general,

S.40°E. on a random line.

Retracement of part of Hualpai Indian Reservation bdy., and  
 4 Survey of part of Subdivision lines of T.26 N., R.14 W.

Chains.

Over rolling land, thru scattering timber and undergrowth.  
 8.10 Wash, 20 lks. wide, course E. Ascend.  
 15.50 Road, brs. E\* and W.  
 17.50 Low ridge, brs. E\* and W. Descend 40 ft.  
 32.30 Road brs. E\* and W.  
 40.02 Fall 20 lks. S.  $50^{\circ}$  W., of the 34 mile cor., which is a malpais rock, 8x10x14 ins., above ground, firmly set, marked and witnessed as described by the surveyor general. The true course and distance of this half mile is therefore S.  $40^{\circ}17'E.$ , 40.02 chs.

From the 34 mile cor.,  
 S.  $40^{\circ}$  E. on a random line.

Over mountainous land, thru scattering timber and undergrowth.

Descend.

2.60 Wash, 20 lks. wide, course E. Ascend 130 ft.  
 13.90 Spur, slopes W. Descend 50 ft.  
 18.75 Wash, course W. Ascend gradually.  
 39.75 Fall 25 lks. N.  $50^{\circ}$  E. of the  $34\frac{1}{2}$  mile cor., which is a sandstone, 6x16x10 ins., above ground, firmly set, marked and witnessed as described by the surveyor-general. The true course and distance of this half mile is therefore S.  $39^{\circ}39'E.$ , 39.75 chs.

Land, mountainous.

Soil, rocky, 4th rate.

Timber, pinon, pine and juniper.

Undergrowth, scrub oak and manzanita.

J.C.H.

## Subdivision of Part of T. 26 N., R. 14 W.

Chains.	S.F.W.
	From the cor. of secs. 31 and 32, on the S. bdy. of the Tp., which is an iron post, described in Book "A"., N.0° 2' W., bet. secs. 31 and 32. Over mountainous land, through scattering undergrowth. Asc. 175 ft.
5.00	Spur, slopes S.30° W. Desc. 40 ft.
9.90	Asc. 30 ft.
11.50	Spur, slopes W. Desc. 145 ft.
21.00	Ravine, course S.30° W. Asc. 360 ft.
31.70	Spur, slopes S.40° W. Desc. 70 ft.
40.00	Set an iron post, 3 ft. long, 1 in. diam., in a mound of stone, for $\frac{1}{4}$ sec. cor., marked on brass cap
	$\begin{array}{r} \frac{1}{4} \\ S31   S32 \\ \hline 1917 \end{array}$
	And raise a mound of stone, 2 ft. base, $1\frac{1}{2}$ ft. high, W. of cor.
	Asc.
40.50	Spur, slopes W. Desc. 425 ft.
51.50	Ravine, course W. Asc. 295 ft.
61.80	Spur, slopes W. Desc. 530 ft.
78.60	Gulch, course W. Asc. 85 ft.
80.00	Set an iron post, 3 ft. long, 2 ins. diam., in a mound of stone, for cor. of secs. 29, 30, 31 and 32, marked on brass cap
	$\begin{array}{r} T26N R14W \\ S30   S29 \\ \hline S31   S32 \\ \hline 1917 \end{array}$
	And raise a mound of stone, 2 ft. base, $1\frac{1}{2}$ ft. high, W. of cor.
	Land, mountainous. Soil, rocky, 4th rate. Timber, none. Undergrowth, scrub oak and cat claw.
40.00	N.89° 59' W., on a random line, bet. secs. 30 and 31. Set temp. $\frac{1}{4}$ sec. cor.
80.08	Intersect W. bdy. of Tp., 14 lks. N. of the cor. of secs. 25, 30, 31 and 36, which is an iron post, described in Book "A".
	Thence
	N; 89° 55' E., on a true line, bet. secs. 30 and 31. Over mountainous land, through scattering undergrowth. Asc. 490 ft.
8.95	Gulch, course NW. Continue ascent.
9.50	Wire fence, brs. N.40° W. and S.40° E.
40.04	Set an iron post, 3 ft. long, 1 in. diam., in a mound of stone, for $\frac{1}{4}$ sec. cor., marked on brass cap
	$\begin{array}{r} S30 \\ \frac{1}{4} S31 \\ \hline 1917 \end{array}$
	And raise a mound of stone, 2 ft. base, $1\frac{1}{2}$ ft. high, N. of cor.
41.70	Point of spur, slopes N. Kohinoor Spring brs. N. 7.00 chs. dist. Desc.
46.65	Asc. 70 ft.
56.40	Desc. 25 ft.
68.70	Gulch, course N.70° W. Asc. 115 ft.
75.20	Desc.
76.80	Gulch, course SW. Asc. 85 ft.
80.08	The cor. of secs. 29, 30, 31 and 32. Land, mountainous.

6 Subdivision of Part of T. 26 N., R. 14 W.

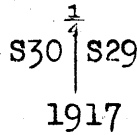
Chains.

Soil, rocky, 4th rate.  
No timber.  
Undergrowth, cat claw and manzanita.

4.30  
5.30  
19.00  
33.00  
38.50  
40.00

N.0° 2' W., bet. secs. 29 and 30.  
Over mountainous land, through scattering undergrowth.  
Asc. 75 ft.

Desc. 10 ft.  
Gulch, course S.30° W. Asc. 715 ft.  
Spur, slopes W. Desc. 515 ft.  
Ravine, course W. Asc. 145 ft.  
Spur, slopes W. Desc. 380 ft.  
Set an iron post, 3 ft. long, 1 in. diam., in a mound of stone, for 1/4 sec. cor., marked on brass cap



And raise a mound of stone, 2 ft. base, 1 1/2 ft. high, W. of cor.

48.00  
51.70  
54.70  
65.70  
80.00

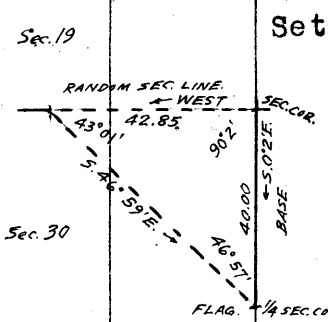
Gulch, course N.80° W. Asc. 60 ft.  
Thence along W. slope.  
Desc. 200 ft.  
Gulch, course S.70° W. Asc. 560 ft.  
The true point for cor. of secs. 19, 20, 29 and 30 falls on porphyry rock in place. At the exact corner point, I mark a cross (X), with 5 grooves E. and 2 grooves S. of cross, for cor. of secs. 19, 20, 29 and 30; and raise a mound of stone, 2 ft. base, 1 1/2 ft. high, W. of cor. From this cor., a cross on a rock brs. N.9° 19' E., 70 lks. dist.

Land, mountainous.  
Soil, rocky, 4th rate.  
No timber.  
Undergrowth, cat claw, scrub oak and mahogany.

S.F.W.

J.C.H.

West on a random line, bet secs. 19 and 30.  
I triangulate from the cor. of secs. 19, 20, 29 and 30, as follows:  
Set a flag ahead on line, from which a flag at the 1/4 sec. cor. bet. secs. 29 and 30 brs. S.46° 59' E. The distance triangulated is given by

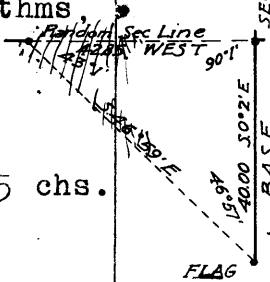


$$\frac{40.00}{\sin. 43^\circ 1'} = \frac{X}{\sin. 46^\circ 57'}$$

or, by logarithms,

log. 40.00	=	1.602060
log. sin. 46° 57'	=	9.863774
colog. sin. 43° 1'	=	0.166081
		<u>1.631915</u>

= log. 42.85 chs.



40.00

I chain E. 2.85 chs., and at Set temp. 1/4 sec. cor.

79.90

Intersect W. bdy. of Tp., 24 lks N. of the cor. of secs. 19, 24, 25 and 30, described in Book 3258, hereinafter described.

Thence N.89° 50' E., on a true line, bet. secs. 19 and 30. Over level land, through dense timber and undergrowth.

5.25  
10.85  
37.05

Desc. 15 ft.  
Wash, 30 lks. wide, course N. Asc. 600 ft.  
Ridge, brs. NE. and SW. Leave timber, brs. NE. and SW. Desc. 165 ft.



Subdivision of Part of T. 26 N., R. 14 W.

Chains.

39.95 Set an iron post, 3 ft. long, 1 in. diam., 26 ins. in a mound of stone, for  $\frac{1}{4}$  sec. cor., marked on brass cap

$\frac{1}{4}$  S19  
S30  
1917

And raise a mound of stone, 2 ft. base,  $1\frac{1}{2}$  ft. high, N. of cor.

79.90 The cor. of secs. 19, 20, 29 and 30.  
Land, level and mountainous.  
Soil, rocky, 4th rate.  
Timber, pinion pine and juniper.  
Undergrowth, scrub oak and manzanita.

J.C.H.

S.F.W.

N.0° 2' W., bet. secs. 19 and 20.  
Over mountainous land, through dense timber and undergrowth.  
Asc. 300 ft.

27.60 Spur, slopes S.40° W. Desc. 55 ft.

35.50 Head of gulch, course SW. Asc. 455 ft.

40.00 Set an iron post, 3 ft. long, 1 in. diam., 26 ins. in the ground, for  $\frac{1}{4}$  sec. cor., marked on brass cap

$\frac{1}{4}$  S19 | S20  
1917

From which

A pinion, 10 ins. diam., brs. N.36° E., 55 lks. dist., marked  $\frac{1}{4}$ S20 BT.

A cedar, 8 ins. diam., brs. S.12° W., 68 lks. dist., marked  $\frac{1}{4}$ S19 BT.

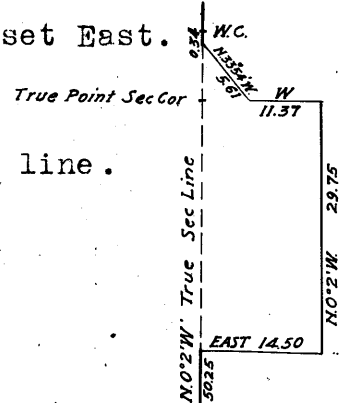
50.25 Spur, slopes W. From this point, I offset East.

Asc. 90 ft.

8.84 Desc. 15 ft.

9.35 Asc. 30 ft.

14.50 Thence N.0° 2' W., on offset line.



Desc. 65 ft.

52.75 Asc. 120 ft.

64.05 Desc. 15 ft.

65.50 Asc. 95 ft.

76.85 Thence along E. slope.

80.00 Thence West.

Asc. 100 ft.

11.37 Top of bluff, brs. N.35° W. and S.35° E.

Thence N.33° 54' W., 5.61 chs.. The westing is given by  $\sin. 33^\circ 54' = .55775 \times 5.61 = 3.13$ , which added to 11.37 gives 14.50 chs., which is therefore a point on the section line bet. secs. 19 and 20. The northing is given by  $.83001 \times 5.61 = 4.66$  chs.

84.66 Thence N.0° 2' W., 34 lks.

85.00 Set an iron post, 3 ft. long, 2 ins. diam., 24 ins. in the ground, for witness cor. to cor. of secs. 17, 18, 19 and 20, marked on brass cap

T26N R14W  
S18 | S17  
S19 | S20  
W C  
1917

From which

A pinion, 8 ins. diam., brs. E. 14 lks. dist., marked WC T26N R14W S17 BT.

A pinion, 14 ins. diam., brs. N.4 $\frac{1}{2}$ ° W., 180 lks. dist.

Chains.

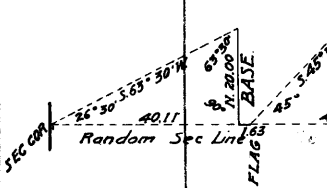
marked WC T26N R14W S18 BT.  
 No other trees within limits. Raise a mound of stone,  
 2 ft. base, 1½ ft. high, W. of cor.  
 Land, mountainous.  
 Soil, rocky, 4th rate.  
 Timber, pinion and juniper.  
 Undergrowth, scrub oak and mahogany.

The cor. of secs. 13, 18, 19 and 24 being visible,  
 West on a random line, bet. secs. 18 and 19,  
 From a point 3.13 chs. E. and 12 chs. N. of the inaccessible  
 true point for cor. of secs. 17, 18, 19 and 20, I tri-  
 angulate as follows;  
 Set a flag ahead on line, and measure a base N. 53° W.,  
 30.00 chs., from the N. end of which, flag brs. S.45° W.  
 The distance triangulated is given as follows:

$$\frac{30.00}{\sin. 45^\circ} = \frac{X}{\sin. 78^\circ} \text{ or, by logarithms,}$$

log. 30.00	=	1.477121
log. sin. 78°	=	9.990404
		<u>1.467525</u>
log. sin. 45°	=	9.849485
		<u>1.618040</u>

= log. 41.50



The distance from the true point for cor. of secs. 17,  
 18, 19 and 20 is given by 41.50 - 3.13 = 38.37 chs.

38.37  
 40.00

Spur, slopes S.  
 Set temp. ¼ sec. cor. From this temp. point, I measure a  
 base North 20.00 chs., from the N. end of which the cor.  
 of secs. 13, 18, 19 and 24 brs. S.63½° W. The distance  
 is given by tan. 63½° X 20.00 = 2.00569 X 20 = 40.11 chs.,  
 which added to 40.00 chs., gives

80.11

Intersect W. bdy. of Tp., at the cor. of secs. 13, 18, 19  
 and 24, described in Book "A."

Thence  
 S.89° 55' E., on a true line, bet. secs. 18 and 19.  
 Over mountainous land, through scattering timber and under-  
 growth.

The approximate topography is as follows:

Desc.

7.00  
 18.00  
 32.00  
 40.05½

Wash, course S. Asc. 300 ft.  
 Point of spur, slopes S. Desc. 250 ft.  
 Wash, course S.20° W. Asc. 300 ft.  
 Set an iron post, 3 ft. long, 1 in. diam., 6 ins. in the  
 ground, in a mound of stone, for ¼ sec. cor., marked on  
 brass cap

¼ S18  
 S19  
 1917

And raise a mound of stone, 2 ft. base, 1½ ft. high, N.  
 of cor.

41.70

Point of spur, slopes S. Asc. 900 ft., over broken cliffs  
 and washes.

80.11

The true point for cor. of secs. 17, 18, 19 and 20.  
 Land, mountainous.  
 Soil, rocky, 4th rate.  
 Timber, scattering pinion and juniper.  
 Undergrowth, cat claw and scrub oak.

Subdivision of Part of T. 26 N., R. 14 W.

Chains.

From the witness cor. to cor. of secs. 17, 18, 19 and 20,  
 5 chs. N. of the true point for cor. of secs. 17, 18,  
 19 and 20,  
 N.0° 2' W., bet. secs. 17 and 18, continuing measurement.  
 Over mountainous land, through scattering undergrowth and  
 dense timber.  
 Desc. 315 ft.  
 14.50 Spur, slopes N.70° E. Continue descent, through scattering  
 timber.  
 25.80 Gulch, course N.70° E. Asc. 115 ft.  
 39.00 Spur, slopes N.50° E. Desc. 200 ft.  
 40.00 Set an iron post, 3 ft. long, 1 in. diam., in a mound of  
 stone, for  $\frac{1}{4}$  sec. cor., marked on brass cap

$\frac{1}{4}$   
 S18 | S17  
 1917

And raise a mound of stone, 2 ft. base,  $1\frac{1}{2}$  ft. high, W.  
 of cor.  
 49.80 Enter dense timber, brs. E. and W.  
 57.50 Draw, course N.70° E. Asc. 85 ft.  
 60.10 Spur, slopes E. Desc. 15 ft.  
 69.10 Draw, course S.80° E. Asc. 220 ft.  
 80.00 Set an iron post, 3 ft. long, 2 ins. diam., in a mound of  
 stone, for cor. of secs. 7, 8, 17 and 18, marked on brass  
 cap

T26N R14W  
 S 7 | S 8  
 S18 | S17  
 1917

From which  
 A pinion pine, 16 ins. diam., brs. N.72 $\frac{1}{4}$ ° E., 86 lks.  
 dist., marked T26N R14W S8 BT.  
 A pinion pine, 14 ins. diam., brs. S.60° E., 27 lks.  
 dist., marked T26N R14W S17 BT.  
 A pinion pine, 12 ins. diam., brs. S.59 $\frac{1}{2}$ ° W., 95 lks.  
 dist., marked T26N R14W S18 BT.  
 A pinion pine, 8 ins. diam., brs. N.81 $\frac{1}{2}$ ° W., 30 lks.  
 dist., marked T26N R14W S7 BT.  
 Land, mountainous.  
 Soil, rocky, 4th rate.  
 Timber, cedar and pinion.  
 Undergrowth, scrub oak, manzanita and mountain mahogany.  
 S.F.W.

J.C.H.  
 40.00 N.89° 55' W., on a random line, bet. secs. 7 and 18.  
 Set temp.  $\frac{1}{4}$  sec. cor.  
 79.81 Intersect W. bdy. of Tp., 14 lks. S. of the cor. of secs.  
 7, 12, 13 and 18, which is an iron post, described in  
 Book "A."  
 Thence  
 S.89° 49' E., on a true line, bet. secs. 7 and 18.  
 Over mountainous land, through dense timber and undergrowth.  
 Asc. 150 ft.  
 7.55 Ridge, brs. N. and S. Desc. 355 ft.  
 22.75 Wash, 20 lks. wide, course NE. Asc. 15 ft.  
 29.45 Spur, slopes NE. Desc. 185 ft.  
 39.90 $\frac{1}{2}$  Set an iron post, 3 ft. long, 1 in. diam., 8 ins. in the  
 ground, in a mound of stone, for  $\frac{1}{4}$  sec. cor., marked on  
 brass cap

$\frac{1}{4}$  S 7  
 S18  
 1917

From which  
 A pinion pine, 6 ins. diam., brs. N.46 $\frac{1}{4}$ ° E., 91 lks.

Chains.  
 dist., marked  $\frac{1}{4}$ S7 BT.  
 A juniper, 10 ins. diam., brs. S.48 $\frac{1}{2}$ ° E., 74 lks. dist.  
 marked  $\frac{1}{4}$ S18 BT.  
 40.30 Wash, course S. Asc.  
 44.80 Spur, slopes S. Desc. 135 ft.  
 55.15 Wash, 20 lks. wide, course S. Asc. 175 ft.  
 66.30 Thence over level land.  
 79.81 The cor. of secs. 7, 8, 17 and 18.  
 Land, mountainous and rolling.  
 Soil, rocky, 4th rate.  
 Timber, dense pinion pine and juniper.  
 Undergrowth, sagebrush, scrub oak and manzanita.

N.0° 2' W., bet. secs. 7 and 8.  
 Over rolling land, through dense timber and undergrowth.  
 Desc. 160 ft.  
 13.02 Wash, 20 lks; wide, course NE. Asc.  
 23.00 Spur, slopes E. Desc. 150 ft.  
 40.00 Set an iron post, 3 ft. long, 1 in. diam., 8 ins. in the  
 ground, in a mound of stone, for  $\frac{1}{4}$  sec. cor., marked on  
 brass cap

$\frac{1}{4}$   
 S 7 | S 8  
 1917

From which  
 A pinion pine, 4 ins. diam., brs. N.87 $\frac{1}{2}$ ° E., 49 lks.  
 dist., marked  $\frac{1}{4}$ S8 BT.  
 A pinion pine, 6 ins. diam., brs. S.44 $\frac{1}{4}$ ° W., 150 lks.  
 dist., marked  $\frac{1}{4}$ S7 BT.  
 53.00 Wash, 20 lks. wide, course SE. Asc. 260 ft.  
 70.68 Ridge, brs. NE. and SW. Desc. 70 ft.  
 80.00 Set an iron post, 3 ft. long, 2 ins. diam., 10 ins. in the  
 ground, in a mound of stone, for cor. of secs. 5, 6, 7  
 and 8, marked on brass cap

T26N R14W  
 S 6 | S 5  
 S 7 | S 8  
 1917

From which  
 A juniper, 4 ins. diam., brs. N.31 $\frac{1}{4}$ ° E., 49 lks. dist.  
 marked T26N R14W S5 BT.  
 A pinion pine, 4 ins. diam., brs. S.51 $\frac{1}{2}$ ° E., 25 lks. dist.  
 marked T26N R14W S8 BT.  
 A pinion pine, 5 ins. diam., brs. S.5 $\frac{1}{2}$ ° W., 92 lks.  
 dist., marked T26N R14W S7 BT.  
 A pinion pine, 5 ins. diam., brs. N.62 $\frac{1}{2}$ ° W., 46 lks.  
 dist., marked T26N R14W S6 BT.  
 Land, mountainous and rolling.  
 Soil, rocky, 4th rate.  
 Timber, pinion pine and juniper.  
 Undergrowth, scrub oak and manzanita.

J.C.H.

40.00 N.89° 49' W., on a random line, bet. secs. 6 and 7.  
 Set temp.  $\frac{1}{4}$  sec. cor.  
 79.66 Intersect W. bdy. of Tp., at the cor. of secs. 1, 6, 7 and  
 12, which is an iron post, described in Book "A."  
 Thence  
 S.89° 49' E., on a true line, bet. secs. 6 and 7.  
 Over rolling land, through scattering undergrowth and  
 dense timber.  
 6.05 Asc.  
 Spur, slopes SE. Desc. 265 ft.

Chains.

29.80  
39.83

Wash, 20 lks. wide, course SE. Asc. 30 ft.  
Set an iron post, 3 ft. long, 1 in. diam., 26 ins. in a mound of stone, for  $\frac{1}{4}$  sec. cor., marked on brass cap

$\frac{1}{4}$  S 6  
S 7  
1917

From which

A juniper, 8 ins. diam., brs. N.79 $\frac{1}{2}$ ° W., 90 lks. dist. marked  $\frac{1}{4}$ S6 BT.

A pinion pine, 6 ins. diam., brs. S.0° 45' E., 97 lks. dist., marked  $\frac{1}{4}$ S7 BT.

44.05  
50.60  
58.40  
79.66

Spur, slopes S.  
Wash, 20 lks. wide, course S. Asc.  
Spur, slopes NW. Desc. 135 ft.  
The cor. of secs. 5, 6, 7 and 8.  
Land, rolling.  
Soil, rocky, 4th rate.  
Timber, pinion pine and juniper.  
Undergrowth, scrub oak and manzanita.

J.C.H.

S.F.W.

40.00  
80.40

N.0° 2' W., on a random line, bet. secs. 5 and 6.  
Set temp.  $\frac{1}{4}$  sec. cor.  
Intersect N. bdy. of Tp., 35 lks. W. of the cor. of secs. 5, 6, 31 and 32, which is an iron post, described in Book "A."

Thence

S.0° 13' W., on a true line, bet. secs. 5 and 6.  
Over rolling land, through scattering timber and undergrowth.

10.60  
30.40  
40.40

Spur, slopes E. Desc. 145 ft.  
Wash, 20 lks. wide, course E. Asc. 70 ft.  
Set an iron post, 3 ft. long, 1 in. diam., in a mound of stone, for  $\frac{1}{4}$  sec. cor., marked on brass cap

S 5  $\frac{1}{4}$  S 6  
1917

From which

A juniper, 6 ins. diam., brs. N.32 $\frac{1}{2}$ ° E., 52 lks. dist. marked  $\frac{1}{4}$ S6 BT.

A pinion pine, 9 ins. diam., brs. S.86 $\frac{1}{2}$ ° W., 66 lks. dist.,  $\frac{1}{4}$ S5 BT.

50.20  
80.40

Cor. falls on spur, slopes E. Desc. 65 ft.  
Wash, 20 lks. wide, course NE. Asc. 265 ft.  
The cor. of secs. 5, 6, 7 and 8.  
Land, rolling.  
Soil, rocky, 4th rate.  
Timber, scattering pinion and juniper.  
Undergrowth, cat claw and manzanita.

From the cor. of secs. 32 and 33, on the S. bdy. of the Tp., which is an iron post, described in Book "A.", N.0° 2' W., bet. secs. 32 and 33.  
Over mountainous land, through scattering timber and undergrowth.

7.45  
19.45  
27.55  
40.00

Asc.  
Spur, slopes N.40° E. Desc. 220 ft.  
Ravine, course E. Asc. 110 ft.  
Spur, slopes E. Desc. 200 ft.  
Set an iron post, 1 in. diam., 26 ins. in the ground, for  $\frac{1}{4}$  sec. cor., marked on brass cap

Chains.

$\frac{1}{4}$   
 S32 | S33  
 1917

From which  
 A pinion, 6 ins. diam., brs. S.20 $\frac{1}{2}$ ° E., 174 lks. dist.,  
 marked  $\frac{1}{4}$ S33 BT.  
 A cedar, 6 ins. diam., brs. N.88° W., 6 lks. dist.,  
 marked  $\frac{1}{4}$ S32 BT.  
 46.25 Gulch, course E. Asc. 95 ft.  
 54.55 Spur, slopes E. Desc. 210 ft.  
 73.65 Gulch, course NE 20° E. Asc. 40 ft.  
 80.00 Set an iron post, 3 ft. long, 2 ins. diam., in a mound of  
 stone, for cor. of secs. 28, 29, 32 and 33, marked on  
 brass cap

T26N R14W  
 S29 | S28  
 S32 | S33  
 1917

From which  
 A cedar, 8 ins. diam., brs. N.40 $\frac{1}{2}$ ° E., 120 lks. dist.,  
 marked T26N R14W S28 BT.  
 A cedar, 7 ins. diam., brs. S.30 $\frac{1}{4}$ ° E., 96 lks. dist.,  
 marked T26N R14W S33 BT.  
 A cedar, 10 ins. diam., brs. S.4° W., 88 lks. dist.,  
 marked T26N R14W S32 BT.  
 A cedar, 8 ins. diam., brs. N.69 $\frac{1}{2}$ ° W., 114 lks. dist.,  
 marked T26N R14W S29 BT.  
 Land, mountainous.  
 Soil, rocky, 4th rate.  
 Timber, cedar and pinion.  
 Undergrowth, scrub oak and manzanita.

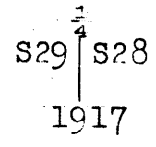
40.00 N.89° 59' W., on a random line, bet. secs. 29 and 32.  
 Set temp.  $\frac{1}{4}$  sec. cor.  
 80.12 Intersect N. and S. line, 11 lks. N. of the cor. of secs.  
 29, 30, 31 and 32.  
 Thence  
 N.89° 56' E., on a true line, bet. secs. 29 and 32.  
 Over mountainous land, through scattering timber and under-  
 growth.  
 Asc. 155 ft.  
 8.35 Desc. 30 ft.  
 9.60 Gulch, course S.30° W. Asc. 600 ft.  
 30.00 Top of slope, brs. N.30° W. and S. Desc. 100 ft.  
 40.06 Set an iron post, 3 ft. long, 1 in. diam., 24 ins. in the  
 ground, for  $\frac{1}{4}$  sec. cor., marked on brass cap

$\frac{1}{4}$  S29  
 $\frac{1}{4}$  S32  
 1917

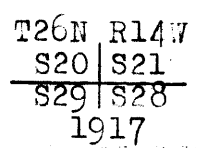
From which  
 A pinion, 6 ins. diam., brs. N.78 $\frac{1}{2}$ ° W., 115 lks. dist.,  
 marked  $\frac{1}{4}$ S29 BT.  
 A cedar, 8 ins. diam., brs. S.6° W., 10 lks. dist.,  
 marked  $\frac{1}{4}$ S32 BT.  
 66.60 Thence along N. slope.  
 71.70 Spur, slopes N.70° E. Desc. 85 ft.  
 80.12 The cor. of secs. 28, 29, 32 and 33.  
 Land, mountainous.  
 Soil, rocky, 4th rate.  
 Timber, scattering pinion and cedar.  
 Undergrowth, cat claw and manzanita.

Subdivision of Part of T. 26 N., R. 14 W.

Chains. N.0° 2' W., bet. secs. 28 and 29.  
 Over rolling land, through scattering timber and undergrowth.  
 Asc.  
 5.00 Spur, slopes N.70° E. Desc. 65 ft.  
 14.30 Wire fence, brs. E. and W.  
 16.50 Draw, course E. Asc. 55 ft..  
 31.40 Point of spur, slopes E. Desc. 10 ft.  
 33.30 Draw, course E. Asc. 45 ft. Enter dense timber, brs. NW  
 and SE.  
 40.00 Set an iron post, 3 ft. long, 1 in. diam., 26 ins. in the  
 ground, for  $\frac{1}{4}$  sec. cor., marked on brass cap



From which  
 A cedar, 16 ins. diam., brs. N.42 $\frac{1}{2}$ ° E., 44 lks. dist.,  
 marked  $\frac{1}{4}$ S28 BT.  
 A cedar, 10 ins. diam., brs. S.36° W., 68 lks. dist.,  
 marked  $\frac{1}{4}$ S29 BT.  
 45.50 Ridge, brs. E. and W. Desc. 45 ft.  
 50.30 Draw, course S.70° E. Asc. 40 ft.  
 62.50 Spur, slopes S.70° E. Desc. 10 ft.  
 63.70 Draw, course S.50° E. Asc. 95 ft.  
 80.00 Set an iron post, 3 ft. long, 2 ins. diam., in a mound of  
 stone, for cor. of secs. 20, 21, 28 and 29, marked on  
 brass cap



From which  
 A pinion, 6 ins. diam., brs. N.12° E., 115 lks. dist.,  
 marked T26N R14W S21 BT.  
 A pinion, 6 ins. diam., brs. S.10 $\frac{3}{4}$ ° E., 104 lks. dist.,  
 marked T26N R14W S28 BT.  
 A pinion, 7 ins. diam., brs. S.9° W., 58 lks. dist.,  
 marked T26N R14W S29 BT.  
 A pinion 6 ins. diam., brs. N.54° W., 35 lks. dist.,  
 marked T26N R14W S20 BT.

Land, rolling.  
 Soil, rocky, 4th rate.  
 Timber, cedar and pinion.  
 Undergrowth, cat claw, scrub oak and manzanita.

S.F.W.

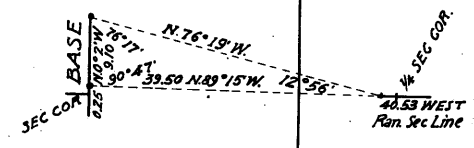
J.C.H.  
 West on a random line, bet. secs. 20 and 29.  
 40.00 Set temp.  $\frac{1}{4}$  sec. cor.

40.53 Triangulation point. From this point, flag set .25 chs.  
 N.0° 2' W. of the cor. of secs. 19, 20, 29 and 30, brs.  
 N.89° 15' W., and flag set 9.35 chs. N.0° 2' W. of the  
 same cor. brs. N.76° 19' W. The distance triangulated  
 is given by

$$\frac{9.10}{\sin. 12^\circ 56'} = \frac{X}{\sin. 76^\circ 17'} \text{ or, by logarithms.}$$

log. 9.10	=	0.959041
log. sin. 76° 17'	=	9.987434
colog. sin. 12° 56'	=	0.650107

1.596582 = log. 39.50 chs.,  
 which added to 40.53 chs., gives



1412 Subdivision of Part of T. 26 N., R. 14 W.

Chains.  
 80.03 Intersect N. and S. line, 27 lks. S. of the cor. of secs. 19, 20, 29 and 30, (falling given by northing of line N.89°15' W. for 39.50 chs., minus .25 chs. = 52-25 = 27 lks.)  
 Thence  
 S.89° 48' E., on a true line, bet. secs. 20 and 29.  
 Over mountainous land, through dense timber and undergrowth.  
 Approximate topography of line triangulated is as follows:  
 Desc.  
 25.00 Deep canyon, course SW. Asc.  
 39.50 Triangulation point. Asc. 60 ft.  
 40.01½ Set an iron post, 3 ft. long, 1 in. diam., 4 ins. in the ground, in a mound of stone, for ¼ sec. cor., marked on brass cap

$$\begin{array}{r} \frac{1}{4} S20 \\ \frac{1}{4} S29 \\ \hline 1917 \end{array}$$

From which  
 A pinion pine, 10 ins. diam., brs. N.26½° W., 87 lks. dist., marked ¼S20 BT.  
 A pinion pine, 12 ins. diam., brs. S.15° E., 60 lks. dist., marked ¼S29 BT.

43.10 Thence over gently rolling land.  
 62.55 Wash, 10 lks. wide, course SE.  
 71.25 Wash, 20 lks. wide, course S. Asc. 40 ft.  
 80.03 The cor. of secs. 20, 21, 28 and 29.  
 Land, gently rolling and mountainous.  
 Soil, rocky, 4th rate.  
 Timber, dense pinion pine and juniper.  
 Undergrowth, scrub oak and manzanita.

J.C.H.

S.F.W.  
 N.0° 2' W., bet. secs. 20 and 21.  
 Over mountainous land, through dense timber and undergrowth.  
 Asc. 120 ft.

10.40 Point of spur, slopes W. Desc. 55 ft.  
 18.10 Asc. 50 ft.  
 24.75 Desc. 45 ft.  
 29.90 Gulch, course S.30° W. Asc. 120 ft.  
 40.00 Set an iron post, 3 ft. long, 1 in. diam., 24 ins. in the ground, for ¼ sec. cor., marked on brass cap

$$\begin{array}{r} \frac{1}{4} \\ S20 | S21 \\ \hline 1917 \end{array}$$

From which  
 A pinion, 12 ins. diam., brs. N.69¼° E., 15 lks. dist. marked ¼S21 BT.  
 A cedar, 14 ins. diam., brs. S.75¾° W., 33 lks. dist., marked ¼S20 BT.

43.00 Thence along E. slope, descending 35 ft.  
 50.30 Draw, course SE. Asc. 150 ft.  
 57.30 Spur, slopes E. Thence along E. slope.  
 62.75 Asc. 115 ft.  
 69.00 Ridge, brs. E. and W. Desc. 80 ft.  
 80.00 Set an iron post, 3 ft. long, 2 ins. diam., in a mound of stone, for cor. of secs. 16, 17, 20 and 21, marked on brass cap

$$\begin{array}{r} T26N, R14W \\ S17 | S16 \\ \hline S20 | S21 \\ \hline 1917 \end{array}$$

From which  
 A pinion, 16 ins. diam., brs. N.85° E., 66 lks. dist. marked T26N R14W S16 BT.



Subdivision of Part of T. 26 N. R. 14 W.

Chains.

A pinion, 8 ins. diam., brs. S.28° E., 27 lks. dist., marked T26N R14W S21 BT.  
 A pinion, 12 ins. diam., brs. S.56½° W., 13 lks. dist., marked T26N R14W S20 BT.  
 A pinion, 10 ins. diam., brs. N.27¾° W., 44 lks. dist., marked T26N R14W S17 BT.  
 Land, mountainous.  
 Soil, rocky, 4th rate.  
 Timber, pinion and cedar.  
 Undergrowth, manzanita and scrub oak.

40.00 N.89° 48' W., on a random line, bet. secs. 17 and 20.  
 79.95 Set temp. ¼ sec. cor.  
 Intersect N. and S. line, 33 lks. N. of the true point for cor. of secs. 17, 18, 19 and 20.  
 Thence  
 N.89° 58' E., on a true line, bet. secs. 17 and 20.  
 Over mountainous land, through dense timber and undergrowth.  
 Desc. 495 ft.  
 35.25 Draw, course N.20° E. Asc. 210 ft.  
 39.97½ Set an iron post, 3 ft. long, 1 in. diam., 26 ins. in the ground, for ¼ sec. cor., marked on brass cap

¼ S17  
 ¼ S20  
 1917

From which  
 A pinion, 8 ins. diam., brs. N.33¼° E., 9 lks. dist., marked ¼S17 BT.  
 A pinion, 12 ins. diam., brs. S.2¼° W., 71 lks. dist., marked ¼S20 BT.  
 48.75 Spur, slopes N. Desc. 145 ft.  
 62.15 Draw, course N.50° E. Asc. 20 ft.  
 66.15 Point of spur, slopes N. Desc. 25 ft.  
 73.65 Draw, course N.30° W. Asc. 85 ft.  
 79.95 The cor. of secs. 16, 17, 20 and 21.  
 Land, mountainous.  
 Soil, rocky, 4th rate.  
 Timber, dense cedar and pinion.  
 Undergrowth, scrub oak, manzanita and mountain mahogany.

4.00 N.0° 2' W., bet. secs. 16 and 17.  
 14.00 Over mountainous land, through dense timber and undergrowth.  
 22.40 Desc. on spur, slopes N.  
 27.80 Leave spur, slopes NW. Desc. along E. slope.  
 40.00 Spur, slopes E. Desc. 130 ft.  
 Guñch, course E. Asc. 30 ft.  
 Spur, slopes E. Desc. 295 ft.  
 Set an iron post, 3 ft. long, 1 in. diam., in a mound of stone, for ¼ sec. cor., marked on brass cap

¼ S17  
 ¼ S16  
 1917

From which  
 A pinion, 8 ins. diam., brs. S.29° E., 72 lks. dist., marked ¼S16 BT.  
 A pinion, 10 ins. diam., brs. S.61¼° W., 34 lks. dist., marked ¼S17 BT.  
 57.70 Draw, course E. Asc. 90 ft.  
 65.20 Spur, slopes E. Desc. 30 ft.

Chains.  
 67.90 Gulch, course E. Asc. 100 ft.  
 79.50 Spur, slopes E. Desc.  
 80.00 Set an iron post, 3 ft. long, 2 ins. diam., in a mound of stone, for cor. of secs. 8, 9, 16 and 17, marked on brass cap

T26N R14W  
 S 8 | S 9  
 ---  
 S17 | S16  
 1917

From which  
 A pinion, 12 ins. diam., brs. N.60 $\frac{1}{2}$ ° E., 76 lks. dist., marked T26N R14W S9 BT.  
 A pinion, 10 ins. diam., brs. S.66 $\frac{3}{4}$ ° E., 68 lks. dist., marked T26N R14W S16 BT.  
 A pinion, 10 ins. diam., brs. S.42° W., 100 lks. dist., marked T26N R14W S17 BT.  
 A cedar, 7 ins. diam., brs. N.82° W., 48 lks. dist., marked T26N R14W S8 BT.

Land, mountainous.  
 Soil, rocky, 3rd and 4th rates.  
 Timber, cedar and pinion.  
 Undergrowth, scrub oak and mountain mahogany.

S.F.W.

J.C.H.  
 S.89° 58' W., on a random line, bet. secs. 8 and 17.  
 40.00 Set temp.  $\frac{1}{4}$  sec. cor.  
 80.15 Intersect N. and S. line, 9 lks. N. of the cor. of secs. 7, 8, 17 and 18.

Thence  
 N.89° 54' E., on a true line, bet. secs. 8 and 17.  
 Over rolling land, through scattering undergrowth and dense timber.

6.15 Desc. 75 ft.  
 Wash, 20 lks. wide, course S. Asc. 20 ft.  
 12.75 Desc. 35 ft.  
 22.15 Wash, 20 lks. wide, course S. Asc.  
 31.70 Low spur, slopes E. Desc. 115 ft.  
 40.07 $\frac{1}{2}$  Set an iron post, 3 ft. long, 1 in. diam., 6 ins. in the ground, in a mound of stone, for  $\frac{1}{4}$  sec. cor., marked on brass cap

$\frac{1}{4}$  S 8  
 ---  
 $\frac{1}{4}$  S17  
 1917

From which  
 A pinion pine, 6 ins. diam., brs. N.6 $\frac{1}{2}$ ° E., 93 lks. dist., marked  $\frac{1}{4}$ S8 BT.  
 A pinion pine, 10 ins. diam., brs. S.29° E., 58 lks. dist., marked  $\frac{1}{4}$ S17 BT.

53.85 Thence over gentle slope, along spur.  
 80.15 The cor. of secs. 8, 9, 16 and 17.  
 Land, rolling and gently rolling.  
 Soil, rocky, 4th rate.  
 Timber, dense pinion pine and juniper.  
 Undergrowth, scrub oak and chemise.

J.C.H.

S.F.W.  
 N.0° 2' W., bet. secs. 8 and 9.  
 Over rolling land, through dense timber and undergrowth.  
 Desc. 110 ft.

7.40 Gulch, course N.80° E. Asc. 50 ft.  
 11.50 Point of spur, slopes E. Desc. 45 ft.  
 14.85 Gulch, course E. Asc. 85 ft.  
 23.40 Spur, slopes E. Desc. 190 ft.  
 40.00 Set an iron post, 3 ft. long, 1 in. diam., in a mound of stone, for  $\frac{1}{4}$  sec. cor., marked on brass cap

Subdivision of Part of T. 26 N., R. 14 W.

Chains.

1  
S 8 | S 9  
1917

From which

A pinion, 8 ins. diam., brs. S.52 $\frac{3}{4}$ ° E., 160 lks. dist.,  
dist., marked  $\frac{1}{4}$ S9 BT.

A pinion, 8 ins. diam., brs. S.53 $\frac{1}{4}$ ° W., 115 lks. dist.,  
marked  $\frac{1}{4}$ S8 BT.

42.50 Draw, course E. Asc. 50 ft.

53.00 Spur, slopes E. Desc. 25 ft.

58.00 Draw, course E. Asc. 60 ft.

63.40 Spur, slopes E. Desc. 55 ft.

80.00 Set an iron post, 3 ft. long, 2 ins. diam., in a mound of  
stone, for cor. of secs. 4, 5, 8 and 9, marked on brass  
cap

T26N R14W  
S 5 | S 4  
S 8 | S 9  
1917

From which

A cedar, 8 ins. diam., brs. N.40° E., 52 lks. dist.,  
marked T26N R14W S4 BT.

A cedar, 10 ins. diam., brs. S.25 $\frac{3}{4}$ ° E., 100 lks. dist.,  
marked T26N R14W S9 BT.

A cedar, 9 ins. diam., brs. S.20 $\frac{1}{2}$ ° W., 89 lks. dist.,  
marked T26N R14W S8 BT.

A cedar, 16 ins. diam., brs. N.80 $\frac{3}{4}$ ° W., 64 lks. dist.,  
marked T26N R14W S5 BT.

Land, rolling.

Soil, rocky, 4th rate.

Timber, cedar and pinion.

Undergrowth, scrub oak, manzanita and mountain mahogany.

S.F.W.

S.F.W.&J.C.H.

40.00 S.89° 54' W., on a random line, bet. secs. 5 and 8.

80.09 Set temp.  $\frac{1}{4}$  sec. cor.

Intersect N. and S. line, 40 lks. S. of the cor. of secs.  
5, 6, 7 and 8.

Thence

S.89° 49' E., on a true line, bet. secs. 5 and 8.

Over rolling land, through dense timber and undergrowth.

Asc. 85 ft.

5.87 Ridge, brs. NE. and SW. Desc. 105 ft.

19.86 Wash, course SE. Asc. 70 ft.

24.70 Desc. 250 ft.

40.04 $\frac{1}{2}$  (S.F.W.) Set an iron post, 3 ft. long, 1 in. diam., in a mound of  
stone, for  $\frac{1}{4}$  sec. cor., marked on brass cap

$\frac{1}{4}$  S 5  
S 8  
1917

From which

A juniper, 10 ins. diam., brs. N.22° W., 25 lks. dist.,  
marked  $\frac{1}{4}$ S5 BT.

A pinion pine, 8 ins. diam., brs. S.48° E., 5 lks. dist.,  
marked  $\frac{1}{4}$ S8 BT.

80.09 The cor. of secs. 4, 5, 8 and 9.

Land, rolling.

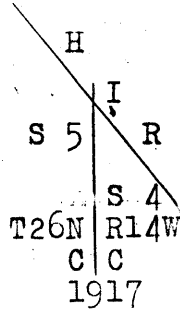
Soil, rocky, 4th rate.

Timber, pinion pine and juniper.

Undergrowth, scrub oak and chemise.

S.F.W.&J.C.H.

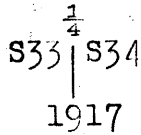
Chains. S.F.W.  
 N.0° 2' W., on a true line, bet. secs. 4 and 5.  
 Over rolling land, through scattering timber and undergrowth.  
 Desc. 30 ft.  
 5.15 Fence, brs. NW. and SE. Thence over level land.  
 10.90 Draw, course SE. Old road in draw, brs. NW. and SE.  
 13.35 Intersect Hualpai Indian Reservation Boundary, 28.17 chs.  
 N.40° W. of the 30 mile cor., which is a limestone,  
 6 X 10 X 9 ins. above ground, firmly set, marked and  
 witnessed as described by the Surveyor-General.  
 At the point of intersection, set an iron post, 3 ft. long,  
 2 ins. diam., in a mound of stone, for closing cor. of  
 secs. 4 and 5, marked on brass cap



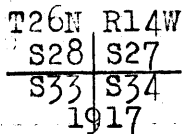
From which  
 A cedar, 10 ins. diam., brs. S.5° 40' E., 350 lks. dist.,  
 marked CC T26N R14W S4 BT.  
 A cedar, 8 ins. diam., brs. S.2° W., 330 lks. dist.,  
 marked CC T26N R14W S5 BT.  
 Land, rolling and level.  
 Soil, rocky, 4th rate.  
 Timber, cedar and juniper.  
 Undergrowth, cat claw, scrub oak and manzanita.

S.F.W.

J.C.H.  
 From the cor. of secs. 33 and 34, on the S. bdy. of the  
 Tp., which is an iron post, described in Book "A",  
 N.0° 1' W., bet. secs. 33 and 34.  
 Over rolling land, through scattering timber and undergrowth.  
 Desc. 105 ft.  
 14.39 Wash, 20 lks. wide, course NE. Asc. 40 ft.  
 25.85 Spur, slopes NE. Desc. 105 ft.  
 38.20 Wash, 40 lks. wide, course NE. Asc. 90 ft.  
 40.00 Set an iron post, 3 ft. long, 1 in. diam., 10 ins. in the  
 ground, in a mound of stone, for  $\frac{1}{4}$  sec. cor., marked on  
 brass cap



From which  
 A juniper, 4 ins. diam., brs. N.85 $\frac{1}{4}$ ° E., 79 lks. dist.,  
 marked  $\frac{1}{4}$ S34 BT.  
 A juniper, 6 ins. diam., brs. S.43 $\frac{1}{2}$ ° W., 138 lks. dist.,  
 marked  $\frac{1}{4}$ S33 BT.  
 44.49 Spur, slopes E. Desc. 195 ft.  
 69.08 Wash, 50 lks. wide, course E. Asc. 30 ft.  
 72.05 Four wire fence, brs. E. and W. Thence over level land.  
 75.70 Wash, course E.  
 80.00 Set an iron post, 3 ft. long, 2 ins. diam., 12 ins. in the  
 ground, in a mound of stone, for cor. of secs. 27, 28,  
 33 and 34, marked on brass cap



Chains.

From which  
 A juniper, 8 ins. diam., brs. N.32 $\frac{1}{4}$ ° E., 66 lks. dist.,  
 marked T26N R14W S27 BT.  
 A juniper, 6 ins. diam., brs. S.36° E., 118 lks. dist.,  
 marked T26N R14W S34 BT.  
 A juniper, 5 ins. diam., brs. S.76 $\frac{1}{4}$ ° W., 188 lks. dist.,  
 marked T26N R14W S33 BT.  
 A juniper, 8 ins. diam., brs. N.32° W., 500 lks. dist.,  
 marked T26N R14W S28 BT.  
 Land, level and rolling.  
 Soil, rocky, 4th rate.  
 Timber, pinion pine, juniper and locust.  
 Undergrowth, scrub oak and sagebrush.

J.C.H.

S.F.W.  
 N.89° 59' W., on a random line, bet. secs. 28 and 33.  
 Set temp.  $\frac{1}{4}$  sec. cor.  
 40.00 Intersect N. and S. line, 26 lks. N. of the cor. of secs.  
 80.01 28, 29, 32 and 33.  
 Thence  
 N.89° 50' E., on a true line, bet. secs. 28 and 33.  
 Over rolling hills, through dense timber and undergrowth.  
 Desc. 85 ft.  
 5.50 Gulch, course N.45° E. Asc. 45 ft.  
 11.70 Spur, slopes N. Desc. 100 ft.  
 22.20 Wash, course S. Asc. 50 ft.  
 27.00 Spur, slopes S. Desc. 120 ft.  
 34.20 Same wash, course NE. Asc.  
 40.00 $\frac{1}{2}$  Set an iron post, 3 ft. long, 1 in. diam., 24 ins. in the  
 ground, for  $\frac{1}{4}$  sec. cor., marked on brass cap

$\frac{1}{4}$  S28  
 $\frac{1}{4}$  S33  
 1917

And raise a mound of stone, 2 ft. base, 1 $\frac{1}{2}$  ft. high, N.  
 of cor.  
 Desc.  
 42.30 Same wash, 30 lks. wide, 3 ft. deep, course S.70° E. Asc.  
 70 ft.  
 57.60 Ridge, brs. N.30° W. and S.30° E. Desc. 95 ft.  
 77.90 Draw, course SE. Asc.  
 80.01 The cor. of secs. 27, 28, 33 and 34.  
 Land, rolling hills.  
 Soil, rocky, 4th rate.  
 Timber, cedar and pinion.  
 Undergrowth, scrub oak, mahogany and sagebrush.

S.F.W.

J.C.H.  
 N.0° 1' W., bet. secs. 27 and 28.  
 Over rolling land, through dense timber and undergrowth.  
 6.50 Wash, 20 lks. wide, course SE.  
 21.50 Wash, 10 lks. wide, course SE.  
 40.00 Set an iron post, 3 ft. long, 1 in. diam., 26 ins. in the  
 ground, for  $\frac{1}{4}$  sec. cor., marked on brass cap

$\frac{1}{4}$  S28 |  $\frac{1}{4}$  S27  
 1917

From which  
 A pinion pine, 8 ins. diam., brs. N.70 $\frac{1}{2}$ ° E., 56 lks. dist.,  
 marked  $\frac{1}{4}$ S27 BT.  
 A pinion pine, 6 ins. diam., brs. N.20° W., 40 lks.  
 dist., marked  $\frac{1}{4}$ S28 BT.  
 53.00 Wash, 20 lks. wide, course SW. Asc. 375 ft.

Subdivision of Part of T. 26 N., R. 14 W.

Chains.  
80.00

Spur, slopes SW.  
Set an iron post, 3 ft. long, 2 ins. diam., 6 ins. in the ground, in a mound of stone, for cor. of secs. 21, 22, 27 and 28, marked on brass cap

T26N R14W  
S21 | S22  
-----  
S28 | S27  
1917

From which

A pinion pine, 8 ins. diam., brs. N.22½° E., 86 lks. dist., marked T26N R14W S22 BT.

A pinion pine, 6 ins. diam., brs. S.84½° E., 12 lks. dist., marked T26N R14W S27 BT.

A pinion pine, 6 ins. diam., brs. S.71° W., 15 lks. dist., marked T26N R14W S28 BT.

A pinion pine, 5 ins. diam., brs. N.19° W., 63 lks. dist., marked T26N R14W S21 BT.

Land, rolling.

Soil, rocky, 4th rate.

Timber, pinion pine and juniper.

Undergrowth, scrub oak and algerita.

40.00

S.89° 50' W., on a random line, bet. secs. 21 and 28.

Set temp. ¼ sec. cor.

80.09

Intersect N. and S. line, 2 lks. N. of the cor. of secs. 20, 21, 28 and 29.

Thence

N.89° 49' E., on a true line, bet. secs. 21 and 28.

Over rolling land, through dense timber and undergrowth.

Desc. 105 ft.

17.00

Thence over gently rolling land.

21.90

Wash, 30 lks. wide, course SE.

35.40

Wash, 20 lks. wide, course S.

40.04½

Set an iron post, 3 ft. long, 1 in. diam., 4 ins. in the ground, in a mound of stone, for ¼ sec. cor., marked on brass cap

¼ S21  
-----  
¼ S28  
1917

From which

A pinion pine, 8 ins. diam., brs. N.17° E., 91 lks. dist., marked ¼S21 BT.

A pinion pine, 6 ins. diam., brs. S.23¼° W., 38 lks. dist., marked ¼S28 BT.

43.90

Wash, 30 lks. wide, course S. Asc. 75 ft.

57.05

Spur, slopes S. Desc. 85 ft.

66.45

Wash, 20 lks. wide, course S. Asc. 210 ft.

80.09

The cor. of secs. 21, 22, 27 and 28.

Land, rolling and mountainous.

Soil, rocky, 4th rate.

Timber, dense pinion pine and juniper.

Undergrowth, scrub oak and manzanita.

N.0° 1' W., bet. secs. 21 and 22.

Over rolling land, through scattering timber and undergrowth. Asc. 75 ft.

8.88

Spur, slopes SW. Desc. 60 ft.

18.83

Wash, 30 lks. wide, course SW. Asc. 140 ft.

28.67

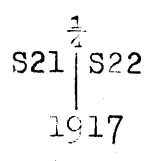
Ridge, brs. E. and W. Desc. 135 ft.

40.00

Set an iron post, 3 ft. long, 1 in. diam., in a mound of stone, for ¼ sec. cor., marked on brass cap

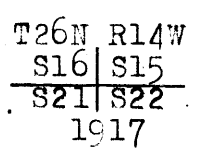
Subdivision of Part of T. 26 N., R. 14 W.

Chains.



From which  
 A pinion pine, 4 ins. diam., brs. S.16 $\frac{1}{2}$ ° E., 135 lks. dist., marked  $\frac{1}{4}$ S22 BT.  
 A pinion pine, 4 ins. diam., brs. S.66° W., 123 lks. dist., marked  $\frac{1}{4}$ S21 BT.  
 Wash, 30 lks. wide, course SW. Asc. 265 ft.  
 Ridge, brs. E. and W. Desc. 200 ft.  
 Set an iron post, 3 ft. long, 2 ins. diam., 4 ins. in the ground, in a mound of stone, for cor. of secs. 15, 16, 21 and 22, marked on brass cap

51.50  
72.02  
80.00

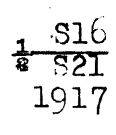


From which  
 A pinion pine, 4 ins. diam., brs. N.38 $\frac{1}{2}$ ° E., 10 lks. dist., marked T26N R14W S15 BT.  
 A pinion pine, 12 ins. diam., brs. S.7 $\frac{1}{2}$ ° E., 49 lks. dist., marked T26N R14W S22 BT.  
 A pinion pine, 12 ins. diam., brs. S.34° W., 55 lks. dist., marked T26N R14W S21 BT.  
 A pinion pine, 10 ins. diam., brs. N.34 $\frac{3}{4}$ ° W., 14 lks. dist., marked T26N R14W S16 BT.

Land, rolling and mountainous.  
 Soil, rocky, 4th rate.  
 Timber, pinion pine and juniper.  
 Undergrowth, scrub oak and manzanita.

40.00  
80.10  
  
14.95  
25.30  
39.10  
40.05

S.89° 49' W., on a random line, bet. secs. 16 and 21.  
 Set temp.  $\frac{1}{4}$  sec. cor.  
 Intersect N. and S. line, 26 lks. S. of the cor. of secs. 16, 17, 20 and 21.  
 Thence  
 East on a true line, bet. secs.16 and 21.  
 Over rolling land, through dense timber and undergrowth.  
 Desc. 145 ft.  
 Wash, 20 lks. wide, course N. Asc. 140 ft.  
 Spur, slopes N. Desc. 140 ft.  
 Wash, 20 lks. wide, course N. Asc. 105 ft.  
 Set an iron post, 3 ft. long, 1 in. diam., 8 ins. in the ground, in a mound of stone, for  $\frac{1}{4}$  sec. cor., marked on brass cap



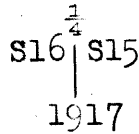
From which  
 A pinion pine, 5 ins. diam., brs. N.5° E., 80 lks. dist., marked  $\frac{1}{4}$ S16 BT.  
 A pinion pine, 4 ins. diam., brs. S.37 $\frac{3}{4}$ ° W., 24 lks. dist., marked  $\frac{1}{4}$ S21 BT.

46.00  
55.50  
58.70  
70.35  
80.10

Spur, slopes N. Desc. 25 ft.  
 Wash, 20 lks. wide, course N. Asc. 90 ft.  
 Spur, slopes N. Desc. 115 ft.  
 Wash, 20 lks. wide, course N. Asc. 75 ft.  
 The cor. of secs. 15, 16, 21 and 22.  
 Land, rolling.  
 Soil, rocky, 4th rate.  
 Timber, pinion pine and juniper.  
 Undergrowth, scrub oak and sagebrush.

Chains.

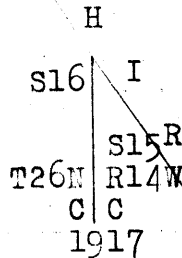
N.0° 1' W., on a true line, bet. secs. 15 and 16.  
 Over rolling and mountainous land, through scattering  
 undergrowth and dense timber.  
 Desc. 305 ft.  
 32.30 Wash, 20 lks. wide, course E. Thence over rolling land.  
 40.00 Set an iron post, 3 ft. long, 1 in. diam., 8 ins. in the  
 ground, in a mound of stone, for  $\frac{1}{4}$  sec. cor., marked on  
 brass cap



From which  
 A juniper, 12 ins. diam., brs. N.35 $\frac{1}{4}$ ° E., 70 lks. dist.,  
 marked  $\frac{1}{4}$ S15 BT.  
 A pinion pine, 4 ins. diam., brs. S.52 $\frac{1}{2}$ ° W., 35 lks.  
 dist., marked  $\frac{1}{4}$ S16 BT.

42.00 Wash, 10 lks. wide, course E. Asc. 35 ft.  
 61.50 Desc. 115 ft.

77.75 Intersect Hualpai Indian Reservation Boundary, 16.45 chs.  
 S.40° E. of the 31 mile cor., which is a sandstone,  
 6 X 16 X 9 ins. above ground, firmly set, marked and  
 witnessed as described by the Surveyor-General.  
 At the point of intersection, set an iron post, 3 ft. long,  
 2 ins. diam., 6 ins. in the ground, in a mound of stone,  
 for closing cor. of secs. 15 and 16, marked on brass  
 cap

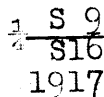


From which  
 A juniper, 24 ins. diam., brs. S.25° E., 376 lks. dist.,  
 marked CC T26N R14W S15 BT.  
 A juniper, 30 ins. diam., brs. S.25 $\frac{1}{4}$ ° W., 104 lks. dist.,  
 marked CC T26N R14W S16 BT.  
 Land, rolling and mountainous.  
 Soil, rocky, 4th rate.  
 Timber, dense pinion pine and juniper.  
 Undergrowth, scrub oak and manzanita.

J.C.H.

S.F.W.

From the cor. of secs. 8, 9, 16 and 17,  
 East on a true line, bet. secs. 9 and 16.  
 Over rolling hills, through dense timber and undergrowth.  
 Desc. 205 ft.  
 14.20 Draw, course S.70° E. Asc. 75 ft.  
 26.10 Point of spur, slopes S. Desc. 105 ft.  
 33.50 Gulch, course S. Asc. 60 ft.  
 39.50 Spur, slopes S. Desc. 105 ft.  
 40.00 Set an iron post, 3 ft. long, 1 in. diam., in a mound of  
 stone, for  $\frac{1}{4}$  sec. cor., marked on brass cap



From which  
 A cedar, 18 ins. diam., brs. N.33° W., 4 lks. dist.,  
 marked  $\frac{1}{4}$ S9 BT.  
 A cedar, 14 ins. diam., brs. S.34 $\frac{1}{2}$ ° W., 36 lks. dist.,  
 marked  $\frac{1}{4}$ S16 BT.



Subdivision of Part of T. 26 N. R. 14 W.

Chains.

53.90

Leave timber, brs. N.40° E. and S.40° W. Thence across flat.

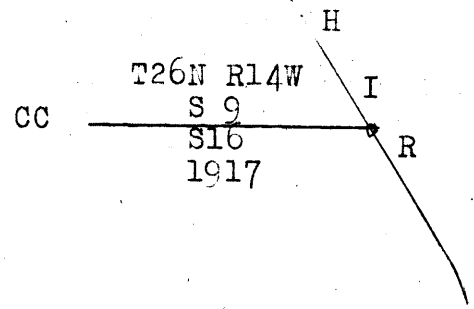
59.20

Leave flat, enter timber, brs. NE. and SW. Asc. gradually.

78.34

Intersect Hualpai Indian Reservation Bdy, 13.39 chs. S.40° E. of the 31 mile cor., which is a sandstone, 6 X 16 X 9 ins. above ground, firmly set, marked and witnessed as described by the Surveyor-General.

At the point of intersection, set an iron post, 3 ft. long, 2 ins. diam., 24 ins. in the ground, for closing cor. of secs. 9 and 16, marked on brass cap



From which

A cedar, 10 ins. diam., brs. N.80° W., 189 lks. dist., marked CC T26N R14W S9 BT.

A cedar, 12 ins. diam., brs. S.28° W., 99 lks. dist., marked CC T26N R14W S16 BT.

Land, rolling hills.

Soil, rocky, 3rd and 4th rates.

Timber, dense pinion pine and cedar.

Undergrowth, scrub oak, sagebrush and mountain mahogany.

11.20

From the cor. of secs. 4, 5, 8 and 9, East on a true line, bet. secs. 4 and 9.

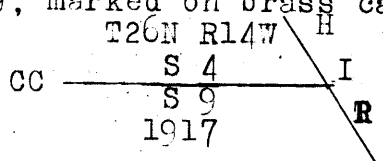
Over rolling hills, through scattering undergrowth and dense timber.

Desc. 70 ft.

Intersect Hualpai Indian Reservation, Boundary, 10.69 chs.

N.40° W. of the 30 mile cor., which is a limestone, 6 X 10 X 9 ins. above ground, firmly set, marked and witnessed as described by the Surveyor-General.

At the point of intersection, set an iron post, 3 ft. long, 2 ins. diam., in a mound of stone, for closing cor. of secs. 4 and 9, marked on brass cap



From which

A cedar, 8 ins. diam., brs. N.89° W., 87 lks. dist., marked CC T26N R14W S4 BT.

A cedar, 7 ins. diam., brs. S.2° E., 90 lks. dist., marked CC T26N R14W S9 BT.

Land, rolling hills.

Soil, rocky, 4th rate.

Timber, dense cedar and pinion.

Undergrowth, cat claw, scrub oak and mahogany.

22.75

From the cor. of secs. 34 and 35, on the S. bdy. of the Tp., which is an iron post, described in Book "A.", North bet. secs. 34 and 35.

Over rolling hills, through dense timber and undergrowth.

Desc. 125 ft.

Draw, course E. Asc. 45 ft.

Chains.

- 28.00 Spur, slopes E. Desc. 70 ft.
- 34.40 Gulch, course E. Asc 100 ft.
- 34.90 Wire fence, brs. E. and NW.
- 40.00 Set an iron post, 3 ft. long, 1 in. diam., in a mound of stone, for  $\frac{1}{4}$  sec. cor., marked on brass cap

$\frac{1}{4}$   
 S34 | S35  
 1917

From which

- A cedar, 10 ins. diam., brs. S.86° E., 77 lks. dist., marked  $\frac{1}{4}$ S35 BT.
- A cedar, 12 ins. diam., brs. N.68° W., 41 lks. dist., marked  $\frac{1}{4}$ S34 BT.

- 44.50 Spur, slopes E. Desc. 180 ft.
- 60.30 Wash, 40 lks. wide, 3 ft. deep, course E. Asc. 85 ft.
- 72.10 Spur, slopes E. Desc. 20 ft.
- 76.30 Gulch, course S.70° E. Asc. 55 ft.
- 80.00 Set an iron post, 3 ft. long, 2 ins. diam., in a mound of stone, for cor. of secs. 26, 27, 34 and 35, marked on brass cap

T26N R14W  
 S27 | S26  
 S34 | S35  
 1917

From which

- A pinion, 6 ins. diam., brs. N.67 $\frac{1}{2}$ ° E., 59 lks. dist., marked T26N R14W S26 BT.
- A cedar, 6 ins. diam., brs. S.76° E., 40 lks. dist., marked T26N R14W S35 BT.
- A cedar 6 ins. diam., brs. S.42 $\frac{1}{2}$ ° W., 14 lks. dist., marked T26N R14W S34 BT.
- A pinion, 10 ins. diam., brs. N.12° W., 65 lks. dist., marked T26N R14W S27 BT.

Land, rolling hills.

Soil, rocky, 3rd and 4th rates.

Timber, cedar and pinion.

Undergrowth, scrub oak and mountain mahogany.

- 40.00 N.89° 59' W., on a random line, bet. secs. 27 and 34. Set temp.  $\frac{1}{4}$  sec. cor.
- 80.00 Intersect N. and S. line, 16 lks. S. of the cor. of secs. 27, 28, 33 and 34.
- Thence
- S.89° 52' E., on a true line, bet. secs. 27 and 34.
- Over rolling hills, through dense timber and undergrowth.
- Desc.
- 2.60 Draw, course S. Asc. 65 ft.
- 8.00 Spur, slopes S.40° E. Desc. 30 ft.
- 23.00 Draw, course S.50° E. Asc. 60 ft.
- 25.50 Spur, slopes S.40° E. Desc. 100 ft.
- 40.00 Set an iron post, 3 ft. long, 1 in. diam., in a mound of stone, for  $\frac{1}{4}$  sec. cor., marked on brass cap

$\frac{1}{4}$  S27  
 $\frac{1}{4}$  S34  
 1917

From which

- A cedar, 18 ins. diam., brs. N.15 $\frac{1}{2}$ ° W., 72 lks. dist., marked  $\frac{1}{4}$ S27 BT.
- A cedar, 12 ins. diam., brs. S.36 $\frac{1}{2}$ ° E., 71 lks. dist., marked  $\frac{1}{4}$ S34 BT.

- 48.20 Gulch, course S.40° E. Asc. 40 ft.
- 55.20 Ridge, brs. N.30° W. and S.30° E. Desc.
- 58.15 Asc. 10 ft.

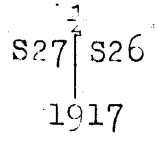
Subdivision of Part of T. 26 N., R. 14 W.

Chains.

60.60 Point of spur, slopes N. Desc. 45 ft.  
 64.30 Gulch, course S. 20° E. Asc. 75 ft.  
 70.00 Spur, slopes S. Desc. 30 ft.  
 80.00 The cor. of secs. 27, 28, 33 and 34.  
 Land, rolling hills.  
 Soil, rocky, 3rd and 4th rate.  
 Timber, dense cedar and pinion.  
 Undergrowth, scrub oak, mountain mahogany and sagebrush.

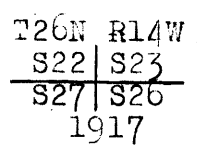
North bet. secs. 26 and 27.  
 Over rolling hills, through dense timber and undergrowth.  
 Asc. 50 ft.

7.00 Spur, slopes E. Desc. 15 ft.  
 9.20 Draw, course E. Asc. 35 ft.  
 18.00 Spur, slopes E. Desc. 75 ft.  
 24.30 Gulch, course E. Asc. 90 ft.  
 32.20 Spur, slopes E. Desc. 55 ft.  
 40.00 Set an iron post, 3 ft. long, 1 in. diam., in a mound of  
 stone, for 1 sec. cor., marked on brass cap



From which  
 A cedar, 8 ins. diam., brs. S. 37° E., 40 lks. dist.,  
 marked  $\frac{1}{2}$  S26 BT.  
 A cedar, 6 ins. diam., brs. S. 39 $\frac{1}{2}$ ° W., 51 lks. dist.,  
 marked  $\frac{1}{2}$  S27 BT.

42.20 Gulch, course E. Asc. 35 ft.  
 46.50 Spur, slopes E. Desc. 40 ft.  
 54.30 Draw, course E. Asc. 65 ft.  
 68.00 Spur, slopes E. Desc. 15 ft.  
 72.00 Draw, course E. Asc. 40 ft.  
 80.00 Spur, slopes E.  
 Set an iron post, 3 ft. long, 2 ins. diam., 8 ins. in the  
 ground, in a mound of stone, for cor. of secs. 22, 23,  
 26 and 27, marked on brass cap



From which  
 A cedar, 8 ins. diam., brs. N. 61° E., 54 lks. dist.,  
 marked T26N R14W S23 BT.  
 A pinion, 8 ins. diam., brs. S. 59° E., 55 lks. dist.,  
 marked T26N R14W S26 BT.  
 A cedar, 14 ins. diam., brs. S. 22 $\frac{1}{2}$ ° W., 23 lks. dist.,  
 marked T26N R14W S27 BT.  
 A cedar, 12 ins. diam., brs. N. 23 $\frac{1}{2}$ ° W., 83 lks. dist.,  
 marked T26N R14W S22 BT.

Land, rolling hills.  
 Soil, rocky, 3rd and 4th rates.  
 Timber, cedar and pinion.  
 Undergrowth, scrub oak and mountain mahogany.

S.F.W.

J.C.H.

40.00 N. 89° 52' W., on a random line, bet. secs. 22 and 27.  
 Set temp. 1 sec. cor.  
 79.96 Intersect N. and S. line, 30 lks. S. of the cor. of secs.  
 21, 22, 27 and 28.  
 Thence  
 S. 89° 39' E., on a true line, bet. secs. 22 and 27.

Subdivision of Part of T. 26 N., R. 14 W.

Chains. Over rolling land, through scattering undergrowth and dense timber.

7.20 Desc. 105 ft.

17.68 Wash, 20 lks. wide, course S. Asc. 15 ft.

25.58 Spur, slopes S. Desc. 195 ft.

39.98 Set an iron post, 3 ft. long, 1 in. diam., 8 ins. in the ground, in a mound of stone, for  $\frac{1}{4}$  sec. cor., marked on brass cap

$\frac{1}{4}$  S22  
 $\frac{1}{4}$  S27  
 1917

From which  
 A pinion pine, 4 ins. diam., brs. N.57 $\frac{1}{2}$ ° W., 92 lks. dist., marked  $\frac{1}{4}$ S22 BT.  
 A juniper, 6 ins. diam., brs. S.42° E., 79 lks. dist., marked  $\frac{1}{4}$ S27 BT.

49.75 Wash, 20 lks. wide, course S. Asc. 55 ft.

71.00 Desc. 80 ft.

79.96 The cor. of secs. 22, 23, 26 and 27.  
 Land, rolling hills.  
 Soil, rocky, 4th rate.  
 Timber, dense pinion pine and juniper.  
 Undergrowth, scrub oak and manzanita.

J.C.H.

S.F.W.

North on a true line, bet. secs. 22 and 23.  
 Over rolling hills, through dense timber and undergrowth.

13.00 Desc. 20 ft.

16.50 Draw, course E. Asc. 45 ft.

22.00 Spur, slopes E. Desc. 30 ft.

25.80 Draw, course E. Asc. 20 ft.

32.40 Spur, slopes E. Desc.

38.60 Draw, course S.70° E. Asc. 340 ft.

40.00 Set an iron post, 3 ft. long, 1 in. diam., 8 ins. in the ground, in a mound of stone, for  $\frac{1}{4}$  sec. cor., marked on brass cap

$\frac{1}{4}$   
 S22 | S23  
 1917

From which  
 A pinion, 8 ins. diam., brs. S.64° E., 32 lks. dist., marked  $\frac{1}{4}$ S23 BT.  
 A pinion, 6 ins. diam., brs. N.3 $\frac{1}{4}$ ° W., 31 lks. dist., marked  $\frac{1}{4}$ S22 BT.

62.67 Intersect Hualpai Indian Reservation Boundary, 18.40 chs. N.39° 41' W. of the 33 mile cor., which is a limestone, 8 X 12 X 8 ins., firmly set, marked and witnessed as described by the Surveyor-General.  
 At the point of intersection, set an iron post, 3 ft. long, 2 ins. diam., in a mound of stone, for closing cor. of secs. 22 and 23, marked on brasscap

H  
 S22 | I  
 S23 R  
 T26N | R14W  
 C C  
 1917

From which  
 A cedar, 10 ins. diam., brs. S.12° E., 132 lks. dist., marked CC T26N R14WS S23 BT.  
 A pinion, 8 ins. diam., brs. S.56 $\frac{1}{2}$ ° W., 82 lks. dist., marked CC T26N R14W S22 BT.

Subdivision of Part of T. 26 N., R. 14 W.

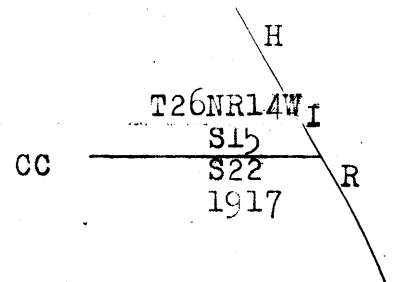
Chains.

Land, rolling hills.  
 Soil, rocky, 4th rate.  
 Timber, cedar and pinion.  
 Undergrowth, scrub oak, manzanita and mountain mahogany.  
 S.F.W.

J.C.H.  
 From the cor. of secs. 15, 16, 21 and 22,  
 East on a true line, bet. secs. 15 and 22.  
 Over rolling hills, through dense timber and undergrowth.  
 Desc. 200 ft.  
 15.70 Wash, 40 lks. wide, course N. Asc.  
 27.92 Spur, slopes N. Desc. 45 ft.  
 31.67 Set an iron post, 3 ft. long, 1 in. diam., in a mound of  
 40.00 stone, for  $\frac{1}{4}$  sec. cor., marked on brass cap

$\frac{1}{4}$  S15  
 $\frac{1}{4}$  S22  
 1917

From which  
 A pinion pine, 4 ins. diam., brs. N.31 $\frac{1}{2}$ ° W., 29 lks. dist., marked  $\frac{1}{4}$ S15 BT.  
 A juniper, 4 ins. diam., brs. S.12° W., 33 lks. dist., marked  $\frac{1}{4}$ S22 BT.  
 40.50 Wash, 15 lks. wide, course N. Asc. 25 ft.  
 50.08 Spur, slopes N. Desc. 55 ft.  
 53.57 Wash, 20 lks. wide, course N. Asc. 105 ft.  
 65.54 Intersect Hualpai Indian Reservation Boundary, 1.58 chs. N.40° W. of the 32 $\frac{1}{2}$  mile cor., which is a sandstone, 12 X 12 X 8 ins. above ground, firmly set, marked and witnessed as described by the Surveyor-General.  
 At the point of intersection, set an iron post, 3 ft. long, 2 ins. diam., 4 ins. in the ground, in a mound of stone for closing cor of secs. 15 and 22, marked on brass cap



From which  
 A pinion pine, 5 ins. diam., brs. N.68° W., 83 lks. dist., mkd. CCT26N R14W S15 BT.  
 A pinion pine, 5 ins. diam., brs. S.48 $\frac{1}{2}$ ° W., 58 lks. dist., mkd. CCT26N R14W S22 BT.  
 Land, rolling hills.  
 Soil, rocky, 4th rate.  
 Timber, cedar and pinion.  
 Undergrowth, scrub oak, manzanita and mountain mahogany.

From the cor. of secs. 35 and 36, on the S. bdy. of the Tp.,  
 which is an iron post, described in Book "A,"  
 North bet. secs. 35 and 36.  
 Over rolling land, through dense timber and undergrowth.  
 Asc. 55 ft.  
 6.42 Spur, slopes E. Desc.  
 25.13 Wash, 30 lks. wide, course NE. Thence over gently rolling  
 land.  
 38.51 Wash, 20 lks. wide, course E. Asc. 45 ft.  
 40.00 Set an iron post, 3 ft. long, 1 in. diam., 8 ins. in the  
 ground, in a mound of stone, for  $\frac{1}{4}$  sec. cor., marked on  
 brass cap

Chains.

$$\begin{array}{r} \frac{1}{2} \\ S35 \mid S36 \\ 1917 \end{array}$$

From which  
 A juniper, 10 ins. diam., brs. N.25° E., 101 lks. dist., marked  $\frac{1}{4}$ S36 BT.  
 A juniper, 15 ins. diam., brs. N.28° W., 61 lks. dist., marked  $\frac{1}{4}$ S35 BT.  
 46.37 Ridge, brs. E. and W. Desc. gradually.  
 80.00 Set an iron post, 3 ft. long, 2 ins. diam., 6 ins. in the ground, in a mound of stone, for cor. of secs. 25, 26, 35 and 36, marked on brass cap.

$$\begin{array}{r} T26N \ R14W \\ S26 \mid S25 \\ \hline S35 \mid S36 \\ 1917 \end{array}$$

From which  
 A juniper, 8 ins. diam., brs. N.29° E., 77 lks. dist., marked T26N R14W S25 BT.  
 A juniper, 4 ins. diam., brs. S.54° E., 97 lks. dist., marked T26N R14W S36 BT.  
 A juniper, 8 ins. diam., brs. S.53 $\frac{1}{2}$ ° W., 85 lks. dist., marked T26N R14W S35 BT.  
 No other trees within limits. Raise a mound of stone, 2 ft. base, 1 $\frac{1}{2}$  ft. high, W. of cor.  
 Land, rolling land.  
 Soil, rocky, 4th rate.  
 Timber, dense pinion pine and juniper.  
 Undergrowth, scrub oak and algerita.

J.C.H.

S.F.W.

40.00 N.89° 59' W., on a random line, bet. secs. 26 and 35.  
 80.08 Set temp.  $\frac{1}{4}$  sec. cor.  
 Intersect N. and S. line, 21 lks. S. of the cor. of secs. 26, 27, 34 and 35.

Thence  
 S.89° 50' E., on a true line, bet. secs. 26 and 35.  
 Over rolling hills, through scattering undergrowth and dense timber.

40.04 Desc. 90 ft.  
 Set an iron post, 3 ft. long, 1 in. diam., 26 ins. in the ground, for  $\frac{1}{4}$  sec. cor., marked on brass cap

$$\begin{array}{r} \frac{1}{4} \ S26 \\ S35 \\ 1917 \end{array}$$

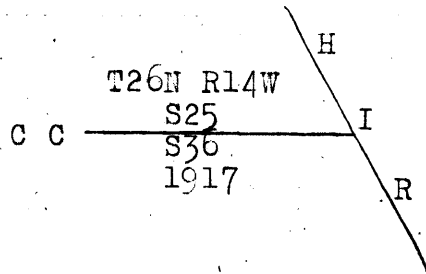
From which  
 A cedar, 10 ins. diam., brs. N.26 $\frac{1}{2}$ ° W., 70 lks. dist., marked  $\frac{1}{4}$ S26 BT.  
 A cedar, 6 ins. diam., brs. S.41 $\frac{1}{2}$ ° E., 101 lks. dist., marked  $\frac{1}{4}$ S35 BT.  
 44.50 Wash, 50 lks. wide, 3 ft. deep, course N.40° E. Asc. 150 ft.  
 58.30 Spur, slopes N.40° E. Desc. 95 ft.  
 72.00 Gulch, course N.30° E. Asc. 65 ft.  
 80.08 The cor. of secs. 25, 26, 35 and 36.  
 Land, rolling hills.  
 Soil, rocky, 3rd and 4th rates.  
 Timber, dense cedar and pinion.  
 Undergrowth, scrub oak and mahogany.

S.F.W.

Subdivision of Part of T. 26 N., R. 14 W.

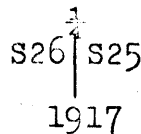
Chains J.C.H.

13.60 East on a true line, bet. secs. 25 and 36.  
 39.81 Over rolling land, through dense timber and undergrowth.  
 Wash, 20 lks. wide, course N.  
 Intersect Hualpai Indian Reservation Boundary, 8.32 chs.  
 S.40° E. of the 35 mile cor., which is a sandstone,  
 6 X 16 X 10 ins. above ground, firmly set, marked and  
 witnessed as described by the Surveyor-General.  
 At the point of intersection, set an iron post, 3 ft. long,  
 2 ins. diam., in a mound of stone, for closing cor. of  
 secs. 25 and 36, marked on brass cap

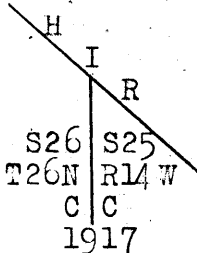


From which  
 A juniper, 4 ins. diam., brs. N.57° W., 95 lks. dist.,  
 marked CC T26N R14W S25 BT.  
 A juniper, 12 ins. diam., brs. S.69½° W., 208 lks. dist.,  
 marked CC T26N R14W S36 BT.  
 Land, rolling.  
 Soil, rocky, 4th rate.  
 Timber, pinion pine and juniper.  
 Undergrowth, sagebrush and scrub oak.  
 Fair bunch grass.

8.37 From the cor. of secs. 25, 26, 35 and 36,  
 21.19 North on a true line, bet. secs. 25 and 26.  
 30.40 Over rolling land, through dense timber and undergrowth.  
 34.52 Desc. 60 ft.  
 36.42 Wash, 20 lks. wide, course NE.  
 40.00 Wash, course NE.  
 Desc. 30 ft.  
 Road, brs. E. and W.  
 Wash, course E.  
 Set an iron post, 3 ft. long, 1 in. diam., 26 ins. in the  
 ground, for ¼ sec. cor., marked on brass cap



47.36 From which  
 A juniper, 8 ins. diam., brs. N.71½° E., 87 lks. dist.,  
 marked ¼ S25 BT.  
 A juniper, 8 ins. diam., brs. S.26½° W., 67 lks. dist.,  
 marked ¼ S26 BT.  
 Intersect Hualpai Indian Reservation Boundary, 13.60 chs.  
 N.39° 39' W. of the 34½ mile cor., which is a sandstone,  
 6 X 16 X 10 ins. above ground, firmly set, marked and  
 witnessed as described by the Surveyor-General.  
 At the point of intersection, set an iron post, 3 ft. long,  
 2 ins. diam., in a mound of stone, for closing cor. of  
 secs. 25 and 26, marked on brass cap



Chains.

From which  
 A juniper, 4 ins. diam., brs. S.32° E., 111 lks. dist.,  
 marked CC T26N R14W S25 BT.  
 A juniper, 4 ins. diam., brs. N.83¼° W., 83 lks. dist.,  
 marked CC T26N R14W S26 BT.

Land, rolling.  
 Soil, rocky, 4th rate.  
 Timber, pinion pine and juniper.  
 Undergrowth, scrub oak.

19.39  
40.00

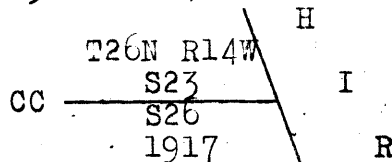
From the cor. of secs. 22, 23, 26 and 27,  
 East on a true line, bet. secs. 23 and 26.  
 Over rolling land, through dense timber and undergrowth.  
 Wash, 20 lks. wide, course S.  
 Set an iron post, 3 ft. long, 1 in. diam., 24 ins. in the  
 ground, for ¼ sec. cor., marked on brass cap

¼ S23  
 ¼ S26  
 1917

From which  
 A pinion pine, 5 ins. diam., brs. N.11½° E., 46 lks.  
 dist., marked ¼ S23 BT.  
 A pinion pine, 6 ins. diam., brs. S.3½° W., 60 lks.  
 dist., marked ¼ S26 BT.

40.00  
42.00  
48.92  
52.98

Desc. 30 ft.  
 Wash, 20 lks. wide, course S. Asc. 35 ft.  
 Spur, slopes S. Desc.  
 Intersect Hualpai Indian Reservation Boundary, 16.47 chs.  
 N.40° 17' W. of the 34 mile cor., which is a malpais  
 rock, 8 X 10 X 14 ins. above ground, firmly set, marked  
 and witnessed as described by the Surveyor-General.  
 At the point of intersection, set an iron post, 2 ins. diam.,  
 10 ins. in the ground, in a mound of stone, for closing  
 cor. of secs. 23 and 26, marked on brass cap



From which  
 A pinion pine, 4 ins. diam., brs. N.47° W., 52 lks.  
 dist., marked CC T26N R14W S23 BT.  
 A juniper, 6 ins. diam., brs. S.0° 15' E., 75 lks. dist.,  
 marked CC T26N R14W S26 BT.  
 Land, rolling.  
 Soil, rocky, 4th rate.  
 Timber, pinion pine and juniper.  
 Undergrowth, scrub oak, manzanita and mahogany.

J.C.H.

General Description.

All except the most westerly portion of this township  
 lies on the high mesa and is heavily rolling land. The  
 western portion lies in the broken mountainous west slope  
 of the Grand Wash Cliffs. The soil is rocky, of poor quality,  
 except in the wide ravines, where there is a good quality  
 of sandy clay loam, supporting a heavy growth of mountain  
 sage. Almost the entire township is heavily timbered with  
 scrub juniper and pinion pine, with scrub oak, manzanita,  
 mountain mahogany and algerita undergrowth. There is prac-  
 tically no grass. Kohinoor Spring is in the SE. ¼ of sec.  
 30. It has been developed by cattlemen and the water piped  
 to a trough in a corral about 30 chs. N.60° W. from the  
 spring. There are no settlers.



Chains.

Survey hereinafter described, executed by S. Frank Walters and James C. Hooper, U.S. Transitmen, on dates shown on diagrams on pages 47 and 49 hereof, using Buff solar transit No. 9985, and Young and Sons' light mountain transit No. 8489, respectively, described in Book "A." Initials "S.F.W." and "J.C.H." are inserted at the beginning and ending of those portions of the notes describing the respective surveys by S. Frank Walters and James C. Hooper, U.S. Transitmen.

From the reestablished cor. of secs. 35 and 36, on the S. bdy. of the Tp., which is an iron post, described in Book "A."

J.C.H.

N.0° 4' W., bet. secs. 35 and 36.

Over nearly level land, through scattering undergrowth.

6.60

Wash, 30 lks. wide, 6 ft. deep, course S.50° W.

22.20

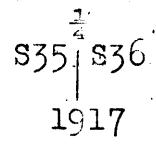
Wash, 20 lks. wide, 10 ft. deep, course S.50° W.

39.00

Road, brs. N.70° E. and S.70° W.

40.00

Set an iron post, 3 ft. long, 1 in. diam., 26 ins. in the ground, for  $\frac{1}{4}$  sec. cor., marked on brass cap



And raise a mound of stone, 3 ft. base, 2 ft. high, W. of cor.

From this cor., cabin brs. N.66° 10' E.

49.87

Leave nearly level land, brs. N.70° E. and S.70° W. Asc. 560 ft.

64.01

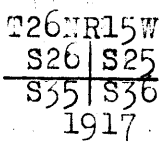
Spur, slopes N.70° E. Same cabin brs. S.45° 5' W. Desc. 35 ft.

75.14

Saddle on ridge, brs. NE. and SW. Desc. 25 ft.

80.00

Set an iron post, 3 ft. long, 2 ins. diam., in a mound of stone, for cor. of secs. 25, 26, 35 and 36, marked on brass cap



And raise a mound of stone, 2 ft. base, 2 ft. high, W. of cor.

Land, nearly level and mountainous.

Soil, rocky, 4th rate.

No timoer.

Undergrowth, cat claw.

40.00

S.89° 58' E., on a random line, bet. secs. 25 and 36.

80.10

Set temp.  $\frac{1}{4}$  sec. cor. Intersect E. bdy. of Tp., 19 lks. N. of the cor. of secs. 25, 30, 31 and 36, which is an iron post, described in Book "A."

Thence

N.89° 50' W., on a true line, bet. secs. 25 and 36.

Over mountainous land, through scattering undergrowth. Desc. 60 ft.

3.30

Gulch, 10 lks. wide, 1 ft. deep, course S.50° W. Asc. 20 ft.

7.10

Desc. 140 ft.

28.35

Wash, course S.50° W. Asc. 655 ft.

29.27

Road, brs. N.30° E. and S.30° W.

40.05

Set an iron post, 3 ft. long, 1 in. diam., 26 ins. in the ground, for  $\frac{1}{4}$  sec. cor., marked on brass cap

Chains.

1/4 S25  
1/4 S36  
1917

And raise a mound of stone, 3 ft. base, 2 ft. high, N. of cor.

51.50 Spur, slopes S. Desc. 155 ft.  
 56.60 Wash, course S.30° W. Asc. 55 ft.  
 61.50 Spur, slopes S.30° W. Desc. 55 ft.  
 66.65 Ravine, course S.70° W. Asc. 115 ft.  
 72.80 Ridge, brs. N.50° E. and S.50° W. Desc. 155 ft.  
 80.10 The cor. of secs. 25, 26, 35 and 36.  
 Land, mountainous.  
 Soil, rocky, 4th rate.  
 No timber.  
 Undergrowth, cat claw.

40.00 N.89° 58' W., on a random line, bet. secs.26 and 35.  
 Set temp. 1/4 sec. cor.  
 79.79 Intersect N. and S. line, 14 lks. S. of the cor. of secs. 26, 27, 34 and 35, which is an iron post, properly set marked and witnessed as described by the Surveyor-General.

Thence  
 S.89° 52' E., on a true line, bet. secs. 26 and 35.  
 Over gently rolling land, through scattering undergrowth.  
 24.85 Wash, 30 lks. wide, 12 ins. deep, course S.60° W. Asc. 420 ft.  
 39.89 1/2 Set an iron post, 3 ft. long, 1 in. diam., 1.8 ins. in the ground, in a mound of stone, for 1/2 sec. cor., marked on brass cap

1/4 S26  
1/4 S35  
1917

And raise a mound of stone, 3 ft. base, 2 ft. high, N. of cor.

44.32 Spur, slopes N.75° W. Desc.  
 44.40 Gulch, course N.70° W. Asc. 215 ft.  
 53.75 Spur, slopes N.40° W. Desc. 15 ft.  
 60.95 Wash, course N.10. W. Asc. 235 ft.  
 79.79 The cor. of secs. 25, 26, 35 and 36.  
 Land, nearly level and mountainous.  
 Soil, rocky, 4th rate.  
 No timber.  
 Undergrowth, cat claw and greasewood.

N.0° 4' W., bet. secs. 25 and 26.  
 Over mountainous land, through scattering undergrowth.  
 Desc. 105 ft.  
 8.93 Ravine, course N.40° W. Asc. 255 ft.  
 19.49 Spur, slopes N.65° W. Desc.  
 23.00 Asc. 50 ft.  
 27.63 Spur, slopes N.70° W. Desc. 495 ft.  
 40.00 Set an iron post, 3 ft. long, 1 in. diam., 12 ins. in the ground, in a mound of stone, for 1/2 sec. cor., marked on brass cap

1  
S26 | S25  
1917

And raise a mound of stone, 3 ft. base, 2 ft. high, W. of cor.

Chains.

44.89 Foot of descent, brs. N.50° W and S.50° E. Thence over gently rolling land.  
 64.89 Wash, 10 lks. wide, 14 ins. deep, course S.40° W.  
 72.29 Leave gently rolling land, brs. N.30° W. and S.30° E. Asc. 105 ft.  
 77.52 Spur, slopes N.60° W. Desc. 15 ft.  
 80.00 The original cor. of secs. 23, 24, 25 and 26, which is an iron post, properly set, marked and witnessed as described by the Surveyor-General.  
 Land, mountainous and gently rolling.  
 Soil, rocky and sandy, 4th rate.  
 No timber.  
 Undergrowth, cat claw.

40.00 S.89° 50' E., on a random line, bet. secs. 24 and 25.  
 Set temp. 1/2 sec. cor.  
 79.92 Intersect E. bdy. of Tn., 12 lks. S. of the cor. of secs. 19, 24, 25 and 30, which is an iron post, described in Book "A."  
 Thence  
 N.89° 55' W., on a true line, bet. secs. 24 and 25.  
 Over mountainous land, through scattering timber and undergrowth.  
 Desc. 325 ft.  
 15.65 Ravine, course S.15° W. Asc. 190 ft. Leave timber, brs. N.15° E. and S.15° W.  
 30.80 Spur, slopes S.10° W. Desc. 95 ft.  
 34.95 Wash, 10 lks. wide, 1 ft. deep, course S.30° W. Asc. 100 ft.  
 39.96 Set an iron post, 3 ft. long, 1 in. diam., 26 ins. in the ground, for 1/2 sec. cor., marked on brass cap

1 S24  
 4 S25  
 1917

And raise a mound of stone, 3 ft. base, 2 ft. high, N. of cor.  
 46.60 Spur, slopes S.30° W. Desc. 655 ft.  
 74.20 Low spur, slopes S.40° W. Continue descent.  
 79.92 The cor. of secs. 23, 24, 25 and 26.  
 Land, mountainous.  
 Soil, rocky, 4th rate.  
 Timber, scattering pinion pine.  
 Undergrowth, cat claw.

J.C.H.

S.F.W.

N.0° 4' W., bet. secs. 23 and 24.  
 Over rolling land, through scattering undergrowth.  
 Desc. 70 ft.  
 13.00 Foot of descent, brs. N.80° E. and S.80° W. Thence over level land.  
 22.50 Wash, 80 lks. wide, 2 ft. deep, course W.  
 36.50 Wash, 50 lks. wide, 1 ft. deep, course S.70° W.  
 40.00 Set an iron post, 3 ft. long, 1 in. diam., 8 ins. in the ground, in a mound of stone, for 1/2 sec. cor., marked on brass cap

1  
 S23 | S24  
 1917

And raise a mound of stone, 2 ft. base, 1 1/2 ft. high, W. of cor.  
 55.00 Spur, slopes S.40° W. Desc. 60 ft.

## Completion of Subdivision of T. 26 N., R. 15 W.

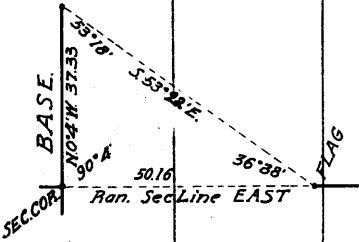
Chains.	
59.40	Gulch, course S.60° W. Asc. 435 ft.
75.70	Ridge, brs. E. and W. Enter scattering timber, brs. E. and W. Desc. 105 ft.
80.00	Set an iron post, 3 ft. long, 2 ins. diam., in a mound of stone, for cor. of secs. 13, 14, 23 and 24, marked on brass cap
	$\begin{array}{r} T26N R15W \\ S14   S13 \\ \hline S23   S24 \\ 1917 \end{array}$
	<p>From which</p> <p>A pinion, 8 ins. diam., brs. N.19° E., 40 lks. dist., marked T26N R15W S13 BT.</p> <p>A pinion, 6 ins. diam., brs. S.62° E., 67 lks. dist., marked T26N R15W S24 BT.</p> <p>A pinion, 8 ins. diam., brs. S.78° W., 68 lks. dist., marked T26N R15W S23 BT.</p> <p>A pinion, 10 ins. diam., brs. N.56½° W., 43 lks. dist., marked T26N R15W S14 BT.</p> <p>Land, level and mountainous.</p> <p>Soil, rocky, 3rd and 4th rates.</p> <p>Timber, pinion pine.</p> <p>Undergrowth, cat claw, cactus and scrub oak.</p>
40.00	S.89° 55' E., on a random line, bet. secs. 13 and 24.
80.08	Set temp. ¼ sec. cor.
	Intersect E. bdy. of Tp., 7 lks. N. of the cor. of secs. 13, 18, 19 and 24, which is an iron post, described in Book "A."
	Thence
	N.89° 52' W., on a true line, bet. secs. 13 and 24.
	Over mountainous land, through scattering undergrowth.
	Asc. 35 ft.
10.40	Desc. 45 ft.
15.35	Asc. 150 ft.
23.30	Gulch, course S.30° W. Continue ascent.
31.60	Saddle in ridge, brs. N. and S. Desc. 45 ft.
40.04	Set an iron post, 3 ft. long, 1 in. diam., in a mound of stone, for ¼ sec. cor., marked on brass cap
	$\begin{array}{r} S13 \\ \hline \frac{1}{4} S24 \\ 1917 \end{array}$
	And raise a mound of stone, 2 ft. base, 1½ ft. high, N. of cor.
	Asc. 20 ft.
44.40	Spur, slopes N.30° W. Desc. 150 ft. Enter timber, brs. E. and S.
55.65	Asc. 125 ft.
65.45	Desc. 165 ft.
75.10	Asc. 25 ft.
80.08	The cor. of secs. 13, 14, 23 and 24.
	Land, mountainous.
	Soil, rocky, 4th rate.
	Timber, pinion pine.
	Undergrowth, scrub oak, cat claw and cactus.
40.00	N.89° 58' W., on a random line, bet. secs. 14 and 23.
80.10	Set temp. ¼ sec. cor.
	Intersect N. and S. line, 21 lks. S. of the cor. of secs. 14, 15, 22 and 23, which is an iron post, properly set marked and witnessed as described by the Surveyor-General.

Completion of Subdivision of T. 26 N., R. 15 W.

Chains	
	<p>Thence  S.89° 49' E., on a true line, bet. secs. 14 and 23.  Over level land, through scattering undergrowth.  Wash, 2 ft. deep, course S.50° W.  Leave level land, brs. N.30° E. and S.30° W. Asc. 1030 ft.  Enter scattering timber, brs. N.50° E. and S.50° W.  Set an iron post, 3 ft. long, 1 in. diam., in a mound of stone, for <math>\frac{1}{4}</math> sec. cor., marked on brass cap</p> <p style="text-align: center;"> <math>\frac{1}{4}</math> S14  <math>\frac{1}{4}</math> S23  1917</p> <p>From which  A pinion 7 ins. diam., brs. N.53<math>\frac{1}{2}</math>° E., 48 lks. dist., marked <math>\frac{1}{4}</math>S14 BT.  A pinion, 8 ins. diam., brs. S.80<math>\frac{1}{4}</math>° W., 7 lks. dist., marked <math>\frac{1}{4}</math>S23 BT.</p>
3.50	
8.00	
24.20	
40.05	
49.90	Desc. 285 ft.
80.10	The cor. of secs. 13, 14, 23 and 24. Land, mountainous and level. Soil, rocky, 4th rate. Timber, pinion. Undergrowth, scrub oak, cactus and cat claw.
	S.F.W.
	<p>J.C.H.  N.0° 4' W., bet. secs. 13 and 14.  Over mountainous land, through dense timber and undergrowth.  Desc. 310 ft.  Gulch, course N.80° W. Asc. 130 ft.  Desc. 45 ft.  Gulch, course S.70° W. Asc. 1170 ft.  Set an iron post, 3 ft. long, 1 in. diam., 8 ins. in the ground, in a mound of stone, for <math>\frac{1}{4}</math> sec. cor., marked on brass cap</p> <p style="text-align: center;"> <math>\frac{1}{4}</math>  S14   S13  1917</p> <p>And raise a mound of stone, 3 ft. base, 2 ft. high, W. of cor. "S.F.W."</p>
9.00	
23.65	
25.80	
40.00	
59.95	J.C.H. Spur, slopes S.70° W. Desc. 275 ft.
67.72	Ravine, course N.50° W. Asc. 10 ft.
69.01	Spur, slopes N.70° W. Desc. 220 ft.
80.00	Set an iron post, 3 ft. long, 2 ins. diam., 8 ins. in the ground, in a mound of stone, for cor. of secs. 11, 12, 13 and 14, marked on brass cap
	T26N R15W S11   S12 --- S14   S13 1917
	<p>From which  A pinion pine, 10 ins. diam., brs. N.32° E., 79 lks. dist., marked T26N R15W S12 BT.  No other trees within limits. Raise a mound of stone, 2 ft. base, 1<math>\frac{1}{2}</math> ft. high, W. of cor.  Land, mountainous.  Soil, rocky, 4th rate.  Timber, scattering pinion pine.  Undergrowth, cat claw and scrub oak.</p>
	<p>East on a random line, bet. secs. 12 and 13.</p>

Completion of Subdivision of T. 26 N., R. 15 W.

Chains.													
	<p>I set a flag East on line, and from the cor. of secs. 11, 12, 13 and 14, measure a base N.0° 4' W., 37.33 chs., from the N. end of which the flag brs. S.53° 22' E. The distance triangulated is given by</p> $\frac{37.33}{\sin. 36^{\circ} 38'} \cdot \frac{X}{\sin. 53^{\circ} 18'}$ <p style="text-align: right;">or by logarithms,</p> <table style="margin-left: auto; margin-right: auto;"> <tr> <td>log. 37.33</td> <td>=</td> <td>1.572058</td> </tr> <tr> <td>log. sin. 53° 18'</td> <td>=</td> <td>9.904053</td> </tr> <tr> <td>colog. sin. 36° 38'</td> <td>=</td> <td>0.224250</td> </tr> <tr> <td></td> <td></td> <td style="border-top: 1px solid black;">1.700361 = log. 50.16</td> </tr> </table> <p>chs.</p>	log. 37.33	=	1.572058	log. sin. 53° 18'	=	9.904053	colog. sin. 36° 38'	=	0.224250			1.700361 = log. 50.16
log. 37.33	=	1.572058											
log. sin. 53° 18'	=	9.904053											
colog. sin. 36° 38'	=	0.224250											
		1.700361 = log. 50.16											
50.16	From this point, West 10.16 chs., and at												
40.00	Set temp. $\frac{1}{4}$ sec. cor. Thence												
	East on a random line, bet. secs. 12 and 13.												
80.07	Intersect E. bdy. of Tp., 6 lks. S. of the cor. of secs. 7, 12, 13 and 18, which is an iron post, described in Book "A."												
	Thence												
	S.89° 57' W., on a true line, bet. secs. 12 and 13												
	Over mountainous land, through scattering timber and undergrowth.												
	Desc. 245 ft.												
8.65	Ravine, course S.30° E. Asc. 390 ft.												
25.85	Ridge, brs. N.10° W. and S.30° E. Desc. 1310 ft.												
29.90	Top of limestone cliffs, 270 ft. high, br. NW. and SE.												
38.70	Cliff, 80 ft. high, brs. N. and S. Continue descent.												
40.03 $\frac{1}{2}$	Set an iron post, 3 ft. long, 1 in. diam., 6 ins. in the ground, in a mound of stone, for $\frac{1}{2}$ sec. cor., marked on brass cap												
	$\frac{1}{4}$ S12 $\frac{1}{4}$ S13 1917												
	From which												
	A pinion pine, 12 ins. diam, brs. N.1 $\frac{1}{2}$ ° E., 41 lks. dist., marked $\frac{1}{4}$ S12 BT.												
	A pinion pine, 12 ins. diam., brs. S.22° W., 6 lks. dist., marked $\frac{1}{4}$ S13 BT.												
80.07	The cor. of secs. 11, 12, 13 and 14.												
	Land, mountainous.												
	Soil, rocky, 4th rate.												
	Timber, scattering pine and juniper.												
	Undergrowth, scrub oak and manzanita.												
<p>N.0° 4' W., bet. secs. 11 and 12.</p> <p>Over mountainous land, through scattering timber and undergrowth.</p> <p>Desc. 85 ft.</p> <p>2.39 Ravine, course N.70° W. Asc. 85 ft.</p> <p>5.00 Spur, slopes S.75° W. Desc.</p> <p>10.64 Ravine, course S.60° W. Asc. 450 ft.</p> <p>28.61 Spur, slopes N.70° E. Desc. 45 ft.</p> <p>34.25 Ravine, course S.40° E. Asc. 500 ft.</p> <p>40.00 Set an iron post, 3 ft. long, 1 in. diam., 14 ins. in the ground, in a mound of stone, for <math>\frac{1}{2}</math> sec. cor., marked on brass cap</p> <p style="text-align: center;"> <math>\frac{1}{4}</math> S11   S12                      1917                 </p> <p>From which</p> <p>A juniper, 7 ins. diam., brs. N.82<math>\frac{1}{2}</math>° E., 12 lks. dist., marked <math>\frac{1}{4}</math>S12 BT.</p> <p>A pinion pine, 14 ins. diam., brs. N.77<math>\frac{1}{2}</math>° W., 30 lks. dist., marked <math>\frac{1}{4}</math>S11 BT.</p>													



Chains.

49.23  
69.40  
72.31  
80.00

Ridge, brs. E. and W. Desc. 590 ft.  
Asc.  
Spur, slopes N.20° E. Desc. 295 ft.  
Set an iron post, 3 ft. long, 2 ins. diam., 6 ins. in the ground, in a mound of stone, for cor. of secs. 1, 2, 11 and 12, marked on brass cap

T26N R15W  
S 2 | S 1  
---  
S11 | S12  
1917

From which

A pinion pine, 4 ins. diam., brs. N.32½° E., 15 lks. dist., marked T26N R15W S1 BT.  
A pinion pine, 12 ins. diam., brs. S.42¾° E., 19 lks. dist., marked T26N R15W S12 BT.  
A pinion pine, 8 ins. diam., brs. S.76° W., 16 lks. dist., marked T26N R15W S11 BT.  
A pinion pine, 6 ins. diam., brs. N.51½° W., 40 lks. dist., marked T26N R15W S2 BT.

Land, 2mountainous  
Soil, rocky, 4th rate.  
Timber, scattering juniper and pinion pine.  
Under growth, scrub oak.

40.00  
80.09

N.89° 57' E., on a random line, bet. secs. 1 and 12.  
Set temp. ¼ sec. cor.  
Intersect E. bdy. of Tp., 11 lks. N. of the cor. of secs. 1, 6, 7 and 12, which is an iron post, described in Book "A."

Thence

N.89° 58' W., on a true line, bet. secs. 1 and 12.  
Over mountainous land, through scattering timber and undergrowth.

1.45  
4.30  
13.35  
18.85  
22.05  
27.00  
30.60  
38.30  
40.04½

Asc. 40 ft.  
Spur, slopes N.10° E. Desc. 25 ft.  
Draw, course N.20° E. Asc. 95 ft.  
Spur, slopes N.10° W. Desc. 130 ft.  
Ravine, course N.30° W. Asc. 25 ft.  
Desc. 30 ft.  
Draw, course N.30° E. Asc. 55 ft.  
Spur, slopes N.40° E. Desc. 85 ft.  
Draw, course N.30° E. Asc. 30 ft.  
Set an iron post, 3 ft. long, 1 in. diam., 6 ins. in the ground, in a mound of stone, for ¼ sec. cor., marked on brass cap

¼ S 1  
---  
S12  
1917

From which

A pinion pine, 12 ins. diam., brs. N.0° 30' W., 71 lks. dist., marked ¼S1 BT.  
A pinion pine, 9 ins. diam., brs. S.57½° E., 48 lks. dist., marked ¼S12 BT.

41.10  
66.65  
71.00  
74.50  
77.80  
80.09

Ridge, brs. N. and S. Desc. 875 ft.  
Ravine, course N.30° W. Asc. 65 ft.  
Spur, slopes N.20° W. Desc. 135 ft.  
Ravine, course N.10° W. Asc. 100 ft.  
Spur, slopes N.10° W. Desc. 20 ft.  
The cor. of secs. 1, 2, 11 and 12.  
Land, mountainous.  
Soil, rocky, 4th rate.  
Timber, juniper and pinion pine.  
Undergrowth, scrub oak and manzanita.

38

## Completion of Subdivision of T. 26 N., R. 15 W.

Chains.	
	N.0° 4' W., on a random line, bet. secs. 1 and 2.
40.00	Set temp. $\frac{1}{4}$ sec. cor.
80.19	Intersect N. bdy. of Tp., 47 lks. W. of the cor. of secs. 1, 2, 35 and 36, which is an iron post, described in Book "A."
	Thence
	S.0° 16' W., on a true line, bet. secs. 1 and 2.
	Over mountainous land, through scattering timber and undergrowth.
	Desc. 495 ft.
6.80	Cliffs, br. E. and W., 200 ft. high.
18.65	Cliffs, 30 ft. high, br. NW. and SE.
20.60	Asc. 30 ft.
27.20	Desc. 40 ft.
36.40	Gulch, course W. Thence along W. slope.
40.19	Set an iron post, 3 ft. long, 1 in. diam., 6 ins. in the ground, in a mound of stone, for $\frac{1}{4}$ sec. cor., marked on brass cap
	$S \ 2 \frac{1}{4} \ S \ 1$ 1917
	From which
	A pinion pine, 10 ins. diam., brs. S.12 $\frac{1}{2}$ ° E., 75 lks. dist., marked $\frac{1}{2}$ S1 BT.
	A pinion pine, 6 ins. diam., brs. N.72 $\frac{1}{2}$ ° W., 48 lks. dist., marked $\frac{1}{2}$ S2 BT.
46.00	Spur, slopes N.80° W. Desc. 280 ft.
68.30	Ravine, course N.35° W. Asc. 260 ft.
80.19	The cor. of secs. 1, 2, 11 and 12.
	Land, mountainous.
	Soil, rocky, 4th rate.
	Timber, pinion pine and juniper.
	Undergrowth, scrub oak.
	From the cor. of secs. 14, 15, 22 and 23, which is an iron post, properly set, marked and witnessed as described by the Surveyor-General,
	N.0° 4' W., bet. secs. 14 and 15.
	Over nearly level land, through scattering undergrowth.
5.00	Wash, 10 lks. wide, 1 ft. deep, course S.40° W. Asc. 550 ft.
40.00	Set an iron post, 3 ft. long, 1 in. diam., 8 ins. diam., in a mound of stone, for $\frac{1}{4}$ sec. cor., marked on brass cap
	$S15 \ \frac{1}{4} \ S14$ 1917
	And raise a mound of stone, 3 ft. base, 2 ft. high, W. of cor.
41.96	Spur, slopes S.70° W. Desc.
49.28	Ravine, course S.60° W. Asc. 1020 ft.
80.00	Set an iron post, 3 ft. long, 2 ins. diam., 8 ins. in the ground, in a mound of stone, for cor. of secs. 10, 11, 14 and 15, marked on brass cap
	T26N R15W $\begin{array}{c} S10 \ S11 \\ \hline S15 \ S14 \\ \hline 1917 \end{array}$
	And raise a mound of stone, 3 ft. base, 2 ft. high, W. of cor.
	Land, mountainous.
	Soil, rocky, 4th rate.



Chains.

No timber.  
Undergrowth, cat claw.

40.00 S.89° 49' E., on a random line, bet. secs. 11 and 14.  
Set temp. 1/4 sec. cor.  
80.00 Intersect N. and S. line, 7 lks. N. of the cor. of secs. 11,  
12, 13 and 14.

Thence

N.89° 46' W., on a true line, bet. secs. 11 and 14.  
Over mountainous land, through scattering undergrowth.  
Desc. 300 ft.

9.45 Ravine, course S.60° W. Asc. 200 ft.  
19.90 Spur, slopes S.10° E. Desc. 25 ft.  
23.35 Ravine, course S.20° W. Asc. 125 ft.  
29.75 Spur, slopes S.15° W. Desc. 85 ft.  
32.30 Ravine, course S.20° W. Asc. 85 ft.  
39.30 Spur, slopes S.10° W. Desc. 105 ft.

40.00 Set an iron post, 3 ft. long, 1 in. diam., 10 ins. in the  
ground, in a mound of stone, for 1/4 sec. cor., marked on  
brass cap

1/4 S11  
S14  
1917

And raise a mound of stone, 3 ft. base, 2 ft. high, N.  
of cor.

44.10 Ravine, course S.30° W. Asc.  
51.20 Spur, slopes S.15° E. Desc. 170 ft.  
67.45 Ravine, course S.40° E. Asc. 435 ft.  
77.15 Spur, slopes S.40° E. Desc. 30 ft.  
80.00 The cor. of secs. 10, 11, 14 and 15.

Land, mountainous.  
Soil, rocky, 4th rate.  
No timber.  
Undergrowth, cat claw and scrub oak.

J.C.H.

S.F.W.

N.0° 4' W, bet. secs. 10 and 11.  
Over mountainous land, through scattering timber and under-  
growth.

Asc. 155 ft.

3.00 Spur, slopes N.70° E. Desc. 15 ft.

9.15 Asc. 335 ft.

19.20 Rim rock, 40 ft. high, brs. N.30° E. and S.30° W. Desc.  
130 ft.

37.60 Rim rock, 60 ft. high, brs. E. and W. Continue descent.

40.00 The true point for 1/4 sec. cor., falls where it cannot be  
permanently established.

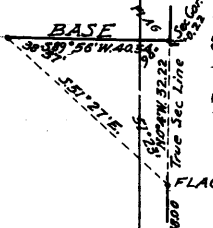
41.10 Set an iron post, 3 ft. long, 1 in. diam., in a mound of  
stone, for 1/4 sec. cor., marked on brass cap

1/4  
S10 | S11  
W | C  
1917

And raise a mound of stone, 2 ft. base, 1 1/2 ft. high, W.  
of cor.

Cor. falls at edge of rim rock, 60 ft. high, brs. NE. and  
SW. Thence over level mesa.

48.00 Edge of cliff, brs. E. and W. Impossible to chain from  
here. I set a flag ahead on line, from which I measure  
a base S.89° 56' W., 40.34 chs., from the W. end of which  
the flag set at the 48.00 ch. point brs. S.51° 27' E.  
The distance is given by 40.34 X tan. 38° 37' = 40.34



Chains.

X .79877 = 32.22, which added to 48.00, gives 80.22 chs. The approximate topography is as follows, beginning with the 48.00 chs. point.  
 Desc. 900 ft.  
 Gulch, course W. Asc. 50 ft.  
 73.00 Thence S.0° 4' E., 22 lks. and at  
 80.22 Set an iron post, 3 ft. long, 2 ins. diam., 20 ins. in the  
 80.00 ground, in a mound of stone, for cor. of secs. 2, 3, 10 and 11, marked on brass cap

T26N R15W  
 S 3 | S 2  
 S10 | S11  
 1917

And raise a mound of stone, 2 ft. base, 1 1/2 ft. high, W. of cor.  
 Land, mountainous.  
 Soil, rocky, 4th rate.  
 Timber, scattering pinion and juniper.  
 Undergrowth, cat claw.

S.F.W.

J.C.H.

East on a random line, bet. secs. 2 and 11.  
 40.00 Set temp. 1/4 sec. cor.  
 38.32 From this point; the 1/4 sec. cor. bet. secs. 2 and 11 bts.  
 N.46° 25' E. and the cor. of secs. 1, 2, 11 and 12 bts.  
 S.89° 24' E. The distance to the cor. of secs. 1, 2, 11 and 12 is therefore given by

$$\frac{40.00}{\sin. 44^\circ 11'} = \frac{X}{\sin. 46^\circ 29'} \text{ or, by logarithms,}$$

$$\log. \sin. 46^\circ 29' = 9.860422$$

$$\log. 40.00 = 1.602060$$

$$\text{colog. } \sin. 44^\circ 11' = 0.156794$$

$$1.619276 = \log. 41.62,$$

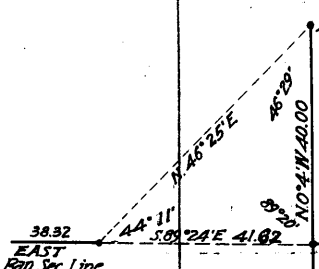
which, added to 38.32, makes the distance for the mile 79.94 chs. The falling is determined from the bearing S.89° 24' W., for 41.62 chs., to be 44 lks.  
 79.94 Intersect N. and S. line, 44 lks. N. of the cor. of secs. 1, 2, 11 and 12.

Thence N.89° 41' W., on a true line, bet. secs. 2 and 11.  
 Over mountainous land, through scattering timber and undergrowth.  
 39.97 Set an iron post, 3 ft. long, 1 in. diam., 10 ins. in the ground, in a mound of stone, for 1/4 sec. cor., marked on brass cap

S 2  
 S11  
 1917

From which  
 A pinion pine, 4 ins. diam., brs. N.45° W., 14 lks. dist., marked 1/2 S2 BT.  
 A pinion pine, 6 ins. diam., brs. S.6° E., 36 lks. dist., marked 1/2 S11 BT.

Asc. 95 ft.  
 59.20 Ridge, brs. N. and S. Desc. 525 ft.  
 79.94 The cor. of secs. 2, 3, 10 and 11.  
 Land, mountainous.  
 Soil, rocky, 4th rate.  
 Timber, pinion pine and juniper.  
 Undergrowth, scrub oak and cactus.



Completion of Subdivision of T. 26 N., R. 15 W.

chains.

40.00 N.0° 4' W., on a random line, bet. secs. 2 and 3.  
 Set temp.  $\frac{1}{4}$  sec. cor.  
 80.09 Intersect N. bdy. of Tp., 21 lks. W. of the cor. of secs.  
 2, 3, 34 and 35, which is an iron post, described in  
 Book "A."  
 Thence  
 S.0° 5' W., on a true line, bet. secs. 2 and 3.  
 Over rolling land, through scattering undergrowth.  
 Desc. 130 ft.  
 17.49 Wash, 1 ch. wide, course W. Asc. 1170 ft.  
 40.09 Set an iron post, 3 ft. long, 1 in. diam., 12 ins. in the  
 ground, in a mound of stone, for  $\frac{1}{4}$  sec. cor., marked on  
 brass cap

$\frac{1}{4}$   
 S 3 | S 2  
 1917

From which  
 A pinion pine, 6 ins. diam., brs. S.48 $\frac{1}{4}$ ° E., 122 lks.  
 dist., marked  $\frac{1}{4}$ S2 BT.  
 A pinion pine, 8 ins. diam., brs. N.88° W., 98 lks.  
 dist., marked  $\frac{1}{4}$ S3 BT.  
 Enter scattering timber, brs. E. and W.  
 64.10 Ridge, brs. E. and W. Desc. 415 ft.  
 74.15 Wash, 20 lks. wide, course W. Asc. 20 ft.  
 76.90 Desc. 30 ft.  
 80.09 The cor. of secs. 2, 3, 10 and 11.  
 Land, rolling and mountainous.  
 Soil, rocky, 4th rate.  
 Timber, cedar and pinion.  
 Undergrowth, cat claw.

J.C.H.

S.F.W.  
 From the cor. of secs. 15, 16, 21 and 22, which is an iron  
 post, properly set, marked and witnessed as described  
 by the Surveyor-General,  
 N.0° 5' W., bet. secs. 15 and 16.  
 Over mountainous land, through scattering undergrowth.  
 Asc. 485 ft.  
 11.00 Spur, slopes S.75° W. Desc. 380 ft.  
 24.80 Asc. 10 ft.  
 25.25 Desc. 35 ft.  
 26.70 Gulch, course S.70° W. Asc. 510 ft.  
 40.00 Set an iron post, 3 ft. long, 1 in. diam., in a mound of  
 stone, for  $\frac{1}{4}$  sec. cor., marked on brass cap

$\frac{1}{4}$   
 S16 | S15  
 1917

And raise a mound of stone, 2 ft. base, 1 $\frac{1}{2}$  ft. high, W.  
 of cor.

42.80 Spur, slopes W. Thence along W. slope.  
 49.80 Asc. 60 ft.  
 52.60 Spur, slopes W. Desc. 160 ft.  
 61.90 Asc. 25 ft.  
 63.35 Desc. 165 ft.  
 70.15 Asc. 20 ft.  
 75.15 Desc. 50 ft.  
 77.70 Gulch, course S.40° W. Asc. 70 ft.  
 80.00 Set an iron post, 3 ft. long, 2 ins. diam., in a mound of  
 stone, for cor. of secs. 9, 10, 15 and 16, marked on  
 brass cap

42

Completion of Subdivision of T. 26 N., R. 15 W.

Chains.

T26N R15W  
S 9 | S10  

---

S16 | S15  
1917

And raise a mound of stone, 2 ft. base, 1½ ft. high, W. of cor.

Land, mountainous.  
Soil, rocky, 4th rate.  
No timber.  
Undergrowth, cat claw and cactus.

40.00 S.89° 57' E., on a random line, bet. secs. 10 and 15.  
Set temp. ¼ sec. cor.  
79.80 Intersect N. and S. line, 19 lks. S. of the cor. of secs. 10, 11, 14 and 15.  
Thence  
S.89° 55' W., on a true line, bet. secs. 10 and 15.  
Over mountainous land, through scattering undergrowth.  
Desc. 15 ft.  
3.00 Asc. 385 ft.  
30.30 Spur, slopes S.50° W. Desc. 1465 ft. Enter timber, brs. N.50° W. and S.50° W.  
39.90 Set an iron post, 3 ft long, 1 in. diam., 12 ins. in the ground, in a mound of stone, for ¼ sec. cor., marked on brass cap

S10  

---

S15  
1917

And raise a mound of stone, 2 ft. base, 1½ ft. high, W. of cor.

59.80 Leave timber, brs. N.50° E. and S.50° W.  
74.80 Gulch, course S.70° W. Continue descent.  
79.80 The cor. of secs. 9, 10, 15 and 16.  
Land, mountainous.  
Soil, rocky, 4th rate.  
Timber, pinion.  
Undergrowth, scrub oak and cat claw.

40.00 N.89° 58' W., on a random line, bet. secs. 9 and 16.  
Set temp. ¼ sec. cor.  
80.09 Intersect N. and S. line, 19 lks. S. of the cor. of secs. 8, 9, 16 and 17, which is an iron post, properly set, marked and witnessed as described by the Surveyor-General.  
Thence  
S.89° 50' E., on a true line, bet. secs. 9 and 16.  
Over mountainous land, through scattering undergrowth.  
Desc.  
2.50- Wash, course N.50° W. Asc. 780 ft.  
22.20 Ridge, brs. N.60° E. and S.60° W Desc. 525 ft.  
40.04½ Set an iron post, 3 ft. long, 1 in. diam., in a mound of stone, for ¼ sec. cor., marked on brass cap

S 9  

---

S16  
1917

And raise a mound of stone, 2 ft. base, 1½ ft. high, N. of cor.

45.45 Asc. 155 ft.  
67.20 Desc. 20 ft.  
70.15 Asc. 70 ft.  
80.09 The cor. of secs. 9, 10, 15 and 16.  
Land, mountainous.  
Soil, rocky, 4th rate.

Completion of Subdivision of T. 26 N., R. 15 W.

Chains.	<p>Timber, none. Undergrowth, cat claw and cactus.</p>
<p>27.00 31.70 34.00 40.00</p>	<p>N.0° 5' W., bet. secs. 9 and 10. Over mountainous land, through scattering undergrowth. Asc. 845 ft. Ridge, brs. NE. and SW. Desc. 100 ft. Enter timber. Head of gulch, course W. Asc. 45 ft. Spur, slopes W. Desc. 1085 ft. Set an iron post, 3 ft. long, 1 in. diam., in a mound of stone, for <math>\frac{1}{4}</math> sec. cor., marked on brass cap</p>
	$\begin{array}{c} \frac{1}{4} \\ S\ 9\   \ S\ 10 \\ 1917 \end{array}$
<p>64.00 70.90 80.00</p>	<p>And raise a mound of stone, 2 ft. base, <math>1\frac{1}{2}</math> ft. high, W. of cor. Leave timber, brs. E. and W. Gulch, course W. Asc. 115 ft. Set an iron post, 3 ft. long, 2 ins. diam., in a mound of stone, for cor. of secs. 3, 4, 9 and 10, marked on brass cap</p>
	$\begin{array}{c} T26N\ R15W \\ S\ 4\   \ S\ 3 \\ \hline S\ 9\   \ S\ 10 \\ 1917 \end{array}$
	<p>And raise a mound of stone, 2 ft. base, <math>1\frac{1}{2}</math> ft. high, W. of cor. Land, mountainous. Soil, rocky, 4th rate. Timber, pinion. Undergrowth, cat claw and scrub oak.</p>
<p>40.00 80.30</p>	<p>N.89° 55' E., on a random line, bet. secs. 3 and 10. Set temp. <math>\frac{1}{4}</math> sec. cor. Intersect N. and S. line, 35 lks. N. of the cor. of secs. 2, 3, 10 and 11. Thence</p>
<p>1.60 10.40 15.35 29.35 40.15</p>	<p>N.89° 50' W., on a true line, bet. secs. 3 and 10. Over mountainous land, through scattering undergrowth. Asc. Spur, slopes S.80° W. Desc. 305 ft. Gulch, course S.65° W. Asc. 45 ft. Thence over rolling land. Desc. 105 ft. Set an iron post, 3 ft. long, 1 in. diam., 10 ins. in the ground, in a mound of stone, for <math>\frac{1}{4}</math> sec. cor., marked on brass cap</p>
	$\begin{array}{c} \frac{1}{4} \ S\ 3 \\ \hline S\ 10 \\ 1917 \end{array}$
<p>48.00 54.90 80.30</p>	<p>And raise a mound of stone, 2 ft. base, <math>1\frac{1}{2}</math> ft. high, N. of cor. Asc. 65 ft. Desc. 555 ft. The cor. of secs. 3, 4, 9 and 10. Land, mountainous. Soil, rocky, 4th rate. No timber. Undergrowth, cat claw, scrub oak and cactus.</p>

Chains.

40.00 N.89° 50' W., on a random line, bet. secs. 4 and 9.  
Set temp.  $\frac{1}{4}$  sec. cor.

80.08 Intersect N. and S. line, 9 lks. N. of the cor. of secs. 4, 5, 8 and 9.

Thence  
S.89° 54' E., on a true line, bet. secs. 4 and 9.  
Over mountainous land, through scattering undergrowth.  
Asc. 205 ft.

18.10 Desc. 290 ft.

39.00 Foot of descent, brs. N.50° E. and S.50° W.. Thence over level land.

40.04 Set an iron post, 3 ft. long, 1 in. diam., in a mound of stone, for  $\frac{1}{4}$  sec. cor., marked on brass cap.

$\frac{1}{4}$  S 4  
 $\frac{1}{4}$  S 9  
 1917

And raise a mound of stone, 2 ft. base, 1 $\frac{1}{2}$  ft. high, N. of cor.

43.00 Wash, 60 lks. wide, 2 ft. deep, course N.70° W.

60.00 Leave level land, brs. N.40° W. and S.40° E. Asc. 190 ft.

80.08 The cor. of secs. 3, 4, 9 and 10.  
Land, level and mountainous.  
Soil, rocky, 2nd and 4th rates.  
No timber.  
Undergrowth, cat claw and cactus.

40.00 N.0° 5' W., on a random line, bet. secs. 3 and 4.  
Set temp.  $\frac{1}{4}$  sec. cor.

79.81 Intersect N. bdy. of Tp., 28 lks. W. of the cor. of secs. 3, 4, 33 and 34, which is an iron post, described in Book "A".

Thence  
S.0° 7' W., on a true line, bet. secs. 3 and 4.  
Over mountainous land, through scattering timber and undergrowth.  
Desc. 10 ft.

1.70 Asc. 255 ft.

15.50 Desc. 125 ft.

17.30 Gulch, course N.40° W. Asc. 770 ft.

33.10 Ridge, brs. N.70° W. and S.70° E. Leave timber, brs. N.70° W. and S.70° E. Desc. 1160 ft.

39.81 Set an iron post, 3 ft. long, 1 in. diam., in a mound of stone, for  $\frac{1}{4}$  sec. cor., marked on brass cap.

$\frac{1}{4}$   
 S 4 | S 3  
 1917

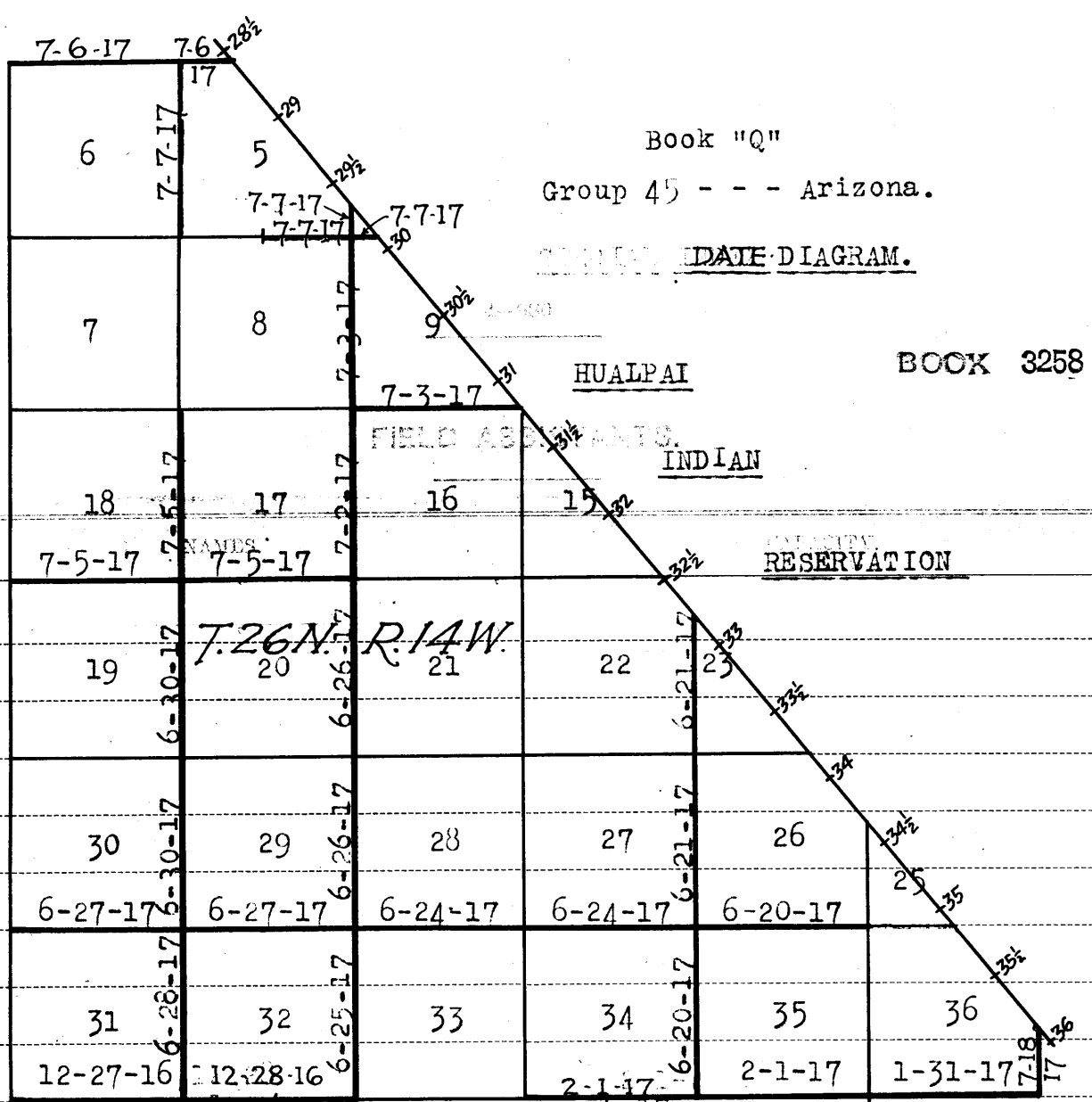
And raise a mound of stone, 2 ft. base, 1 $\frac{1}{2}$  ft. high, W. of cor.

79.81 The cor. of secs. 3, 4, 9 and 10.  
Land, mountainous.  
Soil, rocky, 4th rate.  
Timber, pinion.  
Undergrowth, cat claw.

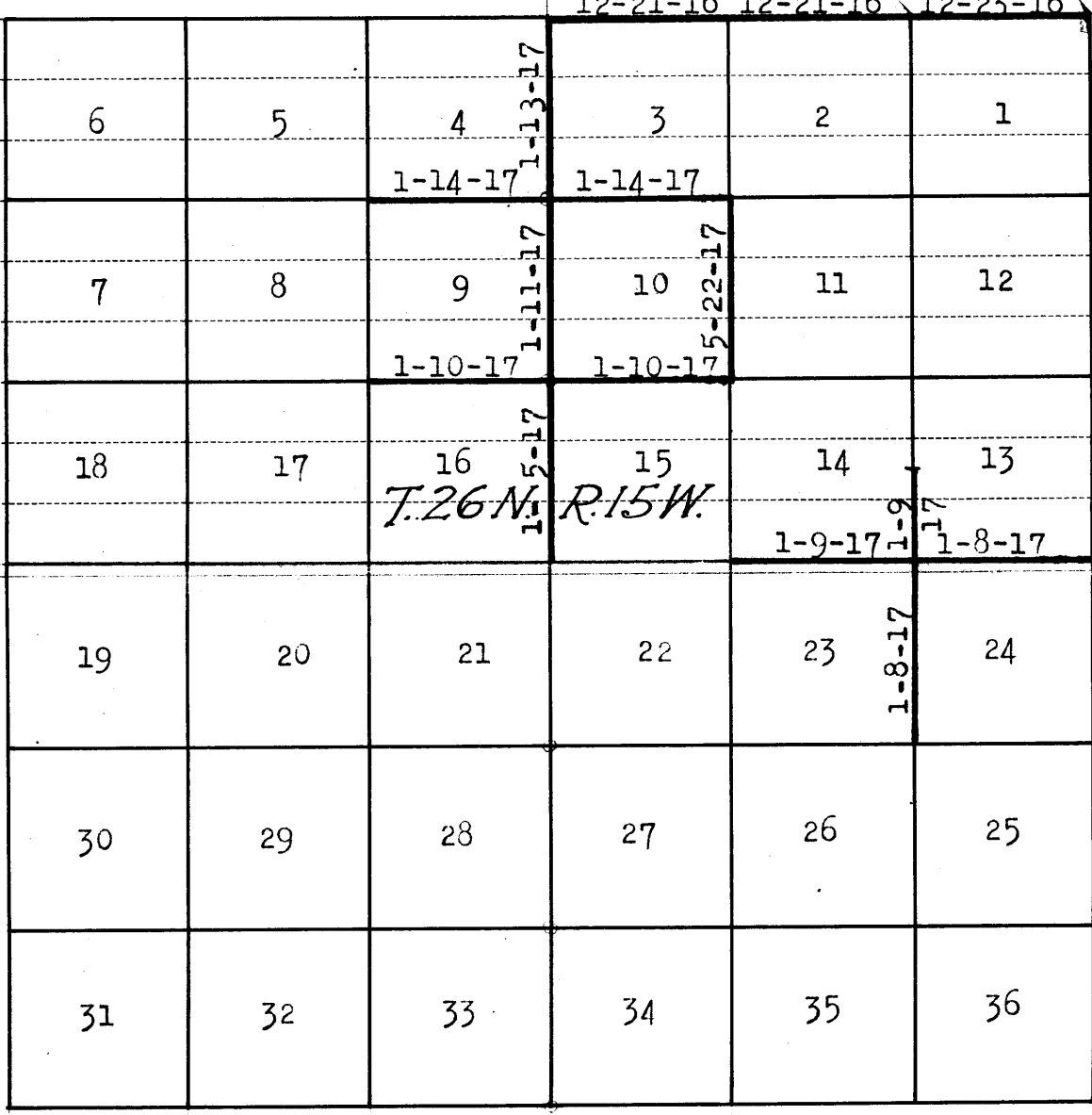
S.F.W.

#### General Description.

This portion of T. 26 N., R. 15 W., lies on the W. slope of the Grand Wash Cliffs. The entire part surveyed is extremely rough, broken foot hills and mountains. There is some fair native grass in the mouths of the canyons, and the sides of the hills carry a good stand, but the hills are so steep and rocky that stock cannot reach it. There is scattering juniper and pinion timber in the east portion, with cat claw, scrub oak and manzanita undergrowth. The western portion grows cactus, where boulders permit. There is no water in the township. The Music Mountain Mining Camp, which operates occasionally, has a pipe line from Clay Springs in T. 27 N., R. 15 W. There are no settlers in this portion of T. 26 N., R. 15 W.



Surveys executed on dates shown on these diagrams by S. Frank Walters, U.S. Transitman.





2058

CERTIFICATE OF UNITED STATES ~~SURVEYOR~~ TRANSITMAN

I, S. Frank Walters, U. S. ~~Surveyor~~ <sup>Transitman</sup>, hereby certify upon honor that, in pursuance of special instructions received from the U. S. Surveyor General for Group 45, Arizona, bearing date of the 7th day of January, 1915, I have well, faithfully, and truly in my own proper person, and in strict conformity with said instructions, the Manual of Surveying Instructions, and the laws of the United States, surveyed all those parts or portions of the Subdivision lines of

TOWNSHIP 26 NORTH, RANGE 14 WEST, and TOWNSHIP 26 NORTH, RANGE 15 WEST,

of the Gila and Salt River Base and Meridian, in the State of Arizona, which are represented by the diagrams on the reverse hereof and in the foregoing field notes as having been executed by me, and under my direction; and that all the corners of said survey have been established and perpetuated in strict accordance with the Manual of Surveying Instructions, and the special written instructions of the U. S. Surveyor General for Group 45, Arizona, and in the specific manner described in the field notes, and that the foregoing are the original field notes of such survey.

Handwritten signature of Frank Walters, U. S. Surveyor Transitman.

APPROVAL.

OFFICE OF THE UNITED STATES SURVEYOR GENERAL,

1918.

The foregoing field notes of the survey of

executed by

under his special instructions dated, 191, having been critically examined, and the necessary corrections and explanations made, the said field notes, and the surveys they describe, are hereby approved.

U. S. Surveyor General.

I certify that the foregoing transcript of the field notes of the above-described surveys in, has been correctly copied from the original notes on file in this office.

U. S. Surveyor General.

Book "Q"

Group 45 - - - Arizona.

DATE DIAGRAM.

6253

12-30-16	6 7-6-17	5 7-6-17				
12-29-16	7 7-6-17	8 7-5-17	9 6-25-17			
12-28-16	18	17	16 6-26-17	15 6-26-17	HUALPAI INDIAN	
12-27-16	T.26N. R.14W.		RESERVATION			
12-26-16	19 7-1-17	20 6-30-17	21 6-30-17	22 6-28-17	23 6-28-17	
12-26-16	30	29	28 6-24-17	27	26 6-20-17	
12-26-16	31	32	33 2-1-17	34	35 6-20-17	36

Surveys executed on dates shown on these diagrams by James C. Hooper, U.S. Transitman,

6	5	4	3 5-22-17	2 5-11-17	1 1-12-17
7	8	9	10	11 1-9-17	12 1-11-17
18	17	16 T.26N. R.15W.	15 1-9-17	14 1-10-17	13 1-17
19	20	21	22	23	24 1-6-17
30	29	28	27	26 1-5-17	25 1-2-17
31	32	33	34	35 1-2-17	36 1-4-17

RESURV. RETR.

CERTIFICATE OF UNITED STATES ~~SURVEYOR~~ TRANSITMAN

BOOK 3258

I, James C. Hooper, U. S. ~~Surveyor~~ <sup>Transitman</sup>, hereby certify upon honor that, in pursuance

of special instructions received from the U. S. Surveyor General for Group 45, Arizona,

bearing date of the 7th day of January, 1915, I have well, faithfully, and truly

in my own proper person, and in strict conformity with said instructions, the Manual of Surveying Instructions, and the laws of the United States, ~~surveyed~~ <sup>retraced</sup> all those parts or portions of the

Hualpai Indian Reservation Bdy. and surveyed all those parts or portions of the Subdivision lines of Townships 26 North, Ranges 14, and 15 West,

of the Gila and Salt

River Base and Meridian, in the State of Arizona, which are represented by the diagrams on the reverse hereof and in the foregoing field notes as having been executed by me, and under my direction; and that all the corners of said survey have been established and perpetuated in strict accordance with the Manual of Surveying Instructions, and the special written instructions of the U. S. Surveyor General for Group 45, Arizona, and in the specific manner described in the field notes, and that the foregoing are the original field notes of such survey.

James C. Hooper  
U. S. Surveyor  
Transitman.

APPROVAL.

OFFICE OF THE UNITED STATES SURVEYOR GENERAL,

Phoenix, Arizona March 17, 1919.

The foregoing field notes of the ~~survey of~~ *Retracement of Part of the Bdy. of the HUALPAI INDIAN RESERVATION, within Township 26 North, Range 14 West, of the SURVEY of the SUBDIVISION LINES of that PORTION of Township 26 North, Range 14 West, which is outside the Bdy. of the HUALPAI Indian Reservation and of the SURVEY of the COMPLETION of the SUBDIVISION LINES of Township 26 North, Range 15 West, of the Gila and Salt River Base and Meridian, in the State of Arizona*

executed by *S. Frank Walters and James C. Hooper, U.S. Transitmen*

under ~~his~~ special instructions dated *January 7, 1915 for Group 45 Arizona*, having been critically examined, and the necessary corrections and explanations made, the said field notes, and the surveys they describe, are hereby approved.

*Frank D. Frost*  
U. S. Surveyor General.

I certify that the foregoing transcript of the field notes of the above described surveys in \_\_\_\_\_, has been correctly copied from the original notes on file in this office.