

293
①

3285

Book "F"
4-679

BOOK 3285

FIELD NOTES

OF THE RETRACEMENT OF

Part of the South Boundary of Township 4 South, Range 30 East,

Part of the Subdivision Lines of Township 4 South, Range 30 East,

RESURVEY OF

Part of the Subdivision Lines of Township 4 South, Range 30 East,

SURVEY OF

Part of the East Boundary of Township 4 South, Range 30 East,

Part of the Subdivision Lines of Township 4 South, Range 30 East.

3285

3285

Of the Gila and Salt River Base and Meridian,

In the State of Arizona.

EXECUTED BY

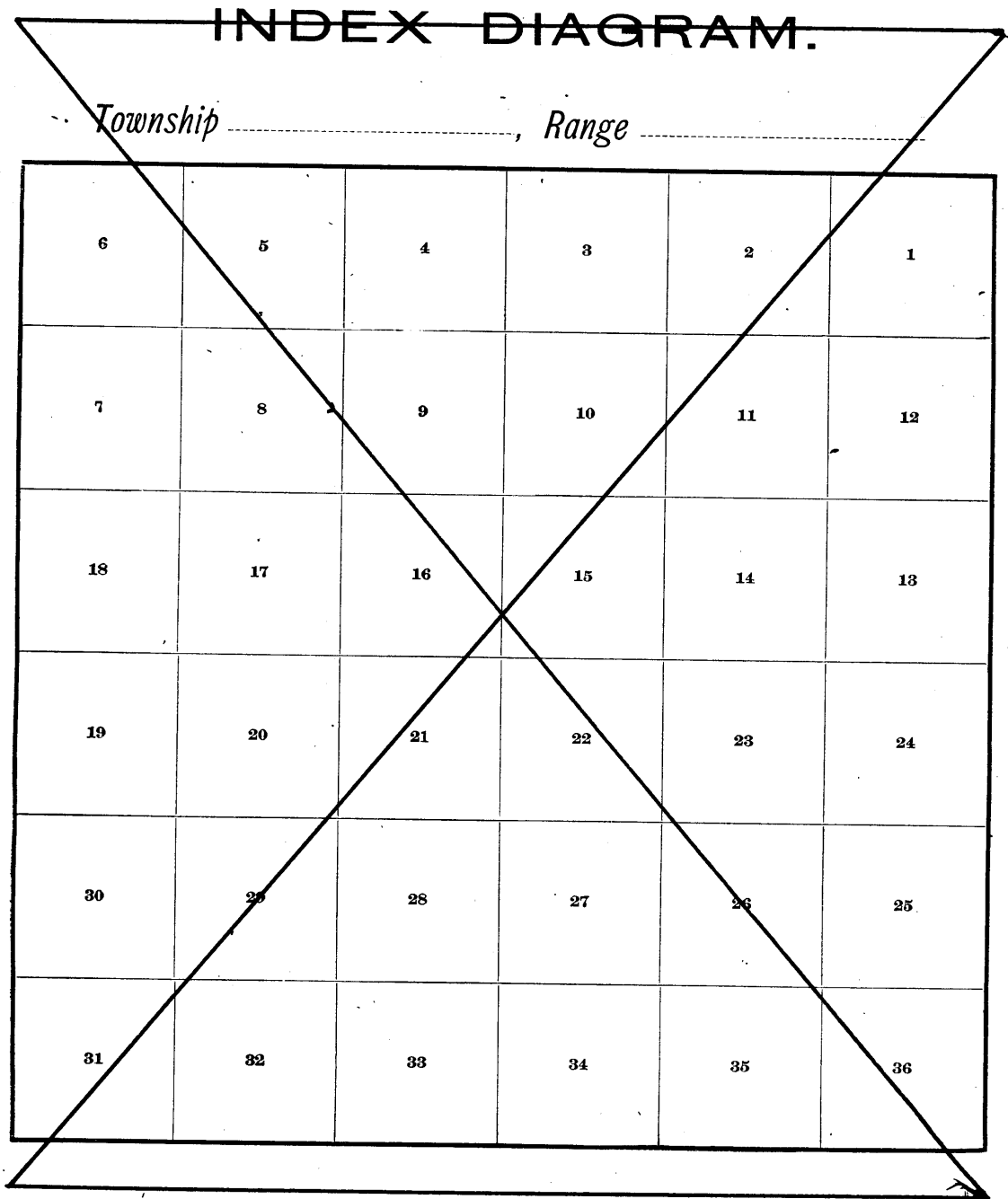
William B. Kimmel

In the capacity of U. S. Surveyor, under Special Instructions dated April 5, 1916,
issued by the United States Surveyor General to govern surveys included in Group
No. 65, which were approved by the Commissioner of the General Land
Office, April 19, 1916, and Assignment Instructions dated August 15, 1916.

Retracement,
Resurvey and Survey commenced November 13, 1916.

Retracement,
Resurvey and Survey completed November 26, 1916.

SEE SPECIAL INDEX DIAGRAM



3285

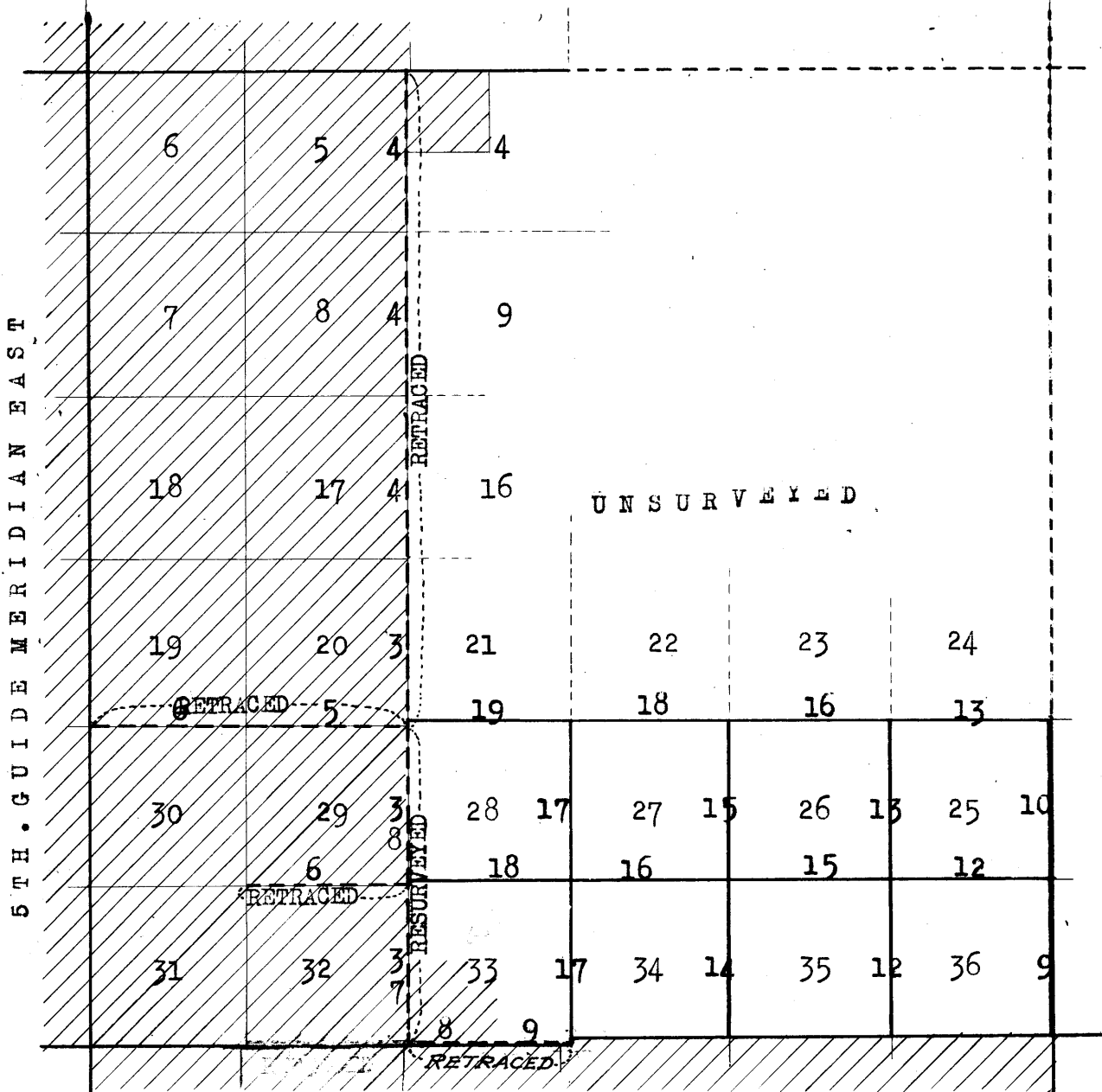
Book "F"

Group 65 - - - Arizona.

T. 4 S., R. 30 E.

Index Diagram.

BOOK 3285



- Lines retraced or resurveyed under this group.
- Lines surveyed under this group.
- Lines of accepted surveys.
- - - Unserved lines.
- /// Areas surveyed as per accepted plats on file.

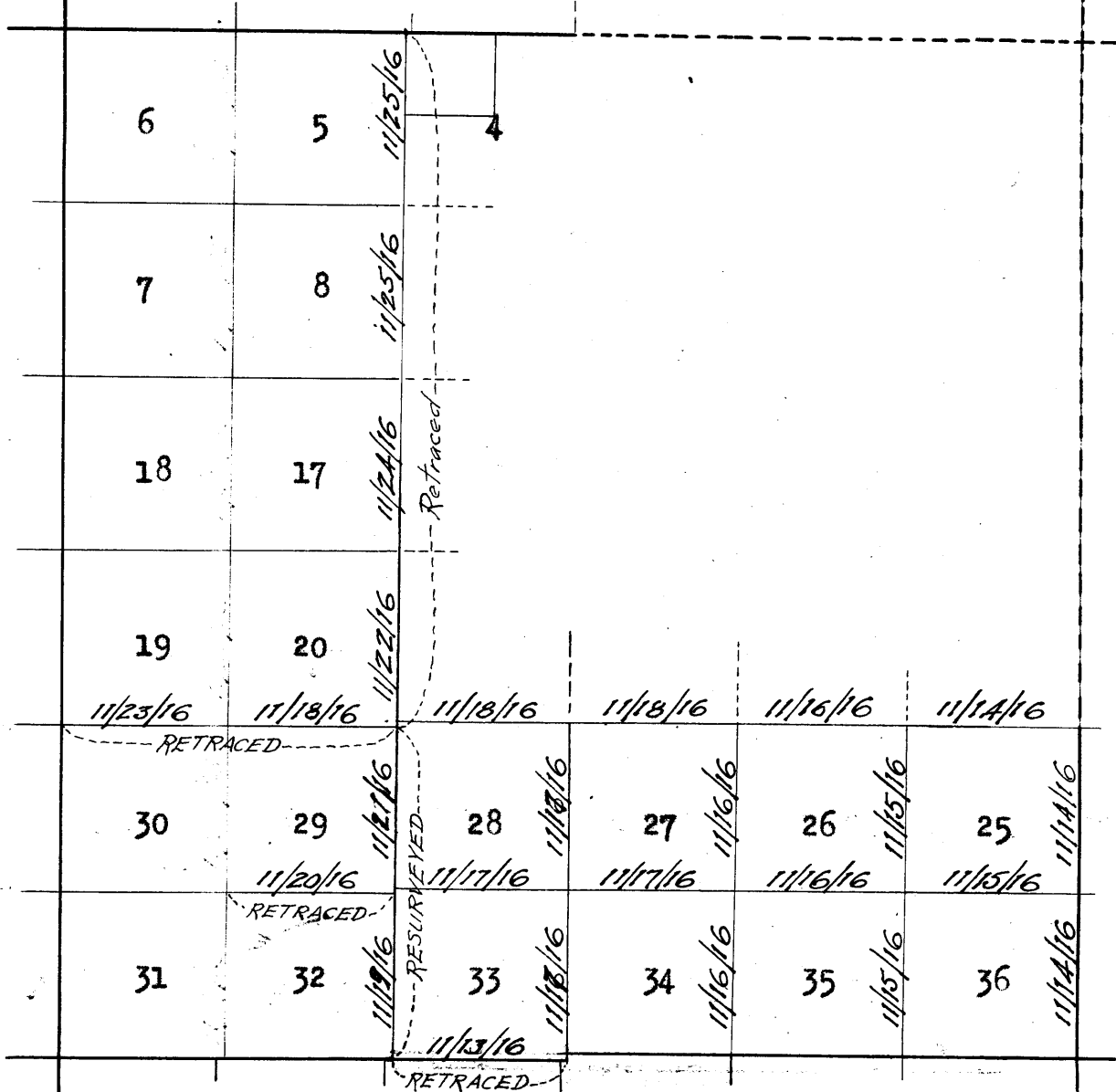
BOOK 3285

Book "F"

Group 65 - - - Arizona.

T. 4 S., R. 30 E.

Date Diagram.



Retracements, Resurveys and surveys executed on the dates shown on the above diagram, by W. B. Kimmel, U. S. Surveyor.

Chaina.

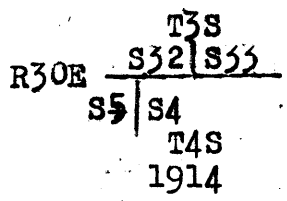
Retracements, Resurveys and Surveys hereinafter described, were executed on dates shown on diagram on page 2 by William B. Kimmel, U.S. Surveyor, using Young and Sons light mountain transit No. 8523, described with record of tests and certificate of approval in Books "D" and "E" of this group.

All measurements hereinafter recorded were made with a 5 chain steel tape properly tested and adjusted, and vertical angles were read with a clinometer and true horizontal distances were computed from such reading.

RETRACEMENT- Part of subdivision lines, T.4 S., R.30 E.

Begin at the recognized cor. of secs. 32 and 33 on S. bdy. of Tp., which is an iron pipe 2 ins. in diam., projecting 6 ft. above ground, firmly set in ground and mound of stone. Alongside is a stone, 16x10x6 ins., marked with 4 notches on one side and 2 notches on the opposite side (Evidently the original cor. as verified by measurement of record dist. W. to original closing cor. of secs. 4 and 5).

Thence,
 North, on random line, on 4th Meridional sec. line, searching diligently for traces of the original $\frac{1}{4}$ sec. and sec. cors. at intervals of 40 chs., but fail to find any, and at
 479.80 Fall 108 lks. W. of reestablished cor. of secs. 32 and 33, T.4 S., R.30 E. on N. bdy. of T.4 S., R.30 E., which cor. is a 3 in. iron post, firmly set, 12 ins. above ground, marked on brass cap,



and witnessed by mound of stone, N. of cor. and one bearing tree NE. of cor. properly marked.

At the time this cor. was reestablished, the original $\frac{1}{4}$ sec. cor. of secs. 5 and 32 was changed to refer to sec. 5 only, and a $\frac{1}{4}$ sec. cor. reestablished for sec. 32 at 36 lks. E. of said original $\frac{1}{4}$ sec. cor.; therefore, the point for the reestablishment of the cor. of secs. 4 and 5 would be at a point 36 lks. W. of the above described cor. of secs. 32 and 33, and the falling of the random meridional sec. line thru. the Tp. on said cor. point would be 72 lks. W., giving a true course and dist. for said meridional line, of N. 0° 5' W., 479.80 chs.

Return to cor. of secs. 32 and 33 on S. bdy. of Tp.
 Thence,
 North, on random line, on 4th Meridional line, setting temp. $\frac{1}{4}$ sec. and sec. cors. at proper intervals to maintain the original proportions.

Between secs. 32 and 33.
 39.95 Set temp. $\frac{1}{4}$ sec. cor.
 79.91 Set temp. cor. of secs. 28, 29, 32 and 33.

Thence,
 North, bet. secs. 28 and 29.
 39.95 Set temp. $\frac{1}{4}$ sec. cor.
 79.91 Set temp. cor. of secs. 20, 21, 28 and 29.

For topography of the preceding two miles see notes of resurvey of E. bdrs. of secs. 32 and 29, hereinafter described.

Thence,
 North, bet. secs. 20 and 21.
 Over mountainous land, thru, scattering timber and undergrowth.

BOOK 3285

Chains.

- Ascend 150 ft. on SE.slope.
 7.68 Spur, slopes SW. Descend gradually over rolling W.slope.
 20.80 Draw, course SW. Ascend 135 ft. on S.slope.
 31.39 Ridge, brs. NE. and W. Descend 70 ft. on rolling NW.slope
 to
 39.95 Set temp. sec.cor.
 Descend 280 ft. over rolling and mountainous NW.slope, to
 79.91 Set temp.cor.of secs. 16, 17, 20 and 21.
 Land, mountainous and rolling.
 Soil, rocky, 4th rate.
 Timber, scattering juniper.
 Undergrowth, scattering catclaw, mesquite, cactus, scrub
 oak and ocotillo.

- North, bet.secs.16 and 17.
 Over broken, mountainous land, thru.scattering timber and
 undergrowth.
 Descend 375ft. over NW. slope.
 22.17 Trail, brs.NE. and SW.
 28.17 Trail, brs.NE. and SW. on S.rim of limestone Gulch, bear-
 ing NE. and SW.
 Thence across said gulch.
 30.47 Limestone Creek, running water, 3 lks.wide, 3 ins. deep,
 course SW. Continue across gulch. Ascend.
 31.97 North rim of gulch. Leave gulch. Ascend 215 ft.on rocky
 S.slope.
 39.08 Spur, slopes SW. Descend 70 ft. on NW.slope.
 39.95 Set temp. sec.cor.
 43.22 Gulch, course SW. Ascend 325 ft. on broken S.slope to
 52.82 Base of rim rock, 20 ft.high, brs.E.and W. From top of
 same, ascend 275 ft.
 74.77 Spur, slopes SW. Descend 15 ft. on N.slope to
 79.91 Set temp.cor.of secs.8,9,16 and 17.
 Land, mountainous.
 Soil, rocky, 4th rate.
 Timber, scattering juniper.
 Undergrowth, scattering scrub oak, catclaw, ocotillo, mes-
 quite and cactus.

- North, bet. secs.8 and 9.
 Over mountainous land, thru.scattering timber and under-
 growth.
 Descend 155 ft.on N.slope.
 9.96 Gulch, course W. Ascend 100 ft. on S.slope/
 16.85 Spur, slopes W. Descend 265 ft. on broken N.slope to
 39.95 Set temp. sec.cor.
 Descend 185 ft.on broken N.slope.
 46.36 Gulch, course NW. Ascend 65 ft. on SW.slope.
 50.35 Spur, extends W. 3.00 chs. Descend 65 ft. on NW.slope.
 54.27 Canyon, course NW. Ascend 186 ft. on broken S.slope.
 55.96 Trail, brs.E.and W. Spring brs.W. about 120 lks.dist.in
 canyon.
 65.55 Spur, slopes NW. Descend 100 ft. on rocky N.slope.
 72.97 Canyon, course W. Ascend 140 ft. on S.slope, to
 79.91 Set temp.cor. of secs.4, 5, 8 and 9.
 Land, mountainous.
 Soil, rocky, 4th rate.
 Timber, scattering juniper, sycamore and cottonwood.
 Undergrowth, scattering scrub oak, mesquite, catclaw, oco-
 tillo and cactus.

- North, bet. secs.4 and 5.
 Over mountainous land, thru, scattering timber and under-
 growth.
 Ascend 90 ft.on S. slope.

Retracement- Part of Subdivision lines of T.4 S..R.30 E. 5

Chains.

- 7.45 Spur, slopes W. from butte, Ascend 30 ft. on W.slope.
- 8.96 Top of ascent on W.side of rocky butte. Descend 388 ft. on rocky N.slope.
- 17.27 Canyon, course W. Ascend 175 ft. on rocky SW.slope.
- 24.65 Spur, slopes W. Extend about 15.00 chs.W. Descend 257 ft. on broken rocky NW.slope.
- 34.04 Canyon, course SW. Ascend 130 ft. to
- 39.95 Set temp. $\frac{1}{4}$ sec.cor. Ascend 303 ft. on S.slope, to
- 51.95 Spur, slopes W. Descend 352 ft. on broken N.slope.
- 67.57 Gulch, course NW. Ascend 40 ft. on SW. slope.
- 70.65 Spur, slopes NW. Descend 167 ft. on NW.slope to
- 80.25 Intersect N. bdy. of Tp. 72 lks. W.of point for cor. of secs. 4 and 5, hereinbefore described.

Land, mountainous.
 Soil, rocky, 4th rate.
 Timber, scattering juniper and cottonwood.
 Undergrowth, scattering scrub oak, ocotilla, mesquite, catclaw and cactus.

 From original cor.of secs.19,24, 25 and 30, on W. bdy.of Tp., East, on random line, on 2nd.Lat.line, searching diligently for original $\frac{1}{4}$ sec. and sec.cors. at the record distances. Find no traces of any original cor., and at

- 160.45 (Record dist.) Fall 160 lks.E., and 19 lks.N. of temp. cor.of secs.20,21,28 and 29, set on 4th.Meridional line, at 159.82 chs. (proportional dist.) N.from the S.bdy.of Tp. After survey of line, bet.secs.21 and 28, and finding closing cor.required for said secs., reestablish the cor.of secs. 20 and 29, as follows:
 In order to preserve record distance on 2nd Lat.line, and original proportion on 4th.Meridional line, at a point 160 lks.E. of temp.cor.of secs.20,21,28 and 29, set on 4th. Meridional line
 Set an iron post, 3 ft.long, 2 ins. in diam., 14 ins. in the ground, supported by a mound of stone, for reestablished cor.of secs. 20 and 29, marked on brass cap,

T4S
 S20
 S29
 R30E
 1916

and raise a mound of stone, 2 ft.base, 1 $\frac{1}{2}$ ft. high, W. of cor.
 The reestablished position of this cor. gives a true course for W. two miles of 2nd.Lat.line of N.89°56'W. and for north four miles of 4th.Mer. line of N.0°9'W.

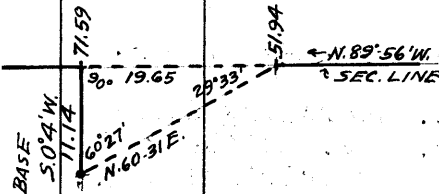
Thence,
 N.89°56'W., on true line, bet. secs.20 and 29.
 Over mountainous land, thru, scattering timber and undergrowth. Ascend 60 ft. on SE.slope.

- 4.60 Spur, slopes SW. Ascend 82 ft. on SW.slope.
- 8.95 Gulch, course SE. Ascend 160 ft. on E.slope.
- 14.60 Spur, slopes S. Descend 230 ft. on W.slope.
- 30.65 Gulch, course SW. Ascend 72 ft. on SE.slope.
- 36.60 Spur, slopes S. Descend 10 ft. on SWSlope.
- 40.13 $\frac{1}{2}$ (Record dist.) Set temp. $\frac{1}{4}$ sec.cor. Ascend 115 ft. on SE.slope.
- 52.05 Ridge, brs.S.from NE. Descend 354 ft. on broken NW.slope.
- 66.45 Canyon, course SW. Ascend 298 ft. on rocky SE.slope.
- 79.60 Ridge, brs. NE.and SW. Descend 25 ft. on rocky NW.slope to
- 80.27 (Record dist.) Set temp.cor. of secs.19,20,29 and 30.

Land, mountainous.
 Soil, rocky, 4th rate.
 Timber, scattering juniper.
 Undergrowth, scattering scrub oak, mesquite, catclaw, ocotilla cactus and greasewood.

chains.

- N. $89^{\circ}56'W.$, on true line, bet. secs. 19 and 30.
Over mountainous land, thru scattering undergrowth.
Descend 265 ft. over broken rocky, N. slope, to
- 20.42 From this point, edge of perpendicular cliff 100 ft. high bearing E. and W. facing N., brs. N. of line about 60 lks. dist.
- 40.00 Descend 225 ft. over broken rocky N. and NW. slope to (Record dist.) Set temp. $\frac{1}{2}$ sec. cor.
Descend 155 ft. over NW. slope to rim of canyon.
- 45.70 One wire telephone line, brs. NE. and SW.
- 47.45 One wire telephone line, brs. NE. and SW.
- 48.03 Trail, brs. NE. and SW.
- 50.42 Trail, brs. N. and S.
- 51.94 East, or left rim of Canyon of San Francisco river, brs. N. and S. Impracticable to obtain measurement across by chaining, therefore triangulate as follows:
Leave flag on E. rim at this point.
Set flag on line on W. rim.
From flag on W. rim lay off a Base $S.0^{\circ}4'W.$, 11.14 chs. dist.
From S. end of base, flag on E. rim, brs. N. $60^{\circ}31'E.$
Included angles are $60^{\circ}27'$, $90^{\circ}00'$ and $29^{\circ}33'$, the sum of which is $180^{\circ}00'$
Dist. on line bet. flags is therefore obtained by tang. $60^{\circ}27' \times$ base or $1.76390 \times 11.14 = 19.65$ chs., which added to 51.94 chs. = 71.59 chs., the dist. to flag on W. rim of canyon.
- 58.00 (Approximate) Center of channel of San Francisco River (dry) 200 lks. wide, course S. in bottom of canyon.
- 71.59 Flag point on W. or right rim of canyon. Leave canyon. Continue measurement by chaining and gradually over broken, rocky NE. slope, to
- 80.18 Intersect the cor. of sec. 19, 24, 25 and 30, on W. bdy. of Tp. (5th. Guide Mer. E.), which is a stone $24 \times 12 \times 12$ ins. above ground, set in a mound of stone, marked with 4 notches on N. and 2 notches on S. edges, and witnessed by mound of stone, W. of cor. No bearing trees. This cor. is of record as a wood post, but there is no evidence of such remaining; however, the topographical features in the vicinity of the sec. cor. found agree with those reported around the original cor.; therefore, conclude that it occupies the former position of original cor.
Land, mountainous.
Soil, rocky, 4th rate.
No timber.
Undergrowth, scattering ocotillo, catclaw, greasewood, mesquite and cactus.



Find cor. of secs. 29, 30, 31 and 32 to be a stone, $8 \times 8 \times 8$ ins. above ground, firmly set in mound of stone, marked with five notches on E. and one notch on S. edge, and witnessed by pits NE., SE., SW. and NW. of cor. No bearing trees. The record description of this cor. is a wood post in mound of stone, witnessed by pits. No cor. of this description could be found in this vicinity; therefore, accept the cor. found as being reestablished at point formerly occupied by the original cor.

Thence,

- 40.08 (Record dist.) East, on random line, bet. secs. 29 and 32. No trace of original $\frac{1}{2}$ sec. cor. can be found.
- 80.17 (Record dist.) No trace of original cor. of secs. 28, 29, 32 and 33 can be found. This point is 42 lks. N., and 46 lks. E. of temp. cor. of said secs. on 4th. Mer. line set at 79.91 chs. N. from S. bdy. of Tp.
After survey of line bet. secs. 28 and 33, and finding closing cor. required for said secs., reestablish the cor.

~~Retacement-Part of Subdivision lines of T.4 S., R.30 E.~~

Chains.

of secs. 29 and 32, as follows:
 In order to preserve the record dist. for line bet. secs. 29 and 32, and original proportion on 4th Mer. Line, at a point 46 lks. E. of temp. cor. of secs. 28, 29, 32 and 33, on 4th Mer. line,
 Set an iron post, 3 ft. long, 2 ins. in diam., 14 ins. in the ground, supported by a mound of stone, for reestablished cor. of secs. 29 and 32, marked on brass cap,

T4S
 S29
 S32
 R30E
 1916

and raise a mound of stone, 2 ft. base, 1½ ft. high, W. of cor.

The reestablished position of this cor. gives a true course for line bet. secs. 29 and 32 of N. 89° 42' W., for E. bdy. of sec. 32, N. 0° 20' E., and for E. bdy. of sec. 29, N. 0° 49' E.

- Thence,
 N. 89° 42' W., on true line, bet. secs. 29 and 32.
 Over mountainous land, thru scattering undergrowth.
 Ascend 66 ft. on rocky broken SE. slope.
- 2.66 Ridge, brs. SE. and N. Descend 342 ft. on rocky broken W. slope.
 - 18.51 Canyon, course S. Ascend 90 ft. on E. slope.
 - 20.86 Spur, slopes SE. Descend 50 ft. on SW. slope.
 - 23.81 Gulch, course SE. Ascend 348 ft. on rocky, broken NE. slope to
 - 40.08 (Record dist.) Set temp. ¼ sec. cor. Ascend 62 ft. on NE. slope.
 - 43.76 Ridge, brs. SE. and NW. Descend 151 ft. on W. slope.
 - 51.91 Gulch, course SW. Ascend 215 ft. on SE. slope.
 - 63.26 Spur, slopes SW. Descend 475 ft. on rocky broken W. slope, to
 - 80.17 (Record dist.) Intersect cor. of secs. 29, 30, 31 and 32, hereinbefore described.
 Land, mountainous.
 Soil, rocky, 4th rate.
 No timber.
 Undergrowth, scattering catclaw, cactus, mesquite, ocotillo and greasewood.

 Resurvey of part of Subdivision lines of T.4 S., R. 30 E.

Begin at the recognized cor. of secs. 32 and 33, on the S. bdy. of the Tp., hereinbefore described,
 Thence,
 N. 0° 20' E., on a true line, on E. bdy. of sec. 32.
 Over mountainous land, thru scattering timber and undergrowth.

- Descend 230 ft.
- 15.40 One wire telephone line, brs. NW. and SE.
- 19.80 Old road, brs. E. and W.
- 21.35 Ward's gulch, course W. Ascend 340 ft.
- 39.95 (Proportionate dist.) Set an iron post, 3 ft. long, 1 in. in diam., 20 ins. in the ground, in a mound of stone, for reestablished ¼ sec. cor., marked on brass cap,

1/4 S32
 1916

and raise a mound of stone, 2 ft. base, 1½ ft. high, W. of cor.

8. Resurvey of part of Subdivision lines of T.4 S., R.30 E.

Chains.
 43.48 From this point, a 1-1/8 in. iron bar, 1 1/2 ft. high, solidly set in the ground, in a mound of stone, brs. W. 31 lks. dist.
 44.00 Spur, slopes SW. Thence along W. slope.
 49.00 Spur, slopes W. Descend 65 ft.
 57.90 Canyon, course SW. Ascend 310 ft.
 73.70 Ridge, brs. N. and SW. Thence along top of ridge.
 78.65 Leave ridge, brs. NW. and S. Descend 25 ft.
 79.91 (Proportionate dist.) The reestablished cor. of secs. 29 and 32, hereinbefore described.

Land, mountainous.
 Soil, rocky, 4th rate.
 Timber, scattering juniper.
 Undergrowth, ocotillo, mesquite, cactus, catclaw and greasewood.

N. 0° 49' E., on a true line, on the E. bdy. of sec. 29. Over mountainous land, thru. scattering timber and undergrowth. Ascend 205 ft.
 3.75 Top of broken cliffs, 90 ft. high, brs. NE. and SW. Continue ascent.
 13.00 Top of ascent, thence along W. slope, descending 180 ft.
 39.95 (Proportionate dist.) Set an iron post, 3 ft. long, 1 in. in diam., 26 ins. in the ground, for reestablished 1/4 sec. cor. of sec. 29, marked on brass cap,

1/4 S 29

1916

and raise a mound of stone, 2 ft. base, 1 1/2 ft. high, W. of cor.

50.00 Trail, brs. E. and W.
 51.00 Gulch, course SW. Ascend 155 ft.
 56.20 Spur, slopes SW. Descend 55 ft.
 64.25 Ascend 95 ft.
 73.75 Descend 25 ft.
 75.90 Gulch, course SW. Ascend 75 ft.
 79.91 (Proportionate dist.) The reestablished cor. of secs. 20 and 29, hereinbefore described.

Land, mountainous.
 Soil, rocky, 4th rate.
 Timber, scattering juniper.
 Undergrowth, greasewood, mesquite, ocotillo, cactus and scrub oak.

Retracement of part of S. bdy. of Township 4 S., R. 30 E.

From the recognized cor. of secs. 32 and 33, on the S. bdy. of the Tp., hereinbefore described, S. 89° 19' E., on random line, on S. bdy. of sec. 33 (W. 1/2). Over mountainous land, thru. scattering timber and undergrowth. Descend 75 ft.
 9.55 Gulch, 20 lks. wide, course N. Ascend 55 ft.
 13.35 Spur, slopes N. Descend 110 ft.
 22.70 Ward's Gulch, 40 lks. wide, course NW. Road in gulch, brs. NW. and SE. Ascend 105 ft.
 24.40 Telephone line brs. NW. and SE.
 31.20 Spur, slopes S. Descend 15 ft.
 34.70 Gulch, 20 lks. wide, course SW. Ascend 110 ft.
 39.90 Fall 54 lks. S. of reestablished 1/4 sec. cor. of sec. 33, which is a quartzite stone, 9x5x3 ins., lying on the ground, marked "1/4" with mound of stone alongside. No bearing

Resurvey of part of Subdivision Lines of T. 4 S., R. 30 E. 79

Chains.

trees.

The true course and dist. of W. 1/2 of S. bdy. of sec. 33 are therefore N. 89° 55' E., 39.90 chs.

Thence,

East, on a random line, on S. bdy. of sec. 33 (E. 1/2).

Ascend 155 ft.

9.00 Spur, slopes SW. Thence along top of spur.

19.50 Leave spur, comes from NE. Thence along S. slope.

39.19 Fall 28 lks. N. of original closing cor. of secs. 3 and 4, T. 5 S., R. 30 E., which is a stone, 24x14x10 ins. firmly set in a mound of stone, marked "CC" on S. face, and 3 notches on each of E. and W. faces. No bearing trees.

39.95 Fall 28 lks. N. of the reestablished cor. of sec. 33 (SE. cor.) which is a stone 10x5x10 ins. above ground, firmly set in mound of stone, marked with 3 notches on W. face, and witnessed by mound of stone W. of cor. No bearing trees.

The true course and dist. of E. 1/2 of S. bdy. of sec. 33 are therefore S. 89° 36' E., 39.95 chs.

Thence,

North, on E. bdy. of sec. 33.

1.86 Intersect the original closing cor. of secs. 3 and 34, which is a stone, 24x9x8 ins., set in a mound of stone and marked "CC" and 3 grooves on E. face. No bearing trees.

Raise a mound of stone, 2 ft. base, 1 1/2 ft. high, NE. of cor. Land, mountainous.

Soil, rocky, 4th rate.

Timber, scattering juniper.

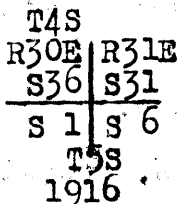
Undergrowth, ocotillo, catclaw, greasewood, and mesquite.

Survey of part of East bdy. of Township 4 South, Range 30 E.

The original cor. of Ts. 4 and 5 S., Rs. 30 and 31 E., is a stone, 12x6x10 ins. above ground, firmly set, marked with 6 notches on each of E., W. N. and S. edges, and witnessed by mound of stone S. of cor. No bearing trees.

Reestablish this cor. in the same place as follows:

Set an iron post, 3 ft. long, 3 ins. in diam., 22 ins. in ground, on bedrock, in a mound of stone, for reestablished cor. of Ts. 4 and 5 S., Rs. 30 and 31 E., marked on brass cap,



Retain as accessory the original mound of stone, 2 ft. base, 1 1/2 ft. high, S. of cor.

Thence,

North, bet. secs. 31 and 36.

Over rolling land, thru. scattering timber and undergrowth.

15.00 Ascend 25 ft.

20.00 Top of knoll; descend 215 ft.

29.40 Gulch, 50 lks. wide, course SW. Ascend 255 ft.

40.00 Set an iron post, 3 ft. long, 1 in. in diam., 20 ins. in the ground, in a mound of stone, for 1/2 sec. cor., marked on brass cap,



and raise a mound of stone, 2 ft. base, 1 1/2 ft. high, W. of cor.

62.50 Thence over mesa.

10 survey of part of East bdy. of Township 4 South, Range 30 East.

Chains.

80.00 Set an iron post, 3 ft. long, 2 ins. in diam., 24 ins. in the ground, for cor. of secs. 25, 30, 31 and 36, marked on brass cap,

T4S	
R30E	R31E
S25	S30
S36	S31
1916	

and raise a mound of stone, 2 ft. base, 1 1/2 ft. high, W. of cor.

Land, rolling and mountainous.

Soil, rocky, 4th rate.

Timber, scattering juniper.

Undergrowth, scrub oak, catalaw, cactus and mesquite.

North, bet. secs. 25 and 30.

Over rolling land, thru. scattering undergrowth.

40.00 Set an iron post, 3 ft. long, 1 in. in diam., 26 ins. in the ground, for 1/4 sec. cor., marked on brass cap,

1	
S25	S30
1916	

and raise a mound of stone, 2 ft. base, 1 1/2 ft. high, W. of cor.

55.00 Thence along gentle W. slope.

80.00 Set an iron post, 3 ft. long, 2 ins. in diam., 12 ins. in the ground, in a mound of stone, for cor. of secs. 19, 24, 25 and 30, marked on brass cap,

T4S	
R30E	R31E
S24	S19
S25	S30
1916	

and raise a mound of stone, 2 ft. base, 1 1/2 ft. high, W. of cor.

Land, rolling.

Soil, rocky, 4th rate.

No timber.

Undergrowth, cactus, mesquite, and catalaw.

Boundaries of S. two tiers of secs. of
T. 4.S., R. 30 E.
Latitudes, departures, and closing errors.

Line designated.	True bearing.	Dist.	Latitudes.		Departures.	
			N.	S.	E.	W.
South boundary	West,	239.24				239.24
	South,	1.86		1.86		
	N.89°36'W.	39.95	.28			39.95
	S.89°55'W.	39.90		.06		39.90
	N.89°19'W.	79.90	.95			79.89
West,	80.00				80.00	
West Tp. boundary (5th. Guide Mer. E.)	North,	160.00	160.00			
Subdivisional boundary,	S.89°56'E.	160.45		.19	160.45	
	N.0°9'W.	2.27	2.27			.01
	East,	78.18			78.18	
	N.89°59'E.	79.90	.02		79.90	
	S.89°47'E.	80.00		.30	80.00	
S.89°48'E.	80.18		.28	80.18		
East Tp. bdy.	South,	160.00		160.00		
Convergency,					.16	
Totals.			163.52	162.69	478.87	478.99
			162.69			478.87
	Error in latitude,		.83			
	Error in departure,					.12

12 Survey of part of the Subdivision lines of T14 S. R. 30 E.

Chains.

Begin at the original cor. of secs. 1, 2, 35 and 36, on the S. bdy. of the Tp., which is a stone, 9x5x8 ins. above ground, firmly set, marked with 1 notch on E. and 5 notches on W. edge, and witnessed by mound of stone, W. of cor. No bearing trees.

Thence, N. 0° 1' W., bet. secs. 35 and 36.

Over rolling, mountainous land, thru scattering timber and undergrowth.

Descend 160 ft.

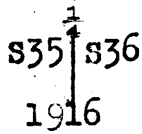
19.95 Gulch, 30 lks. wide, course SW. Ascend 50 ft.

26.70 Spur, slopes E. Descend 20 ft.

30.55 Gulch, course SE. Ascend 100 ft.

39.00 Spur, slopes SE. Descend 50 ft.

40.00 Set an iron post, 3 ft. long, 1 in. in diam., 26 ins. in the ground, for $\frac{1}{4}$ sec. cor., marked on brass cap,

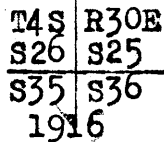


and raise a mound of stone, 2 ft. base, 1 1/2 ft. high, W. of cor. Ascend 175 ft.

71.00 Spur, slopes NE. Descend 125 ft.

75.65 Gulch, course E. Ascend 50 ft.

80.00 Set an iron post, 3 ft. long, 2 ins. in diam., 24 ins. in the ground, for cor. of secs. 25, 26, 35 and 36, marked on brass cap,



and raise a mound of stone, 2 ft. base, 1 1/2 ft. high, W. of cor.

Land, rolling and mountainous.

Soil, rocky, 8 to 16 ins. deep, 4th rate.

Timber, scattering juniper.

Undergrowth, catclaw, mesquite, cactus and ocotillo.

East, on a random line, bet. secs. 25 and 36.

40.00 Set temp. $\frac{1}{4}$ sec. cor.

80.20 Intersect E. bdy. of Tp., 34 lks. N. of the cor. of secs. 25, 30, 31 and 36, which is an iron post, hereinbefore described.

Thence, N. 89° 45' W., on a true line, bet. secs. 25 and 36.

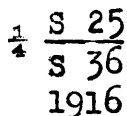
Over rolling and mountainous land, thru scattering timber and undergrowth.

Descend 85 ft.

12.20 Draw, course S. Ascend 85 ft.

18.00 Thence over rolling land.

40.10 Set an iron post, 3 ft. long, 1 in. in diam., 26 ins. in the ground, for $\frac{1}{4}$ sec. cor., marked on brass cap,



And raise a mound of stone, 2 ft. base, 1 1/2 ft. high, N. of cor.

Descend 130 ft.

50.20 Gulch, course SW. Ascend 115 ft.

63.70 Spur, slopes SW. Descend 175 ft.

71.70 Gulch, course S. Ascend 75 ft.

74.80 Descend.

75.80 Ascend 35 ft.

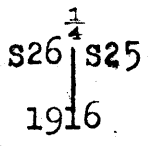
Part of the subdivision lines of Township 4 South, Range 30 E. 13

Chains.

80.20 The cor. of secs. 25, 26, 35 and 36.
Land, rolling and mountainous.
Soil, rocky, 4th rate.
Timber, scattering juniper.
Undergrowth, catclaw, cactus, mesquite and scrub oak.

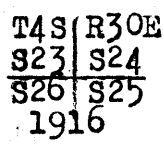
N. 0° 1' W., bet. secs. 25 and 26.
Over mountainous land, thru. scattering timber and undergrowth.

Ascend 45 ft.
Descend 75 ft.
9.00
16.85 Gulch, course E. Ascend 135 ft.
25.00 Spur, slopes E. Descend 90 ft.
29.75 Gulch, course E. Ascend 60 ft.
37.00 Spur, slopes E. Descend 45 ft.
40.00 Set an iron post, 3 ft. long, 1 in. in diam., 18 ins. in the ground, in a mound of stone, for 1/4 sec. cor., marked on brass cap,



and raise a mound of stone, 2 ft. base, 1 1/2 ft. high, W. of cor.

51.40 Road, brs. E. and W.
51.50 Row of fence posts, brs. E. and W.
52.90 Enter plowed land, brs. E. and W.
57.50 Leave plowed land, brs. E. and W. Ascend 95 ft.
58.30 Row of fence posts brs. NW. and SE.
72.00 Spur, slopes SE. Descend 15 ft.
77.90 Draw, course SE. Ascend 25 ft.
80.00 Set an iron post, 3 ft. long, 2 ins. in diam., 24 ins. in the ground, for cor. of secs. 23, 24, 25 and 26, marked on brass cap,



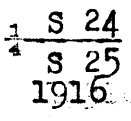
And raise a mound of stone, 2 ft. base, 1 1/2 ft. high, W. of cor.

Land, rolling and mountainous.
Soil, 2nd, 3rd and 4th rates; stony, 6 to 20 ins. deep.
Timber, scattering juniper.
Undergrowth, catclaw, mesquite, scrub oak, cactus and ocotillo.

S. 89° 45' E., on a random line, bet. secs. 24 and 25.
40.00 Set temp. 1/4 sec. cor.
80.18 Intersect E. bdy. of Tp., 7 lks. S. of the cor. of secs. 19, 24, 25 and 30, which is an iron post, hereinbefore described.

Thence,
N. 89° 48' W., on a true line, bet. secs. 24 and 25.
Over rolling and mountainous land, thru. scattering timber, and undergrowth.

Descend 125 ft.
20.85 Gulch, course SW. Ascend 105 ft.
40.09 Set an iron post 3 ft. long, 1 in. in diam., 10 ins. in the ground, in a mound of stone, for 1/4 sec. cor., marked on brass cap,



Chains.

and raise a mound of stone, 2 ft. base, 1 1/2 ft. high, N. of cor.

From this cor., Henry Carr's house brs. S. 43° W. Descend 130 ft.

47.20 Gulch, course S. Ascend 65 ft.

53.00 Spur, slopes SE. Descend 45 ft.

56.55 Gulch, course SE. Ascend 75 ft.

61.60 Spur, slopes SE. Descend 25 ft.

63.80 Head of gulch, course SE. Ascend 95 ft.

66.50 Ridge, brs. N. and S. Henry Carr's house brs. S. 29° E. Descend 90 ft.

72.05 Gulch, course S. Ascend 85 ft.

76.20 Spur, slopes SE. Descend 20 ft.

80.18 The cor. of secs. 23, 24, 25 and 26.

Land, rolling and mountainous.

Soil, rocky, 6 to 14 ins. deep, 4th rate.

Timber, scattering juniper.

Undergrowth, catclaw, mesquite, scrub oak and cactus.

From the original cor. of secs. 2, 3, 34 and 35, on the S. bdy. of the Tp., which is a stone 9x6x14 ins. above ground, firmly set, marked with 2 notches on E. and 4 notches on W. edge, and witnessed by mound of stone; W. of cor. No bearing trees.

N. 0° 1' W., bet. secs. 34 and 35.

Over rolling and mountainous land, thru. scattering timber and undergrowth.

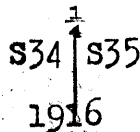
Ascend.

3.00 Descend.

5.00 Draw, course SE. Ascend 70 ft.

13.00 Spur, slopes SE. Thence along E. slope.

40.00 Set an iron post 3 ft. long, 1 in. in diam., 16 ins. in the ground, in a mound of stone, for 1/4 sec. cor., marked on brass cap.



and raise a mound of stone, 2 ft. base, 1 1/2 ft. high, W. of cor.

48.20 Low saddle in ridge, brs. NE. and SW. Descend 15 ft.

53.85 Ascend 80 ft.

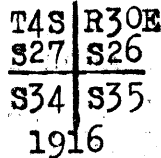
66.50 Spur, slopes W. Descend 140 ft.

73.15 Gulch, course SW.; ascend.

73.35 Trail, brs. E. and W.

76.10 Road brs. NE. and SW.

80.00 Set an iron post, 3 ft. long, 2 ins. in diam., 24 ins. in the ground, for cor. of secs. 26, 27, 34 and 35, marked on brass cap.



and raise a mound of stone, 2 ft. base, 1 1/2 ft. high, W. of cor.

From this cor. Primitive Medina's house brs. N. 35° E. Windmill brs. N. 41° E.

Land, rolling and mountainous.

Soil, rocky, 6 to 12 ins. deep, 4th rate.

Timber, scattering juniper.

Undergrowth, catclaw, mesquite, cactus and scrub oak.

Part of the Subdivision lines of T. 4 S., R. 30 E. 15

Chains.

East, on a random line, bet. secs. 26 and 35.

40.00 Set temp. $\frac{1}{4}$ sec. cor.

80.10 Intersect N. and S. line, 5 lks. N. of the cor. of secs. 25, 26, 35 and 36.

Thence,
N. $89^{\circ}58'$ W., on a true line, bet. secs. 26 and 35.
Over mountainous land, thru scattering timber and undergrowth.

Ascend 315 ft.

6.65 Top of rim rock, 30 ft. high, brs. NE. and SW. Continue ascent.

18.30 Ridge, brs. NE. and SW. Descend 440 ft.

40.05 Set an iron post, 3 ft. long, 1 in. in diam., 6 ins. in the ground, in a mound of stone, for $\frac{1}{4}$ sec. cor., marked on brass cap,

S 26
S 35
1916

and raise a mound of stone, 2 ft. base, $1\frac{1}{2}$ ft. high, N. of cor.

53.60 From this point Primitivo Medina's house brs. N. 58° W. Windmill brs. N. 59° W.

72.95 Trail, brs. NE. and SW. Thence over rolling land.

73.00 Wire fence brs. NE. and SW. Enter cultivated land.

75.60 Wire fence, brs. NE. and SW. Leave cultivated land.

75.80 Wash, 30 lks. wide, 3 ft. deep, course SW.

76.50 Road brs. NE. and SW.

78.60 Road brs. N. and S.

80.10 The cor. of secs. 26, 27, 34 and 35.
Land, rolling and mountainous.
Soil, 2nd and 4th rate, 4 to 20 ins. deep, rocky.
Timber, scattering juniper.
Undergrowth, ocotillo, scrub oak, catclaw and mesquite.

N. $0^{\circ}1'$ W., bet. secs. 26 and 27.
Over rolling land, thru scattering timber and undergrowth.
Ascend 275 ft.

40.00 Set an iron post, 3 ft. long, 1 in. in diam., 16 ins. in the ground, in a mound of stone, for $\frac{1}{4}$ sec. cor., marked on brass cap,

S 27
S 26
1916

and raise a mound of stone, 2 ft. base, $1\frac{1}{2}$ ft. high, W. of cor.

45.00 Ridge, brs. NE. and SW. Descend 30 ft.

58.00 Draw, course SW. Ascend 80 ft.

61.00 Trail, brs. NW. and SE.

71.80 Ridge, brs. NE. and SW. Descend 15 ft.

80.00 Set an iron post, 3 ft. long, 2 ins. in diam., 24 ins. in the ground, for cor. of secs. 22, 23, 26 and 27, marked on brass cap,

T4S R30E
S22 S23
S27 S26
1916

and raise a mound of stone, 2 ft. base, $1\frac{1}{2}$ ft. high, W. of cor.

Land, rolling and mountainous.
Soil, rocky, 10 to 20 ins. deep, 4th rate.
Timber, scattering juniper.
Undergrowth, mesquite, catclaw, cactus and greasewood.

BOOK 3285

16 Part of the Subdivision lines of T.4 S. R.30 E.
chains.

- S.89°58'E., on a random line, bet.secs.23 and 26.
40.00 Set temp. $\frac{1}{4}$ sec.cor.
80.00 Intersect N. and S. line, 26 lks.N.of the cor.of secs.23,
24,25 and 26.
Thence,
N.89°47'W., on a true line, bet.secs.23 and 26.
Over rolling and mountainous land, thru.scattering timber
and undergrowth.
Descend 15 ft.
2.40 Draw, course SE. Ascend 15 ft.
6.10 Ridge, brs.N.and S. Descend 50 ft.
18.70 Draw, course S. Ascend 40 ft.
24.20 Spur,slopes S. Descend 70 ft.
28.80 Gulch, course S. Ascend 45 ft.
33.35 Spur,slopes S. Descend 25 ft.
37.65 Head of draw, course S. Ascend 40 ft.
40.00 Set an iron post, 3 ft.long, 1 in. in diam.,16 ins.in the
ground, in a mound of stone, for $\frac{1}{4}$ sec.cor., marked on
brass cap,

$\frac{1}{4}$ S 23
 $\frac{1}{4}$ S 26

1916

and raise a mound of stone, 2 ft.base, $1\frac{1}{2}$ ft. high,N.
of cor.

- 45.80 Spur, slopes S. Descend 15 ft.
48.10 Gulch, course SE. Ascend 85 ft.
55.00 Spur, slopes S. Descend 50 ft.
65.10 Gulch, course S. Ascend 140 ft.
72.80 Ridge, brs.N,and S. Descend 65 ft.
80.00 the cor.of secs.22,23, 26 and 27.
Land, rolling and mountainous.
Soil,rocky, 4th rate,
Timber, scattering juniper.
Undergrowth, ocotilla, catclaw, mesquite, cactus and
greasewood.

From the cor.of secs.26,27, 34 and 35,
West, on true line, bet. secs. 27 and 34.
Over mountainous land, thru.scattering timber and under-
growth.

- Ascend 65 ft.
16.50 Spur,slopes S. Descend 20 ft.
23.30 Ascend 15 ft.
28.00 Spur, slopes S. Descend 30 ft.
30.40 Gulch, course S. Ascend 125 ft.
40.00 Set an iron post, 3 ft.long, 1 in. in diam., 12 ins. in
the ground, in a mound of stone, for $\frac{1}{4}$ sec.cor.,marked
on brass cap,

$\frac{1}{4}$ S 27
 $\frac{1}{4}$ S 34

1916

from which

A juniper, 5 ins. in diam., brs.S. 21°E., 51 lks.
dist., marked $\frac{1}{4}$ S 34 B T.
No other trees within limits. Raise a mound of stone, 2
ft.base, $1\frac{1}{2}$ ft. high,N.of cor.

- 42.00 Top of knoll; thence along S.slope.
49.00 Ridge, brs.NE. and SW. Descend 70 ft.
64.20 Gulch, course S. Ascend 130 ft.
72.50 Spur,slopes SW. Descend 100 ft.
79.20 Head of draw, course SW. Ascend.
80.00 Set an iron post, 3 ft.long, 2 ins. in diam., 21 ins. in
the ground, in a mound of stone, for cor.of secs. 27,
28, 33 and 34, marked on brass cap;

Chains.

T4S	R30E
S26	S27
S33	S34
1916	

and raise a mound of stone, 2 ft. base, 1½ ft. high, W. of cor.

Land, mountainous.
Soil, rocky, 4th rate.
Timber, scattering juniper.
Undergrowth, ocotillo, catclaw, mesquite, cactus, scrub oak and greasewood.

- 40.00 South, on a random line, bet. secs. 33 and 34.
- 80.08 Set temp. ¼ sec. cor.
- 80.08 Fall 46 lks. W. of the original closing cor. of secs. 3 and 34 on S. bdy. of Tp., hereinbefore described.
- Thence, N. 0° 20' W., on a true line, bet. secs. 33 and 34.
- Over mountainous land, thru scattering timber and undergrowth.
- Ascend 40 ft.
- 4.10 Spur, slopes SW. Descend 10 ft.
- 6.00 Ascend 40 ft.
- 11.10 Spur, slopes SW. Descend 55 ft.
- 18.80 Gulch, course SW. Ascend 130 ft.
- 30.60 Spur, slopes SW. Descend 55 ft.
- 39.60 Draw, course SW. Ascend 105 ft.
- 40.04 (41.90 chs. N. of SE. cor. of sec. 33) Set an iron post, 3 ft. long, 1 in. in diam., 26 ins. in the ground, for ¼ sec. cor., marked on brass cap,

S33	S34
1916	

and raise a mound of stone, 2 ft. base, 1½ ft. high, W. of cor.

- 53.20 Spur, slopes SW. Descend 150 ft.
- 68.30 Canyon, course SW. Ascend 95 ft.
- 75.40 Descend 75 ft.
- 76.85 Draw, course SW. Ascend 45 ft.
- 80.08 The cor. of secs. 27, 28, 33 and 34.
- Land, mountainous.
- Soil, rocky, 4th rate.
- Timber, scattering juniper.
- Undergrowth, ocotillo, cactus, catclaw, greasewood, mesquite and oak brush.

- N. 0° 2' W., bet. secs. 27 and 28.
- Over mountainous land, thru scattering timber and undergrowth.
- Ascend 10 ft.
- 2.00 Spur, slopes SW. Descend 30 ft.
- 5.05 Prospect hole, in bottom of draw, course SW., brs. E. 20 lks. dist. Ascend.
- 8.50 Descend 45 ft.
- 13.50 Gulch, course SW. Ascend 60 ft.
- 32.90 Spur, slopes SW. Descend 30 ft.
- 35.55 Gulch, course SW. Ascend 135 ft.
- 40.00 Set an iron post, 3 ft. long, 1 in. in diam., on bed rock in a mound of stone, for ¼ sec. cor., marked on brass cap,

18. Part of Subdivision Lines of T14 S. R. 30 E.

Chains.

$$\begin{array}{c} \uparrow \\ \text{s28} \mid \text{s27} \\ \downarrow \\ 1916 \end{array}$$

- and raise a mound of stone, 2 ft. base, $1\frac{1}{2}$ ft. high, W. of cor.
- 43.50 Spur, slopes SW. Descend 285 ft.
 62.80 Trail, brs. NE. and SW.
 63.10 Gulch, course SW. Ascend 155 ft.
 66.90 Top of rim rock, 15 ft. high, brs. E. and W.
 67.20 Spur, slopes W. Descend 100 ft.
 80.00 Set an iron post 3 ft. long, 2 ins. in diam., 16 ins. in the ground, in a mound of stone, for cor. of secs. 21, 22, 27 and 28, marked on brass cap,

$$\begin{array}{c} \text{T4S} \mid \text{R30E} \\ \text{s21} \mid \text{s22} \\ \hline \text{s28} \mid \text{s27} \\ 1916 \end{array}$$

from which,

A cedar, 5 ins. in diam., brs. N. 7° E., 23 lks. dist., marked T4S R30E S22 BT.
 No other trees within limits; raise a mound of stone 2 ft. base, $1\frac{1}{2}$ ft. high, W. of cor.
 Land, mountainous.
 Soil, rocky, 4th rate, 3 to 20 ins. deep.
 Timber, scattering juniper.
 Undergrowth, ocotillo, scrub oak, catclaw, mesquite, cactus, and greasewood.

- East, on a random line, bet. secs. 22 and 27.
 40.00 Set temp. $\frac{1}{4}$ sec. cor.
 79.90 Intersect N. and S. line, 2 lks. S. of the cor. of secs. 22, 23, 26 and 27.
 Thence,
 S. $89^{\circ}59'$ W., on a true line, bet. secs. 22 and 27.
 Over mountainous land, thru. scattering timber and undergrowth.
 Ascend.
 4.00 Spur, slopes SW. Descend 225 ft.
 20.80 Gulch, course N. Ascend 80 ft.
 26.00 Spur, slopes N. Descend 140 ft.
 34.30 Gulch, course SW. Ascend 100 ft.
 39.95 Set an iron post, 3 ft. long, 1 in. in diam., 26 ins. in the ground, for $\frac{1}{4}$ sec. cor., marked on brass cap,

$$\begin{array}{c} \frac{1}{4} \text{ S } 22 \\ \text{S } 27 \\ 1916 \end{array}$$

- and raise a mound of stone, 2 ft. base, $1\frac{1}{2}$ ft. high, N. of cor.
- 50.00 Spur, slopes SW. Descend 220 ft.
 79.90 The cor. of secs. 21, 22, 27 and 28.
 Land, mountainous.
 Soil, rocky, 4th rate.
 Timber, scattering juniper.
 Undergrowth, mesquite, catclaw, ocotillo, cactus and greasewood.

From the cor. of secs. 27, 28, 33 and 34,
 West, on a true line, bet. secs. 28 and 33.
 Over mountainous land, thru. scattering timber and undergrowth.

Part of the Subdivision lines of Township 4 South, Range 30 East, 19

Chains.

- Ascend 15 ft.
- 1.50 Spur, slopes SW. Descend 160 ft.
- 12.00 Canyon, course S. Ascend 90 ft.
- 19.70 Spur, slopes SW. Descend 180 ft.
- 40.00 Set an iron post, 3 ft. long, 1 in. in diam., 10 ins. in the ground, in a mound of stone, for $\frac{1}{4}$ sec. cor., marked on brass cap,

$\frac{1}{4}$ S 28
S 33
1916

and raise a mound of stone, 2 ft. base, $1\frac{1}{2}$ ft. high, N. of cor.

- 40.20 Draw, course S. Ascend 60 ft.
 - 45.50 Spur, slopes SW. Descend 340 ft.
 - 55.20 Descend along S. slope.
 - 67.30 Spur, slopes SW. Continue descent.
 - 72.10 Canyon, course S. Ascend 230 ft.
 - 79.08 Intersect E. bdy. of sec. 29, 2.08 chs. N. $0^{\circ} 49'$ E. of the reestablished cor. of secs. 29 and 32, which is an iron post, hereinbefore described.
- At the point of intersection, set an iron post, 3 ft. long, 2 ins. diam., 12 ins. in the ground, in a mound of stone, for closing cor. of secs. 28 and 33, marked on brass cap,

T4S
S28 CC
S33
R30E
1916

and raise a mound of stone, 2 ft. base, $1\frac{1}{2}$ ft. high, E. of cor.

Land, mountainous.
Soil, rocky, 4th rate.
Timber, scattering juniper.
Undergrowth, catclaw, mesquite, ocotillo, scruboak, and cactus.

From the cor. of secs. 21, 22, 27 and 28,
West, on a true line, bet. secs. 21 and 28.
Over mountainous land, thru. scattering timber and undergrowth.

- Descend 45 ft.
- 1.00 Canyon, course SW. Ascend 45 ft.
- 2.00 Thence over rolling land.
- 5.00 Descend 30 ft.
- 10.00 Ascend 45 ft.
- 20.00 Thence over rolling land.
- 29.00 Descend 30 ft.
- 31.50 Ascend 105 ft.
- 40.00 Set an iron post, 3 ft. long, 1 in. in diam., 26 ins. in the ground, for $\frac{1}{4}$ sec. cor., marked on brass cap,

$\frac{1}{4}$ S 21
S 28
1916

and raise a mound of stone, 2 ft. base, $1\frac{1}{2}$ ft. high, N. of cor.

- 44.00 Spur, slopes S. Descend 30 ft.
- 47.35 Gulch, course SE. Ascend 120 ft.
- 52.30 Spur, slopes SE. Descend 115 ft.
- 62.70 Spur, slopes S. Descend W. slope.
- 65.60 Gulch, course S. Ascend 75 ft.
- 70.00 Spur, slopes SW. Descend 135 ft.
- 76.70 Gulch, course SW. Ascend 50 ft.

Chains.
78.18

Intersect E. bdy. of sec. 20, 2.27 chs. N. 0° 9' W. of the re-established cor. of secs. 20 and 29, which is an iron post, hereinbefore described.

At the point of intersection, set an iron post 3 ft. long, 2 ins. in diam., 12 ins. in the ground, in a mound of stone for closing cor. of secs. 21 and 28, marked on brass cap,

T4S
S21 CC
S28
R30E
1916

And raise a mound of stone, 2 ft. base, 1½ ft. high, E. of cor.

From this cor., a post in a mound of stone, marked National Forest Boundary, brs. S. 34° 15' W., 2.01 chs. dist.

Land, mountainous.

Soil, rocky, 4 to 12 ins. deep, 4th rate.

Timber, scattering juniper.

Undergrowth, scrub oak, mesquite, catclaw, ocotillo, cactus and greasewood.

GENERAL DESCRIPTION.

The portion of the township subdivided as hereinbefore described, is rolling, broken and mountainous, draining southwesterly, thru, dry gulches and canyons into the San Francisco River, which runs southerly thru. the west two tiers of secs. The soil is rocky, 4th rate, except some small portions of the area of secs. 25 and 26, where the soil is 2nd and 3rd rate. The only settlers are located in secs. 25 and 26. Henry Carr with house, fences and cultivated land is in NW.¼ of sec. 25, and Primitive Medena, with house, windmill, fences and cultivated land in SW.¼ of sec. 26.

There are no springs or permanent running water in the secs. surveyed under this group, and the only improvements are those of the settlers mentioned.

No evidence of valuable mineral was found.

The unsurveyed portion of the township is very rough and mountainous.

A scattering growth of timber and undergrowth is found over all the secs.

One road bearing NE. and SW. is the only one in the secs. surveyed under this group.

CERTIFICATE OF UNITED STATES SURVEYOR.

I, William B. Kimmel, U. S. Surveyor, hereby certify upon honor that, in pursuance of special instructions received from the U. S. Surveyor General, for Group 65, Arizona, bearing date of the 5th day of April, 1916, I have well, faithfully, and truly in my own proper person, and in strict conformity with said instructions, the Manual of Surveying Instructions, and the laws of the United States, ~~retraced~~ retraced all those parts or portions of the South boundary and subdivision lines, and resurveyed all those parts of portions of the subdivision lines, and surveyed all those parts or portions of the East boundary and subdivision lines, all of TOWNSHIP 4 SOUTH RANGE 30 EAST, of the Gila and Salt River Base and Meridian, in the State of Arizona, which are represented in the foregoing field notes ^{and by diagram on page 2 hereof} as having been executed by me, and under my direction; and that all the corners of said retracement, resurvey and survey have been established and perpetuated in strict accordance with the Manual of Surveying Instructions, and the special written instructions of the U. S. Surveyor General, for Group 65, Arizona and in the specific manner described in the field notes, and that the foregoing are the original field notes of such ~~survey~~ retracement, resurvey and survey.

William B. Kimmel
U. S. Surveyor.

APPROVAL.

OFFICE OF THE UNITED STATES SURVEYOR GENERAL,

Phoenix, Arizona, August 2, 1919.

The foregoing field notes of the ~~survey~~ retracement of a Part of the South Boundary and Subdivision Lines of Township 4 South, Range 30 East, the Resurvey of a Part of the Subdivision Lines of Township 4 South, Range 30 East, and Survey of a Part of the East Boundary and Subdivision Lines of Township 4 South, Range 30 East, of the Gila and Salt River Base and Meridian, in the State of Arizona

executed by William B. Kimmel, U. S. Surveyor under his special instructions dated April 5, 1916 for Group 65 Arizona, having been critically examined, and the necessary corrections and explanations made, the said field notes, and the ~~surveys~~ retracements, resurveys and surveys they describe, are hereby approved.

Frank B. Smith
U. S. Surveyor General.

I certify that the foregoing transcript of the field notes of the above described surveys in _____, ~~has been correctly copied from the original notes on file in this office.~~