

3171

3286

Book "G"

4-679

BOOK 3286

# FIELD NOTES

## OF THE RETRACEMENT OF

~~The First Standard Parallel South through part of Range 26 East~~

~~of the RESURVEY of~~

~~The First Standard Parallel South through part of Range 27 East~~

~~part of the SURVEY of~~

~~East, and part of North and West Boundaries of~~

~~and Part of SUBDIVISIONS of~~

TOWNSHIP 5 SOUTH, RANGE 27 EAST,

*Of the Gila and Salt River Base and Meridian,*

*In the State of Arizona,*

### EXECUTED BY

William B. Kimmel, U.S. Surveyor,

and

Guy R. Veal, U.S. Transitman,

*In the capacity of U.S. Surveyor, under Special Instructions dated April 5, 1916,*

*issued by the United States Surveyor General to govern surveys included in Group*

*No. 65, Arizona, which were approved by the Commissioner of the General Land*

*Office, April 19, 1916, and Assignment Instructions dated August 15, 1916*

Retracement,  
Resurvey and Survey commenced December 1, 1916

Retracement,  
Resurvey and Survey completed November 26, 1919

3286

3286

1A  
318

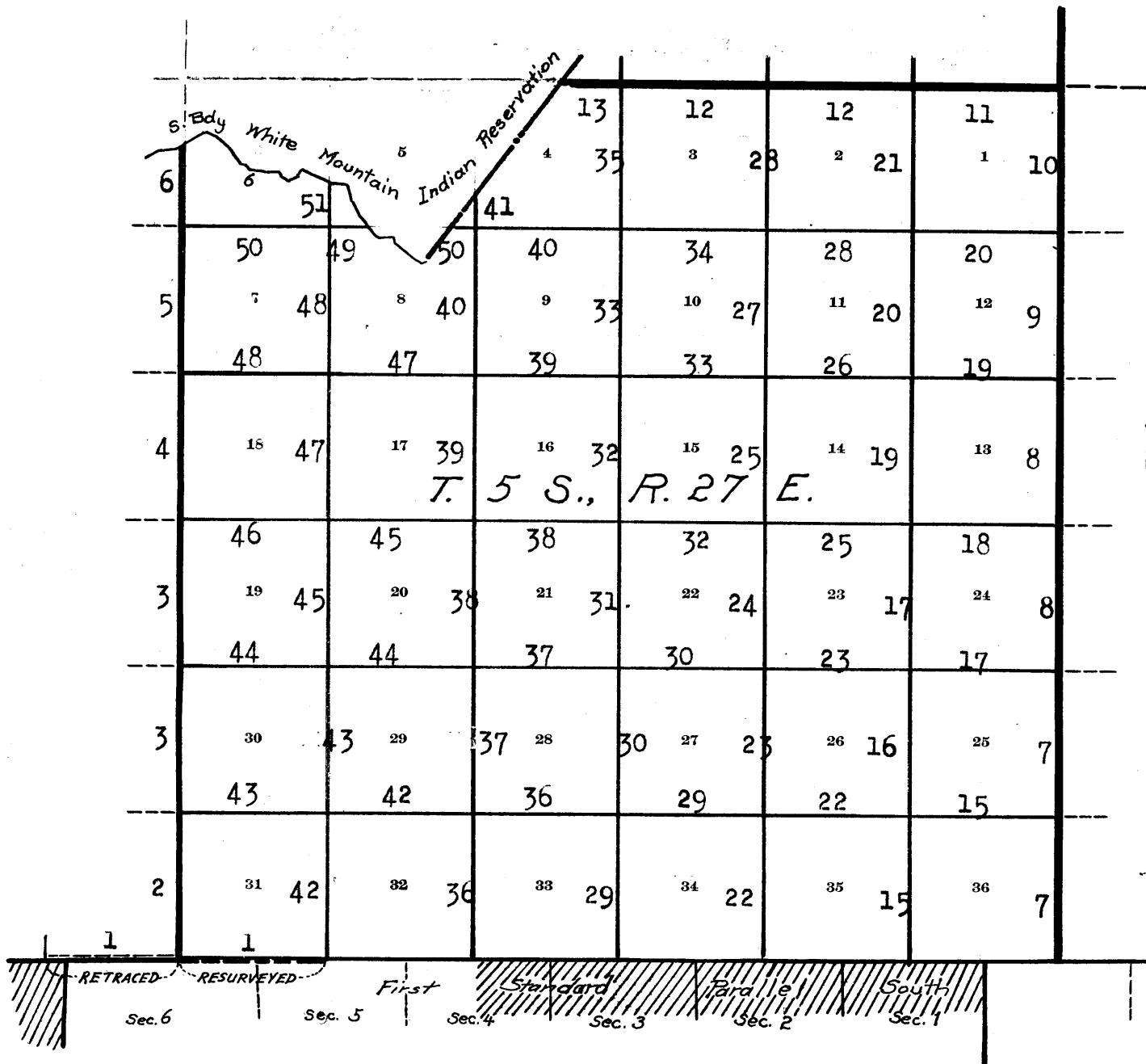
BOOK 3286

3286

Book "G"

Group 65, Arizona

INDEX DIAGRAM.



- Lines surveyed under this group ( Group 65 )
- · — · — Lines retraced or resurveyed under this group
- · — · — Lines resurveyed under Group 87
- Accepted surveys
- Unsurveyed lines, theoretical positions of
- ////// Areas as per accepted plats on file.

Return to the standard cor. of secs. 31 and 32, on the S. bdy. of T. 5 S., R. 27 E., which is a malpais stone, 6x10x7 ins. above ground, firmly set, mkd. and witnessed as described by the Surveyor General, West on a random line along the 1st. Stand. Par. S., making diligent search at intervals of 40.00 chs. for the original cors., and at

Chains

Retracements, resurveys and surveys hereinafter described executed on dates shown on diagram on p. 53 hereof by Wm. B. Kimmel, U. S. Surveyor, and Guy R. Veal, U. S. Transitman, using Young and Son's light Mountain transit No. 8523, with Smith Solar attachment, and Buff Solar Transit No. 9939. These instruments were fully equipped and conform to the specifications of the General Land Office. The adjustments of both instruments were examined and approved by the Assistant Supervisor of Surveys, conditional upon satisfactory field test, a record of which follows herewith.

Observation with Buff solar transit No. 9939. Nov. 12, 1919, at cor. No. 14, White Mountain Indian Reservation, in latitude  $33^{\circ} 03' N.$ , longitude  $109^{\circ} 35' W.$ , at 10h. a.m., app.t., I set off  $17^{\circ} 24' 30'' S.$  on the decl. arc;  $33^{\circ} 03' N.$  on the latitude arc; and determine a meridian with the solar, whence I turn  $42^{\circ} 11'$  to the E. and set a flag, about 40.00 chs. dist.; then to test this indication of the solar I make a series of three altitude observations of the sun for azimuth, each with the telescope in direct and reversed positions, observing opposite limbs of the sun, and reading horizontal deflection angles from the flag to the sun:

Observation.	Telescope	Sun.	Watch time	Vertical angle.	Horizontal angle from flag to sun
1st.	Direct.	p	10h 12m	$32^{\circ} 33'$	$9^{\circ} 45'$ to W.
	Reversed		10h 14m	$33^{\circ} 33'$	$11^{\circ} 30'$ to W.
	Mean	d		$32^{\circ} 33' 30''$	$10^{\circ} 37' 30''$ to W.
2nd.	Direct	q	Mean	$32^{\circ} 40' 30''$	$10^{\circ} 41'$ to W.
	Reversed			$33^{\circ} 46' 30''$	$11^{\circ} 20'$ to W.
	Mean	b		$33^{\circ} 13' 30''$	$11^{\circ} 00' 30''$ to W.
3rd.	Direct	p	time.	$32^{\circ} 48'$	$10^{\circ} 19' 30''$ to W.
	Reversed		10h 15m	$33^{\circ} 57' 30''$	$12^{\circ} 25'$ to W.
	Mean	d		$33^{\circ} 22' 45''$	$11^{\circ} 22' 15''$ to W.

By 1st. obsn, flag bears S.  $42^{\circ} 12' 00'' E.$   
 By 2nd. obsn. flag bears S.  $42^{\circ} 11' 30'' E.$   
 By 3rd. obsn. flag bears S.  $42^{\circ} 11' 00'' E.$   
 Mean true bearing of flag S.  $42^{\circ} 11' 30'' E.$   
 Indicated error of solar attachment  $30''$

Retracement: 1st Stand. Par. S., thru part of Rs. 26 and 27 East  
 Beginning at the standard cor. of secs. 31 and 32, on the S. bdy. of T. 5 S., R. 27 E., which is a malpais stone, 6x10x7 ins. above ground, firmly set, mkd. and witnessed as described by the Surveyor General, West on a random line along the 1st. Stand. Par. S., making diligent search at intervals of 40.00 chs. for the original cors., and at  
 160.48 Fall 69 lks. S. of the stand. cor. of secs. 35 and 36, T. 5 S., R. 26 E., which is a stone, 4x8x8 ins. above ground, firmly set, mkd. and witnessed as described by the Surveyor General,  
 The true course of the line bet. the stand. cor. of secs. 31 and 32, T. 5 S., R. 27 E., and the stand. cor. of secs. 35 and 36, T. 5 S., R. 26 E., is therefore, N.  $89^{\circ} 45' W.$ ; and the length of each mile is 80.24 chs.

Resurvey: 1st Stand. Par. S. thru part of Range 27 East.

I return to the standard cor. of secs. 31 and 32;  
 Thence  
 N.  $89^{\circ} 45' W.$  on a true line along the S. Bdy. of Sec. 31,

Resurvey of part of the 1st. Stand. Par. S. through R. 27 E.

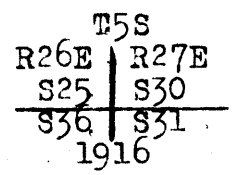
<p>Chains</p> <p>13.50</p> <p>40.12</p> <p>47.35</p> <p>58.96</p> <p>65.35</p> <p>74.25</p> <p>80.24</p>	<p>Over mountainous land, through scattering timber and undergrowth.</p> <p>Desc. 145 ft.</p> <p>Asc. 290 ft.</p> <p>Set an iron post, 3 ft. long, 1 in. diam., 26 ins. in the ground, for reestablished stand. <math>\frac{1}{4}</math> sec. cor., with brass cap mkd.</p> <p style="text-align: center;">S C S31 <math>\frac{1}{4}</math> 1916</p> <p>Raise a mound of stone, 2 ft. base, <math>1\frac{1}{2}</math> ft. high, N. of cor.</p> <p>Desc. 100 ft.</p> <p>Gulch, course NE. Asc. 250 ft.</p> <p>Spur, slopes N. Desc. 100 ft.</p> <p>Gulch, course N. Asc. 340 ft.</p> <p>Thence along N. slope.</p> <p>Set an iron post, 3 ft. long, 3 ins. diam., 24 ins. in the ground, for reestablished stand. cor. of Ts. 5 S., Rs. 26 and 27 E., with brass cap mkd.</p> <p style="text-align: center;">S. C T5S R26E   R27E 336   S31 1916</p> <p>from which, A cedar, 18 ins. diam., bears N. 26° E., 165 lks. dist., mkd. SC T5S R27E S31 BT.</p> <p>No other trees within limits. Raise a mound of stone, 2 ft. base, <math>1\frac{1}{2}</math> ft. high, N. of cor.</p> <p>Land, mountainous.</p> <p>Soil, rocky, 4th. rate.</p> <p>Timber, scrub cedar.</p> <p>Undergrowth, catclaw, cactus and mesquite.</p>
--	---

Survey of part of the W. bdy. of T. 5 S., R 27 E.

<p>7.75</p> <p>10.55</p> <p>17.05</p> <p>19.75</p> <p>24.56</p> <p>31.20</p> <p>40.00</p> <p>46.75</p> <p>49.55</p> <p>53.50</p> <p>57.55</p> <p>66.35</p> <p>78.56</p> <p>80.00</p>	<p>Beginning at the reestablished cor. of secs. 31 and 36, hereinbefore described,</p> <p>North on a true line bet. secs. 31 and 36, over mountainous land, through scattering timber and undergrowth.</p> <p>Desc. 355 ft.</p> <p>Draw, course NE. Asc. 30 ft.</p> <p>Spur, slopes NE. Desc. 190 ft.</p> <p>Gulch, course NE. Asc: 15 ft.</p> <p>Desc. 70 ft.</p> <p>Asc. 20 ft.</p> <p>Desc. 105 ft.</p> <p>Set an iron post, 3 ft. long, 1 in. diam., 15 ins. in the ground, in a mound of stone, for <math>\frac{1}{4}</math> sec. cor., with brass cap mkd.</p> <p style="text-align: center;"><math>\frac{1}{4}</math> S36   S31 1916</p> <p>Raise a mound of stone, 2 ft. base, <math>1\frac{1}{2}</math> ft. high, W. of cor.</p> <p>Gulch, course NE. Asc, 40 ft.</p> <p>Spur, slopes E. Desc. 40 ft.</p> <p>Gulch, course E. Asc. 60 ft.</p> <p>Spur, slopes SE. Desc. 20 ft.</p> <p>Gulch, course SE. Thence, along W. slope</p> <p>Gulch, course SW.</p> <p>Set an iron post, 3 ft. long, 2 ins. diam., 28 ins. in the ground, in a mound of stone, for cor. of secs. 25, 30, 31 and 36, with brass cap mkd.</p>
--	--

Survey of part of the W. bdy. of T. 5 S., R. 27 E.

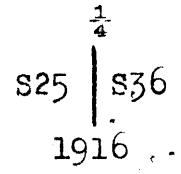
Chains



from which,  
 A catclaw, 4 ins. diam., bears S, 55° W., 287 lks. dist.,  
 mkd. T5S R26E S36 BT.  
 No other trees within limits. Raise a mound of stone,  
 2 ft. base, 1½ ft. high, W. of cor.  
 Land, mountainous.  
 Soil, rocky, 4th. rate.  
 Timber, scattering cedar and catclaw.  
 Undergrowth, mesquite, cactus and ocotilla.

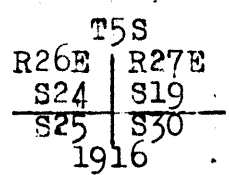
Thence,  
 North bet. secs. 25 and 30, over mountainous land, through  
 scattering timber and undergrowth.

- Asc. 595 ft.
- 26.70 Main divide of the Gila Range, bears N. and SW.  
Thence, along top of divide.
- 29.80 Divide, bears NE. and S. Desc. 740 ft.
- 40.00 Set an iron post, 3 ft. long, 1 in. diam., 14 ins. in  
the ground, in a mound of stone, for ¼ sec. cor.  
with brass cap mkd.



from which,  
 A pinon, 10 ins. diam., bears N. 54° E., 438 lks. dist.,  
 mkd. ¼ S30 BT.  
 No other trees within limits. Raise a mound of stone,  
 2 ft. base, 1½ ft. high, W. of cor.

- 55.85 Trail, bears NW. and SE.
- 62.85 Gulch, course NW. Thence, along W. slope.
- 69.60 Trail, bears E. and W.
- 69.80 Wire fence, bears NE. and SW.
- 71.55 Gulch, course SW. Asc. 115 ft.
- 80.00 Set an iron post, 3 ft. long, 2 ins. diam., 10 ins. in  
the ground, in a mound of stone, for cor. of secs.  
19, 24, 25 and 30, with brass cap mkd.



Raise a mound of stone, 2 ft. base, 1½ ft. high, W.  
 of cor.  
 Land, mountainous.  
 Soil, rocky, 4th. rate.  
 Timber, scattering cedar and pinon.  
 Undergrowth, scrub oak, mesquite, cactus, catclaw,  
 ocotilla and manzanita.

Thence,  
 North bet. secs. 19 and 24, over mountainous land, through  
 scattering timber and undergrowth.

- Asc. 175 ft.
- 2.35 Top of cliff, 30 ft. high, bears NE. and SW. Continue  
ascent.
- 8.00 Spur, slopes S. 10° E. Thence, along E. slope.
- 15.00 Main divide of the Gila Range, bears E. and W.  
Desc. 90 ft.

## Survey of part of the W. bdy. of T. 5 S., R. 27 E.

Chains

- 22.15 Gulch, course E. Asc. 60 ft.  
 26.00 Spur, slopes E. Desc. 85 ft.  
 34.15 Gulch, course E. Asc. 135 ft.  
 40.00 Set an iron post, 3 ft. long, 1 in. diam., 16 ins. in the ground, in a mound of stone, for  $\frac{1}{4}$  sec. cor., with brass cap mkd.

$$\begin{array}{c} \frac{1}{4} \\ \text{S24} | \text{S19} \end{array}$$

1916

- Raise a mound of stone, 2 ft. base,  $1\frac{1}{2}$  ft. high, W. of cor.  
 A cedar, 13 ins. diam., bears S.  $81^\circ$  E., 104 lks. dist., mkd.  $\frac{1}{4}$  S19 BT.  
 45.30 Spur, slopes E. Desc. 65 ft.  
 53.20 Gulch, course SE. Asc. 540 ft.  
 68.10 Spur, slopes SE. Desc. 110 ft.  
 80.00 Set an iron post, 3 ft. long, 2 ins. diam., 25 ins. in the ground, in a mound of stone, for cor. of secs. 13, 18, 19 and 24, with brass cap mkd.

$$\begin{array}{c} \text{T5S} \\ \text{R27E} | \text{R26E} \\ \text{S13} | \text{S18} \\ \hline \text{S24} | \text{S19} \end{array}$$

1917

- from which,  
 A pinon, 14 ins. diam., bears N.  $23^\circ$  E., 153 lks. dist., mkd. T5S R27E S18 BT.  
 A pinon, 8 ins. diam., bears S.  $23\frac{1}{4}^\circ$  E., 116 lks. dist., mkd. T5S R27E S19 BT.  
 A pinon, 8 ins. diam., bears S.  $21^\circ$  W., 97 lks. dist., mkd. T5S R26E S24 BT.  
 No other trees within limits. Raise a mound of stone 2 ft. base,  $1\frac{1}{2}$  ft. high. W. of cor.  
 Land, mountainous.  
 Soil, rocky, 4th. rate.  
 Timber, Scattering pinon and cedar.  
 Undergrowth, scrub oak, manzanita, mesquite, ocotilla, catclaw and cactus.

Thence,

- North on a true line bet. secs. 13 and 18, over mountainous land, through scattering timber and undergrowth.  
 Asc. 20 ft.  
 2.30 Desc. 130 ft. along E. slope, over cliffs.  
 8.80 Gulch, course SE. Asc. 395 ft.  
 27.00 Ridge, bears E. and W. Desc. 750 ft.  
 40.00 Set an iron post, 3 ft. long, 1 in. diam., 4 ins. in the ground, in a mound of stone, for  $\frac{1}{4}$  sec. cor., with brass cap mkd.

$$\begin{array}{c} \frac{1}{4} \\ \text{S13} | \text{S18} \end{array}$$

1917

- from which,  
 A pinon, 6 ins. diam., bears S.  $67\frac{1}{2}^\circ$  E., 68 lks. dist., mkd.  $\frac{1}{4}$  S18 BT.  
 A pinon, 8 ins. diam., bears S.  $88\frac{1}{2}^\circ$  W., 60 lks. dist., mkd.  $\frac{1}{4}$  S. 13 BT.  
 Raise a mound of stone, 2 ft. base,  $1\frac{1}{2}$  ft. high, W. of cor.  
 55.00 Gulch, course NE. Asc. 325 ft.  
 56.45 Trail, bears NE. and SW.  
 70.60 Spur, slopes NE. Desc. 140 ft.

Survey of the W. bdy. of T. 5 S., R. 27 E.

Chains

80.00 Set an iron post, 3 ft. long, 2 ins. diam., 6 ins. in the ground, in a mound of stone, for cor. of secs. 7, 12, 13 and 18, with brass cap mkd.

T5S	
R26E	R27E
S12	S7
<hr/>	
S13	S18
1917	

from which,

A pinon, 5 ins. diam., bears N. 67½° E., 58 lks. dist., mkd. T5S R27E S7 BT.

A pinon, 6 ins. diam., bears S. 12½° E., 90 lks. dist., mkd. T5S R27E S18 BT.

A pinon, 7 ins. diam., bears S. 9½° W., 42 lks. dist., mkd. T5S R26E S13 BT.

A pinon, 5 ins. diam., bears N. 79° W., 59 lks. dist., mkd. T5S R26E S12 BT.

Land, mountainous.

Soil, 4th. rate rocky.

Timber, scattering pine and cedar.

Undergrowth, ocotilla, scrub oak, manzanita, cactus, catclaw, and mesquite.

Thence,

North on a true line bet. secs. 7 and 12, over mountainous land, through scattering timber and undergrowth.

1.10 Draw, course E. Asc. 25 ft.

4.80 Spur, slopes E. Desc. 60 ft.

7.70 Gulch, course NE. Asc. 25 ft.

9.25 Spur, slopes E. Desc. 60 ft.

11.60 Gulch, course NW. Desc. 30 ft.

17.20 Top of ascent. Desc. 170 ft.

23.70 Gulch, course NE. Asc. 245 ft.

34.30 Spur, slopes E. Desc. 235 ft.

40.00 Set an iron post, 3 ft. long, 1 in. diam., 16 ins. in the ground for ¼ sec. cor., in a mound of stone, mkd. on brass cap

¼	
S12	S7
<hr/>	
1917	

from which,

A cedar, 5 ins. diam., bears S. 55° E., 6 lks. dist., mkd. ¼ S7 BT.

A cedar, 7 ins. diam., bears N. 84½° W., 52 lks. dist., mkd. ¼ S12 BT.

Raise a mound of stone, 2 ft. base, 1½ ft. high, W. of cor.

48.20 Gulch, course NE. Spring and water trough about 2chs. up gulch. Asc. 485 ft.

80.00 Set an iron post, 3 ft. long, 2 ins. diam., on bed rock, in a mound of stone, for cor. of secs. 1, 6, 7 and 12, with brass cap mkd.

T5S	
R26E	R27E
S1	S6
<hr/>	
S12	S7
1917	

from which,

A cedar, 5 ins. diam., bears N. 30¼° E., 31 lks. dist., mkd. T5S R27E S6 BT.

A pinon, 12 ins. diam., bears N. 78¼° W., 16 lks. dist., mkd. T5S R26E S1 BT.

No other trees within limits, Raise a mound of stone, 2 ft. base, 1½ ft. high, W. of post.

Land, mountainous.

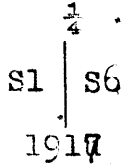
Survey of part of the W. bdy. of T5S. R27E.

Chains

Soil, rocky, 4th. rate.  
 Timber, scattering pinon and cedar.  
 Undergrowth, scrub oak, catclaw, mesquite, manzanita,  
 and cactus.

Thence,  
 North on a true line bet. secs. 1 and 6, over mountainous land, through scattering timber and undergrowth.  
 Asc. 20 ft.

- .2.80 Top of ascent; desc. 120 ft.
- 11.80 Gulch, course SW. Asc. 345 ft.
- 22.50 Cliff, 30 ft. high, bears E. and W. Spur, slopes SW. desc.
- 25.75 Draw, course SW. Asc. 105 ft.
- 29.60 Spur, slopes W. desc. 70 ft.
- 33.60 Gulch, course W. Asc. 230 ft.
- 40.00 Set an iron post, 3 ft. long, 1 in. diam., 18 ins. in the ground, in a mound of stone, for  $\frac{1}{4}$  sec. cor., with brass cap mkd.

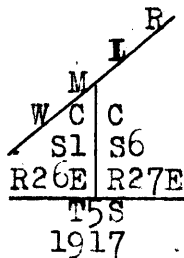


from which,  
 A cedar, 30 ins. diam., bears S.  $70\frac{1}{4}^\circ$  E., 184 lks. dist., mkd.  $\frac{1}{4}$  S6 BT.

No other trees within limits. Raise a mound of stone, 2 ft. base,  $1\frac{1}{2}$  ft. high, W. of post.

- 43.63 Intersect White Mountain Indian Reservation Boundry, at a point, 12.88 chs. S.  $64^\circ 33'$  W. of the 66 mile mon., which is an iron post, 3 ins. diam., properly set, mkd. and witnessed as described by H. L. Baldwin, Topographer, in his resurv. of part of S. Bdy. W.M.I.R. in 1915

At point of intersection,  
 Set an iron post, 3 ft. long, 2 ins. diam., 15 ins. in the ground for <sup>CLOSING</sup> cor. of Ts. 5 S., Rs. 26 and 27 E., with brass cap mkd.



from which,  
 A cedar, 12 ins. diam., bears S.  $9^\circ$  E., 110 lks. dist., mkd. T5S R27E S6 BT.

A pinon, 14 ins. diam., bears S.  $58\frac{1}{2}^\circ$  W., 404 lks. dist., mkd. T5S. R26 E. S1 BT.

Raise a mound of stone, 2 ft. base,  $1\frac{1}{2}$  ft. high, S. of post.

Land, mountainous.  
 Soil, rocky, 4th. rate.  
 Timber, scattering cedar and pinon.  
 Undergrowth, scrub oak, mesquite, cactus and catclaw,



Survey of the East hdy. of T. 5 S., R. 27 E.

Chains

Beginning at the stand. cor. of Ts. 5 S., Rs. 27 and 28 E., which is a malapais stone, 5x12x6 ins. above ground, mkd. and witnessed as described by the Surveyor General.

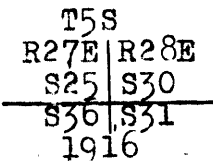
North on a true line bet. secs. 31 and 36, over mountainous land, through scattering timber and undergrowth. Asc.

- 1.20 Spur, slopes NE. Desc. 265 ft.
- 10.60 Top of perpendicular cliff, 50 ft. high, bears NW. and SE. Continue descent.
- 14.75 Trail, bears NW. and SE.
- 14.85 ~~30.00~~ Creek, 15 lks. wide, 4 ins. deep, course SE. Asc. 325 ft. (Gila Bonito Creek)
- 20.50 Top of broken cliff, bears NW. and SE. Continue ascent.
- 24.50 Spur, slopes W. Desc. 100 ft.
- 33.05 Gulch, course SW. Asc. 570 ft.
- 40.00 Set an iron post, 3 ft. long, 1 in. diam., 26 ins. in the ground for  $\frac{1}{4}$  sec. cor., with brass cap mkd.



Raise a mound of stone, 2 ft. base,  $1\frac{1}{2}$  ft. high, W. of cor.

- 45.50 Spur, slopes SW. Continue ascent.
- 69.00 Top of ascent, bears NW. and SE. Thence across mesa, slopes W.
- 80.00 Set an iron post, 3 ft. long, 2 ins. diam., 18 ins. in the ground in a mound of stone, for cor. of secs. 25 30, 31 and 36, with brass cap mkd.

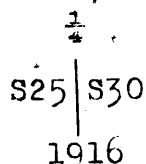


Raise a mound of stone, 2 ft. base,  $1\frac{1}{2}$  ft. high, W. of post.

Land, mountainous. Soil, rocky, 4th. rate. Timber, cottonwood, and sycamore along creek bottom, Undergrowth, greasewood, ocotilla, mesquite, catclaw and cactus,

North on a true line bet. secs. 25 and 30, over mountainous land, through scattering timber and undergrowth. Asc. 110 ft.

- 20.00 Thence over mesa.
- 21.30 Trail, bears E, and W.
- 24.00 Leave mesa, descend 200 ft.
- 33.00 Wash, 40 lks. wide, course W. Asc. 275 ft.
- 40.00 Set an iron post, 3 ft. long, 1 in. diam., 18 ins. in the ground for  $\frac{1}{4}$  sec. cor., with brass cap mkd.



Raise a mound of stone, 2 ft. base,  $1\frac{1}{2}$  ft. high, W. of cor.

- 45.80 Spur, slopes SW. Desc. 85 ft.
- 55.85 Gulch, course SW. Asc. 220 ft.
- 69.60 Spur, slopes SW. Desc. 45 ft.
- 80.00 Set an iron post, 3 ft. long, 2 ins. diam., 12 ins. in the ground, in a mound of stone, for cor. of secs.

## Survey of the East bdy. of T5S., R. 27 E.

Chains

19, 24, 25 and 30, with brass cap mkd.

T5S	
R27E	R28E
S24	S19
S25	S30
1916	

Raise a mound of stone, 2 ft. base,  $1\frac{1}{2}$  ft. high, W. of cor.

Land, mountainous.

Soil, rocky, 4th. rate.

Timber, none.

Undergrowth, greasewood, ocotilla, catclaw, mesquite and cactus.

Thence,

North on a true line bet. secs. 19 and 24, over mountainous land, through scattering timber and undergrowth.

Desc.

- 2.40 Gulch, course SW. Asc. 95 ft.
- 8.00 Spur, slopes SW. Desc. 145 ft.
- 20.40 Gulch, course SW. Asc. 250 ft.
- 32.10 Spur, slopes SW. Desc. 105 ft.
- 39.00 Draw, course W. Asc. 280 ft.
- 40.00 Set an iron post, 3 ft. long, 1 in. diam., 12 ins. in the ground, in a mound of stone, for  $\frac{1}{4}$  sec. cor., with brass cap mkd.

$\frac{1}{4}$	
S24	S19
1916	

Raise a mound of stone, 2 ft. base,  $1\frac{1}{2}$  ft. high, W. of cor.

- 43.30 Spur, slopes SW. Continue Asc.
- 51.45 Top of cliff, 40 ft. high, bears NW. and SE. Continue ascent.
- 59.00 Spur, slopes SW. Desc. 155 ft.
- 65.60 Cliff 60 ft. high, bears NE. and SW.
- 76.50 Asc. 15 ft.
- 78.90 Spur, slopes SW. Desc. 10 ft.
- 80.00 Set an iron post, 3 ft. long, 2 ins. diam., 6 ins. in the ground, in a mound of stone, for cor. of secs. 13, 18, 19 and 24, with brass cap mkd.

T5S	
R27E	R28E
S13	S18
S24	S19
1916	

Raise a mound of stone, 2 ft. base,  $1\frac{1}{2}$  ft. high, W. of cor.

Land, mountainous.

Soil, rocky, 4th. rate.

Timber, scattering cedar.

Undergrowth, greasewood, mesquite, catclaw, cactus, scrub oak and palo verde.

Thence,

North on a true line bet. secs. 13 and 18, over mountainous land, through scattering timber and undergrowth.

Desc. 100 ft.

- 8.45 Gulch, course SW. Asc. 165 ft.
- 16.20 Spur, slopes W. Desc. 10 ft.
- 21/70 Asc. 225 ft.
- 40.00 Set an iron post, 3 ft. long, 1 in. diam., 12 ins. in

Survey of the East bdy. of T. 5 S., R. 27 E.

Chains

the ground, in a mound of stone, for  $\frac{1}{4}$  sec. cor., with brass cap mkd.

$\frac{1}{4}$   
S13 S18

1916

Raise a mound of stone, 2 ft. base,  $1\frac{1}{2}$  ft. high, W. of cor.

- 55.70 Desc. 55 ft.
- 72.00 Spring, bears W. about 3.00 chs., dist., flows SW. Asc. 20 ft.
- 80.00 Set an iron post, 5 ft. long, 2 ins. diam., 24 ins. in the ground, for cor. of secs. 7, 12, 13, and 18, with brass cap mkd.

T5S  
R27E R28E  
S12 S7  

---

S13 S18  
1916

from which,  
 An ash, 9 ins. diam., bears N.80°E., 108 lks. dist., mkd. T5S R28E S7 BT.  
 A hackberry, 8 ins. diam., bears S.34°W., 85 lks. dist., mkd. T5S R27E S13 BT.  
 No other trees within limits. Raise a mound of stone, 2 ft. base,  $1\frac{1}{2}$  ft. high, W. of cor.  
 Land, mountainous.  
 Soil, rocky, 4th. rate.  
 Timber, scrub cedar.  
 Undergrowth, scrub oak, catclaw, mesquite, ocotilla, cactus and palo verde.

North on a true line bet. secs. 7 and 12, over mountainous land, through scattering timber and undergrowth, Asc. 170 ft.

- 10.00 Spur, slopes W. Desc.
- 14.90 Asc. 330 ft.
- 30.30 Spur, slopes W. Desc. 40 ft.
- 36.10 Draw, course SW. Asc. 345 ft.
- 40.00 Set an iron post, 5 ft. long, 1 in. diam., 26 ins. in the ground, for  $\frac{1}{4}$  sec. cor., with brass cap mkd.

$\frac{1}{4}$   
S12 S7  
1916

from which,  
 A cedar, 9 ins. diam., bears N.21°W., 132 lks. dist., mkd.  $\frac{1}{4}$  S12 BT.  
 No other trees within limits, Raise a mound of stone, 2 ft. base,  $1\frac{1}{2}$  ft. high, W. of cor.

- 46.70 Spur, slopes SW. Desc. 30 ft.
- 54.55 Asc. 65 ft.
- 55.40 Desc. 25 ft.
- 56.96 Asc. 90 ft.
- 62.20 Spur, slopes W. Desc. 85 ft.
- 75.35 Draw, course W. Asc. 65 ft.
- 80.00 Set an iron post, 3 ft. long, 2 ins. diam., 24 ins. in the ground, in a mound of stone, for cor. of secs. 1, 6, 7 and 12, with brass cap mkd.

T5S  
R27E R28E  
S1 S6  

---

S12 S7  
1916

Chains

from which,  
 A cedar, 24 ins. diam., bears N.65 $\frac{1}{2}$ °E., 271 lks. dist.,  
 mkd. T5S R28E S6 BT.  
 A cedar, 18 ins. diam., bears S.80 $\frac{1}{2}$ °W., 222 lks. dist.,  
 mkd. T5S R27E S12 BT.  
 A cedar, 10 ins. diam., bears N.80°W., 146 lks. dist.,  
 mkd. T5S R27E S1 BT.  
 No other trees within limits. Raies a mound of stone,  
 2 ft. base, 1 $\frac{1}{2}$  ft. high, W. of cor.  
 Land, mountainous.  
 Soil, rocky, 4th. rate.  
 Timber, scattering cedar.  
 Undergrowth, ocotilla, scrub oak, mesquite, catclaw and  
 cactus.

North on a true line bet. secs. 1 and 6, over mountainous  
 land, through scattering timber and undergrowth.  
 Asc. 100 ft.

7.35 Desc.  
 11.05 Draw, course SW. Asc. 295 ft.  
 34.50 Spur, slopes SW. Hence along W. slope.  
 40.00 Set an iron post, 3 ft. long, 1 in. diam., 12 ins. in  
 the ground, in a mound of stone, for  $\frac{1}{4}$  sec. cor.,  
 with brass cap mkd.

$\frac{1}{4}$   
 S1 S6

1916

Raise a mound of stone, 2 ft. base, 1 $\frac{1}{2}$  ft. high, W. of  
 cor.

-48.00 Spur, slopes W. Desc. 75 ft.  
 60.50 Gulch, course W. Asc. 220 ft.  
 68.60 Spur, slopes SW. Desc. 110 ft.  
 77.80 Head of gulch, course SW. Asc. 75 ft.  
 80.00 Set a volcanic stone, 20x10x8 ins. 16 ins. in the  
 ground, for cor. of Ts. 4 and 5 S., Rs. 27 and 28 E.  
 mkd. 6 notches on N. S. E. and W. edges, from which,  
 A cedar limb, 8 ins. diam., bears N.62 $\frac{1}{4}$ °E., 221 lks. dist.,  
 mkd. T4S R28E S31 BT.  
 A cedar, 10 ins. diam., bears S.76°E., 187 lks. dist.,  
 mkd. T5S R28E S6 BT.  
 No other trees within limits. Raise a mound of stone,  
 2 ft. base, 1 $\frac{1}{2}$  ft. high, S. of cor.  
 Land, mountainous.  
 Soil, rocky, 4th. rate.  
 Timber, scattering cedar.  
 Undergrowth, catclaw, mesquite, scrub oak, and cactus.

Chains.

Beginning at the cor. of Ts. 4 and 5 S., Rs. 27 and 28 E., hereinbefore described.

West on a true line bet. secs. 1 and 36, over mountainous land, through scattering timber and undergrowth. Desc. 615 ft.

20.00 Head of gulch, course SW. Continue descent along S. slope.

28.00 Spring, bears S. about 2 chs. dist. Asc. 60 ft.

35.38 Triangulation point on top of perpendicular cliff, bears NE, and SE. I set a flag ahead on line, vertical angle  $-33^\circ$ , from which point I measure a base, S.  $47^\circ 13' E.$ , 8.98 chs., from the S. end of which the flag set at the 35.38 ch. point bears N.  $50^\circ 07' E.$  The distance triangulated is given by the proportion.

$$\sin. \frac{8.98}{39^\circ 53'} = \frac{x}{\sin. 97^\circ 20'}$$

$$\log. 8.98 = 0.953276$$

$$\log. \sin. 97^\circ 20' = 9.996433-10$$

$$\log. \sin. 39^\circ 53' = 9.807011-10$$

$$1.142698 = \log. 13.89 \text{ chs.}$$

$$35.38 + 13.89 = 49.27 \text{ chs.}$$

49.27 Triangulation point 510 ft. below flag. the true point for  $\frac{1}{4}$  sec. cor. of secs. 1 and 36 being inaccessible, I measure 8.82 chs. E. and at,

40.45 Foot. of cliff, bears N. and S. Set an iron post, 3 ft. long, 1 in. diam., 6 ins. in the ground, in a mound of stone, for witness cor. to  $\frac{1}{4}$  sec. cor., with brass cap mkd.

$$\frac{\frac{1}{4} S36}{S1} = \frac{W C}{1916}$$

from which,  
A cedar, 12 in. diam., bears N.  $41\frac{1}{2}^\circ W.$ , 64 lks. dist., mkd.  $\frac{1}{4}$  S36 WCBT.

A live oak, 10 ins. diam., S.  $3^\circ E.$ , 86 lks. dist., mkd.  $\frac{1}{4}$  S1 WCBT.

Thence,  
West on a true line bet. secs. 1 and 36. Desc. 165 ft.

48.17 Gulch, course SW. Desc 35 ft.

49.27 Triangulation point. Thence along broken S. slope. Desc. 80. ft.

54.00 Asc. 20 ft.

60.35 Desc.

67.20 Foot of cliff, 50 ft. high, bears N. and S. Asc. 50 ft.

67.61 At this point I offset N. 2.07 chs. and run W. 1.26 chs. thence, S, 2.07 chs. to a point on true line, 68.87 chs. W. of the township cor.

68.87 From this point, cliff, 80 ft. high, bearing N. and S., bears E. 40 lks. dist. Desc. 210 ft.

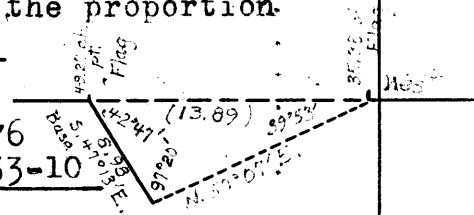
75.00 Draw, course SW. Asc.

80.00 Set an iron post, 3 ft. long, 2 ins. diam., 14 ins. in the ground, for cor. of secs. 1, 2, 35 and 36, with brass cap mkd.

$$\frac{T4S R27E}{S35 | S36} = \frac{S2 | S1}{T5S}{1916}$$

from which,  
A cedar, 10 ins. diam., bears N.  $88^\circ W.$ , 386 lks. dist., mkd. T4S R27E S35 BT.

No other trees within limits. Raise a mound of stone, 2 ft. base,  $1\frac{1}{2}$  ft. high, W. of cor.



Chains

Land, mountainous.  
Soil, rocky, 4th. rate.  
Timber, scattering cedar, pinon and oak.  
Undergrowth, scrub oak, ocotilla, cactus, mesquite and  
catclaw.

Thence,  
West on a true line bet. secs. 2 and 35, over mountainous  
land, through scattering timber and undergrowth.  
Desc. 90 ft.

- 11.00 Enter wash, course SW.
- 14.00 Leave wash, course SW.
- 22.10 Spur, slopes SW. Trail, bears NE. and SW. Desc. 60 ft.
- 25.00 Gulch, course S. Spring, bears N. about 2 chs. dist.
- 35.00 Ridge, bears NE. and SW. 325 ft. above gulch.  
Thence along N. slope.
- 40.00 Set an iron post, 3 ft. long, 1 in. diam., 12 ins. in  
the ground, in a mound of stone, for  $\frac{1}{4}$  sec. cor.,  
with brass cap mkd.

S35
+ S2
1916

Raise a mound of stone, 2 ft. base, 1 1/2 ft. high, N.  
of cor.

Descend rocky, NW. slope 250 ft.

- 58.40 Gulch, course SW. Asc. 160 ft.
- 74.00 Spur, slopes SW. Thence, across top of spur.
- 80.00 Set an iron post, 3 ft. long, 2 ins. diam., 8 ins. in  
the ground, in a mound of stone, for cor. of secs.  
2, 3, 34 and 35, with brass cap mkd.

T4S R27E
S34   S35
S3   S2
T5S
1916

from which,  
A mesquite, 12 ins. diam., bears N. 71 1/2° W., 250 lks. dist.,  
mkd. T5S R27E S3 BT.

No other trees within limits. Raise a mound of stone,  
2 ft. base, 1 1/2 ft. high, W. of cor.

Land, mountainous.  
Soil, rocky, 4th. rate.  
Timber, scrub cedar.  
Undergrowth, oak brush, mesquite, ocotilla, catclaw and  
cactus.

Thence,  
West on a true line bet. secs. 3 and 34, over mountainous  
land, through scattering timber and undergrowth.  
Desc. 225 ft.

- 17.41 Triangulation point. I set a flag ahead on line, on W.  
edge of Bonito Canyon, from which point, I measure  
a base South 8.00 chs., from the S. end of which  
the flag set at the 17.41 ch. point, bears N. 73° 31' E.  
The distance triangulated is given by the proportion

$$8.00 \times \tan. 73^\circ 31' = X$$

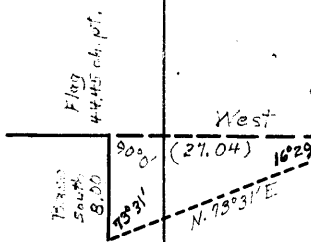
$$\log. 8.00 = 0.903090$$

$$\log. \tan. 73^\circ 31' = 10.528859$$

$$1.431949 = \log. 27.04.$$

17.41 + 27.04 = 44.45 chs.

- 44.45 Top of W. edge of Bonito Canyon, bears N. and S.  
Thence,  
East over canyon wall. Desc. 100 ft.



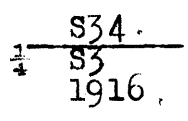
BOOK 3286

13

Part of the N. bdy. of T. 5 S. R. 27 E.

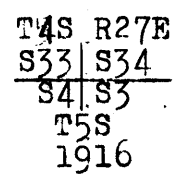
Chains

- 3.95 Gila Bonito Creek, 30 lks. wide, course S.
- .4.45 Set an iron post, 3 ft. long, 1 in. diam., 26 ins. in the ground for  $\frac{1}{4}$  sec. cor., with brass cap mkd.



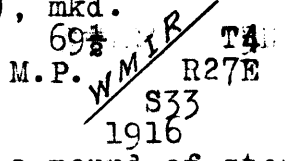
from which,  
 A sycamore, 24 ins. diam., bears N. 9° W., 40 lks. dist., mkd.  $\frac{1}{4}$  S34 BT.  
 A walnut, 12 ins. diam., bears S. 23 $\frac{1}{2}$ ° E., 93 lks. dist., mkd.  $\frac{1}{4}$  S3 BT.

- Thence, West on a true line bet. secs. 3 and 34.
- 44.45 Triangulation point. Thence, over level bench, through dense catclaws.
- 50.44 Leave dense catclaws, bears N. and S. Asc. 40 ft.
- 56.44 Asc. SE. slope 150 ft.
- 60.96 Wash, 60 lks. wide, 40 ft. deep, course SE. Asc. 90 ft.
- 80.00 Set an iron post, 3 ft. long, 2 ins. diam., 24 ins. in the ground for cor. of secs. 3, 4, 33 and 34, with brass cap mkd.

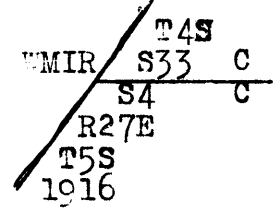


from which,  
 A cedar, 16 ins. diam., bears N. 37 $\frac{1}{2}$ ° E., 145 lks. dist., mkd. T4S R27E S34 BT.  
 A mesquite, 5 ins. diam., bears S. 5° E., 189 lks. dist., mkd. T5S R27E S3 BT.  
 A mesquite 6 ins. diam., bears S. 48° W., 265 lks. dist., mkd. T5S R27E S4 BT.  
 A mesquite, 6 ins. diam., bears N. 74 $\frac{1}{2}$ ° W., 350 lks. dist., mkd. T4S R27E S33 BT.  
 Land, mountainous.  
 Soil, rocky, 4th. rate.  
 Timber, poplar, walnut and sycamore along creek bottom. scattering cedar elsewhere.

- Thence, West on a true line bet. secs. 4 and 33, over mountainous land, through scattering timber and undergrowth. Asc. 215 ft.
- 9.40 Ridge, bears NW. and SE. Thence, over rolling land. Desc. 60 ft.
- 20.40 Draw, course SE. Asc. 40 ft.
- 29.30 Spur, slopes SW.
- 31.72 Intersect White Mountain Indian Reservation boundary, at a point, 6.27 chs. S. 36° 54' W. of the 69 $\frac{1}{2}$  mile post, which is an iron post, 1 in. diam., 26 ins. in above ground, firmly set, (Reestablished under current Group No. 87), mkd. on brass cap



witnessed by a mound of stone, 2 ft. base, 1 $\frac{1}{2}$  ft. high, NW. of post.  
 At point of intersection,  
 Set an iron post, 3 ft. long, 3 ins. diam., 24 ins. in the ground, for closing cor. of fractl. Ts. 4 and 5 S., Rs. 27 E., with brass cap mkd.



Survey of Part of the N. bdy. of T. 5 S., R. 27 E.

Chains

Raise a mound of stone, 2 ft. base, 1 1/2 ft. high, E. of cor.  
 Land, mountainous.  
 Soil, rocky, 3rd. rate.  
 Timber, scattering cedar.  
 Undergrowth, mesquite, catclaw, ocotilla and cactus.

Boundries of T. 5 S., R. 27 E.  
 Latitudes departures and closing errors.

Line designated,	True bearing,	Dist.,	Latitudes.		Departures.	
			N.	S.	E.	W.
		chs.	chs.	chs.	chs.	chs.
South Boundary	West	400.00				400.00
	N.89°45'W.	80.24	0.34			80.24
West Boundary	North	443.63	443.63			
S. Bdy. White Mountain Ind'n Reservation	N.64°33'E.	12.88	5.53		11.63	
	N.64°43'E.	0.60			0.54	
	S.48°45'E.	5.70		3.76	4.29	
	S.38°00'E.	14.10		11.11	8.68	
	S.57°45'E.	8.30		4.43	7.02	
	S.77°00'E.	2.20		0.50	2.14	
	S.69°15'E.	5.00		1.77	4.68	
	S.76°00'E.	1.10		0.27	1.07	
	S.69°30'E.	3.00		1.05	2.81	
	S.80°15'E.	6.20		1.05	6.11	
	S.81°00'E.	5.50		0.86	5.43	
	S.67°45'E.	3.20		1.21	2.96	
	East	3.10			3.10	
	N.25°00'E.	3.40	3.08		1.44	
	S.72°40'E.	21.14		6.30	20.18	
	S.73°45'E.	10.24		2.87	9.83	
	S.16°15'E.	8.42		8.08	2.36	
	S.29°30'E.	7.80		6.79	3.84	
	S.51°45'E.	11.00		6.81	8.64	
	S.79°00'E.	1.60		0.31	1.57	
S.81°15'E.	3.90	0.59		3.86		
S.51°30'E.	2.00		1.25	1.57		
S.57°45'E.	14.00		7.47	11.84		
S.53°00'E.	7.30		4.39	5.83		
S.84°00'E.	2.70		0.28	2.69		
S.88°30'E.	1.00		0.03	1.00		
N.36°54'E.	121.23	96.95		72.79		
North Boundary	East	271.72			271.72	
East Boundary	South	480.00		480.00		
Convergency					0.45	
Totals			550.38	550.59	480.07	480.24
				550.38		480.07
Error in latitude				0.21		
Error in departure						0.17



Chains

Beginning at the stand. cor. of secs. 35 and 36, on the S. bdy. of the Tp., which is a lava stone, 9x9x9 ins. above ground, firmly set, mkd. and witnessed as described by the Surveyor General.

N. 0° 01' W. on a true line bet. secs. 35 and 36, over mountainous land, through scattering undergrowth. Asc. 55 ft.

9.50 Ridge, bears E. and W. Desc. 230 ft.

24.30 Gulch, course NE. Asc. 80 ft.

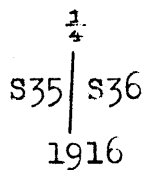
29.75 Trail, bears NE. and SW.

31.40 Spur, slopes NE. Desc. 80 ft.

35.10 Gulch, course NE. Asc. 30 ft.

39.00 Spur, slopes E. Desc. 115 ft.

40.00 Set an iron post, 3 ft. long, 1 in. diam., 12 ins. in the ground, in a mound of stone, for 1/4 sec. cor., with brass cap mkd.



Raise a mound of stone, 2 ft. base, 1 1/2 ft. high, W. of post.

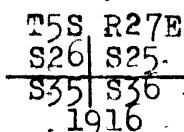
42.60 Canyon, course SE. Asc. 165 ft.

52.00 Spur, slopes SE. Desc. 260 ft.

62.60 Gulch, course E. Asc. 125 ft.

68.00 Spur, slopes E. Desc. 75 ft.

80.00 Set an iron post, 3 ft. long, 2 ins. diam., 6 ins. in the ground, in a mound of stone, for cor. of secs. 25, 26, 35 and 36, with brass cap mkd.



Raise a mound of stone, 2 ft. base, 1 1/2 ft. high, W. of post.

Land, mountainous.

Soil, rocky, 4th. rate.

No timber.

Undergrowth, greasewood, ocotilla, mesquite, cactus and catclaw.

Thence,

East on a random line bet. secs. 25 and 36.

40.00 Set temp. 1/4 sec. cor.

80.05 Intersect the E. bdy. of the Tp. at a point, 14 lks. N. of the cor. of secs. 25, 30, 31 and 36, hereinbefore described.

Thence,

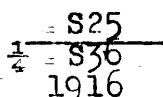
N. 89° 54' W. on a true line bet. secs. 25 and 36, over mountainous land, through scattering undergrowth.

Desc. 255 ft.

21.40 Gulch, course SW. Desc. 80 ft.

31.50 Spur, slopes SW. Desc. 45 ft.

40.02 1/4 Set an iron post, 3 ft. long, 1 in. diam., 18 ins. in the ground, in a mound of stone, for 1/4 sec. cor., with brass cap mkd.



Raise a mound of stone, 2 ft. base, 1 1/2 ft. high, N. of cor.

Asc. 10 ft.

44.00 Spur, slopes SW. Desc. 460 ft.

51.60 Trail, bears NE. and SW.

62.70 Trail, bears NE. and SW.

64.50 Spur, slopes NW. Desc. 460 ft.

Survey of part of the Subdivisions of T. 5 S., R. 27 E.

Chains

- 71.20 Enter creek bed, bears N. and S.
- 74.00 Trail, bears N. and S.
- 78.40 Bonito Creek, 10 lks. wide, 3 ins. deep, course SE., Comes from NE. (Gila Bonito Creek)  
Asc.
- 78.95 Top of perpendicular cliff, 165 ft. high, bears N. and S. Continue ascent.
- 80.05 The cor. of secs. 25, 26, 35 and 36, Land, mountainous. Soil, rocky, 4th. rate. Timber, cottonwood, sycamore and mesquite along creek bottom. Undergrowth, greasewood, mesquite, ocotilla, catclaw and cactus.

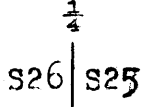
Thence

N. 0° 01' W. on a true line bet. secs. 25 and 26, over mountainous land, through scattering undergrowth. Desc. 25 ft.

- 0.50 Point for triangulation across head of gulch, course E., at approximately 3 chs. I set a point ahead on line, and measure a base, N. 89° 59' E., 5.57 chs; from the E. end of which the flag ahead bears N. 38° 18' W. The distance is given by  $\cot. 38^\circ 17' \times 5.57 \text{ chs.}$ , or  $1.26698 \times 5.57$ , which is 7.06 chs.  $0.50 + 7.06 = 7.56 \text{ chs.}$

- 7.56 Triangulation point on cliff, 100 ft. high, bears N. 10° E., and S. 10° W. Thence, along broken E. slope.

- 13.80 Desc. 150 ft.
- 16.00 Trail, bears NW. and SE.
- 22.00 Trail, bears NW. and SE.
- 23.30 Bonito Creek, 15 lks. wide, course E. Desc. 250 ft. (Gila Bonito Creek)
- 23.75 Pole fence, bears E. and W.
- 25.45 Base of cliff, 90 ft. high, bears E. and W. Old cliff dwellings bear S. 80° W. about 14.00 chs. dist. Asc.
- 27.10 Trail, bears E. and W.
- 39.30 Spur, slopes W. Desc.
- 40.00 Set an iron post, 3 ft. long, 1 in. diam., 6 ins. in the ground, in a mound of stone, for  $\frac{1}{4}$  sec. cor., with brass cap mkd.



1916

Raise a mound of stone, 2 ft. base, 1 1/2 ft. high, W. of cor.

From this cor., lower end of corn field belonging to Jose Bajas, bears N. 70° W., 25.00 chs. dist., House not in sight, but about 1/4 mile up creek.

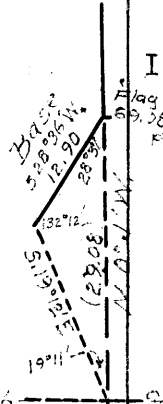
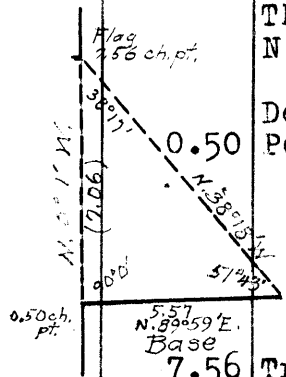
I flag this cor., and set a point ahead on line, from which I measure a base S. 28° 36' W., 12.90 chs., from the S. end of which, flag at the  $\frac{1}{4}$  sec. cor., bears S. 19° 12' E. The distance triangulated is given by the proportion

$$\frac{12.90}{\sin. 19^\circ 11'} = \frac{X}{\sin. 132^\circ 12'} \quad \text{or}$$

$$\begin{aligned} \log. 12.90 &= 1.110590 \\ \log. \sin. 132^\circ 12' &= 9.869704-10 \\ \log. \sin. 19^\circ 11' &= 9.516657-10 \\ \hline &= 1.463637 = \log. 29.08 \end{aligned}$$

which added to 40.00 chs. gives

- 69.08 Triangulation point. The approximate distances to items of topography triangulated across is as follows:-



Sec 26

Sec 25

Survey of part of the Subdivisions of T. 5 S., R. 27 E.

Chains									
43.00	Box canyon 100 ft. deep, course W.								
47.00	Spur, slopes SW.								
50.00	Box canyon, 100 ft. deep, course SW. Asc.								
69.08	Triangulation point. Asc. 140 ft.								
72.00	Spur, slopes SW. Continue ascent.								
79.30	Spur, slopes W. Desc.								
80.00	Set an iron post, 3 ft. long, 2 ins. diam., 12 ins. in the ground for cor. of secs. 23, 24, 25 and 26, in a mound of stone, mkd. on brass cap.								
	<table style="margin-left: auto; margin-right: auto;"> <tr><td colspan="2" style="text-align: center;">T5S R27E</td></tr> <tr><td style="text-align: center;">S23</td><td style="text-align: center;">S24</td></tr> <tr><td style="text-align: center;">S26</td><td style="text-align: center;">S25</td></tr> <tr><td colspan="2" style="text-align: center;">1916</td></tr> </table>	T5S R27E		S23	S24	S26	S25	1916	
T5S R27E									
S23	S24								
S26	S25								
1916									
	Raise a mound of stone, 2 ft. base, 1½ ft. high, W. of cor.								
	Land, mountainous.								
	Soil, rocky, 4th. rate.								
	Timber, cottonwood, mesquite, sycamore and hackberry along creek bottom.								
	Undergrowth, greasewood, mesquite, catclaw, cactus and palo verde.								
40.00	S. 89° 54' E. on a random line bet. secs. 24 and 25. Set temp. ¼ sec. cor.								
79.87	Intersect E. bdy. of the Tp., 19 lks. N. of the cor. of secs. 19, 24, 25 and 30, hereinbefore described.								
	Thence,								
	N. 89° 46' W. on a true line bet. secs. 24 and 25, over mountainous land, through scattering undergrowth.								
	Desc. 30 ft.								
1.65	Gulch, course SW. Asc. 40 ft.								
9.85	Spur, slopes SW. Desc. 245 ft.								
23.15	Wash, 30 lks. wide, course SW. Asc. 155 ft.								
39.85	Spur, slopes SW. Desc. 165 ft.								
39.93½	Set an iron post, 3 ft. long, 1 in., diam., 12 ins. in the ground for ¼ sec. cor., in a mound of stone, mkd. on brass cap.								
	<table style="margin-left: auto; margin-right: auto;"> <tr><td colspan="2" style="text-align: center;">S24</td></tr> <tr><td style="text-align: center;">¼</td><td style="text-align: center;">S25</td></tr> <tr><td colspan="2" style="text-align: center;">1916</td></tr> </table>	S24		¼	S25	1916			
S24									
¼	S25								
1916									
	Raise a mound of stone, 2 ft. base, 1½ ft. high, N. of cor.								
49.70	Gulch, course SW. Asc.								
59.75	Spur, slopes SW. Desc. 215 ft.								
66.65	Gulch, course SW. Asc. 180 ft.								
77.35	Spur, slopes SW. Desc. 25 ft.								
79.87	The cor. of secs. 23, 24, 25 and 26,								
	Land, mountainous.								
	Soil, rocky, 4th. rate.								
	No timber.								
	Undergrowth, greasewood, catclaw, mesquite, cactus and palo verde.								
16.50	N. 0° 01' W. on a true line bet. secs. 23 and 24, over mountainous land, through scattering undergrowth. Desc. 305 ft. Gulch, course SW. Asc. 160 ft.								
26.00	Spur, slopes SW. Desc. 115 ft.								
32.10	Gulch, course SW. Asc. 110 ft.								
35.00	Spur, slopes SW. Asc.								
40.00	Top of ascent. Set an iron post, 3 ft. long, 1 in. diam., 12 ins. in								

Chains

the ground, in a mound of stone, for  $\frac{1}{4}$  sec. cor., with brass cap mkd.

$\frac{1}{4}$   
 S23 | S24  
 1916

Raise a mound of stone, 2 ft. base,  $1\frac{1}{2}$  ft. high, W. of cor.

Desc. 65 ft.

45.85 Wash, 40 lks. wide, course SW. Asc, 15 ft.

47.20 Spur, slopes SE. Desc.

48.25 same wash, course SE. Asc. 15 ft.

49.50 Spur, slopes W. Desc.

50.75 Same wash, course SW. Asc. 345 ft.

74.50 Spur, slopes SW. Desc.

80.00 Set an iron post, 3 ft. long, 2 ins. diam., 12 ins. in the ground, in a mound of stone, for cor. of secs. 13, 14, 23 and 24, with brass cap mkd.

T5S R27E  
 S14 | S13  
 S23 | S24  
 1916

Raise a mound of stone, 2 ft. base,  $1\frac{1}{2}$  ft. high, W. of cor.

Land, mountainous.

Soil, rocky, 4th. rate.

No timber.

Undergrowth, greasewood, palo verde, mesquite, catclaw, cactus and ocotilla.

S.  $89^{\circ}.46'$  E. on a random line bet. secs. 13 and 24.

40.00 Set temp.  $\frac{1}{4}$  sec. cor.

79.72 Intersect E. bdy. of the Tp., 26 lks. S. of the cor. of secs. 13, 18, 19 and 24, hereinbefore described.

Thence,

N.  $89^{\circ}.57'$  W. on a true line bet. secs. 13 and 24, over mountainous land, through scattering timber and undergrowth.

Along N. slope.

1.50 Spur, slopes NW. Desc. 330 ft.

21.35 Enter wash, course W. Comes from NE.

26.20 Leave wash, course S. Asc. 140 ft.

34.50 Ridge, bears N. and SW. Desc. 375 ft.

39.86 Set an iron post, 3 ft. long, 1 in. diam., 12 ins. in the ground, in a mound of stone, for  $\frac{1}{4}$  sec. cor., with brass cap mkd.

S13  
 $\frac{1}{4}$  S24  
 1916

Raise a mound of stone, 2 ft. base,  $1\frac{1}{2}$  ft. high, N. of cor.

60.65 Gulch, course S. Asc. 140 ft.

67.60 Spur, slopes S. Desc. 125 ft.

71.15 Asc. 40 ft.

76.85 Spur, slopes SW. Desc. 55 ft.

79.72 The cor. of secs. 13, 14, 23 and 24.

Land, mountainous.

Soil, rocky, 4th. rat.

Timber, scattering cedar on E. half.

Undergrowth, catclaw, greasewood, palo verde, ocotilla and mesquite.

Survey of part of the Subdivisions in T. 5 S. R. 27 E.

Chains

N. 0° 01' W. on a true line bet. secs. 13 and 14, over mountainous land, through scattering timber and dense undergrowth.

Desc. 15 ft.

6.00 Draw, course SW. Asc. 160 ft.

19.50 Spur, slopes SW. Desc. 290 ft.

31.05 Box canyon, course W. Asc. 215 ft.

38.00 Spur, slopes SW. Desc. 180 ft.

40.00 Set an iron post, 3 ft. long, 1 in. diam., 14 ins. in the ground, in a mound of stone, for 1/4 sec. cor., with brass cap mkd.

1/4  
S14 | S13  
1916

Raise a mound of stone. 2 ft. base, 1 1/2 ft. high, W. of cor.

50.45 Gulch, course SW. Asc. 365 ft.

66.80 Spur, slopes SW. Desc. 85 ft.

80.00 Set an iron post, 3 ft. long, 2 ins. diam., 12 ins. in the ground, in a mound of stone, for cor. of secs. 11, 12, 13 and 14, with brass cap mkd.

T5S R27E  
S11 | S12  
S14 | S13  
1916

from which,

A cedar 10 ins. diam., bears N. 46 3/4° E., 151 lks. dist., mkd. T5S R27E S12 BT.

No other trees within limits. Raise a mound of stone 2 ft. base, 1 1/2 ft. high, W. of cor.

Land, mountainous.

Soil, rocky, 4th. rate.

Timber, scattering cedar.

Undergrowth, greasewood, ocotilla, palo verde, cactus, catclaw, mesquite and scrub oak.

S. 89° 57' E. on a random line bet. secs. 12 and 13.

40.00 Set temp. 1/4 sec. cor.

80.16 Intersect E. bdy. of Tp., 9 lks. N. of cor. of secs. 7, 12, 13 and 18, hereinbefore described.

Thence,

N. 89° 53' W. on a true line bet. secs. 12 and 13, over mountainous land, through scattering timber and dense undergrowth.

Desc. 30 ft.

5.00 Draw, course SW. Asc. 65 ft.

9.20 Spur, slopes SW. Desc. 240 ft.

24.00 "ash, 15 lks. wide, course SW. Asc. 85 ft.

W

32.70 Butte on S. slope of spur, Desc. 95 ft.

40.08 Set an iron post, 3 ft. long, 1 in. diam., 26 ins. in the ground, for 1/4 sec. cor., with brass cap mkd.

1/4  
S12  
S13  
1916

from which,

A cedar, 18 ins. diam., bears N. 14° E., 20 lks. dist., mkd. 1/4 S12 BT.

A cedar limb, 10 ins. diam., bears S. 14° E., 68 lks. dist., Mkd. 1/4 S13 BT.

47.65 Canyon, course SW. Asc. 210 ft.

53.75 Spur, slopes SW. Desc.

Survey of the Subdivisions in T. 5 S., R. 27 E.

Chains

59.45 Butte, descend 250 ft.  
 62.15 Asc. 55 ft.  
 66.70 Spur, slopes SW. Desc. 125 ft.  
 80.16 The cor. of secs. 11, 12, 13 and 14.  
 Land, mountainous.  
 Soil, rocky, 4th. rate.  
 Timber, scattering cedar.  
 Undergrowth, dense catclaw, mesquite, cactus, ocotilla,  
 palo verde and scrub oak.

N. 0° 01' W. on a true line bet. secs. 11 and 12, over  
 mountainous land, through scattering timber and  
 undergrowth.

Desc. 150 ft.

4.40 Gulch, course W. Asc. 230 ft.  
 18.30 Spur, slopes SW. Continue ascent.  
 27.70 Top of ascent. Desc. 160 ft.  
 40.00 True point for  $\frac{1}{4}$  sec. cor. falls in gulch, course SW.,  
 therefore at,  
 39.70 Set an iron post, 3 ft. long, 1 in. diam., 18 ins. in  
 the ground, in a mound of stone, for witness cor.  
 to  $\frac{1}{4}$  sec. cor., with brass cap mkd.

$\frac{1}{4}$   
 W C  
 S11 | S12  
 1916

from which,  
 A cedar, 8 ins. diam., bears S. 50° E., 37 lks. dist.,  
 mkd.  $\frac{1}{4}$  S12 BT.  
 A cedar 10 ins. diam., bears N. 81° W., 51 lks. dist.,  
 mkd.  $\frac{1}{4}$  S11 BT.  
 Raise a mound of stone, 2 ft. base, 1 $\frac{1}{2}$  ft. high, W. of  
 cor.

Asc. 110 ft.  
 48.00 Spur, slopes SW. Desc. 20 ft.  
 51.00 Gulch, course SW. Asc. 335 ft.  
 56.30 Rim rock, 100ft. high, bears NE. and SW. Continue ascent.  
 66.50 Spur, slopes SW. Desc. 240 ft.  
 80.00 Set an iron post, 3 ft. long, 2 ins. diam., 12 ins in  
 the ground, in a mound of stone, for cor. of secs.  
 1, 2, 11 and 12, with brass cap mkd.

T5S R27E  
 S2 | S1  
 S11 | S12  
 1916

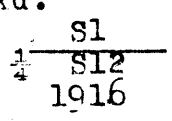
from which,  
 A cedar, 24 ins. diam., bears N. 21° E., 116 lks. dist.,  
 mkd. T5S R27E S1 BT.  
 A cedar, 10 ins. diam., bears S. 34 $\frac{1}{4}$ ° E., 52 lks. dist.,  
 mkd. T5S R27E S12 BT.  
 A cedar, 14 ins. diam., bears S. 50 $\frac{1}{2}$ ° W., 75 lks. dist.,  
 Mkd. T5S R27E S11 BT.  
 A cedar, 12 ins. diam., bears N. 32 $\frac{1}{2}$ ° W., 44 lks. dist.,  
 mkd. T5S R27E S2 BT.  
 Raise a mound of stone, 2 ft. base, 1 $\frac{1}{2}$  ft. high, W. of  
 cor.

Land, mountainous.  
 Soil, rocky, 4th. rate.  
 Timber, scattering cedar.  
 Undergrowth, scrub oak, catclaw, ocotilla, mesquite and  
 cactus.

Survey of the Subdivisions in T. 5 S. R. 27 E.

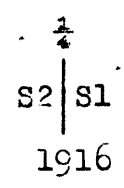
Chains.

40.00 S. 89° 53' E. on a random line bet. secs. 1 and 12.  
 Set temp.  $\frac{1}{4}$  sec. cor.  
 80.35 Intersect the E. bdy. of Tp. 7 lks. S. of the cor. of  
 secs. 1, 6, 7 and 12, hereinbefore described.  
 Thence,  
 N. 89° 56' W. on a true line bet. secs. 1 and 12, over  
 mountainous land, through scattering timber and dense  
 undergrowth.  
 Desc. 175 ft.  
 9.70 Gulch, course SW. Asc.  
 14.40 Top of ascent. Desc. 90 ft.  
 24.00 Asc. 155 ft.  
 33.00 Spur, slopes SW. Desc. 665 ft.  
 40.17 $\frac{1}{2}$  Set an iron post, 3 ft. long, 1 in. diam., 14 ins. in  
 the ground, in a mound of stone, for  $\frac{1}{4}$  sec. cor.,  
 with brass capmkd.



from which,  
 A cedar 18 ins. diam., bears N. 66 $\frac{1}{4}$ ° E., 220 lks. dist.,  
 mkd.  $\frac{1}{4}$  S 1 BT.  
 A cedar limb, 12 ins. diam., bears S. 66 $\frac{1}{4}$ ° W., 138 lks. dist.,  
 mkd.  $\frac{1}{4}$  S12 BT.  
 Raise a mound of stone, 2 ft. base, 1 $\frac{1}{2}$  ft. high, N. of  
 cor.  
 77.90 Top of perpendicular cliff, 70 ft. high, Bears NE. and  
 SW.  
 80.35 The cor. of secs. 1, 2, 11 and 12.  
 Land, mountainous.  
 Soil, rock, 4th. rate.  
 Timber, scattering cedar.  
 Undergrowth, mesquite, scurb oak, ocotilla, cactus and  
 cat claw.

40.00 N. 0° 01' W. on a random line bet. secs. 1 and 2.  
 Set temp.  $\frac{1}{4}$  sec. cor.  
 79.97 Intersect N. bdy. of the Tp. 39 lks. W. of the cor. of secs.  
 1, 2, 35 and 36, hereinbefore described.  
 Thence,  
 S. 0° 16' W. on a true line bet. secs. 1 and 2, over  
 mountainous land, through scattering timber and  
 undergrowth.  
 Desc. 40 ft.  
 9.15 Head of gulch, course W. Asc. 60 ft.  
 13.45 Spur, slopes SW. Desc. 200 ft.  
 26.45 Gulch, course SW. Asc. 15 ft.  
 30.25 Desc. 15 ft.  
 38.85 Gulch, course W. Asc. 245 ft.  
 39.97 Set an iron post, 3 ft. long, 1 in. diam., 9 ins. in  
 the ground for  $\frac{1}{4}$  sec. cor. in a mound of stone, Mkd.  
 on brass cap



from which,  
 A cedar limb, 8 ins. diam., bears S. 47 $\frac{3}{4}$ ° E., 103 lks. dist.,  
 Mkd.  $\frac{1}{4}$  S1 BT.  
 A cedar limb, 6 ins. diam., bears S. 81 $\frac{1}{2}$ ° W., 116 lks. dist.,  
 mkd.  $\frac{1}{4}$  S2 BT.  
 Raise a mound of stone, 2 ft. base, 1 $\frac{1}{2}$  ft. high, W. of  
 cor.  
 45.75 Spur, and Top of perpendicular cliff, bears SW. 80 ft. high.  
 Desc. 185 ft.  
 56.80 Gulch, course W. Asc. 195 ft.  
 64.95 Spur, slopes SW. Desc. 335 ft.

## Cahins

- 67.75 Top of perpendicular cliff, 130 ft. high, bears E. and W.  
 74.55 Gulch, course W. Asc. 145 ft.  
 79.97 The cor. of secs. 1, 2, 11 and 12.  
 Land, mountainous.  
 Soil, rocky, 4th. rate.  
 Timber, scattering cedar.  
 Undergrowth, catclaw, cactus, scrub oak, ocotilla and mesquite.

I begin at the stand. cor. of secs. 34 and 35, on the S. bdy. of the Tp. which is a stone, 10x6x9 ins. above ground, firmly set, properly mkd., witnessed by a mound of stone N. of cor.

Thence,  
 N. 0° 01' W. on a true line bet. secs. 34 and 35, over rolling mountainous land, through dense undergrowth.  
 Desc. 25 ft.

- 4.50 Trail, bears NE. and SW.  
 8.20 Wash, 50 lks. wide, course SW. Asc. 90 ft.  
 16.00 Spur, slopes, SE. Desc. 45 ft.  
 21.50 Gulch, course SE. Asc. 60 ft.  
 35.00 Spur, slopes SE. Desc. 80 ft.  
 40.00 Set an iron post, 3 ft. long, 1 in. diam., 12 ins. in the ground for  $\frac{1}{4}$  sec. cor., in a mound of stone, with brass cap mkd.

$\frac{1}{4}$   
 S34 | S35

1916

Raise a mound of stone, 2 ft. base, 1 $\frac{1}{2}$  ft. high, W. of cor.

- 46.70 Wash, 20 lks. wide, course E. Comes from NW. Asc. 110 ft.  
 56.00 Spur, slopes SE. Desc. 45 ft.  
 62.00 Draw, course SE. Asc. 110 ft.  
 78.60 Ridge, bears NW. and SE. Trail on ridge, bears NW. and SE.  
 Desc.  
 80.00 Set an iron post, 3 ft. long, 2 ins. diam., 22 ins. in the ground, in a mound of stone, with brass cap mkd.

T5S R27E

S34 | S35  
 S27 | S26

1916

Raise a mound of stone, 2 ft. base, 1 $\frac{1}{2}$  ft. high, W. of cor.

Land, rolling mountainous..  
 Soil, rocky, 4th. rate.  
 No timber.  
 Undergrowth, dense greasewood and scattering mesquite and cactus.

East on a random line bet. secs. 26 and 35.

- 40.00 Set temp.  $\frac{1}{4}$  sec. cor.  
 80.22 Intersect N. and S. line at the cor. of secs. 25, 26, 35 and 36.  
 Thence,  
 West on a true line bet. secs. 26 and 35, over mountainous land, through scattering undergrowth.  
 Asc. 240 ft..  
 10.10 Spur, slopes NE. Desc. 165 ft.  
 21.00 Gulch and trail, course NE. Asc. 165 ft.  
 40.11 Set an iron post, 3 ft. long, 3 in. diam., 5 ins. in the ground, in a mound of stone, for  $\frac{1}{4}$  sec. cor., with brass cap mkd.



Chains

$$\begin{array}{r} .s26 \\ \frac{1}{4} \text{---} \\ s35 \\ 1916 \end{array}$$

Raise a mound of stone, 2 ft. base, 1½ ft. high, N. of cor.

- 41.20 Spur, slopes NE. Desc. 60 ft.
  - 56.20 Asc. 85 ft. along N. slope of spur.
  - 61.20 Spur, slopes SE. Asc. along S. slope of spur.
  - 63.20 Bend in trail, bears SE. and SW.
  - 76.20 Head of spur, slopes E. Continue ascent.
  - 80.22 The cor. of secs. 26, 27, 34 and 35.
- Land, mountainous.  
Soil, rocky, 4th. rate.  
No timber.  
Undergrowth, ocotilla, greasewood, cactus mesquite and catclaw.

N. 0° 01' W. on a true line bet. secs. 26 and 27, over mountainous land, through scattering timber and undergrowth.

Desc. 125 ft.

- 11.80 Gulch, course NE. Asc. 120 ft.
- 20.65 Spur, slopes E. Desc. 265 ft.
- 33.50 Canyon, course E. Asc. 255 ft.
- 40.00 Set an iron post, 3 ft. long, 1 in. diam., 12 ins. in the ground, in a mound of stone, for ¼ sec. cor., with brass cap mkd.

$$\begin{array}{r} \frac{1}{4} \\ s27 | s26 \\ 1916 \end{array}$$

Raise a mound of stone, 2 ft. base, 1½ ft. high, W. of cor.

- 41.00 Spur, slopes SE. Desc. 120 ft.
- 48.45 Gulch, course SE. Asc. 135 ft.
- 53.30 Spur, slopes E. Desc. 130 ft.
- 64.60 Gulch, course SE. Asc. 205 ft.
- 73.40 Spur, slopes SE. Desc.
- 77.85 Asc. 15 ft.
- 80.00 Set an iron post, 3 ft. long, 2 ins. diam., 12 ins. in the ground, in a mound of stone, for cor. of secs. 22, 23, 26 and 27, with brass cap mkd.

$$\begin{array}{r} T5S R27E \\ s22 | s23 \\ \frac{1}{4} \text{---} \\ s27 | s26 \\ 1916 \end{array}$$

Raise a mound of stone, 2 ft. base, 1½ ft. high, W. of cor.

Land, mountainous.  
Soil, rocky, 4th. rate.  
Timber, scattering cedar.  
Undergrowth, greasewood, actclaw, ocotilla, palo verde, mesquite and cactus.

East on a random line bet. secs. 23 and 26.

- 40.00 Set temp. ¼ sec. cor.
  - 80.36 Intersect N. and S. line, 26 lks. S. of the cor. of secs. 23, 24, 25 and 26.
- Thence  
S. 89° 49' W. on a true line bet. secs. 23 and 26, over mountainous land, through scattering undergrowth.  
Desc. 490 ft.
  - 11.80 Spur, slopes NW. Continue descent.
  - 16.80 Top of perpendicular cliff, 170 ft. high, bears N. and S.
  - 20.55 Bonito Creek, 12 lks. wide, 10 ins. deep, course S. (Gila Bonito Creek)

Survey of part of the Subdivisions in T. 5 S., R. 27 E.

Chains

21.85 Leave creek bed; asc. 475 ft. Trail, bears N. and S.  
 32.85 Trail, bears NE. and SW.  
 36.35 Same trail, bears NW. and SE.  
 38.05 Same trail, bears NE. and SW.  
 40.18 Set an iron post, 3 ft. long, 1 in. diam., 12 ins. in the ground, in a mound of stone, for  $\frac{1}{4}$  sec. cor., with brass cap mkd.

$\frac{1}{4}$   $\frac{S23}{S26}$   
 1916

Raise a mound of stone, 2 ft. base, 1 $\frac{1}{2}$  ft. high, N. of cor.

From this cor. Jose Bajas' house, bears S. 54° E., about 30.00 chs. dist.

43.90 Spur, slopes NE. Desc. 15 ft.  
 51.00 Asc. 80 ft.  
 57.55 Spur, slopes SE. Trail, bears NE. and SW.  
 64.25 Draw, course SE. Asc. 15 ft.  
 70.85 Spur, slopes SE. Desc. 25 ft.  
 75.35 Asc. 15 ft.  
 80.36 The cor. of secs. 22, 23, 26 and 27.

Land, mountainous.  
 Soil, rocky, 4th. rate.  
 Timber, cottonwood, mesquite, and catclaw, along creek bottom.  
 Undergrowth, greasewood, palo verde, mesquite, catclaw and cactus.

N. 0° 01' W. on a true line bet. secs. 22 and 23, over mountainous land, through scattering timber and undergrowth.

Asc. 15 ft.

2.80 Spur, slopes E. from NW.  
 3.60 Trail, bears E. and W.  
 8.75 Gulch, course E. Asc. 610 ft.  
 30.00 Spur, slopes SW. Thence along W. slope ascending.  
 40.00 Set an iron post, 3 ft. long, 1 in. diam., 12 ins. in the ground, in a mound of stone, for  $\frac{1}{4}$  sec. cor., with brass cap mkd.

$\frac{1}{4}$   
 $\frac{S22}{S23}$   
 1916

Raise a mound of stone, 2 ft. base, 1 $\frac{1}{2}$  ft. high, W. of cor.

45.00 Spur, slopes SE. Asc. along E. slope.  
 60.00 Top of ascent. Desc. 205 ft.  
 80.00 Set an iron post, 3 ft. long, 2 ins. diam., 18 ins. in the ground for cor. of secs. 14, 15, 22 and 23, in a mound of stone, mkd. on brass cap

T5S R27E  
 $\frac{S15}{S22} \frac{S14}{S23}$   
 1916.

from which,

A cedar limb, 12 ins. diam., bears S. 32° E., 218 lks. dist. mkd. T5S R27 E S23 BT.

A cedar, 6 ins. diam., bears S. 46 $\frac{1}{2}$ ° W., 197 lks. dist., mkd. T5S R27E S22 BT.

No other trees within limits. Raise a mound of stone, 2 ft. base, 1 $\frac{1}{2}$  ft. high, W. of cor.

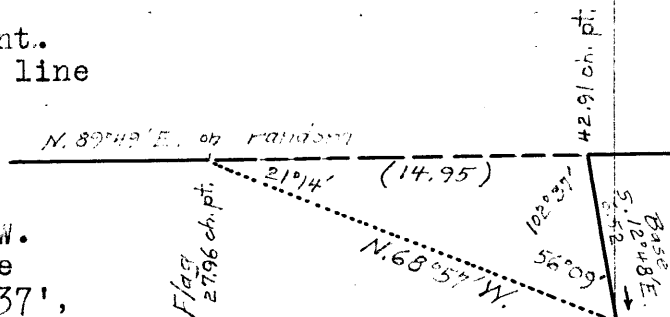
Survey of part of the Subdivisions of T. 5 S., R. 27 E.

Chains

Land, mountainous,  
Soil, rocky, 4th rate.  
Timber, scattering cedar.  
Undergrowth, greasewood, catclaw, cactus, mesquite,  
paloverde and ocotillo.

27.96 N. 89°49' E., on a random line, bet. secs. 14 and 23.  
W. or right rim of Bonito Canyon, across which chain  
measurement is impracticable, therefore triangulate  
as follows:

Leave flag at this point.  
From a point on random line  
on E. or left rim of  
canyon measure a base  
S. 12°48' E., 6.52 chs.  
From SE. end of base  
the flag brs. N. 68°57' W.  
The included angles are  
56°09', 21°14' and 102°37',  
the sum of which is 180°00'.



Dist. triangulated on random line is obtained by  
 $\frac{\text{sine } 56^{\circ}09' \times \text{base}}{\text{sine } 21^{\circ}14'}$  or  $\frac{.83050 \times 6.52}{.36217} = 14.95$  chs.  
which, added to 27,96 chs. gives 42.91 chs. as location  
of triangulation point on random line.

40.00 True point for 1/4 sec. cor. will fall on steep slope of E.  
or left wall of canyon

42.91 Triangulation point. Set temp. witness cor. to 1/4 sec. cor.  
Continue line and measurement by chaining

79.96 Intersect N. and S. line, 9 lks. N. of cor. of secs. 13, 14,  
23 and 24,

Thence,  
S. 89°53' W., on true line, bet. secs. 14 and 23  
Over mountainous land, thru scattering undergrowth.  
Descend 45 ft.

3.45 Draw, course SW. Ascend 90 ft.

13.35 Spur, slopes S. Descend 25 ft.

17.85 Ft. of descent. Ascend 15 ft.

22.85 Spur, slopes E. from NE. Descend 215 ft.

36.96 Set an iron post, 3 ft. long, 1 in. in diam., 5 ins. in  
the ground, in a mound of stone, for witness cor. to  
1/4 sec. cor., marked on brass cap,

$$\text{WC } \frac{1}{4} \frac{\text{S } 14}{\text{S } 23} = 1916$$

37.05 and raise mound of stone, 2 ft. base, 1 1/2 ft. high, N. of cor.  
E. of left rim of Bonito Canyon, bears N. and S. Thence  
across said canyon, measurement by triangulation, herein-  
before described. Descend abruptly.

39.98 True point for 1/4 sec. cor. inaccessible.

45.00 (Approximate) Gila Bonito Creek, in bottom of canyon, with  
stream of running water, 20 lks. wide, 12 ins. deep, course  
S. Ascend 680 ft.

47.50 (Approximate) Ravine course SE.

52.00 W. or right rim of Bonito Canyon, bears NW. and S.  
Thence continuing measurement by chaining. Ascend.

54.10 Trail, bears NW. and S.

79.96 The cor. of secs. 14, 15, 22 and 23.

Land, mountainous.  
Soils rocky, 4th rate.  
Timber, mesquite & cottonwood & sycamore in canyon.  
Undergrowth, greasewood, paloverde, catclaw, cactus, mesquite  
and ocotillo.

N. 0° 01' W., on true line, bet. secs. 14 and 15.  
Over mountainous land, thru scattering timber & undergrowth  
Descend 210 ft.

11.00 Gulch, course NE. Ascend 40 ft.

Chains	
16.00	Spur, slopes NE. Descend 180 ft.
25.75	Ft. of descent. Ascend 30 ft.
28.90	Trail, bears NW. and SE. Descend 120 ft.
32.05	Gulch, course E. Ascend 710 ft.
39.00	Spur slopes SW. Continue ascent
40.00	Set an iron post, 3 ft. long, 1 in. in diam., 12 ins. in the ground in a mound of stone, for $\frac{1}{4}$ sec. cor., marked on brass cap,
	$\begin{array}{r} s\ 15\   \ S\ 14 \\ \hline 1916 \end{array}$
	and raise mound of stone, 2 ft. base, $1\frac{1}{2}$ ft. high, W. of cor.
70.70	Spur, slopes SE. Descend 175 ft.
80.00	Set an iron post, 3 ft. long, 2 ins. in diam., 16 ins. in the ground, in a mound of stone, for cor. of secs. 10, 11, 14 and 15, marked on brass cap,
	$\begin{array}{r} T\ 5\ S\ R\ 27\ E \\ \hline S10\   \ S11 \\ \hline S15\   \ S14 \\ \hline 1916 \end{array}$
	from which,
	A cedar, 11 ins. in diam., brs. N. $45\frac{1}{2}^{\circ}$ E., 68 lks. dist., marked T5S R27E S11 BT
	A cedar, 18 ins. in diam., brs. S. $77\frac{1}{2}^{\circ}$ E., 138 lks. dist., marked T5S R27E S14 BT
	A cedar, 8 ins. in diam., brs. N. $55\frac{1}{2}^{\circ}$ W., 154 lks. dist., marked T5S R27E S10 BT
	Raise a mound of stone, 2 ft. base, $1\frac{1}{2}$ ft. high, W. of cor. Land, mountainous. Gay's house, brs. N. $19^{\circ}$ W.
	Soil, rocky, 4th rate.
	Timber, scattering cedar.
	Undergrowth, greasewood, palo verde, catclaw, cactus, mesquite and ocotillo.
	N. $89^{\circ}53'$ E., on random line, bet. secs. 11 and 14
40.00	Set temp. $\frac{1}{4}$ sec. cor.
79.74	Intersect N. and S. line, 16 lks. S. of cor. of secs. 11, 12, 13 and 14
	Thence
	S. $89^{\circ}46'$ W., on true line, bet. secs. 11 and 14
	Over mountainous land, thru scattering timber & undergrowth. Along N. slope.
2.15	Descend 255 ft.
10.20	Gulch, course SW. Ascend 160 ft.
29.25	Spur, slopes SW. Descend 370 ft.
39.34	Set an iron post, 3 ft. long, 1 in. in diam., 20 ins. in the ground, in a mound of stone, for witness cor. to $\frac{1}{4}$ sec. cor., with brass cap, marked
	$\begin{array}{r} WC\ \frac{1}{4}\ S\ 11 \\ \hline S\ 14 \\ \hline 1916 \end{array}$
	from which,
	A cedar, 8 ins. in diam., brs. N. $62^{\circ}$ E., 19 lks. dist., marked $\frac{1}{4}$ S11 WC BT
	A cedar, 16 ins. in diam., brs. S. $70^{\circ}$ W., 129 lks. dist., marked $\frac{1}{4}$ S14 WC BT
39.87	True point for $\frac{1}{4}$ sec. cor. falls on sliding rock.
46.35	Gulch, course SW. Ascend 65 ft.
50.65	Spur, slopes SW. Descend 205 ft.
52.35	Top of perpendicular cliff, 160 ft. high, brs. N. and S.
54.10	Gila Bonito Creek, with stream of running water, 25 lks. wide, 12 ins. deep, course S. in bottom of canyon.
56.06	Trail, brs. N. and S. Leave bottom of canyon. Ascend 830 ft.
59.75	Top of broken cliff, brs. N. and S. Continue ascent.
79.74	The cor. of secs. 10, 11, 14 and 15.

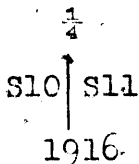
Chains

Land, mountainous.  
 Soil, rocky, 4th. rate.  
 Timber, Scattering cedar, mesquite, sycamore, walnut  
 and cottonwood along creek bottom.  
 Undergrowth, catclaw, scrub oak, mesquite, ocotilla  
 and palo verde.

N. 0° 01' W. on a true line bet. secs. 10 and 11, over  
 mountainous land, through scattering timber and  
 undergrowth.

Desc. 765 ft.

- 17.60 Top of cliff, 80 ft. high, bears E. and W.
- 23.80 Foot of descent, bears NW. and SE.
- 26.80 Enter creek bottom, bears NW. and SE.
- 34.00 Trail, bears NW. and SE.
- 34.50 Gila Bonito Creek, 30 lks. wide, 8 ins. deep, course SE.
- 38.60 Leave Creek bottom, bears E. and W.
- 38.70 Wire fence, bears E. and W.
- 39.40 Trail and foot of mountain, bear E. and W. Asc. 485 ft.
- 40.00 Set an iron post, 3 ft. long, 1 in. diam., 16 ins. in  
 the ground, in a mound of stone, for  $\frac{1}{4}$  sec. cor.,  
 with brass cap mkd.



from which,

A mesquite, 4 ins. diam., bears S. 48° E., 87 lks. dist.,  
 mkd.  $\frac{1}{2}$  S11 BT.

A mesquite 5 ins. diam., bears, N. 33 $\frac{1}{2}$ ° W., 65 lks. dist.,  
 mkd.  $\frac{1}{2}$  S10 BT.

From this cor. J. A. Farrell's house, bears N. 88° W.

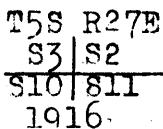
- 43.70 Top of perpendicular cliff, 120 ft. high, bears E. and W.  
 Ruins of cliff dwellings, bear W. 45 lks. dist.  
 Continue to ascend.

- 53.60 Spur, slopes SW. Desc. 95 ft.

- 64.55 Gulch, course SW. Asc. 135 ft.

- 72.00 Spur, slopes SW. Desc. 85 ft.

- 80.00 Set an iron post, 3 ft. long, 2 ins. diam., 20 ins. in  
 the ground, in a mound of stone, for cor. of secs.  
 2, 3, 10 and 11, with brass cap mkd.



from which,

A cedar, 15 ins. diam., bears N. 77 $\frac{1}{2}$ ° E., 169 lks. dist.  
 mkd. T5S R27E S2 BT.

A cedar limb, 7 ins. diam., bears S. 27 $\frac{1}{2}$ ° E., 120 lks. dist.,  
 mkd. T5S R27E S11 BT.

A cedar, 12 ins. diam., bears S. 6 $\frac{1}{2}$ ° W., 94 lks. dist.,  
 mkd. T5S R27E S10 BT.

A cedar limb, 10 ins. diam., bears N76 $\frac{1}{2}$ ° W., 133 lks. dist.,  
 mkd. T5S R27E S3 BT.

Raise a mound of stone, 2 ft. base, 1 $\frac{1}{2}$  ft. high, W. of  
 cor.

Land, mountainous.

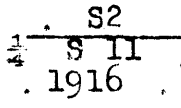
Soil, rocky, 4th. rate.

Timber, scattering cedar, cottonwood and sycamore.

Undergrowth, scrub oak, ocotilla, catclaw, cactus and  
mesquite.

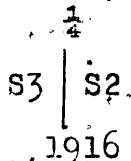
Chains

- N. 89° 46' E. on a random line bet. secs. 2 and 11.
- 40.00 Set temp.  $\frac{1}{4}$  sec. cor.
- 79.75 Intersect N. and S. line, 5 lks. N. of the cor. of secs. 1, 2, 11 and 12.
- Thence,
- S. 89° 48' W. on a true line bet. secs. 2 and 11, over mountainous land, through scattering timber and undergrowth.
- Desc. 195 ft.
- 9.75 Gulch, course SW. Spring bears N. about 1.20 chs. dist. Asc. 75 ft.
- 13.00 Top of ascent. Thence along S. slope, descending 230 ft.
- 35.00 Desc. along top of spur, Slopes W.
- 39.87 $\frac{1}{2}$  Set an iron post, 3 ft. long, 1 in. diam., 15 ins. in the ground, in a mound of stone, for  $\frac{1}{4}$  sec. cor., with brass cap mkd.



- from which,
- A mesquite, 4 ins. diam., bears N.40°E., 86 lks. dist., mkd.  $\frac{1}{4}$  S2 BT.
- A cedar, 10 ins. diam., bears S.8°W., 125 lks. dist., mkd.  $\frac{1}{4}$  S11 BT.
- 42.95 Stream of water, 3 lks. wide, 3 ins. deep, course S. Trail, bears N. and S.
- 43.95 Canyon, course S. Asc. 370 ft.
- 51.25 Wire fence, bears N. and S.
- 64.75 Spur, slopes SW. Desc. 135 ft.
- 79.75 The cor. of secs. 2, 3, 10 and 11.
- Land, mountainous.
- Soil, rocky, 4th. rate.
- Timber, scattering cedar.
- Undergrowth, mesquite, ocotilla, catclaw, cactus and scrub cedar.

- N. 0° 01' W. on a true line bet. secs. 2 and 3.
- 40.00 Set temp.  $\frac{1}{4}$  sec. cor.
- 80.33 Intersect N. bdy. of Tp. 21 lks. W. of the cor. of secs. 2, 3, 34 and 35, hereinbefore described.
- Thence,
- S. 0° 08' W. on a true line bet. secs. 2 and 3, over mountainous land, through scattering timber and undergrowth.
- Asc.
- 2.35 Spur, slopes SW. Desc. 235 ft.
- 30.85 Canyon, course SW. Asc. 155 ft.
- 38.75 Spur, slopes SW. Desc. 145 ft.
- 40.33 Set an iron post, 3 ft. long, 1 in. diam., 12 ins. in the ground, in a mound of stone, for  $\frac{1}{4}$  sec. cor., with brass cap mkd.



- from which,
- A cedar, 14 ins. diam., bears N.22 $\frac{1}{4}$ °W. 213 lks. dist., mkd.  $\frac{1}{4}$  S2 BT.
- A cedar, 10 ins. diam., bears S.45 $\frac{1}{2}$ °W. 199 lks. dist., mkd.  $\frac{1}{4}$  S3 BT.
- Raise a mound of stone, 2 ft. base, 1 $\frac{1}{2}$  ft. high, W. of cor.
- 44.15 Canyon, course SW. Asc. 160 ft.
- 55.05 Spur, slopes SW. Trail, bears NE. and SW. Desc. 185 ft.
- 63.45 Gulch, course SW. Asc.
- 70.85 Spur, slopes SW. Desc. 95 ft.

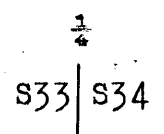
Survey of the Subdivisions in T. 5 S., R. 27 E.

Chains

- 74.25 Canyon, course SW. Spring in canyon, bears NE. 1.00 ch. dist., Asc. 135 ft.
- 80.33 The cor. of secs. 2, 3, 10 and 11.  
Land, mountainous.  
Soil, rocky, 4th. rate.  
Timber, scattering cedar.  
Undergrowth, scrub oak, ocotilla, catclaw, cactus and mesquite.

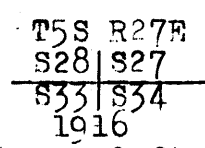
Beginning at the stand. cor. of secs. 33 and 34, on the S. bdy. of the Tp. which is a stone, 10x8x8 ins. above ground, firmly set, properly mkd. witnessed by a mound of stone, N. of cor.  
N. 0° 02' W. bet. secs. 33 and 34, over rolling land, through scattering undergrowth.  
Asc. 80. ft.

- 9.50 Spur, slopes S. 70° E. Desc.
- 30.40 Wash, 40 lks. wide, course SE. Asc. 40 ft.
- 36.00 Spur, slopes SE. Desc.
- 40.00 Set an iron post, 3 ft. long, 1 in. diam., 18 ins. in the ground, in a mound of stone, for  $\frac{1}{4}$  sec. cor., with brass cap mkd.



1916  
Raise a mound of stone, 2 ft. base,  $1\frac{1}{2}$  ft. high, W. of cor.

- 49.00 Wash, 60 lks. wide, course SW. Asc. 40 ft.
- 58.50 Desc. 15 ft.
- 61.30 Trail, bears NE. and SW.
- 68.00 Wash, 20 lks. wide, course E. Asc. 45 ft.
- 80.00 Set an iron post, 3 ft. long, 2 ins. diam., 8 ins. in the ground, in a mound of stone, for cor. of secs. 27, 28, 33 and 34, with brass cap mkd.



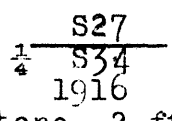
Raise a mound of stone, 2 ft. base,  $1\frac{1}{2}$  ft. high, W. of cor.

Land, rolling.  
Soil, rocky, 4th. rate.  
No timber.  
Undergrowth, greasewood, catclaw, cactus and mesquite.

- 40.00 East on a random line bet. secs. 27 and 34.  
Set temp.  $\frac{1}{4}$  sec. cor.
- 80.06 Intersect N. and S. line, 9 lks. S. of the cor. of secs. 26, 27, 34 and 35.  
Thence,

S. 89° 56' W. on a true line bet. secs. 27 and 34, over rolling land, through scattering undergrowth.

- 8.85 Ridge and trail, bears NW. and SE. Desc. 20 ft.
- 18.15 Draw, course SE. Asc. 35 ft.
- 26.05 Spur, slopes SE. Desc. 75 ft.
- 40.03 Set an iron post, 3 ft. long, 1 in. diam., 18 ins. in the ground, in a mound of stone, for  $\frac{1}{4}$  sec. cor., with brass cap mkd.



Raise a mound of stone, 2 ft. base,  $1\frac{1}{2}$  ft. high, N. of cor.

- 41.65 Wash, 25 lks. wide, course S<sup>W</sup>. Thence, along E. slope

Chains

46.25 Trail, bears NE. and SW.  
 65.85 Wash, 20 lks. wide, course NW. Asc. 45 ft.  
 80.06 The cor. of secs. 27, 28, 33 and 34.  
 Land, rolling.  
 Soil, rocky, 4th. rate.  
 No timber.  
 Undergrowth, greasewood, mesquite, catclaw, and cactus.

N. 0° 02' W. bet. secs. 27 and 28, over rolling mountainous land, through scattering timber and undergrowth.  
 Desc. 10 ft.

5.00 Asc. 25 ft.  
 13.00 Desc. 15 ft.  
 24.50 Wash, 10 lks. wide, course SE. Asc. 35 ft.  
 29.00 Ridge, bears NW, and SE. Desc. 155 ft.  
 40.00 Set an iron post, 3 ft. long, 1 in. diam., 6 ins. in the ground for  $\frac{1}{4}$  sec. cor., in a mound of stone, mkd. on brass cap

$\frac{1}{2}$   
 S28 | S27  
 1916

from which,  
 A cedar, 8 ins. diam., bears N.65°E., 29 lks. dist., mkd.  $\frac{1}{4}$  S27 BT.  
 No other trees within limits. Raise a mound of stone, 2 ft. base, 1 $\frac{1}{2}$  ft. high, W. of cor.

41.80 Gulch, course SE. Asc. 345 ft.  
 67.00 Spur, slopes SE. Desc. 85 ft.  
 80.00 Set an iron post, 3 ft. long, 2 ins. diam., 18 ins. in the ground, in a mound of stone, for cor. of secs. 21, 22, 27 and 28, with brass cap mkd.

T5S. R27E  
 S21 | S22  
 S28 | S27  
 1916

Raise a mound of stone, 2 ft. base, 1 $\frac{1}{2}$  ft. high, W. of cor.  
 Land, rolling mountainous.  
 Soil, rocky, 4th. rate.  
 Timber, scrub cedar.  
 Undergrowth, mesquite, greasewood, ocotilla, cactus and catclaw.

N. 89° 56' E. on a random line bet. secs. 22 and 27.  
 40.00 Set temp.  $\frac{1}{4}$  sec. cor.  
 80.00 Intersect N. and S. line, 7 lks. N. of the cor. of secs. 22, 23, 26 and 27.

Thence,  
 S. 89° 59' W. on a true line bet. secs. 22 and 27, over mountainous land, through scattering timber and undergrowth.

Asc.  
 2.50 Spur, slopes S. Desc. 45 ft.  
 10.10 Draw, course SE. Asc. 35 ft.  
 15.60 Spur, slopes S. Desc. 80 ft.  
 24.30 Draw, course S. Asc.  
 26.60 Spur, slopes S. Desc. 25 ft.  
 34.45 Gulch, course SE. Asc.  
 40.00 Set an iron post, 3 ft. long, 1 in. diam., 18 ins. in the ground, in a mound of stone, for  $\frac{1}{4}$  sec. cor., with brass cap mkd.



BOOK 3286

Survey of part of the Subdivisions in T. 5 S., R. 27 E.

Chains

$$\begin{array}{r} \frac{1}{4} \text{ S22} \\ \hline \frac{1}{4} \text{ S27} \\ \hline 1916 \end{array}$$

from which,  
 A mesquite, 5 ins. diam., bears N.68 $\frac{1}{2}$ °E., 2.99 chs. dist.,  
 mkd.  $\frac{1}{4}$  S22 BT.  
 No other trees within limits. Raise mound of stone,  
 2 ft. base, 1 $\frac{1}{2}$  ft. high, N. of cor.  
 57.95 Spur, slopes SE. Desc. 135 ft.  
 75.15 Gulch, course SE. Asc. 50 ft.  
 80.00 The cor. of secs. 21, 22, 27 and 28.  
 Land, mountainous.  
 Soil, rocky, 4th. rate.  
 Timber, cedar.  
 Undergrowth, dense greasewood, mesquite, catclaw, ocotilla,  
 scrub oak and cactus.

N. 0° 02' W. bet. secs. 21 and 22, over mountainous  
 land, through scattering timber and undergrowth.  
 Desc. 25 ft.  
 1.45 Gulch, course SE. Asc. 215 ft.  
 18.70 Spur, slopes SE. Desc. 115 ft.  
 29.35 Gulch, course SE. Asc. 130 ft.  
 38.00 Ridge, bears NW. and SE. Desc. 230 ft.  
 40.00 Set an iron post, 3 ft. long, 1 in. diam., 14 ins. in  
 the ground, in a mound of stone, for  $\frac{1}{4}$  sec. cor.,  
 with brass cap mkd.

$$\begin{array}{c} \frac{1}{4} \\ \hline \text{S21} | \text{S22} \\ \hline 1916 \end{array}$$

from which,  
 A cedar limb, 6 ins. diam., bears S.76 $\frac{1}{2}$ °E., 171 lks. dist.,  
 mkd.  $\frac{1}{4}$  S22 BT.  
 No other trees within limits. Raise a mound of stone,  
 2 ft. base, 1 $\frac{1}{2}$  ft. high, W. of cor.  
 52.90 Gulch, course E. Asc. 550 ft.  
 75.50 Spur, slopes SE. Desc. 60 ft.  
 80.00 Set an iron post, 3 ft. long, 2 ins. diam., 12 ins. in  
 the ground, in a mound of stone, for cor. of secs.  
 15, 16, 21 and 22, with brass cap mkd.

$$\begin{array}{c} \text{T5S R27E} \\ \hline \text{S15} | \text{S16} \\ \hline \text{S21} | \text{S22} \\ \hline 1916 \end{array}$$

from which,  
 A cedar, 6 ins. diam., bears N.44°E., 125 lks. dist.,  
 Mkd. T5S R27E S15 BT.  
 A cedar, 9 ins. diam., bears S.55 $\frac{1}{2}$ °E., 167 lks. dist.,  
 mkd. T5S R27E S22 BT.  
 No other trees within limits. Raise a mound of stone,  
 2 ft. base, 1 $\frac{1}{2}$  ft. high, W. of cor.  
 Land, mountainous.  
 Soil, rocky, 4th. rate.  
 Timber, scattering cedar.  
 Undergrowth, greasewood, mesquite, cactus, ocotilla,  
 scrub oak and catclaw.

Chains

N. 89° 59' E. on a random line bet. secs. 15 and 22.  
 40.00 Set temp.  $\frac{1}{2}$  sec. cor.  
 80.18 Intersect N. and S. line, 21 lks. N. of the cor. of secs. 14, 15, 22 and 23.  
 Thence,  
 N. 89° 52' W. on a true line bet. secs. 15 and 22, over mountainous land, through scattering timber and undergrowth.  
 Asc. 90 ft.  
 6.75 Desc. 10 ft.  
 10.20 Head ogf gulch, course NE. Asc. 140 ft.  
 18.70 Spur, slopes N. Desc. 25 ft.  
 26.10 Asc.  
 31.10 Ridge, bears NW. and SE. Desc. 495 ft.  
 40.09 Set an iron post, 3 ft. long, 1 in. diam., 15 ins. in the ground, in a mound of stone, for  $\frac{1}{4}$  sec. cor., with brass cap mkd.

$$\frac{1}{4} \frac{S15}{S22} = 1916$$

from which,  
 A cedar, 10 ins. diam., bears N. 50 $\frac{1}{4}$ ° E., 117 lks. dist., mkd.  $\frac{1}{4}$  S15 BT.

No other trees within limits. Raise a mound of stone, 2 ft. base, 1 $\frac{1}{2}$  ft. high; N. of cor.

53.50 Gulch, course S. 25° E. Asc. 410 ft.  
 80.18 The cor. of secs. 15, 16, 21 and 22.

Land, mountainous.  
 Soil, rocky, 4th. rate.  
 Timber, scattering cedar.  
 Undergrowth, greasewood, mesquite, ocotilla, cactus, catclaw, and scrub oak.

N. 0° 02' W. on a true line bet. secs. 15 and 16, over mountainous land, through scattering timber and undergrowth,

Desc. 365 ft.  
 16.30 Gulch, course SE. Asc. 260 ft.  
 29.40 Spur, slopes SE. Desc. 125 ft.  
 39.50 Gulch, course SE. Asc. 400 ft.  
 40.00 Set an iron post, 3 ft. long, 1 in. diam., 14 ins. in the ground, in a mound of stone, for  $\frac{1}{4}$  sec. cor., with brass cap mkd.

$$\frac{1}{4} \frac{S16 | S15}{1916}$$

from which;  
 A cedar, 12 ins. diam., bears S. 47 $\frac{1}{2}$ ° E., 521 lks. dist., mkd.  $\frac{1}{4}$  S. 15 BT.

No other trees within limits. Raise a mound of stone, 2 ft. base, 1 $\frac{1}{2}$  ft. high, W. of cor.

58.50 Ridge, bears W. and SE. Desc. 745 ft.  
 78.80 Canyon, course SE. Trail in canyon, bears NW. and SE.

Asc.  
 80.00 True point for cor. of secs. 9, 10, 15 and 16, falls on sloping rock, where it cannot be established, therefore at

80.10 Set an iron post, 3 ft. long, 2 ins. diam., 24 ins. in the ground, for witness cor. to cor. of secs. 9, 10, 15 and 16, with brass cap mkd.

$$\begin{array}{c} T5S R27E \\ S 9 | S10 \\ \hline S16 | S15 \\ W | C \\ 1916 \end{array}$$

Survey of part of the Subdivisions in T. 5 S., R. 27 E.

Chains

from which,  
 A hackberry, 8 ins. diam., bears S.43°W., 172 lks. dist.,  
 mkd. T5S R27E S16 BT.WC.  
 No other trees within limits, Raise a mound of stone,  
 2 ft. base, 1½ ft. high, W. of cor.  
 Land, mountainous.  
 Soil, rocky, 4th. rate.  
 Timber, scattering cedar and hackberry.  
 Undergrowth, scrub oak, mesquite, catclaw, cactus and  
 ocotilla.  
 Good grazing.

From the true point for the cor. of secs. 9, 10, 15 and 16.  
 S. 89° 52' E. on a random line bet. secs. 10 and 15.  
 40.00 Set temp. ¼ sec. cor.  
 80.15 Intersect N. and S. line, 12 lks. S. of the cor. of secs.  
 10; 11, 14 and 15.  
 Thence,  
 N. 89° 57' W. on a true line bet. secs. 10 and 15, over  
 rolling mountainous land, through scattering timber  
 and undergrowth.  
 Asc. 385 ft.  
 20.15 Top of ascent. Desc, 470 ft.  
 23.00 From this point, Gay's house bears, N. 1½° W.  
 40.07½ Set an iron post, 3 ft. long, 1 in. diam., 15 ins. in the  
 ground for ¼ sec. cor., in a mound of stone, mkd.  
 on brass cap

$$\frac{S10}{\frac{1}{4} S15} = 1916$$

Raise a mound of stone, 2 ft. base, 1½ ft. high, N. of  
 cor.  
 From this cor.,  
 A cedar, 13 ins. diam., bears S. 57½°E., 96 lks. dist.,  
 mkd. ¼ S15 BT.  
 Asc. 65 ft.  
 46.65 Desc. 530 ft.  
 47.65 J. A. Farrell's house, bears N.38°E.,  
 67.80 Canyon, course NE: Trail in canyon, bears NE. and SW.  
 Asc. 195 ft.  
 71.55 Spur, slopes S. Desc. 130 ft.  
 75.45 Canyon, course S. Asc. 45 ft.  
 76.95 Spur, slopes SE. Desc. 15 ft.  
 80.15 The true point for the cor. of secs, 9, 10, 15 and 16.  
 Land, mountainous.  
 Soil, rocky, 4th. rate.  
 Timber, scattering cedar.  
 Undergrowth, scrub oak, ocotilla, catclaw; cactus and  
 mesquite.

From the true point for the cor. of secs. 9, 10, 15 and 16.  
 N. 0° 02' W. bet. secs. 9 and 10, over mountainous land,  
 through scattering timber and undergrowth.  
 Asc. 150 ft.  
 0.10 The witness cor. to the cor. of secs. 9, 10, 15 and 16.  
 3.30 Spur, slopes SW. Desc. 30 ft.  
 7.50 Asc. 45 ft.  
 10.10 Spur, slopes SE. Desc. 90 ft.  
 12.20 Canyon, course E. Asc. 600 ft.  
 21.00 Trail, bears NW. and SE.  
 32.00 Spur, slopes E. Desc. 570 ft.  
 40.00 Set an iron post, 3 ft. long, 1 in. diam., 18 ins. in the  
 ground, in a mound of stone, for ¼ sec. cor., with  
 brass cap mkd.

Chains

$$\begin{array}{r} \frac{1}{4} \\ 89 \quad | \quad S10 \\ \hline 1916 \end{array}$$

from which,  
 A cedar, 9 ins. diam., bears S.  $53\frac{1}{2}^{\circ}$  E., 164 lks. dist.,  
 mkd.  $\frac{1}{4}$  S10 BT.  
 A cedar, 40 ins. diam., bears S.  $45^{\circ}$  W., 73 lks. dist.,  
 mkd.  $\frac{1}{4}$  S 9 BT.  
 Raise a mound of stone, 2 ft. base,  $1\frac{1}{2}$  ft. high, W. of  
 cor.

- 61.40 Gulch, course NE. Asc. 65 ft.
- 66.60 Spur, slopes NE. Desc. 50 ft.
- 68.45 Gulch, course E. Asc. 190 ft.
- 74.70 Trail, bears NE. and SW.
- 80.00 Set an iron post, 3 ft. long, 2 ins. diam., 20 ins. in  
 the ground, in a mound of stone, for cor. of secs.  
 3, 4, 9 and 10, with brass cap mkd.

$$\begin{array}{r} T5S R27E \\ S 4 \quad | \quad S 3 \\ \hline S 9 \quad | \quad S10 \\ \hline 1916 \end{array}$$

A mesquite, 4 ins. diam., bears N.  $72\frac{1}{4}^{\circ}$  E., 184 lks. dist.,  
 mkd. T5S R27E S3 BT.  
 A cedar limb, 4 ins. diam., bears S.  $83^{\circ}$  W., 384 lks. dist.,  
 mkd. T5S R27E S9 BT.  
 No other trees within limits. Raise a mound of stone,  
 2 ft. base,  $1\frac{1}{2}$  ft. high, W. of cor.  
 Land, mountainous.  
 Soil, rocky, 4th. rate.  
 Timber, Scattering cedar and pinon.  
 Undergrowth, catclaw, greasewood, cactus, mesquite and  
 ocotilla.

- 40.00 S.  $89^{\circ} 57'$  E. on a random line bet. secs. 3 and 10.
- 79.83 Set temp.  $\frac{1}{4}$  sec. cor.  
 Intersect N. and S. line, 21 lks. N. of the cor. of secs. 2,  
 3, 10 and 11.  
 Thence,  
 N.  $89^{\circ} 48'$  W. on a true line bet. secs. 3 and 10, over  
 mountainous land, through scattering timber and  
 undergrowth.  
 Desc. 240 ft.
- 8.60 Canyon, course SW. Asc. 190 ft.
- 17.30 Spur, slopes W. Trail on spur, bears NE. and SW.  
 Desc. 300 ft.
- 18.55 Same trail, bears NE. and SW.
- 20.10 Same trail, bears NE. and SW.
- 21.10 Cliff, 50 ft. high, bears SE. and N.
- 27.80 Top of cliff, 40 ft. high, bears NW. and SE. Susie  
 Moreno's house bears N.  $22^{\circ}$  W., about 30.00 chs. dist.,
- 28.50 Ditch, 18 lks. wide, course SE.
- 28.80 Creek bottom and trail, bears N. and S. (Gila Bonito Cr.)
- 28.85 Creek, 15 lks. wide, 10 ins. deep, course S.
- 31.95 Ditch, course S. Asc. 390 ft.
- 32.00 Gay's house, bears S.  $42^{\circ}$  E.
- 37.00 Spur, slopes NE. Continue ascent.
- 39.81 Set an iron post, 3 ft. long, 1 in. diam., 4 ins. in the  
 ground, in a mound of stone, for witness cor. to  $\frac{1}{4}$  sec.  
 cor. with brass cap mkd.

$$\begin{array}{r} WC \quad \frac{1}{4} \quad S3 \\ \hline S10 \\ \hline 1916 \end{array}$$

Survey of part of the Subdivisions in T. 5 S., R. 27 E.

Chains

from which,  
 A pinon, 9 ins. diam., bears N.18½°E., 83 lks. dist.,  
 mkd. WC ¼ S3 BT.  
 A pinon, 14 ins. diam., bears S.68°W., 68 lks. dist.,  
 mkd. WC ¼ S10 BT.  
 39.91½ The true point for ¼ sec. cor. falls on sloping rock,  
 where it cannot be established.  
 61.80 Desc.  
 66.10 Draw, course NE. Asc. 90 ft.  
 68.30 Trail, bears NE. and SW.  
 72.85 Spur, slopes S. Desc. 55 ft.  
 79.83 The cor. of secs. 3, 4, 9 and 10.  
 Land, mountainous.  
 Soil, rocky, 4th. rate.  
 Timber, scattering cedar and pinon.  
 Undergrowth, palo verde, mesquite and catclaw.

N. 0° 07' E. on a random line bet. secs. 3 and 4.  
 40.00 Set temp. ¼ sec. cor.  
 43.77 Triangulation point. I set a flag ahead on line, and  
 measure a base, S. 89° 52' E., 3.01 chs. to a point  
 whence the flag bears N. 13° 11' W. Longer base im-  
 practicable. The distance triangulated is given by  
 the following:-

$$3.01 \times \tan. 76^\circ 41'$$

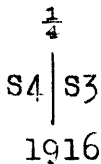
$$\begin{array}{r} \log. 3.01 \qquad \qquad = 0.478566 \\ \log. \tan. 76^\circ 41' \qquad = 10.625807 \end{array}$$

$$1.104373 = \log. 12.72,$$

which added to 43.77, gives

56.49 Triangulation point on spur, slopes SE. Desc. 30 ft.  
 80.10 Intersect N. bdy. of the Tp., 7 lks. E. of the cor. of  
 secs. 3, 4, 33 and 34, hereinbefore described.  
 Thence,  
 S. 0° 04' W. on a true line bet. secs. 3 and 4, over  
 mountainous land, through scattering timber and  
 undergrowth.

Asc. 30 ft.  
 5.80 Spur, slopes SE. Desc.  
 20.16 Head of canyon, course E. Asc. 30 ft.  
 23.60 Spur, slopes SE. Asc. 65 ft.  
 37.90 Wash, in bottom of canyon, course SE.  
 40.10 Set an iron post, 3 ft. long, 1 in. diam., 14 ins. in  
 the ground, in a mound of stone, for ¼ sec. cor.,  
 with brass cap mkd.



from which,  
 A mesquite, 5 ins. diam., bears S.81°E., 92 lks. dist.,  
 mkd. ¼ S3 BT.  
 A mesquite, 9 ins. diam., bears S. 52½°W., 33 lks. dist.,  
 mkd. ¼ S4 BT.  
 40.70 Spur, slopes E. Desc. 40 ft.  
 42.70 Gulch, course E. Asc. 115 ft.  
 61.50 Spur, slopes E. Desc. 70 ft.  
 63.95 Gulch, course E. Asc. 290 ft.  
 77.00 Spur, slopes E. Desc, 15 ft.  
 80.10 The cor. of secs. 3, 4, 9 and 10.  
 Land, mountainous.  
 Soil, rocky, 4th. rate.  
 Timber, scattering cedar and pinon.  
 Undergrowth, mesquite, catclaw, ocotilla and cactus.  
 Good grazing.

Survey of part of the Subdivisions in T. 5 S. R. 27 E.

chains

Beginning at the stand. cor of secs. 32 and 33, on the S. bdy. of the Tp., which is a stone, 14x8x10 ins. above ground, firmly set, mkd. and witnessed as described by the Surveyor General.

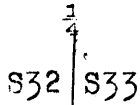
N. 02° 02' W. bet. secs. 32 and 33, over mountainous land, through scattering timber and undergrowth. Asc. 115 ft.

7.00 Ridge, bears NW. and SE. Desc. 585 ft.

33.00 Enter wash, course E.

34.30 Leave, wash, course E. Asc. 70 ft.

40.00 Set an iron post, 3 ft. long, 1 in. diam., 18 ins. in the ground, in a mound of stone, for 1/4 sec. cor., with brass cap mkd.



Raise a mound of stone, 2 ft. base, 1 1/2 ft. high, W. of cor.

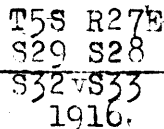
42.30 Trail, bears NE. and SW.

46.50 Spur, slopes E. Desc. 70 ft.

58.40 Wash, 15 lks. wide, course SE. Asc. 110 ft.

75.50 Spur, slopes SE. Desc.

80.00 Set an iron post, 3 ft. long, 2 ins. diam., 18 ins. in the ground, in a mound of stone, for cor. of secs. 28, 29, 32 and 33, with brass cap mkd.



Raise a mound of stone, 2 ft. base, 1 1/2 ft. high, W. of cor.

Land, mountainous.

Soil, rocky, 4th. rate.

Timber, scattering cedar.

Undergrowth, greasewood, ocotilla, mesquite, catclaw, cactus and scrub oak.

East on a random line bet. secs. 28 and 33.

40.00 Set temp. 1/4 sec. cor.

79.82 Intersect N. and S. line, 14 lks. S. of the cor. of secs. 27, 28, 33 and 34.

Thence,

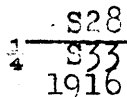
S. 89° 54' W. on a true line bet. secs. 28 and 33, over rolling mountainous land, through scattering timber and undergrowth.

15.10 Wash, 15 lks. wide, course SE.

18.05 Wash, 15 lks. wide, course NE. Asc. 85 ft.

25.15 Trail, bears NE. and SW.

39.91 Set an iron post, 3 ft. long, 1 in. diam., 14 ins. in the ground, in a mound of stone, for 1/4 sec. cor., with brass cap mkd.



from which,

A cedar, 4 ins. diam.; bears N. 74 1/2° W., 379 lks. dist., Mkd. 1/4 S 28 BT.

No other trees within limits. Raise a mound of stone; 2 ft. base, 1 1/2 ft. high, W. of cor.

45.30 Top of ascent. Desc. 65 ft.

62.30 Wash, 50 lks. wide, course SE. Asc. 95 ft.

79.82 The cor. of secs. 29, 28, 32 and 33.

Land, rolling mountainous.

Soil, stony, 4th. rate.

Timber, scattering cedar. Undergrowth, greasewood, cactus, mesquite, ocotilla, scrub oak and catclaw.

Survey of part of the Subdivisions in T. 5 S. R. 27 E.

Chains

N. 0° 02' W. bet. secs. 28 and 29, over mountainous land, through scattering timber and undergrowth.

Desc. 50 ft.

6.90 Wash, 50 lks. wide, course E. Asc. 270 ft.

27.40 Spur, slopes SW. Desc. 75 ft.

33.50 Head of draw, course SW. Asc. 260 ft.

40.00 Set an iron post, 3 ft. long, 1 in. diam., 16 ins. in the ground, in a mound of stone, for 1/4 sec. cor., with brass cap mkd.

1/4  
S29 | S28  
1916

from which,

A cedar, 6 ins. diam., bears N. 71° E., 219 lks. dist., mkd. 1/4 S 28. BT.

No other trees within limits. Raised a mound of stone, 2 ft. base, 1 1/2 ft. high, W. of cor.

44.40 Spur, slopes SE. Continue ascent.

53.40 Ridge, bears E. and W. Desc. 350 ft.

79.90 Cliff, 25 ft. high, bears E. and W.

80.00 The true point for the cor. of secs. 20, 21, 28 and 29, falls on sloping rock, where it cannot be permanently established, therefore at,

80.15 Set an iron post, 3 ft. long, 2 ins. diam., 18 ins. in the ground, in a mound of stone, for witness cor. to cor. of secs. 20, 21, 28 and 29, with brass cap mkd.

T5S R27E  
S20 | S21  
S29 | S28  
W C  
1916

Raise a mound of stone, 2 ft. base, 1 1/2 ft. high, W. of cor.

Land, mountainous.

Soil, rocky, 4th. rate.

Timber, scattering cedar and pinon.

Undergrowth, greasewood, catclaw, mesquite, scrub oak, and ocotilla.

From the true point for the cor. of secs. 20, 21, 28 and 29.

N. 81° 54' E. on a random line bet. secs. 21 and 28.

40.00 Set temp. 1/4 sec. cor.

79.71 Intersect. N. and S. line, 16 lks. S. of the cor. of secs. 21, 22, 27 and 28.

Thence,

S. 89° 47' W. on a true line bet. secs. 21 and 28, over mountainous land, through scattering timber and undergrowth.

Asc. 145 ft.

16.00 Spur, slopes SE. Desc. 120 ft.

30.70 Head of gulch, course SE. Asc. 110 ft.

34.73 Spur, slopes S. Desc.

39.85 1/2 Set an iron post, 3 ft. long, 1 in. diam., 20 ins. in the ground, in a mound of stone, for 1/4 sec. cor., with brass cap mkd.

S21  
1/4 S28  
1916

Raise a mound of stone, 2 ft. base, 1 1/2 ft. high, N. of cor.

40.50 Draw, course S. Asc.

43.25 Desc. 80 ft.

64.20 Trail, bears NW. and SE.

66.25 Wash, 100 lks. wide, course SE. Asc. 160 ft.

79.71 The true point for cor. of secs. 20, 21, 28 and 29.

Chains

Land, mountainous.  
Soil, rocky..4th. rate.  
Timber, scattering cedar.  
Undergrowth, scrub oak, ocotilla, mesquite, catclaw, and cactus.

From the true point for cor. of secs. 20, 21, 28 and 29.  
N. 0° 02' W. bet. secs. 20 and 21, over mountainous  
land, through scattering timber and undergrowth.

Desc. 125 ft.

0.15 The witness cor. to cor. of secs. 20, 21, 28 and 29.

16.00 Trail, bears NW. and SE.

17.85 Wash, in bottom of canyon, 200 lks. wide, course SE.  
Asc. 585 ft.

38.90 Spur, slopes SW. Desc. 165 ft.

40.00 Set an iron post, 3 ft. long, 1 in. diam., 12 ins. in  
the ground, in a mound of stone, for  $\frac{1}{4}$  sec. cor.,  
with brass cap mkd.

$\frac{1}{4}$   
S20 | S21  
1916

from which,

A cedar, 10 ins. diam., bears N. 6 $\frac{1}{2}$ ° E., 249 lks. dist.,  
No other trees within limits. Raise a mound of stone,  
2 ft. base, 1 $\frac{1}{2}$  ft. high. W. of cor.

49.80 Asc. 15 ft.

62.40 Spur, slopes SE. Desc. 135 ft.

80.00 Set an iron post, 3 ft. long, 2 ins. diam., 24 ins. in  
the ground for cor. of secs. 16, 17, 20 and 21, with  
brass cap mkd.

T5S R27E  
S17 | S16  
S20 | S21  
1916

from which,

A mesquite, 8 ins. diam., bears S. 77° W. 206 lks. dist.,  
mkd. T5S R27E S20 BT.

A mesquite, 7 ins. diam., bears N. 7° W., 157 lks. dist.,  
mkd. T5S R27E S17 BT.

No other trees within limits. Raise a mound of stone,  
2 ft. base, 1 $\frac{1}{2}$  ft. high, W. of cor.

Land, mountainous,

Soil, rocky, 4th, rate.

Timber, scattering scrub cedar.

Undergrowth, scrub oak, catclaw, cactus, mesquite, ocotilla.

N. 89° 47' E. on a random line bet. secs. 16 and 21.

40.00 Set temp.  $\frac{1}{4}$  sec. cor.

79.65 Intersect N. and S. line, 7 lks. S. of the cor. of secs.  
15, 16, 21 and 22.

Thence,

S. 89° 44' W. on a true line bet. secs. 16 and 21, over  
mountainous land, through scattering timber and  
undergrowth.

Desc. 335 ft.

39.82 $\frac{1}{2}$  Set an iron post, 3 ft. long, 1 in. diam., 6 ins. in  
the ground, in a mound of stone, for  $\frac{1}{4}$  sec. cor.,  
with brass cap mkd.

S16  
 $\frac{1}{4}$  S21  
1916

from which,

A cedar, 8 ins. diam., bears N. 70° W., 215 lks. dist.,  
mkd.  $\frac{1}{4}$  S16 BT.

A cedar, 8 ins. diam., bears S. 85 $\frac{3}{4}$ ° W., 437 lks. dist.,  
mkd.  $\frac{1}{4}$  S 21 BT.



BOOK 3286

39

Survey of part of the Subdivisions in T. 5 S. R. 27 E.

Chains

61.75 Draw, course N. Asc. 55 ft.  
 79.65 The cor. of secs. 16, 17, 20 and 21.  
 Land, mountainous.  
 Soil, rocky, 4th. rate.  
 Timber, scattering scrub cedar.  
 Undergrowth, scrub oak, mesquite, ocotilla, catclaw and cactus.

N. 0° 02' W. bet. secs. 16 and 17, over mountainous land, through scattering timber and undergrowth.  
 Desc. 10 ft.

1.90 Wash, 30 lks. wide, course NE. Asc. 45 ft.  
 7.60 Spur, slopes E. Desc. 55 ft.  
 9.80 Wash, 25 lks. wide, course E. Asc. 115 ft.  
 22.05 Trail, bears NE. and SW.  
 24.30 Spur, slopes SE. Desc. 210 ft.  
 32.30 Trail bears NE. and SE.  
 36.00 Saddle in ridge, bears E. and W. Continue descent.  
 40.00 Set an iron post, 3 ft. long, 1 in. diam., 12 ins. in the ground, in a mound of stone, for  $\frac{1}{4}$  sec. cor.; with brass cap mkd.

$\frac{1}{4}$   
 S17 | S16  
 1916

from which,  
 A pinon, 10 ins. diam., bears N.  $\frac{1}{2}$ ° W., 87 lks. dist., mkd.  $\frac{1}{4}$  S17 BT.

No other trees within limits. Raise a mound of stone, 2 ft. base, 1  $\frac{1}{2}$  ft. high, W. of cor.

49.15 Trail, bears NW. and SE.  
 58.80 Gulch, course NE. Trail in gulch, bears NW. and SE. Asc.  
 61.60 Spur, slopes E. 1 ch. Desc. 15 ft..  
 62.70 Trail, bears NW. and SE.  
 63.50 Gulch, course SE. Asc. 410 ft.  
 80.00 Set an iron post, 5 ft. long, 2 ins. diam., 18 ins. in the ground, in a mound of stone, 8, 9, 16 and 17, with brass cap mkd.

T5S R27E  
 S8 | S9  
 S17 | S16  
 1916

from which,  
 A cedar, 36 ins. diam., bears N. 3° W., 89 lks. dist., mkd. T5S R27E S8 BT.

No other trees within limits. Raise a mound of stone, 2 ft. base, 1  $\frac{1}{2}$  ft. high, W. of cor.

Land, mountainous.  
 Soil, rocky, 4th. rate.  
 Timber, scattering scrub cedar and pinon.  
 Undergrowth, catclaw, mesquite, ocotilla, cactus and scrub cedar.

N. 89° 44' E. on a random line bet. secs. 9 and 16.  
 40.00 Set temp.  $\frac{1}{4}$  sec. cor.

80.02 Intersect N. and S. line, 2 lks. N. of the true point for the cor. of secs. 9, 10, 15 and 16.

Thence,

S. 89° 45' W. on a true line bet. secs. 9 and 16, over mountainous land, through scattering timber and undergrowth.

Asc. 15 ft.

1.50 Desc. 55 ft.

7.70 Canyon, course N. Trail in canyon, bears N. and S.  
 Asc. 450 ft.

14.35 Rocky spur, slopes N. Desc. 130 ft.

21.50 Canyon, course NW. Comes from NW. Trail, bears NE. and NW.

BOOK 3286

Survey of part of the Subdivisions in T. 5 S. R. 27 E.

Chains

Asc. 115 ft.  
 25.70 Spur, slopes N., Desc. 80 ft.  
 27.50 Canyon, course N., Trail in canyon, bears N. and S.  
 Asc. 430 ft.  
 37.40 Spur, slopes SE. Continue ascent.  
 40.01 Set an iron post, 3 ft. long, 1 in., diam., 18 ins. in  
 the ground, in a mound of stone, for  $\frac{1}{4}$  sec. cor., with  
 brass cap mkd.

$$\begin{array}{r} \frac{1}{4} \text{ S9} \\ \hline \text{S16} \\ 1916 \end{array}$$

Raise a mound of stone, 2 ft. base,  $1\frac{1}{2}$  ft. high, N.  
 of cor.

56.60 Spur, slopes S. Desc. 150 ft.  
 62.20 Gulch, course S. Asc, 140 ft.  
 66.60 Spur, slopes S. Desc. 75 ft.  
 71.35 Gulch, course S. Asc. 200 ft.  
 77.50 Spur, slopes Se. Desc. 20 ft.  
 80.00 The cor. of secs. 8, 9, 16 and 17.  
 Land, mountainous.  
 Soil, rocky, 4th. rate.  
 Timber, scattering cedar.  
 Undergrowth, scrub oak, mesquite, catclaw, ocotilla and  
 cactus.

N.  $0^{\circ} 02'$  W. bet. secs. 8 and 9, over mountainous land,  
 through scattering timber and undergrowth.

Asc. 425 ft.

22.50 Top of ascent. Desc. 410 ft.  
 39.60 Gulch, course E. Asc. 520 ft.  
 40.00 Set an iron post, 3 ft. long, 1 in. diam., 15 ins. in  
 the ground, in a mound of stone, for  $\frac{1}{4}$  sec. cor.,  
 with brass cap mkd.

$$\begin{array}{r} \frac{1}{4} \\ \hline \text{S8 | S9} \\ 1916 \end{array}$$

from which,

A cedar, 16 ins. diam., bears N.  $65^{\circ}$  E., 108 lks. dist.,  
 mkd.  $\frac{1}{4}$  S9 BT.

No other trees within limits. Raise a mound of stone,  
 2 ft. base,  $1\frac{1}{2}$  ft. high, W. of cor.

61.20 Spur, ridge, bears E. and W. Desc. 400 ft.

80.00 Set an iron post, 3 ft. long, 2 ins. diam., 18 ins. in  
 the ground, in a mound of stone, for cor. of secs.  
 4, 5, 8 and 9, with brass cap mkd.

$$\begin{array}{r} \text{T5S R27E} \\ \hline \text{S5 | S4} \\ \hline \text{S8 | S9} \\ 1919 \end{array}$$

from which,

A pine, 6 ins. diam., bears S.  $77\frac{1}{2}^{\circ}$  W., 182 lks. dist.,  
 mkd. T5S R27E S8 BT.

A cedar, 10 ins. diam., bears N.  $83\frac{1}{2}^{\circ}$  W., 157 lks. dist.,  
 mkd. T5S R27E S5 BT.

No other trees within limits. Raise a mound of stone,  
 2 ft. base,  $1\frac{1}{2}$  ft. high, W. of cor.

Land, mountainous.

Soil, rocky, 3rd. rate.

Timber, Scattering pine and cedar.

Undergrowth, catclaw, mesquite, ocotilla and cactus.

N.  $89^{\circ} 45'$  E. on a random line bet. secs. 4 and 9.

40.00 Set temp.  $\frac{1}{4}$  sec. cor.

80.17 Intersect N. and S. line, 2 lks. N. of the cor. of secs.  
 3, 4, 9 and 10.

Survey of part of the Subdivisions in T. 5 S. R. 27 E.

Chains

Thence, S. 89° 46' W. on a true line bet. secs. 4 and 9, over mountainous land, through scattering timber and dense undergrowth.

Asc. 70 ft.

- 5.80 Spur, slopes SE. Desc. 110 ft.
- 27.50 Enter gulch, course NE. Comes from W. Asc. 180 ft.
- 29.80 Leave gulch, comes from SW. Continue ascent.
- 40.08½ Set an iron post, 3 ft. long, 1 in. diam., 20 ins. in the ground, in a mound of stone, for ¼ sec. cor., with brass cap mkd.

S4  
 ¼ S9  
 1916

from which

- A pinon, 5 ins. diam., bears N.29°E., 169 lks. dist., mkd. ¼ S4 BT.
- A pinon, 4 ins. diam., bears S. 55¼°E., 170 lks. dist., mkd. ¼ S9 BT.
- 41.50 Spur, slopes NE. Desc. 85 ft.
- 50.00 Gulch, course N., Asc. 70 ft.
- 56.50 Spur, slopes N. Desc.
- 62.50 Asc. 100 ft.
- 80.17 The cor. of secs. 4, 5, 8 and 9. Land, mountainous. Soil, rocky, 4th. rate. Timber, scattering cedar and pinon. Undergrowth, catclaw, scrub oak, ocotilla, mesquite and cactus.

N. 0° 04' W. on a true line bet. secs. 4 and 5, over mountainous land, through scattering timber and undergrowth.

Desc. 110 ft.

- 2.75 Drain, course NE. Continue descent.
- 10.25 Gulch, course NE. Asc.
- 13.00 Spur, slopes NE. Desc.
- 14.15 Gulch, course E. Asc. 20 ft.
- 15.80 Spur, slopes E.
- 15.87 Intersect White Mountain Indian Reservation boundry, 6.66 chs. S. 36° 54' W. of mile post 68½, which is an iron post, 1 in. diam., 22 ins. above ground, firmly set in a mound of stone, (Reestablished under current group No. 87), with brass cap mkd.

68½ MP S4  
 WMIR T5S  
 R27E  
 1919

from which,

- A pine, 12 ins. diam., bears N.32°E., 2:27 chs. dist., mkd. 68½M WMIR BT
- A cedar limb, 12 ins. diam., bears S.56½°E., 164 chs. dist., mkd. 68½ M T5S R27E S4 BT.
- At point of intersection, Set an iron post, 3 ft. long, 2 ins. diam., 24 ins. in the ground, for closing cor. of fracl. secs. 4 and 5, with brass cap mkd.

WMIR  
 S4  
 S5 R27E  
 T5S  
 C C  
 1919

from which,

- A pine, 6 ins. diam., bears N.68°E., 67 lks. dist., mkd. T5S R27E S4 CCBT.
- A pine, 8 ins. diam., bears S.32°W., 279 lks. dist., mkd. T5S R27E S5 CCBT.

Chains

Land, mountainous,  
Soil, rocky, 3rd. rate.  
Timber, scattering pine and cedar.  
Undergrowth, mesquite, catclaw, ocotilla and cactus.

Beginning at the stand. cor. of secs. 31 and 32, on the S. bdy. of the Tp., which is a malapais stone, 6x10x7 ins. above ground, firmly set, mkd. and witnessed as described by the Surveyor General.

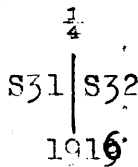
N. 0° 03' W. bet. secs. 31 and 32, over mountainous land, through scattering timber and undergrowth.

Desc. 335 ft.

18.30 Gulch, course E. Asc. 240 ft.

34.30 Spur, slopes E. Desc. 205 ft.

40.00 Set an iron post, 3 ft. long, 1 in. diam., 4 ins. in the ground, in a mound of stone, for  $\frac{1}{4}$  sec. cor., with brass cap mkd.



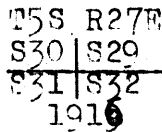
Raise a mound of stone, 2 ft. base, 1 $\frac{1}{2}$  ft. high, W. of cor.

47.40 Draw, course NE. Asc. 30 ft.

52.00 Spur, slopes E. Desc. 60 ft.

58.25 Draw, course E. Asc. 125 ft.

80.00 Set an iron post, 3 ft. long, 2 ins. diam., 20 ins. in the ground, in a mound of stone, for cor. of secs. 29, 30, 31 and 32, with brass cap mkd.



from which,

A cedar limb, 12 ins. diam., bears S. 7 $\frac{1}{2}$ ° E., 154 lks. dist., mkd. T5S R27E S32 BT.

No other trees within limits. Raise a mound of stone, 2 ft. base, 1 $\frac{1}{2}$  ft. high, W. of cor.

Land, mountainous.

Soil, rocky, 4th. rate.

Timber, scattering scrub cedar.

Undergrowth, ocotilla, catclaw, cactus, and scrub oak.

Good grazing.

East on a random line bet. secs. 29 and 32.

40.00 Set temp.  $\frac{1}{4}$  sec. cor.

79.65 Intersect N. and S. line, 19 lks. N. of the cor. of secs. 28, 29, 32 and 33.

Thence,

N. 89° 52' W. on a true line bet. secs. 29 and 32, over mountainous land, through scattering timber and undergrowth.

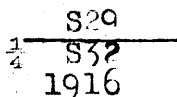
Asc.

3.00 Spur, slopes SE. from W. Desc. 55 ft. on top of spur.

27.00 Leave spur, slopes E. from NW. Continue descent.

33.40 Gulch, course SE. Asc. 50 ft.

39.82 $\frac{1}{2}$  Set an iron post, 3 ft. long, 1 in. diam., 12 ins. in the ground, in a mound of stone, for  $\frac{1}{4}$  sec. cor., with brass cap mkd.



Raise a mound of stone, 2 ft. base, 1 $\frac{1}{2}$  ft. high, W. of cor.

Desc. 20 ft.

50.00 Draw, course NE. Asc. 170 ft.

66.00 Spur, slopes SE. Desc. 35 ft.

Survey of part of the Subdivisions in T. 5 S. R. 27 E.

Chains

78.50 Head of draw, course SE. Asc. 20 ft.  
 79.65 The cor. of secs. 29, 30, 31 and 32.  
 Land, mountainous.  
 Soil, rocky, 4th. rate.  
 Timber, scattering cedar.  
 Undergrowth, greasewood, cactus, catclaw and ocotilla.  
 Good grazing.

N. 89° 45' W. on a random line bet. secs. 30 and 31,  
 40.00 Set temp. 2 sec. cor.  
 79.91 Intersect W. bdy. of Tn., 9 lks. S. of the cor. of secs.  
 25, 30, 31 and 36, hereinbefore described.  
 Thence,  
 S. 89° 41' E. on a true line bet. secs. 30 and 31, over  
 mountainous land, through scattering timber and  
 undergrowth.

Desc.  
 1.05 Gulch, course SW. Asc. 295 ft.  
 11.90 Spur, slopes SW. Desc. 295 ft.  
 14.20 Spur, slopes S<sup>w</sup>. Continue descent.  
 28.20 Head of gulch, course SE. Asc. 175 ft.  
 39.91 Set an iron post, 3 ft. long, 1 in. diam., 8 ins. in  
 the ground, in a mound of stone, for  $\frac{1}{4}$  sec. cor.,  
 with brass cap, mkd.

S30  
 $\frac{1}{4}$  S31  
 1916

from which,  
 A cedar, 12 ins. diam., bears S.47°W...120 lks. dist.,  
 mkd.  $\frac{1}{4}$  S. 31 BT.  
 No other trees within limits. Raise a mound of stone, 2 ft. ba  
 base, 1 $\frac{1}{2}$  ft. high, N. of cor.

40.35 Rocky, spur, slopes SE. Desc. 110 ft.  
 57.90 Asc. 57 ft.  
 65.40 Spur, slopes SE. Desc. 340 ft.  
 79.91 The cor. of secs. 29, 30, 31 and 32.

Land, mountainous.  
 Soil, rocky, 4th. rate.  
 Timber, scattering scrub cedar.  
 Undergrowth, catclaw, mesquite, cactus and ocotilla.

N. 0° 03' W. bet. secs. 29 and 30, over mountainous land  
 through scattering timber and undergrowth.

0.50 Desc.  
 0.50 Head of draw, course SE. Asc. 130 ft.  
 5.60 Spur, slopes E. Desc. 130 ft.  
 20.55 Wash, 40 lks. wide, course E. Asc. 150 ft.  
 32.40 Spur, slopes E. Desc. 140 ft.  
 39.20 Draw, course E. Asc. 70 ft.  
 40.00 Set an iron post, 3 ft. long, 1 in. diam., 20 ins. in  
 the ground, in a mound of stone, for  $\frac{1}{4}$  sec. cor.,  
 with brass cap mkd.

$\frac{1}{4}$   
 S30 | S29  
 1916

from which,  
 A cedar limb, 6 ins. diam., bears N.62°W., 242 lks. dist.,  
 mkd.  $\frac{1}{4}$  S30 BT.  
 No other trees within limits. Raise a mound of stone,  
 2 ft. base, 1 $\frac{1}{2}$  ft. high. W. of cor.

45.00 Desc.  
 50.25 Gulch, course Se. Asc. 675 ft.  
 76.00 Spur, slopes SE. from W. Desc. 115 ft.  
 80.00 Set an iron post, 3 ft. long, 2 ins. diam., 4 ins. in  
 the ground, in a mound of stone, for cor. of secs.

## Survey of part of the Subdivisions in T. 5 S. R. 27 E.

Chains

19, 20, 29 and 30, with brass cap mkd.

T5S R27E
S19   S20
S30   S20
1916

from which,

A pinon, 7 ins. diam., bears N.50°E., 100 lks. dist., mkd. T5S R27E S20 BT.

A pinon, 10 ins. diam., bears S.51°E., 78 lks. dist., mkd. T5S R27E S29 BT.

A pinon, 5 ins. diam., bears S.8°W., 94 lks. dist., mkd. T5S R27E S30 BT.

A pinon, 7 ins. diam., bears N.80°W., 154 lks. dist., mkd. T5S R27E S19 BT.

Land, mountainous.

Soil, rocky, 4th. rate.

Timber, scattering pinon and cedar.

Undergrowth, scrub oak, cactus catclaw, ocotilla, mesquite and manzanita.

S. 89° 52' E. on a random line bet. secs. 20 and 29.

40.00 Set temp.  $\frac{1}{4}$  sec. cor.

79.74 Intersect N. and S. line, 2 lks. N. of the true point for the cor. of secs. 20, 21, 28 and 29.

Thence,

N. 89° 51' W. on a true line between secs. 20 and 29.

Over mountainous land, through scattering timber and undergrowth.

Asc. 40 ft..

2.50 Spur, slopes N. Desc. 45 ft.

10.40 Gulch, course NE. Asc. 785 ft.

39.87 Set an iron post, 3 ft. long, 1 in. diam., 16 ins. in the ground, in a mound of stone, for  $\frac{1}{4}$  sec. cor., with brass cap mkd.

S20.
$\frac{1}{4}$ S20
1916

from which,

A pinon, 10 ins. diam., bears N.50°W., 340 lks. dist., mkd.  $\frac{1}{4}$  S20 BT.No other trees within limits. Raise a mound of stone, 2 ft. base,  $1\frac{1}{2}$  ft. high, N. of cor.

40.00 Ridge bears NW. and SE. Desc. 415 ft.

59.00 Gulch, course SE. Asc. 385 ft.

79.74 The cor. of secs. 19, 20, 29 and 30.

Land, mountainous.

Soil, rocky, 4th. rate.

Timber, scattering pine and cedar.

Undergrowth, scrub oak, mesquite, catclaw, ocotilla and cactus.

Good grazing.

N. 89° 41' W. on a random line bet. secs. 19 and 30.

40.00 Set temp.  $\frac{1}{4}$  sec. cor.

79.80 Intersect W. bdy. of Tn., 35 lks. N. of the cor. of secs. 19, 24, 25 and 30, hereinbefore described.

Thence,

S. 89° 56' E. on a true line bet. secs. 19 and 30, over mountainous land, through scattering timber and undergrowth.

Desc. 25 ft.

4.50 Asc. 25 ft..

13.00 Desc.

14.95 Gulch, course SW. Asc. 130 ft.

27.65 Wire fence, bears NE. and SE.

27.80 Main divide of the Gila Range, bears N. and S. Desc.

36.75 Trail, bears NE. and SW.

39.80 Set an iron post, 3 ft. long, 1 in. diam., 14 ins. in

Chains

the ground, in a mound of stone, for  $\frac{1}{4}$  sec. cor., with brass cap mkd.

S19  
 $\frac{1}{4}$  S30  
1916

from which,

A cedar, 4 ins. diam., bears N.10 $\frac{1}{2}$ °E., 161 lks. dist., mkd.  $\frac{1}{4}$  S19 BT.

A pinon, 6 ins. diam., bears S.18 $\frac{1}{4}$ °E., 159 lks. dist., mkd.  $\frac{1}{4}$  S 30 BT.

Raise a mound of stone, 2 ft. base, 1 $\frac{1}{2}$  ft. high, N. of cor.

40.80 Gulch, course N. Asc. 480 ft.

63.50 Ridge, bears NE. and SW. Desc. 105 ft.

79.80 The cor. of secs. 19, 20, 29 and 30.

Land, mountainous.

Soil, rocky, 4th. rate.

Timber, scattering pinon and cedar.

Undergrowth, scrub oak, catclaw, cactus, mesquite and ocotilla.

---

N. 0° 03' W. bet. secs. 19 and 20, over mountainous land, through scattering timber and undergrowth.

Desc. 150 ft.

4.20 Gulch, course N. Asc. 170 ft.

12.50 Ridge, bears W. and S.60° E. Desc. 720 ft.

40.00 Set an iron post, 3 ft. long, 1 in. diam., 14 ins. in the ground, in a mound of stone, for  $\frac{1}{4}$  sec. cor., with brass cap mkd.

$\frac{1}{4}$   
S19 | S20  
1916

from which,

A cedar, 9 ins. diam., bears S.42 $\frac{1}{2}$ °E., 294 lks. dist., mkd.  $\frac{1}{4}$  S20 BT.

No other trees within limits. Raise a mound of stone, 2 ft. base, 1 $\frac{1}{2}$  ft. high, W. of cor.

43.55 Wash, in bottom of canyon, 40 lks. wide, course SE. Asc. 195 ft.

49.90 Trail, bears NW. and SE.

71.00 Spur, slopes E. Desc. 40 ft.

77.35 Gulch, course SE. Asc. 80 ft.

80.00 Set an iron post, 3 ft. long, 2 ins. diam., 14 ins. in the ground, in a mound of stone, for cor. of secs. 17, 18, 19 and 20, with brass cap mkd.

T5S R27E  
S18 | S17  
S19 | S20  
1916

from which,

A cedar, 8 ins. diam., bears S.52 $\frac{1}{2}$ °W., 114 lks. dist., mkd. T5S R27E S19 BT.

A cedar, 12 ins. diam., bears N.76°W., 149 lks. dist., mkd. T5S R27E S18 BT.

No other trees within limits. Raise a mound of stone, 2 ft. base, 1 $\frac{1}{2}$  ft. high, W. of cor.

Land, mountainous.

Soil, rocky, 4th. rate.

Timber, scattering cedar and pinon.

Undergrowth, catclaw, mesquite, ocotilla, cactus, scrub oak and manzanita.

---

S. 89° 51' E. on a random line bet. secs. 17 and 20.

40.00 Set temp.  $\frac{1}{4}$  sec. cor.

79.86 Intersect N. and S. line, 16 lks. S. of the cor. of secs. 16, 17, 20 and 21.

Chains

- Thence,  
N.  $89^{\circ} 58'$  W. on a true line bet. secs. 17 and 20, over mountainous land, through scattering timber and undergrowth.
- Desc.
- 2.50 Trail, bears NE. and SW,  
3.25 Wash, 30 lks. wide, course NE. Asc. 230 ft.  
20.35 Spur, slopes SE. Desc. 100 ft.  
29.25 Gulch, course SE. Asc. 250 ft.  
39.93 Set an iron post, 3 ft. long, 1 in. diam., 4 ins. in the ground, in a mound of stone, for  $\frac{1}{4}$  sec/cor., with brass cap mkd.
- S17  
        
S20  
1916
- from which,  
A cedar limb, 5 ins. diam., bears N.  $62\frac{1}{2}^{\circ}$  W., 143 lks. dist., mkd.  $\frac{1}{4}$  S17 BT.  
No other trees within limits. Raise a mound of stone, 2 ft. base,  $1\frac{1}{2}$  ft. high, N. of cor.
- 40.85 Spur, slopes S. Desc. 285 ft.  
47.35 Spur, slopes SW. Continue descent.  
59.45 Gulch, course SW. Asc. 65 ft.  
62.85 Spur, slopes SW. Desc. 155 ft.  
75.00 Gulch, course S. Asc. 65 ft.  
78.45 Spur, slopes SE. Desc.  
79.86 The cor. of secs. 17, 18, 19 and 20.  
Land, mountainous.  
Soil, rocky, 4th. rate.  
Timber, scattering pine and cedar.  
Undergrowth, scrub oak, mesquite and cactus, catclaw, manzanita and ocotilla.
- 
- N.  $89^{\circ} 56'$  W. on a random line bet. secs. 18 and 19.  
40.00 Set temp.  $\frac{1}{4}$  sec. cor.  
79.91 Intersect W. bdy. of Tn. 11 lks. S. of the cor. of secs. 13, 18, 19 and 24, hereinbefore described.
- Thence,  
S.  $89^{\circ} 51'$  E. on a true line bet. secs. 18 and 19, over mountainous land, through scattering timber and undergrowth. Desc. 315 ft.
- 9.00 Gulch, course SE. Asc. 230 ft.  
22.00 Spur, slopes S. Desc. 365 ft.  
36.30 Gulch, course S. Asc. 140 ft.  
39.91 Set an iron post, 3 ft. long, 1 in. diam., 15 ins. in the ground, in a mound of stone, for  $\frac{1}{4}$  sec. cor., with brass cap mkd.
- S18  
        
 $\frac{1}{4}$  S19  
1916
- from which,  
A pinon, 14 ins. diam., bears N.  $35\frac{1}{2}^{\circ}$  W., 37 lks. dist., mkd.  $\frac{1}{4}$  S18 BT.  
A pinon, 8 ins. diam., bears S.  $30\frac{1}{4}^{\circ}$  E., 70 lks. dist., mkd.  $\frac{1}{4}$  S19 BT.
- 41.60 Spur, slopes S. Desc. 120 ft.  
50.80 Gulch, course S. Asc. 140 ft.  
55.60 Spur, slopes S. Desc. 55 ft.  
58.25 Head of gulch, course S. Asc. 120 ft.  
65.40 Spur, slopes SE. Desc. 245 ft.  
76.05 Gulch, course SE. Asc.  
79.91 The cor. of secs. 17, 18, 19 and 20.  
Land, mountainous.  
Soil, rocky, 4th. rate.  
Timber, scattering pine and cedar.  
Undergrowth, scrub oak, ocotilla, cactus, catclaw and mesquite.



BOOK 3286

Survey of part of the Subdivisions in T. 5 S., R. 27 E.

Chains	<p>N. 0° 03' W., bet. secs. 17 and 18, over mountainous land through scattering timber and undergrowth. Asc. 250 ft.</p> <p>3.00 Spur, slopes SE. Continue ascent.</p> <p>11.00 Same spur, bears S. 3° W. from NW. Desc. 105 ft.</p> <p>20.60 Gulch, course SE. Asc. 440 ft.</p> <p>35.00 Ridge, bears NW. and SE. Desc. 330 ft.</p> <p>40.00 Set an iron post, 3 ft. long, 1 in. diam., 12 ins. in the ground, in a mound of stone, for <math>\frac{1}{4}</math> sec. cor., with brass cap mkd.</p> <p style="text-align: center;"><math>\frac{1}{4}</math></p> <p style="text-align: center;">S18   S17</p> <p style="text-align: center;">1916</p> <p>from which,</p> <p>A pine, 8 ins. diam., bears S. 57<math>\frac{1}{2}</math>° E., 68 lks. dist., mkd. <math>\frac{1}{4}</math> S17 BT.</p> <p>A pine, 1 ins. diam., bears N. 47<math>\frac{1}{2}</math>° W., 174 lks. dist., mkd. <math>\frac{1}{4}</math> S 18 BT.</p> <p>Raise a mound of stone, 2 ft. base, 1<math>\frac{1}{2}</math> ft. high, W. of cor.</p> <p>53.40 Gulch, course SE. Asc. 30 ft.</p> <p>56.50 Spur, slopes E. Enter heavy timber, bears E. and W. Desc. 405 ft.</p> <p>72.00 Leave heavy timber, bears E. and W.</p> <p>73.70 Wash, 40 lks. wide, course E. Asc. 70 ft.</p> <p>75.20 Trail, bears E. and W.</p> <p>80.00 Set an iron post, 3 ft. long, 2 ins. diam., 12 ins. in the ground, in a mound of stone, for cor. of secs. 7, 8, 17 and 18, with brass cap mkd.</p> <p style="text-align: center;">T5S R27E S7   S8 ----- S18   S17 1916</p> <p>from which,</p> <p>A cedar 14 ins. diam., bears N. 34° E., 80 lks. dist., mkd. T5S R27E S8 BT.</p> <p>A pinon, 8 ins. diam., bears S. 9<math>\frac{1}{2}</math>° E., 146 lks. dist., mkd. T5S R27E S17 BT.</p> <p>A cedar, 9 ins. diam., bears S. 23° W., 120 lks. dist., mkd. T5S R27E S18 BT.</p> <p>A pinon, 9 ins. diam., bears N. 7<math>\frac{1}{2}</math>° W., 125 lks. dist., mkd. T5S R27E S7 BT.</p> <p>Raise a mound of stone, 2 ft. base, 1<math>\frac{1}{2}</math> ft. high, W. of cor.</p> <p>Land, mountainous. Soil, rocky, 4th. rate. Timber, scattering cedar and pinon. Undergrowth, scrub oak, catclaw, mesquite and cactus.</p> <hr/> <p>S. 89° 58' E. on a random line bet. secs. 8 and 17.</p> <p>40.00 Set temp. <math>\frac{1}{4}</math> sec. cor.</p> <p>79.84 Intersect N. and S. line, 17 lks. N. of the cor. of secs. 8, 9, 16 and 17.</p> <p>Thence,</p> <p>N. 89° 52' W. on a true line bet. secs. 8 and 17, over mountainous land, through scattering timber and undergrowth.</p> <p>Desc. 85 ft.</p> <p>8.25 Gulch, course S. Asc. 45 ft.</p> <p>14.30 Spur, slopes S. Desc. 105 ft.</p> <p>23.90 Gulch, course S. Asc. 45 ft.</p> <p>27.00 Spur, slopes S. Desc. 115 ft.</p> <p>39.92 Set an iron post, 3 ft. long, 1 in. diam., on bed rock, in a mound of stone, for <math>\frac{1}{4}</math> sec. cor., with brass cap mkd.</p>
--------	---

Survey of part of the Subdivisions in T. 5 S. R. 27 E.

Chains

$$\frac{\frac{1}{4} \text{ S8}}{\text{S17}} = 1916$$

from which,  
 A pinon, 10 ins. diam., bears N.67°W., 223 lks. dist.,  
 mkd.  $\frac{1}{4}$  S8 BT.  
 A pinon, 10 ins. diam., bears S.32 $\frac{1}{2}$ °W., 106 lks. dist.,  
 mkd.  $\frac{1}{4}$  S17 BT.  
 Raise a mound of stone, 2 ft. base, 1 $\frac{1}{2}$  ft. high, N. of  
 cor.  
 40.45 Head of draw, course S. Asc. 125 ft.  
 45.20 Rocky butte on spur, slopes S. Desc. 80 ft.  
 50.85 Gulch, course S. Asc. 130 ft.  
 64.65 Spur, slopes S. Desc. 100 ft.  
 79.00 Gulch, course S. Asc.  
 79.84 The cor. of secs. 7, 8, 17 and 18.  
 Land, mountainous.  
 Soil, rocky, 4th. rate.  
 Timber, scattering cedar and pinon.  
 Undergrowth, scrub oak, ocotilla, catclaw, mesquite and  
 cactus.

N. 89° 51' W. on a random line bet. secs. 7 and 18.  
 40.00 Set temp.  $\frac{1}{4}$  sec. cor.  
 79.75 Intersect W. bdy. of Tn. 21 lks. S. of the cor. of secs.  
 7, 12, 13 and 18, hereinbefore described.  
 Thence,  
 S. 89° 42' E. on a true line bet. secs. 7 and 18, over  
 mountainous land, through scattering timber and  
 undergrowth,  
 Desc. 140 ft.  
 18.80 Gulch, course SE. Asc. 70 ft.  
 24.40 Spur, slopes SE. Desc. 235 ft.  
 32.85 Gulch, course NE. Asc. 225 ft.  
 39.75 Set an iron post, 3 ft. long, 1 in. diam., 8 ins. in  
 the ground, in a mound of stone, for  $\frac{1}{4}$  sec. cor.,  
 with brass cap mkd.

$$\frac{\frac{1}{4} \text{ S7}}{\text{S18}} = 1916$$

from which;  
 A pinon, 8 ins. diam., bears N.11°E., 4 lks. dist.  
 Mkd.  $\frac{1}{4}$  S7 BT.  
 A pinon, 7 ins. diam., bears S. 54°W., 39 lks. dist.,  
 mkd.  $\frac{1}{4}$  S18 BT.  
 Raise a mound of stone, 2 ft. base, 1 $\frac{1}{2}$  ft. high, N. of  
 cor.  
 44.00 Top of ascent. Desc. 285 ft.  
 50.00 Spring, bears N. 6.00 chs. dist., flows E..  
 59.00 Enter gulch, course NE. Comes from NW.  
 69.00 Leave gulch, course SE. Asc. 80 ft.  
 75.00 Spur, slopes SE. Desc. 40 ft.  
 79.75 The cor. of secs. 7, 8, 17 and 18.  
 Land, mountainous.  
 Soil, rocky, 4th. rate.  
 Timber, scattering pine and cedar.  
 Undergrowth, manzanita, catclaw, cactus, ocotilla,  
 mesquite, and scrub oak.

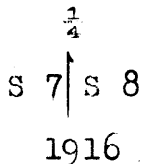
N. 0° 03' W. bet. secs. 7 and 8, over mountainous land,  
 through scattering timber and undergrowth.  
 Asc. 25 ft.  
 1.00 Desc. 15 ft.  
 1.50 Gulch, course SE. Asc. 300 ft.  
 10.70 Spur, slopes S10°W. Continue ascent.  
 22.20 Spue, slopes SE. Desc 110 ft.  
 28.45 Gulch, course SE. Asc. 495 ft.

BOOK 3286

Survey of part of the Subdivisions in T. 5 S. R. 27 E.

Chains

40;00 Set an iron post, 3 ft. long, 1 in. diam., 8 ins. in the ground, in a mound of stone, for  $\frac{1}{4}$  sec. cor., with brass cap mkd.



from which,

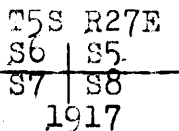
A pinon, 8 ins. diam., bears N.60 $\frac{1}{4}$ °E., 223 lks. dist., mkd.  $\frac{1}{4}$  S8 BT.

A cedar, 5 ins. diam., bears S.30 $\frac{1}{4}$ °W., 94 lks. dist., mkd.  $\frac{1}{4}$  S7 BT.

52.40 Ridge, bears NW. and SE. Desc. 40 ft.

63.45 Asc. 240 ft.

80.00 Set an iron post, 3 ft long, 2 ins. diam., 14 ins. in the ground, in a mound of stone, for cor. of secs. 5, 6, 7 and 8, with brass cap mkd.



from which,

A cedar, 14 ins. diam., bears N.5 $\frac{1}{2}$ °E., 119 lks. dist., mkd. T5S R27E S5 BT.

A pinon, 12 ins. diam., bears S.23 $\frac{1}{2}$ °E., 199 lks. dist., mkd. T5S R27E S8 BT.

A cedar, 40 ins. diam., bears S.17°W., 110 lks. dist., mkd. T5S, R27E S7 BT.

No other trees within limits. Raise a mound of stone, 2 ft. base, 1 $\frac{1}{2}$  ft. high, W. of cor.

Land, mountainous.

Soil, rocky, 4th. rate.

Timber, pinon and cedar.

Undergrowth, scrub oak, ocotilla, catclaw, mesquite and cactus.

S. 89° 52' E. on a true line bet. secs. 5 and 8, over mountainous land, through scattering timber and undergrowth.

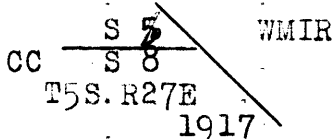
Desc. 90 ft.

3.10 Gulch, course S. Asc. 485 ft.

22.52 Intersect White Mountain Indian Reservation bdy., 5.84 chs.

N. 51° 45' W. of the 67 $\frac{1}{2}$  mile cor., which is an iron post, properly set, mkd. and witnessed as described by H. L. Baldwin, Topographer, in resurv. of part of Res'n bdy. in 1915.

At point of intersection, Set an iron post, 3 ft long, 2 ins. diam., 12 ins. in the ground, in a mound of stone, for closing cor. of fracl. secs. 5 and 8, with brass cap mkd.



from which,

A cedar, 14 ins. diam., bears S.22 $\frac{1}{2}$ °W., 34 lks. dist., mkd. T5S R27E S8 CCBT.

A pinon, 16 ins. diam., bears N.72 $\frac{1}{2}$ °W., 60 lks. dist., mkd. T5S R27E S5 CCBT.

Raise a mound of stone, 2 ft. base, 1 $\frac{1}{2}$  ft. high, W. of cor.,

Land, mountainous,

Soil, rocky, 4th. rate.

Timber, scattering pine and cedar.

Undergrowth, scrub oak and cactus.

Survey of part of the Subdivisions in T. 5 S., R. 27 E.

Chains

From the cor. of secs. 4, 5, 8 and 9.  
 N. 89° 52' W. on a true line bet. secs. 5 and 8, over mountainous land, through scattering timber and undergrowth.  
 Asc. 160 ft.  
 9.00 Drain, course NE. Continue to ascend.  
 11.91 Intersect White Mountain Indian Reservation bdy. 13.54 chs.  
 N. 36° 54' E. of the 68 mile cor., which is an iron post, 3 ins. diam., 24 ins. above ground, firmly set in a mound of stone, (reestablished under current group No. 87), with brass cap mkd.

68 MP S 8  
 WMIR T5S  
 R27E  
 1919

from which,  
 A pine, 8 ins. diam., bears N.16°E., 54 lks. dist., mkd. 68M WMIR BT.  
 A pine, 8 ins. diam., bears N.58°E., 83 lks. dist., mkd. 68M T5S R27E S8 BT.  
 At point of intersection,  
 Set an iron post, 3 ft. long, 2 ins. diam., 10 ins. in the ground, in a mound of stone, for closing cor. of fracl. secs. 5 and 8, with brass cap mkd.

WMIR S5  
 S8 CC  
 T5S R27 E  
 1919

from which,  
 A pine, 6 ins. diam., bears N.56¼°E., 62 lks. dist., mkd. T5S R27E S5 CCBT.  
 A pine, 7 ins. diam., bears S.19¼°W., 97 lks. dist., mkd. T5S R27E S8 CCBT.  
 Land, mountainous.  
 Soil, rocky, 3rd. rate.  
 Timber, scattering cedar and pine.  
 Undergrowth, mesquite, catclaw, and cactus,

From the cor. of secs. 5, 6, 7 and 8, hereinbefore described.  
 N. 89° 42' W. on a random line bet. secs. 6 and 7.  
 40.00 Set temp. ½ sec. cor.  
 79.65 Intersect W. bdy. of Tp. 6 lks. S. of the cor. of secs. 1, 6, 7 and 12, hereinbefore described.  
 Thence,  
 S. 89° 41' E. on a true line bet. secs. 6 and 7, over mountainous land, through scattering timber and undergrowth.

Asc. 205 ft.  
 4.50 Top of ascent. Desc. 60 ft.  
 11.85 Gulch, course SW. Asc. 105 ft.  
 15.00 Spur, slopes S. Desc. 150 ft.  
 27.40 Gulch, course S. Asc. 205 ft.  
 33.00 Spur, slopes S. Desc. 115 ft.  
 39.05 Gulch, course SE. Asc. 25 ft.  
 39.65 Set an iron post, 3 ft. long, 1 in. diam., 12 ins. in the ground, in a mound of stone, for ¼ sec. cor., with brass cap mkd.

S6  
 ¼ S7  
 1917

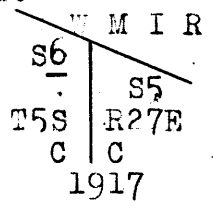
from which,  
 A cedar limb, 8 ins. diam., bears N.27¼°W., 42 lks. dist., mkd. ¼ S6 BT.  
 A cedar, 14 ins. diam., bears S.56¼°E., 319 lks. dist., mkd. ¼ S7 BT.  
 Raise a mound of stone, 2 ft. base, 1½ ft. high, N. of cor.

Survey of part of the Subdivisions in T. 5 S. R. 27 E.

Chains

40.00 Spur, slopes S. Desc. 40 ft.  
 43.10 Gulch, course SW. Asc. 215 ft.  
 52.40 Spur, slopes S. Desc.  
 57.40 Asc. 175 ft.  
 66.50 Ridge, bears NW. and SE. Desc. 160 ft.  
 79.65 The cor. of secs. 6, 5, 7 and 8.  
 Land, mountainous.  
 Soil, rocky, 4th. rate.  
 Timber, scattering pine and cedar.  
 Undergrowth, scrub oak, mesquite, catclaw, ocotilla and cactus.

N. 0° 03' E. on a true line bet. secs. 5 and 6, over mountainous land, through scattering timber and undergrowth.  
 Asc. 325 ft.  
 11.85 Head of gulch, course SE. Continue ascent.  
 21.63 Intersect White Mountain Indian reservation bdy. 8 lks. N. 72° 40' W. of the 67 Mile cor., which is an iron post, properly set, mkd. and witnessed as described by H. L. Baldwin, Topographer, in his resurv. of part of Res'n bdy. in 1915. At point of intersection set an iron post, 3 ft. long, 2 ins. diam.; 24 ins. in the ground, for closing cor. of fracl. secs. 5 and 6, with brass cap mkd.



from which.  
 A piñon, 8 ins. diam., bears S. 43° E., 39 lks. dist., mkd. T5S R27E S5 CCBT.  
 A piñon, 4 ins. diam., bears S. 13 1/2° W., 55 lks. dist., mkd. T5S R27E S8 CCBT.  
 Land, mountainous.  
 Soil, rocky, 4th. rate.  
 Timber, scattering pine and cedar.  
 Undergrowth, scrub oak, mesquite, catclaw, cactus and ocotilla.

GENERAL DESCRIPTION

**SURFACE:** The township is mountainous except for intermittent narrow strips of bottom land along Gila Bonito Creek. Many of the slopes are rendered precipitous by cliffs. The west two-thirds of the township consist of long spur ridges extending east and southeast from the summit of the Gila Range. These spurs break abruptly on the right bank of Gila Bonito Creek, forming the canyon through which the creek courses. The main divide of the Gila Mountains lies within the township for a short distance, entering Sec. 19 from the west, and extending south, then leaving the township in Sec. 30. On the east side of the creek lie rugged spurs that descend in a southwest direction from the divide between the Gila Bonito and Eagle Creeks, which divide lies a short distance east of the east boundary of the township. A number of tributary canyons descend into Bonito Canyon, nine being noted from the east, and nearly as many lying between the steep spurs on the west. Bonito Canyon averages 150 to 200 ft. deep.

**SOIL:** The soil on the spurs and ridges is rocky and 4th rate. There are small areas in the creek bottom where the diluvium is rich enough to support cultivation; Jose Baja has a cornfield in the SE quarter of Sec. 26.

## Township 5 South, Range 27 East

## General Description, continued

**TIMBER AND VEGETATION:** The mountains in some areas are destitute of timber; the rest is covered with a scattering growth of scrub cedar, pinyon and pine, with the cedar predominating. The bottom land in Bonito Canyon supports a growth of cottonwood, sycamore, mesquite and hackberry, and a scattering amount of walnut, catclaw and cedar.

The undergrowth throughout the township is scrub oak, mesquite, cat claw, ocotillo, cactus, manzanita, greasewood (sometimes dense), and palo verde.

The slopes not too precipitous to hold soil support grass in sufficient quantities for good grazing.

**DRAINAGE AND WATER SUPPLY:** Gila Bonito Creek enters the township in Sec. 3, flows in a south-southeasterly direction, and leaves the township on the east boundary of Sec. 36; it is the only permanent stream in the township, and is from 12 to 30 lks. wide and from 3 inches to 1 ft. deep. Though situated in a canyon walled by numerous cliffs, it is accessible to range cattle at a number of points. There is a spring in Sec. 1 near the north boundary, and a spring in the SE quarter of Sec. 7.

**SETTLERS AND IMPROVEMENTS:** There are four residents with habitations located along Bonito Creek, namely, Susie Moreno, Gay, J.A. Farrell, and Jose Baja. Baja has a fenced field under cultivation in the NE quarter of Sec. 26. The region because of its rough topography has at present no roads worthy of the name, but numerous trails follow the spurs and canyons and the creek, and communication with the settlements on the Gila to the south is held chiefly by the pack-horse method. Range fences cross some of the lines of survey. In the SE quarter of Sec. 26, at the confluence of a tributary canyon with the Bonito Canyon, on the southwest wall is the site of some ancient cliff dwellings. In addition, just west of the line between Secs. 10 and 11 the ruins of some cliff dwellings are noted. Arthur W. Brown, U.S. Cadastral Engineer, in his investigation of the south boundary of the White Mountain Indian Reservation in 1918, gives in his report a paragraph that evidently describes the last mentioned ruins. He says in part:

"There is one lone dwelling in the E. wall of the canon about three miles down the canon [from the identified position of the old corner No. 14 of the White Mountain Indian Reservation, Reicker survey of the S. boundary], and three dwellings on the west wall of the canon opposite the one in the east wall."

**INDUSTRY:** The industry carried on at present is cattle raising, which is extensive, because the grazing is good and Gila Bonito Creek furnishes permanent water. This is the only industry that is practicable, except that some farming and fruit-growing might be carried on in a restricted way on the bottom land along Gila Bonito Creek. The timber is of negligible value commercially, because in scattered quantities and growing in a region inaccessible for marketing.

**MINERAL:** No signs of valuable mineral were observed throughout the township on the surface.

**MODE OF SURVEY:** The White Mountain Indian Reservation juts into the NW corner of the township, causing the N. boundary to be irregular, and reducing the areas of Secs. 4, 5, 6 and 8. Where the lines of survey of this township abuts on the Reservation, closing corners were established.

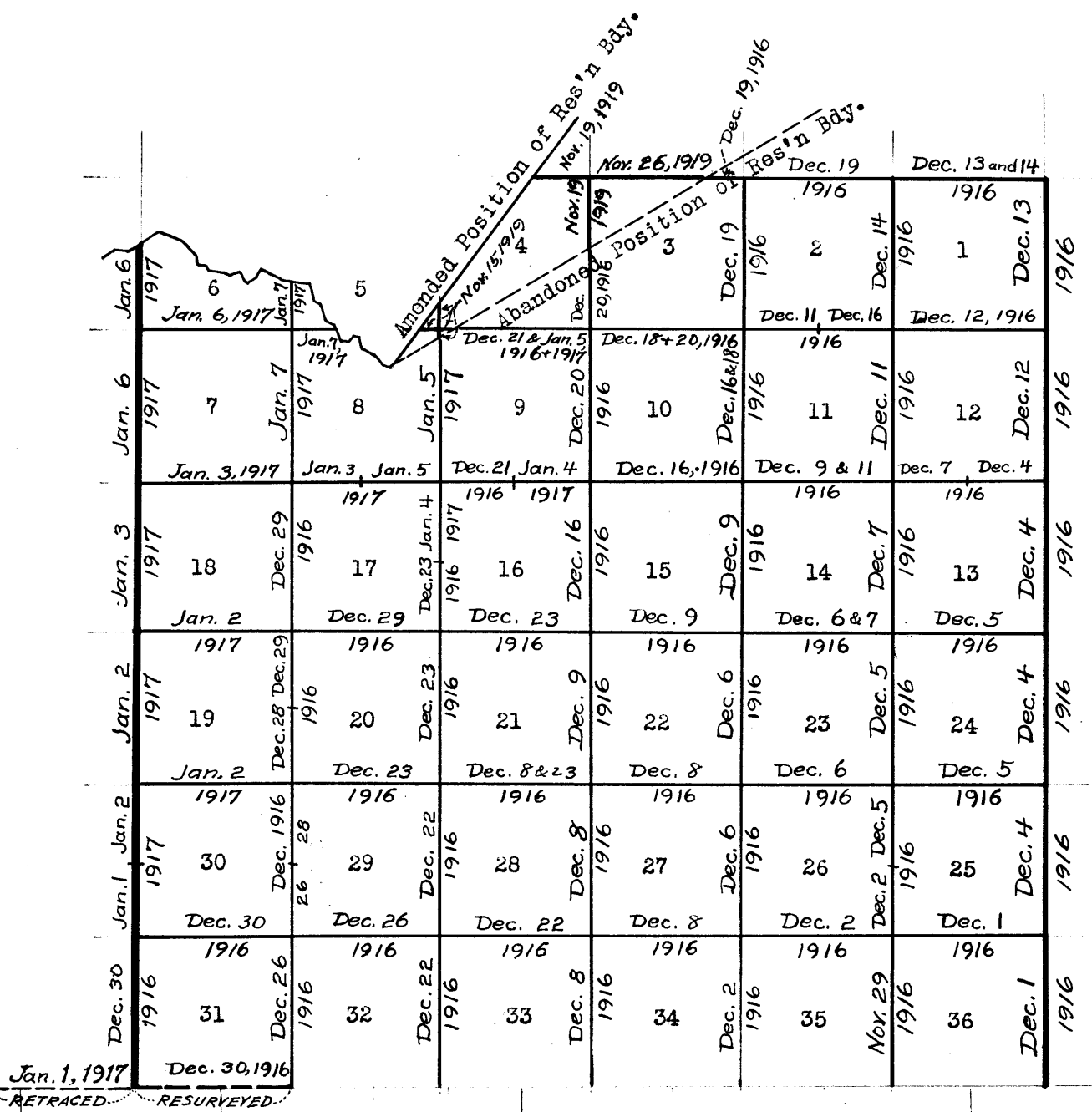
.....

BOOK 3286

DATE DIAGRAM

Group No. 65, Arizona

TOWNSHIP NO. 5 SOUTH, RANGE NO. 27 EAST



Lines run by William B. Kimmel, U.S. Surveyor, on dates shown above.

Lines run by Guy R. Veal, U.S. Transitman, on dates above shown.





CERTIFICATE OF UNITED STATES SURVEYOR.  
( Applies to Books "G" and "H" of Group 65, Arizona )

I, William B. Kimmel, U. S. Surveyor, hereby certify upon honor that, in pursuance of special instructions received from the U. S. Surveyor General, for Group 65, Arizona, bearing date of the 5th day of April, 1916, I have well, faithfully, and truly in my own proper person, and in strict conformity with said instructions, the Manual of Surveying Instructions, and the laws of the United States, retraced surveyed all those parts or portions of 1st Std. Par. S. in R. 26 E., Resurveyed all those parts or portions of 1st Std. Par. S. in R. 27 E., and Surveyed all those parts or portions of the East, West and North bars. and Subdivision lines of T. 5 S., R. 27 E., and the subdivision lines of T. 4 S., R. 27 E., of the Gila and Salt River Base and Meridian, in the State of Arizona, which are represented in the foregoing field notes and by diagram on p. 53 hereof, and on p. 2 of Book "H" as having been executed by me, and under my direction; and that all the corners of said survey have been established and perpetuated in strict accordance with the Manual of Surveying Instructions, and the special written instructions of the U. S. Surveyor General, for Group 65, Arizona, and in the specific manner described in the field notes, and that the foregoing are the original field notes of such survey. retracement, resurvey and survey.

Phoenix, Arizona.  
February 24, 1919.

William B. Kimmel.  
U. S. Surveyor.

APPROVAL.

OFFICE OF THE UNITED STATES SURVEYOR GENERAL,

....., 191

The foregoing field notes of the survey of .....

executed by .....  
under his special instructions dated ....., 191, having been critically examined, and the necessary corrections and explanations made, the said field notes, and the surveys they describe, are hereby approved.

.....  
U. S. Surveyor General.

I certify that the foregoing transcript of the field notes of the above-described surveys in .....  
....., has been correctly copied from the original notes on file in this office.

.....  
U. S. Surveyor General.



CERTIFICATE OF UNITED STATES TRANSITMAN.  
( Applies to Books "G" and "H" of Group 65, Arizona )

I, Guy R. Veal, U.S. Transitman, hereby certify upon honor that, in pursuance of special instructions received from the U. S. Surveyor General, for Group 65, Arizona, bearing date of the 5th day of April, 1916, I have well, faithfully, and truly in my own proper person, and in strict conformity with said instructions, the Manual of Surveying Instructions, and the laws of the United States, surveyed all those parts or portions of the North boundary and subdivision lines of Township 5 South, Range 27 East, and East Boundary and Subdivision lines of Township 4 South, Range 27 East,

of the Gila and Salt River Base and Meridian, in the State of Arizona, which are represented in the foregoing field notes and by diagram on p.53 hereof and on p.2 of Book "H", as having been executed by me, and under my direction; and that all the corners of said survey have been established and perpetuated in strict accordance with the Manual of Surveying Instructions, and the special written instructions of the U. S. Surveyor General, for Group 65, Arizona, and in the specific manner described in the field notes, and that the foregoing are the original field notes of such survey.

*Phoenix Arizona  
June 8, 1920.*

*Guy R. Veal*  
U. S. Transitman.

APPROVAL.

OFFICE OF THE UNITED STATES SURVEYOR GENERAL,

*Phoenix Arizona, June 8 1920.*

The foregoing field notes of the retracement of the First Standard Parallel South through part of Ranges 26 and 27 East, and the Resurvey of the First Standard Parallel South through part of Range 27 East, and the Survey of East, and part of North and West boundaries of and part of Subdivisions of

Township 5 South, Range 27 East,  
of the Gila and Salt River Base and Meridian, State of Arizona,  
executed by William B. Kimmel, U.S. Surveyor, and Guy R. Veal, U.S. Transitman,  
under ~~his~~ special instructions dated for Group 65, dated April 5, 1916, having been critically examined, and the necessary corrections and explanations made, the said field notes, and the ~~surveys~~ retracements, resurveys and surveys they describe, are hereby approved.

*Frank R. Frost*  
U. S. Surveyor General.

~~I certify that the foregoing transcript of the field notes of the above described surveys in~~  
~~has been correctly copied from the original notes on file in this office.~~