

3287

377
ORIG

(1)

BOOK "H"

4-679

BOOK 3287

FIELD NOTES

OF THE SURVEY OF ~~THE~~

Part of the East Boundary, and

Part of the Subdivisions of

TOWNSHIP 4 SOUTH, RANGE 27 EAST,

Of the Gila and Salt River base and Meridian,

In the State of Arizona,

EXECUTED BY

William B. Kimmel, U.S. Surveyor,

and

Guy R. Veal, U.S. Transitman,

~~In the capacity of U.S. Surveyor~~, under Special Instructions dated April 5, 1916,

issued by the United States Surveyor General to govern surveys included in Group

No. 65, Arizona, which were approved by the Commissioner of the General Land

Office, April 19, 1916, and Assignment Instructions dated Aug. 15, 1916

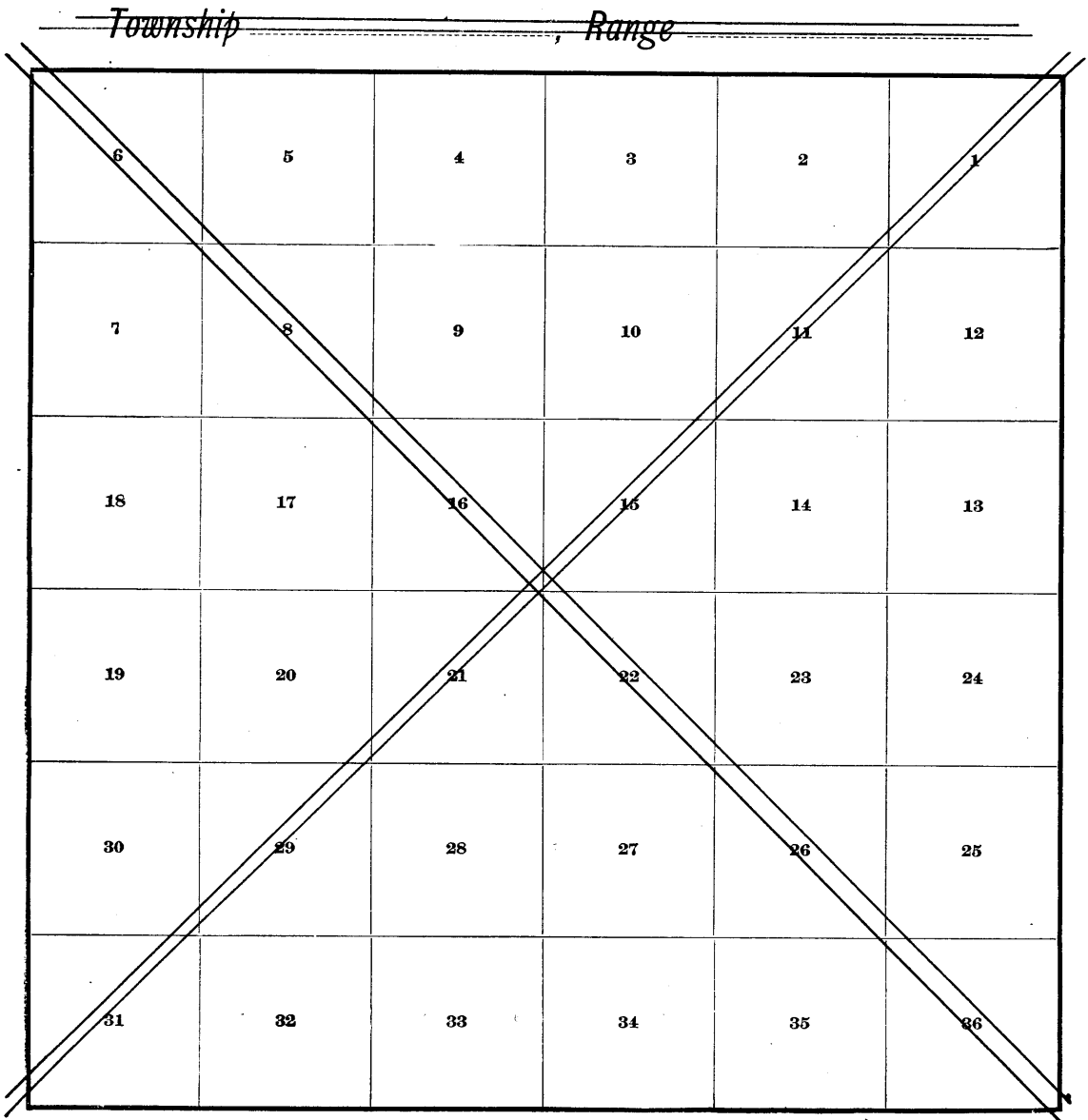
Survey commenced December 15, 1916

Survey completed November 26, 1919

3287

3287

INDEX DIAGRAM.



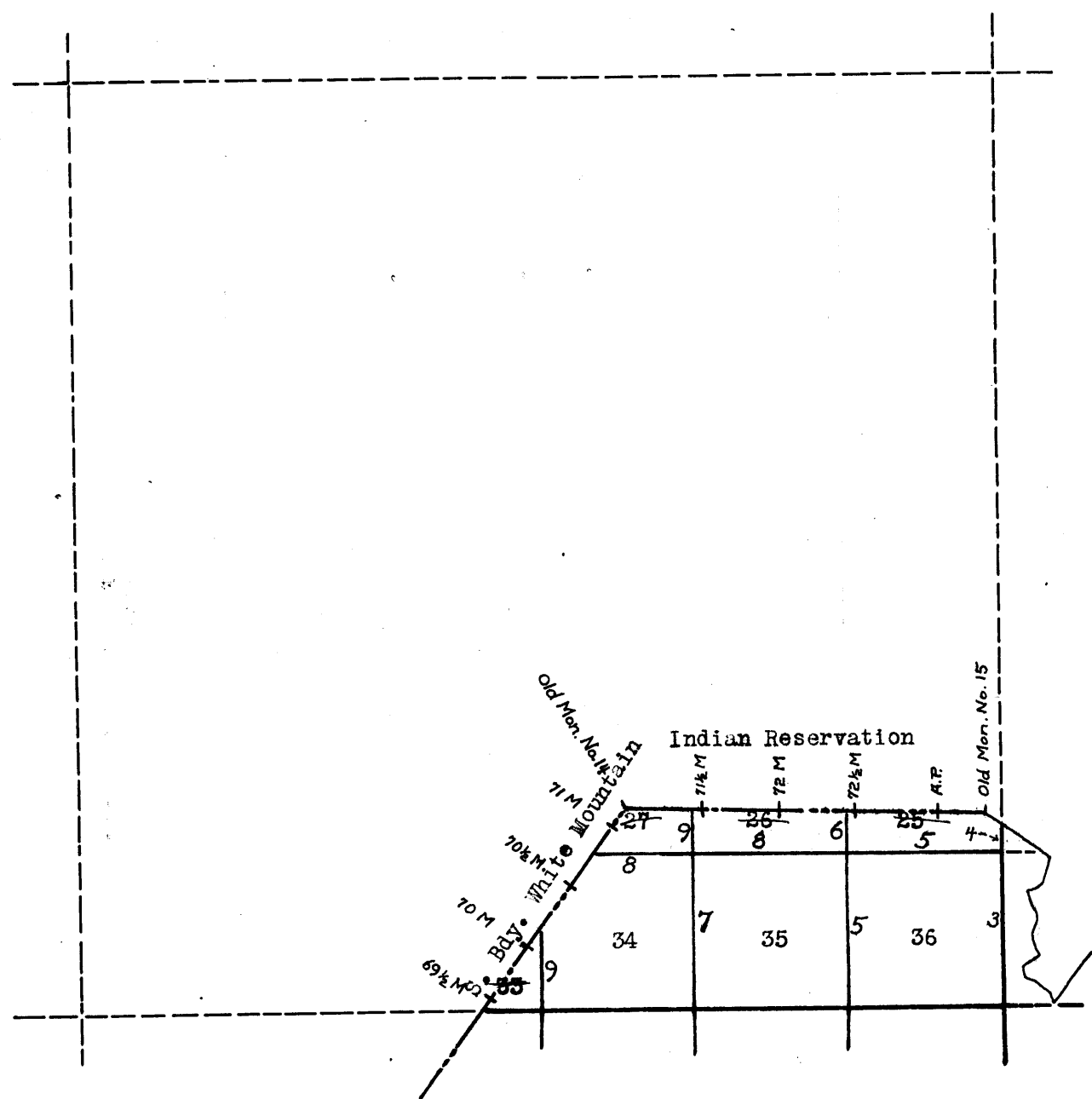
3287

BOOK 3287

SPECIAL INDEX DIAGRAM

TOWNSHIP NO. 4 SOUTH, RANGE NO. 27 EAST

GROUP NO. 65, ARIZONA



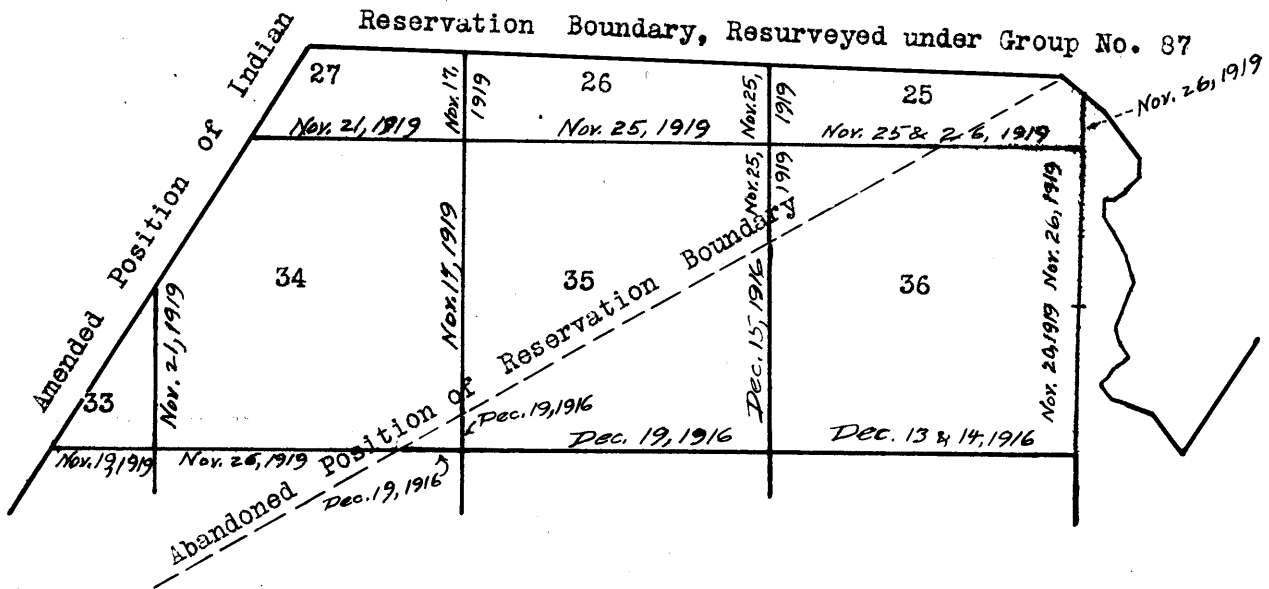
- Surveyed under this group
- Resurveyed under Group 87, Arizona *Books 3370*
- ~~~~~ Accepted surveys
- Unsurveyed lines

BOOK 3287

DATE DIAGRAM

Group No. 65, Arizona

TOWNSHIP NO. 4, SOUTH, RANGE 27 EAST



Lines run by William B. Kimmel, U.S. Surveyor, on dates above shown.

Lines run by Guy R. Veal, U.S. Transitman, on dates above shown.

Survey of part of the E. bdy. of T. 4 S. R27E.

Chains

Surveys hereinafter described executed by W. B. Kimmel, U. S. Surveyor and Guy R. Veal, U. S. Transitman, on dates shown on diagram on page 2 hereof, using Young and Son's Light Mountain transit No. 8523, with Smith solar attachment, and Buff Solar transit No. 9939. For description of instrument, test of adjustments and certificate of approval, see Book "G".

Beginning at the cor. of Ts. 4 and 5 S. Rs. 27 and 28 E., which is a volcanic stone, 4x8x10 ins. above ground, firmly set, mkd. and witnessed as described in the survey of this Group, Book "G".

North bet. secs. 31 and 36, over mountainous, precipitous ascent, scattering timber and undergrowth.

I set a flag ahead on line and measure a base, S. 80° 52' E., 2.16 chs., to a point, whence the flag bears N. 12° 58' W. The distance triangulated is given by the proportion

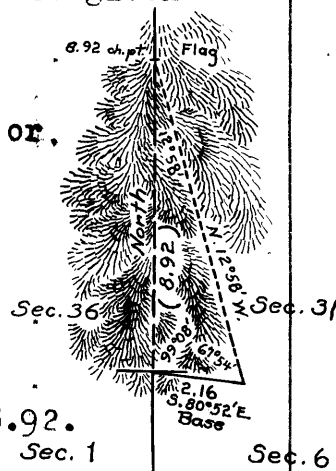
2.16 / sin. 12°58' = X / sin. 67° 54'

log. 2.16 = 0.334454

log. sin. 67°54' = 9.966859

log. sin. 12°58' = 9.350992

0.950321 = log. 8.92.



- 8.92 Triangulation point. Asc. 755 ft.
18.00 W. edge of peak, slopes W. Desc. 790 ft.
29.00 Canyon, course NW. Continue descent.
40.00 True point for 1/4 sec. cor. falls on inaccessible cliff, 40 ft. high, therefore at,
39.20 Set an iron post, 3 ft. long, 1 in. diam., 14 ins. in the ground, in a mound of stone, for witness cor. to 1/4 sec. cor., with brass cap mkd.



1919

Raise a mound of stone, 2 ft. base, 1 1/2 ft. high, W. of cor.

- 40.10 Gulch, course NW.
41.00 Gulch, course W. Asc. 275 ft.
42.40 Spur, slopes SW. Continue ascent.
48.42 Triangulation point on rough broken spur, slopes W. I flag this point, and set a flag ahead on line from which I measure a base, N. 82° 30' W., 9.86 chs.. from the W. end of which, flag set at 48.42 ch. point, bears S. 13° 15' E. The distance triangulated is given by the proportion

9.86 / sin. 13° 15' = X / sin. 69° 15'

log. 9.86 = 0.993877

log. sin. 69° 15' = 9.970874

log. sin. 13° 15' = 9.360215

1.604536 = log. 40.23, which

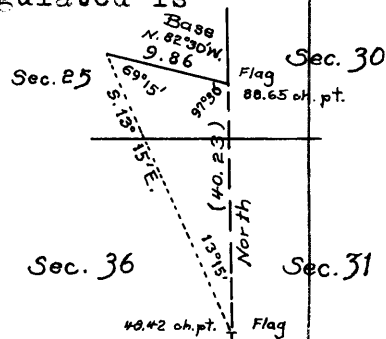
added to 48.42, gives 88.65 chs.

88.65 Over broken cliffs and spurs, impracticable to chain, to

88.65 Triangulation point on spur, slopes W. Thence

South bet. secs. 31 and 36.

8.65 Set an iron post, 3 ft. long, 2 ins. diam., 24 ins. in



Survey of part of the E. bdy. of T. 4 S., R. 27 E.

Chains

the ground, for cor. of secs. 25, 30, 31 and 36, with brass cap mkd.

T5S	
R27E	R28E
S25	S30
S36	S31
1919	

Raise a mound of stone, 2 ft. base, 1 1/2 ft. high, W. of cor.

Land, mountainous.

Soil, rocky, 4th. rate.

Timber, scattering cedar and pine.

Undergrowth, catclaw, ocotilla and cactus.

North bet. secs. 25 and 30, over mountainous land, through scattering timber and undergrowth.

Asc. 250 ft.

14.38 Spur, slopes SE.

Intersect White Mountain Indian Reservation, at a point on the accepted traverse as follows:-

From the cor. No. 15, of Riecker's survey, in 1883, which is AP 72+ 62.50 of Baldwin's survey, a boulder in place, 3x3x1 1/2 ft. above ground, mkd. with a cross and AP North of cross.

S. 63° 15' E.

7.30 Thence

S. 60° 30' E.

1.12 To the point of intersection with the line bet. Rs. 27 and 28 E., where I.

Set an iron post, 3 ft. long, 3 ins. diam., 24 ins. in the ground, for closing cor. of Ts. 4 S., Rs. 27 and 28 E., with brass cap mkd.

W M I R

S25	S30
R27E	R28E
C	C
T4S	
1919	

from which,

A pine, 12 ins. diam., bears S. 16 1/4° W., 160 lks. dist., mkd. T4S R27E S25 CCBT

No other trees within limits. Raise a mound of stone, 2 ft. base, 1 1/2 ft. high, S. of cor.

Land, mountainous.

Soil, rocky, 4th. rate.

Timber, scattering pine and cedar.

Undergrowth, catclaw and cactus.

Survey of part of the Subdivisions in T. 4 S., R27 E.

Canins

- Beginning at the cor. of secs. 1, 2, 35 and 36, which is an iron post, described in Book "G".
 N. 0° 01' W. on a true line bet. secs. 35 and 36, over mountainous land, through scattering timber and undergrowth.
 Desc. 65 ft.
 13.45 Gulch, course SW. Asc. 75 ft.
 17.00 Spur, slopes SW. Desc. 15 ft.
 21.50 Gulch, course SW. Asc. 305 ft.
 32.80 Trail, bears NE. and SW.
 36.50 Spur, slopes S. 20° W. Continue ascent, along W. slope.
 40.00 The true point for $\frac{1}{4}$ sec. cor. falls on cliff, 30 ft. high, sloping W., where it cannot be established. Therefore at,
 39.80 Set an iron post, 3 ft. long, 1 in. diam., 4 ins. in the ground, in a mound of stone, for witness cor. to $\frac{1}{4}$ sec. cor., with brass cap mkd.

$$\frac{1}{4}$$

W	C
S35	S36

1916

- from which,
 A cedar, 8 ins. diam., bears S. 12 $\frac{1}{2}$ ° E., 127 lks. dist., mkd. $\frac{1}{4}$ S36 WCBT.
 A pinon, 12 ins. diam., bears N. 13 $\frac{1}{2}$ ° W., 77 lks. dist., mkd. $\frac{1}{4}$ S35 WCBT.
 Raise a mound of stone, 2 ft. base, 1 $\frac{1}{2}$ ft. high, W. of cor.
 43.50 Spur, slopes SW. Desc. 145 ft.
 48.80 Gulch, course SW. Asc. 135 ft.
 53.30 Rocky, spur, slopes SW. Desc. 25 ft.
 60.50 Gulch, course SW. Asc. 100 ft.
 61.40 Cliff, 60 ft. high, facing SW., bears NW. and SE.
 68.30 Ridge, bears NE. and SW. Desc. 125 ft.
 74.90 Drain, course NW. Continue to ascend.
 79.00 Spur, slopes SW. Desc.
 79.15 Drain, course E. Asc. 20 ft.
 80.00 Set an iron post, 3 ft. long, 2 ins. diam., 16 ins. in the ground, in a mound of stone, for cor. of secs. 25, 26, 35 and 36, with brass cap mkd.

T4S R27E	
S26	S25
S35	S36
1919	

from which,
 A pine, 18 ins. diam., bears S. 64° E., 307 lks. dist., mkd. T4S R27E S36 BT.
 A cedar, ins. diam., bears N. 1° W., 250 lks. dist., mkd. T4S R27E S26 BT.
 No other trees within limits. Raise a mound of stone, 2 ft. base, 1 $\frac{1}{2}$ ft. high, W. of cor.
 Land, mountainous.
 Soil, rocky, 4th. rate.
 Timber, Scattering cedar and pine.
 Undergrowth, catclaw, ocotilla, cactus.
 Good grazing.

- Thence,
 East on a random line bet. secs. 25 and 36.
 40.00 Set temp. $\frac{1}{4}$ sec. cor.
 To triangulate the E. $\frac{1}{2}$ of this line, which is exceedingly rough and broken, I proceed as follows,
 The cor. of secs. 25, 30, 31 and 36, which is plainly visible from this point, bears N. 89° 58' E., and the triangulation point, previously setn at 48.42 chs.

Survey of part of the Subdivisions in T. 4 S., R. 27 E.

Chains

on the line bet. secs. 31 and 36, bears S. 51° 42' E. Length of base as previously determined, 31.58 chs. The distance triangulated is given by the following,

$$\frac{31.55}{\sin. 38^{\circ} 20'} = \frac{X}{\sin. 51^{\circ} 42' \text{ or.}}$$

$$\log. 31.55 = 1.498999$$

$$\log. \sin. 51^{\circ} 42' = 9.894746$$

$$\log. \sin. 38^{\circ} 20' = 9.792557$$

$$\frac{1.393745}{1.601188} = \log. 39.92.$$

Therefore the true course and distance of the line is

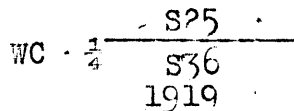
S. 89° 59' W., 79.92 chs.

From the cor. of secs. 25, 30, 31 and 36.

S. 89° 59' W. on a true line bet. secs. 25 and 36, over mountainous land, through scattering timber and undergrowth.

39.96 True point for 1/4 sec. cor. falls in wash, course S., where it cannot be permanently established, therefore at,

37.92 Set an iron post, 3 ft. long, 1 in. diam., 26 ins. in the ground, in a mound of stone, for witness cor. to 1/4 sec. cor., with brass cap mkd.



from which,

A cedar, 6 ins. diam., bears S. 30 1/2° W., 227 lks. dist., mkd. 1/4 S 36 BT. WC.

A cedar, 6 ins. diam., bears N. 79° W., 347 lks. dist., mkd. 1/4 S25 BT. WC.

Asc. 60 ft.

46.00 Spur, bears SW. Desc. 280 ft.

52.40 Gulch, course SW.

55.20 Spur, slopes SW. Continue descent.

58.95 Gulch, 20 lks. wide, course SW. Asc. 50 ft.

67.10 Ridge, bears NE. and SW. Desc. 330 ft.

76.30 Drain, course SW.

79.50 Spur, slopes SW.

79.92 The cor. of secs. 25, 26, 35 and 36.

Land, mountainous.

Soil, rocky, 4th. rate.

Timber, Scattering pine and cedar.

Undergrowth, mesquite, catclaw, and cactus.

N. 0° 01' W., on a true line bet. secs. 25 and 26, over mountainous land, through scattering timber and undergrowth.

Asc. 110 ft.

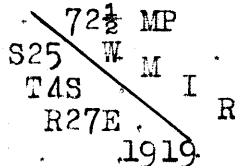
2.00 Drain, course SW. Continue ascent.

5.75 Spur, slopes NW. Desc. 145 ft.

11.30 Gulch, course NW. Asc. 210 ft.

18.05 Gulch, course SW. Continue ascent.

20.29 Intersect White Mountain Indian Reservation, 3.04 chs. N. 88° 26' W. of 72 1/2 mile post, which is an iron post, 1 in. diam., 10 ins. above ground, firmly set, (Reestablished under current Group No. 87) mkd. on brass cap



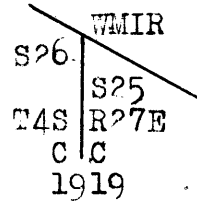
from which,

A cedar, 12 ins. diam., bears S. 67 1/2° W., 194 lks. dist.

Survey of the Subdivisions in T. 4 S., R. 27 E. (part of)

Chains

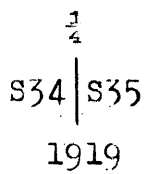
mkd. 72¹/₂ M T4S R27E S25 BT.
 A cedar, 6 ins. diam., bears N.74¹/₂°E., 114 lks. dist.,
 mkd. 72¹/₂ M WMIR BT.
 At point of intersection,
 Set an iron post, 3 ft. long, 2 ins. diam., 24 ins. in
 the ground, for closing cor. of fract. secs. 25 and
 26, with brass cap mkd.



from which,
 A cedar, 8 ins. diam., bears S.72¹/₂°W., 73 lks. dist.,
 mkd. T4S R27E S26 CCBT.
 A cedar, 6 ins. diam., bears S.66°E., 90 lks. dist.,
 mkd. T4S R27E S25 CCBT.
 Land, mountainous.
 Soil, rocky, 3rd. rate.
 Timber, scattering cedar.
 Undergrowth, mesquite, catclaw, ocotilla and cactus.

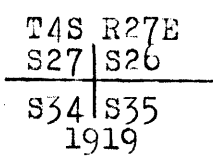
From the cor. of secs. 2, 3, 34 and 35, on the S. bdy.
 of the Tp., Described in Book "G".
 N. 0° 01' W. bet. secs. 34 and 35, over mountainous
 land, through scattering timber and undergrowth,
 Desc. 130 ft.

- 14.10 Gulch, course NW. Wash in gulch, 30 lks. wide, course W.
Asc. 180 ft.
- 21.50 Spur, slopes S.65°W. Desc. 195 ft.
- 28.80 Gulch, course W. Asc. 310 ft.
- 40.00 Set an iron post, 3 ft. long, 1 in. diam., 16 ins. in
the ground, in a mound of stone, for ¹/₄ sec. cor.,
with brass cap mkd.



Raise a mound of stone, 2 ft. base, 1¹/₂ ft. high,
 W. of cor.

- 41.00 Spur, slopes W. Desc. 140 ft.
- 46.60 Drain, course NW. Asc. 30 ft.
- 52.00 Spur, slopes NW. Desc. 140 ft.
- 57.70 Gulch, course NW. Asc. 150 ft.
- 65.70 Spur, slopes S.70°W. Desc. 190 ft.
- 72.20 Gulch, course NW. Asc. 70 ft.
- 76.41 Spur, slopes NW. Desc. 95 ft.
- 80.00 Set an iron post, 3 ft. long, 2 ins. diam., 16 ins. in
the ground, in a mound of stone, for cor. of secs.
26, 27, 34 and 35, with brass cap mkd.



from which,
 A cedar, 6 ins. diam., bears N.9°E., 65 lks. dist.,
 mkd. T4S R27E S26 BT.
 A cedar, 7 ins. diam., bears S.29¹/₂°E., 100 lks. dist.,
 mkd. T4S R27E S35 BT.
 A cedar, 8 ins. diam., bears S.11¹/₂°W., 66 lks. dist.,
 mkd. T4S R27E S34 BT.
 A cedar, 6 ins. diam., bears N.47¹/₂°W., 91 lks. dist.,
 mkd. T4S R27E S27 BT.
 Land, mountainous.

Survey of part of the Subdivisions in T. 4 S., R. 27 E.

Chains

Soil, rocky, 3rd. rate.
 Timber, scattering cedar.
 Undergrowth, mesquite, catclaw, ocotilla and cactus.
 Good grazing.

East on a random line bet. secs. 26 and 35.
 40.00 Set temp. $\frac{1}{4}$ sec. cor.
 79.92 Intersect N. and S. line, 2 lks. S. of the cor. of secs.
 25, 26, 35 and 36.

Thence,
 S. $89^{\circ} 59'$ W. on a true line bet. secs. 26 and 35, over
 mountainous land, through scattering timber and
 undergrowth.

Desc. 10 ft.
 0.20 Drain, course SW..
 6.00 Desc. 170 ft.
 17.70 Wash, course NW. Asc. 80 ft.
 25.10 Spur, slopes NW. Desc. 100 ft.
 40.00 True point for $\frac{1}{4}$ sec. cor. falls on small ledge of rock.
 Mark a cross on ledge and $\frac{1}{4}$ N. of cross, for $\frac{1}{4}$ sec.
 cor.

Raise a mound of stone, 2 ft. base, $1\frac{1}{2}$ ft. high,
 N. of cor.

48.00 Desc. 385 ft.
 69.25 Wash, 30 lks. wide, course NW. Asc. 20 ft.
 70.00 Spur, slopes N. Desc. 100 ft.
 74.70 Wash, course NW. Asc. 60 ft.
 76.00 Spur, slopes N. Desc. 60 ft.
 79.92 The cor. of secs. 26, 27, 34 and 35.

Land, mountainous.
 Soil, rocky, 3rd. rate.
 Timber, scattering cedar.
 Undergrowth, mesquite, catclaw, ocotilla, and cactus.

West on a true line bet. secs. 27 and 34, over mountain-
 ous land, through scattering timber and undergrowth.
 Desc. 300 ft.

4.00 Desc. abruptly into canyon.
 12.90 Gila Bonito Creek, course SW. Thence over level bottom
 land.

20.30 Leave bottom, asc. 220 ft.
 27.00 Top of canyon wall, bears N. and S. Continue ascent.
 40.00 Set a malapais stone, 22x10x8 ins., 18 ins. in the ground,
 for $\frac{1}{4}$ sec. cor., mkd. $\frac{1}{4}$ on N. face.
 Raise a mound of stone, 2 ft. base, $1\frac{1}{2}$ ft. high, N.
 of cor.

45.61 Spur, slopes S. Desc. 50 ft.
 51.56 Intersect White Mountain Indian Reservation bdy., 13.60
 chs. N. $36^{\circ} 54'$ E. of the $70\frac{1}{2}$ mile cor., which is
 an iron post, 1 in. diam., 10 ins. above ground,
 firmly set. (Reestablished under current Group No. 87)
 mkd. on brass cap

W M I R
 $70\frac{1}{2}$ M S34
 T4S
 R27E
 1919

from which,
 A pine, 16 ins. diam., bears N. $28\frac{1}{2}^{\circ}$ E., 172 lks. dist.,
 mkd. $70\frac{1}{2}$ M WMIR-BT.
 A cedar, 10 ins. diam., bears S. $79\frac{1}{4}^{\circ}$ E., 285 lks. dist.,
 mkd. $70\frac{1}{2}$ M T4S R27E S34 BT.

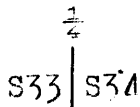
At point of intersection,
 Set an iron post, 3 ft. long, 2 ins. diam., 24 ins. in
 the ground, for closing cor. of fracl. secs. 27 and
 34, with brass cap mkd.

W M I R

Survey of part of the subdivisions in T. 4 S., R. 27 E.

Chains

- 13.30 Spur, slopes SW. Desc. 240 ft.
- 23.20 Wash, 50 lks. wide, course SE. Continue descent.
- 27.09 Small wash, course E. Continue descent.
- 31.05 Canyon, course SE. Asc. 165 ft.
- 39.20 Spur, slopes SE. Desc. 20 ft.
- 40.00 Set an iron post, 5 ft. long, 1 in. diam., 26 ins. in the ground, for 1/4 sec. cor., with brass cap mkd.



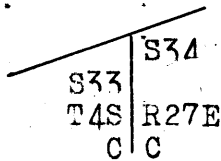
1919

Raise a mound of stone, 2 ft. base, 1 1/2 ft. high W. of cor.

- 42.31 Intersect White Mountain Indian Reservation bdy. 6.43 chs., N. 36° 54' E. of the 70 mile cor., hereinbefore described.

At point of intersection,
Set an iron post, 3 ft. long, 2 ins. diam., 20 ins. in the ground, in a mound of stone, for closing cor. of Fracl. secs. 33 and 34, with brass cap mkd.

W M I R



1919

Raise a mound of stone, 2 ft. base, 1 1/2 ft. high, S. of cor.

Land, mountainous.
Soil, rocky, 3rd. rate.
Timber, scattering cedar.
Undergrowth, mesquite, catclaw, ocotilla and cactus.
Good grazing.

General Description.

This township is mountainous, the higher elevations being found in the Northeast corner. It is drained by Gila Bonito Creek, a stream averaging 30 lks. in width and 6 inches in depth, flowing South through a canyon from 10 to 15 chains wide, with precipitous walls, ranging from 100 to 300 feet high. East of the creek, a series of long narrow spurs slope to the West; West of the creek, the spurs slope to the Southeast. The elevation of the creek bottom is approximately 4,000 feet above sea level, and the highest elevation is about 2,700 feet greater.

Except for small patches of ground along the creek bottom, where the soil is a rich alluvial loam, of first rate, the soil is shallow and rocky. of third rate. Most of the township is covered with malpais rock.

A heavy growth of sycamore timber is found along the creek bottom, the trees ranging from 12 to 36 inches in diameter. Here also are found a few small walnut trees and several species of small hardwood trees, and an occasional poplar. There is a scattering growth of cedar on the ridges and spurs, and scattering pine timber, ranging up to 12 inches in diameter is found on the higher slopes in the Northeast corner of the township.

Mesquite, catclaw, ocotilla and cactus undergrowth is found throughout the township.

No indication of mineral deposits were found.

The only water in the township is afforded by Gila Bonito creek, which is fed by springs, three or four miles

Survey of part of the Subdivisions in T. 4 S., R. 27 E.

Chains

W M I R

S27 C

S34 C

T4S R27E

1919

Raise a mound of stone, 2 ft. base, 1 1/2 ft. high, E. of cor.

Land, mountainous.

Soil, rocky, 3rd. rate.

Timber, sycamore along creek bottom. Scattering cedar elsewhere.

Undergrowth, mesquite, catclaw, ocotilla and cactus.

Good grazing.

N. 0° 01' W. on a true line bet. secs. 26 and 27, over mountainous. land, through scattering timber and undergrowth.

Desc. 60 ft.

1.25 Canyon, 30 lks. wide, course W. Asc. 70 ft.

4.84 Spur, slopes W. Desc. 245 ft.

9.00 Canyon, 50 ft. deep, course SW. Asc. 230 ft.

16.50 Spur, slopes SW. Desc. 90 ft.

21.10 Gulch, course SW. Asc.

22.61 Intersect White Mountain Indian Reservation bdy., 7.44 chs., N. 88° 26' W. of the witness cor. to the 7 1/2 mile post, which is an iron post, 1 in. diam., 10 ins. above ground, firmly set, (Reestablished under current Group 87), mkd. on brass cap

W M I R

WCS 71 1/2 M

S26

T4S R27E

1919

from which,

A cedar, 8 ins. diam., bears N. 17 1/2° E., 33 lks. dist., mkd. 71 1/2 M WMIR WCBT.

A cedar, 8 ins. diam., bears S. 46 1/2° W., 333 lks. dist., mkd. 71 1/2 M T4S R27E S26 WCBT.

At point of intersection,

Set an iron post, 3 ft. long, 2 ins. diam., 10 ins. in the ground, in a mound of stone, for closing cor. of fracl. secs. 26 and 27, with brass cap mkd.

W M I R

S27 S26

T4S R27E

C | C

1919

from which,

A cedar, 22 ins. diam., bears S. 22° E., 221 lks. dist., mkd. T4S R27E S26 CCBT.

A cedar, 8 ins. diam., bears S. 2° W., 328 lks. dist., mkd. T4S R27E S27 CCBT.

Land, mountainous.

Soil, rocky, 3rd. rate.

Timber, scattering cedar.

Undergrowth, mesquite, catclaw, ocotilla and cactus.

From the cor. of secs. 3, 4, 33 and 34, described in Book "G".

N. 0° 02' W. on a true line bet. secs. 33 and 34, over mountainous land, through scattering timber and undergrowth,

Desc. 45 ft.

3.98 Canyon, course NE. Asc. 160 ft.

General description

above where it enters the township.
 At present there are no settlers in the township.
 The entire township is covered with an abundant growth of
 good grass and small patches of the creek bottom can
 be irrigated.
 There are three small groups of old cliff dwellings
 in a poor state of preservation, in section 27.
 There is no wagon road into the township, but trails
 lead to Clifton, Morenci, Solomonsville and Gafford.

Boundries of T. 4 S., R. 27E.
 Latitudes, departures and closing errors.

Line designated,	True course,	Dist,	Latitudes		Departures	
			N.	S.	E.	W.
East bdy.	North	93.38	93.38			
North bdy.	N.60° 30'W.	1.12	.55			.97
	N.63° 15'W.	7.30	3.28			6.52
	N.88° 26'W.	186.29	5.09			186.27
West bdy.	S.36° 54'W.	129.29		103.40		7
South bdy.	East	271.72			271.72	
Convergency						.02

Totals. 103.30 103.40 271.72 271.39
103.30 271.39
 .10 .33

Chs.
 Error in latitude 0.10

Error in departure 0.33

4-680

FIELD ASSISTANTS.

To William B. Kimmel, _____ U.S. Surveyor,

NAMES.	CAPACITY.
B. E. Wakeman,	First chainman
Ben J. Kinsey,	Second chainman
Leopold Krenn	Flagman
Juan Sauny	Moundman
FIELD ASSISTANTS	
To Guy R. Veal,	U.S. Transitman
Raymond McCreary,	First chainman
Richard L. Tinker,	First chainman
Raymond Tielke	Second chainman

For
CERTIFICATE OF UNITED STATES SURVEYOR, and
U. S. TRANSITMAN, SEE
Book "G" of this group.

U. S. Surveyor, hereby certify upon honor that, in pursuance
of special instructions received from the U. S. Surveyor General for
the date of the _____ day of _____, 191____, I have well, faithfully, and truly
surveyed as a proper person, and in strict conformity with said instructions, the Manual of Surveying Instruc-
tions, and the laws of the United States, surveyed all those parts or portions of _____
_____ of the _____
_____ Meridian, in the State of _____, which are represented in
the foregoing field notes as having been executed by me, and under my direction; and that all the corners of
the same have been established and perpetuated in strict accordance with the Manual of Surveying Instruc-
tions, and special written instructions of the U. S. Surveyor General for _____
in the specific manner described in the field notes, and that the foregoing are the original field notes of
this survey.

~~U. S. Surveyor~~

APPROVAL.

OFFICE OF THE UNITED STATES SURVEYOR GENERAL,

Phoenix Arizona, June _____, 1920

The foregoing field notes of the survey of _____ part of ~~East boundary and part of~~
_____ Subdivisions of _____

TOWNSHIP 4 SOUTH, RANGE 27 EAST,

of the Gila and Salt River Base and Meridian, in the State of Arizona.

executed by Wm. B. Kimmel, U.S. SURVEYOR, and Guy R. Veal, U.S. TRANSITMAN,
under ~~his~~ special instructions dated *April 5, 1916 for Group 65, Arizona*, having been
critically examined, and the necessary corrections and explanations made, the said field notes, and the surveys
they describe, are hereby approved.

Frank P. Roth
U. S. Surveyor General.

I certify that the foregoing transcript of the field notes of the above-described surveys in _____
_____ has been correctly copied from the original notes on file in this office.

~~U. S. Surveyor General~~