

Letter E Jan 4, 1916
Aug 1, "

3298

ORIG 29

①

4-679

BOOK 3298

FIELD NOTES

Segregation
OF THE SURVEY OF THE

New Year Gift No. 1 and Res. Lode Claims

Mineral Survey No. 2947

in
T 27 N R 23 E

Of the *G. & P. R.* Meridian,

In the State of *Arizona*

EXECUTED BY

Redney C. Blout

In the capacity of U. S. Surveyor, under instructions dated *July 16*, 1916,
issued by the United States Surveyor General to govern surveys included in
Group No. *64*, which were approved by the Commissioner of the General Land
Office, *February 7*, 1916.

Survey commenced *June 22*, 1916

Survey completed *June 23*, 1916

3298

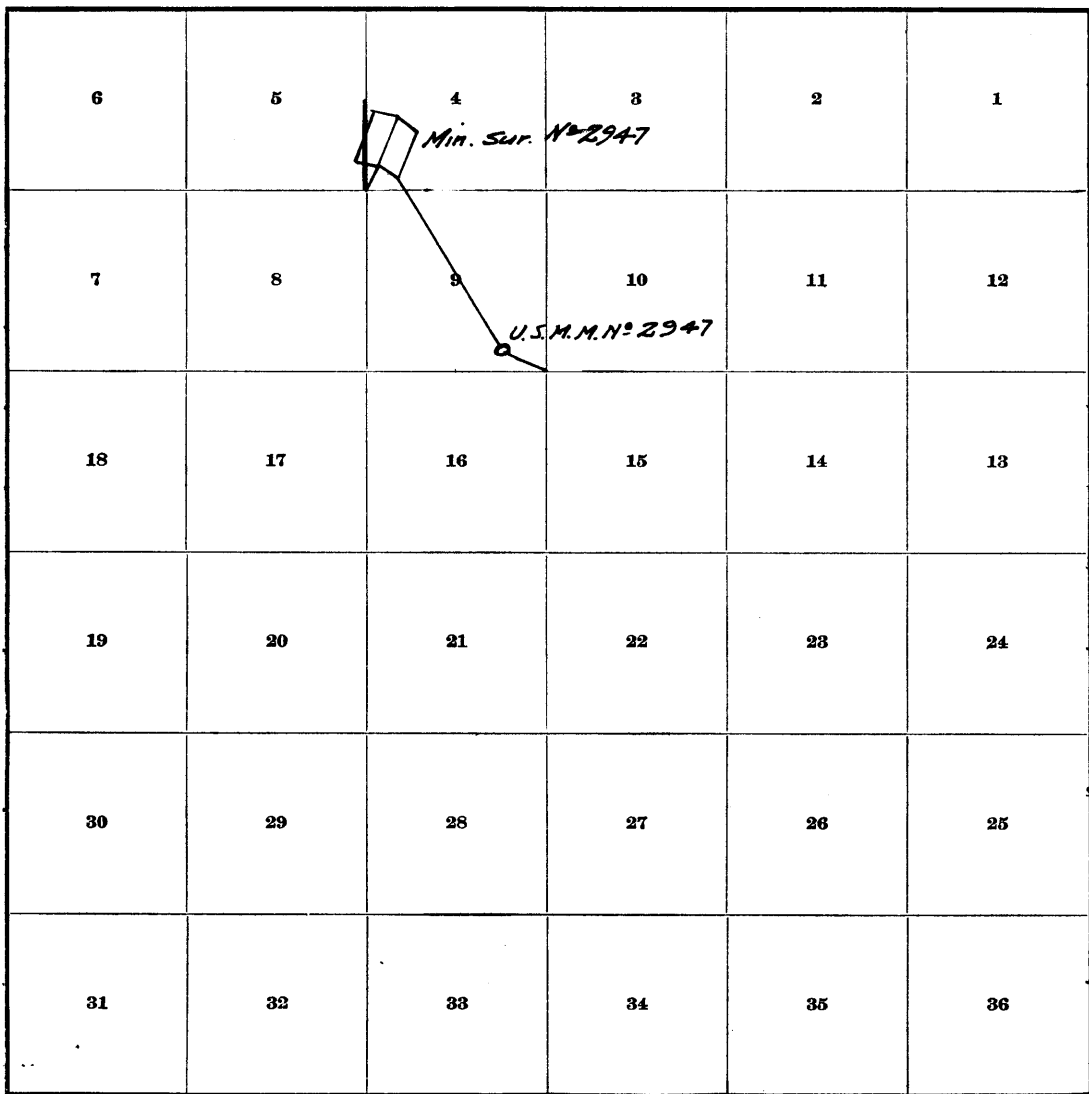
3298

BOOK 3298

3298

INDEX DIAGRAM.

Township 22 S., Range 23 E.



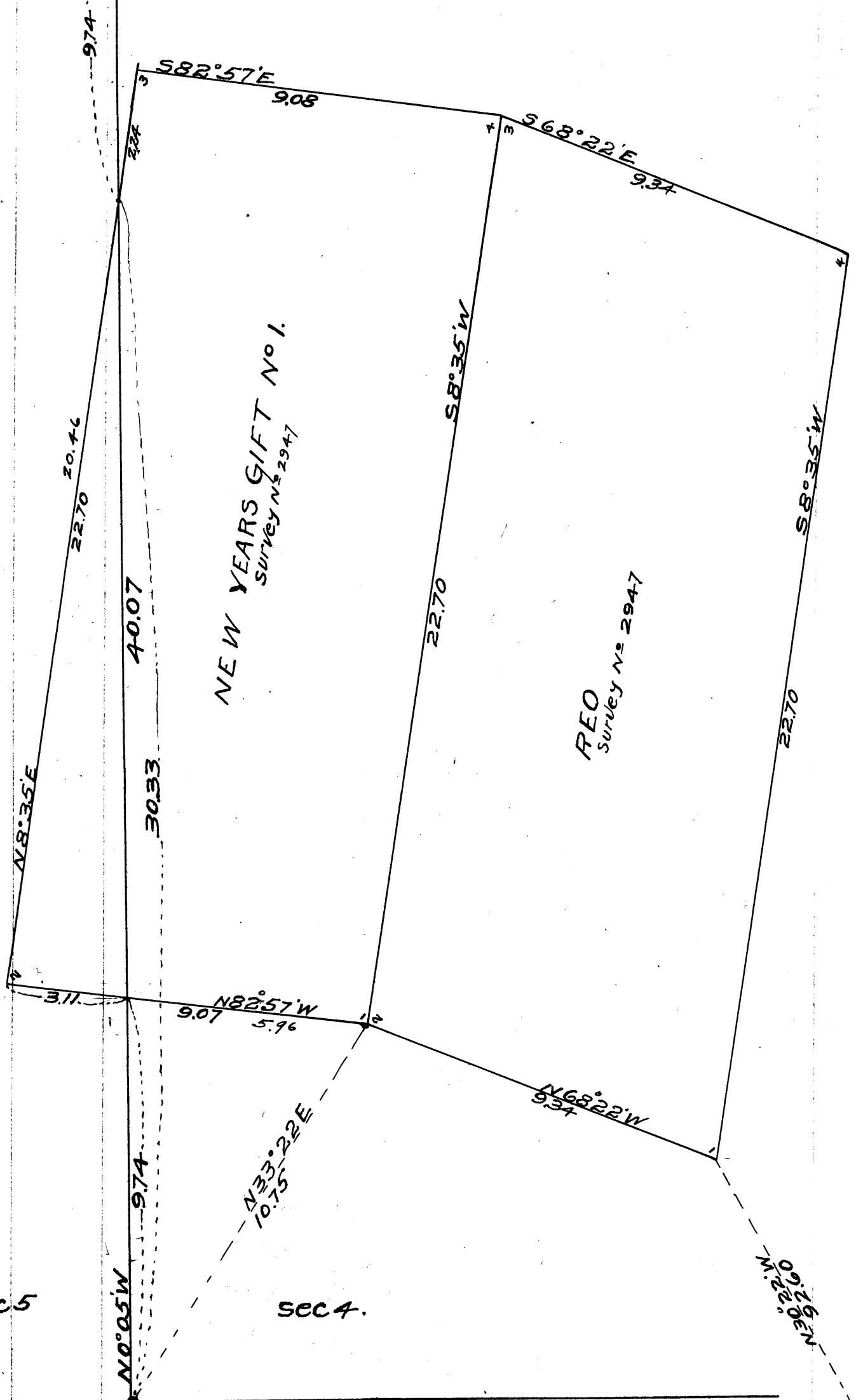
June 30, 1916

sec 5

sec 4.

sec 8

sec 9



MS COR MAX

Determination of the location of "The Mc.Coy Mineral Monument" and Mineral Survey No.2947 in relation to the Public Land Surveys.

Chains

Survey commenced June 22, 1916, and executed with a Buff solar transit No. 9984. The horizontal limb is provided with two double verniers, placed opposite to each other, reading to single minutes of arc, which is also the least count of the verniers of the latitude and declination arcs.

Before beginning this survey I examine the adjustments of the transit and find them to be correct and know from recent tests of the solar apparatus, by comparing its indications, resulting from solar observations made during a.m., and p.m. hours with a meridian established by observations on Polaris at my camp in sec. 14, T23 S., R 24 E., that the instrument is in satisfactory adjustment.

I begin at the cor. of secs. 9, 10, 15, and 16., T 22 S., R 23 E. which is an iron post 3 ft. long, 2 ins. in diam. firmly set in a mound of stone 4 ft. base, 2 1/2 ft. high, marked;

- T 22 S., S 9 in NW.,
- R 23 E., S 10 in NE.,
- S 15 in SE., and
- S 16 in S.W. quadrant.

1911 on S. rim. with a mound of stone 2 ft. base, 1 1/2 ft. high W. of cor.; latitude 31° 31' N., longitude 110° W.

June 22, 1916. At 3^h 02^m p.m., l.m.t. I set off 31° 31' N. on the lat. arc, 23° 27' N. on the decl. arc and determine a meridian with the solar at the above described sec. cor.

Thence I run N 72° 41' W. on a random line .

19.55

Intersect the Mineral Monument, locally known as the "Mc.Coy Mineral Monument". and which is reported as having been established as U.S.M.M. No. 2947 in the field notes furnished me by the surveyor general.; This monument is a 2X4 in. post about 8 ft. long set in a mound of stone 5 ft. base, and 5 ft. high, marked with blue pencil on bottom end of post "The Mc.Coy Mineral Monument, August 15, 1906. from which

The most prominent peak in the "Tombstone Hills" bears N 26° 55' W.

The most prominent peak, and the only high peak in the Huachuca Mountains, visible from this point, bears S 61° 35' W.

The chimney on the "Davis ranch house bears S 48° 50' E. about 70.00 chs dist.

This monument is situated on the crest of a long spur of the Mule mountains which bears in a northeasterly direction.

The changes necessary to identify this monument as U.S.M.M. No. 2947, referred to in the survey of the mineral claims New Years Gift No. 1 and Reo, Survey No. 2947 have not been made in the field.

June 22, 1916.

In order to locate the Mineral claims "Reo and New Years Gift No. 1. survey No. 2947 in order to determine their position with respect to the subdivisional line bet. secs. 4 and 5. I proceed as follows;

June 23, 1916. At 7^h 02^m a.m., l.m.t. I set off 31° 31' N. on the lat. arc, 23° 27' N. on the decl. arc and determine a meridian with the solar at the Mc. Coy Mineral Monument.

Thence I run N 28° 55' W. on a random line.

92.57

Fall 232 lks. N 61° 05' E. of Cor. No. 1 of the Reo Lode claim which is a post 3 ft. long 4 ins. sq. set in a mound of stone, marked 1-2947 R.L.

Course of line back to the Mineral Monument is S 30° 21' E. Length of tie line 92.60 chs.

I find from a traverse of the above tie to the mineral Monument together with the reported bearings and lengths of the end lines of the mineral claims, that the subdivision line bet. secs. 4 and 5 will intersect the "New Years Gift Lode claim, therefore I proceed to the cor. of secs.

Retracement of Mineral Surveys.

~~REO LODE CLAIM~~

Chains June 23, 1916. At 8^h 02^m a.m., l.m.t. I set off 31° 32' N. on the lat. arc, 23° 27' N. on the decl. arc and determine a meridian with the solar at Cor. No. 1 of the Reo lode claim Survey No. 2947.

Thence I run
 9.34 N 68° 22' W. on S. end line of claim.
 Intersect cor. No. 2 of the Reo, ~~which is~~ identical with Cor. No. 1 of the New Years Gift Lode claim No. 1., which is a post 4 ft. long 4 ins. sq. set in a mound of stone, marked 2-2947 R.L. on NE., and 1-2947 N.L. on NW. faces.

Thence
 22.70 N 8° 35' E. on W. side line of the Reo Lode claim and E. side line of the New Years Gift No. 1 Lode claim
 Intersect Cor. No. 3 of the Reo Lode claim, identical with Cor. No. 4 of the New Years Gift No. 1 Lode claim.

Thence
 9.34 S 68° 22' E. on N. end line of the Reo Lode Claim.
 Intersect Cor. No. 4.

Thence
 22.70 S 8° 35' W. on E. side line of the Reo Lode claim
 To cor. No. 1 the place of beginning.

NEW YEARS GIFT NO. 1

I now return to Cor. No. 1 of the New Years Gift No. 1. Lode claim

Thence I run
 9:07 N 82° 57' W. on S. end line of said claim.
 Intersect Cor. No. 2 of said claim, which is a post 4 ft. long 4 ins. sq. set in a mound of stone, marked 2-2947 N.L. on NE. face.

Thence
 22.70 N 8° 35' E. on W. side line of said claim.
 Intersect Cor. No. 3 of said claim, which is a post 4 ft. long 4 ins. sq. set in a mound of stone, marked 3-2947 N.L. on SE. face.

Thence
 9.08 S 82° 57' E. on N. end line of said claim.
 Intersect Cor. NO. 4 of said claim and Cor. No. 3 of the Reo Lode claim.

Thence
 22.70 S 8° 35' W.
 To cor. No. 1 the place of beginning.

June 23, 1916.

Sidney E. Blout

U. S. SURVEYOR

The determination of the position of the "Mc.Coy Mineral Monument
and Mineral Survey No.2947 in relation to the Public Land Surveys

Chains	4,5,8, and 9. which is an iron post 3 ft. long, 2 ins. in diam firmly set in a mound of stone 4 ft. base, 2½ ft. high, marked
	T22S., S5 in NW., R23E., S4 in NE., S9 in SE., and S8 in SW. quadrant 1911 on S. rim. with a mound of stone 2 ft. base, 1½ ft. high W. of cor.
	At 9 ^h 02 ^m a.m., l.m.t. I set off 31° 32' N. on the lat. arc, 23° 26' N. on the decl. arc and determine a meridian with the solar at this cor.
	Thence I run N 0° 05' W. on a random line bet. secs. 4 and 5.
40.07	Intersect the ¼ sec. cor, which is an iron post 1 in in diam. firmly set in a mound of stone, marked and witnessed as described by the surveyor general..
	Thence I run S 0° 05' E. on a true line bet. secs. 4 and 5.
9.74	Intersect the W. side line of the New Years Gift Lode claim No.1 2.24 chs S 8° 35' W. of cor. No. 5
30.33	Intersect the S. end line of the New Years Gift Lode claim No.1. 3.11 chs S 82° 57' E. of cor. No.2 of said claim.
40.07	Intersect the cor. of secs. 4, 5, 8, and 9. From this point Cor. No.1 of the New Years Gift Lode claim, which is identical with Cor. No.2 of the Reo Lode claim bears N 33° 22' E. 10.75 chs. dist.

June 23, 1916.

Sidney E. Blount

U.S. Surveyor.

38
6

(7)

JUN 10 1919

BOOK 3298

FINAL OATH OF UNITED STATES SURVEYOR.

I, Sidney E. Blout, U. S. Surveyor, do solemnly swear that, in pursuance of special instructions received from the U. S. Surveyor General for Arizona bearing date of the 26th day of January, 1916, I have well, faithfully, and truly, in my own proper person, and in strict conformity with said instructions, the Manual of Surveying Instructions, and the laws of the United States, ~~surveyed all those parts or portions of~~ segregated Mineral Survey No. 2947 from the public land
Surveys in T 22 N R 23 E

BLM of the BLM Meridian, in the State of Arizona, which are represented in the foregoing field notes as having been executed by me, and under my direction; and I do further solemnly swear that all the corners of said survey have been established and perpetuated in strict accordance with the Manual of Surveying Instructions, and the special written instructions of the U. S. Surveyor General for Arizona and in the specific manner described in the field notes, and that the foregoing are the original field notes of such survey.

Sidney E. Blout
 U. S. Surveyor.

Subscribed by said ~~Surveyor~~, and sworn to before me
 this 26th day of January, 1919



APPROVAL.

OFFICE OF THE UNITED STATES SURVEYOR GENERAL,

Regregation Phoenix Arizona June 10, 1919.
 The foregoing field notes of the survey of this New Year Gift No. 1 and
Reo Lode Claims, Mineral Survey No. 2947

executed by Sidney E. Blout
 under his special instructions dated January 26, 1916, having been critically examined, and the necessary corrections and explanations made, the said field notes, and the surveys they describe, are hereby approved.

Frank D. Frost
 U. S. Surveyor General.

~~I certify that the foregoing transcript of the field notes of the above described surveys in~~
~~has been correctly copied from the original notes on file in this office.~~