

3304

287

orig 1

Book "F."

4-679

BOOK 3304

FIELD NOTES

OF THE RETRACEMENT OF

Parts of East and South boundaries, and

Part of Subdivision lines of

TOWNSHIP 23 SOUTH, RANGE 24 EAST, and

Patented Mineral Claims therein.

RESURVEY OF

Parts of East and West Boundaries, and

Part of Subdivision lines of

TOWNSHIP 23 SOUTH, RANGE 24 EAST, and

SURVEY OF

South boundary of TOWNSHIP 22 SOUTH, RANGE 24 EAST, and

Completion of Subdivision lines of

TOWNSHIP 23 SOUTH, RANGE 24 EAST,

Of the Gila and Salt River Base and Meridian,

In the State of Arizona.

EXECUTED BY

Sidney E. Blout.

In the capacity of U. S. Surveyor, under instructions dated Nov. 8, 1915,

issued by the United States Surveyor General to govern surveys included in

Group No. 64, which were approved by the Commissioner of the General Land

Office, November 23, 1915.

Retracement,
Resurvey & Survey commenced June 12, 1916.

Retracement,
Resurvey & Survey completed July 25, 1916.

Executed under Assignment
Instructions dated Jan. 14, 1916.

3304

3304

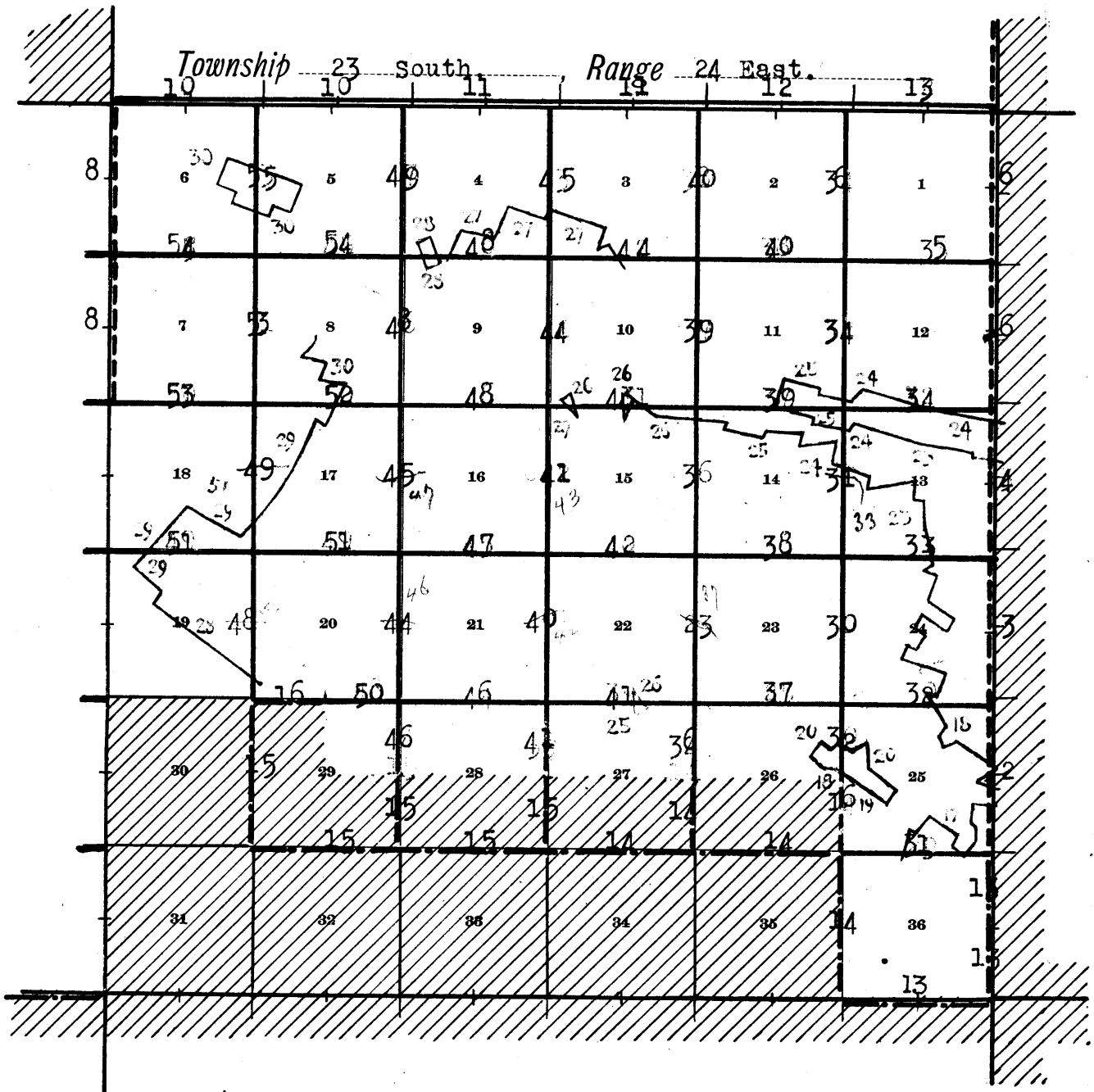
3304

Book "F."

Group 64 - - - Arizona.

BOOK 3304

INDEX DIAGRAM.



Chains

Retracement, Resurveys and Surveys hereinafter described, executed on dates shown on diagram on page 58 hereof, by Sidney E. Blout, U.S. Surveyor, using a Buff light mountain solar transits Nos. 9793 and 9984, each of which is provided with a Smith Solar attachment. The horizontal limb of each of these instruments is provided with two double verniers, placed opposite to each other, reading to single minutes of arc, which is also the least count of the verniers of the latitude and declination arcs.

A 5.00 chain steel tape properly adjusted and clinometer are employed to obtain all measurements hereinafter described.

Examine the adjustments of transit No. 9793, and correct the level and collimation errors; then, in order to test the solar apparatus by comparing its indications resulting from solar observations, made during a.m. and p.m. hours with a meridian established by observations on Polaris, proceed as follows:

At camp, which is located on the east boundary of T. 22 S. R. 24 E., 10.00 chs. N. of the $\frac{1}{4}$ sec. cor. of secs. 19 and 24, latitude, $31^{\circ}30'05''$ N.; longitude, $109^{\circ}52'00''$ W. at 4h. 57m. p.m., l.m.t., set off $31^{\circ}30'$ N. on the lat. arc; $21^{\circ}33'$ N. on the decl. arc, and determine a meridian with the solar, and mark a point thereon by a small nail driven in a stake set firmly in the ground, 5.00 chs. N. of instrument.

May 28, 1916.

May 29, 1916. At 3h. 10m. a.m., l.m.t., by watch, which is correct local mean time, observe Polaris at eastern elongation in accordance with instructions in the Manual, and mark the direction thus determined by a tack driven in a stake set in the ground, 5.00 chs. N. of instrument.

At 7h. 00m. a.m., lay off the azimuth of Polaris $1^{\circ}20\frac{1}{2}'$ to the west, and mark the meridian thus determined by a tack driven in the stake set last evening on which the meridian falls .4 ins. E. of the mark determined by the solar.

At 7h. 57m. a.m., l.m.t., set off $31^{\circ}30'$ N. on the lat. arc; $21^{\circ}38'$ N. on the decl. arc, and determine a meridian with the solar, and mark a point thereon by a small nail driven in the stake already set 5.00 chs. N. of instrument. This point falls .5 ins. E. of the meridian established by the Polaris observation.

The solar apparatus by p.m. and a.m. observations defines positions for meridians respectively about $0^{\circ}21''$ west and $0^{\circ}21''$ east of the meridian established by the Polaris observation; therefore, conclude that the adjustments of the instrument are satisfactory.

May 29, 1916.

June 8, 1916. Upon receipt of transit No. 9984 from the Assistant Supervisor of Surveys at Phoenix, Arizona, examine its adjustments and correct the level and collimation errors; then, in order to test the solar apparatus by comparing its indications resulting from solar observations made during a.m. and p.m. hours with a meridian determined by observations on Polaris, proceed as follows:

At camp, which is located near the $\frac{1}{4}$ sec. cor. of secs. 14 and 23, T. 23 S., R. 24 E., latitude, $31^{\circ}25'28''$ N., longitude, $109^{\circ}53\frac{1}{2}''$ W., at 2h. 23.5m. a.m., l.m.t., June 9, 1916, observe Polaris at eastern elongation in accordance with instructions in the Manual, and mark the direction thus determined by a tally pin driven in a stake set firmly in the ground 5.00 chs. N. of instrument.

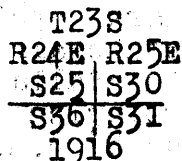
At 8h. 0m. a.m., lay off the azimuth of Polaris $1^{\circ}20\frac{1}{2}'$ to the W., and mark the meridian thus determined by a tack

2. Resurvey of part of E. bdy. of T. 23 S. R. 24 E.

Chains. driven in stake set firmly inground, 5.00chs.N.of instrument. After having carefully adjusted the solar apparatus, set off $31^{\circ}25\frac{1}{2}'$ N. on the latitude arc; $22^{\circ}59\frac{1}{2}'$ N. on the decl. arc, and at 2h. 59m. p.m., determine a meridian with the solar, and mark a point thereon by a nail driven in the stake already set 5.00 chs. N. of instrument, on which the solar meridian falls .6 ins. W. of the point determined by the Polaris observation.
June 9, 1916.

June 10, 1916. At 8h. 59m. a.m., l.m.t., set off $31^{\circ}25\frac{1}{2}'$ N. on the lat. arc; $23^{\circ}02'$ N. on the decl. arc, and determine a meridian with the solar, and mark the direction thus determined by a nail driven in the stake already set, 5.00 chs. N. of instrument. This point falls .5 ins. E. of the point determined by the Polaris observation. At 1h. 59.2m., a.m., l.m.t., set off $23^{\circ}02\frac{1}{2}'$ N. on the decl. arc, and observe the sun on the meridian, and obtain a reading of $31^{\circ}25\frac{1}{2}'$ on the lat. arc. At 1h. 59.2m. p.m., l.m.t., set off $31^{\circ}25\frac{1}{2}'$ N. on the lat. arc; $23^{\circ}03'$ N. on the decl. arc, and determine a meridian with the solar, and mark a point thereon by a tack driven in the stake already set 5.00 chs. N. of instrument. This point falls .4 ins. W. of the point determined by the Polaris observation. The solar apparatus by a.m. and p.m. observations, defines positions for meridians respectively, about $0'21''$ west and $0'21''$ east of the meridian established by the Polaris observation; therefore, conclude that the adjustments of the instrument are satisfactory. The magnetic variation of meridians is $N.12^{\circ}45'W.$, giving a magnetic declination of $12^{\circ}45' E.$
June 10, 1916.

The original cor. of secs. 25, 30, 31 and 36 on E. bdy. of the Tp. is a granite stone $15 \times 6 \times 4$ ins., loosely set in a mound of stone, marked as described by the surveyor general. No cor. accessories. Destroy the old cor., and reestablish it in the same place as follows:
Set an iron post 3 ft. long, 3 ins. in diam., 24 ins. in the ground for cor. of secs. 25, 30, 31 and 36, marked on brass cap,



- 25.22 Raise a mound of stone 2 ft. base, $1\frac{1}{2}$ ft. high, W. of cor. This cor. is within the Bisbee Queen patented lode claim, Mineral Survey No. 2177. Thence N. $1^{\circ}09' E.$, on true line on E. bdy. of sec. 25. Over SW. slope of Gold Hill, thru scattering timber and undergrowth. Ascend 463 ft.
- 26.20 Intersect NE. side line (3-4) Bisbee Queen, patented lode claim, Mineral Survey No. 2177, at point 4.71 chs. S. $52^{\circ}23' E.$ from cor. No. 4 thereof. Leave patented mineral land.
- 27.26 Summit of Gold Hill, brs. E. and W. Descend 417 ft. on N. slope.
- 36.60 Intersect S. side line (2-3) of Copper Point patented lode claim, Mineral Survey No. 1729, at point 6.19 chs. S. $76^{\circ}22' E.$ from cor. No. 2 thereof. Thence over patented mineral land.
- 40.00 Intersect N. side line (1-4) of Copper Reef patented lode claim, Mineral Survey No. 1748 at point 12.07 chs. S. $76^{\circ}22' E.$ from cor. No. 1 thereof. Leave patented mineral land.
- Set an iron post, 3 ft. long, 1 in. in diam., 26 ins. in a mound of stone 6 ft. base for reestablished $\frac{1}{4}$ sec. cor. of sec. 25, marked on brass cap,

Resurvey of part of the East boundary of T. 23 S., R. 24 E. 3

Chains.

1/4 S25 |
1916

and raise a mound of stone, 2 ft. base, 1 1/2 ft. high, W. of cor.

40.77 Continue line and measurement. Intersect the original 1/4 sec. cor. of secs. 25 and 30, which is a limestone 12x10x10 ins. above ground, firmly set, marked and witnessed as described by the surveyor general. Destroy the old cor. and reestablish it in the same place as follows:

Set an iron post, 3 ft. long, 1 in. in diam., 26 ins. in the ground for 1/4 sec. cor. of sec. 30, T. 23 S., R. 25 E., marked on brass cap,

1/4 S30 |
1916

and raise a mound of stone, 2 ft. base, 1 1/2 ft. high, E. of cor.

45.34 Thence, N. 1°00'E., on true line, continuing measurement of E. bdy. of sec. 25.

Intersect SE. side line (1-2) of Sunnyside patented lode claim, Mineral Survey No. 1953 at point 1.78 chs. S. 63° 21' W. from cor. No. 1 thereof.

47.10 Thence over patented mineral land. Intersect NE. end line (1-5) same claim, at point 1.83 chs. N. 58° 56' W., from cor. No. 1 thereof.

49.92 Leave patented mineral land. Descend over stony, mountainous land. Ravine, 10 lks. wide, course NW. Ascend 13 ft. on SW. slope.

53.52 Old ore road, brs. E. and W. 65.12 Ridge, brs. N. 70° E. and S. 70° W. Descend 12 ft. on stony NW. slope.

68.32 Ravine, 12 lks. wide, course W. Ascend 23 ft. on S. slope.

80.00 Set an iron post 3 ft. long, 3 ins. in diam., 2 ins. in the ground, surrounded by a mound of stone 6 ft. base, 2 ft. high, for reestablished cor. of secs. 24 and 25, marked on brass cap,

T23S |
S24 |
S25 |
R24E |
1916

and raise a mound of stone, 2 ft. base, 1 1/2 ft. high, W. of cor.

Land, mountainous. Soil, stony, 4th rate. Timber, scattering oak and mountain mahogany. Undergrowth, greasewood, mesquite and ocotillo, 3 to 7 ft. high, scattering growth. Good grass.

1.50 1.05 N. 1°00'E., on a true line, on E. bdy. of sec. 24. Over stony mountainous land, thru. scattering timber and undergrowth. Descend.

Ravine, 5 lks. wide, 4 ft. deep, course S. 70° W. (40.28) chs. N. 1°00'E. from reestablished 1/4 sec. cor. of sec. 30. Intersect the original cor. of secs. 19, 24, 25, and 30, a granite stone, 12x8x6 ins. above ground, firmly set, marked as described by the surveyor general. No cor. accessories. Reestablish this cor. to refer to secs. 19 and 30 only, by raising a mound of stone 2 ft. base, 1 1/2 ft. high, E. of cor. No change in marking necessary.

Thence, N. 0°7' W., on a true line, continuing measurement of E. bdy. of sec. 24.

4. Resurvey of part of the East boundary of T.23 S. R.24 E.

Chains
 7.55 Spur, slopes W. Descend 12 ft. on N.slope.
 18.00 Ravine, 15 lks.wide, course S.50° W. Ascend 320 ft.on SW. slope.
 27.40 Mountain ridge, brs.N.80°W. and S.80°E. Descend 33 ft.to
 33.00 Ravine, 6 lks.wide, course E. Ascend 40 ft.
 38.70 Spur, slopes N.70°E. Descend 25 ft. on NW.slope to
 40.00 Set an iron post, 3 ft.long, 1 in. in diam., 26 ins. in the ground, for reestablished $\frac{1}{4}$ sec.cor.of sec.24, marked on brass cap,

$\frac{1}{4}$ S24
 1916

Raise mound of stone 2 ft.base, 1 $\frac{1}{2}$ ft. high,W.of cor. Continue line and measurement. Descend.
 42.22 (41.17 chs. N.0°7'W. from reestablished cor.of secs..19 and 30) Intersect the original $\frac{1}{4}$ sec.cor.of secs.19 and 24, a granite stone, 12x10x10 ins.above ground, loosely set, marked and witnessed as described by the surveyor general. Destroy the old cor.and reestablish it in the same place as follows:
 Set an iron post, 3 ft.long, 1 in. in diam., 26 ins. in the ground, for reestablished $\frac{1}{4}$ sec.cor.of sec.19, marked on brass cap,

$\frac{1}{4}$ S19
 1916

Raise mound of stone, 2 ft.base, 1 $\frac{1}{2}$ ft.high,E.of cor. Thence,
 N.1° 6' E., on true line, continuing measurement of E.bdy. of sec.24. Over mountainous land. Descend.
 46.35 Ravine, 12 lks.wide, course E. Ascend 471 ft.on S.slope.
 61.20 Spur, slopes N.70° E. Descend 470 ft. on NW. slope.
 74.30 Intersect S. side line (3-4) of Laura patented lode claim, Mineral Survey No.2455 at point 8.27 chs.S.84°30'E.from cor.No.4 thereof. Thence continue measurement over patented mineral land.
 80.00 Set an iron post, 3 ft.long, 3 ins.in diam., 24 ins. in the ground, for reestablished cor.of secs.13 and 24, marked on brass cap,

T23S
 S13
 S24
 R24E
 1916

Raise a mound of stone, 2 ft.base, 1 $\frac{1}{2}$ ft. high,W.of cor. This cor.is within the Laura patented lode claim, Mineral Survey No.2455.
 Land, mountainous.
 Soil, stony, 4th rate.
 Timber, scattering mesquite and juniper.
 Undergrowth, scattering greasewood, mesquite and ocotillo, 4 to 6 ft.high.

N.1°06'E., on a true line, on E. bdy. of sec.13. Descending over rocky mountainous land, thru scattering timber and undergrowth.
 Across patented mineral land.
 .39 (38.17 chs.N.1° 06'E. from reestablished $\frac{1}{4}$ sec.cor.of sec. 19) Intersect original cor.of secs. 13, 18, 19 and 24, a granite stone, 14x8x12 ins. above ground, firmly set, marked and witnessed as described by the surveyor general. Reestablish this cor. to refer to secs.18 and 19 only, by removing mound on W.of cor., and raising mound of stone, 2 ft.base, 1 $\frac{1}{2}$ ft. high,E.of cor. No change in marking necessary.
 Thence,
 N.1°00'E., on true line, continuing measurement of E.bdy.

Resurvey of part of the East bdy of Township 23 South Range 24 E. 5

- Chains. of sec.13, over mountainous land, along E. slope.
- 12.14 Across patented mineral land.
- 12.14 Intersect N. side line (2-3) of Vic Roy patented lode claim, Mineral Survey No. 2454, at point 4.69 chs. S. 84° 39' E. from cor. No. 2 thereof.
- Leave patented mineral land.
- Ascend 30 ft. over S. slope.
- 16.60 Spur, slopes N. 70° E. Descend 427 ft., over NW. slope.
- 39.30 Enter dry, gravelly creek bed in Forest Canyon, course N. 80° E.
- 40.00 True point for reestablishment of $\frac{1}{4}$ sec. cor. of sec. 13, falls in the creek bed, where it is impracticable to set post; therefore, at a point 70 lks. N. 1° 00' E. set W.C. as hereafter described.
- 40.50 Leave dry creek bed, and enter gravelly bottom land.
- 40.53 (40.14 chs. N. 1° 00' E. from reestablished cor. of secs. 18 and 19) Set an iron post, 3 ft. long, 1 in. in diam., 26 ins. in the ground, for reestablished $\frac{1}{4}$ sec. cor. of sec. 18, marked on brass cap.

$\frac{1}{4}$ S18
 1916

Raise a mound of stone, 2 ft. base, 1½ ft. high, E. of cor. No trace of original $\frac{1}{4}$ sec. cor. of secs. 13 and 18 could be found. Therefore, this $\frac{1}{4}$ sec. cor. is reestablished at the midpoint on line between the existing original sec. cors.

- 40.70 Continue line and measurement.
- Set an iron post, 3 ft. long, 1 in. in diam., 26 ins. in the ground, for witness cor. to reestablished $\frac{1}{4}$ sec. cor. of sec. 13, marked on brass cap.

$\frac{1}{4}$ S13
 W.C.
 1916

- 49.25 Raise a mound of stone, 2 ft. base, 1½ ft. high, W. of cor. Intersect S. side line (1-4) of Wedge patented lode claim, Mineral Survey No. 2413, at point 3.39 chs. S. 86° 48' E. from cor. No. 1 thereof. Thence over patented mineral land.
- 67.06 Intersect N. side line (1-2) of Evening Sun, patented lode claim, Mineral Survey No. 2413 at point 10 lks. S. 86° 48' E. from cor. No. 1 thereof. Leave patented land; continue over stony, mountainous land.
- 67.65 Intersect E. side line (1-2) of Juniper patented lode claim, Mineral Survey No. 2413 at point 3.95 chs. S. 11° 17' W. from cor. No. 1 thereof. Thence over patented mineral land.
- 71.69 Intersect N. end line (1-4) of same claim, at point 68 lks. N. 77° 45' W. from cor. No. 1 thereof. Leave patented mineral land, and continue over stony mountainous land. Descend.
- 77.65 Ravine, 20 lks. wide, 15 ft. deep, course S. 20° E. Ascend 20 ft. on SW. slope.
- 80.00 Set an iron post, 3 ft. long, 3 ins. in diam., 24 ins. in the ground, for reestablished cor. of secs. 12 and 13, marked on brass cap.

T23S
 S12
 S13
 R24E
 1916

Raise a mound of stone, 2 ft. base, 1½ ft. high, W. of cor. Land, mountainous. Soil, rocky, 3rd and 4th rate. Timber, scattering mesquite. Undergrowth, scattering greasewood, mesquite, ocotillo, mescal and soto. Good grass.

6. Resurvey of part of the East bdy. of T. 23 S. R. 24 E.

Chains

N.1°00'E. on a true line on E bdy. of sec. 12.
Over mountainous land, thru scattering timber and undergrowth.
Ascend 681 ft. over stony S. slope.

.67 (40.14 chs. N.1°00'E. from reestablished $\frac{1}{4}$ sec. cor. of sec. 18), Intersect the original cor. of secs. 7, 12, 13 and 18, a granite stone, 12x10x9 ins. above ground, firmly set, marked and witnessed, as described by the surveyor general. Reestablish this cor. to refer to secs. 7 and 18 only, by removing mound on W. of cor., and raising mound of stone, 2 ft. base, 1 $\frac{1}{2}$ ft. high, E. of cor. No change in markings necessary.

Thence N.0°3'W. on true line, continuing measurement of E. bdy. of sec. 12.

33.80 Spur, slopes E. Descend 37 ft. on N. slope.

37.00 Ravine 8 lks. wide, course E. Ascend 139 ft. on S. slope.

39.89 (39.22 chs. N.0°3'W. from reestablished cor. of secs. 7 and 18), Intersect the original $\frac{1}{4}$ sec. cor. of secs. 7 and 12, a granite stone, 10x8x6 ins. above ground, firmly set, marked and witnessed as described by the surveyor general. Reestablish this cor. to refer to sec. 7 only by removing mound W. of cor., and raising mound of stone 2 ft. base, 1 $\frac{1}{2}$ ft. high, E. of cor. No change in marking necessary.

Thence N.2°12'W., on a true line, continuing measurement of E. bdy. of sec. 12. Ascend.

40.00 Set an iron post, 3 ft. long, 1 in. in diam., 26 ins. in the ground for reestablished $\frac{1}{4}$ sec. cor. of sec. 12 only, marked on brass cap,

$\frac{1}{4}$ S12

1916

43.40 Raise a mound of stone, 2 ft. base, 1 $\frac{1}{2}$ ft. high, W. of cor. Spur, slopes S.70°E. Descend 233 ft. on NE. slope.

55.45 Ravine, 10 lks. wide, course S.50°E. Ascend 189 ft. on SW. slope.

59.40 Spur, slopes S.40°E. Descend 15 ft. on NE. slope.

65.30 Ravine, 15 lks. wide, course S.40°E. Asc. 430 ft. on SW. slope.

77.72 (37.83) chs. N.2°12'W. from reestablished $\frac{1}{4}$ sec. cor. of sec. 7), Intersect the original cor. of secs. 1, 6, 7 and 12, a granite stone, 12x10x8 ins. above ground, firmly set, marked and witnessed as described by the surveyor general.

Reestablish this cor. to refer to secs. 6 and 7 only, by removing mound from W. of cor., and raising mound of stone 2 ft. base, 1 $\frac{1}{2}$ ft. high, E. of cor.

No change in marking necessary.

Thence,

N.0°24'W. on a true line, continuing measurement of E. bdy. of sec. 12.

80.00 Set an iron post, 3 ft. long, 3 ins. in diam., 8 ins. in the ground, supported by mound of stone, 5 ft. base, 2 ft. high, for reestablished cor. of secs. 1 and 12, marked on brass cap,

T23S

S 1

S12

R24E

1916

Raise a mound of stone, 2 ft. base, 1 $\frac{1}{2}$ ft. high, W. of cor. Land, mountainous. Soil, rocky, 4th rate.

Timber, scattering mesquite and oak.

Undergrowth, scattering mesquite and soto. Good grass.

N.0°24'W., on a true line, on E. bdy. of sec. 1. Over mountainous land, thru scattering timber & undergrowth. Ascend 16 ft. on rocky SE. slope.

7.35 Spur, slopes E. Descend 356 ft. on N. slope.

18.45 Ravine, 12 lks. wide, course E. Ascend 170 ft. on S. slope.

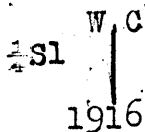
25.35 Spur, slopes S.70°E. Descend 198 ft. on NE. slope.

30.80 Ravine, 10 lks. wide, course E. Ascend 102 ft. on S. slope.

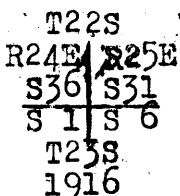
Resurvey of part of the East bdy of Township 23 S., R. 24 E., 7.

Chains.

- 36.35 Spur slopes S. 40° E. Descend 98 ft. on NE. slope.
- 37.39 (39.67 chs. N. 0° 24' W. from reestablished cor. of secs. 6 and 7) Intersect the original $\frac{1}{4}$ sec. cor. of secs. 1 and 6, a granite stone, 20x14x10 ins. above ground, firmly set, marked and witnessed as described by the surveyor general. Reestablish this cor. to refer to sec. 6 only by removing mound of stone from W. of cor., and raising mound of stone 2 ft. base, 1 $\frac{1}{2}$ ft. high, E. of cor. No change in marking necessary.
- 39.02 Thence N. 0° 39' E., on a true line, continuing measurement of E. bdy. of sec. 1. Set an iron post 3 ft. long, 1 in. in diam., 6 ins. in the ground, supported by a mound of stone, 4 ft. base, 2 ft. high, for witness cor. to reestablished $\frac{1}{4}$ sec. cor. of sec. 1, marked on brass cap,



- 39.90 Raise a mound of stone, 2 ft. base, 1 $\frac{1}{2}$ ft. high, W. of cor. Ravine, 15 lks. wide, in bottom of canyon, course E. Ascend 268 ft. over S. slope.
- 40.00 True point for reestablishment of $\frac{1}{4}$ sec. cor. of sec. 1, falls in above noted ravine, where the setting of post would be impracticable; therefore W.C. was set at a point 98 lks. S. 0° 39' W., as hereinbefore described.
- 55.35 Spur, slopes S. 40° E. Descend 85 ft. on NE. slope.
- 59.45 Ravine, 5 lks. wide, course SE. Ascend 760 ft., over cliffs and ledges on SW. slope.
- 76.91 (39.52 chs. N. 0° 39' E. from reestablished $\frac{1}{4}$ sec. cor. of sec. 6) Intersect the original cor. of Ts. 22 and 23 S., Rs. 24 and 25 E., a granite stone, 10x12x14 ins. above ground, marked and witnessed as described by the surveyor general. Destroy all trace of this old cor., and in the same place Set an iron post, 3 ft. long, 3 ins. in diam., 24 ins. in the ground, for reestablished cor. of Ts. 22 and 23 S., Rs. 24 and 25 E., marked on brass cap,



Raise mound of stone, 2 ft. base, 1 $\frac{1}{2}$ ft. high, S. of cor.
 Land, mountainous.
 Soil, rocky, 4th rate.
 Timber, scattering oak and mountain mahogany.
 Undergrowth, scattering soto.
 Good grass.

8 Independent Resur. of part of W. bdy. of T. 23 S., R. 24 E.

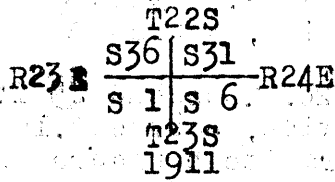
Chains.

- Resurvey commenced July 15, 1916, and executed with Buff & Buff light mountain transit No. 9984, hereinbefore described.
- From original cor. of secs. 7, 12, 13 and 18, on W. bdy. of T. 23 S., R. 24 E., an iron post, with brass cap, firmly set in mound of stone, and marked and witnessed as described by the surveyor general, North, on a true line, bet. secs. 7 and 12. Over mountainous land, thru. scattering timber and dense undergrowth.
- Ascend 264 ft. over rocky SW. slope.
- 11.00 Spur, slopes S. 60° E. Descend 39 ft. on NE. slope.
- 15.35 Ravine, 10 lks. wide, course S. 60° E. Ascend 199 ft. on SW. slope.
- 25.50 Top of "Continental Divide" brs. N. 70° E. and S. 70° W. Descend 253 ft. on NW. slope.
- 37.85 Ravine, 20 lks. wide, course E. Ascend 166 ft. on S. slope.
- 38.30 Intersect original $\frac{1}{4}$ sec. cor., an iron post, 1 in. in diam., with brass cap, marked
- $\frac{1}{4}$ S 12 | S 7
- 1911
- with mound of stone, W. of cor.
- 40.00 Scatter the mound of stone, remove post, and at Reset the same post, 26 ins. in the ground for reestablished $\frac{1}{4}$ sec. cor., with no change in marking, and raise a mound of stone 2 ft. base, 1 $\frac{1}{2}$ ft. high, W. of cor.
- 49.30 Top of "Continental Divide" brs. N. 40° E. and S 30° W. Descend 844 ft. on NW. slope.
- 78.10 Fall 4 lks. W. of original cor. of secs. 1, 6, 7 and 12, an iron post, 3 ins. in diam., with brass cap, marked
- T 23 S
R 23 E | R 24 E
S 1 | S 6
S 12 | S 7
- 1911
- with mound of stone, W. of cor.
- 80.00 Scatter the mound of stone, remove post and at Reset the same post, 24 ins. in the ground for reestablished cor. of secs. 1, 6, 7 and 12, with no change in marking, and raise a mound of stone, 2 ft. base, 1 $\frac{1}{2}$ ft. high, W. of cor.
- Land, mountainous.
Soil, rocky, 3rd and 4th rate.
Timber, scattering oak, juniper and mountain mahogany.
Undergrowth, dense manzanita and scrub oak.
Good grass.
-
- North, on a true line, bet. secs. 1 and 6. Over mountainous land, thru. scattering timber and dense undergrowth. Descend 160 ft. over rocky NW. slope.
- 5.00 Bottom of canyon, 20 lks. wide, course N. 60° E. Ascend 25 ft. on SE. slope.
- 27.00 Spur, slopes E. Descend 433 ft. on NE. slope.
- 38.17 Fall 7 lks. W. of original $\frac{1}{4}$ sec. cor., an iron post, 1 in. in diam., with brass cap, marked
- $\frac{1}{4}$ S 1 | S 6
- 1911
- with mound of stone, W. of cor.
- 38.75 Scatter the mound of stone, remove post, and reset it on line as hereinafter described.
- 39.00 Bottom of canyon, 20 lks. wide, course N. 20° W. Ascend 25 ft. on SW. slope.
- 40.00 Road, brs. N. 20° W. and S. 20° E.
Reset the iron post, removed from 38.17 ch. sta., 26 ins.

Independent Resur. of part of W. bdy. of T. 23 S., R. 24 E. 9

Chains.

- in the ground for reestablished $\frac{1}{4}$ sec. cor., with no change in marking, and raise a mound of stone, 2 ft. base, $1\frac{1}{2}$ ft. high, W. of cor.
- 41.30 Spur, slopes W. Descend 95 ft. on NW. slope.
- 48.40 Road brs. N. 10° E. and S. 10° W.
- 54.50 Bisbee-Tombstone highway, brs. N. 20° W. and S. 30° E.
- 57.00 Bottom of Tombstone canyon, 50 lks. wide, course N. 60° W. Ascend 92 ft. on SW. slope.
- 64.00 Spur, slopes W. Descend 45 ft. on N. slope.
- 68.00 Ravine, 20 lks. wide, course S. 70° W. Ascend 145 ft. on SW. slope.
- 77.95 Intersect the original cor. of Ts. 22 and 23 S., Rs. 23 and 24 E., which is an iron post, 3 ins. in diam., 12 ins. above ground, with brass cap, marked



and raise a mound of stone 2 ft. base, $1\frac{1}{2}$ ft. high, S. of cor.

Land, mountainous.

Soil, rocky 3rd and 4th rate.

Timber, scattering oak, juniper, pinon and mountain mahogany.

Undergrowth, dense mesquite.

Light growth of bunch grass.

10 Survey of south bdy. of Township 22 South Range 24 East.

Chains.

Survey commenced June 7, 1916, and executed with a Buff light mountain transit No. 9793. From original cor. of Ts. 22 and 23 S., Rs. 24 and 25 E., hereinbefore described, and later reestablished by me, West, on a random line, along S. bdy. of T. 22 S., R. 24 E., setting temp. sec. and sec. cors. at intervals of 40.00 chs.; and at 481.32 chs. intersect N. and S. line, 144 lks. S. of the original cor. of Ts. 22 and 23 S., Rs. 23 and 24 E. hereinbefore described.

Thence, S. 89° 50' E. on true line, on S. bdy. of sec. 31. Over mountainous land, thru scattering timber. Ascend 55 ft. on rocky SW. slope.

- 1.50 Spur, slopes S. 30° W. Descend 75 ft. on SE. slope.
- 3.50 Ravine, 15 lks. wide, course S. 20° W. Ascend 170 ft. on SW. slope.
- 10.50 Spur, slopes S. 20° W. Descend 25 ft. on SE. slope.
- 16.65 Ravine, 20 lks. wide, course S. 10° W. Ascend 450 ft. over cliffs and granite boulders on SW. slope.
- 41.32 Set an iron post 3 ft. long, 1 in. in diam., 26 ins. in the ground, for 1/4 sec. cor. of sec. 31, marked on brass cap,

1/4 S31

1916

- 50.85 Raise a mound of stone, 2 ft. base, 1 1/2 ft. high, N. of cor. Spur, slopes S. Descend 88 ft. on SE. slope.
- 61.72 Ravine, 10 lks. wide, course S. 20° W. Ascend 42 ft. on NW. slope.
- 64.75 Road brs. N. and S. Extends southerly to Bisbee.
- 66.00 Summit of "Continental Divide", brs. N. and S. Descend 125 ft. on SE. slope.
- 81.32 Set an iron post 3 ft. long, 3 ins. in diam., 24 ins. in the ground for cor. of secs. 31 and 32, marked on brass cap,

T22S R24E

S31 | S32

1916

and raise a mound of stone, 2 ft. base, 1 1/2 ft. high, N. of cor. From this cor. U.S. Mineral Mon. No. 1725 brs. N. 53° 49' W., 21.70 chs. dist.

Land, mountainous. Soil, rocky, 4th rate. Timber, scattering oak and juniper. No undergrowth. Good grass.

- 4.35 S. 89° 50' E., on a true line on S. bdy. of sec. 32. Over mountainous land, thru scattering timber. Descend 150 ft. on SE. slope.
- 7.50 Ravine, 15 lks. wide, course S. 40° W. Ascend 62 ft. on W. slope.
- 7.50 High mountain ridge, brs. N. 30° W. and S. Descend 400 ft. over NE. slope.
- 29.60 Ravine, 20 lks. wide, course S. 60° E. Ascend 70 ft. on SW. slope.
- 38.40 Spur, slopes S. 60° E. Descend 200 ft. on NE. slope.
- 40.00 Set an iron post, 3 ft. long, 1 in. in diam., 26 ins. in the ground, for 1/4 sec. cor. of sec. 32, marked on brass cap,

1/4 S32

1916

- 47.00 Raise a mound of stone, 2 ft. base, 1 1/2 ft. high, N. of cor. Bottom of canyon, course N. 50° E. Ascend 45 ft. on NW. slope.

Survey of South bdy of Township 22 South, Range 24 East. 11.

- Chains
 55.50 Spur, slopes N. Descend 65 ft. on NE. slope.
 61.55 Ravine, 15 lks. wide, course N. Ascend 145 ft. on NW. slope.
 66.45 Spur, slopes N. Descend 68 ft. on E. slope.
 70.00 Ravine, 20 lks. wide, course N. 20°W. Ascend 250 ft. on NW. slope.
 77.00 High mountain ridge; brs. N. 30°E. and S. 30°W. Descend 60 ft. on SE. slope to
 80.00 Set an iron post, 3 ft. long, 3 ins. in diam., 24 lbs. in the ground, for cor. of secs. 32 and 33, marked on brass cap,

T22S R24E
 S32 | S33
 1916

Raise mound of stone 2 ft. base, 1½ ft. high, N. of cor. Land, mountainous.
 Soil, rocky, 3rd and 4th rate.
 Timber, scattering oak and juniper.
 No undergrowth. Good grass.

- S. 89°50'E., on a true line, on S. bdy. of sec. 33.
 Over mountainous land, thru. scattering timber.
 Descend 570 ft. on rocky SE. slope.
 22.45 Intersect NW. side line (1-2) of White Oak patented lode claim, Mineral Survey No. 2475, at point 6.07 chs. S. 44°44'W. from cor. No. 2 thereof. Thence across said claim.
 29.78 Telephone line, brs. N. 10°E. and S. 10°W. Gleason to Bisbee.
 31.50 Road brs. N. 30°E. to ranch in T. 22 S., R. 24 E. and S. 30°W. to Bisbee.
 31.85 Ravine, 20 lks. wide, course N. 30°E. in canyon. Ascend 135 ft. on NW. slope.
 35.15 Intersect SE. side line (3-4) of White Oak patented lode claim, Mineral Survey No. 2475, at point 1.21 chs. S. 44°44'W. from cor. No. 3 thereof. Leave patented mineral land.
 40.00 Set an iron post, 3 ft. long, 1 in. in diam., 26 ins. in the ground, for ¼ sec. cor. of sec. 33, marked on brass cap,

¼ S 33
 1916

- 43.50 Raise a mound of stone, 2 ft. base, 1½ ft. high, N. of cor. Spur, slopes N. 40°E. Descend 172 ft. on NE. slope.
 58.85 Ravine, 30 lks. wide, course N. 10°W. Ascend 181 ft. on SW. slope.
 66.00 Spur, slopes N. 20°W. Descend 15 ft. on NE. slope.
 72.65 Ravine, 5 lks. wide, course N. 30°W. Ascend 146 ft. on W. slope.
 78.00 Spur, slopes N. 20°W. Descend 35 ft. on NE. slope, to
 80.00 Set an iron post, 3 ft. long, 3 ins. in diam., 24 ins. in the ground for cor. of secs. 33 and 34, marked on brass cap,

T22S R24E
 S33 | S34
 1916

Raise a mound of stone, 2 ft. base, 1½ ft. high, N. of cor. Land, mountainous.
 Soil, rocky, 4th rate.
 Timber, scattering oak, juniper and mountain mahogany.
 No undergrowth. Good grass.

 S. 89°50'E., on a true line on S. bdy. of sec. 34.
 Over mountainous land, thru. scattering timber and undergrowth.

12. Survey of South bdy. of Township 22 South, Range 24 East.

Chains.

- 6.00 Descend 150 ft. over rocky NE. slope.
- 19.75 Ravine, 20 lks. wide, course N. Ascend 390 ft. on NW. slope. Ridge, brs. N. 30° E. and S. 30° W. Descend 495 ft. on SE. slope.
- 36.50 Ravine, 16 lks. wide, in canyon, course N. 20° E. Ascend 140 ft. on NW. slope.
- 40.00 Set an iron post 3 ft. long, 1 in. in diam., 26 ins. in the ground, for $\frac{1}{4}$ sec. cor. of sec. 34, marked on brass cap,

1/4 S 34

1916

- 49.40 Raise a mound of stone, 2 ft. base, 1 1/2 ft. high, N. of cor. Spur, slopes N. 40° E. Descend 365 ft. on SE. slope.
- 70.70 Ravine, 35 lks. wide, in canyon, course N. Ascend 75 ft. on W. slope.
- 78.65 Spur, slopes N. 30° W. Descend 22 ft. on NE. slope, to
- 80.00 Set an iron post 3 ft. long, 3 ins. in diam., 24 ins. in the ground, for cor. of sec. 34 and 35, marked on brass cap,

T22S R24E
S34 S35

1916

Raise a mound of stone, 2 ft. base, 1 1/2 ft. high, N. of cor. Land, mountainous.
Soil, rocky, 4th rate.
Timber, scattering oak and mountain mahogany.
Undergrowth, scattering sota, mescal, ocotillo and buck brush. Good grass.

-
- S. 89° 50' E., on a true line, on S. bdy. of sec. 35. Over mountainous land, thru scattering timber and undergrowth.
 - 1.40 Descend 35 ft. on NE. slope.
 - 17.80 Ravine, 5 lks. wide, course N. 40° W. Ascend 265 ft. on W. slope.
 - 18.50 Spur, slopes N. Descend 90 ft. on E. slope.
 - 32.50 Ravine, 15 lks. wide, course N. 10° E. Ascend 375 ft. on NW. slope.
 - 40.00 Spur, slopes N. 20° E. Descend 180 ft. on NE. slope.
 - Set an iron post, 3 ft. long, 1 in. in diam., 26 ins. in the ground for $\frac{1}{4}$ sec. cor. of sec. 35, marked on brass cap,

1/4 S 35

1916

- 44.90 Raise a mound of stone, 2 ft. base, 1 1/2 ft. high, N. of cor. Ravine, 10 lks. wide, course N. 30° W. Ascend 241 ft. on SW. slope.
- 47.70 High mountain ridge, brs. N. 40° E. and S. 40° W. Descend 525 ft. on SE. slope, to
- 80.00 Set an iron post, 3 ft. long, 3 ins. in diam., 24 ins. in the ground, for cor. of secs. 35 and 36, marked on brass cap,

T22S R24E
S35 S36

1916

Raise mound of stone, 2 ft. base, 1 1/2 ft. high, N. of cor. Land, mountainous.
Soil, rocky, 3rd and 4th rate.
Timber, scattering oak and mountain mahogany.
Undergrowth, scattering mesquite, mescal, ocotillo, sota and buck brush.
Good grass.

Survey of South bdy. of Township 22 South, Range 24 East. 13

Chains

S. 89° 50' E., on a true line, on S. bdy. of sec. 36.
Over mountainous land, thru. scattering timber and undergrowth.
Descend 300 ft, over SE.slope.

25.00 Bottom of canyon, 40 lks.wide, course N. 70° E. Ascend 425 ft. on NW.slope.

33.50 A point on line from which a house brs.N. about 30 lks. dist.

40.00 Set an iron post, 3 ft. long, 1 in. in diam., 26 ins.in the ground, for 1/4 sec. cor. of sec. 36, marked on brass cap.

1/4 S 36

1916

55.25 Raise mound of stone, 2 ft. base, 1 1/2 ft. high, N. of cor. Spur., slopes N.10° E. Descend 336 ft. on NE. slope.

64.45 Ravine, 25 lks.wide, course N.10° E. in canyon. Ascend 80 ft. on NW. slope.

70.65 Spur, slopes N.10° E. Descend 25 ft. on SE.slope.

73.50 Ravine, 15 lks. wide, course N.10° E. Ascend 300 ft. on NW. slope to

80.00 Intersect the original cor. of Ts. 22 and 23 S., Rs. 24 and 25 E., later reestablished, as hereinbefore described.
Land, mountainous.
Soil, rocky, 4th rate.
Timber, scattering oak and mountain mahogany.
Undergrowth, scattering mescal and sota.
Good grass.

RETRACEMENT OF PART OF EAST BDY. OF TP. 23 S., R. 24 E.

From reestablished cor. of secs. 25, 30, 31 and 36, on E. bdy. of T. 23 S., R. 24 E., hereinbefore described,
South, on a random line, bet. secs. 31 and 36 (N. 1/2).

39.97 Fall 3 lks. W. of the original 1/4 sec. cor., a limestone, 3x6x6 ins. above ground, firmly set, marked and witnessed, as described by the surveyor general.
The true course and dist. of N. 1/2 bet. secs. 31 and 36 is therefore N. 0° 2' W., 39.97 chs.

Thence,
South, on a random line, bet. secs. 31 and 36 (S. 1/2).

40.03 Fall 1 lk. W. of the original cor. of Ts. 23 and 24 S., Rs. 24 and 25 E., a granite stone, 8x8x8 ins. above ground, firmly set, marked and witnessed as described by the surveyor general.
The true course and dist. of S. 1/2 bet. secs. 31 and 36 is therefore N. 0° 1' W., 40.03 chs.

RETRACEMENT OF PART OF SOUTH BDY. OF T. 23 S., R. 24 E.

From original cor. of Ts. 23 and 24 S., Rs. 24 and 25 E., described above,
West, on a random line, bet. secs. 1 and 36 (E. 1/2).

39.88 Fall 3 lks. N. of original 1/4 sec. cor., a granite stone, 6x8x10 ins. above ground, firmly set, marked and witnessed as described by the surveyor general.
The true course and distance of E. 1/2, bet. secs. 1 and 36 is therefore N. 89° 57' E., 39.88 chs.

Thence,
West, on a random line, bet. secs. 1 and 36 (W. 1/2).

39.88 Fall 2 lks. S. of original cor. of secs. 1, 2, 35 and 36, a limestone, 12x8x6 ins. loosely set in a mound of stone, marked and witnessed as described by the surveyor general.
The true course and dist. of W. 1/2 bet. secs. 1 and 36 is therefore S. 89° 58' E., 39.88 chs.

14. Retracement of part of Subdivision lines of T. 23 S. R. 24 E.

- Chains.
- From original cor. of secs. 1, 2, 35 and 36, on S. bdy. of Tp. hereinbefore described,
 N. 0° 01' W., on a random line, bet. secs. 35 and 36 (S. $\frac{1}{2}$).
 39.72 Fall 27 lks. W. of the original $\frac{1}{4}$ sec. cor., a granite stone 8x8x8 ins. above ground, firmly set, marked and witnessed, as described by the surveyor general.
 True course and dist. of S. $\frac{1}{2}$ bet. secs. 35 and 36 is therefore S. 0° 22' W., 39.72 chs.
 Thence
- N. 0° 01' W. on random line, bet. secs. 35 and 36 (N. $\frac{1}{2}$).
 40.00 Fall 11 lks. W. of the original cor. of secs. 25, 26, 35 and 36, a limestone 12x10x10 ins. above ground, firmly set, marked and witnessed, as described by the surveyor general.
 True course and dist. of N. $\frac{1}{2}$ bet. secs. 35 and 36 is therefore S. 0° 9' W., 40.00 chs.
-
- N. 0° 1' W., on a random line, bet. secs. 25 and 26 (S. $\frac{1}{2}$).
 40.00 Make diligent search for the original $\frac{1}{4}$ sec. cor., described by the surveyor general as a cross (x) marked on ledge of limestone, with "1/4" on W. of cross, and a mound of stone, W. of cor. No trace of the cor. or accessories can be found.
 The N. $\frac{1}{2}$ of line, bet. secs. 25 and 26 has never been surveyed.
-
- From cor. of secs. 25, 26, 35 and 36, hereinbefore described,
 West, on a random line, bet. secs. 26 and 35, (E. $\frac{1}{2}$).
 40.03 Fall 8 lks. S. of the original $\frac{1}{4}$ sec. cor., a limestone 6x10x10 ins. above ground, firmly set, marked and witnessed as described by the surveyor general.
 True course and dist. of E. $\frac{1}{2}$ bet. secs. 26 and 35 is therefore N. 89° 53' W., 40.03 chs.
 Thence,
- West, on a random line, bet. secs. 26 and 35. (W. $\frac{1}{2}$)
 40.02 Intersect the original cor. of secs. 26, 27, 34 and 35, a limestone 5x10x12 ins. above ground, firmly set, marked and witnessed as described by the surveyor general.
 True course and dist. of W. $\frac{1}{2}$ bet. secs. 26 and 35 is therefore west, 40.02 chs.
-
- N. 0° 01' W., on a random line, bet. secs. 26 and 27.
 38.13 Fall 10 lks. W. of the original closing cor. of secs. 26 and 27 on SW. end line (3-4) of the Gap patented lode claim, Mineral Survey No. 1873, a limestone 8x8x4 ins. above ground, firmly set, marked and witnessed as described by the surveyor general.
 The true course and length of this previously surveyed portion of line bet. secs. 26 and 27 is therefore S. 0° 9' W., 38.13 chs.
 The section line N. of this C.C. has never been surveyed.
-
- From original cor. of secs. 26, 27, 34 and 35, hereinbefore described,
 West, on a random line, bet. secs. 27 and 34 (E. $\frac{1}{2}$).
 40.05 Fall 8 lks. S. of the original $\frac{1}{4}$ sec. cor., a limestone 6x6x6 ins. above ground, firmly set, marked and witnessed, as described by the surveyor general.
 True course and dist. of E. $\frac{1}{2}$ bet. secs. 27 and 34 is therefore N. 89° 53' W., 40.05 chs.
 Thence
- West, on a random line, bet. secs. 27 and 34 (W. $\frac{1}{2}$).
 40.14 Fall 6 lks. N. of the original cor. of secs. 27, 28, 33 and 34, a limestone 10x10x6 ins. above ground, firmly set,

Retracement of part of the Subdivision lines of T.23 S., R.24 E 15

Chains.

marked and witnessed as described by the surveyor general.
True course and dist. of W. 1/4 bet. secs. 27 and 34 is therefore S.89°55'W., 40.14 chs.

40.21

N.0°02'W., on a random line, bet. secs. 27 and 28 (S. 1/2)
Fall 7 lks.W. of the original 1/4 sec.cor., a limestone, 6x6x6 ins. above ground, firmly set, marked and witnessed, as described by the surveyor general.
True course and dist. of S. 1/4 bet. secs.27 and 28 is therefore S.0°6'W., 40.21 chs.

39.94

From original cor.of secs. 27,28,33 and 34, hereinbefore described,
West, on a random line, bet. secs. 28 and 33 (E. 1/2)
Fall 38 lks.N. of the original 1/4 sec.cor., a limestone, 10x10x6 ins. above ground, firmly set, marked and witnessed, as described by the surveyor general.
True course and dist.of E. 1/2 bet. secs/ 28 and 33 is therefore S.89° 27'W., 39.94 chs.

40.06

Thence
West, on a random line. bet. secs.28 and 33 (W. 1/2).
Fall 35 lks.S. of the original cor.of secs. 28,29,32 and 33, a limestone, 12x5x6 ins. buried in center of the Bisbee-Naco Highway.
True course and dist. of W. 1/2 bet. secs. 28 and 33 is therefore N.89°30'W., 40.06 chs.

37.25

N.0°02'W., on a random line, bet. secs. 28 and 29,
Intersect the original closing cor. of secs. 28 and 29 on the S. side line (1-2) of the Elisa patented lode claim Mineral Survey No.1824, a limestone 8x8x6 ins. above ground, firmly set, marked and witnessed as described by the surveyor general.
True course and dist. of this previously surveyed portion of line bet.secs. 28 and 29 is therefore S.0°X'E., 37.25 chs.
The sec. line N. of this closing cor. has never been surveyed.

X5.0'2'E.

40.03

From original cor.of secs. 28,29, 32 and 33, hereinbefore described,
West, on a random line, bet.secs.29 and 32 (E. 1/2).
Fall 18 lks.S. of the original 1/4 sec.cor., a limestone 6x10x10 ins. above ground, firmly set, marked and witnessed, as described by the surveyor general.
True course and dist. of E. 1/2 bet. secs.29and 32 is therefore N.89° 45'W., 40.03 chs.

39.92

Thence,
West, on a random line, bet. secs. 29 and 32 (W. 1/2).
Fall 21 lks.S. of the original cor.of secs. 29,30,31 and 32, a limestone, 10x6x4 ins. marked with 5 notches on E., and 1 notch on W.edges.
True course and dist. of W. 1/2 bet. secs. 29 and 32 is therefore N.89° 42'W., 39.92 chs.

40.16

N.0°01'E., on a random line, bet. secs. 29 and 30 (S. 1/2)
Fall 20 lks.E. of the original 1/4 sec.cor., a limestone 6x6x6 ins. above ground, firmly set, marked and witnessed, as described by the surveyor general.
True course and distance of S/ 1/2 bet. secs.29 and 30 is therefore N.0°16'W., 40.16 chs.
Thence,

16. Retracement of part of the subdivision lines of T.23S. R.24E.

Chains.

39.99 N.0° 01'E., on a random line, bet. secs. 29 and 30 (N. $\frac{1}{2}$).
 Fall 9 lks. W. of the original cor. of secs. 19, 20, 29 and 30, a limestone, 10x10x10 ins. above ground, firmly set, marked and witnessed as described by the surveyor general.
 True course and dist. of N. $\frac{1}{2}$ bet. secs. 29 and 30 is therefore N.0°9'E., 39.99 chs.

40.00 East, on a random line, bet. secs. 20 and 29 (W. $\frac{1}{2}$).
 Fall 23 lks. N. of the original $\frac{1}{4}$ sec. cor., a limestone, 6x6x10 ins., above ground, firmly set, marked and witnessed as described by the surveyor general.
 True course and dist. of W. $\frac{1}{2}$ bet. secs. 20 and 29 is therefore N.89° 41'W., 40.00 chs.

RESURVEY OF PART OF THE SUBDIVISIONAL LINES OF T.23SR24E.

From original cor. of secs. 25, 26, 35 and 36, hereinbefore described,
 N.0°1'W., on a true line, bet. secs. 25 and 26 (S. $\frac{1}{2}$).
 Over patented mineral land.

39.65 Intersect NE. side line (1-4) of Circus patented lode claim, Mineral Survey No. 2189 at point 92 lks. N. 69°33' W. from cor. No. 1 thereof. Leave patented mineral land. Thence over mountainous land, thru. scattering undergrowth. Ascend SE. slope.

40.00 Set an iron post, 3 ft. long, 1 in. in diam., in a mound of stone, 6 ft. base, 2 $\frac{1}{2}$ ft. high, for reestablished $\frac{1}{4}$ sec. cor., marked on brass cap,

S26 S25

1916

Raise a mound of stone 2 ft. base, 1 $\frac{1}{2}$ ft. high, W. of cor. Land, mountainous.
 Soil, rocky, 4th rate. No timber.
 Undergrowth, scattering greasewood and ocotillo.
 Good grass.

Survey of N. $\frac{1}{2}$ of line hereinafter described.

Retracement of Patented Mineral Lode claims in T. 23 S., R. 24 E. 17

Chains	
	In SE $\frac{1}{4}$ of sec. 25, and NE $\frac{1}{4}$ of Section 36.
	Begin in sec. 36, at SE. cor. (No. 2) of Good Luck patented lode claim, Mineral Survey No. 2172, a pine post, 4 ins. square, 24 ins. above ground, firmly set, marked 2-GLL 2172 on NW. face.
	Thence, N. 16° 58' E., on E. end lines of Good Luck, Limekiln and Edith patented lode claims, Mineral Survey No. 2172 in secs. 36 and 25.
19.72	A point on E. end line (1-4) of Edith claim, at intersection with SW. side line (2-3) of Ocatea patented lode claim, Mineral Survey No. 2019, in sec. 25.
	Thence, S. 56° 53' E. on SW. side line (2-3) of said Ocatea claim.
3.13	Intersect cor. No. 2 of Ocatea claim.
	Thence, N. 51° 21' E. on SE. end line (1-2) of the Ocatea claim, and line 2-3 of Mascot patented lode claim, Mineral Survey No. 2019.
12.15	Intersect cor. No. 2 of Mascot claim, identical with cor. No. 2 of Gold Hill Mine patented lode claim, Mineral Survey No. 1958, and Cor. No. 4 of REMEMBER THE MAIN unpatented lode claim, Mineral Survey No. 1958.
	Thence, S. 58° 43' E. on SW. side line (1-2) of Gold Hill Mine claim, identical with SW. side line of NE. side line (1-4) of REMEMBER THE MAIN claim unpatented.
22.75	Intersect cor. No. 1 of GOLD HILL MINE claim, identical with cor. No. 4 of Peidmont patented lode claim, Mineral Survey No. 1958, and cor. No. 1 of REMEMBER THE MAIN claim unpatented.
	Thence, S. 51° 19' W., on NW. side line (3-4) of the Peidmont patented claim, identical with SE. end line (1-2) of REMEMBER THE MAIN claim, unpatented.
9.04	Intersect cor. No. 3 of said Peidmont patented claim, identical with Cor. No. 2 of said REMEMBER THE MAIN claim, unpatented in sec. 25.
	Thence, S. 58° 52' E. on SW. end line (2-3) of said Peidmont claim in secs. 25 and 36.
5.88	Intersect cor. No. 2 of said Peidmont patented claim, in sec. 36.
	Thence, N. 51° 17' E. on SE. side line (1-2) of said Peidmont claim in secs. 36 and 25.
9.06	Intersect Cor. No. 1 of said Peidmont claim, in sec. 25, identical with cor. No. 2 of Puzzle unpatented lode claim, Mineral Survey No. 1958 on NW. end line (1-4) of Bisbee Queen patented lode claim, Mineral Survey No. 2177.
	Thence, N. 4° 43' W. on E. side line (1-2) of said Peidmont claim identical with W. side line (2-3) of said Puzzle unpatented claim.
9.05	Intersect Cor. No. 6 of said Peidmont claim, identical with Cor. No. 3 of said Puzzle unpatented claim.
	Thence, N. 58° 52' W., on NE. end line (5-6) of said Peidmont claim, identical with line 3-4 of said Puzzle claim.
5.91	Intersect Cor. No. 5 of said Peidmont claim, identical with Cor. No. 4 of GOLD HILL MINE patented lode claim, Mineral Survey No. 1958, Cor. No. 2 of COLUMBIA GOLD HILL patented lode claim, same survey, and Cor. No. 4 of PUZZLE unpatented claim, same survey.
	Thence, N. 4° 52' W. on SE. end line (1-2) of said COLUMBIA GOLD HILL claim.
9.07	Intersect Cor. No. 1 of said claim, identical with Cor. No. 2 of James Carretto patented lode claim, Mineral Survey No. 1958.

18 Retracement of patented mineral lode claims in T. 23 S., R. 24 E.
Chains.

- Thence,
N. 3° 21' E., on SE. end line (1-2) of said James Carretto claim.
- 4.66 Intersect post set at intersection of said line with S. side line (2-3) of Copper Reef, patented lode claim, Mineral Survey No. 1748 in sec. 25.
- Thence,
S. 76° 22' E. in sec. 25 of T. 23 S., R. 24 E. and sec. 30 of T. 23 S., R. 25 E. on said S. side line (2-3) of said Copper Reef claim, and S. side line (2-3) of Copper Point patented lode claim, Mineral Survey No. 1729.
- 28.97 Intersect cor. No. 3 of said Copper Point claim in sec. 30, T. 23 S., R. 25 E.
- In NE. $\frac{1}{4}$ of Sec. 25.
- From Cor. No. 1 of Copper Point patented lode claim, Mineral Survey No. 1729, identical with cor. No. 4 of Copper Reef patented lode claim, Mineral Survey No. 1748, in sec. 30, T. 23 S., R. 25 E.,
- N. 76° 22' W. on N. side line (1-4) of said Copper Reef claim, in sec. 30, T. 23 S., R. 25 E. and sec. 25, T. 23 S., R. 24 E.
- 22.73 Intersect Cor. No. 1 of said Copper Reef claim, identical with Cor. No. 2 of Sunnyside patented lode claim, Mineral Survey No. 1953 in sec. 25, T. 23 S., R. 24 E.
- Thence,
N. 63° 22' E., on SE. side line (1-2) of said Sunnyside claim, in secs. 25 and 30.
- 15.04 Intersect Cor. No. 1 of said claim in sec. 30, T. 23 S., R. 25 E.
- Thence,
N. 58° 56' W., in secs. 30 and 25 on NE. end line (1-5) of said Sunnyside claim, and NE. end line (1-5) of George Washington patented lode claim, same survey.
- 19.51 Intersect cor. No. 5 of said George Washington claim in sec. 25.
- Thence,
S. 79° 07' W. on NW. side line (4-5) of said George Washington claim.
- 7.52 Intersect cor. No. 4 of same claim, identical with cor. No. 1 of Horseshoe patented lode claim, Mineral Survey No. 2020.
- Thence,
N. 34° 56' W., on NE. side line (1-4) of said Horseshoe claim.
- 4.07 Intersect cor. No. 1 of Bryan patented lode claim, Mineral Survey No. 2481.
- Thence,
N. 39° 12' E. on SE. end line (1-4) of said Bryan claim.
- 9.25 Intersect cor. No. 4 of same claim, in sec. 25.
- Thence,
N. 40° 14' W. on NE. side line (3-4) of same claim in secs. 25 and 24.
- 22.74 Intersect Cor. No. 3 of same claim on E. end line (1-5) of Blaine patented lode claim of same survey in sec. 24.
-
- In Secs. 25 and 26.
- From cor. No. 4 of the Circus patented lode claim, Mineral Survey No. 2189 on SE. end line (3-4) of Bangor patented lode claim, Mineral Survey No. 1917, in sec. 26,
- S. 69° 33' E. on NE. side line (1-4) of said Circus claim, in secs. 26 and 25.
- 12.63 Intersect cor. No. 1 of same claim, in sec. 25, identical with cor. No. 3 of BUFFALO patented lode claim, Mineral Survey No. 1917, and Cor. No. 5 of CORA patented lode claim, Mineral Survey No. 2187, and Cor. No. 2 of South side unpatented lode claim, Mineral Survey No. 2244, and Cor. No. 3 of Canyon, unpatented lode claim, Mineral Survey No. 2244, in sec. 25.
- Thence,

Retracement of patented mineral lode claims in T.23 S., R.24 E. 19

Chains.	S 59°40'E., on NE. side line (5-6) of CORA patented lode claim, identical with SW. end line (2-3) of Canyon, unpatented lode claim.
6.26	Intersect cor.No.6 of said CORA patented claim, identical with Cor.No.2 of said Canyon, unpatented lode claim, & cor.No.4 of Bisbee Queen unpatented lode claim, Mineral Survey No.2244.
	Thence, S.48° 52' E., on NE. side line of said Cora patented claim, identical with SW. side line of said Bisbee Queen unpatented claim.
5.55	Intersect cor.No.1 of said Cora claim on N. end line (3-4) of LENA patented lode claim, Mineral Survey No.2172.
	Thence, S.83°09'E., on N. end line (3-4) of said Lena claim.
.91	Intersect Cor.No.4 of same claim.
	Thence, S.7°22'W., on E. side line of same claim.
.62	Intersect cor.No.5 of Marquette I patented lode claim, Mineral Survey No.2186, identical with Cor.No.3 of said Bisbee Queen unpatented claim, and Cor. No.4 of Bisbee Queen No.3 unpatented lode claim, Mineral Survey No.2244.
	Thence, S. 48° 52' E., on NE. side line (5-6) of said Marquette I claim, identical with SW. side line (3-4) of said Bisbee Queen No.3 unpatented claim.
15.19	Intersect cor.No.6 of said Marquette I patented claim, identical with Cor.No.3 of said Bisbee Queen No.3, unpatented claim.
	Thence, S.52° 37'E., on NE. side line (1-6) of said Marquette I claim, identical with SW. side line (2-3) of said Bisbee Queen No.3 unpatented claim.
.24	Intersect cor.No.1 of said Marquette I claim, identical with cor.No.2 of said Bisbee Queen No.3 claim, on N. side line (3-4) of EDITH patented lode claim, Mineral Survey No.2172.
	Thence, S.86°52'E. on N. side line of said Edith patented claim, identical with SE. end line (1-2) of said Bisbee Queen No.3 unpatented claim.
2.24	Intersect post set at intersection of N. side line of said Edith claim, with SW. side line (2-3) of Ocatea patented lode claim, Mineral Survey No.2019.
	Thence, N.56° 55'W. on said SW. side line of Ocatea claim, identical with NE. side line (1-6) of said Bisbee Queen No.3 unpatented claim.
1.83	Intersect cor.No.3 of said Ocatea claim, identical with cor.No.2 of Bisbee Queen unpatented lode claim, Mineral Survey No.2244, and Cor.No.6 Bisbee Queen No.3 unpatented claim.
	Thence, N.51° 24'E., on NW. end line (3-4) of said Ocatea patented claim, identical with SE. end line (1-2) of said Bisbee Queen, unpatented claim.
9.57	Intersect cor.No.4 of said Ocatea claim, identical with Cor.No.1 of said Bisbee Queen claim, on SW. side line, (3-4) of Mascot patented lode claim, Mineral Survey No.2019.
	Thence, N.56°55'W. on said SW. side line of said Mascott claim, identical with NE. side line (1-5) of said Bisbee Queen unpatented claim.
.47	Intersect cor.No.4 of said Mascot claim, identical with Cor. No.2 of Little Mary patented lode claim, Mineral Survey No.2019.
	Thence, N.56°51'W. on SW. side line (2-3) of said Little Mary claim, identical with NE. side line (1-5) of said Bisbee Queen, unpatented claim.

20. Retracement of patented mineral lode claims in T. 23 S., R. 24 E.

Chains.	
22.63	Intersect Cor.No.3 of said Little Mary patented claim, identical with Cor.No.16 of Canyon, unpatented lode claim, Mineral Survey No.2244. Thence, N.4° 46' W., on NW. end lines of Little Mary and Little Elsie patented lode claims, Mineral Survey No.2019, identical with E. side lines of Canyon and Bisbee Queen No.2, unpatented claims, Min. Survey No.2244.
18.81	Intersect post set at intersection of NW. end line (2-3) of said Little Elsie claim, with SE. side line. (1-5) of Bryan patented lode claim, Mineral Survey No.1953. Thence, S.6° 55' W., on said SE. side line, of Bryan claim.
3.01	Intersect cor.No.1 of said Bryan claim, identical with Cor.No.7 of Canyon, unpatented claim, on W. side line of Bisbee Queen No.2 unpatented claim. Thence S.44° 02' W., on SE. side line (1-2) of said Bryan patented claim.
2.12	Intersect cor.No.2 of said claim, on NE. side line of Gold Hill unpatented lode claim, Mineral Survey No.2244, in sec.25. Thence, N.69° 21' W., on SW. end line (2-3) of said Bryan claim, identical with NE. side line (1-6) of said GOLD HILL unpatented claim in secs. 25 and 26.
9.97	Intersect cor.No.3 of said Bryan claim, identical with cor.No.6 of said GOLD HILL unpatented claim, on SE. end line (1-2) of CAVE patented lode claim, Mineral Survey No.1781, in sec.26. Thence, S.43° 56' W., on said SE. end line of CAVE patented claim, identical with line 5-6 of said GOLD HILL unpatented claim.
2.45	Intersect Cor.No.2 of said CAVE claim, identical with Cor.No.5 of said GOLD HILL unpatented claim. Thence, N.68° 36' W. on SW. side line (2-3) of said Cave patented claim, identical with NE. side line (4-5) of said GOLD HILL unpatented claim.
10.01	Intersect Cor.No.1 of Last Chance patented lode claim, Mineral Survey No.2173, identical with Cor.No.4 of said Gold Hill unpatented claim. Thence, S.32° 25' W. on SE. side line (1-2) of said LAST CHANCE patented claim, identical with NW. end lines of GOLD HILL and SOUTH SIDE, unpatented lode claims, Mineral Survey No.2244.
12.51	Intersect cor.No.2 of said LAST CHANCE claim, identical with Cor.No.5 of Warren patented lode claim, Mineral Survey No.2188, and Cor.No.4 of said SOUTH SIDE unpatented claim. Thence, S.49° 00' E. on NE. side line (1-5) of said Warren patented claim, identical with SW. side line (3-4) of said SOUTH SIDE unpatented claim.
7.90	Intersect cor.No.1 of said Warren patented claim, on NE. side line (2-3) of Bangor patented lode claim, Mineral Survey No.1917. Thence, S.75° 12' E. on said NE. side line of Bangor claim.
2:76	Intersect cor.No.3 of said claim. Thence, S.59° 58' W., on SE. end line (3-4) of said claim.
1.00	Intersect cor.No.4 of Circus patented lode claim, Mineral Survey No.2189, on SW. side line of SOUTH SIDE unpatented claim, Mineral Survey No.2244, in sec.26, the point of beginning of the foregoing retracement of patented mineral lode claims in secs. 25 and 26, T.23 S., R. 24 E.

Retracement of patented mineral lode claims in T. 23 S., R. 24 E. 21

Chains.	In E. half of sec. 24.
	From cor. No. 4 of Bryan patented lode claim, Mineral Survey No. 2481, in NE $\frac{1}{4}$ of sec. 25,
	N. 40° 14' W. on NE. side line (3-4) of said claim, in secs. 25 and 24.
22.74	Intersect Cor. No. 3 of said claim on E. end line (1-5) of Blaine patented lode claim, same survey, in sec. 24.
	Thence,
	N. 39° 12' E., on said E. end line of Blaine claim.
.20	Intersect cor. No. 5 of said claim, on S. side line (2-3) of Logan patented lode claim, Mineral Survey No. 2028.
	Thence,
	S. 78° 56' E. on said S. side line of LOGAN claim.
1.70	Intersect cor. No. 2 of same claim.
	Thence,
	N. 25° 32' E., on E. end lines of LOGAN and GROVER patented lode claims, Mineral Survey No. 2028.
18.16	Intersect Cor. No. 1 of said GROVER claim.
	Thence,
	N. 78° 56' W., on N. side line (1-5) of said GROVER claim.
22.74	Intersect Cor. No. 4 of same claim, identical with Cor. No. 1 of the McKinley patented lode claim, Mineral Survey No. 2028, and Cor. No. 1 of Omega patented lode claim, Mineral Survey No. 2280.
	Thence
	N. 26° 30' E. on E. end line (1-5) of said Omega claim.
5.12	Intersect post set on SW. side line (1-2) of HIGH FLYER patented lode claim, Mineral Survey No. 2390.
	Thence,
	S. 59° 22' E., on said SW. side line of HIGH FLYER.
.64	Intersect corner No. 1 of same claim.
	Thence,
	N. 30° 38' E., on SE. end line (1-4) of same claim.
9.09	Intersect cor. No. 4 of same claim.
	Thence,
	N. 59° 22' W. on NE. side line (3-4) of same claim.
6.50	Intersect cor. No. 1 of PEST HOUSE patented lode claim, Mineral Survey No. 2390.
	Thence,
	N. 30° 00' E. on SE. end line (1-6) of said PEST HOUSE claim, and continuing on SE. side line (1-4) of NOONDAY patented lode claim, same survey.
10.83	Intersect SW. side line (1-2) of Osceola patented lode claim, Mineral Survey No. 2256.
	Thence,
	S. 54° 07' E., on said SW. side line of Osceola claim.
18.42	Intersect cor. No. 1 of same claim.
	Thence,
	N. 39° 45' E. on SE. end line (1-4) of same claim.
9.08	Intersect cor. No. 4 of same claim.
	Thence,
	N. 54° 07' W. on NE. side line (3-4) of same claim.
19.98	Intersect SE. side line (1-4) of NOONDAY patented claim, Mineral Survey No. 2390.
	Thence,
	N. 30° 00' E. on said SE. side line of NOONDAY.
11.83	Intersect cor. No. 4 of same claim.
	Thence,
	N. 60° 00' W. on NE. end line (3-4) of same claim, continuing on NE. end line (3-4) of KICKER, same survey.
12.16	Intersect post set on S. side line (1-2) of White Horse patented lode claim, Mineral Survey No. 2253.
	Thence,

22 Retracement of patented mineral lode claim in T.23S. R.24 E.

Chains

- N.79°58' E., on said S. side of White Horse claim.
- 6.80 Intersect cor.No.1 of same claim in sec.24.
Thence,
N. 5° 32' W. on E.end line (1-4) of same claim in secs.
24 and 13.
- 9.07 Intersect cor.No.4 of same claim, identical with cor.No.1
of Red Jacket patented lode claim, Mineral Survey
No.2254 in sec.13.

[Faint, mostly illegible text, possibly bleed-through from the reverse side of the page]

Retracement of patented mineral lode claims in T.23 S., R.24E. 21 23

Chains.

In SW. 1/4 of Sec. 13.

- From cor.No.1 of White Horse patented lode claim, Mineral Survey No.2253, in sec.24, N.5°32'W., on E. end line (1-4) of same claim in secs. 24 and 13.
- 9.07 Intersect cor.No.4 of same claim, identical with cor.No.1 of Red Jacket patented lode claim, Mineral Survey No. 2254 in sec. 13.
Thence, N.5° 15' W., on E. end line (1-4) of said Red Jacket claim, and continuing measurement on E.side line (1-4) of Blucher patented lode claim, Mineral Survey No.3117.
- 30.01 Intersect Cor.No.4 of said Blucher claim.
Thence S.79°47'W., on N.end line (3-4) of same claim.
- 1.92 Intersect cor.No.1 of Baltic patented lode claim, Mineral Survey No.3117.
Thence, N.1° 27'E. on E.end line (1-4) of said Baltic claim.
- 8.63 Intersect cor.No.4 of same claim.
Thence, S.80° 45' W., on N.side line, (3-4) of same claim, and continuing measurement on N.side line. (3-4) of Bruce patented lode claim, same survey.
- 28.40 Intersect post on E. end line (1-4) of Horseshoe patented lode claim, Mineral Survey No.2029.
Thence, N.4°52'E., on said E.end line of Horseshoe claim, identical with W. end line (2-3) of Success, unpatented claim, Mineral Survey No.2176.
- 6.49 Intersect cor.No.4 of said Horseshoe patented claim, identical with cor.No.3 of said Success unpatented claim; also, cor.No.2 of Corona, unpatented claim, Mineral Survey No.2176; also, cor.No.1 of Carmelita, unpatented claim, Mineral Survey No.2176 in sec.13.
Thence, N.77° 47' W., on N.side line, (3-4) of said Horseshoe patented claim, identical with S.side line of said Carmelita unpatented claim, in secs.13 and 14.
- 22.72 Intersect cor.No.3 of said Horseshoe patented claim, identical with Cor.No.2 of said Carmelita unpatented claim, on E.side line of SHATTUCK patented claim, Mineral Survey No.2221, in sec.14.

In N. half of Sec. 13.

- From Cor.No.1 of WEDGE patented lode claim, Mineral Survey No.2413, identical with Cor.No.2 of JUNIPER patented lode claim, same survey, in sec.13, T.23 S., R.24 E., the cor.No.4 of said WEDGE claim in sec.18, bears S. 86°48'E.; therefore, the true course of the S.side line (1-4) of said WEDGE claim is N.86°48'W.
- From said cor.No.1 of WEDGE claim, N.77°45'W. on S.end line (2-3) of said Juniper claim.
- 9.09 Intersect cor.No.3 of said Juniper claim.
Thence, N.11°17'E., on W.side line, (3-4) of same claim.
- 4.54 Intersect cor.No.2 of Golden Gate, patented lode claim of same survey.
Thence, N.77°45' W., on S.side line (2-3) of said Golden Gate Claim, continuing measurement on S. side line (2-3) of Mayflower patented lode claim of same survey.
- 45.44 Intersect cor.No.3 of said Mayflower lode claim, identical with Cor.No.2 of the Sunflower patented lode claim, Mineral Survey No.2412.
Thence, N.82°56'W., on S.side line, (2-3) of said Sunflower patented claim.

24 22. Re-tracement of patented mineral lode claims in T. 23 S., R. 24 E.

Chains.

- 22.73 Intersect Cor. No. 3 of said claim on E. end line (1-2) of APACHA patented lode claim, same survey.
Thence,
S. 11° 17' W., on said E. end line of APACHA claim.
- 4.54 Intersect cor. No. 2 of same claim, in sec. 13.
Thence,
N. 78° 08' W. on S. side line (2-3) of said Apache claim, in secs. 13 and 14.
- 22.73 Intersect Cor. No. 3 of said APACHA claim in sec. 14.

In SW. $\frac{1}{4}$ of sec. 12, and NE. $\frac{1}{4}$ of sec. 13.

- From cor. No. 4 of Pomp patented lode claim, Mineral Survey No. 2412, on E. end line (1-2) of VENCENT patented lode claim, same survey, in sec. 11,
S. 77° 24' E., on N. side line, (1-4) of said Pomp claim, in secs. 11 and 12.
- 22.74 Intersect cor. No. 1 of said Pomp claim on W. end line (3-4) of GRAY EAGLE, patented lode claim, same survey, in sec. 12.
Thence,
N. 11° 10' E., on said W. end line of GRAY EAGLE claim.
- 4.54 Intersect cor. No. 4 of same claim.
Thence,
S. 82° 56' E., on N. side line (1-4) of same claim.
- 22.72 Intersect cor. No. 1, of same claim, identical with cor. No. 4 of ABBIE MAY patented lode claim, Mineral Survey No. 2413, in sec. 12.
Thence,
S. 77° 45' E., on N. side line (1-4) of said ABBIE MAY claim, continuing measurement on N. side line (1-4) of ELSIE MAY patented lode claim, same survey, and N. end line (1-4) of JUNIPER patented lode claim, same survey, in secs. 12 and 13 of T. 23 S., R. 24 E., and sec. 18 of T. 23 S., R. 25 E.
- 31.81 Intersect cor. No. 1 of said Juniper claim in sec. 18, T. 23 S., R. 25 E.
Thence,
S. 11° 17' W. on E. side line (1-2) of said Juniper claim in sec. 18, T. 23 S., R. 25 E., and sec. 13, T. 23 S., R. 24 E.
- 4.54 Intersect cor. No. 1 of Evening Sun patented lode claim, of same survey, in sec. 13, T. 23 S., R. 24 E.
The cor. No. 2 of same claim, in sec. 18, T. 23 S., R. 25 E. by brs. S. 86° 48' E., which course is therefore the true one for the N. side line (1-2) of said EVENING SUN patented claim.

In N. $\frac{1}{2}$ of sec. 14.

- From cor. No. 4, Horseshoe patented lode claim, Mineral Survey No. 2029, identical with cor. No. 3 of Success, Cor. No. 2 of Corona, and Cor. No. 1 of Carmelita, all unpatented claims of Mineral Survey No. No. 2176 in sec. 13,
N. 77° 47' W., on N. side line (3-4) of said Horseshoe patented claim, identical with S. side line of said Carmelita unpatented claim, in secs. 13 and 14:
- 22.72 Intersect Cor. No. 3 of said Horseshoe patented claim, identical with Cor. No. 2 of said Carmelita unpatented claim on E. side line (2-3) of Shattuck patented claim, Mineral Survey No. 2221 in sec. 14.
Thence in sec. 14,
N. 4° 49' E., on E. side line (2-3) of said Shattuck patented claim, identical with W. end line (2-3) of said Carmelita unpatented claim.
- 12.14 Intersect cor. No. 3 of said Shattuck claim.
Thence,
S. 82° 16' W., on N. end line of said Shattuck claim, continuing on N. side line (2-3) of Grenfell patented lode

Retracement of patented Mineral lode claims in T.23 N., R.24 E. 25

- Chains.
- claim, Mineral Survey No. 1794.
- 20.04 Intersect cor. No. 4 of Calumet patented lode claim, Survey No. 1794.
- Thence
N. 1° 53' E. on E. end line (3-4) of said Calumet claim.
- 9.10 Intersect cor. No. 3 of same claim.
- Thence,
S. 81° 49' W. on N. side line (2-3) of same claim.
- 22.73 Intersect cor. No. 2 of same claim.
- Thence,
S. 1° 52' W. on W. end line (1-2) of same claim.
- 2.41 Intersect post on N. side line (2-3) of KEATING patented claim of same survey
- Thence,
N. 75° 37' W. on said N. side line of said Keating claim.
- 15.38 Intersect cor. No. 4 of Examiner patented lode claim, Mineral Survey No. 1910.
- Thence,
N. 5° 43' E. on E. side line (4-5) of same claim.
- 4.00 Intersect cor. No. 5 of same claim. Thence
N. 80° 14' W. on N. end line (5-6) of said Examiner lode claim, continuing on N. end line (2-3) of Orleans patented lode claim of same survey.
- 13.82 Intersect cor. No. 2 of said Orleans claim, identical with cor. No. 3, Bucky O'Neil No. 2 patented claim of same survey, in sec. 14.
- Thence,
N. 30° 15' W., on N. end line (2-3) of said Bucky O'Neil No. 2 claim, in secs. 14 and 15.
- 9.09 Intersect cor. No. 2 of said Bucky O'Neil No. 2 claim, identical with cor. No. 6 of Xenia patented lode claim of same survey in sec. 15.

In NE. $\frac{1}{4}$ of sec. 14, and SE. $\frac{1}{4}$ of sec. 11.

- From cor. No. 2 of APACHA patented lode claim, Mineral Survey No. 2412 in NW. $\frac{1}{4}$ of sec. 13,
N. 78° 08' W. on S. side line (2-3) of said APACHA claim, in secs. 13 and 14.
- 22.73 Intersect cor. No. 3 of said APACHA claim in NE. $\frac{1}{4}$ of sec. 14.
- Thence in NE. $\frac{1}{4}$ of sec. 14.
N. 11° 10' E. on W. end line (3-4) of same claim.
- 2.00 Intersect cor. No. 2 of SQUAW patented lode claim of same survey.
- Thence,
N. 68° 48' W. on SW. side line (2-3) of said SQUAW claim.
- 22.72 Intersect cor. No. 3 of same claim in sec. 14.
- Thence,
N. 11° 10' E. on NW. end line (3-4) of same claim, continuing on NW. end line (3-4) of VENCENT patented lode claim, of same survey, in secs. 14 and 11.
- 18.47 Intersect cor. No. 4 of said VENCENT claim in SE. $\frac{1}{4}$ of sec. 11.
- Thence,
S. 68° 46' E. on NE. side line (1-4) of same claim.
- 22.72 Intersect cor. No. 1 of same claim.
- Thence,
S. 11° 10' W. on SE. end line (1-2) of same claim.
- 2.31 Intersect cor. No. 4 of POMP patented lode claim of same survey in SE. $\frac{1}{4}$ of sec. 11.
- Thence,
S. 77° 24' E. on NE. side line (1-4) of said POMP claim in secs. 11 and 12.
- 22.74 Intersect cor. No. 1 of same claim in SW. $\frac{1}{4}$ of sec. 12.

In SE. $\frac{1}{4}$ of sec. 22, and NE. $\frac{1}{4}$ of sec. 27.

From cor. No. 4 of Contentment patented lode claim, Mineral Survey No. 1392, identical with cor. No. 4 of Martin patented lode claim, Mineral Survey No. 1872, an iron post 2 ins. in diam., set in concrete base, in NE. $\frac{1}{4}$ of sec. 27.

26. Retracement of patented Mineral lode claims in T.23 S., R.24 E.

Chains.

- N.45°03'W. on SW.side line (1-4) of said Contentment claim, identical with NE.side line (1-5) of Remainder unpatented lode claim, Mineral Survey No.2178, in secs.27 and 22.
- 15.08 Intersect cor.No.5 of said Remainder unpatented claim, on E.side line (2-3) of MODOC patented lode claim, Mineral survey No.1392 in SE.¼ of sec.22.
- Thence,
S.11°40'E. on E.side line of said Modoc claim, in secs.22 and 27.
- 13.56 Intersect cor.No.3 of said Modoc claim, identical with cor.No.3 of said Remainder unpatented claim, on N end line (2-3) of Mascot patented lode claim, Mineral Survey No.1743 in NE.¼ of sec.27.
- Thence in sec.27.
N.83°42'E., on said N.end line of said Mascot claim, identical with SE.end line (2-3) of said Remainder unpatented claim.
- 3.18 Intersect cor.No.2 of said Remainder claim, at intersection of said N.end line of said Mascot claim, with NW.side line (4-5) of Martin patented lode claim, Mineral Survey No.1872.
- Thence,
N.64°22'E. on NW. side line of said Martin claim, identical with SE.end line (1-2) of said Remainder unpatented claim.
- 5.34 Intersect cor.No.4 of Contentment patented claim, the point of beginning of the above described retracement in secs.22 and 27.

In NE. ¼ of sec.15 and SE.¼ of sec.10.

- From cor.No.2 of Bucky O'Neil No.2 patented lode claim, Mineral Survey No.1910, identical with Cor.No.2 of Orleans patented claim of same survey, in NW.¼ of sec.14,
N.80°15'W. on N.end line (2-3) of said Bucky O'Neil No.2 claim, in secs.14 and 15, continuing on N.end line (5-6) of Xenia patented claim of same survey.
- 18.18 Intersect cor.No.5 of said Xenia claim, identical with cor.No.4 of Rastus patented claim of same survey in NE.¼ of sec.15.
- Thence,
N.67°47'W., on NE.side line (3-4) of said Rastus claim in secs.15 and 10.
- 22.50 Intersect cor.No.3 of said Rastus claim in sec.10.
- Thence,
S.1°15'W. on NW.end line (2-3) of said Rastus claim in secs.10 and 15.
- 7.21 Intersect cor.No.2 of said Rastus claim, on E.side line (5-6) of Arizona patented lode claim, Mineral Survey No.2017 in NE.¼ of sec.15.
- Thence,
N.4°22'W. on said E. side line of Arizona claim, in secs.15 and 10.
- 7.54 Intersect cor.No.5 of same claim on SW. end line (1-4) of WINDY patented lode claim, Mineral Survey No.2247 in sec.10.
- Thence,
S.67°47'E. on said SW. end line of WINDY claim.
- .79 Intersect cor.No.3 of said Rastus patented claim in sec.10.

In SW.¼ of sec.10, and NW ¼ of sec.15.

From cor. No.2 of the ZEO unpatented lode claim, Mineral Survey No.3167, identical with Cor.No.5 of Arizona No.4 patented lode claim, Mineral Survey No.2127, on SW.side line (1-4) of Collins patented lode claim, Mineral Survey No.2009, a pine post 4 ins. square, 3 ft. long, set firmly in a mound of stone, in SW.¼ of sec.10,
S.51°21'E., on said SW. side line of said Collins claim, in

Retracement of patented mineral lode claims in T. 23 S., R. 24 E. 27

Chains.

- secs.10 and 15.
- 3.05 Intersect cor.No.4 of said ZEO unpatented claim, identical with cor.No.3 of Old Republican patented claim, Mineral Survey No.1119, Cor.No.2 of Angel patented claim of same survey, and Cor.No.3 of PORPHYRY unpatented claim, Mineral Survey No.1909 in NW. 1/4 of sec.15.
Thence,
N.77°41'W., on N.end line (2-3) of said Angel patented claim, identical with S.side line (1-4) of said ZEO unpatented claim in secs.15 and 10.
- 2.77 Intersect cor.No.1 of said ZEO claim, on E.side line of said Arizona No.4 patented claim in SW. 1/4 of sec.10.
Thence,
N.13° 24'E., on W.end line (1-2) of said ZEO claim, identical with E.side line of ARIZONA No.4 patented claim.
- 1.38 Intersect cor.No.2 of ZEO claim, point of beginning of the above described retracement.

In Secs. 3 and 4.

- From cor.No.2 of JUMBO patented lode claim, Mineral Survey No.2202, in sec.10, which is a pine post, 4 ins.square, set in a mound of stone, and marked 2-JL 2202 on SW.face.
Thence,
N.43° 35' W., on NE. side line (2-3) of same claim, in secs. 10 and 3.
- 22.73 Intersect cor.No.3 of same claim, in SW. 1/4 of sec.3.
Thence,
S.43° 16'W. on NW end line (3-4) of same claim.
- 1.98 Intersect post on SE.end line (1-2) of "I" patented lode claim, Mineral Survey No.2121.
Thence,
N.34°32'E. on said SE.end line of "I" claim.
- 3.26 Intersect cor.No.2 of same claim in SW. 1/4 of sec.3.
Thence,
N.62°28'W. on NE.side line (2-3) of same claim, continuing on NE.side line (2-3) of "K" patented claim of same survey, in secs.3 and 4.
- 33.33 Intersect cor.No.3 of said "K" claim in SE. 1/4 of sec.4.
Thence in sec.4.
S.24°32' W., on NW. end line (3-4) of said "K" claim.
- 4.56 Intersect cor.No.2 of "J" patented lode claim, Mineral Survey No.2121.
Thence
N.62°55'W. on NE. side line (2-3) of said "J" claim.
- 22.67 Intersect cor.No.3 of same claim.
Thence,
S.24°32'W., on NW end line (3-4) of same claim, continuing on NW end lines (3-4) of "D" and "A" patented claims of same survey.
- 27.22 Intersect cor.No.4 of said "A" patented claim, identical with cor.No.3 of Northern Light patented claim, Mineral Survey No. 1812, and Cor.No.2 of Red Jacket patented claim, Mineral Survey No.1812.
Thence,
N.62° 20'W. on N.side line (2-3) of said RED JACKET patented claim.
- .75 Intersect cor.No.3 of same claim.
Thence N.80° 04' W. on N.side line (3-4) of same claim.
- 21.74 Intersect cor.No.4 of same claim.
Thence,
S.14° 19'W., on W. end line (4-5) of same claim.
- 9.10 Intersect cor.No.5 of same claim, identical with cor.No.3 of WARREN BOY patented claim, Mineral Survey No.1681, in SW. 1/4 of sec.4.
Thence,
S.14° 08'W. on W. end line (3-4) of said Warren Boy claim in secs.4 and 9.

282. Retracement of patented mineral lode claims in T.23S.R.24E.

- Claims
- 9.06 Intersect cor.No.4 of same claim in NW¹/₄ of sec.9, identical with cor.No.3 of Silver Queen patented claim, Mineral Survey No.1583.
-
- In SW¹/₄ of sec. 4 and NW¹/₄ of Sec. 9,
Bdrs. of ALPHA patented lode claim, Mineral Survey 1954.
-
- Begin at Cor.No.1 of ALPHA patented lode claim, Mineral Survey No.1954, a mound of stone, which bears evidence of having been constructed around the post, originally set for said cor., but which is now missing. This cor. is in NW¹/₄ of sec.9.
- Thence in sec.9.
S. 57° 25' W. (original course), on SE. end line (1-2) of same claim.
- 3.41 (Original dist.) The point for cor.No.2 of same claim. No trace of said cor. could be found after diligent search. Thence,
S. 72° 00' W. (original course) on SE. end line (2-3) of same claim.
- 5.20 (Original dist.) The point for cor.No.3 of same claim. No trace of said cor. could be found after diligent search. This point is in NW¹/₄ of sec.9.
Thence,
N. 24° 50' W. on SW. side line (3-4) of same claim in secs. 9 and 4.
- 21.69 Intersect evident remains of original cor.No.4 of same claim in SW¹/₄ of sec.4, a mound of stone, from which the original post is missing.
Thence in sec.4.
N. 72° 39' E., on NW. end line (4-5) of same claim.
- 9.09 Intersect evident remains of original Cor.No.5 of same claim, in SW¹/₄ of sec.4, a mound of stone from which the original post is missing.
Thence,
S. 23° 18' E., on NE. side line (1-5) of same claim, in secs. 4 and 9.
- 20.66 Intersect remains of original cor.No.1 of same claim, in NW¹/₄ of sec.9, the point of beginning of the above described retracement of the ALPHA claim.
-
- In SEC. 19.
- From cor. no.2 of Florence patented lode claim, Mineral Survey No.2094, in SW¹/₄ of sec.20,
N. 54° 00' W., on SW. side line (2-3) of same claim, in secs. 20 and 19.
- 22.72 Intersect cor. No.3 of same claim, in sec.19, identical with cor.No.2 of May patented claim of same survey.
Thence in sec.19,
N. 54° 54' W., on SW. side line of said May claim.
- 22.70 Intersect cor.No.3 of same claim, identical with Cor.No.2 of WEST BISBEE No.9 patented claim of same survey.
Thence,
N. 54° 46' W. on SW. side line (2-3) of said WEST BISBEE No. 9 claim.
- 22.68 Intersect cor.No.3 of same claim.
Thence,
N. 35° 10' E. on NW end line (3-4) of same claim.
- 8.52 Intersect Cor.No.4 of same claim, identical with Cor.No.3 of WEST BISBEE No.5 patented claim, of same survey and cor.No.2 of WEST BISBEE No.11 patented claim of same survey.
Thence,
N. 52° 57' W., on SW. side line (2-3) of said WEST BISBEE No. 11 claim.
- 21.58 Intersect cor.No.3 of same claim, in sec.19.

Retracement of patented mineral lode claim in T.23 S.R.24 E. 29

Chains

Thence,
 N.35°10'E., on NW.end lines (3-4) of WEST BISBEE, No.11, WEST
 BISBEE No.7, and WEST BISBEE No.3 patented claims of
 same survey in secs.19 and 18.
 26.43 Intersect Cor.No.4 of said WEST BISBEE No.3 claim, identi-
 cal with Cor.No.3 of WEST BISBEE No.4 patented claim
 of same survey in sec.18.

In Sec. 18.

From cor.No.4 of WEST BISBEE No.7 patented claim, Mineral
 Survey No.2094, identical with cor.No.3 of WEST BISBEE
 No.3 patented claim of same survey in sec.19,
 N.35°10'E. on NW.end lines (3-4) of WEST BISBEE No.3, WEST
 BISBEE No.4, WEST BISBEE No.8 and WEST BISBEE No.12
 patented claims all of same survey, in secs.19 and 18.
 36.32 Intersect cor.No.4 of said WEST BISBEE No.12 claim in
 sec.18.
 Thence in sec. 18.
 S.55°03' E., on NE side line (1-4) of said WEST BISBEE
 No.12 claim.
 22.22 Intersect cor.No.1 of same claim, identical with cor.No.3
 of SUMMIT No.3 patented claim, Mineral Survey No.1940.
 Thence,
 S.52° 21' E. on NE.side, line (1-2) of said Summit No.3
 claim.
 13.74 Intersect cor.No.5 of LOVERS LEAP No.2 patented claim
 Mineral Survey No.1940, in sec.18.
 Thence,
 N.35° 52' E., on NW. end line of same claim in secs.18 and
 17.
 9.16 Intersect cor.No.4 of same claim in sec. 17, identical
 with cor No.5 of B.C.DUNLAP No.2 patented claim of
 same survey!

In Sec. 17.

From cor.No.5 of LOVERS LEAP No.2 patented claim, Mineral
 Survey No.1940, on NE. side line (2-3) of SUMMIT No.3
 patented claim of same survey in sec.18,
 N.35° 52'E. in sec.18 and 17 on NW. end lines (4-5) of
 LOVERS LEAP No.2, B. C. DUNLAP No.2 and BISBEE pat-
 ented claims, Mineral Survey No.1940, and NW. side line
 (4-5) of DEWEY patented claim of same survey.
 48.88 Intersect Cor.No.4 of said DEWEY claim in sec.17, identi-
 cal with Cor.No.3 of Contact patented claim, Mineral
 Survey No.1387.
 Thence,
 N.31°53'E. on NW.side line (3-4) of said Contact claim.
 21.30 Intersect Cor.No.4 of same claim.
 Thence,
 S.69° 05'E., on NE.end line (1-4) of same claim.
 1.46 Intersect Cor. No.4 of YAKIMA patented claim, Mineral
 Survey No.1387, in sec.17.
 Thence,
 N.26°40'E. in secs.17 and 8, on NW.side line (3-4) of said
 YAKIMA claim.
 22.61 Intersect Cor.No.3 of same claim, in sec.8.

In Sec. 8.

From cor.No.4 of YAKIMA patented lode claim, Mineral Sur-
 vey No.1387, on NW. end line (1-4) of CONTACT patented
 claim of same survey, in sec.17,
 N.26° 40'E. in secs. 17 and 18 on NW.side line (3-4) of
 said YAKIMA claim.

30. Retracement of patented mineral lode claim in T.23 S. R.24 E.

Chains	
22.61	Intersect Cor.No.3 of same claim in sec.8. Thence in sec.8.
4.64	S.69° 34'E., on NE. end line (2-3) of same claim. Intersect Cor.No.6 of TWILIGHT patented claim of same survey.
6.73	Thence, N.6° 57'W., on NW.end line (5-6) of same claim. Intersect S.side line (2-3) of CONTENTION patented claim, Mineral Survey No.1670.
17.80	Thence, N.86° 49'W., on said S. side line of said CONTENTION claim. Intersect Cor.No.3 of same claim.
8.66	Thence, N.25° 54' E., on W. end line (3-4) of same claim. Intersect cor.No.4 of MORNING STAR patented claim, Mineral Survey No. 2133.
13.75	Thence, N.74° 13'W. on S. side line (4-5) of said MORNING STAR claim. Intersect cor.No.5 of same claim.
11.57	Thence, N.54° 28' E. on W. end line (5-6) of same claim. Intersect cor.No.6 of same claim.
.50	Thence, S.74° 13'E., on N.side line (6-7) of same claim. Intersect cor. No.2 of MORNING STAR No.2 patented claim, Mineral Survey No.2674.
4.53	Thence, N.6° 42' E., on W. end line (2-3) of said MORNING STAR No.2 claim. Intersect Cor.No.3 of same claim.
.14	Thence, S.66° 06' E. on N side line (3-4) of same claim. Intersect Cor. No.4 of BISBEE TOWNSHIP.

In Secs. 5 and 6 Mineral Survey No. 1725.	

22.62	From Cor. No.3 of GOLD REEF No.2 patented claim in sec.5, N.73° 33'W. in secs.5 and 6 on S. side line (2-3) of said claim. Intersect Cor.No.2 of same claim, in sec. 6.
9.97	Thence in sec.6, N.26° 26'E., on W. end line (1-2) of same claim. Intersect Cor.No.1 of same claim, on S.side line (2-3) of Gold Reef No.3 patented claim.
11.36	Thence N.73° 33'W., on said S. side line of GOLD REEF No.3 claim. Intersect Cor.No.2 of said claim.
18.20	Thence, N.26° 26'E. on W. end line (1-2) of same claim, and con- tinuing on W.end line (1-2) of GOLD REEF No.4 patented claim. Intersect cor.No.1 of said GOLD REEF No.4 claim, in sec.6.
45.50	Thence, S.73° 33'E. in secs.6 and 5, on N.side line (1-4) of same claim, continuing on N.side line (1-4) of GOLD REEF No. 5 patented claim. Intersect cor.No.4 of said GOLD REEF No.5 claim, in sec.5. Thence in sec.5, end line (3-4) of same claim, continuing S.26° 26'W., on E.end line (3-4) of same claim, continuing on E.end line (3-4) of GOLD REEF No.1 patented claim, 18.20 Intersect cor.No.3 of said GOLD REEF No.1 claim. Thence 11.52 N.73° 33'W. on S.side line (2-3) of same claim. 11.52 Intersect cor.No.4 of GOLD REEF No.2 claim. Thence S.26° 26'W. on end line (3-4) of said claim. 9.02 Intersect cor.No.3 of said claim, the point of beginning of the above described retracement of patented Mineral Survey No.1725.

Survey of completion of Subdivision of T. 23 S. R. 24 E.

Chains.

Survey commenced June 14, 1916, and executed with a Buff light mountain solar transit No. 9984, hereinbefore described.

Examine the adjustments of the transit, and find them to be correct, and know from recent and repeated tests of the solar apparatus by comparing its indications, resulting from solar observations, made during a.m. and p.m. hours with a meridian established by observations on Polaris that the instrument is in satisfactory adjustment.

Begin at the original cor. of secs. 25, 26, 35 and 36, hereinbefore described,

Thence,

East, on a random line, bet. secs. 25 and 36.

40.00

Set temp. 1/4 sec. cor.

79.32

Intersect the E. bdy. of Tp. 18 lks. S. of the reestablished cor. of secs. 25, 30, 31 and 36, hereinbefore described.

Thence,

S. 89° 52' W., on a true line, bet. secs. 25 and 36.

Over patented mineral land.

6.73

Intersect SW. side line of Bisbee Queen patented lode claim, Mineral Survey No. 2177 at point 57 lks. S. 51° 45' E., from cor. No. 1 thereof. Leave patented mineral land.

Thence over rolling land, thru scattering undergrowth. Descend SW. slope.

10.85

Intersect SE. side line (1-2) of Piedmont patented lode claim, Mineral Survey No. 1958 at point 1.93 chs. N. 51° 17' E. from cor. No. 2 thereof.

Thence over patented mineral land to

14.31

Intersect SW. end line (2-3) of same claim at point 2.31 chs. N. 58° 52' W. from cor. No. 2 thereof.

Leave patented mineral land. Continue descent of SW. slope over rolling land.

17.35

Ravine, 15 lks. wide, course S. 30° W. Ascend 18 ft. on SE. slope.

20.00

Wire fence brs. N. 40° E. and S. 40° W.

21.00

Gravelly ridge, brs. N. 40° E. and S. 40° W. Descend 81 ft. on NW. slope.

30.80

A mine shaft 4x5 ft., 50 ft. deep, brs. N. 50 lks. dist.

35.00

Ravine, 10 lks. wide, course S. 70° W. Asc. 15 ft. on SE. slope.

38.00

Spur, slopes SW. Descend 18 ft. on NW. slope.

39.32

Set an iron post 3 ft. long, 1 in. in diam., 26 ins. in the ground for 1/4 sec. cor., marked on brass cap,

1/4 S 25

S 36

1916

40.20

Raise a mound of stone, 2 ft. base, 1 1/2 ft. high, N. of cor. Ravine, 25 lks. wide, course S. 50° W. Asc. 76 ft. on E. slope.

43.95

Wire fence brs. N. 20° W. and S. 20° E.

44.85

Old road brs. N. 30° E. and S. 30° W.

45.96

Intersect E. end line (1-2) of Good Luck patented lode claim, Mineral Survey No. 2172 at point 5.64 chs. N. 16° 58' E. from cor. No. 2 thereof. Thence over patented mineral land.

79.32

The original cor. of secs. 25, 26, 35 and 36, within patented mineral land.

Land, rolling.

Soil, dry, rocky clay loam, 4 to 8 ins. deep, 3rd and 4th rate.

No timber.

Undergrowth, mesquite, catclaw, ocotillo, sota and buck brush.

Good grass.

From reestablished 1/4 sec. cor. of secs. 25 and 26, hereinbefore described,

Chains N.0°1'W., bet. secs. 25 and 26 (N. $\frac{1}{2}$), continuing measurement from original cor. of secs. 25, 26, 35 and 36, Over mountainous land. Ascend 420 ft. over SE. slope, thru. scattering undergrowth.

58.50 Top of mountain brs. NW. and SE. Descend 313 ft. over NE. slope.

58.57 Intersect SW. side line (2-3) of Bryan patented lode claim, Mineral Survey No. 1953 at point 99 lks. S. 69°21'E. from cor. No. 3 thereof. Thence over patented mineral land.

80.00 Set an iron post, 3 ft. long, 2 ins. in diam., in a mound of stone, 6 ft. base, 2 $\frac{1}{2}$ ft. high, for cor. of secs. 23, 24, 25 and 26, marked on brass cap,

T23S R24E
 S23 S24
 S26 S25
 1916

Raise a mound of stone, 2 ft. base, 1 $\frac{1}{2}$ ft. high, W. of cor. Land, mountainous.
 Soil, rocky, 3rd and 4th. rate.
 No timber.
 Undergrowth, scattering mesquite, buck brush and sota.
 Good grass.

40.00 N. 89° 52' E., on a random line, bet. secs. 24 and 25. Set temp. $\frac{1}{4}$ sec. cor.

80.94 Intersect E. bdy. of Tp., 10 lks. N. of reestablished cor. of secs. 24 and 25, hereinbefore described.

Thence,
 S. 89° 56' W., on a true line, bet. secs. 24 and 25. Over mountainous land, thru. scattering undergrowth. Descend 35 ft. on NW. slope.

5.50 Ravine, 5 lks. wide, course S. 70° W. Ascend 33 ft. on SE. slope.

10.70 Spur, slopes S. 30° W. Descend 29 ft. on NW. slope.

20.90 Ravine, 15 lks. wide, course S. 20° E. Ascend 46 ft. on SE. slope.

26.20 Spur, slopes S. Descend 41 ft. on W. slope.

28.65 Ravine, 6 lks. wide, course S. 20° E. Ascend 132 ft. on NE. slope.

31.94 Intersect NE. side line (3-4) of Bryan patented lode claim, Mineral Survey No. 2481 at point 3.64 chs. S. 40° 14' E. from cor. No. 3 thereof. Thence over patented mineral land.

40.94 Set an iron post 3 ft. long, 1 in. in diam., on bedrock in a mound of stone, 6 ft. base, 2 $\frac{1}{2}$ ft. high, for $\frac{1}{4}$ sec. cor., marked on brass cap,

$\frac{1}{4}$ S 24
 S 25
 1916

80.94 Raise a mound of stone, 2 ft. base, 1 $\frac{1}{2}$ ft. high, N. of cor. The cor. of secs. 23, 24, 25 and 26.
 Land, mountainous. Soil, rocky, 4th rate.
 No timber.
 Undergrowth, scattering sota, mescal and ocotillo.
 Good grass.

40.00 N. 0° 1' W., bet. secs. 23 and 24. Over patented mineral land, mountainous surface, scattering undergrowth.
 Set an iron post, 3 ft. long, 1 in. in diam., 18 ins. in the ground, supported by a mound of stone, 4 ft. base, 2 ft. high, for $\frac{1}{4}$ sec. cor., marked on brass cap,

Completion of Subdivision of Township 23 South Range 24 East. 33

Chains.	
	$\frac{1}{4}$ S 23 S24 1916 Raise a mound of stone, 2 ft. base, $1\frac{1}{2}$ ft. high, W. of cor. On a limestone ledge, set an iron post, 3 ft. long, 2 ins. in diam., in a mound of stone, 6 ft. base, $2\frac{1}{2}$ ft. high, for cor. of secs. 13, 14, 23 and 24, marked on brass cap, T23S R24E S14 S13 ----- S23 S24 1916 Raise a mound of stone, 2 ft. base, $1\frac{1}{2}$ ft. high, W. of cor. Land, mountainous. Soil, rocky, 4th rate. No timber. Undergrowth, scattering sota and mescal. Poor grass.
80.00	
40.00	N. $89^{\circ}56'$ E., on a random line, bet. secs. 13 and 24. Set temp. $\frac{1}{4}$ sec. cor.
81.52	Intersect E. bdy. of Tp., 14 lks. S of the reestablished cor. of secs. 13 and 24, hereinbefore described. Thence, S. $89^{\circ}50'$ W., on a true line, bet. secs. 13 and 24. Over patented mineral land, mountainous surface, thru. scattering undergrowth.
16.00	Intersect W. side line (2-3) of the William B. Moore patented lode claim, Mineral Survey No. 2454 at point 12.04 chs. S. $12^{\circ}16'$ W. from cor. No. 3 thereof. Leave patented mineral land. Continue over mountainous land, thru. scattering undergrowth. Descend 200 feet, over rocky NW. slope.
34.34	Intersect E. end line (1-4) of White Horse patented lode claim, Mineral Survey No. 2253, at point 2.72 chs. S. $5^{\circ}32'$ E. from cor. No. 4 thereof. Thence over patented mineral land.
41.52	Set an iron post 3 ft. long, 1 in. in diam., 26 ins. in the ground, for $\frac{1}{4}$ sec. cor., marked on brass cap, $\frac{1}{4}$ S 13 ----- S 24 1916
81.52	Raise a mound of stone 2 ft. base, $1\frac{1}{2}$ ft. high, N. of cor. The cor. of secs. 13, 14, 23 and 24 on patented mineral land. Land, mountainous. Soil, rocky, 4th rate. No timber. Undergrowth, scattering mesquite, sota, mescal and ocotillo. Good grass.
40.00	N. $0^{\circ}1'$ W., bet. secs. 13 and 14. Over patented mineral land, mountainous surface, thru. scattering undergrowth. Set an iron post 3 ft. long, 1 in. in diam., 26 ins. in the ground, for $\frac{1}{4}$ sec. cor., marked on brass cap, $\frac{1}{4}$ S14 S13 1916
46.18	Raise a mound of stone, 2 ft. base, $1\frac{1}{2}$ ft. high, W. of cor. Intersect N. side line (3-4) of Horseshoe patented lode claim, Mineral Survey No. 2029, at point 7.28 chs. S. 77°

Completion of Subdivision of Township 23 South, Range 24 East.

Chains

47'E. from cor No.3 thereof. Leave patented mineral land; continue over mountainous land, thru scattering undergrowth.

55.00 Ridge, brs.N.70°W. and S.70°E. Descend 63 ft. on NE.slope.

58.45 Gulch, course E.; 20 lks.wide. Ascend 312 ft. on SW.slope.

64.61 Intersect S. side line (2-3) of Apache patented lode claim, Mineral Survey No.2412 at point 3.53 chs.N.78° 08'W. from cor.No.2 thereof. Thence over patented mineral land.

80.00 Set an iron post, 3 ft. long, 2 ins. in diam., 12 ins.in the ground to bedrock, supported by a mound of stone, 5 ft. base, 1½ ft. high, for cor.of secs.11,12,13 and 14, marked on brass cap,

T23S R24E
 S11 | S12
 S14 | S13
 1916

Raise a mound of stone 2 ft. base, 1½ ft. high, W. of cor. Land, mountainous.
 Soil, rocky, 4th rate.
 No timber.
 Undergrowth, scattering mesquite, sota, mescal and ocotillo. Good grass.

40.00 N.89°50'E., on a random line, bet. secs. 12 and 13. Set temp. ¼ sec.cor.

83.08 Intersect E. bdy.of Tp. at the reestablished cor.of secs.12 and 13, hereinbefore described.

Thence, S.89° 50'W., on a true line, bet, secs. 12 and 13. Over mountainous land, thru. scattering undergrowth. Descend 20 ft. over SW. slope.

1.78 Ravine, 20 lks.wide, course S 20°E. Ascend 63 ft.on NE. slope.

13.00 Top of limestone spur, brs.N.30°W. and S.30°E. Descend over cliff 30 ft. high, extending N.30°W., 10.00 chs. and S.30°E. about 6.00 chs.dist.

14.10 Foot of same cliff. Descend 174 ft., over rocky SW.slope.

19.18 Ravine, 10 lks.wide, course S. Ascend 36 ft. on E. slope.

26.00 Spur, slopes S. Descend 46 ft. on W.slope.

38.05 Intersect N.side line (1-4) of Abbie May patented lode claim, Mineral Survey No.2413, at point 7.74 chs.N.77° 45'W. from cor.No.1 thereof. Thence over patented mineral land, mountainous surface.

43.08 Set an iron post, 3 ft. long, 1 in. in diam., in a mound of stone, 6 ft. base, 2½ ft. high, for ¼ sec.cor., marked on brass cap,

¼ S 12
 S 13
 1916

83.08 Raise a mound of stone, 2 ft. base, 1½ ft. high, N. of cor. The cor.of secs.11,12,13 and 14 on patented mineral land. Land, mountainous.
 Soil, rocky, 4th rate.
 No timber,
 Undergrowth, scattering mesquite, sota, mescal and ocotillo.
 Good grass.

N.0° 1'W., bet. secs. 11 and 12.
 Over patented mineral land, mountainous surface, thru. scattering undergrowth.

3.08 Intersect N.side line (1-4) of Pomp patented lode claim,

Completion of Subdivision of Township 23 South, Range 24 East. 35

Chains Mineral Survey No.2412 at point 7.18 chs.N.77°24'W., from cor.No.1 thereof. Leave patented mineral land. Ascend 40 ft. along W.slope, to

12.10 Head of gulch, 15 lks.wide, course S.20°W. Ascend 403 ft. over S.slope.

12.80 The west portal of tunnel brs.E.20 lks.dist.

21.80 Spur, slopes S.50°W. Descend 161 ft. on NW.slope.

28.50 Ravine, 5 lks. wide, course S. 60° W. Ascend 88 ft. on SE.slope.

33.00 Spur, slopes S.70°W. Descend 66 ft. on NW.slope.

40.00 Set an iron post, 3 ft.long, 1 in. in diam., 14 ins. in the ground, supported by a mound of stone, 3 ft. base, 1 ft. high, for $\frac{1}{4}$ sec.cor., marked on brass cap,

S11 | S12
1916

51.00 Raise a mound of stone, 2 ft. base, 1½ ft. high, W.of cor. Ravine, 30 lks.wide, course S.20°W. Ascend 634 ft. on SE.slope.

80.00 Set an iron post, 3 ft.long, 2 ins. in diam., 24 ins, on the ground, for cor.of secs.1,2,11 and 12, marked on brass cap,

T23S R24E
S 2 | S 1
S11 | S12
1916

Raise mound of stone, 2 ft. base, 1½ ft. high, W.of cor. Land, mountainous.
Soil, rocky, 4th rate.
No timber.
Undergrowth, scattering sota, mescal and ocotillo.
Good grass.

40.00 N.89°50'E., on a random line, bet. secs. 1 and 12. Set temp. $\frac{1}{4}$ sec.cor.

81.64 Intersect E' bdy.of Tp., 8 lks.N. of the reestablished cor.of secs. 1 and 12, hereinbefore described.

Thence,
S.89°53'W., on a true line, bet. secs.1 and 12.
Over mountainous land, thru.scattering undergrowth.
Ascend 297 ft., over rocky SE. slope.

17.00 Ridge, brs.N.40°E. and S.50°W. Descend 33 ft. on NW. slope.

22.10 Head of gulch, 15 lks.wide, course N+30°E. Ascend 146 ft. on SE.slope.

30.00 Same ridge, crossed at 17.00 ch.station, brs.N.40° W.and S.20°E.
Descend 244 ft. on SW.slope.

31.30 Cliff, 30 ft. high, brs.N.40°W. and S.40°E.

41.64 On a granite ledge set an iron post, 3 ft. long, 1 in. in diam., supported by a mound of stone, 5 ft. base, 2½ ft. high, erected over a cross (x) cut in the stone at exact cor.point, for $\frac{1}{4}$ sec.cor., marked on brass cap,

S 1
S 12
1916

41.90 Raise a mound of stone, 2 ft. base, 1½ ft. high, N.of cor. Gulch, 15 lks.wide, course S. Ascend 152 ft. on SE.slope.

55.10 Spur, slopes S. 20°W. Descend 301 ft. on NW. slope.

63.10 Gulch, 14 lks.wide, course S. Ascend 149 ft. on SE.slope.

70.66 Spur, slopes S. 10°W. Descend 117 ft. on SW.slope.

76.90 Head of gulch, 5 lks.wide, course S. Ascend 80 ft. on SE. slope.

81.64 The cor.of secs. 1,2,11 and 12.

36 Completion of Subdivision of Township 23 S., R. 24 E.

Chains.

Land, mountainous.
Soil, rocky, 4th rate.
No timber.
Undergrowth, scattering, sota, mescal and ocotillo.
Good grass.

N.0°1'W., bet. secs. 1 and 2.

Over mountainous land, thru scattering undergrowth.
Ascend 45 ft. on SE. slope.

3.00 Ridge, or divide, brs. N.60°E. and S.70°W. Descend 844 ft. over NW. slope, along W. side of spur.

10.20 Spur, slopes N.20°W. Descend over NE. slope.

15.40 Head of ravine, 5 lks. wide, course N.50°E. Ascend SE. slope.

18.20 Spur, slopes N.10°E. from S.20°W. Descend along top of same.

40.00 Set an iron post 3 ft. long, 1 in. in diam., on bedrock, supported by a mound of stone, 6 ft. base, 2½ ft. high, for ¼ sec. cor., marked on brass cap,

¼ S 2 | S 1

1916

41.30 Raise a mound of stone, 2 ft. base, 1½ ft. high, W. of cor. Top of limestone cliff, 30 ft. high, extends N.30°E., 5.00 chs. dist. and S.30°W., 20.00 chs. dist. From foot of same descend NW. slope.

57.00 Dry creek bed 70 lks. wide, course N.20°E. in bottom of Mexican Canyon. Ascend 138 ft. on SE. slope.

73.30 Spur, slopes E. Descend 20 ft. on N. slope.

74.00 Gulch, 20 lks. wide, course E. Ascend 20 ft. on SE. slope.

77.25 Intersect N. bdy. of the Tp. at point 1.77 chs. N.89°50'W. from cor. of secs. 35 and 36, T.22 S., R.24 E., hereinbefore described.

At point of intersection,

Set an iron post, 3 ft. long, 2 ins. in diam., in a mound of stone, 5 ft. base, 2 ft. high, for closing cor. of secs. 1 and 2, marked on brass cap,

T22S R24E

S 35

S 2 | S 1

cc

T23S R24E

1916

Raise a mound of stone 2 ft. base, 1½ ft. high, S. of cor. Land, mountainous.

Soil, rocky, 4th rate.

No timber.

Undergrowth, scattering sota, mescal, ocotillo and buck brush.

Good grass.

From the original closing cor. of S. portion of secs. 26 and 27, on SW. end line (3-4) of GAP patented lode claim, Mineral Survey No. 1873 hereinbefore described in notes of retracement of part of the subdivision lines,

N.0°1'W., on a true line, bet. secs. 26 and 27.

Over patented mineral land, mountainous surface, thru scattering undergrowth.

1.87 (40.00 chs. northerly from original cor. of secs. 26, 27, 34 and 35)

Set an iron post, 3 ft. long, 1 in. in diam., 26 ins. in the bedrock, for ¼ sec. cor., marked on brass cap,

¼ S 27 | S 26

1916

Completion of subdivision of Township 23 South Range 24 East. 37

<p>Chains.</p> <p>41.87</p>	<p>Raise a mound of stone 2 ft. base, 1½ ft. high, W. of cor. Continue over patented mineral land. (80.00 chs. northerly from original cor. of secs. 26, 27, 34 and 35). Set an iron post, 3 ft. long, 2 ins. in diam., 8 ins. in the ground to bedrock, supported by a mound of stone 5 ft. base, 2 ft. high, for cor. to secs. 22, 23, 26 and 27, marked on brass cap,</p> <p style="text-align: center;">T23S R24E S22 S23 S27 S26 1916</p>
	<p>Raise a mound of stone, 2 ft. base, 1½ ft. high, W. of cor. Land, mountainous. Soil, rocky, 4th rate. No timber. Undergrowth, scattering soto, mescal and ocotillo. Good grass.</p>
<p>40.00</p> <p>79.94</p> <p>39.97</p>	<p>East, on a random line, bet. secs. 23 and 26. Set temp. ¼ sec. cor. Intersect N. and S. line, 5 lks. N. of the cor. of secs. 23, 24, 25 and 26. Thence, N. 89° 58' W., on a true line, bet. secs. 23 and 26. Over patented mineral land, mountainous surface, thru. scattering undergrowth. Set an iron post, 3 ft. long, 1 in. in diam., 26 ins. in the ground, for ¼ sec. cor., marked on brass cap,</p> <p style="text-align: center;">¼ S 23 S 26 1916</p>
<p>79.94</p>	<p>Raise a mound of stone, 2 ft. base, 1½ ft. high, N. of cor. The cor. of secs. 22, 23, 26 and 27, on patented mineral land. Land, mountainous. Soil, rocky, 4th rate. No timber. Undergrowth, scattering soto, mescal and ocotillo. Good grass.</p>
<p>39.00</p>	<p>N. 0° 1' W., bet. secs. 22 and 23. Over patented mineral land, mountainous and rolling surface, thru. scattering undergrowth. Set an iron post 3 ft. long, 1 in. in diam., 26 ins. in the ground, for witness cor. to ¼ sec. cor., marked on brass cap,</p> <p style="text-align: center;">W C ¼ S 22 S 23 1916</p>
<p>40.00</p> <p>80.00</p>	<p>Raise a mound of stone, 2 ft. base, 1½ ft. high, W. of cor. Continue over patented mineral land. The true point for ¼ sec. cor. falls under a dwelling house on line therefore, set witness cor. as described above. Set an iron post, 3 ft. long, 2 ins. in diam., 24 ins. in the ground, for cor. of secs. 14, 15, 22 and 23, marked on brass cap,</p>

38 Completion of Subdivision of Township 23 South, Range 24 East.

Chains.

T23S R24E
 S15 | S14
 S22 | S23
 1916

Raise a mound of stone, 2 ft base, 1½ ft. high, W of cor.
 From this cor., a cor. of the Warren Townsite brs. S. 26° 51'
 E., 36.58 chs. dist.
 Land, mountainous and rolling.
 Soil, rocky, 3rd and 4th rate.
 No timber.
 Undergrowth, scattering soto, ocotillo, mescal and mesquite.
 Poor grass.

40.00 S. 89° 58' E., on a random line, bet. secs. 14 and 23.
 79.76 Set temp. ¼ sec. cor.
 Intersect N. and S. line, 2 lks. S. of the cor. of secs. 13, 14,
 23 and 24.

Thence,
 N. 89° 59' W., on a true line, bet. secs. 14 and 23.
 Over patented mineral land, rolling surface, thru scattering
 undergrowth.
 39.88 Set an iron post 3 ft. long, 1 in. in diam., 26 ins. in
 the ground, for ¼ sec. cor., marked on brass cap,

¼ S 14
 S 23
 1916

Dig pits 18x18x12 ins., E. and W. of post, 3 ft. dist., and
 raise a mound of earth 3½ ft. base, 1½ ft. high, N. of
 cor.
 79.76 The cor. of secs. 14, 15, 22 and 23 on patented mineral land.
 Land, rolling.
 Soil, sandy and rocky, 3rd and 4th rate.
 Timber, scattering mesquite.
 Undergrowth, scattering mescal, ocotillo and soto.
 Good grass.

N. 0° 1' W., bet. secs. 14 and 15.
 Over patented mineral land, rolling and mountainous sur-
 face, thru scattering timber and undergrowth.
 40.00 Set an iron post 3 ft. long, 1 in. in diam., 26 ins. in the
 ground, for ¼ sec. cor., marked on brass cap,

¼ S 15 | S 14
 1916

Raise a mound of stone, 2 ft. base, 1½ ft. high, W. of cor.
 71.43 Intersect N. end line, (2-3) of Bucky O'Neil No. 2 patented
 lode claim, Mineral Survey No. 1910 at point 3.24 chs.
 N. 80° 15' W. from cor. No. 3 thereof.
 Leave patented mineral land.
 Thence over mountainous land; ascend steep rocky SE. slope.
 80.00 Set an iron post, 3 ft. long, 2 ins. in diam., 6 ins. in
 the ground, supported by a mound of stone, for cor. of
 secs. 10, 11, 14 and 15, marked on brass cap,

T23S R24E
 S10 | S11
 S15 | S14
 1916

Raise a mound of stone, 2 ft. base, 1½ ft. high, W. of cor.
 Land, rolling and mountainous.

Completion of Subdivision of Township 23 South Range 24 East 39

Chains.	<p>Soil, sandy and rocky, 3rd and 4th rate. Timber, scattering mesquite. Undergrowth, scattering mescal, ocotillo, sota and Spanish dagger. Good grass.</p>
40.00 79.68	<p>S. 89° 59' E., on a random line, bet. secs. 11 and 14. Set temp. $\frac{1}{4}$ sec. cor. Intersect the cor. of secs. 11, 12, 13 and 14. Thence,</p>
39.24	<p>N. 89° 59' W., on a true line, bet. secs. 11 and 14. Over patented mineral land, mountainous surface, thru. scattering undergrowth. Intersect W. end line (3-4) of Squaw patented lode claim, Mineral Survey No. 2412 at point 1.20 chs. N. 11° 10' E. from cor. No. 3 thereof. Leave patented mineral land, continue over mountainous land.</p>
39.84	<p>Ascend 119 ft. over NE. slope. Set an iron post 3 ft. long, 1 in. in diam., 26 ins. in the ground, for $\frac{1}{4}$ sec. cor., marked on brass cap,</p>
<p>$\frac{1}{2}$ S 11 S 14 1916</p>	
41.48 49.73	<p>Raise a mound of stone, 2 ft. base, 1 $\frac{1}{2}$ ft. high, N. of cor. Spur, slopes S. 30° E. Descend SW. slope. Ravine, 15 lks. wide, course S. 40° E. Ascend 198 ft. on NE. slope.</p>
57.10	<p>Spur, slopes S. 10° E. Descend 206 ft. on SW. slope.</p>
64.88	<p>Ravine, 25 lks. wide, course SE. Ascend 55 ft. on SE. slope.</p>
71.28	<p>Spur, slopes S. 10° E. Descend 22 ft. on SW. slope.</p>
73.58	<p>Ravine, 20 lks. wide, course S. 30° E. Ascend 60 ft. on NE. slope.</p>
78.18	<p>Spur, slopes S. 10° E. Descend 25 ft. on SW. slope.</p>
79.68	<p>The cor. of secs. 10, 11, 14 and 15. Land, mountainous. Soil, rocky, 4th rate. No timber. Undergrowth, scattering sota, mescal and ocotillo. Good grass.</p>
12.20	<p>N. 0° 1' W., bet. secs. 10 and 11. Over mountainous land, thru. scattering undergrowth. Ascend 129 ft. along W. side of top of spur, sloping S. 10° E.</p>
18.00	<p>Ascend along E. side of top of spur, Pile of stones on line.</p>
22.20	<p>Top of spur, slopes S. from NW. Descend 25 ft. on NE. slope.</p>
24.35	<p>Gulch, 20 lks. wide, course S. 30° E. Ascend 942 ft. on SW. slope.</p>
40.00	<p>Set an iron post, 3 ft. long, 1 in. in diam., 26 ins. in the ground, for $\frac{1}{4}$ sec. cor., marked on brass cap,</p>
<p>$\frac{1}{2}$ S 10 S 11 1916</p>	
74.50	<p>Raise a mound of stone, 2 ft. base, 1 $\frac{1}{2}$ ft. high, W. of cor. Ridge, or divide, brs. N. 40° E. and S. 40° W. Descend 49 ft. on NW. slope to</p>
80.00	<p>Set an iron post, 3 ft. long, 2 ins. in diam., 12 ins. in the ground, supported by a mound of stone, for cor. of secs. 2, 3, 10 and 11, marked on brass cap,</p>
<p>T23S R24E S 3 S 2 S 10 S 11 1916</p>	

Chains.

- Raise a mound of stone, 2 ft. base, 1½ ft. high, W. of cor. Land, mountainous. Soil, rocky, 4th rate. No timber. Undergrowth, scattering sota, mescal and ocotillo. Good grass.
-
- 49.00 s. 89° 59' E., on a random line, bet. secs. 2 and 11.
Set temp. ¼ sec. cor.
79.66 Intersect N. and S. line, 21 lks. N. of the cor. of secs. 1, 2, 11 and 12.
Thence
N. 89° 50' W., on a true line, bet. secs. 2 and 11.
Over mountainous land, thru scattering undergrowth.
Ascend 131 ft. over rocky SE. slope.
16.00 Ridge, or divide, brs. N. 70° E. and S. 60° W. Descend 467 ft. on NW. slope.
35.15 Gulch, 10 lks. wide, course N. 40° W. Ascend 40 ft. on NE. slope.
39.83 Set an iron post 3 ft. long, 1 in. in diam., 26 ins. in the ground, for ¼ sec. cor., marked on brass cap,
- ½ S 2
S 11
1916
- 40.50 Raise a mound of stone, 2 ft. base, 1½ ft. high, N. of cor.
43.41 Spur, slopes N. Descend 32 ft. on NW. slope.
Gulch, 15 lks. wide, course N. 20° E. Ascend 714 ft. over SE. slope.
77.46 Spur, slopes S. 10° W. Descend 75 ft. over limestone cliff, bearing N. 20° E. and S. 10° W. From foot of same, descend 50 ft. over NW. slope, to
79.66 The cor. of secs. 2, 3, 10 and 11.
Land, mountainous.
Soil, rocky, 4th rate.
No timber.
Undergrowth, scattering sota, mescal and ocotillo.
Fair grass.
-
- 15.45 N. 0° 1' W., bet. secs. 2 and 3.
Over mountainous land, thru scattering timber and undergrowth. Descend 372 ft. on NW. slope.
21.30 Ravine, 10 lks. wide, course N. 60° W. Ascend 34 ft. on SW. slope.
29.80 Spur, slopes N. 70° E. Descend 93 ft. on NW. slope.
Ravine, 10 lks. wide, course N. 70° W. Ascend 43 ft. on SW. slope.
34.30 Spur slopes N. 60° W. Descend 285 ft. on NE. slope.
40.00 Set an iron post, 3 ft. long, 1 in. in diam., 26 ins. in the ground, for ¼ sec. cor., marked on brass cap,
- ¼ S 3 | S 2
1916
- 42.90 Raise a mound of stone, 2 ft. base, 1½ ft. high, W. of cor.
Ravine, 25 lks. wide, course N. 60° W. Ascend 50 ft. on SW. slope.
49.50 Spur, slopes N. 60° W. Descend 165 ft. on NE. slope.
54.75 Gulch, 15 lks. wide, course N. 70° W. Ascend 73 ft. on SW. slope.
59.70 Spur, slopes N. 60° W. Descend 133 ft. on NW. slope.
65.90 Gulch, 20 lks. wide, course W. Ascend 143 ft. on SW. slope.
73.00 Spur, slopes N. 50° W. Descend 83 ft. on N. slope.
77.40 Intersect N. bdy. of Tp., 1.53 chs. N. 89° 50' W. from cor. of secs. 34 and 35, T. 22 S., R. 24 E., hereinbefore described.

Completion of Subdivision of Township 23 S., R. 24 E.

Chains

At point of intersection,
Set an iron post, 3 ft. long, 2 ins. in diam., 24 ins. in the ground, for closing cor. of secs. 2 and 3, marked on brass cap,

T22S R24E
S 34
S3 | S2
CC
T23S R24E
1916

Raise a mound of stone, 2 ft. base, 1 1/2 ft. high, S. of cor. Land, mountainous.
Soil, rocky, 4th rate.
Timber, scattering oak.
Undergrowth, scattering sota, mescal and ocotillo.
Good grass.

From original 1/4 sec. cor. of secs. 27 and 28, hereinbefore described,

N. 0° 2' W., bet. secs. 27 and 28 (N. 1/2).

4.35 Over rolling land, thru scattering timber and undergrowth. Intersect the original witness cor. to closing cor. of secs. 27 and 28 on S. side of Germany, patented lode claim.

5.95 The true point for closing cor. of secs. 27 and 28 on S. side line (1-4) of Germany patented lode claim, Mineral Survey No. 1743 at point on said line, 71 lks. N. 77° 44' E. from cor. No. 1 of said claim.

40.00 Continue line and measurement, over patented mineral land (80.21 chs. northerly from original cor. of secs. 27, 28, 33 and 34), Set an iron post, 3 ft. long, 2 ins. in diam., 12 ins. in the ground, supported by a mound of stone, 5 ft. base, 1 1/2 ft. high, for cor. of secs. 21, 22, 27 and 28, marked on brass cap,

T23S R24E
S21 | S22
S28 | S27
1916

Raise a mound of stone, 2 ft. base, 1 1/2 ft. high, W. of cor. Land, rolling.
Soil, rocky, 3rd and 4th rate.
Timber, scattering mesquite.
Undergrowth, scattering buck brush, ocotillo, mescal and sota.
Good grass.

40.00 East, on a random line, bet. secs. 22 and 27.
Set temp. 1/4 sec. cor.

80.30 Intersect N. and S. line, 37 lks. N. of cor. of secs. 22, 23, 26 and 27.

Thence, N. 89° 44' W., on a true line, bet. secs. 22 and 27.

Over patented mineral land, mountainous surface, thru scattering undergrowth.

27.06 Intersect SW. side line (1-4) of Contentment patented lode claim, Mineral Survey No. 1392 at a point 6.96 chs. N. 45° 03' W. from cor. No. 4 thereof, hereinbefore described. Leave patented mineral land. Continue over mountainous surface.

31.63 Intersect E. side line (2-3) of Modoc patented lode claim, Mineral Survey No. 1392 at point 7.72 chs. N. 11° 40' W. from cor. No. 3 thereof. Thence over patented mineral land.

40.15 Set an iron post 3 ft. long, 1 in. in diam., 26 ins. in the ground, for 1/4 sec. cor., marked on brass cap,

42 Completion of Subdivision of Township 23 South Range 24 East.

Chains.

1 S. 22

S 27
1916

80.30 Raise a mound of stone, 2 ft. base, 1½ ft. high, N. of cor. Continue over patented mineral land, mountainous surface. The cor. of secs. 21, 22, 27 and 28, on patented mineral land. Land, mountainous. Soil, rocky, 4th rate. No timber. Undergrowth, scattering, sota, mescal and ocotillo. Good grass.

N. 0° 02' W., bet. secs. 21 and 22. Over patented mineral land, rolling and mountainous surface thru. scattering undergrowth.

40.00 Set an iron post, 3 ft. long, 1 in. in diam., 8 ins. in the ground, to bedrock, supported by a mound of stone 6 ft. base, 2 ft. high, for ¼ sec. cor., marked on brass cap,

1 S 21 | S 22
1916

80.00 Raise a mound of stone, 2 ft. base, 1½ ft. high, W. of cor. On solid limestone ledge, set an iron post, 3 ft. long, 2 ins. in diam., in a mound of stone, 6½ ft. base, 2½ ft. high, for cor. of secs. 15, 16, 21 and 22, marked on brass cap,

T23S R24E
S16 | S15
S21 | S22
1916

Raise a mound of stone, 2 ft. base, 1½ ft. high, W. of cor. Land, rolling and mountainous. Soil, rocky, 4th rate. No timber. Undergrowth, scattering mescal, sota, ocotillo and Spanish bayonet. Poor grass.

40.00 s. 89° 44' E., on a random line, bet. secs. 15 and 22. Set temp. ¼ sec. cor.
80.30 Intersect N. and S. line, 3 lks. S. of the cor. of secs. 14, 15, 22 and 23.

Thence, N. 89° 45' W., on a true line, bet. secs. 15 and 22. Over patented mineral land, rolling and mountainous surface, thru. scattering undergrowth.

40.15 The point for the ¼ sec. cor. falls in the bottom of dry gulch where natural causes would insure the destruction of the cor.; therefore, at

40.40 Set an iron post, 3 ft. long, 1 in. in diam., 26 ins. in the ground, for witness cor. to the ¼ sec. cor., marked on brass cap,

WC ¼ S 15
S 22
1916

80.30 Raise a mound of stone, 2 ft. base, 1½ ft. high, N. of cor. The cor. of secs. 15, 16, 21 and 22, on patented mineral land. Land, rolling and mountainous. Soil, rocky, 4th rate. No timber. Undergrowth, scattering buck brush, ocotillo, mescal and sota. Poor grass.

Completion of Subdivision of Township 23 South, Range 24 East. 43

Chains.	N. 0° 02' W., bet. secs. 15 and 16. Over patented mineral land, rolling and mountainous surface, thru scattering undergrowth.										
40.00	Set an iron post, 3 ft. long, 1 in. in diam., 26 ins. in the ground for $\frac{1}{4}$ sec. cor., marked on brass cap, <div style="text-align: center;"> <table border="1"> <tr><td>S16</td><td>S15</td></tr> <tr><td colspan="2">1916</td></tr> </table> </div>	S16	S15	1916							
S16	S15										
1916											
79.94	Raise a mound of stone 2 ft. base, $1\frac{1}{2}$ ft. high, W. of cor. Set an iron post, 3 ft. long, 2 ins. in diam., firmly set in a mound of stone 6 ft. base, $2\frac{1}{2}$ ft. high, for witness cor. to cor. of secs. 9, 10, 15 and 16, marked on brass cap, <div style="text-align: center;"> <table border="1"> <tr><td colspan="2">WC</td></tr> <tr><td>T23S</td><td>R24E</td></tr> <tr><td>S9</td><td>S10</td></tr> <tr><td>S16</td><td>S15</td></tr> <tr><td colspan="2">1916</td></tr> </table> </div>	WC		T23S	R24E	S9	S10	S16	S15	1916	
WC											
T23S	R24E										
S9	S10										
S16	S15										
1916											
80.00	Raise a mound of stone 2 ft. base, $1\frac{1}{2}$ ft. high, W. of cor. The point for the cor. of secs. 9, 10, 15 and 16, falls on steep slope of a granite ledge, where it is impracticable to establish a permanent cor.; therefore, cut a cross (x) at the exact cor. point, and at point 6 lks. S. 0° 3' E., establish WC as described above. Land, mountainous and rolling. Soil, rocky, 4th rate. No timber. Undergrowth, scattering mescal, sota and ocotillo. Poor grass.										
40.00	S. 89° 45' E., on a random line, from the true point for cor. of secs. 9, 10, 15 and 16.										
80,46	Set temp. $\frac{1}{4}$ sec. cor. Intersect N. and S. line, 8 lks. N. of the cor. of secs. 10, 11, 14 and 15. Thence, N. 89° 42' W., on a true line, bet. secs. 10 and 15. Over mountainous land, thru scattering timber and undergrowth.										
5.25	Descend 102 ft. on SW. slope. Gulch, 25 lks. wide, course S. 20° E. Ascend 135 ft. on NE. slope.										
12.70	Ridge, brs. N. and S. Descend 94 ft. on SW. slope.										
18.00	Gulch, 20 lks. wide, course S. 10° E. Ascend 69 ft. on SE. slope.										
23.35	Ridge, brs. N. and S. Descend 134 ft. on W. slope.										
29.86	Intersect N. side line (3-4) of Rastus patented lode claim, Mineral Survey No. 1910 at point 6.13 chs. S. 67° 47' E. from cor. No. 3 thereof, hereinbefore described. Thence over patented mineral land.										
35.58	Intersect west end line (2-3) of same claim at point 2.29 chs. S. 1° 15' W. from cor. No. 3 thereof. Leave patented mineral land. Continue over mountainous surface.										
36.09	Intersect E. side line (5-6) of Arizona patented lode claim, Mineral Survey No. 2017 at point 2.59 chs. S. 4° 22' E. from Cor. No. 5 thereof, hereinbefore described. Thence over patented mineral land.										
40.23	Set an iron post 3 ft. long, 1 in. in diam., 26 ins. in the ground, for $\frac{1}{4}$ sec. cor., marked on brass cap, <div style="text-align: center;"> <table border="1"> <tr><td>S 10</td></tr> <tr><td>S 15</td></tr> <tr><td>1916</td></tr> </table> </div>	S 10	S 15	1916							
S 10											
S 15											
1916											
	Raise a mound of stone, 2 ft. base, $1\frac{1}{2}$ ft. high, N. of cor.										

41 Completion of subdivision lines of T1 23 S., R. 24 E.

- Chains
71.09 Intersect SW. side line, (1-4) of Collins patented lode claim, Mineral Survey No. 2009 at point 55 lks. N. 51° 21' W. from cor. No. 3 of Old Republican patented lode claim, Mineral Survey No. 1119, hereinbefore described, identical with cor. No. 4 of ZEO lode claim, unpatented, Mineral Survey No. 3167; also cor. No. 2 of Angel patented lode claim, Mineral Survey No. 1119.
Leave patented mineral land. Continue over mountainous surface, across ZEO lode claim.
- 72.30 Intersect N. end line (2-3) of Angel patented lode claim, Mineral Survey No. 1119, at point 1.08 chs. S. 77° 41' E. from cor. No. 1 of the ZEO unpatented lode claim, hereinbefore described on E. side line (4-5) of Arizona No. 4 patented lode claim, Mineral Survey No. 2127.
Thence over patented mineral land.
- 80.46 The true point for cor. of secs. 9, 10, 15 and 16, on patented mineral land.
Land, mountainous.
Soil, rocky, 4th rate.
Timber, scattering oak.
Undergrowth, scattering mescal, sota and ocotillo.
Poor grass.
-
- N. 0° 02' W., bet. secs. 9 and 10, from the true point for cor. of secs. 9, 10, 15 and 16.
Over patented mineral land, mountainous surface, thru. scattering timber and undergrowth.
- 40.00 Set an iron post, 3 ft. long, 1 in. in diam., 26 ins. in the ground for $\frac{1}{4}$ sec. cor., marked on brass cap,
- | | |
|------------------|-----|
| $\frac{1}{4}$ S9 | S10 |
| 1916 | |
- Raise a mound of stone, 2 ft. base, 1½ ft. high, W. of cor.
Continue over patented mineral land.
- 80.00 Set an iron post 3 ft. long, 2 ins. in diam., 24 ins. in the ground for cor. of secs. 3, 4, 9 and 10, marked on brass cap,
- | | |
|------|------|
| T23S | R24E |
| S 4 | S 3 |
| S 9 | S10 |
| 1916 | |
- Raise a mound of stone, 2 ft. base, 1½ ft. high, W. of cor.
Land, mountainous.
Soil rocky, 4th rate.
Timber, scattering oak and juniper.
Undergrowth, scattering mescal, sota and ocotillo.
Poor grass.
-
- S. 89° 42' E., on a random line, bet. secs. 3 and 10.
Set temp. $\frac{1}{4}$ sec. cor.
- 40.00
80.42 Intersect N. and S. line, 10 lks. S. of the cor. of secs. 2, 3, 10 and 11.
Thence,
N. 89° 46' W., on a true line, bet. secs. 3 and 10.
Over mountainous land, thru. scattering undergrowth.
Descend 432 ft. over NW. slope.
- 16.12 Ravine, 10 lks. wide, course N. 60° W. Ascend 131 ft. on NE. slope.
- 25.17 Spur, slopes north, thence on N. slope of ridge or divide.
33.12 Top of ridge or divide, brs. N. 50° W. and S. 60° E. Descend 359 ft. on SW. slope.
- 40.21 Set an iron post, 3 ft. long, 1 in. in diam., 26 ins. in the ground, for $\frac{1}{4}$ sec. cor., marked on brass cap,

Completion of Subdivision of Township 23 South, Range 24 East

Chains.

1/2 S 3
S 10
1916

45.04 Raise a mound of stone, 2 ft. base, 1 1/2 ft. high, N. of cor. Intersect NE. side line (2-3) of Jumbo patented lode claim, Mineral Survey No. 2202, at point 12.33 chs. N. 43° 35' W. from cor. No. 2 thereof.

80.42 Thence, over patented mineral land, mountainous surface. The cor. of secs. 3, 4, 9 and 10, on patented mineral land. Land mountainous. Soil, rocky, 4th rate. No timber. Undergrowth, scattering sota, mescal and ocotillo. Good grass.

24.00 N. 0° 02' W., bet. secs. 3 and 4. Over patented mineral land, mountainous surface, thru. scattering timber and undergrowth.

24.00 Intersect north side line (2-3) of the "K" patented lode claim, Mineral Survey No. 2121 at point 69 lks. S. 62° 28' E. from cor. No. 3 thereof. Leave patented mineral land. Ascend 5 ft. on SW. slope.

27.10 Spur, slopes NW. Descend 18 ft. on NE. slope.

28.70 Ravine, 20 lks. wide, course east. Ascend 430 ft. on S. slope.

40.00 Set an iron post, 3 ft. long, 1 in. in diam., 26 ins. in the ground for 1/4 sec. cor., marked on brass cap,

1/2 S4 | S3
1916

43.65 Raise a mound of stone 2 ft. base, 1 1/2 ft. high, W. of cor. Top of ridge, or divide, brs. N. 60° E. and S. 60° W. Descend 314 ft. on NW. slope.

57.20 Head of ravine, course W. Ascend 37 ft. on SW. slope.

61.00 Spur, slopes W. Thence along W. side of ridge; descend 169 ft.

69.00 Top of ridge, brs. N. 10° W. and S. 10° E. Thence along E. side of ridge.

77.55 Intersect the N. bdy. of the Tp., 1.88 chs. N. 89° 50' W. from cor. of secs. 33 and 34, T. 22 S., R. 24 E., hereinbefore described.

At point of intersection,

Set an iron post, 3 ft. long, 2 ins. in diam., in a mound of stone, for closing cor. of secs. 3 and 4, marked on brass cap,

T22S R24E
S33
S4 | S3
C C
T23S R24E
1916

Raise mound of stone, 2 ft. base, 1 1/2 ft. high, S. of cor. Land, mountainous.

Soil, rocky, 4th rate.

Timber, scattering oak.

Undergrowth, scattering sota, mescal, and ocotillo.

Good grass.

46 Completion of Subdivision of Township 23 S. R. 24 E.

Chains.

From original closing cor. of secs. 28 and 29 on the S. side line of the Elisa, patented lode claim, hereinbefore described,

N. 0° 02' W., bet. secs. 28 and 29.

Over patented mineral land, rolling surface, thru scattering timber and undergrowth.

(2.75) (40.00 chs. northerly from original cor. of secs. 28, 29, 32 and 33), Set an iron post, 3 ft. long, 1 in. in diam., 26 ins. in the ground for 1/4 sec. cor., marked on brass cap,

1/4 S 29 | S 28

1916

42.75

Raise a mound of stone, 2 ft. base, 1 1/2 ft. high, W. of cor.

(80.00 chs. northerly from cor. of secs. 28, 29, 32 and 33),

Set an iron post, 3 ft. long, 2 ins. in diam., 24 ins. in the ground for cor. of secs. 20, 21, 28 and 29, marked on brass cap,

T23S | R24E

S20 | S21

S29 | S28

1916

Raise a mound of stone, 2 ft. base, 1 1/2 ft. high, W. of cor.

From this cor. U.S. Mineral Mon. No. 3 brs. N. 63° 28' E.

Land, rolling.

Soil, rocky, 3rd and 4th rate.

Timber, scattering mesquite.

Undergrowth, scattering sota, mescal, ocotillo and Spanish dagger.

Good grass.

40.00

East, on a random line, bet. secs. 21 and 28.

Set temp. 1/4 sec. cor.

80.06

Intersect N. and S. line, 30 lks. S. of the cor. of secs. 21, 22, 27 and 28.

Thence,

S. 89° 47' W., on a true line, bet. secs. 21 and 28.

Over patented mineral land, rolling and mountainous surface, thru scattering undergrowth.

40.03

Set an iron post, 3 ft. long, 1 in. in diam., 26 ins. in the ground, for 1/4 sec. cor., marked on brass cap,

1/4 S 21

S 28

1916

80.06

Raise a mound of stone, 2 ft. base, 1 1/2 ft. high, N. of cor.

From this cor., U.S. Mineral Monument No. 3 bears N. 75° 52' W.

The cor. of secs. 20, 21, 28 and 29, on patented mineral land.

Land, rolling and mountainous.

Soil, gravelly and rocky, 3rd and 4th rate.

No timber.

Undergrowth, scattering sota, mescal and ocotillo.

Good grass.

40.00

N. 0° 02' W., bet. secs. 20 and 21.

Over patented mineral land, mountainous and rolling surface, thru scattering undergrowth.

Set an iron post, 3 ft long, 1 in. in diam., 8 ins. in the ground, to bedrock, supported by a mound of stone 5 ft. base, 2 ft. high, for 1/4 sec. cor., marked on brass cap,

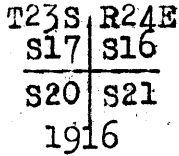
1/4 S 20 | S 21

1916

Completion of Subdivision of Township 23 South, Range 24 East, 47

Chains

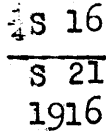
80.00 Raise a mound of stone, 2 ft. base, 1 1/2 ft. high, W. of cor. Set an iron post, 3 ft. long, 2 ins. in diam., 12 ins. in the ground to bedrock, supported by a mound of stone 6 ft. base, 2 ft. high, for cor. of secs. 16, 17, 20 and 21, marked on brass cap,



Raise a mound of stone, 2 ft. base, 1 1/2 ft. high, W. of cor. Land, mountainous and rolling. Soil, gravelly and rocky, 3rd and 4th rate. No timber. Undergrowth, scattering sota, mescal and ocotillo. Good grass.

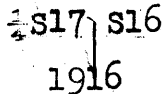
40.00 N. 89° 47' E. on a random line, bet. secs. 16 and 21. Set temp. 1/4 sec. cor. 79.96 Intersect N. and S. line, 8 ins. S. of the cor. of secs. 15, 16, 21 and 22.

Thence, S. 89° 44' W., on a true line, bet. secs. 16 and 21. Over patented mineral land, mountainous surface, thru scattering undergrowth. 39.98 Set an iron post, 3 ft. long, 1 in. in diam., 8 ins. in the ground, to bedrock, supported by a mound of stone, 6 ft. base, 2 ft. high for 1/4 sec. cor., marked on brass cap,

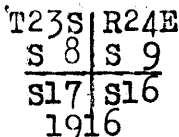


79.96 Raise a mound of stone, 2 ft. base, 1 1/2 ft. high, N. of cor. The cor. of secs. 16, 17, 20 and 21, on patented mineral land. Land, mountainous. Soil, rocky, 4th rate. No timber. Undergrowth, scattering sota, mescal, ocotillo and buck brush. Good grass.

40.00 N. 0° 02' W., bet. secs. 16 and 17. Over patented mineral land, mountainous surface, thru scattering undergrowth. Set an iron post, 3 ft. long, 1 in. in diam., 6 ins. in the ground, to bedrock, supported by a mound of stone, 6 ft. base, 2 ft. high, for 1/4 sec. cor., marked on brass cap,



80.00 Raise a mound of stone, 2 ft. base, 1 1/2 ft. high, W. of cor. Set an iron post, 3 ft. long, 2 ins. in diam., 8 ins. in the ground, to bedrock, supported by a mound of stone, 6 ft. base, 1 1/2 ft. high, for cor. of secs. 8, 9, 16 and 17, marked on brass cap,



Raise a mound of stone, 2 ft. base, 1 1/2 ft. high, W. of cor. Land, mountainous. Soil, rocky, 4th rate. No timber. Undergrowth, scattering sota, mescal & ocotillo. Poor grass.

Completion of Subdivision of Township 23 S. R. 24 E.

Chains. N.89°44'E., on a random line, bet. secs.9 and 16.
 40.00 Set temp. $\frac{1}{4}$ sec. cor.
 80.08 Intersect N. and S. line, 25 lks. N. of the true point for
 cor. of secs. 9, 10, 15 and 16.
 Thence,
 S.89°55'W., on a true line, bet. secs. 9 and 16.
 Over patented mineral land, mountainous surface, thru. scat-
 tering timber and undergrowth.
 40.04 Set an iron post, 3 ft. long, 1 in. in diam., 26 ins. in the
 ground, for $\frac{1}{4}$ sec. cor., marked on brass cap,

$\frac{1}{4}$ S 9
 S 16
 1916

This cor. falls in the supply yards of the Holbrook mine;
 therefore, omit the cor. accessories.
 From this cor., U.S. L.M. No. 1 brs. N. 24° 55' W., 15.67 chs.
 dist.

U.S.L.M. No. 2 has been destroyed by blasting.
 Cor. No. 4 of the Copper Jack patented lode claim, Mineral
 Survey No. 1047, which is identical with cor. No. 13 of
 the Bisbee Townsite brs. N. 47° 19' W., 28.60 chs. dist.

80.08 The cor. of secs. 8, 9, 16 and 17, on patented mineral land.
 Land, mountainous.
 Soil, rocky, 4th rate.
 Timber, scattering oak.
 Undergrowth scattering manzanita, sota, mescal and oco-
 tillo.
 Poor grass.

N. 0° 02' W., bet. secs. 8 and 9.
 Over patented mineral land, and patented Townsite of Bisbee,
 mountainous surface, thru. scattering timber and under-
 growth.

40.00 Set an iron post, 3 ft. long, 1 in. in diam., 26 ins. in the
 ground, for $\frac{1}{4}$ sec. cor., marked on brass cap,

$\frac{1}{4}$ S 8 | S 9
 1916

73.95 Raise a mound of stone, 2 ft. base, 1 $\frac{1}{2}$ ft. high, W. of cor.
 Intersect line 8-9 of Bisbee Townsite Bdy. at a point
 13.41 chs. S. 23° 30' W. from cor. No. 9 thereof.
 Leave patented mineral land and patented Townsite of Bis-
 bee.

80.00 Set an iron post, 3 ft. long, 2 ins. in diam., 24 ins. in
 the ground, for cor. of secs. 4, 5, 8 and 9, marked on
 brass cap,

T23S | R24E
 S 5 | S 4
 S 8 | S 9
 1916

Raise a mound of stone, 2 ft. base, 1 $\frac{1}{2}$ ft. high, W. of cor.
 Land, mountainous,
 Soil, rocky, 4th rate.
 Timber, scattering oak and mountain mahogany.
 Undergrowth, scattering soto, mescal and ocotillo.
 Fair grass.

40.00 N. 89° 55' E., on a random line, bet. secs. 4 and 9.
 79.92 Set temp. $\frac{1}{4}$ sec. cor.
 Intersect N. and S. line, 25 lks. N. of the cor. of secs. 3, 4,
 9 and 10.

Completion of Subdivision of Township 23 S. R. 24 E.

Chains.

- 39.96 Thence, N.89°55'W., on a true line, bet.secs. 4 and 9. Over patented mineral land, mountainous surface, thru. scattering timber and undergrowth. Set an iron post, 3 ft.long, 1 in. in diam., 26 ins.in the ground for $\frac{1}{4}$ sec.cor., marked on brass cap,

$\frac{1}{4}$ S 4
 S 9
 1916
- 58.84 Raise a mound of stone 2 ft.base, 1 $\frac{1}{2}$ ft. high,N.of cor. Intersect W. end line (3-4) of WARREN BOY patented lode claim, Mineral Survey No.1681, at point 1.17 chs.S.14° 08'W. from cor.no.3 thereof, hereinbefore described. Leave patented mineral land,and continue over mountainous surface.
- 62.82 Descend 253 ft. on W.slope of spur. Intersect line 9-10 of the Bisbee Townsite Bdy., at point 15.64 chs.S.66°30'E. from cor.No.9 thereof. Thence across patented Townsite of Bisbee.
- 65.15 Intersect E. side line (1-5) of ALPHA patented lode claim, Mineral Survey No.1954, at point 9.37 chs.N. 23°18'W. from cor.No.1 thereof, hereinbefore described. Leave patented Townsite. Thence over patented mineral land.
- 74.77 Intersect W.side line (3-4) of same claim at point 8.43 chs. S.24° 50'E., from cor.No.4 thereof. Leave patented mineral land. Thence over patented Townsite of Bisbee.
- 77.29 Intersect line 8-9 of Bisbee Townsite Bdy., at point 6.80 chs. S.23°30'W. from cor.No.9 thereof. Leave patented Townsite,and continue over mountainous land.
- 79.92 Ascend 60 ft. over SE.slope of spur, The cor,of secs.4,5,8 and 9. Land, mountainous. Soil,rocky,4th rate. Timber, scattering oak and mountain mahogany, Undergrowth, scattering sota, mescal and ocotillo. Poor grass.

 N.0°2' W., bet. secs. 4 and 5.
 Over mountainous land, thru. scattering timber and undergrowth.

- 1.60 Ascend 16 ft. over SE.slope.
- 10.30 Spur, slopes E. Descend 205 ft. on N.slope. Gulch, 20 lks.wide, course S.70°E. Ascend 173 ft.on s. slope.
- 16.58 Spur, slopes S. 60°E. Descend 139 ft. on NE.
- 24.05 Wire fence brs.N.60°W., 3.00 chs. and S.60°E., about 5.00 chs.dist.
- 24.65 A deserted tent house on line.
- 25.00 Brewery Gulch, 15 lks.wide, course S.60° E. Ascend 263 ft. on SW.slope.
- 25.45 Wire fence brs.N.70°W. 2.50 chs. and S.70° E. about 5.00 chs.dist.
- 40.00 Set an iron p^hst, 3 ft.long, 1 in. in diam., 26 ins. in the ground,for $\frac{1}{4}$ sec.cor., marked on brass cap,

$\frac{1}{4}$ S 54
 1916

- 46.00 Raise a mound of stone,2ft.base,1 $\frac{1}{2}$ ft. high,W.of cor. Ridge or divide, brs.N.70°W. and S.70°E. Descend 158 ft. on NE. slope.
- 54.20 Road brs.N.60°W. and S.60°E. Extends southerly to Bisbee.
- 56.00 Ravine, 5 lks.wide, course N.70° E. Ascend 114 ft.on SE. slope.
- 57.70 Same road crossed at 54.20 ch. station, brs.N.70°E.and S.70° W.
- 65.50 Spur, slopes N.60°E. Descend 73 ft. on NW.slope.

50 43 Completion of Subdivision of Township 23 S., R. 24 E.

Chains.
68.40 Ravine, 15 lks. wide, course N. 70° E.
77.70 Intersect N. bdy. of Tp., at point 1.90 chs. N. 89° 50' W. from
cor. of secs. 32 and 33, T. 22 S., R. 24 E., hereinbefore
described.
At point of intersection,
Set an iron post, 3 ft. long, 2 ins. in diam., 24 ins. in
the ground for closing cor. of secs. 4 and 5, marked on
brass cap,

T22S R24E	
S32	
S 5	S 4
C	C
T23S	R24E
1916	

Raise a mound of stone, 2 ft. base, 1½ ft. high, S. of cor.
Land, mountainous.
Soil, rocky, 4th rate.
Timber, scattering oak.
Undergrowth, scattering sota, mescal and ocotillo.
Good grass.

39.96 From the original ¼ sec. cor. of secs. 20, and 29, hereinbe-
fore described in retracement notes,
East, on random line, bet. secs. 20 and 29 (E. ½).
Intersect N. and S. line, 21 lks. N. of cor. of secs. 20, 21,
28 and 29.

Thence,
N. 89° 42' W., on true line, bet. secs. 20 and 29 (E. ½).
Over patented mineral land, rolling and mountainous sur-
face, thru. scattering undergrowth.

39.96 The original ¼ sec. cor.
Land, rolling and mountainous.
Soil, rocky, 3rd and 4th rate.
No timber.
Undergrowth, scattering sota, mescal, ocotillo and Spanish
dagger.
Good grass.

From original cor. of secs. 19, 20, 29 and 30,
N. 0° 03' W., bet. secs. 19 and 20.
Over mountainous land, thru. scattering timber and under-
growth. Descend 20 ft. on NW. slope.

.50 Ravine, 20 lks. wide, course S. 60° W. Ascend 526 ft. on SE.
slope.

7.63 Intersect SW. side line (2-3) of Florence patented lode
claim, Mineral Survey No. 2094 at point 5.51 chs. N. 54°
W. from Cor. No. 2 thereof.

40.00 Thence over patented mineral land.
Set an iron post 3 ft. long, 1 in. in diam., 26 ins. in
the ground for ¼ sec. cor., marked on brass cap,

¼ S19	S20
1916	

80.00 Raise a mound of stone, 2 ft. base, 1½ ft. high, W. of cor.
Set an iron post 3 ft. long, 2 ins. in diam., 5 ins. in the
ground to bedrock supported by a mound of stone, 5 ft.
base, 2 ft. high for cor. of secs. 17, 18, 19 and 20, marked
on brass cap,

T23S R24E	
S18	S17
S19	S20
1916	

Raise a mound of stone, 2 ft. base, 1½ ft. high, W. of cor.
Land, mountainous.

Completion of Subdivision of Township 23 S., R. 24 E. 51

Chains.

Soil, rocky, 3rd and 4th rate.
Timber, scattering mesquite.
Undergrowth, scattering sota, mescal, ocotillo and Spanish dagger.
Good grass.

40.00
80.10

S. 89° 51' E., on a random line, bet. secs. 17 and 20.
Set temp. $\frac{1}{4}$ sec. cor.

Intersect the cor. of secs. 16, 17, 20 and 21.
Thence,

N. 89° 51' W., on a true line, bet. secs. 17 and 20.

Over patented mineral land, mountainous surface, thru. scattering undergrowth.

40.05

Set an iron post 3 ft. long, 1 in. in diam., 26 ins. in the ground, for $\frac{1}{4}$ sec. cor., marked on brass cap.

$\frac{1}{4}$ S 17
S 20
1916

80.10

Raise a mound of stone, 2 ft. base, 1 $\frac{1}{2}$ ft. high, N. of cor. The cor. of secs. 17, 18, 19 and 20, on patented mineral land. Land, mountainous.

Soil, rocky, 3rd and 4th rate.

No timber.

Undergrowth, scattering sota, mescal and ocotillo.

Good grass.

40.00
79.88

West on random line, bet. secs. 18 and 19.

Set temp. $\frac{1}{4}$ sec. cor.

Intersect the W. bdy. of Tp., 30 lks. N. of the original cor. of secs. 13, 18, 19 and 24, an iron post, 3 ins. in diam., 12 ins. above ground, firmly set, marked and witnessed as described by the surveyor general.

Thence,

N. 89° 47' E. on a true line, bet. secs. 18 and 19.

Over mountainous land, thru. scattering undergrowth. Descend 212 ft. on NE. slope.

7.05

Ravine, 60 lks. wide, in canyon, course S. 20° E. Ascend 343 ft. on SW. slope.

8.78

Old road to deserted mine, brs. N. and S.

27.85

Intersect the NW. end line (3-4) of West Bisbee No. 3 patented lode claim, Mineral Survey No. 2094 at point, 2.11 chs. N. 35° 10' E. from cor. No. 3 thereof, hereinbefore described.

Thence, over patented mineral land.

39.88

Set an iron post 3 ft. long, 1 in. in diam., 3 ins. in the ground to bedrock, supported by a mound of stone, 6 ft. base, 2 $\frac{1}{2}$ ft. high for $\frac{1}{4}$ sec. cor., marked on brass cap.

$\frac{1}{4}$ S 18
S 19
1916

79.88

Raise a mound of stone, 2 ft. base, 1 $\frac{1}{2}$ ft. high, N. of cor. The cor. of secs. 17, 18, 19 and 20, on patented mineral land. Land, mountainous.

Soil, 4th rate.

No timber.

Undergrowth, scattering mescal, sota, ocotillo and buck brush.

Good grass.

N. 0° 03' W., bet. secs. 17 and 18.

Over patented mineral land, mountainous surface, thru. scattering undergrowth.

52 50. Completion of Subdivision of Township 23 South, Range 24 E.

Chains 11.53	Intersect NW* end line (4-5) of Lovers Leap No. 2, patented lode claim, Mineral Survey No. 1940, at point 5.56 chs. N. 35° 52' E. from cor. No. 5 thereof, hereinbefore described.								
40.00	Leave patented mineral land. Continue over mountainous land; ascend 60 ft. over SW. slope. Set an iron post, 3 ft. long, 1 in. in diam., 3 ins. in the ground to bedrock, supported by a mound of stone, 4 ft. base, 2 ft. high, for $\frac{1}{4}$ sec. cor., marked on brass cap, <div style="text-align: center;"> <table border="1"> <tr><td>s18</td><td>s17</td></tr> <tr><td colspan="2">1916</td></tr> </table> </div>	s18	s17	1916					
s18	s17								
1916									
42.00	Raise a mound of stone 2 ft. base, $1\frac{1}{2}$ ft. high, W. of cor. Rocky spur, slopes S. 30° E. Descend 80 ft. on NE. slope.								
45.41	Intersect south side line (3-4) of North Star No. 3 patented lode claim, Mineral Survey No. 1881, at point 2.71 chs. N. 84° 00' W. from cor. No. 4 thereof. Thence over patented mineral land.								
72.66	Intersect north side line (1-2) of North Star No. 2 patented lode claim Mineral Survey No. 1881, at point 2.74 chs. N. 84° 00' W. from cor. No. 1 thereof. Leave patented mineral land. Descend 15 ft. on NW. slope.								
73.99	Ravine, 10 lks. wide, course N. 60° E. Ascend 20 ft. on SE. slope.								
77.50	Spur, slopes N. 40° E. Descend 20 ft. on NW. slope.								
80.00	Set an iron post, 3 ft. long, 2 ins. in diam., 24 ins. in the ground, for cor. of secs. 7, 8, 17 and 18, marked on brass cap, <div style="text-align: center;"> <table border="1"> <tr><td>T23S</td><td>R24E</td></tr> <tr><td>S 7</td><td>S 8</td></tr> <tr><td>s18</td><td>s17</td></tr> <tr><td colspan="2">1916</td></tr> </table> </div>	T23S	R24E	S 7	S 8	s18	s17	1916	
T23S	R24E								
S 7	S 8								
s18	s17								
1916									
	Raise a mound of stone, 2 ft. base, $1\frac{1}{2}$ ft. high, W. of cor. Land, mountainous. Soil, rocky, 4th rate. No timber. Undergrowth, scattering sota, mescal, ototillo and buck brush. Poor grass.								
40.00	s. 89° 51' E., on a random line, bet. secs. 8 and 17. Set temp. $\frac{1}{4}$ sec. cor.								
79.98	Intersect N. and S. line, 18 lks. S. of the cor. of secs. 8, 9, 16 and 17. Thence, N. 89° 59' W., on a true line, bet. secs. 8 and 17. Over patented mineral land, mountainous surface, thru. scattering timber and undergrowth.								
34.04	Intersect NW* side line (3-4) of Yakima patented, lode claim, Mineral Survey No. 1387, at point 5.12 chs. S. 26° 40' W. from cor. No. 3 thereof, hereinbefore described. Leave patented mineral land. Continue over mountainous land. Descend 55 ft. over NW. slope.								
35.40	Ravine, 60 lks. wide, in canyon, course N. 40° E. Ascend 427 ft. on SE. slope.								
39.99	Set an iron post 3 ft. long, 1 in. in diam., 26 ins. in the ground, for $\frac{1}{4}$ sec. cor., marked on brass cap, <div style="text-align: center;"> <table border="1"> <tr><td>s 8</td></tr> <tr><td>s 17</td></tr> <tr><td>1916</td></tr> </table> </div>	s 8	s 17	1916					
s 8									
s 17									
1916									
56.00	Raise mound of stone, 2 ft. base, $1\frac{1}{2}$ ft. high, N. of cor. Rocky spur, slopes N. 30° E. Descend 20 ft. on NW. slope.								
65.50	Ravine, 10 lks. wide, course N. 20° E. Ascend 229 ft. on SE. slope.								

Completion of Subdivision of Township 23 South Range 24 East 53

Chains.

71.70 Spur, slopes N.40°E. Descend 87 ft. on NW.slope.
 75.15 Ravine, 20 lks.wide, course N.20°W. Ascend 170 ft. on E. slope.
 79.98 The cor.of secs.7, 8, 17 and 18.
 Land, mountainous.
 Soil, rocky, 4th rate.
 Timber, scattering oak.
 Undergrowth, scattering soto, mescal, ocotillo, and buck brush.
 Poor grass.

40.00 S 89°47' W., on a random line, bet. secs. 7 and 18.
 Set temp. 1/4 sec.cor.
 79.62 Intersect the W. bdy. of Tp., 12 lks.S.of the cor.of secs. 7,12,13 and 18, hereinbefore described.
 Thence,
 N.89° 52' E., on a true line, bet. secs. 7 and 18.
 Over mountainous land, thru.scattering timber and undergrowth. Ascend 28 ft. on SW.slope.
 2.00 Spur, slopes S. Descend 133 ft. on SE.slope.
 7.27 Ravine, 20 lks.wide, course S.10°W. Ascend 173 ft. on SW.slope.
 10.42 Cliff, 25 ft.high, brs.N.40°E., 3.00 chs. and S.40°W. about 2.50 chs.dist.
 13.82 Spur, slopes S. Descend 211 ft., over SE.slope.
 23.82 Ravine, 15 lks.wide, course S. 20°W. Ascend 386 ft.on SW.slope.
 39.62 Set an iron post, 3 ft.long, 1 in. in diam., 26 ins. in the ground, for 1/2 sec.cor., marked on brass cap,

1/2 S 7
 S 18
 1916

54.27 Raise a mound of stone, 2 ft. base, 1 1/2 ft. high, N.of cor. Summit of Continental Divide brs.N.30°W. and S.20°E.
 Descend 443 ft., on NE.slope, to
 79.62 The cor.of secs. 7,8,17 and 18.
 Land, mountainous.
 Soil, rocky, 3rd and 4th rate.
 Timber, scattering oak and juniper.
 Undergrowth, scattering soto, mescal, ocotillo and buck brush.
 Poor grass.

N.0°03' W., bet. secs. 7 and 8.
 Over mountainous land, thru.scattering timber and undergrowth.
 Descend 136 ft.on NE.slope.
 4.20 Ravine, 20 lks. wide, course east. Ascend 153 ft.on SE.slope.
 12.50 Ridge, brs.N.70°E. and S.70°W. Descend 434 ft. on NW.slope.
 26.20 Ravine, 30 lks.wide, course N.40°E. Ascend 136 ft.on SE.slope.
 33.70 Spur, slopes N.30°E. Descend 302 ft. on NE.slope.
 40.00 Set an iron post, 3 ft.long, 1 in. in diam., 26 ins. in the ground, for 1/4 sec.cor., marked on brass cap,

1/4 S 7 | S 8
 1916

49.50 No trees suitable for bearing trees within limits; raise a mound of stone, 2 ft.base, 1 1/2 ft. high, W.of cor.
 Ravine, 15 lks.wide, course N.70°E. Ascend 124 ft.on SE.slope.
 55.35 Spur, slopes N.50°E. Descend 387 ft.on NW.slope.

5452. Completion of Subdivision of Township 23 S., R. 24 E.

- Chains.
 58.07 Intersect line 5-6 of Bisbee Townsite Bdy. at point 13.00 chs. S. 66° 30' E. from cor. No. 6 thereof. Thence over patented Townsite of Bisbee.
 67.12 Intersect south side line (1-2) of Century patented lode claim, Mineral Survey No. 2553, at point 14.46 chs. S. 82° 19' E. from cor. No. 2 thereof. Leave patented Townsite. Thence over patented mineral land.
 75.90 Intersect North side line (3-4) of same claim, at point 10.34 chs. S 82° 19' E. from cor. No. 3 thereof. Leave patented mineral land. Thence over patented Townsite of Bisbee.
 80.00 Set an iron post, 3 ft. long, 2 ins. in diam., 24 ins. in the ground, for cor. of secs. 5, 6, 7 and 8, marked on brass cap.

T23S	R24E
S 6	S 5
S 7	S 8

1916

Raise a mound of stone, 2 ft. base, 1½ ft. high, W of cor. Land, mountainous.
 Soil, rocky, 4th rate.
 Timber, scattering oak, juniper and mountain mahogany.
 Undergrowth, scattering soto, mescal, ocotillo and buck brush.
 Good grass.

- 40.00 s. 89° 59' E., on a random line bet. secs. 5 and 8. Set temp. ¼ sec. cor.
 80.00 Intersect N. and S. line, 5 lks. S. of the cor. of secs. 4, 5, 8 and 9.
 Thence, s. 89° 59' W., on a true line, bet. secs. 5 and 8. Over mountainous land, thru scattering timber and undergrowth. Ascend 146 ft. on SE. slope.
 5.30 Spur, slopes N. 70° E.; thence on NE. slope of ridge.
 14.40 Ridge, brs. N. 20° W. and S. 20° E. Descend 369 ft., over SW. slope.
 30.46 Intersect line 7-8 of Bisbee Townsite Bdy. at point 30.35 chs. N. 66° 30' W. from cor. No. 8 thereof. Thence over patented Townsite.
 40.00 Set an iron post, 3 ft. long, 1 in. in diam., 26 ins. in the ground to bedrock, supported by a mound of stone, 4 ft. base, 1 ft. high, for ¼ sec. cor., marked on brass cap.

¼ S 5
S 8

1916

- 66.83 Raise a mound of stone, 2 ft. base, 1½ ft. high, N. of cor. Intersect NE. side line (1-4) of Climax patented lode claim, Mineral Survey No. 1803, at point 3.16 chs. N. 42° 24' W. from cor. No. 1 thereof. Leave patented Townsite. Thence over patented mineral land.
 78.44 Intersect SW. side line (2-3) of same claim at point 7.98 chs. N. 42° 24' W. from cor. No. 2 thereof. Leave patented mineral land. Thence over patented Townsite of Bisbee.
 80.00 The cor. of secs. 5, 6, 7 and 8, on patented townsite. Land, mountainous.
 Soil, rocky, 4th rate.
 Timber, scattering oak.
 Undergrowth scattering soto, mescal and ocotillo.
 Good grass.

s. 89° 52' W., on a random line, bet. secs. 6 and 7.

Chains.	
40.00	Set temp. $\frac{1}{4}$ sec. cor.
79.30	Intersect the W. bdy. of Tp., 5 lks. N. of the cor. of secs. 1, 6, 7 and 12; hereinbefore described. Thence, N. 89° 50' E., on a true line, bet. secs. 6 and 7. Over mountainous land, thru scattering timber and dense undergrowth. Descend along N. slope.
6.30	Ravine, 5 lks. wide, course N. 40° W. Ascend 117 ft. on NW. slope.
16.80	Spur, slopes N. Descend 184 ft. on NE. slope.
19.30	Ravine, 8 lks. wide, course north. Ascend 56 ft. on NW. slope.
26.30	Ridge, brs. N. 60° E. and S. 60° W. Descend 825 ft. on SE. slope.
39.30	Set an iron post, 3 ft. long, 1 in. in diam., 26 ins. in the ground, for $\frac{1}{4}$ sec. cor., marked on brass cap, $\frac{1}{4}$ S 6 S 7 1916
57.30	No trees suitable for bearing trees within limits; raise a mound of stone 2 ft. base, 1 $\frac{1}{2}$ ft. high, N. of cor. State Highway from Bisbee to Tombstone, Arizona, brs. N. 20° W. and S. 20° E.
61.30	Head of ravine, 5 lks. wide, course north. Ascend 12 ft. on W. slope.
74.30	Spur, slopes NW. Descend 45 ft. on NE. slope.
74.66	Intersect line 6-7 of Bisbee Townsite Bdy. at point 18.26 chs. N. 23° 30' E. from cor. No. 6 thereof. Thence over patented Townsite.
79.30	The cor. of secs. 5, 6, 7 and 8, on patented Townsite of Bisbee. Land, mountainous. Soil, rocky, 4th rate. Timber, scattering oak. Undergrowth, scattering soto, mescal and ocotillo. Poor grass.
1.72	N. 0° 03' W., bet. secs. 5 and 6. Over patented Townsite of Bisbee, mountainous surface, thru scattering timber and undergrowth. Intersect SW. side line (2-3) of Climax patented lode claim, Mineral Survey No. 1803 at point 12.42 chs. S. 42° 24' E. from Cor. No. 3 thereof. Leave patented Townsite. Thence over patented mineral land.
10.60	Intersect line 6-7 of Bisbee Townsite Bdy. at point 10.19 chs. S. 23° 30' W. from cor. No. 7 thereof. Continue over patented mineral land.
14.43	Intersect cor. No. 4 of said Climax patented lode claim, Leave patented mineral land; ascend.
15.00	Spur, slopes S. 60° E. Descend 165 ft. on NE. slope.
19.82	Intersect south side line (2-3) of Gold Reef No. 2 patented mineral lode claim, Mineral Survey No. 1725 at point 14.10 chs. S 73° 33' E., from cor. No. 2 thereof hereinbefore described in Mineral Retracement notes. Thence, Over patented mineral land.
40.00	Set an iron post 3 ft. long, 1 in. in diam., 26 ins. in the ground for $\frac{1}{4}$ sec. cor., marked on brass cap, S 6 S 5 1916
47.74	No trees suitable for bearing trees within limits; raise a mound of stone 2 ft. base, 1 $\frac{1}{2}$ ft. high, W. of cor. Intersect north side line (1-4) of Gold Reef No. 4 patented lode claim, Mineral Survey No. 1725, at point 9.96 chs. N. 73° 33' W. from cor. No. 4 thereof, hereinbefore described. Leave patented mineral land.

56x Completion of subdivision of Township 23 S., R. 24 E.

Chains Ascend 16 ft. on SE. slope.
 49.50 Spur, slopes S. 70°E. Descend 90 ft. on NE. slope.
 58.00 Ravine, 15 lks. wide, course S. 70°E. Ascend 21 ft. on SW. slope.
 63.00 Spur, slopes S. 70°E. Descend 12 ft. on NE. slope.
 65.80 Ravine, 10 lks. wide, course SE. Ascend 275 ft. on SW. slope.
 77.68 Intersect the N. bdy. of Tp., 2.08 chs. N. 89° 50' W. from cor. of secs. 31 and 32, T. 22 S., R. 24 E. hereinbefore described.
 At the point of intersection, set an iron post, 3 ft. long, 2 ins. in diam., 24 ins. in the ground for closing cor. of secs. 5 and 6, marked on brass cap,

T22S R24E
 S31
 S 6 | S 5
 T23S | R24E
 C | C
 1916

Raise a mound of stone, 2 ft. base, 1½ ft. high, S. of cor. Land, mountainous.
 Soil, rocky, 4th rate.
 Timber, scattering oak.
 Undergrowth, scattering soto, mescal and ocotillo.
 Poor grass.

 Boundaries of that portion of T. 23 S., R. 24 E., surveyed under Group 64, Arizona.

Latitudes, Departures, and Closing Errors.

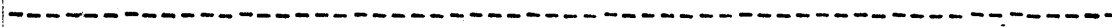
Lines designated.	True Course.	Dist.	Latitudes.		Departures.	
			N.	S.	E.	W.
South boundary,	S. 89° 57' W.	39.88		.003		39.88
	N. 89° 58' W.	39.88	.002			39.88
Subdivisional boundary.	N. 0° 22' E.	39.72	39.72		.285	
	N. 0° 9' E.	40.00	40.00		.10	
	N. 89° 53' W.	40.03	.08			40.03
	West,	40.02				40.02
	N. 89° 53' W.	40.05	.08			40.05
	N. 89° 55' W.	40.14	.06			40.14
	S. 89° 27' W.	39.94		.38		39.94
	N. 89° 30' W.	40.00	.35			40.00
	N. 89° 45' W.	40.03	.17			40.03
	N. 89° 42' W.	39.92	.21			39.92
	N. 0° 16' W.	40.16	40.16			.19
	N. 0° 9' E.	39.99	39.99		.10	
	West,	79.82				79.82
West boundary,	North,	317.95	317.95			
North boundary,	S. 89° 50' E.	481.32		1.40	481.32	
East boundary,	S. 0° 39' W.	39.52		39.52		.45
	S. 0° 24' E.	39.67		39.67	.27	
	S. 2° 12' E.	37.83		37.80	1.45	
	S. 0° 3' E.	39.22		39.22	.03	
	S. 1° 0' W.	80.28		80.27		1.40
	S. 1° 6' W.	38.17		38.17		.73
	S. 0° 7' E.	41.17		41.17	.08	
	S. 1° 0' W.	40.28		40.27		.70
	S. 1° 9' W.	40.77		40.76		.82
	S. 0° 2' E.	39.97		39.97	.02	
	S. 0° 1' E.	40.03		40.03	.01	
Convergency,				.57		
Totals,			478.79	478.66	484.00	484.00
Error in latitude,			478.66		484.00	
Error in departure,			.13		.00	

GENERAL DESCRIPTION.

The land contained in the part of this township surveyed under Group 64 is of a rough, mountainous character, and the soil is a rocky clay loam from 2 to 8 ins. deep, underlaid with ledges of limestone, porphyry and granite, which, during the summer season, is covered with a good growth of different kinds of grasses, which affords excellent pasture for stock. Oak and juniper timber is found on the north slopes of the high mountain spurs in the northern and western parts of the township; the trees, however, are too small to be of any commercial value except as fuel.

This township comprises one of the wealthiest mining districts in the United States, several of the largest copper producing mines being located in secs. 9, 15, and 16. The only water in the township is the water pumped from great depths in the mines, and from the Bisbee-Naco Water Cos. plant at Naco, Arizona, a distance of about 9 miles. The towns of Warren in sec. 23, Lowell, in sec. 15, and Bisbee in secs. 8 and 9 are three prosperous mining towns, with a combined population estimated at 20,000.

Approximately 40 per cent. of the land in the township is patented mineral claims.



Book "F."

Group 64 - - - - Arizona.

T.23 S., R.24 E.

DATE DIAGRAM.

	7-6-16	7-6-16	7-6-16	7-7-16	6-7-16	6-7-16	
Resurvey 7-15-16 7-15-16	6 7-15-16	5 7-5-16	4 7-8-16	3 6-28-16	2 6-17-16	1 6-16-16	
	7 7-3-16	8 7-3-16	9 6-30-16	10 6-27-16	11 6-19-16	12 6-15-16	
	18 7-1-16	17 6-26-16	16 6-24-16	15 6-20-16	14 6-19-16	13 6-15-16	
	19 6-26-16	20 6-21-16	21 6-24-16	22 6-20-16	23 6-17-16	24 6-14-16	
	30 6-21-16	29 6-21-16	28 6-21-16	27 6-20-16	26 6-17-16	25 6-14-16	
						36 7-25-16	
							7-25-16 Retraced

Retracements, Resurveys and Surveys executed on dates shown by Sidney E. Blout, U.S. Surveyor.

603
3304

CERTIFICATE OF UNITED STATES SURVEYOR.

I, Sidney E. Blout, U. S. Surveyor, hereby certify upon honor that, in pursuance of special instructions received from the U. S. Surveyor General, for Group 64, Arizona, bearing date of the 8th day of November, 1915, I have well, faithfully, and truly in my own proper person, and in strict conformity with said instructions, the Manual of Surveying Instructions, and the laws of the United States, ~~surveyed~~ ^{retraced} all those parts or portions of the East and South boundaries, Subdivision lines, and patented mineral claims, and Resurveyed all those parts or portions of the East and West boundaries, and Subdivision lines, all of TOWNSHIP 23 SOUTH, RANGE 24 EAST, and Surveyed all those parts or portions of the South boundary of TOWNSHIP 22 SOUTH, RANGE 24 EAST, and the Subdivision lines of TOWNSHIP 23 SOUTH, RANGE 24 EAST, of the Gila and Salt River Base and Meridian, in the State of Arizona, which are represented in the foregoing field notes ^{and by diagram on page 58 hereof} as having been executed by me, and under my direction; and that all the corners of said ~~survey~~ ^{retracement, resurvey and survey} have been established and perpetuated in strict accordance with the Manual of Surveying Instructions, and the special written instructions of the U. S. Surveyor General, for Group 64, Arizona, and in the specific manner described in the field notes, and that the foregoing are the original field notes of such ~~survey~~ ^{retracements, resurveys and surveys}.

Sidney E. Blout
U. S. Surveyor.

APPROVAL.

OFFICE OF THE UNITED STATES SURVEYOR GENERAL,

Phoenix, Arizona, JUN 10, 1919

The foregoing field notes of the ~~survey of~~ ^{retracement} of part of the East and South bdrs., and part of the Subdivision lines, and Patented Mineral Claims, and Resurvey of parts of the East & West bdrs., and part of the Subdivision lines of TOWNSHIP 23 SOUTH, RANGE 24 EAST, and Survey of the South bdy. of TOWNSHIP 22 SOUTH, RANGE 24 EAST, and Completion of Subdivision lines of TOWNSHIP 23 SOUTH, RANGE 24 EAST, of the Gila and Salt River Base and Meridian, in the State of Arizona, executed by Sidney E. Blout, U. S. Surveyor, under his special instructions dated Nov. 8, 1915, for Group 64, Arizona, ~~and~~ having been critically examined, and the necessary corrections and explanations made, the said field notes, and the ~~surveys~~ ^{retracements, resurveys and surveys} they describe, are hereby approved.

Francis A. Smith
U. S. Surveyor General.

I certify that the foregoing transcript of the field notes of the above-described surveys in _____, has been correctly copied from the original notes on file in this office.

U. S. Surveyor General.