

FIELD NOTES

OF THE RESURVEY OF THE

Third Standard Parallel North thru Range 6 East and

East boundary of Township 13 North, Range 6 East

and SURVEY of

North boundary and

Subdivision lines of

Township 13 North, Range 6 East

Of the Gila and Salt River Base and Meridian,

In the State of Arizona

EXECUTED BY

William H. Richards Jr., U.S. Surveyor

with correction of resurvey of 3rd Std. Par. N. thru Range 6 East by

Sidney E. Blout, U.S. Cadastral Engineer

~~In the capacity of U.S. Surveyor~~, under instructions dated October 14, 1915,

issued by the United States Surveyor General to govern surveys included in

Group No. 61, which were approved by the Commissioner of the General Land

Office, October 28, 1915.

Resurvey and Survey commenced February 23, 1916 (Richards)

Resurvey and Survey completed April 5, 1916 (Richards)

Corrective resurvey of 3rd Std. Par. N. March 8-10, 1919 (Blout)

3324

3324

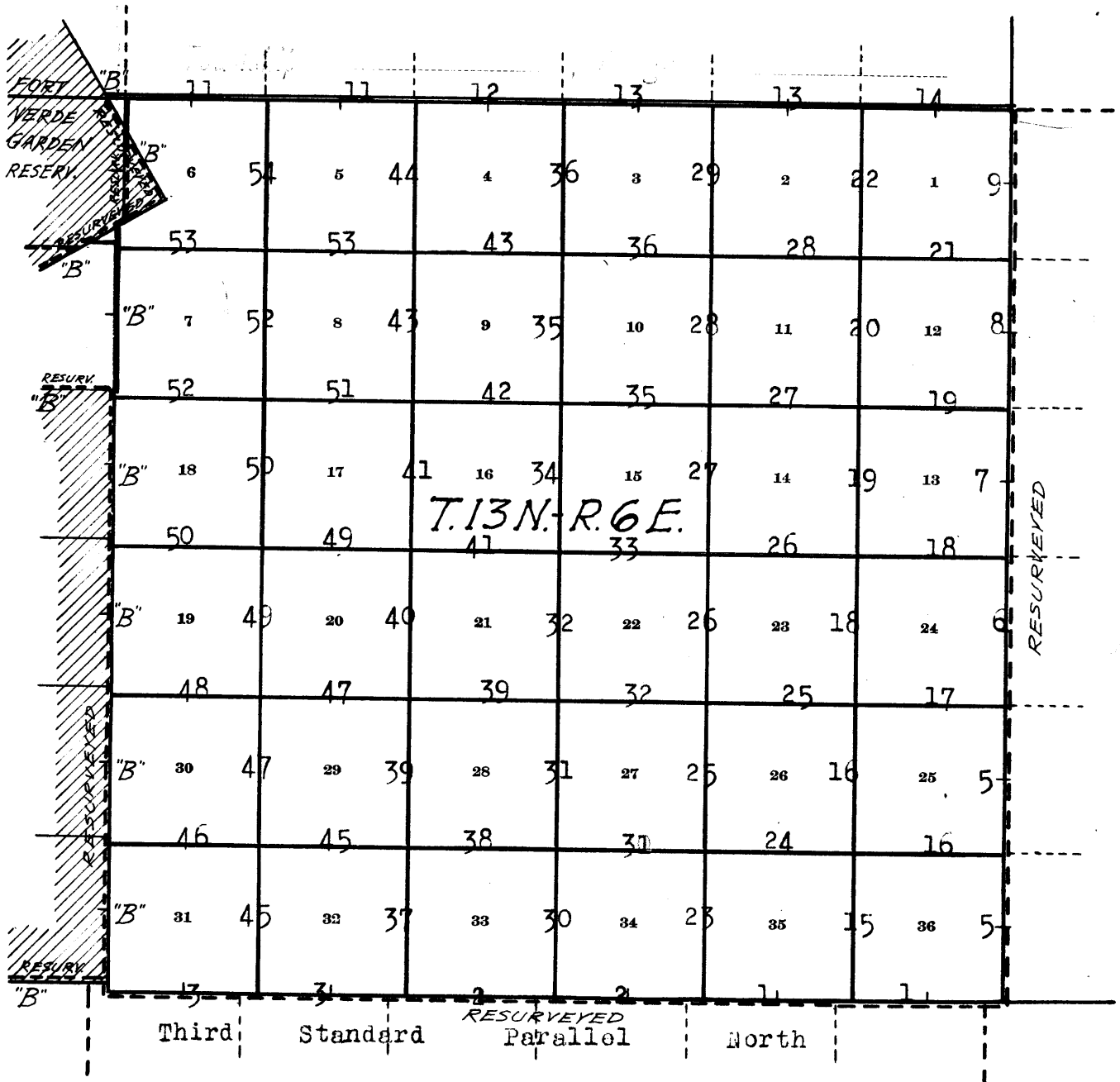
1A






Book "C"

Group 61----Arizona

BOOK 3324

INDEX DIAGRAM.



-  Lines surveyed under this group.
-  Lines retraced or resurveyed under this group.
-  Accepted surveys. .
-  Unsurveyed.
-  Areas surveyed as per accepted plats on file.

Independent Resurvey of 3rd. Std. Parallel N., thru. Range 6 East.

Chains.

Resurveys and Surveys hereinafter described were executed by William H. Richards, Jr. U. S. Surveyor, on dates shown on diagram on page 59 hereof, using Buff solar transit No. 9206 described, with record of test, and certificate of approval, in Book "A" of this group. A later test of said instrument is described in Book "B."

It appeared upon examination of the field notes of William H. Richards' resurvey that he had made a dependent resurvey of the Third Standard Parallel North, thru. Range 6 East, which method was in error, as the line was subject to rectification; therefore, in March, 1919, Sidney E. Blout, U.S. Cadastral Engineer, corrected this error, by destroying all the standard sec. cors. and $\frac{1}{4}$ sec. cors., and closing cors. set on said line by Richards, and making independent resurvey of the Parallel as hereinafter described, on dates shown on diagram on page hereof, using Buff solar transit No. 9984 described with record of test and certificate of approval in Book "L," of this group. The items of topography on 3rd Standard Parallel North hereinafter described, are taken from the dependent resurvey of the line by William H. Richards, Jr., the proper corrections having been made to allow for the movement of the line by the independent resurvey, inasmuch as Sidney E. Blout did not record topography in making the independent resurvey.

The standard cor. of T. 13 N., Rs. 6 and 7 E. on 3rd. Standard Parallel North, is a $3\frac{1}{2}$ in. post, properly set, marked and witnessed as described by the surveyor general. This cor. was reestablished in 1903 as the standard township cor. and cor. No. 67 of the Black Mesa Forest Reserve Bdy.

West, on a true line, along the S. bdy. of sec. 36. Over rolling and mountainous land, thru. dense timber. Descend gradually.

8.00 Timber becomes scattering.
40.00 Set a malpais stone 16x11x6 ins., 11 ins. in the ground for reestablished standard $\frac{1}{4}$ sec. cor., marked

SC $\frac{1}{4}$ S

on N. face, and raise a mound of stone, 2 ft. base, $1\frac{1}{2}$ ft. high, N. of cor. Ascend to Spur, slopes N. 60° W. Descend 460 ft.

41.38
80.00 Set an iron post 3 ft. long, 2 ins. in diam., 24 ins. in the ground, for reestablished standard cor. of secs. 35 and 36, marked on brass cap,

S C
T13N R 6E
S35 | S36

1916

and raise a mound of stone, 2 ft. base, $1\frac{1}{2}$ ft. high, N. of cor.

Land, rolling and mountainous.
Soil, rocky, 3rd rate.
Timber, scattering pinon and scrub oak.
Undergrowth, scrub cedar brush and catclaw.

West, on a true line, along the S. bdy. of sec. 35. Over mountainous land, thru. scattering undergrowth. Descend gradual slope.

~~2. Independent resurvey of 3rd. Std. Par. North, thru. Range 6 East.~~

Chains.

40.00 Set a malpais stone, 16x14x9 ins., 12 ins. in the ground, for reestablished standard $\frac{1}{4}$ sec. cor., marked

SC $\frac{1}{4}$ S

on N. face, and raise a mound of stone, 2 ft. base, 1 $\frac{1}{2}$ ft. high, N. of cor.

Descend steep slope.

54.30 Gulch, 10 lks. wide, 2 ft. deep, course S. 70°W. Ascend.

58.00 Descend 125 ft.

80.00 Set an iron post, 3 ft. long, 2 ins. in diam., 24 ins. in the ground, for reestablished standard cor. of secs. 34 and 35, marked on brass cap,

S C

T13N R 6E

S34 | S35

1916

and raise a mound of stone, 2 ft. base, 1 $\frac{1}{2}$ ft. high, N. of cor.

Land, rolling and mountainous.

Soil, rocky, 3rd rate.

No timber.

Undergrowth, scrub cedar, oak, catclaw and pinyon.

West, on a true line, along the S. bdy. of sec. 34.
Over mountainous land, thru. scattering undergrowth.
Ascend 190 ft.

11.50 Descend 500 ft.

38.75 Gulch, course S. 50°W. Ascend 50 ft.

40.00 Set a malpais stone, 20x14x8 ins., 15 ins. in the ground, for reestablished standard $\frac{1}{4}$ sec. cor., marked

SC $\frac{1}{4}$ S

on N. face, and raise a mound of stone, 2 ft. base, 1 $\frac{1}{2}$ ft. high, N. of cor.

45.00 Top of ascent. Descend 65 ft.

79.00 Toe of spur, slopes S. 60° W. Descend 120 ft.

75.50 North branch of Cottonwood Creek, 30 lks. wide, 3 ft. deep, containing water in holes, course S. 30°W.

Ascend 140 ft.

80.00 Set an iron post, 3 ft. long, 2 ins. in diam., 24 ins. in the ground, for reestablished standard cor. of secs. 33 and 34, marked on brass cap,

S C

T13N R 6E

S33 | S34

1916

and raise a mound of stone, 2 ft. base, 1 $\frac{1}{2}$ ft. high, N. of corner.

Land, rolling and mountainous.

Soil, rocky, 4th rate.

No timber.

Undergrowth, scrub cedar, oak and catclaw.

Some grass.

West, on a true line, along the S. bdy. of sec. 33.
Over mountainous land, thru. scattering undergrowth.
Ascend to

6.00 Rocky spur, slopes S. 10°W. Descend 150 ft.

25.50 Wash, course S. Ascend 200 ft.

Independent resurvey of 3rd. Standard Par. N., thru. Range 6 East.

3.

Chains.

- 31.40 Tonto Basin trail, brs. N. 30° W. and S. 30° E.
- 40.00 Set a malpais stone, 14x9x8 ins., 9 ins. in the ground, for reestablished standard 1/4 sec. cor., marked

SC 1/4 S

on N. face, and raise a mound of stone, 2 ft. base, 1 1/2 ft. high, N. of cor.

- 46.00 Spur, slopes south. Descend.
- 59.50 Gulch, course S. Ascend.
- 67.00 Spur, slopes S. Descend.
- 80.00 Set an iron post, 3 ft. long, 2 ins. in diam., 24 ins. in the ground, for reestablished standard cor. of secs. 32 and 33, marked on brass cap,

S C
 T13N R6 E
 S32 | S33

1916

and raise a mound of stone, 2 ft. base, 1 1/2 ft. high, N. of cor.

Land, mountainous.
 Soil, rocky, 4th rate.
 No timber.
 Undergrowth, scrub cedar, catclaw and mesquite.

West, on a true line, along S. bdy. of sec. 32.
 Over rolling, mountainous land, thru. scattering undergrowth.

- 40.00 Set a malpais stone, 15x10x5 ins., 10 ins. in the ground, for reestablished standard 1/4 sec. cor., marked

SC 1/4 S

on N. face, and raise a mound of stone, 2 ft. base, 1 1/2 ft. high, N. of cor.

- 70.00 Spur, slopes N. 30° W. Descend.
- 77.00 Wash, course NW.
- 80.00 Set an iron post 3 ft. long, 2 ins. in diam., 24 ins. in the ground, for reestablished standard cor. of secs. 31 and 32, marked on brass cap,

S C
 T13N R 6 E
 S31 | S32

1916

and raise a mound of stone, 2 ft. base, 1 1/2 ft. high, N. of cor,

Land, rolling and mountainous.
 Soil, rocky, 4th rate.
 No timber.
 Undergrowth, catclaw, mesquite and scrub cedar.

West, on a true line, along S. bdy. of sec. 31.
 Over rolling land, thru. scattering undergrowth.

- 10.00 Low spur, slopes N. Descend.
- 12.00 Ascend.
- 17.00 Spur, slopes NW. Descend.
- 19.00 Fossil Creek trail brs. N. 50° W. and S. 50° E.
- 40.00 Set a malpais stone, 14x12x10 ins., 9 ins. in the ground, for reestablished standard 1/4 sec. cor., marked

SC 1/4 S

and raise a mound of stone, 2 ft. base, 1 1/2 ft. high, N. of cor.

- 56.00 Wash, 10 lks. wide, 1 ft. deep, course N. 30° W.
- 77.00 Wash, 20 lks. wide. 1 1/2 ft. deep, course S. 70° W.

4. Resurvey of 3rd. Std. Parallel N., thru. Range 6 West.
Chains.

90.69 Fall 1.12 chs. S. of the reestablished standard cor. of Ts. 13 N., Rs. 5 and 6 E., described in Book "B."
Set a malpais stone, 16x12x6 ins., 12 ins. in the ground, for reestablished standard cor. of T.13 N., R.6 E., marked

T13N
R6E
S31

on NE. face, with 6 notches on N. and E. edges, and raise a mound of stone, 2 ft. base, 1 1/2 ft. high, NE. of cor.

Change reestablished standard cor. of Ts. 13 N., Rs. 5 and 6 E. by obliterating notches on E. face of stone, and by moving mound of stone from N. to NW. of cor.

Land, rolling and mountainous.

Soil, stony, 3rd rate.

No timber.

Undergrowth, scrub cedar, catclaw and mesquite.

Independent Resurvey of the
East Boundary of T. 13 N., R. 6 E.

BOOK 3324

Chains
2.50
21.85
37.00
38.91
40.00
47.85
65:00
79:11

From the standard cor. of T. 13 N., Rs. 6 and 7 E., and Forest Bdy. post No. 67, hereinbefore described, North on a true line bet. secs. 31 and 36. Over mountainous land, through scattering undergrowth. Asc: 40 ft.
Spur, slopes N.74°W. Desc. 510 ft.
Gulch, course W. Asc. 410 ft.
Spur, slopes N.80°W. Desc. 260 ft.
Intersect the original 1/4 sec. cor., a granite stone 22 x 12 x 8 ins. in a mound of stone, marked "1/4" on W. face, and witnessed by a mound of stone W. of cor.
Remove stone and mound of stone and on line at
Reset same stone 17 ins. in the ground with the marking on the W. face, for reestablished 1/4 sec. cor. Raise a mound of stone 2 ft. base, 1 1/2 ft. high W. of cor.
Small gulch, course S.75°W. Asc. 325 ft.
Bridge, brs. E. and W. Desc. N. slope.
Fall 11 lks. W. of the original cor. of secs. 25, 30, 31 and 36, also Forest Bdy. post. No. 68, a 3/8 in. iron post, set in a mound of stone with brass cap marked

T13N	
R6E	R7E
S25	S30
S36	S31
No 68	

1903 ; with one notch on S. and 5 notches on N. rim of cap, and witnessed by one tree NW. of cor. marked T13NR6ES25BT and pits NE., NW., SE., and SW. of cor.
Reestablish this cor. by removing post and mound of stone, obliterate the pits and on line at
Set the same post, which is 4 ft. long, 20 ins. in the ground and surround same with a mound of stone. Make no change in the marking on the brass cap described above.
From the reestablished cor., the original bearing tree, a cedar, 8 ins. dia., bears S.41°W., 49 lks. dist. Change marking on this tree to read " T13NR6ES36BT "
No other tree within limits. Raise a mound of stone 2 ft. base, 1 1/2 ft. high W. of cor.
Land; mountainous.
Undergrowth; scrub oak and cedar. No timber.
Some grass.

0.65
10.00
23.50
39.14
40.00
50.00
71.00
79.02

North on a true line bet. secs. 25 and 30. Over mountainous land, through scattering undergrowth.
Small draw, course W. Asc. 25 ft.
Low spur, slopes W. Desc. 25 ft.
Head of gulch, course S.65°W. Asc. 250 ft.
Fall 41 lks. W. of original 1/4 sec. cor., a volcanic stone 23 x 16 x 16 ins., set in a mound of stone, and marked "1/4" on W. face and witnessed by one tree NE. and one tree SW. of cor., each marked "1/4 SBT"
Remove stone and mound of stone and on line at
Reset stone, 18 ins. in the ground, with marking on W. face for reestablished 1/4 sec. cor.
The old bearing trees now bear from reestablished cor. as follows:
A cedar, 18 ins. dia., S.65 1/2°E., 207 lks. dist.
A cedar, 18 ins. dia., S.21°W., 123 lks. dist.
Desc. 90 ft.
Head of wash, course N.40°W. Asc. 70 ft.
Spur, slopes N.80°W. Desc. 230 ft. over rock ledges.
Fall 41 lks. W. of original cor. of secs. 19, 24, 25, and 30, also Forest Bdy. post, No. 69, a 3/8 in. iron post, set in a mound of stone, marked on brass cap

T13N	
R6E	R7E
S24	S19
S25	S30
No 69	
1903	

Independent Resurvey of the
East Boundary of T. 13 N., R. 6 E.

Chains	<p>with four notches on N. and two notches on S. of rim Reestablish this cor. by removing post and mound of stone and on line at</p>										
80.00	<p>Reset same post, which is 4 ft. long, 22 ins. in the ground and surround same with a mound of stone. Make no change in marking on brass cap. On a pinion, 10 ins. dia., N. $39\frac{1}{4}^{\circ}$ E., 223 lks. dist. mark T13NR6ES19BT No other trees within limits. Raise a mound of stone, 2 ft. base, $1\frac{1}{2}$ ft. high W. of cor. Land; mountainous. Soil; rocky, 4th rate. No timber. Undergrowth; cedar, pinion, and scrub oak brush. Good grass.</p>										
11.27	<p>North on a true line bet. secs. 19 and 24. Over mountainous land, through scattering undergrowth. Desc. 220 ft. over rock ledges. Boulder Creek, 15 lks. wide, 3 ft. deep, containing a small stream of clear water, course W. Asc. 680 ft.</p>										
31.16	Top of rock ledge, continue ascent.										
32.00	Spur, slopes W. Desc. 460 ft.										
37.09	<p>Fall 44 lks. W. of original $\frac{1}{4}$ sec. cor., a volcanic stone 25 x 16 x 10 ins. in a mound of stone, marked "$\frac{1}{4}$" on W. face, and witnessed by one tree SE. and one tree NW. of cor., each marked "$\frac{1}{4}$ SBT"</p>										
	Obliterate markings on bearing trees, remove stone and mound of stone, and reestablish the cor. on line as hereinafter described.										
39.44	Telephone line, bears S. 75° E. and N. 75° W.										
40.00	<p>Reset stone originally set for $\frac{1}{4}$ sec. cor., as described above, 19 ins. in the ground, with marking on W. face for reestablished $\frac{1}{4}$ sec. cor. On a cedar, 8 ins. in dia., S. $69\frac{1}{2}^{\circ}$ E., 41 lks. dist. mark $\frac{1}{4}$ S19BT On a cedar, 11 ins. in dia., N. $19\frac{3}{4}^{\circ}$ W., 151 lks. dist. mark $\frac{1}{4}$ S 24 B T</p>										
49.30	Desc. over rock ledges.										
66.65	<p>Sycamore Creek, 15 lks. wide, 3 ft. deep, containing small stream of water, course W. Asc. 340 ft.</p>										
77.05	<p>Fall 44 lks. W. of original cor. of secs. 13, 18, 19, and 24. also Forest Bdy. post, No. 70, a $3\frac{1}{2}$ in. iron post, in a mound of stone, marked on brass cap</p>										
	<table border="1"> <tbody> <tr> <td colspan="2">T13N</td> </tr> <tr> <td>R6E</td> <td>R7E</td> </tr> <tr> <td>S17</td> <td>S18</td> </tr> <tr> <td>S24</td> <td>S19</td> </tr> <tr> <td colspan="2">No 70</td> </tr> </tbody> </table>	T13N		R6E	R7E	S17	S18	S24	S19	No 70	
T13N											
R6E	R7E										
S17	S18										
S24	S19										
No 70											
	<p>1903 , and 3 notches on N. and S. edges of rim, and witnessed by trees NE., SE., SW., and NW. of cor.</p>										
80.00	<p>Obliterate markings on the bearing trees, remove post and mound of stone, and on line at Reset same post, which is 4 ft. long, 10 ins. in the ground and surround same with a mound of stone, for reestablished cor. of secs. 13, 18, 19, and 24, and Forest Bdy. post, No. 70. Make no change in marking on brass cap. On a cedar, 6 ins. in dia., N. 65° E., 55 lks. dist. mark T13NR7ES18BT On a cedar, 8 ins. in dia., S. 9° E., 19 lks. dist. mark T13NR7ES19BT On a cedar, 10 ins. in dia., S. $82\frac{3}{4}^{\circ}$ W., 11 lks. dist. mark T13NR6ES24BT On a cedar, 15 ins. in dia., N. 80° W. 16 lks. dist. mark T13NR6ES13BT</p>										

Independent Resurvey of the
East Boundary of T.13 N., R.6 E.

BOOK 3324

Chains	<p>Land; mountainous. Soil; rocky, 4th rate. No timber. Undergrowth; cedar, pinion, and scrub oak.</p>
19.00	<p>North on a true line bet. secs. 13 and 18. Overmountainous land, through scattering undergrowth. Asc. 70 ft. Road, bears S.70°E. and N.70°W., on main ridge, bears E. and W. Desc.</p>
19.42	<p>Fall 44 lks. W. of Forest Bdy. post No. 71, a 3½ in. iron post, set in a mound of stone, with brass cap marked No 71 1903</p>
25.00	<p>; and witnessed by one tree SE. and one tree NW. of cor., each marked "Bdy P No 71BT" Reestablish this cor. by removing post and mound of stone and at a point on line 44 lks. W. of original position, set same post, which is 4 ft. long, 24 ins. in the ground, and surround same with mound of stone. Make no change in marking on brass cap. The original bearing trees now bear from the reestablished cor. as follows: A pinion, 8 ins. dia., S.74½°E., 170 lks. dist., and A cedar, 6 ins. dia., N.61½°E., 20 lks. dist. Make no change in marking on these trees. Desc. 865 ft.</p>
37.43	<p>Desc. over rock ledge. Fall 47 lks. W. of original ¼ sec. cor., a volcanic stone 24 x 13 x 10 ins., in a mound of stone, marked "¼" on W. face, and witnessed by one tree SE. and one tree NW. of cor. Efface marking on SE. tree, remove stone and mound of stone and on line at</p>
40.00	<p>Reset same stone, 17 ins. in the ground for reestablished ¼ sec. cor., with marking on W. face. The old bearing tree, marked "¼ SBT", originally NW. from old cor., now bears S.6¼°E., 93 lks. dist. No other tree within limits. Raise a mound of stone 2½ ft. base, 1½ ft. high W. of cor.</p>
48.80	<p>Bottom of Windy hollow, containing small stream of water, course W. Asc. 545 ft.</p>
69.99	<p>Sharp bluff, brink of Clear Creek Canyon, bears E. and W. Fall 55 lks. W. of the original witness cor. to the cor. of secs. 7, 12, 13, and 18, being also Forest Bdy. post No. 72, an iron post, 3½ ins. in dia., set in a mound of stone, with brass cap marked T13N R6E R7E S12 S 7 W C S13 S18 No 72 1903 ; with 2 notches on N. and 4 notches on S. edge of rim, and witnessed by one tree SW. of cor. marked "WCT13NR6ES13BT"</p>
70.15	<p>Reestablish this cor. by removing post and mound of stone and at a point on line 55 lks. W. of original position, set same post, which is 4 ft. long, 24 ins. in the ground, and surround same with a mound of stone. Make no change in marking on brass cap. The original bearing tree now bears from the reestablished cor. as follows: A pinion, 9 ins. in dia., S.54°W., 31 lks. dist. Make no change in marking on this tree. No other tree within limits. Raise a mound of stone 2 ft. base, 1½ ft. high W. of cor. It is impracticable to continue measurement by chaining,</p>

Independent Resurvey of the
East Boundary of T. 13 N., R. 6 E.

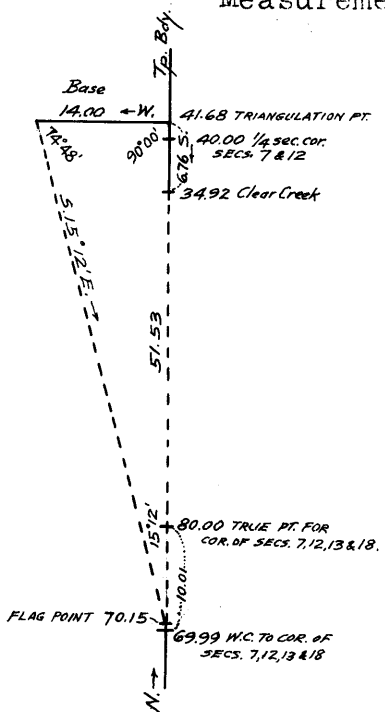
Chains therefore, set flag at this point and triangulate as described in notes of following mile.
Desc.
80.00 The true point for reestablished cor. of secs. 7, 12, 13, and 18, which falls on steep slide rock, where cor. could not be permanently established.
Land; mountainous.
Soil; rocky, 4th rate.
No timber.
Undergrowth; cedar and scrub oak.
Some grass.

North on a true line bet. secs. 7 and 12.
Over mountainous land, through scattering timber and undergrowth.

Measurement by triangulation as follows:

Set flag ahead on Tp. bdy. in bottom of Clear Creek Canyon.
From this flag, measure a base W. 14.00 chs.
From W. end of base, flag left at 70.15 ch. station on Tp. bdy. bet. secs. 13 & 18, bears S. 15° 12' E.
The included angles of this are 74° 48', 90° 00', and 15° 12', the sum of which is 180° 00'

Dist. on Tp. Bdy. bet. flags mentioned is therefore obtained by
Base X cotang. 15° 12' or 14.00 X 3.68061 = 51.53 chs., which added to 70.15 chs. = 121.68 chs.
121.68 chs. - 80.00 chs. = 41.68 chs., the dist. of flag N. of true point for reestablished cor. of secs. 7, 12, 13, and 18.



bdy. 6.76 chs. to
34.92 Clear Creek, running water, 1 ch. wide, 2 ft. deep, course W. 980 ft. below the reestablished W.C. to the reestablished cor. of secs. 7, 12, 13, and 18.
Thence North on a true line, continuing measurement bet. secs. 7 and 12.
Over rough bottom of Clear Creek Canyon.
36.92 Fall 53 lks. W. of original witness cor. to the 1/4 sec. cor. of secs. 7 and 12, which is a volcanic stone 24 x 12 x 8 ins., set, mkd., and witnessed as described by the Surveyor General. Obliterate marking on bearing trees, destroy mound of stone, remove stone and reset it on line as hereinafter described.
39.04 Fall 53 lks. W. of original Forest Bdy. post, No. 73, an iron post, 3 1/2 ins. in dia., set in a mound of earth and stone, and marked on brass cap
No 73
1903
; and witnessed by two bearing trees, one SE. and one SW. of post.
Take up post and move it 53 lks. W. to point on Tp. bdy. and reset it 24 ins. in the ground, 24 ins. above ground supported by a mound of stone around same, for reestablished Forest Bdy. post, No. 73.
The original bearing trees now bear from the reestablished cor. as follows:
A mesquite, 6 ins. dia., mkd. BDY P No 73 BT
S. 82 1/4° E., 60 lks. dist.
A cedar, 12 ins. dia., mkd. BDY P No 73 BT
S. 3/4° W., 63 lks. dist.

Independent Resurvey of the
East Boundary of T. 13 N., R. 6 E.

Chains	<p>-inal NE. bearing tree of original cor., which is A cedar, 26 ins. in dia., mkd. WC T13N R7E S6 BT and bears from reestablished cor. N55$\frac{1}{2}$°E. 81 lks. dist. Reestablish as bearing tree A cedar, 11 ins. in dia., N.78°W., 66 lks. dist. marking same WC T13N R6E S1 BT No tree within limits SE. and SW. of cor. Raise a mound of stone, 2 ft. base, 1$\frac{1}{2}$ ft. high W. of cor.</p>
3.56	<p>Fall 52 lks. W. of orig. position of cor., removed and reset as described above. Obliterate the pits and efface the markings on the old NW bearing tree</p>
15.00	<p>Desc. 210 ft.</p>
32.55	<p>Gulch, course S.45°W. Asc. 115 ft.</p>
37.51	<p>Fall 54 lks. W. of the original $\frac{1}{4}$ sec. cor., a volcanic stone, 24 x 12 x 8 ins., set in a mound of stone, marked and witnessed as described by the Surveyor General. Obliterate marking on bearing trees, destroy mound of stone, remove stone and reset on line as hereinafter described.</p>
40.00	<p>Reset stone removed from point 54 lks. E. of 37.51 ch. station, 18 ins. in the ground for reestablished $\frac{1}{4}$ sec. cor., with marking "$\frac{1}{4}$" on W. face. On a pinon, 5 ins. dia., S.42°E. 34 lks. dist., mark $\frac{1}{4}$ S 6 B T On a cedar, 9 ins. dia., S.35$\frac{1}{2}$°W., 84 lks. dist., mark $\frac{1}{4}$ S 1 B T</p>
60.75	<p>Gulch, course S.45°W. Asc. 140 ft.</p>
73.50	<p>Spur, slopes S.50°W. Desc. 80 ft.</p>
77.48	<p>Fall 56 lks. W. of orig. cor. of Ts. 13 and 14 N., Rs. 6 and 7 E., also Forest Bdy. post, No. 75, a $\frac{3}{8}$ in. iron post, in a mound of earth and stone; and marked on brass cap. T14N R6E R7E S36 S31 S 1 S 6 T13N No 75 1903 and 6 notches on N., S., E., and W. edges of rim of cap, witnessed by pits N., S., E., and W. of post, and one bear- ing tree NE. of post marked "T14NR7ES31BT"</p>
80.00	<p>Destroy mound, obliterate pits, remove the post and on line at Reset same post, which is 4 ft. long, 16 ins. in the ground and surround same with mound of stone, for reestablished cor. of Ts. 13 and 14 N., Rs. 6 and 7 E., and Forest Bdy. post, No. 75. Make no change in marking on brass cap. Old bearing tree to original cor., now bears from reestab- lished cor. as follows: A cedar, 9 ins. in dia., S.65°E., 343 lks. dist. Change marking on this tree to read "T13NR7ES6BT" Establish new bearing trees as follows: On a cedar, 6 ins. in dia., S.37°W., 463 lks. dist., mark T13NR6ES1BT On a cedar, 10 ins. dia., N.37$\frac{1}{2}$°W., 450 lks. dist., mark T14NR6ES36BT No other trees available. Raise a mound of stone, 2 ft. base, 1$\frac{1}{2}$ ft. high S. of cor. Land; mountainous. Soil; rocky, 4th rate. No timber. Undergrowth; cedar, pinon, and scrub oak.</p>

Survey of the North Boundary of T. 13 N., R. 6 E.

Chains.

From the reestablished cor. of Ts. 13 and 14 N., Rs. 6 and 7 E., hereinbefore described,

West, on a random line, along the N. bdy. of T. 13 N., R. 6 E., setting temp. 1/4 sec. and sec. cors. at intervals of 40.00 chs.; and at 484.36 chs., fall 240 links south of the shed cor. of Ts. 13 and 14 N., Rs. 5 and 6 E., described in Book "B". The falling answers to a correction of 0°17', or 140 lks. N. per mile, counting from the NE. cor. of the Tp.; therefore S.89°43'E., on a true line, bet. secs. 6 and 31. Over rolling mountainous land, through scattering undergrowth.

Desc.

33.55
44.36

Wash, 20 lks. wide, 2 1/2 ft. deep, course SW. Asc. 170 ft. Set an iron post, 3 ft. long, 1 in. diam., 8 ins. in the ground, in a mound of stone, for 1/4 sec. cor., marked on brass cap

1/4 S31
S 6
1916

From which

A cedar, 9 ins. diam., brs. South, 52 lks. dist., marked 1/4 S6 BT.

No other trees within limits. Raise a mound of stone, 2 ft. base, 1 1/2 ft. high, N. of cor.

61.35
75.65
84.36

Spur, slopes S.45°W. Desc. 90 ft. Gulch, course S.45°W. Asc. 140 ft. Set an iron post, 3 ft. long, 3 ins. diam., 24 ins. in the ground, for cor. of secs. 5, 6, 31 and 32, marked on brass cap

T14N R6E
S31 | S32
S 6 | S 5
T13N
1916

From which

A cedar, 16 ins. diam., brs. N.56 1/2°E., 64 lks. dist., marked T14N R6E S32 BT.

A cedar, 6 ins. diam., brs. S.13°E., 300 lks. dist., marked T13N R6E S5 BT.

A cedar, 26 ins. diam., brs. S.15 1/4°W., 185 lks. dist., marked T13N R6E S6 BT.

A cedar, 9 ins. diam., brs. N.18°W., 29 lks. dist., marked T14N R6E S31 BT.

Land, rolling mountainous.

Soil, stony, 4th rate, limestone formation.

No timber.

Undergrowth, cedar, greasewood and mountain cranberry.

S.89°43'E., on a true line, bet. secs. 5 and 32. Over rolling land, through scattering undergrowth. Asc. 50 ft.

13.50
28.20
29.75
32.50
40.00

Spur, slopes S.30°W. Desc. 95 ft. Road, brs. NE. and S.30°W. Gulch, course S. Asc. 130 ft. Vacant house at Hantz' Spring, brs. N.14 1/2°E. Set an iron post, 3 ft. long, 1 in. diam., 14 ins. in the ground, in a mound of stone, for 1/4 sec. cor., marked on brass cap

1/4 S32
S 5
1916

From which

A cedar, 8 ins. diam., brs. N.68 1/2°E., 161 lks. dist., marked 1/4 S32 BT.

A cedar, 7 ins. diam., brs. S.51 1/2°W.; 166 lks.

12. Survey of the North Boundary of T. 13 N., R. 6 E.

Chains.

44.30 dist., marked $\frac{1}{4}$ S5 BT.
 44.30 Vacant house at Hantz' Spring brs. N.15 $\frac{3}{4}$ °W.
 59.55 Cow trail, brs. N. and S.
 75.00 Top of ascent. Desc, 40 ft.
 80.00 Set an iron post, 3 ft long, 3 ins. diam., 20 ins. in the ground, in a mound of stone, for cor. of secs. 4, 5, 32 and 33, marked on brass cap

T14N R6E
 S32 | S33

 S 5 | S 4
 T13N
 1916

From which

A cedar, 11 ins. diam., brs. N.39 $\frac{1}{4}$ °E., 256 lks. dist., marked T14N R6E S33 BT.
 A cedar, 9 ins. diam., brs. S.37 $\frac{1}{2}$ °W., 223 lks. dist., marked T13N R6E S5 BT.
 No other trees within limits. Raise a mound of stone, 2 ft. base, 1 $\frac{1}{2}$ ft. high, W. of cor.
 Land, rolling.
 Soil, stony, 4th rate.
 No timber.
 Undergrowth, cedar, mesquite and cat claw.
 Fair grass.

S.89°43'E., on a true line, bet. secs. 4 and 33.
 Over mountainous land, through scattering undergrowth.
 Asc.
 11.50 Top of ascent. Desc. 75 ft.
 16.85 Wash, 20 lks. wide, 3 ft. deep, course S.50°W. Asc. 175 ft.
 28.00 Low spur, slopes N.50°W. Desc.
 30.00 Asc. 150 ft.
 40.00 Set an iron post, 3 ft. long, 1 in. diam., 26 ins. in the ground, for $\frac{1}{4}$ sec. cor., marked on brass cap

$\frac{1}{4}$ S33

 $\frac{1}{4}$ S 4
 1916

From which

A cedar, 9 ins. diam., brs. N.24°W., 158 lks. dist., marked $\frac{1}{4}$ S33 BT.
 A cedar, 12 ins. diam., brs. S.17 $\frac{1}{2}$ °W., 222 lks. dist., marked $\frac{1}{4}$ S4 BT.
 57.70 Wash, 7 lks. wide, 2 ft. deep, course N.65°W. Continue asc. 295 ft.
 72.80 Spur, slopes N.45°W. Continue ascent.
 80.00 Set an iron post, 3 ft. long, 3 ins. diam., 10 ins. in the ground, in a mound of stone, for cor. of secs. 3, 4, 33 and 34, marked on brass cap

T14N R6E
 S33 | S34

 S 4 | S 3
 T13N
 1916

From which

A cedar, 8 ins. diam., brs. N.33°E., 100 lks. dist., marked T14N R6E S34 BT.
 A cedar, 9 ins. diam., brs. S.76°E., 130 lks. dist., marked T13N R6E S3 BT.
 A cedar, 7 ins. diam., brs. N.38 $\frac{1}{2}$ °W., 173 lks. dist., marked T14N R6E S33 BT.
 No other trees within limits. Raise a mound of stone, 2 ft. base, 1 $\frac{1}{2}$ ft. high, W. of cor.

Survey of the North Boundary of T. 13 N., R. 6 E. 13.

Chains.

Land, mountainous.
Soil, rocky, 4th rate.
No timber.
Undergrowth, cedar, mesquite and cat claw.
Fair grass.

21.35
40.00

S.89°43'E., on a true line, bet. secs. 3 and 34.
Over mountainous land, through scattering undergrowth.
Desc. 65 ft.
Head of gulch, course N.20°W. Asc. 350 ft.
Set an iron post, 3 ft. long, 1 in. diam., 16 ins. in the ground, in a mound of stone, for $\frac{1}{4}$ sec. cor., marked on brass cap.

$\frac{1}{4}$ S34
S 3
1916

From which

- A cedar, 15 ins. diam., brs. N.49°W., 114 lks. dist., marked $\frac{1}{4}$ S34 BT.
- A cedar, 12 ins. diam., brs. S.51 $\frac{1}{4}$ °W., 144 lks. dist., marked $\frac{1}{4}$ S3 BT.

45.00
69.90
80.00

Ridge, brs. S.65°W. and NE. Desc. 65 ft.
Head of wash, course S.45°W. Asc. 60 ft.
Set an iron post, 3 ft. long, 3 ins. diam., 10 ins. in the ground, in a mound of stone, for cor; of secs. 2, 3, 34 and 35, marked on brass cap

T14N R6E
S34 | S35
S 3 | S 2
T13N
1916

From which

- A cedar, 8 ins. diam., brs. N.22°E., 85 lks. dist., marked T14N R6E S35 BT.
- A cedar, 7 ins. diam., brs. S.20°E., 164 lks. dist., marked T13N R6E S2 BT.
- A cedar, 9 ins. diam., brs. S.44 $\frac{1}{2}$ °W., 274 lks. dist., marked T13N R6E S3 BT.
- A cedar, 9 ins. diam., brs. N.89 $\frac{1}{2}$ °W., 179 lks. dist., marked T14N R6E S34 BT.

Land, mountainous.
Soil, stony, 4th rate.
No timber.
Undergrowth, cedar, scrub oak and pinion.
Fair grass.

7.65
21.00
40.00

S.89°43'E., on a true line, bet. secs. 2 and 35.
Over mountainous land, through scattering undergrowth.
Asc. 65 ft.
Short spur, slopes S.45°W. Desc. 195 ft.
Gulch, course S.50°W. Asc. 380 ft.
Set an iron post, 3 ft. long, 1 in. diam., 26 ins. in the ground, for $\frac{1}{4}$ sec. cor., marked on brass cap

$\frac{1}{4}$ S35
S 2
1916

From which

- A cedar, 9 ins. diam., brs. N.87 $\frac{1}{2}$ °W., 220 lks. dist., marked $\frac{1}{4}$ S35 BT.
- A cedar, 8 ins. diam., brs. S.72 $\frac{1}{4}$ °W., 280 lks. dist., marked $\frac{1}{4}$ S2 BT.

14. Survey of the North Boundary of T. 13 N., R. 6 E.

Chains.											
48.50	Top of mountain; spur, slopes SW. Desc. 110 ft.										
55.00	Trail, brs. N. and S.										
60.75	Top of cliff, 65 ft. high, brs. N. and S.										
64.00	Head of gulch, course S.										
67.70	Cliff, 25 ft. high, brs. N. and S.										
80.00	Set an iron post, 3 ft. long, 3 ins. diam., 24 ins. in the ground, for cor. of secs. 1, 2, 35 and 36, marked on brass cap										
	<table border="1"> <tr><td>T14N</td><td>R6E</td></tr> <tr><td>S35</td><td>S36</td></tr> <tr><td>S 2</td><td>S 1</td></tr> <tr><td colspan="2">T13N</td></tr> <tr><td colspan="2">1916</td></tr> </table>	T14N	R6E	S35	S36	S 2	S 1	T13N		1916	
T14N	R6E										
S35	S36										
S 2	S 1										
T13N											
1916											
	<p>From which</p> <p>A cedar, 8 ins. diam., brs. N.11$\frac{1}{2}$°E., 39 lks. dist., marked T14N R6E S36 BT.</p> <p>A cedar, 6 ins. diam., brs. S.18°E., 169 lks. dist., marked T13N R6E S1 BT.</p> <p>A cedar, 7 ins. diam., brs. S.80$\frac{1}{2}$°W., 131 lks. dist., marked T13N R6E S2 BT.</p> <p>A cedar, 9 ins. diam., brs. N.45°W., 95 lks. dist., marked T14N R6E S35 BT.</p> <p>Land, mountainous. Soil, rocky, 4th rate. No timber. Undergrowth, cedar, pinion and scrub oak. Some grass.</p>										
	<p>S.89°43'E., on a true line, bet. secs. 1 and 36. Over mountainous land, through scattering undergrowth. Desc.</p>										
5.40	Gulch, course S.40°W. Asc. 605 ft.										
21.10	Asc. over cliff, 80 ft. high.										
23.30	Spur, slopes N. Desc. 285 ft.										
27.75	Desc. over cliff, 40 ft. high.										
40.00	Set an iron post, 3 ft. long, 1 in. diam., 26 ins. in the ground, for $\frac{1}{4}$ sec. cor., marked on brass cap										
	<table border="1"> <tr><td>S36</td></tr> <tr><td>$\frac{1}{4}$ S 1</td></tr> <tr><td>1916</td></tr> </table>	S36	$\frac{1}{4}$ S 1	1916							
S36											
$\frac{1}{4}$ S 1											
1916											
	<p>From which</p> <p>A cedar, 19 ins. diam., brs. N.60°W., 149 lks. dist., marked $\frac{1}{4}$S36 BT.</p> <p>A cedar, 26 ins. diam., brs. S.60°E., 189 lks. dist., marked $\frac{1}{4}$S1 BT.</p>										
46.30	Gulch, course N.70°W. Asc.										
47.50	Rocky point, slopes S. Desc.										
49.00	Same gulch, course S.45°W. Asc. 345 ft.										
67.20	Rocky spur, slopes N. Desc. 155 ft.										
80.00	The reestablished cor. of Ts. 13 and 14 N., Rs. 6 and 7 E., hereinbefore described.										
	<p>Land, mountainous. Soil, rocky, 4th rate. No timber. Undergrowth, pinion and cedar. Some grass.</p>										

Survey of the Subdivision of Township 13 North, Range 6 East. 15

Chains.

The following notes describing the subdivision of T.13 N., R.6 E., have been altered as regards the south tier of secs. from those submitted by William H. Richards, Jr., U. S. Surveyor, such alteration being required to make the notes conform to the independent resurvey of the 3rd Standard Parallel north, thru. range 6 East, by Sidney E. Blout, U.S. Cadastral Engineer in March, 1919, as hereinbefore described.

William H. Richards, Jr., U.S. Surveyor, in 1910, surveyed the first latitudinal section line north of said parallel, west as a sectional correction line, and the meridional sec. lines of the south tier of sections were surveyed south (with proper corrections for convergency) to intersections with said parallel, where closing cors. were set, and the standard sec. and 1/4 sec. cors. changed to angle points.

The independent resurvey of the parallel, hereinbefore described results in said line being parallel to the first latitudinal sec. line, and at 80 chs. south therefrom entirely thru. Range 6 East, making secs. 32, 33, 34, 35 and 36 regular secs. of 640 acres each.

The designation "Sectional Correction Line" for the first latitudinal sec. line used by William H. Richards, Jr., U. S. Surveyor, is eliminated, and the meridional sec. lines of the south tier of secs. are described as being surveyed north (with proper correction for convergency) from the reestablished standard sec. cors., and corresponding changes made in the measurement, etc., of the items of topography.

As a matter of form, the 1st latitudinal sec. line thru. the east 5 tiers of secs. is described as being surveyed for each mile with a random line east 80 chs., and true line 80 chs., with proper changes made in the description of the items of topography.

The courses and distances from the standard sec. cors. on the 3rd Standard Parallel North to the 1/4 sec. cors. on the meridional sec. lines of the south tier of secs. are preceded in the following notes with the initials "S.E.B." indicating thereby that such courses and distances have been determined by Sidney E. Blout, U.S. Cadastral Engineer, at the time of his independent resurvey of said parallel to verify the positions of the reestablished standard corners thereon.

From the reestablished standard cor. of secs. 35 and 36, on the south bdy. of the township (3rd Standard Parallel North) hereinbefore described,

(S.E.B.) N. 0° 01' W., bet. secs. 35 and 36.
Over mountainous land, thru. scattering undergrowth.
10.30 Spur, slopes N. 55° W. Descend 60 ft.

(S.E.B.)
40.00 Set an iron post, 3 ft. long, 1 in. in diam., 26 ins. in the ground, in a mound of stone, for 1/4 sec. cor., marked with brass cap,



from which,
A cedar, 8 ins. in diam., brs. S. 67 1/4° E., 24 lks. dist., marked 1/4 S 36 B T.
A cedar, 26 ins. in diam., brs. S. 33 1/2° W., 43 lks. dist., marked 1/4 S 35 B T.

50.00 Cottonwood Creek, 20 lks. wide, 3 ft. deep, water in holes, course W. Ascend 520 ft.
62.80 Spur, slopes W. Descend 375 ft.
79.00 Set an iron post 3 ft. long, 2 ins. in diam., 24 ins. in the ground, for witness cor. to the cor. of secs. 25,

16. Survey of Subdivision of Township 13 North, Range 6 East.

Chains.

26, 35 and 36, marked on brass cap,

W	C
T13N	R6E
S26	S25
S35	S36
1916	

from which,

A cedar, 24 ins. dia., brs. N. 29° E., 57 lks. dist., marked W.C. T13N R6E S25 BT.

A pinon, 12 ins. dia., brs. S. 18 1/2° E., 50 lks. dist., marked WC T13N R6E S36 BT.

A pinon, 12 ins. diam., brs. S. 60 1/4° W., 21 lks. dist., marked WC T13N R6E S35 BT.

A pinon, 14 ins. diam., brs. N. 07° W., 57 lks. dist., marked WC T13N R6E S26 BT.

80.00 the true point for cor. of secs. 25, 26, 35 and 36 falls in a gulch, course NW.

Land, mountainous.

Soil, stony, 4th rate.

no timber.

Undergrowth, cedar, pinon, and scrub oak.

Some grass.

From the true point for cor. of secs. 25, 26, 35 and 36, East, on a random line, bet. secs. 25 and 36.

40.00 Set temp. 1/4 sec. cor.

80.00 Intersect E. bdy. of Tp., at the reestablished cor. of secs. 25, 30, 31 and 36, hereinbefore described.

Thence,

West, on a true line, bet. secs. 25 and 36.

Over mountainous land, thru. scattering undergrowth.

Ascend 55 ft.

0.00 Spur, slopes N. Descend 550 ft.

40.00 Set an iron post, 3 ft. long, 1 in. in diam., 26 ins. in the ground, in a mound of stone, for 1/4 sec. cor., marked on brass cap,

1/4 S 25
S 36
1916

from which,

A pinon, 16 ins. in diam., brs. N. 44 3/4° W., 93 lks. dist., marked 1/4 S 25 BT.

A pinon, 11 ins. dia., brs. S. 78° W., 75 lks. dist., marked 1/4 S 36 BT.

47.15 Gulch, course S. 70° W. Descend along bank of gulch.

80.00 the true point for the cor. of secs. 25, 26, 35 and 36 falls in same gulch. (witnessed 40 lks. S. 0° 1' E.)

Land, mountainous.

Soil, rocky, 4th rate.

Undergrowth, cedar, pinon, and scrub oak.

Some grass.

No timber;

From true point for cor. of secs. 25, 26, 35 and 36, N. 0° 01' W., bet. secs. 25 and 26.

Over mountainous land, thru. scattering undergrowth.

Ascend 495 ft.

16.75 Spur, slopes S. 70° W. Descend 635 ft.

40.00 Set an iron post, 3 ft. long, 1 in. in diam., 26 ins. in the ground, for 1/4 sec. cor., marked on brass cap,

S26	S25
1916	

from which,

Survey of Subdivision of Township 13 North, Range 6 East. 17.

Chains. A cedar, 26 ins. in diam., brs. S. $78\frac{1}{4}^{\circ}$ E., 170' lks. dist., marked $\frac{1}{4}$ S 25 BT.
 A pinon, 7 ins. in diam., brs. N. 50° W., 137 lks. dist., marked $\frac{1}{4}$ S 26 B T.

47.33 Boulder Creek, 30 lks. wide, 4 ft. deep, course S. 70° W. Asc. 360 ft.
 65.65 Spur, slopes S. 65° W. Descend.
 80.00 Set an iron post, 3 ft. long, 2 ins. in diam., 24 ins. in the ground, for cor. of secs. 23, 24, 25 & 26, marked on brass cap,

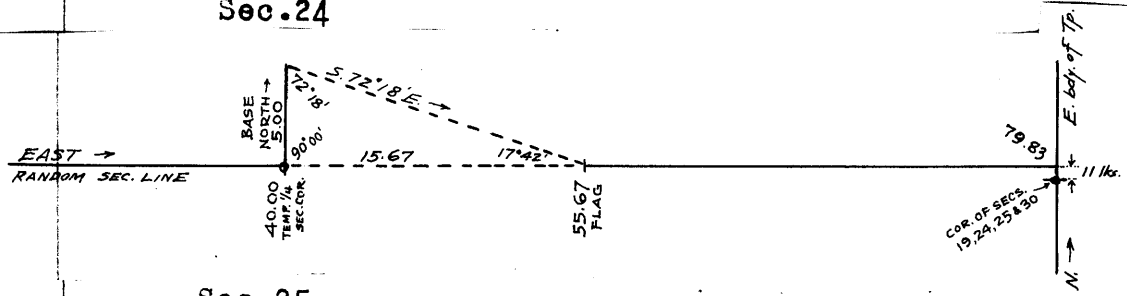
T13N	R 6E
S23	S24
S26	S25
1916	

from which,
 A cedar, 9 ins. in diam., brs. N. $22-3/4^{\circ}$ E., 134 lks. dist., marked T13N R6E S24 BT.
 A pinon, 10 ins. in diam., brs. S. $57-3/4^{\circ}$ E., 62 lks. dist., marked T13N R6E S25 BT.
 A pinon, 12 ins. in diam., brs. S. 20° W., 95 lks. dist., marked T13N R6E S26 BT.
 A cedar, 11 ins. in diam., brs. N. $28\frac{1}{4}^{\circ}$ W., 20 lks. dist., marked T13N R6E S23 BT.

Land, mountainous. Soil, 4th rate, rocky, No timber.
 Undergrowth, pinon, cedar and scrub oak. Some grass.

40.00 East, on a random line, bet. secs. 24 and 25.
 Set temp. $\frac{1}{4}$ sec. cor., high bluff E. of this point, over which it is impracticable to chain measurement; therefore, triangulate as follows:
 Set flag ahead on line, at top of bluff. From temp. $\frac{1}{4}$ sec. cor., measure a base N. 5.00 chs.
 From N. end of base, flag brs. S. $72^{\circ}18'$ E. Included angles are $72^{\circ}18'$, $17^{\circ}42'$ and $90^{\circ}00'$ the sum of which is $180^{\circ}00'$.
 Dist. on random line from temp. $\frac{1}{4}$ sec. cor. to flag is obtained by $\text{tang. } 72^{\circ}18' \times \text{base or } 3.13341 \times 5.00 = 15.67$ chs., which added to 40.00 chs., gives 55.67 chs. as the flag point on random line.

Sec. 24



Sec. 25

55.67 Flag point of triangulation above described. Continue line and measurement.
 79.83 Intersect E. bdy. of Tp., 11 lks. N. of reestablished cor. of secs. 19, 24, 25 and 30, which is an iron post, hereinbefore described. Thence, N. $89^{\circ}55'$ W., on true line, bet. secs. 24 and 25. Over mountainous land, thru. scattering undergrowth. Descend 155 ft.
 7.05 Wash, course N. Ascend 115 ft.
 24.16 A point 8 lks. S. of flag point of triangulation, hereinbefore described.
 24.38 Top of bluff, brs. N. 70° E. and S. 70° W., 70 ft. high; desc. 385 ft. to Boulder Creek. Discontinue chain measurement; thence by triangulated measurement to
 39.83 A point 6 lks. S. of temp. $\frac{1}{4}$ sec. cor., and triangulation point, hereinbefore described. Thence by chain measurement.
 39.91 $\frac{1}{2}$ Set an iron post, 3 ft. long, 1 in. in diam., 26 ins. in the ground, for $\frac{1}{4}$ sec. cor., marked on brass cap,

$\frac{1}{4}$ S 24
S 25
1916

from which,
 A cedar, 8 ins. in diam., brs. N. $61\frac{1}{4}^{\circ}$ E., 81 lks. dist., marked $\frac{1}{4}$ S 24 B T.

18 Subdivision of Township 13 North, Range 6 East.

- Chains.
- A pinon, 9 ins. in diam., brs. S. $17\frac{1}{2}^{\circ}$ E., 144 lks. dist., marked $\frac{1}{4}$ S 25 B T.
- 41.30 Boulder Creek, 15 lks. wide, 3 ft. deep, course S. 55° W. contains small stream of water. Ascend 310 ft.
- 65.95 Spur, slopes S. 70° W. Descend 400 ft.
- 66.15 Foot of cliff, 15 ft. high, brs. N. 70° E. and S. 70° W. Descend.
- 79.83 The cor. of secs. 23, 24, 25 and 26.
Land, mountainous. Soil, rocky, 4th rate.
No timber. Undergrowth, cedar, pinon, and scrub oak.
Some grass.
-
- N. $0^{\circ} 01'$ W., bet. secs. 23 and 24.
- 2.20 Over mountainous land, thru. scattering undergrowth. Descend.
Sycamore Creek, 20 lks. wide, 3 ft. deep, containing small stream of clear water, course S. 60° W. Asc. 980 ft.
- 23.65 Road brs. E. and W.
- 25.00 Telephone line, brs. N. 60° E. and S. 60° W.
- 37.35 Foot of cliff, 80 ft. high.
- 38.96 Top of cliff-ridge, brs. N. 70° E. and SW. Continue ascent.
- 40.00 Set an iron post, 3 ft. long, 1 in. in diam., 26 ins. in the ground, for $\frac{1}{4}$ sec. cor., marked on brass cap,
- S23 | S24
1916
- from which,
- A cedar, 8 ins. in diam., brs. S. 50° E., 90 lks. dist., marked $\frac{1}{4}$ S 24 B T.
- A pinon, 13 ins. in diam., brs. N. 68° W. 128 lks. dist., marked $\frac{1}{4}$ S 23 B T.
- 47.40 Top of 13-mile butte. Leave cedar, brs. E. & W. Descend 615 ft.
- 52.40 Cliff, 20 ft. high, brs. E. and W.
- 70.00 Enter cedar, brs. E. and W.
- 80.00 Set an iron post, 3 ft. long, 2 ins. in diam., 24 ins. in the ground, for cor. of secs. 13, 14, 23 and 24, marked on brass cap,
- T13N | R6 E
S14 | S13
S23 | S24
1916
- from which,
- A cedar, 10 ins. in diam., brs. N. 84° E., 158 lks. dist., marked T13N R6E S13 BT.
- A cedar, 6 ins. in diam., brs. S. $28\frac{1}{2}^{\circ}$ E., 165 lks. dist., marked T13N R6E S24 BT.
- No other trees within limits.
Raise a mound of stone, 2 ft. base, $1\frac{1}{2}$ ft. high, W. of cor.
Land, mountainous.
Soil, stony, 4th rate.
No timber.
Undergrowth, cedar, pinon, and scrub oak.
Some grass.
-
- S. $89^{\circ} 55'$ E., on a random line, bet. secs. 13 and 24.
- 40.00 Set temp. $\frac{1}{4}$ sec. cor.
- 79.82 Intersect the E. bdy. of the Tp., 9 lks. N. of the reestablished cor. of secs. 13, 18, 19 and 24, which is an iron post, hereinbefore described.
- Thence,
N. $89^{\circ} 51'$ W., on a true line, bet. secs. 13 and 24.
Over mountainous land, thru. dense undergrowth.
Ascend 100 ft.
- 4.70 Descend 240 ft.
- 13.60 Wash, course S. Ascend 205 ft.
- 26.20 Road brs. N. 45° E. and S. 45° W.
- 34.80 Leave dense undergrowth, brs. S. 70° E. and N. 70° W.
- 37.30 Spur, slopes N. 55° E. and S. 55° W. Descend 570 ft.
- 39.91 Set an iron post, 3 ft. long, 1 in. in diam., 26 ins. in the ground, for $\frac{1}{4}$ sec. cor., marked on brass cap,

Survey of the Subdivision of Township 13 north, Range 6 East, 19

Chains.

S 13

S 24

1910

from which,

A cedar, 12 ins. in diam., brs. N.40 1/2° E., 99 lks. dist., marked 1/4 S 13 & T.

A cedar, 16 ins. in diam., brs. S.89 1/2° E., 121 lks. dist., marked 1/4 S 24 & T.

54.80 head of gulch, course N.70°W. Continue descent.

79.82 The cor. of secs. 13, 14, 23 and 24.

Land, mountainous.

Soil, rocky, 4th rate.

No timber.

undergrowth, cedar, pinon, and scrub oak.

N.0°01'W., bet. secs. 13 and 14.

Over mountainous land, thru. scattering undergrowth.

Descend 195 ft.

11.22 Gulch, course W. Ascend 125 ft.

18.87 Spur, slopes W. 1 set flag on line at this point.

Descend 405 ft.

37.60 Windy hollow canyon, course S.70°W., containing water in holes. Ascend 810 ft.

40.00 Set an iron post, 3 ft. long, 1 in. in diam., 26 ins. in the ground, for 1/4 sec. cor., marked on brass cap,

S14 | S13

1916

from which,

A pinon, 9 ins. dia., brs. S.29 1/2° E., 114 lks. dist., marked 1/4 S 13 & T.

A cedar, 12 ins. dia., brs. N.50 1/2° W., 43 lks. dist., marked 1/4 S 14 & T.

60.00 Ascend over ledges of slate stone.

80.00 Set an iron post, 3 ft. long, 2 ins. in diam., 24 ins. in the ground, for the cor. of secs. 11, 12, 13 and 14, marked on brass cap,

T13N R 6 E

S11 | S12

S14 | S13

1916

from which,

A cedar, 10 ins. in diam., brs. N.19-3/4° E., 121 lks. dist., marked T13N R 6 E S12 & T.

No other trees within limits.

Raise a mound of stone, 2 ft. base, 1 1/2 ft. high, W. of cor.

Land, mountainous.

Soil, stony, 4th rate.

No timber.

Undergrowth, cedar, pinon, catclaw, scrub oak, mesquite, Spanish dagger and yucca.

30.40 S. 89°51'E., on random line, bet. secs. 12 and 13.

At this point, encounter immense cliffs, which make the entire line E. of this point impracticable to chain measurement over; therefore, set temp. witness cor. to 1/4 sec. cor., and offset into sec. 13, as follows:

South, 10.00 chs., thence

S.89° 51'E., 49.30 chs. to intersection with

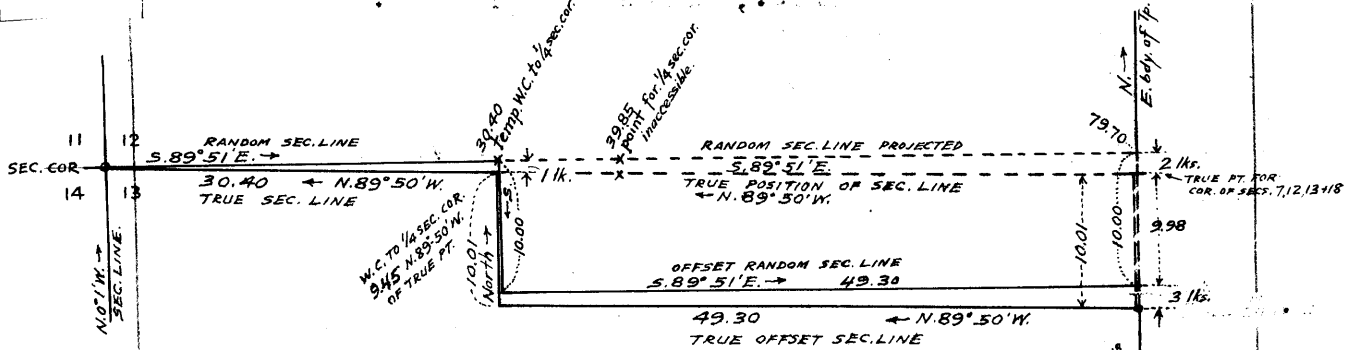
E. bdy. of Tp., at a point 3 lks. N. of reestablished witness cor. to cor. of secs. 7, 12, 13 and 18, hereinbefore described. As this witness cor. is 10.01 chs. S.

of true point for cor., the falling of the offset random line on the true cor. point is 10.01 chs. - .03 chs.

20. Survey of Subdivision of Township 13 N., R. 6 E.

Chains.

9.98 chs. S. As the offset random line is 10.00 chs. S. of said line projected, the falling of the projected random line is 10.00 chs. - 9.98 chs. = 2 lks. N. of true point for cor. of secs. 7, 12, 13 and 18, which is inaccessible. The true course of line bet. secs. 12 and 13 is therefore N. 89° 50' W., and the true length is 30.40 chs. + 49.30 chs. = 79.70 chs.



From witness cor. to cor. of secs. 7, 12, 13 and 18, hereinbefore described, N. 89° 50' W., on offset line in sec. 13, parallel to, and 10.01 chs. S. of true position of sec. line, bet. secs. 12 and 13, along S. rim of Clear Creek Canyon, over mountainous land, thru. scattering undergrowth.

- 49.30 Point on offset line at top of spur, sloping N. 55° W. Thence North, 10.01 chs. to point on true sec. line at
- 49.30 (1 lk. S. of temp. W.C. to 1/4 sec. cor. set on random line), set an iron post 3 ft. long, 1 in. in diam., 26 ins. in the ground for witness cor. to 1/4 sec. cor. of secs. 12 and 13, marked on brass cap,

1/4 S 12
S 13
1916

from which,

- A pinon, 7 ins. in diam., brs. N. 1 1/4° E., 54 lks. dist., mark "WC 1/4 S 12 B T."
- A pinon, 10 ins. in diam., brs. S. 18 1/2° E., 106 lks. dist., marked "WC 1/4 S 13 B T."

The true point for 1/4 sec. cor. is inaccessible. From W.C. N. 89° 50' W., on true line, bet. secs. 12 and 13, continuing measurement, over mountainous land, thru. scattering undergrowth. Descend 315 ft.

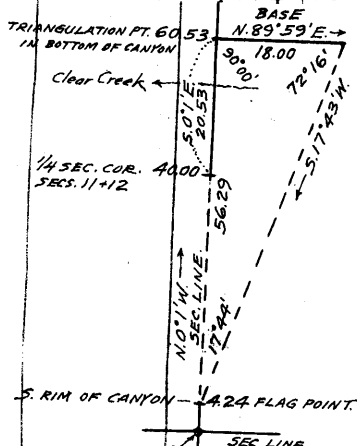
64.70 Head of gulch, course S. 15° W. Ascend 260 ft.

79.70 The cor. of secs. 11, 12, 13 and 14.

Land, mountainous.
Soil, rocky, 4th rate.
No timber.
Undergrowth, scattering cedar, pinon and scrub oak.

N. 0° 1' W., bet. secs. 11 and 12. Over mountainous land, thru. scattering undergrowth. Descend 95 ft. to

4.24 South rim of Clear Creek canyon, brs. E. and W. It is impracticable to continue chaining N. of this point; therefore, triangulate as follows:



- Leave flag at this point.
- At a point on line in bottom of canyon, measure a base N. 89° 59' E., 18.00 chs.
- From E. end of base, flag brs. S. 17° 43' W.
- Included angles are 72° 16', 17° 44' and 90° 00', the sum of which is 180° 00'.
- Distance from flag to point on line at W. end of base is obtained by
- Tang. 72° 16' x base or 3.12713 x 18.00 = 56.29 chs.

Book 102

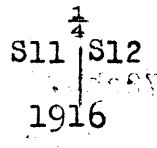
Survey of Subdivision of Township 13 North, Range 6 East. 21

Chains.

which added to 4.24 chs. locates triangulation point at 60.53 chs. N.0° 1'W. from sec.cor.

From 60.53 chs. sta. to flag the vertical angle is + 23°, which gives 1450 ft. as the difference in elevation.

40.00 From 60.53 chain sta., measure S.0° 1'E., 20.53-chs. to Set an iron post 3 ft.long, 1 in. in diam., 26 ins. in the ground, for 1/4 sec.cor., marked on brass cap,



from which,

- A cedar, 30 ins. in diam., brs. S.83 1/4° E., 201 lks dist., marked "1/4 S12 BT."
- A pinon, 14 ins. in diam., brs. N.87 1/2° W., 55 lks. dist., marked "1/4 S11 BT."

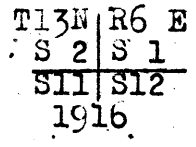
Thence, N.0° 1'W., bet. secs. 11 and 12, continuing measurement. Over mountainous land in Clear Creek Canyon. Descend 335 ft.

53.55 South edge of water in Clear Creek, brs. E. and W. Thence across stream of clear running water, 18 ins. deep, flowing W.

54.25 N. edge of water, brs. E. and W. Leave water. Ascend 235 ft. to sec.cor.

60.53 Triangulation point of previously described triangulation.

80.00 Set an iron post, 3 ft. long, 2 ins. in diam., 24 ins. in the ground, for cor. of secs. 1, 2, 11 and 12, marked on brass cap,



from which,

- A cedar, 9 ins. in diam., brs. N.28° E., 117 lks. dist., marked T 13 N R 6 E S 1 B T.
- A cedar, 6 ins. in diam., brs. S.19° E., 181 lks. dist., marked T 13 N R 6 E S 12 B T.
- A cedar, 10 ins. in diam., brs. S.18 1/4° E., 146 lks. dist., marked T 13 N R 6 E S 11 B T.
- A cedar, 7 ins. in diam., brs. N.57-3/4° W., 165 lks. dist., marked T 13 N R 6 E S 2 B T.

Land, mountainous.

Soil, rocky, 4th rate.

Timber, cottonwood, sycamore, ash, and hackberry in Creek bottom.

Undergrowth, cedar, pinon, scrub oak, mesquite and catclaw. Some grass.

S.89° 50' E. on random line, bet. secs. 1 and 12.

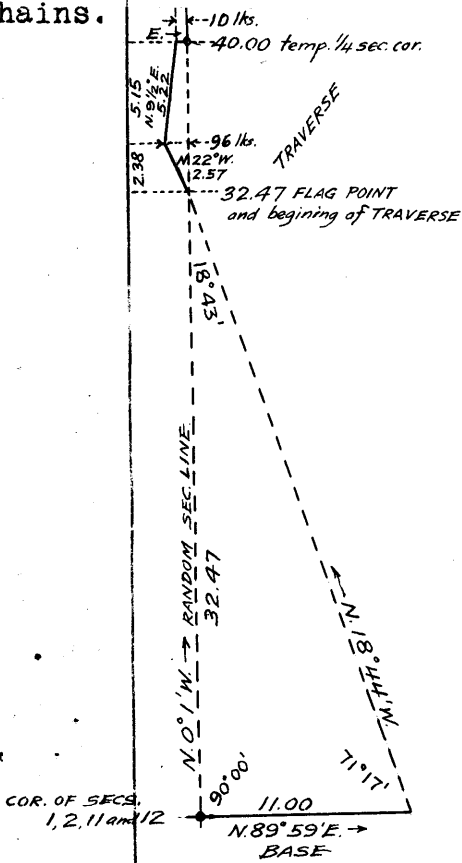
3.68 From this point, flag on W.C. to cor. of secs. 7, 12, 13 and 18 on E. bdy. of Tp., brs. S.40° 10' E,

40.00 Set temp. 1/4 sec. cor.

50.06 From this point, flag on W.C. to cor. of secs. 7, 12, 13 and 18, on E. bdy. of Tp., brs. S.18° 15' E. This point is at foot of cliff 80 ft. high, over which chaining is impracticable; therefore, triangulate the measurement of remainder of line, and compute the falling as shown on the accompanying diagram, and described as follows:

On the diagram the flag on W.C. to cor. of secs. 7, 12, 13 and 18 is indicated by "A", 3.68 chs. sta. on random is indicated by "B."

Chains.



Included angles are 71°17', 90°00' and 18°43', the sum of which is 180°00'

Dist. from sec.cor. to flag is obtained by tang. 71°17' x base or 2.95155 x 11.00 = 32.47 chs.

Vertical angle from sec.cor. to flag is - 24½; therefore, the flag is 889 ft. below sec.cor.

Chaining on random sec.line to temp. ¼ sec.cor. from flag point being impracticable, traverse the dist. as follows:

From flag point
N.22°00'W., 2.57 chs.; thence
N.9°30'E., 5.22 chs.; thence
East, 10 lks. to point on
random sec.line, at

- 40.00 Set temp. ¼ sec.cor.
Thence,
N.0°1'W., on random line, bet. secs.1 and 2, continuing measurement, by chaining.
- 80.01 Intersect the N. bdy.of the Tp., 34 lks.E.of the cor.of secs.1,2,35 and 36, hereinbefore described.
Thence,
S.0°16' E., on a true line,bet. secs.1 and 2.
Over mountainous land, thru. scattering undergrowth.
Descend 135 ft.
- 6.10 Gully, course S.40°W. Ascend 165 ft.
- 14.40 Spur, slopes W. Descend 75 ft.
- 18.45 Wash, 10 lks.wide, 5 ft. deep, course W. Ascend 390 ft.
- 40.01 Set an iron post, 3 ft. long, 1 in.in.diam., 26 ins. in the ground, for ¼ sec.cor., marked on brass cap,

S 2 | S 1

1916

from which,

A cedar, 9 ins. in diam., brs.N.26¼°W., 144. lks. dist., marked ¼ S 2 B T.

No other trees within limits. Raise a mound of stone, 2 ft. base, 1½ ft. high, W.of cor.

Thence by traverse and triangulated distance, as hereinbefore described, descending 870 ft.

- 80.01 The cor.of secs. 1,2,11 and 12.
Land,mountainous.
Soil, rocky, 4th rate.
No timber.
Undergrowth, catclaw, cedar, pinon, and scrub oak.

From the reestablished standard cor. of secs. 34 and 35, on the S. bdy.of the Tp. (3rd.Standard Parallel N.) hereinbefore described,

(S.E.B.N.0°01'W.,bet. secs.34 and 35.

Over mountainous land, thru.scattering undergrowth.
Ascend 45 ft.

- 5.00 Descend 135 ft.
- 15.70 Cottonwood Creek,course W. Ascend 590 ft.

24. Survey of Subdivision of Township 13 North Range 6 East.

Chains.
(S.E.B.)40.00 Set an iron post, 3 ft. long, 1 in. diam., 26 ins. in the ground, for $\frac{1}{4}$ sec. cor., marked on brass cap,
$$\begin{array}{c} \frac{1}{4} \\ \hline \text{S34} \mid \text{S35} \\ \hline 1916 \end{array}$$

from which

A cedar, 10 ins. in diam., brs. N. $85\frac{1}{2}^{\circ}$ E., 51 lks. dist., marked $\frac{1}{4}$ S 35 B T.A cedar, 8 ins. in diam., brs. N. $24\frac{1}{2}^{\circ}$ W., 81 lks. dist., marked $\frac{1}{4}$ S 34 B T.47.00 Spur, slopes N. 75° W. Descend gradually.

53.00 Begin steep descent.

78.10 Gulch, course N. 85° W., 625 ft. below spur. Ascend 80 ft.

80.00 The true point for cor. of secs. 26, 27, 34 and 35, falls on a bluff, where it cannot be properly established. Thence east, 76 lks.

Set an iron post, 3 ft. long, 2 ins. in diam., 24 ins. in the ground, for witness cor. to the cor. of secs. 26, 27, 34 and 35, marked on brass cap,

$$\begin{array}{c} \text{T13N R6E} \\ \hline \text{WC} \mid \frac{\text{S27} \mid \text{S26}}{\text{S34} \mid \text{S35}} \\ \hline 1916 \end{array}$$

from which,

A pinon, 13 ins. in diam., brs. N. $25\frac{1}{2}^{\circ}$ E., 108 lks. dist., marked W C T 13 N R 6 E S 26 B T.A cedar, 8 ins. in diam., brs. S. $85\frac{1}{2}^{\circ}$ E., 75 lks. dist., marked W C T 13 N R 6 E S 35 B T.A cedar, 15 ins. in diam., brs. S. $80\frac{1}{2}^{\circ}$ W., 40 lks. dist., marked W C T 13 N R 6 E S 34 B T.A pinon, 10 ins. in diam., brs. N. 69° W., 51 lks. dist., marked W C T 13 N R 6 E S 27 B T.

Land, mountainous.

Soil, rocky, 4th rate.

No timber.

Undergrowth, pinon, cedar, scrub oak, Spanish dagger and gucca.

From the true point for the cor. of secs. 26, 27, 34 and 35, East, on a random line, bet. secs. 26 and 35.

40.00 Set temp. $\frac{1}{4}$ sec. cor.

80.00 Intersect the cor. of secs. 25, 26, 35 and 36. Thence,

West, on a true line, bet. secs. 26 and 35.

Over mountainous land, thru. scattering undergrowth. Descend 120 ft.

35.00 Same gulch, course S. 85° W. Ascend 85 ft.40.00 Set an iron post 3 ft. long, 1 in. in diam., 26 ins. in the ground for $\frac{1}{4}$ sec. cor., marked on brass cap,
$$\begin{array}{c} \frac{1}{4} \text{ S 26} \\ \hline \text{S 35} \\ \hline 1916 \end{array}$$

from which,

A pinon, 13 ins. in diam., brs. N. $38\frac{1}{2}^{\circ}$ E., 72 lks. dist., marked $\frac{1}{4}$ S 26 B T.A pinon, 15 ins. in diam., brs. S. 7° E., 75 lks. dist., marked $\frac{1}{4}$ S 35 B T.

49.50 Spur, slopes S. Descend 245 ft.

79.24 The witness cor. to the cor. of secs. 26, 27, 34 and 35.

80.00 The true point for the cor. of secs. 26, 27, 34 and 35.

Land, mountainous.

Survey of Subdivision of Township 13 North, Range 6 East. 25

Chains.

Soil, rocky, 4th rate.
No timber.
Undergrowth, pinon, cedar, scrub oak, Spanish dagger, and yucca.
No grass.

From the true point for cor. of secs. 26, 27, 34 and 35, N.0°01'W., bet. secs. 26 and 27.
Over mountainous land, thru scattering undergrowth.
Descend 115 ft.

8.10 Boulder Creek, 30 lks. wide, 3 ft. deep, clear water in holes, course S.80°W. Ascend 700 ft.

40.00 Ridge, brs. N.65°E. and SW.
Set an iron post, 3 ft. long, 1 in. in diam., 26 ins. in the ground, for $\frac{1}{4}$ sec. cor., marked on brass cap,



from which,

A cedar, 10 ins. in diam., brs. S.39 $\frac{1}{2}$ °W., 114 lks. dist., marked $\frac{1}{4}$ S 27 B T.

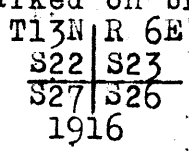
No other trees within limits. Raise a mound of stone, 2 ft. base, 1 $\frac{1}{2}$ ft. high, W. of cor.

49.30 Road brs. S.65°E. and N.65°W.

57.50 Spur, slopes N.45°W. Descend 170 ft.

72.65 Gulch, course N.45°W. Ascend 65 ft.

80.00 Set an iron post, 3 ft. long, 2 ins. in diam., 14 ins. in the ground, in a mound of stone, for the cor. of secs. 22, 23, 26 and 27, marked on brass cap,



from which,

A cedar, 22 ins. in diam., brs. N.65 $\frac{1}{2}$ °E., 217 lks. dist., marked T13N R6E S23 BT.

A cedar, 24 ins. in diam., brs. S.69°W., 173 lks. dist., marked T13N R6E S27 BT.

No other trees within limits. Raise a mound of stone, 2 ft. base, 1 $\frac{1}{2}$ ft. high, W. of cor.

Land, mountainous.

Soil, rocky, 4th rate.

No timber.

Undergrowth, cedar, pinon, mesquite, scrub oak, catclaw, Spanish dagger and yucca.

East, on a random line, bet. secs. 23 and 26.

40.00 Set temp. $\frac{1}{4}$ sec. cor.

80.18 Intersect N. and S. line, 4 lks. N. of the cor. of secs. 23, 24, 25 and 26. Thence,

N.89°58'W. on a true line, bet. secs. 23 and 26.

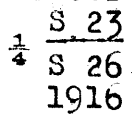
Over mountainous land, thru scattering undergrowth. Descend.

10.00 Dry bed of Sycamore Creek, course S.65°W. Ascend 390 ft.

22.85 Road brs. N.55°E. and S.55°W.

32.20 Ridge, brs. N.70°E. and NW. Descend 405 ft.

40.09 Set an iron post, 3 ft. long, 1 in. in diam., 26 ins. in the ground, for $\frac{1}{4}$ sec. cor., marked on brass cap,



from which,

A cedar, 9 ins. in diam., brs. N.59 $\frac{1}{2}$ °W., 145 lks. dist., marked $\frac{1}{4}$ S 23 B T.

A cedar, 10 ins. in diam., brs. S.52°W., 98 lks. dist., marked $\frac{1}{4}$ S 26 B T.

80.18 The cor. of secs. 22, 23, 26 and 27.

26. Survey of Subdivision of Township 13 North, Range 6 East.

Chains.

Land, mountainous. Soil, rocky, 4th rate.
No timber. Undergrowth, cedar, pinon, scrub oak, catclaw, yucca
and Spanish dagger.

N.0°1' W., bet. secs. 22 and 23.
Over mountainous land, thru scattering undergrowth.
Ascend 35 ft.

- 3.00 Low spur, slopes N.40°W. Descend 255 ft.
- 8.55 Telephone line, brs. N.60°W. and S.60°E.
- 18.00 Gulch, course N.70°W. Ascend 100 ft.
- 27.90 Low spur, slopes N.70°W. Descend 75 ft.
- 37.00 Wash, 5 lks. wide, 1½ ft. deep, course W. Ascend 30 ft.
- 40.00 Set an iron post, 3 ft. long, 1 in. in diam., 26 ins. in the
ground, for ¼ sec. cor., marked on brass cap,

S22 | S23
1916

from which,

- A cedar, 7 ins. in diam., brs. N.25°E., 177 lks.
dist., marked ¼ S 23 B T.
- A cedar, 6 ins. in diam., brs. N.86½°W., 49 lks.
dist., marked ¼ S 22 B T.
- 50.50 Spur, slopes W. Descend 140 ft.
- 63.10 Wash, 5 lks. wide, 2 ft. deep, course W. Ascend 235 ft.
- 80.00 Set an iron post 3 ft. long, 2 ins. in diam., 24 ins. in the
ground, for cor. of secs. 14, 15, 22 and 23, marked on brass
cap,

T13N R 6E
S15 | S14
S22 | S23
1916

from which,

- A cedar, 13 ins. in diam., brs. N.17-¾°E., 24 lks.
dist., marked T13N R6E S14 BT.
- A cedar, 11 ins. in diam., brs. S.62½°E., 63 lks.
dist., marked T13N R6E S23 BT.
- A cedar, 9 ins. in diam., brs. S.18½°W., 79 lks.
dist., marked T13N R6E S22 BT.
- A cedar 12 ins. diam., brs. N.74½°W., 70 lks. dist.
marked T13N R6E S15 BT.

Land, mountainous.
Soil, rocky, 4th rate.
No timber.
Undergrowth, pinon, cedar, catclaw, mesquite. Some grass.

S.89°58'E., on a random line, bet. secs. 14 and 23.

- 40.00 Set temp. ¼ sec. cor.
- 80.08 Intersect N. and S. line, 10 lks. N. of the cor. of secs. 13, 14,
23 and 24. Thence,
N.89°54'W., on true line, bet. secs. 14 and 23.
Over mountainous land, thru scattering undergrowth. Desc. 495 ft.
- 13.10 Spur, slopes N.60°W. Continue descent.
- 39.69 Set an iron post 3 ft. long, 1 in. in diam., 26 ins. in the
ground, for witness cor. to ¼ sec. cor., marked on brass cap,

WC ¼ | S 14
S 23
1916

from which,

- A pinon, 21 ins. in diam., brs. N.54°W., 59 lks.
dist., marked WC ¼ S 14 B T.
- A cedar, 8 ins. in diam., brs. S.38½°W., 49 lks.
dist., marked WC ¼ S 23 B T.
- 40.04 The true point for ¼ sec. cor. falls on rock ledge, where
it cannot be permanently established.
- 40.35 Gulch, course N.55°W. Ascend 320 ft.
- 51.80 Rocky spur, slopes N.40°W. Descend.
- 57.85 Head of wash, course N.50°W. Ascend 35 ft.
- 63.10 Spur, slopes N.70°W. Descend 25 ft.
- 70.30 Ascend 60 ft.

Survey of Subdivision of Township 13 North, Range 6 East. 27

Chains.

74.50 Spur, slopes N.60°W. Descend 65 ft.
 80.08 The cor. of secs. 14, 15, 22 and 23.
 Land, mountainous.
 Soil, rocky, 4th rate.
 No timber.
 Undergrowth, pinon, cedar, catclaw, mesquite, mountain cranberry and Spanish dagger.
 Some grass.

N.0° 1'W., bet. secs. 14 and 15.
 Over mountainous land, thru. scattering undergrowth.
 3.00 Spur, slopes N.70°W. Descend 480 ft.
 18.50 Windy Hollow Canyon, no water, course W. Ascend 805 ft.
 40.00 Set an iron post, 3 ft. long, 1 in. in diam., 26 ins. in the ground, for 1/4 sec. cor., marked on brass cap,

1/4
 S15 | S14
 1916

from which,
 A cedar, 14 ins. in diam., brs. S. 39 1/2° E., 85 lks. dist., marked 1/4 S 14 B T.
 A cedar, 6 ins. in diam., brs. S. 59-3/4° W., 33 lks. dist., marked 1/4 S 15 B T.

60.00 Spur, slopes S.70°W. Descend 240 ft.
 72.35 Head of gulch, course S. 60°W. Ascend 245 ft.
 79.50 Spur, slopes W. Descend.
 80.00 Set an iron post, 3 ft. long, 2 ins. in diam., 24 ins. in the ground, for cor. of secs. 10, 11, 14 and 15, marked on brass cap,

T13N R6 E
 S10 | S11
 S15 | S14
 1916

from which,
 A cedar, 8 ins. in diam., brs. N.70 1/2° E., 113 lks. dist., marked T13N R6E S11 B T.
 A cedar, 8 ins. in diam., brs. S. 8 1/2° W., 39 lks. dist., marked T13N R6E S15 B T.

No other trees within limits. Raise a mound of stone, 2 ft. base, 1 1/2 ft. high, W. of cor.
 Land, mountainous.
 Soil, stony, 4th rate.
 No timber.
 Undergrowth, pinon, cedar, scrub oak, catclaw, mesquite and Spanish dagger.

S. 89° 54' E., on a random line, bet. secs. 11 and 14.
 40.00 Set temp. 1/4 sec. cor.
 80.19 Intersect cor. of secs. 11, 12, 13 and 14.
 Thence,
 N. 89° 54' W., on a true line, bet. secs. 11 and 14.
 Over mountainous land, thru. scattering undergrowth.
 Descend 160 ft.

15.84 Head of gulch, course S. 50°W. Ascend 210 ft.
 28.70 Spur, slopes S. Descend.
 40.09 Set an iron post, 3 ft. long, 1 in. in diam., 26 ins. in the ground, for 1/4 sec. cor., marked on brass cap,

1/4 S 11
 S 14
 1916

from which,
 A cedar, 10 ins. in diam., brs. N. 62-3/4° W., 148 lks. dist., marked 1/4 S11 B T.
 A cedar, 8 ins. in diam., brs. S. 43 1/4° W., 172 lks. dist., marked 1/4 S 14 B T.

40.94 Spur, slopes S. Descend 270 ft.

28. Survey of Subdivision of Township 13 North, Range 6 East.

Chains.

80.19 The cor. of secs. 10, 11, 14 and 15.
Land, mountainous.
Soil, rocky, 4th rate.
No timber.
Undergrowth, cedar, pinon, catclaw, scrub oak, Spanish dagger, mountain cranberry and yucca.

N. 0° 1' W., bet. secs. 10 and 11.
Over mountainous land, thru scattering undergrowth, Ascend.
1.80 Descend 115 ft.
8.90 Gulch, course S. 30° W. Ascend 350 ft.
29.05 Ridge, south side of Clear Creek Canon, brs. E. and W. Descend 230 ft.
40.00 Set an iron post, 3 ft. long, 1 in. in diam., 26 ins. in the ground, for 1/4 sec. cor., marked on brass cap,

1/4
S10 | S11
1916

from which,

A cedar, 10 ins. dia., brs. N. 60° E., 55 lks. dist. mkd. T. 13 N 6 E S 2 BT.

A cedar, 8 ins. dia., brs. S. 58 3/4° W., 118 lks. dist., mks. T. 13 N 10 B T, 10 ft. Descend 100 ft.

46.91 From this point, traverse to avoid impassible cliffs, as follows:
N. 58 3/4° W. 15.84 chs. Desc. 405 ft.
N. 74 1/2° W., 5.00 " Desc. 170 ft.
North, 10.10 " Desc. 135 ft.
N. 43 3/4° E. 4.41 " Desc. 50 ft.
N. 76 3/4° E. 1.71 " Desc. 10 ft.
N. 44 1/2° E. 13.70 " Desc. 395 ft.

Thence, north 2 lks. and E. 4.11 chs.
80.00 Set an iron post, 3 ft. long, 2 ins. diam., 24 ins. in the ground, for cor. of secs. 2, 3, 10 and 11, marked on brass cap,

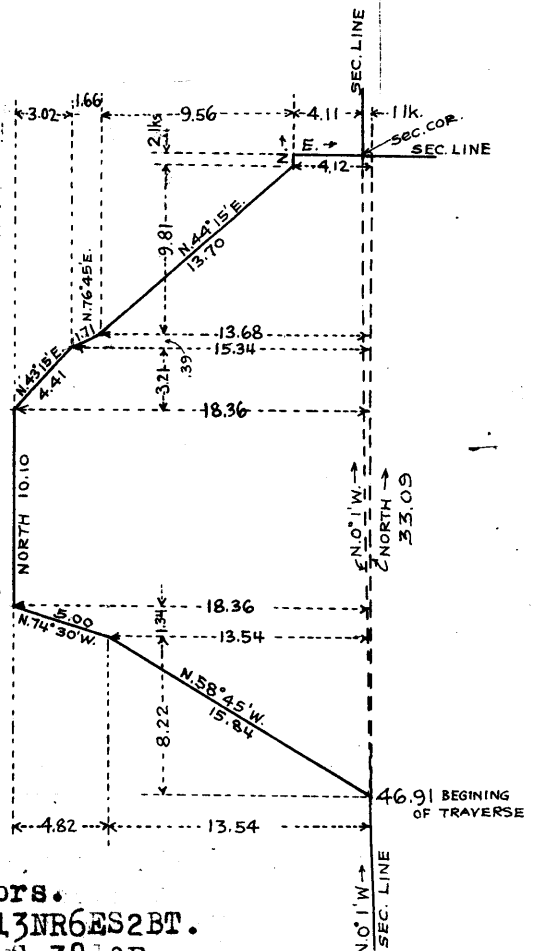
T13N R6E
S 3 S 2
S10 S11
1916

from which,

A sycamore, 12 ins. in diam., brs. N. 9 1/2° E. 88 lks. dist. mkd. T. 13 N R 6 E S 2 BT.
A sycamore, 10 ins. diam., brs. S. 38 1/2° E. 147 lks. dist. mkd. T. 13 N R 6 E S 11 BT.
A sycamore, 12 ins. diam., brs. S. 43 3/4° W., 72 lks. dist., mkd. T. 13 N R 6 E S 10 BT.
A sycamore, 13 ins. diam., brs. N. 11° W., 119 lks. dist., mkd. T. 13 N R 6 E S 3 BT.

Land, mountainous.
Soil, rocky, 4th rate.
Timber, sycamore and ash.
Undergrowth, cedar, pinon, hackberry and scrub oak.

S. 89° 54' E., on a random line, bet. secs. 2 and 11.
40.00 Set temp. 1/4 sec. cor.
80.20 Intersect N. and S. line, 5 lks. S. of the cor. of secs. 1, 2, 11 and 12.
Thence,
N. 89° 56' W., on a true line, bet. secs. 2 and 11.
Over mountainous land, thru scattering undergrowth.
Descend 15 ft.
1.60 Gulch, course S. Ascend 95 ft.



Survey of Subdivision of T. 13 N., R. 6 E.

Chains	
6.60	Trail, bears N. and S. Desc.
13.20	Gulch, course S. Asc. 145 ft.
21.20	Rocky point, slopes S. Desc. 45 ft.
29.40	Sandstone chasm, 60 ft. deep; 130 lks. wide, course S.
31.00	W. bank of chasm, bears N. and S. Asc.
31.20	Rocky point, slopes S. desc. 145 ft.
40.10	Set an iron post, 3 ft. long, 1 in. dia., 26 ins. in the ground, for $\frac{1}{4}$ sec. cor., marked on brass cap
	S 2 $\frac{1}{4}$ --- S 11 1916
	; from which
	A cedar, 9 ins. dia., bears N. $78\frac{1}{4}^{\circ}$ W., 19 lks. dist. marked $\frac{1}{4}$ S 2 B T
	A cedar, 8 ins. dia., bears S. 45° W., 30 lks. dist. marked $\frac{1}{4}$ S 11 B T
44.29	Gulch, course S. 10° E. Asc. 135 ft.
45.20	Red sandstone cliff, 30 ft. high bears N. and S.
47.50	Spur, slopes S. 30° W. Old ruins of red sandstone on line. Desc. 155 ft.
60.75	Fence, bears N. 60° E. and S. 60° W.
62.90	Road, bears N. 60° W. and S. 60° E.
63.80	Enter orchard, bears N. and S. Ditch, course N. 60° W.
68.40	Fence, bears N. and S. Leave orchard, enter cultivated field.
72.10	Leave cultivated field, bears S. 70° E. and N. 70° W.
74.90	Fence, bears S. 50° E. and N. 50° W.
75.00	North bank of Clear Creek, bears N. 70° W. and SE. Thence across Clear Creek, containing clear water, 80 lks. wide, 18 ins. deep, course N. 70° W.
77.50	S. bank of Clear Creek, bears N. 70° W. and SE. Asc.
80.20	The cor. of secs. 2, 3, 10, and 11. Land; mountainous. Soil; rocky, 4th rate. Timber; sycamore along creek. Undergrowth; pinion and cedar. Some grass.
	N. $0^{\circ}01'$ W. on a random line bet. secs. 2 and 3.
40.00	Set temp. $\frac{1}{4}$ sec. cor.
80.46	Intersect N. bdy. of Tp., 19 lks. E. of the cor. of secs. 2, 3, 34, and 35, which is an iron post, hereinbefore described.
	Thence S. $0^{\circ}09'$ E. on a true line bet. secs. 2 and 3. Over mountainous land, thru scattering undergrowth. Desc. 715 ft.
15.25	Spur, slopes S. 45° W. Continue descent.
18.75	Rocky point. Desc over rock ledges.
26.90	Gulch, course S. 40° W. Asc. 140 ft.
35.45	Rocky point, slopes S. 45° W. Desc. 180 ft.
40.46	Set an iron post, 3 ft. long, 1 in. dia., 26 ins. in the ground, for $\frac{1}{4}$ sec. cor., marked on brass cap
	S 3 S 2 1916
	; from which
	A cedar, 9 ins. dia., bears N. 58° T., 89 lks. dist. marked $\frac{1}{4}$ S 2 B T
	A cedar, 11 ins. dia., bears N. 41° W., 92 lks. dist. marked $\frac{1}{4}$ S 3 B T
45.10	Wash, 30 lks. wide, 3 ft. deep, course S. 30° W. Continue descent, 310 ft.

Survey of Subdivision of T. 13 N., R. 6 E.

Chains

- 63.80 Trail, bears S.45°E. and N.45°W.
- 70.60 Road, bears S.70°E. and N.70°W.
- 71.20 Ditch, course S.70°W.
- 71.25 Fence, bears S.70°E. and N.70°W. Enter orchard.
- 72.35 Fence, bears E. and W. E. Jones' house, bears E. 3 chs. dist.
- 72.95 Leave orchard and cultivated field, bears E. and W.
- 73.00 North bank of Clear Creek, bears E. and W. Thence across Clear Creek, 70 lks. wide, 18 ins. deep, course W.
- 77.15 South bank of Clear Creek, bears E. and W. Asc.
- 80.46 The cor. of secs. 2, 3, 10, and 11.
Land; mountainous.
Soil; rocky. 4th rate, and sandy loam 1st. rate.
No timber.
Undergrowth; cedar and pinion.
Some grass.

(S.E.B.) From the reestablished standard cor. of secs. 33 and 34, on S. bdy. of Tp. (3rd. Std. Par. N.) hereinbefore described, N.0°02'W. bet. secs. 33 and 34.

12.35 Over mountainous land, thru scattering undergrowth. Boulder Creek, course S.10°W. Contains water in holes Asc,

(S.E.B.)

40.00 Set an iron post, 3 ft. long, 1 in. dia., 12 ins. in the ground, in a mound of stone, for $\frac{1}{4}$ sec. cor., marked on brass cap

$\frac{1}{4}$
 S 33 | S 34

1916

; from which
A cedar, 6 ins. dia., bears N.53 $\frac{1}{4}$ °E., 59 lks. dist.
marked $\frac{1}{4}$ S 34 B T

A cedar, 30 ins. dia., bears N.36 $\frac{3}{4}$ °W., 52 lks. dist.
marked $\frac{1}{4}$ S 33 B T

55.00 Ridge, bears N.40°E. and S.40°W. Desc.

70.00 Head of wash, course N.55°W. Asc.

72.50 Rocky spur, slopes W. Desc. 110 ft.

80.00 Set an iron post, 3 ft. long, 2 ins. dia., 14 ins. in the ground, on a mound of stone, for the cor. of secs. 27, 28, 33, and 34, marked on brass cap.

T13N R6E
 S 28 | S 27

 S 33 S 34

1916

; from which
A cedar, 11 ins. dia., bears N.19 $\frac{1}{2}$ °E., 238 lks. dist.
marked T 13 N R 6 E S 27 B T

A cedar, 16 ins. dia., bears S.78 $\frac{3}{4}$ °E., 172 lks. dist.
marked T 13 N R 6 E S 34 B T

A cedar, 6 ins. dia., bears S.52 $\frac{1}{2}$ °W., 87 lks. dist.
marked T 13 N R 6 E S 33 B T

A cedar, 7 ins. dia., bears N.28 $\frac{3}{4}$ °W., 172 lks. dist.
marked T 13 N R 6 E S 28 B T

Land; mountainous.
Soil; rocky, 4th rate.
No timber.
Undergrowth; cat claw, scrub oak, cedar, and pinion.
Some grass.

Survey of the Subdivision of T. 13 N., R. 6 E.

Chains East on a random line bet. secs. 27 and 34.
 40.00 Set temp. $\frac{1}{4}$ sec. cor.
 80.00 Intersect the true point for corner of secs. 26, 27, 34, and 35, witnessed 76 lks. E.

Thence West on a true line bet. secs. 27 and 34.
 Over mountainous land, thru scattering undergrowth.
 Desc. 90 ft.
 5.90 Gulch, course NW. Asc.
 8.00 Low spur, slopes N. Desc. 55 ft.
 14.85 Boulder Creek (dry), 30 lks. wide, 3 ft. deep, course SW.
 Asc. 505 ft.
 40.00 Set an iron post, 3 ft. long, 1 in. dia., 26 ins. in the ground, for $\frac{1}{4}$ sec. cor., marked on brass cap

S 27
 $\frac{1}{4}$ ----
 S 34
 1916

; from which

A cedar, 9 ins. dia., bears N. $8\frac{1}{2}^{\circ}$ E., 94 lks. dist.
 marked $\frac{1}{4}$ S 27 B T
 A cedar, 8 ins. dia., bears S. $31\frac{1}{4}^{\circ}$ W., 2 lks. dist.
 marked $\frac{1}{4}$ S 34 B T

52.50 Ridge, bears N. 70° E. and S. 30° W. Desc. 174 ft.
 80.00 The cor. of secs. 27, 28, 33, and 34.
 Land; mountainous.
 Soil; rocky, 4th rate.
 No timber.
 Undergrowth; cedar, pinion, scrub oak, mesquite, cat claw, spanish dagger and yucca.

N. $0^{\circ}02'$ W. bet. secs. 27 and 28 .
 Over mountainous land, thru scattering undergrowth.
 Desc. 245 ft.
 12.70 Gulch, course W. Asc. 285 ft.
 21.40 Spur, slopes N. 70° W. Desc. 195 ft.
 31.00 Gulch, course S. 75° W. Asc. 220 ft.
 40.00 Set an iron post, 3 ft. long, 1 in. dia., 26 ins. in the ground, for $\frac{1}{4}$ sec. cor., marked on brass cap

$\frac{1}{4}$
 S 28 | S 27
 1916

; from which

A cedar, 7 ins. dia., bears S. $35\frac{1}{2}^{\circ}$ E., 80 lks. dist.
 marked $\frac{1}{4}$ S 27 B T
 A cedar, 6 ins. dia., bears N. $62\frac{1}{4}^{\circ}$ W., 51 lks. dist.
 marked $\frac{1}{4}$ S 28 B T

45.70 Spur, slopes N. 60° W. Desc. 250 ft.
 58.10 Gulch, course N. 75° W. Asc. 130 ft.
 65.60 Rocky spur. slopes W. Desc. 20 ft.
 68.00 Wash, 60 lks. wide, course N. 60° W. Asc. 70 ft.
 77.70 Low spur, slopes N. 70° W. Desc.
 80.00 Set an iron post, 3 ft. long, 2 ins. dia., 24 ins. in the ground, for the cor. of secs. 21, 22, 27, and 28, marked on brass cap

T13N R6E
 S 21 | S 22

 S 28 | S 27
 1916

; from which

A cedar, 11 ins. dia., bears N. $25\frac{3}{4}^{\circ}$ E., 25 lks. dist.

Survey of the Subdivision of T. 13 N., R. 6 E.

Chains

marked T 13 N R 6 E S 22 B T
 A cedar, 13 ins. dia., bears S. 23° E., 298 lks. dist.
 marked T 13 N R 6 E S 27 B T
 A cedar, 6 ins. dia., bears S. 59½° W., 253 lks. dist.
 marked T 13 N R 6 E S 28 B T
 A cedar, 10 ins. dia., bears N. 81½° W., 119 lks. dist.
 marked T 13 N R 6 E S 21 B T

Land, mountainous.
 Soil; rocky, 4th rate.
 No timber.
 Undergrowth; cedar, pinion, and scrub oak.
 Some grass.

40.00 East on a random line bet. secs. 22 and 27.
 79.92 Set temp. ¼ sec. cor.
 Intersect N. and S. line, 9 lks. N. of the cor. of secs.
 22, 23, 26, and 27.

Thence
 N. 89° 56' W. on a true line bet. secs. 22 and 27.
 Over mountainous land, thru scattering undergrowth.
 Desc. 80 ft.
 5.15 Gulch, course NW. Asc. 45 ft.
 14.25 Top of ascent. Desc. 320 ft.
 33.55 Desc. over rock ledges.
 37.70 Gulch, course N. 60° W. Asc. 130 ft.
 39.96 Set an iron post, 3 ft. long, 1 in. dia., 26 ins. in the
 ground, for ¼ sec. cor., marked on brass cap

S 22
 ¼ ----
 S 27

1916

; from which
 A cedar, 8 ins. dia., bears N. 66° W., 251 lks. dist.
 marked ¼ S 22 B T
 A cedar, 22 ins. dia., bears S. 31° E. 337 lks. dist.
 marked ¼ S 27 B T

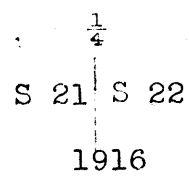
40.93 Desc.
 78.70 Road, bears S. 55° E. and N. 55° W.
 79.92 The cor. of secs. 21, 22, 27, and 28.

Land; mountainous.
 Soil; rocky, 4th rate.
 No timber.
 Undergrowth; cedar, scrub oak, cat claw, mesquite, and
 spanish dagger.

N. 0° 02' W. bet. secs. 21 and 22.
 Over mountainous land, thru scattering undergrowth.
 Desc. 450 ft.
 1.20 Road, bears S. 55° E. and N. 55° W.
 16.42 Telephone line, bears S. 72° 48' E. and N. 72° 48' W.
 33.45 Gulch, course N. 70° W. Asc. 50 ft.
 40.00 Low spur, slopes W.
 Set an iron post, 3 ft. long, 1 in. dia., 14 ins. in the
 ground, in a mound of stone, for ¼ sec. cor., marked on
 brass cap

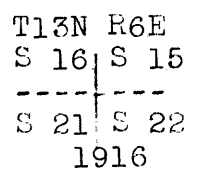
Survey of the Subdivision of T. 13 N., R 6 E.

Chains



; from which
A cedar, 10 ins. dia., bears S. $44\frac{1}{2}^\circ$ E., 80 lks. dist.
marked $\frac{1}{4}$ S 22 B T
A cedar, 9 ins. dia., bears S. $15\frac{1}{4}^\circ$ W., 92 lks. dist.
marked $\frac{1}{4}$ S 21 B T

- 41.70 Gulch, course S. 60° W. Asc. 190 ft.
- 49.00 Spur, slopes W. Desc. 335 ft.
- 57.60 Windy Hollow Canyon, course S. 75° W. Contains water in holes
Asc. 625 ft.
- 80.00 Spur, slopes SW.
Set an iron post, 3 ft. long, 2 ins. dia., 24 ins. in
the ground, for cor. of secs. 15, 16, 21, and 22,
marked on brass cap



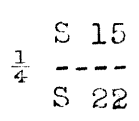
; from which
A cedar, 8 ins. dia., bears N. $10\frac{1}{2}^\circ$ E., 224 lks. dist.
marked T 13 N R 6 E S 15 B T
A cedar, 9 ins. dia., bears S. $65\frac{3}{4}^\circ$ W., 335 lks. dist.
marked T 13 N R 6 E S 21 B T
A cedar, 7 ins. dia., bears N. 60° W., 255 lks. dist.
marked T 13 N R 6 E S 16 B T
No other trees within limits.
Raise a mound of stone 2 ft. base, $1\frac{1}{2}$ ft. high W. of cor.

Land; mountainous.
Soil; rocky, 4hh rate.
No timber.
Undergrowth; cedar, mesquite, cat claw, spanish dagger,
mountain cranberry and yucca.

- 40.00 S. $89^\circ 56'$ E. on a random line bet. secs. 15 and 22.
Set temp. $\frac{1}{4}$ sec. cor.
- 80.00 Intersect N. and S. line, 3 lks. N. of the cor. of secs.
14, 15, 22, and 23.

Thence
N. $89^\circ 55'$ W. on a true line bet. secs. 15 and 22.
Over mountainous land, thru scattering undergrowth.
Desc. 720+ ft.

- 40.00 Set an iron post, 3 ft. long, 1 in. dia., 14 ins. in the
ground, in a mound of stone, for $\frac{1}{4}$ sec. cor., marked
on brass cap



1916

; from which
A cedar, 8 ins. dia., bears N. $53\frac{1}{2}^\circ$ W., 82 lks. dist.
marked $\frac{1}{4}$ S 15 B T
A cedar, 10 ins. dia., bears S. $75\frac{1}{2}^\circ$ E., 186 lks. dist.
marked $\frac{1}{4}$ S 22 B T

- 46.40 Windy Hollow Canyon, course S. 30° W. Asc. 510 ft.

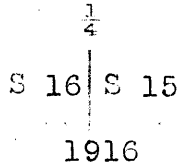
Survey of the Subdivision of T. 13 N., R. 6 E.

Chains
80.00

The cor. of secs. 15, 16, 21 and 22.

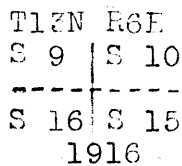
Land; mountainous.
Soil; rocky, 4th rate.
No timber.
Undergrowth; cat claw, cedar, pinion, and scrub oak.

- 10.00 N.0°02'W. bet. secs. 15 and 16.
Over mountainous land, thru scattering undergrowth.
Asc. 25 ft.
19.05 Desc. 250 ft.
19.05 Wash, course N.65°W. Asc. 25 ft.
24.04 Point of spur, slopes W. Desc. 150 ft.
31.44 Gulch, course S.45°W. Asc. 155 ft.
40.00 Set an iron post, 3 ft. long, 1 in. dia., 26 ins. in the ground, for $\frac{1}{4}$ sec. cor., marked on brass cap



; from which
A cedar, 16 ins. dia., bears S.71 $\frac{1}{4}$ °E., 63 lks. dist.
marked $\frac{1}{4}$ S 15 B T
A cedar, 9 ins. dia., bears N.44 $\frac{3}{4}$ °W., 18 lks. dist.
marked $\frac{1}{4}$ S 16 B T

- 54.10 Desc. 350 ft.
66.66 Gulch, course W. Asc. 280 ft.
72.63 Spur, slopes W. Desc. 255 ft.
76.62 Desc. over cliff, 50 ft. high.
80.00 Gulch, course N.50°W. Asc.
Set an iron post, 3 ft. long, 2 ins. dia., 10 ins. in the ground, in a mound of stone, for cor. of secs. 9, 10, 15, and 16, marked on brass cap



; from which
A cedar, 8 ins. dia., bears S.68 $\frac{1}{2}$ °E., 139 lks. dist.
marked T 13 N R 6 E S 15 B T
No other trees within limits.
Raise a mound of stone, 2 ft. base, 1 $\frac{1}{2}$ ft. high W. of cor.

Land; mountainous.
Soil; rocky, 4th rate.
No timber.
Undergrowth; cedar, pinion, scrub oak, and yucca.

Survey of the Subdivision of T. 13 N., R. 6 E.

Chains S.89°55'E. on a random line bet. secs. 10 and 15.
 40.00 Set temp. $\frac{1}{4}$ sec. cor.
 79.88 Intersect N. and S. line, 8 lks. N. of the cor. of secs. 10, 11, 14, and 15.

Thence
 N.89°52'W. on a true line bet. secs. 10 and 15.
 Over mountainous. land, thru scattering undergrowth.
 Desc. 310 ft.
 1.10 Desc. over ledge 10 ft. high.
 10.90 Gulch, course S.20°W. Asc. 105 ft.
 19.90 Spur, slopes S.50°W. Desc. 925 ft.
 39.94 Set an iron post, 3 ft. long, 1 in. dia., 26 ins. in the ground, for $\frac{1}{4}$ sec. cor., marked on brass cap

$\frac{1}{4}$ S 10

 $\frac{1}{4}$ S 15

1916

; from which

A cedar, 7 ins. dia., bears N.4 $\frac{1}{2}$ °W., 131 lks. dist.
 marked $\frac{1}{4}$ S 10 B T
 A cedar, 10 ins. dia., bears S.13 $\frac{1}{4}$ °W., 249 lks. dist.
 marked $\frac{1}{4}$ S 15 B T

52.40 Spur, slopes S.80°W. Continue descent.
 77.00 Rock ledge, 8 ft high.
 77.85 Rock ledge, 14 ft. high.
 79.88 The cor. of secs. 9, 10, 15, and 16.

Land; mountainous.
 Soil; rocky, 4th rate.
 No timber.
 Undergrowth; cedar, scrub oak, and pinion.
 Some grass.

N.0°02'W. bet. secs. 9 and 10.
 Over mountainous land, thru scattering undergrowth.
 Desc. 80 ft.
 3.70 Gulch, course S.80°W. Asc. 485 ft.
 13.30 Spur, slopes W. Desc. 355 ft.
 29.20 Wash, 10 lks. wide, 3 ft. deep, course W. Asc.
 30.00 Desc.
 40.00 Set an iron post, 3 ft. long, 1 in. dia., 10 ins. in the ground, in a mound of stone, for $\frac{1}{4}$ sec. cor., marked on brass cap

$\frac{1}{4}$
 S 9 | S 10

1916

; from which

A cedar, 7 ins. dia., bears S.17 $\frac{3}{4}$ °E., 251 lks. dist.
 marked $\frac{1}{4}$ S 10 B T
 A cedar, 13 ins. dia., bears N.69 $\frac{1}{4}$ °W., 119 lks. dist.
 marked $\frac{1}{4}$ S 9 B T

44.00 Desc. 165 ft.
 51.65 Bluff, 14 ft high. South bank of Clear Creek, bears N.75°E. and S. 75°W. Thence across Clear Creek, 1 ch. wide, 16 ins. deep, course S.75°W.
 53.25 North bank of Clear Creek, bears N.75°E. and S.75°W. Asc. 110 ft.
 64.00 Spur, slopes S.45°E. Desc. 30 ft.

Survey of Subdivision of T. 13 N., R. 6 E.

Chains

67.40

Wash, 10 lks. wide, 3 ft. deep, course S.45°E. Road in wash, bears S.45°E. and N.45°W. Asc.

80.00

Set an iron post, 3 ft. long, 2 ins. dia., 6 ins. in the ground, in a mound of stone, for the cor. of secs. 3, 4, 9, and 10, with brass cap marked

T13N R6E
S 4 S 3

S 9 S 10
1916

; from which
A cedar, 8 ins. dia., bears N.28°E., 77 lks. dist. marked T 13 N R 6 E S 3 B T
A cedar, 7 ins. dia., bears S.42 $\frac{3}{4}$ °W. 120 lks. dist. marked T 13 N R 6 E S 9 B T
A cedar, 8 ins. dia., bears N.13 $\frac{1}{4}$ °W., 203 lks. dist. marked T 13 N R 6 E S 4 B T
No other trees within limits.
Raise a mound of stone, 2 ft. base, 1 $\frac{1}{2}$ ft. high W. of cor.

Land; mountainous.
Soil; rocky, 4th rate.
Timber; sycamore and cottonwood.
Undergrowth; cedar, pinion, and scrub oak.

40.00

S.89°52'E. on a random line bet. secs. 3 and 10.

79.95

Set temp. $\frac{1}{4}$ sec. cor.
Intersect the corner of secs. 2, 3, 10 and 11.

Thence
N.89°52'W. on a true line bet. secs. 3 and 10.
Over rolling land, thru scattering undergrowth.
Desc.

5.80

Left bank of Clear Creek, bears N.60°E. and S.60°W. Thence across water in Clear Creek, 80 lks. wide, 18 ins. deep, course S.60°W.

9.90

Right bank of Clear Creek, bears N.60°E. and S.60°W.

39.97 $\frac{1}{2}$

Set an iron post, 3 ft. long, 1 in. dia., 24 ins. in the ground, in a mound of stone, for $\frac{1}{4}$ sec. cor., marked on brass cap

S 3
 $\frac{1}{4}$ ---
S 10

1916

; from which
A sycamore, 15 ins. dia., bears N.22 $\frac{3}{4}$ °E., 109 lks. dist. marked $\frac{1}{4}$ S 3 B T
A sycamore, 11 ins. dia., bears S.81 $\frac{1}{4}$ °E., 43 lks. dist. marked $\frac{1}{4}$ S 10 B T

43.95

Right bank of Clear Creek, bears S.60°E. and N.60°W. Thence in bed of Clear Creek.

58.30

Right bank of Clear Creek, bear N.40°E. and S.40°W. Leave bed of Clear Creek.

68.25

Spring branch, 5 lks. wide, 2 ins. deep, course S.

69.55

Road, bears N. and S.

79.95

The cor. of secs. 3, 4, 9, and 10.

Land; mountainous.
Soil; rocky, 4th rate.
Timber, sycamore, and cottonwood.
Undergrowth; cedar, mesquite, and cat claw.

Survey of the Subdivision of T. 13 N., R. 6 E.

Chains
 40.00 N.0°02'W. on a random line bet. secs. 3 and 4.
 80.66 Set temp. $\frac{1}{4}$ sec. cor.
 Intersect the N. bdy. of Tp., 30 lks. E. of the cor. of
 secs. 3, 4, 33, and 34, which is an iron post, herein-
 before described.

Thence
 S.0°15'E. on a true line bet. secs. 3 and 4.
 Over mountainous land, thru scattering undergrowth.
 Asc. 195 ft.

16.75 Spur, slopes W. Desc. 740 ft.
 31.60 Ledge, 8 ft. high, bears N.30°W. and S.30°E.
 40.66 Set an iron post, 3 ft. long, 1 in. dia., 26 ins. in the
 ground, for $\frac{1}{4}$ sec. cor., marked on brass cap

$\frac{1}{4}$
 S 4 | S 3
 1916

; from which

A cedar, 9 ins. dia., bears S.72 $\frac{1}{2}$ °E., 116 lks. dist.
 marked $\frac{1}{4}$ S 3 B T

A cedar, 8 ins. dia., bears N.26°W., 151 lks. dist.
 marked $\frac{1}{4}$ S 4 B T

Continue descent.
 58.75 Spur, slopes S.50°W. Continue descent.
 80.66 The cor. of secs. 3, 4, 9, and 10.

Land; mountainous.
 Soil; rocky, 4th rate.
 No timber.
 Undergrowth; cedar, scrub oak, mesquite, and cat claw.

(SEB) From the reestablished standard cor. of secs. 32, and 33,
 on Sbdy. of Tp. (3rd. Std. Par. N.) hereinbefore described,
 N.0°02'W. bet. secs. 32 and 33.
 Over mountainous land, thru scattering undergrowth.
 Asc. 105 ft.

6.75 Low spur, slopes S.55°W. Desc.
 15.00 Low spur, slopes N.45°W. Desc. 390 ft.
 31.40 Gulch, course S.70°W.
 (SEB) 40.00 Set an iron post, 3 ft. long, 1 in. dia., 26 ins. in the
 ground, for $\frac{1}{4}$ sec. cor., marked on brass cap

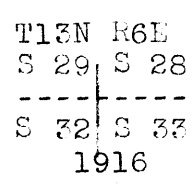
$\frac{1}{4}$
 S 32 | S 33
 1916

; from which

A cedar, 9 ins. dia., bears N.50 $\frac{1}{2}$ °E., 74 lks. dist.
 marked $\frac{1}{4}$ S 33 B T

A cedar, 6 ins. dia., bears S.54 $\frac{3}{4}$ °W., 197 lks. dist.
 marked $\frac{1}{4}$ S 32 B T

42.60 Fossil Creek Trail, bears S.40°E. and N.40°W.
 70.00 Spur, slopes S.45°W. Desc.
 80.00 Set an iron post, 3 ft. long, 2 ins. dia., 24 ins. in the
 ground for the cor. of secs. 28, 29, 32, and 33, marked
 on brass cap



Survey of the Subdivision of T. 13 N., R. 6 E.

Chains

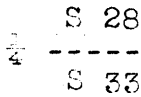
; from which

- A cedar, 10 ins. dia., bears N.48°E., 135 lks. dist. marked T 13 N R 6 E S 28 B T.
- A cedar, 10 ins. dia., bears S.6½°E., 144 lks. dist. marked T 13 N R 6 E S 33 B T
- A cedar, 10 ins. dia., bears S.30°W., 108 lks. dist. marked T 13 N R 6 E S 32 B T
- A cedar, 8 ins. dia., bears N.39°W. 76 lks. dist. marked T 13 N R 6 E S 29 B T

Land, mountainous.
 Soil; rocky, 4th rate.
 No timber.
 Undergrowth; cedar, mesquite, cat claw, and scrub oak.

- 40.00 East on a random line bet. secs. 28 and 33.
- Set temp. ¼ sec. cor.
- 80.00 Intersect the cor. of secs. 27, 28, 33 and 34.

- Thence West on a true line bet. secs. 28 and 33.
- Over mountainous land, thru scattering undergrowth.
- Desc. 30 ft.
- 10.50 Spur, slopes N.70°W. Continue descent 465 ft.
- 32.30 Wash, 10 lks. wide, 1½ ft. deep, course N.35°W. Asc. 135 ft.
- 40.00 Set an iron post, 3 ft. long, 1 in. dia., 3 ins. in the ground in a mound of stone, for ¼ sec. cor., marked on brass cap



1916

; from which

- A cedar, 9 ins. dia., bears N.32½°E., 303 lks. dist. marked ¼ S 28 B T
- A cedar, 10 ins. dia., bears S.46°E., 265 lks. dist. marked ¼ S 33 B T

- 43.00 Top of hill. Desc. 90 ft.
- 46.10 Wash, 20 lks. wide, 2 ft. deep, course N. Asc. 430 ft.
- 53.00 Asc. over red lava ledges, 4 to 20 ft. high.
- 60.35 Rocky point on N. side of spur. Desc. over lava ledges 25 ft. high.
- 73.00 Spur, slopes N.45°W. Desc. 210 ft.
- 80.00 The cor. of secs. 28, 29, 32, and 33.

Land; mountainous.
 Soil; rocky, 4th rate.
 No timber.
 Undergrowth; cedar and scrub oak.

Survey of
Subdivision of T. 13 N., R. 6 E.

Chains.

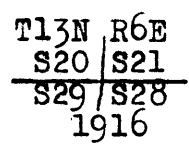
N.0°2'W., bet. secs. 28 and 29.
 Over mountainous land, through scattering undergrowth.
 Asc. 95 ft.
 9.00 Spur, slopes N.60°W. Desc. 555 ft.
 23.85 Gulch, course W. Asc. 375 ft.
 36.10 Rock ledge, 35 ft. high.
 36.70 Top of steep ascent; asc. gradually.
 40.00 Set an iron post, 3 ft. long, 1 in. diam., 26 ins. in the
 ground, for $\frac{1}{4}$ sec. cor., marked on brass cap



From which

A cedar, 10 ins. diam., brs. N.88 $\frac{1}{4}$ °E.,
 103 lks. dist., marked $\frac{1}{4}$ S28 BT.
 A cedar, 26 ins. diam., brs. N.16 $\frac{1}{2}$ °W.,
 157 lks. dist., marked $\frac{1}{4}$ S29 BT.

43.00 Spur, slopes W. Desc. 140 ft.
 51.00 Gulch, course W. Asc. 90 ft.
 57.50 Spur, slopes W. Desc. 210 ft.
 67.00 Spur, slopes N.60°W. Continue descent.
 73.50 Gulch, course N.65°W. Asc. 100 ft.
 80.00 Set an iron post, 3 ft. long, 2 ins. diam., 24 ins. in the
 ground, for cor. of secs. 20, 21, 28 and 29, marked on
 brass cap



From which

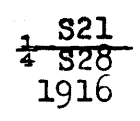
A cedar, 6 ins. diam., brs. N.37 $\frac{3}{4}$ °E.,
 270 lks. dist., marked T13N R6E S21 BT.
 A cedar, 14 ins. diam., brs. S.34 $\frac{3}{4}$ °E.,
 232 lks. dist., marked T13N R6E S28 BT.
 A cedar, 18 ins. diam., brs. S.57 $\frac{1}{2}$ °W.,
 276 lks. dist., marked T13N R6E S29 BT.
 A cedar, 7 ins. diam., brs. N.27 $\frac{1}{2}$ °W.,
 89 lks. dist., marked T13N R6E S20 BT.

Land, mountainous.
 Soil, rocky, 4th rate.
 No timber.
 Undergrowth, cedar, cat claw, pinion and scrub oak.

40.00 East on a random line, bet. secs. 21 and 28.
 79.86 Set temp. $\frac{1}{4}$ sec. cor.
 Intersect N. and S. line, 10 lks. S. of the cor; of secs.
 21, 22, 27 and 28.

Thence
 S.89°56'W., on a true line, bet. secs. 21 and 28.
 Over mountainous land, through scattering undergrowth.
 Asc.

3.93 Spur, slopes S.85°E. Desc. 185 ft.
 16.70 Gulch, course N. Asc. 20 ft.
 20.30 Point fo spur, slopes N.10°E. Desc. 85 ft.
 25.35 Gulch, course S.70°W. Asc. 75 ft.
 32.25 Rocky point, slopes S.70°W. Desc. 90 ft.
 39.93 Set an iron post, 3 ft. long, 1 in. diam., 26 ins. in the
 ground, for $\frac{1}{4}$ sec. cor., marked on brass cap



From which

40.

Survey of
Subdivision of T. 13 N., R. 6 E.

Chains.

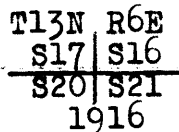
A cedar, 7 ins. diam., brs. N.75 $\frac{1}{2}$ °W.,
219 lks. dist., marked $\frac{1}{4}$ S21 BT.
No other trees within limits. Raise a mound of stone, 2
ft. base, 1 $\frac{1}{2}$ ft. high, N. of cor.
Asc. 60 ft.
49.85 Spur, slopes S.60°W. Desc. 1260 ft.
79.86 The cor. of secs. 20, 21, 28 and 29.
Land, mountainous.
Soil, rocky, 4th rate.
No timber.
Undergrowth, cat claw, scrub oak, cedar and pinion.

N.0°2'W., bet. secs. 20 and 21.
Over mountainous land, through scattering undergrowth.
Asc. 30 ft.
6.27 Point of spur, slopes W. Desc. 155 ft.
17.40 Gulch, course W. Asc.
20.00 Low point of spur, slopes SW. Desc.
24.73 Wash, course S.15°W. Asc. 125 ft.
37.66 Wide spur, slopes W. Desc.
40.00 Set an iron post, 3 ft. long, 1 in. diam., 10 ins. in the
ground, in a mound of stone, for $\frac{1}{4}$ sec. cor., marked on
brass cap



From which

A cedar, 8 ins diam., brs. S.58 $\frac{1}{2}$ °E.,
136 lks. dist., marked $\frac{1}{4}$ S21 BT.
A cedar, 9 ins. diam., brs. N.59°W., 1
172 lks. dist., marked $\frac{1}{4}$ S20 BT.
53.90 Telephone line, brs. N.55°W.
55.00 Head of gulch, course N.75°W. Asc.
61.10 Road, brs. N.75°W.
63.70 Spur, slopes N.70°W. Desc. 115 ft.
76.00 Asc. 30 ft.
79.55 Rocky point, slopes W. Desc.
80.00 Set an iron post, 3 ft. long, 2 ins. diam., 12 ins. in the
ground, in a mound of stone, for cor. of secs. 16, 17,
20 and 21, marked on brass cap



From which

A cedar, 12 ins. diam., brs. N.64 $\frac{1}{2}$ °E.,
92 lks. dist., marked T13N R6E S16 BT.
A cedar, 19 ins. diam., brs. S.46 $\frac{1}{2}$ °E.,
130 lks. dist., marked T13N R6E S21 BT.
A cedar, 15 ins. diam., brs. N.6 $\frac{3}{4}$ °W.,
222 lks. dist., marked T13N R6E S17 BT.
No other trees within limits. Raise a mound of stone, 2
ft. base, 1 $\frac{1}{2}$ ft. high, W. of cor.
Land, mountainous.
Soil, rocky, 4th rate.
No timber.
Undergrowth, cedar, pinion and scrub oak.

Subdivision of Township 13 North, Range 6 East. 41.

Chains.

Thence,
N.89°56'E., on a random line, bet. secs. 16 and 21.

40.00 Set temp. $\frac{1}{4}$ sec. cor.

79.99 Intersect N. and S. line, 12 lks. S. of the cor. of secs. 15, 16, 21 and 22.

Thence,
S.89°51'W., on a true line, bet. secs. 16 and 21.
Over mountainous land, thru. scattering undergrowth. Desc. 220 ft.

17.10 Ascend 40 ft.

23.50 Spur, slopes S. Descend 765 ft.

39.99 $\frac{1}{4}$ Set an iron post, 3 ft. long, 1 in. in diam., 8 ins. in the ground, in a mound of stone, for $\frac{1}{4}$ sec. cor., marked on brass cap,

$\frac{1}{4}$ S 16
 S 21
 1916

from which,
A cedar, 5 ins. diam., brs. N. 53 $\frac{3}{4}$ ° E., 69 lks. dist., marked $\frac{1}{4}$ S 16 B T.
A cedar, 8 ins. in diam., brs. S. 53 $\frac{1}{2}$ ° W., 103 lks. dist., marked $\frac{1}{4}$ S 21 B T.

71.40 Windy Hollow canyon, course N. 25° W. Ascend 300 ft.

79.99 The cor. of secs. 16, 17, 20 and 21.
Land, mountainous. Soil, rocky, 4th rate.
No timber.
Undergrowth, catclaw, cedar, pinon and scrub oak.

N. 0° 2' W., bet. secs. 16 and 17.
Over mountainous land, thru. scattering undergrowth.
Descend 330 ft.

11.90 Descend over ledge, 35 ft. high.

14.60 Windy Hollow Canyon, course N. 60° W. Ascend 80 ft.

16.60 Spur, slopes W. Descend 100 ft.

26.70 South bank of Clear Creek, brs. E. and W. Thence across Clear Creek, water 95 lks. wide, 14 ins. deep, flows W.

27.65 North bank of Clear Creek, brs. E. and W. Ascend.

40.00 Spur, slopes W.
Set an iron post, 3 ft. long, 1 in. in diam., 26 ins. in the ground, for $\frac{1}{4}$ sec. cor., marked on brass cap,

S 17 ↑ S 16
 1916

from which,
A cedar, 7 ins. in diam., brs. N. 29° W., 167 lks. dist., marked $\frac{1}{4}$ S 17 B T.

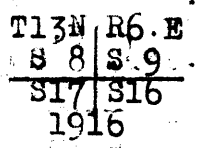
No other trees within limits. Raise a mound of stone, 2 ft. base, 1 $\frac{1}{2}$ ft. high, W. of cor.
Descend 110 ft.

48.40 Gulch, course S. 45° W. Ascend 195 ft.

61.20 Spur, slopes W. Descend.

63.00 Ascend 70 ft.

80.00 Low spur, slopes W.
Set an iron post, 3 ft. long, 2 ins. in diam., 24 ins. in the ground, for cor. of secs. 8, 9, 16 and 17, marked on brass cap,



from which,
A cedar, 8 ins. in diam., brs. N. 79° E., 126 lks. dist., marked T13N R6E S9 B T.
A cedar, 16 ins. diam., brs. S. 77 $\frac{1}{4}$ ° E., 207 lks. dist., marked T13N R6E S16 B T.

No other trees within limits, Raise a mound of stone, 2 ft. base, 1 $\frac{1}{2}$ ft. high, W. of cor.
Land, mountainous.
Soil, rocky, 4th rate.
Timber, sycamore and cottonwood along creek:

42. Subdivision of Township 13 North, Range 6 East.

Chains.

Undergrowth, cedar, catclaw, pinon, mesquite and scrub oak.

N. 89° 51' E., on random line, bet. secs. 9 and 16.

40.00 Set temp. 1/4 sec. cor.

41.69 A point on right rim of Clear Creek Canyon across which chaining is impracticable. Triangulate the measurement of remainder of line bet. secs. 9 and 16, described as follows, and as illustrated by the accompanying diagram:

Set flag on cor. of secs. 9, 10, 15 and 16, which is plainly visible from 41.69 ch. sta.

Flag brs. N. 89° 51' E.; therefore, the random line projected will intersect said sec. cor.

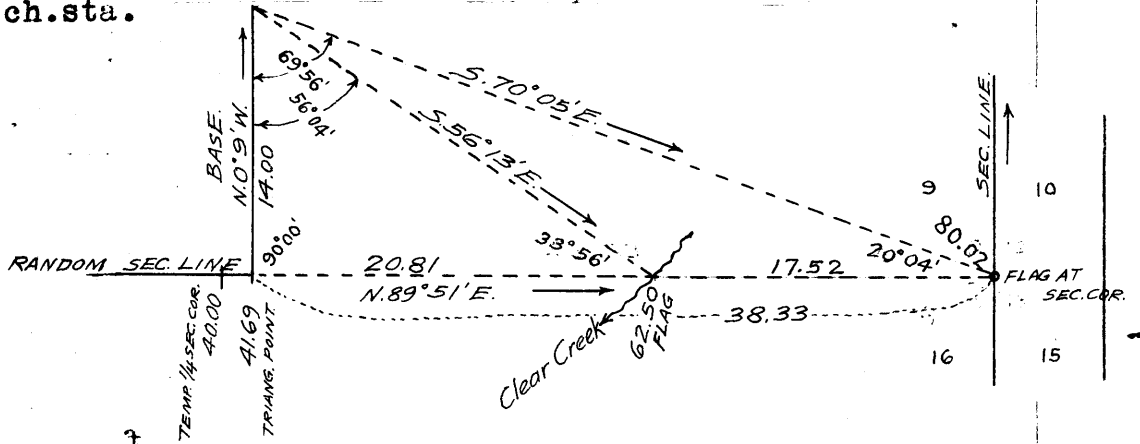
From 41.69 ch. sta., measure a base, N. 0° 9' W., 14.00 chs., from N. end of which, flag brs. S. 70° 05' E.

The included angles are 69° 56', 20° 04' and 90° 00', the sum of which is 180° 00'.

Dist. on sec. line is obtained by

Tang. 69° 56' x base or 2.73756 x 14.00 = 38.33 which, which added to 41.69 chs. = 80.02 chs., length of line bet. secs. 9 and 16.

The vertical angle from 41.69 ch. sta. to flag on sec. cor. is 2° 20' therefore, the flag is 103 ft. below the 41.69 ch. sta.



A flag set at point where Clear Creek crosses sec. line, in bottom of canyon, brs. S. 56° 13' E. from N. end of base. The included angles are 56° 04', 33° 56' and 90° 00', the sum of which is 180° 00'

Dist. on sec. line from 41.69 ch. sta. to Clear Creek is obtained by

Tang. 56° 04' x base or 1.48629 x 14.00 = 20.81 chs. 38.33 chs. - 20.81 chs. = 17.52 chs. dist. on sec. line to Clear Creek from cor. of secs. 9, 10, 15 and 16.

Vertical angle from 41.69 ch. sta. to Clear Creek is 16° 40'; therefore, Clear Creek is 411 ft. below 41.69 ch. sta.

80.02 Intersect the cor. of secs. 9, 10, 15 and 16. Thence, S. 89° 51' W., on a true line, bet. secs. 9 and 16, measurement of 38.33 chs. by triangulation, as hereinbefore described. Over mountainous land, thru. scattering undergrowth.

Descend 308 ft. into Clear Creek Canyon.

17.52 Clear Creek, containing water 1 ch. wide, 14 ins. deep, course S. 50° W. Ascend 411 ft.

38.30 Bluff, right rim of Clear Creek Canyon, brs. N. 60° E. and S. 60° W. Descend 165 ft.

38.33 Triangulation point. Hence by chain measurement.

40.01 Set an iron post, 3 ft. long, 1 in. in diam., 26 ins. in the ground, for 1/4 sec. cor., marked on brass cap,

1/4	S	9
	S	16
		1916

from which,

A cedar, 10 ins. in diam., brs. S. 76 3/4° W., 346 lks. dist., marked 1/4 S 16 B T.

No other trees within limits; raise mound of stone, 2 ft. base 1 1/2 ft. high, N. of cor.

53.10 Gulch, course S. Ascend 285 ft.

68.70 Spur, slopes S. 30° W. Descend 270 ft.

72.00 Ledge 12 ft. high, continue descent.

80.02 The cor. of secs. 8, 9, 16 and 17.

Land, mountainous. Soil, rocky, 4th rate. Timber, sycamore along creek. Undergrowth, cedar, mesquite and catclaw.

Survey of Subdivision of T. 13 N., R. 6 E.

Chains

N.0°02'W. bet. secs. 8 and 9.
 Over mountainous land, thru scattering undergrowth.
 Desc. 35 ft.

3.30 Wash, 10 lks. wide, 3 ft. deep, course S.80°W.
 Asc. 105 ft.

8.10 Spur, slope W. Desc. 75 ft.

15.40 Wash, course S.70°W. Asc. 310 ft.

23.20 Spur, slopes W. Desc. 95 ft.

36.20 Wash, course W. Asc. 65 ft.

40.00 Set an iron post, 3 ft. long, 1 in. dia., 26 ins. in the
 ground for $\frac{1}{4}$ sec. cor., marked on brass cap

$\frac{1}{4}$
 S 8 | S 9
 1916

; from which

A cedar, 7 ins. dia., bears S.76 $\frac{1}{2}$ °E., 201 lks. dist.
 marked $\frac{1}{4}$ S 9 B T

No other trees within limits.
 Raise a mound of stone, 2 ft. base, 1 $\frac{1}{2}$ ft. high W. of
 cor.

42.45 Cow trail, bears E. and W.

46.10 Spur, slopes W. Desc. 40 ft.

52.00 Asc. 20 ft.

54.00 Spur, slopes N.60°W. Desc. 155 ft.

69.00 Wash, 20 lks. wide, 4 ft. deep, course W.
 Asc.

80.00 Set an iron post, 3 ft. long, 2 ins. dia., 24 ins. in the
 ground, for cor. of secs. 4, 5, 8, and 9, marked on
 brass cap

T13N R6E
 S 5 | S 4

 S 8 | S 9
 1916

; and raise a mound
 of stone, 2 ft. base, 1 $\frac{1}{2}$ ft. high W. of cor.

Land; mountainous.
 Soil; rocky, 4th rate.
 No timber.
 Undergrowth; cat claw, scrub oak, cedar, and pinion.

N.89°51'E. on a random line bet. secs. 4 and 9.

40.00 Set temp. $\frac{1}{4}$ sec. cor.

80.05 Intersect N. and S. line 5 lks. N. of the cor. of secs.
 3, 4, 9, and 10.

Thence
 S.89°53'W. on a true line bet. secs. 4 and 9.
 Over mountainous land, thru scattering undergrowth.
 Asc. 165 ft.

28.65 Spur, slopes S.50°W. Desc. 35 ft.

33.60 Road, bears N. and S.

40.02 Set an iron post, 3 ft. long, 1 in. dia., 26 ins. in the
 ground, for $\frac{1}{4}$ sec. cor. marked on brass cap

S 4
 $\frac{1}{4}$ ---
 S 9
 1916

Survey of the Subdivision of T. 13 N., R. 6 E.

Chains

; from which
 A cedar, 10 ins. dia., bears N.79 $\frac{3}{4}$ °W., 244 lks. dist.
 marked $\frac{1}{4}$ S 4 B T
 A cedar, 6 ins. dia., bears S.58 $\frac{3}{4}$ °E., 30 lks. dist.
 marked $\frac{1}{4}$ S 9 B T

41.05 Bend, in wash, course from N.80°E. to N.80°W. Asc. 140 ft.
 50.45 Spur, slopes N.45°W. Desc. 785 ft.
 63.60 Wash, 15 lks. wide, 3 ft. deep, course N.70°W.
 Continue descent.
 80.05 The cor. of secs. 4, 5, 8, and 9.

Land; mountainous.
 Soil; rocky, 4th rate.
 No timber.
 Undergrowth; cat claw, cedar, and mesquite.
 Fair grass.

40.00 N.0°02'W. on a random line bet. secs. 4 and 5.
 Set temp. $\frac{1}{4}$ sec. cor.
 81.37 Intersect N. bdy. of the Tp., 19 lks. E. of the cor. of
 secs. 4, 5, 32, and 33, hereinbefore described.

Thence
 S.0°10'E. on a true line bet. secs. 4 and 5.
 Over rolling land, thru scattering undergrowth.
 11.35 Wash, 40 lks. wide, 7 ft. deep, course S.45°W. Asc.
 26.85 Trail, bears S.55°E. and N.55°W. Desc.
 37.55 Wash, 30 lks. wide, 3 ft. deep, course W. Asc.
 40.35 Low spur, slopes W. Desc. 35 ft.
 41.37 Set an iron post, 3 ft. long, 1 in. dia., 26 ins. in the
 ground, for $\frac{1}{4}$ sec. cor., marked on brass cap

$\frac{1}{4}$
 S 5 | S 4
 1916

; from which
 A cedar, 18 ins. dia., bears N.24°E., 73 lks. dist.
 marked $\frac{1}{4}$ S 4 B T
 A cedar, 9 ins. dia., bears N.72 $\frac{3}{4}$ °W., 94 lks. dist.
 marked $\frac{1}{4}$ S 5 B T

50.75 Wash, 30 lks. wide, 3 ft. deep, course S.60°W.
 Asc. 30 ft.
 52.60 Road, bears E. and W.
 60.85 Rocky point. Desc.
 75.60 Wash, 30 lks. wide, 4 ft. deep, course N.55°W.
 Asc. 25 ft.
 81.37 The cor. of secs. 4, 5, 8, and 9.

Land; mountainous and rolling.
 Soil; stony, 4th rate.
 No timber.
 Undergrowth; cat claw, mesquite and scrub oak.

Survey of the Subdivision of T. 13 N., R. 6 E.

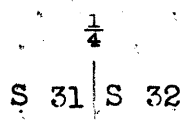
Chains From the reestablished std. cor. of secs. 31 and 32, on the Sbdy. of the Tp. (3rd. Std. Par. N.), hereinbefore described, (S.E.B.) N.0°03'W. bet. secs. 31 and 32.

9.40
32.15
37.70
(SEB) 40.00

Over mountainous land, thru scattering undergrowth. Asc.

Spur, slopes W. Desc. 130 ft.
Gulch, course W. Asc. 120 ft.
Spur, slopes W. Desc. 80 ft.

Set an iron post, 3 ft. long, 1 in. dia., 3 ins. in the ground, in a mound of stone, for 1/4 sec. cor., marked on brass cap

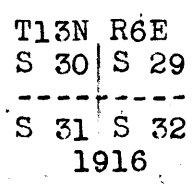


1916

; from which
A cedar, 9 ins. dia., bears S.34 1/2°E., 229 lks. dist. marked 1/4 S 32 B T
A cedar, 11 ins. dia., bears S.8 1/4°W., 152 lks. dist. marked 1/4 S 31 B T

46.95
56.20
80.00

Gulch, course S.50°W. Asc. 140 ft.
Spur, slopes W. Desc. 140 ft.
Set an iron post, 3 ft. long, 2 ins. dia., 24 ins. in the ground, for the cor. of secs. 29, 30, 31, and 32, marked on brass cap



; from which

A cedar, 11 ins. dia., bears N.8°E., 298 lks. dist. marked T 13 N R 6 E S 29 B T
No other trees within limits.
Raise a mound of stone, 2 ft. base, 1 1/2 ft. high W. of cor.

Land; mountainous.
Soil; rocky, 4th rate.
No timber.
Undergrowth; cat claw, cedar, pinion, and scrub oak.

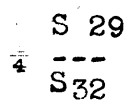
40.00
80.00

East on a random line bet. secs. 29 and 32.
Set temp. 1/4 sec. cor.
Intersect the cor. of secs. 28, 29, 32 and 33.

Thence
West on a true line bet. secs. 29 and 32.
Over mountainous land, thru scattering undergrowth. Desc. 450 ft.

24.00
40.00

Fossil Creek trail, bears NW. and S.40°E.
Set an iron post, 3 ft. long, 1 in. dia., 10 ins. in the ground, in a mound of stone, for 1/4 sec. cor., marked on brass cap



1916

Survey of the Subdivision of T. 13 N., R. 6 E.

Chains ; from which
 A cedar, 24 ins. dia., bears N.31 $\frac{1}{4}$ °W., 132 lks. dist.
 marked $\frac{1}{4}$ S 29 B T
 No other trees within limits.
 Raise a mound of stone, 2 ft. base, 1 $\frac{1}{2}$ ft. high N. of cor.

45.45 Wash, 30 lks. wide, 4 ft. deep, course S.50°W.
 Asc. 120 ft.

53.00 Point of sandstone ledge, 12 ft. high, slopes SW.
 Desc. 225 ft.

58.40 Desc. over ledge, 25 ft. high.

67.20 Wash, 30 lks. wide, 4 ft. deep, course N.55°W.
 Asc. 25 ft.

80.00 The cor. of secs. 29, 30, 31, and 32.

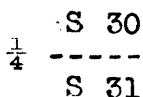
Land; mountainous.
 Soil; rocky, 4th rate.
 No timber.
 Undergrowth; cedar, mesquite, and cat claw.
 Fair grass.

West on a true line bet. secs. 30 and 31.
 Over rolling land, thru scattering undergrowth.
 Asc. 35 ft.

10.00 Spur, slopes N.55°W. Desc. 165 ft.

31.70 Wash, 30 lks. wide, 4 ft. deep, course S.65°W.
 Asc. 25 ft.

40.00 Set an iron post, 3 ft. long, 1 in. dia., 26 ins. in the
 ground, for $\frac{1}{4}$ sec. cor., marked on brass cap



1916

; and raise a mound of
 stone, 2 ft. base, 1 $\frac{1}{2}$ ft. high N. of cor.

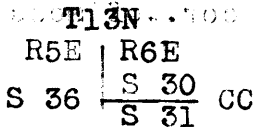
Desc.

76.15 Wash, 30 lks. wide, 8 ft. deep, course S.45°W. Asc.

77.00 Descend.

89.16 Intersect the E. bdy. of T. 13 N., R. 5 E., 2.23 chs. S.0°
 47'W. of the reestablished cor. of secs. 25 and 36,
 described in Book "B"

At the point of intersection, set an iron post, 3 ft.
 long, 2 ins. dia., 24 ins. in the ground, in a mound
 of stone, for the closing cor. of secs. 30 and 31,
 marked on brass cap



1916

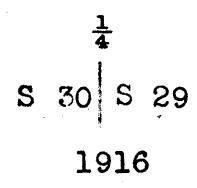
; and raise a mound of
 stone, 2 ft. base, 1 $\frac{1}{2}$ ft. high E. of cor.

Land; rolling.
 Soil; stony, 4th rate.
 No timber.
 Undergrowth; cedar, mesquite, and cat claw.
 Fair grass.

Survey of the Subdivision of T. 13 N., R. 6 E.

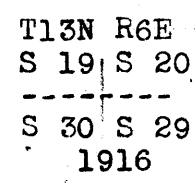
Chains

From the cor. of secs. 29, 30, 31, and 32,
 N.0°03'W. bet. secs. 29 and 30.
 Over rolling land, thru scattering undergrowth.
 Desc. 55 ft.
 5.00 Wash, 35 lks. wide, 4 ft. deep, course N.70°W.
 Asc. 45 ft.
 20.00 Low spur, slopes W. Desc.
 40.00 Set an iron post, 3 ft. long, 1 in. dia., 18 ins. in
 the ground, in a mound of stone, for $\frac{1}{4}$ sec. cor.,
 marked on brass cap



; from which
 A cedar, 5 ins. dia., bears N.74°E., 38 lks. dist.
 marked $\frac{1}{4}$ S 29 B T
 A cedar, 9 ins. dia., bears N.67°W., 126 lks. dist.
 marked $\frac{1}{4}$ S 30 B T

40.50 Wash, 40 lks. wide, 3 ft. deep, course S.70°W. Asc.
 49.00 Fossil Creek Trail, bears N.50°W. and SE.
 60.00 Spur, slopes W. Desc.
 73.00 Wash, 10 lks. wide, course S.60°W.
 80.00 Set an iron post, 3 ft. long, 2 ins. dia., 18 ins. in
 the ground, in a mound of stone, for the cor. of secs.
 19, 20, 29, and 30, marked on brass cap



; from which
 A cedar, 19 ins. dia., bears N.52°E., 270 lks. dist.
 marked T13N R 6 E S 20 B T
 A cedar, 10 ins. dia., bears S.51 $\frac{1}{2}$ °E., 266 lks. dist.
 marked T 13 N R 6 E S 29 B T
 A cedar, 7 ins. dia., bears S.73 $\frac{1}{4}$ °W., 179 lks. dist.
 marked T 13 N R 6 E S 30 B T
 A cedar, 8 ins. dia., bears N.29°W., 149 lks. dist.
 marked T 13 N R 6 E S 19 B T

Land; rolling.
 Soil; rocky, 4th rate.
 No timber.
 Undergrowth; mesquite, cat claw, cedar, and scrub oak.
 Fair grass.

40.00 East on a random line bet. secs. 20 and 29.
 Set temp. $\frac{1}{4}$ sec. cor.
 79.98 Intersect the corner of secs. 20, 21, 28 and 29, 30,
 31 and 32.

Thence
 West on a true line bet. secs. 20 and 29.
 Over mountainous land, thru scattering undergrowth.
 Desc. 125 ft.

3.70 Gulch, course N.50°W. Asc. 130 ft.
 8.50 Ledge, 15 ft. high, bears N.50°W. and S.50°E.

Survey of the Subdivision of T. 13 N., R. 6 E.

Chains

12.50 Spur, slopes N.20°W. Desc. 375 ft.
 30.90 Ledge, 20 ft. high, bears N.45°E. and S.45°W.
 39.99 Set an iron post, 3 ft. long, 1 in. dia., 26 ins. in the ground, in a mound of stone, for $\frac{1}{4}$ sec. cor., marked on brass cap

S 20
 $\frac{1}{4}$ ----
 S 29

1916

; from which,

A cedar, 25 ins. dia., bears N.78 $\frac{3}{4}$ °W., 286 lks. dist. marked $\frac{1}{4}$ S 20 B T

No other trees within limits.

Raise a mound of stone, 2 ft. base, 1 $\frac{1}{2}$ ft. high N. of cor.

45.50 Wash, 30 lks. wide, 3 ft. deep, course S.55°W. Asc. 45 ft.
 50.80 Spur, slopes S.60°W. Desc. 140 ft.
 79.98 The cor. of secs. 19, 20, 29, and 30.

Land; mountainous.

Soil; 4th rate.

No timber.

Undergrowth; mesquite, cat claw, and cedar.

Some grass.

West on a true line bet. secs. 19 and 30.

Over mountainous land, thru scattering undergrowth. Asc.

3.00 Point of sandstone bluff, 30 ft. high, Desc. 35 ft.
 28.30 Fossil Creek Trail, bears N.45°W., and S.45°E. Thence over rolling land.

40.00 Set an iron post, 3 ft. long, 1 in. dia., 26 ins. in the ground, in a mound of stone, for $\frac{1}{4}$ sec. cor., marked on brass cap

S 19
 $\frac{1}{4}$ ----
 S 30

1916

; from which

A cedar, 6 ins. dia., bears N.0°30'E., 96 lks. dist. marked $\frac{1}{4}$ S 19 B T

A cedar, 8 ins. dia., bears S.11°E., 285 lks. dist. marked $\frac{1}{4}$ S 30 B T

65.50 Road, bears N. and S.

67.90 Wash, 35 lks. wide, 3 ft. deep, course S.35°W.

75.00 Wash, course S.45°W.

83.25 Wash, 2 chs. wide, 25 ft. deep, course S.

87.59 Intersect the E. bdy. of T.13 N., R.5 E., 3.36 chs. S.1°22'W. of the reestablished cor. of secs. 24 and 25, described in Book "B".

At point of intersection, set an iron post, 3 ft. long, 2 ins. dia., 24 ins. in the ground, for closing cor. of secs. 19 and 30, marked on brass cap

T13N
 R 6E
 S 25 S 19 CC
 S 30

1916

; from which

A cedar, 11 ins. dia., bears S.4 $\frac{1}{2}$ °E., 304 lks. dist. marked C C T 13 N R 6 E S 30 B T

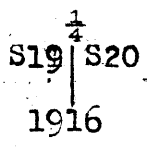
Survey of Subdivision of Township 13 North, Range 6 East.

Chains.

and raise a mound of stone, 2 ft. base, 1 1/2 ft. high, E. of cor. Land, rolling. Soil, stony, 3rd rate. No timber. Undergrowth, catclaw, scrub oak and cactus. Fair grass.

14.00
24.00
35.25
40.00

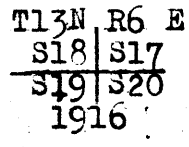
From cor. of secs. 19, 20, 29 and 30, N. 0° 3' W., bet. secs. 19 and 20. Over rolling land, thru. scattering undergrowth. Ascend 60 ft. Spur, slopes N. 45° W. Descend 45 ft. Wash, course S. 45° W. Thence over rolling land. Wash, course S. 55° W. Set an iron post, 3 ft. long, 1 in. in diam., 10 ins. in the ground, in a mound of stone, for 1/4 sec. cor., marked on brass cap,



from which, A cedar, 10 ins. in diam., brs. N. 68° E., 138 lks. dist., marked 1/4 S 20 BT.

55.00
60.00
63.75
72.50
75.50
78.60
80.00

No other trees within limits. Raise a mound of stone, 2 ft. base, 1 1/2 ft. high, W. of cor. Ascend 25 ft. Spur, slopes W. Descend 25 ft. Gulch, course S. 45° W. Ascend 90 ft. Spur, slopes W. Descend 80 ft. Gulch, course S. 45° W. Ascend 50 ft. Telephone line, brs. N. 79° 20' W. and S. 79° 20' E. Set an iron post, 3 ft. long, 2 ins. in diam., 24 ins. in the ground, for cor. of secs. 17, 18, 19 and 20, marked on brass cap,



and raise a mound of stone, 2 ft. base, 1 1/2 ft. high, W. of cor.

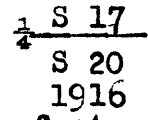
Land, rolling. Soil, rocky, 4th rate. No timber. Undergrowth, catclaw, cedar, pinon and scrub oak.

40.00
79.96

East, on a random line, bet. secs. 17 and 20. Set temp. 1/4 sec. cor. Intersect N. and S. line, 7 lks. N. of the cor. of secs. 16, 17, 20 and 21.

10.65
17.95
29.35
38.95
39.98

Thence, N. 89° 57' W., on a true line, bet. secs. 17 and 20. Over mountainous land, thru. scattering undergrowth. Descend 65 ft. Head of gulch, course N. 10° E. Ascend 130 ft. Spur, slopes N. 15° W. Descend; 195 ft. Gulch, course N. 20° W. Ascend 60 ft. Spur, slopes N. 15° W. Descend 190 ft. Set an iron post 3 ft. long, 1 in. in diam., 12 ins. in the ground, in a mound of stone, for 1/4 sec. cor., marked on brass cap,



and raise a mound of stone, 2 ft. base, 1 1/2 ft. high, N. of cor.

53.55
70.15
79.96

Road brs. N. 35° W. and S. 35° E. Gulch, course S. 75° W. Ascend. The cor. of secs. 17, 18, 19 and 20. Land, mountainous and rolling. Soil, rocky, 4th rate.

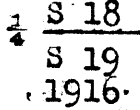
50 Survey of Subdivision of Township 13 North, Range 6 East.

Chains.

No timber.
Undergrowth, mesquite, cactus, scrub cedar and scrub oak.
Fair grass.

7.45
12.00
16.76
40.00

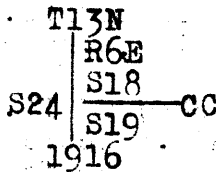
West, on a true line, bet. secs. 18 and 19.
Over rolling land, thru scattering undergrowth.
Telephone line, brs. N.79°20'W. and S.79°20'E.
Low ridge, brs. S.45°W. and N.45°E.
Fence brs. N.42°E. and SW.
Set an iron post, 3 ft. long, 1 in. in diam., 26 ins. in the ground, for $\frac{1}{4}$ sec. cor., marked on brass cap,



and raise a mound of stone, 2 ft. base, 1 1/2 ft. high, N. of cor.

56.60
80.00
87.39

Fence, brs. N. and S.
Dim road, brs. N.40°W. and S.40°E.
Intersect E. bdy. of T. 13 N., R. 5 E., 3.50 chs. S. of the reestablished cor. of secs. 13 and 24, hereinbefore described.
At the point of intersection,
Set an iron post 3 ft. long, 2 ins. in diam., 24 ins. in the ground, for closing cor. of secs. 18 and 19, marked on brass cap,

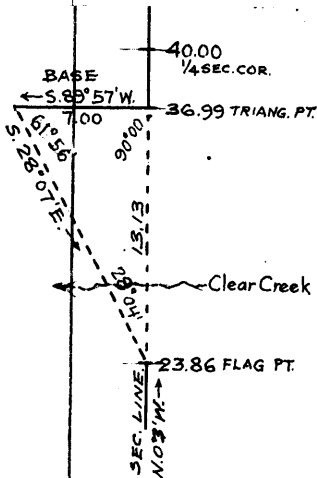


and raise a mound of stone, 2 ft. base, 1 1/2 ft. high, E. of cor.

Land, rolling. Soil, stony, 4th rate.
No timber.
Undergrowth, cactus, catclaw, and scrub oak. Fair grass.

4.44
10.10
23.86

From cor. of secs. 17, 18, 19 and 20,
N. 0° 3' W., bet. secs. 17 and 18.
Over rolling and mountainous land, thru scattering undergrowth. Ascend 50 ft.
Top of ascent brs. E. and W. Thence along rolling W. slope.
Road brs. N.80°W. and S.80°E.
Top of series of perpendicular cliffs, bearing E. and W., forming left wall of Clear Creek Canyon. As it is impracticable to chain measurement across canyon, triangulate as described as follows; and as illustrated by the accompanying diagram:

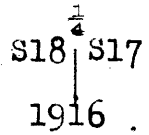


Leave flag at 23.86 ch. sta.
From point N. 0° 3' W. from flag measure a base, S. 89° 57' W., 7.00 chs. from W. end of which flag brs. S. 28° 07' E.
Included angles are 61° 56', 90° 00' and 28° 04' the sum of which is 180° 00'
Dist. triangulated is obtained by Tang. 61° 56' x base or 1.87546 x 7.00 = 13.13 chs. which added to 23.86 chs. = 36.99 chs., the triangulation point at top of steep right wall of Clear Creek Canyon.

Survey of Subdivision of Township 13 North, Range 6 East. 51

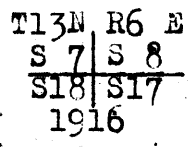
Chains.

- 26.00 (Approximate) Old ruins and caves bear east about 8 chs. dist.
- 28.00 (Approximate) Clear Creek, course W. 225 ft. below 23.86 ch. station. Ascend.
- 36.99 Triangulation point on right or N. rim of Clear Creek canyon, brs. E. and W. Thence by chain measurement. Ascend.
- 40.00 Set an iron post 3 ft. long, 1 in. in diam., 22 ins. in the ground, in a mound of stone, for $\frac{1}{4}$ sec. cor., marked on brass cap,



and raise a mound of stone, 2 ft. base, $1\frac{1}{2}$ ft. high, W. of cor.

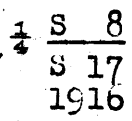
- 45.00 Spur, slopes W. Descend 115 ff.
- 60.95 Gulch, course W. Ascend 90 ft.
- 67.00 Spur, slopes S. 80° W. Descend 30 ft.
- 69.20 Gulch, course S. 80° W. Ascend.
- 77.25 Spur, slopes S. 85° W. Descend.
- 78.50 Gulch, course S. 85° W. Ascend.
- 80.00 Set an iron post 3 ft. long, 2 ins. in diam., 8 ins. in the ground, in a mound of stone, for cor. of secs. 7, 8, 17 and 18, marked on brass cap,



and raise a mound of stone, 2 ft. base, $1\frac{1}{2}$ ft. high W. of cor.

Land, rolling and mountainous.
 Soil, rocky, 4th rate.
 Timber, cottonwood, ash and sycamore along Creek.
 Undergrowth, mesquite, cactus, and scrub cedar.
 Fair grass.

- S. $89^\circ 57'$ E., on a random line, bet. secs. 8 and 17.
- 40.00 Set temp. $\frac{1}{4}$ sec. cor.
- 79.94 Intersect N. and S. line, 9 lks. N. of the cor. of secs. 8, 9, 16 and 17.
- Thence,
 N. $89^\circ 53'$ W., on a true line, bet. secs. 8 and 17.
 Over mountainous land, thru. scattering undergrowth.
 Descend 200 ft.
- 16.95 Gulch, course S. 15° W. Ascend.
- 20.95 Spur, slopes S. 10° W. Descend 45 ft.
- 25.95 Gulch, course S. 5° E. Ascend 95 ft.
- 32.60 Spur, slopes S. Descend 80 ft.
- 39.45 Gulch, course S. 15° E.
- 39.97 Set an iron post, 3 ft. long, 1 in. in diam., 26 ins. in the ground, for $\frac{1}{4}$ sec. cor., marked on brass cap,



and raise a mound of stone, 2 ft. base, $1\frac{1}{2}$ ft. high, N. of cor.

- 42.95 Spur, slopes S. 15° E. Descend 65 ft.
- 45.15 Gulch, course S. 10° E. Ascend 90 ft.
- 51.05 Spur, slopes S. 70° W. Descend.
- 67.50 Gulch, course S. 65° W. Ascend 15 ft.
- 71.75 Spur, slopes S. 70° W. Descend 40 ft.
- 77.15 Gulch, course S. 60° W. Ascend.
- 79.94 The cor. of secs. 7, 8, 17 and 18.
 Land; mountainous.
 Soil, rocky, 4th rate.

52. Survey of Subdivision of Township 13 North, Range 6 East.

Chains.

No timber.
Undergrowth, mesquite, cactus, scrub cedar and scrub oak.
Scant grass.

West, on a true line, bet. secs. 7 and 18.
Over rolling land, thru scattering undergrowth.
Descend 25 ft.

- 13.05 Gulch, course S. Ascend.
- 22.50 Spur, slopes S. Descend 70 ft.
- 24.70 Gulch, from N., course W.
- 37.60 Leave gulch, course S.
- 40.00 Set an iron post, 3 ft. long, 1 in. in diam., 3 ins. in the ground, in a mound of stone, for $\frac{1}{4}$ sec. cor., marked on brass cap,

$\frac{1}{4}$ S 7
 S 18
 1916

and raise a mound of stone, 2 ft. base, $1\frac{1}{2}$ ft. high, N. of cor.

- 51.20 Wash, course S. 10° W. Ascend.
- 58.20 Spur, slopes S. 20° W. Descend.
- 61.00 Wash, course S. 20° W. Ascend.
- 65.00 Spur, slopes S. 10° W. Descend.
- 70.00 Gulch, course S. Ascend 70 ft.
- 87.29 Intersect E. bdy. of Tp. 13 N., R. 5 E., 3.50 chs. S. of true point for reestablished cor. of secs. 12 and 13, described in Book "B."

At the point of intersection, set an iron post, 3 ft. long, 2 ins. in diam., 12 ins. in the ground, in a mound of stone, for closing cor. of secs. 7 and 18, marked on brass cap,

T13N
 R6E
 S 7
 S 18 CC
 1916

and raise a mound of stone, 2 ft. base, $1\frac{1}{2}$ ft. high, E. of cor.

Land, rolling.
Soil, rocky, 4th rate.
No timber.
Undergrowth, mesquite, and cactus.
Fair grass.

From cor. of secs. 7, 8, 17 and 18,
N. $0^\circ 3'$ W., bet. secs. 7 and 8.
Over rolling land, thru scattering undergrowth.
Ascend 50 ft.

- 9.94 Spur, slopes W. Descend 55 ft.
- 16.33 Gulch, course W. Ascend 55 ft.
- 23.30 Spur, slopes S. 80° W. Descend 90 ft.
- 36.70 Gulch, course S. 75° W. Ascend 135 ft.
- 40.00 Set an iron post, 3 ft. long, 1 in. in diam., 26 ins. in the ground, for $\frac{1}{4}$ sec. cor., marked on brass cap,

$\frac{1}{4}$
 S 7 S 8
 1916

and raise a mound of stone, 2 ft. base, $1\frac{1}{2}$ ft. high, W. of cor.

- 46.43 Spur, slopes S. 80° E. Thence along N. slope.
- 54.87 Spur, slopes E. Descend 110 ft.

Survey of
Subdivision of T. 13 N., R. 6 E.

Chains.

72.57
80.00

Gulch, course S.70°W. Asc.
Set an iron post, 3 ft. long, 2 ins. diam., 2 1/4 ins. in the ground, for cor. of secs. 5, 6, 7 and 8, marked on brass cap

T13N R6E
S 6 | S 5
S 7 | S 8
1916

And raise a mound of stone, 2 ft. base, 1 1/2 ft. high, W. of cor.
Land, rolling.
Soil, rocky, 4th rate.
No timber.
Undergrowth, mesquite, buck brush and scrub oak.
Fair grass.

40.00
80.04

S.89°53'E., on a random line, bet. secs. 5 and 8.
Set temp. 1/4 sec. cor.
Intersect N. and S. line, 4 lks. S. of the cor. of secs. 4, 5, 8 and 9.

Thence
N.89°55'W., on a true line, bet. secs. 5 and 8.
Over rolling land, through scattering undergrowth.
Asc.

5.10
15.05
25.05
36.05
40.02

Spur, slopes N.80°W. Desc. 35 ft.
Gulch, course N.80°W. Asc. 10 ft.
Spur, slopes N.80°W. Desc. 25 ft.
Gulch, course S.65°W. Asc. 20 ft.
Set an iron post, 3 ft. long, 1 in. diam., 12 ins. in the ground, in a mound of stone, for 1/4 sec. cor., marked on brass cap

1/4 S 5
S 8
1916

And raise a mound of stone, 2 ft. base, 1 1/2 ft. high, N. of cor.

50.95
70.35
80.04

Spur, slopes S. Desc. 40 ft.
Wash, course S.20°W. Asc.
The cor. of secs. 5, 6, 7 and 8.
Land, rolling.
Soil, rocky, 4th rate.
No timber.
Undergrowth, mesquite, and cactus.
Fair grass.

West on a true line, bet. secs. 6 and 7.
Over rolling and broken land, through scattering undergrowth.

6.50
22.14
40.00

Desc.
Wash, course S.15°E. Asc. 120 ft.
Spur, slopes S.55°W. Desc. 165 ft.
Set an iron post, 3 ft. long, 1 in. diam., 26 ins. in the ground, for 1/4 sec. cor., marked on brass cap

1/4 S 6
S 7
1916

And raise a mound of stone, 2 ft. base, 1 1/2 ft. high, N. of cor.

46.40
66.50
69.90
74.63

Gulch, course S.65°W. Asc. 25 ft.
Road, brs. N.15°E. and S.15°W.
Spur, slopes S.60°W. Desc. 170 ft.
Limestone cliff, 40 ft. high.

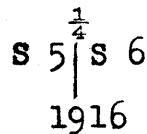
Survey of
Subdivision of T. 13 N., R. 6 E.

Chains.
79.42 Foot of descent; thence over rolling land.
87.24 Intersect E. bdy. of T. 13 N., R. 5 E., 3.48 chs. S. of the true
point for cor. of secs. 1 and 12, witnessed 15 lks. N. as de-
scribed in Book "B."
at the point of intersection, set an iron post 3 ft. long, 2
ins. in diam., 24 ins. in the ground, for closing cor. of secs.
6 and 7, marked on brass cap,

T13N
R6E
S 6
S12 | S 7 CC
1916

And raise a mound of stone, 2 ft. base, 1½ ft. high, E.
of cor.
Land, rolling and broken.
Soil, rocky, 4th rate.
No timber.
Undergrowth, palo verde, mesquite and cactus.
Scant grass.

40.00 N. 0° 3' W., on a random line, bet. secs. 5 and 6.
Set temp. ¼ sec. cor.
81.63 Intersect N. bdy. of Tp., 22 lks. E. of the cor. of secs.
5, 6, 31 and 32, hereinbefore described.
Thence
S. 0° 12' E., on a true line, bet. secs. 5 and 6.
Over rolling and broken land, through scattering undergrowth.
Asc.
5.50 Spur, slopes S. Desc.
10.40 Gulch, course W. Asc. 15 ft.
10.80 Desc. 35 ft.
41.63 Set an iron post, 3 ft. long, 1 in. diam., 26 ins. in the
ground, for ¼ sec. cor., marked on brass cap



And raise a mound of stone, 2 ft. base, 1½ ft. high, W.
of cor.
44.85 Road, brs. S. 70° W. to Camp Verde and N. 60° E. to Hantz'
Spring and N. 75° E. to Jones' ranch. Asc. gradually.
65.20 Spur, slopes S. 10° W. Desc. 70 ft.
81.63 The cor. of secs. 5, 6, 7 and 8.
Land, rolling and broken.
Soil, rocky, 4th rate.
No timber.
Undergrowth, palo verde, scrub cedar, mesquite and cat
claw.
Some grass

Boundaries of T. 13 N., R. 6 E.

Latitudes, departures, and closing errors.							
Line designated.	True bearing.	Dist.	Latitudes		Departures		
			N.	S.	E.	W.	
		chs.	chs.	chs.	chs.	chs.	
South Boundary (3RD STANDARD PAR. NORTH)	West	490.69				490.69	
West Boundary	North	1.12	1.12				
	N. 1°15'E.	40.70	40.69		.89		
	N. 0°47'E.	40.43	40.43		.55		
	N. 0°48'E.	40.42	40.42		.57		
	N. 1° 22'E.	40.71	40.70		.97		
	North	247.62	247.62				
	N. 55°00'E.	2.77	1.59		2.27		
	N. 0°28'E.	29.56	29.56		.24		
	N. 0°30'E.	23.22	23.22		.20		
	North	16.58	16.58				
North Boundary	S. 89°43'E.	484.36		2.40	484.36		
East Boundary	South	480.00		480.00			
Convergency					.52		
Totals			481.93	482.40	490.57	490.69	
				481.93		490.57	
	Error in latitude	-----		.47			
	Error in departure	-----				.12	

GENERAL DESCRIPTION

This township lies on the east side of the Verde River Valley and ranges in elevation from a hundred to twenty five hundred feet above the river. It is largely very rough and mountainous, although the west two ranges of sections are much lower and more rolling than the eastern portion of the township. There is very little soil on the broken slopes, bare ledges and large boulders occupying the larger part of the surface. On more gradual slopes and the mesas, the soil is a reddish brown loam and adobe, generally third rate, with a fair growth of grass. The lower lying portions of the township are covered with a cat claw, mesquite, mesquite, cactus, and wild cranberry. A uniform growth of scrub oak is found in the east four ranges of sections, and along Clear Creek, a fringe of cottonwood, sycamore, alder, ash, and mesquite.

Clear Creek flows thru secs. 9, 10, 11, 12, 16, 17 and 18. For the most part it flows thru a steep box canyon, varying in depth from four hundred to fifteen hundred feet, with nearly perpendicular walls in many places. The drainage North of Clear Creek flows directly into the canyon, while on the south side, the drainage is parallel to the canyon and in the southern part toward Cottonwood Creek.

A settler, Frank Jones, occupies and cultivates about twenty-five or thirty acres of land, just north of the cor. of secs. 2, 3, 10, and 11. He is the only settler in the township.

A number of prehistoric ruins exist in secs. 1, 2, 17 and 25. The one in sec. 1 on what is known as "Church Rock" is the largest and best preserved ruin and should be preserved.

	<p>[Faint, illegible text or markings, possibly bleed-through from the reverse side of the page]</p>	
--	------------------------------------------------------------------------------------------------------	--

58

BOOK 3324

CERTIFICATE OF UNITED STATES CADASTRAL ENGINEER.

I, Sidney E. Blout, U.S. Cadastral Engineer, hereby certify upon honor that, in pursuance of special instructions received from the U. S. Surveyor General, for Group 61, Arizona bearing date of the 14 th day of October, 1915, I have well, faithfully, and truly in my own proper person, and in strict conformity with said instructions, the Manual of Surveying Instructions, and the laws of the United States, surveyed and corrected all those parts or portions of the resurvey of the 3rd Standard Parallel North executed in February 1916 by William H. Richards Jr., U.S. Surveyor under same instructions for Group 61, Arizona in connection with the survey of subdivision of Township 13 North, Range 6 East of the Gila and Salt River Base and Meridian, in the State of Arizona, which are represented in the foregoing field notes and by diagram on page 59 hereof as having been executed by me, and under my direction; and that all the corners of said corrective resurvey have been established and perpetuated in strict accordance with the Manual of Surveying Instructions, and the special written instructions of the U. S. Surveyor General, for Group 61, Arizona, and in the specific manner described in the field notes, and that the foregoing are the original field notes of such corrective resurvey:

Phoenix - Arizona
Nov. 28, 1919.

Sidney E. Blout
U.S. Cadastral Engineer

APPROVAL

Office of the United States Surveyor General,

101

The foregoing field notes of the survey of

executed by

under his special instructions dated, 191, having been critically examined, and the necessary corrections and explanations made, the said field notes, and the surveys they describe, are hereby approved.

U. S. Surveyor General

I certify that the foregoing transcript of the field notes of the above described surveys in

has been correctly copied from the original notes on file in this office.

U. S. Surveyor General

Book "C"

4-680

BOOK 8884

FIELD ASSISTANTS. to
William H. Richards, Jr., U.S.S.

NAMES.	CAPACITY.
Marvin J. Lytle,	Chainman,
Charles L. Moore,	Chainman,
Clayton E. Ryckman,	Flagman,
Ben Swanssen,	Moundman,
Walter McDonald,	Moundman,

= DATE = DIAGRAM =

	3-27-16	3-27-16	3-27-16	3-26-16	3-26-16	3-25-16	
	6	5	4	3	2	1	
	4-5-16	4-5-16	3-30-16	3-24-16	3-24-16	3-20-16	
	7	8	9	10	11	12	
	4-4-16	4-4-16	3-29-16	3-17-16	3-9-16	3-9-16	
	18	17	16	15	14	13	
	4-3-16	4-4-16	3-14-16	3-15-16	3-8-16	3-5-16	
	19	20	21	22	23	24	
	4-3-16	4-3-16	3-13-16	3-11-16	3-7-16	3-4-16	
	30	29	28	27	26	25	
	4-2-16	4-2-16	3-13-16	3-10-16	3-6-16	2-28-16	
	31	32	33	34	35	36	
	4-2-16	3-13-16	3-10-16	3-6-16	2-27-16	3-10-19	
	3-8-19	3-9-19	3-9-19	3-9-19	3-10-19	3-10-19	
	2-23-16	2-23-16 2-26-16	2-26-16	2-26-16	2-26-16 2-27-16	2-27-16	

3rd Std. Par. N. Resurv.

Surveys executed on dates shown above, by Wm. H. Richards Jr. U.S.S.
Correction of Resurvey of 3rd, Std. Par. N, by Sidney E. Blout, U.S. Cadastral Engineer,
on dates shown in red.

For **CERTIFICATE OF UNITED STATES SURVEYOR.**

See Book "A." of ~~this~~ Group.

~~I, _____, U. S. Surveyor, hereby certify upon honor that, in pursuance of special instructions received from the U. S. Surveyor General for _____ bearing date of the _____ day of _____, 191 _____, I have well, faithfully, and truly in my own proper person, and in strict conformity with said instructions, the Manual of Surveying Instructions, and the laws of the United States, surveyed all those parts or portions of _____ of the _____ Meridian, in the State of _____, which are represented in the foregoing field notes as having been executed by me, and under my direction; and that all the corners of said survey have been established and perpetuated in strict accordance with the Manual of Surveying Instructions, and the special written instructions of the U. S. Surveyor General for _____ and in the specific manner described in the field notes, and that the foregoing are the original field notes of such survey.~~

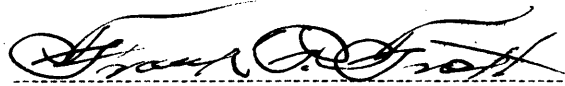
~~U. S. Surveyor~~

APPROVAL.

OFFICE OF THE UNITED STATES SURVEYOR GENERAL,

Phoenix, Arizona, May 14, 1920

The foregoing field notes of the ~~survey of~~ _____ **RESURVEY** of the _____ East boundary of Township 13 North, Range 6 East and Third Standard Parallel North, through Range 6 East, and SURVEY of North boundary and Subdivision lines of township 13 North, Range 6 East, of the Gila and Salt River Base and Meridian, in the State of Arizona, executed by William E. Richards, Jr., U. S. Surveyor, and correction of Richards' resurvey of 3rd Standard Parallel North, by Sidney E. Blout, U. S. Cadastral Engineer under his special instructions dated October 14, 1915, for Group 61, Arizona, having been critically examined, and the necessary corrections and explanations made, the said field notes, and the ^{re}surveys and surveys they describe, are hereby approved.


U. S. Surveyor General.

~~I certify that the foregoing transcript of the field notes of the above described surveys in _____ has been correctly copied from the original notes on file in this office.~~

U. S. Surveyor General.