

APR 25 1919

BOOK 3336

# FIELD NOTES

OF THE RETRACEMENT OF

Part of Subdivision lines of TOWNSHIP 12 NORTH, RANGE 2 EAST, and  
RESURVEY OF

North Boundary of Township 11 North, Range 2 East,

Part of the East Boundary of Township 12 North, Range 1 East,

Part of the Subdivision Lines of Township 12 North, Range 2 East, and

COMPLETION OF THE SURVEY OF

Subdivision Lines of Township 12 North, Range 2 East,

Of the Gila and Salt River Base and Meridian,

In the State of Arizona.

EXECUTED BY

H. L. Baldwin,

In the capacity of U. S. Surveyor, under Special Instructions dated November 13, 1917,

issued by the United States Surveyor General to govern surveys included in Group

No. 61, which were approved by the Commissioner of the General Land

Office, November 26, 1917, and Assignment Instructions dated February 8, 1918.

Retracement,  
Resurvey and Survey commenced March 6, 1918.

Retracement,  
Resurvey and Survey completed March 23, 1918.

3336

3336

1A  
186

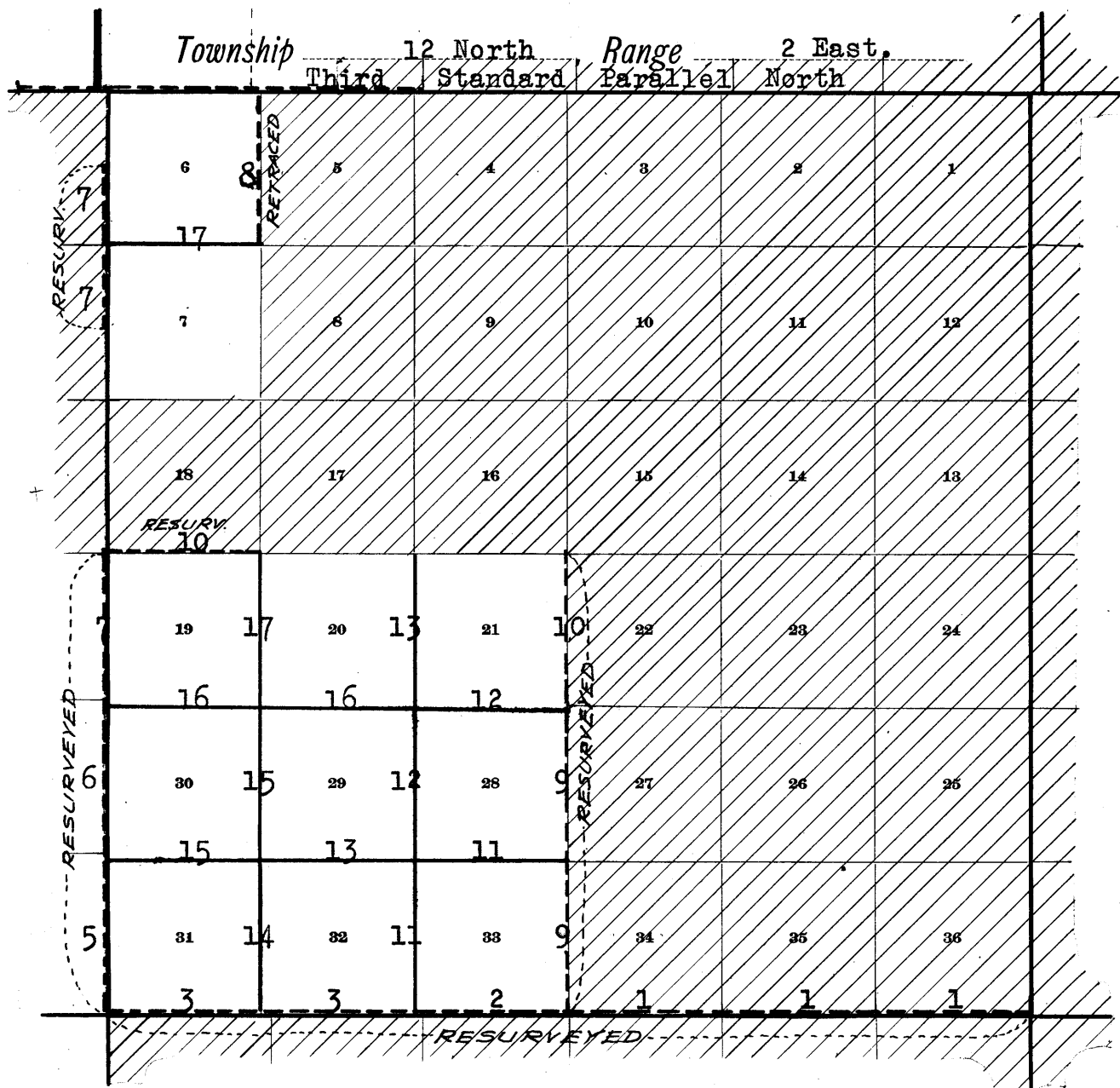
3336

Book "0"

Group 61 - - - Arizona.

ECOK\_ 3336

# INDEX DIAGRAM.



- Lines surveyed under this group.
- - - Lines <sup>retraced or</sup> resurveyed under this group.
- Lines of accepted surveys.
- - - Unsurveyed.
- /// Areas surveyed as per accepted plats on file.

Chains. Retracements, Resurveys and surveys executed by H. H. L. Baldwin, U. S. Surveyor, on dates shown on page 20 hereof, using Buff Favorite transit No. 9207, with Smith solar attachment. For description of instrument and certificate of approval, see Book "N".

Examine the adjustments of the transit and correct all errors; then, to test the solar apparatus by comparing its indications resulting from observations made during a.m. and p.m. hours with a meridian determined by observations on Polaris at elongation, proceed as follows:

March 4, 1918. At camp near the  $\frac{1}{4}$  sec. cor. of secs. 5 and 32, on the S. bdy. of T. 12 N., R. 2 E., in lat.  $34^{\circ}22'N.$ , long.  $112^{\circ}10\frac{1}{2}'W.$ , at 4 hrs. 0 m., p.m. l.m.t., set off  $34^{\circ}22\frac{1}{2}'N.$  on the lat. arc;  $6^{\circ}26'S.$  on the decl. arc; and determine a meridian with the solar and mark a point in the line thus determined by a tack in a stake 5 chs. N. of station.

At 8 hrs. 38 m., p.m., l.m.t., by watch which is set to correct local mean time, observe Polaris at western elongation, in accordance with the Manual of Instructions and mark a point in the line thus determined by a tack in a stake, 5 chs. N. of station.

March 5, 1918: At 7 hrs. 0 m., a.m., l.m.t., lay off the azimuth of Polaris,  $1^{\circ}22'$  to the east, and mark a point in the line thus determined by a tack driven in a stake, 5 chs. N. of station. The meridian thus determined by solar observations coincides with the meridian thus determined.

At 8 hrs. 0 m., a.m., l.m.t., set off  $34^{\circ}22\frac{1}{2}'N.$  on the lat. arc;  $6^{\circ}10\frac{1}{2}'S.$  on the decl. arc; and determine a meridian with the solar. The line thus determined coincides with the meridian determined by observations on Polaris at elongation.

The solar apparatus, by a.m. and p.m. observations, defines positions for meridians which coincide with the meridian determined by observations on Polaris at elongation; therefore conclude that the solar is in correct adjustment.

#### Resurvey of the N. Bdy. of T. 11 N., R. 2 E.

From the cor. of Ts. 12 N., Rs. 1 and 2 E., T. 11 N., R. 2 E., and fracl. T.  $11\frac{1}{2}$  N., R. 1 E., which is a malpais stone, 12 X 8 X 24 ins. above ground, firmly set, marked and witnessed as described by the Surveyor-General, East on a random line, along the S. bdy. of T. 12 N., R. 2 E., making diligent but unsuccessful search for the original  $\frac{1}{4}$  sec. and sec. cors.; and at 479.48 chs., fall 368 lks. N. of the cor. of Ts. 11 and 12 N., Rs. 2 and 3 E., which is a stake, 2 ins. square, set in a mound of stone, marked

XIN RIIIE SVI on one face,  
IINEIII SXXXI on one face,  
TIIN RIIIE SXXXVI on one face and  
SI on the 4th face; the marks are

The marks on this post are weatherbeaten and nearly obliterated. I reestablish this cor. in the same place as follows:

Set an iron post, 3 ft. long, 3 ins. diam., 20 ins. in the ground, on bed rock, in a mound of earth and stone, 5 ft. base,  $1\frac{1}{2}$  ft. high, for reestablished cor. of Ts. 11 and 12 N., Rs. 2 and 3 E., marked on brass cap

Chains.

T12N  
R2E | R3E  
S36 | S31  
-----  
S 11 S 6  
T11N  
1918

And raise a mound of stone, 2 ft. base, 1 1/2 ft. high, S. of cor.  
The falling answers to a correction of 0°26', or 61 lks. N. per mile, counting from the SE. cor. of the Tp.: therefore

240.48 N. 89°34' W., on a true line, along the N. bdy. of T. 11 N., R. 2 E., but without setting any corners, to (Proportionate distance) Set an iron post, 3 ft. long, 2 ins. diam., 28 ins. in the ground, for reestablished cor. of secs. 3, 4, 33 and 34, marked on brass cap

T12N R2E  
S33 | S34  
-----  
S 4 S 3  
T11N  
1918

And raise a mound of stone, 3 ft. base, 2 ft. high, N. of cor.

40.08 N. 89°34' W., on a true line, along the N. bdy. of sec. 4. Over rolling land, through scattering undergrowth. (Proportionate distance) The true point for reestablished 1/4 sec. cor. falls where it cannot be permanently established.

40.60 Set an iron post, 3 ft. long, 1 in. diam., 26 ins. in the ground, for witness cor. to reestablished 1/4 sec. cor. of sec. 4, marked on brass cap

1/4 S 4 WC  
-----  
1918

41.98 And raise a mound of stone, 3 ft. base, 2 ft. high, S. of cor.

(40.00 chs. from the closing cor. of secs. 32 and 33, T. 12 N., R. 2 E., hereinafter described.) Set an iron post, 3 ft. long, 1 in. diam., 28 ins. in the ground, for reestablished 1/4 sec. cor. of sec. 33, T. 12 N., R. 2 E., marked on brass cap

1/4 S 33  
-----  
1918

80.16 And raise a mound of stone, 3 ft. base, 2 ft. high, N. of cor.

(Proportionate distance) Set an iron post, 3 ft. long, 2 ins. diam., 16 ins. in the ground, on bed rock, in a mound of stone, for reestablished cor. of secs. 4 and 5, marked on brass cap

S 5 | S 4  
-----  
T11N | R2E  
1918

And raise a mound of stone, 3 ft. base, 2 ft. high, S. of cor.

Land, hilly and rolling.  
Soil, 2nd and 3rd rates.  
No timber.  
Undergrowth, cat claw, scrub oak and cactus.

Resurvey of the N. bdy. of Township 11 North, Range 2 East. 3.

Chains.

N. 89°34' W., on a true line, along the N. bdy. of sec. 5.  
 Over rolling land, thru scattering undergrowth.  
 1.82 The point for closing cor. of secs. 32 and 33, T. 12 N., R. 2 E., established as hereinafter described.  
 40.08 (Proportional dist.), Set an iron post, 3 ft. long, 1 in. in diam., 12 ins. in the ground, in a mound of stone, for reestablished  $\frac{1}{4}$  sec. cor. of sec. 5, marked on brass cap,

$\frac{1}{4}$              
 S 5  
 1918

and raise a mound of stone, 3 ft. base, 2 ft. high, S. of cor.  
 40.83 Intersect line 3-4 of Mining Claim "Central" Survey No. 1914, Big Bug Mining District, 12.68 chs. S. 11°57' W. of cor. No. 3. Thence over patented mineral land.  
 41.83 (Midway between the closing cors. of secs. 32 and 33, and secs. 31 and 32, T. 12 N., R. 2 E.)  
 Set an iron post, 3 ft. long, 1 in. in diam., 20 ins. in the ground, on bed rock, in a mound of stone, for reestablished  $\frac{1}{4}$  sec. cor. of sec. 32, T. 12 N., R. 2 E., marked on brass cap,

$\frac{1}{4}$  S 32  
 1918

and raise a mound of stone, 3 ft. base, 2 ft. high, N. of cor.  
 59.09 Intersect line 1-2 of Mining Claim "Central George" Survey No. 1914, Big Bug Mining District, 2.13 chs. S. 12° 22' W. of cor. No. 2, and 20.79 chs. N. 12° 22' E. of cor. No. 1. Leave patented mineral land.  
 80.16 (Proportionate distance) Set an iron post, 3 ft. long, 2 ins. in diam., 20 ins. in the ground, on bedrock, in a mound of stone, for reestablished cor. of secs. 5 and 6, marked on brass cap,

          
 S 6 | S 5  
 T11N R 2E  
 1918

and raise a mound of stone, 3 ft. base, 2 ft. high, S. of cor.  
 Land, rolling.  
 Soil, 2nd and 3rd rate.  
 No timber.  
 Undergrowth, catclaw, scrub oak and cactus.

N. 89°34' W., on a true line, along the N. bdy. of sec. 6.  
 Over hilly land, thru scattering undergrowth.  
 1.68 The point for closing cor. of secs. 31 and 32, T. 12 N., R. 2 E., established as hereinafter described.  
 8.46 U.S. Mineral Monument No. 1914, Big Bug Mining District, brs. S. 2.33 chs. dist.  
 40.08 (Proportionate dist.), Set an iron post, 3 ft. long, 1 in. in diam., 12 ins. in the ground on bed rock, in a mound of stone, for reestablished  $\frac{1}{4}$  sec. cor. of sec. 6, marked on brass cap,

$\frac{1}{4}$  S 6  
 1918

and raise a mound of earth and stone, 4 ft. base, 2 ft. high, S. of cor.  
 41.68 (40.00 chs. from the closing cor. of secs. 31 and 32, T. 12 N., R. 2 E., hereinafter described).

## A. Resurvey of N. bdy. of Township 11 North, Range 2 East.

Chains.

Set an iron post, 3 ft. long, 1 in. in diam., 20 ins. in the ground, on bed rock, in a mound of stone, for re-established sec. cor. of sec. 31, T. 12 N., R. 2 E., marked on brass cap;

S 31

1918

and raise a mound of stone, 3 ft. base, 2 ft. high, N. of cor.

78.68 The cor. of Ts. 11 and 12 N., R. 2 E., T. 11½ N., R. 1 E., and T. 12 N., R. 1 E.

Land, hilly.

Soil, rocky, 4th rate.

No timber.

Undergrowth, catclaw, scrub oak, and cactus.

Retracement for Resurvey of a portion of E. bdy. of T. 12  
N., R. 1 E.

40.05 From the cor. of Ts. 11 and 12 N., R. 2 E., frac. T. 11½ N., R. 1 E., and T. 12 N., R. 1 E., hereinbefore described, North, on a random line, along the E. bdy. of sec. 36 (S. ½), Fall 7 lks. W. of the sec. cor. of secs. 31 and 36, which is a basalt stone, 14x6x6 ins. above ground, set in a mound of earth and stone, marked and witnessed as described by the surveyor general.

The true course and dist. of this half mile are therefore N. 0° 6' E., 40.05 chs.

39.78 Thence north on random line on E. bdy. of sec. 36 (N. ½). Fall 2 lks. W. of the true point for cor. of secs. 25, 30, 31 and 36, located 21 lks. S. of witness cor.

The true course and dist. of this half mile are therefore N. 0° 2' E., 39.78 chs.

0.21 North, on a random line, along the E. bdy. of sec. 25 (S. ½). The witness cor. to cor. of secs. 25, 30, 31 and 36, which is a shale stone, 5x10x4 ins. above ground, firmly set, marked and witnessed as described by the surveyor general.

40.02 Fall 7 lks. W. of the sec. cor. of secs. 25 and 30, which is a quartzite stone, 8x9x9 ins. above ground, firmly set, marked and witnessed as described by the surveyor general.

The true course and dist. of this half mile are therefore N. 0° 6' E., 40.02 chs.

39.92 Thence N. on a random line on E. bdy. of sec. 25 (N. ½). Fall 5 lks. W. of the cor. of secs. 19, 24, 25 and 30, which is a schist stone, 8x8x6 ins. above ground, firmly set, marked and witnessed as described by the surveyor general.

The true course and dist. of this half mile are therefore N. 0° 4' E., 39.92 chs.

40.10 North, on a random line, along the E. bdy. of sec. 24 (S. ½). Fall 5 lks. W. of the sec. cor. of secs. 19 and 24, which is a schist stone, 10x5x8 ins. above ground, firmly set, marked and witnessed, as described by the surveyor general.

Retracement for Resurvey of part of E. bdy of T.12 N., R.1 E. 5

Chains

The true course and dist. of this half mile are therefore N.0°4'E., 40.10 chs.  
 Thence,  
 North, on random line, on E. bdy. of sec. 24 (N.  $\frac{1}{2}$ ).  
 40.04 Fall 13 lks. W. of the cor. of secs. 13, 18, 19 and 24, which is a schist stone, 10x6x10 ins. above ground, firmly set, marked and witnessed as described by the surveyor general.  
 The true course and dist. of this half mile are therefore N.0° 11'E., 40.04 chs.

From the  $\frac{1}{4}$  sec. cor. of secs. 7 and 12, on the E. bdy. of T.12 N., R.1 E., which is a white quartz stone, set in a mound of stone, marked and witnessed as described by the surveyor general,  
 North, on a random line, along the E. bdy. of sec. 7 (N.  $\frac{1}{2}$ ).  
 40.00 Diligent search in this vicinity failed to reveal any trace of the original cor. of secs. 1, 6, 7 and 12, which seems to have been destroyed by grading of road.  
 80.08 Fall 5 lks. E. of the true point for  $\frac{1}{4}$  sec. cor. of secs. 1 and 6, located 190 lks. S. of witness cor.  
 The true course and dist. of this half mile are therefore N.0° 2'W., 80.07 chs.  
 North, on a random line.  
 1.90 Intersect the witness cor. to  $\frac{1}{4}$  sec. cor. of secs. 1 and 6, which is a schist stone, 7x12x7 ins. above ground, firmly set, marked and witnessed as described by the surveyor general.

Resurvey of a portion of the E. bdy. of T.12 N., R. 1 E.

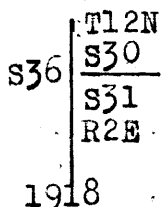
From the cor. of Ts. 11 and 12 N., R.2 E., frac. T.11  $\frac{1}{2}$  N., R.1 E., and T.12 N., R.1 E., hereinbefore described, N.0°6'E., on a true line, along the E. bdy. of sec. 36 (S.  $\frac{1}{2}$ ).  
 Over rolling land, thru scattering undergrowth.  
 Ascend gradually, 70 ft.  
 13.02 Wire fence brs. N. 50°E. and S. 50°W. Thence over level land.  
 28.60 Ascend 65 ft.  
 37.71 (40.00 chs. from the reestablished cor. of secs. 30 and 31, T.12 N., R.2 E., hereinafter described),  
 Set an iron post, 3 ft. long, 1 in. in diam., 20 ins. in the ground, on bed rock, in a mound of stone, for reestablished  $\frac{1}{4}$  sec. cor. of sec. 31, T.12 N., R.2 E., marked on brass cap,



and raise a mound of stone, 4 ft. base, 1  $\frac{1}{2}$  ft. high, E. of cor.  
 40.05 The original  $\frac{1}{4}$  sec. cor. of secs. 31 and 36, hereinbefore described. This cor. will hereafter refer to sec. 36. No change necessary.  
 Thence N.0° 2'E., on a true line, along E. bdy. of sec. 36 (N.  $\frac{1}{2}$ ), continuing measurement.  
 44.70 Top of hill; descend 225 ft.  
 61.55 Big Bug Creek, 1.50 chs. wide, course NE. Ascend 120 ft.  
 77.71 A point due west of the cor. of secs. 27, 28, 33 and 34, T. 12 N., R.2 E., hereinafter described),  
 Set an iron post, 3 ft. long, 2 ins. in diam., 10 ins. in the ground, on bed rock, in a mound of stone, for reestablished cor. of secs. 30 and 31, T.12 N., R.2 E., marked on brass cap,

6. Resurvey of a part of the E. bdy. of Township 12 N., R. 1 E.

Chains.



79.83 and raise a mound of stone, 5 ft. base, 2 ft. high, E. of cor. The true point for cor. of secs. 25, 30, 31 and 36, hereinbefore described. This will henceforth be true point for cor. of secs. 25 and 36 only.

Land, heavily rolling.  
Soil, rocky, 4th rate.  
No timber.  
Undergrowth, scrub oak and catclaw.

From true cor. point, N. 0° 6' E., on a true line, along the E. bdy. of sec. 25 (S. 1/2).

Over mountainous land, thru scattering undergrowth. Asc. 160 ft.

0.21 The original witness cor. to cor. of secs. 25, 30, 31 and 36, hereinbefore described. This cor. will hereafter refer to point for cor. of secs. 25 and 36 only. No change necessary.

5.53 Mining shaft brs. N. 63° E., 25 chs. dist.

15.13 Spur, slopes SW. Descend 60 ft.

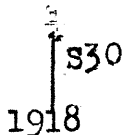
20.13 Ascend 75 ft.

21.38 Telephone line brs. N. 20° E. and S. 20° W.

31.38 Thence along E. slope.

37.88 (40.00 chs. from the reestablished cor. of secs. 30 and 31, T. 12 N., R. 2 E.)

Set an iron post, 3 ft. long, 1 in. in diam., 20 ins. in the ground, on bedrock, in a mound of stone, for reestablished 1/4 sec. cor. of sec. 30, marked on brass cap,



and raise a mound of stone, 3 ft. base, 1 1/2 ft. high, E. of cor.

40.02 The original 1/4 sec. cor. of secs. 25 and 30, hereinbefore described. This cor. will hereafter refer to sec. 25 only. No change necessary.

Thence N. 0° 4' E., on E. bdy. of sec. 25 (N. 1/2), continuing measurement.

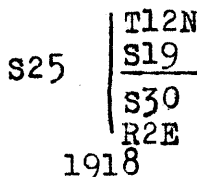
Descend.

59.61 Ravine, course E. Ascend 50 ft.

70.18 Thence over level land.

77.88 (80.00 chs. from the reestablished cor. of secs. 30 and 31, T. 12 N., R. 2 E.)

Set an iron post, 3 ft. long, 2 ins. in diam., 20 ins. in the ground, in a mound of stone, for reestablished cor. of secs. 19 and 30, T. 12 N., R. 2 E., marked on brass cap,



and raise a mound of stone, 3 ft. base, 2 ft. high, E. of cor.

79.94 The original cor. of secs. 19, 24, 25 and 30, hereinbefore described. This cor. will hereafter refer to secs. 24 and 25 only. No change necessary.

Undergrowth, scrub oak and catclaw. Land mountainous.



Resurvey of part of E. bdy. of Township 12 North, Range 1 East. 7

Chains.

Soil, rocky, 4th rate. No timber.

8.35 N. 0° 4' E., on a true line, along the E. bdy. of sec. 24 (S. 1/2).  
37.94 Over rolling land, thru scattering undergrowth.  
Wash, 50 lks. wide, course S. 20° E.  
(40.00 chs. from the reestablished cor. of secs. 19 and 30, T. 12 N., R. 2 E.),  
Set an iron post, 3 ft. long, 1 in. in diam., 26 ins. in the ground, for reestablished 1/4 sec. cor. of sec. 19 T. 12 N., R. 2 E., marked on brass cap,

1/4  
S19  
1918

40.10 and raise a mound of stone, 3 ft. base, 2 ft. high, E. of cor.  
The original 1/4 sec. cor. of secs. 19 and 24, hereinbefore described. This cor. will hereafter refer to sec. 24 only.  
No change necessary.

Thence N. 0° 11' E., on E. bdy. of sec. 24 (N. 1/2), continuing measurement:

Ascend 120 ft.

65.70 Thence over level land.

80.14 (82.20 chs. from reestablished cor. of secs. 19 and 30) The original cor. of secs. 13, 18, 19 and 24, hereinbefore described.

Land, mountainous and rolling.

Soil, rocky, 4th rate.

No timber.

Undergrowth, scrub oak and catclaw.

40.04 From the 1/4 sec. cor. of secs. 7 and 12, hereinbefore described, N. 0° 2' W., on a true line, bet. secs. 7 and 12 (N. 1/2).  
Over rolling land, thru scattering undergrowth.  
(Proportionate dist.), Set an iron post, 3 ft. long, 2 ins. in diam., 26 ins. in the ground, for reestablished cor. of secs. 1, 6, 7 and 12, marked on brass cap,

T12N  
R1E | R2E  
S 1 | S 6  
S12 | S 7  
1918

80.08 ans raise a mound of stone, 3 ft. base. 2 ft. high, W. of cor. Cor. falls 22 lks. E. of a newly graded roadway.  
Thence N. 0° 2' W., on true line, bet. secs. 1 and 6 (S. 1/2).  
Over rolling land, thru scattering undergrowth.  
The true point for 1/4 sec. cor. hereinbefore described.  
Land, rolling. Soil, rocky, 4th rate.  
No timber. Undergrowth, catclaw, scrub oak and cactus.

Retracement for Resurvey of a portion of the Subdivision of Township 12 North, Range 2 East.

40.00 From the reestablished cor. of secs. 3, 4, 33 and 34, on the S. bdy. of the Tp., hereinbefore described,  
North, on random line, along the W. bdy. of sec. 34.  
Diligent search in this vicinity failed to reveal any trace of the original 1/4 sec. cor. Set temp. 1/4 sec. cor.  
79.47 Fall 2.01 chs. E. of the cor. of secs. 27, 28, 33 and 34, which is a quartzite stone, 8x8x20 ins., lying on the ground, beside a mound of stone. The original cor. was reported a limestone, but as there are no limestones in the vicinity, and as this stone bears faint evidence of three grooves on one face, believe it to be the original cor.  
The true course and dist. of line bet. secs. 33 and 34 are therefore N. 1° 27' W., 79.50 chs.

g Retracement for Resurvey of part of the Subdivision of T.12N.R.2E

Chains.  
 North, on random line, along W. bdy. of sec. 27.  
 40.00 Diligent search in this vicinity failed to reveal any trace of the original  $\frac{1}{4}$  sec. cor. Set temp.  $\frac{1}{4}$  sec. cor.  
 81.98 Fall 15 lks. E. of a scattered pile of stones, without marked stone, but which a resident in this locality testifies is the original cor. location;  
 The true course and dist. of this mile are therefore N. 0° 6' W., 81.98 chs.

North, on a random line, along W. bdy. of sec. 22.  
 40.00 Diligent search in this vicinity failed to reveal any trace of the original  $\frac{1}{4}$  sec. cor. Set temp.  $\frac{1}{4}$  sec. cor.  
 79.82 Fall 9 lks. W. of the cor. of secs. 15, 16, 21 and 22, which is a granite stone, 6x10x8 ins. above ground, firmly set, marked and witnessed as described by the surveyor general.  
 The true course and dist. of this mile are therefore N. 0° 4' E., 79.82 chs.

From the cor. of secs. 17, 18, 19 and 20, which is a schist stone, 8x18x18 ins. above ground, firmly set, marked and witnessed, as described by the surveyor general,  
 West, on a random line, bet. secs. 18 and 19 (E.  $\frac{1}{2}$ ).  
 39.06 Fall 31 lks. S. of the  $\frac{1}{4}$  sec. cor., which is a schist stone 12x6x6 ins. above ground, firmly set, marked and witnessed as described by the surveyor general.  
 The true course and dist. of this half mile are therefore S. 89° 33' E., 39.06 chs.  
 Thence west on a random line, bet. secs. 18 and 19 (W.  $\frac{1}{2}$ ).  
 37.89 Fall 10 lks. N. of the cor. of secs. 13, 18, 19 and 24, on the W. bdy. of the Tp., hereinbefore described.  
 The true course and dist. of this half mile are therefore N. 89° 51' E., 37.89 chs.  
 True course and dist. of true line bet. secs. 18 and 19 are therefore S. 89° 51' E., 76.95 chs.

Retracement of part of Subdivision lines of T.12 N.R.2 E.

From the cor. of secs. 5, 6, 7 and 8, which is a schist stone, 10x4x8 ins. above ground, firmly set, marked and witnessed as described by the surveyor general,  
 North 0° 1' W, on random line, bet. secs. 5 and 6 (S.  $\frac{1}{2}$ ).  
 40.02 Fall 4 lks. W. of the  $\frac{1}{4}$  sec. cor. of secs. 5 and 6, which is a granite stone, 6x8x6 ins. above ground, firmly set, marked as described by the surveyor general, but witnessed by two bearing trees as follows:  
 A cedar limb, 8 ins. diam., brs. S. 53° E., 74 lks. dist., marked  $\frac{1}{4}$  S 5 B T.  
 A cedar limb, 14 ins. diam., brs. N. 48 $\frac{1}{2}$ ° W., 68 lks. dist., marked  $\frac{1}{4}$  S 6 B T.  
 The true course and dist. of this half mile are therefore N. 0° 2' E., 40.02 chs.  
 Thence N. 0° E. W., on a random line, bet. secs. 5 and 6 (N.  $\frac{1}{2}$ ).  
 38.80 Fall 8 lks. W. of the closing cor. of secs. 5 and 6, on the N. bdy. of Tp., which is a granite stone, 6x4x4 ins. above ground, firmly set, marked and witnessed, as described by the surveyor general.  
 The true course and dist. of this half mile are therefore N. 0° 7' E., 38.80 chs.

Resurvey of a Portion of the  
Subdivision of T. 12 N., R. 2 E.

Chains

From the reestablished cor. of secs. 3, 4, 33 and 34, on the S. bdy. of Tp., hereinbefore described, N. 1° 27' W., on a true line, along W. bdy. of sec. 34. Over hilly land, through scattering undergrowth. Wash, 10 lks. wide, course E.

25.60

31.50

39.49

(40.00 chs. southing from the cor. of secs. 27, 28, 33 and 34, hereinbefore described.)

Set an iron post, 3 ft. long, 1 in. diam., 26 ins. in the ground, for reestablished  $\frac{1}{4}$  sec. cor. of sec. 33, mkd. on brass cap

S33  
1918

and raise a mound of stone, 3 ft. base, 2 ft. high, W. of cor.

39.75

(Proportionate distance.) Set an iron post, 3 ft. long, 1 in. diam., 20 ins. in the ground, in a mound of stone, for  $\frac{1}{4}$  sec. cor. of sec. 34, marked on brass cap

S34  
1918

and raise a mound of stone, and earth, 3 ft. base, 1 $\frac{1}{2}$  ft. high, E. of cor.

66.50

79.50

Wash, 10 lks. wide, course E.  
The original cor. of secs. 27, 28, 33 and 34, hereinbefore described.

Land, hilly.

Soil, rocky, 3rd rate.

No timber.

Undergrowth, cat claw, scrub oak and cactus.

N. 0° 6' W. on a true line along the W. bdy. of sec. 27. Over hilly land, through scattering undergrowth.

1.00

23.60

39.99

Wash, 10 lks. wide, course E.

Wash, 10 lks. wide, course E.

(A point midway between the cor. of secs. 27, 28, 33 and 34, and the reestablished cor. of secs. 21 and 28, hereinafter described.)

Set an iron post, 3 ft. long, 1 in. diam., 28 ins. in the ground, for reestablished  $\frac{1}{4}$  sec. cor. of sec. 28, mkd. on brass cap

S28  
1918

and raise a mound of stone, 3 ft. base, 2 ft. high, W. of cor.

40.99

(Proportionate distance.) Set an iron post, 3 ft. long, 1 in. diam., 26 ins. in the ground, for reestablished  $\frac{1}{4}$  sec. cor. of sec. 27, marked on brass cap

S27  
1918

and raise a mound of stone, and earth, 3 ft. base, 2 ft. high, E. of cor.

52.00

64.00

67.00

79.98

Ravine, course E. Asc. rocky slope.

Top of ascent. Thence over rolling top to

Desc. rocky slope to

(A point due east of the cor. of secs. 20, 21, 28 and 29, hereinafter described.)

Set an iron post, 3 ft. long, 2 ins. diam., 18 ins. in the ground, in a mound of stone, for cor. of secs. 21 and 28, marked on brass cap

Resurvey of a Portion of the  
Subdivision of T. 12 N., R. 2 E.

10

Chains

T12N  
S21  
S28  
R2E  
1918

81.98 and raise a mound of stone, 2 ft. base, 2 ft. high, W. of cor.  
Set an iron post, 3 ft. long, 2 ins. diam., 26 ins. in the ground, for reestablished cor. of secs. 22 and 27, mkd. on brass cap

T12N  
S22  
S27  
R2E  
1918

and raise a mound of stone, 3 ft. base, 2 ft. high, E. of cor.  
Land, hilly.  
Soil, rocky, 4th rate.  
No timber.  
Undergrowth, cat claw, scrub oak and cactus.

12.00 N. 0° 4' E., on a true line along the W. bdy. of sec. 22.  
38.00 Over rough rolling land, descending along gradual slope, through scattering undergrowth.  
Foot of slope. Thence over gently rolling land.  
(40.00 chs. from the reestablished cor. of secs. 21 and 28,)  
Set an iron post, 3 ft. long, 1 in. diam., 28 ins. in the ground, for reestablished  $\frac{1}{4}$  sec. cor. of sec. 21, mkd. on brass cap

$\frac{1}{4}$   
S21  
1918

39.91 and raise a mound of stone, 3 ft. base, 2 ft. high, W. of cor.  
(Proportionate distance.) Set an iron post, 3 ft. long, 1 in. diam., 28 ins. in the ground, for reestablished  $\frac{1}{4}$  sec. cor. of sec. 22, marked on brass cap

$\frac{1}{4}$   
S22  
1918

49.00 and raise a mound of stone, and earth, 3 ft. base, 2 ft. high, E. of cor.  
78.50 Agua Fria River, 10 lks. wide, dry, course E. thence S.  
79.82 Enter rolling hilly land.  
Wash, 10 lks. wide, course SE.  
The cor. of secs. 15, 16, 21 and 22, hereinbefore described, Land, rough and rolling.  
Soil, rocky, 3rd rate.  
No timber.  
Undergrowth, cat claw, scrub oak and cactus.

36.95 From the cor. of secs. 13, 18, 19 and 24, on the W. bdy. of the Tp., hereinbefore described,  
S. 89° 51' E. on a true line bet. secs. 18 and 19.  
Over rough and mountainous land, through, scattering undergrowth.  
Set the original stone  $\frac{1}{4}$  sec. cor. of secs. 18 and 19, which is a schist, 12 X 6 X 18 ins., 12 ins. in the ground, for  $\frac{1}{4}$  sec. cor. for Sec. 19, only, mkd.  $\frac{1}{4}$  on E. face, and raise a mound of stone, 3 ft. base, 2 ft. high N. of cor.  
37.89 The original position of the  $\frac{1}{4}$  sec. cor. of secs. 18 and 19, brs. N. 21 lks. dist., which now stands as true point, for  $\frac{1}{4}$  sec. cor. for Sec. 18 only although all trace of  $\frac{1}{4}$  sec. cor. was removed.

Resurvey of a Portion of the  
Subdivision of T. 12 N., R. 2 E.

Chains.

76.95

The cor. of secs. 17, 18, 19 and 20, hereinbefore described.  
Land, rough and mountainous.  
Soil, rocky, 4th rate.  
No timber.  
Undergrowth, scrub oak and cat claw.

Completion of the Survey of the  
Subdivision of T. 12 N., R. 2 E.

From the cor. of secs. 27, 28, 32 and 34, hereinbefore  
described,  
West on a Sectional Correction Line, bet. secs. 28 and 33.  
Over rolling land, through scattering undergrowth.  
Asc. 100 ft.

10.00

Thence over undulating S. slope.

40.00

Set an iron post, 3 ft. long, 1 in. diam., 24 ins. in the  
ground, in a mound of stone, for  $\frac{1}{4}$  sec. cor., marked on  
brass cap

$\frac{1}{4}$  S28  
S33  
1918

And raise a mound of stone, 3 ft. base, 2 ft. high, N.  
of cor.

50.00

Asc. 75 ft.

62.70

Spur, slopes S.30°E. Continue ascent, 55 ft.

80.00

Set an iron post, 3 ft. long, 2 ins. diam., 24 ins. in the  
ground, for cor. of secs. 28, 29, 32 and 33, marked on  
brass cap

T12N R2E  
S29 | S28  
S32 | S33  
1918

And raise a mound of stone, 3 ft. base, 2 ft. high, W.  
of cor.

Land, rolling.

Soil, 2nd and 3rd rates; rocky.

No timber.

Undergrowth, cat claw, scrub oak, cactus and rabbit brush.

S.0°2'E., on a true line, bet. secs. 32 and 33.  
Over rolling land, through scattering undergrowth.

Asc.

6.10

Spur, slopes S.60°E. Desc. 90 ft.

16.00

Thence over gently rolling land.

28.10

Wash, 5 lks. wide, 2 ft. deep, course SE.

40.00

Set an iron post, 3 ft. long, 1 in. diam., 26 ins. in the  
ground, for  $\frac{1}{4}$  sec. cor., marked on brass cap

$\frac{1}{4}$   
S32 | S33  
1918

And raise a mound of stone, 3 ft. base, 2 ft. high, W.  
of cor.

46.70

Wash, 45 lks. wide, course N.70°E.

53.50

Road, brs. N.70°E. to Fossil Creek and W.

60.45

Asc. 190 ft.

76.88

Ridge, brs. E. and W. Desc.

78.97

Intersect the S. bdy. of Tp., 1.82 chs. N.89°34'W. of the  
reestablished cor. of secs. 4 and 5, T. 11 N., R. 2 E.,  
hereinbefore described.

At the point of intersection,

Set an iron post, 3 ft. long, 2 ins. diam., 26 ins. in the

Completion of the Survey of the  
Subdivision of T. 12 N., R. 2 E.

12

Chains.

ground, for closing cor. of secs. 32 and 33, marked on brass cap

C C.  
T12N | R2E  
S32 | S33

1918

And raise a mound of stone, 3 ft. base, 2 ft. high, N. of cor.  
Land, heavily rolling.  
Soil, rocky and gravelly; 3rd rate.  
No timber.  
Undergrowth, cat claw and cactus.

From the cor. of secs. 28, 29, 32 and 33, N. 0° 2' W., bet. secs. 28 and 29. Over rolling land, through scattering undergrowth. Asc. gradually.

- 1.90 Spur, slopes N. 70° E. Desc. 65 ft.
- 18.45 Old road, brs. N. 40° W. and S. 30° E.
- 29.15 Wash, 20 lks. wide, course S. 80° E. Thence over level land.
- 39.10 Old road, brs. N. 80° E. and S. 80° W.
- 40.00 Set an iron post, 3 ft. long, 1 in. diam., 10 ins. in the ground, on bed rock, in a mound of stone, for  $\frac{1}{4}$  sec. cor., marked on brass cap

$\frac{1}{4}$   
S29 | S28  
1918

- 49.15 Wash, 10 lks. wide, course N. 85° E.
- 63.30 Wash, 10 lks. wide, course S. 85° E.
- 73.20 Ledge of rock, 12 ft. high, brs. E. and W.
- 77.00 Asc. 50 ft.
- 80.00 Set an iron post, 3 ft. long, 2 ins. diam., 20 ins. in the ground, in a mound of stone, for cor. of secs. 20, 21, 28 and 29, marked on brass cap

T12N | R2E  
S20 | S21  
S29 | S28  
1918

And raise a mound of stone, 3 ft. base, 2 ft. high, W. of cor.  
Land, rolling.  
Soil, rocky, 3rd rate.  
No timber.  
Undergrowth, cedar, cat claw and scrub oak.

- 40.00 East on a random line, bet. secs. 21 and 28.
- 79.98 Set temp.  $\frac{1}{4}$  sec. cor.  
Intersect the ~~reestablished~~ cor. of secs. 21 and 28, on W. 1/2 of body of sec. 27, hereinbefore described, 2.00 chs. S. 0° 6' E. set from cor. of secs. 22 and 27, sec. 21, and 27, as hereinbefore described.  
Thence  
West on a true line, bet. secs. 21 and 28.  
Over rough and broken land, through scattering undergrowth. Asc. 75 ft.
- 14.18 Ridge, brs. N. 40° W. and S. 20° E. Desc. 40 ft.
- 19.65 Ravine, course S. 30° E. Asc. 130 ft.

Completion of the Survey of the  
Subdivision of T. 12 N., R. 2 E.

Chains.

36.10 Thence over level land, along top of hill.  
39.99 Set an iron post, 3 ft. long, 1 in. diam., 28 ins. in the  
ground, for  $\frac{1}{4}$  sec. cor., marked on brass cap

$\frac{1}{4}$  S21  
S28  
1918

And raise a mound of stone, 3 ft. base, 2 ft. high, N.  
of cor.  
Desc. 70 ft.  
48.40 Wash, 10 lks. wide, course S.50°W. Asc. 140 ft.  
67.00 Old mine dump and derrick br. S. about 7.00 chs. dist.  
72.13 Top of S. end of rock ledge. Desc. 95 ft.  
79.98 The cor. of secs. 20, 21, 28 and 29.  
Land, rough and broken.  
Soil, rocky, 4th rate.  
No timber.  
Undergrowth, cedar, scrub oak and cat claw.

40.00 N.0°2'W., on a random line, bet. secs. 20 and 21.  
81.97 Set temp.  $\frac{1}{4}$  sec. cor.  
Intersect the cor. of secs. 16, 17, 20 and 21, which is a  
schist, stone, 8 X 4 X 8 ins. above ground, firmly set,  
marked and witnessed as described by the Surveyor-  
General.

Thence  
S.0°2'E., on a true line, bet. secs. 20 and 21.  
Over rough and broken land, through scattering undergrowth.  
Desc. 20 ft.  
12.17 Spur, slopes E. Asc.  
18.00 Ridge, brs. N.40°W. and S.40°E.  
25.91 Intersect line 1-2 of Knob Hill Mining Claim, Survey No.  
2281, Agua Fria Mining District, 15.73 chs. S.40°55'E.  
off cor. No. 1, and 7.00 chs. N.40°55'W. of cor. No. 2.  
36.00 Ravine, course N.45°E. Asc. 20 ft.  
41.97 Set an iron post, 3 ft. long, 1 in. diam., 20 ins. in the  
ground, on bed rock, in a mound of stone, for  $\frac{1}{4}$  sec.  
cor., marked on brass cap.

S20 | S21  
1918

And raise a mound of stone, 3 ft. base, 2 ft. high, W.  
of cor.  
Continue ascent.  
47.50 Ridge, brs. E. and W. Desc. 40 ft.  
52.80 Ravine, course S.60°E. Asc.  
57.30 Spur, slopes S.85°E., Desc. 30 ft.  
60.10 Ravine, course E. Asc. 120 ft.  
71.50 Top of hill. Desc.  
81.97 The cor. of secs. 20, 21, 28 and 29.  
Land, rough and broken.  
Soil, rocky, 4th rate.  
No timber.  
Undergrowth, cedar, cat claw and cactus.

From the cor. of secs. 28, 29, 32 and 33,  
West on a Sectional Corection Line, bet. secs. 29 and 32.  
Over rolling land, through scattering undergrowth.  
Asc. 15 ft.  
1.80 Ridge, brs. N.50°E. and S.50°W. Desc. 50 ft.  
16.00 Thence over level land.  
32.53 Wash, 25 lks. wide, course S.5°W.

Chains.  
38.00 Asc. 110 ft.  
40.00 Set an iron post, 3 ft. long, 1 in. diam., 26 ins. in the ground, for  $\frac{1}{4}$  sec. cor., marked on brass cap

$\frac{1}{4}$  S29  
 $\frac{1}{4}$  S32  
 1918

And raise a mound of stone, 3 ft. base, 2 ft. high, N. of cor.

47.00 Ridge, brs. N.20°W. and S.20°E. Thence over rolling land.  
72.75 Desc. 30 ft.  
77.50 Draw, course S.50°E. Asc. 30 ft.  
80.00 Set an iron post, 3 ft. long, 2 ins. diam., 20 ins. in the ground, on bed rock, in a mound of stone, for cor. of secs. 29, 30, 31 and 32, marked on brass cap

T12N R2E  
 S30 | S29  
 S31 | S32  
 1918

And raise a mound of stone, 3 ft. base, 2 ft. high, W. of cor.  
Land, rolling.  
Soil, rocky, 4th rate; quartzite and malpais formation.  
No timber.  
Undergrowth, scrub oak, cat claw and cactus.

S.0°3'E., on a true line, bet. secs. 31 and 32.  
Over rough and mountainous land, through scattering undergrowth.  
Asc. 75 ft.

7.10 Spur, slopes S.40°E. Desc. 100 ft.  
12.50 Canyon, course E., containing small stream of water, 10 lks. wide, 1 in. deep, Asc. 150 ft.  
20.00 Ridge, brs. E. and W. Thence over rolling land.  
40.00 Set an iron post, 3 ft. long, 1 in. diam., 26 ins. in the ground, for  $\frac{1}{4}$  sec. cor., marked on brass cap

$\frac{1}{4}$   
 S31 | S32  
 1918

From which  
A cedar, 8 ins. diam., brs. S.20°E.,  
286 lks. dist., marked  $\frac{1}{4}$ S32 BT.  
A cedar limb, 4 ins. diam., brs. N.89°W.,  
383 lks. dist., marked  $\frac{1}{4}$ S31 BT.

Asc. gradually,  
41.50 Top of hill. Desc. E. slope, 150 ft.  
78.37 Intersect S. bdy. of Tp., 1.68 chs. N.89°34'W. of the reestablished cor. of secs. 5 and 6, T. 11 N., R. 2 E. hereinbefore described.  
At the point of intersection,  
Set an iron post, 3 ft. long, 2 ins. diam., 20 ins. in the ground, on bed rock, in a mound of stone, for closing cor. of secs. 31 and 32, marked on brass cap

C C  
 T12N | R2E  
 S31 | S32  
 1918

And raise a mound of stone, 3 ft. base, 2 ft. high, N. of cor.  
Land, rough and mountainous, and rolling.  
Soil, granite and malpais formations; 4th rate.



Completion of the Survey of the  
Subdivision of T. 12 N., R. 2 E.

Chains.	
	No timber. Undergrowth, cedar, cat claw and cactus.
	From the cor. of secs. 29, 30, 31 and 32, West on a Sectional Correction Line, bet. secs. 30 and 31. Over rough and mountainous land, through scattering under- growth. Asc.
1.40	Intersect line, 2-3 of Montana Mining Claim, Survey No.
1746	1746, Big Bug Mining District; 10.90 chs. N.3°12'W. of cor. No. 3, which is a schist stone, 24 X 16 X 8 ins., marked M No. 3 1746, and witnessed by a mound of stone.
9.00	Ridge, brs. N. and S. Desc. 115 ft.
15.25	Ravine, course S. Deserted mine shaft and dump br. N. about 4 chs. dist. Asc. 85 ft.
19.20	Ridge, brs. N. and S. Shaft house of mine brs. N.54°W., about 30 chs. dist.
19.59	Cor. No. 2 of Arizona Mining Claim, Survey No. 1746, Big Bug Mining District, brs. S.2½°E., 112 lks. dist.
	From the 19.59 chs. point, N.2½°W., 15.87 chs., to a point from which U. S. L. M. No. 1746, Big Bug Mining District, brs. N.88°10'E., 34½ lks. dist.
	From the 19.59 ch. point, N.2½°W., 21.45 chs., to a pile of rock, from which a stone marked cross (X) BR A No 1 1746 brs. N.85¼°W., 88 lks. dist. From a point 3 lks. W. of this bearing rock, U. S. L. M. No. 1746 brs. S.14°44'E., 5.83 chs. dist.
	Desc. 160 ft.
23.08	Ravine, course S.10°E. Asc. 85 ft.
40.00	Set an iron post, 3 ft. long, 1 in. diam., 26 ins. in the ground, for ¼ sec. cor., marked on brass cap
	$\frac{1}{4} \begin{matrix} S30 \\ S31 \\ 1918 \end{matrix}$
	And raise a mound of stone, 3 ft. base, 2 ft. high, N. of cor.
43.25	Road, brs. N.10°W. and S.10°E. Asc. 90 ft.
57.40	Top of hill. Desc. 100 ft.
69.60	Ravine, course S.5°E. Asc. 35 ft.
76.99	Intersect the <del>Reestablished cor. of secs. 29, 30, 31 and 32</del> <i>30 and 31 on W. bdy of Tps. hereinbefore described, 2.12 chs. S.50° 8' W. from true point of the cor. for cor. of secs. 25 and 36.</i>
	Land, rough and mountainous. Soil, rocky, 4th rate. No timber. Undergrowth, cat claw and scrub oak.
	From cor. of secs. 29, 30, 31 and 32.
	N.0°3'W., bet. secs. 29 and 30. Over heavily rolling land, through scattering undergrowth.
12.30	Wash, 5 lks. wide, course SE. Asc. 75 ft.
9.50	Ridge, brs. N.80°W. and S.80°E. A miner's cabin brs. N.80°E., about 7 chs. dist. Desc.
11.83	Cor. No. 4 of Montana Mining Claim, Survey No. 1746, Big Bug Mining District, brs. West 2.06 chs. dist.
16.50	Ravine, course S.85°E. Asc. 140 ft.
34.00	Ridge, brs. N.45°W. and S.50°E. Thence over level land.
40.00	Set an iron post, 3 ft. long, 1 in. diam., 16 ins. in the ground, on bed rock, in a mound of stone, for ¼ sec. cor., marked on brass cap

Chains.

$$\begin{array}{c} \frac{1}{2} \\ \hline S30 \quad | \quad S29 \\ \hline 1918 \end{array}$$

And raise a mound of stone, 3 ft. base, 2 ft. high, W. of cor.

Desc. 50 ft.

44.90 Ravine, course SE. Asc. 80 ft.  
46.00 Dim road, brs. N.80°W. and S.80°E.  
59.00 Spur, slopes SW. Desc.  
62.19 Shallow ravine, course W.  
80.00 Set an iron post, 3 ft. long, 2 ins. diam., 18 ins. in the ground, on bed rock, in a mound of stone, for cor. of secs. 19, 20, 29 and 30, marked on brass cap

$$\begin{array}{c} T12N \quad R2E \\ \hline S19 \quad | \quad S20 \\ \hline S30 \quad | \quad S29 \\ \hline 1918 \end{array}$$

And raise a mound of stone, 3 ft. base, 2 ft. high, W. of cor.

Land, heavily rolling.

Soil, rocky, 4th rate.

No timber.

Undergrowth, scrub oak and cat claw.

40.00 East on a random line, bet. secs. 20 and 29.  
80.20 Set temp.  $\frac{1}{4}$  sec. cor.  
Intersect N. and S. line, 5 lks. N. of the cor. of secs. 20, 21, 28 and 29.  
Thence  
N.89°58'W., on a true line, bet. secs. 20 and 29.  
Over rolling land, through scattering undergrowth.  
2.90 Wash, 5 lks. wide, course S.60°E. Asc. 150 ft.  
8.00 Road, brs. N.5°W. and S.10°E.  
13.20 Ridge, brs. N. and S. Desc. 100 ft.  
22.80 Ravine, course S.20°E. Asc. 60 ft.  
32.20 Spur, slopes S. Desc.  
34.80 Ravine, course S.5°W. Asc. 60 ft.  
40.10 Set an iron post, 3 ft. long, 1 in. diam., 16 ins. in the ground, to bed rock, in a mound of stone, for  $\frac{1}{4}$  sec. cor., marked on brass cap

$$\begin{array}{c} \frac{1}{4} \quad S20 \\ \hline S29 \\ \hline 1918 \end{array}$$

And raise a mound of stone, 3 ft. base, 2 ft. high, N. of cor.

Continue ascent, 10 ft.

42.00 Spur, slopes S. Desc. 50 ft.  
47.55 Wash, 15 lks. wide, course S.10°W. Asc. 30 ft.  
56.20 Spur, slopes S. Desc.  
65.00 Ravine, course S. Asc. 135 ft.  
65.40 Old road, brs. N. and S.5°E.  
78.10 Spur, slopes S.5°W. Desc. 15 ft.  
80.20 The cor. of secs. 19, 20, 29 and 30.  
Land, mountainous and rolling.  
Soil, rocky, 4th rate.  
No timber.  
Undergrowth, scrub oak, cat claw and cactus.

40.00 West on a random line, bet. secs. 19 and 30.  
76.78 Set temp.  $\frac{1}{4}$  sec. cor.  
Fall 15 lks. N. of the reestablished cor. of secs. 19 and 30, on the W. bdy. of Tp., hereinbefore described.

Thence

Completion of the Survey of the  
Subdivision of T. 12 N., R. 2 E.

17

DChains.

N.89°53'E., on a true line, bet. secs. 19 and 30.  
Over rolling land, through dense undergrowth.  
5.80 Shallow ravine, course S.30°E.  
20.30 Road, brs. N.40°W. and S.40°E.  
30.25 Telephone line, brs. N.25°E. and S.25°W. Asc. 35 ft.  
32.40 Ridge, brs. N. and S. Desc. 25 ft.  
36.78 Set an iron post, 3 ft. long, 1 in. diam., 16 ins. in the  
ground, in a mound of stone, for  $\frac{1}{4}$  sec. cor., marked on  
brass cap

$$\begin{array}{r} \frac{1}{4} \text{ S19} \\ \frac{1}{4} \text{ S30} \\ \hline 1918 \end{array}$$

And raise a mound of stone, 3 ft. base, 2 ft. high, N.  
of cor.  
42.60 Wash, course S.  
46.25 Road, brs. N.20°W. and S.20°E. Asc. 230 ft.  
62.30 Ridge, brs. N. and S. Desc. 150 ft.  
74.40 Ravine, course S. Asc. 20 ft.  
76.78 The cor. of secs. 19, 20, 29 and 30.  
Soil, rocky, 4th rate. Land, rolling and mountainous.  
No timber.  
Undergrowth, scrub oak and cat claw.

N.0°3'W., on a random line, bet. secs. 19 and 20.  
40.00 Set temp.  $\frac{1}{4}$  sec. cor.  
82.21 Fall 23 lks. W. of the cor. of secs. 17, 18, 19 and 20,  
hereinbefore described.  
Thence  
S.0°7'W., on a true line, bet. secs. 19 and 20.  
Over mountainous land, through scattering undergrowth.  
Desc. 100 ft.  
5.60 Telephone line, brs. N.20°E. and S.20°W.  
7.50 Ravine, course E. Asc. 175 ft.  
12.20 Asc. less abruptly.  
25.20 Spur, slopes E. Desc. 150 ft.  
31.31 U. S. M. M. No. 2162, Agua Fria Mining District., which is  
a cross cut on a high granite ledge, as described by  
the Surveyor-General, brs. S.57°W., 38.74 chs. dist.  
42.21 Set an iron post, 3 ft. long, 1 in. diam., 10 ins. in the  
ground, in a mound of stone, for  $\frac{1}{4}$  sec. cor., marked on  
brass cap

$$\begin{array}{c} \frac{1}{4} \\ \text{S19} \uparrow \text{S20} \\ \hline 1918 \end{array}$$

And raise a mound of stone, 3 ft. base, 2 ft. high, W.  
of cor. Continue descent, 50 ft.  
63.71 Old road, brs. N.60°W. and S.50°E.  
65.31 Ravine, course S.10°E. Asc. 70 ft.  
77.11 Top of hill. Desc. 40 ft.  
82.21 The cor. of secs. 19, 20, 29 and 30.  
Land, mountainous.  
Soil, rocky, 4th rate.  
No timber.  
Undergrowth, scrub oak, cat claw, cedar and juniper.

From the cor. of secs. 5, 6, 7 and 8, hereinbefore described,  
N.89°57'W., on a random line, bet. secs. 6 and 7.  
40.00 Set temp.  $\frac{1}{4}$  sec. cor.  
77.92 Fall 7 lks. S. of the reestablished cor. of secs. 1, 6, 7  
and 12, on the W. bdy. of Tp., hereinbefore described.  
Thence  
S.89°54'E., on a true line, bet. secs. 6 and 7.  
Over mountainous land, through scattering undergrowth.  
Asc. 300 ft.

Completion of the Survey of the  
Subdivision of T. 12 N., R. 2 E.

chains.

- 10.00 Ridge, brs. N. and S. Desc. 240 ft.  
 18.35 Ravine, course N. Asc. 75 ft.  
 28.80 Thence over rolling land.  
 37.70 Intersect line 3-4 of "Otselic" patented mining claim, Survey No. 1694, Agua Fria Mining District, 7.76 chs. N. 2°45'W. of cor. No. 3 thereof  
 37.92 Set an iron post, 3 ft. long, 1 in. diam., 20 ins. in the ground, in a mound of stone, for  $\frac{1}{4}$  sec. cor., marked on brass cap
- $$\begin{array}{r} \frac{1}{4} \text{ S } 6 \\ \frac{1}{4} \text{ S } 7 \\ \hline 1918 \end{array}$$
- And raise a mound of stone, 3 ft. base, 2 ft. high, N. of cor.  
 - From this cor., a quartzite stone, marked  $\frac{1}{4}$  on N. face, brs. 1 lk. E. and 3 lks. S. Destroy all trace of this marked stone, and the mound by which it is witnessed.  
 38.20 Telephone line, brs. N. 30°E. and S. 30°W.  
 41.90 Desc. 160 ft.  
 46.20 Ravine, course NE.  
 54.20 Right bank of Agua Fria River, brs. N. 85°W. and S. 85°E. Thence across bed of Agua Fria River, course S. 85°E.  
 54.71 Intersect line, 3-4 of Genegantslett Mining Claim, Survey No. 1694, Agua Fria Mining District, 2.10 chs. N. 8°01'W. of cor. No. 3.  
 55.90 Water in Agua Fria River, 25 lks. wide, 3 ins. deep, course S. 85°E.  
 59.20 Road, brs. N. 80°W. and S. 80°E.  
 63.76 Intersect line 3-4 of Copper Iron Mining Claim, Survey No. 2959, Agua Fria Mining District, 12.44 chs. N. 4°21'E. of cor. No. 3.  
 72.61 Intersect line 1-2 of Copper Iron Mining Claim, Survey No. 2959, Agua Fria Mining District, 10.86 chs. N. 4°21'E. of cor. No. 2.  
 74.12 Left bank of Agua Fria River, brs. NW. and SE. Asc. 120 ft.  
 77.92 The cor. of secs. 5, 6, 7 and 8.  
 Land, mountainous and rolling.  
 Soil, rocky, 4th rate.  
 No timber.  
 Undergrowth, scrub oak, cat claw and cactus.

Boundaries of SW. 1/4 of Township 12 North, Range 2 East.  
 Latitudes, departures and closing errors.

Line designated	True Bearing	Dist. chs.	Latitudes.		Departures.	
			N. chs.	S. chs.	E. chs.	W. chs.
South Boundary.	N. 89° 34' W.	239.00	1.82			239.00
West Boundary.	N. 0° 6' E.	40.05	40.05		.07	
	N. 0° 2' E.	39.78	39.78		.02	
	N. 0° 6' E.	40.02	40.02		.07	
	N. 0° 4' E.	80.02	80.02		.09	
	N. 0° 11' E.	40.04	40.04		.13	
Subdivisional North and East Boundaries.	S. 89° 51' E. East	76.95 160.00		.21	76.95 160.00	
	S. 0° 4' W.	79.82		79.82		.09
	S. 0° 6' E.	81.98		81.98		.14
	S. 1° 27' E.	79.50		79.47		2.01
Convergency					.13	
Totals			241.73	241.48	239.61	239.09
Error in latitude			241.48		239.09	
Error in departure			.25		.52	

GENERAL DESCRIPTION.

This township is heavy rolling, and in places very mountainous and rough. Land should all be classed as grazing and non-agricultural, owing to the lack of water for irrigation. Agua Fria in springtime carries considerable water, as is also the case with Big Bug Creek in sec. 31, but all other water is temporary in nature.

There are some ranchers in the Agua Fria bottom in secs. 22, 27, and 34.

Stoddard P.O., population about 200, at the flourishing mining camp of that name, is in sec. 6, and much copper ore is mined, concentrated and hauled to the R.R. of Mayer, 6 miles distant.

There would appear to be considerable mineral in the western portion of the area surveyed.

Book "0".

Group 61- - - Arizona.

Date Diagram.

T. 12 N., R. 2 E.

*3rd Standard Parallel North*

	6	5	4	3	2	1
RESURVEYED 3/18/18	3/16/18	3/16/18 RETRACED				
	7	8	9	10	11	12
	18	17	16	15	14	13
RESURVEYED 3/21/18	19	20	21	22	23	24
RESURVEYED 3/21/18	3/19/18	3/20/18	3/15/18	3/12/18		
RESURVEYED 3/21/18	30	29	28	27	26	25
RESURVEYED 3/21/18	3/10/18	3/15/18	3/12/18	3/10/18	3/6/18	RESURVEYED 3/6/18
RESURVEYED 3/21/18	31	32	33	34	35	36
RESURVEYED 3/21/18	3/23/18	3/14/18	3/11/18	3/9/18	3/9/18	3/9/18
	R E S U R V E Y E D					

retraced  
 Lines, resurveyed or surveyed by H. L. Baldwin, U. S.  
 Surveyor, on the dates shown on the above diagram.

4-680

**FIELD ASSISTANTS.**

From  
H. L. Baldwin, U. S. Surveyor.

NAMES.	CAPACITY.
<i>Willard Hutton</i>	<i>Chainman</i>
<i>Ben Mollette</i>	<i>Chainman.</i>
<i>R. C. Larkin</i>	<i>Flagman</i>
<i>Paul Armstrong</i>	<i>Moundman</i>

CERTIFICATE OF UNITED STATES SURVEYOR.

I, H. L. Baldwin, U. S. Surveyor, hereby certify upon honor that, in pursuance of special instructions received from the U. S. Surveyor General, for Group 61, Arizona.

bearing date of the 13th day of November, 1917, I have well, faithfully, and truly in my own proper person, and in strict conformity with said instructions, the Manual of Surveying Instructions, and the laws of the United States, retraced surveyed all those parts or portions of the Subdivision lines of T.12N., R. 2 E., Resurveyed all those parts or portions of the N. bdy. of T.11 N., R. 2 E., the East bdy. of T.12 N., R.1 E., and the Subdivision lines of T.12 N., R.2 E., and surveyed all those parts or portions of the Subdivision lines of T. 12 N., R. 2 E.,

of the Gila and Salt River Base and Meridian, in the State of Arizona, which are represented in the foregoing field notes and by diagram on page 20 hereof as having been executed by me, and under my direction; and that all the corners of said retrace ment, resurvey and survey have been established and perpetuated in strict accordance with the Manual of Surveying Instructions, and the special written instructions of the U. S. Surveyor General, for Group 61, Arizona, and in the specific manner described in the field notes, and that the foregoing are the original field notes of such surveys, retracements, resurveys and surveys.

Wichita Falls Texas Nov 22 1919 H. L. Baldwin U. S. Surveyor.

APPROVAL.

OFFICE OF THE UNITED STATES SURVEYOR GENERAL,

Phoenix, Arizona, May 14, 1920.

The foregoing field notes of the Retracement of Part of the Subdivision lines of Township 12 North, Range 2 East, Resurvey of North Boundary of Township 11 North, Range 2 East, Part of the East Boundary of Township 12 North, Range 1 East, Part of the Subdivision Lines of Township 12 North, Range 2 East, and COMPLETION OF THE SURVEY OF the Subdivision Lines of Township 12 North, Range 2 East, of the Gila and Salt River Base and Meridian, in the State of Arizona,

executed by H. L. Baldwin, U. S. Surveyor, under his special instructions dated November 13, 1917 for Group 61, Arizona, having been critically examined, and the necessary corrections and explanations made, the said field notes, and the surveys, retracements, resurveys and surveys they describe, are hereby approved.

Francis DeWolf U. S. Surveyor General.

I certify that the foregoing transcript of the field notes of the above described surveys in has been correctly copied from the original notes on file in this office.