

Book "P".

4-679

BOOK 3337

FIELD NOTES

RE-
OF THE SURVEY OF THE

South Boundary of Township 10 North, Range 3 East,

Part of the South Boundary of Township 10 North, Range 2 East, and

SURVEY OF

The East and West Boundaries and Subdivision Lines and

COMPLETION OF THE SURVEY OF

The South Boundary of Fractional Township 9 $\frac{1}{4}$ North, Range 3 East,

Of the Gila and Salt River Base and Meridian,

In the State of Arizona.

EXECUTED BY

H. L. Baldwin,

In the capacity of U. S. Surveyor, under Special Instructions dated November 13, 1917, issued by the United States Surveyor General to govern surveys included in Group No. 61, which were approved by the Commissioner of the General Land Office, November 26, 1917, and Assignment Instructions dated February 8, 1918.

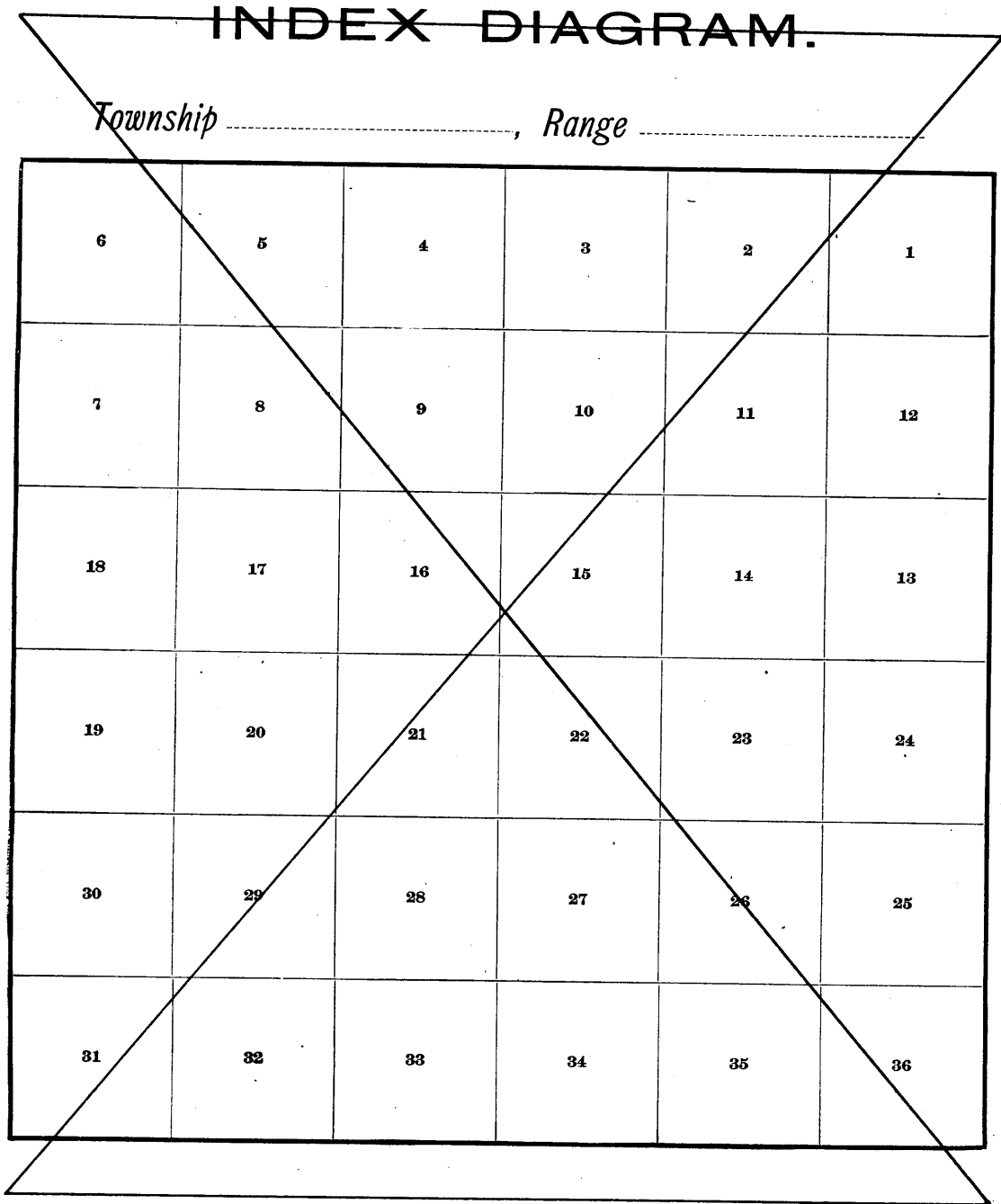
Resurvey and Survey commenced March 25, 1918.

Resurvey and Survey completed April 3, 1918.

3337

3337

SEE SPECIAL INDEX DIAGRAM.



BOOK 3337

Book "P".

Group 61 - - - Arizona.

Date Diagram

Fractional T. 9 $\frac{1}{2}$ N., R. 3 E.

	4/2/18	4/2/18	4/2/18	3/28/18	3/28/18	3/28/18	3/27/18
4/2/18	19 4/3/18	20 4/3/18	21 4/3/18	22 3/29/18	23 3/28/18	24 3/27/18	
4/1/18	30 3/30/18	29 3/30/18	28 3/29/18	27 3/29/18	26 3/28/18	25 3/27/18	
4/1/18	31 3/30/18	32 3/29/18	33 3/29/18	34 3/28/18	35 3/27/18	36 3/26/18	

Lines resurveyed or surveyed by H. L. Baldwin, U. S. Surveyor, on the dates shown on the above diagram.

Chains. Resurvey and Survey executed by H. L. Baldwin, U. S. Surveyor, on dates shown on page VI hereof, using Buff Favorite transit No. 9207, with Smith solar attachment. For description of instrument and certificate of approval, see Book "N".

March 24, 1918. Examine the adjustments of the transit and correct all errors; then, to test the solar apparatus by comparing its indications resulting from solar observations made during a.m. and p.m. hours with a meridian determined by observations on Polaris at elongation, proceed as follows:

At camp near the cor. of secs. 22, 23, 26 and 27, in T. 9½ N., R. 3 E., lat. 34°11½' N., long. 112°1½' W., at 4 hrs. 0 m., p.m., l.m.t., set off 34°11½' N. on the lat. arc; 1°25' N. on the decl. arc; and determine a meridian with the solar and mark a point in the line thus determined by a tack driven in a stake, 8 chs. N. of station.

At 7 hrs. 19 m., p.m., l.m.t., by watch, which is set to correct local mean time, observe Polaris at western elongation, in accordance with the Manual of Instructions, and mark a point in the line thus determined by a nail in a stake, 8 chs. N. of station.

March 25, 1918. At 7 hrs. 0 m., a.m., l.m.t., lay off the azimuth of Polaris, 1°21½' to the east, and mark the meridian thus determined by a tack in a stake, 8 chs. N. of station. The meridian determined by observations with the solar departs less than 1' from the true meridian determined by observations on Polaris at elongation.

At 8 hrs. 0 m., a.m., l.m.t., set off 34°11½' N. on the lat. arc; 1°41' N. on the decl. arc; and determine a meridian with the solar. The meridian thus determined departs less than 1' from the true meridian determined by observations on Polaris at elongation.

The solar apparatus, by a.m. and p.m. observations, defines positions for meridians which depart less than 1' from the true meridian determined by observations on Polaris at elongation; therefore conclude that the adjustments of the solar are satisfactory.

for Resurvey
Retracement of the S. Bdy. of T. 10 N., R. 3 E.

From the cor. originally established for the cor. of Ts. 9 and 10 N., Rs. 3 and 4 E., which is a malpais stone, 10 X 10 X 6 ins. above ground, properly marked, but without accessories,

West on a random line, along the S. bdy. of sec. 36.

40.00 Diligent search in this vicinity failed to reveal any trace of the original ¼ sec. cor. Set temp. ¼ sec. cor.

79.94 Fall 89 lks. N. of the cor. of secs. 1, 2, 35 and 36, which is a malpais stone, 24 X 10 X 6 ins., set in a mound of stone, and marked as described by the Surveyor-General.

From which

A cedar, 20 ins. diam., brs. N. 83¾° W., 186 lks. dist., marked TXRIII XXXV and XXXVI BT.

A charred cedar stump, 30 ins. diam., brs. S. 50° W., 208 lks. dist.

Also witnessed by a mound of stone, N. of cor.

The true course and distance of this mile are therefore S. 89° 22' W., 79.94 chs.

4 Retracement, ^{for resurvey} of the S. Bdy. of T. 10 N., R. 3 E.

Chains.	
40.00	West on a random line, along the S. bdy. of sec. 35. Diligent search in this vicinity failed to reveal any trace of the original $\frac{1}{4}$ sec. cor. Set temp. $\frac{1}{4}$ sec. cor.
79.90	Fall 77 lks. N. of the cor. of secs. 2, 3, 34 and 35, which is a malpais stone, 3 X 8 X 6 ins. above ground, firmly set, marked and witnessed as described by the Surveyor-General. The true course and distance of this mile are therefore S.89°27'W., 79.90 chs.
40.00	West on a random line, along the S. bdy. of sec. 34. Diligent search in this vicinity failed to reveal any trace of the original $\frac{1}{4}$ sec. cor. Set temp. $\frac{1}{4}$ sec. cor.
79.12	Fall 9 lks. N. of the cor. of secs. 3, 4, 33 and 34, which is a volcanic stone, 8 X 6 X 10 ins. above ground, firmly set, marked as described by the Surveyor-General, and witness by a scattered mound of stone, N. of cor. The true course and distance of this mile are therefore S.89°56'W., 79.12 chs.
39.99	West on a random line, along the S. bdy. of sec. 33.(E.½) Fall 76 lks. N. of the $\frac{1}{4}$ sec. cor. of secs. 4 and 33, which is a malpais stone, 6 X 10 X 10 ins. above ground, firmly set, marked and witnessed as described by the Surveyor-General. The true course and distance of this half mile are therefore S.89°55'W., 40.00 chs.
40.00	Thence West on a random line, on S. bdy. of sec. 33 (W.½) Fall 43 lks N. of the cor. of secs. 4, 5, 32 and 33, which is a malpais stone, 10 X 6 X 10 ins. above ground, firmly set, marked as described by the Surveyor-General, and witnessed by a mound of stone, N. of cor. The true course and distance of this half mile is therefore S.89°23'W., 40.00 chs.
40.02	West on a random line, along the S. bdy. of sec. 32.(E.½) Fall 29 lks. N. of the $\frac{1}{4}$ sec. cor. of secs. 5 and 32, which is a malpais stone in place, 12 X 12 X 10 ins. above ground, marked cross (X) on top, with $\frac{1}{4}$ on N. face, and witnessed by a mound of stone, W. of cor. The true course and distance of this half mile are therefore S.89°35'W., 40.02 chs.
39.71	Thence West, on a random line, on S. bdy. of sec. 32 (W.½) Fall 36 lks. N. of the cor. of secs. 5, 6, 31 and 32, which is a malpais stone, 8 X 10 X 18 ins. above ground, firmly set, marked as described by the Surveyor-General, and witnessed by a mound of stone, N. of cor. The true course and distance of this half mile are therefore S.89°29'W., 39.71 chs.
39.95	West on a random line, along the S. bdy. of sec. 31.(E.½) Fall 75 lks. N. of the $\frac{1}{4}$ sec. cor., of secs. 6 and 31, which is a malpais stone, 12 X 8 X 10 ins. above ground, firmly set, marked and witnessed as described by the Surveyor-General. The true course and distance of this half mile are therefore S.88°55'W., 39.96 chs. Thence, West, on a random line, on S. bdy. of sec. 31 (W.½)

for resurvey
Retracement of the S. Bdy. of T. 10 N., R. 3 E.

5

Chains.
47.81 Fall 43 lks. N. of the cor. originally established for cor. of Ts. 9 and 10 N., Rs. 2 and 3 E., which is a malpais rock in place, 5 X 4 X 2 ft. above ground, marked and witnessed as described by the Surveyor-General. The true course and distance of this half mile are therefore S.89°29'W., 47.81 chs.

Dependent
Resurvey of the S. Bdy. of T. 10 N., R. 3 E.

Alter the cor. of Ts. 9 and 10 N., Rs. 3 and 4 E., hereinbefore described, to refer to T. 10 N., R. 3 E. only (SE cor.) by effacing the markings on the S. edge of stone, and by raising a mound of stone, 2 ft. base, 1½ ft. high, N. of cor.

Thence
S.89°22'W., on a true line, along the S. bdy. of sec. 36. Over gently rolling land, through scattering undergrowth. (Proportionate distance) Set an iron post, 3 ft. long, 1 in. diam., 26 ins. in the ground, for reestablished ¼ sec. cor. of sec. 36, marked on brass cap

¼S36

1918

And raise a mound of stone, 3 ft. base, 2 ft. high, N. of cor.

40.41 The cor. of ^{Fracl}Ts. 9½ N., Rs. 3 and 4 E., established as hereinafter described.

53.31 Road, brs. NE. to Mitchell's Ranch and SW. to reservoir in sec. 27.

79.94 The original cor. of secs. 1, 2, 35 and 36, hereinbefore described. This cor. will hereafter refer to secs. 35 and 36 only. No change necessary.

Land, gently rolling.
Soil, rocky, 4th rate.
No timber.
Undergrowth, cat claw.

0.47 S.89°27'W., on a true line, along the S. bdy. of sec. 35. Over gently rolling land, through scattering undergrowth. (40.00 chs. westing from the cor. of ^{Fracl}Ts. 9½ N., Rs. 3 and 4 E.)

Set an iron post, 3 ft. long, 1 in. diam., 26 ins. in the ground, for ¼ sec. cor. of sec. 24, ^{Fracl}T. 9½ N., R. 3 E., marked on brass cap

¼S24

1918

From which

A cedar, 18 ins. diam., brs. S.29°W.,
410 lks. dist, marked ¼S24 BT.

No other trees within limits. Raise a mound of stone, 3 ft. base, 2 ft. high, S. of cor.

39.95 (Proportionate distance) Set an iron post, 3 ft. long, 1 in. diam., 26 ins. in the ground, for reestablished ¼ sec. cor. of sec. 35, marked on brass cap

Dependent

Resurvey of the S. Bdy. of T. 10 N., R. 3 E.

6

Chains.

1/4 S35

1918

40.47 And raise a mound of stone, 3 ft. base, 2 ft. high, N. of cor.
(80.00 chs. westing from the cor. of ^{Fract.} T. 9 1/2 N., R. 3 and 4 E.)

Set an iron post, 3 ft. long, 2 ins. diam., 28 ins. in the ground, for cor. of secs. 23, and 24, ^{Fract.} T. 9 1/2 N., R. 3 E., marked on brass cap

T10N
S23 | S24
T9 1/2 N | R3E
1918

79.90 And raise a mound of stone, 3 ft. base, 2 ft. high, S. of cor.

The cor. of secs. 2, 3, 34 and 35, hereinbefore described. Alter this cor. to refer to secs. 34 and 35 only by destroying the original mound of stone and by raising a new mound of stone, 2 ft. base, 1 1/2 ft. high, N. of cor.

Alongside this cor. is a post bearing a "Forest Reserve Boundary" sign.

Land, gently rolling.
Soil, rocky, 4th rate.
No timber.
Undergrowth, cat claw.

0.57 S. 89° 56' W., on a true line, along the S. bdy. of sec. 34. Over gently rolling land, through scattering undergrowth. (40.00 chs. westing from the cor. of secs. 23 and 24, ^{Fract.} T. 9 1/2 N., R. 3 E.)

Set an iron post, 3 ft. long, 1 in. diam., 26 ins. in the ground, for 1/4 sec. cor. of sec. 23 ^{Fract.} T. 9 1/2 N., R. 3 E., marked on brass cap

1/4 S23

1918

39.56 And raise a mound of stone, 3 ft. base, 2 ft. high, S. of cor.

(Proportionate distance) Set an iron post, 3 ft. long, 1 in. diam., 26 ins. in the ground, for reestablished 1/4 sec. cor. of sec. 34, marked on brass cap

1/4 S34

1918

40.57 And raise a mound of stone, 3 ft. base, 2 ft. high, N. of cor.
(80.00 chs. westing from the cor. of secs. 23 and 24, T. 9 1/2 N., R. 3 E.)

Set an iron post, 3 ft. long, 2 ins. diam., 26 ins. in the ground, for cor. of secs. 22 and 23, ^{Fract.} T. 9 1/2 N., R. 3 E., marked on brass cap

T10N
S22 | S23
T9 1/2 N | R3E
1918

79.12 And raise a mound of stone, 3 ft. base, 2 ft. high, S. of cor.

The original cor. of secs. 3, 4, 33 and 34, hereinbefore described. This cor. will hereafter refer to secs. 33 and 34 only. Rebuild mound of stone, N. of cor.

Dependent Resurvey of S. bdy of Township 10 North Range 3 East 7

Chains.

Soil, rocky, 4th rate; malpais formation.
No timber.
Undergrowth, catclaw.

S. 88° 55' W., on a true line, along the S^o bdy. of sec. 33,
(E. $\frac{1}{2}$).
Over rolling land, thru. scattering undergrowth.
1.45 (40.00 chs. westing from the cor. of secs. 22 and 23, fracl.
T. 9 $\frac{1}{2}$ N., R. 3 E.),
Set an iron post, 3 ft. long, 1 in. in diam., 20 ins. in
the ground, in a mound of stone, for $\frac{1}{4}$ sec. cor. of
sec. 22, fracl. T. 9 $\frac{1}{2}$ N., R. 3 E., marked on brass cap,

1/4 S 22
1918

and raise a mound of stone, 3 ft. base, 2 ft. high, S.
of cor.
40.00 The original $\frac{1}{4}$ sec. cor. of secs. 4 and 33, hereinbefore
described. This cor. will hereafter refer to sec. 33
only. No change necessary.

Thence,
S. 89° 23' W., continuing measurement on W. $\frac{1}{2}$ of S. bdy. of
sec. 33.
41.46 (80.00 chs. westing from the cor. of secs. 22 and 23, fracl.
T. 9 $\frac{1}{2}$ N., R. 3 E.)
Set an iron post, 3 ft. long, 2 ins. in diam., 24 ins. in
the ground, for cor. of secs. 21 and 22, fracl. T. 9 $\frac{1}{2}$
N., R. 3 E., marked on brass cap,

T10N
S21 | S22
R9 $\frac{1}{2}$ N | R3 E
1918

and raise a mound of stone, 3 ft. base, 2 ft. high, S.
of cor.
80.00 The original cor. of secs. 4, 5, 32 and 33, hereinbefore
described. This cor. will hereafter refer to secs. 32
and 33 only. Rebuild mound of stone, N. of cor.
Land, rolling.
Soil, rocky, 4th rate.
No timber.
Undergrowth, catclaw.

S. 89° 35' W., on a true line, along the S. bdy. of sec. 32,
(E. $\frac{1}{2}$).
Over rolling land thru. scattering undergrowth.
1.46 (40.00 chs. westing from the cor. of secs. 21 and 22, fracl.
T. 9 $\frac{1}{2}$ N., R. 3 E.),
Set an iron post, 3 ft. long, 1 in. in diam., 20 ins. in
the ground, in a mound of stone, for $\frac{1}{4}$ sec. cor. of sec.
21, fracl. T. 9 $\frac{1}{2}$ N., R. 3 E., marked on brass cap,

1/4 S 21
1918

and raise a mound of stone, 3 ft. base, 2 ft. high, S. of
cor.
17.00 Descend 160 ft.
32.00 Canyon, course NW. Ascend.
40.02 The original $\frac{1}{4}$ sec. cor. of secs. 5 and 32, hereinbefore de-
scribed. This cor. will hereafter refer to sec. 32
only. Remove the original mound of stone from the W.
to the N. of the cor.

8. Dependent Resurvey of South bdy of Township 10 North Range 3

Chains.

41.46 Thence S.89°29'W., continuing measurement on W. $\frac{1}{2}$ of S. bdy. of sec. 32.
 (80.00 chs. westing from the cor. of secs. 21 and 22, fracl. T. 9 $\frac{1}{2}$ N., R. 3 E.),
 Set an iron post, 3 ft. long, 2 ins. in diam., 20 ins. in the ground, in a mound of stone, 4 ft. base, 1 ft. high, for cor. of secs. 20 and 21, fracl. T. 9 $\frac{1}{2}$ N., R. 3 E., marked on brass cap,

T10N
 S20 S21
 T9 $\frac{1}{2}$ N R3 E
 1918

and raise a mound of stone, 3 ft. base, 2 ft. high, S. of cor.

42.85 Descend 40 ft.

50.95 Gulch, course N.30°E. Ascend 65 ft.

58.65 Thence over level land.

79.73 The original cor. of secs. 5, 6, 31 and 32, hereinbefore described. This cor. will hereafter refer to secs. 31 and 32 only. No change necessary.

Land, rolling and level.

Soil, rocky, 4th rate; malpais formation.

No timber.

Undergrowth, cedar, catclaw and cactus.

S. 88°55'W., on a true line, along the S. bdy. of sec. 31, (E. $\frac{1}{2}$).

Over rolling land, thru. scattering undergrowth.

1.73 (40.00 chs. westing from cor. of secs. 20 and 21, fracl. T. 9 $\frac{1}{2}$ N., R. 3 E.),

Set an iron post, 3 ft. long, 1 in. in diam., 20 ins. in the ground, on bedrock, in a mound of stone, 3 ft. base, 1 ft. high, for $\frac{1}{4}$ sec. cor. of sec. 20, fracl. T. 9 $\frac{1}{2}$ N. R. 3 E., marked on brass cap,

S 20
 1918

and raise a mound of stone, 3 ft. base, 2 ft. high, S. of cor.

17.73 Gulch, course S.80°E. Ascend.

27.73 Thence over rolling land.

39.96 The $\frac{1}{4}$ sec. cor. of secs. 6 and 31, hereinbefore described. This cor. will hereafter refer to sec. 31 only. No change necessary.

Thence S.89°29'W., continuing measurement on W. $\frac{1}{2}$ of S. bdy. of sec. 31.

41.74 (80.00 chs. westing from the cor. of secs. 20 and 21, T. 9 $\frac{1}{2}$ N., R. 3 E.)

Set an iron post, 3 ft. long, 2 ins. diam., 24 ins. in the ground, for cor. of secs. 19 and 20, fracl. T. 9 $\frac{1}{2}$ N., R. 3 E., marked on brass cap,

T10N
 S19 S20
 T9 $\frac{1}{2}$ N R3 E
 1918

and raise a mound of stone, 3 ft. base, 2 ft. high, S. of cor.

Descend 35 ft.

51.65 Draw, course N.40°E. Ascend gradually.

58.75 Descend gradually.

73.75 Draw, course NW.

81.73 (40.00 chs. westing from the cor. of secs. 19 and 20, fracl. T. 9 $\frac{1}{2}$ N., R. 3 E.)

Set an iron post, 3 ft. long, 1 in. in diam., 20 ins. in the ground, in a mound of stone, for $\frac{1}{4}$ sec. cor. of sec. 19, T. 9 $\frac{1}{2}$ N., R. 3 E., marked on brass cap,

Dependent

Resurvey of the S. Bdy. of T. 10 N., R. 3 E.

9

Chains.

~~1/4 S19~~
1918

87.77 And raise a mound of stone, 3 ft. base, 2 ft. high, S. of cor.
 The cor. of Ts. 9 and 10 N., Rs. 2 and 3 E., hereinbefore described. I alter this cor. to refer to Ts. 10 N., Rs. 2 and 3 E. only by effacing the markings on the boulder referring to the Tp. to the S., and by destroying the original mound of stone and building a new mound of stone, 2 ft. base, 1 1/2 ft. high, N. of cor.
 Land, rolling.
 Soil, rocky, 4th rate; malpais formation.
 No timber.
 Undergrowth, cat claw and cactus.

Completion of Survey of North Boundary of T. 9 N., R. 3 E.

40.00 From the cor. of secs. 2, 3, 34 and 35, on the N. bdy. of T. 9 N., R. 3 E., which is an iron post, properly set, marked and witnessed as described in Book "H", East on a true line, bet. secs. 2 and 35.
 Over gently rolling land, through scattering undergrowth.
 Set an iron post, 3 ft. long, 1 in. diam., 24 ins. in the ground, in a mound of stone, for 1/4 sec. cor., marked on brass cap

1/4 S35
S 2
1918

80.00 Dig pits, 18 X 18 X 12 ins., E. and W. of post, 3 ft. dist.
 Set an iron post, 3 ft. long, 2 ins. diam., 24 ins. in the ground, for cor. of secs. 1, 2, 35 and 36, marked on brass cap

T9 1/2 N R3 E
 S35 | S36
 S 2 | S 1
 T9 N
 1918

And raise a mound of stone, 3 ft. base, 2 ft. high, W. of cor.
 Land, gently rolling.
 Soil, rocky, 3rd and 4th rates; malpais formation.
 No timber.
 Undergrowth, rabbit brush, cactus and mesquite.

24.75 East on a true line, bet. secs. 1 and 36.
 40.00 Over gently rolling land, through scattering undergrowth.
 Old road, brs. NE. and SW.
 Set an iron post, 3 ft. long, 1 in. diam., 24 ins. in the ground, in a mound of stone, for 1/4 sec. cor., marked on brass cap

1/4 S36
S 1
1918

79.40 And raise a mound of stone, 3 ft. base, 2 ft. high, N. of cor.
 Top of rocky ledge, 15 ft. high, brs. N.25°E. and S.25°W.
 Desc. 40 ft.

80.00 Set an iron post, 3 ft. long, 3 ins. diam., 24 ins. in the ground, for cor. of Ts. 9 and 9 1/2 N., Rs. 3 and 4 E.,

18

Completion of Survey of
North Boundary of T. 9 N., R. 3 E.

Chains.

marked on brass cap

T9½N	
R3E	R4E
S36	S31
S 1	S 6
T9N	
1918	

And raise a mound of stone, 4 ft. base, 3 ft. high, S. of cor.

From this cor., the Brooklyn Mine and buildings br. N.70°E., about 40. chs. dist.

A store dwelling brs. N.63½°E., about 40 chs. dist.

Mining shaft by mill brs. N.79°20'E., about 40 chs. dist.

An open cut brs. S.81½°E., 20 chs. dist.

The rocks in the ledge above described bear many Indian inscriptions and hieroglyphics and there are many nearly obliterated ruins of Indian dwellings in this vicinity.

Land, gently rolling.

Soil, rocky, 2nd and 4th rates; malpais formation.

No timber.

Undergrowth, cedar, rabbit brush, cactus and mesquite.

Survey of the East Boundary of
Fractional T. 9½ N., R. 3 E.

From the cor. of Ts. 9 and 9½ N., Rs. 3 and 4 E., hereinbefore described,

North bet. secs. 31 and 36.

Over mountainous land, through scattering undergrowth.

Asc. 40 ft.

2.80 Rocky ledge, brs. N.30°E. and S.30°W. Thence over level mesa.

22.80 Ledge, 15 ft. high, brs. NW. and SE. Thence along E. slope, descending 110 ft.

37.80 Thence over level land.

40.00 Set an iron post, 3 ft. long, 1 in. diam., 26 ins. in the ground, for ¼ sec. cor., marked on brass cap

¼	
S36	S31
1918	

And raise a mound of stone, 3 ft. base, 2 ft. high, W. of cor.

45.00 Asc. 65 ft.

50.00 Same ledge, brs. NE. and SW. Thence over rolling land.

58.80 Road, brs. NW. and SE. Thence over level land.

80.00 Set an iron post, 3 ft. long, 2 ins. diam., 24 ins. in the ground, for cor. of secs. 25, 30, 31 and 36, marked on brass cap

T9½N	
R3E	R4E
S25	S30
S36	S31
1918	

And raise a mound of stone, 3 ft. base, 2 ft. high, W. of cor.

Land, mountainous, rolling and level.

Soil, rocky, 3rd and 4th rates; malpais formation.

No timber.

Undergrowth, cedar, scrub oak, cat claw and cactus.

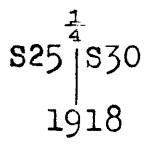
Survey of the East Boundary of
Fractional T. 9½ N., R. 3 E.

BOOK 3337

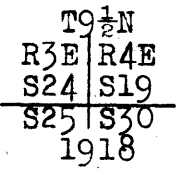
91

Chains.

North bet. secs. 25 and 30.
 Over gently rolling land, through scattering undergrowth.
 8.30 Old road, brs. N.10°E. and S.10°W.
 40.00 Set an iron post, 3 ft. long, 1 in. diam., 20 ins. in the
 ground, in a mound of stone, for ¼ sec. cor., marked on
 brass cap

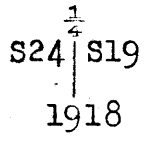


And raise a mound of stone, 3 ft. base, 2 ft. high, W.
 of cor.
 52.50 Wash, 12 lks. wide, 4 ins. deep, course S.70°W.
 80.00 Set an iron post, 3 ft. long, 2 ins. diam., 24 ins. in the
 ground, for cor. of secs. 25, and 30 and fracl. secs.
 19 and 24, marked on brass cap



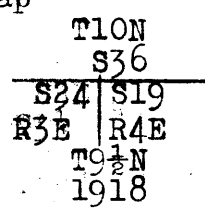
And raise a mound of stone, 3 ft. base, 2 ft. high, W.
 of cor.
 Land, gently rolling.
 Soil, rocky, 4th rate; malpais formation.
 No timber.
 Undergrowth, rabbit brush, cactus and cat claw.

North bet. fracl secs. 19 and 24.
 Over gently rolling land, through scattering undergrowth.
 0.70 Old road, brs. NE. and SW.
 27.00 Draw, course S.75°W. Asc. 60 ft.
 40.00 Set an iron post, 3 ft. long, 1 in. diam., 20 ins. in the
 ground, in a mound of stone, for ¼ sec. cor., marked on
 brass cap



And raise a mound of stone, 3 ft. base, 2 ft. high, W.
 of cor.
 42.00 Thence over rolling land.
 51.70 Intersect S. bdy. of T. 10 N., R. 3 E., 0.44 chs. S.89°22'W.
 of the reestablished ¼ sec. cor. of sec. 36, hereinbe-
 fore described.

At the point of intersection,
 Set an iron post, 3 ft. long, 3 ins. diam., 28 ins. in the
 ground, for cor. of fracl. Ts. 9½N., Rs. 3 and 4 E.,
 marked on brass cap



And raise a mound of stone, 3 ft. base, 2 ft. high, S.
 of cor.
 Land, rolling.
 Soil, rocky, malpais formation; 2nd and 4th rates.
 No timber.
 Undergrowth, rabbit brush, cat claw and cactus.

Survey of the West Boundary of Fractional T. 9 1/2 N., R. 3 E.

12

chains.

From the cor. of Ts. 9 and 9 1/2 N., Rs. 2 and 3 E., which is an iron post, properly set, marked and witnessed as described in Book "I",

North bet. secs. 31 and 36. Over mountainous land, through scattering undergrowth. Along W. slope of Agua Fria Canyon.

- 14.00 Asc. 70 ft.
- 26.00 Desc. 80 ft.
- 31.00 Asc. 40 ft.
- 37.00 Desc. 50 ft.
- 40.00 Asc. 30 ft.

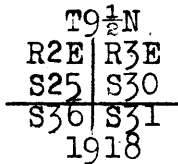
Set an iron post, 3 ft. long, 1 in. diam., on bed rock, in a mound of stone, for 1/4 sec. cor., marked on brass cap



And raise a mound of stone, 3 ft. base, 2 ft. high, W. of cor.

- 80.00 Asc. 335 ft.

Set an iron post, 3 ft. long, 2 ins. diam., 12 ins. in the ground, in a mound of stone, for cor. of secs. 25, 30, 31 and 36, marked on brass cap

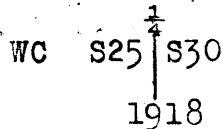


And raise a mound of stone, 3 ft. base, 2 ft. high, W. of cor.

Land, mountainous. Soil, malpais boulders. No timber. Undergrowth, cat claw and cactus.

It being impracticable to survey the line bet. secs. 25 and 30 northward from the cor. of secs. 25, 30, 31 and 36, because of the precipitous nature of the Agua Fria Canyon, along which this line runs, offset East 4.46 chs., to a point 225 ft. above cor.; thence North on offset line, through sec. 30.

- 40.00 Over level mesa top, through scattering undergrowth. Offset West 4.21 chs., and on edge of canyon rim, at a point 25 ft. E. of true point for 1/4 sec. cor. Set an iron post, 3 ft. long, 1 in. diam., on solid rock, in a mound of stone, 4 ft. base, 3 ft. high, for witness cor. to 1/4 sec. cor., marked on brass cap



And raise a mound of stone, 2 ft. base, 1 1/2 ft. high, W. of cor.

Thence North on offset line, 0.25 chs. E. of true line. Asc. 40 ft.

- 48.90 Thence over level land.
- 52.50 Desc. 125 ft.
- 59.50 Canyon, course W. Asc. 125 ft.
- 66.80 Thence over broken land.
- 80.00 Offset West 0.25 chs., and

Set an iron post, 3 ft. long, 2 ins. diam., 20 ins. in the ground, for cor. of secs 25 and 30 and fract. secs 19 & 24, marked on brass cap

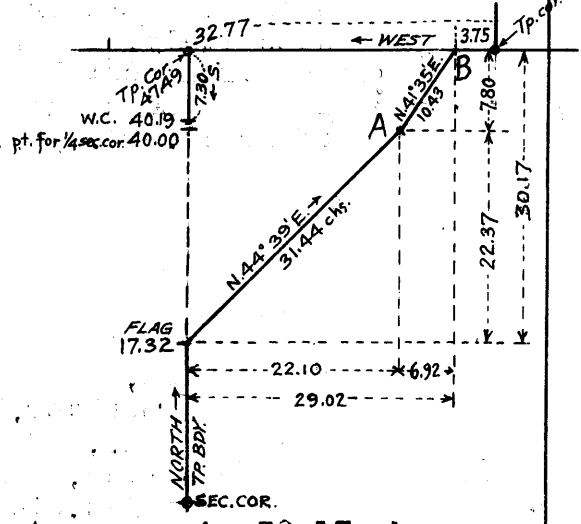
Chains.

T9 1/2 N.
R2E | R3E
S24 | S19
S25 | S30
1918

and raise a mound of stone, 3 ft. base, 2 ft. high, W. of cor.
Land, mountainous.
Soil, rocky, 4th rate; malpais formation.
No timber.
Undergrowth, catclaw and cactus.

North, bet. fracl. secs. 19 and 24.
Over rocky mountainous land, thru, scattering undergrowth.
16.00 Descend.
17.32 Top of cliff, 200 ft. high, bearing NE. and SW., facing NW., overlooking the Agua Fria river. North of this point, chain measurement is impracticable; therefore, leave flag at this point, and run traverse along the top of cliff, as follows:

N. 44° 39' E., 31.44 chs., and set flag marked "A" on diagram.
Thence,
N. 41° 35' E., 10.43 chs. to an intersection with S. bdy. of T. 10 N., R. 2 E., 3.75 chs. W. of reestablished cor. of Ts. 10 N., Rs. 2 and 3 E. hereinbefore described, at which intersection, set flag marked "B" on diagram.



The computed northing of this traverse is 30.17 chs., which added to 17.32 chs. gives 47.49 chs. as the length of the line bet. fracl. secs. 19 and 24 projected. The computed easting of the traverse is 29.02 chs., which added to 3.75 chs., gives 32.77 chs. as the proper dist. W. of reestablished cor. of Ts. 10 N., Rs. 2 and 3 E., at which the W. bdy. of fracl. T. 9 1/2 N., R. 3 E., projected N. would intersect the S. bdy. of T. 10 N., R. 2 E.

From the cor. of fracl. Ts. 9 1/2 N., Rs. 2 and 3 E., hereinafter described,
South, bet. fracl. secs. 19 and 24, along W. wall of Agua Fria river canyon, 7.30 chs. to a point 40.19 chs. N. of cor. of secs. 25 and 30, and fracl. secs. 19 and 24. Set witness cor. to 1/4 sec. cor. of fracl. secs. 19 and 24 at this point, as the true point for 1/4 sec. cor. falls in Agua Fria river.

39.50 (Approximate) Agua Fria river, running water, 12 ins. deep, about 100 lks. wide, course SW.
40.00 True point for 1/4 sec. cor. in river.
40.19 On right, or west bank of Agua Fria river, brs. NE. and SW., about 1200 ft. below 17.32 ch. station. Set an iron post, 3 ft. long, 1 in. in diam., on rocky ground, in a mound of stone, 4 ft. base, 2 1/2 ft. high, for witness cor. to 1/4 sec. cor., marked on brass cap,

S24 | S19
W.C.
1918

and raise a mound of stone 3 ft. base, 2 ft. high, W. of cor.
47.49 Intersect the cor. of fracl. Ts. 9 1/2 N., Rs. 2 and 3 E. hereinafter described.

14 Resurvey- Part of South hdy of Township 10 North Range 2 East

Chains.

Land, mountainous and rough. Soil, rocky, 4th rate.
No timber. Undergrowth, catclaw and cactus.

From reestablished cor. of Ts. 10 N., Rs. 2 and 3 E., here-
inbefore described,
West, on true line, on part of S. bdy. of sec. 36, T. 10 N.,
R. 2 E.

Over rough, rocky, mountainous land, thru scattering un-
dergrowth; descend.

3.75 Terminus of traverse hereinbefore described, at E. rim of
canyon of Agua Fria river, brs. NE. and SW. Descend
about 1000 ft. to bottom of canyon.

Chaining is impracticable W. from 3.75 ch. point.

30.00 (Approximate) Agua Fria river, running water, 12 ins. deep,
100 lks. wide, course S.

32.77 Point for establishment of cor. of fracl. Ts. 9 $\frac{1}{2}$ N., Rs. 2 and
3 E. on west wall of canyon. This point is located
by sighting on flag "B" of traverse hereinbefore de-
scribed, and flag left at 17.32 ch. station on line bet.
fracl. secs. 19 and 24 of W. bdy. of fracl. T. 9 $\frac{1}{2}$ N., R. 3 E.,
both of which are visible, and bear east and south re-
spectively. Therefore, at this point,

Set an iron post, 3 ft. long, 3 ins. in diam., on rocky ground,
in a mound of stone, 5 ft. base, 2 $\frac{1}{2}$ ft. high, for cor.
of fracl. Ts. 9 $\frac{1}{2}$ N., Rs. 2 and 3 E., marked on brass cap,

T10N	
S24	S19
R2E	S3E
T9 $\frac{1}{2}$ N	
1918	

from which,

A boulder, 10x20x15 ft. above ground, brs. N. 12 $\frac{1}{2}$ °
E., 23 lks. dist., marked cross (x) BR.

A rock, 4x3x2 ft. above ground, brs. S. 50° W., 3
lks. dist., marked cross (x) BO.

A high crag, brs. N. 3 $\frac{1}{2}$ ° W., about 20 chs. dist.

A bushy cedar on top of hill of canyon rim, brs.
N. 87 $\frac{1}{2}$ ° E., about 30 chs. dist.

The highest of three rocks across canyon, brs. N.
47 $\frac{1}{2}$ ° E., about 10 chs. dist.

Land, mountainous, and rough.

Soil, rocky, 4th rate.

No timber.

Undergrowth, catclaw and cactus.

Survey of the Subdivision of
Fractional T. 9 $\frac{1}{2}$ N., R. 3 E.

chains.	<p>From the cor.. of secs. 1, 2, 35 and 36, on the S. bdy. of the Tp., hereinbefore described, N.0°1'W., bet. secs. 35 and 36. Over nearly level land, through scattering undergrowth. Set an iron post, 3 ft. long, 1 in. diam., 26 ins. in the ground, for $\frac{1}{4}$ sec. cor., marked on brass cap</p> <p style="text-align: center;"> $\begin{array}{c} \frac{1}{4} \\ \hline S35 \mid S36 \\ \hline 1918 \end{array}$ </p> <p>And raise a mound of stone, 3 ft. base, 2 ft. high, W. of cor.</p>
40.00	<p>Set an iron post, 3 ft. long, 2 ins. diam., 24 ins. in the ground, for cor. of secs. 25, 26, 35 and 36, marked on brass cap</p> <p style="text-align: center;"> $\begin{array}{c} T9\frac{1}{2}N \mid R3E \\ \hline S26 \mid S25 \\ \hline S35 \mid S36 \\ \hline 1918 \end{array}$ </p> <p>And raise a mound of stone, 3 ft. base, 2 ft. high, W. of cor. Land, gently rolling. Soil, rocky, 3rd and 4th rates; malpais formation. No timber. Undergrowth, cat claw.</p>
80.00	<p>East on a random line, bet. secs. 25 and 36. Set temp. $\frac{1}{4}$ sec. cor.</p>
40.00	<p>Intersect E. bdy. of Tp., 6 lks. N. of the cor. of secs. 25, 30, 31 and 36, hereinbefore described. Thence N.89°57'W. on a true line bet. secs. 25 and 36. Over nearly level land, through scattering undergrowth. Old road brs. NE and SW.</p>
79.77	<p>Set an iron post, 3 ft. long, 1 in. diam., 26 ins. in the ground, for $\frac{1}{4}$ sec. cor., marked on brass cap</p> <p style="text-align: center;"> $\begin{array}{c} \frac{1}{4} S25 \\ \hline S36 \\ \hline 1918 \end{array}$ </p> <p>And raise a mound of stone, 3 ft. base, 2 ft. high, N. of cor.</p>
4.00	<p>Old road, brs. NW. and SE.</p>
39.88 $\frac{1}{2}$	<p>The cor. of secs. 25, 26, 35 and 36. Land, gently rolling. Soil, rocky, 2nd and 3rd rates; malpais formation. No timber. Undergrowth, cat claw.</p>
75.17	<p>N.0°1'W., bet. secs. 25 and 26. Over nearly level land, through scattering undergrowth. Old road, brs. N.45°W. and S.45°E.</p>
79.77	<p>Set an iron post, 3 ft. long, 1 in. diam., 26 ins. in the ground, for $\frac{1}{4}$ sec. cor., marked on brass cap</p> <p style="text-align: center;"> $\begin{array}{c} \frac{1}{4} \\ \hline S26 \mid S25 \\ \hline 1918 \end{array}$ </p> <p>And raise a mound of stone, 3 ft. base, 2 ft. high, W. of cor.</p>
3.00	<p>Draw, course N.80°W.</p>
40.00	<p></p>
72.50	<p></p>

Survey of the Subdivision of
Fractional T. 9 $\frac{1}{2}$ N., R. 3 E.

16

Chains. 80.00	<p>Set an iron post, 3 ft. long, 2 ins. diam., 24 ins. in the ground, for cor. of secs. 25 and 26 and fracl. secs. 23 and 24, marked on brass cap</p> <p style="text-align: center;">T9$\frac{1}{2}$N R3E S23 S24 ----- S26 S25 1918</p> <p>And raise a mound of stone, 3 ft. base, 2 ft. high, W. of cor. Land, nearly level. Soil, 2nd and 3rd rates; malpais formation. No timber. Undergrowth, cat claw.</p>
40.00 79.79	<p>S.89°57'E., on a random line, bet. sec. 25 and fracl. sec. 24. Set temp. $\frac{1}{4}$ sec. cor. Intersect the E. bdy. of Tp., 7 lks. S. of the cor. of secs. 25 and 30 and fracl. secs. 19 and 24, hereinbefore described.</p> <p>Thence West on a true line, bet. sec. 25 and fracl. sec. 24. Over slightly rolling land, through scattering undergrowth. Old road, brs. NE. and SW.</p>
3.50 39.89 $\frac{1}{2}$	<p>Set an iron post, 3 ft. long, 1 in. diam., 26 ins. in the ground, for $\frac{1}{4}$ sec. cor., marked on brass cap</p> <p style="text-align: center;">$\frac{1}{4}$ S24 ----- S25 1918</p> <p>And raise a mound of stone, 3 ft. base, 2 ft. high, N. of cor.</p>
48.10 79.79	<p>Road, brs. N.80°W. and S.80°E. The cor. of secs. 25 and 26 and fracl. secs. 23 and 24. Land, slightly rolling. Soil, rocky, 2nd and 3rd rates. No timber. Undergrowth, cat claw and cactus.</p>
40.00 50.87	<p>N.0°1'W., on a random line, bet. fracl. secs. 23 and 24. Set temp. $\frac{1}{4}$ sec. cor. Fall 22 lks. E. of the cor. of fracl. secs. 23 and 24, on S. Bdy. of T. 10 N., R. 3 E., hereinbefore described.</p> <p>Thence S.0°16'E., on a true line, bet. fracl. secs. 23 and 24. Over nearly level land, through scattering undergrowth.</p>
10.87	<p>Set an iron post, 3 ft. long, 1 in. diam., 26 ins. in the ground, for $\frac{1}{4}$ sec. cor., marked on brass cap</p> <p style="text-align: center;">S23 $\frac{1}{4}$S24 ----- 1918</p> <p>And raise a mound of stone, 3 ft. base, 2 ft. high, W. of cor.</p>
24.85 42.37 47.87 50.87	<p>Draw, course S.60°W. Road, brs. NE. and SW. Road, brs. E. and W. The cor. of secs. 25 and 26 and fracl. secs. 23 and 24. Land, level. Soil, rocky, 3rd and 4th rates; malpais formation.</p>

Survey of the Subdivision of
Fractional T. 9 $\frac{1}{2}$ N., R. 3 E.

BOOK 3337

17

Chains.

No timber.
Undergrowth, cat claw.

40.00

From the cor. of secs. 2, 3, 34 and 35, on the S. bdy. of
Tp., described in Book "H",
N.0°1'W., bet. secs. 34 and 35.
Over gently rolling land, through scattering undergrowth.
Set an iron post, 3 ft. long, 1 in. diam., 26 ins. in the
ground, for $\frac{1}{4}$ sec. cor., marked on brass cap

$\frac{1}{4}$
S34 | S35
1918

74.00
80.00

And raise a mound of stone, 3 ft. base, 2 ft. high, W.
of cor.
Draw, course SW.
Set an iron post, 3 ft. long, 2 ins. diam., 20 ins. in the
ground, in a mound of stone, for cor. of secs. 26, 27,
34 and 35, marked on brass cap

T9 $\frac{1}{2}$ N R3E
S27 | S26
S34 | S35
1918

And raise a mound of stone, 3 ft. base, 2 ft. high, W.
of cor.
Land, gently rolling.
Soil, rocky, 3rd and 4th rate.
No timber.
Undergrowth, cat claw.
Good growth of grass.

40.00
80.01

East on a random line, bet. secs. 26 and 35.
Set temp. $\frac{1}{4}$ sec. cor.
Intersect N. and S. line, 2 lks. S. of the cor. of secs.
25, 26, 35 and 36.

38.85

Thence
S.89°59'W., on a true line, bet. secs. 26 and 35.
Over gently rolling land, through scattering undergrowth.
Line of stakes marked "Prescott Nat'l Forest Bdy" brs. N.
and S.

40.00 $\frac{1}{2}$

Set an iron post, 3 ft. long, 1 in. diam., 26 ins. in the
ground, for $\frac{1}{4}$ sec. cor., marked on brass cap

$\frac{1}{4}$ S26
S35
1918

80.01

And raise a mound of stone, 3 ft. base, 2 ft. high, N.
of cor.
The cor. of secs. 26, 27, 34 and 35.
Land, gently rolling.
Soil, rocky, 3rd and 4th rates.
No timber.
Undergrowth, cactus.

28.85
33.80

N.0°1'W., bet. secs. 26 and 27.
Over gently rolling land, through scattering undergrowth.
Desc. 25 ft.
Thence over level land.

Survey of the Subdivision of
Fractional T. 9 $\frac{1}{2}$ N., R. 3 E.

18

Chains.
40.00 Set an iron post, 3 ft. long, 1 in. diam., 26 ins. in the ground, for $\frac{1}{4}$ sec. cor., marked on brass cap

$\frac{1}{4}$
 S27 | S26
 1918

And raise a mound of stone, 3 ft. base, 2 ft. high, W. of cor.

44.00 Old road, brs. NW. and SE.
54.80 Wash, 25 lks. wide, 4 ft. deep, course S.70°W.
65.50 Wash, 20 lks. wide, 2 ft. deep, course N.80°W.
80.00 Set an iron post, 3 ft. long, 2 ins. diam., 24 ins. in the ground, for cor. of secs. 26 and 27 and fracl. secs. 22 and 23, marked on brass cap

T9 $\frac{1}{2}$ N R3E
 S22 | S23
 S27 | S26
 1918

And raise a mound of stone, 3 ft. base, 2 ft. high, W. of cor.
Land, gently rolling.
Soil, 3rd and 4th rates; very rocky.
No timber.
Undergrowth, cat claw.

N.89°59'E., on a random line, bet. secs. 26 and fracl. sec. 23.
40.00 Set temp. $\frac{1}{4}$ sec. cor.
80.00 Intersect N. and S. line, 9 lks. S. of the cor. of secs. 25 and 26 and fracl. secs. 23 and 24.
Thence
S.89°55'W., on a true line, bet. secs. 26 and fracl. sec. 23.
23.45 Over gently rolling land, through scattering undergrowth. Road, brs. NE. to Mitchell's Ranch and SW. to reservoir in sec. 27.
40.00 Set an iron post, 3 ft. long, 1 in. diam., 26 ins. in the ground, for $\frac{1}{4}$ sec. cor., marked on brass cap

$\frac{1}{4}$ S23
 S26
 1918

And raise a mound of stone, 3 ft. base, 2 ft. high, N. of cor.
80.00 The cor. of secs. 26, and 27 and fracl. secs. 22 and 23.
Land, gently rolling.
Soil, rocky, 3rd and 4th rates.
No timber.
Undergrowth, cat claw.

N.0°1'W., on a random line, bet. fracl. secs. 22 and 23.
40.00 Set temp. $\frac{1}{4}$ sec. cor.
50.65 Fall 22 lks. E. of the cor. of fracl. secs. 23 and 24, on the S. bdy. of sec. 34, T. 10 N., R. 3 E., hereinbefore described.
Thence
S.0°16'E., on a true line, bet. fracl. secs. 22 and 23.
10.65 Over rolling land, through scattering undergrowth. Set an iron post, 3 ft. long, 1 in. diam., on rocky ground, in a mound of stone, 4 ft. base, 2 ft. high, for $\frac{1}{4}$ sec. cor., marked on brass cap

Survey of the Subdivision of Fractional T. 9 1/2 N., R. 3 E.

Chains.

S22 1/4 S23
1918

32.65 And raise a mound of stone, 4 ft. base, 2 ft. high, W. of cor.
50.65 Wash, 50 lks. wide, course SW.
The cor. of secs. 26 and 27 and fracl. secs. 22 and 23.
Land, rolling.
Soil, very rocky, 4th rate.
No timber.
Undergrowth, cat claw.

3.00 From the cor. of secs. 3, 4, 33 and 34, on the S. bdy. of the Tp., which is an iron post, properly set, marked and witnessed as described in Book "H",
10.50 N.0°2'W., bet. secs. 33 and 34.
40.00 Over broken land, through scattering undergrowth.
Desc. 100 ft.
Gulch, course W. Asc.
Thence over level land.
Set an iron post, 3 ft. long, 1 in. diam., 28 ins. in the ground, for 1/4 sec. cor., marked on brass cap

S33 1/4 S34
1918

72.50 And raise a mound of stone, 3 ft. base, 2 ft. high, W. of cor.
80.00 Desc. 60 ft.
Set an iron post, 3 ft. long, 2 ins. diam., 26 ins. in the ground, for cor. of secs. 27, 28, 33 and 34, marked on brass cap

T9 1/2 N R3 E
S28 S27
S33 S34
1918

And raise a mound of stone, 3 ft. base, 2 ft. high, W. of cor.
Land, rolling.
Soil, rocky, 3rd and 4th rates.
No timber.
Undergrowth, cat claw.

40.00 East on a random line, bet. secs. 27 and 34.
79.97 Set temp. 1/4 sec. cor.
Intersect N. and S. line, 12 lks. N. of the cor. of secs. 26, 27, 34 and 35.

39.98 1/2 Thence
N.89°55'W., on a true line, bet. secs 27 and 34.
Over rolling land, through scattering undergrowth.
Set an iron post, 3 ft. long, 1 in. diam., on ledge rock, in a mound of stone, 4 ft. base, 2 1/2 ft. high, for 1/4 sec. cor., marked on brass cap

1/4 S27
S34
1918

50.00 And raise a mound of stone, 3 ft. base, 2 ft. high, N. of cor.
70.00 Desc. 50 ft.
Draw, course N.50°W. Asc. gradually.

Survey of the Subdivision of
Fractional T. 9 $\frac{1}{2}$ N., R. 3 E.

Chains.
79.97

The cor. of secs. 27, 28, 33 and 34.
Land, rolling.
Soil, rocky, 3rd and 4th rates.
No timber.
Undergrowth, cat claw and cactus.

4.00
40.00

N.0°2'W., bet. secs. 27 and 28.
Over rolling land, through scattering undergrowth.
Desc. gradually.
Draw, course N.80°W. Asc. gradually.
Set an iron post, 3 ft. long, 1 in. diam., 26 ins. in the ground, for $\frac{1}{4}$ sec. cor., marked on brass cap

$\frac{1}{4}$
 S28 | S27
 1918

80.00

And raise a mound of stone, 3 ft. base, 2 ft. high, W. of cor.
Set an iron post, 3 ft. long, 2 ins. diam., 18 ins. in the ground, in a mound of stone, for cor. of secs. 27 and 28 and fracl. secs. 21 and 22, marked on brass cap

T9 $\frac{1}{2}$ N R3E
 S21 | S22
 S28 | S27
 1918

And raise a mound of stone, 3 ft. base, 2 ft. high, W. of cor.
Land, gently rolling.
Soil, rocky, 3rd and 4th rates.
No timber.
Undergrowth, cat claw.

40.00
79.96

S.89°58'E., on a random line, bet. sec. 27 and fracl. sec. 22.
Set temp. $\frac{1}{4}$ sec. cor.
Intersect N. and S. line, 7 lks. S. of the cor. of secs. 26 and 27 and fracl. secs. 22 and 23.
Thence
N.89°55'W., on a true line, bet. sec. 27 and fracl. sec. 22.
Over gently rolling land, through scattering undergrowth.

21.00
39.98

Artificial reservoir covering about 2 acres 5 ft. deep, for watering cattle, brs. S. about 10 chs. dist.
Set an iron post, 3 ft. long, 1 in. diam., 26 ins. in the ground, for $\frac{1}{4}$ sec. cor., marked on brass cap

$\frac{1}{4}$ S22
 S27
 1918

77.70
79.96

And raise a mound of stone, 3 ft. base, 2 ft. high, N. of cor.
Wash, 30 lks. wide, course N.70°W.
The cor. of secs. 27 and 28 and fracl. secs. 21 and 22.
Land, gently rolling.
Soil, rocky, 3rd and 4th rates.
No timber.
Undergrowth, cat claw and cactus.

Survey of the Subdivision of
Fractional T. 9 $\frac{1}{2}$ N., R. 3 E.

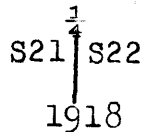
Chains.

40.00
49.79

N.0°2'W., on a random line, bet. fracl. secs. 21 and 22.
Set temp. $\frac{1}{4}$ sec. cor.
Fall 23 lks. E. of the cor. of fracl. secs. 21 and 22,
on the S. bdy. of sec. 33, T. 10 N., R. 3 E., hereinbe-
fore described.

9.79

Thence
S.0°18'E., on a true line, bet. fracl. secs. 21 and 22.
Over rolling land, through scattering undergrowth.
Set an iron post, 3 ft. long, 1 in. diam., 26 ins. in the
ground, for $\frac{1}{4}$ sec. cor., marked on brass cap



And raise a mound of stone, 3 ft. base, 2 ft. high, W.
of cor.

26.29
49.79

Wash, 50 lks. wide, course N.70°W. Asc. gradually.
The cor. of secs. 27, 28, and fracl. secs. 21 and 22.
Land, rolling.
Soil, rocky, 4th rate.
No timber.
Undergrowth, cat claw and cactus.

From the cor. of secs. 4, 5, 32 and 33, on the S. bdy. of
Tp., which is an iron post, properly set, marked and
witnessed as described in Book "H",

N.0°2'W., bet. secs. 32 and 33.
Over rolling land, through scattering undergrowth.
Asc.

1.25
6.70
22.00
38.00
40.00

Spur, slopes S.70°W. Desc. 120 ft.
Asc. 90 ft.
Desc. 220 ft.
Canyon, course S.20°W., containing water in pools. Asc.
30 ft.
Set an iron post, 3 ft. long, 1 in. diam., 12 ins. in the
ground, in a mound of stone, 3 ft. base, 2 ft. high, for
 $\frac{1}{4}$ sec. cor., marked on brass cap

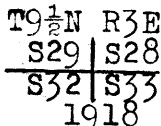


From which

A cedar, 18 ins. diam., in bed of canyon, brs.
S.32 $\frac{1}{2}$ °E., marked $\frac{1}{4}$ S33 BT. Impossible to measure
distance to tree; approximate dist. 1 chain.
A ledge of rock brs. S.87°W., 19 lks. dist.,
marked cross (X) B0.

47.70
56.00
77.00
80.00

Continue ascent, 170 ft.
Top of cliff and canyon rim, 80 ft. high. Asc. gradually,
65 ft.
Desc. 100 ft.
Draw, course E. Asc.
Set an iron post, 3 ft. long, 2 ins. diam., 24 ins. in the
ground, for cor. of secs. 28, 29, 32 and 33, marked on
brass cap



Survey of the Subdivision of
Fractional T. 9 $\frac{1}{2}$ N., R. 3 E.

22

Chains.

And raise a mound of stone, 3 ft. base, 2 ft. high, W. of cor.
Land, rolling and mountainous.
Soil, rocky, 4th rate.
No timber.
Undergrowth, cactus and cat claw.

40.00 East on a random line, bet. secs. 28 and 33.
Set temp. $\frac{1}{4}$ sec. cor.
79.98 Intersect N. and S. line, 7 lks. N. of the cor. of secs. 27, 28, 33 and 34.
Thence
N. 89° 57' W., on a true line, bet. secs. 28 and 33.
Over gently rolling land, through scattering undergrowth.
19.00 Desc. 110 ft.
37.79 Set an iron post, 3 ft. long, 1 in. diam., 14 ins. in the ground, in a mound of stone, for witness cor. to $\frac{1}{4}$ sec. cor., marked on brass cap

WC $\frac{1}{4}$ $\frac{S28}{S33}$
1918

39.99 And raise a mound of stone, 3 ft. base, 2 ft. high, N. of cor.
The true point for $\frac{1}{4}$ sec. cor. falls in draw, course S. 30° E.
Asc. 35 ft.
43.10 Thence over rolling land.
55.00 Desc. 35 ft.
69.00 Draw, course S. 10° E. Asc.
79.98 The cor. of secs. 28, 29, 32 and 33.
Land, rolling and gently rolling.
Soil, rocky, 4th rate.
No timber.
Undergrowth, cat claw and cactus.

23.00 N. 0° 2' W., bet. secs. 28 and 29.
Over rolling land, through scattering undergrowth.
Asc. Joe's Hill, 125 ft.
40.00 Thence over level land.
Set an iron post, 3 ft. long, 1 in. diam., 8 ins. in the ground, on rocky ground, in a mound of stone, for $\frac{1}{4}$ sec. cor., marked on brass cap

$\frac{1}{4}$
S29 | S28
1918

80.00 And raise a mound of stone, 3 ft. base, 2 ft. high, W. of cor.
Set an iron post, 3 ft. long, 2 ins. diam., 24 ins. in the ground, for cor. of secs. 28, 29, and fracl. secs. 20 and 21, marked on brass cap

T9 $\frac{1}{2}$ N R3E
S20 | S21
S29 | S28
1918

And raise a mound of stone, 3 ft. base, 2 ft. high, W. of cor.
Land, rolling.
Soil, rocky, 4th rate.
No timber.
Undergrowth, cat claw and cactus.

Survey of the Subdivision of
Fractional T. 9 $\frac{1}{2}$ N., R. 3 E.

23

Chains.

S. 89°57'E., on a random line, bet. sec. 28 and fracl. sec. 21.
40.00 Set temp. $\frac{1}{4}$ sec. cor.
79.90 Intersect N. and S. line, 5 lks. N. of the cor. of secs. 27 and 28 and fracl. secs. 21 and 22.
Thence
N. 89°55'W., on a true line, bet. sec. 28 and fracl. sec. 21.
39.95 Over level land, through scattering undergrowth.
Set an iron post, 3 ft. long, 1 in. diam., 26 ins. in the ground, for $\frac{1}{4}$ sec. cor., marked on brass cap

$\frac{1}{4}$ S21
 $\frac{1}{4}$ S28
1918

And raise a mound of stone, 3 ft. base, 2 ft. high, N. of cor.
75.00 Asc. 25 ft.
79.90 The cor. of secs. 28, and 29 and fracl. secs. 20 and 21.
Land, nearly level.
Soil, rocky, 4th rate.
No timber.
Undergrowth, cat claw.

N. 0°2'W., on a random line, bet. fracl. secs. 20 and 21.
40.00 Set temp. $\frac{1}{4}$ sec. cor.
48.90 Fall 24 lks. E. of the cor. of fracl. secs. 20 and 21, on the S. bdy. of sec. 32, T. 10 N., R. 3 E., hereinbefore described.
Thence
S. 0°19'E., on a true line, bet. fracl. secs. 20 and 21.
5.90 Over rolling land, through scattering undergrowth.
An Indian ruin of perhaps 100 rooms, brs. S. 20°E., 5 chs. dist., from which it extends about 8 chs. southward.
8.90 Set an iron post, 3 ft. long, 1 in. diam., on rocky ground, in a mound of stone, for $\frac{1}{4}$ sec. cor., marked on brass cap

$\frac{1}{4}$
S20 | S21
1918

And raise a mound of stone, 4 ft. base, 2 $\frac{1}{2}$ ft. high, W. of cor.
14.00 The west edge of Indian ruin brs. East about 2 chs. dist.
48.90 The cor. of secs. 28 and 29 and fracl. secs. 20 and 21.
Land, rolling.
Soil, rocky, 4th rate.
No timber.
Undergrowth, cat claw, cactus and mesquite.

From the cor. of secs. 5, 6, 31 and 32, on the S. bdy. of Tp., which is an iron post, properly set, marked and witnessed as described in Book "H",
N. 0°3'W., bet. secs. 31 and 32.
40.00 Over nearly level land, through scattering undergrowth.
Set an iron post, 3 ft. long, 1 in. diam., 26 ins. in the ground, for $\frac{1}{4}$ sec. cor., marked on brass cap

$\frac{1}{4}$
S31 | S32
1918

And raise a mound of stone, 3 ft. base, 2 ft. high, W. of cor.

24

Survey of the Subdivision of
Fractional T. 9 $\frac{1}{2}$ N., R. 3 E.

Chains. 80.00	<p>Set an iron post, 3 ft. long, 2 ins. diam., 26 ins. in the ground, for cor. of secs. 29, 30, 31 and 32, marked on brass cap</p> <div style="text-align: center;"> $\begin{array}{r} T9\frac{1}{2}N R3E \\ S30 S29 \\ \hline S31 S32 \\ 1918 \end{array}$ </div> <p>And raise a mound of stone, 3 ft. base, 2 ft. high, W. of cor. Land, nearly level. Soil, rocky, 4th rate. No timber. Undergrowth, cat claw and cactus.</p>
40.00 80.04	<p>East on a random line, bet secs. 29 and 32. Set temp. $\frac{1}{4}$ sec. cor. Intersect N. and S. line, 10 lks. N. of the cor. of secs. 28, 29, 32 and 33. Thence N. 89° 56' W., on a true line, bet. secs. 29 and 32. Over rolling land, through scattering undergrowth. Desc. 16.00 Draw, course S. 80° E. Asc. 75 ft. 26.00 Thence over rolling land. 40.02 Set an iron post, 3 ft. long, 1 in. diam., 28 ins. in the ground, for $\frac{1}{4}$ sec. cor., marked on brass cap</p> <div style="text-align: center;"> $\begin{array}{r} S29 \\ \frac{1}{4} S32 \\ 1918 \end{array}$ </div> <p>And raise a mound of stone, 3 ft. base, 2 ft. high, N. of cor.</p>
80.04	<p>The cor. of secs. 29, 30, 31 and 32. Land, rolling. Soil, rocky, 4th rate. No timber. Undergrowth, cat claw and cactus.</p>
40.00 79.32	<p>West on a random line, bet. secs. 30 and 31. Set temp. $\frac{1}{4}$ sec. cor. Fall 32 lks. N. of the cor. of secs. 25, 30, 31 and 36, on the W. bdy. of Tp., hereinbefore described. Thence N. 89° 46' E., on a true line, bet. secs. 30 and 31. Over mountainous land, through scattering undergrowth. Asc. 200 ft. 2.90 Cliff, 100 ft. high, brs. N. and S. Continue ascent. 4.46 Rim of Agua Fria Canyon, brs. N. and S. Thence over level land. 7.30 South edge of old stone ruin containing twelve rooms, brs. North 20 lks. dist. 27.30 Draw, course S. 10° W. Asc. 30 ft. 34.00 Thence over level land. 39.32 Set an iron post, 3 ft. long, 1 in. diam., 24 ins. in the ground, in a mound of stone, for $\frac{1}{4}$ sec. cor., marked on brass cap</p> <div style="text-align: center;"> $\begin{array}{r} S30 \\ \frac{1}{4} S31 \\ 1918 \end{array}$ </div> <p>And raise a mound of stone, 3 ft. base, 2 ft. high, N. of cor. Thence along S. slope of Joe's Hill.</p>

Survey of the Subdivision of
Fractional T. 9 1/2 N., R. 3 E.

BOOK 3337
25

Chains. 79.32	<p>The cor. of secs. 29, 30, 31 and 32. Land, level and rolling. Soil, rocky, 4th rate. No timber. Undergrowth, cat claw and cactus.</p>
40.00	<p>N.0°3'W., bet. secs. 29 and 30. Over rolling land, through scattering undergrowth. Asc. 180 ft. Set an iron post, 3 ft. long, 1 in. diam., 26 ins. in the ground, for 1/4 sec. cor., marked on brass cap</p> <div style="text-align: center;"> $\begin{array}{c} \frac{1}{4} \\ \hline S30 \quad \quad S29 \\ \hline 1918 \end{array}$ </div>
54.20 63.00 80.00	<p>And raise a mound of stone, 3 ft. base, 2 ft. high, W. of cor. Asc. 40 ft. Thence over level land. Desc. 120 ft. Set an iron post, 3 ft. long, 2 ins. diam., 24 ins. in the ground, for cor. of secs. 29 and 30 and fracl. secs. 19 and 20, marked on brass cap</p> <div style="text-align: center;"> $\begin{array}{c} T9\frac{1}{2}N \quad R3E \\ \hline S19 \quad \quad S20 \\ \hline S30 \quad \quad S29 \\ \hline 1918 \end{array}$ </div>
40.00 80.01 10.00 20.00 27.00 35.00 40.00 1/2	<p>S.89°56'E., on a random line, bet. sec. 29 and fracl. sec. 20. Set temp. 1/4 sec. cor. Intersect N. and S. line, 9 lks. S. of the cor. of secs. 28 and 29 and fracl. secs. 20 and 21. Thence West on a random true line, bet. sec. 29 and fracl. sec. 20. Over rolling land, through scattering undergrowth. Asc. 25 ft. Thence over level land. Desc. 25 ft. Draw, course N.20°E. Asc. 30 ft. Thence over level land. Set an iron post, 3 ft. long, 1 in. diam., 26 ins. in the ground, for 1/4 sec. cor., marked on brass</p> <div style="text-align: center;"> $\begin{array}{c} \frac{1}{4} S20 \\ \hline S29 \\ \hline 1918 \end{array}$ </div>
47.50 57.40 72.00 80.01	<p>And raise a mound of stone, 3 ft. base, 2 ft. high, N. of cor. Asc. 50 ft. Thence over level land. Desc. 50 ft. The cor. of secs. 29, and 30 and fracl. secs. 19 and 20. Land, level and rolling. Soil, rocky, 4th rate. No timber.</p>

Survey of the Subdivision of
Fractional T. 9 $\frac{1}{2}$ N., R. 3 E.

Chains.

Undergrowth, cat claw and cactus.

40.00 S. 89° 46' W., on a random line, bet. sec. 30 and fracl. sec. 19.
Set temp. $\frac{1}{4}$ sec. cor.
79.26 Fall 21 lks. S. of the cor. of secs. 25 and 30 and fracl. secs. 19 and 24, on the W. bdy. of Tp., hereinbefore described.

Thence
39.26 N. 89° 55' E., on a true line, bet. sec. 30 and fracl. sec. 19.
Over gently rolling land, through scattering undergrowth.
Set an iron post, 3 ft. long, 1 in. diam., 26 ins. in the ground, for $\frac{1}{4}$ sec. cor., marked on brass cap

$$\begin{array}{r} \frac{1}{4} \text{ S19} \\ \text{S30} \\ 1918 \end{array}$$

79.26 And raise a mound of stone, 3 ft. base, 2 ft. high, N. of cor.
The cor. of secs. 29 and 30 and fracl. secs. 19 and 20.
Land, gently rolling.
Soil, rocky, 4th rate.
No timber.
Undergrowth, cat claw and cactus.

40.00 N. 0° 3' W., on a random line, bet. fracl. secs. 19 and 20.
Set temp. $\frac{1}{4}$ sec. cor.
47.89 Fall 24 lks. E. of the cor. of fracl. secs. 19 and 20, on the S. bdy. of sec. 31, T. 10 N., R. 3 E., hereinbefore described.

Thence
7.89 S. 0° 20' E., on a true line, bet. fracl. secs. 19 and 20.
Over rolling land, through scattering undergrowth.
Set an iron post, 3 ft. long, 1 in. diam., 26 ins. in the ground, for $\frac{1}{4}$ sec. cor., marked on brass cap

$$\begin{array}{r} \frac{1}{4} \\ \text{S19} \mid \text{S20} \\ 1918 \end{array}$$

17.89 And raise a mound of stone, 3 ft. base, 2 ft. high, W. of cor.
Begin ascent of Joe's Hill.
47.89 The cor. of secs. 29 and 30 and fracl. secs. 19 and 20.
Land, rolling.
Soil, rocky, 4th rate.
No timber.
Undergrowth, cactus and cat claw.

Boundaries of Fractional T. 9½ N., R. 3 E.
Latitudes, departures and closing errors.

Line designated.	True bearing.	Dist. chs.	Latitudes.		Departures.	
			N. chs.	S. chs.	E. chs.	W. chs.
South Boundary.	West.	479.51				479.51
West Boundary	North.	207.49	207.49			
North Boundary.	East	3.75			3.75	
	N. 89° 29' E.	47.81	.43		47.81	
	N. 88° 56' E.	39.96	.75		39.95	
	N. 89° 29' E.	39.71	.36		39.71	
	N. 89° 35' E.	40.02	.29		40.02	
	N. 89° 23' E.	40.00	.43		40.00	
	N. 88° 55' E.	40.00	.76		39.99	
	N. 89° 56' E.	79.12	.09		79.12	
	N. 89° 27' E.	79.90	.77		79.90	
N. 89° 22' E.	39.53	.44		39.53		
East Boundary	South	211.70		211.70		
Convergency					.21	
Totals			211.81	211.70	479.01	479.51
Error in latitude			211.70			479.01
Error in departure						.50

GENERAL DESCRIPTION.

This fractional Tp. is generally level except in the W. half, Joes Hill a very gently sloping eminence occupying 4 or 5 sq. miles, and is about 300 ft. in height, and of volcanic origin. The entire Tp. consists of malpais rock ledges, interspersed in the eastern portion with some small tracts comparatively free therefrom; but the entire Tp. is of volcanic nature, and while worthless for agricultural purposes is good grazing, and is now under lease to a large cattle corporation, who have constructed a small reservoir in sec. 27 to catch storm water for watering purposes.

In the deep canyons in the SW. and NW. portions of Tp., some water occurs in holes in rocks, but there is no other natural water in the Tp.

There are no settlers or improvements in the Tp., except the small reservoir above mentioned, but the township seems to have been thickly populated at one time as is evidenced by the very extensive ruins in secs. 20 and 21, sec. 30, and sec. 36.

At this latter point, there are very numerous well preserved hieroglyphics sculptured on the hard malpais ledge, and quite extensive ruins near by, but which are very poorly preserved due to long lapse of time, since they were occupied. Near the ruins in sec. 20 and 21, there is evidence that rather extensive areas had the rocks removed therefrom, and probably some agriculture was practiced.

CERTIFICATE OF UNITED STATES SURVEYOR.

I, H. L. Baldwin, U. S. Surveyor, hereby certify upon honor that, in pursuance of special instructions received from the U. S. Surveyor General, for Group 61, Arizona, bearing date of the 13th day of November, 1917, I have well, faithfully, and truly in my own proper person, and in strict conformity with said instructions, the Manual of Surveying Instructions, and the laws of the United States, re-surveyed all those parts or portions of the South bdrs. of Ts. 10 N., Rs. 2 and 3 E., and surveyed all those parts or portions of the East, West and South boundaries, and subdivision lines of FRACTIONAL TOWNSHIP 9 1/2 NORTH, RANGE 3 EAST,

of the Gila and salt River Base and Meridian, in the State of Arizona, which are represented in the foregoing field notes, and by diagram on page 2 hereof, as having been executed by me, and under my direction; and that all the corners of said survey have been established and perpetuated in strict accordance with the Manual of Surveying Instructions, and the special written instructions of the U. S. Surveyor General, for Group 61, Arizona, and in the specific manner described in the field notes, and that the foregoing are the original field notes of such survey and survey.

Wichita Falls Texas Nov 22 1919

H. L. Baldwin

U. S. Surveyor.

APPROVAL.

OFFICE OF THE UNITED STATES SURVEYOR GENERAL,

Phoenix, Arizona, May 14, 1920.

The foregoing field notes of the re-survey of the South Boundary of Township 10 North, Range 3 East, Part of the South Boundary of Township 10 North, Range 2 East, and SURVEY OF the East and West Boundaries and Subdivision Lines and COMPLETION OF THE SURVEY OF the South Boundary of Fractional Township 9 1/2 North, Range 3 East, of the Gila and Salt River Base and Meridian, in the State of Arizona,

executed by H. L. Baldwin, U. S. Surveyor,

under his special instructions dated November 13, 1917 for Group 61 Arizona, having been critically examined, and the necessary corrections and explanations made, the said field notes, and the resurveys and surveys they describe, are hereby approved.

James O. Smith

U. S. Surveyor General.

I certify that the foregoing transcript of the field notes of the above described surveys in, has been correctly copied from the original notes on file in this office.

U. S. Surveyor General.