

3338

Book "Q"
4-679

BOOK 3338

FIELD NOTES

6161927

RE-
OF THE SURVEY OF ~~THE~~

Part of the Second Standard Parallel North Through Range 1 East,

Part of the Gila and Salt River Meridian Through Townships 9 North.

SURVEY OF

Part of the Subdivision of Township 9 North, Range 1 East.

3338

9998

Of the Gila and Salt River Base and Meridian,

In the State of Arizona.

EXECUTED BY

H. L. Baldwin

and

J. P. Davis

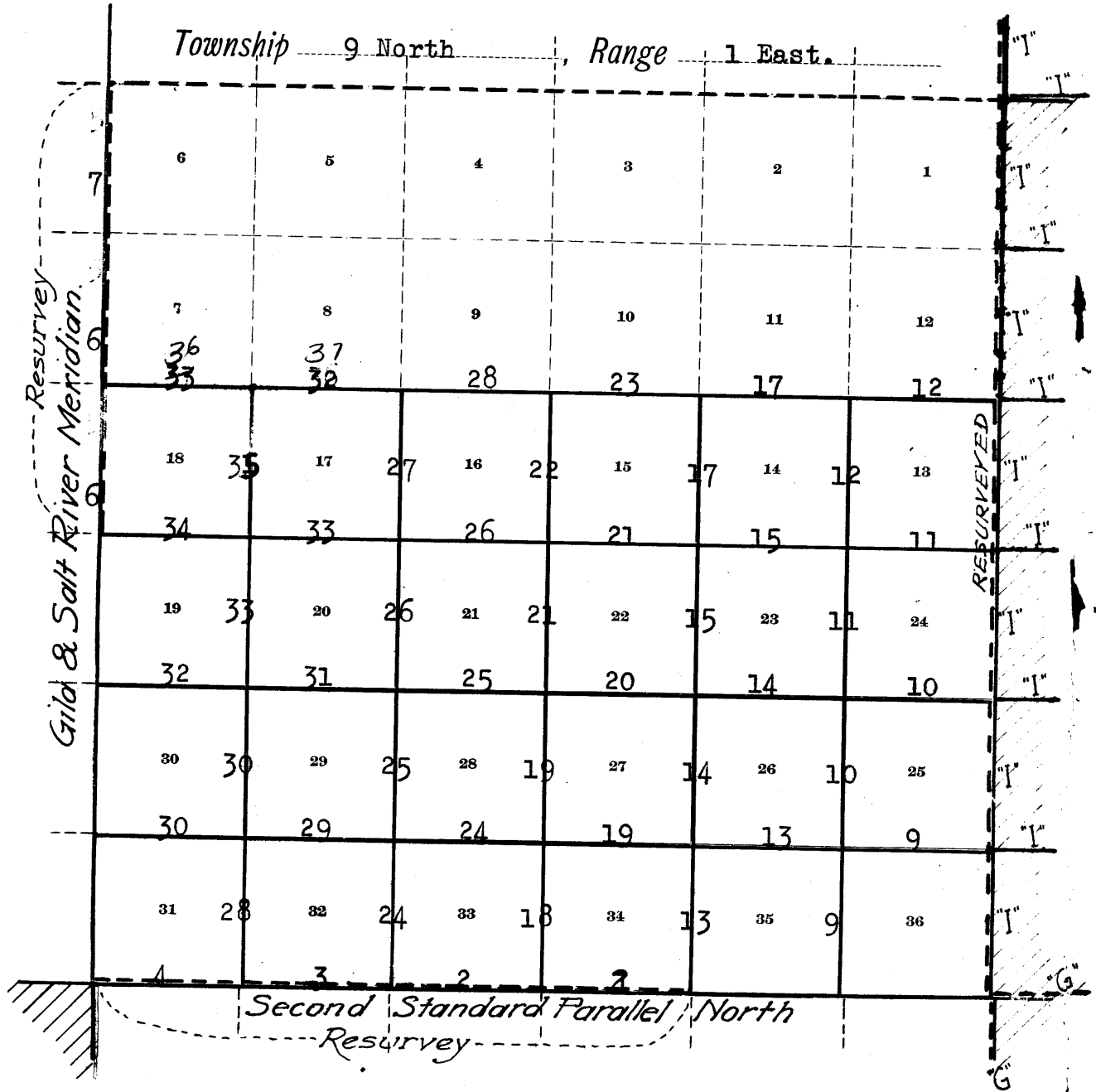
In the capacity of U. S. Surveyors, under Special Instructions dated November 13, 1917,
issued by the United States Surveyor General to govern surveys included in Group
No. 61, which were approved by the Commissioner of the General Land
Office, November 26, 1917, and Assignment Instructions dated February 8, 1918
January 8, 1919.

Survey and Survey commenced April 8, 1918.

Survey and Survey completed April 12, 1919.

BOOK 3338

INDEX DIAGRAM.



- Lines surveyed under this group.
- Lines retraced or resurveyed under this group.
- Lines of accepted surveys.
- Unsurveyed lines.
- Areas surveyed as per accepted plats on file.
- Lines resurveyed under Current Group No. 60.

Chains.

Resurvey and survey executed by H. L. Baldwin and J. P. Davis, U. S. Surveyors, on dates shown on page 38 hereof, using respectively, Buff. Favorite transit No. 9207, and Young and Sons' light mountain transit No. 8532, both instruments being equipped with Smith solar attachments, instruments being equipped with Smith solar attachments.

For description of instrument No. 8532, certificate of approval and tests of adjustments, see Book "S." Test of instrument No. 9207 follows:

April 6, 1918. Examine the adjustments of the transit, and correct all errors; then, in order to test the solar apparatus by comparing its indications resulting from a.m. and p.m. observations, with a meridian determined by observations on Polaris, proceed as follows: At camp, about 0.2 miles SE. of Tiptop, Arizona, in lat. 34° 2' N., long. 112° 14' W., as determined from the Bradshaw Mountains Quadrangle of the U.S. Geological Survey, at 7h. 4.9m. p.m., l.m.t., by watch, which is set to correct local mean time, observe Polaris in accordance with the Manual of Instructions, and mark the line thus determined by a stake, 5 chs. N. of station.

U.C. of Polaris, for the meridian of Greenwich, Civil	
Date and Mean time	0h. 34.0m.
Correction to local meridian (subtract)	1.3m.
Time of U.C. of Polaris, local meridian	0h. 32.7m.
L.M.T. of observation,	7h. 4.9m.
Hour angle	6h. 32.2m.
Azimuth of Polaris,	1° 20.6'

April 7, 1918. At 8h. 0m. a.m., l.m.t., lay off the azimuth of Polaris, 1° 20.6' to the east, and note that the meridian thus determined passes thru. a giant cactus about 1/2 mile north of station. Use this cactus as meridian mark.

At 8h. 5m. a.m., l.m.t., set off 34° 2' N. on the latitude arc; 6° 42' N. on the decl. arc, and determine a meridian with the solar. The line thus determined coincides with the meridian determined by observations on Polaris.

At apparent noon, set off 6° 45' N. on the decl. arc, and observe the sun on the meridian; the resulting lat. is 34° 2' N.

At 4h. 0m. p.m., l.m.t., set off 34° 2' N. on the lat. arc; 6° 49 1/2' N. on the decl. arc, and determine a meridian the solar. The line thus determined coincides with the meridian determined by observations on Polaris.

The solar apparatus, by a.m. and p.m. observations, defines positions for meridians which coincide with the true meridian determined by observations on Polaris; therefore, conclude that the adjustments of the instrument are satisfactory.



2 Independent Resurvey of part of 2nd Std. Par. N. thru R. 1 E.

Chains.

From the standard cor. of secs. 34 and 35, on the S. bdy. of the Tp. (2nd. Std. Par. N.), which is a cross (X) on a granite rock in place 3x2x2 ft. above ground, marked "SC" N., 2 grooves E., and 4 grooves W. of cross, and witnessed by mound of stone, N. of cor. No bearing trees.

West, on true line, along the S. bdy. of sec. 34.

Over mountainous land, thru scattering undergrowth.

Descend 750 ft.

25.58 Boulder Creek, 25 lks. wide, water 1 ft. deep, course S. Thence along S. slope.

33.40 Ravine, course S. 20° E. Ascend 225 ft.

39.41 The original standard $\frac{1}{4}$ sec. cor. of sec. 34, brs. N. 2 lks. dist. Remove all marks from the stone, leaving it otherwise undisturbed.

40.00 Set an iron post, 3 ft. long, 1 in. in diam., 12 ins. in the ground, on bedrock, in a mound of stone, for reestablished standard $\frac{1}{4}$ sec. cor., marked on brass cap,

SC 1 S34

1918

and raise a mound of stone, 3 ft. base, 2 ft. high, N. of cor. Ascend 600 ft.

67.35 Spur, slopes NE. Thence over broken land.

79.35 The original standard cor. of secs. 33 and 34. Remove all marks from the stone, and leave the cor. otherwise undisturbed.

80.00 Set an iron post, 3 ft. long, 2 ins. in diam., 24 ins. in the ground, for reestablished standard cor. of secs. 33 and 34, marked on brass cap,

S C
T9N | R1E
S33 | S34

1918

and raise a mound of earth and stone, 3 ft. base, 2 ft. high, N. of cor.

Land, very mountainous.

Soil, rocky, 4th rate.

No timber.

Undergrowth, scruboak and mahogany. Some cactus.

West, on a true line, along the S. bdy. of sec. 33.

Over mountainous and broken land, thru dense undergrowth. Ascend 250 ft.

19.92 Divide between Boulder and Cottonwood Creeks, brs. N. 30° W. and S. 30° E. Descend 350 ft.

38.84 Intersect the original standard $\frac{1}{4}$ sec. cor. of sec. 33. Remove all marks from the stone, leaving the corner otherwise undisturbed.

40.00 Set an iron post, 3 ft. long, 1 in. in diam., 18 ins. in the ground, in a mound of stone, on bedrock, for reestablished standard $\frac{1}{4}$ sec. cor. of sec. 33, marked on brass cap,

SC 1 S33

1918

and raise a mound of stone, 3 ft. base, 2 ft. high, N. of cor.

Descend 300 ft.

49.65 Mining shaft, 20 ft. deep, brs. S. 0.10 chs. dist.

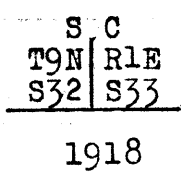
58.73 Draw, course S. containing water in holes. Ascend.

78.77 Intersect the original standard cor. of secs. 32 and 33. Destroy all marks on the stone, leaving the cor. otherwise undisturbed.

Independent Resurvey of ~~part of~~ part of
2nd Standard Parallel North Through Range 1 East. 3.

Chains.
80.00

Set an iron post, 3 ft. long, 2 ins. diam., 20 ins. in the ground, in a mound of stone, for reestablished standard cor. of secs. 32 and 33, marked on brass cap



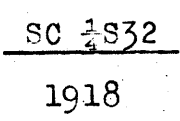
And raise a mound of stone, 3 ft. base, 2 ft. high, N. of cor.
Land, mountainous and broken.
Soil, rocky, 4th rate.
No timber.
Undergrowth, cactus and Spanish bayonet.

12.45
28.23
34.82
38.74

West on a true line, along the S. bdy. of sec. 32. Over mountainous land, through scattering undergrowth. Desc. 100 ft.
Cottonwood Creek, 5 lks. wide, clear water 2 ins. deep, course S.70°W. Asc. 250 ft.
Spur, slopes SE. Desc.
Ravine, course S.70°E. Asc. 75 ft.
Intersect the original standard $\frac{1}{4}$ sec. cor., of sec. 32, which is a granite stone, 6 X 8 X 6 ins. above ground, firmly set, marked and witnessed as described by the Surveyor-General. Destroy all marks on the stone, leaving the cor. otherwise undisturbed.

40.00

Set an iron post, 3 ft. long, 1 in. diam., 26 ins. in the ground, for reestablished standard $\frac{1}{4}$ sec. cor. of sec. 32, marked on brass cap



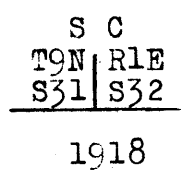
And raise a mound of stone, 3 ft. base, 2 ft. high, N. of cor.
A rock, 2 X 2 X 2 ft. above ground, brs. N.77°E., 40 lks. dist., marked cross (X) BR.
Asc. 75 ft.

46.30
54.50
64.00
78.73

Ridge, brs. N.60°W. and S.70°E. Desc. 40 ft.
Ravine, course S.40°E. Asc. 250 ft.
Ridge, brs. N.10°E. and S.40°W. Desc.
Intersect the original standard $\frac{1}{4}$ sec. cor. of secs. 31 and 32, which is a granite stone, 6 X 8 X 8 ins. above ground, firmly set, marked and witnessed as described by the Surveyor-General. Destroy all marks on the stone, leaving the cor. otherwise undisturbed.

79.60
80.00

Draw, course S.5°E. Asc. 10 ft.
Set an iron post, 3 ft. long, 2 ins. diam., 24 ins. in the ground, for reestablished standard cor. of secs. 31 and 32, marked on brass cap



From which
A mesquite, 8 ins. diam., brs. N.51 $\frac{1}{2}$ °E., 66 lks. dist., marked T9N R1E S32 SCBT
No other trees within limits. Raise a mound of stone, 3 ft. base, 2 ft. high, N. of cor.
Land, mountainous.
Soil, rocky, 4th rate.

Independent Resurvey of ^{part of}
 2nd Standard Parallel North Through Range 1 East.

4.

Chains.

No timber.
 Undergrowth, mesquite, cat claw, cactus and scrub oak.

West on a true line, along S. bdy. of sec. 31. (E. 1/2)
 Over mountainous land, through scattering undergrowth.
 Asc.

- 10.90 Spur, slopes S. Desc. 100 ft.
- 15.55 Ravine, course S. 50° E. Asc. 200 ft.
- 23.30 Ridge, brs. N. and S. Trail on ridge, brs. N. to Crown King and S. to Columbia. Desc. 600 ft.
- 38.97 Intersect the original standard 1/4 sec. cor. of sec. 31, which is a granite stone, 4 X 6 X 4 ins. above ground, firmly set, marked and witnessed as described by the Surveyor-General. Destroy all marks on the stone, leaving the cor. otherwise undisturbed.
- 40.00 Set an iron post, 3 ft. long, 1 in. diam., 10 ins. in the ground, on bed rock, in a mound of stone, for reestablished 1/4 sec. cor., of sec. 31, marked on brass cap

SC 1831

1918

And raise a mound of stone, 3 ft. base, 2 ft. high, N. of cor.

From which

A rock, marked cross (X) BR brs. N. 77° E., 40 lks. dist.

Thence N. 89° 48' W., on a true line ^{on W. 1/2 of S. bdy. of sec. 31} continuing measurement.

- 42.00 Draw, course NW. Continue descent.
- 45.00 Draw, course SW. Continue descent.
- 54.80 Ravine, course S. Asc. 300 ft.
- 68.60 Ridge, brs. N. and S. Desc. 300 ft.
- 79.00 Std. cor. of Ts. 8 and 9 N., Rs. 1 E. and 1 W., which is a granite stone, 6 X 10 X 6 ins. above ground, firmly set, marked and witnessed as described by the Surveyor-General.

Land, rough and mountainous.

Soil, rocky, 4th rate.

No timber.

Undergrowth, cat claw, ocotillo, cactus and buck brush.

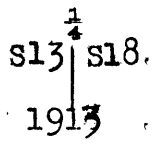
Independent Resurvey of
Gila and Salt River Meridian thru part of T_s 9 North 5

Chains

The cor. of secs. 13, 18, 19 and 24, (reestablished in 1913) is a 3 in. iron post, firmly set 12 ins. above ground, properly marked on brass cap, and witnessed by a mound of stone, W. of cor. No bearing trees.

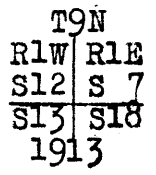
Thence,
North on a true line, bet. secs. 13 and 18.
Over rough, mountainous land, thru dense undergrowth.
Descend.

- 2.70 Head of draw, course SW. Ascend 130 ft.
- 9.70 Ridge, brs. NW. and SE. Thence along E. slope. Ascend 190 ft.
- 19.20 High point on ridge; descend 400 ft.
- 38.80 Spur, slopes NE. Continue descent.
- 40.00 Reset the iron post removed from a point 1.52 chs. N., 3 ft. long, 1 in. in diam., 6 ins. in the ground, on bedrock, in a mound of stone, for reestablished $\frac{1}{4}$ sec. cor., marked on brass cap,



and raise a mound of stone, 2 ft. base, 1 1/2 ft. high, W. of cor.

- 41.10 Head of draw, course NW. Continue descent.
- 41.52 Intersect point from which the $\frac{1}{4}$ sec. cor. of secs. 13 and 18 (reestablished in 1913) was removed and reset, as described above. Demolish the mound of stone.
- 43.80 Same draw, course NE. Continue descent.
- 44.70 Point of spur, slopes NE. Continue descent.
- 49.30 Spring branch, 1 lk. wide, course N. 70° E. Thence along E. slope.
- 52.00 Fork of trail, brs. SW. to Simpson, NW. to Copper Basin, and SE. to Tip Top.
- 54.10 Creek, 10 lks. wide. 8 ins. deep, course S. 70° E. Ascend 200 ft.
- 75.90 Draw, course SE. Continue ascent.
- 80.00 Reset the iron post removed from a point 87 lks. N., 3 ft. long, 3 ins. in diam., 24 ins. in the ground, for reestablished cor. of secs. 7, 12, 13 and 18, marked on brass cap (WC on original post removed),



from which the tree witnessing the former position of the W.C. to cor. of secs. 7, 12, 13 and 18 now bears as follows:

A juniper, 24 ins. diam., brs. S. 45 1/2° E., 100 lks. dist., marked WC T9N R1E S18 BT. Remove marking "WC" from this tree.

No other trees within limits. Raise a mound of stone, 2 ft. base, 1 1/2 ft. high, W. of cor.

Land, rough, mountainous.
Soil, rocky, 4th rate.
No timber.
Undergrowth, catclaw, palo verde, cactus and juniper.

- 0.87 North, on a true line, bet. secs. 7 and 12. Ascend 550 ft. Over rough, mountainous land, thru dense undergrowth. Intersect point from which the W.C. to cor. of secs. 7, 12, 13 and 18 (reestablished in 1913) was removed and reset as sec. cor. as described above. Demolish the

6. Independent Resurvey of Gila & Salt River Mer. thru part of Ts. 9 N.

Chains.

- mound of stone.
- 5.00 Small draw, course S. 5° W. Continue ascent.
- 10.50 Point of spur, slopes SE. Continue ascent.
- 13.00 Head of same draw, course SE. Continue ascent.
- 31.00 Old trail brs. E. and W.
- 40.00 Reset iron post removed from a point 1.47 chs. N., 3 ft. long, 1 in. in diam., on bedrock, in a large mound of stone, for reestablished 1/4 sec. cor., marked on brass cap,

S 12 | S 7
1913

from which, the trees witnessing the former position of the cor. now bear as follows:

- A juniper, 30 ins. diam., brs. N. 15° E., 218 lks. dist., marked 1/4 S 7 B T., and
- A juniper, 12 ins. diam., brs. N. 35 1/2° W., 132 lks. dist., marked 1/4 S 12 B T.

Ascend 185 ft.

- 41.47 Intersect point from which the 1/4 sec. cor. of secs. 7 and 12 (reestablished in 1913) was removed and reset as described above. Demolish the mound of stone.
- 56.00 Top of mountain; descend.
- 80.00 Reset iron post removed from a point 1.45 chs. N., 3 ft. long, 3 ins. in diam., 24 ins. in the ground, for reestablished cor. of secs. 1, 6, 7 and 12, marked on brass cap,

T9N
R1W | R1E
S 1 | S 6
S 12 | S 7
1913

from which the trees witnessing the former position of the cor. now bear as follows:

- A pine, 10 ins. in diam., brs. N. 36° E., 204 lks. dist., marked T9N R1E S6 BT.
- An oak, 10 ins. in diam., brs. N. 13 1/2° E., 108 lks. dist., marked T9N R1E S6 BT.

No other trees within limits. Raise a mound of stone, 2 ft. base, 1 1/2 ft. high, W. of cor.

Land, rough, mountainous.

Soil, rocky, 4th rate.

No timber.

Undergrowth, scrub oak, manzanita, juniper and cedar.

North, on true line, bet. secs. 1 and 6.

Over mountainous land, thru dense undergrowth.

- 1.40 Leave flag here for triangulation.

- 1.45 Intersect point from which cor. of secs. 1, 6, 7 and 12 (reestablished in 1913) was removed and reset as described above.

Discontinue chain measurement at this point, and triangulate as follows:

Set flag at a point on line N.

From which measure a base

15.06 chs. dist.

From W. end of base, flag left

at 1.40 ch. sta. brs. S. 20°

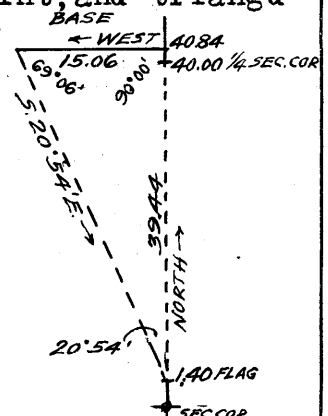
54' E. Included angles

are 69° 06', 90° 00' and 20°

54', the sum of which is

180° 00'.

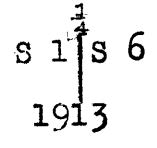
Dist. on line, bet. flags is obtained by



Independent Resurvey of Gila & Salt River Mer. thru part of Ts. 9 N. 7

Chains.

$\text{tang. } 69^{\circ}06' \times \text{base or } 2.61874 \times 15.06 = 39.44 \text{ chs., which}$
 added to 1.40 chs. gives 40.84 chs. as the dist. on
 line from sec.cor. to flag at E.end of base.
 From flag at E.end of base, measure S.84 lks. to
 40.00 Reset iron post removed from a point 2.65 chs. N. 3 ft.
 long, 1 in. in diam., 26 ins. in the ground, for rees-
 tablished $\frac{1}{4}$ sec.cor., marked on brass cap,



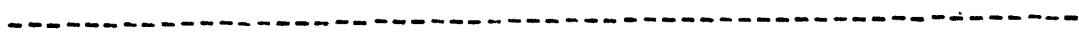
from which

The original pine bearing tree, 10 ins. diam.,
 brs. N. 1° E., 282 lks. dist., marked $\frac{1}{4}$ S 6 B T.
 The original pine bearing tree, 16 ins. diam.,
 brs. N. $6\frac{1}{2}^{\circ}$ W., 291 lks. dist., marked $\frac{1}{4}$ S 1 B T.

Thence,

- North, continuing measurement from sec.cor.
- 40.84 Flag point of triangulation described above.
- 41.00 Spur, slopes E. Descend 60 ft.
- 42.65 Intersect the point from which the $\frac{1}{4}$ sec.cor. of secs. 1
and 6 (reestablished in 1913) was removed and reset at
40.00 ch. station, as described above.
- 43.60 Draw, course E.; ascend 75 ft.
- 49.30 Divide brs. E. and W. Descend.
- 53.80 Draw, course NE. Ascend 70 ft.
- 59.50 Spur, slopes NE. Descend.
- 79.70 Horse Thief Canyon, course E. Ascend.
- 82.80 The cor. of Ts. 9 and 10 N., Rs. 1 E. and 1 W., ~~hereinbefore~~
described.

Land, rough mountainous.
 Soil, rocky, 4th rate.
 No timber.
 Undergrowth, scrub oak and manzanita, juniper and pine.

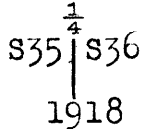


Survey of a Portion of the
Subdivision of T. 9 N., R. 1 E.

Chains.

From the standard cor. of secs. 35 and 36, on the S. bdy. of Tp., which is a granite stone, 10 X 8 X 4 ins. above ground, firmly set, marked and witnessed as described by the Surveyor-General,
N.0°1'W., bet. secs. 35 and 36.
Over mountainous land, through scattering undergrowth.
Asc. 600 ft.

40.00 Set an iron post, 3 ft. long, 1 in. diam., in a crevice between granite boulders, in a mound of stone, for $\frac{1}{4}$ sec. cor., marked on brass cap



And raise a mound of stone, 2 ft. base, $1\frac{1}{2}$ ft. high, W. of cor.
Asc. 120 ft.

64.40 Ridge, brs. NW. and SE. Desc. 100 ft.

80.00 Set an iron post, 3 ft. long, 2 ins diam., 16 ins. in the ground, in a mound of stone, on bed rock, for cor. of secs. 25, 26, 35 and 36, marked on brass cap



And raise a mound of stone, 2 ft. base, $1\frac{1}{2}$ ft. high, W. of cor.
Land, rough and mountainous.
Soil, rocky, 4th rate.
No timber.
Undergrowth, scrub oak and mahogany.

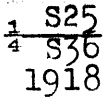
40.00 East on a random line, bet. secs. 25 and 36.
Set temp. $\frac{1}{4}$ sec. cor.

79.81 Intersect E. bdy. of Tp., 13 lks. N. of the reestablished cor. of secs. 25, 30, 31 and 36, described in Book "I".
Thence
N.89°54'W., on a true line, bet. secs. 25 and 36.
Over mountainous land, through scattering undergrowth.
Asc. 20 ft.

1.20 Thence over level land.

20.00 Asc. 470 ft.

39.90 $\frac{1}{2}$ Set an iron post, 3 ft. long, 1 in. diam., on solid rock, in a mound of stone, 4 ft. base, 3 ft. high, for $\frac{1}{4}$ sec. cor., marked on brass cap



From which
A scrub mahogany, 4 ins. diam., brs. N.32 $\frac{3}{4}$ °E.,
95 lks. dist., marked $\frac{1}{4}$ S25 BT.
No other trees within limits. Raise a mound of stone, 2 ft. base, $1\frac{1}{2}$ ft. high, N. of cor.

40.00 Slate Creek, clear running water, 5 lks. wide, 2 ins. deep, course S.80°E.
Asc. 570 ft.

79.81 The cor. of secs. 25, 26, 35 and 36.
Land, mountainous.
Soil, rocky, 4th rate.
No timber.
Undergrowth, scrub oak, mahogany and giant cactus.

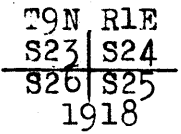
Survey of a Portion of the
Subdivision of T. 9 N., R. 1 E.

chains.

N.0°1'W., bet. secs. 25 and 26.
Over mountainous land, through scattering undergrowth.
Desc. 110 ft.
0.20 Draw, course N.80°E. Continue descent.
8.15 Ravine, course E. Asc. 430 ft.
40.00 Set an iron post, 3 ft. long, 1 in. diam., on solid rock,
in a mound of stone, for $\frac{1}{4}$ sec. cor., marked on brass
cap

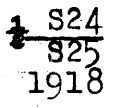


And raise a mound of stone, 3 ft. base, 2 ft. high, W.
of cor.
Asc. 230 ft.
49.30 Ridge, brs. E. and W. Desc. 305 ft.
65.60 Ravine, course E. Asc. 150 ft.
80.00 Set an iron post, 3 ft. long, 2 ins. diam., 24 ins. in the
ground, for cor. of secs. 23, 24, 25 and 26, marked on
brass cap



From which
A juniper, 14 ins. diam., brs. S.7 $\frac{1}{2}$ °E.,
139 lks. dist., marked T9N R1E S25 BT.
No other trees within limits. Raise a mound of stone, 3
ft. base, 2 ft. high, W. of cor.
Land, mountainous.
Soil, rocky, 4th rate.
No timber.
Undergrowth, cedar, scrub oak and mahogany.
From this cor., a small spring of good water brs. NE.,
4.50 chs. dist.

40.00 S.89°54'E., on a random line, bet. secs. 24 and 25.
Set temp. $\frac{1}{4}$ sec. cor.
79.83 Intersect E. bdy. of Tp., 5 lks. N. of the reestablished
cor. of secs. 19, 24, 25 and 30, described in Book "1".
Thence
N.89°52'W., on a true line, bet. secs. 24 and 25.
Over mountainous land, through scattering undergrowth.
Asc. 650 ft.
26.33 Desc. 30 ft.
29.80 Asc.
39.91 $\frac{1}{2}$ Set an iron post, 3 ft. long, 1 in. diam., on bed rock, in
a mound of stone, for $\frac{1}{4}$ sec. cor., marked on brass cap



And raise a mound of stone, 3 ft. base, 2 ft. high, N.
of cor.
41.40 Spur, slopes S. Desc.
48.30 Ravine, course S.10°W. Asc.
59.60 Spur, slopes S. Desc. 40 ft.
66.00 Canyon, course S.20°E. Asc. 330 ft.
79.83 The cor. of secs. 23, 24, 25 and 26.
Land, rough and mountainous.
Soil, rocky, 4th rate.
No timber.
Undergrowth, mahogany, scrub oak and cactus.

Survey of a Portion of the
Subdivision of T. 9 N., R. 1 E.

11

chains.	N.0°1'W., bet. secs. 23 and 24. Over mountainous land, through scattering undergrowth. Asc. 75 ft. 18.70 Desc. 25 ft. 24.00 Draw, course S.20°E. Asc. 225 ft. 40.00 Set an iron post, 3 ft. long, 1 in. diam., 26 ins. in the ground, for $\frac{1}{4}$ sec. cor., marked on brass cap
	$\begin{array}{c} \frac{1}{4} \\ S23 S24 \\ 1918 \end{array}$
	And raise a mound of stone, 3 ft. base, 2 ft. high, W. of cor. Asc. 400 ft. 63.00 Ridge, brs. N.70°W. and S.70°E. Desc. 230 ft. 80.00 Set an iron post, 3 ft. long, 2 ins. diam., 24 ins. in the ground, for cor. of secs. 13, 14, 23 and 24, marked on brass cap
	$\begin{array}{c} T9N R1E \\ S14 S13 \\ \hline S23 S24 \\ 1918 \end{array}$
	From which A cypress, 10 ins. diam., brs. S.78 $\frac{1}{2}$ °W., 74 lks. dist., marked T9N R1E S23 BT. A cypress, 14 ins. diam., brs. N.84 $\frac{1}{2}$ °W., 84 lks. dist., marked T9N R1E S14 BT. No other trees within limits. Raise a mound of stone, 3 ft. base, 1 $\frac{1}{2}$ ft. high, W. of cor. Land, rough and mountainous. Soil, rocky, 4th rate. No timber. Undergrowth, scrub oak, scrub mahogany, cactus and cypress.
40.00	S.89°52'E., on a random line, bet. secs. 13 and 24. Set temp. $\frac{1}{4}$ sec. cor.
79.77	Intersect E. bdy. of Tp., 14 lks. N. of the reestablished cor. of secs. 13, 18, 19 and 24, described in Book "I". Thence N.89°46'W., on a true line, bet. secs. 13 and 24. Over mountainous land, through scattering undergrowth. Asc. 950 ft.
39.88 $\frac{1}{2}$	Set an iron post, 3 ft. long, 1 in. diam., on bed rock, in a mound of stone, for $\frac{1}{4}$ sec. cor., marked on brass cap
	$\begin{array}{c} S13 \\ \frac{1}{4} S24 \\ 1918 \end{array}$
	From which A scrub oak, 5 ins. diam., brs. N.2 $\frac{1}{2}$ °W., 13 lks. dist., marked $\frac{1}{4}$ S13 BT. No other trees within limits. Raise a mound of stone, 3 ft. base, 2 ft. high, N. of cor. Asc. 50 ft.
50.00	Desc.
54.00	Draw, course N.30°E. Asc. 400 ft.
77.00	Desc. 35 ft.
79.77	The cor. of secs. 13, 14, 23 and 24. Land, very mountainous. Soil, rocky, 4th rate. No timber. Undergrowth, scrub oak, cat claw, mahogany and cactus.

Survey of a Portion of the
Subdivision of T. 9 N., R. 1 E.

12

Chains.

N.0°1'W., bet. secs. 13 and 14.
Over mountainous land, through dense undergrowth.
Desc. 640 ft.
30.90 Ravine, course S.85°E. Asc. 250 ft.
40.00 Set an iron post, 3 ft. long, 1 in. diam., 12 ins. in the
ground, in a mound of stone, for $\frac{1}{4}$ sec. cor., marked on
brass cap

$\frac{1}{4}$
 S14 | S13
 1918

And raise a mound of stone, 3 ft. base, 2 ft. high, W.
of cor.
Desc. 90 ft.
47.50 Ravine, course S.80°E. Asc. 125 ft.
56.80 Top of hill. Desc. 90 ft.
66.00 Ravine, course S.80°E. Asc. 250 ft.
80.00 Set an iron post, 3 ft. long, 2 ins. diam., 20 ins. in the
ground, in a mound of stone, for cor. of secs. 11, 12,
13 and 14, marked on brass cap

T9N R1E
 S11 | S12
 S14 | S13
 1918

From which

- An oak, 6 ins. diam., brs. N.21 $\frac{1}{2}$ °E.,
162 lks. dist., marked T9N R1E S12 BT.
- An oak, 6 ins. diam., brs. S.60 $\frac{1}{2}$ °E.,
134 lks. dist., marked T9N R1E S13 BT.
- An oak, 9 ins. diam., brs. S.70 $\frac{3}{4}$ °W.,
135 lks. dist., marked T9N R1E S14 BT.
- An oak, 14 ins. diam., brs. N.79 $\frac{1}{2}$ °W.,
185 lks. dist., marked T9N R1E S11 BT.

Land, rough and mountainous.
Soil, rocky, 4th rate.
No timber.
Undergrowth, scrub oak, mahogany, manzanita and cat claw.

40.00 S.89°46'E., on a random line, bet. secs. 12 and 13.
79.94 Set temp. $\frac{1}{4}$ sec. cor.
Intersect E. bdy. of Tp., 10 lks. S. of the reestablished
cor. of secs. 7, 12, 13 and 18, described in Book "I".
Thence
N.89°50'W., on a true line, bet. secs. 12 and 13.
Over mountainous land, through scattering undergrowth.
Asc. 800 ft.
27.40 Ravine, course N.70°E. Continue ascent.
35.60 Same ravine, course SE. Continue ascent.
39.97 Set an iron post, 3 ft. long, 1 in. diam., on bed rock, in
a mound of stone, 4 $\frac{1}{2}$ ft. base, 2 $\frac{1}{2}$ ft. high, for $\frac{1}{4}$ sec.
cor., marked on brass cap

$\frac{1}{4}$ S12
 S13
 1918

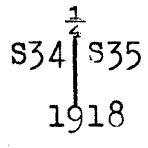
And raise a mound of stone, 2 ft. base, 1 $\frac{1}{2}$ ft. high, N.
of cor.
Asc. 200 ft.
65.40 Spur, slopes S.70°E. Continue ascent.
79.94 The cor. of secs. 11, 12, 13 and 14.
Land, mountainous.
Soil, rocky, 4th rate.
No timber.
Undergrowth, mahogany, scrub oak, cat claw and manzanita.

Survey of a Portion of the
Subdivision of T. 9 N., R. 1 E.

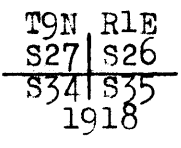
Chains.

As there is no agricultural land N. of this cor. in the Forest Reserve, discontinue the subdivision at this point.

24.20 From the standard cor. of secs. 34 and 35, on the S. bdy. of the Tp., hereinbefore described, N.0°1'W., bet. secs. 34 and 35.
 33.70 Over mountainous land, through scattering undergrowth.
 40.00 Desc. 340 ft.
 Draw, course SW. Asc. 185 ft.
 Spur, slopes S.35°W. Desc. 85 ft.
 Set an iron post, 3 ft. long, 1 in. diam., 18 ins. in the ground, in a mound of stone, for 1/4 sec. cor., marked on brass cap

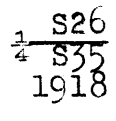


47.70 And raise a mound of stone, 2 ft. base, 1 1/2 ft. high, W. of cor.
 80.00 Desc. 155 ft.
 Ravine, course S.40°W. Asc. 815 ft.
 Set an iron post, 3 ft. long, 2 ins. diam., 10 ins. in the ground, on bed rock, in a mound of stone, 4 ft. base, 2 ft. high, for cor. of secs. 26, 27, 34 and 35, marked on brass cap



And raise a mound of stone, 2 ft. base, 1 1/2 ft. high, W. of cor.
 Land, rough and mountainous.
 Soil, rocky, 4th rate.
 No timber.
 Undergrowth, scrub oak, cat claw, cactus and mahogany.

40.00 East on a random line, bet. secs. 26 and 35.
 79.80 Set temp. 1/4 sec. cor.
 Intersect N. and S. line, 7 lks. N. of the cor. of secs. 25, 26, 35 and 36.
 Thence
 N.89°57'W., on a true line, bet. secs. 26 and 35.
 Over mountainous land, through scattering undergrowth.
 1.00 Drain, course N.80°E. Asc. 220 ft.
 16.10 Ridge, brs. N. and S. Desc. 430 ft.
 34.80 Ravine, containing water in pools, course S. Asc. 60 ft.
 39.90 Set an iron post, 3 ft. long, 1 in. diam., 15 ins. in the ground, on bed rock, in a mound of stone, 4 ft. base, 1 1/2 ft. high, for 1/4 sec. cor., marked on brass cap



44.40 And raise a mound of stone, 2 ft. base, 1 1/2 ft. high, N. of cor.
 54.70 Desc. 120 ft.
 Ravine, course S.20°E. Asc. 90 ft.
 68.55 Spur, slopes S.20°E. Desc. 160 ft.
 76.50 Ravine, course S. Asc. 250 ft.
 79.80 Spur, slopes S. Continue ascent.
 The cor. of secs. 26, 27, 34 and 35.

Survey of a Portion of the
Subdivision of T. 9 N., R. 1 E.

14

Chains.

Land, mountainous.
Soil, rocky, 4th rate.
No timber.
Undergrowth, scrub oak, cat claw and cactus.

N.0°1'W., bet. secs. 26 and 27.
Over mountainous land, through scattering undergrowth.
Asc. 340 ft.

20.00 Thence over level land.
28.00 Ridge, brs. N.30°E. and S.20°W. Desc. gradually.
40.00 Set an iron post, 3 ft. long, 1 in. diam., 26 ins. in the
ground, for $\frac{1}{4}$ sec. cor., marked on brass cap

$$\begin{array}{c} \frac{1}{4} \\ \hline S27 \quad | \quad S26 \\ \hline 1918 \end{array}$$

And raise a mound of stone, 3 ft. base, 2 ft. high, W.
of cor.

Thence over nearly level land.
50.60 Desc. 360 ft.
77.90 Ravine, course N.80°W. Asc. 30 ft.
80.00 Set an iron post, 3 ft. long, 2 ins. diam., 12 ins. in the
ground, on bed rock, in a mound of stone, 4 ft. base, 2
ft. high, for cor. of secs. 22, 23, 26 and 27, marked on
brass cap

$$\begin{array}{c} T9N \quad R1E \\ \hline S22 \quad | \quad S23 \\ \hline S27 \quad | \quad S26 \\ \hline 1918 \end{array}$$

And raise a mound of stone, 2 ft. base, 1 $\frac{1}{2}$ ft. high, W.
of cor.

Land, rough and mountainous.
Soil, rocky, 4th rate.
No timber.
Undergrowth, scrub oak and mahogany.

40.00 S.89°57'E., on a random line, bet. secs. 23 and 26.
79.74 Set temp. $\frac{1}{4}$ sec. cor.
Intersect N. and S. line, 20 lks. N. of the cor. of secs.
23, 24, 25 and 26.

Thence
N.89°48'W., on a true line, bet. secs. 23 and 26.
Over mountainous land, through dense undergrowth.
Asc. 450 ft.
25.20 Ridge, brs. N. and S. Desc. 250 ft.
39.87 Set an iron post, 3 ft. long, 1 in. diam., 26 ins. in the
ground, for $\frac{1}{4}$ sec. cor., marked on brass cap

$$\begin{array}{c} \frac{1}{4} \quad S23 \\ \hline \frac{1}{4} \quad S26 \\ \hline 1918 \end{array}$$

And raise a mound of stone, 4 ft. base, 2 ft. high, N.
of cor.

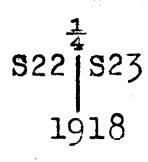
A granite boulder, 10 X 10 X 12 ft. high, marked Cross
(X) BR, brs. N.22°E., 10 lks. dist.
Desc. 100 ft.
42.60 Draw, course SW. Asc. 125 ft.
54.40 Desc. 375 ft.
79.74 The cor. of secs. 22, 23, 26 and 27.
Land, rough and mountainous.
Soil, rocky, 4th rate.
No timber.

Survey of a Portion of the
Subdivision of T. 9 N., R. 1 E.

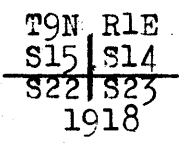
Chains.

Undergrowth, dense scrub oak, manzanita and cat claw.

N.0°1'W., bet. secs. 22 and 23.
 Over mountainous land, through scattering undergrowth.
 Asc. 30 ft.
 1.80 Spur, slopes SW. Desc. 40 ft.
 10.30 Draw, course S.20°W. Asc. 250 ft.
 21.35 Spur, slopes S.40°W. Desc. gradually.
 36.65 Draw, containing water in pools, course S.30°W. Asc.
 70 ft.
 40.00 Set an iron-post, 3 ft. long, 1 in. diam., 12 ins. in the
 ground, on bed rock, in a mound of stone, 3 ft. base,
 1½ ft. high, for ¼ sec. cor., marked on brass cap



And raise a mound of stone, 3 ft. base, 2 ft. high, W.
 of cor.
 Asc. 300 ft.
 54.50 Spur, slopes SW. Thence over nearly level land.
 66.50 Desc. 320 ft.
 80.00 Set an iron post, 3 ft. long, 2 ins. diam., 10 ins. in the
 ground, on bed rock, in a mound of stone, 4 ft. base,
 1½ ft. high, for cor. of secs. 14, 15, 22 and 23, marked
 on brass cap

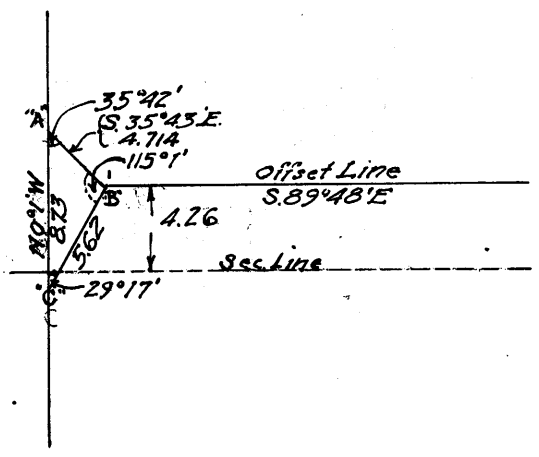


From which
 A live oak limb, 10 ins. diam., brs. N.31½°E.,
 45 lks. dist., marked T9N R1E S14 BT.
 A live oak, 6 ins. diam., brs. N.45°W., 98 lks.
 dist., marked T9N R1E S15 BT.

No other trees within limits. Raise a mound of stone, 2
 ft. base, 1½ ft. high, W. of cor.
 Cor. falls about 4 chs. S. of a vertical crack in a smooth
 granite rock ledge, which rock and crack are prominent
 landmarks for several miles to the southward.

S.89°48'E., on a random line, bet. secs. 14 and 23.
 Impracticable to chain from the cor. of secs. 14, 15, 22
 and 23, because of high rock ledge. Set a flag S.0°1'E.
 0.66 chs. from the cor. of secs. 14, 15, 22 and 23, at
 point "C", and a flag on
 line, N.0°1'W. of this
 cor., on ledge, at "A".

Measure a base on top
 of ledge, S.35°43'E.,
 4.714 chs. to flag "B",
 from which flag "C" is
 visible. By careful
 measurements, find
 angles "A", "B", and "C"
 to be 35°42', 115°1' and
 29°17', respectively, the
 sum of which is 180°.



Survey of a Portion of the
Subdivision of T. 9 N., R. 1 E.

Chains.

Line BC = $\frac{AB \sin. "A"}{\sin. "C"}$ or, by logarithms,

log. AB = 0.673390
 log. sin. "A" = 9.766072-10
 $\frac{0.439462}{9.689423-10}$
 log. sin. "C" =
 log. BC = 0.750039 BC = 5.62 chs.

Line AC = $\frac{AB \sin. "B"}{\sin. "C"}$ or, by logarithms,

log. AB = 0.673390
 log. sin. "B" = 9.957217-10
 $\frac{0.630607}{9.689423-10}$
 log. sin. "C" =
 log. AC = .941184 AC = 8.73 chs.

By computation, point "B" is 4.26 chs. N. and 2.75 chs. S. 89°48'E. of the cor. of secs. 14, 15, 22 and 23.

From flag "B", S. 89°48'E., on random offset line.

18.59 S. 0°1'E., 4.26 chs.; thence

S. 89°48'E., on random line, bet. secs. 14 and 23.

34.63 Set flag "D" for triangulation. From this point, flag "F" set 0.30 chs. S. and 0.12 chs. W. of the cor. of secs. 11, 12, 13 and 14, brs. N. 29°30'E., and flag "E" which is set 4.94 chs. N. 0°1'W. of the cor. of secs. 13, 14, 23 and 24, brs. N. 84°½'E.

40.00 Set temp. ¼ sec. cor. Impracticable to chain from here. Prolong random transit line to the cor. of secs. 13, 14, 23 and 24, where it falls 5 lks. N. of the cor.

At flag points "D", "E" and "F", and carefully measure the angles of the triangle, the values of which are 54°30½', 95°53', and 29°36½', respectively, the sum of which is 180°.

Solving triangle DEF,

DE = $\frac{EF \sin. "F"}{\sin. "D"}$ or, by logarithms,

log. EF = 1.873669
 log. sin. "F" = 9.693787-10
 $\frac{1.567456}{9.910731-10}$
 log. sin. "D" =
 log. DE = 1.656725

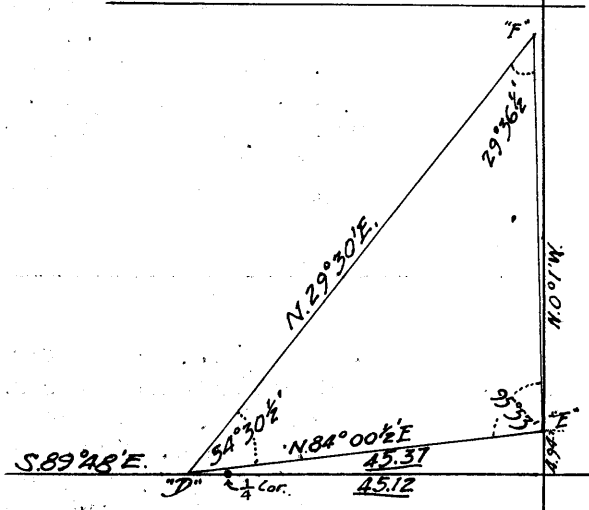
DE = 45.37 chs.
 45.37 X cos. 5°58½' = .99456 X 45.37 = 45.12 chs., which added to 34.63 chs., gives 79.75 chs.

79.75 Intersect N. and S. line, 5 lks. N. of the cor. of secs. 13, 14, 23 and 24.

Thence N. 89°46'W., on a true line, bet. secs. 14 and 23.

Over mountainous land, through scattering undergrowth.

39.87½ Asc. 700 ft. Measurement by triangulation. Set an iron post, 3 ft. long, 1 in. diam., in a rock crevice, in mound of stone, for ¼ sec. cor., marked on brass cap



1 S14
 2 S23
 1918

Survey of a Portion of the
Subdivision of T. 9 N., R. 1 E.

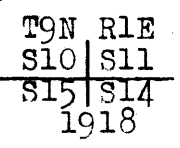
Chains.

From which
 A juniper, 8 ins. diam., brs. N.42½°E.,
 223 lks. dist., marked ¼S14 BT.
 A juniper, 12 ins. diam., brs. S.15¼°W.,
 40 lks. dist., marked ¼S23 BT.
 Asc. 150 ft.
 45.12 Triangulation point, on top of granite ledge, brs. N. and
 S. Asc. 120 ft., distance by chaining.
 52.20 Ridge, brs. N.10°W. and S.10°E. Desc. over broken cliffs,
 through dense undergrowth, 170 ft.
 61.16 Thence N.0°1'W., 4.26 chs.
 Thence on offset, N.89°46'W., 15.84 chs.
 77.00 Triangulation point "B". Desc. 90 ft., distance by triangulation
 79.75 Thence S.0°1'E., 4.26 chs., to the cor. of secs. 14, 15,
 22 and 23.
 Land, broken and mountainous
 Soil, granite ledges and boulders.
 No timber.
 Undergrowth, cypress, juniper, scrub oak, cactus and
 mesquite.

N.0°1'W., bet. secs. 14 and 15.
 Over mountainous land, through dense undergrowth.
 Distance by triangulation.
 8.07 Triangulation point, on ridge, brs. NW. and SE., 150 ft.
 above cor. Thence by chaining. Asc. 450 ft.
 29.15 Desc. 330 ft.
 40.00 Set an iron post, 3 ft. long, 1 in. diam., 10 ins. in the
 ground, on bed rock, in a mound of stone, for ¼ sec.
 cor., marked on brass cap



From which
 A juniper, 24 ins. diam., brs. N.57½°E.,
 211 lks. dist., marked ¼S14 BT.
 A juniper, 7 ins. diam., brs. N.3¼°W.,
 55 lks. dist., marked ¼S15 BT.
 Desc. 310 ft.
 52.73 Draw, course N.80°W. Asc. 200 ft.
 73.30 Divide between Boulder and Bumble Bee Creeks, brs. N.30°W.
 and S.30°E. Desc. 60 ft.
 80.00 Set an iron post, 3 ft. long, 2 ins. diam., 26 ins. in the
 ground, for cor. of secs. 10, 11, 14 and 15, marked on
 brass cap



And raise a mound of stone, 4 ft. base, 2 ft. high, W.
 of cor.
 Land, mountainous and very rough.
 Soil, rocky, 4th rate.
 No timber.
 Undergrowth, juniper, scrub oak, manzanita, mesquite and
 cactus.

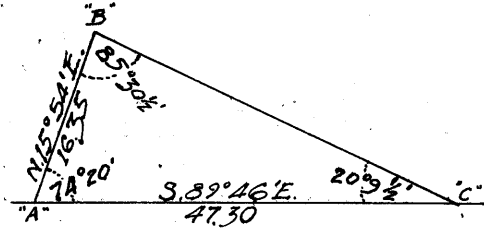
0.81 S.89°46'E., on a random line, bet. secs. 11 and 14.
 Owing to the excessively broken and brushy nature of the
 country, to the eastward, triangulate as follows:
 From this point, "A", set a flag, "C", ahead on line,

Survey of a Portion of the
Subdivision of T. 9 N., R. 1 E.

Chains.

and from "A", measure a base 16.35 chs. N.15°54'E. to flag "B", from which flag "C" is visible.

Set over these points and carefully measure each angle, the values of which are respectively, 74°20', 85°30½' and 20°9½' and whose sum is 180°.



The distance triangulated, AC, is given by

$$\frac{16.35 \times \sin. "B"}{\sin. "C"} \quad \text{or, by logarithms,}$$

log. sin. "B" = 9.998664110
 log. 16.35 = 1.213518
 —————
 1.212182
 log. sin. "C" = 9.537335-10
 log. AC = 1.674847
 AC = 47.30 chs., which added to

- 0.81 chs., gives
- 48.11 Triangulation point "C".
- Thence N.89°46'W., 8.11 chs.
- 40.00 Set temp. ¼ sec. cor
- From triangulation point "C", continue S.89°46'E., on random line.
- 79.90 Intersect N. and S. line, 42 lks. S. of the cor. of secs. 11, 12, 13 and 14.
- Thence S.89°56'W., on a true line, bet. secs. 11 and 14. Over mountainous land, through dense undergrowth. Asc. 150 ft.
- 24.80 Ridge, brs. N.60°E. and S.60°W. Thence over level land.
- 31.79 Triangulation point. Desc. 25 ft.
- 39.95 Set an iron post, 3 ft. long, 1 in. diam., 12 ins. in the ground, in a mound of stone, on bed rock, for ¼ sec. cor., marked on brass cap

1 S11
 ¼ S14
 1918

And raise a mound of stone, 4 ft. base, 2 ft. high, N. of cor.
 The approximate topography over distance triangulated is as follows:

- Desc. 200 ft.
- 55.00 Canyon, course NE. Asc. 700 ft.
- 79.09 Triangulation point, on ridge, brs. N. and S.
- 79.90 The cor. of secs. 10, 11, 14 and 15.
- Land, mountainous.
- Soil, rocky, 4th rate.
- No timber.
- Undergrowth, scrub oak, mahogany, and manzanita.

- From the reestablished standard cor. of secs. 33 and 34, on the S. bdy. of the Tp., hereinbefore described.
- N.0°2'W., bet. secs. 33 and 34.
- Over mountainous land, through dense undergrowth.
- Desc. 220 ft.
- 10.70 Ravine, course NE. Asc. 90 ft.
- 19.60 Spur, slopes E. Desc.
- 26.65 Canyon, course E. Asc.
- 34.20 Ridge, brs. N.80°W. and S.80°E. Desc.
- 40.00 Set an iron post, 3 ft. long, 1 in. diam., 20 ins. in the ground, in a mound of stone, for ¼ sec. cor., marked on brass cap

Survey of a Portion of the
Subdivision of T. 9 N., R. 1 E.

19

19.

chains.

$\frac{1}{4}$
S33 | S34
1918

And raise a mound of stone, 3 ft. base, $1\frac{1}{2}$ ft. high, W. of cor.

43.40 Draw, course N.80°E. Thence along E. slope.
60.50 Ravine, course S.80°E. Asc. 400 ft.
76.50 Desc.
80.00 Set an iron post, 3 ft. long, 2 ins. diam., 28 ins. in the ground, for cor. of secs. 27, 28, 33 and 34, marked on brass cap

T9N R1E
S28 | S27
S33 | S34
1918

And raise a mound of stone, 3 ft. base, $1\frac{1}{2}$ ft. high, W. of cor.

Land, mountainous.
Soil, rocky, 4th rate.
No timber.
Undergrowth, scrub oak, cactus and mahogany.

40.00 East on a random line, bet. secs. 27 and 34.
80.07 Set temp. $\frac{1}{4}$ sec. cor.
Intersect N. and S. line, 10 lks. N. of the cor. of secs. 26, 27, 34 and 35.

Thence N.89°56'W., on a true line, bet. secs. 27 and 34. Over very rough and mountainous land, through dense undergrowth.

Asc. 200 ft.
2.90 Spur, slopes S.5°W. Desc.
13.27 Spur, slopes S. Continue descent.
23.30 Spur, slopes S.20°W. Continue descent.
40.03 $\frac{1}{2}$ Set an iron post, 3 ft. long, 1 in. diam., 10 ins. in the ground, in a mound of stone, for $\frac{1}{4}$ sec. cor., marked on brass cap

$\frac{1}{4}$ S27
S34
1918

From which

A granite boulder, 3 X 5 X 5 ft. above ground, marked cross (X) BR, brs. S.77 $\frac{1}{2}$ °W., 5 lks. dist. Raise a mound of stone, 3 ft. base, $1\frac{1}{2}$ ft. high, N. of cor.

45.90 Spur, slopes S.30°W. Desc. 140 ft.
49.70 Boulder Creek, 25 lks. wide, running water 1 ft. deep, course SE. Asc. 740 ft.

80.07 The cor. of secs. 27, 28, 33 and 34.
Land, mountainous and very rough.
Soil, rocky, 4th rate.
No timber.
Undergrowth, dense scrub oak and mahogany.

5.50 N.0°2'W., bet. secs. 27 and 28.
24.85 Over mountainous land, through dense undergrowth. Desc. 500 ft. over NE slope. Draw course NE. Continue desc. Right bank of Boulder Creek, brs. N.80°W. and S.80°E. Thence across Boulder Creek, large pools of water, with running water, 5 lks. wide, 4 ins. deep, course S.80°E.

Survey of a Portion of the
Subdivision of T. 9 N., R. 1 E.

20

Chains.

28.45 Left bank of Boulder Creek, brs. N.80°W. and S.80°E. Asc. 100 ft.

31.40 Spur, slopes W. Desc.

37.20 Enter Boulder Creek, course S.10°W.

40.00 On right bank of Boulder Creek, at high water mark, Set an iron post, 3 ft. long, 1 in. diam., 6 ins. in the ground, in a mound of stone, for 1/4 sec. cor., marked on brass cap

S28 1/4 S27
1918

From which

A cottonwood, 12 ins. diam., brs. S.28 3/4°W., 158 lks. dist., marked 1/4 S28 BT.

No other trees within limits. Raise a mound of stone, 3 ft. base, 1 1/2 ft. high, W. of cor.

Asc. 20 ft.

41.05 Spur, slopes NE. Desc.

43.85 Boulder Creek, 1 ch. wide, course E. Asc. 275 ft.

51.65 Spur, slopes S.80°W. Desc. 120 ft.

63.90 Asc. 300 ft.

80.00 Set an iron post, 3 ft. long, 2 ins. diam., 24 ins. in the ground, for cor. of secs. 21, 22, 27 and 28, marked on brass cap

T9N R1E
S21 S22
S28 S27
1918

And raise a mound of stone, 3 ft. base, 1 1/2 ft. high, W of cor.

Land, mountainous.

Soil, rocky, 4th rate.

No timber.

Undergrowth, scrub oak and mahogany.

40.00 S.89°56'E., on a random line, bet. secs. 22 and 27. Set temp. 1/4 sec. cor.

80.31 Intersect N. and S. line, 21 lks. S. of the cor. of secs. 22, 23, 26 and 27.

Thence

S.89°55'W., on a true line, bet. secs. 22 and 27.

Over broken land, through dense undergrowth.

Desc.

1.30 Draw, course N.70°W. Asc.

16.05 Ridge, brs. N.30°W. and S.30°E. Desc.

34.30 Draw, course S.60°W.

38.80 Ravine, course S.10°E. Asc. 50 ft.

40.15 1/2 Set an iron post, 3 ft. long, 1 in. diam., 12 ins. in the ground, in a mound of stone, for 1/4 sec. cor., marked on brass cap

1/4 S22
S27
1918

And raise a mound of stone, 3 ft. base, 2 ft. high, N. of cor.

Asc. 150 ft.

50.35 Spur, slopes S.30°E. Desc. 20 ft.

53.90 Draw, course S.20°E. Asc. 200 ft.

66.45 Ridge, brs. N. and S. Desc. 170 ft.

76.10 Draw, course S.30°W. Asc. 20 ft.

80.31 The cor. of secs. 21, 22, 27 and 28.

Land, mountainous and broken.

Soil, rocky, 4th rate.

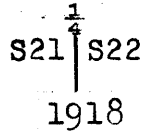
No timber.

Survey of a Portion of the
Subdivision of T. 9 N., R. 1 E.

Chains.

Undergrowth, scrub oak, mahogany and laurel.

N.0°2'W., bet. secs. 21 and 22.
 Over rough, mountainous land, through dense undergrowth.
 Asc.
 6.10 Spur, slopes S.80°W. Desc.
 14.60 Draw, course SW. Asc.
 22.25 Wire fence, brs. N.72°E. and S.72°W.
 24.70 Spur, slopes S.40°W., 275 ft. above cor. Desc.
 40.00 Set an iron post, 3 ft. long, 1 in. diam., on bed rock, in
 a mound of stone, for $\frac{1}{4}$ sec. cor., marked on brass cap



From which
 A water oak, 5 ins. diam., brs. S.75 $\frac{1}{4}$ °W.,
 115 lks. dist., marked $\frac{1}{4}$ S21 BT.
 No other trees within limits. Raise a mound of stone, 3
 ft. base, 1 $\frac{1}{2}$ ft. high, W. of cor.
 43.20 Willow Creek, dry, course S.10°W. Asc. 550 ft.
 68.80 Desc. 25 ft.
 75.00 Asc. 75 ft.
 80.00 Set an iron post, 3 ft. long, 2 ins. diam., 24 ins. in the
 ground, for cor. of secs. 15, 16, 21 and 22, marked on
 brass cap

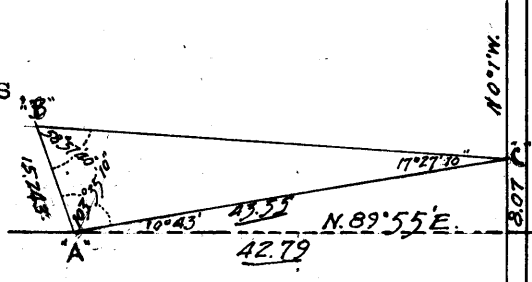


And raise a mound of stone, 3 ft. base, 2 ft. high, W.
 of cor.
 Land, mountainous and rough.
 Soil, rocky, 4th rate.
 No timber.
 Undergrowth, scrub oak, laurel and mountain mahogany.

37.17 N.89°55'E., on a random line, bet. secs. 15 and 22.
 40.00 Set flag "A" for triangulation point.
 Set temp. $\frac{1}{4}$ sec. cor. Return to flag "A", from which
 flag "C" on sec. line bet. secs. 14 and 15, 8.07 chs.
 N.0°1'W. of the cor. of secs. 14, 15, 22 and 23, brs.
 N.79°12'E. From "A", measure a base of 15.243 chs.
 to point "B", from which flag at point "C" is visible
 Measure angles "A", "B" and "C" and find them to be
 respectively 103°35'10",
 58°57'40" and 17°27'10",
 the sum of which is 180°.

Distance AC is given by
 $\frac{AB \sin. "B"}{\sin. "D"}$ or, by logarithms

log. AB = 1.183071
 log. sin. "B" = 9.932889-10
 1.115960
 log. sin. "C" = 9.477005-10
 log. AC = 1.638955
 AC = 43.55 chs.



Survey of a Portion of the
Subdivision of T. 9 N., R. 1 E.

Chains.

The angle between the random sec. line and the line AC is $10^{\circ}43'$. The length of the random line from point "A" is given by $\cos. 10^{\circ}43' \times 43.55 \text{ chs.}$, or $.98256 \times 43.55 = 42.79$, which added to 37.17 chs. , gives 79.96 chs. The falling of the random is determined by multiplying $\sin. 10^{\circ}43' \times 43.55 \text{ chs.}$ and subtracting 8.07 chs. ; or $.18595 \times 43.55 = 8.10 \text{ chs.}$ $8.10 - 8.07 = 0.03 \text{ chs.}$

79.96 Intersect N. and S. line, 3 lks. S. of the cor. of secs. 14, 15, 22 and 23.
Thence
S. $89^{\circ}54'W.$, on a true line, bet. secs. 15 and 22.
Over broken land, through dense undergrowth.
Distance by triangulation.

39.98 Set an iron post, 3 ft. long, 1 in. diam., 6 ins. in the ground, in a mound of stone, for $\frac{1}{4}$ sec. cor., marked on brass cap

$$\begin{array}{r} \frac{1}{4} S15 \\ \frac{1}{4} S22 \\ \hline 1918 \end{array}$$

And raise a mound of stone, 3 ft. base, $1\frac{1}{2}$ ft. high, N. of cor.
Asc. 50 ft.

42.79 Triangulation point. Distance by chaining.

47.80 Ridge, brs. N. $15^{\circ}E.$ and S. $15^{\circ}W.$ At a point 7 lks. N. of line, I set flag "B" for use on triangulation bet. secs. 15 and 16. Desc. 400 ft.

64.95 Willow Creek, dry, course S. $5^{\circ}E.$ Asc. 60 ft.

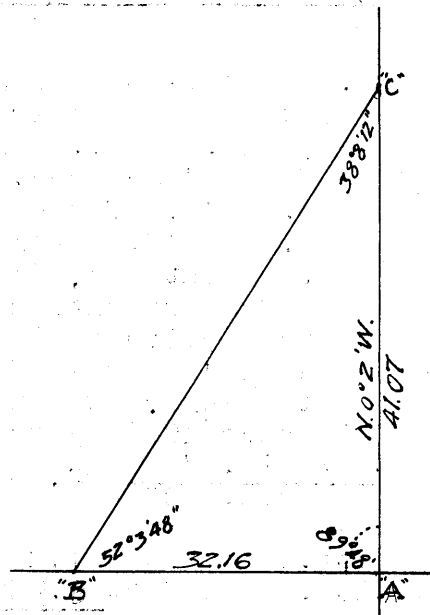
79.00 Ridge, brs. N. $15^{\circ}E.$ and S. $15^{\circ}W.$ Desc. 20 ft.

79.96 The cor. of secs. 15, 16, 21 and 22.
Land, mountainous and broken.
Soil, rocky, 4th rate.
No timber.
Undergrowth, scrub oak and mahogany.

N. $0^{\circ}2'W.$, bet. secs. 15 and 16.
Over mountainous land, through dense undergrowth.
The nature of the country makes good chaining impossible.
Therefore triangulate as follows:

Set a flag ahead on line, "C", denote the cor. of secs. 15, 16, 21 and 22 by "A", and the flag described on last mile, 32.16 chs. from "A" by "B". Then measure the three angles "A", "B" and "C" and find them respectively $89^{\circ}48'$, $52^{\circ}3'48''$ and $38^{\circ}8'12''$, the sum of which is 180° . The distance AC is given by $\frac{AB \sin. "B"}{\sin. "C"}$ or, by logs,

log. AB = 1.507316
log. sin. "B" = 9.896906-10
1.404222
log. sin. "C" = 9.790664-10
log. AC = 1.613558
AC = 41.07 chs.



Thence S. $0^{\circ}2'E.$, 1.07 chs., to point for $\frac{1}{4}$ sec. cor.
The approximate topography on the line triangulated is as follows:

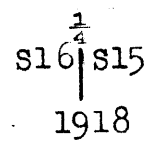
25.00 Desc. deep ravine,
Willow Creek, course SW. Asc.
30.00 Spur, slopes E. Desc.

Survey of a Portion of the
Subdivision of T. 9 N., R. 1 E.

Chains.

35.00
40.00

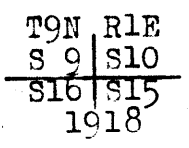
Same ravine,, course SE. Asc. 150 ft.
Set an iron post, 3 ft. long, 1 in. diam., 10 ins. in the
ground, in a mound of stone, for $\frac{1}{4}$ sec. cor., marked on
brass cap



And raise a mound of stone, 3 ft. base, 2 ft. high, W.
of cor.
Asc. 25 ft.

41.10
44.40
72.70
80.00

Spur, slopes SW. Desc. 20 ft.
Same ravine,, dry, course S.20°W. Asc. 600 ft.
Ridge, brs. N.10°E. and S.10°W. Thence over level land.
Set an iron post, 3 ft. long, 2 ins. diam., 10 ins. in the
ground, on bed rock, in a mound of stone, for cor. of
secs. 9, 10, 15 and 16, marked on brass cap



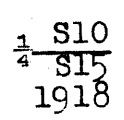
From which
A juniper limb, 6 ins. diam., brs. S.67°W.,
27 lks. dist., marked T9N R1E S16 BT.
No other trees within limits. Raise a mound of stone, 2
ft. base, 1 $\frac{1}{2}$ ft. high, W. of cor.
Land, mountainous and rough.
Soil, granite rocks, 4th rate.
No timber.
Undergrowth, scrub oak, mahogany and manzanita.

40.00
79.86

N.89°54'E., on a random line, bet. secs. 10 and 15.
Set temp. $\frac{1}{4}$ sec. cor.
Intersect N. and S. line, 19 lks. N. of the cor. of secs.
10, 11, 14 and 15.
Thence
N.89°58'W., on a true line, bet. secs. 10 and 15.
Over broken and mountainous land, through dense undergrowth.
Asc. 20 ft.

3.00
10.00
12.00
26.00
39.30
39.70
39.93

Ridge, brs. N.30°W. and S.30°E. Desc. 85 ft.
Draw, course S.40°W. Asc. 30 ft.
Leave dense, enter scattering undergrowth.
Spur, slopes S. Desc. 350 ft.
Willow Creek, dry, course S.
Trail, brs. S.5°W. and N.5°E. to Willow Spring
Set an iron post, 3 ft. long, 1 in. diam., 26 ins. in the
ground, for $\frac{1}{4}$ sec. cor., marked on brass cap



From which
A scrub oak, 6 ins. diam., brs. N.56°E.,
17 lks. dist., marked $\frac{1}{4}$ S10 BT.
A scrub oak, 6 ins. diam., brs. S.22°E.,
11 lks. dist., marked $\frac{1}{4}$ S15 BT.
From this cor., Willow Spring brs. N.30°E., about 3 chs.
dist.
Asc. 180 ft.

54.05
60.90
79.86

Spur, slopes S.10°E. Desc. 50 ft.
Draw, course S.60°E. Asc.
The cor. of secs. 9, 10, 15 and 16.
Land, broken and mountainous.
Soil, rocky, 4th rate.

Survey of a Portion of the
Subdivision of T. 9 N., R. 1 E.

24

Chains.

No timber
Undergrowth, manzanita and scrub oak.

From the reestablished standard cor. of secs. 32 and 33,
on the S. bdy. of Tp., hereinbefore described,
N.0°2'W., bet. secs. 32 and 33.

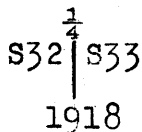
Over mountainous land, through scattering undergrowth.
Asc. 330 ft.

13.60 Spur, slopes W. Thence along W. slope.

20.70 Desc. 150 ft.

30.70 Ravine, course S.70°W; Asc. 330 ft.

40.00 Set an iron post, 3 ft. long, 1 in. diam., 24 ins. in the
ground, in a mound of stone, for $\frac{1}{4}$ sec. cor., marked on
brass cap

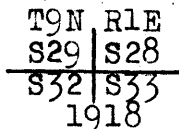


And raise a mound of stone, 3 ft. base, 2 ft. high, W.
of cor.

45.90 Ridge, brs. N.80°E. and S.80°W. Desc. 125 ft.

58.80 Ravine, course S.40°W. Asc. 450 ft.

80.00 Set an iron post, 3 ft. long, 2 ins. diam., 24 ins. in the
ground, for cor. of secs. 28, 29, 32 and 33, marked on
brass cap



And raise a mound of stone, 3 ft. base, 2 ft. high, W.
of cor.

Land, rough and mountainous.

Soil, rocky, 4th rate.

No timber.

Undergrowth, scrub oak and cactus.

East on a random line, bet. secs. 28 and 33.

40.00 Set temp. $\frac{1}{4}$ sec. cor.

80.12 Intersect N. and S. line, 2 lks. S. of the cor. of secs.
27, 28, 33 and 34.

Thence

S.89°59'W., on a true line, bet. secs. 28 and 33.

Over mountainous land, through scattering undergrowth.

Asc. 70 ft.

3.92 Desc. 50 ft.

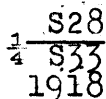
8.92 Asc. 440 ft.

10.12 Draw, course N.70°E. Continue ascent.

17.52 Draw, course S.70°E. Continue ascent.

36.32 Divide between Boulder and Cottonwood Creeks, brs. N.20°E.
and S.30°W. Desc. 590 ft.

40.06 Set an iron post, 3 ft. long, 1 in. diam., 12 ins. in the
ground, in a mound of stone, for $\frac{1}{4}$ sec. cor., marked on
brass cap



And raise a mound of stone, 3 ft. base, 2 ft. high, N.
of cor.

45.42 Trail, brs. S. to Tiptop and N. to Crown King.

61.62 Draw, course S.10°W. Asc. 65 ft.

65.62 Spur, slopes S. Desc. 60 ft.

68.12 Draw, course S. Asc. 275 ft.

80.12 The cor. of secs. 28, 29, 32 and 33.

Survey of a Portion of the
Subdivision of T. 9 N., R. 1 E.

Chains.

Land, rough and mountainous.
Soil, granite rocks and boulders; 4th rate.
No timber.
Undergrowth, scrub oak, cat claw and mahogany.

33.90
40.00

N.0°2'W., bet. secs. 28 and 29.
Over rough and mountainous land, through scattering under-
growth.
Asc. 830 ft.
Desc. 580 ft.
Set an iron post, 3 ft. long, 1 in. diam., 18 ins in the
ground, in a mound of stone, 3 ft. base, 1½ ft. high,
for ¼ sec. cor., marked on brass cap

$\frac{1}{4}$
 S29 | S28
 1918

65.55
66.76
80.00

And raise a mound of stone, 2 ft. base, 1½ ft. high, W.
of cor.
Draw, course N.80°E. Asc. 220 ft.
Wire fence, brs. N.70°E. and S.70°W.
Set an iron post, 3 ft. long, 2 ins. diam., 28 ins. in the
ground, for cor. of secs. 20, 21, 28 and 29, marked on
brass cap

T9N R1E
 S20 | S21
 S29 | S28
 1918

And raise a mound of stone, 3 ft. base, 2 ft. high, W.
of cor.
Land, rough and mountainous.
Soil, granite rocks and boulders; 4th rate.
No timber.
Undergrowth, oak brush.

40.00
79.99

N.89°59'E., on a random line, bet. secs. 21 and 28.
Set temp; ¼ sec. cor.
Intersect N. and S. line, 2 lks. N. of the cor. of secs.
21, 22, 27 and 28.

14.16

Thence
West on a true line, bet. secs. 21 and 28.
Over mountainous land, through dense undergrowth.
Desc. 320 ft.
Left bank of Boulder Creek, brs. N.60°E. and S.60°W.
Thence across Boulder Creek, course S.60°W.

15.16

Boulder Creek, 20 lks. wide, stream of water 4 ins. deep,
course S.60°W.

21.64

Right bank of Boulder Creek, brs. N.80°E. and S.80°W.
Asc. 600 ft.

37.93

Draw, course S.30°E. Continue ascent.

39.99½

Set an iron post, 3 ft. long, 1 in. diam., 28 ins. in the
ground, for ¼ sec. cor., marked on brass cap

$\frac{1}{4}$ S21
 S28
 1918

46.03
49.33
57.66
66.13

And raise a mound of stone, 3 ft. base, 2 ft. high, N.
of cor.
Wire fence, brs. N.70°E. and S.70°W.
Spur, slopes N.70°E. Desc. 100 ft.
Ravine, course NE. Asc. 400 ft.
Wire fence, brs. N.10°E. and S.10°W.

Survey of a Portion of the
Subdivision of T. 9 N., R. 1 E.

26

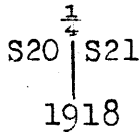
Chains.

66.73
79.99

Trail, brs. N.10°E. to Crown King and S.10°W. to Tiptop.
The cor. of secs. 20, 21, 28 and 29.
Land, mountainous.
Soil, rocky, 4th rate.
No timber.
Undergrowth, scrub oak.

13.00
21.13
40.00

N.0°2'W., bet. secs. 20 and 21.
Over rolling land, through scattering undergrowth.
Asc. 75 ft.
Ridge, brs. N.40°E. and S.60°W. Desc. 200 ft.
Ravine, course N.70°E. Asc.
Set an iron post, 3 ft. long, 1 in. diam., 14 ins. in the
ground, in a mound of stone, 3 ft. base, 2 ft. high,
for 1/4 sec. cor., marked on brass cap



49.34
53.10
56.96
65.20
69.84
80.00

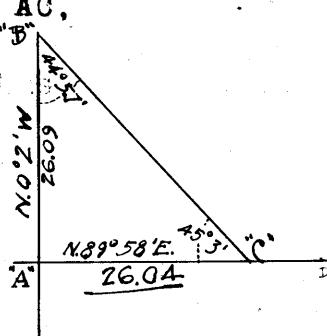
And raise a mound of stone, 3 ft. base, 2 ft. high, W.
of cor.
Desc. 340 ft.
Trail, brs. E. to Tiptop and W. to Crown King.
Ravine, dourse N.70°E. Asc.
Spur, slopes N.70°E. Desc.
Boulder Creek, 10 lks. wide, clear running water, 1 ft.
deep, course S.70°E. Asc. 490 ft.
Top of cliff, 175 ft. high. Continue ascent.
Set an iron post, 3 ft. long, 2 ins. diam., 24 ins. in the
ground, for cor. of secs. 16, 17, 20 and 21, marked on
brass cap



And raise a mound of stone, 3 ft. base, 2 ft. high, W.
of cor.
Land, mountainous and rough.
Soil, rocky, 4th rate.
No timber.
Undergrowth, scrub oak.

26.04
40.00
50.03

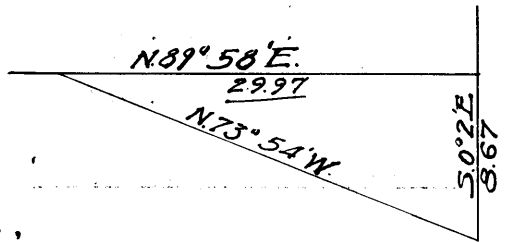
The cor. of secs. 15, 16, 21 and 22 being plainly visible,
N.89°58'E., on a random line, bet. secs. 16 and 21.
Impracticable to chain from this cor. Resignate this
cor. as point "A", and set a flag "C" ahead on line,
and from "A" measure a base N.0°2'W., 26.09 chs. to
flag "B", and measure angles "A", "B" and "C", the
values of which are 90°, 44°57' and 45°3', respectively.
The distance triangulated, AC,
is given by
 $26.09 \times \tan. 44^\circ 57' =$
 $26.09 \times .99826 = 26.04$ chs.
Thence N.89°58'E., on a
random line.
Set temp. 1/4 sec. cor.
Impracticable to chain
from here. Set flag
"D" for triangulation.



Survey of a Portion of the
Subdivision of T. 9 N., R. 1 E.

Chains.

From cor. of secs. 15, 16,
21 and 22, measure a base
S.0°2'E., 8.67 chs., from
which flag "D" brs.
N.73°54'W. The distance
triangulated is given by
8.67 X tan. 73°52' =
8.67 X 3.45703 = 29.97 chs.,
which added to 50.03 chs.,
gives 80.00 chs.



80.00

Intersect N. and S. line, at the cor. of secs. 15, 16, 21
and 22.

Thence
S.89°58'W., on a true line, bet. secs. 16 and 21.
Over mountainous land, through dense undergrowth, measure-
ment by triangulation, approximate distances to top-
ographical features.

18.00

Desc. 500 ft. deep, ravine.
Willow Creek, course S.10°W. Asc.

29.97

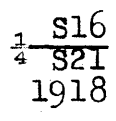
Triangulation point. Thence by
chaining.

36.50

Spur, slopes S.15°E. Desc.

40.00

Ravine, course S.30°E.
Set an iron post, 3 ft. long, 1 in. diam., 28 ins. in the
ground, for 1/4 sec. cor., marked on brass cap



And raise a mound of stone, 3 ft. base, 2 ft. high, N.
of cor.

44.70

Asc. 200 ft.
Top of ascent; thence over broken land.

53.97

Triangulation point. Thence by triangulation.

80.00

The cor. of secs. 16, 17, 20 and 21.

Land, rough and mountainous.
Soil, rocky, 4th rate.
No timber.
Undergrowth, scrub oak.

25.16

N.0°2'W., bet. secs. 16 and 17.
Over mountainous land, through dense undergrowth.
Asc. 525 ft.

28.65

Ridge, brs. N.50°E. and S.40°W. Desc.

40.00

Draw, course S.40°W. Asc. 35 ft.
Set an iron post, 3 ft. long, 1 in. diam., 26 ins. in the
ground, for 1/4 sec. cor., marked on brass cap



And raise a mound of stone, 3 ft. base, 3 ft. high, W.
of cor.

51.60

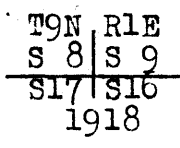
Thence over nearly level land.

69.05

Draw, course S.60°W. Asc.

80.00

Desc.
Set an iron post, 3 ft. long, 2 ins. diam., 28 ins. in the
ground, for cor. of secs. 8, 9, 16 and 17, marked on
brass cap



And raise a mound of stone, 3 ft. base, 2 ft. high, W.
of cor.

Survey of a Portion of the
Subdivision of T. 9 N., R. 1 E.

28

Chains.

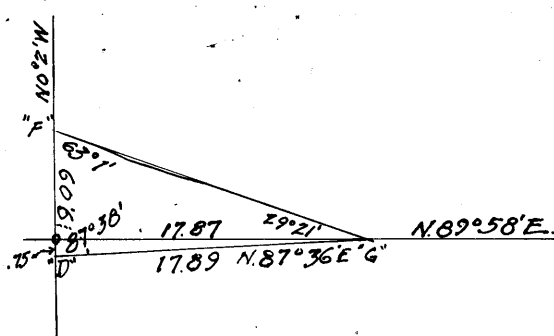
Land, rough and mountainous.
Soil, rocky, 4th rate.
No timber.
Undergrowth, scrub oak and mahogany.

N.89°58'E., on a random line, bet. secs. 9 and 16.
As the country in the vicinity of this sec. cor. is
excessively brushy, chaining is impracticable.
Therefore set a flag "G" ahead on line. I also set
flag "F", 9.09 chs. N.0°2'W. of cor. of secs. 8, 9, 16
and 17 and flag "D" 0.75 chs. S.0°2'E. of the same cor.
As this base is very short, set over each vertex of the
triangle and measure the angles with unusual care, with
the following results: "G", 29°21'; "D", 87°38';
and "F", 63°1', the sum of which is 180°.

Distance DG is found as follows:

DF sin. "F"
sin. "G" or, by logarithms,

log. DF = 9.992995
log. sin. "F" = 9.949945-10
 .942940
log. sin. "G" = 9.690323-10
log. DG = 1.252617
DG = 17.89 chs.



The bearing of the line DG
is N.87°36'E. and the dist.
to flag "G" along the
sec. line is given by
17.89 X sin. 87°38' =
17.89 X .99915 = 17.87chs.

17.87 Triangulation point. Thence N.89°58'E., on a random line.
40.00 Set temp. 1/4 sec. cor.
79.94 Intersect N. and S. line, 10 lks. S. of the cor. of secs.
9, 10, 15 and 16.

Thence
S.89°54'W., on a true line, bet. secs. 9 and 16.
Over mountainous land, through dense undergrowth.
Desc. 90 ft.

8.05 Draw, course S.20°W. Asc. 525 ft.
34.30 Ridge, brs. NE. and SW. Desc. 280 ft.
39.97 Set an iron post, 3 ft. long, 1 in. diam., 26 ins. in the
ground, for 1/4 sec. cor., marked on brass cap

1 S 9
4 S 16
1918

And raise a mound of stone, 3 ft. base, 2 ft. high, N.
of cor.

62.07 Triangulation point on ridge, brs. N.60°E. and S.60°W.
Thence by triangulation, descending.

79.94 The cor. of secs. 8, 9, 16 and 17.

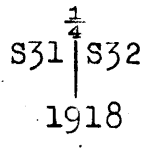
Land, mountainous.
Soil, rocky, 4th rate.
No timber.
Undergrowth, scrub oak, mountain mahogany and manzanita.

From the reestablished standard cor. of secs. 31 and 32,
on the S. bdy. of Tp., hereinbefore described,
N.0°3'W., bet. secs. 31 and 32.
Over mountainous land, through scattering undergrowth.

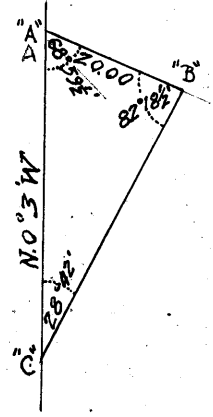
Survey of a Portion of the
Subdivision of T. 9 N., R. 1 E.

Chains.

Asc. 600 ft.
 2.00 Draw, course S.10°E. Continue ascent.
 12.30 Draw, course S.5°W. Continue ascent.
 22.75 Spur, slopes SW. Thence along W. slope, over nearly level land.
 33.45 Draw, course SW. Asc. 260 ft.
 39.55 Ridge, brs. E. and W. Set flag "C" for triangulation.
 40.00 Set an iron post, 3 ft. long, 1 in. diam., 28 ins. in the ground, for $\frac{1}{4}$ sec. cor., marked on brass cap



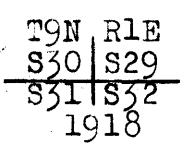
And raise a mound of stone, 3 ft. base, $1\frac{1}{2}$ ft. high, W. of cor.
 The land to the north is very steep and rocky, making direct measurement impracticable. Therefore set flag point "A" ahead on line, and from it measure a base of 20.00 chs. in a southeasterly direction to flag "B", from which flag "C" is visible. Measure angles "A", "B" and "C" and find their values to be 68°59'30", 82°18'30" and 28°42' respectively, the sum of which is 180°.



Distance AC is given by
 $\frac{AB \sin. "B"}{\sin. "C"}$ or, by logarithms,

log. AB = 1.301030
 log. sin. "B" = 9.996074-10
 1.297104
 log. sin. "C" = 9.681443-10
 log. AC = 1.615661
 AC = 41.27 chs.
 41.27 + 39.55 = 80.82 chs.
 Thence S.0°3'E., 0.82 chs.

80.00 Set an iron post, 3 ft. long, 2 ins. diam., 24 ins. in the ground, for cor. of secs. 29, 30, 31 and 32, marked on brass cap



And raise a mound of stone, 3 ft. base, 2 ft. high, W. of cor.
 The approximate topography on the line triangulated is as follows:

52.00 Ravine, course NE. Asc.
 60.00 Spur, slopes NE. Desc.
 65.00 Ravine, course E. Asc.
 79.00 Ridge, brs. E. and W. Desc.
 80.00 The cor. of secs. 29, 30, 31 and 32.
 Land, rough and mountainous.
 Soil, rocky, 4th rate.
 No timber.
 Undergrowth, cat claw and cactus,

40.00 East on a random line, bet. secs. 29 and 32.
 80.04 Set temp. $\frac{1}{4}$ sec. cor.
 Intersect N. and S. line, 10 lks. N. of the cor. of secs. 28, 29, 32 and 33.
 Thence N.89°56'W., on a true line, bet. secs. 29 and 32.
 Over mountainous land, through scattering undergrowth.
 Asc. 225 ft.
 6.56 Ridge, brs. N.10°W. and S.10°E. Desc. 400 ft.
 20.00 Ravine, course S. Asc. 150 ft.

30.

Survey of a Portion of the
Subdivision of T. 9 N., R. 1 E.

Chains.	
30.19	Ridge, brs. N. and S. Desc. 130 ft.
40.02	Set an iron post, 3 ft. long, 1 in. diam., 6 ins. in the ground, in a mound of stone, 4 ft. base, 2 ft. high, for $\frac{1}{4}$ sec. cor., marked on brass cap
	$\begin{array}{r} \frac{1}{4} S29 \\ \hline \frac{1}{4} S32 \\ 1918 \end{array}$
	And raise a mound of stone, 2 ft. base, $1\frac{1}{2}$ ft. high, N. of cor.
48.72	Cottonwood Creek, dry at this point, course S.10°W. Contains water a short distance above and below. Asc. 575 ft.
80.04	The cor. of secs. 29, 30, 31 and 32. Land, rough and mountainous. Soil, rocky, 4th rate. No timber. Undergrowth, cat claw and cactus.
40.00	West on a random line, bet. secs. 30 and 31. Set temp. $\frac{1}{4}$ sec. cor.
78.91	Intersect the Gila and Salt River Meridian, 23 lks. S. of the cor. of secs. 25, 30, 31 and 36, which is a iron post, properly set, marked and witnessed as described by the Surveyor-General.
	Thence S.89°50'E., on a true line, bet. secs. 30 and 31. Over mountainous land, through scattering undergrowth. Asc. 260 ft.
12.90	Ridge, brs. N.30°E. and S.30°W. Desc. 450 ft.
32.35	Ravine, course S. Asc. 150 ft.
38.91	Set an iron post, 3 ft. long, 1 in. diam., 24 ins. in the ground, in a mound of stone, for $\frac{1}{4}$ sec. cor., marked on brass cap
	$\begin{array}{r} \frac{1}{4} S30 \\ \hline \frac{1}{4} S31 \\ 1918 \end{array}$
	And raise a mound of stone, 3 ft. base, 2 ft. high, N. of cor. Asc. 550 ft.
55.50	Ridge, brs. N.10°E. and S.10°W. Desc. 160 ft.
65.20	Draw, course S. Asc. 70 ft.
75.50	Ridge, brs. E. and NW. Desc. gradually.
78.91	The cor. of secs. 29, 30, 31 and 32. Land, mountainous. Soil, rocky, 4th rate. No timber. Undergrowth, scrub oak and mountain mahogany.
	N.0°3'W., bet. secs. 29 and 30. Over mountainous land, through dense undergrowth. Desc. 195 ft.
9.70	
9.70	Ravine, course E. Asc. 285 ft.
33.80	Spur, slopes E. Desc. 50 ft.
40.00	Set an iron post, 3 ft. long, 1 in. diam., 12 ins. in the ground, on bed rock, in a mound of stone, 3 ft. base, 2 ft. high, for $\frac{1}{4}$ sec. cor., marked on brass cap

Survey of a Portion of the
Subdivision of T. 9 N., R. 1 E.

Chains.

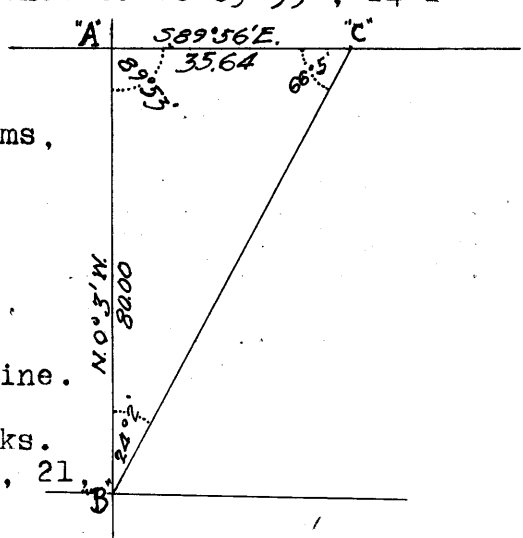
$\frac{1}{4}$
S30 | S29
1918

- 45.00 Desc. 85 ft.
- 53.35 Ravine, containing small stream of water, course S.40°E. Asc. 125 ft.
- 58.00 Spur, slopes S.30°E. Desc. 70 ft.
- 63.30 Right fork of Cottonwood Creek, containing clear running water, 5 lks. wide, 1 in. deep, course S.20°E. Asc. 610 ft.
- 80.00 Set an iron post, 3 ft. long, 2 ins. diam., on bed rock, in a mound of stone, for cor. of secs. 19, 20, 29 and 30, marked on brass cap

T9N R1E
S19 | S20
S30 | S29
1918

And raise a mound of stone, 3 ft. base, 2 ft. high, W. of cor.
Land, rough and mountainous.
Soil, rocky, 4th rate.
No timber.
Undergrowth, scrub oak and mahogany.

S.89°56'E., on a random line, bet. secs. 20 and 29. It is impracticable to chain across deep ravine to the east. Set flag "A" at the sec. cor., and flag "C" ahead on line, from which flag "B" at the cor. of secs. 29, 30, 31 and 32 is visible. Measure the angles "A", "B" and "C" and find them to be 89°53', 24°2' and 66°5' respectively, the sum of which is 180°.



Distance AC is given by
AB sin. "B"
sin. "C" or, by logarithms,

log. AB = 1.903090
log. sin. "B" = 9.609880-10
log. sin. "C" = 1.512970
log. sin. "C" = 9.961011-10
log. AC = 1.551959
AC = 35.64 chs.

- 35.64 Thence S.89°56'E. on random line.
- 40.00 Set temp. $\frac{1}{4}$ sec. cor.
- 80.00 Intersect N. and S. line, 2 lks. S. of the cor. of secs. 20, 21, 28 and 29.

Thence N.89°57'W., on a true line, bet. secs. 20 and 29. Over mountainous land, through scattering undergrowth. Asc. 425 ft.

- 25.90 Ridge, brs. N.10°W. and S.10°E. Desc. 140 ft.
- 34.00 Draw, course SE. Asc. 150 ft.
- 40.00 Set an iron post, 3 ft. long, 1 in. diam., on bed rock, in a mound of stone, 4 ft. base, 2 $\frac{1}{2}$ ft. high, for $\frac{1}{4}$ sec. cor., marked on brass cap

$\frac{1}{4}$ S20
S29
1918

And raise a mound of stone, 2 ft. base, 1 $\frac{1}{2}$ ft. high, N. of cor.

Survey of a Portion of the
Subdivision of T. 9 N., R. 1 E.

32

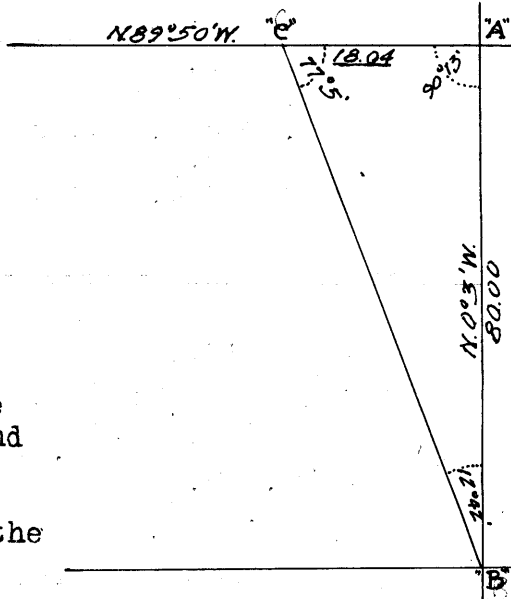
Chains.

44.36 Asc. 100 ft.
Triangulation point. Thence by triangulation, with estimated distances to topographical features. Desc. 500 ft.
60.00 Left fork of Cottonwood Creek, dry, course S.20°W. Asc.
80.00 The cor. of secs. 19, 20, 29 and 30.
Land, mountainous.
Soil, rocky, 4th rate.
No timber.
Undergrowth, scrub oak and mahogany.

N.89°50'W., on a random line, bet. secs. 19 and 30, Impracticable to chain from this cor., because of the nature of the country. From flag "A" at the cor. of secs. 19, 20, 29 and 30, set a flag "C" ahead on line, from which flag "B" at the cor. of secs. 29, 30, 31 and 32 is visible. Measure the angles "A", "B" and "C" and find them to be 90°13', 12°42' and 77°5', respectively, the sum of which is 180°.

The distance AC is given by
$$\frac{AB \sin. "B"}{\sin. "C"} \text{ or, by logarithms,}$$

log. AB	=	1.903090
log. sin. "B"	=	9.342119-10
		<u>1.245209</u>
log. sin. "C"	=	9.988869-10
log. AC	=	<u>1.256340</u>
AC	=	18.04 chs.



18.04 Triangulation point. Thence
N.89°50'W., on a random line.
40.00 Set temp. $\frac{1}{4}$ sec. cor.
78.84 Intersect Gila and Salt River Meridian, 14 lks. S. of the cor. of secs. 19, 24, 25 and 30, which is an iron post, properly set, marked and witnessed as described by the Surveyor-General.
Thence
S.89°44'E., on a true line, bet. secs. 19 and 30.
Over mountainous land, through dense undergrowth.
Asc. 500 ft.
21.83 Ridge, brs. N. and S. Desc. 430 ft.
33.45 Ravine, course SE. Asc. 160 ft.
38.84 Set an iron post, 3 ft. long, 1 in. diam., on bed rock, in a mound of stone, 5 ft. base, 2½ ft. high, for $\frac{1}{4}$ sec. cor., marked on brass cap

$$\frac{1}{4} \frac{S19}{S30}$$

1918

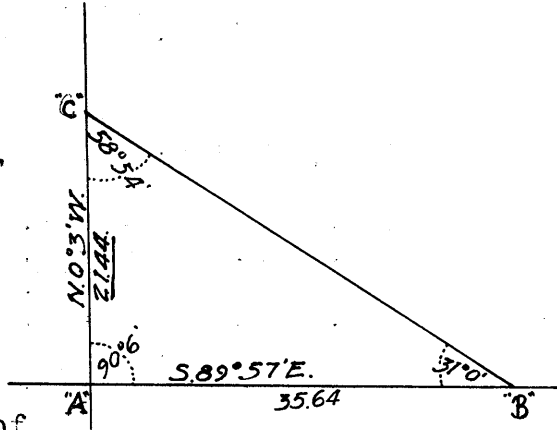
And raise a mound of stone, 2 ft. base, 1½ ft. high, N. of cor.
Asc. 240 ft.
48.40 Ridge, brs. N. and S. Desc. gradually,
50.80 Draw, course S. Asc. 25 ft.
60.34 Triangulation point, on W. wall of canyon, brs. N. and S. Thence by triangulation, with approximate distances to topographical features. Desc. 500 ft.
70.00 Canyon, course S. Asc. 400 ft.
77.60 Ridge, brs. N. and S. Desc.
78.84 The cor. of secs. 19, 20, 29 and 30.
Land, very rough and mountainous.
Soil, rocky, 4th rate.
No timber.
Undergrowth, scrub oak and mahogany.

Survey of a Portion of the
Subdivision of T. 9 N., R. 1 E.

Chains.

N.0°3'W., bet. secs. 19 and 20.
Impracticable to chain from this cor. because of the nature
of the country. Set a flag, "C", on line, ahead from which
flag "B", 35.64 chs. S.89°57'E. of flag point, "A",
the cor. of secs. 19, 20, 29 and 30, brs. S.58°57'E.
The three angles "A", "B" and "C" are 90°6', 31° and
58°54', respectively.

Distance triangulated,
AC, is given as
follows:
AB sin. "B"
sin. "C" or, by logarithms,

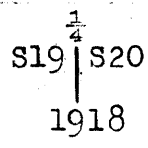


log. AB = 1.551938
log. sin. "B" = 9.711839-10
1.263777
log. sin. "C" = 9.932609-10
log. AC = 1.331168
AC = 21.44 chs.

21.44 Triangulation point, on top of
ridge, brs. E. and W., 400
ft. above cor.

Thence N.0°3'W., distance by chaining.
Over mountainous land, through dense
undergrowth.

40.00 Desc. 400 ft.
Set an iron post, 3 ft. long, 1 in. diam., 12 ins. in the
ground, on bed rock, in a mound of stone, 3 ft. base,
1½ ft. high, for ¼ sec. cor., marked on brass cap



And raise a mound of stone, 3 ft. base, 2 ft. high, SW
of cor. Impracticable to raise mound of stone, W. of
cor.

58.30 Enter draw, course N., comes from SE.
70.30 Leave draw, course N.40°W. Asc.
76.00 Spur, slopes W. Desc. 50 ft.
79.90 Same draw, course N.70°E. Asc.

80.00 Set an iron post, 3 ft. long, 2 ins. diam., 6 ins. in the
ground, on bed rock, in a mound of stone, 4 ft. base,
2 ft. high, for cor. of secs. 17, 18, 19 and 20, marked
on brass cap



From which
An oak, 6 ins. diam., brs. N.53¼°E.,
132 lks. dist., marked T9N R1E S17 BT.
A scrub oak, 8 ins. diam., brs. S.35°E.,
64 lks. dist., marked T9N R1E S20 BT.
A black oak, 12 ins. diam., brs. S.14½°W.,
232 lks. dist., marked T9N R1E S19 BT.
An oak, 5 ins. diam., brs. N.77°W.,
28 lks. dist., marked T9N R1E S18 BT.

Land, rough and mountainous.
Soil, rocky, 4th rate.
No timber.
Undergrowth, scrub oak, mahogany, cat claw and manzanita.

S.89°57'E., on a random line, bet. secs. 17 and 20.
Owing to dense brush on this line, chaining is impracticable.

Survey of a Portion of the
Subdivision of T. 9 N., R. 1 E.

34.

Chains.

Set flag "B" N.0°3'W. of cor.,
flag "A", 67.96 chs. S.0°3'E.
of flag "B", and flag "C" on
random sec. line, S.89°57'E.
of cor. Measure angles
"A", "B" and "C", and find
them 34°27'20", 76°49' and
68°43'40", respectively, the
sum of which is 180°. Dist-
ance AC is found as follows:

AB sin. "B"
Sin. "C" or, by logarithms,

log. AB = 1.832253
log. sin. 76°49' = 9.988401-10
1.820654
log. sin. "C" = 9.969354-10
Log. AC = 1.851300

Using the length AC, the
distance triangulated is
found as follows:

AC sin. "A"
sin.89°54' or by logarithms,

log. AC = 1.851300
log. sin. "A" = 9.752637-10
1.603937
log. sin.89°54' = 9.999999-10
log. dist. = 1.603938

Dist. triangulated = 40.17 chs.

Thence 0.17 chs. N.89°57'W.

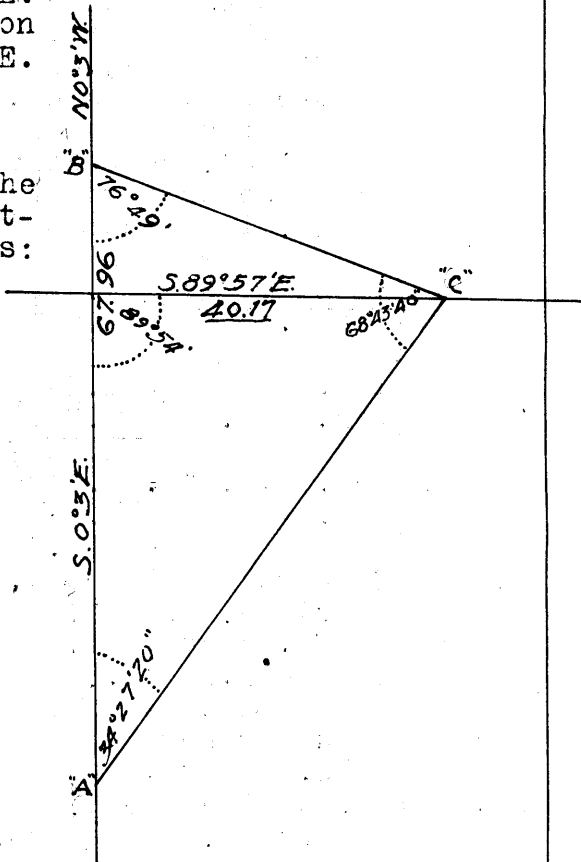
- 40.00 Set temp. 1/4 sec. cor.
- 80.26 Thence S.89°57'E., on a random line.
- 80.26 Intersect N. and S. line, 14 lks. S. of the cor. of secs.
16, 17, 20 and 21.
- Thence
S.89°57'W., on a true line, bet. secs. 17 and 20.
Over nearly level land, through dense undergrowth.
- 3.30 Desc. 185 ft.
- 12.80 Continue gradual descent.
- 25.12 Wire fence, brs. N. and S. Asc.
- 27.25 Thence over level land.
- 40.13 Set an iron post, 3 ft. long, 1 in. diam., 26 ins. in the
ground, for 1/4 sec. cor., marked on brass cap

1/4 S17
1/4 S20
1918

And raise a mound of stone, 4 ft. base, 2 ft. high, N.
of cor.
Distance from this point by triangulation, with approximate
distances to topographical features.

- 41.00 Desc.
- 41.00 Trail, brs. N. to Crown King and S. to Tiptop.
- 50.00 Boulder Creek, water in pools, course S. Asc. 300 ft.
- 60.00 Ridge, brs. N.30°E. and S.30°W. Desc.
- 79.50 Draw, with water in pools, course N.70°E. Asc. 15 ft.
- 80.26 The cor. of secs. 17, 18, 19 and 20.
Land, rough and mountainous.
Soil, rocky, 4th rate.
No timber.
Undergrowth, scrub oak and manzanita.

- 40.00 N.89°44'W., on a random line, bet. secs. 18 and 19.
- 40.00 Set temp. 1/4 sec. cor.



Survey of a Portion of the
Subdivision of T. 9 N., R. 1 E.

Chains.

78.74

Intersect Gila and Salt River Meridian, 18 lks. N. of the cor. of secs. 13, 18, 19 and 24, which is an iron post properly set, marked and witnessed as described by the Surveyor-General.

Thence

S.89°52'E., on a true line, bet. secs. 18 and 19.

Over mountainous land, through dense undergrowth.

Asc. 110 ft.

6.05

Ridge, brs. N. and S. Desc. 230 ft.

17.05

Thence over broken land.

31.74

Draw, course S.70°E. Thence along S. slope.

38.64

Set an iron post, 3 ft. long, 1 in. diam., 28 ins. in the ground, for 1/4 sec. cor., marked on brass cap

1/4 S18
1/4 S19
1918

And raise a mound of stone, 4 ft. base, 2 ft. high, N. of cor.

52.60

Desc. 160 ft.

78.64

The cor. of secs. 17, 18, 19 and 20.

Land, broken and mountainous.

Soil, rocky, 4th rate.

No timber.

Undergrowth, scrub oak.

N.0°3'W., bet. secs. 17 and 18.

Over mountainous land, through dense undergrowth.

Asc. 100 ft.

9.40

Desc. 80 ft.

14.44

Spur, slopes N.60°E. Thence along E. slope.

24.35

Desc. 65 ft.

31.56

Boulder Creek, dry, course SE. Asc. gradually.

32.16

Trail, brs. NW. to Crown King and SE. to Tiptop.

40.00

Set an iron post, 3 ft. long, 1 in. diam., 26 ins. in the ground, for 1/4 sec. cor., marked on brass cap

1/4 S18 | S17
1918

From which

An oak, 5 ins. diam., brs. N.30°E.,
60 lks. dist., marked 1/4 S17 BT.

An oak, 16 ins. diam., brs. S.47°W., 6
64 lks. dist., marked 1/4 S18 BT.

Cor. falls on the NE. edge of what was a small clearing of about 1 acre, known as Simpson's Ranch, long since abandoned. Ruin of old cabin is on W. side of clearing.

62.40

Draw, course S.30°E. Asc. 130 ft.

80.00

Set an iron post, 3 ft. long, 2 ins. diam., 8 ins. in the ground, on bed rock, in a mound of stone, 4 ft. base, 2 ft. high, for cor. of secs. 7, 8, 17 and 18, marked on brass cap

T9N R1E
S 7 | S 8
S18 | S17
1918

From which

A juniper limb, 12 ins. diam., brs. S.56 1/2°W.,
157 lks. dist., marked T9N R1E S18 BT.

A black oak, 10 ins. diam., brs. N.49 3/4°W.,
99 lks. dist., marked T9N R1E S7 BT.

No other trees within limits. Raise a mound of stone, 2 ft. base, 1 1/2 ft. high, W. of cor.

Survey of a Portion of the
Subdivision of T. 9 N., R. 1 E.

36

Chains.

Land, mountainous and rolling.
Soil, rocky, 4th rate.
Undergrowth, scrub oak, mahogany and manzanita.

N. 89° 57' E., on a random line, bet. secs. 8 and 17.
40.00 Set temp. $\frac{1}{4}$ sec. cor.
42.61 Further chaining is impracticable because of the dense brush. Set flag "C" at this point. Flags "D" at the cor. of secs. 8, 9, 16 and 17, and flag "F", 9.84 chs. N. 0° 2' W. of flag "D" are visible. Measure the angles "C", "D" and "F" and find their values to be 14° 41' 30", 88° 56' and 76° 22' 30", respectively.

The distance CD is given by $\frac{DF \sin "F"}{\sin "C"}$ or, by logarithms,

log. DF	=	0.992995
log. sin. "F"	=	9.987603-10
		<u>0.980598</u>
log. sin. "C"	=	9.403962-10
log. CD	=	<u>1.576636</u>
CD	=	37.73 chs.
37.73 + 42.61	=	80.34 chs.

80.34 Intersect N. and S. line, 5 lks. N. of the cor. of secs. 8, 9, 16 and 17.
Thence S. 89° 59' W., on a true line, bet. secs. 8 and 17. Over rough and rolling land, through dense undergrowth, distance by triangulation, approximate distances to topographical features.
Desc. 200 ft.
25.00 Left fork of Boulder Creek, 100 lks wide, course S. 60° W. Asc. 150 ft.
37.73 Triangulation point. Thence by chaining. Asc. 50 ft.
40.17 Set an iron post, 3 ft. long, 1 in. diam., 26 ins. in the ground, for $\frac{1}{4}$ sec. cor., marked on brass cap

$\frac{1}{4}$ S 8
S 17
1918

And raise a mound of stone, 3 ft. base, 2 ft. high, N. of cor.
47.00 Ridge, brs. N. 50° E. and S. 50° W. Desc. 120 ft.
54.00 Ravine, course SW. Asc. 160 ft.
62.50 Spur, slopes SW. Desc. 115 ft.
70.30 Draw, course S. 30° W. Asc. 90 ft.
75.00 Spur, slopes S. Desc. 50 ft.
80.34 The cor. of secs. 7, 8, 17 and 18.
Land, rough and rolling.
Soil, rocky, 4th rate.
No timber.
Undergrowth, scrub oak and mahogany.

Survey of a Portion of the
Subdivision of T. 9 N., R. 1 E.

BOOK 8088
37

Chains. N. 89° 52' W., on a random line, bet. secs. 7 and 18.
40.00 Set temp. $\frac{1}{4}$ sec. cor.
78.50 Intersect Gila and Salt River Meridian, 23 lks. S. of the
reestablished cor. of secs. 7, 12, 13 and 18, herein-
before described.
Thence
S. 89° 42' E., on a true line, bet. secs. 7 and 18.
Over rough mountainous land, through dense undergrowth.
Asc. 15 ft.
2.50 Desc. 130 ft.
14.70 Head of draw, course S. Continue descent, 60 ft.
20.80 Draw, course S. Asc. 210 ft.
29.50 Spur, slopes S. Desc.
38.50 Set an iron post, 3 ft. long, 1 in. diam., 6 ins. in the
ground, on bed rock, in a mound of stone, for $\frac{1}{4}$ sec.
cor., marked on brass cap

S 7
—
S 18
1919

And raise a mound of stone, 2 ft. base, 1 $\frac{1}{2}$ ft. high, N.
of cor.
43.00 Draw, course SE. Asc.
48.90 Spur, slopes S. Desc.
54.00 Creek, 8 lks. wide, 6 ins. deep, course S. Asc. 130 ft.
58.00 Trail, brs. N. to Crown King and S. to Tip Top.
60.30 Ridge, brs. N. and S. Desc. gradually.
78.50 The cor. of secs. 7, 8, 17 and 18.
Land, rough mountainous.
Soil, rocky, 4th rate.
Undergrowth, scrub oak, mahogany and scattering cedar.

Boundaries of that portion of T. 9 N., R. 1 E., subdivided
under this Group.

Latitudes, departures and closing errors.

Line designated.	True bearing.	Dist. chs.	Latitudes		Departures	
			N. chs.	S. chs.	E. chs.	W. chs.
South Boundary (2nd Std. Par. N.)	West	440.00				440.00
" " " "	N. 89° 48' W.	39.00	.14			39.00
West Boundary. (Gila and Salt River Meridian)	North	320.00	320.00			
Subdivisional Bdy.	S. 89° 42' E.	78.50		.42	78.50	
	N. 89° 59' E.	80.34	.02		80.34	
	N. 89° 54' E.	79.94	.14		79.94	
	S. 89° 58' E.	79.86		.05	79.86	
	N. 89° 56' E.	79.90	.09		79.90	
	S. 89° 50' E.	79.94		.23	79.94	
East Boundary	South	320.00		320.00		
Convergency.					.33	
Totals.			320.39	320.70	478.81	479.00
Error in latitude				.31		
Error in departure						.19

GENERAL DESCRIPTION.

This township is very mountainous and broken, and is mostly granite formation. Springs and good running water are therefore quite numerous for this arid region. The southern portion has little vegetation of any kind but the oak brush and mahogany grow progressively thicker to the northward, and bet. the 4th & 5th tiers of secs. is so dense as to be nearly impassable.

This is along the S. bdy. of the Prescott Forest Reserve, which has some considerable ^{TIMBER} therein, but no agricultural land, and therefore, it was not subdivided. There was at one time a small clearing at the middle of the E. side of sec. 18 of about one acre in extent, & that is the only piece of land in the Tp. that could be considered as agricultural, all the remainder being very rocky. In sec. 35 is the grazing homestead of Dave Heckle, and in sec. 28 is the grazing ranch of Mr. Morgan. These are the only two places where improvements of any kind have been made in the Tp. A trail from Crown King mine to Tiptop has been built at considerable expense, and is the only accessible route to the Tp. In secs. 14 & 23 is quite a clump of timber, locally known as the "Cypress Patch" and is the only timber in the Tp. Entire Tp. is locally considered good grazing land, but secs. 15 to 20, inclusive, of the surveyed area are too densely brushed for other than goats.

Book "G"
Group 61 - - - Arizona.
Township 9 North, Range 1 East.

DATE DIAGRAM.

Resurvey	Meridian	6	5	4	3	2	1
		7	8	9	10	11	12
		18	17	16	15	14	13
		19	20	21	22	23	24
		30	29	28	27	26	25
		31	32	33	34	35	36
		Second Standard Parallel North.					
Gila & Salt River	Meridian	6	5	4	3	2	1
		7	8	9	10	11	12
		18	17	16	15	14	13
		19	20	21	22	23	24
		30	29	28	27	26	25
		31	32	33	34	35	36
		Resurvey					

Lines in red, executed on dates shown on above diagram by H. L. Baldwin, U. S. Surveyor.

Lines in green, executed on dates shown on above diagram by J. P. Davis, U. S. Surveyor.

40

BOOK 3338

40

CERTIFICATE OF UNITED STATES SURVEYOR.

I, J.P. Davis, U. S. Surveyor, hereby certify upon honor that, in pursuance of special instructions received from the U. S. Surveyor General, for Group 61, Arizona, bearing date of the 13th day of November, 1917, I have well, faithfully, and truly in my own proper person, and in strict conformity with said instructions, the Manual of Surveying Instructions, and the laws of the United States, re-surveyed all those parts or portions of the GILA AND SALT RIVER MERIDIAN, IN TOWNSHIP 9 NORTH, BET. RANGES 1 EAST AND 1 WEST, and surveyed all those parts or portions of the subdivision lines of TOWNSHIP 9 NORTH, RANGE 1 EAST.

of the Gila and Salt River Base and Meridian, in the State of Arizona, which are represented in and by diagram on page 38 hereof the foregoing field notes, as having been executed by me, and under my direction; and that all the corners of said survey have been established and perpetuated in strict accordance with the Manual of Surveying Instructions, and the special written instructions of the U. S. Surveyor General, for Group 61, Arizona, and in the specific manner described in the field notes, and that the foregoing are the original field notes of such survey.

Boise Idaho, December 2, 1919

J.P. Davis

U. S. Surveyor.

APPROVAL.

OFFICE OF THE UNITED STATES SURVEYOR GENERAL,

191

The foregoing field notes of the survey of

executed by under his special instructions dated 191, having been critically examined, and the necessary corrections and explanations made, the said field notes, and the surveys they describe, are hereby approved.

U. S. Surveyor General.

I certify that the foregoing transcript of the field notes of the above-described surveys in, has been correctly copied from the original notes on file in this office.

U. S. Surveyor General.

4-680

BOOK 3338

FIELD ASSISTANTS.

NAMES.	CAPACITY.
<u>Field Assistants to H. L. Baldwin,</u>	<u>U. S. Surveyor.</u>
<i>Willard Hutton</i>	Chainman
Ben Mollette	Chainman.
Paul Armstrong	"
R. C. Larkin	"
Frank Berger	Moundman.
Wm. Eaton	Flagman.
Ingersoll Heckle	Packer.
Ed Stutsman	Cook.
Amos Trumbly	Cook.
<u>Field Assistants to J. P. Davis,</u>	<u>U. S. Surveyor.</u>
Harold F. Huse	Chainman.
Julius S. Owens	Chainman.
W. Vernon Bailey	Flagman.
Joe Contreras	Axman.
Joe Collins	Cook.
Elliot S. Gallager	Teamster.

42
42
BOOK 3338

CERTIFICATE OF UNITED STATES SURVEYOR.

I, H. L. Baldwin, U. S. Surveyor, hereby certify upon honor that, in pursuance of special instructions received from the U. S. Surveyor General, for Group 61, Arizona, bearing date of the 13th day of November, 1917, I have well, faithfully, and truly in my own proper person, and in strict conformity with said instructions, the Manual of Surveying Instructions, and the laws of the United States ^{re-} surveyed all those parts or portions of the SECOND STANDARD PARALLEL NORTH, IN. RANGE 1 EAST, and Surveyed all those parts or portions of the subdivision lines of TOWNSHIP 9 NORTH, RANGE 1 EAST, of the Gila and Salt River Base & Meridian, in the State of Arizona, which are represented in the foregoing field notes ^{and by diagram on page 38 hereof} as having been executed by me, and under my direction; and that all the corners of said ^{resurvey and} survey have been established and perpetuated in strict accordance with the Manual of Surveying Instructions, and the special written instructions of the U. S. Surveyor General, for Group 61, Arizona, and in the specific manner described in the field notes, and that the foregoing are the original field notes of such ^{re} survey, ^{and survey.}

Wichita Falls Texas Nov 22 1919

H. L. Baldwin

U. S. Surveyor.

APPROVAL.

OFFICE OF THE UNITED STATES SURVEYOR GENERAL,

Phoenix Arizona May 14, 1920.

The foregoing field notes of the ^{re-} survey of the Second Standard Parallel North Through ^{part of} Range 1 East, part of the Gila and Salt River Meridian thru part of Township 9 North, and the Survey of Part of the Subdivision Lines of Township 9 North, Range 1 East, of the Gila and Salt River Base and Meridian in the State of Arizona,

executed by H. L. Baldwin and J. P. Davis, U. S. Surveyors under ~~the~~ special instructions dated November 13, 1917 for Group 61, Arizona, having been critically examined, and the necessary corrections and explanations made, the said field notes, and the ~~surveys~~ ^{resurveys and surveys} they describe, are hereby approved.

Frank O. Frost

U. S. Surveyor General.

I certify that the foregoing transcript of the field notes of the above described surveys in has been correctly copied from the original notes on file in this office.