

①

Book "R"
4-679

BOOK 3339

MAY 25 1919

FIELD NOTES

OF THE RETRACEMENT OF

Part of the Subdivision Lines of Township 7 North, Range 2 East,

RESURVEY OF

Part of the East Boundary of Township 7 North, Range 1 East,
Part of the East and West Boundaries and Subdivision Lines and All of
The South Boundary of Township 7 North, Range 2 East, and

COMPLETION OF THE SURVEY OF

The Subdivision Lines of Township 7 North, Range 2 East.

Of the Gila and Salt River Base and Meridian,

In the State of Arizona.

EXECUTED BY

H. L. Baldwin,

In the capacity of U. S. Surveyor, under Special Instructions dated October 20, 1916,
issued by the United States Surveyor General to govern surveys included in Group
No. 61, which were approved by the Commissioner of the General Land
Office, November 6, 1916, and Assignment Instructions dated February 8, 1918.

Retracement,
Resurvey and Survey commenced May 19, 1918.

Retracement,
Resurvey and Survey completed June 11, 1918.

3339

3339

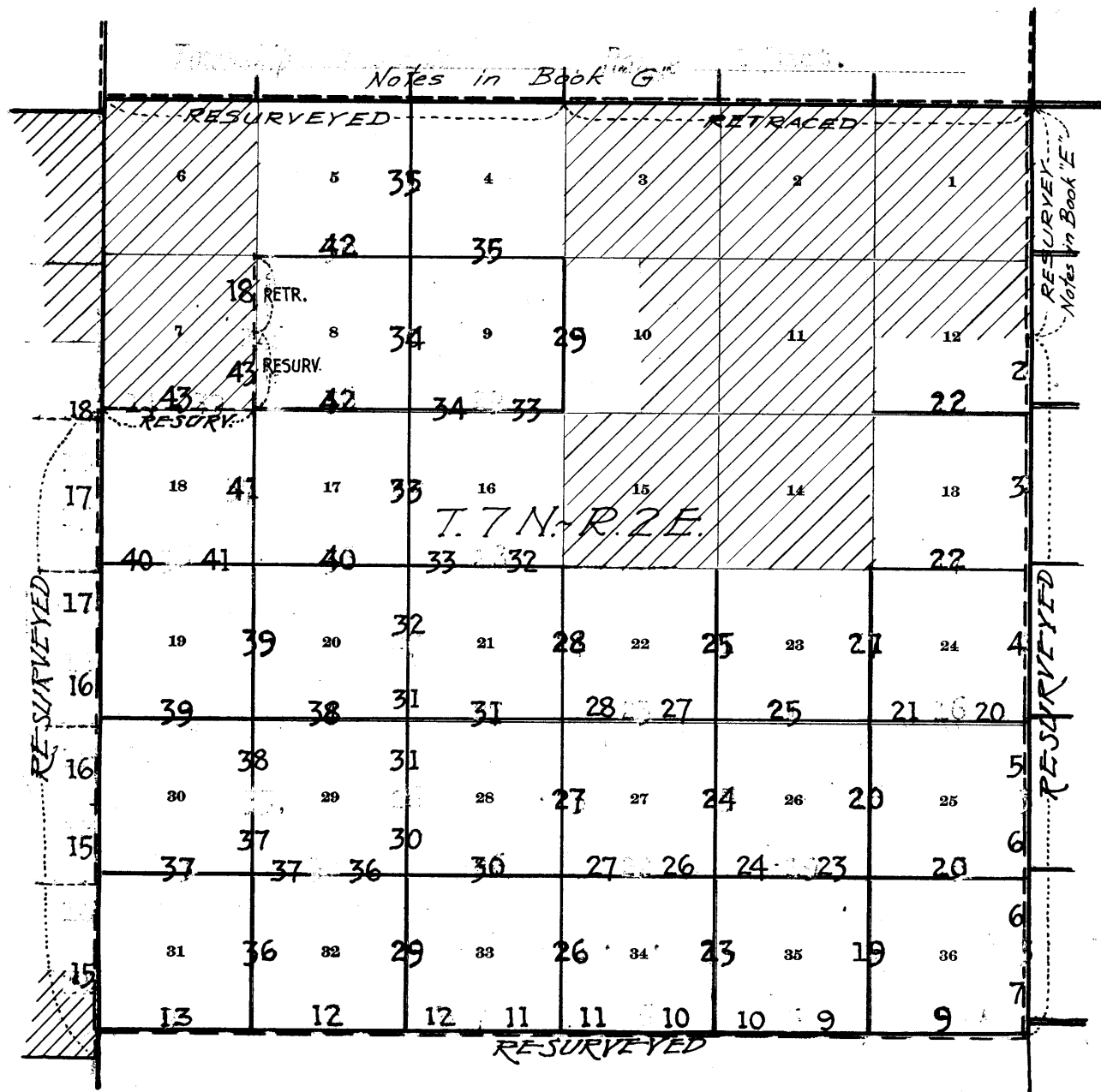
44
12

Book "R".

3339

BOOK 3339

INDEX DIAGRAM.



- Lines surveyed under this group.
- Lines retraced or resurveyed under this group.
- Lines of accepted surveys.
- - - Unsurveyed lines.
- /// Areas surveyed as per accepted plats on file.

Chains.

Retracements, Resurveys and Surveys executed by H.L. Baldwin, U.S. Surveyor, on dates shown on page 45 hereof, using Buff and Buff transit No. 9207, with Smith solar attachment. For description of instrument and certificate of approval, see Book "N".

Examine the adjustments of the transit and correct the level and collimation errors; then, to test the solar apparatus, by comparing its indications resulting from solar observations made during a.m. and p.m. hours with a meridian determined by observations on Polaris, proceed as follows:

May 19, 1918. At camp, near the cor. of secs. 10, 11, 14 and 15, T. 7 N., R. 2 E., in lat. $33^{\circ}57\frac{1}{2}'N.$; long. $112^{\circ}8'W.$, at 7h. 14.9m. p.m., l.m.t., by watch, which is set to correct local mean time, observe Polaris in accordance with the Manual of Instructions, and mark the line thus determined by a tack in a stake, 5 chs. N. of station.

U.C. of Polaris, meridian of Greenwich, Civil Date and Mean Time. 9h. 45.2m.

Correction to local meridian (subtract) 1.2m.

9h. 44.0m.

L.m.t. of observation, 7h. 14.9m.

Hour angle, 9h. 30.9m.

Azimuth of Polaris 1° 18' E.

May 20, 1918. At 7h. a.m., l.m.t., lay off the azimuth of Polaris, 1° 18' to the east, and note that the meridian thus determined intersects a giant cactus on the hill, about one mile north of station; therefore, use same as the north point in meridian.

At 8h. 0m., a.m., l.m.t., set off $33^{\circ}57\frac{1}{2}'N.$ on the lat. arc; $19^{\circ}54\frac{1}{2}'N.$ on the decl. arc, and determine a meridian with the solar. The line thus determined coincides with the true meridian determined by observations on Polaris.

At apparent noon, set off $19^{\circ}56'N.$ on the decl. arc, and observe the sun on the meridian; the resulting lat. is $33^{\circ}57\frac{1}{2}'N.$

At 5h. 0m. p.m., l.m.t., set off $33^{\circ}57\frac{1}{2}'N.$ on the lat. arc; $19^{\circ}59\frac{1}{2}'N.$ on the decl. arc, and determine a meridian with the solar. The line thus determined coincides with the true meridian determined by observations on Polaris.

The solar apparatus by a.m. and p.m. observations, defines positions for meridians which coincide with the true meridian determined by observations on Polaris.

Independent resurvey of part of E. bdy. of T. 7 N., R. 2 E.

The E. bdy. of T. 7 N., R. 2 E., was resurveyed in its entirety in January 1917, by Geo. F. Rigby, U. S. Surveyor, as a dependent resurvey, changing the original cors. to refer to areas west of the line only, and reestablishing new cors. at intervals of 40.00 chs. northerly from reestablished cor. of Ts. 6 and 7 N., R. 3 E. The line S of the original sec. cor. of secs. 7 and 12 being subject to rectification, Rigby's dependent resurvey notes of said portion of line were eliminated from Book "E" of this group, and the notes of the independent resurvey of same part of line which are herein contained, describe the resurvey in May, 1918 by H.L. Baldwin, U.S. Surveyor. The cors. preceded with the initials "G.F.R." are those cors. referring to areas E. of line only, which were reestablished by Rigby. No change was made in the marking of said cors., but they were moved by Surveyor Baldwin in order to bring them into direct alignment with his reestablished cors. referring to T. 7 N., R. 2 E. only. This movement made necessary certain changes in measurement of subdivision lines in T. 7 N., R. 3 E., which changes have been made as described in Book "E."

2. Independent Resurvey of part of East bdy. of T.7 N., R.2 E.

Chains

The reestablished cor. of Ts. 6 and 7 N., R.2 E., originally cor. of Ts. 6 and 7 N., Rs. 2 and 3 E., but changed by Surveyor Rigby in Jan. 1917 when surveying S. bdy. of T. 7 N., R. 3 E. as described in Book "E," is a sandstone 6x8x4 ins. above ground, firmly set marked with 6 notches on each of N., S. and W. edges, and witnessed by mound of stone W. of cor.

Thence,

North, on random line, on E. bdy. of T.7 N., R. 2 E., for course only.

361.15 Fall 42 lks. W. of reestablished 1/4 sec. cor. of sec. 12, originally 1/4 sec. cor. of secs. 7 and 12, but changed to refer to sec. 12 only by Rigby in January, 1917, as described in Book "E."

This cor. is a granite stone, 6x5x4 ins. above ground, firmly set, marked 1/4 on W. face, and witnessed by mound of stone, W. of cor., and a palo verde tree SW. of cor., marked "S12BT."

True course of E. bdy. of T.7 N., R.2 E., from this cor. to SE. cor. of Tp. is therefore S. 0° 4' W.

From above described 1/4 sec. cor.,

S. 0° 4' W., on true line, on E. bdy. of sec. 12 (S. 1/4).

Over mountainous land, thru scattering undergrowth. Descend 70 ft.

5.49 Foot of descent. Ascend 125 ft.

12.41 Top of peak at W. end of ridge. Descend 300 ft.

GFR37.41 (40.00 chs. southerly from reestablished 1/4 sec. cor. of sec. 7) Fall 12 lks. E. of reestablished cor. of secs. 7 and 18, which is an iron post, 2 ins. in diam., 3 ft. long, set 24 ins. in the ground, marked on brass cap,

T7N
S7
S18
R3E
1917

and witnessed by mound of stone, 2 ft. base, 1 1/2 ft. high, E. of cor.

Move post, 12 lks. E., and reset 28 ins. in the ground. Rebuild mound of stone, 3 ft. base, 2 ft. high, at original dist. E. of cor.

Thence over rolling land.

40.00 Set an iron post, 3 ft. long, 2 ins. in diam., 12 ins. in the ground, supported by a mound of stone, 3 ft. base, 2 ft. high for reestablished cor. of secs. 12 and 13, marked on brass cap,

T7N
S12
S13
R2E
1918

and raise mound of stone, 3 ft. base, 2 ft. high, W. of cor. corner.

The reestablished cor. of secs. 12 and 13, originally cor. of secs. 7, 12, 13 and 18, but changed by Rigby to refer to secs. 12 and 13 only, hrs. W. 13 lks. dist. This cor. is a granite stone 6x6x5 ins. above ground, firmly set, marked with 4 notches on S. and 2 notches on N. edges, and witnessed by mound of stone, W. of cor. Obliterate notches on stone.

Land, mountainous and rolling.

Soil, rocky, 4 th rate.

No timber.

Undergrowth, scattering catclaw and palo verde, greasewood and mesquite.

No grass.

Independent Resurvey of part of East bdy of T.7 N., R. 2 E. 3.

Chains.

S.0° 4' W., on true line, on E. bdy. of sec.13.
Over rolling land, thru scattering undergrowth.

7.91 Foot of steep ascent, brs.E and W. Leave rolling and
enter mountainous land. Ascend 250 ft.

20.68 Ridge, brs. S.70° E. and N.80° W. Descend 135 ft.

27.41 Draw, course SW. Ascend 20 ft.

35.24 Spur, slopes S. 30°W. Descend 35 ft. to

GFR 37.41 (40.00 chs. southerly from reestablished cor. of secs.7
and 18) Fall 9 lks.E. of reestablished $\frac{1}{4}$ sec.cor.of sec.
18, which is an iron post, 1 in. in diam., 3 ft. long,
set 6 ins. in the ground, supported by a mound of
stone, marked on brass cap,

S18
1917

and witnessed by mound of stone, 2 ft. base, 1 1/2 ft. high,
E. of cor.

Move post, 9 lks.E., and reset 6 ins. in ground, and re-
build mound of stone around same.

Rebuild mound of stone, 3 ft. base, 2 ft. high, at original
dist., E. of cor.

Descend.

39.88 Fall 9 lks.E. of reestablished $\frac{1}{4}$ sec.cor. of sec.13, orig-
inally $\frac{1}{4}$ sec.cor. of secs.13 and 18, but changed by
Rigby to refer to sec.13 only. This cor. is a granite
stone, 6x8x4 ins. above ground, firmly set, marked $\frac{1}{4}$
on W. face, witnessed by mound of stone, W. of cor., and
bearing tree SW. of cor., marked "S13BT."

Obliterate marking on stone and bearing tree.

40.00 Set an iron post 3 ft. long, 1 in. in diam., 6 ins. in the
ground, supported by a mound of stone, 3 ft. base, 2 ft.
high, for reestablished $\frac{1}{4}$ sec.cor. of sec.13, marked
on brass cap,

S13
1918

and raise a mound of stone 3 ft. base, 2 ft. high, W. of
cor.

Descend.

44.01 Wash, 10 lks. wide, course S.30°W. Ascend 80 ft.

56.97 Spur, slopes S.50°W. Descend 160 ft. to cor. of secs.13
and 24.

GFR 77.41 (80.00 chs. southerly from reestablished cor. of secs.7
and 18) Fall 5 lks.E. of reestablished cor. of secs.18
and 19, which is an iron post, 2 ins. in diam., 3 ft.
long, set in a mound of stone, and marked on brass cap,

T7N
S18
S19
R3E
1917

and witnessed by mound of stone, E. of cor.

Move post 5 lks.E., and reset in mound of stone, 4 ft.
base, 2 1/2 ft. high.

Rebuild mound of stone, 3 ft. base. 2 ft. high at orig-
inal dist. E. of cor.

80.00 Set an iron post, 3 ft. long, 2 ins. in diam., 6 ins. in
the ground, supported by a mound of stone, 4 ft. base,
2 ft. high, for reestablished cor. of secs. 13 and 24,
marked on brass cap,

T7N
S13
S24
R2 E
1918

and raise a mound of stone, 3 ft. base, 2 ft. high, W. of
cor.

Independent Resurvey of part of East bdy. of T.7 N., R.2 E.

Chains.

Land, mountainous.
Soil, rocky, 4th rate.
No timber.
Undergrowth, scattering palo verde, ocotillo and greasewood.
No grass.

.09 S.0° 4' W., on true line, on E. bdy. of sec. 24.
Over rolling land, thru scattering undergrowth. Descend.
Fall 5 lks. E. of reestablished cor. of secs. 13 and 24, originally cor. of secs. 13, 18, 19 and 24, but changed by Rigby's resurvey to refer to secs. 13 and 24 only. This cor. is a malpais stone 6x4x4 ins. above ground, firmly set, marked with 3 notches on each of N. and S. edges, and witnessed by mound of stone, W. of cor.

Obliterate marking on stone.

3.71 Wash, 20 lks. wide, course S.60°W.
14.47 Wash, 30 lks. wide, course S.80°W. Ascend gradual N. slope.
23.04 Ridge, brs. E. and S.80°W. Descend gradually.
32.62 Road, brs. E. and W.
36.84 Wash, 15 lks. wide, course S.40°W; Ascend.

GFR 37.41

(40.00 chs. southerly from reestablished cor. of secs. 18 and 19) Fall 5 lks. E. of reestablished $\frac{1}{4}$ sec. cor. of sec. 19, which is an iron post, 1 in. indiam., 3 ft. long, set 8 ins. in the ground, and supported by a mound of stone, and marked on brass cap,

S19

1917

and witnessed by a mound of stone, 2 ft. base, 1 1/2 ft. high, E. of cor.
Move post 5 lks. E. and reset 8 ins. in ground, and surround it with a mound of stone 3 ft. base, 2 ft. high.
Rebuild mound of stone 3 ft. base, 2 ft. high at original dist. E. of cor.

Thence over nearly level land.

40.00 Set an iron post 3 ft. long, 1 in. in diam., 20 ins. in the ground, supported by a mound of stone, 3 ft. base, 1 ft. high, for reestablished $\frac{1}{4}$ sec. cor. of sec. 24, marked on brass cap,

S24

1918

from which original bearing tree to original $\frac{1}{4}$ sec. cor. of secs. 19 and 24.

A palo verde, 8 ins. indiam., brs. S.70 3/4°W., 183 lks. dist., marked "S24 BT."

Establish additional bearing trees as follows:

On a palo verde, 9 ins. in diam., bearing N.25°W., 282 lks. dist., marked "S24 BT."

40.21 Fall 5 lks. E. of reestablished $\frac{1}{4}$ sec. cor. of sec. 24, originally $\frac{1}{4}$ sec. cor. of secs. 19 and 24, but changed by Rigby to refer to sec. 24 only. This cor. is a malpais stone 6x6x6 ins. above ground, firmly set, marked "1" on W. face, and witnessed by mound of stone, W. of cor., and bearing tree SW. of cor., which is retained as accessory to new reestablished $\frac{1}{4}$ sec. cor. of sec. 24. as hereinbefore described.

Obliterate marking on stone; Thence over level land.

44.81 Wash, 10 lks. wide, course S.10°W.
49.21 Wash, 30 lks. wide, course N.80°W.
66.06 Road brs. S.40°E. and N.50°W.
70.01 Wash, 10 lks. wide, course S.80°W.
72.41 Leave level land; ascend 20 ft. to

GFR 77.41

(80.00 chs. southerly from reestablished cor. of secs. 18 and 19) Fall 5 lks. E. of reestablished cor. of secs. 19 and 30, which is an iron post, 2 ins. in diam., 3 ft. long,

Independent Resurvey of part of East bdy. of T.7 N., R.2 E. 5

Chains.

set 24 ins. in the ground, marked on brass cap,

T7N
S19
S30
R3E

1917

and witnessed by mound of stone, 3 ft. base, 2 ft. high, E. of cor. Move post E. 5 lks., and reset 24 ins. in ground. Rebuild mound of stone, 3 ft. base, 2 ft. high at original dist. E. of cor.

Ascend on NE. slope.

80.00 Set an iron post 3 ft. long, 2 ins. in diam., 15 ins. in the ground, supported by a mound of stone, 4 ft. base, 1 1/2 ft. high, for reestablished cor. of secs. 24 and 25, marked on brass cap,

T7N
S24
S25
R2E

1918

and raise a mound of stone, 3 ft. base, 1 1/2 ft. high, W. of cor.

Land, level and rolling.

Soil, gravelly and rocky, 3rd and 4th rate.

No timber.

Undergrowth, scattering palo verde, cholla, ocotillo and greasewood.

No grass.

S. 0° 4' W., on a true line, on E. bdy. of sec. 25.

Over rolling land, thru scattering undergrowth; ascend.

.39 Fall 5 lks. E. of reestablished cor. of secs. 24 and 25, originally cor. of secs. 19, 24, 25 and 30, but changed by Rigby to refer to secs. 24 and 25 only. This cor. is a malpais stone, 6x5x5 ins. above ground, firmly set, marked with 2 notches on S. and 4 notches on N. edge, and witnessed by mound of stone, W. of cor., and bearing tree NW. of cor., marked "T7NR2ES24BT."

Obliterate marking on stone and bearing tree.

Ascend 130 ft. to

10.62 Top of ascent on E. slope of round topped butte. Top of butte is 80 lks. west of line, and is 30 ft. above line. On top of butte at 100 lks. W. of line is a group of prehistoric ruins.

Descend 190 ft. to

18.30 Wash, 5 lks. wide, course W. Ascend gradually.

GPR 37.41 (40.00 chs. southerly from reestablished cor. of secs. 19 and 30) Fall 4 lks. E. of reestablished 1/4 sec. cor. of sec. 30, which is an iron post, 1 in. in diam., 3 ft. long, set 26 ins. in the ground, marked on brass cap,

S30

1917

and witnessed by mound of stone, 2 ft. base, 1 1/2 ft. high, E. of cor.

Move post 4 lks. E., and reset 26 ins. in the ground. Rebuild mound of stones. 3 ft. base, 2 ft. high at original dist. E. of cor.

Ascend gradually.

40.00 Set an iron post, 3 ft. long, 1 in. in diam., 20 ins. in the ground, supported by a mound of stone, for reestablished 1/4 sec. cor. of sec. 25, marked on brass cap,

S25
1918

6. Independent Resurvey of part of E. bdy. of T.7 N..R.2 E.

Chains.

- and raise a mound of stone, 3 ft. base, 1½ ft. high, W. of cor.
- Ascend gradually.
- 40.39 Fall 4 lks. E. of reestablished ¼ sec. cor. of sec. 25, originally ¼ sec. cor. of secs. 25 and 30, but changed by Rigby to refer to sec. 25 only. This cor. is a malpais stone 6x10x6 ins. above ground, marked "1" on W face, witnessed by mound of stone W of cor., and bearing tree SW. of cor. marked "¼ S25 BT."
- Obliterate marks on stone and bearing tree.
- Ascend gradually.
- 42.41 Top of ascent, brs. E* and W. Descend steep slope.
- 49.50 Foot of steep descent, brs. E* and W. Descend gradually.
- 62.62 Road brs. E and W.
- 63.12 Wash, 10 lks. wide, course W. Ascend gradually.
- GFR 77.41 (80.00 chs. southerly from reestablished cor. of secs. 19 and 30) Fall 3 lks. W. of reestablished cor. of secs. 30 and 31, which is an iron post, 2 ins. in diam., 3 ft. long, set 24 ins. in the ground, marked on brass cap,

T7N
S30
S31
R3E

1917

and witnessed by a mound of stone 3 ft. base, 2 ft. high, E. of cor., and

A catclaw, 8 ins. in diam., bearing N. 29¼° E., 319 lks. dist., marked "T7NR3E S30BT."

Move post 3 lks. W., and reset 24 ins. in the ground.

Rebuild mound of stone, 3 ft. base, 2 ft. high at original dist., E of cor.

The marked tree described above, now brs. N. 29¼° E., 320 lks. dist.

- 80.00 Set an iron post, 3 ft. long, 2 ins. in diam., 24 ins. in the ground, for reestablished cor. of secs. 25 and 36, marked on brass cap,

T7N
S25
S36
R2E

1918

and raise a mound of stone, 3 ft. base, 1½ ft. high, W. of cor.

Land rolling.

Soil, gravelly and rocky, 3rd and 4th rate.

No timber.

Undergrowth, scattering mesquite, palo verde, greasewood, ocotillo and cholla.

No grass.

S. 0° 4' W., on true line, on E. bdy. of sec. 36.

Over rolling land, thru dense undergrowth; ascend.

- .72 Fall 3 lks. W. of reestablished cor. of secs. 25 and 36, originally cor. of secs. 25, 30, 31 and 36, but changed by Rigby to refer to secs. 25 and 36 only. This cor. is a malpais stone 8x6x5 ins., above ground, firmly set, marked with 1 notch on S. edge and 5 notches on N. edge, and witnessed by mound of stone, W of cor., and bearing trees NW. and SW. of cor., properly marked.
- Obliterate marking on stone and bearing trees.
- Ascend 65 ft.

22.44 Ridge, brs. NE. and SW. Descend 55 ft. to

- GFR 37.41 (40.00 chs. southerly from reestablished cor. of secs. 30 and 31) Intersect the reestablished ¼ sec. cor. of sec. 31, which is an iron post, 1 in. in diam., set firmly 10 ins. above ground, marked on brass cap,

Independent Resurvey of part of E. bdy. of Township 7 North, Range 2 E. 7

Chains.

$\frac{1}{4}$
S31

1917

and witnessed by a mound of stone, 3 ft. base, 2 ft. high, E. of cor.

40.00 Set an iron post, 3 ft. long, 1 in. in diam., 26 ins. in the ground, for reestablished $\frac{1}{4}$ sec. cor. of sec. 36, marked on brass cap,

$\frac{1}{4}$
S36

1918

and establish bearing trees as follows:

On a palo verde, 6 ins. in diam., bearing S. 48 $\frac{1}{2}$ $^{\circ}$ W., 123 lks. dist., mark " $\frac{1}{4}$ S36BT." and

On a palo verde, 8 ins. in diam., bearing N. 36 $\frac{1}{4}$ $^{\circ}$ W., 70 lks. dist., mark " $\frac{1}{4}$ S36BT."

40.95 Intersect reestablished $\frac{1}{4}$ sec. cor. of sec. 36, originally $\frac{1}{4}$ sec. cor. of secs. 31 and 36, but changed by Rigby to refer to sec. 36 only. This cor. is a malpais stone, 8x10x6 ins. above ground, firmly set, marked " $\frac{1}{4}$ " on W. face, and witnessed by mound of stone, W. of cor., and bearing tree NW. of cor., properly marked.

Obliterate marking on stone, and bearing tree.

47.65 Wash, 15 lks. wide, course NE.

62.95 Wash, 20 lks. wide, course E. Ascend.

GPR 77.41 (80.00 chs. southerly from the reestablished cor. of secs. 30 and 31) Intersect reestablished cor. of Ts. 6 and 7 N., R. 3 E., reestablished by Rigby as described in Book "E."

80.00 Set an iron post, 3 ft. long, 3 ins. in diam., 28 ins. in the ground, for reestablished cor. of Ts. 6 and 7 N., R. 2 E., marked on brass cap,

T7N
R2E S36 R3E

S 1
T6N

1918

Raise mound of stone, 4 ft. base, 2 ft. high, W. of cor.

Obliterate marking on the original cor. of Ts. 6 and 7 N., Rs. 2 and 3 E. reestablished by Rigby to refer to Ts. 6 and 7 N., R. 2 E. only, as described in Book "E," of this group. This cor. bears south, 1.15 chs. dist.

Land, gently rolling.

Soil, 3rd and 4th rate, malpais and schist formations.

No timber.

Undergrowth, dense palo verde, mesquite, greasewood, ocotillo and cholla.

No grass.

Independent Resurvey of the
South Boundary of T. 7 N., R. 2 E.

BOOK 3339

9.

Chains.

From the reestablished cor. of Ts. 6 and 7 N., R. 2 E.,
hereinbefore described,
West on a true line, bet. secs. 1 and 36.
Over nearly level land, through scattering undergrowth.
Wash, 20 lks. wide, course N.60°E.
Wash, 20 lks. wide, course S.80°E. Asc. 80 ft.
Spur, slopes N. Desc. 70 ft.
Wash, 20 lks. wide, course N. Thence along N. slope.
Set an iron post, 3 ft. long, 1 in. diam., 10 ins. in the
ground, on bed rock, in a mound of stone, 4 ft. base,
2 ft. high, for reestablished 1/4 sec. cor., marked on
brass cap

1/4 S36
1/4 S1
1918

From which

A palo verde, 6 ins. diam., brs. N.79 1/4°W.,
97 lks. dist., marked 1/4 S36 BT.

A palo verde, 4 ins. diam., brs. S.54 1/2°W.,
87 lks. dist., marked 1/4 S1 BT.

From this reestablished 1/4 sec. cor., the original 1/4 sec.
cor., which is a malpais stone, 6 X 8 X 8 ins. above
ground, firmly set, marked and witnessed as described
by the Surveyor-General, brs. S.3°W., 1.09 chs. dist.

Destroy the marks on the stone and on the bearing trees,
leaving the cor. otherwise unchanged.

40.60 Wash, 20 lks. wide, course N.30°E.
50.65 Wash, 20 lks. wide, 6 ft. deep, course N.10°W. Asc. 155
ft.
66.85 Spur, slopes N.60°E.
70.90 Desc. 160 ft.

80.00 Set an iron post, 3 ft. long, 2 ins. diam., 10 ins. in the
ground, on bed rock, in a mound of stone, for reestab-
lished cor. of secs. 1, 2, 35 and 36, marked on brass
cap

T7N R2E
S35 | S36
S 2 | S 1
T6N
1918

And raise a mound of stone, 4 ft. base, 2 ft. high, W.
of cor.

From this reestablished cor., the original cor. of secs.
1, 2, 35 and 36, which is a schist, 12 X 4 X 6 ins.
above ground, firmly set, marked with 5 notches on W.
and 1 notch on E. edge, and witnessed by a mound of stone,
W. of cor., brs. S.9 1/2°W., 1.15 chs. dist. Destroy
the marks on the stone, leaving the cor. otherwise un-
changed.

Land, level and mountainous.

Soil, rocky, 3rd and 4th rates.

No timber.

Undergrowth, ocotillo, cholla and scattering palo verde.

West on a true line, bet. secs. 2 and 35.
Over rough mountainous land, through scattering undergrowth.
Asc. 50 ft.

21.50 Ridge, brs. NE. and SW. Desc. 140 ft.

28.90 Edge of rolling mesa, brs. NW. and SE. Desc. over rolling
land.

39.80 Wash, 10 lks. wide, course S.70°W:

40.00 Set an iron post, 3 ft. long, 1 in. diam., 26 ins. in the
ground, for reestablished 1/4 sec. cor., marked on brass
cap

Independent Resurvey of the
South Boundary of T. 7 N., R. 2 E.

Chains.

$\frac{1}{4}$ S35
 $\frac{1}{4}$ S 2
1918

From which

A palo verde, 6 ins. diam., brs. N.17 $\frac{1}{2}$ °E.,
19 lks. dist., marked $\frac{1}{4}$ S35 BT.

A palo verde, 8 ins. diam., brs. S.71 $\frac{1}{2}$ °W.,
68 lks. dist., marked $\frac{1}{4}$ S2 BT.

From this reestablished $\frac{1}{4}$ sec. cor., the original $\frac{1}{4}$ sec. cor., which is a granite stone, 18 X 8 X 5 ins., set in a mound of stone, marked and witnessed as described by the Surveyor-General, brs. South 1.27 chs. dist.

Destroy the markings on the stone and bearing trees, leaving the cor. otherwise unchanged.

49.40 Wash, 5 lks. wide, course S.10°W.

75.60 Wash, 5 lks. wide, course S.70°W.

76.60 Same wash, course N.

77.10 Same wash, course SW.

80.00 Set an iron post, 3 ft. long, 2 ins. diam., 20 ins. in the ground, in a mound of stone, for reestablished cor. of secs. 2, 3, 34 and 35, marked on brass cap

T7N R2E
S34 | S35
 $\frac{1}{4}$ S 3 | S 2
T6N
1918

From which

A palo verde, 6 ins. diam., brs. N.40 $\frac{3}{4}$ °E.,
107 lks. dist., marked T7N R2E S35 BT.

A palo verde, 6 ins. diam., brs. S.68°E.,
40 lks. dist., marked S2 BT. (Space insufficient on tree for Tp. & Rg.)

A palo verde limb, 6 ins. diam., brs. N.19 $\frac{1}{2}$ °W.,
128 lks. dist., marked T7N R2E S34 BT.

No other trees within limits. Raise a mound of stone, 2 ft. base, 1 $\frac{1}{2}$ ft. high, W. of cor.

From this reestablished cor., the original cor. of secs. 2, 3, 34 and 35, which is a malpais stone, 24 X 12 X 6 ins., set in a mound of earth and stone, marked and witnessed as described by the Surveyor-General, brs. South 1.27 chs. dist. Destroy the marks on the stone and on the bearing trees, leaving the cor. otherwise unchanged.

Land, rolling and rough mountainous.

Soil, rocky, 4th rate.

No timber.

Undergrowth, ocotillo, palo verde and cholla.

West on a true line, bet. secs. 3 and 34.

Over rolling land, through scattering undergrowth.

0.15 Wash, 5 lks. wide, course S.20°W.

19.53 Wash, 25 lks. wide, course N.70°W.

21.00 Same wash, course S.70°W.

24.00 Same wash, course N.70°W.

40.00 Set an iron post, 3 ft. long, 1 in. diam., 10 ins. in the ground, on bed rock, in a mound of stone, 3 ft. base, 1 $\frac{1}{2}$ ft. high, for reestablished $\frac{1}{4}$ sec. cor., marked on brass cap

$\frac{1}{4}$ S34
 $\frac{1}{4}$ S 3
1918

From which

A palo verde, 4 ins. diam., brs. N.21 $\frac{1}{2}$ °E.,
101 lks. dist., marked $\frac{1}{4}$ S34 BT.

Independent Resurvey of the South Boundary of T. 7 N., R. 2 E.

Chains.

A mesquite, 8 ins. diam., brs. S.18 $\frac{3}{4}$ °W.,
 68 lks. dist., marked $\frac{1}{4}$ S3 BT.
 From this reestablished $\frac{1}{4}$ sec. cor., the original $\frac{1}{4}$ sec.
 cor., which is a malpais stone, 6 X 10 X 6 ins. above
 ground, firmly set, marked and witnessed as described
 by the Surveyor-General, brs. S.4 $\frac{3}{4}$ °W., 1.25 chs. dist.
 Destroy the marks on the stone and the bearing trees,
 leaving the cor. otherwise unchanged.

48.60 Highway, brs. N. to Prescott and S. to Phoenix,
 55.70 Old road, brs. N.5°E. and S.10°W.
 60.90 Left bank of New River, brs. N. and S. Thence across
 dry bed of New River, course S.
 63.20 Right bank of New River, brs. N. and S.
 65.00 Wash, 30 lks. wide, course S.
 75.20 Wash, 60 lks. wide, course S.
 80.00 Set an iron post, 3 ft. long, 2 ins. diam., 18 ins. in the
 ground, for reestablished cor. of secs. 3, 4, 33 and 34,
 marked on brass cap

T7N R2E
 S33 | S34

 S 4 | S 3
 T6N
 1918

From which
 A palo verde limb, 6 ins. diam., brs. N.26°E.,
 363 lks. dist., marked T7N R2E S34 BT.
 A palo verde, 8 ins. diam., brs. S.68 $\frac{3}{4}$ °E.,
 230 lks. dist., marked T6N R2E S3 BT.
 A palo verde limb, 4 ins. diam., brs. S.87 $\frac{1}{2}$ °W.,
 28 lks. dist., marked T6N R2E S4 BT.

No other trees within limits. Raise a mound of stone,
 1 $\frac{1}{2}$ ft. high, around post and elongated to the W.
 From this reestablished cor., the original cor. of secs.
 3, 4, 33 and 34, which is a granite stone, 12 X 8 X 8
 ins. above ground, firmly set, marked and witnessed
 as described by the Surveyor-General, brs. S.14 $\frac{1}{2}$ °W.,
 1.24 chs. dist. Destroy the markings on the stone
 and on the bearing tree, leaving the cor. otherwise
 unchanged.

Land, rolling and nearly level.
 Soil, 2nd and 4th rates.
 No timber.
 Undergrowth, ocotillo, palo verde and mesquite.

West on a true line, bet. secs. 4 and 33.
 Over bottom land, through scattering undergrowth.
 Wash, 5 lks. wide, course S.10°W.
 Asc. 35 ft.
 Thence over gently rolling land, brs. NE. and SW.
 4.50 Set an iron post, 3 ft. long, 1 in. diam., 20 ins. in the
 10.00 ground, on bed rock, in a mound of stone, for reestab-
 14.40 lished $\frac{1}{4}$ sec. cor., marked on brass cap
 40.00

$\frac{1}{4}$ S33

 S 4
 1918

From which
 A mesquite limb, 6 ins. diam., brs. N.35 $\frac{1}{2}$ °W.,
 59 lks. dist., marked $\frac{1}{4}$ S33 BT.
 A palo verde, 6 ins. diam., brs. S.37 $\frac{1}{2}$ °E.,
 104 lks. dist., marked $\frac{1}{4}$ S4 BT.

From this reestablished $\frac{1}{4}$ sec. cor., the original $\frac{1}{4}$ sec.
 cor., which is a granite stone, 5 X 12 X 8 ins. above
 ground, firmly set, marked and witnessed as described
 by the Surveyor-General, brs. S.19°W., 1.20 chs. dist.

Independent Resurvey of the South Boundary of T. 7 N., R. 2 E.

12

Chains.

65.90
80.00

Destroy the markings on the stone and on the bearing trees, leaving the cor. otherwise unchanged.
Wash, 25 lks. wide, course S.20°W.
Set an iron post, 3 ft. long, 2 ins. diam., 24 ins. in the ground, for reestablished cor. of secs. 4, 5, 32 and 33, marked on brass cap

T7N R2E
S32 | S33
S 5 | S 4
T6N
1918

And raise a mound of stone, 3 ft. base, 1½ ft. high, W. of cor.

From this reestablished cor., the original cor. of secs. 4, 5, 32 and 33, which is a granite stone, 6 X 8 X 6 ins. above ground, firmly set, marked and witnessed as described by the Surveyor-General, brs. S.21¾°W., 1.20 chs. dist. Destroy the markings on the stone, leaving the cor. otherwise unchanged.

Land, level and gently rolling.
Soil, gravelly, 3rd and 4th rates.
No timber.
Undergrowth, greasewood, cactus, palo verde and ironwood.

10.00
19.00
40.00

West on a true line, bet. secs. 5 and 32.
Over nearly level mesa, through scattering undergrowth.
Desc. gradually, 45 ft.
Wash, 10 lks. wide, course S.10°W. Thence over gently rolling land.
Set an iron post, 3 ft. long, 1 in. diam., 26 ins. in the ground, for reestablished ¼ sec. cor., marked on brass cap

¼ S32
¼ S 5
1918

From which

- A palo verde limb, 8 ins. diam., brs. N.5¼°W., 128 lks. dist., marked ¼S32 BT.
- A palo verde limb, 8 ins. diam., brs. S.68½°W., 157 lks. dist., marked ¼S5 BT.

From this reestablished ¼ sec. cor., the original ¼ sec. cor., which is a granite stone, 5 X 8 X 8 ins. above ground, firmly set, marked and witnessed as described by the Surveyor-General, brs. S.25°W., 1.21 chs. dist. Destroy the markings on the stone and on the bearing trees, leaving the cor. otherwise unchanged.

42.20
60.00
80.00

Wash, 10 lks. wide, course SE.
Wash, 60 lks. wide, course S.10°E.
Set an iron post, 3 ft. long, 2 ins. diam., 20 ins. in the ground, on bed rock, in a mound of stone, for reestablished cor. of secs. 5, 6, 31 and 32, marked on brass cap

T7N R2E
S31 | S32
S 6 | S 5
T6N
1918

From which

- A palo verde, 6 ins. diam., brs. N.37½°E., 156 lks. dist., marked T7N R2E S32 BT.
- A palo verde, 6 ins. diam., brs. S.16½°E., 17 lks. dist., marked T6N R2D S5 BT.
- A palo verde, 6 ins. diam., brs. S.75°W., 85 lks. dist., marked T6N R2E S6 BT.

Independent Resurvey of the South Boundary of T. 7 N., R. 2 E. 13

Chains.

An iron wood limb, 8 ins. diam., brs. N.30 $\frac{1}{2}$ °W., 149 lks. dist., marked T7N R2E S31 BT.
 From this reestablished cor., the original cor. of secs. 5, 6, 31 and 32, which is a malpais stone, 6 X 10 X 8 ins. above ground, firmly set, marked and witnessed as described by the Surveyor-General, brs. S.29 $\frac{1}{2}$ °W., 1.28 chs. dist. Destroy the markings on the stone, and on the bearing trees, leaving the cor. otherwise unchanged.
 Land, nearly level.
 Soil, gravel and small rocks, 3rd rate.
 No timber.
 Undergrowth, palo verde, mesquite, ironwood, greasewood, cholla and cat claw.

3.00
33.00
40.00

West on a true line, bet. secs. 6 and 31.
 Over rolling land, through scattering undergrowth.
 Desc. 20 ft.
 Wash, 10 lks. wide, course S.20°W. Thence over level land.
 Desc. gradually, 60 ft.
 Set an iron post, 3 ft. long, 1 in. diam., 20 ins. in the ground, in a mound of stone, for reestablished $\frac{1}{4}$ sec. cor., marked on brass cap

$\frac{1}{4}$ S31
 $\frac{1}{4}$ S 6
 1918

From which

A palo verde, 4 ins. diam., brs. N.48 $\frac{1}{4}$ °E., 65 lks. dist., marked $\frac{1}{4}$ S31 BT.
 A palo verde, 8 ins. diam., brs. S.20°E., 99 lks. dist., marked $\frac{1}{4}$ S6 BT.

42.00
47.40
69.50
76.01

From this reestablished $\frac{1}{4}$ sec. cor., the original $\frac{1}{4}$ sec. cor., which is a granite stone, 6 X 8 X 6 ins. above ground, firmly set, marked and witnessed as described by the Surveyor-General, brs. S.32 $\frac{3}{4}$ °W., 1.28 chs. dist. Destroy the markings on the stone and on the bearing trees, leaving the cor. otherwise unchanged.
 Wash, 30 lks. wide, course S.15°W. Asc. very gradually.
 Old road, brs. N.10°E. and S.10°W.
 Wash, 15 lks. wide, course S.
 Fall 1.10 chs. N. of the closing cor. of Ts. 6 and 7 N., R. 2 E., which is a granite stone, 5 X 10 X 6 ins. above ground, firmly set, marked and witnessed as described by the Surveyor-General. Destroy the markings on the stone and on the bearing tree, leaving the cor. otherwise unchanged.

76.04

Intersect the E. bdy. of T. 7 N., R. 1 E., 5.67 chs. N.0°21'W. of the cor. of Ts. 6 and 7 N., R. 1 E., which is a granite stone, 6 X 10 X 8 ins. above ground, firmly set, marked and witnessed as described by the Surveyor-General.
 At the point of intersection, set an iron post, 3 ft. long, 3 ins. diam., 24 ins. in the ground, for reestablished cor. of Ts. 6 and 7 N., R. 2 E., marked on brass cap

T7N
 R2E
 S31
 S 6
 T6N
 1918

From which

A palo verde limb, 4 ins. diam., brs. N.12 $\frac{1}{4}$ °E., 66 lks. dist., marked T7N R2E S31 BT.
 A palo verde limb, 6 ins. diam., brs. S.69 $\frac{1}{2}$ °E., 251 lks. dist., marked T6N R2E S6 BT.

Independent Resurvey of the South Boundary of T. 7 N., R. 2 E.

.14

chains.

Land, level and rolling.
Soil, gravelly and rocky; 4th rate.
No timber.
Undergrowth, greasewood, cactus, palo verde and iron wood.

Retracement for Resurvey of a Portion of the East Boundary of T. 7 N., R. 1 E.

39.77 From the cor. of Ts. 6 and 7 N., R. 1 E., hereinbefore described,
North on retracement, along the E. bdy. of sec. 36. (S. 1/2)
Fall 24 lks. E. of the 1/4 sec. cor. of secs. 31 and 36, which is a malpais boulder, 20 X 20 X 18 ins. above ground, firmly set, marked and witnessed as described by the Surveyor-General.
The true course and distance of this half mile are therefore N.0°21'W., 39.77 chs.

40.00 Thence N.0°21'E., on retracement, on E. bdy. of sec. 36 (N. 1/2)
Intersect the cor. of secs. 25, 30, 31 and 36, which is a malpais stone, 6 X 6 X 8 ins. above ground, firmly set, marked and witnessed as described by the Surveyor-General.
The true course and distance of this half mile are therefore N.0°21'E., 40.00 chs.

39.98 N.0°21'E., on retracement, along the E. bdy. of sec. 25 (S. 1/2)
Intersect the 1/4 sec. cor. of secs. 25 and 30, which is a malpais stone, 6 X 8 X 4 ins. above ground, firmly set, marked and witnessed as described by the Surveyor-General.
The true course and distance of this half mile are therefore N.0°21'E., 39.98 chs.

39.98 Thence N.0°21'E., on retracement, on E. bdy. of sec. 25 (N. 1/2)
Intersect the cor. of secs. 19, 24, 25 and 30, which is a malpais stone, 8 X 8 X 8 ins. above ground, firmly set, marked and witnessed as described by the Surveyor-General.
The true course and distance of this half mile are therefore N.0°21'E., 39.98 chs.

39.85 N.0°21'E., on retracement, along the E. bdy. of sec. 24 (S. 1/2)
Intersect the 1/4 sec. cor. of secs. 19 and 24, which is a malpais stone, 6 X 8 X 8 ins. above ground, firmly set, marked and witnessed as described by the Surveyor-General.
The true course and distance of this half mile are therefore N.0°21'E., 39.85 chs.

39.47 Thence N.0°21'E., on retracement, on E. bdy. of sec. 24 (N. 1/2)
Intersect the cor. of secs. 13, 18, 19 and 24, which is a malpais stone in place, 20 X 18 X 18 ins. above ground, firmly set, marked and witnessed as described by the Surveyor-General.
The true course and distance of this half mile are therefore N.0°21'E., 39.47 chs.

N.0°21'E., on retracement, along the E. bdy. of sec. 13 (S. 1/2)

Retracement for Resurvey of a
Portion of the East boundary of Township 7 North, Range 1 East, 15

Chains.

40.19 Intersect the $\frac{1}{4}$ sec. cor. of secs. 13 and 18, which is a malpais stone, 6x6x4 ins. above ground, firmly set, marked and witnessed as described by the surveyor general.

The true course and dist. of this half mile are therefore N. 0° 21' E., 40.19 chs.

39.91 Thence N. 0° 21' E. on retracement, on E. bdy. of sec. 13 (N. $\frac{1}{2}$) Intersect the cor. of secs. 12 and 13, which is a malpais stone, in place, 30x20x18 ins. above ground, firmly set, marked and witnessed as described by the surveyor general.

The true course and dist. of this half mile are therefore N. 0° 21' E., 39.91 chs.

6.49 N. 0° 21' E., on retracement, on part of E. bdy. of sec. 12 (S. $\frac{1}{2}$) Intersect the closing cor. of secs. 7 and 18, which is a malpais stone, 6x4x4 ins. above ground, firmly set, marked and witnessed as described by the surveyor general.

Resurvey of a portion of the East bdy. of T. 7 N., R. 1 E.

From the cor. of Ts. 6 and 7 N., R. 1 E., hereinbefore described,

N. 0° 21' W., on a true line, on E. bdy. of sec. 36 (S. $\frac{1}{2}$). Over rolling land, thru scattering undergrowth.

5.67 Intersect the reestablished cor. of Ts. 6 and 7 N., R. 2 E., hereinbefore described.

15.87 Wash, 20 lks. wide, course S. 20° E.

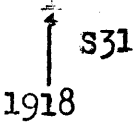
27.67 Wash, 12 lks. wide, course S. 80° E.

28.27 Ascend 420 ft.

39.77 The original $\frac{1}{4}$ sec. cor. of secs. 31 and 36, hereinbefore described. This cor. will hereafter refer to sec. 36 T. 7 N., R. 1 E., only. No change necessary.

Thence N. 0° 21' E., on E. bdy. of sec. 36 (N. $\frac{1}{2}$).

5.90 (40.00 chs. northerly for reestablished cor. of Ts. 6 and 7 N., R. 2 E.) Set an iron post, 3 ft. long, 1 in. in diam., on bedrock, in a mound of stone, for reestablished $\frac{1}{4}$ sec. cor. of sec. 31, marked on brass cap,



from which,

A palo verde, 6 ins. in diam., brs. N. 19 $\frac{1}{2}$ ° E., 58 lks. dist., mark $\frac{1}{4}$ S 31 BT.

No other trees within limits. Raise a mound of stone, 3 ft. base, 2 ft. high, E. of cor.

6.65 Top of steep ascent; thence over nearly level land.

8.00 Ridge, brs. E. and W.

8.30 Descend 325 ft.

26.05 Wash, 25 lks. wide, course E. Ascend 65 ft.

40.00 The original cor. of secs. 25, 30, 31 and 36, hereinbefore described. This cor. will hereafter refer to secs. 25 and 36, T. 7 N., R. 1 E., only. No change necessary.

Land, rough and mountainous.

Soil, rocky, 4th rate.

No timber.

Undergrowth, catclaw, cholla and palo verde.

N. 0° 21' E., on true line, on E. bdy. of sec. 25 (S. $\frac{1}{2}$). Over rough, mountainous land, thru scattering undergrowth. Ascend 135 ft.

5:90 (80 chs. northerly from reestablished cor. of Ts. 6 and 7 N., R. 2 E.) Set an iron post, 3 ft. long, 2 ins. in diam., 10 ins. in the ground, on bedrock, in a mound of stone, for reestablished cor. of secs. 30 and 31,

16. of a portion of the East bdy. of Township 7 North, Range 1 East.

Chains.

marked on brass cap,

T7N
S30
S31
R2E

1918

and raise a mound of stone, 2 ft. base, 1 1/2 ft. high, E. of cor.

Continue line and measurement. Ascend.

7.60 Ridge, brs. E. and W. Descend 155 ft.

14.90 Wash, 10 lks. wide, course E. Ascend 160 ft.

27.80 Top of ascent; thence over nearly level land.

38.90 Descend 15 ft. to

39.98 The original 1/4 sec. cor. of secs. 25 and 30, hereinbefore described. This cor. will hereafter refer to sec. 25, T. 7 N., R. 1 E. only. No change necessary.

Thence,

N. 0° 21' E., on true line, on E. bdy. of sec. 25 (N. 1/2).

Descend 100 ft. to

5.92 (40.00 chs. N. 0° 21' E., from reestablished cor. of secs. 30 and 31) Set an iron post, 3 ft. long, 1 in. in diam., 20 ins. in the ground, on bedrock, in a mound of stone, for reestablished 1/4 sec. cor. of sec. 30, marked on brass cap,

1/4 S30

1918

and raise a mound of stone, 3 ft. base, 2 ft. high, E. of cor. Descend 65 ft. to

12.22 Wash, 10 lks. wide, course E. Ascend 270 ft.

36.12 East side of peak. Descend 100 ft. to

39.98 The original cor. of secs. 19, 24, 25 and 30, hereinbefore described. This cor. will hereafter refer to secs. 24 and 25, T. 7 N., R. 1 E., only. No change necessary.

Land, rough mountainous.

Soil, rocky, 4th rate.

No timber.

Undergrowth, palo verde, cholla, mesquite and catclaw.

N. 0° 21' E., on a true line, on E. bdy. of sec. 24.

Over rough and mountainous land, thru. scattering undergrowth. Descend 175 ft. to

35.94 (80.00 chs. N. 0° 21' E. from reestablished cor. of secs. 30 and 31), Set an iron post, 3 ft. long, 2 ins. in diam., 6 ins. in the ground, on bedrock, in a mound of stone, 4 ft. base, 2 ft. high, for reestablished cor. of secs. 19 and 30, marked on brass cap,

T7N
S19
S30
R2E

1918

and raise a mound of stone, 3 ft. base, 2 ft. high, E. of cor.

Descend 45 ft.

22.94 Ascend.

29.24 Rocky point slopes SW. Thence along rolling W. slope.

39.85 The original 1/4 sec. cor. of secs. 19 and 24, hereinbefore described. This cor. will hereafter refer to sec. 24, T. 7 N., R. 1 E., only. No change necessary.

Thence N. 0° 21' E., on true line on E. bdy. of sec. 24 (N. 1/2).

6.09 (40.00 chs. N. 0° 21' E. from reestablished cor. of secs. 19 and 30) Set an iron post, 3 ft. long, 1 in. in diam., 6 ins. in the ground, in a mound of stone, 4 ft. base, 2 1/2 ft. high, for reestablished 1/4 sec. cor. of sec. 19, marked on brass cap,

Chains.

↑ S19
1918

from which,

A palo verde limb, 4 ins. diam., brs. S. $33\frac{1}{2}^{\circ}$ W.,
14 lks. dist., marked $\frac{1}{2}$ S 19 B T.

No other trees within limits. Raise a mound of stone,
3 ft. base, 2 ft. high, E. of cor.

Descend 40 ft.

10.09 Ascend 70 ft.

20.09 Spur, slopes W. Thence along W. slope, ascending 30 ft.

30.79 Spur, slopes W. Descend 60 ft. to

39.47 The original cor. of secs. 13, 18, 19 and 24, hereinbefore
described. This cor. will hereafter refer to secs.
13 and 24, T. 7 N., R. 1 E. only. No change necessary.

Land, rough and mountainous.

Soil, rocky, 4th rate; malpais formation.

No timber.

Undergrowth, palo verde, cholla, ocotillo and catclaw.

N. $0^{\circ} 21'$ E., on a true line, on the E. bdy. of sec. 13.

Over mountainous land, thru scattering undergrowth.

Descend 100 ft. to

6.62 (80.00 chs. N. $0^{\circ} 21'$ E. from reestablished cor. of secs. 19 and
30). Set an iron post, 3 ft. long, 2 ins. in diam., 12
ins. in the ground, on bedrock, in a mound of stone,
4 ft. base, 2 ft. high, for reestablished cor. of secs.
18 and 19, marked on brass cap,

T7N
S18
S19
R2E
1918

and raise a mound of stone, 3 ft. base, 2 ft. high, E.
of cor.

Descend 100 ft. to

11.82 Gulch, course S. 60° W. Ascend 360 ft.

26.12 Top of ascent, brs. E. and W. Thence over rolling mesa.

40.19 The original $\frac{1}{4}$ sec. cor. of secs. 13 and 18, hereinbefore
described. This cor. will hereafter refer to sec. 13,
T. 7 N., R. 1 E. only. No change necessary.

Thence,

N. $0^{\circ} 21'$ E., on true line, on E. bdy. of sec. 13 (N. $\frac{1}{2}$).

6.41 (39.98 chs. N. $0^{\circ} 21'$ E. from reestablished cor. of secs. 18
and 19.) Set an iron post, 3 ft. long, 1 in. in diam.,
20 ins. in the ground, in a mound of stone, for rees-
tablished $\frac{1}{4}$ sec. cor., marked on brass cap,

↑ S18
1918

and raise a mound of stone, 4 ft. base, $1\frac{1}{2}$ ft. high, E.
of cor.

19.83 Descend 115 ft.

22.43 Draw, course E. Ascend 20 ft.

27.13 Top of ascent; thence over rolling mesa, brs. NE and SW.

39.90 The original cor. of secs. 12 and 13, T. 7 N., R. 1 E.,
hereinbefore described.

Land, mountainous and gently rolling.

Soil, rocky, 3rd and 4th rate; malpais formation.

No timber.

Undergrowth, palo verde, mesquite, catclaw and cactus.

Thence N. $0^{\circ} 21'$ E., on true line, on part of E. bdy. of sec.
12.

Resurvey of a
18. Portion of the E. bdy. of Township 7 North Range 1 East

Chains

6.49 Over rolling land, thru scattering undergrowth.
(39.98 chs. N. 0° 21' E. from reestablished sec. cor. of sec. 18) The closing cor. of secs. 7 and 18, hereinbefore described.
Land, mountainous and gently rolling.
Soil, rocky 3rd and 4th rate; malpais formation.
No timber.
Undergrowth, palo verde, mesquite, catclaw and cactus.

RETRACEMENT- Part of Subdivision lines of T. 7 N., R. 2 E.

The original cor. of secs. 5, 6, 7 and 8, is a malpais stone in place, 5x3½x1½ ft. above ground, marked with cross (x) on top, and 5 notches on each of S. and E. edges, and witnessed by 4 bearing trees, NW., NE., SE. and SW. of cor., properly marked.
Thence,
South, on random line, bet. secs. 7 and 8 (N. ½).
Over mountainous land, thru scattering undergrowth. Ascend 200 ft. on steep, rocky N. slope.
7.00 Top of ascent, brs. E. and W. Thence along steep E. slope, 100 ft. below perpendicular wall of mesa, W. of line.
12.00 Begin ascent on steep E. slope.
15.00 Foot of broken cliff, 150 ft. high, bearing SE. and NW.
24.80 Top of same cliff, 420 ft. above sec. cor. Thence across rolling mesa, bearing E. and W. Ascend 30 ft. to
34.70 S. rim of mesa brs. NE. and SW. Descend steep rocky SE. slope.
39.87 Fall 24 lks. E. of original ¼ sec. cor. of secs. 7 and 8, which is a malpais stone, 10x8x8 ins. above ground, firmly set, marked "¼" on W. face, and witnessed by one bearing tree SW. of cor. and one tree NE. of cor., both properly marked.
True course and dist. of N. ½ of line bet. secs. 7 and 8 are therefore S. 0° 21' W., 39.87 chs.
Land, mountainous and rolling.
Soil, rocky, 4th rate.
No timber.
Undergrowth, scattering mesquite, palo verde and greasewood.

RETRACEMENT FOR RESURVEY.

40.39 South, on random line, bet. secs. 7 and 8. (S. ½).
Fall 34 lks. E. of original witness cor. to cor. of secs. 7, 8, 17 and 18, which is a malpais stone, 5x8x6 ins. above ground, firmly set, marked "W.C." on NE. face, and 4 notches on S. edge, and 5 notches on E. edge, and witnessed by mound of stone, W. of cor.
True course and dist. of line to this W.C. are therefore S. 0° 29' W., 40.39 chs.
As the true point for sec. cor. was originally set on line, bet. the W.C. and the ¼ sec. cor. of secs. 7 and 8, at 40 lks. dist. from W.C., the true course and dist. of S. ½ of line bet. secs. 7 and 8 are therefore S. 0° 29' W., 39.99 chs., and the W.C. is now 40 lks. S. 0° 29' W., from true point for sec. cor.

From true point for cor. of secs. 7, 8, 17 and 18, described above,
West, on random line, bet. secs. 7 and 18 (E. ½).
39.57 Fall 24 lks. N. of original ¼ sec. cor. of secs. 7 and 18, which is a malpais stone, 6x6x6 ins. above ground, firmly set, marked "¼" on N. face, and witnessed by mound of stone, N. of cor.
True course and dist. of E. half of line, bet. secs. 7 and 18 are therefore S. 89° 39' W., 39.57 chs.

BOOK 300

Retracement-Part of Subdivision lines of T. 7 N., R. 2 E. 10

Chains.

Retracement for Resurvey (continued)

The nature of the surface on the W. 1/2 of line, bet. secs. 7 and 18, makes chaining impracticable over a portion of the line; therefore, triangulate as follows:

Set flag at a point 1.50 chs. E. of 1/4 sec. cor.

At point W. of 1/4 sec. cor., lay off a base S. 34° 48 1/2' E., 8.71 chs.

From SE. end of base, flag brs. N. 70° 32' 40" E.

Included angles are 105° 21' 10", 55° 11' 30", and 19° 27' 20", the sum of which is 180° 00'

Distance triangulated is obtained by $\frac{\sin 105^\circ 21' 10'' \times \text{base}}{\sin 19^\circ 27' 20''}$ or $\frac{.96432 \times 8.71}{.33307}$

25.22 chs. 25.22 chs. - 1.50 chs. = 23.72 chs. = dist. of triangulation point from 1/4 sec. cor.

23.72 Triangulation point. Continue measurement by chaining.
32.93 Fall 3 lks. N. of original closing cor. of secs. 7 and 18, hereinbefore described.

True course and dist. of W. 1/2 of line, bet. secs. 7 and 18 are therefore S. 89° 57' W., 32.93 chs.

Completion of Survey of Subdivision of T. 7 N., R. 2 E.

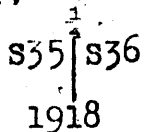
From the reestablished cor. of secs. 1, 2, 35 and 36, on the S. bdy. of the Tp., hereinbefore described, N. 0° 3' E., bet. secs. 35 and 36.

Over rolling land, thru scattering undergrowth. Descend. Draw course W. Ascend.

11.20 Thence over broken land.

15.40 From this point, a volcanic peak, 800 ft. high, brs. N. 60° W.

40.00 Set an iron post, 3 ft. long, 1 in. in diam., 10 ins. in the ground, in a mound of stone, for 1/4 sec. cor., marked on brass cap,



from which,

A palo verde, 4 ins. in diam., brs. S. 85 1/2° E., 50 lks. dist., marked 1/4 S 36 B T.

A palo verde, 6 ins. in diam., brs. N. 82 1/2° W., 126 lks. dist., marked 1/2 S 35 B T.

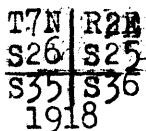
49.80 Ascend 40 ft.

54.80 Descend 160 ft.

56.23 From this point, volcanic peak brs. S. 62° 25' W.

68.40 Thence over level land.

80.00 Set an iron post 3 ft. long, 2 ins. in diam., 10 ins. in the ground, in a mound of stone, 4 ft. base, 1 1/2 ft. high, for cor. of secs. 25, 26, 35 and 36, marked on brass cap,



from which,

A palo verde, 6 ins. diam., brs. S. 51° E., 26 lks. dist., marked T7N R2E S36 BT.

No other trees within limits. Raise a mound of stone, 2 ft. base, 1 1/2 ft. high, W. of cor.

Land, rolling, broken and level.

Soil, rocky, 4th rate.

No timber.

Undergrowth, ocotillo, cholla, greasewood, palo verde and mesquite.

20. Completion of survey of the Subdivision of T.7 N., R.2 E.

Chains
 40.00 East, on random line, bet. secs. 25 and 36.
 79.96 Set temp. $\frac{1}{4}$ sec. cor.
 Intersect E. bdy. of Tp. 4 lks. N. of reestablished cor. of secs.
 25 and 36, hereinbefore described. Thence,
 N. $89^{\circ}58'W.$, on a true line, bet. secs. 25 and 36.
 Over nearly level land, thru scattering undergrowth.
 .8.75 Wash, 10 lks. wide, course N. $5^{\circ}W.$
 23.05 Wash, 12 lks. wide, course N. $10^{\circ}W.$
 28.00 Enter rolling land; ascend 40 ft.
 39.98 Set an iron post, 3 ft. long, 1 in. in diam., 26 ins. in the
 ground, for $\frac{1}{4}$ sec. cor., marked on brass cap,

$$\begin{array}{c} \frac{1}{4} \text{ S } 25 \\ \text{S } 36 \\ 1918 \end{array}$$

 and raise a mound of stone, 3 ft. base, 2 ft. high, N. of cor.
 51.50 Descend 50 ft.
 59.90 Ascend 20 ft.
 63.70 Ridge, brs. N. and S. Descend 75 ft.
 69.15 Wash, 20 lks. wide, course N. $70^{\circ}W.$ Thence over rolling land.
 77.55 Wash, 10 lks. wide, course N. $30^{\circ}W.$
 79.96 The cor. of secs. 25, 26, 35 and 36.
 Land, level and rolling. Soil, rocky, 3rd and 4th rate.
 No timber. Undergrowth, greasewood, ocotillo, mesquite and
 palo verde.

N. $0^{\circ}3'E.$, bet. secs. 25 and 26.
 Over broken land, thru scattering undergrowth.
 1.30 Draw, 5 lks. wide, course NW. Ascend 20 ft.
 5.80 Descend 40 ft.
 11.80 Ascend 45 ft.
 23.80 Descend 85 ft.
 40.00 Set an iron post, 3 ft. long, 1 in. in diam., 12 ins. in the
 ground, in a mound of earth and stone, 4 ft. base, $1\frac{1}{2}$ ft.
 high, for $\frac{1}{4}$ sec. cor., marked on brass cap,

$$\begin{array}{c} \text{S } 26 \text{ S } 25 \\ 1918 \end{array}$$

from which,

A mesquite, 8 ins. diam., brs. N. $84\frac{1}{2}^{\circ}E.$, 64 lks.
 dist., marked $\frac{1}{4}$ S 25 BT.

A palo verde, 12 ins. in diam., brs. S. $82^{\circ}W.$, 14 $\frac{1}{2}$
 lks. dist., marked $\frac{1}{4}$ S 26 BT.

43.20 Wash, 15 lks. wide, course W. Thence over nearly level land.
 46.00 Road brs. E. and W.
 66.50 Wash, 20 lks. wide, course SW.
 80.00 Set an iron post, 3 ft. long, 2 ins. in diam., 12 ins. in the
 ground, on bed rock, in a mound of earth and stone, 4 ft.
 base, 2 ft. high, for cor. of secs. 23, 24, 25 and 26, marked
 on brass cap,

$$\begin{array}{c} \text{T } 7 \text{ N } \text{ R } 2 \text{ E} \\ \text{S } 23 \text{ S } 24 \\ \text{S } 26 \text{ S } 25 \\ 1918 \end{array}$$

from which,

A palo verde, 5 ins. diam., brs. N. $39^{\circ}E.$, 105
 lks. dist., marked T 7 N R 2 E S 24 BT.

A palo verde, 5 ins. diam., brs. N. $75\frac{1}{2}^{\circ}W.$, 131
 lks. dist., marked T 7 N R 2 E S 23 BT.

No other trees, within limits. Raise mound of stone 2 ft.
 base, $1\frac{1}{2}$ ft. high, W. of cor.
 Land, broken and nearly level. Soil, rocky, 3rd & 4th rate.
 No timber.
 Undergrowth, greasewood, cactus, palo verde, mesquite and
 ironwood.

S $89^{\circ}58'E.$, on a random line, bet. secs. 24 and 25.
 40.00 Set temp. $\frac{1}{4}$ sec. cor.
 79.92 Intersect E. bdy. of Tp., 5 lks. S. of the reestablished cor.
 of secs. 24 and 25, hereinbefore described. Thence
 West on a true line, bet. secs. 24 and 25.
 Over rolling land, thru scattering undergrowth. Ascend.
 0.30 Ridge, brs. N. and S. Descend 80 ft.
 7.60 Draw, course NW. Continue descent, 45 ft.

Completion of the Survey of the
Subdivision of T. 7 N., R. 2 E.

Chains.
 15.40 Wash, course S.70°W.
 17.10 Same wash, course N180°W.
 19.00 Same wash, course S.10°W.
 20.40 Wash, 5 lks. wide, course SW. Asc. gradually, 25 ft.
 26.00 Desc. gradually, 25 ft.
 30.00 Thence over gently rolling land.
 39.96 Set an iron post, 3 ft. long, 1 in. diam., 6 ins. in the ground, in a mound of earth and stone, for $\frac{1}{4}$ sec. cor., marked on brass cap

$\frac{1}{4}$ S24
 $\frac{1}{4}$ S25
 1918

From which
 A palo verde, 6 ins. diam., brs. N.70 $\frac{1}{2}$ °W.,
 64 lks. dist., marked $\frac{1}{4}$ S24 BT.
 A palo verde, 6 ins. diam., brs. S.64 $\frac{1}{2}$ °E.,
 59 lks. dist., marked $\frac{1}{4}$ S25 BT.

64.10 Wash, 10 lks. wide, course S.70°W.
 66.90 Road, brs. N. and S.
 79.92 The cor. of secs. 23, 24, 25 and 26.
 Land, rolling and nearly level.
 Soil, rocky, 3rd and 4th rates; schist and malpais formations.
 No timber.
 Undergrowth, greasewood, cactus, palo verde, mesquite and iron-wood.

40.00 N.0°3'E., on a random line, bet. secs. 23 and 24.
 Set temp. $\frac{1}{4}$ sec. cor.
 79.58 Fall 22 lks. E. of the cor. of secs. 13, 14, 23 and 24, which is a malpais stone, 6 X 6 X 6 ins. above ground, firmly set, marked and witnessed as described by the Surveyor-General.

Thence
 S.0°6'E., on a true line, bet. secs. 23 and 24.
 Over nearly level land, through scattering undergrowth.

7.70 Wash, 5 lks. wide, course W.
 24.70 Wash, 3 lks. wide, course W.
 39.79 Set an iron post, 3 ft. long, 1 in. diam., 28 ins. in the ground, for $\frac{1}{4}$ sec. cor., marked on brass cap

$\frac{1}{4}$
 S23 | S24
 1918

From which
 A mesquite, 6 ins. diam., brs. N.32 $\frac{1}{2}$ °E.,
 185 lks. dist., marked $\frac{1}{4}$ S24 BT.
 A palo verde, 8 ins. diam., brs. S.12 $\frac{1}{2}$ °W.,
 190 lks. dist., marked $\frac{1}{4}$ S23 BT.

70.30 Wash, 20 lks. wide, course SW.
 79.58 The cor. of secs. 23, 24, 25 and 26.
 Land, nearly level.
 Soil, gravelly and rocky, 3rd rate.
 No timber.
 Undergrowth, palo verde, ocotillo, greasewood, mesquite and cactus.

From the cor. of secs. 13, 14, 23 and 24, hereinbefore described,
 East on a random line, bet. secs. 13 and 24.
 40.00 Set temp. $\frac{1}{4}$ sec. cor.
 80.32 Fall 26 lks. S. of the reestablished cor. of secs. 13 and

22.

Completion of the survey of the
Subdivision of T. 7 N., R. 2 E.

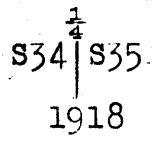
Chains.

	<p>24, hereinbefore described.</p> <p>Thence S.89°49'W., on a true line, bet. secs. 13 and 24. Over rolling land, through scattering undergrowth. Desc. 75 ft.</p>
7.50	Draw, course SW. Asc. 45 ft.
18.93	Spur, slopes S. Desc. 10 ft.
24.94	Draw, course SE. Asc. 75 ft.
25.93	Spur, slopes SE. Desc. 45 ft.
34.82	Set an iron post, 3 ft. long, 1 in. diam., 26 ins. in the ground, for $\frac{1}{4}$ sec. cor., marked on brass cap
40.16	
	$\frac{1}{4} \frac{S13}{S24}$ 1918
	<p>And raise a mound of stone, 2 ft. base, $1\frac{1}{2}$ ft. high, N. of cor.</p> <p>Thence over rolling land.</p>
54.00	Road, brs. NW. and SE.
80.32	The cor. of secs. 13, 14, 23 and 24. Land, rolling. Soil, rocky, 4th rate. No timber. Undergrowth, palo verde, mesquite and cactus.
	<p>From the cor. of secs. 11, 12, 13 and 14, which is a malpais stone, 6 X 8 X 5 ins. above ground, firmly set, marked and witnessed as described by the Surveyor-General,</p> <p>N.89°49'E., on a random line, bet. secs. 12 and 13. Set temp. $\frac{1}{4}$ sec. cor.</p>
40.00	Fall 47 lks. N. of the reestablished cor. of secs. 12 and 13, hereinbefore described, on E. bdy. of Tp.
80.19	Thence N.89°51'W., on a true line, bet. secs. 12 and 13. Over rolling land, through dense undergrowth. Desc. 35 ft.
9.97	Small gulch, course SW. Asc. 250 ft.
34.94	Spur, slopes S. Desc. 65 ft.
40.09 $\frac{1}{2}$	Set an iron post, 3 ft. long, 1 in. diam., 26 ins. in the ground, for $\frac{1}{4}$ sec. cor., marked on brass cap
	$\frac{1}{4} \frac{S12}{S13}$ 1918
	<p>And raise a mound of stone, 2 ft. base, $1\frac{1}{2}$ ft. high, N. of cor.</p>
44.96	Draw, course S. Asc. 30 ft.
46.90	Spur, slopes S. Desc. 50 ft.
54.81	Draw, course S.25°W. Asc. 20 ft.
57.29	Thence over rolling land.
80.19	The cor. of secs. 11, 12, 13 and 14. Land, rolling and rolling mountainous. Soil, rocky, 4th rate. No timber. Undergrowth, mesquite, amole, sactus, palo verde and iron-wood.

Completion of the Survey of the
Subdivision of T. 7 N., R. 2 E.

Chains.

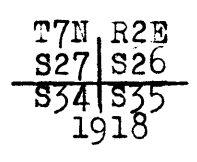
From the reestablished cor. of secs. 2, 3, 34 and 35, on the S. bdy. of Tp., hereinbefore described, N.0°3'E., bet. secs. 34 and 35.
Over rolling mesa, through scattering undergrowth.
0.20 Wash, 10 lks. wide, course S.30°W.
3.00 Asc. 50 ft.
7.20 Top of ascent; thence over level land.
19.60 Asc. 30ft.
22.50 Ridge, brs. W. and S.60°E. Desc. 85 ft.
28.70 Wash, 10 lks. wide, course N.80°W. Asc. 50 ft.
33.70 Ridge, brs. N.60°E. and S.10°W. Desc. 30 ft.
40.00 Set an iron post, 3 ft. long, 1 in. diam., 26 ins. in the ground, for $\frac{1}{4}$ sec. cor., marked on brass cap



From which

- A palo verde, 6 ins. diam., brs. N.60 $\frac{3}{4}$ °E., 44 lks. dist., marked $\frac{1}{4}$ S35 BT.
- A palo verde, 6 ins. diam., brs. N.83 $\frac{1}{2}$ °W., 115 lks. dist., marked $\frac{1}{4}$ S34 BT.

40.70 Wash, 5 lks. wide, course N.10°W.
47.80 Wash, 5 lks. wide, course W.
59.60 Wash, 10 lks. wide, course N.5°E.
61.80 Same wash, course W.
69.00 Wash, 5 lks. wide, course W.
75.10 Highway, brs. N.30°E. to Prescott and S.30°W. to Phoenix.
80.00 Set an iron post, 3 ft. long, 2 ins. diam., 12 ins. in the ground, in a mound of stone, for cor. of secs. 26, 27, 34 and 35, marked on brass cap



From which

- A palo verde, 6 ins. diam., brs. N.84 $\frac{3}{4}$ °E., 163 lks. dist., marked T7N R2E S26 BT.
- A palo verde, 4 ins. diam., brs. S.58°E., 83 lks. dist., marked T7N R2E S35 BT.
- A mesquite, 12 ins. diam., brs. S.44 $\frac{1}{4}$ °W., 45 lks. dist., marked T7N R2E S34 BT.
- A palo verde, 6 ins. diam., brs. N.10 $\frac{3}{4}$ °W., 30 lks. dist., marked T7N R2E S27 BT.

Land, rolling.
Soil, rocky, 4th rate.
No timber.
Undergrowth, palo verde, mesquite, cat claw, cholla and greasewood.

40.00 East on a random line, bet. secs. 26 and 35.
Set temp. $\frac{1}{4}$ sec. cor.
80.00 Intersect N. and S. line, 2 lks. N. of the cor. of secs. 25, 26, 35 and 36.
Thence
N.89°59'W., on a true line, bet. secs. 26 and 35.
Over rolling land, through scattering undergrowth.
1.00 Wash, 5 lks. wide, course N.5°E. Asc. 25 ft.
3.10 Ridge, brs. N. and S. Desc.
14.26 Wash, 20 lks. wide, course N.
17.65 Wash, 25 lks. wide, course N.15°W. Asc. 25 ft.
27.40 Desc.
37.34 Wash, 5 lks. wide, course N.
40.00 Set an iron post, 3 ft. long, 1 in. diam., 28 ins. in the

Completion of the survey of the
Subdivision of T. 7 N., R. 2 E.

24.

Chains.

ground, for $\frac{1}{4}$ sec. cor., marked on brass cap

$$\begin{array}{r} \frac{1}{4} S26 \\ \frac{1}{4} S35 \\ \hline 1918 \end{array}$$

From which

A mesquite, 10 ins. diam., brs. N.72 $\frac{1}{2}$ °E.,
75 lks. dist., marked $\frac{1}{4}$ S26 BT.

A palo verde, 4 ins. diam., brs. S.4°E.,
21 lks. dist., marked $\frac{1}{4}$ S35 BT.

Asc. 15 ft.

43.60 Low ridge, brs. N. and S. Desc. 85 ft.

54.70 Wash, 20 lks. wide, course N.80°W.

61.40 Wash, 5 lks. wide, course NW.

76.90 Highway, brs. N.20°E. to Prescott and S.20°W. to Phoenix.

80.00 The cor. of secs. 26, 27, 34 and 35.

Land, rolling.

Soil, rocky, 4th rate.

No timber.

Undergrowth, greasewood, cactus, and palo verde.

N.0°3'E., bet. secs. 26 and 27.

Over rolling land, through dense undergrowth.

6.80 Wash, 40 lks. wide, course S.20°W.

10.30 Old road, brs. N.60°E. and S.40°W. Leave undergrowth, brs.
E. and W.

34.80 Asc. gradually, 50 ft.

40.00 Set an iron post, 3 ft. long, 1 in. diam., 20 ins. in the
ground, in a mound of stone, for $\frac{1}{4}$ sec. cor., marked on
brass cap

$$\begin{array}{r} \frac{1}{4} \\ S27 \mid S26 \\ \hline 1918 \end{array}$$

From which

A palo verde, 6 ins. diam., brs. S.58°E.,
113 lks. dist., marked $\frac{1}{4}$ S26 BT.

A palo verde, 6 ins. diam., brs. S.72 $\frac{1}{2}$ °W.,
201 lks. dist., marked $\frac{1}{4}$ S27 BT.

80.00 Set an iron post, 3 ft. long, 2 ins. diam., 12 ins. in the
ground, on bed rock, in a mound of stone, 4 ft. base, 2
ft. high, for cor. of secs. 22, 23, 26 and 27, marked on
brass cap

$$\begin{array}{r} T7N R2E \\ S22 \mid S23 \\ \hline S27 \mid S26 \\ \hline 1918 \end{array}$$

From which

A palo verde, 10 ins. diam., brs. N.4 $\frac{3}{4}$ °E.,
225 lks. dist., marked T7N R2E S23 BT.

A palo verde limb, 4 ins. diam., brs. S.75°E.,
213 lks. dist., marked T7N R2E S26 BT.

A palo verde limb, 4 ins. diam., brs. S.37 $\frac{3}{4}$ °W.,
157 lks. dist., marked T7N R2E S27 BT.

A palo verde limb, 6 ins. diam., brs. N.5 $\frac{3}{4}$ °W.,
30 lks. dist., marked T7N R2E S22 BT.

Land, rolling.

Soil, gravelly and rocky; 4th rate.

No timber.

Undergrowth, mesquite, palo verde, ocotillo and cholla.

Completion of the Survey of the
Subdivision of T. 7 N., R. 2 E.

Chains.

40.00 S.89°59'E., on a random line, bet. secs. 23 and 26.
Set temp. $\frac{1}{4}$ sec. cor.

79.95 Intersect N. and S. line, 5 lks. N. of the cor. of secs.
23, 24, 25 and 26.

Thence
N.89°57'W., on a true line, bet. secs. 23 and 26.
Over nearly level land, through scattering undergrowth.

3.60 Wash, 25 lks. wide, course S.

12.15 Old road, brs. N.20°E. and S.20°W.

24.95 Wash, 30 lks. wide, course S.

31.30 Wash, 5 lks. wide, course S.10°E.

39.97 $\frac{1}{2}$ Set an iron post, 3 ft. long, 1 in. diam., 10 ins. in the
ground, in a mound of stone, for $\frac{1}{4}$ sec. cor., marked on
brass cap

$\frac{1}{4}$ S23
 $\frac{1}{4}$ S26
1918

And raise a mound of stone, 3 ft. base, 2 ft. high, N.
of cor.

43.55 Wash, 10 lks. wide, course S.20°E. Asc. 100 ft.

44.65 Highway, brs. N. to Prescott and S. to Phoenix.

53.25 Top of ascent; thence over nearly level land.

72.25 Draw, course S.10°E;

79.95 The cor. of secs. 22, 23, 26 and 27.
Land, level and nearly level.
Soil, rocky, 4th rate.
No timber.
Undergrowth, palo verde, mesquite, ironwood, greasewood and
cactus.

40.00 N.0°3'E., on a random line, bet. secs. 22 and 23.
Set temp. $\frac{1}{4}$ sec. cor.

79.43 Fall 37 lks. E. of the cor. of secs. 14, 15, 22 and 23,
which is a malpais stone, 6 X 8 X 6 ins. above ground,
firmly set, marked and witnessed as described by the
Surveyor-General.

Thence
S.0°13'E., on a true line, bet. secs. 22 and 23.
Over river bottom land, through scattering undergrowth.

5.00 Leave bottom land, brs. NE. and SW. Asc. 125 ft.

22.00 Top of ascent; thence over rolling mesa, brs. NE. and SW.

28.40 Desc. 55 ft.

35.20 Foot of descent; thence over level land.

39.43 Set an iron post, 3 ft. long, 1 in. diam., 20 ins. in the
ground, in a mound of stone, for $\frac{1}{4}$ sec. cor., marked on
brass cap

$\frac{1}{4}$
S22 | S23
1918

From which
A palo verde, 4 ins. diam., brs. N.82 $\frac{1}{2}$ °E.,
71 lks. dist., marked $\frac{1}{4}$ S23 BT.
A palo verde, 4 ins. diam., brs. N.15 $\frac{1}{2}$ °W.,
17 lks. dist., marked $\frac{1}{4}$ S22 BT.

Asc. 25 ft.

41.53 Wire fence, brs. E. and W.

43.63 Spur, slopes W. Desc. 50 ft.

49.90 Draw, course SW. Asc.

52.40 Thence over level land.

59.00 Desc. 60 ft.

66.30 Draw, course S.60°W. Asc. 50 ft.

72.00 Top of ascent; thence over level mesa.

79.43 The cor. of secs. 22, 23, 26 and 27.
Land, level and rolling.
Soil, rocky, 3rd and 4th rates; malpais formation.

Completion of Survey of the
Subdivision of T. 7 N., R. 2 E.

26.

Chains.

	<p>No timber. Undergrowth, mesquite, ironwood, greasewood and cactus.</p>
	<p>From the reestablished cor. of secs. 3, 4, 33 and 34, on the S. bdy. of Tp., hereinbefore described, N.0°2'E., bet. secs. 33 and 34. Over level river bottom land, through scattering undergrowth.</p>
15.50	Leave undergrowth, brs. NE. and SW. Asc. 65 ft.
22.40	Thence over rolling mesa, brs. NE. and SW.
40.00	Set an iron post, 3 ft. long, 1 in. diam., 20 ins. in the ground, in a mound of earth and stone, for $\frac{1}{4}$ sec. cor., marked on brass cap
	$\begin{array}{c} \frac{1}{4} \\ S33 \mid S34 \\ 1918 \end{array}$
	<p>From which</p> <p>A mesquite limb, 6 ins. diam., brs. S.35$\frac{1}{2}$°E., 31 lks. dist., marked $\frac{1}{4}$S34 BT.</p> <p>A mesquite limb, 6 ins. diam., brs. S.35$\frac{3}{4}$°W., 133 lks. dist., marked $\frac{1}{4}$S33 BT.</p>
77.86	Road, brs. N.70°W. and S.70°E.
80.00	Set an iron post, 3 ft. long, 2 ins. diam., 10 ins. in the ground, on bed rock, in a mound of earth and stone, 4 ft. base, 2 ft. high, for cor. of secs. 27, 28, 33 and 34, marked on brass cap
	$\begin{array}{c} T7N \ R2E \\ S28 \mid S27 \\ \hline S33 \mid S34 \\ 1918 \end{array}$
	<p>From which</p> <p>A palo verde limb, 6 ins. diam., brs. N.80$\frac{1}{2}$°E., 160 lks. dist., marked T7N R2E S27 BT.</p> <p>A palo verde, 8 ins. diam., brs. S.6°E., 183 lks. dist., marked T7N R2E S34 BT.</p> <p>A palo verde, 8 ins. diam., brs. S.40$\frac{3}{4}$°W., 172 lks. dist., marked T7N R2E S33 BT.</p> <p>A palo verde, 8 ins. diam., brs. N.61°W., 160 lks. dist., marked T7N R2E S28 BT.</p> <p>Land, level and rolling. Soil, 2nd and 3rd rates. Undergrowth, mesquite, cat claw and cholla. No timber.</p>
	<p>East on a random line, bet. secs. 27 and 34. Set temp. $\frac{1}{4}$ sec. cor.</p>
40.00	Intersect N. and S. line, 10 lks. S. of the cor. of secs. 26, 27, 34 and 35.
80.03	Thence
	S.89°56'W., on a true line, bet. secs. 27 and 34.
	Over nearly level land, through dense undergrowth.
3.30	Wash, 1 ch. wide, course S.10°W.
10.45	Old road, brs. N.30°E. and S.30°W. Thence through scattering undergrowth.
12.20	Left bank of New River, brs. NE. and SW. Thence across dry bed of New River.
14.30	Stream of water, 20 lks. wide, 3 ins. deep, clear running water, course S.20°W.
17.00	Right bank of New River, brs. N.10°E. and S.10°W.
34.30	Wash, 20 lks. wide, course S.
40.01 $\frac{1}{2}$	Set an iron post, 3 ft. long, 1 in. diam., 28 ins. in the ground, for $\frac{1}{4}$ sec. cor., marked on brass cap

Completion of the Survey of the
Subdivision of T. 7 N., R. 2 E.

Chains.

$\frac{1}{4}$ S27
 $\frac{1}{4}$ S34
1918

From which

- A mesquite, 18 ins. diam., brs. N.67 $\frac{1}{2}$ °E.,
55 lks. dist., marked $\frac{1}{4}$ S27 BT.
- A palo verde limb, 4 ins. diam., brs. S.28°W.,
41 lks. dist., marked $\frac{1}{4}$ S34 BT.

43.00
61.50
80.03

Asc. 80 ft.
Top of ascent, brs. N. and S. Thence over level mesa.
The cor. of secs. 27, 28, 33 and 34.
Land, level and rolling.
Soil, gravelly and rocky, 3rd and 4th rates; malpais for-
mation.
No timber.
Undergrowth, palo verde, mesquite, greasewood and cactus.

N.0°2'E., bet. secs. 27 and 28.

40.00

Over level mesa, through scattering undergrowth.
Set an iron post, 3 ft. long, 1 in. diam., 26 ins. in the
ground, for $\frac{1}{4}$ sec. cor., marked on brass cap

$\frac{1}{4}$
S28 | S27
1918

From which

- A mesquite, 4 ins. diam., brs. S.82 $\frac{1}{2}$ °E.,
123 lks. dist., marked $\frac{1}{4}$ S27 BT.
- A palo verde; 8 ins. diam., brs. N.51 $\frac{1}{2}$ °W.,
68 lks. dist., marked $\frac{1}{4}$ S28 BT.

44.20
55.00
70.80
77.10
80.00

Wash, 10 lks. wide, course S.70°E.
Asc. 70 ft.
Spur, slopes E. Desc. 65 ft.
Wash, 20 lks. wide, course E.
Set an iron post, 3 ft. long, 2 ins. diam., 20 ins. in the
ground, in a mound of stone, 4 ft. base, 1 ft. high, for
cor. of secs. 21, 22, 27 and 28, marked on brass cap

T7N R2E
S21 | S22
S28 | S27
1918

From which

- A palo verde, 6 ins. diam., brs. N. $\frac{1}{2}$ °E.,
79 lks. dist., marked T7N R2E S22 BT.
- A palo verde, 4 ins. diam., brs. S.76 $\frac{1}{2}$ °E.,
167 lks. dist., marked T7N R2E S27 BT.
- A palo verde limb, 5 ins. diam., brs. S.33°W.,
13 lks. dist., marked T7N R2E S28 BT.
- A palo verde limb, 4 ins. diam., brs. N.74 $\frac{1}{2}$ °W.,
83 lks. dist., marked T7N R2E S21 BT.

Land, level and rolling.
Soil, rocky, 3rd rate.
No timber.
Undergrowth, palo verde, cholla, mesquite and cat claw.

40.00
79.98

N.89°56'E., on a random line, bet. secs. 22 and 27.
Set temp. $\frac{1}{4}$ sec. cor.
Intersect N. and S. line, 12 lks. N. of the cor. of secs.
22, 23, 26 and 27.

Thence
N.89°59'W., on a true line, bet. secs. 22 and 27.

Completion of the Survey of the
Subdivision of T. 7 N., R. 2 E.

28.

Chains.

0.50	Over level mesa, through scattering undergrowth. Desc. 115 ft.
7.00	Thence over level bottom land.
17.50	Old road, brs. N. and S.
21.20	Left bank of New River, brs. NW. and SE. Thence over dry rocky bed of New River, course S.10°E.
22.08	Stream of water, 20 lks. wide, 2 ins. deep, course S.10°E.
23.50	Right bank of New River, brs. N. and S.
32.80	Wash, 20 lks. wide, course S.30°E. Asc. gradually.
39.99	Set an iron post, 3 ft. long, 1 in. diam., 20 ins. in the ground, in a mound of stone, 4 ft. base, 1 ft. high, for $\frac{1}{4}$ sec. cor., marked on brass cap
	$\frac{1}{4}$ S22 $\frac{1}{4}$ S27 1918
	From which
	A palo verde, 8 ins. diam., brs. N.58°E., 138 lks. dist., marked $\frac{1}{4}$ S22 BT.
	A palo verde, 6 ins. diam., brs. S.24 $\frac{1}{2}$ °W., 53 lks. dist., marked $\frac{1}{4}$ S27 BT.
51.00	Draw, course S.
65.00	Wash, 10 lks. wide, course S.
79.98	The cor. of secs. 21, 22, 27 and 28. Land, level and rolling. Soil, rocky, 3rd and 4th rates; malpais formation. No timber. Undergrowth, greasewood, palo verde, mesquite, iron-wood and cactus.
40.00	N.0°2'E., on a random line, bet. secs. 21 and 22. Set temp. $\frac{1}{4}$ sec. cor.
79.56	Fall 47 lks. E. of the cor. of secs. 15, 16, 21 and 22, which is a malpais stone, 5 X 8 X 8 ins. above ground, firmly set, marked and witnessed as described by the Surveyor-General.
	Thence
	S.0°18'E., on a true line, bet. secs. 21 and 22. Over rolling land, through scattering undergrowth.
0.30	Wash, 15 lks. wide, course S.20°E.
12.60	Wash, 10 lks. wide, course N.70°E.
23.00	Wash, 10 lks. wide, course E. Asc. 25 ft.
31.20	Spur, slopes E. Desc. 40 ft.
39.78	Set an iron post, 3 ft. long, 1 in. diam., 20 ins. in the ground, in a mound of stone, 4 ft. base, 1 ft. high, for $\frac{1}{4}$ sec. cor., marked on brass cap
	$\frac{1}{4}$ S21 S22 1918
	From which
	A palo verde, 10 ins. diam., brs. S.67 $\frac{1}{2}$ °E., 146 lks. dist., marked $\frac{1}{4}$ S22 BT.
	A palo verde, limb, 4 ins. diam., brs. S.83°W., 66 lks. dist., marked $\frac{1}{4}$ S21 BT.
44.10	Wash, 5 lks. wide, course S.70°E. Desc. 35 ft.
60.10	Wash, 10 lks. wide, course E. Desc. 50 ft.
79.56	The cor. of secs. 21, 22, 27 and 28. Land, rolling. Soil, rocky, 3rd and 4th rates. No timber. Undergrowth, palo verde, cholla and ocotillo.

Completion of the Survey of the
Subdivision of T. 7 N., R. 2 E.

Chains.

From the cor. of secs. 9, 10, 15 and 16, which is a malpais stone, 6 X 8 X 8 ins. above ground, firmly set, marked and witnessed as described by the Surveyor-General, North on a random line, bet. secs. 9 and 10.

40.00 Set temp. $\frac{1}{4}$ sec. cor.

80.12 Fall 21 lks. W. of the cor. of secs. 3, 4, 9 and 10, which is a quartzite stone, 8 X 8 X 20 ins., firmly set, marked and witnessed as described by the Surveyor-General.

Thence
S.0°9'W., on a true line, bet. secs. 9 and 10.
Over level land, through scattering undergrowth.

23.50 Wash, 5 lks. wide, course N.15°E. Asc. 250 ft.

40.06 Set an iron post, 3 ft. long, 1 in. diam., 20 ins. in the ground, in a mound of stone, for $\frac{1}{4}$ sec. cor., marked on brass cap

$$\begin{array}{c} \frac{1}{4} \\ S\ 9\ | \ S10 \\ 1918 \end{array}$$

And raise a mound of stone, 4 ft. base, $1\frac{1}{2}$ ft. high, W. of cor.

43.20 Ridge, brs. E. and W. Desc. 120 ft.

60.10 Thence over rolling land.

67.10 Wash, course S.5°E.

71.10 Same wash, course S.10°W.

74.90 Same wash, 10 lks. wide, course S.5°E.

80.12 The cor. of secs. 9, 10, 15 and 16.
Land, level and rolling.
Soil, rocky, 4th rate; malpais formation.
No timber.
Undergrowth, palo verde, ocotillo, cactus and cat claw.

From the reestablished cor. of secs. 4, 5, 32 and 33, on the S. bdy. of Tp., hereinbefore described, N.0°2'E., bet. secs. 32 and 33.

Over nearly level land, through scattering undergrowth.

24.50 Wash, 10 lks. wide, course S.70°W.

40.00 Set an iron post, 3 ft. long, 1 in. diam., 18 ins. in the ground, in a mound of earth and stone, for $\frac{1}{4}$ sec. cor., marked on brass cap

$$\begin{array}{c} \frac{1}{4} \\ S32\ | \ S33 \\ 1918 \end{array}$$

From which

A palo verde, 8 ins. diam., brs. N.69 $\frac{1}{2}$ °E.,
268 lks. dist., marked $\frac{1}{4}$ S33 BT.

A palo verde, 6 ins. diam., brs. S.8 $\frac{3}{4}$ °W.,
28 lks. dist., marked $\frac{1}{4}$ S32 BT.

51.40 Edge of mesa, brs. NE. and SW. Desc. 25 ft.

56.40 Thence over level land.

80.00 Set an iron post, 3 ft. long, 2 ins. diam., 26 ins. in the ground, for cor. of secs. 28, 29, 32 and 33, marked on brass cap

$$\begin{array}{c} T7N\ R2E \\ S29\ | \ S28 \\ \hline S32\ | \ S33 \\ 1918 \end{array}$$

From which

An iron-wood, 6 ins. diam., brs. N.9°E.,
557 lks. dist., marked T7N R2E S28 BT?

A palo verde limb, 8 ins. diam., brs. S.59°E.,
383 lks. dist., marked T7N R2E S33 BT.

Completion of the Survey of the
Subdivision of T. 7 N., R. 2 E.

30.

chains.

An iron-wood, 4 ins. diam., brs. S.62°W.,
211 lks. dist., marked T7N R2E S32 BT.
A mesquite limb, 6 ins. diam., brs. N.43°W.,
295 lks. dist., marked T7N R2E S29 BT.
Land, nearly level.
Soil, 3rd and 4th rates.
No timber.
Undergrowth, palo verde, ironwood, greasewood and cactus.

40.00 East on a random line, bet. secs. 28 and 33.
79.97 Set temp. 1/4 sec. cor.
Intersect N. and S. line, 5 lks. N. of the cor. of secs.
27, 28, 33 and 34.
Thence
N.89°58'W., on a true line, bet. secs. 28 and 33.
Over rolling land, through scattering undergrowth.
6.10 Road, brs. N.70°W. and S.70°E.
24.90 Wash, 10 lks. wide, course S.10°E. Asc. gradually.
39.98 1/2 Set an iron post, 3 ft. long, 1 in. diam., 18 ins. in the
ground, in a mound of stone, for 1/4 sec. cor., marked on
brass cap

S28
1/4 S33
1918

From which
A palo verde, 8 ins. diam., brs. N.36°E.,
51 lks. dist., marked 1/4 S28 BT.
A palo verde limb, 5 ins. diam., brs. S.73 1/2°W.,
75 lks. dist., marked 1/4 S33 BT.
42.00 Ridge, brs. N. and S. Desc. 40 ft.
56.00 Wash, 5 lks. wide, course S.5°W. Thence over level land.
62.10 Asc. 50 ft.
70.00 Ridge, brs. N.10°E. and S.10°W. Desc. 75 ft.
79.97 The cor. of secs. 28, 29, 32 and 33.
Land, rolling.
Soil, 3rd rate.
No timber.
Undergrowth, greasewood, palo verde and cactus.

N.0°2'E., bet. secs. 28 and 29.
Over level land, through scattering undergrowth.
14.40 Wash, 5 lks. wide, course S.70°W.
25.50 Wash, 30 lks; wide, course S.70°W.
27.10 Asc. 75. ft.
36.50 Ridge, brs. N.40°E. and S.20°W. Desc. gradually.
40.00 Set an iron post, 3 ft. long, 1 in. diam., 15 ins. in the
ground, in a mound of stone, 4 ft. base, 1 1/2 ft. high,
for 1/4 sec. cor., marked on brass cap

S29 | S28
1918

From which
A palo verde, 4 ins. diam., brs. S.52°E.,
110 lks. dist., marked 1/4 S28 BT.
A palo verde, 14 ins. diam., brs. N.38 1/4°W.,
194 lks. dist., marked 1/4 S29 BT.
47.60 Asc. 20 ft.

Completion of the Survey of the
Subdivision of T. 7 N., R. 2 E.

chains.

49.40 Ridge, brs. E. and W. Desc. gradually.
 52.00 Wash, 6 lks. wide, course SW. Asc. 85 ft.
 64.10 Spur, slopes S.30°E. Desc. 35 ft.
 70.40 Road, brs. N.70°W. and S.20°E. Desc. 25 ft.
 75.00 Wash, 15 lks. wide, course S.15°E.
 79.30 Same wash, 10 lks. wide, course S.70°W.
 80.00 Set an iron post, 3 ft. long, 2 ins. diam., 28 ins. in the
 ground, for cor. of secs. 20, 21, 28 and 29, marked on
 brass cap

T7N	R2E
S20	S21
S29	S28
1918	

From which

An iron-wood, 8 ins. diam., brs. N.24 $\frac{1}{4}$ °E.,
 44 lks. dist., marked T7N R2E S21 BT.
 A palo verde, 8 ins. diam., brs. S.83 $\frac{1}{8}$ °E.,
 84 lks. dist., marked T7N R2E S28 BT.
 A palo verde, 6 ins. diam., brs. S.19 $\frac{1}{2}$ °W.,
 39 lks. dist., marked T7N R2E S29 BT.
 An iron-wood, 6 ins. diam., brs. N.44°W.,
 65 lks. dist., marked T7N R2E S20 BT.

Land, level and rolling.
 Soil, rocky, 4th rate.
 No timber.
 Undergrowth, greasewood, palo verde and cholla.

40.00 S.89°58'E., on a random line, bet. secs. 21 and 28.
 Set temp. $\frac{1}{4}$ sec. cor.
 79.97 Intersect N. and S. line, 5 lks. S. of the cor. of secs.
 21, 22, 27 and 28.
 Thence
 West on a true line, bet. secs. 21 and 28.
 Over rolling land, through scattering undergrowth.
 8.50 Wash, 6 lks. wide, course SE. Thence over mesa, brs. N.
 and S.
 25.10 Leave mesa, brs. N. and S. Asc. 100 ft.
 31.80 Desc. 110 ft.
 39.98 $\frac{1}{2}$ Set an iron post, 3 ft. long, 1 in. diam., 16 ins. in the
 ground, on bed rock, in a mound of stone, for $\frac{1}{4}$ sec.
 cor., marked on brass cap

$\frac{1}{4}$	S21
$\frac{1}{4}$	S28
1918	

From which

A palo verde, 5 ins. diam., brs. N.73°E., 13 lks.
 dist., marked $\frac{1}{4}$ S21 BT.
 A palo verde, 5 ins. diam., brs. S.36 $\frac{1}{2}$ °W., 73 lks.
 dist., marked $\frac{1}{4}$ S28 BT.

41.20 Wash, 20 lks. wide, course S.70°W. Asc. 50 ft.
 48.20 Top of ascent; thence over level land.
 50.00 Asc. 90 ft.
 60.00 Desc. 75 ft.
 79.25 Wash, 10 lks. wide, course SW.
 79.97 The cor. of secs. 20, 21, 28 and 29.
 Land, rolling and mountainous.
 Soil, rocky, malpais formation; 3rd rate.
 No timber.
 Undergrowth, ocotillo and cholla.

1.00 N.0°2'W., bet. secs. 20 and 21.
 Over rolling land, through scattering undergrowth.
 Wash, 10 lks. wide, course S.10°W.

Completion of the Survey of the
Subdivision of T. 7 N., R. 2 E.

Chains. 74.60 79.50	<p>Spur, slopes N.60°E. Continue ascent. The cor. of secs. 16, 17, 20 and 21. Land, rough and mountainous. Soil, rocky, 4th rate. No timber. Undergrowth, ocotillo, palo verde and cholla.</p>
8.80 16.30 24.80 40.00	<p>N.0°2'E., bet. secs. 16 and 17. Over mountainous land, through scattering undergrowth. Desc. 100 ft. Thence over level land. Desc. 140 ft. Draw, course N.80°E. Desc. 100 ft., along E. slope. Set an iron post, 3 ft. long, 1 in. diam., 20 ins. in the ground, in a mound of stone, for $\frac{1}{4}$ sec. cor., marked on brass cap</p> <p style="text-align: center;"> $\frac{1}{4}$ S17 S16 1918 </p> <p>From which A palo verde, 6 ins. diam., brs. N.85°E., 27 lks. dist., marked $\frac{1}{4}$S16 BT. A palo verde, 6 ins. diam., brs. S.6$\frac{3}{4}$°W., 77 lks. dist., marked $\frac{1}{4}$S17 BT.</p>
41.00 50.00 58.50 63.30 72.20 79.00 80.00	<p>Wash, 15 lks. wide, course N.30°W. Asc. 25 ft. Thence over level land. Asc. 25 ft. Spur, slopes W. Desc. 70 ft. Draw, course SW. Asc. 35 ft. Spur, slopes W. Desc. 15 ft. Set an iron post, 3 ft. long, 2 ins. diam., 24 ins. in the ground, for cor. of secs. 8, 9, 16 and 17, marked on brass cap</p> <p style="text-align: center;"> T7N R2E S 8 S 9 S17 S16 1918 </p> <p>From which A palo verde, 8 ins. diam., brs. N.57°E., 150 lks. dist., marked T7N R2E S9 BT. A palo verde limo, 4 ins. diam., brs. S.34°E., 84 lks. dist., marked T7N R2E S16 BT. A palo verde, 6 ins. diam., brs. S.25°W., 109 lks. dist., marked T7N R2E S17 BT. A palo verde limb, 6 ins. diam., brs. N.81°W., 110 lks. dist., marked T7N R2E S8 BT.</p> <p>Land, level and mountainous. Soil, rocky, 4th rate. No timber. Undergrowth, ocotillo, and cholla.</p>
40.00 79.60 26.50 32.90 39.80	<p>S.89°46'E., on a random line, bet. secs. 9 and 16. Set temp. $\frac{1}{4}$ sec. cor. Fall 3 lks. N. of the cor. of secs. 9, 10, 15 and 16, hereinbefore described. Thence N.89°45'W., on a true line, bet. secs. 9 and 16. Over rolling mesa, through scattering undergrowth. Asc. 50 ft. Ridge, brs. NE. and SW. Desc. 40 ft. Set an iron post, 3 ft. long, 1 in. diam., 18 ins. in the ground, on bed rock, in a mound of stone, 4 ft. base, 1 ft. high, for $\frac{1}{4}$ sec. cor., marked on brass cap</p>

Completion of the Survey of the
Subdivision of T. 7 N., R. 2 E.

34.

Chains.

$\frac{1}{4}$ S 9
S 16
1918

And raise a mound of stone, 3 ft. base, 2 ft. high, N. of cor.

- 71.80 Thence over level land. Asc. 25 ft.
- 77.10 Ridge, brs. N.10°E. and S.10°W. Desc. 25 ft.
- 79.60 The cor. of secs. 8, 9, 16 and 17. Land, level, rolling and broken. Soil, rocky, 4th rate. No timber. Undergrowth, palo verde, ocotillo and cholla.

N.0°2'E., bet. secs. 8 and 91
Over broken and mountainous land, through scattering undergrowth.

- 1.00 Desc. 20 ft.
- 7.40 Wash, 5 lks. wide, course W. Asc. 60 ft.
- 22.50 Ridge, brs. N.10°E. and S.70°E. Desc. 155 ft.
- 31.00 Spur, slopes N.70°W. Continue descent, 150 ft.
- 35.30 Wash, 25 lks. wide, course S.80°W. Asc. 25 ft.
- 38.30 Spur, slopes W. Desc. 50 ft.
- 40.00 Draw, course W. Asc. 50 ft.
- Set an iron post, 3 ft. long, 1 in. diam., 18 ins. in the ground, on bed rock, in a mound of stone, for $\frac{1}{4}$ sec. cor., marked on brass cap

$\frac{1}{4}$
S 8 | S 9
1918

From which

- A palo verde, 6 ins. diam., brs. N.45°E., 30 lks. dist., marked $\frac{1}{4}$ S9 BT.
- A palo verde, 4 ins. diam., brs. S.72½°W., 76 lks. dist., marked $\frac{1}{4}$ S8 BT.

- 41.30 Asc. 35 ft.
- 45.50 Ridge, brs. E. and W. Desc. 100 ft.
- 52.60 Wash, 10 lks. wide, course S.70°W. Asc. 150 ft.
- 62.00 Ridge, brs. E. and W. Desc. 140 ft.
- 75.10 Draw, course SW. Asc. 70 ft.
- 77.10 Ridge, brs. NW. and SE. Desc. 60 ft.
- 77.10 Draw, course NE. Asc.
- 80.00 Set an iron post, 3 ft. long, 2 ins. diam., 6 ins. in the ground, on solid rock, in a mound of stone, 4 ft. base, 2½ ft. high, for cor. of secs. 4, 5, 8 and 9, marked on brass cap

T7N R2E
S 5 | S 4
S 8 | S 9
1918

And raise a mound of stone, 2 ft. base, 1½ ft. high, W. of cor.

Land, broken and mountainous.
Soil, rocky, malpais formation; 3rd rate.
No timber.
Undergrowth, palo verde, greasewood and cactus.

- 40.00 S.89°45'E., on a random line, bet. secs. 4 and 9.
- 79.74 Set temp. $\frac{1}{4}$ sec. cor. Fall 5 lks. S. of the cor. of secs. 3, 4, 9 and 10, hereinbefore described.

Completion of the Survey of the
Subdivision of T. 7 N., R. 2 E.

Chains.

Thence
N.89°47'W., on a true line, bet. secs. 4 and 9.
Over mountainous land, through scattering undergrowth.
Desc.
5.00 Thence over level land.
8.00 Wash, 10 lks. wide, course N.15°W. Thence over rolling mesa.
13.80 Wash, 15 lks. wide, course N.15°W.
20.70 Wash, 25 lks. wide, course N.10°W. Asc. 80 ft.
26.10 Spur, slopes N. Desc. 80 ft.
31.00 Draw, course N. Asc. 40 ft.
34.00 Ridge, brs. N. and S. Desc. 40 ft.
39.87 Set an iron post, 3 ft. long, 1 in. diam., 20 ins. in the ground, on bed rock, in a mound of stone, for $\frac{1}{4}$ sec. cor., marked on brass cap

$\frac{1}{4}$ S 4
 $\frac{1}{4}$ S 9
 1918

From which
A palo verde, 4 ins. diam., brs. N.1 $\frac{1}{2}$ °E.,
95 lks. dist., marked $\frac{1}{4}$ S4 BT.
A palo verde, 6 ins. diam., brs. S.9 $\frac{1}{2}$ °W.,
204 lks. dist., marked $\frac{1}{4}$ S9 BT.
Asc. 140 ft.
49.80 Ridge, brs. N. and S. Desc. 250 ft.
51.80 Foot of cliff, 50 ft. high. Continue descent.
56.60 Ravine, course NW. Asc. 50 ft.
66.00 Desc. 95 ft.
71.80 Wash, 20 lks. wide, course N.20°W. Asc. 115 ft.
79.74 The cor. of secs. 4, 5, 8 and 9.
Land, rough and mountainous.
Soil, rocky, 4th rate; malpais and slate formation.
No timber.
Undergrowth, palo verde, cholla and ocotillo.

40.00 N.0°2'E., on a random line, bet. secs. 4 and 5.
Set ttemp. $\frac{1}{4}$ sec. cor.
79.67 Fall 47 lks. E. of ~~reestablished~~ cor. of secs. 4, 5, 32 and 33,
described in Book "G".

Thence
S.0°18'E., on a true line, bet. secs. 4 and 5.
Over gently rolling land, through scattering undergrowth.
17.17 Road, brs. N.70°W. to Tiptop mine and S.70°E.
19.77 Enter wash, course W. Comes from S.
24.77 Leave wash, course N. Comes from SE.
39.67 Set an iron post, 3 ft. long, 1 in. diam., 28 ins. in the ground, for $\frac{1}{4}$ sec. cor., marked on brass cap

$\frac{1}{4}$
 S 5 | S 4
 1918

From which
A palo christi, 4 ins. diam., brs. S.34 $\frac{1}{2}$ °E.,
276 lks. dist., marked $\frac{1}{4}$ S4 BT.
A palo verde, 4 ins. diam., brs. N.19 $\frac{1}{4}$ °W.,
106 lks. dist., marked $\frac{1}{4}$ S5 BT.
53.67 Wash, 10 lks. wide, course NW. Asc. 40 ft.
67.57 Ridge, brs. E. and W. Desc. 40 ft.
71.17 Wash, 15 lks. wide, course W. Asc. 180 ft.
79.07 Spur, slopes NE. Desc.
79.67 The cor. of secs. 4, 5, 8 and 9.
Land, rolling and broken.
Soil, rocky, 4th rate.
No timber.

36.

Completion of the Survey of the
Subdivision of T. 7 N., R. 2 E.

Chains.

Undergrowth, palo verde, ocotillo and cholla.

From the reestablished cor. of secs. 5, 6, 31 and 32, on
the S. bdy. of Tp., hereinbefore described,
N.0°1'E., bet. secs. 31 and 32.
Over rolling land, through scattering undergrowth.
Wash, 10 lks. wide, course S.10°E.
29.00 Asc. 35 ft.
34.00 Set an iron post, 3 ft. long, 1 in. diam., 20 ins. in the
40.00 ground, in a mound of stone, 4 ft. base, 1 ft. high,
for $\frac{1}{4}$ sec. cor., marked on brass cap

$$\begin{array}{c} \frac{1}{4} \\ \uparrow \\ \text{S31} \mid \text{S32} \\ \downarrow \\ 1918 \end{array}$$

And raise a mound of stone, 3 ft. base, 1 ft. high, W.
of cor.
Asc. 25 ft.
54.40 Desc. 85 ft.
75.00 Wash, 40 lks. wide, course S.30°E. Asc.
80.00 Set an iron post, 3 ft. long, 2 ins. diam., 24 ins. in the
ground, for cor. of secs. 29, 30, 31 and 32, marked on
brass cap

$$\begin{array}{c} \text{T7N R2E} \\ \text{S30} \mid \text{S29} \\ \hline \text{S31} \mid \text{S32} \\ 1918 \end{array}$$

From which

A palo verde limb, 8 ins. diam., brs. N.11 $\frac{1}{4}$ °E.,
366 lks. dist., marked T7N R2E S29 BT.
A palo verde, 4 ins. diam., brs. S.19 $\frac{3}{4}$ °E.,
130 lks. dist., marked T7N R2E S32 BT.
N A palo verde, 4 ins. diam., brs. S.28 $\frac{1}{4}$ °W.,
79 lks. dist., marked T7N R2E S31 BT.
No other trees within limits. Raise a mound of stone, 3 ft.
base, 2 ft. high, W. of cor.
Land, rolling.
Soil, rocky, 4th rate; malpais formation.
Undergrowth, palo verde, greasewood and cholla.

East on a random line, bet. secs. 29 and 32.
40.00 Set temp. $\frac{1}{4}$ sec. cor.
79.98 Intersect N. and S. line, 4 lks. N. of the cor. of secs.
28, 29, 32 and 33.
Thence
N.89°58'W., on a true line, bet. secs. 29 and 32.
Over level land, through scattering undergrowth.
24.50 Wash, 50 lks. wide, course S.60°W.
32.00 Wash, 10 lks. wide, course S.30°E.
37.70 Wash, 30 lks. wide, course S.20°W.
39.99 Set an iron post, 3 ft. long, 1 in. diam., 26 ins. in the
ground, for $\frac{1}{4}$ sec. cor., marked on brass cap

$$\begin{array}{c} \frac{1}{4} \text{ S29} \\ \hline \frac{1}{4} \text{ S32} \\ 1918 \end{array}$$

From which

A palo verde, 12 ins. diam., brs. N.59 $\frac{1}{4}$ °E.,
200 lks. dist., marked $\frac{1}{4}$ S29 BT.
A palo verde, 10 ins. diam., brs. S.60 $\frac{3}{4}$ °E.,
175 lks. dist., marked $\frac{1}{4}$ S32 BT.

Completion of the Survey of the
Subdivision of T. 7 N., R. 2 E.

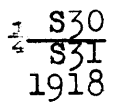
BOOK 3889

37.

Chains.

41.45 Wash, 15 lks. wide, course S.20°W.
 48.10 Wash, 10 lks. wide, course S.10°W.
 68.90 Wash, 10 lks. wide, course S.10°E.
 79.98 The cor. of secs. 29, 30, 31 and 32.
 Land, nearly level.
 Soil, rocky, 4th rate.
 No timber.
 Undergrowth, palo verde, greasewood and cactus.

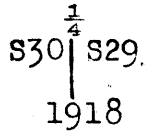
40.00 West on a random line, bet. secs. 30 and 31.
 Set temp. $\frac{1}{4}$ sec. cor.
 75.83 Fall 22 lks. N. of the reestablished cor. of secs. 30 and
 31, on the W. bdy. of Tp., hereinbefore described.
 Thence
 N.89°50'E., on a true line, bet. secs. 30 and 31.
 Over level mesa, through scattering undergrowth.
 3.80 Edge of mesa, brs. N.70°E. and S.70°W. Desc. 400 ft.
 28.30 Wash, 50 lks. wide, course S.10°W.
 35.83 Set an iron post, 3 ft. long, 1 in. diam., 20 ins. in the
 ground, on bed rock, in a mound of stone, 3 ft. base,
 1 ft. high, for $\frac{1}{4}$ sec. cor., marked on brass cap



From which
 A palo verde, 6 ins. diam., brs. N.16°W.,
 105 lks. dist., marked $\frac{1}{4}$ S30 BT.
 A palo verde, 10 ins. diam., brs. S.16 $\frac{1}{2}$ °W.,
 256 lks. dist., marked $\frac{1}{4}$ S31 BT.

37.83 Asc. 100 ft.
 54.00 Ridge, brs. N. and S. Desc. gradually.
 65.80 Thence over level land.
 70.50 Wash, 10 lks. wide, course S.15°E.
 75.83 The cor. of secs. 29, 30, 31 and 32.
 Land, level and mountainous.
 Soil, rocky, 4th rate.
 No timber.
 Undergrowth, palo verde, mesquite, greasewood, iron-wood
 and cactus.

40.00 N.0°1'E., bet. secs. 29 and 30.
 Over rolling land, through scattering undergrowth.
 Set an iron post, 3 ft. long, 1 in. diam., 12 ins. in the
 ground, on bed rock, in a mound of stone, 3 ft. base,
 1 ft. high, for $\frac{1}{4}$ sec. cor., marked on brass cap



From which
 A palo verde limb, 5 ins. diam., brs. S.17 $\frac{1}{2}$ °E.
 15 lks dist., marked $\frac{1}{4}$ S29 BT.
 An iron-wood, 4 ins. diam., brs. S.78 $\frac{1}{2}$ °W.,
 55 lks. dist., marked $\frac{1}{4}$ S30 BT.

Asc. 75 ft.
 43.40 Ridge, brs. N.70°E. and S.80°W. Desc. 125 ft.
 48.30 Draw, course N.80°W. Asc. 110 ft.
 53.00 Spur, slopes W. Desc. 160 ft.
 61.30 Thence over rolling mesa, brs. E. and W.
 64.30 Forks of road, brs. E. and W. and N.75°W.
 66.80 Road, brs. E. and W.
 67.40 Same road, brs. NW. and SE.

Completion of the Survey of the
Subdivision of T. 7 N., R. 2 E.

38.

Chains.

68.30
80.00

Wash, 10 lks. wide, course S.30°W. Asc. 70 ft.
Set an iron post, 3 ft. long, 2 ins. diam., 14 ins. in the
ground, on bed rock, in a mound of stone, 3 ft. base,
1½ ft. high, for cor. of secs. 19, 20, 29 and 30, marked
on brass cap

T7N R2E
S19 | S20
S30 | S29
1918

From which

A palo verde, 4 ins. diam., brs. N.1½°E.,
381 lks. dist., marked T7N R2E S20 BT.
A palo verde, 6 ins. diam., brs. S.78°W.,
62 lks. dist., marked T7N R2E S30 BT.
A palo verde, 4 ins. diam., brs. N.7½°W.,
325 lks. dist., marked T7N R2E S19 BT.
No other trees within limits. Raise a mound of stone, 2
ft. base, 1½ ft. high, W. of cor.
Land, rolling and mountainous.
Soil, rocky and gravelly, 4th and 3rd rates.
No timber.
Undergrowth, palo verde, ironwood and cactus.

40.00
79.94

S.89°58'E., on a random line, bet. secs. 20 and 29.
Set temp. ¼ sec. cor.
Intersect N. and S. line, 14 lks. S. of the cor. of secs.
20, 21, 28 and 29.

Thence

S.89°56'W., on a true line, bet. secs. 20 and 29.
Over rolling land, through scattering undergrowth.

0.35
2.74
6.00
16.00
20.70
23.40
34.40
36.40
36.90
39.97

Wash, 10 lks. wide, course S. Asc. 110 ft.
Road, brs. N. and S.
Hill. Desc. 100 ft.
Foot of descent; thence over level land.
Wash, 10 lks. wide, course S.10°W.
Same road, brs. NE. and SW
Same road, brs. N.20°W. and S.30°E.
Wash, 10 lks. wide, course S.5°W.
Same road, brs. N.30°E. and S.60°W.
Set an iron post, 3 ft. long, 1 in. diam., 28 ins. in the
ground, for ¼ sec. cor., marked on brass cap

1 S20
4 S29
1918

From which

A palo verde, 4 ins. diam., brs. N.18°W.,
81 lks. dist., marked ¼ S20 BT.
An iron-wood, limb, 4 ins. diam., brs. S.57°W.,
94 lks. dist., marked ¼ S29 BT.

51.57
70.00
75.40
79.94

Wash, 5 lks. wide, course S.15°W.
Asc. 60 ft.
Ridge, brs. N. and S. Desc.
The cor. of secs. 19, 20, 29 and 30.
Land, rolling. and level.
Soil, rocky, 4th rate.
No timber.
Undergrowth, palo verde and cactus.

Completion of the Survey of the
Subdivision of T. 7 N., R. 2 E.

Chains

S. 89°50'W., on a random line, bet. secs. 19 and 30.
 40.00 Set temp. $\frac{1}{4}$ sec. cor.
 75.39 Fall 5 lks. N. of the reestablished cor. of secs. 19 and 30,
 on W. bdy. of Tp., hereinbefore described.
 Thence
 N. 89°48'E., on a true line, bet. secs. 19 and 30.
 Over rolling land, through scattering undergrowth.
 Desc. 440 ft.
 35.39 Set an iron post, 3 ft. long, 1 in. diam., 20 ins. in the
 ground, on bed rock, in a mound of stone, 3 ft. base,
 1 ft. high, for $\frac{1}{4}$ sec. cor., marked on brass cap

$\frac{1}{4}$ S19
 $\frac{1}{4}$ S30
 1918

From which
 A palo verde, 4 ins. diam., brs. N. 38 $\frac{3}{4}$ °E.,
 120 lks. dist., marked $\frac{1}{4}$ S19 BT.
 A palo verde, 8 ins. diam., brs. S. 31 $\frac{1}{4}$ °E.,
 112 lks. dist., marked $\frac{1}{4}$ S30 BT.

46.00 Thence over nearly level land.
 53.00 Wash, 10 lks. wide, course S. 30°E.
 56.00 Wash, 30 lks. wide, course S. 10°W. A spring of clear water
 brs. S. about 6 chs. dist. Asc.
 58.75 Low ridge, brs. N. and S. Desc.
 63.55 Wash, 10 lks. wide, course S. 30°W.
 66.75 Asc. 50 ft.
 75.39 The cor. of secs. 19, 20, 29 and 30.
 Land, rolling and level.
 Soil, rocky, 4th rate; malpais formation.
 No timber.
 Undergrowth, greasewood and palo verde.

N. 0°1'E., bet. secs. 19 and 20.
 Over rocky hills, through scattering undergrowth.
 Desc.
 5.00 Asc. 85 ft.
 18.10 Spur, slopes W. Desc. 75 ft.
 22.70 Wash, 10 lks. wide, course W. Asc.
 26.40 Spur, slopes W. Desc. 25 ft.
 30.00 Wash, 10 lks. wide, course S. 50°W.
 39.20 Wash, 5 lks. wide, course S. 20°W. Asc. 215 ft.
 40.00 Set an iron post, 3 ft. long, 1 in. diam., 10 ins. in the
 ground, on bed rock, in a mound of stone, 4 ft. base,
 1 $\frac{1}{2}$ ft. high, for $\frac{1}{4}$ sec. cor., marked on brass cap

$\frac{1}{4}$ S19 | S20
 1918

From which
 A palo verde, 4 ins. diam., brs. N. 70 $\frac{3}{4}$ °E.,
 124 lks. dist., marked $\frac{1}{4}$ S20 BT.
 A palo verde, 6 ins. diam., brs. N. 40°W.,
 184 lks. dist., marked $\frac{1}{4}$ S19 BT.

57.00 W. side of hill. Desc. 210 ft.
 69.30 Wash, 10 lks. wide, course W. Asc. 130 ft.
 76.10 Spur, slopes W. Desc. 90 ft.
 80.00 Set an iron post, 3 ft. long, 2 ins. diam., 18 ins. in the
 ground, in a mound of stone, 4 ft. base, 1 $\frac{1}{2}$ ft. high,
 for cor. of secs. 17, 18, 19 and 20, marked on brass cap

Completion of the Survey of the
Subdivision of T. 7 N., R. 2 E.

40.

Chains.

T7N	R2E
S18	S17
S19	S20
1918	

From which

A palo verde, 6 ins. diam., brs. N.23½°E.,
220 lks. dist., marked T7N R2E S17 BT.

A mesquite, 24 ins. diam., brs. N.44½°W.,
170 lks. dist., marked T7N R2E S18 BT.

No other trees within limits. Raise a mound of stone,
3 ft. base, 2 ft. high, W. of cor.

Land, broken and mountainous.

Soil, rocky, 4th rate.

No timber.

Undergrowth, mesquite, palo verde, ocotillo, cholla and
cat claw.

40.00

N.89°56'E., on a random line, bet. secs. 17 and 20.

Set temp. ¼ sec. cor.

79.97

Intersect N. and S. line, 7 lks. N. of the cor. of secs.
16, 17, 20 and 21.

Thence

S.89°59'W., on a true line, bet. secs. 17 and 20.

Over rough and mountainous land, through scattering under-
growth.

Asc. 20 ft.

4.20

Ridge, brs. N.30°W. and S.10°E. Desc. 210 ft.

15.80

Spur, slopes SW. Continue descent.

31.27

Wash, 10 lks. wide, course N. Asc. 60 ft.

39.98½

Set an iron post, 3 ft. long, 1 in. diam., 20 ins. in the
ground, in a mound of stone, 2 ft. base, 1 ft. high,
for ¼ sec. cor., marked on brass cap

¼	S17
¼	S20
1918	

And raise a mound of stone, 3 ft. base, 1½ ft. high, N.
of cor.

45.20

Spur, slopes NW. Desc.

54.90

Draw, course N.20°W. Asc.

59.85

Spur, slopes N.30°W. Desc. 150 ft.

69.60

Wash, 50 lks. wide, course NW. Asc.

79.97

The cor. of secs. 17, 18, 19 and 20.

Land, rough and mountainous.

Soil, rocky, 4th rate.

No timber.

Undergrowth, ocotillo, cholla and palo verde.

40.00

S.89°48'W., on a random line, bet. secs. 18 and 19.

Set temp. ¼ sec. cor.

74.87

Fall 2 lks. N. of the reestablished cor. of secs. 18 and
19, on W. bdy. of Tp., hereinbefore described.

Thence

N.89°47'E., on a true line, bet. secs. 18 and 19.

Over rough rolling land, through scattering undergrowth.

Asc. 190 ft.

16.00

Ridge, brs. N.30°E. and S.30°W. Desc. 310 ft.

34.67

Set an iron post, 3 ft. long, 1 in. diam., 20 ins. in the
ground, on bed rock, in a mound of stone, 3 ft. base,
1 ft. high, for witness cor. to ¼ sec. cor., marked on
brass cap

Completion of the Survey of the
Subdivision of T. 7 N., R. 2 E.

chains.

$\frac{1}{4}$ S18 WC
 ~~$\frac{1}{4}$ S19~~
1918

From which

An iron-wood limb, 5 ins. diam., brs. N.63°W.,
48 lks. dist., marked $\frac{1}{4}$ S18 WC BT.

A palo verde, 4 ins. diam., brs. S.82°W.,
260 lks. dist., marked $\frac{1}{4}$ S19 WC BT.

34.87 The true point for $\frac{1}{4}$ sec. cor. falls in gulch, 8 lks. wide,
course SE.

38.57 Wash, 10 lks. wide, course S.

68.90 Wash, 50 lks. wide, course SW. Asc.

74.87 The cor. of secs. 17, 18, 19 and 20.

Land, rough and mountainous.

Soil, rocky, 4th rate.

No timber.

Undergrowth, palo verde and cholla.

40.00 N.0°1'E., on a random line, bet. secs. 17 and 18.

79.88 Set temp. $\frac{1}{4}$ sec. cor.

Intersect S. bdy. of sec. 8, 1.93 chs. N.89°56'E. of the
true point for cor. of secs. 7, 8, 17 and 18.

The point of intersection is about the middle of a smooth
rock surface, 20 ft. long, N. and S., concave to the
W., and 12 ft. high. Impracticable to set an iron post
at this point. Cut a cross (X) at the exact cor.
point, with 4 notches S. and 5 notches E. of cross, for
reestablished cor. of secs. 17 and 18. Impracticable
to raise a mound of stone, at any reasonable distance
from this cor.

From this cor., a spring in wash, probably permanent, with
small flow of good water, brs. N. 3 chs. dist.

Thence

S.0°1'W., on a true line, bet. secs. 17 and 18.

Over heavily rolling land, through scattering undergrowth.

Asc. 40 ft.

8.28 Desc. 25 ft.

11.48 Wash, 10 lks. wide, course N.20°W.

16.78 Same wash, 10 lks. wide, course N.15°E. Asc. 45 ft.

20.18 Thence over rolling land.

39.94 Set an iron post, 3 ft. long, 1 in. diam., 18 ins. in the
ground, on bed rock, in a mound of stone, 4 ft. base, 1
ft. high, for $\frac{1}{4}$ sec. cor., marked on brass cap

$\frac{1}{4}$
S18 | S17
1918

From which

A palo verde, 6 ins. diam., brs. N. E.,
84 lks. dist., marked $\frac{1}{4}$ S17 BT.

A palo verde, 4 ins. diam., brs. N. W.,
41 lks. dist., marked $\frac{1}{4}$ S18 BT.

(Through an oversight, the bearings to these trees were
not taken.)

43.98 Asc. 130 ft.

52.88 West side of butte. Desc. 125 ft.

62.68 Wash, course W. Asc. 45 ft.

67.68 Desc. 100 ft.

78.38 Wash, 1 ch. wide, course S.80°W. Asc. 30 ft.

79.58 Top of bluff, brs. N.80°E. and S.80°W.

79.88 The cor. of secs. 17, 18, 19 and 20.

Land, rolling and heavily rolling.

Soil, rocky, 4th rate.

No timber.

Undergrowth, palo verde and ocotillo.

42.

Completion of the Survey of the
Subdivision of T. 7 N., R. 2 E.

chains.

From the true point for cor. of secs. 7, 8, 17 and 18,
which will hereafter be the cor. point for secs. 7 and
8 only,
N.89°59'E., on a random line, along S. bdy. of sec. 8.
40.00 Set temp. $\frac{1}{2}$ sec. cor.
82.09 Intersect N. and S. line, 7 lks. S. of the cor. of secs.
8, 9, 16 and 17.
Thence
S.89°56'W., on a true line, along S. bdy. of sec. 8.
Over rough and mountainous land, through scattering under-
growth.
Desc. 90 ft.
10.40 Wash, 10 lks. wide, course N.30°W. Asc.
10.80 Spur, slopes N. Desc.
17.60 Wash, 10 lks. wide, course N.5°E. Asc.
28.40 Ridge, brs. N.30°E. and S.15°W. Desc. 160 ft.
37.90 Draw, course NW. Asc. 55 ft.
40.00 Set an iron post, 3 ft. long, 1 in. diam., 20 ins. in the
ground, on bed rock, in a mound of stone, 4 ft. base,
1 $\frac{1}{2}$ ft. high, for $\frac{1}{4}$ sec. cor., marked on brass cap

$\frac{1}{4}$ S 8
 $\frac{1}{4}$ S 17
1918

And raise a mound of stone, 2 ft. base, 1 $\frac{1}{2}$ ft. high, N.
of cor.
43.30 Spur, slopes N. Desc. 170 ft.
50.85 Wash, 20 lks. wide, course N.15°E. Asc. 165 ft.
57.00 Spur, slopes N.30°E. Desc. 110 ft.
62.75 Draw, course N.5°E. Asc. 140 ft.
71.30 Spur, slopes N.30°W. Desc. 200 ft.
80.20 Wash, 25 lks. wide, course N.
82.09 The true point for cor. of secs. 7 and 8.
Land, rough and mountainous.
Soil, rocky, 4th rate.
No timber.
Undergrowth, ocotillo, and cactus.

From the cor. of secs. 5, 6, 7 and 8, hereinbefore described,
N.89°56'E., on a random line, bet. secs. 5 and 8.
81.65 Intersect N. and S. line, 33 lks. S. of the cor. of secs.
4, 5, 8 and 9.
Thence
S.89°42'W., on a true line, bet. secs. 5 and 8.
Over rough and mountainous land, through scattering under-
growth.
Asc. 10 ft.
0.70 Spur, slopes N.70°E. Thence along N. slope.
4.00 Desc. 150 ft.
12.50 Ravine, course N. Asc. 110 ft.
22.10 Spur, slopes N. Desc. 95 ft.
28.10 Wash, 10 lks. wide, course N. Thence along N. slope.
32.30 Ravine, course N, Asc. 140 ft.
39.80 Thence along N. slope.
40.00 Set an iron post, 3 ft. long, 1 in. diam., 28 ins. in the
ground, for $\frac{1}{4}$ sec. cor., marked on brass cap

$\frac{1}{4}$ S 5
 $\frac{1}{4}$ S 8
1918

And raise a mound of stone, 3 ft. base, 2 ft. high, N.
of cor.
51.50 Top of cliff, brs. N. and S. Desc. 300 ft.
55.00 Ravine, course N.20°E. Asc. 300 ft.
70.48 Spur, slopes N. Desc. 100 ft.
73.60 Ravine, course N. Asc. 100 ft.
81.65 The cor. of secs. 5, 6, 7 and 8,
Land, rough and mountainous. Soil, rocky, 4th rate.
No timber. Undergrowth, palo verde and cholla.

RESURVEY-Part of Subdivision lines of T. 7 N., R. 2 E. 43

Chains.

From original $\frac{1}{4}$ sec. cor. of secs. 7 and 8, hereinbefore described,
 S. $0^{\circ}29'W.$, on true line, on S. $\frac{1}{2}$ of line, bet. secs. 7 and 8.
 Over mountainous land, thru scattering undergrowth. Desc.
 300 ft. over steep, rocky SE. slope, to
 20.48 Draw, course E. at foot of steep descent. Descend 60 ft.
 over rolling E. slope.
 28.33 Ascend 50 ft. to
 35.53 Top of ascent. Thence over nearly level land.
 39.99 True point for reestablishment of cor. of secs. 7 and 8
 falls in wash.
 This point is witnessed at 40 lks., S $0^{\circ}29'W.$, by the
 original witness cor. to cor. of secs. 7, 8, 17 and 18,
 hereinbefore described, and said witness cor. now re-
 fers to cor. of secs. 7 and 8 only.
 Land, mountainous and rolling.
 Soil, rocky, 4th rate.
 No timber.
 Undergrowth, scattering mesquite, palo verde and grease-
 wood.

 From true point for reestablished cor. of secs. 7 and 8,
 (1.93 chs. S. $89^{\circ}56'W.$ from reestablished cor. of secs.
 17 and 18)
 S. $89^{\circ}39'W.$, on true line, on S. bdy. of sec. 7 (E. $\frac{1}{2}$).
 Over mountainous land, thru scattering undergrowth. Ascend.
 8.27 Draw, course NE. Ascend 350 ft.
 17.37 Wire fence brs. N. $20^{\circ}E.$ and S. $20^{\circ}W.$ on top of ridge, same
 bearing.
 Descend 230 ft. to
 38.07 (40.00 chs. westerly from reestablished cor. of secs. 17
 and 18 hereinbefore described) Set an iron post 3 ft.
 long, 1 in. in diam., 26 ins. in the ground, for re-
 established $\frac{1}{4}$ sec. cor. of secs. 18, marked on brass cap,

$\frac{1}{4}$ S 18
1918

and raise a mound of stone, 3 ft. base, 2 ft high, S. of
 cor.
 Continue line and measurement of E. $\frac{1}{2}$ of S. bdy. of sec. 7.
 Descend 45 ft. to
 39.57 Intersect original $\frac{1}{4}$ sec. cor. of secs. 7 and 18, hereinbefore
 described.
 This cor. now refers to sec. 7 only. No change in marking
 or accessory necessary.
 Thence by triangulation measurement hereinbefore de-
 scribed in notes of retracement of this line.
 S. $89^{\circ}57'W.$, on true line, on S. bdy. of sec. 7 (W. $\frac{1}{2}$).
 Over rough, broken land. Descend 100 ft. on W. slope to
 2.93 (Approximate) Head of ravine, course N. $10^{\circ}E.$ Ascend about
 400 ft.
 22.93 East rim of mesa, brs. N. and S. Thence over nearly level
 top of mesa.
 23.72 A point 2 lks. S. of triangulation point of triangulation
 hereinbefore described. Thence by chain measurement.
 32.93 (74.43 chs. westerly from reestablished cor. of secs. 17 and
 18) Intersect original closing cor. of secs. 7 and 18,
 hereinbefore described.
 Land, mountainous and level.
 Soil, rocky, 4th rate.
 No timber.
 Undergrowth, scattering palo verde and mesquite.

Boundaries of that portion of T.7 N., R.2 E., subdivided under this Group.

Latitudes, Departures, and Closing Errors.

Line designated.	True bearing.	Dist.	Latitudes.		Departures.	
			N.	S.	E.	W.
South boundary,	West,	476.04				476.04
West boundary,	N.0°21'W.	34.10	34.10			0.21
	N.0°21'E.	285.86	285.86		1.75	
Subdivisional boundary	N.89°57'E.	32.93	.03		32.93	
	N.89°39'E.	39.57	.24		39.57	
	N.0°29'E.	39.99	39.99		.34	
	N.0°21'E.	39.87	39.87		.25	
	N.0°3'W.	80.00	80.00			.07
North boundary,	S.89°52'E.	160.86		.37	160.86	
Subdivisional boundary,	S.0°7'E.	79.68		79.68	.16	
	S.0°9'W.	80.12		80.12		.21
	S.0°2'E.	80.00		80.00	.05	
	East,	160.00			160.00	
	N.0°1'W.	80.00	80.00			.02
East boundary,	S.89°51'E.	80.19		.21	80.19	
	S.0°4'W.	320.00		320.00		.37
Convergency,					.35	
Totals,			560.09	560.38	476.45	476.92
Error in latitude,				560.09	476.92	476.45
Error in departure,				0.29	1.46	0.47

GENERAL DESCRIPTION

This township is generally level in the SE. portion and rocky and mountainous in the western part. Some land lying along the New river might be classed as agricultural if it could be irrigated, as there is considerable of an underflow in the bed of said river. Cline's ranch on New river in sec.15 is a well known grazing ranch. In addition to this, a homestead has been taken up in sec.25 by Robert N.Holmes at a good flowing spring of water. A spring is found near the cor. of secs.7,8,17 and 18, also in sec.30 near the NE. cor., also several springs in sec. 16 and in sec. 21 near the $\frac{1}{4}$ sec.cor. bet. said secs. furnish water for rather large herds of cattle. The township is chiefly valuable for grazing purposes. A graded state road runs nearly N. and S. thru the Tp. a little E. of the center thereof. There is no existing evidence of valuable mineral deposits.

Book "R"
 Group 61 - - - Arizona.
 DATE DIAGRAM
 T. 7 N., R. 2 E.

Book "G"		Dependent Resurvey in Feb. 1917 by Rigby, U.S.S.		Independent Resurvey in June 1918 by Baldwin. See Book "G"		Dates in Book "G"	
RESURVEYED			RETRACED				
6	5	4	3	2	1		
	6/11/18	6/11-2/18					
7	8	9	10	11	12		
6/11/18	6/10/18	6/2-10/18	6/2/18		5/21/18	5/21/18	
18	17	16	15	14	13		
6/6/18	6/6-7-9/18	6/2-7/18			5/29/18	5/29/18	
19	20	21	22	23	24		
6/6/18	6/6-7/18	6/7/18	5/29/18	5/29/18	5/28/18	5/28/18	5/24/18
30	29	28	27	26	25		
6/3/18	6/3/18	6/3/18	5/29/18	5/27/18	5/25/18	5/24/18	5/24/18
31	32	33	34	35	36		
5/31/18	5/30/18	5/30/18	5/28/18	5/27/18	5/23/18	5/23/18	5/23/18

Dependent Resurvey in Jan. 1917 by Rigby See Book "E."

RESURVEYED IN JAN. 1917 BY RIGBY INDEPENDENT RESURVEY IN MAY 1918 BY BALDWIN.

Lines executed on dates shown on above diagram, by
 H. L. Baldwin, U. S. Surveyor.

4-680

FIELD ASSISTANTS.
to

H. L. Baldwin, U. S. Surveyor.

NAMES.	CAPACITY.
<i>Willard Hutton</i> Ben Mollette,	<i>Chainman.</i> Chainman,
Martin Holmes,	Flagman,
William Eaton,	Moundman,
Robert W. Holmes,	Moundman,
Albert Rau,	Moundman,
Ingersoll Heckle,	Axman,

CERTIFICATE OF UNITED STATES SURVEYOR.

I, H. L. Baldwin, U. S. Surveyor, hereby certify upon honor that, in pursuance of special instructions received from the U. S. Surveyor General, for Group 61, Arizona, bearing date of the 20th day of October, 1916, I have well, faithfully, and truly in my own proper person, and in strict conformity with said instructions, the Manual of Surveying Instructions, and the laws of the United States, retraced ~~surveyed~~ all those parts or portions of the Subdivision lines of T. 7 N., R. 2 E., Resurveyed all those parts or portions of the East bdy. of T. 7 N., R. 1 E., the East and South bdrs. and Subdivision lines of T. 7 N., R. 2 E.; and Surveyed all those parts or portions of the Subdivision lines of T. 7 N., R. 2 E.,

of the Gila and Salt River Base and Meridian, in the State of Arizona, which are represented in and by diagram on page 45 hereof the foregoing field notes as having been executed by me, and under my direction; and that all the corners of ~~retracement, resurvey and~~ said survey have been established and perpetuated in strict accordance with the Manual of Surveying Instructions, and the special written instructions of the U. S. Surveyor General, for Group 61, Arizona, and in the specific manner described in the field notes, and that the foregoing are the original field notes of such ~~survey~~ retracement, resurvey and survey.

Wichita Falls Texas Nov 22 1919

H. L. Baldwin

U. S. Surveyor.

APPROVAL.

OFFICE OF THE UNITED STATES SURVEYOR GENERAL,

Phoenix, Arizona, May 14, 1920.

The foregoing field notes of the ~~survey of~~ Retracement of part of the Subdivision lines of TOWNSHIP 7 NORTH, RANGE 2 EAST, the Resurvey of part of East bdy. of T. 7 N., R. 1 E., part of the East bdy. and Subdivision lines, and all of the South bdy. of Township 7 North, Range 2 East, and the completion of the survey of the Subdivision lines of Township 7 North, Range 2 East, of the Gila and Salt River Base and Meridian, in the State of Arizona,

executed by H. L. Baldwin, U. S. Surveyor,

under his special instructions dated October 20, 1916, for Group 61, Arizona, having been critically examined, and the necessary corrections and explanations made, the said field notes, and the ~~survey~~ retracements, resurveys and surveys they describe, are hereby approved.

[Signature] U. S. Surveyor General.

I certify that the foregoing transcript of the field notes of the above described surveys in ~~has been correctly copied from the original notes on file in this office.~~