

3375

Book "M"

4-679

ORIG
Completed

BOOK 3375

FIELD NOTES

RE-
OF THE SURVEY OF THE

West boundary of East and West boundaries, and

East boundary of TOWNSHIP 15 NORTH, RANGE 16 EAST,

and SURVEY of

South boundary, and

Subdivision lines of

TOWNSHIP 15 NORTH, RANGE 16 EAST,

Of the Gila and Salt River Base and Meridian,

In the State of Arizona.

EXECUTED BY

Thomas B. Matthews, U.S. Surveyor,

and

William L. Nash, U.S. Transitman.

~~In the capacity of U.S. Surveyor~~, under Special Instructions dated December 1., 1916 issued by the United States Surveyor General to govern surveys included in Group No. 79, Arizona, which were approved by the Commissioner of the General Land Office, December 19., 1916, and Assignment Instructions dated January 12., 1917 and May 11, 1917.

Resurvey and Survey commenced May 30, 1917.

Resurvey and Survey completed June 20, 1917.

3375

12

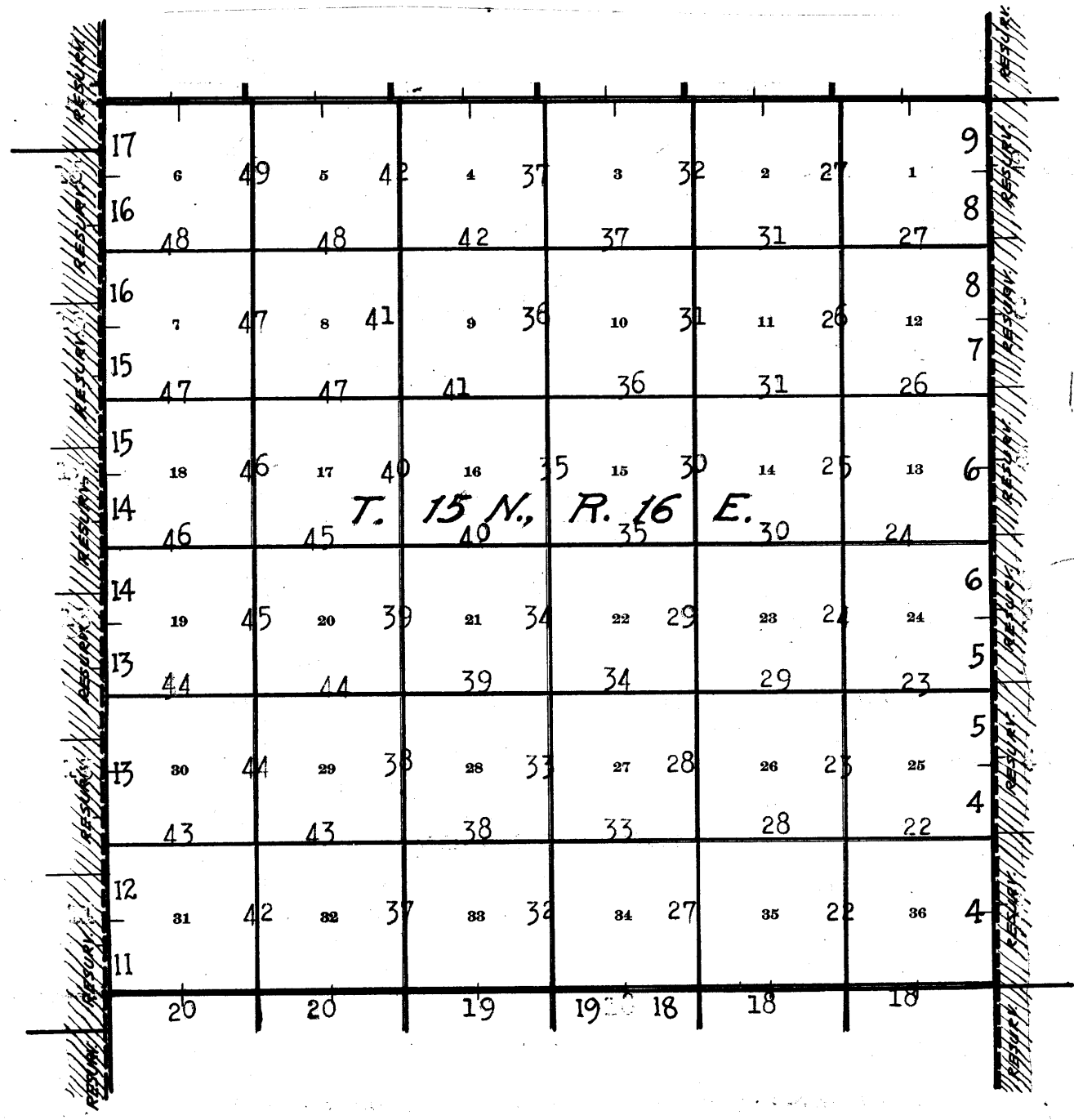
3375

Book "M"

Group 79 - - - Arizona.

BOOK 3375

INDEX DIAGRAM.



- Lines surveyed under this group.
- - - - Lines retraced or resurveyed under this group.
- Accepted surveys.
- Areas surveyed as per accepted plats on file.

Chains

Resurveys and Surveys hereinafter described, executed by Thomas B. Matthews, U.S. Surveyor, and William L. Nash, U.S. Transitman, on the dates shown on the diagram on page 54 hereof, using Buff and Buff light mountain transits Nos. 10124 and 9937, respectively.

For description of instruments together with record of certificates of approval, see Books "A" and "D."

Tests of instrument No. 10124.

The adjustments of the transit were examined and the level and collimation errors corrected; then, to test the solar apparatus by comparing its indications, resulting from solar observations made during a.m. and p.m. hours, with a meridian determined by observations on Polaris, the following method was used.

June 10, 1917. At a point near camp in sec. 22, T. 15 N., R. 16 E., in latitude, $34^{\circ}41'N.$, longitude, $110^{\circ}38\frac{1}{2}'W.$, at 2h. 22m. a.m., l.m.t., Polaris is observed at eastern elongation in accordance with instructions in the Manual of Surveying, and a point on the line thus determined is marked by a tack in a wooden peg, set firmly in the ground, 5 chs. N. of station.

At 7h. 0m., a.m., l.m.t., the azimuth of Polaris, $1^{\circ}23\frac{1}{2}'$ is turned off to the west, and a point in the meridian thus determined is marked by a tack in a wooden peg set firmly in the ground, 5 chs. N. of station.

At 8h. 0m. a.m., l.m.t., $34^{\circ}41'N.$ latitude is set off on the lat. arc; $23^{\circ}1'N.$ on the decl. arc, and a meridian determined with the solar. The meridian thus determined coincides with the meridian determined by observations on Polaris.

~~At 4h. 0m., p.m., l.m.t., $34^{\circ}41'N.$ latitude is set off on the lat. arc; $23^{\circ}1'N.$ on the decl. arc, and a meridian determined with the solar. The meridian thus determined coincides with the meridian determined by observations on Polaris.~~

At 4h. 0m. p.m., l.m.t., $34^{\circ}41'N.$ latitude is set off on the lat. arc; $23^{\circ}2\frac{1}{2}'N.$ on the decl. arc, and a meridian determined with the solar. The meridian thus determined coincides with the meridian determined by observations on Polaris. It is therefore concluded that the adjustments of the transit and solar attachment are satisfactory.

From recent and repeated field tests made on June 3rd, and thereafter, on meridians determined by observations on Polaris, the adjustments of transit No. 9937, and its solar attachment are known to be satisfactory.

Dependent Resurvey of E. bdy. of Township 15 N., R. 16 E.

The east bdy. of T. 15 N., R. 16 E., was originally surveyed in 1883, and designated as the "4th Auxiliary Guide Meridian East," but as this line, in connection with the surveys in T. 15 N., R. 16 E. is not used as a Guide Meridian, the original designation is omitted from the following notes describing the resurvey of the line.

Retracement for Resurvey:

From the reestablished cor. of Ts. 15 and 16 N., Rs. 16 and 17 E., described in Book "L," South, on random line on N. $\frac{1}{2}$ of W. bdy., of sec. 6, T. 15 N., R. 17 E.

40.76 Fall 38 lks. W. of point of original location of $\frac{1}{4}$ sec. cor. of secs. 1 and 6, determined by the original pits N. and S., and the original mound of earth in which the wood post was set.

2. Dependent Resurvey of E. bdy. of Township 15 North Range 16 E.

- Chains. Retracement for Resurvey, continued.
- The old wood post 3 ft. long, 3 ins. square, marked "S" on one face, is lying on the ground alongside the mound. There are no bearing trees.
- True course and dist. of N. $\frac{1}{2}$ of W. bdy. of sec. 6 are therefore N. $0^{\circ}32'W.$, 40.76 chs.
- Thence,
South, on random line, on S. $\frac{1}{2}$ of W. bdy. of sec. 6, T. 15 N., R. 17 E.
- 40.77 Fall 28 lks. W. of point of original location of cor. of secs. 1, 6, 7 and 12, determined by the original pits in each sec., and the original mound of earth in which the wood post was set. The old wood post 4 ft. long, 4 ins. square, marked on each face, is lying on the ground alongside the mound. There are no bearing trees.
- True course and dist. of S. $\frac{1}{2}$ of W. bdy. of sec. 6 are therefore N. $0^{\circ}24'W.$, 40.72 chs.
-
- South on random line on N. $\frac{1}{2}$ of W. bdy. of sec. 7, T. 15 N., R. 17 E.
- 40.76 Fall 8 lks. E. of point of original location of $\frac{1}{4}$ sec. cor. of secs. 7 and 12, determined from original pits, N. and S., and mound of earth in which wood post was set. The old wood post, 3 ft. long, 3 ins. square, marked "S" on one face, is lying alongside the mound. There are no bearing trees.
- True course and dist. of N. $\frac{1}{2}$ of W. bdy. of sec. 7 are therefore N. $0^{\circ}7'E.$, 40.76 chs.
- Thence,
South, on a random line on S. $\frac{1}{2}$ of W. bdy. of sec. 7, T. 15 N., R. 17 E.
- 40.77 Fall 16 lks. W. of point of original location of cor. of secs. 7, 12, 13 and 18, determined from original pits in each sec., and mound of earth in which wood post was set. The old wood post, 4 ft. long, 4 ins. square, marked on each face, is lying alongside the mound. There are no bearing trees.
- True course and dist. of N. $\frac{1}{2}$ of W. bdy. of sec. 7 are therefore, N. $0^{\circ}14'W.$, 40.77 chs.
-
- South, on random line on N. $\frac{1}{2}$ of W. bdy. of sec. 18, T. 15 N., R. 17 E.
- 40.76 Fall 6 lks. W. of the original $\frac{1}{4}$ sec. cor. of secs. 13 and 18, which is a limestone, 24x12x6 ins. above ground, firmly set, marked "S" on W. face, and witnessed by a mound of stone, W. of cor. No bearing trees.
- True course and dist. of N. $\frac{1}{2}$ of W. bdy. of sec. 18, are therefore N. $0^{\circ}5'W.$, 40.76 chs.
- Thence,
South, on random line on S. $\frac{1}{2}$ of W. bdy. of sec. 18, T. 15 N., R. 17 E.
- 40.83 Fall 25 lks. W. of the original cor. of secs. 13, 18, 19 and 24, which is a limestone, 14x9x5 ins. above ground, firmly set, marked with 3 notches on each of N. and S. edges, and witnessed by mound of stone, W. of cor. No bearing trees.
- True course and dist. of S. $\frac{1}{2}$ of W. bdy. of sec. 18, are therefore N. $0^{\circ}21'W.$, 40.83 chs.
-
- South, on random line, on N. $\frac{1}{2}$ of W. bdy. of sec. 19, T. 15 N., R. 17 E.
- 41.10 Fall 14 lks. W. of original $\frac{1}{4}$ sec. cor. of secs. 19 and 24, which is a limestone, 14x10x4 ins. above ground, firmly set, marked "S" on W. face, and witnessed by a mound of stone, W. of cor. No bearing trees.
- True course and dist. of N. $\frac{1}{2}$ of W. bdy. of sec. 19 are therefore N. $0^{\circ}12'W.$ 41.10 chs.

Chains. Retracement for Resurvey, continued.

Thence,
 South, on random line on S. $\frac{1}{2}$ of W. bdy. of sec. 19, T. 15 N., R. 17 E.
 40.85 Fall 11 lks. W. of point of original location of cor. of secs. 19, 24, 25 and 30, determined from original pits in each sec., and mound of earth in which wood post was set. The old wood post, 4 ft. long, 4 ins. square, marked on each face, is lying alongside the mound. There are no bearing trees. True course and dist. of S. $\frac{1}{2}$ of W. bdy. of sec. 19 are therefore N. 0° 9' W., 40.85 chs.

South, on random line on N. $\frac{1}{2}$ of W. bdy. of sec. 30, T. 15 N., R. 17 E.
 40.86 Fall 42 lks. E. of original $\frac{1}{4}$ sec. cor. of secs. 25 and 30, which is a limestone, 14x6x5 ins. above ground, firmly set, marked "1" on W. face, and witnessed by a mound of stone, W. of cor. No bearing trees. True course and dist. of N. $\frac{1}{2}$ of W. bdy. of sec. 30 are therefore N. 0° 35' E., 40.86 chs.

Thence,
 South, on a random line on S. $\frac{1}{2}$ of W. bdy. of sec. 30, T. 15 N., R. 17 E.
 40.90 Fall 18 lks. E. of original cor. of secs. 25, 30, 31 and 36, which is a limestone, 12x8x4 ins. above ground, firmly set, marked with 1 notch on S. edge, and 5 notches on N. edge, and witnessed by mound of stone, W. of cor. No bearing trees. True course and dist. of S. $\frac{1}{2}$ of W. bdy. of sec. 30 are therefore, N. 0° 15' E., 40.90 chs.

S. on random line on N. $\frac{1}{2}$ of W. bdy. of sec. 31, T. 15 N., R. 17 E.
 40.98 Fall 32 lks. E. of original $\frac{1}{4}$ sec. cor. of secs. 31 and 36, which is a limestone, 12x10x4 ins. above ground, firmly set, marked "1" on W. face, and witnessed by 2 pits, one each N. and S. of cor., and mound of earth W. of cor. No bearing trees. True course and dist. of N. $\frac{1}{2}$ of W. bdy. of sec. 31 are therefore N. 0° 27' E., 40.98 chs.

South, on random on S. $\frac{1}{2}$ of W. bdy. of sec. 31, T. 15 N., R. 17 E.
 40.67 Fall 14 lks. E. of original cor. of Ts. 14 and 15 N., Rs. 16 and 17 W., which is a limestone, 22x14x10 ins. above ground, firmly set, marked with 6 notches on each of N., S., E. and W. edges, and witnessed by 4 pits, one each N., S., E. and W. of cor., and mound of earth, S. of cor. No bearing trees. True course and dist. of S. $\frac{1}{2}$ of W. bdy. of sec. 31, are therefore, N. 0° 12' E., 40.67 chs.

RESURVEY:

Reestablish the cor. of Ts. 14 and 15 N., Rs. 16 and 17 E., hereinbefore described, as follows:
 Destroy the old mound of earth, fill in the old pits, and alongside old stone,
 Set an iron post, 3 ft. long, 3 ins. in diam., 24 ins. in the ground, for reestablished cor. of Ts. 14 and 15 N., Rs. 16 and 17 E., marked on brass cap,

| | | |
|-----|------|------|
| | T15N | |
| R16 | E | R17E |
| S36 | | S31 |
| S 1 | | S 6 |
| | T14N | |
| | 1917 | |

4. Dependent Resurvey of E. bdy. of Township 15 North Range 16 E.

Chains. Resurvey, continued.

and raise a mound of stone, 2 ft. base, 1 1/2 ft. high, S. of cor.

Thence, N. 0° 12' E., on true line, on E. bdy. of sec. 36, T. 15 N., R. 16 E. Over rolling land, thru scattering.

.80 Wash, 10 lks. wide, 4 ft. deep, course NE.
35.00 Foot of SE. slope of ridge, brs. E. and W. Ascend.

40.00 Set an iron post, 3 ft. long, 1 in. in diam., 26 ins. in the ground, for reestablished 1/4 sec. cor. of sec. 36, T. 15 N. R. 16 E., marked on brass cap,

s36
1917

40.67 dig pits, 18x18x12 ins. N. and S. of post, 3 ft. dist. Intersect original 1/4 sec. cor. of secs. 31 and 36. hereinbefore described. Change this cor. to 1/4 sec. cor. of sec. 31 only, by obliterating marking on W. face of stone, marked "N" on E. face of stone, filling in old pits, destroying old mound of earth, and building mound of stone, 2 ft. base, 1 1/2 ft. high, E. of cor.

Thence, N. 0° 27' E., on true line, continuing measurement of E. bdy. of sec. 36 (beginning of N. 1/2 of W. bdy. of sec. 31).

45.00 Ascend SE. slope of ridge.
50.00 Top of ridge, bears NE. and SW. Desc. NW. slope.

80.00 Foot of slope, brs. NE. and SW.
Set an iron post, 3 ft. long, 3 ins. in diam., 20 ins. in the ground, in a mound of stone, for reestablished cor. of secs. 25 and 36, T. 15 N., R. 16 E., marked on brass cap,

T15N
R16E
S25
s36
1917

and raise a mound of stone, 2 ft. base, 1 1/2 ft. high, W. of cor.

Land, rolling.
Soil, sandy and gravelly, 2nd rate.
Timber, none.
Undergrowth, scattering sage brush.
Poor grass.

N. 0° 27' E., on true line, on E. bdy. of sec. 25, T. 15 N., R. 16 E. (part of N. 1/2 of W. bdy. of sec. 31, T. 15 N., R. 17 E.) Over rolling land, thru scattering scrub timber and undergrowth.

1.65 (40.98 chs. N. 0° 27' E. from 1/4 sec. cor. of sec. 31) Intersect original cor. of secs. 25, 30, 31 and 36, hereinbefore described. Change this cor. to refer to secs. 30 and 31 only, by destroying old mound of stone, and rebuilding mound of stone, 2 ft. base, 1 1/2 ft. high, E. of cor.

Thence, N. 0° 15' E., on true line, continuing measurement of E. bdy. of sec. 25 (beginning of S. 1/2 of W. bdy. of sec. 30).

40.00 Set an iron post, 3 ft. long, 1 in. in diam., 18 ins. in the ground, in a mound of stone, for reestablished 1/4 sec. cor. of sec. 25, T. 15 N., R. 16 E., marked on brass cap,

s25
1917

from which,

A cedar, 6 ins. in diam., brs. S. 56 1/2° W., 391 lks. dist., marked 1/4 S 25 BT.

A cedar, 8 ins. in diam., brs. N. 59 1/2° W., 410 lks. dist., marked 1/4 S 25 BT.

Dependent Resurvey of Ebdy. of Township 15 North, Range 16 East. 5

Chains.
42.55

(40.90 chs. N. 0° 15' E., from cor. of secs. 30 and 31) Intersect original $\frac{1}{4}$ sec. cor. of secs. 25 and 30, hereinbefore described. Change this cor. to $\frac{1}{4}$ sec. cor. of sec. 30 only, by obliterating old marking on W. face of stone, marking " $\frac{1}{4}$ " on E. face, destroying old mound of stone, and building mound of stone 2 ft. base, 1 $\frac{1}{2}$ ft. high, E. of cor.

80.00

Thence, N. 0° 35' E., on true line, continuing measurement of E. bdy. of sec. 25 (beginning of N. $\frac{1}{2}$ of W. bdy. of sec. 30) Set an iron post, 3 ft. long, 3 ins. in diam., 24 ins. in the ground, for reestablished cor. of secs. 24 and 25, T. 15 N., R. 16 E., marked on brass cap,

T15N
R16E
S24
S25

1917

and dig pits, 24x24x12 ins. NW. and SW. of post, 6 ft. dist.

Land, rolling.
Soil, rocky, 3rd rate, on limestone subsoil.
Timber, scattering scrub cedar.
Undergrowth, scattering sage brush.
Poor grass.

3.41

N. 0° 35' E., on true line, on E. bdy. of sec. 24, T. 15 N., R. 16 E. (part of N. $\frac{1}{2}$ of W. bdy. of sec. 30, T. 15 N., R. 17 E.) Over rolling land, thru scattering scrub timber and undergrowth.

(40.85 chs. N. 0° 35' E. from $\frac{1}{4}$ sec. cor. of sec. 30) Intersect point of original location of cor. of secs. 19, 24, 25 and 30, hereinbefore described. Destroy all trace of the old cor., and in the same place Set an iron post, 3 ft. long, 3 ins. in diam., 24 ins. in the ground, for reestablished cor. of secs. 19 and 30, T. 15 N., R. 17 E., marked on brass cap,

T15N
R17E
S19
S30

1917

from which,
A cedar, 10 ins. in diam., brs. N. 57 $\frac{1}{2}$ ° E., 125 lks. dist., marked T15NR17ES19BT.
A cedar, 8 ins. in diam., brs. S. 32° E., 124 lks. dist. marked T15NR17E S30BT.

-25.56
40.00

Thence, N. 0° 9' W., on true line, continuing measurement of E. bdy. of sec. 24 (beginning of S. half of W. bdy. of sec. 19) Wash, 15 lks. wide, 4 ft. deep, course NE. Set an iron post, 3 ft. long, 1 in. in diam., 26 ins. in the ground, for reestablished $\frac{1}{4}$ sec. cor., of sec. 24, T. 15 N., R. 16 E., marked on brass cap,

S24
1917

from which,
A cedar, 6 ins. in diam., brs. S. 48 $\frac{1}{2}$ ° W., 314 lks. dist., marked S 24 BT.
A cedar, 8 ins. in diam., brs. N. 70 $\frac{1}{2}$ ° W., 305 lks. dist., marked S 24 BT.

44.26

(40.85 chs. N. 0° 9' W., from cor. of secs. 19 and 30) Intersect original $\frac{1}{4}$ sec. cor. of secs. 19 and 24, hereinbefore described. Change this cor. to $\frac{1}{4}$ sec. cor., of

6. Dependent Resurvey of E. bdy. of Township 15 North, Range 16 E.

| | |
|---------|---|
| Chains. | <p>sec.19 only, by obliterating marking on W. face of stone, marking "E" on E. face, destroying old mound of stone, and raising mound of stone, 2 ft. base, 1½ ft. high, E. of cor.</p> <p>Thence, N.0°12'W., on true line, continuing measurement of E. bdy. of sec.24 (beginning of N.½ of W. bdy. of sec.19).</p> |
| 60.00 | <p>South or right bank of draw, brs. E. and W. Descend gradually.</p> |
| 65.80 | <p>Bottom of draw, course NE. Ascend gradually.</p> |
| 70.80 | <p>North, or left bank of draw, brs. E. and W.</p> |
| 80.00 | <p>Set an iron post, 3 ft. long, 3 ins. in diam., 18 ins. in the ground, in a mound of stone, for reestablished cor. of secs. 13 and 24, T.15 N., R.16 E., marked on brass cap,</p> |
| | <p>T15N R16E S13 S24 1917</p> |
| | <p>and raise a mound of stone, 2 ft. base, 1½ ft. high, W. of cor.</p> <p>Land, rolling. Soil, gravelly, 2nd rate. Timber, scattering scrub cedar. Undergrowth, scattering sage brush. No grass.</p> |
| ----- | |
| | <p>N.0°12'W., on true line, on E. bdy. of sec.13, T.15 N., R.16 E. (part of N.½ of W. bdy. of sec.19, T.15 N., R.17 E.)</p> <p>Over rolling land, thru scattering scrub timber and undergrowth.</p> |
| 5.36 | <p>(41.10 chs. N.0°12'W. from ¼ sec. cor. of sec.19) Intersect original ¼ sec. cor. of secs.13 and 18, 19 and 24, hereinbefore described. Change this cor. to refer to secs. 18 and 19 only, by destroying old mound of stone, and building mound of stone, 2 ft. base, 1½ ft. high, E. of cor.</p> |
| | <p>Thence, N.0°21'W., on true line, continuing measurement of E. bdy. of sec.13 (beginning of S.½ of W. bdy. of sec.18).</p> |
| 40.00 | <p>Set an iron post, 3 ft. long, 1 in. in diam., on rock ledge in a mound of stone, for reestablished ¼ sec. cor. of sec.13, T.15 N., R.16 E., marked on brass cap,</p> |
| | <p>S13 1917</p> |
| | <p>from which,</p> <p style="padding-left: 40px;">A cedar, 8 ins. in diam., brs. S.41°W., 103 lks. dist., marked ¼ S13BT.</p> <p style="padding-left: 40px;">A cedar, 15 ins. in diam., brs. N.27°W., 36 lks. dist., marked ¼ S13BT.</p> |
| 46.19 | <p>(40.83 chs. N.0°21'W. from cor. of secs.18 and 19) Intersect original ¼ sec. cor. of secs.13 and 18, hereinbefore described. Change this cor. to ¼ sec. cor. of sec.18 only, by obliterating old marking on W. face of stone, marking "E" on E. face, and building mound of stone, 2 ft. base, 1½ ft. high, E. of cor.</p> |
| | <p>Thence, N.0°5'W. on true line, continuing measurement of E. bdy. of sec.13 (beginning of N.½ of W. bdy. of sec.18)</p> |
| 80.00 | <p>Set an iron post, 3 ft. long, 3 ins. in diam., on surface rock, in a mound of stone, for reestablished cor. of secs.12 and 13, T.15 N., R.16 E., marked on brass cap,</p> |

Chains.

T15N
R16E
S12
S13
1917

from which,

- A cedar, 10 ins. in diam., brs. S. 8° W., 65 lks. dist., marked T15NR16ES13BT.
- A cedar, 8 ins. in diam., brs. N. 20° W., 119 lks. dist., marked T15N R16E S12BT.

Land, rolling.
Soil, gravelly and rocky, 3rd rate.
Timber, scrub cedar.
Undergrowth, scattering sage brush,
Poor grass.

N. 0° 5' W., on true line, on E. bdy. of sec. 12, T. 15 N., R. 16 E. (part of N. ½ of W. bdy. of sec. 18, T. 15 N. R. 17 E.)
Over rolling land, thru scattering scrub timber and undergrowth.

6.95 (40.76 chs. N. 0° 5' W., from ¼ sec. cor. of sec. 18) Intersect point of original location of cor. of secs. 7, 12, 13 and 18, hereinbefore described. Destroy all trace of old cor., and in the same place Set an iron post, 3 ft. long, 3 ins. in diam., 24 ins. in the ground, for reestablished cor. of secs. 7 and 18, T. 15 N., R. 17 E., marked on brass cap,

T15N
R17E
S 7
S18
1917

from which,

- A cedar, 6 ins. in diam., brs. N. 44½° E., 254 lks. dist., marked T15NR17ES7BT.
- A cedar, 8 ins. in diam., brs. S. 89¾° E., 68 lks. dist., marked T15NR17ES18BT.

Thence,
N. 0° 14' W., on true line, continuing measurement of E. bdy. of sec. 12 (beginning of S. ½ of W. bdy. of sec. 7)

40.00 Set an iron post, 3 ft. long, 1 in. in diam., 26 ins. in the ground, for reestablished ¼ sec. cor. of sec. 12, T. 15 N., R. 16 E., marked on brass cap,

S12
1917

from which,

- A cedar, 12 ins. in diam., brs. S. 19° W., 54 lks. dist., marked ¼ S 12 BT.
- A cedar, 6 ins. in diam., brs. N. 8½° W., 116 lks. dist., marked ¼ S 12 BT.

47.72 (40.77 chs. N. 0° 14' W., from cor. of secs. 7 and 18) Intersect point of original location of ¼ sec. cor. of secs. 7 and 12, hereinbefore described. Destroy all remains of old cor., and in the same place Set an iron post, 3 ft. long, 1 in. in diam., 26 ins. in the ground, for reestablished ¼ sec. cor., of sec. 7, T. 15 N., R. 17 E., marked on brass cap,

S 7
1917

from which

- A cedar, 8 ins. in diam., brs. N. 87½° E., 42 lks. dist., marked ¼ S 7 BT.
- A cedar, 6 ins. in diam., brs. S. 45½° E., 125 lks. dist., marked ¼ S 7 BT.

8. Dependent Resurvey of E. bdy. of Township 15 N. R.16 E.

Chains.

53.48
80.00

Thence,
N.0°7'E., on true line, continuing measurement of E. bdy.
of sec.12 (beginning of N. $\frac{1}{2}$ of W. bdy. of sec.7).
Leave scattering scrub cedar, brs. E² and W.
Set an iron post, 3 ft. long, 3 ins. in diam., 24 ins. in
the ground, for reestablished cor. of secs. 1 and 12,
T.15 N., R.16 E., marked on brass cap,

T15N
R16E
S 1

S12
1917

Dig pits, 24x24x12 ins. NW. and SW. of post, 6 ft. dist.
Land, rolling.
Soil, rocky, 3rd rate on limestone subsoil.
Timber, scattering scrub cedar.
Undergrowth, scattering sage brush.
Poor grass.

8.48

N.0°7'E., on true line, on E. bdy. of sec.1, T.15 N., R.
16 E. (part of W. bdy. of sec.7, T.15 N., R.17 E.)
Over rolling land, thru scattering undergrowth.
(40.76 chs. N.0°7'E., from $\frac{1}{2}$ sec. cor. of sec.7) Intersect
point of original location of cor. of secs. 1, 6, 7 and 12,
hereinbefore described. Destroy all remains of old
cor., and in the same place.

Set an iron post, 3 ft. long, 3 ins. in diam., 24 ins. in
the ground, for reestablished cor. of secs. 6 and 7, T.
15 N., R.17 E., marked on brass cap,

T15N
R17E
S 6
S 7

1917

dig pits, 24x24x12 ins., NE. and SE. of post, 6 ft.
dist.

Thence,
N.0°24'W., on true line, continuing measurement of E. bdy.
of sec.1 (beginning of S $\frac{1}{2}$ of W. bdy. of sec.6)

30.00
40.00

Enter scattering scruo timber bearing E. and W.
Set an iron post, 3 ft. long, 1 in. in diam., 26 ins. in
the ground, for reestablished $\frac{1}{4}$ sec. cor. of sec.1, T.
15 N., R.16 E., marked on brass cap,

S 1
1917

from which,

A cedar, 10 ins. in diam., brs. S. 59 $\frac{1}{2}$ °W., 214 lks.
dist., marked $\frac{1}{4}$ S 1 BT.

A cedar, 8 ins. in diam., brs. N.15°W., 220 lks.
dist., marked $\frac{1}{4}$ S 1 BT.

49.25

(49.77 chs. N.0°24'W., from cor. of secs. 6 and 7) Intersect
point of original location of $\frac{1}{4}$ sec. cor. of secs. 1
and 6, hereinbefore described. Destroy all remains of
old cor., and in the same place

Set an iron post, 3 ft. long, 1 in. in diam., 26 ins. in
the ground, for reestablished $\frac{1}{4}$ sec. cor. of sec.6, T.
15 N., R.17 E., marked on brass cap,

S 6
1917

from which,

A cedar, 8 ins. in diam., brs. N.24 $\frac{1}{2}$ °E., 188 lks.
dist., marked $\frac{1}{4}$ S 6 BT.

Dependent Resurvey of E. bdy. of Township 15 North Range 16 East. 9

Chains.

A cedar, 6 ins. in diam., brs. S. 80 1/2 ° E., 253 lks. dist., marked 1/4 S 6 BT.

Thence,

N. 0° 32' W., on true line, continuing measurement of E. bdy. of sec. 1 (beginning of N. 1/2 of W. bdy. of sec. 6)

66.66 Road brs. NE. to Joseph City and Holbrook, and SW. to Heber.

89.83 Road brs. E. to Joseph City and Holbrook, and W.

89.98 Wire fence brs. E. and W.

90.01 (40.76 chs. N. 0° 32' W. from 1/4 sec. cor. of sec. 6) Interest reestablished cor. of Ts. 15 and 16 N., Rs. 16 and 17 E., described in Book "L." - BK. 3374

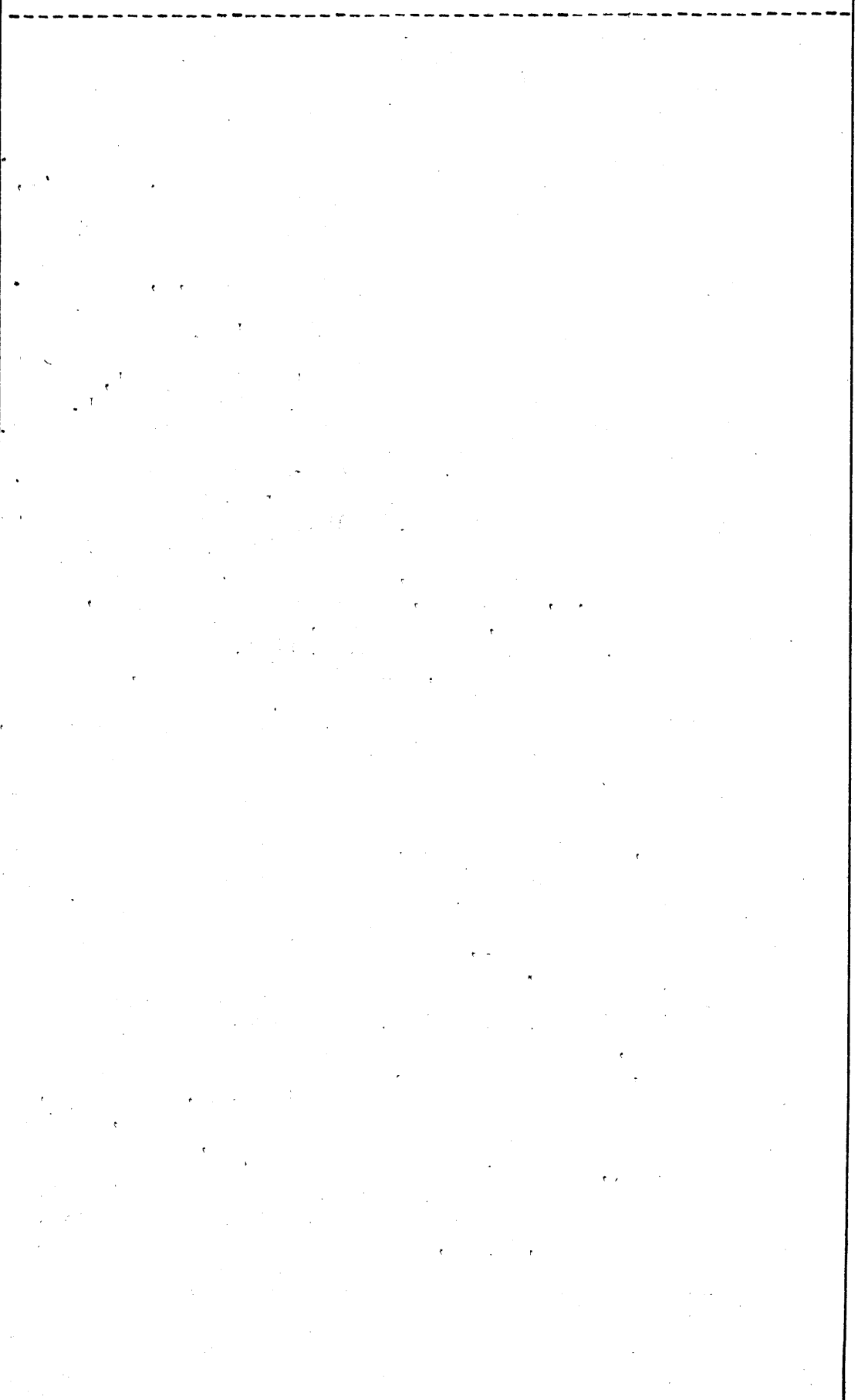
Land, rolling.

Soil, sandy and gravelly, 2nd rate.

Timber, scattering scrub cedar.

Undergrowth, scattering sage brush.

Poor grass.



10. Dependent Resurvey of West bdy. of T. 15 N., R. 16 E.

Chains.

Retracement for resurvey:

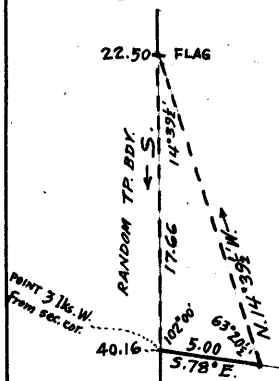
The East bdy. of T. 16 N., R. 15 E. forming part of W. bdy. of T. 15 N., R. 16 E. was retraced preliminary to Resurvey of W. bdy. of T. 16 N., R. 16 E., as described in Book "L."; therefore, preliminary to Resurvey of W. bdy. of T. 15 N., R. 16 E., retrace the East bdy. of T. 15 N., R. 15 E., as follows:

From original cor. of Ts. 15 and 16 N., Rs. 15 and 16 E., described in Book "L.,"

39.99 South, on random line, on N. $\frac{1}{2}$ of E. bdy. of sec. 1.
Intersect original $\frac{1}{4}$ sec. cor. of secs. 1 and 6, which is a limestone, 24x20x18 ins. above ground, marked with a cross (x) on top, and "1" on W. face, and witnessed by a mound of stone W. of cor. No bearing trees.
True course and dist. of N. $\frac{1}{2}$ of E. bdy. of sec. 1 are therefore, North, 39.99 chs.

Thence,

22.50 South, on random line, on S. $\frac{1}{2}$ of E. bdy. of sec. 1.
North or left rim of Chevelon Canyon, brs. NW. and SE.
Chain measurement across canyon being impracticable, triangulate as follows:



Leave flag at this point.
Measure a base, S. 78° E., 5.00 chs. from a point on random line, near S. or right rim of canyon, at 3 lks. W. from original cor. of secs. 1, 6, 7 and 12.
From E. end of base, flag brs. N. 14° 39 $\frac{1}{2}$ ' W.
Included angles are 63° 20 $\frac{1}{2}$ ', 102° 00' and 14° 39 $\frac{1}{2}$ ', the sum of which is 180° 00'.

Dist. triangulated on random line is obtained by.

$$\frac{\sin 63^{\circ} 20\frac{1}{2}' \times \text{base}}{\sin 14^{\circ} 29\frac{1}{2}'} \quad \text{or} \quad \frac{.89369 \times 5.00}{.25305} = 17.66 \text{ chs.}$$

which, added to 22.50 chs. =

40.16 Triangulation point on random line, near S. or right rim of Chevelon Canyon, at 3 lks. W. from original cor. of secs. 1, 6, 7 and 12, which is a limestone, 12x6x4 ins. above ground, firmly set, marked with 1 notch on N. edge, and 5 notches on S. edge, and witnessed by 4 pits, one in each sec., and mound of earth, W. of cor.
No bearing trees.
True course and dist. of S. $\frac{1}{2}$ of E. bdy. of sec. 1, are therefore, N. 0° 3' W., 40.16 chs.

39.97 South, on random line, on N. $\frac{1}{2}$ of E. bdy. of sec. 12.
Fall 6 lks. E. of original $\frac{1}{4}$ sec. cor. of secs. 7 and 12, which is a limestone, 14x8x4 ins. above ground, firmly set, marked "1" on W. face, and witnessed by two pits, one each N. and S., and mound of earth W. of cor. No bearing trees.
True course and dist. of N. $\frac{1}{2}$ of E. bdy. of sec. 12 are therefore, N. 0° 5' E., 39.97 chs.

39.98 Thence,
South, on random line, on S. half of E. bdy. of sec. 12.
Intersect original cor. of secs. 7, 12, 13 and 18, which is a limestone, 10x6x5 ins. above ground, firmly set, marked with 2 notches on N. edge, and 4 notches on S. edge, and witnessed by 4 pits, one in each sec., and mound of earth W. of cor. No bearing trees.
True course and dist. of S. $\frac{1}{2}$ of E. bdy. of sec. 12, are therefore, North, 39.98 chs.

39.95 South, on random line, on N. $\frac{1}{2}$ of E. bdy. of sec. 13.
Fall 13 lks. E. of original $\frac{1}{4}$ sec. cor. of secs. 13 and 18,

Dependent Resurvey of West bdy. of T. 15 N., R. 16 E.

Chains.

- 39.97 which is a limestone, 8x5x4 ins. above ground, firmly set, marked "1" on W. face, and witnessed by 2 pits, one each N. and S., and mound of earth, W. of cor. No bearing trees.
True course and dist. of N. $\frac{1}{2}$ of E. bdy. of sec. 13, are therefore, N. 0° 11' E., 39.95 chs.
Thence,
South, on random line, on S. $\frac{1}{2}$ of E. bdy. of sec. 13.
Fall 13 lks. E. of original cor. of secs. 13, 18, 19 and 24, which is a limestone, 8x5x5 ins. above ground, firmly set, marked with 3 notches on each of N and S edges, and witnessed by mound of stone, W. of cor., and one bearing tree properly marked, NE. of cor.
True course and dist. of S. $\frac{1}{2}$ of E. bdy. of sec. 13, are therefore, N. 0° 11' E., 39.97 chs.

- 40.21 South, on random line, on N. $\frac{1}{2}$ of E. bdy. of sec. 24.
Intersect original $\frac{1}{2}$ sec. cor. of secs. 19 and 24, which is a limestone, 14x8x5 ins. above ground, firmly set, marked "2" on W. face, and witnessed by two pits, one each N. and S., and mound of earth W. of cor. No bearing trees.
True course and dist. of N. $\frac{1}{2}$ of E. bdy. of sec. 24, are therefore, North, 40.21 chs.
Thence,
South, on random line, on S. $\frac{1}{2}$ of E. bdy. of sec. 24.
- 40.27 Intersect original cor. of secs. 19, 24, 25 and 30, which is a limestone, 12x6x4 ins. above ground, firmly set, marked with 4 notches on N. edge, and 2 notches on S. edge, and witnessed by 4 pits, one in each sec., and mound of earth, W. of cor. No bearing trees.
True course and dist. of S. $\frac{1}{2}$ of E. bdy. of sec. 24, are therefore, North, 40.27 chs.

- 40.00 South, on random, on E. bdy. of sec. 25.
Diligent search in this vicinity fails to reveal any trace of original $\frac{1}{2}$ sec. cor. of secs. 25 and 30. Set temp. $\frac{1}{2}$ sec. cor. of sec. 25.
- 80.00 Diligent search in this vicinity fails to reveal any trace of the original cor. of secs. 25, 30, 31 and 36. Set temp. cor. of secs. 25 and 36.
Continue line and measurement E. of sec. 36.
- 120.00 Diligent search in this vicinity fails to reveal any trace of the original $\frac{1}{2}$ sec. cor. of secs. 31 and 36/
Set temp. $\frac{1}{2}$ sec. cor. of sec. 36.
- 142.68 Intersect S. bdy. of T. 15 N., R. 16 E., surveyed due west as hereinafter described.
- 159.65 Fall 153 lks. E. of original cor. of Ts. 14 and 15 N., Rs. 15 and 16 E., which is a limestone, 15x10x5 ins. above ground, firmly set, marked with 6 notches on each of N., S., E. and W. edges, and witnessed by 4 bearing trees, properly marked, one in each Tp.
True course and dist. of Range line, back to original cor. of secs. 19, 24, 25 and 30, are therefore, N. 0° 33' E., 159.66 chs., which gives a proportional dist. for intervals bet. reestablished cor. of 39.91 $\frac{2}{3}$ chs.

RESURVEY:

- From reestablished cor. of Ts. 14 and 15 N., R. 16 E., hereinafter described,
N. 0° 33' E., on true line, on W. bdy. of sec. 31, T. 15 N., R. 16 E. (E. of sec. 36, T. 15 N., R. 15 E.)
Over rolling land, thru scattering timber and undergrowth. Ascend gradually.
- 1.07 S. or left rim of small canyon, brs. NE. and SW. Descend 32 ft. to

12. Dependent Resurvey of West bdy. of T.15 N., R.,16 E.

Chains.

4.35 Bottom of canyon, course SW. Ascend 58 ft. to
7.95 North or right rim of above described canyon, brs. NE. and SW.

13.07 Draw, course SW.
22.94 (Proportional dist. of 39.92 chs., N.0°33'E. from cor. of Ts. 14 and 15 N., R.15 E.)
Set an iron post, 3 ft. long, 1 in. in diam., 26 ins. in the ground, for reestablished $\frac{1}{4}$ sec. cor. of sec. 36, T.15 N., R.15 E., marked on brass cap,

S36
1917

from which,

- A pinyon, 10 ins. in diam., brs. S. 36 $\frac{1}{2}$ ° W., 145 lks. dist., marked $\frac{1}{4}$ S 36 B T.
- A cedar, 6 ins. in diam., brs. N. 53° W., 415 lks. dist., marked $\frac{1}{4}$ S 36 B T.

40.00 (17.06 chs. N.0°33'E., from $\frac{1}{4}$ sec. cor. of sec. 36),
Set an iron post, 3 ft. long, 1 in. in diam., 6 ins. in the ground, in a mound of stone, for reestablished $\frac{1}{4}$ sec. cor. of sec. 31, T.15 N., R.16 E., marked on brass cap,

S31
1917

and raise a mound of stone, 2 ft. base, 1 $\frac{1}{2}$ ft. high, E. of cor.

62.85 (Proportional dist. of 39.91 chs. N.0° 33'E. from $\frac{1}{4}$ sec. cor. of sec. 36),
Set an iron post, 3 ft. long, 3 ins. in diam., 12 ins. in the ground, in a mound of stone, for reestablished cor. of secs. 25 and 36, T.15 N., R.15 E., marked on brass cap,

T15N
R15E
S25
S36
1917

and raise a mound of stone, 2 ft. base, 1 $\frac{1}{2}$ ft. high, W. of cor.

Continue line and measurement of W. bdy. of sec. 31 (E. of sec. 25).

80.00 (17.15 chs. N.0°33'E. from cor. of secs. 25 and 36),
Set an iron post 3 ft. long, 3 ins. in diam., 24 ins. in the ground, for reestablished cor. of secs. 30 and 31, T.15 N., R.16 E., marked on brass cap,

T15N
R16E
S30
S31
1917

dig pits, 24x24x12 ins. NE. and SE. of post, 6 ft. dist.

Land, rolling.
Soil, sandy and gravelly, 3rd rate.
Timber, scattering scrub cedar.
Undergrowth, scattering sage brush.
Poor grass.

Dependent Resurvey of West bdy. of T.15 N., R. 16 E. 13.

Chains.

N.0°33'E., on true line, on W. bdy. of sec. 30, T. 15 N., R. 16 E. (part of E. bdy. of sec. 25, T. 15 N. R. 15 E.)
 Over rolling land, thru scattering scrub timber and undergrowth.
 22.77 (Proportional dist. of 39.92 chs. N.0°33'E. from cor. of secs. 25 and 36),
 Set an iron post, 3 ft. long, 1 in. in diam., 26 ins. in the ground, for reestablished $\frac{1}{4}$ sec. cor. of sec. 25, T. 15 N., R. 15 E., marked on brass cap.

S25
 1917

40.00 dig pits, 18x18x12 ins., N. and S. of post, 3 ft. dist. (17.23 chs. N.0°33'E. from $\frac{1}{4}$ sec. cor. of sec. 25),
 Set an iron post, 3 ft. long, 1 in. in diam., 26 ins. in the ground, for reestablished $\frac{1}{4}$ sec. cor. of sec. 30, T. 15 N., R. 16 E., marked on brass cap.

S30
 1917

62.68 dig pits, 18x18x12 ins., N. and S. of post, 3 ft. dist. (Proportional dist. of 39.91 chs. N.0°33'E. from $\frac{1}{4}$ sec. cor. of sec. 25) Intersect original cor. of secs. 19, 24, 25 and 30, hereinbefore described. Change this cor. to refer to secs. 24 and 25 only, as follows: Destroy old mound of earth, fill in the old pits, and alongside old stone,
 Set an iron post, 3 ft. long, 3 ins. in diam., 24 ins. in the ground, for reestablished cor. of secs. 24 and 25, T. 15 N., R. 15 E., marked on brass cap.

T15N
 R15E
 S24
 S25
 1917

and dig pits, 24x24x12 ins. NW. and SW. of post, 6 ft. dist.
 Thence,
 80.00 North, on true line, continuing measurement of W. bdy. of sec. 30 (beginning of S. $\frac{1}{2}$ of E. bdy. of sec. 24). (17.32 chs. N. from cor. of secs. 24 and 25),
 Set an iron post, 3 ft. long, 3 ins. in diam., 24 ins. in the ground, for reestablished cor. of secs. 19 and 30, T. 15 N., R. 16 E., marked on brass cap.

T15N
 R16E
 S19
 S30
 1917

dig pits, 24x24x12 ins. NE. and SE. of post, 6 ft. dist.
 Land, rolling.
 Soil, gravelly, 2nd rate.
 Timber, scattering scrub cedar.
 Undergrowth, scattering sage brush.
 Fair grass.

10.00 North, on true line, on W. bdy. of sec. 19, T. 15 N., R. 16 E. (part of S. $\frac{1}{2}$ of E. bdy. of sec. 24).
 Over rolling land, thru scattering undergrowth.
 Road, brs. NE. and SW.
 22.95 (40.27 chs. N. from cor. of secs. 24 and 25), Intersect original $\frac{1}{4}$ sec. cor. of secs. 19 and 24, hereinbefore

14. Dependent Resurvey of West bdy. of T. 15 N., R. 16 E.

Chains.

described. Change this cor. to $\frac{1}{4}$ sec. cor. of sec. 24 only, by destroying old mound of earth, filling in the old pits, and building a mound of stone, 2 ft. base, $1\frac{1}{2}$ ft. high, W. of cor.

Thence,

North, on true line, continuing measurement of W. bdy. of sec. 19 (beginning of N. $\frac{1}{2}$ of E. bdy. of sec. 24).

40.00

(17.05 chs. N. from $\frac{1}{4}$ sec. cor. of sec. 24),

Set an iron post, 3 ft. long, 1 in. in diam., 20 ins. in the ground, in a mound of stone, for reestablished $\frac{1}{4}$ sec. cor. of sec. 19, T. 15 N., R. 16 E., marked on brass cap,



1917

dig pits, 18x18x12 ins., N. and S. of post, 3 ft. dist.

63.16

(40.21 chs. N. from $\frac{1}{4}$ sec. cor. of sec. 24) Intersect original cor. of secs. 13, 18, 19 and 24, hereinbefore described.

Change this cor. to refer to secs. 13 and 24 only, by obliterating the marking on the original NE. bearing tree, leaving undisturbed the old mound of stone, 2 ft. base, $1\frac{1}{2}$ ft. high, W. of cor.

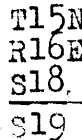
Thence,

N. 0° 11' E., on true line, continuing measurement of W. bdy. of sec. 19 (beginning of S. $\frac{1}{2}$ of E. bdy. of sec. 13).

80.00

(16.84 chs. N. 0° 11' E. from cor. of secs. 13 and 24),

Set an iron post, 3 ft. long, 3 ins. in diam., on surface rock, in a mound of stone, for reestablished cor. of secs. 18 and 19, T. 15 N., R. 16 E., marked on brass cap,



1917

and raise a mound of stone, 2 ft. base, $1\frac{1}{2}$ ft. high, E. of cor.

Land, rolling.

Soil, gravelly, 3rd rate on limestone subsoil.

Timber, none.

Undergrowth, scattering sagebrush and Spanish dagger.

Poor grass.

N. 0° 11' E., on true line, on W. bdy. of sec. 18, T. 15 N., R. 16 E. (part of S. $\frac{1}{2}$ of E. bdy. of sec. 13, T. 15 N., R. 15 E.)

Over rolling land, thru. scattering undergrowth.

23.13

(39.97 chs. N. 0° 11' E. from cor. of secs. 13 and 24) Intersect original $\frac{1}{4}$ sec. cor. of secs. 13 and 18, hereinbefore described. This cor. now becomes $\frac{1}{4}$ sec. cor. of sec. 13 only. No change in marking or accessories is required.

Thence,

N. 0° 11' E., on true line, continuing measurement of W. bdy. of sec. 18 (beginning of N. $\frac{1}{2}$ of E. bdy. of sec. 13).

40.00

(16.87 chs. N. 0° 11' E. from $\frac{1}{4}$ sec. cor. of sec. 13),

Set an iron post, 3 ft. long, 1 in. in diam., 26 ins. in the ground, for reestablished $\frac{1}{4}$ sec. cor. of sec. 18, T. 15 N., R. 16 E., marked on brass cap,



1917

dig pits, 18x18x12 ins., N. and S. of post, 3 ft. dist.

63.08

(39.95 chs. N. 0° 11' E. from $\frac{1}{4}$ sec. cor. of sec. 13) Intersect original cor. of secs. 7, 12, 13 and 18, hereinbefore described. Change this cor. to refer to secs. 12 and 13

Dependent Resurvey of West bdy. of T. 15 N., R. 16 E., 15.

Chains.

only, as follows: Destroy old mound of earth, fill in old pits, and alongside old stone,
Set an iron post, 3 ft. long, 3 ins. in diam., 8 ins. in the ground, in a mound of stone, for reestablished cor. of secs. 12 and 13, T. 15 N., R. 15 E., marked on brass cap,

T15N
R15E
S12
S13
1917

and raise a mound of stone, 2 ft. base, 1 1/2 ft. high, W. of cor.

Thence,

North, on true line, continuing measurement of W. bdy. of sec. 18 (beginning of S. 1/2 of E. bdy. of sec. 12):

80.00

(16.92 chs. N. from cor. of secs. 12 and 13),
Set an iron post, 3 ft. long, 3 ins. in diam., 8 ins. in the ground, in a mound of stone, for reestablished cor. of secs. 7 and 18, T. 15 N., R. 16 E., marked on brass cap,

T15N
R16E
S 7
S18

1917

and raise a mound of stone, 2 ft. base, 1 1/2 ft. high, E. of cor.

Land, rolling.

Soil, gravelly, 3rd rate, on limestone subsoil.

Timber, none.

Undergrowth, scattering sagebrush and Spanish dagger.

Fair grass.

North, on true line, on W. bdy. of Sec. 7, T. 15 N., R. 16 E. (part of S. 1/2 of E. bdy. of sec. 12, T. 15 N., R. 15 E.)

23.06

Over rolling land, thru scattering undergrowth. (39.98 chs. N. from cor. of secs. 12 and 13) Intersect original 1/4 sec. cor. of secs. 7 and 12, hereinbefore described. This cor. now becomes 1/4 sec. cor. of sec. 12 only. No change in marking or accessories is required.

Thence,

N. 0° 5' E., on true line, continuing measurement of W. bdy. of sec. 7 (beginning of N. 1/2 of E. bdy. of sec. 12).

23.75

Fence brs. NE and SW.

40.00

(16.94 chs. N. 0° 5' E., from 1/4 sec. cor. of sec. 12),
Set an iron post, 3 ft. long, 1 in. in diam., 6 ins. in the ground, in a mound of stone for reestablished 1/4 sec. cor., of sec. 7, T. 15 N., R. 16 E., marked on brass cap,

S 7
1917

and raise a mound of stone, 2 ft. base, 1 1/2 ft. high, E. of cor.

63.03

(39.97 chs. N. 0° 5' E. from 1/4 sec. cor. of sec. 12), Intersect original cor. of secs. 1, 6, 7 and 12, hereinbefore described. Change this cor. to refer to secs. 1 and 12, only; as follows:

Destroy old mound of earth, fill in old pits, and build a mound of stone, 2 ft. base, 1 1/2 ft. high, W. of cor.

Thence,

N. 0° 3' W., on true line, continuing measurement of W. bdy. of sec. 7 (beginning of S. 1/2 of E. bdy. of sec. 1).

66.15

South or right rim of Chevelon Canyon, brs. NW. and SE. Descend into canyon. Measurement across canyon by trian-

15
16
31

16 dependent Resurvey of West bdy. of T. 15 N., R. 16 E.

Chains.

75.00 gulation, hereinbefore described.
(Approximate) Bottom of Chevelon Canyon, course SE., about 300 ft. below rim.

80.00 Ascend.
(16.97 chs. N. 0° 3' W. from cor. of secs. 1 and 12) True point for reestablishment of cor. of secs. 6 and 7, falls on canyon wall, where post could not be set; therefore, at the flag point of the triangulation hereinbefore described, at 69 lks. N. 0° 3' W., from true point for cor. at

80.69 North or left rim of Chevelon Canyon, brs. NW. and SE., Set an iron 3 ft. long, 3 ins. in diam., 12 ins. in the ground, for witness cor. to reestablished cor. of secs. 6 and 7, T. 15 N., R. 16 E., marked on brass cap,

T15N
R16E
S 6
S 7
W.C.
1917

and raise a mound of stone, 2 ft. base, 1½ ft. high, E. of cor.

Land, rolling, except at canyon crossing.

Soil, gravelly and rocky, 3rd.

Timber, none.

Undergrowth, scattering sage brush and Spanish dagger.

Fair grass.

From true point for cor. of secs. 6 and 7, on wall of Chevelon Canyon, N. 0° 3' W., on true line, on W. bdy. of sec. 6, T. 15 N., R. 16 E. (part of S. ½ of E. bdy. of sec. 1, T. 15 N., R. 15 E.) Over steep, rocky canyon wall, measurement by triangulation, to

.69 Witness cor. to reestablished cor. of secs. 6 and 7, hereinbefore described, on N. or left rim of Chevelon Canyon, bearing NW. and SE.

Continue line and measurement by chaining.

Over level land, thru. scattering undergrowth.

5.19 Road, brs. E. and W.

23.19 (40.16 chs. N. 0° 3' W. from cor. of secs. 1 and 12), Intersect original ¼ sec. cor. of secs. 1 and 6, hereinbefore described. This cor. now becomes ¼ sec. cor. of sec. 1 only. No change in marking or accessory is required.

Thence,

North, on true line, continuing measurement of W. bdy. of sec. 6 (beginning of N. ½ of E. bdy. of sec. 1).

40.00 (16.81 chs. N. from ¼ sec. cor. of sec. 1).

Set an iron post, 3 ft. long, 1 in. in diam., 26 ins. in the ground, for reestablished ¼ sec. cor. of sec. 6, T. 15 N., R. 16 E., marked on brass cap,

¼
S 6

1917

and raise a mound of stone, 2 ft. base, 1½ ft. high, W. of cor.

59.78 Road brs. NW. and SE.

63.18 (39.99 chs. N. from ¼ sec. cor. of sec. 1), Intersect original cor. of Ts. 15 and 16 N., Rs. 15 and 16 E. described in Book "L." Change this cor. to refer to Ts. 15 and 16 N., R. 15 E. only, by obliterating notches from E. edge of stone, destroying mound of stone, S. of cor., and building mound of stone, 2 ft. base, 1½ ft. high, W. of cor.

Thence, as per result of retracement described in Book "L."

Dependent Resurvey of West bdy. of T. 15 N., R. 16 E. 17.

Chains.

89.17

N.0° 11' E., on true line, continuing measurement of w. bdy. of sec.6 (beginning of S. $\frac{1}{2}$ of E. bdy. of sec.36, T.16 N., R.15 E.)
 (25.99 chs. N.0° 11' E., from cor. of Ts. 15 and 16 N., R.15 E.) Intersect the reestablished cor. of Ts.15 and 16 R., R.16 E., described in Book "L."
 Land, rolling and level.
 Soil, gravelly and rocky, 3rd rate, on limestone subsoil.
 Timber, none.
 Undergrowth, scattering sage brush.
 Fair grass.

18 survey of South boundary of Township 15 North, Range 16 E.

Chains

From the reestablished cor. of Ts. 14 and 15 N., Rs. 16 and 17 E., hereinbefore described, West, bet. secs. 1 and 36. Over gently rolling land, thru. scattering scrub timber and undergrowth.

- 1.00 Wash, 10 lks. wide, course NE.
- 20.00 Ascend gradual slope to
- 23.00 Top of small rocky ridge, brs. NE. and SW. Descend gradual slope.
- 40.00 Set an iron post 3 ft. long, 1 in. in diam., 26 ins. in the ground, for $\frac{1}{4}$ sec. cor., marked on brass cap,

$\frac{1}{4}$ S 36
 S 1
 1917

- 80.00 dig pits, 18x18x12 ins., E. and W. of post, 3 ft. dist. Set an iron post, 3 ft. long, 3 ins. in diam., 24 ins. in the ground, for cor. of secs. 1, 2, 35 and 36, marked on brass cap,

T15N R16E
 S 2 | S 1
 S35 | S36
 T14N
 1917

and raise a mound of stone, 2 ft. base 1 $\frac{1}{2}$ ft. high, W. of cor.
 Land, rolling.
 Soil, limestone subsoil, 3rd rate.
 Timber, very scattering scrub cedar.
 Undergrowth, scattering sage brush and cactus.
 Fair growth of grass.

- 40.00 West, bet. secs. 2 and 35. Over gently rolling land, thru. scattering scrub cedar and undergrowth. Set an iron post, 3 ft. long, 1 in. in diam., 26 ins. in the ground, for $\frac{1}{4}$ sec. cor., marked on brass cap,

$\frac{1}{4}$ S 35
 S 2
 1917

- 78.05 Dig pits, 18x18x12 ins., E. and W. of post, 3 ft. dist.
- 80.00 Land slopes towards the north. Set an iron post, 3 ft. long, 3 ins. in diam., on rock ledge, in a mound of stone, for cor. of secs. 2, 3, 34 and 35, marked on brass cap,

T15N R16E
 S34 | S35
 S 3 | S 2
 1917

and raise a mound of stone, 2 ft. base, 1 $\frac{1}{2}$ ft. high, W. of cor.
 Land, gently rolling.
 Soil, limestone subsoil, 3rd rate.
 Timber, scattering scrub cedar.
 Undergrowth, sage brush.
 Poor growth of grass.

West, bet. secs. 3 and 34. Over gently rolling land, thru. scattering scrub cedar and undergrowth.

Survey of South bdy of Township 15 North Range 16 East 19

Chains.

40.00 Set an iron post, 3 ft. long, 1 in. in diam., 8 ins. in the ground, in a mound of stone, for $\frac{1}{4}$ sec. cor., marked on brass cap,

$\frac{1}{4}$ S 34
S 3
1917

and raise a mound of stone, 2 ft. base, 1 $\frac{1}{2}$ ft. high, N. of cor.

41.35 Road hrs. NE to Joseph City and Holbrook and SW. to Heber.
63.35 Land, slopes toward NE.

80.00 Set an iron post, 3 ft. long, 3 ins. in diam., on surface rock, in a mound of stone, for cor. of secs. 3, 4, 33 and 34, marked on brass cap,

T15N R16E
S33 | S34
S 4 | S 3
T14N
1917

from which,

A pinyon, 12 ins. in diam., hrs. S. 77° W., 126 lks. dist., marked T14N R16E S4BT.

No other trees within limits. Raise a mound of stone, 2 ft. base, 1 $\frac{1}{2}$ ft. high, W. of cor.

Land, gently rolling.
Soil, limestone subsoil, 3rd rate.
Timber, scattering scrub cedar.
Undergrowth, sage brush.
Poor growth of grass.

West, bet. secs. 4 and 33.
Over gently rolling land, thru. scattering scrub timber and undergrowth.

40.00 Set an iron post, 3 ft. long, 1 in. in diam., 26 ins. in the ground, for $\frac{1}{4}$ sec. cor., marked on brass cap,

$\frac{1}{4}$ S 33
S 4
1917

from which,

A cedar, 10 ins. in diam., hrs. N. 45° W., 18 lks. dist., marked $\frac{1}{4}$ S 33 BT.

No other trees within limits.

80.00 Dig pits, 18x18x12 ins., E. and W. of post, 3 ft. dist.
Set an iron post 3 ft. long, 3 ins. in diam., 18 ins. in the ground, in a mound of stone, for cor. of secs. 4, 5, 32 and 33, marked on brass cap,

T15N R16E
S32 | S33
S 5 | S 4
T14N
1917

and raise a mound of stone, 2 ft. base, 1 $\frac{1}{2}$ ft. high, W. of cor.

Land, gently rolling.
Soil, limestone subsoil, 3rd rate.
Timber, scattering scrub cedar.
Undergrowth, sage brush and Spanish dagger.
Poor growth of grass.

20. survey of south bdy. of Township 15 North Range 16 East.

Chains.

West, bet. secs. 5 and 32,
Over rolling land, thru scattering scrub timber and under-
growth.
10.00 Right bank of Potato Wash, brs. NE. and SW. Descend 66 ft.
20.00 Bottom of wash, course NE. Ascend 62 ft. to
22.00 Left bank of Potato Wash, brs. NE. and SW.
40.00 Set an iron post, 3 ft. long, 1 in. in diam., 26 ins. in
the ground, for $\frac{1}{4}$ sec. cor., marked on brass cap,

$$\begin{array}{r} \frac{1}{4} S 32 \\ S 5 \\ 1917 \end{array}$$

80.00 Dig pits, 18x18x12 ins., E. and W. of post, 3 ft. dist.
Set an iron post, 3 ft. long, 3 ins. in diam., 18 ins. in
the ground, in a mound of stone, for cor. of secs. 5, 6,
31 and 32, marked on brass cap,

$$\begin{array}{r} T15N R16E \\ S31 | S32 \\ S 6 | S 5 \\ T14N \\ 1917 \end{array}$$

and raise a mound of stone, 2 ft. base, 1 $\frac{1}{2}$ ft. high, W.
of cor.

Land, rolling.

Soil, limestone subsoil, 3rd rate.

Timber, scattering scrub cedar.

Undergrowth, sage brush.

Poor growth of grass.

West, bet. secs. 6 and 31.
Over rolling land, thru scattering timber and under-
growth.
27.02 Road brs. NW. to Joseph City and Holbrook, and SE.
40.00 Set an iron post, 3 ft. long, 1 in. in diam., 20 ins. in
the ground, in a mound of stone, for $\frac{1}{4}$ sec. cor., marked
on brass cap,

$$\begin{array}{r} \frac{1}{4} S 31 \\ S 6 \\ 1917 \end{array}$$

from which,

A pinyon, 10 ins. in diam., brs. N. 43 $\frac{1}{2}$ ° E., 156
lks. dist., marked $\frac{1}{4}$ S 31 BT.

A pinyon, 8 ins. in diam., brs. S. 43 $\frac{1}{2}$ ° W., 205
lks. dist., marked $\frac{1}{4}$ S 6 BT.

also A pinyon, 8 ins. in diam., brs. N. 49° W., 322 lks.
dist., marked $\frac{1}{4}$ S 31 BT.

51.80 Wash, 15 lks. wide, 6 ft. deep, course NW.

67.50 Wash, 12 lks. wide, 3 ft. deep, course N.

77.50 Wash, course NW.

82.64 Four-strand wire fence, brs. N. and S.

84.60 Wash, 15 lks. wide, 4 ft. deep, course N.

84.79 Intersect E. bdy. of Tp. 15 N., R. 15 E., 16.98 chs. N. 0° 33'
E. of the cor. of Ts. 14 and 15 N., Rs. 15 and 16 E.,
hereinbefore described, changed to cor. of Ts. 14 and 15
N., R. 15 E. only, as described in Book "N."

At the point of intersection,

Set an iron post, 3 ft. long, 3 ins. in diam., 24 ins. in the
ground, for reestablished cor. of Ts. 14 and 15 N., R. 16
E., marked on brass cap,

Chains.

| |
|------|
| T15N |
| R16E |
| S31 |
| S 6 |
| T14N |

1917

from which,

A cedar, 8 ins. in diam., brs. N. 72 $\frac{3}{4}$ ° E., 139 lks. dist., marked T15N R16E S31 BT.

A cedar, 6 ins. in diam., brs. S. 11° E., 230 lks. dist., marked T14N R16E S6 BT.

Land, rolling.

Soil, limestone subsoil, 3rd rate.

Timber, scattering cedar and pinyon.

Undergrowth, scattering sage brush and cactus.

Poor growth of grass.



22 survey of subdivision of Township 15 North, Range 16 East.

Chains.

From the corner of secs. 1, 2, 35 and 36, on south bdy. of Tp., hereinbefore described, North, on a sectional guide meridian, between secs. 35 and 36.

40.00 Over gently rolling land, thru. scattering scrub timber and undergrowth.
Set an iron post 3 ft. long, 1 in. in diam., 26 ins. in the ground, for $\frac{1}{4}$ sec. cor., marked on brass cap,

S35 | S36
1917

from which,

A cedar, 10 ins. in diam., brs. S. $64\frac{1}{2}^{\circ}$ E., 144 lks. dist., marked $\frac{1}{4}$ S 36 BT.

A cedar, 8 ins. in diam., brs. S. 28° W., 99 lks. dist., marked $\frac{1}{4}$ S 35 B T.

80.00 Set an iron post, 3 ft. long, 2 ins. in diam., 24 ins. in the ground, for cor. of secs. 25, 26, 35 and 36, marked on brass cap,

T15N R16E
S26 | S25
S35 | S36
1917

from which,

A cedar, 8 ins. in diam., brs. N. $35\frac{1}{2}^{\circ}$ W., 310 lks. dist., marked T15NR16ES26BT.

No other trees within limits.

Raise a mound of stone, 2 ft. base, $1\frac{1}{2}$ ft. high, W. of corner.

Land, gently rolling.

Soil, sandy, 2nd rate.

Timber, scrub cedar.

Undergrowth, algerita, and sagebrush.

Fair growth of short grass.

40.00
80.17

East, on a random line, bet. secs. 25 and 36.

Set temp. $\frac{1}{4}$ sec. cor.

Fall 25 lks. south of the reestablished cor. of secs. 25 and 36, on E. bdy. of Tp., hereinbefore described.

Thence,

S. $89^{\circ} 49'$ W., on a true line, bet. secs. 25 and 36.

Over gently rolling land, through scattering scrub timber and undergrowth.

Subdivision of T. 15 N., R. 16 E.

Chains
40.17

Set an iron post, 3 ft. long, 1 in. diam., 4 ins. in the ground, in a mound of stone, for $\frac{1}{4}$ sec. cor., mkd. on brass cap

$\frac{1}{4}$ S 25
 $\frac{1}{4}$ S 36
1917

and raise a mound of stone, 2 ft. base, $1\frac{1}{2}$ ft. high, N. of cor.

80.17

The cor. of secs. 25, 26, 35 and 36.
Land, gently rolling.
Soil, thin and rocky, 3rd rate.
Timber, scattering scrub cedar.
Undergrowth, sagebrush.

North on sectional guide meridian, bet. secs. 25 and 26. Over rolling land, through scattering scrub timber and undergrowth.

40.00

Set an iron post, 3 ft. long, 1 in. diam., 26 ins. in the ground, for $\frac{1}{4}$ sec. cor., mkd. on brass cap

$\frac{1}{4}$
S26 | S25
1917

from which,

- A cedar, 12 ins., diam., brs. N. $53\frac{1}{4}^\circ$ E. 32 lks. dist.; mkd. $\frac{1}{4}$ S 25 B T.
- A cedar, 14 ins. diam., brs. S. $31\frac{1}{2}^\circ$ W. 215 lks. dist.; mkd. $\frac{1}{4}$ S 26 B T.

80.00

Set an iron post, 3 ft. long, 2 ins. diam., 24 ins. in the ground, for cor. of secs. 23, 24, 25 and 26, mkd. on brass cap

T15N R16E
S23 | S24
S26 | S25
1917

and raise a mound of stone, 2 ft. base, $1\frac{1}{2}$ ft. high, W. of cor.

Land, gently rolling.
Soil, thin and rocky, 3rd rate.
Timber, scattering scrub cedar.
Undergrowth, sagebrush and yucca.

80.34

N. $89^\circ 49'$ E. on a random line bet. secs. 24 and 25. Fall 5 lks. N. of the reestablished cor. of secs. 24 and 25, on E. bdy. of Tp., hereinbefore described. Thence

S. $89^\circ 51'$ W. on a true line bet. secs. 24 and 25.

Over gently rolling land, through scattering scrub timber and undergrowth.

40.34

Set an iron post, 3 ft. long, 1 in. diam., 26 ins. in the ground, for $\frac{1}{4}$ sec. cor., mkd. on brass cap

$\frac{1}{4}$ S 24
 $\frac{1}{4}$ S 25
1917

and raise a mound of stone, 2 ft. base, $1\frac{1}{2}$ ft. high, N. of cor.

80.34

The cor. of secs. 23, 24, 25 and 26.
Land, rolling.

20 Subdivision of T. 15 N. R. 16 E.

Chains

Soil, thin and rocky, 3rd rate.
Timber, scattering scrub cedar.
Undergrowth, sagebrush.

North on sectional guide meridian, bet. secs. 23 and 24.
Over gently rolling land, through scattering timber and
undergrowth.

40.00 Set an iron post, 3 ft. long, 1 in. diam., 26 ins. in the
ground, for $\frac{1}{4}$ sec. cor., mkd. on brass cap

$\frac{1}{4}$
S23 | S24
1917

from which,

A cedar, 12 ins. diam., brs. S. 60° E.
160 lks. dist.; mkd. $\frac{1}{4}$ S 24 B T.

A cedar, 8 ins. diam., brs. N. 23 $\frac{3}{4}$ ° W.
58 lks. dist.; mkd. $\frac{1}{4}$ S 23 B T.

45.00 Bottom of draw, course NE.

70.00 Head of small canyon, course NE. Desc. 52 ft. to

72.00 Bottom of canyon, course NE.

80.00 Set an iron post, 3 ft. long, 2 ins. diam., 8 ins. in the
ground, in a mound of stone, for cor. of secs. 13, 14,
23 and 24, mkd. on brass cap

T15N R16E
S14 | S13
S23 | S24
1917

and raise a mound of stone, 2 ft. base, 1 $\frac{1}{2}$ ft. high,
W. of cor.

Land, gently rolling.

Soil, thin and rocky, 3rd rate.

Timber, scattering scrub cedar.

Undergrowth, sagebrush.

Fair growth of short grass.

40.00 N. 89° 51' E. on a random line bet. secs. 13 and 24.
Set temp. $\frac{1}{4}$ sec. cor.

80.44 Fall 5 lks. S. of the reestablished cor. of secs. 13 and
24, on E. bdy. of Tp., hereinbefore described.

Thence

S. 89° 49' W. on a true line bet. secs. 13 and 24.

Over level land, through scattering scrub timber and
undergrowth.

33.45 Left rim of canyon brs. NW. and SE. Desc. 37 ft. to

36.45 Bottom of canyon. Wash, 50 lks. wide, course SE. in
canyon. Asc. NE. slope 15 ft.

40.44 Set an iron post, 3 ft. long, 1 in. diam., 20 ins. in the
ground, in a mound of stone, for $\frac{1}{4}$ sec. cor., mkd. on
brass cap

S 13
4S 24
1917

from which,

A cedar, 10 ins. diam., brs. N. 32° W.
193 lks. dist.; mkd. $\frac{1}{4}$ S 13 B T.

A cedar, 10 ins. diam., brs. S. 1° E.
45 lks. dist.; mkd. $\frac{1}{4}$ S 24 B T.

40.95 Rim-rock, 6 ft. high on right rim of canyon brs. NW. and
SE.

Subdivision of T. 15 N., R. 16 E.

Chains

49.65 Thence over level land to Rim-rock on right rim of canyon brs. vNE. and SW. Desc. NW. slope 43 ft. to

55.60 Shallow wash, 50 lks. wide, course NE. in bottom of canyon. Asc. SE. slope, 16 ft. to

59.10 Point of spur bet. rims of canyon slopes S. Desc. left rim of canyon along SW. slope to

62.57 Bottom of canyon. Shallow wash, 50 lks. wide, course SE. Asc. NE. slope, 43 ft. to

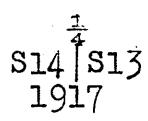
68.94 Point of spur slopes N. Desc. right rim of canyon, 43 ft. to

73.15 Wash, 50 lks. wide, in bottom of canyon, course N. Asc. 53 ft. to

76.45 Left rim of canyon brs. N. and S. Thence over rolling land, to

80.44 The cor. of secs. 13, 14, 23 and 24.
Land, rolling and broken; very little level.
Soil, rocky, 3rd rate.
Timber, scattering scrub cedar.
Undergrowth, scattering sagebrush.
Fair growth of short grass.

40.00 North on sectional guide meridian, bet. secs. 13 and 14. Over gently rolling land, through scattering scrub timber and undergrowth.
Set an iron post, 3 ft. long, 1 in. diam., 26 ins. in the ground, for $\frac{1}{4}$ sec. cor., mkd. on brass cap



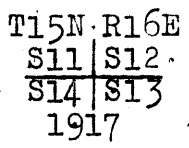
from which,

A cedar, 10 ins. diam., brs. S. 81° E.
20 lks. dist.; mkd. $\frac{1}{4}$ S 13 B T.

A cedar, 14 ins. diam., brs. S. 13 $\frac{1}{4}$ ° W.
83 lks. dist.; mkd. $\frac{1}{4}$ S 14 B T.

78.00 Desc. 30 ft. to

80.00 Set an iron post, 3 ft. long, 2 ins. diam., 24 ins. in the ground, for cor. of secs. 11, 12, 13 and 14, mkd. on brass cap



from which;

A cedar, 12 ins. diam., brs. N. 62° E.
78 lks. dist.; mkd. T 15 NR 16 E S 12 B T.

A cedar, 12 ins. diam., brs. S. 10° E.
70 lks. dist.; mkd. T 15 NR 16 E S 13 B T.

A cedar, 10 ins. diam., brs. S. 89 $\frac{1}{2}$ ° W.
48 lks. dist.; mkd. T 15 NR 16 E S 14 B T.

A cedar, 10 ins. diam., brs. N. 41° W.
75 lks. dist.; mkd. T 15 NR 16 E S 11 B T.

Land, rocky and rolling.
Soil, thin and rocky; 3rd rate.
Timber, scattering scrub cedar.
Undergrowth, sagebrush.
No grass.

26

Subdivision of T. 15 N., R. 16 E.

Chains

N. 89° 49' E. on a random line bet. secs. 12 and 13.
 40.00 Set temp. $\frac{1}{4}$ sec. cor.
 79.94 Intersect E. bdy. of Tp., at the reestablished cor. of
 secs. 12 and 13, hereinbefore described.
 Thence
 S. 89° 49' W. on a true line bet. secs. 12 and 13.
 Over rolling land, through scattering scrub timber and
 undergrowth.
 39.94 Set an iron post, 3 ft. long, 1 in. diam., 26 ins. in the
 ground, for $\frac{1}{4}$ sec. cor., mkd. on brass cap

S 12
~~S 13~~
 1917

from which,

A cedar, 10 ins. diam., brs. N. 56 $\frac{1}{2}$ ° E.
 337 lks. dist.; mkd. $\frac{1}{4}$ S 12 B T.
 A cedar, 14 ins. diam., brs. S. 77 $\frac{1}{4}$ ° E.
 374 lks. dist.; mkd. $\frac{1}{4}$ S 13 B T.

71.60 Desc. 59 ft. into canyon.
 76.64 Bottom of canyon, course SE. Asc. 60 ft. to
 79.94 The cor. of secs. 11, 12, 13 and 14.
 Land, rolling.
 Soil, thin and rocky, 3rd rate.
 Timber, scattering scrub cedar.
 Undergrowth, sagebrush.

North on sectional guide meridian, bet. secs. 11 and 12.
 Over rolling land, through scattering timber and under-
 growth.

Desc. 29 ft. to
 4.98 Bottom of canyon, course SE. Asc. 41 ft. to
 8.52 Thence over rolling land.
 40.00 Set an iron post, 3 ft. long, 1 in. diam., 26 ins. in the
 ground, for $\frac{1}{4}$ sec. cor., mkd. on brass cap

S 11 | S 12
 1917

from which,

A cedar, 10 ins. diam., brs. N. 40° E.
 111 lks. dist.; mkd. $\frac{1}{4}$ S 12 B T.
 A cedar, 8 ins. diam., brs. S. 58 $\frac{3}{4}$ ° W.
 70 lks. dist.; mkd. $\frac{1}{4}$ S 11 B T.

46.70 Bottom of draw, course SW. Thence over level land.
 80.00 Set an iron post, 3 ft. long, 2 ins. diam., 8 ins. in the
 ground, in a mound of stone, for cor. of secs. 1, 2, 11
 and 12, mkd. on brass cap

T 15 N R 16 E
 S 2 | S 1
~~S 11 | S 12~~
 1917

from which,

A cedar, 10 ins. diam., brs. S. 80 $\frac{3}{4}$ ° E.
 191 lks. dist.; mkd. T 15 N R 16 E S 12 B T.
 A cedar, 10 ins. diam., brs. S. 89 $\frac{3}{4}$ ° W.
 90 lks. dist.; mkd. T 15 N R 16 E S 11 B T.
 A cedar, 8 ins. diam., brs. N. 11 $\frac{1}{2}$ ° W.
 217 lks. dist.; mkd. T 15 N R 16 E S 2 B T.

No other trees within limits.
 Raise a mound of stone, 2 $\frac{1}{8}$ ft. base, 1 $\frac{1}{2}$ ft. high, W. of cor.
 Land, rolling and level.
 Soil, thin and rocky, 3rd rate.
 Timber, scattering cedar.
 Undergrowth, sagebrush.

Subdivision of T. 15 N., R. 16 E.

Chains

40.00 N. 89° 49' E. on a random line bet. secs. 1 and 12.
Set temp. 1/4 sec. cor.
79.42 Fall 10 lks. S. of the reestablished cor. of secs. 1 and 12, on N. bdy. of Tp., hereinbefore described.

Thence
39.42 S. 89° 45' W. on a true line bet. secs. 1 and 12.
Over gently rolling land, through scattering scrub timber and undergrowth.
Set an iron post, 3 ft. long, 1 in. diam., 26 ins. in the ground, for 1/4 sec. cor., mkd. on brass cap

1/4 S 1
4 S 12
1917

79.42 dig pits, 18 X 18 X 12 ins., E. and W. of post, 3 ft. dist.

The cor. of secs. 1, 2, 11 and 12.
Land, rolling.
Soil, thin and rocky, 3rd rate.
Timber, scattering scrub cedar.
Undergrowth, sagebrush.

North on sectional guide meridian, bet. secs. 1 and 2.
Over rolling land, through scattering scrub timber and undergrowth.

.40 Road brs. NE. and SW.
40.00 Set an iron post, 3 ft. long, 1 in. diam., 26 ins. in the ground, for 1/4 sec. cor.; mkd. on brass cap

1/4
S 2 | S 1
1917

from which,
A cedar, 12 ins. diam., brs. S. 29 1/2° E.
199 lks. dist.; mkd. 1/4 S 1 B T.
A cedar, 12 ins. diam., brs. N. 36 1/2° W.
165 lks. dist.; mkd. 1/4 S 2 B T.

87.00 Road brs. E. and W.
87.10 Fence brs. E. and W.
90.16 Intersect N. bdy. of Tp., 3.12 chs. E. of the reestablished cor. of secs. 35 and 36, described in book "L".

At the point of intersection,
Set an iron post, 3 ft. long, 1 in. diam., 26 ins. in the ground, for 1/4 sec. cor., mkd. on brass cap.
Establish cor. of secs. 1 and 2, as described in Book "L," and at intervals of 40.00 chs. west therefrom establish sec. and 1/4 sec. cors. to refer to secs. in T. 15 N., R. 16 E. only.

1917

dig pits, 18 X 18 X 12 ins., E. and W. of post, 3 ft. dist.
Land, rolling.
Soil, thin, 2nd rate.
Timber, scattering scrub cedar.
Undergrowth, sagebrush.

24.50 From the cor. of secs. 2, 3, 34 and 35, on S. bdy. of Tp., hereinbefore described.
N. 0° 1' W. bet. secs. 34 and 35.
Over rolling land, through scattering scrub timber and undergrowth.
Change to gentle W. slope.

28

Subdivision of T. 15 N. R. 16 E.

Chains

40.00 Set an iron post, 3 ft. long, 1 in. diam., 4 ins. in the ground, in a mound of stone, for $\frac{1}{4}$ sec. cor., mkd. on brass cap

$\frac{1}{4}$
 S34 | S35
 1917

and raise a mound of stone, 2 ft. base, $1\frac{1}{2}$ ft. high, W. of cor.

55.00 Change to gentle NW. slope.

80.00 Set an iron post, 3 ft. long, 2 ins. diam., 24 ins. in the ground, for cor. of secs. 26, 27, 34 and 35, mkd. on brass cap

T15N R16E
 S27 | S26
 S34 | S35
 1917

from which,

A cedar, 8 ins. diam., brs. N. $33\frac{3}{4}^{\circ}$ E.
328 lks. dist.; mkd. T 15 N R 16 E S 26 B T.

A cedar, 10 ins. diam., brs. S. 60° W.
406 lks. dist.; mkd. T 15 N R 16 E S 34 B T.

No other trees within limits.

Dig pits, 18 X 18 X 12 ins., NW. and SE. of cor. $5\frac{1}{2}$ ft. dist.

Land, gently rolling.

Soil, sandy, 2nd and 3rd rates.

Timber, scattering cedar.

Undergrowth, sagebrush.

40.00 East on a random line bet. secs. 26 and 35.

Set temp. $\frac{1}{4}$ sec. cor.

80.34 Fall 4 lks. S. of the cor. of secs. 25, 26, 35 and 36.

Thence

S. $89^{\circ} 58'$ W. on a true line bet. secs. 26 and 35.

Over gently rolling land, through scattering scrub timber and undergrowth.

40.17 Set an iron post, 3 ft. long, 1 in. diam., 26 ins. in the ground, for $\frac{1}{4}$ sec. cor., mkd. on brass cap

S 26
~~S 35~~
 1917

dig pits, 18 X 18 X 12 ins., E. and W. of post, 3 ft. dist.

70.00 General drainage at this point is NE.

80.34 The cor. of secs. 26, 27, 34 and 35.

Land, gently rolling.

Soil, limestone subsoil, 3rd rate.

Timber, scattering cedar.

Undergrowth, sagebrush.

Poor growth of grass.

N. $0^{\circ} 1'$ W. bet. secs. 26 and 27.

Over gently rolling land, through scattering scrub timber and undergrowth.

40.00 Set an iron post, 3 ft. long, 1 in. diam., 26 ins. in the ground, for $\frac{1}{4}$ sec. cor., mkd. on brass cap

$\frac{1}{4}$
 S27 | S26
 1917

Subdivision of T. 15 N., R. 16 E.

Chains

from which,

A cedar, 10 ins. diam., brs. S. 79° E.
109 lks. dist.; mkd. 1/4 S 26 B T.

A cedar, 8 ins. diam., brs. N. 78 1/2° W.
35 lks. dist.; mkd. 1/4 S 27 B T.

49.80 Road brs. NE. and SW.

80.00 Set an iron post, 3 ft. long, 2 ins. diam., 6 ins. in the ground, in a mound of stone, for cor. of secs. 22, 23, 26 and 27, mkd. on brass cap

T15N R16E
S22 | S23
S27 | S26
1917

from which,

A cedar, 12 ins. diam., brs. N. 28° E.
150 lks. dist.; mkd. T 15 N R 16 E S 23 B T.

A cedar, 12 ins. diam., brs. S. 11 1/2° E.
109 lks. dist.; mkd. T 15 N R 16 E S 26 B T.

A cedar, 10 ins. diam., brs. S. 17 1/4° W.
96 lks. dist.; mkd. T 15 N R 16 E S 27 B T.

A cedar, 14 ins. diam., brs. N. 41 1/4° W.
328 lks. dist.; mkd. T 15 N R 16 E S 22 B T.

Land, gently rolling.

Soil, limestone subsoil, 3rd rate.

Timber, scattering scrub cedar and pinyon.

Undergrowth, sagebrush.

Poor growth of grass.

40.00 N. 89° 58' E. on a random line bet. secs. 23 and 26.
Set temp. 1/4 sec. cor.

80.44 Fall 16 lks. S. of the cor. of secs. 23, 24, 25 and 26.
Thence:

40.22 S. 89° 51' W. on a true line bet. secs. 23 and 26.

Set an iron post, 3 ft. long, 1 in. diam., 26 ins. in the ground, for 1/4 sec. cor., mkd. on brass cap

1/4 S 23
1/4 S 26
1917

from which,

A cedar, 10 ins. diam., brs. N. 68 1/2° E.
175 lks. dist.; mkd. 1/4 S 23 B T.

A cedar, 12 ins. diam., brs. S. 42 1/4° W.
88 lks. dist.; mkd. 1/4 S 26 B T.

60.45 Road brs. N. and S.

80.44 The cor. of secs. 22, 23, 26 and 27.

Land, gently rolling.

Soil, thin and rocky, 3rd rate.

Timber, scattering cedar.

Undergrowth, sagebrush.

Fair growth of short grass.

40.00 N. 0° 1' W. bet. secs. 22 and 23.

Over gently rolling land, through scattering scrub timber and undergrowth.

Set an iron post, 3 ft. long, 1 in. diam., 26 ins. in the ground, for 1/4 sec. cor., mkd. on brass cap

1/4
S22 | S23
1917

30

Subdivision of T. 15 N., R. 16 E.

Chains

from which,

A cedar, 10 ins. diam., brs. S. $41\frac{1}{2}^\circ$ E.
126 lks. dist.; mkd. $\frac{1}{4}$ S 23 B T.

A cedar, 14 ins. diam., brs. N. 4° W.
88 lks. dist.; mkd. $\frac{1}{4}$ S 22 B T.

80.00 Set an iron post, 3 ft. long, 2 ins. diam., 4 ins. in the ground, in a mound of stone, for cor. of secs. 14, 15, 22 and 23, mkd. on brass cap

T15N R16E
S15/S14
S22/S23
1917

from which,

A cedar, 10 ins. diam., brs. N. 54° E.
76 lks. dist.; mkd. T 15 N R 16 E S 14 B T.

A cedar, 6 ins. diam., brs. S. $77\frac{3}{4}^\circ$ E.
227 lks. dist.; mkd. T 15 N R 16 E S 23 B T.

A cedar, 10 ins. diam., brs. S. 33° W.
109 lks. dist.; mkd. T 15 N R 16 E S 22 B T.

A cedar, 12 ins. diam., brs. N. $74\frac{3}{4}^\circ$ W.
272 lks. dist.; mkd. T 15 N R 16 E S 15 B T.

Land, gently rolling.
Soil, thin and rocky, 3rd rate.
Timber, scrub cedar.
Undergrowth, sagebrush.

40.00 N. $89^\circ 51'$ E. on a random line bet. secs. 14 and 23.
Set temp. $\frac{1}{4}$ sec. cor.

80.16 Fall 3 lks. N. of the cor. of secs. 13, 14, 23 and 24.
Thence

S. $89^\circ 52'$ W. on a true line bet. secs. 14 and 23.

Over gently rolling land, through scattering scrub timber and undergrowth.

40.08 Set an iron post, 3 ft. long, 1 in. diam., 26 ins. in the ground, for $\frac{1}{4}$ sec. cor., mkd. on brass cap

$\frac{1}{4}$ S 14
 $\frac{1}{4}$ S 23
1917

and raise a mound of stone, 2 ft. base, $1\frac{1}{2}$ ft. high,
N. of cor.

59.68 Road brs. N. and S.
80.16 The cor. of secs. 14, 15, 22 and 23.

Land, gently rolling.
Soil, thin and rocky, 3rd rate.
Timber, scattering scrub cedar.
Undergrowth, sagebrush.

N. $0^\circ 1'$ W. bet. secs. 14 and 15.
Over gently rolling land, through scattering timber and undergrowth.

40.00 Set an iron post, 3 ft. long, 1 in. diam., 26 ins. in the ground, for $\frac{1}{4}$ sec. cor., mkd. on brass cap

$\frac{1}{4}$
S15/S14
1917

dig pits, 18 X 18 X 12 ins., N. and S. of post, 3 ft. dist.

Subdivision of T. 15 N., R. 16 E.

Chains

80.00 Set an iron post, 3 ft. long, 2 ins. diam., 24 ins. in the ground, for cor. of secs. 10, 11, 14 and 15, mkd. on brass cap

T15N R16E
S10|S11
S15|S14
1917

and raise a mound of stone, 2 ft. base, 1 1/2 ft. high, W. of cor.

Land, gently rolling.
Soil, thin and rocky, 3rd rate.
Timber, scattering scrub cedar.
Undergrowth, sagebrush.

40.00 N. 89° 52' E. on a random line bet. secs. 11 and 14.
Set temp. 1/4 sec. cor.

80.26 Fall 3 lks. N. of the cor. of secs. 11, 12, 13 and 14.
Thence

S. 89° 53' W. on a true line bet. secs. 11 and 14.
Over gently rolling land, through scattering timber and undergrowth.

2.26 Asc. 30 ft. from side of small canyon to
Right rim of canyon brs. NW. and SE.

40.13 Set an iron post, 3 ft. long, 1 in. diam., 26 ins. in the ground, for 1/4 sec. cor., mkd. on brass cap

1/4 S 11
1/4 S 14
1917

from which,

A cedar, 12 ins. diam., brs. N. 23 1/2° W.
135 lks. dist.; mkd. 1/4 S 11 B T.

A cedar, 8 ins. diam., brs. S. 45° W.
70 lks. dist.; mkd. 1/4 S 14 B T.

48.76 Road brs. N. and S.

80.26 The cor. of secs. 10, 11, 14 and 15.

Land, gently rolling.
Soil, thin and rocky, 3rd rate.
Timber, scattering scrub cedar.
Undergrowth, scattering sagebrush. -- No grass.

N. 0° 1' W. bet. secs. 10 and 11.

Over gently rolling land, through scattering scrub timber and undergrowth.

40.00 Set an iron post, 3 ft. long, 1 in. diam., 26 ins. in the ground, for 1/4 sec. cor., mkd. on brass cap

1/4
S10|S11
1917

and raise a mound of stone, 2 ft. base, 1 1/2 ft. high, W. of cor.

80.00 Set an iron post, 3 ft. long, 2 ins. diam., 4 ins. in the ground, in a mound of stone, for cor. of secs. 2, 3, 10 and 11, mkd. on brass cap

T15N R16E
S 3|S 2
S10|S11
1917

and raise a mound of stone, 2 ft. base, 1 1/2 ft. high, W. of cor.

Land, gently rolling.
Soil, thin and rocky, 3rd rate.--Timber, scattering cedar.
Undergrowth, sagebrush.--Fair growth of short grass.

40.00 N. 89° 53' E. on a random line bet. secs. 2 and 11.
Set temp. 1/4 sec. cor.

80.28 Intersect N. and S. line at the cor. of secs. 1, 2, 11 and 12.

Thence
S. 89° 53' W. on a true line bet. secs. 2 and 11.
Over gently rolling land, through scattering timber and undergrowth.

32

Subdivision of T. 15 N., R. 16 E.

Chains

8.28 Bottom of shallow draw, course N.
 12.78 Road brs. NE. and SW.
 40.14 Set an iron post, 3 ft. long, 1 in. diam., 20 ins. in the ground, in a mound of stone, for $\frac{1}{4}$ sec. cor., mkd. on brass cap

$\frac{1}{4}$ S 2
 $\frac{1}{4}$ S 11
 1917

from which,
 A cedar, 10 ins. diam., brs. N. $21\frac{1}{2}^\circ$ E.
 86 lks. dist.; mkd. $\frac{1}{4}$ S 2 B T.
 A cedar, 9 ins. diam., brs. S. $3\frac{1}{4}^\circ$ W.
 290 lks. dist.; mkd. $\frac{1}{4}$ S 11 B T.

80.28 The cor. of secs. 2, 3, 10 and 11.
 Land, rolling. -- Soil, thin, 2nd rate.
 Timber, scattering cedar. -- Undergrowth, sagebrush, yucca.
 Short grass.

40.00 N. 0° 1' W. on a random line bet. secs. 2 and 3.
 Set temp. $\frac{1}{4}$ sec. cor.
 90.30 Fall 15 lks. W. of the corner of secs. 2 and 3, on N. bdy. of Tp., described in Book "L."
 Thence
 S. 0° 5' W. on a true line bet. secs. 2 and 3.
 Over gently rolling land, through timber and undergrowth.

8.80 Fence brs. E. and W.
 10.90 Road brs. NW. and SE.
 20.30 Draw, course NW.
 49.00 Road brs. NE. and SW.
 50.30 Set an iron post, 3 ft. long, 1 in. diam., 26 ins. in the ground, for $\frac{1}{4}$ sec. cor., mkd. on brass cap

$\frac{1}{4}$ S 3 | S 2
 1917

from which,
 A cedar, 14 ins. diam., brs. N. $61\frac{1}{4}^\circ$ E.
 206 lks. dist.; mkd. $\frac{1}{4}$ S 2 B T.
 A cedar, 11 ins. diam., brs. S. $8\frac{1}{4}^\circ$ W.
 228 lks. dist.; mkd. $\frac{1}{4}$ S 3 B T.

90.30 The cor. of secs. 2, 3, 10 and 11.
 Land, gently rolling. -- Soil, thin and rocky, 3rd rate.
 Timber, scattering scrub cedar.
 Undergrowth, sagebrush, brigham brush and yucca.
 Fair growth of short grass.

From the cor. of secs. 3, 4, 33 and 34, on S. bdy. of Tp., hereinbefore described,
 N. 0° 1' W. bet. secs. 33 and 34.
 Over gently rolling land, through scattering scrub timber and undergrowth.

40.00 Set an iron post, 3 ft. long, 1 in. diam., 26 ins. in the ground, for $\frac{1}{4}$ sec. cor., mkd. on brass cap

$\frac{1}{4}$ S 33 | S 34
 1917

from which,
 A cedar, 12 ins. diam., brs. N. $32\frac{1}{4}^\circ$ E.
 376 lks. dist.; mkd. $\frac{1}{4}$ S 34 B T.
 No other trees within limits.
 Dig pits, 18 X 18 X 12 ins., N. and S. of post, 3 ft. dist.

80.00 Set an iron post, 3 ft. long, 2 ins. diam., 24 ins. in the ground, for cor. of secs. 27, 28, 33 and 34, mkd. on brass cap

T15N R16E
 S28 | S27
 S33 | S34
 1917

Subdivision of T. 15 N., R. 16 E.

33

Chains

from which,

- A cedar, 15 ins. diam., brs. N. $89\frac{1}{2}^\circ$ E.
200 lks. dist.; mkd. T 15 N R 16 E S 27 B T.
- A cedar, 10 ins. diam., brs. S. $21\frac{1}{4}^\circ$ E.
262 lks. dist.; mkd. T 15 N R 16 E S 34 B T.
- A cedar, 8 ins. diam., brs. N. $30\frac{1}{2}^\circ$ W.
675 lks. dist.; mkd. T 15 N R 16 E S 28 B T.

No other trees within limits.

Dig one pit, 18 X 18 X 12 ins., SW. of post, $5\frac{1}{2}$ ft. dist.

Land, gently rolling.

Soil, 2nd rate.

Timber, scattering scrub cedar.

Undergrowth, sagebrush.

Fair growth of grass.

40.00

East on a random line bet. secs. 27 and 34.

79.88

Set temp. $\frac{1}{4}$ sec. cor.

Fall 7 lks. N. of the cor. of secs. 26, 27, 34 and 35.

Thence

N. $89^\circ 57'$ W. on a true line bet. secs. 27 and 34.

Over gently rolling land, through scattering scrub timber and undergrowth.

15.58

Road brs. NE. and SW.

19.90

Timber becomes more dense.

39.94

Set an iron post, 3 ft. long, 1 in. diam., 26 ins. in the ground, for $\frac{1}{4}$ sec. cor., mkd. on brass cap

$\frac{1}{4}$ S 27
 $\frac{1}{4}$ S 34
 1917

from which,

- A cedar, 12 ins. diam., brs. N. $21\frac{1}{2}^\circ$ E.
132 lks. dist.; mkd. $\frac{1}{4}$ S 27 B T.
- A cedar, 8 ins. diam., brs. S. 12° E.
5 lks. dist.; mkd. $\frac{1}{4}$ S 34 B T.

76.90

Timber becomes scattering.

79.88

The cor. of secs. 27, 28, 33 and 34.

Land, gently rolling.

Soil, sandy, 3rd rate.

Timber, scrub cedar.

Undergrowth, sagebrush.

40.00

N. $0^\circ 1'$ W. bet. secs. 27 and 28.

Over gently rolling land, through scattering scrub timber and undergrowth.

Set an iron post, 3 ft. long, 1 in. diam., 20 ins. in the ground, in a mound of stone, for $\frac{1}{4}$ sec. cor., mkd. on brass cap

$\frac{1}{4}$
 S28 | S27
 1917

80.00

and raise a mound of stone, 2 ft. base, $1\frac{1}{2}$ ft. high, W. of cor.

Set an iron post, 3 ft. long, 2 ins. diam., 6 ins. in the ground, in a mound of stone, for cor. of secs. 21, 22, 27 and 28, mkd. on brass cap

T15 N R16 E
 S21 | S22
 S28 | S27
 1917

34

Subdivision of T. 15 N., R. 16 E.

Chains

and raise a mound of stone, 2 ft. base, 1½ ft. high,
W. of cor.
Land, gently rolling.
Soil, limestone subsoil, 3rd rate.
Timber, scattering scrub cedar.
Undergrowth, sagebrush.
Poor growth of grass.

40.00 S. 89° 57' E. on a random line bet. secs. 22 and 27.
Set temp. ¼ sec. cor.
79.94 Fall 4 lks. S. of the cor. of secs. 22, 23, 26 and 27.
Thence
N. 89° 59' W. on a true line bet. secs. 22 and 27.
Over gently rolling land, through dense scrub timber and
scattering undergrowth.
39.97 Set an iron post, 3 ft. long, 1 in. diam., 26 ins. in the
ground, for ¼ sec. cor., mkd. on brass cap

§ 22
S 27
1917

from which,
A cedar, 8 ins. diam., brs. N. 24¾° W.
88 lks. dist.; mkd. ¼ S 22 B T.
A pinyon, 15 ins. diam., brs. S. 63° W.
48 lks. dist.; mkd. ¼ S 27 B T.

55.00 Timber becomes scattering.
79.94 The cor. of secs. 21, 22, 27 and 28.
Land, gently rolling.
Soil, sandy, 3rd rate.
Timber, scattering scrub cedar.
Undergrowth, sagebrush.
Poor growth of grass.

40.00 N. 0° 1' W. bet. secs. 21 and 22.
Over gently rolling land, through scattering undergrowth.
Set an iron post, 3 ft. long, 1 in. diam., 14 ins. in the
ground, in a mound of stone, for ¼ sec. cor., mkd. on
brass cap

1
S21 | S22
1917

and raise a mound of stone, 2 ft. base, 1½ ft. high,
W. of cor.
71.00 S. edge of potato wash brs. NE. and SW.
72.00 Center of wash, course NE.
74.50 Fence brs. NE. and SW.
75.00 NW. edge of potato wash brs. NE. and SW.
80.00 Set an iron post, 3 ft. long, 2 ins. diam., 18 ins. in the
ground, in a mound of stone, for cor. of secs. 15, 16,
21 and 22, mkd. on brass cap

T15N R16E
S16 | S15
S21 | S22
1917

and raise a mound of stone, 2 ft. base, 1½ ft. high,
W. of cor.
Land, gently rolling.
Soil, limestone subsoil, 3rd rate.
No timber.
Undergrowth, scattering sagebrush.--Poor growth of grass.

Subdivision of T. 15 N., R. 16 E.

Chains
 40.00 S. 89° 59' E. on a random line bet. secs. 15 and 22.
 Set temp. $\frac{1}{4}$ sec. cor.
 80.12 Fall 2 lks. S. of the cor. of secs. 14, 15, 22 and 23.
 Thence
 West on a true line bet. secs. 15 and 22.
 Over rolling land, through scattering scrub timber and
 undergrowth.
 20.00 Timber becomes dense.
 40.06 Set an iron post, 3 ft. long, 1 in. diam., 18 ins. in the
 ground, in a mound of stone, for $\frac{1}{4}$ sec. cor. mkd. on
 brass cap

$\frac{1}{4}$ S 15
 $\frac{1}{4}$ S 22
 1917

from which,
 A cedar, 6 ins. diam., brs. N. 70 $\frac{1}{4}$ ° W.
 110 lks. dist.; mkd. $\frac{1}{4}$ S 15 B T.
 A cedar, 15 ins. diam., brs. S. 50° W.
 135 lks. dist.; mkd. $\frac{1}{4}$ S 22 B T.
 48.00 Timber becomes scattering.
 73.70 Edge of Potato wash brs. NE. and SW.
 77.70 Bottom of wash, course NE.
 Dam 6 ft. high on line; no water in reservoir.
 78.70 Edge of Potato wash brs. NE. and SW.
 Fence brs. NW. and SE.
 80.12 The cor. of secs. 15, 16, 21 and 22.
 Land, gently rolling.
 Soil, limestone subsoil, 3rd rate.
 Timber, scrub cedar.
 Undergrowth, sagebrush.
 Poor growth of grass.

N. 0° 1' W. bet. secs. 15 and 16.
 Over gently rolling land, through scattering scrub timber
 and undergrowth.
 5.00 W. edge of Potato wash at bend brs. NE. and SE.
 40.00 Set an iron post, 3 ft. long, 1 in. diam., 6 ins. in the
 ground, in a mound of stone, for $\frac{1}{4}$ sec. cor., mkd. on
 brass cap

$\frac{1}{4}$
 S16 | S15
 1917

and raise a mound of stone, 2 ft. base, 1 $\frac{1}{2}$ ft. high,
 W. of cor.
 80.00 Set an iron post, 3 ft. long, 2 ins. diam., 8 ins. in the
 ground, in a mound of stone, for cor. of secs. 9, 10,
 15 and 16, mkd. on brass cap

T15N R16E
 S 9 | S10
 S16 | S15
 1917

and raise a mound of stone, 2 ft. base, 1 $\frac{1}{2}$ ft. high,
 W. of cor.
 Land, gently rolling.
 Soil, limestone subsoil, 3rd rate.
 Timber, scattering scrub cedar.
 Undergrowth, sagebrush, and Spanish daggers.
 Poor growth of grass.

36

Subdivision of T. 15 N. R. 16 E.

Chains

- East on a random line bet. secs. 10 and 15.
- 40.00 Set temp. $\frac{1}{4}$ sec. cor.
- 80.08 Fall 5 lks. S. of the cor. of secs. 10, 11, 14 and 15.
Thence
S. $89^{\circ} 58'$ W. on a true line bet. secs. 10 and 15.
Over gently rolling land, through scattering scrub timber
and undergrowth.
- 40.04 Set an iron post, 3 ft. long, 1 in. diam., 6 ins. in the
ground, in a mound of stone, for $\frac{1}{4}$ sec. cor., mkd. on
brass cap

$\frac{1}{4}$ S 10
 $\frac{1}{4}$ S 15
 1917

from which,

- A cedar, 8 ins. diam., brs. N. $48\frac{1}{2}^{\circ}$ E.
230 lks. dist.; mkd. $\frac{1}{4}$ S 10 B T.
- A cedar, 20 ins. diam., brs. S. 47° W.
31 lks. dist.; mkd. $\frac{1}{4}$ S 15 B T.

- 50.08 Enter Potato wash, course N.
- 55.10 Leave Potato wash.
- 80.08 The cor. of secs. 9, 10, 15 and 16.
Land, gently rolling.
Soil, limestone subsoil, 3rd rate.
Timber, scattering scrub cedar.
Undergrowth, sagebrush.
Poor growth of grass.

N. $0^{\circ} 1'$ W. bet. secs. 9 and 10.

- Over gently rolling land, through scattering scrub timber
and undergrowth.
- 40.00 Set an iron post, 3 ft. long, 1 in. diam., 20 ins. in the
ground, in a mound of stone, for $\frac{1}{4}$ sec. cor., mkd. on
brass cap

$\frac{1}{4}$
 S 9 | S 10
 1917

dig pits, 18 X 18 X 12 ins., N. and S. of post, 3 ft.
dist.

- 53.22 Road brs. NE. and SW.
- 80.00 Set an iron post, 3 ft. long, 2 ins. diam., 6 ins. in the
ground, in a mound of stone, for cor. of secs. 3, 4,
9 and 10, mkd. on brass cap

T15N R16E
 S 4 | S 3
 S 9 | S 10
 1917

and raise a mound of stone, 2 ft. base, $1\frac{1}{2}$ ft. high,
W. of cor.

- Land, gently rolling.
- Soil, limestone subsoil, 3rd rate.
- Timber, scattering scrub cedar.
- Undergrowth, sagebrush and Spanish daggers.
- Poor growth of grass.

Subdivision of T. 15 N., R. 16 E.

Chains
 40.00 N. 89° 58' E. on a random line bet. secs. 3 and 10.
 Set temp. $\frac{1}{4}$ sec. cor.
 79.98 Fall 5 lks. S. of the cor. of secs. 2, 3, 10 and 11.
 Thence
 S. 89° 56' W. on a true line bet. secs. 3 and 10.
 Over gently rolling land, through scattering scrub timber
 and undergrowth.
 31.00 Enter Potato wash, course N.
 34.70 Leave Potato wash.
 39.99 Set an iron post, 3 ft. long, 1 in. diam., 10 ins. in the
 ground; in a mound of stone, for $\frac{1}{4}$ sec. cor., mkd. on
 brass cap

$\frac{1}{4}$ S 3
 $\frac{1}{4}$ S 10
 1917

and raise a mound of stone, 2 ft. base, $1\frac{1}{2}$ ft. high,
 N. of cor.
 41.70 Road brs. NE. and SW.
 79.98 The cor. of secs. 3, 4, 9 and 10.
 Land, gently rolling.
 Soil, limestone subsoil, 3rd rate.
 Timber, scattering cedar.
 Undergrowth, sagebrush.
 Poor growth of grass.

40.00 N. 0° 1' W. on a random line bet. secs. 3 and 4.
 Set temp. $\frac{1}{4}$ sec. cor.
 90.04 Fall 12 lks. W. of the corner of secs. 3 and 4, on N. bdy.
 of Tp. described in Book "J."
 Thence
 S. 0° 4' W. on a true line bet. secs. 3 and 4.
 Over gently rolling land, through scattering scrub timber
 and undergrowth.
 50.04 Set an iron post, 3 ft. long, 1 in. diam., 26 ins. in the
 ground, for $\frac{1}{4}$ sec. cor., mkd. on brass cap

$\frac{1}{4}$ S 4
 $\frac{1}{4}$ S 3
 1917

and raise a mound of stone 2 ft. base, $1\frac{1}{2}$ ft. high,
 W. of cor.
 53.73 Fence brs. E. and W.
 54.05 Road brs. E. and W.
 90.04 The cor. of secs. 3, 4, 9 and 10.
 Land, gently rolling.
 Soil, limestone subsoil, 3rd rate.
 Timber, scattering scrub cedar.
 Undergrowth, sagebrush and Spanish daggers.
 Poor growth of grass.

From the cor. of secs. 4, 5, 32 and 33; on S. bdy. of Tp.,
 hereinbefore described,
 N. 0° 2' W. bet. secs. 32 and 33.
 Over gently rolling land, through scattering scrub timber
 and undergrowth.
 25.00 Enter Potato wash.
 30.00 Bottom of Potato wash, course NE.
 35.00 Leave Potato wash.
 40.00 Set an iron post, 3 ft. long, 1 in. diam., 3 ins. in the
 ground, in a mound of stone, for $\frac{1}{4}$ sec. cor., mkd. on
 brass cap

58
 15
 23
 93

38

Subdivision of T. 15 N., R. 16 E.

Chains

$\frac{1}{4}$
S32|S33
1917

from which,

A cedar, 8 ins. diam., brs. N. $35\frac{1}{2}^\circ$ E.

43 lks. dist.; mkd. $\frac{1}{4}$ S 33 B T.

A cedar, 12 ins. diam., brs. S. $75\frac{1}{2}^\circ$ W.

761 lks. dist.; mkd. $\frac{1}{4}$ S 32 B T.

80.00 Set an iron post, 3 ft. long, 2 ins. diam., 12 ins. in the ground, in a mound of stone, for cor. of secs. 28, 29, 32 and 33, mkd. on brass cap

T15N R16E
S29|S28
S32|S33
1917

and raise a mound of stone, 2 ft. base, $1\frac{1}{2}$ ft. high, W. of cor.

Land, gently rolling.

Soil, sandy, 3rd rate.

Timber, scattering scrub cedar.

Undergrowth, sagebrush.

Poor growth of grass.

40.00 East on a random line bet. secs. 28 and 33.

79.86 Set temp. $\frac{1}{4}$ sec. cor.

Fall 9 lks. N. of the cor. of secs. 27, 28, 33 and 34.

Thence

N. $89^\circ 56'$ W. on a true line bet. secs. 28 and 33.

Over gently rolling land, through scattering scrub timber and undergrowth.

30.45 Wash, 15 lks. wide, 3 ft. deep, course NE.

39.93 Set an iron post, 3 ft. long, 1 in. diam., 2 ins. in the ground, in a mound of stone, for $\frac{1}{4}$ sec. cor., mkd. on brass cap

$\frac{1}{4}$ S 28
4 S 33
1917

and raise a mound of stone, 2 ft. base, $1\frac{1}{2}$ ft. high, N. of cor.

62.56 Enter Potato wash.

64.66 Bottom of Potato wash, course N.

66.45 Leave wash.

79.86 The cor. of secs. 28, 29, 32, and 33.

Land, gently rolling.

Soil, 2nd rate.

Timber, scattering cedar.

Undergrowth, sagebrush.

N. $0^\circ 2'$ W. bet. secs. 28 and 29.

Over gently rolling land, through scattering scrub cedar timber and undergrowth.

40.00 Set an iron post, 3 ft. long, 1 in. diam., 14 ins. in the ground, in a mound of stone, for $\frac{1}{4}$ sec. cor., mkd. on brass cap

$\frac{1}{4}$
S29|S28
1917

Subdivision of T. 15 N., R. 16 E.

Chains

from which,
 A cedar, 6 ins. diam., brs. N. 61° E.
 198 lks. dist.; mkd. 1/4 S 28 B T.
 A cedar, 8 ins. diam., brs. S. 33° W.
 95 lks. dist.; mkd. 1/4 S 29 B T.

80.00

Set an iron post, 3 ft. long, 2 ins. diam., 24 ins. in the ground, for cor. of secs. 20, 21, 28 and 29, mkd. on brass cap

T15N R16E.
 S20 | S21
 S29 | S28
 1917

dig pits, 18 X 18 X 12 ins., in each sec., 5 1/2 ft. dist.
 Land, gently rolling.
 Timber, scattering scrub cedar.
 Undergrowth, sagebrush.
 Abundant grass.
 Soil, 2nd rate.

40.00
80.08

S. 89° 56' E. on a random line bet. secs. 21 and 28.
 Set temp. 1/4 sec. cor.
 Intersect N. and S. line at the cor. of secs. 21, 22, 27 and 28.

Thence
 N. 89° 56' W. on a true line bet. secs. 21 and 28.
 Over gently rolling land, through scattering scrub timber and undergrowth.

40.04

Set an iron post, 3 ft. long, 1 in. diam., 20 ins. in the ground, in a mound of stone, for 1/4 sec. cor., mkd. on brass cap

S 21
 1/4 S 28
 1917

43.58
45.40
46.60
80.08

and raise a mound of stone, 2. ft. base, 1 1/2 ft. high, N. of cor.

Enter Potato wash.
 Bottom of wash, course N.
 Leave wash.
 The cor. of secs. 20, 21, 28. and 29.
 Land, gently rolling.
 Soil, limestone subsoil, 3rd rate.
 Timber, scattering cedar.
 Undergrowth, sagebrush.
 Poor grass.

40.00

N. 0° 2' W. bet. secs. 20 and 21.
 Over gently rolling land, through scattering timber and undergrowth.
 Set an iron post, 3 ft. long, 1 in. diam., 26 ins. in the ground, for 1/4 sec. cor., mkd. on brass cap

1/4
 S20 | S21
 1917

80.00

dig pits, 18 X 18 X 12 ins., N. and S. of post, 3 ft. dist.
 Set an iron post, 3 ft. long, 2 ins. diam., 6 ins. in the ground, in a mound of stone, for cor. of secs. 16, 17, 20 and 21, mkd. on brass cap

40

Subdivision of T. 15 N. R. 16 E.

Chains

T15N R16E
 S17|S16
 S20|S21
 1917

from which,

- A cedar, 8 ins. diam., brs. N. $38\frac{3}{4}^{\circ}$ E.
 178 lks. dist.; mkd. T 15 N R 16 E S 16 B T.
 A cedar, 10 ins. diam., brs. S. 26° E.
 62 lks. dist.; mkd. T 15 N R 16 E S 21 B T.
 A cedar, 8 ins. diam., brs. N. $51\frac{3}{4}^{\circ}$ W.
 496 lks. dist.; mkd. T 15 N R 16 E S 17 B T.

No other trees within limits.

Raise a mound of stone, 2 ft. base, $1\frac{1}{2}$ ft. high, W. of cor.
Land, gently rolling.

Soil, limestone subsoil, 3rd. rate.

Timber, scattering scrub cedar.

Undergrowth, sagebrush.

Fair growth of grass.

40.00

S. $89^{\circ} 56'$ E. on a random line bet. secs. 16 and 21.Set temp. $\frac{1}{4}$ sec. cor.

80.06

Intersect N. and S. line at the cor. of secs. 15, 16, 21
and 22.

Thence

N. $89^{\circ} 56'$ W. on a true line bet. secs. 16 and 21.Over gently rolling land, through scattering scrub timber
and undergrowth.

40.03

Set an iron post, 3 ft. long, 1 in. diam., 26 ins. in the
ground, for $\frac{1}{4}$ sec. cor., mkd. on brass cap

S 16
 4S 21
 1917

and raise a mound of stone, 2 ft. base, $1\frac{1}{2}$ ft. high,
N. of cor.

80.06

The cor. of secs. 16, 17, 20 and 21.

Land, gently rolling.

Soil, limestone subsoil, 3rd rate.

Timber, scattering scrub cedar.

Undergrowth, sagebrush.

Poor growth of grass.

40.00

N. $0^{\circ} 2'$ W. bet. secs. 16 and 17.Over gently rolling land, through scattering scrub timber
and undergrowth.Set an iron post, 3 ft. long, 1 in. diam., 26 ins. in the
ground, for $\frac{1}{4}$ sec. cor., mkd. on brass cap

S17|S16
 1917

from which,

A cedar, 8 ins. diam., brs. S. $6\frac{1}{4}^{\circ}$ E.
259 lks. dist.; mkd. $\frac{1}{4}$ S 16 B T.A cedar, 10 ins. diam., brs. S. $28\frac{1}{2}^{\circ}$ W.
272 lks. dist.; mkd. $\frac{1}{4}$ S 17 B T.

80.00

Set an iron post, 3 ft. long, 2 ins. diam., 12 ins. in the
ground, in a mound of stone, for cor. of secs. 8, 9,
16 and 17, mkd. on brass cap

Subdivision of T. 15 N., R. 16 E.

Chains

T15N R16E
S 8 | S 9
S 17 | S 16
1917

and raise a mound of stone, 2 ft. base, 1 1/2 ft. high, W. of cor.

Land, gently rolling.
Soil, limestone subsoil, 3rd rate.
Timber, scattering scrub cedar.
Undergrowth, scattering sagebrush and Spanish daggers.
Poor growth of grass.

40.00 S. 89° 56' E. on a random line bet. secs. 9 and 16.
80.02 Set temp. 1/4 sec. cor.
Intersect N. and S. line at the cor. of secs. 9, 10, 15 and 16.

40.01 Thence
N. 89° 56' W. on a true line bet. secs. 9 and 16.
Over gently rolling land, through scattering undergrowth.
Set an iron post, 3 ft. long, 1 in. diam., 4 ins. in the ground, in a mound of stone, for 1/4 sec. cor., mkd. on brass cap

S 9
S 16
1917

50.00 and raise a mound of stone, 2 ft. base, 1 1/2 ft. high, N. of cor.
80.02 Wash, 15 lks. wide, 4 ft. deep, course NE.
The cor. of secs. 8, 9, 16 and 17.

Land, gently rolling.
Soil, limestone subsoil, 3rd rate.
No timber.
Undergrowth, scattering sagebrush and Spanish daggers.
Poor growth of grass.

21.70 N. 0° 2' W. bet. secs. 8 and 9.
40.00 Over gently rolling land, through scattering undergrowth.
Road brs. NE. and SW.
Set an iron post, 3 ft. long, 1 in. diam., 22 ins. in the ground, in a mound of stone, for 1/4 sec. cor., mkd. on brass cap

S 8 | S 9
1917

80.00 and raise a mound of stone, 2 ft. base, 1 1/2 ft. high, W. of cor.
Set an iron post, 3 ft. long, 2 ins. diam., 24 ins. in the ground, for cor. of secs. 4, 5, 8 and 9, mkd. on brass cap

T15N R16E
S 5 | S 4
S 8 | S 9
1917

dig pits, 18 X 18 X 12 ins., in each sec., 5 1/2 ft. dist.
Land, gently rolling. From this cor., cabin brs. N. 26° W.
Soil, limestone subsoil, 3rd rate.
No timber.
Undergrowth, scattering sagebrush.
Fair growth of grass.

42

Subdivision of T. 15 N., R. 16 E.

Chains

S. 89° 56' E. on a random line bet. secs. 4 and 9.
 40.00 Set temp. $\frac{1}{4}$ sec. cor.
 80.14 Fall 12 lks. S. of the cor. of secs. 3, 4, 9 and 10.
 Thence
 S. 89° 59' W. on a true line bet. secs. 4 and 9.
 Over gently rolling land, through scattering undergrowth.
 40.07 Set an iron post, 3 ft. long, 1 in. diam., 26 ins. in the
 ground, for $\frac{1}{4}$ sec. cor., mkd. on brass cap

$\frac{1}{4}$ S 4
 $\frac{1}{4}$ S 9
 1917

dig pits, 18 X 18 X 12 ins., E. and W. of post, 3 ft. dist.
 80.14 The cor. of secs. 4, 5, 8 and 9.
 Land, gently rolling.
 Soil, limestone subsoil, 3rd rate.
 No timber.
 Scattering sagebrush.
 Fair growth of grass.

N. 0° 2' W. on a random line bet. secs. 4 and 5.
 40.00 Set temp. $\frac{1}{4}$ sec. cor.
 89.78 Fall 47 lks. W. of the corner of secs. 4 and 5, ^{on N.bdy. of Tp.} describ-
 ed in Book "L." Book "E".
 Thence
 S. 0° 16' W. on a true line bet. secs. 4 and 5.
 Over gently rolling land, through scattering scrub timber
 and undergrowth.
 49.78 Set an iron post, 3 ft. long, 1 in. diam., 26 ins. in the
 ground, for $\frac{1}{4}$ sec. cor., mkd. on brass cap

$\frac{1}{4}$
 S 5 | S 4
 1917

and raise a mound of stone, 2 ft. base, 1 $\frac{1}{2}$ ft. high,
 W. of cor.
 68.50 Fence brs. E. and W.
 68.60 Wagon road brs. E. and W.
 89.78 The cor. of secs. 4, 5, 8 and 9.
 Land, gently rolling.
 Soil, thin and rocky, 3rd rate.
 Timber, scattering scrub cedar.
 Undergrowth, sagebrush.

From the cor. of secs. 5, 6, 31 and 32, on S. bdy. of Tp.,
 hereinbefore described,
 N. 0° 2' W. bet. secs. 31 and 32.
 Over gently rolling land, through scattering scrub timber and
 undergrowth.
 40.00 Set an iron post, 3 ft. long, 1 in. diam., 26 ins. in the
 ground, for $\frac{1}{4}$ sec. cor., mkd. on brass cap

$\frac{1}{4}$
 S 31 | S 32
 1917

and raise a mound of stone, 2 ft. base, 1 $\frac{1}{2}$ ft. high,
 W. of cor.
 80.00 Set an iron post, 3 ft. long, 2 ins. diam., 24 ins. in the
 ground, for cor. of secs. 29, 30, 31 and 32, mkd. on
 brass cap

Subdivision of T. 15 N., R. 16 E.

Chains

T15N R16E
S30|S29
S31|S32
1917

from which,
A cedar, 12 ins. diam., brs. S. 14 1/4° W.
322 lks. dist.; mkd. T 15 N R 16 E S 31 B T.
No other trees within limits.
Raise a mound of stone, 2 ft. base, 1 1/2 ft. high, W. of cor.
Land, gently rolling.
Soil, thin and rocky, 3rd rate.
Timber, scattering scrub cedar.
Undergrowth, sagebrush.

40.00 East on a random line bet. secs. 29 and 32.
Set temp. 1/4 sec. cor.
80.09 Fall 28 lks. N. of the cor. of secs. 28, 29, 32 and 33.
Thence
N. 89° 48' W. on a true line bet. secs. 29 and 32.
Over gently rolling land, through scattering undergrowth.
23.49 Shallow rocky wash, 5 lk. wide, course NE.
40.04 1/2 Set an iron post, 3 ft. long, 1 in. diam., 26 ins. in the
ground, for 1/4 sec. cor., mkd. on brass cap

S 29
4S 32
1917

and raise a mound of stone, 2 ft. base, 1 1/2 ft. high, N. of
cor.
61.60 Center of shallow wash, 5 chs. wide, course NE.
80.09 The cor. of secs. 29, 30, 31 and 32.
Land, gently rolling.
Soil, thin and rocky, 3rd rate.
No timber.
Undergrowth, scattering sagebrush.

40.00 West on a random line bet. secs. 30 and 31.
Set temp. 1/4 sec. cor.
83.88 Fall 5 lks. S. of the reestablished cor. of secs. 30 and
31, on W. bdy. of Tp.; hereinbefore described.
Thence
S. 89° 58' E. on a true line bet. secs. 30 and 31.
Over gently rolling land, through scattering scrub timber
and undergrowth.
.69 Fence brs. N. and S.
.81 Road brs. N. and S.
43.88 Set an iron post, 3 ft. long, 1 in. diam., 26 ins. in the
ground, for 1/4 sec. cor., mkd. on brass cap

S 30
4S 31
1917

dig pits, 18 X 18 X 12 ins., E. and W. of post, 3 ft.
dist.
83.88 The cor. of secs. 29, 30, 31 and 32.
Land, gently rolling.
Soil, thin and rocky, 3rd rate.
Timber, scattering scrub cedar.
Undergrowth, sagebrush.

44

Subdivision of T. 15 N. R. 16 E.

Chains

N. 0° 2' W. bet. secs. 29 and 30.

Over gently rolling land, through scattering scrub timber and undergrowth.

40.00 Set an iron post, 3 ft. long, 1 in. diam., 26 ins. in the ground, for $\frac{1}{4}$ sec. cor., mkd. on brass cap
$$\begin{array}{c} \frac{1}{4} \\ S30 | S29 \\ 1917 \end{array}$$

from which,

A cedar, 12 ins. diam., brs. N. 16 $\frac{1}{2}$ ° E.476 lks. dist.; mkd. $\frac{1}{4}$ S 29 B T.A cedar, 18 ins. diam., brs. N. 24 $\frac{1}{4}$ ° W.379 lks. dist.; mkd. $\frac{1}{4}$ S 30 B T.

80.00 Set an iron post, 3 ft. long, 2 ins. diam., 24 ins. in the ground, for cor. of secs. 19, 20, 29 and 30, mkd. on Brass cap

$$\begin{array}{c} T15N R16E \\ S19 | S20 \\ S30 | S29 \\ 1917 \end{array}$$

from which,

A cedar, 10 ins. diam., brs. N. 37° E.

432 lks. dist.; mkd. T 15 N R 16 E S 20 B T.

A cedar, 12 ins. diam., brs. S. 68 $\frac{1}{2}$ ° E.

330 lks. dist.; mkd. T 15 N R 16 E S 29 B T.

No other trees within limits.

Raise a mound of stone, 2 ft. base, 1 $\frac{1}{2}$ ft. high, W. of cor. Land, gently rolling.

Soil, limestone subsoil, 3rd rate.

Timber, scattering scrub cedar.

Undergrowth, sagebrush and algerita.

Fair growth of short grass.

40.00 S. 89° 48' E. on a random line bet. secs. 20 and 29.

Set temp. $\frac{1}{4}$ sec. cor.

79.86 Fall 16 lks. S. of the cor. of secs. 20, 21, 28 and 29.

Thence

N. 89° 55' W. on a true line bet. secs. 20 and 29.

Over gently rolling land, through scattering undergrowth.

39.93 Set an iron post, 3 ft. long, 1 in. diam., 26 ins. in the ground, for $\frac{1}{4}$ sec. cor., mkd. on brass cap
$$\begin{array}{c} S 20 \\ S 29 \\ 1917 \end{array}$$
and raise a mound of stone, 2 ft. base, 1 $\frac{1}{2}$ ft. high, N. of cor.

79.86 The cor. of secs. 19, 20, 29 and 30.

Land, gently rolling.

Soil, thin and rocky, 3rd rate.

No timber.

Undergrowth, sagebrush.

40.00 S. 89° 58' W. on a random line bet. secs. 19 and 30.

Set temp. $\frac{1}{4}$ sec. cor.

83.57 Intersect W. bdy. of Tp., at the reestablished cor. of secs. 19 and 30, hereinbefore described.

Thence

N. 89° 58' E. on a true line bet. secs. 19 and 30.

Over gently rolling land, through scattering undergrowth.

.07 Fence brs. N. and S.

Subdivision of T. 15 N., R. 16 E.

Chains

42.07 Road brs. NE. and SW.
43.57 Set an iron post, 3 ft. long, 1 in. diam., 26 ins. in the ground, for $\frac{1}{4}$ sec. cor. mkd. on brass cap

S 19
4S 30
1917

and raise a mound of stone, 2 ft. base, $1\frac{1}{2}$ ft. high, N. of cor.
83.57 The cor. of secs. 19, 20, 29 and 30.
Land, gently rolling.
Soil, thin and rocky, 3rd rate.
Timber, scattering scrub cedar.
Undergrowth, sagebrush.

N. 0° 2' W. bet. secs. 19 and 20.
Over gently rolling land, through scattering scrub timber and undergrowth.

40.00 Set an iron post, 3 ft. long, 1 in. diam., 26 ins. in the ground, for $\frac{1}{4}$ sec. cor., mkd. on brass cap

$\frac{1}{4}$
S19 | S20
1917

from which,
A cedar, 14 ins. diam., brs. N. 50° E.
157 lks. dist.; mkd. $\frac{1}{4}$ S-20 B T.
A cedar, 12 ins. diam., brs. N. 80° W.
139 lks. dist.; mkd. $\frac{1}{4}$ S 19 B T.
80.00 Set an iron post, 3 ft. long, 2 ins. diam., 10 ins. in the ground, in a mound of stone, for cor. of secs. 17, 18, 19 and 20, mkd. on brass cap

T15N R16E
S18 | S17
S19 | S20
1917

from which, A cedar, 12 ins. diam., brs. N. $63\frac{3}{4}$ ° E.
120 lks. dist.; mkd. T 15 N R 16 E S 17 B T.
A cedar, 10 ins. diam., brs. S. $70\frac{1}{2}$ ° E.
374 lks. dist.; mkd. T 15 N R 16 E S 20 B T.
A cedar, 12 ins. diam., brs. S. $6\frac{1}{4}$ ° W.
351 lks. dist.; mkd. T 15 N R 16 E S 19 B T.
No other trees within limits.
Raise a mound of stone, 2 ft. base, $1\frac{1}{2}$ ft. high, W. of cor.
Land, gently rolling.
Soil, thin and rocky, 3rd rate.
Timber, scattering scrub cedar.
Undergrowth, scattering sagebrush.
Fair growth of short grass.

40.00 S. 89° 55' E. on a random line bet. secs. 17 and 20.
Set temp. $\frac{1}{4}$ sec. cor.
79.83 Fall 18 lks. S. of the cor. of secs. 16, 17, 20 and 21.
Thence

S. 89° 57' W. on a true line bet. secs. 17 and 20.
Over gently rolling land, through scattering undergrowth.
39.91 $\frac{1}{2}$ Set an iron post, 3 ft. long, 1 in. diam., 26 ins. in the ground, for $\frac{1}{4}$ sec. cor., mkd. on brass cap

46

Subdivision of T. 15 N., R. 16 E.

Chains

$\frac{1}{4}$ S 17
 $\frac{1}{4}$ S 20
 1917

79.83 and raise a mound of stone, 2 ft. base, $1\frac{1}{2}$ ft. high,
 N. of cor.
 The cor. of secs. 17, 18, 19 and 20.
 Land, gently rolling.
 Soil, thin and rocky, 3rd rate.
 No timber.
 Undergrowth, sagebrush.

40.00 S. $89^{\circ} 58'$ W. on a random line bet. secs. 18 and 19.
 Set temp. $\frac{1}{4}$ sec. cor.
 83.54 Fall 5 lks. N. of the reestablished cor. of secs. 18 and
 19, on W. bdy. of Tp., hereinbefore described.
 Thence
 N. $89^{\circ} 56'$ E. on a true line bet. secs. 18 and 19.
 Over gently rolling land, through scattering undergrowth.
 43.02 Fence brs. N. and S.
 43.54 Set an iron post, 3 ft. long, 1 in. diam., 26 ins. in the
 ground, for $\frac{1}{4}$ sec. cor., mkd. on brass cap

$\frac{1}{4}$ S 18
 $\frac{1}{4}$ S 19
 1917

77.74 and raise a mound of stone, 2 ft. base, $1\frac{1}{2}$ ft. high, N. of cor.
 83.54 Road brs. NE. and SW.
 The cor. of secs. 17, 18, 19 and 20.
 Land, gently rolling.
 Soil, thin and rocky, 3rd rate.
 No timber.
 Undergrowth, sagebrush.

8.60 N. $0^{\circ} 2'$ W. bet. secs. 17 and 18.
 13.80 Over gently rolling land, through scattering scrub timber
 and undergrowth.
 Road brs. NE. and SW.
 40.00 Road brs. NE. and SW.
 Set an iron post, 3 ft. long, 1 in. diam., 26 ins. in the
 ground, for $\frac{1}{4}$ sec. cor., mkd. on brass cap

$\frac{1}{4}$
 S18 | S17
 1917

76.50 and raise a mound of stone, 2 ft. base, $1\frac{1}{2}$ ft. high, W.
 80.00 of corner.
 Shallow draw, course NE.
 Set an iron post, 3 ft. long, 2 ins. diam., 6 ins. in the
 ground, in a mound of stone, for cor. of secs. 7, 8,
 17 and 18, mkd. on brass cap

T15N R16E
 S 7 | S 8
 S18 | S17
 1917

from which,
 A cedar, 10 ins. diam., brs. N. $73\frac{1}{2}^{\circ}$ E.
 243 lks. dist.; mkd. T 15 N R 16 E S 8 B T.
 A cedar, 10 ins. diam., brs. S. $41\frac{1}{4}^{\circ}$ E.
 258 lks. dist.; mkd. T 15 N R 16 E S 17 B T.
 A cedar, 12 ins. diam., brs. S. 17° W.
 199 lks. dist.; mkd. T 15 N R 16 E S 18 B T.

Subdivision of Township 15 North, Range 16 East, 47.

Chains. A cedar, 8 ins. in diam., brs. N. 22¹/₂° W., 390 lks. dist., marked T15N R16E S7 BT.
 Land, gently rolling.
 Soil, thin and rocky, 3rd rate.
 Timber, scattering scrub cedar.
 Undergrowth, yucca and algerita.
 No grass.

40.00 N. 89° 57' E., on a random line, bet. secs. 8 and 17.
 80.08 Set temp. ¹/₄ sec. cor.
 Fall 7 lks. N. of the cor. of secs. 8, 9, 16 and 17.
 Thence,
 West, on true line, bet. secs. 8 and 17.
 Over gently rolling land, thru. scattering undergrowth.
 26.78 Road brs. NE. and SW.
 40.04 Set an iron post, 3 ft. long, 1 in. in diam., 26 ins. in the ground, for ¹/₄ sec. cor., marked on brass cap,

$$\frac{1}{4} \frac{S \ 8}{S \ 17}$$
 1917

77.00 dig pits, 18x18x12 ins., E. and W. of post, 3 ft. dist.
 80.08 General drainage at this point is NE.
 The cor. of secs. 7, 8, 17 and 18.
 Land, gently rolling.
 Soil, limestone subsoil, 3rd rate.
 No timber.
 Undergrowth, scattering sage brush.
 Poor growth of grass.

40.00 S. 89° 56' W., on a random line, bet. secs. 7 and 18.
 83.12 Set temp. ¹/₄ sec. cor.
 Fall 16 lks. S. of the reestablished cor. of secs. 7 and 18, on W. bdy. of Tp., hereinbefore described.
 Thence,
 S 89° 57' E., on a true line, bet. secs. 7 and 18.
 Over gently rolling land, thru. scattering scrub timber and undergrowth.
 .05 4-strand wire fence, brs. N. and S.
 43.12 Set an iron post 3 ft. long, 1 in. in diam., 26 ins. in the ground, for ¹/₄ sec. cor., marked on brass cap,

$$\frac{1}{4} \frac{S \ 7}{S \ 18}$$
 1917

83.12 dig pits, 18x18x12 ins., E. and W. of post, 3 ft. dist.
 The cor. of secs. 7, 8, 17 and 18.
 Land, gently rolling.
 Soil, limestone subsoil, 3rd rate.
 Timber, scattering scrub cedar.
 Undergrowth, Spanish dagger.
 Poor growth of grass.

35.00 N. 0° 2' W., bet. secs. 7 and 8.
 40.00 Over gently rolling land, thru. scattering undergrowth.
 Earthen reservoir (dry) brs. E. 10 chs. dist.
 Set an iron post, 3 ft. long, 1 in. in diam., 26 ins. in the ground, for ¹/₄ sec. cor., marked on brass cap,

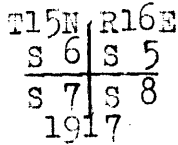
$$S \ 7 \ S \ 8$$
 1917

and raise a mound of stone, 2 ft. base, 1¹/₂ ft. high,

48 Subdivision of Township 15 North, Range 16 East.

Chains.

80.00 W. of cor.
Set an iron post, 3 ft. long, 2 ins. in diam., 10 ins. in the ground, in a mound of stone, for cor. of secs. 5, 6, 7 and 8, marked on brass cap,

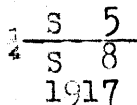


and raise a mound of stone 2 ft. base, 1½ ft. high, W. of cor.
Land, gently rolling.
Soil, limestone subsoil, 3rd rate.
No timber.
Undergrowth, sage brush.

40.00 The cor. of secs. 4, 5, 8 and 9, being plainly visible, S. 89° 57' E., on a random line for distance only, bet. secs. 5 and 8.

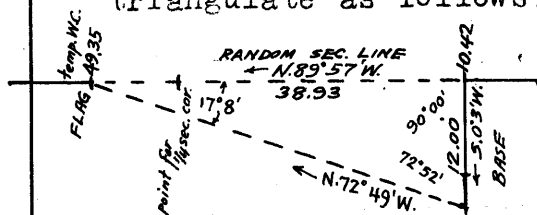
80.27 Set temp. ¼ sec. cor.
The cor. of secs. 4, 5, 8 and 9. Thence,

40.13½ N. 89° 57' W., on a true line, bet. secs. 5 and 8. Over gently rolling land, thru scattering undergrowth. Set an iron post 3 ft. long, 1 in. in diam., 26 ins. in the ground, for ¼ sec. cor., marked on brass cap,



56.00 and raise a mound of stone, 2 ft. base, 1½ ft. high, N. of cor.
Cabin brs. N. 65½° E.
71.25 Right rim of side canyon, brs. NW. and SE. Descend 45 ft. to
73.70 Bottom of canyon, course NW. Ascend 45 ft. to
75.70 Left rim of canyon, brs. NW and SE.
80.27 The cor. of secs. 5, 6, 7 and 8.
Land, rolling.
Soil, thin and rocky, 3rd rate.
No timber.
Undergrowth, sage brush.

10.42 N. 89° 57' W., on random line, bet. secs. 6 and 7. South or right rim of Chevelon Canyon, brs. NE. and SW, Chain measurement on random line being impracticable, triangulate as follows:



Measure a base, S. 0° 3' W., 12.00 chs.
Set flag on random line, beyond canyon.
From S. end of of base, flag brs. N. 72° 49' W.
Included angles are 72° 52', 17° 8' and 90° 00', the sum of which is 180° 00'.

Triangulated dist. on random line is obtained by tang. 72° 52' x base or .30828 x 12.00 = 38.93 chs., which, added to 10.42 chs. =

49.35 Flag point of above described triangulation. As the point for ¼ sec. cor. will fall on steep slope of canyon wall, set temp. witness cor. to ¼ sec. cor. at this point. Continue measurement by chaining.

82.96 Fall 3 lks. S. of true point for reestablished cor. of secs.

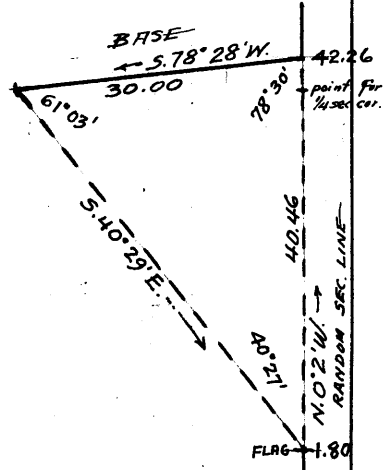
Chains. 6 and 7, on W. bdy. of Tp., witnessed 69 lks. N. 0°3' W., as hereinbefore described.
 From true point for cor. of secs. 6 and 7, S. 89°56' E. on true line, bet. secs. 6 and 7.
 Over N. or left wall of Chevelon Canyon. Ascend steep slope to
 .50 N. or left rim of Chevelon Canyon, brs. NW. and SE.
 Thence over rolling land, clear of timber and undergrowth.
 13.26 Road brs. NW. and SE.
 16.06 Road brs. NW. and SE.
 16.96 Cabin, brs. S. 1 ch. dist.
 18.20 West side of shearing pens.
 18.45 North end of shearing pens.
 21.15 Corner of shearing pens, from which board fences extend NW. and NE.
 33.61 Flag point of triangulation and temp. W.C. to 1/4 sec. cor. This point being the nearest to the true point for 1/4 sec. cor., at which it is suitable to set permanent witness cor.,
 Set an iron post, 3 ft. long, 1 in. in diam., on surface rock, supported by a mound of stone, for witness cor. to 1/4 sec. cor., marked on brass cap,

S 6 WC
 S 7
 1917

and raise a mound of stone, 2 ft. base, 1 1/2 ft., N. of cor.
 Thence by triangulated measurement.
 Descend over broken rocky SE. slope.
 42.96 True point for 1/4 sec. cor. at N. or left rim of Chevelon Canyon, bearing NE. and SW.
 Descend about 200 ft. over steep canyon wall.
 56.00 (Approximate) Enter Chevelon Creek, in bottom of canyon, with stream of running water, 30 lks. wide, 18 ins. deep, course E. from SW. Thence down the creek.
 66.00 (Approximate) Leave Chevelon Creek, course NE. from W. Ascend 200 ft. on steep S. wall of canyon.
 72.54 Triangulation point on S. or right rim of Chevelon Canyon, bearing NE. and SW.
 Continue measurement by chaining. Over rolling land.
 82.96 The cor. of secs. 5, 6, 7 and 8.
 Land, rolling and broken.
 Soil, rocky, 3rd and 4th rate.
 No timber or undergrowth.
 No grass.

1.80 N. 0°2' W., on random line, bet. secs. 5 and 6.
 S. or right rim of Chevelon Canyon, brs. NE. and SW. North of this point, chain measurement is rendered impracticable owing to three crossings of Chevelon Canyon; therefore, triangulate as follows:

Leave flag at this point.
 Measure a base, S. 78°28' W., 30.00 chs. from a point on random sec. line, on N. or left rim of canyon.
 From W. end of base, flag brs. S. 40°29' E.
 Included angles are 61°03', 78°30' and 40°27', the sum of which is 180°00'.
 Triangulated dist. on random sec. line is obtained by
 $\frac{\sin 61^{\circ}03' \times \text{base}}{\sin 40^{\circ}27'}$ or $\frac{.87504 \times 30.00}{.64878} = 40.46$ chs., which,



added to 1.80 chs. =
 42.26 Triangulation point on N. or left rim of Chevelon Canyon, brs. SE and SW.

50 10. Subdivision of Township 15 North, Range 16 East.

| | |
|---------|---|
| Chains. | As point for $\frac{1}{4}$ sec.cor. will fall in canyon, set temp. witness cor. to $\frac{1}{4}$ sec.cor. at this point. Continue line and measurement by chaining. |
| 89.49 | Fall 34 lks.W. of the cor.of secs. 5 and 6, on N. bdy.of Tp., described in Book "L." Thence, S. 0°11'W., on true line, bet. secs.5 and 6. Over level land, thru.scattering undergrowth. |
| 47.23 | N.or left rim of Chevelon Canyon, brs.SE. and SW. (nearly W.) Set an iron post, 3 ft.long, 1 in. in diam., 20 ins. in the ground, supported by a mound of stone, for witness cor.to $\frac{1}{4}$ sec.cor., marked on brass cap, |
| | S 6 $\frac{1}{2}$ S 5 W 10 1917 |
| | and raise a mound of stone, 2 ft. base, 1 $\frac{1}{2}$ ft.high,W. of cor. Thence across three crossings of Chevelon Canyon, measurement by triangulation, hereinbefore described. Descend 200 ft. |
| 49.49 | True point for $\frac{1}{4}$ sec.cor. falls on canyon wall, and is inaccessible. |
| 53.00 | (Approximate) Chevelon Creek, 50 lks.wide, course NE., in bottom of canyon with water in holes. Ascend 200 ft. to |
| 57.00 | (Approximate) S.or right rim of Chevelon Canyon, brs.SE and SW. Thence across narrow point in bend in canyon, brs.NW. and SE. |
| 60.00 | (Approximate) S.or right rim of Chevelon Canyon, brs.SE. and NW. Descend 200 ft. to |
| 64.00 | (Approximate) Chevelon Creek, 40 lks.wide, course NW., in bottom of canyon, with water in holes. Ascend 200 ft. |
| 75.00 | (Approximate) N.or left rim of Chevelon Canyon, brs.NW. and SE. Thence across narrow point in bend of canyon, brs.E. and W. |
| 77.00 | (Approximate) N. or left rim of Chevelon Canyon, brs.NE. and SW. (nearly W.) Descend 200 ft. |
| 82.00 | (Approximate) Chevelon Creek 30 lks.wide, course E., in bottom of canyon, with water in holes. Ascend 200 ft. |
| 87.00 | S.or right rim of Chevelon Canyon, brs.NE. and SW. Thence over rolling land. |
| 89.49 | The cor.of secs.5,6,7 and 8. Land, level, rolling and broken. Soil, sandy, gravelly and rocky, 2nd and 3rd rate. Timber, none. Undergrowth, scattering yucca. Fair grass. |

GENERAL DESCRIPTION.

SURFACE: The surface is as a rule gently rolling, except where broken by Chevelon Canyon, Potato Wash and a number of small canyons and minor draws.

SOIL: The soil is thin, rocky, sometimes sandy, on a limestone subsoil; generally classed as 3rd rate, less often as 2nd rate.

TIMBER & VEGETATION: A patch of dense scrub cedar extends through secs.22 and 27, and into secs. 15 and 34. Some sparsely scattered cedar is found throughout the township. The undergrowth is sattering, and consists principally of sage brush, and occasionally of brigham brush and yucca. Short grass in quantities

Chains.

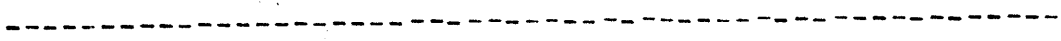
varying from poor to fair, covers most of the township.

DRAINAGE & WATER SUPPLY: Chevelon Canyon, a rough and precipitous canyon, 200 feet deep, crosses the north-western corner of the township, coursing in a north-easterly direction, containing at time of survey a stream of running water in some parts, and water standing in holes at other parts. Potato wash courses thru. the center of the township in a north-northeasterly direction, containing no water at time of survey. A small canyon in secs. 11, 13, and 24, contains no water.

SETTLERS & IMPROVEMENTS: There is a cabin and sheep corrals and shearing pens in sec. 7, on the left rim of Chevelon Canyon, a cabin in sec. 5, an earthen reservoir surrounded by a fence in the SW. quarter of sec. 8, and a dam in Potato Wash on the line between secs. 15 and 22. There is a long fence extending from the right rim of Chevelon Canyon southward along the west boundary of the township, and another fence extending from the right rim of Chevelon Canyon eastward thru. the northern tier of sections, for the purpose of separating grazing ranges.

INDUSTRY: The industry best fitted for this region is cattle or sheep raising, for the grazing is fairly good. Sheep raising is the industry carried on at present.

MINERAL: No signs of valuable mineral were observable on the surface.



80
25
23
130

52

| | | | |
|--|--|--|--|
| | | | |
|--|--|--|--|

General Description, continued.

present.
 REMARK: No signs of valuable minerals were observable on the surface.

.....

boundaries of Township 15 North, Range 16 East
 Latitudes, Departures and Closing Errors

| Line Designated | True Course | Dists. chs. | Latitudes | | Departures | | |
|--------------------|---------------|----------------|------------|------------|------------|------------|-----|
| | | | N. chs. | S. chs. | E. chs. | W. chs. | |
| South Boundary | West | 484.79 | | | | 484.79 | |
| West Boundary | N. 0°33'E. | 142.68 | 142.67 | | 1.37 | | |
| | North | 80.48 | 80.48 | | | | |
| | N. 0°11'E. | 79.92 | 79.92 | | .26 | | |
| | North | 39.98 | 39.98 | | | | |
| | N. 0°05'E. | 39.97 | 39.97 | | .06 | | |
| | N. 0°03'W. | 40.16 | 40.16 | | | .03 | |
| North Boundary | North | 39.99 | 39.99 | | | | |
| | N. 0°11'E. | 25.99 | 25.99 | | .08 | | |
| | East | 482.23 | | | 482.23 | | |
| | East Boundary | S. 0°32'E. | 40.76 | | 40.76 | .38 | |
| | | S. 0°24'E. | 40.77 | | 40.77 | .28 | |
| | | S. 0°07'W. | 40.76 | | 40.76 | | .08 |
| S. 0°14'E. | | 40.77 | | 40.77 | .17 | | |
| S. 0°05'E. | | 40.76 | | 40.76 | .06 | | |
| S. 0°21'E. | | 40.83 | | 40.83 | .25 | | |
| S. 0°12'E. | | 41.10 | | 41.10 | .14 | | |
| S. 0°09'E. | | 40.85 | | 40.85 | .11 | | |
| S. 0°35'W. | | 40.86 | | 40.86 | | .42 | |
| S. 0°15'W. | | 40.90 | | 40.90 | | .18 | |
| Convergency | S. 0°27'W. | 40.98 | | 40.98 | | .32 | |
| | S. 0°12'W. | 40.67 | | 40.67 | | .14 | |
| Convergency | | | | | .50 | | |
| Totals | | | 489.16 | 490.01 | 485.89 | 485.96 | |
| | | | | 489.16 | | 485.89 | |
| Error in Latitude | | | 0.85 | | | | |
| Error in Departure | | | | | | 0.07 | |

DATE D I A G R A M
 Group 79 , Arizona
 Book "M"

TOWNSHIP 15 NORTH , RANGE 16 EAST

| | | | | | | | | | |
|---------|---------|---------|---------|---------|---------|---------|---------|--------|--|
| | | | | | | | | | |
| May 30 | 6 | 5 | 4 | 3 | 2 | 1 | | | |
| June 12 | June 20 | June 19 | June 16 | June 16 | June 15 | June 18 | June 15 | June 9 | |
| June 12 | 7 | 8 | 9 | 10 | 11 | 12 | | | |
| June 12 | June 19 | June 19 | June 16 | June 16 | June 14 | June 15 | June 15 | June 9 | |
| June 12 | 18 | 17 | 16 | 15 | 14 | 13 | | | |
| June 12 | June 19 | June 19 | June 15 | June 14 | June 14 | June 13 | June 13 | June 9 | |
| June 12 | 19 | 20 | 21 | 22 | 23 | 24 | | | |
| June 12 | June 19 | June 16 | June 15 | June 14 | June 14 | June 13 | June 13 | June 9 | |
| June 12 | 30 | 29 | 28 | 27 | 26 | 25 | | | |
| June 12 | June 16 | June 16 | June 15 | June 14 | June 13 | June 13 | June 13 | June 9 | |
| June 12 | 31 | 32 | 33 | 34 | 35 | 36 | | | |
| June 12 | June 16 | June 15 | June 14 | June 13 | June 13 | June 11 | June 11 | June 9 | |
| June 12 | June 11 | June 11 | June 11 | June 11 | June 11 | June 11 | June 11 | June 9 | |

RESURVEYED

RESURVEYED

June 11

Lines in red surveyed by Thomas B. Matthews, U.S. Surveyor, in 1917; dates shown on diagram above.

June 11

Lines in black surveyed by William L. Nash, U.S. Transitman, in 1917; dates shown on diagram above.

BOOK 3375

4-680

FIELD ASSISTANTS.
to
Thomas B. Matthews U.S. Surveyor

| NAMES. | CAPACITY. |
|----------------|--------------|
| M. A. Rennie | 1st Chainman |
| Steven Hayes | 2nd Chainman |
| Ernest Lundahl | Cornerman |
| Fred Hayes | Cornerman |
| Jim Sakaraison | Flagman |
| J. E. Wall | Flagman |
| B. E. Dry | Axeman |
| Lee W. Eastman | Axeman |
| | |
| | |
| | |
| | |
| | |
| | |
| | |
| | |
| | |
| | |
| | |
| | |

56

BOOK 3375

CERTIFICATE OF UNITED STATES SURVEYOR.

I, Thomas B. Matthews, U. S. Surveyor, hereby certify upon honor that, in pursuance

of special instructions received from the U. S. Surveyor General, for Group 79, Arizona,

bearing date of the 1st day of December, 191 6 I have well, faithfully, and truly

in my own proper person, and in strict conformity with said instructions, the Manual of Surveying Instruc-
tions, and the laws of the United States, surveyed all those parts or portions of the

West boundary

and surveyed all those parts or portions of the

Subdivision lines of

TOWNSHIP 15 NORTH, RANGE 16 EAST,

of the Gila and Salt

River Base & Meridian, in the State of Arizona,

which are represented in the foregoing field notes and by diagram on page 54 hereof as having been executed by me, and under my direction; and that all the corners of said resurvey and survey

have been established and perpetuated in strict accordance with the Manual of Surveying Instruc-

tions, and the special written instructions of the U. S. Surveyor General, for Group 79, Arizona,

and in the specific manner described in the field notes, and that the foregoing are the original field notes of

such resurvey and survey.

Thomas B. Matthews
U. S. Surveyor.

APPROVAL.

OFFICE OF THE UNITED STATES SURVEYOR GENERAL,

....., 191

The foregoing field notes of the survey of

executed by

under his special instructions dated, 191 , having been critically examined, and the necessary corrections and explanations made, the said field notes, and the surveys they describe, are hereby approved.

.....
U. S. Surveyor General.

I certify that the foregoing transcript of the field notes of the above described surveys in
....., has been correctly copied from the original notes on file in this office.

.....
U. S. Surveyor General.

CERTIFICATE OF UNITED STATES ~~SURVEYOR~~ ^{TRANSITMAN.}

I, William L. Nash, ^{Transitman} ~~U. S. Surveyor~~, hereby certify upon honor that, in pursuance of special instructions received from the U. S. Surveyor General, for Group 79, Arizona, bearing date of the 1st day of December, 1916, I have well, faithfully, and truly in my own proper person, and in strict conformity with said instructions, the Manual of Surveying Instructions, and the laws of the United States, ^{re-} surveyed all those parts or portions of the East and West boundaries and South boundary, and Subdivision lines of TOWNSHIP 15 NORTH, RANGE 16 EAST, of the Gila and Salt River Base & Meridian, in the State of Arizona, which are represented in the foregoing field notes ^{and by diagram on page 54 hereof} ~~as~~ having been executed by me, and under my direction; and that all the corners of ^{said resurvey and survey} ~~said survey~~ have been established and perpetuated in strict accordance with the Manual of Surveying Instructions, and the special written instructions of the U. S. Surveyor General, for Group 79, Arizona, and in the specific manner described in the field notes, and that the foregoing are the original field notes of such ~~survey~~ ^{resurvey and survey}.

William L. Nash
 U. S. Surveyor.
 Transitman.

APPROVAL.

OFFICE OF THE UNITED STATES SURVEYOR GENERAL,

Phoenix, Arizona, June 16, 1920.

The foregoing field notes of ^{re-} ~~the~~ ^{survey} of the East and West boundaries and of the Survey of the South boundary, and Subdivision Lines of TOWNSHIP 15 NORTH, RANGE 16 EAST, of the Gila and Salt River Base and Meridian, in the State of Arizona, executed by Thomas B. Matthews, U.S. Surveyor, and Wm. L. Nash, U.S. Transitman, under ~~his~~ special instructions dated Dec. 1, 1916, for Group 79, Arizona, ~~and~~ having been critically examined, and the necessary corrections and explanations made, the said ^{resurveys &} ~~field notes, and the~~ surveys they describe, are hereby approved.

Frank P. [Signature]
 U. S. Surveyor General.

~~I certify that the foregoing transcript of the field notes of the above described surveys in~~
~~has been correctly copied from the original notes on file in this office.~~

~~U. S. Surveyor General.~~