

'03

3400

Book "J,"

4-1873

1816
①

BOOK 3400

FIELD NOTES

OF THE SURVEY OF THE

East, West and North boundaries, and

Subdivision lines of

TOWNSHIP 1 NORTH, RANGE 10 EAST,

Of the Gila and Salt River Base and Meridian,

In the State of Arizona.

EXECUTED BY

Alton O. Stinson, U.S. Surveyor.

and

William B. Kimmel, U.S. Cadastral Engineer,

in the capacity of U.S. Surveyors supplemental
~~In the capacity of U.S. Surveyor~~, under instructions dated October 31, 1917, &
January 4, 1918.

issued by the United States Surveyor General to govern surveys included in

Group No. 71, which were approved by the Commissioner of the General Land

Office, November, 1917, and Assignment Instructions dated Nov.
19, 1917, and February 24, 1919.

Survey commenced November 24, 1917.

Survey completed May 6, 1919.

3400

3400

104 (A)

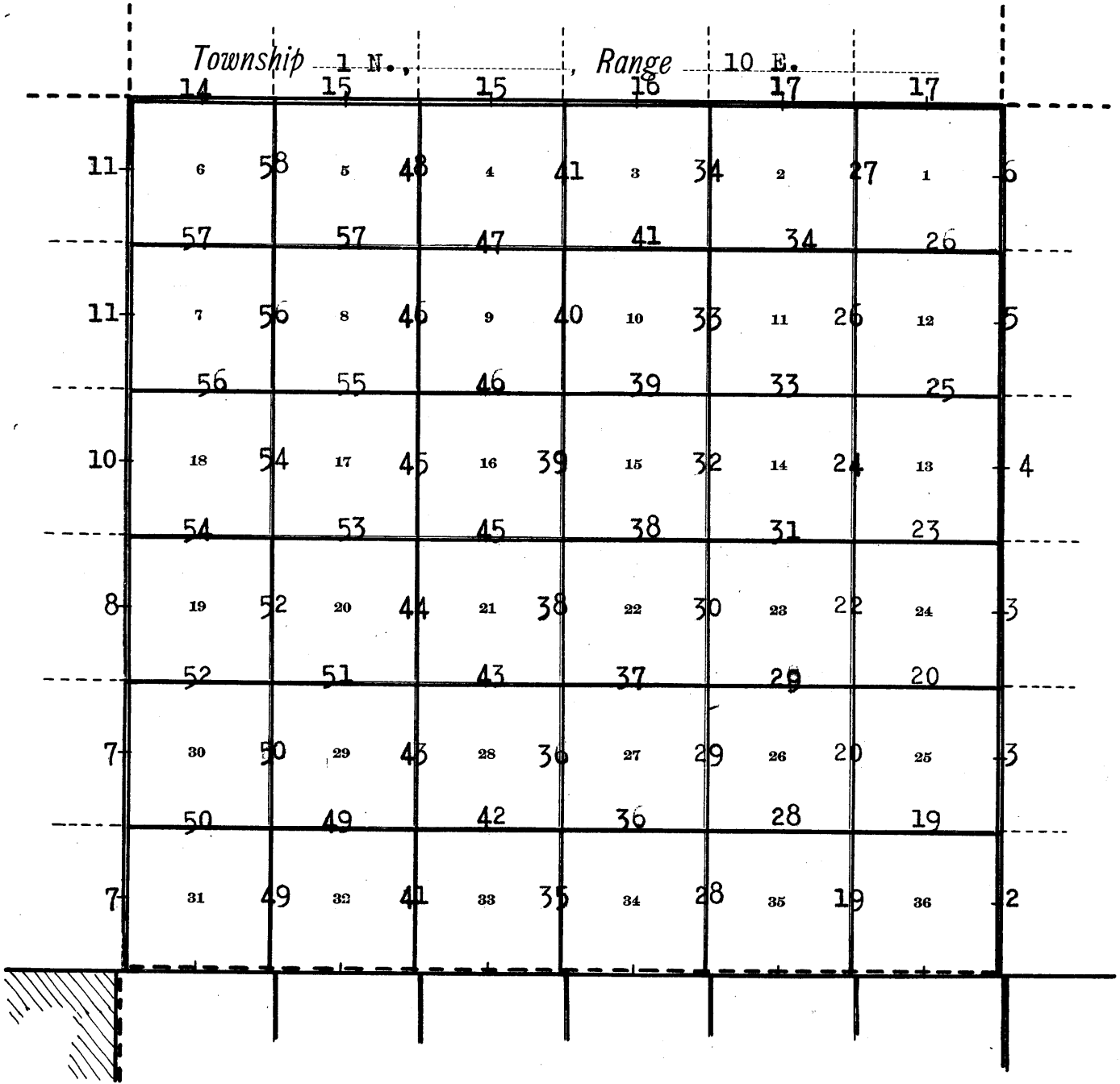
3400

Book "J"

Group 71 - - - Arizona.

BOOK 3400

INDEX DIAGRAM.



- Lines surveyed under this group.
- Lines resurveyed under this group.
- Accepted surveys.
- Unsurveyed.
- Areas surveyed as per accepted plat on file.

Chains.

Surveys hereinafter described, executed by Alton O. Stinson, U.S. Surveyor, and William B. Kimmel, U.S. Cadastral Engineer, on dates shown on diagram on page 61 hereof, both using Young and Sons' light mountain transit No. 8540, with Smith solar attachment. The horizontal limb is provided with two double verniers placed opposite to each other, reading to single minutes of arc, which is also the least count of the verniers of the latitude and declination arcs.

The instrument was approved by the Assistant Supervisor of Surveys, conditional upon satisfactory field tests, a record of which follows:

Field Test of Instrument by Alton O. Stinson, U.S.S.

Nov. 19, 1917. Examine the adjustments of the transit, and correct the level and collimation errors; then, to test the solar apparatus, by comparing its indications, resulting from solar observations made during a.m. and p.m. hours, with a meridian determined by observations on Polaris, proceed as follows:

At a point near camp in sec. 24, T. 1 S., R. 10 E.; latitude, $33^{\circ}20'N.$; longitude, $111^{\circ}17'W.$, at 4 h. p.m., l.m.t., set off $33^{\circ}20'N.$ on the lat. arc; $20^{\circ}33'S.$ on the decl. arc; and mark the meridian thus determined with the solar, on a peg driven in the ground, 5 chs. N. of station.

At 5 h. 13 m. p.m., l.m.t., observe Polaris, in accordance with the Manual of Instructions, and mark a point in the line thus determined, on a peg driven in the ground, 5 chs. N. of station.

November 24, 1917.

November 25; At 7 h. 50 m. a.m., l.m.t., lay off the azimuth of Polaris, $1^{\circ}17'W.$, the resulting meridian agreeing within $\frac{1}{2}'$ of the meridian determined by solar yesterday p.m.

At 8 h. a.m., l.m.t., set off $33^{\circ}20'N.$ on the lat. arc; $20^{\circ}41'S.$ on the decl. arc; the resulting meridian agreeing within $\frac{1}{2}'$ of the meridian determined by solar yesterday p.m.

The three meridians agreeing within $1'$ of arc, conclude that the adjustments of the instrument are satisfactory.

November 25, 1917.

Field Test of same instrument by William B. Kimmel, U.S. Cadastral Engineer.

March 3, 1919: Examine the adjustments of the transit, and correct the level and collimation errors; then, to test the solar apparatus, by comparing its indications, resulting from solar observations made during a.m. and p.m. hours, with a meridian determined by observations on Polaris, proceed as follows:

At a point near the center of sec. 27, T. 1 N., R. 10 E.; latitude, $33^{\circ}24'N.$, longitude, $111^{\circ}19'W.$, at 7 h. 30 m. a.m., l.m.t., set off $33^{\circ}24'N.$ on the lat. arc; $7^{\circ}1\frac{1}{2}'S.$ on the decl. arc, and mark the meridian thus determined with the solar, on a peg driven in the ground, 5 chs. N. of station.

At 4 h. p.m., l.m.t., set off $33^{\circ}24'N.$ on the lat. arc; $6^{\circ}55'S.$ on the decl. arc, the resulting meridian agreeing within $\frac{1}{2}'$ of the meridian determined by solar this a.m.

At 6 h. 16 m. p.m., l.m.t., observe Polaris in accordance with Manual of Instructions, and mark a line thus determined, on a peg driven in the ground, 5 chs. N. of station.

March 3, 1919.

2.

Chains.

March 4, 1919: At 7h. a.m., l.m.t., lay off the azimuth of Polaris, 1°04'E., the resulting meridian agreeing within ½' of the meridian determined by solar yesterday.

The three meridians agreeing within 1' of arc, conclude that the adjustments of the instrument are satisfactory.

March 4, 1919.

Unless otherwise specified all measurements are made with a 5-chain steel tape found correct by comparison with a standard steel tape, the measurements are made on the slope, the vertical angle determined with transit or clinometer, and the slope measurement properly reduced to true horizontal distances.

The instrument was maintained in adjustment throughout the survey.

Survey of East bdy. of Township 1 North, Range 10 East.

From the reestablished standard corner of Ts. 1 N., Rs. 10 and 11 E., on the Gila and Salt River Base line, described in Book "D" of this group, North, bet. secs. 31 and 36.

Over mountainous land, thru scattering undergrowth.

Ascend 284 ft. on SW. slope, to

9.00 Foot of cliffs, 30 ft. high, bear E. and W.

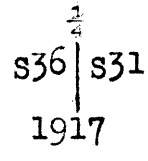
From top of cliffs, ascend 175 ft. on S. slope, to

16.10 Divide brs. NE. and SW. Descend 160 ft. on broken NW. slope, to

25.20 Spur, slopes W. Descend 125 ft. on NE. slope, to

31.00 Head of draw, course NW. Descend 200 ft. on NW. slope, to

40.00 Set an iron post 3 ft. long, 1 in. in diam., 8 ins. in the ground, to bedrock, supported by a mound of stone, for ¼ sec. cor., marked on brass cap,



and raise a mound of stone, 3 ft. base, 2 ft. high, W. of cor.

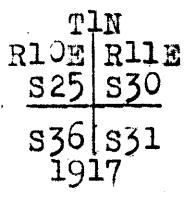
Descend 46 ft. to

43.00 Spur, slopes NW. Descend 170 ft. to

53.60 Canyon, course SW. Water hole about 1 chain E. of line. Descend 80 ft., along steep W. slope, to

64.80 Bottom of Frazer Canyon, course SW. Ascend 90 ft. in bottom of side canyon, course S.

80.00 Set an iron post, 3 ft. long, 2 ins. in diam., 10 ins. in the ground to bedrock, supported by a mound of stone, for cor. of secs. 25, 30, 31 and 36, marked on brass cap,



and raise a mound of stone, 3 ft. base, 2 ft. high, W. of cor.

Land, mountainous.

Soil, rocky, 4th rate, igneous formation.

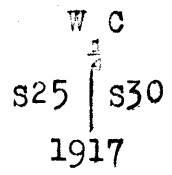
No timber.

Undergrowth, palo verde, catclaw, mesquite and cacti.

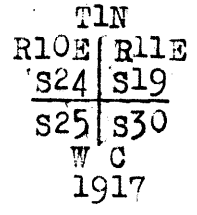
Fair grass.

East boundary of Township 1 North, Range 10 East

- Chains. North, bet. secs. 25 and 30.
- Over mountainous land, thru scattering undergrowth. Ascend 300 ft. on broken SW. slope, to
- 11.75 Top of cliffs, 60 ft. high, bear E. and W. Ascend 75 ft. to
- 19.90 Point of spur, slopes W. Descend 100 ft. on NW. slope, to
- 20.00 Foot of descent. Ascend 70 ft. on SW. slope, to
- 27.00 Foot of cliffs, bear NW. and SE. Ascend 470 ft. over SW. face of cliffs.
- 37.40 Top of cliffs, and divide, brs. E. and W. Descend 154 ft. over cliffs, facing NE. to
- 39.90 Set an iron post, 3 ft. long, 1 in. in diam., 14 ins. in the ground, to bedrock, supported by a mound of stone, for witness cor. to $\frac{1}{4}$ sec. cor., marked on brass cap,



- and raise a mound of stone 3 ft. base, 2 ft. high, W. of cor.
- Descend 40 ft. over NE. face of cliff.
- 40.00 The point for $\frac{1}{4}$ sec. cor. falls on NE. face of cliff. Impracticable to set post.
- 44.00 Head of draw, course SE. Ascend 165 ft. on SE. slope, to
- 50.00 Foot of cliffs, about 300 ft. high, bear NE. and SW. Cliffs impassable on line; therefore, offset as follows:
 East, 6.25 chains.
 North, 31.10 chs.
 West, 6.25 chains to a point on Tp. line at foot of cliffs, bears NW. and SE., at 1.10 chs. N. from true point for sec. cor.
- 80.00 True point for cor. of secs. 19, 24, 25 and 30, falls high up on sloping face of cliffs, and is inaccessible; therefore at
- 81.10 Set an iron post 3 ft. long, 2 ins. in diam., 14 ins. in the ground, supported by a mound of stone, for witness cor. to cor. of secs. 19, 24, 25 and 30, marked on brass cap,



and raise a mound of stone 3 ft. base, 2 ft. high, 4 ft. N. of cor. Impossible to raise mound W. of cor. on account of cliff.
 Land, mountainous.
 Soil, rocky, 4th rate, igneous formation.
 No timber.
 Undergrowth, palo verde, catclaw, mesquite and cacti.
 Fair grass.

- North, bet. secs. 19 and 24.
- Descend 6 ft. on NE. face of cliff, over mountainous land.
- 1.10 Witness cor. to secs. 19, 24, 25 and 30, hereinbefore described.
- Foot of cliff brs. NW. and SE. Descend 50 ft. on NE. slope, to
- 8.00 Head of draw, course SE. Ascend 410 ft. over cliffs, facing SE., to
- 13.30 Rocky spur, slopes SE. Thence ascend 65 ft. over broken E. slope.
- 21.09 Top of cliff, bearing NW. and SE., about 200 ft. high. It being impracticable to continue chain measurement on Tp. bdy. N. from this point, triangulate as follows:
 Leave flag at this point.
 From point on Tp. bdy. N. from flag, measure a base S. 57° 46' E., 25.28 chs.

4. East boundary of Township 1 North, Range 10 East.

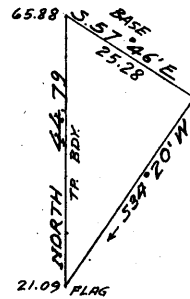
chains.

From SE. end of base, flag
 brs. S. 34° 20' W.
 Included angle are 87° 54',
 34° 20' and 57° 46', the sum
 of which is 180° 00'.
 Distance triangulated is ob-
 tained by

$$\frac{\text{Sine } 87^\circ 54' \times \text{base}}{\text{sine } 34^\circ 20'} \text{ or } .99933 \times 25.28 = 44.79 \text{ chs.}$$

.56401
 which added to 21.09 chs.
 gives 65.88 chs. as the dist.
 to triangulation point from
 sec. cor.

From triangulation point, S. on
 Tp. bdy., 25.88 chs. to



40.00 Set an iron post, 3 ft. long, 1 in. in diam., 20 ins. in
 the ground, to bedrock, supported by a mound of stone,
 for sec. cor., marked on brass cap,

1
 S24 | S19
 1919

and raise a mound of stone, 3 ft. base, 2 ft. high, W.
 of cor. This cor. is 510 ft. below top of cliff at
 21.09 chain station.

Thence,
 North on tp. bdy. continuing measurement from sec. cor.,
 Over mountainous land, thru dense undergrowth. Descend
 180 ft. on NE. slope, to

56.00 Head of draw, course E. Ascend 80 ft. on SE. slope, to
 65.88 Triangulation point of above described triangulation.

Ascend 55 ft. on SE. slope, to
 70.00 Spur, slopes E. Descend 255 ft. on NE. slope, to.

80.00 Set an iron post, 3 ft. long, 2 ins. in diam., 10 ins. in
 the ground, to bedrock, supported by a mound of stone,
 for cor. of secs. 13, 18, 19 and 24, marked on brass cap,

TLN
 R10E | R11E
 S13 | S18
 S24 | S19
 1919

from which

A mountain mahogany, 5 ins. in diam., brs. N.
 79° W., 264 lks. dist., marked "TLN R10E S13 BT."
 No other trees available; raise a mound of stone 3 ft.
 base, 2 ft. high, W. of cor.

Land mountainous. Soil rocky, 4th rate, igneous formation.
 No timber; undergrowth, scrub oak, mountain mahogany, cat-
 claw, mesquite, palo verde and cacti.
 Fair grass.

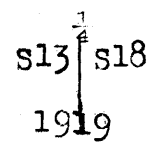
North, bet. secs. 13 and 18.
 Over mountainous land, thru dense undergrowth. Descend
 40 ft. on NE. slope, to

1.75 Bottom of ravine, course E. Ascend 40 ft. to
 3.00 Spur, slopes E. Descend 20 ft. on NE. slope, to
 4.60 Gulch, course SE. Ascend 410 ft. on rough SW. slope.
 4.80 Trail, brs. NW. and SE.
 25.00 Ridge, brs. NW. and SE. Descend 260 ft. on NE. slope.
 38.15 Trail, brs. NW. and SE.
 39.00 Gulch, course SE. Ascend 25 ft. on SE. slope, to

East boundary of Township 1 North, Range 10 East, 5.

Chains.
40.00

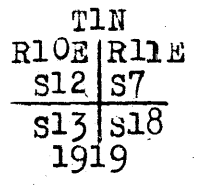
Set an iron post, 3 ft. long, 1 in. in diam., 26 ins. in the ground, for $\frac{1}{4}$ sec. cor., marked on brass cap,



and raise a mound of stone, 3 ft. base, 2 ft. high, W. of cor.

43.00
46.50
61.00
64.60
80.00

Ascend 75 ft. on SE. slope, to Spur, slopes E. Descend 70 ft. on NE. slope, to Head of gulch, course SE. Ascend 420 ft. on SE. slope, to Divide brs. NE. and SW. Descend 20 ft. on W. slope, to Spur, slopes NW. Descend 390 ft. on NE. slope, to Set an iron post, 3 ft. long, 2 ins. in diam., 24 ins. in the ground, for the cor. of secs. 7, 12, 13 and 18, marked on brass cap,



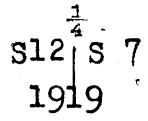
and raise a mound of stone, 3 ft. base, 2 ft. high, W. of cor., from which cor.,

A cedar limb, 5 ins. in diam., brs. S. 37° W., 148 lks. dist. marked "TLN R10E S13 BT."

No other trees available.
Land, mountainous.
Soil, rocky, 4th rate, igneous formation.
No timber.
Undergrowth, scrub oak, mountain mahogany, Spanish dagger, cedar, catclaw, mesquite and cacti.
Fair grass.

6.60
12.75
20.90
24.50
33.80
40.00

North, bet. secs. 7 and 12.
Over mountainous land, thru dense undergrowth. Descend 110 ft. on NE. slope, to Gulch, course W., small intermittent stream of clear water in bottom of same. Ascend 170 ft. on S. slope, to Spur, slopes W. Descend 170 ft. on N. slope to Gulch, course W.; small intermittent stream of clear water in bottom of same. Ascend 120 ft. on S. slope, to Spur, slopes W. Descend 110 ft. on N. slope, to Gulch, course SW. Ascend 80 ft. on SW. slope, to Set an iron post, 3 ft. long, 1 in. in diam., 18 ins. in the ground, to bedrock, supported by a mound of stone, for $\frac{1}{4}$ sec. cor., marked on brass cap,



from which,
A mesquite, 8 ins. in diam., brs. S. 64 $\frac{3}{4}$ ° E., 232 lks. dist., marked "S7 BT." No other trees available.
A cement water trough, brs. S. 67 $\frac{1}{2}$ ° E., 208 lks. dist.

Raise a mound of stone, 3 ft. base, 2 ft. high, W. of cor. Ascend 470 ft. on SW. slope.

44.10
66.25
80.00

Trail, brs. NW. and SE.
Divide brs. NW. and SE. Descend 240 ft. on NE. slope, to Set an iron post, 3 ft. long, 3 ins. in diam., 20 ins. in the ground, to bedrock, supported by a mound of stone, for cor. of secs. 1, 6, 7 and 12, marked on brass cap,

6 East boundary of Township 1 North, Range 10 East.

Chains.

T1N	
R10E	R11E
S 1	S 6
S12	S7
1919	

from which,

A cedar, 24 ins. in diam., brs. S. 31° E., 306 lks. dist., marked "T1N R11E S7 BT."

No other trees available. Raise a mound of stone, 3 ft. base, 2 ft. high, W. of cor.

Land, mountainous.

Soil, rocky, 4th rate, igneous formation.

No timber.

Undergrowth, scrub oak, mountain mahogany, scrub cedar, catclaw, cacti and mesquite.

Fair grass.

North, bet. secs. 1 and 6.

Over mountainous land, thru. dense undergrowth. Descend 220 ft. over broken NE. slope.

14.50 Gulch, course NE. Thence along E. slope, to

17.10 Gulch, course NW. Ascend 200 ft. on broken SW. slope, to

31.30 Spur, slopes NW. Descend 70 ft. over rolling NE. slope, to

40.00 Set an iron post, 3 ft. long, 1 in. in diam., 8 ins. in the ground, to bedrock, supported by a mound of stone, for $\frac{1}{2}$ sec. cor., marked on brass cap,

S 1 S 6	
1919	

and raise a mound of stone, 3 ft. base, 2 ft. high, W. of cor.

Descend 230 ft. on N. slope, to

69.50 Gulch, course W. Ascend 175 ft. on SE. slope, to

80.00 Ridge, brs. E. and SW. Set an iron post, 3 ft. long, 3 ins. in diam., 2 ins. in the ground, to bedrock, supported by a mound of stone, for cor. of Ts. 1 and 2 N., Rs. 10 and 11 E., marked on brass cap,

T2N	
R10E	R11E
S36	S31
S 1	S 6
T1N	
1919	

and raise a mound of stone, 4 ft. base, 2 $\frac{1}{2}$ ft. high, S. of cor.

Land, mountainous.

Soil, rocky, 4th rate, igneous formation.

No timber.

Undergrowth, scrub oak, mountain mahogany, catclaw, mesquite and cacti.

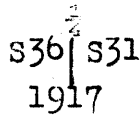
Fair grass.

Survey of West boundary of Township 1 North, Range 10 East. 7

Chains.

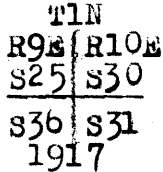
The standard cor. of T.1 N., Rs. 9 and 10 E. on Gila and Salt River Base line, reestablished in July, 1914, is found to be an iron post, 3 ins. in diam., 5 ins. above a mound of stone, firmly set, properly marked on brass cap, with a mound of stone, N. of cor. No bearing trees. Thence, North, bet. secs. 31 and 36. Over gently rolling land, ascending gradually thru scattering undergrowth.

40.00 Set an iron post, 3 ft long, 1 in. in diam., 26 ins. in the ground, for $\frac{1}{4}$ sec. cor., marked on brass cap,



and raise a mound of stone 3 ft. base, 2 ft. high, W. of cor.

80.00 Set an iron post, 3 ft. long, 2 ins. in diam., 12 ins. in the ground, to bedrock, supported by a mound of stone, for the cor. of secs. 25, 30, 31 and 36, marked on brass cap,



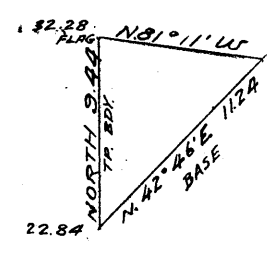
and raise a mound of stone, 3 ft. base, 2 ft. high, W. of cor.

The ascent from Tp. cor. to this sec. cor. is 275 ft. Land, gently rolling, slopes S., fair grazing. Soil, gravelly, 3rd and 4th rate, igneous formation. No timber; undergrowth, palo verde, palo fierro, catclaw, mesquite and cacti.

North, bet. secs. 25 and 30. Over mountainous land, thru dense undergrowth. Ascend over S. slope.

3.50
22.84
A rail, brs. E. and W. A point 170 ft. above cor. of secs. 25, 30, 31 and 36. A high cliff N. of this point renders continuation of chain measurement on tp. bdy. impracticable; therefore, triangulate as follows: set a flag on tp. bdy. at top of cliff.

From triangulation point at 22.84 ch. station, measure a base N. 42° 46' E., 11.24 chs. From NE. end of base, flag brs. N. 81° 11' W. Included angles are 56° 03', 42° 46', and 81° 11', the sum of which is 180° 00'.



Dist. triangulated is obtained by $\frac{\text{sine } 56^{\circ}03' \times \text{base}}{\text{sine } 81^{\circ}11'}$ or $\frac{.82953 \times 11.24}{.98818} = 9.44$ chs., which added to 22.84 chs. gives 32.28 chs. as the dist. on tp. bdy. from sec. cor. to flag on top of cliff. The vertical angle from the triangulation point at 22.84 ch. station to flag at 32.28 ch. station is + 36°, which gives difference of elevation bet. said points, 453 ft.

32.28 Flag point at top of cliff, 180 ft. high, brs. NE. and NW. Ascend 90 ft. on S. slope, to

8. Survey of West boundary of Township 1 North, Range 10 East

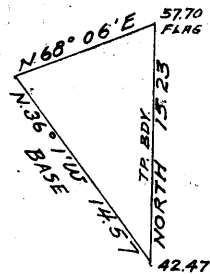
Chains.

40.00 Set an iron post, 3 ft. long, 1 in. in diam., 20 ins. in the ground, to bedrock, supported by a mound of stone, for $\frac{1}{4}$ sec. cor., marked on brass cap,

S25 $\frac{1}{4}$ S30
1919

and raise a mound of stone, 3 ft. base, 2 ft. high, W. of cor.

42.47 Ascend 55 ft. on SW. slope, to Cliffs N. of this point render chain measurement impracticable; therefore, triangulate as follows:



Measure a base N. 36° 01' W., 14.57 chs.

Set flag on Tp. bdy. at top of cliffs.

From NW. end of base, the flag brs. N. 68° 06' E.

Included angles are 75° 53', 68° 06' and 36° 01' the sum of which is 180° 00'.

Dist. triangulated is obtained by $\frac{\text{sine } 75^\circ 53' \times \text{base}}{\text{sine } 68^\circ 06'}$ or

$$\frac{.96980 \times 14.57}{.92784} = 15.23 \text{ chs.},$$

which added to 42.47 chs. gives 57.70 chs. as dist. on Tp. bdy. from sec. cor. to flag.

Vertical angle from 42.47 chs. sta. to flag is + 42° which gives difference of elevation bet. said points 905 ft.

57.70 Flag point at top of cliffs, bearing NW. and SE., 250 ft. high.

57.80 Rocky spur, slopes E. Descend 50 ft., over broken cliffs to

61.80 Foot of descent, brs. E. and W. Ascend 107 ft. to

69.00 Top of mountain ridge, brs. NE. and SW. Descend 30 ft. on steep NW. slope, over broken cliffs to

72.80 Foot of descent, brs. NE. and SW. Ascend 58 ft. to

76.30 Top of ascent, brs. E. and W. Descend 117 ft, on N. slope to

80.00 Set an iron post 3 ft. long, 2 ins. in diam., 20 ins. in the ground to bedrock, supported by a mound of stone, for cor. of secs. 19, 24, 25 and 30, marked on brass cap,

T1N
R9E, R10E
S24 | S19
S25 | S30
1919

and raise a mound of stone, 3 ft. base, 2 ft. high, W. of cor.

Land, mountainous.

Soil, rocky, 4th rate, igneous formation.

No timber.

Undergrowth, scrub oak, catclaw, mesquite, palo verde, palo fierro and cacti.

Poor grass.

North, bet. secs. 19 and 24.

Over mountainous land, thru. scattering undergrowth. Descend 115 ft. on rocky N. slope.

3.80 Gulch, course W., with small intermittent stream of clear water in bottom. Ascend 210 ft. on S. slope.

11.70 Rocky spur, slopes W. Descend 125 ft. on NW. slope.

18.40 Gulch, course W. with small intermittent stream of clear

West boundary of Township 1 North, Range 10 East. 9.

Chains

29.20 water in bottom. Ascend 310 ft. on SW.slope.
 Rocky point slopes W. Thence along steep broken W.slope,
 Descend 30 ft.to

40.00 Set an iron post 3 ft.long, 1 in. in diam., 20 ins. in
 the ground, to bed rock, supported by a mound of stone
 for $\frac{1}{2}$ sec.cor., marked on brass cap,

S24 | S19
 1919

from which,

- A pine, 6 ins. in diam., brs.S.18°E., 91 lks.
 dist., marked " $\frac{1}{4}$ S 19 BT."
- A pine, 8 ins. in diam., brs.S.25 $\frac{1}{2}$ °W., 114 lks.
 dist., marked " $\frac{1}{4}$ S 24 BT."

49.20 Continue along steep broken W. slope. Ascend 17 ft.to
 (Top of ascent, brs.NE. and SW. Leave W.slope. Descend
 230 ft. on NW.slope.

56.80 Gulch, course W. Ascend 165 ft. on SW. slope.

63.50 Rocky ridge, brs. NW. and SE.

Descend 175 ft. on broken, cliffy NE.slope.

72.43 Top of cliffs, 175 ft. high, bearing NW. and SE. Precipitous
 descent from cliffs renders contin-
 uation of chain measurement impracti-
 cable; therefore, triangulate as
 follows:

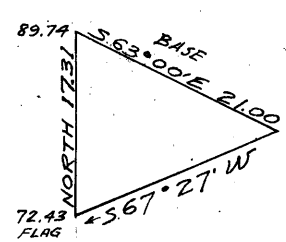
Leave flag at this point.
 Measure a base S.63°00'E. from a
 point on Tp.bdy.N.of flag.
 From SE.end of base, flag brs.S.67°27'
 W.

Included angles are 49°33', 67°27'
 and 63°00', the sum of which is
 180°.

Dist. triangulated is obtained by

$$\frac{\text{sine } 49^{\circ}33' \times \text{base}}{\text{sine } 67^{\circ}27'}$$
 or

$$\frac{.76097 \times 21.00}{.92355} = 17.31 \text{ chs.},$$



which added to 72.43 chs.gives
 89.74 chs. as the dist.on Tp.bdy.
 from cor.of secs.19,24, 25 and 30
 to triangulation point.

Vertical angle from 89.74 chs.station to flag at 72.43
 ch.station is + 15°, which gives difference of eleva-
 tion bet. said points, 306 ft.

From 89.74 chs.station, south 9.74 chs.

Ascend 131 ft. on broken NE.slope to

80.00 Foot of cliff, brs.NW. and SE. Set an iron post 3 ft.
 long, 2 ins. in diam., 2 ins. in the ground, to bed-
 rock, supported by a mound of stone, for cor.of secs.
 13,18,19 and 24, marked on brass cap,

T1N
 R9E | R10E
 S13 | S18
 S24 | S19
 1919

and raise a mound of stone, 3 ft.base, 2 ft.high, 3 ft.
 E.of cor.; impossible to raise mound W.of cor.on ac-
 count of cliffs.

Land, mountainous.
 Soil, rocky, 4th rate, igneous formation.
 Timber, a few scattering pine and cedar.
 Undergrowth, scrub oak, catclaw and cacti.
 Poor grass.

114

10 West boundary of Township 1 North Range 10 East

Chains.

Preliminary to measurement by stadia method in the following mile, make the following test of the stadia wire interval: Stadia measurements are made with fixed stadia wires with a ratio of 1:132, as exhibited by test here described; the focal constant of the instrument being 1.2 lks., using a standard Philadelphia level rod graduated to feet and equipped with two targets and a rod level; all readings are made with a vertical rod:

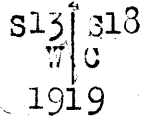
Horizontal length of base = 5.016 chs.
 Mean of 6 readings, = 2.500 ft.
 Vertical angle of test, = 0°00'
 K = 132.00. No error shown.

North, bet. secs. 13 and 18.

Over mountainous land, thru dense undergrowth.

Descend 370 ft. on broken NE slope.

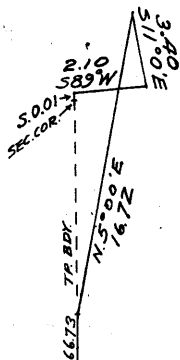
- 9.74 Triangulation point of triangulation here in before described.
- 26.80 Canyon, course NW., with small intermittent stream of clear water in bottom. Ascend 220 ft., over broken SW slope, to
- 38.24 Rocky point slopes W.; discontinue chain measurement owing to cliffs facing W., and Stadia to rocky point, mean rod reading 1.475 ft. vertical angle + 9° 08', gives horizontal dist. of 2.89 chs. which added to 38.44 chs. = 41.13 chs. = rod point.
- 40.00 True point for 1/4 sec. cor. is inaccessible; therefore, at 1.30 chs. N. set witness cor. to 1/4 sec. cor., as described below.
- 41.13 Rod point on rocky point, sloping W. 30 ft. above 38.24 chs. sta. Descend 12 ft., over broken cliffy W. slope, to
- 41.30 Set an iron post 3 ft. long, 1 in. in diam., 10 ins. in the ground, to bedrock, supported by a mound of stone, for witness cor. to 1/4 sec. cor. marked on brass cap,



and raise a mound of stone 3 ft. base, 2 ft. high, W. of cor.

Ascend 100 ft., over broken cliffy W. slope, to

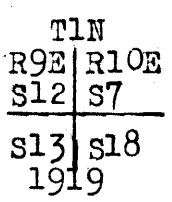
- 49.38 Stadia over broken cliffs, facing W.; mean rod reading 5.700 ft., vertical angle + 9° 24', gives horizontal dist. of 11.11 chs., which added to 49.38 chs. = 60.49 chs. = rod point.
- 60.49 Rod point 121 ft. above 49.38 ch. sta. Resume measurement with steel tape. Ascend 25 ft. to
- 65.60 Top of ascent brs. NW. and SE. on NW. side of Weavers Needle (the top of which brs. S. 20° E., about 7 chs. dist., and is about 300 ft. high) Descend 10 ft. on NW. slope, to
- 66.73 Top of cliff, 80 ft. high, brs. NE. and SW. On account of the steep W. face of cliffs N. of this station, it is impracticable to continue chaining on Tp. bdy., and the point for sec. cor. is not visible from this station; therefore, traverse to the sec. cor., as follows:
 Stadia over broken cliffy W. slope; N. 5° 00' E., mean rod reading, 8.91 ft., vertical angle = 14° 30' = 16.72 chs. = rod point at the only accessible point near sec. cor., which is visible from stadia station, said rod point being 285 ft. below the top of cliffs; thence measuring with steel tape, S. 11° E., 3.40 chs.; thence S. 89° W., 2.10 chs. Thence S. 1 lk. to true point for cor. on Tp. bdy. at
- 80.00 Set an iron post, 3 ft. long, 2 ins. in diam., 12 ins. in



West boundary of Township 1 North, Range 10 West 11

Chains

the ground, to bedrock, supported by a mound of stone, for cor. of secs. 7, 12, 13 and 18, marked on brass cap,



and raise a mound of stone, 3 ft. base, 2 ft. high, W. of cor.

Land, mountainous.
Soil, rocky, 4th rate, igneous formation.
Timber, a few scattering pine and cedar.
Undergrowth, scrub oak, catclaw, coffee brush and cacti.
Poor grass.

North, bet. secs. 7 and 12.
Over mountainous land.

To avoid impassable cliffs, traverse as follows: N. 89° E., 2.10 chs.; thence N. 11° W., 3.40 chs., thence N. 66 1/2° W., 1.58 chs. to point on Tp. bdy. at

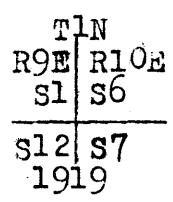
- 4.00 Over broken cliffy W. slope, thru dense undergrowth. Desc. 120 ft. to
- 13.50 Spur, slopes NW. Descend 280 ft. on NE. slope.
- 21.50 Gulch, course NW. Ascend 210 ft. on SW. slope.
- 27.00 Ridge, brs. NW. and SE. Descend 60 ft. on broken E. slope, to
- 40.00 Set an iron post, 3 ft. long, 1 in. in diam., on bedrock, supported by a mound of stone, for 1/4 sec. cor., marked on brass cap,



from which,
A mesquite, 8 ins. in diam., brs. N. 65° E., 177 lks. dist., marked "1/4 S 7 B T."

No other tree available. Raise a mound of stone, 3 ft. base, 2 ft. high, W. of cor.

- 49.65 Ascend 135 ft. on broken E. slope, to Rocky point, slopes NE. Descend 400 ft. on broken NW. slope to
- 68.70 Gulch, course NE. Ascend 200 ft. on SE. slope, to
- 80.00 Set an iron post, 3 ft. long, 2 ins. in diam., 14 ins. in the ground, to bedrock, supported by a mound of stone, for the cor. of secs. 1, 6, 7 and 12, marked on brass cap,



and raise a mound of stone, 3 ft. base, 2 ft. high, W. of cor.

Land, mountainous.
Soil, rocky, 4th rate, igneous formation.
Timber, a few scattering cedar.
Undergrowth, scrub oak, coffee brush, catclaw, mesquite and cacti.
Poor grass.

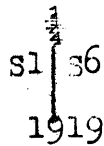
North, bet. secs. 1 and 6.
Over mountainous land, thru dense undergrowth.

- 3.00 Ascend 100 ft. on S. slope.
- 3.00 Spur, slopes E. Thence over heavily rolling E. slope. Desc. 350 ft. to
- 40.00 Set an iron post, 3 ft. long, 1 in. in diam., on bedrock,

12 West boundary of Township 1 North, Range 10 East.

Chains.

supported by a mound of stone, for $\frac{1}{4}$ sec. cor., marked on brass cap,



from which,

A mesquite, 8 ins. in diam., brs. N. 27° E., 109 lks. dist., marked " $\frac{1}{4}$ S 6 B T."

No other tree available; and raise a mound of stone, 3 ft. base, 2 ft. high, w. of cor.

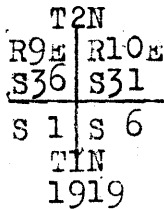
Descend 150 ft. on NE. slope, to

56.20 Wash, 50 lks. wide, course NW.; small intermittent stream of clear water, in bottom of same. Ascend 180 ft. on SW. slope.

58.45 Trail, brs. NW. and SE.

72.00 Ridge, brs. NW. and SE. Descend 100 ft. on NE. slope, to

80.00 Set an iron post, 3 ft. long, 3 ins. in diam., 16 ins. in the ground, to bedrock, supported by a mound of stone, for cor. of T. 1 and 2 N., R. 9 and 10 E., marked on brass cap,



and raise a mound of stone, 4 ft. base, 2 $\frac{1}{2}$ ft. high, S. of cor.

Land, mountainous.

Soil, rocky, 4th rate, igneous formation.

No timber.

Undergrowth, scrub oak, coffee brush, catclaw, mesquite and cacti.

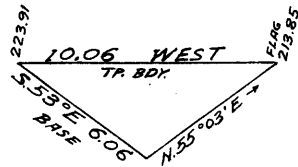
Fair grass.

Survey of North boundary of Township 1 North, Range 10 East. 13.

Chains.

From the cor. of Ts. 1 and 2 N., Rs. 10 and 11 E., hereinbefore described,
West, on a random line, along the N. bdy. of T. 1 N., R. 10 E., setting temp. $\frac{1}{4}$ sec. and sec. cors. at intervals of 40.00 chs., until at
213.85 Top of cliff, brs. NW. and SE. Discontinue chaining, and triangulate to point on random Tp. bdy. beyond cliff, as follows:

Leave flag at this point.
From point on random Tp. bdy.
W. from flag, measure a base S. $53^{\circ}E.$, 6.06 chs.
From SE. end of base, flag brs. N. $55^{\circ}03'E.$



Included angles are $108^{\circ}03'$, $37^{\circ}00'$ and $34^{\circ}57'$, the sum of which is $180^{\circ}00'$. Dist. triangulated is obtained by $\frac{\text{sine } 108^{\circ}03' \times \text{base}}{\text{sine } 34^{\circ}57'}$ or $\frac{.95079 \times 6.06}{.57286} = 10.06$ chs., which

added to 213.85 chs. gives 223.91 chs. as the position of triangulation point. From said point, vertical angle to flag is $+20^{\circ}$.

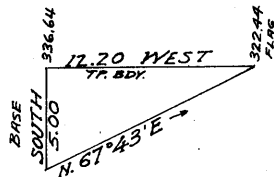
223.91 Triangulation point of above described triangulation, 240 ft. below flag point.

Resume chaining and continue line and measurement.

240.00 Set temp. cor. for secs. 3, 4, 33 and 34. At intervals of 40.00 chs. W. from this cor., set temp. $\frac{1}{4}$ sec. and sec. cors. until at

322.44 Discontinue chaining at top of cliff on E. rim of box canyon, bearing N. and S., and triangulate to a point on the random Tp. bdy. on W. side of box canyon, as follows.

Leave flag at this point.
From point on random Tp. bdy. on W. rim of canyon, measure a base S., 5.00 chs.
From S. end of base, flag brs. N. $67^{\circ}43'E.$



Included angles are $67^{\circ}43'$, $90^{\circ}00'$ and $22^{\circ}17'$, the sum of which is $180^{\circ}00'$.

Dist. triangulated is obtained by $\text{tang, } 67^{\circ}43' \times \text{base}$ or $2.44027 \times 5.00 = 12.20$ chs., which added to 322.44 chs. gives 336.64 chs. as position of triangulation point. From said point vertical angle to flag is $+4^{\circ}$.

336.64 Triangulation point on W. rim of box canyon, 56 ft. below flag point.

Resume chaining and continue line and measurement.

358.47 To avoid cliffs facing south, set stake to mark offset point, and traverse as follows: N. $53^{\circ}55'W.$, 16.67 chs., thence S. $48^{\circ}15'W.$, 14.75 chs. to random Tp. bdy. at

382.94 Set stake to mark offset point and continue measurement of random Tp. bdy., West

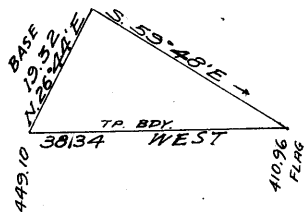
400.00 Set temp. cor. for secs. 5, 6, 31 and 32, and to avoid cliffs W. of this cor., traverse as follows: N. $57^{\circ}15'W.$, 5.61 chs.; thence S. $63^{\circ}15'W.$, 6.73 chs. to random Tp. bdy., at

410.27 Set stake to mark offset point, and continue measurement of random Tp. bdy., West.

410.96 Top of cliff, brs. N. and S. Discontinue chaining, and triangulate as follows:

14. North boundary of Township 1 North, Range 10 west.

Chains.



Leave flag at this point.
 From point on random Tp. bdy.
 W. from flag, measure a base
 N. 26° 44' E., 19.32 chs.
 From NE. end of base, flag brs.
 S. 59° 48' E.

Included angles are 86° 32',
 20° 12' and 63° 16', the sum
 of which is 180° 00'.

Dist. triangulated is obtained
 by sine 86° 32' x base or
 $\frac{\sin 20^\circ 12'}{\sin 86^\circ 32'} \times 19.32 = 38.34$

$\frac{.99817 \times 19.32}{.34550} = 55.54$
 chs. which, added to
 410.96 chs. gives 449.10 chs.
 as position of triangulation
 point. From said point, the
 vertical angle to flag point
 is + 25°.

Thence,
 east, 9.10 chs. to

440.00 set temp. & sec. cor.

Thence, west, continuing measurement of random Tp. bdy.,

449.10 triangulation point 1180 ft. below flag point.

479.26 Fall 32 lks. N., of the cor. of Ts. 1 and 2 N., Rs. 9 and 10
 E., hereinbefore described, which falling answers to
 a correction of 0° 02', or 5 lks. S. per mile, counting
 from the NE. cor. of the Tp., giving a true course of
 N. 89° 58' E.

N. 89° 58' E., on a true line, bet. secs. 6 and 31.

Over mountainous land, thru dense undergrowth.

Descend 40 ft. on NE. slope, to

7.00 Draw, course SE. Thence over S. slope. Descend 60 ft. to

18.30 Same draw, course NE. Descend 90 ft. on N. slope.

34.75 Center of LaBarge Wash, 100 lks. wide, 6 ft. banks, course N.
 with small intermittent stream of clear water in bot-
 tom. Ascend 125 ft. on W. slope, to 1/4 sec. cor.

36.75 Trail, brs. N. and S.

39.26 Set an iron post, 3 ft. long, 1 in. in diam., 10 ins. in
 the ground, to bedrock, supported by a mound of stone,
 for 1/4 sec. cor., marked on brass cap,

T 2 N | R 10 E
 S 31 | S 6
 1919

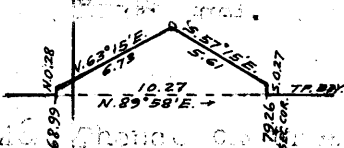
and raise a mound of stone, 3 ft. base, 2 ft. high, N. of
 cor.

Thence by triangulated measurement, hereinbefore described.

Ascend 1055 ft. to

68.60 Top of cliffs, bear N. and S., 300 ft. high. Desc. 70 ft. to sec. cor.

68.99 To avoid cliffs, traverse as follows:



North 28 lks. Thence,
 N. 63° 15' E., 6.73 chs. Thence,
 S. 57° 15' E., 5.61 chs. Thence,
 S. 27° 15' E., 5.61 chs. Thence,
 S. 27 lks. to point on true line at

79.26 Thence, by triangulated measurement.

Set an iron post 3 ft. long, 2 ins. in diam., 6 ins. in the
 ground, to bedrock, supported by a mound of stone, for
 cor. of secs. 5, 6, 31 and 32, marked on brass cap,

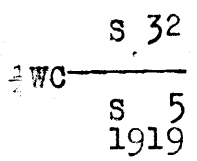
T 2 N | R 10 E
 S 31 | S 32
 S 6 | S 5
 T 1 N
 1919

North boundary of Township 1 North, Range 10 East. 15

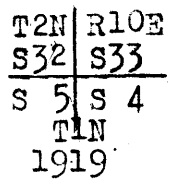
Chains.

and raise a mound of stone, 3 ft. base, 2 ft. high, W. of cor.
 Land, mountainous.
 Soil, rocky, 4th rate, igneous formation.
 No timber.
 Undergrowth, coffee brush, scrub oak, catclaw, mesquite, scrub cedar and cacti.
 Fair grass.

- 6.00 N. 89°58'E., on a true line, bet. secs. 5 and 32. Over mountainous land, thru. scattering undergrowth. Ascend 140 ft. on SW. slope, to Top of ascent, brs. NW. and SE. Thence over rolling top of mountain.
- 20.00 Leave mountain top, thence over broken cliffs, facing S. Descend 110 ft. to W.C. to 1/2 sec. cor.
- 40.00 True point for 1/2 sec. cor. inaccessible; therefore at
- 40.30 Set an iron post 3 ft. long, 1 in. in diam., on bedrock, supported by a mound of stone, for witness cor. to 1/4 sec. cor., marked on brass cap,

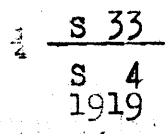


- 48.00 and raise a mound of stone, 3 ft. base, 2 ft. high, N. of cor. Ascend 70 ft. on SW. slope. Spur, slopes SE. Descend NE. slope.
- 62.62 West rim of Box Canyon, brs. N. and S. Thence across said canyon, course S., about 150 ft. deep, with small intermittent stream of clear water in bottom. Measurement by triangulation hereinbefore described, to
- 76.82 East rim of box canyon, brs. N. and S. Thence over mesa, brs. N. and S.
- 80.00 Set an iron post 3 ft. long, 2 ins. in diam., on bedrock, supported by a mound of stone, for cor. of secs. 4, 5, 32 and 33, marked on brass cap,



and raise a mound of stone, 3 ft. base, 2 ft. high, W. of cor.
 Land, mountainous.
 Soil, rocky, 4th rate, igneous formation.
 No timber.
 Undergrowth, catclaw, coffee brush, mesquite, scrub oak and cacti.
 Fair grass.

- 10.40 N. 89°58'E., on a true line, bet. secs. 4 and 33. Over rolling land, slopes N., thru. dense undergrowth. Trail, brs. N. and S.
- 22.60 Gulch, course NW. Ascend 230 ft. on W. slope, to
- 40.00 Set an iron post, 3 ft. long, 1 in. in diam., 14 ins. in the ground, to bedrock, supported by a mound of stone, for 1/2 sec. cor., marked on brass cap,



16. North boundary of Township 1 North, Range 10 East.

Chains.

45.00 and raise a mound of stone, 3 ft. base, 2 ft. high, N.
 59.00 of cor. Ascend 65 ft. on SW. slope.
 73.10 Ridge, brs. NW. and SE., thence along rolling N. slope.
 80.00 Spur, slopes NW. Descend 290 ft. on NE. slope.
 Gulch, course NW. Ascend 90 ft. on SW. slope, to
 Set an iron post, 3 ft. long, 2 ins. in diam., on bedrock,
 supported by a mound of stone, for cor. of secs. 3, 4,
 33 and 34, marked on brass cap,

T2N R10E
 S33 | S34
 S 4 | S 3
 T1N
 1919

from which,

A mesquite, 8 ins. in diam., brs. N. 89° 55' W., 151
 lks. dist., marked "T2N R10E S33 BT."
 and raise a mound of stone, 3 ft. base, 2 ft. high, W. of
 cor.

Land, rolling and mountainous.
 Soil, rocky, 4th rate, igneous formation.
 No timber.
 Undergrowth, mesquite, catclaw, coffee brush, scrub oak
 and cacti.
 Fair grass.

15.50 N. 89° 58' E., on a true line, bet. secs. 3 and 34.
 Over mountainous land, thru scattering undergrowth.
 Ascend 280 ft. on SW. slope, to
 Foot of cliffs, bearing NW. and SE. Ascend 40 ft. to top
 of cliff.

Measurement by triangulation, hereinbefore described.
 25.60 Top of cliff, brs. NW. and SE. Ascend 10 ft. to
 27.00 Rocky spur, slopes S. Descend 170 ft. on SE. slope, to
 40.00 Set an iron post, 3 ft. long, 1 in. diam., 26 ins. in the
 ground, for sec. cor., marked on brass cap,

S 34
 S 3
 1919

from which,

A mesquite, 8 ins. in diam., brs. S. 60 1/2° E., 61
 lks. dist., marked "S 3 B T."
 No other tree available. And raise a mound of stone, 3
 ft. base, 2 ft. high, N. of cor.

Descend 130 ft. on SE. slope to gulch.
 47.45 Frail, brs. N. and S.
 50.60 Gulch, course SW. Ascend 210 ft. on NW. slope.
 69.00 Spur, slopes SW. Descend 50 ft. on S. slope.
 78.00 Draw, course SW. Ascend on S. slope, to
 80.00 Set an iron post, 3 ft. long, 2 ins. in diam., 20 ins. in
 the ground, to bedrock, supported by a mound of stone,
 for cor. of secs. 2, 3, 34 and 35, marked on brass cap,

T2N R10E
 S34 | S35
 S 3 | S 2
 T1N
 1919

from which,

A cedar limb, 6 ins. in diam., brs. S. 36 1/2° E.
 124 lks. dist., marked "T 1N R10E S2BT."
 No other trees available. Raise a mound of stone, 3
 ft. base, 2 ft. high, W. of cor.
 Land, mountainous. Soil, rocky, 4th rate, igneous formation.
 Timber, a few scattering cedars.

Chains.

Undergrowth, scrub oak, coffee brush, catclaw, mesquite and cacti.
Fair grass.

40.00

N.89°58'E., on a true line, bet. secs.2 and 35.
Over rolling land, thru scattering undergrowth.
Ascend 250 ft., over rolling S. slope to divide.
Set an iron post, 3 ft. long, 1 in. in diam., 12 ins. in the ground, to bedrock, supported by a mound of stone, for 1/4 sec. cor., marked on brass cap,

1/4 S 35
S 2
1919

from which,

A mountain willow, 5 ins. in diam., brs. N.76°E., 139 lks. dist., marked "1/4 S 35 BT."

45.00

No other tree available. And raise a mound of stone, 3 ft. base, 2 ft. high, N. of cor.

61.30

Divide, brs. NW. and SE. Descend 360 ft. on NE. slope, to Gulch, course NE. Ascend 120 ft. over broken N. slope.

73.00

Spur, slopes NE. Descend 190 ft. over SE. slope, to

80.00

Set an iron post, 3 ft. long, 2 ins. in diam., 24 ins. in the ground, for cor. of secs. 1, 2, 35 and 36, marked on brass cap,

T2N R10E
S35 S36
S 2 S 1
T1E
1919

and raise a mound of stone, 3 ft. base, 2 ft. high, W. of cor.

Land, rolling and mountainous.
Soil, rocky, 4th rate, igneous formation.
Timber, a few scattering cedars.

Undergrowth, scrub oak, catclaw, mesquite, coffee brush and cacti.

Fair grass.

7.60

Gulch, course NE. Ascend 25 ft. over rolling N. slope.

22.00

Spur, slopes NE. Descend 20 ft. on E. slope.

29.80

Gulch, course N., with small intermittent stream of clear water in bottom. Ascend 130 ft. on SW. slope, to

40.00

Set an iron post, 3 ft. long, 1 in. in diam., 26 ins. in the ground, for 1/4 sec. cor., marked on brass cap,

1/4 S 36
S 1
1919

from which,

A cedar, 7 ins. in diam., brs. S. 20 1/2° W., 408 lks. dist., marked "1/4 S 6 BT."

No other trees available. Raise md. of stone, 3 ft. base, 2 ft. high, N. of cor. Ascend 270 ft. on SW. slope.

59.00

Spur, slopes NW. Thence over rolling N. slope, thru dense undergrowth.

78.50

Spur, slopes SW. Descend 20 ft. along top of spur.

80.00

Intersect the cor. of Ts. 1 and 2 N., Rs. 10 and 11 E., here- in before described.

18. North boundary of Township 1 North, Range 10 East.

Chains.

Land, mountainous.
 Soil, rocky, 4th rate, igneous formation.
 Timber, a few scattering cedars.
 Undergrowth, scrub oak, coffee brush, catclaw, mesquite,
 and cacti.
 Fair grass.

From the recentish standard of 1895 and 96, 0

Survey of Subdivision lines of Township 1 North Range 10 East 19

Chains.

From the reestablished standard cor. of secs. 35 and 36, on the S. bdy. of the Tp., (G. and S.R. Base Line), described in Book "D" of this group

- N. 0° 1' W., bet. secs. 35 and 36.
- Over mountainous land, thru scattering undergrowth. Desc. 40 ft. on broken W. slope, to
- 10.20 Bend of "Frazer Canyon" from NW., course SW. Ascend 140 ft. on SW. slope.
- 21.30 Spur, slopes W. Descend 120 ft. on NW. slope.
- 32.00 "Frazer Canyon," course SW. Ascend 75 ft. on SE. slope, to
- 40.00 Set an iron post 3 ft. long, 1 in. in diam., 20 ins. in the ground, to bedrock, supported by a mound of stone, for $\frac{1}{4}$ sec. cor., marked on brass cap,

$\frac{1}{4}$ s35 | s36
 1917

and raise a mound of stone, 3 ft. base, 2 ft. high, W. of cor.

- Ascend 125 ft. on SE. slope, to
- 53.20 Spur, slopes E. Descend 260 ft. over broken NE. slope.
- 79.60 Draw, course SE. Ascend 20 ft. on S. slope, to
- 80.00 Set an iron post, 3 ft. long, 2 ins. in diam., 14 ins. in the ground, to bedrock, supported by a mound of stone, for cor. of secs. 25, 26, 35 and 36, marked on brass cap,

TLN | R10E
 S26 | S25
 s35 | s36
 1917

and raise a mound of stone, 3 ft. base, 2 ft. high, W. of cor.

Land, mountainous.
 Soil, rocky, 4th rate, igneous formation.
 No timber.
 Undergrowth, palo verde, scrub oak, catclaw, mesquite, coffee brush and cacti.
 Poor grass.

- 40.00 East, on a random line, bet. secs. 25 and 36.
- 79.98 Set temp. $\frac{1}{4}$ sec. cor.
- Fall 5 lks. S. of the cor. of secs. 25, 30, 31 and 36, on E. bdy. of Tp., hereinbefore described.
- Thence,
- S. 89° 58' W., on a true line, bet. secs. 25 and 36.
- Over mountainous land, thru scattering undergrowth.
- .15 Wash, 30 lks. wide, $1\frac{1}{2}$ ft. deep, course S. Ascend 40 ft. on SE. slope, to
- 5.00 Spur, slopes NE. Ascend 235 ft. over NE. slope, to
- 16.90 Ridge, brs. NW. and SE. Descend 150 ft. over SW. slope.
- 23.00 Draw, course SW. Ascend 70 ft. over SE. slope.
- 28.90 Spur, slopes S. from NE. Corral brs. S. 51° W. Descend 87 ft. over broken SW. slope, to
- 39.99 Set an iron post, 3 ft. long, 1 in. in diam. 10 ins. in the ground, to bedrock, supported by a mound of stone, for $\frac{1}{4}$ sec. cor., marked on brass cap,

$\frac{1}{4}$ S 25
 S 36
 1917

and raise a mound of stone, 3 ft. base, 2 ft. high, N. of cor.

- 46.70 Corral brs. S. 12° W.; a spring about 5 chs. W. of corral.
- Ridge, brs. NE. and SW. (same as at 16.90 ch. station) Descend 460 ft., over W. slope.

20 Survey of Subdivision of Township 1 North, Range 10 East.

Chains.

58.00
72.90
76.60
79.98

Canyon, course SW. Ascend 150 ft. over SE.slope.
Ridge, brs.NW. and SE., near SE.end of same. Descend 30 ft. over SW.slope, to
Wash, 30 lks.wide, 4 ft.deep, course S.
Descend 40 ft. over S.slope, to
The cor. of secs. 25, 26, 35 and 36.
Land, mountainous.
Soil, rocky, 4th rate, igneous formation.
No timber.
Undergrowth, palo verde, scrub oak, coffee brush, catclaw, mesquite and cacti..
Poor grass.

1.40
5.00
22.50
30.75
40.00

N. 0° 01' W., bet. secs. 25 and 26.
Over mountainous land, thru. dense undergrowth.
Ascend 15 ft. on SW.slope, to
SE. point of ridge, bearing NW. and SE. Descend 10 ft. over NE.slope, to
Draw, course SE. Ascend 130 ft. over SW.slope, to
Ridge, brs. NW. and SE. Ascend 30 ft. over E.slope, to
Spur, slopes E. Descend 100 ft. over NE.slope, to
Set an iron post, 3 ft. long, 1 in. in diam., 26 ins. in the ground, for $\frac{1}{4}$ sec. cor., marked on brass cap.

S26 | S25
1919

from which,

A mesquite, 12 ins. in diam., brs. N. 83 $\frac{1}{2}$ ° E., 181 lks. dist. marked "S 25 BT."

No other tree available. And raise a mound of stone, 3 ft. base, 2 ft. high, W. of cor.

41.60
80.00

Descend 10 ft. on NE.slope, to
Gulch, course SE. Ascend 290 ft., over broken SW.slope.
Set an iron post 3 ft. long, 2 ins. in diam., 20 ins. in the ground, to bedrock, supported by a mound of stone, for cor. of secs. 23, 24, 25 and 26, marked on brass cap.

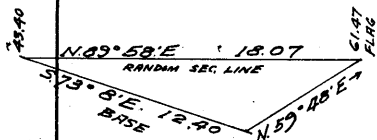
T1N | R10E
S23 | S24
S26 | S25
1919

and raise a mound of stone, 3 ft. base, 2 ft. high, W. of cor.

Land, mountainous.
Soil, rocky, 4th rate, granite formation.
No timber.
Undergrowth, mesquite, catclaw, coffee brush, palo verde, scrub oak and cacti.
Fair grass.

40.00
43.40

N. 89° 58' E., on a random line, bet. secs. 24 and 25.
Set temp. $\frac{1}{4}$ sec. cor.
East of this point random line passes over cliffs, bearing N. and S., which renders chain measurement impracticable. Therefore, triangulate as follows:



From this point, measure a base S. 73° 08' E., 12.40 chs.
Set flag on random line.
From SE. end of base, flag brs. N. 59° 48' E.
Included angles are 132° 56', 16° 52' & 20° 12', the sum of

Chains.

which is 180°00'. The vertical angle from 43.40 ch. station to flag = + 30°. Distance triangulated is obtained by

$$\frac{\text{sine } 132^\circ 56' \times \text{base}}{\text{sine } 20^\circ 12'} \text{ or } \frac{.73215 \times 12.40}{.34530} = 18.07$$

chs. which, added to 43.40 chs. gives 61.47 chs. as distance to flag point from sec.cor. The difference in elevation is 688 ft.

61.47 Flag point on edge of cliff, 200 ft. high, bearing N. and S. Cannot resume chain measurement on random line, E. of this point; therefore, make another triangulation as follows:

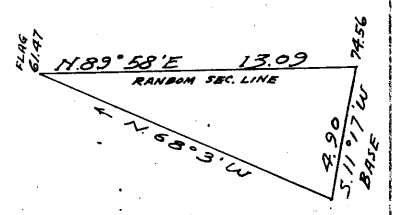
Leave flag at this point. From point ahead on random line, measure a base S.11° 17' W., 4.90 chs. From SW. end of base, flag brs. N.68° 3' W. The included angles are

79° 20', 21° 57', and 78° 43', the sum of which is 180° 00'.

The vertical angle from triangulation point on random line to flag point is - 21°.

Dist. on random line triangulated is obtained by

$$\frac{\text{sine } 78^\circ 43' \times \text{base}}{\text{sine } 21^\circ 57'} \text{ or } \frac{.98067 \times 4.90}{.37380} = 13.09 \text{ chs.}$$



which added to 61.47 chs. gives 74.56 chs. as the dist. to triangulation point from sec.cor.

The difference in elevation is 330 ft.

74.56 Triangulation point of above described triangulation on ridge, bearing N. and S. Resume measurement of random line by chaining.

76.30 Top of cliff, 400 ft. high, brs. N. and S. Precipitous descent from this cliff, renders chaining impracticable; therefore, triangulate as follows:

Leave flag at this point. From a point on E. bdy. of Tp., on rocky spur, sloping SE., at 13.29 chs. N. from true point for cor. of secs. 19, 24, 25 and 30, measure a base N.89° 8' W., 6.00 chs.

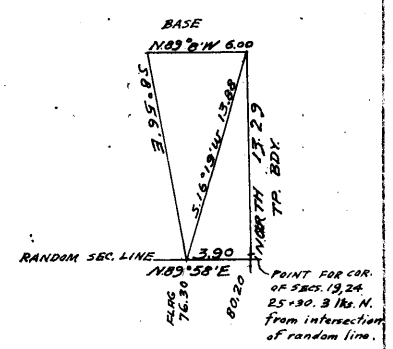
From west end of base, flag on random sec. line brs. S.8° 56' E.

From east end of base, same flag brs. S.16° 19' W.

Included angles are, 74° 33', 25° 15' and 80° 12', the sum of which is 180° 00'.

Distance from E. end of base to flag is obtained by

$$\frac{\text{sine } 80^\circ 12' \times \text{base}}{\text{sine } 25^\circ 15'} \text{ or } \frac{.98541 \times 6.00}{.42657} = 13.88 \text{ chs.}$$



Triangulated dist. on random sec. line is obtained by $\frac{\text{sine } 16^\circ 19' \times 13.29 \text{ chs.}}{\text{sine } 73^\circ 39'} \text{ or } \frac{.28095 \times 13.29}{.95956} = 3.90 \text{ chs.}$

which added to 76.30 chs. gives 80.20 chs. as length of line bet. secs. 24 and 25.

22 Subdivision lines of Township 1 North, Range 10 East.

Chains.
 80.20 Fall 3 lks.S. of the true point for cor.of secs.19,24,25 and 30, on East bdy.of Tp.,witnessed 1.10 chs.N. as hereinbefore described.
 From the true point for cor.,
 S.89°57'W., on a true line, bet. secs.24 and 25.
 Over mountainous land.
 Ascend E.face of cliff. Measurement by triangulation hereinbefore described to
 3.90 Top of cliff, 400 ft. high, brs. N. and S. Ascend 50 ft. on E.slope. Chain measurement to
 5.64 Ridge, brs.N. and S. Descend broken cliffy SW. slope. Triangulated measurement to
 18.73 Flag point of triangulation. Continue by triangulated measurement to 36.80 ch. station, from which make return measurement by chaining to
 24.00 Foot of cliffs, bearing NW. and SE. Descend over W.slope, thru.dense undergrowth.
 36.80 Triangulation point. Continue measurement by chaining.
 40.10 Set an iron post, 3 ft.long, 1 in. in diam., 15 ins. in the ground, to bedrock, supported by a mound of stone, for $\frac{1}{4}$ sec.cor., marked on brass cap,

$\frac{1}{4}$ S 24
 S 25
 1919

and raise a mound of stone 3 ft.base, 2 ft.high, N.of cor.
 Descend 46 ft.
 43.40 Gulch, course S. 730 ft. below ridge. Ascend 140 ft. over E.slope.
 46.90 Spur, slopes S. Descend 380 ft. over W.slope.
 59.80 Gulch, course S. Ascend 300 ft. on E.slope.
 74.80 Ridge, brs.N. and S. Descend 150 ft. over broken SW.slope, to
 80.20 Cor.of secs.23,24, 25 and 26.
 Land mountainous.
 Soil, rocky, 4th rate, granite formation,
 No timber.
 Undergrowth, mesquite, catclaw, coffee brush, scrub oak and cacti.
 Poor grass.

 N.0°1'W., bet. secs.23 and 24.
 Over mountainous land, thru.dense undergrowth
 Ascend 110 ft. over broken SW.slope.
 5.00 Ridge, brs.NW. and SE.
 Descend 70 ft. over broken E.slope.
 13.10 Draw, course E. Ascend 100 ft. over SE.slope,
 21.50 Spur, slopes E. Descend 90 ft. over NE. slope.
 30.25 Gulch, course SE.
 Ascend 165 ft. over SW.slope, to
 40.00 Set an iron post 3 ft.long, 1 in. in diam., 8 ind. in the ground, to bedrock, supported by a mound of stone, for $\frac{1}{4}$ sec.cor, marked on brass cap,

$\frac{1}{4}$
 S23 | S24
 1919

and raise a mound of stone 3 ft.base, 2 ft.high, W.of cor.
 Ascend 40 ft.
 43.00 Point of spur, slopes SW.
 Descend 50 ft. over NW.slope.
 47.90 Gulch, course SW.
 Ascend 660 ft. over rocky, broken SE. slope, to
 80.00 Set an iron post 3 ft.long, 2 ins. in diam., 24 ins. in the ground, for the cor.of secs.13,14,23 and 24,

Chains.

marked on brass cap,

TLN	R10E
S14	S13
S23	S24
1919	

from which,

A mountain mahogany 5 ins. in diam., brs. S.72° W., 364 lks. dist., marked TLN R10E S23 BT.

No other tree available. Raise a mound of stone, 3 ft. base 2 ft. high, W. of cor.

Land, mountainous.

Soil, rocky, 4th rate, igneous formation.

No timber.

Undergrowth, scrub oak, palo verde, catclaw, cacti, mesquite, coffee brush, mountain mahogany.

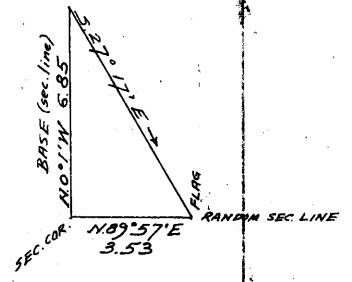
Fair grass.

N. 89° 57' E. on a random line, bet. secs. 13 and 24. Chain measurement is rendered impracticable at the beginning of this line by reason of high cliffs bearing NW. and SE., facing SW. Therefore, triangulate as follows:

Set flag on random section line at top of ridge, bearing NW. and SE.

From sec. cor., triangulate a base, N. 0° 1' W., 6.85 chs. as hereinafter described in notes of line bet. secs. 13 and 14.

From N. end of base, flag brs. S. 27° 17' E. Included angles are 27° 16', 62° 46', and 89° 58', the sum of which is 180° 00'.



Distance triangulated on random sec. line is obtained by

$$\frac{\text{sine } 27^{\circ}16' \times \text{base}}{\text{sine } 62^{\circ}46'} \text{ or } \frac{.45813 \times 6.85}{.88915} = 3.53 \text{ chs.}$$

3.53 Flag point of above described triangulation. Continue measurement by chaining.

40.00 Set temp. 1/4 sec. cor.

80.08 Fall 16 lks. S. of the cor. of secs. 13, 18, 19 and 24, on the E. bdy of the Tp., hereinbefore described.

Thence, S. 89° 50' W., on a true line, bet. secs. 13 and 24. Over mountainous land, thru. dense undergrowth.

Ascend 410 ft. over broken NE. slope.

30.00 Divide, brs. N. and S.

Descend gradually along N. slope.

40.04 Set an iron post 3 ft. long, 1 in. in diam., 10 ins. in the ground to bedrock, supported by a mound of stone, for 1/4 sec. cor., marked on brass cap,

1/4	S 13
	S 24
	1919

from which,

A mountain mahogany, 6 ins. in diam., brs. S. 50° W., 113 lks. dist., marked 1/4 S 24 BT.

No other tree available. Raise a mound of stone, 3 ft. base, 2 ft. high, N. of cor.

Descend 75 ft., over N. slope.

51.30 Head of gulch, course N.

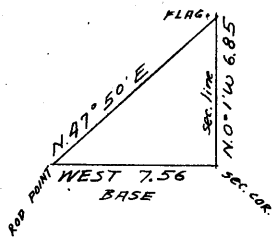
Ascend 470 ft. to

24 Subdivision of Township 1 North, Range 10 East.

chains.

64.00 Divide, brs. NW. and SE. (Same as at 30 ch. station).
 Descend along top of Divide.
 76.50 Top of cliffs, about 400 ft. high, brs. NW. and SE.
 Measurement to sec. cor. by triangulation, hereinbefore described.
 Descend over broken cliffs.
 80.08 Cor. of secs. 13, 14, 23 and 24.
 Land, mountainous.
 Soil, rocky, 4th rate, igneous formation.
 Timber, very scattering cedar.
 Undergrowth dense scrub oak, catclaw, mesquite, coffee
 brush and cacti.
 Fair grass.

N. 0° 17' W. bet. secs. 13 and 14.
 Over mountainous land.
 Ascend over broken cliffs, facing south.
 Measurement by triangulation as follows:



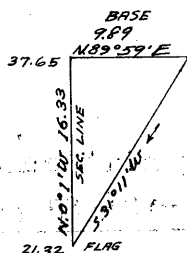
Set flag ahead on sec. line, at top of cliffs.
 From sec. cor. stadia a base line 7., mean rod reading 5.00 ft.
 vertical angle + 29° 40' gives horizontal dist. of 7.56 chs. as the length of the base.
 From W. end of base, flag brs. N. 47° 50' E. Included angles are 42° 10', 47° 49', and 89° 59', the sum of which is 180° 00.

Distance triangulated on section line is obtained by

$$\frac{\text{sine } 42^{\circ} 10' \times \text{base}}{\text{sine } 47^{\circ} 49'} \text{ or } \frac{.67129 \times 7.56}{.74100} = 6.85 \text{ chs.}$$

6.85 Top of cliffs, 400 ft. above sec. cor., bearing W. and SE.
 Ascend 50 ft. over rolling, broken, cliffy SE. slope.
 15.00 Top of ascent, bearing NE. and SW.
 Thence over flat top of mountain.
 21.32 Top of cliffs, 500 ft. high, bearing NW. and SE., facing NE.

Descend over cliffs. Measurement by triangulation as follows:
 Leave flag at this point. From point ahead on line, measure a base, N. 89° 59' E. 9.89 chs.



From E. end of base, flag brs. S. 31° 11' W.
 Included angles are 58° 48', 31° 12' and 90° 00', the sum of which is 180° 00'.

Distance triangulated on section line is obtained by

$$\text{Tang. } 58^{\circ} 48' \times \text{base} \text{ or } 1.65120 \times 9.89 = 16.33 \text{ chs., which added to } 21.32 \text{ chs. gives } 37.65 \text{ chs. as the dist. to triangulation point from sec. cor.}$$

37.65 Triangulation point of above described triangulation.
 Descend over broken N. slope, thru. dense undergrowth.
 Measurement by chaining.
 40.00 Set an iron post 3 ft. long, 1 in. in diam., 4 ins. in the ground to bedrock, supported by a mound of stone, for 1/2 sec. cor., marked on brass cap,

Subdivision of Township 1 North, Range 10 East. 25.

Chains .

75.80 Raise a mound of stone 3 ft. base, 2 ft. high, W. of cor. Descend 430 ft., over N. slope, to Creek, 10 lks. wide, clear running water, 6 ins. deep, course west. Ascend 110 ft. on S. slope.

80.00 Set an iron post 3 ft. long, 2 ins. in diam., 15 ins. in the ground, to bedrock, supported by a mound of stone, for cor. of secs. 11, 12, 13 and 14, marked on brass cap,

T1N	R10E
S11	S12
S14	S13

1919

from which,
 A cedar 24 ins. in diam., brs. S. 73 1/2° W., 184 lks. dist., marked T1N R10E S14 BT.
 No other trees available. Raise a mound of stone, 3 ft. base, 2 ft. high, W. of cor.
 Land, mountainous.
 Soil, rocky, 4th rate, igneous formation.
 Timber, very scattering cedar.
 Undergrowth, scrub oak, catclaw, mesquite, coffee brush, mahogany and cacti.
 Fair grass.

40.00 N. 89° 50' E., on random line, bet. secs. 12 and 13. Set temp. 1/4 sec. cor.

80.18 Intersect cor. of secs. 7, 12, 13 and 18 on E. bdy of Tp., here- inbefore described.

Thence,
 S. 89° 50' W., on true line, bet. secs. 12 and 13.
 Over mountainous land, thru. dense undergrowth.
 Ascend 250 ft. over NE. slope.

14.70 Spur, slopes NW.
 Descend 385 ft. over SW. slope, to 1/4 sec. cor.

38.50 Trail, brs. N. and S.

40.09 Set an iron post, 3 ft. long, 1 in. in diam., 22 ins. in the ground to bedrock, supported by a mound of stone, for 1/4 sec. cor., marked on brass cap,

1/4 S 12
S13

1919

from which,
 A willow, 8 ins. in diam., brs. N. 62° W., 175 lks. dist., marked 1/4 S 12 BT.
 No other tree available. Raise a mound of stone 3 ft. ft. base, 2 ft. high, N. of cor.
 Descend 185 ft. over NW. slope.

48.60 Trail, brs. N. and S.

50.70 Gulch, course NW. Small stream of clear running water. Descend slightly along N. slope.

53.80 Same gulch, course SW.
 Descend 60 ft. along S. slope, to

63.80 Rocky gulch, course SW.

66.30 Gulch, course NW., with small stream of clear running water at bottom. Cattle corral brs. N. about 2 chs. dist.
 Descend 50 ft. over N. slope.

68.40 Trail, brs. NE. and SW.

69.90 Gulch, course SW. Small stream of clear running water in bottom.
 Ascend 100 ft. on SE. slope.

75.00 Top of ascent, brs. NE. and SW.
 Descend 60 ft. along S. slope, to

80.18 The cor. of secs. 11, 12, 13 and 14.
 Land, mountainous.

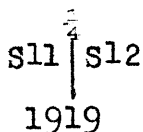
26. Subdivision of Township 1 North, Range 10 East.

Chains.

Soil, rocky, 4th rate, igneous formation.
 Timber, very scattering cedar.
 Undergrowth, catclaw, coffee brush, mesquite, mahogany,
 palo verde, and cacti.
 Fair grass.

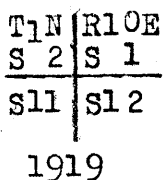
N. 0° 1' W. on a true line, bet. secs. 11 and 12.
 Over mountainous land, thru dense undergrowth.

- 6.50 Ascend 120 ft. on SW. slope.
- 11.90 Spur, slopes SW. Descend 85 ft. on NW. slope.
- 14.75 Draw, course W. Ascend 20 ft. on SW. slope.
- 16.00 Saddle in ridge, bearing NW. and SE.
 Descend 20 ft. on NE. slope.
- 22.00 Draw, course NW.
 Ascend 95 ft. over SW. slope, to
 Spur, slopes SW.
- 39.00 Ascend 60 ft. along W. slope.
 Top of ascent.
- 40.00 Descend 20 ft. over NW. slope, to
 Set an iron post 3 ft. long, 1 in. in diam., 26 ins. in
 the ground for $\frac{1}{4}$ sec. cor., marked on brass cap,



Raise a mound of stone 3 ft. base, 2 ft. high, W. of cor.

- 49.00 Descend 75 ft. over NW. slope.
 Gulch, course SW.
 Ascend 500 ft. to sec. cor.
 Beginning over SE. slope.
- 53.00 Trail, brs. NW. and SE.
- 65.00 Leave SE. slope, enter SW. slope.
- 80.00 Set an iron post, 3 ft. long 2 ins. in diam., 12 ins.
 in the ground to bedrock supported by a mound of stone
 for cor. of secs. 1, 2, 11 and 12, marked on brass cap,



from which,

A cedar, 16 ins. in diam., brs. S. 33° W., 268
 lks. dist., marked T1N R1OE S11 BT.

No other trees available. Raise a mound of stone 3 ft.
 base, 2 ft. high, W. of cor.

Land, mountainous.
 Soil, rocky, 4th rate.
 Timber, very scattering cedar.
 Undergrowth, scrub oak, catclaw, cedar, mesquite, coffee
 brush, cacti. Fair grass.

- 40.00 N. 89° 50' E., on a random line, bet. secs. 1 and 12.
 Set temp. $\frac{1}{4}$ sec. cor.
- 80.24 Fall 12 lks. S. of the cor. of secs. 1, 6, 7 and 12, on E. bay
 of Tpt., hereinbefore described.
 Thence,
 S 89° 45' W., on a true line, bet. secs. 1 and 12.
 Over mountainous land, thru dense undergrowth.
- 5.00 Ascend 75 ft, over NE. slope.
 Spur, slopes N.
- 14.30 Descend 140 ft. over NW. slope.
 Gulch, course NE.
 Ascend 250 ft. over NE. slope.

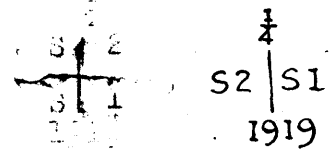
Subdivision of Township 1 North Range 10 East.

Chains.
 25.50 Divide, brs. N^e and S.
 Descend 100 ft. over SW. slope, to
 40.12 Set an iron post 3 ft. long, 1 in. in diam., 26 ins. in the
 ground, for $\frac{1}{4}$ sec. cor., marked on brass cap,

$\frac{1}{4}$ S 1
 S 12
 1919

raise a mound of stone 3 ft. base, 2 ft. high, N. of cor.
 Ascend 175 ft. over S. slope.
 54.00 Ridge, brs. NE. and SW.
 Descend 30 ft. on NW. slope.
 60.00 Foot of descent.
 Ascend 35 ft. on NE. slope.
 70.25 Ridge, brs. W. and SE.
 Descend 55 ft. along top, of ridge.
 78.00 Leave top of ridge, brs. NW. and E.
 Descend 110 ft. on SW. slope, to
 80.24 Cor. of secs. 1, 2, 11 and 12.
 Land, mountainous.
 Soil, rocky, 4th rate, igneous formation.
 Timber, very scattering cedar.
 Undergrowth, catclaw, scrub oak, coffee brush, mesquite,
 cacti.
 Fair grass.

N. 0° 1' W. on a random line, bet. secs. 1 and 2.
 40.00 Set temp. $\frac{1}{4}$ sec. cor.
 80.12 Fall 14 lks. W. of the cor. of secs. 1, 2, 35 and 36, on N.
 bdy. of Tp, hereinbefore described.
 Thence,
 S. 0° 5' W. on a true line, bet. secs. 1 and 2.
 Over mountainous land, thru. scattering undergrowth.
 Descend 65 ft. over E. slope.
 7.10 Gulch, course NE.
 Ascend 430 ft., over NE. slope.
 32.60 Divide, brs. NW. and SE.
 Descend 85 ft. over S. slope, to
 40.12 Set an iron post, 3 ft. long, 1 in. in diam., 4 ins. in
 the ground to bedrock, supported by a mound of stone,
 for $\frac{1}{4}$ sec. cor., marked on brass cap,



and raise a mound of stone 3 ft. base, 2 ft. high, W. of
 cor.
 Descend 315 ft. over SW. slope.
 53.40 Gulch, course SW.
 Ascend 85 ft. on N. slope.
 58.10 Spur, slopes SW.
 Descend 75 ft.
 Over S. slope.
 66.10 Course, course W. Ascend 360 ft., over N. slope.
 78.10 Ridge, brs. W. and SE.
 Descend 20 ft. over SW. slope, to
 80.12 The cor. to secs. 1, 2, 11 and 12.
 Land, mountainous.
 Soil, rocky, 4th, igneous formation.
 No timber.
 Undergrowth, catclaw, mesquite, palo verde, scrub oak, cof-
 fee brush and cacti. Fair grass.

28. Subdivision of Township 1 North, Range 10 East.

Chains.

From the reestablished standard cor. of secs. 34 and 35. on the S. bdy. of the Tp., (G. and S.R. Base Line) described in Book "D" of this group, N. 0° 01' W., bet. secs. 34 and 35. Over mountainous land, thru scattering undergrowth. Ascend 740 ft., over broken SE. slope, to

40.00 Set an iron post, 3 ft. long, 1 in. in diam., 12 ins. in the ground, to bedrock, supported by a mound of stone, for $\frac{1}{2}$ sec. cor., marked on brass cap,

S34 | S35
1917

and raise a mound of stone, 3 ft. base, 2 ft. high, W. of cor.

41.00 Ascend 30 ft. on S. slope. Ridge, abears E. and NW. Descend 220 ft. over broken NE. slope.

50.40 Draw, course SE. Ascend 240 ft. over SW. slope.

66.70 Ridge, brs. W. and SE. Descend 410 ft. over NE. slope, to

77.40 Leave NE. slope, Descend 55 ft. over N. slope, to

80.00 Set an iron post, 3 ft. long, 2 ins. in diam., on bedrock, supported by a mound of stone, for the cor. of secs. 26, 27, 34 and 35, marked on brass cap,

T1N | R10E
S27 | S26
S34 | S35
1919

and raise a mound of stone, 3 ft. base, 2 ft. high, W. of cor.

Land, mountainous. Soil, rocky, 4th rate, igneous formation. No timber. Undergrowth, palo verde, catclaw, mesquite, coffee brush and cacti. Fair grass.

40.00 East, north-south line, bet. secs. 26 and 35. Set temporary sec. cor. on location of diggers and

79.96 Fall 7 lks. S of the cor. of secs. 25, 26, 35 and 36. Thence, S. 39° 57' W., on a true line, bet. secs. 26 and 35.

Over mountainous land, thru dense undergrowth.

.45 Draw, course SE. Ascend 135 ft. over broken NE. slope.

5.00 Spur, slopes NE., thence along broken N. slope.

9.00 Same draw, course NE. Ascend 96 ft. over broken SE. slope.

15.50 Ridge, brs. NE. and SW. Descend 100 ft. over NW. slope.

26.00 Draw, course SW.

36.00 "Coffin Flats Wash," 30 lks. wide, 2 ft. deep, course SE. Ascend 46 ft. over broken NE. slope, to

39.98 Set an iron post 3 ft. long, 1 in. in diam., 20 ins. in the ground, to bedrock, supported by a mound of stone, for $\frac{1}{2}$ sec. cor., marked on brass cap,

S 26
S 35
1917

and raise a mound of stone, 3 ft. base, 2 ft. high, N. of cor.

69.50 Ascend 575 ft., over NE. slope. Spur, slopes NE. Descend 100 ft. over NW. slope.

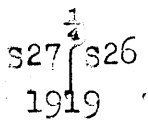
74.40 Draw, course NE. Ascend 100 ft. over NE. slope.

79.96 The cor. of secs. 26, 27, 34 and 35. Land, mountainous.

Chains.

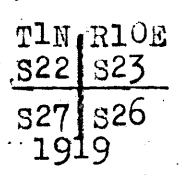
Soil, rocky, 4th rate, igneous formation.
No timber.
Undergrowth, catclaw, mesquite, coffee brush, palo verde,
and cacti.
Fair grass.

- 19.90 N.0° 01' W., bet. secs. 26 and 27.
Over mountainous land, thru. scattering undergrowth. Descend 335 ft. to Gulch, course E. Ascend 85 ft. over SE.slope.
- 25.00 Spur, slopes E. Descend 100 ft. over E.slope.
- 34.40 Head of gulch, course E. Ascend 40 ft. over E.slope to 1/4 sec. cor.
- 35.40 Trail, brs. E. and W.
- 37.10 Prospect hole, 5 ft. deep, on line.
- 40.00 Set an iron post, 3 ft. long, 1 in. in diam., 26 ins. in the ground, for 1/4 sec. cor., marked on brass cap,



from which,
A mesquite, 8 ins. in diam., brs. S. 56 1/2° E., 152 lks. dist., marked "1/4 S26BT."

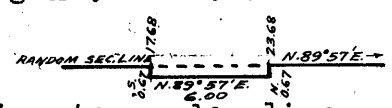
- No other tree available. Raise a mound of stone, 3 ft. base, 2 ft. high, W. of cor.
- Ascend 35 ft. to
- 47.80 Low ridge, brs. NE. and SW.
Descend 20 ft. along rolling W. slope, to
- 53.00 Ascend 685 ft. over broken cliffy S. slope, to
- 72.80 Top of cliff point, brs. SE., 100 ft. high on SW. side, 40 ft. high on NE. side. Ascend 60 ft. over broken cliffy E. slope, to
- 77.00 Point of cliff, bears E. Descend 20 ft., cliffy E. slope.
- 80.00 Spur, slopes E. Set an iron post, 3 ft. long, 2 ins. in diam., on bedrock, supported by a mound of stone, for the cor. of secs. 22, 23, 26 and 27, marked on brass cap,



and raise a mound of stone, 3 ft. base, 2 ft. high, W. of cor,

Land, mountainous.
Soil, rocky, 4th rate, igneous formation.
No timber.
Undergrowth, catclaw, mesquite, palo verde, coffee brush and cacti.
Fair grass.

- 17.68 N. 89° 57' E., on a random line, bet. secs. 23 and 26. To avoid impassable cliff, bearing NW. and SE. offset as follows:
South, 67 lks.
N. 89° 57' E., 6.00 chs.
North 67 lks., returning to random line, at
- 23.68 Offset point. Continue measurement on random line.
- 40.00 Set temp. 1/4 sec. cor.
- 80.13 Fall 2 lks. N. of the cor. of secs. 23, 24, 25 and 26. thence
S. 89° 58' W., on a true line, bet. secs. 23 and 26.
Over mountainous land, thru. scattering undergrowth.
Descend 65 ft. over S. slope.
- 3.60 Head of gulch, course S. Ascend 170 ft. over SE. slope.



30 subdivision of Township 1 North Range 10 East.

Chains.
 13.90 Spur, slopes S. Descend 80 ft. over broken W.slope.
 17.20 Gulch, course S. Ascend 140 ft. over E.slope.
 20.40 Rocky spur, slopes S. Descend 70 ft., over W.slope, to
 23.80 Gulch, course S. Ascend 60 ft. over E.slope.
 25.30 Rocky spur, slopes S. Descend 20 ft., over W.slope.
 29.00 Draw, course SE. Ascend 225 ft. over E.slope.
 36.40 Spur, slopes S. Descend 80 ft. on W.slope to
 40.06¹/₂ Set an iron post 3 ft. long, 1 in. in diam., 2 ins. in the
 ground, to bedrock, supported by a mound of stone, for
¹/₄ sec. cor., marked on brass cap,

$\frac{1}{4}$ S 23
 S 26
 1919

and raise a mound of stone, 3 ft. base, 2 ft. high, N. of cor.

46.00 Descend 160 ft. over W.slope, to
 56.00 Descend 140 ft. over SW.slope.
 Gulch, course SE. Ascend 350 ft. over broken cliffy NE.
 slope.
 80.13 The cor. of secs. 22, 23, 26 and 27.
 Land, mountainous.
 Soil, rocky, 4th rate, igneous formation.
 No timber.
 Undergrowth, scrub oak, mesquite, palo verde, catclaw and
 cacti.
 Fair grass.

N. 0° 01' W., bet. secs. 22 and 23.
 Over mountainous land, thru scattering undergrowth. De-
 scend 110 ft., over NE.slope.

8.85 Head of gulch, course SE.
 Ascend 335 ft. over broken SE.slope.
 16.75 Divide, brs. E. and W.
 Descend 325 ft. over N.slope, thru dense undergrowth.
 28.30 Rocky gulch, course W. Ascend 125 ft. over broken S.
 slope.
 32.10 Spur, slopes W. Descend 250 ft. over N.slope.
 40.00 Bottom of gulch, course NW., insecure place for ¹/₄ sec.
 cor.; continue along rolling W. slope, and at
 40.40 Set an iron post, 3 ft. long, 1 in. in diam., 16 ins. in the
 ground to bedrock, supported by a mound of stone, for
 witness cor. to ¹/₄ sec. cor., marked on brass cap,

$\frac{1}{4}$ S 22 | S 23
 W | C
 1919

from which,

A mesquite, 4 ins. in diam., brs. S. 43° W., 44 lks.
 lks. dist., marked " $\frac{1}{4}$ S 22 W C B T."

No other tree available. And raise a mound of stone, 3
 ft. base, 2 ft. high, W. of cor.

50.02 Stadia across rocky gulch, course W., and up broken cliffs
 that bear NW. and SE.; mean rod reading, 9.94 ft.,
 vertical angle + 19° 02' gives horizontal dist. of
 17.78 chs., which added to 50.02 chs. = 67.80 chs. rod
 point.

Difference in elevation, 425 ft.

67.80 Rod point on spur, slopes NW. Descend 230 ft. on NE.
 slope to

80.00 Set an iron post, 3 ft. long, 2 ins. in diam., 12 ins. in
 the ground, to bedrock, supported by a mound of stone,
 for the cor. of secs. 14, 15, 22 and 23, marked on brass
 cap,

Chains .

T1N	R10E
S15	S14
S22	S23
1919	

from which,

A mahogany, 6 ins. in diam., brs. S. 75 1/2° E., 290 lks. dist., marked "T1N R10E S23 BT."

No other trees available. And raise a mound of stone, 3 ft. base, 2 ft. high, W. of cor.

Land, mountainous.

Soil, rocky, 4th rate, igneous formation.

No timber.

Undergrowth, palo verde, scrub oak, catclaw, coffee brush, mesquite, ocatea and cacti.

Fair grass.

N. 89° 58' E., on a random line, bet. secs. 14 and 23.

Stadia across rocky, cliffy canyon, course N., mean rod reading, 5.270 ft., vertical angle + 13° 48' gives horizontal dist. of 9.95 chs.

9.95 Rod point. Thence continue line and measurement by chaining.

40.00 Set temp. 1/4 sec. cor.

72.35 Fall 23 lks. N. of rod point of stadia measurement of 7.56 chs. west of the cor. of secs. 13, 14, 23 and 24, made for a base in triangulating measurement of beginning of line bet. secs. 13 and 14, as hereinbefore described.

79.91 Thence by stadia measurement hereinbefore described to Fall 25 lks. N. of the cor. of secs. 13, 14, 23 and 24.

Thence, N. 89° 51' W., on a true line, bet. secs. 14 and 23.

Over mountainous land, thru dense undergrowth. Over broken cliffs, slopes S. and E. Measurement by stadia as hereinbefore described. Ascend 250 ft. to

7.56 Top of cliffs, bear N. and S., 100 ft. high. Ascend 125 ft. on E. slope. Continue line and measurement by chaining.

12.20 Divide brs. NE. and SW. Descend 310 ft. over broken NW. slope, to

28.00 Change to W. slope. Descend 180 ft. to

34.90 Head of gulch, course SW. Descend 47 ft., over S. slope, to

39.95 1/2 Set an iron post, 3 ft. long, 1 in. in diam., 8 ins. in the ground, to bedrock, supported by a mound of stone, for 1/4 sec. cor., marked on brass cap,

1/4	S 14
	S 23
1919	

and raise a mound of stone, 3 ft. base, 2 ft. high, N. of cor.

Descend 8 ft., over S. slope.

42.00 Changes to SW. slope. Descend 270 ft. to

51.40 Gulch, course NW, with small intermittent stream of clear water in bottom. Ascend 70 ft. on NE. slope.

55.00 Top of ascent, brs. N. and S. Descend 275 ft. on NW. slope.

63.75 Same gulch, course SW., with small intermittent stream of clear water in bottom.

Ascend 15 ft. over S. slope.

69.96 Top of sloping cliff, brs. NW. and SE., 60 ft. high. Descend 240 ft. over W. slope, into canyon. measurement to sec. cor. by stadia as hereinbefore described.

78.50 (Approximate) bottom of canyon, course N. Ascend about 80 ft. on E. slope, to

79.91 The cor. of secs. 14, 15, 22 and 23.

Land, mountainous.

Soil, rocky, 4th rate, igneous formation.

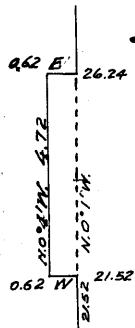
Timber, scattering cedar.

Undergrowth, catclaw, mesquite, scrub oak, coffee brush and cacti. Poor grass.

32. Subdivision of Township 1 North, Range 10 East.

Chains

- N.0°01'W., bet. secs. 14 and 15.
- Over mountainous land, thru. dense undergrowth. Ascend 18 ft., over broken, rocky E. slope, to
- 6.51 Rocky point, slopes E., stadia across cliffs, facing E., mean rod reading, 2.18 ft., vertical angle + 2°26' gives horizontal dist. of 4.37 chs., which added to 6.51 chs. = 10.88 chs., the dist. of rod point from sec. cor.
- Ascent from 6.51 chs. sta. to Rod point = 12 ft.
- 10.88 Rod point on rocky point slopes NE., stadia across canyon about 400 ft. deep, course NW., bottom of which crosses sec. line approximately at 16 chs. N. of sec. cor., mean rod reading 5.315 ft., vertical angle 0°00' gives horizontal dist. of 10.64 chs., which added to 10.88 chs. = 21.52 chs., the dist. of rod point from sec. cor.
- 21.52 Rod point on rocky point, slopes W. To avoid precipitous face of cliffs, offset as follows:



West, 62 lks., thence N.0°1'W. Stadia over cliffs, mean rod reading 2.370 ft., vertical angle - 4°42' gives horizontal dist. of 4.72 chs.; therefore, this portion of offset is N.0°01'W., 4.72 chs., Thence, East, 62 lks., returning to sec. line at

- 26.24 Rocky point, slopes W. Continue measurement by chaining. Descend 485 ft. over NW. slope, to
- 40.00 Set an iron post 3 ft. long, 1 in. in diam., 18 ins. in the ground, to bedrock, supported by a mound of stone, for $\frac{1}{4}$ sec. cor., marked on brass cap,

S15 | S14
1919

from which,

A mesquite, 4 ins. in diam., brs. E. 21 lks. dist., marked "S 14 BT."

No other tree available.

And raise a mound of stone, 3 ft. base, 2 ft. high, W. of cor., 3 ft. high,

- 40.30 Top of giant boulder on line. Descend 35 ft. to
- 42.00 Stadia across canyon, and over broken cliffs on N. side of canyon. Creek in bottom of canyon, course W. crosses sec. line at approximately 48 chs. N. of sec. cor. Mean rod reading, 10.290 ft. vertical angle, + 20° 50' gives horizontal dist. of 17.99 chs., which added to 42 chs. = 59.99 chs., the dist. of rod point from sec. cor.
- 48.00 (Approximate) rocky creek, with rapidly flowing clear water, 8 lks. wide, 4 ins. deep, course W. About 140 ft. below 42.00 ch. station. Ascend about 590 ft. on S. slope, to.
- 59.99 Rod point at top of cliffs, 200 ft. high, bears NW. and SE. Ascend 150 ft. over SW. slope.
- 75.00 Spur, slopes W. Descend 85 ft. over rolling W. slope, to
- 80.00 Set an iron post, 3 ft. long, 2 ins. in diam., 24 ins. in the ground, for the cor. of secs. 10, 11, 14 and 15, marked on brass cap,

TLN | R10E
S10 | S11
S15 | S14
1919

and raise a mound of stone, 3 ft. base, 2 ft. high, W. of cor.

Chains.

Land, mountainous.
Soil, rocky, 4th rate, igneous formation,
Timber, scattering cedar and cottonwood.
Undergrowth scrub oak, catclaw, mesquite, coffee brush
and cacti.
Fair grass.

40.00 S. 89° 51' E., on a random line, bet. secs. 11 and 14.
Set temp. $\frac{1}{4}$ sec. cor.
80.07 Fall 12 lks. S. of the cor. of secs. 11, 12, 13 and 14,
Thence,
N. 89° 56' W., on a true line, bet. secs. 11 and 14.
Over mountainous land, thru. dense undergrowth.
Descend 75 ft., on SW. slope.
8.55 Trail, brs. N. and S.
11.00 Gulch, course S. Ascend 500 ft., over broken S. slope.
37.80 Spur, slopes S. Descend 10 ft., over S. slope, to
40.03 $\frac{1}{2}$ Set an iron post, 3 ft. long, 1 in. in diam., 14 ins. in
the ground, to bedrock, supported by a mound of stone,
for $\frac{1}{2}$ sec. cor., marked on brass cap,

$\frac{1}{4}$ S 11
S 14
1919

and raise a mound of stone, 3 ft. base, 2 ft. high, N. of
cor.
Descend 70 ft., over S. slope.
44.00 Change to broken W. slope. Descend 350 ft.,
57.25 Rocky gulch, course S. Ascend 320 ft. on E. slope.
61.10 Trail, brs. N. and S.
71.00 Spur, slopes S. Descend 140 ft. on broken W. slope, to
80.07 The cor. of secs. 10, 11, 14 and 15.
Land, mountainous.
Soil, rocky, 4th rate, igneous formation.
No timber.
Undergrowth, catclaw, mesquite, coffee brush, scrub oak
and cacti.
Fair grass.

13.50 N. 0° 01' W., bet. secs. 10 and 11.
23.85 Over mountainous land, thru. scattering undergrowth.
33.00 Ascend 40 ft. on W. slope, to
40.00 Spur, slopes W. Descend 480 ft. on N. slope.
Gulch, course W. Ascend 340 ft. over broken S. slope, to
Change to broken E. slope. Ascend 25 ft. to
Set an iron post, 3 ft. long, 1 in. in diam., 15 ins. in
the ground, to bedrock, supported by a mound of stone,
for $\frac{1}{4}$ sec. cor., marked on brass cap,

S10 | S11
1919

and raise a mound of stone, 3 ft. base, 2 ft. high, W.
of cor.
Ascend 100 ft., over broken E. slope, to
60.80 Head of draw, course SE. Ascend 115 ft. on SW. slope.
71.40 Spur, slopes SE. Descend 110 ft. on NE. slope, to
80.00 Set an iron post, 3 ft. long, 2 ins. in diam., on bedrock,
supported by a mound of stone, for the cor. of secs. 2,
3, 10 and 11, marked on brass cap,

T1N | R10E
S3 | S2
S10 | S11
1919

34 Subdivision of Township 1 North Range 10 East

Chains.

and raise a mound of stone, 3 ft. base, 2 ft. high, W. of cor.

Land, mountainous.

Soil, rocky, 4th rate, igneous formation.

No timber.

Undergrowth, scrub oak, catclaw, mesquite, coffee brush and cacti.

Fair grass.

40.00 S. 89° 56' E., on a random line, bet. secs. 2 and 11.
Set temp. $\frac{1}{4}$ sec. cor.

80.35 Fall 14 lks. N. of the cor. of secs. 1, 2, 11 and 12.
Thence,

N. 89° 50' W., on a true line, bet. secs. 2 and 11.

Over mountainous land, thru scattering undergrowth.

Descend 413 ft., over S. slope, to

40.17 $\frac{1}{2}$ Set an iron post, 3 ft. long, 1 in. in diam., 4 ins. in the ground, to bed rock, supported by a mound of stone, for $\frac{1}{4}$ sec. cor., marked on brass cap,

$\frac{1}{4}$ S 2
S 11
1919

from which,

A cedar, 12 ins. in diam., brs. N. 78° W., 190 lks. dist., marked " $\frac{1}{4}$ S 2 BT."

No other tree available.

And raise a mound of stone, 3 ft. base, 2 ft. high, N. of cor.

Descend 183 ft., over S. slope to gulch.

55.55 Trail, brs. N. and S.

56.55 Gulch, course S. Ascend 290 ft. over NE. slope.

72.35 Rocky spur, slopes SE. Descend 110 ft., over broken SW. slope.

80.00 Draw, course SE. Ascend 10 ft., over NE. slope, to

80.35 The cor. of secs. 2, 3, 10 and 11.

Land, mountainous.

Soil, rocky, 4th rate, igneous formation.

Timber, very scattering cedar.

Undergrowth, scrub oak, catclaw, mesquite, coffee brush and cacti.

Good grass.

40.00 N. 0° 01' W., on a random line, bet. secs. 2 and 3.
Set temp. $\frac{1}{4}$ sec. cor.

80.01 Fall 50 lks. W. of the cor. of secs. 2, 3, 34 and 35, on N. bdy. of Tp., hereinbefore described.

Thence,

S. 0° 20' W., on a true line, bet. secs. 2 and 3.

Over mountainous land, thru scattering undergrowth.

Descend 70 ft., over W. slope.

10.65 Draw, course W. Ascend 190 ft. over N. slope.

24.60 Ridge, brs. E. and W. Descend 240 ft., over rolling S. slope.

25.00 Trail, brs. NW. and SE.

36.60 Draw, course E. Ascend rolling E. slope, to

40:01 Set an iron post 3 ft. long, 1 in. in diam., 26 ins. in the ground, for $\frac{1}{4}$ sec. cor., marked on brass cap,

S 3 $\frac{1}{4}$ S 2
1919

and raise a mound of stone, 3 ft. base, 2 ft. high, W. of cor.

73.00 Spur, slopes SE. 175 ft. above draw. Descend 100 ft., over broken SW. slope.

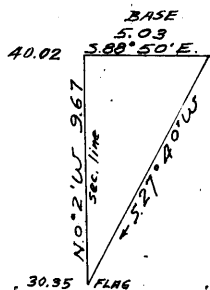
79.70 Draw, course SE. Ascend 7 ft. over NE. slope, to

Chains.

80.01 The cor. of secs. 2, 3, 10 and 11.
 Land, mountainous.
 Soil, rocky, 4th rate, igneous formation.
 No timber.
 Undergrowth, catclaw, scrub oak, mahogany, coffee brush,
 mesquite and cacti.
 Good grass.

 From the reestablished standard cor. of secs. 33 and 34, on
 the S. bdy. of the Tp. (Gila and Salt River Base Line)
 described in Book "D,"

20.00 N. 0° 02' W., bet. secs. 33 and 34.
 Over mountainous land, thru dense undergrowth.
 Ascend 480 ft., over broken SW. slope, to
 Ridge, brs. NE. and SW.
 30.35 Descend 35 ft., over broken N. slope, to
 A point on S. wall of canyon, beyond which chaining is im-
 practicable owing to steepness of descent; therefore,
 triangulate as follows:
 Set flag at this point.



From a point on sec. line
 on N. wall of canyon, meas-
 ure a base S. 88° 50' E.,
 5.03 chs.

From E. end of base, flag brs.
 S. 27° 40' W.

Included angles are 63° 30',
 27° 42' and 88° 48', the
 sum of which is 180° 00'.

Dist. triangulated on sec.
 line is obtained by
 $\frac{\text{side } 63^\circ 30' \times \text{base}}{\text{side } 27^\circ 42'}$ or

$$\frac{.89493 \times 5.03}{.46484} = 9.67 \text{ chs.}$$

which added to 30.35 chs.
 gives 40.02 chs. as position
 of triangulation point, from
 which measure S. 0° 2' E. 0.02
 chs., and establish $\frac{1}{4}$ sec. cor.
 as described below.

38.00 (Approximate) Bottom of canyon, course W. 465 ft. below
 flag point. Ascend 450 ft. to ridge.

40.00 Set an iron post, 3 ft. long, 1 in. in diam., on bedrock, sup-
 ported by a mound of stone for $\frac{1}{4}$ sec. cor., marked on
 brass cap,

S33 | S34

1917

Accessories impracticable on account of cliffs.
 Resume chaining, and continue line and measurement.

47.55 Ridge, brs. NW. and SE. Descend 600 ft. over N. slope, to
 70.00 Foot of ridge, brs. E. and SW. Descend 30 ft. over gradual
 N. slope, to

78.40 Wash, 30 lks. wide, 2 ft. deep, course W. Ascend 10 ft. over
 SW. slope, to sec. cor.

79.70 Road brs. NE. and SW.

80.00 Set an iron post, 3 ft. long, 2 ins. in diam., 20 ins. in
 the ground, to bed rock, supported by a mound of stone,
 for the cor. of secs. 27, 28, 33 and 34, marked on brass
 cap,

T1N | R10E

S28 | S27

S33 | S34

1917

and raise a mound of stone, 3' ft. base, 2 ft. high, W. of
 cor.

36. Subdivision of Township 1 North, Range 10 East

Chains.

Land, mountainous,
Soil, rocky, 4th rate, igneous formation.
No timber.
Undergrowth, palo verde, catclaw, mesquite, scrub oak, coffee
brush and cacti.
Fair grass.

East, on a random line, bet. secs. 27 and 34.

- 40.00 Set temp, $\frac{1}{4}$ sec. cor.
- 80.00 Fall 3 lks. S. of the cor. of secs. 26, 27, 34 and 35.
Thence,
S. 89° 59' W., on a true line, bet. secs. 27 and 34.
Over mountainous land, thru. dense undergrowth. Along steep
N. slope.
- 1.50 Draw, course N. Ascend 100 ft., over NE. slope, to
- 4.75 Spur, slopes NE. Descend slightly to
- 6.75 Drain, course NE. Ascend 30 ft. to
- 10.50 Ridge, brs. NE. and W. Ascend 100 ft. on top of ridge.
- 16.40 Top of cliff, brs. N. and S. 75 ft. high; about 10 chs. N.
of this point is a wire fence bearing NW. and SE.; leave
top of ridge, brs. E. and S. Descend 500 ft. over steep
W. slope, to
- 38.00 Foot of ridge, bearing NE. and SW. Descend 15 ft. to
- 40.00 Set an iron post, 3 ft. long, 1 in. in diam., 20 ins. in the
ground, to bedrock, supported by a mound of stone, for
 $\frac{1}{4}$ sec. cor., marked on brass cap,

S 27

S 34
1917

and raise a mound of stone, 3 ft. base, 2 ft. high, N. of
cor.

- 60.50 Descend 116 ft., over W. slope, to
Wash, 15 lks. wide, 3 ft. deep, course SW.
Thence over level land.
- 78.50 Wash, 60 lks. wide, 5 ft. deep, course SW.
- 79.75 Road brs. NE. and SW.
- 80.00 The cor. of secs. 27, 28, 33 and 34.
Land, mountainous and level.
Soil, rocky, 4th rate, igneous formation.
No timber.
Undergrowth, scrub oak, palo verde, catclaw, mesquite,
coffee brush and cacti.
Good grass.

N. 0° 02' W., bet. secs. 27 and 28.
Over rolling land, thru. dense undergrowth; asc. 130 ft. to $\frac{1}{4}$ sec. cor.

- 6.30 Rocky ravine, 10 ft. deep, course SW.
- 26.50 Wire fence, brs. NE. and SW.
- 40.00 Set an iron post, 3 ft. long, 1 in. in diam., 20 ins. in
the ground, to bed rock, supported by a mound of
stone, for $\frac{1}{4}$ sec. cor., marked on brass cap,

S 28 | S 27

1919

and raise a mound of stone, 3 ft. base, 2 ft. high, W. of
cor. Ascend 12 ft. to

- 47.30 Wash, 20 lks. wide, 2 ft. deep, course SW. Ascend 16 ft. to
- 62.00 Leave rolling, and enter mountainous land, at foot of cliffs.
- 80.00 Ascend 584 ft., over S. face, of cliffs, to
Set an iron post, 3 ft. long, 2 ins. in diam., on bedrock, sur-
ported by a mound of stone, for the cor. of secs. 21, 22,
27 and 28, marked on brass cap,

Chains.

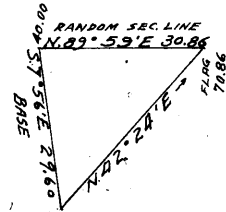
T1N	R10E
S21	S22
S28	S27
1919	

and raise a mound of stone, 3 ft. base, 2 ft. high, W. of cor.

Land, rolling and mountainous.
Soil, rocky, 4th rate, igneous formation.
No timber.
Undergrowth, palo verde, catclaw, mesquite, coffee brush and cacti.
Good grass.

40.00 N.89°59'E., on a random line, bet. secs. 22 and 27. Set temp. 1/4 sec. cor. at foot of steep cliffs. Discontinue chaining and triangulated as follows:

Measure a base S.7°56'E., 29.60 chs. Set flag ahead on random line at top of cliffs. From S. end of base, flag brs. N.42° 24'E.



Included angles are 50°20', 82°05' and 47°35', the sum of which is 180°00'.

Dist. triangulated on random line is obtained by

$$\frac{\text{base} \times \sin 50^\circ 20'}{\sin 47^\circ 35'} \text{ or } \frac{.76977 \times 29.60}{.73826} = 30.86 \text{ chs.}$$

which added to 40.00 chs. =

70.86 Flag point at top of cliffs bearing NW. and SE. Continue line and measurement by chaining.

80.14 Fall 12 lks. N. of the cor. of secs. 22, 23, 26 and 27. Thence,

N.89°56'W., on a true line, bet. secs. 22 and 27. Over mountainous land, thru. scattering undergrowth. Ascend 100 ft. on broken E. slope.

4.50 Rocky spur, slopes SE. Descend 45 ft., over broken SW. slope, to

9.28 Top of cliffs, facing SW.; descend 725 ft. over cliffs to 1/4 sec. cor. Measurement by triangulation hereinbefore described.

40.07 Set an iron post, 3 ft. long, 1 in. in diam., 14 ins. in the ground, to bed rock, supported by a mound of stone, for 1/4 sec. cor., marked on brass cap,

S 22
1/4
S 27
1919

and raise a mound of stone, 3 ft. base, 2 ft. high, N. of cor.

40.14 Triangulation point. Continue line and measurement by chaining; descend 275 ft. over broken SW. slope to gulch.

61.60 Trail, brs. NW. and SE,

63.20 Gulch, course S.; ascend 415 ft. on E. slope to

78.70 Spur, slopes SE.; ascending 35 ft. on S. slope, to

80.14 The cor. of secs. 21, 22, 27 and 28.

Land, mountainous.
Soil, rocky, 4th rate, igneous formation.
No timber.
Undergrowth, catclaw, mesquite, palo verde, coffee brush, scruboak and cacti.
Fair grass.

Chains.

N.0°02'W., bet. secs. 21 and 22.

Over mountainous land, thru scattering undergrowth; ascend 210 ft. on SE. slope.

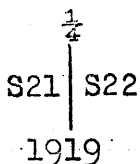
10.00 Rocky point, slopes E. Descend 360 ft., over NE. slope.

23.60 Gulch, course SE.; ascend 200 ft., over S. slope.

30.50 Trail, brs. NW. and SE.

37.00 Ridge, brs. E. and W.; descend 30 ft. on N. slope, to

40.00 Set an iron post 3 ft. long, 1 in. in diam.; 10 ins. in the ground, to bed rock, supported by a mound of stone, for 1/4 sec. cor., marked on brass cap,



from which,

A mesquite, 10 ins. in diam., brs. N.64°E., 314 lks. dist., marked "1/4 S-22 BT."

A mesquite, 9 ins. in diam., brs. N.20 1/2°W., 312 lks. dist., marked "1/4 S 21 BT."

Descend 30 ft.

41.60 Draw, course NW.; ascend 40 ft. over SW. slope.

46.50 Spur, slopes W.; descend 100 ft., over NW. slope.

49.60 Draw, course W.; ascend 90 ft., over SW. slope.

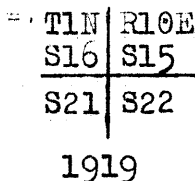
53.00 Spur, slopes W.; descend 170 ft., over NW. slope.

66.80 Gulch, course SW., with small intermittent stream of clear water; ascend 145 ft. over broken SE. slope.

75.00 Trail, brs. NE. and SW.

79.00 Ridge, brs. E. and W.; descend 10 ft., over NE. slope, to

80.00 Set an iron post, 3 ft. long, 2 ins. in diam., 20 ins. in the ground, to bed rock, supported by a mound of stone, for the cor. of secs. 15, 16, 21 and 22, marked on brass cap,



and raise a mound of stone, 3 ft. base, 2 ft. high, W. of cor.

Land, mountainous,

Soil, rocky, 4th rate, igneous formation.

No timber.

Undergrowth, scattering catclaw, mesquite, coffee brush, palo verde, scrub oak and cacti.

Fair grass.

S.89°56'E., on a random line, bet. secs. 15 and 22.

40.00 Set temp. 1/4 sec. cor.

79.86 Fall 23 lks. S. of cor. of secs. 14, 15, 22 and 23.

Thence,

S.89°54'W., on true line, bet. secs. 15 and 22.

Over mountainous land; ascend 50 ft., over broken E. slope, thru dense undergrowth.

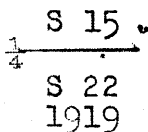
3.20 Spur, slopes N.; descend 625 ft., over W. slope.

21.85 Gulch, course N., with small intermittent stream of water; ascend 80 ft., over NE. slope.

26.75 Spur, slopes N.; descend 65 ft., over NW. slope.

34.30 Gulch, course NE.; ascend 55 ft., over E. slope, to

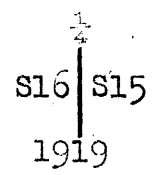
39.93 Set an iron post 3 ft. long, 1 in. in diam., 10 ins. in the ground, to bed rock, supported by a mound of stone, for 1/4 sec. cor., marked on brass cap,



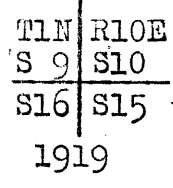
Chains.

and raise a mound of stone, 3 ft. base, 2 ft. high, N. of cor.
 Ascend 410 ft. over E. slope.
 58.00 Ridge, brs. NE. and W.; spur from same, slopes NE.
 70.00 Leave top of ridge, brs. NW. and E.; descend 75 ft., over W. slope.
 76.50 Trail, brs. N. and S.
 78.00 Head of draw, course N.; ascend 25 ft., over NE. slope, to
 79.86 The cor. of secs. 15, 16, 21 and 22.
 Land, mountainous.
 Soil, rocky, 4th rate, igneous formation.
 No timber.
 Undergrowth, dense catclaw, mesquite, scrub oak, coffee brush, palo verde and cacti.
 Fair grass.

N. 0° 02' W., bet. secs. 15 and 16.
 Over mountainous land; descend 120 ft. over NE. slope, thru. scattering undergrowth.
 6.75 Draw, course NW.; ascend 90 ft. over SW. slope.
 12.00 Spur, slopes N. from SE.; thence on top of same; descend 20 ft. to
 18.00 Leave top of spur, slopes NW. from S.; descend 30 ft., over rolling E. slope, to
 40.00 Set an iron post 3 ft. long, 1 in. in diam., 12 ins. in the ground, to bed rock, supported by a mound of stone, for 1/4 sec. cor., marked on brass cap,



and raise a mound of stone, 3 ft. base, 2 ft. high, W. of cor.
 Ascend 75 ft., over E. slope.
 45.00 Spur, slopes E.; descend 450 ft., over rolling NE. slope.
 71.30 South channel of La Barge wash, 30 lks. wide, 2 ft. deep, course W.
 73.80 North channel of La Barge wash, 20 lks. wide, 2 ft. deep, course W.; ascend 50 ft. over SW. slope to sec. cor.
 74.20 Trail, brs. NW. and SE.
 80.00 Set an iron post 3 ft. long, 2 ins. in diam., 20 ins. in the ground, to bed rock, supported by a mound of stone, for the cor. of secs. 9, 10, 15 and 16, marked on brass cap,



from which,
 A mesquite, 10 ins. in diam., brs. S. 0° 48' E., 335 lks. dist., marked T1N R10E S15 BT.
 No other trees available. Raise a mound of stone, 3 ft. base, 2 ft. high, W. of cor.
 Land, mountainous.
 Soil, rocky, 4th rate, igneous formation.
 Timber, a few sycamore and cottonwood trees along La Barge wash.
 Undergrowth, scattering scrub oak, catclaw, mesquite, coffee brush, palo verde and cacti.
 Fair grass.

N. 89° 54' E., on a random line, bet. secs. 10 and 15.
 40.00 Set temp. 1/2 sec. cor.

Subdivision lines of Township 1 North, Range 10 East.

Chains.
79.94

Fall 17 lks.N.of the cor.of secs.10,11,14 and 15.
 Thence,
 N.89°59'W. on a true line, bet. secs.10 and 15.
 Over mountainous land, thru.dense undergrowth; descend
 250 ft., over N.slope to
 21.00 Descend 425 ft.,over broken W.slope,to
 34.00 Thence along rolling S.slope, descending slightly to
 39.97 Set an iron post, 3 ft.long, 1 in. in diam., 26 ins. in
 the ground, for $\frac{1}{4}$ sec.cor., marked on brass cap,
 S 10
 $\frac{1}{4}$
 S 15
 1919

and raise a mound of stone, 3 ft.base, 2 ft.high, N.of cor.

50.00
64.80
79.94

Descend slightly over S.slope,to
 Descend 160 ft.,over W.slope.
 Gulch, course SW., with small intermittent stream of
 water; descend 35 ft.,over S.slope,to
 The cor.of secs.9,10,15 and 16.
 Land;mountainous.
 Soil,rocky,4th rate, igneous formation.
 No timber.
 Undergrowth, dense scrub oak, catclaw,mesquite,palo verde,
 coffee brush and cacti.
 Good grass.

N.0°02'W., bet. secs.9 and 10.
 Over mountainous land, thru.danse undergrowth; ascend
 835 ft.,over SW.slope,to
 40.00 Set an iron post, 3 ft.long, 1 in. in diam., 26 ins. in
 the ground, for $\frac{1}{4}$ sec.cor., marked on brass cap,

$\frac{1}{4}$
 S 9 | S10
 1919

and raise a mound of stone, 3 ft.base, 2 ft.high,W. of cor.

51.00
55.40
63.00
74.40
80.00

Ascend 245 ft.over S.slope.
 Spur,slopes W.; descend 115 ft.,over N.slope.
 Gulch,course W.; ascend 205 ft.,over S.slope.
 Ridge, brs.E. and W.; descend 300 ft.over N.slope.
 Gulch, course W.; ascend 90 ft.over S.slope, to
 80.00 Set an iron post 3 ft.long, 2 ins. in diam., 24 ins. in
 the ground, for the cor.of secs.3,4,9 and 10, marked
 on brass cap,

TLN	R1OE
S 4	S 3
S 9	S10

1919

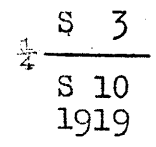
and raise a mound of stone, 3 ft.base, 2 ft.high,W.of cor.

Land,mountainous.
 Soil,rocky,4th rate, igneous formation.
 No timber.
 Undergrowth,dense scrub oak, coffee brush, catclaw, mes-
 quite and cacti.
 Fair grass.

Subdivision lines of Township 1 North, Range 10 East. 41.

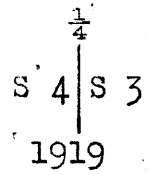
Chains.

40.00 S.89°59'E., on a random line, bet. secs.3 and 10.
 Set temp. 1/4 sec.cor.
 79.85 Fall 10 lks.S.of cor.to secs. 2,3,10 and 11,
 Thence,
 S.89°57'W., on a true line,bet.secs.3 and 10.
 Over mountainous land, thru.dense undergrowth; ascend 290
 ft. on SE. slope,to
 15.00 Ascend 340 ft., over E.slope,to
 27.00 Top of mountain, brs.N. and S.
 Descend 150 ft.over SW.slope,to
 39.92 1/2 Set an iron post 3 ft.long, 1 in. in diam., 18 ins. in
 the ground, to bed rock, supported by a mound of
 stone, for 1/4 sec.cor., marked on brass cap,



and raise a mound of stone, 3 ft.base, 2 ft.high,N.
 of cor.
 Descend 425 ft.,over W.slope.
 74.50 Gulch,course SW.; ascend 25 ft.,over SE.slope,to
 79.85 The cor.of secs.3,4,9 and 10.
 Land,mountainous.
 Soil,rocky,4th rate,igneous formation.
 No timber.
 Undergrowth, dense scrub oak, catclaw, mesquite,palo verde,
 coffee brush and cacti.
 Fair grass.

 40.00 N.0°02'W., on a random line, bet. secs.3 and 4.
 Set temp. 1/4 sec.cor.
 80.37 Fall 33 lks.W. of the cor. of secs.3,4,33 and 34, on N.
 bdy.of Tp. hereinbefore described.
 Thence,
 S.0°12'W., on a true line, bet. secs.3 and 4.
 Over mountainous land, thru. dense undergrowth; descend
 90 ft.,over SW.slope.
 6.50 Gulch, course NW.; ascend 500 ft. over NE.slope.
 29.40 Ridge, brs.NW. and SE.; descend 295 ft. over S.slope, to
 40.37 Set an iron post, 3 ft. long, 1 in. diam.,on bed rock,
 supported by a mound of stone, for 1/4 sec.cor., marked
 on brass cap,



and raise a mound of stone,3 ft.base, 2 ft.high,W.of
 cor.
 Descend 50 ft.,over S.slope,to
 42.40 Thence along rolling W. slope, descending slightly.
 55.00 Gulch, course NW.; ascend 250 ft.,over N.slope.
 66.40 Spur,slopes W.; descend 285 ft. over S.slope,to
 80.37 The cor.of secs.3,4, 9 and 10.
 Land, mountainous.
 Soil,rocky, 4th rate, igneous formation.
 No timber.
 Undergrowth; dense scrub oak, mesquite,catclaw,palo
 verde, coffee brush and cacti.

 From the reestablished standard cor. of secs.32 and 33, on
 the S. bdy.of the Tp.(G.& S.R.Base Line), which is
 an iron post, described in Book "D,"
 N.0°02'W., bet. secs. 32 and 33.

42. Subdivision lines of Township 1 North, Range 10 East.

Chains.

Over mountainous and rolling land, thru. dense undergrowth.
Descend 25 ft. over N. slope.

- 2.00 Draw, course NW.; ascend 80 ft. over SW. slope.
- 7.00 Spur, slopes W.; descend 220 ft. over broken NW. slope.
- 13.60 Wire fence brs. NW. and SE.
- 21.00 Wash, 80 lks. wide, 6 ft. deep, course SW.; ascend about 50 ft. over SE. slope to $\frac{1}{4}$ sec. cor.
- 23.00 Barkley's ranch house, barn, windmill and corral, bear W. about 6 chs. dist.
- 23.50 Road, brs. E. and W.
- 40.00 Set an iron post, 3 ft. long, 1 in. in diam., 12 ins. in the ground, to bed rock, supported by a mound of stone, for $\frac{1}{4}$ sec. cor., marked on brass cap,

$\frac{1}{4}$
S32 | S33
1917

and raise a mound of stone, 3 ft. base, 2 ft. high, W. of cor.

- Ascend about 100 ft. over SE. slope to sec. cor.
- 54.40 Wire fence brs. N. 00° E. and S. 60° W.
- 60.00 Wash, 30 lks. wide, 6 ft. deep, course SE.
- 80.00 Set an iron post 3 ft. long, 2 ins. in diam., 24 ins. in the ground, for the cor. of secs. 28, 29, 32 and 33, marked on brass cap,

T1N | R10E
S29 | S28
S32 | S33
1917

and raise a mound of stone, 3 ft. base, 2 ft. high, W. of cor.

Land, mountainous and rolling.
Soil, rocky, 4th rate, igneous formation.
No timber.
Undergrowth, dense palo verde, palo fierra, catclaw, mesquite, coffee brush and cacti.
Good grass.

-
- 40.00 East, on a random line, bet. secs. 28 and 33. Set temp. $\frac{1}{4}$ sec. cor.
 - 79.84 Fall 28 lks. N. of the cor. of secs. 27, 28, 33 and 34. Thence, N. 89° 48' W., on a true line, bet. secs. 28 and 33. Over rolling land, thru. dense undergrowth. Descend 30 ft., over SW. slope, to
 - 4.20 Wash, 40 lks. wide, 4 ft. deep, course NW.
 - 5.60 Same wash, course SW.
 - 11.60 Rocky ravine, 15 ft. deep, course S.
 - 38.50 Wash, 20 lks. wide, 2 ft. deep, course SW.
 - 38.80 Wire fence brs. NE. and SW.
 - 39.92 Set an iron post, 3 ft. long, 1 in. in diam., 10 ins. in the ground, to bed rock, supported by a mound of stone, for $\frac{1}{4}$ sec. cor., marked on brass cap,

S 28
 $\frac{1}{4}$ ———
S 33
1917

- 66.30 and raise a mound of stone, 3 ft. base, 2 ft. high, N. of cor. Rocky wash, 30 lks. wide, 15 ft. deep, course S.; a small intermittent stream of clear water in wash. Ascend gradually over SE. slope.

Subdivision lines of Township 1 North, Range 10 East. 43.

Chains.

72.30 Read brs.N. and S.
 79.84 The cor.of secs.28,29,32 and 33.
 Land, rolling.
 Soil,rocky,4th rate,igneous formation.
 No timber.
 Undergrowth,dense catclaw,palo verde,palo
 fierra,mesquite,coffee brush,scrub oak and cacti.
 Good grass.

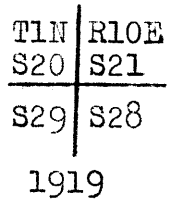
 N.0°02'W., bet. secs. 28 and 29.
 Over mountainous land, thru.dense undergrowth. Ascend 100
 ft. over E. slope.

9.00 Top of ascent; descend 130 ft.,over E.slope.
 16.40 Draw, course E.; ascend 40 ft. over S.slope, to
 18.00 Top of ascent; descend gradually along rolling E.slope.
 26.20 Draw, course E., and bend of road, brs.NE. and SE.
 29.90 Road brs.NW. and SE.
 38.60 Rocky wash, 60 lks.wide, 12 ft. deep,course S.20°E.; a
 small intermittent stream of clear water in wash;ascend
 20 ft.to
 40.00 Set an iron post 3 ft.long, 1 in. in diam., 20 ins. in
 the ground, to bed rock, supported by a mound of stone,
 for $\frac{1}{4}$ sec.cor., marked on brass cap,



from which,
 A mesquite 9 ins.in diam., brs.S.15 $\frac{1}{2}$ °W., 245 lks.
 dist., marked "1/4 S 29 BT."
 No other tree available. Raise a mound of stone, 3 ft.
 base, 2 ft.high, W.of cor.
 Ascend 175 ft.,over SW.slope to rocky point.

49.50 Prospect tunnels, one about 2 chs.E., and one about 5 chs.
 W.
 53.50 Rocky point slopes W.; ascend 450 ft. over broken W.slope.
 74.30 Top of ascent; descend 25 ft. over W.slope, to
 80.00 Set an iron post 3 ft.long, 2 ins. in diam., 2 ins.in the
 ground, to bed rock, supported by a mound of stone,
 for the cor.of secs.20,21, 28 and 29, marked on brass
 cap,



from which,
 A cedar,11 ins. in diam., brs.N.34 $\frac{3}{4}$ °E., 220
 lks.dist., marked T1N R10E S21 BT.
 No other trees available.
 Raise a mound of stone 3 ft.base, 2 ft. high, W.of cor.
 Land,mountainous.
 Soil,rocky,4th rate, igneous formation.
 No timber.
 Undergrowth,dense catclaw,mesquite,palo verde,palo
 fierra,scrub oak and cacti.
 Good grass.

 S.89° 48'E., on a random line, bet. secs.21 and 28.
 40.00 Set temp. $\frac{1}{4}$ sec.cor.
 80.00 Fall 9 lks.N. of the cor.of secs:21,22,27 and 28.
 Thence,

44. Subdivision lines of Township 1 North, Range 10 East.

Chains.

- N. 89°44'W., on a true line, bet. secs. 21 and 28. Over mountainous land, thru dense undergrowth. Ascend 105 ft., over rocky cliffy S. slope.
- 2.70 Rocky point, slopes S. Descend 250 ft., over SW. slope.
- 17.60 Foot of descent; ascend 335 ft., over E. slope.
- 27.00 Spur, slopes SE.; descend 155 ft., over W. slope, to
- 40.00 Set an iron post 3 ft. long, 1 in. in diam., 12 ins. in the ground, to bed rock, supported by a mound of stone for 1/4 sec. cor., marked on brass cap,

S 21

S 28

1919

from which,

A mesquite, 8 ins. in diam., brs. N. 76 1/2° E., 365 lks. dist., marked 1/4 S 21 BT.

No other tree available.

Raise a mound of stone, 3 ft. base, 2 ft. high, N. of cor. Descend 365 ft., over W. slope, to

- 50.50 Gulch, course S.; ascend 80 ft., over SE. slope.
- 54.75 Top of ascent; descend 110 ft., over S. slope.
- 61.20 Gulch, course SE.; ascend 430 ft. over NE. slope.
- 75.25 Spur, slopes SE.; descend 65 ft. over W. slope, to
- 80.00 The cor. of secs. 20, 21, 28 and 29.

Land, mountainous.

Soil, rocky, 4th rate, igneous formation.

No timber.

Undergrowth, dense scrub oak, catclaw, mesquite, palo verde, coffee brush and cacti.

Fair grass.

N. 0°02'W., bet. secs. 20 and 21.

Over mountainous land, thru scattering undergrowth; ascend over W. slope, to

- 4.00 Ridge, brs. NW. and SE.; descend 100 ft. over E. slope, to
- 9.50 Head of draw, course NE.; descend 60 ft., over E. slope, to
- 21.20 Head of draw, course E.; ascend 30 ft. over E. slope, to
- 26.00 Ascend 345 ft., over S.; slope, to
- 40.00 Set an iron post 3 ft. long, 1 in. in diam., 26 ins. in the ground, for 1/4 sec. cor., marked on brass cap,

S20 | S21

1919

and raise a mound of stone 3 ft. base, 2 ft. high, W. of cor.

Ascend 140 ft., over S. slope, to

- 50.50 Ridge, brs. E. and W.; descend 200 ft., over NE. slope.
- 63.60 Draw, course NW.; ascend 130 ft., over SW. slope.
- 75.00 Rocky point slopes NW.; descend 200 ft. over N. slope, to
- 80.00 Set an iron post, 3 ft. long, 2 ins. in diam., on bed rock, supported by a mound of stone, for the cor. of secs. 16, 17, 20 and 21, marked on brass cap,

T1N | R10E

S17 | S16

S20 | S21

1919

from which,

A mesquite, 6 ins. in diam., brs. N. 31 1/2° W., 345 lks. dist., marked T1N R10E S17 BT.

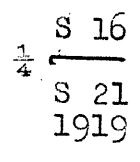
No other tree available; and raise a mound of stone, 3 ft. base 2 ft. high, W. of cor.

Subdivision lines of Township 1 North, Range 10 East.

Chains.

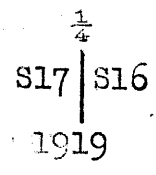
Land, mountainous.
Soil, rocky, 4th rate, igneous formation.
No timber.
Undergrowth, scattering scrub oak, catclaw, mesquite, coffee brush, palo verde and cacti.
Fair grass.

- 40.00 S. 89° 44' E., on a random line, bet. secs. 16 and 21. Set temp. 1/4 sec. cor.
- 79.71 Fall 3 lks. N. of the cor. of secs. 15, 16, 21 and 22. Thence, N. 89° 43' W., on a true line, bet. secs. 16 and 21. Over mountainous land, thru. scattering undergrowth; ascend 25 ft., over NE. slope.
- 1.80 Spur, slopes NW.; descend 320 ft., over SW. slope.
- 36.60 Gulch, course N., with small intermittent stream of clear water; ascend 20 ft., over E. slope to 1/4 sec. cor.
- 38.20 Trail, brs. NW. and SE.
- 39.85 1/2 Set an iron post 3 ft. long, 1 in. in diam., 20 ins. in the ground, to bed rock, supported by a mound of stone, for 1/4 sec. cor., marked on brass cap,



- and raise a mound of stone, 3 ft. base, 2 ft. high, N. of cor.
- 54.70 Ascend 95 ft., over E. slope, to Spur, slopes N.; descend 60 ft., over W. slope.
- 60.00 Foot of descent; an old corral brs. N. 10° E., about 16 chs. dist.; ascend 115 ft., over N. slope, to
- 79.71 The cor. of secs. 16, 17, 20 and 21. Land, mountainous. Soil, rocky, 4th rate, igneous formation. Timber, a few scattering cedar. Undergrowth, scattering scrub oak, catclaw, mesquite, coffee brush and cacti. Fair grass.

- N. 0° 02' W., bet. secs. 16 and 17. Over mountainous land, thru. dense undergrowth; descend 30 ft., over N. slope.
- 3.00 Gulch, course E.; ascend 350 ft., over S. slope.
- 16.50 Rocky point, slopes E. Descend 160 ft., over E. slope, to
- 40.00 Set an iron post, 3 ft. long, 1 in. in diam., 26 ins. in the ground, for 1/4 sec. cor., marked on brass cap,



- from which, A wild cherry, 8 ins. in diam., brs. S. 37° E., 14 lks. dist., marked 1/4 S 16 BT.
- No other tree available.
- Raise a mound of stone, 3 ft. base, 2 ft. high, W. of cor.
- Ascend 175 ft., over SE. slope.
- 48.00 Rocky point, slopes E.; descend 430 ft., over broken NE. slope, to
- 80.00 Set an iron post, 3 ft. long, 2 ins. in diam., 24 ins. in the ground, for the cor. of secs. 8, 9, 16 and 17, marked on brass cap,

46. Subdivision lines of Township 1 North, Range 10 East.

Chains.

T1N	R10E
S 8	S 9
S17	S16

1919

from which,

A wild cherry, 10 ins. in diam., brs. S. 9 1/2° E., 65 lks. dist., marked T1N R10E S16 BT.

No other tree available. Raise a mound of stone, 3 ft. base, 2 ft. high, W. of cor.

Land, mountainous:

Soil, rocky, 4th rate, igneous formation.

Timber, a few scattering cedar.

Undergrowth, dense mesquite, catclaw, mahogany, scrub oak, coffee brush and cacti.

Fair grass.

- 40.00 S. 89° 43' E., on a random line; bet. secs. 9 and 16. Set temp. 1/4 sec. cor.
- 79.66 Fall 5 lks. S. of the cor. of secs. 9, 10, 15 and 16. Thence, N. 89° 45' W., on a true line, bet. secs. 9 and 16. Over mountainous land, thru. dense undergrowth; descend 60 ft., over SW. slope.
- 7.10 Trail, brs. NW. and SE.
- 9.30 LaBarge Wash, 20 lks. wide, 2 ft. deep, course NW., with small intermittent stream of clear water; ascend 430 ft. over NE. slope.
- 28.75 Spur, slopes NW.; descend 235 ft., over SW. slope, to
- 39.40 Set an iron post, 3 ft. long, 1 in. in diam., 2 ins. in the ground, to bed rock, supported by a mound of stone, for witness cor. to 1/4 sec. cor., marked on brass cap,

WC 1/2	S 9
	S 16
	1919

from which,

A mesquite, 9 ins. in diam., brs. N. 63 1/2° E., 105 lks. dist., marked 1/4 S 9 W C B T.

No other tree available. Raise a mound of stone, 3 ft. base, 2 ft. high, N. of cor.

39.83 True point for 1/4 sec. cor. falls in bottom of gulch, course W. from SE.; descend 15 ft. in gulch.

43.20 Leave gulch, course NW. from E.; ascend 160 ft. over NE. slope.

52.60 Rocky spur, slopes N.; descend 120 ft., over N. slope.

61.10 Trail, brs. N. and S.

68.50 Gulch, course N.; ascend 240 ft., over NE. slope, to

79.66 The cor. of ecs. 8, 9, 16 and 17.

Land, mountainous.

Soil, rocky, 4th rate, igneous formation.

Timber, a few scattering cedar.

Undergrowth, dense scrub oak, catclaw, mesquite, mahogany, coffee brush and cacti.

Fair grass.

- 40.00 N. 0° 02' W., bet. secs. 8 and 9. Over mountainous land, thru. scattering undergrowth; descend 180 ft., over NE. slope, to Set an iron post, 3 ft. long, 1 in. in diam., 20 ins. in the ground, to bedrock, supported by a mound of stone, for 1/4 sec. cor., marked on brass cap,

Subdivision lines of Township 1 North, Range 10 East.

Chains.

1/4
S 8 | S 9
1919

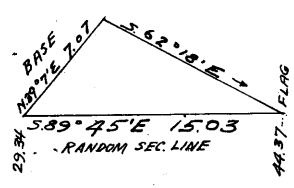
from which,
 A wild cherry, 8 ins. in diam., brs. S. 70° E., 6 lks. dist., marked 1/4 S. 9 BT.
 A wild cherry, 6 ins. in diam., brs. N. 32 1/2° W., 8 lks. dist., marked 1/4 S. 8 BT.
 Descend 200 ft., over NE. slope, to
 59.60 Enter LaBarge Canyon, from SE., course N., with small intermittent stream of clear water; descend 100 ft. in bottom of canyon.
 64.70 Trail, brs. NW. and SE.
 70.00 Leave bottom of La Barge Canyon, course NW. from S.; ascend 160 ft., over SW. slope.
 77.00 Rocky point slopes W.; descend 130 ft., over N. slope to
 80.00 Set an iron post 3 ft. long, 2 ins. in diam., 24 ins. in the ground, for cor. of secs. 4, 5, 8 and 9, marked on brass cap,

T1N R10E
S 5 | S 4
S 8 | S 9
1919

from which,
 A mesquite, 4 ins. in diam., brs. N. 17 1/4° W., 70 lks. dist., marked T1N R10E S5 BT.
 A sycamore, 24 ins. in diam., brs. N. 24 1/2° E., 127 lks. dist., marked T1N R10E S4 BT.
 No other trees available; raise a mound of stone 3 ft. base, 2 ft. high, W. of cor.
 Land, mountainous.
 Soil, rocky, 4th rate, igneous formation.
 Timber, a few scattering cedar, sycamore and cottonwood.
 Undergrowth scattering catclaw, mesquite, scrub oak, coffee brush, wild cherry and cacti.
 Good grass.

29.34 S. 89° 45' E., on a random line, bet. secs. 4 and 9. Discontinue chaining at this point, and triangulate as follows:

Measure a base N. 39° 07' E., 7.07 chs.
 Set flag on random line, at top of point of cliff, bearing SE. and SW. Vertical angle to flag = + 22°.
 From NE. end of base, flag brs. S. 62° 18' E.
 Included angles are 51° 08', 101° 25' and 27° 27', the sum of which is 180° 00'.



Dist. triangulated on random line is obtained by $\frac{\sin 101^\circ 25' \times \text{base}}{\sin 27^\circ 27'}$ or $\frac{.98021 \times 7.07}{.46097} = 15.03$ chs.

which added to 29.34 chs. gives 44.37 chs. as position of flag point on random line.
 From 29.34 chs. sta. measure S. 89° 45' E., 10.66 chs. to
 40.00 Set temp. 1/4 sec. cor. Thence S. 89° 45' E., 38 lks. to
 40.38 Foot of cliff.
 44.37 Flag point of above described triangulation.
 Chaining being impracticable, make stadia measurement as follows: Mean rod reading = 4.080 ft. Vertical angle = + 3° 10'. Horizontal dist. = 8.15 chs., which added

52

48 Subdivision lines of Township 1 North, Range 10 East.

Chains.
 to 44.37 chs.=
 52.52 Rod point on rocky point sloping N. Thence chain measurement on random line to
 55.23 Rocky point sloping N. Discontinue chain measurement, and make stadia measurement across canyon as follows:
 Mean rod reading = 11.440 ft. Vertical angle = + 1°20'.
 Horizontal dist. = 22.88 chs., which added to 55.23 chs.=
 78.11 Rod point on SW.slope of spur. Thence by chain measurement to
 79.83 Fall 21 lks.S. of cor.of secs. 3,4,9 and 10.
 Thence,
 N.89°54'W., on a true line, bet. secs.4 and 9.
 Over mountainous land, thru.dense undergrowth; descend 10 ft., over SW.slope, to
 1.72 Rod point. Thence by stadia measurement of 22.88 chs., as hereinbefore described.
 14.00 (Approximate) box canyon, about 250 ft. deep, course NW.; ascend about 215 ft., over cliffs.
 24.60 Rocky point slopes N.; thence by chain measurement to
 27.31 Rocky point slopes N. Thence by stadia measurement; descend 30 ft. to
 35.46 Top of point of cliff, 200 ft. high, brs. SE. and SW.; thence by triangulation, hereinbefore described.
 39.45 Foot of cliff, brs. NE. and SW.; descend 12 ft. along broken N.slope, to
 39.91½ Set an iron post, 3 ft. long, 1 in. in diam., 26 ins. in the ground, for ¼ sec. cor., marked on brass cap,

S 4
 ¼ ———
 S 9
 1919

from which,
 A wild cherry, 8 ins. in diam., brs. N.71°W., 52 lks. dist., marked "¼ S 4 BT."
 A wild cherry, 10 ins. in diam., brs. S.65°W., 48 lks. dist., marked "¼ S 9 BT."

Descend 160 ft. to
 50.49 Triangulation point; ascend 50 ft. to
 56.00 Spur, slopes NW.; descend 22 ft., over S. slope to
 66.00 Rocky spur, slopes SW.; descend 425 ft., over broken NW. slope, to
 79.83 The cor. of secs. 4, 5, 8 and 9.
 Land, mountainous.
 Soil, rocky, 4th rate, igneous formation.
 Timber, a few scattering cedar.
 Undergrowth, scrub oak, catclaw, mesquite, coffee brush, mahogany and cacti.
 Fair grass.

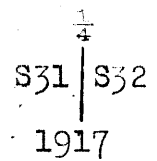
N.0°02'W., on a random line, bet. secs. 4 and 5.
 40.00 Set temp. ¼ sec. cor.
 79.89 Fall 2 lks. E. of the cor. of secs. 4, 5, 32 and 33, on N. bdy. of Tp., hereinbefore described.
 Thence,
 S.0°03'E., on a true line, bet. secs. 4 and 5.
 Over mountainous land, thru. dense undergrowth; ascend 15 ft., over N. slope.
 3.00 Spur, slopes NW.; descend 170 ft., over broken, cliffy W. slope, to
 31.30 Descend 185 ft., over broken cliffy SW. slope to
 39.89 Set an iron post 3 ft. long, 1 in. in diam., 18 ins. in the ground, to bedrock, supported by a mound of stone for ¼ sec. cor., marked on brass cap,

¼
 S 5 | S 4
 1919

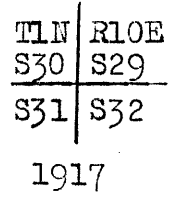
Chains.

and raise a mound of stone, 3 ft. base, 2 ft. high, W. of cor.
 Descend 100 ft., over W. slope.
 47.90 Trail, brs. E. and W.
 68.60 Descend 400 ft., over steep S. slope.
 78.60 Gulch, course W., a small intermittent stream of clear water; ascend 50 ft. over N. slope, to
 79.89 The cor. of secs. 4, 5, 8 and 9.
 Land, mountainous.
 Soil, rocky, 4th rate, igneous formation.
 Timber, scattering cedar, sycamore and cottonwood.
 Undergrowth, dense catclaw, mesquite, coffee brush, palo verde, mahogany, scrub oak, ocotilla and cacti.
 Fair grass.

From the reestablished standard cor. of secs. 31 and 32, on the S. bdy. of the Tp., (G. & S. R. Base Line), which is an iron post, described in Book "D," N. 0° 03' W., bet. secs. 31 and 32.
 Over mountainous and rolling land, thru. dense undergrowth.
 Descend 150 ft., over NW. slope.
 15.00 Foot of descent, brs. NE. and SW.; descend gradually over NW. slope.
 18.15 Road, brs. NE. and SW.
 27.00 Wash, 60 lks. wide, 10 ft. deep, course SW.; ascend gradual SE. slope.
 40.00 Set an iron post, 3 ft. long, 1 in. in diam., 12 ins. in the ground, to bed rock, supported by a mound of stone, for $\frac{1}{4}$ sec. cor., marked on brass cap,



and raise a mound of stone, 3 ft. base, 2 ft. high, W. of cor.
 Descend gradually over W. slope.
 58.00 Road, brs. NE. and SW.
 65.00 Wash, 80 lks. wide, 10 ft. deep, course SW.; ascend gradual SE. slope.
 80.00 Set an iron post, 3 ft. long, 2 ins. in diam., 24 ins. in the ground, for the cor. of secs. 29, 30, 31 and 32, marked on brass cap,



and raise a mound of stone, 3 ft. base, 2 ft. high, W. of cor.
 Land, rolling and mountainous.
 Soil, rocky, 4th rate, igneous formation.
 No timber.
 Undergrowth, dense palo verde, palo fierra, catclaw, mesquite, coffee brush and cacti.
 Fair grass.

East, on a random line, bet. secs. 29 and 32.
 40.00 Set temp. $\frac{1}{4}$ sec. cor.
 79.96 Fall 5 lks. S. of the cor. of secs. 28, 29, 32 and 33.
 Thence,
 S. 89° 58' W., on a true line, bet. secs. 29 and 32.
 Over rolling and mountainous land, thru. dense undergrowth.

Chains.

- Ascend 210 ft., over SE. slope.
- 20.50 Ridge, brs. N. and S.; descend 300 ft., over W. slope.
- 33.10 Wash, 15 lks. wide, 8 ft. deep, course SW.; descend gradual S. slope.
- 39.98 Set an iron post, 3 ft. long, 1 in. in diam., 26 ins. in the ground, for $\frac{1}{4}$ sec. cor., marked on brass cap,

$\frac{1}{4}$ ——— S 29
 S 32
 1917

and raise a mound of stone $2\frac{1}{2}$ ft. base, $1\frac{1}{2}$ ft. high, N. of cor.

- Descend gradual S. slope.
- 53.80 Rocky wash, 20 lks. wide, 12 ft. deep, course S., with a small intermittent stream of clear water. A vacant house brs. N. about 5 chs. dist.
- 55.50 Old road, brs. N. and S.
- 57.80 Old road, brs. NE and SW.
- 79.96 The cor. of secs. 29, 30, 31 and 32.
 Land, rolling and mountainous.
 Soil, rocky, 4th rate, igneous formation.
 No timber.
 Undergrowth, dense palo verde, palo fierra, catclaw, mesquite, ocotilla and cacti.
 Fair grass.

-
- West, on a random line, bet. secs. 30 and 31.
 - 40.00 Set temp. $\frac{1}{4}$ sec. cor.
 - 79.90 Fall 7 lks. S. of the cor. of secs. 25, 30, 31 and 36, on the W. bdy. of the Tp., hereinbefore described.
 Thence,
 S $89^{\circ}57'E.$, on a true line, bet. secs. 30 and 31.
 Over rolling land, thru. dense undergrowth; descend 80 ft., over SE. slope.
 - 7.50 Trail, brs. NE and SW.
 - 18.00 Vacant house, brs. N. $10^{\circ}E.$, about 10 chs. dist.
 - 23.00 Wash, 10 lks. wide, 2 ft. deep, course SW. Thence over broken and rolling S. slope.
 - 24.30 Road, brs. NE and SW.
 - 32.30 Rocky wash, 15 lks. wide, 8 ft. deep, course S.
 - 36.10 Prospect hole on line, 6 ft. deep.
 - 39:90 Set an iron post 3 ft. deep, 1 in. in diam., 8 ins. in the ground, to bed rock, supported by a mound of stone, for $\frac{1}{4}$ sec. cor., marked on brass cap,

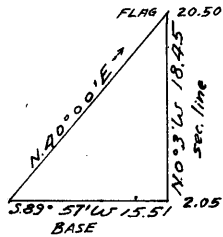
S 30
 $\frac{1}{4}$ ———
 S 31
 1917

and raise a mound of stone, $2\frac{1}{2}$ ft. base, $1\frac{1}{2}$ ft. high, N. of cor.

- 43.80 Old road brs. NE and SW.
- 79.90 The cor. of secs. 29, 30, 31 and 32.
 Land, rolling.
 Soil, rocky, 4th rate, igneous formation.
 No timber.
 Undergrowth, dense palo verde, palo fierra, catclaw, mesquite, ocotilla, coffee brush and cacti.
 Fair grass.

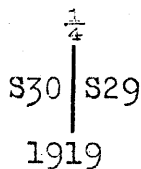
-
- N. $0^{\circ}03'W.$, bet. secs. 29 and 30.
 Over mountainous land, thru. dense undergrowth; ascend 18 ft., over S. slope, to
 - 2.05 Discontinue chaining at this point on account of high cliffs ahead on line, and triangulate as follows:

Chains.



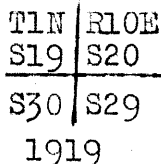
Measure a base S. 89° 57' W.,
 15.51 chs.
 Set flag at top of cliff on
 line. Vertical angle to
 flag = + 37°.
 From W. end of base, flag brs.
 N. 40° 00' E.
 Included angles are 49° 57',
 40° 03', 90° 00', the sum of
 which is 180° 00'.
 The dist. triangulated is ob-
 tained by tang. 49° 57' x
 base, or 1.18964 x 15.51 =
 18.45 chs., which added to
 2.05 chs., gives 20.50 chs.
 as location of flag point
 on top of cliff.

- 14.00 (Approximate) foot of cliff, brs. E. and W., cliff about 700 ft. high, foot of cliff about 200 ft. above sec. cor.
- 20.50 Flag point of triangulation at top of cliff, brs. E. and W.
- Ascend 240 ft. over S. slope, to
- 40.00 Set an iron post, 3 ft. long, 1 in. in diam., 10 ins. in the ground, to bed rock, supported by a mound of stone, for $\frac{1}{4}$ sec. cor., marked on brass cap,



and raise a mound of stone, 3 ft. base, 2 ft. high, W. of cor.

- Ascend 60 ft., over SW. slope, to
- 43.50 Rocky spur, slopes SE.; descend 370 ft., over broken NE. slope.
- 60.00 Draw, course E.; ascend 90 ft. over E. slope.
- 70.00 Rocky point, slopes E.; descend 150 ft., over NE. slope, to
- 80.00 Set an iron post, 3 ft. long, 2 ins. in diam., 18 ins. in the ground, to bedrock, supported by a mound of stone, for the cor. of secs. 19, 20, 29 and 30, marked on brass cap,



and raise a mound of stone, 3 ft. base, 2 ft. high, W. of cor.

Land, mountainous.
 Soil, rocky, 4th rate, igneous formation.
 No timber.
 Undergrowth, dense cacti, catclaw, mesquite, ocotilla, scrub oak, coffee brush and mahogany.
 Fair grass.

-
- 40.00 N. 89° 58' E., on a random line, bet. secs. 20 and 29. Set temp. $\frac{1}{4}$ sec. cor.
 - 80.20 Fall 21 lks. N. of the cor. of secs. 20, 21, 28 and 29. Thence, N. 89° 53' W., on a true line, bet. secs. 20 and 29. Over mountainous land, thru patches of dense undergrowth; descend 315 ft., over W. slope.
 - 10.00 Canyon, course S.; ascend 335 ft., over E. slope.
 - 19.00 Spur, slopes S.; descend 100 ft., over SW. slope.
 - 24.50 Draw, course SE.; ascend 300 ft., over broken E. slope, to
 - 40.10 Set an iron post, 3 ft. long, 1 in. in diam., 2 ins. in

52. Subdivision lines of Township 1 North, Range 10 East.

Chains.

the ground, to bed rock, supported by a mound of stone, for 1/4 sec.cor., marked on brass cap,

S 20
1/4
S 29
1919

and raise a mound of stone, 3 ft.base, 2 ft.high,N.of cor.

- Ascend 55 ft. over E.slope, to
- 43.70 Ridge, brs.N. and S.; descend 90 ft. over broken S.slope, to
- 53.25 Spur, slopes S.; descend 150 ft. over W.slope.
- 69.60 Trail, brs.N. and S.
- 71.25 Gulch, course S., 275 ft. below ridge; ascend 315 ft. over E.slope, to
- 80.20 The cor.of secs.19,20,29 and 30.
Land, mountainous.
Soil, rocky, 4th rate, igneous formation.
Timber, scattering cedar.
Undergrowth, dense patches of scrub oak, catclaw, mesquite, coffee brush, palo verde and cacti.
Fair grass.

-
- N.89°57'W., on a random line, bet. secs.19 and 30.
 - 40.00 Set temp. 1/4 sec.cor.
 - 79.99 Fall 40 lks.N.of the cor.of secs.19,24,25 and 30, on the W.bdy.of the Tp., hereinbefore described.
Thence,
N.89°46'E., on a true line, bet. secs.19 and 30.
Over mountainous land, thru. dense undergrowth; ascend 25 ft., over N.slope.
 - 6.00 Ridge, brs..NE. and SW., saddle in ridge about 3 chs. NE.; descend 80 ft., over E.slope, to
 - 18.45 Foot of descent; ascend 300 ft. over S.slope, to
 - 39.99 Set an iron post 3 ft.long, 1 in. in diam., on bed rock, supported by a mound of stone, for 1/4 sec.cor., marked on brass cap,

S 19
1/4
S 30
1919

from which,
A pine, 5 ins. in diam., brs.S.26° E., 86 lks. dist., marked "1/4 S 30 BT."
No other tree available. Raise a mound of stone, 3 ft. base, 2 ft. high, N.of cor.
Ascend 40 ft. over SW.slope.

- 60.50 Rocky spur, slopes S.; descend 80 ft., over E.slope, to
- 79.99 The cor.of secs.19,20,29 and 30.
Land, mountainous.
Soil, rocky, 4th rate, igneous formation.
Timber, scattering pine and cedar.
Undergrowth, dense catclaw, palo verde, mesquite, scrub oak, coffee brush, mahogany and cacti.
Poor grass.

-
- N.0°03' W., bet. secs. 19 and 20.
 - Over mountainous land, thru.scattering undergrowth; descend 145 ft., over NE.slope.
 - 11.90 Gulch, course SE., with a small intermittent stream of clear water; ascend 670 ft., over broken cliffy SW.slope.

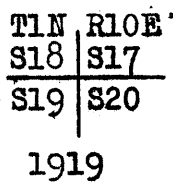
5.20

Chains.

- 13.20 Trail, brs. NW. and SE.
- 29.00 Rocky ridge, brs. NW. and SE.; descend 370 ft., over broken N. slope, to
- 39.50 Set an iron post, 3 ft. long, 1 in. in diam., 18 ins. in the ground, to bedrock, supported by a mound of stone for witness cor. to $\frac{1}{4}$ sec. cor., marked on brass cap,

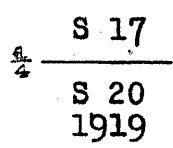


- Raise a mound of stone, 3 ft. base, 2 ft. high, 4 ft. S. of cor.; impracticable to raise a mound of stone on W. on account of sloping cliffs.
- Descend 175 ft., over NE. slope.
- 40.00 True point for $\frac{1}{4}$ sec. cor. falls on giant boulder on line; impracticable to set $\frac{1}{4}$ sec. cor.
- 49.55 Rocky gulch, course SE.; ascend 120 ft., over S. slope.
- 57.50 Spur, slopes SE.; descend 245 ft., over NE. slope.
- 71.15 Rocky gulch, course SE., with a small intermittent stream of clear water; ascend 60 ft., over SW. slope.
- 74.40 Spur, slopes SE.; descend 50 ft. over NE. slope.
- 75.80 Gulch, course SE.; ascend 80 ft., over SW. slope, to
- 80.00 Set an iron post, 3 ft. long, 2 ins. in diam., 24 ins. in the ground, for the cor. of secs. 17, 18, 19 and 20, mark on brass cap,



from which,
A mountain willow, 6 ins. in diam., brs. N. $40\frac{1}{2}^\circ$ W., 131 lks. dist., marked "T1N R10E S18 BT."
No other trees available. Raise a mound of stone 3 ft. base, 2 ft. high, W. of cor.
Land, mountainous.
Soil, rocky, 4th rate, igneous formation.
Timber, scattering pine and cedar.
Undergrowth, scattering scrub oak, catclaw, coffee brush, mesquite and cacti.
Good grass.

- 40.00 S. $89^\circ 53'$ E., on a random line, bet. secs. 17 and 20.
- Set temp. $\frac{1}{4}$ sec. cor.
- 79.90 Fall 28 lks. N. of the cor. of secs. 16, 17, 20 and 21. Thence
- N. $89^\circ 41'$ W., on a true line, bet. secs. 17 and 20.
- Over mountainous land, thru scattering undergrowth.
- Descend 20 ft., over N. slope.
- 6.75 Gulch, course NE.; ascend 200 ft. over S. slope, to
- 22.55 Same gulch, course SE.; ascend 400 ft., over rocky NE. slope, to
- 39.95 Set an iron post 3 ft. long, 1 in. in diam., on bed rock, supported by a mound of stone, for $\frac{1}{4}$ sec. cor., marked on brass cap.



Raise a mound of stone, 3 ft. base, 2 ft. high, N. of cor.
Ascend 60 ft. over E. slope, to

54 Subdivision lines of Township 1 North, Range 10 East.

Chains.

42.60 Ridge, brs.N. and S.
 Descend 260 ft., over NW.slope.
 55.00 Gulch, course S.
 Ascend 300 ft., over NE.slope.
 76.65 Rocky spur, slopes SE.
 Descend 75 ft., over SW.slope.
 79.90 The cor.of secs.17,18,19 and 20.
 Land,mountainous.
 Soil,rocky, 4th rate,igneous formation.
 Timber, scattering cedar.
 Undergrowth, scattering catclaw, scrub oak, mesquite,
 coffee brush, palo verde, and cacti.
 Fair grass.

 40.00 S.89°46'W., on a random line, bet. secs. 18 and 19.
 Set temp. 1/4 sec.cor.
 79.80 Intersect the cor.of secs. 13,18, 19 and 24, on the W.bdy.
 of the Tp., here in before described.
 Thence,
 N.89°46'E., on a true line, bet.secs.18 and 19.
 Over mountainous land, thru scattering undergrowth;
 descend 200 ft., over NE.slope.
 12.30 Gulch, course NW., with a small intermittent stream of
 clear water.
 Ascend 300 ft., over broken SW.slope.
 38.80 Ridge, brs.N. and S.; descend 25 ft., over broken NE.
 slope to
 39.80 Set an iron post, 3 ft.long, 1 in. in diam., 6 ins. in
 the ground to bed rock, supported by a mound of stone
 for 1/4 sec.cor., marked on brass cap,

S 18
 1/4
 S 19
 1919

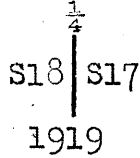
And raise a mound of stone, 3 ft. base, 2 ft. high, N.
 of cor.
 Descend 175 ft., over NE.slope.
 55.20 Gulch, course SE., with a small intermittent stream of
 clear water, 200 ft. below ridge; ascend 100 ft.
 over broken S.slope.
 69.00 Spur, slopes SE.; descend 80 ft. over NE. slope.
 75.00 Gulch, course SE.; ascend 75 ft., over broken SW.slope,
 to
 79.80 The cor.of secs.17,18,19 and 20.
 Land, mountainous.
 Soil,rocky, 4th rate, igneous formation.
 Timber, a few scattering pine and cedar.
 Undergrowth, scattering scrub oak, catclaw, mesquite,
 coffee brush and cacti.
 Fair grass.

 N. 0°03'W., bet.secs. 17 and 18.
 Over mountainous land, thru scattering undergrowth; as-
 cend 50 ft., over SW.slope.
 1.10 Rocky point slopes W.; descend 60 ft., over N.slope.
 3.60 Draw, course W.
 Ascend 190 ft., over SE.slope.
 22.80 Spur, slopes SE.
 Descend 150 ft., over NE.slope.

Subdivision lines of Township 1 North, Range 10 East.

Chains.

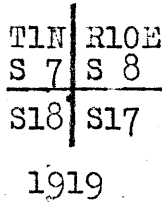
38.00 Head of draw, course SE.; ascend 45 ft. over S. slope, to
40.00 Set an iron post, 3 ft. long, 1 in. in diam., 22 ins. in
the ground to bed rock, supported by a mound of stone,
for $\frac{1}{4}$ sec. cor., marked on brass cap,



and raise a mound of stone, 3 ft. base, 2 ft. high, W. of
cor.

Ascend 400 ft. over S. slope.

50.00 Spur, slopes W.; descend 440 ft.; over N. slope.
67.60 Head of gulch, course NW.; ascend 200 ft., over SW. slope, to
80.00 Set an iron post 3 ft. long, 2 ins. in diam., 24 ins. in
the ground, for the cor. of secs. 7, 8, 17 and 18, marked
on brass cap,



and raise a mound of stone, 3 ft. base, 2 ft. high, W.
of cor.

Land, mountainous.

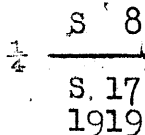
Soil, rocky, 4th rate, igneous formation.

Timber, scattering cedar.

Undergrowth, scattering catclaw, scrub oak, mesquite, palo
verde, coffee brush and cacti.

Fair grass.

S. 89° 41' E., on a random line, bet. secs. 8 and 17.
40.00 Set temp. $\frac{1}{4}$ sec. cor.
80.23 Fall 5 lks. N. of the cor. of secs. 8, 9, 16 and 17.
Thence,
N. 89° 39' W., on a true line, bet. secs. 8 and 17.
Over mountainous land, thru dense undergrowth; ascend 425
ft., over E. slope, to
13.00 Foot of cliff, brs. N. and S.
15.80 Top of cliff, brs. N. and S., 300 ft. high; ascend 35 ft.
over SE. slope.
21.00 Ridge, brs. N. and S.; descend 160 ft., over SW. slope.
28.70 Gulch, course NW.; ascend 75 ft. over NE. slope, to
40.11 Set an iron post, 3 ft. long, 1 in. in diam., 10 ins. in
the ground, to bed rock, supported by a mound of stone,
for $\frac{1}{4}$ sec. cor., marked on brass cap,



from which,

A mountain mahogany, 5 ins. in diam., brs. S. 53° E.,
120 lks. dist., marked " $\frac{1}{4}$ S 17 BT."

No other tree available. Raise a mound of stone, 3 ft,
base, 2 ft. high, N. of cor.

Ascend 170 ft. over B. slope.

44.00 Spur, slopes N.; descend 130 ft., over W. slope.
51.35 Gulch, course N.; ascend 335 ft., over NE. slope.
63.50 Ridge, brs. NW. and SE.; descend 270 ft., over broken SW.
slope, to
80.23 The cor. of secs. 7, 8, 17 and 18.
Land, mountainous.
Soil, rocky, 4th rate, igneous formation.
Timber, scattering cedar.

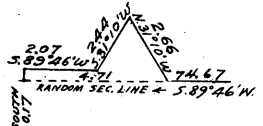
56 Subdivision lines of Township 1 North, Range 10 East.

Chains. Undergrowth, dense catclaw, scrub oak, coffee brush, mesquite, mahogany and cacti.
Fair grass.

40.00 S.89°46'W., on a random line, bet. secs.7 and 18.
Set temp. 1/4 sec.cor.

74.67 To avoid impassable cliffs, traverse as follows:

- N.31°10'W., 266 lks.; thence
- S.31°10'W., 244 lks.; thence
- S.89°46'W., 207 lks.; thence
- South, 17 lks. to the cor.



79.38 Fall 5 lks. N. of the cor. of secs. 7, 12, 13 and 18, on the W. bdy. of the Tp., hereinbefore described.

Thence, N.89°44'E., on a true line, bet. secs.7 and 18. Over mountainous land, thru dense undergrowth, over broken cliffs, facing NW.; ascend 130 ft. to top of ridge.

4.71 Measurement by traverse to End of traverse. Continue line and measurement by chaining.

5.50 Rocky ridge, brs. N. and S.; descend 380 ft., over broken cliffy NE. slope, to

39.38 Set an iron post 3 ft. long, 1 in. in diam., 12 ins. in the ground, to bed rock, supported by a mound of stone for 1/4 sec.cor., marked on brass cap,

S 7

S 18
1919

from which,

A mesquite, 4 ins. in diam., brs. S.57°E., 64 lks. dist., marked 1/4 S 18 B T.

No other tree available. Raise a mound of stone, 3 ft. base, 2 ft. high, N. of cor.

Descend 80 ft., over NE. slope.

50.60 Rocky gulch, course NW.; ascend 715 ft., over broken SW. slope, to

79.38 The cor. of secs. 7, 8, 17 and 18.

Land, mountainous. Soil, rocky, 4th rate, igneous formation.

Timber, scattering pine and cedar.

Undergrowth, dense catclaw, scrub oak, mesquite, mahogany, coffee brush, wild cherry and cacti.

Poor grass.

N.0°03'W., bet. secs.7 and 8.

Over mountainous land, thru scattering undergrowth; ascend 75 ft., over SW. slope, to

2.00 Ascend 75 ft. over W. slope.

13.50 Ridge, brs. NW. and SE.; descend 190 ft., over E. slope to

39.30 Top of sloping cliff, brs. NW. and SE.; desc. 230 ft. to gulch.

40.00 Point for 1/4 sec.cor. falls on sloping cliff, insecure place for 1/4 sec.cor.

40.60 Set an iron post, 3 ft. long, 1 in. in diam., 26 ins. in the ground, for witness cor. to 1/4 sec.cor., marked on brass cap,

1/4
S 7 | S 8
W | C
1919

from which,

A mountain mahogany, 5 ins. in diam., brs. S.73° E., 24 lks. dist., marked WC 1/4 S 8 BT.

A small stone dam, brs. E. about 5 chs. dist.

Chains.

No other tree available. Raise a mound of stone, 3 ft. base, 2 ft. high, W. of cor.
 49.55 Rocky gulch, course NW.; ascend 460 ft., over broken cliffy, SW. slope.
 73.40 Spur, slopes NW.; descend 270 ft., over N. slope, to
 80.00 Set an iron post, 3 ft. long, 2 ins. in diam., 6 ins. in the ground, to bed rock, supported by a mound of stone, for the cor. of secs. 5, 6, 7 and 8, marked on brass cap,

TLN	R10E
S 6	S 5
S 7	S 8

1919

and raise a mound of stone; 3 ft. base, 2 ft. high, W. of cor.
 Land, mountainous.
 Soil, rocky, 4th rate, igneous formation.
 Timber, scattering cedar.
 Undergrowth, scrub oak, catclaw, mesquite, coffee brush, mahogany, palo verde, wild cherry and cacti.
 Fair grass.

40.00 S. 89° 39' E., on a random line, bet. secs. 5 and 8.
 Set temp. $\frac{1}{4}$ sec. cor.
 80.32 Fall 24 lks. S. of the cor. of secs. 4, 5, 8 and 9.
 Thence,
 N. 89° 49' W., on a true line, bet. secs. 5 and 8.
 Over mountainous land, thru. dense undergrowth; descend 70 ft., over NW. slope.
 6.50 LaBarge Wash, 60 lks. wide, 10 ft. deep, course N., with a small intermittent stream of clear water; ascend 225 ft., over E. slope.
 11.50 Trail, brs. NE. and SW.
 25.00 Spur, slopes N.; descend 100 ft., over W. slope.
 31.35 Gulch, course N.; ascend 70 ft., over N. slope, to
 40.16 Set an iron post 3 ft. long, 1 in. in diam., 26 ins. in the ground, for $\frac{1}{4}$ sec. cor., marked on brass cap,

S 5
$\frac{1}{4}$
S 8
1919

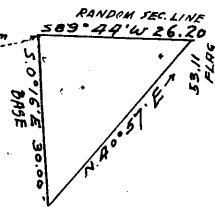
from which,
 A wild cherry, 10 ins. in diam., brs. S. 89° E., 63 lks. dist., marked " $\frac{1}{4}$ S 8 BT."

No other tree available. Raise a mound of stone, 3 ft. base, 2 ft. high, N. of cor.
 Ascend 35 ft., over N. slope, to
 42.00 Ascend 750 ft., over broken, cliffy SE. slope.
 70.00 Spur, slopes NE.; descend 10 ft., over N. slope, to
 77.60 Descend 60 ft., over broken NW. slope, to
 80.32 The cor. of secs. 5, 6, 7 and 8.
 Land, mountainous.
 Soil, rocky, 4th rate, igneous formation.
 Timber, scattering sycamore, cottonwood, pine and cedar.
 Undergrowth, dense catclaw, mesquite, wild cherry, scrub oak, mahogany, coffee brush, palo verde, and cacti.
 Fair grass.

40.00 S. 89° 44' W., on a random line bet. secs. 6 and 7.
 Set temp. $\frac{1}{4}$ sec. cor.
 53.11 Discontinue chaining at this point, and triangulate across canyon, as follows:

Chains.

Point 7 lks. N. from cor. of secs. 1, 6, 7 and 12



Leave flag at this point.
 Measure a base, S.0°16'E., 30 chs. dist. from a point 7 lks. N. of the cor. of secs. 1, 6, 7 and 12, on W. bdy. of Tp. which point brs. S.89°44'W. from flag. From S. end of base, flag brs. N.40°57'E. Included angles are 41°00', 90°00', and 49°00', the sum of which is 180°00'.

Dist. triangulated is obtained by tang. 41°00' x base, or .86929 x 30.00 = 26.20 chs. which added to 53.11 chs. =

79.31 Fall 7 lks. N. of the cor. of secs. 1, 6, 7 and 12, on the W. bdy. of the Tp., hereinbefore described.

Thence, N.89°41'E., on a true line, bet. secs. 6 and 7. Over mountainous land, thru. dense undergrowth; ascend 25 ft., over S. slope, to

4.30 Descend 300 ft., over E. slope.

10.30 Canyon, course N., with a small intermittent stream of clear water; ascend 750 ft., over W. slope.

26.20 Flag point of triangulation, hereinbefore described.

Top of cliffs, bear N. and S., 300 ft. high; descend 235 ft. over E. slope.

35.90 Gulch, course N.; ascend 80 ft., over NW. slope, to

39.31 Set an iron post, 3 ft. long, 1 in. in diam., on bed rock supported by a mound of stone, for 1/4 sec. cor., marked on brass cap,

$$\frac{1}{4} \frac{S \ 6}{S \ 7} = 1919$$

and raise a mound of stone, 3 ft. base, 2 ft. high, N. of cor.

45.00 Ascend 15 ft. over W. slope.

Rocky point, slopes N.; descend 190 ft., over broken NE. slope.

50.40 Gulch, course NW.; ascend 440 ft., over broken SW. slope.

64.30 Spur, slopes NW.; descend 15 ft. over broken cliffs, along steep N. slope, to

79.31 The cor. of secs. 5, 6, 7 and 8.

Land, mountainous.

Soil, rocky, 4th rate, igneous formation.

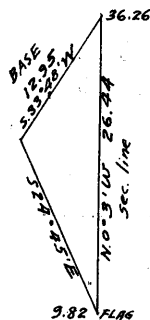
Timber, scattering cedar; undergrowth, dense catclaw,

mesquite, coffee brush, scrub oak, mahogany, wild cherry, palo verde and cacti.

Fair grass.

9.82 N.0°03'W., on a random line, bet. secs. 5 and 6.

Discontinue chaining at this point, and triangulate across impassable cliffs as follows:



Leave flag at this point.

From a point on random line, beyond cliffs, measure a base S.33°48'W., 12.95 chs. From SW. end of base, flag brs. S.24°45'E.

From NE. end of base, vertical angle to flag is + 14 1/2°.

Included angles are 121°27', 33°51', and 24°42', the sum of which is 180°.

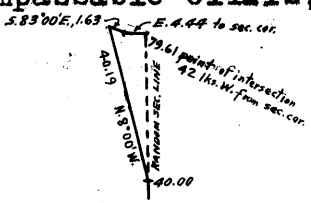
Dist. triangulated on random

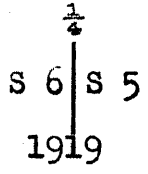
line is obtained by $\frac{\text{sine } 121^{\circ}27' \times \text{base}}{\text{sine } 24^{\circ}42'}$ or

Subdivision lines of Township 1 North, Range 10 East.

Chains.

$.93074 \times 12.95 = 26.44$ chs., which added to 9.82 =
.41787

- 36.26 Flag point of triangulation. Continue line and measurement by chaining.
- 40.00 Set temp. $\frac{1}{4}$ sec.cor. To avoid impassable cliffs, traverse as follows:

- 79.61 Fall 42 lks.W. of the cor.of secs.5,6,31 and 32, on the N.bdy.of the Tp., hereinbefore described.
Thence,
S.0° 15' W., on a true line, bet. secs.5 and 6.
Over mountainous land, thru.dense undergrowth; descend 950 ft. over S.slope to La Barge Canyon.
- 2.00 Top of cliffs, bear E. and W., about 350 ft. high; about 6 chs.W. is crevice in cliff that is passable.
- 26.60 Trail, brs.E. and W.
- 27.60 Bottom of La Barge Canyon, course W., with a small intermittent stream of clear water; ascend 350 ft. over broken NE.slope to $\frac{1}{4}$ sec.cor.
- 34.60 Wire fence brs.E. and W.
- 39.61 Set an iron post 3 ft.long, 1 in. in diam., 12 ins. in the ground, to bed rock, supported by a mound of stone, for $\frac{1}{4}$ sec.cor., marked on brass cap,



- and raise a mound of stone, 3 ft. base, 2 ft. high, W. of cor. Ascend 100 ft. to spur.
- 43.35 Triangulation point.
- 43.70 Spur, slopes NW.; ascend 500 ft., over broken cliffy W. and NW.slopes, to sec.cor.
- 69.79 Flag point of triangulation.
- 79.61 The cor.of secs.5,6,7 and 8.
Land, mountainous.
Soil, rocky, 4th rate, igneous formation.
Timber, scattering sycamore, cottonwood and cedar.
Undergrowth, dense catclaw, mesquite, scrub oak, coffee brush, mahogany, wild cherry, ocotilla and cacti.
Fair grass.

Boundaries of Township 1 North, Range 10 East.
Latitudes, departures, and closing errors.

Line designated.	True bearing.	Dist.	Latitudes.		Departures.	
			N.	S.	E.	W.
South boundary (G.&S.R. Base Line)	West,	480.00				480.00
West boundary,	North,	480.00	480.00			
North boundary,	N. 89° 58' E.	479.26	.28		479.26	
East boundary,	South,	480.00		480.00		
Convergency,					.47	
Totals.			480.28	480.00	479.73	480.00
			480.00			479.73
Error in latitude,			0.28			
Error in departure,						0.27

GENERAL DESCRIPTION.

This township is rough and mountainous, with the exception of a few sections in the SW. part, which is rolling. There are several small intermittent springs, scattered throughout the township. The soil is rocky, unsuitable for cultivation, but fairly good for grazing. A few sycamores and cottonwoods in La Barge Canyon, and a few cedars and pines on top of the mountains constitute the only timber. There are several prospect holes in secs. 28, 29, and 30. There is one cattle company with improvements in sec. 32, with fences extending into secs. 33, 28, and 27.

Book "J"

Group 71 - - - - Arizona.

DATE-DIAGRAM.

BOOK 3400

Township 1 North, Range 10 East.

5-5-19 6	5-6-19 5-2-19 5	5-6-19 4-30-19 4	5-6-19 4-25-19 3	5-6-19 4-17-19 2	5-6-19 4-15-19 1
5-4-19 7	5-1-19 4-28-19 8	4-29-19 4-29-19 9	4-24-19 3-24-19 10	4-14-19 4-14-19 11	4-11-19 4-11-19 12
3-25-19 18	4-26-19 3-25-19 17	4-23-19 4-23-19 16	4-12-19 4-18-19 15	4-8-9-19 4-8-19 14	4-19-19 4-9-19 13
3-22-19 19	3-26-19 3-21-19 20	3-26-27-19 3-26-19 21	4-18-19 3-27-19 22	4-5-19 3-28-19 23	4-3-19 3-31-19 24
3-19-19 30	3-8-19 3-17-19 29	3-12-19 3-12-19 28	3-10-19 3-10-19 27	3-29-19 3-9-19 26	3-6-19 3-15-19 25
12-11-17 31	12-11-17 12-11-17 32	12-6-17 12-6-17 33	12-4-17 12-4-17 34	12-3-17 12-3-17 35	12-1-17 12-1-17 36

Gila and Salt River Base Line

KEY

12-11-17 Indicates dates of execution of surveys by Alton O. Stinson, U. S. Surveyor.

5-5-19 Indicates dates of execution of surveys by William B. Kimmel, U.S. Cadastral Engineer.

168

BOOK 3400

CERTIFICATE
~~FINAL OATH~~ OF UNITED STATES SURVEYOR.

I, Alton O. Johnson, U. S. Surveyor, ^{hereby certify upon honor} ~~do solemnly swear~~ that, in pursuance
supplemental
of special instructions received from the U. S. Surveyor General, for Group 71, Arizona,
bearing date of the 31st day of October, 1917, I have well, faithfully, and truly,
in my own proper person, and in strict conformity with said instructions, the Manual of Surveying
Instructions, and the laws of the United States, surveyed all those parts or portions of
the East and West boundaries, and Subdivision lines of
TOWNSHIP 1 NORTH, RANGE 10 EAST,

of the Gila and Salt River
Base and Meridian, in the State of Arizona, which are represented in
the foregoing field notes, ^{and by diagram on page 61 hereof} as having been executed by me, and under my direction; and ~~I do further~~
~~solemnly swear~~ that all the corners of said survey have been established and perpetuated in strict accord-
ance with the Manual of Surveying Instructions, and the ^{supplemental} special written instructions of the U. S. Surveyor
General, for Group 71, Arizona, and in the specific manner described in the field notes, and that
the foregoing are the original field notes of such survey.

Phoenix, Arizona
April 13, 1918.

Alton O. Johnson
U. S. Surveyor.

~~Subscribed by said~~ Alton O. Johnson ~~and sworn to before me~~
~~this~~ 13th day of April, 1918

~~James H. [Signature]~~
~~SURVEYOR GENERAL OF ARIZONA~~



APPROVAL.

OFFICE OF THE UNITED STATES SURVEYOR GENERAL,
....., 191

The foregoing field notes of the survey of

executed by
under his special instructions dated, 191, having been
critically examined, and the necessary corrections and explanations made, the said field notes, and the
surveys they describe, are hereby approved.

U. S. Surveyor General.

I certify that the foregoing transcript of the ~~field~~ notes of the above-described surveys in
....., has been correctly copied from the original notes on file in this office.

U. S. Surveyor General.

CERTIFICATE OF UNITED STATES CADASTRAL ENGINEER.

BOOK 3400

I, William B. Kimmel, U.S. Cadastral Engineer, U.S. Surveyor, hereby certify upon honor that, in pursuance supplemental of special instructions received from the U. S. Surveyor General, for Group 71, Arizona,

bearing date of the 4th day of January, 1918, I have well, faithfully, and truly in my own proper person, and in strict conformity with said instructions, the Manual of Surveying Instructions, and the laws of the United States, surveyed all those parts or portions of the East, West and North boundaries, and subdivision lines of Township 1 North, Range 10 East,

of the Gila and Salt River Base and Meridian, in the State of Arizona, which are represented in the foregoing field notes and by diagram on page 61 hereof as having been executed by me, and under my direction; and that all the corners of said survey have been established and perpetuated in strict accordance with the Manual of Surveying Instructions, supplemental and the special written instructions of the U. S. Surveyor General, for Group 71, Arizona, and in the specific manner described in the field notes, and that the foregoing are the original field notes of such survey.

San Francisco, California. January 10, 1920.

William B. Kimmel, U.S. Cadastral Engineer.

APPROVAL.

OFFICE OF THE UNITED STATES SURVEYOR GENERAL,

Phoenix, Arizona, February 7, 1920

The foregoing field notes of the survey of the East, West and North boundaries, and the subdivision lines of TOWNSHIP 1 NORTH, RANGE 10 EAST,

of the Gila and Salt River Base and Meridian, in the State of Arizona,

executed by Alton O. Stinson, U.S. Surveyor, and William B. Kimmel, U.S. Cadastral Engineer, under special instructions dated Oct. 31, 1917 and Jan. 4, 1918, having been critically examined, and the necessary corrections and explanations made, the said field notes, and the surveys they describe, are hereby approved.

Frank O. Frost, U. S. Surveyor General.

I certify that the foregoing transcript of the field notes of the above described surveys in has been correctly copied from the original notes on file in this office.