

"B"

4-679

BOOK 3403

Original

JAN - 3 1921

# FIELD NOTES

OF RETRACEMENT OF

Part of Second Guide Meridian East, thru. Township 20 South,

Part of South bdy. of Township 19 South, Range 10 East,

RESURVEY OF

South boundary of TOWNSHIP 18 SOUTH, RANGE 11 EAST,

Part of 2nd Guide Meridian East, thru. Township 19 South,

Part of South boundary, and

Part of Subdivision lines of

TOWNSHIP 19 SOUTH, RANGE 11 EAST.

and SURVEY of

Completion of 2nd Guide Meridian East, thru. Township 19 South, and

Completion of Subdivision lines of

TOWNSHIP 19 SOUTH, RANGE 11 EAST.

Of the Gila and Salt River Base and Meridian,

In the State of Arizona.

EXECUTED BY

J. P. Davis,

In the capacity of U. S. Surveyor, under Special Instructions dated Feby. 28, 1917,

issued by the United States Surveyor General to govern surveys included in Group

No. 82, Arizona, which were approved by the Commissioner of the General Land

Office, March 10, 1917, and Assignment Instructions dated Nov. 23, 1917,

Retracement,

Resurvey & Survey commenced January 3, 1918.

Retracement,

Resurvey & Survey completed March 14, 1918.

3403

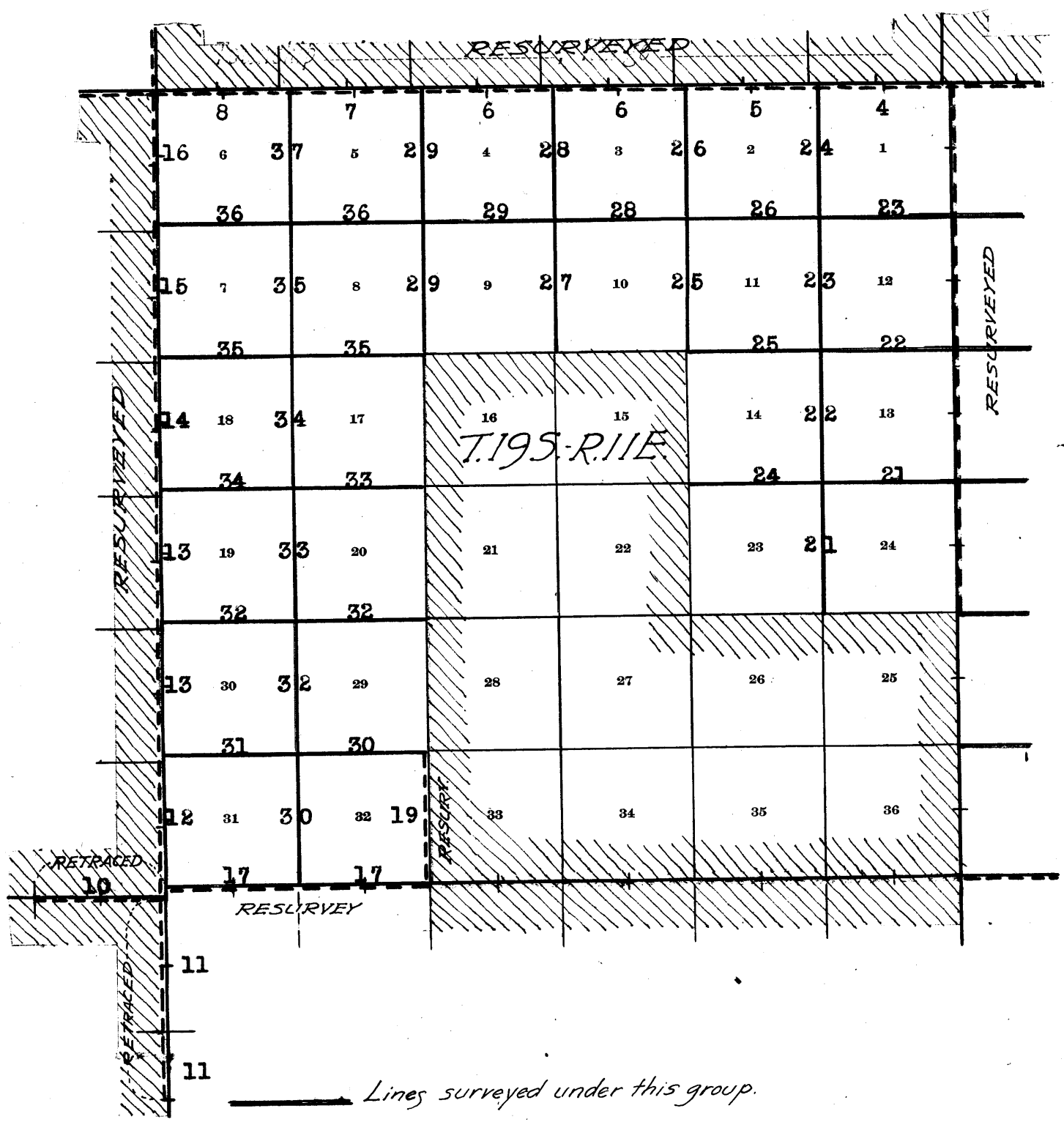
3403

1A  
04

BOOK 3403

3403

# INDEX DIAGRAM.



- Lines surveyed under this group.
- Lines retraced or resurveyed under this group.
- Accepted surveys.
- Unsurveyed.
- Areas surveyed as per accepted plats on file.

BOOK 3403

3403

Book "B"

GROUP 82, ARIZONA,

TOWNSHIP 19 SOUTH, RANGE 11 EAST

DATE DIAGRAM - 1918.

	1-15	1-15	1-14	1-14	1-11	1-11
2-1	6 1-25	5 1-25	4 1-12	3 1-12	2 1-10	1 1-8
2-2	7 1-24	8 1-24	9 1-12	10 1-10	11 1-8	12 1-7
2-2	13 1-26	17 1-24	16	15	14 1-8	13 1-7
2-2	19 1-29	20 1-23	21	22	23 1-7	24 1-3
1-29	30 1-21	29 1-22	28	27	26	25
3-14	31 1-30	32 1-22	33 1-29	34	35	36
1-30	1-31					
1-31						

Surveys executed on dates shown, by J. P. DAVIS, U. S. Surveyor.

## Chains

Retracements, Resurveys and Surveys, hereinafter described, executed on dates shown on diagram on page 1 hereof by J. P. Davis, U. S. Surveyor, using a Young and Sons light mountain transit No. 8538, described with record of test and certificate of approval in Book "A" of this Group.

The instrument was maintained in proper adjustment by tests at frequent intervals during the execution of the survey.

RESURVEY of SOUTH BOUNDARY of T. 18 S., R. 11 E  
Retracement for Resurvey.

The cor. of Ts. 18 and 19 S., Rs. 11 and 12 E., was originally established in December, 1872. The cor. was reestablished in original position in August, 1907, retaining same designation. In April, 1909, the corner was changed to refer to Ts. 18 S., Rs. 11 and 12 E., only. The cor. is now found to be a granite stone, 12 x 15 x 6 ins. above ground firmly set, marked with 6 notches on each of E. W. and N. edges, and witnessed by mound of stone N. of cor., and one bearing tree NE. of cor. properly marked.

The south Bdy. of T. 18 S., R. 11 E., was originally surveyed in Aug. 1907.

From reestablished cor. of Ts. 18 S., Rs. 11 and 12 E., described above,

S.  $89^{\circ} 58' W.$ , (record course) on random line, on S. bdy. of Sec. 36 (E $\frac{1}{4}$ ).

39.69 Intersect the original  $\frac{1}{4}$  sec. cor. of secs. 1 and 36, which is a quartz stone 10 x 8 x 8 ins., above ground, firmly set, marked " $\frac{1}{4}$ " on N. face and witnessed by md. of stone N. of cor. and one bearing tree NE. of cor. properly mkd.

True course and dist. of E.  $\frac{1}{4}$  of S. bdy. of Sec. 36, are therefore S.  $89^{\circ} 58' W.$ , 39.69 chs.

Thence

S.  $89^{\circ} 58' W.$ , on random line, on S. bdy. of Sec. 36 (W.  $\frac{1}{2}$ )

40.13 Intersect the orig. cor. of secs. 1, 2, 35 & 36, which is a granite stone 10 x 8 x 4 ins. above ground, firmly set, mkd. with 1 notch on E. edge and 5 notches on W. edge, and witnessed by md. of stone W. of cor. and one bearing tree NE. of cor. properly mkd.

True course and dist. of W.  $\frac{1}{2}$  of S. bdy. of Sec. 36 are therefore, S.  $89^{\circ} 58' W.$ , 40.13 chs.

From orig. cor. of secs. 1, 2, 35 and 36,

S.  $89^{\circ} 58' W.$ , on random line, on S. bdy. of Sec. 35 (E.  $\frac{1}{2}$ ).

40.08 Intersect orig.  $\frac{1}{4}$  sec. cor. of secs. 2 and 35, which is a granite stone, 12 x 8 x 6 ins. above ground, firmly set, mkd. " $\frac{1}{4}$ " on N. face and witnessed by md. of stone N. of cor. and one bearing tree SW. of cor. properly mkd.

True course and dist. of E.  $\frac{1}{2}$  of S. bdy. of Sec. 35, are therefore S.  $89^{\circ} 58' W.$ , 40.08 chs.

Thence

S.  $89^{\circ} 58' W.$ , on random line, on S. bdy. of Sec. 35 (W.  $\frac{1}{2}$ )

39.07 Intersect orig. witness cor. to cor. of Secs. 2, 3, 34 and 35, which is a conglomerate stone, 24 x 15 x 15 ins. above ground, firmly set, mkd. "W. C.", with 2 notches on E. edge, and 4 notches on W. edge, and witnessed by md. of stone W. of cor. and two bearing trees, properly mkd., one NW. and one SW. of cor.

RESURVEY of SOUTH BOUNDARY of T. 18 S., R. 11 E.,  
Retracement for Resurvey (Cont'd.)

Chains As this W. C. is on record as being 72 lks. N. 89° 58' E. from true cor. point, the true course and dist. of W.  $\frac{1}{2}$  of S. bdy. of Sec. 32 are, therefore S. 89° 58' W., 39.79 chs.

From true point for cor. of secs. 2, 3, 34 and 35. S. 89° 58' W., on random line, on S. bdy. of sec. 34 (E.  $\frac{1}{2}$ ).

39.86 Intersect the orig.  $\frac{1}{4}$  sec. cor. of secs. 3 and 34, which is a limestone 20 x 18 x 6 ins. above ground, firmly set, mkd. " $\frac{1}{4}$ " on N. face and witnessed by md. of stone N. of cor. No bearing trees. True course and dist. of E.  $\frac{1}{2}$  of S. bdy. of sec. 34, are, therefore, S. 89° 58' W., 39.86 chs.

Thence S. 89° 58' W., on random line, on S. bdy. of Sec. 34 (W.  $\frac{1}{2}$ ).

39.76 Intersect orig. cor. of secs. 3, 4, 33 and 34, which is a granite stone, 12 x 8 x 6 ins. above ground, firmly set, mkd. with 3 notches on each of E. and W. edges and witnessed by md. of stone W. of cor. and three bearing trees, properly mkd., one each NW., NE., and SE., of cor. True course and dist. of W.  $\frac{1}{2}$  of S. bdy. of Sec. 34 are therefore S. 89° 58' W., 39.76 chs.

From orig. cor. of secs. 3, 4, 33 and 34. S. 89° 58' W., on random line, on S. bdy. of Sec. 33 (E.  $\frac{1}{2}$ ).

40.03 Intersect orig.  $\frac{1}{4}$  sec. cor. of Secs. 4 and 33, which is a granite stone 14 x 14 x 12 ins. above ground, firmly set, mkd. " $\frac{1}{4}$ " on N. face and witnessed by md. of stone N. of cor. No bearing trees. True course and dist. of E.  $\frac{1}{2}$  of S. bdy. of Sec. 33 are, therefore, S. 89° 58' W., 40.03 chs.

Thence S. 89° 58' W., on random line, on S. bdy. of Sec. 33 (W.  $\frac{1}{2}$ ).

39.98 Intersect the orig. cor. of secs. 4, 5, 32 and 33, which is a conglomerate stone 12 x 12 x 6 ins. above ground, firmly set, mkd. with 4 notches on E. edge and 2 notches on W. edge and witnessed by md. of stone W. of cor. No bearing trees. True course and dist. of W.  $\frac{1}{2}$  of S. bdy. of Sec. 33 are, therefore S. 89° 58' W., 39.98 chs.

From orig. cor. of secs. 4, 5, 32 and 33. S. 89° 58' W., on random line, on S. bdy. of Sec. 32 (E.  $\frac{1}{2}$ ).

40.19 Fall 14 lks. N. of orig.  $\frac{1}{4}$  sec. cor. of secs. 5 and 32, which is a conglomerate stone 12 x 10 x 8 ins. above ground, firmly set, mkd. " $\frac{1}{4}$ " on N. face and witnessed by md. of stone N. of cor., and two bearing trees properly mkd., one each NE. and SE. of cor. True course and dist. of E.  $\frac{1}{2}$  of S. bdy. of sec. 32 are therefore S. 89° 46' W., 40.19 chs.

Thence S. 89° 58' W., on random line, on S. bdy. of Sec. 32 (W.  $\frac{1}{2}$ ).

39.88 Fall 20 lks. S. of orig. cor. of secs. 5, 6, 31 and 32, which is a granite stone 12 x 10 x 6 ins. above ground, firmly set, marked with 5 notches on E. edge and 1 notch on W. edge and witnessed by md. of stone W. of

RESURVEY of SOUTH BOUNDARY of T. 18 S., R. 11 E.,  
Retracement for Resurvey (Cont'd.)

Chains

cor., and four bearing trees properly mkd. one each NE., SE., SW., and NW. of cor.  
True course and dist. of W.  $\frac{1}{2}$  of S. bdy. of Sec. 32, are therefore N. 89° 45' W., 39.88 chs.

From orig. cor. of secs. 5, 6, 31 and 32.

S. 89° 58' W., on random line, on S. bdy. of sec. 31 (E.  $\frac{1}{2}$ ).

- 40.98 Intersect orig. witness cor. to  $\frac{1}{4}$  sec. cor. of secs. 6 and 31, which is a granite stone, 12 x 12 x 4 ins. above ground, firmly set, mkd. "W C  $\frac{1}{4}$ " on N. face, and witnessed by md. of stone N. of cor. and two bearing trees properly mkd., one each, NW. and SE. of cor.  
True course and dist. of E.  $\frac{1}{2}$  of S. bdy. of sec. 31 are therefore, S. 89° 58' W., 39.98 chs.

Thence

S. 89° 58' W., on a random line, on S. bdy. of sec. 31 (W.  $\frac{1}{2}$ ).

- 30.22 Fall 49 lks. N. of orig. cor. of Ts. 18 and 19 S., Rs. 10 and 11 E., on 2nd Guide Mer. E., established in April, 1885, which is a granite stone 15 x 12 x 8 ins. above ground, firmly set, mkd. with 6 notches on each of N., S., E., and W. edges and witnessed by md. of stone S. of cor., and one bearing tree, properly mkd., SE. of cor.  
True course and dist. of W.  $\frac{1}{2}$  of S. bdy. of Sec. 31, are therefore S. 89° 02' W., 30.22 chs.

## RESURVEY.

From the reestablished cor. of Ts. 18 S., Rs. 11 and 12 E., hereinbefore described.

S. 89° 58' W., on a true line, on S. bdy. of Sec. 36. Over rolling mountainous land, through scattering undergrowth.

Desc. 50 ft.

- 6.63 Wash, 1 ch. wide, course S. Asc. 70 ft.  
11.83 Ridge, brs. N. and S. Desc. 60 ft.  
19.83 Wash, 2 chs. wide, course S. Asc. 30 ft.  
27.73 Ridge, brs. NW. and SE. Desc. 70 ft.  
35.23 (40.00 chs. westing from the reestablished closing cor. of Ts. 19 S., Rs. 11 and 12 E.)

Set an iron post, 3 ft. long, 1 in. diam., 26 ins. in the ground, for reestablished  $\frac{1}{4}$  sec. cor. of sec. 1, T. 19 S., R. 11 E., marked on brass cap

$\frac{1}{4}$  S 1  
1918

And raise a mound of stone, 2 ft. base, 1 $\frac{1}{2}$  ft. high, S. of cor.

- 38.50 Small draw, course SE. Asc. 15 ft.  
39.69 Intersect the original  $\frac{1}{4}$  sec. cor. of secs. 1 and 36, hereinbefore described. This cor. refers to sec. 36 only now. No change in marking or accessory is required.  
42.03 Low ridge, brs. NE. and SW. Desc. 25 ft.  
47.03 Wash, 35 lks. wide, course S. Asc. 40 ft.  
53.13 Road, brs. NW. and SE.  
57.03 Ridge, brs. N. and S. Desc. 35 ft.  
62.00 Wash, 20 lks. wide, course SE. Asc. 55 ft.  
68.33 Ridge, brs. NW. and SE. Desc. 35 ft.  
75.23 (80.00 chs. westing from the reestablished closing cor. of Ts. 19 S., Rs. 11 and 12 E.)  
Set an iron post, 5 ft. long, 2 ins. diam., 26 ins. in the ground, for reestablished cor. of secs. 1 and 2 only, marked on brass cap;

Resurvey of the  
South Boundary of T. 18 S., R. 11 E.

3403

Chains

S 2: S 1  
T 19 S: R 11 E  
1918

And raise a mound of stone, 2 ft. base, 1 1/2 ft. high S. of cor.

- 76.53 Wash, 10 lks. wide, course S. 45° E.
- 79.82 (40.13 chs. S. 89° 58' W. from 1/4 sec. cor. of Sec. 36)  
Intersect the original cor. of secs. 1, 2, 35 and 36, hereinbefore described. Change this cor. to refer to Secs. 35 and 36 only by destroying the original mound of stone and raising a new mound of stone, 2 ft. base, 1 1/2 ft. high, N. of cor.  
Land, rolling mountainous and broken.  
Soil, sandy surface, 2nd and 3rd rates; clay subsoil, on limestone formation.  
No timber.  
Undergrowth, mesquite, cat claw.  
Good growth of grama grass.

S. 89° 58' W., on a true line, on S. bdy. of sec. 35. Over mountainous land, through scattering undergrowth. Asc.

- 1.00 Ridge, brs. NW. and SE. Desc. 35 ft.
- 6.90 Wash, 10 lks. wide, course S. 60° E. Asc. 110 ft.
- 17.00 Ridge, brs. NW. and SE. Desc. 65 ft.
- 27.20 Dim road, brs. NW. and SE.
- 32.40 Wash, 10 lks. wide, course S. 20° W. Asc. 25 ft.
- 35.41 (40.00 chs. S. 89° 58' W., from cor. of secs. 1 and 2)  
Set an iron post, 3 ft. long, 1 in. diam., 12 ins. in the ground, on bed rock, in a mound of stone, for re-established 1/4 sec. cor. of sec. 2 only, marked on brass cap.

1/4 S 2  
1918

And raise a mound of stone, 2 ft. base, 1 1/2 ft. high, S. of cor.

- 37.70 Ridge, brs. NW. and SE. Desc. 35 ft.
- 40.08 Intersect the original 1/4 sec. cor. of secs. 2 and 35, hereinbefore described. Change this cor. to refer to Sec. 35 only by obliterating marking on the bearing tree SW. of cor.
- 40.60 Wash, 4 lks. wide, course S. Asc. 85 ft.
- 47.90 Ridge, brs. N. and S. Desc. 105 ft.
- 59.80 Wash, 25 lks. wide, course S. Asc. 40 ft.
- 63.60 Spur, slopes S. Desc. 30 ft.
- 68.40 Wash, 10 lks. wide, course S. 40° E. Asc. 45 ft.
- 74.50 Ridge, brs. NW. and S. Desc. 65 ft.
- 75.41 (80.00 chs. S. 89° 58' W., from cor. of secs. 1 and 2)  
Set an iron post, 3 ft. long, 2 ins. diam., 26 ins. in the ground, for reestablished cor. of secs. 2 and 3 only, marked on brass cap

S 3: S 2  
T 19 S: R 11 E  
1918

And raise a mound of stone, 2 ft. base, 1 1/2 ft. high, S. of cor.

- 79.15 Intersect the original witness cor. to cor. of secs. 2, 3, 34 and 35, hereinbefore described. Change this cor. to refer to secs. 34 and 35 only by destroying the md. of stone W. of cor. and mkg. on SW. bearing tree; and raise a md. of stone 2 ft. base, 1 1/2 ft. high N. of cor.
- 79.87 (39.79 chs. S. 89° 58' W., from 1/4 sec. cor. of Sec. 35)  
The true point for reestablished cor. of secs. 34 and 35 in draw, 20 lks. wide, course S.

Resurvey of the  
South Boundary of T. 18 S., R. 11 E.

Chains Land, mountainous.  
Soil, sandy surface, 2nd and 3rd rates; clay subsoil, on limestone formation.  
No timber.  
Undergrowth, mesquite and cat claw.

From the true point for reestablished cor. of secs. 34 and 35.  
S. 89° 58' W., on a true line, on S. bdy. of sec. 34. Over rolling and mountainous land, through scattering undergrowth. Asc. 145 ft.

- 11.74 Ridge, brs. N. and S. Desc. 85 ft.
- 17.95 Head of draw, course S. Asc. 40 ft.
- 23.25 Spur, slopes S. Desc. 150 ft.
- 31.55 Draw, 30 lks. wide, course S. Asc. 160 ft.
- 35.54 (40.00 chs. from cor. of secs. 2 and 3)  
Set an iron post, 3 ft. long, 1 in. diam., 20 ins. in the ground, in a mound of stone, for reestablished  $\frac{1}{4}$  sec. cor. of sec. 3 only

1/4 S 3  
1918

And raise a mound of stone, 2 ft. base, 1 1/2 ft. high, S. of cor.

- 39.86 Intersect original  $\frac{1}{4}$  sec. cor. of secs. 3 and 34, hereinbefore described. This cor. now refers to sec. 34 only. No change in mkg. or accessory is required.
- 44.25 Ridge, brs. N. and SE. Desc. 145 ft.
- 52.85 Draw, 20 lks. wide, course S.
- 53.95 Draw, 10 lks. wide, course SE. Asc. 100 ft.
- 62.15 Ridge, brs. NW. and SE. Desc. 160 ft.
- 68.64 Head of small draw, course SW. Continue descent.
- 74.55 Draw, 20 lks. wide, course S.
- 75.54 (80.00 chs. S. 89° 58' W., from cor. of secs. 2 and 3).  
Set an iron post, 3 ft. long, 2 ins. diam., 16 ins. in the ground, on bed rock, in a mound of stone, for reestablished cor. of secs. 3 and 4, marked on brass cap

S 4: E 3  
T 19 S: R 11 E  
1918

And raise a mound of stone, 2 ft. base, 1 1/2 ft. high S. of cor. Asc. 60 ft.

- 79.62 (39.76 chs. S. 89° 58' W. from  $\frac{1}{4}$  sec. cor. of Sec. 34)  
Intersect the original cor. of secs. 3, 4, 33 and 34, hereinbefore described. Change this cor. to refer to secs. 33 and 34 only by obliterating the markings on the SE. bearing tree, destroying the original mound of stones, and raising a new mound of stones, 2 ft. base, 1 1/2 ft. high, N. of cor.  
Land, rolling and mountainous.  
Soil, sandy surface, 2nd and 3rd rates; clay subsoil, on limestone formation.  
No timber.  
Undergrowth, mesquite and catclaw.  
Good growth of grama grass.

S. 89° 58' W., on a true line, on S. bdy. of sec. 33. Over rolling land, through scattering undergrowth. Desc. 40 ft.

- 4.90 Wash, 20 lks. wide, course S. Asc. 60 ft.
- 10.90 Thence over rolling land.
- 15.60 Road, brs. NW. and SE.
- 33.70 Wash, 10 lks. wide, course S.
- 35.92 (40.00 chs. S. 89° 58' W., from the cor. of secs. 3 and 4).



Resurvey of the  
South Boundary of T. 18 S., R. 11 E.

BOOK 3403

Chains Set an iron post, 3 ft. long, 1 in. diam., 14 ins. in the ground, on bed rock, in a mound of stone, for re-established  $\frac{1}{4}$  sec. cor. of sec. 4 only, marked on brass cap

$\frac{1}{4}$  S 4  
1918

And raise a mound of stone, 2 ft. base, 1 $\frac{1}{2}$  ft. high, S. of cor.

40.03 Intersect the original  $\frac{1}{4}$  sec. cor. of secs. 4 and 33, hereinbefore described. This cor. now refers to sec. 33 only. No change in mkg. or accessory is required.

75.92 (80.00 chs. S. 89° 58' W., from cor. of secs. 3 and 4) Set an iron post, 3 ft. long, 2 ins. diam., 26 ins. in the ground, for reestablished cor. of secs. 4 and 5 only, marked on brass cap

S 5:S 4  
T 19 S:R 11 E  
1918

And raise a mound of stone, 2 ft. base, 1 $\frac{1}{2}$  ft. high, S. of cor.

80.01 (39.98 chs. S. 89° 58' W. from  $\frac{1}{4}$  sec. cor. of sec. 33). Intersect the original cor. of secs. 4, 5; 32 and 33, hereinbefore described. Change this cor. to refer to secs. 32 and 33 only, by destroying the original mound of stone, and raising a new mound of stone, 2 ft. base, 1 $\frac{1}{2}$  ft. high, N. of cor.

Land, rolling and level.

Soil, 1st and 2nd rates; clay subsoil, on limestone formation.

No timber

Undergrowth, mesquite and cat claw.

Good growth of grama grass.

S. 89° 46' W., on a true line, on S. bdy. of sec. 32. Over rolling land, through scattering undergrowth.

2.00 Wash, 10 lks. wide, course S. 65° W. Asc. 25 ft.

12.30 Desc. 20 ft.

13.70 Draw, course S. Asc.

17.30 Desc. 40 ft.

22.00 Draw, course SW.

31.20 Enter dense undergrowth, brs. N. and S.

35.91 (40.00 chs. westing from cor. of secs. 4 and 5)

Set an iron post, 3 ft. long, 1 in. diam., 26 ins. in the ground, for reestablished  $\frac{1}{4}$  sec. cor. of sec. 5 only marked on brass cap

$\frac{1}{4}$  S 5  
1918

And raise a mound of stone, 2 ft. base, 1 $\frac{1}{2}$  ft. high, S. of cor.

38.90 Wash, 10 lks. wide, course NW.

40.19 Intersect the original  $\frac{1}{4}$  sec. cor. of secs. 5 and 32, hereinbefore described. Change this cor. to refer to sec. 32 only, by destroying the markings on the SE. bearing tree.

Thence, N. 89° 45' W., on true line, continuing measurement of S. bdy. of sec. 32.

42.00 Wash, 20 lks. wide, course S. 70° W.

51.00 Wash, 30 lks. wide, course NW. Leave dense, enter scattering undergrowth.

64.20 Enter dense undergrowth, brs. NE. and SW.

75.91 (80.00 chs. westing from cor. of secs. 4 and 5)

Set an iron post, 3 ft. long, 2 ins. diam., 26 ins. in the ground, for reestablished cor. of secs. 5 and 6 only, marked on brass cap

S 6:S 5  
T 19 S:R 11 E  
1918

Resurvey of the  
South Boundary of T. 18 S., R. 11 E.

Chains  
80.07 And raise a mound of stone, 2 ft. base, 1½ ft. high, S. of cor.  
(39.88 chs. N. 89° 45' W. from ¼ sec. cor. of sec. 32)  
Intersect the original cor. of secs. 5, 6, 31 and 32, hereinbefore described. Change this cor. to refer to secs. 31 and 32 only by destroying the markings on the SE. and SW. bearing trees.  
Land, rolling.  
Soil, sandy surface, 1st and 2nd rates; clay subsoil, on limestone formation.  
No timber.  
Undergrowth, mesquite, cat claw and palo verde.  
Good growth of grama grass.

.04 S. 89° 58' W., on a true line, on S. bdy. of sec. 31.  
17.00 Over nearly level land, through dense undergrowth.  
35.84 Road, brs. N. 80° W. and S. 80° E.  
Wash, 40 lks. wide, course S. 80° W.  
(40.00 chs. westing from cor. of secs. 5 and 6).  
Set an iron post, 3 ft. long, 1 in. diam., 26 ins. in the ground, for reestablished ¼ sec. cor. of sec. 6 only, marked on brass cap

¼ S 6  
1918

39.98 And raise a mound of stone, 2 ft. base, 1½ ft. high, S. of cor.  
Intersect the true point for the original ¼ sec. cor. of secs. 6 and 31 witnessed 1.00 ch. S. 89° 58' W., as hereinbefore described. Change this witness cor. to refer to point for ¼ sec. cor. to sec. 31 only by destroying the markings on the SE. bearing tree.  
From true point for ¼ sec. cor. of sec. 31, S. 89° 02' W. on true line, continuing measurement of S. bdy. of sec. 31.

43.85 Wash, 15 lks. wide, course SW.  
69.55 Road, brs. N. 20° E., and S.  
70.20 (30.22 chs. S. 89° 02' W., from point for ¼ sec. cor. of Sec. 31)

Intersect the original cor. of Ts. 18 and 19 S., Rs. 10 and 11 E., hereinbefore described. Reestablish this cor. as follows:

Set an iron post, 3 ft. long, 3 ins. diam., 26 ins. in the ground, alongside of the old stone cor., for reestablished cor. of Ts. 18 and 19 S., Rs. 10 and 11 E.,

T 18 S  
R 10 E:R 11 E  
S 36:S 31  
S 1:S 6  
T 19 S  
1918

From which

A mesquite, 12 ins. diam., brs. S. 63½° E., 80 lks. dist., marked T 19 S R 11 E S 6 BT. (Original B.T.)

A mesquite, 6 ins. diam., brs. N. 34½° E., 30 lks. dist., marked T 18 S R 11 E S 31 BT.

No other trees within limits. Raise a mound of stone, 2 ft. base, 1½ ft. high, S. of cor.

Soil, sandy surface, 1st and 2nd rates; clay subsoil, on limestone formation.

Land, rolling.

No timber.

Undergrowth, cat claw and palo verde.

Good growth of grama grass.

Resurvey of the Second Guide Meridian East, through Township 19 South, between Ranges 10000 and 11 East. 3403

Chains	Retracement for Resurvey.
	From the reestablished cor. of Ts. 18 and 19 S., Rs. 10 and 11 E., hereinbefore described.
40.00	<p>South, on random line, on E. bdy. of Sec. 1 (N. <math>\frac{1}{2}</math>)</p> <p>Fall 78 lks. E. of the original <math>\frac{1}{4}</math> sec. cor. of secs. 1 and 6, which is a granite stone, 16 x 6 x 6 ins. above ground, firmly set, marked "<math>\frac{1}{4}</math>" on W. face and witnessed by md. of stone W. of cor. No bearing trees.</p> <p>True course and distance of N. <math>\frac{1}{2}</math> of E. bdy. of Sec. 1, are therefore N. 1° 07' E., 40.01 chs.</p>
40.10	<p>Thence South on random line, on E. bdy. of sec. 1 (S. <math>\frac{1}{2}</math>)</p> <p>Fall 6 lks. W. of the original cor. of secs. 1, 6, 7 and 12, which is a granite stone, 8 x 6 x 6 ins. above ground, firmly set, marked with 1 notch on N., and 5 notches on S. edges, and witnessed by md. of stone W. of cor. No bearing trees.</p> <p>The true course and distance of S. <math>\frac{1}{2}</math> of E. bdy. of Sec. 1 are therefore N. 0° 5' W., 40.10 chs.</p>
40.00	South on random line on E. bdy. of sec. 12.
80.52	Diligent search in this vicinity failed to reveal any trace of the original $\frac{1}{4}$ sec. cor. of secs. 7 and 12.
80.52	<p>Fall 33 lks. W. of the original cor. of secs. 7, 12, 13 and 18, which is a granite stone 10 x 8 x 6 ins. above ground, firmly set, marked with 2 notches on N. edge and 4 notches on S. edge and witnessed by md. of stone W. of cor., and one bearing tree, properly mkd. SE. of cor.</p> <p>True course and distance of E. bdy. of sec. 12 are therefore N. 0° 14' W., 80.52 chs.</p>
40.01	South on random line, on E. bdy. of sec. 13 (N. $\frac{1}{2}$ )
40.01	Fall 8 lks. E. of the original $\frac{1}{4}$ sec. cor. of secs. 13 and 18, which is a granite stone, 30 x 18 x 8 ins., lying on the ground, marked " $\frac{1}{4}$ " but unwitnessed.
	The true course and distance of N. $\frac{1}{2}$ of E. bdy. of sec. 13, are therefore N. 0° 07' E., 40.01 chs.
39.99	Thence, South, on random line, on E. bdy. of sec. 13 (S. $\frac{1}{2}$ )
39.99	Fall 44 lks. W. of the original position of cor. of secs. 13, 18, 19 and 24, as determined from three bearing trees NE., SE., and SW., of point. No trace of md. of stone W. of point.
39.99	The true course and distance of S. $\frac{1}{2}$ of E. bdy. of sec. 13 are therefore N. 0° 38' W., 39.99 chs.
40.23	South on random line, on E. bdy. of sec. 24 (N. $\frac{1}{2}$ ).
40.23	Fall 21 lks. W. of the original $\frac{1}{4}$ sec. cor. of secs. 19, and 24, which is a basalt stone 18 x 12 x 6 ins. above ground, firmly set, marked " $\frac{1}{4}$ " on W. face, and witnessed by md. of stone W. of cor. No bearing trees.
	The true course and distance of N. $\frac{1}{2}$ of E. bdy. of sec. 24 are therefore N. 0° 18' W., 40.23 chs.
40.16	Thence, South, on random line, on E. bdy. of sec. 24 (S. $\frac{1}{2}$ )
40.16	Fall 13 lks. W. of the original cor. of secs. 19, 24, 25 and 30, which is a quartzite stone, 12 x 10 x 6 ins. above ground, firmly set, marked with 4 notches on N. and 2 notches on S. edges and witnessed by md. of stone W. of cor. No bearing trees.
40.16	The true course and distance of S. $\frac{1}{2}$ of E. bdy. of Sec. 24, are therefore N. 0° 11' W., 40.16 chs.

Resurvey of the Second Guide Meridian East,  
through Township 19 South, between Ranges 10 and  
11 East.

Chains

## Retracement for Resurvey.

- South on random line, on E. bdy. of sec. 25 (N.  $\frac{1}{2}$ )  
40.12 Intersect the original  $\frac{1}{4}$  sec. cor. of secs. 25 and 30,  
which is a volcanic stone 10 x 8 x 8 ins. above ground  
firmly set, marked " $\frac{1}{4}$ " on W. face and witnessed by md.  
of stone W. of cor. No bearing trees.  
The true course and distance of N.  $\frac{1}{2}$  of E. bdy.  
of Sec. 25 are therefore North 40.12 chs.  
Thence, South, on random line, on E. bdy. of Sec. 25 (S.  $\frac{1}{2}$ )  
40.01 Fall 24 lks. E. of the original cor. of secs. 25, 30, 31  
and 36, which is a volcanic stone, 10 x 8 x 6 ins.  
above ground, firmly set, marked with 5 notches on N.,  
and 1 notch on S. edges, and witnessed by md. of stone  
W. of cor. No bearing trees.  
The true course and distance of S.  $\frac{1}{2}$  of E. bdy.  
of sec. 25 are therefore N.  $0^{\circ} 21' W.$ , 40.01 chs.

- South, on random line, on E. bdy. of sec. 36.  
23.50 Diligent search in this vicinity failed to reveal any  
trace of the original witness cor. to  $\frac{1}{4}$  sec. cor. of  
secs. 31 and 36.  
45.50 Top of granite cliff, brs. E. and W. Thence across  
broken cliffs, impracticable to chain.

Triangulate as follows:

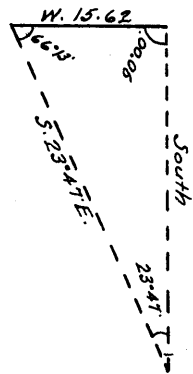
Set a flag ahead on line and from  
the 45.50 ch. point measure a  
base West 15.62 chs. From W.  
end of base, flag brs. S.  $23^{\circ}$   
 $47' E.$

Included angles are  $66^{\circ} 13'$   
 $90^{\circ} 00'$ , and  $23^{\circ} 47'$ , the sum of  
which is  $180^{\circ} 00'$ .

Distance triangulated is ob-  
tained by tang.  $66^{\circ} 13' X$  base  
or  $2.26909 X 15.92 = 35.44$  chs.,  
which added to 45.50 chs., gives position of flag as  
80.94 chs. S. from orig. cor. of secs. 25, 30, 31 and  
36.

From flag measure North 0.94 chs. to

- 80.00 Diligent search in this vicinity failed to reveal any  
trace of the original cor. of Ts. 19 and 20 S., R. 10  
E., or of the orig. closing cor. of Ts. 19 and 20 S.,  
R. 11 E. Set temp. cor. of Ts. 19 and 20 S., R. 10 E.



Retracement of part of  
South Boundary of T. 19 S., R. 10 E.

In order to reestablish the cor. of Ts. 19 and 20 S., R.  
10 E., make retracement on S. bdy. of T. 19 S., R.  
10 E., as follows.

From the temp. cor. of Ts. 19 and 20 S., R. 10 E.

West on random line, bet. secs. 1 and 36.

Over rough mountainous land, through scattering undergrowth.  
Asc. 30 ft.

- 2.65 Desc. 755 ft.  
37.12 Asc. 50 ft.  
40.00 Diligent search in this vicinity failed to reveal any trace  
of the original  $\frac{1}{4}$  sec. cor. of secs. 1 and 36.  
44.80 Desc. 245 ft.  
64.75 Draw, course SW. Thence over rolling land.  
76.03 Fall 70 lks. S. of the orig. cor. of secs. 1, 2, 35 and  
36, which is a volcanic stone 12 x 6 x 5 ins. above  
ground, firmly set, marked with 1 notch on E., and  
5 notches on W. edges and witnessed by md. of stone  
W. of cor. No bearing trees.  
Return to temp. cor. of Ts. 19 and 20 S., R. 10 E., and

Retracement of part of  
South Boundary of T. 19 S., R. 10 E.

Book 3408

Chains

at a point 70 lks. N. and 3.97 chs. E. therefrom set temp. cor. of said Ts. which is 80.00 chs. E. from cor. of secs. 1, 2, 35 and 36, and is indicated on diagram hereinafter shown as point "A".  
After reestablishing the cor. of Ts. 19 and 20 S., R. 10 E., the true course and dist. of line bet. secs. 1 and 36 are found to be N. 88° 11' W., 80.04 chs. as hereinafter described.  
Land, rolling and rough mountainous.  
Soil, rocky, 4th rate.  
No timber.  
Undergrowth, mesquite and cactus.

Retracement of 2nd Guide Meridian  
through part of T. 20 S., bet. Rs. 10 and 11 E.

Owing to precipitous slopes of cliffs on 2nd Guide Meridian East; on the E. bdy. of sec. 1 and N.  $\frac{1}{4}$  of E. bdy. of sec. 12, T. 20 S., R. 10 E., it is impracticable to chain random lines S. from temp. cor. of Ts. 19 and 20 S., R. 10 E. therefore obtain the measurement and course of such portion of the line by traverse from cor. of secs. 1, 2, 35, and 36, as follows:

S. 23° 30' E.,	4.27 chs.
S. 24° 30' E.,	80.03 "
S. 89° 45' E.,	40.00 "

to a point near the record position of orig. cor. of secs. 1 and 12, and make diligent but unsuccessful search for said cor. The  $\frac{1}{4}$  sec. cor. of sec. 1 is on record as being witnessed at a point 24. chs. N. of cor. of secs. 1 and 12. Make diligent search in vicinity of such point but find no trace of such witness cor.

Continue traverse

S. 25° 00' W.,	11.79 chs.
S. 5° 15' E.,	29.25 "
S. 36° 15' E.,	2.20 "
S. 38° 50' E.,	8.71 "

to the  $\frac{1}{4}$  sec. cor. of secs. 7 and 12, which is a sandstone, 12 x 6 x 5 ins. above ground, firmly set, marked " $\frac{1}{4}$ " on W. face and witnessed by md. of stone W. of cor. No bearing trees.

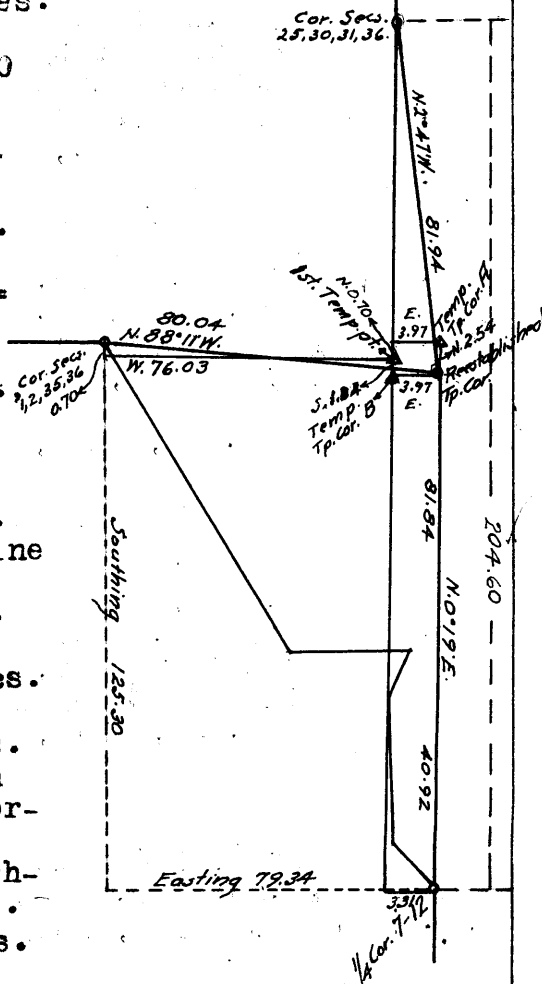
The computed Southing of above described traverse is 125.30 chs.

The computed Easting of above described traverse is 79.34 chs.

The above described  $\frac{1}{4}$  sec. cor. of secs. 7 and 12 is therefore, 125.30 chs. - 70 lks. = 124.60 chs. S. from E. and W. line through the temporary cor. of Ts. 19 and 20 S., R. 10 E., first set, and is 79.34 chs. - 76.03 chs. = 3.31 chs. E. from N. & S. line through same temp. cor.

The length of random line projected S. from cor. of secs. 25, 30, 31 and 36, Ts. 19 S., Rs. 10 and 11 E., to the orig.  $\frac{1}{4}$  sec. cor. of secs. 7 and 12, T. 20 S., Rs. 10 and 11 E., will be 80.00 chs. + 124.60 = 204.60 chs., which to maintain the record proportion for the cor. intervals gives 40.92 chs. as the Southing for the proper intervals.

As the temp. cor. of Ts.



Retracement of 2nd Guide Meridian East,  
Through part of T. 20 S., R. 10 and 11 E.

Chains 19 and 20 S., R. 10 E., first set on N. and S. random line is 80.00 chs. S. from the cor. of secs. 25, 30, 31 and 36, determine position for proper reestablishment of the Tp. cor. by setting another temp. Tp. cor. by setting another temp. Tp. cor. indicated as "B" on accompanying diagram, at a point 1284 chs. S. of the temp. cor. first set. The proper point for reestablishment of the cor. of Ts. 19 and 20 S., R. 10 E., is determined by the intersection of cardinal lines through temp. cors. "A" and "B" which point of intersection is found to be 3.97 chs. E. from temp. cor. "B" and 2.54 chs. S. from temp. cor. "A".  
This point for reestablishment of the cor. of Ts. 19 and 20 S., R. 10 E., gives true courses and distances for the lines affected, as follows:  
E. bdy. of sec. 36, T. 19 S., R. 10 E., N. 2° 47' W., 81.94 chs.  
Bet. secs. 1 and 36, Ts. 19 and 20 S., R. 10 E., N. 88° 11' W., 80.04 chs.  
E. bdy. of sec. 1, T. 20 S., R. 10 E., N. 0° 19' E., 81.84 chs.  
N.  $\frac{1}{2}$  of E. bdy. of Sec. 12, T. 20 S., R. 10 E., N. 0° 19' E., 40.92 chs.  
The true point for reestablishment of cor. of Ts. 19 and 20 S., R. 10 E. falls on steep S. slope, where the cor. cannot be firmly reestablished. Therefore at a point on E. bdy. of sec. 36, T. 19 S., R. 10 E., N. 2° 47' W., 0.90 chs. dist.  
Set a granite stone, 24 x 6 x 6 ins., in a mound of stone, for witness cor. to reestablished cor. of Ts. 19 and 20 S., R. 10 E., marked with 6 grooves on N., W., and S. faces; and "WC" on S. face; and raise a mound of stone, 2 ft. base, 1 $\frac{1}{2}$  ft. high, W. of cor.

Resurvey of the Second Guide Meridian East,  
Through Township 19 South, bet. Ranges 10 and 11 East.

From the true point for reestablished cor. of Ts. 19 and 20 S., R. 10 E., N. 2° 47' W., on a true line, on E. bdy. of sec. 36. Over mountainous land, through scattering undergrowth. Measurement by triangulation described in notes of "Retracement of resurvey."  
0.90 Intersect the witness cor. to reestablished cor. of Ts. 19 and 20 S., R. 10 E., hereinbefore described.  
6.56 The reestablished cor. of Ts. 19 and 20 S., R. 11 E., hereinafter described.  
Thence over very mountainous land.  
36.40 A point 2.21 chs. E. of triangulation point, on cliff, brs. E. and W. Thence by chaining. Desc. 1000 ft.  
40.97 (Proportional distance, 40.92 chs. northing). Set an iron post, 3 ft. long, 1 in. diam., on solid rock, in a mound of stone, for reestablished  $\frac{1}{2}$  sec. cor. of sec. 36, only, marked on brass cap  
 $\frac{1}{2}$   
S 36:  
1918  
And raise a mound of stone, 2 ft. base, 1 $\frac{1}{2}$  ft. high W. of cor.  
47.73 (40.00 chs. southing from cor. of secs. 30 and 31)  
Set an iron post, 3 ft. long, 1 in. diam., on ledge rock, in a mound of stone, for reestablished  $\frac{1}{2}$  sec. cor. of sec. 31, only, marked on brass cap.  
 $\frac{1}{2}$   
S 31  
1918  
And raise a mound of stone, 2 ft. base, 1 $\frac{1}{2}$  ft. high, E. of cor. Continue descent.  
58.05 Head of draw, course NE. Continue descent.

Resurvey of the Second Guide Meridian East,  
Through Township 19 South, bet. Ranges 10 and 11  
East.

BOOK 3406

Chains	
71.84	Head of draw, course NE. Continue descent.
81.94	Intersect the original cor. of secs. 25, 30, 31 and 36, hereinbefore described. This cor. now refers to secs. 25 and 36 only, no change in marking or accessory is required.
	Land, mountainous. Soil, rocky, 4th rate. No timber. Undergrowth, cactus. Good growth of grama grass.
	N. 0° 21' E., on a true line, on E. bdy. of sec. 25. Over rolling land, through scattering undergrowth. Desc. 240 ft.
5.84	(40.00 chs. northing from $\frac{1}{4}$ sec. cor. of sec. 31). The reestablished cor. of secs. 30 and 31, hereinafter described.
25.85	Fence cor. Fence brs. N. and E.
40.01	Intersect the original $\frac{1}{4}$ sec. cor. of secs. 25 and 30, hereinbefore described. This cor. now refers to sec. 25 only. No change in marking or accessory is required. Fence corners here and runs W. and S. Thence North on true line continuing measurement of E. bdy. of sec. 25.
45.04	Draw, 10 lks. wide, course NW.
45.84	(40.00 chs. northing from cor. of secs. 30 and 31) Set an iron post, 3 ft. long, 1 in. diam., 26 ins. in the ground, for reestablished $\frac{1}{4}$ sec. cor. of sec. 30 only, marked on brass cap
	$\frac{1}{4}$ :S 30 1918
	And raise a mound of stone, 2 ft. base, 1 $\frac{1}{2}$ ft. high E. of cor.
59.64	Head of shallow draw, course NW.
80.13	(40.12 chs. North from $\frac{1}{4}$ sec. cor. of sec. 25. Intersect the original cor. of secs. 19, 24, 25 and 30, hereinbefore described. This cor. now refers to secs. 24 and 25 only, no change in mkg. or accessory is required.
	Land, rolling. Soil, sandy surface, 2nd and 3rd rates; clay subsoil, on limestone formation. No timber. Undergrowth, mesquite, catclaw and ocotillo. Good growth of grama grass.
	N. 0° 11' W., on a true line, on E. bdy. of sec. 24. Over level land, through dense undergrowth.
1.70	Enter wash, course NW.
3.70	Leave wash, course NW. Thence across draw, course NW.
5.71	(80.00 chs. northing from cor. of secs. 30 and 31.) Set an iron post, 3 ft. long, 2 ins. diam., 26 ins. in the ground, for reestablished cor. of secs. 19 and 30 only, T. 19 S., R. 11 E., marked on brass cap
	:T 19 S :S 19 :S 30 :R 11 E 1918
	And raise a mound of stone, 2 ft. base, 1 $\frac{1}{2}$ ft. high, E. of cor.
6.70	Leave draw, course NW.; bank, 6 ft. high, brs. NW. and SE.
37.20	Wash, 20 lks. wide, 4 ft. deep, course W.
40.16	Intersect the original $\frac{1}{4}$ sec. cor. of secs. 19 and 24,

Resurvey of the Second Guide Meridian East  
Through Township 19 South, bet. Rs. 10 and 11 East.

Chains hereinbefore described. This cor. now refers to sec. 24 only, no change in mkg. or accessory is required. Thence, N. 0° 18' W., on true line, continuing measurement of E. bdy. of sec. 24.

45.71 (40.00 chs. northing from cor. of secs. 19 and 30.)  
Set an iron post, 3 ft. long, 1 in. diam., 26 ins. in the ground, for reestablished  $\frac{1}{4}$  sec. cor. of sec. 19, only, marked on brass cap

$\frac{1}{4}$   
 :S 19  
 1918

And raise a mound of stone, 2 ft. base, 1 $\frac{1}{2}$  ft. high, E. of cor.

54.70 Wash, 30 lks. wide, course W.  
67.40 Road, brs. E. and W.  
76.70 Wash, 20 lks. wide, course W.  
80.39 (40.23 chs. N. 0° 18' W., from  $\frac{1}{4}$  sec. cor. of Sec. 24.)  
The true point for original cor. of secs. 13, 18, 19 and 24, Reestablish cor. in the same place as follows:  
Set an iron post, 3 ft. long, 2 ins. diam., 26 ins. in the ground, for reestablished cor. of secs. 13 and 24, only, marked on brass cap

T 19 S:  
 S 13:  
 S 24:  
 R 10 E:  
 1918

And raise a mound of stone, 2 ft. base, 1 $\frac{1}{2}$  ft. high W. of cor.  
Destroy the markings on the NE. and SE. bearing trees.  
Land, level and rolling.  
Soil, sandy surface, 2nd and 3rd rates; clay subsoil, on limestone formation.  
No timber.  
Undergrowth, mesquite.

---

5.32 N. 0° 38' W., on a true line, on E. bdy. of sec. 13. Over rolling land, through scattering undergrowth.  
(80.00 chs. northing from cor. of secs. 19 and 30.)  
Set an iron post, 3 ft. long, 2 ins. diam., 26 ins. in the ground, for reestablished cor. of secs. 18 and 19, only, marked on brass cap

:T 19 S  
 :S 18  
 :S 19  
 :R 11 E  
 1918

And raise a mound of stone, 2 ft. base, 1 $\frac{1}{2}$  ft. high E. of cor.

10.12 Draw, 20 lks. wide, course W.  
14.50 Draw, 20 lks. wide, course W.  
39.99 Intersect the original  $\frac{1}{4}$  sec. cor. of secs. 13 and 18, hereinbefore described. Reset the same stone in same place, 23 ins. in the ground for  $\frac{1}{4}$  sec. cor. of sec. 13 only, and raise a mound of stone, 2 ft. base, 1 $\frac{1}{2}$  ft. high W. of cor.  
Thence, N. 0° 7' E., on true line, continuing measurement of E. bdy. of sec. 13.

45.32 (40.00 chs. northing from cor. of secs. 18 and 19).  
Set an iron post, 3 ft. long, 1 in. diam., 26 ins. in the ground, for reestablished  $\frac{1}{4}$  sec. cor. of sec. 18 only, marked on brass cap

$\frac{1}{4}$   
 :S 18  
 1918.



Resurvey of the Second Guide Meridian East  
Through Township 19 South, bet. Rs. 10 and 11 East.

3403

Chains And raise a mound of stone, 2 ft. base, 1½ ft. high  
E. of cor.  
50.80 Wash, 20 lks. wide, course SW.  
80.00 (40.01 chs. N. 0° 07' E., from ¼ sec. cor. of sec. 13).  
Intersect the orig. cor. of secs. 7, 12, 13 and 18, here-  
inbefore described. Change this cor. to refer to secs.  
12 and 13 only by destroying the markings on the bear-  
ing tree.  
Land, level and rolling.  
Soil, sandy surface, 2nd and 3rd rates; clay subsoil, on  
limestone formation.  
No timber.  
Undergrowth, mesquite, catclaw, ocatillo and cactus.  
Good growth of grama grass.

N. 0° 14' W., on a true line, on E. bdy. of sec. 12,  
Over rolling land, through scattering undergrowth.  
3.70 Enter draw, course SW. Comes from N.  
5.32 (80.00 chs. northing from cor. of secs. 18 and 19)  
Set an iron post, 3 ft. long, 2 ins. diam., on bed rock,  
in a mound of stone, for reestablished cor. of secs.  
7 and 18, only, marked on brass cap

:T 19 S  
:S 7  
:S 18  
:R 11 E.  
1918

And raise a mound of stone, 2 ft. base, 1½ ft. high,  
E. of cor.  
7.30 Leave draw, course S. Comes from NE.  
9.70 Wash, 10 lks. wide, course SW.  
26.20 Wash, 10 lks. wide, course SW.  
40.26 (Proportional dist.) Set an iron post, 3 ft. long, 1 in.  
diam., 26 ins. in the ground, for reestablished ¼ sec.  
cor. of sec. 12, only, marked on brass cap

¼  
S 12:  
1918

And raise a mound of stone, 2 ft. base, 1½ ft. high,  
W. of cor.  
45.32 (40.00 chs. northing from cor. of secs. 7 and 18)  
Set an iron post, 3 ft. long, 1 in. diam., 26 ins. in the  
ground, for reestablished ¼ sec. cor. of sec. 7, only,  
marked on brass cap

¼  
:S 7  
1918

And raise a mound of stone, 2 ft. base, 1½ ft. high  
E. of cor.  
48.00 Enter dense undergrowth, brs. NE. and SW.  
65.00 Leave dense undergrowth, brs. E. and W.  
70.70 Wash, 20 lks. wide, course W. Asc. 75 ft.  
80.52 Intersect the original cor. of secs. 1, 6, 7 and 12, here-  
inbefore. This cor. now refers to secs. 1 and 12 only,  
no change in marking or accessory being required.

Land, rolling.  
Soil, sandy surface; 2nd and 3rd rates; clay subsoil, on  
limestone formation.  
No timber.  
Undergrowth, mesquite, cat claw, ocatillo and cactus.  
Good growth of grama grass.

Resurvey of the Second Guide Meridian East,  
Through Township 19 South, bet. Rs. 10 and 11 East.

Chains N. 0° 05' W., on a true line, on E. bdy. of sec. 1.  
Over rolling land, through scattering undergrowth. Asc.  
4.80 (80.00 chs. northing from cor. of secs. 7 and 18).  
Set an iron post, 3 ft. long, 2 ins. diam., 20 ins. in  
the ground, in a mound of stone, for reestablished cor.  
of secs. 6 and 7, only, marked on brass cap

:T 19 S  
:S 6  
:S 7  
:R 11 E  
1918

And raise a mound of stone, 2 ft. base, 1½ ft. high E.  
of cor.

9.10 Top of ascent, brs. E. and W. Desc. 110 ft.  
20.90 Road, brs. E. and W. Enter draw, course W.  
21.90 Wash, 40 lks. wide, course N. 50° W.  
28.00 Leave draw, course W. Asc. 100 ft.  
40.10 Intersect the original ¼ sec. cor. of secs. 1 and 6, here-  
inbefore described. This cor. now refers to sec. 1  
only, no change in mkg. or accessory being required.  
Thence N. 1° 07' E., on true line, continuing measurement  
of E. bdy. of sec. 1.  
44.80 (40.00 chs. northing from cor. of secs. 6 and 7).  
Set an iron post, 3 ft. long, 1 in. diam., on cap rock,  
in a mound of stone, for reestablished ¼ sec. cor. of  
sec. 6, only, marked on brass cap

¼  
:S 6  
1918

And raise a mound of stone, 2 ft. base, 1½ ft. high,  
E. of cor.

48.40 Top of ascent, brs. NE. and SW. Desc. 40 ft.  
50.50 House brs. S. 32½° E.  
57.50 Dim road, brs. NW. and SE.  
66.50 Wash, 10 lks. wide, course W.  
77.10 Enter dense undergrowth, brs. NE. and SW.  
80.11 (40.01 chs. N. 1° 07' E. from ¼ sec. cor. of sec. 1)  
Intersect the reestablished cor. of Ts. 18 and 19 S.,  
Rs. 10 and 11 E., hereinbefore described.  
Land, rolling.  
Soil, sandy surface, 1st and 2nd rates; clay subsoil, on  
limestone formation.  
No timber.  
Undergrowth, mesquite, cat claw and cactus.  
Good growth of grama grass.

Independent Resurvey of a Portion of the  
South Boundary of T. 19 S., R. 11 E.

BOOK 3403

- Chains From the orig. cor. of secs. 4, 5, 32 and 33, on the S. bdy. of the Tp., which is a malpais stone, 10 x 10 x 6 ins. above ground, firmly set, marked with 4 notches on E., and 2 notches on W. edges, and witnessed by a md. of stone W. of cor. No bearing trees.
- West, on a true line, on S. bdy. of sec. 32.  
Over mountainous land, through scattering undergrowth.  
Asc. 20 ft.
- 3.20 Desc. 35 ft.
- 11.50 Draw, course SE. Asc. 410 ft.
- 34.30 Saddle in ridge, brs. N. and S. Desc. 325 ft.
- 38.82 Intersect the  $\frac{1}{4}$  sec. cor., which is a lava stone in place properly marked and witnessed. Destroy all trace of this cor.
- 40.00 Set an iron post, 3 ft. long, 1 in. diam., 15 ins. in the ground, in a mound of stone, for reestablished  $\frac{1}{4}$  sec. cor. of sec. 32, only, marked on brass cap

$\frac{1}{4}$  S 32  
1918

- And raise a mound of stone, 2 ft. base,  $1\frac{1}{2}$  ft. high, N. of cor.
- 57.20 Draw, 10 lks. wide, course NE. Asc. 220 ft.
- 69.35 Ridge, brs. N. and S. Desc. 130 ft.
- 80.00 Diligent search in this vicinity failed to reveal any trace of the original cor. of secs. 5, 6, 31 and 32.  
Set an iron post 3 ft. long, 2 ins. diam., 6 ins. in the ground, on bed rock, in a mound of stone, for reestablished cor. of secs. 31 and 32, only, marked on brass cap

T 19 S R 11 E  
S 31:S 32

1918

- And raise a mound of stone, 2 ft. base,  $1\frac{1}{2}$  ft. high, N. of cor.
- Land, rough mountainous.  
Soil, very rocky, 4th rate.  
No timber.  
Undergrowth, mesquite, palo verde, cat claw and cactus.  
Good bunch and grama grass.

- West on a true line, on S. bdy. of sec. 31.  
Over mountainous land, through scattering undergrowth.  
Desc. 90 ft.
- 5.63 Draw, course N. 30° E. Asc. 475 ft.
- 21.90 Cliff, 15 ft. high, brs. N. and S.
- 40.00 Ridge, brs. NE. and SW. Diligent search in this vicinity failed to reveal any trace of the original  $\frac{1}{4}$  sec. cor.  
Set an iron post, 3 ft. long, 1 in. diam., 26 ins. in the ground, for reestablished  $\frac{1}{4}$  sec. cor. of sec. 31 only marked on brass cap

$\frac{1}{4}$  S 31

1918

- And raise a mound of stone, 2 ft. base,  $1\frac{1}{2}$  ft. high, N. of cor.
- 42.87 Cliff, 90 ft. high, brs. N. and S. Desc. 195 ft.
- 48.31 Draw, course N. Asc. 420 ft.
- 59.04 Top of cliff, 70 ft. high, brs. N. and S. Thence along broken N. slope.
- 66.00 Desc. 30 ft.
- 71.30 Intersect the E. bay. of T. 19 S., R. 10 E., (Second Guide Meridian East) at a point 6.56 chs. N. 2° 47' W. of the true point for cor. of Ts. 19 and 20 S., R. 10 E., witnessed 90 lks. N. 2° 47' W., as hereinbefore described.  
At the point of intersection.

Independent Resurvey of a Portion of the  
South Boundary of T. 19 S., R. 11 E.

Chains Set an iron post, 3 ft. long, 3 ins. diam., 18 ins. in the ground, in a mound of stone, for reestablished cor. of Ts. 19 and 20 S., R. 11 E., marked on brass cap

:T 19 S

:R 11 E

:S 6

:T 20 S

1918

And raise a mound of stone, 2 ft. base,  $1\frac{1}{2}$  ft. high, E. of cor.

Land, mountainous.

Soil, rocky, 4th rate.

No timber.

Undergrowth, mesquite, palo verde, cat claw and cactus.

Resurvey of Part of Subdivision Lines of  
T. 19 S., R. 11 E.

BOOK 8408

Chains From the orig. cor. of secs. 4, 5, 32 and 33, on the S. bdy. of Tp., hereinbefore described.  
N. 0° 02' W., on a random line, bet. secs. 32 and 33.

40.00 Diligent search in this vicinity failed to reveal any trace of the original  $\frac{1}{4}$  sec. cor.

81.00 Fall 5 lks. W. of the orig. cor. of secs. 28, 29, 32 and 33., which is a malpais stone 14 x 8 x 6 ins. above ground, firmly set, marked with 1 notch on S. & 4 notches on E. edges and witnessed by a md. of stone W. of cor. and four bearing trees, properly mkd., one each NE., SE., SW., and NW., of cor.  
Return to the orig. cor. of secs. 4, 5, 32 and 33.

Thence  
North, on a true line, bet. secs. 32 and 33.  
Over mountainous land, through scattering undergrowth.  
Desc. 85 ft.

12.20 Draw, 10 lks. wide, course E. Asc. 115 ft.

23.70 Spur, slopes E. Desc. 60 ft.

30.40 Draw, course E. Asc. 65 ft.

35.50 Spur, slopes E. Desc. 90 ft.

40.50 Set an iron post, 3 ft. long, 1 in. diam., on ledge rock, in a mound of stone, for reestablished  $\frac{1}{4}$  sec. cor. of sec. 33, only, marked on brass cap

$\frac{1}{4}$   
:S 33  
1918

And raise a mound of stone, 2 ft. base,  $1\frac{1}{2}$  ft. high, E. of cor.

41.00 (40.00 chs. south from cor. of secs. 28, 29, 32 and 33.) Set an iron post, 3 ft. long, 1 in. diam., 16 ins. in the ground, in a mound of stone, for reestablished  $\frac{1}{4}$  sec. cor. of sec. 32, only, marked on brass cap

$\frac{1}{4}$   
S 32:  
1918

And raise a mound of stone, 2 ft. base,  $1\frac{1}{2}$  ft. high, W. of cor.

41.10 Draw, 20 lks. wide, course SE. Asc. 60 ft.

44.40 Low ridge, brs. E. and W. Desc. 10 ft.

51.50 Draw, 20 lks. wide, course E. Asc. 115 ft.

66.70 Ridge, brs. E. and W. Desc. 110 ft.

73.85 Draw, 20 lks. wide, course S. 60° E. Asc. 110 ft.

81.00 Intersect the orig. cor. of secs. 28, 29, 32 and 33.  
Land, mountainous.  
Soil, rocky, 4th rate.  
No timber.  
Undergrowth, mesquite, palo verde and cat claw.  
Good growth of bunch and grama grass.



Completion of Survey of  
Subdivision of T. 19 S., R. 11 E.

BOOK 3403

- Chains From the orig. cor. of secs. 23, 24, 25 and 26, which is a granite stone 6 x 6 x 4 ins. above ground, firmly set, marked with 2 notches on the S., and 1 notch on E. edges, and witnessed by four bearing trees, properly mkd., one each NE., SE., SW., and NW., of cor.
- N. 0° 01' W., bet. secs. 23 and 24.
- Over rolling land, through dense undergrowth.
- 20.70 Left bank of draw, 10 ft. high, brs. N. 35° E., and S. 35° W. Thence across draw, course S. 35° W.
- 24.80 Wash, 40 lks. wide, 3 ft. deep, course S. 30° W. Leave draw.
- 40.00 Set an iron post, 3 ft. long, 1 in. diam., 26 ins. in the ground, for  $\frac{1}{4}$  sec. cor., marked on brass cap

$\frac{1}{4}$   
S 23:S 24

1918

Dig pits, 18 x 18 x 12 ins., N. and S. of post, 3 ft. dist.

- 70.10 Same wash, 60 lks. wide, course S. 45° E., in draw, course S. 45° E.
- 80.00 Set an iron post, 3 ft. long, 2 ins. diam., 24 ins. in the ground, for cor. of secs. 13, 14, 23 and 24, marked on brass cap

T 19 S R 11 E  
S 14:S 13  
S 23:S 24  
1918

And raise a mound of stone, 2 ft. base, 1 $\frac{1}{2}$  ft. high, W. of cor.

Land, rolling.

Soil, 1st and 2nd rates, sandy surface, clay subsoil, on limestone formation.

No timber.

Undergrowth, mesquite and catclaw.

Good growth of grama grass.

- 40.00 S. 89° 55' E., on a random line, bet, secs. 13 and 24. Set temp.  $\frac{1}{4}$  sec. cor.
- 79.78 Intersect E. bdy. of Tp., 3 lks. S. of the reestablished cor. of secs. 13, 18, 19 and 24, described in Book "A".
- Thence
- N. 89° 56' W., on a true line, bet. secs. 13 and 24.
- Over rolling land, through scattering undergrowth.
- 21.00 Wash, 15 lks. wide, 2 ft. deep, course S.
- 32.50 Wash, 10 lks. wide, 2 ft. deep, course S. 20° W.
- 39.89 Set an iron post, 3 ft. long, 1 in. diam., 26 ins. in the ground, for  $\frac{1}{4}$  sec. cor., marked on brass cap

$\frac{1}{4}$  S 13  
S 24  
1918

And raise a mound of stone, 2 ft. base, 1 $\frac{1}{2}$  ft. high, N. of cor.

- 41.00 Wash, 40 lks. wide, course S. 45° E.
- 43.20 Asc.
- 44.30 Low ridge, brs. NW. and SE. Desc.
- 50.30 Head of wash, 10 lks. wide, 2 ft. deep, course S. 30° E.
- 59.70 Wash, 10 lks. wide, course S. 30° E.
- 77.60 Left bank of draw, 15 ft. high, brs. N. and S.
- 79.78 The cor. of secs. 13, 14, 23 and 24.

Land, rolling.

Soil, 1st and 2nd rates; sandy surface, clay subsoil on limestone formation.

No timber.

Undergrowth, mesquite and cat claw.

Good growth of grama grass.

Completion of the Survey of the  
Subdivision of T. 19 S., R. 11 E.

Chains	N. 0° 01' W., bet. secs. 13 and 14. Over level land, through dense undergrowth, across draw.	
3.90	Left bank of draw, 6 ft. high, brs. N. 45° W., and S. 45° E.	
24.00	Wash, 20 lks. wide, 2 ft. deep, course S. 30° E.	
40.00	Set an iron post, 3 ft. long, 1 in. diam., 26 ins. in the ground, for $\frac{1}{4}$ sec. cor., marked on brass cap	
	$\frac{1}{4}$ S 14:S 13 1918	
	And raise a mound of stone, 2 ft. base, 1 $\frac{1}{2}$ ft. high w. of cor.	
55.00	Asc. 85 ft.	
66.50	Wire fence, brs. N. 30° W., and S. 30 E. The SW. cor. of fence brs. 2.00 chs. SE.	
72.00	Low ridge, brs. NW. and SE. Desc. 45 ft., into draw, course S. 45° E.	
80.00	Set an iron post, 3 ft. long, 2 ins. diam., 26 ins. in the ground, for cor. of secs. 11, 12, 13 and 14, marked on brass cap	
	T 19 S R 11 E S 11:S 12 S 14:S 13 1918	
	And raise a mound of stone, 2 ft. base, 1 $\frac{1}{2}$ ft. high, w. of cor.	
	Land, level and rolling. Soil, sandy surface, 1st and 2nd rates; clay subsoil, on limestone formation. No timber. Undergrowth, mesquite and cat claw. Good grama grass.	
	<hr/>	
	S. 89° 56' E., on a random line, bet. secs. 12 and 13.	
40.00	Set temp. $\frac{1}{4}$ sec. cor.	
79.70	Intersect E. bdy. of Tp., at the true point for reestablished cor. of secs. 7, 12, 13 and 18, witnessed 0.30 chs. South, as described in Book "A".	
	Thence	
	N. 89° 56' W., on a true line, bet. secs. 12 and 13.	
	Over rolling land, through dense undergrowth.	
	Asc. 25 ft.	
12.70	Desc. 25 ft	
17.20	Wash, 20 lks. wide, course S. 45° E. Asc. 35 ft.	
22.70	Ridge, brs. NW. and SE. Desc. 15 ft.	
27.70	Wire fence, brs. N. 60° E., and S. 60° W.	
39.50	Wash, 35 lks. wide, course S. 20° E.	
39.85	Set an iron post, 3 ft. long, 1 in. diam., 26 ins. in the ground, for $\frac{1}{4}$ sec. cor., marked on brass cap	
	$\frac{1}{4}$ $\frac{S 12}{S 13}$ 1918	
	And raise a mound of stone, 2 ft. base, 1 $\frac{1}{2}$ ft. high, N. of cor.	
58.60	Wash, 10 lks. wide, course S.	
74.70	Enter draw, course SE.	
79.40	Wash, 30 lks. wide, course S.	
79.70	The cor. of secs. 11, 12, 13 and 14.	
	Land, rolling. Soil, sandy surface, 1st and 2nd rates; clay subsoil, on limestone formation. No timber. Undergrowth, mesquite and cat claw. Good growth of grama grass.	



Completion of the Survey of the  
Subdivision of T. 19 S., R. 11 E.

2403

Chains N. 0° 1' W., bet. secs. 11 and 12.  
Over rolling land, through scattering undergrowth, across  
draw.  
2.60 Wash, 30 lks. wide, course SE. Asc. 40 ft.  
9.50 Low spur, slopes SE. Desc.  
12.00 Asc. 105 ft.  
40.00 Set an iron post, 3 ft. long, 1 in. diam., 26 ins. in  
the ground, for  $\frac{1}{4}$  sec. cor., marked on brass cap

S 11: S 12  
1918

And raise a mound of stone, 2 ft. base,  $1\frac{1}{2}$  ft. high,  
W. of cor.  
42.50 Desc. 25 ft.  
57.30 Wash, 10 lks. wide, course S. 60° E. Asc. 75 ft.  
67.50 Spur, slopes SE. Desc. 25 ft.  
80.00 Set an iron post, 3 ft. long, 2 ins. diam., 16 ins. in  
the ground, on bed rock, in a mound of stone, for  
cor. of secs. 1, 2, 11 and 12, marked on brass cap

T 19 S R 11 E  
S 2: S 1  
S 11: S 12  
1918

And raise a mound of stone, 2 ft. base,  $1\frac{1}{2}$  ft. high,  
W. of cor.  
Land, rolling.  
Soil, sandy surface, 1st and 2nd rates; clay subsoil, on  
limestone formation.  
No timber.  
Undergrowth, mesquite and cat. claw.  
Good growth of grama grass.

S. 89° 56' E., on a random line, bet. secs. 1 and 12.  
40.00 Set temp.  $\frac{1}{4}$  sec. cor.  
79.74 Intersect E. bdy. of Tp., 7 lks. S. of the reestablished  
cor. of secs. 1, 6, 7 and 12, described in book "A".  
Thence  
N. 89° 59' W., on a true line, bet. secs. 1 and 12.  
Over level and rolling land, through scattering under-  
growth.  
8.75 Wire fence, brs. N. 20° W., and S. 20° E.  
10.10 Wash, 15 lks. wide, course S. 45° E.  
14.75 Same wash, 15 lks. wide, course NE. Comes from NW. Asc.  
45 ft.  
26.55 Road, brs. N. 30° W. to Taylor's ranch and S. 30° E. to  
Amadoville.  
29.05 Spur, slopes NW. Taylor's house and corral, brs. N. 25°  
W. Desc. 50 ft.  
36.45 Wash, 30 lks. wide, course S.  
38.05 Wash, 30 lks. wide, course S. 45° E. Asc. 60 ft.  
39.87 Set an iron post, 3 ft. long, 1 in. diam., 26 ins. in the  
ground, for  $\frac{1}{4}$  sec. cor., marked on brass cap

$\frac{1}{4}$  S 1  
S 12  
1918

And raise a mound of stone, 2 ft. base,  $1\frac{1}{2}$  ft. high,  
N. of cor.  
Taylor's ranch house and corral brs. N. Mr. Taylor is  
drilling a well about 10 chs. N. of his house.  
48.24 Ridge, brs. NW. and SE. Desc. 40. ft.  
62.05 Wash, 20 lks. wide, course S. 20° E.  
70.55 Wash, 20 lks. wide, course S. 20° W.  
78.15 Wash, 12 lks. wide, course S. 20° E.  
79.74 The cor. of secs. 1, 2, 11 and 12.  
Land, level and rolling.  
Soil, sandy surface, 1st and 2nd rates; clay subsoil, on  
limestone formation.

Completion of the Survey of the  
Subdivision of T. 19 S., R. 11 E.

Chains	<p>No timber Undergrowth, mesquite, cat claw and cactus Good growth of grama grass.</p> <hr/> <p>N. 0° 01' W., on a random line, bet. secs. 1 and 2. 40.00 Set temp. <math>\frac{1}{4}</math> sec. cor. 75.74 Intersect N. bdy. of Tp., 28 lks. E. of the reestablished cor. of secs. 1 and 2, hereinbefore described. Thence S. 0° 14' E., on a true line, bet. secs. 1 and 2. Over rolling land, through scattering undergrowth. 2.65 Wash, 10 lks. wide, course S. 60° E. 8.95 Wash, 10 lks. wide, course S. 60° E. Asc. 45 ft. 23.75 Ridge, brs. NW. and SE. Desc. 65 ft. 35.74 Set an iron post, 3 ft. long, 1 in. diam., 14 ins. in the ground, in a mound of stone, for <math>\frac{1}{4}</math> sec. cor., marked on brass cap.</p> <p style="text-align: center;"><math>\frac{1}{4}</math> S 2:S 1 1918</p> <p>And raise a mound of stone, 2 ft. base, 1<math>\frac{1}{2}</math> ft. high W. of cor. 36.24 Wash, 10 lks. wide, course E. 45.75 Desc. 20 ft. 53.15 Wash, 20 lks. wide, course S. 45° E. Asc. 25 ft. 61.55 Wire fence, brs. N. 80° E. and S. 80° W. 65.75 Spur, slopes SE. Desc. 50 ft. 73.85 Wash, 10 lks. wide, course S. 45° E. 75.74 The cor. of secs. 1, 2, 11 and 12. Land, rolling. Soil, sandy surface, 1st and 2nd rates; clay subsoil, on limestone formation. No timber. Undergrowth, mesquite and cat claw. Good growth of grama grass.</p> <hr/> <p>From the orig. cor. of secs. 14, 15, 22 and 23, which is a basalt stone, 16 x 12 x 6 ins. above ground, firmly set, marked with 3 notches on S., and 2 notches on E. edges, and witnessed by md. of stone W. of cor., and 2 bearing trees, properly marked, one each NE. and SE. of cor. S. 89° 57' E., on a random line, bet. secs. 14 and 23. 40.00 Set temp. <math>\frac{1}{4}</math> sec. cor. 79.98 Intersect N. and S. line, 30 lks. N. of the cor. of secs. 13, 14, 23 and 24. Thence N. 89° 44' W., on a true line, bet. secs. 14 and 23. Over level land, through scattering undergrowth. 3.90 Wash, 60 lks. wide, 3 ft. deep, course S. 18.50 Wash, 6 lks. wide, 3 ft. deep, course S. 20° E. 31.10 Wash, 10 lks. wide, course S. Asc. 40 ft. 33.35 Wire fence, brs. N. and S. 39.80 Spur, slopes S. Desc. gradually. 39.99 Set an iron post, 3 ft. long, 1 in. diam., 26 ins. in the ground, for <math>\frac{1}{4}</math> sec. cor., marked on brass cap.</p> <p style="text-align: center;"><math>\frac{1}{4}</math> S 14 S 23 1918.</p> <p>And raise a mound of stone, 2 ft. base, 1<math>\frac{1}{2}</math> ft. high N. of cor. 43.70 Head of draw, course SE. 53.60 Left bank of draw, 6 ft. high, brs. N. 45° W., and S. 45° E. Desc. 30 ft. 55.20 Wash, 50 lks. wide, course S. 45° E., in bottom of draw, course S. 45° E. Asc. 35 ft.</p>
--------	--

Completion of the Survey of the  
Subdivision of T. 19 S., R. 11 E.

BOOK 3403

Chains

64.00 Desc. 30 ft.  
 79.98 The cor. of secs. 14, 15, 22 and 23.  
 Land, level and rolling.  
 Soil, sandy surface, 1st and 2nd rates; clay subsoil, on limestone formation.  
 No timber.  
 Undergrowth, mesquite and cat claw.  
 Good growth of grama grass.

From the cor. of secs. 10, 11, 14 and 15, which is a basalt stone 10 x 10 x 8 ins. above ground, firmly set, marked with 4 notches on S., and 2 notches on E. edges, and witnessed by a md. of stone W. of cor.  
 No bearing trees.

S. 89° 44' E., on a random line, bet. secs. 11 and 14.  
 40.00 Set temp.  $\frac{1}{4}$  sec. cor.  
 80.08 Intersect N. and S. line, 2 lks. S. of the cor. of secs. 11, 12, 13 and 14.

Thence  
 N. 89° 45' W., on a true line, bet. secs. 11 and 14.  
 Over rolling land, through scattering undergrowth.  
 Asc. 70 ft.

3.50 Wire fence, brs. N. and S.  
 8.10 Ridge, brs. NW. and SE. Desc. 30 ft.  
 17.70 Wash, 30 lks. wide, course S. Asc. 65 ft.  
 27.00 Low ridge, brs. NW. and SE. Desc. 15 ft.  
 29.80 Wash, 30 lks. wide, course S. 30° E., in draw, course SE.  
 36.10 Asc. 20 ft.

36.90 Top of ascent; thence over level land.  
 40.04 Set an iron post, 3 ft. long, 1 in. diam., 12 ins. in the ground, on bed rock, in a mound of stone, for  $\frac{1}{4}$  sec. cor., marked on brass cap

$\frac{1}{4}$  S 11  
 S 14  
 1918

And raise a mound of stone, 2 ft. base, 1 $\frac{1}{2}$  ft. high, N. of cor.

48.90 Wash, 10 lks. wide, course S.  
 65.00 Wash, 20 lks. wide, course S. 60° E.  
 67.00 Asc. 80 ft.

74.00 Ridge, brs. NW. and SE. Desc. 40 ft.  
 80.08 The cor. of secs. 10, 11, 14 and 15.  
 The cor. of secs. 10, 11, 14 and 15.  
 Land, rolling and level.  
 Soil, sandy surface, 1st and 2nd rates; clay subsoil, on limestone formation.  
 No timber.  
 Undergrowth, mesquite and cat claw.  
 Good growth of grama grass.

N. 0° 01' W., bet. secs. 10 and 11.  
 Over rolling land, through scattering undergrowth.  
 Asc. 65 ft.

18.50 Desc. 25 ft.  
 23.50 Asc. 30 ft.  
 28.50 Ridge, brs. N. and S. Thence along top of ridge.  
 40.00 Set an iron post, 3 ft. long, 1 in. diam., 12 ins. in the ground, in a mound of stone, for  $\frac{1}{4}$  sec. cor., marked on brass cap

$\frac{1}{4}$   
 S 10: S 11  
 1918

And raise a mound of stone, 2 ft. base, 1 $\frac{1}{2}$  ft. high, W. of cor.

45.00 Thence along W. slope of ridge.

Completion of the Survey of the  
Subdivision of T. 19 S., R. 11 E.

Chains 80.00	<p>Set an iron post, 3 ft. long, 2 ins. diam., 12 ins. in the ground, on bed rock, in a mound of stone, for cor. of secs. 2, 3, 10 and 11, marked on brass cap</p> <p style="text-align: center;">T 19 S R 11 E S 3:S 2 S 10:S 11 1918</p> <p>And raise a mound of stone, 2 ft. base, 1½ ft. high W. of cor. Land, rolling. Soil, sandy surface, 2nd and 3rd rates; clay subsoil, on limestone formation. No timber. Undergrowth, mesquite and cat claw. Good growth of grama grass.</p>
40.00 80.20	<p>S. 89° 45' E., on a random line, bet. secs. 2 and 11. Set temp. ¼ sec. cor. Intersect N. and S. line, 2 lks. N. of the cor. of secs. 1, 2, 11 and 12. Thence N. 89° 44' W., on a true line, bet. secs. 2 and 11. Over rolling land, through scattering undergrowth. Asc. 65 ft.</p>
6.70 11.50 21.20 25.00 26.30 30.70 40.00 40.10	<p>Ridge, brs. N. and S. Desc. 70 ft. Draw, course SW. Wash, 15 lks. wide, course SE. Wire fence, brs. N. and S. Asc. 55 ft. Spur, slopes S. Desc. 55 ft. Wash, 6 lks. wide, course S. Asc. 45 ft. Ridge, brs. NW. and SE. Desc. 25 ft. Set an iron post, 3 ft. long, 1 in. diam., 26 ins. in the ground, for ¼ sec. cor., marked on brass cap.</p> <p style="text-align: center;">¼ S 2 S 11 1918</p> <p>And raise a mound of stone, 2 ft. base, 1½ ft. high, N. of cor.</p>
43.00 47.30 50.50 51.20 62.40 75.20 80.20	<p>Wash, 6 lks. wide, course S. 30° E., in draw; course SE. Asc. 45 ft. Ridge, brs. N. and S. Desc. Wash, 50 lks. wide, course S. Asc. Thence over level land. Asc. 50 ft. Ridge, brs. NE. and SW. Desc. 25 ft. The cor. of secs. 2, 3, 10 and 11. Land, level and rolling. Soil, sandy surface, 2nd and 3rd rates; clay subsoil, on limestone formation. No timber. Undergrowth, mesquite and cat claw. Good growth of grama grass.</p>
40.00 75.44	<p>N. 0° 01' W., on a random line, bet. secs. 2 and 3. Set temp. ¼ sec. cor. Intersect N. bdy. of Tp., 2 lks. E. of the reestablished cor. of secs. 2 and 3, hereinbefore described.</p>
23.40 30.45	<p>Thence S. 0° 02' E., on a true line, bet. secs. 2 and 3. Over rolling land, through scattering undergrowth. Asc. gradually 55 ft. Desc. 100 ft. Asc. 30 ft.</p>

Completion of the survey of the  
Subdivision of T. 19 S., R. 11 E.

BOOK 3403

Chains

35.44 Set an iron post, 3 ft. long, 1 in. diam., 16 ins. in the ground, on bed rock, in a mound of stone, for  $\frac{1}{4}$  sec. cor., marked on brass cap

$\frac{1}{4}$   
S 3:S 2

1918

And raise a mound of stone, 2 ft. base,  $1\frac{1}{2}$  ft. high W. of cor

- 38.45 Spur, slopes W. Desc. 155 ft.
- 57.05 Enter draw, course NW.
- 64.45 Leave draw, course NE. Asc. gradually 45 ft.
- 75.44 The cor. of secs. 2, 3, 10 and 11.

Land, rolling.  
Soil, sandy surface, 2nd and 3rd rates; clay subsoil on limestone formation.  
No timber.  
Undergrowth, mesquite and cat claw.  
Good growth of grama grass.

From the orig. cor. of secs. 9, 10, 15 and 16, which is a granite stone 12 x 8 x 6 ins. above ground, firmly set, marked with 4 notches on S., and 3 notches on E. edges, and witnessed by a md. of stone W. of cor.  
No bearing trees.

- N. 0° 2' W., bet. secs. 9 and 10.
- Over rolling land, through scattering undergrowth. Desc.
- 1.60 Head of draw, course SW. Asc. 45 ft.
- 9.90 Desc. 30 ft.
- 18.60 Wash, 15 lks. wide, course S. 45° W. Asc. 40 ft.
- 25.30 Spur, slopes SW. Desc. 20 ft.
- 30.80 Wash, 10 lks. wide, course S. 70° W. Asc. 25 ft.
- 40.00 Set an iron post, 3 ft. long, 1 in. diam., 14 ins. in the ground, on bed rock, in a mound of stone, for  $\frac{1}{4}$  sec. cor., marked on brass cap.

$\frac{1}{4}$   
S 9:S 10

1918

And raise a mound of stone, 2 ft. base,  $1\frac{1}{2}$  ft. high W. of cor.

- 52.70 Top of cliff, 40 ft. high, brs. N. 10° E. and S. 20° W.
- 54.20 Cliff; 40 ft. high, brs. N. 10° E. and S. 20° W. Desc. 60 ft.
- 62.90 Wash, 20 lks. wide, course S. 20° W. Comes from N.
- 76.10 Same wash, 20 lks. wide, course S. Comes from NW. Asc. 40 ft.
- 77.90 Mouth of draw from NE.
- 80.00 Set an iron post, 3 ft. long, 2 ins. diam., 24 ins. in the ground, for cor. of secs. 3, 4, 9 and 10, marked on brass cap

T 19 S R 11 E  
S 4:S 3  
S 9:S 10  
1918

And raise a mound of stone, 2 ft. base,  $1\frac{1}{2}$  ft. high, W. of cor.

Land, rolling.  
Soil, sandy surface, 1st and 2nd rates; clay subsoil, on limestone formation.  
No timber.  
Undergrowth, mesquite and catclaw.  
Good growth of grama grass.

Completion of the Survey of the  
Subdivision of T. 19 S., R. 11 E.

Chains S. 89° 59' E., on a random line, bet. secs. 3 and 10.  
40.00 Set temp.  $\frac{1}{4}$  sec. cor.  
80.06 Intersect N. and S. line, 2 lks. N. of the cor. of secs.  
2, 3, 10 and 11.  
Thence  
N. 89° 58' W., on a true line, bet. secs. 3 and 10.  
Over rolling land, through scattering undergrowth.  
Desc. 40 ft.  
5.15 Wash, 30 lks. wide, course S. 20° E. Asc. 85 ft.  
16.05 Ridge, brs. N. and S. Desc. 110 ft.  
27.00 Wash, 15 lks. wide, course S.  
32.05 Wash, 20 lks. wide, course S. 45° E. Asc. 100 ft.  
40.03 Ridge, brs. NW. and SE.  
Set an iron post, 3 ft. long, 1 in. diam., 10 ins. in the  
ground, in a mound of stone, for  $\frac{1}{4}$  sec. cor., marked  
on brass cap

$\frac{1}{4}$   $\frac{S\ 3}{S\ 10}$   
1918

And raise a mound of stone, 2 ft. base,  $1\frac{1}{2}$  ft. high,  
N. of cor.  
Desc. 80 ft.  
52.55 Wash, 10 lks. wide, course S. 10° E. Asc. 75 ft.  
64.35 Ridge, brs. N. and S. Desc. 95 ft.  
73.45 Top of cliff, 40 ft. high, brs. N. 20° E. and S. 45° W.  
75.05 Wash, 20 lks. wide, course S. 45° W. Asc.  
80.06 The cor. of secs. 3, 4, 9 and 10.  
Land, rolling.  
Soil, sandy surface, 1st and 2nd rates; clay subsoil, on  
limestone formation.  
No timber.  
Undergrowth, mesquite and cat claw.  
Good growth of grama grass.

N. 0° 02' W., on a random line, bet. secs. 3 and 4.  
40.00 Set temp.  $\frac{1}{4}$  sec. cor.  
75.46 Intersect N. bay. of Tp., at the reestablished cor. of  
secs. 3 and 4, hereinbefore described.  
Thence  
S. 0° 02' E., on a true line, bet. secs. 3 and 4.  
Over rolling land, through scattering undergrowth.  
Desc. 20 ft.  
8.05 Wash, 20 lks. wide, course S. 45° W. Asc. 30 ft.  
9.45 Top of ascent, brs. N. 45° E., and S. 45° W. Desc. 30 ft.  
13.55 Wash, 20 lks. wide, course S. 20° W. Asc. 45 ft.  
19.45 Thence along W. slope.  
25.45 Desc. 75 ft.  
35.46 Set an iron post, 3 ft. long, 1 in. diam., 26 ins. in  
the ground, for  $\frac{1}{4}$  sec. cor., marked on brass cap

$\frac{1}{4}$   
S 4:S 3  
1918

And raise a mound of stone, 2 ft. base,  $1\frac{1}{2}$  ft. high W.  
of cor. Asc. 40 ft.  
52.35 Desc. 15 ft.  
53.00 Asc. 25 ft.  
57.85 Top of steep bank, 80 ft. high, brs. N. 30° E., and S.  
40° W. Desc.  
75.46 The cor. of secs. 3, 4, 9 and 10.  
Land, rolling.  
Soil, sandy surface, 1st and 2nd rates; clay subsoil, on  
limestone formation.  
No timber.  
Undergrowth, mesquite and cat claw.  
Good growth of grama grass.

Completion of the Survey of the  
Subdivision of T. 19 S., R. 11 E.

BOOK 3403

Chains From the original cor. of secs. 8, 9, 16 and 17, which is a quartzite stone, 12 x 10 x 10 ins. above ground, firmly set, marked with 4 notches on S., and E. edges, and witnessed by a md. of stone W. of cor. No bearing trees.

N. 0° 02' W., bet. secs. 8 and 9.  
Over nearly level land, through scattering undergrowth.

20.00 Leave nearly level, enter rolling land, brs. NE. and SW.

23.70 Wash, 15 lks. wide, course S. 45° W.

40.00 Set an iron post, 3 ft. long, 1 in. diam., 26 ins. in the ground, for  $\frac{1}{4}$  sec. cor., marked on brass cap

$\frac{1}{4}$   
S 8:S 9  
1918

And raise a mound of stone, 2 ft. base, 1 $\frac{1}{2}$  ft. high, W. of cor.

78.10 Wash, 20 lks. wide, course SW.

80.00 Set an iron post, 3 ft. long, 2 ins. diam., 26 ins. in the ground, for cor. of secs. 4, 5, 8 and 9, marked on brass cap

T 19 S R 11 E  
S 5:S 4  
S 8:S 9  
1918

And raise a mound of stone, 2 ft. base, 1 $\frac{1}{2}$  ft. high, W. of cor.

Land, nearly level and rolling.  
Soil, 1st and 2nd rates; sandy surface, clay subsoil, on limestone formation.  
No timber.  
Undergrowth, mesquite and cat claw.  
Good growth of grama grass.

East on a random line, bet. secs. 4 and 9.

40.00 Set temp.  $\frac{1}{4}$  sec. cor.

79.92 Intersect N. and S. line, at the cor. of secs. 3, 4, 9 and 10.

Thence  
West on a true line, bet. secs. 4 and 9  
Over rolling land, through scattering undergrowth.

2.30 Wash, 40 lks. wide, course S. Asc. 60 ft.

11.50 Thence over level land.

22.10 Road, brs. NE. to Teota Ranch and SW. to Amadoville..

39.96 Set an iron post, 3 ft. long, 1 in. diam., 16 ins. in the ground, in a mound of stone, for  $\frac{1}{4}$  sec. cor., marked on brass cap

$\frac{1}{4}$   $\frac{S 4}{S 9}$   
1918

And raise a mound of stone, 2 ft. base, 1 $\frac{1}{2}$  ft. high, N. of cor.

50.90 Wash, 30 lks. wide, course S. 45° W.

70.70 Desc. 65 ft.

78.80 Wash, 20 lks. wide, course S. Enter dense undergrowth, brs. N. and S.

79.92 The cor. of secs. 4, 5, 8 and 9.  
Land, level and rolling.  
Soil, sandy surface, 1st and 2nd rates; clay subsoil, on limestone formation.  
No timber.  
Undergrowth, mesquite and cat claw.  
Good growth of grama grass.

N. 0° 02' W., on a random line, bet. secs. 4 and 5.

Completion of the Survey of the  
Subdivision of T. 19 S., R. 11 E.

Chains

40.00 Set temp.  $\frac{1}{4}$  sec. cor.  
75.41 Intersect N. bdy. of Tp., 12 lks. E. of the reestablished  
cor. of secs. 4 and 5, hereinbefore described.  
Thence  
S.  $0^{\circ} 07'$  E., on a true line, bet. secs. 4 and 5.  
Over rolling land, through scattering undergrowth.  
12.60 Thence over granite boulders.  
15.00 Right bank of gulch, 80 ft. deep, course SW.  
17.30 Left bank of gulch, course SW.  
19.60 Leave granite boulders.  
35.41 Set an iron post, 3 ft. long, 1 in. diam., 22 ins. in the  
ground, on bed rock, in a mound of stone, for  $\frac{1}{4}$  sec.  
cor., marked on brass cap  
 $\frac{1}{4}$   
S 5:S 4  
1918  
And raise a mound of stone, 2 ft. base,  $1\frac{1}{2}$  ft. high,  
W. of cor.  
43.00 Head of draw, course SW. Asc.  
55.40 Desc. 90 ft.  
75.41 The cor. of secs. 4, 5, 8 and 9.  
Land, rolling.  
Soil, sandy surface, 2nd and 3rd rates; clay subsoil, on  
limestone formation.  
No timber.  
Undergrowth, mesquite and cat claw.  
Good growth of grama grass.

From the orig. cor. of secs. 28, 29, 32 and 33, herein-  
before described.  
West, on Sectional Correction Line, bet. secs. 29 and 32.  
Over mountainous land, through scattering undergrowth.  
Desc. 40 ft.

9.50 Asc. 80 ft.  
29.60 Saddle in ridge, brs. N and S. Desc. 130 ft.  
40.00 Set an iron post, 3 ft. long, 1 in. diam., 20 ins. in  
the ground, in a mound of stone, for  $\frac{1}{4}$  sec. cor.,  
marked on brass cap  
 $\frac{1}{4}$  S 29  
S 32  
1918  
And raise a mound of stone, 2 ft. base,  $1\frac{1}{2}$  ft. high,  
N. of cor.  
49.90 Gulch, 5 lks. wide, course NW. Thence over rolling land.  
52.00 Gulch, 5 lks. wide, course N.  
62.20 Gulch, 20 lks. wide, course N.  $20^{\circ}$  W.  
65.10 Gulch, 20 lks. wide, course N.  $30^{\circ}$  E. Asc. 360 ft.  
69.90 Cliff, 20 ft. high, brs. N. and S.  
72.00 Cliff, 30 ft. high, brs. N. and S. Continue ascent.  
80.00 Set an iron post, 3 ft. long, 2 ins. diam., 10 ins. in the  
ground, in a mound of stone, for cor. of secs. 29, 30,  
31 and 32, marked on brass cap  
T 19 S R 11 E  
S 30:S 29  
S 31:S 32  
1918  
And raise a mound of stone, 2 ft. base,  $1\frac{1}{2}$  ft. high W.  
of cor.  
Land, mountainous and rolling.  
Soil, rocky 4th rate.  
No timber.  
Undergrowth, mesquite, palo verde, ocotillo and cat claw.  
Good white grama grass.

From the cor. of secs. 29, 30, 31 and 32.  
S.  $0^{\circ} 03'$  E., on a random line, bet. secs. 31 and 32.



Completion of the Survey of the  
Subdivision of T. 19 S., R. 11 E.

BOOK 3403

Chains	
40.00	Set temp. $\frac{1}{4}$ sec. cor.
81.01	Intersect the S. bdy. of Tp., 5 lks. E. of the reestablished cor. of secs. 31 and 32, hereinbefore described. Thence N. $0^{\circ} 01' W.$ , on a true line, bet. secs. 31 and 32. Over mountainous land, through scattering undergrowth. Desc.
1.00	Asc. 25 ft.
2.00	Desc.
3.90	Draw, 20 lks. wide, course NE. Asc. 205 ft.
18.50	Desc. 160 ft.
33.30	Head of draw, course N. $50^{\circ} E.$ Asc. 285 ft.
41.01	Set an iron post, 3 ft. long, 1 in. diam., 10 ins. in the ground, in a mound of stone, for $\frac{1}{4}$ sec. cor., marked on brass cap $\frac{1}{4}$ S 31:S 32 1918 And raise a mound of stone, 2 ft. base, $1\frac{1}{2}$ ft. high, W. of cor.
47.55	Desc. 300 ft.
70.12	Saddle in ridge, brs. N. and SW. Asc. 175 ft.
81.01	The cor. of secs. 29, 30, 31 and 32. Land, mountainous. Soil, rocky, 4th rate. No timber. Undergrowth, palo verde, mesquite and cat claw. Good growth of white grama grass.
From the cor. of secs. 29, 30, 31 and 32. West on Sectional Correction Line, bet. secs. 30 and 31. Over mountainous land, through scattering undergrowth. Desc. 410 ft.	
19.60	Draw, course N. Asc. 75 ft.
27.10	Fence, brs. N. and S. Thence along N. slope.
40.00	Set an iron post, 3 ft. long, 1 in. diam., 26 ins. in the ground, for $\frac{1}{4}$ sec. cor., marked on brass cap $\frac{1}{4}$ S 30 S 31 1918 And raise a mound of stone, 2 ft. base, $1\frac{1}{2}$ ft. high N. of cor. Desc. 60 ft.
49.50	Draw, 30 lks. wide, course N. Thence along N. slope.
60.90	Draw, course NE. Asc. 160 ft.
71.80	Desc. 65 ft.
74.82	Intersect W. bdy. of Tp., (2nd Guide Mer. E.) 5.84 chs. N. $0^{\circ} 21' E.$ , of the reestablished cor. of secs. 25 and 36, T. 19 S., R. 10 E., hereinbefore described. At the point of intersection. Set an iron post, 3 ft. long, 2 ins. diam., on bed rock, in a mound of stone, for reestablished cor. of secs. 30 and 31, marked on brass cap :T 19 S :S 30 :S 31 :R 11 E 1918 And raise a mound of stone, 2 ft. base, $1\frac{1}{2}$ ft. high E. of cor. Land, mountainous. Soil, rocky, 4th rate. No timber. Undergrowth, mesquite, palo verde and cat claw. Good growth of white grama grass.

96  
Completion of the Survey of the  
Subdivision of T. 19 S., R. 11 E.

Chains From the cor. of secs. 29, 30, 31 and 32.  
N.  $0^{\circ} 03'$  W., bet. secs. 29 and 30.  
Over mountainous land, through scattering undergrowth.  
Desc. 395 ft.

19.80 Draw, course NW. Thence over level land.  
22.10 Draw, 20 lks. wide, course W.  
32.20 Draw, course NW.  
40.00 Set an iron post, 3 ft. long, 1 in. diam., 26 ins. in the  
ground, for  $\frac{1}{4}$  sec. cor., marked on brass cap

$\frac{1}{4}$   
S 30:S 29  
1918

And raise a mound of stone, 2 ft. base,  $1\frac{1}{2}$  ft. high,  
W. of cor.

80.00 Set an iron post, 3 ft. long, 2 ins. diam., 24 ins. in  
the ground, for cor. of secs. 19, 20, 29 and 30, mark-  
ed on brass cap

T 19 S R 11 E  
S 19:S 20  
S 30:S 29  
1918

And raise a mound of stone, 2 ft. base,  $1\frac{1}{2}$  ft. high  
W. of cor.  
Land, mountainous and level.  
Soil, 1st 15 chs., very rocky, 4th rate; remainder, 2nd  
and 3rd rates.  
No timber.  
Undergrowth, mesquite, catclaw and palo verde.  
Good growth of white grama grass.

East on a random line, bet. secs. 20 and 29.

40.00 Set temp.  $\frac{1}{4}$  sec. cor.  
79.98 Intersect N. and S. line, 21 lks. N. of the orig. cor. of  
secs. 20, 21, 28 and 29, which is a malpais stone, 15  
x 12 x 6 ins. above ground, firmly set, marked with  
2 notches on S., and 4 notches on E. edges, and witness-  
ed by a md. of stone W. of cor.

Thence  
N.  $89^{\circ} 51'$  W., on a true line, bet. secs. 20 and 29.  
Over mountainous land, through scattering undergrowth.  
Asc. 155 ft.

19.90 Desc. 20 ft.  
21.50 Asc. 165 ft.  
39.99 Set an iron post, 3 ft. long, 1 in. diam., 10 ins. in  
the ground, on cap rock, in a mound of stone, for  $\frac{1}{4}$   
sec. cor., marked on brass cap

$\frac{1}{4}$  S 20  
S 29  
1918

And raise a mound of stone, 2 ft. base,  $1\frac{1}{2}$  ft. high,  
N. of cor.

52.60 Ridge, hrs. N. and S. Desc. 335 ft.  
79.00 Draw, 15 lks. wide, course NW. Asc.  
79.98 The cor. of secs. 19, 20, 29 and 30.  
Land, mountainous.  
Soil, rocky, 4th rate.  
No timber.  
Undergrowth, mesquite, palo verde, ocotillo and cactus.  
Good growth of white grama grass.

West on a random line, bet. secs. 19 and 30.

40.00 Set temp.  $\frac{1}{4}$  sec. cor.  
74.61 Intersect W. bdy. of Tp., (2nd Guide Meridian E.) at the  
reestablished cor. of secs. 19 and 30, hereinbefore  
described.

Thence  
East on a true line, bet. secs. 19 and 30.

Completion of the Survey of the  
Subdivision of T. 19 S., R. 11 E.

BOOK 3403

Chains Over level and rolling land, through dense undergrowth.  
1.50 Top of bank, 8 ft. high, brs. NW. and SE. Thence over  
level land.

34.61 Set an iron post, 3 ft. long, 1 in. diam., 24 ins. in  
the ground, in a mound of stone, for  $\frac{1}{4}$  sec. cor.,  
marked on brass cap

$$\frac{1}{4} \begin{array}{r} S 19 \\ S 30 \end{array}$$

1918.

And raise a mound of stone, 2 ft. base,  $1\frac{1}{2}$  ft. high,  
N. of cor.

65.80 Desc. 25 ft.

74.61 The cor. of secs. 19, 20, 29 and 30.

Land, level and rolling.

Soil, 2nd rate.

No timber.

Undergrowth, mesquite.

N.  $0^{\circ} 03'$  W., bet. secs. 19 and 20.

Over rolling land, through scattering undergrowth.

1.30 Draw, 15 lks. wide, course NW. Asc. gradually.

1.80 Road, brs. NW. and SE.

22.00 Desc. gradually.

40.00 Set an iron post, 3 ft. long, 1 in. diam., 26 ins. in the  
ground, for  $\frac{1}{4}$  sec. cor., marked on brass cap

$$S 19 : S 20$$

1918

And raise a mound of stone, 2 ft. base,  $1\frac{1}{2}$  ft. high W.  
of cor.

57.20 Road, brs. NE. and SW.

80.00 Set an iron post, 3 ft. long, 2 ins. diam., 26 ins. in  
the ground, for cor. of secs. 17, 18, 19 and 20, mark-  
ed on brass cap

$$T 19 S R 11 E$$

$$S 18 : S 17$$

$$S 19 : S 20$$

1918

And raise a mound of stone, 2 ft. base,  $1\frac{1}{2}$  ft. high,  
W. of cor.

Land, level and rolling.

Soil, first 60 chs., rocky, 4th rate; last 20 chs., 2nd  
rate.

No timber.

Undergrowth, mesquite, ocatillo and cat claw.

Good growth of white grama grass.

S.  $89^{\circ} 51'$  E., on a random line, bet. secs. 17 and 20.

40.00 Set temp.  $\frac{1}{4}$  sec. cor.

79.98 Intersect N. and S. line, 34 lks. S. of the orig. cor. of  
secs. 16, 17, 20 and 21, which is a basalt stone, 12  
x 12 x 6 ins. above ground, firmly set, marked 3 notches  
on S., and 4 notches on E. edges, and witnessed by a  
md. of stone W. of cor. No bearing trees.

Thence

S.  $89^{\circ} 54'$  W., on a true line, bet. secs. 17 and 20.

Over rolling land, through scattering undergrowth. Desc.

6.40 Draw, 10 lks. wide, course N.  $75^{\circ}$  E. Asc. 185 ft.

34.00 Hill. Desc. 90 ft.

39.99 Set an iron post, 3 ft. long, 1 in. diam., 8 ins. in the  
ground, on bed rock, in a mound of stone, for  $\frac{1}{4}$  sec.  
cor., marked on brass cap

$$\frac{1}{4} \begin{array}{r} S 17 \\ S 20 \end{array}$$

1918

And raise a mound of stone, 2 ft. base,  $1\frac{1}{2}$  ft. high,  
N. of cor.

Completion of the Survey of the  
Subdivision of T. 19 S., R. 11 E.

Chains

44.60 Head of draw, course N. Asc. 160 ft.  
60.60 Desc. 255 ft.  
75.40 Road, brs. NE. and SW.  
79.98 The cor. of secs. 17, 18, 19 and 20.  
Land, rough and rolling mountainous.  
Soil, very rocky, 4th rate.  
No timber.  
Undergrowth, mesquite, cat claw and ocotillo.  
Good growth of white grama grass.

West on a random line, bet. secs. 18 and 19.  
40.00 Set temp.  $\frac{1}{4}$  sec. cor.  
74.84 Intersect W. bdy. of Tp., (2nd Guide Mer. E.) 6 lks. N.  
of the reestablished cor. of secs. 18 and 19, hereinbe-  
fore described. Thence  
N.  $89^{\circ} 57'$  E., on a true line, bet. secs. 18 and 19.  
Over level and rolling land, through scattering undergrowth  
6.84 Enter draw, course S.  $70^{\circ}$  W.  
12.15 Leave draw, 50 lks. wide; course S.  $85^{\circ}$  W.  
34.84 Set an iron post, 3 ft. long, 1 in. diam., 26 ins. in the  
ground, for  $\frac{1}{4}$  sec. cor., marked on brass cap

$\frac{1}{4}$  S 18  
S 19  
1918

And raise a mound of stone, 2 ft. base,  $1\frac{1}{2}$  ft. high,  
N. of cor.

44.90 Road, brs. NE. and SW.  
56.85 Cut bank, 15 ft. high, brs. N.  $80^{\circ}$  E., and S.  $80^{\circ}$  W. Desc.  
66.05 Draw, 20 lks. wide, course S.  $80^{\circ}$  W.  
74.84 The cor. of secs. 17, 18, 19 and 20:  
Land, level and rolling.  
Soil, rocky, 4th rate.  
No timber.  
Undergrowth, mesquite, cat claw and palo verde.  
Good growth of grama grass.

N.  $0^{\circ} 03'$  W., bet. secs. 17 and 18.  
Over rolling land, through scattering undergrowth.  
5.00 Enter dense undergrowth, brs. NE. and SW.  
11.20 Draw, 20 lks. wide, course S.  $60^{\circ}$  W.  
15.00 Leave dense, enter scattering undergrowth, brs. NE. and SW  
20.70 Road, brs. NE. and SW.  
29.20 Draw, 30 lks. wide, course SW. Asc. gradually.  
33.70 Low spur, slopes SW. Desc.  
40.00 Set an iron post, 3 ft. long, 1 in. diam., 24 ins. in the  
ground, in a mound of stone, for  $\frac{1}{4}$  sec. cor., marked  
on brass cap:

$\frac{1}{4}$   
S 18: S 17  
1918

And raise a mound of stone, 2 ft. base,  $1\frac{1}{2}$  ft. high,  
W. of cor.

51.20 Draw, 20 lks. wide, course S.  $20^{\circ}$  W. Asc. gradually, 85 ft  
80.00 Set an iron post, 3 ft. long, 2 ins. diam., 24 ins. in  
the ground, for cor. of secs. 7, 8, 17 and 18, marked  
on brass cap

T 19 S R 11 E  
S 7: S 8  
S 18: S 17  
1918

And raise a mound of stone, 2 ft. base,  $1\frac{1}{2}$  ft. high,  
W. of cor.

Land, rolling.  
Soil, 4th rate.  
No timber.  
Undergrowth, mesquite and cat claw.  
Good growth of white grama grass.

Completion of the Survey of the  
Subdivision of T. 19 S., R. 11 E.

BOOK 2402

Chains N. 89° 54' E., on a random line, bet. secs. 8 and 17.  
 40.00 Set temp.  $\frac{1}{4}$  sec. cor.  
 79.98 Intersect N. and S. line, 14 lks. S. of the cor. of secs. 8, 9, 16 and 17, hereinbefore described.  
 Thence  
 S. 89° 48' W., on a true line, bet. secs. 8 and 17.  
 Over rolling land, through scattering undergrowth.  
 Desc. 25 ft.  
 15.80 Draw, 10 lks. wide, course SW.  
 28.80 Draw, course SW.  
 35.10 Draw, 10 lks. wide, course SW.  
 39.99 Set an iron post, 3 ft. long, 1 in. diam., 22 ins. in the ground, in a mound of stone, for  $\frac{1}{4}$  sec. cor., marked on brass cap

$$\frac{1}{4} \begin{array}{r} S 8 \\ S 17 \\ 1918 \end{array}$$

And raise a mound of stone, 2 ft. base,  $1\frac{1}{2}$  ft. high, N. of cor.  
 47.50 Draw, 20 lks. wide, course S. Asc. 25 ft.  
 49.60 Thence over rolling land.  
 58.20 Desc. 50 ft.  
 70.20 Draw, 20 lks. wide, course SW.  
 71.70 Draw, 10 lks. wide, course S., Asc. 30 ft.  
 79.98 The cor. of secs. 7, 8, 17 and 18.  
 Land, rolling.  
 Soil, rocky, 4th rate.  
 No timber.  
 Undergrowth, mesquite, cat claw and palo verde.  
 Good growth of white grama grass.

S. 89° 57' W., on a true line, bet. secs. 7 and 18.  
 40.00 Set temp.  $\frac{1}{4}$  sec. cor.  
 75.07 Fall 9 lks. N. of the reestablished cor. of secs. 7 and 18, hereinbefore described, on the W. bdy. of Tp. (2nd Guide Meridian E.)  
 Thence  
 N. 89° 53' E., on a true line, bet. secs. 7 and 18.  
 Over rolling land, through scattering undergrowth. Desc.  
 6.05 Draw, 20 lks. wide, course S. 60° W. Asc. 70 ft.  
 30.05 Desc.  
 35.07 Head of draw, course SW.  
 Set an iron post, 3 ft. long, 1 in. diam., 26 ins. in the ground, for  $\frac{1}{4}$  sec. cor., marked on brass cap

$$\frac{1}{4} \begin{array}{r} S 7 \\ S 18 \\ 1918 \end{array}$$

And raise a mound of stone, 2 ft. base,  $1\frac{1}{2}$  ft. high N. of cor.  
 40.05 Low ridge, brs. NE. and SW. Desc. 25 ft.  
 52.15 Draw, 10 lks. wide, course SW. Asc. 55 ft.  
 60.05 Thence over level land.  
 75.07 The cor. of secs. 7, 8, 17 and 18.  
 Land, level and rolling.  
 Soil, rocky, 4th rate.  
 No timber.  
 Undergrowth, mesquite and ocotillo.  
 Good growth of grama grass.

N. 0° 03' W., bet. secs. 7 and 8.  
 Over rolling land, through scattering undergrowth.  
 40.00 Set an iron post, 3 ft. long, 1 in. diam., 24 ins. in the ground, in a mound of stone, for  $\frac{1}{4}$  sec. cor., marked on brass cap

$$\frac{1}{4} \begin{array}{r} S 7 : S 8 \\ 1918 \end{array}$$

And raise a mound of stone, 2 ft. base,  $1\frac{1}{2}$  ft. high, W. of cor.  
 47.30 Desc. 110 ft.  
 55.20 Draw, 20 lks. wide, course SW. Asc. 150 ft.  
 80.00 Set an iron post, 3 ft. long, 2 ins. diam., 26 ins. in

Completion of the Survey of the  
Subdivision of T. 19 S., R. 11 E.

Chains the ground, for cor. of secs. 5, 6, 7 and 8, marked on  
brass cap T 19 S R 11 E  
S 6:S 5  
S 7:S 8  
1918

And raise a mound of stone, 2 ft. base, 1½ ft. high,  
W. of cor.  
Land, rolling. Soil, 3rd rate.  
No timber. Undergrowth, mesquite and ocotillo.  
Good growth of white grama grass.

N. 89° 48' E., on a random line, bet. secs. 5 and 8.  
40.00 Set temp. ¼ sec. cor.  
79.98 Intersect N. and S. line, 5 lks. N. of the cor. of secs.  
4, 5, 8 and 9

Thence  
S. 89° 50' W., on a true line, bet. secs. 5 and 8.  
Over rolling land, through scattering undergrowth.  
Asc. 50 ft.  
7.00 Low ridge, brs. NE. and SW. Desc. 50 ft.  
20.60 Draw, 10 lks. wide, course SW. Asc. 10 ft.  
22.20 Spur, slopes S. Desc. 15 ft.  
24.50 Draw, 20 lks. wide, course S. Asc. 65 ft.  
32.00 Ridge, brs. NE. and SW. Desc. 40 ft.  
36.00 Draw, 5 lks. wide, course SW. Asc. 40 ft.  
39.99 Set an iron post, 3 ft. long, 1 in. diam., 8 ins. in the  
ground, in a mound of stone, for ¼ sec. cor., marked  
of brass cap ¼ S 5  
S 8

And raise a mound of stone, 2 ft. base, 1½ ft. high,  
N. of cor.  
42.00 Spur, slopes S. Desc. 70 ft.  
52.30 Draw, course S. Asc.  
57.00 Low ridge, brs. NE. and SW. Desc. 70 ft.  
63.00 Draw, 20 lks. wide, course SW. Asc. 75 ft.  
73.00 Desc. gradually.  
79.98 The cor. of secs. 5, 6, 7 and 8.  
Land, rolling.  
Soil, 3rd rate.  
No timber.  
Undergrowth, mesquite and ocotillo.  
Good growth of white grama grass.

S. 89° 53' W., on a random line, bet. secs. 6 and 7.  
40.00 Set temp. ¼ sec. cor.  
75.32 Fall 8 lks. N. of the reestablished cor. of secs. 6 and 7,  
hereinbefore described, on W. bdy. of Tp. (2nd Guide  
Mer. E.)  
Thence N. 89° 49' E., on a true line, bet. secs. 6 and 7.  
Over level land, through scattering undergrowth.

8.30 Desc. gradually.  
19.30 Asc. 35 ft.  
28.30 Low spur, slopes NW. Desc.  
35.32 Set an iron post, 3 ft. long, 1 in. diam., on cap rock,  
in a mound of stone, for ¼ sec. cor., marked on brass  
cap ¼ S 6  
S 7

And raise a mound of stone, 2 ft. base, 1½ ft. high  
N. of cor.  
45.30 Ranch house, brs. N. 65½° W. Asc. 75 ft.  
60.30 Thence over level land.  
75.32 The cor. of secs. 5, 6, 7 and 8.  
Land, level and rolling.  
Soil, rocky, 4th rate. No timber.  
Undergrowth, cat claw, mesquite and palo verde.  
Good growth of grama grass.

Completion of the Survey of the  
Subdivision of T. 19 S. , R. 11 E.

BOOK 3403

Chains.  
40.00  
75.64  
  
1.35  
12.65  
34.85  
35.64  
  
41.15  
45.85  
51.64  
75.64

N. 0° 03' W., on a random line, bet. secs. 5 and 6.  
Set temp.  $\frac{1}{4}$  sec. cor.  
Intersect N. bdy. of Tp., 16 lks. E. of the reestablished  
cor. of secs. 5 and 6, hereinbefore described.  
Thence  
S. 0° 10' E., on a true line, bet. secs. 5 and 6.  
Over rolling land, through scattering undergrowth.  
Desc.  
Draw, 10 lks. wide, course W. Asc. 165 ft.  
Ridge, brs. E. and W. Desc. 245 ft.  
Draw, 10 lks. wide, course W. Asc. 90 ft.  
Set an iron post, 3 ft. long, 1 in. diam., 10 ins. in the  
ground, on cap rock, in a mound of stone, for  $\frac{1}{4}$  sec.  
cor., marked on brass cap

S 6  $\frac{1}{4}$  S 5  
1918

And raise a mound of stone, 2 ft. base, 1  $\frac{1}{2}$  ft. high, W  
of cor.  
Top of ascent, brs. E. and W. Desc. 45 ft.  
Head of draw, course W. Asc. 80 ft.  
Thence over level land.  
The cor. of secs. 5, 6, 7 and 8.  
Land, level and rolling.  
Soil, rocky, 4th rate.  
No timber.  
Undergrowth, mesquite, cat claw and ocotillo.  
Good growth of white grama grass.

GENERAL DESCRIPTION.

The portion of this township surveyed under the present  
assignment consists of level, rolling and mountainous land.  
The soil for the most part is sandy and rocky and ranges  
from 1st. to 4th. rate. There is no timber but considerable  
undergrowth of mesquite, catclaw, palo verde and other  
desert varieties. The land has little agricultural value  
except for grazing. The water for stock purposes is ob-  
tained from wells.  
Mr. Taylor has a house and well in section 1 and has  
fenced in several hundred acres in sections 1, 2, 11, 12,  
13 and 14. There is also a house in the SW  $\frac{1}{4}$  of sec. 6,  
the owner of which is unknown.  
There are no mineral indications.

Boundaries of that part of  
T. 19 S., R. 11 E.,  
Subdivided under Group 82.

Latitudes, Departures and Closing Errors.							
Line designated.	True bearing.	Dist.	Latitudes.		Departures.		
			N.	S.	E.	W.	
		chs.	chs.	chs.	chs.	chs.	chs.
South Boundary	West.	151.30					151.30
West Boundary (2nd Guide Mer. E.)	N. 2° 47' W.	75.28	75.19				3.66
	N. 0° 21' E.	40.01	40.01		.24		
	North	40.12	40.12				
	N. 0° 11' W.	40.16	40.16				.13
	N. 0° 18' W.	40.23	40.23				.21
	N. 0° 38' W.	39.99	39.99				.44
	N. 0° 7' E.	40.01	40.01		.08		
	N. 0° 14' W.	80.52	80.52				.33
	N. 0° 5' W.	40.10	40.10				.06
N. 1° 7' E.	40.01	40.00		.78			
North Boundary	N. 89° 2' E.	30.22	.51		30.22		
	S. 89° 45' E.	39.88		.17	39.88		
	N. 89° 46' E.	40.19	.16		40.19		
	N. 89° 58' E.	359.30	.21		359.30		
	S. 82° 19' E.	4.78		.64	4.77		
East Boundary	South	315.44		315.44			
Subdivisional Boundary.	N. 89° 55' W.	79.64	.12				79.64
	N. 89° 57' W.	79.90	.07				79.90
	N. 0° 1' W.	160.00	160.00				.05
	N. 89° 59' W.	80.02	.02				80.02
	West	80.00					80.00
	S. 0° 2' E.	240.00		240.00	.14		
South	81.00		81.00				
Convergency					.30		
Totals			637.42	637.25	475.90	475.74	
			637.25		475.74		
Error in latitude				.17			
Error in departure					.16		





BOOK 3403

CERTIFICATE OF UNITED STATES SURVEYOR.

I, J. P. Davis, U. S. Surveyor, hereby certify upon honor that, in pursuance of special instructions received from the U. S. Surveyor General, for Group 82, Arizona,

bearing date of the 28th day of February, 1917, I have well, faithfully, and truly

in my own proper person, and in strict conformity with said instructions, the Manual of Surveying Instructions, and the laws of the United States, retraced

all those parts or portions of the 2nd Guide Meridian East in Township 20 South, South bdy. of Township 19 South, Range 10 East; Resurveyed all those parts or portions of the South Boundary of Township 18 South, Range 11 East; 2nd. Guide Mer. East, in Township 19 South; South Boundary and Subdivision Lines of Township 19 South, Range 11 East; and Surveyed all those parts or portions of the Sub-division lines in Township 19 South, Range 11 East

of the Gila and Salt

River Base and Meridian, in the State of Arizona, which are represented in

and by diagram on page 1 hereof the foregoing field notes as having been executed by me, and under my direction; and that all the corners of retracement, resurvey and survey

said survey have been established and perpetuated in strict accordance with the Manual of Surveying Instructions, and the special written instructions of the U. S. Surveyor General, for Group 82, Arizona,

and in the specific manner described in the field notes, and that the foregoing are the original field notes of such survey retracement, resurvey and survey.

Littlefield, Arizona Dec. 30, 1920

Place

Date

J. P. Davis

U. S. Surveyor.

APPROVAL.

OFFICE OF THE UNITED STATES SURVEYOR GENERAL,

Phoenix, Arizona, January 7, 1921.

The foregoing field notes of the survey of retracement of part of the 2nd Guide Meridian East, in Township 20 South, part of South Bdy. of Township 19 South, Range 10 E.; RESURVEY of South bdy. of Township 18 South, Range 11 East; 2nd Guide Mer. E., through Township 19 S.; part of S. bdy., and part of Subdivision lines of Township 19 South, Range 11 East; and SURVEY of completion of Subdivision lines of Township 19 South, Range 11 East, of the Gila and Salt River Base and Meridian, in the State of Arizona, executed by J. P. Davis, U. S. Surveyor

under his special instructions dated Feby. 28, 1917, for Group 82, Arizona, having been critically examined, and the necessary corrections and explanations made, the said field notes, and the surveys they describe, are hereby approved.

[Signature]

U. S. Surveyor General.

I certify that the foregoing transcript of the field notes of the above described surveys in retracements, resurveys and surveys, Book "B" of Group 82, Arizona, has been correctly copied from the original notes on file in this office.

U. S. Surveyor General.