

3447

ORIG. 155

Book "U"

4-679

COMPARED ①

BOOK 3447

# FIELD NOTES

OF THE RETRACEMENT OF THE

North half of East boundary of Township 10 South, Range 15 E.  
and Part of the East boundary of Township 10 South, Range 14 E.

OF THE RESURVEY OF THE

2nd Standard Parallel South thru Range 15 E. and part of Range 16 E.,  
Part of the East boundary of Township 10 South, Range 14 East and  
Part of the Subdivision lines of Township 10 South, Range 15 East

AND OF THE SURVEY OF THE

South half of East boundary and  
Part of the Subdivision lines of  
Township 10 South, Range 15 East

of the Gila and Salt River Base and Meridian,

In the State of Arizona

EXECUTED BY

Herbert N. Raymond, U.S. Cadastral Engineer

and

Dupree R. Averill, U.S. Transitman

In the capacity of U. S. Surveyor S., under Special Instructions dated Feb. 6, 1918,  
issued by the United States Surveyor General to govern surveys included in Group  
No. 81, which were approved by the Commissioner of the General Land  
Office, Feb. 27, 1918, and Assignment Instructions dated Feb. 7, 1919.

Retracement  
Resurvey & Survey commenced February 22, 1919

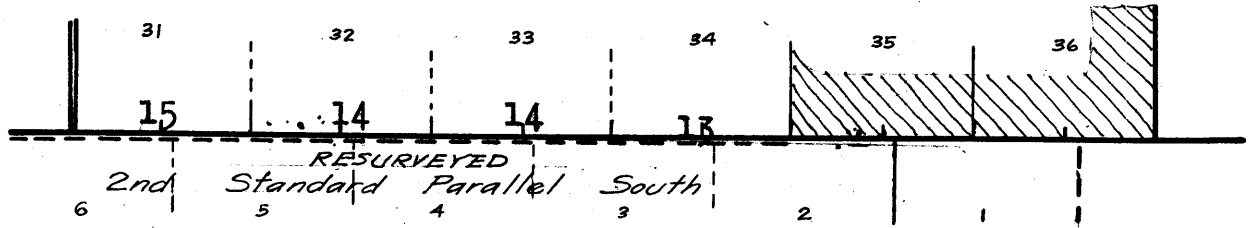
Retracement  
Resurvey & Survey completed March 22, 1919

3447

156  
1A

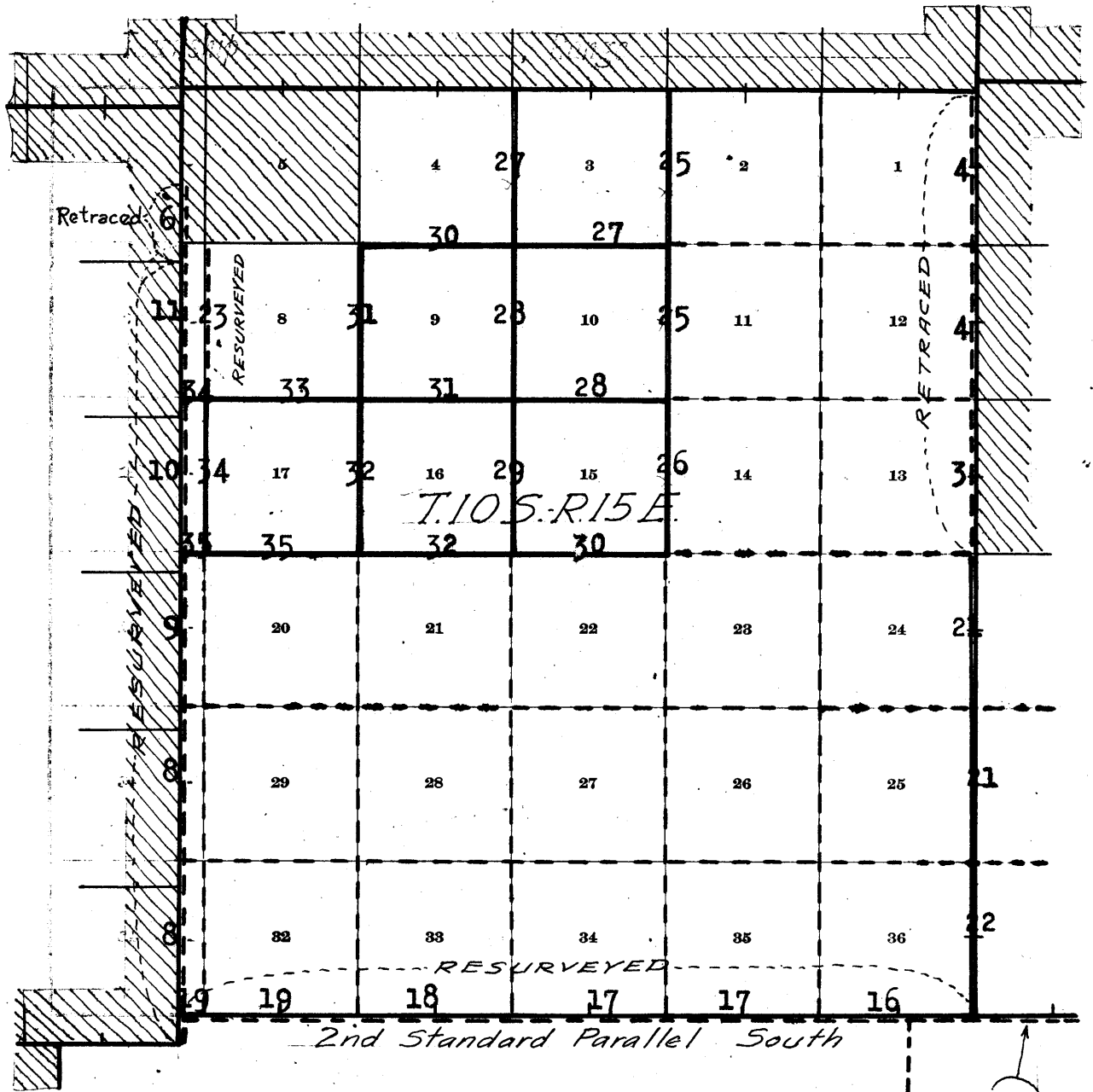
BOOK 3447

T.10S.-R.16E.



CONTINUATION OF DIAGRAM SHOWN BELOW.

Book "U"  
**INDEX DIAGRAM.**



- Lines surveyed under this group.
- Lines retraced or resurveyed under this group.
- Accepted surveys.
- Unsurveyed.
- Areas surveyed as per accepted plats on file.

Resurvey of 2nd Standard Par. S. thru part of R.16E. indexed at top of this page.

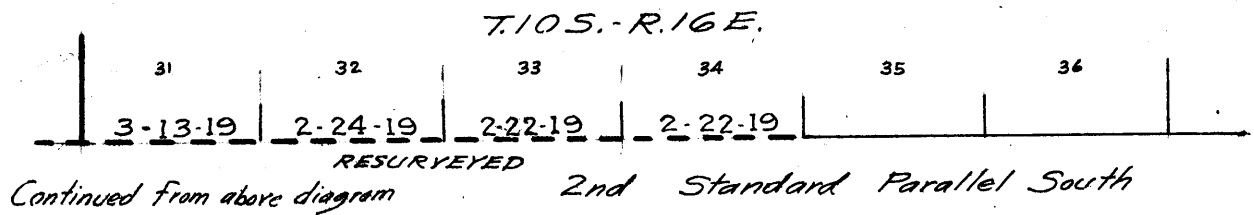
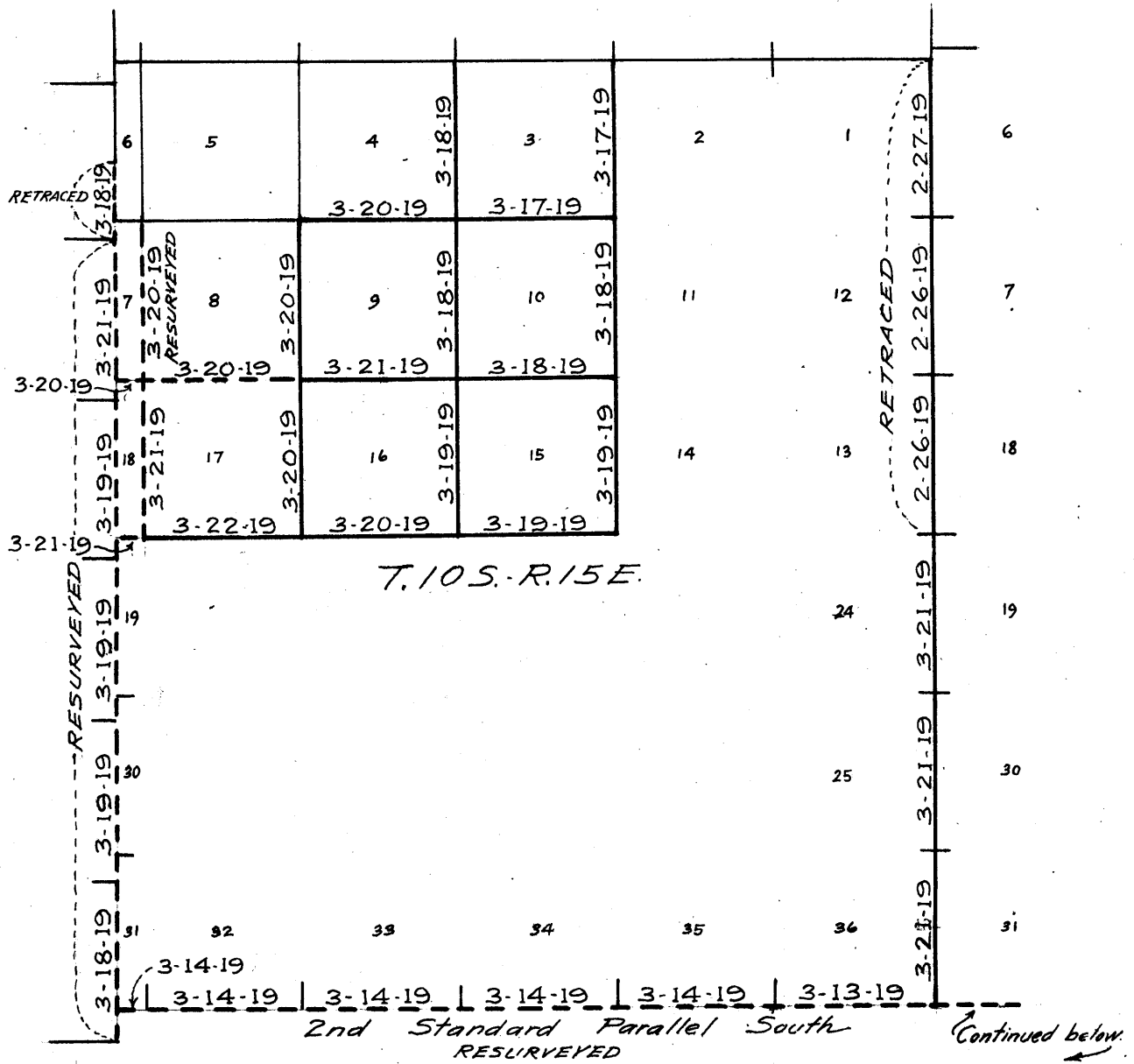
Book "U"

DATE-DIAGRAM

BOOK 3447

Dotted red lines on diagram indicate surveys executed by Herbert N. Raymond, U.S. Cadastral Engineer, on dates shown thereon.

Blue lines on diagram indicate surveys executed by Dupree R. Averill, U.S. Transitman, on dates shown thereon.



Retracements, resurveys and surveys hereinafter described executed on dates shown on diagram on page 1 hereof by Herbert N. Raymond, U. S. Cadastral Engineer, using W. and L. E. Gurley solar transit "Memo G", and Dupree R. Averill, U. S. Transitman, using Young and Sons' light mountain transit No. 8541. The horizontal limb of each instrument is provided with two double verniers, placed opposite to each other, reading to single minutes of arc, which is also the least count of the verniers of the latitude and declination arcs of their respective solar attachments.

The instruments were examined, tested on the true meridian at Phoenix, found correct and were approved, subject to satisfactory field tests, by the Assistant Supervisor of Surveys for Arizona and California, February 16, 1919.

All measurements are made with Lufkin 5 chain steel tapes, compared with Chesterman Standard steel tapes, and found correct. The measurements are made on the slope, the vertical angles determined and the slope measurements properly reduced to the true horizontal distances.

#### Field test of Instruments.

We examine the adjustments of the transits and correct all errors; then, to test the solar apparatus, by comparing their indications, resulting from solar observations made during a.m. and p.m. hours, with a meridian determined by observations on Polaris at elongation, we proceed as follows:

Feb. 22, 1919: At our camp, 20 chs. N. of the  $\frac{1}{4}$  sec. cor. bet. secs. 27 and 28, T. 10 S., R. 16 E., in lat.  $32^{\circ} 32\frac{1}{2}'$  N., long.  $110^{\circ} 42\frac{1}{2}'$  W., at 9 hrs. 20 m., p.m., l.m.t., we observe Polaris at western elongation, in accordance with the Manual of Instructions, and lay off the azimuth of Polaris,  $1^{\circ} 20'$  to the east, and mark the meridian thus determined by a tack in a stake, firmly driven in the ground, 5 chs. N. of our station.

Feb. 23, 1919. At 9 hrs. 0 m., a.m., l.m.t., we set off  $32^{\circ} 32\frac{1}{2}'$  N. on the lat. arcs;  $10^{\circ} 9'S.$  on the decl. arcs; and determine a meridian with each solar, which in each case agrees with the true meridian.

At apparent noon, with the lat. arcs unchanged, we observe the sun on the meridian; the resulting reading of the decl. arc in each case is  $9^{\circ} 58\frac{1}{2}'$  S., which is the computed decl. of the sun.

At 3 hrs. 0 m., p.m., l.m.t., with the lat. arcs unchanged, we set off  $9^{\circ} 55\frac{1}{2}'$  S. on the decl. arcs; and determine a meridian with each solar, which in each case agrees with the true meridian.

As all of the solar observations during the usual hours of solar work come within  $1' 30''$  of the true meridian, we conclude that the adjustments of the instruments are satisfactory.

Retracement of North half of East bdy. of Township 10 South, Range 15 East. 3

Chains.

The north half of the East bdy. of T.10 S., R.15 E., was surveyed by William B. Alexander, U.S.D.S. in August, 1904, and no retracement or resurvey of same is of record, The south half of said boundary is unsurveyed.

The original corner of secs.13,18,19 and 24, Ts.10 S.,Rs. 15 and 16 E., is a sandstone, 12x8x6 ins. above ground, firmly set, marked with 3 notches on each of N. and S. edges, and witnessed by four bearing trees as follows:

- A juniper, 8 ins.diam., N.61½°E., 31 lks.dist., marked "T10SR16E S18BT."
- An oak, 10 ins.diam., S.5½°E., 98 lks.dist., marked "T10SR16E S19BT."
- An oak, 20 ins.diam., S.33½°W., 115 lks.dist., marked "T10SR15E S24 BT."
- An oak, 0 ins.diam., N.35°W., 61 lks. dist., marked "T10S R15E S13BT."

Thence, North, on random line, bet. secs.13 and 18 (S.½). Over mountainous land, thru. scattering timber and undergrowth; descend.

- 6.00 Ravine, course W.; ascend.
- 11.00 Spur, slopes WSW.; descend.
- 15.00 Gulch, course W.; ascend SW.slope.
- 20.00 Top of ascent at about 100 lks.W.of top of peak; descend NW.slope.

- 35.50 Ravine, course W.; ascend steep S.slope.
- 38.20 Top of spur, slopes W. Intersect the original witness cor. to ¼ sec.cor. of secs.13 and 18, which is a porphyry stone, 10x6x4 ins. above ground, firmly set, marked "WC¼" on W.face and witnessed by two bearing trees, as follows:

- An oak, (dead), 10 ins. diam., N.73°W., 17 lks.dist., marked "WC¼S13BT."
- An oak, (dead), 8 ins.diam., S.30½°E., 54 lks.dist., marked "WC¼S18BT."

These are the record bearing trees, and as they are dead, establish two new bearing trees to this witness cor. as follows:

- On an oak, 6 ins.diam., N.69½°E., 44 lks.dist.; mark "WC¼S18BT."
- On an oak, 6 ins.diam., S.47½°W., 49 lks.dist.; mark "WC¼S13BT."

This witness cor. is on record as being 2.02 chs. S. from true point for ¼ sec.cor.

- 40.22 Descend over steep N.slope. Intersect the true point for ¼ sec.cor. of secs.13 and 18, which falls on steep slope, where it is impracticable to monument the cor. True course and dist. of S.½ of line bet. secs.13 and 18 are therefore North, 40.22 chs.

Thence, North, on random line, bet. secs.13 and 18 (N.½). Over mountainous land, thru. scattering timber and undergrowth. Descend over steep N.slope.

- 7.40 Ravine, course W.; ascend over S.slope.
- 11.50 Spur, slopes W.; descend.
- 15.00 Gulch, course W.
- 16.50 Gulch, course W.; ascend SW.slope.
- 21.20 Spur, slopes W.; descend NW.slope.
- 25.10 Gulch, course W.; ascend SW.slope.
- 33.20 Top of ascent on W. side of hill; descend NW.slope.
- 40.20 Fall 2 lks.W.of the original cor. of secs. 7,12,13 and 18, which is a granite stone, 8x8x6 ins. above ground, firmly set, marked with 2 notches on N.edge, and 4 notches on S.edge, and witnessed by the four record bearing trees as follows:
  - A juniper, 26 ins. in diam., N.62°E., 178 lks. dist., marked "T10SR16ES7BT."
  - An oak, 8 ins.diam., S.21½°E. 48 lks. dist., marked "T10SR16ES18BT"

Retracement of  
North half of East bdy. of Township 10 South, Range 15 East.

Chains.

	<p>An oak, 8 ins. in diam., S. <math>66\frac{1}{2}^{\circ}</math> W., 69 lks. dist., marked "T10SR15ES13 BT."</p> <p>An oak, 8 ins. in diam., N. <math>62\frac{1}{2}^{\circ}</math> W., 89 lks. dist., marked "T10SR15E S12 BT."</p> <p>True course and dist. of N. <math>\frac{1}{2}</math> of line bet. secs. 13 and 18 are therefore, N. <math>0^{\circ} 2' E.</math>, 40.20 chs.</p> <p>Land, mountainous. Soil, gravelly and rocky, 3rd and 4th rate. Timber, scattering oak, juniper and cedar. Undergrowth, scattering manzanita, scrub oak and cactus.</p>
	<p>-----</p> <p>North, on random line, bet. secs. 7 and 12 (S. <math>\frac{1}{2}</math>). Over mountainous land, thru. scattering timber and undergrowth. Ascend 470 ft. to <math>\frac{1}{4}</math> sec. cor. Begin ascent over rolling W. slope.</p>
4.25	Wash, course W.
7.35	Wash, course W.
13.65	Wash, course SW.
16.10	Same wash, course SE.
16.75	Same wash, course SW. Ascend rolling SW. slope.
37.15	Spur, slopes WSW.; descend NW. slope.
39.20	Gulch, course W.; ascend over SW. slope.
40.10	Fall 7 lks. W. of original $\frac{1}{4}$ sec. cor. of secs. 7 and 12, which is a granite stone, 16x14x8 ins. above ground, firmly set, marked " $\frac{1}{4}$ S" on W. face; and witnessed by the two record bearing trees as follows: An oak, 12 ins. diam.; S. $9\frac{1}{2}^{\circ}$ E., 167 lks. dist., marked " $\frac{1}{4}$ S7 BT." An oak, 12 ins. diam.; S. $4^{\circ}$ W., 171 lks. dist., marked " $\frac{1}{4}$ S12 BT."
	<p>True course and dist. of S. <math>\frac{1}{2}</math> of line, bet. secs. 7 and 12 are therefore N. <math>0^{\circ} 6' E.</math>, 40.10 chs.</p> <p>Thence, North, on random line, bet. secs. 7 and 12 (N. <math>\frac{1}{2}</math>). Over mountainous land; thru. scattering timber and undergrowth. Ascend 30 ft., over SW. slope, to</p>
5.00	Ridge, brs. NW. and SE.; descend 300 ft. to sec. cor.; begin descent over rolling NE. slope.
16.00	Gulch, course NE.; continue descent over rolling NE. slope.
29.00	Same gulch; course NW.; descend over rolling NW. slope.
40.00	Intersect the original cor. of secs. 1, 6, 7 and 12, which is a granite stone, 10x8x5 ins. above ground, firmly set, marked with 1 notch on N. edge, and 5 notches on S. edge, and witnessed by the four record bearing trees, as follows: An oak, 5 ins. diam., N. $21\frac{1}{2}^{\circ}$ E., 58 lks. dist., marked "T10SR16ES6 BT." An oak, 6 ins. diam., S. $53^{\circ}$ E., 61 lks. dist., marked "T10SR16ES7 BT." An oak, 5 ins. diam., S. $12^{\circ}$ W., 13 lks. dist., marked "T10SR15ES12 BT." An oak, 9 ins. diam., N. $58^{\circ}$ W., 39 lks. dist., marked "T10SR15ES1 BT."
	<p>True course and dist. of N. <math>\frac{1}{2}</math> of line, bet. secs. 7 and 12 are therefore, North, 40.00 chs.</p> <p>Land, mountainous. Soil, gravelly and rocky, 3rd and 4th rate. Timber, scattering juniper, cedar and oak. Undergrowth, scattering manzanita, scrub oak and cactus.</p>
	<p>-----</p> <p>North, on random line, bet. secs. 1 and 6 (S. <math>\frac{1}{2}</math>). Over mountainous land, thru. scattering timber and undergrowth. Descend 315 ft., over rolling NW. slope to <math>\frac{1}{4}</math> sec. cor.</p>
.60	Gulch, course NW.
39.90	Intersect the original $\frac{1}{4}$ sec. cor. of secs. 1 and 6, which

Retracement of  
North half of East bdy. of Township 10 South Range 15 East. 5

Chains.

is a porphyry stone, 12x12x6 ins. above ground, firmly set, marked "S" on W. face, and witnessed by one of the two record bearing trees as follows:

An oak, 8 ins. diam., S. 34° W., 20 lks. dist., marked "S1BT."

The other record bearing tree cannot be found; therefore, establish a new bearing tree as follows:

On an oak, 6 ins. diam., S. 54½° E., 15 lks. dist., mark "S6BT."

True course and dist. of S. ½ of line, bet. secs. 1 and 6, are therefore North, 39.90 chs.

Thence,

North, on random line, on N. ½ of E. bdy. of sec. 1, T. 10 S., R. 15 E.

Over mountainous land, thru. scattering timber and undergrowth; descend 250 ft. to Tp. cor. Begin descent over rolling NW. slope.

26.70

Wash, course NW.

29.30

Road brs. NW. and SE.

35.20

Wash, course W.; descend over rolling W. slope.

39.99

Fall 3 lks. W. of the original cor. of Ts. 9 and 10 S., R. 15 E., which is a granite stone, 8x6x4 ins. above ground, firmly set, marked with 6 notches on each of N., S. and W. edges, and witnessed by mound of stone, W. of cor., and one bearing tree as follows:

An oak, 6 ins. in diam., S. 4½° W., 95 lks. dist., marked "T10SR15ES1BT."

True course and dist. of N. ½ of E. bdy. of sec. 1 are therefore N. 0° 20' E., 39.99 chs.

Land, mountainous.

Soil, gravelly and rocky, 3rd and 4th rate.

Undergrowth, manzanita, scrub oak and cactus.

Timber, scattering juniper, cedar and oak.

Retracement of part of  
East boundary of Township 10 South, Range 14 East.

Chains.

The East bdy. of T.10 S., R.14 E. was surveyed in June, 1884 by George J. Roskrige, U.S.D.S. The original cor. of secs.1, 6, 7 and 12; was changed to refer to secs.1 and 12 only, and the E. bdy. of sec.1, T.10 S., R.15 E., re-surveyed in October, 1904, by William B. Alexander, U.S. D.S. No retracement, or other resurvey on this Tp. bdy. is of record.

The cor. of secs.1 and 12, is a granite stone, 12x5 ins., above ground, firmly set, marked with 1 notch on N. edge, and 5 notches on S. edge, and witnessed by mound of stone, 2 ft. base, 1½ ft. high, W. of cor.

No bearing trees.

Thence,

North, on random line, on E. bdy. of sec.1 (S. ½).

Over rolling land, thru. scattering timber and undergrowth. Descend 100 ft., over N. slope to Coplen Wash.

9.44 Intersect the original closing cor. of secs.6 and 7, T.10 S., R.15 E., which is a granite stone, 12x7x5 ins. above ground, firmly set, marked "CC" on E. face, 1 notch on N. edge, and 5 notches on S. edge, and witnessed by mound of stone, 2 ft. base, 1½ ft. high, E. of cor. No bearing trees.

Continue line and measurement.

25.20 Coplen Wash, 30 lks. wide, course W. Thence over W. slope.

35.80 Road brs. E. and W.

40.23 Intersect the reestablished ¼ sec. cor. of sec.1, which is a granite stone, 8x7x5 ins. above ground, firmly set, marked "1/4" on W. face, and witnessed by mound of stone, 2 ft. base, 1½ ft. high, W. of cor. No bearing trees.

True course and dist. of S. ½ of E. bdy. of sec.1 are therefore North, 40.23 chs.

Land, rolling.

Soil, gravelly, 3rd rate.

Timber, very scattering mesquite.

Undergrowth, scattering catclaw and cactas.



Dependent Resurvey of  
Part of the East bdy. of Township 10 South, Range 14 East.

7

Chains.

Retracement for Resurvey:

From reestablished cor. of secs. 1 and 12, T. 10 S., R. 14 E., hereinbefore described,  
South, on random line, on E. bdy. of sec. 12 (N.  $\frac{1}{2}$ ).  
30.56 (40.00 chs. S. from closing cor. of secs. 6 and 7, T. 10 S., R. 15 E.), Set temp.  $\frac{1}{4}$  sec. cor. of sec. 7, T. 10 S., R. 15 E.  
39.72 Fall 40 lks. E. of the original  $\frac{1}{4}$  sec. cor. of secs. 7 and 12, which is a granite stone, 10x8x5 ins. above ground, firmly set, marked " $\frac{1}{4}$ " on W. face, and witnessed by mound of stone, 2 ft. base,  $1\frac{1}{2}$  ft. high, W. of cor. No bearing trees. This cor. now refers to sec. 12 only. True course and dist. of N.  $\frac{1}{2}$  of E. bdy. of sec. 12 are therefore, N. 0° 40' E., 39.72 chs.

Thence,  
South, on random line, on E. bdy. of sec. 12 (S.  $\frac{1}{2}$ ).  
30.84 (80.00 chs. S. from closing cor. of secs. 6 and 7, T. 10 S., R. 15 E.), Set temp. cor. of secs. 7 and 18, T. 10 S., R. 15 E.  
40.30 Fall 24 lks. E. of the original cor. of secs. 7, 12, 13 and 18, which is a granite stone, 10x6x5 ins. above ground, firmly set, marked with 2 notches on N. edge, and 4 notches on S. edge, and witnessed by mound of stones 2 ft. base,  $1\frac{1}{2}$  ft. high, W. of cor. No bearing trees. This cor. now refers to secs. 12 and 13 only. True course and dist. of S.  $\frac{1}{2}$  of E. bdy. of sec. 12 are therefore N. 0° 22' E., 40.30 chs.

From cor. of secs. 12 and 13, described above,  
South, on random line, on E. bdy. of T. 10 S., R. 14 E., searching diligently at record intervals for the original cors. established in the survey of this line in June, 1884, by Geo. J. Roskruege, U.S.D.S.  
Set two sets of temp.  $\frac{1}{4}$  sec. and sec. cors. alternately, on random line, one set at intervals of 40 chs. S. from cor. of secs. 12 and 13 to refer to areas in T. 10 S., R. 14 E. only, and another set at intervals of 40 chs. S. from temp. cor. of secs. 7 and 18, to refer to areas in T. 10 S., R. 15 E. only.  
No trace of any original cor. is found on or near the line, and at  
325.92 (335.38 chs. S. from temp. cor. of secs. 7 and 18, T. 10 S., R. 15 E.) Fall 189 lks. W. from the original std. cor. of T. 10 S., R. 14 and 15 E. on the 2nd Std. Par. S., established by J. B. McLaughlin, U.S.D.S. in January 1884, which is a fir post, 4 ins. square, 4 ft. above ground, firmly set in mound of stone, marked "SCT10S R14ES36" on NW. face, "R15ES31" on NE. face, and 6 notches on each of N., E. and W. edges.  
No bearing trees.  
Reestablish this cor. in same place to refer only to T. 10 S., R. 14 E. (SE. cor.), as follows:  
Alongside the old post, set a sandstone, 14x12x6 ins., 8 ins. in the ground, marked with 6 notches on each of N. and W. faces; and raise a mound of stone, 2 ft. base,  $1\frac{1}{2}$  ft. high, NW. of cor. Obliterate the marking on the NE. face of old wood post, and the notches on the E. edges thereof.  
True course and dist. of the E. bdy. of T. 10 S., R. 14 E.; back to the cor. of secs. 12 and 13 are therefore, N. 0° 20' W., 325.92 chs., which, to maintain original proportion between the cor. intervals, gives 40.74 chs. as the proper interval for reestablishment of the missing cors. referring to areas in T. 10 S., R. 14 E. only. In the resurvey of the line, the cors. referring to areas in T. 10 S., R. 15 E. are reestablished on true line E. or W. of each corresponding temp. cor. set on random line, according to the relative position of said random line to the true line, and the fractional measurement placed in the S.  $\frac{1}{2}$  of W. bdy. of sec. 31.

Dependent Resurvey of  
Part of E. bdy. of Township 10 South, Range 14 East.

Chains.

Resurvey:

From the reestablished std. cor. of T.10 S., R.14 E. (SE. cor.),  
heretofore described,  
N.0°20'W., on true line, on E. bdy. of sec. 36.  
Over mountainous land, thru scattering timber and under-  
growth.

- 15.17 Descend 52 ft., over NW. slope.  
The 2nd Std. Parallel South, independently resurveyed due west, thru part of Range 16 East, and thru Range 15 East, intersects the Range line at this point, and the standard cor. of T.10 S.; R.15 E. only is reestablished here, as hereinafter described.
- 25.15 Continue line and measurement.  
Gulch, course W. with stream of running water, 8 lks. wide, 3 ins. deep.
- 27.56 Gulch, course W. with stream of running water, 2 lks. wide, 4 ins. deep; ascend 15 ft., over SW. slope.
- 32.47 Spur, slopes NW.; descend 128 ft., over NE. slope.
- 40.74 (Proportional dist.), Set an iron post, 3 ft. long, 1 in. in diam., 26 ins. in the ground, for reestablished  $\frac{1}{4}$  sec. cor. of sec. 36 only, marked on brass cap,

S36

1919

- 43.30 Raise a mound of stone, 2 ft. base, 1 $\frac{1}{2}$  ft. high, W. of cor. Gulch, course SW., with stream of clear running water, 5 lks. wide, 2 ins. deep; ascend 151 ft., over SE. slope.
- 51.73 Ridge, brs. NE. and SW.; descend 28 ft., over NW. slope, to
- 55.38 (40.41 chs. N.0°20'W., from std. cor. of T. 10 S., R.15 E.), Set an iron post, 3 ft. long, 1 in. in diam., 26 ins. in the ground, for reestablished  $\frac{1}{4}$  sec. cor. of sec. 31 only, marked on brass cap,

S31

1919

- 60.79 Raise a mound of stone, 2 ft. base, 1 $\frac{1}{2}$  ft. high, E. of cor. Descend 57 ft., over NW. slope.
- 68.28 Wash, 8 lks. wide, course SW.; ascend 21 ft., over SE. slope.
- 81.48 Ridge, brs. NE. and SW.; descend 69 ft., over NW. slope, to (Proportional dist.); Set an iron post, 3 ft. long, 2 ins. in diam., 24 ins. in the ground, for reestablished cor. of secs. 25 and 36, marked on brass cap,

T10S	
S25	S31
S36	
R14E	R15E

1919.

Raise a mound of stone, 2 ft. base, 1 $\frac{1}{2}$  ft. high, W. of cor. Land, mountainous.  
Soil, gravelly and rocky, 3rd and 4th rate.  
Timber, scattering palo verde and oak.  
Undergrowth, scattering catclaw and cactus.

- .54 N.0°20'W., on true line, on E. bdy. of sec. 25.  
Over rolling and mountainous land, thru scattering timber and undergrowth.
- 13.75 Wash, course W.; banks 3 ft. high, with stream of running water, 2 lks. wide; ascend 34 ft., over S. slope.
- 13.90 Spur, slopes W.; descend 114 ft., over N. slope.  
(40.00 chs. N.0°20'W. from  $\frac{1}{4}$  sec. cor. of sec. 31) Set an iron post, 3 ft. long, 2 ins. in diam., 24 ins. in the ground, for reestablished cor. of secs. 30 and 31 only.

Dependent Resurvey of Part of E. bdy. of Township 10 South, Range 14 East. 9

Chains.

marked on brass cap,

	T10S
	S30
R14E	S31
S25	R15E

1919

- 24.03 Raise a mound of stone, 2 ft. base, 1½ ft. high, E. of cor.
- 26.57 Draw, 6 lks. wide, course NW.; ascend 29 ft., over SW. slope.
- 30.03 Point of spur, sloping NW.; descend 29 ft., over NE. slope.
- 35.50 Wash, course SE. with stream of water, 4 lks. wide; ascend
- 40.74 .58 ft., over S. slope.
- Point of spur, sloping SE.; descend 96 ft., over NE. slope.
- (Proportional dist.), Set an iron post, 3 ft. long, 1 in. in diam., 26 ins. in the ground, for reestablished ¼ sec. cor. of sec. 25 only, marked on brass cap,

¼S25

1919

- 53.90 Raise a mound of stone 2 ft. base, 1½ ft. high, W. of cor. (40.00 chs. N.0°20'W. from cor. of secs. 30 and 31), Set an iron post, 3 ft. long, 1 in. in diam., 26 ins. in the ground, for reestablished ¼ sec. cor. of sec. 30, only, marked on brass cap,

¼S30

1919

- 54.71 Raise a mound of stone, 2 ft. base, 1½ ft. high, E. of cor.
- 56.50 Draw, 10 lks. wide, course NW.; ascend 14 ft., over SW. slope.
- 81.08 Spur, slopes W.; descend 131 ft. over N. slope, to Set an iron post, 3 ft. long, 2 ins. in diam., 24 ins. in the ground, for witness cor. to reestablished cor. of secs. 24 and 25 only, marked on brass cap,

	WC
T10 S	
S24	R15E
S25	S30
R14E	

1919

- 81.48 raise a mound of stone, 2 ft. base, 1½ ft. high, W. of cor. (Proportional dist.) True point for reestablishment of cor. of secs. 24 and 25 only falls where it is not practicable to monument the cor.; therefore at a point 40 lks. S.0° 20'E., set witness cor., as described above.

Land, rolling and mountainous.  
 Soil, gravelly and rocky, 3rd and 4th rate.  
 Timber, scattering palo verde and oak.  
 Undergrowth, scattering catclaw and cactus.

- 12.42 From true point for cor. of secs. 24 and 25, N.0° 20'W., on true line, on E. bdy. of sec. 24. Over mountainous land, thru. scattering timber and undergrowth; descend 155 ft., over NW. slope. (80.00 chs. N.0°20'W., from cor. of secs. 30 and 31), Set an iron post, 3 ft. long, 2 ins. in diam., 24 ins. in the ground, for reestablished cor. of secs. 19 and 30, only, marked on brass cap,

Dependent Resurvey of

10 Part of East bdy. of Township 10 South, Range 14 East.

Chains.

	T10S	
	S19	
R14E	S30	
S24	R15E	

1919

- 13.53 Raise a mound of stone, 2 ft. base, 1½ ft. high, E. of cor. Gulch, course SW., with stream of clear running water, 8 lks. wide, 3 ins. deep; ascend 99 ft. over SE. slope.
- 18.72 Spur, slopes SW.; descend about 10 ft., over NW. slope.
- 22.82 Gulch, 5 lks. wide, course SW.; ascend 37 ft., over SE. slope.
- 26.78 Ridge, brs. NE. and SW.; descend 49 ft., over NW. slope.
- 36.50 Foot of descent on W. slope of ridge; ascend 103 ft., over SW. slope.
- 40.74 (Proportional dist.) Set an iron post, 3 ft. long, 1 in. in diam., 26 ins. in the ground, for reestablished ¼ sec. cor. of sec. 24 only, marked on brass cap,

¼	S24	
---	-----	--

1919

- 43.24 Raise a mound of stone 2 ft. base, 1½ ft. high, W. of cor. Spur, slopes SW.; descend 65 ft. over NE. slope.
- 52.42 (40.00 chs. N.0°20'W. from cor. of secs. 19 and 30), Set an iron post 3 ft. long, 1 in. in diam., 26 ins. in the ground for reestablished ¼ sec. cor. of sec. 19 only, marked on brass cap,

¼	S19	
---	-----	--

1919

- 54.02 Raise a mound of stone, 2 ft. base, 1½ ft. high, E. of cor. Wash, 6 lks. wide, course SW.; leave mountainous and enter rolling land.
- 74.99 Wash, 8 lks. wide, course NW.; leave rolling and reenter mountainous land.
- 81.48 Ascend 131 ft., over SW. slope, to (Proportional dist.), Set an iron post, 3 ft. long, 2 ins. in diam., 24 ins. in the ground for reestablished cor. of secs. 13 and 24 only, marked on brass cap,

	T10S	
	S13	
S24	R15E	
R14E	S19	

1919

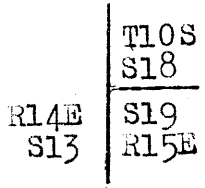
Raise a mound of stone, 2 ft. base, 1½ ft. high, W. of cor. Land, rolling and mountainous.  
Soil, sandy and gravelly, 2nd and 3rd rate.  
Timber, scattering catclaw.  
Undergrowth, scattering catclaw and cactus.

- 
- 10.94 N.0°20'W., on true line, on E. bdy. of sec. 13. Over mountainous land, thru. scattering undergrowth; ascend 123 ft. over SW. slope. (80.00 chs. N.0°20'W. from cor. of secs. 19 and 30), Set an iron post, 3 ft. long, 2 ins. in diam., 24 ins. in the ground, for reestablished cor. of secs. 18 and 19 only, marked on brass cap,

	S19	
--	-----	--

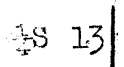
Dependent Resurvey of  
Part of East bdy. of Township 10 South, Range 14 East.

Chains.



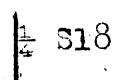
1919

- 11.10 Raise a mound of stone, 2 ft. base, 1½ ft. high, E. of cor. Spur, slopes SW.; descend 178 ft., over NW. slope.
- 18.69 Draw, 10 lks. wide, course NW.; ascend 280 ft., over S. slope.
- 31.27 Spur, slopes W.; descend 170 ft. over N. slope.
- 36.83 Wash, 10 lks. wide, course W.; ascend 102 ft., over S. slope.
- 40.74 (Proportional dist.) Set an iron post, 3 ft. long, 1 in. in diam., 26 ins. in the ground, for reestablished ¼ sec. cor. of sec. 13 only, marked on brass cap,



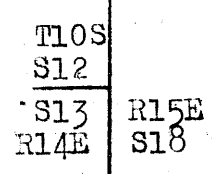
1919

- 42.75 Raise a mound of stone, 2 ft. base, 1½ ft. high, W. of cor. Spur, slopes SW.; descend 59 ft., over NW. slope.
- 46.26 Wash, 6 lks. wide, course SW.; ascend 159 ft., over SE. slope.
- 50.94 (40.00 chs. N. 0° 20' W. from cor. of secs. 18 and 19), Set an iron post, 3 ft. long, 1 in. in diam., 26 ins. in the ground, for reestablished ¼ sec. cor. of sec. 18 only, marked on brass cap,



1919

- 53.88 Raise a mound of stone, 2 ft. base, 1½ ft. high, E. of cor. Spur, slopes SW.; descend 58 ft., over NW. slope.
- 61.00 Foot of descent on W. slope of mountain; thence over rolling W. slope; not much change in elevation.
- 70.00 Ascend 29 ft., over SW. slope.
- 76.10 Spur; slopes W.; descend 29 ft., over N. slope.
- 81.48 (Proportional dist.), Intersect the original cor. of secs. 7, 12, 13 and 18, hereinbefore described; alongside of the old stone, set an iron post, 3 ft. long, 2 ins. in diam., 24 ins. in the ground, for reestablished cor. of secs. 12 and 13 only, marked on brass cap,



1919

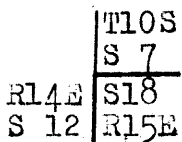
leaving the original mound of stone, W. of cor. undisturbed.  
 Land, mountainous and rolling.  
 Soil, sandy and gravelly, 2nd and 3rd rate.  
 No timber.  
 Undergrowth, scattering catclaw and cactus.

- 
- 4.79 N. 0° 22' E., on true line, on E. bdy. of sec. 12. Over mountainous land, thru. very scattering timber and undergrowth; descend 63 ft., over NW. slope.
  - 5.71 Wash in bottom of Canyon del Oro, 25 lks. wide, course SW.; ascend 271 ft., over SE. slope.
  - 9.46 Road from Copper Hill mine to Tucson, Arizona, brs. NE. and SW.  
 (80.00 chs. northing from cor. of secs. 18 and 19), Set an

Dependent Resurvey of  
 12 Part of East bdy. of Township 10 South, Range 14 East.

Chains.

iron post, 3 ft. long, 2 ins. in diam., 24 ins. in the ground, for reestablished cor. of secs. 7 and 18 only, marked on brass cap,



1919

- 23.30 Raise a mound of stone, 2 ft. base, 1½ ft. high, E. of cor. Spur, slopes SW.; descend about 20 ft., over NW. slope.
  - 29.24 Draw, 10 lks. wide, course SW.; asc. 222 ft., over SE. slope.
  - 40.30 Intersect the original ¼ sec. cor. of secs. 7 and 12, hereinbefore described.
- Alongside, of old stone, set an iron post, 3 ft. long, 1 in. in diam., 26 ins. in the ground, for reestablished ¼ sec. cor. of sec. 12 only, marked on brass cap,



1919

- 49.46 Raise a mound of stone, 2 ft. base, 1½ ft. high, W. of cor. Thence, N. 0° 40' E., on true line, continuing measurement of E. bdy. of sec. 12. (40.00 chs. northing from cor. of secs. 7 and 18, and 40.00 chs. southing from closing cor. of secs. 6 and 7), Set an iron post, 3 ft. long, 1 in. in diam., 26 ins. in the ground, for reestablished ¼ sec. cor. of sec. 7 only, marked on brass cap,



1919

- 59.70 Raise a mound of stone, 2 ft. base, 1½ ft. high, E. of cor. Ridge, brs. NE. and SW.; descend 52 ft. over NW. slope.
- 67.15 Draw, 10 lks. wide, course W. Leave mountainous and enter rolling land; ascend 74 ft., over S. slope.
- 74.46 Ridge, brs. E. and W.; descend 40 ft., over N. slope.
- 80.02 (39.72 chs. N. 0° 40' E. from ¼ sec. cor. of sec. 12), Intersect the reestablished cor. of secs. 1 and 12, hereinbefore described.

Land, mountainous and rolling.  
 Soil, sandy and gravelly, 3rd and 4th rate.  
 Timber, scattering catclaw.  
 Undergrowth, scattering catclaw and cactus.

Independent Resurvey of 2nd Standard Parallel South, thru. part of Range 16 East, and thru. Range 15 East.

Chains.

The 2nd Std.Par.South, was surveyed thru. Ranges 15 and 16 East, by J.B.McLaughlin, U.S.D.S. in January, 1884, with the exception of a Resurvey of the East  $1\frac{1}{2}$  miles in Range 16 East, in July 1904. No retracements or resurveys of the line are on record.

John F. Hesse, U.S.S. in November 1915, in connection with the survey of part of the Subdivision lines of T.10 S., R.16 E.reestablished the standard cor.of secs.34 and 35 of said township.

There being no accepted surveyed areas tied to the parallel W.of the standard cor.of secs. 34 and 35, T. 10 S., R.16 E., such portion of the line is subject to rectification by an independent resurvey; and therefore, no preliminary retracement is required.

Thru.Part of Range 16 E.

The standard cor.of secs. 34 and 35, as reestablished by John F.Hesse,U.S.S., in 1915, is a granite stone, 12x5x5 ins. above ground, firmly set; marked "SC" on N.face, 2 grooves on E.face, and 4 grooves on W.face, and witnessed by a mound of stone, 2 ft.base,  $1\frac{1}{2}$  ft. high, N.of cor. No bearing trees.

- Thence,
- West, on true line, on S.bdy.of sec.34.
- Over rolling land, thru. scattering undergrowth.
- .45 Wire fence, brs.N.and S.
- 2.75 Draw, 6 lks.wide, 3 ft. deep, course N.
- 7.32 Draw, 12 lks.wide, 5 ft.deep, course N.; ascend 30 ft., over E.slope.
- 16.50 Ridge, brs.N. and S.; descend 30 ft., over W.slope.
- 25.24 Ravine, 10 lks.wide, course NE. Leave rolling and enter mountainous land; ascend 125 ft., over SE.slope.
- 35.00 Enter scattering timber, brs. N. and S.
- 35.50 Ridge; brs.N. and S.; descend 95 ft., over W.slope.
- 40.00 Set an iron post, 3 ft.long, 1 in. in diam., 26 ins. in the ground, for reestablished standard  $\frac{1}{4}$  sec.cor.of sec.34, marked on brass cap,

S C  
 $\frac{1}{4}$  S 34  
1919

from which,  
An oak, 12 ins. in diam., brs.N.43°E., 78 lks. dist., mark "SC  $\frac{1}{4}$ S34BT."  
An oak, 12 ins.diam., brs.N.48°W., 86 lks.dist., mark "SC  $\frac{1}{4}$ S34BT."

- Diligent search in this vicinity fails to reveal any trace of original std. $\frac{1}{4}$  sec.cor. of sec.34.
- 43.12 Wash, course NE., with stream of running water, 6 lks.wide; ascend 250 ft., over NE.slope.
- 61.50 Top of ascent; thence along N.slope with very little change in elevation.
- 68.50 Ascend 160 ft., over gradual NE.slope, to
- 80.00 Set an iron post 3 ft.long, 2 ins. in diam., 24 ins. in the ground for reestablished standard cor.of secs.33 and 34, marked on brass cap,

SC  
T10S | R16E  
S33 | S34  
1919

from which,  
An oak, 16 ins. in diam., brs.N.11°E., 40 lks. dist., mark "SC T10S R16E S34BT."  
An oak, 8 ins.in diam., brs.N.79°W., 52 lks. dist., mark "SC T10S R16E S33BT."

Independent Resurvey of the  
14. Second Standard Parallel South thru part of Range 10E & thru R15E.

Chains.

Diligent search in this vicinity fails to reveal any trace of original standard cor. of secs. 33 and 34.  
Land, rolling and mountainous.  
Soil, sandy and gravelly, 2nd and 3rd rate.  
Timber, scattering oak.  
Undergrowth, scattering soap weed, Spanish dagger and cactus.

West, on true line on S. bdy. of sec. 33.  
Over rolling and mountainous land, thru scattering timber and undergrowth; ascend 10 ft. over E. slope.

- 1.00 Spur, slopes N.; descend 15 ft., over W. slope.
- 4.00 Draw, 5 lks. wide, course N.; ascend 20 ft., over E. slope.
- 9.25 Spur, slopes N.; descend 15 ft., over W. slope.
- 13.75 Wash, course N., with stream of running water, 5 lks. wide, 3 ins. deep; ascend E. slope.
- 26.00 Spur, slopes SE. from SW.; descend over NW. slope.
- 30.00 Foot of descent, thence over rolling NE. slope.
- 40.00 Set an iron post, 3 ft. long, 1 in. in diam., 26 ins. in the ground, for reestablished standard  $\frac{1}{4}$  sec. cor. of sec. 33, marked on brass cap,

S C  
1/4 S 33

1919

from which,

An oak, 10 ins. in diam., brs. N. 17 $\frac{1}{2}$ ° W., 88 lks. dist., mark "SC  $\frac{1}{4}$  S 33 BT."

No other bearing trees being available, raise a mound of stone 2 ft. base, 1 $\frac{1}{2}$  ft. high, N. of cor.

Diligent search in this vicinity fails to reveal any trace of original standard  $\frac{1}{4}$  sec. cor. of sec. 33.

- 48.00 Ascend gradually over NE. slope.
- 70.00 Top of gradual ascent; thence along N. slope.
- 80.00 Set an iron post 3 ft. long, 2 ins. in diam., 24 ins. in the ground, for reestablished standard cor. of secs. 32 and 33, marked on brass cap,

S C  
TLOS R16E  
S32 S33

1919

from which,

An oak, 15 ins. in diam., brs. N. 68° E., 22 lks. dist., mark "SC TLOS R16E S33 BT."

An oak, 10 ins. in diam., brs. N. 76° W., 36 lks. dist., mark "SC TLOS R16E S32 BT."

Diligent search in this vicinity fails to reveal any trace of original std. cor. of secs. 32 and 33.

Land, rolling and mountainous.  
Soil, sandy, gravelly and rocky, 2nd and 3rd rate.  
Timber, scattering palo verde, cedar, juniper, and oak.  
Undergrowth, scattering soap weed, Spanish dagger and cactus.

West, on true line, on S. bdy. of sec. 32.  
Over mountainous land, thru scattering timber and undergrowth; descend 27 ft., over NW. slope.

- .90 Ravine, 6 lks. wide, course NE.; ascend 340 ft., over SE. slope.
- 12.50 Spur, slopes S.; descend 25 ft., over SW. slope.
- 14.50 Short ravine, 6 lks. wide, course S.; ascend 634 ft., over SE. slope.
- 40.00 Set an iron post, 3 ft. long, 1 in. in diam., 26 ins. in the ground, for reestablished std.  $\frac{1}{4}$  sec. cor. of sec. 32,



Independent Resurvey of the Second Std.  
Parallel South, thru. part of Range 16 E., and thru. Range 15 East. 15

Chains.

marked on brass cap,

S C  
1/4 S 32

1919

from which,

An oak, 8 ins. in diam., brs. N. 34° E., 29 lks. dist.,  
mark "SC 1/4 S 32 BT."

An oak, 10 ins. in diam., brs. N. 48° W., 29 lks. dist.,  
mark "SC 1/4 S 32 BT."

Diligent search in this vicinity fails to reveal any  
trace of original std. 1/4 sec. cor. of sec. 32.

46.90

Rocky spur, slopes NE.; descend 410 ft., over NW. slope.

64.30

Gulch, course NW., with stream of water, 2 lks. wide, 4 ins.  
deep; ascend 490 ft., over SE. slope.

80.00

Set an iron post, 3 ft. long, 2 ins. in diam., 24 ins. in  
the ground, for reestablished std. cor. of secs. 31 and  
32, marked on brass cap,

S C  
T10S R16E  
S31 S32

1919

from which,

An oak, 6 ins. in diam., brs. N. 57° E., 6 lks.  
dist., mark "SC T10S R16E S32 BT."

An oak, 8 ins. in diam., brs. N. 84° W., 78 lks.  
dist., mark "SC T10S R16E S31 BT."

Diligent search in this vicinity fails to reveal any  
trace of original std. cor. of secs. 31 and 32.

Land, mountainous.

Soil, gravelly 3rd rate.

Timber, scattering cedar, juniper and oak.

Undergrowth, scattering soapweed, Spanish dagger, mesquite  
and cactus.

West, on true line, on S. bdy. of sec. 31.

Over mountainous land, thru. scattering timber and under-  
growth; ascend 131 ft., over NE. slope.

8.50

A point, 8 chs. S. of prominent hill.

11.70

Spur, slopes NE.; descend over NW. slope.

17.80

Head of ravine, 6 lks. wide, course N.; ascend 41 ft., over  
E. slope.

20.80

Sour, about 20 chs. long, slopes N.; descend 15 ft., over  
W. slope.

23.10

Head of ravine, 8 lks. wide, course N.; ascend 424 ft., over  
NE. slope.

40.00

Set an iron post, 3 ft. long, 1 in. in diam., 26 ins. in  
the ground, for reestablished standard 1/4 sec. cor. of  
sec. 31, marked on brass cap,

S C  
1/4 S 31

1919

from which,

A juniper, 20 ins. in diam., brs. N. 83° E., 170 lks.  
dist., mark "SC 1/4 S 31 BT."

No other trees being available, raise a mound of stone,  
2 ft. base, 1 1/2 ft. high, N. of cor.

Diligent search in this vicinity fails to reveal any  
trace of original std. 1/4 sec. cor. of sec. 31.

47.20

Top of the main ridge of the Santa Catalina Mountains,  
5.00 chs. N. of Rice Peak, brs. N. and S.; descend 822 ft.  
over NW. slope, to

81.45

Point of intersection of the Range line bet. Ts. 10 S., Rs.  
15 and 16 E., surveyed due south, as hereinafter de-  
scribed.

Independent Resurvey of 2nd Std. Par.  
South, thru. part of Range 16 E., and thru. Range 15 East.

16

Chains.

(Thru. part of Range 16 East) cont'd.

Set an iron post, 3 ft. long, 3 ins. in diam., 24 ins. in the ground, for reestablished standard cor. of Ts. 10 S., Rs. 15 and 16 E., marked on brass cap,

S C  
T10S  
R15E | R16E  
S36 | S31

1919

Raise a mound of stone, 2 ft. base, 1½ ft. high, N. of cor. Diligent search in the vicinity of 80.00 ch. station failed to reveal any trace of the original standard cor. of Ts. 10 S., Rs. 15 and 16 E.

Land, mountainous.

Soil, gravelly and rocky, 3rd and 4th rate.

Timber, scattering juniper, cedar and oak.

Undergrowth, scattering soap weed, buck brush, Spanish dagger and cactus.

Thru. Range 15 East.

From reestablished standard cor. of Ts. 10 S., Rs. 15 and 16 E.,

West, on true line, on S. bdy. of sec. 36.

Over mountainous land, thru. dense timber and undergrowth.

Descend 945 ft., over NW. slope, to

28.50 Ascend 55 ft., over NE. slope, to

32.90 Spur, slopes NW.; descend 210 ft., over SW. slope, to

40.00 Set an iron post, 3 ft. long, 1 in. in diam., 26 ins. in the ground, for reestablished standard ¼ sec. cor. of sec. 36, marked on brass cap,

S C  
S 36

1919

from which,

An oak, 8 ins. in diam., brs. N. 51° E., 35 lks. dist., mark "SC ¼ S 36 BT."

An oak, 14 ins. in diam., brs. N. 79° W., 109 lks. dist., mark "SC ¼ S 36 BT."

Diligent search in this vicinity fails to reveal any trace of original std. ¼ sec. cor. of sec. 36.

Descend 327 ft., over SW. slope, to

54.15 Wash, course SW.; descend 127 ft., over SW. slope, to

67.40 Wash, course SW.; descend 60 ft., over SW. slope, to

80.00 Set an iron post 3 ft. long, 2 ins. in diam., 24 ins. in the ground, for reestablished std. cor. of secs. 35 and 36, marked on brass cap,

S C  
T10S | R15E  
S35 | S36

1919

from which,

An oak, 12 ins. in diam., brs. N. 75½° E., 179 lks. dist., mark "SCT10S R15ES36BT."

An oak, 6 ins. in diam., brs. N. 56½° W., 79 lks. dist., mark "SCT10S R15ES35BT."

Diligent search in this vicinity fails to reveal any trace of the original std. cor. of secs. 35 and 36.

Land, mountainous.

Soil, gravelly and rocky, 3rd and 4th rate.

Timber, dense cedar and oak. Undergrowth, dense catclaw, buck brush and manzanita.

Chains.

(Thru. Range 15 East) cont'd.

West, on true line, on S. bdy. of sec. 35.  
Over mountainous land, thru. scattering timber and undergrowth.

- 5.00 Descend 40 ft., over SW. slope.
- 8.06 Draw, course SE.; ascend 20 ft., over E. slope.
- 36.28 Spur, slopes SE.; descend 290 ft., over rolling SW. slope, to
- 40.00 Draw, course SW.; descend 30 ft., over SW. slope, to
- Set an iron post, 3 ft. long, 1 in. in diam., 26 ins. in the ground, for reestablished std.  $\frac{1}{4}$  sec. cor. of sec. 35, marked on brass cap,

S C  
 $\frac{1}{4}$ S 35  
1919

from which,  
An oak, 8 ins. in diam., brs. N. 88° W., 31 lks. dist., mark "SC  $\frac{1}{4}$ S 35 BT."

No other bearing tree being available, raise a mound of stone, 2 ft. base, 1  $\frac{1}{2}$  ft. high, N. of cor. Diligent search in this vicinity fails to reveal any trace of the original std.  $\frac{1}{4}$  sec. cor. of sec. 35.

- 43.98 Descend 23 ft., over SW. slope.
- Bottom of Canyon del Oro, course NW., with stream of running water, 12 lks. wide, 3 ins. deep; ascend 25 ft., over NE. slope.
- 50.93 Spur, slopes NW.; descend 36 ft., over SW. slope.
- 53.28 Wash, course NW., with stream of running water, 4 lks. wide. Enter dense timber; ascend 175 ft., over SE. slope, to
- 60.75 Draw, course SE.; ascend 145 ft., over SE. slope, to
- 66.68 Foot of perpendicular cliff, 15 ft. high, bearing N. and S. From the top of cliff, ascend 63 ft., over SE. slope, to
- 68.55 Spring on line, in draw, course SE.; ascend 286 ft., over SE. slope, to
- 80.00 Set an iron post 3 ft. long, 2 ins. in diam., 24 ins. in the ground, for reestablished std. cor. of secs. 34 and 35, marked on brass cap,

S C  
T10S | R15E  
S34 | S35  
1919

from which,  
An oak, 6 ins. in diam., brs. N. 60° E., 29 lks. dist., mark "SCT10S R15E S35BT."  
An oak, 6 ins. in diam., brs. N. 48° W., 38 lks. dist., mark "SCT10S R15E S34BT."

Raise a mound of stone, 2 ft. base, 1  $\frac{1}{2}$  ft. high, N. of cor. Diligent search in this vicinity fails to reveal any trace of original std. cor. of secs. 34 and 35.

Land, mountainous.  
Soil, gravelly and rocky, 3rd and 4th rate.  
Timber, scattering and dense cedar and oak.  
Undergrowth, scattering catclaw, yucca, scrub oak, buck brush and cactus.

West, on true line, on S. bdy. of sec. 34.  
Over mountainous land, thru. dense timber and undergrowth; ascend 440 ft., over E. slope.

- 13.60 Spur, slopes NE.; descend 437 ft., over W. slope.
- 28.70 Wash, course NW.; ascend 182 ft., over NE. slope, to
- 40.00 Set an iron post, 3 ft. long, 1 in. in diam., 12 ins. in the ground, supported by a mound of stone, for reestablished std.  $\frac{1}{4}$  sec. cor. of sec. 34, marked on brass cap,

S C  
 $\frac{1}{4}$ S 34  
1919

Independent Resurvey of 2nd Std.Par.  
18 South, thru. part of Range 16 E., and thru. Range 15 East.

Chains.

Thru. Range 15 East, (cont'd).

from which,

An oak, 6 ins. in diam., brs. N. 39° E., 39 lks. dist.,  
mark "SC 1/4 S 34 BT."

An oak, 14 ins. in diam., brs. N. 48° W., 38 lks. dist.,  
mark "SC 1/4 S 34 BT."

Diligent search in this vicinity fails to reveal any trace  
of the original std. sec. cor. of sec. 34.

Ascend 290 ft., over NE. slope.

56.60 Samaniego Ridge, brs. NW. and SW.; descend 200 ft., over W.  
slope, to

74.65 Gulch, course NE.; descend 90 ft., over NW. slope, to

80.00 Set an iron post, 3 ft. long, 2 ins. in diam., 8 ins. in  
the ground, supported by a mound of stone, for rees-  
tablished std. cor. of secs. 33 and 34, marked on brass  
cap,

S | C  
T10S | R15E  
S33 | S34

1919

from which,

An oak, 6 ins. in diam., brs. N. 14 1/2° E., 110 lks.  
dist., mark "SCT10NR15ES34BT."

An oak, 6 ins. in diam., brs. N. 48° W., 176 lks.  
dist., mark "SCT10S R15ES33BT."

Diligent search in this vicinity fails to reveal any  
trace of original std. cor. of secs. 33 and 34.

Land, mountainous.

Soil, gravelly, 3rd rate.

Timber, dense cedar and oak.

Undergrowth, dense yucca, scrub oak, catelaw and cactus.

West, on true line, on S. bdy. of sec. 33.

Over mountainous land, thru. dense timber and undergrowth.  
Descend 286 ft., over NW. slope, to

11.27 Gulch, course NW., with stream of running water, 6 lks.  
wide; descend 575 ft., over NW. slope, to

38.49 Wash, course NW.; descend slightly, over NW. slope, to

40.00 Set an iron post, 3 ft. long, 1 in. in diam., 26 ins. in  
the ground, for reestablished std. 1/4 sec. cor. of sec. 33,  
marked on brass cap,

S | C  
1/4 S 33

1919

from which,

An oak, 6 ins. in diam., brs. N. 72° E., 67 lks. dist.,  
mark "SC 1/4 S 33 BT."

An oak, 14 ins. in diam., brs. N. 69° W., 42 lks. dist.,  
mark "SC 1/4 S 33 BT."

Diligent search in this vicinity fails to reveal any  
trace of original std. 1/4 sec. cor. of sec. 33.

Descend 165 ft., over NW. slope, to

58.25 Wash, course SW.; descend 80 ft., over SW. slope, to

76.00 Wash, course SW., with stream of running water, 5 lks. wide;  
descend 15 ft., over SW. slope, to

80.00 Set an iron post, 3 ft. long, 2 ins. in diam., 24 ins. in the  
ground, for reestablished std. cor. of secs. 32 and 33,  
marked on brass cap,

S | C  
T10S | R15E  
S32 | S33

1919

from which,

Independent Resurvey of 2nd Std. Par.  
South, thru. part of Range 16 E., and thru. Range 15 East. 19.

Chais.

An oak, 20 ins. in diam., brs. N. 40° E., 63 lks. dist., mark "SCTIOS R15E S33BT."  
An oak, 20 ins. in diam., brs. N. 37° W., 173 lks. dist., mark "SCTIOSR15ES32BT."

Diligent search in this vicinity fails to reveal any trace of the original std. cor. of secs. 32 and 33.  
Land, mountainous.  
Soil, gravelly, 3rd rate.  
Timber, dense oak and cedar.  
Undergrowth, dense yucca, catclaw, Spanish dagger and cactus.

29.20

West, on true line, on S bdy. of sec. 32.  
Over rolling land, thru. scattering timber and undergrowth. Descend 100 ft., over rolling SW. slope, to Draw, course S. from NE. Thence over rolling S. slope, with very little change in elevation.

40.00

Set an iron post, 3 ft. long, 1 in. in diam., 26 ins. in the ground, for reestablished std.  $\frac{1}{4}$  sec. cor. of sec. 32, marked on brass cap,

S C  
TS 32  
1919

from which,  
An oak, 10 ins. in diam., brs. N. 61° E., 84 lks. dist., mark "SC $\frac{1}{4}$ S32BT."  
An oak, 8 ins. in diam., brs. N. 14 $\frac{1}{2}$ ° W., 143 lks. dist., mark "SC $\frac{1}{4}$ S32 BT."

79.00

Diligent search in this vicinity fails to reveal any trace of the original std.  $\frac{1}{4}$  sec. cor. of sec. 32. Descend 170 ft., over rolling S. slope, to

80.00

Wash, course NW. Descend slightly over NW. slope, to Set an iron post, 3 ft. long, 2 ins. in diam., 24 ins. in the ground, for reestablished std. cor. of secs. 31 and 32, marked on brass cap,

S C  
T10S R15E  
S31 S32  
1919

from which,  
An oak, 24 ins. in diam., brs. N. 24° W., 164 lks. dist., mark "T10SR15ES31BT."

No other trees being available, raise a mound of stone, 2 ft. base, 1 $\frac{1}{2}$  ft. high, N. of cor.  
Diligent search in this vicinity fails to reveal any trace of the original std. cor. of secs. 31 and 32.  
Land, rolling.  
Soil, gravelly and rocky, 3rd and 4th rate.  
Timber, scattering oak and palo verde.  
Undergrowth, scattering yucca, catclaw, Spanish dagger and cactus.

11.87

West, on true line, on S. bdy. of sec. 31.  
Over rolling land, thru. scattering timber and undergrowth. Descend 50 ft., over NW. slope, to Intersect the East bdy. of T. 10 S., R. 14 E., at a point 15.17 chs.

N. 0° 20' W., from the reestablished std. cor. of T. 10 S., R. 14 E. (SE. cor.) hereinbefore described.  
At point of intersection, set an iron post, 3 ft. long, 3 ins. in diam., 24 ins. in the ground, for reestablished std. cor. of T. 10 S., R. 15 E. (SW. cor.), marked on brass cap,

Independent Resurvey of 2nd Std. Par.  
20 South, thru. part of Range 16 East, and thru. Range 15 East.

Chains.

R14E	SC
S36	T10S
	R15E
	S31

1919

Raise a mound of stone, 2 ft. base, 1½ ft. high, NE, of cor.

Land, rolling.

Soil, gravelly, 3rd rate.

Timber, scattering oak, and palo verde.

Undergrowth, scattering catclaw, scrub oak, and cactus.



Chains.

From the original cor. of secs. 13, 18, 19 and 24, hereinbefore described,  
South, on true line, bet. secs. 19 and 24.  
Over mountainous land, thru. dense timber and undergrowth;  
ascend 33 ft., over N. slope.

- 1.50 Spur, slopes W.; descend 70 ft., over S. slope.
- 7.10 Gulch, course W.; ascend 83 ft., over N. slope, to
- 9.90 Foot of cliff, 40 ft. high, brs. E and W. facing N. From top of cliff; ascend 50 ft., over N. slope.
- 12.10 Spur, slopes W.; descend 130 ft., over S. slope.
- 16.60 Gulch, course W.; ascend 111 ft., over N. slope.
- 19.35 Spur, slopes W.; descend 72 ft., over S. slope.
- 22.80 Gulch, course W.; ascend 57 ft., over N. slope.
- 25.75 Spur, slopes W.; descend 55 ft., over S. slope.
- 33.95 Gulch, course W.; ascend 210 ft., over N. slope, to
- 40.00 Set an iron post, 3 ft. long, 1 in. in diam., 26 ins. in the ground, for  $\frac{1}{4}$  sec. cor. of secs. 19 and 24, marked on brass cap,

$\frac{1}{4}$   
 S24 | S19  
 1919

from which,

- An oak, 6 ins. in diam., brs. N.  $84\frac{1}{2}^\circ$  W., 18 lks. dist., mark " $\frac{1}{4}$ S24BT."
- An oak, 8 ins. diam., brs. N.  $62\frac{1}{4}^\circ$  W., 18 lks. dist., mark " $\frac{1}{4}$ S24 BT."

No bearing trees available E. of line.

Ascend 304 ft. over NW. slope.

- 56.00 Ridge, brs. NE. and SW.; descend 10 ft., over S. slope, to
- 58.00 Top of cliff, 25 ft. high, brs. E. and W., facing S. From foot of cliff; descend 220 ft., over S. slope.
- 65.25 Bottom of canyon, course S.  $70^\circ$  E.; ascend 116 ft., over N. slope, to
- 76.20 Spur, slopes E.; descend 20 ft., over SE. slope, to
- 80.00 Set an iron post, 3 ft. long, 2 ins. in diam., 24 ins. in the ground, for cor. of secs. 19, 24, 25 and 30, marked on brass cap,

T10S  
 R15E | R16E  
S24 | S19  
 S25 | S30  
 1919

from which,

- An oak, 12 ins. in diam., brs. N.  $40^\circ$  E., 11 lks. dist., mark "T10SR16ES19BT."
- An oak, 14 ins. diam., brs. S  $19^\circ$  E., 61 lks. dist., mark "T10S R16ES30BT."
- An oak, 16 ins. in diam., brs. S.  $7^\circ$  W., 54 lks. dist., mark "T10S R15E S25BT."
- An oak, 6 ins. in diam., brs. N.  $67^\circ$  W., 24 lks. dist., mark "T10S R15ES24BT."

Land; mountainous...

Soil, gravelly and rocky, 3rd and 4th rate.

Timber, dense cedar, juniper and oak,

Undergrowth, dense catclaw, scrub oak, and buck brush.

South, on true line, bet. secs. 25 and 30.  
Over mountainous land, thru. dense timber and undergrowth.  
Ascend 160 ft., over NE. slope.

- 12.30 Spur, slopes NE.; descend 50 ft., over SE. slope.
- 16.16 Draw, course N.  $80^\circ$  E.; ascend 30 ft., over N. slope.
- 18.20 Short spur, slopes N.  $70^\circ$  E.; descend 10 ft., over S. slope.
- 20.40 Draw, course E.; ascend 220 ft., over NE. slope, to
- 40.00 Set an iron post, 3 ft. long, 1 in. in diam., 16 ins. in the ground, supported by a mound of stone, for  $\frac{1}{4}$  sec.

Chains.

cor. of secs. 25 and 30, marked on brass cap,

S25 | S30

1919

from which,

A juniper, 24 ins. in diam., brs. N. 84½° W., 34 lks. dist., mark "¼ S25 BT."

An oak, 12 ins. in diam., brs. S. 74½° E., 20 lks. dist., mark "¼ S30 BT."

Ascend 45 ft., over NE. slope.

48.25 Main ridge of the Santa Catalina Mountains, known as the Oracle Ridge, brs. N. 15° W., and S. 15° E. Leave dense, and enter scattering timber and undergrowth; descend 300 ft., over SW. slope, to

80.00 Set an iron post, 3 ft. long, 2 ins. in diam., 14 ins. in the ground, supported by a mound of stone, for cor. of secs. 25, 30, 31 and 36, marked on brass cap,

TLOS  
R15E | R16E  
S25 | S30  
S36 | S31

1919

No suitable bearing trees being available; raise a mound of stone, 2 ft. base, 1½ ft. high, W. of cor.

Land, mountainous.

Soil, adobe and rocky, 4th rate.

Timber, dense and scattering, juniper and oak.

Undergrowth, dense and scattering catclaw, scrub oak and buck brush.

South, on true line, bet. secs. 31 and 36.

Over mountainous land, thru. scattering timber and dense undergrowth.

Descend 10 ft., over SW. slope, to

.05 Gulch, course S, 80° W.; ascend 60 ft., over NW. slope, to

11.60 Descend 140 ft., over rolling W. slope, to

35.90 Gulch, course W.

39.50 Short gulch, course W.; ascend 30 ft. over NW. slope to

40.00 Set an iron post, 3 ft. long, 1 in. in diam., 26 ins. in the ground, for ¼ sec. cor., of secs. 31 and 36, marked on brass cap,

S31 | S36

1919

No suitable bearing trees being available, raise a mound of stone, 2 ft. base, 1½ ft. high, W. of cor.

Ascend 40 ft., over NW. slope.

42.20 Spur, slopes W.; descend 62 ft., over S. slope,

44.80 Gulch, course W.; ascend 530 ft., over N. slope, to

62.10 Spur, slopes N., 80° W.; descend 110 ft., over SW. slope.

74.00 Gulch, course W.; ascend 260 ft., over NW. slope, to

80.00 Intersect the reestablished std. cor. of Ts. 10 S., Rs. 15 and 16 E., on 2nd Std. Parallel South, hereinbefore described in notes of resurvey of the Parallel.

Land, mountainous.

Soil, rocky, 4th rate.

Timber, scattering juniper and oak.

Undergrowth, dense catclaw, scrub oak, buck brush, manzanita and cactus.



Independent Resurvey of Part of Subdivision lines of Township 10 South, Range 15 East. 23

Chains.

The accepted surveyed subdivision lines in T.10 S., R.15 E. consist of the boundaries of secs.5 and 6, and the line between secs.7 and 8, all executed by William B. Alexander, U.S.D.S. in 1904. No retracement of resurvey of same is on record. As no accepted surveyed area is dependent on the line bet. secs.7 and 8, the same is subject to rectification by an independent resurvey, the description of which is given below.

-----

The original cor.of secs.5,6,7 and 8 is a granite stone, 8x6x5 ins., above ground, firmly set, marked with 5 notches on each of E. and S. edges, and witnessed by a mound of stone, 2 ft.base, 1 1/2 ft.high, W.of cor. No bearing trees.

Thence, S.0°3'E., on true line, bet. secs.7 and 8. Over mountainous land, thru. scattering timber and under growth, descend 81 ft, over SE.slope.

13.24  
21.93  
28.38  
40.00

Wash, course SW.; ascend 43 ft. over NW. slope. Ridge, brs.NE. and SW.; descend 86 ft., over SE.slope. Wash, course SW.; ascend 34 ft., over NW.slope, to Set an iron post 3 ft.long, 1 in. in diam., 20 ins. in the ground, for reestablished 1/4 sec.cor.of secs.7 and 8, marked on brass cap,



Raise a mound of stone, 2 ft.base, 1 1/2 ft.high, W.of cor. The original 1/4 sec.cor., a granite stone, marked and witnessed, as per record, brs.N.71°34'E., 4 lks.dist. Destroy all trace of same. Ascend 10 ft., over NW.slope.

42.50  
45.96  
52.50  
61.12  
79.00  
79.45

Spur, slopes SW.; descend 26 ft., over S.slope. Wash, course W.; ascend 106 ft., over N.slope. Ridge, brs.NE. and SW.; descend 95 ft., over SE.slope, to Spur, slopes SE.; descend 425 ft., over SW.slope, to Foot of descent, brs.SE. and SW. Enter bottom of Canyon del Oro, course SW. from E. Set an iron post, 3 ft. long, 2 ins. in diam., 24 ins. in the ground, for reestablished witness cor.to cor. of secs.7,8,17 and 18, marked on brass cap,



from which,

- A mesquite, 6 ins.in diam., brs.N.72 1/2°E., 69 lks. dist., mark "WCT10SR15ES8BT."
- An oak, 10 ins.in diam., brs.S.12 1/2°E., 148 lks. dist., mark "WCT10SR15E S17BT."
- A sycamore, 16 ins.in diam., brs.S.79 1/2°W., 278 lks. dist., mark "WCT10SR15ES18 BT."
- A palo verde, 10 ins.in diam., brs.N.70°W., 48 lks. dist., mark "WCT10SR15ES7BT."

The original witness cor., a granite stone, marked and witnessed, as per record, brs.S.1°16'W., 265 lks.dist. Destroy all trace of same.

79.60  
80.00

N. edge of wash, course SW.from SE., with stream of running water, 30 lks.wide, and 4 to 6 ins.deep; thence across wash. Point for reestablishment of cor.of secs.7,8,17 and 18 falls in wash, where it would be impracticable to monument the cor.; therefore, at a point 55 lks.N.0°3' W., reestablish a witness cor.as described above.

Independent Resurvey of part of  
24 Subdivision lines of Township 10 South, Range 15 East.

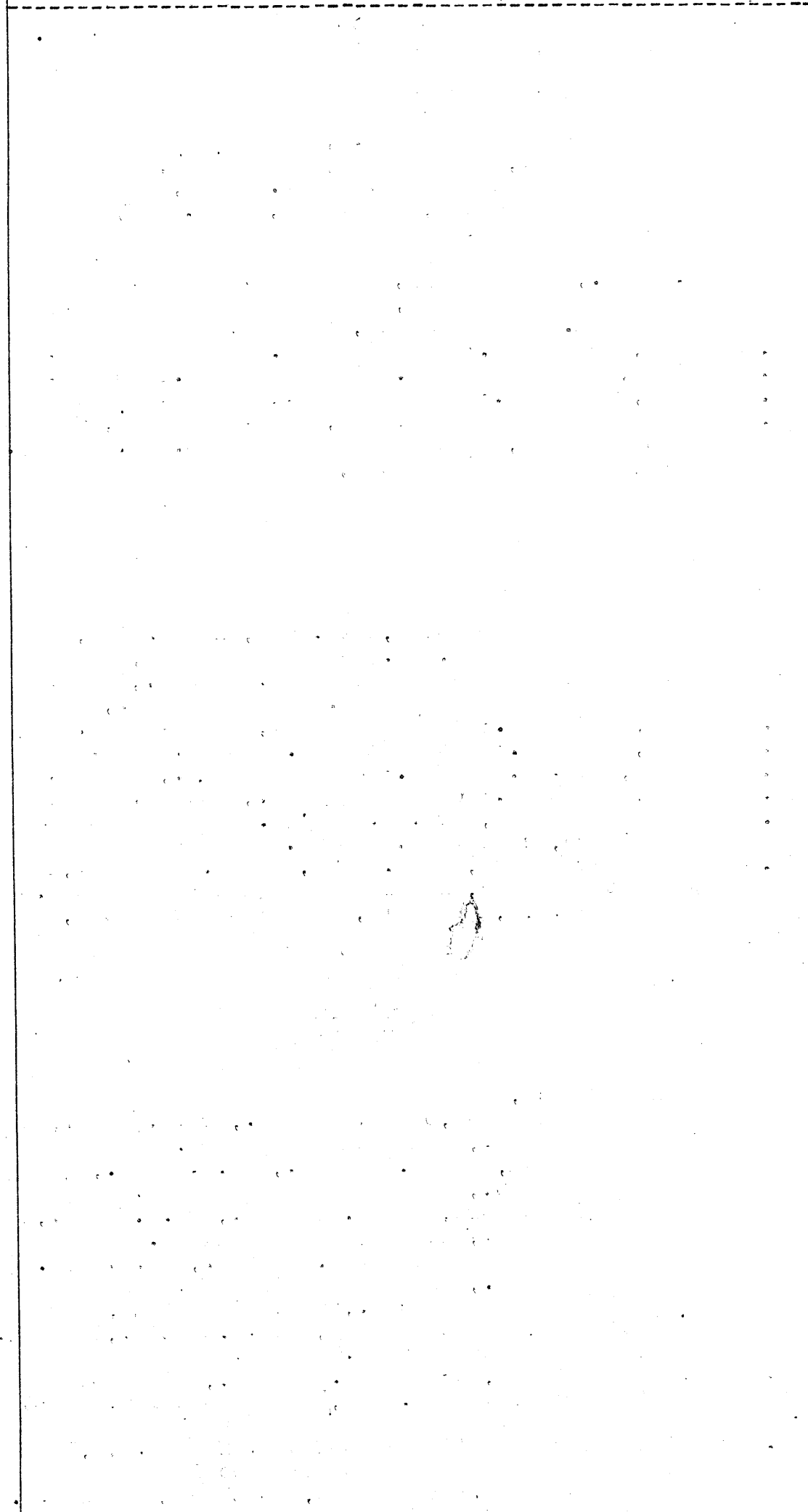
Chains.

Land, mountainous.

Soil, gravelly and rocky, 3rd and 4th rate.

Timber, scattering palo verde, mesquite, oak and sycamore.

Undergrowth, scattering catclaw, scrub oak and mesquite  
and cactus.



Survey of part of the  
Subdivision lines of township 10 South, Range 15 East.

Chains.

The original cor. of secs. 2, 3, 34 and 35, on N. bdy. of Tp., is a granite stone, 12x10x10 ins. above ground, firmly set, marked with 2 notches on E. and 4 notches on W. edges, and witnessed by a mound of stone, 2 ft. base, 1 1/2 ft. high, W. of cor. No bearing trees.

Thence,

S. 0° 01' E., bet. secs. 2 and 3.

Over mountainous land, thru. scattering timber and undergrowth; descend 52 ft., over SW. slope.

4.60 An oak tree, 24 ins. in diam., on line.

9.50 Wash, with stream of water; 1 lk. wide, course W.; ascend 20 ft., over N. slope.

11.50 Spur, slopes W.; descend 20 ft., over S. slope.

14.10 Wash, course W.; ascend 30 ft., over N. slope.

17.60 Spur, slopes W.; descend 55 ft., over S. slope.

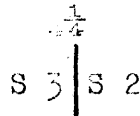
21.90 Wash, course NW.; ascend 70 ft., over NE. slope.

24.40 Spur, slopes NW.; descend 70 ft., over SW. slope.

35.90 Wash, course NW.; ascend 85 ft., over NE. slope.

39.44 Cor. of wire fences on line; fences extend S., E. and W.

40.00 Spur, slopes W., Set an iron post 3 ft. long, 1 in. in diam., 26 ins. in the ground, for 1/4 sec. cor., marked on brass cap,



1919

Raise a mound of stone, 2 ft. base, 1 1/2 ft. high, W. of cor. Descend 92 ft. over S. slope.

44.40 Wash, course W.; ascend 115 ft. over N. slope.

48.80 Spur, slopes W.; descend 65 ft., over S. slope.

52.90 Wash, course W.; ascend 36 ft. over N. slope.

54.70 Short spur, slopes W.; descend 30 ft., over S. slope.

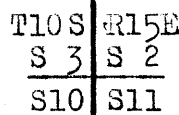
56.40 Wash, course NW.; ascend 153 ft., over NE. slope.

64.40 Spur, slopes W.; descend 165 ft., over S. slope.

67.90 Quartz ledge, 5 ft. high, brs. E. and W.

74.00 Wash, course W.; ascend 90 ft., over N. slope, to

80.00 Set an iron post, 3 ft. long, 2 ins. in diam., 24 ins. in the ground, for cor. of secs. 2, 3, 10 and 11, marked on brass cap,



1919

from which,

An oak, 12 ins. in diam., brs. N. 23 1/4° E., 71 lks. dist., mark "T10SR15ES2BT."

An oak, 14 ins. in diam., brs. S. 73 1/2° E., 125 lks. dist., mark "T10S R15E S11BT."

An oak, 16 ins. in diam., brs. S. 52 1/4° W., 73 lks. dist., mark "T10S R15E S10BT." and

An oak, 6 ins. in diam., brs. N. 33° W., 136 lks. dist., mark "T10SR15E S3BT."

Land, mountainous.

Soil, sandy and gravelly, 2nd and 3rd rate.

Timber, scattering oak.

Undergrowth, scattering scrub oak, buck brush and manzanita.

S. 0° 01' E., bet. secs. 10 and 11.

Over mountainous land, thru. scattering timber and undergrowth; ascend 25 ft., over NW. slope.

3.15 Spur, slopes NW.; descend over SW. slope.

11.00 Draw, course WSW.

29.50 Wash, course WSW.; ascend 225 ft., over N. slope.

38.90 Spur, slopes WSW.; descend 105 ft., over SE. slope.

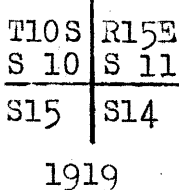
40.00 Set an iron post, 3 ft. long, 1 in. in diam., 26 ins. in the ground, for 1/4 sec. cor., marked on brass cap,

26 Part of Subdivision lines of Township 10 South, Range 15 East.

Chains.

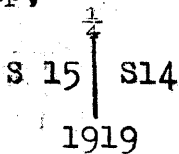


- 50.30 Raise a mound of stone 2 ft. base,  $1\frac{1}{2}$  ft. high, W. of cor.
- Head of gulch, course W.; ascend 65 ft., over N. slope.
- 54.10 Spur, slopes WSW.; descend 282 ft., over SE. slope, to
- 80.00 Set an iron post 3 ft. long, 2 ins. in diam., 24 ins. in the ground, for cor. of secs. 10, 11, 14 and 15, marked on brass cap,

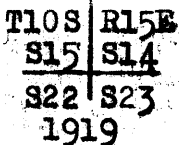


Raise a mound of stone, 2 ft. base,  $1\frac{1}{2}$  ft. high, W. of cor. Land, mountainous.  
Soil, sandy and gravelly, 2nd and 3rd rate.  
Timber, scattering oak.  
Undergrowth, scattering scrub oak, buck brush and manzanita.

- S.0°01'E., bet. secs. 14 and 15.  
Over mountainous land, thru. scattering timber and undergrowth; descend 15 ft. over SE. slope.
- 1.20 Wash, 10 lks. wide, course WSW.; ascend 122 ft. over NW. slope.
  - 7.70 Short spur, slopes W.; descend 60 ft., over S. slope.
  - 10.50 Wash, course WSW.; ascend 219 ft., over NW. slope.
  - 19.60 Spur, slopes W.; descend 22 ft., over S. slope.
  - 24.10 Wash, course SW.; ascend 124 ft., over NW. slope.
  - 32.90 Spur, slopes W.; from this point, another spur extends South; descend gradually on top of spur, to
  - 40.00 Point of spur, sloping south, Set an iron post, 3 ft. long, 1 in. in diam., 26 ins. in the ground, for  $\frac{1}{4}$  sec. cor., marked on brass cap,



- 66.30 Raise a mound of stone, 2 ft. base,  $1\frac{1}{2}$  ft. high, W. of cor. Descend 520 ft., over SE. slope.
- Wash, in bottom of canyon, with stream of running water 2 lks. wide, 3 ins. deep, course WSW.; asc. 225 ft. over N. slope, to
- 80.00 Set an iron post, 3 ft. long, 2 ins. in diam., 24 ins. in the ground, for cor. of secs. 14, 15, 22 and 23, marked on brass cap,



Raise a mound of stone, 2 ft. base,  $1\frac{1}{2}$  ft. high, W. of cor. From this U.S. Mineral Monument No. 1 of the Canyon del Ore Mineral District hrs. S.45°35'W.  
Land, mountainous.  
Soil, sandy and gravelly, 2nd and 3rd rate.  
Timber, scattering oak.  
Undergrowth, scattering scrub oak, and manzanita and cactus.

LOCK 2447

Part of Subdivision lines of Township 10 South, Range 15 E. 27

Chains.

The original cor. of secs. 3, 4, 33, and 34, on N. bdy. of Tp. is a granite stone, 10x8 ins. above ground, firmly set, marked with 3 notches on each of E. and W. edges, and witnessed by mound of stone, 2 ft. base, 1 1/2 ft. high, W. of cor. No bearing trees.

- Thence,
- S. 0° 02' E., bet. secs. 3 and 4.
- Over rolling land, thru. scattering timber and undergrowth.
- Ascend 15 ft., over NW. slope.
- 3.30 Road, brs. NE. and SW.
- 6.00 Descend 130 ft., over SW. slope.
- 14.70 Wash, course SW.; ascend 80 ft., over NW. slope.
- 22.00 Spur, slopes W.; descend 07 ft., over S. slope.
- 32.70 Wash, course SW.; ascend 75 ft., over NW. slope.
- 35.50 Spur, slopes SW.; descend 112 ft., over SE. slope.
- 40.00 Set an iron post, 3 ft. long, 1 in. in diam., 26 ins. in the ground, for 1/4 sec. cor., marked on brass cap,

$\frac{1}{4}$   
 S 4 | S 3  
 1919

- 46.20 Raise a mound of stone, 2 ft. base, 1 1/2 ft. high, W. of cor. Wash, course SW.; ascend 110 ft., over NW. slope. Leave rolling, and enter mountainous land.
- 50.70 Spur, slopes SW.; descend 132 ft., over SE. slope.
- 57.40 Wash, course SW.; ascend 121 ft., over NW. slope.
- 69.50 Spur, slopes SW.; descend 80 ft., over SE. slope, to
- 80.00 Set an iron post, 3 ft. long, 2 ins. in diam., 24 ins. in the ground, for cor. of secs. 3, 4, 9 and 10, marked on brass cap,

T10S	R15E
S 4	S 3
S 9	S 10

  
 1919

Raise a mound of stone 2 ft. base, 1 1/2 ft. high, W. of cor.  
 Land, rolling and mountainous.  
 Soil, sandy and gravelly, 2nd and 3rd rate.  
 Timber, scattering oak.  
 Undergrowth, scattering scrub oak; manzanita and cactus.

- 
- 40.00 East, on a random line, bet. secs. 3 and 10.
  - 80.10 Set temp. 1/4 sec. cor.
  - Intersect N. and S. line, 11 lks. S. of the cor. of secs. 2, 3, 10 and 11.
  - Thence,
  - S. 89° 55' W., on true line, bet. secs. 3 and 10.
  - Over rolling and mountainous land, thru. scattering undergrowth; descend 10 ft., over rolling N. slope.
  - .15 Wire fence, brs. N. and S.
  - 5.00 Ascend 20 ft., over S. slope.
  - 18.00 Spur, slopes S. 85° W.; descend 172 ft., over NW. slope.
  - 29.60 Wash, course SW.; ascend 115 ft., over SE. slope.
  - 38.50 Top of quartz covered hill, 1 chain wide.
  - 39.50 Descend slightly over SW. slope, to
  - 40.05 Set an iron post, 3 ft. long, 1 in. in diam., 26 ins. in the ground, for 1/4 sec. cor., marked on brass cap,

$\frac{1}{4}$  S 3  
 S 10  
 1919

- 45.00 Raise a mound of stone, 2 ft. base, 1 1/2 ft. high, N. of cor. Descend 40 ft., over SW. slope. Ascend 20 ft., over SE. slope.

## 28 Part of Subdivision lines of Township 10 South, Range 15 East.

Chains.

49.20 Spur, slopes SSW.; descend 60 ft., over NW. slope.  
 53.00 Wash, course SW.; ascend 30 ft., over SE. slope.  
 65.00 Spur, slopes WSW.; descend 40 ft., over NW. slope.  
 78.00 Wash, course SW.; ascend 100 ft., over SE. slope, to  
 80.10 The cor. of secs. 3, 4, 9 and 10.  
 Land, rolling and mountainous.  
 Soil, sandy and gravelly, 2nd and 3rd rate.  
 No timber.  
 Undergrowth, scattering scrub oak, manzanita and cactus.

-----  
 S. 0°02' E., bet. secs. 9 and 10.

Over rolling and mountainous land, thru. scattering undergrowth; descend 67 ft., over SE. slope.  
 2.20 Wash, course SW.; ascend 90 ft., over NW. slope.  
 6.10 Spur, slopes SW.; descend 82 ft., over SE. slope.  
 12.90 Wash, course SW.; ascend 60 ft., over NW. slope.  
 16.20 Short spur, slopes SW.; descend 185 ft., over SE. slope.  
 22.60 Wash, course SW.; ascend 60 ft., over NW. slope.  
 29.50 Spur, slopes SSW.; descend 195 ft., over SE. slope.  
 38.80 Foot of descent at east edge of wash, course S. Thence along E. edge of said wash.  
 40.00 Set an iron post, 3 ft. long, 1 in. in diam., 26 ins. in the ground, for  $\frac{1}{4}$  sec. cor., marked on brass cap,

$\frac{1}{4}$   
 S 9 | S10

1919

Raise a mound of stone, 2 ft. base,  $1\frac{1}{2}$  ft. high, W. of cor.  
 Continue along east edge of wash, course S.  
 40.60 Cross same wash, course SSE.; ascend 10 ft., over NE. slope.  
 41.60 Point of spur, slopes E.; descend 10 ft., over SE. slope.  
 44.40 Recross same wash, course W. from NNE.  
 Ascend 15 ft., over N. slope.  
 45.10 Short spur, slopes W.; descend 15 ft., over S. slope.  
 47.70 Wash, course W., joins preceding wash, 1 ch. W. of line; ascend 320 ft., over S. slope.  
 60.20 Spur, slopes W.; descend 45 ft., over S. slope.  
 64.75 Wash, course W.; ascend 140 ft., over N. slope.  
 68.70 Spur, slopes W.; descend 100 ft. over S. slope, to  
 80.00 Set an iron post, 3 ft. long, 2 ins. in diam., 24 ins. in the ground, for cor. of secs. 9, 10, 15 and 16, marked on brass cap,

T10S | R15E  
 S 9 | S10  
 S16 | S15

1919

Raise a mound of stone, 2 ft. base,  $1\frac{1}{2}$  ft. high, W. of cor.  
 Land, rolling and mountainous.  
 Soil, sandy and gravelly, 2nd and 3rd rate.  
 No timber.  
 Undergrowth, scattering scrub oak, manzanita and cactus.

-----  
 N. 89°55' E., on a random line, bet. secs. 10 and 15.  
 40.00 Set temp.  $\frac{1}{4}$  sec. cor.  
 80.00 Intersect N. and S. line, 18 lks. N. of the cor. of secs. 10, 11, 14 and 15.

Thence,  
 N. 89°57' W., on true line, bet. secs. 10 and 15.  
 Over rolling and mountainous land, thru. scattering undergrowth; descend 100 ft., over rolling S. slope.

.85 Wire fence, brs. N. and S.  
 29.45 Wash, course WNW.; ascend 202 ft., over NE. slope.  
 40.00 Set an iron post, 3 ft. long, 1 in. in diam., 26 ins. in

Part of Subdivision lines of Township 10 South Range 15 East. 29

Chains.

the ground, for 1/4 sec.cor., marked on brass cap,

1/4 S 10  
S 15  
1919

43.00 Raise a mound of stone, 2 ft.base, 1 1/2 ft.high, N.of cor.  
Spur, slopes N.: descend 300 ft., over W.slope.  
54.50 Wash, course S.: ascend 240 ft., over E.slope.  
64.50 Spur, slopes S.: descend 70 ft., over W.slope.  
69.40 Wash, course S.: ascend 215 ft., over SE.slope, to  
80.00 The cor.of secs.9,10,15 and 16.  
Land, rolling and mountainous.  
Soil, sandy and gravelly, 2nd and 3rd rate.  
No timber.  
Undergrowth, scattering scrub oak, manzanita and cactus.

S.0°02'E., bet. secs.15 and 16.  
Over mountainous land, thru. scattering undergrowth; descend 374 ft., over S.slope.

3.30 Mine dump on line.  
9.20 Prospect hole, 5 ft. deep, on line.  
10.70 Wash, course SW.: ascend 162 ft., over NW.slope.  
21.10 Spur, slopes W.: descend 145 ft. over S.slope.  
25.60 Wash, course W.: ascend N.slope.  
29.70 Spur, slopes WSW.: descend 35 ft., over SE.slope.  
31.90 Wash, 2 chs. from head, course W.; ascend over NW.slope.  
37.10 Short spur, slopes SW.: descend 50 ft., over SE.slope, to  
40.00 Set an iron post, 3 ft.long, 1 in. in diam., 26 ins. in  
the ground, for 1/4 sec.cor., marked on brass cap,

1/4  
S16 | S15  
1919

51.30 Raise a mound of stone, 2 ft.base, 1 1/2 ft.high, W.of cor.  
Descend 280 ft., over S.slope.  
Road from Canyon del Oro to Tucson, Arizona, brs.E. and W.  
52.90 Bridge brs.W. about 20 chs.dist.  
Foot of descent, brs.E. and W. Enter wash in bottom of  
Canyon del Oro with stream of water, 20 lks.wide, 6 ins.  
deep, course W.; ascend 577 ft., over NE.slope to sec.  
61.20 cor.  
Mine shaft, 20 ft.deep.  
80.00 Set an iron post 3 ft. long, 2 ins. in diam., 24 ins.in  
the ground, for cor.of secs.15,16,21 and 22, marked  
on brass cap,

T10S | R15E  
S16 | S15  
S21 | S22  
1919

from which,  
A cedar, 10 ins.in diam., brs.N.48 1/2°E., 34 lks.  
dist., mark "T10S R15E S15 BT."  
A cedar, 12 ins.in diam., brs.S.59°E., 104 lks.  
dist., mark "T10S R15E S22 BT."  
A cedar, 8 ins.in diam., brs.N.15°W., 99 lks.  
dist., mark "T10SR15E S16 BT."  
No other trees being available, raise a mound of stone,  
2 ft.base, 1 1/2 ft.high, W.of cor.  
Land, mountainous.  
Soil, sandy and gravelly, 2nd and 3rd rate.  
Timber, scattering cedar and oak near S.end of mile; none  
elsewhere.  
Undergrowth, scattering scrub oak, manzanita and cactus.

## 30 Part of Subdivision lines of Township 10 South, Range 15 East.

Chains.	
40.00	S.89°57'E., on a random line, bet. secs.15 and 22. Set temp. $\frac{1}{4}$ sec.cor.
80.12	Intersect N. and S. line, 10 lks.S. of the cor.of secs. 14,15,22 and 23. Thence, S.89°59'W., on true line, bet. secs. 15 and 22. Over mountainous land, thru. scattering timber and under- growth; ascend 40 ft., over S.slope.
1.45	Wire fence, brs.N. and S.
6.10	Spur, slopes WSW.; descend 280 ft., over NW.slope.
9.65	A point from which U.S.Mineral Monument No.1 of the Canyon del Oro District brs.S.27°15'W.
16.90	A prospect tunnel brs.N. 15 lks.dist.
17.25	Bottom of canyon, course SW., with stream of water 2 lks. wide, 3 ins. deep; ascend 60 ft., over SE.slope.
18.90	Red sandstone cliff, 15 ft.high, brs.NE. and SW.
21.60	Short spur, slopes S.; trail, brs.N and S.; descend 75 ft., over SW.slope.
29.00	Foot of descent at junction of bottom of canyon from SE., with bottom of Canyon del Oro, course W. from SSE. Cross stream of water, 20 lks.wide, 6 ins. deep, course NW. Thence in bottom of Canyon del Oro.
30.40	A point from which U.S.Mineral Monument No.1 of the Can- yon del Oro Mineral District, brs.S.29°40'E.
32.00	A point 75 lks.S.of corrugated iron house.
35.60	A stone house, deserted, brs. S.25 lks.dist.
38.10	Same stream of water crossed at 29.00 ch. station, 20 lks. wide, 5 ins. deep, course S.80° W.
40.06	Set an iron post, 3 ft.long, 1 in. in diam., 26 ins. in the ground, for $\frac{1}{4}$ sec.cor., marked on brass cap,

$\frac{1}{4}$  S 15  
S 22  
1919

from which,

A sycamore, 20 ins.in diam., brs.N.62 $\frac{1}{4}$ °E., 276  
lks.dist., mark " $\frac{1}{4}$ S15BT."

A sycamore, 12 ins.in diam., brs.S.50 $\frac{1}{4}$ °E., 97  
lks.dist., mark " $\frac{1}{4}$ S22BT."

Continue in bottom of Canyon del Oro.

41.20 Road to old Stamp Mill, brs.NW. and SE.

45.30 Same stream of water crossed at 29.00 and 38.10 chain  
stations, 20 lks.wide, 6 ins.deep, course NW.

49.50 Wash, course NW. Leave bottom of Canyon del Oro.  
Ascend 573 ft., over NE.slope.

73.20 Spur, slopes NE.; descend 70 ft., over N.slope, to

80.12 The cor.of secs.15,16,21 and 22.

Land, mountainous.

Soil, sandy and gravelly, 2nd and 3rd rate.

Timber, scattering cedar and sycamore.

Undergrowth, scattering scrub oak and manzanita and cac-  
tus.

From the original cor.of secs.4,5, 8 and 9, T.10 S.,R.  
15 E. is a triangular granite stone 10x6x10 ins.  
above ground, firmly set, marked with 4 notches on  
E.edge, and 5 notches on S.edge, and witnessed by a  
mound of stone, 2 ft.base, 1 $\frac{1}{2}$  ft. high, W. of cor. No  
bearing trees.

Thence,

East, on a random line, bet. secs.4 and 9.

40.00 Set temp.  $\frac{1}{4}$  sec.cor.

80.36 Intersect N. and S. line, 18 lks.N. of the cor.of secs.3,  
4,9 and 10.

Thence,

N.89°52'W., on true line, bet. secs.4 and 9.

Over mountainous land, thru.scattering undergrowth; de-  
scend 90 ft., over rolling S.slope, to

40.18 Set an iron post, 3 ft.long, 1 in.in diam., 26 ins.in the



Part of Subdivision lines of Township 10 South, Range 15 East. 31

Chains.

ground, for 1/4 sec.cor., marked on brass cap,

1/4 S 4  
S 9  
1919

- 61.06 Raise a mound of stone, 2 ft. base, 1 1/2 ft. high, N. of cor.
  - 70.96 Descend 30 ft., over S. slope, to Spur, slopes SW.; descend 171 ft., over NW. slope.
  - 75.66 Wash, course SSW.; ascend 132 ft., over SE. slope.
  - 80.36 Short spur, slopes S.; descend 80 ft., over W. slope, to Intersect the original cor. of secs. 4, 5, 8 and 9.
- Land, mountainous.  
Soil, gravelly, 3rd rate.  
No timber.  
Undergrowth, scattering scrub oak and cactus.

- 4.80 S. 0° 02' E., bet. secs. 8 and 9.
- 10.60 Over rolling and mountainous land, thru. scattering undergrowth; descend 96 ft., over SW. slope, to Point of hill; descend 150 ft., over SE. slope.
- 13.00 Wash, course SW.; ascend 20 ft., over NW. slope.
- 40.00 North side of flat cut by small washes, course SW.; thence over flat. Set an iron post, 3 ft. long, 1 in. in diam., 26 ins. in the ground, for 1/4 sec. cor., marked on brass cap,

S 8 1/2 S 9  
1919

from which,

- A cedar, 22 ins. in diam., brs. N. 81 1/2° E., 267 lks. dist., mark "1/4 S 9 BT."
- A cedar, 22 ins. in diam., brs. N. 86° W., 251 lks. dist., mark "1/4 S 8 BT."
- 40.50 Large wash, course SW.; leave flat, brs. NE. and SW.; ascend 130 ft., over NW. slope.
- 53.00 Spur, slopes WSW.; descend 65 ft., over SE. slope.
- 56.90 Wash, course WSW.; ascend 400 ft., over NW. slope.
- 69.40 Stony ridge, brs. E. and W.; descend 250 ft., over S. slope.
- 78.60 Junction of two draws, brs. 50 lks. W. One draw from N., and the other from E. Ascend 10 ft., over S. slope, to
- 80.00 Set an iron post, 3 ft. long, 2 ins. in diam., 24 ins. in the ground, for cor. of secs. 8, 9, 16 and 17, marked on brass cap,

T10S | R15E  
S 8 | S 9  
S17 | S16  
1919

Raise a mound of stone, 2 ft. base, 1 1/2 ft. high, W. of cor.  
Land, rolling and mountainous.  
Soil, 2nd and 3rd rate.  
Timber, none except scattering oak and cedar near the 1/4 sec. cor.  
Undergrowth, scattering scrub oak, manzanita and cactus.

- 40.00 S. 89° 52' E. on a random line, bet. secs. 9 and 16. Set temp. 1/4 sec. cor.
  - 80.28 Intersect N. and S. line, 10 lks. N. of the cor. of secs. 9, 10, 15 and 16.
- Thence,  
N. 89° 48' W., on true line, bet. secs. 9 and 16.  
Over mountainous land, thru. scattering timber and undergrowth; desc. 118 ft., over SW. slope, to

32. Part of Subdivision lines of Township 10 South, Range 15 East.

Chains.

- 5.78 Wash, course SW.; descend 70 ft., over SW. slope, to
- 12.58 Same, wash, course N.80°W.; ascend 57 ft., over NE. slope.
- 29.28 Spur, slopes NW.; descend 279 ft., over NW. slope.
- 40.14 Set an iron post, 3 ft. long, 1 in. in diam., 26 ins. in ground, for  $\frac{1}{4}$  sec. cor., marked on brass cap,

$\frac{1}{4}$  S 9  
 8 16  
 1919

- 61.08 Raise a mound of stone, 2 ft. base,  $1\frac{1}{2}$  ft. high, N. of cor. Wash, 20 lks. wide, course SW.; ascend 257 ft., over SE. slope.
- 74.78 Spur, slopes S.; descend 154 ft., over W. slope, to
- 80.28 The cor. of secs. 8, 9, 16 and 17.  
 Land, mountainous.  
 Soil, gravelly, 3rd rate.  
 Timber, scattering oak and cedar.  
 Undergrowth, scattering scrub oak, manzanita, and cactus.

-----

S.0°02'E., bet. secs. 16 and 17.  
 Over mountainous land, thru. scattering timber and undergrowth; ascend 20 ft., over W. slope.

- 1.40 Short spur, slopes SW.; descend 73 ft., over SE. slope.
- 9.60 Wash, course SW.; ascend 10 ft.
- 10.30 Short spur, slopes SW.; descend 105 ft., over SE. slope
- 17.80 Road, brs. E and W.
- 19.90 Foot of descent; enter bottom of Canyon del Oro, with stream of water, 20 lks. wide, 6 ins. deep, course W.
- 20.10 Foot of perpendicular cliff, 40 ft. high, brs. E. and W., facing N. From top of cliff ascend 500 ft., over NW. slope.
- 40.00 Set an iron post, 3 ft. long, 1 in. in diam., 26 ins. in the ground, for  $\frac{1}{4}$  sec. cor., marked on brass cap,

$\frac{1}{4}$   
 S17 | S16  
 1919

- 40.30 Raise a mound of stone, 2 ft. base,  $1\frac{1}{2}$  ft. high, W. of cor. Spur, slopes SW.; descend 180 ft., over SE. slope.
- 48.50 Gulch, course NW.; ascend 375 ft., over NE. slope.
- 63.60 Top of Samandego Ridge, brs. E. and W. at this point, general bearing NW. and SE.  
 Descend 215 ft., over SW. slope.
- 73.00 Head of gulch, course W.; ascend 35 ft., over W. slope, to
- 80.00 Set an iron post, 3 ft. long, 2 ins. in diam., 24 ins. in the ground, for cor. of secs. 16, 17, 20 and 21, marked on brass cap,

T10S | R15E  
 S17 | S16  
 -----  
 S20 | S21  
 1919

-----

Raise a mound of stone, 2 ft. base,  $1\frac{1}{2}$  ft. high, W. of cor.  
 Land, mountainous.  
 Soil, gravelly, 3rd rate.  
 Timber, scattering oak and cedar.  
 Undergrowth, scattering scrub oak, manzanita and cactus.

- 40.00 S.89°48'E., on a random line, bet. secs. 16 and 21. Set temp.  $\frac{1}{4}$  sec. cor.
- 80.20 Intersect N. and S. line, 8 lks. N. of the cor. of secs. 15, 16, 21 and 22.  
 Thence,

Part of Subdivision lines of Township 10 South Range 15 East. 33

Chains.

- N. 89°45' W., on a true line, bet. secs. 16 and 21. Over mountainous land, thru. scattering timber and undergrowth; ascend 58 ft., over NE. slope.
- 4.50 Spur, slopes NNW.; descend 478 ft., over W. slope.
- 22.20 Wash, with stream of water, 1 lk. wide, 3 ins. deep, course NE.; ascend 230 ft., over SE. slope.
- 35.70 Spur, slopes NE. from W.; thence along top of same; ascend 300 ft. to top of Samamiego Ridge.
- 40.10 Set an iron post, 3 ft. long, 1 in. in diam., 26 ins. in the ground, for 1/4 sec. cor., marked on brass cap,

$\frac{1}{4} \frac{S \ 16}{S \ 21}$   
 1919

from which,

- An oak, 12 ins. in diam., brs. N. 47° W., 290 lks. dist., mark "1/4 S16 BT."
- An oak, 12 ins. in diam., brs. S. 72 1/2° W., 254 lks. dist., mark "1/4 S21 BT."
- 57.90 Top of Samamiego Ridge, brs. WNW. and ESE.; descend 145 ft., over SW. slope.
- 78.30 Spur, slopes S.; descend 60 ft., over W. slope, to
- 80.20 The cor. of secs. 16, 17, 20 and 21. Land, mountainous. Soil, gravelly and rocky, 3rd and 4th rate. Timber, scattering oak and cedar. Undergrowth, scattering scrub oak, manzanita and cactus.

-----

From true point for cor. of secs. 7, 8, 17 and 18, East, on a random line, bet. secs. 8 and 17.

- 40.00 Set temp. 1/4 sec. cor.
- 79.92 Intersect N. and S. line; 3 lks. S. of the cor. of secs. 8, 9, 16 and 17. Thence, S. 89°59' W., on true line, bet. secs. 8 and 17. Over mountainous land, thru. scattering timber and undergrowth; descend 52 ft., over W. slope.
- 4.92 Draw, course SW.; ascend 45 ft., over SE. slope.
- 8.90 Spur, slopes SW.; descend 91 ft., over NW. slope.
- 12.59 Draw, course SW.; ascend 63 ft., over SE. slope.
- 14.90 Spur, slopes SW.; descend 65 ft., over W. slope.
- 18.30 Wash, course S.; thence over rolling S. slope, to
- 39.96 Set an iron post, 3 ft. long, 1 in. in diam., 18 ins., in the ground, supported by a mound of stone, for 1/4 sec. cor., marked on brass cap,

$\frac{1}{4} \frac{S \ 8}{S \ 17}$   
 1919

- Raise a mound of stone, 2 ft. base, 1 1/2 ft. high, N. of cor. Descend 76 ft., over NW. slope.
- 47.26 Road brs. NE. and SW. at foot of descent, brs. NW. and SE. Enter bottom of Canyon del Oro.
- 50.22 Stream of water, 18 lks. wide, 4 ins. deep, course NW.; leave bottom of Canyon del Oro; ascend 48 ft., over NE. slope.
- 55.25 An adobe house, brs. SE. 4 chs. dist.
- 55.50 Point of spur, sloping N.; descend 40 ft.
- 58.86 Wash, course N.; ascend 30 ft.
- 63.42 Point of spur, slopes N.; descend 50 ft.
- 66.00 Reenter bottom of Canyon del Oro, brs. NE. and SW.
- 66.33 Stream of water, 5 lks. wide, 3 ins. deep, course SW. Leave bottom of Canyon del Oro; ascend 62 ft., over SE. slope.
- 67.00 Top of ascent on point of bluff, brs. ENE. and WNW.; descend 45 ft., over S. slope, to
- 79.00 Foot of descent, brs. NW. and SE. Reenter bottom of Canyon del Oro.
- 79.92 Intersect the reestablished true point for cor. of secs. 7, 8, 17 and 18, in wash with stream of water 30 lks. wide,

34 Part of Subdivision lines of Township 10 South, Range 15 East.

Chains.

4 to 6 ins. deep, course SW. from SE. The witness cor. to this cor. is hereinbefore described in notes of resurvey of part of Subdivision lines of T.10 S., R.15 E.

Land, mountainous.

Soil, gravelly and rocky, 3rd and 4th rate.

Timber, scattering oak, cedar, palo verde, and cottonwood.

Undergrowth, scattering scrub oak, manzanita and cactus.

From reestablished true point for cor. of secs. 7, 8, 17 and 18,

West, on a random line, bet. secs. 7 and 18.

12.68 Intersect W. bdy. of Tp. at the reestablished cor. of secs. 7 and 18, hereinbefore described.

Thence,

East, on true line, bet. secs. 7 and 18.

Over mountainous land, thru. scattering timber and undergrowth; descend 102 ft., over SE. slope.

12.00 Foot of descent, brs. NE. and SW.; enter bottom of Canyon del Oro.

12.68 The reestablished true point for cor. of secs. 7, 8, 17 and 18, in wash, with stream of water, course SW. Cor. point is witnessed at 55 lks. N. 0° 3' W., as hereinbefore described.

Land, mountainous.

Soil, gravelly and rocky, 3rd and 4th rate.

Timber, scattering palo verde, oak and cedar, cactus.

Undergrowth, scattering scrub oak, manzanita and cactus.

S. 0° 03' E., bet. secs. 17 and 18, from reestablished true point for cor. of secs. 7, 8, 17 and 18.

Over mountainous land, thru. scattering timber and undergrowth.

In wash, with stream of water, 30 lks. wide, 4 to 6 ins. deep, course SW., in bottom of Canyon del Oro.

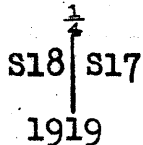
.80 Leave wash, and bottom of Canyon del Oro; ascend 302 ft. over N. slope.

1.50 Road brs. NW. and SE.

18.97 Spur, slopes NW.; descend 268 ft., over SW. slope.

33.29 Wash, course SW.; ascend 93 ft., over NW. slope to

40.00 Spur, slopes SW. Set an iron post 3 ft. long, 1 in. in diam., 26 ins. in the ground for  $\frac{1}{4}$  sec. cor., marked on brass cap,



Raise a mound of stone, 2 ft. base,  $1\frac{1}{2}$  ft. high, W. of cor. Descend 120 ft., over SE. slope.

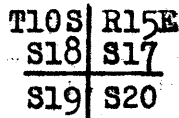
44.80 Wash, course SW.; ascend 104 ft., over N. slope.

50.50 Spur, slopes W.; descend 57 ft., over S. slope.

54.50 Wash, course W.; ascend 179 ft., over N. slope.

60.10 Spur, slopes W.; descend 231 ft., over SW. slope, to

80.00 Set an iron post, 3 ft. long, 2 ins. in diam., 24 ins. in the ground, for cor. of secs. 17, 18, 19 and 20, marked on brass cap,



1919

Raise a mound of stone, 2 ft. base,  $1\frac{1}{2}$  ft. high, W. of cor. Ladd, mountainous.

Soil, gravelly and rocky, 3rd and 4th rate.

Timber, scattering cedar, oak, and sycamore, cactus.

Undergrowth, scattering scrub oak, manzanita and cactus.

Part of Subdivision lines of Township 10 South, Range 15 East. 35

Chains.

N. 89° 59' E., on a random line, bet. secs.17 and 20.  
 40.00 Set temp.  $\frac{1}{4}$  sec.cor.  
 80.14 Intersect N. and S. line, 5 lks.S. of the cor.of secs.16,  
 17,20 and 21.  
 Thence,  
 S.89°57'W., on true line, bet. secs.17 and 20.  
 Over mountainous land, thru. scattering timber and under-  
 growth; descend 110 ft., over SW. slope.  
 4.00 Wash, course SE.; ascend 15 ft.  
 5.54 Point of spur, slopes SE.; descend 15 ft.  
 7.34 Wash, course SE.; ascend 15 ft.  
 8.90 Pass between hills, bears N. and S.; descend 77 ft.  
 20.44 Wash, course SSW.; ascend 20 ft.  
 22.84 Spur, slopes SW.; descend 125 ft., over W.slope.  
 34.74 Wash, course SE.; ascend 15 ft.  
 39.15 Spur, slopes S.; descend 10 ft.  
 40.07 Set an iron post, 3 ft.long, 1 in. in diam., 26 ins. in  
 the ground, for  $\frac{1}{4}$  sec.cor., marked on brass cap,

$\frac{1}{4}$  S 17  
 S 20  
 1919

40.74 Raise a mound of stone, 2-ft. base, 1 $\frac{1}{2}$  ft. high, N.of cor.  
 43.32 Draw, course S. Head of same brs.2 chs.N.; ascend 20 ft.  
 55.14 Short spur, slopes S.; descend 35 ft., over W.slope.  
 61.34 Wash, course SE.; ascend 135 ft., over NE.slope.  
 66.34 Top of hill; descend 80 ft., over W.slope.  
 70.04 Wash, course SSW.; ascend 105 ft., over E.slope.  
 80.14 Spur, slopes SSW.; descend 186 ft., over NW.slope, to  
 The cor.of secs.17,18,19 and 20.  
 Land, mountainous.  
 Soil, gravelly and rocky, 3rd and 4th rate.  
 Timber, scattering oak and cedar.  
 Undergrowth, scattering scrub oak, manzanita and cactus.

12.35 West, on a random line, bet. secs.18 and 19.  
 Intersect W. bdy.of Tp., at the reestablished cor.of secs.  
 18 and 19, hereinbefore described.  
 Thence,  
 East, on a true line, bet. secs.18 and 19.  
 Over mountainous land, thru. scattering timber and under-  
 growth. Ascend 307 ft., over W.slope, to  
 12.35 The cor.of secs.17,18,19 and 20.  
 Land, mountainous.  
 Soil, gravelly and rocky, 3rd and 4th rate.  
 Timber, scattering oak.  
 Undergrowth, scattering scrub oak, manzanita and cactus.

The continued satisfactory adjustment of the solar appa-  
 ratus during the survey of this township is indicated  
 from field tests as described in Book "N".

Boundaries of that part of T.10 S., R.15 E., subdivided  
under this Group.

-----  
Latitudes, Departures, and Closing Errors.  
-----

Line designated.	True course.	Dist.	Latitudes.		Departures.	
			N.	S.	E.	W.
Subdivisional boundary.	S.89°59'W.	80.12		.02		80.12
	N.89°45'W.	80.20	.35			80.20
	S.89°57'W.	80.14		.07		80.14
	West,	12.35				12.35
West boundary.	N.0°20'W.	70.54	70.54			.41
	N.0°22'E.	40.30	40.30		.26	
	N.0°40'E.	39.72	39.72		.46	
	North,	9.44	9.44			
Subdivisional North bdy.	East,	91.63			91.63	
	N.0°2'W.	80.00	80.00			.05
North boundary,	East,	160.00			160.00	
Subdivisional East bdy.	S.0°1'E.	240.00		240.00		
Convergency,					.12	
Totals,			240.35	240.09	252.47	253.27
			240.09			252.47
<u>Error in latitude.</u>			0.26			
<u>Error in departure.</u>					0.80	

GENERAL DESCRIPTION.

T.10 S., R.15 E., is generally mountainous, traversed by high ridges and spurs, having a northerly trend. The township is drained by the Canyon del Oro, and numerous sand washes which cross the Tp. in a northwesterly direction. The soil of the major portion of the township is generally rocky, and can nearly all be classed as 3rd and 4th rate. The township is watered by the creek flowing in the Canyon del Oro, and several small brooks which flow for short periods during the different seasons of the year when rains are prevalent. That portion of the township south of the Canyon del Oro is fairly well timbered with cedar and oak, while along the bottom of the canyon is found groves of sycamore and cottonwood; in the northeastern and eastern parts, scattering patches of mesquite and palo verde timber occur, though most of the trees are too small to be of much value, except for fuel purposes. The greater portion of the township is covered with a good growth of bunch grass and filaree, one of the most nutritious of the wild forage plants, which naturally adapts the land for grazing purposes. This township is situated in the Canyon del Oro Mining District, and at the present time contains 8 patented mining claims in sections 5, 8, 9 and 10. The U.S. Mineral Mon. No. 1 of this district is in the NE. quarter of section 22.

4-680

BOOK 3447

FIELD ASSISTANTS.  
to Dupree R. Averill, U. S. Transitman

NAMES.	CAPACITY.
Theo. VanderMeer,	1st chainman,
Raymond Nettleship,	2nd chainman,
William Bunch,	cornerman,
William Dalglisch,	axeman,
Gus A. Huebner,	flagman,

BOOK 3447

CERTIFICATE OF UNITED STATES TRANSITMAN

I, Dupree R. Averill, U. S. Transitman hereby certify upon honor that, in pursuance of special instructions received from the U. S. Surveyor General, for Group 81, Arizona

bearing date of the 6th day of February, 1918, I have well, faithfully, and truly

in my own proper person, and in strict conformity with said instructions, the Manual of Surveying Instructions, and the laws of the United States, retraced

and surveyed all those parts or portions of the East boundary, and Subdivision lines

of Township 10 South, Range 15 East

of the Gila and Salt River

Base and Meridian, in the State of Arizona

and by diagram on page 1 hereof

the foregoing field notes, as having been executed by me, and under my direction; and that all the corners of retracement and

said survey have been established and perpetuated in strict accordance with the Manual of Surveying Instruc-

tions, and the special written instructions of the U. S. Surveyor General, for Group 81, Arizona

and in the specific manner described in the field notes, and that the foregoing are the original field notes of such retracement and survey.

Date February 28, 1921

Dupree R. Averill

U. S. Transitman

Place Siam, California

APPROVAL.

OFFICE OF THE UNITED STATES SURVEYOR GENERAL,

, 191

The foregoing field notes of the survey of

executed by

under his special instructions dated, 191, having been critically examined, and the necessary corrections and explanations made, the said field notes, and the surveys they describe, are hereby approved.

U. S. Surveyor General.

I certify that the foregoing transcript of the field notes of the above-described surveys in

, has been correctly copied from the original notes on file in this office.

U. S. Surveyor General.



FIELD ASSISTANTS.

to Herbert N. Raymond, U. S. Cadastral Engineer,

NAMES.	CAPACITY.
Edward S. Smith,	1st chainman,
Frank Clancy,	2nd chainman,
Lee Bunch,	cornerman,
Bert Overton,	axeman,
John W. Read,	flagman.

40  
BOOK 3447

CERTIFICATE OF UNITED STATES CADASTRAL ENGINEER.

I, Herbert N. Raymond, U.S. Cadastral Engineer,

hereby certify upon honor that, in pursuance of special instructions received from the U. S. Surveyor General, for Group 81, Arizona,

bearing date of the 5th day of February, 1918, I have well, faithfully, and truly

in my own proper person, and in strict conformity with said instructions, the Manual of Surveying Instructions, and the laws of the United States, ~~surveyed~~ <sup>retraced</sup> all those parts or portions of the E. bdy. of T. 10

S., R. 14 E., and resurveyed all those parts or portions of the 2nd Std.

Par. S. in Rs. 15 and 16 E., the E. bdy. of T. 10 S., R. 14 E., and the Subdi-

vision lines of T. 10 S., R. 15 E., and surveyed all those parts or por-

tions of the Subdivision lines of T. 10 S., R. 15 E.

of the Gila and Salt

River Base and Meridian, in the State of Arizona, which are represented in

the foregoing field notes <sup>and by diagram on page 1 hereof</sup> as having been executed by me, and under my direction; and that all the corners of

~~my~~ <sup>said retracement, resurvey &</sup> survey have been established and perpetuated in strict accordance with the Manual of Surveying Instruc-

tions, and the special written instructions of the U. S. Surveyor General, for Group 81, Arizona,

and in the specific manner described in the field notes, and that the foregoing are the original field notes of

such retracement, resurvey and survey.

Date February 17, 1921

Place Olympia, Wash

*Herbert N. Raymond*  
U.S. Cadastral Engineer.

APPROVAL.

OFFICE OF THE UNITED STATES SURVEYOR GENERAL,

Phoenix, Arizona, May 23, 1921

The foregoing field notes of the ~~survey~~ <sup>retracement</sup> of the North half of the East bdy. of T. 10 S., R. 15 E., and part of the East bdy. of T. 10 S., R. 14 E.; the resurvey of the 2nd Standard Parallel South, thru. Range 15 E., and the W. 4 miles in Range 16 E., part of the E. bdy. of T. 10 S., R. 14 E., and part of Subdivision lines of T. 10 S., R. 15 E., and the survey of S. 1/2 of E. bdy., and part of Subdivision lines of T. 10 S., R. 15 E., of the Gila and Salt River Base and Meridian, in the State of Arizona, executed by William H. Thorn and Herbert N. Raymond, U.S. Cadastral Engineers, and Dupree R. Averill, U.S. Transitman,

under ~~the~~ special instructions dated Feb. 6, 1918, for Group 81, Arizona, ~~and~~ <sup>retracements, resurveys and</sup> having been critically examined, and the necessary corrections and explanations made, the said field notes, and the surveys they describe, are hereby approved.

*Frank O. Frost*  
U. S. Surveyor General.

I certify that the foregoing transcript of the field notes of the above described surveys in \_\_\_\_\_, has been correctly copied from the original notes on file in this office.