

FIELD NOTES

OF ~~THE SURVEY OF THE~~

RESURVEY OF

Subdivision and Meander Lines

in

TOWNSHIP 5 SOUTH

RANGE 8 EAST

Within the Gila River Indian Reservation

Of the Gila & Salt River Base and Meridian,

In the State of Arizona

EXECUTED BY

Guy P. Harrington

In the capacity of U. S. Surveyor, under instructions dated Oct. 11, 1910,

Commissioner of the General Land Office to A.F. Dunnington,
~~issued by the United States Surveyor General to govern surveys included in~~
Topographer in Charge of Indian Surveys and dated Sept. 20, 1919 issued by
~~Group No. 98, which were approved by the Commissioner of the General Land~~

~~U. S. Sur. Gen'l. to govern resurveys under Group No. 98, approved by the~~
~~Office, 1910, pursuant to authority contained in the Act of~~

Commissioner of the G. L. O. on October 11, 1919.

Survey ~~completed~~ March 26 to March 28, 1911

and

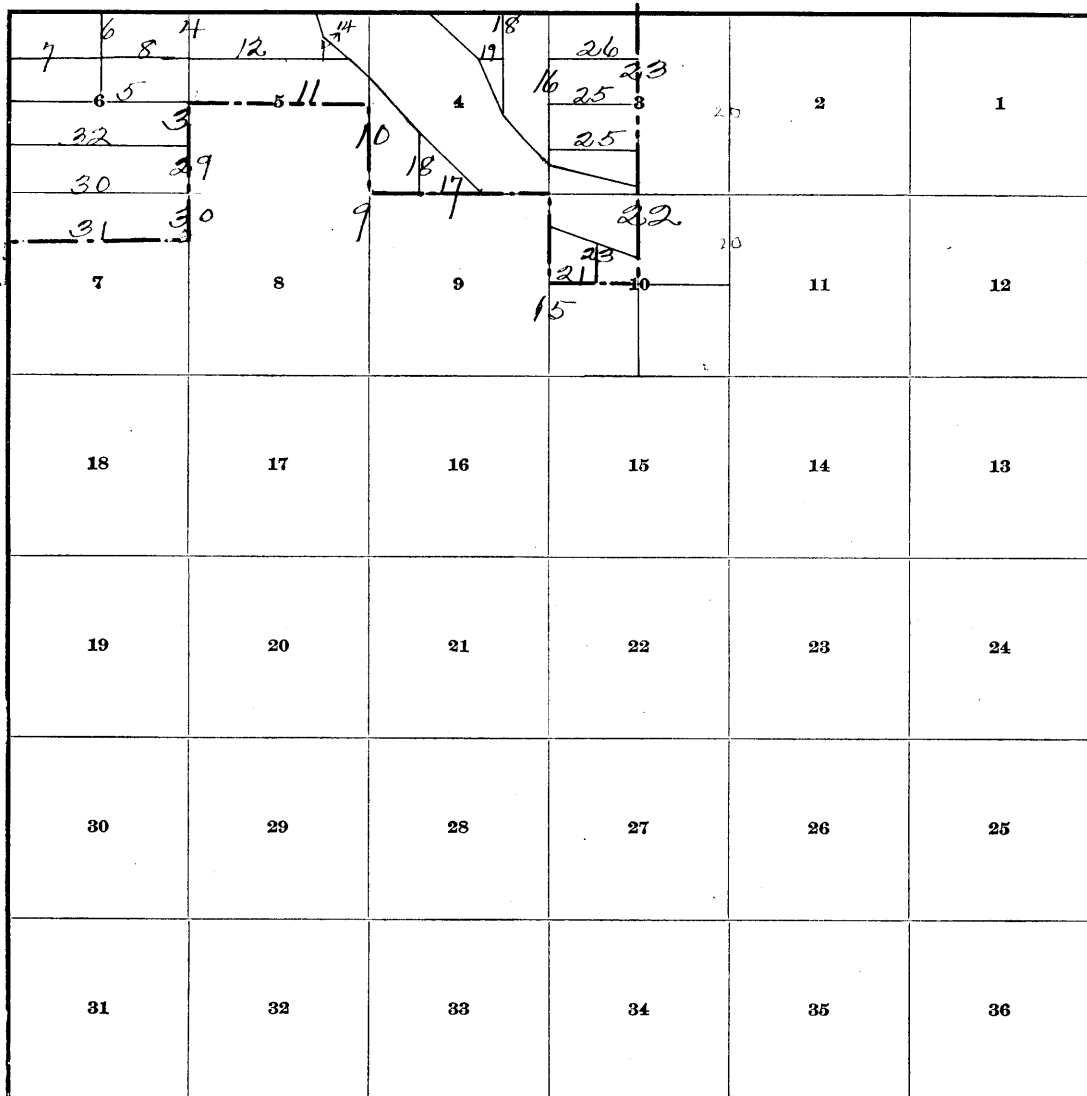
Survey ~~completed~~ January 3, 1912

Survey Oct. 14 to 17, 1919 incl.

BOOK 877

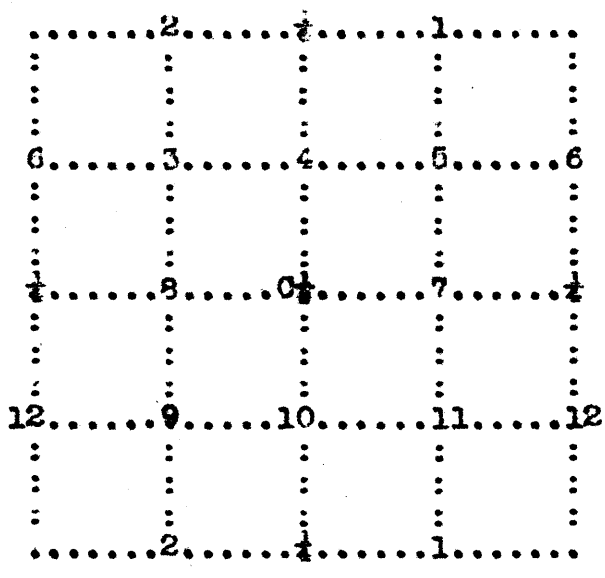
INDEX DIAGRAM.

Township 5 South, Range 8 East



Meanders of Gila River, Pages 27 and 28. 6-151

Diagram of a section showing position
of 1/16 sec. cors.



Subdivision of T. 5 S., R. 8 E.

Chains

Survey commenced March 26, 1911, by Guy P. Harrington, U. S. Surveyor, and executed with Young & Sons light mountain transit, No. 8388, with solar attachment. The horizontal limb is provided with two double verniers placed opposite each other, reading to single minutes of arc, which is also the least count of the verniers of the latitude and declination arcs.

The instrument was examined and tested on a meridian at Phoenix, Arizona, on December 1, 1910; and later, at various times on meridians established at camp from observations on Polaris, and found to be in correct adjustment. (For notes of Polaris observation, see notes of the survey of subdivision of T. 4 S., R. 6 E., Jan. 5, 1911).

The iron posts used in this survey, unless otherwise described, are 3 feet long, 1 inch in diameter and are set 26 ins. in the ground. The posts are filled with cement and fitted with brass caps.

The NW. cor. of this township is in Lat. 33° 02' N., Long. 111° 35' W.

After several days' search for old corners in the subdivision of T. 5 S., R. 8 E., I discover the cor. of secs. 10, 11, 14 and 15, which is a palo fierro post 6 ins. sq., 1 1/2 ft. above ground, firmly set, marked S 15 on SW. face, and T 4 S R 8 E on NE. face. I decide that the marking T 4 S was an error made in marking the post at the time of survey. There is no evidence of pits or mound.

Thence I run

S. 89° 44' W. on a random line bet. secs. 10 and 15.

40.03 Falls 34 lks. S. of a wooden post marked plainly N E S 15 on SE. face.

Since this marking is not in accordance with that described in the notes of original survey, I decide that it is not an original corner. This post has the appearance of having been set at a later date than the original survey.

40.13 Set temp. 1/4 sec. cor. bet. secs. 10 and 15.

80.27 No trace of the old cor. of secs. 9, 10, 15 and 16 is found.

Set temp. cor.

Thence I run

N. 89° 40' W. on a random line bet. secs. 9 and 16.

39.80 No trace of the old 1/4 sec. cor. is found.

79.60 No trace of the old cor. of secs. 8, 9, 16 and 17 is found.

Set temp. cor.

Subdivision of T. 5 S., R. 8 E.

Chains

Thence I run

S. 89° 51' W. on a random line bet. secs. 8 and 17.

40.00 No trace of the old 1/4 sec. cor. is found.

Set temp. 1/4 sec. cor.

80.00 No trace of the old cor. of secs. 7, 8, 17 and 18. is found.

Set temp. cor.

Thence I run

S. 89° 45' W. on a random line bet. secs. 7 and 18.

40.00 No trace of the old 1/4 sec. cor. is found.

Set temp. cor.

82.70 Falls 180 lks. N. of the cor. of secs. 7 and 18, on W. bdy. of Tp., which is a wooden post 2 ft. sq., 1 ft. above ground, marks illegible, from which a mesquite 24 ins. dia. brs. N. 18° E., 103 lks. dist.; mkd. S. 18 B.T.; A mesquite stump 10 ins. dia. brs. S. 33° 30' W., 17 lks. dist., all markings on stump destroyed when tree was cut. These bearings and distances agree with notes of original survey.

Returning to the cor. of secs. 10, 11, 14, and 15 and along side the old cor. set an iron post 3 ft. long, 3 ins. in diam. 24 ins. in the ground mkd. on cap

T5S	R8E
S10	S11
S15	S14

1919

Thence I run

S. 89° 25' W. on a true blank line bet. secs. 10 and 15. (Since this line is not on the Reservation, I take no topography along same).

40.48 At proportional dist. Set temp. stake at true point for 1/4 sec. cor. bet. secs. 10 and 15.

80.97 At proportional dist. Set temp. stake at true point for cor. of secs. 9, 10, 15 and 16.

Thence

N. 89° 59' W. on a true blank line bet. secs. 9 and 16.

40.15 At proportional distance Set temp. stake at true point for 1/4 sec. cor.

80.30 At proportional distance Set temp. stake at true point for cor. of secs. 8, 9, 16 and 17.

Thence

S. 89° 32' W. on a true blank line bet. secs. 8 and 17.

40.35 At proportional distance Set temp. stake at true point for 1/4 sec. cor.

80.70 At proportional distance Set temp. stake at true point for cor. of secs. 7, 8, 17 and 18.

Subdivision of T. 5 S., R. 8 E.

Chains

Thence

S. 89° 26' W. on a true blank line bet. secs. 7 and 18.

40.35 At proportional dist.,
Set temp. stake at true point for 1/4 sec. cor. bet. secs. 7 and 18.

80.60 At proportional dist.,
The cor. of secs. 7 and 18, on W. bdy. of Tp., heretofore described.

March 26, 1911. At temp. stake at true point for the cor. of secs. 7, 8, 17 and 18, I set off 2° 00' N. on the decl. arc, and at apparent Noon, observe the sun on the meridian; the resulting lat. is 33° 00', the proper lat.

Thence I run

N. 0° 30' W. on a random line bet. secs. 7 and 8.

40.00 No trace of the 1/4 sec. cor. bet. secs. 7 and 8.
Set temp. cor.

80.00 No trace of the cor. of secs. 5, 6, 7 and 8.
Set temp. cor.

Thence

N. 0° 37' W. on a random line bet. secs. 5 and 6, preserving the original difference in bearing of the section lines at this point.

40.00 No trace of the old 1/4 sec. cor. bet. secs. 5 and 6.
Set temp. 1/4 sec. cor.

79.06 Falls 40 lks. E. of the cor. of secs. 5 and 6, as re-established by me on the N. bdy. of the Tp.

The reported length of this line is 80.42 chs. My distance is therefore 1.36 chs. less for the 2 miles than the reported length or 68 lks. short per mile.

Returning to the temp. stake at true point for cor. of secs. 7, 8, 17 and 18, thence I run

N. 0° 39' W. on a true line bet. secs. 7 and 8.

39.66 True point for the 1/4 sec. cor. bet. secs. 7 and 8, (proportional dist.)
I leave no monument at this point.

For establishment of 1/16 cor. of 55.49 and cor. of secs. 5, 6, 7 and 8 see Pages 30 and 29 of amended survey

79.32 True point for cor. of secs. 5, 6, 7 and 8, (proportional dist.)
I leave no monument at this point.

Thence

N. 0° 46' W. on a true blank line bet. secs. 5 and 6,

39.66 *For establishment of 1/16 cor. of 19.83 see Page 29 of amended survey*
Set an iron post for 1/4 sec. cor. bet. secs. 5 and 6, stamped in cap

- 1/8 6 in W.
- S 5 G R I R in NE.
- P L in SW.
- P L in SE.
- 1911 in S.

Subdivision of T. 5 S., R. 8 E.

Chains

Dig pits 18x18x12 ins. N. and S. of post 3 ft. dist.; and raise a mound of earth 3½ ft. base, 1½ ft. high, W. of cor.

A mesquite 18 ins. dia. brs, N. 52° 32' E., 189 lks. dist. Mkd. ¼ S 5 B T.

A mesquite 12 ins. dia. brs. N. 0° 30' E., 166 lks. dist. Mkd. ¼ S 5 B T.

This cor. is designated as a point on the reservation bdy.

Note: I established this cor. common to sec. 6 as well as sec. 5, since I must use it in establishing the center ¼ sec. cor. of sec. 6.

Thence I continue

N. 0° 46' W. on a true line bet. secs. 5 and 6, along the reservation bdy; Commencing my distance anew at the ¼ sec. cor.

Over level land, through scattered brush.

9.75 Wire fence, brs. N. 5° E. and S. 5° W.

Enter land claimed by Padilla.

13.00 Wire fence, brs. N. 70° W. and S. 70° E.

Leave Padilla's field.

16.00 Little Gila River, 1.00 ch. wide, course N. 70° W., (water in pools).

16.50 Road, brs. N. 70° W. and S. 70° E.

17.00 Wire fence, brs. N. 70° W. and S. 70° E.

Enter cultivated field claimed by Indians.

19.83 At proportional distance Set an iron post for 1/16 sec. cor. No. 6, bet. secs. 5 and 6 (N½), stamped in cap

1/16 S 6 in W.
S 5 in E.
G E I R in NE.
P L in SW.
No 6 1911 in S., from which

A mesquite 12 ins. dia. brs. N. 66° E., 197 lks. dist. Mkd. 1/16 S 5 B T.

A willow 24 ins. dia. brs. S. 1° 0' E., 248 lks. dist. Mkd. 1/16 S 5 B T.

Dig pits 18x18x12 ins. N. and S. of post 3 ft. dist.; and raise a mound of earth 3½ ft. base, 1½ ft. high, W. of cor.

This cor. is an angle point on the reservation bdy.

Thence continue over Indian Reservation.

31.80 Wire fence, brs. E. and W.

32.10 Lateral ditch, brs. E. and W.

32.50 Wire fence, brs. N. 30° E. and S. 30° W.

33.00 Indian's cabin brs. W., 10 lks. dist.

35.00 Wire fence, brs. N. 70° W. and S. 70° E.

Subdivision of T. 5 S., R. 8 E.

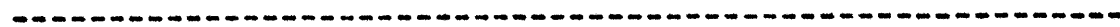
Chains

35.10 Road, brs. N. 70° W. and S. 70° E.

38.00 Cabin, brs. W., 2.00 chs. dist.

At proportional dist.,
40.08 (20.25) ^ The cor. of secs. 5 and 6, previously described,
on N. bdy. of Tp.

Land, level and cultivated.
Soil, sandy loam, 1st rate.



From the 1/4 sec. cor. bet. secs. 5 and 6, which is an
angle point on the reservation bdy., I run

West on a random line through the middle of sec. 6, along
the reservation bdy.

40.00 Set temp. center 1/4 sec. cor. of sec. 6.

79.72 Falls 18 lks. N. of the 1/4 sec. cor. on the W. bdy. of sec.
6, which is an angle point on the reservation bdy.

(Theoretical length of this line is 80.11 chs.)

Thence I run

N. 89° 52' E. on a true line through the middle of sec. 6,
along the reservation bdy.

Over level land, through scattered brush.

2.00 Road, brs. N. 30° E. and S. 30° W.

6.60 Road, brs. N. 45° E., and S. 45° W.

14.30 Wire fence, brs. N. 30° E. and S. 30° W.

20.07 At proportional distance, set an iron post for 1/16 sec.
cor. No. 8, bet. the NW. and SW. quarters of sec. 6,
stamped in cap

1/16 S 6 G R I R in N.
No 8 P L 1911 in S., from which
For change in markings on pipe see amerided notes Pg. 33
A mesquite 12 ins. dia. brs. S. 46° 30' E., 94 lks. dist.
Mkd. 1/16 S 6 B T.
A mesquite 10 ins. dia. brs. N. 59° 30' W., 162 lks. dist.
Mkd. 1/16 S 6 B T.

Dig pits 18x18x12 ins. E. and W. of post 3 ft. dist.;
and raise a mound of earth 3 1/2 ft. base, 1 1/2 ft. high, N.
of cor.

25.50 Wire fence, brs. N. 60° W. and S. 60° E.

26.50 Road, brs. N. 70° W. and S. 70° E.

32.00 Indian's cabin, brs. N. 3.00 chs. dist.

38.00 Road, brs. N. and S.

39.96 At proportional distance, set an iron post for center 1/4
sec. cor. of sec. 6, stamped in cap

C 1/4 S 6 in middle
G R I R in NW.
P L in SE.
1911 in S., from which

Subdivision of T. 5 S., R. 8 E.

Chains

The SW. cor. of adobe store building brs. S. 53° E., 105 lks. dist.

The NW. cor. of Padilla's house brs. N. 11° 30' E., 163 lks. dist.

A mesquite 8 ins. dia. brs. S. 78° 30' W., 294 lks. dist.
Mkd. C 1/4 S 6 B T.

79.72 The 1/4 sec. cor. bet. secs. 5 and 6.

Land, level.
Soil, sandy loam, 1st rate.
Scattered brush of sage, mesquite, chaparral, - 39.85 chs.

From the center 1/4 sec. cor. of sec. 6, which is a point on the reservation bdy., I run

N. 0° 30' W. on a random line through the middle of sec. 6.

20.00 Set temp. 1/16 sec. cor.

40.15 Falls 3 lks. E. of the 1/4 sec. cor. on the N. bdy. of sec. 6.

Returning to the center 1/4 sec. cor. of sec. 6, thence I run

N. 0° 32' W. on a true line through the middle of the N. half of sec. 6.

Through scattered brush.

19.97 At proportional distance, set an iron post for 1/16 sec. cor. No. 4, bet. the NE. and NW. quarters of sec. 6, stamped in cap

1/16 S 6 No 4 in middle
G R I R in NW.
P L in SE.
1911 in S., from which

A mesquite 6 ins. dia. brs. N. 15° 45' W., 203 lks. dist.
Mkd. 1/16 S 6 B T.

A mesquite 6 ins. dia. brs. N. 40° 30' W., 143 lks. dist.
Mkd. 1/16 S 6 B T.

Dig pits 18x18x12 ins. N. and S. of post 3 ft. dist.; and raise a mound of earth 3 1/2 ft. base, 1 1/2 ft. high, W. of cor.

This cor. is an angle point on the reservation bdy.

Thence over the reservation (continuing measurement).

22.00 Wire fence, brs. N. 10° E. and S. 10° W.

26.10 Wire fence, brs. N. 80° W. and S. 80° E.

30.00 Road, brs. E. and W.

Subdivision of T. 5 S., R. 8 E.

Chains

- 31.50 Wire fence, brs. N. 80° W. and S. 80° E.
Leave fields.
 - 32.50 Little Gila River, 75 lks. wide, (water in pools), course W.
 - 34.00 Wire fence, brs. N. 80° W. and S. 80° E.
 - 40.15 The ¼ sec. cor. on N. bdy. of sec. 6, heretofore described.

Land, level.
Soil, sandy loam, 1st rate.
Open brush of mesquite, 6.00 chs.
-
- From the 1/16 sec. cor. No. 4, bet. the NE. and NW. quarters of sec. 6, which is an angle point on the reservation bdy., I run

West on a random line through the NW¼ of sec. 6.
 - 20.00 Set temp. 1/16 sec. cor.
 - 39.76 Falls 6 lks. N. of the 1/16 sec. cor. No. 6, on the W. bdy. of sec. 6 (N½).

Thence I run

N. 89° 55' E. on a true line through the NW¼ of sec. 6.

Over level land, through scattered brush.
 - 5.20 Road, brs. N. 80° E. and S. 80° W.
 - 10.20 Road, brs. N. and S.
 - 19.00 Road, brs. N. 20° W. and S. 20° E.
 - 19.88 Set an iron post for the 1/16 sec. cor. No. 3, in the center of the NW¼ of sec. 6, stamped in cap

1/16 S 6 in middle
No 3 1911 in S., from which

A mesquite 8 ins. dia. brs. S. 26° 30' E., 53 lks. dist.
Mkd. 1/16 S 6 B T.
A mesquite 8 ins. dia. brs. N. 73° W., 75 lks. dist.
Mkd. 1/16 S 6 B T.

Dig pits 18x18x12 ins. E. and W. of post 3 ft. dist.;
and raise a mound of earth 3½ ft. base, 1½ ft. high, N. of cor.
 - 23.50 Cabin, brs. S., 10 lks. dist.
 - 24.00 Cabin, brs. N., 150 lks. dist.
 - 32.00 Road, brs. N. 45° W. and S. 45° E.
 - 33.00 Wire fence, brs. N. 20° E. and S. 20° W.

Enter cultivated field.
 - 36.80 Lateral ditch, brs. N. 20° E. and S. 20° W.

Subdivision of T. 5 S., R. 8 E.

Chains

39.76 The 1/16 sec. cor. No. 4, which is an angle point on the reservation bdy.

Land, level, 6.76 chs. cultivated.
Soil, sandy loam, 1st rate.
Scattered brush of sage and mesquite, 33.00 chs.

From the 1/16 sec. cor. No. 4, bet. the NE. and NW. quarters of sec. 6, which is an angle point on the reservation bdy., I run

East on a random line through the middle of the NE $\frac{1}{4}$ of sec. 6, along the reservation bdy.

20.00 Set temp. 1/16 sec. cor.

39.84 Falls 10 lks. N. of the 1/16 sec. cor. No. 6, bet. secs. 5 and 6 (N $\frac{1}{2}$), which is an angle point on the reservation bdy.

Returning to the 1/16 sec. cor. No. 4, bet. the NE. and NW. quarters of sec. 6, which is an angle point on the reservation bdy., thence I run

S. 89° 51' E. on a true line through the middle of the NE $\frac{1}{4}$ of sec. 6, along the reservation bdy.

19.92 Set an iron post for 1/16 sec. cor. No. 5, in the center of the NE $\frac{1}{4}$ of sec. 6, stamped in cap

1/16 S 6 No 5 in middle
G R I R in N.
P L 1911 in S.

Dig pits 18x18x12 ins. E. and W. of post 3 ft. dist.; and raise a mound of earth 3 $\frac{1}{2}$ ft. base, 1 $\frac{1}{2}$ ft. high, N. of cor.

25.00 Lateral ditch, brs. N. 50° W. and S. 60° E.

. Enter open brush.

31.00 Wire fence, brs. N. 20° E. and S. 20° W.

32.00 Wire fence, brs. N. and S.

32.50 Little Gila River, course N. 70° W.

33.00 Wire fence, brs. N. and S.

35.00 Road, brs. N. 70° W. and S. 70° E.

35.50 Wire fence, brs. N. 70° W. and S. 70° E.

Enter cultivated field.

38.00 Wire fence, brs. N. 20° W. and S. 20° E.

39.84 The 1/16 sec. cor. No. 6, bet. secs. 5 and 6 (N $\frac{1}{2}$), which is an angle point on the reservation bdy.

Land, level.
Soil, sandy loam, 1st rate.

4-21-1911

Subdivision of T. 5 S., R. 8 E.

Chains

4.34 chs. of cultivated field claimed by Indians.
10.50 chs. open brush of sage and mesquite.

March 26, 1911.

March 27, 1911. At 9.00 a.m., l.m.t., I set off 33°00' on the lat. arc, 2° 21' N. on the decl. arc, and determine a meridian with the solar, at the temp. stake at the true point for the cor. of secs. 8, 9, 16 and 17.

Thence I run

N. 1° 0' W. on a random line bet. secs. 8 and 9.

40.00 No trace of the 1/2 sec. cor. bet. secs. 8 and 9.
Set temp. cor.

80.00 No trace of the cor. of secs. 4, 5, 8 and 9.
Set temp. cor.

Thence

N. 0° 48' W. on a random line bet. secs. 4 and 5, preserving the difference in bearing of section lines at this point.

40.00 No trace of the 1/2 sec. cor. bet. secs. 4 and 5.

78.86 Falls 32 lks. E. of the point for the cor. of secs. 4, and 5, in bed of Gila River, as re-established by me on N. bdy. of Tp.

The reported length of this line is 79.83 chs. My distance is 96 lks. shorter than the reported distance or 43 lks. per mile.

Returning to the temp. stake at the true point for the cor. of secs. 8, 9, 16 and 17, thence I run

N. 1° 07' W. on a true blank line bet. secs. 8 and 9.

At proportional dist.
39.76 True point for the 1/2 sec. cor. bet. secs. 8 and 9.

I establish no monument at this point.

At proportional dist.
79.52 Set an iron post for the SW. cor. of sec. 4, stamped in cap
S 9 in SE.
S 5 in NW.
T 5 S R 8 E S 4 G R I R in NE.
P L S 8 in SW.
1911 in S.
5 notches on S. and 4 on E. edge, from which

A mesquite 8 ins. dia. brs. N. 36° 45' W., 83 lks. dist.
Mkd. T 5 S R 8 E S 5 B T.

Dig pits 36x36x12 ins., E. and N. of cor., 4 ft. dist., and raise a mound of earth 5 ft. base, 2 1/2 ft. high, NE. of cor.

This is also the proportionate original point for the cor. of secs. 4, 5, 8 and 9.

Subdivision of T. 5 S., R. 8 E.

Chains	
	Thence I run
	N. 0° 55' W. on a true line bet. secs. 4 and 5, along the reservation bdy.
	Over level land, through open brush.
1.20	Wire fence, brs. E. and W.
19.88	At proportional dist., Set an iron post for 1/16 sec. cor. No. 12, of sec. 4, S $\frac{1}{2}$, stamped in cap 1/16 S 4 No 12 G R I R in E. P L in W. 1911 in S.
	Dig pits 18x18x12 ins. N. and S. of post 3 ft. dist.; and raise a mound of earth 3 $\frac{1}{2}$ ft. base, 1 $\frac{1}{2}$ ft. high, E. of cor.
22.30	Road, brs. N. 60° W. and S. 60° E.
26.00	Middle of earth dam across Little Gila River, brs. N. 30° W. and S. 30° E. Enter reservoir, water about 1 ft. deep.
28.35	Leave reservoir, brs. N. 70° W. and S. 70° E.
30.30	Irrigation ditch, brs. N. 70° W. and S. 70° E. and forks to N. Thence along N. fork.
31.00	Leave ditch, brs. N. 5° E. and S. 5° W.
33.00	Same ditch, course N. 70° W.
34.00	Old ditch, brs. N. 70° W. and S. 70° E.
39.76	At proportional dist., Set an iron post for the $\frac{1}{4}$ sec. cor. bet. secs. 4 and 5, stamped in cap $\frac{1}{4}$ S 5 in W. S 4 in E. G R I R in NE. P L in SW. 1911 in S. Dig pits 18x18x12 ins. N. and S. of post 3 ft. dist.; and raise a mound of earth 3 $\frac{1}{2}$ ft. base, 1 $\frac{1}{2}$ ft. high, W. of cor. This cor. is an angle point on the reservation bdy.
54.25	Left bank of Gila River. Set an iron post for M.C. bet. secs. 4 and 5, stamped in cap M C in N. T 5 S S 5 in SW. R 8 E S 4 in SE. 1911 in S. 4 notches on E. edge Dig a pit 36x36x12 ins. S. of post, and raise a mound of earth 4 ft. base, 2 ft. high, S. of cor.
59.64	At proportional dist., True point for 1/16 sec. cor. No. 6, bet. secs. 4 and 5 (N $\frac{1}{2}$), falls in bed of Gila River.
79.34	True point for cor. of secs. 4 and 5, on N. bdy. of Tp., falls in bed of Gila River. Land, level. Soil, sandy loam, 1st rate. Open and dense brush of sage, and mesquite, full distance.

Subdivision of T. 5 S., R. 8 E.

Chains

From the 1/4 sec. cor. bet. secs. 5 and 6, I run East on a random line through the middle of sec. 5, along the reservation bdy., setting temp. cors. at intervals of 20.00 chs.

79.76 Falls 63 lks. S. of the 1/4 sec. cor. bet. secs. 4 and 5, which is an angle point on the reservation bdy.

Thence I run

S. 89° 33' W. on a true line through the middle of sec. 5, along the reservation bdy.

Over level land, through open and dense brush of sage and mesquite.

2.00 Road, brs. N. 60° E. and S. 60° W.

5.00 Lateral ditch, brs. N. 60° W. and S. 60° E.

12.50 Irrigation canal 10 lks. wide, brs. N. 60° W. and S. 60° E.

16.10 Road, brs. N. 20° W. and S. 20° E.

19.50 Old ditch, brs. N. 20° W. and S. 20° E.

19.94 Set an iron post for 1/16 sec. cor. No. 7, ~~center~~ of the N. half of sec. 5, stamped in cap

1/16 S 5 No 7 C R I R in N.
P L 1911 in S., from which

A cottonwood 5 ft. dia. brs. N. 89° 45' E., 139 lks. dist.
Mkd. 1/16 S 5 B T.

Dig pits 18x18x12 ins. E. and W. of post 3 ft. dist.; and raise a mound of earth 3 1/2 ft. base, 1 1/2 ft. high, N. of cor.

23.80 Road, brs. N. 30° E. and S. 30° W.

24.10 Wire fence, brs. N. 30° E. and S. 30° W.

25.80 Lateral ditch brs. N. 60° W. and S. 60° E.

28.10 Wire fence, brs. N. 60° W. and S. 60° E.

28.70 Lateral ditch, brs. N. 60° W. and S. 60° E.

32.10 Road, brs. N. 60° W. and S. 60° E.

38.00 Bend in Little Gila River, from S. 80° E. to S. 80° W.

39.88 Set an iron post for the center 1/4 sec. cor., ~~center~~ of the N. half of sec. 5, stamped in cap

C 1/4 S 5 G R I R in N.
P L 1911 in S., from which

A willow 3 ft. dia. brs. S. 60° W., 102 lks. dist.
Mkd. C 1/4 S 5 B T.

Dig pits 18x18x12 ins. E., W. and N. of post 4 ft. dist.; and raise a mound of earth 5 ft. base, 2 1/2 ft. high, N. of cor.

52.00 Little Gila River, 1.00 ch. wide, course N. 40° W.

Subdivision of T. 5 S., R. 8 E.

Chains

- 54.00 Wire fence, brs. N. 60° W. and S. 60° E.
- 59.82 Set an iron post for 1/16 sec. cor. No. 8, ~~xxxxx~~ for the N. half of sec. 5, stamped in cap

 1/16 S 5 No 8 G R I R in N.
 P L 1911 in S., from which

 A mesquite 10 ins. dia. brs. N. 60° E., 162 lks. dist.
 Mkd. 1/16 S 5 B T.

 Dig pits 18x18x12 ins. E. and W. of post 3 ft. dist.;
 and raise a mound of earth 3½ ft. base, 1½ ft. high,
 N. of cor.
- 74.50 Road, brs. N. 40° W. and S. 40° E.
- 79.76 The ¼ sec. cor. bet. secs. 5 and 6, previously described,
 which is an angle point on the reservation bdy.

 Land, level.
 Soil, sandy loam, 1st rate.
 Open and dense brush of sage and mesquite, full distance.

 From the 1/16 sec. cor. No. 6, bet. secs. 5 and 6 (N½)
 which is an angle point on the reservation bdy., pre-
 viously described, I run

 East on a random line through the middle of the N. half
 of sec. 5, setting temp. cors. at intervals of 20.00
 chs.
- 71.10 Left bank of Gila River.
 Set temp. M.C.
- 79.52 Falls 56 lks. S. of point for 1/16 sec. cor. No. 6, bet.
 secs. 4 and 5 (N½), which point falls in bed of Gila
 River.

 Thence I run

 S. 89° 36' W. on a true line through the middle of the
 N. half of sec. 5.

 Over dry channel of Gila River.
- 8.42 Left bank of Gila River.

 Set an iron post for 1/16 M.C. of sec. 5, stamped in cap

 M C in E.
 1/16 S 5 in W.
 1911 in S.

 Dig a pit 36x36x12 ins. 8 ft. W. of post, and raise a
 mound of earth 4 ft. base, 2 ft. high, W. of cor.

 Thence over level land, through scattered sage and mes-
 quite brush.
- 13.50 Enter cultivated field, brs. N. and S.
- 17.00 Wire fence, brs. N. 30° E. and S. 30° W.
- 17.40 Lateral ditch, brs. N. 60° W. and S. 60° E.

Subdivision of T. 5 S., R. 8 E.

Chains

19.88 Set an iron post for 1/16 sec. cor. No. 5, in the center of the NE $\frac{1}{4}$ of sec. 5, stamped in cap

1/16 S 5 in middle
No 5 1911 in S., from which

A mesquite 6 ins. dia. brs. N. 54 $\frac{1}{2}$ $^{\circ}$ W., 202 lks. dist.
Mkd. 1/16 S 5 B T.

Dig pits 18x18x12 ins. E. and W. of post 3 ft. dist.;
and raise a mound of earth 3 $\frac{1}{2}$ ft. base, 1 $\frac{1}{2}$ ft. high,
N. of cor.

21.40 Wire fence, brs. N. 60 $^{\circ}$ W. and S. 60 $^{\circ}$ E.

25.70 Lateral ditch, brs. N. 30 $^{\circ}$ E. and S. 30 $^{\circ}$ W.

32.50 Lateral ditch, brs. N. 60 $^{\circ}$ W. and S. 60 $^{\circ}$ E.

35.00 Wire fence, brs. N. 60 $^{\circ}$ W. and S. 60 $^{\circ}$ E.

35.50 Wire fence, and lateral ditch, brs. N. 60 $^{\circ}$ W. and S. 60 $^{\circ}$ E.

39.40 Lateral ditch, brs. N. 60 $^{\circ}$ W. and S. 60 $^{\circ}$ E.

39.76 Set an iron post for the 1/16 sec. cor. No. 4, bet. the NE.
and NW. quarters of sec. 5, stamped in cap

1/16 S 5 in middle
No 4 1911 in S., from which

A cottonwood 4 ins. dia. brs. S. 84 $\frac{1}{2}$ $^{\circ}$ W., 176 lks. dist.
Mkd. 1/16 S 5 B T.

Dig pits 18x18x12 ins. E. and W. of post 3 ft. dist.;
and raise a mound of earth 3 $\frac{1}{2}$ ft. base, 1 $\frac{1}{2}$ ft. high,
N. of cor.

41.50 Wire fence, brs. N. 30 $^{\circ}$ E. and S. 30 $^{\circ}$ W.

46.60 Wire fence, brs. N. 60 $^{\circ}$ W. and S. 60 $^{\circ}$ E.

47.50 Wire fence, brs. N. 30 $^{\circ}$ E. and S. 30 $^{\circ}$ W.

51.50 Wire fence, brs. N. 30 $^{\circ}$ E. and S. 30 $^{\circ}$ W.

52.50 Lateral ditch, brs. N. 60 $^{\circ}$ W. and S. 60 $^{\circ}$ E.

54.00 Lateral ditch, and wire fence, brs. N. 30 $^{\circ}$ E. and S. 30 $^{\circ}$ W.

56.50 Lateral ditch, brs. N. 60 $^{\circ}$ W. and S. 60 $^{\circ}$ E.

59.64 Set an iron post for 1/16 sec. cor. No. 3, in the center of the NW $\frac{1}{4}$ of sec. 5, stamped in cap

1/16 S 5 in middle
No 3 1911 in S.

Dig pits 18x18x12 ins. E. and W. of post 3 ft. dist.;
and raise a mound of earth 3 $\frac{1}{2}$ ft. base, 1 $\frac{1}{2}$ ft. high,
N. of cor.

61.50 Wire fence, brs. N. 30 $^{\circ}$ E. and S. 30 $^{\circ}$ W.

68.50 Lateral ditch, and wire fence, brs. N. 60 $^{\circ}$ W. and S. 60 $^{\circ}$ E.

73.10 Lateral ditch, brs. N. 30 $^{\circ}$ E. and S. 30 $^{\circ}$ W.

75.30 Wire fence, brs. N. and S.

Subdivision of T. 5 S., R. 8 E.

Chains

75.40 Road, brs. N. and S.

79.52 The 1/16 sec. cor. No. 6, bet. secs. 5 and 6 (N $\frac{1}{2}$), which is an angle point on the reservation bdy., previously described.

Land, level; 66.60 chs. cultivated.
Soil, sandy loam, 1st rate.
Open and dense brush of sage and mesquite, 13.50 chs.

From the 1/16 sec. cor. No. 5, in the center of the NE $\frac{1}{4}$ of sec. 5, I run

N. 0° 53' W. on a true line through the NE $\frac{1}{4}$ of sec. 5.

Over cultivated field.

1.20 Lateral ditch, brs. N. 60° W. and S. 60° E.

2.10 Lateral ditch, brs. N. 30° E. and S. 30° W.

9.35 Left bank of Gila River.

Set an iron post for 1/16 M.C. of sec. 5, stamped in cap

1/16 S 5 1911 in S.
M C in N.

Dig a pit 36x36x12 ins. 8 ft. S. of post; and raise a mound of earth 4 ft. base, 2 ft. high, S. of cor.

Land, level and cultivated.
Soil, sandy loam, 1st rate.

From temp. stake at true point for the cor. of secs. 9, 10, 15 and 16, I run

N. 1° 30' W. on a random line bet. secs. 9 and 10.

40.00 No trace of the $\frac{1}{4}$ sec. cor. bet. secs. 9 and 10.
Set temp. $\frac{1}{4}$ sec. cor.

80.00 Point for cor. of secs. 3, 4, 9 and 10 falls in middle of dry bed of Gila River.

set temp. cor.

Thence I run

N. 1° 08' W. on a random line bet. secs. 3 and 4, preserving the reported difference in bearing of section lines at this point.

40.00 No trace of the $\frac{1}{4}$ sec. cor. bet. secs. 3 and 4.
Set temp. $\frac{1}{4}$ sec. cor.

78.96 Falls 52 lks. E. of the cor. of secs. 3 and 4, on N. bdy. of Tp., as re-established by me and previously described.

The reported length of this line is 79.70 chs. The difference in measurement is 74 lks. for the 2 miles. I therefore have 37 lks. to proportion into each mile.

Subdivision of T. 5 S., R. 8 E.

Chains

Returning to the temp. stake at the true point for the cor. of secs. 9, 10, 15 and 16, thence I run

N. 1° 41' W. on a true blank line bet. secs. 9 and 10.

Over public land.

~~At proportional dist.,
 39.81 Set an iron post for 1/4 sec. cor. bet. secs. 9 and 10,
 stamped in cap (This cor. removed under instructions for Group 98 as it no longer indicates reservation bdy. See pg. 50 of these field notes.)~~

~~1/4 S 9 P L in W.
 S 10 G R I R in E.
 1911 in S.~~

~~Dig pits 18x18x12 ins. N. and S. of post 3 ft. dist.; and raise a mound of earth 3 1/2 ft. base, 1 1/2 ft. high, W. of cor.~~

~~This cor. is an angle point on the reservation bdy.~~

~~Thence along the reservation bdy., bet. secs. 9 and 10 (N 1/2) continuing measurement.~~

Over level land, through open and dense brush of sage, willow and mesquite.

40.11 Wire fence, brs. N. 85° W. and S. 85° E.

40.30 Road, brs. N. 85° W. and S. 85° E.

55.20 Irrigation canal, brs. N. 85° W. and S. 85° E. (ditch)

59.72 Proportional dist. for 1/16 sec. cor. falls in irrig'n

60.02 Set an iron post for WC. to 1/16 cor. bet. secs. 9 and 10 (N. 1/2 mile) stamped in cap

S 10 in E.
1 16 S 9 P L in W.
G R I R in N.
WC 1911 in S.

Dig pits 18x18x12 ins. N. and S. of post 3 ft. dist.; True point for cor is an angle point on the reservation boundary.

60.50 Lateral ditch, brs. E. and W.

66.50 Road, brs. E. and W.

66.70 Irrigation ditch, 15 lks. wide, brs. E. and W.

67.30 Left bank of Gila River, course NW.

Set an iron post for M.C. of secs. 9 and 10, stamped in cap

M C in N.
T 5 S S 9 in SW.
R 8 E S 10 in SE.
1911 in S.
3 notches on E. edge

Dig pit 36x36x12 ins. 8 ft. S. of post; and raise a mound of earth 4 ft. base, 2 ft. high, S. of cor.

79.63 Set temp. stake at true point for cor. of secs. 3, 4, 9 and 10, in bed of Gila River, which is now dry.

This temp. stake is an angle point on the reservation bdy.

Land, level.

Soil, sandy loam, 1st rate.

Open and dense brush of sage, willow and mesquite, full distance.

Subdivision of T. 5 S., R. 8 E.

Chains

From temp. stake at true point for cor. of secs. 3, 4, 9 and 10, I run

N. 1° 19' W. on a true line bet. secs. 3 and 4.

Over Gila River bed, now dry.

14.80 Right bank of Gila River, course NW.

Set an iron post for M.C. bet. secs. 3 and 4, stamped in cap

M C 1911 in S.
T 5 S S 3 in NE.
R 8 E S 4 in NW.
3 notches on E. edge

Dig a pit 36x36x12 ins. 8 ft. N. of post; and raise a mound of earth 4 ft. base, 2 ft. high, N. of cor.

Thence through dense brush of willow and mesquite.

At proportional dist.,
19.91 Set an iron post for 1/16 sec. cor. No. 12, bet. secs. 3 and 4 (S 1/2), stamped in cap

1/16 S 4 in W. half
S 3 in E. half
No 12 1911 in S.

Dig pits 18x18x12 ins. N. and S. of post 3 ft. dist.; and raise a mound of earth 3 1/2 ft. base, 1 1/2 ft. high, W. of cor.

25.00 Wire fence, brs. N. 70° W. and S. 70° E.

28.40 Enter cultivated field, brs. N. 60° W. and S. 60° E.

37.40 Wire fence, brs. N. 30° E. and S. 30° W.

37.60 Wire fence, brs. N. 30° E. and S. 30° W.

38.70 Wire fence, brs. N. 60° W. and S. 60° E.

At proportional dist.,
39.82 Set an iron post for 1/4 sec. cor. bet. secs. 3 and 4, stamped in cap

1/4 S 4 in W. half
S 3 in E. half
1911 in S., from which

A mesquite 18 ins. dia. brs. N. 3 1/2° E., 255 lks. dist.
Mkd. 1/4 S 3 B T.

Dig pits 18x18x12 ins. N. and S. of post 3 ft. dist.; and raise a mound of earth 3 1/2 ft. base, 1 1/2 ft. high, W. of cor.

41.70 Lateral ditch, brs. N. 60° W. and S. 60° E.

41.80 Wire fence, brs. N. 30° E. and S. 30° W.

41.90 Lateral ditch, brs. N. 60° E. and S. 60° W.

53.90 Wire fence, brs. N. 30° E. and S. 30° W.

Leave cultivated field, enter dense mesquite brush.

At proportional dist.,
59.73 Set an iron post for 1/16 sec. cor. No. 6, bet. secs. 3 and 4 (N 1/2) stamped in cap

Subdivision of T. 5 S., R. 9 E.

Chains

1/16 S 4 in W.
S 3 in E.
No 6 1911 in S., from which

A mesquite 10 ins. dia. brs. N. 10 1/2° E., 18 lks. dist.
Mkd. 1/16 S 3 B T.

Dig pits 18x18x12 ins. N. and S. of post 3 ft. dist.;
and raise a mound of earth 3 1/2 ft. base, 1 1/2 ft. high,
W. of cor.

68.10 Road, brs. N. 50° W. and S. 50° E.

73.00 Cabin, brs. W., 50 lks. dist.

79.33 The cor. of secs. 3 and 4, on N. bdy. of Tp., previously
described.

Land, level, 25.50 chs. cultivated; 14.80 chs. river bed.
Soil, sandy loam, 1st rate.
Dense brush of mesquite and willow, 39.03 chs.

March 27, 1911. At the SW. cor. of sec. 4 (which is also
the cor. of secs. 4, 5, 8 and 9) I set off 2° 24' N. on
the decl. arc, and at apparent noon, observe the sun on
the meridian; the resulting lat. is 33° 01', which is
the proper lat.

Thence I run

East on a random line bet. secs. 4 and 9, along the reser-
vation bdy., setting temp. cors. at intervals of 20.00
chs.

79.72 Falls 14 lks. S. of temp. stake at true point for the cor.
of secs. 3, 4, 9 and 10, in bed of Gila River.

Thence I run

S. 89° 54' W. on a true line bet. secs. 4 and 9.

Over Gila River Channel, which is now dry.

31.07 Left bank of Gila River, course NW.

Set an iron post for M.C. bet. secs. 4 and 9, stamped in
cap

M C in E.
T 5 S R 8 E S 4 G R I R in N.
P L S 9 1911 in S.

Dig a pit 36x36x12 ins. S ft. W. of post; and raise a
mound of earth 4 ft. base, 2 ft. high, W. of cor.

Thence over level land.

39.86 Set an iron post for 1/4 sec. cor. of sec. 4, stamped in
cap

1/4 S 4 G R I R in N.
P L S 9 1911 in S., from which

A mesquite 24 ins. dia. brs. N. 18° 45' W., 172 lks. dist.
Mkd. 1/4 S 4 B T.

Dig pits 18x18x12 ins. E. and W. of post 3 ft. dist.;

Subdivision of T. 5 S., R. 8 E.

Chains

and raise a mound of earth $3\frac{1}{2}$ ft. base, $1\frac{1}{2}$ ft. high,
N. of cor.

41.00 Wire fence, brs. N. 60° E. and S. 60° W.

59.79 Set an iron post for $1/16$ sec. cor. No. 2, of sec. 4, $W\frac{1}{2}$,
stamped in cap

$1/16$ S 4 No 2 G R I R on N.
P L 1911 in S., from which

A mesquite 8 ins. dia. brs. N. $8^{\circ} 15'$ E., 208 lks. dist.
Mkd. $1/16$ S 4 B T.

A mesquite 8 ins. dia. brs. S. $72^{\circ} 30'$ E., 180 lks. dist.
Mkd. $1/16$ S 9 B T.

79.72 The SW. cor. of sec. 4, which is an angle point on the
reservation bdy.

Land, level, 31.07 chs.; river bed.
Soil, sandy loam, 1st rate.
48.65 chs.; dense mesquite brush.

From the $1/16$ sec. cor. No. 2, on S. bdy. of sec. 4, $W\frac{1}{2}$,
I run

N. $1^{\circ} 03'$ W. on a true line through the $SW\frac{1}{4}$ of sec. 4.

Over level land, through dense brush of mesquite and
willow.

8.00 Wire fence, brs. N. 60° W. and S. 60° E.

8.20 Wire fence, brs. N. 60° W. and S. 60° E.

13.30 S. edge of swamp caused by a dam on Little Gila River on
line bet. secs. 4 and 5.

Set an iron post for W.C. to the $1/16$ sec. cor. No. 9,
in the center of the $SW\frac{1}{4}$ of sec. 4, stamped in cap

W C $1/16$ S 4 in center
No 9 1911 in S.

Dig pits $18 \times 18 \times 12$ ins. N. and S. of post 3 ft. dist.;
and raise a mound of earth $3\frac{1}{2}$ ft. base, $1\frac{1}{2}$ ft. high,
W. of cor.

19.89 True point for $1/16$ sec. cor. in the center of the $SW\frac{1}{4}$ of
sec. 4, falls in swamp.

30.00 Left bank of Gila River, course NW., and true point for
M.C., which falls in swamp.

Land, level.
Soil, sandy loam, 1st rate.
26.70 chs. swamp. Dense brush of willow and mesquite,
full distance.

From the $1/16$ sec. cor. No. 1, ~~xxxxxx~~ of sec. 4 ($E\frac{1}{2}$) on
N. bdy. of Tp., I run

S. $1^{\circ} 11'$ E. on a true line through the E. half of sec. 4.

Over level land, through sage and mesquite brush.

0.80 Road, brs. N. 45° E. and S. 45° W.

Subdivision of T. 5 S., R. 8 E.

Chains

15.00 Road, brs. NE. and SW.

17.50 Wire fence, brs. N. 60° W. and S. 60° E.
Enter cultivated field.

19.62 Set an iron post for 1/16 sec. cor. No. 5, in the center
of the NE $\frac{1}{4}$ of sec. 4, stamped in cap

1/16 S 4 in middle
No 5 1911 in S.

Dig pits 18x18x12 ins. N. and S. of post 3 ft. dist.;
and raise a mound of earth 3 $\frac{1}{2}$ ft. base, 1 $\frac{1}{2}$ ft. high,
W. of cor.

25.90 Lateral ditch, brs. N. 60° W. and S. 60° E.

26.20 Lateral ditch, brs. N. 60° W. and S. 60° E.

33.00 Wire fence, brs. N. 60° W. and S. 60° E.

34.00 Wire fence, brs. N. 30° E. and S. 30° W.

39.40 Wire fence, brs. N. 60° W. and S. 60° E.

Leave field, enter dense mesquite brush.

39.52 Set an iron post for the 1/16 sec. cor. No. 7, bet. the
NE. and SE. quarters of sec. 4, stamped in cap

1/16 S 4 in middle
No 7 1911 in S., from which

A mesquite 24 ins. dia. brs. S. 64° E., 175 lks. dist.
Mkd. 1/16 S 4 B T.

Dig pits 18x18x12 ins. N. and S. of post 3 ft. dist.;
and raise a mound of earth 3 $\frac{1}{2}$ ft. base, 1 $\frac{1}{2}$ ft. high,
W. of cor.

45.82 Right bank of Gila River, course NW.

Set an iron post for 1/16 M.C. of sec. 4, stamped in cap

M C 1911 in S.
1/16 S 4 in N.

Dig a pit 36x36x12 ins. 8 ft. N. of post; and raise a
mound of earth 4 ft. base, 2 ft. high, N. of cor.

Land, level. 21.90 chs. cultivated.

Soil, sandy loam, 1st rate.

Open and dense brush of sage and mesquite, 23.92 chs.

From the 1/16 sec. cor. No. 5, in the center of the NE $\frac{1}{4}$
of sec. 4, I run

S. 89° 54' W. on a true line through the middle of the
NE $\frac{1}{4}$ of sec. 4.

Through cultivated field.

3.00 Wire fence, brs. N. 30° E. and S. 30° W.

Leave field, enter dense mesquite brush.

7.00 Irrigation canal, 15 lks. wide, brs. N. 60° W. and S. 60° E.

10.80 Right bank of Gila River, course NW.

Subdivision of T. 5 S., R. 8 E.

Chains

Set an iron post for 1/16 M.C. of sec. 4, stamped in cap

M C in W.
1/16 S 4 in E.
1911 in S., from which

A mesquite 12 ins. dia. brs. N. 4° W., 133 lks. dist.
Mkd. 1/16 S 4 M C B T.

Dig a pit 36x36x12 ins. 8 ft. E. of post, and raise a mound of earth 4 ft. base, 2 ft. high, E. of cor.

Land, level. 3.00 chs. cultivated.
Soil, sandy loam, 1st rate.
7.80 chs. of dense brush of mesquite and willow.

From the cor. of secs. 10, 11, 14 and 15, I run
N. 2° 0' W. on a random line bet. secs. 10 and 11.

40.00 No trace of the 1/4 sec. cor. bet. secs. 10 and 11.

Set temp. 1/4 sec. cor.

80.00 No trace of the cor. of secs. 2, 3, 10 and 11.

Set temp. cor.

Thence

N. 1° 52' W. on a random line bet. secs. 2 and 3, preserving the reported difference in bearing of sec. lines at this point.

40.00 No trace of the 1/4 sec. cor. bet. secs. 2 and 3.

78.44 Falls 5 lks. E. of the old cor. of secs. 2, 3, 34 and 35 on N. bdy. of Tp., previously described.

The reported length of the line bet. secs. 2 and 3 is 80.25 chs.

I therefore have 90 lks. to proportion for each mile.

Returning to the cor. of secs. 10, 11, 14 and 15, thence I run

N. 2° 01' W. on a true line (blank) bet. secs. 10 and 11.

Over public land.

At proportional dist.,
39.55 Set temp. stake at true point for 1/4 sec. cor. bet. secs. 10 and 11.

At proportional dist.,
79.10 Set temp. stake at true point for cor. of secs. 2, 3, 10 and 11, which point falls in Gila River channel.

Thence I run

S. 89° 25' W. on a random line bet. secs. 3 and 10.

Subdivision of T. 5 S., R. 8 E.

Chains

40.00 No trace of the 1/4 sec. cor. bet. secs. 3 and 10, which point now falls in Gila River channel.

Set temp. 1/4 sec. cor.

80.40 Falls 52 lks. S. of temp. stake at true point for cor. of secs. 3, 4, 9 and 10, in Gila River channel.

The bearing of the true line bet. secs. 3 and 10 is therefore S. 89° 47' W.

The true point for the 1/4 sec. cor. bet. secs. 3 and 10 is 26 lks. N. and 20 lks. W. of temp. cor. on random line, at which true point I set a temp. stake.

From temp. stake at true point for 1/4 sec. cor. bet. secs. 10 and 15, I run

N. 1° 50' W. on a random line through the middle of sec. 10.

40.00 Set temp. center 1/4 sec. cor.

52.00 Left bank of Gila River, course NW.

Set temp. M.C.

79.40 Falls 2 lks. W. of temp. stake at true point for 1/4 sec. cor. bet. secs. 3 and 10.

Move temp. center 1/4 sec. cor. 1 lk. E.

From the 1/4 sec. cor. bet. secs. 9 and 10,

N. 89° 39' E. on a random line through the middle of sec. 10.

40.40 Falls 30 lks. S. of temp. center 1/4 sec. cor.

80.60 Intersect temp. stake at true point for 1/4 sec. cor. bet. secs. 10 and 11.

Thence I run

S. 89° 39' W. on a true blank line, through the middle of sec. 10.

~~40.20 Set an iron post for center 1/4 sec. cor. of sec. 10, stamped in cap~~

~~C 1/4 S 10 G R I R in NW.
P L in SE.
1911 in S.~~

(This cor. removed under instructions for Group 98 as it no longer indicates reservation bdy. See Pg. 50 of these field notes.)

~~Dig pits 36x36x12 ins. W. and N. of post 8 ft. dist.; and raise a mound of earth 5 ft. base, 2 1/2 ft. high, NW. of cor.~~

~~This cor. is an angle point on the reservation bdy.~~

~~Thence along the reservation bdy., over cultivated field.~~

~~60.40 Set an iron post for 1/16 sec. cor. No. 8, stamped in cap for the NW 1/4 of sec. 10,~~

~~(This cor removed under instructions for Group 98 as it no longer indicates reservation boundary.)~~

Subdivision of T. 5 S., R. 8 E.

Chains

~~1/16 S 10 No 8 G R I R in N.
P L 1911 in S., from which~~

~~A mesquite 6 ins. dia. brs. N. 26° 45' E., 229 lks. dist.
Mkd. 1/16 S 10 B T.~~

~~Dig pits 18x18x12 ins. E. and W. of post 3 ft. dist.;
and raise a mound of earth 3 1/2 ft. base, 1 1/2 ft. high,
N. of cor.~~

78.00 Wire fence, brs. N. and S.

80.60 (40.40) ^{Point for} The 1/4 sec. cor. bet. secs. 9 and 10.

Returning to the temp. stake at the true point for the 1/4 sec. cor. bet. secs, 10 and 15, thence I run

N. 1° 49' W. on a true line (blank) through the middle of sec. 10.

39.70 ^{temp.} The center 1/4 sec. cor. of sec. 10, thence

over cultivated field.

41.00 Wire fence, brs. E. and W.
Leave cultivated field.

42.00 Lateral ditch, brs. E. and W.

46.10 Wire fence, brs. E. and W.

46.40 Road, brs. E. and W.

48.50 Irrigation canal, brs. E. and W.

48.70 Road, brs. from W. to N. 60° E.

51.50 Irrigation canal, brs. E. and W.

52.00 Left bank of Gila River, course NW. As point for 1/16 cor. Sec. 10 falls in river, set an iron post for WC, to 1/16 cor. bet. the NE. and NW. quarter secs. of sec. 10 marked on cap

~~1/16 S 10 G R I R in N.
P L WC 1911 in S.
from which~~

~~A mesquite 8 ins. dia. brs. S. 76° E., 21 lks. dist.
Mkd. 1/16 S 10 B T.~~

59.55 True point for the 1/16 sec. cor. between the NE. and NW. quarter secs. of sec. 10 falls in bed of river. This the SE. angle point on the reservation boundary.

Thence over river bed, along reservation boundary

79.40 The temp. stake at true point for the 1/4 sec. cor. bet. secs. 3 and 10.

Land, level, north from the center 1/4 sec. ^{cor} which is the only portion on which topography was taken; 1.00 ch. cultivated field.

Soil, sandy loam, 1st rate.

Open and dense growth of sage and mesquite, 11.30 chs.

Subdivision of T. 5 S., R. 8 E.

Chains

From the 1/16 sec. cor. No. 8, bet. the NW. and SW. quarters of sec. 10, on the reservation bdy., I run

N. 1° 45' W. on a true line through the NW $\frac{1}{4}$ of sec. 10.

Over cultivated field.

0.80 Wire fence, brs. E. and W. Leave cultivated field.

1.00 Road, brs. E. and W.

1.50 Irrigation ditch, brs. E. and W.

14.20 Wire fence, brs. S. 80° E. and N. 80° W.

15.20 Lateral ditch, brs. N. 70° W. and S. 70° E.

15.50 Road, brs. N. 70° W. and S. 70° E.

17.00 Road, brs. N. 30° W. and S. 30° E.

17.50 Irrigation ditch, brs. E. and W.

18.00 Road, brs. N. 10° E. and S. 10° W.

18.50 Road, brs. N. 70° W. and S. 70° E.

20.00 Left bank of Gila River, course NW, on the Reservation Bdy.

Set an iron post for 1/16 M.C. of sec. 10, stamped in cap

M C in N.
1/16 S 10 1911 in S., from which

A cottonwood 4 ft. dia. brs. South 64 lks. dist.
Mkd. 1/16 S 10 M C B T.

Dig a pit 36x36x12' ins. 8 ft. S. of post, and raise a mound of earth 4 ft. base, 2 ft. high, S. of cor.

Land, level. 80 lks. cultivated.

Soil, sandy loam, 1st rate.

Open brush of sage and mesquite, 19.20 chs.

From the temp. stake at true point for $\frac{1}{4}$ sec. cor. bet. secs. 3 and 10, I run

N. 1° 40' W. on a random line through the middle of sec. 3, along the reservation bdy., setting temp. cors. at intervals of 20.00 chs.

79.38 Intersect the $\frac{1}{4}$ sec. cor. bet. secs. 3 and 34, on N. bdy. of Tp., previously described.

The theoretical length of this line according to the old survey is 79.97 chs.

Thence I run

S. 1° 40' E. on a true line through the middle of sec. 3, along the reservation bdy.

Ascending steep slope of mountain.

2.80 Summit of steep ascent, brs. NE. and SW.

Subdivision of T. 5 S., R. 8 E.

Chains

19.83 At proportional distance, set an iron post for 1/16 sec. cor. No. 4 which refers to the NW 1/4 of sec. 3 only, stamped in cap

1/16 S 3 No 4 G R I R in W.
P L in E.
1911 in S.

Build a mound of stone 3 ft. base, 2 ft. high, W. of cor.

22.00 Deep gulch, course SE. Thence ascend.

26.00 Summit of ascent, brs. NW. and SE. Thence broken descent of SW. slope.

36.00 Bottom of steep descent. Leave mountainous land; enter level land covered with dense mesquite brush, brs. E. and W.

At proportional dist.,
39.68 Set an iron post for center 1/4 sec. cor. of sec. 3, which refers only to the W. half, stamped in cap

C 1/4 S 3 G R I R in W.
P L in E.
1911 in S.

Dig pits 18x18x12 ins. N. and S. of post 3 ft. dist.; and W., 7 ft. dist.; and raise a mound of earth 4 ft. base, 2 ft. high, W. of cor.

45.00 Irrigation ditch, brs. N. 75° W. and S. 75° E.

51.00 Road, brs. E. and W.

At proportional dist.,
59.53 Set an iron post for 1/16 sec. cor. No. 10, which refers only to the W. half of sec. 3, stamped in cap

1/16 S 3 No 10 G R I R in W.
P L in E.
1911 in S.

Dig pits 18x18x12 ins. N. and S. of post 3 ft. dist.; and raise a mound of earth 3 1/2 ft. base, 1 1/2 ft. high, W. of cor.

74.25 Right bank of Gila River, course NW.

Set an iron post for 1/16 M.C. of sec. 3, stamped in cap

M C 1911 in S.
1/16 S 3 G R I R in W.
P L in E.

Dig a pit 36x36x12 ins. 8 ft. N. of post, and raise a mound of earth 4 ft. base, 2 ft. high, N. of cor.

Thence over river channel (now dry).

79.38 Temp. stake at true point for 1/4 sec. cor. bet. secs. 3 and 10.

Land, level and mountainous.
Soil, stony, 3rd rate; and sandy loam, 1st rate.
48.25 chs. dense brush of willow and mesquite.

~~From the 1/16 sec. cor. No. 12, bet. secs. 3 and 4 (S 1/4) I run~~

Subdivision of T. 5 S., R. 8 E.

Chains

From the 1/16 sec. cor. No. 12, bet. secs. 3 and 4 (S 1/2)
I run

East on a random line through the middle of the S. half
of sec. 3.

20.00 Set temp. 1/16 sec. cor.

39.82 Falls 1 lk. N. of 1/16 sec. cor. No. 10, on reservation
bdy.

Thence I run

N. 89° 59' W. on a true line through the middle of the
S. half of sec. 3.

Through dense willow and mesquite brush, over level land.

19.91 Set an iron post for 1/16 sec. cor. No. 9, in the center
of the SW 1/4 of sec. 3, stamped in cap

1/16 S 3 in middle
No 9 1911 in S., from which

A mesquite 8 ins. dia. brs. S. 39° E., 16 lks. dist.
Mkd. 1/16 S 3 B T.

Dig pits 18x18x12 ins. E. and W. of post 3 ft. dist.;
and raise a mound of earth 3 1/2 ft. base, 1 1/2 ft. high,
N. of cor.

39.82 The 1/16 sec. cor. No. 12, bet. secs. 3 and 4 (S 1/2).

Land, level.

Soil, sandy loam, 1st rate.

Dense brush of willow and mesquite, full distance.

From the 1/4 sec. cor. bet. secs. 3 and 4, I run

East on a random line through the middle of sec. 3.

20.00 Set temp. 1/16 sec. cor.

39.70 Falls 3 lks. N. of the center 1/4 sec. cor. common to the
W. half of sec. 3, on the reservation bdy.

Thence I run

N. 89° 58' W. on a true line through the middle of sec.
3 (W 1/2).

Over level land, through dense brush.

3.00 Lateral ditch, brs. N. 30° E. and S. 30° W.

13.80 Road, brs. N. 20° W. and S. 20° E.

17.70 Wire fence, and lateral ditch, brs. N. 30° E. and S. 30° W.

19.85 Set an iron post for 1/16 sec. cor. No. 8, bet. the NW.
and SW. quarters of sec. 3, stamped in cap

1/16 S 3 in middle
No 8 1911 in S., from which

A mesquite 30 ins. dia. brs. S. 56° W., 30 lks. dist.
Mkd. 1/16 S 3 B T.

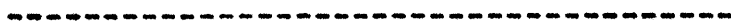
Subdivision of T. 5 S., R. 8 E.

Chains

Dig pits 18x18x12 ins. E. and W. of post 3 ft. dist.; and raise a mound of earth 3½ ft. base, 1½ ft. high, N. of cor.

- 21.00 Lateral ditch, brs. N. 60° W. and S. 60° E.
- 23.00 Lateral ditch, brs. N. 60° W. and S. 60° E.
- 24.00 Enter cultivated field, brs. N. 60° W. and S. 60° E.
- 33.00 Wire fence, and lateral ditch, brs. N. 30° E. and S. 30° W.
- 39.70 The ¼ sec. cor. bet. secs. 3 and 4.

Land, level, 15.70 chs.
Soil, sandy loam, 1st rate.
Dense brush of mesquite and willow, 24.00 chs.



From the 1/16 sec. cor. No. 6, bet. secs. 3 and 4 (N½)
I run

East on a random line through the middle of the N. half of sec. 3.

- 20.00 Set temp. 1/16 sec. cor.
- 39.78 Falls 5 lks. N. of the 1/16 sec. cor. No. 4, on the E. bdy. of the reservation.

Thence I run
N. 89° 56' W. on a true line through the middle of the NW¼ of sec. 3.

Ascending broken slope of mountain.

- 6.00 Top of broken ascent. Begin descent, brs. NW. and SE.
- 8.70 Foot of broken descent.
Enter level land, covered with dense mesquite and willow brush.

- 19.89 Set an iron post for 1/16 sec. cor. No. 3, in the center of the NW¼ of sec. 3, stamped in cap

1/16 S 3 in middle
No 3 1911 in S.

Build a mound of stone 2 ft. base, 1½ ft. high, N. of cor.

- 30.00 Wire fence, brs. N. and S.
- 30.10 Road, brs. N. and S.
- 31.00 A cabin, brs. N., 2.00 chs. dist.
- 33.00 A cabin, brs. N., 50 lks. dist.
- 35.50 A cabin on line.
- 36.00 Wire fence, brs. N. 30° E. and S. 30° W.
- 39.78 The 1/16 sec. cor. bet. secs. 3 and 4 (N½).

Land, level and mountainous.
Soil, stony, 3rd rate; and sandy loam, 1st rate.
Dense brush of sage and mesquite, 39.78 chs.

Subdivision of T. 5 S., R. 8 E.

Chains.

Meanders of Left Bank of Gila River,
down stream.

March 28, 1911. At 8 a.m., l.m.t., I set off 33° 00' on the lat. arc, 2° 44' N. on the decl. arc, and determine a meridian with the solar, at the ^{point for the} M.C. which is 12.30 chs. ^{normally} N. 1° 49' W. of the center ^{of the} sec. cor. of sec. 10, on the reservation bdy., at the SE. cor. of the reservation.

Thence I run with meanders in sec. 10, along the left bank of the Gila River, down stream.

Over level land, through mesquite brush.

- N. 69° 29' W., 21.76 chs. To 1/16 M.C. of sec. 10. (See Pg. 23 for construction this cor.)
- N. 70° 00' W., 21.60 " To M.C. bet. secs. 9 and 10, on the reservation bdy.

Land, level.

Soil, sandy loam, 2nd rate.

Open and dense brush of sage, mesquite and willow, full distance.

From the M.C. bet. secs. 4 and 9, on the reservation bdy., I run with meanders in sec. 4.

Over level land, through dense willow and mesquite brush.

- N. 44° 14' W., 41.80 chs. To true point for 1/16 M.C. of sec. 4., which is 16.70 chs. N. 1° 3' W. of W.C. to 1/16 sec. cor. No. 9 of sec. 4. At 20.00 chs. - enter swamp brs. NE. and SW.
- N. 40° 00' W., 31.60 " To M.C. bet. secs. 4 and 5. At 10.50 chs. - Leave swamp brs. NE. and SW. At 25.00 chs. - Road, brs. N. 80° E. to ford on river and S. 45° W.

Land, level.

Soil, sandy, 2nd rate.

Open and dense brush of willow and mesquite, full distance.

Thence in sec. 5.

Over level bottom, through dense mesquite brush.

- N. 57° 23' W., 10.00 chs. To 1/16 M.C. of sec. 5.
- N. 51° 28' W., 14.82 chs. To 1/16 M.C. of sec. 5.
- N. 17° 45' W., 11.00 " To M.C. bet. secs. 5 and 32, on N. bdy. of Tp.

Land, level.

Soil, sandy loam, 1st rate.

Open and dense brush of sage, mesquite and greasewood, full distance.

Subdivision of T. 5 S., R. 8 E.

Chains

Meanders of Right Bank of Gila River,
down stream.

From the M.C. on the N. and S. center line of sec. 3, on
the reservation bdy., I run with meanders through sec.
3.

Over level land, through dense willow and mesquite brush.

N. 76° 26' W. 41.32 chs. to M.C. bet. secs. 3 and 4.

Land, level.

Soil, sandy, 1st rate.

Open and dense brush of willow and mesquite, full distance.

Thence in sec. 4.

Over level land, through dense willow and mesquite brush.

N. 47° 30' W., 27.60 chs. To 1/16 M.C. of sec. 4.

N. 23° 29' W., 28.52 " To 1/16 M.C. of sec. 4.

N. 50° 15' W., 30.70 " To H.C. bet. secs. 4 and 33,
on N. bdy. of Tp.
At 14.20 chs. - Road, brs.
N. 20° E. and S. 80° W. to
ford on river.

Land, level.

Soil, sandy loam, 1st rate.

Open and dense brush of mesquite and willow, full distance.

March 28, 1911.

Subdivision of T. 5 S., R. 8 E.

Amended survey of sections 6 and 7, T. 5 S., R. 8 E., making addition to the reservation, to conform with Executive Order No. 1387, dated July 31, 1911.

Survey executed by Guy P. Harrington, U. S. Surveyor, on Jan. 3, 1912.

The 1/4 sec. cor. bet. secs. 5 and 6, still remains an angle point on the reservation bdy.; I, therefore, allow the original markings to remain.

Thence I run

S. 0° 46' E. on a true line bet. secs. 5 and 6, ~~along the reservation bdy.~~, (the random line having been run by me last March).

Over level land, through scattered brush.

- 1.00 Enter cultivated field, brs. E. and W.
- 19.83 Set an iron post for 1/16 sec. cor. No. 12, for sec. 6, S 1/2, stamped in cap

1/16 S 6 No 12 G R I R in W.
1912 in S.

Dig pits 10x18x12 ins. N. and S. of post 3 ft. dist.; and raise a mound of earth 3 1/2 ft. base, 1 1/2 ft. high, W. of cor.

- 33.50 This cor. is an angle ^{point} on the res'n bdy. Thence along res'n bdy. Irrigation ditch, 5 lks. wide, brs. E. and W. Leave cultivated field.

- 34.50 Wire fence, brs. N. 85° W. and S. 85° E. Enter dense mesquite brush.

- 39.66 Intersect temp. stake at true point for cor. of secs. 5, 6, 7 and 8, as determined by me last March.

Set an iron post for the cor of secs 6 and 7, mkd. on cap

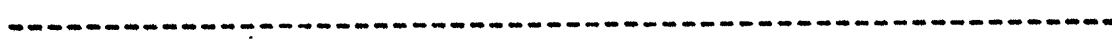
S 5 in NE.
S 8 in SE.
P L on E.
T 5 S S 7 in SW.
R 8 E S 6 in NW.
G R I R in W.
1912 in S.

5 notches on S. and E. edges, from which

A mesquite 6 ins. dia. brs. S. 6° 30' W., 88 lks. dist.
Mkd. T 5 S R 8 E S 7 B T.

Dig pits 24x24x12 ins. in each sec., 6 ft. dist.; and raise a mound of earth 4 ft. base, 2 ft. high, W. of cor.

Land, gently rolling. (Irrigable).
32.50 chs. - cultivated.
7.16 chs. - dense mesquite brush.
Soil, sandy loam, 1st rate.



Subdivision of T. 5 S., R. 8 E.

Chains

S. 0° 39' E. on a true line bet. secs. 7 and 8, along the reservation bdy.

Over level land, through scattered brush.

19.83 At temp. point established by me on Mar. 26, 1911, I

Set an iron post for 1/16 sec. cor. No. 6, of sec. 7, stamped in cap

S 8 1 L in E.
1/16 No 6 S 7 G R I R in NW.
1912 in S.

Dig pits 18x18x12 ins. N. and W. of post 3 ft. dist.; and raise a mound of earth 3 1/2 ft. base, 1 1/2 ft. high, NW. of cor.

This cor. is an angle point on the reservation bdy.

39.66 Temp. point for 1/4 sec. cor. bet. secs. 7 and 8, established by me on Mar. 26, 1911.

Land, level. (Irrigable).
Soil, sandy loam, 1st rate.
Scattered mesquite brush, full distance.

From the cor. of secs. 6 and 7, I run

S. 89° 30' W. on a random line bet. secs. 6 and 7, setting temp. cors. at intervals of 20.00 chs.

80.10 Falls 12 lks. S. of the cor. of secs. 6 and 7, on W. bdy. of Tp., previously described.

(The reported length of this line is 80.22 chs.).

Thence I run

N. 89° 35' E. on a true line bet. secs. 6 and 7.

Over level land, through scattered brush.

20.19^{At proportional dist.} Set an iron post for 1/16 sec. cor. No. 2, bet. secs. 6 and 7 (W 1/2), stamped in cap

1/16 S 6 in N.
S 7 No 2 1912 in S.

Dig pits 18x18x12 ins. E. and W. of post 3 ft. dist.; and raise a mound of earth 3 1/2 ft. base, 1 1/2 ft. high, N. of cor.

21.10 Road, brs. N. and S.

25.50 Road, brs. N. 30° W. and S. 30° E.

27.10 Old irrigation ditch, brs. N. 30° W. and S. 30° E.

40.16^{At proportional dist.} Set an iron post for 1/4 sec. cor. bet. secs. 6 and 7, stamped in cap

1/4 S 6 in N.
S 7 1912 in S.

Dig pits 18x18x12 ins. E. and W. of post 3 ft. dist.; and raise a mound of earth 3 1/2 ft. base, 1 1/2 ft. high, N. of cor.

97 31

Subdivision of T. 5 S., R. 8 E.

Chains

51.00 Road, brs. N. 35° W. and S. 35° E.

At proportional dist.,
60.13 Set an iron post for 1/16 sec. cor. No. 1, bet. secs. 6 and 7 (E½), stamped in cap

1/16 S 6 in N.
S 7 No 1 1912 in S.

Dig pits 18x18x12 ins. E. and W. of post 3 ft. dist., and raise a mound of earth 3½ ft. base, 1½ ft. high, N. of cor.

68.00 Road, brs. N. 20° W. and S. 20° E.

80.10 The cor. of secs. 6 and 7, on reservation bdy.

Land, level. (Irrigable).
Soil, sandy loam, 1st rate.
scattered brush of mesquite and sage, full distance.

From the 1/16 sec. cor. No. 6, of sec. 7 (N½), I run

S. 89° 30' W. on a random line through the middle of the N. half of sec. 7, along the reservation bdy., setting temp. cors. at intervals of 20.00 chs.

80.32 Intersect the 1/16 sec. cor. No. 6, of sec. 7 (N½), on W. bdy. of Tp., which is an angle point on the reservation bdy.

The reported calculated length of this line is 80.14 chs.

Thence I run

N. 89° 30' E. on a true line through the middle of the N. half of sec. 7, along the reservation bdy.

Over nearly level land, through scattered brush.

17.30 Road, brs. N. 50° W. and S. 50° E.

18.80 Road, brs. N. and S.

At proportional dist.,
20.20 Set an iron post for 1/16 sec. cor. No. 3, in the center of the NW¼ of sec. 7, stamped in cap

1/16 S 7 G R I R in N.
No 3 1912 in S.

Dig pits 18x18x12 ins. E. and W. of post 3 ft. dist.; and raise a mound of earth 3½ ft. base, 1½ ft. high, N. of cor.

37.70 Road, brs. N. 20° W. and S. 20° E.

At proportional dist.,
40.24 Set an iron post for 1/16 sec. cor. No. 4, bet. the NW. and NE. quarters of sec. 7, stamped in cap

1/16 S 7 G R I R in N.
No 4 1912 in S.

Dig pits 18x18x12 ins. E. and W. of post 3 ft. dist.; and raise a mound of earth 3½ ft. base, 1½ ft. high, N. of cor.

52.50 Road, brs. N. 20° E. and S. 20° W.

Subdivision of T. 6 S., R. 3 E.

Chains

60.28^{At proportional dist.,} Set an iron post for 1/16 sec. cor. No. 5, in the center of the NE $\frac{1}{4}$ of sec. 7, stamped in cap

1/16 S 7 G R I R in N.
No 5 1912 in S.

Dig pits 18x18x12 ins. E. and W. of post 3 ft. dist.; and raise a mound of earth 3 $\frac{1}{2}$ ft. base, 1 $\frac{1}{2}$ ft. high, N. of cor.

80.32 The 1/16 sec. cor. No. 6, of sec. 7 (N $\frac{1}{2}$), which is an angle point on the reservation bdy.

Land, level. (Irrigable.)
Soil, sandy loam, 1st rate.
Scattered brush of mesquite, greasewood and sage.

From the 1/16 sec. cor. No. 12, of sec. 6 (S $\frac{1}{2}$), on the reservation bdy., I run

S. 89° 45' W. on a random line through the middle of the S. half of sec. 6, setting temp. cors. at intervals of 20.00 chs.

79.96 Intersect the 1/16 sec. cor. No. 12, of sec. 6 (S $\frac{1}{2}$) on W. bdy. of Tp., previously described.

(The reported calculated length of this line is 80.16 chs.)

Thence I run

N. 89°45' E. on a true line through the middle of the S. half of sec. 6.

Over level land, through scattered sage and mesquite brush.

20.11^{At proportional dist.,} Set an iron post for 1/16 sec. cor. No. 9, in the center of the SW $\frac{1}{4}$ of sec. 6, stamped in cap

1/16 S 6 in middle
No 9 1912 in S.

Dig pits 18x18x12 ins. E. and W. of post 3 ft. dist.; and raise a mound of earth 3 $\frac{1}{2}$ ft. base, 1 $\frac{1}{2}$ ft. high, N. of cor.

25.30 Road, brs. N. and S.

27.00 Road, brs. N. and S.

40.06^{At proportional dist.,} Set an iron post for 1/16 sec. cor. No. 10, bet. the SE. and SW. quarters of sec. 6, stamped in cap

G R I R in SE.
1/16 S 6 in middle
No 10 1912 in S.
P L in NE.

Dig pits 18x18x12 ins. E. and W. of post 3 ft. dist.; and raise a mound of earth 3 $\frac{1}{2}$ ft. base, 1 $\frac{1}{2}$ ft. high, N. of cor.

43.70 Road, brs. N. 10° W. and S. 10° E.

50.00 Road, brs. N. 10° W. and S. 10° E.

55.00 Wire fence, brs. N. 60° W. and S. 60° E.

60.01^{At proportional dist.,} Set an iron post for 1/16 sec. cor. No. 11, in the center

Subdivision of T. 5 S., R. 8 E.

Chains

of the SE $\frac{1}{4}$ of sec. 6, stamped in cap
P L in N.
1/16 S 6 in middle
No 11 1912 G R I R in S.

Dig pits 18x18x12 ins. E. and W. of post 3 ft. dist.;
and raise a mound of earth 3 $\frac{1}{2}$ ft. base, 1 $\frac{1}{2}$ ft. high,
N. of cor.

70.60 Irrigation ditch, brs. N. 80° W. and S. 60° E.

78.10 Irrigation ditch, brs. N. and S.

78.20 Wire fence, brs. N. and S.
Enter cultivated field.

79.96 The 1/16 sec. cor. No. 12, of sec. 6, (S $\frac{1}{2}$), on reservation
bdy.

Land, level. (Irrigable).
Soil, sandy loam, 1st rate.
Scattered brush of mesquite and sage, 78.00 chs.

Note: I remove the markings G R I R from the 1/16 sec.
cor. No. 8, bet. the NW. and SW. quarters of sec. 6, as
this cor. is no longer a point on the reservation bdy.
The S $\frac{1}{2}$ of the NE $\frac{1}{4}$ and the N $\frac{1}{2}$ of the SE $\frac{1}{4}$ of sec. 6, is
patented land, therefore all other corners on the for-
mer reservation bdy. in sec. 6 separate patented land
from Indian land. The markings of such posts are
unchanged.

Jan. 3, 1912.

Retracements for Report, T. 5 S., R. 8 E.

Survey commenced Oct. 14, 1919, and executed with Buff and Buff light mountain transit No. 9938, with solar attachment.; The horizontal limb of which is provided with two double verniers, placed opposite to each other, reading to single minutes of arc, which is also the least count of the verniers of the lat. and decl. arcs.

The instrument was tested on Oct. 12th. and 13th. on the meridian of the Surveyor General's office at Phoenix Arizona, found correct, and approved by the Assistant Supervisor of Surveys for Arizona.

The object of this examination is to determine the relation between old fence lines and of laid out lands of bona fide patentees, with the boundaries of the reservation, as determined by the survey of 1911 of the reservation. My examination consisted of gathering data by retracements on the ground and getting statements from land owners in the vicinity.

Beginning at the 1/16 sec. cor. bet. secs. 7 and 8, (N. $\frac{1}{2}$), which is a point on the reservation bdy., and is marked by an iron post 1 in. in diam., 1 ft. above ground, mkd. as described in the notes of the 1911 survey.; This cor. is in the middle of public road, bears N. and S.

Thence

S $89^{\circ}30'W$. along the reservation bdy.

.50 Cor. of wire fence from which fences, bear S. and S $89^{\circ}30'W$. along line, Thence along fence with cotton field on the S. and level land, covered with mesquite on the N.

20.04 Intersect the 1/16 sec. cor., center of the NE. $\frac{1}{4}$., which is an iron post 1 in. in diam., 1 ft. above ground., markd as described in the notes of 1911 survey.; This cor is under the fence forming the N. bdy. of the field of the Salt River Cotton Co.

40.09 Intersect the 1/16 sec. cor. bet. the NE. and NW. quarters which is an iron post 1 in. in diam. 1 ft. above ground, mkd. as described in the notes of 1911 survey. This cor. is under the fence forming the N. bdy. of the cotton field

Retracements for Report, T. 5 S., R. 8 E.

of the Salt River Cotton Co.

60.12 Intersect the $\frac{1}{16}$ sec. cor., which is the center of the NW. $\frac{1}{4}$ which is an iron post 1 in. in dia., 1 ft. above ground, with brass cap mkd. as described in the notes of 1911 survey.; This cor. is under the fence of the ^{N. bdy. of the} holdings of the Salt River Cotton Co.

80.30 Intersect the 1/16 sec. cor on W. bdy. of Tp., which is an iron post 1 in. in diam. 10 ins. above ground, mkd. and witnessed as described in the notes of 1911 survey.; This cor. is at the cor. of the fence of the Salt River Cotton Co. and they recognize it as the proper line of demarcation between their holdings and the boundary of the reservation.

It is to be noted that the Salt River Cotton Co. have recognized the line of the reservation in this section as the proper boundary of their holdings.; Any shift of this line to the south would conflict with their highly developed, cultivated, and irrigated lands.

From the 1/16 sec. cor. bet. secs. 7 and 8, ($N\frac{1}{2}$), which is an angle point on the reservation bdy., previously described, N 0° 39' W. bet. secs. 7 and 8 and along reservation bdy.

Along middle of road which has been laid out for a number of years on the supposed sec. line.; A wire fence parallels this line 50 lks. E., which encloses cotton field.

19.85 Fall 2 lks. W. of the cor. of secs. 5, 6, 7, and 8., as re-established in the Indian Survey of 1911., which is an iron post 1 in. in diam. 10 ins. above ground, mkd. and witnessed as described in the notes of said survey.

Lee Patrick, whose address is Blackwater Arizona, is the present owner of lands in sec. 5 and 6. He states that he used this cor. in determining his boundaries and recognizes it as the proper corner. He is the owner of all lands not included in the reservation in sec. 5.

Retracements and Investigations, T. 5 S., R. 8 E.

- Thence $N0^{\circ}46'W.$ bet. secs.5 and 6.
- .50 Leave roadway at wire fence bears E. and W.;road bears W. thence along wire fence.
- 19.82 Intersect the $1/16$ sec. cor. bet. secs.5 and 6, ($S.\frac{1}{2}$), which is an iron post 1 in. in diam.10 ins. above ground,marked and witnessed as described in the notes of 1911 survey.; This cor. forms the SE. cor. of the claim of Jose Gradillo,now owned by Lee Patrick. Cor. is at the cor. of wire fence,from which fences bear $S 0^{\circ}46'E.$ and $S 89^{\circ}45'W.$
- 39.65 Intersect the $\frac{1}{4}$ sec. cor. bet. secs.5 and 6.,as reestablished in the Indian Survey of 1911,which is an iron post 1 in. in diam.1 ft.above ground,mkd.and witnessed as described by the notes of the Indian survey of 1911. This cor.forma an angle point on the reservation bdy. Lee Patrick has a fence built easterly from this cor., which fence I follow and find the $1/16$ sec. cors. established in the survey of 1911 on the E.and W.center line under this fence. He has recognized the line of the survey of 1911 of the reservation and has constructed a four-wire fence along the same. He has cleared the land S.of this fence in many places up to the fence and is now in the process of levelling the same preparatory to putting in a crop of cotton next year.
- I now investigate the the patented claim of Jose Gradillo, for which some apprehension is noted in the Commissioner's letter.; As previously stated,this claim is now owned by Lee Patrick. He has found the cors. of this claim as established in the 1911 survey and fenced the entire area along the lines.of same. The lines of this claim never were very definitely established,but now they are established in accordance with the survey of 1911.
- Lee Patrick states that the lines as they now exist are satisfactory to him.

From the 1/16 cor. bet. secs. 7 and 8, (N. $\frac{1}{2}$) previously described

S $0^{\circ}39'E.$ along the reported course of the Indian Survey of 1911, along middle of road with wire fences at edge of road to the E. and W. about 50 lks. dist. This road is supposed to be on section line, by local authorities.

19.83 No trace of the old $\frac{1}{4}$ sec. cor.; No cor. was established here in the Indian Survey of 1911.

Thence from cor. point, continue on same line

20.10 Intersect property line, marked by a fence to the E. and a ditch to the W., both of which are on the supposed line of legal subdivisions. Line continues in road, which swings slightly to the SE. at this point.

40.55 Intersect the supposed line of legal subdivisions, which is marked by a fence to the E. and W., along the S. side of cotton field of the Salt River Cotton Co.

59.49 Point for the cor. of secs. 7, 8, 17, and 18, as defined by the Indian Survey of 1911. No post was established in that survey at this point, but a temporary point was established from which to project the lines of legal subdivision of the reservation bdy.

A point at the intersection of roads, which bear E. and W. and N. and S., which is 50 lks. S. of a fence, which bears E. and W., (which fence was set back 50 lks. from the supposed sec. line to allow for a road as is the custom,) bears S $24^{\circ}E.$ 1.18 chs. dist. This point is where the local authorities, who constructed the road, and the land owners have taken for the position of the cor.

The Indian Survey of 1911 was made under my supervision and at that time a search was made for this cor. No trace was found of it and no evidence was obtainable, which would place it. This same statement will apply to all corners, which were proportioned under the survey of 1911.

Retracements and Investigations, T. 5 S., R. 8 E.

From the point, described above as the point accepted by local authorities for the cor. of secs. 7, 8, 17, and 18.

South along middle of road and parallel with fence 45 lks. to the E., which has been set back from the supposed sec. line to allow for a road.

40.08 Fall 52 lks. W. of point in middle of N. and S. road and 45 lks. W. of fence cor., from which cor. fences bear N. and S., and E. and W.; This point is taken by settlers and local authorities as the position for the $\frac{1}{4}$ sec. cor.

Thence from the above local cor. point

South

Along middle of road parallel to fence about 50 lks. to the E.

40.00 Fall 21 lks. E. of a stake which settlers inform me was established by a local surveyor as the point for cor. of secs. 17, 18, 19, and 20, and is tacitly accepted by the owners of land there, in the absence of a better and more accurate determination. I find no trace of the original cor.

M. Borree is the owner of land in sec. 19. He states that no old cors have ever been found to his knowledge in this vicinity. He further states that he located his lands and built his fences along bdys. which he measured out from his neighbors to the South. They likewise measured from other person's holdings and established blocks one built upon the other, containing 40 acres approximately. He also states that a constant search has been made for old cors.

From the point for cor. of secs. 7, 8, 17, and 18 as recognized by settlers, which point, is S 24° E 1.18 chs. of the proportional point, determined for this cor. in the survey of 1911,

Retracements and Investigations, T. 5 S., R. 8 E.

East along middle of road in lane with fences about 50 lks.

N, and S., and approximately parallel to line.

40.38 Point in middle of road, from which fences are projected
N. and S. along the supposed line of legal subdivisions.

79.81 Fall 192 lks. S. of a mesquite post 3 ins. sq. and 2 ft.
above ground. This post Mr. Frank Pinkley informs me
was placed in its position by settlers in the vicinity
as the point for cor. of secs. 8, 9, 16, and 17.
From this point the proportional point for this cor.
as established in the Indian Survey of 1911, bears E.
30 lks. dist. and S. 19 lks. dist. I find the old temp.
post set in 1911 Indian Survey, and identify it by kiel
marks upon it. Mr. Pinkley, who has lived in the
vicinity for 18 years, is custodian of the Casa Grande
Ruin Reservation. He states that the position of this
cor. as determined by the Indian Survey of 1911 is very
close to a position determined by some Government
surveyor at the time the ruins of Casa Grande were
reserved. He says, at that time the old $\frac{1}{4}$ sec. cor. bet.
secs. 16 and 17 was in existence and he believes the
NW. cor. of sec. 16 which contains the ruin reservation
was established from that cor. He has been unable to
find this $\frac{1}{4}$ sec. cor. for a number of years.. It is to
be noted that the cor. accepted by settlers is close
to the reestablished cor. of the 1911 Indian Survey.

From the reestablished temporary point for cor. of secs.
8, 9, 16, and 17 in accordance with the Indian Survey of
1911.

S 89° 59' E. along the bearing given in the notes of the
Indian survey. The line here is not determined by
settlers, as there are no fences or other improvements
along here, since E. O. C. Orr owns land on both sides of

Retracements and Investigations, T. 5 S., R. 8 E.

the line, and the position of this section line did not interest him.

- 35.32 Road bears N. and S.
 35.78 Telephone line, bears N. and S.
 40.00 No trace of the old $\frac{1}{4}$ sec. cor.
 70.36 Road, bears NW. and SE.
 80.30 The proportioned point for cor. of secs. 9, 10, 15, and 16 according to the Indian Survey of 1911.

This line follows about 20 lks. N. of a line of stakes, which Mr. Pinkley informs me is on a supposed section line and is the survey of a power line, made by the present State Engineer of Arizona. Mr. Pinkley has in his possession a plat of this survey and it shows this portion of the power line to be on the line bet. secs. 9 and 16. This point falls in the middle of road, which bears E. and N85°W. The portion of the road to the east is on the supposed section line. The point is 50 lks. N. of an E. and W. fence of E.O.C. Orr, which fence was set back from the supposed section line in order to leave room for a road. A fence which is on the supposed section line between secs. 9 and 10 is 77 lks. E. of this point. This fence forms the E. bdy. of E.O.C. Orr's land.

It is to be noted that the position of this cor. agrees very closely with the settlers, in latitude, but does not agree in departure. There seems to be no belief on the part of any one that this is not the proper position in departure for the establishment of the cor. since it is at proportional distance between old existing and identified corners to the E. and W.

From point for cor. of secs. 9, 10, 15, and 16, according to the Indian Survey of 1911.

N 1°41'W. according to the bearing of the 1911 Indian Survey.

- 20.00 Middle of irrigation ditch, 20 lks. wide, course W.; This

Retracements and Investigations, T. 5 S., R. 8 E.

- 39.83 ditch is on the supposed line of legal subdivisions. Fall 2 lks. W. of the reestablished $\frac{1}{4}$ sec. cor. bet. secs. 9 and 10. This cor. was an angle point on the reservation bdy.
- 39.92 Wire fence on the supposed line of legal subdivisions, bears E. and W. Thence from cor. N $1^{\circ}41'W.$, continuing measurement.
- 59.74 Irrigation ditch, bears E. and W., which is on the supposed line of legal subdivisions. The $1/16$ sec. cor. has been destroyed in the construction of the ditch. The establishment of this cor., which is now an angle point on the reservation, is given in the notes of corrections.
- The settlers position of the supposed section line is mkd. by a fence about 75 to 100 lks. to the E. and parallel to the above line. The line for the N. 20 chs. is not marked but passes through cultivated cotton field on both sides of line, owned by the Salt River Cotton Co.
- I now go to the $\frac{1}{4}$ sec. cor. for sec. 10 which was at the time of the 1911 Indian Survey a point on the reservation boundary. The center of this section, as determined by settlers is a fence cor. from which fences bear N. and E. From the cor. established in the Indian Survey of 1911 this fence cor. bears N $46^{\circ}E.$ 1.99 chs. dist.; It is to be observed that the E. bdy. of the reservation, as now established, in no way interferes with holdings claimed by settlers. Its acceptance in no way jeopardizes the rights of the Indians, as they have done nothing in the way of improving or clearing the land on their side of the line which is covered with dense mesquite timber and undergrowth.

Oct. 16, 1919

Beginning at the point determined by the Indian Survey

Retracements and Investigations, T. 5 S., R. 8 E.

for cor. of secs. 9, 10, 15, and 16.

South bet. secs. 15 and 16.

Over nearly level land, through scattering sage and greasewood with timber of mesquite.

This line is not marked in any way by settlers.

40.00 No trace of the $\frac{1}{4}$ sec. cor.

79.66 Cor. of wire fence from which fences extend S. and W. and which I presume is intended for the cor. of secs. 15, 16, 21, and 22., bears $S89^{\circ}30'W$. 1.60 chs. dist.

80.00 I fail to find any evidence of the cor. of secs. 15, 16, 21, and 22.

South bet. secs. 21 and 22.

Over level land, through dense mesquite and greasewood, parallel to fence 1.60 chs. to the W.

40.00 I fail to find any evidence of the old $\frac{1}{4}$ sec. cor.

40.39 Cor. of wire fence, from which fences extend E. and W. and N., bears West 1.78 chs. dist.

I presume that this fence cor. is intended to be at the position for the $\frac{1}{4}$ sec. cor.

79.83 Wire fence, bears E. and W., cor. of fences from which fences extend N., E., and W., bears W. 1.70 chs. dist.

80.00 I fail to find the old cor. of secs. 21, 22, 27, and 28. This point falls just N. of the Casa Grande and Florence State highway, which bears E. and W. and is on the supposed section line. A point in the middle of the highway and in line of an old fence to the south, bears $S38^{\circ}30'W$, 73 lks. dist.

South bet. secs. 27 and 28, over right of way of State highway.

.58 Embankment of State highway, bears E. and W.

1.10 Leave right of way of State highway, enter cleared and level land, bears E. and W., Thence parallel to the line of

Retracements and Investigations, T. 5 S., R. 8 E.

- clearing about 125 lks. to the W.
- 40.00 I fail to find any evidence of the old $\frac{1}{4}$ sec. cor.
The cor. recognized by settlers, which is a pole in the ground 20 ft. high and at edge of clearing, bears S64°40'W 1.36 chs. dist.
- 80.00 The original cor. of secs. 27, 28, 33, and 34., which is a mesquite post 4 ins. sq. 16 ins. above ground; mkd. in Roman numerals as described in the original notes.; no accessories remaining, bears S65°25'W. 1.37 chs. dist.
This post is very old and weathered and is, no doubt, the original cor. Settlers in the immediate vicinity also recognize it.
-
- From the original cor. of secs. 27, 28, 33, and 34.
West bet. secs. 28 and 33.
Over level land, through sage brush and scattering mesquite.
- 39.94 Fall 4 lks. N. of a post 3 ins. sq. of pine mkd. $\frac{1}{4}$ on N. face, which has been established by a local surveyor. I find no trace of the original cor.
- 79.94 Fall 1 lk. N. of a pine post 3 ins. sq. 8 ins. above ground mkd., sec. cor.; This post established by a local surveyor.
- 80.00 I find no trace of the original cor.
-
- Thence
South bet. secs. 32 and 33.
Over nearly level land, through scattering sage and mesquite.
- 14.50 Wash 20 lks. wide, course NW.
- 40.00 I fail to find any trace of the $\frac{1}{4}$ sec. cor.
- 80.00 I fail to find any trace of the old cor. of secs. 4, 5, 32, and 33.
A pine post set. by local surveyor bears S3°12'W. 1.24 chs. dist. This post is just north of county road which bears E. and W. and is on the supposed S. bdy. of the Tp.
-

Retracements and Investigations, T. 5 S., R. 8 E.

- Thence
West bet. secs. 5 and 32 from my 80.00 ch. point along N. side of county road.
- 40.00 I find no trace of the old $\frac{1}{4}$ sec. cor.
- 80.00 I find no trace of the cor. of secs. 5, 6, 31, and 32.
From my temp. cor. of secs. 28, 29, 32, and 33.
West bet. secs. 29 and 32.
Over level land, through sage and scattering mesquite.
- 40.00 I fail to find the $\frac{1}{4}$ sec. cor.
- 80.00 I fail to find the old cor. of secs. 29, 30, 31, and 32
This line is not well marked by settlers but seems to be close to the above line as evidenced by stakes along same.
-
- From temp. cor. of secs. 28, 29, 32, and 33.
North bet. secs. 28 and 29.
Over level land, through scattering sage and mesquite, parallel to fence about 50. lks. E. and in middle of road.
- 40.00 The old original $\frac{1}{4}$ sec. cor., which is a mesquite post 4 ins. sq., 18 ins. above ground, marked $\frac{1}{4}$ on W. face, bears S 24° W. 1.43 chs. dist.; No accessories remain at this cor. but it is very much weathered and I believe there is no doubt but that it is the old original cor. and in its original position.
A post of pine, marked $\frac{1}{4}$, established by local surveyors bears S $32^{\circ} 15'$ E. 24 lks. dist.
It is to be noted that the settlers and local surveyors do not recognize the above described original cor.
From the old original $\frac{1}{4}$ sec. cor. as described above,
North
- 40.00 I fail to find any trace of the old original sec. cor.
A pine stake on the S. side of the State highway, mkd. sec.

Retracements and Investigations, T. 5 S., R. 8 E.

cor. and probably established by the engineers who surveyed the highway, bears $N86^{\circ}40'E$. 1.00 ch. dist.; this point seems to be recognized by settlers as the proper position for this cor.

From the above described local cor.

$N. 0^{\circ}15'E$. over right of way of State highway.

- .25 Middle of embankment of State highway, bears E. and W. Thence along middle of road to the N., and parallel to fence about 20 lks. to the W. of line.
- 40.00 A pine stake set. by local surveyor, mkd. $\frac{1}{4}$ bears $N84^{\circ}30'E$. 26 lks. dist. This stake is in the middle of N. and S. road and in line with fence to the W. and with a well cleared line to the E.
- 80.00 I fail to find the old cor. of secs. 16, 17, 20, and 21.; The point falls very close to the position determined by local authorities and settlers. It is in the middle of N. and S. road on the supposed sec. line, and in the projection of the middle line of a lane to the W. it is also on line with a well axed line to the east.

North bet. secs. 16 and 17

Along middle of road

- 20.00 Road swings $N45^{\circ}E$. to the Casa Grande ruins. Thence parallel to a fence about 20 lks. to the W.
- 40.00 I fail to find the $\frac{1}{4}$ sec. cor. This is the cor., which Mr. Frank Pinkley, states was in position about 18 years ago but which is not in evidence at the present time.
- 81.77 Fall 5 lks. W. of the proportioned point for cor. of secs. 8, 9, 16, and 17. as determined in the Indian Survey of 1911. and reestablished by me.

From the proportioned point for cor. of secs. 9, 10, 15, and 16,

Retracements and Investigations, T. 5 S., R. 8 E.

- N 89°25'E. bet. secs. 10 and 15.
Over nearly level land, through scattering sage and dense greasewood along roadway on the supposed sec. line.
- 40.00 I find no trace of the $\frac{1}{4}$ sec. cor.
The point falls in the middle of E. and W. road, 50 lks. S. of fence, which bears E. and W., thus showing a close agreement in latitude with this line and the line established by settlers.
- 80.88 Fall 3 lks. S. of the old original cor. of secs. 10, 11, 14, and 15, which is a mesquite post 4 ins. sq. as described in the notes of the Indian Survey. I later set iron post at this cor. which is under the heading of adjustments and corrections in this report.
-
- From the original cor. of secs. 10, 11, 14, and 15.
South bet. secs. 14 and 15.
Over level land, through dense greasewood. This line is not marked by settlers holdings.
- 39.48 Cor. of wire fences from which fences extend S. and E. enclosing the SW. $\frac{1}{4}$ of sec. 14., bears East 46 lks. dist. I do not know whether or not this fence cor. is at the supposed $\frac{1}{4}$ sec. cor. or whether the N. and S. fence has been set to the E. 50 lks. to allow for a road.
- 40.00 I fail to find any trace of the $\frac{1}{4}$ sec. cor.
- 79.63 Cor of wire fence from which fences extend N. and E., bears East 50 lks. dist.; This fence incloses the SW. $\frac{1}{4}$ of sec. 14.
- 80.00 I fail to find the original cor. of secs. 14, 15, 22, and 23.

SUMMARY AND RECOMMENDATIONS

As previously stated the Indian Survey of this township in which the reservation bdy. was established, was made

Retracements and Investigations, T. 5 S., R. 8 E.

under my supervision, although not actually run by me in the field.

The methods used in its determination were decided by me after a careful study of conditions.

A search covering several days was made for cors. at that time with about the same results as are shown in this report. I decided on a single proportion for points for cors. since by that method it seemed to fit conditions of the settlers more closely.

The cor. of secs. 7, 8, 17, and 18; the cor. of secs. 8, 9, 16, and 17, and the cor. of secs. 9, 10, 15, and 16, had been determined by a local surveyor, prior to 1911 by a somewhat similar method, except that he took no account of the bearings of the old lines but established his cors. on a line direct between the cor. of secs. 14, 15, 22, and 23 and of secs. 7 and 18 on the W. bdy. of the Tp. The settlers at the time had roughly laid out their claims and sections based on these cors.

From the number of old cors. in existence today it can be seen that a survey of the entire township would have been necessary to have established the Indian boundary by double proportional distances.

It would have necessitated an establishment of the S. bdy. and portions of the E. and W. bdys. From the evidence at hand I felt justified in my procedure and with the result of this examination I feel still more convinced

that it was the proper method.

In sections 5, 7, and 8 the holdings of settlers coincide with the bdy. as established in the Indian survey of 1911.

In section 9 the boundary coincides closely with the Indian subdivision and along the E. bdy. of the reservation in secs. 3 and 10 the settlers are not claiming to the 1911 bdy. The patented claim of Jose Gradillo in sec. 6 is held under the legal subdivisions as determined by the Indian Survey. It is also to be noted that the land owners in accepting this line have practically their entire area.

I would say that in the survey of 1911, retracements were

Retracements and Investigations, T. 5 S., R. 8 E.

made bet. secs. 2 and 11, and bet. secs. 1 and 12 in search of old cōrs., but none were found, including the cor. of secs. 1, 6, 7, and 12.; Remembering that fact, I did not retrace these lines in the present examination.

The notes of the 1911 survey, no doubt were defective in not explaining many of the reasons for the unusual procedure, and had the matter been referred to me I might have given some of the data, contained herein, without extensive examination. Of course many of the fences built on the line of the reservation and improvements made to the line, have been made subsequent to my survey of 1911, but the people in good faith, in the absence of any thing else whatsoever, were glad to accept the iron posts on the boundary, thinking that they were the proper lines.

I would recommend the acceptance of the survey of the township as it now stands. I am submitting herewith a report on the corrections made in accordance with the Commissioner's letter of July 29, 1919.

(Signed) Guy P Harrington
U.S. Cadastral Engineer.

Corrections in T 5 S., R 8 E.

In accordance with the Commissioner's letter of July 29, 1919 and the letter of the U.S. Surveyor General, with instructions for Group No. 98, I make the following corrections;

The cor. of secs. 5, 6, 7, and 8, which was marked for secs. 6 and 7, I additionally mark for secs. 5 and 8 with the letters P.L. on E. side of cap.

I place the letters P.L. on the SE. quadrant of the cap for the $\frac{1}{4}$ sec. cor. of secs. 5 and 6.

The post at the point for cor. of secs. 4, 5, 8, and 9, which was marked for sec. 4 only on the Indian Survey, I additionally mark for secs 5, 8, and 9.

The $\frac{1}{4}$ sec. cor. bet. secs. 4 and 9, which was marked for sec. 4 only, I additionally mark for sec. 9.

The $\frac{1}{16}$ sec. cor. bet. secs. 7 and 8, numbered 6, marked for sec. 7 only, I mark, S8 P.L. on the east half of the cap.

The $\frac{1}{16}$ sec. cor. No. 10, sec. 6 I mark G R I R in the SW. quadrant and P.L. in the NE. quadrant of cap.

The $\frac{1}{16}$ cor. No. 11, sec. 6 I mark G R I R in the S. and P.L. in N. halves of cap.

Alongside the old cor. of secs. 10, 11, 14, and 15, which according to the Commissioner's letter forms the whole structure of this resurvey, I set an iron post 3 ft. long, 3 ins. in diam. 24 ins. in the ground, marked as follows;

T5S	R8E
S10	S11
S15	S14

1919

The $S\frac{1}{2}$ of NW. $\frac{1}{4}$ of sec. 10 I eliminate from the reservation as follows;

I retrace the line bet. the $\frac{1}{4}$ sec. cor. bet. secs. 9 and 10 and the cor. of secs. 3, 4, 9, and 10.; The $\frac{1}{16}$ sec. cor. bet. secs. 9 and 10 is at the proper position for the angle point of the reservation. I find this cor. has

Corrections in T 5 S., R 8 E.

been destroyed by the construction of an irrigating ditch, the true point for same falling in the ditch. Therefore at a point 30 lks. N1°41'W. of true point, which ^{true} point is S 1°41'E. 19.91 chs. of the cor. of secs. 3, 4, 9, and 10, set an iron post 3 ft. long, 1 in. in diam. 26 ins. in the ground for witness 1/16 sec. cor. bet. secs. 9 and 10 (N. $\frac{1}{2}$ mile) which is also an angle point on the reservation boundary, with brass cap mkd. as follows;

GRIR
1/16 |
S9 | S10
P L
WC
1911

Dig pits 18x18x12 ins N. and S. of post 3 ft. dist.
I remove the post set at the point for the $\frac{1}{4}$ sec. cor. bet. secs. 9 and 10 which was marked for the reservation bdy.

The point for the 1/16 sec. cor. bet. the NE. and NW. quarter secs. of sec. 10 falls in the Gila River.

At a point 7.55 chs. S1°49'E. of true point as determined by the dependent resurvey; set an iron post 3 ft. long, 1 in. in diam. 26 ins. in the ground, with brass cap mkd. as follows;

GRIR
1/16 | S10
P L
WC
1911

I remove the post which marked the center $\frac{1}{4}$ sec. cor.
The above post is set identically at the position for the M.C. on the N. and S. center line of sec. 10 and I correct the markings on the bearing tree ~~to~~ referring to that cor., to read as follows

1/16 S10 BT.

(Signed) Guy P Harrington
U.S. Cadastral Engineer.

Oct. 17, 1919.

Subdivision of T. 5 S., R. 8 E.

GENERAL DESCRIPTION

The portion of this township which is contained within the Gila River Indian Reservation consists almost entirely of level ,irrigable land, much of which is under cultivation. Whwat and barley are the principal crops.

The water used in the irrigation is derived from the Gila River when in flood. The source of water for irrigation is therefore unreliable at all times of the year.

Practically all of the land adjoining the reservation on the south and on the east has been patented or filed upon by settlers.

GUY P. HARRINGTON

U. S. Surveyor

List of Assistants: in 1911:

Earl G. Harrington,	Instrumentman
Archie J. Strane,	Chainman
Myron E. Hays,	"
Fred J. Bergener,	Moundsman
Chas. Hoebeke,	Flagman
Mike Cavanaugh,	Axeman
Elmer L. Neye,	"

List of Assistants in 1912:

Thos. Allison,	Chainman
John Evans,	"
Cyrus Thomas,	Flagman
Juan E. Scott	Moundsman and Axeman.

110
53

Washington, D.C., *June 17,* 1915.

I hereby certify that the survey of the subdivision lines in T. 5 S., R. 8 E., within the Gila River Indian Reservation, Arizona, was made under my supervision and direction, and to the best of my knowledge and belief the field work was executed in strict accordance with the instructions given me dated Oct. 11, 1910, and the Manual of Surveying Instructions, and that these field notes are a correct representation thereof.

A. F. Drummond

Topographer in Charge of
Indian Surveys.

55
FINAL OATH OF UNITED STATES SURVEYOR.

I, _____, U. S. Surveyor, do solemnly swear that, in pursuance of special instructions received from the U. S. Surveyor General for _____ bearing date of the _____ day of _____, 191 _____, I have well, faithfully, and truly, in my own proper person, and in strict conformity with said instructions, the Manual of Surveying Instructions, and the laws of the United States, surveyed all those parts or portions of _____

For oath of U.S. Surveyor, see Book "B" (township exteriors and reservation boundary)

_____ of the _____ Meridian, in the State of _____, which are represented in the foregoing field notes as having been executed by me, and under my direction; and I do further solemnly swear that all the corners of said survey have been established and perpetuated in strict accordance with the Manual of Surveying Instructions, and the special written instructions of the U. S. Surveyor General for _____ and in the specific manner described in the field notes, and that the foregoing are the original field notes of such survey.

U. S. Surveyor.

Subscribed by said _____, and sworn to before me }
this _____ day of _____, 191 _____ }



APPROVAL.

OFFICE OF THE COMMISSIONER OF THE GENERAL LAND OFFICE
~~OFFICE OF THE UNITED STATES SURVEYOR GENERAL~~

Washington, D.C., October 23, 1920

The foregoing field notes of the survey of subdivision lines in T. 5 S., R. 8 E.,
within the Gila River Indian Reservation, Arizona,

executed by Guy P. Harrington, U. S. Surveyor, under direction of A. F. Dunnington,
Topographer in Charge of Indian Surveys Oct. 11, _____, 191 _____, and under
under his special instructions dated _____, 191 _____, having been
special instructions of the U.S. Sur. Gen'l. dated Sept. 20, 1919, Grp. No. 198
critically examined, and the necessary corrections and explanations made, the said field notes, and the
surveys they describe, are hereby approved.

(Signed) Clyde Tolson

~~U.S. Surveyor General~~
Commissioner of the General Land Office

I certify that the foregoing transcript of the field notes of the above-described surveys in the Gila River Ind. Res'n, Ariz., has been correctly copied from the original notes on file in this office.

[Handwritten signature]

[Handwritten signature]

[Handwritten signature]

~~U.S. Surveyor General~~
Commissioner of the General Land Office