

3487

Book "A"

4-679

BOOK 3487

FIELD NOTES

OF THE RESURVEY OF THE

South boundary of Township 19 North, Range 2 West,

Part of the West boundary, and

Part of the Subdivision lines of Township 18 North, Range 2 West,

and of the Survey of

Part of the Subdivision lines of

TOWNSHIP 18 NORTH, RANGE 2 WEST,

Of the Gila and Salt River Base and Meridian,

In the State of Arizona.

EXECUTED BY

Otis Ross,

In the capacity of U. S. Surveyor, under Special Instructions dated Oct. 15, 1919, issued by the United States Surveyor General to govern surveys included in Group No. 104, Arizona, which were approved by the Commissioner of the General Land Office, October 29, 1919, and Assignment Instructions dated November 7, 1919.

Resurvey and Survey commenced December 20, 1919.

Resurvey and Survey completed January 10, 1920.

3487

1A

INDEX DIAGRAM.

Township Range

6	5	4	3	2	1
7	8	9	10	11	12
18	17	16	15	14	13
19	20	21	22	23	24
30	29	28	27	26	25
31	32	33	34	35	36

OR 11

1B

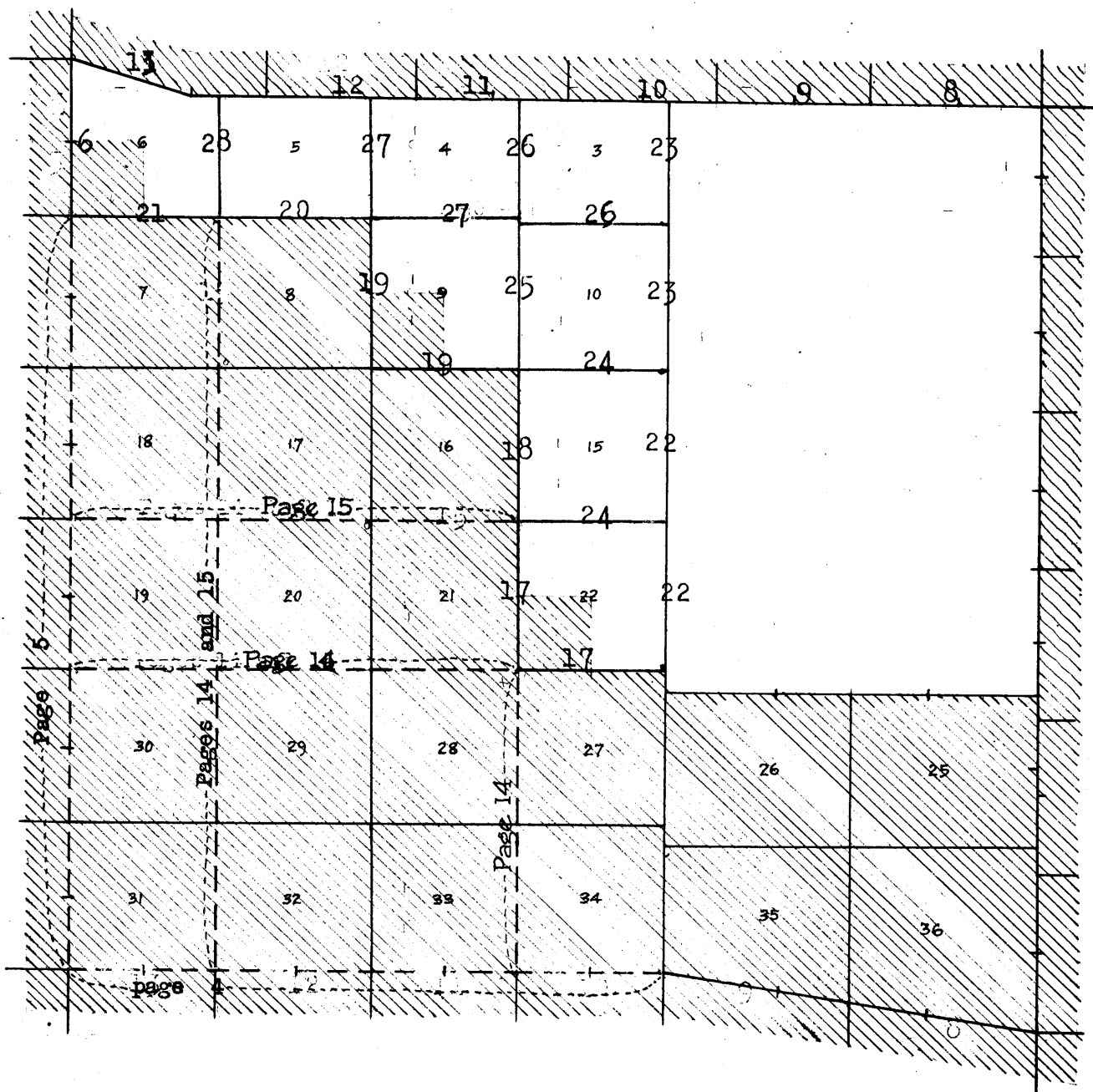
BOOK 3487

3487

Book "A"
Group 104---Arizona.

Index Diagram.

Township 18 North, Range 2 West.

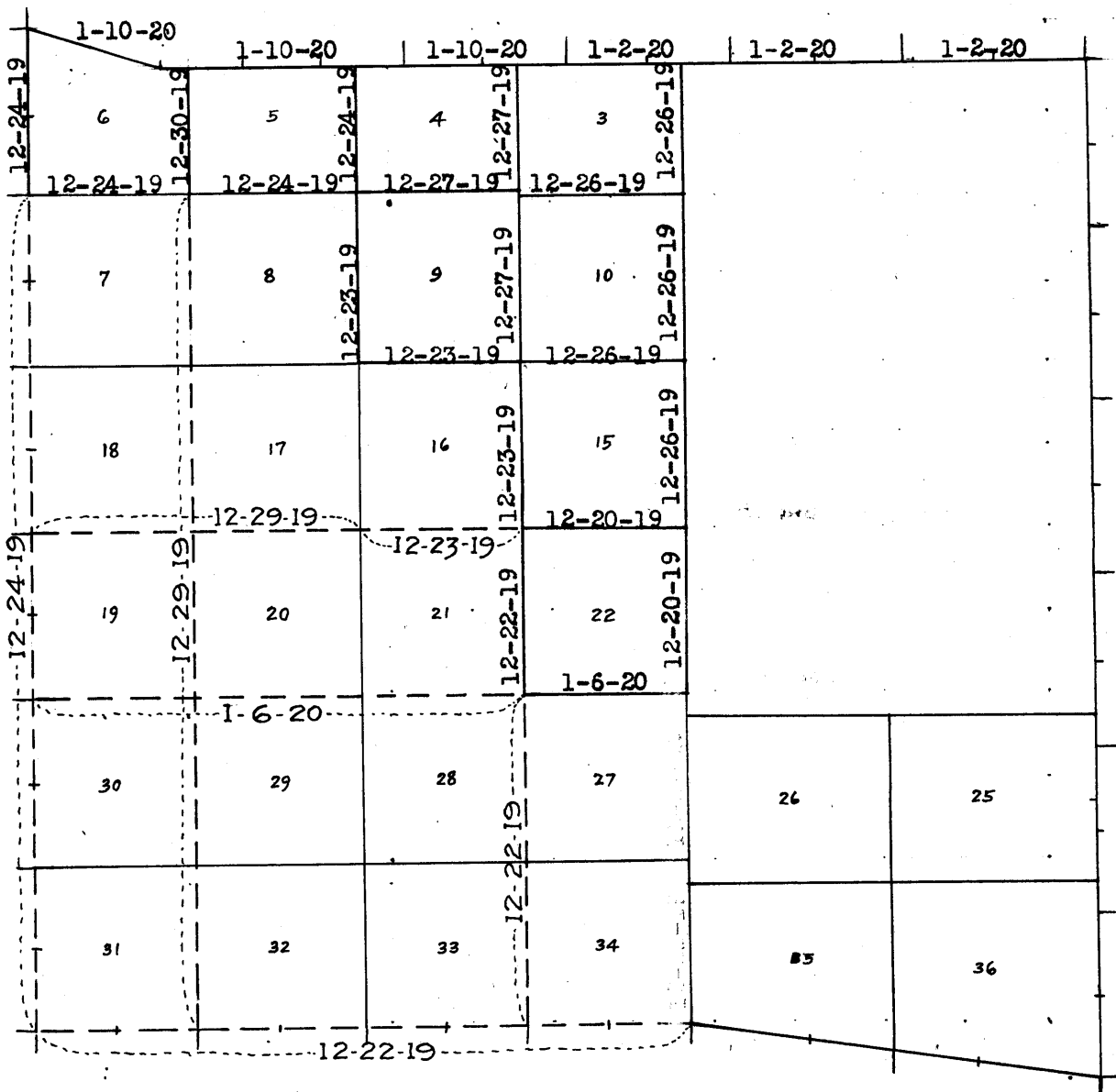


- Accepted surveys.
- Lines surveyed under this Group.
- - - - - Retracement for Resurvey this Group.
- Resurveyed under this Group.
- ▨▨▨▨▨▨ Areas surveyed as per accepted plats on file.

BOOK 3487

Date Diagram

Township 18 North, Range 2 West.



On the above diagram:

Red lines indicate surveys;

Blue lines indicate resurveys, and

Broken blue lines indicate retracement for resurvey;

all executed by Otis Ross, U.S. Surveyor, on dates shown thereon.

Black lines on above diagram indicate accepted surveys.

Survey commenced Dec. 20, 1919, and executed with Young and Sons mountain transit No. 8501; the instrument is equipped with a full vertical circle and the Smith solar attachment; unless otherwise specified all azimuth determinations are accomplished with the solar attachment.

Dec. 19, 1919: I examine the adjustment of the instrument and correct all errors; then to test the solar apparatus by comparing its indications from observations made during a.m. and p.m. hours with a meridian established by Polaris observation, proceed as follows:

In camp near the NW. cor. of sec. 16, T. 17 N., R. 2 W., Gila and Salt River Base and Meridian, Arizona, in latitude $34^{\circ}52'$ N., and longitude, $112^{\circ}29'$ W.; at 1h. 47m., a.m., l.m.t., I observe Polaris at western elongation, making four observations, two each with the telescope in direct and reversed positions, and mark the mean point in the line thus determined, on a peg driven firmly in the ground, 10 chs. N.

Azimuth of Polaris at western elongation = $1^{\circ}21'49''$.

Dec. 19, 1919: I lay off the azimuth of Polaris, $1^{\circ}22'$ to the east, and mark the meridian thus determined by a tack in a peg driven firmly in the ground, 10 chs. N.

At 9h. 00m. a.m., l.m.t., I set off $34^{\circ}52'$ N., on the lat. arc; $23^{\circ}22'$ S. on the decl. arc; and determine a meridian with the solar, which I find to agree with the true meridian.

At app. noon, with the lat. arc unchanged, I observe the sun on the meridian; the resulting reading of the decl. arc is $23^{\circ}23'$ S., which agrees with the computed declination of the sun.

At 3h. 00m., p.m., l.m.t., with the lat. arc unchanged, I set off $23^{\circ}22\frac{1}{2}'$ S. on the decl. arc; and determine a meridian with the solar, which I find to agree with the true meridian.

As all of the solar observations during the usual hours of solar work come within $1'30''$ of the true meridian, I conclude that the adjustments of the instrument are satisfactory.

Unless otherwise specified all measurements are made with a Lufkin 8-chain steel tape, compared with a Chesterman standard steel tape and found correct. The measurements are made on the slope, the vertical angles determined, and the slope measurements properly reduced to true horizontal distances.

Retracement of a portion of South bdy. of T.18 N., R.2 W.

Chains.

N.

The south bdy. of Township 18 (South) Range 2 West, was surveyed by S. W. Foreman, U.S.D.S. in October, 1871, the east two miles were resurveyed by Fred Mensch, U.S.S., in March, 1916. No retracement of the west 4 miles is of record.

Make diligent search for the original cor. Ts.17 and 18 N., Rs.2 and 3 W., established by S.W.Foreman, U.S.D.S. in 1871, but can find no trace of a monument agreeing with record description of said corner; however, in a fence cor., from which fences extend N., S. and W., find a cedar post firmly set in ground, which, by the testimony of resident settlers in this vicinity is accepted as being in the original position of the Tp. cor.

Thence,

S.89°53'E. on random line, bet. Ts.17 and 18 N., R.2 W., searching diligently at record intervals for the original cors., but fail to find any trace of same; until at

318.66

Fall 120 lks. S. of the cor. of secs. 2, 3, 34 and 35, reestablished by Fred Mensch, U.S.S., in 1916, which is an iron post, 3 ins. in diam., projecting 12 ins. above ground, firmly set, properly marked on brass cap, and witnessed by a mound of stone, W. of cor., and three bearing trees as follows:

A cedar, 14 ins. in diam., N.80½°E., 227 lks.
dist., marked T18N R2W S35 BT.

A cedar, 14 ins. in diam., S.80½°E., 229 lks.
dist., marked T17N R2W S2 BT.

A cedar, 12 ins. in diam., N.53½°W., 100 lks.
dist., marked T18N R2W S34 BT.

The true course and dist. of Tp. bdy. back to the accepted point for Tp. cor. are therefore, S.89°54'W., 318.66 chs., which, to maintain the original proportion between sec. cor. intervals thereon, gives reestablished intervals as follows: between secs. 3 and 34, bet. secs. 4 and 33, and bet. secs. 5 and 32, 79.74 chs. each, and bet. secs. 6 and 31, 79.44 chs.

From reestablished cor. of secs. 2, 3, 34 and 35, described above,
S.89°54'W., setting temp. sec. cors. at intervals of
79.74 chs.

Resurvey of a portion of West bdy. of T. 18 N., R. 2 W.

5

Chains.

The range line, bet. Ts. 18 N., Rs. 2 and 3 W., was surveyed by C. Burton Foster, U.S.D.S. in 1877, and no retracement or resurvey of said line is of record.

Retracement for Resurvey.

The original $\frac{1}{4}$ sec. cor. of secs. 1 and 6, is a limestone, 10x10x4 ins., marked $\frac{1}{4}$ on W. face, firmly set in a mound of stone, and witnessed by a mound of stone, W. of cor. No bearing trees.

Thence,

South, on a random line, bet. Ts. 18 N., Rs. 2 and 3 W., searching diligently at record intervals for the original cors., but fail to find any trace of same; until at Fall 220 lks. W. of the accepted point of original location of the cor. of Ts. 17 and 18 N., Rs. 2 and 3 W., hereinbefore described.

439.45

True course and dist. of range line back to $\frac{1}{4}$ sec. cor. of secs. 1 and 6 are therefore N. 0° 17' W., 439.45 chs., which, to maintain the original sec. cor. intervals thereon, gives reestablished intervals of 79.90 chs. for the S. $\frac{1}{2}$ mile of the line, and 39.95 chs. for the S. $\frac{1}{4}$ mile bet. secs. 1 and 6.

From the accepted point of the original location of the corner of Ts. 17 and 18 N., Rs. 2 and 3 W., hereinbefore described, N. 0° 17' W., setting temp. sec. cors. at intervals of 79.90 chs.

6. Dependent resurvey of a portion of West bdy. of T.18 N., R.2 W.

Chains.

38.03 From the original $\frac{1}{4}$ sec. cor. of secs. 1 and 6, hereinbefore described,
North, on random line, bet. secs. 1 and 6.
Fall 11 lks. S. of the original cor. of Ts. 18 and 19 N., Rs. 2 and 3 W., hereinafter described.
True course and dist. of N. $\frac{1}{2}$ of line, bet. secs. 1 and 6, are therefore N. $0^{\circ}10'W.$, 38.03 chs.

RESURVEY.

Set an iron post, 3 ft. long, 2 ins. in diam., 24 ins. in the ground, for reestablished cor. of secs. 1, 6, 7 and 12, with brass cap, marked

T18N	
R3W	R2W
S 1	S 6
S12	S.7
1919	

39.95 Raise a mound of stone, 2 ft. base, $1\frac{1}{2}$ ft. high, W. of cor. Thence,
N. $0^{\circ}17'W.$, on a true line, bet. secs. 1 and 6 (S. $\frac{1}{2}$).
Over level land, thru. scattering undergrowth.
Intersect the original $\frac{1}{4}$ sec. cor. of secs. 1 and 6, hereinbefore described.

Alongside old stone, set an iron post, 3 ft. long, 1 in. in diam., 20 ins. in the ground, supported by a mound of stone, for $\frac{1}{4}$ sec. cor. of secs. 1 and 6, with brass cap, marked

S 1	S 6
1919	

20.00 Thence,
N. $0^{\circ}10'W.$, on true line, bet. secs. 1 and 6 (N. $\frac{1}{2}$).
Over level land, thru. scattering undergrowth.
Leave level, and enter rolling land. Ascend gradually thru. scattering timber and undergrowth.

38.03 Intersect the original cor. of Ts. 18 and 19 N., Rs. 2 and 3 W., which is a limestone, 10x10x6 ins. above ground, firmly set, marked with 6 notches on each of N., S.E. and W. edges, and witnessed by a mound of stone, S. of cor. No bearing trees.
Alongside the old stone, set an iron post, 3 ft. long, 3 ins. in diam., 24 ins. in the ground, for cor. of Ts. 18 and 19 N., Rs. 2 and 3 W., with brass cap, marked

T19N	
R3W	R2W
S36	S31
S 1	S 6
T18N	
1919	

Land, level and rolling.
Soil, sandy and gravelly, 2nd and 3rd rate.
Timber, scattering cedar.
Undergrowth, scattering oak brush and catclaw.
Good grass.

The South bdy. of T.18 N., R.2 W. was surveyed by J. J. Smith, U.S.G.S. in 1895, and no retracement or resurvey is of record.

Dependent Resurvey of South bdy. of Township 19 North, Range 2 West. 7

Chains.	The South bdy. of T. 19 N., R. 2 W. was surveyed by J. T. Smith U.S.D.S. in 1883 and no retracement or resurvey is of record.
	<u>Retracement for Resurvey.</u>
39.87	From the cor. of Ts. 18 and 19 N., Rs. 1 and 2 W., hereinafter described, S. 89°42'W., on a random line on S. bdy. of sec. 36. Fall 83 lks. S. of the original $\frac{1}{4}$ sec. cor., hereinafter described. True course and dist. of the E. half of S. bdy. of sec. 36 are therefore N. 89°07'W., 39.88 chs.
40.31	Thence, S. 89°42'W., on a random line on S. bdy. of sec. 36. Fall 82 lks. N. of the original cor. of secs. 1, 2, 35 and 36, hereinafter described. True course and dist. of the W. $\frac{1}{2}$ of S. bdy. of sec. 36 are therefore S. 88°32'W., 40.32 chs.

40.11	From the cor. of secs. 1, 2, 35 and 36, S. 89°42'W., on a random line, on S. bdy. of sec. 35. Fall 23 lks. N. of the original $\frac{1}{4}$ sec. cor. of secs. 2 and 35, hereinafter described. True course and dist. of E. half of S. bdy. of sec. 35, are therefore S. 89°22'W., 40.11 chs.
40.16	Thence, S. 89°42'W., on a random line on S. bdy. of sec. 35. Fall 2 lks. S. of the original cor. of secs. 2, 3, 34 and 35, hereinafter described. True course and dist. of the W. half of S. bdy. of sec. 35, are therefore S. 89°44'W., 40.16 chs.

40.00	From the cor. of secs. 2, 3, 34 and 35, S. 89°42'W. on a random line on S. bdy. of sec. 34. Find no evidence of the original $\frac{1}{4}$ sec. cor. of secs. 3 and 34. Set temp. cor.
79.80	Fall 132 lks. S. of the original cor. of secs. 3, 4, 33 and 34, hereinafter described. True course and dist. of the S. bdy. of sec. 34, are therefore N. 89°21'W., 79.80 chs.

40.05	From the cor. of secs. 3, 4, 33 and 34, S. 89°42'W., on a random line on S. bdy. of sec. 33. Fall 16 lks. N. of the original $\frac{1}{4}$ sec. cor. of secs. 4 and 33, hereinafter described. True course and dist. of E. $\frac{1}{2}$ of S. bdy. of sec. 33 are therefore S. 89°28'W., 40.05 chs.
40.00	Thence, S. 89°42'W. on random line on S. bdy. of sec. 33. Find no evidence of original cor. of secs. 4, 5, 32 and 33. Set temporary corner.
80.00	Continue line and measurement. Find no evidence of the original $\frac{1}{4}$ sec. cor. of secs. 5 and 32. Set temp. corner.
120.69	Fall 35 lks. S. of the original cor. of secs. 5, 6, 31 and 32, hereinafter described. True course and dist. of Tp. bdy. from $\frac{1}{4}$ sec. cor. of secs. 4 and 33 to the cor. of secs. 5, 6, 31 and 32, are therefore S. 89°52'W., 120.69 chs., resulting in proportional intervals of 40.23 chs. for reestablished positions of missing corners thereon.
40.30	From the original cor. of secs. 5, 6, 31 and 32, S. 89°42'W., on a random line, on S. bdy. of sec. 31. Fall 22 lks. N. of the original $\frac{1}{4}$ sec. cor. of secs. 6 and 31, hereinafter described.

8. Dependent resurvey of South bdy. of T.19 N., R. 2 W.

Chains.

True course and dist. of E. half of S. bdy. of sec. 31 are therefore S. 89° 23' W., 40.30 chs.

Thence, S. 89° 42' W., on a random line on S. bdy. of sec. 31.

64.57 Fall 10.24 chs. S. of the reestablished cor. of Ts. 18 and 19 W., Rs. 2 and 3 W., hereinbefore described.

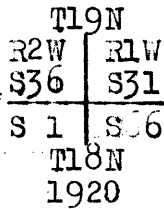
True course and dist. of the W. half of S. bdy. of sec. 31, are therefore N. 70° 10' W., 66.50 chs.

RESURVEY.

The cor. of Ts. 18 and 19 N., Rs. 1 and 2 W., reestablished by Alfred N. Oliver, U.S.D.S. in 1909, is a limestone 8x8x8 ins. above ground, firmly set, properly marked, and witnessed by four properly marked bearing trees, as follows:

N. 82° E., 84 lks. dist., S. 23 1/4° E., 15 lks. dist., S. 36° 35' W., 59 lks. dist., and N. 63° W., 34 lks. dist.

Alongside old stone, set an iron post, 3 ft. long, 3 ins. in diam., 12 ins. in the ground to bed rock, supported in a mound of stone for cor. of Ts. 18 and 19 N., Rs. 1 and 2 W., with brass cap, marked



Thence, N. 89° 07' W., on a true line, on S. bdy. of sec. 36 (E. 1/2). Over mountainous land, thru. scattering timber and undergrowth.

3.48 Descend 25 ft., over broken S. slope. Gulch, 20 lks. wide; course SE. Ascend 70 ft., over SE. slope.

8.59 Same gulch, course NE.

14.91 Spur, slopes SE. Descend 50 ft., over NW. slope.

19.79 Same gulch, as above, course SE. Ascend 60 ft., over E. slope.

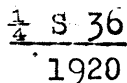
27.53 Spur, slopes N. Descend 20 ft., over W. slope.

29.10 Gulch, course NE. Ascend 70 ft., over SE. slope.

37.64 Spur, slopes SE. Descend 60 ft., over SW. slope.

39.88 The original 1/4 sec. cor. of secs. 1 and 36, which is a limestone, 8x8x8 ins., above ground; firmly set, marked 1/4 on N. face, and witnessed by a mound of stone, N. of cor. No other accessories.

Alongside old cor., set an iron post, 3 ft. long, 1 in. in diam., 20 ins. in the ground to bed rock, in a mound of stone, for 1/4 sec. cor. of sec. 36 only, marked on brass cap,



from which,

A cedar, 6 ins. in diam., brs. N. 53 1/4° E., 83 lks. dist., marked 1/4 S 36 BT.

A cedar, 7 ins. in diam., N. 48 1/2° W., 4 lks. dist., marked 1/4 S 36 BT.

Thence, S. 88° 32' W., on a true line, on S. bdy. of sec. 36 (W. 1/2). Over mountainous land, thru. scattering timber and undergrowth.

7.98 Gulch, course SE. Ascend 150 ft., over SE. slope.

24.87 Rim of mesa, brs. SE. and NW. Thence across mesa.

Dependent resurvey of South bdy. of T. 19 N., R. 2 W.

9

Chains.

40.32 Intersect the original cor. of secs. 1, 2, 35 and 36, which is a limestone, 12x8x6 ins., above ground, firmly set, properly marked and witnessed by a mound of stone, W. of cor. No other accessories. Alongside old stone set an iron post, 3 ft. long, 2 ins. in diam., 12 ins. in the ground, to bed rock, supported in a mound of stone, for cor. of secs. 35 and 36 only, marked on brass cap,

T19N R 2W
S35 | S36

1920

from which,

A pinon, 10 ins. in diam., brs. N. 20 $\frac{1}{2}$ ° E., 53 lks.
dist., marked T19N R2W S30 BT.

A cedar, 10 ins. in diam., brs. N. 71° W., 107 lks.
dist., marked "T19N R2W S35 BT.

Move old mound of stone from W. to N. of cor.

Land, mountainous.

Soil, rocky, 4th rate.

Timber, cedar and pinyon.

Undergrowth, oak brush, catclaw and cactus.

30.60
40.11

S. 89° 22' W., on a true line, on S. bdy. of sec. 35 (E. $\frac{1}{2}$).
Over level mesa, thru. scattering timber and undergrowth.
Old railroad grade, brs. SE. and NW.

Intersect the original $\frac{1}{4}$ sec. cor. of secs. 2 and 35, which is a wooden post 3 ins. in diam., projecting 12 ins. above ground, firmly set marked $\frac{1}{4}$ on N. face, and witnessed by two bearing as follows:

A cedar, 12 ins. in diam., N. 61° E., 73 lks.
dist., marked $\frac{1}{4}$ S B T.

A cedar, 10 ins. in diam., S. 5° E., 48 lks.
dist., marked $\frac{1}{4}$ S B T.

Alongside old wood post, set an iron post 3 ft. long, 1 in. in diam., 26 ins. in the ground for $\frac{1}{4}$ sec. cor. of sec. 35 only, marked on brass cap,

$\frac{1}{4}$ S 35

1920

from which,

A cedar, 10 ins. in diam., brs. N. 70 $\frac{1}{2}$ ° W., 90 lks.
dist., marked $\frac{1}{4}$ S 35 BT.

Change old marking on NE. bearing tree to read $\frac{1}{4}$ S B T 35.
Thence,

S. 89° 44' W., on a true line, on S. bdy. of sec. 35 (W. $\frac{1}{2}$).
Over level mesa, thru. scattering timber and undergrowth.
Road, brs. SE. and NW.

11.40
14.89
40.10

Road, brs. SE. and NW. in gulch, course SE.
Intersect the original cor. of secs. 2, 3, 34 and 35, which is a post, 4 ins. in diam., projecting 24 ins. above ground, firmly set, properly marked and witnessed by four bearing trees as follows:

A cedar, 14 ins. in diam., N. 50° E., 18 lks.
dist., marked T19N R2W S35 BT.

A cedar, 5 ins. in diam., S. 61° E., 55 lks.
dist., marked T18N R2W S2 BT.

A cedar, 18 ins. in diam., S. 48° W., 104 lks.
dist., marked T18N R2W S3 BT.

A cedar, 8 ins. in diam., N. 42° W., 67 lks.
dist., marked T19N R2W S34 BT.

Oblierate markings on SE. and SW. bearing trees, and alongside old wood post, set an iron post, 3 ft. long, 2 ins. in diam., 24 ins. in the ground, for cor. of secs. 34 and 35 only, marked on brass cap,

Dependent Resurvey of South bdy. of T. 19 N., R. 2 W.

Chains.

T19N | R 2W
S34 | S35

1920

Land, level.
Soil, loose rock and gravel, 3rd rate.
Timber, cedar and pinon.
Undergrowth, oak brush, catclaw and cactus.

23.97

N. 89° 21' W., on a true line on S. bdy. of sec. 34.
Over level land, thru. timber and undergrowth.
Set an iron post, 3 ft. long, 2 ins. in diam., 24 ins. in the ground, for cor. of secs. 2, and 3 only, with brass cap, marked

S 3 | S 2
T18N | R2W
1920

from which,

A cedar, 14 ins. in diam., brs. S. 44½° E., 65 lks.
dist., marked T18N R2W S2 BT.

A cedar, 6 ins. in diam., brs. S. 48° W., 102 lks.
dist., marked T18N R2W S3 BT.

39.90

Set an iron post, 3 ft. long, 3 ft. long, 1 in. in diam., 12 ins. in the ground to bed rock, supported in a mound of stone, for reestablished ¼ sec. cor. of sec. 34 only, marked on brass cap,

¼ S 34
1920

from which,

A cedar, 6 ins. in diam., brs. N. 35° E., 94 lks.
dist., marked ¼ S 34 BT.

A cedar, 8 ins. in diam., brs. N. 74½° W., 42 lks.
dist., marked ¼ S 34 BT.

Corner stands on spur, sloping S.
Descend 50 ft., over W. slope.

46.64

Gulch, course S. Ascend 190 ft., over E. slope.

63.97

Set an iron post, 3 ft. long, 1 in. in diam., 12 ins. in the ground to bed rock, supported in a mound of stone for ¼ sec. cor. of sec. 3 only, marked on brass cap,

¼ S 3
1920

from which,

A cedar, 12 ins. in diam., brs. S. 51° E., 229 lks.
dist., marked ¼ S 3 BT.

A cedar, 20 ins. in diam., brs. S. 25° W., 110 lks.
dist., marked ¼ S 3 BT.

74.53

Spur, slopes S. Descend 70 ft., over W. slope.

79.80

Intersect the original cor. of secs. 3, 4, 33 and 34, which is a limestone, 12x8x6 ins. above ground, firmly set, properly marked, witnessed by a mound of stone, W. of cor.; also,

A cedar tree, 12 ins. in diam., N. 40° W., 6 lks.
dist., marked T19N R2W S33 BT.

Alongside old stone, set an iron post, 3 ft. long, 2 ins. in diam., 20 ins. in the ground to bed rock, supported in a mound of stone, for cor. of secs. 33 and 34, marked on brass cap,

T19N | R2W
S33 | S34
1920

Chains.

Destroy the old mound of stone, W. of cor., and raise a mound of stone, 2 ft. base, 1½ ft. high, N. of cor.
 Land, mountainous and level.
 Soil, rocky, 3rd and 4th rate.
 Timber, cedar and pinyon.
 Undergrowth, oak brush, catclaw and cactus.

S. 89° 28' W., on a true line, on S. bdy. of sec. 33 (E. ½).
 Over mountainous land, thru. scattering timber and undergrowth. Descend 60 ft., over SW. slope.
 3.06 Gulch, course SE. Ascend 100 ft., over NE. slope.
 6.40 Spur, slopes SE. Descend 25 ft., over S. slope.
 12.35 Gulch, course SE. Ascend 150 ft., over NE. slope.
 21.17 Spur, slopes SE. Descend 20 ft., over SW. slope.
 24.17 Set an iron post, 3 ft. long, 2 ins. in diam., on bed rock, supported in a mound of stone, for reestablished cor. of secs. 3 and 4 only, marked on brass cap,

S 4	S 3
T18N	R 2W
1920	

from which,
 A cedar, 8 ins. in diam., brs. S. 69° 15' W., 164 lks. dist., marked T18N R2W S4 BT.
 28.18 Raise a mound of stone, 2 ft. base, 1½ ft. high, S. of cor.
 Gulch, course SE. Ascend 130 ft., over NE. slope.
 40.05 Intersect the original ¼ sec. cor. of secs. 4 and 33, which is a limestone, 14x6x6 ins. above ground, firmly set, marked ¼ on N. face, and witnessed by a cedar tree, 12 ins. in diam., S. 42° W., 70 lks. dist., marked ¼ S BT.
 No other accessories.
 Alongside old stone, set an iron post, 3 ft. long, 1 in. in diam., 10 ins. in the ground, to bed rock, supported in a mound of stone, for ¼ sec. cor. of sec. 33 only, marked on brass cap,

S 33
1920

from which,
 A cedar, 14 ins. in diam., brs. N. 85½° E., 172 lks. dist., marked ¼ S 33 BT.
 A cedar, 14 ins. in diam., brs. N. 13° W., 126 lks. dist., marked ¼ S 33 BT.
 Thence,
 S. 89° 52' W., on a true line, on S. bdy. of sec. 33 (W. ½).
 Over mesa, thru. scattering timber and undergrowth.
 16.98 Leave mesa, brs. NE. and SW. Descend 290 ft., over NW. slope.
 24.12 Set an iron post, 3 ft. long, 1 in. in diam., 14 ins. in the ground to bed rock, supported in a mound of stone, for ¼ sec. cor. of sec. 4 only, with brass cap, marked

¼ S 4
1920

from which,
 A cedar, 12 ins. in diam., brs. S. 87¼° E., 102 lks. dist., marked ¼ S 4 BT.
 A cedar, 16 ins. in diam., brs. S. 70½° W., 26 lks. dist., marked ¼ S 4 BT.
 40.23 Set an iron post, 3 ft. long, 2 ins. in diam., 24 ins. in the ground, for reestablished cor. of secs. 32 and 33 only, marked on brass cap,

12 Dependent Resurvey of South bdy. of T.19 N., R. 2 W.

Chains.

T19N R 2W
S32 | S33
1920

from which,

A pinyon, 6 ins. in diam., brs. N. $02\frac{1}{2}^{\circ}$ E., 51 lks.
dist., marked T19N R2W S33 BT.

A pinyon, 6 ins. in diam., brs. N. $35\frac{3}{4}^{\circ}$ W., 44 lks.
dist., marked T19N R2W S32 BT.

Land, mountainous.

Soil, on mountains, rocky limestone formation, 4th rate; on mesa, loose rock and gravel, 3rd rate.

Timber, cedar and pinyon.

Undergrowth, oak brush, catclaw and cactus.

S. $89^{\circ}52'$ W., on a true line, on S. bdy. of sec. 32.

Over mountainous land, thru heavy timber and undergrowth.
Descend 210 ft., over NW. slope.

19.70 Leave mountains; enter level bench land, brs. NE. and SW.

23.30 Gulch, course SW.

25.89 Set an iron post, 3 ft. long, 2 ins. in diam., 20 ins. in the ground, to bedrock, supported in a mound of stone, for cor. of secs. 4 and 5, only, marked on brass cap,

S 5 | S 4
T18N R2 W
1920

from which,

A cedar, 8 ins. in diam., brs. S. $9\frac{1}{2}^{\circ}$ E., 101 lks.
dist., marked T18N R2W S4 BT.

A cedar, 24 ins. in diam., brs. S. $12\frac{1}{2}^{\circ}$ W., 97 lks.
dist., marked T18N R2W S5 BT.

40.23 Set an iron post, 3 ft. long, 1 in. in diam., 26 ins. in the ground, for reestablished $\frac{1}{4}$ sec. cor. of sec. 32 only, marked on brass cap,

$\frac{1}{4}$ S 32
1920

from which,

A cedar, 15 ins. in diam., brs. N. $47\frac{1}{2}^{\circ}$ E., 305 lks. dist., marked $\frac{1}{4}$ S 32 BT.

A cedar, 12 ins. in diam., brs. N. $45\frac{1}{2}^{\circ}$ W., 346 lks. dist., marked $\frac{1}{4}$ S 32 BT.

65.94 Set an iron post, 3 ft. long, 1 in. in diam., 15 ins. in the ground, to bed rock, supported in a mound of stone, for $\frac{1}{4}$ sec. cor. of sec. 5 only, marked on brass cap,

$\frac{1}{4}$ S 5
1920

from which,

A cedar, 10 ins. in diam., brs. S. $77\frac{1}{2}^{\circ}$ E., 210 lks. dist., marked $\frac{1}{4}$ S 5 BT.

A cedar, 6 ins. in diam., brs. S. $34\frac{1}{2}^{\circ}$ W., 241 lks. dist., marked $\frac{1}{4}$ S 5 BT.

74.37 Gulch, course S. Ascend 20 ft., over $\frac{1}{4}$ slope.

80.40 Intersect the original cor. of secs. 5, 6, 31 and 32, which is a limestone, 12x8x8 ins. above ground, firmly set, properly marked and witnessed by a mound of stone, W. of cor.

Alongside old stone, set an iron post, 3 ft. long, 2 ins. in diam., 24 ins. in the ground, for cor. of secs. 31 and 32 only, with brass cap, marked

Chains.

T19N R 2W
S31 S32

1920

from which,

A cedar, 12 ins. in diam., brs. N. $84\frac{1}{2}^\circ$ E., 71 lks.
dist., marked T19N R2W S 32 BT.

A cedar, 10 ins. in diam., brs. N. $32\frac{1}{4}^\circ$ W., 104 lks.
dist., marked T19N R2W S31 BT.

Move mound of stone from W. to N. of cor.

Land, mountainous and level.

Soil, rocky, 4th rate.

Timber, cedar and pinon.

Undergrowth, oak, catclaw and cactus.

25.52

S. $89^\circ 23'$ W., on a true line on S. bdy. of sec. 31 (E. $\frac{1}{2}$).
Over level land, thru. scattering timber and undergrowth.
Set an iron post, 3 ft. long, 2 ins. in diam., 24 ins. in
the ground, for cor. of secs. 5 and 6 only, marked on
brass cap,

S 0 S 5
T18N R2 W
1920

from which,

A cedar, 6 ins. in diam., brs. S. 29° E., 112 lks.
dist., marked T18N R2W S5 BT.

A cedar, 14 ins. in diam., brs. S. 29° W., 371 lks.
dist., marked T18N R2W S6 BT.

20.96
40.30

Gulch, course SW.
Intersect the original $\frac{1}{4}$ sec. cor. of secs. 6 and 31, which
is a limestone, $14 \times 8 \times 8$ ins., marked $\frac{1}{4}$ on N. face, and
witnessed by a mound of stone, N. of cor.
Alongside old stone, set an iron post 3 ft. long, 1
in. in diam., 20 ins. in the ground, for $\frac{1}{4}$ sec. cor.,
of sec. 31 only, marked on brass cap,

$\frac{1}{4}$ S 31

1920

Thence,

N. $70^\circ 10'$ W., on a true line on S. bdy. of sec. 31 (W. $\frac{1}{2}$).
Over rolling land, thru. scattering timber and undergrowth.

2.08

Gulch, course SW. Ascend NE. slope.

5.00

Spur, slopes SW. Descend NW. slope.

7.97

Gulch, course SW. Ascend SE. slope.

12.98

Spur, slopes SW. Descend NW. slope.

18.70

Gulch, course SW. Ascend SE. slope.

26.44

Set an iron post, 3 ft. long, 1 in. in diam., 20 ins. in
the ground, for reestablished $\frac{1}{4}$ sec. cor. of sec. 6,
only, marked on brass cap,

$\frac{1}{4}$ S 6

1920

Raise a mound of stone, 2 ft. base, $1\frac{1}{2}$ ft. high, S. of
cor.

32.62

Gulch, course SW. Ascend SE. slope.

60.50

Intersect the cor. of Ts. 18 and 19 N., Rs. 2 and 3 W.,
hereinbefore described.

Land, level and rolling.

Soil, gravelly, 3rd rate.

Timber, cedar and pinon.

Undergrowth, oak brush, catclaw and cactus.

14. Dependent Resurvey of portion of Subdivision of T.18 N. R.2 W.

Chains.

The Subdivision lines of the surveyed portion of this Tp. with the exception of secs. 25, 26, 35 and 36, were surveyed in 1877 by C. Burton Foster, U.S.D.S., and with the exception of the E. boundaries of secs. 27 and 34, no retracement or resurvey is of record.

Fred Mensch, U.S.S. in 1916, surveyed the subdivision lines of secs. 25, 26, 35 and 36, and resurveyed the E. boundaries of secs. 27 and 34:

Retracement for Resurvey.

From temp. cor. of secs. 3, 4, 33 and 34 on S. bdy. of Tp., set as hereinbefore described,

North, on random line, searching diligently at record intervals for the original $\frac{1}{4}$ sec. and sec. cors.

160.00 Diligent search in this vicinity fails to reveal any trace of the original cor. of secs. 21, 22, 27 and 28.

Set temp. cor. of said secs.

After retracement of the latitudinal sec. line thru this cor. as hereinafter described, the point for reestablishment of the cor. is determined by proportional measurement to be at 9 lks. E. of this temp. cor.

True course and dist. of the meridional sec. line from temp. cor. of secs. 3, 4, 33 and 34 on S. bdy. of Tp. to reestablished cor. of secs. 21, 22, 27 and 28 are therefore N. 0° 2' E., 160.00 chs.

From temp. cor. of secs. 19, 24, 25 and 30, on W. bdy. of Tp., set as hereinbefore described,

East, on a random line, searching diligently at record intervals for the original cors., but fail to find any trace of same.

239.79 A point 37 lks. S. of the temp. cor. of secs. 21, 22, 27 and 28, set as hereinbefore described.

319.88 Fail to find cor. of secs. 22 and 27, reestablished in 1916, by Fred Mensch, U.S.S., which is an iron post, 2 ins. in diam., projecting 10 ins. above ground, firmly set, properly marked on brass cap, and witnessed by a mound of stone, W. of cor. No bearing trees.

The true length of a line back to temp. cor. of secs. 19, 24, 25 and 30, on W. bdy. of Tp. is therefore 319.88 chs., which is to maintain original proportion bet. the cor. intervals, gives 80.00 chs. as the reestablished length of the line between secs. 22 and 27.

The temp. cor. of secs. 21, 22, 27 and 28 is 80.09 chs. W., and 23 lks. S. of the reestablished cor. of secs. 22 and 27; therefore, to maintain the proportional length of 80.00 chs. on the latitudinal sec. line, the proper point for reestablishment of the cor. of secs. 21, 22, 27 and 28 is 9 lks. E. of the temp. cor. of said secs.

The resulting true courses and distances of the lines affected by such reestablishment of the cor. of secs. 21, 22, 27 and 28 are as follows:

Line bet. secs. 22 and 27: S. 89° 50' W., 80.00 chs.

From temp. cor. of secs. 3, 4, 33 and 34 on S. bdy. to said reestablished cor.: N. 0° 2' E., 160.00 chs.

From said reestablished cor. to the temp. cor. of secs. 19, 24, 25 and 30 on W. bdy. of Tp.: S. 89° 55' W., 239.88 chs.

From temp. cor. of secs. 5, 6, 31 and 32, on S. bdy. of Tp., set as hereinbefore described,

North, on random line, searching diligently at record intervals for the original $\frac{1}{4}$ sec. and sec. cors., but fail to find any trace of same until, at

Chains.

Retracement for Resurvey, continued.

321.61 Fall 77 lks. E. of the original cor. of secs. 7, 8, 17 and 18, which is a limestone, 14x12x8 ins. above ground, firmly set, marked with 5 notches on E. face, and 4 notches on S. face, and witnessed by a mound of stone, N. of cor.
No bearing trees. Move the mound of stone, from N. to W. of cor.

40.00 From original cor. of secs. 7, 8, 17 and 18, North, on random line, bet. secs. 7 and 8. Diligent search in this vicinity fails to reveal any trace of the original $\frac{1}{4}$ sec. cor.
80.00 Diligent search in this vicinity fails to reveal any trace of the original cor. of secs. 5, 6, 7 and 8. Set temp. cor. of said secs.

160.65 From the temp. cor. of secs. 13, 18, 19 and 24 on W. bdy. of Tp. set as hereinbefore described, East, on a random line, searching diligently at record intervals for the original cors., but fail to find any trace of any until, at Fall 98 lks. S. of the original cor. of secs. 16, 17, 20 and 21, which is a wooden post, 3 ins. square, 4 ft. long, properly marked, lying on and imbedded in the mound of earth which is recorded as having been raised around the post. No trace of the original bearing trees and pits. Destroy the remains of the old mound, reset the old wood post, 24 ins. in the ground, and alongside same, set an iron post, 3 ft. long, 2 ins. in diam., 24 ins. in the ground, for cor. of secs. 16, 17, 20 and 21, with brass cap, marked

T18N R2 W	
S17	S16
S20	S21
1919	

from which,
A cedar, 22 ins. in diam., brs. S. $44\frac{1}{2}^{\circ}$ E., 123 lks. dist., marked T18N R2W S21 BT.
and raise a mound of stone, 2 ft. base, $1\frac{1}{2}$ ft. high, W. of cor.

True course and distance of line back to temp. cor. of secs. 13, 18, 19 and 24, on W. bdy. of Tp., are therefore, S. $89^{\circ}39'$ W., 160.65 chs.

39.95 From original cor. of secs. 16, 17, 20 and 21, East, on random line, bet. secs. 16 and 21. Diligent search in this vicinity fails to reveal any trace of the original $\frac{1}{4}$ sec. cor.
79.90 Diligent search in this vicinity fails to reveal any trace of the original cor. of secs. 15, 16, 21 and 22. Set temp. cor. of said secs. The cor. is reestablished as hereinafter described, at 23 lks. S. of this temp. cor. The true course and dist. of line between secs. 16 and 21 are therefore N. $89^{\circ}50'$ W., 79.90 chs.

40.00 From reestablished point for cor. of secs. 21, 22, 27 and 28, North, on random line, bet. secs. 21 and 22. Diligent search in this vicinity fails to reveal any trace of the original $\frac{1}{4}$ sec. cor. Set temp. cor.

16 Dependent Resurvey of a portion of Subdivision of T.18 N., R.2 W.

Chains.

80.00 Diligent search in this vicinity fails to reveal any trace of the original cor. of secs. 15, 16, 21 and 22. Set temp. cor. From a point 5 lks. E. of this temp. cor., the temp. cor. of same secs. set at 79.90 chs. E. from cor. of secs. 10, 17, 20 and 21, as hereinbefore described, brs. N. 23 lks. dist. To maintain record westing of line between secs. 16 and 21, and record northing of line between secs. 21 and 22, the reestablished point for cor. of secs. 15, 16, 21 and 22 is at 5 lks. E. of temp. cor. just set, and 23 lks. S. of the temp. cor. previously set. The resulting true course and dist. for line bet. secs. 21 and 22 are therefore, N. 0° 02' E., 80.00 chs.

40.00 From reestablished point for cor. of secs. 15, 16, 21 and 22, North, on random line, bet. secs. 15 and 16.

80.00 Diligent search in this vicinity fails to reveal any trace of the original $\frac{1}{4}$ sec. cor. Set temp. cor.

80.00 Diligent search in this vicinity fails to reveal any trace of the original cor. of said secs. 9, 10, 15 and 16. Set temp. cor. of said secs.

From original cor. of secs. 8, 9, 16 and 17, hereinafter described,

40.04 East, on a random line, bet. secs. 9 and 16.

80.08 Diligent search in this vicinity fails to reveal any trace of the original $\frac{1}{4}$ sec. cor. Set temp. cor.

80.08 Diligent search fails to reveal any trace of the original cor. of secs. 9, 10, 15 and 16. Set temp. cor. of said secs.

From a point 16 lks. E. of this temp. cor., the temp. cor. of said secs. previously set, brs. S. 160 lks. dist.

To maintain record westing of line, bet. secs. 9 and 16, and record northing of line bet. secs. 15 and 16,

the reestablished point for cor. of secs. 9, 10, 15 and 16 is at 160 lks. S. of the temp. cor. just set, and 16 lks. W. of the temp. cor. previously set.

The resulting true courses and distances of the section lines affected by such reestablishment of the sec. cor. are as follows:

Between secs. 15 and 16: N. 0° 7' W., 80.00 chs., and
Between secs. 9 and 16, N. 88° 51' W., 80.10 chs.

From original cor. of secs. 8, 9, 16 and 17, hereinafter described,

40.00 North, on random line, bet. secs. 8 and 9.

80.00 Diligent search in this vicinity fails to reveal any trace of the original $\frac{1}{4}$ sec. cor. Set temp. cor.

80.00 Diligent search in this vicinity fails to reveal any trace of the original cor. of secs. 4, 5, 8 and 9. Set temp. cor. of said secs.

From reestablished cor. of secs. 1, 6, 7 and 12, on W. bdy. of Tp., hereinbefore described,

38.90 East, on a random line, bet. secs. 6 and 7.

78.90 Diligent search in this vicinity fails to reveal any trace of the original $\frac{1}{4}$ sec. cor. Set temp. cor.

78.90 Diligent search in this vicinity fails to reveal any trace of the original cor. of secs. 5, 6, 7 and 8. Set temp. cor. of said secs.

From a point 194 lks. E. of this temp. cor., the temp. cor. of same secs. previously set, brs. N. 195 lks. dist.

To maintain record westing of line between secs. 6 and 7, and record northing of line bet. secs. 7 and 8, the re-

established point for cor. of secs. 5, 6, 7 and 8 is at 195 lks. N. of the temp. cor. just set, and 194 lks. W. of the temp. cor. previously set.

Independent Resurvey of portion of subdivision of T.18 N. R.2 W. 17 chains.

The resulting true courses and distances of sec. lines are as follows:
 Between secs. 7 and 8: N.1°23'W., 80.02 chs., and
 Between secs. 6 and 7: S.89°35'W., 78.92 chs.

From reestablished point for cor. of secs. 5, 6, 7 and 8, determined as described above,
 East, on random line, bet. secs. 5 and 8.

40.08 Diligent search in this vicinity fails to reveal any trace of the original $\frac{1}{4}$ sec. cor. Set temp. cor.

80.16 Diligent search in this vicinity fails to reveal any trace of the original cor. of secs. 4, 5, 8 and 9. Set temp. cor. of said secs. from a point 194 lks. E. of this temp. cor., the temp. cor. of same secs. previously set, brs. S. 10 lks. dist.

To maintain record westing of line bet. secs. 5 and 8, and record northing of line, bet. secs. 8 and 9, the reestablished point for cor. of secs. 4, 5, 8 and 9, is at 10 lks. S. of temp. cor. just set, and 194 lks. W. of the temp. cor., previously set.

The resulting true courses and distances of sec. lines are as follows:
 Between secs. 8 and 9, N.1°23'W., 80.02 chs., and
 Between secs. 5 and 8, N.89°50'W., 80.16 chs.

RESURVEY:

From the reestablished cor. of secs. 22 and 27, here in before described,
 S.89°50'W., on a true line, bet. secs. 22 and 27.
 Over rolling land devoid of timber or undergrowth; ascend 65 ft. over E. slope.

15.65 Spur, slopes S. Descend 100 ft., over W. slope.

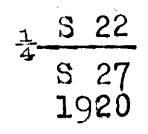
25.76 Road, brs. N. and S.

28.96 Gulch, course S. Ascend 30 ft., over E. slope.

29.16 Fence, brs. N. and S. At a point about 250 lks. N. this fence turns to W.

33.88 Spur, slopes S. Descend 50 ft., over NW. slope.

40.00 Set an iron post, 3 ft. long, 1 in. in diam., 18 ins. in the ground, to bed rock, supported in a mound of stone, for reestablished $\frac{1}{4}$ sec. cor., marked on brass cap,

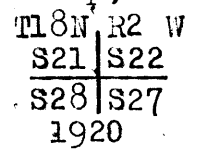


40.58 Raise a mound of stone 2 ft. base, 1 $\frac{1}{2}$ ft. high, N. of cor. Gulch, course SW. Ascend.

45.48 Low spur, slopes SW. Descend.

50.00 Leave rolling and enter level land.

80.00 Set an iron post, 3 ft. long, 2 ins. in diam., 24 ins. in the ground, for reestablished cor. of secs. 21, 22, 27 and 28, marked on brass cap,



Raise a mound of stone, 2 ft. base, 1 $\frac{1}{2}$ ft. high, W. of cor. Land, slightly rolling and level. Soil, sandy loam, 2nd rate. No timber or undergrowth. Good grass.

N.0°02'E., on a true line, bet. secs. 21 and 22.
 Over level land, devoid of timber or undergrowth.

2.72 Fence brs. E. and W.

35.88 Road brs. SE. and NW.

18 Dependent Resurvey of a portion of Subdivision of T.18 N. R.2 W.

Chains.

40.00 (from dist.), Set an iron post, 3 ft. long, 1 in. in diam., 24 ins. in the ground, for reestablished $\frac{1}{4}$ sec. cor., with brass cap, marked

$\frac{1}{4}$
S21 | S22
1919

from which,

A cedar, 30 ins. in diam., brs. N. $75\frac{1}{2}^{\circ}$ E., 172 lks. dist., marked $\frac{1}{4}$ S 22 BT.

50.53 Raise a mound of stone, 2 ft. base, $1\frac{1}{2}$ ft. high, W. of cor. Leave Chino Valley, brs. SE. and NW. Enter mountainous land, scattering timber and undergrowth. Ascend 200 ft., over SW. slope.

80.00 Set an iron post, 3 ft. long, 2 ins. in diam., 6 ins. in the ground, to bed rock, supported in a mound of stone, for reestablished cor. of secs. 15, 16, 21 and 22, marked on brass cap,

T18N R2 W
S16 | S15
S21 | S22
1919

Raise a mound of stone, 2 ft. base, $1\frac{1}{2}$ ft. high, W. of cor.

Land, level and mountainous.

Soil, sandy, 1st and 2nd rate, in S. 50 chs.; rocky, 4th rate in N. 30 chs.

Timber, scattering cedar in N. 30 chs.

Undergrowth, scattering oak brush, catclaw and cactus in N. 30 chs.

Fair grass in S. 50 chs. Poor grass in N. 30 chs.

N. $0^{\circ}07'$ W., on a true line, bet. secs. 15 and 16.

Over mountainous land, thru. scattering timber and undergrowth.

Ascend 90 ft., over SW. slope.

11.45 Oil derrick, brs. N. $13^{\circ}10'$ W. Descend 120 ft., over NW. slope.

21.00 Gulch, course W. Ascend 50 ft., over S. slope.

31.15 Oil derrick, brs. N. $47^{\circ}45'$ W.

36.27 Gulch, course SW.

40.00 Set an iron post, 3 ft. long, 1 in. in diam., 20 ins. in the ground, for reestablished $\frac{1}{4}$ sec. cor., with brass cap, marked

$\frac{1}{4}$
S16 | S15
1919

from which

A cedar, 14 ins. in diam., brs. N. 29° E., 151 lks. dist., marked $\frac{1}{4}$ S 15 BT.

Raise a mound of stone, 2 ft. base, $1\frac{1}{2}$ ft. high, W. of cor. Ascend 170 ft., over broken SW. slope.

80.00 Set an iron post, 3 ft. long, 2 ins. in diam., 8 ins. in the ground, to bed rock, supported in a mound of stone for reestablished cor. of secs. 9, 10, 15 and 16, marked on brass cap,

T18N R 2W
S. 9 | S10
S16 | S15
1919

from which,

Dependent Resurvey of a portion of Subdivision of T.18 N., R.2 W. 19

Chains.

- A pinon, 8 ins. in diam., brs. N. 81° E., 54 lks. dist., marked T18N R2W S10 BT.
- A pinon, 8 ins. in diam., brs. S. 30° E., 65 lks. dist., marked T18N R2W S15 BT.
- A pinon, 10 ins. in diam., brs. S. 29½° W., 39 lks. dist., marked T18N R2W S16 BT.
- A cedar, 8 ins. in diam., brs. N. 76° W., 46 lks. dist., marked T18N R2W S9 BT.

Land, mountainous.
 Soil, rocky limestone formation, 4th rate.
 Timber, scattering cedar and pinon pine.
 Undergrowth, scattering oak brush, catclaw and cactus.
 Good grass.

N. 88° 51' W., on a true line, bet. secs. 9 and 10.
 Over mountainous land, thru. timber and undergrowth.
 Descend 70 ft., over SW. slope.

- 5.50 Gulch, course SW.
- 13.20 Spur, slopes S. Descend 50 ft., over SW. slope.
- 25.09 Gulch, course SE. Ascend 30 ft., over NE. slope.
- 29.70 Spur, slopes SE. Descend 25 ft., over SW. slope.
- 40.05 Set an iron post 3 ft. long, 1 in. in diam., 20 ins. in the ground, for reestablished ¼ sec. cor., marked on brass cap,

$$\frac{1}{4} \text{ S } 9$$

$$\text{S } 16$$
 1919

from which,

- A pinon, 12 ins. in diam., brs. S. 15½° W., 110 lks. dist., marked ¼ S 16 BT.
- A cedar, 6 ins. in diam., brs. N. 21½° W., 30 lks. dist., marked ¼ S 9 BT.

- 41.43 Gulch, course S. Ascend over E. slope.
- 44.85 Spur, slopes S. Descend 10 ft., over W. slope.
- 46.23 Gulch, course S. Ascend 70 ft., over E. slope.
- 55.80 Spur, slopes SE. Descend 60 ft., over SW. slope.
- 63.80 Gulch, course S. Ascend 30 ft., over E. slope.
- 67.50 Spur, slopes S. Thence over rolling W. slope.
- 80.10 Intersect the original cor. of secs. 8, 9, 10 and 17, which is a wooden post, 3 ins. square, projecting 2½ ft. above ground, firmly set, marks visible, but not legible, and witnessed by the original bearing trees, as follows:

- A cedar, 14 ins. in diam., N. 47° E., 102 lks. dist., marked T18N R2W S9 BT.
- A cedar, 10 ins. in diam., N. 46° W., 110 lks. dist., marked T18N R2W S8 BT.

Alongside old wood post, set an iron post, 3 ft. long, 2 ins. in diam., 24 ins. in the ground, for cor. of secs. 8, 9, 10 and 17, marked on brass cap,

$$\begin{array}{c} \text{T18N R2W} \\ \text{S } 8 \text{ S } 9 \\ \hline \text{S17 S16} \\ 1919 \end{array}$$

from which,

- A pine, 6 ins. in diam., brs. S. 50° E., 197 lks. marked T18N R2W S16 BT.
- A cedar, 6 ins. in diam., brs. S. 17¼° W., 124 lks. dist., marked T18N R2W S17 BT.

Land, mountainous.
 Soil, rocky limestone, 4th rate.
 Timber, scattering cedar and pinon.
 Undergrowth, scattering oak brush, catclaw and cactus.
 Poor grass.

N. 1° 23' W., on a true line, bet. secs. 8 and 9.
 Over mountainous land, thru. scattering timber and

20 Dependent Survey of a portion of subdivision of T.18 N.R.2 W.

Chains.

undergrowth. Descend 30 ft., over NW.slope.
 11.46 Gulch, course SW. Ascend 160 ft., over SE. slope.
 25.33 Spur, slopes SW. Descend 60 ft., over NE.slope.
 35.17 Gulch, course SW. Ascend 540 ft., over SE.slope.
 40:01 Set an iron post, 3 ft.long, 1 in. in diam., 18 ins. in
 the ground to bed rock, supported in a mound of stone,
 for reestablished $\frac{1}{4}$ sec.cor., marked on brass cap,

$\frac{1}{4}$
 S 8 | S 9
 1919

from which,

A pinyon, 13 ins. in diam., brs.N.74 $\frac{1}{2}$ °E., 31
 lks.dist., marked $\frac{1}{4}$ S 9 BT.
 A pinon, 7 ins. in diam., brs.S.47°W., 60
 lks.dist., marked $\frac{1}{4}$ S 8 BT.

50.00 Slopes changes to SW.
 64.86 Ridge, brs.E.and W. Descend 310 ft., over N.slope.
 80.02 Set an iron post, 3. ft.long, 2 ins. in diam., 15 ins. in
 the ground to bed rock, supported in a mound of stone,
 for reestablished cor.of secs.4,5, 8 and 9, marked on
 brass cap,

T18N R 2W
 S 5 | S 4
 S 8 | S 9
 1919

from which,

A pinyon, 8 ins. in diam., brs.N.44 $\frac{1}{2}$ °E., 39 lks.
 dist., marked T18N R2W S4 BT.
 A cedar, 14 ins. in diam., brs.S.38 $\frac{1}{2}$ °E., 27 lks.
 dist., marked T18N R2W S9 BT.
 A pinon, 10 ins. in diam., brs.S.85 $\frac{1}{2}$ °W., 39 lks.
 dist. marked T 18N R2W S8 BT.
 A pinon, 12 ins. in diam., brs.N.64 $\frac{1}{2}$ °W., 45 lks.
 dist., marked T18N R2 W S5 BT.

Land, mountainous.
 Soil, rocky, limestone formation, 4th rate.
 Timber, scattering cedar and pinon.
 Undergrowth, scattering oak brush and catclaw.
 Poor grass.

N.89°50'W., on a true line, bet.secs.5 and 8.
 Over mountainous land, thru.scattering timber and under-
 growth.

9.66 Descend 120 ft., over NW.slope.
 25.00 Gulch, course SW. Ascend 20 ft., over SE.slope.
 30.30 Spur, slopes SW.
 40.08 Set an iron post, 3 ft.long, 1 in. in diam., 12 ins. in
 the ground, to bed rock, supported in a mound of
 stone, for reestablished $\frac{1}{4}$ sec.cor., marked on brass
 cap,

$\frac{1}{4}$ S 5
 S 8
 1919

from which,

A cedar, 12 ins. in diam., brs.N.46°E., 132
 lks.dist., marked $\frac{1}{4}$ S 5 BT.
 A cedar, 6 ins. in diam., brs.S.54 $\frac{1}{2}$ °E., 145
 lks.dist., marked $\frac{1}{4}$ S 8 BT.

41.05 Gulch, course SW. Thence over rolling land.
 80.16 Set an iron post, 3 ft.long, 2 ins. in diam., 24 ins. in
 the ground, for reestablished cor.of secs. 5, 6, 7 and
 8, marked on brass cap,

Dependent Resurvey of a portion of Subdivision of T.18 N. R.2 W. 21

Chains.

T18N | R 2W
 S 6 | S 5
 S 7 | S 8
 1919

Raise a mound of stone 2 ft. base, 1½ ft. high, W. of cor. Land, mountainous and rolling.
 Soil, rocky, limestone formation, 4th rate.
 Timber, scattering cedar and pinyon.
 Undergrowth, scattering oak brush, catclaw and cactus.
 Poor grass.

S. 88° 35' W., on a true line, bet. secs. 6 and 7.
 Over slightly rolling land, thru. scattering timber and undergrowth.

27.50 Gulch, course SW.

39.90 Gulch, course SW. Enter valley, brs. SE. and NW. Leave timber and undergrowth, brs. SE. and NW.

40.01 Set an iron post, ¾ ft. long, 1 in. in diam., 20 ins. in the ground, for reestablished ¼ sec. cor., marked on brass cap,

¼ S 6
 S 7
 1919

from which;

A cedar, 10 ins. in diam., brs. N. 45½° E., 63 lks. dist., marked ¼ S 6 BT

A cedar, 6 ins. in diam., brs. S. 12½° E., 207 lks. dist., marked ¼ S 7 BT

78.92 Intersect the reestablished cor. of secs. 1, 6, 7 and 12, on W. bdy. of Tp., hereinbefore described.

Land, slightly rolling.

Soil, sandy loam, 2nd rate.

Timber, scattering cedar in E. ½.

Undergrowth, scattering oak brush, catclaw and cactus in E. ½.

Good grass.

22 Survey of a portion of Subdivision of T18 N. R. 2 W.

chains.

From the reestablished cor. of secs. 22 and 27, hereinbefore described,

North, on a true line, on E. bdy. of sec. 22.

Over mountainous land, thru. scattering timber and undergrowth. Ascend 150 ft., over S. slope.

14.80 Spur, slopes W. Descend 60 ft., over N. slope.

36.50 Gulch, course SW. Ascend 140 ft., over SE. slope.

40.00 Set an iron post, 3 ft. long, 1 in. in diam., 18 ins. in the ground, to bed rock, supported in a mound of stone, for $\frac{1}{4}$ sec. cor., of sec. 22 only, marked on brass cap,

$\frac{1}{4}$ S22

1919

Raise a mound of stone, 2 ft. base, $1\frac{1}{2}$ ft. high, W. of cor. Spur, slopes E. Descend 60 ft., over broken NE. slope.

64.26 79.70 Set an iron post, 3 ft. long, 2 ins. in diam., 18 ins. in the ground, to bed rock, supported in a mound of stone for cor. of secs. 15 and 22 only, marked on brass cap,

T18N
S15
S22
R 2W

1919

Raise a mound of stone, 2 ft. base, $1\frac{1}{2}$ ft. high, W. of cor. Land, mountainous.

Soil, rocky, 4th rate.

Timber, scattering cedar and pinyon.

Undergrowth, scattering oak brush, catclaw and cactus.

Poor grass.

N. $0^{\circ} 01'$ W., on a true line, on E. bdy. of sec. 15.

Over mountainous land, thru. scattering timber and undergrowth.

1.40 Gulch, course E.

Ascend 50 ft., over S. slope.

12.66 Spur, slopes E. Descend 10 ft., over N. slope.

15.74 Gulch, course E. Ascend 95 ft., over S. slope.

29.87 Top of ascent. Descend 40 ft., over N. slope.

40.00 Set an iron post, 3 ft. long, 1 in. in diam., 12 ins. in the ground, to bed rock, supported in a mound of stone for $\frac{1}{4}$ sec. cor. of sec. 15, only, marked on brass cap,

$\frac{1}{4}$ S 15

1919

from which,

A pinyon, 10 ins. in diam., brs. S. $20\frac{1}{2}^{\circ}$ W., 54 lbs. dist., marked $\frac{1}{4}$ S 15 3T.

A pinyon, 10 ins. in diam., brs. N. $08\frac{1}{2}^{\circ}$ W., 80 lbs. dist., marked $\frac{1}{4}$ S 15 3T.

41.30 Gulch, course SE. Ascend 280 ft., over SW. slope.

59.52 S. rim of mesa, brs. NW. and SE. Thence over level mesa.

80.00 N. rim of mesa, brs. SE. and NW.

Set an iron post, 3 ft. long, 2 ins. in diam., 18 ins. in the ground, to bed rock, supported in a mound of stone, for cor. of secs. 10 and 15 only, marked on brass cap,

T18N
S10
S15
R2W

1919

Chains.

from which,
 A cedar, 14 ins. in diam., brs. S. 21 1/4° W., 132 lks.
 dist., marked T18N R2W S15 BT.
 A cedar, 8 ins. in diam., brs. N. 54 1/2° W., 271 lks.
 dist., marked T18N R2W S10 BT.

Land, mountainous and level.
 Soil, rocky, 3rd and 4th rate.
 Timber, scattering cedar and pinyon pine.
 Undergrowth, scattering oak brush, catclaw and cactus.
 Poor grass.

6.75
 34.82
 40.00

N. 0° 01' W., on E. bdy. of sec. 10.
 Over mountainous land, thru. scattering timber and undergrowth. Descend 45 ft., over NE. slope.
 Gulch, course SE. Ascend 190 ft., over SW. slope.
 Spur, slopes SE. Descend 60 ft., over NE. slope.
 Set an iron post, 3 ft. long, 1 in. in diam., 6 ins. in the ground to bed rock, supported in a mound of stone, for 1/4 sec. cor. of sec. 10 only, marked on brass cap,

1/2 S10

1919

54.82
 61.78
 72.32
 80.00

Raise a mound of stone, 2 ft. base, 1 1/2 ft. high, W. of cor.
 Gulch, course E. Ascend 120 ft., over S. slope.
 Spur, slopes SE. Descend 70 ft., over NE. slope.
 Gulch, course SE. Ascend 70 ft., over SW. slope.
 Set an iron post, 3 ft. long, 2 ins. in diam., 10 ins. in the ground, to bed rock, supported in a mound of stone, for cor. of secs. 3 and 10 only, marked on brass cap;

T18N
 S 3
 S10
 R2W

1919

Raise a mound of stone, 2 ft. base, 1 1/2 ft. high, W. of cor.
 Land, mountainous.
 Soil, rocky, limestone formation, 4th rate.
 Timber, scattering cedar and pine.
 Undergrowth, scattering oak brush, catclaw and cactus.
 Poor grass.

2.78
 26.84
 33.17
 40.00

N. 0° 01' W., on a true line, on E. bdy. of sec. 3.
 Over mountainous land, thru. scattering timber and undergrowth. Ascend 20 ft., over SW. slope.
 Spur, slopes SE. Descend 105 ft., over NE. slope.
 Gulch, course SE. Ascend 60 ft., over SW. slope.
 Spur, slopes SE. Ascend gradually over rolling E. slope.
 Set an iron post, 3 ft. long, 1 in. in diam., 26 ins. in the ground, for 1/4 sec. cor. of sec. 3 only, marked on brass cap,

1/4 S 3

1919

from which,
 A cedar, 6 ins. in diam., brs. S. 54 1/2° W., 120 lks.
 dist., marked 1/4 S 3 BT.
 A cedar, 6 ins. in diam., brs. N. 58 1/2° W., 64 lks.
 dist., marked 1/4 S 3 BT.

61.50

Continue over rolling E. slope, descending.
 Intersect the cor. of secs. 2 and 3 on N. bdy. of Tp., hereinbefore described.

24 Portion of Subdivision of T. 18 N., R. 2 W.

Chains.

Land, mountainous and rolling.
Soil, rocky, limestone formation, 4th rate.
Timber, scattering cedar and pinon.
Undergrowth, scattering oak brush, catclaw and cactus.
Poor grass.

From the reestablished cor. of secs. 15, 16, 21 and 22, here-
inbefore described,
East, on a true line, bet. secs. 15 and 22.
Over mountainous land, thru. scattering timber and under-
growth.

13.80
32.47
40.00

Ascend 150 ft., over NW. slope.
Spur, slopes SE. Descend 210 ft., over NE. slope.
Gulch, course SE. Ascend 210 ft., over SW. slope.
Set an iron post, 3 ft. long, 1 in. in diam., 14 ins. in
the ground to bed rock, supported in a mound of stone,
for $\frac{1}{4}$ sec. cor. of secs. 15 and 22, marked on brass cap,

$\frac{1}{4}$ S 15
S 22
1919

from which,

A cedar, 6 ins. in diam., brs. S. $42\frac{3}{4}^{\circ}$ E., 112 lks.

dist.; marked $\frac{1}{4}$ S 22 BT.

A cedar, 12 ins. in diam., brs. N. 89° W., 55 lks.

dist.; marked $\frac{1}{4}$ S 15 BT.

45.65
55.94
68.45
80.00

Spur, slopes SE. Descend 190 ft., over NE. slope.
Gulch, course SE. Ascend 95 ft., over SW. slope.
Spur, slopes SE. Descend 155 ft., over NE. slope, to
The cor. of secs. 15 and 22, hereinbefore described.
Land, mountainous.
Soil, rocky, 4th rate.
Timber, scattering cedar and pinon.
Undergrowth, scattering oak brush, catclaw and cactus.
Poor grass.

From cor. of secs. 10 and 15,
West, on a random line, bet. secs. 10 and 15.

40.00
80.08

Set temp. $\frac{1}{4}$ sec. cor.
Intersect the reestablished cor. of secs. 9, 10, 15 and 16.
Thence,

East, on a true line, bet. secs. 10 and 15.
Over mountainous land, thru. scattering timber and under-
growth. Ascend 330 ft., over SW. slope.

13.00
18.16
28.86
40.04

Spur, slopes SE. Descend 70 ft., over E. slope.
Gulch, course SE. Ascend 110 ft., over SW. slope.
Spur, slopes SE. Descend 30 ft., over E. slope, to
Set an iron post, 3 ft. long, 1 in. in diam., 12 ins. in
the ground, to bed rock, supported in a mound of stone,
for $\frac{1}{4}$ sec. cor., marked on brass cap,

$\frac{1}{4}$ S 10
S 15
1919

from which,

A cedar, 6 ins. in diam., brs. S. $42\frac{1}{4}^{\circ}$ W., 102 lks. dist.,
marked $\frac{1}{4}$ S 15 BT.

A cedar, 40 ins. in diam., brs. N. 7° W., 24 lks. dist.,
marked $\frac{1}{4}$ S 10 BT.

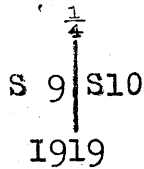
Thence descend gradually over slightly rolling surface of
mesa.

80.08

The cor. of secs. 10 and 15.
Land, mountainous and rolling.
Soil, rocky, 4th rate.
Timber, scattering cedar and pine.
Undergrowth, scattering oak and catclaw, and cactus. Poor grass.

Chains.

From reestablished cor. of secs. 9, 10, 15 and 16,
North, on true line, on E. bdy. of sec. 9.
Over mountainous land, thru. scattering timber and under-
growth.
7.30 Gulch, course SW. Ascend 420 ft., over SE. slope.
21.35 South rim of mesa, brs. SE. and NW. Thence over level
mesa.
40.00 Set an iron post, 3 ft. long, 1 in. in diam., 26 ins. in
the ground, for $\frac{1}{4}$ sec. cor. of secs. 9 and 10, marked on
brass cap,



from which,

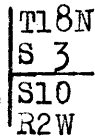
A cedar, 10 ins. in diam., brs. N. $72\frac{1}{2}^\circ$ E., 46 lks. dist.,
marked $\frac{1}{4}$ S 10 BT.

A cedar, 12 ins. in diam., brs. N. $69\frac{1}{2}^\circ$ W., 30 lks.
dist., marked $\frac{1}{4}$ S 9 BT.

North rim of mesa, brs. NW. and SE.

Thence over mountainous land; descend 45 ft., over NE.
slope:

44.65 Gulch, course E. Ascend 25 ft., over S. slope.
51.63 Spur, slopes E. Descend 66 ft., over N. slope.
59.87 Gulch, course E. Ascend 70 ft., over S. slope.
64.76 Spur, slopes E. Descend 75 ft., over N. slope.
72.19 Gulch, course E. Ascend 30 ft., over S. slope.
74.77 Spur, slopes E. Descend 45 ft., over NE. slope.
80.00 Set an iron post, 3 ft. long, 2 ins. in diam., 24 ins. in
the ground, for cor. of secs. 3 and 10 only, marked on
brass cap,



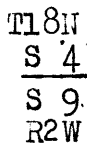
1919

from which,

A cedar, 18 ins. in diam., brs. N. $43\frac{1}{2}^\circ$ E., 84 lks.
dist., marked T18 N R 2 W S 3 BT.

A cedar, 10 ins. in diam., brs. S. 68° E., 59 lks. dist.,
marked T18N R2 W S10 BT.

81.50 Set an iron post 3 ft. long, 2 ins. in diam., 24 ins. in
the ground, for cor. of secs. 4 and 9 only, marked on
brass cap,



1919

from which,

A cedar, 14 ins. in diam., brs. N. $18\frac{1}{2}^\circ$ W., 11 lks.
dist., marked T18N R2W S4 BT.

A cedar, 12 ins. in diam., brs. S. 57° W., 30 lks.
dist., marked T18N R2W S9 BT.

Land, mountainous and level.

Soil, sandy loam, 2nd rate on mesa; rocky, 3rd and 4th
rate elsewhere.

Timber, scattering cedar and pine.

Undergrowth, oak, catclaw and cactus.

Good grass on mesa; poor grass elsewhere.

40.00 From cor. of secs. 3 and 10,
West, on a random line, bet. secs. 3 and 10,
Set temp. $\frac{1}{4}$ sec. cor.

26.2 Portion of Subdivision of T. 18 N., R. 2 West.

Chains.
 80.00 Intersect the cor. of secs. 3 and 10, on E. bdy. of sec. 9.
 Thence,
 East, on a true line, bet. secs. 3 and 10.
 Over mountainous land, thru. scattering timber and under-
 growth. Descend 100 ft. over NE. slope.
 1.28 Gulch, course SE. Ascend 140 ft., over SW. slope.
 15.27 Spur, slopes SE. Descend 140 ft., over NE. slope.
 27.70 Gulch, course SE. Ascend 100 ft., over SW. slope.
 33.15 Spur, slopes SE. Descend 155 ft., over NE. slope.
 40.00 Set an iron post, 3 ft. long, 1 in. in diam., 12 ins. in
 the ground to bed rock, supported in a mound of stone,
 for $\frac{1}{4}$ sec. cor., marked on brass cap,

$\frac{1}{4}$ S 3
 S 10
 1919

from which,
 A cedar, 8 ins. in diam., brs. S. $1\frac{1}{4}^{\circ}$ E., 14 lks.
 dist., marked $\frac{1}{4}$ S 10 BT.
 A cedar, 6 ins. in diam., brs. N. 44° W., 44 lks.
 dist., marked $\frac{1}{4}$ S 3 BT.

52.30 Gulch, course SE. Ascend 80 ft., over SW. slope.
 60.45 Spur, slopes SE. Descend 100 ft., over SE. slope.
 80.00 The cor. of secs. 3 and 10.
 Land, mountainous.
 Soil, rocky, 4th rate.
 Timber, scattering cedar and pinoñ.
 Undergrowth, scattering oak brush, catclaw and cactus.
 Poor grass.

From the cor. of secs. 4 and 9,
 N. $0^{\circ} 01'$ W., on true line, on E. bdy. of sec. 4.
 Over mountainous land, thru. scattering timber and under-
 growth. Descend 10 ft., over NE. slope.

5.79 Gulch, course SE. Ascend 110 ft., over SW. slope.
 16.89 Spur, slopes W. Leave mountainous and enter rolling land.
 Thence along west slope.
 38.50 Set an iron post, 3 ft. long, 1 in. in diam., 26 ins. in
 the ground, for $\frac{1}{4}$ sec. cor. of sec. 3 only, marked on
 brass cap,

$\frac{1}{4}$ S 3
 1919

from which,
 A cedar, 20 ins. in diam., brs. N. $31\frac{1}{4}^{\circ}$ E., 104 lks.
 dist., marked $\frac{1}{4}$ S 3 BT.
 A cedar, 8 ins. in diam., brs. S. 66° E., 22 lks.
 dist., marked $\frac{1}{4}$ S 3 BT.

40.00 Set an iron post, 3 ft. long, 1 in. in diam., 14 ins. in
 the ground to bed rock, supported by a mound of stone,
 for $\frac{1}{4}$ sec. cor. of sec. 4 only, marked on brass cap,

$\frac{1}{4}$ S 4
 1919

from which,
 A cedar, 14 ins. in diam., brs. S. $79\frac{1}{2}^{\circ}$ W., 72 lks.
 dist., marked $\frac{1}{4}$ S 4 BT.
 A cedar, 15 ins. in diam., brs. N. $81\frac{3}{4}^{\circ}$ W., 88 lks.
 dist., marked $\frac{1}{4}$ S 4 BT.

Continue over rolling land.
 55.00 Descend 70 ft., over NE. slope.
 58.95 Gulch, course E. Ascend 10 ft., over S. slope.
 60.51 Intersect the cor. of secs. 3 and 4 on N. bdy. of sec. 4
 of Tp., hereinbefore described.
 Land, mountainous and rolling.

Chains.

Soil, gravelly and rocky, 3rd and 4th rate.
 Timber, scattering cedar and pinon.
 Undergrowth, scattering oak brush, catclaw and cactus.
 Poor grass.

From cbr. of secs. 4 and 9.
 West on a true line, bet. secs. 4 and 9.
 Over mountainous land, thru. scattering timber and under-
 growth. Ascend 132 ft., over NE. slope.

6.50 Slope changes to SE. Continue ascent 220 ft.
 19.70 Slope changes to E. Ascend 35 ft.
 27.06 Ridge, brs. N. and S. Descend 350 ft., over W. slope.
 40.00 Set an iron post, 3 ft. long, 1 in. in diam., 8 ins. in
 the ground, to bed rock, supported in a mound of stone,
 for $\frac{1}{4}$ sec. cor., of sec. 4 only, marked on brass cap,

$\frac{1}{4}$ S 4

1919

from which,

A pinyon, 12 ins. in diam., brs. N. $78\frac{1}{2}^{\circ}$ E., 45 lks.
 dist., marked $\frac{1}{4}$ S 4 BT
 A pinyon, 14 ins. in diam., brs. N. $24\frac{1}{2}^{\circ}$ W., 42 lks.
 dist., marked $\frac{1}{4}$ S 4 BT.

40.53 Gulch, course S. Ascend 175 ft., over E. slope.

42.10 Set an iron post, 3 ft. long, 1 in. in diam., 14 ins. in
 the ground to bed rock, supported in a mound of stone,
 for $\frac{1}{4}$ sec. cor., of sec. 9 only, marked on brass cap,

$\frac{1}{4}$ S 9
 1919

from which,

A pinyon, 8 ins. in diam., brs. S. $77\frac{1}{2}^{\circ}$ E., 48 lks.
 dist., marked $\frac{1}{4}$ S 9 BT.
 A pinyon, 7 ins. in diam., brs. S. 51° W., 53 lks.
 dist., marked $\frac{1}{4}$ S 9 BT.

53.60 Ridge, brs. N. and S.
 Descend 420 ft. over SW. slope.

78.68 Gulch, course NW. Ascend slightly to
 82.10 The reestablished cor. of secs. 4, 5, 8 and 9.

Land, mountainous.
 Soil, rocky, 4th rate.
 Tumber, scattering cedar and pine.
 Undergrowth, scattering oak brush, catclaw and cactus.
 Poor grass.

From the reestablished cor. of secs. 4, 5, 8 and 9,
 N. $0^{\circ}02'$ W., on true line, bet. secs. 4 and 5.
 Over mountainous land, thru. scattering timber and under-
 growth. Descend 14 ft., over N. slope.

2.00 Gulch, course W. Ascend 40 ft., over broken W. slope.
 14.96 Spur, slopes SW. Descend 25 ft. over NW. slope.
 26.16 Gulch, course SW. Ascend 20 ft., over SE. slope.
 32.95 Spur, slopes SW. Thence along W. slope.
 40.00 Set an iron post, 3 ft. long, 1 in. in diam., 26 ins. in
 the ground, for $\frac{1}{4}$ sec. cor., marked on brass cap,

S 5 $\frac{1}{4}$ S 4

1919

from which,

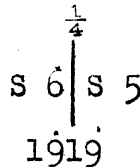
A cedar, 12 ins. in diam., brs. N. 26° E., 51 lks. dist.
 marked $\frac{1}{4}$ S 4 BT.

Chains.

A pine, 10 ins. in diam., brs. S. 58° W., 4 lks. dist.,
 marked $\frac{1}{4}$ S 5 B T.
 46.00 Descend 75 ft., over NW. slope.
 55.67 Gulch, course SW. Ascend 23 ft., over S. slope.
 60.33 Intersect the cor. of secs. 4 and 5, on N. bdy. of Tp.,
 hereinbefore described.

Land, mountainous.
 Soil, rocky, limestone formation, 4th rate.
 Timber, scattering cedar and pinon.
 Undergrowth, scattering oak brush, catclaw and cactus.
 Good grass.

From the reestablished cor. of secs. 5, 6, 7 and 8,
 N. 0° 02' W., on true line, bet. secs. 5 and 6.
 Over rolling land, thru. scattering timber and under-
 growth. Ascend gradually over S. slope.
 40.00 Set an iron post, 3 ft. long, 1 in. in diam., 18 ins. in
 the ground, to bedrock, supported in a mound of stone,
 for $\frac{1}{4}$ sec. cor., marked on brass cap,



Raise a mound of stone, 2 ft. base, 1 1/2 ft. high, W. of cor.
 50.00 Ascend 30 ft., over SE. slope.
 57.98 Spur, slopes SW. Descend 12 ft., over NW. slope.
 60.02 Intersect the cor. of secs. 5 and 6 on N. bdy. of Tp.,
 hereinbefore described.

Land, rolling.
 Soil, sandy loam, 2nd rate.
 Timber, scattering cedar.
 Undergrowth, scattering oak brush and algerita.
 Good grass.

The continued satisfactory adjustment of the solar appa-
 ratus during the survey of this township is indicated
 from field tests as described in Book "B."

Boundaries of the portion of T.18 N., R.2 W., surveyed under this Group.

Latitudes, Departures and Closing Errors.

Line designated.	True bearing.	Dist.	Latitudes.		Departures.	
			N.	S.	E.	W.
Subdivisional boundary,	S.0°1' E.	221.50		221.50	.06	
	South,	79.70		79.70		
	S.89°50'W.	80.00		.23		80.00
	N.0°02'E.	80.00	80.00		.05	
	N.0°07'W.	80.00	80.00			.16
	N.88°51'W.	80.10	1.61			80.08
	N.1°23'W.	80.02	80.00			1.93
	N.89°50'W.	80.16	.09			80.16
	S.88°35'W.	78.92		1.95		78.90
West boundary,	N.0°17'W.	39.95	39.95			.20
	N.0°10'W.	38.03	38.03			.11
North boundary,	S.76°10'E.	66.50		15.90	64.57	
	N.89°23'E.	40.30	.43		40.30	
	N.89°52'E.	120.69	.28		120.69	
	N.89°28'E.	40.05	.37		40.05	
	S.89°21'E.	55.83			.63	55.83
Convergency,					.11	
Totals,			320.76	319.91	321.66	321.54
			319.91		321.54	
<u>Error in latitude.</u>			0.85			
<u>Error in departure.</u>					0.12	

GENERAL DESCRIPTION.

This portion of the township consists of rough mountainous land, traversed by deep gulches with precipitous sides. The tops of the ridges form mesas, and are covered with a heavy growth of cedar and pinon timber, and an undergrowth of oak brush and greasewood.

The soil varies from a rocky limestone formation, to a loose rocky gumbo, on the mesas.

There is no running water or indications of mineral in this portion of the township.

There is an oil prospect in the SE. 1/4 of sec.16.

A scant growth of poor grass affords indifferent grazing.

4-680

FIELD ASSISTANTS.

to Otis Ross, U. S. Surveyor

NAMES.	CAPACITY.
Claude F. Warren	1st Chairman
Harvey W. Syster	" "
Alva L. Bowers	2nd "
Marcus Fulton	" "
Clifford Birkholz	Flagman
Earl Jolly	Moundsman
Robt. Greene	"
Robert Brown	"
George Jaynes	Axman
John Rothwell	"

CERTIFICATE OF UNITED STATES SURVEYOR.

I, Otis Ross, U. S. Surveyor, hereby certify upon honor that, in pursuance of special instructions received from the U. S. Surveyor General for Group 104, Arizona, bearing date of the 15th day of October, 191⁹, I have well, faithfully, and truly in my own proper person, and in strict conformity with said instructions, the Manual of Surveying Instructions, and the laws of the United States, ~~surveyed~~ ^{resurveyed} all ~~the~~ ^{the} ~~boundaries and subdivision lines of Township 18 North, Range 2 West, and~~ ^{those parts or portions of the West boundary of Township 18 North, Range 2 West, the South boundary of Township 19 North, Range 2 West, and the Subdivision lines of Township 18 North, Range 2 West;} and surveyed all those parts or portions of the ~~Subdivision lines of Township 18 North, Range 2 West~~ ^{Subdivision lines of Township 18 North, Range 2 West} of the Gila and Salt River Base and Meridian, in the State of Arizona, which are represented in and by diagram on page 2 hereof the foregoing field notes ~~as~~ ^{as} having been executed by me, and under my direction; and that all the corners of said ~~survey~~ ^{resurvey and survey} have been established and perpetuated in strict accordance with the Manual of Surveying Instructions, and the special written instructions of the U. S. Surveyor General, for Group 104, Arizona, and in the specific manner described in the field notes, and that the foregoing are the original field notes of such ~~survey~~ ^{resurvey and survey}.

Place Jumear Akahy
 Date Nov 29 1921

Otis Ross
 U. S. Surveyor.

APPROVAL.

OFFICE OF THE UNITED STATES SURVEYOR GENERAL,

Phoenix Ariz. December 10, 1921.

The foregoing field notes of the ~~survey of part of the North and West boundaries of~~ ^{resurvey of part of the West boundary of} Township 18 North, Range 2 West, of the ~~resurvey of part of the West boundary of~~ ^{resurvey of part of the West boundary of} Township 18 North, Range 2 West, and all of the ~~South boundary of Township 19 North, Range 2 West; and of the Retracement, resurvey, and survey of part of the Subdivision lines of Township 18 North, Range 2 West, of the Gila and Salt River Base and Meridian,~~ ^{South boundary of Township 19 North, Range 2 West; and of the Retracement, resurvey, and survey of part of the Subdivision lines of Township 18 North, Range 2 West, of the Gila and Salt River Base and Meridian,} in the State of Arizona,

executed by Otis Ross, U. S. Surveyor,

under his special instructions dated October 15, 1919 For Group 104, having been critically examined, and the necessary corrections and explanations made, the said field notes, and the ~~surveys~~ ^{resurveys and surveys} they describe, are hereby approved.

Frank P. Smith
 U. S. Surveyor General.

~~I certify that the foregoing transcript of the field notes of the above-described surveys in~~
~~has been correctly copied from the original notes on file in this office.~~