

3504

73  
1

Book "B"

4-679

BOOK 3504

# FIELD NOTES

OF THE SURVEY OF THE

Seventh Standard Parallel North through Range 7 West,

the North boundary,

the West boundary,

and the Subdivision lines of

Township 29 North, Range 7 West,

Of the Gila and Salt River Base and Meridian,

In the State of Arizona,

EXECUTED BY

Fred W. Rodolf, U. S. Cadastral Engineer,

Dupree R. Averill, U. S. Surveyor, and

James C. O'Brien, U. S. Transitman,

In the capacity of U. S. Surveyor, under Special Instructions dated February 24, 1920, issued by the United States Surveyor General to govern surveys included in Group No. 195, Arizona, which were approved by the Commissioner of the General Land Office, March 8, 1920, and Assignment Instructions dated March 27, 1920 April 15, 1920

Survey commenced April 14, 1920

Survey completed April 30, 1920

3504

3504

74  
1A

3504

BOOK 3504

# INDEX DIAGRAM.

Township		29 North		Range		7 West	
	12	12	13	14	15		
10	6	51 5	42 4	35 3	29 2	22 1	
	51	50	41	34	28	22	
10	7	50 8	41 9	34 10	28 11	21 12	
	49	48	40	33	27	20	
9	18	47 17	39 16	32 15	27 14	20 13	
	46	46	38	32	26	19	
8	19	45 20	38 21	32 22	25 23	19 24	
	45	45	37	31	25	18	
7	30	44 29	37 28	31 27	24 26	18 25	
	44	43	36	30	24	17	
7	31	42 32	35 33	29 34	23 35	17 36	
	6	Seventh 5	Standard 4	Parallel 4	North 3	3	

==== Lines surveyed under this Group.

==== Lines surveyed under current Group 106.

==== Lines surveyed under current Group 107.

350A

Book "B"  
DATE DIAGRAM.

TOWNSHIP 29 NORTH, RANGE 7 WEST.

Black lines on this diagram indicate surveys executed by Fred W. Rodolf, U.S. Cadastral Engineer, on dates shown thereon.

Red lines on this diagram indicate surveys executed by Dupree R. Averill, U.S. Surveyor, on dates shown thereon.

Blue lines on this diagram indicate surveys executed by James C. O'Brien, U.S. Transitman, on dates shown thereon.

4-21-20	4-21-20	4-21-20	4-23-20	4-23-20	4-23-20
4-21-20	4-22-20	4-30-20	4-30-20	4-29-20	4-29-20
4-22-20	4-22-20	4-26-20	4-29-20	4-29-20	4-29-20
4-20-20	4-22-20	4-26-20	4-26-20	4-29-20	4-29-20
4-21-20	4-24-20	4-26-20	4-29-20	4-28-20	4-28-20
4-20-20	4-21-20	4-24-20	4-26-20	4-28-20	4-26-20
4-21-20	4-23-20	4-26-20	4-28-20	4-28-20	4-28-20
4-20-20	4-21-20	4-23-20	4-24-20	4-28-20	4-27-20
4-20-20	4-23-20	4-24-20	4-27-20	4-27-20	4-27-20
4-20-20	4-20-20	4-23-20	4-24-20	4-27-20	4-27-20
4-19-20	4-20-20	4-19-20	4-15-20	4-15-20	4-15-20
4-19-20	4-20-20	4-19-20	4-15-20	4-27-20	4-15-20
4-19-20	4-19-20	4-16-20	4-15-20	4-15-20	4-14-20

See book "A" for dates of survey of this line

Surveys hereinafter described, executed on dates shown on above diagram by Fred W. Rodolf, U.S. Cadastral Engineer, Dupree R. Averill, U.S. Surveyor, both using Buff solar transit No. 9223, and James C. O'Brien, U.S. Transitman, using successively, Young and Sons mountain transits Nos. 8389 and 8541.

Each instrument is equipped with full vertical circle and the Smith solar attachment; unless otherwise specified all azimuth determinations are accomplished with the solar attachments.

PRELIMINARY FIELD TEST OF BUFF SOLAR TRANSIT NO. 9223,  
by FRED W. RODOLF, U.S.C.E.

April 13, 1920. I examine the adjustment of the instrument, and correct all errors; then, to test the solar apparatus by comparing its indications from observations

observations made during a.m. and p.m. hours with a meridian established by Polaris observation, proceed as follows:

At camp in the NW  $\frac{1}{4}$  of sec. 16, T. 29 N., R. 7 W., G. & S. R. Base and Mer., Arizona, in lat.  $35^{\circ}54'N.$ ; long.  $113^{\circ}02\frac{1}{2}'W.$  at 6h.00m. p.m., l.m.t., observe Polaris at western elongation, making four observations, two each with the telescope in direct and reversed positions, and mark the mean point in the line thus determined, on a peg driven firmly in the ground 8 chs. N.

Azimuth of Polaris at western elongation =  $1^{\circ}23'00''$ .

April 14, 1920, I lay off the azimuth of Polaris  $1^{\circ}23'$  to the east, and mark the meridian thus determined by a tack in a peg driven firmly in the ground 8 chs. N.

At 9h.00m. a.m., l.m.t., I set off  $35^{\circ}54'N.$  on the lat. arc;  $9^{\circ}07'N.$  on the decl. arc, and determine a meridian with the solar, which I find to agree with the true meridian.

At app. noon, with the lat. arc unchanged, I observe the sun on the meridian; the resulting reading of the decl. arc is  $9^{\circ}09\frac{1}{2}'N.$ , which agrees with the computed declination of the sun.

At 3h.00m. p.m., l.m.t., with the lat. arc unchanged, I set off  $9^{\circ}12\frac{1}{2}'N.$  on the decl. arc; and determine a meridian with the solar, which I find to agree with the true meridian.

As all of the solar observations during the usual hours of solar work come within  $1'30''$  of the true meridian, I conclude that the adjustment of the instrument is satisfactory.

-----  
 FINAL FIELD TEST OF YOUNG & SONS TRANSIT NO. 8389, AND  
 PRELIMINARY FIELD TEST OF YOUNG & SONS TRANSIT NO.  
 8541, BY JAMES C. O'BRIEN, U. S. T.  
 -----

April 17, 1920. I examine the adjustment of each instrument and correct all errors; then, to test the solar apparatus by comparing its indications from observations made during a.m. and p.m. hours with the meridian established by Polaris observation April 13, 1920, by Fred W. Rodolf at camp in the NW  $\frac{1}{4}$  of sec. 16, T. 29 N., R. 7 W., as hereinbefore described, proceed with each instrument as follows:

April 18, 1920. At 9h.00m., a.m., l.m.t., I set off  $35^{\circ}54'N.$  on the lat. arc;  $10^{\circ}53\frac{1}{2}'N.$  on the decl. arc, and determine a meridian with the solar, which I find to agree with the true meridian.

At app. noon, with the lat. arc unchanged, I observe the sun on the meridian; the resulting reading of the decl. arc is  $10^{\circ}56'N.$ , which agrees with the computed declination of the sun.

At 3h.00m. p.m., l.m.t., with the lat. arc unchanged, I set off  $10^{\circ}59'N.$  on the decl. arc, and determine a meridian with the solar, which I find to agree with the true meridian. As all of the solar observations made during the usual hours of solar work come within  $1'30''$  of the true meridian, I conclude that the adjustments of both instruments are satisfactory.

-----  
 Unless otherwise specified, all measurements are made with Lufkin steel tapes, 5 chs. in length, compared with a Chesterman standard steel tape, and found correct. The measurements are made on the slope, the vertical angles determined, and the slope measurements properly reduced to true horizontal distances.  
 -----

Survey of Seventh Std. Parallel North, thru. Range 7 West. 3.

Chains. From the standard cor. of T<sub>29</sub> N., R<sub>7</sub> W., on 7th Standard Parallel North, described in Book "A," West, on true line, on S. bdy. of sec. 30. Over gently rolling land, thru. scattering timber and undergrowth. Asc. 45 ft. over E. slope.

19.98 NE. end of low ridge, brs. NE. and SW. Desc. slightly over NW. slope.

25.98 Draw, course NE. Asc. 55 ft., over E. slope, to

40.00 Set an iron post, 3 ft. long, 1 in. in diam., 10 ins. in the ground, in a mound of stone, for standard  $\frac{1}{4}$  sec. cor. of sec. 30, marked on brass cap,

S C  
 $\frac{1}{4}$ S 30  
 1920

from which,  
 A pine, 6 ins. in diam., brs. N.  $11\frac{1}{2}^{\circ}$  E., 96 lks.  
 dist., mkd.  $\frac{1}{4}$ S 36 S C B T.  
 A pine, 12 ins. in diam., brs. N.  $44\frac{1}{2}^{\circ}$  W., 230 lks.  
 dist., mkd.  $\frac{1}{4}$ S 30 S C B T.

Continue over gently rolling land, thru. scattering timber and undergrowth. Ascend 30 ft., over E. slope, to

43.07 Point of spur, slopes N. Desc. 70 ft., over W. slope.

63.14 Draw, course N.  $85^{\circ}$  E. Asc. 80 ft. over SE. slope, to

69.09 Rim, brs. NE. and SW. Thence over level land, to

80.00 Set an iron post, 3 ft. long, 2 ins. in diam., 24 ins. in the ground, for standard cor. of secs. 35 and 36, marked on brass cap,

S C  
 T29N R7 W  
S35 S36  
 1920

from which,  
 A pine, 10 ins. in diam., brs. N.  $75\frac{1}{2}^{\circ}$  E., 49 lks.  
 dist., mkd. T29N R7W S 36 S C B T.  
 A pine, 7 ins. in diam., brs. N.  $7^{\circ}$  W., 93 lks.  
 dist., mkd. T29N R7W S 35 S C B T.

Land, gently rolling and level.  
 Soil, gravelly brown loam, 2nd rate.  
 Timber, scattering cedar and pine.  
 Undergrowth, scattering sage brush, scrub oak, and mountain mahogany.  
 Fair grass.

West, on true line, on S. bdy. of sec. 35.  
 Over level land, thru. scattering timber and undergrowth.

9.00 Rim brs. N. and S. Leave level and enter rolling land. Descend 75 ft., over W. slope.

20.00 Leave timber, brs. N. and S.

22.50 Coulee, course N. Asc. very gradually over N. slope, to

40.00 Set an iron post, 3 ft. long, 1 in. in diam., 20 ins. in the ground, for standard  $\frac{1}{4}$  sec. cor. of sec. 35, marked on brass cap,

S C  
 $\frac{1}{4}$ S 35  
 1920

from which,  
 A cedar, 12 ins. in diam., brs. N.  $49\frac{1}{2}^{\circ}$  E., 104 lks.  
 dist., mkd.  $\frac{1}{4}$ S 35 S C B T.  
 A cedar, 24 ins. in diam., brs. N.  $21^{\circ}20'$  W., 143 lks.  
 dist., mkd.  $\frac{1}{4}$ S 35 S C B T.

Continue over rolling land, thru. scattering timber and undergrowth, along N. slope, with slight change in elevation.

50.00 Ascend very gradually over NE. slope. in diam., 20 ins.

Seventh Standard Parallel North, thru. range 7 west.

Chains.  
80.00

Set an iron post 3 ft. long, 2 ins. in diam., 26 ins. in the ground, for standard cor. of secs. 34 and 35, marked on brass cap,

S	C
T29N	R7 W
S34	S35

1920

from which,

A cedar, 8 ins. in diam., brs. N. 70° E., 350 lks. dist., mkd. T29N R7W S 35 S C B T.

A cedar, 30 ins. in diam., brs. N. 24° W., 471 lks. dist., mkd. T29N R7W S34 S C B T.

Land, E. 9 chs. level; remainder, gently rolling.

Soil, sandy and gravelly clay loam, 1st and 2nd rate.

Timber, scattering pine and cedar.

Undergrowth, scattering sage brush and scrub cedar.

Fair grass.

West, on true line, on S. bdy. of sec. 34.

Over rolling land, thru. scattering timber, ascending gradually over E. slope.

20.00 Change to N. slope, and ascend slightly to

35.00 Descend 35 ft., over W. slope, to

40.00 Set an iron post, 3 ft. long, 1 in. in diam., 26 ins. in the ground, for standard  $\frac{1}{4}$  sec. cor. of sec. 34, marked on brass cap,

S	C
S 34	

1920

from which,

A pine, 18 ins. in diam., brs. N. 79° E., 203 lks. dist., mkd. S 34 S C B T.

A pine, 24 ins. in diam., brs. N. 33° W., 503 lks. dist., mkd. S 34 S C B T.

Corner is in draw, course NW, continue over rolling land, thru. scattering timber.

42.00 Ascend 30 ft., over E. slope, to

50.00 Descend gradually over NW. slope to sec. cor.

68.10 Road brs. SE and NW.

80.00 Set an iron post, 3 ft. long, 2 ins. in diam., 26 ins. in the ground, for standard cor. of secs. 33 and 34, marked on brass cap,

S	C
T29N	R7 W
S33	S34

1920

from which,

A pine, 20 ins. in diam., brs. N. 50 $\frac{1}{4}$ ° E., 254 lks. dist., mkd. T29N R7W S34 S C B T.

A pine, 14 ins. in diam., brs. N. 20° W., 257 lks. dist., mkd. T29N R7W S33 S C B T.

Land, rolling.

Soil, E.  $\frac{1}{2}$  sandy loam, 1st rate; W.  $\frac{1}{2}$  gravelly, 2nd rate.

Timber, scattering cedar and pine.

Undergrowth, none.

Good grass.

West, on true line, on S. bdy. of sec. 33.

Over rolling land, thru. scattering timber, along N. slope, descending slightly to

28.00 Center of shallow draw, 4 chs. wide, course NE.

Ascend 35 ft., over E. slope, to

Chains.

35.00 Thence along N. slope, descending slightly to  
.40.00 Coulee, course NE, from W. Set an iron post, 3 ft. long,  
1 in. in diam., in a mound of stone, for standard  
1/4 sec. cor. of sec. 33, marked on brass cap,

S C  
1/4 S 33

1920

from which,  
An oak, 12 ins. in diam., brs. N. 30° E., 87 lks.  
dist., mkd. 1/4 S 33 S C B T.  
A pine, 24 ins. in diam., brs. N. 64° W., 35 lks.  
dist., mkd. 1/4 S 33 S C B T.

Continue over rolling land, thru. scattering timber. Ascend 100 ft. over E. slope, along N. side of coulee, course E., which is about 100 lks. S. of line.

65.00 Rim brs. N and SW. Leave rolling and enter level land.  
70.00 Head of coulee, course E., brs. S., about 100 lks. dist.

80.00 Set an iron post, 3 ft. long, 2 ins. in diam., 26 ins. in the ground, for standard cor. of secs. 32 and 33, marked on brass cap,

S C  
T29N R 7W  
S32 S33

1920

from which,  
A pine, 16 ins. in diam., brs. N. 19° E., 116 lks.  
dist., mkd. T29N R7W S 33 SCBT.  
A pine, 16 ins. in diam., brs. N. 18 1/2° W., 130 lks.  
dist., mkd. T29N R7W S32 SC BT.

Land, rolling in E. 05 chs.; level in W. 15 chs.  
Soil, gravelly clay, 2nd rate.  
Timber, scattering pine and cedar.  
Undergrowth, none.  
Fair grass.

West, on true line, on S. bdy. of sec. 32.

20.00 Over level land, thru. scattering timber.  
Leave level and enter rolling land. Ascend 90 ft., over E. slope, to

34.00 Ridge, brs. N. and S., near N. end of same.

40.00 Descend 35 ft. over W. slope, to

40.00 Set an iron post, 3 ft. long, 1 in. in diam., 26 ins. in the ground, for standard 1/4 sec. cor., of sec. 32, marked on brass cap,

S C  
1/4 S 32

1920

from which,  
A pine, 4 ins. in diam., brs. N. 40° E., 325 lks.  
dist., mkd. 1/4 S 32 S C B T.  
A cedar, 24 ins. in diam., brs. N. 74 1/2° W., 253 lks.  
dist., mkd. 1/4 S 32 S C B T.

Continue over rolling land, thru. scattering timber. Descend 140 ft., over W. slope, to

80.00 Foot of descent, brs. NE and SW. Set an iron post, 3 ft. long, 2 ins. in diam., 24 ins. in the ground, for standard cor. of secs. 31 and 32, marked on brass cap,

S C  
T29N R7 W  
S31 S32

1920

6 Seventh Standard Parallel North thru Range 7 West

Chains.

from which,

A cedar, 24 ins. in diam., brs. N. 61° E., 315 lks. dist., mkd. T29N R7W S32 SC BT.

A cedar, 24 ins. in diam., brs. N. 57 1/2° W., 323 lks. dist., mkd. T29N R7W S31 SC BT.

Land, E. 20 chs. level; W. 60 chs. rolling.  
Soil, gravelly clay, 2nd rate.  
Timber, scattering pine and cedar.  
Undergrowth, none,  
Fair grass.

West, on true line, on S. bdy. of sec. 31.  
Over level land, thru. scattering timber.

1.80 Road, brs. N. and SW.

5.47 Fence, brs. N. 14° E. and S. 14° W. Leave level, and enter rolling land. Asc. 70 ft., over E. slope, to

19.00 Thence over level land, to

25.00 Leave level, and enter rolling land. Desc. 50 ft., over NW. slope, to

40.00 Foot of descent, brs. NE. and SW. Set an iron post, 3 ft. long, 1 in. in diam., 26 ins. in the ground, for standard 1/4 sec. cor. of sec. 31, marked on brass cap,

S C  
T S 31  
1920

from which,

A pine, 6 ins. in diam., brs. N. 34 1/2° E., 84 lks. dist., mkd. T29N R7W S31 SC BT.

A pine, 8 ins. in diam., brs. N. 35° W., 152 lks. dist., mkd. T29N R7W S31 SC BT.

Thence over level land, thru. scattering timber.

60.00 Enter pine saw timber.

62.00 Leave level, and enter rolling land. Desc. 40 ft., over W. slope, to

75.00 Head of draw, course SE. Asc. 50 ft., over E. slope, to

78.00 Rim, brs. N. and S. Leave rolling, and enter level land.

80.00 Set an iron post, 3 ft. long, 3 ins. in diam., 26 ins. in the ground, for standard cor. of Ts. 29 N., Rs. 7 and 8 W. marked on brass cap,

S C  
T29N  
R8 W | R7 W  
S36 | S31  
1920

from which,

A pine, 8 ins. in diam., brs. N. 50 1/2° E., 60 lks. dist., mkd. T29N R7W S31 SC BT.

A pine, 18 ins. in diam., brs. N. 53° W., 287 lks. dist., mkd. T29N R8W S36 SC BT.

Land, rolling and level.  
Soil, gravelly clay, 2nd and 3rd rate.  
Timber, scattering pine.  
Undergrowth, none.  
Fair grass.



Survey of West bdy. of Township 29 North, Range 7 West.

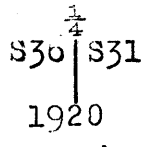
Chains.

From the standard cor. of Ts. 29 N., Rs. 7 and 8 W., on 7th Standard Parallel North, hereinbefore described, North, on true line, bet. secs. 31 and 36. Over level land, thru. scattering timber.

15.00 Leave level, and enter rolling land. Asc. 70 ft., over S. slope, to

35.00 Thence over E. slope, with slight change in elevation.

40.00 Set an iron post, 3 ft. long, 1 in. in diam., 24 ins. in the ground, for  $\frac{1}{4}$  sec. cor., marked on brass cap,



from which,

- A pine, 24 ins. in diam., brs. S.  $80\frac{1}{2}^\circ$  E., 115 lks. dist., mkd.  $\frac{1}{4}$ S 31 BT.
- A pine, 14 ins. in diam., brs. N.  $83\frac{1}{2}^\circ$  W., 226 lks. dist., mkd.  $\frac{1}{4}$ S 30 BT.

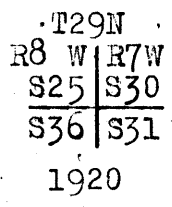
Continue over rolling land, thru. scattering timber; asc. 10 ft., over S. slope, to

45.00 Leave rolling, and enter level land. Enter saw timber.

60.00 Leave level, and enter rolling land. Desc. gradually, over NE. slope.

75.00 Leave rolling, and enter level land.

80.00 Set an iron post, 3 ft. long, 2 ins. in diam., 24 ins. in the ground, for cor. of secs. 25, 30, 31 and 36, marked on brass cap,



from which,

- A pine, 30 ins. in diam., brs. N.  $18^\circ$  E., 430 lks. dist., mkd. T29N R7W S30 BT.
- A pine, 16 ins. in diam., brs. S.  $14^\circ$  E., 60 lks. dist., mkd. T29N R7W S31 BT.
- A cedar, 30 ins. in diam., brs. S.  $52\frac{1}{2}^\circ$  W., 198 lks. dist., mkd. T29N R8W S30 BT.

and dig a pit 18x18x12 ins., NW. of cor., 3 ft. dist. Land, gently rolling, and level. Soil, gravelly clay, 2nd rate. Timber, scattering pine and timber. Undergrowth, none. Fair grass.

North, on true line, bet. secs. 25 and 30. Over level land, thru. scattering timber.

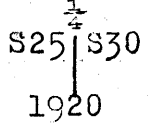
7.00 Road, brs. NE and SW.

12.50 Drain, 15 lks. wide, 2 ft. deep, course NE. Continue over level land.

25.00 Leave level, and enter rolling land. Ascend 30 ft., over S. slope, to

30.00 Thence along E. slope, with slight change in elevation.

40.00 Set an iron post, 3 ft. long, 1 in. in diam., 24 ins. in the ground, for  $\frac{1}{4}$  sec. cor., marked on brass cap,



from which,

- A pine, 20 ins. in diam., brs. S.  $50\frac{1}{2}^\circ$  E., 155 lks. dist., mkd.  $\frac{1}{4}$ S 30 BT.
- A pine, 26 ins. in diam., brs. S.  $80\frac{1}{2}^\circ$  W., 250 lks. dist., mkd.  $\frac{1}{4}$ S 25 BT.

8 West boundary of Township 29 North, Range 7, West.

chains.

75.00 Continue over rolling land, thru. scattering timber, along  
 E. slope, with slight change in elevation.  
 80.00 Change to W. slope, and ascend slightly to  
 Set an iron post, 3 ft. long, 2 ins. in diam., 26 ins. in  
 the ground, for cor. of secs. 19, 24, 25 and 30, marked  
 on brass cap,

T29N	
R8W	R7W
S24	S19
S25	S30
1920	

from which,  
 A pine, 20 ins. in diam., brs. N. 22 $\frac{1}{2}$ ° E., 177 lks.  
 dist., mkd. T29N R7W S19 BT.  
 A pine, 20 ins. in diam., brs. S. 25° E., 94 lks.  
 dist., mkd. T29N R7W S30 BT.  
 A pine, 20 ins. in diam., brs. S. 41 $\frac{1}{2}$ ° W., 174 lks.  
 dist., mkd. T29N R8W S25 BT.  
 A pine, 36 ins. in diam., brs. N. 25° W., 7 lks.  
 dist., mkd. T29N R8W S24 BT.

Land, gently rolling.  
 Soil, gravelly clay, 2nd rate.  
 Timber, scattering pine.  
 Undergrowth, none.  
 Fair grass.

6.00 North, on true line, bet. secs. 19 and 24.  
 14.50 Over rolling land, thru. scattering timber and undergrowth,  
 along W. slope, with slight change in elevation.  
 Change to NW. slope, and descend 35 ft.  
 Center of draw, 4 chs. wide, course NE. Asc. 50 ft. over  
 SE. slope, to  
 20.00 Point of spur, slopes E. Desc. 10 ft.  
 23.20 Draw, course E. Asc. 20 ft., over SE. slope, to  
 30.00 Point of spur, slopes E. Desc. 35 ft., over N. slope, to  
 38.40 Draw, course SE. Thence over E. slope, ascending slightly  
 to  
 40.00 Set an iron post, 3 ft. long, 1 in. in diam., 24 ins. in  
 the ground, for  $\frac{1}{4}$  sec. cor., marked on brass cap,

$\frac{1}{4}$	
S24	S19
1920	

from which,  
 A pine, 30 ins. in diam., brs. S. 64 $\frac{1}{2}$ ° E., 91 lks.  
 dist., mkd. S 19 BT.  
 A pine, 30 ins. in diam., brs. N. 85 $\frac{1}{2}$ ° W., 49 lks.  
 dist., mkd. S 24 BT.

49.00 Continue over rolling land, thru. scattering timber and  
 undergrowth, along E. slope. Desc. 30 ft. to  
 Center of draw, course SE. Asc. 100 ft., over SW. slope.  
 70.00 Point of spur, slopes W. Desc. 40 ft., over NW. slope.  
 75.00 Draw, course W. Asc. gradually over SW. slope, to  
 80.00 Set an iron post, 3 ft. long, 2 ins. in diam., 20 ins. in  
 the ground, for cor. of secs. 13, 18, 19 and 24, marked  
 on brass cap,

T29N	
R8W	R7W
S13	S18
S24	S19

1920

from which,  
 A pine, 20 ins. in diam., brs. N. 70 $\frac{1}{2}$ ° E., 148

West boundary of Township 29 North, Range 7 West.

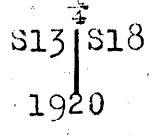
chains.

lks. dist., mkd. T29N R7W S18 BT.  
 A pine, 32 ins. in diam., brs. S. 15° E., 194 lks.  
 dist., mkd. T29N R7W S19 BT.  
 A pine, 20 ins. in diam., brs. S. 78½° W., 96 lks.  
 dist., mkd. T29N R8W S24 BT.  
 A pine, 24 ins. in diam., brs. N. 47½° W., 41 lks.  
 dist., mkd. T29N R8W S13 BT.

Land, rolling.  
 Soil, gravelly clay, 2nd rate.  
 Timber, scattering pine.  
 Undergrowth, scattering scrub oak.  
 Fair grass.

15.00  
 20.00  
 24.80  
 40.00

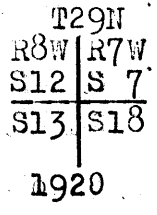
North, on true line, bet. secs. 13 and 18.  
 Over rolling land, thru. scattering timber and undergrowth.  
 Ascend 80 ft., over SW. slope, to  
 Rim brs. W. and SE. Thence over level land to  
 Leave level and enter rolling land. Desc. 30 ft. over NE.  
 slope.  
 Draw, course E: Asc. 30 ft. over SE. slope, to  
 Set an iron post, 3 ft. long, 1 in. in diam., 24 ins. in the  
 ground, for ¼ sec. cor., marked on brass cap,



from which,  
 A pine, 20 ins. in diam., brs. S. 29° E., 174 lks.  
 dist., mkd. S 18 BT.  
 A pine, 24 ins. in diam., brs. N. 80½° W., 154 lks.  
 dist., mkd. S 13 BT.

45.00  
 50.00  
 70.50  
 80.00

Continue over rolling land, thru. scattering timber and  
 undergrowth, along E. slope, with slight change in eleva-  
 tion.  
 Change to S. slope, and ascend 10 ft. to  
 Thence along W. slope, with slight change in elevation.  
 Enter pine saw timber.  
 Center of draw, 2 chs. wide, 4 ft. deep, course NE. Thence  
 over E. slope, slightly broken, and with little change  
 in elevation.  
 Set an iron post 3 ft. long, 2 ins. in diam., 20 ins. in  
 the ground, for cor. of secs. 7, 12, 13 and 18, marked  
 on brass cap,



from which,  
 A pine, 34 ins. in diam., brs. N. 41½° E., 69 lks.  
 dist., mkd. T29N R7W S7 BT.  
 A pine, 20 ins. in diam., brs. S. 26½° E., 109 lks.  
 dist., mkd. T29N R7W S18 BT.  
 A pine, 30 ins. in diam., brs. S. 70½° W., 30 lks.  
 dist., mkd. T29N R8W S13 BT.  
 A pine, 20 ins. in diam., brs. N. 26½° W., 100 lks.  
 dist., mkd. T29N R8W S12 BT.

Land, rolling and broken.  
 Soil, rocky, 4th rate.  
 Timber, scattering pine and cedar.  
 Undergrowth, scattering scrub oak.  
 Fair grass.

10. West boundary of Township 29 North Range 7 West.

Chains.

- North, on true line, bet. secs. 7 and 12.  
Over rolling land, thru. scattering timber and undergrowth,  
along E. slope. Desc. slightly to  
8.05 Head of draw, course E. Continue over E. slope. Desc. 30 ft.  
to  
15.00 Head of draw, course E. Continue over E. slope. Desc. 20  
ft. to  
26.70 Head of draw, course NE. Desc. 25 ft. over NE. slope, to  
33.50 Head of draw, course NE. Asc. 30 ft., over NE. slope, to  
40.00 Set an iron post, 3 ft. long, 1 in. in diam., 24 ins. in the  
ground, for  $\frac{1}{4}$  sec. cor., marked on brass cap,

S12 | S 7

1920

from which,

- A pine, 20 ins. in diam., brs. S.  $10\frac{1}{4}^{\circ}$  E., 70 lks.  
dist., mkd.  $\frac{1}{4}$  S 7 BT.  
A pine, 8 ins. in diam., brs. S.  $30^{\circ}$  W., 3 lks. dist.  
mkd.  $\frac{1}{4}$  S 12 BT.  
Continue over rolling land, thru. scattering timber and  
undergrowth. Descend slightly.  
42.00 Rim, brs. NE. and SW. Desc. 80 ft., over NW. slope.  
50.00 Draw, course NE. Ascend 80 ft., over SE. slope, to  
60.00 Thence over E. slope, with slight change in elevation.  
64.00 Descend 50 ft., over N. slope.  
69.00 Center of draw, 2 chs. wide, course NE. Asc. 55 ft., over  
S. slope.  
75.00 Rim, brs. E. and W. Thence over level land, to  
80.00 Set an iron post, 3 ft. long, 2 ins. in diam., 20 ins. in  
the ground, for cor. of secs. 1, 6, 7 and 12, marked on  
brass cap,

T29N

R8 W | R7 W

S 1 | S 6

S12 | S 7

1920

from which,

- A pine, 20 ins. in diam., brs. N.  $18^{\circ}$  E., 70 lks.  
dist., mkd. T29N R7W S 6BT.  
An oak, 10 ins. in diam., brs. S.  $79\frac{1}{2}^{\circ}$  E., 154 lks.  
dist., mkd. T29N R7W S7 BT.  
A pine, 10 ins. in diam., brs. S.  $82\frac{1}{2}^{\circ}$  W., 212 lks.  
dist., mkd. T29N R8W S12 BT.  
A pine, 10 ins. in diam., brs. N.  $25\frac{1}{4}^{\circ}$  W., 81 lks.  
dist., mkd. T29N R8W S1 BT.

Land, rolling, level and broken.

Soil, rocky, 4th rate.

Timber, scattering pine and cedar, and a few oaks.

Undergrowth, scattering scrub oak.

Poor grass.

- North, on a true line, bet. secs. 1 and 6.  
Over level land, thru. scattering timber and undergrowth.  
2.00 Rim, brs. E. and W. Leave level, and enter rolling & broken  
land. Desc. 50 ft., over N. slope.  
5.70 Drain, course E. Asc. 50 ft., over S. slope.  
13.00 Spur, slopes E. Desc. 50 ft., over N. slope.  
16.50 Draw, course E. Asc. 50 ft., over S. slope, to  
20.00 Thence, over E. slope, with slight change in elevation, to  
35.00 Descend 20 ft., over NE. slope, to  
40.00 Set an iron post, 3 ft. long, 1 in. in diam., 20 ins. in  
the ground, for  $\frac{1}{4}$  sec. cor., marked on brass cap,

West boundary of Township 29 North, Range 7 West.

Chains.

S 1 | S 6  
1920

from which,

A pine, 10 ins. in diam., brs. N. 43 1/2° E., 73 lks. dist.,  
mkd. S 6 BT.

A pine, 14 ins. in diam., brs. S. 53° W., 42 lks. dist.,  
mkd. S 1 BT.

Continue over rolling and broken land, thru. scattering  
timber and undergrowth. Desc. slightly, to

40.73 Head of draw, course NW. Desc. 30 ft., over W. slope, to

44.00 Center of same draw, 2 chs. wide, course NE. Asc. 50 ft,  
over SE. slope.

55.00 Desc. 45 ft., over NE. slope.

58.50 Draw, course E. Asc. 45 ft. to

63.00 Rim, brs. E. and W. Thence, over level land to

80.00 Set an iron post, 3 ft. long, 3 ins. in diam., 24 ins. in  
the ground, for cor. of Ts. 29 and 30 N., Rs. 7 and 8 W.  
marked on brass cap,

T30N  
R8W | R7W  
S36 | S31  
S 1 | S 6  
T29N  
1920

from which,

A pine, 30 ins. in diam., brs. N. 31 1/2° E., 179 lks.  
dist., mkd. T30N R7W S31 BT.

A pine, 10 ins. in diam., brs. S. 29° E., 130 lks.  
dist., mkd. T29N R7W S30 BT.

A pine, 10 ins. in diam., brs. S. 35 1/2° W., 150 lks.  
dist., mkd. T29N R8W S1 BT.

A pine, 8 ins. in diam., brs. N. 70° W., 69 lks.  
dist., mkd. T30N R8W S30 BT.

Land, rolling, broken and level.

Soil, rocky, 4th rate.

Timber, scattering pine and cedar, and a few oaks.

Undergrowth, scattering scrub oak.

Poor grass.

12 Survey of North boundary of Township 29 North, Range 7 West.

Chains.

From the cor. of Ts. 29 and 30 N., Rs. 6 and 7 W., described in Book "A,"

West, on a random line, setting temp. sec. and sec. cors. alternately at intervals of 40.00 chs., until at 479.35 chs. fall 20 lks. N. of the cor. of Ts. 29 and 30 N., Rs. 7 and 8 W., hereinbefore described.

Thence, N. 89° 58' E., on a true line, bet. secs. 6 and 31.

Over level land, thru. scattering timber and undergrowth. Leave level, and enter rolling land. Descend 30 ft., over NE. slope.

8.30

Head of draw, course NW. Ascend 24 ft. to

10.00

Point of spur, slopes N. Descend 35 ft., over NE. slope, to

11.30

Thence along N. slope, with little change in elevation, to

15.00

Descend 50 ft., over NE. slope, to

25.00

Coulee, course N. Ascend slightly over NW. slope, to

35.00

Set an iron post, 3 ft. long, 1 in. in diam., 20 ins. in the ground, for 1/4 sec. cor., marked on brass cap,

39.35

S 31  
S 6  
1920

from which,

A pine, 24 ins. in diam., brs. N. 14° E., 55 lks. dist., mkd. S 31 BT.

A pine, 30 ins. in diam., brs. S. 53 1/4° E., 84 lks. dist., mkd. S 6 BT.

Continue over rolling land, thru. scattering timber and undergrowth. Descend 40 ft., over NE. slope.

51.70

Center of shallow draw, 3 chs. wide, course NE. Asc. 70 ft., over NW. slope, to

61.50

Rim, brs. NE. and SW. Thence over level land, to

79.35

Set an iron post, 3 ft. long, 2 ins. in diam., 12 ins. in the ground, to bed rock, supported in a mound of stone, for cor. of secs. 5, 6, 31 and 32, marked on brass cap,

T30N | R7 W  
S31 | S32  
S 6 | S 5  
T29N  
1920

from which,

A pine, 30 ins. in diam., brs. N. 35 1/2° E., 161 lks. dist., mkd. T30N R7W S32 BT.

A pine, 24 ins. in diam., brs. S. 54 1/4° E., 128 lks. dist., mkd. T29N R7W S 5 BT.

A pine, 6 ins. in diam., brs. S. 47 1/2° W., 157 lks. dist., mkd. T29N R7W S6 BT.

A pine, 6 ins. in diam., brs. N. 30 1/4° W., 122 lks. dist., mkd. T30N R7W S31 BT.

Land, rolling and level.

Soil, gravelly, 3rd rate.

Timber, scattering pine and cedar.

Undergrowth, scattering scrub cedar.

Poor grass.

N. 89° 58' E., on a true line, bet. secs. 5 and 32.

Over rolling land, thru. scattering timber and undergrowth. Desc. 30 ft., over N. slope.

10.00

Desc. 80 ft., over E. slope, to

10.70

Thence over S. slope. Leave scattering, and enter dense timber and undergrowth. Ascend 20 ft. to

20.00

Descend 100 ft., over SE. slope, to

40.00

Set an iron post 3 ft. long, 1 in. in diam., 24 ins. in the ground, for 1/4 sec. cor., marked on brass cap,

Chains.

1/4 S 32  
S 5  
1920

from which,  
A pine, 10 ins. in diam., brs. S. 11° W., 27 lks.  
dist., mkd. 1/4 S 5 BT.  
A pine, 12 ins. in diam., brs. N. 2° W., 87 lks.  
dist., mkd. 1/4 S 32 BT.

55.00 Continue over rolling land, thru. dense timber and undergrowth. Desc. slightly over N. slope, to W. edge of Laguna Valley, brs. S. 10° E. and N. 10° W. Thence across nearly level bottom of valley, draining N. Leave timber and undergrowth.

64.40 Road, brs. N. and S.  
69.00 E. edge of bottom of Laguna Valley, brs. N. and S. Enter scattering timber; leave bottom of valley, and ascend 50 ft., over W. slope, to

80.00 Set an iron post, 3 ft. long, 2 ins. in diam., 24 ins. in the ground, for cor. of secs. 4, 5, 32 and 33, marked on brass cap,

T30N | R7W  
S32 | S33  
S 5 | S 4  
T29N  
1920

from which,  
A pine, 20 ins. in diam., brs. N. 44° E., 140 lks. dist., mkd. T30N R7W S33 BT.  
A cedar, 10 ins. in diam., brs. S. 83 1/2° E., 220 lks. dist., mkd. T29N R7W S4 BT.  
A pine, 18 ins. in diam., brs. S. 54° W., 189 lks. dist., mkd. T29N R7W S5 BT.  
A pine, 20 ins. in diam., brs. N. 70° W., 319 lks. dist., mkd. T30N R7W S32 BT.

Land, rolling.  
Soil, gravelly, 3rd rate.  
Timber, pine and cedar, dense and scattering as noted.  
Undergrowth, scrub cedar in W. 55 chs. None elsewhere.  
Grass, poor.

27.50 N. 89° 58' E., on true line, bet. secs. 4 and 33. Over gently rolling land, thru. scattering timber, along N. slope, with slight change in elevation.

40.00 Head of shallow draw, course NW. Ascend 40 ft., over SW. slope, to Set an iron post, 3 ft. long, 1 in. in diam., 24 ins. in the ground, for 1/4 sec. cor., marked on brass cap,

1/4 S 33  
S 4  
1920

from which,  
A pine, 7 ins. in diam., brs. N. 1 1/4° E., 52 lks. dist., mkd. 1/4 S 33 BT.  
A pine, 6 ins. in diam., brs. S. 28 1/2° E., 35 lks. dist., mkd. 1/4 S 4 BT.

50.00 Continue over gently rolling land, thru. scattering timber. Asc. 25 ft., over W. slope, to Thence over S. slope, with slight change in elevation.

57.00 Leave scattering, and enter dense timber.  
60.00 Thence over small level bench, brs. NE and SW.  
70.00 Leave level bench, and desc. 30 ft., over E. slope, to  
80.00 Set an iron post 3 ft. long, 2 ins. in diam., 12 ins. in the ground, to bed rock, supported in a mound of

14 North boundary of Township 29 North, Range 7 West.

Chains.

stone, for cor. of secs. 3, 4, 33 and 34, marked on brass cap,

T30N R7 W  
S33 S34  
S 4 1/2 3  
T29N  
1920

from which,

- A cedar, 12 ins. in diam., brs. N. 11 1/2° E., 36 lks. dist., mkd. T30N R7W S34 BT.
- A cedar, 15 ins. in diam., brs. S. 43° E., 54 lks. dist., mkd. T29N R7W S3 BT.
- A pine, 9 ins. in diam., brs. S. 59° W., 37 lks. dist., mkd. T29N R7W S4 BT.
- A cedar, 10 ins. in diam., brs. N. 07° W., 62 lks. dist., mkd. T30N R7W S33 BT.

Land, gently rolling.  
Soil, gravelly, and rocky, 3rd and 4th, rate.  
Timber, cedar and pine, scattering and dense as noted.  
Undergrowth, none.  
Poor grass.

N. 89° 58' E., on a true line, bet. secs. 3 and 34.  
Over gently rolling land, thru. dense timber. Desc. 20 ft. over NE. slope.

- 6:50 Head of draw, course NE. Thence over S. slope, with slight change in elevation.
- 21.00 Head of draw, course S. Desc. 60 ft., over SE. slope, to
- 40.00 Set an iron post, 3 ft. long, 1 in. in diam., 20 ins. in the ground, for 1/4 sec. cor., marked on brass cap,

S 34  
S 3  
1920

from which,

- A pine, 10 ins. in diam., brs. N. 32° E., 55 lks. dist., mkd. S 34 BT.
- A pine, 8 ins. in diam., brs. S. 10° W., 44 lks. dist., mkd. S 3 BT.

Continue over rolling land, thru. dense timber. Desc. 10 ft., over SE. slope, to

- 54.00 Head of shallow coulee, course SE. Thence along S. slope, with slight change in elevation.
- 60.00 Change to E. slope, and descend 20 ft. to
- 80.00 Head of coulee, course NE. Set an iron post, 3 ft. long, 2 ins. in diam., 20 ins. in the ground, for cor. of secs. 2, 3, 34 and 35, marked on brass cap,

T30N R7W  
S34 S35  
S 3 1/2 S 2  
T29N  
1920

from which,

- A pine, 16 ins. in diam., brs. N. 77 1/2° E., 223 lks. dist., mkd. T30N R7W S 35 BT.
- A pine, 10 ins. in diam., brs. S. 21 1/2° E., 130 lks. dist., mkd. T29N R7W S2 BT.
- A pine, 10 ins. in diam., brs. S. 25 1/2° W., 95 lks. dist., mkd. T29N R7W S 3 BT.
- A pine, 10 ins. in diam., brs. N. 15 1/2° W., 115 lks. dist., mkd. T30N R7W S34 BT.

Land, gently rolling.  
Soil, gravelly and rocky, 3rd and 4th rate.  
Timber, dense cedar and pine and a few oaks.



North boundary of Township 29 North, Range 7 West.

Chains.

Undergrowth, none.  
Poor grass.

N. 89° 58' E., on a true line, bet. secs. 2 and 35.  
Over gently rolling land, thru. dense timber, near N. edge  
of same, along N. slope, with slight change in elevation.

- 15.00 Leave dense, and enter scattering timber.
- 20.00 Descend 45 ft., over NE. slope.
- 26.30 Center draw, 3 chs. wide, course SE. Asc. 30 ft., over SW. slope to
- 33.00 Rim, brs. NW. and SE. Leave rolling, and enter level land.
- 40.00 Set an iron post, 3 ft. long, 1 in. in diam., on bed rock, supported in a mound of stone, for  $\frac{1}{4}$  sec. cor., marked on brass cap,

$\frac{1}{4}$  S 35  
S 2  
1920

from which,  
A pine, 8 ins. in diam., brs. S. 65 $\frac{1}{2}$ ° E., 158 lks.  
dist., mkd. S 2 BT.  
A pine, 38 ins. in diam., brs. N. 12° W., 235 lks.  
dist., mkd. S 35 BT.

- 45.00 Continue over level land, thru. scattering timber.
- 45.00 Leave scattering, and enter dense timber.
- 65.00 Leave level land and timber, and enter rolling land. Desc. 40 ft., over SE. slope, to
- 75.00 Thence, over S. slope, with slight change in elevation.
- 80.00 Set an iron post, 3 ft. long, 2 ins. in diam., 20 ins. in the ground, for cor. of secs. 1, 2, 35 and 36, marked on brass cap,

T30N | R7 W  
S35 | S36  
S 2 | S 1  
T29N  
1920

from which,  
A pine, 10 ins. in diam., brs. N. 2° E., 130 lks.  
dist., mkd. T30N R7W S36 BT.  
and raise a mound of stone, 2 ft. base, 1 $\frac{1}{2}$  ft. high, W. of cor.

Land, rolling and level.  
Soil, gravelly clay loam, 3rd rate.  
Timber, cedar and pine, scattering and dense as noted.  
No timber in E. 15 chs.  
Undergrowth, none.  
Poor grass.

N. 89° 58' E., on a true line, bet. secs. 1 and 36.  
Over rolling land, devoid of timber and undergrowth,  
along S. slope of spur, descending slightly to

- 5.00 Top of flat spur, sloping SE. from W. Desc. 65 ft., over E. slope.
- 11.90 Road brs. N. and S. in draw, course NE. Asc. 75 ft., over W. slope.
- 24.00 Top of flat ridge, brs. N. and S., near N. end of same. Desc. 70 ft., over E. slope.
- 30.30 Enter dense timber, brs. N. and S.
- 30.30 Draw, course NE. Leave dense, and enter scattering timber. Ascend slightly over W. slope, to
- 40.00 Set an iron post, 3 ft. long, 1 in. in diam., 24 ins. in the ground, for  $\frac{1}{4}$  sec. cor., marked on brass cap,

35

16 North boundary of Township 29 North, Range 7 West.

Chains.

$\frac{1}{4}$  S 30  
S 1  
1920

from which,

A pine, 8 ins. in diam., brs. S. 63° W., 126 lks.  
dist., mkd.  $\frac{1}{4}$  S 1 3 T.

A pine, 8 ins. in diam., brs. N. 79° W., 85 lks.  
dist., mkd.  $\frac{1}{4}$  S 36 B T.

Continue over rolling land, thru. scattering timber. Asc. 25 ft., over W. slope, to

47.00 Change to NE. slope, and descend 120 ft., over NE. slope.

60.00 Leave timber, brs. N. and S.

70.00 Change to NW. slope, and ascend 20 ft. to

80.00 Intersect the cor. of Ts. 29 and 30 N., Rs. 6 and 7 W., described in Book "A."

Land, rolling.

Soil, gravelly clay loam, 3rd rate.

Timber, cedar and pine, dense and scattering as noted.

Undergrowth, none.

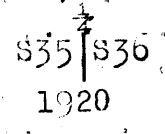
Fair grass.

Boundaries of Township 29 North, Range 7 West.  
Latitudes, departures, and closing errors.

Line designated.	True course.	Dist.	Latitudes.		Departures.	
			N.	S.	E.	W.
South boundary, (7th Std. Par. N.)	West,	480.00				480.00
West boundary,	North,	480.00	480.00			
North boundary,	N. 89° 58' E.	479.35	.26		479.35	
East boundary,	South,	480.00		480.00		
Convergency,					.53	
<u>Totals,</u>			480.26	480.00	479.88	480.00
			480.00			479.88
<u>Error in latitude,</u>			0.26			
<u>Error in departure,</u>					0.12	

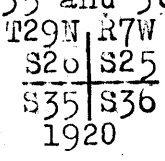
Survey of Subdivision lines of Township 29 North, Range 7 West. 17

Chains. From the std. cor. of secs. 35 and 36, on S. bdy. of Tp., (7th. Std. Parallel North), hereinbefore described, N. 0° 01' W., bet. secs. 35 and 36.  
 40.00 Over level land, thru. scattering timber and undergrowth. Set an iron post, 3 ft. long, 1 in. in diam., 24 ins. in the ground, for  $\frac{1}{4}$  sec. cor., marked on brass cap,



from which;  
 A cedar, 12 ins. in diam., brs. S. 83° E., 32 lks. dist., mkd.  $\frac{1}{4}$  S 36 BT.  
 A cedar, 12 ins. in diam., brs. S. 24½° W., 13 lks. dist., mkd.  $\frac{1}{4}$  S 35 BT.

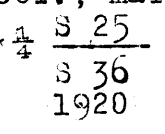
70.00 Leave level, and enter gently rolling land. Asc. very gradually over SE. slope.  
 80.00 Low ridge, brs. NE. and SW. Desc. slightly over NW. slope, to Set an iron post, 3 ft. long, 2 ins. in diam., 14 ins. in the ground, to bed rock, supported in a mound of stone, for cor. of secs. 25, 26, 35 and 36, marked on brass cap,



from which,  
 A cedar, 10 ins. in diam., brs. N. 55½° E., 184 lks. dist. mkd. T29N R7W S25 BT.  
 A pine, 18 ins. in diam., brs. S. 68½° E., 91 lks. dist., mkd. T29N R7W S36 BT.  
 A pine, 20 ins. in diam., brs. S. 65° W., 90 lks. dist., mkd. T29N R7W S35 BT.  
 A pine, 20 ins. in diam., brs. N. 75° W., 220 lks. dist., mkd. T29N R7W S26 BT.

Land, level in S.  $\frac{1}{2}$ ; and gently rolling in N.  $\frac{1}{2}$ .  
 Soil, sandy and gravelly loam, 1st and 2nd rate.  
 Timber, scattering cedar and pine, and a few oaks.  
 Undergrowth, scattering mountain mahogany, scrub oak & cedar.  
 Good grass.

40.00 East, on a random line, bet. secs. 25 and 36.  
 79.94 Set temp.  $\frac{1}{4}$  sec. cor.  
 Fall 7 lks. N. of cor. of secs. 25, 30, 31 and 36, on E. bdy. of Tp., described in Book "A."  
 Thence, N. 89° 57' W., on true line, bet. secs. 25 and 36.  
 Over gently rolling land, thru. scattering timber and undergrowth. Ascend slightly over E. slope, to  
 7.30 Thence over N. slope, with slight change in elevation.  
 25.00 Wash, course NE. Asc. 35 ft., over SE. slope.  
 35.00 Low ridge, brs. NE. and SW. Desc. 10 ft., over NW. slope, to  
 39.97 Set an iron post, 3 ft. long, 1 in. in diam., 24 ins. in the ground, for  $\frac{1}{4}$  sec. cor., marked on brass cap,



from which,  
 A cedar, 10 ins. in diam., brs. S. 81½° E., 64 lks. dist., mkd.  $\frac{1}{4}$  S 36 BT.  
 A cedar, 12 ins. in diam., brs. N. 1° W., 79 lks. dist., mkd.  $\frac{1}{4}$  S 25 BT.

51.61 Continue over gently rolling land, thru. scattering timber and undergrowth; desc. 20 ft., over NW. slope.  
 01.90 Wash, course NE. Asc. 50 ft., over SE. slope.  
 00.35 Low ridge, brs. NE. and SW. Desc. 10 ft., over NW. slope.  
 75.00 Wash, course NE. Asc. 20 ft., over SE. slope.  
 79.94 Low ridge, brs. NE. and SW. Desc. 10 ft., over NW. slope.  
 The cor. of secs. 25, 26, 35 and 36.  
 Land, gently rolling. Soil, gravelly loam, 2nd rate.  
 Timber, scattering cedar and pine.  
 Undergrowth, scattering sage brush, scrub oak and cedar.  
 Good grass.

18 Subdivision lines of Township 29 North Range 7 West.

Chains.

N. 0° 01' W., bet. secs. 25 and 26.  
 Over rolling and broken land, thru scattering timber and undergrowth. Desc. 30 ft. over NW. slope.  
 2.50 Draw, course NE. Asc. 40 ft. over SE. slope, to  
 7.00 Thence over E. slope, with slight change in elevation, to  
 10.50 Descend 35 ft., over NE. slope,  
 13.50 Draw, course E. Asc. 35 ft., over SE. slope, to  
 17.50 Thence over E. slope, with slight change in elevation.  
 25.00 Descend 50 ft., over NE. slope.  
 31.00 Center of draw, 3 chs. wide, course E. Asc. 70 ft. over S. slope, to  
 37.00 Thence over E. slope, with slight change in elevation, to  
 40.00 Set an iron post 3 ft. long, 1 in. in diam., 20 ins. in the ground, for  $\frac{1}{4}$  sec. cor., marked on brass cap,

S 26	S 25
------	------

1920

from which,

A cedar, 16 ins. in diam., brs. S. 43° E., 29 lks. dist., mkd  $\frac{1}{4}$  S 25 BT.

A pine, 8 ins. in diam., brs. S. 86 $\frac{1}{2}$ ° W., 42 lks. dist., mkd  $\frac{1}{4}$  S 26 BT.

Continue over rolling and broken land, thru scattering timber and undergrowth. Desc. 10 ft., over NE. slope.

44.70 Head of coulee, course E. Leave scattering, and enter dense timber. Thence over E. slope, ascending very gradually to gradually to

60.00 Descend very gradually over E. slope.

65.00 Leave dense, and enter scattering timber.

80.00 Set an iron post, 3 ft. long, 2 ins. in diam., 24 ins. in the ground, for cor. of secs. 23, 24, 25 and 26, marked on brass cap,

T 29 N	R 7 W
--------	-------

S 23	S 24
------	------

S 26	S 25
------	------

1920

from which,

A pine, 14 ins. in diam., brs. N. 21 $\frac{1}{4}$ ° E., 220 lks. dist., mkd T 29 N R 7 W S 24 BT.

A cedar, 10 ins. in diam., brs. S. 30° E., 124 lks. dist., mkd T 29 N R 7 W S 25 BT.

A pine, 12 ins. in diam., brs. S. 5° W., 163 lks. dist., mkd T 29 N R 7 W S 26 BT.

A pine, 12 ins. in diam., brs. N. 60 $\frac{1}{4}$ ° W., 132 lks. dist., mkd T 29 N R 7 W S 23 BT.

Land, rolling and broken. Soil, rocky, 4th rate.  
 Timber, cedar and pine, dense and scattering as noted.  
 Undergrowth, scattering scrub oak, cedar and sage brush.  
 Poor grass.

40.00 S 89° 57' E., on a random line, bet. secs. 24 and 25.

80.00 Set temp.  $\frac{1}{4}$  sec. cor.

Fall 5 lks. N. of the cor. of secs. 19, 24, 25, and 30, on E. bay of Tp., described in Book "A."

Thence N. 89° 55' W., on a true line, bet. secs. 24 and 25.

Over rolling and broken land, thru scattering timber.

Descend slightly to

2.50 Center of draw, 4 chs. wide, course NE. Thence over S. slope, ascending 75 ft. to

25.00 Ascend 50 ft., over SE. slope. Enter scattering undergrowth.

35.00 Thence over S. slope, descending 10 ft. to

40.00 Head of draw, course S. Set an iron post, 3 ft. long, 1 in. in diam., 24 ins. in the ground, for  $\frac{1}{4}$  sec. cor., marked on brass cap,

$\frac{1}{4}$ S 24
--------------------

S 25

1920

from which,

A pine, 6 ins. in diam., brs. S. 45° E., 55 lks. dist., mkd  $\frac{1}{4}$  S 25 BT.

Subdivision lines of Township 29 North, Range 7 West. 19

Chains.

A pine, 8 ins. in diam., brs. N. 22 $\frac{1}{2}$ ° W., 38 lks. dist.,  
mkd.  $\frac{1}{4}$ S 24 BT.

Continue over rolling and broken land, thru scattering tim-  
ber and undergrowth. Asc. 20 ft., over S. slope, to

51.50 Descend 25 ft., over SW. slope. Leave scattering, and enter  
dense timber and undergrowth.

54.00 Head of coulee, course SE. Asc. 60 ft., over SE. slope, to

72.50 Change to N. slope. Leave dense and enter scattering timber  
and undergrowth. Ascend slightly, to

80.00 The cor. of secs. 23, 24, 25 and 26.  
Land, rolling and broken.  
Soil, rocky, 4th rate.  
Timber, cedar and pine, dense and scattering, as noted.  
Undergrowth, scrub oak and cedar, dense and scattering as  
noted. Poor grass.

---

N. 0° 1' W., bet. secs. 23 and 24.  
Over gently rolling land, thru scattering timber and  
undergrowth. Desc. very gradually over N. slope..

32.30 Center of shallow draw, 4 chs. wide, course NE. Thence over  
E. slope, ascending slightly to

40.00 Set an iron post, 3 ft. long, 1 in. in diam., 26 ins. in the  
ground, for  $\frac{1}{4}$  sec. cor., marked on brass cap,  
 $\frac{1}{4}$   
S23 | S24  
1920

from which,  
A cedar, 30 ins. in diam., brs. S. 08 $\frac{1}{2}$ ° E., 509 lks.  
dist., mkd.  $\frac{1}{4}$ S 24 BT.  
A cedar, 60 ins. in diam., brs. S. 13° W., 110 lks.  
dist., mkd.  $\frac{1}{4}$ S 23 BT.

Continue over gently rolling land, thru scattering timber  
and undergrowth, along E. slope, descending slightly to

45.00 Ascend 20 ft., over SE. slope, to

50.00 Thence over E. slope, descending slightly to

55.80 Head of coulee, course E. Continue over E. slope, ascending to

65.00 Thence over level bench, to

80.00 Set an iron post, 3 ft. long, 2 ins. in diam., 26 ins. in  
the ground, for cor. of secs. 13, 14, 23 and 24, marked  
on brass cap,  
T29N | R7W  
S14 | S13  
S23 | S24  
1920

from which,  
A pine, 8 ins. in diam., brs. N. 29° E., 77 lks. dist.,  
mkd. T29N R7W S13 BT.  
A pine, 8 ins. in diam., brs. S. 50° E., 69 lks. dist.,  
mkd. T29N R7W S24 BT.  
A pine, 12 ins. in diam., brs. S. 70 $\frac{1}{2}$ ° W., 108 lks. dist.  
mkd. T29N R7W S23 BT.  
A pine, 10 ins. in diam., brs. N. 50 $\frac{1}{2}$ ° W., 151 lks. dist.  
mkd. T29N R7W S14 BT.

Land, gently rolling and level. Soil, rocky, 4th rate.  
Timber, scattering cedar and pine.  
Undergrowth, scattering scrub oak and cedar. Poor grass.

---

S. 89° 55' E., on a random line, bet. secs. 13 and 24.

40.00 Set temp.  $\frac{1}{4}$  sec. cor.

79.96 Intersect the E. bdy. of Tp. at the cor. of secs. 13, 18, 19  
and 24, described in Book "A."  
Thence N. 89° 55' W., on a true line, bet. secs. 13 and 24.  
Over level land, thru scattering timber and undergrowth.

20.00 Leave scattering, and enter dense timber.

25.00 Leave dense, and enter scattering timber.

39.98 Set an iron post, 3 ft. long, 1 in. in diam., 26 ins. in the  
ground, for  $\frac{1}{4}$  sec. cor., marked on brass cap,  
 $\frac{1}{4}$ S 13  
S 24  
1920

from which,

20 Subdivision lines of Township 29 North, Range 7 West.

Chains.

A pine, 12 ins. in diam., brs. N. 55° E., 218 lks.  
 dist., mkd. S 13 BT.  
 A pine, 6 ins in diam., brs. S. 22½° E., 107 lks.  
 dist., mkd. S 24 BT.  
 Continue over level land, thru. scattering timber and under-  
 growth.  
 42.50 Rim, brs. NE. and SW. Leave level, and enter rolling land.  
 Descend 20 ft., over NW. slope.  
 51.60 Center of draw, 5 chs. wide, course NE. Thence over S. slope, to  
 65.00 Ascend 15 ft., over E. slope, to  
 70.00 Thence over level bench to  
 79.96 The cor. of secs. 13, 14, 23 and 24.  
 Land, level, and rolling. Soil, rocky, 4th rate.  
 Timber, cedar and pine, dense and scattering as noted.  
 Undergrowth, scattering scrub oak and cedar.  
 Poor grass.

N. 0° 1' W., bet. secs. 13 and 14.  
 Over level bench, thru. scattering timber and undergrowth.  
 2.00 Leave level bench, and enter rolling land, and descend 30  
 ft. over N. slope.  
 10.00 Head of coulee, course N. 20° W. Asc. slightly over W. slope, to  
 14.00 Ascend 45 ft., over SW. slope, to  
 22.50 Thence over W. slope, descending 20 ft. to  
 29.00 Descend 80 ft., over NW. slope, to  
 40.00 West edge of draw, course NE. Set an iron post, 3 ft. long,  
 1 in. in diam., 24 ins. in the ground, for ¼ sec. cor., mark-  
 ed on brass cap,

S14 | S13  
 1920

from which,

A pine, 10 ins. in diam., brs. S. 9½° E., 228 lks.  
 dist., mkd. S 13 BT.  
 A pine, 30 ins. in diam., brs. S. 8½° W., 373 lks.  
 dist., mkd. S 14 BT.  
 Continuing over rolling and broken land, thru. scattering  
 timber and undergrowth. Desc. slightly over E. slope, to  
 50.00 Ascend 85 ft., over SW. slope.  
 57.00 Thence over slightly broken E. slope, with little change  
 in elevation.  
 73.00 Draw, course SE. Ascend 40 ft., over S. slope, to  
 80.00 Set an iron post, 3 ft. long, 2 ins. in diam., 20 ins. in the  
 ground, for cor. of secs. 11, 12, 13 and 14, marked on brass  
 cap,

T29N R7 W  
 S11 | S12  
 S14 | S13  
 1920

from which,

A pine, 12 ins. in diam., brs. N. 33½° E., 52 lks.  
 dist., mkd. T29N R7W S12 BT.  
 A cedar, 16 ins. in diam., brs. S. 17½° E., 263 lks.  
 dist., mkd. T29N R7W S13 BT.  
 A pine, 14 ins. in diam., brs. S. 72½° W., 48 lks.  
 dist., mkd. T29N R7W S14 BT.  
 A cedar, 12 ins. in diam., brs. N. 1¼° W., 302 lks.  
 dist., mkd. T29N R7W S11 BT.  
 Land, rolling, level. Soil, rocky, 4th rate.  
 Timber, scattering cedar and pine.  
 Undergrowth, scattering scrub oak and cedar. Poor grass.

S. 89° 55' E., on a random line, bet. secs. 12 and 13.  
 40.00 Set temp. ¼ sec. cor.  
 79.98 Fall 17 lks. S. of cor. of secs. 7, 12, 13 and 18, on e. bdy. of  
 Tps. described in Book "A."  
 Thence, S. 89° 58' W., on a true line, bet. secs. 12 and 13.  
 Over rolling land, thru. scattering timber and undergrowth.  
 Ascend 15 ft., over E. slope.  
 3.00 Change to NW. slope, and descend 90 ft. to  
 16.00 Junction of coulee, course NE. From W. withdraw from SW. Asc.  
 50 ft. in coulee, to  
 30.70 Mouth of drain, 30 lks. wide, 3 ft. deep, from S.; continue

Subdivision of lines of Township 29 North Range 7 West. 21

Chains.  
39.40  
39.99

ascend in coulee.  
Leave coulee, course E. from S. Ascend over E. slope, to  
Set an iron post, 3 ft. long, 1 in. in diam., on bedrock, in a  
mound of stone, for  $\frac{1}{4}$  sec. cor., marked on brass cap,

$\frac{1}{4}$  S 12  
S 13  
1920

46.00  
79.98

and raise a mound of stone, 2 ft. base,  $1\frac{1}{2}$  ft. high, N. of  
cor.  
Continue over rolling land, thru. scattering timber and  
undergrowth.  
Ascend 100 ft., over E. slope, to  
Top of ascent, brs. NE. and SW: Thence over S. slope, with  
slight change in elevation.  
The cor. of secs. 11, 12, 13 and 14.  
Land, rolling.  
Soil, rocky, 4th rate.  
Timber, scattering cedar and pine.  
Undergrowth, scattering scrub oak.  
Poor grass.

10.00  
20.00  
35.00  
40.00

N.  $0^{\circ} 01' W$ , bet. secs. 11 and 12.  
Over gently rolling land, thru. scattering timber. Ascend  
20 ft., over S. slope, to  
Thence over level land.  
Leave scattering, and enter dense timber.  
Leave dense, and enter scattering timber.  
Set an iron post, 3 ft. long, 1 in. in diam., 26 ins. in  
the ground, for  $\frac{1}{4}$  sec. cor., marked on brass cap,

$\frac{1}{4}$  S 11 | S 12  
1920

60.00  
64.40  
70.00  
80.00

from which,  
A pine, 16 ins. in diam., brs. N.  $88^{\circ} E$ , 153 lks.  
dist., mkd.  $\frac{1}{4}$  S 12 BT.  
A pine, 8 ins. in diam., brs. S.  $38\frac{1}{2}^{\circ} W$ , 98 lks.  
dist., mkd.  $\frac{1}{4}$  S 11 BT.  
Continue over level land, thru. scattering timber and  
undergrowth.  
Leave timber. Enter tract 10 chs. wide, bearing E. and W.,  
which is devoid of timber.  
Road, brs. NE. and SW., and head of coulee, course NE.  
Leave level, and enter gently rolling land, descending  
very gradually, over E. slope, to sec. cor.  
Enter scattering timber and undergrowth.  
Set an iron post, 3 ft. long, 2 ins. in diam., 18 ins. in  
the ground, to bed rock, supported in a mound of stone  
for cor. of secs. 1, 2, 11 and 12, marked on brass cap,

T29N | R 7 W  
S 2 | S 1  
S 11 | S 12  
1920

from which,  
A cedar, 6 ins. in diam., brs. N.  $48\frac{1}{2}^{\circ} E$ , 476 lks:  
dist., mkd. T29N R7W S1 BT.  
A cedar, .14 ins. in diam., brs. S.  $60\frac{1}{2}^{\circ} W$ , 260 lks.  
dist., mkd. T29N R7W S11 BT.  
A cedar, 8 ins. in diam., brs. N.  $43^{\circ} W$ , 370 lks.  
dist., mkd. T29N R7W S2 BT.  
and raise a mound of stone, 2 ft. base,  $3\frac{1}{2}$  ft. high, W.  
of cor. mkd. T29N R7W S2 BT.  
Land, level, and gently rolling.  
Soil, gravelly, and rocky clay, 3rd and 4th rate.

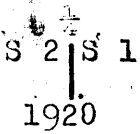
## 22 Subdivision lines of Township 029 North, Range 7 West.

Chains.

- Timber, cedar and pine, dense and scattering as noted.  
Undergrowth, scattering scrub oak and cedar.  
Poor grass.
- 
- 40.00 N. 89° 58' E., on a random line, bet. secs. 1 and 12.  
Set temp.  $\frac{1}{4}$  sec. cor.  
79.96 Intersect the cor. of secs. 1, 6, 7 and 12, on E. bdy. of Tp.,  
described in Book "A."  
Thence,  
S. 89° 58' W., on a true line, bet. secs. 1 and 12.  
Over rolling land, thru. dense timber and scattering un-  
dergrowth. Desc. slightly over NW. slope.  
3.00 Center of draw, 3 chs. wide, course NE. Ascend 40 ft., over  
SE. slope.  
10.00 Top of ascent. Thence over S. slope, with little change  
in elevation, to  
20.00 Thence over N. slope, ascending slightly, to change in  
elevation, to  
39.98 Set an iron post, 3 ft. long, 1 in. in diam., 20 ins. in the  
ground, for  $\frac{1}{4}$  sec. cor., marked on brass cap,
- S 1  
 $\frac{1}{4}$  S 12  
1920
- from which,  
A pine, 12 ins. in diam., brs. N. 37° E., 55 lks.  
dist., mkd. S 1 BT.  
A pine, 12 ins. in diam., brs. S. 11 $\frac{1}{2}$ ° E., 137 lks.  
dist., mkd. S 12 BT.
- Continue over rolling land, thru. dense timber and scat-  
tering undergrowth. Descend slightly over N. slope, to  
42.00 Head of draw, course NE. Ascend 10 ft., over NE. slope, to  
47.00 Change to N. slope.  
52.00 Change to NW. slope.  
58.00 Change to W. slope, and enter scattering timber. Descend  
very gradually.  
62.96 Road, brs. NE. and SW.  
78.06 Draw, course NE. for about 100 lks., thence NW. Ascend  
slightly over NE. slope, to  
79.96 The cor. of secs. 1, 2, 11 and 12.  
Land, rolling.  
Soil, rocky, 4th rate.  
Timber, pine and cedar, dense and scattering as noted.  
Undergrowth, scattering scrub oak and cedar.  
Grass, poor.
- 
- 40.00 N. 0° 01' W., on a random line, bet. secs. 1 and 2.  
Set temp.  $\frac{1}{4}$  sec. cor.  
80.02 Fall 4 lks. E. of the cor. of secs. 1, 2, 35 and 36, on N. bdy.  
of Tp., hereinbefore described.  
Thence,  
S. 0° 03' E., on a true line, bet. secs. 1 and 2.  
Over rolling land, devoid of timber and undergrowth. De-  
scend 30 ft., over S. slope, to  
3.00 Enter coulee, course S. from NW. Descend gradually in  
coulee.  
9.65 Road, brs. SE. and NW. at this point only; general bear-  
ing NE. and SW.  
19.00 Leave coulee, course SE. from N. Thence over E. slope,  
descending 40 ft., to  
32.50 Center of draw, 3 chs. wide, course NE. Asc. 30 ft., over  
NW. slope, to  
38.00 Top of ascent. Thence over W. slope, with slight change  
in elevation. Enter scattering timber.  
40.02 Set an iron post, 3 ft. long, 1 in. in diam., 28 ins. in the  
ground, for  $\frac{1}{4}$  sec. cor., marked on brass cap,

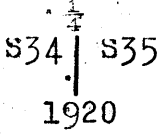


Chains.

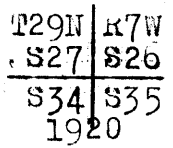


from which,  
 A pine, 10 ins. in diam., brs. S.  $03\frac{3}{4}^{\circ}$  E., 260 lks.  
 dist., mkd.  $\frac{1}{4}$  S 1 BT.  
 and raise a mound of stone, 2 ft. base,  $1\frac{1}{2}$  ft. high, W. of cor.  
 Continue over rolling land, thru. scattering timber, along W. slope, ascending very gradually.  
 42.40 Head of coulee, course NW. Continue very gradual ascent, over W. slope.  
 60.00 Head of coulee, course NW.  
 65.00 Leave timber.  
 75.50 Center of draw, 2 chs. wide, course NW. Asc. 10 ft., over NE. slope.  
 80.02 The cor. of secs. 1, 2, 11 and 12.  
 Land, rolling.  
 Soil, gravelly clay loam, 3rd rate.  
 Timber, scattering cedar and pine, where noted.  
 Undergrowth, none.  
 Poor grass.

-----  
 From the standard cor. of secs. 34 and 35, on S. bdy. of Tp., (7th Standard Parallel N.), hereinbefore described, N.  $0^{\circ}01'$  W., bet. secs. 34 and 35.  
 Over gently rolling land, thru. scattering timber and undergrowth. Descend very gradually, over NE. slope, to  
 15.00 Change to E. slope, and continue very gradual descent to  
 20.00 Leave timber, brs. E. and W.  
 40.00 Set an iron post, 3 ft. long, 1 in. in diam., 24 ins. in the ground, for  $\frac{1}{4}$  sec. cor., marked on brass cap,



from which,  
 A cedar, 10 ins. in diam., brs. N.  $25\frac{1}{2}^{\circ}$  E., 563 lks.  
 dist., mkd.  $\frac{1}{4}$  S 35 BT.  
 A cedar, 8 ins. in diam., brs. N.  $5^{\circ}$  W., 225 lks.  
 dist., mkd.  $\frac{1}{4}$  S 34 BT.  
 Continue over gently rolling land devoid of timber, thru. scattering undergrowth, ascending very gradually over SE. slope.  
 50.50 Enter scattering timber, brs. NE. and SW.  
 60.00 Low ridge, brs. NE. and SW. Descend 50 ft., over NW. slope, to  
 80.00 Set an iron post, 3 ft. long, 2 ins. in diam., 24 ins. in the ground, for cor. of secs. 26, 27, 34 and 35, marked on brass cap,



and dig pits, 18x18x12 ins., one each NE., SE., SW. and NW. of cor., 3 ft. dist.  
 Land, gently rolling.  
 Soil, sandy clay loam, 2nd rate.  
 Timber, scattering pine and cedar, where noted.  
 Undergrowth, scattering scrub cedar and sage brush.  
 Fair grass.

24. Subdivision lines of Township 29 North, Range 7 West.

Chains.

East, on a random line, bet. secs. 26 and 35.  
 40.00 Set temp.  $\frac{1}{4}$  sec. cor.  
 80.04 Fall 2 lks. N. of the cor. of secs. 25, 26, 35 and 36.  
 Thence  
 N. 89° 59' W., on a true line, bet. secs. 26 and 35.  
 Over gently rolling land, thru. scattering timber and  
 undergrowth. Descend slightly to  
 2.15 Drain course NE. Asc. 40 ft., over SE. slope.  
 11.87 Low ridge, brs. NE. and SW. Desc. 60 ft., over NW. slope.  
 26.93 Wash, 15 lks. wide, 4 ft. deep, course NW. Leave timber.  
 Ascend 20 ft., over E. slope, to  
 40.02 Low ridge, brs. N. and S. Set an iron post, 3 ft. long, 1  
 in. in diam., 24 ins. in the ground, for  $\frac{1}{4}$  sec. cor.,  
 marked on brass cap,

$\frac{1}{4}$  S 26  
 S 35  
 1920

and dig pits, 18x18x12 ins., one each E. and W. of cor.,  
 3 ft. dist.  
 Continue over gently rolling land, devoid of timber, thru.  
 scattering undergrowth. Descend 45 ft., over W. slope.  
 48.00 Ascend 50 ft., over SE. slope.  
 64.97 Low ridge, brs. NE. and SW. Desc. 50 ft., over NW. slope, to  
 80.04 The cor. of secs. 26, 27, 34 and 35.  
 Land, gently rolling.  
 Soil, gravelly loam, 2nd rate.  
 Timber, scattering cedar and pine where noted.  
 Undergrowth, scattering scrub cedar.  
 Fair grass.

N. 0° 01' W., bet. secs. 26 and 27.  
 Over gently rolling land, thru, very scattering timber.  
 Descend slightly over NW. slope, to  
 5.00 Draw, course E. Asc. 50 ft., over S. slope.  
 25.00 Low ridge, brs. E. and W. Desc. 80 ft., over N. slope.  
 39.85 Thorton Coulee, 15 lks. wide, 3 ft. deep, course E.  
 40.00 Set an iron post, 3 ft. long, 1 in. in diam., 24 ins. in  
 the ground, for  $\frac{1}{4}$  sec. cor., marked on brass cap,

$\frac{1}{4}$   
 S27 | S26  
 1920

and raise a mound of stone, 2 ft. base, 1 $\frac{1}{2}$  ft. high,  
 W. of cor.  
 Continue over gently rolling land, thru. scattering tim-  
 ber.  
 Ascend 50 ft., over S. slope.  
 49.97 Ridge, brs. E. and W. Desc. 50 ft., over N. slope.  
 54.94 Draw, course E. Asc. 45 ft., over S. slope.  
 74.92 NE. end of low ridge, brs. NE. and SW. Desc. slightly over  
 N. slope, to  
 80.00 Set an iron post, 3 ft. long, 2 ins. in diam., 24 ins. in  
 the ground, for cor. of secs. 22, 23, 26 and 27, marked  
 on brass cap,

T29N | R7 W  
 S22 | S23  
 S27 | S26.  
 1920

from which,  
 A pine, 10 ins. in diam., brs. N. 18 $\frac{1}{2}$ ° E., 23 lks.  
 dist., mkd. T29N R7W S23 BE.

Chains.

- A pine, 13 ins. in diam., brs. S. 34 $\frac{1}{2}$ ° E., 105 lks.  
dist., mkd. T29N R7W S26 BT.
- A pine, 18 ins. in diam., brs. S. 34 $\frac{1}{2}$ ° E., 105 lks.  
dist., mkd. T29N R7W S26 BT.
- A pine, 8 ins. in diam., brs. S. 50 $\frac{1}{4}$ ° W., 8 lks.  
dist., mkd. T29N R7W S27 BT.
- A pine, 18 ins. in diam., brs. N. 33 $\frac{1}{2}$ ° W., 82 lks.  
dist., mkd. T29N R7W S22 BT.

Land, gently rolling.  
Soil, sandy and gravelly loam, 2nd and 3rd rate.  
Timber, very scattering cedar and pine.  
Fair grass.  
Undergrowth, scattering scrub cedar.

- 40.00 S. 89° 59' E., on a random line, bet. secs. 23 and 26.  
Set temp.  $\frac{1}{4}$  sec. cor.
- 79.98 Fall 12 lks. N. of the cor. of secs. 23, 24, 25 and 26.  
Thence,  
N. 89° 54' W., on a true line, bet. secs. 23 and 26.  
Over rolling land, thru, scattering timber and undergrowth.  
Descend slightly, over N. slope, to
- 9.00 Head of shallow coulee, course N. 20° E. Ascend 50 ft., over  
E. slope.
- 25.00 Ridge, brs. N. and S. Leave scattering, and enter dense  
timber. Desc. 20 ft. over W. slope, to
- 39.99 Set an iron post, 3 ft. long, 1 in. in diam., 26 ins. in  
the ground, for  $\frac{1}{4}$  sec. cor., marked on brass cap,

S 23  
 $\frac{1}{4}$   
S 26  
1920

- from which,
- A pine, 11 ins. in diam., brs. S. 11 $\frac{1}{2}$ ° E., 50 lks.  
dist., mkd. S 26 BT.
- A pine, 12 ins. in diam., brs. N. 5 $\frac{1}{2}$ ° W., 44 lks.  
dist., mkd. S 23 BT.

- Continue over rolling land, thru. dense timber and scat-  
tering undergrowth.
- Descend 90 ft., over W. slope, to
- 56.30 Drain, 15 lks. wide, 3 ft. deep, course N.
- 59.00 Center of coulee, 4 chs. wide, course N. Leave timber;  
ascend 85 ft., over E. slope, to
- 75.00 Thence over N. slope; enter scattering timber.
- 79.98 The cor. of secs. 22, 23, 26 and 27.  
Land, rolling.  
Soil, rocky clay, 3rd rate.  
Timber, pine and cedar, scattering and dense as noted:  
Undergrowth, scattering scrub oak and mountain mahogany.  
Poor grass.

- N. 0° 01' W., bet. secs. 22 and 23.  
Over gently rolling land, thru. scattering timber and  
undergrowth. Desc. 30 ft., over N. slope.
- 5.00 Draw, course N. Ascend 60 ft., over S. slope.
- 9.94 Point of spur, slopes E. Desc. 34 ft., over N. slope, to
- 11.97 Draw, drains E. Thence over E. slope, to
- 27.80 Draw, drains E. Asc. 40 ft., over S. slope, to
- 29.94 Ridge, brs. E. and W. Desc. 60 ft., over N. slope, to
- 40.00 Draw, course S. 80° E. Set an iron post, 3 ft. long, 1 in.  
in diam., 24 ins. in the ground, for  $\frac{1}{4}$  sec. cor., marked  
on brass cap,

S 22 | S 23  
 $\frac{1}{4}$   
1920

from which,

26 Subdivision lines of Township 29 North, Range 7 West.

Chains.

A pine, 30 ins. in diam., brs. N. 45° E., 114 lks.  
 dist., mkd. S 23 BT.  
 A pine, 15 ins. in diam., brs. N. 79° W., 102 lks.  
 dist., mkd. S 22 BT.  
 Continue over gently rolling land, thru. scattering timber  
 and undergrowth.  
 Ascend 75 ft., over S. slope.  
 Ridge, brs. E. and W. Desc. 52 ft. to  
 Draw, drains E. Asc. slightly over E. slope, to  
 54.94 Set an iron post, 3 ft. long, 2 ins. in diam., 24 ins. in  
 61.34 the ground, for cor. of secs. 14, 15, 22 and 23, marked  
 80.00 on brass cap,

T29N	R7W
S15	S14
S22	S23

1920

from which,  
 A cedar, 20 ins. in diam., brs. N. 15° E., 62 lks.  
 dist., mkd. T29N R7W S14 BT.  
 A pine, 8 ins. in diam., brs. S. 20° E., 13 lks.  
 dist., mkd. T29N R7W S23 BT.  
 A cedar, 15 ins. in diam., brs. S. 5° W., 100 lks.  
 dist., mkd. T29N R7W S22 BT.  
 A cedar, 15 ins. in diam., brs. N. 25° W., 121 lks.  
 dist., mkd. T29N R7W S15 BT.

Land, gently rolling.  
 Soil, sandy and gravelly loam, 2nd and 3rd rate.  
 Timber, scattering cedar, pine and oak.  
 Undergrowth, scattering mountain mahogany, scrub oak and  
 scrub cedar.  
 Fair grass.

40.00 S. 89° 54' E., on a random line, bet. secs. 14 and 23.  
 Set temp. 1/4 sec. cor.  
 80.00 Fall 5 lks. N. of the cor. of secs. 13, 14, 23 and 24.  
 Thence,  
 N. 89° 52' W., on a true line, bet. secs. 14 and 23.  
 Over level bench, thru. scattering timber and undergrowth.  
 15.00 Rim, brs. NE. and SW. Leave level bench, enter rolling land.  
 Descend 40 ft., over NW. slope.  
 19.00 Coulee, course NE. Asc. 40 ft., over E. slope.  
 25.00 Descend 60 ft., over NE. slope.  
 29.00 Center of coulee, 4 chs. wide, course NE. Asc. 40 ft., over  
 SE. slope.  
 40.00 Set an iron post, 3 ft. long, 1 in. in diam., on bed rock,  
 in a mound of stone, for 1/4 sec. cor., marked on brass  
 cap,

1/4	S 14
S 23	

1920

from which,  
 A pine, 10 ins. in diam., brs. S. 3 1/4° E., 429 lks.  
 dist., mkd. S 23 BT.  
 A pine, 30 ins. in diam., brs. N. 18 1/2° W., 475 lks.  
 dist., mkd. S 14 BT.  
 Continue over rolling land, thru. scattering timber and  
 undergrowth.  
 Ascend 50 ft., over E. slope.  
 47.70 Descend 40 ft., over NW. slope.  
 52.00 Ascend 95 ft., over NE. slope, to  
 80.00 The cor. of secs. 14, 15, 22 and 23.  
 Land, E. 15 chs. level; remainder, gently rolling.  
 Soil, sandy and gravelly loam, 2nd and 3rd rate.  
 Timber, scattering cedar, oak and pine.  
 Undergrowth, scattering mountain mahogany, scrub oak and  
 scrub cedar.

Chains.

Fair grass.

N. 0° 01' W., bet. secs. 14 and 15.  
Over gently rolling land, thru. scattering timber and undergrowth. Desc. very gradually over E. slope.  
Set an iron post, 3 ft. long, 1 in. in diam., 24 ins. in the ground, for 1/4 sec. cor., marked on brass cap,

40.00

S15 | S14  
1920

from which,  
A pine, 12 ins. in diam., brs. N. 83° E., 135 lks. dist., mkd. 1/4 S 14 BT.  
A cedar, 15 ins. in diam., brs. N. 61° W., 115 lks. dist., mkd. 1/4 S 15 BT.

Continue over gently rolling land, thru. scattering timber and undergrowth. Desc. very gradually over NE. slope.

50.57

Barb wire fence, brs. N. 60 1/2° E., and S. 60 1/2° W.

65.00

Leave timber, brs. NE. and W.

80.00

Set an iron post, 3 ft. long, 2 ins. in diam., 24 ins. in the ground, for cor. of secs. 10, 11, 14 and 15, marked on brass cap,

T29N | R7 W  
S10 | S11  
S15 | S14  
1920

and dig pits, 18x18x12 ins., one each NE., SE., SW. and NW. of post, 3 ft. dist.

Land, gently rolling.  
Soil, sandy and gravelly brown loam, 1st and 2nd rate.  
Timber, scattering cedar, pine and oak in S. 65 chs. None in N. 15 chs.  
Undergrowth, scattering scrub oak and scrub cedar.  
Good grass.

40.00

S. 89° 52' E., on a random line, bet. secs. 11 and 14.  
Set temp. 1/4 sec. cor.

80.04

Fall 7 lks. S. of the cor. of secs. 11, 12, 13 and 14.

Thence,  
N. 89° 55' W., on a true line, bet. secs. 11 and 14.  
Over gently rolling land, thru. scattering timber.

15.00

Ascend 50 ft., over S. slope, to

20.00

Thence, over level land, to  
Head of draw, course S. Leave timber. Thence over S. slope, ascending slightly to

40.02

Set an iron post, 3 ft. long, 1 in. in diam., 12 ins. in the ground, supported in a mound of stone, for 1/4 sec. cor., marked on brass cap,

1/4 S 11  
1/4 S 14  
1920

and dig pits 18x18x12 ins., one each E. and W. of cor., 3 ft. dist.

Continue over gently rolling land, thru. scattering undergrowth.

Ascend 5 ft., over E. slope, to sec. cor.

53.00

Enter dense timber, brs. N. and S.

60.00

Along N. edge of timber.

65.00

Leave timber.

28 Subdivision lines of Township 29 North, Range 7 West.

Chains.  
80.04

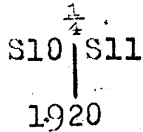
The cor. of secs. 10, 11, 14 and 15.  
Land, gently rolling.  
Soil, gravelly clay loam, 2nd rate.  
Timber, pine and cedar, dense and scattering where noted.  
Undergrowth, scattering scrub oak and scrub cedar.  
Good grass.

9.15  
14.20

N. 0° 01' W., bet. secs. 10 and 11.  
Over gently rolling land, thru. scattering undergrowth,  
descending very gradually over NE. slope.  
Road, brs. NE and SW.  
Draw, course NE. Continue very gradual descent, over NE.  
slope.

30.00  
40.00

Enter scattering timber, brs. NE and SW.  
Set an iron post, 3 ft. long, 1 in. in diam., 24 ins. in  
the ground, for  $\frac{1}{4}$  sec. cor., marked on brass cap,



from which,

- A pine, 8 ins. in diam., brs. S. 2 $\frac{1}{2}$ ° E., 153 lks. dist.,  
mkd. S 11 BT.
- A cedar, 12 ins. in diam., brs. N. 10 $\frac{1}{2}$ ° W., 395 lks.  
dist., mkd. S 10 BT.

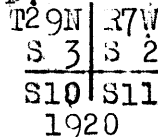
Continue over gently rolling land, thru. scattering tim-  
ber and undergrowth, descending very gradually over  
N. slope.

77.47

Road, brs. NE. and SW. in draw, course NE. Asc. 30 ft., over  
S. slope, to

80.00

Set an iron post, 3 ft. long, 2 ins. in diam., on bed rock,  
in a mound of stone, for cor. of secs. 2, 3, 10 and 11,  
marked on brass cap,



from which,

- A pine, 10 ins. in diam., brs. N. 38 $\frac{1}{2}$ ° E., 158 lks.  
dist., mkd. T29N R7W S2 BT.
- A cedar, 10 ins. in diam., brs. S. 13 $\frac{1}{2}$ ° E., 798 lks.  
dist., mkd. T29N R7W S11 BT.
- A cedar, 12 ins. in diam., brs. S. 82 $\frac{1}{2}$ ° W., 530 lks..  
dist., mkd. T29N R7W S10 BT.
- A pine, 12 ins. in diam., brs. N. 21 $\frac{1}{2}$ ° W., 145 lks.  
dist., mkd. T29N R7W S3 BT.

Land, gently rolling.  
Soil, sandy and gravelly brown loam, 1st and 2nd rate.  
Timber, scattering cedar, pine and oak in N. 50 chs. None  
in S. 30 chs.  
Undergrowth, scattering scrub oak and scrub cedar.  
Good grass.

40.00  
80.08

S. 89° 55' E., on a random line, bet. secs. 2 and 11.  
Set temp.  $\frac{1}{4}$  sec. cor.  
Intersect the cor. of secs. 1, 2, 11 and 12.  
Thence,

18.50

N. 89° 55' W., on a true line, bet. secs. 2 and 11.  
Over gently rolling land, thru. scattering timber and  
undergrowth, along N. slope, ascending slightly to  
Center of draw, 2 chs. wide, 10 ft. deep, course NE. Ascend  
very gradually, over NE. slope, to

40.04

Set an iron post, 3 ft. long, 1 in. in diam., 24 ins. in the  
ground, for  $\frac{1}{4}$  sec. cor., marked on brass cap,

Subdivision lines of Township 29 North, Range 7 West.

Chains.

1/4 S 2  
S 11  
1920

from which,  
A pine, 10 ins. in diam., brs. S. 40 1/2° E., 77 lks.  
dist., mkd. S 11 BT.  
A pine, 10 ins. in diam., brs. N. 1 1/2° W., 107 lks.  
dist., mkd. S 2 BT.

Continue over gently rolling land, thru. scattering timber and undergrowth, along N. slope, descending slightly.

40.00 Leave timber.  
60.00 Descend 30 ft., over W. slope.  
71.00 Coulee, course NE.  
75.20 Road, brs. NE and SW. Asc. slightly over SE. slope, to  
77.00 Asc. 30 ft., over S. slope, to  
80.08 The cor. of secs. 2, 3, 10 and 11.  
Land, gently rolling.  
Soil, gravelly and rocky clay loam, 3rd and 4th rate.  
Timber, scattering cedar, pine and oak in E. 46 chs. None elsewhere.  
Undergrowth, scattering scrub oak and scrub cedar.  
Fair grass.

40.00 N. 0° 03' W., on a random line, bet. secs. 2 and 3.  
Set temp. 1/4 sec. cor.  
79.88 Fall 7 lks. W. of the cor. of secs. 2, 3, 34 and 35, on N. bdy. of Tp., hereinbefore described.

Thence,  
South, on a true line, bet. secs. 2 and 3.  
Over gently rolling land, thru. scattering timber and undergrowth, descending very gradually over E. slope.

21.00 Draw, course NE. Ascend very gradually over N. slope.  
39.88 Set an iron post, 3 ft. long, 1 in. in diam., 24 ins. in the ground, for 1/4 sec. cor., marked on brass cap,

1/4 S 3 | S 2  
1920

from which,  
A cedar, 20 ins. in diam., brs. S. 65 1/4° E., 90 lks.  
dist., mkd. S 2 BT.  
A pine, 10 ins. in diam., brs. S. 89 1/2° W., 55 lks.  
dist., mkd. S 3 BT.

Continue over gently rolling land, thru. scattering timber and undergrowth, ascending very gradually over N. slope.

52.32 Low ridge, brs. E. and W. Descend gradually over S. slope.  
72.30 Draw, course E. Ascend 20 ft., over N. slope.  
77.29 Low ridge, brs. E. and W. Descend 15 ft., over S. slope, to  
79.88 The cor. of secs. 2, 3, 10 and 11.  
Land, gently rolling.  
Soil, rocky and gravelly, 3rd and 4th rate.  
Timber, scattering cedar, pine and oak.  
Undergrowth, scattering scrub oak and scrub cedar.  
Poor grass.

From the standard cor. of secs. 33 and 34, on S. bdy. of Tp., (7th, Standard Parallel North), hereinbefore described, N. 0° 02' W., bet. secs. 33 and 34.

19.00 Over gently rolling land, thru. scattering timber and undergrowth. Desc. very gradually over N. slope, to  
27.00 Drain, course NE. Desc. very gradually over NE. slope.  
40.00 Road, brs. SE. and NW.  
Set an iron post, 3 ft. long, 1 in. in diam., 20 ins. in the ground, for 1/4 sec. cor., marked on brass cap,

30 Subdivision lines of Township 29 North Range 7 West.

Chains.

from the corner of sec. 27 and 34, marked on brass cap, S 33 S 34

1920

from which,

A pine, 20 ins. in diam., brs. N. 49 1/2° E., 114 lks.  
dist., mkd. 1/4 S 34 BT.

A pine, 20 ins. in diam., brs. N. 64 1/2° W., 208 lks.  
dist., mkd. 1/4 S 33 BT.

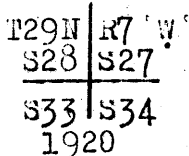
Continue over gently rolling land, thru. scattering timber and undergrowth, descending very gradually over N. slope.

51.00

Thornton Tank, brs. W. 34 chs.

80.00

Set an iron post, 3 ft. long, 2 ins. in diam., 24 ins. in the ground, for cor. of secs. 27, 28, 33 and 34, marked on brass cap,



from which,

A pine, 14 ins. in diam., brs. N. 23 1/2° E., 490 lks.  
dist., mkd. T29N R7W S27 BT.

An oak, 6 ins. in diam., brs. S. 9 1/2° E., 48 lks.  
dist., mkd. T29N R7W S34 BT.

A cedar, 20 ins. in diam., brs. S. 32 1/2° W., 238 lks.  
dist., mkd. T29N R7W S33 BT.

A pine, 20 ins. in diam., brs. N. 26 1/4° W., 172 lks.  
dist., mkd. T29N R7W S28 BT.

Land, gently rolling.

Soil, gravelly clay, 2nd rate.

Timber, scattering pine, oak and cedar.

Undergrowth, scattering mountain mahogany and scrub oak.

Fair grass.

East, on a random line, bet. secs. 27 and 34.

40.00

Set temp. 1/4 sec. cor.

80.10

Fall 5 lks. N. of the cor. of secs. 26, 27, 33 and 34.

Thence,

N. 39° 58' W., on a true line, bet. secs. 27 and 34.

Over gently rolling land, thru. scattering undergrowth.

Descend gradually over NW. slope.

14.50

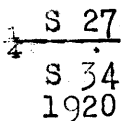
Draw, course NE. Ascend gradually over E. slope,

20.10

Enter scattering timber.

40.05

Set an iron post 3 ft. long, 1 in. in diam., 24 ins. in the ground, for 1/4 sec. cor., marked on brass cap,



from which,

A cedar, 16 ins. in diam., brs. S. 17° W., 127 lks.  
dist., mkd. 1/4 S 34 BT.

A cedar, 20 ins. in diam., brs. N. 10° W., 15 lks.  
dist., mkd. 1/4 S 27 BT.

Continue over gently rolling land, thru. scattering timber and undergrowth. Asc. very gradually over E. slope, to

60.00

Thence over N. slope, with slight change in elevation.

80.10

The cor. of secs. 27, 28, 33 and 34.

Land, gently rolling.

Soil, gravelly clay, 2nd rate.

Timber, scattering pine, cedar and oak in W. 60 chs. None in E. 20 chs.



Subdivision lines of Township 29 North, Range 7 West. 31

Chains.

Undergrowth, scattering scrub oak and scrub cedar.  
Fair grass.

N. 0° 2' W., bet. secs. 27 and 28.  
Over gently rolling land, thru scattering timber and undergrowth. Desc. 25 ft., over N. slope.

11.00 Center of Thornton Coulee, 4 chs. wide, course NE. Ascend 40 ft., over SE. slope, to  
25.00 Leave scattering, and enter dense timber; thence over E. slope, descending 15 ft., to  
30.40 Head of draw, course SE. Asc. 20 ft., over E. slope, to  
40.00 Set an iron post, 3 ft. long, 1 in. in diam., 24 ins. in the ground, for 1/4 sec. cor., marked on brass cap,

S28 | S27  
1920

from which,  
A pine, 8 ins. in diam., brs. N. 58 1/2° E., 91 lks.  
dist., mkd. 1/4 S 27 BT.  
A pine, 8 ins. in diam., brs. N. 33° W., 172 lks.  
dist., mkd. 1/4 S 28 BT.

Continue over gently rolling land; leave dense and enter scattering timber. Desc. very gradually over NE. slope.  
50.69 Fence, brs. S. 74° W. and N. 74° E.

60.00 Thence over level land.  
80.00 Set an iron post, 3 ft. long, 2 ins. in diam., 20 ins. in the ground, for cor. of secs. 21, 22, 27 and 28, marked on brass cap,

T29N | R7 W  
S21 | S22  
S28 | S27  
1920

from which,  
A pine, 24 ins. in diam., brs. N. 31 1/2° E., 248 lks.  
dist., mkd. T29N R7W S22 BT.  
A pine, 27 ins. in diam., brs. S. 53 1/2° E., 163 lks.  
dist., mkd. T29N R7W S27 BT.  
A cedar, 36 ins. in diam., brs. S. 55 1/2° W., 147 lks.  
dist., mkd. T29N R7W S28 BT.  
A cedar, 50 ins. in diam., brs. N. 34 1/2° W., 163 lks.  
dist., mkd. T29N R7W S21 BT.

Land, gently rolling in S. 60 chs.; level in N. 20 chs.  
Soil, gravelly, rocky, 3rd and 4th rate.  
Timber, cedar and pine, dense and scattering as noted.  
Undergrowth, scattering scrub oak and mountain mahogany.  
Fair grass.

40.00 S. 89° 58' E., on a random line, bet. secs. 22 and 27.  
Set temp. 1/4 sec. cor.  
80.14 Fall 12 lks. N. of the cor. of secs. 22, 23, 26 and 27.  
Thence,

N. 89° 53' W., on a true line, bet. secs. 22 and 27.  
Over gently rolling land, thru scattering timber and undergrowth. Desc. 25 ft., over N. slope, to

2.17 Draw, course NE. Asc. very gradually, over NE. slope, to  
40.07 Set an iron post, 3 ft. long, 1 in. in diam., 24 ins. in the ground, for 1/4 sec. cor., marked on brass cap,

1/4 S 22  
S 27  
1920

from which,  
A cedar, 15 ins. in diam., brs. N. 12 1/2° E., 254 lks.  
dist., mkd. 1/4 S 22 BT.  
A cedar, 24 ins. in diam., brs. S. 73 1/2° W., 93 lks.  
dist., mkd. 1/4 S 27 BT.

Continue over gently rolling land, thru scattering timber and undergrowth, ascending very gradually over NE. slope.  
60.00 Leave gently rolling, and enter level land.  
80.14 The cor. of ses. 21, 22, 27 and 28.

Land, E. 60 chs. gently rolling; W. 20 chs. level.  
Soil, sandy and gravelly loam, 2nd and 3rd rate.  
Timber, scattering cedar and pine. Undergrowth, scattering

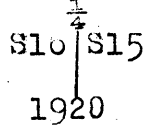
## 70 Subdivision lines of Township 29 North, Range 7 West.

Chains.	<p>Dim scrub oak and mountain mahogany. Fair grass.</p> <p>-----</p> <p>N. 0°02' W., bet. secs. 21 and 22. Over level land, thru scattering timber and undergrowth. Fence brs. N. 30°15' E. and S. 30°15' W.</p> <p>16.60 40.00 Set an iron post, 3 ft. long, 1 in. in diam., 26 ins. in the ground, for <math>\frac{1}{4}</math> sec. cor., marked on brass cap,</p> <p style="text-align: center;">S21   S22 1920</p> <p>from which, A cedar, 8 ins. in diam., brs. S. 31° E., 137 lks. dist., mkd. S 22 BT. A pine, 30 ins. in diam., brs. N. 47° W., 440 lks. dist., mkd. S 21 BT.</p> <p>Continue over level land, thru scattering timber and undergrowth.</p> <p>65.00 Leave scattering, and enter dense timber. 74.95 Road, brs. NE. and SW. Leave level, and enter gently rolling land along E. slope.</p> <p>80.00 Set an iron post, 3 ft. long, 2 ins. in diam., 24 ins. in the ground, for cor. of secs. 15, 16, 21 and 22, marked on brass cap,</p> <p style="text-align: center;">T29N   R 7W S16   S15 S21   S22 1920</p> <p>from which, A cedar, 8 ins. in diam., brs. N. 34<math>\frac{1}{2}</math>° E., 409 lks. dist., mkd. T29N R7W S15 BT. A cedar, 16 ins. in diam., brs. S. 71<math>\frac{1}{2}</math>° E., 171 lks. dist., mkd. T29N R7W S22 BT. A pine, 12 ins. in diam., brs. S. 42<math>\frac{3}{4}</math>° W., 137 lks. dist., mkd. T29N R7W S21 BT. A cedar, 10 ins. in diam., brs. N. 80<math>\frac{1}{2}</math>° W., 59 lks. dist., mkd. T29N R7W S16 BT.</p> <p>Land, level. Soil, gravelly clay loam, 2nd rate. Timber, cedar and pine, scattering and dense as noted. Undergrowth, scattering scrub oak and mountain mahogany. Fair grass.</p> <p>-----</p> <p>S. 89°53' E., on a random line, bet. secs. 15 and 22.</p> <p>40.00 Set temp. <math>\frac{1}{4}</math> sec. cor. 80.06 Fall 0 lks. N. of the cor. of secs. 14, 15, 22 and 23. Thence, N. 89°50' W., on a true line, bet. secs. 15 and 22. Over gently rolling land, thru scattering timber and undergrowth, ascending very gradually over E. slope.</p> <p>40.03 Set an iron post, 3 ft. long, 1 in. in diam., 24 ins. in the ground, for <math>\frac{1}{4}</math> sec. cor., marked on brass cap,</p> <p style="text-align: center;"><math>\frac{1}{4}</math> S 15 S 22 1920</p> <p>from which, A pine, 10 ins. in diam., brs. S. 11<math>\frac{1}{4}</math>° E., 60 lks. dist., mkd. S 22 BT. A cedar, 10 ins. in diam., brs. N. 19<math>\frac{1}{2}</math>° W., 24 lks. dist., mkd. S 15 BT.</p> <p>Continue over gently rolling land, thru scattering timber and undergrowth, ascending very gradually over E. slope.</p> <p>41.80 Barb wire fence, brs. S. 29<math>\frac{1}{2}</math>° W. and N. 29<math>\frac{1}{2}</math>° E. 75.56 Road, brs. NE. and SW. 80.06 The cor. of secs. 15, 16, 21 and 22. Land, gently rolling. Soil, sandy and gravelly loam, 1st and 2nd rate. Timber, scattering cedar and pine. Undergrowth, scattering scrub oak and cedar. Good grass.</p> <p>-----</p> <p>N. 0°02' W., bet. secs. 15 and 16. Over gently rolling land, thru scattering timber and undergrowth, along E. slope, with slight change in elevation.</p> <p>10.00 Enter saw timber. 10.20 Dim road, brs. E. and W.</p>
---------	--

Subdivision lines of Township 29 North, Range 7 West.

12.50  
23.48  
25.50  
40.00

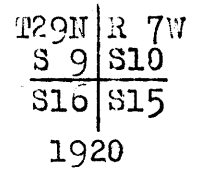
Head of draw, course E. Continue over E. slope.  
Fence, brs. N. 62° W. and S. 62° E.  
Head of coulee, -course NE. Continue over E. slope, to  
Set an iron post, 3 ft. long, 1 in. in diam., on bed rock,  
in a mound of stone, for  $\frac{1}{4}$  sec. cor., marked on brass  
cap,



from which,  
A cedar, 10 ins. in diam., bears N. 51 $\frac{1}{2}$ ° E., 75 lks.  
dist., mkd. S 15 BT.  
A pine, 7 ins. in diam., bears S. 37 $\frac{1}{2}$ ° W., 82 lks.  
dist., mkd. S 16 BT.

55.80  
80.00

Continue over gently rolling land, thru. scattering tim-  
ber and undergrowth, descending very gradually over  
NE. slope.  
Road, brs. NE. and SW., in draw, 2 chs. wide, course NE.  
Continue very gradual descent, over NE. slope, to  
Set an iron post, 3 ft. long, 2 ins. in diam., 26 ins. in  
the ground, for cor. of secs. 9, 10, 15 and 16, marked  
on brass cap,

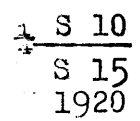


from which,  
A cedar, 12 ins. in diam., brs. N. 65 $\frac{1}{2}$ ° E., 131 lks.  
dist., mkd. T29N R7W S10 BT.  
A pine, 6 ins. in diam., brs. S. 30° E., 140 lks.  
dist., mkd. T29N R7W S15 BT.  
A cedar, 12 ins. in diam., brs. S. 24 $\frac{1}{2}$ ° W., 320 lks.  
dist., mkd. T29N R7W S16 BT.  
A pine, 4 ins. in diam., brs. N. 42 $\frac{1}{2}$ ° W., 140 lks.  
dist., mkd. T29N R7W S9 BT.

Land, gently rolling.  
Soil, gravelly, 3rd and 4th rate.  
Timber, scattering cedar and pine.  
Undergrowth, scattering scrub oak and scrub oak.  
Fair grass.

40.00  
79.90  
12.60  
19.98  
34.98  
39.95

S. 89° 50' E., on a random line, bet. secs. 10 and 15.  
Set temp.  $\frac{1}{4}$  sec. cor.  
Fall 2 lks. N. of the cor. of secs. 10, 11, 14 and 15.  
Thence,  
N. 89° 49' W., on a true line, bet. secs. 10 and 15.  
Over gently rolling land, thru. scattering undergrowth,  
ascending very gradually over E. slope.  
Road, brs. NE. and SW.  
Enter timber, brs. NE. and SW.  
Ridge, brs. N. and S. Desc. 25 ft., over W. slope, to  
Set an iron post, 3 ft. long, 1 in. in diam., 24 ins. in  
the ground, for  $\frac{1}{4}$  sec. cor., marked on brass cap,



from which,  
A cedar, 24 ins. in diam., brs. S. 26 $\frac{1}{2}$ ° E., 435 lks.  
dist., mkd. S 15 BT.  
A cedar, 18 ins. in diam., brs. N. 89° W., 46 lks.  
dist., mkd. S  $\frac{1}{4}$  S 10 BT.

Continue over gently rolling land, thru. scattering timber  
and undergrowth.  
Descend 20 ft., over W. slope.

45.00

Draw, course N. Asc. very gradually over NE. slope, to

## 34 Subdivision lines of Township 29 North, Range 7 West.

Chains.

79.90 The cor. of secs. 9, 10, 15 and 16.  
Land, gently rolling.  
Soil, brown, sandy loam, 1st rate.  
Timber, scattering cedar, pine and oak in W. 60 chs. None  
in E. 20 chs.  
Undergrowth, scattering scrub oak and scrub cedar.  
Good grass.

N. 0° 02' W., bet. secs. 9 and 10.  
Over rolling land, thru. scattering timber and under-  
growth.  
Descend 30 ft., over N. slope.  
10.00 Center of draw, 4 chs. wide, course NE. Ascend 20 ft., over  
SE. slope, to  
16.00 Rim brs. NE. and SW. Thence over E. slope, to  
22.00 Rim, brs. NW. and SE. Desc. 30 ft., over NE. slope, to  
26.00 Center of draw, 4 chs. wide, course E. Asc. 50 ft., over S.  
slope, to  
40.00 Set an iron post, 3 ft. long, 1 in. in diam., on bed rock,  
supported in a mound of stone, for  $\frac{1}{4}$  sec. cor., marked  
on brass cap,

S 9 | S 10  
1920

from which,

A pine, 14 ins. in diam., brs. S.  $83\frac{1}{2}^{\circ}$  E., 40 lks.  
dist., mkd. S 10 BT.

A pine, 8 ins. in diam., brs. S.  $38^{\circ}$  E., 33 lks.  
dist., mkd. S 9 BT.

Continue over rolling land, thru. scattering timber and  
undergrowth, descending slightly.

72.00 Head of draw, course E. Continue over E. slope.  
80.00 Set an iron post, 3 ft. long, 2 ins. in diam., 20 ins. in  
the ground, for cor. of secs. 3, 4, 9 and 10, marked on  
brass cap,

T29N | R7 W  
S 4 | S 3  
S 9 | S 10  
1920

from which,

A cedar, 10 ins. in diam., bears N.  $25\frac{1}{2}^{\circ}$  E., 5 lks.  
dist., mkd. T29N R7 W S 3 BT.

A pine, 10 ins. in diam., bears S.  $48\frac{1}{2}^{\circ}$  E., 43 lks.  
dist., mkd. T29N R7 W S 10 BT.

A pine, 8 ins. in diam., bears S.  $50^{\circ}$  W., 30 lks.  
dist., mkd. T29N R7 W S 9 BT.

A pine, 12 ins. in diam., bears E.  $17\frac{1}{2}^{\circ}$  W., 111 lks.  
dist., mkd. T29N R7 W S 4 BT.

Land, rolling,  
Soil, rocky, 4th rate.  
Timber, scattering cedar and pine.  
Undergrowth, scattering scrub oak and scrub cedar.  
Poor grass.

40.00 S.  $89^{\circ} 49'$  E., on a random line, bet. secs. 3 and 10.  
Set temp.  $\frac{1}{4}$  sec. cor.

80.00 Fall 10 lks. S. of the cor. of secs. 2, 3, 10 and 11.  
Thence,

N.  $89^{\circ} 56'$  W., on a true line, bet. secs. 3 and 10.  
Over gently rolling land, thru. scattering timber and  
undergrowth. Asc. 35 ft., over SE. slope.

12.00 Descend gradually over N. slope.

33.47 Draw, course NE. Asc. 30 ft. over E. slope, to

40.00 Set an iron post, 3 ft. long, 1 in. in diam., 6 ins. in

Chains.

the ground, to bed rock, supported in a mound of stone, for 1/4 sec.cor., marked on brass cap,

1/4 S 3  
S 10  
1920

from which,  
A pine, 12 ins. in diam., brs. S. 73° W., 81 lks.  
dist., mkd. S 10 3T.  
A cedar, 10 ins. in diam., brs. N. 50 1/2° W., 42 lks.  
dist., mkd. S 3 3T.

80.00 Continue over gently rolling land, thru scattering timber and undergrowth, ascending very gradually over E. slope. The cor. of secs. 3, 4, 9 and 10. Land, gently rolling. Soil, gravelly loam, 2nd and 3rd rate. Timber, scattering cedar, pine and oak. Undergrowth, scattering scrub oak and scrub cedar. Fair grass.

40.00 N. 0° 01' W., on a random line, bet. secs. 3 and 4. Set temp. 1/4 sec. cor.  
79.78 Fall 26 lks. W. of the cor. of secs. 3, 4, 33 and 34, on N. bdy. of Tp., hereinbefore described.

39.78 Thence, S. 0° 10' W., on a true line, bet. secs. 3 and 4. Over gently rolling land, thru scattering timber and undergrowth, along E. slope, with slight change in elevation. Set an iron post, 3 ft. long, 1 in. in diam., 24 ins. in the ground, for 1/4 sec. cor., marked on brass cap,

1/4 S 4 | S 3  
1920

from which,  
A cedar, 8 ins. in diam., brs. S. 03° E., 50 lks.  
dist., mkd. S 3 3T.  
A pine, 12 ins. in diam., brs. N. 89 1/2° W., 20 lks.  
dist., mkd. S 4 3T.

65.28 Continue over gently rolling, land, thru scattering timber and undergrowth, along E. slope, with slight change in elevation. Wash, 10 lks. wide, 2 ft. deep, course NE. Continue over E. slope.  
79.78 The cor. of secs. 3, 4, 9 and 10. Land, gently rolling. Soil, sandy and gravelly loam, 1st and 2nd rate. Timber, scattering cedar, pine and oak. Undergrowth, scattering scrub oak and scrub cedar. Good grass.

13.00 From the standard cor. of secs. 32, and 33, on S. bdy. of Tp., (7th. Std. Par. N.) hereinbefore described, N. 0° 03' W., bet. secs. 32 and 33. Over level land, thru scattering timber and undergrowth. Leave level land and enter gently rolling land. Descend 35 ft., over N. slope, to  
21.60 Wash, course NE. Continue over gently rolling land. Asc. 45 ft., over E. slope, to  
40.00 Set an iron post, 3 ft. long, 1 in. in diam., 24 ins. in the ground, for 1/4 sec. cor., marked on brass cap,

36 Subdivision lines of Township 29 North, Range 7 West.

Chains.

S32 | S33  
1920

from which,

- A pine, 20 ins. in diam., brs. S.  $01\frac{1}{2}^{\circ}$  E., 103 lks.  
dist., mkd. S 33 BT.
- A pine, 20 ins. in diam., brs. S.  $79\frac{1}{2}^{\circ}$  W., 57 lks.  
dist., mkd. S 32 BT.

Continue over gently rolling land, thru. scattering timber and undergrowth. Desc. very gradually over NE. slope, to

70.00  
80.00

Leave gently rolling, and enter level land.  
Set an iron post, 3 ft. long, 2 ins. in diam., 24 ins. in the ground, for cor. of secs. 28, 29, 32 and 33, marked on brass cap,

T29N | R 7W  
S29 | S28  
S32 | S33  
1920

from which,

- A cedar, 18 ins. in diam., brs. N.  $41^{\circ}$  E., 134 lks.  
dist., mkd. T29N R7W S28 BT.
- A pine, 20 ins. in diam., brs. S.  $87\frac{1}{2}^{\circ}$  E., 30 lks.  
dist., mkd. T29N R7W S33 BT.
- A cedar, 15 ins. in diam., brs. S.  $38\frac{1}{2}^{\circ}$  W., 129 lks.  
dist., mkd. T29N R7W S32 BT.
- A pine, 18 ins. in diam., brs. N.  $52\frac{1}{2}^{\circ}$  W., 61 lks.  
dist., mkd. T29N R7W S29 BT.

Land, level and gently rolling.  
Soil, gravelly loam, 2nd and 3rd rate.  
Timber, scattering cedar, oak and pine.  
Undergrowth, scattering scrub cedar and scrub oak.  
Fair grass.

40.00  
79.78

East, on a random line, bet. secs. 28 and 33.  
Set temp.  $\frac{1}{4}$  sec. cor.  
Fall 38 lks. S: of the cor. of secs. 27, 28, 33 and 34.  
Thence,

10.00

S.  $89^{\circ}44'$  W., on a true line, bet. secs. 28 and 33.  
Over gently rolling land, thru. scattering timber and undergrowth; descend slightly over NW. slope, to  
Draw, course NE. Thence over N. slope, ascending very gradually to  $\frac{1}{4}$  sec. cor.

22.85  
25.25  
39.89

Road brs. N. and S. Extends northeasterly to National Tank.  
Fence, brs. N. and S.  
Set an iron post, 3 ft. long, 1 in. in diam., 24 ins. in the ground, for  $\frac{1}{4}$  sec. cor., marked on brass cap,

S 28  
S 33  
1920

from which,

- A pine, 18 ins. in diam., brs. S.  $23\frac{1}{4}^{\circ}$  E., 190 lks.  
dist., mkd. S 33 BT.
- A cedar, 10 ins. in diam., brs. N.  $22\frac{1}{2}^{\circ}$  W., 49 lks.  
dist., mkd. S 28 BT.

Continue over gently rolling land, thru. scattering timber and undergrowth, along N. slope, with slight change in elevation.

71.20

Wash, 10 lks. wide, 2 ft. deep, course NE. Fence, brs. S.  $15^{\circ}$  E. and N.  $15^{\circ}$  W. Leave gently rolling, and enter level land.

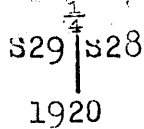
79.78

The cor. of secs. 28, 29, 32 and 33.  
Land, gently rolling and level.  
Soil, sandy and gravelly loam, 1st and 2nd rate.

Chains.

Timber, scattering cedar, oak and pine.  
Undergrowth, scattering scrub oak and scrub cedar.  
Good grass.

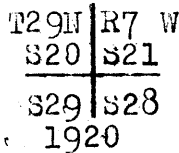
N.0°03'W., bet. secs. 28 and 29  
Over level land, thru. scattering timber and undergrowth.  
21.15 Wire fence, brs.S. 26°E. and N.30°W.  
31.25 Wire fence brs.N.26½°E. and S.26½°W.  
40.00 Set an iron post, 3 ft.long, 1 in. in diam., 24 ins. in  
the ground, for ¼ sec.cor., marked on brass cap,



from which,  
A cedar, 15 ins. in diam., brs.S.21°E., 265 lks.  
dist., mkd. S 28 BT.  
A cedar, 12 ins. in diam., brs.N.27½°W., 409 lks.  
dist., mkd. S 29 B T.

Continue over level land, thru. scattering timber and undergrowth.

47.50 Wash, 15 lks.wide, 1 ft. deep, course NE.  
65.80 Road, brs.NE and SW.  
80.00 Set an iron post, 3 ft.long, 2 ins. in diam., 24 ins. in  
the ground, for cor.of secs. 20,21,28 and 29, marked  
on brass cap,



from which,  
A cedar, 10 ins. in diam., brs.N.18°E., 15 lks.  
dist., mkd. T29N R7W S21 BT.  
A cedar, 15 ins. in diam., brs.S.43½°E., 78 lks.  
dist., mkd. T29N R7W S28 BT.  
A cedar, 14 ins. in diam., brs.S.38°W., 79 lks.  
dist., mkd. T29N R7W S29 BT.  
A cedar, 12 ins. in diam., brs.N.49½°W., 9 lks.  
dist., mkd. T29N R7W S20 BT.

Land, level.  
Soil, sandy and gravelly loam, 1st and 2nd rate.  
Timber, scattering cedar and pine.  
Undergrowth, scattering scrub cedar.  
Good grass.

40.00 N.89°44'E., on a random line, bet. secs.21 and 28.  
Set temp.¼ sec.cor.  
79.84 Fall 10 lks.N.of the cor.of secs. 21,22,27 and 28.  
Thence,  
S.89°48'W., on a true line, bet. secs.21 and 28.  
Over level land, devoid of timber and undergrowth.  
9.78 Fence brs.N.30¼°E., and S.30¼°W.  
15.00 Enter scattering timber.  
20.00 Leave timber.  
25.88 Fence, brs.N.65¼°W. and S.65¼°E.  
37.90 Road brs.N. and S., extends northeasterly to National  
Tank.  
39.92 Set an iron post, 3 ft.long, 1 in. in diam., 24 ins. in  
the ground, for ¼ sec.cor., marked on brass cap,

38 Subdivision of Township 29 North, Range 7 West.

Chains.

$\frac{1}{4}$  S 21  
S 28  
1920

and dig pits, 18x18x12 ins., one each E. and W. of cor.,  
3 ft. dist.  
Continue over level land, devoid of timber and undergrowth.  
50.25 Fence brs. N. 23 $\frac{1}{2}$ ° E., and S. 23 $\frac{1}{2}$ ° W.  
64.00 Along N. edge of cedar timber.  
75.90 Road, brs. NE. and SW.  
79.84 The cor. of secs. 20, 21, 28 and 29.  
Land, level.  
Soil, sandy clay loam, 1st rate.  
Timber, scattering cedar and pine, where noted.  
Undergrowth, none.  
Good grass.

N. 0° 03' W., bet. secs. 20 and 21.  
Over level land; thru. scattering undergrowth.  
29.55 wash, 15 lks. wide; 1 ft. deep; course NE.  
40.00 Set an iron post; 3 ft. long, 1 in. in diam., 24 ins. in  
the ground, for  $\frac{1}{4}$  sec. cor., marked on brass cap,

$\frac{1}{4}$   
S 20 | S 21  
1920

and dig pits, 18x18x12 ins., one each N. and S. of cor.  
3 ft. dist.  
Continue over level land, thru. scattering undergrowth.  
80.00 Set an iron post, 3 ft. long, 2 ins. in diam., 24 ins. in  
the ground, for cor. of secs. 16, 17, 20 and 21, marked  
on brass cap,

T 29 N | R 7 W  
S 17 | S 16  
S 20 | S 21  
1920

and dig pits, 18x18x12 ins., one each NE., SE., SW. and  
NW. of cor. 3 ft. dist.  
Land, level.  
Soil, sandy and gravelly loam, 1st and 2nd rate.  
No timber.  
Undergrowth, scattering sage brush.  
Good grass.

N. 89° 48' E., on a random line, bet. secs. 16 and 21.  
40.00 Set temp.  $\frac{1}{4}$  sec. cor.  
79.86 Fall 11 lks. S. of the cor. of secs. 15, 16, 21 and 22.  
Thence,  
S. 89° 43' W., on a true line, bet. secs. 16 and 21.  
Over gently rolling land, thru. scattering timber. Asc. 50  
ft. over E. slope, to  
25.00 Top of ascent, brs. N. and S. Leave timber, brs. N. and S.  
Descend 20 ft., over W. slope.  
32.85 Road, brs. NE. and SW.  
39.93 Set an iron post, 3 ft. long, 1 in. in diam., 20 ins. in  
the ground, for  $\frac{1}{4}$  sec. cor., marked on brass cap,

$\frac{1}{4}$  S 16  
S 21  
1920

and dig pits, 18x18x12 ins., one each E. and W. of cor.,  
3 ft. dist.



Subdivision lines of Township 29 North, Range 7 West. 39

Chains.

40.25 Continue over gently rolling land, devoid of timber and undergrowth. Descend 30 ft., over W. slope.

60.85 Fence cor. brs: N. about 7 chs. dist., from which fence extends N. 10° W. and S. 81° W.

68.15 Foot of descent, brs: N. and S. Thence over level land.

79.86 Fence, brs: N. and S.

The cor. of secs. 10, 17, 20 and 21.

Land, gently rolling and level.

Soil, gravelly clay loam, 2nd rate.

Timber, scattering cedar and pine, in E. 25 chs. None elsewhere.

Undergrowth, none.

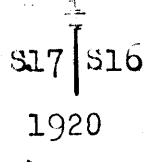
Fair grass.

N. 0° 03' W., bet. secs. 16 and 17.

Over level land, devoid of timber and undergrowth.

6.45 Road, brs. NE. and SW.

40.00 Set an iron post, 3 ft. long, 1 in. in diam., 24 ins. in the ground, for  $\frac{1}{4}$  sec. cor., marked on brass cap,



and dig pits 18x18x12 ins., one each N. and S. of cor. 3 ft. dist.

Continue over level land, devoid of timber and undergrowth.

49.71 Fence brs. S. 21 1/2° E. and N. 21 1/2° W.

51.37 W. edge of water in Laguna Lake, brs. S. 21 1/2° E and N. 21 1/2° W. near S. end of said lake. This lake is about 100 chs. in length N. and S. and about 10 chs. wide, E. and W.

The line N. of this point passes over the water surface of the lake, rendering continuation of chaining impracticable; therefore, obtain the measurement across the lake by triangulation, as described as follows, and as shown on the diagram hereon:

Measure a base S. 89° 57' W., 14.79 chs.

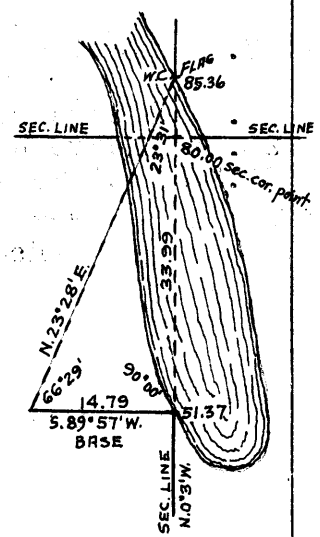
Set flag ahead on sec. line at E. edge of water in lake.

From W. end of base, flag brs. N. 23° 28' E.

Included angles are 66° 29', 23° 31' and 90° 00', the sum of which is 180° 00'.

Triangulated dist. on sec. line across lake is obtained by

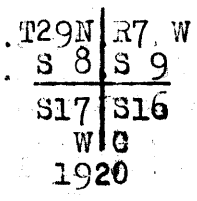
Tang. 66° 29' x base or 2.29801 x 14.79 = 33.99 chs., which added to 51.37 chs. gives 85.36 chs., N. 0° 3' W., from cor. of secs. 16, 17, 20 and 21, for the position of the flag on the E. edge of lake.



80.00 True point for cor. of sec. 8, 9, 16 and 17 falls in water of Laguna Lake, where it is impracticable to monument the cor.; therefore, at

85.36 (5.36 chs. N. 0° 3' W., from sec. cor. point). Flag point of above described triangulation at E. edge of water in Laguna Lake, bearing N 21 1/2° W. and S. 21 1/2° E.

Set an iron post 3 ft. long, 2 ins. in diam., on bed rock in mound of stone for witness cor. to cor. of secs. 8, 9, 16 and 17, marked on brass cap,

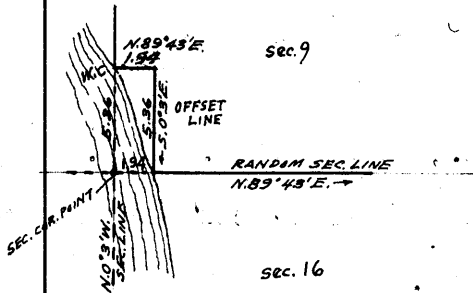


40 Subdivision lines of Township 29 North, Range 7 West.

Chains.

from which,  
 A pine, 10 ins. in diam., brs. N. 49° E., 147 lks.  
 dist., mkd. T29N R7W S9 WC BT.  
 A pine, 36 ins. in diam., brs. S. 40° E., 478 lks.  
 dist., mkd. T29N R7W S9 WC BT.  
 Land, level.  
 Soil, sandy and gravelly loam, 1st and 2nd rate.  
 Timber, none.  
 Undergrowth, scattering sage brush.  
 Good grass.

The W. end of sec. line, bet. secs. 9 and 16 falls in Laguna Lake, rendering it impracticable to begin chaining random line at point for cor. of secs. 8, 9, 16 and 17; therefore, begin at the witness cor. to cor. of secs. 8, 9, 16 and 17, and obtain the measurement from sec. cor. point to point on random sec. line at E. edge of lake by offset into sec. 9, as described as follows, and as shown on the diagram hereon:



N. 89° 43' E., 1.94 chs. to offset point.

Thence,  
 S. 0° 3' E., 5.36 chs. to point on random sec. line at E. edge of lake, 1.94 chs.  
 N. 89° 43' E. from the true point for cor. of secs. 8, 9, 16 and 17.

- 1.94 E. edge of Laguna Lake.
- Thence,  
 N. 89° 43' E., on random line, continuing measurement from sec. cor. point.
- 40.00 Set temp. 1/4 sec. cor.
- 79.90 Fall 2 lks. N. of the cor. of secs. 9, 10, 15 and 16.
- Thence,  
 S. 89° 44' W., on true line, bet. secs. 9 and 16.
- 7.50 Over gently rolling land, thru, scattering timber and undergrowth. Descend slightly over N. slope. Center of draw, 4 chs. wide, 6 ft. deep, course NE. Asc. gradually over E. slope to 1/4 sec. cor.
- 15.00 Leave scattering, and enter dense timber.
- 25.00 Leave dense, and enter scattering timber.
- 39.95 Set an iron post, 3 ft. long, 1 in. in diam., 25 ins. in the ground, for 1/4 sec. cor., marked on brass cap,

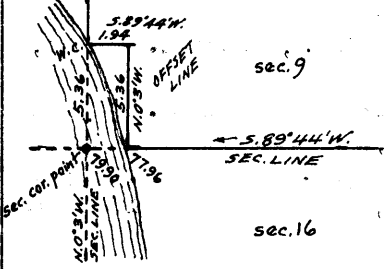
S 9  
 S 16  
 1920

- from which,  
 A cedar, 16 ins. in diam., brs. North 53 lks.  
 dist., mkd. S 9 BT.  
 A pine, 8 ins. in diam., brs. S. 87° W., 38 lks.  
 dist., mkd. S 16 BT.
- Leave gently rolling, and enter level land, and continue thru. scattering timber and undergrowth.
- 52.00 Leave scattering, and enter dense timber.
- 65.00 Leave level, and enter gently rolling land, along N. slope, with slight change in elevation.
- 72.30 Thence over W. slope, descending 35 ft. over W. slope to Laguna Lake.
- 76.25 Fence brs. N. 6 1/2° W. and S. 6 1/2° E.
- 77.05 Road, brs. N. 20° W. and S. 20° E.
- 77.96 E. edge of water in Laguna Lake, brs. N. 21 1/2° W. and S. 21 1/2° E.  
 Thence across water surface of Laguna Lake, measurement to the sec. cor. point in lake, by offset into sec. 9, as

Subdivision lines of Township 29 North, Range 7 West. 41

Chains.

described as follows and as shown on the diagram here-  
on:



From 77.96 ch. station,  
 N. 0° 3' W., 5.36 chs. to offset point.  
 Thence  
 S. 89° 44' W., 1.94 chs. to the witness  
 cor. to cor. of secs. 8,  
 9, 16 and 17, which is  
 5.36 chs. N. 0° 3' W.  
 from

79.90 True point for cor. of secs. 8, 9, 16 and 17 in Laguna Lake.  
 Land, gently rolling and level.  
 Soil, sandy and gravelly loam, 1st and 2nd rate.  
 Timber, cedar and pine, scattering and dense as noted.  
 Undergrowth, scattering sage brush.  
 Good grass.

From true point for cor. of secs. 8, 9, 16 and 17,  
 N. 0° 3' W., on true line, bet. secs. 8 and 9.  
 Over water surface in Laguna Lake. Measurement by triangulation to

5.36 Intersect the witness cor. to cor. of secs. 8, 9, 16 and 17,  
 hereinbefore described, at the E. edge of water of  
 Laguna Lake, brs. N. 21½° W. and S. 21½° E. Leave lake and  
 ascend gradually over gently rolling W. slope, thru.  
 scattering timber and undergrowth, continuing measurement  
 by chaining.

5.85 Road, brs. N. 20° W. and S. 20° E.  
 22.60 Thence over NW. slope, descending slightly to  
 40.00 Wire fence, brs. N. 0° 1' W. and S. 0° 1' E. Set an iron post,  
 3 ft. long, 1 in. in diam., 24 ins. in the ground, for  
 ¼ sec. cor., marked on brass cap,

S 8 | S 9  
 1920

from which,  
 A pine, 18 ins. in diam., brs. S. 48½° E., 276 lks.  
 dist., mkd S 9 BT.  
 A cedar, 15 ins. in diam., brs. S. 57¼° W., 160 lks.  
 dist., mkd S 8 BT.

Continue over gently rolling land, thru. scattering timber  
 and undergrowth, descending very gradually over  
 NW. slope.

65.00 Leave timber, brs. SE. and NW.  
 80.00 Set an iron post, 3 ft. long, 2 ins. in diam., 24 ins. in  
 the ground, for cor. of secs. 4, 5, 8 and 9, marked on  
 brass cap,

T29N | R 7W  
 S 5 | S 4  
 S 8 | S 9  
 1920

Dig pits, 18x18x12 ins., one each NE., SE., SW. and NW. of  
 cor. 3 ft. dist.  
 Land, gently rolling.  
 Soil, sandy and gravelly loam, 1st and 2nd rate.  
 Timber, scattering cedar and pine, where noted.  
 Undergrowth, scattering sage brush and scrub cedar.  
 Good grass.

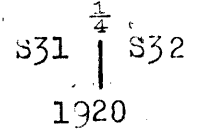
40.00 N. 89° 44' E., on a random line, bet. secs. 4 and 9.  
 Set temp. ¼ sec. cor.

## 42 Subdivision lines of Township 29 North, Range 7 West.

- Chains.  
79.70 Fall 7 lks. N. of the cor. of secs. 3, 4, 9 and 10.  
Thence,  
S. 39° 47' W., on a true line, bet. secs. 4 and 9.  
Over gently rolling land, thru. dense timber and scattering undergrowth. Ascend 30 ft., over E. slope, to  
10.00 Thence over level land.  
30.00 Leave level, and enter gently rolling land. Leave timber. Descend slightly over W. slope, to  
39.85 Set an iron post, 3 ft. long, 1 in. in diam., 24 ins. in the ground, for  $\frac{1}{4}$  sec. cor., marked on brass cap,
- $$\begin{array}{c} \frac{1}{4} \text{ S } 4 \\ \text{S } 9 \\ 1920 \end{array}$$
- and dig pits, 18x18x12 ins., one each E. and W. of cor., 3 ft. dist.  
Leave gently rolling, and enter level land. Continue thru. scattering undergrowth.  
79.70 The cor. of secs. 4, 5, 8 and 9.  
Land, E.  $\frac{1}{2}$ , gently rolling; W.  $\frac{1}{2}$ , level.  
Soil, sandy and gravelly loam, 1st and 2nd rate.  
Timber, dense cedar and pine in E. 30 chs. None elsewhere.  
Undergrowth, scattering sage brush.  
Good grass.
- 
- 40.00 N. 0° 09' E., on a random line, bet. secs. 4 and 5.  
Set temp.  $\frac{1}{4}$  sec. cor.  
79.85 Fall 28 lks. E. of the cor. of secs. 4, 5, 32 and 33, on N. bdy. of Tp., hereinbefore described,  
Thence,  
S. 0° 3' E., on a true line, bet. secs. 4 and 5.  
Over gently rolling land, thru. scattering timber and undergrowth. Along W. slope, with slight change in elevation.  
23.40 Leave timber, brs. SE. and NW. Desc. 30 ft., over SW. slope, to  
28.38 N. edge of dry lake bed, brs. SE. and NW. Thence across lake bed.  
30.40 S. edge of lake bed, brs. E. and W. Leave lake bed, thence over level land.  
39.85 Set an iron post, 3 ft. long, 1 in. in diam., 24 ins. in the ground, for  $\frac{1}{4}$  sec. cor., marked on brass cap,
- $$\begin{array}{c} \frac{1}{4} \\ \text{S } 5 \text{ S } 4 \\ 1920 \end{array}$$
- and dig pits, 18x18x12 ins., one each N. and S. of cor., 3 ft. dist.  
Continue over level land, thru. scattering undergrowth.  
79.85 The cor. of secs. 4, 5, 8 and 9.  
Land, gently rolling and level.  
Soil, sandy and gravelly loam, 1st and 2nd rate.  
Timber, scattering cedar and pine in N. 23  $\frac{1}{2}$  chs. only.  
Undergrowth, scattering sage brush and scrub cedar.  
Good grass.
- 
- 18.30 From the standard cor. of secs. 31 and 32, on S. bdy. of Tp. (7th Std. Parallel North), hereinbefore described,  
N. 0° 03' W., bet. secs. 31 and 32.  
Over level land, thru. scattering timber and undergrowth, in narrow valley, bearing N. and S.  
40.00 Wire fence, brs. N. 11° E. and S. 11° W.  
Set an iron post, 3 ft. long, 1 in. in diam., 24 ins. in the ground, for  $\frac{1}{4}$  sec. cor., marked on brass cap,

Subdivision lines of Township 29 North, Range 7 West. 43

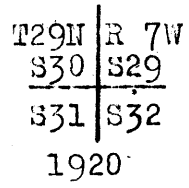
Chains.



from which,  
 A pine, 18 ins. in diam., brs. S. 39 1/4° E., 206 lks.  
 dist., mkd. 1/4 S 32 BT.  
 A pine, 30 ins. in diam., brs. S. 21 1/4° W., 69 lks.  
 dist., mkd. 1/4 S 31 BT.

Continue over level land, thru scattering timber and undergrowth.

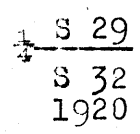
- 45.90 Wash, 10 lks. wide, 3 ft. deep, course N. 20° W.
- 68.00 Same wash, 25 lks. wide, course NE.
- 75.90 Road, brs. NE. and SW.
- 80.00 Set an iron post, 3 ft. long, 2 ins. in diam., 24 ins. in the ground, for cor. of secs. 29, 30, 31 and 32, marked on brass cap,



from which,  
 A pine, 15 ins. in diam., brs. N. 54 1/2° E., 634 lks.  
 dist., mkd. T29N R7W S29 BT.  
 A pine, 30 ins. in diam., brs. S. 70 1/2° E., 439 lks..  
 dist., mkd. T29N R7W S32 BT.  
 A pine, 24 ins. in diam., brs. S. 53 1/2° W., 345 lks.  
 dist., mkd. T29N R7W S31 BT.  
 A pine, 18 ins. in diam., brs. N. 24 1/2° W., 250 lks.  
 dist., mkd. T29N R7W S30 BT.

Land, level.  
 Soil, sandy and gravelly loam, 1st and 2nd rate.  
 Timber, scattering pine and cedar.  
 Undergrowth, scattering scrub cedar.  
 Good grass.

- 40.00 East, on a random line, bet. secs. 29 and 32.
- 80.04 Set temp. 1/4 sec. cor.
- 80.04 Fall 5 lks. N. of the cor. of secs. 28, 29, 32 and 33. Thence, N. 89° 58' W., on a true line, bet. secs. 29 and 32.
- 34.18 Over level land, thru scattering timber and undergrowth.
- 40.02 Wire fence, brs. N. 11° E. and S. 11° W.
- 40.02 Set an iron post, 3 ft. long, 1 in. in diam., 24 ins. in the ground, for 1/4 sec. cor., marked on brass cap,



from which,  
 A pine, 12 ins. in diam., brs. S. 31 1/2° E., 84 lks.  
 dist., mkd. 1/4 S 32 BT.  
 A cedar, 18 ins. in diam., brs. N. 16 1/2° W., 90 lks.  
 dist., mkd. 1/4 S 29 BT.

Continue over level land, thru scattering timber and undergrowth.

- 50.00 Enter pine saw timber.
- 75.30 Wash, course NE.
- 77.63 Road, brs. NE. and SW.
- 80.04 The cor. of secs. 29, 30, 31 and 32.

Land, level.  
 Soil, sandy and gravelly loam, 2nd and 3rd rate.  
 Timber, scattering cedar and pine.  
 Undergrowth, scattering scrub cedar. Good grass.

11. Subdivision lines of Township 29 North, Range 7 West.

Chains.

West, on a random line, bet. secs. 30 and 31.  
 40.00 Set temp.  $\frac{1}{4}$  sec. cor.  
 80.15 Fall 10 lks. S. of the cor. of secs. 25, 30, 31 and 30, on W. bdy. of Tp., hereinbefore described.  
 Thence,  
 S.  $89^{\circ}50' E.$ , on a true line, bet. secs. 30 and 31.  
 Over level land, thru. scattering timber and undergrowth.  
 5.00 Leave level and enter gently rolling land.  
 Ascend very gradually, over NW. slope.  
 22.50 Low spur, slopes NE. Desc. very gradually, over NE. slope, to  
 40.15 Set an iron post, 3 ft. long, 1 in. in diam., 24 ins. in the ground, for  $\frac{1}{4}$  sec. cor., marked on brass cap,

$\frac{1}{4}$  S 30  
 S 31  
 1920

from which,

A pine, 36 ins. in diam., brs. N.  $9\frac{1}{2}^{\circ} E.$ , 94 lks.  
 dist., mkd.  $\frac{1}{4}$  S 30 BT.  
 A pine, 28 ins. in diam., brs. S.  $26^{\circ} W.$ , 68 lks.  
 dist., mkd.  $\frac{1}{4}$  S 31 BT.

Continue over gently rolling land, thru. scattering timber and undergrowth, descending very gradually over E. slope.

59.00 Head of coulee, course SE. Desc. slightly over S. slope, to  
 75.00 Leave gently rolling, and enter level land.  
 80.15 The cor. of secs. 29, 30, 31 and 32. 2nd rate.  
 Land, gently rolling and level.  
 Soil, sandy and gravelly loam, 1st and 2nd rate.  
 Timber, scattering pine and cedar.  
 Undergrowth, scattering scrub cedar and scrub oak,  
 Good grass.

N.  $0^{\circ}03' W.$ , bet. secs. 29 and 30.  
 Over level land, thru. scattering timber and undergrowth.  
 5.00 Leave level and enter gently rolling land, ascending very gradually over SE. slope.  
 39.08 Low ridge, brs. NE. and SW. Desc. slightly over NW. slope, to  
 40.00 Set an iron post, 3 ft. long, 1 in. in diam., 24 ins. in the ground, for  $\frac{1}{4}$  sec. cor., marked on brass cap,

S30 | S29  
 1920

from which,

A pine, 12 ins. in diam., brs. S.  $67\frac{3}{4}^{\circ} E.$ , 105 lks.  
 dist., mkd.  $\frac{1}{4}$  S 29 BT.  
 An oak, 12 ins. in diam., brs. N.  $70\frac{1}{2}^{\circ} W.$ , 53 lks.  
 dist., mkd.  $\frac{1}{4}$  S 30 BT.

Continue over gently rolling land, thru. scattering timber and undergrowth, descending very gradually over NW. slope.

65.00 Draw, course NE. Leave gently rolling and enter level land.  
 80.00 Set an iron post, 3 ft. long, 2 ins. in diam., 24 ins. in the ground, for cor. of secs. 19, 20, 29 and 30, marked on brass cap,

T29N | R7 W  
 S19 | S20  
 S30 | S29  
 1920

from which,

A cedar, 12 ins. in diam., brs. N.  $54\frac{1}{2}^{\circ} E.$ , 287 lks.  
 dist., mkd. T29N R7W S20 BT.  
 A pine, 15 ins. in diam., brs. S.  $33^{\circ} E.$ , 269 lks.

Subdivision lines of Township 29 North, Range 7 West.

	<p>lks. dist., mkd. T29N R7W S29 BT.  A pine, 12 ins. in diam., brs. S. 40° W., 159 lks.  dist., mkd. T29N R7W S30 BT.  A pine, 12 ins. in diam., brs. N. 39° W., 143 lks.  dist., mkd. T29N R7W S19 BT.  Land, gently rolling and level.  Soil, gravelly loam, 2nd and 3rd rate.  Timber, scattering cedar, oak and pine.  Undergrowth, scattering scrub oak and cedar. Fair grass.</p>
<p>40.00 79.84 39.92</p>	<p>S. 89° 58' E., on a random line, bet. secs. 20 and 29.  Set temp. ¼ sec. cor.  Fall 7 lks. N. of the cor. of secs. 20, 21, 28 and 29,  Thence, N. 89° 55' W., on a true line, bet. secs. 20 and 29.  Over level land, thru scattering timber and undergrowth.  Set an iron post, 3 ft. long, 1 in. in diam., 20 ins. in the  ground, to bed rock, supported in a mound of stone, for  ¼ sec. cor., marked on brass cap,                                  ¼ S 20    S 29    1920</p>
<p>79.84</p>	<p>from which,  A cedar, 12 ins. in diam., brs. S. 9° W., 137 lks.  dist., mkd. S 29 BT.  A cedar, 15 ins. in diam., brs. N. 23° W., 60 lks.  dist., mkd. S 20 BT.  Continue over level land, thru scattering timber and under-  growth.  The cor. of secs. 19, 20, 29 and 30.  Land, level. Soil, gravelly loam, 2nd and 3rd rate.  Timber, scattering cedar and pine.  Undergrowth, scattering scrub cedar. Fair grass.</p>
<p>40.00 80.07 25.88 40.07</p>	<p>N. 89° 56' W., on a random line, bet. secs. 19 and 30.  Set temp. ¼ sec. cor.  Fall 6 lks. N. of the cor. of secs. 19, 24, 25 and 30, on W. bdy.  of Tp., hereinbefore described.  Thence, S. 89° 59' E., on a true line, bet. secs. 19 and 30.  Over gently rolling land, thru scattering timber and under-  growth, ascending gradually over W. slope.  Ridge, brs. N. and SW. Desc. 100 ft., over E. slope, to  Set an iron post, 3 ft. long, 1 in. in diam., 24 ins. in the  ground, for ¼ sec. cor., marked on brass cap,                                  ¼ S 19    S 30    1920</p>
<p>41.06 55.10 80.07</p>	<p>from which,  A pine, 30 ins. in diam., brs. S. 77° W., 106 lks.  dist., mkd. S 30 BT.  A pine, 24 ins. in diam., brs. N. 54° W., 120 lks.  dist., mkd. S 19 BT.  Continue over gently rolling land, thru scattering timber  and undergrowth. Desc. 6 ft., over E. slope, to  Road, brs. NE. and SW., in draw, course NE. Asc. 110 ft., over  NW. slope.  Ridge, brs. N. 80° E. and S. 80° W. Desc. 75 ft., over E. slope, to  The cor. of secs. 19, 20, 29 and 30.  Land, gently rolling. Soil, gravelly loam, 2nd &amp; 3rd rate.  Timber, scattering cedar, oak and pine.  Undergrowth, scattering scrub cedar and oak. Fair grass.</p>
<p>32.25 40.00</p>	<p>N. 0° 03' W., bet. secs. 19 and 20.  Over level land, thru scattering timber and undergrowth.  Wash, 7 lks. wide, 3 ft. deep, course E.  Set an iron post, 3 ft. long, 1 in. in diam., 20 ins. in the  ground, for ¼ sec. cor., marked on brass cap,                                  ¼ S 19    S 20    1920  from which,</p>

46 Subdivision lines of Township 29 North, Range 7 West.

Chains.

A pine, 12 ins. in diam., brs. S. 41° E., 472 lks.  
 dist., mkd. S 20 BT.  
 A pine, 18 ins. in diam., brs. N. 29½° W., 439 lks.  
 dist., mkd. S 19 BT.  
 Continue over level land, thru. scattering timber & undergrowth.  
 Road, Laguna to Pine Springs, brs. NE. and SW.  
 41.15 Foot of slope from low ridge, brs. NE. and SW. Asc. 25 ft.,  
 51.00 over S. slope, to  
 58.68 Top of low ridge, brs. E. and W. Desc. 15 ft., over N. slope, to  
 63.92 Draw, course E. Asc. 10 ft., over S. slope.  
 67.40 Top of low ridge, brs. E. and W. Desc. 30 ft., over N. slope.  
 73.07 Draw, course E. Asc. 20 ft., over SE. slope, to  
 80.00 Set an iron post, 3 ft. long, 2 ins. in diam., 24 ins. in  
 the ground, for cor. of secs. 17, 18, 19 and 20, marked on  
 brass cap,

T29N	R7W
S18	S17
S19	S20
1920	

from which,  
 A pine, 15 ins. in diam., brs. N. 70° E., 240 lks.  
 dist., mkd. T29N R7W S17 BT.  
 A pine, 15 ins. in diam., brs. S. 59½° E., 333 lks.  
 dist., mkd. T29N R7W S20 BT.  
 A cedar, 10 ins. in diam., brs. S. 12° W., 258 lks.  
 dist., mkd. T29N R7W S19 BT.  
 A pine, 15 ins. in diam., brs. N. 20½° W., 436 lks.  
 dist., mkd. T29N R7W S18 BT.

Land, S. 51 chs. level; remainder, gently rolling.  
 Soil, sandy and gravelly loam, 1st, 2nd and 3rd rate.  
 Timber, scattering cedar and pine. in W. 27½ chs. only. None  
 Undergrowth, scattering scrub oak and mountain mahogany.  
 Fair grass.

40.00 S. 89° 55' E., on a random line, bet. secs. 17 and 20,  
 Set temp. ¼ sec. cor.  
 79.80 Fall 5 lks. S. of the cor. of secs. 10, 17, 20 and 21.  
 Thence,  
 N. 89° 57' W., on a true line, bet. secs. 17 and 20.  
 Over level land, thru. scattering undergrowth.  
 7.85 Road, brs. NE. and SW.  
 39.90 Set an iron post, 3 ft. long, 1 in. in diam., 24 ins. in the  
 ground, for ¼ sec. cor., marked on brass cap,

¼ S. 17
S 20
1920

and dig pits, 18x18x12 ins., one each E. and W. of cor., 3  
 ft. dist.

44.25 Continue over level land, thru. scattering undergrowth.  
 Road, brs. N. and S.  
 52.50 Enter scattering timber, brs. NE. and SW.  
 72.00 Leave level, and enter gently rolling land. Asc. slightly  
 over E. slope, to  
 79.80 The cor. of secs. 17, 18, 19 and 20.  
 Land, S. 72 chs. level; remainder, gently rolling.  
 Soil, sandy and gravelly loam, 1st and 2nd rate.  
 Timber, scattering cedar and pine. in W. 27½ chs. only. None  
 elsewhere.  
 Undergrowth, scattering sagebrush and scrub cedar. Good grass.

40.00 N. 89° 59' W., on a random line, bet. secs. 18 and 19.  
 Set temp. ¼ sec. cor.  
 80.00 Fall 2 lks. S. of the cor. of secs. 13, 18, 19 and 24, on W. bdy.  
 of Tp. hereinbefore described.  
 Thence S. 89° 53' E., on a true line, bet. secs. 18 and 19.  
 Over gently rolling land, thru. scattering timber and under-  
 growth. Asc. 80 ft., over SW. slope.  
 15.00 Ridge, brs. NW. & S. Desc. 120 ft., over E. slope.  
 32.00 Center of draw, 2 chs. wide, course SE.  
 Ascend 60 ft., over W. slope, to



Subdivision lines of Township 29 North, Range 7 West.

Chains.

40.00 Set an iron post, 3 ft. long, 1 in. in diam., 24 ins. in the ground, for  $\frac{1}{4}$  sec. cor., marked on brass cap,

$\frac{1}{4}$  S 18  
S 19  
1920

from which,

A pine, 20 ins. in diam., brs. N.  $71\frac{1}{2}^{\circ}$  E., 50 lks. dist.,  
mkd.  $\frac{1}{4}$  S 18 BT.

A cedar, 24 ins. in diam., brs. S.  $40\frac{1}{2}^{\circ}$  E., 82 lks.  
dist., mkd.  $\frac{1}{4}$  S 19 BT.

Continue over gently rolling land, thru. scattering timber and undergrowth. Desc. gradually over SE. slope, to

50.00 Draw, course SE. Thence over S. slope, descending very gradually.

74.70 Draw, course NE. Asc. 15 ft., over NW. slope.

77.20 NE. end of low ridge, brs. NE. and SW. Desc. slightly over E. slope, to

80.00 The cor. of secs. 17, 18, 19 and 20.

Land, gently rolling.

Soil, gravelly loam, 2nd and 3rd rate.

Timber, scattering cedar, oak and pine.

Undergrowth, scattering scrub cedar, scrub oak, and mountain mahogany.

Fair grass.

N.  $0^{\circ}03'$  W., bet. secs. 17 and 18.

Over gently rolling land, thru. scattering timber and undergrowth. Desc. 20 ft., over NE. slope.

6:39 Draw, course NE. Asc. 40 ft., over SE. slope.

14.07 Low ridge, brs. NE. and SW. Desc. 20 ft., over NW. slope.

24.07 Draw, course NE. Asc. 25 ft., over E. slope, to

40.00 Set an iron post, 3 ft. long, 1 in. in diam., on bed rock, in a mound of stone, for  $\frac{1}{4}$  sec. cor., marked on brass cap,

$\frac{1}{4}$  S 18 | S 17  
1920

from which,

A cedar, 15 ins. in diam., brs. N.  $15\frac{3}{4}^{\circ}$  E., 243 lks. dist., mkd.  $\frac{1}{4}$  S 17 BT.

A pine, 12 ins. in diam., brs. N.  $78\frac{1}{2}^{\circ}$  W., 137 lks. dist., mkd.  $\frac{1}{4}$  S 18 BT.

Continue over gently rolling land, thru. scattering timber and undergrowth. Desc. 30 ft., over E. slope.

67.00 Draw, course E. Asc. 25 ft., over SE. slope, to

80.00 Set an iron post, 3 ft. long, 2 ins. in diam., 24 ins. in the ground, for cor. of secs. 17, 18, 17 and 18, marked on brass cap,

T29N | R7 W  
S 7 | S 8  
S 18 | S 17  
1920

from which,

A pine, 15 ins. in diam., brs. N.  $40^{\circ}$  E., 69 lks. dist., mkd. T29N R7W S8 BT.

A pine, 12 ins. in diam., brs. S.  $70\frac{1}{2}^{\circ}$  E., 53 lks. dist., mkd. T29N R7W S17 BT.

A cedar, 12 ins. in diam., brs. S.  $24\frac{1}{2}^{\circ}$  W., 80 lks. dist., mkd. T29N R7W S18 BT.

A pine, 10 ins. in diam., brs. N.  $28^{\circ}$  W., 167 lks. dist., mkd. T29N R7W S7 BT.

48 Subdivision of lines of Township 29 North Range 7 West.

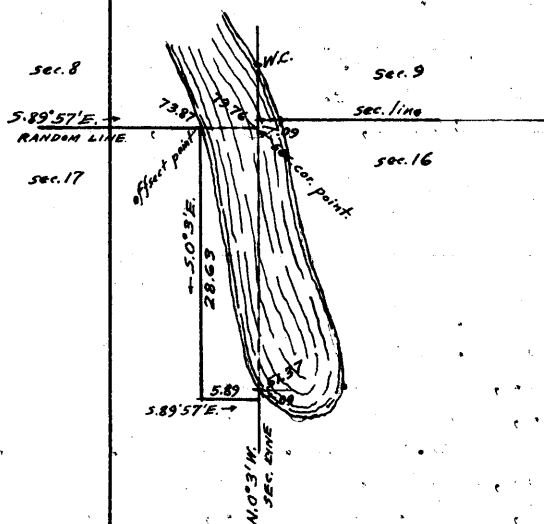
Chains.

Land, gently rolling.  
Soil, gravelly loam, 2nd and 3rd rate.  
Timber, scattering cedar, oak and pine.  
Undergrowth, scattering mountain mahogany and scrub oak.  
Fair grass.

40.00  
73.87

S. 89° 57' E., on random line, bet. secs. 8 and 17.  
Set temp.  $\frac{1}{4}$  sec. cor.  
W. edge of water surface of Laguna Lake, brs. N. 20° W. and S. 20° E.

The remainder of the random sec. line, and the point for cor. of secs. 8, 9, 10 and 17 falls in Laguna Lake, rendering continuation of chaining on said random line impracticable; therefore, obtain the measurement of the remainder of line, and the falling on the sec. cor. point by means of an offset line, thru. sec. 17, as described as follows, and as shown on the diagram hereon:



From 73.87 ch. station on random sec. line, bet. secs. 8 and 17, at w. edge of water surface of Laguna Lake,

S. 0° 3' E., 28.63 chs. on offset line in sec. 17, parallel to sec. line bet. secs. 16 and 17, to offset point.

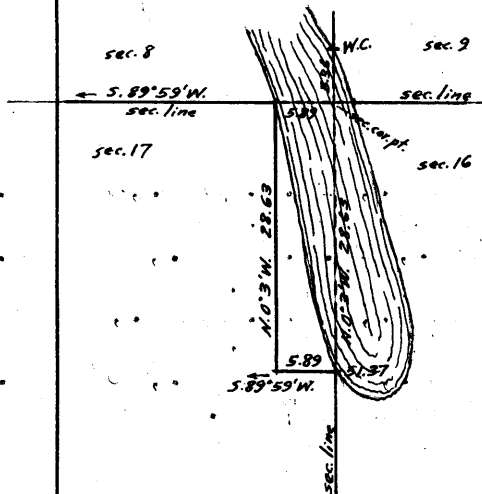
Thence,  
S. 89° 57' E., 5.89 chs. on offset line in sec. 17, parallel to random line, bet. secs. 8 and 17, to intersection with sec. line, bet. secs. 16 and 17, at a point 9 lks. S. of the 51.37 ch. station thereon, which is on the W. edge of water surface of Laguna Lake, and is the

point from which the measurement of said sec. line was triangulated across the lake. The course and dist. from the 51.37 ch. station to point for cor. of secs. 8, 9, 16 and 17 (N. 0° 3' W., 28.63 chs.) being identical with the N. and S. portion of the offset line, the random sec. line bet. secs. 8 and 17 projected across water surface of Laguna Lake S. 89° 57' E., 5.89 chs. will fall 9 lks. S. of the true point for cor. of secs. 8, 9, 10 and 17. The true length of said random sec. line is therefore 73.87 chs. + 5.89 chs. = 79.76 chs.

79.76

Fall 9 lks. S. of the true point for cor. of secs. 8, 9, 16 and 17 in Laguna Lake witnessed 5.36 chs. N. 0° 3' W., as hereinbefore described:

From true point for sec. cor.,  
S. 89° 59' W., on true line, bet. secs. 8 and 17.  
Over water surface of Laguna Lake, measurement to W. edge thereof by offset line thru. sec. 17, as described as follows, and as shown on the diagram hereon:



From 51.37 ch. station on line bet. secs. 16 and 17,  
S. 89° 59' W., 5.89 chs. on offset line in sec. 17, parallel to true line, bet. secs. 8 and 17, to offset point.

Thence,  
N. 0° 3' W., 28.63 chs. on offset line in sec. 17, parallel to sec. line bet. secs. 16 and 17 to offset point on true line bet. secs. 8 and 17 at W. edge of lake, 5.89 chs., S. 89° 59' W. from sec. cor. point.

BOOK 43504

BOOK 43504

Subdivision lines of Township 29 North, Range 7 West.

Chains.  
 . 5.89 Offset point on true line at W. edge of water in Laguna Lake, brs. N. 20° W. and S. 20° E.  
 Thence,  
 S. 89° 59' W., on true line, bet. secs. 8 and 17, continuing measurement from true point for cor. of secs. 8, 9, 16 and 17.  
 Over level land, thru. scattering undergrowth.  
 7.36 Wire fence, brs. N. 21 1/4° W. and S. 21 1/4° E.  
 20.79 Road brs. N. 5° W. and S.  
 29.80 Enter scattering timber, brs. N. and S.  
 39.88 Set an iron post, 3 ft. long, 1 in. in diam., 20 ins. in the ground for 1/4 sec. cor., marked on brass cap,

1/4 S 8  
 S 17  
 1920

from which,  
 A cedar, 12 ins. in diam., brs. S. 20 1/4° W., 97 lks. dist., mkd. 1/4 S 17 BT.  
 A cedar, 20 ins. in diam., brs. N. 10 1/4° W., 116 lks. dist., mkd. 1/4 S 8 BT.  
 Continue over level land, thru. scattering timber and undergrowth.  
 65.00 Leave level, and enter gently rolling land. Asc. very gradually, over E. slope, to.  
 79.76 The cor. of secs. 7, 8, 17 and 18.  
 Land, E. 65 chs. level, remainder gently rolling.  
 Soil, sandy and gravelly loam, 1st. and 2nd rate.  
 Timber, scattering pine and cedar, where noted.  
 Undergrowth, scattering sage brush and scrub cedar.  
 Good grass.

N. 89° 58' W., on a random line, bet. secs. 7 and 18.  
 40.00 Set temp. 1/4 sec. cor.  
 80.04 Fall 3 lks. N. of the cor. of secs. 7, 12, 13 and 18, on W. bdy. of Tp., hereinbefore described.  
 Thence,  
 S. 89° 59' E., on a true line, bet. secs. 7 and 18.  
 Over gently rolling land, thru. scattering timber and undergrowth. Desc. 20 ft., over E. slope, to  
 4.45 Draw, course NE. Thence over N. slope, descending slightly to  
 23.57 Draw, course SE. Ascend 50 ft., over SW. slope.  
 33.90 Descend 55 ft., over E. slope, to  
 40.04 Draw, course SE. Set an iron post, 3 ft. long, 1 in. in diam., 24 ins. in the ground, for 1/4 sec. cor., marked on brass cap,

1/4 S 7  
 S 18  
 1920

from which,  
 A cedar, 12 ins. in diam., brs. S. 24 1/2° W., 79 lks. dist., mkd. 1/4 S 18 BT.  
 A pine, 20 ins. in diam., brs. N. 48 1/2° W., 59 lks. dist., mkd. 1/4 S 7 BT.  
 Continue over gently rolling land, thru. scattering timber and undergrowth.  
 Ascend 50 ft., over W. slope.  
 45.53 Ridge, brs. N. and S. Descend 60 ft., over E. slope.  
 60.50 Draw, course NE. Asc. 35 ft., over NW. slope.  
 70.50 NE. end of ridge, brs. NE and SW. Desc. 70 ft., over E. slope, to  
 80.04 The cor. of secs. 7, 8, 17 and 18.  
 Land, gently rolling.  
 Soil, gravelly loam, 2nd and 3rd rate.  
 Timber, scattering cedar, oak and pine.

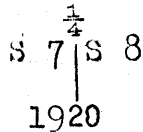
50 Subdivision lines of Township 29 North, Range 7 West.

Chains.

Undergrowth, scattering scrub cedar and mountain mahogany.  
Fair grass.

N. 093° W., bet. secs. 7 and 8.

- 12.48 Over gently rolling land, thru. scattering timber and undergrowth. Desc. 25 ft., over E. slope, to
- 15.00 Draw, course NE. Asc. slightly over E. slope, to
- 34.95 Draw, course SE. Asc. 55 ft., over S. slope.
- 40.00 Low ridge, brs. NE. and SW. Desc. 15 ft., over NW. slope, to
- Set an iron post, 3 ft. long, 1 in. in diam., 24 ins. in the ground, for  $\frac{1}{4}$  sec. cor., marked on brass cap,

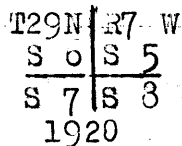


from which,

- A pine, 30 ins. in diam., brs. S. 87 $\frac{1}{2}$ ° E., 34 lks.  
dist., mkd.  $\frac{1}{4}$  S 8 BT.
- A pine, 15 ins. in diam., brs. N. 1 $\frac{1}{4}$ ° W., 144 lks.  
dist., mkd.  $\frac{1}{4}$  S 7 BT.

Continue over gently rolling land, thru. scattering timber and undergrowth. Desc. 30 ft., over NW. slope.

- 50.00 Draw, course NE. Asc. 25 ft., over SE. slope.
- 60.00 Low ridge, brs. NE. and SW. Desc. 90 ft., over N. slope.
- 77.11 Draw, course E. Asc. 20 ft., over S. slope, to
- 80.00 Set an iron post, 3 ft. long, 2 ins. in diam., on bedrock, in a mound of stone, for cor. of secs. 5, 6, 7 and 8, marked on brass cap,



from which,

- A pine, 10 ins. in diam., brs. N. 70 $\frac{1}{2}$ ° E., 69 lks.  
dist., mkd. T29N R7W S5 BT.
- A cedar, 20 ins. in diam., brs. S. 74 $\frac{1}{4}$ ° E., 33 lks.  
dist., mkd. T29N R7W S8 BT.
- A pine, 15 ins. in diam., brs. S. 83° W., 54 lks.  
dist., mkd. T29N R7W S7 BT.
- A pine, 12 ins. in diam., brs. N. 29° W., 64 lks.  
dist., mkd. T29N R7W S6 BT.

Land, gently rolling.

Soil, gravelly loam, 2nd and 3rd rate.

Timber, scattering cedar, oak and pine.

Undergrowth, scattering scrub cedar and mountain mahogany.  
Fair grass.

N. 89° 59' E., on a random line, bet. secs. 5 and 8.

- 40.00 Set temp.  $\frac{1}{4}$  sec. cor.
- 79.86 Fall 2 lks. N. of the cor. of secs. 4, 5, 8 and 9.

Thence,

West, on a true line, bet. secs. 5 and 8.

Over level, land, thru. scattering undergrowth.

- 5.00 North end of Laguna Lake, brs. S. 30 $\frac{1}{2}$ ° W., 10 chs. dist.
- 13.40 Road, brs. S. 10° E. and N. 10° W.
- 15.60 Road, brs. N. and S. 20° W.
- 20.53 North end of Laguna Lake, brs. S. 52 $\frac{1}{2}$ ° E., 15.00 chs. dist.
- 25.00 Enter scattering timber, brs. N. and S.
- 39.93 Set an iron post, 3 ft. long, 1 in. in diam., 20 ins. in the the ground, for  $\frac{1}{4}$  sec. cor., marked on brass cap,

Chains.

$$\begin{array}{r} \frac{1}{4} S 5 \\ S 8 \\ 1920 \end{array}$$

from which,  
 A cedar, 15 ins. in diam., brs. S. 23 $\frac{1}{2}$ ° E., 44 lks.  
 dist., mkd.  $\frac{1}{4}$  S 8 BT.  
 A cedar, 10 ins. in diam., brs. N. 31° W., 94 lks.  
 dist., mkd.  $\frac{1}{4}$  S 5 BT.

Continue over level land, thru. scattering timber and undergrowth.  
 49.98 Draw, course NE.  
 60.00 Leave level, and enter gently rolling land. Asc. very gradually over SE. slope.  
 79.86 The cor. of secs. 5, 6, 7 and 8.  
 Land, E. 60 chs. level; W. 20 chs., gently rolling.  
 Soil, sandy and gravelly loam, 1st and 2nd rate.  
 Timber, scattering cedar and pine in W. 55 chs.; none in E. 25 chs.  
 Undergrowth, scatterings scrub cedar and sage brush.  
 Good grass.

40.00 N. 89° 59' W., on a random line, bet. secs. 6 and 7.  
 Set temp.  $\frac{1}{4}$  sec. cor.  
 79.91 Fall 4 lks. S. of the cor. of secs. 1, 6, 7 and 12, on W. bdy. of Tp., hereinbefore described.  
 Thence,  
 S. 89° 57' E., on a true line, bet. secs. 6 and 7.  
 Over gently rolling land, thru. scattering timber and undergrowth. Desc. very gradually, over E. slope.  
 29.10 Draw, course SE. Asc. 70 ft., over SW. slope, to  
 39.91 Set an iron post, 3 ft. long, 1 in. in diam., 6 ins. in the ground, to bed rock, supported in a mound of stone, for  $\frac{1}{4}$  sec. cor., marked on brass cap,

$$\begin{array}{r} \frac{1}{4} S 6 \\ S 7 \\ 1920 \end{array}$$

from which,  
 A pine, 12 ins. in diam., brs. S. 54° W., 49 lks.  
 dist., mkd.  $\frac{1}{4}$  S 7 BT.  
 A cedar, 15 ins. in diam., brs. N. 51 $\frac{1}{2}$ ° W., 41 lks.  
 dist., mkd.  $\frac{1}{4}$  S 6 BT.

Continue over gently rolling land, thru. scattering timber and undergrowth, along S. slope, descending very gradually to  
 79.91 The cor. of secs. 5, 6, 7 and 8.  
 Land, gently rolling.  
 Soil, gravelly loam, 2nd and 3rd rate.  
 Timber, scattering cedar, oak and pine.  
 Undergrowth, scattering scrub oak and mountain mahogany.  
 Fair grass.

40.00 N. 0° 03' W., on a random line, bet. secs. 5 and 6.  
 Set temp.  $\frac{1}{4}$  sec. cor.  
 79.95 Fall 30 lks. E. of the cor. of secs. 5, 6, 31 and 32, on N. bdy. of Tp., hereinbefore described.  
 Thence,  
 S. 0° 10' E., on a true line, bet. secs. 5 and 6.  
 Over level land, thru. scattering timber and undergrowth,  
 8.94 Leave level, and enter rolling land. Desc. 30 ft., over SE. slope.  
 16.20 Draw, course NE. Asc. 60 ft., over N. slope.  
 23.43 NE. end of ridge, brs. NE. and SW. Desc. 25 ft., over SE. slope.

Chains.

31.00 Draw, course NE. Asc. 35 ft., over N. slope.  
 35.00 Ridge, brs. NE and SW. Desc. 35 ft., over SE. slope, to  
 39.93 Set an iron post, 3 ft. long, 1 in. in diam., 20 ins. in  
 the ground, for  $\frac{1}{4}$  sec. cor., marked on brass cap,

s 6  $\frac{1}{2}$  s 5

1920

from which,

A pine, 9 ins. in diam., brs. N.  $70\frac{1}{2}^{\circ}$  E., 87 lks.  
 dist., mkd.  $\frac{1}{4}$  S 5 31.

A cedar, 14 ins. in diam., brs. S.  $68^{\circ}$  W., 13 lks.  
 dist., mkd.  $\frac{1}{4}$  S 6 31.

Continue over rolling land, thru. scattering timber and  
 undergrowth. Desc. 20 ft., over SE. slope.

42.80 Draw, course NE. Asc. 40 ft., over NW. slope.  
 50.00 Descend. 35 ft., over SE. slope.  
 53.53 Draw, course NE. Asc. 55 ft., over NW. slope.  
 63.27 Ridge, brs. NE. and SW. Desc. 25 ft., over SE. slope.  
 65.64 Draw, course E. Asc. 30 ft., over NE. slope.  
 68.09 Point of spur, sloping SE. Desc. 80 ft., over SW. slope, to  
 79.93 The cor. of secs. 5, 6, 7 and 8.

Land, N. 9 chs. level; remainder, rolling.

Soil, gravelly loam, 2nd and 3rd rate.

Timber, scattering cedar, oak and pine.

Undergrowth, scattering scrub cedar and mountain mahog-  
 any.

Fair grass.

The continued satisfactory adjustment of the solar apparatus  
 during the survey of this township is indicated from  
 field tests described in books "C" and "D" of this group.

#### GENERAL DESCRIPTION.

This township lies entirely within the Hualpai Indian  
 Reservation, and the surface is mostly gently rolling.  
 The entire township is on the plateau between Cataract  
 Canyon on the East, and the Colorado River Canyon on  
 the North and West. The general course of the drain-  
 age is NE. The west two ranges of sections drain NE.  
 into a valley bearing N. and S., which forms the head  
 of what is known as Laguna Valley, and which drains  
 northerly into the Colorado River.

The soil varies from a sandy loam, 1st rate, to rocky, 4th  
 rate, a gravelly clay, 2nd and 3rd rate predominating.

The timber consists mainly of pine and cedar, inter-  
 spersed with oak, and is mostly in a scattering growth,  
 tho. in some parts are found dense timbered areas.

A scattering undergrowth of scrub oak, scrub cedar, sage  
 brush and mountain mahogany is prevalent in nearly  
 all sections.

There are no streams of permanent flowing water, the  
 drainage system consisting of dry coulees, washes and  
 draws, carrying water at irregular periods.

Water is stored in Thorton Tank in sec. 33, and in Laguna  
 Lake in secs. 8, 9, 16 and 17 for watering of range  
 stock.

A good growth of desert grass is found in nearly all  
 parts of the township, rendering the area good for  
 grazing purposes, which is the only use to which  
 the land is at present utilized.

There are no settlers residing in the township, and the  
 only improvements are wire fences in the central part

OK 3504

53

There is no evidence of there being valuable mineral deposits of any kind.  
Several roads traverse the township.

---

BOOK 3504

4-680

### FIELD ASSISTANTS.

to James C. O'Brien, U. S. Transitman.

NAMES.	CAPACITY.
	Actual number, in Book 3504
William Josephson	1st Chainman
Rolla Puzey	2nd Chainman
Peter Wilchensky	Cornerman - Axman
Harland Rothwell	Axman
Zara Shullaw	Flagman



BOOK 56 3504

CERTIFICATE OF UNITED STATES TRANSITMAN.

I, James C. O'Brien, U. S. Transitman, hereby certify upon honor that, in pursuance of special instructions received from the U. S. Surveyor General, for Group 105, Arizona, bearing date of the 24th day of February, 1920, I have well, faithfully, and truly in my own proper person, and in strict conformity with said instructions, the Manual of Surveying Instructions, and the laws of the United States, surveyed all those parts or portions of the Seventh Standard Parallel North through Range 7 West, and the Subdivision lines of

Township 29 North, Range 7 West,

of the Gila and Salt River

Base and Meridian, in the State of Arizona, which are represented in and by diagram on page 1 hereof the foregoing field notes, as having been executed by me, and under my direction; and that all the corners of said survey have been established and perpetuated in strict accordance with the Manual of Surveying Instructions, and the special written instructions of the U. S. Surveyor General, for Group 105, Arizona, and in the specific manner described in the field notes, and that the foregoing are the original field notes of such survey.

Place - Phoenix, Arizona
Date - May 8, 1922

James C. O'Brien (deceased)
U. S. Transitman

APPROVAL. by [Signature]
Asst. Supervisor of Surveys
District No. 5

Office of the United States Surveyor General,

, 191

The foregoing field notes of the survey of

executed by under special instructions dated , 191 , having been critically examined, and the necessary corrections and explanations made, the said field notes, and the surveys they describe, are hereby approved.

U. S. Surveyor General.

I certify that the foregoing transcript of the field notes of the above-described surveys in , has been correctly copied from the original notes on file in this office.

U. S. Surveyor General.

BOOK 3504

4-680

FIELD ASSISTANTS.

to Dupree R. Averill, U. S. Surveyor

NAMES.	CAPACITY.
<i>James Shine</i>	<i>1st Chainman</i>
<i>Wilbur McGuire</i>	<i>2nd Chainman</i>
<i>Homer Klippel</i>	<i>Cornerman</i>
<i>E. F. Stanley</i>	<i>Axman</i>
<i>Forest Nimmo</i>	<i>Flagman</i>

CERTIFICATE OF UNITED STATES SURVEYOR.

I, Dupree R. Averill, U. S. Surveyor, hereby certify upon honor that, in pursuance of special instructions received from the U. S. Surveyor General, for Group 105, Arizona, bearing date of the 24th day of February, 1920, I have well, faithfully, and truly in my own proper person, and in strict conformity with said instructions, the Manual of Surveying Instructions, and the laws of the United States, surveyed all those parts or portions of the Seventh Standard Parallel North through Range 7 West, the North and West boundaries, and the Subdivision lines of

Township 29 North, Range 7 West,

of the Gila and Salt River

Base and Meridian, in the State of Arizona, which are represented in and by diagram on page 1 hereof the foregoing field notes, as having been executed by me, and under my direction; and that all the corners of said survey have been established and perpetuated in strict accordance with the Manual of Surveying Instructions, and the special written instructions of the U. S. Surveyor General, for Group 105, Arizona, and in the specific manner described in the field notes, and that the foregoing are the original field notes of such survey.

Place - Phoenix Arizona
Date - July 15, 1921

Dupree R. Averill
U. S. Surveyor.

APPROVAL.

OFFICE OF THE UNITED STATES SURVEYOR GENERAL,

, 191

The foregoing field notes of the survey of

executed by under his special instructions dated, 191, having been critically examined, and the necessary corrections and explanations made, the said field notes, and the surveys they describe, are hereby approved.

U. S. Surveyor General.

I certify that the foregoing transcript of the field notes of the above-described surveys in, has been correctly copied from the original notes on file in this office.

U. S. Surveyor General.

FIELD ASSISTANTS. to

Fred W. Rodolf, U.S. Cadastral Engineer.

NAMES.	CAPACITY.
<i>James Shine</i>	<i>1st Chainman</i>
<i>Wilbur McGuire</i>	<i>2nd Chainman</i>
<i>Homer Klippel</i>	<i>Cornerman</i>
<i>E. F. Stanley</i>	<i>Axeman</i>
<i>Peter Wilchinsky</i>	<i>Flagman</i>

60  
BOOK 3504

CERTIFICATE OF UNITED STATES CADASTRAL ENGINEER.

I, Fred W. Rodolf, U.S. Cadastral Engineer, hereby certify upon honor that, in pursuance of special instructions received from the U. S. Surveyor General, for Group 105, Arizona bearing date of the 24th day of February, 1920, I have well, faithfully, and truly in my own proper person, and in strict conformity with said instructions, the Manual of Surveying Instructions, and the laws of the United States, surveyed all those parts or portions of the  
Seventh Standard Parallel North thru Range 7 West,  
and  
the Subdivision lines of  
Township 29 North, Range 7 West  
of the Gila and Salt  
River Base and Meridian, in the State of \_\_\_\_\_, which are represented in the foregoing field notes <sup>and by diagram on page 1 hereof</sup> as having been executed by me, and under my direction; and that all the corners of said survey have been established and perpetuated in strict accordance with the Manual of Surveying Instructions, and the special written instructions of the U. S. Surveyor General, for Group 105, Arizona and in the specific manner described in the field notes, and that the foregoing are the original field notes of such survey.

Place Las Vegas, Nevada  
Date April 19, 1922

Fred W. Rodolf  
 U.S. Cadastral Engineer.

APPROVAL.

OFFICE OF THE UNITED STATES SURVEYOR GENERAL,

Phoenix, Arizona, May 13, 1922

The foregoing field notes of the survey of the  
Seventh Std. Parallel North thru Range 7 West, and the  
North and West boundaries and Subdivision lines of  
Township 29 North, Range 7 West  
of the Gila and Salt River Base and Meridian in the State of Arizona  
executed by Fred W. Rodolf, U.S. Cadastral Engineer, Dupree R. Averill,  
U.S. Surveyor and James C. O'Brien, U.S. Transitman  
 under ~~his~~ special instructions dated February 24, 1920 for Group 105, 1921, having been critically examined, and the necessary corrections and explanations made, the said field notes, and the surveys they describe, are hereby approved.

Frank R. Frost  
 U. S. Surveyor General.

I certify that the foregoing transcript of the field notes of the above described surveys in \_\_\_\_\_, has been correctly copied from the original notes on file in this office.