

FIELD NOTES

OF THE SURVEY OF THE

North boundary,

the West boundary,

and the Subdivision lines of

Township 31 North, Range 7 West,

Of the Gila and Salt River Base and Meridian,

In the State of Arizona

EXECUTED BY

Dupree R. Averill, U. S. Surveyor,

and

James C. O'Brien, U. S. Transitman,

In the capacity of U. S. Surveyor, under Special Instructions dated February 24, 1920, issued by the United States Surveyor General to govern surveys included in Group No. 105, Arizona, which were approved by the Commissioner of the General Land Office, March 8, 1920, and Assignment Instructions dated March 27, 1920 April 15, 1920

Survey commenced June 17, 1920

Survey completed August 14, 1920

3508

3508

64
17

3508

Book "F"

Group 105 - - - Arizona.

BOOK 3508

INDEX DIAGRAM.

Township 31 North				Range 7 West							
8	9	10	10	11	12						
7	6	58	5	47	4	39	3	29	2	20	1
	57		50		47		38		28		20
5	7	56	8	40	9	37	10	26	19	12	
	55		54		45		36		25		18
5	18	54	17	44	16	34	15	25	14	17	13
	53		53		43		33		24		17
4	19	52	20	43	21	32	22	23	23	16	24
	51		51		42		31		23		16
3	30	50	29	41	28	30	27	22	26	15	25
	49		49		40		30		22		14
3	31	48	32	40	33	29	34	21	35	14	36

RESERVATION

INDIAN

HUALPA

==== Lines surveyed under this Group.

==== Lines surveyed under current Group 106.

3508

Book "F"

DATE DIAGRAM.

TOWNSHIP 31 NORTH, RANGE 7 WEST.

8-1-20 6	8-3-20 5	8-4-20 4	8-5-20 3	8-14-20 2	8-13-20 1
8-1-20 7	8-7-20 8	8-12-20 9	8-10-20 10	8-13-20 11	6-24-20 12
7-28-20 18	8-6-20 17	8-9-20 16	8-9-20 15	6-29-20 14	6-23-20 13
7-27-20 19	8-6-20 20	8-6-20 21	8-11-20 22	6-28-20 23	6-22-20 24
7-27-20 30	7-30-20 29	7-29-20 28	7-1-20 27	6-19-20 26	6-21-20 25
7-27-20 31	7-29-20 32	7-27-20 33	6-30-20 34	6-18-20 35	6-17-20 36

See book "E" for dates of survey of this line

See book "C" for dates of survey of this line

Red lines on above diagram indicate surveys executed by Dupree R. Averill, U.S. Surveyor, on dates shown thereon.

Blue lines on above diagram indicate surveys executed by James G. O'Brien, U.S. Transitman, on dates shown thereon.

Surveys hereinafter described, executed on dates shown on page 1 hereof, by Dupree R. Averill, U.S. Surveyor, and James C. O'Brien, U.S. Transitman, using respectively Buff solar transit No. 9223, and Young and Sons solar transit No. 8541. Each instrument is equipped with full vertical circle, and the Smith solar attachment; unless otherwise specified, all azimuth determinations are accomplished with the solar attachments.

June 12, 1920. We examine the adjustments of each instrument, and correct all errors; then, to test the solar apparatus by comparing its indications from observations made during a.m. and p.m. hours with a meridian established by Polaris observation, proceed with each instrument as follows:

At camp in SE. $\frac{1}{4}$ of sec. 21, T. 31 N., R. 6 W., Gila and Salt River Base and Meridian, Arizona, in lat. $36^{\circ} 03\frac{1}{2}'$ N., long. $112^{\circ} 55\frac{1}{2}'$ W. at 8h. 9m. p.m., l.m.t., observe Polaris at lower culmination, and mark a point in the meridian thus determined by a tack in a stake set firmly in the ground, 5 chs. N.

June 13, 1920. At 9h. 00m. a.m., l.m.t. set off $36^{\circ} 03\frac{1}{2}'$ N. on the lat. arc; $23^{\circ} 14'$ N. on the decl. arc, and determine a meridian with the solar, which agrees with the true meridian.

At app. noon, with the lat. arc unchanged, observe the sun on the meridian; the resulting reading of the decl. arc is $23^{\circ} 14'$ N., which agrees with the computed decl. of the sun.

At 3h. 00m., p.m., l.m.t., with the lat. arc unchanged, set off $23^{\circ} 14\frac{1}{2}'$ N. on the decl. arc, and determine a meridian with the solar, which agrees with the true meridian.

As all of the solar observations made with both instruments during the usual hours of solar work come within $1' 30''$ of the true meridian, we conclude that the adjustments of the instruments are satisfactory.

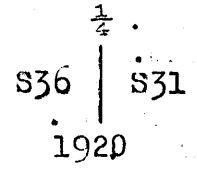
Unless otherwise specified, all measurements are made with Lufkin steel tapes, 5 chs. in length, compared with a Chesterman standard steel tape, and found correct. The measurements are made on the slope, the vertical angle determined, and the slope measurements properly reduced to true horizontal distances.

Survey of West boundary of Township 31 North, Range 7 West.

3

Chains.

From the corner of Ts. 30 and 31 N., Rs. 7 and 8 W., described in Book "C,"
 North, on true line, bet. secs. 31 and 36.
 Over gently rolling land, thru. scattering undergrowth, descending very gradually over E. slope.
 20.75 Wire fence brs. N. $81\frac{1}{2}^\circ$ E. and S. $81\frac{1}{2}^\circ$ W.
 21.00 Enter dense timber.
 39.90 Road brs. SE. and NW.
 40.00 Set an iron post, 3 ft. long, 1 in. in diam., 4 ins. in the ground, to bed rock, supported in a mound of stone, for $\frac{1}{4}$ sec. cor., marked on brass cap.,



from which,
 A pine, 10 ins. in diam., brs. N. 58° E., 65 lks. dist. marked $\frac{1}{4}$ S31 BT.
 A pine, 10 ins. in diam., brs. N. $53\frac{1}{2}^\circ$ W., 33 lks. dist. marked $\frac{1}{4}$ S30 BT.
 Continue over gently rolling land, thru. dense timber and scattering undergrowth. Descend very gradually over E. slope.
 55.00 Ascend 46 ft., over SE. slope.
 65.00 Leave gently rolling, and enter roughly rolling land. Descend 31 ft., over NW. slope.
 68.80 Draw, course W. Ascend 38 ft., over SW. slope.
 71.30 Point of spur, slopes W. Descend 35 ft. over NW. slope.
 74.30 Draw, course W. Ascend 70 ft., over SW. slope, to
 80.00 Set an iron post, 3 ft. long, 2 ins. in diam., 12 ins. in the ground, to bed rock, supported in a mound of stone, for cor. of secs. 25, 30, 31 and 36, marked on brass cap.,



from which,
 A pine, 8 ins. in diam., brs. N. $50\frac{1}{2}^\circ$ E., 23 lks. dist. mkd. T31N R7W S30 BT.
 A pine, 8 ins. in diam., brs. S. $75\frac{1}{2}^\circ$ E., 37 lks. dist. mkd. T31N R7W S31 BT.
 A pine, 8 ins. in diam., brs. S. $35\frac{1}{2}^\circ$ W., 86 lks. dist. mkd. T31N R8W S36 BT.
 A cedar, 6 ins. in diam., brs. N. $41\frac{1}{2}^\circ$ W., 52 lks. dist. mkd. T31N R8W S25 BT.
 Land, gently rolling in S. .05 chs.; roughly rolling in N. 15 chs.
 Soil, gravelly and rocky, 2nd. and 3rd. rate.
 Timber, dense cedar and pine, where noted.
 Undergrowth, scattering sage brush, dogwood, scrub cedar and scrub oak.
 Fair grass.

North, on true line, bet. secs. 25 and 30.
 Over roughly rolling land, thru. dense timber and scattering undergrowth. Descend 74 ft., over NW. slope.
 3.70 Draw, course W. Ascend 65 ft., over SW. slope.
 7.50 Point of spur, slopes W. Descend 22 ft., over NW. slope.
 10.20 Draw, course W. Ascend 37 ft., over SW. slope.
 12.50 Point of spur, slopes W. Descend 64 ft., over NW. slope.
 17.60 Draw, course W. Ascend 77 ft., over S. slope, to
 22.50 Rim, brs. E. and W. Leave roughly rolling, and enter nearly level land. Along W. slope, descending slightly to
 40.00 Set an iron post, 3 ft. long, 1 in. in diam., 12 ins. in

West boundary of Township 31 North Range 7 West.

chains.

the ground, to bed rock, supported in a mound of stone,
for $\frac{1}{4}$ sec.cor., marked on brass cap,

1 	S25 S30
-------	-----------

1920

from which,

A pine, 16 ins. in diam., brs.S.44°E., 52 lks.
dist., mkd. $\frac{1}{4}$ S 30 BT.

A pine, 14 ins. in diam., brs.N.05°W., 29 lks.
dist., mkd. $\frac{1}{4}$ S 25 BT.

Continue over nearly level land, thru. dense timber and
scattering undergrowth.

Descend 25 ft., over NW.slope, to

41.70

Draw, course W. Continue over nearly level land, ascend-
ing slightly over W.slope, to

80.00

Set an iron post, 3 ft.long, 2 ins. in diam., 7 ins.in
the ground, to bed rock, supported in a mound of stone,
for cor.of secs.19,24,25 and 30, marked on brass cap,

T31N	
R8W R7W	
S24 S19	
S25 S30	
1920	

from which,

A pine, 10 ins. in diam., brs.N.31 $\frac{1}{2}$ °E., 99 lks.
dist., mkd. T31N R7W S19 BT.

A pine, 16 ins. in diam., brs.S.23°E., 34 lks.
dist., mkd. T31N R7W S30 BT.

A pine, 14 ins. in diam., brs.S.33 $\frac{1}{2}$ °W., 93 lks.
dist., mkd. T31N R8W S25 BT.

A twin cedar, 6 ins. in diam., brs.N.29°W., 8 lks.
dist., mkd. T31N R8W S24 BT.

Land, roughly rolling in S.22 $\frac{1}{2}$ chs.; remainder, nearly
level.

Soil, gravelly and rocky, 2nd and 3rd rate.

Timber, dense cedar and pine.

Undergrowth, scattering sage brush, dogwood, scrub cedar
and scrub oak.

Fair grass.

North, on true line, bet. ~~secs.~~ 19 and 24.

Over nearly level land, thru. dense timber and scattering
undergrowth, ascending slightly over W.slope, to

40.00

Set an iron post, 3 ft.long, 1 in. in diam., 12 ins.in
the ground, to bed rock, supported in a mound of
stone, for $\frac{1}{4}$ sec.cor., marked on brass cap,

1 	S24 S19
-------	-----------

1920

from which,

A pine, 8 ins. in diam., brs.N.81°E., 33 lks.
dist., mkd. $\frac{1}{4}$ S 19 BT.

A cedar, 10 ins. in diam., brs.N.80 $\frac{1}{2}$ °W., 45 lks.
dist., mkd. $\frac{1}{4}$ S 24 BT.

Continue over nearly level land, thru. dense timber and
scattering undergrowth, descending very gradually over
NE.slope.

56.80

Shallow wash, course NE. Thence along E.slope. with
slight change in elevation.

West boundary of Township 31 North, Range 7 West.

Chains.

61.00 Shallow wash, course E. Continue over E. slope.
72.58 A pine, 20 ins. in diam., on line.
78.60 Shallow draw, course E. Continue over E. slope.
80.00 Set an iron post, 3 ft. long, 2 ins. in diam., 15 ins. in the ground, to bed rock, supported in a mound of stone, for cor. of secs. 13, 18, 19 and 24, marked on brass cap,

T31N
R8W | R7W
S13 | S18

S24 | S19
1920

from which,
A pine, 10 ins. in diam., brs. N. 59½° E., 19 lks.
dist., mkd. T31N R7W S18 BT.
A cedar, 14 ins. in diam., brs. S. 49½° E., 24 lks.
dist., mkd. T31N R7W S19 BT.
A pine, 10 ins. in diam., brs. S. 79½° W., 30 lks.
dist., mkd. T31N R8W S24 BT.
A pine, 8 ins. in diam., brs. N. 36° W., 42 lks.
dist., mkd. T31N R8W S13 BT.

Land, nearly level.
Soil, gravelly and rocky, 2nd and 3rd rate.
Timber, dense cedar and pine.
Undergrowth, scattering dogwood, scrub oak and scrub cedar.
Fair grass.

North, on a true line, bet. secs. 13 and 18.
Over nearly level land, thru timber and scattering undergrowth, along E. slope, descending slightly to

14.00 Leave nearly level, and enter gently rolling land.
Descend 15 ft., over NE. slope, to

15.50 Draw, course NE. Descend gradually over E. slope.
24.00 Draw, course E. Continue over E. slope, with slight change in elevation.

40.00 Set an iron post, 3 ft. long, 1 in. in diam., 12 ins. in the ground, to bed rock, supported in a mound of stone, for ¼ sec. cor., marked on brass cap,

S13 | S18

1920

from which,
A pine, 16 ins. in diam., brs. N. 63° E., 39 lks.
dist., mkd. S 18 BT.
A pine, 12 ins. in diam., brs. N. 20° W., 52 lks.
dist., mkd. S 13 BT.

Continue over gently rolling land, thru dense timber and scattering undergrowth. Desc. 70 ft. over NE. slope.

48.70 Shallow draw, course NE. Descend slightly over NE. slope, to

57.50 Draw, course NE. Descend 40 ft., over E. slope.
60.00 Draw, course E. Ascend 133 ft., over S. slope, to

70.00 Rim, brs. E. and SW. Leave rolling, and enter level land.
77.70 Rim, brs. E. and W. Leave level, and enter rolling land.
80.00 Descend 22 ft., over N. slope, to

80.00 Set an iron post, 3 ft. long, 2 ins. in diam., 20 ins. in the ground, for cor. of secs. 7, 12, 13 and 18, marked on brass cap,

6 West boundary of Township 31 North, Range 7 West.

Chains.

T31N	
R8W	R7W
S12	S 7
S13	S18

1920

from which,

A cedar, 12 ins. in diam., brs. N. 32° E., 111 lks.

dist., mkd. T31N R7W S7 BT.

A pine, 8 ins. in diam., brs. S. 27° E., 57 lks.

dist., mkd. T31N R7W S18 BT.

A pine, 10 ins. in diam., brs. S. 76° W., 46 lks.

dist., mkd. T31N R8W S13 BT.

A pine, 10 ins. in diam., brs. N. 32½° W., 67 lks.

dist., mkd. T31N R8W S12 BT.

Land, nearly level, gently rolling, and rolling and level.

Soil, gravelly and rocky, 2nd and 3rd rate.

Timber, dense pine and cedar.

Undergrowth, scattering sage brush, dogwood and scrub cedar.

Fair grass.

North, on true line, bet. secs. 7 and 12.

Over roughly rolling and broken land, thru dense timber and scattering undergrowth. Descend 40 ft., over N. slope.

6.50 Draw, course NE. Ascend 15 ft., over E. slope, to

11.20 Draw, course E. Ascend 70 ft., over SE. slope.

20.00 Descend 30 ft., over NE. slope.

28.40 Shallow draw, course SE. Ascend 50 ft., over S. slope.

32.50 Spur, slopes E. Descend 45 ft., over N. slope.

35.56 A pine, 12 ins. in diam., on line.

37.30 Ascend 30 ft., over SE. slope, to

40.00 Set an iron post, 3 ft. long, 1 in. in diam., 20 ins. in the ground, for ¼ sec. cor., marked on brass cap,

T31N	
R8W	R7W
S12	S 7

1920

from which,

A pine, 8 ins. in diam., brs. N. 78° E., 23 lks.

dist., mkd. T31N R7W S7 BT.

A pine, 8 ins. in diam., brs. S. 70½° W., 33 lks.

dist., mkd. T31N R7W S12 BT.

Continue over roughly rolling land, thru dense timber and scattering undergrowth. Ascend slightly over SE. slope, to

43.00 Rim, brs. NE. and SW. Leave roughly rolling, and enter broken and mountainous land.

Descend 1120 ft., over precipitous N. slope, broken by cliffs.

72.50 Gulch, course NW. Descend 20 ft., over W. slope, to

76.90 Gulch, course W. Descend 25 ft., over W. slope, to

80.00 Set an iron post, 3 ft. long, 2 ins. in diam., 7 ins. in the ground to bed rock, supported in a mound of stone, for cor. of secs. 1, 6, 7 and 12; marked on brass cap,

T31N	
R8W	R7W
S 1	S 6
S12	S 7

1920

from which,

A pine, 10 ins. in diam., brs. N. 63° E., 87 lks.

dist., mkd. T31N R7W S6 BT.

West boundary of Township 31 North, Range 7 West.

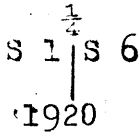
7

Chains.

A pine, 8 ins. in diam., brs. S. $38\frac{1}{4}^{\circ}$ E., 99 lks.
 dist., mkd. T31N R7W S7 BT.
 A pine, 14 ins. in diam., brs. S. 21° W., 121 lks.
 dist., mkd. T31N R8W S12 BT.
 A pine, 10 ins. in diam., brs. N. 24° W., 112 lks.
 dist., mkd. T31N R8W S1 BT.
 Land, roughly rolling, broken and mountainous.
 Soil, gravelly and rocky, 3rd and 4th rate.
 Timber, dense pine and cedar.
 Undergrowth, scattering mesquite, scrub cedar and scrub oak.
 Poor grass.

North, on true line, bet. secs. 1 and 6.
 Over broken and mountainous land, thru. dense timber and scattering undergrowth. Descend 75 ft., over NW. slope, to

- 3.00 Gulch, course NW. Descend 20 ft., over W. slope, to
- 4.00 Gulch, course W. Descend 16 ft., over W. slope, to
- 9.00 Gulch, course W. Descend 180 ft., over NW. slope, to
- 23.30 Gulch, course NW. Ascend 30 ft., over SW. slope.
- 26.50 Descend 35 ft. over NW. slope, to
- 34.30 Gulch, course W. Ascend 25 ft., over S. slope.
- 39.00 Spur, slopes W. Descend 25 ft., over N. slope, to
- 40.00 Set an iron post, 3 ft. long, 1 in. in diam., 24 ins. in the ground, for $\frac{1}{4}$ sec. cor., marked on brass cap,



from which,
 A pine, 8 ins. in diam., brs. N. 85° E., 85 lks.
 dist., mkd. T30 BT.
 A pine, 14 ins. in diam., brs. S. $46\frac{1}{4}^{\circ}$ W., 100 lks.
 dist., mkd. T31 BT.

Continue over broken and mountainous land, thru. dense timber, and scattering undergrowth. Desc. 70 ft., over N. slope, to

- 44.00 Gulch, course W. Descend 80 ft., over NW. slope, to
- 50.00 Foot of NW. slope, hrs. N.E. and SW. Leave mountainous and enter gently rolling land on bench. Descend gradually over W. slope.
- 80.00 Set an iron post, 3 ft. long, 3 ins. in diam., 24 ins. in the ground, for cor. of Ts. 31 and 32 N., Rs. 7 and 8 W., marked on brass cap,



from which,
 A pine, 12 ins. in diam., brs. N. 58° E., 173 lks.
 dist., mkd. T32N R7W S31 BT.
 A pine, 10 ins. in diam., brs. S. $27\frac{1}{2}^{\circ}$ E., 102 lks.
 dist., mkd. T31N R7W S6 BT.
 A pine, 20 ins. in diam., brs. S. 26° W., 83 lks.
 dist., mkd. T31N R8W S1 BT.
 A pine, 12 ins. in diam., brs. N. $34\frac{3}{4}^{\circ}$ W., 90 lks.
 dist., mkd. T32N R8W S36 BT.

Land, broken and mountainous in S. 50 chs.; remainder, gently rolling.
 Soil, gravelly, 3rd rate.
 Timber, dense pine and cedar.
 Undergrowth, scattering scrub cedar and sage brush.
 Poor grass.

8 Survey of North boundary of Township 31 North, Range 7 West.

Chains.

From the cor. of Tps. 31 and 32 N., Rs. 6 and 7 W., described in Book "E,"
 West, on a random line, setting temp. $\frac{1}{4}$ sec. and (sec. cor.) alternately at intervals of 40.00 chs.
 3.30 E. rim of Mohawk Canyon, brs. N. and S. Precipitous descent over cliffs renders chaining impracticable; therefore, triangulate as described as follows, and as shown on the diagram hereon:

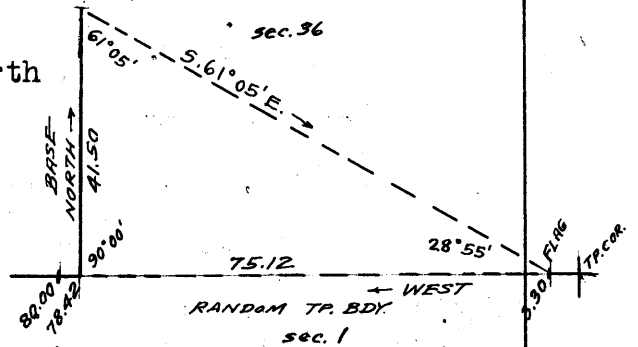
Leave flag at this point.

From a point ahead on random Tp. bdy., measure a Base, North 41.50 chs.

From N. end of Base, flag brs. S. $61^{\circ}05'E$.

Included angles are $61^{\circ}05'$, $28^{\circ}55'$, and $90^{\circ}00'$, the sum of which is $180^{\circ}00'$.

Triangulated dist. on random Tp. bdy. is obtained by



Tang. $61^{\circ}05' \times$ Base or $1.81025 \times 41.50 = 75.12$ chs., which, added to 3.30 chs. gives 78.42 chs. W. from Tp. cor. for position of triangulation point.

78.42

Triangulation point.

Continue line and measurement, by chaining.

160.99

Foot of cliffs on W. wall of Mohawk Canyon. Precipitous ascent over cliffs, renders chaining impracticable; therefore, triangulate as described as follows, and as shown on the diagram hereon:

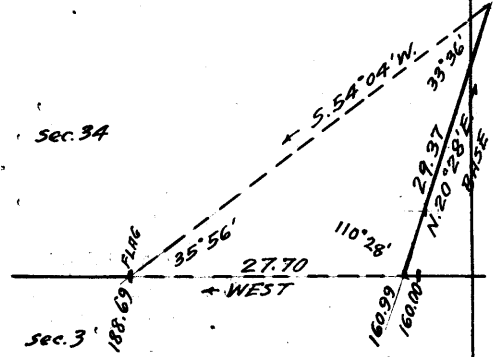
Measure a Base N. $20^{\circ}28'E$, 29.37 chs.

Set flag ahead on random Tp. bdy. at top of cliffs.

From NE. end of Base, flag brs. S. $54^{\circ}04'W$.

Included angles are $33^{\circ}30'$, $110^{\circ}28'$ and $35^{\circ}56'$, the sum of which is $180^{\circ}00'$.

Triangulated dist. on random Tp. bdy. is obtained by



$$\frac{\text{sine } 33^{\circ}30' \times \text{Base}}{\text{sine } 35^{\circ}56'} \text{ or } \frac{.55339 \times 29.37}{.58684} = 27.70 \text{ chs.}$$

which added to 160.99 chs. gives 188.69 chs. W. from Tp. cor. for the position of the flag point.

188.69

Flag point of above described triangulation.

Continue line and measurement by chaining.

478.18

Run 28 lks. N. of the cor. of Tps. 31 and 32 N., Rs. 7 and 8 W., hereinbefore described.

Thence,

N. $89^{\circ}58'E$, on a true line, bet. secs. 6 and 31.

Over gently rolling land on bench, thru. scattering timber and undergrowth. Ascend slightly over W. slope.

4.00

Leave gently rolling land and bench, and enter broken and mountainous land. Descend 40 ft., over E. slope, to

8.70

Gulch, course NE. Ascend 20 ft., over NW. slope.

15.00

Descend 80 ft., over E. slope.

20.60

Gulch, course N. Ascend 225 ft., over W. slope, to

38.18

Spur, slopes NW. Set an iron post, 3 ft. long, 1 in. in diam., 26 ins. in the ground, for $\frac{1}{4}$ sec. cor., marked on brass cap,

$$\frac{1}{4} \frac{S \ 31}{S \ 6} = 1920$$

from which,

A pine 8 ins. in diam., brs. S. $72^{\circ}E$, .94 lks. dist., mkd. AS 6 BT.

Survey of North boundary of Township 31 North, Range 7 west.

Chains.

A pine, 8 ins. in diam., brs. N. $40\frac{1}{2}^\circ$ W., 91 lks.
 dist., mkd. $\frac{1}{4}$ S 31 BT.
 Continue over broken and mountainous land, thru. scattering
 timber and undergrowth. Descend 30 ft., over NE. slope.
 Gulch, course NW. Ascend 505 ft. over W. slope, to
 Same gulch, course SW. Ascend 90 ft., over SW. slope, to
 Set an iron post, 3 ft. long, 2 ins. in diam., 26 ins. in
 the ground, for cor. of secs. 5, 6, 31 and 32, marked on
 brass cap,

48.30
73.50
78.18

T32N	R7 W
S31	S32
S 6	S 5
T31N	
1920	

from which,
 A pine, 12 ins. in diam., brs. S. 36° E., 80 lks.
 dist., mkd. T31N R7W S5 BT.
 A pine, 10 ins. in diam., brs. S. $12\frac{1}{2}^\circ$ W., 152 lks.
 dist., mkd. T31N R7W S6 BT.
 A pine, 10 ins. in diam., brs. N. $7\frac{1}{2}^\circ$ W., 61 lks.
 dist., mkd. T32N R7W S31 BT.
 and raise a mound of stone 2 ft. base, $1\frac{1}{2}$ ft. high, W. of
 cor.

Land, broken and mountainous.
 Soil, gravelly and rocky, 2nd and 3rd rate.
 Timber, scattering cedar and pine.
 Undergrowth, scattering scrub cedar and sagebrush.
 Poor grass.

0.50
11.30
15.30
25.90
40.00

N. $89^\circ 58'$ E., on a true line, bet. secs. 5 and 32.
 Over broken and mountainous land, thru. dense timber
 and scattering undergrowth.
 Base of cliffs, bearing NW. and SE. facing SW. Ascend
 about 500 ft. over cliffs to
 Top of cliffs, brs. NW. and S. Ascend 33 ft., over W. slope.
 Spur, slopes N. Descend 400 ft., over E. slope.
 Canyon, course N. Ascend 330 ft., over W. slope, to
 Set an iron post, 3 ft. long, 1 in. in diam., 4 ins. in
 the ground to bed rock, supported in a mound of stone,
 for $\frac{1}{4}$ sec. cor., marked on brass cap,

$\frac{1}{4}$ S 32
S 5
1920

from which,
 A pine, 8 ins. in diam., brs. N. $21\frac{1}{2}^\circ$ E., 86 lks.
 dist., mkd. $\frac{1}{4}$ S 32 BT.
 A pine, 6 ins. in diam., brs. S. 3° E., 75 lks.
 dist., mkd. $\frac{1}{4}$ S 5 BT.

Continue over broken and mountainous land, thru. dense
 timber, and scattering undergrowth.
 Ascend 230 ft., over W. slope.
 Old Indian trail, brs. NE. and S.
 Ridge, brs. N. 30° E. and S. 30° W. Desc. 120 ft., over E.
 slope.
 Gulch, course N: from SW. Ascend slightly over NW. slope, to
 Set an iron post, 3 ft. long, 2 ins. in diam., in a mound
 of stone, for cor. of secs. 4, 5, 32 and 33, marked on
 brass cap;

58.00
59.60
79.50
80.00

T32N	R7 W
S32	S33
S 5	S 4
T31N	
1920	

from which,
 A pine, 18 ins. in diam., brs. N. 39° E., 23 lks.
 dist., mkd. T32N R7W S33 BT.

10 North Boundary of Township 31 North Range 7 West.

Chains.

- A pine, 10 ins. in diam., brs. S. $63\frac{1}{4}^{\circ}$ E., 32 lks. dist., marked T31N R7W S4 BT.
- A pine, 10 ins. in diam., brs. S. 30° W., 47 lks. dist., marked T31N R7W S5 BT.
- A pine, 22 ins. in diam., brs. N. 45° W., 33 lks. dist., marked T32N R7W S32 BT.

Land, mountainous.
 Soil, rocky, 4th rate.
 Timber, dense cedar and pine.
 Undergrowth, scattering scrub cedar and dogwood.
 Poor grass.

N. $89^{\circ}58'$ E., on a true line, bet. secs. 4 and 33.
 Over roughly rolling land, thru. dense timber, and scattering undergrowth.

- Ascend 12 ft., over NW. slope.
- 3.50 Spur, slopes NE. Descend 70 ft., over E. slope.
- 13.00 Head of draw, course SE. Ascend 87 ft., over W. slope.
- 17.50 Point of spur, slopes S. Descend 80 ft., over E. slope.
- 24.90 Draw, course NE. Ascend 05 ft., over NW. slope.
- 29.80 Point of spur, slopes N. Descend 30 ft., over E. slope.
- 32.70 Draw, course N. Ascend 70 ft., over W. slope, to
- 40.00 Spur, slopes N. Set an iron post, 3 ft. long, 1 in. in diam., 4 ins. in the ground, to bed rock, supported in a mound of stone, for $\frac{1}{4}$ sec. cor., marked on brass cap,

$\frac{1}{4}$ S 33
 S 4
 1920

from which,

- A pine, 12 ins. in diam., brs. N. 28° E., 49 lks. dist., marked $\frac{1}{4}$ S 33 BT.
- A pine, 14 ins. in diam., brs. S. 25° W., 42 lks. dist., marked $\frac{1}{4}$ S 4 BT.

Continue over roughly rolling land, thru. dense timber, and scattering undergrowth.
 Descend 150 ft., over E. slope.

- 63.30 Draw, course N. Ascend 120 ft., over NW. slope, to
- 80.00 Set an iron post, 3 ft. long, 2 ins. in diam., 6 ins. in the ground, to bed rock, supported in a mound of stone, for cor. of secs. 3, 4, 33 and 34, marked on brass cap,

T32N	R7W
S33	S34
S 4	S 3
T31N	
1920	

from which,

- A cedar, 10 ins. in diam., brs. N. 23° E., 26 lks. dist., marked T32N R7W S34 BT.
- A pine, 10 ins. in diam., brs. S. $52\frac{1}{2}^{\circ}$ E., 48 lks. dist., marked T31N R7W S3 BT.
- A pine, 7 ins. in diam., brs. S. $45\frac{1}{2}^{\circ}$ W., 26 lks. dist., marked T31N R7W S 4 BT.
- A cedar, 14 ins. in diam., brs. N. 22° W., 27 lks. dist., marked T32N R7W S33 BT.

Land, broken, and roughly rolling.
 Soil, gravelly and rocky; 3rd rate.
 Timber, dense cedar and pine.
 Undergrowth, scattering scrub cedar, sagebrush and dogwood.
 Poor grass.

N. $89^{\circ}58'$ E., on a true line, bet. secs. 3 and 34.
 Over broken, roughly rolling land, thru. dense timber and scattering undergrowth.

North boundary of Township 31 North Range 7 West 11

chains

- 10.40 Descend 90 ft., over NE. slope.
- 19.00 Draw, course NE. Ascend 65 ft., over W. slope.
- 23.30 Point of spur, slopes N. Descend 55 ft., over E. slope.
- 40.00 Draw, course N. Ascend 140 ft., over W. slope, to Spur, slopes N. Set an iron post, 3 ft. long, 1 in. in diam., 4 ins. in the ground to bed rock, supported in a mound of stone, for $\frac{1}{4}$ sec. cor., marked on brass cap,

$\frac{1}{4}$ S 34
 S 3
 1920

from which,
 A pine, 8 ins. in diam., brs. N. 37° E., 44 lks.
 dist., mkd. $\frac{1}{4}$ S 34 BT."
 A pine, 8 ins. in diam., brs. S. 12 $\frac{1}{2}$ ° W., 59 lks.
 dist., mkd. $\frac{1}{4}$ S 3 BT."

- Continue over roughly rolling land, thru, dense timber and scattering undergrowth.
- Descend 155 ft., over E. slope.
- 51.31 Flag point of triangulation. W. rim of Mohawk Canyon, brs. N. 30° E. and S. Leave roughly rolling, and enter mountainous land in Mohawk Canyon. Leave timber.
- 70.01 Descend 800 ft., over cliffs, facing E. Measurement by triangulation, hereinbefore described, to
- 79.01 Triangulation point at foot of cliffs. Descend 20 ft., over steep E. slope, to
- 80.00 Set an iron post, 3 ft. long, 2 ins. in diam., 8 ins. in the ground to bed rock, supported in a mound of stone, for cor. of secs. 2, 3, 34 and 35, marked on brass cap,

T32N | R7 W
 S34 | S35
 S 3 | S 2
 T31N
 1920

and raise a mound of stone, 2 ft. base, 1 $\frac{1}{2}$ ft. high, W. of cor.

Land, roughly rolling and mountainous.
 Soil, gravelly and rocky, 3rd rate.
 Timber, dense cedar and pine in W. 51 chs. only.
 Undergrowth, scattering scrub cedar, sagebrush and dogwood.
 Poor grass.

-
- N. 89° 58' 4", on a true line, bet. secs. 2 and 35.
 - Over broken and mountainous land, thru. scattering undergrowth in Mohawk Canyon.
 - Descend 200 ft., over E. slope.
 - 12.00 Gulch, course SE. Ascend 60 ft., over SW. slope.
 - 17.70 Spur, slopes SE. Desc. 300 ft., over E. slope.
 - 37.40 Wash, in bottom of Mohawk Canyon, course N. 30° E. Ascend 20 ft., over NW. slope, to
 - 40.00 Set an iron post, 3 ft. long, 1 in. in diam., 6 ins. in the ground to bed rock, supported in a mound of stone, for $\frac{1}{4}$ sec. cor., marked on brass cap,

$\frac{1}{4}$ S 35
 S 2
 1920

and raise a mound of stone, 2 ft. base, 1 $\frac{1}{2}$ ft. high, N. of cor.

- Continue over broken and mountainous land in Mohawk Canyon, thru. scattering timber and undergrowth.
- Ascend 300 ft., over NW. slope, to
- 80.00 Set an iron post, 3 ft. long, 2 ins. in diam., 8 ins. in the ground to bed rock, supported in a mound of stone, for cor. of secs. 1, 2, 35 and 36, marked on brass cap,

12. North boundary of Township 31 North, Range 7 West.

Chains.

T32N	R7W
S35	S36
S 2	S 1
T31N	
1920	

and raise a mound of stone, 2 ft. base, $1\frac{1}{2}$ ft. high, W. of cor.

Land, broken and mountainous.

Soil, gravelly and rocky, 3rd rate.

Timber, scattering cedar and pine in E. $\frac{1}{2}$ only.

Undergrowth, scattering scrub cedar, sagebrush and dogwood.

Poor grass.

N. $89^{\circ}58'$ E., on a true line, bet. secs. 1 and 30.

Over broken and mountainous land, thru scattering timber and undergrowth in Mohawk Canyon.

Ascend 64 ft., over W. slope, to

1.58 Spur, slopes N. Point from which triangulated measurement to E. rim of Mohawk Canyon was made, as hereinbefore described. Continue line and measurement by chaining.

Descend 50 ft., over E. slope.

9.90 Wash, course N. Ascend 35 ft., over W. slope.

12.50 Spur, slopes N. Descend 260 ft., over E. slope.

19.00 Wash, course N. Ascend 60 ft., over W. slope.

24.90 Spur, slopes N. Descend 50 ft., over E. slope.

25.70 Wash, course NW. Ascend 130 ft., over SW. slope.

30.30 Spur, slopes N. Descend 115 ft., over E. slope.

37.50 Wash, course NW. Ascend 20 ft., over W. slope, to

40.00 Set an iron post, 3 ft. long, 1 in. in diam., in a mound of stone, for $\frac{1}{4}$ sec. cor., marked on brass cap,

1 -S 36
S 1
1920

and raise a mound of stone, 2 ft. base, $1\frac{1}{2}$ ft. high, N. of cor.

Continue over broken and mountainous land in Mohawk Canyon, thru scattering timber and undergrowth.

Ascend 20 ft., over W. slope.

42.50 Spur, slopes N. Descend 35 ft., over E. slope.

45.90 Wash, course NE. Discontinue chaining. Ascend 1250 ft., over precipitous W. slope, broken by cliffs.

76.70 Measurement by triangulation from 1.58 ch. station to E. rim of Mohawk Canyon, brs. N. and S. flag point of triangulation. Ascend 40 ft., over W. slope, to

80.00 The cor. of Ts. 31 and 32 N., Rs. 6 and 7 W., described in Book "E."

Land, broken and mountainous.

Soil, rocky, 4th rate.

Timber, scattering cedar and pine.

Undergrowth, scattering scrub cedar and sage brush.

Poor grass.

Boundaries of Township 31 North, Range 7 West.

Latitudes, Departures and Closing Errors.

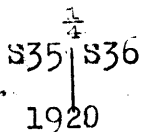
Line designated.	True bearing.	Dist.	Latitudes.		Departures.	
			N.	S.	E.	W.
South boundary,	West,	478.88				478.88
West boundary,	North,	480.00	480.00			
North boundary,	N. 89° 58' E.	478.18	.28		478.18	
East boundary,	South,	480.00		480.00		
Convergency,					.53	
Totals,			480.28	480.00	478.71	478.88
			480.00			478.71
<u>Error in latitude,</u>			0.28			
<u>Error in departure,</u>					0.17	

14. Survey of Subdivision lines of T.31 N., R.7 W.

Chains.

From the cor. of secs. 1, 2, 35 and 36 on S. bdy. of Tp., described in Book "C,"
 N. 0° 01' W., bet. secs. 35 and 36
 Over level land, thru. very scattering timber and undergrowth.

40.00 Set an iron post, 3 ft. long, 1 in. in diam., 20 ins. in the ground, for $\frac{1}{4}$ sec. cor., marked on brass cap,



and raise a mound of stone, 2 ft. base, $1\frac{1}{2}$ ft. high, W. of cor.

Continue over level land, thru. very scattering timber and undergrowth.

43.50 Leave level, and enter gently rolling land. Descend 32 ft. over N. slope.

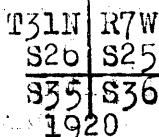
45.00 Enter dense timber, brs. SE. and NW.

49.80 Draw, course N. 30° W. Ascend 25 ft. over SW. slope.

60.00 Spur, slopes W. Descend 21 ft., over N. slope.

65.00 Draw, course W. for about 2.00 chs., thence N. Descend slightly over W. slope, to

80.00 Set an iron post, 3 ft. long, 2 ins. in diam., 10 ins. in the ground, to bed rock, supported in a mound of stone, for cor. of secs. 25, 26, 35 and 36, marked on brass cap,



from which,

A cedar, 14 ins. in diam., brs. N. 74° E., 52 lks.
 dist., mkd. T31N R7W S25 BT.

A pine, 16 ins. in diam., brs. S. 57 $\frac{1}{2}$ ° E., 16 lks.
 dist., mkd. T31N R7 W S 36 BT.

A pine, 9 ins. in diam., brs. S. 24° W., 28 lks.
 dist., mkd. T31N R7W S35 BT.

A pine, 15 ins. in diam., brs. N. 34 $\frac{1}{2}$ ° W., 41 lks.
 dist., mkd. T31N R7W S26 BT.

Land, S. 43 $\frac{1}{2}$ chs., level; remainder, gently rolling.
 Soil, sandy and gravelly loam, 1st and 2nd rate.

Timber, cedar and pine, scattering and dense as noted.
 Undergrowth, scattering scrub cedar, sagebrush and dogwood.

Fair grass.

East, on a random line, bet. secs. 25 and 36.

40.00 Set temp. $\frac{1}{4}$ sec. cor.

80.10 Fall 20 lks. N. of the cor. of secs. 25, 30, 31 and 36, on E. bdy. of Tp., described in Book "E."

Thence,

N. 89° 51' W., on a true line, bet. secs. 25 and 36.

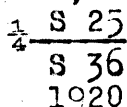
Over rolling land, thru. dense timber and scattering undergrowth. Ascend 125 ft., over SE. slope.

15.00 Thence over N. slope, with slight change in elevation.

25.00 Descend 30 ft., over NW. slope.

32.30 Draw, course NE. Ascend 40 ft., over E. slope, to

40.05 Set an iron post, 3 ft. long, 1 in. in diam., 10 ins. in the ground, to bed rock, supported in a mound of stone, for $\frac{1}{4}$ sec. cor., marked on brass cap,



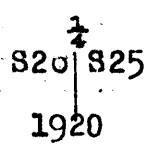
from which,

Subdivision lines of Township 31 North, Range 7 West. 15

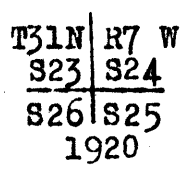
Chains.

A cedar, 12 ins. in diam., brs. N. 8° E., 03 lks.
 dist., marked $\frac{1}{4}$ S 25 BT.
 A pine, 9 ins. in diam., brs. S. 1 $\frac{1}{2}$ ° E., 05 lks.
 dist., marked $\frac{1}{4}$ S 36 BT.
 Continue over rolling land, thru. dense timber and under-
 growth. Descend 25 ft., over NW. slope.
 46.00 Draw, course N. 20° E. Ascend 35 ft., over E. slope.
 55.00 Spur, slopes N. 30° E. Descend 45 ft., over W. slope.
 66.90 Draw, course NE. Ascend 30 ft., over E. slope.
 74.90 Spur, slopes N. Descend 40 ft., over W. slope, to
 80.10 The cor. of secs. 25, 26, 35 and 36.
 Land, rolling.
 Soil, gravelly and rocky, 2nd and 3rd rate.
 Timber, dense cedar and pine.
 Undergrowth, scattering scrub cedar, sagebrush and dog-
 wood.
 Fair grass.

N. 0° 01' W., bet. secs. 25 and 26.
 Over gently rolling land, thru. dense timber and scatter-
 ing undergrowth.
 Descend 35 ft. over NW. slope.
 10.00 Leave dense, and enter scattering timber, brs. NE. and SW.
 13.30 Enter draw, course N. from SW. Descend very gradually in
 draw;
 35.00 Leave draw, course NE. from S. Ascend 03 ft., over SE. slope
 to $\frac{1}{4}$ sec. cor.
 39.90 Leave scattering, and enter dense timber, brs. NE. and SW.
 40.00 Set an iron post, 3 ft. long, 1 in. in diam., 13 ins. in
 the ground to bed rock, supported in a mound of stone,
 for $\frac{1}{4}$ sec. cor., marked on, brass cap,



from which,
 A pine, 6 ins. in diam., brs. N. 27 $\frac{1}{2}$ ° E., 24 lks.
 dist., marked $\frac{1}{4}$ S 25 BT.
 A pine, 14 ins. in diam., brs. S. 07° W., 90 lks.
 dist., marked $\frac{1}{4}$ S 20 BT.
 Continue over gently rolling land, thru. dense timber and
 scattering undergrowth. Desc. 10 ft., over NE. slope.
 45.00 Head of draw, course E. Asc. 25 ft., over S. slope.
 50.00 Spur, slopes SE. Desc. 40 ft., over NE. slope.
 54.90 Draw, course SE. Asc. 110 ft., over SE. slope.
 65.00 Spur, slopes NE. Descend 20 ft., over N. slope.
 70.00 Ascend 30 ft., over E. slope, to
 80.00 Set an iron post, 3 ft. long, 2 ins. in diam., 26 ins. in
 the ground, for cor. of secs. 23, 24, 25 and 26, marked
 on brass cap,



from which,
 A pine, 10 ins. in diam., brs. N. 49 $\frac{1}{2}$ ° E., 48 lks.
 dist., mkd. T31N R7W S24 BT.
 A cedar, 8 ins. in diam., brs. S. 25 $\frac{1}{2}$ ° E., 110 lks.
 dist., mkd. T31N R7W S25 BT.
 A pine, 10 ins. in diam., brs. S. 56 $\frac{1}{2}$ ° W., 64 lks.
 dist., mkd. T31N R7W S20 BT.
 A cedar, 14 ins. in diam., brs. N. 44 $\frac{1}{2}$ ° W., 31 lks.
 dist., mkd. T31N R7W S23 BT.
 Land, gently rolling.
 Soil, gravelly and rocky, 2nd and 3rd rate.
 Timber, cedar and pine, dense and scattering as noted.

16

Subdivision lines of Township 31 North, Range 7 West.

Chains.

Undergrowth, scattering scrub cedar, sagebrush and dog-wood.
Fair grass.

- 40.00 S. 89° 51' E., on a random line, bet. secs. 24 and 25.
Set temp. $\frac{1}{4}$ sec. cor.
80.20 Fall 2 lks. N. of the cor. of secs. 19, 24, 25 and 30, on E. bdy. of Tp., described in Book "E."
Thence,
N. 89° 50' W., on a true line, bet. secs. 24 and 25.
Over rolling land, thru. dense timber and scattering undergrowth.
Descend 20 ft., over W. slope.
5.40 Draw, course NE. Ascend 65 ft., over SE. slope.
10.30 Spur, slopes NE. Descend 95 ft., over NW. slope, to
40.10 Set an iron post, 3 ft. long, 1 in. in diam., on surface rock supported in a mound of stone, for $\frac{1}{4}$ sec. cor., marked on brass cap,

S 24
 $\frac{1}{4}$
S 25
1920

from which,

- A pine, 6 ins. in diam., brs. N. 3 $\frac{1}{2}$ ° E., 34 lks. dist., marked $\frac{1}{4}$ S 24 BT.
A pine, 8 ins. in diam., brs. S. 39° E., 112 lks. dist., marked $\frac{1}{4}$ S 25 BT.
Continue over rolling land, thru. dense timber and scattering undergrowth. Descend 16 ft., over W. slope, to
42.00 Draw, course N. Ascend 206 ft., over E. slope.
60.20 Spur, slopes NE. Desc. 35 ft., over NW. slope.
70.20 Draw, course NE. Ascend 25 ft., over E. slope, to
80.20 The cor. of secs. 23, 24, 25 and 26.
Land, rolling.
Soil, sandy and gravelly loam, 2nd rate.
Timber, dense cedar and pine.
Undergrowth, scattering scrub cedar, sagebrush and dog-wood.
Fair grass.

- N. 0° 01' W., bet. secs. 23 and 24.
Over gently rolling land, thru. dense timber and scattering undergrowth, along E. slope, with slight change in elevation.
20.00 Descend 35 ft., over NE. slope.
30.00 Draw, course SE. Ascend very gradually over SW. slope, to
40.00 Set an iron post, 3 ft. long, 1 in. in diam., on surface rock supported in a mound of stone, for $\frac{1}{4}$ sec. cor., marked on brass cap,

S 23 $\frac{1}{4}$ S 24
|
1920

from which,

- A pine, 8 ins. in diam., brs. N. 23 $\frac{1}{2}$ ° E., 23 lks. dist., marked $\frac{1}{4}$ S 24 BT.
A pine, 6 ins. in diam., brs. N. 38 $\frac{1}{2}$ ° W., 68 lks. dist., marked $\frac{1}{4}$ S 23 BT.
Continue over gently rolling land, thru. dense timber and scattering undergrowth. Ascend very gradually over SW. slope.
45.00 Leave dense, and enter scattering timber, brs. NE. and SW.
50.00 Leave scattering, and enter dense timber, brs. NE. and SW.
60.00 Descend very gradually over NE. slope.
80.00 Set an iron post, 3 ft. long, 2 ins. in diam., 8 ins. in

Subdivision lines of Township 31 North, Range 7 West. 17

Chains.

the ground, to bed rock, supported in a mound of stone for cor. of secs. 13, 14, 23 and 24, marked on brass cap,

T31N	R7W
S14	S13
S23	S24
1920	

- from which,
- A cedar, 12 ins. in diam.; bears N. 15 1/2° E., 94 lks. dist., marked T31N R7W S13 BT.
- A cedar, 16 ins. in diam., brs. S. 26° E., 15 lks. dist., marked T31N R7W S24 BT.
- A pine, 9 ins. in diam., bears S. 54° W., 17 lks. dist., marked T31N R7W S23 BT.
- A pine, 17 ins. in diam.; brs. N. 40 1/4° W., 109 lks. dist., marked T31N R7W S14 BT.

Land, gently rolling.
 Soil, sandy and gravelly, 2nd rate.
 Timber, cedar and pine, dense and scattering as noted.
 Undergrowth, scattering scrub cedar, sage brush and dog-wood.
 Fair grass.

40.00
79.80

S. 89° 50' E., on a random line, bet. secs. 13 and 24.
 Set temp. 1/4 sec. cor.
 Fall 5 lks. N. of the cor. of secs. 13, 18, 19 and 24, on E. bdy. of Tp., described in Book "E."

10.00
19.00
36.30
39.90

Thence,
 N. 89° 48' W., on a true line, bet. secs. 13 and 24.
 Over gently rolling land, thru. dense timber and scattering undergrowth.
 Ascend 28 ft., over E. slope.
 Spur, slopes SE. Descend 50 ft., over SW. slope.
 Draw, course SE. Ascend 60 ft., over E. slope.
 Spur, slopes NE. Descend 25 ft., over W. slope, to
 Set an iron post, 3 ft. long, 1 in. in diam., 26 ins. in the ground, for 1/4 sec. cor., marked on brass cap,

1/4 S 13
S 24
1920

- from which,
- A pine, 10 ins. in diam., brs. S. 59° E., 34 lks. dist., marked 1/4 S 24 BT.
- A pine, 9 ins. in diam., brs. N. 35° W., 82 lks. dist., marked 1/4 S 13 BT.

53.00
79.80

Continue over gently rolling land thru. dense timber and scattering undergrowth. Descend 40 ft., over W. slope.
 Draw, course N. Ascend 45 ft., over NE. slope, to
 The cor. of secs. 13, 14, 23 and 24.
 Land, gently rolling.
 Soil, sandy and gravelly, 2nd and 3rd rate.
 Timber, dense cedar and pine.
 Undergrowth, scattering scrub cedar, sage brush and dog-wood.
 Fair grass.

30.00
40.00

N. 0° 01' W., bet. secs. 13 and 14.
 Over gently rolling land, thru. dense timber and scattering undergrowth.
 Descend 30 ft. over NE. slope.
 Draw, course NE. Asc. 20 ft., over SE. slope, to
 Set an iron post, 3 ft. long, 1 in. in diam., 26 ins. in the ground, for 1/4 sec. cor., marked on brass cap,

18 Subdivision lines of Township 31 North, range 7 West.

Chains.

$\frac{1}{4}$
 S14 | S13
 1920

from which,

A cedar, 10 ins. in diam., brs. S. 50° E., 108 lks.
 dist., marked $\frac{1}{4}$ S 13 BT.

A pine, 14 ins. in diam., brs. S. 30 $\frac{1}{4}$ ° W., 91 lks.
 dist., marked $\frac{1}{4}$ S 14 BT.

Continue over gently rolling land, thru. dense timber
 and scattering undergrowth. Descend slightly over E.
 slope, to

42.00 Head of draw, course E. Ascend 30 ft., over SE. slope, to

55.00 Descend very gradually over E. slope, to

80.00 Set an iron post, 3 ft. long, 2 ins. in diam., 18 ins. in
 the ground to bed rock, supported in a mound of stone
 for cor. of secs. 11, 12, 13 and 14, marked on brass cap,

T31N | R7 W
 S11 | S12
 S14 | S13
 1920

from which,

A pine, 10 ins. in diam., brs. S. 43° E., 48 lks.
 dist., marked T 31N R7W S13 BT.

A cedar, 13 ins. in diam., brs. S. 53 $\frac{1}{4}$ ° W., 11 lks.
 dist., marked T31N R7W S14 BT.

A pine, 12 ins. in diam., brs. N. 31 $\frac{1}{4}$ ° W., 58 lks.
 dist., marked T31N R7W S11 BT.

and raise a mound of stone 2 ft. base, 1 $\frac{1}{2}$ ft. high, W.
 of cor.

Land, gently rolling.

Soil, sandy, gravelly and rocky, 2nd and 3rd rate.

Timber, dense cedar and pine.

Undergrowth, scattering scrub cedar, sagebrush and dog-
 wood.

Fair grass.

40.00 S. 89° 48' E., on a random line, bet. secs. 12 and 13.

79.86 Set temp. $\frac{1}{4}$ sec. cor.

Fall 5 lks. N. of the cor. of secs. 7, 12, 13 and 18, on E. bdy.
 of Tp., described in Book "E."

Thence,

N. 89° 40' W., on a true line, bet. secs. 12 and 13.

Over rolling land, thru. dense timber and scattering un-
 dergrowth.

Descend 30 ft., over NW. slope.

5.46 Head of draw, course N: Ascend 25 ft., over E. slope.

12.00 Sptr, slopes N. Desc. 40 ft., over NW. slope.

15.00 Draw, course NE. Ascend 75 ft., over E. slope. Leave
 dense timber, brs. NE. and SW.

20.00 Enter dense timber, brs: NE. and SW.

30.00 Spur, slopes NE. Descend 20 ft., over NW. slope, to

39.93 Set an iron post, 3 ft. long, 1 in. in diam., 4 ins. in
 the ground to bed rock, supported in a mound of stone
 for $\frac{1}{4}$ sec. cor., marked on brass cap,

$\frac{1}{4}$ S 12
 S 13
 1920

from which,

A pine, 6 ins. in diam., brs. N. 30 $\frac{1}{4}$ ° E., 74 lks.
 dist., marked $\frac{1}{4}$ S 12. BT.

A pine, 9 ins. in diam., brs. S. 31 $\frac{1}{4}$ ° E., 82 lks.
 dist., marked $\frac{1}{4}$ S 13 BT.

Continue over rolling land, thru. dense timber, and scat-
 tering undergrowth. Descend 30 ft., over NW. slope.

Subdivision lines of Township 31 North, Range 7 West.

Chains.

48.00
50.00
64.00
69.86
74.86
79.86

Draw, course NE. Ascend 20 ft., over SE. slope.
Spur, slopes NE. Descend 60 ft., over W. slope.
Draw, course N. Ascend 30 ft., over E. slope.
Spur, slopes N. Descend 30 ft., over W. slope.
Draw, course N. Ascend 30 ft., over E. slope, to
The cor. of secs. 11, 12, 13 and 14.
Land, rolling.
Soil, gravelly and rocky, 2nd and 3rd rate.
Timber, dense cedar and pine.
Undergrowth, scattering sage brush, scrub cedar and dogwood.
Fair grass.

N. 0° 01' W., bet. secs. 11 and 12.
Over rolling land, through scattering timber and undergrowth.

12.00
29.90
35.00
40.00

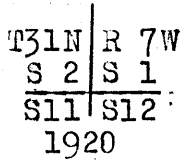
Descend 20 ft., over NE. slope.
Draw, course E. Ascend 65 ft., over S. slope.
Spur, slopes E. Descend 15 ft., over N. slope.
Draw, course E. Ascend 15 ft., over S. slope, to
Set an iron post, 3 ft. long, 1 in. in diam., 14 ins. in the ground, to bed rock, supported in a mound of stone, for $\frac{1}{4}$ sec. cor., marked on brass cap,



from which,
A cedar, 9 ins. in diam., brs. S. 84 $\frac{1}{2}$ ° E., 334 lks. dist., marked $\frac{1}{4}$ S 12 BT.
A cedar, 16 ins. in diam., brs. S. 36 $\frac{1}{2}$ ° W., 151 lks. dist., marked $\frac{1}{4}$ S 11 BT.

45.00
64.40
69.90
73.80
80.00

Continue over rolling land, thru. scattering timber and undergrowth. Ascend 25 ft., over SE. slope.
Spur, slopes NE. Descend 60 ft., over NW. slope.
Draw, course NE. Ascend 40 ft., over SE. slope.
Spur, slopes NE. Descend 50 ft., over NW. slope.
Draw, course E. Ascend 30 ft., over SE. slope, to
Set an iron post, 3 ft. long, 2 ins. in diam., 6 ins. in the ground, to bed rock, supported in a mound of stone, for cor. of secs. 1, 2, 11 and 12, marked on brass cap,



from which,
A pine, 15 ins. in diam., brs. N. 58 $\frac{1}{2}$ ° E., 49 lks. dist., marked T31N R7W S1 BT.
A pine, 16 ins. in diam., brs. S. 62 $\frac{1}{2}$ ° E., 80 lks. dist., marked T31N R7W S12 BT.
A pine, 22 ins. in diam., brs. S. 61 $\frac{1}{2}$ ° W., 53 lks. dist., marked T31N R7W S11 BT.
A pine, 8 ins. in diam., brs. N. 49 $\frac{1}{2}$ ° W., 103 lks. dist., marked T31N R7W S2 BT.

Land, rolling.
Soil, sandy, gravelly and rocky, 2nd and 3rd rate.
Timber, scattering cedar and pine.
Undergrowth, scattering sage brush, scrub cedar and dogwood.
Fair grass.

20 Subdivision lines of Township 31 North, Range 7 West.

Chains.

40.00 S. 89° 40' E., on a random line, bet. secs. 1 and 12.
 Set temp. $\frac{1}{4}$ sec. cor.
 79.60 Fall 11 lks. N. of the cor. of secs. 1, 6, 7 and 12, on N. bdy. of Tp., described in Book "E."
 Thence,
 N. 89° 41' W., on a true line, bet. secs. 1 and 12.
 Over rolling and mountainous land, thru dense timber and scattering undergrowth. Ascend 30 ft., over SE. slope.
 - 5.00 Spur, slopes NE. Descend 195 ft., over W. slope.
 20.50 Draw, course NW. Ascend 74 ft., over E. slope.
 25.40 Point of spur, slopes N. Descend 70 ft., over NW. slope.
 28.00 Draw, course NE. Ascend 185 ft., over E. slope, to
 39.80 Set an iron post, 3 ft. long, 1 in. in diam., on surface rock, in a mound of stone, for $\frac{1}{4}$ sec. cor., marked on brass cap,

$\frac{1}{4}$ S 1
 S 12
 1920

from which,

A pine, 10 ins. in diam., brs. N. 74 $\frac{1}{2}$ ° E., 48 lks. dist., marked $\frac{1}{4}$ S 1 BT.

A cedar, 8 ins. in diam., brs. S. 57° E., 41 lks. dist., marked $\frac{1}{4}$ S 12 BT.

Continue over rolling and mountainous land, thru dense timber, and scattering undergrowth. Ascend 30 ft., over E. slope.

45.00 Spur, slopes NE. Descend 100 ft., over W. slope.

55.30 Draw, course N. Ascend 45 ft., over E. slope.

64.80 Spur, slopes N. Descend 90 ft., over W. slope.

70.70 Draw, course N. Ascend 73 ft., over E. slope, to

79.60 The cor. of secs. 1, 2, 11 and 12.

Land, rolling and mountainous.

Soil, rocky, 3rd and 4th rate.

Timber dense cedar and pine.

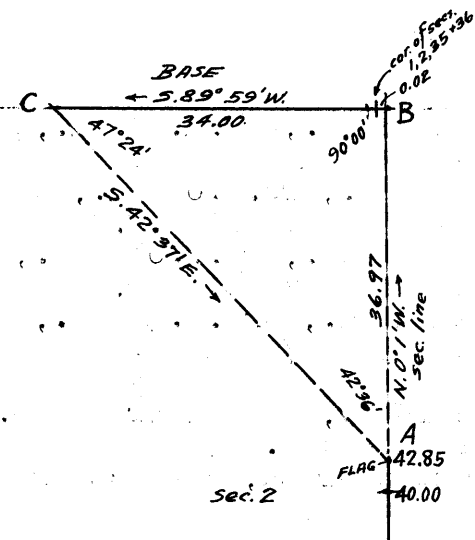
Undergrowth, scattering sage brush, scrub cedar and dog-wood.

Poor grass.

40.00 N. 0° 01' W., on a random line, bet. secs. 1 and 2.

42.85 Set temp. $\frac{1}{4}$ sec. cor.

E. rim of Mohawk Canyon, brs. NE. and SW. Continuation of measurement by chaining is impracticable, owing to steep broken descent over cliffs; therefore, triangulate as described as follows, and as shown on the diagram hereon:



Set flag at this point on random sec. line indicated on diagram at "A."

A flag indicated on diagram at "B" bears N. 0° 1' W. from flag "A," and is 2 lks. E. of cor. of secs. 1, 2, 35 and 36 on N. bdy. of Tp.

The true course of sec. line is therefore S. 0° 2' E.

From point "B" measure a base, S. 89° 59' W., 34.00 chs. to point "C."

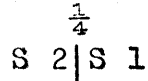
Bearing "C" to "A" = S. 42° 37' E. Included angles are 47° 24', 90° 00' and 42° 36', the sum of which is 180° 00'.

Triangulated dist. on random sec. line is obtained by Tang. 47° 24' x Base or 1.08749 x 34.00 = 36.97 chs., which added to 42.85 chs. gives 79.82 chs., N. 0° 1' W. from cor. of secs. 1, 2, 11 and 12, for the position of point "B."

Subdivision lines of Township 31 North, Range 7 West. 21

Chains.

79.82 Fall 2 lks. E. of the cor. of secs. 1, 2, 35 and 36 on N. bdy. of Tp., hereinbefore described.
 Thence, S. 0° 2' E., on a true line, bet. secs. 1 and 2.
 Over mountainous land, thru. scattering timber and undergrowth.
 Ascend over precipitous, broken NW. slope on E. wall of Mohawk Canyon, triangulating measurement as hereinbefore described, to
 36.97 Triangulation point at E. rim of Mohawk Canyon, brs. N. 40° E., and S. 40° W. Leave canyon.
 Continue line and measurement by chaining.
 Enter dense timber; descend 35 ft., over SE. slope, to
 39.82 Set an iron post, 3 ft. long, 1 in. in diam., on surface rock, in a mound of stone, for $\frac{1}{4}$ sec. cor., marked on brass cap,



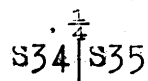
1920

from which,
 A cedar, 18 ins. in diam., brs. N. 36 $\frac{1}{2}$ ° E., 45 lks. dist., marked $\frac{1}{4}$ S 1 BT.
 A cedar, 16 ins. in diam., brs. N. 77° W., 46 lks. dist., marked $\frac{1}{4}$ S 2 BT.

Continue over mountainous land, thru. dense timber, and scattering undergrowth. Descend 180 ft., over SE. slope.
 40.30 Gulch, course NE. Ascend 140 ft., over NW. slope.
 64.80 Spur, slopes NE. Descend 50 ft., over SE. slope, to
 79.82 The cor. of secs. 1, 2, 11 and 12.
 Land, mountainous.
 Soil, rocky, 4th rate.
 Timber, cedar and pine, scattering and dense as noted.
 Undergrowth, scattering sage brush, scrub cedar and dogwood.
 Poor grass.

From the cor. of secs. 2, 3, 34 and 35, on S. bdy. of Tp., described in Book 2, 3, 31 and 35, on N. bdy. of Tp., brs. N. 0° 01' W., bet. sec. 34 and 35.

Over rolling land, thru. dense timber and scattering undergrowth.
 Descend 45 ft., over NW. slope.
 12.67 Draw, course NE. Ascend 75 ft., over S. slope, to
 40.00 Set an iron post, 3 ft. long, 1 in. in diam., 9 ins. in the ground to bed rock, supported in a mound of stone, for $\frac{1}{4}$ sec. cor., marked on brass cap,



1920

from which,
 A cedar, 12 ins. in diam., brs. S. 49 $\frac{1}{2}$ ° E., 49 lks. dist., marked $\frac{1}{4}$ S 35 BT.
 A pine, 10 ins. in diam., brs. N. 72° W., 74 lks. dist., marked $\frac{1}{4}$ S 34 BT.

Continue over rolling land, thru. dense timber and scattering undergrowth.
 Descend 90 ft., over NE. slope.
 65.00 Draw, course SE. Ascend 50 ft., over SE. slope, to
 80.00 Set an iron post, 3 ft. long, 2 ins. in diam., 15 ins. in the ground, to bed rock, supported in a mound of stone, for cor. of secs. 26, 27, 34 and 35, marked on brass cap,

22 Subdivision lines of Township 31 North, Range 7 West.

Chains.

T31N R7 W
S27 S26
S34 S35
1920

from which,

- A cedar, 21 ins. in diam., brs. N. 32 $\frac{1}{2}$ ° E., 51 lks. dist., marked T31N R7W S26 BT.
- A cedar, 15 ins. in diam., brs. S. 36° E., 21 lks. dist., marked T31N R7W S 35 BT.
- A cedar, 9 ins. in diam., brs. S. 73° W., 61 lks. dist., marked T31N R7W S34 BT.
- A pine, 9 ins. in diam., brs. N. 50 $\frac{1}{2}$ ° W., 89 lks. dist., marked T31N R7W S27 BT.

Land, rolling:

Soil, gravelly and rocky, 2nd and 3rd rate.
Timber, dense cedar and pine.
Undergrowth, scattering sage brush, scrub cedar and dog-wood.
Fair grass.

40.00
79.84

East, on a random line, bet. secs. 20 and 35.
Set temp. $\frac{1}{4}$ sec. cor.
Fall 17 lks. S. of the cor. of secs. 25, 26, 35 and 36.
Thence, S. 89° 53' W., on a true line, bet. secs. 20 and 35.
Over gently rolling land, thru. dense timber, and scattering undergrowth.
Descend 34 ft., over W. slope.
5.00 Draw, course N. Ascend 25 ft., over E. slope.
11.50 Spur, slopes N. Descend 21 ft., over NW. slope.
14.90 Draw, course N. from SW. Ascend 75 ft., over SE. slope, to
39.92 Set an iron post, 3 ft. long, 1 in. in diam., 16 ins. in the ground, to bed rock, supported, in a mound of stone, for $\frac{1}{4}$ sec. cor., marked on brass cap,

$\frac{1}{4}$ S 26
S 35
1920

from which,

- A pine, 16 ins. in diam., brs. N. 16 $\frac{1}{2}$ ° W., 46 lks. dist., marked $\frac{1}{4}$ S. 26 BT.
- A pine, 8 ins. in diam., brs. S. 22 $\frac{1}{2}$ ° W., 78 lks. dist., marked $\frac{1}{4}$ S 35 BT.

Continue over gently rolling land, thru. dense timber and scattering undergrowth. Descend 25 ft. to

44.00 Head of draw, course SE. Ascend 110 ft., over SE. slope, to
79.84 the cor. of secs. 26, 27, 34 and 35.

Land, gently rolling.
Soil, gravelly, 2nd rate.
Timber, dense cedar and pine.
Undergrowth, scattering sage brush, scrub cedar and dog-wood.
Fair grass.

40.00

N. 0° 01' W., bet. secs. 26 and 27.
Over gently rolling land, thru. dense timber and scattering undergrowth.
Ascend 70 ft., over SE. slope, to
Set an iron post, 3 ft. long, 1 in. diam., 20 ins. in the ground, for $\frac{1}{4}$ sec. cor., marked on brass cap,

S27 S26
1920

from which,

Subdivision lines of Township 31 North, Range 7 West. 23

Chains.

A cedar, 9 ins. in diam., brs. S. 88 1/2° E., 23 lks.
dist., marked 1/4 S 26 BT.

A cedar, 6 ins. in diam., brs. S. 00 1/2° W., 17 lks.
dist., marked 1/4 S 27 BT.

75.00
80.00

Continue over gently rolling land, thru. dense timber and scattering undergrowth. Ascend 70 ft., over SE. slope, to
Top of divide, brs. NE. and SW. Descend slightly to
Set an iron post, 3 ft. long, 2 ins. in diam., 14 ins. in the ground, to bed rock, supported in a mound of stone, for cor. of secs. 22, 23, 26 and 27, marked on brass cap,

T31N | R7 W
S22 | S23
S27 | S26
1920

from which,
A pine, 12 ins. in diam., brs. N. 36 3/4° E., 28 lks.
dist., marked T31N R7W S23 BT.
A cedar, 10 ins. in diam., brs. S. 31 1/2° E., 15 lks.
dist., marked T31N R7W S26 BT.
A pine, 8 ins. in diam., brs. S. 27 1/2° W., 70 lks.
dist., marked T31N R7W S27 BT.
A pine, 10 ins. in diam., brs. N. 56 1/4° W., 60 lks.
dist., marked T31N R7W S22 BT.

Land, gently rolling.
Soil, gravelly, 2nd rate.
Timber, dense cedar and pine.
Undergrowth, scattering sage brush, scrub cedar and dog-wood.
Fair grass.

40.90
79.74

N. 89° 53' E., on a random line, bet. secs. 23 and 26.
Set temp. 1/4 sec. cor.
Fall 7 lks. S. of the cor. of secs. 23, 24, 25 and 26.
Thence,
S. 89° 50' W., on a true line, bet. secs. 23 and 26.

39.87

Over gently rolling land, thru. dense timber, and scattering undergrowth. Ascend 50 ft., over E. slope, to
Set an iron post, 3 ft. long, 1 in. in diam., 13 ins. in the ground, to bed rock, supported in a mound of stone, for 1/4 sec. cor., marked on brass cap,

1/4 S 23
S 26
1920

from which,
A cedar, 15 ins. in diam., brs. S. 24 1/2° W., 45 lks.
dist., marked 1/4 S 26 BT.
A pine, 12 ins. in diam., brs. N. 20° W., 73 lks.
dist., marked 1/4 S 23 BT.

77.50
79.74

Continue over gently rolling land, thru. dense timber and scattering undergrowth. Ascend 70 ft., over E. slope.
Top of divide, brs. NE. and SW. Descend slightly to
The cor. of secs. 22, 23, 26 and 27.
Land, gently rolling.
Soil, gravelly, 2nd rate.
Timber, dense cedar and pine.
Undergrowth, scattering sage brush, scrub cedar and dog-wood.
Fair grass.

N. 0° 01' W., bet. secs. 22 and 23.
Over rolling and broken land, thru. dense timber and scattering undergrowth.
Descend 50 ft., over NW. slope.

24 Subdivision lines of Township 31 North, Range 7 West.

Chains.

14.80 Draw, course NW. Ascend 30 ft., over SW. slope.
 26.60 Point of spur, slopes W. Descend 21 ft., over N. slope.
 29.50 Draw, course W. Ascend 30 ft., over S. slope.
 35.80 Spur, slopes W. Descend 50 ft., over N. slope, to
 40.00 Set an iron post, 3 ft. long, 1 in. in diam., on bed rock,
 supported in a mound of stone, for $\frac{1}{4}$ sec. cor., marked
 on brass cap,

S22 | S23
 |
 1920

from which,

A pine, 7 ins. in diam., brs. N. $49\frac{1}{2}^{\circ}$ E., 170 lks.
 dist., marked $\frac{1}{4}$ S 23 BT.

A pine, 6 ins. in diam., brs. N. 51° W., 174 lks.
 dist., marked $\frac{1}{4}$ S 22 BT.

Continue over rolling and broken land, thru. dense tim-
 ber and scattering undergrowth.

Descend 45 ft., over N. slope.

52.50 Draw, course NW. Ascend 45 ft., over SW. slope.

59.60 Spur, slopes NW. Descend 70 ft., over NE. slope.

64.40 Draw, course NW. Ascend 70 ft., over SW. slope.

72.20 Point of spur, slopes W. Descend 90 ft., over N. slope.

75.45 Draw, course W. Ascend 65 ft., over SW. slope, to

80.00 Set an iron post, 3 ft. long, 2 ins. in diam., 12 ins. in
 the ground, to bed rock, supported in a mound of stone
 for cor. of secs. 14, 15, 22 and 23, marked on brass cap,

T31N | R7 W
 S15 | S14
 S22 | S23
 1920

from which,

A pine, 20 ins. in diam., brs. N. 44° E., 70 lks..
 dist., marked T31N R7W S14 BT.

A pine, 7 ins. in diam., brs. S. 54° E., 80 lks.
 dist., marked T31N R7W S23 BT.

A pine, 10 ins. in diam., brs. S. $37\frac{1}{2}^{\circ}$ W., 94 lks.
 dist., marked T31N R7W S22 BT.

A pine, 14 ins. in diam., brs. N. $30\frac{1}{2}^{\circ}$ W., 93 lks.
 dist., marked T31N R7W S15 BT.

Land, rolling and broken.

Soil, gravelly and rocky, 3rd rate.

Timber, dense cedar and pine.

Undergrowth, scattering scattering sage brush, scrub ce-
 dar and dogwood.

Fair grass.

40.00 N. $89^{\circ}50'$ E., on a random line, bet. secs. 14 and 23.

Set temp. $\frac{1}{4}$ sec. cor.

79.90 Fall 24 lks. S. of the cor. of secs. 13, 14, 23 and 24.

Thence,

S. $89^{\circ}40'$ W., on a true line, bet. secs. 14 and 23.

Over gently rolling land, thru. dense timber and scat-
 tering undergrowth.

Ascend 95 ft., over E. slope, to

39.95 Set an iron post, 3 ft. long, 1 in. in diam., 10 ins. in
 the ground, to bed rock, supported in a mound of stone
 for $\frac{1}{4}$ sec. cor., marked on brass cap,

$\frac{1}{4}$ S 14
 S 23
 1920

from which,

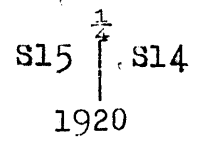
A pine, 7 ins. in diam., brs. S. $17\frac{1}{2}^{\circ}$ E., 92 lks.
 dist., marked $\frac{1}{4}$ S 23 BT.

A pine, 8 ins. in diam., brs. N. $20\frac{1}{2}^{\circ}$ W., 52 lks.
 dist., marked $\frac{1}{4}$ S 14 BT.

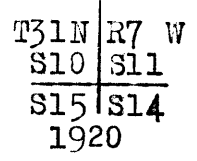
Subdivision lines of Township 31 North, Range 7 West. 25

Chains. Continue over gently rolling land, thru dense timber and scattering undergrowth. Ascend 15 ft., over E. slope.
 45.30 Leave dense timber, brs. N. and S.
 55.30 Top of divide, brs. N. and S. Enter dense timber, brs. NE. and SW. Descend 20 ft., over W. slope, to
 72.00 Descend 90 ft., over SW. slope, to
 79.90 The cor. of secs. 14, 15, 22 and 23.
 Land, gently rolling.
 Soil, sandy and gravelly, 1st and 2nd rate.
 Timber, dense cedar and pine.
 Undergrowth, scattering sage brush and scrub cedar.
 Fair grass.

N. 0° 01' W., bet. secs. 14 and 15.
 Over mountainous land, thru dense timber, and scattering undergrowth.
 Ascend 5 ft., over SW. slope.
 7.90 Spur, slopes W. Descend 200 ft., over N. slope.
 18.75 Gulch, course W. Ascend 290 ft., over S. slope.
 28.50 Spur, slopes W. Descend 100 ft., over N. slope.
 32.70 Gulch, course W. Ascend 86 ft., over SW. slope, to
 40.00 Set an iron post, 3 ft. long, 1 in. in diam., 8 ins. in the ground, to bed rock, supported in a mound of stone, for 1/4 sec. cor., marked on brass cap,



from which,
 A pine, 6 ins. in diam., brs. N. 47 1/2° E., 15 lks. dist., marked 1/4 S 14 BT.
 A pine, 12 ins. in diam., brs. N. 48 1/2° W., 74 lks. dist., marked 1/4 S 15 BT.
 Continue over mountainous land, thru dense timber and scattering undergrowth. Ascend 15 ft., over SW. slope.
 42.00 Spur, slopes NW. Descend 120 ft., over N. slope.
 48.70 Gulch, course W. Ascend 30 ft., over S. slope.
 57.70 Point of spur, sloping W. Descend 10 ft., over N. slope, to
 60.00 E. rim of Mohawk Canyon, brs. NE. and SW. Descend 345 ft., over steep NW. slope, on E. wall of Mohawk Canyon. Leave timber.
 67.00 Gulch, course W. Ascend 60 ft., over SW. slope.
 70.50 Point of spur, slopes W. Descend 54 ft., over NW. slope, to
 80.00 Set an iron post, 3 ft. long, 2 ins. in diam., 13 ins. in the ground to bed rock, supported in a mound of stone, for cor. of secs. 10, 11, 14 and 15, marked on brass cap,



and raise a mound of stone 2 ft. base, 1 1/2 ft. high, W. of cor.
 Land, mountainous.
 Soil, in S. 1/2, sandy and gravelly, 2nd and 3rd rate. In N. 1/2, rocky, 4th rate.
 Timber, dense cedar and pine in S. 60 chs. only.
 Undergrowth, scattering sage brush, scrub cedar and dogwood.
 Poor grass.

N. 89° 40' E., on a random line, bet. secs. 11 and 14.
 40.00 Set temp. 1/4 sec. cor.
 79.78 Fall 10 lks. N. of the cor. of secs. 11, 12, 13 and 14.
 Thence,
 S. 89° 47' W., on a true line, bet. secs. 11 and 14.

26 Subdivision lines of Township 31 North, Range 7 West.

Chains.

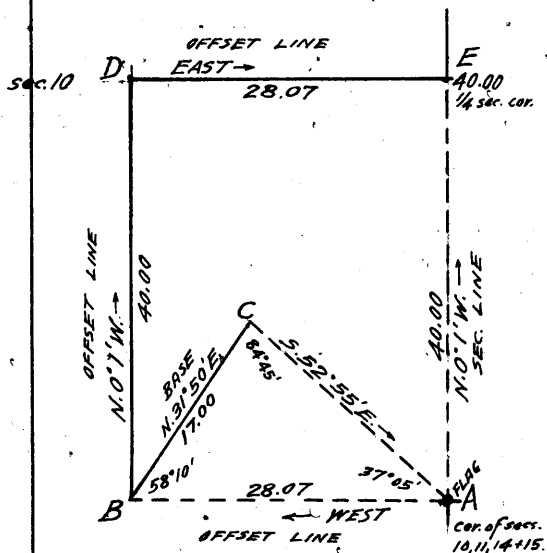
Over rolling land, thru dense timber and scattering undergrowth.
 Ascend 40 ft., over N.E. slope.
 10.00 Point of spur, slopes N. Descend 20 ft., over NW. slope.
 18.00 Draw, course NE. Ascend 45 ft., over E. slope, to
 39.89 On top of divide, brs. NE. and SW. Set an iron post, 3 ft. long, 1 in. in diam., 6 ins. in the ground, to bedrock, supported in a mound of stone, for $\frac{1}{4}$ sec. cor., marked on brass cap,

$\frac{1}{4}$ S 11
 S 14
 1920

from which,
 A pine, 8 ins. in diam., brs. S. $12\frac{1}{2}^{\circ}$ E., 95 lks. dist., marked $\frac{1}{4}$ S 14 MBP.
 A pine, 10 ins. in diam., brs. N. 31° W., 62 lks. dist., marked $\frac{1}{4}$ S 11 BE.

65.00 Continue over rolling land, thru dense timber and scattering undergrowth. Descend 25 ft., over W. slope, to E. rim of Mohawk Canyon, brs. N. and S. Leave rolling, and enter mountainous land on E. wall of Mohawk Canyon. Leave dense, and enter scattering timber. Descend 470 ft., over steep W. slope, to
 79.78 The cor. of secs. 10, 11, 14 and 15.
 Land, E. 65 chs. rolling, remainder, mountainous.
 Soil, E. 65 chs., gravelly, 2nd and 3rd rate; remainder, rocky, 4th rate.
 Timber, cedar and pine, dense in E. 65 chs., scattering in remainder.
 Undergrowth, scattering sage brush, scrub cedar and dogwood.
 Fair grass in E. 65 chs.

N. 0° 1' W. bet. secs. 10 and 11.
 Over mountainous land, thru scattering timber and undergrowth.
 Descend over cliffs, facing NW. on E. wall of Mohawk Canyon.
 Measurement by chaining on the sec. line is impracticable, owing to the precipitous slopes; therefore, obtain the measurement of the $\frac{1}{4}$ of the sec. line by offset, as described as follows, and as shown on the diagram hereon:



Set flag at the cor. of secs. 10, 11, 14 and 15, indicated on diagram at "A."
 Set another flag in bottom of Mohawk Canyon bearing West from "A" and indicated on diagram at "B."
 Vertical angle from "A" to "B" = -28° .
 From "B" measure a Base N. 31° 50' E., down bottom of canyon, 17.00 chs. to point "C."
 Bearing from "C" to "A" = S. 52° 55' E.
 Included angles of triangle "ABC" are $37^{\circ} 05'$, $58^{\circ} 10'$, and $84^{\circ} 45'$, the sum of which is $180^{\circ} 00'$.
 Triangulated dist. on offset line from "A" to "B" is obtained by

$$\frac{\text{sine } 84^{\circ} 45' \times \text{base}}{\text{sine } 37^{\circ} 05'} \text{ or } \frac{.99580 \times 17.00'}{.60298} = 28.07 \text{ chs.}$$

From offset point "B" which is 28.07 chs. W. from cor. of secs. 10, 11, 14 and 15, in bottom of Mohawk Canyon,

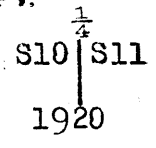
Subdivision lines of Township 31 North, Range 7 West. 27

Chains.

985 ft. below said sec.cor.,
 N.0°1'W., 40.00 chs. on offset line in sec.10, parallel
 to sec.line, bet.secs.10 and 11.
 Over mountainous land, thru scattering
 timber and undergrowth, along W.
 wall of Mohawk Canyon.
 Ascend 210 ft., over broken E.slope,
 to offset point "D," which is 28.07
 chs. W.from point for $\frac{1}{4}$ sec.cor.
 of secs.10 and 11.

From offset point "D,"
 East, 28.07 chs. on offset line in sec.10, parallel
 to portion "AB" of offset line.
 Over mountainous land, thru scatter-
 ing timber and undergrowth.
 Ascend 105 ft. to 9.50 ch. station.
 Thence descend 80 ft. to bottom of
 Mohawk Canyon, at 14.34 ch.sta-
 tion; thence ascend 180 ft.,
 over steep broken NW.slope, re-
 turning to sec.line between secs.
 10 and 11, at point "E" which is
 40.00 chs.N.0°1'W.from cor.of
 secs.10,11,14 and 15, and there-
 fore the point for $\frac{1}{4}$ sec.cor.of
 secs. 10 and 11.
 By computation of the differences
 in elevation around the offset
 line, the $\frac{1}{4}$ sec.cor. is found to
 be 510 ft. below the cor.of secs.
 10,11,14 and 15.

40.00 Set an iron post, 3 ft.long, 1 in. in diam., on surface
 rock, supported in a mound of stone, for $\frac{1}{4}$ sec.cor.,
 marked on brass cap,



and raise a mound of stone, 2 ft.base, 1 $\frac{1}{2}$ ft.high, W.
 of cor.

Thence,
 N.0°01'W., on true line, bet.secs.10 and 11, continuing
 measurement.

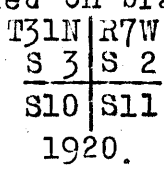
Over mountainous land, thru scattering timber and
 undergrowth, along E.wall of Mohawk Canyon. Ascend
 40 ft., over W.slope.

47.00 Descend 200 ft., over NW.slope.

69.20 Bottom of Mohawk Canyon, course N.30°E.

Ascend 40 ft., over SE.slope, to

80.00 Set an iron post, 3 ft.long, 2 ins. in diam., on surface
 rock, supported in a mound of stone, for cor.of secs.2,
 3, 10 and 11, marked on brass cap,



from which,
 A pine, 14 ins. in diam., brs:N.20°E., 80 lks.
 dist., marked T31N R7W S2 BT.

A cedar, 8 ins. in diam., brs.S.73 $\frac{3}{4}$ °E., 92 lks.
 dist., marked T31N R7W S11 BT.

A pine, 10 ins.in diam., brs.S.86 $\frac{1}{2}$ °W., 24 lks.
 dist., marked T31N R7W S10 BT.

and raise a mound of stone, 2 ft.base, 1 $\frac{1}{2}$ ft.high, W.
 of cor.

Land, mountainous.

Soil, rocky, 4th rate.

Timber, scattering cedar and pine.

Chains.

Undergrowth, scattering sage brush and scrub cedar.
Poor grass.

6.20 N. 89° 47' E., on a random line, bet. secs. 2 and 11.
Bottom of Mohawk Canyon, course NE.
The line beyond this point passes over cliffs on E. wall of Mohawk Canyon, and chaining is impracticable; therefore triangulate as described as follows, and as shown on the diagram hereon.

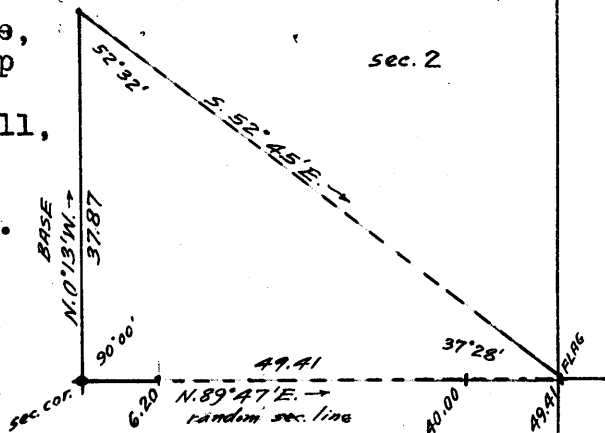
Set flag ahead on random line, on E. wall of canyon at top of cliffs.

From cor. of secs. 2, 3, 10 and 11, measure a Base N. 0° 13' W., 37.87 chs.

From N. end of Base, flag brs. S. 52° 45' E.

Included angles are 52° 32', 37° 28' and 90° 00' the sum of which is 180° 00'.

Triangulated dist. on random sec. line from sec. cor. to flag at top of cliffs is obtained by



Tang. $52^\circ 32' \times \text{Base}$ or $1.30480 \times 37.87 = 49.41$ chs.

40.00 Point for temp. $\frac{1}{4}$ sec. cor. falls on face of cliffs and is inaccessible.

49.41 Flag point of above described triangulation. This being the nearest accessible point to the point for $\frac{1}{4}$ sec. cor., set temporary witness cor. to $\frac{1}{4}$ sec. cor. here.

Continue line and measurement by chaining.

79.70 Fall 32 lks. N. of the cor. of secs. 1, 2, 11 and 12. Thence,

N. 89° 59' W., on a true line, bet. secs. 2 and 11.

Over rolling land, thru dense timber and scattering undergrowth.

Ascend 90 ft., over E. slope.

13.00 Top of divide, brs. NE. and SW. Descend 10 ft., over NW. slope, to

19.70 East rim of Mohawk Canyon, brs. N. 35° E. and S. 35° W. Leave rolling and enter mountainous land. Leave timber.

Descend 500 ft., over steep NW. slope, to

30.29 Top of cliffs, bearing N. 30° E. and S. 30° W., facing NW.

Set an iron post, 3 ft. long, 1 in. in diam., 12 ins. in the ground, to bed rock, supported in a mound of stone, for witness cor. to the $\frac{1}{4}$ sec. cor., marked on brass cap,

WCT S. 2
S 11
1920

and raise a mound of stone, 2 ft. base, $1\frac{1}{2}$ ft. high, N. of cor.

Thence by triangulated measurement to sec. cor., as hereinbefore described.

Descend about 1300 ft., over cliffs to bottom of Mohawk Canyon.

39.85 True point for $\frac{1}{4}$ sec. cor. falls on face of cliff, where it cannot be monumented.

73.50 Bottom of Mohawk Canyon, course N. 30° E. Enter scattering timber; ascend 45 ft., over SE. slope, to

79.70 The cor. of secs. 2, 3, 10 and 11.

Land, E. 19.70 chs., rolling; remainder mountainous.

Soil, gravelly and rocky, 3rd and 4th rate.

Timber, cedar and pine, dense and scattering where noted.

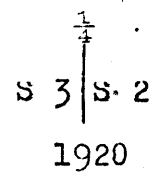
Undergrowth, scattering sage brush, scrub cedar and dogwood.

Poor grass.

Subdivision lines of Township 31 North, Range 7 West. 29

Chains.

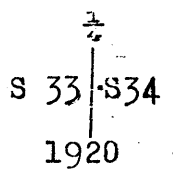
40.00 N.0°01'W., on a random line, bet. secs.2 and 3.
 Set temp. $\frac{1}{4}$ sec.cor.
 79.84 Fall 7 lks.W.of the cor.of secs. 2,3,34 and 35 on N. bdy.
 of Tp., hereinbefore described.
 Thence,
 S.0°02'W., on a true line, bet. secs.2 and 3.
 Over mountainous land, thru scattering timber and under-
 growth, along W. wall of Mohawk Canyon.
 Ascend 14 ft., over N.slope.
 2.00 Point of spur, slopes E. Descend 270 ft., over broken SE.
 slope.
 35.00 Ascend 53 ft., over N.slope, to
 39.84 Set an iron post, 3 ft.long, 1 in. in diam., on surface
 rock, in a mound of stone, for $\frac{1}{4}$ sec.cor., marked on
 brass cap,



from which,
 A pine, 8 ins. in diam., brs. S.29 $\frac{1}{2}$ °W., 100 lks.
 dist., marked $\frac{1}{4}$ S 3 BT.
 and raise a mound of stone, 2 ft. base, 1 $\frac{1}{2}$ ft. high, W.
 of cor.

Continue over mountainous land, thru scattering timber
 and undergrowth, along W. wall of Mohawk Canyon.
 Ascend 55 ft., over N.slope.
 41.64 Point of spur, slopes E. Descend 374 ft., over SE.slope, to
 79.84 the cor.of secs. 2,3, 10 and 11.
 Land, mountainous.
 Soil, rocky, 4th rate.
 Timber, scattering cedar and pine.
 Undergrowth, scattering sage brush and scrub cedar.
 Poor grass.

 From the cor.of secs. 3,4,33 and 34, on S. bdy.of Tp.,
 described in Book "C,"
 N.0°02'W., bet. secs.33 and 34.
 Over rolling land, thru. dense timber and scattering un-
 dergrowth.
 Descend 50 ft., over N.slope.
 15.40 Draw, course NW. Descend 25 ft., over NW.slope, to
 20.50 Wash, course W. Thence along W.slope, with slight change
 in elevation.
 40.00 Set an iron post, 3 ft.long, 1 in. in diam., 12 ins. in
 the ground to bed rock, supported in a mound of stone,
 for $\frac{1}{4}$ sec.cor., marked on brass cap,



from which,
 A pine, 8 ins. in diam., brs. N.05°E., 10 lks.
 dist. marked $\frac{1}{4}$ S 34 BT.
 A pine, 8 ins. in diam., brs. S.55°W., 45 lks.
 dist., marked $\frac{1}{4}$ S 33 BT.

Continue over rolling land, thru. dense timber and scat-
 tering undergrowth.
 Descend 50 ft., over N.slope.
 43.70 Rocky draw, course W. Ascend 31 ft., over SW.slope.
 48.30 Descend 43 ft., over NW.slope.
 53.50 Rocky draw, course W. Ascend 82 ft., over SW.slope.
 60.00 Descend 10 ft., over NW.slope.
 64.50 Shallow wash, course SW. Ascend 35 ft., over SW.slope.
 70.00 Descend slightly over W.slope, to
 80.00 Set an iron post, 3 ft.long, 2 ins. in diam., 20 ins. in

30 Subdivision lines of Township 31 North, Range 7 West.

Chains.

the ground to bed rock, supported in a mound of stone, for cor. of secs. 27, 28, 33 and 34, marked on brass cap,

T31N	R7 W
S28	S27
S33	S34

1920

from which,

A pine, 8 ins. in diam., brs. N. 13° E., 60 lks. dist., marked T31N R7W S27 BT.

A pine, 14 ins. in diam., brs. S. 79½° E., 157 lks. dist., marked T31N R7W S34 BT.

A pine, 8 ins. in diam., brs. S. 30½° W., 98 lks. dist., marked T31N R7W S33 BT.

A pine, 10 ins. in diam., brs. N. 35° W., 43 lks. dist., marked T31N R7W S28 BT.

Land, rolling.

Soil, gravelly loam, 2nd and 3rd rate.

Timber, dense cedar and pine.

Undergrowth, scattering sage brush, dogwood and scrub cedar.

Fair grass.

East, on a random line, bet. secs. 27 and 34.

40.00 Set temp. ¼ sec. cor.

80.14 Fall 9 lks. N. of the cor. of secs. 26, 27, 34 and 35.

Thence,

N. 39° 50' W., on a true line, bet. secs. 27 and 34.

Over gently rolling land, thru. dense timber and scattering undergrowth. Ascend 25 ft., over SE. slope.

5.00 Descend 15 ft., over SW. slope.

19.50 Shallow wash, course S. Ascend 25 ft., over S. slope, to

28.00 Shallow draw, course SE. Ascend 35 ft., over E. slope to ¼ sec. cor.

38.00 Leave dense, and enter scattering timber.

40.07 Set an iron post, 3 ft. long, 1 in. in diam., 6 ins. in the ground to bed rock, supported in a mound of stone, for ¼ sec. cor., marked on brass cap,

¼ S 27
S 34
1920

from which,

A cedar, 8 ins. in diam., brs. N. 32½° E., 74 lks. dist., marked ¼ S 27 BT.

A cedar, 5 ins. in diam., brs. S. 34½° E., 70 lks. dist., marked ¼ S 34 BT.

Continue over gently rolling land, thru. scattering timber and undergrowth. Ascend 20 ft., over E. slope.

48.00 Enter dense timber.

52.00 Top of divide, brs. NE. and S. Descend 50 ft., over W. slope, to

80.14 The cor. of secs. 27, 28, 33 and 34.

Land, gently rolling,

Soil, sandy and gravelly, 1st and 2nd rate.

Timber, cedar and pine, scattering and dense.

Undergrowth, scattering dogwood, sagebrush and scrub cedar.

Fair grass.

N. 0° 02' W., bet. secs. 27 and 28.

Over gently rolling land, thru. dense timber and scattering undergrowth.

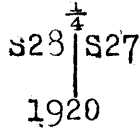
Descend slightly over NW. slope, to

28

Subdivision lines of Township 31 North, Range 7 West.

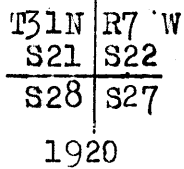
Chains.

1.00 Shallow wash, course NW., near head. Descend 80 ft., over NW. slope, to
 34.30 Descend 35 ft., over NE. slope, to
 40.00 Set an iron post, 3 ft. long, 1 in. in diam., 28 ins. in the ground, for $\frac{1}{4}$ sec. cor., marked on brass cap,



from which,
 A pine, 10 ins. in diam., brs. N. $77\frac{1}{2}^{\circ}$ E., 37 lks. dist., marked $\frac{1}{4}$ S 27 BT.
 A cedar, 10 ins. in diam., brs. N. 70° W., 38 lks. dist., marked $\frac{1}{4}$ S 28 BT.

Continue over gently rolling land, thru. dense timber and scattering undergrowth. Descend 25 ft., over NE. slope, to
 42.30 E. rim of Mohawk Canyon, brs. NE. and SW. Leave rolling, and enter mountainous land. Descend 250 ft., over cliffs and slide rock on broken NW. slope of E. wall of Mohawk Canyon, to
 55.00 Gulch, course NE. Descend 205 ft., over broken NE. slope, to
 73.30 Gulch, course NW. Descend 30 ft., over NW. slope, to
 80.00 Set an iron post, 3 ft. long, 2 ins. in diam., on surface rock, supported in a mound of stone, for cor. of secs. 21, 22, 27 and 28, marked on brass cap,



from which,
 A pine, 10 ins. in diam., brs. N. 55° E., 95 lks. dist., marked T31N R7W S22 BT
 A pine, 10 ins. in diam., brs. S. $53\frac{1}{2}^{\circ}$ E., 98 lks. dist., marked T31N R7W S27 BT.
 A pine, 10 ins. in diam., brs. S. $49\frac{1}{2}^{\circ}$ W., 17 lks. dist., marked T31N R7W S28 BT.
 A pine, 10 ins. in diam., brs. N. $17\frac{1}{2}^{\circ}$ W., 27 lks. dist., marked T31N R7W S21 BT.

Land, S. 42 chs., gently rolling; remainder, broken and mountainous.
 Soil, on rolling portion, gravelly, 2nd rate; on broken and mountainous portion, rocky, 4th rate.
 Timber, dense pine and cedar.
 Undergrowth, scattering dogwood, sagebrush and scrub cedar.
 Fair grass in S. 42 chs.

40.00 S. $89^{\circ}56'$ E., on a random line, bet. secs. 22 and 27.
 Set temp. $\frac{1}{4}$ sec. cor.
 80.14 Fall 7 lks. N. of the cor. of secs. 22, 23, 26 and 27.
 Thence,
 N. $89^{\circ}53'$ W., on a true line, bet. secs. 22 and 27.
 Over rolling land, thru. dense timber and scattering undergrowth. Ascend 15 ft., over NE. slope.
 2.60 Spur, slopes NW. Descend 130 ft., over W. slope, to
 25.15 Enter wash, course W. Descend 30 ft., in wash, to
 36.00 Leave wash, course NW. from E. This wash is joined at this point by another wash from SE. Leave rolling and enter mountainous land. Ascend 50 ft., over NE. slope, to
 40.07 Set an iron post 3 ft. long, 1 in. in diam., 14 ins. in the ground to bed rock, supported in a mound of stone, for $\frac{1}{4}$ sec. cor., marked on brass cap,

32 Subdivision lines of Township 31 North, Range 7 West.

Chains.

1/4 S 22
S 27
1920

from which,

A pine, 10 ins. in diam., brs. N. 57 3/4° E., 58 lks. dist., marked 1/4 S 22 BT.

A pine, 6 ins. in diam., brs. S. 21° E., 20 lks. dist., marked 1/4 S 27 BT.

Continue over mountainous land, thru. dense timber and scattering undergrowth. Ascend 85 ft., over NE. slope.

49.00 Spur, slopes NW. Descend 110 ft., over W. slope, to
52.90 E. rim of Mohawk Canyon, brs. NW. and SE. Descend 110 ft., over W. slope, to

63.45 Gulch, course NW. Ascend 150 ft., over NE. slope.

70.84 Spur, slopes NW. Descend 310 ft., over W. slope, to

80.14 The cor. of secs. 21, 22, 27 and 28.

Land, rolling and mountainous.

Soil, gravelly and rocky; 2nd and 3rd rate.

Timber, dense cedar and pine.

Undergrowth, scattering sage brush and scrub cedar.

Fair grass.

N. 0° 02' W., bet. secs. 21 and 22.

Over mountainous land, thru. scattering timber and undergrowth, along E. wall of Mohawk Canyon. Ascend 35 ft., along broken W. slope, to

10.90 Descend 90 ft., along broken W. slope, to

16.01 Top of cliffs, bearing NE. and SW., facing NW. Descent over these cliffs is too abrupt to continue chaining; therefore triangulate measurement across the cliffs as described as follows, and as shown on the diagram hereon:

Leave flag at 16.01 chain station.

From a point on sec. line, beyond foot of cliffs, measure a base N. 89° 58' E., 5.20 chs., which is as long a base as it is practicable to chain. From E. end of base, flag brs. S. 22° 50' W.

Included angles are 67° 08', 22° 52' and 90° 00', the sum of which is 180° 00'.

Vertical angle from W. end of base to flag is + 33°.

Triangulated dist. on sec. line is obtained by

Tang. 67° 08' x Base or 2.37118 x 5.20 = 12.33 chs., which,

added to 16.01 chs. gives 28.34 chs. N. 0° 2' W., from cor. of secs. 21, 22, 27 and 28 for the position of the triangulation point on sec. line.

28.34 Triangulation point, on E. wall of Mohawk Canyon, 530 ft. below 16.01 ch. station.

Continue line and measurement by chaining.

Descend 200 ft., over broken NW. slope, to

37.20 Bottom of Mohawk canyon, course NE. Descend 15 ft. to

40.00 Set an iron post, 3 ft. long, 1 in. in diam., 6 ins. in the ground to bed rock, supported in a mound of stone, for 1/4 sec. cor., marked on brass cap,



and raise a mound of stone, 2 ft. base, 1 1/2 ft. high, W. of cor.

Continue over mountainous land, thru. scattering timber and undergrowth, along W. wall of Mohawk Canyon.

Chains.

80.00

Ascend 450 ft., over SE. slope, to Set an iron post, 3 ft. long, 2 ins. in diam., on surface rock, supported in a mound of stone, for cor. of secs. 15, 16, 21 and 22, marked on brass cap,

T31N R7 W
S16 S15
S21 S22
1920

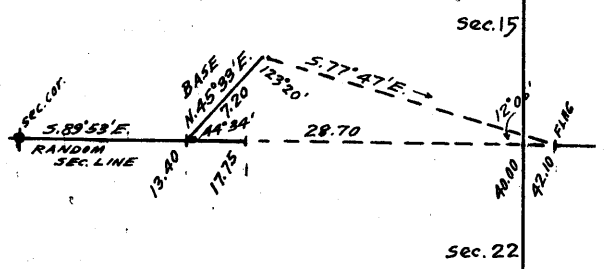
from which,
A pine, 8 ins. in diam., brs. N. 41 1/2° E., 44 lks. dist., marked T31N R7W S15 BT.
A pine, 8 ins. in diam., brs. S. 21 1/2° E., 28 lks. dist., marked T31N R7W S22 BT.
A pine, 9 ins. in diam., brs. N. 45 1/2° W., 13 lks. dist., marked T31N R7W S16 BT.
and raise a mound of stone, 2 ft. base, 1 1/2 ft. high, W. of cor.

Land, mountainous.
Soil, rocky, 4th rate.
Timber, scattering cedar and pine.
Undergrowth, scattering sage brush and scrub cedar.
Poor grass.

13.40
17.75

S. 89° 53' E., on a random line, bet. secs. 15 and 22. Triangulation point.
Bottom of Mohawk Canyon; discontinue chaining on random line at this point owing to abrupt ascent over cliffs on the E. wall of Mohawk Canyon, rendering continuation of chaining impracticable.
Return to 13.40 ch. station, and triangulate as described as follows, and as shown on the diagram hereon:

Set flag ahead on random sec. line at E. rim of canyon.
From 13.40 ch. station, measure a Base, N. 45° 33' E., 7.20 chs.
From NE. end of Base, flag brs. S. 77° 47' E.



Included angles are 123° 20', 12° 00' and 44° 34', the sum of which is 180° 00'.
Vertical angle from 13.40 ch. station to flag is + 19°.
Triangulated dist. on random sec. line is obtained by
$$\frac{\sin 123^\circ 20' \times \text{Base}}{\sin 12^\circ 00'}$$
 or $\frac{.83549 \times 7.20}{.20962} = 28.70$ chs., which added to 13.40 chs. gives 42.10 chs., S. 89° 53' E. from cor. of secs. 15, 16, 21 and 22, for the position of the flag on random sec. line at E. rim of canyon.

40.00
42.10
80.10

Point for temp. 1/4 sec. cor. is inaccessible.
Flag point of above described triangulation. Set temp. witness cor. to 1/4 sec. cor.
Continue line and measurement by chaining.
Intersect the cor. of secs. 14, 15, 22 and 23.
Thence,
N. 89° 53' W., on a true line, bet. secs. 15 and 22.
Over mountainous land, thru. dense timber and scattering undergrowth.
Descend 240 ft., over SW. slope.
10.50 Gulch, course NW. Ascend 255 ft., over NE. slope.
22.90 Spur, slopes N. Descend 100 ft., over W. slope.
30.05 Gulch, course N. Ascend 100 ft., over E. slope.
35.20 Point of spur, slopes N. Desc. 75 ft., over NW. slope, to
38.06 E. rim of Mohawk Canyon, brs. NE. and SW.
Flag point of triangulation hereinbefore described, from

34 Subdivision lines of Township 31 North, Range 7 West

Chains.

which chain measurement to witness cor.
 Descend 50 ft., over W. slope, to
 38.88 Set an iron post, 3 ft. long, 1 in. in diam., on surface rock, supported in a mound of stone, for witness cor. to the $\frac{1}{4}$ sec. cor., marked on brass cap,

$$\begin{array}{r} WC \frac{1}{4} \quad S \ 15 \\ \quad \quad \quad S \ 22 \\ \hline 1920 \end{array}$$

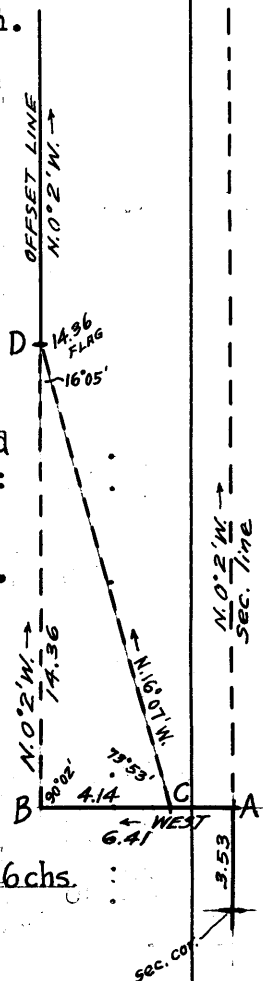
 from which,
 A pine, 24 ins. in diam., brs. S. $4\frac{3}{4}^{\circ}$ E., 63 lks. dist., marked $WC \frac{1}{4} S \ 22 \ 3T.$
 A pine, 14 ins. in diam., brs. N. $28\frac{3}{4}^{\circ}$ E., 65 lks. dist., marked $WC \frac{1}{4} S \ 15 \ 3T.$
 Continue over mountainous land, thru. scattering timber and undergrowth, Descend 600 ft. over cliffs to bottom of canyon.
 40.08 True point for $\frac{1}{4}$ sec. cor. falls on face of cliff, and is inaccessible.
 62.40 Wash, 40 lks. wide in bottom of Mohawk Canyon, course N. Ascend 400 ft., over E. slope to sec. cor., chaining measurement thereto.
 66.76 Triangulation point, from which measurement across Mohawk Canyon was made, as hereinbefore described.
 80.16 The cor. of secs. 15, 16, 21 and 22.
 Land, mountainous.
 Soil, rocky, 4th rate.
 Timber, cedar & pine, dense in E. $\frac{1}{2}$, scattering in W. $\frac{1}{2}$.
 Undergrowth, scattering sage brush, scrub cedar and dog-wood.
 Poor grass.

N. $0^{\circ}2'W.$, bet. secs. 15 and 16.
 Over mountainous land, thru. scattering timber, along W. wall of Mohawk Canyon. Ascend 40 ft., over SE. slope, to
 3.53 Offset point. As the sec. line beyond this point passes over cliffs which render chaining impracticable, obtain the measurement of a portion of the line by means of an offset line as described as follows, and as shown on the diagram hereon:

From offset point on sec. line at 3.53 ch. station, indicated on diagram at "A." West, on offset line in sec. 16.
 Over mountainous land, on W. wall of Mohawk Canyon.
 Ascend 70 ft.; over SE. slope, to
 6.41 Offset point "B."
 Thence N. $0^{\circ}2'W.$, on offset line, parallel to sec. line.
 Over mountainous land, Ascend over S. slope, which is so steep and broken as to render chaining impracticable; therefore triangulate the measurement of a portion of the offset line, as described as follows, and as shown on the diagram:
 From offset point "B," measure a Base East 4.14 chs. to point "C."
 Set flag on offset line, at "D," N. $0^{\circ}2'W.$ from "B."
 Bearing "C" to "D" = N. $16^{\circ}07'W.$
 Vertical angle "B" to "D" = $+ 25^{\circ}$.
 Included angles of triangle "BCD" are $90^{\circ}02'$, $73^{\circ}53'$ and $16^{\circ}05'$, the sum of which is 180° .
 Triangulated dist. on offset line is obtained by

$$\frac{\text{sine } 73^{\circ}53' \times \text{Base}}{\text{sine } 16^{\circ}05'} \text{ or } \frac{.96079 \times 4.14}{.27704} = 14.36 \text{ chs.}$$

14.36 Flag point "D" of above described triangulation, 442 ft. above offset point "B."



Subdivision lines of Township 31 North, Range 7 West. 35

Chains. Chains.

Continue measurement from "B" by chaining. Ascend slightly to

14.47 Spur, slopes E. Desc. 205 ft., over N. slope.

19.57 Gulch, course NE. Ascend 50 ft., over SE. slope.

26.19 Spur, slopes E. Descend 195 ft., over N. slope.

28.87 Gulch, course E. Ascend 90 ft., over S. slope, to

36.47 Offset point "E," which is 6.41 chs. W. from true point for $\frac{1}{4}$ sec. cor.

40.00 True point for $\frac{1}{4}$ sec. cor. falls in inaccessible position, where it cannot be monumented.

From offset point "E" East, on offset line, toward point for $\frac{1}{4}$ sec. cor. of secs. 15 and 16. Over mountainous land.

1.41 Descend slightly over S. slope, to A point 5 chs. W. from true point for $\frac{1}{4}$ sec. cor.

It being impracticable to chain measurement any farther E. on this portion of the offset line owing to steep, broken cliffs, establish witness cor. to $\frac{1}{4}$ sec. cor. at this point as follows: Set an iron post, 3 ft. long, 1 in. in diam., on bed rock, supported in a mound of stone, for witness cor. to $\frac{1}{4}$ sec. cor., marked on brass cap,

$\frac{1}{4}$
S16 | S15 WC
1920

and raise a mound of stone, 2 ft. base, $1\frac{1}{2}$ ft. high, W of cor.

Thence,
West, on offset line, toward point "E."

1.41 Offset point "E," which is 36.47 chs. N. 0°2' W. from offset point "B."

Thence,
N. 0°2' W., on offset line parallel to and 6.41 chs. W. from sec. line, continuing measurement from point "B."

Over mountainous land, along broken slopes on W. wall of Mohawk Canyon. Ascend 390 ft., over steep S. slope, to

53.82 Offset point "F," at top of cliffs, bearing E. and SE., facing S. and E.

Thence,
East, on offset line, toward sec. line.

Over mountainous land, along top of cliffs, bearing E. and W., facing S. Descend 55 ft., along S. slope, to

6.41 Offset point "G" on sec. line, bet. secs. 15 and 16, at

57.35 Top of cliffs bearing NE. and W., facing SE. and S. Continue measurement, N. 0°2' W. on sec. line. Over mountainous land, thru. scattering timber and undergrowth.

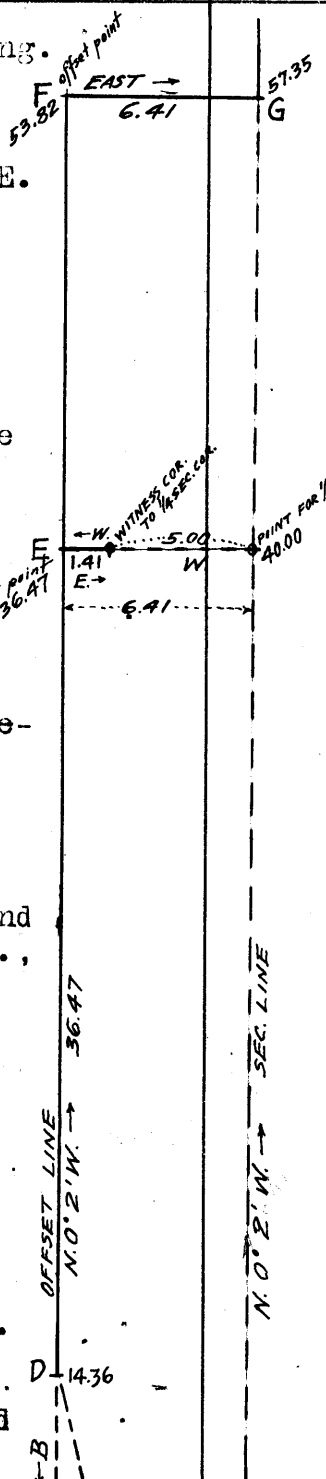
Ascend 20 ft., over SE. slope.

58.00 Point of spur, slopes E. Descend 35 ft., over NE. slope.

60.00 Gulch, course E. Ascend 75 ft., over S. slope.

67.00 Spur, slopes E. Descend 390 ft., over N. slope, to

80.00 Set an iron post, 3 ft. long, 2 ins. in diam., 28 ins. in the ground for cor. of secs. 9, 10, 15 and 16, marked on brass cap,



T31N | R 7W
S 9 | S10
S16 | S15
1920

30 Subdivision lines of Township 31 North, Range 7 West.

Chains.

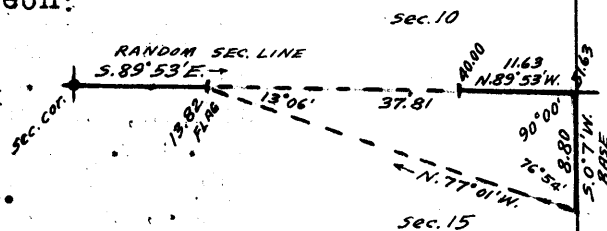
- from which,
- A pine, 14 ins. in diam., brs. N. 39° E., 53 lks.
- dist., marked T31N R7W S10 BT.
- A pine, 12 ins. in diam., brs. S. 70° E., 73 lks.
- dist., marked T31N R7W S15 BT.
- A pine, 8 ins. in diam., brs. S. 53° W., 63 lks.
- dist., marked T31N R7W S10 BT.
- A pine, 12 ins. in diam., brs. N. 37° W., 57 lks.
- dist., marked T31N R7W S9 BT.

Land, mountainous.
 Soil, rocky, 4th rate.
 Timber, scrub cedar and pine.
 Undergrowth, sage brush and scrub cedar.

13.82

S. 89° 53' E., on a random line, bet. secs. 10 and 15.
 Top of cliffs, facing E. Chaining beyond this point is impracticable owing to abrupt descents over cliffs; therefore, triangulate as described as follows, and as shown on the diagram hereon:

Leave flag at this point.
 From point ahead on random line, in bottom of Mohawk Canyon, measure a Base S. 0° 7' W., 8.80 chs.
 From S. end of Base, flag brs. N. 77° 01' W.



Included angles are 76° 54', 13° 06' and 90° 00', the sum of which is 180° 00'!!
 Vertical angle from N. end of Base to flag is + 24½°.
 Triangulated dist. on random sec. line is obtained by Tang. 70° 54' x Base or 4.29724 x 8.80 = 37.81 chs., which added to 13.82 chs. gives 51.63 chs. S. 89° 53' E. from cor. of secs. 9, 10, 15 and 16, for the position of the triangulation point on random sec. line in bottom of Mohawk Canyon.

40.00

Thence chain measurement N. 89° 53' W., 11.63 chs. to Set temp. ¼ sec. cor.

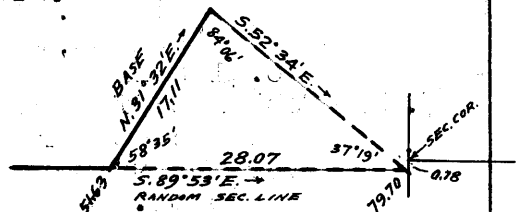
51.03

Thence, S. 89° 53' E., on random line, returning to Triangulation point in bottom of Mohawk Canyon.
 Chaining of the remainder of random line is impracticable owing to steep broken ascents on E. wall of canyon; therefore, triangulate as described as follows, and as shown on the diagram hereon:

Chaining of the remainder of random line is impracticable, owing to steep broken ascents on E. wall of canyon; therefore, triangulate as described as follows, and as shown on the diagram hereon:

A flag set at 18 lks. S. of the cor. of secs. 10, 11, 14 and 15, brs. S. 89° 53' E. from 51.03 ch. station.

The falling of the random line projected is therefore 18 lks. S. of the sec. cor., which gives a true course for the sec. line, S. 89° 59' W.



Vertical angle from 51.03 ch. station to flag is + 28°.
 From 51.03 ch. station, measure a Base, N. 31° 32' E., 17.11 chs.

From NE. end of Base, flag brs. S. 52° 34' E.
 Included angles are 84° 06', 37° 19' and 58° 35', the sum of which is 180° 00'.

Triangulated distance on random line is obtained by $\frac{\sin 84^{\circ} 06' \times \text{Base}}{\sin 37^{\circ} 19'}$ or $.99470 \times 17.11 = 28.07$ chs., which

Subdivision lines of Township 31 North, Range 7 West.

Chains. added to 51.03 chs. gives 79.70 chs. as the total length of random line, bet. secs. 10 and 15.

79.70 Fall 18 lks. S. of the cor. of secs. 10, 11, 14 and 15. Thence, S. 89° 59' W., on true line, bet. secs. 10 and 15. Over mountainous land, thru. scattering timber and undergrowth. Descend 986 ft., over cliffs on steep NW. slope of E. wall of Mohawk Canyon. Measurement by triangulation to

28.07 Triangulation point in bottom of Mohawk Canyon, course N. 30° E. Continue line and measurement by chaining. Ascend 150 ft., over E. slope, to

39.85 Set an iron post, 3 ft. long, 1 in. in diam., in a mound of stone, for $\frac{1}{4}$ sec. cor., marked on brass cap,

$\frac{1}{4}$ S 10
S 15
1920

and raise a mound of stone, 2 ft. base, $1\frac{1}{2}$ ft. high, N. of cor. Continue over mountainous land, thru. scattering timber and undergrowth, on W. wall of Mohawk Canyon, measurement by triangulation as hereinbefore described.

65.88 Ascend 987 ft., over cliffs facing E. Triangulation point at top of cliffs, bearing NE and SW. Continue line and measurement by chaining. Ascend 65 ft. over SE. slope, to

71.10 Descend 30 ft., over S. slope, to

73.00 Gulch, course SE. from W. Thence along N. slope, near bottom of gulch. Ascend 52 ft., to

79.70 The cor. of secs. 9, 10, 15 and 16. Land, mountainous. Soil, rocky, 4th rate. Timber, scattering cedar and pine. Undergrowth, scattering sage brush and scrub cedar. Poor grass.

N. 0° 02' W., bet. secs. 9 and 10. Over mountainous land, thru. scattering timber and undergrowth, along W. wall of Mohawk Canyon. Descend slightly over N. slope.

0.50 Gulch, course E. Ascend 400 ft., over slides and cliffs, bearing E. and W., facing S.

10.14 W. rim of Mohawk Canyon, brs. E. and W. Leave canyon, and mountainous land, and enter roughly rolling and broken land. Ascend 67 ft., over E. slope. Enter dense timber.

22.50 Descend 60 ft., over NE. slope.

29.00 Gulch, course NE. Ascend 80 ft., over S. slope.

38.00 Descend 10 ft., over N. slope, to

40.00 Set an iron post, 3 ft. long, 1 in. in diam., 22 ins. in the ground to bed rock, supported in a mound of stone, for $\frac{1}{4}$ sec. cor., marked on brass cap,

$\frac{1}{4}$
S 9 | S 10
1920

from which,
A pine, 14 ins. in diam., brs. N. 32 $\frac{1}{2}$ ° E., 28 lks. dist., marked $\frac{1}{4}$ S 10 BT.
A pine, 18 ins. in diam., brs. N. 85° W., 45 lks. dist., marked $\frac{1}{4}$ S 9 BT.
Continue over rolling and broken land, thru. dense timber and scattering undergrowth. Descend slightly to

38 Subdivision lines of Township 31 North, Range 7 West.

Chains.

- 41.00 Drain, course NE. Ascend slightly over SE. slope, to
- 45.00 Descend 150 ft., over N. slope.
- 61.50 Gulch, course NE. Ascend 25 ft., over E. slope, to
- 66.00 Gulch, course E. Ascend 45 ft., over SE. slope, to
- 75.50 Gulch, course E. Ascend 40 ft., over S. slope, to
- 80.00 Set an iron post, 3 ft. long, 2 ins. in diam., 28 ins. in the ground, for cor. of secs. 3, 4, 9 and 10, marked on brass cap,

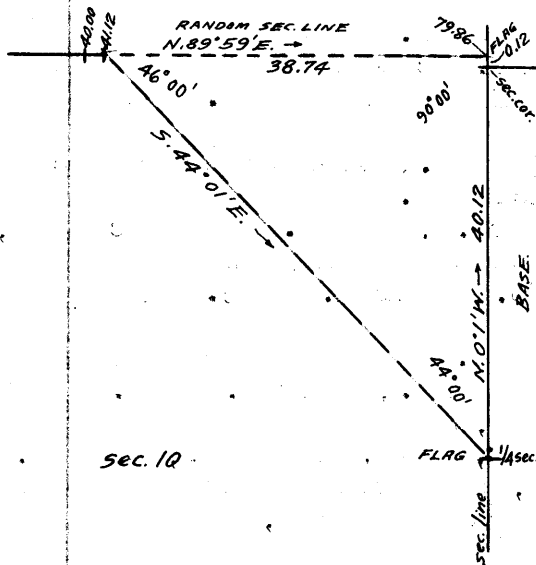
T31N	R7 W
S 4	S 3
S 9	S10
1920	

from which,

- A pine, 14 ins. in diam. brs. N. 67° E., 72 lks. dist., marked T31N R7W S3 BT
- A pine, 8 ins. in diam., brs. S. 37° E., 28 lks. dist., marked T31N R7W S10 BT.
- A pine, 8 ins. in diam., brs. S. 27½° W., 44 lks. dist., marked T31N R7W S9 BT.
- A pine, 12 ins. in diam., brs. N. 46½° W., 135 lks. dist., marked T31N R7W S4 BT.

Land, S. 10 chs. mountainous, remainder, rolling and broken. Soil, rocky and gravelly, 3rd rate. Timber, cedar and pine, scattering and dense as noted. Undergrowth, sage brush and scrub cedar. Fair grass.

- 40.00 N. 89° 59' E., on a random line, bet. secs. 3 and 10. Set temp. ¼ sec. cor.
- 41.12 W. rim of Mohawk Canyon, brs. SE. and NW. on spur, sloping NE. The line beyond this point passes over precipitous cliffs, facing E. and SE. on W. wall of Mohawk Canyon, rendering chaining impracticable. Therefore, triangulate as described as follows, and as shown on the diagram hereon:



From said station on random line, a flag set at 12 lks. N. of cor. of secs. 2, 3, 10 and 11, brs. N. 89° 59' E.

The falling of the random line projected is therefore, 12 lks. N. of the sec. cor., giving a true course for the sec. line, N. 89° 56' W.

A flag on the ¼ sec. cor. of secs. 10 and 11, brs. S. 44° 01' E.

From said ¼ sec. cor. to flag 12 lks. N. of the cor. of secs. 2, 3, 10 and 11 is N. 0° 1' W., 40.12 chs. which is the base for the triangulation.

Included angles are 46° 00', 90° 00' and 44° 00', the sum of which is 180° 00'.

Triangulated dist. on random sec. line is obtained by Tang. 44° 00' x Base or .96569 x 40.12 = 38.74 chs., which added to 41.12 chs. gives 79.86 chs. as the total length of random line.

- 79.86 Fall 12 lks. N. of the cor. of secs. 2, 3, 10 and 11.

Thence,

N. 89° 56' W., on a true line, bet. secs. 3 and 10.

Over mountainous land, thru. scattering timber and undergrowth. Ascend about 800 ft., over steep broken SE. and E. slopes on W. wall of Mohawk Canyon. Measurement of 38.74 chs. by triangulation, hereinbefore described.

Subdivision lines of Township 31 North, Range 7 West.

Chains.

38.74 Triangulation point at W. rim of Mohawk Canyon, brs. SE. and SW. on spur, sloping NE. Continue line and measurement by chaining. Descend 15 ft., over NW. slope, to

39.93 Set an iron post, 3 ft. long, 1 in. in diam., 26 ins. in the ground, for $\frac{1}{4}$ sec. cor., marked on brass cap,

$\frac{1}{4}$ S 3
S 10
1920

from which,
A pine, 10 ins. in diam., brs. S. $83\frac{3}{4}^{\circ}$ W., 94 lks. dist., marked $\frac{1}{4}$ S 10 BT and raise a mound of stone, 2 ft. base, $1\frac{1}{2}$ ft. high, N. of cor.

Continue over mountainous land, thru. scattering timber and undergrowth.
Descend 100 ft., over NW. slope.
52.00 Gulch, course N. 80° E. Ascend 100 ft., over SE. slope, to
64.45 N. rim of gulch, brs. N. 80° E. and S. 80° W. Leave mountainous, and enter rolling land. Ascend 100 ft., over SE. slope, to

79.86 The cor. of secs. 3, 4, 9 and 10.
Land, mountainous, rolling and broken.
Soil, rocky and gravelly, 2nd and 3rd rate.
Timber, scattering pine and cedar.
Undergrowth, scattering sage brush and scrub cedar.
Fair grass.

40.00 N. $0^{\circ}02'$ W., on a random line, bet. secs. 3 and 4.
Set temp. $\frac{1}{4}$ sec. cor.
79.70 Fall 16 lks. E. of the cor. of secs. 3, 4, 33 and 34, on N. bdy. of Tp., hereinbefore described.

Thence,
S. $0^{\circ}09'$ E., on a true line, bet. secs. 3 and 4.
Over rolling land, thru. dense timber and scattering undergrowth. Descend 04 ft., over SE. slope.
8.40 Ascend 30 ft., over NE. slope.
10.00 Descend 21 ft., over SE. slope.
11.60 Ascend 05 ft., over NE. slope.
18.50 Descend 50 ft., over SE. slope.
25.00 Ascend 135 ft., over NE. slope, to
39.70 Set an iron post, 3 ft. long, 1 in. in diam., 6 ins. in the ground to bed rock, supported in a mound of stone, for $\frac{1}{4}$ sec. cor.; marked on brass cap,

$\frac{1}{4}$
S 4 | S 3
1920

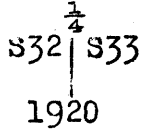
and raise a mound of stone, 2 ft. base, $1\frac{1}{2}$ ft. high, W. of cor.

Continue over rolling land, thru. dense timber and scattering undergrowth. Descend slightly over SE. slope.
49.70 Wash, course NE. Descend 15 ft., over E. slope, to
60.00 Wash, 1 ch. wide, course E. Ascend 20 ft., over NE. slope.
70.00 Descend 50 ft., over SE. slope, to
79.70 The cor. of secs. 3, 4, 9 and 10.
Land, rolling.
Soil, gravelly and rocky, 3rd rate.
Timber, dense pine and cedar.
Undergrowth, scattering sage brush and scrub cedar.
Fair grass.

40. Subdivision lines of Township 31 North, Range 7 West.

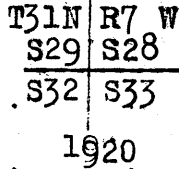
Chains.

From the cor. of secs. 4, 5, 32 and 33. on S. bdy. of Tp., described in Book "C," N. 0° 03' W., bet. secs. 32 and 33. Over mountainous land, thru. dense timber and scattering undergrowth. Ascend 41 ft., over SE. slope. Spur, slopes NE. Descend 302 ft., over NW. slope. 4.95 Gulch, course E. from SW. Ascend 140 ft., over S. slope. 24.10 Point of spur, slopes SE. Descend 52 ft., over NE. slope. 27.50 Head of gulch, course E. Ascend 63 ft., over SE. slope. 32.47 Point of spur, slopes NE. Descend 15 ft., over N. slope, to 38.37 Set an iron post, 3 ft. long, 1 in. in diam., 15 ins. in 40.00 the ground, to bed rock, supported in a mound of stone for $\frac{1}{4}$ sec. cor., marked on brass cap,



from which,
 A pine, 8 ins. in diam., brs. S. 85° E., 60 lks. dist., marked $\frac{1}{4}$ S 33 BT.
 A pine, 10 ins. in diam., brs. N. 65 $\frac{3}{4}$ ° W., 44 lks. dist., marked $\frac{1}{4}$ S 32 BT.

Continue over mountainous land, thru. dense timber and scattering undergrowth. Descend 41 ft., over N. slope. 43.00 Gulch, course E. Ascend 266 ft., over S. slope, to 52.80 Spur, slopes SE. Descend 20 ft., over NE. slope. 54.30 Gulch, course E. Ascend 60 ft., over S. slope. 59.20 Spur, slopes E. Descend 252 ft., over N. slope. 70.00 Gulch, course E. Ascend 221 ft., over SE. slope, to 80.00 Set an iron post, 3 ft. long, 2 ins. in diam., 6 ins. in the ground, to bed rock, supported in a mound of stone, for cor. of secs. 28, 29, 32 and 33, marked on brass cap,



from which,
 A pine, 11 ins. in diam., brs. N. 28 $\frac{3}{4}$ ° E., 53 lks. dist., marked T31N R7W S28 BT.
 A pine, 5 ins. in diam., brs. S. 28 $\frac{3}{4}$ ° E., 58 lks. dist., marked T31N R7W S33 BT.
 A pine, 6 ins. in diam., brs. S. 38 $\frac{1}{2}$ ° W., 111 lks. dist., marked T31N R7W S32 BT.
 A pine, 10 ins. in diam., brs. N. 30° W., 56 lks. dist., marked T31N R7W S29 BT.

Land, mountainous.
 Soil, rocky, 4th rate.
 Timber, dense cedar and pine.
 Undergrowth, scattering sage brush and scrub cedar.
 Poor grass.

40.00 East, on a random line, bet. secs. 28 and 33. Set temp. $\frac{1}{4}$ sec. cor.
 80.18 Fall 3 lks. N. of the cor. of secs. 27, 28, 33 and 34. Thence, N. 89° 59' W., on a true line, bet. secs. 28 and 33. Over rolling land, thru. dense timber and scattering undergrowth.
 16.50 East rim of Mohawk Canyon, brs. N. and S. Leave rolling, and enter mountainous land. Descend 780 ft., over W. slope, to bottom of canyon.
 26.00 Cliff, 50 ft. high, brs. N. and S.

Subdivision lines of Township 31 North, Range 7 West. 41

Chains.
 28.00 Cliff, 100 ft. high, brs. N. and S.
 30.00 Bottom of Mohawk Canyon, course N. Ascend 30 ft., over E. slope.
 32.00 Point of short spur, slopes N. Descend 46 ft. to
 33.10 Ascend 140 ft., over NE. slope, to
 40.09 Set an iron post, 3 ft. long, 1 in. in diam., in a mound of stone, for $\frac{1}{4}$ sec. cor., marked on brass cap,

$\frac{1}{4}$ S 28
 S 33
 1920

from which,
 A pine, 10 ins. in diam., brs. S. $44\frac{1}{2}^{\circ}$ E., 31 lks. dist., marked $\frac{1}{4}$ S 33 BT.
 A pine, 8 ins. in diam., brs. N. 37° W., 7 lks. dist., marked $\frac{1}{4}$ S 28 BT.

Continue over mountainous land, thru. dense timber and scattering undergrowth, in Mohawk Canyon.
 Ascend 270 ft., over E. slope, to
 60.30 W. rim of Mohawk Canyon, brs. NE. and S. Leave canyon; asc. 20 ft., over SE. slope.
 65.30 Spur, slopes NE. Descend 25 ft., over NW. slope.
 70.20 Head of gulch, course NE. Ascend 52 ft., over SE. slope, to
 80.18 The cor. of secs. 28, 29, 32 and 33.
 Land, E. $10\frac{1}{2}$ chs., rolling; remainder mountainous.
 Soil, rocky, 4th rate.
 Timber, dense cedar and pine.
 Undergrowth, scattering sagebrush and scrub cedar.
 Poor grass.

 N. $0^{\circ}03'$ W., bet. secs. 28 and 29.
 Over mountainous land, thru: dense timber and scattering undergrowth. Ascend 20 ft., over SE. slope.
 2.00 Descend 410 ft., over N. slope.
 17.30 Gulch, course E. Ascend 410 ft., over S. slope.
 27.80 Spur, slopes E. Descend 124 ft., over N. slope.
 33.14 Gulch, course E. Ascend 180 ft., over S. slope, to
 40.00 Set an iron post, 3 ft. long, 1 in. in diam., 12 ins. in the ground to bed rock, supported in a mound of stone, for $\frac{1}{4}$ sec. cor., marked on brass cap,

$\frac{1}{4}$
 S29 | S28
 1920

from which,
 A pine, 9 ins. in diam., brs. N. $21\frac{1}{2}^{\circ}$ E., 54 lks. dist., marked $\frac{1}{4}$ S 28 BT.
 A pine, 10 ins. in diam., brs. S. 00° W., 29 lks. dist., marked $\frac{1}{4}$ S 29 BT.

Continue over mountainous land, thru. dense timber and scattering undergrowth.
 Ascend 42 ft., over S. slope.
 44.00 Spur, slopes E. from NW. Descend 70 ft., over N. slope.
 53.90 Head of gulch, course NE. Ascend 85 ft., over SE. slope.
 60.00 Spur, slopes NE. Descend 200 ft., over NW. slope.
 70.30 Gulch, course E. Ascend 200 ft., over S. slope, to
 80.00 Set an iron post, 3 ft. long, 2 ins. in diam., in a mound of stone, for cor. of secs. 20, 21, 28 and 29, marked on brass cap,

T31N | R7 W
 S20 | S21
 S29 | S28
 1920

from which,
 A pine, 7 ins. in diam., brs. N. $69\frac{3}{4}^{\circ}$ E., 139 lks. dist., marked T31N R7W S21 BT.

42 Subdivision lines of Township 31 North, Range 7 West.

Chains.

A cedar, 12 ins. in diam., brs. S. $60\frac{1}{2}^{\circ}$ E., 74 lks. dist., marked T31N R7W S28 BT.
 A pine, 8 ins. in diam., brs. S. $74\frac{1}{4}^{\circ}$ W., 33 lks. dist., marked T31N R7W S29 BT.
 A pine, 6 ins. in diam., brs. N. $26\frac{1}{4}^{\circ}$ W., 21 lks. dist., marked T31N R7W S20 BT.

Land, mountainous.
 Soil, rocky, 3rd and 4th rate.
 Timber, dense cedar and pine.
 Undergrowth, scattering dogwood and scrub cedar.
 Poor grass.

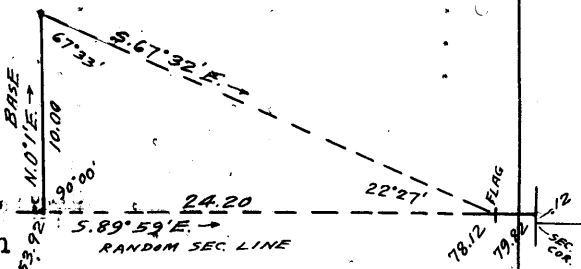
40.00 S. $89^{\circ}59'$ E., on a random line, bet. secs. 21 and 28.
 53.92 Set temp. $\frac{1}{4}$ sec. cor.
 W. rim of Mohawk Canyon, brs. N. and S. The line beyond this point passes over precipitous cliffs on the walls of Mohawk Canyon, rendering continuation of chaining impracticable. Triangulate as described, as follows and as shown on the diagram hereon:

Measure a Base, N. $0^{\circ}1'$ E., 10.00 chs.

Set flag ahead on random line on E. wall of canyon.

From N. end of Base, flag brs. S. $67^{\circ}32'$ E.

Included angles are $67^{\circ}33'$; $22^{\circ}27'$ and $90^{\circ}00'$, the sum of which $180^{\circ}00'$.



Triangulated dist. on random sec. line is obtained by Tang. $67^{\circ}33' \times$ Base, or $2.42019 \times 10.00 = 24.20$ chs., which added to 53.92 chs., gives 78.12 chs. S. $89^{\circ}53'$ E. from cor. of secs. 20, 21, 28 and 29, for the position of the flag point on random line.

78.12 Flag point of above described triangulation.

79.82 Continue line and measurement by chaining.

Fall 12 lks. N. of the cor. of secs. 21, 22, 27 and 28. Thence, N. $89^{\circ}54'$ W., on a true line, bet. secs. 21 and 28. Over mountainous land, thru. dense timber and scattering undergrowth, on E. wall of Mohawk Canyon.

1.70 Descend 20 ft., over NW. slope, to Flag point of triangulation, hereinbefore described, at top of cliffs, bearing N. and S., facing W.

Discontinue chaining, and triangulate for 24.20 chs. across cliffs, on E. and W. walls of Mohawk Canyon. Descend about 500 ft., over E. wall of canyon, to

10.00 (Approximate dist.) Bottom of Mohawk Canyon, course NW. Ascend about 600 ft., over W. wall of canyon, to

25.90 Triangulation point at W. rim of Mohawk Canyon, brs. N. and S. Leave canyon. Continue line and measurement by chaining.

28.00 Descend 40 ft., over SW. slope.

32.00 Gulch, course SE. Ascend 30 ft., over N. slope, to

36.00 Head of same gulch, course N. Ascend 72 ft. over SE. slope, to

39.91 Set an iron post, 3 ft. long, 1 in. in diam., 13 ins. in the ground to bed rock, supported in a mound of stone, for $\frac{1}{4}$ sec. cor., marked on brass cap,

$\frac{1}{4}$ S 21
 S 28
 1920

from which,

A pine, 14 ins. in diam., brs. N. $3\frac{3}{4}^{\circ}$ E., 40 lks. dist., marked $\frac{1}{4}$ S 21 BT.

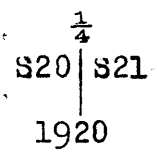
A pine, 8 ins. in diam., brs. S. $45\frac{3}{4}^{\circ}$ E., 44 lks. dist., marked $\frac{1}{4}$ S 28 BT.

Subdivision lines of Township 31 North, Range 7 West.

Chains.

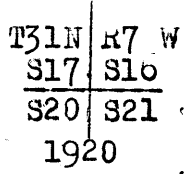
65.00. Continue over mountainous land, thru. dense timber and scattering undergrowth. Asc. 390 ft., over E. slope.
 70.00. Spur, slopes S. Descend 40 ft., over W. slope.
 79.82. Ascend 60 ft., over SE. slope, to
 The cor. of secs. 20, 21, 28 and 29.
 Land, mountainous.
 Soil, rocky, 3rd and 4th rate.
 Timber, dense cedar and pine.
 Undergrowth, scattering dogwood and scrub cedar.
 Poor grass.

10.00 N. 0° 03' W., bet. secs. 20 and 21.
 22.20 Over mountainous land, thru. dense timber and scattering undergrowth. Ascend 15 ft., over S. slope.
 29.50 Spur, slopes E. Descend 170 ft., over N. slope.
 34.40 Gulch, course E. Ascend 95 ft., over S. slope.
 39.40 Spur, slopes E. Descend 20 ft., over N. slope.
 40.00 Head of gulch, course E. Ascend 27 ft., over S. slope.
 Set an iron post, 3 ft. long, 1 in. in diam., 8 ins. in the ground to bed rock, supported in a mound of stone for $\frac{1}{4}$ sec. cor., marked on brass cap,



from which,
 A pine, 6 ins. in diam., brs. S. 67° E., 34 lks. dist., marked $\frac{1}{4}$ S 21 BT.
 A pine, 8 ins. in diam., brs. N. 51 $\frac{1}{2}$ ° W., 62 lks. dist., marked $\frac{1}{4}$ S 20 BT.

60.00 Continue over mountainous land, thru. dense timber and scattering undergrowth.
 73.00 Descend 200 ft., over N. slope.
 80.00 Gulch, course E. Asc. 214 ft., over S. slope.
 Set an iron pest 3 ft. long, 2 ins. in diam., 9 ins. in the ground, to bed rock, supported in a mound of stone, for cor. of secs. 16, 17, 20 and 21, marked on brass cap,



from which,
 A pine, 8 ins. in diam., brs. N. 54 $\frac{3}{4}$ ° E., 81 lks. dist., marked T31N R7W S16 BT.
 A cedar, 12 ins. in diam., brs. S. 50° E., 81 lks. dist., marked T31N R 7 W S21 BT.
 A pine, 8 ins. in diam., brs. S. 44 $\frac{1}{2}$ ° W., 51 lks. dist., marked T31N R7W S20 BT.
 A pine, 10 ins. in diam., brs. N. 56 $\frac{1}{2}$ ° W., 42 lks. dist., marked T31 N R7W S17 BT.

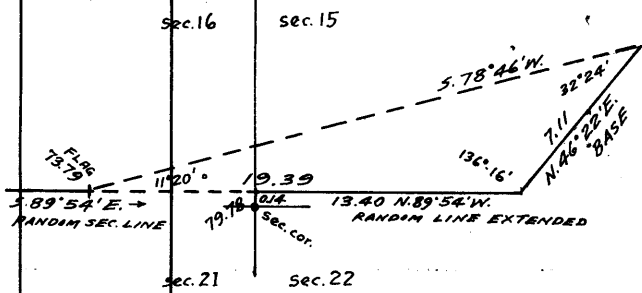
Land, mountainous.
 Soil, rocky, 3rd and 4th rate.
 Timber, dense cedar and pine.
 Undergrowth, scattering scrub cedar.
 Poor grass.

40.00 S. 89° 54' E., on a random line, bet. secs. 16 and 21.
 73.79 Set temp. $\frac{1}{4}$ sec. cor.
 Top of cliffs bearing N. 20° E. and S., facing E. Abrupt descent over cliffs render chaining impracticable; therefore triangulate as described, as follows, and as

44 Subdivision lines of Township 31 North, Range 7 West.

Chains.

shown on the diagram hereon:



Leave flag at this point. From a point on random line, projected beyond the cor. of secs. 15, 16, 21 and 22, measure a Base, B. 46° 22' E., 7.11 chs. From NE. end of Base, flag brs. S. 78° 46' W. Vertical angle from flag to SW. end of base is - 30°. Included angles are 11° 20', 32° 24', 136° 10', the sum of which is 180° 00.

Triangulated dist. on random line projected is obtained by $\frac{\text{sine } 32^\circ 24' \times \text{Base}}{\text{sine } 11^\circ 20'}$ or $\frac{.53583 \times 7.11}{.19052} = 19.39$ chs., which

- 79.78 added to 73.79 chs. gives 93.18 chs., S. 89° 54' E., from cor. of secs. 16, 17, 20 and 21 for the position of the triangulation point. Thence chain measurement, N. 89° 54' W., 13.40 chs., to Fall 14 lks. N. of the cor. of secs. 15, 16, 21 and 22. Thence, N. 89° 48' W., on a true line, bet. secs. 16 and 21. Over mountainous land, thru. scattering timber and undergrowth in Mohawk Canyon. Measurement by triangulation for 5.99 chs. as hereinbefore described. Ascend 340 ft., over cliffs, facing E. Flag point of triangulation at top of cliffs bearing N. and S. Continue line and measurement by chaining. Ascend 415 ft., over steep E. slope.
- 5.99
- 17.40 W. rim of Mohawk Canyon brs. N. 15° E. and S. Leave mountainous and enter rolling land and dense timber.
- 39.89 Ascend 90 ft., over gradual E. slope, to Set an iron post, 3 ft. long, 1 in. in diam., 9 ins. in the ground, to bed rock, supported in a mound of stone, for $\frac{1}{4}$ sec. cor., marked on brass cap,

$\frac{1}{4}$ S 16
S 21
1920

from which,

A cedar, 8 ins. in diam., brs. N. 23 $\frac{1}{4}$ ° E., 56 lks. dist., marked $\frac{1}{4}$ S 16 BT.

A pine, 6 ins. in diam., brs. S. 1° E., 59 lks. dist., marked $\frac{1}{4}$ S 21 BT.

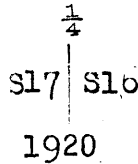
Continue over rolling land, thru. dense timber and undergrowth. Descend 20 ft., over NW. slope.

- 41.50 Wash, course NE. Ascend 90 ft., over E. slope.
- 69.80 Spur, slopes N. from SW. Descend 40 ft., over NW. slope, to
- 79.78 The cor. of secs. 16, 17, 20 and 21. Land; E. 17.40 chs., mountainous; remainder rolling. Soil, gravelly, 3rd rate. Timber; cedar and pine, scattering and dense. Undergrowth, scattering sage brush, scrub cedar and dogwood. Fair grass.

N. 0° 03' W., bet. secs. 16 and 17. Over rolling land, thru. dense timber and scattering undergrowth. Descend 100 ft., over NW. slope. Draw, course NE. Thence over E. slope, with slight change in elevation.

Chains.

10.00 Draw, course SE. Ascend 150 ft. over S. slope.
 27.50 Spur, slopes E. Descend 15 ft., over N. slope, to
 29.30 Draw, course E. Ascend 25 ft., over E. slope to
 35.20 Draw, course SE. Ascend 40 ft., over SE. slope, to
 40.00 Set an iron post, 3 ft. long, 1 in. in diam., 15 ins. in
 the ground to bed rock, supported in a mound of stone,
 for $\frac{1}{4}$ sec. cor., marked on brass cap,

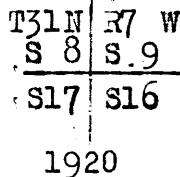


from which,

- A pine, 10 ins. in diam., brs. S. $89^{\circ}E.$, 25 lks.
dist., marked $\frac{1}{4}$ S 16 BT.
- A pine, 10 ins. in diam., brs. S. $81\frac{1}{2}^{\circ}W.$, 84 lks.
dist., marked $\frac{1}{4}$ S 17 BT.

Continue over rolling land, thru. dense timber and scattering undergrowth. Ascend 47 ft., over SE. slope.

43.20 Descend slightly over NE. slope.
 47.80 Drain, course E. Ascend 40 ft., over E. slope.
 51.50 Enter area where timber has been burned.
 62.20 Drain, course E. Ascend 20 ft., over E. slope, to
 70.00 Drain, course E. Leave burnt timber. Ascend 10 ft.
 72.80 Descend 15 ft.
 74.50 Drain, course E. Asc. 20 ft., over SE. slope.
 77.25 Descend slightly over NW. slope, to
 80.00 Set an iron post, 3 ft. long, 2 ins. in diam., 15 ins. in
 the ground, supported in a mound of stone, for cor.
 of secs. 8, 9, 16 and 17, marked on brass cap,



from which,

- A pine, 12 ins. in diam., brs. N. $63\frac{1}{2}^{\circ}E.$, 17 lks.
dist., marked T 31 N R 7 W S 9 BT
- A pine, 10 ins. in diam., brs. S. $30\frac{1}{2}^{\circ}E.$, 36 lks.
dist., marked T31N R7W S16 BT.
- A pine, 12 ins. in diam., brs. S. $51^{\circ}W.$, 65 lks.
dist., marked T31N R7W-S17 BT.
- A pine, 14 ins. in diam., brs. N. $37\frac{3}{4}^{\circ}W.$, 70 lks.
dist., marked T31N R7W-S8 BT.

Land, rolling and broken.
 Soil, gravelly, 2nd and 3rd rate.
 Timber, dense cedar and pine.
 Undergrowth, scattering dogwood, scrub oak, scrub cedar
 and sage brush.
 Fair grass.

40.00 S. $89^{\circ}48'E.$, on a random line, bet. secs. 9 and 16.
 Set temp. $\frac{1}{4}$ sec. cor.
 80.20 Fall 35 lks. S. of the cor. of secs. 9, 10, 15 and 16.
 Thence,
 S. $89^{\circ}57'W.$, on a true line, bet. secs. 9 and 16.
 Over mountainous land, thru. scattering timber and under-
 growth, in Mohawk Canyon; over broken N. slope on S.
 side of gulch. Ascend 160 ft. to
 5.70 Point of sharp spur, slopes N.
 Continue over broken N. slope. Ascend 60 ft. to
 8.30 Gulch, course NE. Ascend 225 ft. over broken E. slope, to
 25.00 W. rim of Mohawk Canyon, brs. N. and S. Leave mountainous
 and enter rolling land and dense timber. Descend 15
 ft., over NW. slope.

46 Subdivision lines of Township 31 North, Range 7 West.

Chains.

29.20 Drain, course NE. Ascend 20 ft., over NE. slope, to
 40.10 Set an iron post, 3 ft. long, 1 in. in diam., 10 ins. in
 the ground to bed rock, supported in a mound of stone,
 for $\frac{1}{4}$ sec. cor., marked on brass cap,

$\frac{1}{4}$ S 9
 S 16
 1920

from which,
 A pine, 10 ins. in diam., brs. S. 67° W., 37 lks.
 dist., marked $\frac{1}{4}$ S 16 BT.
 A pine, 10 ins. in diam., brs. N. 20° W., 13 lks.
 dist., marked $\frac{1}{4}$ S 9 BT.

Continue over rolling land, thru. dense timber and scat-
 tering undergrowth. Descend 10 ft., over N. slope.
 50.00 Draw, course NE. Ascend 80 ft., over NE. slope, to
 66.20 Draw, course NE. Ascend 40 ft., over E. slope.
 78.00 Descend slightly over NW. slope, to
 80.20 The cor. of secs. 8, 9, 16 and 17.
 Land, E. 25 chs. mountainous; remainder, broken and roll-
 ing.
 Soil, gravelly and rocky, 2nd and 3rd rate.
 Timber, pine and cedar, scattering and dense.
 Undergrowth, scattering scrub oak, scrub cedar and dog-
 wood.
 Fair grass.

N. 0° 03' W., bet. secs. 8 and 9.
 Over rolling land, thru. scattering timber and undergrowth.
 Descend 30 ft., over NW. slope.
 5.00 Wash, course NW. Ascend 70 ft., over W. slope, to
 27.00 Descend 35 ft., over W. slope, to
 40.00 Set an iron post, 3 ft. long, 1 in. in diam., 28 ins. in
 the ground, for $\frac{1}{4}$ sec. cor., marked on brass cap,

$\frac{1}{4}$
 S 8 | S 9
 1920

from which,
 A cedar, 12 ins. in diam., brs. S. 85 $\frac{1}{2}$ ° E., 129 lks.
 dist., marked $\frac{1}{4}$ S 9 BT.
 A cedar, 10 ins. in diam., brs. N. 89 $\frac{1}{4}$ ° W., 119 lks.
 dist., marked $\frac{1}{4}$ S 8 BT.

Continue over rolling land, thru. scattering timber and
 undergrowth. Descend 60 ft., over NW. slope, to
 55.00 Wash, course NE. Ascend 25 ft. over SE. slope.
 62.00 Descend 40 ft., over NE. slope.
 76.80 Drain, course NE. Ascend slightly over SE. slope, to
 80.00 Set an iron post, 3 ft. long, 2 ins. in diam., 12 ins. in
 the ground, to bed rock, supported in a mound of stone
 for cor. of secs. 4, 5, 8 and 9, marked on brass cap,

T31N | R7W
 S 5 | S 4
 S. 8 | S 9
 1920

from which,
 A cedar, 14 ins. in diam., brs. N. 27 $\frac{1}{2}$ ° E., 129 lks.
 dist., marked T31N R7W S4 BT.
 A pine, 6 ins. in diam., brs. S. 53 $\frac{1}{2}$ ° E., 49 lks.
 dist., marked T31N R7W S9 BT.
 A cedar, 10 ins. in diam., brs. S. 23° W., 67 lks.
 dist., marked T31N R7W S8 BT.
 A pine, 6 ins. in diam., brs. N. 33 $\frac{1}{2}$ ° W., 86 lks.
 dist., marked T31N R7W S5 BT.

Chains.

Land, rolling and broken.
Soil, gravelly loam, 2nd and 3rd rate.
Timber, scattering pine and cedar.
Undergrowth, scattering dogwood, scrub oak, scrub cedar and sagebrush.
Fair grass.

N. 89° 57' E., on a random line, bet. secs. 4 and 9.
40.00 Set temp. $\frac{1}{4}$ sec. cor.
80.04 Fall 20 lks. S. of the cor. of secs. 3, 4, 9 and 10.
Thence,
S. 89° 48' W., on a true line, bet. secs. 4 and 9.
Over rolling land, thru. dense timber, and scattering undergrowth. Descend 10 ft. to
.85 Head of draw, course SW. Thence over S. slope, with slight change in elevation.
3.00 Draw, course SE. Ascend 90 ft., over SE. slope.
18.00 Descend 15 ft., over SW. slope.
25.00 Drain, course SE. Ascend 20 ft., over E. slope, to
40.02 Set an iron post, 3 ft. long, 1 in. in diam., 14 ins. in the ground, to bed rock, supported in a mound of stone, for $\frac{1}{4}$ sec. cor., marked on brass cap,

$\frac{1}{4}$ S 4
S 9
1920

from which,
A pine, 11 ins. in diam., brs. S. 14° E., 40 lks. dist., marked $\frac{1}{4}$ S 9 BT.
A pine, 10 ins. in diam., brs. N. 70° W., 42 lks. dist., marked $\frac{1}{4}$ S 4 BT.

Continue over rolling land, thru. dense timber and scattering undergrowth. Descend 30 ft., over W. slope.
46.50 Drain, course N. Ascend 40 ft., over NE. slope.
53.00 Point of spur, slopes N. Descend 50 ft., over NW. slope.
62.50 Drain, course NE. Ascend 35 ft., over E. slope, to
70.00 Thence along N. slope, with slight change in elevation.
74.00 Descend 20 ft., over NW. slope.
78.14 Drain, course NE. Ascend slightly over SE. slope, to
80.04 The cor. of secs. 4, 5, 8 and 9.
Land, rolling.
Soil, rocky and gravelly, 2nd and 3rd rate.
Timber, dense, cedar and pine.
Undergrowth, scattering dogwood, sagebrush, scrub oak and scrub cedar.
Fair grass.

North, on a random line, bet. secs. 4 and 5.
40.00 Set temp. $\frac{1}{4}$ sec. cor.
79.64 Fall 17 lks. W. of the cor. of secs. 4, 5, 32 and 33, on N. bdy. of Tp., hereinbefore described.
Thence,
S. 0° 07' W., on a true line, bet. secs. 4 and 5.
Over broken and rolling land, thru. dense timber, and scattering undergrowth.
Ascend 42 ft., over NW. slope.
5.00 Thence over E. slope, with slight change in elevation.
14.60 Descend 40 ft., over SE. slope.
19.64 Draw, course NE. Ascend 20 ft., over N. slope.
21.50 Descend 30 ft., over E. slope.
31.00 Draw, course NE. Ascend 15 ft., over NE. slope, to
35.35 Draw, course NE. Ascend 50 ft., over NW. slope, to
39.64 Set an iron post, 3 ft. long, 1 in. in diam., 12 ins. in the ground, to bed rock, supported in a mound of stone, for $\frac{1}{4}$ sec. cor., marked on brass cap,

S 5 | S 4
1920

48 Subdivision lines of Township 31 North, Range 7 West.

Chains.

from which,

A pine, 12 ins. in diam., brs. S. 83 1/2° E., 32 lks.
dist., marked 1/4 S 4 BT.

A pine, 14 ins. in diam., brs. S. 57° W., 19 lks.
dist., marked 1/4 S 5 BT.

Continue over rolling land, thru. dense timber and scattering undergrowth. Ascend 15 ft., over NW. slope.

52.00 Descend very gradually, over E. slope, to

79.04 The cor. of secs. 4, 5, 8 and 9.

Land, rolling and broken.

Soil, gravelly and rocky, 2nd and 3rd rate.

Timber, dense cedar and pine.

Undergrowth, scattering scrub oak, dogwood, sagebrush and scrub cedar.

Fair grass.

From the cor. of secs. 5, 6, 31 and 32, on S. bdy. of Tp., described in Book "C,"

N. 0° 03' W., bet. secs. 31 and 32.

Over rolling land, thru. dense timber and scattering undergrowth. Descend 50 ft., over N. slope.

13.30 Draw, course E. Ascend 50 ft., over S. slope.

17.90 Descend 20 ft., over N. slope.

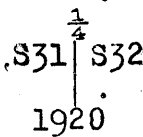
23.30 Draw, course E. Thence over E. slope, ascending slightly to

27.30 Draw, course SE. Ascend 95 ft., over SE. slope, to 1/4 sec. cor.

34.58 A pine tree, 5 ins. in diam., on line.

34.63 A pine tree, 6 ins. in diam., on line.

40.00 Set an iron post, 3 ft. long, 1 in. in diam., 20 ins. in the ground, for 1/4 sec. cor., marked on brass cap,



from which,

A pine, 10 ins. in diam., brs. N. 59 1/4° E., 28 lks.
dist., marked 1/4 S 32 BT.

A pine, 8 ins. in diam., brs. S. 39° W., 44 lks.
dist., marked 1/4 S 31 BT.

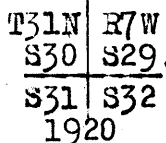
Leave rolling, and enter level land, brs. NE, and SW. Continue thru. dense timber and scattering undergrowth.

60.00 Leave level, and enter rolling land, brs. NE. and SW.

Descend 50 ft., over NE. slope to sec. cor.

62.40 Wire fence, brs. N. 40 1/2° E., and S. 40 1/2° W.

80.00 Set an iron post, 3 ft. long, 2 ins. in diam., 6 ins. in the ground, to bed rock, supported in a mound of stone, for cor. of secs. 29, 30, 31 and 32, marked on brass cap,



from which,

A pine, 14 ins. in diam., brs. N. 23° E., 41 lks.
dist., marked T31N R7W S29 BT.

A pine, 10 ins. in diam., brs. S. 34 1/2° E., 71 lks.
dist., marked T31N R7W S32 BT.

A pine, 12 ins. in diam., brs. S. 39 1/2° W., 57 lks.
dist., marked T31N R7W S31 BT.

A pine, 15 ins. in diam., brs. N. 38° W., 35 lks.
dist., marked T31N R7W S30 BT.

Land, rolling, and level.

Soil, gravelly and rocky, 2nd and 3rd rate.

Timber, dense cedar and pine.

Undergrowth, scattering dogwood, scrub oak, sagebrush and scrub cedar.

Fair grass.

Subdivision lines of Township 31 North, Range 7 West.

Chains.

40.00 East, on a random line, bet. secs. 29 and 32.
 Set temp. $\frac{1}{4}$ sec. cor.
 80.24 Fall 25 lks. N. of the cor. of secs. 28, 29, 32 and 33.
 Thence,
 N. $89^{\circ}49'W.$, on a true line, bet. secs. 29 and 32.
 Over rolling land, thru. dense timber and scattering undergrowth. Descend 42 ft., over NW. slope.
 5.00 Head of draw, course N. Ascend 40 ft., over E. slope.
 14.90 Spur, slopes N. Descend 15 ft., over W. slope.
 17.40 Head of draw, course NW. Ascend 45 ft., over NE. slope, to
 25.00 Ascend 25 ft., over E. slope, to
 40.12 Set an iron post, 3 ft. long, 1 in. in diam., 6 ins. in the ground, to bed rock, supported in a mound of stone, for $\frac{1}{4}$ sec. cor., marked on brass cap,

$\frac{1}{4}$ S 29
 S 32
 1920

from which,
 A pine, 10 ins. in diam., brs. S. $50\frac{1}{2}^{\circ}E.$, 61 lks. dist., marked $\frac{1}{4}$ S 32 BT.
 A pine, 10 ins. in diam., brs. N. $14^{\circ}W.$, 58 lks. dist., marked $\frac{1}{4}$ S 29 BT.

Continue over rolling land, thru. dense timber, and scattering undergrowth. Ascend 25 ft., over SE. slope.
 45.00 Descend 10 ft., over SW. slope, to
 48.14 Draw, course S. Thence over S. slope, with slight change in elevation.
 55.75 Draw, course SE. Ascend 45 ft., over E. slope.
 65.00 Descend 35 ft., over W. slope.
 69.89 Wire fence, brs. N. $34\frac{1}{2}^{\circ}E.$ and S. $34\frac{1}{2}^{\circ}W.$
 74.74 Shallow draw, course N. Ascend 30 ft., over NE. slope, to
 80.24 The cor. of secs. 29, 30, 31 and 32.
 Land, rolling.
 Soil, gravelly and rocky, 2nd and 3rd rate.
 Timber, dense cedar and pine.
 Undergrowth, scattering dogwood, sagebrush, scrub cedar and scrub oak.
 Fair grass..

West, on a random line, bet. secs. 30 and 31.
 40.00 Set temp. $\frac{1}{4}$ sec. cor.
 78.60 Intersect W. bdy. of Tp., at the cor. of secs. 25, 30, 31 and 36, hereinbefore described.
 Thence,
 East, on a true line, bet. secs. 30 and 31.
 Over rolling land, thru. dense timber and scattering undergrowth.
 Descend 30 ft., over NE. slope.
 6.40 Draw, course NW. Ascend 65 ft., over W. slope.
 9.80 Road, brs. N. and S.
 15.00 Descend 15 ft., over E. slope.
 19.00 Shallow drain, course SE. Thence over S. slope, descending slightly to
 32.80 Same drain, course NE. Descend 25 ft., over NE. slope, to
 37.70 Draw, course NE. Ascend slightly over NW. slope, to
 38.60 Set an iron post, 3 ft. long, 1 in. in diam., 8 ins. in the ground, to bed rock, supported in a mound of stone, for $\frac{1}{4}$ sec. cor., marked on brass cap,

$\frac{1}{4}$ S 30
 S 31
 1920

from which,
 A pine, 12 ins. in diam., brs. S. $8^{\circ}W.$, 35 lks. dist., marked $\frac{1}{4}$ S 31 BT.
 A pine, 12 ins. in diam., brs. N. $18^{\circ}W.$, 28 lks. dist., marked $\frac{1}{4}$ S 30 BT.

50 Subdivision lines of Township 31 North, Range 7 West.

Chains.

Continue over rolling land, thru. dense timber and scattering undergrowth. Descend 90 ft., over NE. slope.
 49.20 Same draw as at 37.70 ch. station, course SE. Ascend slightly over S. slope, to
 51.60 Wash, course S. Ascend 50 ft., over SW. slope.
 58.70 Descend 105 ft., over SE. slope.
 68.40 Wash, 10 lks. wide, course NE. Ascend slightly over N. slope, to
 69.22 A pine tree, 12 ins. in diam., on line.
 71.70 Shallow draw, course N. Ascend 40 ft., over NW. slope.
 73.75 Descend 20 ft., over NE. slope, to
 78.60 The cor. of secs. 29, 30, 31 and 32.
 Land, rolling.
 Soil, rocky loam, 3rd rate.
 Timber, cedar and pine.
 Undergrowth, sage brush and dogwood.

 N. 0° 03' W., bet. secs. 29 and 30.
 Over rolling land, thru. dense timber and scattering undergrowth.
 Descend 80 ft., over NE. slope.
 11.50 Wash, course NE. Thence over E. slope, ascending 20 ft. to
 19.50 Draw, course SE. Ascend 75 ft., over SE. slope.
 20.90 Descend 75 ft., over N. slope.
 34.40 Intersection of two draws, from NW. and SW., course E.
 Ascend 52 ft., over SE. slope, to
 40.00 Set an iron post, 3 ft. long, 1 in. in diam., 20 ins. in the ground, for $\frac{1}{4}$ sec. cor., marked on brass cap,

$\frac{1}{4}$
 S30 | S29

1920

from which,

A pine, 12 ins. in diam., brs. S. 32° E., 52 lks. dist., marked $\frac{1}{4}$ S 29 BT.

A pine, 6 ins. in diam., brs. N. 05° W., 48 lks. dist., marked $\frac{1}{4}$ S 30 BT.

Continue over rolling land, thru. dense timber and scattering undergrowth.
 Ascend 20 ft., over SE. slope.
 50.00 Descend 15 ft., over NE. slope.
 63.10 Drain course NE. thence over E. slope, ascending slightly to sec. cor. Leave dense, and enter scattering timber.
 75.00 Draw, course E.
 79.50 Draw, course E.
 80.00 Set an iron post, 3 ft. long, 2 ins. in diam., 12 ins. in the ground, to bed rock, supported in a mound of stone, for cor. of secs. 19, 20, 29 and 30, marked on brass cap,

T31N | R7 W

S19 | S20

S30 | S29

1920

from which,

A yellow pine, 24 ins. in diam., brs. N. 50 $\frac{1}{2}$ ° E., 47 lks. dist., marked T31N R7W S20 BT.

A yellow pine, 16 ins. in diam., brs. S. 21° E., 152 lks. dist., marked T31N R7W S29 BT.

A yellow pine, 30 ins. in diam., brs. S. 36° W., 74 lks. dist., marked T31N R7W S30 BT.

A yellow pine, 34 ins. in diam., brs. N. 02 $\frac{1}{2}$ ° W., 51 lks. dist., marked T31N R7W S19 BT.

Subdivision lines of Township 31 North, Range 7 West.

Chains.

Land, rolling.
Soil, gravelly, 3rd rate.
Timber, cedar and yellow pine, dense and scattering.
Undergrowth, scattering sage brush, scrub cedar and scrub oak.
Fair grass..

40.00 S. 89°49'E., on a random line, bet. secs. 20 and 29.
80.20 Set temp. 1/4 sec. cor.
Fall 5 lks. S. of the cor. of secs. 20, 21, 28 and 29.
Thence,
N. 89°51'W., on a true line, bet. secs. 20 and 29.
Over rolling land, thru. dense timber and scattering undergrowth.
39.00 Ascend 120 ft., over SE. slope, to
40.10 Descend slightly over SW. slope, to
Set an iron post, 3 ft. long, 1 in. in diam., 12 ins. in the ground, supported in a mound of stone, for 1/4 sec. cor., marked on brass cap,

1/4 S 20
S 29
1920

from which,
A pine, 6 ins. in diam., brs. N. 2° E., 44 lks. dist., marked 1/4 S 20 BT.
A pine, 7 ins. in diam., brs. S. 10° W., 20 lks. dist., marked 1/4 S 29 BT.

Continue over rolling land, thru. dense timber and scattering undergrowth.
Descend 20 ft., over SW. slope.
44.00 Draw, course SE. Ascend 70 ft., over E. slope.
54.90 Spur, slopes SE. Desc. 95 ft., over SW. slope.
71.30 Draw, course SE. Descend 50 ft., over SE. slope.
76.00 Point of spur, slopes SE. Descend 35 ft., over W. slope.
79.50 Wash, course SE. Ascend slightly to
80.20 The cor. of secs. 19, 20, 29 and 30.
Land, rolling.
Soil, gravelly and rocky, 2nd and 3rd rate.
Timber, dense cedar and pine.
Undergrowth, scattering scrub oak, and scrub cedar and dogwood.
Fair grass.

40.00 West, on a random line, bet. secs. 19 and 30.
78.48 Set temp. 1/4 sec. cor.
Fall 36 lks. N. of the cor. of secs. 19, 24, 25 and 30, on W. bdy. of Tp., here in before described.
Thence,
N. 89°45'E., on a true line, bet. secs. 19 and 30.
Over nearly level land, thru. dense timber and scattering undergrowth. Ascend very gradually over W. slope.
27.68 Road, brs. N. 10° E. and S. 10° W.
36.00 Top of ascent, brs. N. and S. Leave nearly level, and enter rolling land. Descend 15 ft., over E. slope, to
38.48 Set an iron post, 3 ft. long, 1 in. in diam., 13 ins. in the ground, supported in a mound of stone, for 1/4 sec. cor., marked on brass cap,

1/4 S 19
S 30
1920

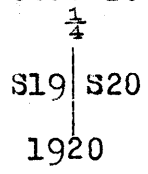
from which,
A pine, 15 ins. in diam., brs. S. 14 1/4° W., 65 lks. dist., marked 1/4 S 30 BT.

52 Subdivision lines of Township 31 North, Range 7 West.

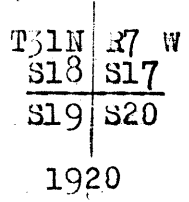
Chains.

78.48 A pine, 7 ins. in diam., brs. N. 18° W., 51 lks. dist., marked $\frac{1}{4}$ S 19 BT.
 Continue over rolling land, thru. dense timber and scattering undergrowth.
 Descend 180 ft., over E. slope, to The cor. of secs. 19, 20, 29 and 30.
 Land, W. 30 chs. nearly level; remainder, rolling.
 Soil, gravelly and rocky, 2nd and 3rd rate.
 Timber, dense cedar and pine.
 Undergrowth, scattering dogwood, and scrub cedar.
 Fair grass.

.50 N. 0° 03' W., bet. secs. 19 and 20.
 Over broken and rolling land, thru. dense timber and scattering undergrowth. Desc. slightly to Small wash, course SE. Ascend very gradually over E. slope, to $\frac{1}{4}$ sec. cor.
 .15.00 Timber becomes scattering. Enter dense undergrowth.
 35.40 Drain, course E.
 38.50 Drain, course E.
 40.00 Set an iron post, 3 ft. long, 1 in. in diam., 20 ins. in the ground, for $\frac{1}{4}$ sec. cor., marked on brass cap,



from which,
 A pine, 10 ins. in diam., brs. S. 72° E., 102 lks. dist., marked $\frac{1}{4}$ S 20 BT.
 A cedar, 12 ins. in diam., brs. S. 59 $\frac{1}{2}$ ° W., 122 lks. dist., marked $\frac{1}{4}$ S 19 BT.
 Continue over rolling and broken land, thru. scattering timber and dense undergrowth.
 Ascend slightly over E. slope, to
 51.00 Drain, course SE. Ascend very gradually over SE. slope, to sec. cor.
 52.00 Enter dense timber.
 80.00 Set an iron post, 3 ft. long, 2 ins. in diam., 20 ins. in the ground, for cor. of secs. 17, 18, 19 and 20, marked on brass cap,



from which,
 A cedar, 10 ins. in diam., brs. N. 66° E., 69 lks. dist., marked T31N R7W S17 BT.
 A cedar, 6 ins. in diam., brs. S. 57 $\frac{1}{2}$ ° E., 83 lks. dist., marked T31N R7W S20 BT.
 A pine, 18 ins. in diam., brs. S. 60 $\frac{1}{2}$ ° W., 95 lks. dist., marked T31N R7W S19 BT.
 A pine, 12 ins. in diam., brs. N. 57 $\frac{1}{2}$ ° W., 95 lks. dist., marked T31N R7W S18 BT.
 Land, rolling and broken.
 Soil, rocky and gravelly, 2nd and 3rd rate.
 Timber, cedar and pine, dense and scattering.
 Undergrowth, sage brush and scrub oak, and scrub cedar, dense and scattering.
 Fair grass.

Subdivision lines of township 31 North, Range 7 West, 53

chains.

S. 89° 51' E., on a random line, bet. secs. 17 and 20.
 40.00 Set temp. $\frac{1}{4}$ sec. cor.
 80.24 Fall 16 lks. S. of the cor. of secs. 16, 17, 20 and 21.
 Thence
 N. 89° 58' W., on a true line, bet. secs. 17 and 20.
 Over rolling and broken land, thru. dense timber and scattering undergrowth.
 Descend 55 ft., over W. slope.
 1.75 Head of draw, course N. Ascend 40 ft., over E. slope, to
 8.70 Thence over SE. slope, ascending 35 ft. to
 25.00 Descend 35 ft., over SW. slope.
 30.05 Draw, course S. Ascend 50 ft., over NE. slope, to
 40.12 Set an iron post, 3 ft. long, 1 in. in diam., 20 ins. in the ground, for $\frac{1}{4}$ sec. cor., marked on brass cap,

$\frac{1}{4}$ S 17
 S 20
 1920

from which,
 A pine, 15 ins. in diam., brs. S. 67 $\frac{1}{4}$ ° W., 60 lks. dist., marked $\frac{1}{4}$ S 20 BT.
 A pine, 15 ins. in diam., brs. N. 68° W., 62 lks. dist., marked $\frac{1}{4}$ S 17 BT.

Continue over rolling and broken land, thru. dense timber and scattering undergrowth.
 Descend 20 ft., over NW. slope.
 47.25 Draw, course NE. Asc. 65 ft., over SE. slope, to
 80.24 The cor. of secs. 17, 18, 19 and 20.
 Land, rolling and broken.
 Soil, gravelly, 2nd rate.
 Timber, dense cedar and pine.
 Undergrowth, scattering dogwood, sagebrush and scrub cedar.
 Fair grass.

S. 89° 45' W., on a random line, bet. secs. 18 and 19.
 40.00 Set temp. $\frac{1}{4}$ sec. cor.
 78.07 Fall 19 lks. S. of the cor. of secs. 13, 18, 19 and 24, on W. bdy. of Tp., hereinbefore described.
 Thence,
 N. 89° 53' E., on a true line, bet. secs. 18 and 19.
 Over rolling land, thru. dense timber and scattering undergrowth. Desc. 23 ft., over SE. slope.
 4.00 Draw, course NE. from W. Asc. 21 ft., over NW. slope.
 8.00 Spur, slopes NE. Descend 50 ft., over E. slope.
 14.37 Draw, course N. Ascend 20 ft., over N. slope, to
 20.00 Draw, course NW. Ascend 65 ft., over NW. slope, to
 38.07 Set an iron post, 3 ft. long, 1 in. in diam., 15 ins. in the ground, supported in a mound of stone, for $\frac{1}{4}$ sec. cor., marked on brass cap,

$\frac{1}{4}$ S 18
 S 19
 1920

from which,
 A pine, 14 ins. in diam., brs. S. 49° W., 75 lks. dist., marked $\frac{1}{4}$ S 19 BT.
 A pine, 10 ins. in diam., brs. N. 82° W., 150 lks. dist., marked $\frac{1}{4}$ S 18 BT.

Continue over rolling land, thru. dense timber and scattering undergrowth.
 Descend 180 ft., over SE. slope, to sec. cor.
 60.77 Road, brs. NE. and SW.
 78.07 The cor. of secs. 17, 18, 19 and 20.
 Land rolling.
 Soil, gravelly, 2nd and 3rd rate.

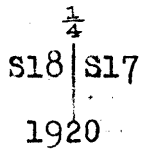
54 Subdivision lines of Township 31 North, Range 7 West.

Chains.

Timber, dense cedar and pine.
Undergrowth, scattering dogwood, sagebrush and scrub cedar.
Fair grass.

N.0°03'W., bet. secs. 17 and 18.

- 6.00 Over rolling land, thru. dense timber and scattering undergrowth. Ascend 35 ft., over SE. slope, to
- 17.00 Trail to tank, brs. E. and W. Ascend 16 ft., over S. slope.
- 20.00 Spur, slopes W. Descend 30 ft., over NW. slope, to
- 40.00 Thence over W. slope, descending 50 ft. to
- Set an iron post, 3 ft. long, 1 in. in diam., 8 ins. in the ground to bed rock, supported in a mound of stone, for $\frac{1}{4}$ sec. cor., marked on brass cap,

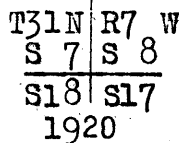


from which,

- A pine, 12 ins. in diam., brs. N.88°E., 52 lks. dist., marked $\frac{1}{4}$ S 17 BT.
- A pine, 12 ins. in diam., brs. S.87°W., 97 lks. dist., marked $\frac{1}{4}$ S 18 BT.

Continue over rolling land, thru. dense timber and scattering undergrowth.

- 53.70 Descend 100 ft., over NW. slope.
- Wash, course NE. Thence along E. slope, with slight change in elevation.
- 58.80 Tank brs. E. 5 chs. dist. in above wash.
- 67.50 Same wash, course NW. Thence over W. slope, descending 40 ft. to
- 78.00 Draw, course W. Ascend slightly over SW. slope, to
- 80.00 Set an iron post, 3 ft. long, 2 ins. in diam., 8 ins. in the ground to bed rock, supported in a mound of stone, for cor. of secs. 7, 8, 17 and 18, marked on brass cap,



from which,

- A pine, 18 ins. in diam., brs. N.21°E., 81 lks. dist., marked T31N R7W S8 BT.
- A pine, 14 ins. in diam., brs. S.29 $\frac{1}{4}$ °E., 118 lks. dist., marked T31N R7W S17 BT.
- A pine, 12 ins. in diam., brs. S.30°W., 111 lks. dist., marked T31N R7W S18 BT.
- A pine, 8 ins. in diam., brs. N.49 $\frac{1}{4}$ °W., 100 lks. dist., marked T31N R7W S7 BT.

Land, rolling.

Soil, gravelly, 2nd rate.

Timber, dense cedar and pine.

Undergrowth, scattering sage brush, and scrub cedar.

Fair grass.

S.89°58'E., on a random line, bet. secs. 8 and 17.

- 40.00 Set temp. $\frac{1}{4}$ sec. cor.
- 80.16 Fall 7 lks. N. of the cor. of secs. 8, 9, 16 and 17.
- Thence,
- N.89°55'W., on a true line, bet. secs. 8 and 17.
- Over rolling and broken land, thru. dense timber and scattering undergrowth. Descend 20 ft., over NW. slope.

Subdivision lines of Township 31 North, Range 7 West. 55

Chains.

5.00 Head of draw, course N. Thence over N.slope, with slight change in elevation.
 11.00 Leave timber, brs.N. and S.
 12.00 Draw, course NE. Continue over N.slope.
 20.00 Enter timber.
 24.00 Drain, course N. Continue over N.slope.
 29.30 Drain, course N. Descend 65 ft. over N.slope, to
 40.08 Set an iron post, 3 ft. long, 1 in. in diam., 24 ins. in the ground, for $\frac{1}{4}$ sec. cor., marked on brass cap,

$\frac{1}{4}$ S 8
 S 17
 1920

from which,
 A pine, 14 ins. in diam., brs. S. $33\frac{1}{2}^{\circ}$ E., 34 lks. dist., marked $\frac{1}{4}$ S 17 BT.
 A pine, 14 ins. in diam., brs. N. $24\frac{1}{2}^{\circ}$ W., 33 lks. dist., marked $\frac{1}{4}$ S 8 BT.
 Continue over rolling and broken land, thru. dense timber and scattering undergrowth.
 Ascend 10 ft., over NE. slope, to
 41.60 Descend 160 ft., over W. slope, to
 67.86 Draw, course SW. Descend 50 ft. over SW. slope, to
 80.16 The cor. of secs. 7, 8, 17 and 18.
 Land, rolling and broken.
 Soil, gravelly, 3rd rate.
 Timber, dense cedar and pine.
 Undergrowth, scattering dogwood, sagebrush and scrub cedar.
 Fair grass.

40.00 S. $89^{\circ}53'$ W., on a random line, bet. secs. 7 and 18.
 Set temp. $\frac{1}{4}$ sec. cor.
 78.30 Fall 23 lks. N. of the cor. of secs. 7, 12, 13 and 18, on W. bdy. of Tp., hereinbefore described.
 Thence,
 N. $89^{\circ}43'$ E., on a true line, bet. secs. 7 and 18.
 Over rolling and broken land, thru. dense timber and scattering undergrowth.
 Descend 112 ft., over NE. slope, to
 32.30 Draw, course SE. Descend 86 ft., over SE. slope, to
 38.30 Set an iron post, 3 ft. long, 1 in. in diam., 9 ins. in the ground, to bed rock, supported in a mound of stone, for $\frac{1}{4}$ sec. cor., marked on brass cap,

$\frac{1}{4}$ S 7
 S 18
 1920

from which,
 A pine, 16 ins. in diam., brs. N. $53\frac{1}{2}^{\circ}$ E., 80 lks. dist., marked $\frac{1}{4}$ S 7 BT.
 A pine, 10 ins. in diam., brs. S 35° E., 65 lks. dist., marked $\frac{1}{4}$ S 18 BT.
 Continue over rolling and broken land, thru. dense timber and scattering undergrowth.
 40.50 Wash, course N. Ascend 40 ft., over NW. slope.
 48.00 Descend 60 ft., over NE. slope, to
 60.30 Wash, course NE. Desc. 20 ft., over N. slope, to
 66.00 Wash, course N. Desc. slightly over N. slope, to
 76.30 Wash, course N. Asc. slightly over SW. slope, to
 78.30 The cor. of secs. 7, 8, 17 and 18.
 Land, rolling and broken.
 Soil, rocky and gravelly, 2nd and 3rd rate.
 Timber, dense cedar and pine.
 Undergrowth, scattering scrub oak, sagebrush, scrub cedar and dogwood.
 Fair grass.

56 Subdivision lines of Township 31 North, Range 7 West.

Chains.	N.0°03'W., bet. secs.7 and 8. Over rolling and broken land, thru. dense timber and scattering undergrowth. Descend 15 ft., over W.slope, to								
3.00	Wash, course W. Descend 20 ft., over SW.slope, to								
9.00	Wash, course SW. Descend 15 ft., over SW.slope, to								
14.00	Wash, course W. Descend 30 ft., over SW.slope, to								
25.00	Wash, course SW. from N. Thence along E. side of this wash. Ascend 30 ft., to								
29.00	Leave same wash, course S. from NE. Ascend 20 ft., over E.slope, to								
35.00	Wash, course SE. Ascend 41 ft., over SW. slope, to								
40.00	Set an iron post, 3 ft. long, 1 in. in diam., 8 ins. in the ground to bed rock, supported in a mound of stone for $\frac{1}{4}$ sec.cor., marked on brass cap,								
	$\frac{1}{4}$ <table style="margin: auto;"> <tr> <td style="border-right: 1px solid black; padding: 0 5px;">S 7</td> <td style="padding: 0 5px;">S 8</td> </tr> <tr> <td colspan="2" style="text-align: center;">1920</td> </tr> </table>	S 7	S 8	1920					
S 7	S 8								
1920									
	from which, A pine, 8 ins. in diam., brs. S.26°E., 19 lks. dist., marked $\frac{1}{4}$ S 8 BT. A pine, 8 ins. in diam., brs. S.77 $\frac{1}{2}$ °W., 34 lks. dist., marked $\frac{1}{4}$ S 7 BT.								
	Continue over rolling and broken land, thru. dense timber and scattering undergrowth. Ascend 50 ft., over SW.slope.								
55.00	Ascend 60 ft., over SE.slope, to								
65.00	Ascend 20 ft. over E.slope, to								
70.00	Head of draw, course E. Ascend 25 ft., over E.slope, to								
75.00	Descend 10 ft., over E.slope, to								
80.00	Set an iron post, 3 ft. long, 2 ins. in diam., 6 ins. in the ground, to bed rock, supported in a mound of stone, for cor. of secs. 5, 6, 7 and 8, marked on brass cap,								
	<table style="margin: auto;"> <tr> <td style="border-right: 1px solid black; padding: 0 5px;">T31N</td> <td style="padding: 0 5px;">R7 W</td> </tr> <tr> <td style="border-right: 1px solid black; padding: 0 5px;">S 6</td> <td style="padding: 0 5px;">S 5</td> </tr> <tr> <td style="border-right: 1px solid black; padding: 0 5px;">S 7</td> <td style="padding: 0 5px;">S 8</td> </tr> <tr> <td colspan="2" style="text-align: center;">1920</td> </tr> </table>	T31N	R7 W	S 6	S 5	S 7	S 8	1920	
T31N	R7 W								
S 6	S 5								
S 7	S 8								
1920									
	from which, A pine, 10 ins. in diam., brs. N. 36 $\frac{1}{2}$ °E., 7 lks. dist., marked T31N R7W S5 BT. A pine, 12 ins. in diam., brs. S.43 $\frac{1}{4}$ °E., 20 lks. dist., marked T31N R7W S8 BT. A pine, 8 ins. in diam., brs. S.44 $\frac{1}{2}$ °W., 39 lks. dist., marked T31N R7W S 7 BT. A pine, 12 ins. in diam., brs. N.24°W., 49 lks. dist., marked T31N R7W S6 BT.								
	Land, rolling and broken. Soil, rocky and gravelly, 2nd and 3rd rate. Timber, dense cedar and pine. Undergrowth, scattering scrub oak, dogwood, scrub cedar and sagebrush. Fair grass.								

	S.89°55'E., on a random line, bet. secs.5 and 8.								
40.00	Set temp. $\frac{1}{4}$ sec.cor.								
80.42	Fall 21 lks. S. of the cor. of secs. 4, 5, 8 and 9. Thence, S.89°50'W., on true line, bet. secs.5 and 8. Over rolling land, thru. dense timber and scattering undergrowth. Ascend, 110 ft., over SE.slope.								
17.50	Top of ascent; thence over level land.								
23.90	Old road, brs. N. and S.								
28.00	Leave level, and enter rolling land. Descend 90 ft., over								

Chains.

40.21 SW.slope, to Set an iron post, 3 ft.long, 1 in. in diam., 6 ins. in the ground to bed rock, supported in a mound of stone, for 1/4 sec.cor., marked on brass cap,

1/4 S 5 / S 8 1920

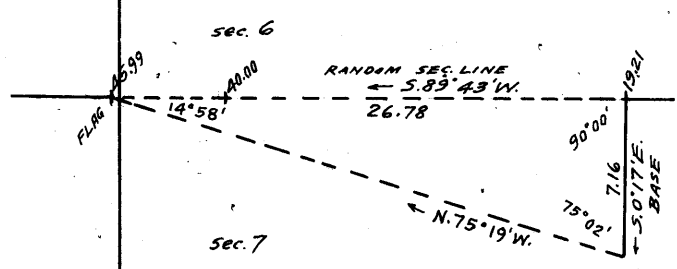
from which, A pine, 11 ins. in diam., brs.N.19°E., 40 lks. dist., marked 1/4 S 5 BT. A pine, 15 ins. in diam., brs.S.38°E., 27 lks. dist., marked 1/4 S 8 BT.

Continue over rolling land, thru. dense timber and scattering undergrowth.

- 40.90 Descend slightly over W.slope, to Wash, course SW. Descend 52 ft., over SW.slope, to
40.50 Same wash, course NW. Descend 55 ft., over NW.slope, to
60.20 Wash, course NW. Ascend 20 ft., over NE.slope.
62.00 Point of spur, slopes N. Descend 10 ft., over NW.slope.
64.00 Wash, course N. Ascend 53 ft. over SE.slope, to
69.00 Drain, course SE. Ascend 130 ft., over E.slope, to
80.42 The cor.of secs. 5, 6, 7 and 8.

Land, rolling. Soil, gravelly and rocky, 2nd and 3rd rate. Timber, dense cedar and pine. Undergrowth, sage brush, dogwood and scrub cedar.

19.21 S.89°43'W., on a random line, bet. secs.6 and 7. E. rim of canyon, brs.N.and S. Chain measurement on random line across canyon is impracticable; therefore, triangulate as described as follows, and as shown on the diagram hereon:



Measure a Base, S.0°17'E., 7.16 chs. Set flag ahead on random sec.line at top of cliffs on W.wall of canyon. From S.end of Base, flag brs.N. 75°19'W., Included angles are 75°02', 14°58' and 90°00', the sum of which is 180°00'.

Triangulated dist. on random sec.line is obtained by Tang. 75°02' x Base or 3.74075 x 7.16= 26.78 chs., which added to 19.21 chs. gives 45.99 chs. S.89°43'W., from cor.of secs. 5, 6, 7 and 8, for the position of the flag on random line at top of cliffs on W.wall of canyon.

- 40.00 Point for 1/4 sec.cor. falls on face of cliffs, and is inaccessible.
45.99 Flag point of above described triangulation. Set temp. witness cor. to 1/4 sec.cor. Continue line and measurement.
78.19 Fall 7 lks.N. of the cor. of secs.1, 5, 7 and 12, on W.bdy. of Tp.; hereinbefore described. Thence, N.89° 40'E., on a true line, bet. secs. 6 and 7. Over mountainous land; thru. dense timber and scattering undergrowth. Ascend 96 ft.; over W.slope, to
5.00 Descend 40 ft., over NE.slope.
6.00 Gulch, course NW. Ascend 837 ft., over broken W.slope, to top of spur.
9.50 Cliff, 90 ft.high, brs.N.and S.
18.00 Cliff, 35 ft.high, brs.N.and S.
25.30 Top of spur, sloping N. Desc.320 ft., over NE.slope, on W. wall of canyon.
32.20 Triangulation point at top of cliffs, bearing and S.

58 Subdivision lines of Township 31 North, Range 7 West.

Chains.

Point for 1/4 sec.cor. being inaccessible, Set an iron post, 3 ft.long, 1.in. in diam., 8 ins. in the ground to bed rock, supported in a mound of stone for witness cor. to the 1/4 sec.cor., marked on brass cap,

1/4 S 6 WC
S 7
1920

from which,

A pine, 6 ins. in diam., brs. N. 18 1/2° W., 33 lks. dist., marked WC 1/4 S 6 BT.

A pine, 6 ins. in diam., brs. S. 65 1/2° W., 16 lks. dist., marked WC 1/4 S 7 BT.

Continue over mountainous land, thru. dense timber and scattering undergrowth. Descend over cliffs, facing E., into canyon.

Measurement across canyon by triangulation hereinbefore described.

38.19 True point for 1/4 sec.cor. falls on face of cliff, and is inaccessible.

44.00 (Approximate) Bottom of canyon, course N. Ascend over cliffs facing W. on E. wall of canyon.

58.98 Triangulation point at E. rim of canyon, brs. N. and E. Continue line and measurement by chaining. Descend 60 ft., over NE. slope.

65.70 Gulch, course NW. Ascend 120 ft., over W. slope.

73.00 Ridge, brs. N. and S. Descend 20 ft., over E. slope, to

78.19 The cor. of secs. 5, 6, 7 and 8.

Land, broken and mountainous.

Soil, rocky, 4th rate.

Timber, dense cedar and pine.

Undergrowth, scattering sage brush and scrub cedar.

31.02 N. 0° 3' W., on a random line, bet. secs. 5 and 6.

40.00 E. rim of canyon, brs. NE. and SW. Offset point.

Set temp. 1/4 sec.cor. Cliffs beyond this point render continuation of chaining on random line impracticable; therefore, obtain the measurement of the remainder of the line by offset and triangulation, as described as follows, and as shown on the diagram hereon:

Return on random sec. line to offset point at 31.02 chs. station.

Thence,

West, 1.25 chs. on offset line in sec. 6 to offset point "A."

Thence,

N. 0° 3' W., on offset line parallel to random sec. line, and 1.25 chs. W. therefrom.

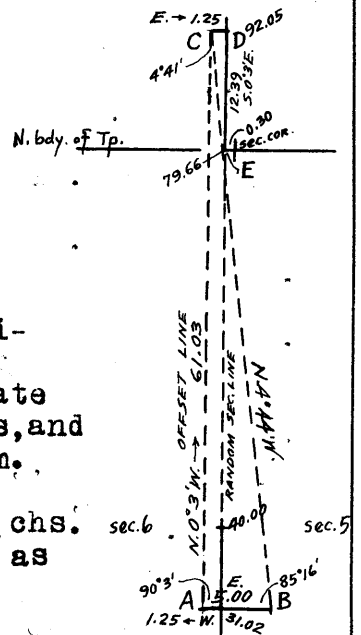
Chaining being impracticable owing to steep broken slopes triangulate as described as follows, and as shown on the diagram.

From offset point "A," measure base, East, 5.00 chs. to point "B." which is as long a base as it is practicable to chain.

Set flag ahead on offset line, beyond cliffs at point "C."

Bearing from "B" to "C" = N. 4° 44' W.

Included angles of triangle "ABC" are 90° 3', 85° 16' and 4° 41', the sum of which is 180° 00'.



Subdivision lines of Township 31 North, Range 7 West. 59

Chains.

Triangulated dist. on offset line from "A" to "C" is obtained by $\frac{\text{side } 85^{\circ}16' \times \text{Base}}{\text{side } 4^{\circ}41'}$ or $\frac{.99659 \times 5.00}{.08165}$

= 61.03 chs., which added to 31.02 chs. gives 92.05 chs. northing from cor. of secs. 5, 6, 7 and 8, for the position of offset point "C."

Thence,

East, 1.25 chs., on offset line to point "D," which is on the random sec. line extended to 92.05 chs. N. 0° 3' W. from cor. of secs. 5, 6, 7 and 8.

Thence,

S. 0° 3' E., 12.39 chs. on extension of random sec. line to point "E," which is 30 lks. W. of the cor. of secs. 5, 6, 31 and 32 on N. bdy. of Tp., giving a true course for the sec. line, S. 0° 10' W.

The true length of the sec. line bet. secs. 5 and 6 is therefore, 92.05 chs. - 12.39 chs. = 79.66 chs.

79.00 Fall 30 lks. W. of the cor. of secs. 5, 6, 31 and 32 on N. bdy. of Tp., hereinbefore described.

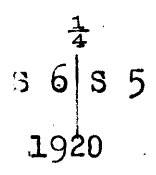
Thence,

S. 0° 10' W., on a true line, bet. secs. 5 and 6.

Over mountainous land, thru. dense timber and scattering undergrowth.

Ascend over cliffs facing W. on E. wall of canyon measurement to $\frac{1}{4}$ sec. cor. by offset and triangulation, as hereinbefore described.

39.00 Set an iron post, 3 ft. long, 1 in. in diam., 28 ins. deep in slide rock, for $\frac{1}{4}$ sec. cor., marked on brass cap,



and raise a mound of stone, 2 ft. base, 1 1/2 ft. high, W. of cor.

Continue line and measurement by chaining.

Continue over mountainous land, thru. dense timber and scattering undergrowth.

Ascend 500 ft., over steep NW. slope, to

48.64 Offset point at E. rim of canyon, brs. NE. and SW. Leave mountainous and enter rolling and broken land. Descend slightly over SE. slope, to

52.60 Wash, course NE. Asc. 35 ft., over NE. slope.

60.00 Descend 30 ft., over E. slope, to

79.66 The cor. of secs. 5, 6, 7 and 8.

Land, mountainous, rolling and broken.

Soil, rocky and gravelly, 3rd and 4th rate.

Timber, dense cedar and pine.

Undergrowth, scattering sagebrush and scrub cedar..

Poor grass.

The continued satisfactory adjustment of the solar apparatus during the survey of this township is indicated from field tests, as described in Book "G."

GENERAL DESCRIPTION.

This township lies entirely within the Hualpai Indian Reservation on the plateau between Cataract Canyon on the east, and the Colorado River Canyon on the N. & W. The surface is mostly rolling except the walls of Mohawk canyon, and another canyon in secs. 6 and 7, where the surface is extremely broken and mountainous. There is some level; and nearly level surface in secs. 18, 19, and 30, near the west boundary of the Township, and also in secs. 35 and 36 near the south boundary of the township.

The drainage of most of the township is into Mohawk Canyon, which cuts thru. the central part in a north-easterly direction. The southeastern portion of the township drains NE. into National Canyon in T. 31 N. R. 6 W.

The northwestern portion drains N. into Prospect Valley in T. 32 N. R. 7 W.

The soil of most of the area except the canyon walls is sandy and gravelly, 2nd and 3rd rate. In the canyons the soil is gravelly and rocky, 3rd and 4th rate. There is some sandy 1st rate soil in the southeastern part.

A dense growth of cedar and pine timber is prevalent in all sections, and also a scattering undergrowth of sage brush, scrub cedar, scrub oak, and dogwood.

There is a fair growth of grass in all parts, except on the canyon walls.

There is no permanent flowing water. There is a tank for storing water in the NW. $\frac{1}{4}$ of sec. 17.

There are no settlers, and no indications of valuable mineral.

The only improvements observed are fences in the southwestern part.

One road, bearing N. and S. passes thru. the western part, but in many places is little more than a trail.

4-680

BOOK COPY

FIELD ASSISTANTS.

to James C. O'Brien, U. S. Transitman

NAMES.	CAPACITY.
<i>Rolla Puzey</i>	<i>1st Chainman</i>
<i>T. E. Sheffield</i>	<i>2nd Chainman</i>
<i>Victor Hansen</i>	<i>Cornerman</i>
<i>Willard C. Anderson</i>	<i>Cornerman</i>
<i>H. J. McKenzie</i>	<i>Cornerman - Axman</i>
<i>Melvin Goodson</i>	<i>Axman</i>
<i>Hugh Bowers</i>	<i>Flagman</i>

126
BOOK 3508

CERTIFICATE OF UNITED STATES ~~TRANSITMAN.~~

I, James C. O'Brien, U. S. Transitman, hereby certify upon honor that, in pursuance of special instructions received from the U. S. Surveyor General for Group 105, Arizona, bearing date of the 24th day of February, 1920, I have well, faithfully, and truly in my own proper person, and in strict conformity with said instructions, the Manual of Surveying Instructions, and the laws of the United States, surveyed all those parts or portions of the North boundary, and Subdivision lines of

Township 31 North, Range 7 West,

of the Gila and Salt River

Base and Meridian, in the State of Arizona, which are represented in and by diagram on page 1 hereof the foregoing field notes, as having been executed by me, and under my direction; and that all the corners of said survey have been established and perpetuated in strict accordance with the Manual of Surveying Instructions, and the special written instructions of the U. S. Surveyor General, for Group 105, Arizona and in the specific manner described in the field notes, and that the foregoing are the original field notes of such survey.

Place - Phoenix, Arizona,

Date - May 8, 1922.

James C. O'Brien, (deceased)
U. S. Transitman

By [Signature]
APPROVAL. Asst. Supervisor of Surveys,
District No. 5.

~~OFFICE OF THE UNITED STATES SURVEYOR GENERAL,~~

, 191

The foregoing field notes of the survey of

executed by _____ under his special instructions dated _____, 191____, having been critically examined, and the necessary corrections and explanations made, the said field notes, and the surveys they describe, are hereby approved.

U. S. Surveyor General.

I certify that the foregoing transcript of the field notes of the above-described surveys in _____, has been correctly copied from the original notes on file in this office.

U. S. Surveyor General.

FOOTNOTES

FIELD ASSISTANTS.

to Dupree R. Averill, U. S. Surveyor

NAMES.	CAPACITY.
<i>Howard D. Hickman</i>	<i>1st Chainman</i>
<i>Max Dessau</i>	<i>2nd Chainman</i>
<i>Forrest Nimmo</i>	<i>Cornerman</i>
<i>Roy Hume</i>	<i>Cornerman - Axman</i>
<i>Anthony Mendillo</i>	<i>Axman</i>
<i>Frank L. Mills</i>	<i>Flagman</i>

BOOK 3508
64

CERTIFICATE OF UNITED STATES SURVEYOR.

I, Dupree R. Averill, U. S. Surveyor, hereby certify upon honor that, in pursuance of special instructions received from the U. S. Surveyor General for Group 105, Arizona, bearing date of the 24th day of February, 1920, I have well, faithfully, and truly in my own proper person, and in strict conformity with said instructions, the Manual of Surveying Instructions, and the laws of the United States, surveyed all those parts or portions of the North and West boundaries and Subdivision lines of

Towship 31 North, Range 7 West,

of the Gila and Salt River

Base and Meridian, in the State of Arizona, which are represented in and by diagram on page 1 hereof the foregoing field notes, as having been executed by me, and under my direction; and that all the corners of said survey have been established and perpetuated in strict accordance with the Manual of Surveying Instructions, and the special written instructions of the U. S. Surveyor General, for Group 105, Arizona, and in the specific manner described in the field notes, and that the foregoing are the original field notes of such survey.

Place - Phoenix, Arizona

Date July 15, 1921

Dupree R. Averill
U. S. Surveyor.

APPROVAL.

OFFICE OF THE UNITED STATES SURVEYOR GENERAL,

Phoenix Arizona, May 13, 1922.

The foregoing field notes of the survey of the North and West boundaries, and the Subdivision lines of

Towship 31 North, Range 7 West,

of the Gila and Salt River Base and Meridian,

in the State of Arizona,

executed by Dupree R. Averill, U. S. Surveyor, and James C. O'Brien, U. S. Transitman, under special instructions dated February 24, 1920, for Group 105 Ariz., having been critically examined, and the necessary corrections and explanations made, the said field notes, and the surveys they describe, are hereby approved.

Frank A. Smith
U. S. Surveyor General.

~~I certify that the foregoing transcript of the field notes of the above described surveys in~~
~~has been correctly copied from the original notes on file in this office.~~