

3522

orig

4-679

BOOK 3522

Book "F"

FIELD NOTES

OF THE SURVEY OF THE

10th Standard Parallel North through Range 14 West,

the East boundary,

the North boundary,

and the Subdivision lines of

Township 41 North, Range 14 West,

Of the Gila and Salt River Base and Meridian,

In the State of Arizona

EXECUTED BY

Joseph P. Davis, U. S. Cadastral Engineer,

and Claude F. Warner, U. S. Transitman,

In the capacity of U. S. Surveyor, under Special Instructions dated September 29, 1920, issued by the United States Surveyor General to govern surveys included in Group No. 112, Arizona, which were approved by the Commissioner of the General Land Office, November 10, 1920, and Assignment Instructions dated December 15, 1920

Survey commenced February 3, 1921

Survey completed March 8, 1921

3522

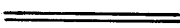

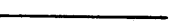


3522

BOOK 3522

INDEX DIAGRAM.

Township 41 North			Range 14 West		
16	18	19	19	19	20
6	59	55	47	39	30
65	55	54	47	38	30
7	54	54	46	38	29
	8	9	10	11	12
64	53	53	45	37	29
18	53	53	45	37	28
	17	16	15	14	13
62	62	52	44	36	27
19	61	51	43	35	26
	20	21	22	23	24
61	60	50	43	34	24
30	59	49	41	32	23
	29	28	27	26	25
58	56	49	40	32	22
31	55	48	39	30	22
	32	33	34	35	36
3	3	4	5	5	7

Tenth Standard Parallel North

-  Lines surveyed under this Group.
-  Lines resurveyed under this Group.
-  Accepted surveys.
-  Areas surveyed as per accepted plats on file.
-  Unsurveyed.

Date Diagram

Township 41 North, Range 14 West,

See Book "D" for dates of survey of this line

2-22-21 6	2-23-21 5	2-23-21 4	2-24-21 3	2-25-21 2	2-26-21 1
2-14-21 2-12-21 7	2-14-21 2-12-21 8	2-17-21 2-16-21 9	2-17-21 2-19-21 10	2-21-21 3-1-21 11	2-21-21 3-5-21 3-4-21 12
2-10-21 18	2-10-21 2-18-21 17	2-16-21 2-18-21 16	2-19-21 2-28-21 15	2-28-21 3-2-21 14	2-28-21 3-3-21 3-3-21 13
2-8-21 19	2-9-21 2-8-21 20	2-16-21 2-11-21 21	2-17-21 2-28-21 22	2-26-21 2-28-21 2-24-21 23	3-5-21 2-26-21 3-4-21 24
2-7-21 30	2-11-21 2-7-21 29	2-12-21 2-11-21 2-8-21 28	2-18-21 2-12-21 27	2-25-21 2-24-21 26	3-4-21 2-25-21 3-3-21 25
2-5-21 31	2-14-21 2-4-21 2-4-21 32	2-9-21 2-8-21 2-7-21 33	2-22-21 2-10-21 2-19-21 34	2-23-21 2-21-21 2-21-21 35	3-3-21 2-23-21 3-1-21 36

2-5-21 Tenth Standard Parallel North

On the above diagram:-

black lines indicate surveys, and dotted black lines indicate resurveys, executed by Joseph P. Davis, U. S. Cadastral Engineer,

and red lines indicate surveys, executed by Claude F. Warner, U. S. Transitman, all on dates shown thereon,

and brown lines indicate accepted surveys.

Retrieval, resurveys and Surveys hereinafter described executed by Joseph R. Davis, U.S. Cadastral Engineer and Claude F. Warner, U.S. Transitman, on dates shown on diagram on page 1 hereof, using respectively Buff light mountain transit No. 10125 and Young and Sons light mountain transit No. 8532. For description of instruments and certificate of approval, see Book "A".

Unless otherwise specified, all measurements are made with a Lufkin steel tape, 5 chs. in length, compared with a Chesterman standard steel tape and found correct. The measurements are made on the slope, the vertical angles determined, and the slope measurements properly reduced to true horizontal distances.

We examine the adjustments of the transits and correct all errors; then, to test the solar apparatus, by comparing their indications, resulting from solar observations, made during a.m. and p.m. hours, with a meridian determined by observations on Polaris at elongation, we proceed as follows:

Jan. 29, 1921. At our camp in sec. 25, T. 41 N., R. 15 W., G. and S. R. B. and M., lat. $36^{\circ}55\frac{1}{2}'$ N., long. $113^{\circ}52'$ W., at 10 hrs. 53.3 m. p.m., l.m.t., we observe Polaris at Western elongation, in accordance with the Manual of Instructions, and mark the line thus determined by a tack in a stake, firmly driven in the ground, 5 chs. N. of our station.

Jan. 30, 1921. At 8 hrs. 0 m., a.m., l.m.t., we lay off the azimuth of Polaris, $1^{\circ}23\frac{1}{2}'$ to the East and mark a point in the true meridian thus determined by a tack in a stake, firmly driven in the ground, 5 chs. N. of our station.

At 9 hrs. 0 m., a.m., l.m.t., we set off $36^{\circ}55\frac{1}{2}'$ N. on the lat. arcs; $17^{\circ}38\frac{1}{2}'$ S. on the decl. arcs; and determine a meridian with each solar, which in each case agrees with the true meridian.

At apparent noon, with the lat. arcs unchanged, we observe the sun on the meridian with each solar; the resulting decl. with each solar is $17^{\circ}37'$ S., which is the computed decl. of the sun.

At 3 hrs. 0 m., p.m., l.m.t., with the lat. arcs unchanged, we set off $17^{\circ}34'$ S. on the decl. arcs; and determine a meridian with each solar, which in each case agrees with the true meridian.

As all of the solar observations during the usual hours of solar work come within $1'30''$ of the true meridian, we conclude that the adjustments of the solars are satisfactory.

Survey of 10th. Std. Parallel North, thru. Range 14 West. 3

Chains.

The true point for standard cor. of Ts. 41 N., Rs. 14 and 15 W., on 10th Standard Parallel North, established by Thomas B. Matthews, U.S.S. in 1912, is marked by a cross (x) on bed rock, and witnessed by a mound of stone, N. of cor. point, and by a witness cor. 0.15 chs. west of true point, which is an iron post 3 ins. in diam., projecting 12 ins. above ground, firmly set, properly marked on brass cap, and witnessed by a mound of stone, N. of post. No bearing trees.

7.65
13.20
40.00

From a point 4 lks. S. of point for std. Tp. cor., N. 89°58'E., on the secant, S. of sec. 31. Over mountainous land, thru. scattering undergrowth. Ascend 200 ft., over W. slope of Virgin Mountains. Spur, slopes NW. Descend 55 ft. Head of draw, course NW. Ascend 855 ft., to North 2 lks. from the secant, Set an iron post, 3 ft. long, 1 in. in diam., on bed rock, with marked stone, for standard $\frac{1}{4}$ sec. cor. of sec. 31, and raise a mound of stone around post, with brass cap, marked

S C
1/4 S 31
1921

57.00
58.20
68.85
75.40
80.00

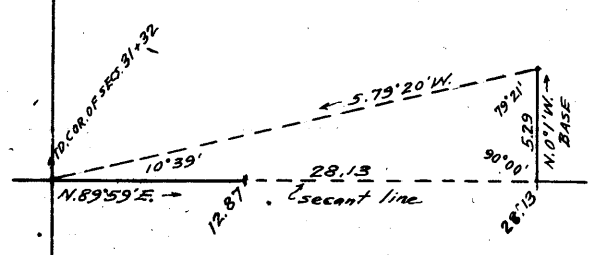
Ascend 725 ft., over W. slope. Summit of main ridge of Virgin Mountains, brs. N. and S. Descend 50 ft. Head of draw, course S. Asc. 70 ft., over W. slope. Spur, slopes S. Descend 155 ft. Ascend 80 ft. Set an iron post, 3 ft. long, 3 ins. in diam., on side of solid rock ledge, with marked stone, for standard cor. of secs. 31 and 32, and raise a mound of stone around post, with brass cap, marked

S C
T41N R14W
S31 S32
1921

Land, mountainous.
Soil, rocky, 4th rate.
No timber.
Undergrowth, black brush.

12.87

N. 89°59'E., on the secant, thru. sec. 32. Over mountainous land, thru. scattering undergrowth. Descend 630 ft., over cliff, brs. N. and S., facing E. Draw, course NE. Precipitous broken ascent E. of this point renders chaining impracticable; therefore, triangulate as described as follows, and as shown on the diagram hereon.



From a point on the secant at top of spur, sloping N., measure a base, N. 0°1'W., 5.29 chs. which is as long a base as can be obtained.

Set flag on std. cor. of secs. 31 and 32.

From N. end of base, flag brs. S. 79°20'W.

Included angles are 79°21', 90°00' and 10°39', the sum of which is 180° 00'.

Triangulated distance on secant is obtained by $\tan 79°21' \times \text{base}$ or $5.31778 \times 5.29 = 28.13$ chs.

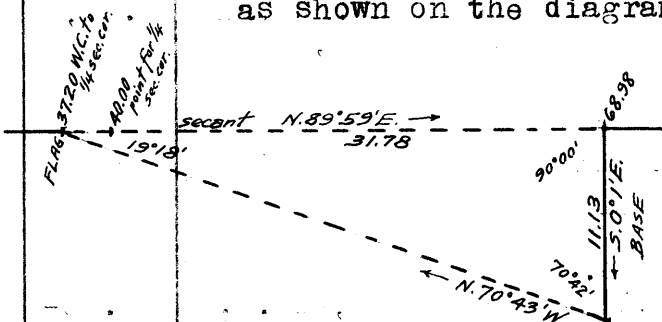
4 10th Standard Parallel North, thru. Range 14 West.

Chains.

- 28.13 Triangulation point on top of spur, sloping N. Continue measurement N. 89°59'E. by chaining.
- 37.20 Descend 125 ft., over E. slope, to West rim of canyon, brs. N. and S. South, 1 lk. from the secant, Set an iron post, 3 ft. long, 1 in. in diam., on surface rock, with marked stone, for witness cor. to std. 1/4 sec. cor. of sec. 32, and raise a mound of stone around post with brass cap, marked,

S C
1S 32 WC
1921.

Steep descent over cliff immediately E. of the W C, and two box canyons crossing the line at points farther E. render chaining, impracticable; therefore, triangulate measurement on the secant as described as follows, and as shown on the diagram hereon.



Leave flag at W.C. to 1/4 sec. cor.

From a point on the secant at top of spur sloping N., measure a base, S. 0° 1' E., 11.13 chs.

From S. end of base, flag brs. N. 70° 45' W.

Included angles are 70° 42', 19° 18' and 90° 00' the sum of which is 180° 00'.

Triangulated distance on secant is obtained by Tang. 70° 42' x base or 2.85555 x 11.13 = 31.78 chs., which added to 37.20 chs. gives 68.98 chs. N. 89° 59' E. from standard cor. of secs. 31 and 32 for the triangulation point on top of spur.

- 40.00 S. 1 lk. from secant, true point for standard 1/4 sec. cor. of sec. 32 is in bottom of box canyon, 100 ft. deep, course N. Ascend.
- 50.00 (Approximate) Spur, slopes N. Descend.
- 60.00 (Approximate) Bottom of box canyon, course N. Ascend about 500 ft. to
- 68.98 Triangulation point of above described triangulation, on top of spur, sloping N. Continue line and measurement by chaining. Descend 240 ft.
- 77.00 Draw, course N. Ascend 80 ft., to
- 80.00 S. 2 lks. from the secant, Set an iron post 3 ft. long, 3 ins. in diam., on bed rock, with marked stone, for standard cor. of secs. 32 and 33 and raise a mound of stone around post, with brass cap, marked

S C
T41N | R14W
S32 | S33
1921

Land, mountainous.
Soil, rocky, 4th rate.
No timber.
Undergrowth, black brush.

- 17.30 N. 89° 59' E., on the secant, thru. sec. 33. Over mountainous land, thru. scattering undergrowth. Ascend 440 ft., over W. slope.
- 27.50 Spur, slopes NW. Descend 225 ft. Draw, course NW. Ascend 515 ft.
- 39.50 Ridge, brs. N. and S. Descend over steep E. slope.
- 40.00 South 3 lks. from the secant, Set an iron post, 3 ft. long, 1 in. in diam., on bed rock,

10th Standard Parallel North, thru. Range 14 West.

Chains.

5

with marked stone, for standard $\frac{1}{4}$ sec. cor. of sec. 33, and raise a mound of stone around post, with brass cap, marked

S C
S 33
1921

68.80
75.00
78.00

Descend 830 ft., over N. 75° E. slope.
Foot of descent, brs. N. and S. Ascend 50 ft., over W. slope.
Spur, slopes NE. Descend 50 ft. to South, 3 lks. from the secant,
Set an iron post, 3 ft. long, 3 ins. in diam., 6 ins. in the ground, with marked stone for witness cor. to standard cor. to secs. 33 and 34, and raise a mound of stone around post, with brass cap, marked

S C
T41 N R14W
S33 S34 WC
1921

80.00

This W.C. is at top of cliff, bearing NE. and SW. facing E. Descend over cliffs.
South 3 lks. from the secant, the true point for standard cor. of secs. 33 and 34 falls on face of cliff on W. wall of Sullivan's Canyon, where it cannot be monumented.
Land, mountainous.
Soil, rocky, 4th rate.
No timber.
Undergrowth, black brush.

10.12

From a point 3 lks. N. from true point for std. cor. of secs. 33 and 34, East, on the secant, thru. sec. 34. Over mountainous land, thru. scattering undergrowth. Descend over steep rocky E. slope, into Sullivan's Canyon. Bottom of Sullivan's Canyon, course N. 15° W. The line E. of this point passes over steep broken E. wall of canyon, and chaining is impracticable; therefore, triangulate as described as follows, and as shown on the diagram hereon.

From this point, measure a base N. 17° W., 20.98 chs. Set flag on secant beyond the steep and broken portion of the canyon wall.

Vertical angle from 10.12 ch. station on secant to flag = + 28 $\frac{1}{2}$ °.

From NW. end of base, flag brs. S. 64° 09' E.

Included angles are 47° 09' 25° 51' and 107° 00', the sum of which is 180° 00'.

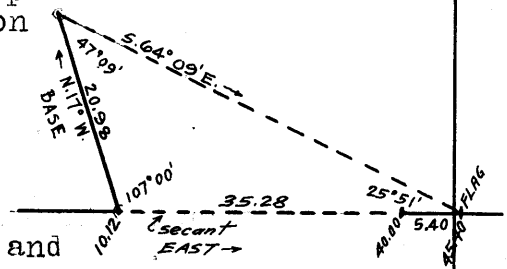
Triangulated distance on secant is obtained by $\frac{\text{sine } 47^\circ 09' \times \text{base}}{\text{sine } 25^\circ 51'}$ or $\frac{.73314 \times 20.98}{.43602} = 35.28$ chs., which

added to 10.12 chs., gives 45.40 chs. E. from point on secant 3 lks. N. of point for std. cor. of secs. 33 and 34, as the position of the flag point of the above described triangulation.

From flag point on secant, measure West 5.40 chs. to point on secant, at

40.00

South 3 lks. from the secant Set an iron post, 3 ft. long, 1 in. in diam., on bed rock, with marked stone, for standard $\frac{1}{4}$ sec. cor. of secs. 34, and raise a mound of stone around post, with brass cap, marked



6. 10th Standard Parallel North, thru. Range 14 West.

Chains.

S C
1/2 S 34
1921

- 45.40 Triangulation point. Continue line and measurement, by chaining. Ascend 510 ft.
- 51.60 Spur, slopes NW. Continue ascent.
- 65.34 Head of draw, course N.70°W. Continue ascent.
- 69.50 Spur, slopes N.15°W. top of ascent. Thence along N.slope.
- 70.80 Descend 05 ft. to
- 80.00 South 2 lks. from the secant,
Set an iron post, 3 ft. long, 3 ins. in diam., 12 ins. in the ground, with marked stone; for standard cor. of secs. 34 and 35, and raise a mound of stone, around post, with brass cap, marked

S C
T41N | R14W
S34 | S35
1921

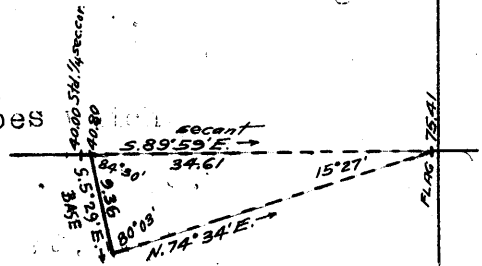
Land, mountainous.
Soil, rocky, 4th rate.
No timber.
Undergrowth, black brush.

- 6.85 S.89°59'E., on the secant, thru. sec. 35.
- 11.84 Over broken land, thru. scattering undergrowth.
- 18.00 Ascend 85 ft.
- 31.50 Descend 15 ft.
- 40.00 Head of gulch, course N. Ascend 70 ft.
- 18.00 Descend 245 ft., over NE. slope, to 1/4 sec. cor.
- 31.50 Gulch, course N. 15°E.
- 40.00 South, 1 lk. from the secant,
Set an iron post, 3 ft. long, 1 in. in diam., 10 ins. in the ground, with marked stone, for standard 1/4 sec. cor. of sec. 35, and raise a mound of stone around post, with brass cap, marked

S C
1/2 S 35
1921

- 40.80 Descend 13 ft. to
The slope becomes too steep and broken. of this point to make chaining practicable; therefore, triangulate as described as follows; and as shown on the diagram hereon:

From this point, measure a base
S.5°29'E., 9.36 chs.
Set flag on secant beyond the slopes which are impracticable to chain measurement over.
From S. end of base, flag brs.
N.74°34'E.



Vertical angle from 40.80 ch. point on secant to flag is - 13 1/2°.
Included angles are 80°03' 84°30' and 15°27', the sum of which is 180° 00'.
Triangulated distance is obtained by
$$\frac{\text{base} \times \sin 80^\circ 03'}{\sin 15^\circ 27'}$$
 or $\frac{9.36 \times .98496}{.26640} = 34.61 \text{ chs.}$

- 62.00 which added to 40.80 chs. gives 75.41 chs. S.89°59'E. from a point on secant 2 lks. N. from std. cor. of secs 34 and 35, as the position of the flag.
- (Approximate) Gulch, course N., about 825 ft. below 1/4 sec. cor.
- 75.41 Ascend about 275 ft. to
Flag point of above described triangulation, 560 ft. below 1/4 sec. cor.

10th Standard Parallel, North, thru. Range 14 West.

Chains.

Continue line and measurement by chaining.

Ascend 70 ft. to
80.00 Set an iron post, 3 ft. long, 3 ins. in diam., 6 ins. in the ground, with marked stone, for standard cor. of secs. 35 and 36, and raise a mound of stone around post, with brass cap, marked

S | C
T41N | R14W
S35 | S36

1921

Land, broken and mountainous.
Soil, rocky, 4th rate.
No timber.
Undergrowth, black brush.

S. 89° 58' E., on the secant, S. of sec. 36.
Over mountainous land, thru. scattering undergrowth.
Ascend 425 ft.

13.30 Spur, slopes N. 75° W. Descend 120 ft.

21.10 Gulch, course N. 15° W. Ascend 900 ft.

40.00 North 2 lks. from the secant,
Set an iron post, 3 ft. long, 1 in. in diam., on bed rock, with marked stone, for standard $\frac{1}{4}$ sec. cor. of sec. 36, and raise a mound of stone around post, with brass cap, marked

S | C
 $\frac{1}{4}$ S 36

1921

Ascend 320 ft., over N. 80° W. slope.
46.05 Spur, slopes N. 5° W. Descend 130 ft.
50.65 Gulch, course N. Ascend 150 ft.
56.00 Spur, slopes N. Descend 310 ft.
62.50 Gulch, course N. 50° W. Ascend over W. slope.

80.00 North 4 lks. from the secant,
Set an iron post, 3 ft. long, 3 ins. in diam., 24 ins. in the ground, for standard cor. of Ts. 41 N., Rs. 13 and 14 W., marked on brass cap,

S | C
T41N
R14 W | R13 W
S36 | S31

1921

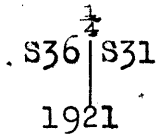
Land, mountainous.
Soil, rocky, 4th rate.
No timber.
Undergrowth, black brush and dead cedar.

8 Survey of East bdy. of Township 41 North, Range 14 West.

Chains.

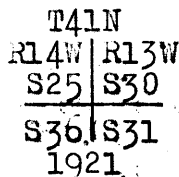
From the standard cor. of Ts. 41 N., Rs. 13 and 14 W., on 10th Standard Parallel North, hereinbefore described, North, on true line, bet. secs. 31 and 36. Over mountainous land, thru. scattering undergrowth. Ascend 75 ft. Ridge, brs. NW. and SE. Thence, across top of ridge. Descend 305 ft., over steep N. slope. Gulch, course E. Ascend 15 ft., over S. slope, to Set an iron post, 3 ft. long, 1 in. in diam., on bed rock, with marked stone, for $\frac{1}{4}$ sec. cor., and raise a mound of stone around post, with brass cap, marked

6.70
21.69
34.85
40.00



Ascend 225 ft., over S. slope. Spur, slopes E. Descend 520 ft., over N. 15° E. slope, to Set an iron post, 3 ft. long, 3 ins. in diam., 24 ins. in the ground, for cor. of secs. 25, 30, 31 and 36, marked on brass cap,

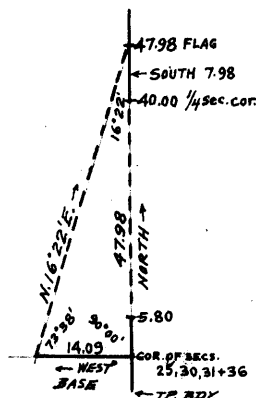
53.08
80.00



and raise a mound of stone, 3 ft. base, 3 ft. high, W. of cor. Land, mountainous. Soil, rocky, 3rd rate. No timber. Undergrowth, black brush and cedar.

North, on true line, bet. secs. 25 and 30. Over mountainous land, thru. scattering undergrowth. Descend 75 ft. Gulch, course N. 75° E. Ascend 90 ft. Spur, slopes E. Steep broken slopes N. of this point render chaining impracticable; therefore, triangulate as described as follows, and as shown on diagram hereon.

3.20
5.80



Set flag on Tp. bdy. beyond the steep broken slopes. From cor. of secs. 25, 30, 31 and 36, measure a base, West 14.09 chs. to top of spur, From west end of base, flag bears N. 16° 22' E. Included angles are 73° 38', 16° 22' and 90° 00', the sum of which is 180° 00'. Vertical angle from W. end of base to flag is -18°.

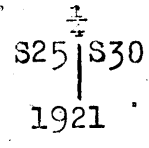
Triangulated distance on Tp. bdy. from sec. cor. to flag is obtained by tang. 73° 38' x base or 3.40502 x 14.09 = 47.98 chs.

17.50 (Approximate) Gulch, course N. 50° W. About 650 ft. below spur at 5.80 ch. station. Ascend about 150 ft.
24.00 (Approximate) Spur, slopes W. Descend about 650 ft.
35.00 (Approximate) Gulch, course W. Ascend about 100 ft. to $\frac{1}{4}$ sec. cor.
From flag point at 47.98 ch. station, measure south 7.98 chs. to
40.00 Set an iron post, 3 ft. long, 1 in. in diam., on bed rock, with marked stone, for $\frac{1}{4}$ sec. cor., and raise

Survey of East bdy. of Township 41 North, Range 14 West.

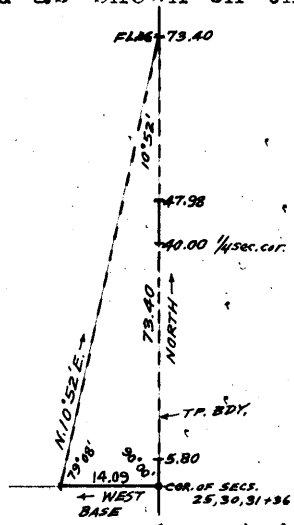
Chains.

a mound of stone around post, with brass cap, marked



47.98

This cor. is 1023 ft. below cor. of secs. 25, 30, 31 and 36. Ascend 130 ft. over S. 80° W. slope, to Flag point of above described triangulation, on short steep spur, sloping W. from cliffs, bearing N. and S. close to line on the E. The steep broken slopes from these cliffs render chaining N. from this point impracticable; therefore triangulate as described as follows, and as shown on the diagram hereon.



Set flag ahead on Tp. bdy. Use same base as established for the triangulation in S. 1/4 bet. secs. 25 and 30, described above. From W. end of base, flag brs. N. 10° 52' E. Included angles are 79° 08', 10° 52' and 90° 00', the sum of which is 180° 00'. Vertical angle from W. end of base to flag is - 5°. Triangulated dist. on Tp. bdy. from sec. cor. to flag is obtained by

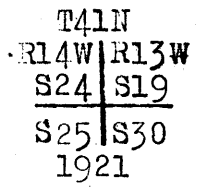
Tang. 79° 08' x Base or 5.20925 x 14.09 = 73.40 chs.

73.40

From 47.98 ch. station ascend 643 ft. over steep broken S. 85° W. slope, to Flag point of above described triangulation, on top of spur sloping W. This point is 250 ft. below cor. of secs. 25, 30, 31 and 36.

80.00

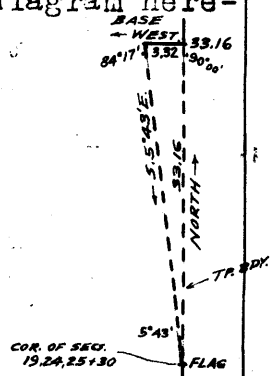
Descend 40 ft., over N. 80° W. slope, to Set an iron post, 3 ft. long, 3 ins. in diam., 10 ins. in the ground, with marked stone, for cor. of secs. 19, 24, 25 and 30, and raise a mound of stone around post, with brass cap, marked



Land, mountainous.
Soil, rocky, 4th rate.
No timber.
Undergrowth, blackbrush.

North, on true line, bet. secs. 19 and 24. Over mountainous land, thru. scattering undergrowth. Steep broken N. 80° W. slope from cliffs E. of line renders chaining on Tp; line impracticable N. from the cor. of the secs. 19, 24, 25 and 30; therefore triangulate as described as follows, and as shown on the diagram hereon:

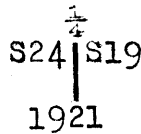
Leave flag at cor. of secs. 19, 24, 25 and 30. From a point on Tp. bdy. N. of flag, measure a base, West 3.32 chs., which is as long a base as can be secured for this triangulation. From W. end of base, flag brs. S. 5° 43' E. Included angles are 84° 17', 90° 00'



10 Survey of East bdy. of Township 41 North, Range 14 West.

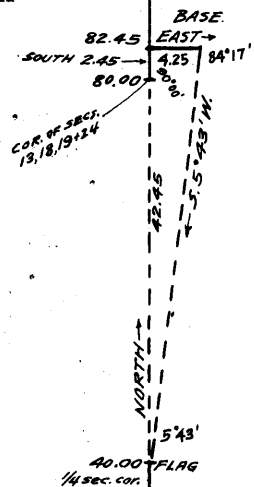
Chains.

and $5^{\circ}43'$, the sum of which is $180^{\circ}00'$.
 Vertical angle from sec.cor. to triangulation point on Tp. bdy. at E. end of base is -14° .
 Triangulated distance on Tp. bdy. is obtained by tang. $84^{\circ}17' \times \text{base}$ or $9.98931 \times 3.32 = 33.16$ chs.
 33.16 Triangulation point of above described triangulation, on top of sandstone spur sloping N. 80° W. This point is 546 ft. below cor. of secs. 19, 24, 25 and 30.
 Continue line and measurement, by chaining.
 40.00 Descend 125 ft., over steep NW. slope, to Set an iron post, 3 ft. long, 1 in. in diam., 26 ins. in the ground, for $\frac{1}{4}$ sec.cor., marked on brass cap,



and raise a mound of stone, $2\frac{1}{2}$ ft. base, $2\frac{1}{2}$ ft. high, W. of cor.
 This cor. is at head of gulch, course N. 15° W.
 Steep broken N. 15° W. slope renders chaining on Tp. bdy. N. from this $\frac{1}{4}$ sec.cor. impracticable; therefore, triangulate as described as follows; and as shown on the diagram hereon.

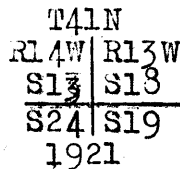
Leave flag at the $\frac{1}{4}$ sec.cor.
 From point on Tp. bdy. N. of flag, measure a base, East 4.25 chs., which is as long a base as can be secured for this triangulation.



From E. end of base, flag brs. S. $5^{\circ}43'$ W.
 Included angles are $84^{\circ}17'$, $5^{\circ}43'$ and $90^{\circ}00'$, the sum of which is $180^{\circ}00'$.

Vertical angle from $\frac{1}{4}$ sec. cor. to triangulation point on Tp. bdy. at W. end of base is $-16\frac{1}{2}^{\circ}$.
 Triangulated dist. on Tp. bdy. is obtained by tang. $84^{\circ}17' \times \text{base}$ or $9.98931 \times 4.25 = 42.45$ chs., which added to 40.00 chs. gives position of triangulation point as 82.45 chs. North from cor. of secs. 19, 24, 25 and 30.

From triangulation point, measure South, 2.45 chs. descending 11 ft. over N. 15° W. slope, to
 80.00 Set an iron post, 3 ft. long, 3 ins. in diam., 24 ins. in the ground, for cor. of secs. 13, 18, 19 and 24; marked on brass cap,



and raise a mound of stone, 2 ft. base, $1\frac{1}{2}$ ft. high, W. of cor.
 This cor. is 827 ft. below $\frac{1}{4}$ sec.cor. of secs. 19 and 24.
 Land, mountainous.
 Soil, rocky, 4th rate.
 No timber.
 Undergrowth, blackbrush.

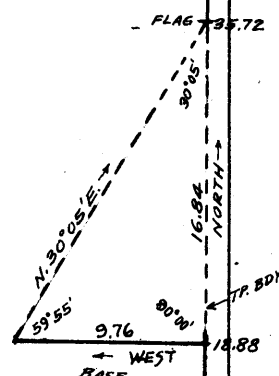
North, on true line, bet. secs. 13 and 18.
 Over mountainous land, thru scattering undergrowth.
 Ascend 11 ft.

Survey of East boundary of Township 41 North Range 14 West 11

Chains.

- 2.45 Spur, sloping N. from S. 15° E. Descend 70 ft., along top of spur, to
- 18.88 Leave top of spur, sloping N. 15° E. from S. Descend along steep rocky W. slope of same spur, near top. Slope is too steep and broken to make chaining practicable; therefore, triangulate as described as follows, and as shown on the diagram hereon:

Measure a base, West, 9.76 chs,
 Set flag ahead on Tp. line on top of same spur.
 From W. end of base, flag brs. N. 30° 05' E.
 Included angles are 59° 55', 30° 05' and 90° 00', the sum of which is 180° 00'.
 Vertical angle from 18.88 ch. sta. to flag is - 17 1/4°.



Triangulated dist. on Tp. bdy. is obtained by tang. 59° 55' x base or 1.72625 x 9.76 = 16.85 chs., which added to 18.88 chs. gives 35.73 chs. N. from cor. of secs. 13, 18, 19 and 24, as the flag point of above described triangulation.

- 35.73 Flag point on top of same spur, sloping N. 45° W., 345 ft. below 18.88 ch. station.

Continue line and measurement by chaining. Descend 75 ft.

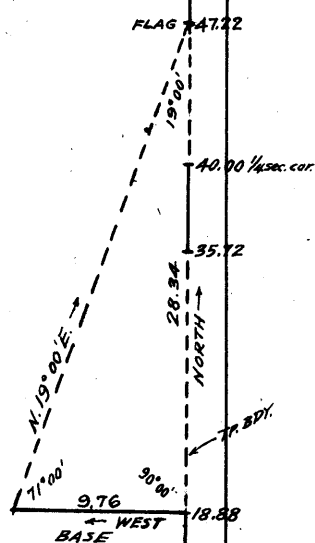
- 37.70 Gulch, course W. for 4 chs.; thence NW. Ascend 80 ft. over steep broken S. slope, to

- 40.00 Set an iron post, 3 ft. long, 1 in. in diam. on bed rock, with marked stone, for 1/4 sec. cor., and raise a mound of stone, around post, marked on brass, capped on brass

1/4
 S13 | S18
 1921

Steep ascent N. of this cor. renders chaining impracticable; therefore, triangulate as described as follows, and as shown on the diagram hereon:

Set flag ahead on Tp. line on top of spur.
 From W. end of base used for above described triangulation, flag brs. N. 19° E.
 Included angles are 71° 19' and 90°, the sum of which is 180° 00'.
 Vertical angle from 18.88 ch. sta. to flag is + 2°.



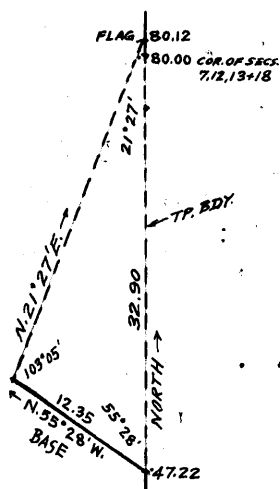
Triangulated dist. on Tp. bdy. is obtained by tang. 71° x Base or 2.90421 x 9.76 = 28.34 chs., which added to 18.88 chs. gives 47.22 chs. N. from cor. of secs. 13, 18, 19 and 24 for position of flag point.

- 47.22 Flag point of above described triangulation, on top of spur, sloping N. 50° W. This point is 405 ft. above 1/4 sec. cor. From this point N. the Tp. bdy. crosses a canyon, thru. which the Virgin River flows. Steep walls of this canyon render chaining impracticable; therefore, triangulate as described as follows, and as shown on the diagram hereon.

Measure a base, N. 55° 28' W., 12.35 chs. along top of spur. Set flag ahead on Tp. line on N. wall of canyon. From NW. end of base, flag brs. N. 21° 27' E. Included angles are 103° 05', 21° 27' and 55° 28',

12 East boundary of Township 41 North, Range 14 West.

Chains.



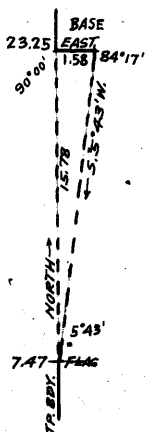
the sum of which is 180°00'.
 Vertical angle from 47.22 chs. station to flag point is -14½°. Triangulated dist. on Tp. bdy. is obtained by $\frac{\sin 103^{\circ}05' \times \text{Base}}{\sin 21^{\circ}27'}$ or $\frac{.97404 \times 12.35}{.36569} = 32.90$ chs., which added to 47.22 chs. gives 80.12 chs. N. from cor. of secs. 7, 12, 13, 18 and 24, as the position of the flag point of above described triangulation.

- 72.00 (Approximate) Virgin River, course SW. About 690 ft. below 47.22 chs. station. Ascend about 130 ft., over steep broken S. slope to sec. cor.
- 80.00 From flag point, measure south 12 lks. to Set an iron post, 3 ft. long, 3 ins. in diam., 24 ins. in the ground, for cor. of secs. 7, 12, 13 and 18, marked on brass cap,

T41N
 RL4W | R13W
 S12 | S 7
 S13 | S18
 1921

and raise a mound of stone, 2 ft. base, 1½ ft. high, W. of cor.
 This cor. is 561 ft. below 47.22 ch. station.
 Land, mountainous.
 Soil, rocky, 4th rate.
 No timber.
 Undergrowth, black brush.

- 7.47 North, on true line, bet. secs. 7 and 12. Over mountainous land, thru. scattering undergrowth. Asc. 35 ft., over N. wall of Virgin River canyon in bend of same from N. to SW. Top of ascent, brs. E. and W. From this point N. the Tp., bdy. recrosses the canyon of the Virgin River, and chaining is impracticable; therefore, triangulate as described as follows, and as shown on the diagram hereon.



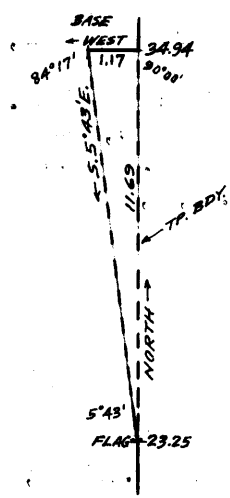
Leave flag at this point.
 From a point ahead on Tp. line, on point of spur, sloping W., measure a base East, 1.58 chs. This is as long a base as can be obtained for this triangulation.
 From E. end of base, flag brs. S. 5° 43' W.
 Included angles are 84° 17', 5° 43' and 90° 00', the sum of which is 180° 00'.
 Vertical angle from 7.47 ch. station to triangulation point at W. end of base is + 1°.

- 15.50 Triangulated dist. on Tp. bdy. is obtained by $\text{Tang. } 84^{\circ}17' \times \text{Base}$ or $9.98931 \times 1.58 = 15.78$ chs., which added to 7.47 chs. gives 23.25 chs. North from cor. of secs. 7, 12, 13 and 18 for the position of the triangulation point.
 (Approximate) Virgin River, course S. 30° E. in bottom of canyon, about 170 ft. below 7.47 ch. station. Asc. about 190 ft. over SW. slope on S. wall of canyon.

East boundary of Township 41 North, Range 14 West.

Chains.

23.25, Triangulation point on point of spur, sloping W. From this point N., the Tp. bdy. recrosses the canyon of the Virgin River, and chaining is impracticable; therefore, triangulate as described as follows, and as shown on the diagram hereon.



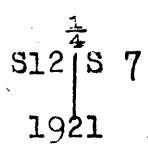
Leave flag at this point. From a point ahead on Tp. bdy. on N. wall of canyon, measure a base, West, 1.17 chs. This is as long a base as can be secured for this triangulation. From W. end of base, flag brs. S. 5° 43' E. Included angles are 84°17', 90°00' and 5°43', the sum of which is 180°00'. Vertical angle from 23.25 ch. sta. to triangulation point at E. end of Base is - 5°.

Triangulated dist. on Tp. bdy. is obtained by $\text{Tang. } 84^\circ 17' \times \text{Base}$ or $9.98931 \times 1.17 = 11.69$ chs., which added to 23.25 chs. gives 34.94 chs. N. from cor. of secs. 7, 12, 13 and 18, as the position of triangulation point.

28.50 (Approximate) Virgin River, course S. 75° W. in bottom of canyon, about 190 ft. below 23.25 ch. station. Ascend about 125 ft., over N. wall of canyon, to

34.94 Triangulation point on broken SE. slope of N. wall of canyon. Continue line and measurement by chaining.

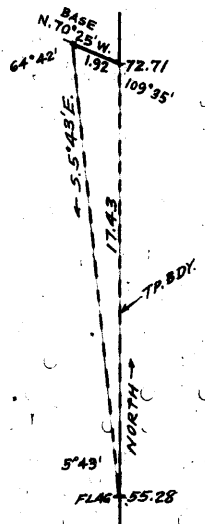
40.00 Ascend 65 ft., over broken SE. slope, to Set an iron post, 3 ft. long, 1 in. in diam., 20 ins. in the ground, for $\frac{1}{4}$ sec. cor.; marked on brass cap,



and raise a mound of stone, 3 ft. base, 2 ft. high, W. of cor.

This cor. is on a narrow bench, bearing NE and SW. Ascend 240 ft., over broken S. slope.

55.28 Spur, slopes SE. The Tp. bdy. N. of this point crosses a deep gulch, the sides of which are too steep and broken to admit of chaining; therefore, triangulate as described as follows, and as shown on the diagram hereon.



Leave flag at this point. From a point ahead on Tp. bdy., on top of spur, measure a base, N. 70° 25' W., 1.92 chs. This is as long a base as can be secured for this triangulation. From NW. end of base, flag brs. S. 5° 43' E. Included angles are 64° 42'; 109° 35' and 5° 43', the sum of which is 180° 00'. Vertical angle from 55.28 ch. station to triangulation point at SE. end of base is + 4°.

Triangulated distance on Tp. bdy. is obtained by $\frac{\text{sine } 64^\circ 42' \times \text{Base}}{\text{sine } 5^\circ 43'}$ or $\frac{.90408 \times 1.92}{.09961} = 17.43$ chs., which

14 East boundary of Township 41 North, Range 14 West.

Chains.

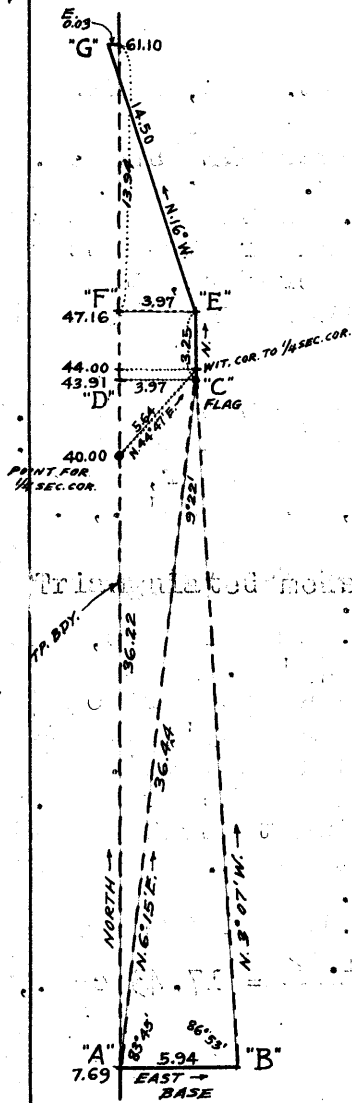
- added to 55.28 chs. gives 72.71 chs. N. from cor. of secs. 7, 12, 13 and 18, as the position of the triangulation point.
- 66.00 (Approximate) Bottom of gulch, course S. 40° E., about 530 ft. below 55.28 ch. station. Ascend about 610 ft. over SW. slope.
- 72.71 Triangulation point on top of narrow spur, sloping S. 45° E.
- Continue line and measurement by chaining.
- Descend 175 ft., over steep NE. slope, to
- 80.00 Set an iron post, 3 ft. long, 3 ins. in diam., 24 ins. in the ground, for cor. of secs. 1, 6, 7 and 12, marked on brass cap.

T41N	
R14W	R13W
S 1	S 6
S 12	S 7
1921	

and raise a mound of stone, 2 ft. base, 1½ ft. high, W. of cor.

Land, mountainous.
Soil, rocky, 3rd rate.
No timber.
Undergrowth, black brush and greasewood.

- North, on true line, bet. secs. 1 and 6.
- Over mountainous land, thru. scattering undergrowth.
- Descend.
- 0.75 Bottom of gulch, course SE. Ascend 205 ft., over steep SW. slope.
- 7.69 Narrow bench brs. NW. and SE. The Tp. bdy. N. of this point, crosses almost perpendicular sides of a high sandstone spur, and chaining is impracticable; therefore, triangulate as described as follows, and as shown on the diagram hereon.



From 7.69 ch. station indicated on diagram at "A" measure a Base East, 5.94 chs. to point "B."
This is as long a base as can be secured for this triangulation. No point on Tp. bdy. N. of point "A" is accessible; therefore, set flag on a ledge E. of Tp. bdy. at point "C."
Bearing of "AC" = N. 6° 15' E.
Bearing of "BC" = N. 3° 07' W.
Included angles of triangle "ABC" are 83° 45', 86° 53' and 9° 22', the sum of which is 180° 00'.
Vertical angle "B" to "C" = + 15°.
Triangulated measurement of "AC" is obtained by
 $\frac{\text{side } 86^{\circ}53' \times \text{Base}}{\text{side } 9^{\circ}22'}$ or $\frac{.99852 \times 5.94}{.16275}$
= 36.44 chs.
"AD" = cosine 6° 15' x "AC" or .99406 x 36.44 = 36.22 chs.
"DC" = sine 6° 15' x "AC" or .10887 x 36.44 chs. = 3.97 chs.
Position of point "D" on Tp. bdy. is 7.69 + 36.22 chs. = 43.91 chs. N. of cor. of secs. 1, 6, 7 and 12.
This point being inaccessible, and further triangulation being

East boundary of Township 41 North, Range 14 West.

Chains.

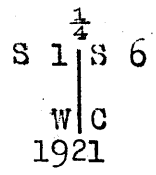
impracticable, obtain measurement N. from said point by offset line described as follows:

From point "C," North, 3.25 chs. on offset line, parallel to and 3.97 chs. E. of Tp. bdy. Ascend 50 ft., over steep SW. slope to offset point "E" on top of sandstone spur, sloping S. 75° E. This offset point is 3.97 chs. E. of 47.16 ch. station on Tp. bdy. indicated on diagram at "F."

From offset point "E" N. 16° W., 14.50 chs. on offset line, descending along NE. slope of spur to offset point "G" which by computation is 13.94 chs. N. of "EF" and 0.03 chs. W. of Tp. bdy.

From offset point "G" East, 0.03 chs. to point on Tp. bdy. 61.10 chs. (47.16 chs. + 13.94 chs.) North from cor. of secs. 1, 6, 7 and 12.

40.00 True point for 1/4 sec. cor. of secs. 1 and 6 is inaccessible. From flag point "C" measure North 0.09 chs. on offset line, and set an iron post, 3 ft. long, 1 in. in diam., on bedrock, with marked stone, for witness cor. to 1/4 sec. cor. of secs. 1 and 6, and raise a mound of stone around post, with brass cap, marked



This witness cor. is about 900 ft. above cor. of secs. 1, 6, 7 and 12. By computation, this witness cor. is 5.64 chs. N. 44° 47' E. from the true point for cor. and is established at the nearest point to the 1/4 sec. cor. at which it is possible to set monument cor.

44.00 Inaccessible point on Tp. bdy. 3.97 chs. W. of the above described witness cor.

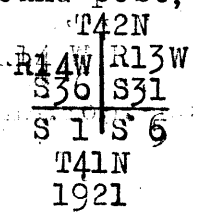
61.10 End of offset line, Thence North, on Tp. bdy., continuing measurement from cor. of secs. 1, 6, 7 and 12.

Descend 90 ft.

72.85 Ascend 15 ft.

73.74 Descend 130 ft.

80.00 Set an iron post, 3 ft. long, 3 ins. in diam., on bed rock, with marked stone, for cor. of Ts. 41 N., Rs. 13 and 14 W., and frac. Ts. 42 N., Rs. 13 and 14 W., and raise a mound of stone around post, with brass cap, marked



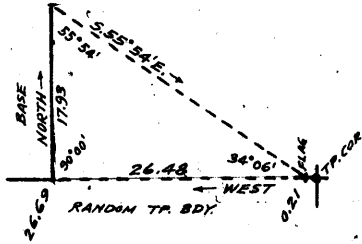
Land, mountainous. Soil, rocky, 4th rate. No timber. Undergrowth, black brush.

16 Survey of North boundary of Township 41 North, Range 14 West.

Chains.

From cor. of Ts. 41 N., Rs. 13 and 14 W., and frscl. Ts. 42 N., Rs. 13 and 14 W., hereinbefore described, West, on random line.

0.21 Base of cliffs bearing N. and S., facing E. Impracticable to continue chain measurement; therefore, triangulate as described as follows, and as shown on the diagram hereon.



Leave flag at this point. From a point ahead on random line at top of cliffs, measure a Base North 17.93 chs. From N. end of Base, flag brs. S. 55° 54' E. Included angles are 55° 54', 34° 06' and 90° 00', the sum of which is 180° 00'.

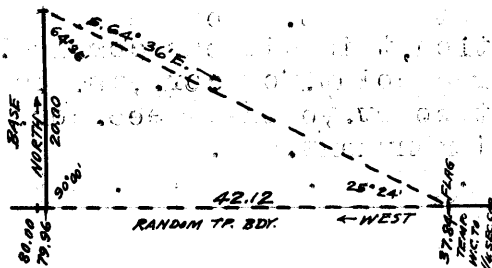
Triangulated dist. on random Tp. bdy. is obtained by Tang. 55° 54' x Base or 1.47699 x 17.93 = 26.48 chs., which added to 0.21 chs. gives 26.69 chs. W. from Tp. cor. for the position of the triangulation point.

26.69 Triangulation point at top of cliffs, bearing N. and S., facing E.

Continue line and measurement, by chaining. Ascend 140 ft., over E. slope.

37.84 Ridge, brs. N. and S. Steep descent over cliffs on W. slope of this ridge renders chaining impracticable; therefore, triangulate as described, as follows, and as shown on the diagram hereon.

The point for temporary $\frac{1}{4}$ sec. cor. is inaccessible; therefore set temp. witness cor. to $\frac{1}{4}$ sec. cor. at 37.84 chs. station on random Tp. bdy.



Leave flag at this temp. W.C. From a point ahead on random line beyond cliffs, measure a Base, North, 20.00 chs. From N. end of Base, flag brs. S. 64° 30' E. Included angles are 64° 30', 25° 24' and 90° 00', the sum of which is 180° 00'.

Triangulated dist. on random Tp. bdy. is obtained by Tang. 64° 30' x Base or 2.10600 x 20.00 = 42.12 chs., which added to 37.84 chs. gives 79.96 chs. W. from Tp. cor. for the position of the triangulation point.

79.96 Triangulation point. Continue line and measurement by chaining.

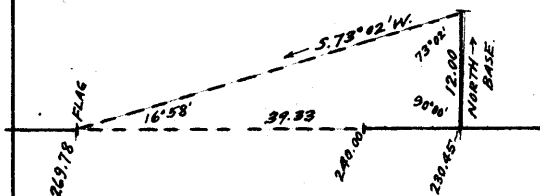
80.00 Set temp. cor. of secs. 1, 2, 35 and 36. Thence,

West, on random line, continuing measurement from Tp. cor., setting temp. $\frac{1}{4}$ sec. cor. and sec. cors. at intervals of 40.00 chs.

230.45 Triangulation point of triangulation hereinafter described.

240.00 Continue chaining on random line, to Set temp. cor. of secs. 3, 4, 33 and 34.

Random Tp. bdy. W. of this point crosses steep ascent over cliffs, rendering chain measurement impracticable; therefore, triangulate as described as follows, and as shown on the diagram hereon.



Return to 230.45 ch. station on random Tp. bdy., and measure a Base, North, 12.00 chs. Set flag ahead on random Tp. bdy. at top of cliffs. From N. end of base, flag brs.

Chains.

S.73°02'W.
Included angles are 73°02', 90°00'
and 16°58', the sum of which is
:180°00'.

Triangulated dist. on random Tp. line is obtained by
Tang. 73°02' x Base or 3.27767 x 12.00 = 39.33 chs., which
added to 230.45 chs. gives 269.78 chs. W. from Tp. cbr.
for the position of flag point of above described
triangulation.

269.78 Flag point at top of cliffs.
Continue line and measurement, by chaining.
280.00 Set temp. 1/4 sec. cor. of secs. 4 and 33.
Thence,
West, on random Tp. bdy., setting temp. sec. and 1/4 sec. cors.
at intervals of 40.00 chs.; until at
479.46 Fall 18 lks. S. of the cor. of Ts. 41 N., Rs. 14 and 15 W.,
and fracl. Ts. 42 N., Rs. 14 and 15 W., described in
Book "D" of this group. The true course and length
of the Tp. bdy. are therefore, S.89°59'E., 476.46 chs.

From cor. of Ts. 41 N., Rs. 14 and 15 W., and fracl. Ts. 42
N., Rs. 14 and 15 W.,
S.89°59'E., on true line, bet. sec. 6 and fracl. sec. 31.
Over mountainous land, thru. scattering undergrowth.

Ascend 65 ft. to
3.00 Point of spur, slopes S.45°W. Ascend 260 ft. to
14.41 Ridge, brs. N. and S. Descend 170 ft. to
17.80 Head of gulch, course SE, Ascend 00 ft. to
23.51 Point of spur, slopes S.85°E. Descend 150 ft. to
31.91 Point of spur, slopes S.45°E. Descend 30 ft. to
35.00 Wash, course S. Ascend 25 ft.
38.11 Point of spur, slopes S. Descend 25 ft. to
39.46 Set an iron post 3 ft. long, 1 in. in diam., 26 ins. in
the ground, for 1/4 sec. cor., marked on brass cap,

1/4 S 31
S 6
1921

and raise a mound of stone, 2 ft. base, 1 1/2 ft. high,
N. of cor.

This cor. stands in bottom of wash, 30 lks. wide, course S.
Ascend 100 ft., over SW. slope.

44.16 Point of spur, slopes S.20°E. Descend 30 ft. over SE.
slope.
53.96 Enter brushy flat.
58.73 Leave flat; descend 340 ft., over E. slope.
74.60 Canyon, course S.20°E. Ascend.
78.50 Thence over rolling land.
79.46 Set an iron post, 3 ft. long, 3 ins. in diam., on bed rock,
with marked stone, for cor. of secs. 5 and 6, and fracl.
secs. 31 and 32, and raise a mound of stone around
post, with brass cap, marked

T42N | R14W
S31 | S32
S 6 | S 5
T41N
1921

Land, mountainous and rolling.
Soil, rocky, 4th rate.
No timber.
Undergrowth, yucca, sagebrush, greasewood and cactus.

Chains.

- S. $89^{\circ}59'E.$, on a true line, bet. sec. 5, and frac. sec. 32. Over mountainous land, thru. scattering undergrowth. Ascend 250 ft., over SW. slope.
- 5.00 Ascend over cliff, brs. N. and S.
- 14.17 Spur, slopes S. Descend 70 ft. over SE. slope.
- 16.00 Canyon, course S. Ascend.
- 19.50 Spur, slopes S. Descend 150 ft.
- 39.76 Set an iron post, 3 ft. long, 1 in. in diam., on bed rock with marked stone, for witness cor. to $\frac{1}{4}$ sec. cor., and raise a mound of stone around post, with brass cap, marked
- $\frac{1}{4}$ S 32 WC
 S 5
 1921
- Descend 65 ft.
- 40.00 The true point for $\frac{1}{4}$ sec. cor. falls on rocks where it cannot be monumented in suitable manner.
- 42.88 Ascend 10 ft.
- 44.38 Descend.
- 46.38 Wash, 40 lks. wide, course S. Thence along broken S. slope.
- 60.08 Wash, 50 lks. wide, course S. $20^{\circ}E.$
- 70.00 Wash, 60 lks. wide, course S. $10^{\circ}E.$ Ascend 140 ft.
- 79.70 Set an iron post, 3 ft. long, 3 ins. in diam., on bed rock, with marked stone, for witness cor. to cor. of secs. 4 and 5, and frac. secs. 32 and 33, and raise a mound of stone around post, with brass cap, marked
- | | | |
|------|------|----|
| T42N | R14W | |
| S32 | S33 | WC |
| S 5 | S 4 | |
| T41N | | |
| 1921 | | |
- 80.00 The true point for cor. of secs. 4 and 5, and frac. secs. 32 and 33 falls where it cannot be permanently and properly monumented.
- Land, mountainous.
Soil, rocky, 4th rate.
No timber.
Undergrowth, yucca, sagebrush, greasewood and cactus.
-
- From true point for cor. of secs. 4 and 5, and frac. secs. 32 and 33,
- S. $89^{\circ}59'E.$, on a true line, bet. sec. 4 and frac. sec. 33. Over mountainous land, thru. scattering undergrowth. Ascend 665 ft., over SW. slope.
- 17.00 Rim of cliff, brs. N. $80^{\circ}W.$ and S. $80^{\circ}E.$ Continue ascent.
- 22.76 Thence over rolling mesa.
- 34.96 Leave mesa; descend E. slope, over cliff.
- 35.00 Set an iron post 3 ft. long, 1 in. in diam. on bed rock, with marked stone, for witness cor. to $\frac{1}{4}$ sec. cor., and raise a mound of stone around post, with brass cap, marked
- $\frac{1}{4}$ S 33 WC
 S 4
 1921
- Descend 240 ft.
- 40.00 True point for $\frac{1}{4}$ sec. cor. is inaccessible.
- 47.00 Wash, 50 lks. wide, course N. $20^{\circ}E.$ Ascend 130 ft.
- 50.22 Cliff, brs. N. and S. Discontinue chaining, and triangulate 39.33 chs. to 89.55 ch. station, from which measure back 9.55 chs. N. $89^{\circ}59'W.$ to
- 80.00 Set an iron post, 3 ft. long, 3 ins. in diam., 26 ins. in the ground, for cor. of secs. 3 and 4, and frac. secs. 33 and 34, marked on brass cap,

chains.

T42N	R14W
S33	S34
S 4	S 3
T41N	
1921	

and raise a mound of stone, 2 ft. base, 1½ ft. high, W. of cor.
 Land, mountainous.
 Soil, rocky, 4th rate.
 No timber.
 Undergrowth, yucca, sagebrush, greasewood and cactus.

S. 89° 59' E., on a true line, bet. sec. 3 and frac. sec. 34.
 Over mountainous land, thru. scattering undergrowth.
 Ascend over SW. slope.

- 5.00 Spur, slopes S. Descend 100 ft.
- 9.55 Triangulation point.
- 13.00 Wash, 30 lks. wide, course S. 45° E. Thence over level land.
- 29.60 Leave flat, brs. NW. and SE. Ascend 140 ft., over SW. slope.
- 39.00 Spur, slopes S. 30° E. Descend.
- 40.00 Set an iron post, 3 ft. long, 1 in. in diam., on bed rock, with marked stone, for ¼ sec. cor., and raise a mound of stone, around post, with brass cap, marked

¼ S 34
S 3
1921

- Descend 50 ft.
- 44.30 Center of canyon, 1 ch. wide, course S. 10° E. Ascend 55 ft.
- 49.30 Descend 35 ft.
- 54.30 Ascend 95 ft.
- 61.30 Spur, slopes S. Descend 105 ft.
- 66.00 Canyon, 70 lks. wide, course S. Ascend.
- 68.40 Spur, slopes S. Descend.
- 70.00 Canyon, course S. 20° W. Ascend 80 ft.
- 76.40 Spur, slopes S. Descend over E. slope, 110 ft.
- 80.00 Set an iron post, 3 ft. long, 3 ins. in diam., on bed rock, with marked stone, for cor. of secs. 2 and 3, and frac. secs. 34 and 35, and raise a mound of stone around post, with brass cap, marked

T42N	R14W
S34	S35
S 3	S 2
T41N	
1921	

Land, mountainous.
 Soil, rocky, 4th rate.
 No timber.
 Undergrowth, blackbrush, yucca, sagebrush, greasewood and cactus.

S. 89° 59' E., on a true line, bet. sec. 2, and frac. sec. 35.

- Over mountainous land, thru. scattering undergrowth.
 Descend 70 ft.
- 6.70 Center of wash, 1 ch. wide, course S. 20° E. Asc. 305 ft.
- 24.86 Spur, slopes S. Desc. 240 ft., over E. slope.
- 40.00 Set an iron post, 3 ft. long, 1 in. in diam., on bed rock with marked stone, for ¼ sec. cor., and raise a mound of stone around post, with brass cap, marked

¼ S 35
S 2
1921

20 North boundary of Township 41 North, Range 14 West.

Chains.

- 40.10 Enter wash, course SW.
 42.10 Leave wash, course SW. Ascend 420 ft., over W. slope.
 57.40 Ridge, brs. N. and S. Descend 220 ft., over SE. slope.
 67.50 Wash, 40 lks. wide, course S. Asc. 105 ft., over SW. slope.
 78.50 Wash, 70 lks. wide, course S. 45° W. Continue ascent.
 80.00 Set an iron post, 3 ft. long, 3 ins. in diam., on bedrock, with marked stone, for cor. of secs. 1 and 2, and frac. secs. 35 and 36, and raise a mound of stone around post, with brass cap, marked

T42N	R14W
S35	S36
S 2	S 1
T41N	
1921	

Land, mountainous.
 Soil, rocky, 4th rate.
 No timber.
 Undergrowth, yucca, sagebrush, black brush and cactus.

- S. 89° 59' E., on a true line, bet. sec. 1, and frac. sec. 36.
 Over mountainous land, thru. scattering undergrowth.
 0.04 Triangulation point from which measurement of 42.12 chs. S. 89° 59' E. is triangulated as hereinbefore described.
 Ascend over cliffs, facing W.
 40.00 True point for $\frac{1}{4}$ sec. cor. is inaccessible.
 42.10 Flag point of triangulation on ridge, brs. N. and S. Set an iron post, 3 ft. long, 1 in. in diam., on bedrock, with marked stone, for witness cor. to $\frac{1}{4}$ sec. cor., and raise a mound of stone around post, with brass cap, marked

WC $\frac{1}{4}$	S 36
	S 1
1921	

- This witness cor. is at rim of cliff, brs. N. and S. facing W. Continue line and measurement by chaining. Descend 140 ft., over E. slope, to
 53.31 Rim of cliff, brs. N. and S. facing E. Discontinue chaining, and triangulate 26.48 chs. S. 89° 59' E., as hereinbefore described. Descend over cliffs.
 79.79 Flag point of triangulation at foot of cliffs. Chain measurement, S. 89° 59' E., 21 lks. to
 80.00 The cor. of Ts. 41 N., Rs. 13 and 14 W., and frac. Ts. 42 N., Rs. 13 and 14 W., hereinbefore described.
 Land, mountainous.
 Soil, rocky, 4th rate.
 No timber.
 Undergrowth, greasewood, sagebrush, yucca and cactus.

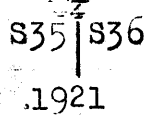
Boundaries of Township 41 North, Range 14 West.
 Latitudes, departures and closing errors.

Line designated.	True bearing.	Dist.	Latitudes.		Departures.	
			N.	S.	E.	W.
South boundary, (10th. Std. Par. N)	West,	480.00				480.00
West boundary,	North,	480.00	480.00			
North boundary,	S. 89° 59' E.	479.46		.14	479.46	
East boundary,	South,	480.00		480.00		
Convergency,					.55	
<u>Totals</u>			480.00	480.14	480.01	480.00
				480.00	480.00	
<u>Error in latitude,</u>			0.14			
<u>Error in departure,</u>					0.01	

22 Survey of Subdivision lines of Township 41 North, Range 14 West

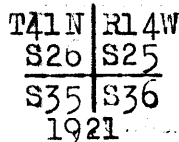
Chains.

From the standard cor. of secs. 35 and 36, on the S. bdy. of the Tp., (10th Std. Par. N.), hereinbefore described, N. 0° 1' W., bet. secs. 35 and 36.
 Over mountainous land, thru. scattering undergrowth.
 Descend 15 ft.
 0.70 Draw, course N. 80° W. Ascend 50 ft.
 2.62 Spur, slopes W. Descend 70 ft.
 4.85 Gulch, course W. Ascend 50 ft.
 10.10 Descend 20 ft.
 10.50 Gulch, 45 lks. wide, course SW. Ascend 200 ft., over SE. slope.
 33.44 Descend 35 ft.
 40.00 Head of gulch, course W. Set an iron post, 3 ft. long, 1 in. in diam., 26 ins. in the ground, for $\frac{1}{4}$ sec. cor., marked on brass cap,



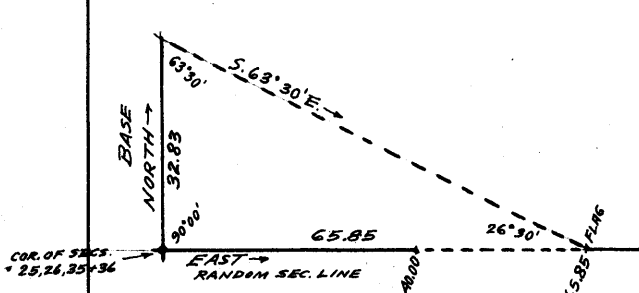
and raise a mound of stone, 2 ft. base, 1 1/2 ft. high, W. of cor.

Thence over broken W. slope.
 60.74 Draw, course W.
 73.22 Head of draw, course N. Descend 75 ft., along E. slope, to
 80.00 Set an iron post, 3 ft. long, 2 ins. in diam., on bed rock with marked stone, for cor. of secs. 25, 26, 35 and 36, and raise a mound of stone around post, with brass cap, marked



Land, rough, mountainous.
 Soil, rocky, 4th rate.
 No timber.
 Undergrowth, black brush and cactus.

40.00 East, on random line, bet. secs. 25 and 36. Set temp. $\frac{1}{4}$ sec. cor. Owing to steep sides of a gulch, E. of this point, discontinue chaining, and triangulate as described as follows, and as shown on the diagram hereon:



Set flag ahead on random line. From cor. of secs. 25, 26, 35 and 36, measure a Base, North, 32.83 chs. From N. end of Base flag brs. S. 03° 30' E. Included angles are 63° 30', 26° 30', and 90° 00', the sum of which is 180° 00'.

65.85 Triangulated dist. on random sec. line is obtained by Tang. 63° 30' x Base or 2.00569 x 32.83 = 65.85 chs. Flag point.

79.94 Continue line and measurement by chaining. Fall 2 lks. N. of the cor. of secs. 25, 30, 31 and 36 on E. bdy. of Tp., hereinbefore described.

Thence, N. 89° 59' W., on true line, bet. secs. 25 and 36. Over mountainous land, thru. scattering undergrowth. Descend 45 ft. over W. slope.

1.35 Gulch, course N. Ascend 235 ft., over E. slope.
 14.09 Flag point of triangulation. Descend 1125 ft. over cliffs into gulch, measurement to $\frac{1}{4}$ sec. cor. by triangulation hereinbefore described.

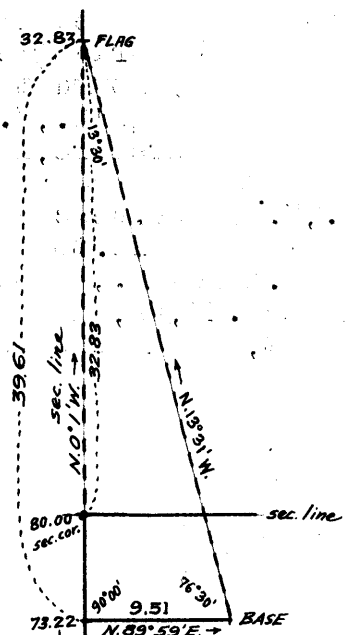
Chains.

35.00 (Approximate) Gulch, course N.30°W. Ascend 155 ft. to
39.97 Set an iron post, 3 ft. long, 1 in. in diam., on bed rock, with marked stone, for 1/4 sec. cor., and raise a mound of stone around post, with brass cap, marked

1/4 S 25
S 36
1921

50.06 Ascend 455 ft., over steep broken E. slope.
77.85 Long spur, slopes N.10°W. Descend 600 ft.
79.94 Gulch, course N. Ascend 45 ft.
The cor. of secs. 25, 26, 35 and 36.
Land, mountainous.
Soil, rocky, 4th rate.
No timber.
Undergrowth, bitter brush and cactus.

N.0° 1'W., bet. secs. 25 and 26.
Over mountainous land, thru. scattering undergrowth.
Descend along steep broken E. slope on W. side of gulch,
Chaining is impracticable; therefore, triangulate as described as follows; and as shown on the diagram hereon:



From 73.22 ch. station on line, bet. secs. 35 and 36, measure a Base, N.89°59'E., 9.51 chs.
Set flag on line, bet. secs. 25 and 26 on a ledge.
From E. end of base, flag brs. N.13° 31'W.
Included angles are 76°30', 90°00' and 13°30', the sum of which is 180°00'.
Triangulated dist. on sec. line is obtained by tang. 76°30' x Base or 4.16530 x 9.51 = 39.61 chs., which added to 73.22 chs. gives 112.83 chs. N.0°1'W. from std. cor. of secs. 35 and 36, or 32.83 chs. N.0°1'W. from cor. of secs. 25, 26, 35 and 36 for the position of the flag point.

32.83 Flag point of above described triangulation, on top of ledge on W. side of gulch, 95 ft. below cor. of secs. 25, 26, 35 and 36.

Continue line and measurement, by chaining.

36.90 Descend 135 ft. over E. slope, to
Set an iron post, 3 ft. long, 1 in. in diam., on bed rock, with marked stone for witness cor. to 1/4 sec. cor., and raise a mound of stone around post, with brass cap, marked

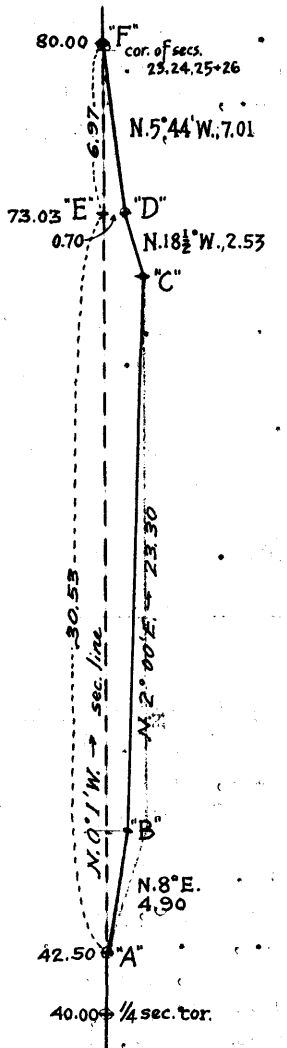
1/4 W | C
S26 | S25
1921

40.00 Descend 30 ft. to
True point for 1/4 sec. cor. in unsuitable place to monument same.

42.50 Descend 35 ft. to
Slope becomes too steep to continue chaining on sec. line; therefore leave sec. line, and traverse in sec. 25, as described as follows, and as shown on the diagram hereon:

24 Subdivision of Township 41 North, Range 14 West.

Chains



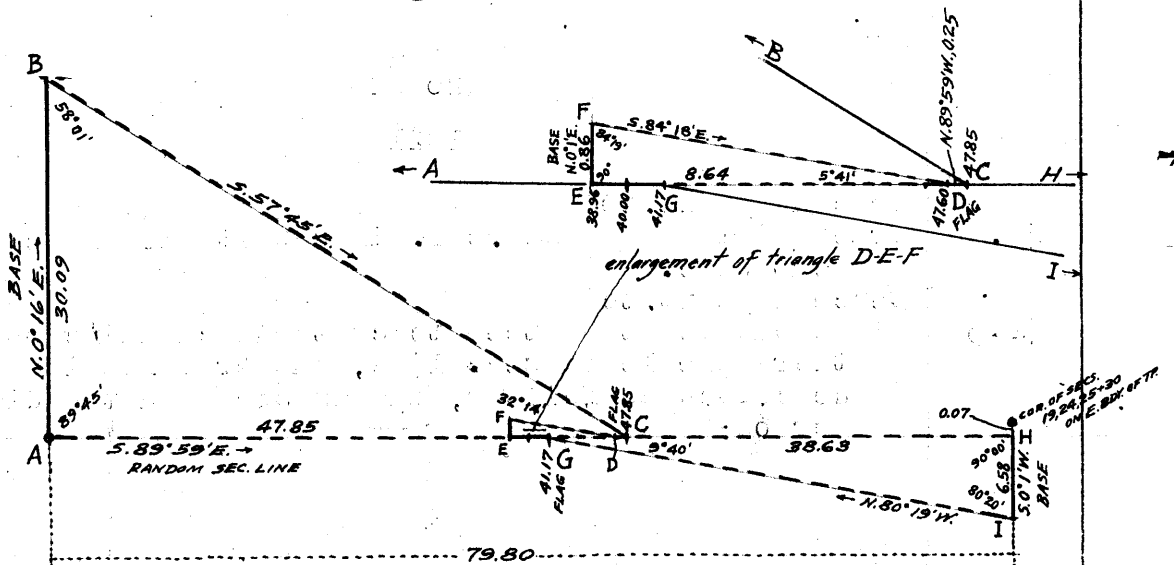
From 42.50 ch. station, indicated on diagram at "A,"
N. 8° E., 4.90 chs. descending 70 ft. to point "B."
Thence,
N. 2° E. 23.30 chs. descending 245 ft. to point "C."
Thence,
N. 18 1/2° W. 2.53 chs. descending 50 ft. to point "D."
which by computation is 70 lks. E. of point "B" on sec. line 30.53 chs. N. 0° 1' W. from point "A" or 73.03 chs. N. 0° 1' W. from cor. of secs. 25, 26, 35 and 36.
"EF" = 80.00 chs. - 73.03 chs. = 6.97 chs.
Course and length of line "DF" of traverse is computed from the triangle "DEF" and found to be N. 5° 44' W., 7.01 chs.;
Therefore, from point "D"
N. 5° 44' W., 7.01 chs. descending 120 ft. to

80.00 Set an iron post, 3 ft. long, 2 ins. in diam., on bed rock, with marked stone, for cor. of secs. 23, 24, 25 and 26, and raise mound of stone around post, with brass cap, marked

T41N	R14W
.S23	S24
S26	S25
1921	

Land, mountainous.
Soil, rocky, 4th rate.
No timber.
Undergrowth, bitter brush and cactus.

S 89° 59' E., on a random line, bet. secs. 24 and 25.
The surface is extremely mountainous and slopes too steep for chaining; therefore, obtain the measurement by a series of triangulations, as described as follows, and as shown on the diagram hereon:



Subdivision lines of Township 41 North, Range 14 West.

Chains.

From cor. of secs. 23, 24, 25 and 26, indicated on diagram at "A," measure a Base N.0° 16'E., 30.09 chs. to point "B."

Set flag on random line at point "C," which brs.S. 57°45' E. from "B."

Included angles of triangle "ABC" are 89°45', 58°01' and 32°14', the sum of which is 180°00'.

Triangulated dist. on random sec.line "A" to "C" is obtained by $\frac{\text{sine } 58^{\circ}01' \times \text{Base}}{\text{sine } 32^{\circ}14'}$ or $\frac{.84820 \times 30.09}{.53337} = 47.85$ chs.

From point "C," measure N.89°59'W., 0.25 chs. to point "D," 47.60' chs.S. 89°59'E., from cor.of secs.23,24,25 and 26, and set flag.

From a point on random sec.line, N.89°59'W. from "D," indicated on diagram at "E," measure a Base N.0°1'E., 0.86 chs. to point "F."

This is as long a base as can be secured.

From "F" the bearing to "D" is S.84° 18'E.

Included angles of triangle "DEF" are 5°41', 90°00' and 84°19', the sum of which is 180°00'.

Triangulated dist. on random sec.line "E" to "D" is obtained by Tang. 84° 19' x Base or 10.0483 x .86 = 8.64 chs., which subtracted from 47.60 chs. gives 38.96 chs. S.89°59'E. from cor.of secs.23,24, 25 and 26, for the position of triangulation point "E" on random sec. line.

38.96 Triangulation point "E" of triangle "DEF."
Continue line and measurement, by chaining.

40.00 Set temp. $\frac{1}{4}$ sec.cor.

41.17 Discontinue chaining, and set flag indicated on diagram at "G" for third triangulation.

From point "H" 0.97 chs.S. of the cor. of secs.19,24,25 and 30, and bearing S. 89°59'E. from "G", measure a Base S.0° 1' W., 6.58 chs. to point "I."

Bearing of line from "I" to "G" is N.80°19'W.

Included angles of triangle "GHI" are 9°40', 90°00' and 80°20', the sum of which is 180° 00'.

Triangulated dist. on random sec.line "G" to "H" is obtained by $\text{Tang. } 80^{\circ}20' \times \text{Base}$ or $5.87080 \times 6.58 = 38.63$ chs., which added to 41.17 chs. gives 79.80 chs. as the length of random sec.line.

47.60 Flag point "D" of triangle "DEF".
Continue line and measurement by chaining to

47.85 Flag point "C" of triangle "ABC."
Continue line and measurement by triangulation on triangle "GHI."

79.80 Triangulation point "H" at intersection of random sec. line with E bdy.of Tp. 7 lks.S. of the cor.of secs.19, 24, 25 and 30, hereinbefore described.

Thence,
S 89°58'W., on true line, bet. secs.24 and 25.
Over mountainous land, thru. scattering undergrowth.
Descend 1200 ft. to $\frac{1}{4}$ sec.cor., over broken sandstone cliffs, facing N.75°W.

Measurement by triangulation as hereinbefore described.

31.95 Triangulation point on ledge. Thence across ledge, chaining measurement to

32.20 Triangulation point; leave ledge. Descend steep W.slope. Measurement by triangulation to

38.63 Triangulation point at foot of cliffs. Thence across sandstone shelf, descending. Chain measurement to

39.90 Set an iron post, 3 ft.long, 1 in. in diam., on bed rock, with marked stone for $\frac{1}{4}$ sec.cor., and raise a mound of stone around post, marked on brass cap,

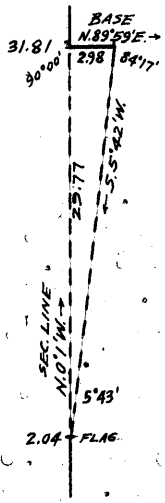
S 24
S 25
1921

26 Subdivision lines of Township 41 North, Range 14 West.

Chains.

Continue across sandstone shelf, bearing N. and S., descending.
 Chain measurement to
 40.80 Triangulation point on rim of ledge, bearing N. and S. Leave ledge, and descend 425 ft., over steep rocky broken W. slope.
 Measurement of remainder of mile by triangulation.
 70.00 (Approximate) Gulch, course N. Ascend 325 ft.
 76.00 (Approximate) Spur, slopes N. Descend 35 ft.
 77.00 (Approximate) Gulch, course N. Ascend 95 ft. to
 79.80 The cor. of secs. 23, 24, 25 and 26.
 Land, mountainous.
 Soil, rocky, 4th rate.
 No timber.
 Undergrowth, cactus and bitter brush.

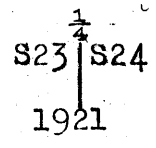
2.04 N. 0° 1' W., bet. secs. 23 and 24.
 Over mountainous land, thru. scattering undergrowth. Ascend 45 ft., over steep E. slope, on W. side of gulch. Point of spur, sloping N. 15° E. Discontinue chaining owing to steep, broken sides of gulch, over which the section line passes N. of this point, and triangulate as described as follows, and as shown on the diagram hereon.



Leave flag at this point.
 From a point ahead on sec. line, measure a base N. 89° 59' E., 2.98 chs., which is as long a base as can be secured.
 From E. end of base, flag brs. S. 5° 42' W.
 Included angles are 84° 17', 5° 43' and 90° 00', the sum of which is 180° 00'.
 Vertical angle from flag point to triangulation point on sec. line is - 11 1/2°.
 Triangulated dist. on sec. line is obtained by

Tang. 84° 17' x Base or 9.9831 x 2.98 = 29.77 chs., which added to 2.04 chs. gives 31.81 chs. as the position of the triangulation point.

3.50 From 2.04 ch. station, descend 90 ft. to (Approximate) Head of gulch, course N. Thence in bottom of gulch, descending.
 20.00 (Approximate) Leave bottom of gulch, course N. 45° E. from S.
 Ascend 125 ft., over E. slope, to
 31.81 Triangulation point on ledge, bearing N. and S. Continue line and measurement by chaining. Desc. 60 ft., over E. slope, to
 40.00 Set an iron post, 3 ft. long, 1 in. in diam., on bed rock, with marked stone, for sec. cor., and raise a mound of stone around post, with brass cap, marked



51.63 Descend 100 ft., over steep E. slope, to
 64.98 Spur, slopes N. 15° E. Descend 225 ft., over NW. slope. Ascend 25 ft.
 71.80 Descend 140 ft., over NW. slope, to
 80.00 Head of draw, course N. 30° W. Set an iron post, 3 ft. long, 2 ins. in diam., 12 ins. in the ground, with marked stone, for cor. of secs. 13, 24, 23 and 24, and raise a

Subdivision lines of Township 41 North Range 14 West.

Chains.

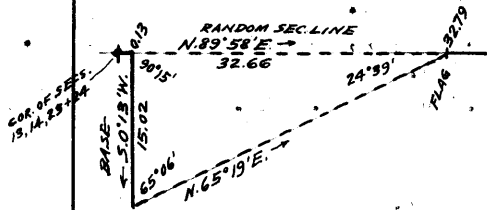
mound of stone around post, with brass cap, marked

T41N	R14W
S14	S13
S23	S24

1921.

Land, mountainous.
 Soil, rocky, 4th rate.
 No timber.
 Undergrowth, bitter brush and cactus.

0.13 N. 89° 58' E., on random line, bet. secs. 13 and 24.
 Discontinue chaining, owing to steep slopes E. of this point, and triangulate as described as follows, and as shown on the diagram hereon:



From this point, measure a Base, S. 0° 13' W., 15.02 chs. Set flag ahead on random sec. line. From S. end of base, flag brs. N. 65° 19' E. Included angles are 65° 06', 90° 15' and 24° 39', the sum of which is 180° 00'.

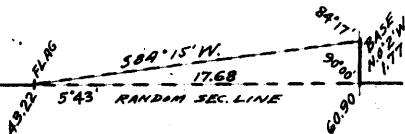
Triangulated dist. on random line is obtained by $\frac{\text{side } 65^{\circ}06' \times \text{Base}}{\text{side } 24^{\circ}39'}$ or $\frac{.90704 \times 15.02}{.41707} = 32.66$ chs., which

added to 0.13 chs. gives 32.79 chs., N. 89° 58' E. from sec. cor., the position of flag point.

32.79 Flag point of above described triangulation.
 Continue line and measurement by chaining.

40.00 Set temp. $\frac{1}{4}$ sec. cor.

43.22 Discontinue chaining at this point owing to deep gulch ahead, and triangulate across same as described as follows, and as shown on the diagram hereon.



Leave flag at this point. From point ahead on random sec. line, measure a Base, N. 0° 2' W., 1.77 chs., which is as long a base as can be secured. From N. end of base, flag brs. S. 84° 15' W. Included angles are 84° 17', 5° 43' and 90° 00', the sum of which is 180° 00'.

Vertical angle from flag point to triangulation point at S. end of base is - 9°.

Triangulated dist. on random sec. line is obtained by $\text{Tang. } 84^{\circ}17' \times \text{Base}$ or $9.98931 \times 1.77 = 17.68$ chs., which added to 43.22 chs. gives 60.90 chs. N. 89° 58' E. from sec. cor. for the position of the triangulation point.

60.90 Triangulation point.

Continue line and measurement by chaining.

79.92 Fall 14 lks. N. of the cor. of secs. 13, 18, 19 and 24 on E. bdy. of Tp., hereinbefore described.

Thence, N. 89° 56' W., on true line, bet. secs. 13 and 24. Over mountainous land, thru. scattering undergrowth. Ascend 15 ft., over E. slope.

1.65 Spur, slopes N. 10° W. Descend 160 ft.

9.40 Gulch, course N. 10° W. Ascend 100 ft.

11.80 Spur, slopes N. Descend 65 ft.

16.65 Gulch, course N. Ascend 40 ft. to

19.02 Triangulation point on low spur, sloping N.

Chains.

Thence by triangulated measurement.
Descend gradually over very broken N.30°W. slope.
25.00 (Approximate) Gulch, course N. Ascend 190 ft., over broken
NE. slope, to
36.70 Triangulation point. Thence continue measurement by
chaining.
Ascend 12 ft., over NE. slope, to
38.49 Spur, slopes N.10°W. Descend 12 ft., over W. slope, to
39.96 Set an iron post, 3 ft. long, 1 in. in diam., on bedrock,
with marked stone, for $\frac{1}{4}$ sec. cor., and raise a mound
of stone around post, with brass cap, marked

$\frac{1}{4}$ S 13
S 24
1921

47.13 Descend 85 ft., over W. slope, to
Triangulation point on rocky shelf, bearing N.15°E. and
S.15°W.
Thence by triangulated measurement.
Descend 730 ft., over steep W. slope, broken by cliffs.
73.00 Gulch, course N. Ascend 125 ft.
76.60 Spur, slopes N. Descend 65 ft. to sec. cor.
79.79 Triangulation point.
Measurement by chaining to
79.92 The cor. of secs. 13, 14, 23 and 24.
Land, mountainous.
Soil, rocky, 4th rate.
No timber.
Undergrowth, bitter brush and cactus.

N.0° 1' W., bet. secs. 13 and 14.
Over mountainous land, thru. scattering undergrowth.
Descend 40 ft.
2.00 Ascend 10 ft.
8.50 Point of spur, slopes N.45° W. Descend 120 ft., over grad-
ual NE. slope, to
39.00 Set an iron post, 3 ft. long, 1 in. in diam., 18 ins. in
the ground on bed rock, with marked stone, for witness
cor. to $\frac{1}{4}$ sec. cor., and raise a mound of stone around
post, with brass cap, marked

$\frac{1}{4}$
W | C
S14 | S13
1921.

39.40 Left bank of Virgin River, course S.80°W.
40.00 The true point for $\frac{1}{4}$ sec. cor. falls in Virgin River, where
it cannot be monumented.
41.00 Right bank of Virgin river. Thence over alluvial flat.
48.90 Leave level land, brs. NE. and SW. Ascend 85 ft., over SW.
slope, to
53.90 Point of spur, slopes S.60°W. Ascend 200 ft., over rolling
W. slope, to
80.00 Set an iron post, 3 ft. long, 2 ins. in diam., 8 ins. in
the ground, on bed rock, with marked stone, for cor.
of secs. 11, 12, 13 and 14, and raise a mound of stone
around post, with brass cap, marked

T41N | R14W
S11 | S12
S14 | S13
1921.

Land, mountainous and rolling.
Soil, rocky and sandy, 4th rate.

Subdivision lines of Township 41 North, Range 14 West.

Chains.	<p>No timber. Undergrowth, yucca, sagebrush, greasewood, cactus and black brush.</p>
<p>40.00 79.80 8.80 20.60 27.10 30.35 39.90</p>	<p>----- S. 89° 56' E., on a random line, bet. secs. 12 and 13. Set temp. $\frac{1}{4}$ sec. cor. Fall 19 lks. S. of the cor. of secs. 7, 12, 13 and 18, on the E. bdy. of Tp., hereinbefore described. Thence, S. 89° 56' W., on a true line, bet. secs. 12 and 13. Over mountainous land, thru. scattering undergrowth. Ascend 75 ft., over E. slope. Descend 15 ft. Ascend 90 ft. Spur, slopes S. Descend 110 ft. Ascend 210 ft., over SE. slope, to Set an iron post, 3 ft. long, 1 in. in diam., on bed rock, with marked stone, for $\frac{1}{4}$ sec. cor., and raise a mound of stone around post, with brass cap, marked</p> $\begin{array}{c} \frac{1}{4} \text{ S } 12 \\ \text{S } 13 \\ 1921 \end{array}$
<p>47.70 56.00 62.10 79.80</p>	<p>Ascend 90 ft. Descend 30 ft. Wash, 40 lks. wide, course S. 10° E. Ascend 140 ft. Ridge, brs. N. 25° E. and S. 25° W. Descend 265 ft. to The cor. of secs. 11, 12, 13 and 14. Land, mountainous. Soil, rocky, 4th rate. No timber. Undergrowth, yucca, sagebrush, greasewood and blackbrush.</p>
<p>27.90 32.20 37.10 40.00</p>	<p>----- N. 0° 1' W., bet. secs. 11 and 12. Over mountainous land, thru. scattering undergrowth. Ascend 160 ft., over SW. slope. Spur, slopes W. Descend. Wash, 30 lks. wide, course W. Ascend 95 ft., over SW. slope. Spur, slopes W. Descend 25 ft. Set an iron post, 3 ft. long, 1 in. in diam., on bed rock, with marked stone, for $\frac{1}{4}$ sec. cor., and raise a mound of stone, around post, with brass cap, marked</p> $\begin{array}{c} \frac{1}{4} \\ \text{S11} \text{S12} \\ 1921 \end{array}$
<p>41.00 43.86 53.90 62.70 80.00</p>	<p>Draw, 70 lks. wide, course W. Asc. 35 ft., over SW. slope. Spur, slopes W. Desc. 40 ft. Wash, 30 lks. wide, course S. 80° W. Ascend 140 ft. Spur, slopes W. Descend 80 ft. Set an iron post, 3 ft. long, 2 ins. in diam., 20 ins. in the ground, for cor. of secs. 1, 2, 11 and 12, marked on brass cap,</p> $\begin{array}{c} \text{T41N} \text{R14W} \\ \text{S } 2 \text{S } 1 \\ \text{S11} \text{S12} \\ 1921 \end{array}$ <p>and raise a mound of stone, 2 ft. base, 1$\frac{1}{2}$ ft. high, W. of cor. Land, mountainous. Soil, rocky, 4th rate. No timber. Undergrowth, yucca, sagebrush, black brush, cactus and greasewood.</p>

30 Subdivision lines of Township 41 North, Range 14 West.

Chains.

40.00 N. $89^{\circ}50'E.$, on a random line, bet. secs. 1 and 12.
 Set temp. $\frac{1}{4}$ sec. cor.
 79.78 Fall 2 lks. S. of the cor. of secs. 1, 6, 7 and 12, on the E.
 bdy. of the Tp., hereinbefore described.
 Thence,
 S. $89^{\circ}55'W.$, on a true line, bet. secs. 1 and 12.
 Over mountainous land, thru. scattering undergrowth.
 Ascend 205 ft., over NE. slope.
 3.50 Thence over mesa, brs. NW and SE.
 10.70 Leave mesa; descend 165 ft.
 14.60 Wash, 80 lks. wide, course S. $10^{\circ}E.$ Ascend 90 ft.
 19.90 Spur, slopes NE. Descend 10 ft.
 25.10 Wash, 70 lks. wide, course N. $70^{\circ}E.$ Ascend.
 27.60 Spur, slopes S. $20^{\circ}E.$ Descend.
 28.80 Wash, 70 lks. wide, course S. $40^{\circ}E.$ Ascend 105 ft.
 39.89 Set an iron post, 3 ft. long, 1 in. in diam., on bed rock,
 with marked stone, for $\frac{1}{4}$ sec. cor., and raise a mound
 of stone, around post, with brass cap, marked

$$\frac{1}{4} \begin{array}{c} S \ 1 \\ S \ 12 \\ 1921 \end{array}$$

61.70 Ascend 510 ft., over SE. slope.
 79.78 Ridge, brs. N. and S. Desc. 480 ft., over W. slope.
 The cor. of secs. 1, 2, 11 and 12.
 Land, mountainous.
 Soil, rocky, 4th rate.
 No timber.
 Undergrowth, yucca, sagebrush and black brush.

40.00 N. $0^{\circ}1'W.$, on a random line, bet. secs. 1 and 2.
 Set temp. $\frac{1}{4}$ sec. cor.
 79.88 Fall 4 lks. E. of the cor. of secs. 1, 2, 35 and 36, on the
 N. bdy. of the Tp., hereinbefore described.
 Thence,
 S. $0^{\circ}3'E.$, on a true line, bet. secs. 1 and 2.
 Over mountainous land, thru. scattering undergrowth.
 Ascend.
 7.10 Spur, slopes N. $60^{\circ}W.$ Descend 230 ft.
 19.60 Ascend 50 ft.
 28.80 Descend 150 ft., over SW. slope.
 39.88 Set an iron post, 3 ft. long, 1 in. in diam., on bed rock,
 with marked stone, for $\frac{1}{4}$ sec. cor., and raise a mound
 of stone around post, with brass cap, marked

$$S \ 2 \left| \begin{array}{c} \frac{1}{4} \\ S \ 1 \\ 1921 \end{array} \right.$$

41.30 Cor. stands, in bottom of wash, 30 lks. wide, course W.
 Ascend 45 ft.
 60.90 Descend 205 ft.
 Center of wash, 1 ch. wide, course W. Ascend 50 ft.
 72.40 Descend 50 ft.
 79.88 The cor. of secs. 1, 2, 11 and 12.

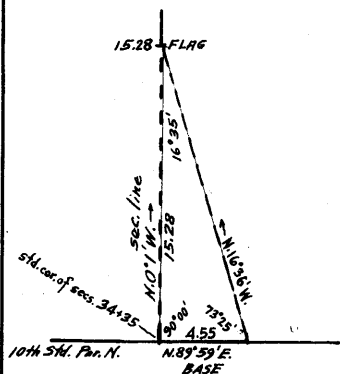
Land, mountainous.
 Soil, rocky, 4th rate.
 No timber. Undergrowth, yucca, sagebrush, greasewood, black
 brush and cactus, sagebrush, greasewood, black brush

From the standard cor. of secs. 34 and 35, on S. bdy. of Tp.,
 (10th. Std. Par. N.), hereinbefore described,

N. $0^{\circ}1'W.$, bet. secs. 34 and 35.
 Over mountainous land, thru. scattering undergrowth.
 Owing to steep slopes on sides of a gulch, at S. end of this
 mile, begin measurement by a triangulation described
 as follows, and as shown on the diagram hereon:

Subdivision lines of Township 41 North, Range 14 West.

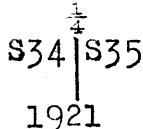
Chains.



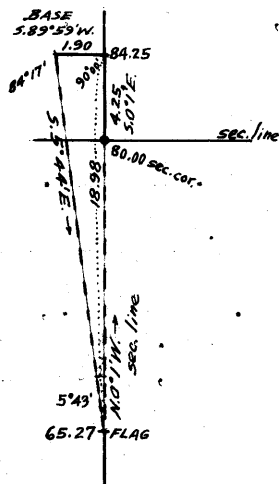
From the standard cor., measure a Base, N.89°59'E., 4.55 chs. Set flag ahead on sec. line. From E. end of base, flag brs. N. 16°30'W. Included angles are 73°25', 90°00' and 16°35', the sum of which is 180°00'. Vertical angle from sec. cor. to flag is - 9°.

Triangulated distance on sec. line is obtained by Tang. 73° 25' x Base or 3.35800 x 4.55 = 15.28 chs. The std. cor. of secs. 34 and 35 is at head of gulch, course N.

5.00 Descend 50 ft., in bottom of gulch, to (Approximate) Leave bottom of gulch, course N.15°E. from S. Descend 115 ft., over N.75° E. slope, to
 15.28 Flag point of above described triangulation. Continue line and measurement by chaining.
 33.38 Descend 210 ft., over N.75°E. slope, to
 40.00 Ascend 15 ft., over SE. slope, to Set an iron post, 3 ft. long, 1 in. indiam., on bedrock, with marked stone, for 1/4 sec. cor., and raise a mound of stone around post, with brass cap, marked



51.20 Ascend 35 ft., over SE. slope. Ridge, brs. N.30°W. and S.30°W.
 65.27 Descend 440 ft., over NE. slope, to Slope becomes too steep for chaining N. of this point; therefore, triangulate as described as follows, and as shown on the diagram hereon:



Leave flag at this point. From a point N.0°1'W. from flag, measure a Base, S.89°59'W., 1.90 chs., which is as long a base as can be secured for this triangulation. From W. end of base, flag brs. S. 5°44'E. Included angles are 84°17', 90°00' and 5°43', the sum of which is 180°00'. Vertical angle from flag to triangulation point at E. end of Base is - 20°.

Triangulated dist. on sec. line is obtained by Tang. 84°17' x Base or 9.98931 x 1.90 = 18.98 chs., which added to 65.27 chs. gives 84.25 chs. N.0°1'W. from std. cor. of secs. 34 and 35 for the position of triangulation point.

80.00 From triangulation point, measure S.0°1'E., 4.25 chs. across bottom of gulch, to Point on SW. side of bottom of gulch, 2.00 chs. wide, course N.30°W., 1015 ft. below 1/4 sec. cor. of secs. 34 and 35. Set an iron post, 3 ft. long, 2 ins. in diam., on bed rock, with marked stone for cor. of secs. 26, 27, 34 and 35, and raise a mound of stone around post, with brass cap, marked

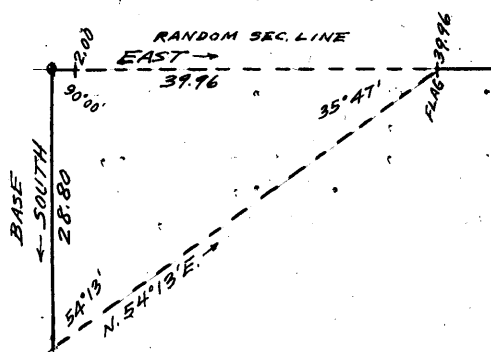
32 Subdivision of Township 41 North Range 14 West.

Chains.

T41N	R14W
S27	S26
S34	S35
1921	

Land, mountainous.
Soil, rocky, 4th rate.
No timber.
Undergrowth, bitter brush and cactus.

2.00. East, on random line, bet. secs. 26 and 35.
Discontinue chaining at this point owing to steep ascent over cliffs on SW. slope, E. of this point, and triangulate as described as follows, and as shown on the diagram hereon:



Set flag ahead on random line. A point 1 lk. W. of 51.20 ch. station on line bet. secs. 34 and 35 gives a Base for this triangulation of South, 28.80 chs. from cor. of secs. 26, 27, 34 and 35. From S. end of base, flag brs. N. 54° 13' E. Included angles are 54° 13', 90° 00' and 35° 47', the sum of which is 180° 00'. Vertical angle from cor. of secs. 26, 27, 34 and 35 to flag is + 20 1/2°.

39.96 Triangulated dist. on random line is obtained by
Tang. 54° 13' x Base or 1.38738 x 28.80 = 39.96 chs.
Flag point of above described triangulation.
Continue line and measurement by chaining.
40.00 Set temp. 1/4 sec. cor.
79.86 Intersect the cor. of secs. 25, 26, 35 and 36.
Thence,
West, on true line, bet. secs. 26 and 35.
Over mountainous land, thru. scattering undergrowth.
Ascend 90 ft., over E. slope.
3.37 Ridge, brs. N. 15° W. and S. 15° E. Desc. 240 ft. over S. 75° W. slope, to
39.90 Flag point of triangulation at top of cliff facing S. 15° W.
Set an iron post, 3 ft. long, 1 in. in diam., on bed rock, with marked stone, for witness cor. to 1/4 sec. cor., and raise a mound of stone around post, with brass cap, marked

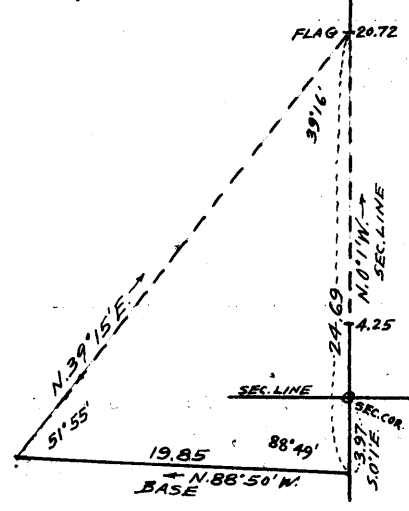
1/4	S 26	WC
	S 35	
1921		

Measurement of remainder of line by triangulation.
39.93 Descend 922 ft., over cliffs on SW. slope.
77.86 True point for 1/4 sec. cor. on face of cliff.
Foot of descent on NE. side of bottom of gulch, 2.00 chs. wide, course N. 30° W. thence across bottom of gulch, to
79.86 the cor. of secs. 26, 27, 34 and 35.
Land, mountainous.
Soil, rocky, 4th rate.
No timber.
Undergrowth, bitter brush and cactus.

N. 0° 1' W., bet. secs. 26 and 27.
Over mountainous land, thru. scattering undergrowth.

Chains.

4.25 Across bottom of gulch, 2.00 chs. wide, course N.30°W. Foot of steep SW. slope. Leave bottom of gulch, and ascend over steep SW. slope. Chaining being impracticable N. of this point, triangulate as described as follows, and as shown on the diagram hereon:



Set flag ahead on sec. line. From a point 3.97 chs. S. 0° 1' E. from cor. of secs. 26, 27, 34 and 35, measure a Base N. 88° 50' W., 19.85 chs. From W. end of base, flag brs. N. 39° 15' E. Included angles are 51° 55', 39° 16' and 88° 49' the sum of which is 180° 00'. Vertical angle from sec. cor. to flag point is + 28°. Triangulated dist. on sec. line is obtained by

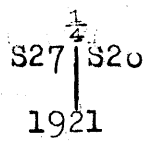
$$\frac{\text{sine } 51^{\circ}55' \times \text{Base}}{\text{sine } 39^{\circ}16'} \text{ or } \frac{.78711 \times 19.85}{.63293} = 24.69 \text{ chs.}$$

The position of flag point on line bet. secs. 26 and 27 is 24.69 chs. - 3.97 chs. = 20.72 chs. N. 0° 1' W. from cor. of secs. 26, 27, 34 and 35.

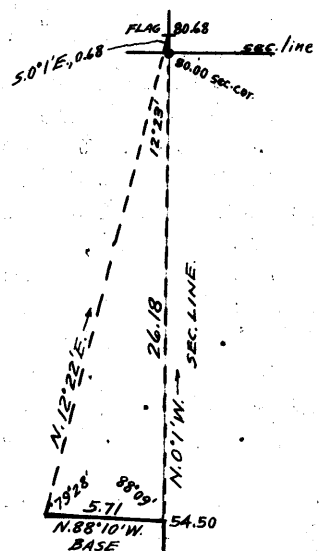
20.72 Flag point of above described triangulation, on a ledge bearing NW. and SE. 720 ft. above cor. of secs. 26, 27, 34 and 35.

Continue line and measurement by chaining. Ascend 85 ft. over SW. slope.

35.20 Ridge, brs. NW and SE. Descend 40 ft., over NE. slope, to
40.00 Set an iron post, 3 ft. long, 1 in. in diam., 10 ins. in the ground, with marked stone, for 1/4 sec. cor., and raise a mound of stone around post, with brass cap, marked



54.50 Descend 100 ft., over NE. slope, to Discontinue chaining at this point owing to steep descent of about 900 ft., over cliffs and ledges, and triangulate as described as follows, and as shown on the diagram hereon:



Measure a Base N. 88° 10' W., 5.71 chs. Set flag ahead on sec. line. From W. end of Base, flag brs. N. 12° 22' E. Included angles are 79° 28', 12° 23' and 88° 09', the sum of which is 180° 00'. Vertical angle from triangulation point at E end of Base to flag is - 24 1/2°.

Triangulated dist. on sec. line is obtained by

$$\frac{\text{sine } 79^{\circ}28' \times \text{Base}}{\text{sine } 12^{\circ}23'} \text{ or } \frac{.98315 \times 5.71}{.21445} = 26.18 \text{ chs., which added to}$$

54.50 chs. gives 80.68 chs. N. 0° 1' W. from cor. of secs. 26, 27, 34 and 35, as the position of the flag point.

73.00 (Approximate) Bottom of gulch, course NW. Ascend about 150 ft. over SW. slope to sec. cor.

From flag point of triangulation, measure S. 0° 1' E., 0.68 chs. to

80.00 870 ft. below 1/4 sec. cor. Set an iron post, 3 ft. long,

34 Subdivision of Township 41 North, Range 14 West.

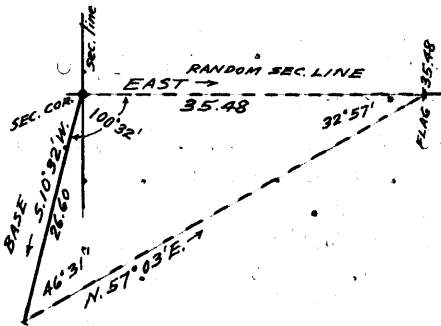
Chains.

2 ins. in diam., on bed rock, for cor. of secs. 22, 23, 26 and 27, and raise a mound of stone around post, with brass cap, marked

T41N	R14W
S22	S23
S27	S26
1921	

Land, mountainous.
Soil, rocky, .4th rate.
No timber.
Undergrowth, bitter brush and cactus.

East, on random line, bet. secs. 23 and 26. It is impracticable to chain measurement owing to steep, rocky S.15°W. slope; therefore, triangulate as described as follows, and as shown on the diagram hereon:



Set flag ahead on random sec. line.
Measure a Base, S.10°32'W., 26.60 chs. from cor. of secs. 22, 23, 26 and 27.
From SW end of base, flag brs. N.57°03'E.
Included angles are 40°31', 100°32' and 32°57', the sum of which is 180°00'.
Vertical angle from sec. cor. to flag is + 24°.

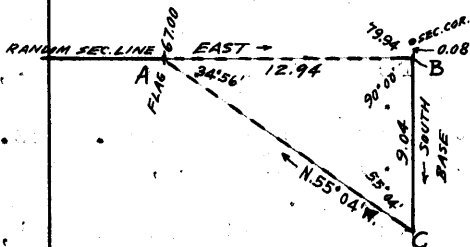
Triangulated dist. on random sec. line is obtained by:
 $\frac{\text{side } 40^{\circ}31' \times \text{Base}}{\text{side } 32^{\circ}57'}$ or $\frac{.72557 \times 26.60}{.54491} = 35.48$ chs.

35.48 Flag point of above described triangulation.

40.00 Continue line and measurement by chaining.

67.00 Set temp. $\frac{1}{4}$ sec. cor.

Discontinue chaining owing to steep descent E. of this point, and triangulate as described as follows, and as shown on the diagram hereon:



Leave flag at this point indicated on diagram at "A."
A point 8 lks. S. of cor. of secs. 23, 24, 25 and 26, indicated on diagram at "B," bearing East from "A" is the terminus of the random sec. line.
From "B" measure a Base, South 9.04 chs. to point "C."
Bearing "C" to "A" is N.55°04'W.
Included angles of triangle "ABC" are 34°50', 90°00' and 55°04', the sum of which is 180°00'.
Vertical angle "A" to "B" is - 37°.

Triangulated measurement on random sec. line is obtained by $\text{tang. } 55^{\circ}04' \times \text{Base}$ or $1.43169 \times 9.04 = 12.94$ chs., which, added to 67.00 chs. gives 79.94 chs. as the total length of random sec. line.

79.94 Triangulation point, 8 lks. S. of the cor. of secs. 23, 24, 25 and 26.

Thence, S.89° 57'W., on true line, bet. secs. 23 and 26. Over mountainous land, thru. scattering undergrowth. Measurement for 12.94 chs. by triangulation.

12.94 Ascend 525 ft., over steep N.75°E. slope to Flag point of triangulation on ledge.

Continue line and measurement by chaining.

chains.

26.40
39.97

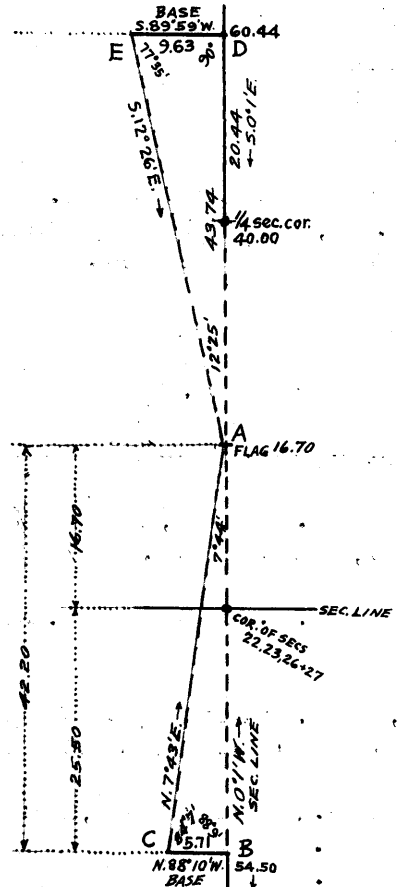
Ascend 165 ft., over N.80°E. slope.
Ridge, brs. N. and S. Desc. 87 ft., over NW. slope, to
Head of draw, course N.45°W. Set an iron post, 3 ft. long,
1/4 in. in diam., on bed rock, with marked stone, for
1/4 sec. cor., and raise a mound of stone around post,
with brass cap, marked

1/4 S 23
S 20
1921

44.46
79.94

Descend 60 ft. to
Flag point of triangulation on spur, sloping NW.
Triangulate the measurement of the remainder of the mile.
Descend 1050 ft., over steep rocky S.15° W. slope, to
Triangulation point at cor. of secs. 22, 23, 26 and 27.
Land, mountainous.
Soil, rocky, 4th rate.
No timber.
Undergrowth, bitter brush and cactus.

N.0°1' W., bet. secs. 22 and 23.
Over mountainous land, thru. scattering undergrowth.
The steep broken slopes of a long high spur crossing the
S. half of line renders chain measurement impractica-
ble; therefore, triangulate as described as follows,
and as shown on the diagram hereon:



Set flag ahead on sec. line at
point indicated on diagram at "A."
From 54.50 ch. station on line bet.
secs. 20 and 27 indicated on
diagram at "B" measure a Base
N.88°10'W., 5.71 chs. to point
"C." This is the same base used
in the triangulation of the N.
end of line bet. secs. 26 and 27,
as hereinbefore described.
From W. end of Base, flag brs. N.7°
43'E.
Included angles of triangle "ABC"
are 7°44', 88°9' and 84°7', the
sum of which is 180°00'.
Vertical angle from cor. of secs.
22, 23, 26 and 27 to point "A" is
+ 24 1/2°.
Triangulated dist. from "B" to "A"
is obtained by
 $\frac{\sin 84^\circ 7' \times \text{Base}}{\sin 7^\circ 44'}$ or $\frac{.99473 \times 5.71}{.13456} =$
42.20 chs., which added to 54.50
chs. gives 96.70 chs.
N.0°1'W., from cor. of secs. 26, 27,
34 and 35, or 16.70 chs. N.0°1'W.
from cor. of secs. 22, 23, 26 and 27,
for the position of flag point "A."

16.70

Flag point on top of long high spur sloping N.75°W.,
500 ft. above cor. of secs. 22, 23, 26 and 27.
Descend 650 ft. over steep broken N. slope to 1/4 sec. cor.
Chaining being impracticable, triangulate as described as
follows, and as shown on above diagram.
From a point ahead on sec. line indicated on diagram at
"D" measure a Base, S.89°59'W., 9.03 chs. to point
"E."
From W. end of base, flag point "A" brs. S.12°20'E.
Vertical angle from "A" to "D," is - 14 1/2°.
Included angles of triangle "AED" are 12°25', 77°35' and
90°00', the sum of which is 180°00'.
Triangulated dist. on sec. line from "A" to "D" is ob-
tained by

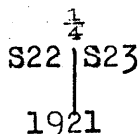
36 Subdivision of Township 41 North, Range 14 West.

Chains.

Tang. $77^{\circ}35'$ x Base or $4.54196 \times 9.63 = 43.74$ chs., which added to 16.70 chs. gives 60.44 chs. N. $0^{\circ}1'$ W. from cor. of secs. 22; 23, 26 and 27, for point "D" on sec. line.

From triangulation point "D" measure S. $0^{\circ}1'$ E., 20.44 chs. to

40.00 Set an iron post, 3 ft. long, 1 in. in diam., 16 ins. in the ground, with marked stone for $\frac{1}{4}$ sec. cor., and raise a mound of stone, around post, with brass cap, marked



and raise a mound of stone 2 ft. base, $1\frac{1}{2}$ ft. high, W. of cor.

Descend 95 ft., over NW. slope, to Triangulation point on spur, sloping NW.

60.44

Descend 270 ft., over NE. slope.

68.90

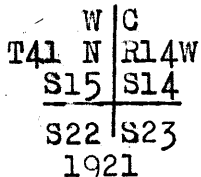
Gulch, course N. 60° W. Ascend 80 ft.

76.46

Point of spur, slopes N. 80° W. Descend 70 ft., over N. slope, to

79.80

Top of cliff, 100 ft. high, bearing E. and W. facing N. Set an iron post, 3 ft. long, 2 ins. in diam., on bedrock, with marked stone, for witness cor. to cor. of secs. 14, 15, 22 and 23, and raise a mound of stone around post with brass cap, marked



80.00

Descend over cliffs into Virgin River canyon. True point for cor. of secs. 14, 15, 22 and 23 falls on face of cliff, where it cannot be monumented.

Land, mountainous.

Soil, rocky, 4th rate.

No timber.

Undergrowth, bitter brush and cactus.

From true point for cor. of secs. 14, 15, 22 and 23, N. $89^{\circ}57'$ E., on a random line, bet. secs. 14 and 23.

40.00

Set temp. $\frac{1}{4}$ sec. cor.

80.06

Intersect N. and S. line, 5 lks. N. of the cor. of secs. 13, 14, 23 and 24.

Thence,

S. $89^{\circ}59'$ W., on a true line, bet. secs. 14 and 23.

Over mountainous land, thru. scattering undergrowth. Descend 15 ft.

10.00

Gulch, course N. Ascend 110 ft., over cliff, facing E.

15.00

Spur, slopes N. Descend 220 ft.

18.90

Gulch, course N. Ascend 280 ft.

22.05

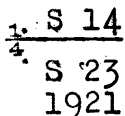
Spur, slopes N. Descend 125 ft.

37.80

Gulch, course N. Ascend slightly over NE. slope, to

40.03

Set an iron post, 3 ft. long, 1 in. in diam., on bed rock, with marked stone, for $\frac{1}{4}$ sec. cor., and raise a mound of stone around post, with brass cap, marked



Ascend 80 ft.

42.24

Spur, slopes N. 10° W. Descend 110 ft.

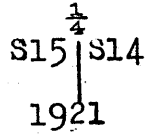
45.20

Gulch, course N. 5° W. Ascend 85 ft.

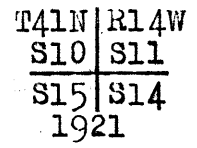
Chains.
 51.90 Spur, slopes N. Descend 320 ft.
 64.40 Gulch, course N.20°W. Ascend 100 ft. to
 70.10 Top of sandstone cliff, 100 ft. high, brs. W and SE. Descend
 over cliffs into Virgin River Canyon.
 80.06 The true point for cor. of secs. 14, 15, 22 and 23, on face of
 cliff, witnessed 0.20 chs. S. 0°1'E., as hereinbefore de-
 scribed.
 Land, mountainous.
 Soil, rocky, 4th rate.
 No timber.
 Undergrowth, bitter brush and cactus.

 From the true point for cor. of secs. 14, 15, 22 and 23,
 N. 0°1'W., bet. secs. 14 and 15.
 Over mountainous land, in Virgin River Canyon, thru.
 scattering undergrowth.

0.60 Descend 25 ft.
 Left bank of Virgin river, brs. E. and W. Thence across
 river, course W. in bottom of canyon.
 3.70 Right bank of Virgin River, brs. E. and W. Leave river
 and bottom of canyon, and ascend 110 ft. over SE.
 slope, to
 13.44 Rim of canyon, brs. NE. and SW. Leave mountainous and en-
 ter rolling land. Ascend slightly to.
 23.60 Point of spur, sloping SE. Descend 40 ft., over NE. slope, to
 40.00 Set an iron post, 3 ft. long, 1 in. in diam., 14 ins. in
 the ground, with marked stone, for 1/4 sec. cor., and
 raise a mound of stone around post, with brass cap,
 marked.



54.00 Ascend gradually over rolling E. slope, to
 Wash, 30 lks. wide, course S. 45° E. Leave rolling and en-
 ter mountainous land.
 Ascend 200 ft., over SE. slope.
 73.80 Top of cliff, brs. E and W. facing N. Descend 145 ft.
 77.60 Center of wash, 4.00 chs. wide, course SE. from N. Thence
 in wash.
 80.00 Set an iron post, 3 ft. long, 2 ins. in diam., 16 ins. in
 the ground, with marked stone, for cor. of secs. 10, 11,
 14 and 15, and raise a mound of stone around post, with
 brass cap, marked



Land, rolling and mountainous.
 Soil, sandy and rocky, 4th rate.
 No timber.
 Undergrowth, greasewood, cactus, sagebrush and yucca.

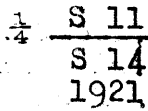
 40.00 N. 89°59'E., on a random line, bet. secs. 11 and 14.
 Set temp. 1/4 sec. cor.
 79.92 Intersect N. and S. line, 14 lks. N. of the cor. of secs.
 11, 12, 13 and 14.
 Thence,
 N. 89°55'W., on a true line, bet. secs. 11 and 14.
 Over mountainous land, thru. scattering undergrowth.
 Ascend 40 ft.
 14.10 Descend 50 ft.
 19.30 Center of wash, 1 ch. wide, course S. Ascend 55 ft.
 28.80 Descend 45 ft. to
 39.96 Set an iron post, 3 ft. long, 1 in. in diam., 26 ins. in

28.80

38 Subdivision of Township 41 North, Range 14 West.

Chains.

the ground, for $\frac{1}{4}$ sec. cor., marked on brass cap,



and raise a mound of stone, 2 ft. base, $1\frac{1}{2}$ ft. high, N. of cor.

Descend gradually to

- 45.10 Wash, 40 lks. wide, course S. Ascend slightly to
- 48.10 Spur, slopes S. 20° E. Descend 45 ft.
- 56.70 Wash, 60 lks. wide, course S. 30° E. Asc. 70 ft., over E. slope.

70.00 Descend 60 ft.

72.80 Ascend 25 ft.

77.80 Descend 45 ft., over SW. slope, to

79.92 The cor. of secs. 10, 11, 14 and 15, in wash, 4.00 chs. wide, course SE. from N.

Land, mountainous.

Soil, rocky, 4th rate.

No timber,

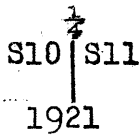
Undergrowth, yucca, sagebrush, black brush and greasewood.

N. $0^\circ 1'$ W., bet. secs. 10 and 11.

Over rolling land, thru. scattering undergrowth.

Ascend gradually in wash, 4.00 chs. wide, course S.

- 40.00 Set an iron post, 3 ft. long, 1 in. in diam., on bed rock, with marked stone, for $\frac{1}{4}$ sec. cor., and raise a mound of stone around post, with brass cap, marked



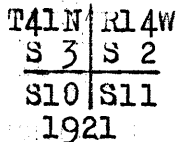
Continue in same wash, 1.00 ch. wide, course S., ascending gradually, to

- 61.50 Leave same wash, course S., from N. 45° W. Asc. 150 ft., over S. slope, to

68.90 point of spur, sloping S. Asc. 75 ft. on top of same spur, to

- 73.80 Leave top of same spur, and descend 35 ft. over E. slope of same.

- 80.00 Set an iron post 3 ft. long, 2 ins. in diam., 18 ins. in the ground, with marked stone, for cor. of secs. 2, 3, 10 and 11, and raise a mound of stone around post, with brass cap, marked



and raise a mound of stone, 2 ft. base, $1\frac{1}{2}$ ft. high, W. of cor.

Land, mountainous.

Soil, rocky, 4th rate.

No timber.

Undergrowth, yucca, sagebrush and black brush.

S. $89^\circ 55'$ E., on a random line, bet. secs. 2 and 11.

- 40.00 Set temp. $\frac{1}{4}$ sec. cor.

- 79.90 Intersect N. and S. line, 21 lks. S. of the cor. of secs. 1, 2, 11 and 12.

Thence,

S. $89^\circ 50'$ W., on a true line, bet. secs. 2 and 11.

Over mountainous land, thru. scattering undergrowth.

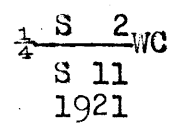
Descend 135 ft.

- 9.50 Center of wash, 1 ch. wide, course S. Asc. 473 ft. to

Subdivision of Township 41 North, Range 14 West. 39

Chains.

- 35.00 Point of spur, slopes S.45°E. Asc. 122 ft. to witness cor.
- 39.95 The true point for ¼ sec.cor. falls where it cannot be monumented.
- 40.24 Ridge, brs.N. and S. Set an iron post, 3 ft.long, 1 in. in diam., 26 ins. in the ground, for witness cor. to ¼ sec.cor., marked on brass cap,



and raise a mound of stone, 2 ft. base, 1½ ft. high, N. of cor.

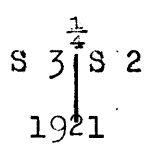
- 53.40 Descend 290 ft., to Point of spur, slopes S.45°W. Desc. 250 ft. to
- 64.20 Head of draw, course S.20°W. Desc. 410 ft. to
- 79.90 The cor. of secs. 2, 3, 10 and 11, on E. slope of spur, near top.

Land, mountainous. Soil, rocky, 4th rate. No timber. Undergrowth, yucca, sage brush, greasewood and cactus.

- 40.00 N.0°3' W., on a random line, bet. secs. 2 and 3. Set temp. ¼ sec.cor.
- 80.06 Fall 2 lks. E. of the cor. of secs. 2, 3, 34 and 35, on the N. bdy. of Tp., hereinbefore described.

Thence, S.0°4'E., on a true line, bet. secs. 2 and 3. Over mountainous land, thru. scattering undergrowth. Descend 95 ft. to

- 26.15 Foot of descent, brs. NE. and SW. Leave mountainous and enter rolling land. Descend gradually.
- 30.55 Center of wash, 1.70 chs. wide, course S.45°W. Asc. gradually to
- 40.06 Set an iron post, 3 ft. long, 1 in. in diam., 26 ins. in the ground, for ¼ sec.cor., marked on brass cap,



and raise a mound of stone, 2 ft. base, 1½ ft. high, W. of cor. Ascend gradually.

- 51.25 Leave rolling, and enter mountainous land; ascend 35 ft., over NW. slope.
- 60.95 Spur, slopes SW., which, about 1 ch. SW. of this point forks to S. and SW. Descend 115 ft., over broken SE. slope of spur, sloping S., near top of same.
- 80.06 The cor. of secs. 2, 3, 10 and 11. Land, rolling, broken and mountainous. Soil, rocky, 4th rate. No timber. Undergrowth, yucca, sagebrush, greasewood and black brush.

From the true point for standard cor. of secs. 33 and 34, on the S. bdy. of the Tp. (10th Std. Par. N.) witnessed 2.00 chs. W. as hereinbefore described,

- N.0°2'W., bet. secs. 33 and 34. Over mountainous land, thru. scattering undergrowth. Ascend 50 ft.
- 2.99 Point of spur, sloping E. from SW. Descend 215 ft. to
- 8.30 Bottom of short side of canyon, course E. Heads about 10 chs. W. of line. Ascend 165 ft. to
- 12.60 N. rim of side canyon, brs. E. and W. Desc. 233 ft., over E. slope, to

40 Subdivision of Township 41 North, Range 14 West.

Chains.

29.50 W.rim of Sullivan Canyon, brs.NW. and SE. Desc.160 ft., over NE.slope, to
 40.00 Set an iron post 3 ft.long, 1 in. in diam., 20 ins. in. the ground, for $\frac{1}{4}$ sec.cor., marked on brass cap,

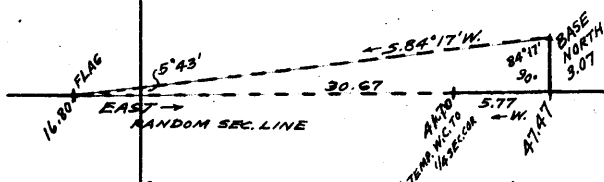
S33 $\frac{1}{4}$ S34
 1921

and raise a mound of stone, 2 ft. base, $1\frac{1}{2}$ ft. high, W.of cor.
 Descend 80 ft., over NE.slope, to
 50.00 Foot of descent, brs.N.10°W. and S.10°E. Thence across bottom of Sullivan's Canyon, 5 chs.wide, course N.10°W.
 67.00 Leave bottom of canyon, and ascend 80 ft. over W.slope, to
 80.00 Set an iron post, 3 ft.long, 2 ins. in diam., on bed rock, with marked stone, for cor.of secs.27,28, 33 and 34, and raise a mound of stone around post, with brass cap, marked

T41N | R14W
 S28 | S27
 S33 | S34
 1921

Land, mountainous.
 Soil, rocky, 4th rate.
 No timber.
 Undergrowth, black brush.

16.80 East, on random line, bet. secs.27 and 34. Discontinue chaining at this point, as the line passes over a deep canyon. Triangulate as described as follows, and as shown on the diagram hereon:



Leave flag at this point. From a point ahead on random sec. line, measure a Base, North, 3.07 chs., which is as long a base as can be secured.

From N. end of Base, flag brs. S.84°17'W.

Included angles are 84°17', 5°43' and 90°00', the sum of which is 180°00'.

Vertical angle from flag to triangulation point at S. end of base is - $1\frac{1}{2}$ °.

Triangulated dist. on random sec. line is obtained by Tang. 84°17' x Base or 9.98931 x 3.07 = 30.67 chs., which added to 16.80 chs. gives 47.47 chs. E. from sec. cor. as the position of the triangulation point.

40.00 Point for temp. $\frac{1}{4}$ sec. cor. falls on face of cliff, and is inaccessible.

From triangulation point at 47.47 ch. station on random line, measure West, 5.77 chs. to

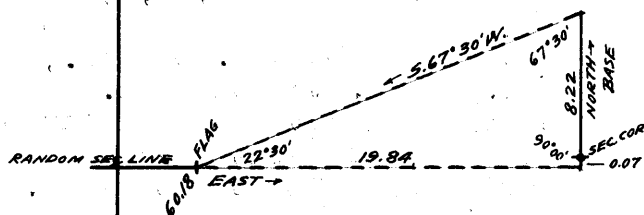
41.70 Top of cliff, bearing NW. and SE. facing SW. Set temp. witness cor. to $\frac{1}{4}$ sec. cor.

Thence, East on random line, continuing measurement, by chaining.

60.18 Top of spur, sloping NW. Steep descent from same renders chaining impracticable; therefore, complete the measurement of the random line by triangulation, as described as follows, and as shown on the diagram hereon:

Leave flag at this point. From a point E. of flag, and 7

Chains.



lks.S.of cor. of secs.26, 27,34 and 35, measure a Base, North, 8.22 chs. From N. end of Base, flag brs.S. 67° 30'W. Included angles are 67°30', 90°00' and 22°30', the sum of which is 180°00'.

- 80.02 Vertical angle from flag point to sec.cor. is - 21°. Triangulated distance on random sec.line is obtained by Tang. 67° 30' x Base or 2.41421 x 8.22 = 19.84 chs., which, added to 60.18 chs. gives 80.02 chs. as the total length of random line.
- 80.02 Intersect N. and S. line, 7 lks.S.of the cor. of secs.26, 27, 34 and 35. Thence, S.89°57'W., on true line, bet. secs.27 and 34. Over mountainous land, thru. scattering undergrowth. Measurement of 19.84 chs. by triangulation, as hereinbefore described.
- 19.84 Ascend 500 ft., over steep, broken NE.slope. Spur, slopes N. 30°W. Flag point of triangulation. Continue line and measurement, by chaining. Descend 230 ft., over SW.slope to witness cor. to 1/4 sec. cor.
- 32.55 Triangulation point of triangulation of 30.07 chs. hereinbefore described. Continue chaining to
- 38.32 Top of cliff, brs.NW and SE., facing SW. This is as near to the true point for 1/4 sec.cor. as it is possible to get; therefore, set an iron post 3 ft.long, 1 in. in diam., on bed rock, with marked stone, for witness cor. to 1/4 sec.cor., and raise a mound of stone around post, with brass cap, marked

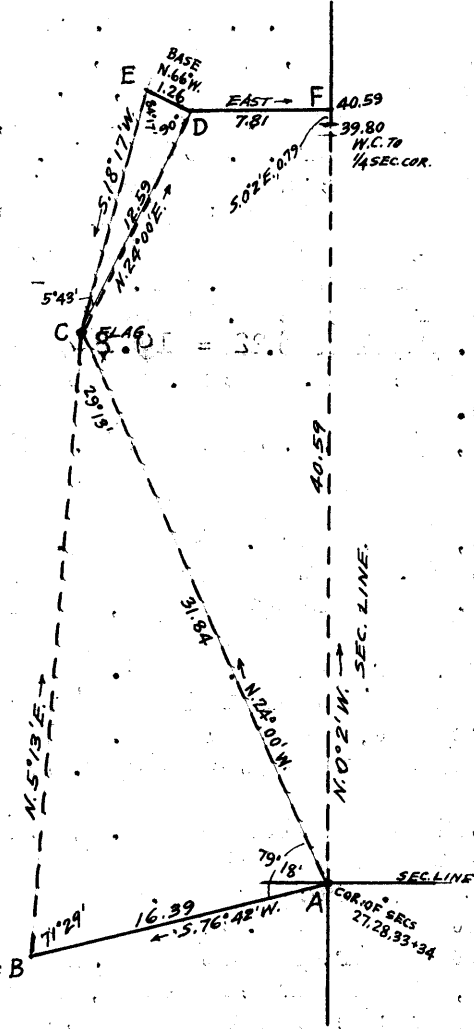
WC 1/4 S 27
 S 34
 1921

- Continue line, measuring by triangulation as hereinbefore described.
- 40.01 Descend 215 ft., over cliffs into canyon. True point for 1/4 sec.cor. falls on face of cliffs, and is inaccessible.
- 50.00 (Approximate) Bottom of canyon; course N.30°W. Asc. 400 ft., over almost perpendicular cliffs, facing NE.
- 63.22 Flag point of triangulation on top of spur, sloping N.35° W. Continue line and measurement by chaining.
- 80.02 Descend 550 ft., over steep W.slope, to The cor.of secs. 27,28, 33 and 34 on steep W.slope of E. wall of Sullivan's canyon, 200 ft. above the bottom of said canyon. Land, mountainous. Soil, rocky, 4th rate. No timber. Undergrowth, bitter brush and cactus.

N.0°2'W., bet. secs. 27 and 28. Over mountainous land, thru. scattering undergrowth. The south half of this section line passes over the steep slopes of the E. wall of Sullivan's canyon, rendering chaining thereon impracticable. It is also found impracticable to secure a triangulation point on sec. line, or chain a traverse or offset line; therefore, obtain measurement to the 1/4 sec.cor. by a triangulated traverse as described as follows, and as shown on the diagram hereon.

12 Subdivision of Township 41 North, Range 14 West.

Chains.



From cor. of secs. 27, 28, 33 and 34, indicated on diagram at "A," measure a Base S. 70° 42' W., 16.39 chs. to point "B." Set flag in bottom of Sullivan's Canyon, at point "C." Bearing from "B" to "C" is N. 5° 13' E. Bearing from "A" to "C" is N. 24° W.

Included angles of triangle "ABC" are 79° 18', 71° 29' and 29° 13', the sum of which is 180° 00'.

Triangulated measurement of portion "AC" of traverse is obtained by $\frac{\sin 71^\circ 29' \times \text{Base}}{\sin 29^\circ 13'}$ or $.94823 \times 16.39 = 31.84$ chs.
 .48811

From a point N. 24° E. from "C" indicated on diagram at "D" measure a base, N. 60° W., 1.26 chs. to point "E." This is as long a base as can be secured.

Bearing from "E" to "C" is S. 8° 17' W.

Included angles of the triangle "CDE" are 5° 43', 90° 00' and 84° 17', the sum of which is 180° 00'.

Triangulated measurement of portion "CD" of traverse is obtained by

Tang. 84° 17' x Base or 9.98931 x 1.26 = 12.59 chs.

By computation of the portion "ACD" the remainder of the traverse from "D" to point "F" on section line is found to be East, 7.81 chs.; therefore, chain measurement from point "D," East, 7.81 chs. to 40.59 ch. station on sec. line.

Thence, chain measurement, S. 0° 2' E., 0.79 chs. to

39.80 On S. side of gulch, set an iron post, 3 ft. long, 1 in. in diam., 26 ins. in the ground, for witness cor. to 1/4 sec. cor., marked on brass cap,

W C
S28 | S27
1921

40.00 Descend to True point for 1/4 sec. cor. in bottom of gulch, course W. Un-suitable place to establish monument.

47.30 Ascend 107 ft., over SW. slope. Spur, slopes W. Desc. 193 ft., over NW. slope.

57.00 Gulch, 1.00 ch. wide, course W. Asc. 285 ft., over W. slope, to

80.00 Set an iron post, 3 ft. long, 2 ins. in diam., on bed rock with marked stone, for cor. of secs. 21, 22, 27 and 28, and raise a mound of stone around post, with brass cap, marked

T41N | R14W
S21 | S22
S28 | S27
1921

Land, mountainous.
Soil, rocky, 4th rate.
No timber.
Undergrowth, bitter brush and cactus.

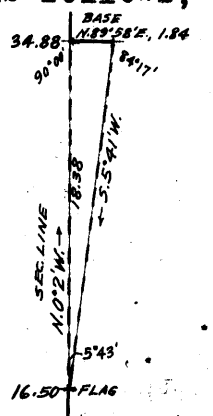
Chains.

40.00 N. 89°57'E., on a random line, bet. secs. 22 and 27.
 79.88 Set temp. $\frac{1}{4}$ sec. cor.
 Intersect N. and S. line, 7 lns. N. of the cor. of secs. 22, 23, 26 and 27.
 Thence,
 West, on true line, bet. secs. 22 and 27.
 Over mountainous land, thru. scattering undergrowth.
 Descend 190 ft., over SW. slope.
 13.90 Gulch, course N. 45°W. Asc. 135 ft., over NE. slope.
 34.20 Spur, slopes N. 30°W. Desc. 165 ft., over W. slope, to
 37.88 Set an iron post, 3 ft. long, 1 in. in diam., 24 ins. in the ground, for witness cor. to $\frac{1}{4}$ sec. cor., marked on brass cap,

$WC \frac{1}{4} \frac{S 22}{S 27}$
 1921

and raise a mound of stone, 2 ft. base, 1 $\frac{1}{2}$ ft. high, N. of cor.
 Descend 78 ft., over W. slope, to
 39.94 True point for $\frac{1}{4}$ sec. cor. falls on slope too steep to allow proper establishment of monument.
 Descend 50 ft., over W. slope, to
 43.90 Center of wash, 2.00 chs. wide, course N. Asc. 550 ft., over E. slope.
 64.90 Spur, slopes NW. Descend 202 ft., over W. slope.
 78.90 Head of draw, course N. Ascend 25 ft. to
 79.88 The cor. of secs. 21, 22, 27 and 28.
 Land, mountainous.
 Soil, rocky, 4th rate.
 No timber.
 Undergrowth, black brush, sagebrush and cactus.

N. 0°2'W., bet. secs. 21 and 22.
 Over mountainous land, thru. scattering undergrowth.
 Descend 265 ft., along W. side of gulch.
 11.30 Cross gulch, course NW. from S. Asc. 87 ft., over SW. slope.
 16.50 Spur, slopes N. 60°W. Discontinue chaining owing to steep descent. N. of this point, and triangulate as described as follows, and as shown on the diagram hereon:



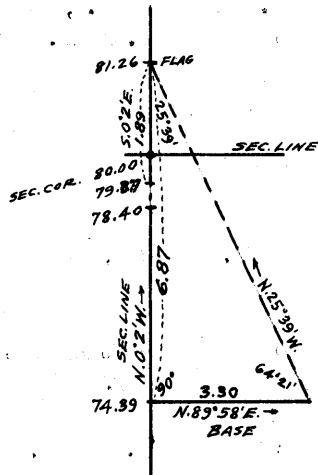
Leave flag at this point.
 From a point ahead on sec. line, measure a Base, N. 89°58'E., 1.84 chs., which is as long a base as can be secured.
 From E. end of base, flag brs. S. 5°41'W.
 Included angles are 84° 17', 5°43' and 90°00', the sum of which is 180°00'.

Triangulated dist. on sec. line is obtained by
 Tang. 84° 17' x Base or 9.98931 x 1.84 = 18.38 chs., which added to 16.50 chs. gives 34.88 chs. N. 0°2'W. from sec. cor. for the position of triangulation point.
 34.88 Triangulation point on NW. slope.
 Continue line and measurement by chaining.
 Descend 80 ft. to
 40.00 True point for $\frac{1}{4}$ sec. cor. falls where it cannot be suitably monumented.
 Descend 20 ft. to
 42.20 Set an iron post, 3 ft. long, 1 in. in diam., on bed rock, with marked stone, for witness cor. to $\frac{1}{4}$ sec. cor., and raise a mound of stone around post, with brass cap, marked

44 Subdivision of Township 41 North, Range 14 West.

Chains.

- 69.40 Descend 126 ft. over NW. slope, to Foot of descent, brs. E. and W. Enter bottom of Virgin River canyon.
- 74.39 Left or S. bank of Virgin River, brs. N. 80° E. and S. 80° W. Thence across Virgin River, course S. 80° W.
- 78.40 Right or N. bank of Virgin River, brs. N. 80° E. and S. 80° W. at base of high cliff, facing S. It is impracticable to continue chaining on account of this cliff; therefore triangulate as described as follows, and as shown on the diagram hereon:



From 74.39 ch. station on sec. line at S bank of Virgin River, measure a Base N. 89° 58' E., 3.30 chs. Set flag ahead on sec. line, beyond top of cliff. From E. end of base, flag brs. N. 25° 39' W. Included angles are 64° 21', 90° 00' and 25° 39', the sum of which is 180° 00'. Vertical angle from triangulation point at 74.39 ch. station to flag is + 40 1/2°. Triangulated dist. on sec. line is obtained by

Tang. 64° 21' x Base or 2.08250 x 3.30 = 6.87 chs., which added to 74.39 chs. gives 81.26 chs. N. 0° 2' W. from cor. of secs. 21, 22, 27 and 28, for the position of flag point.

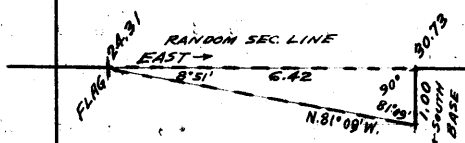
- 79.37 From flag point, measure S. 0° 2' E., 1.89 chs. to Top of cliff, bearing E. and W., facing S., 322 ft. above 74.39 ch. station.
- 80.00 Ascend 25 ft. to Set an iron post, 3 ft. long, 2 ins. in diam., 24 ins. in the ground, for cor. of secs. 15, 16, 21 and 22, marked on brass cap,

T41N	R14W
S16	S15
S21	S22
1921	

and raise a mound of stone, 2 ft. base, 1 1/2 ft. high, W. of cor.

Land, mountainous.
Soil, rocky, 4th rate.
No timber.
Undergrowth, black brush, sagebrush and cactus.

- 24.31 East, on a random line, bet. secs. 15 and 22. Top of cliff, brs. N. 15° E. and S. 15° W., facing SE. Steep descent to Virgin River from this cliff renders chaining impracticable; therefore, triangulate as described as follows, and as shown on the diagram hereon:



Leave flag at this point. From a point on random sec. line, on left or S. bank of Virgin River, measure a Base, South, 1.00 ch., which is as long a Base as it is practicable to chain. From S. end of base, flag brs. N. 81° 09' W. Included angles are 81° 09', 8° 51' and 90° 00', the sum of which is 180° 00'.

Vertical angle from flag point to triangulation point

Chains.

at N. end of Base is - $18\frac{1}{2}^\circ$.
 Triangulated distance on random sec. line is obtained by
 Tang. $81^\circ 09'$ x Base or $0.42253 \times 1.00 = 0.42$ chs., which
 added to 24.31 chs. gives 30.73 chs. E. from sec. cor.
 as the position of the triangulation point.

30.73 Triangulation point of above described triangulation.
 Continue line and measurement, by chaining.

40.00 Set temp. $\frac{1}{4}$ sec. cor.
 80.02 Intersect N. and S' line, 28 lks. S. of the true point, for
 cor. of secs. 14, 15, 22 and 23, witnessed 0.20 chs. S. $0^\circ 1'$
 E., as hereinbefore described.

From true point for sec. cor.,
 S. $89^\circ 48' W.$, on a true line, bet. secs. 15 and 22.
 Over mountainous land, thru. scattering undergrowth.
 Along N. slope, above Virgin River.
 7.50 Gulch; course N. $30^\circ W.$ Ascend 40 ft.
 10;50 Descend 42 ft.
 12.20 Gulch, course N. Ascend 110 ft.
 16.04 Descend 110 ft. to
 40.01 Set an iron post 3 ft. long, 1 in. in diam., 20 ins. in the
 ground, for $\frac{1}{4}$ sec. cor., marked on brass cap,

$\frac{1}{4}$ S 15
 S 22
 1921

and raise a mound of stone, 2 ft. base, $1\frac{1}{2}$ ft. high, N.
 of cor.

49.29 Descend 31 ft., over NW. slope, to
 Triangulation point on left or S. bank of Virgin River,
 brs. N. $15^\circ E.$ and S. $15^\circ W.$ Thence across Virgin River,
 course S. $15^\circ W.$ Measurement of 0.42 chs. by triangula-
 tion as hereinbefore described.

55.71 Triangulation point at top of cliff, bearing N. $15^\circ E.$ and
 S. $15^\circ W.$, facing SE. 150 ft. above the river.
 Continue line and measurement by chaining. Ascend 42 ft.
 to

63.20 Point of spur, slopes S. Desc. 150 ft., over SW. slope, to
 80.02 The cor. of secs. 15, 16, 21 and 22.
 Land, mountainous.
 Soil, rocky, 4th rate.
 No timber.
 Undergrowth, black brush; sagebrush and cactus.

N. $0^\circ 2' W.$, bet. secs. 15 and 16.
 Over mountainous land; thru. scattering undergrowth. Asc.
 150 ft., over S. slope.

4.90 Descend 105 ft., over NW. slope, to
 35.00 Natural cave on line. Ascend 37 ft.
 38.50 Hill brs. E. and W. Descend 15 ft. to
 40.00 Set an iron post, 3 ft. long, 1 in. in diam., on bed rock,
 with marked stone, for $\frac{1}{4}$ sec. cor.; and raise a mound
 of stone around post, with brass cap, marked

$\frac{1}{4}$
 S16 S15
 1921

Descend 45 ft. to

46.00 Ascend 120 ft., over rolling E. slope, to
 61.50 Wash, 40 lks. wide, course E. Asc. 139 ft., over SE. slope.
 71.30 Rim of canyon, brs. N. $80^\circ W.$ and S. $80^\circ E.$ Desc. 250 ft.
 75.00 Bottom of canyon, course S. $80^\circ E.$ Ascend 250 ft. to
 80.00 Set an iron post, 3 ft. long, 2 ins. in diam., on bed rock,
 with marked stone, for cor. of secs. 9, 10, 15 and 16, and
 raise a mound of stone around post, with brass cap,
 marked

46 Subdivision of Township 41 North, Range 14 West.

chains.

T41N | R14W
 S 9 | S10
 S16 | S15
 1921

Land, rolling and mountainous.
 Soil, rocky, 4th rate.
 No timber.
 Undergrowth, sagebrush, yucca and black brush.

40.00 N. 89° 48' E., on a random line, bet. secs. 10 and 15.
 79.00 Set temp. $\frac{1}{4}$ sec. cor.
 Intersect N. and S. line, 7 lks. N. of the cor. of secs. 10, 11, 14 and 15.
 Thence,
 S. 89° 51' W., on a true line, bet. secs. 10 and 15.
 Over mountainous land, thru. scattering undergrowth.
 Across wash, course S. 20° E. from N.
 0.65 Leave wash. Ascend 165 ft., over E. slope.
 3.45 Spur, slopes S. 20° E. Descend 70 ft.
 8.65 Wash, 35 lks. wide, course S. Ascend 145 ft.
 19.55 Point of spur, slopes S. 45° E. Descend 85 ft.
 23.25 Wash, 30 lks. wide, course S. 60° E. Ascend 290 ft.
 37.35 Spur, slopes S. Descend 80 ft., over SW. slope, to
 39.83 Set an iron post, 3 ft. long, 1 in. in diam., on bed rock, with marked stone for $\frac{1}{4}$ sec. cor., and raise a mound of stone around post, with brass cap, marked

$\frac{1}{4}$ S 10
 S 15
 1921

50.35 Descend 195 ft.
 Center of wash, 1 ch. wide, course S. 20° E. Ascend 675 ft., over SE. slope, to
 79.66 The cor. of secs. 9, 10, 15 and 16.
 Land, mountainous.
 Soil, rocky, 4th rate.
 No timber.
 Undergrowth, black brush.

N. 0° 2' W., bet. secs. 9 and 10.
 Over mountainous land, thru. scattering undergrowth.
 Ascend 40 ft.
 5.40 Point of spur, slopes E. Descend 135 ft.
 9.30 Canyon, course N. 85° E. Ascend 145 ft.
 17.10 Point of spur, slopes E. Descend.
 19.50 Wash, 70 lks. wide, course S. 45° E. Ascend 305 ft., over SE. slope.
 36.00 Spur, slopes E. Descend 105 ft. to
 40.00 Set an iron post, 3 ft. long, 1 in. in diam., on bedrock, with marked stone, for $\frac{1}{4}$ sec. cor., and raise a mound of stone around post, with brass cap, marked

$\frac{1}{4}$
 S 9 | S10
 1921

50.00 Descend 110 ft. to
 52.60 Ascend 20 ft. to
 63.30 Point of spur, slopes E. Desc. 175 ft. over N. slope.
 76.60 Wash, 30 lks. wide, course E. Ascend 40 ft.
 80.00 Point of spur, slopes E. Descend 55 ft. to
 Set an iron post, 3 ft. long, 2 ins. in diam., 20 ins. in the ground, for cor. of secs. 3, 4, 9 and 10, marked on

Subdivision of Township 41 North, Range 14 West.

Chains.

. brass cap,

T41N	R14W
S 4	S 3
S 9	S 10
1921	

and raise a mound of stone, 2 ft. base, 1 1/2 ft. high, W. of cor.

Land. mountainous.

Soil, rocky, 4th rate.

No timber.

Undergrowth, yucca, black brush and sage brush.

- 40.00 N. 89° 51' E., on a random line, bet. secs. 3 and 10. Set temp. 1/4 sec. cor.
- 79.00 Intersect the cor. of secs. 2, 3, 10 and 11. Thence, S. 89° 51' W., on a true line, bet. secs. 3 and 10. Over mountainous land, thru. scattering undergrowth. Ascend slightly over E. slope, to
- 1.20 Spur, slopes S. Descend 30 ft.
- 6.35 Wash, 40 lks. wide, course S. Ascend 65 ft.
- 12.65 Point spur, slopes S. Descend 75 ft.
- 17.85 Center of wash, 2 chs. wide, course S. Ascend 280 ft., over E. slope.
- 32.15 Ridge, brs. N. 20° W. and S. 20° E. Descend 35 ft., over W. slope.
- 34.65 Wash, 30 lks. wide, course S. Ascend 65 ft., over SE. slope to
- 39.83 Set an iron post, 3 ft. long, 1 in. in diam., on bed rock, with marked stone, for 1/4 sec. cor., and raise a mound of stone around post, with brass cap, marked

1/4 S 3
S 10
1921

- 41.55 Ascend 5 ft.
- 46.55 Point of spur, slopes S. from NW. Descend 50 ft.
- 46.55 Ascend 195 ft.
- 71.55 Point of short spur, slopes S. Descend 30 ft.
- 74.05 Ascend 25 ft. to
- 79.60 The cor. of secs. 3, 4, 9 and 10. Land, mountainous. Soil, rocky, 4th rate. No timber. Undergrowth, yucca, sagebrush and black brush.

- 40.00 N. 0° 4' W., on a random line, bet. secs. 3 and 4. Set temp. 1/4 sec. cor.
- 80.14 Fall 21 lks. E. of the cor. of secs. 3, 4, 33 and 34, on the N. bdy. of Tp., hereinbefore described. Thence, S. 0° 13' E., on a true line, bet. secs. 3 and 4. Over mountainous land, thru. scattering undergrowth. Ascend 105 ft.
- 24.40 Point of spur, slopes E. Descend 75 ft.
- 30.35 Ascend 10 ft.
- 31.45 Ridge, brs. N. 45° W. and S. 45° E. Descend 150 ft. to
- 40.14 Set an iron post, 3 ft. long, 1 in. in diam., on bed rock, with marked stone, for 1/4 sec. cor., and raise a mound of stone around post, with brass cap, marked

S 4	S 3
1921	

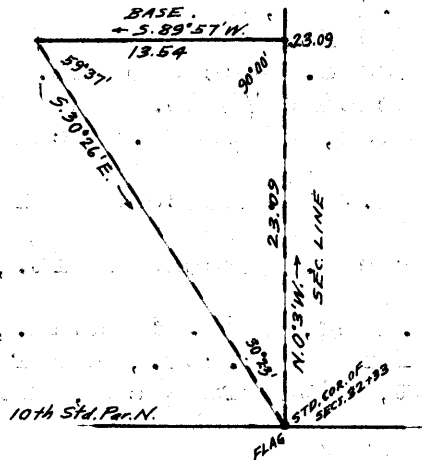
Descend 35 ft.

48 Subdivision of Township 41 North Range 14 West

Chains.

45.35 Wash, 50 lks.wide, course S.30°E. Ascend 35 ft.
 49.45 Point of spur, slopes S.45°E. Descend 65 ft.
 69.15 Wash, 60 lks.wide, course E. Ascend 40 ft.
 74.95 Spur, slopes E. Descend 45 ft. to
 80.14 The cor. of secs. 3, 4, 9 and 10.
 Land, mountainous.
 Soil, rocky, 4th rate.
 No timber.
 Undergrowth, yucca, sagebrush, black brush and greasewood.

From the standard cor. of secs. 32 and 33, on the S. bdy. of the Tp. (10th Std. Par. N.), hereinbefore described, N.0°3'W., bet. secs. 32 and 33. Over mountainous land, thru. scattering undergrowth. The southern portion of this section line passes over nearly perpendicular W. slope of the E. wall of a canyon, in a bend of same from S. to NW., and chaining is impracticable; therefore, triangulate as described, as follows, and as shown on the diagram hereon:



Leave flag at std. cor. of secs. 32 and 33. From a point ahead on sec. line, measure a base, S. 89° 57' W., 13.54 chs. From W. end of base, flag brs. S. 30° 26' E. Included angles are 59° 37', 90° 00' and 30° 23' the sum of which is 180° 00'. Triangulated distance on sec. line is obtained by $\text{Tang. } 59^{\circ}37' \times \text{base or } 1.70560 \times 13.54 = 23.09 \text{ chs.}$

10.00 (Approximate) Bottom of canyon, course N. 10° E. from S. Thence along W. wall of canyon, near foot of same.
 15.00 (Approximate) bottom of same canyon, course N. 15° W. Ascend about 300 ft. to
 23.09 Triangulation point of above described triangulation. Ascend 15 ft. to
 26.00 Spur, slopes N. 20° W. from E. Descend 480 ft.
 38.00 Ascend 30 ft.
 39.60 Point of sharp spur, slopes NW. Desc. 16 ft. to
 40.00 Set an iron post 3 ft. long, 1 in. in diam.; on bed rock, with marked stone, for $\frac{1}{4}$ sec. cor., and raise a mound of stone around post, with brass cap, marked,

S32 | S33

1921

Descend 105 ft. to
 41.95 Draw, course N. 35° W. Descend 150 ft. to
 53.10 Point of spur, slopes W. Descend 60 ft. to
 55.95 Draw, course W. Ascend 120 ft.
 61.60 Spur, slopes NW. from E. Descend 370 ft. to
 80.00 Set an iron post, 3 ft. long, 2 ins. in diam., on bedrock, with marked stone; for cor. of secs. 28, 29, 32 and 33, and raise a mound of stone around post, with brass cap, marked

T41N | R14W
 S29 | S28

S32 | S33
 1921

Land, mountainous.
 Soil, solid rock.
 No timber.
 Undergrowth, black brush.

Subdivision of Township 41 North, Range 14 West. 49

Chains.
 East, on a random line, bet. secs.28 and 33.
 40.00 Set temp, $\frac{1}{4}$ sec.cor.
 80.00 Intersect N. and S. line, 10 lks.S.of the cor.of secs.27,
 28, 33 and 34.
 Thence,
 S.89°50'W., on a true line, bet. secs.28 and 33.
 Ober mountainous land, thru. scattering undergrowth.
 Descend 200 ft.to
 3.40 E.side of bottom, Sullivan's Canyon, brs.N.and S.Thence
 across bottom of canyon, course N.
 10.00 Leave bottom of Sullivan's Canyon at foot of cliff. Asc.
 130 ft., over cliff, brs.N. and S.
 15.15 Top of cliff, at point of spur, slopes N. Descend 15 ft.
 22.70 Head of draw, course NE. Ascend 185 ft.
 35.10 Ridge, brs.NW and SE. Descend 175 ft.to
 40.00 Set an iron post, 3 ft.long, 1 in. in diam., 6 ins. in the
 ground, with marked stone, for $\frac{1}{4}$ sec.cor., and raise
 a mound of stone around post, with brass cap, marked

$\frac{1}{4}$ S 28
 S 33
 1921

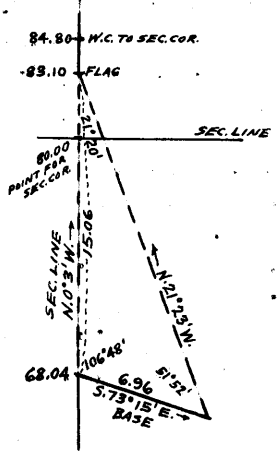
50.00 Descend 175 ft. to
 Spur, slopes W. from NE. Descend 645 ft., over NW.slope
 of this spur.
 77.90 Draw, course N. Ascend 50 ft. to
 80.00 The cor.of secs.28,29, 32 and 33.
 Land, mountainous.
 Soil,rocky, 4th rate.
 No timber.
 Undergrowth, black brush.

N.0°3'W., bet. secs.28 and 29.
 Over mountainous land, thru. scattering undergrowth,along
 E.side of Virgin River Canyon.

Descend 20 ft.
 0.50 Draw, course SW. Ascend 810 ft.to
 17.00 Descend 106 ft.
 32.00 Ascend 30 ft.
 38.20 Descend 27 ft. to
 40.00 Set an iron post 3 ft.long, 1 in. in diam., on bed rock,
 with marked stone, for $\frac{1}{4}$ sec.cor., and raise a mound
 of stone around post, with brass cap, marked

$\frac{1}{4}$
 S29 | S28
 1921

57.00 Descend 485 ft.to
 68.04 Draw, course NW. Descend 110 ft.to
 Top of cliff, 150 ft.high, bearing NE. and SW.facing NW.
 From this point N., the sec. line crosses Virgin River
 Canyon, and chaining is impracticable; therefore,tri-
 angulate as described as follows,and as shown on the
 diagram hereon.



From this point, measure a Base,
 S.73°15'E., 6.96 chs.
 Set flag ahead on sec.line at
 top of cliff on N.side of Vir-
 gin River.
 From SE.end of Base, flag brs.N.
 21°23'W.
 Included angles are 51°52', 21°
 20' and 106° 48', the sum of
 which is 180°00'.
 Triangulated distances from 68.04
 chain station to flag is ob-
 tained by

50 Subdivision of Township 41 North, Range 14 West.

Chains.

$$\frac{\text{side } 51^{\circ}52' \times \text{Base}}{\text{side } 21^{\circ}20'} \text{ or } \frac{.78658 \times 6.96}{.36379}$$

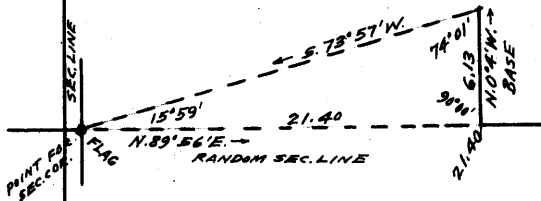
= 15.06 chs.

- 77.00 (Approximate) Center of Virgin River, course S.75°W. in bottom of canyon. Ascend about 300 ft. to
- 80.00 True point for cor. of secs. 20, 21, 28 and 29 falls on steep slope on N. side of river, where it is impracticable to establish monument.
- 83.10 Ascend about 185 ft. to Flag point of above described triangulation, at top of cliff.
- 84.80 Thence chain measurement, N.0°3'W., 1.70 chs. to The nearest point to point for sec. cor., at which it is practicable to establish monument in suitable manner for witness cor. Set an iron post 3 ft. long, 2 ins. in diam., on bedrock, with marked stone, for witness cor. to cor. of secs. 20, 21, 28 and 29, and raise a mound of stone around post, with brass cap, marked

T41N | R14W
 S20 | S21
 S29 | S28
 W C
 1921

Land, mountainous.
 Soil, rocky, 4th rate.
 No timber.
 Undergrowth, black brush.

From true point for cor. of secs. 20, 21, 28 and 29, N.89°56'E., on random line, bet. secs. 21 and 28. Beginning of random line, passes over steep walls of Virgin River canyon, rendering chaining impracticable; therefore, triangulate as described as follows, and as shown on the diagram hereon:



Leave flag at the true point for cor. of secs. 20, 21, 28 and 29. From point ahead on random line at top of spur on opposite side of canyon, measure a Base, N.0°4'W., 6.13 chs. From N. end of Base, flag brs. S. S.73° 57' W. Included angles are 74°01', 90°00' and 15°59', the sum of which is 180°00'.

- 21.40 Triangulated dist. on random line is obtained by Tang. 74° 01' x Base or 3.49125 x 6.13 = 21.40 chs. Triangulation point.
- 40.00 Continue line and measurement by chaining. Set temp. 1/4 sec. cor.
- 79.98 Intersect N. and S line, 2 lks. N. of cor. of secs. 21, 22, 27 and 28. Thence, S.89°57'W., on true line, bet. secs. 21 and 28. Over mountainous land, thru. scattering undergrowth. Descend 473 ft., over NW. slope.
- 14.00 Bottom of Sullivan's Canyon, course N. Ascend 515 ft., over E. slope.
- 34.80 Top of cliff, brs. N. and S., facing E., at top of ridge, bearing NE and SW. Thence across top of ridge, to

Chains.

39.99 Set an iron post, 3 ft. long, 1 in. in diam., on bed rock, with marked stone for $\frac{1}{4}$ sec. cor., and raise a mound of stone, around post, with brass cap, marked

S 21
S 28
1921

51.75 Descend 210 ft., over W. slope.
58.58 Gulch, course N. Ascend 170 ft. over E. slope, to
Triangulation point on point of spur, sloping N. 20° E.
Triangulate measurement of remainder of mile.

75.00 Descend about 600 ft. to
(Approximate) Center of Virgin River, course SW.
Ascend about 300 ft. to

79.98 True point for cor. of secs. 20, 21, 28 and 29, witnessed
4.80 chs. N. 0° 3' W., as hereinbefore described.

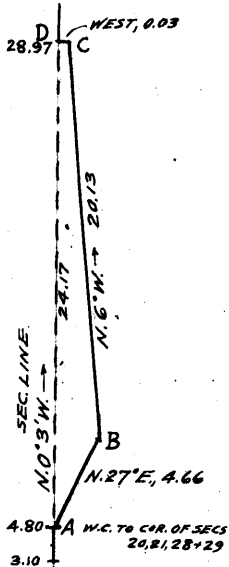
- Land, mountainous.
- Soil, rocky, 4th rate.
- No timber.
- Undergrowth, black brush.

From true point for cor. of secs. 20, 21, 28 and 29,
N. 0° 3' W., bet. secs. 20 and 21.
Over mountainous land, thru. scattering undergrowth.
Measurement of 3.10 chs. by triangulation hereinbefore
described.

3.10 Ascend about 185 ft. to
Triangulation point at top of ascent. Thence across
ledge bearing NE. and SW.

4.80 Continue line and measurement by chaining to
Intersect witness cor. to cor. of secs. 20, 21, 28 and 29,
hereinbefore described.

Encounter cliffs, which render chaining or triangulation
of continued measurement on sec. line impracticable;
therefore, tranverse around the cliffs on a ledge, as
described as follows, and as shown on the diagram here-
on:



From witness cor. to cor. of
secs. 20, 21, 28 and 29, indi-
cated on diagram at "A."
N. 27° E., 4.60 chs. on traverse in-
to sec. 21; to sec. 21. Ascending
68 ft. along ledge to
point "B."
Thence,
N. 6° W., 20.13 chs. on traverse in
sec. 21; descending
50 ft. along ledge
to point "C."
By computation of the
portion "ABC" of
traverse, point "D"
on sec. line is found
to be 0.03 chs. W. of
point "C" on sec.
line of traverse.

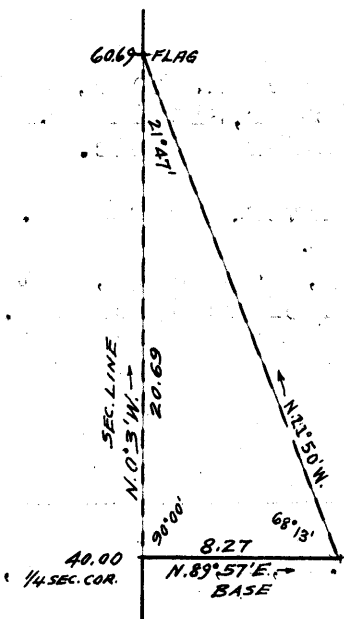
Therefore, from point "C"
West, 0.03 chs. to
28.97 (24.17 chs. N. 0° 3' W. from W.C.) End of above described
traverse, on steep, E. slope, about 500 ft. above Virgin
River.

Continue measurement on sec. line by chaining.
Ascend 300 ft., over E. slope, to
40.00 Set an iron post 3 ft. long, 1 in. in diam., on bed rock,
with marked stone, for $\frac{1}{4}$ sec. cor., and raise a mound
of stone around post, with brass cap, marked

Chains.

S20 | S21
1921

Discontinue chaining on sec. line at this 1/4 sec. cor. owing to cliffs ahead, and triangulate as described, as follows, and as shown on diagram hereon:



Measure a Base, N. 89° 57' E., 8.27 chs. from 1/4 sec. cor.
 Set flag ahead on random line at top of cliffs.
 From E. end of base, flag brs. N. 21° 50' W.
 Included angles are, 68° 13', 90° 00' and 21° 47', the sum of which is 180° 00'.
 Vertical angle from 1/4 sec. cor. to flag is + 48°.
 Triangulated dist. on sec. line is obtained by,
 Tang. 68° 13' x Base or 2.50229 x 8.27 = 20.69 chs., which added to 40.00 chs. gives 60.69 chs. N. 0° 3' W. from true point for cor. of secs. 20, 21, 28 and 29, for the position of flag point.

60.69 Flag point of above described triangulation at top of cliffs, bearing NE and SW., facing SE., 1517 ft. above 1/4 sec. cor.

Continue line and measurement by chaining.
Descend 245 ft., over broken E. slope.

75.25 Head of gulch, course E. Ascend 38 ft., over SE. slope, to
80.00 Set an iron post, 3 ft. long, 2 ins. in diam., on bed rock, with marked stone, for cor. of secs. 16, 17, 20 and 21, and raise a mound of stone, around post, with brass cap, marked.

T16 | R14W
S17 | S16
S20 | S21
1921

Land, mountainous.
Soil, rocky, 4th rate.
No timber.
Undergrowth, black brush.

N. 89° 57' E., on random line, bet. secs. 16 and 21.
40.00 Set temp. 1/4 sec. cor.
79.98 Intersect N. and S. line, 30 lks. N. of the cor. of secs. 15, 16, 21 and 22.

Thence,
N. 89° 50' W., on true line, bet. secs. 16 and 21.
Over mountainous land, thru. scattering undergrowth.
Ascend 280 ft.

.4.30 Top of cliff, brs. NE and SW., facing SE.
Descend 125 ft., over SW. slope.
12.90 Draw, course SW. Ascend 65 ft., over broken S. and SE. slope to
39.99 Set an iron post 3 ft. long, 1 in. in diam., on bed rock, with marked stone, for 1/4 sec. cor., and raise a mound of stone around post, with brass cap, marked

1/4 S 16
S 21
1921

Ascend 180 ft., over SE. slope.

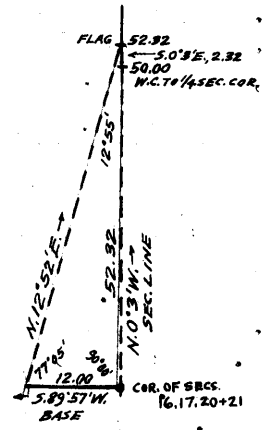
Subdivision of Township 41 North, Range 14 West

Chains.

45.50 Point of spur, slopes S. Desc. 305 ft., over SW. slope.
 71.70 Bottom of canyon, course S. Asc. 015 ft., over steep SE. slope, to
 79.98 The cor. of secs. 10, 17, 20 and 21.
 Land, mountainous. Soil, rocky, 4th rate.
 No timber. Undergrowth, black brush.

N. 0° 3' W., bet. secs. 10 and 17.

Owing to steep broken SE. slope, on W. wall of canyon, over which the S. $\frac{1}{2}$ of this sec. line passes, it is impracticable to chain measurement; therefore, triangulate as described, as follows, and as shown on the diagram hereon:



From cor. of secs. 10, 17, 20 and 21, measure a base S. 89° 57' W., 12.00 chs. Set flag ahead on sec. line at top of spur.

From W. end of base, flag brs. N. 12° 52' E.

Included angles are 77° 05', 12° 55' and 90° 00', the sum of which is 180° 00'.

Triangulated dist. on sec. line is obtained by tang. 77° 05' x Base or 4.36040 x 12.00 = 52.32 chs.

From flag point at 52.32 ch. station, chain measurement of 2.32 chs., S. 0° 3' E. to 50.00 ch. station,

and establish witness cor. to $\frac{1}{4}$ sec. cor., as hereinafter described,

40.00 True point for $\frac{1}{4}$ sec. cor. falls on W. wall of canyon. Desc.

42.00 (Approximate) Bottom of canyon, course SE. for about 5. chs.;

thence S. Asc. over steep E. wall of canyon.
 50.00 E. rim of canyon, brs. NW. and SE. Set an iron post, 3 ft. long, 1 in. in diam., 8 ins. in the ground, with marked stone, for witness cor. to $\frac{1}{4}$ sec. cor., and raise a mound of stone around post, with brass cap, marked

S17	S16
W	C

1921

Ascend 78 ft., over SW. slope.

52.32 Flag point of triangulation on top of spur, sloping SE. Continue line and measurement by chaining.

Descend 15 ft.

57.30 Ascend 45 ft.

60.90 Descend 105 ft., over NE. slope.

67.30 Ascend 15 ft.

70.75 Ridge, brs. E. and W. Desc. 103 ft.

76.40 Wash, 70 lks. wide, course W. Asc. 30 ft. to

80.00 Set an iron post 3 ft. long, 2 ins. in diam., on bed rock, with marked stone, for cor. of secs. 8, 9, 10 and 17, and raise a mound of stone around post, with brass cap, marked

T41N	R14W
S 8	S 9
S17	S16

1921

Land, mountainous.
 Soil, rocky, 4th rate. No timber.
 Undergrowth, yucca, sagebrush and blackbrush.

S. 89° 50' E., on a random line, bet. secs. 9 and 10.

40.00 Set temp. $\frac{1}{4}$ sec. cor.

79.94 Intersect N. and S. line, 35 lks. S. of the cor. of secs. 9, 10, 15 and 16.

Thence, S. 89° 55' W., on a true line, bet. secs. 9 and 16. Over mountainous land, thru scattering undergrowth.

Descend 253 ft., over SW. slope, on N. wall of canyon.

8.95 Bottom of canyon, course S. 80° E. Asc. 525 ft., over NE. slope on S. wall of canyon, to

39.65 Bottom of same canyon, course N. 20° E. Asc. 10 ft. over E.

54 Subdivision of Township 41 North, Range 14 West.

Chains.

39.97 slope, to
Set an iron post, 3 ft. long, 1 in. in diam., on bed rock, with marked stone, for 1/4 sec. cor., and raise a mound of stone around post, with brass cap, marked

1/4 S 9
S 16
1921

41.75 Ascend 140 ft., over steep E. slope.
Top of cliff, brs. N. 10° E. and S. 10° W., facing E. Desc. 60 ft.

46.30 Ascend 70 ft.
74.35 Ridge, brs. N. 20° W. and S. 20° E. Descend 280 ft. to
79.94 The cor. of secs. 8, 9, 16 and 17.

Land, mountainous. Soil, rocky, 4th rate.
No timber, Undergrowth, yucca, sagebrush and black brush.

N. 0° 03' W., bet. secs. 8 and 9.
Over mountainous land, thru. scattering undergrowth, asc. 20 ft., over SW. slope, to

2.70 Head of gulch, course W. Ascend 70 ft.
9.00 Spur, slopes W. Descend 180 ft.
21.10 Wash, 50 lks. wide, course N. 80° W. Ascend 60 ft.
26.10 Spur, slopes N. 80° W. Descend 120 ft.
31.90 Wash, 70 lks. wide, course N. 60° W. Ascend 10 ft.

35.10 Point of spur, slopes W. Descend 20 ft. to
40.00 Set an iron post, 3 ft. long, 1 in. in diam., on bed rock, with marked stone, for 1/4 sec. cor., and raise a mound of stone around post, with brass cap, marked

S 8 | S 9
1921

52.50 Descend 200 ft., over NW. slope.
Wash, 20 lks. wide, course N. 45° W. Asc. 200 ft. over SW. slope.
64.00 Spur, slopes N. 60° W. Descend 78 ft.

75.30 Wash, 30 lks. wide, course S. 45° W. Ascend 25 ft. to
80.00 Set an iron post, 3 ft. long, 2 ins. in diam., on bed rock, with marked stone for cor. of secs. 4, 5, 8 and 9, and raise a mound of stone around post, with brass cap, marked

T41N | R14W
S 5 | S 4
S 8 | S 9
1921

Land, mountainous.
Soil, rocky, 4th rate. No timber.
Undergrowth, sagebrush, yucca and black brush.

N. 89° 55' E., on a random line, bet. secs. 4 and 9.
49.00 Set temp. 1/4 sec. cor.
80.00 Intersect N. & S. line, 9 lks. S. of cor. of secs. 3, 4, 9 and 10. Thence, S. 89° 51' W., on a true line, bet. secs. 4 and 9. Over mountainous land, thru. scattering undergrowth.

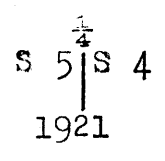
19.30 Ascend 265 ft., over SE. slope, to
Spur, slopes S. 20° E. W. 20° E. Ascend 96 ft. to
28.70 Point of spur, slopes S. Desc. 142 ft., over W. slope, to
40.00 Set an iron post, 3 ft. long, 1 in. in diam., on bed rock, with marked stone, for 1/4 sec. cor., and raise a mound of stone around post, with brass cap, marked

1/4 S 4
S 9
1921

56.90 Ascend 280 ft., over E. slope.
Ridge, brs. N. and S. Descend 240 ft.
70.00 Head of draw, course SW. Asc. 40 ft., over SE. slope, to
80.00 The cor. of secs. 4, 5, 8 and 9.
Land, mountainous. Soil, rocky, 4th rate.
No timber.
Undergrowth, black brush and greasewood.

Chains.

- N.0°13' W., on a random line, bet. secs. 4 and 5.
- 40.00 Set temp. $\frac{1}{4}$ sec. cor.
- 80.25 Fall 7 lks. E. of the true point for cor. of secs. 4 and 5, and frac. secs. 32 and 33 on the N. bdy. of the Tp., witnessed 0.30 chs. N.89° 59' W., as hereinbefore described.
- From true point for sec. cor.,
- S.0°10'E. on a true line, bet. secs. 4 and 5.
- Over mountainous land, thru. scattering undergrowth.
- Descend 175 ft. to
- 4.25 Head of canyon, course S.45°W. Descend 200 ft.
- 24.45 Ascend 20 ft.
- 29.45 Top of red sandstone dome. Desc. 60 ft. to
- 40.25 Set an iron post, 3 ft. long, 1 in. in diam., 12 ins. in the ground, on bed rock, with marked stone, for $\frac{1}{4}$ sec. cor., and raise a mound of stone around post, with brass cap, marked



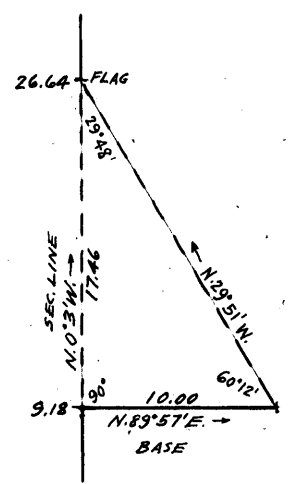
- Descend 65 ft. to
- 58.55 Wash, 30 lks. wide, course W. Asc. 35 ft., over N. slope.
- 62.95 Desc. 25 ft.
- 75.25 Ascend 25 ft. to
- 80.25 The cor. of secs. 4, 5, 8 and 9.
- Land, mountainous.
- Soil, rocky, 4th rate.
- No timber.
- Undergrowth, sagebrush, black brush and yucca.

From the standard cor. of secs. 31 and 32 on the S. bdy. of Tp. (10 th Std. Par. N.) hereinbefore described, N.0°3'W., bet. secs. 31 and 32

Over mountainous land, thru. scattering undergrowth.

Ascend 450 ft., over S. slope.

- 9.18 Spur, slopes E. Steep descent over cliffs N. of this point, renders chaining impracticable; therefore, triangulate as described as follows, and as shown on the diagram herenn:



Measure a Base, N.89°57'E., 10.00 chs.

Set flag ahead on random line.

From E. end of base, flag brs. N. 29°51'W.

Included angles are 60°12', 90° 00' and 29°48', the sum of which is 180°00'.

Triangulated dist. on sec. line is obtained by

lang. 60°12' x Base or 1.74010 x 10.00 = 17.40 chs., which added to 9.18 chs. gives 26.04 chs.

N.0° 3'W. from standard cor. of secs. 31 and 32, for the position of the flag point.

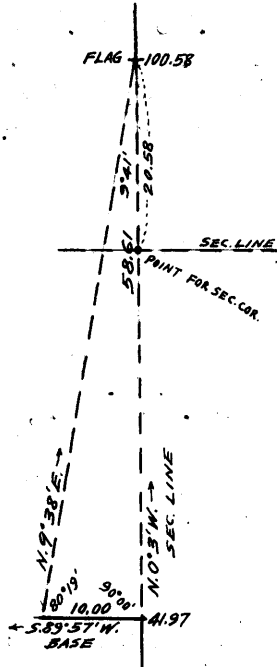
- 26.04 Flag point of above described triangulation, 1000 ft. below 9.18 ch. station.
- Continue line and measurement, by chaining.
- Descend 295 ft.
- 38.30 Bottom of canyon, course N.20°E. Ascend slightly to
- 40.00 Set an iron post, 3 ft. long, 1 in. in diam., 12 ins. in the ground on bed rock, with marked stone, for $\frac{1}{4}$ sec. cor., and raise a mound of stone around post, with brass cap, marked

56 Subdivision of Township 41 North, Range 14 West.

Chains.

S31 | S32
1921

Ascend slightly to
41.97 S. rim of Virgin River canyon, brs. NW and SE.
From this point N., the line passes over said canyon, and chaining is impracticable; therefore, triangulate as described as follows, and as shown on the diagram hereon:



Measure a base, S. 89° 57' W., 10.00 chs.

Set flag on sec. line at N. rim of canyon.

From W. end of base, flag brs. N. 9° 38' E.

Included angles are 80° 19', 9° 41' and 90° 00', the sum of which is 180° 00'.

Triangulated dist. on sec. line is obtained by Tang. 80° 19' x Base or 5.86051 x 10.00 = 58.61 chs., which added to 41.97 chs. gives 100.58 chs.

N. 0° 03' W. from std. cor. of secs. 31 and 32, or 20.58 chs. N. 0° 3' W. from true point for cor. of secs. 29, 30, 31 and 32, for the position of the flag point.

75.00 (Approximate) Center of Virgin River, course NW., in bottom of canyon, about 2220 ft. below S. rim of canyon. Ascend over cliffs on N. wall of canyon.

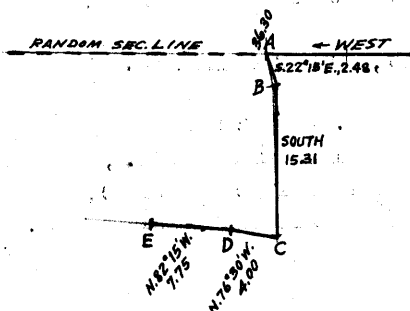
80.00 True point for cor. of secs. 29, 30, 31 and 32, falls on face of cliff, where it cannot be monumented, and witness cor. to same is established at a point 3.50 chs. N. 34° 13' W. therefrom as hereinafter described.

Land, mountainous.
Soil, rocky, 4th rate.
No timber.
Undergrowth, black brush.

It being impracticable to survey random line bet. secs. 29 and 32 East from true point for cor. of secs. 29, 30, 31 and 32, begin at the cor. of secs. 28, 29, 32 and 33.

Thence, West, on random line, bet. secs. 29 and 32.

36.30 Point of spur, sloping S. 20° E., on N. wall of Virgin River Canyon. West of this point, the random line cannot be chained, and a triangulation is impracticable owing to almost perpendicular S. slope of the canyon wall; therefore, obtain the measurement of the remainder of the random line by traverse thru sec. 32, as described as follows, and as shown on the diagram hereon:



From this point on random line, indicated on diagram at "A," S. 22° 15' E., 2.48 chs. to "B."

Thence,

South, 15.31 chs. to "C."

Thence,

following right bank of Virgin River, as follows:

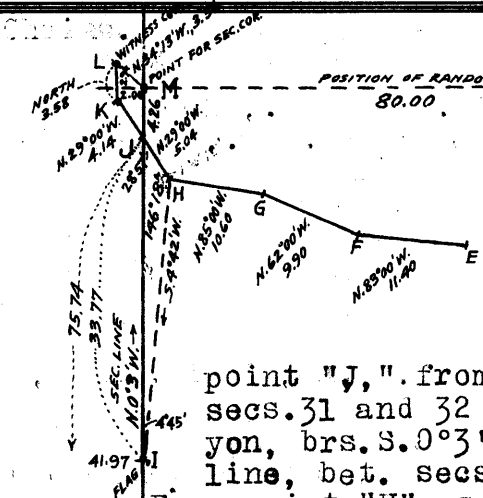
N. 76° 30' W., 4.00 chs. to "D."

Thence,

N. 82° 15' W., 7.75 chs. to "E."

Thence,

Subdivision of Township 41 North, Range 14 West.



N.83°00'W., 11.40 chs. to "F."
 Thence,
 N.02°00'W., 9.90 chs. to "G."
 Thence,
 N.85°00'W., 10.00 chs. to "H."
 Thence,
 N.29°00' W., 5.04 chs. to

point "J," from which flag at "I" on sec. line, bet. secs. 31 and 32 at 41.97 ch. station on S. rim of canyon, brs. S.0°3'E., Point "J" is therefore on the sec. line, bet. secs. 31 and 32.

From point "H" same flag brs. S.4°42' W.
 Included angles of the triangle "HIJ" are 146°18', 4°45' and 28°57', the sum of which is 180°00'.
 Distance on sec. line, bet. secs. 31 and 32 from 41.97 ch. station to point "J" on N. or right bank of Virgin River is obtained by.

$$\frac{\text{sine } 146^{\circ} 18' \times \text{HJ}}{\text{sine } 4^{\circ} 45'} \text{ or } \frac{.55484 \times 5.04}{.08281} = 33.77 \text{ chs.}, \text{ which}$$

added to 41.97 chs., gives 75.74 chs. N.0°3' W., from standard cor. of secs. 31 and 32, or 4.26 chs. S.0°3' E. from true point for cor. of secs. 29, 30, 31 and 32, for the position of point "J." of traverse.

The computed westing of traverse to point "J" is 43.70 chs., and the southing, 4.26 chs.

The above described traverse and triangulation determines that the projection of the random line bet. secs. 29 and 32, would intersect the true point for cor. of secs. 29, 30, 31 and 32, indicated on diagram at "M," and that the total length of said random sec. line is 30.30 chs. + 43.70 chs. = 80.00 chs.

Continue the traverse from point "J" to witness cor. as follows:

N.29°00' W., 4.14 chs. along North or right bank of Virgin river in bottom of canyon to point "K."
 Leave N. bank of river at point "K."

Thence,
 North, 3.58 chs. to terminus of traverse at point "L," which is 2.00 chs. west, and 2.94 chs. North of the true point for cor. of secs. 29, 30, 31 and 32, indicated on diagram at "M," of 3.56 chs. N. 34°13' W. therefrom. This being the nearest accessible point to the cor. point at which it is practicable to monument a witness cor. to the sec. cor., make a cross (x) on surface rock, at this point,

Chains.

chisel "41N 14W" N. of cross, "WC" and 1 notch S. of cross, 5 notches E. of cross, for witness cor. to cor. of secs. 29, 30, 31 and 32, and raise a mound of stone 2 ft. base, 1 1/2 ft. high, W of cross.

40.00 Point for temp. 1/4 sec. cor. is inaccessible.
 80.00 Intersect the true point for corner of secs. 29, 30, 31 and 32.

Thence,
 East, on true line, bet. secs. 29 and 32. Over mountainous land, thru. scattering undergrowth. Along steep impassable N. wall of Virgin River canyon. Measurement of 43.70 chs. by traverse, as hereinbefore described.

40.00 True point for 1/4 sec. cor. is inaccessible.
 43.70 End of traverse, on point of spur, sloping S. 20° E., about 700 ft. above Virgin River.

Chains.

Set an iron post, 3 ft. long, 1 in. in diam., 20 ins. in the ground, for witness cor. to $\frac{1}{4}$ sec. cor., marked on brass cap,

WC $\frac{1}{4}$ S 29
S 32
1921

and raise a mound of stone, 2 ft. base, 1 $\frac{1}{2}$ ft. high, N. of cor.

Descend 700 ft., over steep E. slope.

55.00 Center of Virgin river, 2.00 chs. wide, course S. in bottom of canyon.

Ascend 600 ft., over cliffs, on steep W. slope.

65.70 Top of cliffs at E. rim of canyon, brs. N. and S. Thence along N. slope.

78.50 Draw, course NW. Ascend.

79.00 Point of spur, sloping S. Descend.

79.70 Same draw, course SW.

80.00 Ascend.

80.00 The cor. of secs. 28, 29, 32 and 33.

Land, mountainous.

Soil, rocky, 4th rate.

No timber.

Undergrowth, black brush.

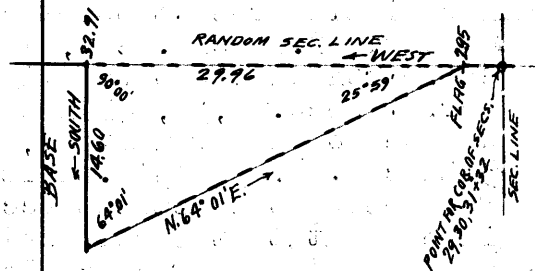
From true point for cor. of secs. 29, 30, 31 and 32, West, on random line, bet. secs. 30 and 31.

Measurement by traverse for 2.00 chs., as hereinbefore described.

2.00 A point 2.94 chs. S. of witness cor. to cor. of secs. 29, 30, 31 and 32.

Chain measurement 95 lks. W. to

2.95 Bend in Virgin River from SE. to SW. Steep walls of the Virgin river canyon W. of this point render chaining impracticable; therefore, triangulate as described as follows, and as shown on the diagram hereon:



Leave flag at this point.

From point ahead on random sec. line at S. rim of canyon, measure a Base, South 14.60 chs.

From S. end of base, flag brs. N. 64° 01' E.

Included angles are 64° 01', 90° 00' and 25° 59', the sum of which is 180° 00'.

Triangulated dist. on random sec. line is obtained by

Tang. 64° 01' x Base or 2.05182 x 14.60 = 29.96 chs.,

which added to 2.95 chs. gives 32.91 chs. W. from

true point for sec. cor. for the position of the triangulation point.

32.91 Triangulation point.

Continue line and measurement, by chaining.

40.00 Set temp. $\frac{1}{4}$ sec. cor.

80.04 Fall 4 lks. S. of the original cor. of secs. 25, 30, 31 and 36, on W. bdy. of Tp., which is an iron post, 3 ins. in diam., projecting 12 ins. above ground, firmly set, properly marked on brass cap, and witnessed by a mound of stone, W. of post.

No bearing trees.

Chains.

Thence,
 S. 89° 58' E., on a true line, bet. secs. 30 and 31.
 Over mountainous land, thru. scattering undergrowth
 Ascend 390 ft.
 14.31 Point of spur, slopes N. 5° W. Descend 130 ft.
 20.00 Head of draw, course N. 10° W. Ascend 430 ft. to
 40.04 Set an iron post, 3 ft. long, 1 in. in diam., 4 ins. in the
 ground, with marked stone, for $\frac{1}{4}$ sec. cor., and raise
 a mound of stone around post, with brass cap, marked

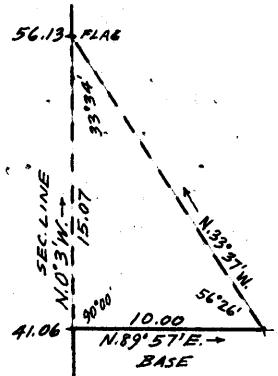
$\frac{1}{4}$ S 30
 S 31
 1921

Ascend 50 ft.
 43.39 Point of spur, slopes N. 15° W. Descend 40 ft. to
 47.14 S. rim of canyon of Virgin river, brs. NW. and SE.
 Descend 1700 ft., measurement of 29,96 chs. by triangulation,
 as hereinbefore described.
 60.00 (Approximate) Virgin River, course NW.
 77.10 Triangulation point in bend of Virgin River, from SE. to
 SW. Continue measurement by chaining. Ascend.
 78.04 Point 2.94 chs. S. of witness cor. to cor. of secs. 29, 30,
 31 and 32.
 Continue measurement by traverse, hereinbefore described.
 80.04 The true point for cor. of secs. 29, 30, 31 and 32, on face
 of cliff, on N. wall of Virgin river canyon, witnessed
 3.56 chs. N. 34° 13' W., as hereinbefore described.
 Land, mountainous.
 Soil, rocky, 4th rate.
 No timber.
 Undergrowth, black brush.

From the true point for the cor. of secs. 29, 30, 31 and 32,
 N. 0° 3' W., bet. secs. 29 and 30.
 Over mountainous land, thru. scattering undergrowth,
 Measurement for 20.58 chs. by triangulation, as hereinbefore
 described. Asc. over steep cliffs, on N. wall of Virgin
 river canyon. of witness cor. to cor. of secs. 29, 30,
 2.94 A point 2.00 chs. E. of witness cor. to cor. of secs. 29, 30, 31 & 32.
 20.58 Triangulation point on N. rim of Virgin river canyon, brs.
 NE. and SW.
 Continue line and measurement by chaining. Ascend 150 ft.
 to
 29.52 Head of canyon, 40 lks. wide, course W. Asc. 90 ft. to
 37.60 Point of spur, slopes W. Desc. 20 ft. to
 40.00 Set an iron post 3 ft. long, 1 in. in diam., on bed rock,
 with marked stone, for $\frac{1}{4}$ sec. cor., and raise a mound
 of stone, around post, with brass cap, marked

$\frac{1}{4}$
 S 30 | S 29
 1921

Ascend 10 ft. to
 41.06 Foot of cliff, brs. NW and SE., slope too steep to chain
 measurement over; therefore, triangulate as described
 as follows, and as shown on the diagram hereon:



Measure a Base, N. 89° 57' E., 10.00
 chs. from this point.
 Set flag ahead on sec. line at
 top of cliff.
 From E. end of base, flag brs. N.
 33° 37' W.
 Included angles are 56° 26' 90°
 00' and 33° 34', the sum of
 which is 180° 00'.
 Triangulated dist. on sec. line
 is obtained by

60 Subdivision of Township 41 North, Range 14 West.

Chains.

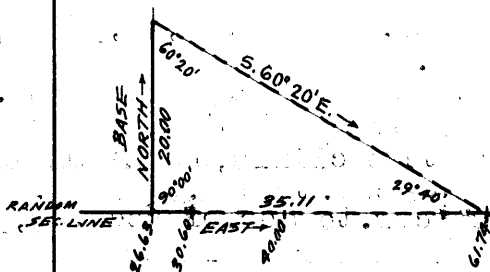
Tang. $56^{\circ} 26' x$ Base or $1.50702 x 10.00 = 15.07$ chs., which added to 41.06 chs. gives 56.13 chs. $N. 0^{\circ} 3' W.$ from true point for cor. of secs. 29, 30, 31 and 32, for the position of the flag.

- 50.13 Flag point of above described triangulation at top of cliff, bearing NW and SE. Asc. 50 ft. over SW; slope.
- 57.64 Spur, slopes NW. Desc: 215 ft.
- 65.30 Wash; 30 lks. wide, course $N. 20^{\circ} W.$ Desc. 80 ft., over W. slope to
- 80.00 Set an iron post, 3 ft. long, 2 ins. in diam., on bedrock, with marked stone, for cor. of secs. 19, 20, 29 and 30, marked on brass cap,

T41N	R14W
S19	S20
S30	S29
1921	

Land, mountainous.
Soil, rocky, 4th rate.
No timber.
Undergrowth, black brush.

- 26.63 East, on random line, bet. secs. 20 and 29.
30.00 Triangulation point of triangulation hereinafter described.
West rim of Virgin River canyon, brs. N. and S. Cliffs E. of this point render chaining impracticable; therefore, set temp. witness cor. to $\frac{1}{4}$ sec. cor. at this point, and return to 26.03 ch. station, and triangulate as described as follows, and as shown on diagram hereon:



Measure a Base North, 20.00 chs. from 26.03 ch. station.
Set flag ahead on random sec. line.

From N. end of Base, flag brs. S. $60^{\circ} 20' E.$

Included angles are $60^{\circ} 20'$, $29^{\circ} 40'$ and $90^{\circ} 00'$, the sum of which is $180^{\circ} 00'$.

Triangulated dist. on random sec. line is obtained by

Tang. $60^{\circ} 20' x$ Base or $1.75556 x 20.00 = 35.11$ chs., which added to 26.63 chs. gives 61.74 chs. E. from sec. cor. for position of flag on random sec. line.

- 40.00 Point for temp. $\frac{1}{4}$ sec. cor. is inaccessible.
- 61.74 Flag point of above described triangulation.
Continue line and measurement by chaining.
- 80.10 Intersect N. and S. line, 12 lks. N. of true point for cor. of secs. 20, 21, 28 and 29, witnessed 4.80 chs. $N. 0^{\circ} 3' W.$ as hereinbefore described.
From true point for cor. of secs. 20, 21, 28 and 29, $N. 89^{\circ} 55' W.$, on true line, bet. secs. 20 and 29.
Over mountainous land, thru. scattering undergrowth.
Ascend 240 ft., over steep SE. slope, on N. wall of Virgin River canyon.
- 18.36 Point of spur in canyon wall, slopes SE. Triangulation point.
Discontinue chaining, and triangulate, as hereinbefore described.
Continue ascent over N. wall of Virgin River canyon.
- 40.05 True point for $\frac{1}{4}$ sec. cor. is inaccessible.
- 49.50 West rim of Virgin River canyon, brs. N. and S.
Set an iron post, 3 ft. long, 1 in. in diam., on bed rock, with marked stone for witness cor. to $\frac{1}{4}$ sec. cor., and raise a mound of stone around post, with brass cap, marked

Chains.

$\frac{1}{4}$ S 20 WC
S 29
1921

Continue line and measurement by chaining.
Ascend 350 ft., over E. slope to top of ridge.
53.47 Triangulation point.
60.10 Ridge, brs. N. and S. Descend 410 ft., over W. slope, to
80.10 The cor. of secs. 19, 20, 29 and 30.
Land, mountainous.
Soil, rocky, 4th rate.
No timber.
Undergrowth, yucca, sage brush and black brush.

N. 89° 58' W., on a random line, bet. secs. 19 and 30.
40.00 Set temp. $\frac{1}{4}$ sec. cor.
80.00 Intersect the original cor. of secs. 19, 24, 25 and 30, on
the W. bdy. of Tp., described in Book "D."
Thence,
S. 89° 58' E., on a true line, bet. secs. 19 and 30.
Over mountainous land, thru. scattering undergrowth.
Ascend 520 ft., over W. slope, to
40.00 Set an iron post, 3 ft. long, 1 in. in diam., on bed rock,
with marked stone, for $\frac{1}{4}$ sec. cor., and raise a mound
of stone around post, with brass cap, marked

$\frac{1}{4}$ S 19
S 30
1921

Ascend 405 ft. over W. slope, to
50.12 Ridge, brs. N. 20° W. and S. 20° E. Descend 30 ft.
53.00 Draw, course N. 25° W. Ascend 240 ft., over W. slope.
65.74 Spur, slopes N. 10° W. Descend 50 ft., over NE. slope.
76.60 Wash, 40 lks. wide, course N. 20° W. Ascend 10 ft. to
80.00 The cor. of secs. 19, 20, 29 and 30.
Land, mountainous.
Soil, rocky, 4th rate.
No timber.
Undergrowth, yucca and sagebrush.

N. 0° 3' W., bet. secs. 19 and 20.
Over mountainous land, thru. scattering undergrowth.
Ascend 30 ft.
3.00 Descend 10 ft.
5.10 Wash, 40 lks. wide, course W. Ascend 15 ft.
8.70 Spur, slopes W. Desc. 95 ft.
15.00 Wash, 30 lks. wide, course N. 45° W. Asc. 125 ft., over SW. slope.
29.00 Spur, slopes S. 80° W. Descend 100 ft. to
40.00 Set an iron post, 3 ft. long, 1 in. in diam., on bed rock,
with marked stone, for $\frac{1}{4}$ sec. cor., and raise a mound
of stone around post, with brass cap, marked

S 19 S 20
1921

Ascend 10 ft. to
42.20 Spur, slopes W. Desc. 340 ft., over NW. slope, to
61.00 Wash, 45 lks. wide, course N. 45° W. Desc. 85 ft. to
63.88 Wash, 70 lks. wide, course N. 70° W. Asc. 70 ft., over SW.
slope.
70.60 Point of spur, slopes W. from NE. Desc. 30 ft.
72.80 Center of wash, 150 lks. wide, course W. from NE. Asc. 125
ft. to
80.00 Set an iron post, 3 ft. long, 2 ins. in diam., on bedrock,

62 Subdivision of Township 41 North, Range 14 West.

Chains.

with marked stone, for cor. of secs. 17, 18, 19 and 20, and raise a mound of stone around post, with brass cap, marked

T41N	R14W
S18	S17
S19	S20
1921	

Land, mountainous.
Soil, rocky, 4th rate.
No timber.
Undergrowth, black brush.
Fair bunch grass.

40.00 S. 89°55'E., on a random line, bet. secs. 17 and 20.
Set temp. $\frac{1}{4}$ sec. cor.
80.00 Intersect N. and S. line, 12 lks. S. of the cor. of secs. 16, 17, 20 and 21.

Thence,

West, on a true line, bet. secs. 17 and 20.
Over mountainous land, thru. scattering undergrowth.
Ascend 690 ft., over SE. slope.

37.50 Main divide, brs. N. and S. Desc. 65 ft. to
40.00 Set an iron post, 3 ft. long, 1 in. in diam., on bed rock, with marked stone, for $\frac{1}{4}$ sec. cor., and raise a mound of stone around post, with brass cap, marked,

$\frac{1}{4}$ S 17
S 20
1921

51.25 Descend 225 ft., over SW. slope,
Ascend 55 ft.
57.50 Spur, slopes S. 80°W. Descend 310 ft.
72.50 Wash, 40 lks. wide, course S. 45°W. Ascend 20 ft. to
80.00 The cor. of secs. 17, 18, 19 and 20.

Land, mountainous.
Soil, rocky, 4th rate.
No timber.
Undergrowth, black brush and sagebrush.

40.00 N. 89°58'W., on a random line, bet. secs. 18 and 19.
Set temp. $\frac{1}{4}$ sec. cor.
80.02 Fall 2 lks. S. of the reestablished cor. of secs. 13, 18, 19 and 24, on the W. bdy. of the tp., described in Book "D."

Thence,

S. 89°57'E., on a true line, bet. secs. 18 and 19.
Over mountainous land, thru. scattering undergrowth.
Descend 17 ft.

5.00 Wash, 70 lks. wide, course NW. Ascend 90 ft.
10.00 Point of spur, slopes S. 45°W. Descend 12 ft.
14.50 Same wash, 20 lks. wide, course S. 45°W. Ascend 125 ft.
32.50 Point of spur, slopes S. 45°W. Descend 30 ft.
38.00 Gulch, 1 ch. wide, course S. 45°W. Ascend 15 ft. to
40.02 Set an iron post, 3 ft. long, 1 in. in diam., on bed rock, with marked stone, for $\frac{1}{4}$ sec. cor., and raise a mound of stone around post, with brass cap, marked

$\frac{1}{4}$ S 18
S 19
1921

50.00 Ascend 132 ft., over N. slope, to
Same gulch, 2 chs. wide, course NW. Ascend 600 ft. over SW. slope.
73.40 Point of short spur, slopes S. 30°W. Descend 35 ft.
75.00 Ascend 50 ft. to
80.02 The cor. of secs. 17, 18, 19 and 20.

Subdivision of Township 41 North, Range 14 West.

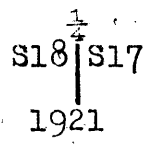
63

Chains.

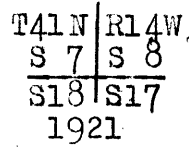
Land mountainous.
Soil, rocky, 4th rate.
No timber.
Undergrowth, black brush.
Sparse grass.

N.0°3' W., bet. secs. 17 and 18.
Over mountainous land, thru. scattering undergrowth.
Ascend 30 ft.

- 1.70 Ridge, brs. E. and W. Descend 145 ft.
- 9.00 Head of draw, course N.60°W. Ascend 20 ft.
- 14.80 Point of spur, slopes N.40°W. Descend 35 ft.
- 18.10 Wash, 40 lks. wide, course N.80°W. Asc. 35 ft. to
- 23.98 Wash, 60 lks. wide, course W. Ascend 140 ft.
- 36.00 Spur, slopes W. Descend 65 ft.
- 38.80 Wash, 70 lks. wide, course W. Ascend 14 ft. to
- 40.00 Set an iron post, 3 ft. long, 1 in. in diam., on bed rock, with marked stone, for $\frac{1}{2}$ sec. cor., and raise a mound of stone, around post, with brass cap, marked



- Ascend 195 ft., over SW. slope.
- 54.50 Spur, slopes S. 60°W. Descend 355 ft., over NW. slope.
- 72.80 Ascend 25 ft.
- 78.50 Point of spur, slopes S.80°W. Descend 35 ft. to
- 80.00 Set an iron post, 3 ft. long, 2 ins. in diam., on bed rock, with marked stone, for cor. of secs. 7, 8, 17 and 18, and raise a mound of stone around post, with brass cap, marked

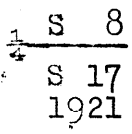


Land, mountainous.
Soil, rocky, 4th rate.
No timber.
Undergrowth, yucca, sagebrush and black brush.

- East, on a random line, bet. secs. 8 and 17.
- 40.00 Set temp. $\frac{1}{4}$ sec. cor.
- 79.92 Intersect N. and S. line, 17 lks. N. of the cor. of secs. 8, 9, 16 and 17.

Thence,
N.89°53' W., on a true line, bet. secs. 8 and 17.
Over mountainous land, thru. scattering undergrowth.
Ascend 7 ft.

- 2.20 Spur, slopes W. Descend 170 ft.
- 12.20 Wash, 40 lks. wide, course N.40°W. Ascend 390 ft.
- 33.80 Spur, slopes N.60°W. Descend 90 ft.
- 39.60 Wash, course N.45°W. Ascend slightly to
- 39.96 Set an iron post, 3 ft. long, 1 in. in diam., on bed rock, with marked stone, for $\frac{1}{4}$ sec. cor., and raise a mound of stone, around post, with brass cap, marked



- Ascend 55 ft., over NE. slope.
- 43.90 Point of spur, slopes N.45°W. Desc. 00 ft. to
- 46.90 Wash, 70 lks. wide, course N.45°W. Descend 00 ft.
- 53.30 Ascend 7 275 ft., over NE. slope.

04 Subdivision of Township 41 North, Range 14 West.

Chains.

60.10 Ridge, brs. N.35°W. and S.35°E. Desc. 480 ft., over W. slope to
 79.92 The cor. of secs. 7, 8, 17 and 18.
 Land, mountainous.
 Soil, rocky, 4th rate.
 No timber.
 Undergrowth, yucca, sagebrush and black brush.

 N.89°57'W., on a random line, bet. secs. 7 and 18.
 40.00 Set temp. $\frac{1}{4}$ sec. cor.
 79.87 Fall 7 lks. S. of the reestablished cor. of secs. 7, 12, 13 and
 18, on W. bdy. of Tp., described in Book "D."
 Thence,
 S.89°54'E., on a true line, bet. secs. 7 and 18.
 Over mountainous land, thru. scattering undergrowth.
 Ascend 300 ft., over W. slope.
 15.30 Spur, slopes S. Descend 110 ft.
 27.85 Ascend 85 ft., over SW. slope.
 32.85 Spur, slopes S. Descend 55 ft. to
 39.87 Set an iron post, 3 ft. long, 1 in. in diam., on bed rock,
 with marked stone, for $\frac{1}{4}$ sec. cor., and raise a mound
 of stone around post, with brass cap, marked

$\frac{1}{4}$ S 7
 S 18
 1921

Ascend 30 ft. to
 42.35 Descend 115 ft., over SE. slope.
 45.45 Ascend 165 ft.
 53.35 Point of spur, slopes S.45°W. Descend 35 ft.
 64.95 Center of wash, 150 lks. wide, course S.70°W. Asc. 385 ft.
 over W. slope, to
 79.87 The cor. of secs. 7, 8, 17 and 18.
 Land, mountainous.
 Soil, rocky, 4th rate.
 No timber.
 Undergrowth, yucca, sagebrush and black brush.

 N.0°3'W., bet. secs. 7 and 8.
 Over mountainous land, thru. scattering undergrowth.
 Ascend 220 ft., over SW. slope.
 13.80 Ridge, brs. SE. and W. Descend 600 ft., over N. slope.
 39.50 Wash, 40 lks. wide, course N.30°W. Asc. slightly to
 40.00 Set an iron post, 3 ft. long, 1 in. in diam., 18 ins. in
 the ground, with marked stone, for $\frac{1}{4}$ sec. cor., and
 raise a mound of stone around post, with brass cap,
 marked

$\frac{1}{4}$
 S 7 | S 8
 1921

Ascend 30 ft.
 48.10 Point of spur, sloping NW. Desc. 115 ft., over N. slope.
 67.80 Center of wash, 2 chs. wide, course W. Asc. 30 ft.
 72.80 Descend 20 ft.
 79.00 Center of main wash, 4 chs. wide, course SW.
 80.00 Set an iron post, 3 ft. long, 2 ins. in diam., on bed
 rock, with marked stone, for cor. of secs. 5, 6, 7 and 8,
 and raise a mound of stone, around post, with brass
 cap, marked

T41N | R14W
 S 6 | S 5
 S 7 | S 8
 1921

Subdivision of Township 41 North, Range 14 West.

Chains.

Land, mountainous and rolling.
Soil, rocky, 4th rate.
No timber.
Undergrowth, sagebrush, yucca and black brush.

S 89°53'E., on a random line, bet. secs. 5 and 8.
40.00 Set temp. 1/4 sec. cor.
79.86 Intersect N. and S. line, 2 lks. S. of the cor. of secs. 4, 5, 8 and 9.
Thence,
N. 89°54'W., on a true line, bet. secs. 5 and 8.
Over rolling and mountainous land, thru. scattering undergrowth.
Ascend 15 ft.
3.40 Descend 70 ft.
8.40 Ascend 15 ft.
11.40 Descend 55 ft.
21.40 Ascend 200 ft., over SE. slope.
34.55 Spur, slopes SW. from N. Desc. 105 ft. to
39.93 Set an iron post 3 ft. long, 1 in. in diam., on bed rock, with marked stone for 1/4 sec. cor., and raise a mound of stone around post, with brass cap, marked

1/4 S 5
S 8

Descend 410 ft. to 1921
77.00 Center of main wash, 4.00 chs. wide, course SW. Thence in wash;
79.86 The cor. of secs. 5, 6, 7 and 8 at N. edge of main wash, course SW.

Land, mountainous and rolling.
Soil, rocky, 4th rate.
No timber.
Undergrowth, yucca, sagebrush and black brush.

N. 89°54'W., on a random line, bet. secs. 6 and 7.
40.00 Set temp. 1/4 sec. cor.
79.96 Fall 19 lks. N. of the reestablished cor. of secs. 1, 6, 7 and 12; on the W. bdy. of the Tp., described in Book "D."
Thence,
N. 89°58'E., on a true line, bet. secs. 6 and 7.
Over mountainous land, thru. scattering undergrowth.
Ascend 80 ft., over SW. slope to
3.65 Point of short spur, slopes N. 45°W. Ascend 50 ft.
8.05 Descend 35 ft.
10.75 Ascend 45 ft.
15.05 Spur, slopes SW. Desc. 165 ft., over SE. slope.
30.15 Center of wash, 2 chs. wide, course S. 40°W. Asc. slightly to
39.96 Set an iron post, 3 ft. long, 1 in. in diam., 26 ins. in the ground, for 1/4 sec. cor., marked on brass cap,

1/4 S 6
S 7
1921

and raise a mound of stone, 2 ft. base, 1 1/2 ft. high, N. of cor.
Ascend 135 ft.
61.45 top of hill, brs. NE and SW. Thence over rolling land.
Descend 60 ft.
71.15 Center of wash, 3 chs. wide, course S. 20°W. from N. Asc. 30 ft.
78.35 Descend 10 ft. to
79.96 The cor. of secs. 5, 6, 7 and 8, at N. edge of main wash, course SW.
Land, mountainous and rolling.
Soil, rocky, 4th rate.
No timber. Undergrowth, yucca, sagebrush & black brush.

66. Subdivision of Township 41 North, Range 14 West.

chains.

- N.0°16'W., on a random line, bet. secs.5 and 6.
 40.00 Set temp. $\frac{1}{4}$ sec.cor.
 80.14 Fall 2 lks.E. of the cor.of secs.5 and 6, and fracl.secs. 31 and 32, on the N. bdy.of the Tp., hereinbefore described.
 Thence,
 S.0°17'E., on a true line, bet. secs.5 and 6.
 Over mountainous land, thru. scattering undergrowth.
 Descend 400 ft., over SW.slope, to
 30.15 Wash, 60 lks.wide, course S. 20°E. Descend 30 ft. to
 35.15 Same wash, 60 lks.wide, course S.10°W. Desc.30 ft. to
 40.14 Set an iron post, 3 ft.long, 1 in. in diam., 6 ins.in the ground, with marked stone, for $\frac{1}{4}$ sec.cor., and raise a mound of stone around post, with brass cap, marked

$\frac{1}{4}$
 S 0 | S 5
 1921

- 42.45 Thence over rolling land. Descend slightly to
 Same wash, 70 lks.wide, course S.60°W. Continue gradual descent to sec.cor.
 51.15 Same wash, 70 lks.wide, course W. from NE.
 54.15 Same wash, 70 lks.wide, course S.10°E.
 69.15 Center of draw, 150 lks.wide, course S.45°E.
 80.14 The cor.of secs.5, 6, 7 and 8, on N.edge of main wash, course SW.
 Land, mountainous, and rolling.
 Soil, rocky, 4th rate.
 No timber.
 Undergrowth, sage brush, yucca and black brush.

 The continued satisfactory adjustment of the solar apparatus during the survey of this township is indicated from field tests, as described in Book "G."

GENERAL DESCRIPTION.

The Virgin River, flowing in a westerly direction, divides this township approximately into halves. The mountains NW. of the river are known as the Beaver Dam mountains. South of the river, the land is exceedingly rugged, broken and mountainous; to the north, although still mountainous, it is less rugged and impenetrable. No roads traverse this township, and there are no settlers. Considerable of the land is too precipitous even for grazing purposes, particularly south of the river. Much of the surface is solid rock, supporting only a scattering growth of sagebrush and black brush; and all of the surface may be classed as rocky, 4th rate.
 There are no indications of valuable mineral.

4-680

BOOK 3522

FIELD ASSISTANTS. to

Claude F. Warner, U. S. Transitman,

NAMES.	CAPACITY.
Gilbert N. Hunter,	1st chainman,
Charles Barnum,	2nd chainman,
Kanute Jensen,	2nd chainman and flagman,
George Strosser,	cornerman,
Robert Barnum,	axman.

CERTIFICATE OF UNITED STATES TRANSITMAN.

I, Claude F. Warner, U. S. Transitman, hereby certify upon honor that, in pursuance of special instructions received from the U. S. Surveyor General, for Group 112, Arizona, bearing date of the 29th day of September, 19120, I have well, faithfully, and truly in my own proper person, and in strict conformity with said instructions, the Manual of Surveying Instructions, and the laws of the United States, surveyed all those parts or portions of the North boundary and Subdivision lines of

Township 41 North, Range 14 West,

of the Gila and Salt River Base and Meridian, in the State of Arizona, which are represented in and by diagram on page 1 hereof the foregoing field notes, as having been executed by me, and under my direction; and that all the corners of said survey have been established and perpetuated in strict accordance with the Manual of Surveying Instructions, and the special written instructions of the U. S. Surveyor General, for Group 112, Arizona, and in the specific manner described in the field notes, and that the foregoing are the original field notes of such survey.

Place Helena Mont Date Jan 19, 1922

Claude F. Warner U. S. Transitman

APPROVAL.

OFFICE OF THE UNITED STATES SURVEYOR GENERAL,

101

The foregoing field notes of the survey of

executed by under his special instructions dated 101, having been critically examined, and the necessary corrections and explanations made, the said field notes, and the surveys they describe, are hereby approved.

U. S. Surveyor General.

I certify that the foregoing transcript of the field notes of the above described surveys in has been correctly copied from the original notes on file in this office.

U. S. Surveyor General.

4-680

FIELD ASSISTANTS. to

Joseph P. Davis, U. S. Cadastral Engineer,

NAMES.	CAPACITY.
Peving Ison, Hill Group, page 13	1st and 2nd chainman and flagman,
Roger F. Wilson,	1st chainman,
Francis Hinton,	2nd chainman,
Asahel J. Barnum,	cornerman,
Stephen Jennings,	axman,
Chauncey Potter,	flagman.

BOOK 352270

CERTIFICATE OF UNITED STATES CADASTRAL ENGINEER.

I, Joseph P. Davis, U. S. Cadastral Engineer, hereby certify upon honor that, in pursuance of special instructions received from the U. S. Surveyor General for Group 112, Arizona, bearing date of the 29th day of September, 1920, I have well, faithfully, and truly in my own proper person, and in strict conformity with said instructions, the Manual of Surveying Instructions, and the laws of the United States, surveyed all those parts or portions of the 10th Standard Parallel North, through Range 14 West, and the East boundary, and Subdivision lines of

Township 41 North, Range 14 West,

of the Gila and Salt River Base and Meridian, in the State of Arizona, which are represented in and by diagram on page 1 hereof the foregoing field notes, as having been executed by me, and under my direction; and that all the corners of said survey have been established and perpetuated in strict accordance with the Manual of Surveying Instructions, and the special written instructions of the U. S. Surveyor General, for Group 112, Arizona and in the specific manner described in the field notes, and that the foregoing are the original field notes of such survey.

Place - Bois Idolo - - -
Date - January - 16, 1922 - - -

Joseph P. Davis
U. S. Cadastral Engineer

APPROVAL.

OFFICE OF THE UNITED STATES SURVEYOR GENERAL,

Phoenix, Arizona, January 25, 1922

The foregoing field notes of the survey of the 10th Standard Parallel North, through Range 14 West, and the East and North boundaries, and Subdivision lines of Township 41 North, Range 14 West, of the Gila and Salt River Base and Meridian, in the State of Arizona,

executed by Joseph P. Davis, U.S. Cadastral Engineer, and Claude F. Warner, U.S. Transitman, under his special instructions dated September 29, 1920, for Group 112, Arizona, having been critically examined, and the necessary corrections and explanations made, the said field notes, and the surveys they describe, are hereby approved.

Claude F. Warner
U. S. Surveyor General.

I certify that the foregoing transcript of the field notes of the above described surveys in has been correctly copied from the original notes on file in this office.