

3548

Book "H"

4-679

BOOK 3548

Orig. 1

MAR 24 1923

MAR 28 1923

# FIELD NOTES

OF THE SURVEY OF THE

PART OF THE

West boundary,

North boundary, and

Subdivision lines

of

TOWNSHIP 27 NORTH, RANGE 10 WEST,

and of Part of the Subdivision Lines

of

TOWNSHIP 28 NORTH, RANGE 10 WEST,

(Within the Hualpai Indian Reservation)

Of the Gila and Salt River Base and Meridian,

In the State of Arizona.

EXECUTED BY

Thomas D. Daley, U. S. Surveyor,

and

Horace M. Muscott and William E. Hiester, U.S. Transitmen.

In the capacity of U. S. Surveyors, under Special Instructions dated February 26, 1920,

issued by the United States Surveyor General to govern surveys included in Group

No. 108, Arizona, which were approved by the Commissioner of the General Land

Office, March 10, 1920, and Assignment Instructions dated April 9, 1921

and June 8, 1921

Survey commenced May 7, 1921

Survey completed June 24, 1921.

3548

3548

# INDEX DIAGRAM.

Township ..... Range .....

6	5	4	3	2	1
7	8	9	10	11	12
18	17	16	15	14	13
19	20	21	22	23	24
30	29	28	27	26	25
31	32	33	34	35	36

Book "H"

Group 108 - Arizona

Township 27 North, Range 10 West,

and

Township 28 North, Range 10 West,

INDEX DIAGRAM.

BOOK 3548

\* p. 10 = tie to Diamond Creek Power Site.

				5 3							
		* 9		9							
	6	5 1	5	4 0	4	3 2	3		2		1
8	50		50		40		31		24		
7	7	4 9	8	3 9	9	3 0	10	2 3	11	1 7	12
	48		47		38		29		22		16
6	18	4 6	17	3 7	16	2 8	15	2 1	14	1 5	13
	46		45		36		28		20		15
6	19	4 4	20	3 5	21	2 7	22	2 0	23	1 4	24
	44		43		34		26		19		13
5	30	4 2	29	3 4	28	2 6	27	1 9	26	1 2	25
	42		41		33		25		18		11
5	31	4 1	32	3 2	33	2 4	34	1 8	35	1 1	36

East boundary surveyed under Group 107.

For survey of this line, see Book "E" of this Group.

Book "H"

Group 108 - Arizona

Township 27 North, Range 10 West

BOOK 3548

and

Township 28 North, Range 10 West

DATE DIAGRAM.

			6-24-21	6-23-21					
	6	5	4	3	2	1			
6-2-21	6-4-21	5-13 5-31	5-30 6-6	6-7 6-23	6-14 6-15	6-15 6-22			
6-2-21	7	8	9	10	11	12			
5-30	6-2	5-28-21	5-28 6-4	6-4 6-6	6-11 6-13	6-16-21	6-22-21	6-21-21	
5-11-21	18	17	16	15	14	13			
6-1-21	5-27	5-27-21	5-26-21	6-1 6-2	6-9 6-10	6-20-21	6-21-21	6-20-21	
5-10-21	19	20	21	22	23	24			
5-11-21	5-26-21	5-26-21	5-27 5-25	5-21-21	6-18 5-21	5-18-21			
5-9 5-10	30	29	28	27	26	25			
5-9 5-10	5-18-21	5-18-21	5-19-21	5-19 5-20	5-20-21	6-17-21			
5-7-21	31	32	33	34	35	36			
5-7-21	5-16-21	5-16-21	5-18 5-19	5-19-21	5-20-21	5-20-21			

For dates of survey of this line see Book "E" of this Group.

For dates of survey of this line, see Book "H" of Group 107.

— Blue lines on above diagram indicate surveys executed by Thomas D. Daley, U. S. Surveyor, on dates shown thereon

— Red lines on above diagram indicate surveys executed by Morace M. Muscott, U. S. Transitman, on dates shown thereon.

— Green lines on above diagram indicate surveys executed by William E. Miester, U. S. Transitman, on dates shown thereon.

Surveys commenced May 7, 1921 and executed with Buff Rocky Mountain Favorite Transit No. 9977, and Young and Sons Light Mountain Transit No. 8489. Each instrument is equipped with full vertical circle and the Smith solar attachment; unless otherwise specified all azimuth determinations are accomplished with the solar attachment.

FIELD TEST OF INSTRUMENTS NOS. 9977 and 8489  
Mr. Thomas D. Daley, U. S. Surveyor, and  
Mr. Horace M. Muscott, U. S. Transitman.

May 4, 1921. We examine the adjustments of the instruments and correct all errors; then to test the solar apparatus by comparing their indications, resulting from observations made during a. m. and p. m. hours with a meridian established by Polaris observation, we proceed as follows:

May 5, 1921. In camp near the cor. of secs. 25, 26, 35 and 36, T. 27 N., R. 11 W., G. and S. R. B. and M., Arizona, lat.  $35^{\circ} 41\frac{1}{2}'$  N., long.  $113^{\circ} 25'$  W., at 4 hrs. 43.6 m., a. m., l. m. t., we observe Polaris at eastern elongation, making four observations, two each with the telescope in direct and reversed positions, and mark the mean point in the line thus determined on a peg driven firmly in the ground 5.00 chs. N.

Azimuth of Polaris at eastern elongation  $1^{\circ} 22\frac{1}{2}'$ .

May 8, 1921. At 8 hrs. 0 m., a. m., l. m. t., we lay off the azimuth of Polaris,  $1^{\circ} 22\frac{1}{2}'$  to the west and mark the meridian thus determined by a tack in a peg driven firmly in the ground, 5.00 chs. N.

At 9 hrs. 0 m., a. m., l. m. t., we set off  $35^{\circ} 41\frac{1}{2}'$  N. on the lat. arcs,  $17^{\circ} 4\frac{1}{2}'$  N. on the decl. arcs, and determine a meridian with each solar, which we find to agree with the true meridian.

At apparent noon, with the lat. arcs unchanged, we observe the sun on the meridian with each solar; the resulting reading of the decl. arcs. is  $17^{\circ} 6'$  N., which agrees with the computed declination of the sun.

At 3 hrs. 0 m., p. m., l. m. t., with the lat. arcs unchanged, we set off  $17^{\circ} 8\frac{1}{2}'$  N. on the decl. arcs, and determine a meridian with each solar which we find to agree with the true meridian.

As all of the solar observations during the usual hours of solar work come within  $1'.30''$  of the true meridian, we conclude that the adjustments of the instruments are satisfactory.

Unless otherwise specified all measurements are made with a Lufkin steel tape 5.00 chs. in length, compared with a Lufkin standard one chain steel tape and found correct. The measurements are made on the slope, the vertical angle determined and the slope measurements properly reduced to true horizontal distances.

FIELD TEST OF INSTRUMENT NO. 8489  
by Mr. William E. Hiester, U. S. Transitman.

June 16, 1921. I examine the adjustment of the instrument and correct all errors; then to test the solar apparatus by comparing its indications from observations made during a. m., and p. m. hours, with a meridian established by Polaris observation proceed as follows:

In camp 25: chs. South of the cor. of secs. 4, 5, 32 and 33, on the N. bdy. of T. 27 N., R. 10 W., G. and S. R. B. and M., Arizona, lat.  $35^{\circ} 45'$  N., long.  $113^{\circ} 22'$  W., using the meridian established as hereinafter described on page 53 at 9 hrs. 0 m., a. m., l. m. t., I set off  $35^{\circ} 45'$  N. on the lat. arc,  $23^{\circ} 19'$  N., on the decl. arc, and determine a meridian with the solar, which I find to agree with the true meridian. 53

At apparent noon with the lat. arc unchanged, I observe the sun on the meridian; the resultant reading of the decl. arc is  $23^{\circ} 19'$  N., which agrees with the computed decl. of the sun.

At 3 hrs. 0 m., p. m., l. m. t., with the lat. arc unchanged, I set off  $23^{\circ} 19\frac{1}{2}'$  N. on the decl. arc, and determine a meridian with the solar, which I find to agree with the true meridian.

As all of the solar observations during the usual hours of work come within  $1' 30''$  of the true meridian, I conclude that the adjustments of the instruments are satisfactory.

Unless otherwise specified, all measurements are made with a Lufkin steel tape 5 chs. in length, compared with a Lufkin 1 ch. standard steel tape and found correct. The measurements are made on the slope, the vertical angle determined, and the slope measurements properly reduced to true horizontal distances

## West Boundary of T. 27 N., R. 10 W.

Chains From the cor. of Ts. 26 and 27 N., Rs. 10 and 11 W., described in Book "E".  
North between secs. 31 and 36,  
Over mountainous land, thru scattering undergrowth.  
Impossible to measure on line.  
Measurement by traverse as follows:  
N. 40° W., 17.00 chs., ascending 180 ft.  
N. 25° W., 5.80 " ascending 40 ft.  
N. 20° W., 7.50 "  
N. 1° W., 1.30 "  
N. 3° E., 13.39 " descending 220 ft.  
East 13.77 " ascending 370 ft., to a  
point 1.50 chs. West of the true point for  $\frac{1}{4}$  sec. cor.,  
which is inaccessible.

40.00 Mark cross (X) at exact W.C. point, and over same set an  
iron post, 3 ft. long, 1 in. in diam., on surface rock  
supported in a mound of stone for witness cor. to the  
 $\frac{1}{4}$  sec. cor. marked on brass cap

$\frac{1}{4}$   
 S 36 | S 31 W C  
 1921

From witness cor., continue by traverse as follows:  
West 13.77 chs.  
N. 3° E., 8.91 " ascending 35 ft.,  
N. 17° E., 11.30 " descending 55 ft.,  
N. 28° E., 8.30 " over W. slope,  
N. 17° E., 13.00 " descending 265 ft.,  
East, 3.79 " over N. slope.  
North, .53 " to point for cor. of  
secs. 25, 30, 31 and 36, where I

80.00 Set an iron post 3 ft. long, 2 ins. in diam., 6 ins. in  
the ground to bed rock, deposit stone marked cross (X)  
at base of post and raise a mound of stone around  
post, for cor. of secs. 25, 30, 31 and 36, marked on  
brass cap

T 27 N  
 R 11 W | R 10 W  
 S 25 | S 30  
 S 36 | S 31  
 1921

Land; cliffs and precipices.  
Soil; rocky, 4th rate.  
Timber; none.  
Undergrowth; black brush, yucca, cactus and palo verde.

North, bet. secs. 25 and 30.  
Over broken land, thru scattering undergrowth.  
Desc. 78 ft.

6.00 Gulch, 40 ft. deep, course N. 60° W., asc. 56 ft.

21.00 Spur, slopes W., desc. 370 ft. to

40.00 Set an iron post, 3 ft. long, 1 in. in diam., 10 ins. in  
the ground to bed rock, deposit stone marked cross (X)  
at base of post, and raise a mound of stone around  
post for  $\frac{1}{4}$  sec. cor., marked on brass cap

$\frac{1}{4}$   
 S 25 | S 30  
 1921

41.50 Gulch, 40 ft. deep, course N. 60° W., asc. 80 ft.

46.00 Spur, slopes W., desc. 440 ft. to

64.10 Peach Springs Wash, course N. 40° E.

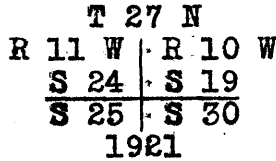
73.50 Branch of Peach Springs Wash, 30 lks. wide, course NE.  
Asc. 70 ft. to

80.00 Set an iron post, 3 ft. long, 2 ins. in diam., 12 ins.

Survey of the West Boundary of T. 27 N., R. 10 W.

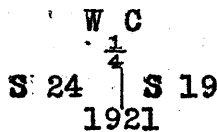
Chains

in the ground to bed rock, deposit stone marked cross (X) at base of post, and raise a mound of stone around post, for cor. of secs. 19, 24, 25 and 30, marked on brass cap



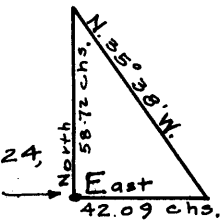
Land; broken.  
Soil; rocky, 4th rate.  
Timber; none.  
Undergrowth; black brush, yucca, cactus, and palo verde.

North, bet. secs. 19 and 24.  
Over mountainous land, thru scattering undergrowth.  
Asc. along broken SE. slope.  
4.00 Gulch, 20 lks. wide, course E., asc. 180 ft. to  
17.00 Spur, slopes E., desc. 40 ft. to  
26.30 Gulch, 20 lks. wide, course S. 70° E., asc. 436 ft. to  
38.03 Set an iron post, 3 ft. long, 1 in. in diam., 14 ins.  
in the ground to bed rock, deposit stone marked cross (X) at base of post, and raise a mound of stone around post, for witness cor. to the 1/4 sec. cor., marked on brass cap



Cor. stands at base of cliff 900 ft. high, bears NE. and SW.  
Impossible to chain farther. In order to obtain a suitable base for triangulation, return to cor. of secs. 19, 24, 25 and 30, from which vertical angle to flag ahead is +24°; auxiliary flag brs. East 42.09 chs. dist.; from auxiliary flag, flag ahead brs. N. 35° 38' W.; all bearings checked by direct reading of the solar, and all angles checked by deflection Dist. by triangulation = 58.72 chs.

Cor. secs. 19, 24, 25 and 30

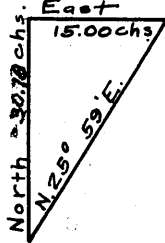


58.72 Triangulation point on top of high cliff, bearing NE. and SW.  
Thence over rolling land, dist. by chaining.  
79.90 Set a limestone 20 x 15 x 15 ins. on bed rock, supported in a mound of stone for witness cor. to the cor. of secs. 13, 18, 19 and 24, marked with 3 notches on N. and 3 notches on S. and W C on N. face.  
80.00 Mark a cross (X) at true cor. point which falls on sloping shelf of rock.  
Land; broken and mountainous.  
Soil; rocky, 4th rate.  
Timber; none.  
Undergrowth; black brush, yucca, cactus, and palo verde.

From the true point for cor. of secs. 13, 18, 19 and 24.  
North, bet. secs. 13 and 18.  
Over broken land, thru scattering undergrowth.  
10.00 Spur, slopes N. 70° E. Desc. 630 ft. over NW. slope to  
32.80 Gulch, course N. 70° E., asc. 124 ft. to  
36.24 Spur, slopes N. 70° E., desc. 90 ft. to  
40.00 Mark cross (X) at exact cor. point, and over same set an



## Survey of the West Boundary of T. 27 N., R. 10 W.

Chains	iron post, 3 ft. long, 1 in. in diam., on bed rock supported in a mound of stone, for $\frac{1}{4}$ sec. cor., marked on brass cap
	$\begin{array}{c} \frac{1}{4} \\ \uparrow \\ \text{S } 13 \quad   \quad \text{S } 18 \\ \downarrow \\ 1921 \end{array}$
40.60	Gulch, 10 lks. wide, course E. Asc. 108 ft. over SW. slope to
60.72	Rim of canyon brs. SE. and NW. Impossible to chain further. Vertical angle to flag ahead, $-37\frac{1}{2}^{\circ}$ ; auxiliary flag brs. N. $25^{\circ} 59'$ E.; from flag ahead, auxiliary flag brs. East 15.00 chs. dist.; all bearings checked by direct reading of the solar, and all angles checked by deflection.  Dist. by triangulation = 30.78 chs. Dist. by chaining = 60.72 chs. Total dist. = 91.50 chs.
84.00	Thence South bet. secs. 13 and 18, dist. by chaining. Impassable cliff brs. E. and W.
80.00	Set witness cor. as hereinafter described. The true point for cor. of secs. 7, 12, 13 and 18, falls in inaccessible cliff, about 1500 ft. below 60.72 ch. point. Land; broken and mountainous. Soil; rocky 4th rate. Timber; none. Undergrowth; black brush, cactus, yucca and palo verde.
<hr/> <p>From the true point for cor. of secs. 7, 12, 13 and 18, (inaccessible).  North, bet. secs. 7 and 12.  Over mountainous land, through scattering undergrowth.</p>	
4.00	Set a blue limestone 22 x 12 x 8 ins. on bed rock supported in a mound of stone for witness cor. to the cor. of secs. 7, 12, 13 and 18, marked with 4 notches on S. and 2 notches on N. edges and W C on N.
5.00	Thence over broken land, thru scattering undergrowth. Gulch, course NE. Desc. 640 ft. over NE. slope to
40.00	Set an iron post, 3 ft. long, 1 in. in diam., 8 ins. in the ground to bed rock, deposit stone marked cross (X) at base of post, and raise a mound of stone around post, for $\frac{1}{4}$ sec. cor., marked on brass cap
	$\begin{array}{c} \frac{1}{4} \\ \uparrow \\ \text{S } 12 \quad   \quad \text{S } 7 \\ \downarrow \\ 1921 \end{array}$
41.50	Desc. 30 ft. to Wash, 3 chs. wide, course NW.
69.00	Asc. over broken SW. slope 90 ft. to Spur, slopes NW. desc. 130 ft. to
80.00	Set an iron post, 3 ft. long, 2 ins. in diam., 6 ins. in the ground to bed rock, deposit stone marked cross (X) at base of post, and raise a mound of stone around post, for cor. of secs. 1, 6, 7 and 12, marked on brass cap

## Survey of the West Boundary of T. 27 N., R. 10 W.

Chains

T 27 N	
R 11 W	R 10 W
S 1	S 6
S 12	S 7
1921	

Cor. stands on E. side of small draw, course N.  
 Land; mountainous.  
 Soil; rocky, 4th rate.  
 Timber; none.  
 Undergrowth; black brush, yucca, cactus, and palo verde.

North, bet. secs. 1 and 6.  
 Over mountainous land.

5.59 Top of cliff, 150 ft. high bears E. and W. On account of the precipitous nature of the land in advance it is necessary to discontinue the survey of this line. The distance to the Colorado River from this point is about 14.00 chs. The vertical angle to water's edge is  $-34^{\circ}$ . Course of river is west.

Survey of the North Boundary of T. 27 N., R. 10 W.

Chains From the cor. of secs. 3, 4, 33 and 34, on the North Bdy. of Tp., hereinafter described, line to E. unsurveable. West, on a true line bet. secs. 4 and 33. Over mountainous land, thru scattering undergrowth.

2.39 Edge of canyon, bears N. and S. Set flag ahead on line, auxiliary flag brs. N. 52° 32' W.; from flag ahead, auxiliary flag brs. N. 23° 5' E., 3.32 chs. dist.; all bearings checked by direct reading of the solar, and all angles checked by deflection.

Dist. by triangulation = 5.29 chs.  
 Dist. by chaining = 2.39 chs.  
 Total dist. = 7.68 chs.

5.60 (Approx.) Wash, 40 lks. wide, course S. 25° W., about 300 ft. below 2.39 ch. point

7.68 Triangulation point on W. side of canyon. Thence by chaining.

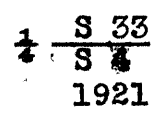
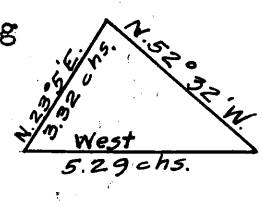
8.94 Top of cliff 20 ft. high. Desc. 137 ft. to

13.00 Wash, 100 lks. wide, 30 ft. deep, course SW. Continue descent 168 ft. to

24.37 Wash, 100 lks. wide, 15 ft. deep, course S. 10° W. Asc. 250 ft. over SE. slope to

35.10 Spur, slopes S. 15° W., desc. 125 ft.

40.00 Set an iron post, 3 ft. long, 1 in. in diam., 12 ins. in the ground to bed rock, deposit stone marked cross (X) at base of post, and raise a mound of stone around post for 1/4 sec. cor., marked on brass cap



40.25 Wash, course S. 10° W., asc. 84 ft.

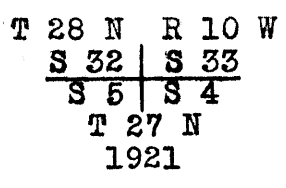
45.00 Spur, slopes SW. Desc. 300 ft. over SW. slope to

54.00 Wash, 150 lks. wide, course SW., asc. 115 ft. to

67.90 Spur, slopes S. 15° W. Desc. 400 ft. to

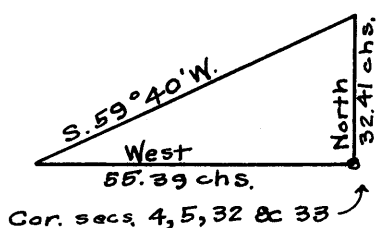
79.60 Wash, 80 lks. wide; course S. 10° W.

80.00 Set an iron post, 3 ft. long, 2 ins. in diam., 10 ins. in the ground to bed rock, deposit stone marked cross (X) at base of post, and raise a mound of stone around post, for cor. of secs. 4, 5, 32 and 33, marked on brass cap



Land; mountainous.  
 Soil; rocky, 4th rate.  
 Timber; none.  
 Undergrowth; black brush, cactus and cat claw.

West, on a true line bet. secs. 5 and 32. Over mountainous land, through scattering undergrowth. On account of precipitous cliffs it is impracticable to chain. Set flag on line ahead; auxiliary flag brs. North, 32.41 chs. dist.; from auxiliary flag, flag ahead brs. S. 59° 40' W.; all bearings checked by direct reading of the solar, and all angles checked by deflection.



Survey of the North Boundary of T. 27 N., R. 10 W.

Chains Dist. by triangulation = 55.39 chs.  
 Return measure = 15.45 chs.  
 Difference = 39.94 chs.  
 Approximate topography as follows:  
 1.50 Small spur, slopes S. Desc. over S. W. slope.  
 5.00 Diamond Creek, 5 chs. wide, course N. 80° W. Thence  
 over broken cliffs, sloping N.  
 39.94 Set an iron post, 3 ft. long, 1 in. in diam., 6 ins. in  
 the ground to bed rock, deposit stone marked cross  
 (X) at base of post, and raise a mound of stone around  
 post,

W C  $\frac{1}{4}$   $\frac{S 32}{S 5}$   
 1921

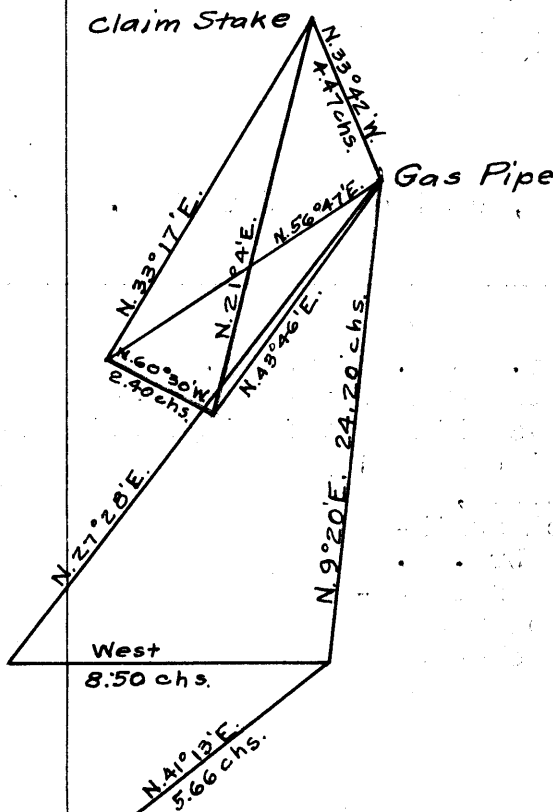
Thence by chaining:  
 40.00 True point for  $\frac{1}{4}$  sec. cor., falls on precipitous ground,  
 where the cor. cannot be securely established.  
 Desc. 40 ft. over W. slope to  
 43.00 Draw, course N. Asc. 440 ft. over NE. slope to  
 55.39 Triangulation point, on west rim of Diamond Creek, 1100  
 ft. above sec. cor. Thence over level bench.  
 64.09 Intersect top of canyon wall on left bank of Colorado  
 River, course S. 20° W. This point is about 300 ft.  
 above river. Impossible to continue line farther.  
 Set a granite stone 18 x 12 x 6 ins. marked with a  
 cross (X) on top, in a mound of stone for temporary  
 point.  
 Land; mountainous.  
 Soil; rocky, 4th rate.  
 Timber; none.  
 Undergrowth; black brush, yucca, cactus, and catclaw.

Tie to  
 DIAMOND CREEK POWER SITE  
 on Colorado River.

From triangulation point at 55.39 chs. bet. secs. 5 and  
 32, above described.  
 N. 41° 13' E., 5.66 chs. to edge of canyon on S. side  
 of Diamond Creek

From this point a gas pipe on  
 high spur on N. side of Dia-  
 mond Creek, at the junction  
 of Diamond Creek with the  
 Colorado River, bears N. 9°  
 20' E. To determine the dist.  
 to this pipe, measure a base  
 west 8.50 chs. dist. to a  
 point from which gas pipe  
 bears N. 27° 28' E. Triangu-  
 lated dist. is therefore 24.20  
 chs. This iron pipe has a  
 mound of stone alongside and  
 is about 150 ft. above the  
 river.

On left bank of Colorado River  
 on top of boulder about 25  
 ft. by 30 ft. is rock monu-  
 ment known as claim stake  
 for power site. Obtain dist.  
 bet. gas pipe and claim stake  
 as follows: Lay off a base  
 N. 60° 30' W. 2.40 chs. dist.  
 From E. end of base gas pipe  
 bears N. 43° 46' E., and  
 claim stake bears N. 21° 04'  
 E. From W. end of base gas  
 pipe bears N. 56° 47' E. and



Book 1348

Survey of the North Boundary of T. 27 N., R. 10 W.

Chains

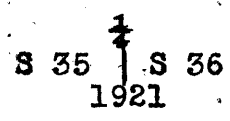
claim stake bears N. 33° 17' E. Dist bet. monuments is therefore 4.47 chs. and the bearing is N. 33° 42' W.

SURVEY OF PART OF SUBDIVISIONS OF T. 27 N., R. 10 W.

From the cor. of secs. 1, 2, 35 and 36, on the S. bdy. of Tp., described in Book "F", N. 0° 01' W., bet. secs. 35 and 36. Over rolling land, thru scattering timber and dense undergrowth. Desc. 80 ft.

10.25  
40.00

Asc. 230 ft. to Set an iron post, 3 ft. long, 1 in. in diam., on bed rock supported in a mound of stone, for 1/4 sec. cor., marked on brass cap

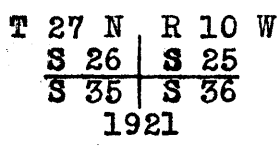


From which,

- A juniper, 10 ins. in diam., bears S. 88 1/4° E., 37 lks. dist. marked 1/4 S.36 B T.
- A juniper, 8 ins. in diam., bears N. 61 1/2° W., 134 lks. dist. marked 1/4 S.35 B T.

46.50  
54.50  
70.00  
80.00

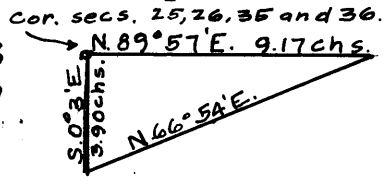
Asc. 50 ft. over S. slope to Spur, slopes E., along E. slope to Desc. over N. slope, 231 ft. Desc. 300 ft. over broken land to Set an iron post, 3 ft. long, 2 ins. in diam., 6 ins. in the ground to bed rock, deposit stone marked cross (X) at base of post, and raise a mound of stone around post, for cor. of secs. 25, 26, 35 and 36; marked on brass cap



land; S. half, rolling, N. half, mountainous. Soil; rocky, 4th rate. Timber; scattering juniper. Undergrowth; black brush, cactus, Spanish bayonet and palo christi.

N. 89° 57' E., on a random line bet. secs. 25 and 36. On account of precipitous cliffs, it is impracticable to chain dist.

Vertical angle to flag ahead, +5°; auxiliary flag brs. S. 0° 3' E., 3.90 chs.; from auxiliary flag, flag ahead brs. N. 66° 54' E.; all bearings checked by direct reading of the solar, and all angles checked by deflection.

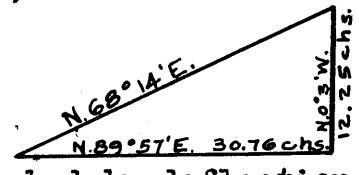


9.17

Dist. by triangulation = 9.17 chs. Triangulation point. Thence N. 89° 57' E., on a random line bet. secs. 25 and 36, dist. by chaining.

11.02

Impracticable to chain from this point, vertical angle to flag ahead, on random line, -27°; auxiliary flag brs. N. 68° 14' E.; from flag ahead, auxiliary flag brs. N. 0° 3' W., 12.25 chs.; all bearings checked by direct reading of the solar and all angles checked by deflection.

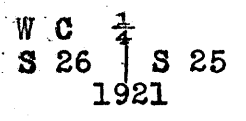


## Survey of the Subdivision of T. 27 N., R. 10 W.

Chains	Dist. by triangulation 30.76 <sup>o</sup> chs. Dist. on random line = 11.02 chs. Total dist. = 41.78 chs. Thence West 1.78 chs. to
40.00	Set temp. $\frac{1}{4}$ sec. cor.
41.78	Still impracticable to chain; vertical angle to flag ahead on random line +42 <sup>o</sup> ; auxiliary flag brs. N. 0 <sup>o</sup> 3' W., 12.25 chs., from auxiliary flag, flag ahead brs. S. 66 <sup>o</sup> 15' E.; all bearings checked by direct reading of the solar and all angles checked by deflection. Dist. on random line = 41.78 chs. Dist. by triangulation = 27.77 chs. Total dist. = 69.55 chs.
69.55	Triangulation point; thence by chaining, continuing random line N. 89 <sup>o</sup> 57' E., bet. secs. 25 and 36.
80.10	Fall 21 lks. N. of the cor. of secs. 25, 30, 31 and 36 on E. bdy. of Tp., described in field notes of current group No. 107. Thence N. 89 <sup>o</sup> 54' W., on a true line bet. secs. 25 and 36. Over rolling land, thru scattering timber and undergrowth. Desc. 128 ft. over W. slope to
10.55	Top of precipitous cliff bears N. and S., about 1000 ft. high. Thence by triangulation, as hereinbefore described, topography approximate.
18.00	Base of cliff, bears N. and S., desc. 600 ft.
33.40	Wash, 40 lks. wide, course N., asc. 80 ft.
38.32	Thence by chaining.
40.05	Set an iron post, 3 ft. long, 1 in. in diam., 12 ins. in the ground to bed rock, deposit stone marked cross (X) at base of post, and raise a mound of stone around post, for $\frac{1}{4}$ sec. cor., marked on brass cap
	$\frac{1}{4} \begin{array}{l} S 25 \\ S 36 \\ 1921 \end{array}$
69.08	Asc. about 1000 ft., dist. by triangulation. Top of rim rock on W. edge of canyon, bears N. and S. Thence by chaining.
70.93	Triang. pt. on ridge brs. N. and S. Desc. over cliffs 53 ft., dist. by triangulation.
80.10	The cor. of secs. 25, 26, 35 and 36. Land; mountainous. Soil; rocky, 4th rate. Timber; scattering juniper. Undergrowth; black brush, cactus, Spanish bayonet and palo christi.
	N. 0 <sup>o</sup> 01' W., bet. secs. 25 and 26. Over precipitous cliffs, through scattering undergrowth. It being impossible to chain on account of steep cliffs, or to triangulate on line, set a flag ahead on a bearing N. 3 <sup>o</sup> 0' E.; auxiliary flag brs. N. 21 <sup>o</sup> 58' E.; from flag ahead, auxiliary flag brs. S. 87 <sup>o</sup> 0' E., 12.00 chs. dist.; bearings checked by direct reading of the solar and all angles checked by deflection. Dist. by triangulation = 34.92 chs., on bearing N. 3 <sup>o</sup> 0' E.
	Thence North, 3.10 chs. to base of cliff, bearing S. 45 <sup>o</sup> E., and N. 45 <sup>o</sup> W.
	Thence N. 42 <sup>o</sup> W., 1.73 chs. to base of cliff, bearing N. and S.

Survey of part of Subdivisions of T. 27 N., R. 10 W.

Chains about 400 ft. below sec. cor.  
 From this point, the true point for  $\frac{1}{4}$  sec. cor., which is inaccessible, brs. N.  $42^{\circ}$  W., 1.00 ch. dist.  
 Set an iron post, 3 ft. long, 1 in. in diam., 6 ins. in the ground to bed rock, deposit stone marked cross (X) at base of post, and raise a mound of stone around post, for witness cor. to the  $\frac{1}{4}$  sec. cor., marked on brass cap

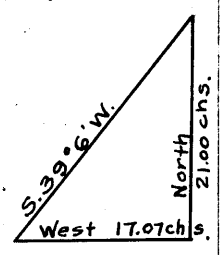


Thence from W C continue by traverse in sec. 25 as follows:

- S.  $42^{\circ}$  E., .90 chs.
- N.  $33\frac{3}{4}^{\circ}$  E., 9.70 "
- N.  $19^{\circ}$  E., 35.13 "
- North 0.13 " To a point 18.10 chs. due East of the true point for cor. of secs. 23, 24, 25 and 26.

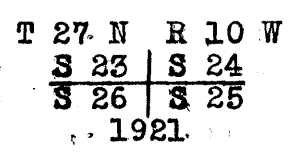
Impossible to chain from this point:  
 Thence by triangulation as follows:

Set flag on top of high cliff due west; auxiliary flag brs. North 21.00 chs. dist.; from auxiliary flag, flag ahead brs. S.  $39^{\circ} 6'$  W.; all bearings checked by direct reading of the solar, and all angles checked by deflection



Dist. by triangulation = .17.07 chs. Thence West 1.03 chs. to point for cor. of secs. 23, 24, 25 and 26, where I

80.00 Set an iron post, 3 ft. long, 2 ins. in diam., 8 ins. in the ground to bed rock, deposit stone marked cross (X) at base of post, and raise a mound of stone around post, for cor. of secs. 23, 24, 25 and 26, marked on brass cap



Land; mountainous.  
 Soil; rocky, 4th rate.  
 Timber; none.  
 Undergrowth; black brush, yucca, cactus, Spanish bayonet and cat claw.

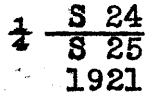
1.03 S.  $89^{\circ} 54'$  E., on a random line, bet. secs. 24 and 25  
 Impossible to chain from this point  
 From the triangulation point 18.10 chs. East of the cor. of secs. 23, 24, 25 and 26, South 3 lks. to a point 18.10 chs. S.  $89^{\circ} 54'$  E. of said cor. Thence S.  $89^{\circ} 54'$  E., on a random line bet. secs. 24 and 25, continuing measurement

40.00 Set temp.  $\frac{1}{4}$  sec. cor.  
 80.02 Fall 26 lks. N. of the cor. of secs. 19, 24, 25 and 30, on E. bdy. of Tp., described in field notes of current group No. 107.

Thence,  
 N.  $89^{\circ} 43'$  W., on a true line bet. secs. 24 and 25. Over mountainous land, thru scattering undergrowth. Desc. over SW. slope.  
 16.90 Center of canyon, 5 chs. wide, course N.  $15^{\circ}$  W.

. Survey of part of the Subdivisions of T. 27 N., R. 10 W.

Chains  
 28.10 Asc. 230 ft. over NE. slope to  
 36.80 Spur, slopes N. Desc. 137 ft. over NW. slope to  
 40.01 Wash, 3.50 chs. wide, course N. 15° E.  
 Set an iron post, 3 ft. long, 1 in. in diam., 8 ins.  
 in the ground to bed rock, deposit stone marked cross  
 (X) at base of post, and raise a mound of stone around  
 post, for 1/4 sec. cor., marked on brass cap



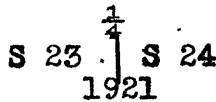
61.92 Asc. 430 ft. over broken E. slope to  
 Thence over precipitous cliffs by triangulation, as  
 hereinbefore described, ascending 575 ft.  
 78.99 Thence by chaining.  
 80.02 The cor. of secs. 23, 24, 25 and 26.  
 Land; mountainous.  
 Soil; rocky, 4th rate.  
 Timber; none.  
 Undergrowth; black brush and palo christi.

N. 0° 01' W., bet. secs. 23 and 24.  
 Over mountainous land, through scattering undergrowth.  
 It being impracticable to survey on true line, offset  
 East 18.23 chs. Thence

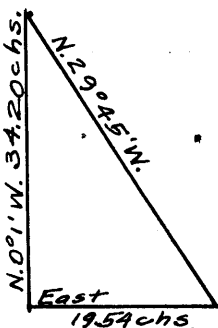
9.00 N. 0° 01' W., on offset line, through sec. 24. East 1.31  
 Desc. 260 ft. over N. slope. Foot of descent. Asc. 226 ft. to  
 21.98 Offset 1.31 chs. E. to avoid cliffs. Cor. secs. 23, 24,  
 Thence N. 0° 01' W., on offset line continuing measure-  
 ment.

40.00 Thence by traverse as follows:  
 N. 88° 43' W., 19.54 chs. to point on true line  
 S. 0° 01' E., .44 chs. to true point for 1/4  
 sec. cor.; where I

40.00 Set an iron post, 3 ft. long, 1 in. in diam., 6 ins. in  
 the ground to bed rock, deposit stone marked cross (X)  
 at base of post, and raise a mound of stone around  
 post, for 1/4 sec. cor., marked on brass cap



On account of precipitous cliffs it is impracticable  
 to chain. Vertical angle  
 to flag ahead on line, +12°; aux-  
 iliary flag brs. East 19.54 chs.;  
 from auxiliary flag, flag ahead  
 brs. N. 29° 45' W.; all bearings  
 checked by direct reading of the  
 solar, and all angles checked by  
 deflection.



Dist. by triangulation = 34.20 chs.  
 Dist. by traverse = 40.00 "  
 Total dist. = 74.20 "

46.00 (Approx. dist.) Canyon, 300 ft. below 1/4 sec. cor.,  
 course NE., asc. about 800 ft. over precipitous cliffs  
 to

74.20 Triangulation point on spur, sloping W., desc. 212 ft.,  
 dist. by chaining.

80.00 Set an iron post, 3 ft. long, 2 ins. in diam., 8 ins.  
 in the ground to bed rock, deposit stone marked cross  
 (X) at base of post, and raise a mound of stone around  
 post, for cor. of secs. 13, 14, 23 and 24, marked on  
 brass cap

V 4000



FOCK

Survey of part of Subdivisions of T. 27 N., R. 10 W.

Chains

T 27 N R 10 W  
 S 14 | S 13  
 S 23 | S 24  
 1921

Land; mountainous.  
 Soil; rocky, 4th rate.  
 Timber; none.  
 Undergrowth; black brush, yucca, cactus, Spanish bayonet  
 and cat claw.

40.00 S. 89° 43' E., on a random line bet. secs. 13 and 24.  
 64.35 Set temp. 1/4 sec. cor.  
 To edge of precipitous cliffs. Thence by traverse in  
 sec. 24 as follows:  
     S. 63 1/4° E.,           4.20 chs.  
     S. 61 1/4° E.,           10.30 chs.  
     East                    2.94 chs.  
     North                   7.20 chs.  
 80.08 Intersect the true point for cor. of secs. 13, 18, 19 and  
 24, witnessed by cor. at 0.79 chs. North, as described  
 in the field notes of current Group 107.  
 The true course and dist. of line bet. secs. 13 and 24  
 are therefore N. 89° 49' W., 80.08 chs.  
 From the true point for cor. of secs. 13, 18, 19 and 24.  
 N. 89° 49' W., on a true line bet. secs. 13 and 24.  
 Over mountainous land, thru scattering undergrowth, dist.  
 by traverse as hereinbefore described.  
 15.73 End of traverse. Thence desc. 220 ft. over W. slope to  
 27.07 Top of cliff, 75 ft. high. Desc. 215 ft. over cliffs  
 and steep W. slope to  
 28.90 Foot of descent.  
 31.00 Wash, 2 chs. wide, 20 ft. deep, course N. 25° E.  
     Asc. 194 ft. over E. slope to  
 38.00 Spur, slopes N., over N. slope to  
 40.04 Set an iron post, 3 ft. long, 1 in. in diam., 8 ins in  
 the ground to bed rock, deposit stone marked (X) at  
 base of post, and raise a mound of stone around post  
 for 1/4 sec. cor., marked on brass cap

1/4 S 13  
 S 24  
 1921

74.00 Asc. 400 ft. over broken NE. slope to  
 Top of ascent. Desc. 125 ft. to  
 77.60 Wash, 50 lks. wide, course N. 5° E.  
 80.08 The cor. of secs. 13, 14, 23 and 24.  
 Land; mountainous.  
 Soil; rocky, 4th rate.  
 Timber; none.  
 Undergrowth; black brush, cactus and cat claw.

N. 0° 01' W., bet. secs. 13 and 14.  
 Over mountainous land, thru scattering undergrowth.  
 Desc. 50 ft. to  
 3.00 Gulch, course N. 70° E. Asc. 100 ft. to  
 15.00 Spur, slopes N. 70° E. Desc. 365 ft. over N. slope to  
 40.00 Set an iron post, 3 ft. long, 1 in. in diam., 8 ins. in  
 the ground to bed rock, deposit stone marked cross (X)  
 at base of post, and raise a mound of stone around  
 post for 1/4 sec. cor., marked on brass cap

S 14 | S 13  
 1921

## Survey of part of Subdivisions of T. 27 N., R. 10 W.

Chains Cor. stands on edge of rim rock on NE. slope.  
Continue descent 100 ft. to  
44.40 Gulch, 40 lks. wide, course E. Asc. 200 ft. to  
57.40 Spur, slopes S.  $70^{\circ}$  E. Desc. 125 ft. over NE. slope to  
67.00 Draw, course E. Asc. 63 ft. to  
72.00 Spur, slopes E. Desc. 70 ft. to  
75.56 Top of rim rock, 80 ft. high, bears SE. and NW.  
Continue descent 230 ft. to  
80.00 Mark cross (X) at exact cor. point, and over same set  
an iron post, 3 ft. long, 2 ins. in diam., on bed  
rock, supported in a mound of stone, for cor. of secs.  
11, 12, 13 and 14, marked on brass cap

T 27 N R 10 W  
S 11 | S 12  
S 14 | S 13  
1921

Cor. stands on NE. slope of E. side of rocky spur.

Land; mountainous.

Soil; rocky; 4th rate.

Timber; none.

Undergrowth; black brush, cat claw, and cactus.

9.92 S.  $89^{\circ} 49'$  E., on a random line bet. secs. 12 and 13.  
Impossible to continue on random line; traverse as  
follows up Diamond Creek:

South	.10	chs.
S. $35\frac{3}{4}^{\circ}$ E.,	14.60	"
N. $54\frac{1}{2}^{\circ}$ E.,	5.17	"
N. $42\frac{1}{2}^{\circ}$ E.,	7.80	"
N. $85\frac{3}{4}^{\circ}$ E.,	3.15	"
S. $31\frac{1}{2}^{\circ}$ E.,	3.80	"
S. $39\frac{1}{2}^{\circ}$ E.,	3.35	"
N. $46\frac{1}{2}^{\circ}$ E.,	6.10	"
N. $38\frac{1}{2}^{\circ}$ E.,	4.20	"
N. $1\frac{3}{4}^{\circ}$ E.,	1.25	"
West,	2.23	"
South	.10	" to

40.00 Set temp.  $\frac{1}{4}$  sec. cor., S.  $89^{\circ} 49'$  E., of the cor. of  
secs. 11, 12, 13 and 14.

From temp.  $\frac{1}{4}$  sec. cor.:

East,	2.23	chs.
North	1.25	"
S. $81^{\circ}$ E.,	3.70	"
S. $65\frac{1}{4}^{\circ}$ E.,	13.60	"
N. $48\frac{1}{8}^{\circ}$ E.,	7.10	"
N. $73^{\circ}$ E.,	6.30	"
S. $53^{\circ}$ E.,	3.30	"
S. $76\frac{3}{4}^{\circ}$ E.,	1.40	"
S. $34^{\circ}$ E.,	3.20	"
N. $57\frac{1}{4}^{\circ}$ E.,	5.40	"
N. $17\frac{1}{4}^{\circ}$ E.,	.88	"
South	0.67	" to

80.22 Intersect cor. of secs. 7, 12, 13 and 18 on E. bdy. of  
Tp., described in field notes of current group No.  
107.

The true course and distance of this mile are, therefore  
N.  $89^{\circ} 44'$  W., 80.22 chs.

Thence

N.  $89^{\circ} 44'$  W., on a true line bet. secs. 12 and 13.  
Over mountainous land, thru scattering undergrowth.

Dist. by traverse as hereinbefore described.

Thru Diamond Creek Canyon, high cliffs forming each  
canyon wall.

40.11 Set an iron post, 3 ft. long, 1 in. in diam., 12 ins. in  
the ground to bed rock, deposit stone marked cross (X)  
at base of post, and raise a mound of stone around

Survey of part of Subdivisions of T. 27 N., R. 10 W.

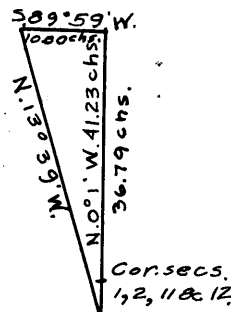
Chains

post, for  $\frac{1}{4}$  sec. cor., marked on brass cap

$\frac{1}{4}$   $\frac{S 12}{S 13}$   
1921

70.30 Cor. stands on E. slope about 100 ft. above creek.  
Leave Diamond Creek, course NW. Asc, about 300 ft. over steep NE. slope, dist. by chaining.  
80.22 The cor. of secs. 11, 12, 13 and 14.  
Land; mountainous.  
Soil; rocky, 4th rate.  
Timber; none.  
Undergrowth; black brush, and cactus.

10.25 N.  $0^{\circ} 01' W.$ , bet. secs. 11 and 12.  
Over mountainous land, thru scattering undergrowth.  
Desc. 328 ft. over NE. slope to Center of Diamond Creek Canyon, 2 chs. wide, course NW. On account of precipitous cliffs on N. side of canyon it is impossible to chain. Vertical angle to flag on line, from point 4.44 chs. S.  $0^{\circ} 01' E.$  of cor. of secs. 1, 2, 11 and 12, is  $+3^{\circ}$ ; auxiliary flag from same point brs. N.  $13^{\circ} 39' W.$ ; from flag ahead auxiliary flag brs. S.  $89^{\circ} 59' W.$ , 10.00 chs. dist.; all bearings checked by direct reading of the solar, and all angles checked by deflection.



Dist. by triangulation = 41.23 chs.  
41.23 - 4.44 = 36.79 chs.

36.79 Triangulation point on spur, sloping W. 470 ft. above Diamond Creek.

Thence by chaining,  
40.00 Desc. 45 ft. over N. slope to Set an iron post, 3 ft. long, 1 in. in diam., 6 ins. in the ground to bed rock, deposit stone marked cross at base of post, and raise a mound of stone around post for  $\frac{1}{4}$  sec. cor., marked on brass cap

S 11  $\frac{1}{4}$  S 12  
1921

56.00 Continue descent 354 ft. over N. slope to Gulch, 30 lks. wide, course S.  $60^{\circ} W.$  Asc. 580 ft. over SE. slope to

80.00 Set an iron post, 3 ft. long, 2 ins. in diam., 16 ins. in the ground to bed rock, deposit stone marked cross, (X) at base of post, and raise a mound of stone around post for cor. of secs. 1, 2, 11 and 12, marked on brass cap

T 27 N R 10 W  
S 2 | S 1  
S 11 | S 12  
1921

Land; mountainous.  
Soil; rocky, 4th rate.  
Timber; none.  
Undergrowth; black brush, cat claw and cactus.

## Survey of part of Subdivisions of T. 27 N., R. 10 W.

Chains

The rugged and mountainous nature of the country makes and further survey of this range of secs. impossible.

From the cor. of secs. 2, 3, 34 and 35 on S. bdy. of Tp. described in Book "F".

N.  $0^{\circ} 01'$  W., bet. secs. 34 and 35.

Over rolling land, thru dense timber and undergrowth.

3.00 Ravine, 20 ft. deep, course E., asc. 30 ft.

7.60 Spur, slopes NE., desc. 87 ft. to

21.60 Asc. 100 ft. to

40.00 Set an iron post, 3 ft. long, 1 in. in diam., 12 ins. in the ground to bed rock, supported in a mound of stone, for  $\frac{1}{4}$  sec. cor., marked on brass cap

$\frac{1}{4}$   
 S 34 | S 35  
 1921

From which

A juniper, 8 ins. in diam., bears N.  $67^{\circ}$  E., 33 lks. dist. marked  $\frac{1}{4}$  S 35 B T.

A juniper, 10 ins. in diam., bears S.  $81^{\circ}$  W., 56 lks. dist. marked  $\frac{1}{4}$  S 34 B T.

Continue ascent.

48.70 Ridge, bears E. and W. Leave timber, desc. 130 ft. to

80.00 Set an iron post, 3 ft. long, 2 ins. in diam., 14 ins. in the ground to bed rock, deposit stone marked cross (X) at base of post, and raise a mound of stone around post, for cor. of secs. 26, 27, 34 and 35, marked on brass cap

T 27 N R 10 W  
 S 27 | S 26  
 S 34 | S 35  
 1921

Land; rolling.

Soil; gravelly, 2nd rate.

Timber; juniper.

Undergrowth; black brush, cat claw and cactus.

40.00 N.  $89^{\circ} 57'$  E., on a random line bet. secs. 26 and 35.

79.86 Set temp.  $\frac{1}{4}$  sec. cor.

Intersect N. and S. line 17 lks. S. of the cor. of secs. 25, 26, 35 and 36.

Thence

S.  $89^{\circ} 50'$  W., on a true line bet. secs. 26 and 35.

Over rolling land, thru low undergrowth.

Asc. 150 ft. over E. slope to

12.00 Top of ascent. Desc. 70 ft. over NW. slope to

20.00 Gulch, 40 lks. wide, course NE. A few pinyon at this point. Asc. 275 ft. over E. slope to

39.93 Mark cross (X) at exact cor. point, and over same set an iron post, 3 ft. long, 1 in. in diam., on bed rock supported in a mound of stone, for  $\frac{1}{4}$  sec. cor., marked on brass cap

$\frac{1}{4}$  S 26  
 S 35  
 1921

56.00 Spur, slopes N. Desc. 70 ft. to

59.85 Ravine, course N. Asc. 160 ft. over NE. slope to

79.86 The cor. of secs. 26, 27, 34 and 35.

Land; rolling.

Soil; gravelly, 2nd rate. Timber, none.

Undergrowth; black brush, cat claw, and cactus.

Survey of part of Subdivisions of T. 27 N., R. 10 W.

Chains N. 0° 01' W., bet. secs. 26 and 27.  
 Over rolling land; thru scattering timber and low brush.  
 Desc. 236 ft. over gradual N. slope to  
 40.00 Set an iron post, 3 ft. long, 1 in. in diam., 16 ins. in  
 the ground to bed rock, deposit a stone marked cross  
 (X) at base of post, and raise a mound of stone around  
 post, for 1/4 sec. cor., marked on brass cap

$$\begin{array}{c} \frac{1}{4} \\ \uparrow \\ \text{S } 27 \quad \text{S } 26 \\ 1921 \end{array}$$

42.50 Ravine, course W. Asc. 110 ft. over S. slope to  
 61.00 Small spur, slopes SW., along W. slope.  
 74.00 Ravine, course S. 60° W.  
 80.00 Set an iron post, 3 ft. long, 2 ins. in diam., 14 ins. in  
 the ground to bed rock, deposit stone marked cross  
 (X) at base of post, and raise a mound of stone around  
 post, for cor. of secs. 22, 23, 26 and 27, marked on  
 brass cap

$$\begin{array}{cc} \text{T } 27 \text{ N} & \text{R } 10 \text{ W} \\ \hline \text{S } 22 & \text{S } 23 \\ \hline \text{S } 27 & \text{S } 26 \\ 1921 \end{array}$$

Land; rolling.  
 Soil; gravelly and rocky, 3rd rate.  
 Timber; juniper.  
 Undergrowth; black brush, cat claw, and cactus.

40.00 N. 89° 50' E., on a random line bet. secs. 23 and 26.  
 67.84 Set temp. 1/4 sec. cor.  
 Rim rock, bears N. and S. Impossible to chain, vertical  
 angle to flag "A" 18.10 chs. East  
 of the true point for cor. of secs.  
 23, 24, 25 and 26, - 31 1/2°; bear-  
 ing is S. 89° 54' E.; auxiliary  
 flag brs. N. 55° 24' E.; from  
 flag "A" auxiliary flag brs. True point  
 North 21.00 chs. dist.; all for cor. secs  
 23, 24, 25 & 26 18.10 chs. "A"

Dist. by triangulation = 30.36 chs.  
 Dist. on random = 67.84 "  
 Total dist. = 98.20 "  
 Return measure = 18.10 "  
 Length of line = 80.10 "

The true course and dist. of the line bet. secs. 23 and  
 26 are therefore S. 89° 54' W., 80.10 chs.

Thence  
 S. 89° 54' W., on a true line bet. secs. 23 and 26.  
 Over mountainous land, through scattering undergrowth,  
 dist. by triangulation, as hereinbefore described.  
 Asc, over cliffs, 670 ft.  
 12.25 Rim rock, bears N. and S. Thence by chaining.  
 Continue ascent 105 ft. over E. slope.  
 18.18 Rocky spur, slopes E., along easterly breaks of cliff.  
 29.60 Ridge, bears SE. and NW. along S. slope.  
 40.05 Set an iron post, 3 ft. long, 1 in. in diam., 12 ins.  
 in the ground to bed rock, deposit stone marked cross  
 (X) at base of post, and raise a mound of stone around  
 post, for 1/4 sec. cor., marked on brass cap

$$\frac{1}{4} \frac{\text{S } 23}{\text{S } 26}$$
 1921

47.00 Spur, slopes SE., desc. 150 ft. to

Survey of part of Subdivisions of T. 27 N., R. 10 W.

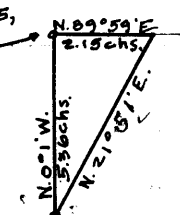
Chains  
 56.00 Ravine, course SE., along S. slope to cor.  
 73.60 Ravine, course SW.  
 80.10 The cor. of secs. 22, 23, 26 and 27.  
 Land; mountainous and rolling.  
 Soil; rocky, 4th rate.  
 Timber; none.  
 Undergrowth; black brush, cat claw and cactus.

N. 0° 01' W., bet. secs. 22 and 23.  
 Over hilly land, thru scattering timber and undergrowth.  
 Asc. 206 ft. over S. slope to  
 21.80 Spur, slopes NW. Desc. 215 ft. over NE. slope to  
 32.80 Wash, 15 lks. wide, course SW., along E. slope  
 40.00 Set an iron post, 3 ft. long, 1 in. in diam., 16 ins. in  
 the ground to bed rock, deposit stone marked cross  
 (X) at base of post, and raise a mound of stone around  
 post, for 1/4 sec. cor., marked on brass cap



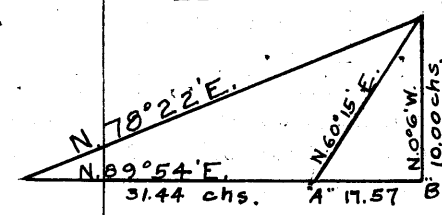
40.30 Small ravine, course SE., asc. 208 ft.  
 62.00 Ridge, bears E. and W.  
 Desc. 350 ft. over steep N. slope to  
 74.64 Top of cliff, bears E. and W. Impossible to chain, Set  
 flag ahead on line, auxiliary flag brs. N.  
 21° 51' E.; from flag ahead, auxiliary flag  
 brs. N. 89° 59' E., 2.15 chs. dist.; all  
 bearings checked by direct reading of the  
 solar and all angles checked by deflection  
 Dist. by triangulation = 5.36 chs.  
 Dist. by chaining = 74.64 chs.  
 Total dist. = 80.00 chs.

Cor. secs. 14, 15, 22 & 23.



80.00 330 ft. below triangulation pt., set a blue limestone  
 18 x 12 x 8 ins., 8 ins. in the ground for cor. of  
 secs. 14, 15, 22 and 23, marked with 3 notches on S.  
 and 2 notches on E. edges.  
 Raise a mound of stone, 3 1/2 ft. base, 2 ft. high W. of  
 cor.  
 Land; hilly and mountainous.  
 Soil; rocky, 4th rate.  
 Timber; juniper.  
 Undergrowth; black brush, cat claw, and cactus.

N. 89° 54' E., on a random line, bet. secs. 14 and 23.  
 Impracticable to chain from this cor.  
 From a point 5.36 chs. S. 0° 01' E. of the cor. of secs.  
 14, 15, 22 and 23. Cor. secs. 14, 15, 22 & 23.  
 N. 89° 54' E., on random offset line, through sec. 23.  
 10.27 Thence N. 0° 01' W., 5.36 chs. to random line and con-  
 tinue N. 89° 54' E., on a random line, bet. secs.  
 14 and 23. Impracticable to chain. Set flags "A"  
 and "B" ahead on random line; vertical  
 angle to "A" is -12°; vertical angle  
 from "A" to "B" is +12°; auxiliary  
 flag brs. N. 78° 22' E.; from "A" aux-  
 iliary flag brs. N. 60° 15' E., and  
 from "B" auxiliary flag brs. N. 0° 6'  
 W., 10.00 chs. dist., all bearings  
 checked by direct reading of the solar, and all angles  
 checked by deflection.



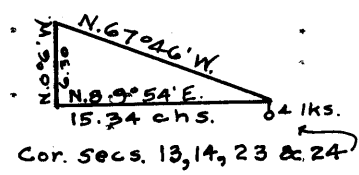
Dist. by triangulation to "B" = 49.01 chs.  
 " " " "B" to "A" = 17.57 chs.  
 Total distance to "A" on random line, = 41.71 chs.

Survey of part of Subdivisions of T. 27 N., R. 10 W.

Chains

Total dist. to "B" on random line, 59.28 chs.  
 From "A", S. 89° 54' W., 1.71 chs., and at  
 40.00 Set temp. 1/4 sec. cor.  
 59.28 Continue N. 89° 54' E., dist. by chaining.  
 64.50 Impossible to chain from this point.

Vertical angle to flag on random line, -41°; auxiliary flag brs. N. 0° 6' W., 6.30 chs. dist.; from flag ahead, auxiliary flag brs. N. 67° 46' W.; all bearings checked by direct reading of the solar, and all angles checked by deflection.  
 Dist. by triangulation = 15.34 chs.  
 " on random line = 64.50 "  
 Total dist. = 79.84 "



79.84 Intersect N. and S line, 4 lks. N. of the cor. of secs. 13, 14, 23 and 24.

Thence S. 89° 56' W., on a true line, bet. secs. 14 and 23. Over mountainous land, through scattering undergrowth. Dist. by triangulation, as hereinbefore described.

15.34 Top of cliff, brs. N. and S., 880 ft. above cor. Continue ascent.

20.56 Flat spur brs. North. Thence by triangulation, descending 260 ft.

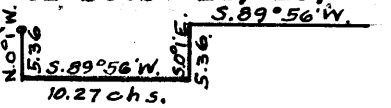
38.13 Thence by chaining.

39.92 Mark cross (X) at exact cor. point, and over same, set an iron post, 3 ft. long, 1 in. in diam., on bed rock, supported in a mound of stone, for 1/4 sec. cor., marked on brass cap

1/4 S 14  
S 23  
1921

Cor. stands at base of cliff 75 ft. high, bearing NW. and SE.

69.57 Asc, over cliffs, 440 ft., dist. by triangulation.  
 Thence S. 0° 1' E., 5.36 chs.  
 Thence S. 89° 56' W., 10.27 chs.  
 Thence N. 0° 01' W., 5.36 " by triangulation as described in the field notes of mile bet. secs. 22 and 23, to the cor. of secs. 14, 15, 22 and 23.



Land, mountainous. Soil, rocky, 4th rate. Timber; none. Undergrowth; black brush, cat claw, and cactus.

N. 0° 01' W., bet. secs. 14 and 15. Over mountainous land, through scattering undergrowth. On account of precipitous cliffs, facing N. W., it is impossible to chain on true line. Therefore proceed by offset and traverse as follows:

West 2.15 chs.  
 N. 10° W., 21.46 chs.  
 Descending 566 ft. down draw and over cliffs.  
 North 18.87 chs.  
 East 4.90 " up draw, to a point 680. ft. below sec. cor., and 0.95 chs. West of the true point for 1/4 sec. cor., where I

Mark cross (X) at exact witness cor. point, and over same set an iron post, 3 ft. long, 1 in. in diam., on bed rock, supported in a mound of stone, for witness cor. to the 1/4 sec. cor., marked on brass cap

1/4  
S 15 | S 14 W C  
1921

Survey of part of Subdivisions of T. 27 N., R. 10 W.

Chains Cor. stands at W. base of high cliff. True point for cor. inaccessible.  
 From witness cor., offset 4.90 chs. West. Thence N. 0° 01' W., on offset line counting measurement from initial cor.  
 45.00 Edge of W. base of cliff, bears SE. and NE. Desc. 200 ft.  
 57.48 Thence East 5.85 chs. to true line and continue N. 0° 1' W., bet. secs. 14 and 15.  
 Desc. 250 ft. over N. slope to .  
 80.00 Set an iron post, 3 ft. long, 2 ins. in diam., 6 ins. in the ground to bed rock, deposit stone marked cross (X) at base of post, and raise a mound of stone around post, for cor. of secs. 10, 11, 14 and 15, marked on brass cap

T 27 N R 10 W  
 S 10 | S 11  
 S 15 | S 14  
 1921

Land; mountainous.  
 Soil; rocky, 4th rate.  
 Timber; none.  
 Undergrowth; cat claw, black brush, and cactus.

Cor. secs. 10, 11, 14 & 15  
 N. 89° 56' E., on a random line bet. secs. 11 and 14. About 6 chs. E. of cor. line passes over precipitous cliffs over which it is impossible to chain, vertical angle to flag on random line, -4½°;  
 N. 89° 56' E. 26.91 chs. auxiliary flag brs. S. 58° 31' E.; from flag ahead, auxiliary flag brs. S. 21° 54' W., 14.28 chs. all bearings checked by direct reading of the solar and all angles checked by deflection.

Dist. by triangulation = 26.91 chs.

26.91 Triangulation point.

Thence N. 89° 56' E., on a random line, bet. secs. 11 and 14, Dist. by chaining.

40.00 Set temp. ¼ sec. cor. Impracticable to chain from here. Vertical angle to flag ahead, 0°; auxiliary flag brs. S. 61° 3' E.; from flag ahead, auxiliary flag brs. S. 0° 4' E. 4.00 chs. dist., all bearings checked by direct reading of the solar, and all angles checked by deflection.

Dist. on random = 40.00 chs.  
 Dist. by triangulation = 7.21 chs.  
 Total dist. = 47.21 chs.

47.21 Triangulation point.

Thence N. 89° 56' E., on a random line bet. secs. 11 and 14, dist. by chaining.

80.12 Intersect N. and S. line 19 lks. N. of the cor. of secs. 11, 12, 13 and 14.

Thence N. 89° 56' W., on a true line bet. secs. 11 and 14. Over mountainous land, thru scattering undergrowth. Asc. 57 ft. over E. slope to

1.60 Spur, slopes N. Desc. 160 ft. over broken W. slope to  
 17.20 Gulch, 30 lks. wide, 40 ft. deep, course N. 30° E.  
 Asc. 350 ft. over E. slope to



Survey of part of Subdivisions of T. 27 N., R. 10 W.

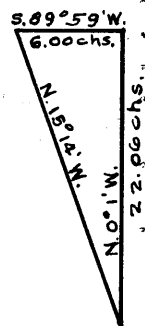
Chains

28.40 Spur, slopes NE., desc. 60 ft.  
 32.91 Rim of canyon brs. N. and S., thence by triangulation  
 36.40 Gulch, 160 ft. deep, course N. 20° W., near head, cliffs  
 75 ft. high.  
 40.06 Set an iron post, 3 ft. long, 1 in. in diam., 8 ins. in  
 the ground to bed rock, deposit stone marked cross  
 (X) at base of post, and raise a mound of stone, around  
 post for 1/4 sec. cor., marked on brass cap

1/4 S 11  
 S 14  
 1921

Cor. stands on edge of rim rock, bearing S. 20° E., and  
 N. 20° W., asc. 135 ft., dist. by chaining.  
 45.98 Desc. 60 ft. to  
 53.21 Thence by triangulation.  
 59.20 Spur, slopes N. 20° W.  
 59.52 (Approximate) Gulch, course NW., 180 ft. deep.  
 69.00 Gulch, 200 ft. deep, course NE.  
 74.00 Rim rock, bears N. and S., asc. 145 ft. to  
 80.12 The cor. of secs. 10, 11, 14 and 15.  
 Land; mountainous.  
 Soil; rocky, 4th rate.  
 Timber; none.  
 Undergrowth; cat claw, black brush, and cactus.

N. 0° 01' W., bet. secs. 10 and 11.  
 Over broken cliffs.  
 4.00 Spur, slopes N. 30° E. Desc. 220 ft. over N. slope to  
 13.83 Edge of rim rock, bears NE. and SW.  
 From this point line descends into  
 Diamond Creek, down precipitous  
 cliffs, over which it is imposs-  
 ible to chain; vertical angle to  
 flag ahead, -2 3/4°; auxiliary flag  
 brs. N. 15° 14' W.; from flag  
 ahead, auxiliary flag brs. S. 89°  
 59' W., 6.00 chs. dist.; all bear-  
 ings checked by direct reading of  
 the solar, and all angles checked  
 by deflection.

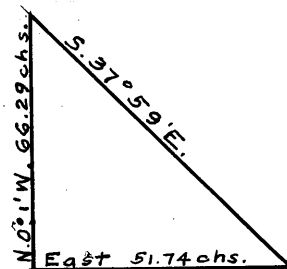


Dist. by triangulation = 22.06 chs.  
 Dist. by chaining = 13.83 chs.  
 Total dist. = 35.89 chs.

35.70 Center of Diamond Creek Wash, 2 chs. wide, course W.,  
 containing stream of water 12 lks. wide, 6 ins. deep.  
 35.89 Triangulation point. Asc. 200 ft. over steep S. slope,  
 dist. by chaining.  
 40.00 Mark cross (X) at exact cor. point and over same set an  
 iron post, 3 ft. long, 1 in. in diam., on bed rock  
 supported in a mound of stone, for 1/4 sec. cor. marked  
 on brass cap

S 10 | S 11  
 1921

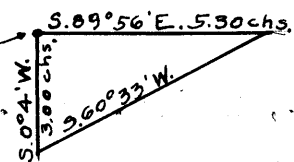
Cor. stands at base of wall on SE. slope of rocky spur.  
 It is impossible to chain up precipitous  
 N. wall of canyon. Set flag ahead on  
 line. From cor. of secs. 10, 11, 14  
 and 15, auxiliary flag brs. East 51.74  
 chs.; from flag ahead, auxiliary flag  
 brs. S. 37° 59' E.; all bearings  
 checked by direct reading of the solar  
 and all angles checked by deflection.



Dist. by triangulation = 66.29 chs.  
 66.29 Triangulation point. Thence by chaining.

Cor. secs. 10, 11, 14 & 15

## Survey of part of Subdivisions of T. 27 N., R. 10 W.

Chains 80.00	Desc. 110 ft. over NW. slope to Set a granite stone, 22 x 14 x 8 ins. 12 ins. in the ground for cor. of secs. 2, 3, 10 and 11, marked with 5 grooves on S. and 2 grooves on E. faces. Raise a mound of stone, 2 ft. base, 1½ ft. high W. of cor. Land; mountainous. Soil; rocky, 4th rate. Timber; none. Undergrowth; black brush, cat claw and cactus.
40.00	S. 89° 56' E., on a random line, bet. secs. 2 and 11. Set temp. ¼ sec. cor. Impracticable to chain from here. Vertical angle to flag on random line, +42°; auxiliary flag brs. S. 0° 4' W., 3.00 chs. dist; from flag on random line, auxiliary flag brs. S. 60° 33' W.; all bearings checked by direct read- ing of the solar, and all angles check- ed by deflection.
¼ Cor. secs. 2 & 11	
	Dist. by triangulation = 5.30 chs. Dist. on random = 40.00 " Total dist. = 45.30 " (dist. by chaining.)
80.14	Thence continue S. 89° 56' E., on a random line bet. secs. 2 and 11, Intersect N. and S. line 21 lks. S. of the cor. of secs. 1, 2, 11 and 12. Thence S. 89° 55' W., on a true line, bet. secs. 2 and 11. Over mountainous land, through scattering undergrowth. Desc. 120. ft.
7.37	Over broken S. slope.
23.70	Asc. 180 ft.; over cliff.
27.90	Top of cliff, brs. NE. and SW. Asc. 15 ft.
29.90	Spur slopes SW. Desc. 160 ft.
34.84	Top of cliff, 300 ft. high, brs. NW. and SE. Thence by triangulation, as hereinbefore described.
35.85	(Approximate) Base of cliff, brs. NW. and SE. Desc. 90 ft.
40.07	Set an iron post, 3 ft. long, 1 in. in diam., 12 ins. in the ground to bed rock; deposit stone marked cross (X) at base of post, and raise a mound of stone around post, for ¼ sec. cor., marked on brass cap
	¼ $\frac{S 2}{S 11}$ 1921
44.00	Desc. 30 ft., dist. by chaining.
69.65	Wash, 40 lks. wide, course S. Asc. 200 ft.
80.14	Spur, slopes S. 20° W. Desc. 300 ft. The cor. of secs. 2, 3, 10 and 11. Land; mountainous. Soil; rocky, 4th rate. Timber; none. Undergrowth; black brush, cat claw, and cactus.

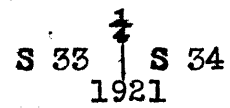
The rugged and mountainous nature of the country makes any further survey of this range of secs. impossible.

From the cor. of secs. 3, 4, 33 and 34, on S. bdy. of  
Tp., described in Book "F"  
N. 0° 02' W., bet. secs. 33 and 34.  
Over rolling land, thru scattering timber and dense

BOOK 332

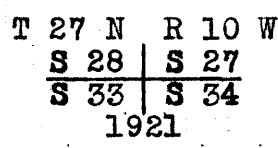
Survey of part of Subdivisions of T. 27 N., R. 10 W.

Chains  
 .50 undergrowth.  
 .50 Spur, SW. Desc.  
 3.84 Wash, 15 lks. wide, course W. Asc. 210 ft. over SE.  
 slope to  
 17.00 Spur, slopes SW., continue asc.  
 23.00 Spur, slopes SW., continue asc.  
 32.30 Spur, slopes NW., desc. 80 ft. to  
 40.00 Set an iron post, 3 ft. long, 1 in. in diam., on bed  
 rock, supported in a mound of stone, for  $\frac{1}{4}$  sec. cor.,  
 marked on brass cap



From which,  
 A juniper, 10 ins. in diam., bears S.  $25\frac{1}{8}^\circ$  E., 42  
 lks. dist. marked  $\frac{1}{4}$  S 34 B T.  
 A juniper, 10 ins. in diam., bears N.  $47^\circ$  W., 37  
 lks. dist. marked  $\frac{1}{4}$  S 33 B T.

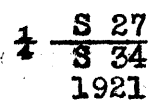
Desc. 70 ft. over NE. slope to  
 43.42 Wash, 15 lks. wide, course NW.. Asc. 154 ft. over SW.  
 slope to  
 58.50 Spur, slopes NW. Desc. 265 ft. over NE. slope to  
 80.00 Set an iron post, 3 ft. long, 2 ins. in diam., 10 ins.  
 in the ground to bed rock, deposit stone marked cross  
 (X) at base of post and raise a mound of stone around  
 post, for cor. of secs. 27, 28, 33 and 34, marked on  
 brass cap



From which,  
 A juniper, 6 ins. in diam., bears N.  $84\frac{3}{8}^\circ$  E., 90  
 lks. dist. marked T 27 N R 10 W S 27 B T.  
 A juniper, 12 ins. in diam., bears N.  $16\frac{3}{4}^\circ$  W.,  
 167 lks. dist., marked T.27 N R 10 W S 28 B T.  
 No other trees within limits.

Land; rolling.  
 Soil; rocky, 4th rate.  
 Timber; juniper.  
 Undergrowth; black brush, cactus, yucca, Indian tea and  
 palo christi.

40.00 N.  $89^\circ 57'$  E., on a random line bet. secs. 27 and 34.  
 Set temp.  $\frac{1}{4}$  sec. cor.  
 80.20 Intersect N. and S. line, 11 lks. N. of the cor. of  
 secs. 26, 27, 34 and 35.  
 Thence,  
 N.  $89^\circ 58'$  W., on a true line bet. secs. 27 and 34.  
 Over rolling land, thru scattering timber and dense  
 undergrowth.  
 Desc. 128 ft. over W. slope to  
 10.60 Ravine, 10 lks. wide, course N. Asc. 145 ft. over E.  
 slope to  
 24.40 Ridge, bears N. and S. Desc. 190 ft. over W. slope to  
 40.10 Set an iron post, 3 ft. long, 1 in. in diam., 8 ins. in  
 the ground to bed rock, deposit stone marked cross  
 at base of post and raise a mound of stone around post,  
 for  $\frac{1}{4}$  sec. cor., marked on brass cap



## Survey of part of Subdivisions of T. 27 N., R. 10 W.

Chains	Continue descent 40 ft. over W. slope to						
42.80	Wash, 20 lks. wide, course NW. Asc. 100 ft. to						
50.20	Spur, slopes N. Desc. over NW. slope 50 ft. to						
56.20	Wash, 15 lks. wide, course N. 20° E. Asc. 140 ft. to						
66.00	Spur, slopes N.						
70.00	Spur, slopes NW., desc. 200 ft. to						
79.20	Wash, 20 lks. wide, course NW.						
80.20	The cor. of secs. 27, 28, 33 and 34.						
	Land; rolling.						
	Soil; rocky, 4th rate.						
	Timber; scattering juniper.						
	Undergrowth; black brush, yucca, cactus and Indian tea.						
N. 0° 02' W., bet. secs. 27 and 28.							
	Over mountainous land, thru scattering timber and undergrowth.						
1.70	Wash, 20 lks. wide, course NW. Asc. 76 ft. over SW. slope to						
7.00	Spur, slopes SW. Desc. 90 ft. along NW. slope to						
15.90	Spur, slopes NW., desc. 190 ft. to						
30.20	Spur, slopes W. Desc. 160 ft. over NW. slope to						
40.00	Mark a cross (X) on solid rock at exact cor. point and over same set an iron post, 3 ft. long, 1 in. in diam., supported in a mound of stone, for $\frac{1}{4}$ sec. cor., marked on brass cap						
$\begin{array}{c} \uparrow \\ \text{S } 28 \quad   \quad \text{S } 27 \\ \hline 1921 \end{array}$							
	On account of precipitous cliffs, forming walls of canyon, it is impracticable to chain. Vertical angle to flag ahead from 15.90 ch. point is +2°; from same point, auxiliary flag brs. N. 6° 49' W.; from flag ahead, auxiliary flag brs. S. 85° 39' W., 7.66 chs., all bearings checked by direct solar, and all angles checked by deflection.						
	<table style="margin-left: auto; margin-right: auto;"> <tbody> <tr> <td>Dist. by triangulation</td> <td>= 50.01 chs.</td> </tr> <tr> <td>Dist. by chaining</td> <td>= 15.90 chs.</td> </tr> <tr> <td>Total dist.</td> <td>= 65.91 chs.</td> </tr> </tbody> </table>	Dist. by triangulation	= 50.01 chs.	Dist. by chaining	= 15.90 chs.	Total dist.	= 65.91 chs.
Dist. by triangulation	= 50.01 chs.						
Dist. by chaining	= 15.90 chs.						
Total dist.	= 65.91 chs.						
52.00	(Approximate dist.) Wash in bottom of canyon, course W.						
65.91	Triangulation point, on N. rim of canyon, asc. slightly. Dist. by chaining.						
75.30	Spur, slopes W., desc. slightly to						
77.10	Top of bluff, desc. 190 ft. to						
80.00	Set an iron post, 3 ft. long, 2 ins. in diam., 10 ins. in the ground to bed rock, deposit stone marked cross (X) at base of post, and raise a mound of stone around post, for cor. of secs. 21, 22, 27 and 28, marked on brass cap						
$\begin{array}{c} \text{T } 27 \text{ N } \quad \text{R } 10 \text{ W} \\ \hline \text{S } 21 \quad   \quad \text{S } 22 \\ \hline \text{S } 28 \quad   \quad \text{S } 27 \\ \hline 1921 \end{array}$							
	Land; mountainous.						
	Soil; rocky, 4th rate.						
	Timber; juniper.						
	Undergrowth; black brush, cactus, yucca, Indian tea and palo christi.						
40.00	S. 89° 58' E., on a random line bet. secs. 22 and 27. Set temp. $\frac{1}{4}$ sec. cor.						
79.98	Intersect N. and S. line, 12 lks. S. of the cor. of secs. 22, 23, 26 and 27.						

BOOK 238

Survey of part of Subdivisions of T. 27 N., R. 10 W.

Chains Thence  
 S. 89° 57' W., on a true line bet. secs. 22 and 27.  
 Over rolling land, thru scattering timber and undergrowth  
 1.20 Small ravine, course SE.  
 18.50 Desc. 250 ft. over W. slope to  
 37.80 Wash, course S. Leave timber and asc. 23 ft. over E.  
 slope to  
 39.99 Set an iron post, 3 ft. long, 1 in. in diam., 10 ins.  
 in the ground to bed rock, deposit stone marked cross  
 (X) at base of post, and raise a mound of stone around  
 post for 1/4 sec. cor., marked on brass cap

1/4 S 22  
 S 27

1921

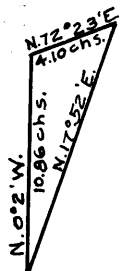
62.60 Continue ascent 170 ft. over E. slope to  
 Spur, slopes S., desc. slightly to  
 75.70 Top of bluff. Desc. 113 ft. to  
 79.98 The cor. of secs. 21, 22, 27 and 28.  
 Land; mountainous.  
 Soil; rocky, 4th rate.  
 Timber; juniper.  
 Undergrowth; black brush, cactus, yucca, Indian tea and  
 palo christi.

N. 0° 02' W., bet. secs. 21 and 22.  
 Over rolling land, thru dense undergrowth.  
 Desc. 180 ft. over steep N. slope to  
 4.20 Wash, 30 lks. wide, course SW.  
 Asc. 300 ft. over S. slope to  
 15.00 Spur, slopes SE., desc. slightly to  
 27.00 Wash, 10 lks. wide, course SE., asc. 100 ft. to spur  
 40.00 Mark cross (X) at exact cor. point, and over same set an  
 iron post, 3 ft. long, 1 in. in diam., on bed rock,  
 supported in a mound of stone for 1/4 sec. cor., marked  
 on brass cap

S 21 | S 22  
 1921

41.20 Spur, slopes SE. Desc. 34 ft. over N. slope to  
 46.20 Wash, 10 lks. wide, course SE. Asc. 75 ft. to  
 57.00 Spur, slopes E.  
 60.00 Wash, 10 lks. wide, course SE. Asc. 90 ft. over S.  
 slope to  
 68.51 Top of cliff, bears E. and W. Impracticable to chain  
 Vertical angle to flag ahead, -46°;  
 auxiliary flag brs. N. 17° 52' E.;  
 from flag ahead, auxiliary flag brs.  
 N. 72° 23' E., 4.10 chs. dist.; all  
 bearings checked by direct reading  
 of the solar, and all angles checked by  
 deflection

Dist. by triangulation = 10.86 chs.  
 Dist. by chaining = 68.51 chs.  
 Total dist. = 79.37 chs.



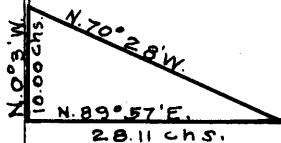
79.37 Triangulation point, about 740 ft. below top of cliff.  
 80.00 Set an iron post, 3 ft. long 2 ins. in diam., 12 ins.  
 in the ground to bed rock, deposit stone marked cross  
 (X) at base of post and raise a mound of stone around  
 post, for cor. of secs. 15, 16, 21 and 22, marked  
 on brass cap

T 27 N R 10 W  
 S 16 | S 15  
 S 21 | S 22  
 1921

## Survey of part of Subdivisions of T. 27 N., R. 10 W.

Chains Land; rolling and mountainous.  
Soil; rocky, 4th rate.  
Timber; none.  
Undergrowth; black brush, yucca, palo christi and cactus

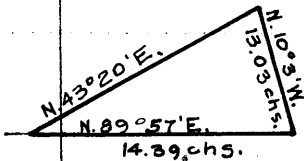
40.00 N.  $89^{\circ} 57' E.$ , on a random line bet. secs. 15 and 22.  
Set temp.  $\frac{1}{4}$  sec. cor. Impracticable to chain from this point



From 35.40 ch. point, vertical angle to flag ahead on random line is  $+18^{\circ}$ ; auxiliary flag brs. N.  $0^{\circ} 3' W.$ , 10.00 chs. dist., from flag ahead, auxiliary flag brs. N.  $70^{\circ} 28' W.$ , all bearings checked by direct reading of the solar, and all angles checked by deflection.

Dist. on random. = 35.40 chs.  
Dist. by triangulation = 28.11 chs.  
Total dist. = 63.51 chs.

63.51 Triangulation point. Impracticable to chain from here.  
Vertical angle to flag on random line,  $-21^{\circ}$ ; auxiliary flag brs. N.  $43^{\circ} 20' E.$ ; from flag on random line, auxiliary flag brs. N.  $10^{\circ} 3' W.$ , 13.03 chs. dist.; all bearings checked by direct reading of the solar, and all angles checked by deflection



Dist. on random = 63.51 chs.  
Dist. by triangulation = 14.39 chs.  
Total dist. = 77.90 chs.

77.90 Triangulation point.

Thence

N.  $89^{\circ} 57' E.$ , on a random line bet. secs. 15 and 22, dist. by chaining.

80.04 Intersect N. and S. line, 2 lks. S. of the cor. of secs. 14, 15, 22 and 23.

Thence

S.  $89^{\circ} 56' W.$ , on a true line bet. secs. 15 and 22.

Over mountainous land, through scattering undergrowth, dist. by chaining.

Asc. 360 ft.

2.14 Thence by triangulation.

16.53 Rocky spur extends N., desc. 480 ft. to

40.02 Set a blue limestone 16 x 16 x 8 ins., 8 ins. in the ground for  $\frac{1}{4}$  sec. cor., marked " $\frac{1}{4}$ " on N. face and raise a mound of stone, 2 ft. base,  $1\frac{1}{2}$  ft. high N. of cor.

Desc. 268 ft. over NW. slope, dist. by triangulation.

44.64 Thence by chaining.

51.20 Gulch, 15 lks. wide, course N.  $20^{\circ} E.$  Asc. 500 ft. over broken NE. slope to

80.04 The cor. of secs. 15, 16, 21 and 22.

Land; mountainous.

Soil; rocky, 4th rate.

Timber; none.

Undergrowth; black brush, cactus, yucca, Indian tea, and palo christi.

N.  $0^{\circ} 02' W.$ , bet. secs. 15 and 16.

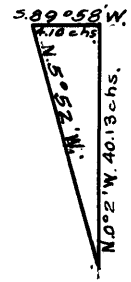
Over mountainous land, through scattering undergrowth. On account of precipitous cliffs, it is impracticable to chain.

Survey of part of Subdivisions of T. 27 N., R. 10 W.

Chains

Vertical angle to flag ahead,  $+10\frac{3}{4}^{\circ}$ ; auxiliary flag brs. N.  $5^{\circ} 52' W.$ ; from flag ahead, auxiliary flag brs. S.  $89^{\circ} 58' W.$  4.10 chs.; all bearings checked by direct reading of the solar, and all angles checked by deflection.

Dist. by triangulation = 40.13 chs.  
Return measure = .13 chs.  
Total dist. = 40.00 chs.



Topography on line is approximately as follows:

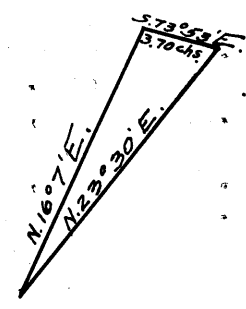
8.00  
14.00  
40.00

From cor. desc. 240. ft. over N. slope to Wash, course NE.  
Wash, course E. Asc. 810 ft. over ledges to Top of high peak, set an iron post, 3 ft. long, 1 in. in diam., 12 ins. in the ground to bed rock, deposit stone marked cross (X) at base of post, and raise a mound of stone around post, for  $\frac{1}{4}$  sec. cor., marked on brass cap

$\frac{1}{4}$   
S 16 | S 15  
1921

From  $\frac{1}{4}$  sec. cor. line descends about 200 ft. over cliffs where it is impossible to chain and at about 65.00 chs. is a high peak practically inaccessible.

Set flag ahead on a bearing N.  $16^{\circ} 7' E.$ ; auxiliary flag brs. N.  $23^{\circ} 30' E.$ ; from flag ahead, auxiliary flag brs. S.  $73^{\circ} 53' E.$ , 3.70 chs.; all bearings checked by direct reading of the solar, and all angles checked by deflection



Therefore course and dist. of triangulated line are N.  $16^{\circ} 07' E.$ , 28.55 chs.

Thence continue by traverse

N.  $35^{\circ} W.$ , 2.40 chs.  
N.  $34\frac{1}{2}^{\circ} W.$ , 9.60 chs.  
West " 1.13 "

77.31

To point on sec. line, 77.31 chs. N.  $0^{\circ} 2' W.$ , of the cor. of secs. 3, 4, 9 and 10.

80.00

Thence N.  $0^{\circ} 02' W.$ , on true line, dist. by chaining Desc. over N. slope 40 ft.  
On wide bench, set an iron post, 3 ft. long, 2 ins. in diam., 10 ins. in the ground to bed rock, deposit stone marked cross (X) at base of post, and raise a mound of stone around post, for cor. of secs. 9, 10, 15 and 16, marked on brass cap

T 27 N R 10 W  
S 9 | S 10  
S 16 | S 15  
1921

Land; mountainous.  
Soil; rocky, 4th rate.  
Timber; none.  
Undergrowth; black brush, palo christi, yucca and cactus.

40.00  
79.80

N.  $89^{\circ} 56' E.$ , on a random line bet. secs. 10 and 15.  
Set temp.  $\frac{1}{4}$  sec. cor.  
Intersect N. and S. line, 8 lks. S. of the cor. of secs. 10, 11, 14 and 15.  
Thence S.  $89^{\circ} 53' W.$ , on a true line bet. secs. 10 and 15.  
Over mountainous land, thru low undergrowth.

Survey of part of Subdivisions of T. 27 N., R. 10 W.

Chains  
 9.20 Asc. 100 ft. to  
 29.60 Spur, slopes NW. Desc. 325 ft. over SW. slope to  
 34.85 Gulch, 40 lks. wide, course NW. Asc. 145. ft. to  
 39.90 Spur, slopes NW. Desc. 46 ft. to  
 Set an iron post, 3 ft. long, 1 in. in diam., 8 ins.  
 in the ground to bed rock, deposit stone marked cross  
 (X) at base of post, and raise a mound of stone around  
 post, for  $\frac{1}{4}$  sec. cor., marked on brass cap

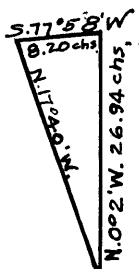
$\frac{1}{4}$   $\frac{S 10}{S 15}$   
 1921

47.30 Continue descent 36 ft. over W. slope to  
 Wash, 20 lks. wide, course NE. Asc. 416 ft. over NE.  
 slope to  
 63.30 Rim of canyon N. & S., over N. slope to  
 73.65 Wash, 6 lks. wide, course NE., asc. 265 ft. to cor.  
 79.80 The cor. of secs. 9, 10, 15 & 16.  
 Land; mountainous.  
 Soil; rocky, 4th rate.  
 Timber; none.  
 Undergrowth; black brush, palo christi, yucca, and  
 cactus.

1.50 N.  $0^{\circ} 02'$  W., bet. secs. 9 and 10.  
 Over mountainous land, thru low undergrowth.  
 Edge of cliff, 100 ft. high, bears SE. and NW.  
 Desc. 456 ft. over cliff and N. slope to  
 18.66 Wash, 2 chs. wide, 6 ft. deep, course NE. Asc. 77 ft.  
 over SE. slope to  
 24.70 Spur, slopes N.  $30^{\circ}$  E. Desc. 468 ft. over NW. slope to  
 40.00 Set an iron post, 3 ft. long, 1 in. in diam., 14 ins.  
 in the ground to bed rock, deposit stone marked cross  
 (X) at base of post, and raise a mound of stone around  
 post, for  $\frac{1}{4}$  sec. cor., marked on brass cap

$\frac{1}{4}$   
 S 9 | S 10  
 1921

44.00 Asc. 95 ft. over SE. slope to  
 49.60 Rocky spur, slopes NE. Desc. 280 ft. over NW. slope to  
 Edge of impassable cliffs.



Vertical angle  $+0$ , flag ahead,  $-4^{\circ}$ ;  
 auxiliary flag brs. N.  $17^{\circ} 40'$  W.; from  
 flag ahead auxiliary flag brs. S.  $77^{\circ} 58'$   
 W., 8.20 chs.; all bearings checked by di-  
 rect reading of the solar and all angles  
 checked by deflection

Dist. by triangulation	= 26.94 chs.
Dist. by chaining	= 49.60 chs.
Total dist	= <u>76.54</u> chs.

62.00 (Approx.) Gulch, 30 lks. wide, course NE. 400 ft.  
 below 49.60 ch. pt., asc. 275. ft. to  
 76.54 Triangulation point, asc. 50 ft. dist. by chaining.  
 80.00 Set an iron post, 3 ft. long, 2 ins. in diam., 8 ins.  
 in the ground to bed rock, deposit stone marked cross  
 (X) at base of post, and raise mound of stone around  
 post, for cor. of secs. 3, 4, 9 and 10, marked on  
 brass cap

T 27 N R 10 W  
 $\frac{S 4}{S 9} | \frac{S 3}{S 10}$   
 1921

Mark a cross (X) on face of rock wall one link east  
 of cor.



Survey of part of Subdivisions of T. 27 N., R. 10 W.

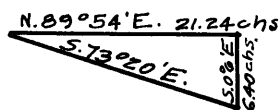
Chains

Land; mountainous.  
Soil; rocky 4th rate.  
Timber; none.  
Undergrowth; black brush, cactus, yucca, Indian tea, and palo christi.

1.10

The cor. of secs. 2, 3, 10 and 11, being plainly visible N. 89° 54' E., on a random line bet. secs. 3 and 10. Edge of precipitous cliffs over which it is impossible to chain.

Vertical angle to flag on random line, -30°; auxiliary flag brs. S. 73° 20' E.; from flag on random line, auxiliary flag brs. S. 0° 6' E., 6.40 chs. dist.; all bearings checked by direct reading of the solar, and all angles checked by deflection



Dist. by triangulation = 21.24 chs.  
Dist. on random, = 1.10 chs.  
Total dist. = 22.34 chs.

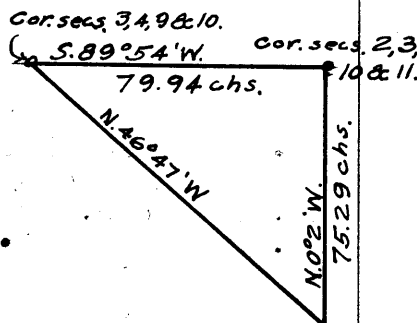
Thence by traverse as follows:

South 6.40 chs.  
S. 35 1/2° E. 5.55 "  
N. 34 1/2° E. 13.27 "  
North .09 " to point on random line, 33.03 chs. N. 89° 54' E. of the cor. of secs. 2, 3, 10 and 11.

33.03

Set temp. witness cor. to 1/4 sec. cor. It being impracticable to continue the line on account of the precipitous nature of the land in advance, I determine the total length of line by one triangulation as follows:

From a point 4.71 chs. N. 0° 02' W. of the cor. of secs. 10, 11, 14 and 15, a flag at the cor. of secs. 3, 4, 9 and 10, bears N. 46° 47' W. From



the cor. of secs. 2, 3, 10 and 11, the same flag bears S. 89° 54' W.; vertical angle - 1 1/2°; all bearings checked by direct reading of the solar, and all angles checked by deflection

Dist. by triangulation = 79.94 chs.  
The true course and dist. of the line bet. secs. 3 and 10 are therefore S. 89° 54' W., 79.94 chs.

From the cor. of secs. 2, 3, 10 & 11. S. 89° 54' W., on a true line bet. secs. 3 and 10. Over rolling land, through scattering undergrowth, dist. by triangulation, topography approximate. Desc. 100 ft. over SW. slope to

22.40

Edge of precipitous cliffs, bears SE. and NW. Desc.

39.97

True point for 1/4 sec. cor. falls on inaccessible cliff.

46.99

Mark cross (X) at exact witness cor. point, and over same set an iron post, 3 ft. long, 1 in. in diam., on bed rock, supported in a mound of stone, for witness cor. to 1/4 sec. cor., marked on brass cap

1/4 S 3/10 W C  
1921

Thence by triangulation and traverse, as hereinbefore described.

58.64

(Approx.) Diamond Creek, 10 lks. wide, 10 ins. deep, in canyon 2 chs. wide, course N. Asc. 700 ft. over cliffs.

78.84

Thence by chaining.

79.94

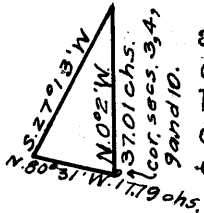
The cor. of secs. 3, 4, 9 and 10.

Survey of part of subdivision of T. 27 N., R. 10 W.

Chains

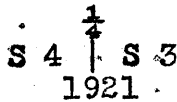
Land; rolling and mountainous.  
Soil; rocky, 4th rate.  
Timber; none.  
Undergrowth; black brush, cactus, yucca, Indian tea, and palo christi.

N. 0° 02' W., on a true line bet. secs. 3 and 4.  
Over mountainous land, through scattering undergrowth.  
On account of high cliffs it is impossible to chain.

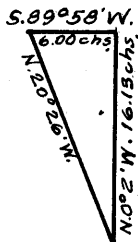


Vertical angle to flag ahead, - 7½°;  
auxiliary flag brs. N. 80° 31' W.; 17.79  
chs. dist.; from flag ahead, auxiliary flag  
brs. S. 27° 13' W.; all bearings checked by  
direct reading of the solar, and all angles  
checked by deflection.

- 23.50 (Approx.) Diamond Creek, 12 lks. wide, 8 ins. deep in canyon 150 lks. wide, course SW., 870 ft. below cor.
- 37.01 Triangulation point 450. ft. above creek. Asc. 154 ft. dist. by chaining.
- 40.00 Set an iron post, 3 ft. long, 1 in. in diam., 6 ins. in the ground to bed rock, deposit stone marked cross (X) at base of post, and raise a mound of stone around post, for ¼ sec. cor., marked on brass cap

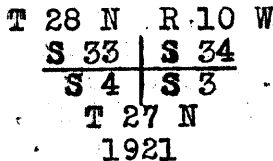


- 46.10 Asc. 372 ft. over steep S. slope to Spur, slopes S. 20° W. Impossible to chain from here,



Vertical angle to flag ahead, +7°;  
auxiliary flag brs. N. 20° 26' W.; from  
flag ahead, auxiliary flag brs. S. 89° 58'  
W., 6.00 chs. dist.; all bearings checked  
by direct reading of the solar, and all  
angles checked by deflection.  
Dist. by triangulation = 16.13 chs.  
46.10 + 16.13 = 62.23 chs.

- 62.23 Tringulation point on rocky spur sloping W. Thence by chaining.
- 64.00 Desc. 226 ft. over broken NW. slope to
- 80.00 Set an iron post, 3 ft. long, 2 ins. in diam., 6 ins. in the ground to bed rock; deposit stone marked cross (X) at base of post, and raise a mound of stone around post, for cor. of secs. 3, 4, 33 and 34, marked on brass cap.



Land; mountainous.  
Soil; rocky 4th rate.  
Timber; none.  
Undergrowth; black brush, cactus, yucca, Indian tea and palo christi.

- 5.30 From the cor. of secs. 4, 5, 32 and 33, on S. bdy. of Tp., described in Book "F"  
N. 0° 03' W.; bet. secs. 32 and 33.  
Over mountainous land, thru low desert brush.  
Asc. over broken SE. slope.  
Gulch, 20 lks. wide, course SE.

BOOK 128

## Survey of part of Subdivisions of T. 27 N., R. 10 W.

Chains  
 8.50 Spur, slopes SE.  
 11.30 Gulch, 15 lks. wide, 50 ft. deep, course SE.  
 16.00 Spur, slopes SE.  
 24.00 Gulch, course SE.  
 29.40 Spur, slopes E., 320 ft. above sec. cor. Desc. 44 ft. to  
 33.00 Ravine, course S. 70° E. Asc. 118 ft. to  
 40.00 Set an iron post, 3 ft. long, 1 in. in diam., 10 ins. in  
 the ground to bed rock, deposit stone marked cross  
 (X) at base of post, and raise a mound of stone around  
 post, for  $\frac{1}{4}$  sec. cor., marked on brass cap

$$\begin{array}{c} \frac{1}{4} \\ \text{S } 32 \quad | \quad \text{S } 33 \\ 1921 \end{array}$$

41.20 Spur, slopes SE. Enter scattering juniper.  
 Desc. 155 ft. over NE. slope to  
 51.40 Gulch, 30 lks. wide, course SE. Asc. 450 ft. over SW.  
 slope to  
 65.00 Spur, slopes SE. Desc. 208 ft. to  
 80.00 Set an iron post, 3 ft. long, 2 ins. in diam., 12 ins.  
 in the ground to bed rock, deposit stone marked cross  
 (X) at base of post, and raise a mound of stone  
 around post, for cor. of secs. 28, 29, 32 and 33,  
 marked on brass cap

$$\begin{array}{c} \text{T } 27 \text{ N } \text{ R } 10 \text{ W} \\ \text{S } 29 \quad | \quad \text{S } 28 \\ \text{S } 32 \quad | \quad \text{S } 33 \\ 1921 \end{array}$$

Land; mountainous.  
 Soil, 3d rate.  
 Timber; juniper.  
 Undergrowth; black brush, cactus, yucca, Indian tea,  
 and palo christi.

40.00 Set temp.  $\frac{1}{4}$  sec. cor. N. 89° 57' E., on a random line bet. secs. 28 and 33.  
 80.18 Intersect N. and S. line 9 lks. S. of the cor. of secs.  
 27, 28, 33 and 34.  
 Thence  
 S. 89° 53' W., on a true line bet. secs. 28 and 33.  
 Over rolling land, thru scattering timber and undergrowth  
 7.85 About 5 chs. N. rim of canyon, bears NE. and W.  
 10.50 Spur, slopes N. Desc. 350 ft. over W. slope to  
 27.00 Wash, 15 lks. wide, course NW.  
 28.00 Divide of N. and S. drainage.  
 40.00 About 3 chs. N. break of canyon, bears E. and W.  
 40.09 Mark cross (X) at exact cor. point, and over same set  
 an iron post, 3 ft. long, 1 in. in diam., on bed rock,  
 supported in a mound of stone, for  $\frac{1}{4}$  sec. cor., mark-  
 ed on brass cap

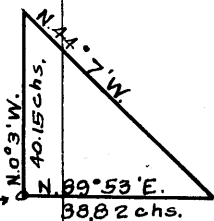
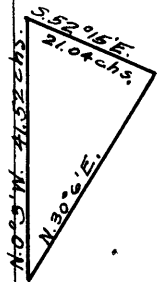
$$\begin{array}{c} \frac{1}{4} \text{ S } 28 \\ \text{S } 33 \\ 1921 \end{array}$$

54.00 N. wall of canyon 600 ft. deep, asc. 400 ft. to  
 75.30 Spur, slopes S. 20° E. Desc. 40 ft. to  
 80.18 The cor. of secs. 28, 29, 32 and 33.  
 Land; rolling.  
 Soil; rocky, 4th rate.  
 Timber; scattering juniper.  
 Undergrowth; black brush, cactus, yucca, Indian tea and  
 palo christi.

## Survey of part of Subdivision of T. 27 N., R. 10 W.

Chains	N. 0° 03' W., bet. secs. 28 and 29. Over mountainous land, through scattering undergrowth.
2.50	Small wash, course NE.
5.80	Wash, 12 lks. wide, course SE. Asc. 350 ft. over S. slope to
26.70	Top of ascent. Desc. 37 ft. over N. slope to
27.51	Rim rock, bears SE. and NW., about 1200 ft. above $\frac{1}{4}$ sec. cor. Impossible to chain from here
	Vertical angle to flag ahead, $-32\frac{1}{2}^{\circ}$ ; auxiliary flag brs. N. 30° 6' E.; from flag ahead auxiliary flag brs. S. 52° 15' E. 21.04 chs.; all bearings checked by direct reading of the solar, and all angles checked by deflection.
	Dist. by triangulation = 41.52 chs.
	Dist. by chaining = 27.51 chs.
	Total dist. = 69.03 chs.
	Dist by return measurement = 29.03 chs.
	40.00 chs.
40.00	Set an iron post, 3 ft. long, 1 in. in diam., 8 ins. in the ground to bed rock, deposit stone marked cross (X) at base of post, and raise a mound of stone around post, for $\frac{1}{4}$ sec. cor., marked on brass cap
	$\begin{array}{c} \frac{1}{4} \\ \uparrow \\ \text{S } 29 \quad   \quad \text{S } 28 \\ \hline 1921 \end{array}$
	About 60 lks. S. of the cor. rock wall 100 ft. high bears E. and W.
	Desc. 520 ft. over steep N. slope to
69.03	Triangulation point. Desc. 60 ft. dist. by chaining.
73.25	Wash, 3 chs. wide, course NW. Asc. 100 ft. over S. slope to
80.00	Set an iron post, 3 ft. long, 3 ins. in diam., 14 ins. in the ground to bed rock, deposit stone marked cross (X) at base of post, and raise a mound of stone around post, for cor. of secs. 20, 21, 28 and 29, marked on brass cap
	$\begin{array}{c} \text{T } 27 \text{ N } \quad \text{R } 10 \text{ W} \\ \hline \text{S } 20 \quad   \quad \text{S } 21 \\ \hline \text{S } 29 \quad   \quad \text{S } 28 \\ \hline 1921 \end{array}$
	Land; mountainous. Soil; rocky, 4th rate. Timber; none. Undergrowth; black brush, cactus, yucca, Indian tea, and palo christi.

32.35	N. 89° 53' E., on a random line bet. secs. 21 and 28. Base of high cliff over which it is impossible to chain.
	Vertical angle to flag ahead from cor. of secs. 20, 21, 28 and 29, $+28\frac{1}{2}^{\circ}$ ; auxiliary flag from point ahead brs. N. 44° 07' W.; from the cor. of secs. 20, 21, 28 and 29, auxiliary flag bears N. 0° 3' W., 40.15 chs.; all bearings checked by direct reading of the solar, and all angles checked by deflection.
	Dist. by triangulation = 38.82 chs.
38.82	Triangulation point on cliff. Set temp. witness cor. to $\frac{1}{4}$ sec. cor. Thence by traverse as follows:
	East 0.04 chs.
	South .34 chs.
	S. 15° W. 5.00 "
	Impossible to chain from this point



Survey of part of Subdivision of T. 27 N., R. 10 W.

Chains Vertical angle to cor. of secs. 21, 22, 27 and 28, is  $+1^\circ$ ; section cor. brs. N.  $83^\circ$  E.; auxiliary flag brs. N.  $72^\circ 25'$  E.; from sec. cor., auxiliary flag brs. N.  $7^\circ$  W.; 8.00 chs. dist.; all bearings checked by direct reading of the solar, and all angles checked by deflection. Triangulated dist. = 42.82 chs.; bearing N.  $83^\circ$  E.

The true course and distance of the line bet. secs. 21 and 28 are therefore S.  $89^\circ 54'$  W., 80.08 chs. S.  $89^\circ 54'$  W., on a true line bet. secs. 21 and 28 Over precipitous cliffs, forming walls of deep canyon; Through scattering undergrowth, dist. by triangulation and traverse.

7.00 (Approx. dist.) Wash course S. W. about 200 feet below sec. cor. Asc. about 200 ft. over series of sheer walls and steep benches to

40.04 True point for  $\frac{1}{4}$  sec. cor. falls on inaccessible cliff.  
41.20 Mark a cross (X) on solid rock at exact witness cor. point, and over same set an iron post, 3 ft. long, 1 in. in diam., supported in a mound of stone for witness cor. to  $\frac{1}{4}$  sec. cor., marked on brass cap

$\frac{1}{4}$   $\frac{S 21}{S 28}$  W. C  
1921

47.68 Desc. over cliffs, about 600 ft.  
47.73 Base of cliff, bears N. and S. Thence by chaining.

80.08 Desc. 800 ft. over broken SW. slope to The cor. of secs. 20, 21, 28 and 29. Land; precipitous cliffs. Soil; 4th rate. Timber; none. Undergrowth; black brush, yucca and palo christi.

---

N.  $0^\circ 03'$  W., bet. secs. 20 and 21. Over mountainous land.

1.50 Spur, slopes SW.  
8.00 Wash, 70 lks. wide, course S.  $20^\circ$  W. Asc. 167 ft. over S. slope to

22.10 Spur, slopes SW. Desc. 150 ft. to  
33.20 Gulch, 15 lks. wide, course SW. Asc. 150 ft. to  
40.00 Set an iron post, 3 ft. long, 1 in. in diam., 12 ins. in the ground to bed rock, deposit stone marked cross (X) at base of post, and raise a mound of stone around post, for  $\frac{1}{4}$  sec. cor., marked on brass cap

$\frac{1}{4}$   
S 20 | S 21  
1921

43.60 Cor. stands on spur, sloping SW. along W. slope.  
48.00 Gulch, 30 lks. wide, course SW., asc. 50 ft.  
55.90 Spur, slopes SW., along W. slope to  
57.94 Gulch, 40 lks. wide, 70 ft. deep, course SW. Base of cliff, 300 ft. high. To avoid cliff run traverse as follows:

West	19.00 chs.
N. $32^\circ$ W.,	2.33 "
North	3.74 "
N. $31\frac{1}{2}^\circ$ E.,	19.12 "
East	10.29 "

## Survey of part of Subdivision of T. 27 N., R. 10 W.

Chains  
80.00

To point for cor. of secs. 16, 17, 20 and 21, where I  
Set an iron post, 3 ft. long, 2 ins. in diam., 18 ins.  
in the ground to bed rock, deposit stone marked cross  
(X) at base of post, and raise a mound of stone  
around post, for cor. of secs. 16, 17, 20 and 21,  
marked on brass cap

T 27 N R 10 W  
S 17 | S 16  
S 20 | S 21  
1921

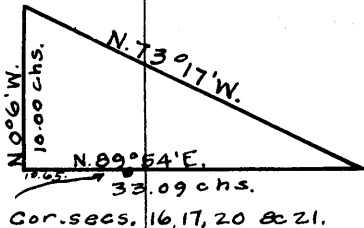
Land; mountainous.

Soil; rocky, 4th rate.

Timber; none.

Undergrowth; black brush, cactus, yucca, Indian tea,  
and palo christi.

N. 89° 54' E., on a random line bet. secs. 16 and 21.  
This line is extremely rough and passes over a series  
of high cliffs over which it is impossible to chain.



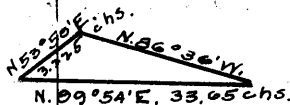
Vertical angle to flag on random line  
from a point 10.65 chs. S. 89° 54' W. of  
cor. of secs. 16, 17, 20 and 21 is +32°;  
from same point, auxiliary flag brs. N. 0°  
6' W. 10.00 chs. dist.; from flag ahead,  
auxiliary flag brs. N. 73° 17' W.; all  
bearings checked by direct reading of the  
solar, and all angles checked by deflection

Dist. by triangulation = 33.09 chs.  
Minus 10.65 chs.  
Total dist. = 22.44 chs.

22.44

Triangulation point. Still impracticable to chain.

Vertical angle to flag on random line,  
-2°; auxiliary flag brs. N. 53° 50' E.,  
3.225 chs. dist.; from flag on random line,  
auxiliary flag brs. N. 86° 36' W.; all bear-  
ings checked by direct reading of the solar,  
and all angles checked by deflection

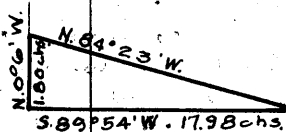


Dist. on random = 22.44 chs.  
Dist. by triangulation = 33.65 chs.  
Total dist. = 56.09 chs.

56.09

Triangulation point. To locate temp.  $\frac{1}{4}$  sec. cor.,  
proceed as follows:

Set flag on a bearing S. 89° 54' W., near  
point for temp.  $\frac{1}{4}$  sec. cor., + vertical  
angle, -18°; auxiliary flag brs. N. 84° 23'  
W.; from flag near  $\frac{1}{4}$  sec. cor., auxiliary  
flag brs. N. 0° 6' W., 1.80 chs. distant;  
all bearings checked by direct reading of  
the solar, and all angles checked by deflec-  
tion.



Dist. on random = 56.09 chs.  
Dist. by triangulation = 17.98 chs.  
Total dist. = 38.11 chs.

40.00

Thence N. 89° 54' E., 1.89 chs. to

56.09

Set temp.  $\frac{1}{4}$  sec. cor.

Triangulation point.

Thence

N. 89° 54' E., on random line bet. secs. 16 and 21,  
dist. by chaining

57.45

Thence by traverse as follows:

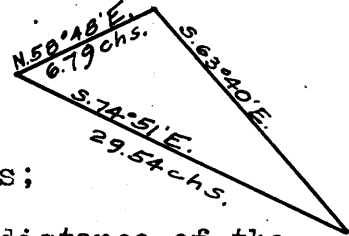
South .18 chs.

S. 58 $\frac{1}{2}$ ° W., 6.80 chs. to a point fromwhich a flag at the 68.51 chain point bet. secs.  
21 and 22 bears S. 74° 51' E.

Survey of part of Subdivision of T. 27 N., R. 10 W.

Chains

Vertical angle +3°; auxiliary flag brs. N. 58° 48' E., 6.79 chs.; from auxiliary flag, flag at the 68.51 ch. point bet. secs. 21 and 22 brs. S. 65° 40' E.; all bearings checked by direct reading of the solar, and all angles checked by deflection.



Dist. by triangulation = 29.54 chs; bearing S. 74° 51' E.

By computation, the true course and distance of the line bet. secs. 16 and 21 are therefore S. 89° 54' W. 80.16 chs.

From cor. of secs. 15, 16, 21 and 22.

S. 89° 54' W., on a true line bet. secs. 16 and 21.

Over mountainous land, through scattering timber and undergrowth, dist. by triangulation and traverse, as hereinbefore described.

40.08

Mark cross (X) at exact cor. point and over same, set an iron post, 3 ft. long, 1 in. in diam., on bed rock, supported in a mound of stone, for 1/2 sec. cor., marked on brass cap

1/4 S 16  
S 21  
1921

57.72

Triangulation point on south side of high rocky pinnacle known as the thumb.

80.16

The cor. of secs. 16, 17, 20 and 21.

Land; precipitous cliffs.

Soil; rocky, 4th rate.

Timber; scattering juniper and pinon.

Undergrowth; black brush, yucca, cactus and palo christi.

N. 0° 03' W., bet. secs. 16 and 17.

Over mountainous land.

Desc. 200 ft. to

6.20

Gulch, 20 lks. wide, course NW., asc. 150 ft.

30.50

Rolling spur, slopes W., desc. 90 ft. to

36.20

Rim rock, bears E. and W., desc. 220 ft. to

40.00

Set an iron post, 3 ft. long, 1 in. in diam., 8 ins. in the ground to bed rock, deposit stone marked (X) at base of post and raise a mound of stone around post, for 1/2 sec. cor., marked on brass cap

1/4  
S 17 | S 16  
1921

40.20

Cor. stands on N. side of large stone 10 ft. high

44.20

Draw, course N. 70° W., asc. 65 ft. to

51.28

Spur, slopes NW. Desc. 240 ft. over NE. slope to Top of precipitous cliffs down which it is impossible to chain.

Vertical angle to flag ahead,

-37°; auxiliary flag brs. N.

19° 48' W.; from flag ahead, auxil-

iary flag brs. N. 64 1/2° W., 3.78 chs.

dist.; all bearings checked by direct

reading of the solar, and all

angles checked by deflection.

Dist. by triangulation = 7.87 chs.

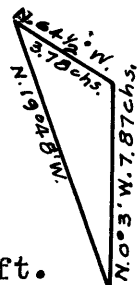
51.28 + 7.87 = 59.15 chs

59.15

Wash, 2 chs. wide, course N. 70° W., about 400 ft. below top of cliffs.

Thence by traverse in sec. 17 as follows, descending 165 ft.

N. 64 1/2° W., 3.78 chs.



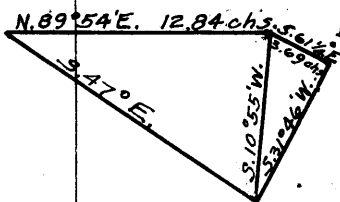
Survey of part of Subdivision of T. 27 N., R. 10 W.

Chains N. 81° W., 8.29 chs.  
 N. 76° W., 8.70 "  
 N. 24° E., 10.84 " ascending about 700 ft.  
 N. 69½° E., 16.70 " at 9. chs. desc.  
 180 ft. to 13+48, thence asc. 110 ft. to sec. cor  
 80.00 Set an iron post, 3 ft. long, 2 ins. in diam., 10 ins.  
 in the ground to bed rock, deposit stone marked cross  
 (X) at base of post, and raise a mound of stone around  
 post for cor. of secs. 8, 9, 16 and 17, marked on  
 brass cap

T 27 N R 10 W  
 S 8 | S 9  
 S 17 | S 16  
 1921

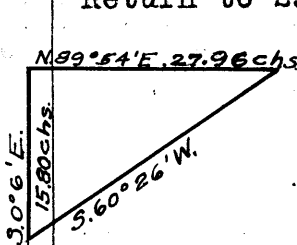
Cor. stands on SW. slope at lower edge of slide rock.  
 Land; mountainous.  
 Soil; rocky, 4th rate.  
 Timber; none.  
 Undergrowth; black brush, yucca, cactus, and palo christi.

N. 89° 54' E., on a random line bet. secs. 9 and 16.  
 It being impossible to chain over cliffs, set flag ahead  
 on line, the vertical angle to which is +40°. Also set auxiliary flag S. 47° E. From flag  
 on random line auxiliary flag bears S. 10°  
 55' W. From flag on random line line lay  
 off a base S. 61¼° E., 3.69 chs. dist. to  
 a point from which auxiliary flag bears S.  
 31° 46' W. All bearings checked by direct  
 reading of the solar, and all angles check-  
 ed by deflection.



Triangulated dist. on random line  
 = 12.84 chs.

Thence  
 N. 89° 54' E. on a random line bet. secs. 9 and 16,  
 dist. by chaining.  
 12.84 Triangulation point.  
 23.88 Set temp. point.  
 40.66 Set temp. W. C. to ¼ sec. cor. Impossible to chain  
 from here. Line passes over precipitous cliffs.  
 Return to 23.88 ch. point.

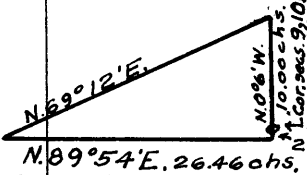


Vertical angle to flag on random line, +20°;  
 auxiliary flag brs. S. 0° 6' E. 15.80 chs.;  
 from flag ahead, auxiliary flag brs. S. 60°  
 26' W.; all bearings checked by direct read-  
 ing of the solar, and all angles checked by  
 deflection

Dist. by triangulation = 27.96 chs.  
 Dist. on random = 23.88 chs.  
 Total dist = 51.84 "

51.84 Triangulation point.  
 Thence  
 N. 89° 54' E., on a random line, bet. secs. 9, and 16,  
 dist. by chaining.

53.60 Top of high cliff, impossible to chain;  
 Vertical angle to flag on random line, -12½°;  
 auxiliary flag brs. N. 69° 12' E.; from  
 flag on random line, auxiliary flag brs. N.  
 0° 6' W., 10.00 chs. dist.; all bearings  
 checked by direct reading of the solar, and  
 all angles checked by deflection



Dist. on random = 53.60 chs.  
 Dist. by triangulation = 26.46 chs.  
 Total dist. = 80.06 chs.

80.06 Intersect N. and S. line, 2 lks. S. of the cor. of secs.  
 9, 10, 15 and 16.  
 Thence



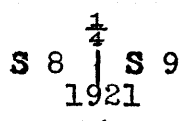
Survey of part of Subdivision of T. 27 N., R. 10 W.

Chains S. 89° 53' W., on a true line bet. secs. 9 and 16.  
 Over mountainous land, through scattering undergrowth,  
 dist. by triangulation as hereinbefore described.  
 Ascend 380 ft. over precipitous cliffs facing N. E. to  
 26.46 Top of cliff. Thence by chaining.  
 28.22 Thence by triangulation as hereinbefore described.  
 28.85 Top of high cliff, bears S. 20° E. and N. 20° W.  
 Desc. 490 ft. over cliffs to  
 38.00 Foot of cliffs, along S. slope.  
 39.40 Set an iron post, 3 ft. long, 1 in. in diam., 8 ins. in  
 the ground to bed rock, deposit stone marked cross  
 (X) at base of post, and raise a mound of stone around  
 post, for witness cor. to the 1/4 sec. cor., marked on  
 brass cap

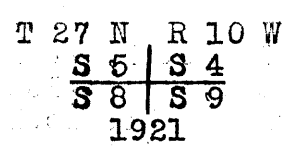
W C 1/4    S 9  
                   S 16  
                   1921

Thence by chaining  
 40.03 True point for 1/4 sec. cor. falls on steep slide.  
 Asc. 100 ft. to  
 43.30 Top of ascent. Desc. 360 ft. over SW. slope to  
 67.22 Thence by triangulation as hereinbefore described  
 68.20 Rim rock bears SE. and NW., desc. about 700 ft. to  
 80.06 The cor. of secs. 8, 9, 16 and 17.  
 Land; mountainous.  
 Soil; rocky, 4th rate.  
 Timber; none.  
 Undergrowth; black brush, yucca, cactus, and palo christi.

N. 0° 03' W., bet. secs. 8 and 9.  
 Over mountainous land, through scattering undergrowth.  
 Impossible to chain line; traverse as follows:  
 West 13.66 chs.  
 Thence N. 18 1/2° E., 42.24 chs., descending  
 330. ft. At. 32.58 chs. gulch course SW.  
 Thence East 0.05 chs. To true point for 1/4 sec.  
 cor., where I  
 40.00 Set an iron post, 3 ft. long, 1 in. in diam., 6 ins.  
 in the ground to bed rock, deposit stone marked cross  
 (X) at base of post, and raise a mound of stone  
 around post



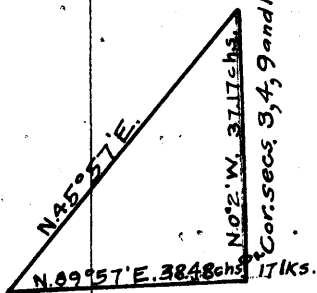
Thence  
 N. 0° 03' W., on true line, bet. secs. 8 and 9.  
 Desc. 280 ft. over N. slope to  
 78.00 Wash, 10 lks. wide, course W.  
 80.00 Set an iron post, 3 ft. long, 2 ins. in diam., 12 ins.  
 in the ground to bed rock, deposit stone marked cross  
 (X) at base of post, and raise a mound of stone around  
 post, for cor. of secs. 4, 5, 8 and 9, marked on brass  
 cap



Land; mountainous.  
 Soil; rocky, 4th rate.  
 Timber; none.  
 Undergrowth; black brush, yucca, cactus, and palo christi.

Survey of part of Subdivision of T. 27 N., R. 10 W.

<p>Chains 40.00 41.80</p>	<p>N. 89° 53' E., on a random line bet. secs. 4 and 9 Set temp. <math>\frac{1}{4}</math> sec. cor. High rocky spur, slopes NW. Remainder of line passes over a series of steep cliffs and gulches over which it is impracticable to chain</p>
	<p>Vertical angle to flag 0.17 chs. S. 0° 2' E. of the cor. of secs. 3, 4, 9 and 10 is -8°; the bearing is N. 89° 57' E.; auxiliary flag brs. N. 45° 57' E.; from flag 0.17 chs. S. 0° 2' E. of the cor. of secs. 3, 4, 9, and 10; auxiliary flag brs. N. 0° 2' W., 37.17 chs. dist.; all bearings checked by direct reading of the solar, and all angles checked by deflection. Dist. on random = 41.80 chs. Dist. by triangulation = 38.48 chs. The true course and dist. of the line bet. secs. 4 and 9 are, therefore, S. 89° 48' W., 80.28 chs.</p>
	<p>Thence S. 89° 48' W., on a true line, bet. secs. 4 and 9. Over mountainous land, across cliffs and gulches draining North, through scattering undergrowth, dist. by triangulation as hereinbefore described.</p>
<p>38.48 40.14</p>	<p>Spur, slopes NW., 360 ft. above sec. cor. Thence by chaining, descending 90 ft. Mark cross (X) at exact cor. point, and over same set an iron post, 3 ft. long, 1 in. diam., on bed rock, supported in a mound of stone 3 ft. base, 2<math>\frac{1}{2}</math> ft. high, for <math>\frac{1}{4}</math> sec. cor., marked on brass cap</p>
	<p><math>\frac{1}{4} \frac{S \ 4}{S \ 9}</math> 1921</p>
<p>48.10 55.70 80.28</p>	<p>Desc. 300 ft. over steep SW. slope to Gulch, 40 lks. wide, course NW. Asc. 126 ft. over NE. slope to Rocky spur, slopes N. Desc. 500 ft. over rolling NW. slope to The cor. of secs. 4, 5, 8 and 9. Land; mountainous. Soil; rocky, 4th rate. Timber; none. Undergrowth; black brush, yucca, cactus, and palo christi.</p>
<p>40.00 80.05 .50 8.40 11.90 23.25 25.50 40.05</p>	<p>N. 0° 03' W., on a random line bet. secs. 4 and 5. Set temp. <math>\frac{1}{4}</math> sec. cor. Fall 5 lks. W. of the cor. of secs. 4, 5, 32 and 33 on N. bdy. of Tp., hereinbefore described. Thence S. 0° 01' E., on a true line bet. secs. 4 and 5. Over broken land. Gulch, 10 lks. wide, course SW., along W. slope to Small spur, slopes W. Diamond Creek, 10 lks. wide, 6 ins. deep, course NW. S. edge of Diamond Creek Wash, bears N. 60° W., and S. 60° E. NE. cor. of old Hotel, bears W. 22 lks. dist. Set an iron post, 3 ft. long, 1 in. in diam., 16 ins. in the ground to bed rock, deposit stone marked cross (X) at base of point, and raise a mound of stone around stone, for <math>\frac{1}{4}</math> sec. cor., marked on brass cap</p>
	<p><math>\frac{1}{4} \frac{S \ 5}{S \ 4}</math> 1921</p>
	<p>Cor. stands on E. side of Peach Springs Wash.</p>



BOOK 8748

Survey of part of Subdivision of T. 27 N., R. 10 W.

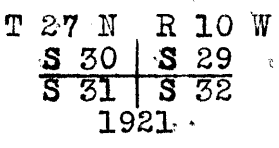
Chains

55.00 Asc. 120 ft. to  
 67.45 Gulch, 40 lks. wide, 50 ft. deep, course NW.  
 Asc. 170 ft. to  
 72.00 Top of cliff, 100 ft. high, bears NE. and SW., along  
 W. slope.  
 80.05 The cor. of secs. 4, 5, 8 and 9.  
 Land; broken.  
 Soil; rocky, 4th rate.  
 Timber; none.  
 Undergrowth; black brush, yucca, cactus, and palo christi

From the cor. of secs. 5, 6, 31 and 32 on S. bdy. of Tp.,  
 described in Book "FW",  
 N. 0° 03' W., bet. secs. 31 and 32.  
 Over rolling land, thru scattering timber and undergrowth.  
 Asc. 106 ft. over S. slope to  
 16.20 Spur, slopes W. from North, along E. slope of top of spur.  
 27.70 Spur, extends from NE. to S. Desc. 58 ft. over NW.  
 slope to  
 33.00 Wash, 10 lks. wide, 6 ins. deep, course S. 50° W.  
 Asc. 60 ft. over S. slope to  
 40.00 Set an iron post, 3 ft. long, 1 in. in diam., 8 ins. in  
 the ground to bed rock, deposit stone marked cross  
 (X) at base of post, and raise a mound of stone around  
 post, for 1/4 sec. cor., marked on brass cap

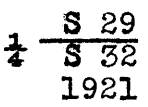


Asc. 50 ft. to  
 44.50 Spur, slopes SW., along W. slope.  
 65.00 Head of N. drainage. Thence along E. spur.  
 80.00 Set an iron post, 3 ft. long, 2 ins. in diam., 14 ins.  
 in the ground to bed rock, deposit stone marked cross  
 (X) at base of post, and raise a mound of stone  
 around post, for cor. of secs. 29, 30, 31 and 32, mark-  
 ed on brass cap



Land; rolling.  
 Soil; rocky, 4th rate.  
 Timber; scattering juniper.  
 Undergrowth; black brush, cactus, yucca, Indian tea  
 and palo christi.

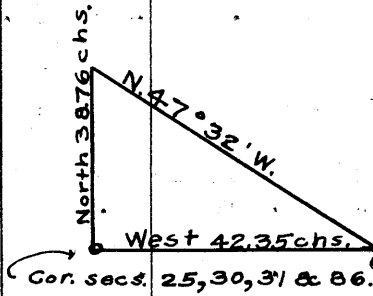
N. 89° 57' E., on a random line bet. secs. 29 and 32.  
 40.00 Set temp. 1/4 sec. cor.  
 79.86 Intersect N. and S. line, 2 lks. N. of the cor. of secs.  
 28, 29, 32 and 33.  
 Thence S. 89° 58' W., on a true line bet. secs. 29 and 32.  
 Over rolling land, through scattering undergrowth.  
 1.30 Small draw, course NE. Asc. 370 ft. over NE. slope to  
 36.50 Low spur, slopes N. Desc. 34 ft. to  
 39.93 Set an iron post, 3 ft. long, 1 in. in diam., 12 ins.  
 in the ground to bed rock, deposit stone marked cross  
 (X) at base of post, and raise a mound of stone  
 around post, for 1/4 sec. cor., marked on brass cap



Survey of part of Subdivision of T. 27 N., R. 10 W.

Chains  
 57.00 Along N. slope to  
 72.20 Desc. 80 ft. over NW. slope to  
 79.86 Flat draw, 20 lks. wide, course N., asc. 100 ft. to cor.  
 The cor. of secs. 29, 30, 31 and 32.  
 Land; rolling.  
 Soil; gravelly, 2nd rate.  
 Timber; none.  
 Undergrowth; black brush, yucca, cactus, and palo christi.

36.20 S. 89° 57' W., on a random line bet. secs. 30 and 31.  
 Top of cliff, over which it is impracticable to chain.  
 Set temp. witness cor. to  $\frac{1}{4}$  sec. cor.  
 From a point 0.07 chs. N. of temp. witness cor., the cor. of secs. 25, 30, 31 and 36, on West bdy. of Tp., brs. West, vertical angle  $-32^{\circ} 2'$ ; auxiliary flag brs. N. 47° 32' W.; from cor. secs. 25, 30, 31 and 36, auxiliary flag brs. North 38.76 chs. dist.; all bearings checked by direct reading of the solar, and all angles checked by deflection.  
 Dist. by triangulation = 42.35 chs.  
 Dist. on random = 36.20 chs.  
 Total dist. = 78.55 chs.



The true course and dist. of the line bet. secs. 30 and 31 are, therefore, S. 89° 58' E., 78.55 chs.  
 From the cor. of secs. 25, 30, 31 and 36, on W. bdy. of Tp., hereinbefore described, S. 89° 58' E., on a true line bet. secs. 30 and 31. Over broken land, through scattering undergrowth. Asc. 145 ft. over cliffs and broken NW. slope, dist. by chaining.

13.30 Gulch, 20 lks. wide, course NW. Asc. 180 ft. to  
 17.90 Top of cliff, 50 ft. high, bears N. and S. Impossible to chain further.  
 Thence by triangulation, as hereinbefore described.  
 23.50 Top of cliff, 70 ft. high, bears N. and S.  
 27.00 Top of cliff, 160 ft. high bears N. and S.  
 Ascend about 1300 ft. to W. C.  
 38.55 True point for  $\frac{1}{4}$  sec. cor. falls on inaccessible cliff.  
 42.35 On rim of cliff, bearing NE. and SW. Mark cross (X) at exact witness cor. point, and over same, set an iron post, 3 ft. long, 1 in. in diam., on surface rock, supported in a mound of stone, for witness cor. to  $\frac{1}{4}$  sec. cor., marked on brass cap

W C  $\frac{1}{4}$  S 30  
                   S 31  
                   1921

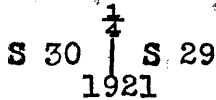
47.10 Asc. 94 ft. over W. slope to  
 67.10 Ridge, bears NE. and SW. Desc. 123 ft. over E. slope to  
 78.55 Gulch, course N. Asc. 100 ft.  
 The cor. of secs. 29, 30, 31 and 32.  
 Land; rolling and mountainous.  
 Soil; 3rd rate.  
 Timber; none.  
 Undergrowth; black brush, yucca, cactus, and palo christi.

18.80 N. 0° 03' W., bet. secs. 29 and 30.  
 26.50 Over rolling hills, through scattering undergrowth.  
 36.00 Desc. 186 ft. over N. slope to  
 40.00 Ravine, course NE. Asc. 60 ft. over S. slope to  
 Spur, slopes E. Desc. 115 ft. to  
 A short ravine, course NW.  
 Mark cross (X) at exact cor. point, and over same, set

Survey of part of Subdivision of T. 27 N., R. 10 W.

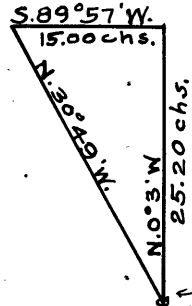
Chains

an iron post, 3 ft. long, 1 in. in diam., on bed rock supported in a mound of stone, for  $\frac{1}{4}$  sec. cor., marked on brass cap



40.40 Top of high cliff bears NE. and SW. Impossible to chain from here.

From  $\frac{1}{4}$  sec. cor. vertical angle to flag ahead,  $-38\frac{3}{4}^\circ$ ; auxiliary flag brs. N.  $30^\circ 49'$  W. from  $\frac{1}{4}$  sec. cor.; from flag ahead, auxiliary flag brs. S.  $89^\circ 57'$  W. 15.00 chs.; all bearings checked by direct reading of the solar and all angles checked by deflection.



Dist. by triangulation = 25.20 chs.

Dist. by chaining = 40.00 chs.

Total dist. = 65.20 chs.

$\frac{1}{4}$  cor. secs. 29 and 30.

65.20 Triangulation point at SW. base of high cliff, bearing SE. and NW. about 1300 ft. below  $\frac{1}{4}$  sec. cor.

Thence by traverse in sec. 30 along base of cliff, as follows, ascending about 200 ft

N.  $45^\circ$  W., 8.00 chs.

N.  $20^\circ$  W., 5.00 "

N.  $60^\circ$  E., 8.50 "

North .19 " to the true point

for cor. of secs. 19, 20, 29 and 30, where I

80.00 Set an iron post, 3 ft. long, 2 ins. in diam., 12 ins. in the ground to bed rock, deposit stone marked cross (X) at base of post, and raise a mound of stone around post, for cor. of secs. 19, 20, 29 and 30, marked on brass cap

T 27 N R 10 W

S 19 | S 20

S 30 | S 29

1921

Cor. stands on NW. slope of bench, 2 chs. W. of cliff. Land; broken.

Soil; rocky, 4th rate.

Timber; none.

Undergrowth; black brush, yucca, cactus, and palo christi.

.89 N.  $89^\circ 58'$  E., on a random line bet. secs. 20 and 29. To avoid cliffs, run traverse in sec. 20 as follows:

N.  $35^\circ$  E., 9.51 chs.

East 4.00 chs.

S.  $25^\circ$  E., 8.60 "

North 0.01 "

To point on random line, 13.98 chs. N.  $89^\circ 58'$  E., of the cor. of secs. 19, 20, 29 and 30.

Thence continue on random line, N.  $89^\circ 58'$  E., bet. secs. 20 and 29.

40.00 Set temp.  $\frac{1}{4}$  sec. cor.

79.90 Intersect N. and S. line, 5 lks. S. of the cor. of secs. 20, 21, 28 and 29.

Thence

S.  $89^\circ 56'$  W., on a true line bet. secs. 20 and 29. Over broken land, through scattering undergrowth.

Desc. 160 ft. over W. slope to

7.00 Wash, 3 chs. wide, course NW. Asc. 190 ft. over E. slope to

29.20 Small spur, slopes N. Desc. 40 ft. to

33.00 Short draw, course N. Asc. 120 ft. over E. slope to

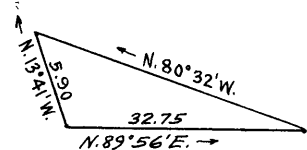
## Survey of part of Subdivision of T. 27 N., R. 10 W.

Chains	
39.30	Spur, slopes N. 30° W.
39.95	Mark a cross (X) at exact cor. point, and over same, set an iron post, 3 ft. long, 1 in. in diam., on bed rock, supported in a mound of stone, for $\frac{1}{4}$ sec. cor., marked on brass cap
	$\frac{1}{4} \frac{S 20}{S 29}$ 1921
49.60	Desc. 206 ft. over W. slope to Gulch, 20 lks. wide, 20 ft. deep, course N. 20° W.
65.92	Asc. 546 ft. over E. slope to Base of cliff, 400 ft. high, bears S. 25° E., and N. 25 W.
79.90	Thence by traverse as described hereinbefore, descending 90 ft. following base of cliff. The cor. of secs. 19, 20, 29 and 30. Land; mountainous. Soil; rocky, 4th rate. Timber; none. Undergrowth; black brush, yucca, cactus and palo christi.
40.00	N. 89° 58' W., on a random line bet. secs. 19 and 30. Set temp. $\frac{1}{4}$ sec. cor.
78.50	Fall 14 lks. N. of the cor. of secs. 19, 24, 25 and 30, on the W. bdy. of Tp., hereinbefore described. Thence N. 89° 56' E., on a true line bet. secs. 19 and 30. Over mountainous land, through scattering undergrowth.
4.50	Desc. 124 ft. over SE. slope to Enter Peach Springs Wash, 150 lks. wide, course N. 30° E.
8.00	Old road, bears NE. and SW.
14.00	Asc. 650 ft. over NW. slope to
38.50	Set an iron post, 3 ft. long, 1 in. in diam., 16 ins. in the ground to bed rock, deposit stone marked cross (X) at base of post, and raise a mound of stone around post, for $\frac{1}{4}$ sec. cor., marked on brass cap
	$\frac{1}{4} \frac{S 19}{S 30}$ 1921
49.00	Asc. 178 ft. over NW. slope to Spur, slopes NW., desc. along N. slope about 70 ft.
65.00	Draw, 20 lks. wide, course NW., asc. about 350 ft. to sec. cor.
74.00	Cliff, 70 ft. high, bears NE. and SW.
78.50	The cor. of secs. 19, 20, 29 and 30. Land; mountainous. Soil; rocky, 4th rate. Timber; none. Undergrowth; black brush, yucca, cactus, and palo christi.
14.50	N. 0° 03' W., bet. secs. 19 and 20. Over broken land. Desc. 250 ft. over NW. slope to Rim rock, bears NE. and SW. Desc. 385 ft. to
40.00	Set an iron post, 3 ft. long, 1 in. in diam., 8 ins. in the ground to bed rock, deposit stone marked cross at base of post, and raise a mound of stone around post, for $\frac{1}{4}$ sec. cor., marked on brass cap
	$S 19 \begin{array}{c} \uparrow \\ \frac{1}{4} \end{array} S 20$ 1921

BOOK 332

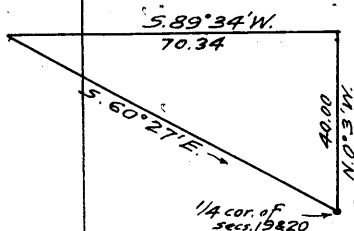
## Survey of Part of Subdivision of T. 27 N., R. 10 W.

- Chains Desc. 50 ft. to  
 42.00 Rim rock, 70 ft. high, bears NE. and SW.  
 Desc. 840 ft. over steep slope to  
 80.00 Set an iron post, 3 ft. long, 2 ins. in diam., 12 ins. in the ground to bed rock, deposit stone marked cross (X) at base of post, and raise a mound of stone around post, for cor. of secs. 17, 18, 19 and 20, marked on brass cap
- T 27 N R 10 W  
 S 18 | S 17  
 S 19 | S 20  
 1921
- Land; broken.  
 Soil; rocky, 4th rate.  
 Timber; none.  
 Undergrowth; low desert brush.
- 
- 36.40 N. 89° 56' E., on a random line, bet. secs. 17 and 20. Set temp. point.  
 41.54 Set temp. witness cor. to  $\frac{1}{4}$  sec. cor. Impracticable to chain further  
 Vertical angle to flag on random line from 36.40 ch. point is +15°; from same point, auxiliary flag brs. N. 13° 41' W., 5.90 chs. dist.; from flag on random, auxiliary flag brs. N. 80° 32' W.; all bearings checked by direct reading of the solar, and all angles checked by deflection.
- Dist. on random \*36.40 chs.  
 Dist. by triangulation =32.75 chs.  
 Total dist. =69.15 chs.
- 69.15 Triangulation point.  
 Thence N. 89° 56' E., on a random line, bet. secs. 17 and 20, dist. by chaining.
- 79.90 Intersect N. & S. line, 2 lks. S. of the cor. of secs. 16, 17, 20 and 21.  
 Thence  
 S. 89° 55' W., on a true line, bet. secs. 17 and 20. Over mountainous land, through scattering undergrowth. Along N. slope.
- 10.75 Triangulation point. Spur, slopes N., desc. over broken mountainous land about 580 ft., dist. by triangulation, as hereinbefore described.
- 38.36 West bank of wash, bears NW. and SE. Mark cross (X) at exact witness cor. point, and over same, set an iron post, 3 ft. long, 1 in. in diam., on surface rock, supported in a mound of stone, for witness cor. to  $\frac{1}{4}$  sec. cor., marked on brass cap
- W C  $\frac{1}{4}$  S 17  
 S 20  
 1921
- 39.95 The true point for  $\frac{1}{4}$  sec. cor. falls in wash where cor. can not be permanently monumented.  
 43.50 Spur, slopes N. Desc. 170 ft. over W. slope, dist. by chaining.  
 48.25 Wash, 10 lks. wide, course NW., desc. 160 ft. along N. slope.  
 60.00 Spur, slopes NW. Desc. 400 ft. over W. slope to  
 77.40 Wash, 5 chs. wide, course N.  
 79.90 The cor. of secs. 17, 18, 19 and 20.  
 Land; mountainous.  
 Soil; rocky, 4th rate.  
 Timber; none.  
 Undergrowth; black brush, cactus, yucca, Indian tea, cat claw and palo christi.
- 



## Survey of part of Subdivision of T. 27 N., R. 10 W.

Chains S. 89° 55' W., on a random line bet. secs. 18 and 19.  
 40.00 Set temp.  $\frac{1}{4}$  sec. cor.  
 56.73 Foot of high cliff over which it is impossible to chain



From flag ahead on random line, auxiliary flag at the  $\frac{1}{4}$  sec. cor. of secs. 19 and 20, brs. S. 60° 27' E.; vertical angle from same flag to the cor. of secs. 17, 18, 19 and 20 is -38°; all bearings checked by direct reading of the solar, and all angles checked by deflection.

Dist. by triangulation = 70.34 chs.

70.34 Triangulation point. Thence S. 89° 55' W., on a random line, bet. secs. 18 and 19, dist. by chaining.

Continuing measurement.

78.38 Fall 7 lks. N. of the cor. of secs. 13, 18, 19 and 24, on W. bdy. of Tp., hereinbefore described.

Thence

N. 89° 52' E., on a true line bet. secs. 18 and 19.

8.04 Over mountainous land, through scattering undergrowth Top of cliffs, bears NE. and SW. Thence by triangulation as hereinbefore described.

21.65 Foot of cliffs, 900 ft. below top. Desc. 340 ft. over SE. slope, dist. by chaining.

38.38 Set an iron post, 3 ft. long, 1 in. in diam., 14 ins. in the ground to bed rock, deposit stone marked cross (X) at base of post, and raise a mound of stone around post, for  $\frac{1}{4}$  sec. cor., marked on brass cap

$\frac{1}{4}$   $\frac{S 18}{S 19}$   
1921

58.68 Desc. 400 ft. over SE. slope to Old road, bears N. and S.

59.00 Enter Peach Springs Canyon, bears S. and NE.

69.90 Leave Peach Springs Canyon. Asc. 170 ft. over W. slope to

75.90 Spur, slopes N. 10° E. Desc. 80 ft. to

78.38 The cor. of secs. 17, 18, 19 and 20.

Land; mountainous.

Soil; rocky, 4th rate.

Timber; none.

Undergrowth; black brush, yucca, cactus, and palo christi.

N. 0° 03' W., bet. secs. 17 and 18.

Over rolling land, covered with boulders.

2.60 Point of spur, slopes N. Desc.

4.50 Wash, 2.50 chs. wide, course NW.

22.50 Wash, 2 chs. wide, from SE. to N.

27.00 Leave wash which drains NE.

32.80 Road, bears E. and W.

33.00 Peach Spring Wash, course N. 60° E.

40.00 Spur, slopes E. Set an iron post, 3 ft. long, 1 in. in diam. 12 ins. in the ground to bed rock, deposit stone marked cross (X) at base of post, and raise a mound of stone around post for  $\frac{1}{4}$  sec. cor., marked on brass cap

$\frac{1}{4}$   
S 18 | S 17  
1921

About 7 chs. N. of  $\frac{1}{4}$  sec. cor. base of high cliffs, bears NE. and SW. It being impracticable to chain over these cliffs, begin at a point 0.035 chs. W. of the  $\frac{1}{4}$  sec. cor. and traverse as follows:

N. 40° E.,	7.80 chs.
N. 23° E.,	11.60 "
N. 40° E.,	19.50 "
North	8.41 "



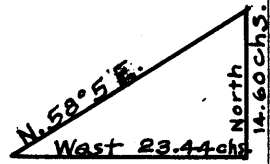
Survey of part of Subdivision of T. 27 N., R. 10 W.

Chains

To a point 22.07 chs. East of the true point for cor. of secs. 7, 8, 17 and 18.

Thence West,

Impossible to chain. Vertical angle to flag ahead  $+30\frac{1}{2}^\circ$ ; auxiliary flag brs. North 14.60 chs.; from flag ahead auxiliary flag brs. N.  $58^\circ 5'$  E.; all bearings checked by direct reading of the solar, and all angles checked by deflection



Dist. by triangulation = 23.44 chs.

By return measurement =  $\frac{1.37}{22.07}$  "

80.00

True point for cor. of secs. 7, 8, 17 and 18 falls on cliff, where it cannot be established.

Land; S. half, rolling and covered with boulders, N. half in cliffs.

Soil; rocky, 4th rate.

Timber; none.

Undergrowth; sagebrush, cat claw, ocotillo, cactus, yucca and palo christi.

From the true point for cor. of secs. 7, 8, 17 and 18. N.  $89^\circ 55'$  E., on a random line bet. secs. 8 and 17.

Impossible to chain from this cor. From the point on traverse 22.07 chs. East of the true point for cor. of secs. 7, 8, 17 and 18, determined as described in the field notes of the line bet. secs. 17 and 18, North 0.03 chs. to a point on random line bet. secs. 8, and 17, 22.07 chs. N.  $89^\circ 55'$  E. of the true point for cor. of secs. 7, 8, 17 and 18. Thence N.  $89^\circ 55'$  E. on a random line, bet. secs. 8 and 17, continuing measurement, dist by chaining.

40.00

Set temp.  $\frac{1}{4}$  sec. cor.

79.82

Intersect N. and S. line, 23 lks. N. of the cor. of secs. 8, 9, 16 and 17.

Thence,

N.  $89^\circ 55'$  W., on a true line bet. secs. 8 and 17.

Over mountainous land, through scattering undergrowth.

Desc. 125 ft. to

3.60

Wash, 30 lks. wide, course NW. Asc. 100 ft. over E. slope to

7.80

Spur, slopes NW. Desc. 430 ft. over W. slope to

39.91

Set an iron post, 3 ft. long, 1 in. in diam., 8 ins. in the ground to bed rock, deposit stone marked cross (X) at base of post, and raise a mound of stone around post, for  $\frac{1}{4}$  sec. cor., marked on brass cap

$\frac{1}{4}$   $\frac{S 8}{S 17}$   
1921

49.30

Desc. 80 ft. over W. slope to

51.20

Road, bears N. and S.

Peach Springs Wash, 1 ch. wide, course N.  $30^\circ$  E.

Asc. 206 ft. over E. slope to

57.75

Thence by triangulation over cliffs ascending about 735 ft.

79.82

The true point for cor. of secs. 7, 8, 17 and 18, as hereinbefore described.

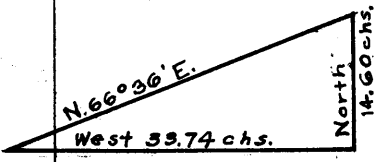
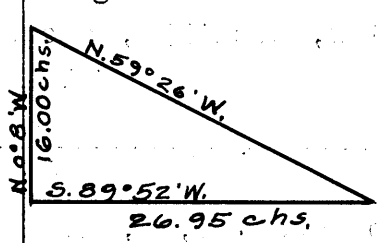
Land; mountainous.

Soil; rocky, 4th rate.

Timber; none.

Undergrowth; sage brush, cat claw, and ocotillo.

## Survey of part of Subdivision of T. 27 N., R. 10 W.

Chains	From the true point for cor. of secs. 7, 8, 17 and 18, S. 89° 52' W. on a random line, bet. secs. 7 and 18. Impossible to chain. Set flag West of true point for cor. of secs. 7, 8, 17, and 18, vertical angle to which is +51°; from this flag auxiliary flag brs. N. 66° 36' E.; from a point 22.07 chs. East of the true point for cor. of secs. 7, 8, 17 and 18, auxiliary flag brs. North 14.60 chs. dist.; all bearings checked by direct reading of the solar, and all angles checked by deflection  Dist. by triangulation = 33.74 chs. 33.74 - 22.07 = 11.67 chs.
11.67	Triangulation point. Thence South 0.02 chs. to random line bet. secs. 7 and 18, and continue S. 89° 52' W., on random line, bet. secs. 7 and 18. Dist. by chaining.
28.42	Edge of cliffs. Impossible to chain from here. Vertical angle to flag on random line, -42½°; auxiliary flag brs. N. 59° 26' W.; from flag on random line, auxiliary flag brs. N. 0° 8' W., 16.00 chs. dist.; all bearings checked by direct reading of the solar, and all angles checked by deflection.  Dist. on random = 28.42 chs. Dist. by triangulation = 26.95 chs. Total dist. = 55.37 chs. Return measure = 15.37 chs.
40.00	Set temp. ¼ sec. cor.
55.37	Triangulation point. Thence S. 89° 52' W., on a random line, bet. secs. 7 and 18. Dist. by chaining.
71.74	Offset North, 4.00 chs. to avoid cliffs, 150 ft. high. Thence S. 89° 52' W., on offset line continuing measurement. <small>W.C. to Cor. secs. 7, 12, 13 and 18</small>
78.32	Fall 7 lks. S. of the witness cor. to the cor. of secs. 7, 12, 13, and 18 on W. bdy. of Tp., hereinbefore described, established 4.00 chs. North of the true point for cor. of secs. 7, 12, 13 and 18. Thence, from W. C. N. 89° 55' E., on offset to true line bet. secs. 7 and 18. Over broken land, along base of cliffs, 150 ft. high, through scattering undergrowth. <small>N. 89° 55' E. 6.58 chs.</small>
6.58	Offset South 4.00 chs., descending 80 ft. to true line. Thence N. 89° 55' E., on a true line bet. secs. 7 and 18. Desc. over broken NE. slope 250 ft. to
21.50	Wash, 2 chs. wide, course N. 25° W. Asc. 450 ft. over W. slope to
38.32	Set an iron post, 3 ft. long, 1 in. in diam., 8 ins. in the ground to bed rock, deposit stone marked cross (X) at base of post, and raise a mound of stone around post for ¼ sec. cor., marked on brass cap $\frac{1}{4} \frac{S. 7}{S. 18}$ 1921
39.80	Thence by triangulation, as hereinbefore described. Base of cliffs, bears SE. and NW.
49.90	Top of cliffs, bears N. and S. Thence over nearly level mesa, dist. by chaining.
66.65	East edge of mesa bears N. and S. Desc. about 950 ft., dist. by triangulation as hereinbefore described.
78.32	The true point for cor. of secs. 7, 8, 17 and 18. Land; mountainous. Soil; rocky, 4th rate. Timber; none. Undergrowth; sage brush, cactus, ocotillo, yucca, and palo christi.

Survey of part of Subdivision of T. 27 N., R. 10 W.

Chains

From the true point for cor. of secs. 7, 8, 17 and 18. N. 0° 03' W., bet. secs. 7 and 8.

1.00

Over mountainous land, through scattering undergrowth Mark cross (X) at exact witness cor. point, and over same, Set an iron post, 3 ft. long, 2 ins. diam., on surface rock, supported in a mound of stone, for witness cor. to cor. of secs. 7, 8, 17 and 18, marked on brass cap

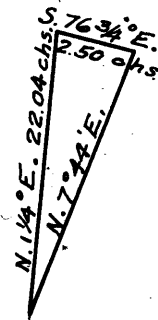
T. 27 N R 10 W  
S 7 | S 8  
S 18 | S 17  
W C  
1921

On account of cliffs it is impossible to run on true line, therefore run traverse as follows:

N. 16° E., 17.30 chs.,  
N. 45° E., 3.20 "

Encounter cliffs over which it is impossible to chain.

Vertical angle to flag set ahead on bearing N. 1 1/4° E., is +2°; auxiliary flag brs. N. 7° 44' E., from flag ahead, auxiliary flag brs. S. 76 1/2° E., 2.50 chs. dist.; all bearings checked by direct reading of the solar, and all angles checked by deflection.



Dist. by triangulation = 22.04 chs., on bearing N. 1 1/4° E.

Thence continue traverse

N. 14° W., 6.80 chs.  
N. 27° W., 5.50 "  
West, 3.39 "  
South, 13.42 " to point for 1/4 sec. cor.,

where I

40.00

Mark a cross (X) on surface rock at exact cor. point and over same, set an iron post, 3 ft. long, 1 in. in diam., supported in a mound of stone, for 1/4 sec. cor., marked on brass cap

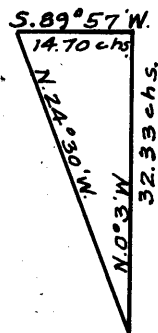
S 7 | S 8  
1921

Thence

54.74

N. 0° 3' W., bet. secs. 7 and 8, dist. by chaining. Rim rock, bears NE. and SW. Impossible to chain from here.

Vertical angle to flag ahead, -35°; auxiliary flag brs. N. 24° 30' W.; from flag ahead, auxiliary flag brs. S. 89° 57' W., 14.70 chs. dist.; all bearings checked by



direct reading of the solar, and all angles checked by deflection.

Dist. by triangulation = 32.33 chs.

Dist. by triangulation,

chaining and traverse = 54.74 chs.

Total dist. = 87.07 chs.

Return measurement = 7.07 chs.

80.00

Set a blue limestone, .22 x 12 x 8 ins., 1 1/4 ins. in the ground for cor. of secs. 5, 6, 7 and 8, marked with 5 grooves on E. and 5 grooves on S. faces. Raise a mound of stone, 2 ft. base, 1 1/2 ft. high W. of cor.

Cor. about 1300 ft. below rim.

Land; mountainous.

Soil; rocky, 4th rate.

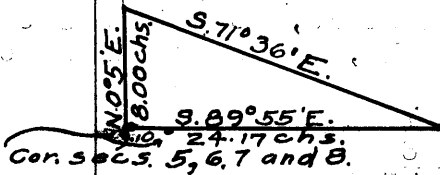
Timber; none.

Undergrowth; sage brush, catclaw, ocotillo, cactus, yucca, and palo christi.

Survey of part of subdivision of T. 27 N., R. 10 W.

Chains

S. 89° 55' E., on a random line bet. secs. 5 and 8. On account of precipitous cliffs in advance it is impracticable to chain

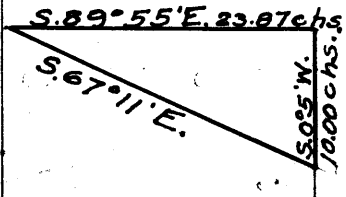


Vertical angle to flag on random line, from a point 9.10 chs. N. 89° 55' W. of the cor. of secs. 5, 6, 7 and 8, is +32°; from same point, auxiliary flag brs. N. 0° 5' E., 8.00 chs. dist.; from auxiliary flag, flag on random line brs. S. 71° 36' E.; all bearings checked by direct reading of the solar, and all angles checked by deflection.

Dist. by triangulation = 24.17 chs.  
24.17 - 9.10 = 15.07 chs.

15.07

Triangulation point. Still impossible to chain.



Vertical angle to flag on random line -30°; auxiliary flag brs. S. 67° 11' E.; from flag on random line, auxiliary flag brs. S. 0° 5' W., 10.00 chs. dist.; all bearings checked by direct reading of the solar and all angles checked by deflection.

Dist. on random = 15.07 chs.  
Dist. by triangulation = 23.87 chs.  
Total dist. = 38.94 chs.

38.94

Triangulation point.

Thence

S. 89° 55' E., on a random line bet. secs. 5 and 8, dist. by chaining.

40.00

Set temp. 1/4 sec. cor.

79.92

Intersect N. and S. line 21 lks. S. of the cor. of secs. 4, 5, 8 and 9.

Thence

S. 89° 56' W., on a true line bet. secs. 5 and 8. Over broken land, through scattering undergrowth.

Desc. 290 ft. over NW. slope to

8:90

E. side of Peach Springs Wash, bears N. 20° E., and S. 20° W.

14.00

W. side of Peach Springs Wash, bears N. 20° E., and S. 20° W. Asc. 200 ft. to

15.40

Top of cliff, facing E., bears N. 20° E., and S. 20° W. Asc. 500 ft. over E. slope to

39.96

Mark cross (X) at exact cor. point, and over same set an iron post, 3 ft. long, 1 in. in diam., on bed rock, supported in a mound of stone, for 1/4 sec. cor. marked on brass cap

1/4  $\frac{35}{88}$   
.1921

Asc. about 900 ft. to top of ridge.

40.98

Thence by triangulation, as hereinbefore described.

42.80

(Approx.) Foot of cliffs, bears N. 20° E., and S. 20° W.

63.86

Ridge, bears N. and S., desc. about 1000 ft. to cor.

79.92

The cor. of secs. 5, 6, 7 and 8.

Land; mountainous.

Soil; rocky; 4th rate.

Timber; none.

Undergrowth; sagebrush, cat claw, ocotillo, cactus, yucca and palo christi.

40.00

S. 89° 55' W., on a random line bet. secs. 6 and 7.

78.26

Set temp. 1/4 sec. cor.

Fall 5 lks. S. of the cor. of secs. 1, 6, 7 and 12 on W. bdy. of Tp., hereinbefore described.

## Survey of part of subdivision of T. 27 N., R. 10 W.

Chains

Thence

N.  $89^{\circ} 57'$  E., on a true line bet. secs. 6 and 7.

Over broken N. slope, through scattering undergrowth.

24.70

Desc. 120 ft. over NE. slope to

38.26

Set an iron post, 3 ft. long, 1 in. in diam., 16 ins. in the ground to bed rock, deposit stone marked cross (X) at base of post, and raise a mound of stone around post, for  $\frac{1}{4}$  sec. cor., marked on brass cap
$$\frac{1}{4} \frac{S 6}{S 7}$$

1921

45.00

Desc. 200 ft. over E. slope to

58.82

Gulch, 50 lks. wide, course N. Asc. 234 ft. to

66.00

Top of asc., desc. 40 ft. to

78.26

Wash, course N., asc. 150 ft. to cor.

The cor. of secs. 5, 6, 7 and 8.

Land; broken.

Soil; rocky, 4th rate.

Timber; none.

Undergrowth; sage brush, catclaw, ocotillo, cactus, yucca and palo christi.

N.  $0^{\circ} 05'$  W., bet. secs. 5 and 6.

Over broken land, through scattering undergrowth.

7.40

Asc. 57 ft. over S. slope to

29.05

Spur, slopes N.  $70^{\circ}$  W. Desc. 340 ft. over N. slope to

30.50

Draw, 10 lks. wide; course NW.

30.70

Spur, bears NW.

Set a malpais stone, 26 x 14 x 8 ins. 14 ins. in the ground for witness cor. to the  $\frac{1}{4}$  sec. cor., marked " $\frac{1}{4}$  W C" on W. face. Raise a mound of stone  $2\frac{1}{2}$  ft. base, 2 ft. high W. of cor.

Impossible to continue on line on account of cliffs.

About 18 chs. N. of this point the Colorado River flows SW.

From witness cor. by triangulation and traverse as follows:

Set a flag ahead on a bearing N.  $25^{\circ} 13'$ 

E.; from witness cor. auxiliary

flag brs. N.  $14^{\circ} 43'$  E.; from

flag ahead, auxiliary flag

brs. N.  $54^{\circ} 23'$  W., 2.56 chs.

dist.; all bearings checked by

direct reading of the solar

and all angles checked by

deflection.

Dist. by triangulation on course

N.  $23^{\circ} 13'$  E., 16.18 chs.

Continue traverse as follows:

N.  $19\frac{1}{2}^{\circ}$  E., 5.50 chs.N.  $6^{\circ}$  E., 8.80 "N.  $18\frac{1}{2}^{\circ}$  E., 21.60 "to temp. point on N. bdy. of Tp., hereinbefore described which is 24.09 chs. west of the  $\frac{1}{4}$  sec. cor. bet. secs. 5 and 32.

Northing of traverse = 49.29 chs.

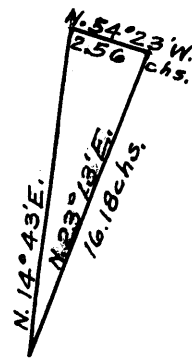
Easting of traverse = 15.96 chs.

Land; broken.

Soil; rocky, 4th rate.

Timber; none.

Undergrowth; sagebrush, catclaw, ocotillo, cactus, yucca and palo christi.



Latitudes, departures and closing errors						
Line designated.	True bearing	Dist- ance	Latitudes		Departures	
			N.	S.	E.	W.
South boundary	S.89°57'W.	478.72		.42		478.72
West bdy.(part)	North	400.00	400.00			
Subdivisional Bdy.	N.89°57'E.	78.26	.07		78.26	
	N.89°56'E.	79.92	.09		79.92	
	N. 0°01'W.	80.05	80.05			.02
	East	80.00			80.00	
	S. 0°02'E.	80.00		80.00		.05
	N.89°54'E.	79.94	.14		79.94	
	N.89°55'E.	80.14	.12		80.14	
East bdy.(part)	S. 0°01'E.	80.00		80.00		.02
	S.89°44'E.	80.22		.37	80.22	
Convergency					.43	
Totals			480.47	480.79	478.98	478.74
				480.47	478.74	
	Error in latitude			.32		
	Error in departure				.24	

BOOK 3548

## Survey of part of subdivision of T. 28 N., R. 10 W.

Chains From the cor. of secs. 4, 5, 32 and 33 on S. bdy. of  
 Tp., hereinbefore described.  
 N.  $0^{\circ} 03'$  W., bet. secs. 32 and 33.  
 Over mountainous land, through scattering undergrowth  
 Asc. 240 ft. over S. slope to  
 6.00 Top of high bluff. Continue ascent 440 ft. to  
 32.40 Spur, slopes W.  
 40.00 Set an iron post, 5 ft. long, 1 in. in diam., 8 ins. in  
 the ground to bed rock, deposit stone marked cross  
 (X) at base of post, and raise a mound of stone  
 around post, for  $\frac{1}{4}$  sec. cor., marked on brass cap

S 32 | S 33  
 1921

48.30 Desc. 450 ft. over NW. slope.  
 56.50 Old trail, bears NE. and SW.  
 Rim rock, bears NE. and SW.  
 Impossible to continue farther. From this point it is  
 9.50 chs. to Colorado River. The descent is about  
 385 ft.  
 Land; mountainous.  
 Soil; rocky, 4th rate.  
 Timber; none.  
 Undergrowth; desert brush.

This is the only surveyable line in T. 28 N., R. 10  
 W., lying on the south side of the Colorado River.

## FINAL FIELD TEST

of Instrument No. 8489, by Mr. Horace M. Muscott  
 U. S. Transitman

June 4, 1921: I examine the adjustment of the instru-  
 ment and find it satisfactory; then to test the solar  
 apparatus by comparing its indications from observa-  
 tions made during a. m. and p. m. hours with a meri-  
 dian established by Polaris observation, proceed as  
 follows:

June 5, 1921: In camp 25.00 chs. south of the cor. of  
 secs. 4, 5, 32 and 33 on the N. bdy. of T. 27 N., R.  
 10 W., G. and S. R. B. and M., lat.  $35^{\circ} 45'$  N., long.  
 $113^{\circ} 22'$  W., at 2 hrs. 42 m., a. m., 1<sup>h</sup> m. t., I ob-  
 serve Polaris at eastern elongation, making four  
 observations, two each with the telescope in direct  
 and reversed positions, and mark the mean point in  
 the line thus determined on a peg driven firmly in  
 the ground 5 chs. North.

Azimuth of Polaris at eastern elongation is  $1^{\circ} 22' 48''$ .

At 7 hrs. 0 m., a. m., 1. m. t., I lay off the azimuth  
 of Polaris,  $1^{\circ} 23'$  to the West, and mark the meridian  
 thus determined by a tack in a peg driven firmly in  
 the ground, 5 chs. North.

At 9 hrs. 0 m., a. m., 1. m. t., I set off  $35^{\circ} 45'$  N.,  
 on the lat. arc.,  $22^{\circ} 32\frac{1}{2}'$  N. on the decl. arc.,  
 and determine a meridian with the solar, which I  
 find to agree with the true meridian.

At apparent noon, with the lat. arc unchanged, I observe  
 the sun on the meridian; the resulting reading of  
 the decl. arc is  $22^{\circ} 35\frac{1}{2}'$  N., which agrees with the  
 computed decl. of the sun.

At 3 hrs. 0 m., p. m., l. m. t., with the lat arc unchanged, I set off  $22^{\circ} 34\frac{1}{2}'$  N. on the decl. arc, and determine a meridian with the solar which I find to agree with the true meridian.

As all of the solar observations during the usual hours of solar work come within  $1' 30''$  of the true meridian, I conclude that the adjustment of the instrument has been satisfactory during the progress of this survey.

#### FINAL FIELD TEST

of Instruments Nos. 9977 and 8489, by Mr. Thomas D. Daley, U. S. Surveyor, and Mr. William E. Hiester, U. S. Transitman.

June 25, 1921: We examine the adjustments of the instruments, and find them satisfactory; then to test the solar apparatus, by comparing their indications, from observations made during a. m., and p. m., hours with a meridian established by Polaris observation, proceed as follows:

In camp 25 chs. south of the cor. of secs. 4, 5, 32 and 33, on the N. bdy. of T. 27 N., R. 10 W., G. & S. R. B. and M., Arizona, lat  $35^{\circ} 45'$  N., long.  $113^{\circ} 22'$  W., using the meridian established by Mr. Horace M. Muscott, U. S. Transitman, as hereinbefore described, at 9 hrs. 0 m., a. m., l. m. t., we set off  $35^{\circ} 45'$  N. on the lat arcs,  $23^{\circ} 24\frac{1}{2}'$  N. on the decl. arcs, and determine a meridian with each solar, which agrees with the true meridian.

At apparent noon, with the lat. arcs unchanged, we observe the sun on the meridian with each instrument; the resulting decl. in each case is  $23^{\circ} 24'$  N., which agrees with the computed decl. of the sun.

At 3 hrs. 0 m., p. m., l. m. t., with the lat. arcs unchanged, we set off  $23^{\circ} 24'$  N. on the decl. arcs and determine a meridian with each solar, which we find to agree with the true meridian.

As all of the solar observations during the usual hours of solar work come within  $1' 30''$  of the true meridian, we conclude that the adjustments of the instruments have been satisfactory during the progress of this survey.

---

#### GENERAL DESCRIPTION.

The portions of Ts. 27 and 28 N., R. 10 W., as described in the foregoing notes are, for the most part, very rough and mountainous. They are drained by Diamond Creek and Peach Springs Canyon, and the Colorado River. The soil is very rocky and unfit for cultivation.

There are a few scattering juniper and pinyon trees in the township and also a scattered growth of black brush, cactus, spanish dagger, Indian tea and other desert varieties of undergrowth. No indications of mineral were found. There are no settlers and no improvements.

The Diamond Creek Power Site on the Colorado River is located in Sec. 32, T. 28 N., R. 10 W. An old road, practically impassable, follows Peach Springs Canyon to an abandoned house in Sec. 5.

---



BOOK 3548

4-680

FIELD ASSISTANTS.  
to

Horace M. Muscott, U. S. Transitman,

NAMES.	CAPACITY.
C. E. Merrill	1st Chainman.
Robt. Johnson	1st & 2nd Chainman.
Jas. Chamberlain	2nd Chainman.
F. A. Weir	Moundman.
Walter Hutchison	Axman.
Roy T. Abbeloos	Flagman.
Sam Dysart	2nd Chainman.

56 BOOK 3548

CERTIFICATE OF UNITED STATES TRANSITMAN

I, Horace M. Muscott, U. S. Transitman, hereby certify upon honor that, in pursuance of special instructions received from the U. S. Surveyor General for Group 108, Arizona, bearing date of the 20th day of February, 1920, I have well, faithfully, and truly in my own proper person, and in strict conformity with said instructions, the Manual of Surveying Instructions, and the laws of the United States, surveyed all those parts or portions of the West Boundary and the Subdivision lines of

TOWNSHIP 27 NORTH, RANGE 10 WEST,

of the Gila and Salt River Base and Meridian, in the State of Arizona, and by diagram on page 2 hereof the foregoing field notes as having been executed by me, and under my direction; and that all the corners of said survey have been established and perpetuated in strict accordance with the Manual of Surveying Instructions, and the special written instructions of the U. S. Surveyor General for Group 108, Arizona, and in the specific manner described in the field notes, and that the foregoing are the original field notes of such survey.

Place Los Angeles, Calif. Horace M. Muscott U.S. Transitman. Date March 22 1923

APPROVAL.

OFFICE OF THE UNITED STATES SURVEYOR GENERAL,

The foregoing field notes of the survey of

executed by

under his special instructions dated , 191 , having been critically examined, and the necessary corrections and explanations made, the said field notes, and the surveys they describe, are hereby approved.

U. S. Surveyor General.

I certify that the foregoing transcript of the field notes of the above-described surveys in , has been correctly copied from the original notes on file in this office.

U. S. Surveyor General.

BOOK 3548

4-680

### FIELD ASSISTANTS.

to

William E. Hiestler, U. S. Transitman.

NAMES.	CAPACITY.
Robert A. Johnson	1st Chainman.
Irving A. Jennings	2nd Chainman.
H. M. O'Connor	Flagman.
F. A. Weir	Moundman.
Jas. Chamberlain	2nd Chainman.
Sam Dysart	2nd Chainman.

58  
BOOK 3548

CERTIFICATE OF UNITED STATES TRANSITMAN.

I, William E. Hiester, U.S. Transitman, hereby certify upon honor that, in pursuance of special instructions received from the U. S. Surveyor General for Group 108, Arizona, bearing date of the 26th day of February, 1920, I have well, faithfully, and truly in my own proper person, and in strict conformity with said instructions, the Manual of Surveying Instructions, and the laws of the United States, surveyed all those parts or portions of the North boundary, and Subdivision lines of TOWNSHIP 27 NORTH, RANGE 10 WEST, and the Subdivision Lines of TOWNSHIP 28 NORTH, RANGE 10 WEST, of the Gila and Salt River Base and Meridian, in the State of Arizona, and by diagram on page 2 hereof the foregoing field notes as having been executed by me, and under my direction; and that all the corners of said survey have been established and perpetuated in strict accordance with the Manual of Surveying Instructions, and the special written instructions of the U. S. Surveyor General for Group 108, Arizona, and in the specific manner described in the field notes, and that the foregoing are the original field notes of such survey.

Place Wolf Hole Arizona William E. Hiester  
 Date May 30 1923 U.S. Transitman.  
 APPROVAL.

OFFICE OF THE UNITED STATES SURVEYOR GENERAL

191

The foregoing field notes of the survey of

executed by

under his special instructions dated , 191 , having been critically examined, and the necessary corrections and explanations made, the said field notes, and the surveys they describe, are hereby approved.

U. S. Surveyor General.

I certify that the foregoing transcript of the field notes of the above-described surveys in , has been correctly copied from the original notes on file in this office.

U. S. Surveyor General.



BOOK 3548

CERTIFICATE OF UNITED STATES SURVEYOR.

I, Thomas D. Daley, U. S. Surveyor, hereby certify upon honor that, in pursuance of special instructions received from the U. S. Surveyor General for Group 103, Arizona, bearing date of the 20th day of February, 1920, I have well, faithfully, and truly in my own proper person, and in strict conformity with said instructions, the Manual of Surveying Instructions, and the laws of the United States, surveyed all those parts or portions of the West boundary and Subdivision lines of

TOWNSHIP 27 NORTH, RANGE 10 WEST,

of the Gila and Salt River Base and Meridian, in the State of Arizona, and by diagram on page 2 hereof the foregoing field notes as having been executed by me, and under my direction; and that all the corners of said survey have been established and perpetuated in strict accordance with the Manual of Surveying Instructions, and the special written instructions of the U. S. Surveyor General for Group 103, Arizona, and in the specific manner described in the field notes, and that the foregoing are the original field notes of such survey.

Place Santa Fe, N.M. Date March 26, 1923.

Thomas D. Daley U.S. Surveyor.

APPROVAL.

OFFICE OF THE UNITED STATES SURVEYOR GENERAL, Phoenix, Arizona, JUN 18 1923.

The foregoing field notes of the survey of part of the West and North boundaries, and Subdivision lines of TOWNSHIP 27 NORTH, RANGE 10 WEST, and Part of the Subdivision lines of

TOWNSHIP 28 NORTH, RANGE 10 WEST,

of the Gila and Salt River Base and Meridian, in the State of Arizona, executed by Thomas D. Daley, U.S. Surveyor, & William E. Hiester and Horace M. Muscott, U.S. Transitman, under his special instructions dated Feby. 26, 1920, for Grp. 108, Arizona, having been critically examined, and the necessary corrections and explanations made, the said field notes, and the surveys they describe, are hereby approved.

U.S. Surveyor General.

I certify that the foregoing transcript of the field notes of the above-described surveys in has been correctly copied from the original notes on file in this office.

U. S. Surveyor General.