

3583

Book "C"

4-679

65

(1)

BOOK 3583

FIELD NOTES

OF THE RETRACEMENT OF

part of the South boundary of White Mountain Indian Reservation,

and SURVEY of

West boundary,

part of North boundary,

part of East boundary, and

part of the Subdivision lines of

TOWNSHIP 4 SOUTH, RANGE 25 EAST,

Of the Gila and Salt River Base and Meridian,

In the State of Arizona.

EXECUTED BY

William H. Thorn, U.S. Cadastral Engineer,

and

Benjamin J. Kinsey, U.S. Transitman,

In the capacity of U. S. Surveyor S, under Special Instructions dated August 24, 1920, issued by the United States Surveyor General to govern surveys included in Group No. 111, which were approved by the Commissioner of the General Land Office, December 18, 1920, and Assignment Instructions dated November 17, 1920

Retracement & Survey commenced January 6, 1921

Retracement & Survey completed February 13, 1921.

3583

3583

112

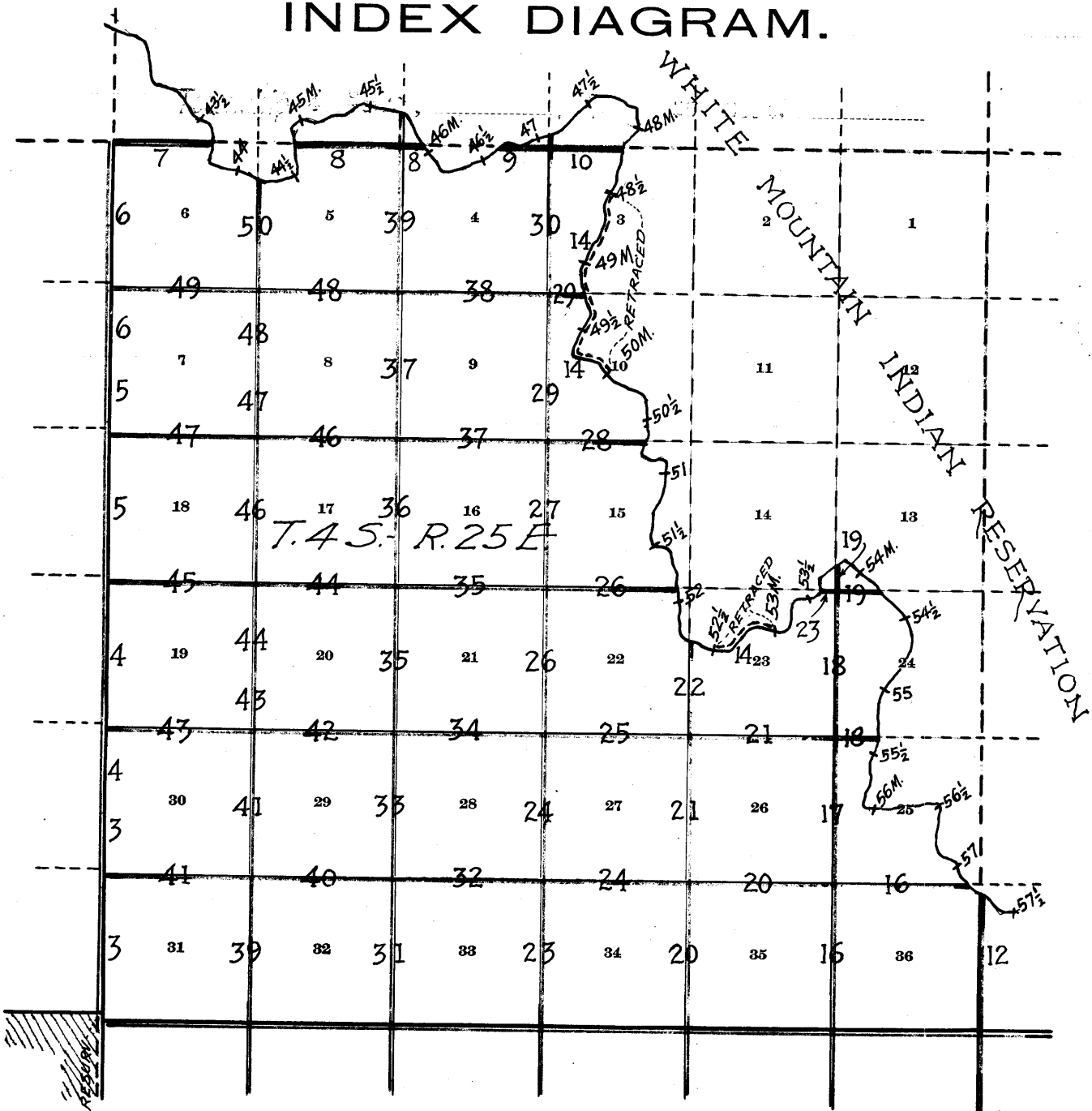
3583

Book "C"

Group 111 - - - - - Arizona.

BOOK 3583

INDEX DIAGRAM.



- Lines surveyed under this group.
- - - - Lines retraced or resurveyed under this group.
- Accepted surveys.
- - - - Unsurveyed.
- ▨▨▨▨▨ Areas surveyed as per accepted plats on file.

1A

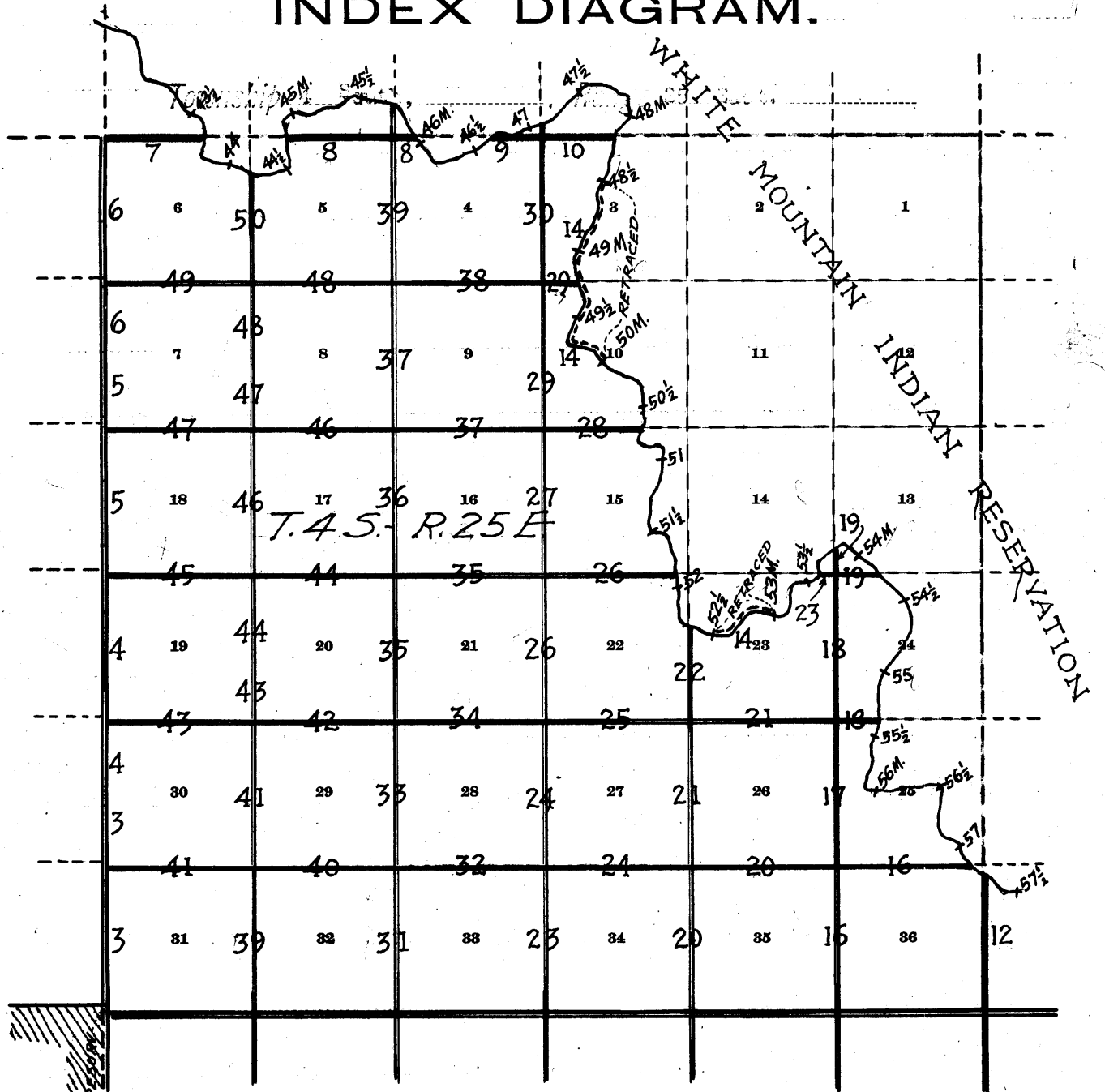
3583


Book "C"

Group 111 - - - - - Arizona.

BOOK 3583

INDEX DIAGRAM.



- Lines surveyed under this group.
- - - Lines retraced or resurveyed under this group.
- Accepted surveys.
- - - Unsurveyed.
-  Areas surveyed as per accepted plats on file.

Retracement and surveys hereinafter described, executed by Wm. H. Thorn, U.S. Cadastral Engineer, and Benjamin J. Kinsey, U.S. Transitman, on dates shown on diagram on page 1 hereof, using respectively Young and Sons light mountain transits Nos. 8592 and 8487. Each instrument is equipped with full vertical circle, and the Smith solar attachment. Unless otherwise specified, all azimuth determinations are accomplished with the solar attachments.

January 1, 1921. We examine the adjustments of each instrument, and correct all errors; then, to test the solar apparatus by comparing its indications from observations made during a.m. and p.m. hours with a meridian established by Polaris observation, proceed with each instrument as follows:

At camp near the cor. of secs. 10, 11, 14 and 15, T. 5 S., R. 25 E., Gila and Salt River Base and Meridian, Arizona, in latitude $33^{\circ}00'N.$, long. $109^{\circ}45'W.$, at 9h. 0m., a.m. 1.m.t., using the meridian established December 23, 1920, as described in Book "B," set off $33^{\circ}00'N.$ on the lat. arc; $22^{\circ}59'S.$ on the decl. arc, and determine a meridian with the solar, which agrees with the true meridian.

At apparent noon, with the lat. arc unchanged, observe the sun on the meridian; the resulting reading of the decl. arc is $22^{\circ}58\frac{1}{2}'S.$, which agrees with the computed decl. of the sun.

At 3h. 0m. p.m., 1.m.t. with the lat. arc unchanged, set off $22^{\circ}57\frac{1}{2}'S.$ on the decl. arc, and determine a meridian with the solar, which agrees with the true meridian.

As all of the solar observations made with both instruments during the usual hours of solar work come within $1'30''$ of the true meridian, we conclude that the adjustment of the instruments is satisfactory.

Unless otherwise specified, all measurements are made with Lufkin steel tapes 5 chs. in length, compared with a Chesterman standard steel tape and found correct. The measurements are made on the slope, the vertical angles determined with clinometer, and the slope measurements properly reduced to true horizontal distances.

Survey of West bdy. of Township 4 South, Range 25 East.

3

Chains.

From the closing cor. of Ts. 4 and 5 S., R. 25 E., described in Book "B,"
 N. 0° 2' E., on true line, on W. bdy. of sec. 31.
 Over mountainous land, thru. dense undergrowth.
 Ascend 5 ft., over W. slope, to
 2.20 The reestablished cor. of Ts. 4 and 5 S., R. 24 E., described in Book "B."
 Thence,
 North, on true line, continuing measurement.
 Ascend 6 ft., over W. slope.
 5.00 Descend 91 ft., over NW. slope.
 13.00 Gully, 50 lks. wide, course SW.
 Ascend 115 ft., over SW. slope, to
 28.60 Head of gully, course SW.
 Ascend 53 ft., over S. slope.
 34.15 Spur, slopes SW.
 Descend 35 ft., over NW. slope, to
 40.00 Set an iron post 3 ft. long, 1 in. in diam., 24 ins. in the ground, for $\frac{1}{4}$ sec. cor., of sec. 31 only, marked on brass cap,

| $\frac{1}{4}$ S 31
 1921

and raise a mound of stone, 3 ft. base, 2 ft. high, E. of cor.

Descend slightly over NW. slope.
 41.00 Wash, 50 lks. wide, course SW.
 Ascend 338 ft., over S. slope.
 44.90 From this point, a large giant cactus brs. East 2 lks. dist.
 69.00 Top of rocky knoll.
 Descend 17 ft., over N. slope.
 74.00 Ascend 30 ft., over W. slope, to
 80.00 Set an iron post, 3 ft. long, 2 ins. in diam., 24 ins. in the ground, for cor. of secs. 30 and 31, only, marked on brass cap,

| T4S
 | S30
 | S31
 | R25E
 1921

and raise a mound of stone, 3 ft. base, 2 ft. high, E. of cor.

Land, mountainous.
 Soil, stony, 4th rate.
 Timber, none.
 Undergrowth, dense greasewood, ocotillo and other cacti.

North, on true line on W. bdy. of sec. 30.
 Over mountainous land, thru. dense undergrowth.
 Ascend 84 ft., over W. and SW. slopes.
 13.00 Spur, slopes W.
 Descend 135 ft., over N. slope.
 20.60 Gulch, 20 lks. wide, course SW.
 Ascend 220 ft., over S. slope.
 30.50 Spur, slopes W.
 Descend 110 ft., over N. slope, to
 40.00 Set an iron post, 3 ft. long, 1 in. in diam., 24 ins. in the ground for $\frac{1}{4}$ sec. cor. of sec. 30 only, marked on brass cap,

| $\frac{1}{4}$ S 30
 1921

and raise a mound of stone, 3 ft. base, 2 ft. high, E. of cor.

4 West boundary of Township 4 South, Range 25 East.

Chains.

43.80 Descend slightly over N. slope, to
Wash, 30 lks. wide, course SW.
Ascend 1066 ft., over S. slope.
75.50 Top of mountain.
80.00 Descend 15 ft. over N. slope, to
Set an iron post, 3 ft. long, 2 ins. in diam., on bed rock,
in a mound of stone, 5 ft. base, 3 ft. high, for cor.
of secs. 19 and 30 only, marked on brass cap,

T4S
S19
S30
R25E

1921

and raise a mound of stone, 3 ft. base, 2 ft. high,
E. of cor.

Land, mountainous.

Soil, stony, 3rd and 4th rate.

Timber, none.

Undergrowth, dense greasewood, ocotillo and other cacti.

North, on true line, on W. bdy. of secs 19.

Over mountainous land, thru dense undergrowth.

Descend 393 ft., over N. slope.

20.80 Gully, 10 lks. wide, course NE.

Ascend 80 ft., over SE slope.

37.80 Descend 45 ft., over NE slope, to

40.00 Set an iron post, 3 ft. long, 1 in. in diam., on bed rock,
in a mound of stone, 5 ft. base, 3 ft. high, for $\frac{1}{4}$ sec.
cor. of sec. 19 only, marked on brass cap,

$\frac{1}{4}$ S19

1921

from which,

A cedar, 14 ins. in diam., brs. S. 20° E., 8 lks.
dist., marked $\frac{1}{4}$ S 19 BT.

No other trees within limits; raise a mound of stone, 3
ft. base, 2 ft. high, E. of cor.

Descend slightly over NE slope.

40.20 Gully, 5 lks. wide, course NE.

Ascend 40 ft., over SE slope.

42.93 Point of spur, slopes E.

Descend 120 ft., over NE slope.

53.40 Gulch, 50 lks. wide, course SE.

Ascend 73 ft., over SE slope, to

55.20 Gully, 5 lks. wide, course SE.

Ascend 165 ft. over SE slope.

65.00 Ridge, brs. E. and S. 20° W.

Descend 162 ft., over NW slope, to

80.00 Set an iron post, 3 ft. long, 2 ins. in diam., 24 ins. in
the ground for cor. of secs. 18, and 19 only, marked on
brass cap,

T4S
S18
S19
R25E

1921

from which,

A pine, 4 ins. in diam., brs. S. 30° E., 30 lks.
dist., marked T4S R25E S19 BT.

No other trees within limits; raise a mound of stone, 3
ft. base, 2 ft. high, E. of cor.

Land, mountainous.

Soil, rocky, 4th rate.

Timber, none. Undergrowth, dense greasewood, ocotillo and
other cacti.

West boundary of Township 4 South, Range 25 East, 5

Chains.

- North, on true line, on W. bdy. of sec. 18.
- Over mountainous land, thru. very scattering timber and dense undergrowth.
- Descend 134 ft., over NW. slope.
- 4.57 Gulch, course W.
- Ascend 225 ft., over SW. slope.
- 13.93 Spur, slopes W. from SE.
- Descend 520 ft., over N. slope.
- 28.62 Wash, 50 lks. wide, in bottom of canyon, course E.
- Ascend 277 ft., over S. slope, to
- 40.00 Set an iron post, 3 ft. long, 1 in. in diam., 20 ins. in the ground, supported by a mound of stone, for $\frac{1}{4}$ sec. cor. of sec. 18 only, marked on brass cap,

S18

1921

and raise a mound of stone, 3 ft. base, 2 ft. high, E. of cor.

- Ascend 135 ft., over S. slope.
- 48.73 Point of spur, slopes E.
- Descend 145 ft., over NE. slope.
- 55.90 Gulch, 20 lks. wide, course SE.
- Ascend 100 ft., over S. slope.
- 62.88 Spur, slopes E.
- Descend 242 ft., over N. slope, to
- 73.14 South rim of canyon, brs. E. and W.
- Descend 135 ft., over N. slope.
- 76.16 Wash, 50 lks. wide, in bottom of canyon, course E.
- Ascend 135 ft., over S. slope, to
- 78.14 North rim of canyon, brs. E. and W.
- Ascend 55 ft., over S. slope, to
- 80.00 Set an iron post, 3 ft. long, 2 ins. in diam., on bedrock, supported in a mound of stone, for cor. of secs. 7 and 18, only, marked on brass cap,

T4S

S 7

S18

R25E

1921

and raise a mound of stone, 3 ft. base, 2 ft. high, E. of cor.

Land, mountainous.
Soil, rocky, 4th rate. Timber, very scattering pine.
Undergrowth, dense catclaw, scrub oak and cacti.

-
- North, on true line, on W. bdy. of sec. 7.
 - Over mountainous land, thru. dense undergrowth.
 - Ascend 220 ft., over S. slope.
 - 15.08 Spur, slopes E. Desc. 230 ft., over N. slope.
 - 24.89 Gulch, 50 lks. wide, course E.
 - Ascend 115 ft., over S. slope.
 - 30.38 Point of spur, slopes SE. Desc. 55 ft., over NE. slope.
 - 33.48 Gulch, course E.
 - Ascend 203 ft., over S. slope, to
 - 40.00 Spur, slopes E. Set an iron post, 3 ft. long, 1 in. in diam., 12 ins. in the ground to bed rock, supported by a mound of stone, for $\frac{1}{4}$ sec. cor. of sec. 7 only, marked on brass cap,

S 7

1921

and raise a mound of stone, 3 ft. base, 2 ft. high, E. of cor.

15.7

6 West bdy. of Township 4 South, Range 25 East.

Chains.

72.90 Descend 444 ft., over N. and NE. slopes, to
Center of Wet fork of Markham Wash, 150 lks. wide, course
SE. Asc. 45 ft., over SW. slope.

77.95 Point of spur, slopes W. Desc. 35 ft., over NW. slope, to
80.00 The true point for cor. of secs. 6 and 7 falls in Wet Fork
of Markham Wash, 100 lks. wide, course SW.
Land, mountainous.
Soil, rocky, 4th rate.
Timber, none.
Undergrowth, dense catclaw, scrub mesquite and scrub cedar.

1.50 From true point for cor. of secs. 6 and 7,
North, on true line on W bdy. of sec. 6.
Over mountainous land, thru dense undergrowth.
Ascend 10 ft., over SE. slope, to
Set an iron post, 3 ft. long, 2 ins. in diam., on bed rock,
supported in a mound of stone, for witness cor. to
cor. of secs. 6 and 7, only, marked on brass cap,

T4S
S 6
S 7
R25E

W C
1921.

and raise a mound of stone, 3 ft. base, 2 ft. high, E. of
cor.

15.77 Ascend 95 ft., over SE. slope.
Point of spur, slopes E.
25.20 Descend 110 ft., over NE. slope.
Wet Fork of Markham Wash, 100 lks. wide, course SE.
29.60 Ascend 192 ft., over SW. slope, to $\frac{1}{4}$ sec. cor.
40.00 Old corral brs. West, 4 chs. dist.
Set an iron post, 3 ft. long, 1 in. in diam., 10 ins. in the
ground to bed rock, supported by a mound of stone, for
 $\frac{1}{4}$ sec. cor. of sec. 6 only, marked on brass cap,

$\frac{1}{4}$ S 6

1921

and raise a mound of stone, 3 ft. base, 2 ft. high, E.
of cor.

49.22 Ascend 150 ft., over SW. slope.
Point of spur, slopes W.
57.00 Descend 74 ft., over NW. slope.
Gulch, course W.
80.00 Ascend 240 ft., over SW. and W. slopes, to
Set an iron post, 3 ft. long, 2 ins. in diam., 26 ins. in
the ground, for cor. of Ts. 3 and 4 S., R. 25 E., marked
on brass cap,

T3S R25E
S31
S 6
T4S

1921

from which,
A cedar, 6 ins. in diam., brs. S. 58° E., 53 lks.
dist., marked T4S R25E S6 BT.

No other trees within limits.
Raise a mound of stone, 3 ft. base, 2 ft. high, E. of cor.
Land, mountainous.
Soil, rocky, 4th rate.
Timber, none.
Undergrowth, dense catclaw, scrub oak, scrub cedar and
cacti.

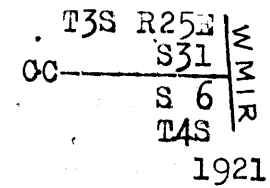
Survey of part of the North bdy. of Township 4 South, Range 25 E. 7

Chains.

From the cor. of Ts. 3 and 4 S., R. 25 E., hereinbefore described,
 East, on a true line, bet. secs. 6 and 31.
 Over mountainous land, thru. very scattering timber and dense undergrowth.
 Ascend 255 ft., over steep rocky W. slope.
 13.37 Point of spur, slopes NW., and rocky ledge bearing NW. and SE., facing NE.
 Descend 105 ft., over NE. slope.
 17.92 Gulch, course NW.
 Ascend 146 ft., over SW. slope.
 26.97 Point of spur, slopes SW.
 Descend 30 ft., over SE. slope.
 35.17 Same gulch, course S. 50° W.
 Ascend 90 ft., over NW. slope, to
 38.40 (38.88 chs. minus 48 lks. convergency), Set a stone, 20x12x6 ins., 15 ins. in the ground, for $\frac{1}{4}$ sec. cor., marked $\frac{1}{4}$ S 31 on N., and S 6 on S. face,

from which,
 A pine, 6 ins. in diam., brs. S. 3° W., 35 lks. dist., marked $\frac{1}{4}$ S 6 BT.
 No other trees within limits; raise a mound of stone, 3 ft. base, 2 ft. high, N. of cor.
 Ascend 75 ft., over NW. slope, to
 43.37 Head of same gulch, course NW.
 Ascend 107 ft., over W. slope, to
 52.92 Main ridge of the Gila Mountains, brs. N. 4° W. and S. 14° W.
 Intersect the S. bdy. of the White Mountain Indian Reservation at a point on traverse of South bdy. from the $43\frac{1}{2}$ mile mon., as follows:
 S. 38 $\frac{1}{2}$ ° E., 6.60 chs.
 S. 9 $\frac{1}{2}$ ° W., 5.90 chs.
 S. 4° E., 3.00 chs.

The $43\frac{1}{2}$ mile mon, is an iron post, 1 in. in diam., projecting 24 ins. above ground, firmly set in ground and mound of stone, and properly marked on brass cap, No accessories.
 At point of intersection, set an iron post 3 ft. long, 2 ins. in diam., 12 ins. in the ground to bed rock, supported by a mound of stone, for closing cor. of secs. 6 and 31, marked on brass cap,



and raise a mound of stone, 3 ft. base, 2 ft. high, W. of cor.
 Thence,
 East, on a blank line, thru. White Mountain Indian Reservation, continuing measurement.
 78.40 (78.88 chs., minus 48 lks. convergency) Set temp. cor. of secs. 5, 6, 31 and 32.
 Land, mountainous.
 Soil, rocky, 4th rate.
 Timber, very scattering pine.
 Undergrowth, dense manzanita, scrub oak, catclaw and cacti.

From temp. cor. of secs. 5, 6, 31 and 32,
 East, on a blank line, bet. secs. 5 and 32, thru. W.M.I.R.
 20.78 Over mountainous land, thru. dense undergrowth.
 Main ridge of the Gila Mountains, brs. N. 31 $\frac{1}{2}$ ° W. and S. 15° E. Intersect the South boundary of the White Mountain

8 Part of the North bdy. of Township 4 South, Range 25 East.

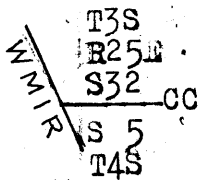
Chains.

Indian Reservation at a point on traverse of South bdy. from the 45 mile mon., as follows:

- S. 70° W., 1.00 ch.
- S. 46° W., 13.00 chs.
- S. 31½° E., 6.04 chs.

The 45 mile mon. is an iron post, 3 ins. in diam., properly marked on brass cap, projecting 10 ins. above ground, firmly set and witnessed by a mound of stone, N. of mon. and one properly marked bearing tree, a cedar limb, S. 43½° E., 165 lks. dist.

At the point of intersection, set an iron post, 3 ft. long, 2 ins. in diam., 6 ins. in the ground to bed rock, supported by a mound of stone, for closing cor. of secs. 5 and 32, marked on brass cap,



1921 Raise a mound of stone, 3 ft. base, 2 ft. high, E. of cor.

Leave White Mountain Indian Reservation.

Thence,

East, on a true line, bet. secs. 5 and 32, continuing measurement.

Descend 180 ft., over E. slope.

26.28 Indian Reservation fence, brs. N. and S.

30.83 Rocky gulch, course SE.

Ascend 85 ft., over SW. slope, to

40.00 Set an iron post, 3 ft. long, 1 in. in diam., on bed rock, supported by a mound of stone, for ¼ sec. cor., marked on brass cap;

1/4 S 32

S 5
1921

and raise a mound of stone, 3 ft. base, 2 ft. high, N. of cor.

Ascend 25 ft. over SW. slope, to

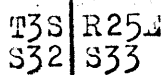
44.80 Spur, slopes SW.

Descend 205 ft., over SE. slope, to

64.73 Gulch, 20 lks. wide, course SW.

Ascend 337 ft., over W. and SW. slopes, to

80.00 Set an iron post, 3 ft. long, 2 ins. in diam., 12 ins. in the ground to bed rock, supported in a mound of stone for cor. of secs. 4, 5, 32 and 33, marked on brass cap,



S 5 S 4
T4S
1921

and raise a mound of stone, 3 ft. base, 2 ft. high, W. of cor.

Land, mountainous.

Soil, rocky, 4th rate.

Timber, none.

Undergrowth, dense catclaw, scrub mesquite, scrub oak, scrub cedar and cacti.

East, on a true line, bet. secs. 4 and 33.

Over mountainous land, thru. dense undergrowth.

Part of North bdy. of Township 4 South, Range 25 East.

Chains.

8.10 Ascend 70 ft., over SW. slope to closing cor.
 Indian Reservation fence, brs. NW. and SE.
 8.88 Main ridge of Gila Mountains, brs. NW. and SE. Intersect
 the South bdy. of the White Mountain Indian Reservation,
 at a point 3.00 chs. N. 31 $\frac{1}{2}$ ° W. from the 46 mile mon., which
 is an iron post, 3 ins. in diam., properly marked on
 brass cap, projecting 10 ins. above ground, firmly set
 and witnessed by two properly marked bearing trees as
 follows:

- A cedar limb, S. 6 $\frac{1}{2}$ ° W., 58 lks. dist.
- A cedar limb, N. 7° E., 181 lks. dist.

At the point of intersection, set a stone, 24x10x6 ins.,
 18 ins. in the ground, for closing cor. of secs. 4 and
 33, marked three grooves R25E on W. face, six
 grooves on S. face, and WHIR on E. face, and raise a
 mound of stone, 3 ft. base; 2 ft. high, W. of cor.

Thence,

East, on a blank line, thru. the White Mountain Indian
Reservation, continuing measurement.

40.00 Set temp. $\frac{1}{2}$ sec. cor.

52.99 Main ridge of the Gila Mountains, brs. NE. and SW. The
 theoretical point of intersection of Tp. bdy. with
 the south bdy. of White Mountain Indian Reservation
 on traverse of South bdy., from the 46 $\frac{1}{2}$ mile mon., as
 follows:

- N. 63 $\frac{1}{2}$ ° E., 8.00 chs.
- N. 34 $\frac{1}{2}$ ° E., 3.40 chs.
- N. 30 $\frac{1}{2}$ ° E., 2.70 chs.
- N. 53° E., 2.32 chs.

This point for closing cor. of secs. 4 and 33 was not
 monumented, owing to field error in computation of
 the Reservation boundary thru. sec. 4, which located
 this portion S. of the Tp. boundary.

Leave W.M.I.R.

Continue line and measurement, bet. secs. 4 and 33.

Along S. slope of main ridge of the Gila Mountains.

63.86 Main ridge of the Gila Mountains, brs. N. 88° W. and S. 88° E.
 The theoretical point of intersection of the Tp. bdy. with
 the South bdy. of the White Mountain Indian Reserva-
 tion on traverse of South bdy. from the 47 mile mon.,
 as follows:

- S. 65 $\frac{1}{2}$ ° W., 2.00 chs.
- N. 81° W., 2.10 chs.
- S. 75 $\frac{1}{2}$ ° W., 4.80 chs.
- S. 65° W., 1.50 chs.
- N. 87 $\frac{1}{2}$ ° W., 0.92 chs.

This point for closing cor. of secs. 4 and 33 was not
 monumented for reason explained in connection with
 intersection at 52.99 ch. station.

Thence,

East, on a blank line, thru. W.M.I.R.

Along N. slope of main ridge of the Gila Mountains, near
top.

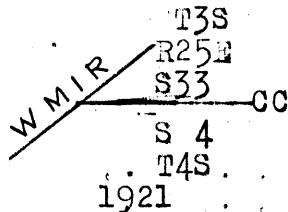
64.87 (Main ridge of Gila Mountains, brs. N. 65° E. and S. 65° W.)
 Intersect the South boundary of the White Mountain Indian
 Reservation, at a point on traverse of South bdy. from
 the 47 mile mon.; as follows:

- S. 65 $\frac{1}{2}$ ° W., 2.00 chs.
- N. 81° W., 2.10 chs.
- S. 75 $\frac{1}{2}$ ° W., 4.80 chs.
- S. 65° W., 1.40 chs.

The 47 mile mon. is an iron post, 3 ins. in diam., pro-
 jecting 12 ins. above ground, firmly set, properly
 marked on brass cap, and witnessed by a mound of stone
 NW. of post, and one properly marked bearing tree, a

102 part of the North bdy. of Township 4 South, Range 25 East.
Chains.

cedar limb, N. 58 $\frac{1}{2}$ ° W., 25 lks. dist.
At the point of intersection, set an iron post, 3 ft. long, 2 ins. in diam., rocked into a crevice in the rock, with 8 ins. projecting above ground, for closing cor. of secs. 4 and 33, marked on brass cap,



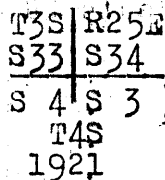
and raise a mound of stone, 3 ft. base, 2 ft. high, E. of cor.

Leave White Mountain Indian Reservation.

Thence, East, on a true line, bet. secs. 4 and 33, continuing measurement.

76.65
80.00

Descend 350 ft., over SE. slope.
Ascend 20 ft., over SW. slope, to Set an iron post, 3 ft. long, 2 ins. in diam., over cross (x) marked on surface rock, and raise a mound of stone around post, for cor. of secs. 3, 4, 33 and 34, marked on brass cap,



and raise a mound of stone, 3 ft. base, 2 ft. high, W. of cor.

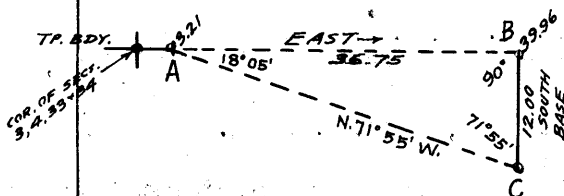
Land, mountainous.
Soil, rocky, 4th rate.
Timber, none.

Undergrowth, dense Spanish dagger, catclaw, scrub cedar, ocotillo and other cacti.

East, on a true line, bet. secs. 3 and 34.
Over mountainous land, thru. very scattering timber and dense undergrowth.

3.21

Ascend 45 ft., over SW. slope, to Spur, slopes S. from main ridge of Gila mountains. Beyond this point, the township bdy. passes over a deep canyon near head of same, and the walls are a series of cliffs, which render chaining impracticable. Triangulate the measurement across canyon as described as follows, and as shown on the diagram hereon:



Set flag at 3.21 ch. station, indicated on diagram at "A."
Set flag ahead, on Tp. bdy. on top of main ridge of the Gila Mountains at point "B."
From point "B," measure a Base, South, 12.00 chs. along top of ridge, to "C."

Bearing "C-A" = N. 71° 55' W. Vertical angle "A" to "B" = 0°.
Included angles of triangle "A-B-C" are 18° 05', 90° 00' and 71° 55', the sum of which is 180° 00'.
Triangulated measurement of "A-B" is obtained by tang. 71° 55' x Base or 3.06252 x 12.00 = 36.75 chs., which added to 3.21 chs. gives 39.96 chs. E. from cor. of secs. 3, 4, 33 and 34 for the position of triangulation point "B."

Part of North boundary of Township 4 South Range 25 East T13

Chains.

18.00

(Approximately) Bottom of canyon, course S. near head. Ascend over cliffs, bearing N. and S., facing W.

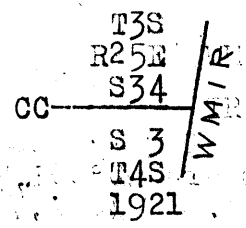
39.96

Triangulation point on top of main ridge of the Gila mountains, bearing N. 33° E. and S. 8° W.; and also point of intersection of this Tp. boundary with the S. bdy. of the White Mountain Indian Reservation, on traverse of South bdy., from the 48-mile mon., as follows:

- S. 46 3/4° W. 8.10 chs.
- S. 33 1/2° W.; 4.60 chs.
- S. 8° W., 0.15 chs.

The 48 mile mon, is an iron post, 3 ins. in diam., firmly set in a mound of stone, properly marked on brass cap, and witnessed by one properly marked bearing tree, a juniper S. 1 1/2° W., 249 lks. dist. Also, a large rock 8 ft. high, projecting 1 ft. above post, NW., and alongside same is marked cross (x) "30.

At the point of intersection, set an iron post, 3 ft. long, 2 ins. in diam., 12 ins. in the ground to bed rock, supported by a mound of stone, for closing cor. of secs. 3 and 34, marked on brass cap,



and raise a mound of stone, 3 ft. base, 2 ft. high, W. of cor.

Land, mountainous

Soil, rocky, 4th rate.

Timber, very scattering cedar.

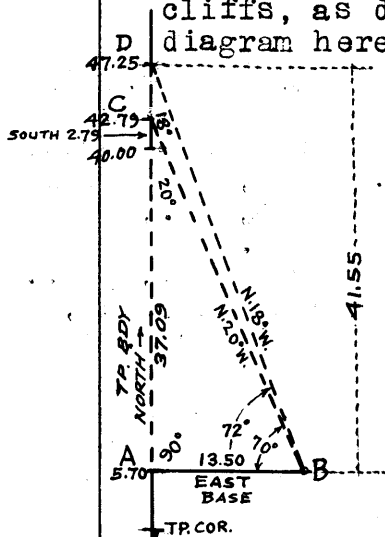
Undergrowth, dense Spanish dagger, catclaw, scrub cedar, ocotillo and other cacti.

The remainder of this township bdy. lies within the White Mountain Indian Reservation, and is not included in the instructions for survey of Group No. 111 Arizona.

12 Survey of part of the East bdy. of Township 4 South, Range 25 East
Chains.

From the cor. of Ts. 4 and 5 S., Rs. 25 and 26 E., described in Book "A," North, on true line, bet. secs. 31 and 36. Over mountainous land, thru. scattering timber and dense undergrowth.

5.70 Ascend 90 ft., over S. slope, to Beyond this point, the range line passes over a series of cliffs, bearing E. and W. facing S., and chaining is impracticable; therefore triangulate measurement to point near $\frac{1}{4}$ sec. cor., and to point on line at top of cliffs, as described as follows, and as shown on the diagram hereon:



From 5.70 ch. station indicated on diagram at "A," measure a Base East 13.50 chs. to point "B." Set flag ahead on Tp. bdy. at points "C" and "D" Vertical angle of "A-C" = +12° 00'. Vertical angle of "A-D" = +15° 00'. Bearing "B-C" = N. 20° W. Bearing "B-D" = N. 18° W. Included angles of triangle

"A-B-C" are 90° 00', 70° 00' and 20° 00', the sum of which is 180° 00'. Included angles of triangle "A-B-D" are 90° 00', 72° 00' and 18° 00', the sum of which is 180° 00'. Triangulated measurement of "A-C" is obtained by Tang. 70° 00' x Base or 2.74748 x 13.50 = 37.09 chs., which added to 5.70 chs. gives 42.79 chs. North from Tp. cor. for the position of triangulation point "C." Triangulated measurement of "A-D" is obtained by Tang. 72° 00' x Base or 3.07768 x 13.50 = 41.55 chs., which added to 5.70 chs. gives 47.25 chs. North from Tp. cor. for the position of triangulation point "D." From triangulation point "C," chain measurement South, 2.79 chs. to

40.00 On ledge bearing E. and W. Set an iron post, 3 ft. long, $\frac{1}{2}$ in. in diam., on surface rock, supported in a mound of stone, for $\frac{1}{4}$ sec. cor., marked on brass cap,

$\frac{1}{4}$
S36 | S31
1921

and raise a mound of stone, 3 ft. base, 2 ft. high, W. of cor.

Thence, North, between secs. 31 and 36, continuing measurement from Tp. cor. by chaining.

42.79 Ascend 30 ft., over S. slope on ledge, bearing E. and W. Triangulation point at foot of cliffs, bearing E. and W. facing S. This point is 350 ft. above Tp. cor.

Discontinue chaining; measurement to top of cliffs by triangulation, hereinbefore described.

47.25 Ascend 296 ft. to Triangulation point at top of cliffs, bearing E. and W., facing S.

Continue line and measurement by chaining.

77.65 Ascend 606 ft., over steep broken SW. slope, to Main ridge of the Gila Mountains, brs. NW. and SE. Intersect the South boundary of the White Mountain Indian Reservation, at a point on traverse of South bdy. from the $57\frac{1}{2}$ mile mon., as follows:

ECCK 3583

part of East Bdy. of Township 4 South, Range 25 East. 13

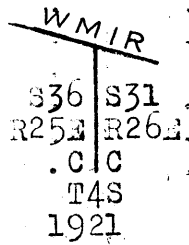
Chains.

- S. 70 1/2° W., 6.90 chs.
- S. 87° W., 5.00 chs.
- N. 42° W., 0.90 chs.
- N. 26° W., 4.30 chs.
- N. 55° W., 1.30 chs.

The 57 1/2 mile mon. is an iron post, 1 in. in diam., projecting 14 ins. above ground, firmly set in ground and mound of stone, properly marked on brass cap, and witnessed by two properly marked bearing trees as follows:

- A juniper, N. 51 1/2° W., 101 lks. dist.
- A juniper, S. 11 1/2° E., 98 lks. dist.

At the point of intersection, Set an iron post, 3 ft. long, 2 ins. in diam., on bed rock, supported by a mound of stone, for closing cor. of secs. 31 and 36, marked on brass cap.



and raise a mound of stone, 3 ft. base, 2 ft. high, S. of cor.

Land, mountainous.
 Soil, rocky, 4th rate.
 Timber, scattering juniper and cedar.
 Undergrowth, dense scrub oak, manzanita, catclaw and cacti.

The remainder of this range line lies within the White Mountain Indian Reservation, and is not included in the instructions for survey of Group 111, Arizona.



[Faint, mostly illegible text, possibly bleed-through from the reverse side of the page.]

Retracement of part of the South boundary
of the White Mountain Indian Reservation.

14

Chains.

That portion of the South boundary of the White Mountain Indian Reservation, situated in T.4 S. R.25 E. was surveyed in June and July, 1883, by Paul Riecker, Deputy Surveyor, and resurveyed in October, 1915, by H.L. Baldwin, Topographer, who established the monuments hereinafter described.

The 48½ mile mon., on the South bdy. of the White Mountain Indian Reservation, is an iron post, 1 in. in diam., projecting 12 ins. above ground, firmly set, and properly marked on brass cap, and witnessed by two properly marked bearing trees, as follows:

A cedar, S. 48½° E., 26 lks. dist.

A cedar, S. 19½° W., 113 lks. dist.

Thence, retrace the South boundary of the White Mountain Indian Reservation between angle points in sec. 3, T.4 S., R.25 E., as follows:

S. 3° W., 0.20 chs.

S. 81° E., 1.50 chs.

S. 22½° W., 3.70 chs.

S. 14° E., 3.60 chs.

S. 4° E., 4.60 chs.

S. 32½° W., 11.30 chs.

S. 39° W., 4.40 chs.

S. 35½° W., 10.70 chs. to the 49 mile mon. and angle point, which is an iron post 3 ins. in diam., projecting 12 ins. above ground, firmly set, properly marked on brass cap, and witnessed by a mound of stone, SE. of post. No bearing trees.

Thence, continuing in sec. 3,

S. 18½° W., 7.90 chs.

S. 20° E., 11.90 chs., to the closing cor. of secs.

3 and 10, hereinafter described.

Thence, in sec. 10,

S. 20° E., 9.10 chs.

S. 34° W., 11.10 chs. To the 49½ mile mon., which is an iron post, 1 in. in diam., projecting 12 ins. above ground, firmly set, properly marked on brass cap, and witnessed by a mound of stone, SE. of post. No bearing trees.

Thence,

S. 34° W., 12.80 chs.

S. 13° E., 7.00 chs.

S. 75° E., 13.40 chs.

S. 41½° E., 3.90 chs.

N. 82½° E., 2.90 chs. To the 50 mile mon. and angle point, which is an iron post, 3 ins. in diam., projecting 24 ins. above ground, firmly set in ground and mound of stone, properly marked on brass cap, and witnessed by a mound of stone, N. of post, and one properly marked bearing tree, as follows:

A cedar, N. 75° W., 285 lks. dist.

Land, mountainous.

Soil, rocky, 4th rate.

Timber, none.

Undergrowth, dense Spanish bayonet, mesquite, tesota and cacti.

The 52½ mile mon., on South bdy. of the White Mountain Indian Reservation is an iron post, 1 in. in diam., projecting 26 ins. above ground, firmly set in ground and mound of stone, properly marked on brass cap, and witnessed by two properly marked bearing trees, as follows:

A cedar limb, S. 53½° E., 126 lks. dist.

A cedar limb, S. 23½° W., 81 lks. dist.

Thence, retrace the South bdy. of the White Mountain Indian Reservation between angle points in sec. 23, T.4 S., R.25 E., as follows:

S. 57° E., 0.60 chs.

Retacement of part of S. bdy. of White Mountain Ind. Reservation. 15

Chains.

- N. 67 $\frac{1}{2}$ ° E., 2.90 chs.
- S. 83° E., 6.70 chs.
- N. 46° E., 6.00 chs.
- N. 19° E., 6.50 chs.
- N. 65 $\frac{1}{2}$ ° E., 4.40 chs.
- N. 87 $\frac{1}{2}$ ° E., 8.70 chs.
- S. 40 $\frac{1}{2}$ ° E., 4.20 chs.

to the 53 mile mon., and angle point, which is an iron post, 3 ins. in diam., projecting 30 ins. above ground, firmly set in ground and mound of stone, properly marked on brass cap, witnessed by a mound of stone, N. of post, and three properly marked bearing trees as follows:

- A cedar, N. 63 $\frac{1}{2}$ ° E., 38 lks. dist.
- A cedar, S. 81 $\frac{1}{2}$ ° E., 270 lks. dist.
- A cedar, S. 9 $\frac{1}{2}$ ° W., 148 lks. dist.

Land, mountainous.

Soil, rocky, 4th rate.

Timber, none.

Undergrowth, dense Spanish dagger, mescal, tesota and cacti.

Boundaries of that part of T. 4 S., R. 25 E. surveyed under this group (Outside White Mountain Indian Reservation).

Latitudes, departures and closing errors.

Line designated.	True bearing.	Dist.	Latitudes.		Departures.	
			N.	S.	E.	W.
South boundary,	West,	478.88				478.88
West boundary,	N. 0° 2' E., North,	2.20 477.80	2.20 477.80			
North boundary,	East,	278.36			278.36	
W.M.I.R. boundary,	Various	Various	65.96	468.53	291.14	92.12
East boundary,	South,	77.65		77.65		
Convergency,					.35	
Totals.			545.96	546.18	569.85	571.00
				545.96		569.85
	Error in latitude,			0.22		
	Error in departure,					1.15

BOOK 3583

16 Survey of part of the Subdivision lines of T.4 S. R.25 E.

Chains.

From the cor. of secs. 1, 2, 35 and 36, on the S. bdy. of Tp., described in Book "B,"
 N. 0° 1' W., bet. secs. 35 and 36.
 Over mountainous land, thru. dense undergrowth.
 Descend 160 ft., over NW. slope.
 10.00 Head of gulch, course W.
 Ascend 90 ft., over SW. slope.
 20.60 Change to W. slope, and ascend 10 ft., to
 29.50 Ascend 67 ft., over SW. slope, to
 40.00 Set an iron post, 3 ft. long, 1 in. in diam., on bed rock, supported by a mound of stone, for $\frac{1}{4}$ sec. cor., marked on brass cap,

$$\frac{1}{4}$$

S35	S36
-----	-----

1921

and raise a mound of stone, 3 ft. base, 2 ft. high, W. of cor.
 Ascend 20 ft., over S. slope.
 45.72 Spur, slopes W.
 Descend 240 ft., over N. slope.
 57.68 Gulch, 15 lks. wide, course W.
 Ascend 17 ft., over SW. slope.
 57.97 Point of spur, slopes W.
 Descend 5 ft., over NW. slope.
 60.87 Center of wash, 3 chs. wide, course SW.
 Ascend 225 ft., over SW. and W. slopes, to
 80.00 Set an iron post, 3 ft. long, 2 ins. in diam., 8 ins. in the ground to bed rock, supported by a mound of stone for cor. of secs. 25, 26, 35 and 36, marked on brass cap,

T4S	R25E
S26	S25
S35	S36

1921

and raise a mound of stone, 3 ft. base, 2 ft. high, W. of cor.
 Land, mountainous.
 Soil, rocky, 4th rate, limestone formation.
 Timber, none.
 Undergrowth, dense catclaw, scrub oak, scrub cedar and cacti.

East, on a true line, bet. secs. 25 and 36.
 Over mountainous land, thru. dense undergrowth.
 Ascend 8 ft., over W. slope.
 1.30 Spur, slopes S.
 Descend 142 ft., over E. slope.
 7.57 Gulch, course S.
 Ascend 90 ft., over W. slope, to
 15.00 Point of spur, slopes SW. Thence along S. slope.
 Ascend 55 ft., to
 24.10 Wash, 100 lks. wide, course SW. from E.
 Ascend 80 ft. along bottom of wash, to
 35.00 Leave wash, course W. from NE.
 Ascend 110 ft., over NW. slope, to
 36.53 Top of cliff, 50 ft. high, bearing NE. and SW. facing NW.
 Ascend 81 ft., over W. slope, to
 40.00 Set an iron post, 3 ft. long, 1 in. in diam., on bed rock, supported by a mound of stone, for $\frac{1}{4}$ sec. cor., marked on brass cap,

$$\frac{1}{4}$$

S 25	
S 36	

1921

and raise a mound of stone, 3 ft. base, 2 ft. high, N. of cor.

Part of the Subdivision lines of Township 4 South, Range 25 East, 17

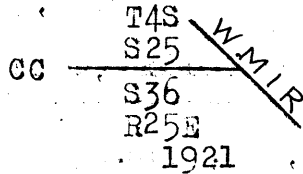
Chains.

66.00
75.72

Ascend 1140 ft., over W. slope, to
 Spur, slopes SW. Asc. 60 ft., over S. and SW. slopes, to
 Main ridge of the Gila Mountains, brs. NW. and SE.
 Intersect the S. bdy. of the White Mountain Indian Reserva-
 tion, at a point on traverse on South bdy., from the
 57-mile mon., as follows:
 S. 44° E., 0.90 chs.
 S. 16° E., 6.30 chs.
 S. 52° E., 3.50 chs.
 East, 3.00 chs.
 S. 64° E., 3.00 chs.

The 57 mile mon., and angle point is an iron post, 3 ins. in
 diam., projecting 22 ins. above ground, firmly set in
 ground, and mound of stone, properly marked on brass cap
 and witnessed by a malpais rock, 3x3x4 ft. above ground
 S. 46° E., 66 lls. dist., marked X B0.

At the point of intersection,
 Set an iron post, 3 ft. long, 2 ins. in diam., over cross (x)
 marked on surface rock, and raise a mound of stone
 around post, for closing cor. of secs. 25 and 36, marked
 on brass cap,



and raise a mound of stone, 3 ft. base, 2 ft. high, W. of cor.
 Land, mountainous.

Soil, rocky, 4th rate. Timber, none.

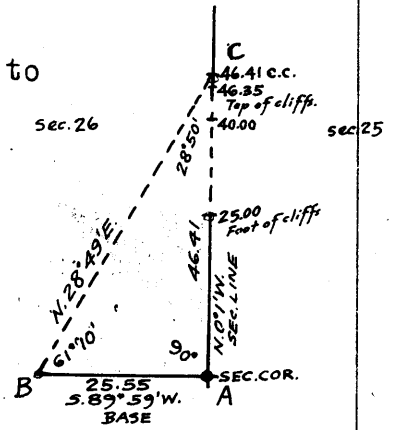
Undergrowth, dense catclaw, scrub oak, scrub cedar and cacti.

10.00
25.00

From cor. of secs. 25, 26, 35 and 36.
 N. 0° 1' W., bet. secs. 25 and 26.
 Over mountainous land, thru. dense undergrowth.
 Descend 250 ft., over W. and NW. slopes.
 Gulch, course W. near head, Asc. 250 ft., over SW. slope, to
 Foot of cliffs, bearing NW and SE. Beyond this point, the
 sec. line passes over SW. faces of cliffs.
 Discontinue chaining, and triangulate as described as fol-
 lows, and as shown on the diagram hereon:

From cor. of secs. 25, 26, 35 and 36,
 indicated on diagram at "A"
 measure a Base S. 89° 59' W., 25.55 chs. to
 to point "B."

Set flag "C" ahead on sec. line,
 near top of cliff.
 Vertical angle "A" to "C" = + 12° 10'.
 Bearing "B-C" = N. 28° 49' E.
 Included angles of triangle "A-B-C"
 are 90° 00', 61° 10' and 28° 50', the
 sum of which is 180° 00'.



Triangulated measurement of "A-C"
 is obtained by
 Tang. 61° 10' x Base, or 1.81649 x 25.55 =
 46.41 chs.

40.00

True point for 1/4 sec. cor. falls on face of cliff, and is
 inaccessible.

46.35

From triangulation point "C" chain measurement S. 0° 1' E.
 6 lks. to

46.41

Top of cliff, 200 ft. high, bearing W. and S.E., facing S.
 and SW. At about 3 chs. W., the cliff turns to NW.

Ascend slightly over S. slope, to
 Triangulation point, and point of spur, sloping W. 660
 ft. above foot of cliffs.

Set an iron post, 3 ft. long, 1 in. in diam., on bed rock,
 supported by a mound of stone, for witness cor. to 1/4
 sec. cor., marked on brass cap,

18 Part of Subdivision lines of Township 4 South Range 25 East

Chains.

$\frac{1}{2}$
 S26 | S25
 W | C
 1921

and raise mound of stone, 3 ft. base, 2 ft. high, W. of cor.
 Descend 265 ft., over NW. slope.
 56.42 Gulch, course NW.
 Ascend 50 ft., over SW. slope.
 67.42 Spur slopes, W.
 Descend 120 ft., over N. slope.
 75.60 Gulch, 20 lks. wide, course W. Asc. 110 ft., over S. slope, to
 80.00 Set an iron post, 3 ft. long, 2 ins. in diam., on bed rock,
 supported by a mound of stone, for cor. of secs. 23, 24, 25
 and 26, marked on brass cap,

T4S | R25E
 S23 | S24

 S26 | S25
 1921

and raise a mound of stone, 3 ft. base, 2 ft. high, W.
 of cor.
 Land, mountainous. Soil, rocky, 4th rate.
 Timber, none.
 Undergrowth, dense scrub oak, catclaw, scrub cedar and cacti.

East, on true line, bet. secs. 24 and 25.
 Over mountainous land, thru. dense undergrowth.
 Ascend 220 ft. over S. slope, to
 16.65 Head of gulch, course SW. Asc. 303 ft., over W. slope, to
 24.88 Main ridge of the Gila Mountains, brs. N. and S. Intersect
 the S. bdy. of the White Mountain Indian Reservation, on
 traverse on S. bdy. from the 55½ mile mon., as follows:
 N. 28° E., 4.10 chs.
 N. 3¼° E., 5.00 chs.
 N. ¾° W., 0.44 chs.

The 55½ mile mon. is an iron post, 1 in. in diam., projecting
 23 ins. above ground, firmly set in ground and mound of
 stone, properly marked on brass cap, and witnessed by a
 mound of stone SE. of mon., and one properly marked
 bearing tree, a cedar limb S. 69¼° W., 230 lks. dist.
 At the point of intersection,
 Set an iron post, 3 ft. long, 2 ins. in diam., on bed rock,
 supported by a mound of stone for closing cor. of secs.
 24 and 25, marked on brass cap,

T4S | R
 S24 | W
 CC ---
 S25 | W
 R25E |
 1921

and raise a mound of stone, 3 ft. base, 2 ft. high, W. of cor.
 Land, mountainous. Soil, rocky, 4th rate.
 Timber, none.
 Undergrowth, dense scrub oak, catclaw, scrub cedar and cacti.

From the cor. of secs. 23, 24, 25 and 26,
 N. 0° 1' W., bet. secs. 23 and 24.
 Over mountainous land, thru. dense undergrowth.
 Ascend 76 ft., over SW. slope.
 11.92 Point of spur, slopes W. Desc. 195 ft., over NW. slope.
 19.49 Gulch, course W. Asc. 75 ft., over S. slope.
 22.76 Point of spur, slopes W. Desc. 196 ft., over NW. slope.
 38.38 Gulch, 50 lks. wide, course W. Asc. 9 ft., over SE. slope, to
 40.00 Set an iron post, 3 ft. long, 1 in. in diam., 24 ins. in the
 ground, for ¼ sec. cor., marked on brass cap,

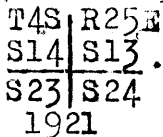
$\frac{1}{2}$
 S23 | S24
 1921

and raise mound of stone, 3 ft. base, 2 ft. high, W. of cor.
 Ascend 228 ft., over SE. slope, to
 49.32 Top of cliff, 30 ft. high, bearing NE. and SW., facing SE.

Part of Subdivision lines of Township 4 South, Range 25 East. 19

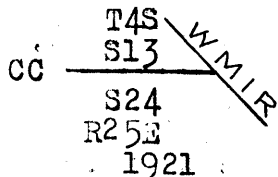
chains.

54.26 Ascend 52 ft., over SE. slope, to
 60.20 Point of spur, slopes E. Desc. 118 ft., over NE. slope, to
 74.68 Gulch, course SE. Asc. 400 ft., over SE. slope.
 80.00 Point of spur, slopes E. Desc. 75 ft., over NE. slope, to
 Set an iron post, 3 ft. long, 2 ins. in diam., on bed rock, supported by a mound of stone, for cor. of secs. 13, 14, 23 and 24, marked on brass cap.



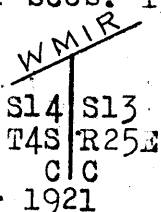
and raise mound of stone, 3 ft. base, 2 ft. high, W. of cor. Land, mountainous. Soil, rocky, 4th rate. Timber, none. Undergrowth, dense catchlaw, scrub oak and cacti.

East, on a true line, bet. secs. 13 and 24. Over mountainous land, thru. dense undergrowth. Descend slightly over NE. slope, to
 0.15 Gully, course SE. Desc. 70 ft., over S. and SE. slopes to
 24.11 Main ridge of the Gila Mountains, brs. NW. and SE. Intersect the S. bdy. of the White Mountain Indian Reservation, at a point S. 54° E., 13.30 chs. from the 54 mile mon. thereon, which is an iron post, 3 ins. in diam., projecting 24 ins. above ground, firmly set in ground and mound of stone, properly marked on brass cap, and witnessed by a mound of stone, N. of mon. No bearing trees. At the point of intersection, Set an iron post, 3 ft. long, 1 in. in diam., 12 ins. in the ground to bed rock, supported by a mound of stone, for closing cor. of secs. 13 and 24, marked on brass cap,



and raise a mound of stone, 3 ft. base, 2 ft. high, W. of cor. Land, mountainous. Soil, rocky, 4th rate. Timber, none. Undergrowth, dense catchlaw, scrub oak and cacti.

From the cor. of secs. 13, 14, 23 and 24, N. 0° 1' W., bet. secs. 13 and 14. Over mountainous land, thru. dense undergrowth. Descend slightly over NE. slope.
 0.10 Gully, course SE. Asc. 220 ft., over S. slope, to
 10.02 Intersect the South boundary of the White Mountain Indian Reservation, at a point on traverse on South bdy. from the 53 1/2 mile mon. as follows:
 N. 75° E., 7.50 chs.
 N. 6 1/2° E., 6.00 chs.
 N. 40 1/2° E., 8.95 chs.
 The 53 1/2 mile mon. is an iron post, 1 in. in diam., projecting 26 ins. above ground, firmly set in ground for mound of stone, and properly marked on brass cap, No accessories. At the point of intersection, set an iron post, 3 ft. long, 1 in. in diam., on bed rock, supported by a mound of stone for closing cor. of secs. 13 and 14, marked on brass cap,



and raise mound of stone, 3 ft. base, 2 ft. high, S. of cor. Land, mountainous. Soil, rocky, 4th rate.

Chains.

Timber, none.
Undergrowth, dense catclaw, scrub oak and cacti.

From the cor. of secs. 2, 3, 34 and 35, on S. bdy. of Tp., described in Book "B,"

N. 0° 1' W., bet. secs. 34 and 35.

Over mountainous land, thru dense undergrowth, along E. slope, near foot of same.

Ascend 10 ft., to

9.00 Descend 25 ft., to

25.30 Center of wash, 100 lks. wide, course S. 20° E.

Ascend 190 ft., over SW. slope, to

40.00 Set an iron post, 3 ft. long, 1 in. in diam., 10 ins. in the ground to bed rock, supported by a mound of stone for $\frac{1}{4}$ sec. cor., marked on brass cap,

$\frac{1}{4}$
S34 | S35

1921

and raise mound of stone, 3 ft. base, 2 ft. high, W. of cor.

Ascend 195 ft., over SW. slope, to

54.70 Thence along W. slope, with slight change in elevation.

58.69 Descend 225 ft., over NW. slope.

73.07 Gulch, course W. Asc. 33 ft., over S. slope.

77.02 Point of spur, slopes W. Desc. 21 ft., over NW. slope, to

80.00 Set an iron post, 3 ft. long, 2 ins. in diam., 24 ins. in the ground, for cor. of secs. 26, 27, 34 and 35, marked on brass cap,

T4S | R25E

S27 | S26

S34 | S35

1921

and raise a mound of stone, 3 ft. base, 2 ft. high, W. of cor.

Land, mountainous.

Soil, rocky, 4th rate.

No timber.

Undergrowth, dense catclaw, scrub mesquite, scrub cedar, ocotillo and other cacti.

East, on a random line, bet. secs. 26 and 35.

40.00 Set temp. $\frac{1}{4}$ sec. cor.

80.02 Intersect the cor. of secs. 25, 26, 35 and 36.

Thence,

West, on a true line, bet. secs. 26 and 35.

Over mountainous land, thru dense undergrowth.

Descend 210 ft., over W. slope.

12.58 Head of gulch, course S.

Ascend 186 ft. over E. slope.

25.55 Top of mountain.

Descend 345 ft., over NW. slope, to

40.01 Set an iron post, 3 ft. long, 1 in. in diam., 20 ins. in the ground to bed rock, supported by a mound of stone, for $\frac{1}{4}$ sec. cor., marked on brass cap,

$\frac{1}{4}$ S 26

S 35

1921

and raise a mound of stone, 3 ft. base, 2 ft. high, N. of cor.

Descend slightly over NW. slope, to

42.25 Wash, 70 lks. wide, course SW.

48.00 Ascend 20 ft., over SE. slope.

Point of spur, slopes S. Descend 10 ft. over SW. slope.

50.05 Wash, course S.

Ascend 175 ft., over E. slope.

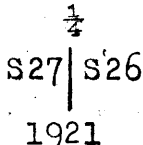
65.75 ridge, brs. N. and S.

Part of Subdivision lines of Township 4 South Range 25 East

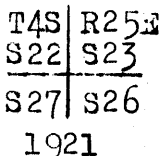
Chains.

80.02 Descend 167 ft., over NW. slope, to
 The cor. of secs. 26, 27, 34 and 35.
 Land, mountainous,
 Soil, rocky, malpais formation, 4th rate.
 Timber, none.
 Undergrowth, dense scrub oak, catclaw, tesota, ocotillo
 and other cacti.

3.68 N. 0° 1' W., bet. secs. 26 and 27.
 Over mountainous land, thru. dense undergrowth.
 Descend 20 ft., over NW. slope.
 Wash, 50 lks. wide, course S. 30° W.
 Ascend 96 ft.; over SE. slope.
 21.94 Descend 25 ft., over E. slope.
 31.94 Same wash, 50 lks. wide, course SE. from N.
 Ascend slightly in bottom of wash to
 34.45 Leave wash, course S. from NW.
 Ascend 50 ft., over S. slope, to
 40.00 Set an iron post, 3 ft. long, 1 in. in diam., 26 ins. in
 the ground, for $\frac{1}{4}$ sec. cor., marked on brass cap,



and raise a mound of stone, 3 ft. base, 2 ft. high, W.
 of cor.
 Ascend 365 ft., over S. slope.
 62.16 Top of mountain.
 Descend 210 ft., over NW. slope.
 76.80 Wash, course SW. from N. Thence along W. side of this
 wash.
 Ascend 41 ft., over foot of SE. slope, to
 80.00 Set an iron post, 3 ft. long, 2 ins. in diam., on bed rock,
 supported by a mound of stone, for cor. of secs. 22, 23,
 26 and 27, marked on brass cap,



and raise a mound of stone, 3 ft. base, 2 ft. high, W.
 of cor.
 Land, mountainous.
 Soil, rocky, 4th rate.
 Timber, none.
 Undergrowth, dense catclaw, greasewood, scrub mesquite,
 ocotillo and other cacti.

40.00 East, on a random line, bet. secs. 23 and 26.
 Set temp. $\frac{1}{4}$ sec. cor.
 79.96 Intersect the cor. of secs. 23, 24, 25 and 26.
 Thence,
 West, on a true line, bet. secs. 23 and 26.
 Over mountainous land, thru. dense undergrowth.
 Descend 242 ft., over SW. slope.
 6.65 Gulch, 30 lks. wide, course N. 20° W.
 Ascend 85 ft., over NE. slope.
 11.25 Spur, slopes NW.
 Descend 280 ft., over W. slope.
 22.05 Center of wash, 100 lks. wide, course S.
 Ascend 217 ft., over SE. slope.
 38.95 Spur, slopes S.
 Descend 15 ft., over W. slope, to

22 Part of Subdivision lines of Township 4 South, Range 25 East.

Chains.

39.98 Set an iron post, 3 ft. long, 1 in. in diam., on bedrock, supported by a mound of stone, for $\frac{1}{4}$ sec. cor., marked on brass cap,

$$\begin{array}{r} \frac{1}{4} \text{ S } 23 \\ \hline \text{S } 26 \\ 1921 \end{array}$$

and raise a mound of stone, 3 ft. base, 2 ft. high, N. of cor.

44.85 Descend 105 ft., over W. slope.

Gulch, course S.

Ascend 175 ft., over E. slope.

51.85 Spur, slopes S.

Descend 180 ft., over W. slope.

60.20 Center of wash, 2 chs. wide, in gulch, course S.

Ascend 115 ft., over E. slope.

70.90 Ridge, brs. N. and S.

Descend 155 ft., over broken W. slope.

79.25 Wash, course S.

Ascend slightly over SE. slope, to

79.96 The cor. of secs. 22, 23, 26 and 27.

Land, mountainous.

Soil, rocky, 4th rate, malpais formation.

Timber, none.

Undergrowth, dense catclaw, scrub oak, scrub cedar and cacti.

N. $0^{\circ}1'W.$, bet. secs. 22 and 23.

Over mountainous land, thru dense undergrowth.

Ascend 665 ft., over SE. slope, to

40.00 Set an iron post, 3 ft. long, 1 in. in diam., 20 ins. in the ground to bed rock, supported by a mound of stone, for $\frac{1}{4}$ sec. cor., marked on brass cap,

$$\begin{array}{r} \frac{1}{4} \\ \hline \text{S } 22 \mid \text{S } 23 \\ 1921 \end{array}$$

and raise a mound of stone, 3 ft. base, 2 ft. high, W. of cor.

51.33 Ascend 450 ft., over S. slope, to

Main ridge of the Gila Mountains, brs. NW. and SE.

Intersect the South bdy. of the White Mountain Indian Reservation, at a point on traverse on S. bdy. from the $52\frac{1}{2}$ mile mon., as follows:

N. $57^{\circ}W.$, 12.90 chs.
S. $83\frac{1}{2}^{\circ}W.$, 1.80 chs.

The $52\frac{1}{2}$ mile mon. is an iron post, 1 in. in diam., projecting 26 ins. above ground, firmly set in ground and mound of stone, properly marked on brass cap, and witnessed by two properly marked bearing trees, as follows:

A cedar limb, S. $53\frac{1}{2}^{\circ}E.$, 126 lks.

A cedar limb S. $23\frac{1}{2}^{\circ}W.$, 81 lks.

At the point of intersection,

Set an iron post, 3 ft. long, 1 in. in diam., on bed rock, supported by a mound of stone, for closing cor. of secs. 22 and 23, marked on brass cap.

$$\begin{array}{r} \text{WMIR} \\ \hline \text{S } 22 \mid \text{S } 23 \\ \text{Q } 48 \mid \text{R } 25 \\ \text{C } \mid \text{C} \\ 1921 \end{array}$$

Part of Subdivision lines of Township 4 South, Range 25 East. 23

Chains.

and raise a mound of stone, 3 ft. base, 2 ft. high, S. of cor.

Land, mountainous.

Soil, rocky, 4th rate.

Timber, none.

Undergrowth, dense catclaw, scrub oak and cacti.

6.13 From the cor. of secs. 13, 14, 23 and 24, West, on a true line, bet. secs. 14 and 23. Over mountainous land, thru. dense undergrowth. Ascend 125 ft., over NE. slope, to Main ridge of the Gila Mountains brs. NE. and SW. Intersect the South bdy. of the White Mountain Indian Reservation, at a point on traverse on South bdy. from the 53½ mile mon., as follows:

N. 75° E., 7.50 chs.

N. 64° E., 2.80 chs.

The 53½ mile mon. is an iron post 1 in. in diam., projecting 26 ins. above ground, firmly set in ground and mound of stone, and properly marked on brass cap, No accessories.

At the point of intersection.

Set an iron post, 3 ft. long, 1 in. in diam., on bed rock, supported by a mound of stone, for closing cor. of secs. 14 and 23, marked on brass cap,

WMIR / T4S
S14 — CC
S23
R25E
1921

and raise a mound of stone, 3 ft. base, 2 ft. high, E. of cor.

Land, mountainous.

Soil, rocky, 3rd and 4th rate.

Timber, none.

Undergrowth, dense catclaw, scrub oak and cacti.

11.50 From the cor. of secs. 3, 4, 33 and 34, on the S. bdy. of the Tp., described in Book "B," N. 0° 2' W., bet. secs. 33 and 34. Over mountainous land, thru. dense undergrowth. Ascend 35 ft., over SW. slope, to Wash, course SW.

30.00 Ascend 142 ft., over S. slope.

40.00 Descend 27 ft., over NW. slope, to Set an iron post 3 ft. long, 1 in. in diam., 14 ins. in the ground to bed rock, supported by a mound of stone, for ¼ sec. cor., marked on brass cap,

1/4
S33 | S34
1921

and raise a mound of stone, 3 ft. base, 2 ft. high, W. of cor.

43.00 Descend 17 ft., over NW. slope. Wash, 20 lks. wide, course SW.

72.00 Ascend 413 ft., over SW. slope.

Spur, slopes SW. from E.

73.80 Descend 36 ft., over NW. slope.

Gulch, 20 lks. wide, course SW.

Ascend 161 ft., over SW. slope, to

80.00 Set an iron post, 3 ft. long, 2 ins. in diam., 8 ins. in

24 Part of Subdivision lines of Township 4 South, Range 25 East.

Chains.

the ground to bed rock, supported by a mound of stone, for cor. of secs. 27, 28, 33 and 34, marked on brass cap,

T4S	R25E
S28	S27
S33	S34
1921	

and raise a mound of stone, 3 ft. base, 2 ft. high, W. of cor. Land, mountainous. Soil, rocky, 4th rate. Timber, none. Undergrowth, dense catchaw, crucifixion thorn, greasewood and ocotillo.

East, in a random line, bet. secs. 27 and 34.

40.00 Set temp. 1/4 sec. cor.

80.02 Intersect N. and S. line, 2 lks. S. of the cor. of secs. 26, 27, 34 and 35.

Thence, S. 89° 59' W., on a true line, bet. secs. 27 and 34. Over mountainous land, thru. dense undergrowth. Descend 35 ft., over NW. slope.

5.00 Wash, 60 lks. wide, course SW.

Ascend 12 ft., over SE. slope.

7.00 Point of spur, slopes SE.

Descend 75 ft., over SW. slope.

21.00 Ascend 300 ft., over E. slope, to

40.01 Set an iron post, 3 ft. long, 1 in. in diam., 12 ins. in the ground to bed rock supported by a mound of stone, for 1/4 sec. cor., marked on brass cap,

1/4	S 27
	S 34
1921	

and raise a mound of stone, 3 ft. base, 2 ft. high, N. of cor.

43.70 Ascend 117 ft., over E. slope, to saddle in ridge, bearing N. 10° E. and S. 10° W.

62.00 Ascend 191 ft., over N. and NE. slopes, to spur, slopes NW.

80.02 Descend 525 ft., over W. and SW. slopes, to the cor. of secs. 27, 28, 33 and 34.

Land, mountainous. Soil, rocky, 4th rate. Timber, none. Undergrowth, dense tesota, scrub cedar, ocotillo and other cacti.

N. 0° 02' W., bet. secs. 27 and 28. Over mountainous land, thru. dense undergrowth. Ascend 15 ft., over SW. slope.

2.20 Spur, slopes W. Descend 80 ft., over NW. slope.

7.90 Head of gulch, course S. 80° W. Ascend 130 ft., over SW. slope.

15.50 Spur, slopes W. Descend 165 ft., over NW. slope.

28.10 Ascend 180 ft., over SW. slope.

39.00 Spur, slopes NW. Descend 45 ft., over NE. slope, to

40.00 Set an iron post, 3 ft. long, 1 in. in diam., 6 ins. in the ground to bed rock, supported by a mound of stone,

Part of Subdivision lines of Township 4 South Range 25 East 25

Chains.

for 1/4 sec.cor., marked on brass cap,

1/4
S28 | S27
1921

and raise a mound of stone, 2 ft. base, 1 1/2 ft.high,W. of cor.

67.00 Descend 455 ft., over N.E. slope. Gulch, course NW.

75.00 Ascend 110 ft., over SW. slope. Point of spur, slopes W.

78.40 Descend 90 ft., over NW. slope. Gulch, 20 lks. wide, course W.

80.00 Ascend 85 ft., over S. slope, to Set an iron post, 3 ft. long, 2 ins. in diam., 8 ins. in the ground to bed rock, supported by a mound of stone, for cor. of secs. 21, 22, 27 and 28, marked on brass cap.

T4S | R25E
S21 | S22
S28 | S27
1921

and raise a mound of stone, 3 ft. base, 2 ft. high, W. of cor.

Land, mountainous.

Soil, rocky, 4th rate.

Timber, none.

Undergrowth, dense catclaw, scrub oak and cacti.

40.00 N. 89° 59' E., on a random line, bet. secs. 22 and 27.

79.88 Set temp. 1/4 sec. cor.

Intersect N. and S. line, 2 lks. N. of the cor. of secs. 22, 23, 26 and 27.

Thence,

West, on true line, bet. secs. 22 and 27.

Over mountainous land, thru. dense undergrowth.

20.96 Ascend 65 ft., over SE. slope.

Spur, slopes SW.

27.10 Descend 92 ft., over W. slope, to

Center of wash, 1.50 chs. wide, course SW.

31.18 Descend 22 ft., over S. slope, to

Wash, 20 lks. wide, course SE.

39.94 Ascend 184 ft., over E. slope, to

Set an iron post, 3 ft. long, 1 in. in diam., on bed rock, supported by a mound of stone, for 1/4 sec. cor., marked on brass cap,

1/4 S 22
S 27
1921

and raise a mound of stone, 3 ft. base, 2 ft. high, N. of cor.

56.33 Ascend 220 ft., over E. slope.

Ridge, brs. N. and S.

75.07 Descend 650 ft., over W. slope.

Gulch, course SW. for 150 lks., thence W.

79.88 Descend 20 ft., along S. slope, to

The cor. of secs. 21, 22, 27 and 28.

Land, mountainous.

Soil, rocky, 4th rate.

Timber, none.

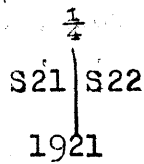
Undergrowth, dense catclaw, greasewood, scrub cedar and cacti.

BOOK 3583

26 Part of Subdivision lines of Township 4 South, Range 25 East.

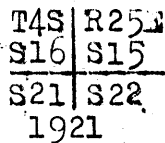
Chains.

- N.0°2'W., bet. secs. 21 and 22.
 Over mountainous land, thru. dense undergrowth.
 Ascend 305 ft., over S. slope.
 10.37 Spur, slopes W.
 Descend 161 ft., over N. slope.
 16.33 Gulch, course W.
 Ascend 132 ft., over S. slope.
 22.00 Spur, slopes W.
 Descend 180 ft., over N. slope.
 28.00 Gulch, course W.
 Ascend 105 ft., over S. slope.
 34.22 Spur, slopes W.
 Descend 145 ft., over N. slope, to
 40.00 Set an iron post, 3 ft. long, 1 in. in diam., on bed rock, supported by a mound of stone, for $\frac{1}{4}$ sec. cor., marked on brass cap,



and raise a mound of stone, 3 ft. base, 2 ft. high, W. of cor.

- Descend slightly over N. slope.
 41.00 Wash, course W.
 Ascend 26 ft., over S. slope.
 45.18 Spur, slopes W.
 Descend 92 ft., over N. slope, to
 53.73 South rim of canyon brs. E. and W.
 Descend 238 ft., over N. slope, to
 56.80 Wash, in bottom of canyon, 50 lks. wide, course W.
 Ascend 250 ft., over S. slope, to
 61.37 North rim of canyon, brs. E and W.
 Ascend 150 ft. over S. slope, to
 65.26 Top of cliff, bearing E. and W. facing S.
 Ascend 76 ft., over SE. slope, to
 69.86 Point of spur, slopes E.
 Descend 80 ft., over NE. slope.
 77.56 Gulch course SE. near head.
 Ascend 35 ft., over S. slope, to
 80.00 Set an iron post 3 ft. long; 2 ins. in diam., 24 ins. in the ground, for cor. of secs. 15, 16, 21 and 22, marked on brass cap,



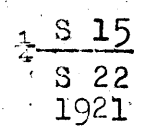
and raise a mound of stone, 3 ft. base, 2 ft. high, W. of cor.

Land, mountainous.
 Soil rocky, 4th rate.
 Timber, none.
 Undergrowth, dense greasewood, scrub oak and cacti.

- East, on a true line, bet. secs. 15 and 22.
 Over mountainous land, thru. dense undergrowth.
 Ascend 40 ft., over S. and SW. slopes.
 10.08 Point of spur, slopes S.
 Descend 90 ft., over SE. slope.
 15.00 Head of gulch, course S.
 Ascend 340 ft., over SW. slope.
 29.93 Spur, slopes NW.
 Descend 85 ft., over NE. slope, to
 40.00 Set an iron post, 3 ft. long, 1 in. in diam., on bed rock,

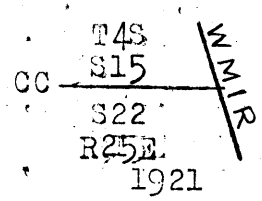
Part of Subdivision lines of Township 4 South, Range 25 East, 27 Chains.

supported by a mound of stone, for 1/4 sec.cor., marked on brass cap,



and raise a mound of stone, 3 ft. base, 2 ft. high, N. of cor.

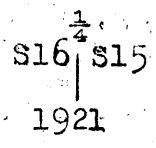
- 43.90 Descend 15 ft., over NE. slope.
- Wash, 50 lks. wide, 10 ft. deep, course NW.
- Ascend 525 ft., over W. slope, to
- 62.82 Top of cliff, 100 ft. high, bearing N. and S., facing W.
- Ascend 365 ft., over W. slope, to
- 74.60 Main ridge of the Gila Mountains, brs. NW. and SE.
- Intersect the South bdy. of the White Mountain Indian Reservation, at a point 5.68 chs. N. 26 1/2° W. from the 52 mile mon. thereon, which is an iron post, 3 ins. in diam., projecting 12 ins. above ground, firmly set, properly marked on brass cap, witnessed by a mound of stone, E. of mon. No bearing trees.
- At the point of intersection,
- Set an iron post, 3 ft. long, 1 in. in diam., on bed rock, supported in a mound of stone, for closing cor. of secs. 15 and 22., marked on brass cap,



and raise a mound of stone, 3 ft. base, 2 ft. high, W. of cor.

Land, mountainous.
Soil, rocky, 4th rate.
Timber, none.
Undergrowth, dense catclaw, greasewood, scrub oak and cacti.

-
- From the cor. of secs. 15, 16, 21 and 22,
 - N. 9° 2' W., bet. secs. 15 and 16.
 - Over mountainous land, thru. dense undergrowth.
 - Ascend 155 ft., over S. and SW. slopes, to
 - 8.12 Spur, slopes NW.
 - Descend 310 ft., over N. slope.
 - 25.00 Center of wash, 100 lks. wide, 6 ft. deep, course NW.
 - Ascend 25 ft., over W. slope, to
 - 31.23 Wash, 20 lks. wide, course SW.
 - Ascend 97 ft., over SE. slope, to
 - 40.00 Spur, slopes SW.
 - Set an iron post, 3 ft. long, 1 in. in diam., on bedrock supported by a mound of stone, for 1/4 sec.cor., marked on brass cap,



and raise a mound of stone, 3 ft. base, 2 ft. high, W. of cor.

- Ascend 43 ft., along W. slope, to
- 48.00 Descend 92 ft., over NW. slope.
- 51.60 Wash, 20 lks. wide, 6 ft. deep, course W. from E.
- Ascend 117 ft., over S. slope.
- 56.76 Spur, slopes SW.
- Descend slightly along W. slope, to

28 part of Subdivision lines of Township 4 South, Range 25 East.

Chains.

- 66.00 Ascend 50 ft., over SW. slope.
- 73.50 Descend 50 ft., over NW. slope.
- 78.65 Wash, course S. 50° W. Small seepage spring brs. East 0.15 chs. dist.
- 80.00 Ascend 32 ft., over S. slope, to Set an iron post, 3 ft. long, 2 ins. in diam., on bed rock, supported by a mound of stone, for cor. of secs. 9, 10, 15 and 16, marked on brass cap,

T4S | R25E
 S 9 | S10

 S16 | S15
 1921

and raise a mound of stone, 3 ft. base, 2 ft. high, W. of cor.
 Land, mountainous.
 Soil, rocky, 4th rate.
 Timber, none.
 Undergrowth, dense scrub oak, catclaw and cacti.

- 0.90 East, on a true line, bet. secs. 10 and 15. Over mountainous land, thru. dense undergrowth. Descend slightly over S. slope. Wash, course SW.
- 14.17 Ascend 230 ft., over NW. slope, to Same wash, course N. 50° W.
- 20.03 Ascend 171 ft., over SW. slope, Spur, slopes NW.
- 24.03 Descend slightly over N. slope. Wash, course NW.
- 34.49 Ascend 320 ft., over SW. slope. Spur, slopes NW.
- 40.00 Ascend 24 ft., along N. slope, to Set an iron post, 3 ft. long, 1 in. in diam., 10 ins. in the ground to bed rock, supported by a mound of stone, for $\frac{1}{4}$ sec. cor., marked on brass cap,

S 10
 $\frac{1}{4}$ ---
 S 15
 1921

- 51.20 and raise a mound of stone, 3 ft. base, 2 ft. high, N. of cor. Ascend 95 ft., over N. slope, to Head of gulch, course NW.
- 56.03 Ascend 170 ft., over W. slope, to Main ridge of the Gila Mountains, brs. NE. and SW. Intersect the South boundary of the White Mountain Indian Reservation, at a point on traverse on S. bdy. from the 50 $\frac{1}{2}$ mile mon. as follows:
 S. 22 $\frac{1}{2}$ ° E., 7.60 chs. S. 12 $\frac{1}{2}$ ° W., 2.70 chs.
 The 50 $\frac{1}{2}$ mile mon. is an iron post, 1 in. in diam., projecting 26 ins. above ground, firmly set in ground and mound of stone, properly marked on brass cap, and witnessed by the two properly marked bearing trees as follows:
 A cedar, S. 51° E., 68 lns. dist. and juniper limb, S. 62 $\frac{1}{2}$ ° E., 248 chs. dist. At the point of intersection.
 Set an iron post, 3 ft. long, 1 in. in diam., on bed rock, supported by a mound of stone, for closing cor. of secs. 10 and 15, marked on brass cap,

T4S
 CC-12 S10
 S15
 R25E
 1921
 W.M.I.R.

BOOK 3583

Part of Subdivision lines of Township 4 South, Range 25 East. 29

Chains.

and raise a mound of stone, 3 ft. base, 2 ft. high, W. of cor.

Land, mountainous.

Soil, rocky, 4th rate.

Timber, none.

Undergrowth, dense scrub oak, catclaw and cacti.

From the cor. of secs. 9, 10, 15 and 16,

N. 0° 02' W., bet. secs. 9 and 10.

Over mountainous land, thru. dense undergrowth.

Ascend 88 ft., over S. and SE. slopes.

9.90 Spur, slopes W. for about 2 chs. Thence SW.

Descend 55 ft., over N. slope.

13.15 Wash, 50 lks. wide, 5 ft. deep, course W.

Ascend 310 ft., over S. slope.

32.15 Spur, slopes SW.

Descend 26 ft., over NW. slope, to

36.60 Ascend 60 ft., over W. slope, to

40.00 Set an iron post, 3 ft. long, 1 in. in diam., on bed rock, supported by a mound of stone, for $\frac{1}{4}$ sec. cor., marked on brass cap,

$\frac{1}{4}$
S 9 | S 10

1921

and raise a mound of stone, 3 ft. base, 2 ft. high, W.

of cor.

Ascend 16 ft., over W. slope.

41.50 Descend 7 ft., over NW. slope.

44.37 Wash, course SW.

Ascend 410 ft., over S. slope.

56.00 Spur, slopes NW.

Descend 500 ft., over N. slope.

75.15 Wash, 20 lks. wide, course NW.

Ascend 100 ft., over SW. slope, to

80.00 Point of spur, sloping W. Set an iron post, 3 ft. long, 2 ins. in diam., on bed rock, supported by a mound of stone for cor. of secs. 3, 4, 9 and 10, marked on brass cap,

T4S | R25E
S 4 | S 3
S 9 | S 10

1921

and raise a mound of stone, 3 ft. base, 2 ft. high, W. of cor.

Land, mountainous.

Soil, rocky, 4th rate.

Timber, none.

Undergrowth, dense scrub oak, catclaw, scrub cedar and cacti.

East, on a true line, bet. secs. 3 and 10.

Over mountainous land, thru. dense undergrowth, along top of spur, sloping W.

Ascend 410 ft., to

22.15 Main ridge of the Gila mountains, brs. NW. and SE.

Intersect the South bdy. of the White Mountain Indian

Reservation, at a point on traverse on S. bdy. from the 49 mile mon., as follows:

S. 18 $\frac{1}{2}$ ° W., 7.90 chs.

S. 20 $\frac{1}{4}$ ° E., 11.90 chs.

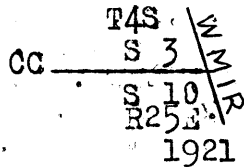
30 Part of Subdivision lines of Township 4 South, Range 25 East.

Chains.

The 49 mile mon. is an iron post, 3 ins. in diam., projecting 12 ins. above ground, firmly set, properly marked on brass cap and witnessed by a mound of stone, SE. of post.

No bearing trees.

At the point of intersection, Set an iron post, 3 ft. long, 1 in. in diam., on bed rock, supported by a mound of stone, for closing cor. of secs. 3 and 10, marked on brass cap,



and raise a mound of stone, 3 ft. base, 2 ft. high; W. of cor.

Land, mountainous.

Soil, rocky, 4th rate.

Timber, none.

Undergrowth, dense scrub oak, catclaw, greasewood and cacti.

40.00
61.60

From the cor. of secs. 3, 4, 9 and 10, N. 0° 02' W., on a random line, bet. secs. 3 and 4.

Set temp. 1/4 sec. cor.

Top of spur, sloping SW. Beyond this point, the sec. line passes over a series of cliffs, facing NW. and W. Chaining is impracticable; therefore triangulate as described as follows, and as shown on the diagram hereon:

From 61.60 chs. station on random sec. line indicated on diagram at "A," line in a flag N. 0° 2' W. at "B."

From "B" measure a Base, S. 54° W., 8.00 chs. to point "C."

Vertical angle "A" to "B" = +20°.

Bearing "C-A" = S. 18° 02' E.

Included angles of triangle "A-B-C" are 18° 00' 54° 02' and 107° 58' the sum of which is 180° 00'.

Triangulated measurement "A-B" is obtained by

$$\frac{\sin 107^{\circ}58' \times \text{Base}}{\sin 18^{\circ}00'} \quad \text{or} \quad \frac{.95124 \times 8.00}{.30902} = 24.63 \text{ chs.},$$

which added to 61.60 chs. gives 86.23 chs. N. 0° 2' W. from cor. of secs. 3, 4, 9 and 10 for the position of triangulation point "B."

From triangulation point "B," chain measurement S. 0° 2' E., 6.23 chs., descending 190 ft. to

80.00

Intersect the cor. of secs. 3, 4, 33 and 34 on the N. bdy. of the Tp., hereinbefore described.

Thence, S. 0° 2' E., on true line, bet. secs. 3 and 4.

Over mountainous land, thru. dense undergrowth.

Measurement for 18.40 chs. by triangulation, as hereinbefore described.

5.00

Descend over broken SW. slope, to (Approximate) head of gulch, course SW. Thence over cliffs, facing W. and NW.

18.40

Triangulation point on spur, sloping SW., 402 ft. below the cor. of secs. 3, 4, 33 and 34. Continue line and measurement by chaining.

34.75

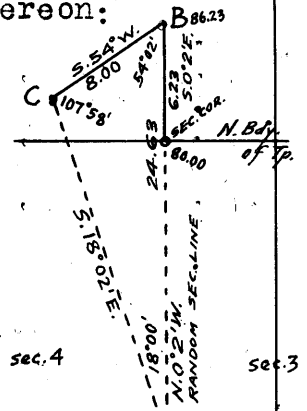
Descend 494 ft., over SE. slope.

Gulch, 40 lks. wide, course SW.

Ascend 127 ft., over NW. slope, to

40.00

Set an iron post, 3 ft. long, 1 in. in diam., on bed rock, supported by a mound of stone, for 1/4 sec. cor., marked



Part of Subdivision lines of Township 4 South Range 25 East 31

Chains.

on brass cap,

S. 4 | S 3

1921

and raise a mound of stone, 3 ft. base, 2 ft. high, W. of cor.

42.40 Ascend 65 ft., over NW. slope.

Point of spur, slopes W.

Descend 130 ft., over SW. slope.

52.95 Ascend 30 ft., over W. slope.

57.95 Descend 45 ft., over SW. slope.

61.25 Gulch, course W.

Ascend 190 ft., over N. slope.

69.85 Spur, slopes SW. from E.

Descend 200 ft., over SE. slope.

75.50 Gulch, course SW.

Ascend 57 ft., over NW. slope, to

80.00 The cor. of secs. 3, 4, 9 and 10.

Land, mountainous. Soil, rocky, 4th rate.

Timber, none.

Undergrowth, dense scrub oak, catclaw, greasewood and cacti.

From the cor. of secs. 4, 5 and 32 and 33, on the S. bdy. of the Tp., described in Book "B,"

N. 0° 2' W., bet. secs. 32 and 33.

Over mountainous land, thru. dense undergrowth.

Descend 25 ft., over E. slope.

10.00 Ascend 265 ft., over E. and SE. slope, to

40.00 Set an iron post, 3 ft. long, 1 in. in diam., 26 ins. in ground, for 1/4 sec. cor., marked on brass cap,

S32 | S33

1921

and raise a mound of stone, 3 ft. base, 2 ft. high, W. of cor.

45.10 Ascend 90 ft. over SE. slope.

Ridge, brs. N. 20° E. and S. 20° W.

Descend 22 ft., over NW. slope.

48.90 Head of gulch, course SW.

Ascend 75 ft., over S. slope.

55.22 Same ridge, brs. E. and W.

Descend 365 ft., over N. slope.

78.81 Center of wash, 150 lks. wide in gulch, course SE. from S. 80° W.

Ascend 135 ft., over SW. slope.

80.00 Set an iron post, 3 ft. long, 2 ins. in diam., on bed rock, supported by a mound of stone, for cor. of secs. 28, 29, 32 and 33, marked on brass cap,

T4S | R25E
S29 | S28

S32 | S33

1921

and raise a mound of stone, 3 ft. base, 2 ft. high, W. of cor.

Land, mountainous.

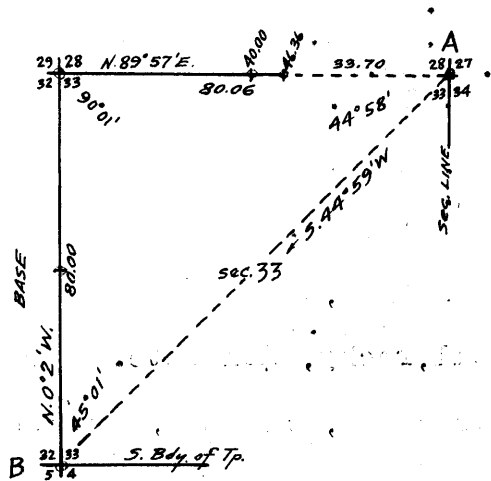
Soil, rocky, 4th rate.

Timber, none.

Undergrowth, dense catclaw, scrub oak, palo verde and giant cactus.

Part of
32 Subdivision lines of Township 4 South, Range 25 East
chains.

N. 89° 57' E., on a random line, bet. secs. 28 and 33, the objective cor., being visible at such bearing.
30.00 From this point, the vertical angle to the cor. of secs. 27, 28, 33 and 34 is +13°.
40.00 Set a temp. $\frac{1}{4}$ sec. cor. + 13°.
46.36 Center of Markham Wash, 250 lks. wide, course S. in bottom of canyon. The east or left wall of this canyon is so steep and broken as to render chaining impracticable; therefore, triangulate the measurement of the remainder of the random sec. line, as described as follows, and as shown on the diagram hereon:



From the cor. of secs. 27, 28, 33 and 34, indicated on diagram at "A," the cor. of secs. 4, 5, 32 and 33, on S. bdy. of Tp., indicated at "B," hrs. S. 44° 59' W.

Use the sec. line bet. secs. 32 and 33 (B-C) as a Base, N. 0° 2' W., 80.00 chs.

The included angles of the triangle "A-B-C" are 44° 58', 45° 01' and 90° 01' the sum of which is 180° 00'.

Triangulated measurement of sec. line "A-C" is obtained by $\frac{\text{sine } 45^{\circ} 01' \times \text{Base}}{\text{sine } 44^{\circ} 58'}$ or $\frac{.70731 \times 80.00}{.70670} = 80.06$ chs.

The distance on sec. line from bottom of canyon to the cor. of secs. 27, 28, 33 and 34 is therefore, 80.06 chs. - 46.36 chs. = 33.70 chs.

80.06 Intersect the cor. of secs. 27, 28, 33 and 34.

Thence, S. 89° 57' W., on a true line, bet. secs. 28 and 33.

Over mountainous land, thru. dense undergrowth.

Measurement to Markham Wash by triangulation, as hereinbefore described.

33.70 Descend 1020 ft., over steep W. and SW. slopes, to Center of Markham wash, 2.50 chs. wide in bottom of canyon, course S.

Continue line and measurement by chaining.

Ascend 159 ft., over E. slope.

38.10 Point of spur, slopes SE.

Descend 20 ft., over SW. slope, to

40.03 Set an iron post, 3 ft. long, 1 in. in diam., on bed rock, supported by a mound of stone, for $\frac{1}{4}$ sec. cor., marked on brass cap,

$\frac{1}{4}$ S. 28
S. 33
1921

and raise a mound of stone, 3 ft. base, 2 ft. high, N. of cor.

43.90 Descend 15 ft., over SW. slope.

51.85 Ascend 160 ft., over SE. slope.

Point of spur, slopes S.

59.90 Descend 94 ft., over SW. slope.

Gulch, course SE.

Ascend 172 ft., over E. slope.

67.90 Spur, slopes SE.

Descend 150 ft., over SW. slope.

73.35 Gulch, course S.

Ascend 60 ft., over SE. slope.

75.35 Point of spur, slopes SW.

Descend 86 ft., over SW. slope, to

80.06 The cor. of secs. 28, 29, 32 and 33.

Part of Subdivision lines of Township 4 South, Range 25 East. 33

Chains.

Land, mountainous.
Soil, rocky, 4th rate.
Timber, none.
Undergrowth, dense catclaw, tesota, ocotillo and other cacti.

N. 0° 2' W., bet. secs. 28 and 29.

Over mountainous land, thru. dense undergrowth.

Ascend 144 ft., over SW. slope, to foot of cliff.

2.20 Triangulation point.

8.00 Foot of cliff, 160 ft. high, bearing NW. and SE., facing SW.

Precipitous ascent over the face of this cliff renders chaining impracticable; therefore, triangulate as described as follows, and as shown on the diagram hereon:

Set flag ahead on sec. line at top of cliff indicated on diagram at "B."

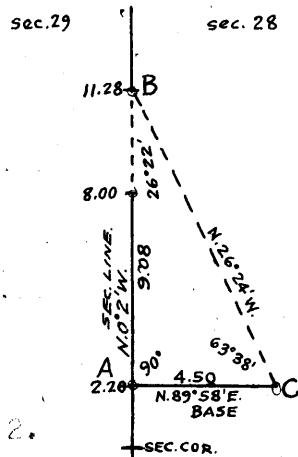
From 2.20 ch. station on sec. line, indicated at "A," measure a Base N. 89° 58' E., 4.50 chs. to point "C."

Vertical angle "A" to "C" = +24°.

Bearing of "C-B" = N. 26° 24' W.

Included angles of triangle "A-B-C" are 90° 00', 26° 22' and 63° 38', the sum of which is 180° 00'.

Triangulated measurement of "A-B" is obtained by $\text{tang. } 63^{\circ}38' \times \text{Base}$ or $2.01743 \times 4.50 = 9.08$ chs., which added to 2.20 chs. gives 11.28 chs. N. 0° 2' W. from the cor. of secs. 28, 29, 32 and 33, for the position of triangulation point "B."



11.28 Triangulation point at top of same cliff, bearing NW. and SE.

Continue line and measurement by chaining.

Ascend 127 ft., over SW. slope.

17.47 Ridge, brs. NW. and SE.

Descend 292 ft. over NE. slope.

36.78 Gulch, course E.

Ascend 20 ft., over SE. slope, to

39.25 Gulch, course SE.

Ascend 9 ft., over SW. slope, to

40.00 Set an iron post, 3 ft. long, 1 in. in diam., on bed rock, supported by a mound of stone, for $\frac{1}{4}$ sec. cor., marked on brass cap,

$\frac{1}{4}$
 s29 | s28
 |
 1921.

and raise a mound of stone, 3 ft. base, 2 ft. high, W. of cor.

52.30 Ascend 310 ft., over SW. slope.

Spur, slopes SE.

Descend 150 ft., over NE. slope.

57.50 Gulch, course E. near head.

Ascend 200 ft., over SE. slope.

66.73 Spur, slopes E.

Descend 252 ft., over N. slope, to

80.00 Set an iron post, 3 ft. long, 2 ins. in diam., 24 ins. in the ground, for cor. of secs. 29, 21, 28 and 29, marked on brass cap,

BOOK 3583

34 Part of Subdivision lines of Township 4 South, Range 25 East.

Chains.

T4S	R25E
S20	S21
S29	S28
1921	

and raise a mound of stone, 3 ft. base, 2 ft. high, W. of cor.

Land, mountainous.

Soil, rocky, 4th rate.

Timber, none.

Undergrowth, dense scrub palo verde, scrub oak, catclaw, ocotillo and other cacti.

40.00

N. 89° 57' E., on a random line, bet. secs. 21 and 28.

79.98

Set temp. $\frac{1}{4}$ sec. cor.

Intersect N. and S. line, 7 lks. N. of the cor. of secs. 21, 22, 27 and 28.

Thence,

West, on a true line, bet. secs. 21 and 28.

Over mountainous land, thru. scattering timber and dense undergrowth.

3.00

Descend 64 ft., along S. slope.

7.45

Ascend 15 ft., over SE. slope.

Point of spur, slopes S.

17.20

Descend 315 ft., over SW. slope.

Gulch, course NW.

20.20

Ascend 17 ft., over NE. slope.

Descend 230 ft., over N. and NW. slopes to $\frac{1}{4}$ sec. cor. point.

38.60

Wire fence, brs. N. 80° W. and S. 80° E.

39.99

The true point for $\frac{1}{4}$ sec. cor. falls in center of dry fork of Markham wash, 2 chs. wide, in bottom of canyon, course S.

41.98

Ascend 20 ft., over SE. slope, to

Set an iron post, 3 ft. long, 1 in. in diam., 26 ins. in the ground, for witness cor. to $\frac{1}{4}$ sec. cor., marked on brass cap,

$\frac{1}{4}$ S 21
$\frac{1}{4}$ S 28
WC
1921

from which,

A mesquite, 6 ins. in diam., brs. N. 29 $\frac{1}{2}$ ° E., 117 lks. dist., marked WC $\frac{1}{4}$ S 21 BT.

A mesquite, 12 ins. in diam., brs. S. 52 $\frac{1}{2}$ ° E., 16 lks. dist., marked WC $\frac{1}{4}$ S 28 BT.

46.40

Ascend 86 ft., over SE. slope, to

Point of spur, slopes S.

52.60

Descend 140 ft., over SW. slope.

Center of Wet Fork of Markham wash, 150 lks. wide, course S.

54.50

Ascend 55 ft., over NE. slope.

56.35

Descend 45 ft., over NW. slope.

West fork of Markham Wash, 150 lks. wide, course NE.

61.90

Ascend 10 ft., over S. slope, to

Same wash, 150 lks. wide, course SE.

71.50

Ascend 300 ft., over NE. slope.

Point of spur, slopes N.

74.80

Descend 115 ft., over NW. slope.

Gulch, course N.

78.70

Ascend 123 ft., over NE. slope.

79.98

Ascend 5 ft., over N. slope, to

The cor. of secs. 20, 21, 23 and 29.

Land, mountainous.

Soil, rocky, 4th rate.

Timber, scattering mesquite.

Undergrowth, dense scrub mesquite, catclaw, scrub oak, ocotillo and other cacti.

ECOK 3583

Part of Subdivision lines of Township 4 South, Range 25 East. 35

Chains.

- N.0° 2'W., bet. secs. 20 and 21.
Over mountainous land, thru. dense undergrowth.
Descend 265 ft., over N. slope.
- 12.00 Center of Wet Fork of Markham wash, 2.50 chs. wide, course SE.
- Ascend 6 ft. over SW. slope, to
15.90 Wet fork of Markham wash, course SW.
- Ascend 105 ft. over SE. slope.
24.62 Point of spur, slopes E.
- Descend 85 ft., over NE. slope.
29.13 Wet fork of Markham wash, course SE. Thence along top of spur, sloping S.
- Ascend 245 ft. to W.C. to $\frac{1}{4}$ sec. cor.
40.00 The true point for $\frac{1}{4}$ sec. cor. falls on sloping bed rock, where it cannot be properly monumented; therefore, at
- 40.40 Set an iron post, 3 ft. long, 1 in. in diam., on bed rock, supported in a mound of stone, for witness cor. to $\frac{1}{4}$ sec. cor., marked on brass cap,

$\frac{1}{4}$
S20 | S21
W C
1921

and raise a mound of stone 3 ft. base, 2 ft. high, W. of cor.

- Continue along top of spur, sloping S.
Ascend 170 ft., to
54.26 Leave top of spur, slopes S. from NE.
- Descend 30 ft., over NW. slope.
61.75 Ascend 170 ft., over W. slope, to
- 80.00 Set an iron post, 3 ft. long, 2 ins. in diam., 12 ins. in the ground to bed rock, supported by a mound of stone, for cor. of secs. 16, 17, 20 and 21, marked on brass cap,

T4S | R25E
S17 | S16
S20 | S21
1921

and raise a mound of stone, 3 ft. base, 2 ft. high, W. of cor.

Land, mountainous.
Soil, rocky, 4th rate, malpais formation.
Timber, none.
Undergrowth, dense scrub oak, catclaw, ocotillo and other cacti.

- East, on a random line, bet. secs. 16 and 21.
40.00 Set temp. $\frac{1}{4}$ sec. cor.
- 80.12 Intersect N. and S. line, 5 lks. N. of the cor. of secs. 15, 16, 21 and 22.
- Thence,
N.89°58'W., on a true line, bet. secs. 16 and 21.
Over mountainous land, thru. dense undergrowth.
- Ascend 50 ft., over SE. slope.
6.90 Spur, slopes SW.
- Descend 365 ft., over W. slope.
24.90 Gulch, 20 lks. wide, course SW.
- Ascend 120 ft., over SE. slope.
31.80 Spur, slopes SW.
- Descend 86 ft., over W. slope, to
40.06 Set an iron post, 3 ft. long, 1 in. in diam., on bed rock, supported by a mound of stone, for $\frac{1}{4}$ sec. cor., marked on brass cap,

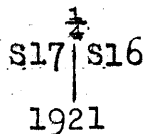
$\frac{1}{4}$ S 16
S 21
1921

36 Part of Subdivision lines of Township 4 South, Range 25 East.

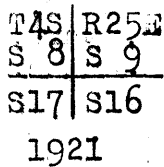
Chains.

and raise a mound of stone, 3 ft. base, 2 ft. high, N. of cor.
 Descend 215 ft., over W. slope.
 48.90 Dry fork of Markham Wash, 100 lks. wide, course S.
 Ascend 605 ft. over E. slope.
 72.85 Ridge, brs. N. and S.
 Descend 265 ft., over W. slope, to
 80.12 The cor. of secs. 16, 17, 20 and 21.
 Land, mountainous.
 Soil, rocky, 4th rate.
 Timber, none.
 Undergrowth, dense catclaw, greasewood, scrub mesquite, ocotillo and other cacti.

N. 0° 2' W., bet. secs. 16 and 17.
 Over mountainous land, thru. scattering timber and dense undergrowth.
 Ascend 10 ft., over W. slope, to
 2.00 Gulch, course S. 10° W.
 Ascend 342 ft. over S. slope.
 11.54 Ridge, brs. E. and W.
 Descend 435 ft. over N. slope.
 22.23 Gulch, course NE.
 Ascend 15 ft., over SE. slope.
 24.39 Point of spur, slopes E.
 Descend 130 ft., over NE. slope.
 29.84 Gulch, course SE. At about 20 chs. SE. this gulch joins the dry fork of Markham wash, and near such junction point is located a house and corral.
 Ascend 223 ft., over S. slope, to
 40.00 Set an iron post, 3 ft. long, 1 in. in diam., 10 ins. in the ground to bed rock, supported by a mound of stone, for $\frac{1}{4}$ sec. cor., marked on brass cap;



and raise a mound of stone, 3 ft. base, 2 ft. high, W. of cor.
 Ascend 530 ft., over S. slope.
 57.08 Ridge, brs. E and W.
 Descend 185 ft., over N. slope, to
 63.99 Gulch, course NE. near head.
 Descend 75 ft., over E. slope, to
 75.90 Point of spur, slopes NE.
 Descend 130 ft., over N. slope, to
 78.61 South rim of canyon, brs. E. and W.
 Descend 80 ft., over N. slope, to
 80.00 Set an iron post, 3 ft. long, 2 ins. in diam., 18 ins. in the ground, over cross (x) marked on bed rock, and raise a mound of stone around post, for cor. of secs. 8, 9, 16 and 17, with brass cap, marked



from which,
 A pine, 12 ins. in diam., brs. N. 85° E., 40 lks. dist., marked T4S R25E S9 BT.
 A pine, 10 ins. in diam., brs. N. 39° W., 60 lks. dist., marked T4S R25E S8 BT.
 No other trees within limits.
 Land, mountainous.
 Soil, rocky, 4th rate.

Part of Subdivision lines of Township 4 South, Range 25 East. 37

Chains.

Timber, scattering pine.
Undergrowth, dense catclaw; scrub oak and crucifixion thorn.

-
- S. 89° 58' E., on a random line, bet. secs. 9 and 16.
40.00 Set temp. $\frac{1}{4}$ sec. cor.
80.10 Intersect N. and S. line, 5 lks. N. of the cor. of secs. 9, 10, 15 and 16.
Thence,
N. 89° 56' W., on a true line, bet. secs. 9 and 16.
Over mountainous land, thru. dense undergrowth.
Ascend 155 ft., over SE. slope.
7.90 Spur, slopes SW.
Descend 220 ft., over W. slope.
18.85 Gulch, 50 lks. wide, course SW.
Ascend 235 ft., over E. slope.
28.10 Ridge, brs. N. and S.
Descend 250 ft., over W. slope, to
40.05 Set an iron post, 3 ft. long, 1 in. in diam., on bed rock, supported by a mound of stone, for $\frac{1}{4}$ sec. cor., marked on brass cap,

$$\begin{array}{c} \frac{1}{4} \text{ S } 9 \\ \text{S } 16 \\ 1921 \end{array}$$

- and raise a mound of stone, 3 ft. base, 2 ft. high, N. of cor.
Descend 105 ft. over W. slope.
45.50 Dry fork of Markham wash, course S.
Ascend 312 ft. over SE. slope.
47.20 From this point, a pole corral brs. S. about 1.50 chs. dist.
57.50 Point of spur, slopes S.
Descend 207 ft., over SW. slope.
73.65 Wash in bottom of canyon, course SE.
Ascend 47 ft. over N. slope, to
80.10 The cor. of secs. 8, 9, 16 and 17.
Land, mountainous.
Soil, rocky, 4th rate.
Timber, none.
Undergrowth, dense greasewood, catclaw, scrub mesquite, ocotillo and other cacti.

-
- N. 0° 2' W., bet. secs. 8 and 9.
Over mountainous land, thru. very scattering timber and dense undergrowth.
Descend 10 ft., over N. slope.
1.15 Wash, in bottom of canyon, course E.
Ascend 355 ft., over S. slope.
14.00 Point of spur, slopes SW.
Ascend 226 ft., over W. and SW. slopes, to
32.00 Ridge, brs. NW. and SE.
Descend 15 ft. along E. slope, to
40.00 Set an iron post, 3 ft. long, 1 in. in diam., on bed rock, supported by a mound of stone, for $\frac{1}{4}$ sec. cor. marked on brass cap,

$$\begin{array}{c} \frac{1}{4} \\ \text{S } 8 \text{ S } 9 \\ 1921 \end{array}$$

- and raise a mound of stone, 3 ft. base, 2 ft. high, W. of cor.
Descend 177 ft., over NE. slope.
59.77 Head of gulch, course E.

38 Part of Subdivision lines of Township 4 South, Range 25 East.

Chains.

- 70.78 Ascend 195 ft., over SE slope.
Ridge, brs. NE. and SW.
Descend 10 ft., over NW slope.
- 75.80 Ascend 65 ft., over W. slope, to
- 80.00 Set an iron post, 3 ft. long, 2 ins. in diam., on bed rock,
supported by a mound of stone, for cor. of secs. 4, 5, 8
and 9, marked on brass cap,

T4S	R25E
S 5	S 4
S 8	S 9
.1921	

from which,

A cedar, 8 ins. in diam., brs. S. $55\frac{1}{2}^{\circ}$ E., 60 lks.
dist., marked T4S R25E S9 BT.

A cedar, 10 ins. in diam., brs. N. $33\frac{1}{2}^{\circ}$ W., 125 lks.
dist., marked T4S R25E S5 BT.

No other trees within limits. Raise a mound of stone, 3
ft. base, 2 ft. high, W. of cor.

Land, mountainous.

Soil, rocky, 4th rate.

Timber, very scattering cedar.

Undergrowth, dense catclaw, scrub oak, tesota, Spanish
dagger, ocotillo and other cacti.

- S. $89^{\circ}56'$ E., on a random line, bet. secs. 4 and 9.
- 40.00 Set temp. $\frac{1}{4}$ sec. cor.
- 80.02 Intersect N. and S. line, 9 lks. S. of the cor. of secs. 3, 4,
9 and 10.

Thence,

West, on true line, bet. secs. 4 and 9.

Over mountainous land, thru. dense undergrowth.

Descend 167 ft., over W. slope.

- 7.00 Gulch, course SW.

Ascend 11 ft., over SE slope.

- 8.25 Descend 72 ft., over S. and SW. slopes.

- 14.20 Gulch, course N. 50° W.

Ascend 11 ft., over NE slope.

- 15.20 Descend 185 ft., over N. and NW slopes.

- 38.00 Center of dry fork of Markham wash, 100 lks. wide, course
SW.

Ascend 21 ft., over SE slope, to

- 40.01 Set an iron post, 3 ft. long, 1 in. in diam., 26 ins. in
the ground, for $\frac{1}{4}$ sec. cor., marked on brass cap,

$\frac{1}{4}$	S 4
	S 9
1921	

and raise a mound of stone, 3 ft. base, 2 ft. high, N.
of cor.

Descend 21 ft., over SW slope.

- 44.50 Wash, 50 lks. wide, course S.

Ascend 655 ft., over E. slope.

- 77.00 Ridge, brs. N. and S.

Descend 21 ft., over W. slope, to

- 80.02 The cor. of secs. 4, 5, 8 and 9.

Land, mountainous.

Soil, rocky, 4th rate.

Timber, none.

Undergrowth, dense greasewood, catclaw, scrub mesquite,
scrub cedar, ocotillo and other cacti.

Part of Subdivision lines of Township 4 South, Range 25 East. 39

Chains.

- N.0°2'W., on a random line, bet. secs.4 and 5.
 40.00 Set temp. $\frac{1}{4}$ sec. cor.
 79.80 Intersect the cor. of secs. 4, 5, 32 and 33, on the N. bdy.
 of Tp., hereinbefore described.
 Thence,
 S.0° 2'E., on a true line, bet. secs. 4 and 5.
 Over mountainous land, thru. dense undergrowth.
 Descend 75 ft., over SW. slope.
 5.75 Head of gulch, course W.
 Ascend 330 ft., over NW. slope.
 27.80 Ridge, brs. NE. and SW.
 Descend 77 ft., over SE. slope, to
 39.80 Set an iron post, 3 ft. long, 1 in. in diam., 12 ins. in
 the ground to bed rock, supported by a mound of stone
 for $\frac{1}{4}$ sec. cor., marked on brass cap,

$\frac{1}{4}$
 S 5 | S 4
 1921

- and raise a mound of stone, 3 ft. base, 2 ft. high; W.
 of cor.
 Ascend 95 ft., over NE. slope.
 49.30 From this point, monument on top of Slaughter Mountain
 brs. N. 61 $\frac{1}{2}$ ° E.
 49.80 Ridge, brs. NW. and SE.
 Descend 335 ft. over SW. and W. slopes, to
 79.80 The cor. of secs. 4, 5, 8 and 9.
 Land, mountainous.
 Soil, rocky; 4th rate.
 Timber, none.
 Undergrowth, dense greasewood, catclaw, scrub mesquite,
 ocotillo and other cacti.

- From the cor. of secs. 5, 6, 31 and 32, on the S. bdy. of
 the Tp., described in Book "B,"
 N.0°3'W., bet. secs. 31 and 32.
 Over mountainous land, thru. dense undergrowth.
 Descend 40 ft., over NW. slope.
 5.66 Gulch, 30 lks. wide, course SW.
 Ascend 140 ft., over SE. slope.
 12.85 Ridge, brs. W. and NE.
 Descend 64 ft. over N. slope.
 16.92 Bend in gulch, course NW. from NE.
 Ascend 175 ft., over S. slope.
 32.56 Spur, slopes W. from NE.
 Descend 82 ft., over NW. slope.
 38.42 Gulch, course SW.
 Ascend 35 ft., over S. slope, to
 40.00 Set an iron post, 3 ft. long, 1 in. in diam., on bed rock,
 supported by a mound of stone, for $\frac{1}{4}$ sec. cor., marked
 on brass cap,

$\frac{1}{4}$
 S31 | S32
 1921

- and raise a mound of stone, 3 ft. base, 2 ft. high, W.
 of cor.
 Ascend 140 ft., over SE. slope.
 46.67 Spur, slopes SW.
 Descend 75 ft., over NW. slope.
 68.60 Gulch, course SW.
 Ascend 130 ft., over SE. slope.
 74.35 Ridge, brs. NE. and SW.

BOOK 3583

40. Part of Subdivision lines of Township 4 South, Range 25 East

Chains.

80.00 Descend 40 ft., over NW. slope, to
Set an iron post, 3 ft. long, 2 ins. in diam., on bed rock, supported by a mound of stone, for cor. of secs. 29, 30, 31 and 32, marked on brass cap,

T4S	R25E
S30	S29
S31	S32
1921	

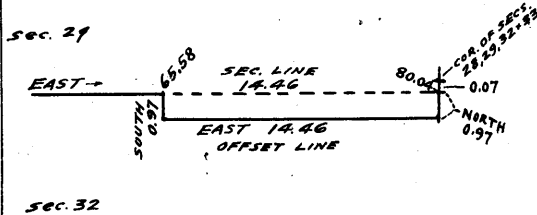
and raise a mound of stone, 3 ft. base, 2 ft. high, W. of cor.

Land, mountainous.
Soil, rocky, 4th rate.
Timber, none.

Undergrowth, dense catclaw, scrub oak, ocotillo and other cacti.

40.00 East, on a random line, bet. secs. 29 and 32.
Set temp. $\frac{1}{4}$ sec. cor.

65.58 Beyond this point, the random sec. line passes over S. faces of cliffs, and chaining is impracticable; therefore, obtain the measurement of the remainder of the line, and avoid the cliffs by an offset line, as described as follows, and as shown on the diagram hereon:



From 65.58 ch. station, South, 0.97 chs. to offset point.

Thence, East, 14.46 chs. to N. and S. line, thru. the cor. of secs. 28, 29, 32 and 33.

Thence, North, 0.97 chs. to point on

80.04 random sec. line projected to
Intersect N. and S. line, 7 lks. S. of the cor. of secs. 28, 29, 32 and 33.

Thence, S. $89^{\circ}57'$ W., on a true line, bet. secs. 29 and 32.

Over mountainous land, thru. dense undergrowth, along S. faces of cliffs, bearing E. and W.

Measurement of 14.46 chs. by offset as hereinbefore described.

14.46 Ascend 390 ft., to
Offset point near foot of cliffs. Continue measurement on sec. line.

15.40 Descend 9 ft., over SW. slope.

20.40 Ascend 23 ft., over S. slope.

20.40 Descend 7 ft., over SW. slope.

21.45 Wash, course SE.

Ascend 475 ft., over NE. and E. slopes, to

40.02 Set an iron post, 3 ft. long, 1 in. in diam., on bed rock, supported by a mound of stone, for $\frac{1}{4}$ sec. cor., marked on brass cap,

$\frac{1}{4}$ S 29
S 32
1921

and raise a mound of stone, 3 ft. base, 2 ft. high, N. of cor.

41.95 Ascend 40 ft., over E. slope.

Ridge, brs. N. and S.

Descend 393 ft., over SW. slope.

57.45 Wash, 30 lks. wide, 4 ft. deep, course SW.

Ascend 160 ft., over SE. slope.

Part of Subdivision lines of Township 4 South, Range 25 East. 41

Chains.

67.65 Ridge brs. NE. and SW.
 Descend 340 ft., over NW. slope, to
 80.04 The cor. of secs. 29, 30, 31 and 32.
 Land, mountainous.
 Soil, rocky, 4th rate.
 Timber, none.
 Undergrowth, dense greasewood, catclaw, ocotillo and other cacti.

 West, on a random line, bet. secs. 30 and 31.
 40.00 Set temp. $\frac{1}{4}$ sec. cor.
 78.65 Fall 3 lks. S. of the cor. of secs. 30 and 31, on the W. bdy. of Tp., hereinbefore described.
 Thence,
 S. 89° 59' E., on a true line, bet. secs. 30 and 31.
 Over mountainous land, thru. dense undergrowth.
 Ascend 110 ft., over W. slope.
 6.90 Spur, slopes S.
 Descend 250 ft., over SE. slope.
 18.20 Wash, 20 lks. wide, course S.
 Ascend slightly over S. slope, to
 18.90 Gully, course SW.
 Ascend 355 ft., over NW. slope.
 38.65 Saddle in ridge, bearing NE. and SW. Set an iron post, 3 ft. long, 1 in. in diam., 12 ins. in the ground to bed-rock, supported by a mound of stone, for $\frac{1}{4}$ sec. cor., marked on brass cap,

$\frac{1}{4}$ S 30
 S 31
 1921

and raise a mound of stone, 3 ft. base, 2 ft. high, N. of cor.

Ascend 102 ft., over W. slope.
 42.30 Top of hill.
 Descend 270 ft., over E. slope.
 58.40 Wash, course S.
 Ascend 105 ft., over SW. slope.
 70.15 Descend 15 ft., over S. slope.
 74.75 Wash, course SW.
 Ascend 55 ft., over NW. slope, to
 78.65 The cor. of secs. 29, 30, 31 and 32.
 Land, mountainous.
 Soil, rocky, 4th rate.
 Timber, none.
 Undergrowth, dense catclaw, greasewood, scrub mesquite, ocotillo and crucifixion thorn.

 N. 0° 03' W., bet. secs. 29 and 30.
 Over mountainous land, thru. dense undergrowth.
 Descend 25 ft., over NW. slope.
 1.40 Wash, course S. 75° W.
 Ascend 165 ft., over SE. slope.
 8.77 Spur, slopes SW.
 Descend 25 ft., over NW. slope.
 14.83 Gully, course SW.
 Ascend 654 ft.
 36.78 Ridge, brs. E. and W.
 Descend 140 ft., over N. slope, to
 40.00 Set an iron post, 3 ft. long, 1 in. in diam., on bed rock, supported by a mound of stone, for $\frac{1}{4}$ sec. cor., marked on brass cap.

42 Subdivision lines of Township 4 South, Range 25 East.

Chains.

$\frac{1}{4}$
S30 | S29
1921

- and raise a mound of stone, 3 ft. base, 2 ft. high, W. of cor.
- Descend 445 ft., over N. slope.
- 60.61 Grape Vine wash, 50 lks. wide, course NE. in bottom of canyon. At 50 lks. NE. a wash comes in from SE.
- Ascend 102 ft. over SE. slope.
- 65.98 Point of spur, sloping E. from NW.
- Descend 85 ft., over NE. slope.
- 70.81 Head of gulch, course SE.
- Ascend 237 ft., over SE. and E. slopes to
- 80.00 Set an iron post, 3 ft. long, 2 ins. in diam., on bed rock, supported by a mound of stone, for cor. of secs. 19, 20, 29 and 30, marked on brass cap,

T4S | R25E
S19 | S20

S30 | S29
1921

and raise a mound of stone, 3 ft. base, 2 ft. high, W. of cor.

Land, mountainous.
Soil, rocky, 4th rate.
Timber, none.
Undergrowth, dense catclaw, greasewood, scrub mesquite, scrub cedar, tesota, ocotillo and other cacti.

- 40:00 N. 89° 57' E., on a random line, bet. secs. 20 and 29.
- Set temp. $\frac{1}{2}$ sec. cor.
- 80.14 Intersect N. and S. line, 7 lks. N. of the cor. of secs. 20, 21, 28 and 29.
- Thence
- West on true line, bet. secs. 20 and 29.
- Over mountainous land, thru. dense undergrowth.
- Ascend 10 ft., over N. slope.
- 2.20 Descend 173 ft., over NW. slope.
- 7.50 Gulch, course N.
- Ascend 410 ft., over E. slope.
- 22.95 Spur, slopes N.
- Descend 97 ft., over W. slope.
- 28.80 Gulch, course N.
- Ascend 99 ft., over E. slope.
- 33.80 Spur, slopes N.
- Descend 92 ft., over W. slope.
- 40.07 Set an iron post, 3 ft. long, 1 in. in diam., on bed rock, supported by a mound of stone, for $\frac{1}{2}$ sec. cor., marked on brass cap,

$\frac{1}{2}$ S 20
S 29
1921

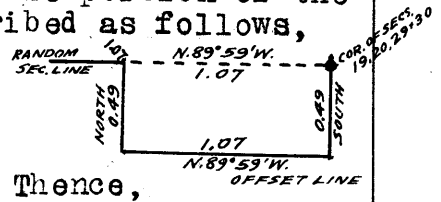
- and raise a mound of stone, 3 ft. base, 2 ft. high, N. of cor.
- Descend 125 ft., over NW. slope.
- 47.50 Gulch, 20 lks. wide, course N.
- Ascend 80 ft., over NE. slope.
- 55.10 Point of spur, slopes N.
- Descend 35 ft., over NW. slope.
- 57.90 Grapevine wash, 50 lks. wide, in gulch, course N.
- Ascend 215 ft., over SE. and S. slopes, to
- 72.90 Gulch, course SE.
- Ascend 205 ft., over E. slope.

Part of Subdivision lines of Township 4 South Range 25 East 43

Chains.

78.90 Top of cliff, bearing N. and S. facing E.
 Ascend 45 ft., over E. slope, to
 80.14 The cor. of secs. 19, 20, 29 and 30.
 Land, mountainous.
 Soil, rocky, 4th rate.
 Timber, none.
 Undergrowth, dense catclaw, scrub mesquite, scrub cedar,
 ocotillo and other cacti.

N. 89° 59' W., on a random line, bet. secs. 19 and 30.
 An almost perpendicular cliff near the sec. cor. renders
 chaining on the sec. line impracticable; therefore, ob-
 tain the measurement of the impassable portion of the
 line by means of an offset as described as follows,
 and as shown on the diagram hereon.



From cor. of secs. 19, 20, 29 and 30,
 South, 0.49 chs. to offset point.
 Thence,
 N. 89° 59' W., 1.07 chs. to offset point. Thence,
 North, 0.49 chs. returning to random sec. line, at
 1.07 Offset point.
 Continue measurement on random sec. line.

40.00 Set temp. 1/4 sec. cor.
 78.58 Fall 9 lks. N. of the cor. of secs. 19 and 30, on the W.
 bdy. of the Tp., hereinbefore described.

Thence,
 N. 89° 57' E., on a true line, bet. secs. 19 and 30.
 Over mountainous land, thru. dense undergrowth.
 Descend 106 ft., over N. and NE. slopes.
 4.43 Descend 111 ft., over E. and SE. slopes.
 15.80 Head of wash, course S.
 Ascend 107 ft., over SW. slope.
 21.00 Ridge, brs. NW. and SE.
 Descend 215 ft., over NE. slope.
 35.20 Gulch, course SE.
 Ascend 60 ft., over SW. slope.

38.58 Set an iron post, 3 ft. long, 1 in. in diam., on bed rock,
 supported by a mound of stone, for 1/4 sec. cor., marked
 on brass cap,

1/4 S 19
 S 30
 1921

and raise a mound of stone, 3 ft. base, 2 ft. high, N.
 of cor.

Ascend. 45 ft., over SW. slope.
 42.15 Point of spur, slopes S.
 Descend 6 ft., over SE. slope, to
 45.70 Thence along S. slope.
 Ascend 35 ft.
 55.90 Descend 20 ft.
 61.60 Ascend 40 ft.
 71.60 Top of cliffs, bearing NE. and SW. facing SE.
 Descend 193 ft., to
 77.51 Thence over precipitous S. and SE. face of cliff. Measure-
 ment to sec. cor. by offset, as hereinbefore described.
 Descend 65 ft., to

78.58 The cor. of secs. 19, 20, 29 and 30.
 Land, mountainous,
 Soil, rocky, 4th rate.
 Timber, none.
 Undergrowth, dense catclaw, greasewood, crucifixion
 thorn, scrub cedar and cacti.

N. 0° 3' W., bet. secs. 19 and 20.
 Over mountainous land, thru. very scattering timber and
 dense undergrowth.

44. Part of Subdivision lines of Township 4 South Range 25 East.

Chains.

- Ascend 50 ft. over SE. and E. slopes.
 7.30 Descend 10 ft., over NE. slope.
 9.31 Gulch, course SE.
 Ascend 240 ft., over SW. slope.
 16.65 Spur, slopes SE.
 18.00
 Descend 285 ft., over NE. slope.
 31.18 Gulch, course E.
 Ascend 207 ft., over S. slope, to
 40.00 Set an iron post, 3 ft. long, 1 in. in diam., on bed
 rock, supported by a mound of stone, for $\frac{1}{4}$ sec. cor.,
 marked on brass cap,

$$\begin{array}{c} \frac{1}{4} \\ \text{S19} | \text{S20} \\ 1921 \end{array}$$
 and raise a mound of stone, 3 ft. base, 2 ft. high, W. of
 cor.
 Ascend 20 ft., over S. slope.
 41.33 Ridge, brs. E. and W.
 Descend 236 ft., over N. slope.
 52.29 Gulch, course NE.
 Ascend 26 ft., over SE. slope.
 55.77 Spur, slopes NE.
 Descend 100 ft., over NW. slope, to
 72.69 South rim of canyon, brs. E. and W.
 Descend 375 ft. over N. slope, to
 80.00 Set an iron post, 3 ft. long, 2 ins. in diam., 18 ins. in
 the ground to bed rock, supported by a mound of stone,
 for cor. of secs. 17, 18, 19 and 20, marked on brass cap,

$$\begin{array}{c} \text{T4S} | \text{R25E} \\ \text{S18} | \text{S17} \\ \text{S19} | \text{S20} \\ 1921 \end{array}$$

from which,

- A pine, 10 ins. in diam. brs. N. 55° E., 102 lks.
dist., marked T4S R25E S17 BT.
- A cedar, 14 ins. in diam., brs. S. 45° E., 30 lks.
dist., marked T4S R25E S20 BT.
- A cedar, 6 ins. in diam., brs. S. 50° W., 80 lks.
dist., marked T4S R25E S19 BT.
- A pine, 10 ins. in diam., brs. N. 55° W., 86 lks.
dist., marked T4S R25E S18 BT.

Land, mountainous.

Soil, rocky, 4th rate, malpais formation.

Timber, very scattering cedar and pine.

Undergrowth, dense catclaw, scrub cedar, scrub oak and
cacti.

- East, on a random line, bet. secs. 17 and 20.
 40.00 Set temp. $\frac{1}{4}$ sec. cor.
 80.20 Intersect N. and S. line, 6 lks. S. of the cor. of secs. 16,
 17, 20 and 21.
 Thence,
 S. $89^\circ 57'$ W., on a true line, bet. secs. 17 and 20.
 Over mountainous land, thru dense undergrowth.
 Descend slightly over W. slope.
 0.20 Wash, course S.
 Ascend 60 ft., over E. slope.
 6.50 Spur, slopes S.
 Descend 70 ft., over W. slope.
 10.35 Wash, course S.

Part of Subdivision lines of Township 4 South Range 25 East. 45

Chains.

- 30.45 Ascend 190 ft., over E. slope. Spur, slopes S.
- 40.10 Descend 210 ft., over W. slope. The true point for $\frac{1}{4}$ sec. cor. falls in wash, course S.; therefore, at
- 40.80 Set an iron post, 3 ft. long, 1 in. in diam., on bed rock, in a mound of stone, for witness cor. to $\frac{1}{4}$ sec. cor., marked on brass cap,

$\frac{1}{4}$ S 17 WC
 S 20
 1921

- and raise a mound of stone, 3 ft. base, 2 ft. high, N. of cor.
- 45.75 Ascend 115 ft., over SE. slope. Point of spur, slopes S.
- 65.20 Descend 495 ft., over SW. slope. Center of Wet Fork of Markham Wash, 2 chs. wide, course SE. in bottom of canyon.
- 70.20 Ascend 75 ft., over NE. slope, to Thence along steep N. slope.
- 80.20 Ascend 25 ft. to The cor. of secs. 17, 18, 19 and 20. Land, mountainous. Soil, rocky, 4th rate. Timber, none. Undergrowth, dense catclaw, scrub oak, ocotillo and other cacti.

-
- 40.00 S. 89° 57' W., on a random line, bet. secs. 18 and 19. Set temp. $\frac{1}{4}$ sec. cor.
 - 78.60 Fall 7 lks. N. of the cor. of secs. 18 and 19, on W. bdy. of Tp., hereinbefore described. Thence, N. 89° 54' E., on a true line, bet. secs. 18 and 19. Over mountainous land, thru. dense undergrowth.
 - 7.80 Descend 35 ft., over NE. slope. Gulch, course NW.
 - 13.55 Ascend 200 ft., over SW. slope. Ridge, brs. NW. and SE.
 - 29.15 Descend 320 ft., over NE. slope. Gulch, course N.
 - 38.60 Ascend 195 ft., over NW. slope, to Set an iron post 3 ft. long, 1 in. in diam., on bed rock, supported by a mound of stone, for $\frac{1}{4}$ sec. cor., marked on brass cap,

$\frac{1}{4}$ S 18
 S 19
 1921

- and raise a mound of stone 3 ft. base, 2 ft. high, N. of cor.
- 40.00 Ascend 12 ft., over NW. slope. Top of hill.
- 58.30 Descend 650 ft., over E. slope. Center of Wet Fork of Markham wash, 2 chs. wide, course S. in bottom of canyon.
- 59.75 Ascend 35 ft., over SW. slope. Spur, slopes S.
- 67.15 Descend 60 ft., over SE. slope. Wet fork of Markham wash, course NE.
- 74.10 Ascend 67 ft., over NW. slope. Thence along steep N. slope, descending gradually to
- 78.60 The cor. of secs. 17, 18, 19 and 20. Land, mountainous. Soil, rocky, 4th rate. Timber, none.

BOOK 3583

46 Part of Subdivision lines of Township 4 South, Range 25 East.

Chains.

Undergrowth, dense catclaw, scrub oak, crucifixion thorn, and cacti.

N. 0° 3' W., bet. secs. 17 and 18.
Over mountainous land, thru. very scattering timber and dense undergrowth.

2.85 Descend 75 ft., over N. slope.
Center of Wet Fork of Markham wash, 1.70 chs. wide, course E. in bottom of canyon.

12.25 Ascend 200 ft., over SE. slope, to
Wash, 20 lks. wide, course S. 25° E. from N.

38.75 Asc. 995 ft. over S. slope, about 100 lks. E. from wash, course S.
Ridge, brs. E. and W.

40.00 Descend 10 ft., over N. slope, to
Set an iron post, 3 ft. long, 1 in. in diam., 26 ins. in the ground, for $\frac{1}{4}$ sec. cor., marked on brass cap,

S18	S17
-----	-----

1921

from which,

A pine, 5 ins. in diam., brs. N. 13° W., 118 lks. dist., marked $\frac{1}{4}$ S 18 BT.

No other trees within limits. Raise a mound of stone, 3 ft. base, 2 ft. high, W. of cor.

53.00 Descend 467 ft., over N. slope, to
Gulch, course NW. Thence along W. slope.

59.91 Descend 75 ft., to
Gulch, 70 lks. wide, course SW.

80.00 Ascend 440 ft., over SE. slope, to
Set an iron post, 3 ft. long, 2 ins. in diam., on bed rock, supported by a mound of stone, for cor. of secs. 7, 8, 17 and 18, marked on brass cap,

T4S	R25E
S 7	S 8

S18	S17
-----	-----

1921

and raise a mound of stone, 3 ft. base, 2 ft. high, W. of cor.

Land, mountainous.

Soil, rocky, 4th rate.

Timber, very scattering pine.

Undergrowth, dense catclaw, scrub oak and cacti.

40.00 N. 89° 57' E., on a random line, bet. secs. 8 and 17.
Set temp. $\frac{1}{4}$ sec. cor.

80.28 Intersect W. and S. line, 7 lks. S. of the cor. of secs. 8, 9, 16 and 17.

Thence,
S. 89° 54' W., on a true line, bet. secs. 8 and 17.

Over mountainous land, thru. very scattering timber and dense undergrowth.

2.90 Ascend 100 ft., over NE. slope, to
South or right rim of canyon, brs. NW. & SE. Leave canyon.

6.20 Descend slightly over NW. slope.
Wash, course NE. into canyon.

27.25 Ascend 400 ft., over SE. slope,
Ridge, brs. NE. and SW.

40.14 Descend 335 ft., over NW. slope, to
Set an iron post, 3 ft. long, 1 in. in diam., on bed rock, supported by a mound of stone, for $\frac{1}{4}$ sec. cor., marked on brass cap,

Part of Subdivision lines of Township 4 South, Range 24 East. 47

Chains.

$$\frac{1}{4} \text{ S } 8$$

$$\text{S } 17 \frac{1}{2}$$

$$1921$$

from which,

A pine, 8 ins. in diam., brs. N. 31° W., 21 lks. dist., marked $\frac{1}{4}$ S 8 BT.A pine, 6 ins. in diam., brs. S. 18 $\frac{1}{2}$ ° W., 51 lks. dist., marked $\frac{1}{4}$ S 17 BT.

Descend 270 ft.

58.90 Wash, 70 lks. wide, course SW.

Ascend 23 ft., over S. slope, to

65.60 Wash, course SE.

Ascend 320 ft., over SE. slope, to

80.28 The cor. of secs. 7, 8, 17 and 18.

Land, mountainous.

Soil, rocky, 4th rate.

Timber, very scattering pine.

Undergrowth, descend scrub oak, catclaw, scrub pine, and cacti. pine and cacti.

40.00 S. 89° 54' W., on a random line, bet. secs. 7 and 18.

Set temp. $\frac{1}{4}$ sec. cor.

78.58 Fall 14 lks. S. of the cor. of secs. 7 and 18, on the W. bdy. of Tp., hereinbefore described.

Thence,

East, on true line, bet. secs. 7 and 18.

Over mountainous land, thru. dense undergrowth.

Descend 240 ft. over S and SE. slopes.

14.70 Wet fork of Markham wash, 1.50 chs. wide, containing small stream of clear water, course S.

Ascend 191 ft., over SW. slope.

19.79 Descend 208 ft., over SE. slope.

33.00 Ascend 144 ft., over SW. slope; to

38.58 Set an iron post, 3 ft. long, 1 in. in diam., 8 ins. in the ground to bed rock, supported by a mound of stone, for $\frac{1}{4}$ sec. cor., marked on brass cap,
$$\frac{1}{4} \text{ S } 7$$

$$\text{S } 18$$

$$1921$$

and raise a mound of stone, 3 ft. base, 2 ft. high, N. of cor.

56.00 Ascend 280 ft., over SW. slope.

Spur, slopes SE.

61.10 Descend 75 ft., over E. slope.

Wash, course S.

75.40 Ascend 290 ft., over NW. slope.

Ridge, brs. NE. and SW.

78.58 Descend 95 ft., over SE. slope, to

The cor. of secs. 7, 8, 17 and 18.

Land, mountainous.

Soil, rocky, 4th rate.

Timber, none.

Undergrowth, dense catclaw, scrub mesquite, ironwood, scrub oak and cacti.

N. 0° 3' W., bet. secs. 7 and 8.

Over mountainous land, thru. dense undergrowth.

Ascend 140 ft., over SE. slope.

5.82 Bend in top of ridge from SW. to NW.

26.00 Descend 36 ft., over NE. slope, to

Head of wash, course SE.

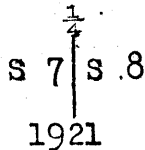
32.80 Ascend 30 ft., over S. slope.

Same ridge, brs. NE. and SW.

48. Part of Subdivision lines of Township 4 South, Range 25 East.

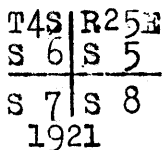
Chains.

39.80 Descend 25 ft., over NW. slope.
Wash, course SW.
40.00 Ascend slightly over SE. slope, to
Set an iron post, 3 ft. long, 1 in. in diam., on bed rock, supported by a mound of stone for $\frac{1}{4}$ sec. cor., marked on brass cap,



and raise a mound of stone, 3 ft. base, 2 ft. high, W. of cor.

71.55 Ascend 240 ft., over SE. slope.
80.00 Descend 35 ft., over NE. slope, to
Set an iron post, 3 ft. long, 2 ins. in diam., on bed rock, supported by a mound of stone, for cor. of secs. 5, 6, 7 and 8, marked on brass cap,



and raise a mound of stone, 3 ft. base, 2 ft. high, W. of cor.

Land, mountainous.
Soil, rocky, 4th rate.
Timber, none.
Undergrowth, dense catclaw, scrub oak and cacti.

30.14 N. 89° 54' E., on a random line, bet. secs. 5 and 8.
31.51 Triangulation point.
West rim of canyon, brs. N. and S. Beyond this point, the line crosses a canyon, course S. 20° W., the W. wall of which is so steep and broken as to render a chaining impracticable; therefore, triangulate as described as follows, and as shown on the diagram hereon:

Set flag ahead on random sec. line near East rim of canyon, indicated on diagram at "C."

From 30.14 ch. station (A) measure a Base N. 0° 6' W., 5.00 chs. to point "B."

Vertical angle of "A-C" = - 5°.
Bearing of "B-C" = S. 72° 58' E.

Included angles of triangle "A-B-C" are 90° 00', 72° 52', and 17° 08', the sum of which is 180° 00'.

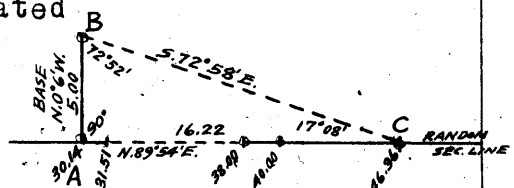
Triangulated measurement of "A-C" is obtained by Tang. 72° 52' x Base or 3.24383 x 5.00 = 16.22 chs., which added to 30.14 chs. gives 46.36 chs. N. 89° 54' E. from cor. of secs. 5, 6, 7 and 8, for the position of triangulation point "C."

38.00 Thence chain measurement S. 89° 54' W., 8.36 chs. to Bottom of canyon. Vertical angle to W. rim is + 37° and to E. rim is + 29°.

Thence N. 89° 54' E., on random line, bet. secs. 5 and 8, continuing measurement from cor. of secs. 5, 6, 7 and 8.

40.00 Set temp. $\frac{1}{4}$ sec. cor.
46.36 Triangulation point. Continue chaining.
80.30 Intersect N. and S. line, 14 lks. N. of the cor. of secs. 4, 5, 8 and 9.

Thence, West, on a true line, bet. secs. 5 and 8. Over mountainous land, thru. dense undergrowth and scattering timber.



Part of Subdivision lines of Township 4 South, Range 25 East. 49

Chains.

- 14.15 Descend 335 ft., over W. slope.
 Wash, 40 lks.wide, course S.
 Ascend 100 ft., over SE.slope.
- 29.45 Spur, slopes SW. from N.
 Descend 50 ft., over W.slope, to
- 33.90 East, or left rim of canyon, brs. N. and S.
 Descend 227 ft., over W.slope to $\frac{1}{4}$ sec.cor.
- 33.94 Triangulation point. Continue chaining.
- 40.15 Set a granite stone, 8x14x20 ins., 14 ins. in the ground
 for $\frac{1}{4}$ sec.cor., marked $\frac{1}{4}$ on N. face; from which,
- An oak, 8 ins. in diam., brs. N. 43° W., 74
 lks. dist., marked $\frac{1}{4}$ S 5 BT.
- An oak, 6 ins. in diam., brs. S. 87° W., 24 lks.
 dist., marked $\frac{1}{4}$ S 8 BT.
- 42.30 Descend 80 ft., over W. slope, to
 Wash, 40 lks.wide, course S. 20° W. in bottom of canyon.
 Discontinue chaining.
 Measurement to 50.16 ch. station by triangulation.
- 48.79 Ascend 391 ft., over E. slope, to
 West, or right rim of canyon, brs. N. and S. Continue
 line and measurement by chaining.
- Ascend 24 ft., over SE.slope.
- 50.16 Triangulation point.
- 52.55 Point of spur, slopes S.
 Descend 315 ft., over W.slope.
- 58.97 Gulch, 20 lks.wide, course S.
 Ascend 374 ft., over N.E. slope, to
- 80.30 The cor. of secs. 5, 6, 7 and 8.
- Land, mountainous.
 Soil, rocky, 4th rate.
 Timber, scattering oak and cedar.
 Undergrowth, dense catclaw, scrub oak and cacti.
-
- 40.00 West, on a random line, bet. secs. 6 and 7.
 Set temp. $\frac{1}{4}$ sec.cor.
- 78.45 Fall 2 lks. N. of the true point for cor. of secs. 6 and 7,
 on the west bdy. of the Tp., witnessed 1.50 chs.
 N., as hereinbefore described.
- From the sec.cor. point in Markham Wash,
 N. 89° 59' E., on a true line, bet. secs. 6 and 7.
 Over mountainous land, thru. scattering timber and
 dense undergrowth.
- 10.90 Ascend 400 ft., over NW.slope.
 Point of spur, slopes N.
- Descend 90 ft., over N.E. slope.
- 19.40 Gulch, 20 lks.wide, course N. near head.
 Ascend 200 ft., over NW.slope.
- 28.45 Ridge, brs. NE. and SW.
 Descend 20 ft., over S. slope, to
- 38.45 Set a granite stone 6x12x24 ins., 18 ins. in the ground
 for $\frac{1}{4}$ sec.cor., marked $\frac{1}{4}$ on N. face, from which,
- A cedar, 12 ins. in diam., brs. N. 42° E., 56
 lks. dist., marked $\frac{1}{4}$ S 6 BT.
- A cedar, 4 ins. in diam., brs. S. 7 $\frac{1}{2}$ ° W., 108
 lks. dist., marked $\frac{1}{4}$ S 7 BT.
- Ascend 21 ft., over SW.slope.
- 42.50 Point of spur, slopes S.
 Descend 45 ft., over SE.slope.
- 47.10 Gulch, course S.
 Ascend 380 ft., over W.slope.
- 63.55 Ridge, brs. N. and S.
 Descend 115 ft., over E. slope, to
- 78.45 The cor. of secs. 5, 6, 7 and 8.
 Land, mountainous.
 Soil, rocky, 4th rate.

Chains.

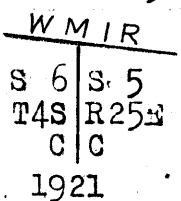
Timber, scattering cedar.
Undergrowth, dense catclaw, scrub oak and cacti.

-
- N. 0° 3' W., on a true line, bet. secs. 5 and 6.
Over mountainous land, thru. dense undergrowth.
Descend 80 ft., over NE. slope.
- 5.30 Gulch, course SE.
Ascend 195 ft., over S. slope.
- 22.34 Spur, slopes E.
Descend 270 ft., over N. slope.
- 33.79 Gulch; course E. At 150 lks. E. is the mouth of a
gulch, from N.
Ascend 137 ft., over SE. slope, to
- 40.00 Set a limestone, 6x12x20 ins., 10 ins. in the ground to
bed rock, supported by a mound of stone, for $\frac{1}{4}$ sec.
cor., marked $\frac{1}{4}$ on W. face; and raise a mound of stone
3 ft. base, 2 ft. high, W. of cor.
Ascend 310 ft., over SE. slope, to
- 59.98 Main ridge of the Gila Mountains, brs. NW. and E.
Intersect the South bdy. of the White Mountain Indian
Reservation, at a point on traverse on South bdy., from
the 44 mile mon., as follows:

S. 53 $\frac{1}{2}$ ° E., 12.80 chs.
S. 85 $\frac{1}{2}$ ° E., .90 chs.

The 44 mile mon. is an iron post, 3' ins. in diam., pro-
jecting 10 ins. above ground, firmly set, properly
marked on brass cap, and witnessed by a mound of stone
N. of cor.

No bearing trees.
At the point of intersection,
Set an iron post, 3 ft. long, 2 ins. in diam., 18 ins. in
the ground to bed rock, supported by a mound of stone
for closing cor. of secs. 5 and 6, marked on brass
cap,



and raise a mound of stone, 3 ft. base, 2 ft. high, S.
of cor.
Land, mountainous.
Soil, rocky, 4th rate.
Timber, none.
Undergrowth, dense catclaw, scrub oak and cacti.

The continued satisfactory adjustment of the solar appa-
ratus during the survey of this township is indicated
from field tests, as described in Books "D" and "F."

GENERAL DESCRIPTION.

This township is situated in Graham County, Arizona, about
14 miles northwest from Safford, the county seat. The
White Mountain Indian Reservation invades the east
half of the township.
The surface is mountainous, and lies on the southwestern
slope of the Gila Mountains, the main ridge of which
forms the south boundary of the Reservation, and passes
thru. the east half of the township, with a general

Part of Subdivision lines of Township 4 South, Range 25 East. 51

Chains.

bearing NW. and SE.

The soil is rocky, 4th rate.

There is no timber, except a few scattered portions, where there is a scattering growth of small cedar and pine.

All of the township is covered with a dense undergrowth of greasewood, catclaw, scrub oak, mesquite and cedar, manzanita, ironwood, tesota and cacti.

There are no water courses carrying a permanent flow of water. In the northeast quarter of sec. 18, a cliff in a gulch creates a waterfall in seasons when there is running water in the gulch. A seepage spring is located near the cor. of secs. 9, 10, 15 and 16, which is the only one observed during this survey.

There is no evidence of valuable mineral deposits.

No settlers are located in the township at this time.

A house and corral in sec. 16, a house in sec. 21, and a fence along the Reservation boundary in secs. 4 and 5, are the only improvements.

There are no roads within the township.

54

CERTIFICATE OF UNITED STATES TRANSITMAN.

I, ~~Benjamin J. Kinsey~~, U. S. Transitman, hereby certify upon honor that, in pursuance of special instructions received from the U. S. Surveyor General, for Group 111, Arizona, bearing date of the 24th day of August, 19 20, I have well, faithfully, and truly in my own proper person, and in strict conformity with said instructions, the Manual of Surveying Instructions, and the laws of the United States, ~~surveyed~~ ^{retraced} all those parts or portions of the ~~South boundary of the White Mountain Indian Reservation, and~~ Surveyed all those parts or portions of the West, North and East boundaries, and Subdivision lines of TOWNSHIP 4 SOUTH, RANGE 25 EAST, of the Gila and Salt River Base & Meridian, in the State of Arizona, which are represented in and by diagram on page 1 hereof the foregoing field notes as having been executed by me, and under my direction; and that all the corners of said retracement and survey have been established and perpetuated in strict accordance with the Manual of Surveying Instructions, and the special written instructions of the U. S. Surveyor General, for Group 111, Arizona and in the specific manner described in the field notes, and that the foregoing are the original field notes of such retracement and survey.

Place, Phoenix, Arizona.
 Date, May 17th 1913.

Benjamin J. Kinsey
 U. S. Transitman.

~~APPROVAL~~

~~OFFICE OF THE UNITED STATES SURVEYOR GENERAL,~~

~~....., 19~~

~~The foregoing field notes of the survey of~~

~~executed by~~

~~under his special instructions dated, 19 .., having been critically examined, and the necessary corrections and explanations made, the said field notes, and the surveys they describe, are hereby approved.~~

~~.....
 U. S. Surveyor General.~~

~~I certify that the foregoing transcript of the field notes of the above-described surveys in~~

~~....., has been correctly copied from the original notes on file in this office.~~

~~.....
 U. S. Surveyor General.~~

CERTIFICATE OF UNITED STATES ~~CADASTRAL~~
ENGINEER.

I, ~~William H. Thorn, U.S. Cadastral Engineer~~, hereby certify upon honor that, in pursuance of special instructions received from the U. S. Surveyor General, for Group 111, Arizona, bearing date of the 24th day of August, 1920, I have well, faithfully, and truly in my own proper person, and in strict conformity with said instructions, the Manual of Surveying Instructions, and the laws of the United States, surveyed all those parts or portions of the
West boundary of

TOWNSHIP 4 SOUTH, RANGE 25 EAST,

of the Gila and Salt
River Base & Meridian, in the State of Arizona, which are represented in the foregoing field notes ^{and by diagram on page 1 hereof} as having been executed by me, and under my direction; and that all the corners of said survey have been established and perpetuated in strict accordance with the Manual of Surveying Instructions, and the special written instructions of the U. S. Surveyor General, for Group 111, Arizona, and in the specific manner described in the field notes, and that the foregoing are the original field notes of such ~~survey notes and~~

Place Phoenix Arizona ~~(Signed)~~ William H. Thorn
U. S. Cadastral Engineer.
Date: June 5 1923

APPROVAL.

OFFICE OF THE UNITED STATES SURVEYOR GENERAL,

Phoenix, Arizona, JUN 7 1923, 1922.

The foregoing field notes of the ~~retracement of part of the~~
South boundary of the White Mountain Indian Reservation, and
Survey of the
West boundary,
Parts of the North and East boundaries, and the
Part of the Subdivision lines of TOWNSHIP 4 SOUTH, RANGE 25 EAST,
of the Gila and Salt River Base and Meridian, in the State of Arizona,

executed by William H. Thorn, U.S. Cadastral Eng'r. and Benjamin J. Kinsey, U.S. Transitman, under ~~his~~ special instructions dated August 24, 1920, for Group 111, Arizona, having been critically examined, and the necessary corrections and explanations made, the said field notes, and the ^{retracements} ~~and surveys~~ they describe, are hereby approved.

Frank P. Frost
U. S. Surveyor General.

I certify that the foregoing transcript of the field notes of the above described surveys in
_____, has been correctly copied from the original notes on file in this office.