

3590

ORIG
(1)

Book "J"
4-879

BOOK 3590

FIELD NOTES

OF THE SURVEY OF THE

West boundary, and

Subdivision lines

of

TOWNSHIP 3 SOUTH, RANGE 29 EAST,

Of the Gila and Salt River Base and Meridian,

In the State of Arizona.

EXECUTED BY

William H. Thorn, U.S. Cadastral Engineer,

and

Benjamin J. Kinsey, U.S. Transitman,

In the capacity of U. S. Surveyors, under Special Instructions dated May 12, 1921, issued by the United States Surveyor General to govern surveys included in Group No. 111, which were approved by the Commissioner of the General Land Office, May 17, 1921, and Assignment Instructions dated November 17, 1920.

Survey commenced June 6, 1921.

Survey completed July 10, 1921.

3590

3590

1A

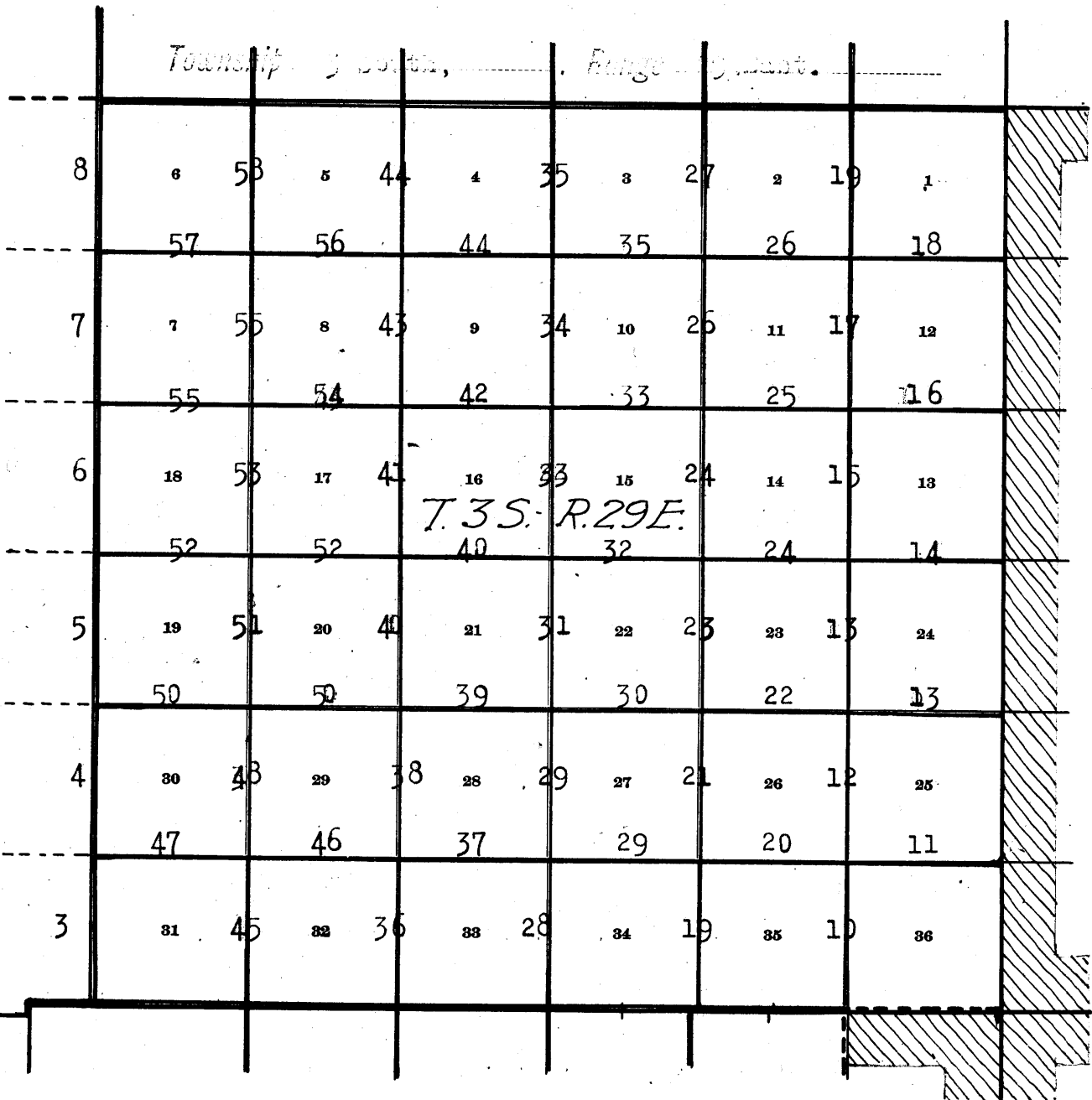
3590






Book "J"

BOOK 3590

Group 111 - - Arizona.

INDEX DIAGRAM.



-  Lines surveyed under this group.
-  Lines resurveyed under this group.
-  Accepted surveys.
-  Unsurveyed.
-  Areas surveyed as per accepted plats on file.

Surveys hereinafter described, executed by William H. Thorn, U.S. Cadastral Engineer, and Benjamin J. Kinsey, U.S. Transitman, on dates shown on diagram on page 1 hereof, using Young and Sons light mountain transits Nos. 8592 and 8477, respectively. Each instrument is equipped with full vertical circle and the Smith solar attachment. Unless otherwise specified, all azimuth determinations are accomplished with the solar attachments.

We examine the adjustment of each instrument and correct all errors; then, to test the solar apparatus, by comparing its indications from observations made during a.m. and p.m. hours with a meridian established by Polaris observation, we proceed with each instrument as follows:

June 5, 1921: In camp at Garfield, in N. $\frac{1}{2}$ of sec. 33, T. 3 S. R. 29 E., Gila and Salt River Base and Meridian, Arizona, in latitude $33^{\circ}07\frac{1}{2}'$ N., long. $109^{\circ}21'$ W. at 2h. 40.5m. a. m., l. m. t., observe Polaris at eastern elongation, making four observations, two each with the telescope in direct and reversed positions, and mark the mean point in the line thus determined, on a peg driven firmly in the ground, 5 chs. N.

Azimuth of Polaris at eastern elongation = $1^{\circ}20'14''$.

At 8h. 0m., a. m., l. m. t., lay off the azimuth of Polaris, $1^{\circ}20'$ to the west, and mark the meridian thus determined by a tack in a peg driven firmly in the ground, 5 chs. N.

At 9h. 0m. a. m., l. m. t., set off $33^{\circ}07\frac{1}{2}'$ N. on the lat. arc; $22^{\circ}32\frac{1}{2}'$ N. on the decl. arc, and determine a meridian with the solar, which agrees with the true meridian.

At apparent noon, with the lat. arc unchanged, observe the sun on the meridian; the resulting reading of the decl. arc is $22^{\circ}33\frac{1}{2}'$ N., which agrees with the computed declination of the sun.

At 3h. 0m., p. m., l. m. t., with the lat. arc unchanged, set off $22^{\circ}34\frac{1}{2}'$ N. on the decl. arc, and determine a meridian with solar, which agrees with the true meridian.

As all of the solar observations made with both instruments during the usual hours of solar work come within $1'30''$ of the true meridian, we conclude that the adjustment of the instruments is satisfactory.

Unless otherwise specified, all measurements are made with Tufkin steel tapes, each 5 chs. in length, compared with a Chesterman standard steel tape, and found correct. The measurements are made on the slope, the vertical angles determined with clinometers, and the slope measurements properly reduced to true horizontal distances.

Survey of West boundary of Township 3 South, Range 29 East. 3

Chains.

From the cor. of Ts. 2 and 3 S., Rs. 28 and 29 E., described in Book "I," South, on a random line, thru T. 3 S., between Ranges 28 and 29 E.

40.00 Set temp. 1/4 sec. cor. of secs. 1 and 6.

53.60 Triangulation point.

56.26 North, or right rim of canyon, brs. E. and W. Beyond this point, the range line passes over a deep canyon, course W., the walls of which are too precipitous to permit chaining; therefore, triangulate measurement across the canyon by triangulation, as described as follows, and as shown on the diagram hereon:

From 53.60 ch. station, indicated on diagram at "A," measure a Base S. 74° 30' E., 10.00 chs. to point "B," at rim of canyon.

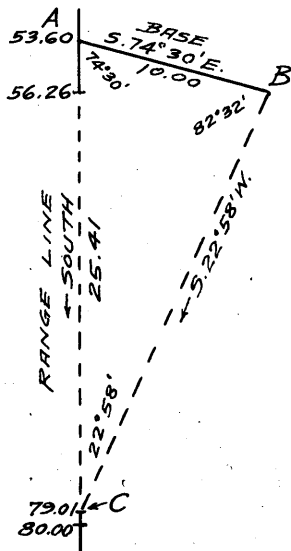
Set flag ahead on range line at point "C," at top of cliffs on the S. wall of canyon.

Vertical angle from "A" to "C" = - 7°.

Bearing of "B-C" = S. 22° 58' W.

Included angles of triangle "A-B-C" are 74° 30', 82° 32' and 22° 58', the sum of which is 180° 00'.

Triangulated measurement of "A-C" is obtained by



$$\frac{\text{sine } 82^{\circ}32' \times \text{Base}}{\text{sine } 22^{\circ}58'} \text{ or } \frac{.99152 \times 10.00}{.39020} = 25.41 \text{ chs., which}$$

added to 53.60 chs., gives 79.01 chs. South from the Tp. cor. for the position of triangulation point "C."

79.01 Triangulation point.

Continue line and measurement by chaining.

80.00 Set temp. cor. of secs. 1, 6, 7 and 12.

Continue line and measurement, setting temp. 1/4 sec. and sec. cors. alternately at intervals of 40.00 chs., and at

479.66 Intersect the N. bdy. of T. 4 S., R. 29 E. at 80.94 chs. W. from cor. of secs. 5, 6, 31 and 32, and 34.04 chs. E. from point for closing cor. (NW. cor.) of T. 4 S., R. 29 E., both of which cors. are described in Book "H."

At the point of intersection;

Set an iron post, 3 ft. long, 3 ins. in diam., 26 ins. in the ground, for cor. of Ts. 3 S., Rs. 28 and 29 E., marked on brass cap,

T3S.	
R28E	R29E
S36	S31
S16	
T4S R29E	
1921	

and raise a mound of stone, 3 ft. base, 2 ft. high, N. of cor.

Thence,

North, on true line, bet. secs. 31 and 36.

Over mountainous land, thru scattering timber and dense undergrowth.

Descend 56 ft., over NW. slope.

2.20 Head of gully, course W.

Ascend 125 ft., over SW. slope.

10.28 Trail, brs. NW. and SE.

12.30 Spur, slopes W.

Descend 318 ft., over N. slope.

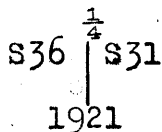
18.55 Trail, brs. NW. and SE.

21.75 Trail, brs. NW. and SE.

4. West boundary of Township 3 South, Range 29 East.

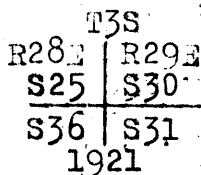
Chains.

- 24.90 Gulch, course NW.
Ascend 10 ft., over SW. slope.
- 26.40 Point of spur, slopes W.
Descend 8 ft., over NW. slope.
- 28.20 Gulch, course W.
Ascend 39 ft., over SW. slope.
- 30.85 Point of spur, slopes SW.
Descend 22 ft., over NW. slope.
- 33.40 Gulch, course SW.
Ascend 56 ft., over S. slope, to
- 40.00 Set an iron post, 3 ft. long, 1 in. in diam., 12 ins. in
the ground to bed rock, supported by a mound of stone,
for $\frac{1}{4}$ sec. cor., marked on brass cap,



from which,
 A pine, 12 ins. in diam., brs. S. 30° W., 16 lks.
 dist., marked $\frac{1}{4}$ S 36 BT.
 A rock in place, marked cross (x) brs. N. 60° E., 15 lks.
 dist.

- 51.00 Ascend 335 ft., over S. slope.
Ridge, brs. E. and W.
Descend 450 ft., over N. slope.
- 66.17 Trail, brs. NW. and SE.
- 68.00 Descend 372 ft., over NE. slope, to
- 80.00 Set an iron post, 3 ft. long, 2 ins. in diam., 24 ins. in
the ground, for cor. of secs. 25, 30, 31 and 36, marked
on brass cap,



from which,
 An oak, 4 ins. in diam., brs. N. 79 $\frac{1}{4}$ ° E., 55 lks.
 dist., marked BT.
 An oak, 4 ins. in diam., brs. S. 7° E., 4 lks.
 dist., marked BT.
 An oak, 6 ins. in diam., brs. S. 87 $\frac{1}{2}$ ° W., 24 lks.
 dist., marked T3S R28E S36 BT.
 An oak, 6 ins. in diam., brs. N. 22 $\frac{1}{2}$ ° W., 51 lks.
 dist., marked T3S R28E S25 BT.

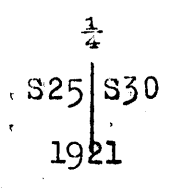
Land, mountainous.
 Soil, rocky, 4th rate.
 Timber, scattering oak, juniper and pine.
 Undergrowth, dense scrub oak, ironwood and manzanita.

North, on true line, bet. secs. 25 and 30.
 Over mountainous land, thru scattering timber and dense
 undergrowth.

- 3.03 Descend 83 ft., over NE. slope.
Gulch, course NW.
Ascend 10 ft., over SW. slope.
- 6.53 Point of spur, slopes W.
Descend 66 ft., over N. slope.
- 9.86 Wash, 20 lks. wide in gulch, course W.
Ascend 285 ft., over S. slope.
- 18.90 Spur ridge, brs. NW. and E. sloping NW.
Descend 360 ft., over NE. slope.
- 28.20 Gulch, course NW.
Ascend 131 ft., over SW. slope.
- 36.75 Descend 96 ft., over NW. slope, to

Chains.

40.00 Set an iron post, 3 ft. long, 1 in. in diam., on bed rock, supported by a mound of stone; for $\frac{1}{4}$ sec. cor., marked on brass cap,



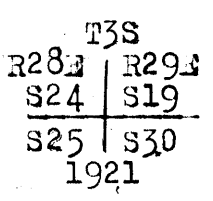
and raise a mound of stone, 3 ft. base, 2 ft. high, W. of cor.

47.84 Descend 131 ft., over NW. slope.
Wash, 20 lks. wide in gulch, course W.
Ascend 355 ft. over S. slope.

57.16 Spur ridge, brs. E. and W. sloping W.
Descend 535 ft. over N. slope.

74.50 Wash, 20 lks. wide in gulch, course NW.
Ascend 120 ft., over SW. slope, to

80.00 Set an iron post, 3 ft. long, 2 ins. in diam., 20 ins. in the ground to bed rock, supported by a mound of stone, for cor. of secs. 19, 24, 25 and 30, marked in brass cap,



from which,

A pine, 4 ins. in diam., brs. N. $49\frac{1}{2}^\circ$ E., 72 lks. dist., marked B T.

A juniper, 12 ins. in diam., brs. S. 60° E., 84 lks. dist., marked T3S R29E S30 BT.

A pine, 8 ins. in diam., brs. S. $66\frac{1}{2}^\circ$ W., 48 lks. dist., marked T3S R28E S25 BT.

A pine, 10 ins. in diam., brs. N. 64° W., 67 lks. dist., marked T3S R28E S24 BT.

Land, mountainous.
Soil, rocky, 4th rate.
Timber, scattering pine, juniper and oak.
Undergrowth, dense scrub oak, ironwood and manzanita.

North, on true line, bet. secs. 19 and 24.
Over mountainous land, thru. scattering timber and dense undergrowth.

1.00 Ascend 5 ft., over SW. slope.
Spur, slopes NW.
Descend 273 ft., over N. slope.

5.01 Trail, brs. E. and W.

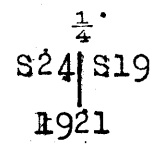
8.95 Gulch, course W.
Ascend 252 ft., over S. slope.

16.30 West end of spur ridge, brs. E. and W. sloping W.
Descend 196 ft., over N. slope.

23.06 Dry bed of Knight Creek, 60 lks. wide in ravine, course W.
Ascend 262 ft., over S. and SE. slopes to $\frac{1}{4}$ sec. cor.

25.00 Trail, brs. E. and W.

40.00 Set an iron post, 3 ft. long, 1 in. in diam., 26 ins. in the ground, for $\frac{1}{4}$ sec. cor., marked on brass cap,



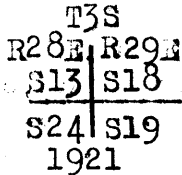
from which,

A juniper, 10 ins. in diam., brs. S. $14\frac{1}{2}^\circ$ E., 28 lks. dist., marked $\frac{1}{4}$ S 19 BT.

6 West boundary of Township 3 South, Range 29 East.

Chains.

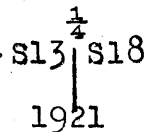
A pine, 4 ins. in diam., brs. S. $66\frac{1}{2}^{\circ}$ W., 135 lks.
 dist., marked BT.
 Ascend 480 ft., over SE. slope.
 59.35 Point of spur, slopes SE.
 Descend 190 ft., over NE. slope.
 69.64 Gulch, course E.
 Ascend 412 ft., over S. slope, to
 80.00 Set an iron post, 3 ft. long, 2 ins. in diam., on bed rock,
 supported by a mound of stone, for cor. of secs. 13, 18,
 19 and 24, marked on brass cap,



from which,

A juniper, 10 ins. in diam., brs. N. 33° E., 27 lks.
 dist., marked T3S R29E S18 BT.
 A pine, 6 ins. in diam., brs. S. 43° E., 86 lks.
 dist., marked T3S R29E S19 BT.
 An oak, 4 ins. in diam., brs. S. 73° W., 14 lks.
 dist., marked B T.
 A limestone outcrop in place brs. N. 17° W., 21 lks.
 dist., marked Cross (x),
 Land, mountainous.
 Soil, rocky, 4th rate.
 Timber, scattering oak, juniper and pine.
 Undergrowth, dense manzanita, scrub oak, ironwood and
 cacti.

North, on true line, bet. secs. 13 and 18.
 Over mountainous land, thru. scattering timber and dense
 undergrowth.
 Ascend 10 ft., over S. slope.
 1.30 Spur, slopes E.
 Descend 300 ft., over NE. slope.
 15.25 Gulch, course E.
 Ascend 815 ft., over S. slope.
 34.24 Spur, slopes E.
 Descend 126 ft., over NE. slope, to
 40.00 Set an iron post, 3 ft. long, 1 in. in diam., 20 ins. in
 the ground to bed rock, supported by a mound of stone,
 for $\frac{1}{4}$ sec. cor., marked on brass cap,



from which,

A juniper, 10 ins. in diam., brs. N. 18° E., 16
 lks. dist., marked $\frac{1}{4}$ S-18 BT.
 A pine, 12 ins. in diam., brs. S. 28° W., 39
 lks. dist., marked $\frac{1}{4}$ S-13 BT.
 Descend 10 ft., over NE. slope.
 42.00 Gulch, course E. near head.
 Ascend 257 ft., over SE. slope.
 43.70 Trail, brs. NE. and SW.
 51.34 Ridge, brs. NE. and SW.
 Descend 181 ft., over NW. slope.
 71.06 Head of gulch, course W.
 Ascend 115 ft., over SW. and W. slopes, to
 80.00 Set an iron post, 3 ft. long, 2 ins. in diam., on bed rock,
 supported by a mound of stone, for cor. of secs. 7, 12,
 13 and 18, marked on brass cap,

West boundary of Township 3 South, Range 29 East.

7

Chains.

T3S	
R28E	R29E
S12	S 7
S13	S18
1921	

from which,

- A pine, 8 ins. in diam., brs. N. 18° E., 24 lks. dist., marked T3S R29E S7 BT.
- A pine, 10 ins. in diam., brs. S. 82° E., 28 lks. dist., marked T3S R29E S18 BT.
- A pine, 6 ins. in diam., brs. S. 57° W., 10 lks. dist., marked T3S R28E S 13 BT.
- A pine, 6 ins. in diam., brs. N. 42° W., 37 lks. dist., marked T3S R28E S12 BT.

Land, mountainous.

Soil, rocky, 4th rate.

Timber, scattering pine, juniper and cedar.

Undergrowth, dense scrub oak, ironwood, manzanita and cacti.

North, on true line, bet. secs. 7 and 12.

Over mountainous land, thru. scattering timber and dense undergrowth.

Descend 511 ft., over rough, rolling NW. slope.

3.00 Trail, brs. NE. and SW.

34.53 Spur, slopes NW.

Descend 141 ft., over N. slope, to

40.00 Set an iron post, 3 ft. long, 1 in. in diam., 4 ins. in the ground, to bed rock, supported by a mound of stone, for base cor., marked on brass cap,

$\frac{1}{4}$	
S12	S 7
1921	

from which,

- A juniper, 6 ins. in diam., brs. N. 88° E., 20 lks. dist., marked $\frac{1}{4}$ S 7 BT.
- A juniper, 10 ins. in diam., brs. S. 17° W., 21 lks. dist., marked $\frac{1}{4}$ S 12 BT.

Descend 168 ft., over N. slope.

46.07 Gulch, course W.

Ascend 150 ft., over S. slope.

50.68 Point of spur, slopes W.

Descend 18 ft., over NW. slope.

56.57 Gulch, course SW.

Ascend 340 ft., over SE. slope.

68.00 Trail, brs. NW and SE.

69.45 Ridge, brs. E. and W.

Descend 230 ft., over N. slope, to

80.00 Set an iron post, 3 ft. long, 2 ins. in diam., 10 ins. in the ground to bed rock, supported by a mound of stone for cor. of secs. 1, 6, 7 and 12, marked on brass cap,

T3S	
R28E	R29E
S 1	S 6
S12	S 7
1921	

from which,

- A juniper, 12 ins. in diam., brs. N. 23 $\frac{1}{2}$ ° E., 31 lks. dist., marked T3S R29E S6 BT.
- A pine, 10 ins. in diam., brs. S. 61° E., 16 lks. dist., marked T3S R29E S7 BT.
- A pine, 8 ins. in diam., brs. S. 20° W., 46 lks. dist., marked T3S R28E S12 BT.

8 West boundary of Township 3 South Range 29 East

Chains.

A juniper, 14 ins. in diam., brs. N. $83\frac{1}{2}^{\circ}$ W., 48 lks.
dist., marked T3S R28E S1 BT.

Land, mountainous.

Soil, rocky, 4th rate.

Timber, scattering yellow pine, juniper, cedar and oak.

Undergrowth, dense scrub oak, manzanita, ironwood and cacti.

North, on a true line, bet. secs. 1 and 6.

Over mountainous land, thru scattering timber and dense undergrowth.

0.65 Descend 23 ft., over N. slope, to
Triangulation point at top of cliffs, bearing E. and W.,
facing N. Discontinue chaining. Measurement across
canyon by triangulation hereinbefore described.

17.00 Descend about 300 ft., to
(Approx.) Wash in bottom of canyon, course W.

23.40 Ascend about 500 ft., over S. face of cliffs, to
N. rim of canyon, brs. E. and W. Continue line and measure-
ment by chaining.

26.06 Ascend 132 ft., over S. slope.
Triangulation point.

28.27 Spur, slopes W.

40.00 Descend 320 ft., over NW. slope.

True point for $\frac{1}{4}$ sec. cor. falls in wash in bottom of
canyon, course SW., where it is impracticable to monu-
ment the cor. to insure its permanence; therefore, at

40.50 At N. edge of bottom of canyon, Set an iron post, Set an
iron post, 3 ft. long, 1 in. in diam., 26 ins. in the
ground for witness cor. to $\frac{1}{4}$ sec. cor., marked on brass
cap,

$\frac{1}{4}$
S 1 $\frac{1}{4}$ S 6
W/C
1921

from which,

A cedar, 44 ins. in diam., brs. N. 56° E., 44 lks.
dist., marked WC $\frac{1}{4}$ S 6 BT.

A cedar, 40 ins. in diam., brs. S. $31\frac{1}{2}^{\circ}$ W., 40 lks.
dist., marked WC $\frac{1}{4}$ S 1 BT.

56.57 Ascend 320 ft., over SE. slope.
Ridge, brs. E. and W.

79.66 Descend 565 ft., over N. and NW. slopes, to
The cor. of Ts. 2 and 3 S., Rs. 28 and 29 E.; described in
Book "I."

Land, mountainous.

Soil, rocky, 4th rate.

Timber, scattering yellow pine, juniper, cedar and oak.

Undergrowth, dense scrub oak, ironwood and manzanita.

Boundaries of Township 3 South, Range 29 East.
Latitudes, Departures, and Closing Errors.

Line designated.	True bearing.	Dist.	Latitudes.		Departures.	
			N.	S.	E.	W.
South boundary,	West,	480.94				480.94
West boundary,	North,	479.66	479.66			
North boundary,	East,	480.81			480.81	
East boundary,	South,	480.00		480.00		
Convergency,					.47	
Totals.			479.66	480.00	481.28	480.94
				479.66	480.94	
	<u>Error in latitude,</u>			0.34		
	<u>Error in departure,</u>				0.34	

10 Survey of Subdivision lines of Township 3 South, Range 29 East.

Chains.

From the true point for cor. of secs. 1, 2, 35 and 36, on the S. bdy. of Tp., witnessed 0.70 chs. West by an iron post, as described in Book "H,"

N. 0° 1' W., bet. secs. 35 and 36.

Over mountainous land, thru. scattering timber, and dense undergrowth.

Descend over precipitous NE. slope.

The south half of this section line passes over very precipitous slopes, and chaining is therefore impracticable; therefore, triangulate as described as follows, and as shown on the diagram hereon:

From a point indicated on diagram at "A" which is 0.34 chs. S. 0° 1' E. from the true point for cor. of secs. 1, 2, 35 and 36, line in a flag N. 0° 1' W. at point "B."

From point "B," measure a Base S. 89° 59' W., 10.00 chs. to point "C," from which a flag at point "A." bears S. 14° 4' E.

Included angles of triangle "A-B-C" are 14° 3', 90° 00' and 75° 57', the sum of which is 180° 00'.

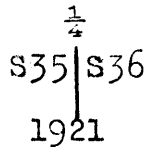
Triangulated measurement of "A-B" is therefore obtained by

Tang. 75° 57' x Base or 3.99592 x 10.00 = 39.96 chs.

The distance from the sec. cor. point to triangulation point "B," is therefore 39.96 chs. - 0.34 chs. = 39.62 chs.

The approximate positions of the topographical features on the sec. line within the triangulated interval are as follows:

- 10.00 Head of gulch, course NE. about 150 ft. below the sec. cor. point.
- 34.00 Thence over precipitous broken E. slope, to Bottom of Colorado Gulch, course SE. Heads about 8 chs. NW. from this point. A vacant shack brs. NW. about 2.00 chs. dist.
- 39.62 Ascend over precipitous S. slope, to Triangulation point about 415 ft. above the point for cor. of secs. 1, 2, 35 and 36 on S. bdy. of Tp. Continue line and measurement by chaining.
- 40.00 Ascend 15 ft., over S. slope, to Set an iron post, 3 ft. long, 1 in. in diam., 24 ins. in the ground, for $\frac{1}{4}$ sec. cor., marked on brass cap,



and raise a mound of stone, 3 ft. base, 2 ft. high, W. of cor.

- 49.33 Ascend 520 ft., over S. slope. Ridge, forming divide bet. Chase Creek and San Francisco River, brs. E. and W. turns to NE. at about 3 chs. E. of this point and to SW. at about 5 chs. W.
- 54.38 Descend 200 ft., over N. slope. Head of gulch, course W.
- 57.83 Ascend 35 ft., over SW. slope. Descend 26 ft., over W. slope, to
- 61.49 Same ridge, brs. NW. and SE. Spur slopes NE. from this point.
- 76.53 Descend 421 ft., over NW. slope. Gully, course NE.
- 78.00 Ascend 7 ft., over SE. slope
- 80.00 Descend 20 ft., over E. slope, to Set an iron post, 3 ft. long, 2 ins. in diam., 24 ins. in

Subdivision lines of Township 3 South, Range 29 East. 11

Chains.

the ground, for cor. of secs. 25, 26, 35 and 36, marked on brass cap,

T3S	R29E
S26	S25
S35	S36
1921	

and raise a mound of stone, 3 ft. base, 2 ft. high, W. of cor.

Land, mountainous.

Soil, rocky, 4th rate.

Timber, scattering cedar, juniper, pine and oak.

Undergrowth, dense scrub oak, ironwood and cacti.

- 40.00 East, on a random line, bet. secs. 25 and 36. Set temp. $\frac{1}{4}$ sec. cor.
- 79.92 Fall 2 lks. S. of the cor. of secs. 25, 30, 31 and 36, on the E. bdy. of sp., reestablished by W. B. Kimmel, U.S.S. in 1914 which is an iron post, 3 ins. in diam., projecting 36 ins. above ground, firmly set in a mound of stone, properly marked on brass cap, and witnessed by a mound of stone, W. of cor. No bearing trees. Thence, S. 89° 59' W., on a true line, bet. secs. 25 and 36. Over mountainous land, thru. scattering timber and dense undergrowth.
- 10.42 Descend 80 ft., over SW. slope. Dorsey Gulch, course SE.
- 10.90 Ascend 900 ft., over N. and NE. slopes to $\frac{1}{4}$ sec. cor. SE. end of house on line.
- 39.96 Set an iron post, 3 ft. long, 1 in. in diam., 24 ins. in the ground, for $\frac{1}{4}$ sec. cor., marked on brass cap,

$\frac{1}{4}$ S 25
S 36
1921

from which,

A pine, 10 ins. in diam., brs. S. 51 $\frac{1}{2}$ ° E., 72 lks. dist., marked $\frac{1}{4}$ S 36 st.

No other trees within limits. Raise a mound of stone, 3 ft. base, 2 ft. high, N. of cor.

- 41.51 Ascend 21 ft., over NE. slope. Point of spur, slopes N.
- 49.47 Descend 137 ft., over NW. slope. Old mine shaft and hoist on line in gully, course N.
- 51.47 Ascend 12 ft., over NE. slope. Descend 9 ft., over NW. slope.
- 52.27 Enter bottom of Dorsey Gulch, course NE. from W. Thence along bottom of Dorsey Gulch. Ascend 30 ft., to
- 59.47 Leave bottom of Dorsey Gulch, course E. from SW. Ascend 57 ft., over SE. slope, to
- 63.39 Dorsey Gulch, course SE. Ascend 100 ft., over N. slope, to
- 68.06 Gulch, course NE. Ascend 155 ft., over NE. slope.
- 73.90 Point of spur, slopes N. 10° E. Descend 34 ft., over NW. slope.
- 77.37 Gulch, course N. Ascend 73 ft., over E. slope, to
- 79.92 The cor. of secs. 25, 26, 35 and 36. Land, mountainous. Soil, rocky, 4th rate. Timber, scattering juniper, pine and oak. Undergrowth, dense scrub oak, ironwood and cacti.

12 Subdivision lines of Township 3 South Range 29 East.

Chains.

- N.0°1'W., bet. secs. 25 and 26.
Over mountainous land, thru. scattering timber and dense undergrowth.
- 1.33 Descend 30 ft., over NE. slope.
Head of Dorsey Gulch, course E.
Ascend 226 ft., over SE. slope.
- 13.58 Spur ridge, brs. N.70°E. and S.70°W. sloping N.70°E.
Descend 370 ft., over N. slope.
- 27.23 Wash, course NE.
Ascend 15 ft., over SE. slope.
- 30.56 Point of spur, slopes E.
Descend 41 ft., over NE. slope.
- 33.17 Wash, 10 lks. wide, course SE. near head.
Ascend 105 ft., over SE. slope.
- 37.42 Spur ridge, brs. NE. and SW. sloping NE.
Descend 30 ft., over NW. slope, to
- 40.00 Set an iron post, 3 ft. long, 1 in. in diam., 18 ins. in the ground to bed rock, supported by a mound of stone, for $\frac{1}{4}$ sec. cor., marked on brass cap,

1
S26 | S25

1921

from which,

- A juniper, 8 ins. in diam., brs. S.78 $\frac{1}{2}$ °E., 106 lks. dist., marked $\frac{1}{4}$ S 25 BT.
A juniper, 6 ins. in diam., brs. S.28°W., 130 lks. dist., marked $\frac{1}{4}$ S 26 BT.

- Descend 167 ft., over NW. slope.
- 45.74 Trail, brs. NE. and SW.
- 50.00 Dry bed of Sycamore Creek in gulch, course NE.
Ascend 125 ft., over SE. slope.
- 58.62 Spur, slopes E.
Descend 77 ft., over N. slope.
- 62.74 Wash, 20 lks. wide, in gulch, course E.
Ascend 100 ft., over S. slope.
- 68.00 Spur, slopes E.
Descend 115 ft., over N. slope.
- 73.73 Wash, in gulch, course NE.
Ascend 20 ft., over SE. slope.
- 75.85 Descend 45 ft., over NE. slope.
- 78.00 Barn on line.
- 79.03 Wood Poland ranch house brs. West, about 2.00 chs. dist.
- 79.80 Wash in gulch, course SE.
Ascend slightly over SW. slope, to
- 80.00 Set an iron post, 3 ft. long, 2 ins. in diam., 24 ins. in the ground, for cor. of secs. 23, 24, 25 and 26, marked on brass cap,

T3S | R29E
S23 | S24
S26 | S25

1921

from which,

- An oak, 14 ins. in diam., brs. N.79°E., 34 lks. dist., marked T3S R29E S24 BT.
An oak, 5 ins. in diam., brs. S.77°E., 100 lks. dist., marked T3S R29E S25 BT.
A boulder brs. S.24 $\frac{1}{2}$ °W., 10 lks. dist., marked (X) B0.
An oak, 8 ins. in diam., brs. N.1°W., 48 lks. dist., marked T3S R29E S23 BT.

Land, mountainous.

Soil, rocky, 4th rate.

Timber, scattering oak, juniper, pine and cedar.

Undergrowth, dense scrub oak, ironwood and cacti.

Subdivision lines of Township 3 South Range 29 East 13

Chains.

- N. 89° 59' E., on a random line, bet. secs. 24 and 25.
 40.00 Set temp. $\frac{1}{4}$ sec. cor.
 80.00 Fall 7 lks. S. of the cor. of secs. 19, 24, 25 and 30, on the E. bdy. of the Tp., reestablished by W. B. Kimmel, U. S. S. in 1914, which is an iron post, projecting 12 ins. above ground, firmly set, properly marked on brass cap, and witnessed by four properly marked bearing trees, as follows:
- An oak, 8 ins. in diam., N. 24° E., 24 lks. dist.
 A pine, 7 ins. in diam., S. 39° E., 58 lks. dist.
 A pine, 10 ins. in diam., S. 25 $\frac{1}{2}$ ° W., 29 lks. dist.
 An oak, 7 ins. in diam., N. 39° W., 48 lks. dist.
- Thence,
 S. 89° 56' W., on a true line, bet. secs. 24 and 25.
 Over mountainous land, thru. scattering timber and dense undergrowth.
 Ascend 322 ft., over SE. slope.
 8.44 From this point, Fisher's house brs. S. 13 $\frac{1}{2}$ ° W., about 20 chs. dist.
 9.06 Point of spur, slopes S.
 Descend 76 ft., over SW. slope.
 19.48 Ascend 15 ft., over S. slope.
 20.46 Point of spur, slopes SW.
 Descend 213 ft., over W. slope.
 25.04 Trail, brs. N. and S.
 26.19 Wash, 20 lks. wide, in gulch, course S.
 Ascend 292 ft., over SE. slope.
 35.81 Point of spur, slopes S.
 Descend 50 ft., over W. slope, to
 40.00 Set an iron post, 3 ft. long, 1 in. in diam., 20 ins. in the ground to bed rock, supported by a mound of stone for $\frac{1}{4}$ sec. cor., marked on brass cap,
- $\frac{1}{4}$ S 24
 S 25
 1921
- from which,
 A pine, 6 ins. in diam., brs. N. 66° W., 50 lks. dist., marked $\frac{1}{4}$ S 24 BT.
 A pine, 6 ins. in diam., brs. S. 44 $\frac{1}{2}$ ° W., 9 lks. dist., marked $\frac{1}{4}$ S 25 BT.
- Descend slightly over W. slope, to
 40.20 Wash, 20 lks. wide, course S.
 Ascend 65 ft., over SE. slope.
 54.10 Descend 17 ft., over SW. slope.
 56.60 Wash, course SE.
 Ascend 70 ft., over SE. slope.
 67.70 Wire fence, brs. N. and S.
 70.50 Point of spur, slopes S.
 Descend 21 ft., over SW. slope to sec. cor.
 77.50 Watering troughs on line.
 78.50 Corral on line.
 80.00 The cor. of secs. 23, 24, 25 and 26.
 Land, mountainous;
 Soil, rocky, 4th rate.
 Timber, scattering pine, oak, juniper and cedar.
 Undergrowth, dense scrub oak, ironwood and cacti.

- N. 0° 1' W., bet. secs. 23 and 24.
 Over mountainous land, thru. scattering timber and dense undergrowth.
 Ascend 522 ft., over SW. slope.
 2.42 Trail, brs. NW and SE.
 18.00 Spur, slopes SE.
 Descend 15 ft., over NE. slope.

14. Subdivision lines of Township 3 South, Range 29 East.

Chains.

- 21.50 Ascend 180 ft. over SE. and S. slopes.
 36.27 Spur ridge, brs. E. and W. sloping E.
 Descend 126 ft., over N. slope, to
 40.00 Set an iron post, 3 ft. long, 1 in. in diam., on bed rock, supported by a mound of stone, for $\frac{1}{4}$ sec. cor., marked on brass cap,

$\frac{1}{4}$
 S23 | S24
 1921

from which,

- A pine, 6 ins. in diam., brs. N. $41\frac{1}{2}^{\circ}$ E., 49 lks. dist., marked $\frac{1}{4}$ S 24 BT.
 An oak, 4 ins. in diam., brs. S. 78° W., 27 lks. dist., marked B T.
 Descend 388 ft. over N. slope.
 65.68 Descend 353 ft., over NW. slope.
 77.35 Wash, 30 lks. wide, in gulch, course NE.
 Ascend 70 ft., over SE. slope, to
 80.00 Set an iron post, 3 ft. long, 2 ins. in diam., 18 ins. in the ground to bed rock, supported by a mound of stone for cor. of secs. 13, 14, 23 and 24, marked on brass cap,

T3S | R29E
 S14 | S13
 S23 | S24
 1921

and raise a mound of stone, 3 ft. base, 2 ft. high, W. of cor.

Land, mountainous.

Soil, rocky, 4th rate.

Timber, scattering juniper, pine and oak.

Undergrowth, dense scrub oak, ironwood and cacti.

- N. $89^{\circ}56'$ E., on a random line, bet. secs. 13 and 24.
 40.00 Set temp. $\frac{1}{4}$ sec. cor.
 79.98 Fall 2 lks. N. of the cor. of secs. 13, 18, 19 and 24, on E. bdy. of the Tp., reestablished by W. B. Kimmel, U. S. S. in 1914, which is an iron post, 3 ins. in diam., projecting 26 ins. above ground, firmly set in ground and mound of stone, properly marked on brass cap, and witnessed by four properly marked bearing trees, as follows:
- A pine, 8 ins. in diam., brs. N. $65\frac{1}{2}^{\circ}$ E., 139 lks. dist.,
 A juniper, 5 ins. in diam., S. $6\frac{1}{2}^{\circ}$ E., 261 lks. dist.
 A juniper, 10 ins. in diam., S. $29\frac{1}{4}^{\circ}$ W., 193 lks. dist.
 A cedar, 8 ins. in diam., N. $32\frac{1}{4}^{\circ}$ W., 201 lks. dist.
- Thence,
 S. $89^{\circ}57'$ W., on a true line, bet. secs. 13 and 24.
 Over mountainous land, thru. scattering timber and dense undergrowth; across nearly level surface of small bench.
- 1.98 Rim of bench, brs. NE. and SW. Leave bench.
 Descend 292 ft., over NW. slope.
 19.66 Wash, 20 lks. wide, in gulch, course N.
 Ascend 230 ft., over NE. slope.
 27.98 Point of spur, slopes N.
 Descend 225 ft., over NW. slope, to
 39.99 Set an iron post, 3 ft. long, 1 in. in diam., 10 ins. in the ground to bed rock, supported by a mound of stone for $\frac{1}{4}$ sec. cor., marked on brass cap,

Subdivision lines of Township 3 South, Range 229 East. 15

Chains.

1/4 S 13
S 14
1921

from which,
An oak, 6 ins. in diam., brs. N. 72 1/2° E., 15 lks.
dist., marked 1/4 S 13 BT.
An oak, 3 ins. in diam., brs. S. 64° E., 27 lks.
dist., marked B T.

- 40.28 Descend slightly over NW. slope.
- Wash, 20 lks. wide in gulch, course N.
- Ascend 24 ft., over E. slope.
- 41.15 Point of spur, slopes NE.
- Descend 9 ft., over NW. slope.
- 41.80 Wash, 20 lks. wide, course NE.
- Ascend 335 ft., over E. slope.
- 55.76 Point of spur, slopes NE.
- Descend 210 ft., over NW. slope.
- 68.72 Gulch, course NE.
- Ascend 71 ft., over SE. slope.
- 71.34 Spur, slopes NE.
- Descend 74 ft., over NW. slope.
- 74.65 Wash, in gulch, course NE.
- Ascend 87 ft. over SE. slope, to
- 79.98 The cor. of secs. 13, 14, 23 and 24.
- Land, mountainous.
- Soil, rocky, 4th rate.
- Timber, scattering cottonwood, sycamore, pine and juniper.
- Undergrowth, dense scrub oak, ironwood, ocotillo and other cacti.

N. 0° 1' W., bet. secs. 13 and 14.
Over mountainous land, thru. scattering timber and dense undergrowth.

- Ascend 125 ft., over SE. slope.
- 0.15 Trail, brs. NE. and SW.
- 7.78 Point of spur, slopes E.
- Descend 157 ft., over NE. slope.
- 11.75 Same trail, brs. NW. and SE.
- 17.40 Wire fence, brs. NW. and SE.
- 19.50 Elizabeth Paddock's cabin brs. W. about 1.00 ch. dist.
- 19.69 Silver Creek, 20 lks. wide, containing small stream of water, course SE.
- Ascend 130 ft., over SW. slope.
- 20.00 Wire fence, brs. NW. and SE.
- 22.50 Old corral brs. East 1.50 chs. dist.
- 29.64 Spur, slopes SE.
- Descend 20 ft., over NE. slope.
- 34.64 Wash. 20 lks. wide, course SE.
- Ascend 155 ft., over SW. slope, to
- 40.00 Set an iron post, 3 ft. long, 1 in. in diam., 15 ins. in the ground to bed rock, supported by a mound of stone, for 1/4 sec. cor., marked on brass cap,

1/4 S 14
S 13
1921

and raise a mound of stone, 3 ft. base, 2 ft. high, W. of cor.

- Ascend 220 ft. over SW. slope.
- 47.48 Ridge, brs. E. and W.
- Descend 270 ft., over N. slope.
- 49.58 Line of fence posts, brs. E. and W.
- 54.94 From this point, Pat Sutherlin's ranch house brs. East about 20 chs. dist.
- 59.91 North branch of Silver Creek, 40 lks. wide, course E.

16 Subdivision lines of Township 3 South, Range 29 East.

Chains.

- 60.93 Ascend 337 ft., over S. and SW. slopes.
- 73.85 Wire fence, brs. E. and W.
Spur, slopes S.E.
- 78.50 Descend 30 ft., over NE. slope.
Head of gulch, course S. 75° E.
- 80.00 Ascend 25 ft., over SE. slope, to
Set an iron post, 3 ft. long, 2 ins. in diam., 20 ins. in the ground to bed rock, supported by a mound of stone, for cor. of secs. 11, 12, 13 and 14, marked on brass cap,

T3S	R29E
S11	S12
S14	S13

.1921

- from which,
- A juniper, 6 ins. in diam., brs. N. 21° E., 228 lks. dist., marked T3S R29E S12 BT.
- A juniper, 12 ins. in diam., brs. S. 21° E., 316 lks. dist., marked T3S R29E S13 BT.
- An oak, 4 ins. in diam., brs. S. 23½° W., 18 lks. dist., marked B. T.
- A cedar, 8 ins. in diam., brs. N. 22½° W., 34 lks. dist., marked T3S R29E S11 BT.

Land, mountainous.
Soil, rocky, 4th rate.
Timber, scattering pine, oak, cedar and juniper.
Undergrowth, dense scrub oak, ironwood and cacti.

- 40.00 N. 89° 57' E., on a random line, bet. secs. 12 and 13.
Set temp. ¼ sec. cor.
- 79.88 Fall 19 lks. N. of the cor. of secs. 7, 12, 13 and 18, on the E. bdy. of the Tp., reestablished by W. B. Kimmel, U.S.S. in 1914, which is an iron post, 3 ins. in diam., projecting 12 ins. above ground, firmly set, properly marked on brass cap, and witnessed by a mound of stone, W. of cor, and two properly marked bearing trees, as follows:

- A juniper, 8 ins. in diam., S. 13° E., 189 lks. dist.
- A juniper, 10 ins. in diam., S. 21° W., 243 lks. dist.

Thence,
N. 89° 55' W., on true line, bet. secs. 12 and 13.
Over mountainous land, thru. scattering timber and dense undergrowth.

- 17.05 Ascend 114 ft., over rolling S. slope on bench.
Rim of bench, brs. N. and S.
- 20.25 Leave bench and descend 71 ft., over W. slope.
Gulch, course S.
- 25.40 Ascend 100 ft., over E. slope.
Spur, slopes S.
- 36.90 Descend 160 ft., over SW. slope.
Wash, 30 lks. wide, in gulch, course SE.
- 39.94 Ascend 110 ft., over E. slope, to
Set an iron post, 3 ft. long, 1 in. in diam., on bed rock, supported by a mound of stone, for ¼ sec. cor., marked on brass cap,

¼	S 12
	S 13

1921

and raise a mound of stone, 3 ft. base, 2 ft. high, N. of cor.

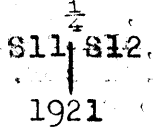
- 43.80 Ascend 125 ft., over E. slope.
Spur, slopes S.
- 49.90 Descend 170 ft., over W. slope.
Wash, course S.
- 60.60 Ascend 160 ft., over E. slope.
Spur, slopes S.

Subdivision lines of Township 3 South, Range 29 East. 17

Chains.

63.80 Descend 92 ft., over W. and SW. slopes.
 Wire fence, brs. NW. and SE.
 70.50 Ascend 67 ft., over S. slope, to
 79.88 The cor. of secs. 11, 12, 13 and 14.
 Land, mountainous.
 Soil, rocky, 4th rate.
 Timber, scattering oak, pine, juniper and cedar.
 Undergrowth, dense scrub oak, ironwood and cacti.

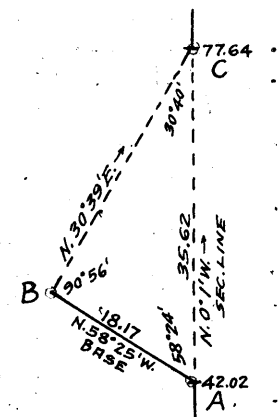
N. 0° 1' W., bet. secs. 11 and 12.
 Over mountainous land, thru. scattering timber and dense undergrowth.
 Ascend 222 ft., over SE. slope.
 5.46 Wire fence, brs. E. and W.
 6.07 From this point, Sutherlin's ranch house, brs. S. 22½° E.
 9.82 Spur, ridge, brs. NE. and W. sloping W.
 Descend 127 ft., over NW. slope.
 16.53 Gulch, course SW.
 Ascend 675 ft., over SE. slope.
 36.85 Spur, slopes SW. From this point, same house, brs. S. 11½° E. Desc. 15 ft., over W. slope, to
 40.00 Set an iron post, 3 ft. long, 1 in. in diam., on bed rock, supported by a mound of stone, for ¼ sec. cor., marked on brass cap,



from which,
 An oak, 3 ins. in diam., brs. S. 14° E., 124 lks. dist., marked BT.
 An oak, 6 ins. in diam., brs. N. 10° W., 66 lks. dist., marked ¼ S 11 BT.

Ascend 20 ft., over S. slope.
 42.02 Spur ridge, brs. N. 58½° W. and S. 80° E., sloping NW.
 42. The section line beyond this point passes over precipitous slopes, and chaining is impracticable; therefore, triangulate as described as follows, and as shown on the diagram hereon:

From the 42.02 ch. station indicated on diagram at "A," measure a Base N. 58° 25' W. 18.17 chs. along top of ridge to point "B." Set flag ahead on sec. line at point "C." Vertical angle from "A" to "C" is - 22° 50'. Bearing of "B-C" = N. 30° 39' E. Included angles of triangle "A-B-C" are 58° 24', 90° 56' and 30° 40', the sum of which is 180° 00'.



Triangulated measurement on sec. line is obtained by $\frac{\sin 90^\circ 56' \times \text{Base}}{\sin 30^\circ 40'}$ or $\frac{.99987 \times 18.17}{.51004} = 35.62$ chs., which added to 42.02 chs. gives 77.64 chs. N. 0° 1' W. from cor. of secs. 11, 12, 13 and 14 for the position of triangulation point "C."

70.00 (Approximate) Gulch, course NW. near head, about 800 ft. below 42.02 ch. point.
 Descend 190 ft., over W. slope, to
 77.64 Triangulation point.
 Continue line and measurement by chaining.
 Descend 97 ft., over NW. slope, to
 80.00 Set an iron post, 3 ft. long, 2 ins. in diam., 24 ins. in the ground, for cor. of secs. 1, 2, 11 and 12, marked on

18 Subdivision lines of Township 3 South, Range 29 East.

Chains.

brass cap,

T3S	R29E
S 2	S 1
S11	S12
1921	

. from which,

- A pine, 4 ins. in diam., brs. N. 15 $\frac{1}{2}$ ° E., 72 lks. dist., marked B.T.
- A pine, 10 ins. in diam., brs. S. 75 $\frac{1}{2}$ ° E., 40 lks. dist., marked T3S R29E S12 BT.
- A pine, 4 ins. in diam., brs. S. 75 $\frac{1}{2}$ ° W., 79 lks. dist., marked B.T.
- An oak, 8 ins. in diam., brs. N. 50 $\frac{1}{4}$ ° W., 66 lks. dist., marked T3S R29E S2 BT.

Land, mountainous.
 Soil, rocky, 4th rate.
 Timber, scattering pine, oak and cedar.
 Undergrowth, dense scrub oak, ironwood and cacti.

S. 89° 55' E., on a random line, bet. secs. 1 and 12.

40.00

Set temp. $\frac{1}{4}$ sec. cor.

79.80

Intersect the cor. of secs. 1, 6, 7 and 12, on the E. bdy. of the Tp., reestablished by W. B. Kimmel, U.S.S. in 1914, which is an iron post, 3 ins. in diam., projecting 26 ins. above ground, firmly set in ground and mound of stone, properly marked on brass cap, and witnessed by a mound of stone, W. of cor., and one properly marked bearing tree, as follows:

- A juniper, 6 ins. in diam., S. 3 $\frac{1}{4}$ ° W., 77 lks. dist.,

Thence,

N. 89° 55' W., on a true line, bet. secs. 1 and 12.
 Over mountainous land, thru. scattering timber and dense undergrowth, along rolling and broken N. slope of Walker Butte, the top of which brs. S. about one half mile dist..

1.72

Ascend 38 ft.

6.60

Descend 75 ft.

11.45

Gully, course N.

19.40

Ascend 75 ft.

23.80

Descend 75 ft.

30.56

Gully, course N. 10° E.

31.65

Ascend 135 ft., over NE. slope.

36.06

Point of spur, slopes N.

37.10

Descend 213 ft., over NW. slope.

39.90

Gulch, 20 lks. wide, course N.

Ascend 47 ft., over NE. slope.

Descend 155 ft., over NW. slope.

Gulch, course N. 20° E.

Ascend 30 ft., over E. slope.

Descend 46 ft., over NW. slope, to

Set an iron post, 3 ft. long, 1 in. in diam., on bed rock, supported by a mound of stone, for $\frac{1}{4}$ sec. cor., marked on brass cap,

$\frac{1}{4}$ S	1
S	12
1921	

and raise a mound of stone, 3 ft. base, 2 ft. high, N. of cor.

From this cor., U.S. L. M. No. 227, H. E. S. brs. N. 10° 11' W.

44.70

Descend 30 ft., over NW. slope.

60.25

Gully, course N. 30° E.

Ascend 161 ft., over NE. slope, to

Foot of cliff, 200 ft. high, bearing NW and SE. facing NE.

Ascend to

Subdivision lines of Township 3 South, Range 29 East. 19

Chains.	
61.90	Top of cliff.
68.65	Ascend 106 ft., over NE. slope, to Point of spur, slopes N.
79.80	Descend 198 ft., over NW. slope, to The cor. of secs. 1, 2, 11 and 12. Land, mountainous. Soil, rocky, 4th rate. Timber, scattering pine, cedar, juniper and oak. Undergrowth, dense scrub oak, ironwood and cacti.

40.00	N. 0° 1' W., on a random line, bet. secs. 1 and 2. Set temp. $\frac{1}{4}$ sec. cor.
79.76	Fall 21 lks. E. of the cor. of secs. 1, 2, 35 and 36, on the N. bdy. of the Tp.; described in Book "I." Thence, S. 0° 10' E., on a true line, bet. secs. 1 and 2. Over rolling land, thru. scattering timber and dense undergrowth on Prieto Plateau. Ascend 65 ft., over N. slope.
5.95	Trail, brs. E. and W.
16.00	Rim of Prieto Plateau, brs. NE. and NW. Leave rolling land and Prieto Plateau, and enter mountainous land. Descend 856 ft., over S. slope, to $\frac{1}{4}$ sec. cor.
32.08	Drift fence, brs. E. and W.
39.76	Set an iron post, 3 ft. long, 1 in. in diam., 26 ins. in the ground, for $\frac{1}{4}$ sec. cor., marked on brass cap,
	$\begin{array}{c} \frac{1}{4} \\ \text{S } 2 \text{ S } 1 \\ 1921 \end{array}$
	and raise a mound of stone, 3 ft. base, 2 ft. high, W. of cor.
56.70	Descend 490 ft., over S. slope. Sardine Creek, 20 lks. wide, containing stream of running water, course E. Asc. 64 ft., over NE. slope.
59.70	Trail, brs. NE. and SW.
62.00	Dry bed of Cave Creek, course NE. into Sardine Creek. Ascend 570 ft., over N. and NW. slopes, to
79.76	The cor. of secs. 1, 2, 11 and 12. Land, N. 16 chs., rolling; remainder, mountainous. Soil, rocky, 4th rate. Timber, scattering pine, juniper and sycamore. Undergrowth, dense scrub oak, ironwood and cacti.

	From the cor. of secs. 34 and 35, on the S. bdy. of the Tp., described in Book "H," N. 0° 1' W., bet. secs. 34 and 35. Over mountainous land, thru. scattering timber and dense undergrowth.
2.89	Descend 131 ft., over N. slope. Gulch, course NW.
12.86	Ascend 215 ft., over SW. slope. Spur, slopes NW.
16.61	Descend 232 ft., over N. slope.
19.00	Graded trail, brs. E. and W. Wash, 20 lks. wide, in gulch, course W.
25.52	Ascend 143 ft., over S. slope. Spur, slopes W.
34.53	Descend 300 ft., over N. slope. Gulch, course NW.
37.24	Ascend 50 ft., over SW. slope. Point of spur, slopes W.
40.00	Descend 65 ft., over NW. slope, to Set an iron post, 3 ft. long, 1 in. in diam., 26 ins. in the

20 Subdivision lines of Township 3 South, Range 29 East.

Chains.

ground, for $\frac{1}{4}$ sec. cor., marked on brass cap,

S34 | S35

1921

from which,

An oak, 4 ins. in diam., brs. S. 84° E., 11 lks. dist., marked B T.

A pine, 3 ins. in diam., brs. S. $49\frac{1}{2}^{\circ}$ W., 24 lks. dist., marked B T.

Descend 40 ft., over NW. slope.

42.30 Placer gulch, 50 lks. wide, course SW.

Ascend 260 ft., over SE. slope.

56.00 Point of spur, slopes SE.

Descend 70 ft., over NE. slope.

60.59 Wash, in gulch, course SE.

Ascend 133 ft., over SW. slope.

62.48 Graded trail, brs. E. and W.

65.83 Spur, slopes SE. Desc. 36 ft., over NE. slope.

68.95 Wash, 10 lks. wide in gulch, course SE. Asc. 233 ft. over S. slope.

74.71 From this point, cor. No. 3, of El Moro patented lode mining claim, Mineral Survey No. 2485, Greenlee Gold Mountain Mining District, brs. West, 3.57 chs. dist.

77.00 Spur, slopes SE.

Descend 20 ft., over NE. slope, to

80.00 Set an iron post, 3 ft. long, 2 ins. in diam., on bed rock, supported by a mound of stone, for cor. of secs. 26, 27, 34 and 35, marked on brass cap.

T3S | R29E

S27 | S26

S34 | S35

1921

from which,

A pine, 6 ins. in diam., brs. N. $78^{\circ}20'$ E., 117 lks. dist., marked T3S R29E S26 BT.

A pine, 3 ins. in diam., brs. S. 45° E., 79 lks. dist., marked BT.

A pine, 3 ins. in diam., brs. S. $16\frac{1}{2}^{\circ}$ W., 98 lks. dist., marked B T.

A pine, 6 ins. in diam., brs. N. $45\frac{1}{2}^{\circ}$ W., 146 lks. dist., marked T3S R29E S27 BT.

Land, mountainous.

Soil, rocky, 4th rate.

Timber, scattering pine, juniper, oak and cedar.

Undergrowth, dense scrub oak, ironwood and cacti.

40.00 East, on a random line, bet. secs. 26 and 35.

Set temp. $\frac{1}{4}$ sec. cor.

79.96 Intersect N. and S. line, 4 lks. S. of the cor. of secs. 25, 26, 35 and 36.

Thence,

S. $89^{\circ}58'$ W., on a true line, bet. secs. 26 and 35.

Over mountainous land, thru scattering timber and dense undergrowth.

8.40 Ascend 140 ft., over E. slope.

Ridge, brs. N. and S. forming divide between Chase Creek and San Francisco River.

Trail, brs. N. and S.

Descend 240 ft., over W. slope.

23.00 Gulch, course SW.

Ascend 60 ft., over SE. slope.

24.21 Trail, brs. NE. and SW.

26.51 Spur, slopes SW.

Descend 175 ft., over NW. slope.

Chains.	
33.05	Wash, 20 lks. wide, in gulch, course SW.
	Ascend 57 ft., over SE. slope.
33.95	Old mine shaft on line.
37.46	Spur, slopes S.
	Descend 42 ft., over W. slope, to
39.98	Set an iron post, 3 ft. long, 1 in. in diam., 26 ins. in the ground, for $\frac{1}{4}$ sec. cor., marked on brass cap,
	$\frac{1}{4}$ S 26 S 35 1921
	<p>from which,</p> <p>A pine, 10 ins. in diam., brs. N. 58$\frac{1}{2}$° W., 40 lks. dist., marked $\frac{1}{4}$ S 26 BT.</p> <p>A pine, 10 ins. in diam., brs. S. 8$\frac{1}{2}$° E., 82 lks. dist., marked $\frac{1}{4}$ S 35 BT.</p>
	Descend 70 ft., over W. slope.
43.69	Gulch, course S. From this point, cor. No. 2 of Last Spike patented lode mining claim, Mineral Survey No. 1712, Greenlee Gold Mountain Mining District, brs. S. 37 $\frac{1}{2}$ ° W., 46 lks. dist.
	Ascend 30 ft., over E. slope.
46.80	Spur, slopes S.
	Descend 96 ft., over W. slope.
54.30	Wash, 20 lks. wide in gulch, course S.
	Ascend 62 ft., over E. slope.
58.25	Spur, slopes S.
	Descend 75 ft., over SW. slope.
67.11	Gulch, course SE.
	Ascend 200 ft., over NE. slope, to
79.96	The cor. of secs. 26, 27, 34 and 35. Land, mountainous. Soil, rocky, 4th rate. Timber, scattering cedar, juniper, pine and oak. Undergrowth, dense scrub oak, ironwood and cacti.

	N. 0° 1' W., bet. secs. 26 and 27. Over mountainous land, thru. scattering timber and dense undergrowth.
	Ascend 72 ft., over SE. slope.
3.00	Point of short spur, slopes SE.
	Descend 14 ft., over NE. slope.
4.33	The NE. cor. of Dead Pine, identical with the NW. cor. of Iolanthe patented lode mining claim, Mineral Survey No. 2485, Greenlee Gold Mountain Mining District, on line, at this point.
7.20	Head of gully, course SE.
	Ascend 70 ft., over E. slope.
10.00	Spur ridge, brs. NE. and SW. sloping SW.
	Descend 46 ft. over NW. slope.
14.50	Ascend 30 ft., over W. slope, to
20.86	Head of gulch, course SW.
	Ascend 307 ft., over S. slope.
29.01	Spur, slopes SW.
	Descend 5 ft., over W. slope, to
30.00	Ascend 50 ft., over SW. slope.
36.45	Point of spur, slopes W.
	Descend 115 ft., over NW. slope, to
40.00	Set an iron post, 3 ft. long, 1 in. in diam., on bed rock, supported by a mound of stone, for $\frac{1}{4}$ sec. cor., marked on brass cap,
	$\frac{1}{4}$ S 27 S 26 1921
	from which,

22 Subdivision lines of Township 3 South Range 20 East.

Chains.

- A juniper, 10 ins. in diam., brs. S. $73^{\circ}35'E.$, 300 lks. dist., marked $\frac{1}{4}$ S 26 BT.
- A juniper, 20 ins. in diam., brs. N. $71^{\circ}W.$, 143 lks. dist., marked $\frac{1}{4}$ S 27 BT.
- Descend 250 ft., over NW. slope.
- 47.54 Gulch, course W.
Ascend 245 ft., over S. slope.
- 57.76 Spur, slopes W.
Descend 295 ft., over NW. slope.
- 68.14 Wash, 30 lks. wide, in gulch, course W.
Ascend 30 ft., over SW. slope.
- 68.96 Point of spur, slopes W.
Descend 15 ft., over NW. slope.
- 69.96 Wash, course W.
Ascend 20 ft., over S. slope.
- 71.75 Point of spur, slopes SE.
Descend 10 ft., over NE. slope.
- 72.75 Same wash, course S. $20^{\circ}E.$
Ascend 65 ft., over SW. slope.
- 76.73 Point of spur, slopes W.
Descend 21 ft., over NW. slope.
- 78.65 Same wash, course W. from NE.
Ascend 28 ft., over S. slope, to
- 80.00 Set an iron post, 3 ft. long, 2 ins. in diam., 18 ins. in the ground to bed rock, supported by a mound of stone for cor. of secs. 22, 23, 26 and 27, marked on brass cap,
- | | |
|------|------|
| T3S | R29E |
| S22 | S23 |
| S27 | S26 |
| 1921 | |
- from which,
- A juniper, 6 ins. in diam., brs. N. $65\frac{1}{2}^{\circ}E.$, 62 lks. dist., marked T3S R29E S23 BT.
- An oak, 4 ins. in diam., brs. S. $16\frac{1}{4}^{\circ}E.$, 66 lks. dist., marked BT.
- An oak, 6 ins. in diam., brs. S. $39^{\circ}W.$, 42 lks. dist., marked T3S R29E S27 BT.
- An oak, 3 ins. in diam., brs. N. $42^{\circ}W.$, 21 lks. dist., marked BT.
- Land, mountainous.
Soil, rocky, 4th rate.
Timber, scattering pine, oak, juniper, and cedar.
Undergrowth, dense scrub oak, ironwood, ocotillo and other cacti.
-
- 40.00 N. $89^{\circ}58'E.$, on a random line, bet. secs. 23 and 26.
Set temp. $\frac{1}{4}$ sec. cor.
- 79.90 Intersect the cor. of secs. 23, 24, 25 and 26.
Thence,
S. $89^{\circ}58'W.$, on a true line, bet. secs. 23 and 26.
Over mountainous land, thru. scattering timber and dense undergrowth.
- 0.10 Descend slightly over SW. slope.
Wash, in gulch, course SE.
- 9.94 Ascend 70 ft., over NE. slope.
From this point, Wood Poland's ranch house brs. S. about 1 ch. dist.
- 2.93 Wire fence brs. N. $75^{\circ}E.$ and S. $75^{\circ}W.$
- 7.90 Same wash, course NE.
Ascend 516 ft., over E. slope, to
- 39.95 Set an iron post, 3 ft. long, 1 in. in diam., on bed rock, supported by a mound of stone, for $\frac{1}{4}$ sec. cor., marked on brass cap,

Subdivision lines of Township 3 South, Range 29 East. 23

Chains.

$\frac{1}{4}$ S 23
S 26
1921

- and raise a mound of stone, 3 ft. base, 2 ft. high, N. of cor.
- Ascend 330 ft., over E. slope.
- 46.90 Ridge, brs. N. and S. forming divide between Chase Creek and San Francisco River.
- Descend 455 ft., over W. slope.
- 58.29 Wash, 20 lks. wide, in gulch, course NW.
- Ascend 16 ft., over NE. slope.
- 65.19 Descend 241 ft., over N. and NW. slopes.
- 77.00 Wash, course SW.
- Ascend 15 ft., over S. slope, to
- 79.90 The cor. of secs. 22, 23, 26 and 27.
- Land, mountainous.
- Soil, rocky, 4th rate.
- Timber, scattering pine, oak, juniper, and cedar.
- Undergrowth, dense scrub oak, ironwood, ocotillo and other cacti.

-
- N. 0° 1' W., bet. secs. 22 and 23.
 - Over mountainous land, thru. scattering timber and dense undergrowth.
 - Ascend 530 ft., over S. slope.
 - 18.66 Ridge, brs. E. and W.
 - Descend 375 ft., over N. slope.
 - 31.76 Gulch, course W.
 - Ascend 236 ft., over S. slope, to
 - 40.00 Set an iron post, 3 ft. long, 1 in. in diam., 24 ins. in the ground, for $\frac{1}{4}$ sec. cor., marked on brass cap,

$\frac{1}{4}$
S22 | S23
1921

- from which,
- A juniper, 10 ins. in diam., brs. S. 76° E., 30 lks. dist., marked $\frac{1}{4}$ S 23 BT.
- A juniper, 6 ins. in diam., brs. N. 88° W., 10 lks. dist., marked $\frac{1}{4}$ S 22 BT.
- Ascend 101 ft., over SW. slope.
- 46.40 Spur, slopes NW.
- Descend 71 ft., over NE. slope.
- 50.54 Wash, 20 lks. wide, course NW.
- Ascend 60 ft., over SW. slope.
- 58.67 Point of spur, slopes NW.
- Descend 300 ft., over N. slope.
- 68.46 Wash in gulch, course NW.
- Ascend 46 ft., over SW. slope.
- 73.80 Point of spur, slopes W.
- Descend 132 ft., over NW. slope, to
- 80.00 Set an iron post, 3 ft. long, 2 ins. in diam., on bed rock supported by a mound of stone, for cor. of secs. 14, 15, 22 and 23, marked on brass cap,

T3S | R29E
S15 | S14
S22 | S23
1921

- from which,
- An oak, 4 ins. in diam., brs. N. 89° E., 21 lks. dist., marked BT.
- A juniper, 5 ins. in diam., brs. S. 70° E., 43 lks. dist., marked T3S R29E S23 BT.

24 Subdivision lines of Township 3 South, Range 29 East.

Chains.

An oak, 4 ins. in diam., brs. S. 8° W., 35 lks. dist., marked BT.
 An oak, 6 ins. in diam., brs. N. 30° W., 13 lks. dist., marked T3S R29E S15 BT.

Land, mountainous.
 Soil, rocky, 4th rate.
 Timber, scattering pine, juniper, oak, walnut and cedar.
 Undergrowth, dense scrub oak, ironwood, ocotillo and other cacti.

40.00 N. 89° 58' E., on a random line, bet. secs. 14 and 23.
 79.88 Set temp. $\frac{1}{4}$ sec. cor.
 Intersect the cor. of secs. 13, 14, 23 and 24.
 Thence
 S. 89° 58' W., on a true line, bet. secs. 14 and 23.
 Over mountainous land, thru. scattering timber and dense undergrowth.
 0.38 Ascend 757 ft., over SE. slope to $\frac{1}{4}$ sec. cor.
 39.94 Trail, brs. NE. and SW.
 Set an iron post, 3 ft. long, 1 in. in diam., 26 ins. in the ground, for $\frac{1}{4}$ sec. cor., marked on brass cap,

$\frac{1}{4}$ S 14
 S 23
 1921

and raise a mound of stone, 3 ft. base, 2 ft. high, N. of cor.
 44.35 Ascend 17 ft., over SE. slope, to Head of gulch, course SE.
 55.96 Ascend 405 ft., over E. slope. Ridge, brs. N. and S. forming divide between Chase Creek and San Francisco River.
 79.88 Descend 516 ft., over W. and NW. slopes, to The cor. of secs. 14, 15, 22 and 23.
 Land, mountainous.
 Soil, rocky, 4th rate.
 Timber, scattering juniper, pine, oak and cedar.
 Undergrowth, dense scrub oak, ironwood and cacti.

N. 0° 1' W., bet. secs. 14 and 15.
 Over mountainous land, thru. scattering timber and dense undergrowth.
 0.50 Descend slightly over NW. slope.
 Wash, 20 lks. wide in gulch, course SW.
 30.00 Ascend 700 ft., over SE. slope. Ridge, brs. NE. and SW. forming divide between Chase Creek and San Francisco River.
 40.00 Descend 98 ft., over NW. slope, to Set an iron post, 3 ft. long, 1 in. in diam., on bed rock, supported by a mound of stone, for $\frac{1}{4}$ sec. cor., marked on brass cap,

$\frac{1}{4}$
 S15 | S14
 1921

from which,
 A juniper, 8 ins. in diam., brs. S. 72° E., 49 lks. dist., marked $\frac{1}{4}$ S 14 BT.
 A juniper, 6 ins. in diam., brs. S. 63° W., 20 lks. dist., marked $\frac{1}{4}$ S 15 BT.
 52.38 Descend 457 ft., over NW. slope. Gulch, course NE.
 63.41 Ascend 270 ft., over SE. slope. Spur, slopes NE. turns to N. at point 2 chs. NE.

Chains.

80.00

Descend 372 ft., over NW. and W. slopes, to
Set an iron post, 3 ft. long, 2 ins. in diam., 10 ins. in
the ground, to bed rock, supported by a mound of stone,
for $\frac{1}{4}$ cor. of secs. 10, 11, 14 and 15, marked on brass cap,

T3S	R29E
S10	S11
S15	S14
1921	

from which,

An oak, 3 ins. in diam., brs. N. $42\frac{1}{2}^{\circ}$ E., 31 lks.
dist., marked B T.

An oak, 6 ins. in diam., brs. S. $23\frac{1}{2}^{\circ}$ E., 73 lks.
dist., marked T3S R29E S14 BT.

A pine, 12 ins. in diam., brs. S. $16\frac{1}{4}^{\circ}$ W., 130 lks.
dist., marked T3S R29E S15 BT.

A pine, 6 ins. in diam., brs. N. 68° W., 73 lks.
dist., marked T3S R29E S10 BT.

Land, mountainous.

Soil, rocky, 4th rate.

Timber, scattering oak, pine, juniper and cedar.

Undergrowth, dense scrub oak, ironwood and cacti.

40.00

N. $89^{\circ} 58'$ E., on a random line, bet. secs. 11 and 14.

Set temp. $\frac{1}{4}$ sec. cor.

79.94

Intersect N. and S. line, 5 lks. S. of the cor. of secs. 11,
12, 13 and 14.

Thence,

S. $89^{\circ} 56'$ W., on a true line, bet. secs. 11 and 14.

Over mountainous land, thru. scattering timber and dense
undergrowth.

Ascend 120 ft., over SE. slope.

4.47

Spur, slopes SE.

Descend 230 ft., over SW. slope.

12.62

Wife fence, brs. NE. and SW.

18.65

Head of North branch of Silver Creek, course S.

Ascend 81 ft., over SE. slope.

26.12

Spur, ridge, brs. N. and S. sloping S. turns to E. at about
5 chs. N. of this point.

Descend 261 ft., over W. slope.

34.54

Wash, 50 lks. wide in gulch, course N.

Ascend 140 ft., over E. slope, to

39.97

Set an iron post, 3 ft. long, 1 in. in diam., on bed rock,
supported by a mound of stone, for $\frac{1}{4}$ sec. cor., marked
on brass cap,

$\frac{1}{4}$	S 11
	S 14
1921	

and raise a mound of stone, 3 ft. base, 2 ft. high, N.
of cor.

43.64

Ascend 75 ft., over E. slope.

Spur, slopes N.

Descend 190 ft., over W. slope.

49.66

Wash, 20 lks. wide, in gulch, course N.

Ascend 357 ft., over E. slope.

62.06

Spur, slopes N.

Descend 204 ft., over W. slope.

71.59

Gulch, course N.

Ascend 276 ft., over E. slope.

78.20

Spur, slopes N.

Descend 75 ft., over W. slope, to

79.94

The cor. of secs. 10, 11, 14 and 15.

Land, mountainous.

Soil, rocky, 4th rate.

Timber, scattering pine, juniper and oak.

Undergrowth, dense scrub oak, manzanita and cacti.

26. Subdivision lines of Township 3 South, Range 29 East.

Chains.

N. 0° 1' W., bet, secs. 10 and 11.
Over mountainous land, thru. scattering timber and dense undergrowth.

12.63 Descend 357 ft., over NW. and N. slopes, to Wash, 20 lks. wide in gulch, course E.

Ascend 245 ft., over S. slope.

22.54 Spur, slopes E.

Descend 356 ft., over N. slope.

32.09 Wash, 40 lks. wide, in gulch, course E.

Ascend 231 ft., over S. slope, to

40.00 Set an iron post, 3 ft. long, 1 in. in diam., 10 ins. in the ground, to bed rock, supported by a mound of stone for $\frac{1}{4}$ sec. cor., marked on brass cap,

$\frac{1}{4}$
S10 | S11

1921

and raise a mound of stone, 3 ft. base, 2 ft. high, W. of cor.

Ascend 156 ft., over S. slope.

46.06 Spur, slopes E.

Descend 483 ft., over N. slope.

63.10 Dry bed of Cave Creek, 50 lks. wide, in gulch, course SE.

Ascend 367 ft., over SW. and W. slopes, to

80.00 Set an iron post, 3 ft. long, 2 ins. in diam., on bed rock, supported by a mound of stone, for cor. of secs. 2, 3, 10 and 11, marked on brass cap,

T3S | R29E
S 3 | S 2
S10 | S11

1921

from which,

An oak, 4 ins. in diam., brs. N. 73° E., 77 lks. dist., marked BT.

A juniper, 6 ins. in diam., brs. S. 20 $\frac{1}{2}$ ° E., 129 lks. dist., marked T3S R29E S11 BT.

An oak, 6 ins. in diam., brs. S. 0° 30' W., 73 lks. dist., marked T3S R29E S10 BT.

An oak, 4 ins. in diam., brs. N. 21 $\frac{1}{2}$ ° W., 13 lks. dist., marked BT.

Land, mountainous.

Soil, rocky, 4th rate.

Timber, scattering oak, juniper and cedar.

Undergrowth, dense scrub oak, mahzanita, ironwood and cacti.

40.00 N. 89° 56' E., on a random line, bet. secs. 2 and 11.
Set temp. $\frac{1}{4}$ sec. cor.

80.02 Intersect N. and S. line, 9 lks. N. of the cor. of secs. 1, 2, 11 and 12.

Thence,

West, on a true line, bet. secs. 2 and 11.

Over mountainous land, thru. scattering timber and dense undergrowth.

Descend 318 ft., over NW. slope.

7.50 Gulch, course NW.

Ascend 175 ft., over NE. slope.

13.84 Point of spur, slopes NW.

Descend 320 ft., over NW. slope.

25.84 Dry bed of Cave Creek, course N. 30° E.

Ascend 146 ft., over E. slope.

34.26 Point of spur, slopes SE.

Descend 37 ft., over SW. slope.

36.56 Gulch, course SE.

Subdivision lines of Township 3 South Range 29 East. 27

Chains.

40.01 Ascend 120 ft., over NE. slope, to Set an iron post, 3 ft. long, 1 in. in diam., 20 ins. in the ground to bed rock, supported by a mound of stone, for 1/4 sec. cor., marked on brass cap,

1/4 S 2
S 11
1921

and raise a mound of stone, 3 ft. base, 2 ft. high, N. of cor.

42.77 Ascend 38 ft., over NE. slope, to Spur, slopes SE.

53.28 Ascend 197 ft., over S. slope, to Descend 60 ft., over SW. slope.

61.14 Gulch, course SE.

69.14 Ascend 360 ft., over E. slope. Spur, slopes SE.

70.90 Descend 10 ft., over SW. slope.

72.64 Head of gulch, course S.

Ascend 10 ft., over SE. slope.

Short spur, slopes SW.

80.02 Descend 265 ft., over W. slope, to

The cor. of secs. 2, 3, 10 and 11.

Land, mountainous.

Soil, rocky, 4th rate.

Timber, scattering pine, juniper and sycamore.

Undergrowth, dense scrub oak, ironwood, manzanita and cacti.

40.00 N. 0° 10' W., on a random line, bet. secs. 2 and 3. Set temp. 1/4 sec. cor.

79.88 Fall 14 lks. W. of the cor. of secs. 2, 3, 34 and 35, on the N. bdy. of the Tp., described in Book "I."

Thence,

S. 0° 4' E., on a true line, bet. secs. 2 and 3.

Over mountainous land, thru. scattering timber and dense undergrowth.

Descend 560 ft., over SW. slope.

6.12 Trail, brs. E. and W.

26.91 Dry bed. of Sardine Creek, 50 lks. wide, course E.

Ascend 177 ft., over NE. slope.

33.45 Point of spur, slopes E.

Descend 50 ft., over S. slope.

37.34 Gulch, course NE.

Ascend 105 ft., over N. slope, to

39.88 Set an iron post, 3 ft. long, 1 in. in diam., 24 ins. in the ground, for 1/4 sec. cor., marked on brass cap,

1/4
S 3 | S 2
1921

from which,

A pine, 6 ins. in diam., brs. N. 38° E., 43 lks. dist., marked 1/4 S 2 BT.

A pine, 8 ins. in diam., brs. N. 86° W., 33 lks. dist., marked 1/4 S 3 BT.

58.03 Ascend 495 ft., over N. slope. Ridge, brs. E. and W.

Descend 46 ft., over S. slope.

62.98 Ascend 33 ft., over NW. slope.

63.83 A juniper, 48 ins. in diam., on line. Mark 2 notches on each of N. and S. faces of same.

66.94 Spur, slopes SW.

Descend 330 ft., over S. and SE. slopes, to

78.28 Head of gulch; course SW.

chains.

79.83 Ascend 10 ft., over W. slope, to
 The cor. of secs. 2, 3, 19 and 11.
 Land, mountainous.
 Soil, rocky, 4th rate.
 Timber, scattering pine, juniper, sycamore and oak.
 Undergrowth, dense scrub oak, manzanita and cacti.

 From the cor. of secs. 3, 4, 33 and 34, on the S. bdy. of Tp.,
 described in Book "H,"

N. 0° 2' W., bet. secs. 33 and 34.
 Over mountainous land, thru. scattering timber and under-
 growth.

3.53 Ascend 125 ft., over SE. slope.
 Ridge, brs. N. 25° E. and S. 25° W. Group of houses brs. W.
 about 10 chs. dist. Thence along W. slope.

30.34 Ascend 127 ft., to
 Top of ascent; aerial tramway, brs. N. 52½° E. and S. 52½° W.
 Descend 75 ft., over NW. slope to ¼ sec. cor.

33.99 Pack trail, brs. NE. and SW.

40.00 Set an iron post, 3 ft. long, 1 in. in diam., 26 ins. in
 the ground, for ¼ sec. cor., marked on brass cap,

$\frac{1}{4}$
 S33 | S34

1921

and raise a mound of stone, 4 ft. base, 3 ft. high, W. of
 cor.

46.69 Descend 135 ft., over NW. slope.

Head of gulch, course N. 80° W.

54.00 Ascend 130 ft., over SW. slope.

Point of spur, slopes W.

60.21 Descend 206 ft., over NW. slope.

Gulch, course S. 70° W.

73.28 Ascend 318 ft. over S. slope.

Spur, slopes S. 45° W. From this point, U. S. L. M. No. 2,
 Greenlee Gold Mountain Mining District, brs. N. 45½° E.,
 2.20 chs. dist.

73.38 Descend 114 ft., over NW. slope to sec. cor.

From this point, Detroit Copper Mining Co's. triangula-
 tion station No. 300 brs. N. 47½° E., 2.36 chs. dist.

80.00 Set an iron post, 3 ft. long, 2 ins. in diam., 24 ins. in
 the ground, for cor. of secs. 27, 28, 33 and 34, marked
 on brass cap,

T3S	R29E
S28	S27
S33	S34

1921

from which,

A pine, 8 ins. in diam., brs. N. 69° E., 37 lks. dist.,
 marked T3S R29E S27 BT.

A juniper, 10 ins. in diam., brs. S. 26° 20' E., 91 lks.
 dist., marked T3S R29E S34 BT.

A black jack oak, 6 ins. in diam., brs. S. 30° W., 128
 lks. dist., marked T3S R29E S33 BT.

A scrub cedar, 6 ins. in diam., brs. N. 89° W., 89 lks.
 dist., marked T3S R29E S28 BT.

Land, mountainous.

Soil, rocky, 3th rate.

Timber, pine, juniper and cedar.

Undergrowth, dense scrub white and black oak, manzanita,
 algerita, mescal and other cacti.

Subdivision lines of Township 3 South, Range 29 East, 29

Chains.	
	East, on a random line, bet. secs. 27 and 34.
40.00	Set temp. $\frac{1}{4}$ sec. cor.
80.20	Intersect N. and S. line, 9 lks. N. of the cor. of secs. 26, 27, 34 and 35.
	Thence, N. $89^{\circ}56'$ W., on a true line, bet. secs. 27 and 34. Over mountainous land, thru. scattering timber and dense undergrowth.
	Ascend 72 ft., over SE. slope.
2.20	Spur, ridge, brs. NE. and SW., slopes SW.
	Descend 280 ft., over NW. slope.
5.16	Old mine, caved in, on line.
13.60	Gulch, course S. 70° W.
	Ascend 55 ft., over SE. slope.
21.52	From this point Cor. No. 4 of "Copper Era" patented lode mining claim, Mineral Survey No. 2926, Greenlee Gold Mountain Mining District, brs. North 0.57 chs. dist.
22.83	Spur, slopes S. 45° W.
	Descend 265 ft., over W. slope.
34.09	Bottom of King Gulch, 30 lks. wide, course S. 10° E.
	Ascend 145 ft., over E. slope to $\frac{1}{4}$ sec. cor.
36.77	Pack trail, brs. N. and S. Goat ranch brs. N. about 20 chs. dist.
40.10	Set an iron post, 3 ft. long, 1 in. in diam., on bed rock, supported by a mound of stone, for $\frac{1}{4}$ sec. cor., marked on brass cap,
	$\frac{1}{4}$ S 27 $\frac{1}{4}$ S 34 1921
	from which, A pine, 8 ins. in diam., brs. N. 11° W., 24 lks. dist., marked $\frac{1}{4}$ S 27 BT. A white oak, 4 ins. in diam., brs. S. 67° E., 41 lks. dist., marked BT.
46.62	Ascend 120 ft., over SE. slope. Point of short spur, slopes S. 15° E. From this point, Detroit Copper Mining Co.'s. triangulation station No. 298 brs. S. 35° W., 0.50 chs. dist.
	Descend 70 ft., over SW. slope.
52.47	Head of gulch, course S. 45° E. Pack trail, brs. N. 15° W. and S. 15° E.
	Ascend 45 ft., over E. slope.
55.18	Ridge, brs. N. and S.
	Descend 220 ft., over NW. slope.
64.54	Head of gulch, course N. 80° W.
	Ascend 115 ft., over NE. slope, to
75.26	NW. end of cliffs, bearing N. 15° W. and S. 15° E. facing NE.
	Descend 31 ft., over NW. slope, to
80.20	The cor. of secs. 27, 28, 33 and 34. Land, mountainous. Soil, rocky, 4th rate. Timber, scattering pine, juniper, oak and cedar. Undergrowth, dense scrub oak, manzanita, ironwood and cacti.

	N. $0^{\circ}2'$ W., bet. secs. 27 and 28. Over mountainous land, thru. scattering timber and dense undergrowth.
	Descend 320 ft., over NW. slope.
8.08	Garfield Gulch, course S. 65° W.
	Ascend 285 ft., over S. slope.
19.65	Spur, slopes S. 45° W.
	Descend 218 ft., over NW. slope.
29.98	Gulch, course S. 55° W.
	Ascend 137 ft., over S. slope.
37.87	Point of spur, slopes SW. Thence along W. slope, ascending 10 ft. to
40.00	Set an iron post, 3 ft. long, 1 in. in diam., 26 ins. in

30. Subdivision lines of Township 3 South, Range 29 East.

Chains.

the ground, for 1/4 sec.cor., marked on brass cap,

S28 1/2 S27

1921

and raise a mound of stone, 4 ft. base, 3 ft. high, W. of cor.

- Ascend 23 ft., over W. slope.
- 44.99 Gulch, course W. near head.
- Ascend 776 ft., over S. slope, to
- 66.17 Top of cliffs, 50 ft. high, bearing E. and W. facing S.
- Ascend 139 ft. over SE. slope, to
- 70.70 Ridge, brs. N. 60° E., and S. 60° W.
- Descend 220 ft., over NW. slope, to
- 80.00 Set an iron post, 3 ft. long, 2 ins. in diam., 6 ins. in the ground to bed rock, deposit a stone marked with a cross (x) at base of post, and raise a mound of stone around post, for cor. of secs. 21, 22, 27 and 28, marked on brass cap,

T3S R29E
S21 S22

S28 S27

1921

from which,

- A pine, 10 ins. in diam., brs. S. 8° E., 110 lks. dist., marked T3S R29E S27 BT.
- A pine, 6 ins. in diam., brs. S. 1° W., 102 lks. dist., marked T3S R29E S28 BT.
- A pine, 6 ins. in diam., brs. N. 19 1/2° W., 12 lks. dist., marked T3S R29E S21 BT.

No other trees within limits.
 Land, mountainous.
 Soil, rocky, 4th rate.
 Timber, scattering pine, juniper, oak and cedar.
 Undergrowth, dense scrub oak, manzanita, ironwood and cacti.

S. 89° 56' E., on a random line, bet. secs. 22 and 27.

- 40.00 Set temp. 1/4 sec. cor.
- 80.32 Intersect N. and S. line, 12 lks. N. of the cor. of secs. 22, 23, 26 and 27.

Thence,
 N. 89° 51' W., on a true line, bet. secs. 22 and 27.
 Over mountainous land, thru. scattering timber and dense undergrowth.

- Ascend 122 ft., over SE. slope.
- 7.20 Spur, slopes S. 20° W.
- Descend 100 ft., over W. slope.
- 10.87 Gulch, course S. 10° W.
- Ascend 293 ft. over SE. slope.
- 24.55 Spur, slopes S. 20° E.
- Descend 77 ft., over SW. and S. slopes.
- 33.97 Head of gulch, course S. 15° E.
- Ascend 145 ft., over SE. slope, to
- 38.46 Top of cliff, brs. NE. and SW., facing SE.
- Descend 36 ft., over S. slope, to
- 40.16 Set an iron post, 3 ft. long, 1 in. in diam., on bed rock, supported by a mound of stone, for 1/4 sec. cor., marked on brass cap,

S 22
S 27

1921

from which,

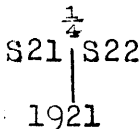
Subdivision lines of Township 3 South, Range 29 East. 31

Chains.

A blue oak, 6 ins. in diam., brs. N. $5\frac{1}{2}^{\circ}$ W., 17 lks. dist., marked $\frac{1}{4}$ S 22 BT.
 A pine, 6 ins. in diam., brs. S. $43\frac{3}{4}^{\circ}$ E., 25 lks. dist., marked $\frac{1}{4}$ S 27 BT.
 Ascend 96 ft., over SE. slope.
 50.03 Saddle in ridge, brs. NE. and SW.
 Descend 96 ft., over NW. slope.
 57.32 Head of gulch, course N. 20° W.
 Ascend 86 ft., over NE. slope.
 61.15 Point of spur, slopes N.
 Descend 120 ft., over NW. slope.
 66.58 Head of gulch, course N.
 Ascend 77 ft., over NE. slope.
 69.32 Spur, slopes N. 45° W.
 Descend 311 ft., over NW. slope, to
 80.32 The cor. of secs. 21, 22, 27 and 28.
 Land, mountainous.
 Soil, rocky, 4th rate.
 Timber, scattering oak, pine, juniper and cedar.
 Undergrowth, dense scrub oak, manzanita, ironwood and cacti.

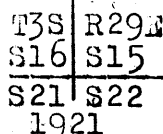
N. $0^{\circ}2'$ W., bet. secs. 21 and 22.
 Over mountainous land, thru. scattering timber and dense undergrowth.

Descend 42 ft., over NW. slope.
 1.36 Head of gulch, course W.
 Ascend 212 ft., over SW. slope.
 8.35 Spur, slopes W.
 Descend 89 ft., over NW. and W. slopes, to
 16.73 Spur, slopes N. 45° W.
 Descend 622 ft., over NE. slope, to
 40.00 Set an iron post, 3 ft. long, 1 in. in diam., 26 ins. in the ground, for $\frac{1}{4}$ sec. cor., marked on brass cap,



from which,

A cedar, 8 ins. in diam., brs. N. $45\frac{1}{2}^{\circ}$ W., 11 lks. dist., marked $\frac{1}{4}$ S 21 BT.
 No other trees within limits. Raise a mound of stone, 4 ft. base, 3 ft. high, W. of cor.
 Descend 75 ft., over NE. slope.
 42.67 Gulch, course N. 45° W.
 Ascend 35 ft., over SW. slope.
 47.78 Point of spur, slopes N. 70° W.
 Descend 92 ft., over NW. slope.
 54.64 Wash, 60 lks. wide, in gulch, course S. 45° W.
 Ascend 133 ft., over SE. slope.
 59.20 Point of spur, slopes E. From this point, frame house brs. E. about 10 chs. dist.
 Descend 10 ft., over NE. slope.
 64.20 Gulch, course S. 45° E.
 Ascend 480 ft., over S. slope, to
 80.00 Set an iron post, 3 ft. long, 2 ins. in diam., on bed rock, supported by a mound of stone, for cor. of secs. 15, 16, 21 and 22, marked on brass cap,



from which,

A black jack oak, 8 ins. in diam., brs. N. $75\frac{1}{2}^{\circ}$ E., 87 lks. dist., marked T3S R29E S15 BT.

32 Subdivision lines of Township 3 South, Range 29 East.

Chains.

A pine, 8 ins. in diam., brs. S. 78° E., 54 lks.
dist., marked T3S R29E S22 BT.

A pine, 8 ins. in diam., brs. S. 78° W., 26 lks.
dist., marked T3S R29E S21 BT.

A black jack oak, 6 ins. in diam., brs. N. 17½° W.,
120 lks. dist., marked T3S R29E S16 BT.

Land, mountainous.

Soil, rocky, 4th rate.

Timber, scattering pine, oak, juniper and cedar.

Undergrowth, dense scrub oak, manzanita, ironwood and
cacti.

- 40.00 S. 89° 51' E., on a random line, bet. secs. 15 and 22.
Set temp. ¼ sec. cor.
- 80.18 Intersect N. and S. line, 14 lks. S. of the cor. of secs.
14, 15, 22 and 23.
Thence,
N. 89° 57' W., on a true line, bet. secs. 15 and 22.
Over mountainous land, thru. scattering timber and
dense undergrowth.
Descend slightly over NW. slope.
- 0.75 Gulch, course SW.
Ascend 50 ft., over SE. slope.
- 3.61 Point of spur, slopes S.
Descend 170 ft., over SW. slope, to
- 11.91 Enter bottom of gulch, course W. from SE.
Descend 31 ft., along bottom of gulch, to
- 20.20 Leave bottom of gulch, course S. 50° W. from E.
Ascend 30 ft., over SE. slope.
- 27.59 Descend 45 ft., over S. slope.
- 30.51 Ascend 74 ft., over SE. slope.
- 35.38 Point of spur, slopes S. 40° W. Thence over cliffs, bearing
NW. and SE., facing SW.
Descend 238 ft., to
- 40.09 Set an iron post, 3 ft. long, 1 in. in diam., on bed rock,
supported by a mound of stone, for ¼ sec. cor., marked
on brass cap,

¼ S 15
S 22
1921

from which,

A white oak, 6 ins. in diam., brs. N. 88½° W.,
24 lks. dist., marked ¼ S 15 BT.

A white oak, 6 ins. in diam., brs. S. 89½° W., 125
lks. dist., marked ¼ S 22 BT.

Descend 46 ft., over SW. slope.

43.82 Gulch, course N. 45° W.

Ascend 240 ft., over NE. slope, to

49.30 Top of cliffs, 30 ft. high, bearing NW. and SE. facing NE.
Ascend slightly over NE. slope.

49.94 Point of spur, slopes N. 25° W.

Descend 470 ft., over broken NW. and W. slopes.

65.00 Gulch, course S. 35° W.

Concrete dam, 5 ft. high, 20 ft. long, brs. N. 0.30 chs.

dist. at junction of two gulches, one from NE. and
one from NW.

80.18 Ascend 433 ft., over SE. slope, to
The cor. of secs. 15, 16, 21 and 22.

Land, mountainous.

Soil, rocky, 4th rate.

Timber, scattering oak, juniper, pine and cedar.

Undergrowth, dense scrub oak, manzanita, ironwood and
cacti.

Subdivision lines of Township 3 South, Range 29 East. 33

Chains.

N. $9^{\circ} 2' W.$, bet. secs. 15 and 16.
Over mountainous land, thru. scattering timber and dense undergrowth.

- 1.91 Ascend 40 ft., over S. slope.
Point of spur, slopes S. $70^{\circ} E.$
Descend 385 ft., over NE. slope.
17.78 Gulch, course S. $45^{\circ} E.$
Ascend 646 ft., over SW. slope, to
40.00 Set an iron post, 3 ft. long, 1 in. in diam., 26 ins. in the ground, for $\frac{1}{4}$ sec. cor., marked on brass cap,

$\frac{1}{2}$
 S16 | S15
 1921

from which,

- A pine, 6 ins. in diam., brs. S. $56^{\circ} E.$, 30 lks.
dist., marked $\frac{1}{4}$ S 15 BT.
A pine, 8 ins. in diam., brs. N. $58^{\circ} W.$, 4 lks.
dist., marked $\frac{1}{4}$ S 16 BT.
Ascend 36 ft., over SW. slope.
41.40 Point of spur, slopes W.
Descend 354 ft., over NW. slope.
51.56 Gulch, course N. $85^{\circ} W.$
Ascend 122 ft., over SW. slope.
57.67 Point of spur, slopes S. $70^{\circ} W.$
Descend 65 ft., over NW. slope.
67.21 Gulch, course S. $30^{\circ} W.$
Ascend 147 ft., over SE. slope, to
80.00 Set an iron post, 3 ft. long, 2 ins. in diam., 24 ins. in the ground, for cor. of secs. 9, 10, 15 and 16, marked on brass cap,

T3S | R29E
 S 9 | S10
 S16 | S15
 1921

from which,

- A white oak, 6 ins. in diam., brs. N. $25^{\circ} E.$, 41 lks.
dist., marked T3S R29E S10 BT.
A black jack oak, 7 ins. in diam., brs. S. $76^{\circ} E.$, 36
lks. dist., marked T3S R29E S15 BT.
A white oak, 6 ins. in diam., brs. S. $68^{\circ} W.$, 50
lks. dist., marked T3S R29E S16 BT.
A black jack oak, 6 ins. in diam., brs. N. $68^{\circ} W.$, 35
lks. dist., marked T3S R29E S9 BT.
Land, mountainous.
Soil, rocky, 4th rate.
Timber, scattering black jack and white oak, pine, juniper,
and cedar.
Undergrowth, dense scrub oak, manzanita, ironwood and cacti.

- 40.00 S. $89^{\circ} 57' E.$, on a random line, bet. secs. 10 and 15.
Set temp. $\frac{1}{4}$ sec. cor.
80.04 Intersect N. and S. line, 12 lks. N. of the cor. of secs. 10,
11, 14 and 15.
Thence,
N. $89^{\circ} 52' W.$, on a true line, bet. secs. 10 and 15.
Over mountainous land, thru. scattering timber and dense
undergrowth.
Descend 126 ft., over W. slope.
5.75 Gulch, course N.
Ascend 145 ft., over NE. slope.
10.23 Point of spur, slopes N.
Descend 165 ft., over NW. slope.
14.41 Gulch, course N.

34 Subdivision lines of Township 3 South, Range 20 East

Chains.

- 25.70 Ascend 320 ft., over NE. slope.
Point of spur, slopes N.
30.30 Descend 115 ft., over NW. slope.
Gulch, course N.20°E.
35.05 Ascend 102 ft., over NE. slope.
Point of spur, slopes NE.
38.40 Descend 77 ft., over NW. slope.
Gulch, course N.45°E.
40.02 Ascend 55 ft., over E. slope, to
Set an iron post, 3 ft. long, 1 in. in diam., 6 ins. in
the ground to bed rock, supported by a mound of stone,
for $\frac{1}{4}$ sec. cor., marked on brass cap,

$$\frac{1}{4} \begin{array}{l} S 10 \\ S 15 \\ 1921 \end{array}$$

- and raise a mound of stone, 4 ft. base, 3 ft. high, N.
of cor.
45.86 Ascend 110 ft., over E. slope.
Spur, slopes N.40°E.
53.68 Descend 80 ft., over NW. slope.
Gulch, course N.35°E. near head.
58.13 Ascend 115 ft., over NE. slope.
Ridge, brs. N.45°W. and S.45°E. forming divide between
Chase Creek and San Francisco River.
70.68 Descend 253 ft., over SW. slope.
Head of gulch, course S.20°W.
80.04 Ascend 50 ft., over SE. slope, to
The cor. of secs. 9, 10, 15 and 16.
Land, mountainous.
Soil, rocky, 4th rate.
Timber, scattering pine, juniper, oak and cedar.
Undergrowth, dense scrub oak, manzanita, catclaw and
cacti.

- N.0°2'W., bet. secs. 9 and 10.
Over mountainous land, thru. scattering timber and dense
undergrowth.
3.48 Ascend 104 ft., over SE. and S. slopes.
Trail, brs. NE. and SW.
10.87 Ridge, brs. E. and W. forming divide between Chase Creek
and San Francisco River.
12.00 Descend 40 ft., over N. slope.
Gulch, course N.70°E. near head.
22.01 Ascend 185 ft., over SE. slope.
Spur, slopes E.
33.29 Descend 335 ft., over NE. slope.
Gulch, course S. 45°E.
40.00 Ascend 275 ft., over SW. slope, to
Set an iron post, 3 ft. long, 1 in. in diam., 26 ins. in
the ground, for $\frac{1}{4}$ sec. cor., marked on brass cap,

$$S 9 \begin{array}{l} | \\ S 10 \\ 1921 \end{array}$$

- from which,
A black jack oak, 6 ins. in diam., brs. S.48 $\frac{1}{2}$ °E.,
25 lks. dist., marked $\frac{1}{4}$ S 10 BT.
A black jack oak, 8 ins. in diam., brs. N.45°W.,
58 lks. dist., marked $\frac{1}{4}$ S 9 BT.
41.70 Ascend 190 ft., over SW. slope.
Old trail, brs. NW. and SE.
50.05 Spur ridge, brs. NW. and SE. sloping SE.
Descend 322 ft., over NE. slope.
74.83 Dry bed of Cave Creek, course S.45°E.
Ascend 72 ft., over SE. slope, to

Subdivision lines of Township 3 South, Range 29 East. 35

Chains.

80.00 Gully, course S.10°E. from N. Set an iron post, 3 ft. long, 2 ins. in diam., 6 ins. in the ground to bed rock, supported by a mound of stone, for cor. of secs. 3, 4, 9 and 10, marked on brass cap,

T3S | R29E
S 4 | S 3
S.9 | S10
1921

from which,

A white oak, 6 ins. in diam., brs. N. 53°E., 13 lks. dist., marked T3S R29E S3 BT.

A yellow pine, 10 ins. in diam., brs. S. 32½°E., 31 lks. dist., marked T3S R29E S10 BT.

A white oak, 8 ins. in diam., brs. S. 69½°W., 34 lks. dist., marked T3S R29E S9 BT.

A blue oak, 6 ins. in diam., brs. N. 60°W., 59 lks. dist., marked T3S R29E S4 BT.

Land, mountainous.

Soil, rocky, 4th rate.

Timber, scattering oak, pine, juniper and cedar.

Undergrowth, dense scrub oak, manzanita, ironwood and cacti.

40.00 s. 39° 52' E., on a random line, bet. secs. 3 and 10. Set temp. ¼ sec. cor.

80.02 Intersect N. and S. line, 5 lks. N. of the cor. of secs. 2, 3, 10 and 11.

Thence,

N. 89° 50' W., on a true line, bet. secs. 3 and 10.

Over mountainous land, thru. scattering timber and dense undergrowth.

Descend 12 ft., over W. slope.

1.00 Gulch, course S. 30° W.

Ascend 80 ft., over SE. slope.

5.00 Point of spur, slopes S.

Descend 365 ft., over SW. slope.

21.80 Gulch, course S. 30° E.

Ascend 345 ft., over E. slope, to

40.01 Point of spur, slopes SE. Set an iron post 3 ft. long, 1 in. in diam., 10 ins. in the ground to bed rock, supported by a mound of stone, for ¼ sec. cor., marked on brass cap,

¼ S 3
S 10
1921

from which,

A pine, 12 ins. in diam., brs. N. 32½° E., 29 lks. dist., marked ¼ S 3 BT.

A pine, 8 ins. in diam., brs. S. 3½° E., 59 lks. dist., marked ¼ S 10 BT.

Descend 37 ft., over SW. slope.

52.21 Gulch, course S.

Ascend 330 ft., over E. and NE. slopes.

76.10 Spur, slopes SE. from N.

Descend 60 ft. over SW. slope, to

80.02 The cor. of secs. 3, 4, 9 and 10 in gully, course S. 10° E. from N.

Land, mountainous.

Soil, rocky, 4th rate.

Timber, scattering juniper, cedar, oak and pine.

Undergrowth, dense scrub oak, manzanita, ironwood and cacti.

40.00 N. 0° 4' W., on a random line, bet. secs. 3 and 4. Set temp. ¼ sec. cor.

36 Subdivision lines of Township 3 South, Range 29 East.

Chains.
 79.60 Fall 26 lks.W.of the cor. of secs.3,4, 33 and 34, on the N. bdy. of the Tp., described in Book "I."
 Thence,
 S.0°7'W., on a true line, bet. secs.3 and 4.
 Over mountainous land, thru. scattering timber and dense undergrowth.
 Ascend slightly along E. slope of spur, the top of which slopes S. at about 1.00 ch. W. of line.
 3.65 Spur, slopes S.30°E. from N.
 Descend 330 ft., over SW. and S. slopes.
 14.30 Dry bed of Sardine Creek, in gulch, course E.
 Ascend 136 ft., over NE. slope.
 21.60 Point of spur, slopes E.
 Descend 20 ft., over SE. slope.
 25.60 Gulch, course NE.
 Ascend 426 ft. over NW. slope to $\frac{1}{4}$ sec. cor.
 30.10 Trail, brs. NE. and SW.
 39.60 Set an iron post, 3 ft. long, 1 in. in diam., 26 ins. in the ground, for $\frac{1}{4}$ sec. cor., marked on brass cap,

$\frac{1}{4}$
 S 4 | S 3
 1921

from which,

A pine, 10 ins. in diam., brs. N.74 $\frac{1}{2}$ °E., 18 lks. dist., marked $\frac{1}{4}$ S 3- BT.

A yellow pine, 14 ins. in diam., brs. N.85 $\frac{1}{4}$ °W., 72 lks. dist., marked $\frac{1}{4}$ S 4 BT.

Ascend 95 ft., over NW. slope.
 42.35 Spur ridge, brs. N.40°E. and S.40°W. sloping NE.
 Descend 167 ft., over SE. slope.
 48.20 Head of gulch, course S.45°E.
 Ascend 149 ft., over NE. slope.
 59.30 Spur, slopes S.80°E.
 Descend 228 ft., over S. slope, to
 68.60 Enter gully, course S, from NW. Desc. 87 ft. along bottom of gully to sec. cor. brs. E. 1 ch. dist., and corral
 73.93 Trail, brs. E. and W. dist.
 From this point, corral brs. E. 1 ch. dist., and corral,
 73.93 brs. W. 2 chs. dist.
 79.60 The cor. of secs. 3, 4, 9 and 10 in gully, course S.10°E. from N.

Land, mountainous.
 Soil, rocky, 4th rate.
 Timber, scattering pine, juniper, oak, and cedar.
 Undergrowth, dense scrub oak, manzanita, ironwood and cacti.

 From the cor. of secs. 4, 5, 32 and 33, on the S. bdy. of the Tp., described in Book "H,"
 N.0°2'W., bet. secs. 32 and 33.
 Over mountainous land, thru. scattering timber and undergrowth.

Descend 53 ft., over E. slope.
 2.16 Gulch, course N.80°E.
 Ascend 73 ft., over SE. slope.
 3.48 Point of spur, slopes S.80°E.
 Descend 14 ft., over NE. slope.
 9.38 Gulch, course S. 40°E. near head.
 Ascend 417 ft., over SW. slope.
 27.02 Spur ridge, brs. N.60°W. and S.60°E. sloping SE. A saddle in same brs. SE. 4.00 chs. dist.
 Descend 113 ft., over NE. slope.
 37.35 Gulch, course S.75°E. near head.
 Ascend 10 ft., over SE. slope, to
 40.00 Set an iron post, 3 ft. long, 1 in. in diam., 26 ins. in the ground, for $\frac{1}{4}$ sec. cor., marked on brass cap,

Subdivision lines of Township 3 South, Range 29 East, 37

Chains.

$\frac{1}{4}$
 S32 | S33
 1921

from which,

A black jack oak, 6 ins. in diam., brs. S. $52\frac{1}{2}^\circ$ W.,
34 lks. dist., marked $\frac{1}{4}$ S 32 BT.

A black jack oak, 8 ins. in diam., brs. N. 45° W.,
62 lks. dist., marked $\frac{1}{4}$ S 32 BT.

From this cor., Cor. No. 4 of Johanna No. 2 patented lode
mining claim, Mineral Survey No. 3101, Greenlee Gold
Mountain Mining District, brs. N. 10° E.

Ascend 198 ft., over broken SE. slope.

49.92 From this point, same mining claim, cor., brs. N. 84° E.

56.12 Spur, slopes N. 70° E.

Descend 270 ft., over N. slope.

68.31 Gulch, course S. 45° E.

Ascend 216 ft., over S. slope.

76.66 Spur, slopes E.

Descend 100 ft., over N. slope, to

80.00 Set an iron post, $\frac{3}{8}$ ft. long, 2 ins. in diam., 24 ins. in
the ground, for cor. of secs. 28, 29, 32 and 33, marked
on brass cap,

T3S | R29E
 S29 | S28
 S32 | S33
 1921

from which,

A blue oak, 8 ins. in diam., brs. S. 10° W., 54 lks.
dist., marked T3S R29E S32 BT.

A cedar, 10 ins. in diam., brs. N. $41\frac{1}{2}^\circ$ W., 88 lks.
dist., marked T3S R29E S29 BT.

No other trees within limits; raise a mound of stone, 3
ft. base, 2 ft. high, W. of cor.

Land, mountainous.

Soil, rocky, 4th rate.

Timber, scattering oak, cedar, juniper and pine.

Undergrowth, dense manzanita, scrub oak, ironwood and cacti.

40.00 East, on a random line, bet. secs. 28 and 33.

79.62 Set temp. $\frac{1}{4}$ sec. cor.

Intersect N. and S. line, 5 lks. N. of the cor. of secs. 27,
28, 33 and 34.

Thence,

N. $89^\circ 58'$ W., on a true line, bet. secs. 28 and 33.

Over mountainous land, thru. scattering timber and dense
undergrowth.

17.90 Descend 535 ft., over NW. slope.

Garfield Gulch, course S. 50° W.

Ascend 330 ft., over SE. slope.

29.00 From this point, Detroit Copper Mining Company's triangu-
lation station No. 314 brs. North 4.00 chs. dist.

30.67 Spur, slopes S. 45° W.

Descend 330 ft., over NW. slope.

36.64 Trail, brs. NE. and SW.

38.22 Gulch, course S. 45° W.

Ascend 50 ft., over E. slope, to

39.81 Set an iron post, $\frac{3}{8}$ ft. long, 1 in. in diam., 26 ins. in
the ground, for $\frac{1}{4}$ sec. cor., marked on brass cap,

$\frac{1}{4}$ S 28
 S 33
 1921

from which,

A black jack oak, 4 ins. in diam., brs. N. 64° W.,

38 Subdivision lines of Township 3 South, Range 29 East.

chains.

- 12 lks. dist., marked B T.
A black jack oak, 8 ins. in diam., brs. S. $62\frac{1}{2}^{\circ}$ W.,
43 lks. dist., marked $\frac{1}{2}$ S 33 BT.
- 42.45 Ascend 85 ft., over E. slope.
Spur, slopes S. 20° W.
From this point, the center of the town of Garfield brs.
South about 18 chs. dist.
- 49.30 Descend 285 ft., over W. slope.
Dry bed of Chase Creek, course S. 30° E. in bottom of canyon.
- 50.84 Ascend 555 ft., over E. slope.
State Highway, Clifton to Springerville, brs. N. 80° W. and
S. 80° E.
- 68.80 From this point, Detroit Copper Mining Co's. triangulation
station No. 305 brs. N. 3° W., 0.69 chs. dist.
- 69.62 Spur, slopes N. 20° E.
Descend 145 ft., over NW. slope.
- 74.50 Head of short gulch, course N.
Ascend 100 ft., over NE. slope.
- 77.19 Descend 40 ft., over N. slope, to
- 79.62 The cor. of secs. 28, 29, 32 and 33.
Land, mountainous.
Soil, rocky, 4th rate.
Timber, scattering oak, juniper, pine and cedar.
Undergrowth, dense scrub oak, manzanita, ironwood and cacti.
-
- N. $0^{\circ} 2'$ W., bet. secs. 28 and 29.
Over mountainous land, thru. scattering timber and dense
undergrowth.
- 9.94 Descend 63 ft., over NE. slope.
Gulch, course E. from SW.
- 11.86 Ascend 36 ft., over SE. slope.
Point of spur, slopes E.
- 26.30 Descend 157 ft., over NE. slope.
Pack trail, brs. NW and SE.
- 28.88 Gulch, course E.
Ascend 128 ft. over SE. slope.
- 32.34 Same pack trail, brs. NE. and SW.
- 36.56 Point of spur, slopes E.
Descend 14 ft., over NE. slope, to
- 40.00 Set an iron post, 3 ft. long, 1 in. in diam., 26 ins. in
the ground, for $\frac{1}{4}$ sec. cor., marked on brass cap,
- $\frac{1}{4}$
S29 | S28
1921
- from which,
A white oak, 4 ins. in diam., brs. S. $29\frac{1}{2}^{\circ}$ E.,
14 lks. dist., marked BT.
A white oak, 4 ins. in diam., brs. S. $62\frac{1}{2}^{\circ}$ W.,
37 lks. dist., marked BT.
- 51.94 Descend 71 ft., over NE. slope.
Gulch, course E.
- 56.75 Ascend 90 ft., over SE. slope.
Point of spur, slopes E.
- 70.22 Descend 49 ft., over NE. slope.
- 70.68 Ascend 14 ft., over SE. slope.
Trail, brs. NW and SE.
- 71.20 Descend 30 ft., over NE. slope.
- 73.86 Gulch, course E.
Ascend 70 ft., over SE. slope.
- 78.17 Point of spur, slopes E.
Descend 25 ft., over NE. slope, to sec. cor.
- 79.66 Three strand barb wire fence, brs. N. 80° E. and S. 80° W.
- 80.00 Set an iron post, 3 ft. long, 2 ins. in diam., 24 ins. in
the ground, for cor. of secs. 20, 21, 28 and 29, marked
on brass cap,

Subdivision lines of Township 3 South, Range 29 East. 39

Chains.

T3S	R29E
S20	S21
S29	S28
1921	

from which,

A black jack oak, 8 ins. in diam., brs. S. 87° E., 112 lks. dist., marked T3S R29E S28 BT.

No other trees within limits; raise a mound of stone, 4 ft. base, 3 ft. high, W. of cor.

From this cor., Cor. No. 3 of Heckscher patented lode mining claim, Mineral Survey No. 1799, Greenlee Gold Mountain Mining District, brs. S. 71 1/4° E., 0.88 chs. dist.

Land, mountainous.

Soil, rocky, 4th rate.

Timber, scattering oak, juniper, pine and cedar.

Undergrowth, dense scrub oak, manzanita, ironwood and cacti.

40.00 S. 89° 58' E., on a random line, bet. secs. 21 and 28.

79.66 Set temp. 1/4 sec. cor.

Intersect N. and S. line, 11 lks. N. of the cor. of secs. 21, 22, 27 and 28.

Thence,

N. 89° 53' W., on a true line, bet. secs. 21 and 28.

Over mountainous land, thru. scattering timber and dense undergrowth.

10.22 Descend 230 ft., over NW. slope.

Gulch, course N. 70° W. near head.

18.79 Ascend 200 ft., over E. slope, to

Cliffs, 100 ft. high, bearing N. and S. facing E.

27.71 Ascend 50 ft., over NE. slope.

Spur, slopes N. 45° W.

39.83 Descend 410 ft., over W. and NW. slopes to

Set an iron post, 3 ft. long, 1 in. in diam., 14 ins. in the ground to bed rock, supported by a mound of stone, for 1/4 sec. cor., marked on brass cap.

1/4	S 21
	S 28
1921	

from which,

A cedar, 10 ins. in diam., brs. N. 17 1/2° E., 5 lks. dist., marked 1/4 S 21 BT.

A cedar, 6 ins. in diam., brs. S. 68° W., 7 lks. dist., marked 1/4 S 28 BT.

44.41 Descend 97 ft., over NW. slope.

Head of gulch, course N. 15° W.

53.42 Ascend 140 ft., over NE. slope.

Spur, slopes N. 45° W.

70.09 Descend 656 ft., over W. slope.

Dry bed of Chase Creek, course S. 15° W. in bottom of canyon.

71.08 Ascend 15 ft., over SE. slope.

State Highway, Clifton to Springerville, brs. N. 20° W. and S. 20° W.

72.38 Descend 7 ft., over SW. slope.

73.37 Wash, course S. 50° E.

Ascend 112 ft., over NE. slope, to sec. cor.

75.33 Three strand barb wire fence, brs. N. 80° E. and S. 80° W.

78.71 Old prospect hole, 10 ft. deep, 30 ft. long, on line.

79.66 The cor. of secs. 20, 21, 28 and 29.

Land, mountainous.

Soil, rocky, 4th rate.

Timber, scattering juniper, pine, oak and cedar.

Undergrowth, dense scrub oak, manzanita, ironwood and cacti.

40 Subdivision lines of Township 3 South, Range 29 East.

Chains.

N. 0° 2' W., bet. secs. 20 and 21.
 Over mountainous land, thru. scattering timber and dense undergrowth.
 Descend 30 ft., over NE. slope.
 3.20 Wash, in gulch, course S. 55° E.
 Ascend 256 ft., over SE. and E. slopes.
 12.10 From this point C. E. Steven's house brs. East about 5 chs. dist., adjoining which are improvements consisting of well, garden and orchard.
 20.00 One strand barb wire fence, brs. N. 75° W. and S. 75° E.
 From this point, T. S. Chesser's house brs. East about 7 chs. dist.
 Another house brs. East about 10 chs. dist., adjoining which are improvements consisting of well, garden and orchard.
 38.29 Descend 5 ft., over E. slope, to
 40.00 Set an iron post, 3 ft. long, 1 in. in diam., 26 ins. in the ground, for $\frac{1}{4}$ sec. cor., marked on brass cap,

S20 | S21

1921

and raise a mound of stone, .4 ft. base, 3 ft. high, W. of cor.

Ascend 9 ft., over E. slope.
 42.00 Descend 22 ft., over NE. slope.
 43.77 Gulch, course S. 65° E.
 Ascend 395 ft., over S. slope.
 54.31 Spur, slopes S. 45° E.
 Descend 132 ft., over NE. slope.
 58.24 Gulch, course S. 80° E.
 Ascend 220 ft., over SE. slope.
 67.20 Spur, slopes N. 80° E.
 Descend 110 ft., over N. slope.
 76.10 Gulch, course E.
 Ascend 102 ft., over SE. slope, to
 80.00 Set an iron post, 3 ft. long, 2 ins. in diam., 24 ins. in the ground, for cor. of secs. 16, 17, 20 and 21, marked on brass cap,

T3S | R29E
 S17 | S16
 S20 | S21

1921

from which,

- A blue oak, 6 ins. in diam., brs. N. 60° E., 20 lks. dist., marked T3S R29E S16 BT.
- A black jack oak, 6 ins. in diam., brs. S. 89° E., 52 lks. dist., marked T3S R29E S21 BT.
- A black jack oak, 4 ins. in diam., brs. S. 58° W., 41 lks. dist., marked B T
- A black jack oak, 8 ins. in diam., brs. N. 27° W., 17 lks. dist., marked T3S R29E S17 BT.

Land, mountainous:

Soil, rocky, 4th rate:

Timber, scattering oak, juniper, pine and cedar.

Undergrowth, dense scrub oak, manzanita, ironwood and cacti.

40.00 S. 89° 53' E., on a random line, bet. secs. 16 and 21.
 Set temp. $\frac{1}{2}$ sec. cor.
 79.92 Intersect N. and S. line, 16 lks. S. of the cor. of secs. 15, 16, 21 and 22.
 Thence,
 West, on a true line, bet. secs. 16 and 21.
 Over mountainous land, thru. scattering timber and dense undergrowth.

BOOK 3590

Subdivision lines of Township 3 South, Range 29 East, 41

Chains.

- Ascend 88 ft., over S. and SE. slopes.
 11.00 Spur, slopes S.
 Descend 260 ft., over W. and SW. slopes.
 28.45 Gulch, course S. 15° E. near head.
 Ascend 160 ft., over SE. slope.
 34.55 Spur, slopes S. 20° W.
 Descend 173 ft. over W. slope to $\frac{1}{4}$ sec. cor.
 39.00 State Highway, Clifton to Springerville, brs. N. and S.
 39.96 Set an iron post, 3 ft. long, 1 in. in diam., 18 ins.
 the ground to bed rock, supported by a mound of stone
 for $\frac{1}{4}$ sec. cor., marked on brass cap,
- $\frac{1}{4}$ S 16
 S 21
 1921
- from which,
 A pine, 10 ins. in diam., brs. N. 44 $\frac{1}{2}$ ° W., 17 lks.
 dist., marked $\frac{1}{4}$ S 16 BT.
 A pine, 8 ins. in diam., brs. S. 13° W., 26 lks.
 dist., marked $\frac{1}{4}$ S 21 BT.
- Descend 315 ft., over W. slope.
 41.60 Same State Highway, brs. N. and S.
 49.82 Same State Highway, brs. N. and S.
 From this point, Forest Ranger Station brs. N. about 10
 chs. dist.
 59.49 Dry bed of Chase Creek, course S. in bottom of canyon.
 Ascend 205 ft., over SE. slope.
 64.06 Point of spur, slopes S.
 Descend 56 ft., over SW. slope.
 70.46 Trail, brs. NW. and SE.
 72.23 Gulch, course S. 50° E.
 Ascend 340 ft., over SE. slope, to
 79.92 The cor. of secs. 16, 17, 20 and 21.
 Land, mountainous.
 Soil, rocky, 4th rate.
 Timber, scattering oak, juniper, pine and cedar.
 Undergrowth, dense manzanita, scrub oak, ironwood and cacti.
-
- N. 0° 2' W., bet. secs. 16 and 17.
 Over mountainous land, thru scattering timber and dense
 undergrowth.
- Ascend 65 ft., over SE. slope.
 2.64 Point of spur, slopes S. 80° E.
 Descend 267 ft., over NE. slope.
 10.00 Gulch, course SE.
 Ascend 765 ft. over SW. slope to $\frac{1}{4}$ sec. cor.
 37.76 From this point, camp, clearing and spring br West
 about 30 chs. dist.
 40.00 Set an iron post, 3 ft. long, 1 in. in diam., 6 ins. in
 the ground to bed rock, supported by a mound of stone,
 for $\frac{1}{4}$ sec. cor., marked on brass cap,
- $\frac{1}{4}$
 S17 | S16
 1921
- and raise a mound of stone, 4 ft. base, 3 ft. high, W.
 of cor.
- Ascend 70 ft., over SW. slope.
 43.32 Long spur, slopes S. 40° E.
 Descend 135 ft.
 50.59 Gulch, course S. 75° E. near head.
 Ascend 375 ft., over S. slope.
 60.66 Spur, slopes S. 70° E.
 Descend 310 ft., over NE. and E. slopes, to sec. cor.
 71.57 State Highway, Clifton to Springerville, brs. NW. and SE.

42 Subdivision lines of Township 3 South, Range 29 East.

Chains.

77.91 Enter road, brs. N. and SE.
80.00 The true point for cor. of secs. 8, 9, 16 and 17 falls in the west wheel track of road.
Set an iron bolt $\frac{5}{8}$ in. in diam., 12 ins. in the ground at this point; and at a point 20 lks. west herefrom, Set an iron post, 3 ft. long, 2 ins. in diam., 24 ins. in the ground, for witness cor. to cor. of secs. 8, 9, 16 and 17, marked on brass cap,

T3S	R29E	
S 8	S 9	WC
S17	S16	
1921		

from which,

A juniper, 34 ins. in diam., brs. N. $72\frac{1}{2}^{\circ}$ E.,
88 lks. dist., marked WC T3S R29E S9 BT.
A cedar, 36 ins. in diam., brs. S. 69° E. 170
lks. dist., marked WC T3S R29E S16 BT.
An oak, 4 ins. in diam., brs. S. 41° W., 32 lks.
dist., marked BT.
A juniper, 6 ins. in diam., brs. N. 38° W., 7
lks. dist., marked WC T3S R29E S8 BT.

Land, mountainous.

Soil, rocky, 4th rate.

Timber, scattering pine, oak, cedar, and sycamore.

Undergrowth, dense scrub oak, manzanita, black lotus, mountain mahogany and cacti.

From the true point, for cor. of secs. 8, 9, 16 and 17,
East, on a random line, bet. secs. 9 and 16.

40.00 Set temp. $\frac{1}{4}$ sec. cor.

80.12 Intersect N. and S. line, 5 lks. N. of the cor. of secs. 9, 10,
15 and 16. Thence,

N. $89^{\circ}58'$ W., on a true line, bet. secs. 9 and 16.

Over mountainous land, thru. scattering timber and dense
undergrowth. Asc. 723 ft., over SE. and E. slopes.

3.60 Trail, brs. N. and S.

23.25 Spur, slopes SE. Ascend 345 ft., over S. and SE. slopes.

38.50 A pine tree, 12 ins. in diam., on which is a tin plate, marked
Asc Nat'l. Forest Bdy., brs. N. $0^{\circ}02'$ chs. dist.

39.04 A stone, 10x8x8 ins. marked "FSM" on S. face, firmly set in
a mound of stone, 4 ft. base, 3 ft. high brs. S. $0^{\circ}07'$ chs. dist.

39.13 Spur, from N. forks at this point. One spur, sloping S. 20°
E. and one spur sloping S. 25° W.

Descend 8 ft., over W. slope, to

40.06 Set an iron post, 3 ft. long, 1 in. in diam., 8 ins. in
the ground to bed rock, supported by a mound of stone,
for $\frac{1}{4}$ sec. cor., marked on brass cap,

$\frac{1}{4}$	S 9	
	S 16	
1921		

from which,

A pine, 16 ins. in diam., brs. N. 31° W., 18 lks.
dist., marked $\frac{1}{4}$ S 9 BT.

A pine, 8 ins. in diam., brs. S. $7\frac{1}{2}^{\circ}$ W., 12 lks.
dist., marked $\frac{1}{4}$ S 16 BT.

Descend 640 ft., over W. slope.

58.10 Gulch, course SW.

Ascend 36 ft., over SE. slope.

64.84 Brush and wire fence, brs. N. and S.

65.57 Spur, slopes SW.

Descend 145 ft., over W. slope, to

71.24 Gulch, course SW.

Descend 85 ft., over SW. slope.

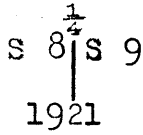
79.29 Dry bed of Chase Creek, course S. in bottom of canyon.

Subdivision lines of Township 3 South, Range 29 East. 43

Chains.

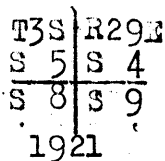
79.93 Ascend 10 ft., over E. slope to sec. cor.
 80.12 Three strand wire fence, brs. N. and S.
 The true point for cor. of secs. 8, 9, 16 and 17, in road.
 Witness cor. 0.20 chs. west.
 Land, mountainous.
 Soil, rocky, 4th rate.
 Timber, scattering pine, juniper, cedar and oak.
 Undergrowth, dense scrub oak, mountain mahogany, manzanita, black lotus, catclaw and cacti.

From the true point for cor. of secs. 8, 9, 16 and 17,
 N. 0° 2' W., bet. secs. 8 and 9.
 Over mountainous land, thru. scattering timber, and dense
 undergrowth, over E. slope, along road bearing N. and S.
 Ascend slightly to Chase Creek.
 1.70 Gate across road in fence, bearing E. and W.
 2.90 Enter dry bed of Chase Creek, course S. 10° E. from N.
 Ascend 5 ft. along creek bed to
 4.00 Hagan's tent house brs. E. 0.10 chs. dist.
 Leave dry bed of Chase Creek, course S. from NW.
 Ascend 180 ft., over SW. slope.
 4.50 Well of good water, 30 ft. deep, on line.
 5.50 Fence around house, brs. E. and W.
 17.11 Descend 7 ft., over NW. slope.
 19.22 Wash, course S. 20° W.
 Ascend 410 ft., over S. slope to $\frac{1}{4}$ sec. cor.
 22.52 Trail, brs. NE and SW.
 40.00 Set an iron post, 3 ft. long, 1 in. in diam., 8 ins. in
 the ground to bed rock, supported by a mound of stone,
 for $\frac{1}{4}$ sec. cor., marked on brass cap,



from which,
 A juniper, 10 ins. in diam., brs. S. 0° 50' E.,
 300 lks. dist., marked $\frac{1}{4}$ S 9 BT.
 A juniper, 8 ins. in diam., brs. S. 2 $\frac{1}{2}$ ° W.,
 295 lks. dist., marked $\frac{1}{4}$ S 8 BT.

Ascend 510 ft., over S. slope.
 40.02 Trail, brs. E. and W.
 58.40 Top of mountain, brs. E. and W.
 Descend 400 ft. over N. slope.
 79.54 Gully, course NW. near head.
 Ascend slightly over SW. slope, to
 80.00 Set an iron post, 3 ft. long, 2 ins. in diam., 18 ins. in
 the ground to bed rock, supported by a mound of stone
 for cor. of secs. 4, 5, 8 and 9, marked on brass cap,



from which,
 A juniper, 30 ins. in diam., brs. N. 52° E., 60 lks.
 dist., marked T3S R29E S4 BT.
 A juniper, 6 ins. in diam., brs. S. 38 $\frac{1}{2}$ ° E., 75 lks.
 dist., marked T3S R29E S9 BT.
 A white oak, 6 ins. in diam., brs. S. 89 $\frac{1}{2}$ ° W., 5 lks.
 dist., marked T3S R29E S8 BT.
 A juniper, 14 ins. in diam., brs. N. 18 $\frac{1}{2}$ ° W., 170 lks.
 dist., marked T3S R29E S5 BT.

Land, mountainous.
 Soil, rocky, 4th rate.

44. Subdivision lines of Township 3 South, Range 29 East.

Chains.

Timber, scattering oak, juniper and pine.
Undergrowth, dense scrub oak, manzanita, black lotus, cat-claw, mountain mahogany, scrub mesquite and cacti.

S. 89° 58' E., on a random line, bet. secs. 4 and 9.
40.00 Set temp. $\frac{1}{4}$ sec. cor.
80.00 Intersect N. and S. line, 26 lks. N. of the cor. of secs. 3, 4, 9 and 10.
Thence,
N. 89° 47' W., on a true line, bet. secs. 4 and 9.
Over mountainous land, thru. scattering timber and dense undergrowth.
Ascend slightly over S. slope.
3.00 Dry bed of Cave Creek, course SE. Trail, brs. N. and S. From this point, SE. cor. of Fry's fence brs. N. 0.80 chs. dist.
A spring in bed of Cave Creek brs. NW. about 17 chs. dist.
Ascend 12 ft., over E. slope.
5.10 Trail, brs. N. and S.
8.00 Foot of steep NE. slope.
Ascend 486 ft. to $\frac{1}{4}$ sec. cor.
12.70 Trail, brs. N. and S.
19.40 Fry's ranch house brs. N. 10 chs. dist., in the close vicinity of which are improvements consisting of a chicken house, fence, garden and orchard.
40.00 Set an iron post, 3 ft. long, 1 in. in diam., 26 ins. in the ground, for $\frac{1}{4}$ sec. cor., marked on brass cap,

$\frac{1}{4}$ S 4
 S 9
 1921

and raise a mound of stone, 4 ft. base, 3 ft. high, N. of cor.
Ascend 530 ft., over steep NE. slope.
63.43 Ridge, brs. N. and S. forming divide between Chase Creek and San Francisco river.
Descend 343 ft., over W. and SW. slopes, to
80.00 the cor. of secs. 4, 5, 8 and 9.
Land, mountainous.
Soil, rocky, 4th rate.
Timber, scattering pine, cedar, walnut, juniper and oak.
Undergrowth, dense scrub oak, manzanita, black lotus, mountain mahogany, algerita, catclaw and cacti.

N. 0° 7' E., on a random line, bet. secs. 4 and 5.
40.00 Set temp. $\frac{1}{4}$ sec. cor.
79.90 Fall 7 lks. E. of the cor. of secs. 4, 5, 32 and 33, on the N. bdy. of the T. described in Book 51.
Thence,
S. 0° 4' W., on a true line, bet. secs. 4 and 5.
Over mountainous land, thru. scattering timber and dense undergrowth.
Ascend 107 ft., over W. and NW. slopes.
1.90 Old double circle trail, brs. NE. and SW.
3.35 Old road, brs. N. 50° E. and S. 50° W.
9.85 Ridge, brs. N. 10° E. and S. 20° E. forming divide between Eagle Creek and San Francisco River. Spur ridge slopes W. from this point.
Descend 140 ft., over SW. slope.
18.40 Same old road, brs. N. 80° W. and S. 80° E.
20.75 Gulch, course S. 70° W. near head.
Ascend 340 ft., over NW. slope.
22.25 Same old road, brs. NE. and SW.
35.80 Ridge, brs. N. 60° E. and S. 60° W. forming divide between Eagle Creek and Chase Creek.

Chains.

39.90 Descend 120 ft., over S.E. slope, to
Set an iron post, 3 ft. long, 1 in. in diam., 18 ins. in the ground to bed rock, supported by a mound of stone, for $\frac{1}{4}$ sec. cor., marked on brass cap,

S 5 $\frac{1}{4}$ S 4

1921

and raise a mound of stone, 4 ft. base, 3 ft. high, W. of cor.

62.56 Descend 353 ft., over SE. slope, to Gully, course S. 60° W.

65.95 Descend 36 ft., over SW. slope, to Dry bed of Chase Creek, near head, course SW.

77.90 Ascend 53 ft., over NW. slope. Point of spur, slopes W.

79.90 Descend 9 ft., over SW. slope, to The cor. of secs. 4, 5, 8 and 9.

Land, mountainous.
Soil, rocky, 4th rate.
Timber, scattering pine, cedar, juniper and oak.
Undergrowth, dense scrub oak, manzanita, black lotus, cedar, mountain mahogany and cacti.

From the cor. of secs. 5, 6, 31 and 32, on the S. bdy. of the Tp., described in Book "H," N. 0° 3' W., bet. secs. 31 and 32. Over mountainous land, thru. scattering timber and dense undergrowth.

4.20 Descend 56 ft., over NE. slope. Gulch, course E.

10.10 Ascend 77 ft. over S. slope. Spur, slopes E. from NW.

16.85 Descend 95 ft., over NE. slope. Gulch, course SE.

23.53 Ascend 298 ft., over S. slope. Spur, slopes SE.

31.71 Descend 250 ft., over NE. slope. Gulch, course SE.

35.65 Ascend 177 ft., over S. slope. Spur, slopes SE.

40.00 Descend 32 ft., over NE. slope, to Set an iron post, 3 ft. long, 1 in. in diam., 26 ins. in the ground, for $\frac{1}{4}$ sec. cor., marked on brass cap,

S 31 $\frac{1}{4}$ S 32

1921

from which,
A juniper, 6 ins. in diam., brs. S. 47° E., 48 lks. dist., marked $\frac{1}{4}$ S 32 BT.
A pine 4 ins. in diam., brs. S. 8° W., 25 lks. dist., marked BT.

From this cor. the NE. end center monument of Utica patented lode mining claim, Mineral Survey No. 2834, Greenlee Gold Mountain Mining District brs. S. 61° 35' E.

43.73 Descend 38 ft., over NE. slope. Gulch, course SE.

48.60 Ascend 253 ft., over SW. slope. Descend 23 ft., over NW. slope.

51.10 Ascend 88 ft., over S. slope. Spur, slopes SE.

55.86 Descend 115 ft. over NE. slope.

64.22 Wash, 20 lks. wide, in bottom of Santa Rose Gulch, course SE.

46 Subdivision lines of Township 3 South, Range 29 East.

Chains.

- 65.73 Trail, brs. NW. and SE.
Ascend 25 ft., over SW. slope, to Santa Rosa gulch, course SW.
- 72.40 Ascend 243 ft., over SE. slope, to Santa Rosa gulch, course SE. near head.
Ascend 351 ft., over SW. slope, to sec. cor.
- 75.06 Same trail, brs. NE. and SW.
- 75.90 Same trail, brs. NW. and SE.
- 76.20 Same trail, brs. E. and W.
- 80.00 Set an iron post, 3 ft. long, 2 ins. in diam., 24 ins. in the ground, for cor. of secs. 29, 30, 31 and 32, marked on brass cap.

T3S	R29E
S30	S29
S31	S32
1921	

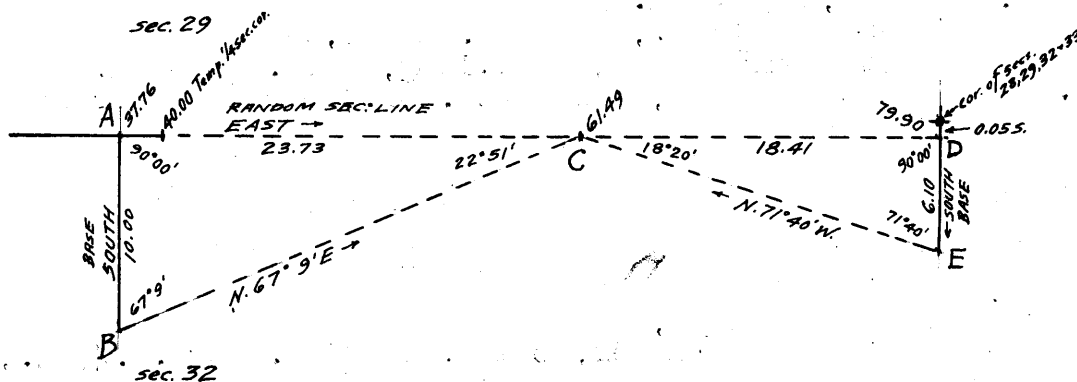
from which,

- A juniper, 6 ins. in diam., brs. N. 88° E., 16 lks. dist., marked T3S R29E S29 BT.
- A juniper, 6 ins. in diam., brs. S. 77° E., 15 lks. dist., marked T3S R29E S32 BT.
- A juniper, 12 ins. in diam., brs. S. 57° W., 67 lks. dist., marked T3S R29E S31 BT.
- A juniper, 5 ins. in diam., brs. N. 51½° W., 10 lks. dist., marked T3S R29E S30 BT.

From this cor., the NE. end center monument of Utica patented lode Mining Claim, Mineral Survey No. 2834, Greenlee Gold Mountain Mining District, brs. S. 16° 40' E, Land, mountainous.
Soil, rocky, 4th rate.
Timber, scattering pine, juniper, oak, and cedar,
Undergrowth, dense scrub oak, manzanita, ironwood and cacti.

37.76
40.00

East, on a random line, bet. secs. 29 and 32.
Triangulation point.
Set temp. ¼ sec. cor.
Beyond this point, the random sec. line passes over cliffs, and chaining is impracticable; therefore, triangulate the measurement of the remainder of the sec. line, as described as follows, and as shown on the diagram hereon:



From 37.76 ch. station indicated on diagram at "A",
measure a Base, South, 10.00 chs. to point "B."
Set flag ahead on random sec. line, on top of high peak,
indicated on diagram at "C."
From a point "D," which is 5 lks. S. of the cor. of secs. 28,
29, 32 and 33, the flag at "C," bears West; therefore,
point "D" is the point of intersection of the random

Subdivision lines of Township 3 South, Range 29 East. 47

Chains.

sec. line projected to N. and S. line, thru. said sec. cor. The true bearing of the sec. line, bet. secs. 29 and 32 is therefore S. 89° 58' W.

From point "D," measure a Base, South 6.10 chs. to point "E." Bearing "B-C" = N. 67° 9' E. Bearing "E-C" = N. 71° 40' W. Vertical angle "A" to "C" = -14°. Vertical angle "C" to "D" = -13 1/2°. Included angles of triangle "A-B-C" are 90° 00', 67° 9', and 22° 51' the sum of which is 180° 00'. Included angles of triangle "C-D-E" are 18° 20', 90° 00' and 71° 40', the sum of which is 180° 00'. Triangulated measurement of "A-C" is obtained by $\text{tang. } 67^\circ 9' \times \text{base or } 2.37311 \times 10.00 = 23.73 \text{ chs.}$ which added to 37.76 chs. gives 61.49 chs. from cor. of secs. 29, 30, 31 and 32, for position of triangulation point "C."

61.49 Triangulation point.

Triangulated measurement of "C-D" is obtained by $\text{Tang. } 71^\circ 40' \times \text{Base or } 3.01783 \times 6.10 = 18.41 \text{ chs.}$, which added to 61.49 chs. gives 79.90 chs. for the total length of the random sec. line.

79.90 Intersect N. and S. line, 5 lks. S. of the cor. of secs. 28, 29, 32 and 33.

Thence, S. 89° 58' W., on true line, bet. secs. 29 and 32. Over mountainous land, thru. scattering timber and dense undergrowth.

Measurement of 42.14 chs. by triangulation as hereinbefore described.

10.00 Ascend over precipitous NE. slope, to (Approximate) Gulch, course NE. near head.

18.41 Ascend over a series of cliffs, facing SE. Triangulation point on high peak, 298 ft. above cor. of secs. 28, 29, 32 and 33.

32.00 Descend over precipitous W. slope. (Approximate) Head of gulch, course NE.

39.95 Ascend over precipitous E. slope. Set an iron post, 3 ft. long, 1 in. in diam., 26 ins. in the ground, for 1/4 sec. cor., marked on brass cap,

$$\frac{1}{4} \text{ S } 29$$

$$\text{S } 32$$

$$1921$$

and raise a mound of stone, 3 ft. base, 2 ft. high, N. of cor.

42.14 Ascend 35 ft., over E. slope, to Triangulation point, 690 ft., above the cor. of secs. 28, 29, 32 and 33. This point is on spur sloping NE. Continue line and measurement by chaining.

49.40 Descend 47 ft., over NW. slope. Ascend 198 ft., over NE. slope.

54.53 Point of spur, slopes N. Descend 114 ft., over NW. slope.

61.40 Ascend 314 ft., over NE. slope.

73.85 Top of ridge, brs. NW. and SE. From this point, the NE. cor. of Montezuma Chief patented lode mining claim, Mineral Survey No. 2834 Greenlee Gold Mountain Mining District, brs. S. 43 1/2° E. Thence along top of ridge.

75.10 Ascend 14 ft., to Leave top of ridge.

75.88 Descend 63 ft., over SW. slope, to sec. cor. Trail, brs. NW and SE.

79.90 The cor. of secs. 29, 30, 31 and 32. Land, mountainous. Soil, rocky, 4th rate. Timber, scattering pine, cedar, juniper and oak. Undergrowth, dense scrub oak, manzanita and cacti.

40.00 West, on a random line, bet. secs. 30 and 31. Set temp. 1/4 sec. cor.

48 Subdivision lines of Township 3 South, Range 29 East.

Chains.

- 80.04 Intersect the cor. of secs. 25, 30, 31 and 36, on the W. bdy. of the Tp., hereinbefore described.
Thence,
East, on a true line, bet. secs. 30 and 31.
Over mountainous land, thru. scattering timber and dense undergrowth.
- 2.61 Descend 33 ft., over N.E. slope.
Wash, 20 lks. wide, in gulch, course NW.
Ascend 350 ft., over SW. slope.
- 23.48 Spur, slopes NW.
Descend 45 ft., over N.E. slope.
- 28.80 Gulch, course NW, over one of the slopes.
Ascend 370 ft., over W. slope.
- 39.85 Spur, slopes NW.
Descend 5 ft., over E. slope, to
- 40.84 Set an iron post, 3 ft. long, 1 in. in diam., .26 ins. in the ground, for $\frac{1}{4}$ sec. cor., marked on brass cap,

$\frac{1}{4}$ S 30

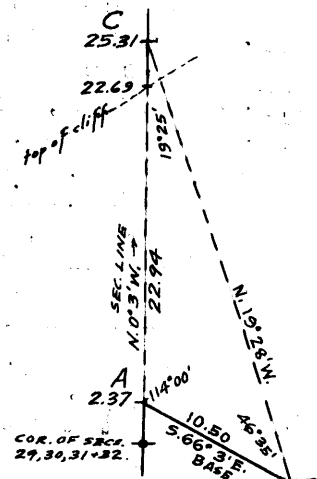
S 31
1921

 from which,
 A juniper, 8 ins. in diam., brs. N. 70° E., 38 lks. dist., marked $\frac{1}{4}$ S 30 BT.
 A juniper, 10 ins. in diam., brs. S. 57 $\frac{1}{2}$ ° W., 18 lks. dist., marked $\frac{1}{4}$ S 31 BT.
 Descend 193 ft., over E. slope.
- 46.62 Gulch, course N.
Ascend 449 ft., over NW. slope, to
- 58.97 Point of short spur, slopes NW.
Descend 98 ft., over N. slope, to
- 67.00 Ascend slightly over NW. slope, to
- 68.18 Ridge, bearing N.E. and SW. forming divide between Eagle Creek and Chase Creek. Trail, brs. N.E. and SW.
Descend 270 ft., over steep E. slope, to
- 75.85 Head of gulch, course SE.
Ascend 12 ft., over SW. slope, to
- 80.84 The cor. of secs. 29, 30, 31 and 32.
Land, mountainous.
Soil, rocky, 4th rate.
Timber, scattering pine, juniper, oak and cedar.
Undergrowth, dense scrub oak, manzanita, ironwood and cacti.

N. 0° 3' W., bet. secs. 29 and 30.
Over mountainous land, thru. scattering timber and dense undergrowth.
Ascend 85 ft., over SW. slope.

2.37 Ridge, brs. NW; and SE. Trail, brs. NW. and SE.
From this point, the N.E. cor. of Montezuma Chief patented lode claim, Mineral Survey No. 2834, Greenlee Gold Mountain Mining District, brs. S. 55° 32' E.
Beyond this point, the sec. line passes over precipitous cliffs at head of a gulch, and chaining is impracticable; therefore, triangulate as described as follows, and as shown on the diagram hereon:

From 2.37 ch. point indicated on diagram at "A," measure a Base S. 66° 3' E., 10.50 chs. along top of ridge to point "B."
Set flag ahead on sec. line beyond the cliffs at point "C."
Vertical angle from "A" to "C" is + 9°.
Bearing of "B-C" = N. 19° 28' W.
Included angles of triangle "A-B-C" are 114° 00', 46° 35' and 19° 25' the sum of which is 180° 00'.



Chains.

Triangulated measurement of "A-C" is obtained by
 $\frac{\text{sine } 46^{\circ}35' \times \text{Base}}{\text{sine } 19^{\circ}25'}$ or $\frac{.72637 \times 10.50}{.33244} = 22.94 \text{ chs.},$

which added to 2.37 chs. gives 25.31 chs, N.0°3'W.
from the cor. of secs, 29, 30, 31 and 32, for the position
of triangulation point "C."

10.00 (Approximate) Head of gulch, course E. about 100 ft. below
2.37 ch. point.

Ascend over cliffs facing SE.
From triangulation point "C," chain measurement,
S.0°3'E., 2.62 chs. to

22.69 Top of cliff, bearing NE. and SW. facing SE. about 200
ft. above 2.37 ch. point.

Thence,
N.0°3'W., continuing measurement from sec. cor. by chaining.

25.31 Ascend 40 ft., over SE. slope, to
Triangulation point.

28.13 Ascend 12 ft., over SE. slope, to
Ridge, brs. NE. and SW., forming divide bet. Eagle Creek
and Chase Creek.

32.05 Descend 110 ft. over steep NW. slope, to
SW. end of perpendicular cliff 100 ft. high, bearing NE.
and SW., facing NW. Beyond this point, the sec. line
passes over the face of this cliff, and chaining is
impracticable; therefore, obtain measurement to the
 $\frac{1}{4}$ sec. cor. by offset as described, as follows, and as
shown on the diagram hereon.

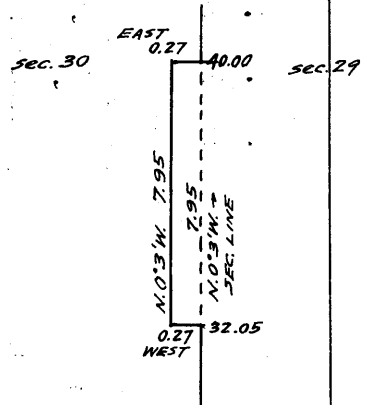
From 32.05 ch. station,
West, 0.27 chs. to offset point
in sec. 30.

Thence,
N.0°3'W., 7.95 chs. in sec. 30, parallel
to sec. line, to
offset point.

Thence,
East, 0.27 chs. in sec. 30, returning to
offset point on sec.
line, at

40.00 On steep NW. slope 405 ft. below 32.05
ch. station.

Set an iron post, 3 ft. long, 1 in. in diam., 26 ins. in the
ground, for $\frac{1}{4}$ sec. cor.; marked on brass cap,



$\frac{1}{4}$
S30 | S29
1921

from which,

A juniper, 6 ins. in diam., brs. N. 89° E., 11
lks. dist., marked $\frac{1}{4}$ S 29 BT.

A juniper, 5 ins. in diam., brs. S. 25° W., 24
lks. dist., marked $\frac{1}{4}$ S 30 BT.

Descend 375 ft., over NW. slope.

52.91 Trail, brs. NE and SW.

56.12 Gulch, course W.

Ascend 95 ft., over SW. slope.

60.58 Trail, brs. NW. and SE.

65.03 Spur, slopes W.

Descend 45 ft., over N. slope.

68.01 Gulch, course W.

Ascend 250 ft., over S. slope, to

80.00 Set an iron post, 3 ft. long, 2 ins. in diam., on bed rock,
supported by a mound of stone, for cor. of secs. 19, 20,
29 and 30, marked on brass cap,

T3S | R29E
S19 | S20
S30 | S29
1921

50 Subdivision lines of Township 3 South, Range 29 East.

Chains.

from which,

A juniper, 9 ins. in diam., brs. N. 16° E., 30 lks.
dist., marked T3S R29E S20 BT.A juniper, 6 ins. in diam., brs. S. 26° E., 26 lks.
dist., marked T3S R29E S29 BT.A juniper, 10 ins. in diam., brs. S. 65° W., 23 lks.
dist., marked T3S R29E S30 BT.A juniper, 10 ins. in diam., brs. N. 16½° W., 32 lks.
dist., marked T3S R29E S19 BT.

Land, mountainous.

Soil rocky, 4th rate.

Timber, scattering juniper, oak, cedar and pine.

Undergrowth, dense scrub oak, manzanita, ironwood and cacti.

40.00
79.84

N. 89° 58' E., on a random line, bet. secs. 20 and 29.

Set temp. ¼ sec. cor.

Intersect N. and S. line, 5 lks. S. of the cor. of secs. 20, 21,
28 and 29.

Thence,

S. 89° 56' W., on a true line, bet. secs. 20 and 29.

Over mountainous land, thru. scattering timber and dense
undergrowth.1.10
4.81
22.12

Ascend 815 ft., over NE. slope to spur.

Three strand barb wire fence, brs. NW. and SE.

Trail, brs. N. 30° W. and S. 40° E.

Spur, slopes S. 50° E.

35.32

Ascend 210 ft., over S. slope.

Gulch, course S. 65° E. near note.

39.92

Ascend 48 ft., over NE. slope, to

Set an iron post, 3 ft. long, 1 in. in diam., 26 ins. in
the ground, for ¼ sec. cor., marked on brass cap,
$$\frac{1}{4} \frac{S \ 20}{S \ 29}$$
 1921
and raise a mound of stone, 4 ft. base, 3 ft. high, N.
of cor.

53.59

Ascend 31 ft., over N. slope, to

Head of gulch, course N. 60° E.

66.27

Ascend 340 ft., over E. slope.

Ridge brs. N. and S. forming divide between Eagle Creek
and Chase Creek.

79.84

Descend 333 ft., over SW. and S. slopes, to

The cor. of secs. 19, 20, 29 and 30.

Land, mountainous.

Soil, rocky, 4th rate.

Timber, scattering pine, juniper and cedar.

Undergrowth, dense scrub oak, catclaw, lotus, manzanita,
mountain mahogany and cacti.

Pampas and bunch grass.

40.00
80.80

West, on a random line, bet. secs. 19 and 30.

Set temp. ¼ sec. cor.

Fall 9 lks. S. of the cor. of secs. 19, 24, 25 and 30, on
the W. bdy. of the Tp., hereinbefore described.

Thence,

S. 89° 56' E., on a true line, bet. secs. 19 and 30.

Over mountainous land, thru. scattering timber and dense
undergrowth.

2.38

Ascend 51 ft., over SW. slope.

Spur, slopes NW. Descend 153 ft. over NE. slope.

4.50

Trail, brs. NW. and SE.

9.80

Gulch, course N. from SE.

20.59

Ascend 370 ft., over W. slope, to

Spur, slopes NW. Thence along N. slope.

29.07

Ascend 33 ft. to

Descend 38 ft., to

Subdivision lines of Township 3 South, Range 29 East. 51

Chains.

34.00 Descend 107 ft., over NE. slope, to
40.80 Set an iron post, 3 ft. long, 1 in. in diam., 20 ins. in the ground to bed rock, supported by a mound of stone, for 1/4 sec. cor., marked on brass cap,

1/4 S 19
S 30
1921

from which:

A juniper, 20 ins. in diam., brs. N. 43° E., 28 lks. dist., marked 1/4 S 19 BT.

A juniper, 10 ins. in diam., brs. S. 63° E., 30 lks. dist., marked 1/4 S 30 BT.

48.83 Descend 61 ft. over NE. slope.
Wash, 40 lks. wide, in gulch, course NW.
Ascend 340 ft., over W. slope.
49.71 Trail, brs. NW. and SE.
70.40 Point of spur, slopes SW.
71.00 Descend slightly over SE. slope, to sec. cor.
Head of gulch, course SW.
Ascend 280 ft., over S. slope, to sec. cor.
73.20 Trail, brs. N. and S.
80.80 The cor. of secs. 19, 20, 29 and 30.
Land, mountainous.
Soil, rocky, 4th rate.
Timber, scattering pine, juniper and oak.
Undergrowth; dense scrub oak, manzanita, ironwood and cacti.

N. 0° 3' W., bet. secs. 19 and 20.
Over mountainous land, thru scattering timber, and dense undergrowth.

Ascend 10 ft., over S. slope.
1.10 Spur, slopes W.
Descend 70 ft., over NW. slope.
9.38 Head of gulch, course W.
Ascend 328 ft., over SW. slope.
24.00 Spur, slopes W.
Descend 60 ft., over NW. slope.
28.17 Head of gulch, course W.
Ascend 185 ft., over SW. slope, to
40.00 Set an iron post, 3 ft. long, 1 in. in diam., on bed rock, supported by a mound of stone, for 1/4 sec. cor., marked on brass cap,

1/4
S 19 | S 20
1921

and raise a mound of stone, 3 ft. base, 2 ft. high, W. of cor.

51.08 Ascend 410 ft., over SW. and S. slopes, to Top of cliff, 50 ft. high, bearing E. and W. facing S.
Ascend 25 ft., over SW.
52.00 Ridge, brs. NW. and SE. forming divide bet. Eagle Creek and Chase Creek.
62.74 Descend 200 ft., over NE. slope.
Head of gulch, course E.
Ascend 74 ft., over SE. slope.
77.11 Same ridge, brs. NE. and SW.
Descend 85 ft., over NW. slope.
80.00 Set an iron post, 3 ft. long, 2 ins. in diam., 26 ins. in the ground, for cor. of secs. 17, 18, 19 and 20, marked on brass cap,

T3S | R29E
S18 | S17
S19 | S20
1921

52 Subdivision lines of Township 3 South, Range 29 East.

Chains.

from which,

- A juniper, 10 ins. in diam., brs. N. $21\frac{1}{2}^{\circ}$ E., 43 lks.
dist., marked T3S R29E S17 BT.
- A juniper, 6 ins. in diam., brs. S. $86\frac{1}{2}^{\circ}$ E., 9 lks.
dist., marked T3S R29E S20 BT.
- A juniper, 6 ins. in diam., brs. S. $70\frac{1}{2}^{\circ}$ W., 63 lks.
dist., marked T3S R29E S19 BT.
- A juniper, 6 ins. in diam., brs. N. $51\frac{1}{2}^{\circ}$ W., 39 lks.
dist., marked T3S R29E S18 BT.

Land, mountainous.

Soil, rocky, 4th rate.

Timber, scattering juniper, pine, cedar and oak.

Undergrowth, dense scrub oak, manzanita, ironwood and cacti.

40.00

79.98

N. $89^{\circ}56'$ E., on a random line, bet. secs. 17 and 20.Set temp. $\frac{1}{4}$ sec. cor.

Intersect N. and S. line, 12 lks. S. of the cor. of secs. 16, 17, 20 and 21.

Thence,

S. $89^{\circ}51'$ W., on a true line, bet. secs. 17 and 20.

Over mountainous land, thru. scattering timber and dense undergrowth.

5.20

Ascend 247 ft., over SE. slope, to

Top of broken cliff, 75 ft. high, brs. N. and S. facing E.

Ascend 445 ft., over NE. slope to $\frac{1}{4}$ sec. cor.

29.20

From this point, old camp clearing and spring in cave, bear North about 38 chs. dist.

39.99

Set an iron post, 3 ft. long, 1 in. in diam., 26 ins. in the ground, for $\frac{1}{4}$ sec. cor., marked on brass cap,

$\frac{1}{4}$ S 17
 S 20
 1921

from which,

- A juniper, 10 ins. in diam., brs. N. 22° W., 36 lks.
dist., marked $\frac{1}{4}$ S 17 BT.
- A juniper, 10 ins. in diam., brs. S. 78° E., 24 lks.
dist., marked $\frac{1}{4}$ S 20 BT.

53.65

Ascend 307 ft., over NE. slope.

Spur, slopes SE.

Descend 110 ft., over SW. slope.

73.21

Trail, brs. NW. and SE.

75.40

Head of gulch, course SE.

Ascend 117 ft., over E. slope.

78.90

Ridge, brs. N. and S. forming divide between Eagle Creek and Chase Creek.

79.98

Descend 19 ft., over NW. slope, to

The cor. of secs. 17, 18, 19 and 20.

Land, mountainous.

Soil, rocky, 4th rate.

Timber, scattering pine, cedar, juniper and oak.

Undergrowth, dense scrub oak, manzanita, ironwood and cacti.

40.00

80.77

N. $89^{\circ}56'$ W., on a random line, bet. secs. 18 and 19.Set temp. $\frac{1}{4}$ sec. cor.

Fall 14 lks. S. of the cor. of secs. 13, 18, 19 and 24, on the W. bdy. of the Tp., hereinbefore described.

Thence,

S. $89^{\circ}50'$ E., on a true line, bet. secs. 18 and 19.

Over mountainous land, thru. scattering timber and dense undergrowth.

17.20

Descend 690 ft., over SE. and E. slopes.

Dry bed of Knight Creek, course S. in bottom of canyon.

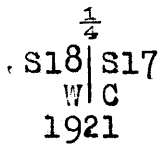
Ascend 225 ft., over W. slope.

Subdivision lines of Township 3 South, Range 29 East. 53

Chains.
 27.80 Spur, slopes SW.
 Descend 87 ft., over SE, slope.
 38.70 Gulch, course SW.
 Ascend 46 ft., over NW. slope, to
 40.77 Set an iron post, 3 ft. long, 1 in. in diam., 26 ins. in
 the ground, for $\frac{1}{4}$ sec. cor., marked on brass cap,

$$\frac{1}{4} \begin{array}{c} S 18 \\ S 19 \\ 1921 \end{array}$$
 and raise a mound of stone, 2 ft. base, $1\frac{1}{2}$ ft. high, N.
 of cor.
 Ascend 161 ft., over NW. slope.
 42.71 Trail, brs: NE. and SW.
 47.50 Point of spur, slopes N.
 Descend 12 ft., over NE. slope.
 52.90 Gulch, course NW.
 Ascend 385 ft., over SW. slope, to
 63.86 Spur, slopes NW.
 Ascend 428 ft., over N. and NW. slopes, to
 80.77 The cor. of secs. 17, 18, 19 and 20.
 Land, mountainous.
 Soil, rocky, 4th rate.
 Timber, scattering pine, juniper and oak.
 Undergrowth, dense scrub oak, manzanita, ironwood and
 cacti.

N. $0^{\circ}3'W.$, bet. secs. 17 and 18.
 Over mountainous land, thru. scattering timber and dense
 undergrowth.
 Descend 80 ft., over NW. slope.
 4.05 Head of gulch, course W.
 Ascend 90 ft., over SW. slope.
 5.46 Trail, brs. NW. and SE.
 9.41 Point of spur, slopes W.
 Descend 102 ft., over NW. slope.
 22.25 Ascend 75 ft., over W. slope.
 26.60 Descend 108 ft., over NW. slope.
 34.74 Head of gulch, course W.
 Ascend 140 ft., over SW. slope, to
 40.00 The true point for $\frac{1}{4}$ sec. cor. falls on sloping bed rock,
 where an iron post cannot be set; therefore, mark a
 cross (x) on rock at exact cor. point; and at
 40.35 Set an iron post, 3 ft. long, 1 in. in diam., on bed rock,
 supported by a mound of stone, for witness cor. to $\frac{1}{4}$
 sec. cor., marked on brass cap,



from which,
 A pine, 6 ins. in diam., brs. S. $45^{\circ}E.$, 44 lks.
 dist., marked WC $\frac{1}{4}$ S 17 BT.
 A juniper, 12 ins. in diam., brs. S. $40^{\circ}W.$, 27 lks.
 dist., marked WC $\frac{1}{4}$ S 18 BT.
 Ascend 445 ft., over SW. slope.
 56.18 Spur, slopes W. from Enebro Mountain, the top of which brs.
 Descend about 10. cherdist. ...
 Descend 100 ft., over NW. slope.
 60.40 Ascend 70 ft., over SW. slope.
 66.30 Spur, slopes NW. from Enebro Mountain.
 Descend 247 ft., over N. slope.
 74.12 Descend 60 ft., over W. slope, to
 80.00 Point of spur, slopes N. $10^{\circ}W.$ Set an iron post, 3 ft. long,
 2 ins. in diam., 18 ins. in the ground to bed rock

54 Subdivision lines of Township 3 South Range 29 East.

Chains.

supported by a mound of stone, for cor. of secs. 7, 8, 17, and 18, marked on brass cap,

T3S	R29E
S 7	S 8
S18	S17

1921

from which,

- A juniper, 10 ins. in diam., brs. N. 61° E., 20 lks. dist., marked T3S R29E S8 BT.
- A juniper, 12 ins. in diam., brs. S. 30° E., 45 lks. dist., marked T3S R29E S17 BT.
- A pine, 10 ins. in diam., brs. S. 5° W., 50 lks. dist., marked T3S R29E S18 BT.
- A pine, 6 ins. in diam., brs. N. 14° W., 37 lks. dist., marked T3S R29E S7 BT.

Land, mountainous.

Soil, rocky, 4th rate.

Timber, scattering pine, juniper, oak and cedar.

Undergrowth, dense scrub oak, manzanita, ironwood and cacti.

40.00
79.88

N. 89° 51' E., on a random line, bet. secs. 8 and 17.

Set temp. $\frac{1}{4}$ sec. cor.

Intersect N. and S. line, 5 lks. S. of the true point, for cor. of secs. 8, 9, 16 and 17, witnessed 0.20 chs. west, as hereinbefore described.

From the true point for cor. of secs. 8, 9, 16 and 17

S. 89° 49' W., on a true line, bet. secs. 8 and 17.

Over mountainous land, thru. scattering timber and dense undergrowth.

Ascend 660 ft., over E. and NE. slopes.

0.20 The witness cor. to cor. of secs. 8, 9, 16 and 17 (W. of cor. point).

0.93 Trail, brs. NE and SW.

5.32 State Highway; Springerville to Clifton, brs. NW. and SE.

30.67 Long spur, slopes SE. from N. 80° W.

Descend 65 ft., over S. slope, to

35.58 Ascend 37 ft., over S. slope.

39.54 Descend slightly over broken S. slope, to

39.94 Set an iron post, 3 ft. long, 1 in. in diam., 6 ins. in the ground to bed rock, supported by a mound of stone, for $\frac{1}{4}$ sec. cor., marked on brass cap,

$\frac{1}{4}$	S 8
	S 17
	1921

and raise mound of stone, 4 ft. base, 3 ft. high, N. of cor.

49.68 Descend 140 ft., over SW. slope.

Head of gulch, course S. 35° E.

Ascend 160 ft., over SE. slope.

54.93 Ridge, brs. N. 15° E. and S. 45° W. forming divide between Eagle Creek and Chase Creek. From this point, a monument on the boundary of the Apache National Forest Reserve, which is a sandstone rock, 6x10x16 ins. firmly set in a mound of stone, marked FSM brs. North 0.20 chs. dist.

Descend 340 ft., over NW. slope.

57.00 Good pack trail, brs. N. 20° W. and S. 20° E.

70.00 Gulch, course N. 20° W.

Ascend 165 ft., over NE. slope, to

79.88 The cor. of secs. 7, 8, 17 and 18, on point of spur, sloping N. 10° W.

Land, mountainous.

Soil, rocky, 4th rate.

Chains.

Timber, scattering pine, juniper and oak.
Undergrowth, dense scrub oak, manzanita, ironwood and cacti.

- N. 89° 50' W., on a random line, bet. secs. 7 and 18.
40.00 Set temp. $\frac{1}{4}$ sec. cor.
80.65 Intersect the cor. of secs. 7, 12, 13 and 18, on the W. bdy.
of the Tp., hereinbefore described.
Thence,
S. 89° 50' E., on a true line, bet. secs. 7 and 18.
Over mountainous land, thru. scattering timber and dense
undergrowth.
Ascend 34 ft., over W. slope.
1.93 Ridge, brs. N. and S.
Descend 165 ft., over E. slope.
2.80 Trail, brs. N. and S.
10.49 Head of gulch, course SE.
Ascend 160 ft., over SW. slope.
21.32 Spur, slopes S.
Descend 85 ft., over E. slope.
26.77 Head of gulch, course S.
Ascend 40 ft., over W. slope.
29.76 Spur, slopes S.
Descend 240 ft. over E. slope.
38.65 Gulch, course SE.
Ascend 20 ft. over SW. slope.
40.65 Set an iron post, 3 ft. long, 1 in. in diam., 18 ins. in
the ground to bed rock, supported by a mound of stone,
for $\frac{1}{4}$ sec. cor., marked on brass cap,

$$\frac{1}{4} \begin{array}{r} S \ 7 \\ S \ 18 \\ 1921 \end{array}$$

- and raise a mound of stone, 2 ft. base, 1 $\frac{1}{2}$ ft. high, N.
of cor.
Ascend 12 ft., over SW. slope.
42.50 Point of spur, slopes S.
Descend 145 ft., over SE. slope.
47.58 Dry bed of Knight Creek, 50 lks. wide, course SW.
Ascend 200 ft., over NW. slope.
54.02 Point of spur, slopes NW.
Descend 20 ft., over NE. slope.
60.06 Gulch, course NW.
Ascend 250 ft., over W. slope.
72.03 Spur, slopes NW.
Descend 40 ft., over NE. slope.
75.73 Head of gulch, course NW.
Ascend 160 ft. over W. slope, to
80.65 The cor. of secs. 7, 8, 17 and 18, on point of spur, sloping N.
10° W.
Land, mountainous.
Soil, rocky, 4th rate.
Timber, scattering pine, cedar, juniper and oak.
Undergrowth, dense scrub oak, ironwood, manzanita and cacti.

- N. 0° 3' W., bet. secs. 7 and 8.
Over mountainous land, thru. scattering timber and dense
undergrowth.
Descend 275 ft., over N. slope.
10.68 Gulch, course NW.
Ascend 55 ft. over SW. slope.
14.40 Point of spur, slopes W.
Descend 65 ft., over NW. slope.
19.45 Trail, brs. NW. and SW.
20.62 Dry bed of Knight Creek, 20 lks. wide, course SW. from E.
near head.

56 Subdivision lines of Township 3 South, Range 29 East.

chains.

- Ascend 285 ft., over S. slope.
 22.53 Same trail, brs. NE. and SW.
 34.56 Ridge, brs. E. and W. Trail, brs. E. and W.
 Descend 95 ft., over N. slope, to
 40.00 Set an iron post, 3 ft. long, 1 in. in diam., 26 ins. in
 the ground, for $\frac{1}{4}$ sec. cor., marked on brass cap,

$$\begin{array}{c} \frac{1}{4} \\ \text{S } 7 \frac{1}{2} \text{ S } 8 \\ | \\ 1921 \end{array}$$

from which,

- A juniper, 10 ins. in diam., brs. N. 33° E., 35 lks.
 dist., marked $\frac{1}{4}$ S 8 BT.
 A juniper, 6 ins. in diam., brs. S. $64\frac{1}{2}^{\circ}$ W., 25 lks.
 dist., marked $\frac{1}{4}$ S 7 BT.
 Descend 40 ft., over N. slope.
 41.38 Wash, 20 lks. wide, in gulch, course W.
 Ascend 55 ft., over S. slope.
 44.80 Trail, brs. E. and W.
 45.00 Ridge, brs. E. and W.
 Descend 512 ft., over N. and NE. slopes, to
 48.31 Trail, brs. NW. and SE.
 66.41 Wash, 50 lks. wide, course NW.
 Descend 95 ft., over W. slope, to
 75.38 Gulch, course W.
 Ascend 60 ft., over SW. slope.
 80.00 Point of spur, slopes W. Set an iron post, 3 ft. long, 2
 ins. in diam., 6 ins. into the ground to bed rock, sup-
 ported by a mound of stone, for cor. of secs. 5, 6, 7 and
 8, marked on brass cap,

$$\begin{array}{c} \text{T3S } | \text{ R29E} \\ \text{S } 6 | \text{ S } 5 \\ \text{S } 7 | \text{ S } 8 \\ 1921 \end{array}$$

from which,

- A juniper, 12 ins. in diam., brs. N. 38° E., 64 lks.
 dist., marked T3S R29E S5 BT.
 A juniper, 14 ins. in diam., brs. S. 12° E., 41 lks.
 dist., marked T3S R29E S8 BT.
 A juniper, 8 ins. in diam., brs. S. 81° W., 45 lks.
 dist., marked T3S R29E S7 BT.
 A spruce, 6 ins. in diam., brs. N. $81\frac{1}{2}^{\circ}$ W., 50 lks.
 dist., marked T3S R29E S6 BT.
 Land, mountainous.
 Soil, rocky, 4th rate.
 Timber, scattering juniper, pine, fir and cedar.
 Undergrowth, dense scrub oak, ironwood, manzanita and cacti.

- N. $89^{\circ}49'$ E., on a random line, bet. secs. 5 and 8.
 40.00 Set temp. $\frac{1}{4}$ sec. cor.
 80.08 Intersect N. and S. line, 19 lks. N. of the cor. of secs.
 4, 5, 8 and 9.
 Thence,
 S. $89^{\circ}57'$ W., on a true line, bet. secs. 5 and 8.
 Over mountainous land, thru. scattering timber and dense
 undergrowth.
 Descend slightly, over SW. slope.
 9.50 Gully, course NW.
 7.80 Point of spur, slopes N.
 Descend 197 ft., over NW. slope.
 23.70 Dry bed of Chase Creek, course SW. in ravine,
 Old road, brs. NE and SW.
 Several houses on E. side of ravine, NE. and SW. of this
 point constitute a summer resort, known as Granville.

Subdivision lines of township 3 south, Range 29 East. 57

Chains.

32.50 Ascend 205 ft., over SE. slope.
Ridge brs. NE. and SW. forming divide between Eagle Creek and Chase Creek.

35.90 Descend 185 ft., over NW. slope to $\frac{1}{4}$ sec. cor.
State Highway, Springerville to Clifton, brs. NE. and SW.

40.04 Set an iron post, 3 ft. long, 1 in. in diam., 24 ins. in the ground, for $\frac{1}{4}$ sec. cor., marked on brass cap,

$\frac{1}{4}$ S 5
S 8
1921

from which,
An oak, 6 ins. in diam., brs. N. 46° W., 26 lks. dist., marked $\frac{1}{4}$ S 5 BT.
An oak, 8 ins. in diam., brs. S. 79° E., 35 lks. dist., marked $\frac{1}{4}$ S 8 BT.

Descend 285 ft., over W. slope.

41.30 Trail, brs. N. and S.

48.00 Same trail, brs. NE. and SW.

51.30 Gulch, course NW. Trail, brs. NW. and SE.

Ascend 62 ft., over NE. slope.

56.86 Descend 16 ft., over N. slope, to

58.36 Ascend 44 ft., over NE. slope.

65.40 Top of spur, slopes W. from SE. Thence along top of spur.

Descend 266 ft. to

80.08 The cor. of secs. 5, 6, 7 and 8.
Land, mountainous.
Soil, rocky, 4th rate.
Timber, scattering pine, juniper, cedar and fir.
Undergrowth, dense scrub oak, ironwood, manzanita, black locust and cacti.

40.00 N. 89° 50' W., on a random line, bet. secs. 6 and 7.
Set temp. $\frac{1}{4}$ sec. cor.

80.70 Fall 23 lks. N. of the cor. of secs. 1, 6, 7 and 12, on the W. bdy. of the Tp., hereinbefore described.

Thence,
East, on a true line, bet. secs. 6 and 7.
Over mountainous land, thru scattering timber and dense undergrowth.

Descend 210 ft., over NE. slope.

11.83 Head of gulch, course N.

Ascend 95 ft., over NW. slope.

17.59 Point of spur, slopes N.

Descend 67 ft., over NE. slope.

21.18 Wash, 40 lks. wide, in gulch, course NW.

Ascend 405 ft., over SW. slope.

32.27 Spur, slopes NW.

Descend 40 ft., over N. slope, to

40.70 Set an iron post, 3 ft. long, 1 in. in diam., 26 ins. in the ground, for $\frac{1}{4}$ sec. cor., marked on brass cap,

$\frac{1}{4}$ S 6
S 7
1921

from which,
A juniper, 6 ins. in diam., brs. N. 38° E., 31 lks. dist., marked $\frac{1}{4}$ S 6 BT.
A juniper, 8 ins. in diam., brs. S. 46° W., 56 lks. dist., marked $\frac{1}{4}$ S 7 BT.

Ascend 270 ft., over NE. slope.

54.45 Point of spur, slopes N.

Descend 240 ft., over NE. slope.

65.50 Gulch, course N.

Ascend 110 ft., over NW. slope.

69.88 Point of spur, slopes N.

58 Subdivision lines of Township 3 South, Range 29 East.

Chains.

- 76.59 Descend 220 ft., over N. slope.
Gulch, course N.
- 80.70 Ascend 105 ft., over W. slope, to
The cor. of secs. 5, 6, 7 and 8, in point of spur, sloping
W.
Land, mountainous.
Soil, rocky, 4th rate.
Timber, scattering juniper, pine, cedar, oak and fir.
Land, mountainous.
Soil, rocky, 4th rate.
Timber, scattering juniper, pine, cedar, oak and fir.
Undergrowth, dense scrub oak, ironwood, manzanita and
cacti.
-
- 40.00 N. 0° 4' E., on a random line, bet. secs. 5 and 6.
Set temp. $\frac{1}{4}$ sec. cor.
- 79.76 Fall 7 lks. E. of the cor. of secs. 5, 6, 31 and 32, on the
N. bdy. of the Tp., hereinbefore described.
Thence,
S. 0° 1' W., on a true line, bet. secs. 5 and 6.
Over mountainous land, thru. scattering timber and dense
undergrowth.
- 2.48 Ascend 83 ft., over NW. slope.
Point of spur, slopes W.
- 5.26 Descend 227 ft., over SW. slope.
Wash in bottom of ravine, course W. Trail, brs. E. and W.
- 15.31 Ascend 173 ft., over N. slope.
Point of spur, slopes NW.
- 17.60 Descend 15 ft., over SW. slope.
Gulch, course NW.
- 28.05 Ascend 220 ft., over N. slope.
Ridge, brs. E. and W.
- 39.76 Descend 251 ft., over S. slope, to
Set an iron post, 3 ft. long, 1 in. in diam., 10 ins. in
the ground to bed rock, supported by a mound of stone,
for $\frac{1}{4}$ sec. cor., marked on brass cap,
- s. 6 $\frac{1}{4}$ s 5
|
1921
- from which,
A pine, 8 ins. in diam., brs. S. 18° E., 16 lks,
dist., marked $\frac{1}{4}$ S 5 BT.
A pine, 10 ins. in diam., brs. S. 46° W., 45 lks.
dist., marked $\frac{1}{4}$ S 6 BT.
- 42.38 Descend 127 ft., over S. slope.
Trail, brs. NW. and SE.
- 46.96 Wash, 20 lks. wide, in gulch, course W.
Ascend 85 ft., over N. slope.
- 58.41 Spur, slopes W.
Descend 396 ft., over S. slope.
- 77.26 Wash in gulch, course W. Trail, brs. E. and W.
Ascend 96 ft., over NW. slope, to
- 79.76 The cor. of secs. 5, 6, 7 and 8, on point of spur, sloping W.
Land, mountainous.
Soil, rocky, 4th rate.
Timber, scattering pine, cedar, juniper, fir and oak.
Undergrowth, dense manzanita, ironwood, scrub oak and
cacti.

The continued satisfactory adjustment of the solar appa-
ratus during the survey of this township is indicated
from the field tests described in Books "K" and "L".

GENERAL DESCRIPTION.

This township is situated in Greenlee county, Arizona, about five miles northwest from Clifton, the county seat. The surface is mountainous, the greater part draining east and south into the San Francisco River. The west range of sections drains west into Eagle Creek. The highest point in elevation is the top of Enebro Mt. in sec. 17, 7600 ft.

The soil in all parts is rocky, 4th rate.

The north two tiers of secs., secs. 17, 18, 19 and 30, and the west halves of secs. 16 and 31 are within the Apache National Forest Reserve.

There is a scattering growth of juniper, pine, cedar and oak timber in all sections, and a dense undergrowth of scrub oak, manzanita, ironwood and cacti.

None of the water courses carry a permanent flow of water, but there are permanent springs in various parts of the township.

The south two tiers of sections are highly mineral in character, as indicated by about one hundred patented mining claims, the output of which is copper.

The mining town of Garfield in sec. 33 was uninhabited at the time of this survey, owing to the fact that the mines were temporarily idle as a result of a general depression in the copper mining industry.

A group of buildings in secs. 5 and 8 constitutes a summer resort, known as Granville.

There are about a dozen settlers living in the township at the present time.

The Springerville-Clifton State Highway passes N. and S. thru. the township, following Chase Creek.

CERTIFICATE OF UNITED STATES TRANSITMAN.

I, Benjamin J. Kinsey, U.S. Transitman, hereby certify upon honor that, in pursuance of special instructions received from the U. S. Surveyor General, for Group 111, Arizona, bearing date of the 12th day of May, 19 21, I have well, faithfully, and truly in my own proper person, and in strict conformity with said instructions, the Manual of Surveying Instructions, and the laws of the United States, surveyed all those parts or portions of the West boundary and Subdivision lines of

TOWNSHIP 3 SOUTH, RANGE 29 EAST,

of the Gila and Salt
River Base and Meridian, in the State of Arizona, which are represented in the foregoing field notes ^{and by diagram on page 1 hereof} as having been executed by me, and under my direction; and that all the corners of said survey have been established and perpetuated in strict accordance with the Manual of Surveying Instructions, and the special written instructions of the U. S. Surveyor General, for Group 111, Arizona, and in the specific manner described in the field notes, and that the foregoing are the original field notes of such survey.

Place: Phoenix, Arizona.

Benjamin J. Kinsey,
U.S. Transitman.

Date: May 17th 1923.

~~APPROVAL.~~

~~OFFICE OF THE UNITED STATES SURVEYOR GENERAL,~~

~~The foregoing field notes of the survey of~~

~~executed by~~

~~under his special instructions dated _____, 19 _____, having been critically examined, and the necessary corrections and explanations made, the said field notes, and the surveys they describe, are hereby approved.~~

~~U. S. Surveyor General.~~

~~I certify that the foregoing transcript of the field notes of the above-described surveys in _____, has been correctly copied from the original notes on file in this office.~~

~~U. S. Surveyor General.~~

BOOK 3590
64

CERTIFICATE OF UNITED STATES CADASTRAL
ENGINEER.

I, William H. Thorn, U.S. Cad. Engineer, hereby certify upon honor that, in pursuance of special instructions received from the U. S. Surveyor General, for Group 111, Arizona, bearing date of the 12th day of May, 1921, I have well, faithfully, and truly in my own proper person, and in strict conformity with said instructions, the Manual of Surveying Instructions, and the laws of the United States, surveyed all those parts or portions of the Subdivision lines of

TOWNSHIP 3 SOUTH, RANGE 29 EAST,

of the Gila and Salt River Base and Meridian, in the State of Arizona, and by diagram on page 1 hereof, which are represented in the foregoing field notes as having been executed by me, and under my direction; and that all the corners of said survey have been established and perpetuated in strict accordance with the Manual of Surveying Instructions, and the special written instructions of the U. S. Surveyor General, for Group 111, Arizona, and in the specific manner described in the field notes, and that the foregoing are the original field notes of such survey.

Place: Phoenix Arizona

William H. Thorn
U.S. Cadastral Engineer.

Date: June 5th 1923

APPROVAL.

OFFICE OF THE UNITED STATES SURVEYOR GENERAL,

Phoenix, Arizona, JUN 7, 1923.

The foregoing field notes of the survey of the West boundary, and Subdivision lines of TOWNSHIP 3 SOUTH, RANGE 29 EAST,

of the Gila and Salt River Base and Meridian, in the State of Arizona,

executed by William H. Thorn, U.S. Cadastral Engineer, and Benjamin J. Kinsey, U.S. Transitman, under his special instructions dated May 12, 1921, for Group 111, Arizona, having been critically examined, and the necessary corrections and explanations made, the said field notes, and the surveys they describe, are hereby approved.

Frank B. Smith
U. S. Surveyor General.

I certify that the foregoing transcript of the field notes of the above described survey in has been correctly copied from the original notes on file in this office.