

3616

Book "A"

4-679

BOOK 3616

FIELD NOTES

OF THE SURVEY OF THE

8th. Standard Parallel North, thru Range 10 West.

The West Boundary,

The East Boundary and

The Subdivisions of

T.33 N., R.10 W.

Of the Gila and Salt River Base and Meridian,

In the State of Arizona

EXECUTED BY

Guy Redwine,

Dupree R. Averill and

William M. Hiester

In the capacity of U. S. Surveyors, under Special Instructions dated October 12, 1916, and Supplemental Special Instructions dated March 17, 1917, issued by the United States Surveyor General to govern surveys included in Group

No. 72, Arizona, which were approved by the Commissioner of the General Land

Office, October 24, 1916, and Assignment Instructions dated April 3, 1917, March 29, 1917, August 11, 1921.

Survey commenced May 10, 1917

Survey completed October 12, 1921

3616

3616

BOOK 3616

3616

Book "A"
Group 72 - Arizona

BOOK 3616

INDEX DIAGRAM.

Township		33 North					Range 10 West					
13	6	52	5	46	4	39	3	32	2	25	1	15
	54		53		45		38		32		24	
12	7	52	8	44	9	37	10	31	11	24	12	15
	52		51		44		37		30		23	
11	18	51	17	43	16	36	15	30	14	22	13	15
	50		50		42		36		29		22	
10	19	49	20	42	21	35	22	28	23	21	24	15
	49		48		41		35		27		21	
10	30	48	29	41	28	34	27	26	26	20	25	14
	47		47		40		34		26		19	
10	31	46	32	40	33	33	34	25	35	19	36	14
	9		8		7		6		5		4	
			8th		Standard		Parallel		North			

T.33N. R.10W.

==== Lines surveyed under this group.

==== Lines surveyed under Group 73.

Book "A"

Group 72-- Arizona.

DATE DIAGRAM

T.33 N., R.10 W.

For dates of execution of survey of this lines see Book "F"

5-29-17	6 5-31-17	5 6-2-17	4 6-6-17	3 9-28-21	2 10-8-21	1 10-12-21	6-20-17
5-22-17	7 5-30-17	8 6-1-17	9 6-5-17	10 6-9-17	11 10-8-21	12 10-7-21	6-19-17
5-22-17	18 5-29-17	17 5-31-17	16 6-4-17	15 6-7-17	14 10-7-21	13 10-7-21	6-19-17
5-21-17	19 5-23-17	20 6-2-17	21 6-2-17	22 6-6-17	23 10-6-21	24 10-6-21	6-19-17
5-21-17	30 5-18-17	29 6-1-17	28 6-1-17	27 6-5-17	26 6-7-17	25 10-5-21	6-8-17
5-18-17	31 5-31-17	32 5-17-17	33 5-12-17	34 5-12-17	35 5-11-17	36 5-10-17	6-8-17
			6-1-17	6-5-17	6-7-17	6-8-17	

8th Standard Parallel North

Lines in blue surveyed by Guy Redwine.

Lines in black surveyed by Dupree R. Averill.

Lines in red surveyed by William E. Hiester.

BOOK 3616

Survey commenced May 10, 1917, and executed with Young and Sons light mountain transit No. 8480, and Buff and Buff light mountain transits. Nos. 9208, 10125, 9977 and 9225; each instrument is equipped with full vertical circle and Smith solar attachment; unless otherwise specified, all azimuth determinations are accomplished with the solar attachment.

Field Test of Instruments No. 8480 and 9208.

April 23, 1917: We examine the adjustments of the instruments and correct all errors; then, to test the solar apparatus, by comparing their indications, resulting from observations made during a.m. and p.m. hours, with a meridian established by Polaris observations, we proceed as follows:

April 24, 1917: in camp near the $\frac{1}{4}$ cor. of secs. 4 & 33, Ts. 34 & 35 N., R. 9 W., G. and S. R. B. and M., lat. $36^{\circ}23'N.$, long. $113^{\circ}16\frac{1}{2}'W.$, at 5 hrs. 24.8 m., a.m., l.m.t., we observe Polaris at eastern elongation, making four observations, two each with the telescope in direct and reversed positions, and marking the mean point in the line thus determined on a peg driven firmly in the ground, 5 chs. N.

Azimuth of Polaris, at eastern elongation, is $1^{\circ}24'41''$.

At 8 hrs. 0 m., a.m., l.m.t., we lay off the azimuth of Polaris, $1^{\circ}24\frac{1}{2}'$ to the west, and mark the meridian thus determined by a tack driven in a peg set firmly in the ground, 5 chs. N.

At 9 hrs. 0 m., a.m., l.m.t., we set off $36^{\circ}23'N.$ on the lat. arcs; $12^{\circ}50\frac{1}{2}'N.$ on the decl. arcs; and determine a meridian with each solar, which we find to agree with the true meridian.

At apparent noon, with the lat. arcs unchanged, we observe the sun on the meridian with each solar. The resulting readings of the declination arcs are $12^{\circ}52\frac{1}{2}'N.$ which agree with the computed decl. of the sun.

At 3 hrs. 0 m., p.m., l.m.t., with the lat. arcs unchanged, we set off $12^{\circ}55'N.$ on the decl. arcs and determine a meridian with each solar, which we find to agree with the true meridian.

As all of the solar observations during the usual hours of solar work come within $1'30''$ of the true meridian, we conclude that the adjustments of the instruments are satisfactory.

Unless otherwise specified, all measurements are made with a Lufkin steel tape, 5 chs. in length, compared with a Lufkin standard steel tape and found correct. The measurements are made on the slope, the vertical angles determined, and the slope measurements properly reduced to true horizontal distances.

Field tests of Instruments Nos. 10 125, 9977 and 9225.

Sept. 18, 1921: We examine the adjustments of the instruments and correct all errors; then, to test the solar apparatus, by comparing their indications, resulting from observations made during a.m. and p.m. hours with a meridian established by Polaris observations, we proceed as follows:

At our camp, near the $\frac{1}{4}$ sec. cor. bet. secs. 21 and 22,

T. 34 N., R. 10 W., G. and S. R. 3. and M., lat. $36^{\circ}20'N.$, long. $113^{\circ}22\frac{1}{2}'W.$, using the meridian established as described in Book "F", at 9 hrs. 0 m., a.m., l.m.t., we set off $36^{\circ}20'N.$ on the lat. arcs; $1^{\circ}55\frac{1}{2}'N.$ on the decl. arcs; and determine a meridian with each solar, which we find to agree with the true meridian.

At apparent noon, with the lat. arcs unchanged, we observe the sun on the meridian with each solar. The resulting readings of the declination arcs are $1^{\circ}52\frac{1}{2}'N.$, which agree with the computed decl. of the sun.

At 3 hrs. 0 m., p.m., l.m.t., with the lat. arcs unchanged, we set off $1^{\circ}50'N.$ on the decl. arcs and determine a meridian with each solar, which we find to agree with the true meridian.

As all of the solar observations during the usual hours of solar work come within $1'30''$ of the true meridian, we conclude that the adjustments of the instruments are satisfactory.

Unless otherwise specified, all measurements are made with a Lufkin steel tape, 5 chs. in length, compared with a Lufkin standard steel tape and found correct.

The measurements are made on the slope, the vertical angles determined and the slope measurements properly reduced to true horizontal distances.

Survey of the 8th Standard Parallel North
Through Range 10 West.

Chains.

From the standard cor. of Ts. 33 N., Rs. 9 and 10 W.,
which is an iron post, described in Book "B",
West on the S. bdy. of sec. 36.
Over mountainous land, through scattering undergrowth.
Asc. 190 ft.

13.06 Spur, slopes N.70°E. Desc. 35 ft.

19.09 Wash, 20 lks. wide, course NE. Asc. 405 ft.

20.10 (Midpoint bet. the closing cor. of Ts. 32 N., Rs. 9 and
10 W., and the closing cor. of secs. 1 and 2, T. 32 N.,
R. 10 W.) Set an iron post, 3 ft. long; 1 in. diam.,
26 ins. in the ground, for $\frac{1}{4}$ sec. cor. of sec. 1,
T. 32 N., R. 10 W., marked on brass cap

$\frac{1}{4}$ S 1
1921

From which

A cedar, 14 ins. diam., brs. S.61°E.,
72 lks. dist., marked $\frac{1}{4}$ S1 BT.A cedar, 12 ins. diam., brs. S.25°W.,
103 lks. dist., marked $\frac{1}{4}$ S1 BT.

38.56 Desc. 30 ft.

40.00 Set an iron post, 3 ft. long, 1 in. diam., 24 ins. in the
ground, in a mound of stone, for standard $\frac{1}{4}$ sec. cor.,
marked on brass cap

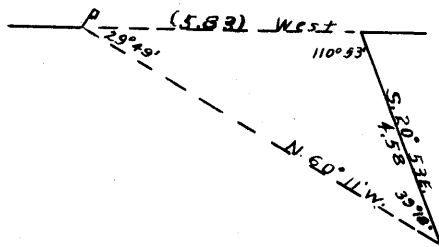
SC
 $\frac{1}{4}$ S36

1917

And raise a mound of stone, 2 ft. base, $1\frac{1}{2}$ ft. high, N.
of cor.

Continue descent, 160 ft.

44.40 Asc. 185 ft.

49.55 Impossible to chain from this point. Set a flag ahead on
line, and from the 49.55 ch. point, measure a base
S.20°53'E. 4.58 chs.--
impossible to secure
longer base--from the S.
end of which, flag brs.
N.60°11'W. The three an-
gles of the triangle are
therefore 29°49', 110°53'
and 39°18', the sum of
which is 180°. The dist-
ance triangulated is

given by the sine proportion:

$$\frac{X}{4.58} = \frac{\sin. 39^{\circ}18'}{\sin. 29^{\circ}49'}$$

$$\begin{array}{rcl} \log. 4.58 & = & 0.660865 \\ \log. \sin. 39^{\circ}18' & = & 9.801665 \\ \log. \sin. 29^{\circ}49' & = & 9.696554 \\ \log. X & = & 0.765976 \\ X & = & 5.83 \text{ chs.} \end{array}$$

49.55 chs., gives

55.38 Triangulation point, 430 ft. above 49.55 ch. point. Thence
by chaining, ascending 555 ft.60.21 The closing cor. of secs. 1 and 2, T. 32 N., R. 10 W.,
described in Book "M".67.84 Rimbears N. and S. Thence by rolling
rolling land.73.76 Impassable bluff prevents projection of line. Offset
North 6.50 chs., and continue

West on offset line, through sec. 36.

80.00 Thence South 4.00 chs., to a point 2.50 chs. N.09°1'W. of
true point for standard cor. of secs. 35 and 36, where

Survey of the 8th Standard Parallel North
Through Range 10 West.

Chains.

I set an iron post, 3 ft. long, 3 ins. diam., 24 ins. in the ground, and in a mound of stone, for witness cor. to standard cor. of secs. 35 and 36, marked on brass cap

S C
T33N | R10W
S35 | S36

W C
1917

And raise a mound of stone, 2 ft. base, 1½ ft. high, N. of cor.
Land, rolling and mountainous.
Soil, rocky, 4th rate.
Timber, none.
Undergrowth, sagebrush.

20.00
20.07

West on S. bdy. of sec. 35.
Over rolling land, through scattering undergrowth.
Impossible to measure from true point for cor. Continue on offset line, 6.50 chs. N. of standard parallel.
Desc. 100 ft. to
Asc.

From this point, South 6.50 chs. to the midpoint bet. the closing cors. of secs. 1 and 2 and 2 and 3, T. 32 N., R. 10 W., The true point I find to be inaccessible. Continue West on offset line.

25.00

Thence South 6.50 chs. and set an iron post, 3 ft. long, 1 in. diam., on ledge rock, in a mound of stone, 4 ft. base, 3½ ft. high, with stone marked cross (X) at base of post, for witness cor. to ¼ sec. cor. of sec. 2, T. 32 N., R. 10 W., marked on brass cap

----- WC
S 2
1921

30.00
40.00

Thence continue West on offset line, 6.50 chs. N. of Standard Parallel.
Desc. 70 ft.

South 6.50 chs., and set an iron post, 3 ft. long, 1 in. diam., 24 ins. in the ground, and in a mound of stone, for standard ¼ sec. cor. of sec. 35, marked on brass cap

SC
S35

1917

And raise a mound of stone, 2 ft. base, 1½ ft. high, N. of cor.

Thence continue West on offset line, 6.50 chs. N. of Standard Parallel.

48.15
59.93

Desc. 130 ft.
Asc. 170 ft.
The closing cor. of secs. 2 and 3, T. 32 N., R. 10 W., described in Book "M", bra. South 6.50 chs. dist.

67.90
80.00

Desc. 125 ft.
South 6.50 chs., and set an iron post, 3 ft. long, 3 ins. diam., 24 ins. in the ground, and in a mound of stone, for standard cor. of secs. 34 and 35, marked on brass cap

S C
T33N | R10W
S34 | S35

1917

Survey of the 8th Standard Parallel North
Through Range 10 West.

Chains.

From which

A pinyon, 4 ins. diam., brs. N.69°50'E.,
290 lks. dist., marked SC T33N R10W S35 BT.

A pinyon, 16 ins. diam., brs. N.77°10'W.,
101 lks. dist., marked SC T33N R10W S34 BT.

Land, mountainous. and rolling.

Soil, rocky, 4th rate.

Timber, pinyon and juniper.

Undergrowth, sagebrush.

Good grazing.

West on S. bdy. sec. 34.

Over rolling and mountainous land, through scattering timber and undergrowth.

Impossible to measure from standard cor. of secs. 34 and 35. Continue on offset line, 6.50 chs. N. of standard parallel.

Asc. 80 ft.

20.00 South 6.50 chs. to a point mid way between the closing cors. of secs. 2 and 3 and 3 and 4, where I set an iron post, 3 ft. long, 1 in. diam., 14 ins. in the ground, in a mound of stone, 4 ft. base, 1½ ft. high, for ¼ sec. cor. of sec. 3, T. 32 N., R. 10 W., marked on brass cap

T33
1921

From which

A pinyon, 6 ins. diam., brs. S.18½°E.,
112 lks. dist., marked ¼S3 BT.

A cedar, 6 ins. diam., brs. S.51°E.,
69 lks. dist., marked ¼S3 BT.

Continue West on offset line, 6.50 chs. N. of standard parallel.

Continue ascent.

30.70 Desc. 25 ft.

40.00 South 6.50 chs., and set an iron post, 3 ft. long, 1 in. diam., 18 ins. in the ground, in a mound of stone, for standard ¼ sec. cor., marked on brass cap

SC
¼S34
1917

And raise a mound of stone, 2 ft. base, 1½ ft. high,
N. of cor.

Continue West on offset line, 6.50 chs. N. of standard parallel.

Continue descent, 335 ft.

60.07 The closing cor. of secs. 3 and 4, T. 32 N., R. 10 W., described in Book "M". brs. South 6.50 chs. dist.

Continue descent, 375 ft.

76.14 Wash, course S. Asc. 165 ft.

80.00 South 6.50 chs., and set an iron post, 3 ft. long, 3 ins. diam., 24 ins. in the ground, for standard cor. of secs. 33 and 34, marked on brass cap

S C
T33N | R10W
S33 | S34
1917

And raise a mound of stone, 2 ft. base, 1½ ft. high,
N. of cor.

Land, rolling and mountainous.

Soil, rocky, 4th rate.

Timber, juniper and pinyon.

Undergrowth, sagebrush.

Good grazing.

Survey of the 8th Standard Parallel North
Through Range 10 West.

Chains.

West on S. bdy. of sec. 33.
Over mountainous land, through scattering timber and
undergrowth.
Impossible to measure from standard cor. of secs. 33 and
34. Continue on offset line, 6.50 chs. N. of standard
parallel.

13.00
20.15

Asc. 460 ft.
Thence over rolling land, ascending 55 ft.
South 6.50 chs., to a point midway between the closing
cors. of secs. 3 and 4 and 4 and 5, where I
Set an iron post, 3 ft. long, 1 in. diam., 8 ins. in the
ground, in a mound of stone, 4 ft. base, 3 ft. high,
for $\frac{1}{4}$ sec. cor. of sec. 4, T. 32 N., R. 10 W., marked
on brass cap

1S 4
1921

From which

- A cedar, 8 ins. diam., brs. S. $18\frac{3}{4}^{\circ}$ E.,
69 lks. dist., marked $\frac{1}{4}$ S4 BT.
- A cedar, 8 ins. diam., brs. S. $43\frac{1}{2}^{\circ}$ W.,
93 lks. dist., marked $\frac{1}{4}$ S4 BT.

Thence continue on offset line, 6.50 chs. N. of standard
parallel.

40.00

South 6.50 chs., and set an iron post, 3 ft. long, 1 in.
diam., 24 ins. in the ground, and in a mound of stone,
for standard $\frac{1}{4}$ sec. cor., marked on brass cap

SC
1S33
1917

From which

- A cedar, 14 ins. in diam, bears N. 63° W.,
43 lks. dist., marked S C $\frac{1}{4}$ S 33 B T
- A pinyon, 8 ins. diam., brs. N. 57° E.,
76 lks. dist., marked SC $\frac{1}{4}$ S33 BT.

Raise a mound of stone, 2
ft. base, $1\frac{1}{2}$ ft. high, N. of cor.

Thence continue on offset line, 6.50 chs. N. of standard
parallel.

60.22

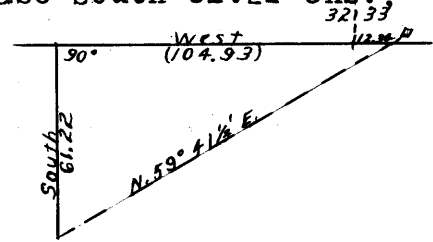
The closing cor. of secs. 4 and 5, T. 32 N., R. 10 W.,
described in Book "M" brs. South 6.50 chs. dist.

67.66

Offset South 6.50 chs. to true line.

Thence West on S. bdy. of sec. 33, continuing measurement.
Impossible to chain from this point. Set a flag ahead on
line, from which I measure a base South 61.22 chs.,

from the South end of which,
flag at the 67.66 ch. point
brs. N. $59^{\circ}41\frac{1}{2}'$ E. The dist-
ance triangulated is given by
 $\tan. 59^{\circ}41\frac{1}{2}' \times 61.22 =$
 $1.71072 \times 61.22 = 104.73$ chs.,
which added to 67.66 chs.,
gives 172.39 chs. Thence I
chain East 92.39 chs. to



80.00

Set an iron post, 3 ft. long, 3 ins. diam., 24 ins. in the
ground, for standard cor. of secs. 32 and 33, marked
on brass cap

S C
T33N | R10W
S32 | S33
1917

And raise a mound of stone, 2 ft. base, $1\frac{1}{2}$ ft. high,
N. of cor.

This cor. stands 2.00 chs. West of foot of bluffs, bear-
ing N. and S.

Land, mountainous.

Soil, rocky, 4th rate.

Timber, sagebrush and black brush.

Fair grazing.

Survey of the 8th Standard Parallel North
Through Range 10 West.

Chains.

West on S. bdy. of sec. 32.
Over mountainous land, through scattering timber and
undergrowth.

Desc. 635 ft.

- 20.22 (Mid point between the closing cors. of secs. 4 and 5 and
5 and 6.) Set an iron post, 3 ft. long, 1 in. diam.,
10 ins. in the ground, in a mound of stone, 4 ft. base,
3 ft. high, for $\frac{1}{4}$ sec. cor. of sec. 5, T. 32 N., R. 10
W., marked on brass cap

1/4 S 5
1921

And raise a mound of stone, 4 ft. base, 3 ft. high, S.
of cor.

Continue descent, 70 ft.

- 27.00 Gulch, 15 lks. wide, course SW. Asc. 110 ft.

- 35.62 Spur, slopes S.40°W. Desc. 130 ft.

- 40.00 Set an iron post, 3 ft. long, 1 in. diam., 22 ins. in the
ground, on bed rock, in a mound of stone, for standard
 $\frac{1}{4}$ sec. cor., marked on brass cap

SC
1/4 S 32
1917

And raise a mound of stone, 2 ft. base, 1 $\frac{1}{2}$ ft. high, N.
of cor.

Continue descent, 305 ft.

- 41.00 Top of rim rocks, brs. NE. and SW. Continue descent.

- 60.21 The closing cor. of secs. 5 and 6, T. 32 N., R. 10 W.,
described in Book "M".

- 80.00 Set an iron post, 3 ft. long, 3 ins. diam., 24 ins. in
the ground, and in a mound of stone, for standard cor.
of secs. 31 and 32, marked on brass cap

S C
T33N | R10W
S31 | S32
1917

And raise a mound of stone, 2 ft. base, 1 $\frac{1}{2}$ ft. high,
N. of cor.

Land, mountainous.

Soil, rocky, 4th rate.

Timber, juniper and pinyon.

Undergrowth, sagebrush and black brush.

Fair grazing.

West on S. bdy. of sec. 31.

Over rolling and mountainous land, through scattering
timber and undergrowth.

Desc.

- 5.00 Wash, course S. Asc. 40 ft.

- 16.55 Desc. 30 ft.

- 20.21 (40.00 chs. West of the closing cor. of secs. 5 and 6,
T. 32 N., R. 10 W.) Set an iron post, 3 ft. long, 1
in. diam., 28 ins. in the ground, for $\frac{1}{4}$ sec. cor. of
sec. 6, T. 32 N., R. 10 W., marked on brass cap

1/4 S 6
1921

And raise a mound of stone, 4 ft. base, 3 ft. high,
S. of cor.

Continue descent, 35 ft.

- 24.35 Asc. 20 ft.

Survey of the 8th Standard Parallel North
Through Range 10 West.

Chains.

34.60
40.00

Desc. 30 ft.
Set an iron post, 3 ft. long, 1 in. diam., 24 ins. in the ground, in a mound of stone, for standard $\frac{1}{2}$ sec. cor. marked on brass cap

SC
1/2 S31
1917

And raise a mound of stone, 2 ft. base, 1 $\frac{1}{2}$ ft. high, N. of cor. Asc. 145 ft.

45.92
58.92

Spur, slopes S. Desc. 185 ft.
The closing cor. of Ts. 32 N., Rs. 10 and 11 W., described in Book "M". Continue descent, 35 ft.

75.47
77.00
80.00

Road, brs. NW. and SE. to Copper Mountain Mine.
Wash, 60 lks. wide, 4 ft. deep, course S. 30° E.
Set an iron post, 3 ft. long, 3 ins. diam., 24 ins. in the ground, for standard cor. of Ts. 33 N., Rs. 10 and 11 W., marked on brass cap

S C
T33N
R11W | R10W
S36 | S31
1917

And raise a mound of stone, 2 ft. base, 1 $\frac{1}{2}$ ft. high, N. of cor.
Land, rolling and mountainous.
Soil, rocky. 4th rate.
Timber, juniper and pinyon.
Undergrowth, sagebrush and black brush.
Good grazing.

BOOK 3616

Survey of the
West Boundary of T. 33 N., R. 10 W.

Chains.

From the standard cor. of Ts. 33 N., Rs. 10 and 11 W.,
hereinbefore described,
North bet. secs. 31 and 36.
Over rolling land, through scattering timber and under-
growth.

Across overflowed land.

5.00 Wash, 60 lks. wide, 4 ft. deep, course S.30°E.
8.10 Road, brs. NW. and SE. to Copper Mountain Mine.
10.00 Leave overflowed land, brs. NW. and SE. Asc. 340 ft.
23.76 Spur, slopes W. Desc. 110 ft.
32.03 Wash, 20 lks. wide, course W. Asc. 55 ft.
37.60 Desc. 15 ft.
40.00 Set an iron post, 3 ft. long, 1 in. diam., 20 ins. in the
ground, in a mound of stone, for $\frac{1}{4}$ sec. cor., marked
on brass cap

$\frac{1}{4}$
S36 | S31
1917

And raise a mound of stone, 2 ft. base, $1\frac{1}{2}$ ft. high, W.
of cor.

Continue descent.

40.40 Wash, 15 lks. wide, 6 ft. deep, course W. Asc. 320 ft.
52.77 Spur, slopes W. Desc. 85 ft.
57.60 Asc. 160 ft.
67.25 Desc. 20 ft.
72.25 Asc. 190 ft.
80.00 Set an iron post, 3 ft. long, 2 ins. diam., 24 ins. in the
ground, for cor. of secs. 25, 30, 31 and 36, marked on
brass cap

T33N
R11W | R10W
S25 | S30
S36 | S31
1917

And raise a mound of stone, 2 ft. base, $1\frac{1}{2}$ ft. high, W.
of cor.

Land, rolling and mountainous.

Soil, rocky, 4th rate.

Timber, cedar.

Undergrowth, sagebrush.

North bet. secs. 25 and 30.

Over mountainous land, through scattering timber and
undergrowth.

1.40 Impossible to measure on line from this point. Run
traverse as follows:

N.34°W.	12.63	chs.
West	3.83	"
N.67°W.	11.11	"
N.58 $\frac{1}{2}$ °W.	4.62	"
East	25.07	"

18.61 chs. North of the cor. of secs. 25, 30, 31 and
36.

18.61 Continue North bet. secs. 25 and 30.
Asc. 140 ft.

35.00 Thence over rolling plateau.

40.00 Set an iron post, 3 ft. long, 1 in. diam., 24 ins. in the
ground, in a mound of stone, for $\frac{1}{4}$ sec. cor., marked
on brass cap

$\frac{1}{4}$
S25 | S30
1917

Survey of the
West Boundary of T. 33 N., R. 10 W.

chains.

49.00 And raise a mound of stone, 2 ft. base, 1½ ft. high,
 55.40 W. of cor.
 65.46 Desc. 165 ft.
 80.00 Asc. 60 ft.
 Desc. 240 ft.
 Wash, 20 lks. wide, course E. Asc. 400 ft.
 Set an iron post, 3 ft. long, 2 ins. diam., 24 ins. in
 the ground, for cor. of secs. 19, 24, 25 and 30,
 marked on brass cap

T33N	
R11W	R10W
S24	S19
S25	S30
1917	

From which
 A pinyon, 10 ins. diam., brs. N.13°25'E.,
 87 lks. dist., marked T33N R10W S19 BT.
 A pinyon, 15 ins. diam., brs. S.21°5'E.,
 303 lks. dist., marked T33N R10W S30 BT.
 No other trees within limits. Raise a mound of stone, 2
 ft. base, 1½ ft. high, W. of cor.
 Land, rolling and mountainous.
 Soil, rocky, 4th rate.
 Timber, juniper and pinyon.
 Undergrowth, sagebrush.

26.60 North bet. secs. 19 and 24.
 40.00 Over nearly level land, through scattering timber and
 undergrowth.
 Desc. 140 ft.
 Set an iron post, 3 ft. long, 1 in. diam., 24 ins. in the
 ground, and in a mound of stone, for ¼ sec. cor.,
 marked on brass cap

¼	
S24	S19
1917	

49.00 And raise a mound of stone, 2 ft. base, 1½ ft. high,
 80.00 W. of cor.
 Continue descent, 70 ft.
 Wash, 25 lks. wide, course NE. Asc. 190 ft.
 Set an iron post, 3 ft. long, 2 ins. diam., 24 ins. in
 the ground, for cor. of secs. 13, 18, 19 and 24,
 marked on brass cap

T33N	
R11W	R10W
S13	S18
S24	S19
1917	

And raise a mound of stone, 2 ft. base, 1½ ft. high,
 W. of cor.
 Land, nearly level and mountainous.
 Soil, rocky, 4th rate.
 Timber, juniper and pinyon.
 Undergrowth, sagebrush and cactus.
 Poor grazing.

North bet. secs. 13 and 18.

Survey of the
West Boundary of T. 33 N., R. 10 W.

Chains

Over rolling land, through scattering timber and undergrowth.

Desc. 100 ft.

25.20 Thence over nearly level land.

40.00 Set an iron post, 3 ft. long, 1 in. diam., 24 ins. in the ground, and in a mound of stone, for $\frac{1}{4}$ sec. cor., marked on brass cap

$\frac{1}{4}$
S13 | S18
1917

From which

A juniper, 9 ins. diam., brs. S.12°E.,
158 lks. dist., marked $\frac{1}{4}$ S18 BT.

A juniper, 8 ins. diam., brs. S.5°W.,
87 lks. dist., marked $\frac{1}{4}$ S13 BT.

77.00 Wash, 25 lks. wide, course NE.

80.00 Set an iron post, 3 ft. long, 2 ins. diam., 24 ins. in the ground, for cor. of secs. 7, 12, 13 and 18, marked on brass cap

T33N
R11W | R10W
S12 | S 7
S13 | S18
1917

From which

A juniper, 6 ins. diam., brs. N.43°E.,
28 lks. dist., marked T33N R10W S7 BT.

A juniper, 18 ins. diam., brs. S.64 $\frac{1}{2}$ °E.,
175 lks. dist., marked T33N R10W S18 BT.

A juniper, 12 ins. diam., brs. S.73°W.,
113 lks. dist., marked T33N R10W S13 BT.

A juniper, 7 ins. diam., brs. N.69 $\frac{1}{2}$ °W.,
163 lks. dist., marked T33N R10W S12 BT.

Land, nearly level and rolling.

Soil, rocky, 4th rate.

Timber, juniper and pinyon.

Undergrowth, sagebrush.

Poor grazing.

North bet. secs. 7 and 12.

Over nearly level land, through scattering timber and undergrowth.

1.80 Wash, 25 lks. wide, 12 ft. deep, course NW.

6.90 Same wash, 25 lks. wide, 12 ft. deep, course NE.

13.40 Wash, 15 lks. wide, 8 ft. deep, course N.70°E.

25.40 Desc. 45 ft.

28.86 Wash, 15 lks. wide, course SE. Asc. 45 ft.

33.20 Thence over nearly level land.

36.90 Desc. 35 ft.

40.00 Set an iron post, 3 ft. long, 1 in. diam., 18 ins. in the ground, in a mound of stone, for $\frac{1}{4}$ sec. cor., marked on brass cap

$\frac{1}{4}$
S12 | S 7
1917

From which

A pinyon, 8 ins. diam., brs. N.12°E.,
106 lks. dist., marked $\frac{1}{4}$ S7 BT.

A juniper, 12 ins. diam., brs. S.8°W.,
8 lks. dist., marked $\frac{1}{4}$ S12 BT.

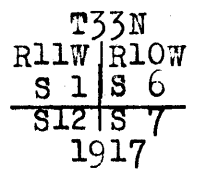
Desc. 60 ft.

44.16 Wash, 40 lks. wide, course NE. Asc. 80 ft.

Survey of the
West Boundary of T. 33 N., R. 10 W.

Chains.
50.30
54.78
80.00

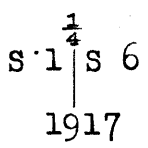
Desc. 105 ft.
Box canyon, course SE. Asc. 150 ft.
Set an iron post, 3 ft. long, 2 ins. diam., 24 ins. in the ground, with stone marked cross (X) at base of post, for cor. of secs. 1, 6, 7 and 12, marked on brass cap



From which
A juniper, 10 ins. diam., brs. N.41°E.,
317 lks. dist., marked T33N R10W S6 BT.
A juniper, 12 ins. diam., brs. N.19°W.,
317 lks. dist., marked T33N R11W S1 BT.
No other trees within limits.
Land, nearly level and mountainous.
Soil, rocky, 4th rate.
Timber, juniper and pinyon.
Undergrowth, sagebrush.
Good grazing last 20 chs.; remainder fair.

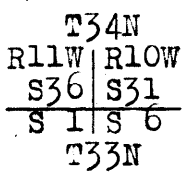
6.50
15.45
30.30
40.00

North bet. secs. 1 and 6.
Over rolling and mountainous land, through scattering timber and undergrowth.
Desc. 20 ft.
Gulch, 40 lks. wide, course E. Asc. 70 ft.
Desc. 90 ft.
Asc. 60 ft.
Set an iron post, 3 ft. long, 1 in. diam., 24 ins. in the ground, in a mound of stone, for $\frac{1}{4}$ sec. cor., marked on brass cap



And raise a mound of stone, 2 ft. base, $1\frac{1}{2}$ ft. high.
W. of cor.
Continue ascent, 30 ft.
Thence over nearly level land.
Desc. 90 ft.
Asc. 85 ft.
Desc. 45 ft.
Set an iron post, 3 ft. long, 3 ins. diam., 24 ins. in the ground, for cor. of Ts. 33 and 34 N., Rs. 10 and 11 W., with stone marked cross (X) at base of post, marked on brass cap

42.80
55.20
63.10
77.00
80.00



From which
A juniper, 18 ins. diam., brs. N.9 $\frac{3}{4}$ °E.,
340 lks. dist., marked T34N R10W S31 BT.
A juniper, 24 ins. diam., brs. N.58 $\frac{3}{4}$ °W.,
337 lks. dist., marked T34N R11W S36 BT.
No other trees within limits.
Land, nearly level, rolling and mountainous.
Soil, rocky, 4th rate.
Timber, juniper and pinyon.
Undergrowth, sagebrush.
Fair grazing.

Survey of the
East Boundary of T. 33 N., R. 10 W.

Chains.

From the standard cor. of Ts. 33 N., Rs. 9 and 10 W.,
described in Book "B",
North bet. secs. 31 and 36.
Over mountainous land, through scattering
undergrowth.

5.33 Desc. 75 ft
6.60 Wash, 10 lks. wide, course E. Asc. 30 ft.
40.00 Desc. 100 ft.
Set an iron post, 3 ft. long, 1 in. diam., 24 ins. in the
ground, in a mound of stone, for $\frac{1}{4}$ sec. cor., marked
on brass cap

$\frac{1}{4}$
S36 | S31
1917

And raise a mound of stone, 2 ft. base, $1\frac{1}{2}$ ft. high,
W. of cor.

58.00 Asc. 210 ft.
Spur, slopes E. Desc. 180 ft.
62.66 Wash, 50 lks. wide, course E. Asc. 65 ft.
67.30 Desc. 65 ft.
80.00 Set an iron post, 3 ft. long, 2 ins. diam., 24 ins. in
stone mound, for cor. of secs. 25, 30, 31 and 36,
marked on brass cap

T33N
R10W | R9W
S25 | S30

S36 | S31
1917

And raise a mound of stone, 2 ft. base, $1\frac{1}{2}$ ft. high,
W. of cor.

Land, mountainous.
Soil, rocky, 4th rate.
Timber, none.
Undergrowth, sagebrush and greasewood.
Good grazing.

North bet. secs. 25 and 30.
Over mountainous land, through scattering timber and
undergrowth. Asc. 50 ft.

6.30 Desc. 385 ft.
38.00 Enter main channel Parashont Wash, course SE.
40.00 Set an iron post, 3 ft. long, 1 in. diam., 24 ins. in the
ground, in a mound of stone, for $\frac{1}{4}$ sec. cor., marked
on brass cap

$\frac{1}{4}$
S25 | S30
1917

And raise a mound of stone, 2 ft. base, $1\frac{1}{2}$ ft. high,
W. of cor.

53.80 Leave Parashont Wash, course SE. Asc. 265 ft.
64.27 Desc. 35 ft.
80.00 Set an iron post, 3 ft. long, 2 ins. diam., 20 ins. in
the ground, 14 ins. in a mound of stone, for cor. of
secs. 19, 24, 25 and 30, marked on brass cap

T33N
R10W | R9W
S24 | S19

S25 | S30
1917

And raise a mound of stone, 3 ft. base, 3 ft. high, W.
of cor.

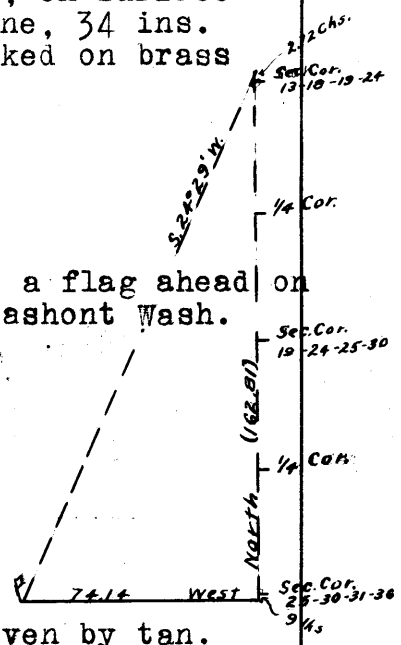
Survey of the
East Boundary of T. 33 N., R. 10 W.

Chains. Land, mountainous.
Soil, rocky, 4th rate.
Timber, pinyon and juniper.
Undergrowth, sagebrush and cactus.
Good grazing.

11.40 North bet. secs. 19 and 24.
40.00 Over mountainous land, through scattering undergrowth.
Asc. 420 ft.,
Draw, course W. Continue ascent.
Set an iron post, 3 ft. long, 1 in. diam., on surface
rock over cross (X), in a mound of stone, 34 ins.
high, 4 ft. base, for $\frac{1}{4}$ sec. cor., marked on brass
cap

S24 $\frac{1}{4}$ S19
1917

Impossible to chain from this point. Set a flag ahead on
line, on the north, or left rim of Parashont Wash.
From a point 0.09 chs. South
of the cor. of secs. 25, 30,
31 and 36, measure a base
West 74.14 chs., from the
W. end of which, flag ahead
brs. N.24°29'E. The three
angles of the triangle are
therefore 90°, 24°29' and
65°31', the sum of which is
180°. The distance triangulated is given by tan.
65°31' X 74.14 chs. = 2.19599 X 74.14 = 162.81 or
162.72 chs. North of the cor. of secs. 25, 30, 31 and
36. Thence South 2.72 chs. and at



80.00 Set an iron post, 3 ft. long, 2 ins. diam., 26 ins. in
the ground, for cor. of secs. 13, 18, 19 and 24, marked
on brass cap

T33N
R10W | R9W
S13 | S18

S24 | S19
1917

And raise a mound of stone, 2 ft. base, 1 $\frac{1}{2}$ ft. high,
W. of cor.
Land, mountainous.
Soil, rocky, 4th rate.
Timber, none.
Undergrowth, sagebrush, greasewood, and cactus.

25.80 North bet. secs. 13 and 18.
40.00 Over mountainous land, through scattering timber and
undergrowth.
Asc. 330 ft.
Rim rock, brs. NW. and SE. Thence over nearly level land.
Set an iron post, 3 ft. long, 1 in. diam., 24 ins. in the
ground, in a mound of stone, for $\frac{1}{4}$ sec. cor., marked
on brass cap

S13 $\frac{1}{4}$ S18
1917

From which

BOOK 3616

Survey of the
East Boundary of T. 33 N., R. 10 W.

Chains.

46.80 A juniper, 8 ins. diam., brs. N.17½°E.,
379 lks. dist., marked ¼S18 BT.
80.00 A scrub oak, 6 ins. diam., brs. S.66½°W.,
152 lks. dist., marked ¼S13 BT.
Continue ascent, 45 ft.
Thence over nearly level land.
Set an iron post, 3 ft. long, 2 ins. diam., 24 ins. in the
ground, with stone marked cross (X) at foot of post,
for cor. of secs. 7, 12, 13 and 18, marked on brass
cap

T33N	
R10W	R9W
S12	S 7
S13	S18
1917	

From which
A juniper, 8 ins. diam., brs. S.2¾°W.,
313 lks. dist., marked T33N R10W S13 BT.
A juniper, 15 ins. diam., brs. N.40½°W.,
265 lks. dist., marked T33N R10W S12 BT.
No other trees within limits.
Land, mountainous and nearly rolling.
Soil, 4th rate.
Timber, pinyon and juniper.
Undergrowth, sagebrush and dogwood.
Good grazing last 40 chs.; remainder poor.

17.58 North bet. secs. 7 and 12.
Over rolling land, through scattering undergrowth.
At this point, offset 10.58 chs. East to avoid impassable
bluffs, bearing E. and W., and continue
North on offset line, through sec. 7. Desc. 345 ft.
29.30 Wash, 35 lks. wide, course W. Asc. 76 ft.
34.66 Set back West 10.58 chs. to true line, and continue
North bet. secs. 7 and 12. Asc. 160 ft.
40.00 Set an iron post, 3 ft. long, 1 in. diam., 24 ins. in a
mound of stone, for ¼ sec. cor., marked on brass cap

¼	
S12	S 7
1917	

80.00 And raise a mound of stone, 2 ft. base, 1½ ft. high,
W. of cor.
Continue ascent, 355 ft.
Set an iron post, 3 ft. long, 2 ins. diam., 24 ins. in
the ground, with stone marked cross (X) at base of
post, for cor. of secs. 1, 6, 7 and 12, marked on
brass cap

T33N	
R10W	R9W
S 1	S 6
S12	S 7
1917	

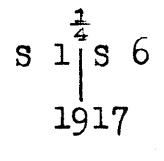
Land, rolling and mountainous.
Soil, rocky, 4th rate.
Timber, none.
Undergrowth, sagebrush and greasewood.

North bet. secs. 1 and 6.
Over rolling land, through scattering timber and under-
growth.
Desc. 155 ft.

Survey of the
East Boundary of T. 33 N., R. 10 W.

Chains.

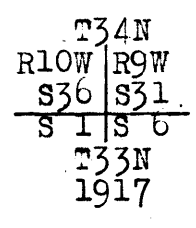
22.80 Wash, 10 lks. wide, course E. Asc. 30 ft.
29.00 Thence over nearly level land.
40.00 Set an iron post, 3 ft. long, 1 in. diam., 24 ins. in the
ground, in a mound of stone, for $\frac{1}{4}$ sec. cor., marked
on brass cap



From which

A pinyon, 18 ins. diam., brs. S.10°E.,
330 lks. dist., marked $\frac{1}{4}$ S6 BT.
A juniper, 16 ins. diam., brs. S.25°W.,
204 lks. dist., marked $\frac{1}{4}$ S1 BT.

80.00 Set an iron post, 3 ft. long, 3 ins. diam., 24 ins. in the
ground, and in a mound of stone, for cor. of Ts. 33 and
34 N., Rs. 9 and 10 W., marked on brass cap



From which

A juniper, 24 ins. diam., brs. S.31 $\frac{1}{2}$ °E.,
312 lks. dist., marked T33N R9W S6 BT.

No other trees within limits. Raise a mound of stone,
2 ft. base, 1 $\frac{1}{2}$ ft. high, S. of cor.
Land, rolling and nearly level.
Soil, 4th rate.
Timber, juniper and pinyon.
Undergrowth, sagebrush.
Good grazing.

Boundaries of T. 33 N., R. 10 W.

Latitudes, departures and closing errors.

Line designated.	True bearing	Dist. chs.	Latitudes.		Departures.	
			N. chs.	S. chs.	E. chs.	W. chs.
South Boundary (8th Std. Par. North.)	West.	480.00				480.00
West Boundary.	North	480.00	480.00			
North Boundary.	N. 89° 58' E.	479.47	.28		479.47	
East Boundary.	South.	480.00		480.00		
Convergency.					.53	
Totals			480.28	480.00	480.00	480.00
			480.00			480.00
Error in latitude			0.28			
Error in departure					0.00	

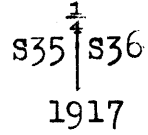
ECCOCK 3616

Survey of the
Subdivision of T. 33 N., R. 10 W.

Chains.

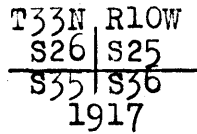
(2.50) From the true point for standard cor. of secs. 35 and 36 on the S. bdy. of Tp., (inaccessible) N.0°1'W. bet. secs. 35 and 36. Over rim rock, through scattering timber and undergrowth. The witness cor. to standard cor. of secs. 35 and 36, hereinbefore described. Thence over nearly level land.

40.00 Set an iron post, 3 ft. long, 1 in. diam., 24 ins. in the ground, and in a mound of stone, for $\frac{1}{4}$ sec. cor., marked on brass cap



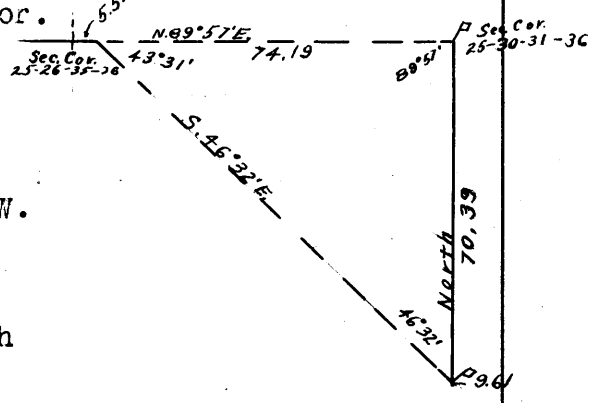
From which
 A pinyon, 8 ins. diam., brs. N.59°E., 182 lks. dist., marked $\frac{1}{4}$ S36 BT.
 A pinyon, 10 ins. diam., brs. N.9°W., 292 lks. dist., marked $\frac{1}{4}$ S35 BT.

80.00 Set an iron post, 3 ft. long, 2 ins. diam., 24 ins. in the ground, for cor. of secs. 25, 26, 35 and 36, marked on brass cap



From which
 A juniper, 10 ins. diam., brs. N.4°E., 167 lks. dist., marked T33N R10W S25 BT.
 No other trees within limits. Raise a mound of stone, 2 ft. base, 1 $\frac{1}{2}$ ft. high, W. of cor.
 Land, nearly level, except 2.50 chs. of rim rock.
 Soil, rocky, 4th rate.
 Timber, juniper and pinyon.
 Undergrowth, sagebrush.
 Good grazing.

5.52 East on a random line, bet. secs. 25 and 36. Right of canyon bears N. and S. thence across impassable cliffs, bearing N. and S. Triangulate as follows:
 From this point, flag at the cor. of secs. 25, 30, 31 and 36 is plainly visible and brs. N.89°57'E. Also from same point, flag set 9.61 chs. North of the standard cor. of Ts. 33 N., Rs. 9 and 10 W. brs. S.46°32'E. The three angles of the triangle are therefore 89°57', 46°32' and 43°31', the sum of which is 180°. The distance triangulated is given by the sine proportion:



$$\frac{X}{70.39} = \frac{\sin. 46^{\circ}32'}{\sin. 43^{\circ}31'}$$

log. 70.39	=	1.847511
log. sin. 46°32'	=	9.860802
		<u>1.708313</u>
log. sin. 43°31'	=	9.837945
log. X	=	<u>1.870368</u>
X	=	74.19 chs.. which added to

5.52 chs., gives
 79.71 Intersect the cor. of secs. 25, 30, 31 and 36, on the

Survey of the
Subdivision of T. 33 N., R. 10 W.

Chains.

E. bdy. of Tp., which is an iron post, hereinbefore described.

Thence

S.89°57'W. on a true line, bet. secs. 25 and 36.

Over mountainous land, through scattering timber and undergrowth.

Asc. 155 ft.

12.30 Spur, slopes NE. Desc. 15 ft.

13.00 Asc. 235 ft.

39.85½ Set an iron post, 3 ft. long, 1 in. diam., 14 ins. in the ground, in a mound of stone, 3 ft. base, 22 ins. high, with stone marked cross (X) at base of post, for ¼ sec. cor., marked on brass cap

1/4 S25
S36
1921

Thence by triangulation, as hereinbefore described.

74.19 Triangulation point, 1690 ft. above the cor. of secs. 25, 30, 31 and 36. Thence by chaining.

79.71 The cor. of secs. 25, 26, 35 and 36.

Land, mountainous.

Soil, rocky, 4th rate.

Timber, juniper and pinyon.

Undergrowth, sagebrush and cactus.

N.0°1'W. bet. secs. 25 and 26.

Over mountainous land, through scattering undergrowth.

Impossible to chain from this point. Set a flag ahead

on line, near the point for cor. of secs. 23, 24, 25 and 26, from which I measure a base N.89°59'E. 41.99 chs., from the E. end of which, flag at cor. secs. 25, 26, 35 and 36 brs. S.27°37'W. The three angles of the triangle are therefore 62°22', 27°38' and 90°, the sum of which is 180°. The distance triangulated is given by $\tan. 62^\circ 22' \times 41.99 \text{ chs.} = 1.91012 \times 41.99 = 80.21$. Thence

S.0°1'E. 40. 21 chs. to

40.00 Set an iron post, 3 ft. long, 1 in. diam., 14 ins. in the ground, in a mound of stone, 3 ft. base, 22 ins. high, with stone marked cross (X) at base of post, for ¼ sec. cor., marked on brass cap

1/4 S26 | S25
1921

Thence by chaining, descending 560 ft.

68.10 Wash, course E. Asc. 150 ft.

80.00 Set an iron post, 3 ft. long, 2 ins. diam., 10 ins. in the ground, in a mound of stone, 6 ft. base, 2 ft. high, with stone marked cross (X) at base of post, for cor. of secs. 23, 24, 25 and 26, marked on brass cap

T33N | R10W
S24 | S23
S25 | S26
1921

Land, mountainous.

Soil, rocky, 4th rate.

Survey of the
Subdivision of T. 33 N., R. 10 W.

Chains.

No timber.
Undergrowth, sagebrush.

40.00 N. 89° 57' E. on a random line, bet. secs. 24 and 25.
 79.70 Set temp. $\frac{1}{4}$ sec. cor.
 Fall 14 lks. S. of the cor. of secs. 19, 24, 25 and 30,
 on the E. bdy. of Tp., which is an iron post, here-
 inbefore described.
 Thence
 S. 89° 51' W. on a true line, bet. secs. 24 and 25.
 Over broken land, through scattering undergrowth.
 Desc. 110 ft.
 14.50 Parashont Wash, 50 lks. wide, course S. Asc. 155 ft.
 39.00 Spur, slopes NE. Desc. 25 ft.
 39.85 Set an iron post, 3 ft. long, 1 in. diam., 26 ins. in the
 ground, for $\frac{1}{4}$ sec. cor., marked on brass cap

$$\begin{array}{r} \frac{1}{4} S24 \\ \hline S25 \\ 1921 \end{array}$$

And raise a mound of stone, 2 ft. base, 1 $\frac{1}{2}$ ft. high,
N. of cor.

45.30 Continue descent.
 79.70 Wash, 50 lks. wide, course NE. Asc.
 The cor. of secs. 23, 24, 25 and 26.
 Land, broken.
 Soil, rocky, 4th rate.
 Timber, none.
 Undergrowth, sagebrush, cat claw, Spanish bayonet and
 cactus.

N. 0° 1' W. bet. secs. 23 and 24.
 Over broken precipitous land, through scattering under-
 growth.
 Impossible to measure on line from this point. Run
 traverse as follows:

N. 26° E.	15.24	chs.
North.	23.66	"
N. 68 $\frac{1}{2}$ ° W.	7.20	" to a point on sec.

40.00 line, 40.00 chs. N. 0° 1' W. of the cor. of secs. 23, 24,
 25 and 26.
 Set an iron post, 3 ft. long, 1 in. diam., 26 ins. in the
 ground, for $\frac{1}{4}$ sec. cor., marked on brass cap

$$\begin{array}{r} \frac{1}{4} \\ S23 \uparrow S24 \\ 1921 \end{array}$$

And raise a mound of stone, 2 ft. base, 1 $\frac{1}{2}$ ft. high,
W. of cor.

Thence
 N. 0° 1' W. bet. secs. 23 and 24, continuing measurement.
 Desc.
 49.10 Draw, course E. Asc. 255 ft.
 64.50 Spur, slopes NE. Desc. 375 ft.
 80.00 Set an iron post, 3 ft. long, 2 ins. diam., 24 ins. in
 the ground, 12 ins. in a mound of stone, for cor. of
 secs. 13, 14, 23 and 24, marked on brass cap

$$\begin{array}{r} T33N R10W \\ S14 \mid S13 \\ \hline S23 \mid S24 \\ 1921 \end{array}$$

Survey of the
Subdivision of T. 33 N., R. 10 W.

chains.

And raise a mound of stone, 2 ft. base, 1½ ft. high, W. of cor.
Land, broken precipitous.
Soil, rocky, 4th rate.
Timber, none.
Undergrowth, quinine brush, sagebrush, Spanish bayonet and cactus.

From the cor. of secs. 13, 14, 23 and 24, the cor. of secs. 13, 18, 19 and 24, on the E. bdy. of Tp. is plainly visible and brs. East.

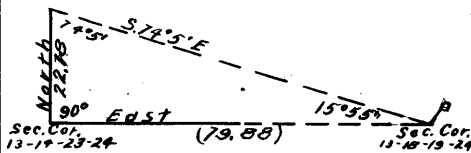
Thence

East on a random line, bet. secs. 13 and 24.

40.00

Set temp. ¼ sec. cor. Impossible to continue measurement by chaining from this point. I return to the cor. of secs. 13, 14, 23 and 24, and measure a base

North 22.78 chs., from the N. end of which, the cor. of secs. 13, 18, 19 and 24 brs. S. 74° 5' E. The three angles of the triangle are therefore 74° 5', 15° 55' and 90°, the sum of which is 180°. The distance triangulated is given by $\tan. 74^{\circ} 5' \times 22.78 = 3.50666 \times 22.78 = 79.88$ chs.



79.88

Intersect the cor. of secs. 13, 18, 19 and 24, on the E. bdy. of Tp., which is an iron post, hereinbefore described.

Thence

West on a true line, bet. secs. 13 and 24. (By triangulation Over mountainous land, through scattering undergrowth.

39.94

Set an iron post, 3 ft. long, 1 in. diam., 26 ins. in the ground, for ¼ sec. cor., marked on brass cap

$$\begin{array}{r} \frac{1}{4} S13 \\ \frac{1}{4} S24 \\ \hline 1921 \end{array}$$

And raise a mound of stone, 2 ft. base, 1½ ft. high, N. of cor.

This cor. is 1032 ft. below the cor. of secs. 13, 18, 19 and 24. Thence by chaining.

Desc. 30 ft.

51.90

Left bank of Parashont Wash, brs. N. and S. Thence across wash, course S.

54.90

Right bank of Parashont Wash, brs. N. and S. Asc. 120 ft.

79.88

The cor. of secs. 13, 14, 23 and 24.

Land, mountainous.

Soil, rocky, 4th rate.

Timber, none.

Undergrowth, quinine brush, scrub oak, Spanish bayonet, cat claw, sagebrush and cactus.

N. 0° 1' W. bet. secs. 13 and 14.

Over broken mountainous land, through dense undergrowth.

Desc. 40 ft.

3.80

Draw, course NE.

14.90

Draw, course E. Asc.

23.70

Spur, slopes E. Desc.

29.80

Draw, course SE. Asc.

34.20

Spur, slopes SE. Desc.

40.00

Set an iron post, 3 ft. long, 1 in. diam., 26 ins. in the ground, for ¼ sec. cor., marked on brass cap

Survey of the
Subdivision of T. 33 N., R. 10 W.

Chains.

1
S14 | S13
1921

55.40
80.00

And raise a mound of stone, 2 ft. base, 1½ ft. high, W. of cor.
Spur, slopes SE. Desc.
Set an iron post, 3 ft. long, 2 ins. diam., 20 ins. in the ground, 14 ins. in a mound of stone, for cor. of secs. 11, 12, 13 and 14, marked on brass cap

T33N R10W
S11 | S12
S14 | S13
1921

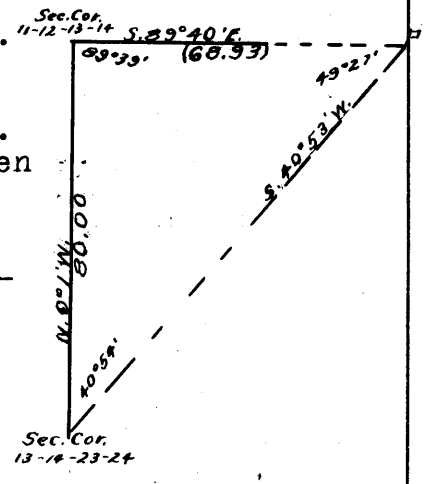
And raise a mound of stone, 4 ft. base, 3 ft. high, W. of cor.
Land, broken mountainous.
Soil, rocky, 4th rate.
Timber, none.
Undergrowth, quinine brush, sagebrush, Spanish dagger and cactus.

40.00

East on a random line, bet. secs. 12 and 13.
Set temp. ¼ sec. cor. Impossible to continue chaining from this point. I return to the cor. of secs. 11, 12, 13 and 14, and set a flag ahead on a bearing S.89°40'E., from this flag, another flag at the cor. of secs. 13, 14, 23 and 24 brs. S.40°53'W.
The three angles of the triangle are therefore 89°39', 49°27' and 40°54', the sum of which is 180°. The distance triangulated is given by the sine proportion:

$$\frac{X}{80.00} = \frac{\sin. 40^\circ 54'}{\sin. 49^\circ 27'}$$

log. 80.00	=	1.903090
log. sin. 40°54'	=	9.816069
		1.719159
log. sin. 49°27'	=	9.880722
log. X	=	1.838437
X	=	68.93 chs.



to the random line, and continue
East on a random line, bet. secs. 12 and 13.
Fall 42 lks. N. of the cor. of secs. 7, 12, 13 and 18, on the E. bdy. of Tp., which is an iron post, hereinbefore described.

80.10

Thence N.89°42'W. on a true line, bet. secs. 12 and 13.
Over mountainous land, through scattering undergrowth.
Desc.

11:17

Triangulation point. Thence by triangulation, as hereinbefore described.

40.05

Set an iron post, 3 ft. long, 1 in. diam., 26 ins. in the ground, for ¼ sec. cor., marked on brass cap

1/4 S12
S13
1921

And raise a mound of stone, 2 ft. base, 1½ ft. high, N. of cor.

Survey of the
Subdivision of T. 33 N., R. 10 W.

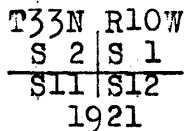
Chains.

65.10 Thence by chaining, continuing descent, 315 ft.
Wash, course SW.
72.20 Left bank of Parashont Wash, brs. N. and S.
75.70 Right bank of Parashont Wash, brs. N. and S. Asc. 50 ft.
80.10 The cor. of secs. 11, 12, 13 and 14, 1560 ft. below
triangulations point.
Land, mountainous.
Soil, rocky, 4th rate.
Timber, none.
Undergrowth, sagebrush, quinine brush, scrub oak, Spanish
bayonet and cactus.

N.0°1'W. bet. secs. 11 and 12.
Over broken mountainous land, through scattering under-
growth.
Asc. 40 ft.
5.20 Spur, slopes E. Desc.
15.00 Right bank of Parashont Wash, course SE. Thence across
Parashont Wash, 3 chs. wide, course SE.
23.30 Left bank of Parashont Wash, brs. NW. and SE. Asc.
37.00 Center of gulch, 10 chs. wide, course SW. Continue
ascent.
40.00 Set an iron post, 3 ft. long, 1 in. diam., 26 ins. in the
ground, for $\frac{1}{4}$ sec. cor., marked on brass cap



And raise a mound of stone, 2 ft. base, $1\frac{1}{2}$ ft. high,
W. of cor.
Continue ascent.
60.00 Foot of cliffs, brs. NE. and SE. Desc.
75.00 Canyon, course W. Asc.
80.00 Set an iron post, 3 ft. long, 2 ins. diam., 4 ins. in the
ground, 32 ins. in a mound of stone, 3 ft. base, with
cross (X) on rock at base of post, for cor. of secs. 1,
2, 11 and 12, marked on brass cap



Land, mountainous.
Soil, rocky, 4th rate.
Timber, none.
Undergrowth, sagebrush, quinine brush, scrub oak, Spanish
bayonet and cactus.

40.00 S.89°42'E. on a random line, bet. secs. 1 and 12.
Set temp. $\frac{1}{4}$ sec. cor.
79.90 Fall 46 lks. S. of the cor. of secs. 1, 6, 7 and 12, on
the E. bdy. of Tp., which is an iron post, hereinbefore
described.
Thence
S.89°58'W. on a true line, bet. secs. 1 and 12.
Over mountainous land, through scattering timber and
undergrowth.
Desc.
1.10 Draw, course NE. Asc.
9.90 Spur, slopes NE. Desc. 80 ft.
16.40 Draw, course NE. Asc. 105 ft.
28.70 Old road, brs. NW. and SE.

Survey of the
Subdivision of T. 33 N., R. 10 W.

Chains.

33.90 Ridge, brs. N. and S. Desc.
39.95 Draw, course N. Set an iron post, 3 ft. long, 1 in. diam.,
24 ins. in a mound of stone, for $\frac{1}{4}$ sec. cor., marked
on brass cap

$\frac{1}{4}$ S 1
S 12
1921

From which

A pinyon, 16 ins. diam., brs. N. $15\frac{1}{4}^{\circ}$ E.,
146 lks. dist., marked $\frac{1}{4}$ S 1 BT.
A cedar, 12 ins. diam., brs. S. $42\frac{3}{4}^{\circ}$ W.,
62 lks. dist., marked $\frac{1}{4}$ S 12 BT.

Thence over rolling land.

44.90 Desc. 940 ft.
74.90 Wash, 10 lks. wide, course SW.
79.90 The cor. of secs. 1, 2, 11 and 12.
Land, mountainous and rolling.
Soil, rocky, 4th rate.
Timber, cedar and pinyon.
Undergrowth, sagebrush.

40.00 N. $0^{\circ} 1' W.$, on a random line, bet. secs. 1 and 2.
Set temp. $\frac{1}{4}$ sec. cor.
80.25 Fall 10 lks. E. of the cor. of secs. 1, 2, 35 and 36,
on the N. bdy. of Tp., which is an iron post, de-
scribed in Book "F".

Thence

S. $0^{\circ} 5' E.$ on a true line, bet. secs. 1 and 2.
Over mountainous land, through scattering timber and
undergrowth.

Asc.

5.25 Spur, slopes W. Thence along W. slope.
23.65 Spur, slopes NW. Desc.
40.25 Set an iron post, 3 ft. long, 1 in. diam., 26 ins. in the
ground, for $\frac{1}{4}$ sec. cor., marked on brass cap

$\frac{1}{4}$
S 2 | S 1
1921

. From which

A pinyon, 12 ins. diam., brs. S. $29\frac{1}{4}^{\circ}$ E.,
81 lks. dist., marked $\frac{1}{4}$ S 1 BT.
A cedar, 12 ins. diam., brs. S. 32° W.,
191 lks. dist., marked $\frac{1}{4}$ S 2 BT.

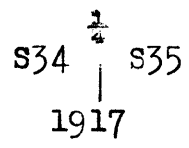
80.25 Continue descent, 1100 ft.
The cor. of secs. 1, 2, 11 and 12.
Land, mountainous.
Soil, rocky, 4th rate.
Timber, pinyon and cedar.
Undergrowth, sagebrush, dogwood, Spanish bayonet and
cactus.

From the standard cor. of secs. 34 and 35, on the S. bdy.
of Tp., which is an iron post, hereinbefore described
N. $0^{\circ} 1' W.$ bet. secs. 34 and 35.
Over rolling and mountainous land, through scattering
timber and undergrowth.
Desc. 80 ft.
6.70 Wash, 10 lks. wide, course E. Asc. 80 ft.
15.12 Desc. 160 ft.
40.00 Wash, 10 lks. wide, course N. 20° E. Set an iron post,

Survey of the
Subdivision of T. 33 N., R. 10 W.

Chains.

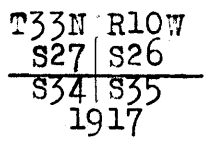
3 ft. long, 1 in. diam., on bed rock, in a mound of stone, for $\frac{1}{4}$ sec. cor., marked on brass cap



And raise a mound of stone, 2 ft. base, $1\frac{1}{2}$ ft. high, W. of cor.

46.60
49.30
57.75
63.58
71.97
80.00

Asc. 20 ft.
Desc. 85 ft.
Wash, 20 lks. wide, course E. Asc. 100 ft.
Desc. 255 ft.
Wash, 20 lks. wide, course E. Asc. 225 ft.
Spur, slopes E. Desc. 205 ft.
Set an iron post, 3 ft. long, 2 ins diam., 24 ins. in the ground, for cor. of secs. 26, 27, 34 and 35, marked on brass cap



And raise a mound of stone, 2 ft. base, $1\frac{1}{2}$ ft. high, W. of cor.
Land, rolling and mountainous.
Soil, rocky, 4th rate.
Timber, cedar and pinyon.
Undergrowth, sagebrush.

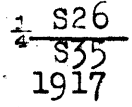
40.00
80.06

East on a random line, bet. secs. 26 and 35.
Set temp. $\frac{1}{4}$ sec. cor.
Intersect N. and S. line, 16 lks. S. of the cor. of secs. 25, 26, 35 and 36.

Thence
S. $89^{\circ}53'$ W. on a true line, bet. secs. 26 and 35.
Over mountainous land, through scattering timber and undergrowth.
Desc. 245 ft.

40.03

Set an iron post, 3 ft. long, 1 in. diam., 24 ins. in the ground, in a mound of stone, for $\frac{1}{4}$ sec. cor., marked on brass cap



And raise a mound of stone, 2 ft. base, $1\frac{1}{2}$ ft. high, N. of cor.

41.38
60.00
74.46
80.06

Continue descent, 55 ft.
Wash, 40 lks. wide, course N. Asc. 175 ft.
Desc. 455 ft.
Wash, 50 lks. wide, course NW. Asc. 135 ft.
The cor. of secs. 26, 27, 34 and 35.
Land, mountainous.
Soil, rocky, 4th rate.
Timber, cedar and pinyon.
Undergrowth, sagebrush.

11:42

N. $0^{\circ}1'$ W. bet. secs. 26 and 27.
Over mountainous land, through scattering timber and undergrowth.
Desc. 230 ft.
Center of wash, 1 ch. wide, course NE. Asc. 560 ft.

BOOK 3616

Survey of the
Subdivision of T. 33 N., R. 10 W.

Chains.
40.00

Set an iron post, 3 ft. long, 1 in. diam., 6 ins. in the ground, on bed rock, in a mound of stone, for $\frac{1}{4}$ sec. cor., marked on brass cap

S27 ^{$\frac{1}{4}$} S26
|
1917

From which

A pinyon, 12 ins. diam., brs. S.65 $\frac{1}{2}$ °E.,
324 lks. dist., marked $\frac{1}{4}$ S26 BT.

A cedar, 6 ins. diam., brs. N.88°50'W.,
33 lks. dist., marked $\frac{1}{4}$ S27 BT.

80.00

Thence over slightly rolling land, ascending 60 ft. Set an iron post, 3 ft. long, 2 ins. diam., 15 ins. in the ground, on bed rock, in a mound of stone, with stone marked cross (X) at base of post, for cor. of secs. 22, 23, 26 and 27, marked on brass cap

T33N R10W
S22 | S23

S27 | S26
1917

From which

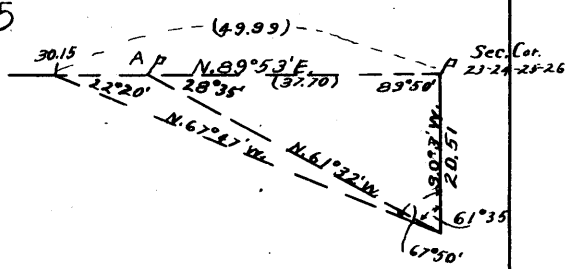
A cedar, 8 ins. diam., brs. S.3°55'E.,
98 lks. dist., marked T33N R10W S26 BT.

A cedar, 10 ins. diam., brs. S.30°25'W.,
166 lks. dist., marked T33N R10W S27 BT.

No other trees within limits.
Land, mountainous and rolling.
Soil, rocky, 4th rate.
Timber, cedar and pinyon.
Undergrowth, sagebrush.

30.15

N.89°53'E. on a random line, bet. secs. 23 and 26. Impossible to chain from this point; triangulate as follows
The cor. of secs. 23, 24, 25 and 26 brs. N.89°53'E. Set a flag "A" ahead on line, near the true point for $\frac{1}{4}$ sec. cor. of secs. 23 and 26. From the cor. of secs. 23, 24, 25 and 26, measure a base S.0°3'W. 20.51 chs., from the S. end of which, flag "A" brs. N.61°32'W. and flag at the 30.15 ch. point brs. N.67°47'W. The three angles of the larger triangle are therefore 22°20', 89°50' and 67°50', the sum of which is 180°. The distance triangulated is given by the sine proportion:



$$\frac{X}{20.51} = \frac{\sin. 67^{\circ}50'}{\sin. 22^{\circ}20'}$$

log.	20.51	=	1.311966	
log. sin.	22°20'	=	9.579777	
			1.732189	
log. sin.	67°50'	=	9.966653	
log. X		=	1.698842	
	X	=	49.99 chs.,	which added to

30.15 chs., gives 80.14.
In the smaller triangle, the three angles are 28°35', 89°50' and 61°35', the sum of which is 180°. The distance triangulated is given by the sine proportion:

Survey of the
Subdivision of T. 33 N., R. 10 W.

Chains.

$$\frac{X}{20.51} = \frac{\sin. 61^{\circ}35'}{\sin. 28^{\circ}35'}$$

$$\begin{aligned} \log. 20.51 &= 1.311966 \\ \log. \sin. 28^{\circ}35' &= 9.679824 \\ & \underline{1.632142} \\ \log. \sin. 61^{\circ}35' &= 9.944241 \\ \log. X &= 1.576383 \\ X &= 37.70 \text{ chs., or} \end{aligned}$$

42.44 chs. from the cor. of secs. 22, 23, 26 and 27.
42.44 Set temp. witness cor. to $\frac{1}{4}$ sec. cor.
80.14 Intersect the cor. of secs. 23, 24, 25 and 26.

Thence
S. 89° 53' W. on a true line, bet. secs. 23 and 26.
Over mountainous land, through scattering timber and
undergrowth, distance by triangulation.

Asc. 495 ft.
37.70 Foot of cliffs, brs. NE. and SW. Set an iron post, 3
ft. long, 1 in. diam., 20 ins. in the ground, in a
mound of stone, 2 ft. base, 14 ins. high, with stone
marked cross (X) at base of post, for witness cor. to
 $\frac{1}{4}$ sec. cor., marked on brass cap

$$\text{WC } \frac{1}{4} \frac{S23}{S26} \\ 1921$$

Continue ascent, 560 ft.
49.99 Triangulation point. Thence by chaining, ascending 255
ft.

80.14 The cor. of secs. 22, 23, 26 and 27.
Band, mountainous.
Soil, rocky, 4th rate.
Timber, cedar and pinyon.
Undergrowth, sagebrush, Spanish dagger, scrub oak and
cactus.

N. 0° 1' W. bet. secs. 22 and 23.
Over rolling land, through scattering timber and under-
growth.

Desc. 135 ft.
12.31 Wash, 10 lks. wide, course E. Asc. 90 ft.
20.28 Spur, slopes E. Desc. 60 ft.
24.49 Wash, 10 lks. wide, course E. Thence over nearly level
land.

40.00 Set an iron post, 3 ft. long, 1 in. diam., 20 ins. in the
ground, in a mound of stone, for $\frac{1}{4}$ sec. cor., marked
on brass cap

$$\frac{1}{4} \frac{S22}{S23} \\ 1917$$

From which
A pinyon, 12 ins. diam., brs. S. 18° 35' E.,
87 lks. dist., marked $\frac{1}{4}$ S23 BT.
A pinyon, 8 ins. diam., brs. S. 26° W.,
64 lks. dist., marked $\frac{1}{4}$ S22 BT.

Continue ascent, 70 ft.
67.80 Desc. 190 ft.
73.69 Wash, 10 lks. wide, course E. Asc. 110 ft.
80.00 Set an iron post, 3 ft. long, 2 ins. diam., 16 ins. in the
ground, in a mound of stone, with stone marked cross
(X) at base of post, for cor. of secs. 14, 15, 22 and
23, marked on brass cap

$$\begin{array}{c} T33N \ R10W \\ \hline S15 \ S14 \\ \hline S22 \ S23 \\ \hline 1917 \end{array}$$

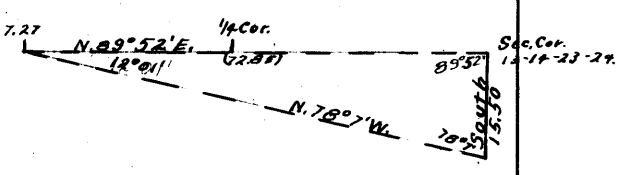
Survey of the
Subdivision of T. 33 N., R. 10 W.

Chains.

From which
 A pinyon, 14 ins. diam., brs. S.13°E.,
 74 lks. dist., marked T33N R10W S23 BT.
 A pinyon, 18 ins. diam., brs. S.75½°W.,
 92 lks. dist., marked T33N R10W S22 BT.
 No other trees within limits.
 Land, rolling and nearly level.
 Soil, rocky, 4th rate.
 Timber, pinyon. and cedar.
 Undergrowth, sagebrush and cactus.

7.27

N.89°53'E. on a random line, bet. secs. 14 and 23.
 Impossible to chain from this point. The cor. of secs.
 13, 14, 23 and 24 brs.
 N.89°52'E. From the cor. of secs. 13, 14, 23 and 24,
 measure a base South
 15.50 chs., from the S.
 end of which, flag at the
 7.27 ch. point brs.
 N.78°7'W. The three angles
 of the triangle are there-
 fore 89°52', 78°7' and
 12°1', the sum of which is
 180°. The distance triangulated is given by the sine
 proportion:



$$\frac{X}{15.50} = \frac{\sin. 78^{\circ}7'}{\sin. 12^{\circ}1'}$$

log. 15.50	=	1.190332
log. sin. 12°1'	=	9.318473
		<u>1.871859</u>
log. sin. 78°7'	=	9.990591
log. X	=	<u>1.862450</u>
X	=	72.85 chs., which added to

7.27 chs., gives 80.12 chs. Thence chain S.89°52'W.
 40.06 chs. to

40.06
80.12

Set temp. ¼ sec. cor. Thence N.89°52'E. to
 The cor. of secs. 13, 14, 23 and 24.
 Thence
 S.89°52'W. on a true line, bet. secs. 14 and 23.
 Over rough broken land, through scattering undergrowth.
 Asc. E. slope..

14.00
21.20

Enter draw, course N.80°E., from W. Asc. in draw.
 Spring in draw. Leave draw, course E., from S.80°W.
 Asc.

40.06

Set an iron post, 3 ft. long. 1 in. diam., 20 ins. in the
 ground, in a mound of stone, 3 ft. base, 16 ins. high,
 with stone marked cross (X) at base of post, for ¼ sec.
 cor., marked on brass cap

$$\frac{1}{4} \frac{S14}{S23} = 1921$$

72.85
80.12

Thence by triangulation, as hereinbefore described..
 Triangulation point. Thence by chaining.
 The cor. of secs. 14, 15, 22 and 23.
 Land, mountainous.
 Soil, rocky, 4th rate.
 Timber, none.
 Undergrowth, quinine, sagebrush, Spanish bayonet and
 cactus.

Survey of the
Subdivision of T. 33 N., R. 10 W.

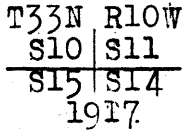
Chains.

N.0°1'W. bet. secs. 14 and 15.
Over rolling land, through scattering timber and undergrowth.
Asc. 110 ft.
Desc. 30 ft.
24.40
40.00 Set an iron post, 3 ft. long, 1 in. diam., 12 ins. in the ground, in a mound of stone, for $\frac{1}{4}$ sec. cor., marked on brass cap



From which

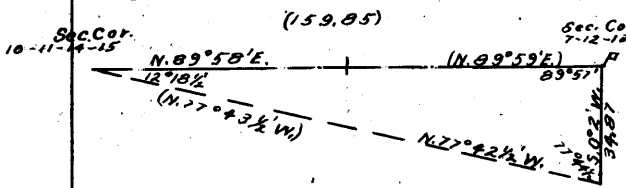
A pinyon, 12 ins. diam., brs. S.75°E.,
344 lks. dist., marked $\frac{1}{4}$ S15 BT.
No other trees within limits. Raise a mound of stone, 2 ft. base, 1 $\frac{1}{2}$ ft. high, W. of cor.
68.95
80.00 Continue descent, 145 ft.
Wash, 15 lks. wide, course NE. Asc. 140 ft.
Set an iron post, 3 ft. long, 2 ins. diam., 18 ins. in the ground, in a mound of stone, with stone marked cross (X) at base of post, for cor. of secs. 10, 11, 14 and 15, marked on brass cap



From which

A cedar, 6 ins. diam., brs. N.56°E.,
284 lks. dist., marked T33N R10W S11 BT.
No other trees within limits.
Land, rolling.
Soil, 3rd and 4th rates.
Timber, cedar.
Undergrowth, sagebrush.

N.89°52'E. on a random line, bet. secs. 11 and 14.
Impossible to chain this mile; triangulate as follows:



A flag on the East bdy. of
Tp. at the cor. of secs. 7,
12, 13 and 18, brs. N.89°
58'E. From the cor. of secs.
7, 12, 13 and 18, measure a
base S.0°2'W. 34.87 chs.,
from the S. end of which,
flag at the cor. of secs.
10, 11, 14 and 15 brs.
N.77°42 $\frac{1}{2}$ 'W. The three an-
gles of the triangle are

therefore 77°44 $\frac{1}{2}$ ', 12°18 $\frac{1}{2}$ ' and 89°57', the sum of
which is 180°. The distance is found from the sine
proportion:

$$\frac{X}{34.87} = \frac{\sin. 77^\circ 44\frac{1}{2}'}{\sin. 12^\circ 18\frac{1}{2}'}$$

log. 34.87	=1.542452
log. sin. 12°18 $\frac{1}{2}$ '	=9.328732
	2.213720
log. sin. 77°44 $\frac{1}{2}$ '	=9.989984
log. X	=2.203704
X	= 159.85 chs.

The bearing and length of mile bet. secs. 12 and 13 are
S.89°42'E. 80.10 chs. It therefore follows that the
bearing and length of mile bet. secs. 11 and 14 are

Survey of the
Subdivision of T. 33 N., R. 10 W.

BOOK 3616

Chains.

s. 89°39' W. 79.75 chs.
From the cor. of secs. 11, 12, 13 and 14,
S. 89°39' W. on a true line, bet. secs. 11 and 14.
Over mountainous land, through scattering timber and
undergrowth.
Asc.
37.70 Foot of impassable cliff, brs. N. and S. Set an iron
post, 3 ft. long, 1 in. diam., 10 ins. in the ground,
in a mound of stone, 3½ ft. base, 18 ins. high, with
cross (X) on face of cliff, at height of brass cap,
for witness cor. to ¼ sec. cor., marked on brass cap

WC ¼ S11
 ¼ S14
 1921

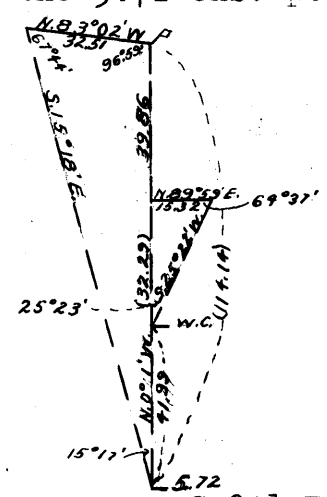
39.87½ The true point for ¼ sec. cor. is inaccessible.
60.00 Top of cliffs, brs. N. and S., 1720 ft. above the cor.
of secs. 11, 12, 13 and 14.
Continue ascent.
79.75 The cor. of secs. 10, 11, 14 and 15.
Land, mountainous.
Soil, rocky, 4th rate.
Timber, cedar.
Undergrowth, quinine brush, cat claw, scrub oak, Spanish
bayonet and cactus.

N. 0°1' W. bet. secs. 10 and 11.
Over mountainous land, through scattering timber and
undergrowth.
5.72 Set flag for triangulation.
16.35 Right rim of Parashont Wash, brs. NW. and SE. Impossible
to chain from this point. Set a flag ahead on line,
from which I measure a base N. 83°02' W. 32.51 chs.,
from the W. end of which, flag at the 5.72 chs. point
brs. S. 15°18' E. The three
angles of the triangle are
therefore 67°44', 96°59'
and 15°17', the sum of
which is 180°. The dist-
ance triangulated is given
by the sine proportion:

$$\frac{X}{32.51} = \frac{\sin. 67^\circ 44'}{\sin. 15^\circ 17'}$$

log. 32.51 = 1.512017
log. sin. 15°17' = 9.420933
 2.091084
log. sin. 67°44' = 9.966344
log. X = 2.057428
X = 114.14 chs. Thence measure S. 0°1' E.
by chaining and triangulation, as hereinafter de-
scribed, to a point, 47.71 chs. N. 0°1' W. of the cor.
of secs. 10, 11, 14 and 15, where I

47.71 Set an iron post, 3 ft. long, 1 in. diam., 6 ins. in the
ground, in a mound of stone, 4 ft. base, 30 ins. high,
with stone marked cross (X) at base of post, for wit-
ness cor. to ¼ sec. cor., marked on brass cap



¼
S10 | S11
W C
1921

Set a flag ahead on line, from which I measure a base
N. 89°59' E. 15.32 chs., from the E.
end of which, flag at the wit-
ness cor. brs. S. 25°22' W. The
three angles of the triangle

Survey of the
Subdivision of T. 33 N., R. 10 W.

Chains.

40.00 Set temp. $\frac{1}{4}$ sec. cor.
 79.86 Fall fall 2 lks. W. of the cor. of secs. 2, 3, 34 and 35, on the N. bdy. of Tp., which is an iron post, described in Book "F".
 Thence
 South on a true line, bet. secs. 2 and 3.
 Over rolling land, through scattering timber and undergrowth.
 10.00 Draw, course E. Asc. 50 ft.
 39.86 Set an iron post, 3 ft. long, 1 in. diam., 8 ins. in the ground, 26 ins. in a mound of stone, for $\frac{1}{4}$ sec. cor., marked on brass cap

$\frac{1}{4}$
 S 3 | S 2
 1921

From which
 A cedar, 12 ins. diam., brs. N.27 $\frac{1}{2}$ °E.,
 190 lks. dist., marked $\frac{1}{4}$ S2 BT.
 A cedar, 14 ins. diam., brs. N.48°W.,
 48 lks. dist., marked $\frac{1}{4}$ S3 BT.

59.63 Triangulation point. Thence by triangulation, as hereinbefore described.
 79.86 The cor. of secs. 2, 3, 10 and 11.
 Land, rolling and mountainous.
 Soil, rocky, 4th rate.
 Timber, cedar.
 Undergrowth, sagebrush, and cactus.

From the standard cor. of secs. 33 and 34, on the S. bdy. of Tp., which is an iron post, hereinbefore described, N.0°2'W. bet. secs. 33 and 34.
 Over rolling and mountainous land, through scattering timber and undergrowth.
 Asc. 40 ft.
 9.74 Desc. 75 ft.
 16.24 Wash, 40 lks. wide, course SE. Asc. 535 ft.
 37.55 Desc. 35 ft.
 40.00 Set an iron post, 3 ft. long, 1 in. diam., 3 ins. in the ground, in a mound of stone, for $\frac{1}{4}$ sec. cor., marked on brass cap

$\frac{1}{4}$
 S33 | S34
 1917

From which
 A pinyon, 10 ins. diam., brs. N.8°20'E.,
 185 lks. dist., marked $\frac{1}{4}$ S34 BT.
 A pinyon, 10 ins. diam., brs. S.83°40'W.,
 26 lks. dist., marked $\frac{1}{4}$ S33 BT.

Continue descent, 20 ft.
 40.64 Wash, 10 lks. wide, course SE. Asc. 140 ft.
 56.74 Desc. gradual slope.
 78.75 Wash, 5 lks. wide, course N.10°E. Asc.
 80.00 Set an iron post, 3 ft. long, 2 ins. diam., 24 ins. in the ground, for cor. of secs. 27, 28, 33 and 34, marked on brass cap

T33N R10W
 S28 | S27
 S33 | S34
 1917

From which
 A cedar, 20 ins. diam., brs. N.49°10'E.,
 138 lks. dist., marked T33N R10W S27 BT.

Survey of the
Subdivision of T. 33 N., R. 10 W.

Chains.

A cedar, 18 ins. diam., brs. S.19°E.,
49 lks. dist., marked T33N R10W S34 BT.
A cedar, 6 ins. diam., brs. S.62°W.,
129 lks. dist., marked T33N R10W S33 BT.
A cedar, 24 ins. diam., brs. N.70°W.,
133 lks. dist., marked T33N R10W S28 BT
Land, rolling and mountainous.
Soil, rocky, 4th rate.
Timber, cedar and pinyon.
Undergrowth, sagebrush.

40.00
80.10

13.94
28.15
40.05

East on a random line, bet. secs. 27 and 34.
Set temp. $\frac{1}{4}$ sec. cor.
Intersect N. and S. line, 5 lks. S. of the cor. of secs.
26, 27, 34 and 35.
Thence
S.89°58'W. on a true line, bet. secs. 27 and 34.
Over mountainous land, through scattering timber and
undergrowth.
Asc. 340 ft.
Desc. 80 ft.
Asc. 75 ft.
Set an iron post, 3 ft. long, 1 in. diam., 12 ins. in the
ground, in a mound of stone, for $\frac{1}{4}$ sec. cor., marked
on brass cap

$\frac{1}{4}$ S27
 $\frac{1}{4}$ S34
1917

From which

A pinyon, 8 ins. diam., brs. N.41°10'E.,
108 lks. dist., marked $\frac{1}{4}$ S27 BT.
A pinyon, 20 ins. diam., brs. S.10°20'E.,
131 lks. dist., marked $\frac{1}{4}$ S34 BT.
Desc. 125 ft.
Wash, 20 lks. wide, course NE. Asc. 135 ft.
Desc. 30 ft.
Wash, course S.70°E. Asc. 110 ft.
Desc. 70 ft.
The cor. of secs. 27, 28, 33 and 34.
Land, mountainous.
Soil, rocky, 4th rate.
Timber, cedar and pinyon.
Undergrowth, sagebrush.

23.43
40.00

N.0°2'W. bet. secs. 27 and 28.
Over rolling land, through scattering timber and under-
growth.
Desc. 75 ft.
Wash, 10 lks. wide, course E. Asc. 100 ft.
Set an iron post, 3 ft. long, 1 in. diam., 20 ins. in the
ground, in a mound of stone, for $\frac{1}{4}$ sec cor., marked
on brass cap

$\frac{1}{4}$
S28 | S27
1917

From which

A cedar, 12 ins. diam., brs. S.86°5'W.
94 lks. dist., marked $\frac{1}{4}$ S28 BT.
No other trees within limits. Raise a mound of stone, 2
ft. base, $1\frac{1}{2}$ ft. high, W. of cor.
Desc. 140 ft.
Wash, 10 lks. wide, course E. Asc. 105 ft.

59.91

Survey of the
Subdivision of T. 33 N., R. 10 W.

Chains.
80.00 Set an iron post, 3 ft. long, 2 ins. diam., 24 ins. in the ground, for cor. of secs. 21, 22, 27 and 28, marked on brass cap

$$\begin{array}{r} T33N R10W \\ S21 | S22 \\ \hline S28 | S27 \\ 1917 \end{array}$$

From which
 A cedar, 12 ins. diam., brs. N.29°10'E.,
 181 lks. dist., marked T33N R10W S22 BT.
 A cedar, 5 ins. diam., brs. S.68°E.,
 115 lks. dist., marked T33N R10W S27 BT.
 A cedar, 18 ins. diam., brs. S.78°50'W.,
 177 lks. dist., marked T33N R10W S28 BT.
 A cedar, 14 ins. diam., brs. N.72°20'W.,
 194 lks. dist., marked T33N R10W S21 BT.

Land, rolling.
 Soil, rocky, 4th rate.
 Timber, cedar.
 Undergrowth, sagebrush.

40.00 N.89°58'E. on a random line, bet. secs. 22 and 27.
 Set temp. $\frac{1}{4}$ sec. cor.

80.26 Intersect N. and S line, 5 lks. N. of the cor. of secs. 22, 23, 26 and 27.

Thence
 West on a true line, bet. secs. 22 and 27.
 Over rolling land, through scattering timber and undergrowth.

Asc. 30 ft.
 Desc. 15 ft.

4.20 Desc. 15 ft.
 12.20 Asc. 15 ft.
 33.95 Desc. 15 ft.
 40.13

Set an iron post, 3 ft. long, 1 in. diam., 14 ins. in the ground, in a mound of stone, for $\frac{1}{4}$ sec. cor., marked on brass cap

$$\begin{array}{r} \frac{1}{4} S22 \\ \hline \frac{1}{4} S27 \\ 1917 \end{array}$$

From which
 A cedar, 12 ins. diam., brs. N.29 $\frac{3}{4}$ °W.,
 45 lks. dist., marked $\frac{1}{4}$ S22 BT.
 A cedar, 10 ins. diam., brs. S.43 $\frac{1}{4}$ °E.,
 56 lks. dist., marked $\frac{1}{4}$ S27 BT.

Continue descent, 90 ft.

55.03 Wash, 10 lks. wide, course S.15°E. Asc. 30 ft.
 74.91 Spur, slopes S. Desc. 25 ft.
 79.19 Wash, 10 lks. wide, course S.40°E. Asc. 10 ft.
 80.26 The cor. of secs. 21, 22, 27 and 28.

Land, rolling.
 Soil, rocky, 4th rate.
 Timber, cedar and pinyon.
 Undergrowth, sagebrush.

40.00 N.0°2'W. bet. secs. 21 and 22.
 Over rolling land, through scattering timber and undergrowth.

Set an iron post, 3 ft. long, 1 in. diam., 24 ins. in the ground, in a mound of stone, for $\frac{1}{4}$ sec. cor., marked on brass cap

$$\begin{array}{r} \frac{1}{4} \\ S21 | S22 \\ \hline 1917 \end{array}$$

Survey of the
Subdivision of T. 33 N., R. 10 W.

Chains.

80.00 From which
 A juniper, 8 ins. diam., brs. S.62°E.,
 113 lks. dist., marked $\frac{1}{2}$ S22 BT.
 A juniper, 12 ins. diam., brs. S.63°W.,
 266 lks. dist., marked $\frac{1}{2}$ S21 BT.
 Set an iron post, 3 ft. long, 2 ins. diam., 24 ins. in the
 ground, for cor. of secs. 15, 16, 21 and 22, marked on
 brass cap

T33N	R10W
S16	S15
<hr/>	
S21	S22
1917	

From which
 A juniper, 16 ins. diam., brs. N.13°E.,
 172 lks. dist., marked T33N R10W S15 BT.
 A juniper, -- ins. diam., brs. S.31 $\frac{1}{2}$ °E.,
 205 lks. dist., marked T33N R10W S22 BT.
 No other trees within limits. Raise a mound of stone, 2
 ft. base, 1 $\frac{1}{2}$ ft. high, W. of cor.
 Land, rolling.
 Soil, rocky, 4th rate.
 Timber, juniper and pinyon.
 Undergrowth, sagebrush.
 Good grazing.

40.00 East on a random line, bet. secs. 15 and 22.
 80.14 Set temp. $\frac{1}{4}$ sec. cor.
 Intersect N. and S. line, 3 lks. S. of the cor. of secs.
 14, 15, 22 and 23.
 Thence
 S.89°59'W. on a true line, bet. secs. 15 and 22.
 Over rolling land, through scattering timber and under-
 growth.
 Asc. 155 ft.
 33.07 Wash, 5 lks. wide, course S.80°E. Continue ascent.
 40.07 Set an iron post, 3 ft. long, 1 in. diam., 20 ins. in the
 ground, in a mound of stone, for $\frac{1}{4}$ sec. cor., marked
 on brass cap

$\frac{1}{4}$	S15
$\frac{1}{4}$	S22
<hr/>	
1917	

48.00 From which
 A cedar, 22 ins. diam., brs. N.85°E.,
 189 lks. dist., marked $\frac{1}{4}$ S15 BT.
 No other trees within limits. Raise a mound of stone, 2
 ft. base, 1 $\frac{1}{2}$ ft. high, N. of cor.
 Continue ascent, 30 ft.
 80.14 Desc. gradual slope.
 The cor. of secs. 15, 16, 21 and 22.
 Land, rolling.
 Soil, 3rd and 4th rates.
 Timber, cedar.
 Undergrowth, sagebrush.

40.00 N.0°2'W. bet. secs. 15 and 16.
 Over rolling land, through scattering timber and under-
 growth.
 Set an iron post, 3 ft. long, 1 in. diam., 24 ins. in the
 ground, for $\frac{1}{4}$ sec. cor., marked on brass cap

S16	$\frac{1}{4}$ S15
<hr/>	
1917	

Survey of the
Subdivision of T. 33 N., R. 10 W.

BOOK 3616

Chains.

From which

A pinyon, 12 ins. diam., brs. N.51°E.,
111 lks. dist., marked $\frac{1}{4}$ S15 BT.

A pinyon, 8 ins. diam., brs. N.48°W.,
85 lks. dist., marked $\frac{1}{4}$ S16 BT.

80.00 Set an iron post, 3 ft. long, 2 ins. diam., 24 ins. in the
ground, for cor. of secs. 9, 10, 15 and 16, marked
on brass cap

T33N R10W
S 9 | S10

S16 | S15
1917

And raise a mound of stone, 2 ft. base, 1½ ft. high, W.
of cor.

Land, rolling.

Soil, 4th rate.

Timber, juniper and pinyon.

Undergrowth, sagebrush.

Good grazing.

40.00 N.89°59'E. on a random line, bet. secs. 10 and 15.
Set temp. $\frac{1}{4}$ sec. cor.

80.24 Intersect N. and S. line, 5 lks. N. of the cor. of secs.
10, 11, 14 and 15.

Thence

N.89°59'W. on a true line, bet. secs. 10 and 15.

Over rolling land, through scattering timber and under-
growth.

Asc. 100 ft., over gradual slope.

33.10 Desc. 30 ft.

40.12 Set an iron post, 3 ft. long, 1 in. diam., 22 ins. in the
ground, in a mound of stone, for $\frac{1}{4}$ sec. cor., marked
on brass cap

$\frac{1}{4}$ S10

S15
1917

From which

A pinyon, 14 ins. diam., brs. N.36°W.,
237 lks. dist., marked $\frac{1}{4}$ S10 BT.

A pinyon, 10 ins. diam., brs. S.79°E.,
110 lks. dist., marked $\frac{1}{4}$ S15 BT.

Continue descent, 275 ft.

53.90 Wash, 20 lks. wide, course N. Asc. 310 ft.

80.24 The cor. of secs. 9, 10, 15 and 16.

Land, rolling and mountainous.

Soil, rocky, 4th rate.

Timber, cedar and pinyon.

Undergrowth, sagebrush.

N.0°2'W. bet. secs. 9 and 10.

Over mountainous land, through scattering timber and
undergrowth.

Desc. 45 ft.

8.00 Asc. 15 ft.

12.86 Desc. 685 ft.

40.00 Set an iron post, 3 ft. long, 1 in. diam., on surface
rock, in a mound of stone, for $\frac{1}{4}$ sec. cor., marked on
brass cap

S 9 | S10
|
1917

And raise a mound of stone, 2 ft. base, 1½ ft. high,
W. of cor.

Survey of the
Subdivision of T. 33 N., R. 10 W.

Chains.

40.10 Box canyon, 40 lks. wide, course E. Asc. 690 ft.
67.54 Spur, slopes SE. Desc. 205 ft.
79.50 Right of canyon, bears NW and, SE. NW. and SE. Set an
iron post, 3 ft. long, 2 ins. diam., on surface rock,
in a mound of stone, for witness cor. to cor. of secs.
3, 4, 9 and 10, marked on brass cap

W C
T33N R10W
S 4 | S 3
S 9 | S 10
1917

From which

A pinyon, 16 ins. diam., brs. S.72°W.,
47 lks. dist., marked WC T33N R10W S9 BT.

A pinyon, 8 ins. diam., brs. N.68°W.,
163 lks. dist., marked WC T33N R10W S4 BT.

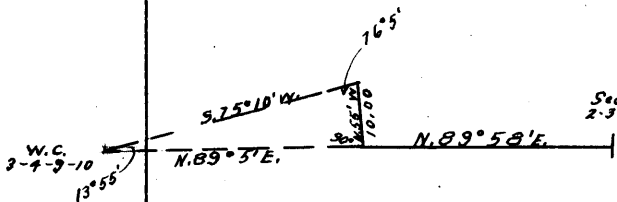
No other trees within limits. Raise a mound of stone,
2 ft. base, 1½ ft. high, W. of cor.

80.00 The true point for cor. falls where corner cannot be
permanently established.

Land, mountainous.
Soil, rocky, 4th rate.
Timber, pinyon and cedar.
Undergrowth, sagebrush.

From the true point for cor. of secs. 3, 4, 9 and 10,
S.89°59'E. on a random line, bet. secs. 3 and 10.
As it is impossible to measure S.89°59'E. from the true
point for cor. of secs. 3, 4, 9 and 10, I proceed as
follows:

From the witness cor. of secs. 3, 4, 9 and 10, 0.50 chs.
S.0°2'W. of the true point for
cor. of secs. 3, 4, 9 and 10,
set a flag ahead on a bearing
N.89°5'E., from which I measure
a base N.0°55'W., 10.00 chs.,
from the North end of which,
flag at the witness cor. to
cor. of secs. 3, 4, 9 and 10
brs. S.75°10'W. The three an-
gles of the triangle are there-
fore 90°, 13°55' and 76°5',



the sum of which is 180°. The distance triangulated
is given by tan. 76°5' x 10.00 = 4.03578 x 10.00 =
40.36 chs. The latitude and departure of this line
are given by the cos. and sin. of 89°5' x 40.36 =
.99987 x 40.36 and .201600 x 40.36 respectively, or
0.65 chs. North and 40.35 chs. East. From this point,
the cor. of secs. 2, 3, 10 and 11 is plainly visible
and brs. N.89°58'W.

40.35 From a point 40.35 chs. East and 0.15 chs. North of the
true point for cor. of secs. 3, 4, 9 and 10,
N.89°58'W. on a random line, continuing measurement.

80.35 Intersect the cor. of secs. 2, 3, 10 and 11.
Thence
S.89°53'W. on a true line, bet. secs. 3 and 10.
Over mountainous land, through scattering timber and
undergrowth.

35.00 Desc.
Parashont Wash, course SE. Asc.

40.17½ Set an iron post, 3 ft. long, 1 in. diam., 10 ins. in the
ground, in a mound of stone, with stone marked cross
(X) at base of post, for ½ sec. cor., marked on brass
cap

1 S 3
4 S 10
1921

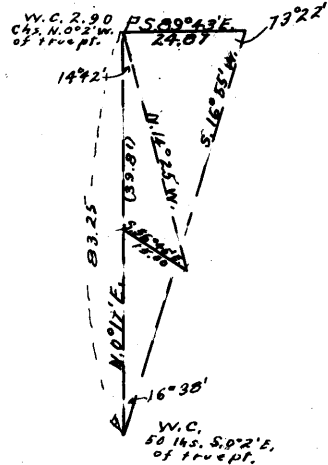
Survey of the
Subdivision of T. 33 N., R. 10 W.

Chains.

80.35

Continue ascent.
The true point for cor. of secs. 3, 4, 9 and 10.
Land, mountainous.
Soil, rocky, 4th rate.
Timber, cedar and pinyon.
Undergrowth, sagebrush.

From the witness cor. to cor. of secs. 3, 4, 9 and 10, 0.50 chs. S.0°2'E. of the true point for cor. of secs. 3, 4, 9 and 10, the witness cor. to cor. of secs. 3, 4, 33 and 34, on the N. bdy. of Tp., 2.90 chs. N.0°2'W. of true point for cor. of secs. 3, 4, 33 and 34, brs. N.0°17'E. I set a flag near the point for temporary $\frac{1}{4}$ sec. cor. of secs. 3 and 4, from which I measure a base S.56°45'E. 15.00 chs. From the East end of base, flag at the witness cor. to cor. of secs. 3, 4, 33 and 34 brs. N.14°25'W. From the flag at the witness cor. to cor. of secs. 3, 4, 33 and 34, measure a base S.89°43'E. 24.87 chs., from the E. end of which, flag at the witness cor. to cor. of secs. 3, 4, 9 and 10, brs. S.16°55'W.



In the larger triangle, the three angles are 90°, 73°22' and 16°38', the sum of which is 180°. The distance triangulated is given by $\tan. 73°22' \times 24.87 = 3.34732 \times 24.87 = 83.25$ chs. which leaves 79.85 as the distance between the respective true points for cors. In the smaller triangle, the three angles are 14°42', 42°20' and 122°58', the sum of which is 180°. The distance triangulated is given by the sine proportion:

$$\frac{X}{15.00} = \frac{\sin. 42°20'}{\sin. 14°42'}$$

log. 15.00	=	1.176091
log. sin. 14°42'	=	9.404420
		<u>1.771671</u>
log. sin. 42°20'	=	9.828301
log. X	=	<u>1.599972</u>
X	=	39.81 chs., or 42.94 chs.

N.0°17'E. of the true point for cor. of secs. 3, 4, 9 and 10.

40.00
79.85

Thence
S.0°17'W. 2.94 chs. to
Set temp. $\frac{1}{4}$ sec. cor.
Intersect the true point for cor. of secs. 3, 4, 33 and 34, on the N. bdy. of Tp., witnessed at 2.90 chs. N.0°2'W. by an iron post, as described in Book "F".

30.00
39.85

Thence
S.0°17'W. on a true line, bet. secs. 3 and 4.
Over mountainous land, through scattering timber and undergrowth. Distance by triangulation.
(Approx.) Parashont Wash, course SE as before described.
Set an iron post, 3 ft. long, 1 in. diam., 10 ins. in the ground, in a mound of stone, with stone marked cross (X) at base of post, for $\frac{1}{4}$ sec. cor., marked on brass cap

$\frac{1}{4}$
 S 4 | S 3
 1921

46.00

(Approx.) Wash, course E.

BOOK 3616

Survey of the
Subdivision of T. 33 N., R. 10 W.

Chains.	
79.85	<p>Asc., distance by triangulation. The true point for cor. of secs. 3, 4, 9 and 10. Land, mountainous. Soil, rocky, 4th rate. Timber, cedar and pinyon. Undergrowth, sagebrush and cactus.</p>
2.70 27.68 34.85 40.00	<p>From the standard cor. of secs. 32 and 33, on the S. bdy. of Tp., which is an iron post, hereinbefore described, N.0°3'W. bet. secs. 32 and 33. Over mountainous land, through scattering timber and undergrowth. Desc. Wash, 20 lks. wide, course S.60°W. Asc. 810 ft. Spur, slopes SW. Continue ascent. Top of ascent, brs. NW. and SE. Thence over rolling land. Set an iron post, 3 ft. long, 1 in. diam., 24 ins. in the ground, in a mound of stone, for $\frac{1}{4}$ sec. cor., marked on brass cap</p> <p style="text-align: center;"> $\begin{array}{c} \frac{1}{4} \\ S32 S33 \\ 1917 \end{array}$ </p>
68.50 80.00	<p>From which A pinyon, 10 ins. diam., brs. S.81°E., 7 lks. dist., marked $\frac{1}{4}$S33 BT. A pinyon, 12 ins. diam., brs. N.69°W., 184 lks. dist., marked $\frac{1}{4}$S32 BT. Wash, course NW. Set an iron post, 3 ft. long, 2 ins. diam., 24 ins. in the ground, for cor. of secs. 28, 29, 32 and 33, marked on brass cap</p> <p style="text-align: center;"> $\begin{array}{c} T33N R10W \\ S29 S28 \\ \hline S32 S33 \\ 1917 \end{array}$ </p>
40.00 79.72	<p>From which A pinyon, 10 ins. diam., brs. N.3$\frac{1}{2}$°W., 236 lks. dist., marked T33N R10W S29 BT. No other trees within limits. Raise a mound of stone, 2 ft. base, 1$\frac{1}{2}$ ft. high, W. of cor. Land, rolling and mountainous. Soil, rocky, 4th rate. Timber, juniper and pinyon. Undergrowth, sagebrush. Good grazing.</p>
14.10 22.25 39.86	<p>East on a random line, bet. secs. 28 and 33. Set temp. $\frac{1}{4}$ sec. cor. Intersect N. and S. line, 22 lks. S. of the cor. of secs. 27, 28, 33 and 34. Thence S.89°51'W. on a true line, bet. secs. 28 and 33. Over rolling land, through scattering timber and undergrowth. Asc. 65 ft. Desc. 45 ft. Asc. 50 ft. Set an iron post, 3 ft. long, 1 in. diam., 15 ins. in the ground, on bed rock, in a mound of stone, for $\frac{1}{4}$ sec. cor., marked on brass cap</p>

Survey of the
Subdivision of T. 33 N., R. 10 W.

Chains.

$\frac{1}{4}$ S28
 $\frac{1}{4}$ S33
1917

From which
 A cedar, 15 ins. diam., brs. N.2°E.,
 370 lks. dist., marked $\frac{1}{4}$ S28 BT.
 A cedar, 10 ins. diam., brs. S.9°10'W.,
 64 lks. dist., marked $\frac{1}{4}$ S33 BT.
 Continue ascent, 15 ft.
 Desc. 20 ft.
 Wash, 5 lks. wide, course N.60°E. Asc. 70 ft.
 Thence over nearly level land.
 The cor. of secs. 28, 29, 32 and 33.
 Land, rolling.
 Soil, 4th rate.
 Timber, cedar and pinyon.
 Undergrowth, sagebrush.
 Fair grazing.

43.10
50.56
67.75
79.72

N.0°3'W. bet. secs. 28 and 29.
 Over nearly level land, through scattering timber and
 undergrowth.
 40.00 Set an iron post, 3 ft. long, 1 in. diam., 24 ins. in the
 ground, in a mound of stone, for $\frac{1}{4}$ sec. cor., marked
 on brass cap

$\frac{1}{4}$
S29 | S28
1917

From which
 A scrub oak, 6 ins. diam., brs. N.73°E.,
 83 lks. dist., marked $\frac{1}{4}$ S28 BT.
 No other trees within limits. Raise a mound of stone, 2
 ft. base, 1 $\frac{1}{2}$ ft. high, W. of cor.
 80.00 Set an iron post, 3 ft. long, 2 ins. diam., 24 ins. in the
 ground, for cor. of secs. 20, 21, 28 and 29, marked on
 brass cap

T33N R10W
S20 | S21
 $\frac{1}{4}$ S29 | S28
1917

From which
 A juniper, 8 ins. diam., brs. N.49 $\frac{1}{2}$ °E.,
 211 lks. dist., marked T33N R10W S21 BT.
 A juniper, 10 ins. diam., brs. N.3 $\frac{1}{2}$ °W.,
 607 lks. dist., marked T33N R10W S20 BT.
 No other trees within limits. Raise a mound of stone,
 2 ft. base, 1 $\frac{1}{2}$ ft. high, W. of cor.
 Land, nearly level.
 Soil, rocky, 4th rate.
 Timber, juniper and pinyon.
 Undergrowth, sagebrush.
 Good grazing.

N.89°51'E. on a random line, bet. secs. 21 and 28.
 40.00 Set temp. $\frac{1}{4}$ sec. cor.
 79.72 Intersect N. and S. line, 28 lks. N. of the cor. of secs.
 21, 22, 27 and 28.
 Thence
 N.89°57'W. on a true line, bet. secs. 21 and 28.
 Over rolling land, through scattering timber and under-
 growth.
 Desc.

Survey of the
Subdivision of T. 33 N., R. 10 W.

Chains.

7.00
39.86

Wash, 10 lks. wide, course S.65°E. Asc. 115 ft.
Set an iron post, 3 ft. long, 1 in. diam., 8 ins. in the ground, in a mound of stone, for $\frac{1}{4}$ sec. cor., marked on brass cap

$\frac{1}{4}$ S21
S28
1917

And raise a mound of stone, 2 ft. base, $1\frac{1}{2}$ ft. high, N. of cor.

79.72

Desc. 85 ft.
The cor. of secs. 20, 21, 28 and 29.
Land, rolling.
Soil, 2nd and 3rd rates.
Timber, cedar.
Undergrowth, sagebrush.
Fair grazing.

26.60

35.00

40.00

N.0°3'W. bet. secs. 20 and 21.
Over rolling land, through scattering timber and undergrowth.

Desc. 45 ft.

Wash, 5 lks. wide, course NE.

Set an iron post, 3 ft. long, 1 in. diam., 24 ins. in the ground, in a mound of stone, for $\frac{1}{4}$ sec. cor., marked on brass cap

$\frac{1}{4}$ S20 | S21
1917

From which

A juniper, 8 ins. diam., brs. N.51°E.,
110 lks. dist., marked $\frac{1}{4}$ S21 BT.

A juniper, 20 ins. diam., brs. N.26°W.,
186 lks. dist., marked $\frac{1}{4}$ S20 BT.

80.00

Set an iron post, 3 ft. long, 2 ins. diam., 24 ins. in the ground, for cor. of secs. 16, 17, 20 and 21, marked on brass cap

T33N R10W
S17 | S16
S20 | S21
1917

From which

A juniper, 8 ins. diam., brs. N.36°E.,
42 lks. dist., marked T33N R10W S16 BT.

A pinyon, 12 ins. diam., brs. S.83 $\frac{1}{2}$ °E.,
170 lks. dist., marked T33N R10W S21 BT.

A juniper, 12 ins. diam., brs. S.50°W.,
65 lks. dist., marked T33N R10W S20 BT.

A juniper, 12 ins. diam., brs. N.52°W.,
124 lks. dist., marked T33N R10W S17 BT.

Land, rolling.

Soil, rocky, 4th rate.

Timber, juniper and pinyon.

Undergrowth, sagebrush.

Good grazing.

40.00

79.86

S.89°57'E. on a random line, bet. secs. 16 and 21.

Set temp. $\frac{1}{4}$ sec. cor.

Intersect N. and S. line, 2 lks. S. of the cor. of secs. 15, 16, 21 and 22.

Thence

N.89°58'W. on a true line, bet. secs. 16 and 21.

Over rolling and mountainous land, through scattering

Survey of the
Subdivision of T. 33 N., R. 10 W.

Chains.

timber and undergrowth.
 Desc. 140 ft.
 14.97 Wash, 30 lks. wide, course N. Asc. 70 ft.
 19.50 Desc.
 25.00 Wash, 15 lks. wide, course NE. Asc. 20 ft., over gradual slope.
 39.93 Set an iron post, 3 ft. long, 1 in. diam., 24 ins. in the ground, in a mound of stone, for $\frac{1}{4}$ sec. cor., marked on brass cap

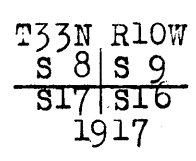
$$\begin{array}{r} \frac{1}{4} \text{ S16} \\ \frac{1}{4} \text{ S21} \\ \hline 1917 \end{array}$$

From which
 A juniper, 16 ins. diam., brs. N.65°W.,
 94 lks. dist., marked $\frac{1}{4}$ S16 BT.
 A pinyon, 10 ins. diam., brs. S.60°W.,
 110 lks. dist., marked $\frac{1}{4}$ S21 BT.
 Continue gradual ascent, 100 ft.
 64.00 Thence over nearly level land.
 79.86 The cor. of secs. 16, 17, 20 and 21.
 Land, nearly level, rolling and mountainous.
 Soil, rocky, 4th rate.
 Timber, juniper and pinyon.
 Undergrowth, sagebrush.
 Fair grazing.

N.0°3'W. bet. secs. 16 and 17.
 Over nearly level land, through scattering timber and undergrowth.
 40.00 Set an iron post, 3 ft. long, 1 in. diam., 24 ins. in the ground, in a mound of stone, for $\frac{1}{4}$ sec. cor. marked on brass cap

$$\begin{array}{r} \frac{1}{4} \\ \text{S17} \uparrow \text{S16} \\ \hline 1917 \end{array}$$

From which
 A juniper 14 ins. diam., brs. N.61°E.,
 30 lks. dist., marked $\frac{1}{4}$ S16 BT.
 A juniper, 12 ins. diam., brs. N.65°W.,
 142 lks. dist., marked $\frac{1}{4}$ S17 BT.
 42.60 Desc. 70 ft.
 52.93 Wash, 20 lks. wide, course NE. Asc. 25 ft.
 65.05 Desc. 65 ft.
 67.84 Wash, 40 lks. wide, course SE. Asc. 120 ft.
 80.00 Set an iron post, 3 ft. long, 2 ins. diam., 24 ins. in the ground, in a mound of stone, for cor. of secs. 8, 9, 16 and 17, marked on brass cap



From which
 A juniper, 10 ins. diam., brs. N.25°E.,
 56 lks. dist., marked T33N R10W S9 BT.
 A pinyon, 8 ins. diam., brs. S.43 $\frac{1}{2}$ °E.,
 110 $\frac{1}{2}$ lks. dist., marked T33N R10W S16 BT.
 A pinyon, 10 ins. diam., brs. S.39°W.,
 149 lks. dist., marked T33N R10W S17 BT.
 A pinyon, 12 ins. diam., brs. N.55 $\frac{1}{2}$ °W.,
 180 lks. dist., marked T33N R10W S8 BT.
 Land, nearly level and mountainous.
 Soil, rocky, 4th rate.
 Timber, juniper and pinyon.
 Undergrowth, sagebrush.

Survey of the
Subdivision of T. 33 N., R. 10 W.

Chains.

Good grazing.

40.00 S. 89° 58' E. on a random line, bet. secs. 9 and 16.
Set temp. $\frac{1}{4}$ sec. cor.
79.84 Intersect N. and S. line, 7 lks. N. of the cor. of secs.
9, 10, 15 and 16.

Thence

N. 89° 55' W. on a true line, bet. secs. 9 and 16.
Over mountainous land, through scattering timber and
undergrowth.

Desc.

11.10 Desc. 505 ft.

24.50 Wash, 35 lks. wide, course NE. Asc. 435 ft.

39.92 Set an iron post, 3 ft. long, 1 in. diam., 24 ins. in the
ground, in a mound of stone, for $\frac{1}{4}$ sec. cor., marked
on brass cap

$\frac{1}{4}$ S 9
S 16
1917

From which

A pinyon, 10 ins. diam., brs. N. 35° E.,
73 lks. dist., marked $\frac{1}{4}$ S 9 BT.

A pinyon, 8 ins. diam., brs. S. 23 $\frac{1}{2}$ ° W.,
110 lks. dist., marked $\frac{1}{4}$ S 16 BT.

Desc. 215 ft.

58.35 Wash, 20 lks. wide, course NE. Asc. 35 ft.

60.00 Same wash, course SE. Continue ascent.

65.00 Desc. 70 ft.

68.30 Same wash, 30 lks. wide, course NE. Asc. 115 ft.

79.84 The cor. of secs. 8, 9, 16 and 17.

Land, mountainous.

Soil, rocky, 4th rate.

Timber, cedar and pinyon.

Undergrowth, sagebrush.

Fair grazing.

N. 0° 3' W. bet. secs. 8 and 9.

Over rolling land, through scattering timber and under-
growth.

Desc. 155 ft.

40.00 Set an iron post, 3 ft. long, 1 in. diam., 24 ins. in the
ground, in a mound of stone, for $\frac{1}{4}$ sec. cor., marked
on brass cap

$\frac{1}{4}$
S 8 | S 9
1917

From which

A juniper, 8 ins. diam., brs. N. 6 $\frac{1}{2}$ ° E.,
160 lks. dist., marked $\frac{1}{4}$ S 9 BT.

A juniper, 10 ins. diam., brs. S. 57° W.,
203 lks. dist., marked $\frac{1}{4}$ S 8 BT.

Continue descent, 345 ft.

64.26 Wash, 50 lks. wide, course E. Asc. 290 ft.

72.94 Thence over rolling land, brs. E. and W.

80.00 Set an iron post, 3 ft. long, 2 ins. diam., 24 ins. in the
ground, for cor. of secs. 4, 5, 8 and 9, marked on
brass cap

T33N R10W
S 5 | S 4
S 8 | S 9
1917

Survey of the
Subdivision of T. 33 N., R. 10 W.

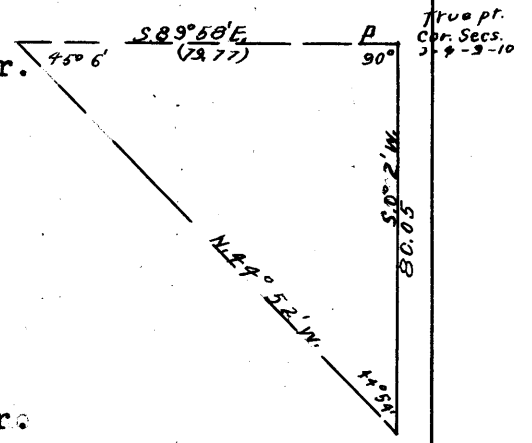
Chains.

From which

- A juniper, 8 ins diam., brs. N.23 $\frac{3}{4}$ °E.,
85 lks. dist., marked T33N R10W S4 BT.
- A juniper, 12 ins. diam., brs. S.47 $\frac{1}{2}$ °E.,
141 lks. dist., marked T33N R10W S9 BT.
- A juniper, 8 ins. diam., brs. S.49 $\frac{1}{2}$ °W.,
164 lks. dist., marked T33N R10W S8 BT.
- A pinyon, 14 ins. diam., brs. N.74 $\frac{1}{2}$ °W.,
265 lks. dist., marked T33N R10W S5 BT.

Land, rolling and mountainous.
Soil, rocky, 4th rate.
Timber, juniper and pinyon.
Undergrowth, sagebrush.
Good grazing.

S.89°55'E. on a random line, bet. secs. 4 and 9. A flag
7.56 chs. W. of true point for cor. of secs. 3, 4, 9 and
10 is plainly visible, and brs. S.89°58'E. From
the true point for cor. of secs.
3, 4, 9 and 10, measure a base
S.0°2'W. 80.05 chs., from the
S. end of which, flag at the cor.
of secs. 4, 5, 8 and 9 brs.
N.44°52'W. The three angles of
the triangle are therefore 90°,
44°54' and 45°6', the sum of
which is 180°. The distance
triangulated is given by tan.
44°54' X 80.05 = .99652 X 80.05
= 79.77 chs.



Thence
N.89°58'W. 37.76 chs., to a point
42.01 chs. S.89°58'E. of the cor.
of secs. 4, 5, 8 and 9, where I
42.01 Set temp. witness cor. to $\frac{1}{4}$ sec. cor.
79.77 Intersect the true point for cor. of secs. 3, 4, 9 and 10,
witnessed 0.50 chs. S.0°2'E. as hereinbefore described.
Thence (from the witness cor.)
N.89°58'W. on offset line, through sec. 9.
Over mountainous land, through scattering timber and
undergrowth.
Asc. 340 ft.
7.56 Top of slope, brs. NW. and SE. Thence set back N.0°2'W.
0.50 chs., and continue
N.89°58'W. on true line, bet. secs. 4 and 9.
21.25 Desc. 270 ft.
35.55 Asc. 20 ft.
37.76 Set an iron post, 3 ft. long, 1 in. diam., 24 ins. in
the ground, in a mound of stone, for witness cor. to
 $\frac{1}{4}$ sec. cor., marked on brass cap

WC $\frac{1}{4}$ S 4
S 9
1917

From which

A pinyon, 16 ins. diam., brs. S.45°W., 93 lks.
dist., marked WC $\frac{1}{4}$ S9 BT.
No other trees within limits. Raise a mound of stone, 2
ft. base, 1 $\frac{1}{2}$ ft. high, N. of cor.

Thence by triangulation.
The true point for $\frac{1}{4}$ sec. cor. is inaccessible.
79.77 The cor. of secs. 4, 5, 8 and 9.
Land, mountainous.
Soil, rocky, 4th rate.
Timber, juniper and pinyon.
Undergrowth, sagebrush.
Fair grazing.

Survey of the
Subdivision of T. 33 N. R. 10 W.

Chains.

N.0°16'E. on a random line, bet. secs. 4 and 5.
 40.00 Set temp. $\frac{1}{4}$ sec. cor.
 79.82 Intersect N. bdy. of Tp., 37 lks. E. of the cor. of
 secs. 4, 5, 32 and 33, on the N. bdy. of Tp., which is
 an iron post, described in Book "F".
 Thence
 S.0°1'W. on a true line, bet. secs. 4 and 5.
 Over mountainous land, through scattering timber and
 undergrowth.
 Asc. 590 ft.
 33.65 Thence over rolling land.
 39.82 Set an iron post, 3 ft. long, 1 in. diam., 24 ins. in the
 ground, in a mound of stone, for $\frac{1}{4}$ sec. cor., marked
 on brass cap

$\frac{1}{4}$
 S 5 | S 4
 1917

From which
 A pinyon, 10 ins. diam., brs. S.1 $\frac{1}{2}$ °E.,
 505 lks. dist., marked $\frac{1}{4}$ S4 BT.
 No other trees within limits. Raise a mound of stone, 2
 ft. base, 1 $\frac{1}{2}$ ft. high, W. of cor.
 Desc. 95 ft.
 53.75 Wash, 15 lks. wide, course SE. Asc. 85 ft.
 60.36 Thence over rolling land.
 79.82 The cor. of secs. 4, 5, 8 and 9.
 Land, mountainous.
 Soil, rocky, 4th rate.
 Timber, pinyon and juniper.
 Undergrowth, sagebrush.
 Good grazing.

From the standard cor. of secs. 31 and 32, on the S.
 bdy. of Tp., which is an iron post, hereinbefore de-
 scribed,
 N.0°3'W. bet. secs. 31 and 32.
 Over mountainous land, through scattering timber and under-
 growth.
 Asc. 160 ft.
 3.40 Wash, 6 ft. deep, course SW. Continue ascent.
 22.65 Desc. 25 ft.
 25.75 Wash, 20 lks. wide, course SW. Asc. 135 ft.
 40.00 Set an iron post, 3 ft. long, 1 in. diam., 12 ins. in the
 ground, in a mound of stone, for $\frac{1}{4}$ sec. cor., marked
 on brass cap

$\frac{1}{4}$
 S31 | S32
 1917

And raise a mound of stone, 2 ft. base, 1 $\frac{1}{2}$ ft. high,
 W. of cor.
 Desc. 30 ft.
 48.00 Asc. 20 ft.
 52.00 Desc. 80 ft.
 55.18 Wash, 20 lks. wide, course SW. Asc. 260 ft.
 68.45 Desc. 45 ft.
 80.00 Set an iron post, 3 ft. long, 2 ins. diam., on bed rock,
 in a mound of stone, for cor. of secs. 29, 30, 31 and
 32, marked on brass cap

T33N R10W
 S30 | S29
 S31 | S32
 1917

Survey of the
Subdivision of T. 33 N., R. 10 W.

Chains.

And raise a mound of stone, 2 ft. base, 1½ ft. high,
W. of cor.
Land, mountainous.
Soil, rocky, 4th rate.
Timber, cedar and pinyon.
Undergrowth, sagebrush.

40.00 East on a random line, bet. secs. 29 and 32.
Set temp. ¼ sec. cor.
79.94 Intersect N. and S. line, 12 lks. N. of the cor. of secs.
28, 29, 32 and 33.
Thence
N.89°55'W. on a true line, bet. secs. 29 and 32.
Over rolling land, through scattering timber and under-
growth.
15.00 Desc. 260 ft.
31.41 Wash, 30 lks. wide, course NW. Asc. 210 ft.
37.10 Thence over rolling land.
39.97 Set an iron post, 3 ft. long, 1 in. diam., 10 ins. in the
ground, on bed rock, in a mound of stone, for ¼ sec.
cor., marked on brass cap

¼ S29
S32
1917

From which
A pinyon, 10 ins. diam., brs. S.91¼°W.,
290 lks. dist., marked ¼ S32 BT.
No other trees within limits. Raise a mound of stone, 2
ft. base, 1½ ft. high, N. of cor.
Desc. 1220 ft.
79.94 The cor. of secs. 29, 30, 31 and 32.
Land, mountainous.
Soil, rocky, 4th rate.
Timber, cedar and pinyon.
Undergrowth, sagebrush.

40.00 West on a random line, bet. secs. 30 and 31.
Set temp. ¼ sec. cor.
79.92 Fall 12 lks. N. of the cor. of secs. 25, 30, 31 and 36,
on the W. bdy. of Tp., which is an iron post, herein-
before described.
Thence
N.89°55'E. on a true line, bet. secs. 30 and 31.
Over mountainous land, through scattering timber and under-
growth.
Asc. 805 ft.
25.03 Spur, slopes S. Desc. 845 ft.
34.46 Top of bluff, 190 ft. high, Brs. N. and S. Continue
descent.
39.92 Set an iron post, 3 ft. long 1 in. diam., 24 ins. in the
ground, in a mound of stone, for ¼ sec. cor., marked on
brass cap

¼ S30
S31
1917

And raise a mound of stone, 2 ft. base, 1½ ft. high, N.
of cor.
Continue descent, 505 ft.
69.77 Wash, 90 lks. wide, course S. Asc. 185 ft.
79.92 The cor. of secs. 29, 30, 31 and 32.
Land, mountainous.
Soil, rocky, 4th rate.

Survey of the
Subdivision of T. 33 N., R. 10 W.

Chains.

Timber, cedar and pinyon.
Undergrowth, sagebrush.

N.0°3'W bet. secs. 29 and 30.
Over mountainous land, through scattering timber and
undergrowth.

Asc. 30 ft.

1.44 Top of red sandstone ledge, brs. E. and W. Continue
ascent, 225 ft.

16.09 Top of ledge, brs. E. and W. Desc. 155 ft.

39.04 Wash, 40 lks. wide, course S.70°W. Asc. 40 ft.

40.00 Set an iron post, 3 ft. long, 1 in. diam., 18 ins. in the
ground, in a mound of stone, for $\frac{1}{4}$ sec. cor., marked on
brass cap

$\frac{1}{4}$
S30 | S29
1917

And raise a mound of stone, 2 ft. base, 1 $\frac{1}{2}$ ft. high, W.
of cor.

Asc. 825 ft.

48.83 Top of bluff, brs. E. and W. Continue ascent.

59.15 Spur, slopes E. Desc. 90 ft.

80.00 Set an iron post, 3 ft. long, 2 ins. diam., 12 ins. in the
ground, in a mound of stone, for cor. of secs. 19, 20,
29 and 30, marked on brass cap

T33N R10W
S19 | S20
S30 | S29
1917

From which

A cedar, 8 ins. diam., brs. N.87°5'E.,
64 lks. dist., marked T33N R10W S20 BT.

A pinyon, 10 ins. diam., brs. S.80 $\frac{1}{4}$ °W.,
83 lks. dist., marked T33N R10W S30 BT.

No other trees within limits. Raise a mound of stone, 2
ft. base, 1 $\frac{1}{2}$ ft. high, W. of cor.

Land, mountainous.

Soil, rocky, 4th rate.

Timber, cedar and pinyon.

Undergrowth, sagebrush.

40.00 S.89°55'E. on a random line, bet. secs. 20 and 29.

79.82 Set temp. $\frac{1}{4}$ sec. cor.

Intersect N. and S. line, 23 lks. S. of the cor. of secs.
20, 21, 28 and 29.

Thence

S.89°55'W. on a true line, bet. secs. 20 and 29.

Over rolling land, through scattering undergrowth and
timber.

Asc. gradual slope, 55 ft.

30.47 Desc. 70 ft.

39.91 Set an iron post, 3 ft. long, 1 in. diam., 6 ins. in the
ground, in a mound of stone, for $\frac{1}{4}$ sec. cor., marked
on brass cap

$\frac{1}{4}$ S20
S29
1917

From which

A cedar, 6 ins. diam., brs. N.40 $\frac{1}{2}$ °W.,
201 lks. dist., marked $\frac{1}{4}$ S20 BT.

Survey of the
Subdivision of T. 33 N., R. 10 W.

Chains.

A pinyon, 12 ins. diam., brs. S.76°E.,
235 lks. dist., marked $\frac{1}{4}$ S29 BT.
Asc. 35 ft.
47.65 Desc. 570 ft.
75.19 Wash, 40 lks. wide, course S. Asc. 100 ft.
79.82 The cor. of secs. 19, 20, 29 and 30.
Land, mountainous and rolling.
Soil, rocky, 4th rate.
Timber, cedar and pinyon.
Undergrowth, sagebrush.

S.89°55'W. on a random line, bet. secs. 19 and 30.
40.00 Set temp. $\frac{1}{4}$ sec. cor.
79.98 Fall 21 lks. N. of the cor. of secs. 19, 24, 25 and 30,
on the W. bdy. of Tp., which is an iron post, herein-
before described.
Thence
N.89°46'E. on a true line, bet. secs. 19 and 30.
Over rolling land, through scattering timber and
undergrowth.
10.00 Leave rolling, enter mountainous land, brs. NW. and SE.
Desc. 345 ft.
20.60 Wash, 30 lks. wide, course S.60°E. Asc. 290 ft.
31.45 Spur, slopes S. Desc. 180 ft.
37.45 Wash, 10 lks. wide, course S. Asc. 40 ft.
39.98 Set an iron post, 3 ft. long, 1 in. diam., 12 ins. in the
ground, in a mound of stone, for $\frac{1}{4}$ sec. cor., marked on
brass cap.

$\frac{1}{4}$ S19

 S30
 1917

And raise a mound of stone, 2 ft. base, 1 $\frac{1}{2}$ ft. high,
N. of cor.
Continue ascent, 210 ft.
51.70 Spur, slopes SE. Desc. 545 ft.
79.98 The cor. of secs. 19, 20, 29 and 30.
Land, mountainous and rolling.
Soil, rocky, 4th rate.
Timber, cedar and pinyon.
Undergrowth, sagebrush.
Fair grazing.

N.0°3'W. bet. secs. 19 and 20.
Over rolling land, through scattering timber and under-
growth.
Desc. 30 ft.
9.50 Asc. 35 ft.
11.80 Desc. 85 ft.
14.28 Wash, 40 lks. wide, course S.65°E. Asc. 290 ft.
40.00 Set an iron post, 3 ft. long, 1 in. diam., 6 ins. in the
ground, in a mound of stone, for $\frac{1}{4}$ sec. cor., marked
on brass cap

$\frac{1}{4}$
S19 | S20
 |
 1917

From which
A pinyon, 10 ins. diam., brs. N.23°50'E.,
118 lks. dist., marked $\frac{1}{4}$ S20 BT.
A pinyon, 12 ins. diam., brs. N.62 $\frac{1}{4}$ °W.,
173 lks. dist., marked $\frac{1}{4}$ S19 BT.
Continue ascent, 160 ft.
46.65 Desc. 105 ft.

Survey of the
Subdivision of T. 33 N., R. 10 W.

Chains. 52.56 57.64 80.00	<p>Wash, 10 lks. wide, course S.80°W. Asc. 130 ft. Thence over rolling land. Set an iron post, 3 ft. long, 2 ins. diam., 15 ins. in the ground, in a mound of stone, for cor. of secs. 17, 18, 19 and 20, marked on brass cap</p> <p style="text-align: center;">T33N R10W S18 S17 ----- S19 S20 1917</p> <p>From which A cedar, 14 ins. diam., brs. N.38°40'E., 253 lks. dist., marked T33N R10W S17 BT. A cedar, 6 ins. diam., brs. S.82°5'E., 221 lks. dist., marked T33N R10W S20 BT. No other trees within limits. Raise a mound of stone, 2 ft. base, 1½ ft. high, W. of cor. Land, rolling and mountainous. Soil, rocky, 4th rate. Timber, cedar and pinyon. Undergrowth, sagebrush. Fair grazing.</p>
40.00 80.00 40.00	<p>N.89°55'E. on a random line, bet. secs. 17 and 20. Set temp. ¼ sec. cor; Intersect N. and S. line, 19 lks. S. of the cor. of secs. 16, 17, 20 and 21. Thence S.89°47'W. on a true line, bet. secs. 17 and 20. Over rolling land, through scattering timber and undergrowth. Set an iron post, 3 ft. long, 1 in. diam., 24 ins. in the ground, for ¼ sec. cor., marked on brass cap</p> <p style="text-align: center;">¼ S17 ----- S20 1917</p> <p>From which A juniper, 8 ins. diam., brs. N.19°W., 375 lks. dist., marked ¼ S17 BT. A juniper, 6 ins. diam., brs. S.51½°E., 16 lks. dist., marked ¼ S20 BT.</p>
80.00	<p>The cor. of secs. 17, 18, 19 and 20. Land, rolling. Soil, rocky, 4th rate. Timber, juniper and pinyon. Undergrowth, sagebrush.</p>
40.00 79.92 22.25 39.92	<p>S.89°46'W. on a random line, bet. secs. 18 and 19. Set temp. ¼ sec. cor. Fall 23 lks. S. of the cor. of secs. 13, 18, 19 and 24, on the W. bdy. of Tp., which is an iron post, hereinbefore described. Thence N.89°56'E. on a true line, bet. secs. 18 and 19. Over rolling and mountainous land, through scattering timber and undergrowth. Desc. 215 ft. Wash, 10 lks. wide, course S. Asc. 130 ft. Set an iron post, 3 ft. long, 1 in. diam., 15 ins. in the ground, in a mound of stone, for ¼ sec. cor., marked on brass cap</p> <p style="text-align: center;">¼ S18 ----- S19 1917</p>

Survey of the
Subdivision of T. 33 N., R. 10 W.

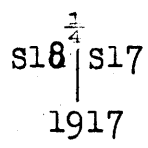
Chains.

From which
 A cedar, 12 ins. diam., brs. N.17°20'W.,
 157 lks. dist., marked $\frac{1}{2}$ S18 BT.
 A cedar, 6 ins. diam., brs. S.54°40'W.,
 116 lks. dist., marked $\frac{1}{2}$ S19 BT.
 Desc. 85 ft.
 Wash, 10 lks; wide, course S. Asc. 100 ft.
 Desc. 30 ft.
 Asc. 45 ft.
 The cor. of secs. 17, 18, 19 and 20.
 Land, rolling and mountainous.
 Soil, rocky, 4th rate.
 Timber, cedar and pinyon.
 Undergrowth, sagebrush.

47.25
60.37
68.35
79.92

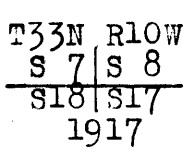
N.0°3'W. bet. secs. 17 and 18.
 Over rolling land, through scattering timber and under-
 growth.
 Thence over nearly level land.
 Desc. 30 ft.
 Set an iron post, 3 ft. long, 1 in. diam., 16 ins. in the
 ground, on bed rock, in a mound of stone, for $\frac{1}{2}$ sec.
 cor., marked on brass cap

6.00
25.40
40.00



From which
 A cedar, 14 ins. diam., brs. S.78°50'E.,
 224 lks. dist., marked $\frac{1}{2}$ S17 BT.
 A cedar, 8 ins. diam., brs. N.65°W.,
 90 lks. dist., marked $\frac{1}{2}$ S18 BT.
 Desc. 100 ft.
 Wash, 10 lks. wide, course NE. Asc. 30 ft.
 Set an iron post, 3 ft. long, 2 ins. diam., on bed rock,
 in a mound of stone, with stone marked cross (X) at
 base of post, for cor. of secs. 7, 8, 17 and 18,
 marked on brass cap

70.95
80.00



From which
 A cedar, 10 ins. diam., brs. S.41°20'E.,
 74 lks. dist., marked T33N R10W S17 BT.
 A cedar, 6 ins. diam., brs. S.86°10'W.,
 67 lks. dist., marked T33N R10W S18 BT.
 A cedar, 12 ins. diam., brs. N.28°W.,
 188 lks. dist., marked T33N R10W S7 BT.
 Land, rolling and nearly level.
 Soil, 2nd and 3rd rates.
 Timber, cedar.
 Undergrowth, sagebrush.

N.89°47'E. on a random line, bet. secs. 8 and 17.
 Set temp. $\frac{1}{2}$ sec. cor.
 Intersect the cor. of secs. 8, 9, 16 and 17.
 Thence
 S.89°47'W. on a true line, bet. secs. 8 and 17.
 Over rolling and mountainous land, through scattering
 timber and undergrowth.
 Desc. 125 ft.

40.00
79.96

Survey of the
Subdivision of T. 33 N., R. 10 W.

Chains.

14.55 Wash, 20 lks. wide, course SE. Thence along N. slope.
24.75 Same wash, 15 lks. wide, course NE. Asc. 110 ft.
39.98 Set an iron post, 3 ft. long, 1 in. diam., 24 ins. in the
ground, in a mound of stone, for $\frac{1}{4}$ sec. cor., marked
on brass cap

$$\frac{\frac{1}{4} S 8}{S17}$$

1917

From which

A juniper, 8 ins. diam., brs. N.8°W.,
193 lks. dist., marked $\frac{1}{4}$ S8 BT.

A juniper, 8 ins. diam., brs. S.59 $\frac{1}{2}$ °E.,
353 lks. dist., marked $\frac{1}{4}$ S17 BT.

Continue ascent, 20 ft.

46.50 Desc. 35 ft.
54.45 Asc. 10 ft.
64.15 Desc. 80 ft.
75.35 Wash, 15 lks. wide, course N.25°E. Asc. 30 ft.
79.96 The cor. of secs. 7, 8, 17 and 18.
Land, rolling and mountainous.
Soil, rocky, 4th rate.
Timber, juniper and pinyon.
Undergrowth, sagebrush.

40.00 S.89°56'W. on a random line, bet. secs. 7 and 18.
Set temp. $\frac{1}{4}$ sec. cor.
79.79 Fall 5 lks. S. of the cor. of secs. 7, 12, 13 and 18, on
the W. bdy. of Tp., which is an iron post, hereinbefore
described.

Thence

N.89°58'E. on a true line, bet. secs. 7 and 18.

Over rolling land, through scattering timber and under-
growth.

Desc.

1.97 Wash, 30 lks. wide, course N. Asc. 85 ft.
14.45 Desc. 80 ft.
39.79 Set an iron post, 3 ft. long, 1 in. diam., 24 ins. in the
ground, for $\frac{1}{4}$ sec. cor., marked on brass cap

$$\frac{\frac{1}{4} S 7}{S18}$$

1917

From which

A cedar, 14 ins. diam., brs. N.15°50'W.,
64 lks. dist., marked $\frac{1}{4}$ S7 BT.

A cedar, 16 ins. diam., brs. S.83°5'E.,
274 lks. dist., marked $\frac{1}{4}$ S18 BT.

Desc. 60 ft.

43.40 Wash, 10 lks. wide, course N.15°E. Asc. 45 ft.
67.80 Desc. 55 ft.
79.79 The cor. of secs. 7, 8, 17 and 18.
Land, rolling.
Soil, rocky, 4th rate.
Timber, cedar and pinyon.
Undergrowth, sagebrush.

N.0°3'W. bet. secs. 7 and 8.

Over rolling land, through scattering timber and under-
growth.

Asc. 60 ft.

15.65 Desc. 100 ft.
40.00 Set an iron post, 3 ft. long, 1 in. diam., 18 ins. in the
ground, on bed rock, in a mound of stone, for $\frac{1}{4}$ sec.

Survey of the
Subdivision of T. 33 N., R. 10 W.

Chains.

cor., marked on brass cap

$\frac{1}{4}$
S 7 | S 8
1917

From which

- A cedar, 18 ins. diam., brs. N.6°20'E.,
242 lks. dist., marked $\frac{1}{4}$ S8 BT.
- A cedar, 18 ins. diam., brs. S.14°W.,
215 lks. dist., marked $\frac{1}{4}$ S7 BT.

Asc. 30 ft.

48.00
70.88
79.00
80.00

Desc. 225 ft.

Wash, 10 lks. wide, course N. Continue descent, 150 ft.

Leave wash, course NE.

Set an iron post, 3 ft. long, 2 ins. diam., 8 ins. in the ground, in a mound of stone, with stone marked cross (X) at base of post, for cor. of secs. 5, 6, 7 and 8, marked on brass cap

T33N R10W
S 6 | S 5
S 7 | S 8
1917

From which

- A pinyon, 16 ins. diam., brs. N.85°40'E.,
113 lks. dist., marked T33N R10W S5 BT.
- A cedar, 6 ins. diam., brs. S.5°50'E.,
26 lks. dist., marked T33N R10W S8 BT.
- A pinyon, 8 ins. diam., brs. N.8°55'W.,
26 lks. dist., marked T33N R10W S6 BT.

Land, rolling.

Soil, 2nd and 3rd rates.

Timber, cedar and pinyon.

Undergrowth, sagebrush.

N.89°47'E. on a random line, bet. secs. 5 and 8.

40.00
79.98

Set temp. $\frac{1}{4}$ sec. cor.

Intersect N. and S. line, 2 lks. N. of the cor. of secs. 4, 5, 8 and 9.

Thence

S.89°48'W. on a true line, bet. secs. 5 and 8.

Over nearly level land, through scattering timber and undergrowth.

31.95
39.99

Asc. 25 ft.

Set an iron post, 3 ft. long, 1 in. diam., 24 ins. in the ground, and in a mound of stone, for $\frac{1}{4}$ sec. cor., marked on brass cap

$\frac{1}{4}$ S 5
S 8
1917

From which

- A pinyon, 8 ins. diam., brs. N.2°E.,
328 lks. dist., marked $\frac{1}{4}$ S5 BT.
- A juniper, 8 ins. diam., brs. S.51°W.,
117 lks. dist., marked $\frac{1}{4}$ S8 BT.

65.60
78.69
79.98

Desc. 320 ft.

Wash, 10 lks. wide, course NE. Asc.

The cor. of secs. 5, 6, 7 and 8.

Land, nearly level, rolling and mountainous.

Soil, rocky, 4th rate.

Timber, pinyon and juniper.

Undergrowth, sagebrush.

Survey of the
Subdivision of T. 33 N., R. 10 W.

Chains.

S.89°58'W. on a random line, bet. secs. 6 and 7.
40.00 Set temp. $\frac{1}{4}$ sec. cor.
79.74 Fall 2 lks. S. of the cor. of secs. 1, 6, 7 and 12, on
the W. bdy. of Tp., which is an iron post, hereinbe-
fore described.
Thence
N.89°59'E. on a true line, bet. secs. 6 and 7.
Over rolling land, through scattering timber and under-
growth. Desc. 60 ft. to
13.47 Desc. 390 ft.
28.32 Wash, 60 lks. wide, course N.70°E. Asc. 60 ft.
30.87 Spur, slopes N. Continue ascent.
32.60 Desc. 55 ft.
35.60 Asc. 20 ft.
39.74 Set an iron post, 3 ft. long, 1 in. diam., 24 ins. in the
ground, for $\frac{1}{4}$ sec. cor., marked on brass cap

$\frac{1}{4}$ S 6
 $\frac{1}{4}$ S 7
1917

And raise a mound of stone, 2 ft. base, 1 $\frac{1}{2}$ ft. high, N.
of cor.

Continue ascent, 495 ft.
55.12 Spur, slopes N. Desc. 410 ft.
66.11 Wash, 10 lks. wide, course N. Asc. 165 ft.
76.57 Spur, slopes N. Desc. 85 ft.
79.74 The cor. of secs. 5, 6, 7 and 8.
Land, rolling and mountainous.
Soil, rocky; 4th rate.
Timber, cedar and pinyon.
Undergrowth, sagebrush.
Fair grazing.

North on random line, bet. secs. 5 and 6.
40.00 Set temp. $\frac{1}{4}$ sec. cor.
79.98 Fall 5 lks. E. of the cor. of secs. 5, 6, 31 and 32, on
the N. bdy. of Tp., which is an iron post, described
in Book "F".
Thence
S.0°2'E. on a true line, bet. secs. 5 and 6.
Over rolling land, through scattering timber and under-
growth.
Asc. 65 ft.
14.90 Desc. 360 ft.
37.90 Wash, 10 lks. wide, course E. Asc. 65 ft.
39.98 Set an iron post, 3 ft. long, 1 in. diam., 3 ins. in the
ground, in a mound of stone, for $\frac{1}{4}$ sec. cor., marked
on brass cap

$\frac{1}{4}$
S 6 | S 5
1917

From which

A pinyon, 6 ins. diam., brs. S.37°E.,
77 lks. dist., marked $\frac{1}{4}$ S5 BT.
A pinyon, 6 ins. diam., brs. N.61 $\frac{1}{2}$ °W.,
82 lks. dist., marked $\frac{1}{4}$ S6 BT.
Continue ascent, 160 ft.
46.36 Spur, slopes S.80°E. Desc. 490 ft.
67.23 Wash, 150 lks. wide, course N.70°E. Asc. 260 ft.
79.98 The cor. of secs. 5, 6, 7 and 8.
Land, rolling and mountainous.
Soil, rocky, 4th rate.
Timber, cedar and pinyon.
Undergrowth, sagebrush.

The continued satisfactory adjustment of the solar transits during the survey of this township is indicated from field tests as described in Books "F" and "X" .

GENERAL DESCRIPTION.

This township consists of a rolling plateau, traversed in a southerly direction through the eastern and northern parts by Parashont Wash, a deep and almost impassable gorge. A scattering growth of cedar, juniper and pinyon trees are found over the township. Sagebrush and grass are abundant, except in the very mountainous sections. The soil is generally rocky, 3rd and 4th rates. There are no roads or settlers in the township. No signs of mineral were observed during the survey of this township.

4-680

FIELD ASSISTANTS to
 Guy Redwine, Dupree R. Averill and William E. Hiester, U.S. Surveyors.

NAMES.	CAPACITY.
A. J. Chalfant	Chainman.
George M. Ginochio	Chainman.
J. A. Redwine	Chainman.
Wilson Searles	Chainman.
J. S. Dameron	Chainman.
Walter Thomas	Chainman.
L. M. Brumfield	Chainman.
J. Burrows	Chainman.
L. S. Ruddick	Flagman.
R. J. Yates	Flagman.
George Tucker	Flagman.
C. McLarty	Flagman.
Joe Mancha	Cornerman.
Ted Hunt	Cornerman.
Lowell McAllister	Cornerman.
Hale Pierce	Cornerman.
William Baker	Axman
Henry McKelvey	Axman.

CERTIFICATE OF UNITED STATES SURVEYOR.

BOOK 3616

I, Dupree R. Averill, U. S. Surveyor, hereby certify upon honor that, in pursuance of special instructions received from the U. S. Surveyor General, for Group 72, Arizona bearing date of the 12th day of October 1916, 17th day of March, 1917, I have well, faithfully, and truly in my own proper person, and in strict conformity with said instructions, the Manual of Surveying Instructions, and the laws of the United States, surveyed all those parts or portions of the 8th. Standard Parallel North, thru Range 10 West; the West Boundary, the East Boundary and the Subdivision Lines of T.33 N., R.10 W.

of the Gila and Salt River Base & Meridian, in the State of Arizona, which are represented in the foregoing field notes and by diagram on page 1 hereof as having been executed by me, and under my direction; and that all the corners of said survey have been established and perpetuated in strict accordance with the Manual of Surveying Instructions, and the special written instructions of the U. S. Surveyor General, for Group 72, Arizona and in the specific manner described in the field notes, and that the foregoing are the original field notes of such survey.

Phoenix Arizona
January 3, 1924

Dupree R. Averill
U. S. Surveyor.

APPROVAL
OFFICE OF THE UNITED STATES SURVEYOR GENERAL

The foregoing field notes of the survey of _____ 19

executed by _____ under his special instructions dated _____, 19 _____, having been critically examined, and the necessary corrections and explanations made, the said field notes, and the surveys they describe, are hereby approved.

U. S. Surveyor General

I certify that the foregoing transcript of the field notes of the above-described surveys in _____, has been correctly copied from the original notes on file in this office.

U. S. Surveyor General

60

CERTIFICATE OF UNITED STATES SURVEYOR.

BOOK 3618

I, Guy Redwine, U. S. Surveyor, hereby certify upon honor that, in pursuance of special instructions received from the U. S. Surveyor General, for Group 72, Arizona bearing date of the 17th day of March, 1917, I have well, faithfully, and truly in my own proper person, and in strict conformity with said instructions, the Manual of Surveying Instructions, and the laws of the United States, surveyed all those parts or portions of

The Subdivisions of

T.33 N., R.10 W.

of the Gila and Salt

River Base & Meridian, in the State of Arizona, which are represented in the foregoing field notes/as having been executed by me, and under my direction; and that all the corners of said survey have been established and perpetuated in strict accordance with the Manual of Surveying Instructions, and the special written instructions of the U. S. Surveyor General, for Group 72, Arizona and in the specific manner described in the field notes, and that the foregoing are the original field notes of such survey.

Ukiah, California, Feb. 15, 1924.

Guy Redwine U. S. Surveyor.

APPROVAL

Office of the United States Surveyor General

....., 191

The foregoing field notes of the survey of

executed by

under his special instructions dated, 191, having been critically examined, and the necessary corrections and explanations made, the said field notes, and the surveys they describe, are hereby approved.

U. S. Surveyor General.

I certify that the foregoing transcript of the field notes of the above-described surveys in, has been correctly copied from the original notes on file in this office.

U. S. Surveyor General.

62

BOOK 3616

CERTIFICATE OF UNITED STATES SURVEYOR.

I, William E. Hiester, U. S. Surveyor, hereby certify upon honor that, in pursuance of special instructions received from the U. S. Surveyor General, for Group 72, Arizona bearing date of the 17 th day of March, 1917, I have well, faithfully, and truly in my own proper person, and in strict conformity with said instructions, the Manual of Surveying Instructions, and the laws of the United States, surveyed all those parts or portions of

The Subdivisions of

T.33 N., R.10 W.,

of the Gila and Salt

River Base & Meridian, in the State of Arizona

and by diagram on page 1 hereof, which are represented in the foregoing field notes as having been executed by me, and under my direction; and that all the corners of said survey have been established and perpetuated in strict accordance with the Manual of Surveying Instructions, and the special written instructions of the U. S. Surveyor General, for Group 72, Arizona and in the specific manner described in the field notes, and that the foregoing are the original field notes of such survey.

Wolf Hole Arizona
March 14, 1924

William E. Hiester
U. S. Surveyor.

APPROVAL.

OFFICE OF THE UNITED STATES SURVEYOR GENERAL,

Phoenix, Arizona, May 15, 1924

The foregoing field notes of the survey of The 8th Standard Parallel North, thru Range 10 West; the West Boundary, The East Boundary and The Subdivisions of T.33 N., R.10 W. of the Gila and Salt River Base and Meridian in the State of Arizona

executed by Guy Redwine, Dupree R. Averill and William E. Hiester, U.S. Surveyors under his special instructions dated Oct. 12, 1916 and March 17, 1917 for Group 72, Ariz., having been critically examined, and the necessary corrections and explanations made, the said field notes, and the surveys they describe, are hereby approved.

Charles M. Doolittle
U. S. Surveyor General.

I certify that the foregoing transcript of the field notes of the above described surveys in _____, has been correctly copied from the original notes on file in this office.