

3628

BOOK "M"

4-679

BOOK 3628

FIELD NOTES

OF THE SURVEY OF THE

West Boundary,

The South Boundary and

The Subdivision of

T.32 N., R.10 W.

Of the Gila and Salt River Base and Meridian,

In the State of Arizona

EXECUTED BY

Dupree R. Averill
and

William L. Meister

In the capacity of U. S. Surveyors, under Special Instructions dated March 17, 1917, issued by the United States Surveyor General to govern surveys included in Group No. 72, Arizona, which were approved by the Commissioner of the General Land Office, March 29, 1917, and Assignment Instructions dated August 11, 1921

Survey commenced January 12, 1922

Survey completed February 24, 1922.

3628

3628

1A

3628

Book "M"

Group 72 - Arizona

BOOK 3628

INDEX DIAGRAM.

Township 32 North		Range 10 West	
8th Standard Parallel North			
3	6 59 5 48 4 39 3 31 2 23 1	58 58 47 39 30 22	
4	7 57 8 47 9 38 10 30 11 22 12	57 56 46 38 29 21	
5	18 55 17 45 16 37 15 28 14 20 13	55 54 45 37 27 18	T.32N. R.10W.
5	19 54 20 44 21 35 22 26 23 17 24	53 52 42 34 25 16	
6	30 52 29 41 28 33 27 25 26 16 25	51 51 41 33 23 15	
7	31 50 32 41 33 32 34 23 35 15 36	11 11 12 12 13 14	

———— Lines surveyed under this group.

———— Lines surveyed under Group 73.

———— Lines surveyed under Group 74.

----- Unsurveyed.

Book "M"
Group 72- Arizona

DATE DIAGRAM

T.32 N., R.10W.

For dates of execution of survey of this line see Books "A" and "B"
8th Standard Parallel North

1-12-22	6 2-21-22	5 2-21-22	4 2-21-22	3 2-10-22	2 2-2-22	1 2-2-22
1-12-22	7 2-20-22	8 2-12-22	9 2-12-22	10 1-28-22	11 2-1-22	12 2-1-22
1-12-22	18 2-14-22	17 2-16-22	16 2-16-22	15 1-28-22	14 1-26-22	13 1-24-22
1-13-22	19 2-5-22	20 2-14-22	21 2-15-22	22 2-15-22	23 1-26-22	24 1-23-22
1-13-22	30 2-17-22	29 2-4-22	28 2-4-22	27 1-27-22	26 1-21-22	25 1-23-22
1-14-22	31 1-14-22	32 1-15-22	33 1-15-22	34 1-15-22	35 1-19-22	36 1-19-22

For dates of execution of survey of this line see Book "A".

Lines in black surveyed by Dupree R. Averill.

Lines in red surveyed by William E. Hiester.

Survey commenced January 12, 1922, and executed with Buff and Buff light mountain transits Nos. 10125 and 9977; each instrument is equipped with full vertical circle and Smith solar attachment; unless otherwise specified all azimuth determinations are accomplished with the solar attachment.

Field Tests of Instruments Nos. 10125 and 9977.

January 9, 1922: We examine the adjustments of the instruments and correct all errors; then, to test the solar apparatus, by comparing their indications, resulting from observations made during a.m. and p.m. hours, with a meridian established by Polaris observations, we proceed as follows:

January 10, 1922. At our camp in sec. 7, T. 32 N., R. 11 W., G. and S. R. B. and M., Arizona, lat. $36^{\circ}11\frac{1}{2}'$ N., long. $113^{\circ}31\frac{1}{2}'$ W., at 0 hrs. 14 m. a.m., l.m.t., we observe Polaris at western elongation, making four observations, two each with the telescope in direct and reversed positions, and marking the mean point in the line thus determined on a peg driven firmly in the ground, 5 chs. N.

Azimuth of Polaris at western elongation is $1^{\circ}22\frac{1}{2}'$.

At 8 hrs. 0 m., a.m., l.m.t., we lay off the azimuth of Polaris, $1^{\circ}22\frac{1}{2}'$ to the east, and mark the meridian thus determined by a tack driven in a peg set firmly in the ground, 5 chs. N.

At 9 hrs. 0 m., a.m., l.m.t., we set off $36^{\circ}11\frac{1}{2}'$ N. on the lat. arcs; $21^{\circ}58'S.$ on the decl. arcs; and determine a meridian with each solar, which we find to agree with the true meridian.

At apparent noon, with the lat. arcs unchanged, we observe the sun on the meridian with each solar. The resulting readings of the decl. arcs; are $21^{\circ}57\frac{1}{2}'S.$, which agree with the computed decl. of the sun.

At 3 hrs. 0 m., p.m., l.m.t., with the lat. arcs unchanged, we set off $21^{\circ}56'S.$ on the decl. arcs and determine a meridian with each solar, which we find to agree with the true meridian.

As all of the solar observations during the usual hours of solar work come within $1'30''$ of the true meridian, we conclude that the adjustments of the instruments are satisfactory.

Unless otherwise specified, all measurements are made with a Lufkin steel tape, 5 chs. in length, compared with a Lufkin standard steel tape and found correct. The measurements are made on the slope, the vertical angles determined and the slope measurements properly reduced to true horizontal distances.

Survey of the
West Boundary of T. 32 N., R. 10 W.

chains.

At a point 21.08 chs. East of the standard cor. of Ts. 33 N., Rs. 10 and 11 W., which is an iron post, described in Book "A",
Set an iron post, 3 ft. long, 3 ins. diam., 28 ins. in the ground, for closing cor. of Ts. 32 N., Rs. 10 and 11 W., marked on brass cap

T33N R10W
S31
S 1 S 6
R11W R10W
T32N
C C
1922

From which

- A cedar, 10 ins. diam., brs. S. 61 1/2° E., 21 lks. dist., marked T32N R10W S6 CC BT.
- A cedar, 12 ins. diam., brs. S. 33 1/2° W., 336 lks. dist., marked T32N R11W S1 CC BT.

Thence

South bet. secs. 1 and 6.
Over rolling mountainous land, through scattering timber and undergrowth.

Desc.

- 3.50 Wash, 10 lks. wide, 4 ft. deep, course SW. Asc.
- 5.00 Desc. 20 ft.
- 8.40 Wash, 10 lks. wide, course SW. Asc. 60 ft.
- 10.93 Spur, slopes W. Desc. 70 ft.
- 14.79 Wash, 10 lks. wide, 3 ft. deep, course W. Asc. 210 ft.
- 26.82 Spur, slopes NE. and S. Desc. 185 ft.
- 37.61 Wash, 10 lks. wide, 5 ft. deep, course SW. Asc. 90 ft.
- 40.00 Set an iron post, 3 ft. long, 1 in. diam., 24 ins. in the ground, with stone marked cross (X) alongside, for 1/4 sec. cor., marked on brass cap

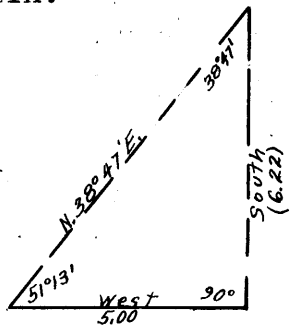
S 1 S 6
1922

From which

- A cedar, 30 ins. diam., brs. S. 30 1/2° E., 165 lks. dist., marked 1/4 S6 BT.
- No other trees within limits. Raise a mound of stone, 4 ft. base, 3 ft. high, W. of cor.

Desc.

- 40.28 Wash, 10 lks wide, 10 ft. deep, course SW. Asc. 30 ft.
- 50.00 Spur, slopes W. Desc. 125 ft.
- 54.94 Cliff, 100 ft. high, brs. NW. and SE Continue descent.
- 57.95 Wash, 50 lks. wide, 10 ft. deep, course SE. Road in wash, brs. NW. and SE. Asc. 145 ft.
- 68.40 Spur, slopes E. Desc.
- 71.58 Rim of Dansill Canyon, 150 ft. deep, bearing E. and W., across which it is impossible to chain.
Set flag on opposite side of canyon, from which measure a base West 5.00 chs., from the W. end of which, flag at the 71.58 ch. point brs. N. 38° 47' E.
The three angles of the triangle are therefore 51° 13', 38° 47', and 90°, the sum of which is 180°. The distance triangulated is given by tan. 51° 13' X 5.00 = 1.2445 X 5.00 = 6.22 chs., which added to 71.58 chs., gives 77.80 chs. The approximate topography is as follows:



Desc. 175 ft.

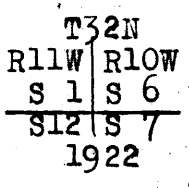
- 77.48 Wash in bottom of canyon, course NE. Asc. 175 ft.
- 77.80 Right rim of canyon, bearing NE. and SW. Also triangulation point. Continue South bet. secs. 1 and 6.

Survey of the West Boundary
of T. 32 N., R. 10 W.

Chains.

80.00

Asc. 25 ft.
Set an iron post, 3 ft. long, 2 ins. diam., 20 ins. in the ground, in a mound of stone, with stone marked cross (X) alongside, for cor. of secs. 1, 6, 7 and 12, marked on brass cap



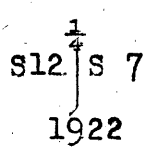
From which
A cedar, 3 ins. diam., brs. N.22°E.,
61 lks. dist., marked B T
A cedar, 10 ins. diam., brs. S.76½°E.,
193 lks. dist., marked T32N R10W S7 BT.
A pinyon, 8 ins. diam., brs. N.16°W.,
208 lks. dist., marked T32N R11W S1 BT.

No other trees within limits.
Land, rolling and rough mountainous.
Soil, rocky, 3rd and 4th rates.
Timber, cedar and pinyon.
Undergrowth, black brush, cat claw, sagebrush, scrub oak, and mesal.

South bet. secs. 7 and 12.
Over mountainous land, through scattering timber and undergrowth.

5.00
12.50
13.85
15.50
18.64
29.73
38.30
40.00

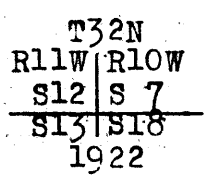
Asc.
Spur, slopes E. Desc. 115 ft.
Cliff, facing S, 100 ft. high, brs. E. and W. Continue descent.
Wash, 20 lks. wide, 6 ft deep, course E. Asc. 60 ft.
Cliff, facing N., 40 ft. high, brs. E. and W. Desc.
Wash, 10 lks. wide, 4 ft. deep, course NE. Asc. 115 ft.
Trail, brs. NW. and SE.
Spur, slopes E. Desc. 10 ft.
Set an iron post, 3 ft. long, 1 in. diam., 12 ins. in the ground, in a mound of stone, 4 ft. base, 2 ft. high, for ¼ sec. cor., marked on brass cap



And raise a mound of stone, 4 ft. base, 3 ft. high, W. of cor.

48.36
52.00
55.25
65.56
67.55
80.00

Continue descent, 55 ft.
Wash, 10 lks. wide, 5 ft. deep, course E. Asc. 10 ft.
Foot of cliff, 50 ft. high, faces NE., bearing NW. and SE. Continue ascent.
Wash, 10 lks. wide, 5 ft. deep, course NE. Asc. 125 ft.
Spur, slopes NE. Desc. 15 ft.
Draw, course NE. Asc. 100 ft.
Set an iron post, 3 ft. long, 2 ins. diam., 6 ins. in the ground, in a mound of stone, 4 ft. base, 30 ins. high, with stone marked cross (X) alongside, for cor. of secs. 7, 12, 13 and 18, marked on brass cap



Land, mountainous.
Soil, rocky, 4th rate.

Survey of the
West Boundary of T. 32 N., R. 10 W.

Chains.

Timber, cedar and pinyon.
Undergrowth, black brush, sagebrush, mescal, and dogwood.

South bet. secs. 13 and 18.
Over mountainous land, through scattering timber and
undergrowth.

- Asc. 15 ft.
- 2.00 Spur, slopes NE. Desc. 30 ft.
- 6.77 Wash, 10 lks. wide, 5 ft. deep, course NE. Asc. 55 ft.
- 11.41 Spur, slopes E. Desc. 35 ft.
- 13.85 Draw, course E. Asc. 55 ft.
- 17.28 Spur, slopes E. Desc. 70 ft.
- 23.35 Wash, 10 lks. wide, 5 ft. deep, course E. Asc. 25 ft.
- 30.00 Desc.
- 32.08 Wash, 10 lks. wide, 6 ft. deep, course NE. Asc. 60 ft.
- 35.39 Wash, 5 lks. wide, 3 ft. deep, course NE. Continue asc-
ent, 70 ft.
- 38.15 Wash, 5 lks. wide, 3 ft. deep, course NW. Continue ascent,
120 ft.
- 40.00 Spur, slopes E. Set an iron post, 3 ft. long, 1 in. diam.,
6 ins. in the ground, in a mound of stone, 4 ft. base,
2½ ft. high, for ¼ sec. cor., marked on brass cap

1/4
S13 S18

1922

And raise a mound of stone, 4 ft. base, 3 ft. deep,
course W.

- Desc.
- 40.93 Wash, 5 lks. wide, 3 ft. deep, course E. Asc 130 ft.
- 47.70 Ridge, brs. E. and W. Desc. 170 ft.
- 53.35 Wash, 20 lks. wide, 5 ft. deep, course E. Thence along
E. slope.
- 60.00 Desc. 70 ft.
- 61.87 Wash, 10 lks. wide, 5 ft. deep, course SE. Asc. 25 ft.
- 64.10 Desc.
- 67.60 Wash, 15 lks. wide, 5 ft. deep, course NE. Asc. 35 ft.
- 69.10 Desc. 30 ft.
- 71.24 Wash, 5 lks. wide, 2 ft. deep, course NW. Asc. 190 ft.
- 77.06 Ridge, brs. E. and W. Desc. 15 ft.
- 80.00 Set an iron post, 3 ft. long, 2 ins. diam., 16 ins. in the
ground, in a mound of stone, 3 ft. base, 1½ ft. high,
with stone marked cross (X) alongside, for cor. of secs.
13, 18, 19 and 24, marked on brass cap

T32N
R11W R10W
S13 S18
S24 S19
1922

And raise a mound of stone, 4 ft. base, 3 ft. high, W.
of cor.

Land, mountainous.
Soil, rocky, 3rd and 4th rates.
Timber, cedar, and pinyon.
Undergrowth, black brush, sagebrush, dogwood, mescal,
and cactus.

South bet. secs. 19 and 24.
Over mountainous land, through scattering timber and
undergrowth.

Desc. 75 ft.

Survey of the
West Boundary of T. 32 N., R. 10 W.

Chains.

- 3.83 Wash, 10 lks. wide, 10 ft. deep, course SE. Continue descent, 165 ft.
- 11.08 Wash, 15 lks. wide, 6 ft. deep, course SE. Asc. 25 ft.
- 15.00 Desc.
- 21.75 Wash, 8 lks. wide, 8 ft. deep, course SE. Continue descent, 85 ft.
- 31.27 Wash, 8 lks. wide, 4 ft. deep, course E. Thence along E. slope.
- 35.67 Wash, 30 lks. wide, 6 ft. deep, course NE. Asc. 80 ft.
- 40.00 Set an iron post, 3 ft. long, 1 in. diam., 18 ins. in the ground, in a mound of stone, for $\frac{1}{4}$ sec. cor., marked on brass cap

$\frac{1}{4}$
 S24 | S19
 1922

From which

- A cedar, 6 ins. diam., brs. S.70 $\frac{3}{4}$ °E.,
108 lks. dist., marked $\frac{1}{4}$ S19 BT.
- A cedar, 20 ins. diam., brs. N.46°W.,
22 lks. dist., marked $\frac{1}{4}$ S24 BT.

Continue ascent, 10 ft.

- 41.00 Desc.
- 47.50 Draw, 20 ft. deep, course NE. Asc. 455 ft.
- 53.00 Draw, course NE. Continue ascent.
- 72.05 Gulch, course NE. Continue ascent.
- 80.00 Set an iron post, 3 ft. long, 2 ins. diam., on ledge rock, in a mound of stone, 5 ft. base, 3 $\frac{1}{2}$ ft. high, over cross (X) on ledge, for cor. of secs. 19, 24, 25 and 30, marked on brass cap

T32N
 R11W | R10W
 S24 | S19
~~S25 | S30~~
 1922

From which

- A pinyon, 14 ins. diam., brs. N.40 $\frac{1}{2}$ °E.,
163 lks. dist., marked T32N R10W S19 BT.
- A pinyon, 12 ins. diam., brs. S.54°E.,
140 lks. dist., marked T32N R10W S30 BT.
- A pinyon, 12 ins. diam., brs. S.48 $\frac{1}{2}$ °W.,
184 lks. dist., marked T32N R11W S25 BT.
- A pinyon, 12 ins. diam., brs. N.56 $\frac{1}{4}$ °W.,
106 lks. dist., marked T32N R11W S24 BT.

Land, rough mountainous.

Soil, rocky, 3rd and 4th rates.

Timber, cedar and pinyon.

Undergrowth, black brush, sagebrush, dogwood, cat claw, and mesal.

South bet. secs. 25 and 30.

Over rolling mountainous land, through scattering timber and undergrowth.

Asc. 25 ft.

- 2.00 Ridge, brs. NE. and SW. Desc. 40 ft.
- 8.96 Draw, course E. Thence along E. slope.
- 18.36 Wash, 30 lks. wide, 20 ft. deep, course NE. Asc.
- 20.00 Desc. 100 ft.
- 25.80 Draw, course E. Asc 50 ft.
- 31.75 Spur, slopes E. Desc. 25 ft.
- 38.13 Wash, 25 lks. wide, 10 ft. deep, course NE. Asc. 10 ft.
- 40.00 Set an iron post, 3 ft. long, 1 in. diam., 8 ins. in the ground, in a mound of stone, 5 ft. base, 3 ft. high, for $\frac{1}{4}$ sec. cor., marked on brass cap

Survey of the
West Boundary of T. 32 N., R. 10 W.

Chains.

S25^{1/4} S30
1922

From which

- A pinyon, 12 ins. diam., brs. N.28^{1/2}°E.,
50 lks. dist., marked ^{1/4}S30 BT.
- A cedar, 6 ins. diam., brs. S.11^{1/2}°W.,
72 lks. dist., marked ^{1/4}S25 BT.

Continue ascent, 165 ft.

50.00

Desc.

51.70

Wash, 10 lks. wide, 5 ft. deep, course NE. Asc. 1325 ft.

68.75

Rim of cliff, 100 ft. high, brs. NW. and SE. Continue ascent.

78.40

Rim of cliff, 50 ft. high, brs. NW. and SE. Continue ascent.

80.00

Set an iron post, 3 ft. long, 2 ins. diam., 10 ins. in the ground, in a mound of stone, 4 ft. base, 2 ft. high, for cor. of secs. 25, 30, 31 and 36, marked on brass cap

T32N
R11W | R10W
S25 | S30
S36 | S31
1922

From which

- A pinyon, 10 ins. diam., brs. N.3^{3/4}°E.,
33 lks. dist., marked T32N R10W S30 BT.
- A pinyon, 8 ins. diam., brs. S.45°E.,
2 lks. dist., marked T32N R10W S31 BT.
- A pinyon, 24 ins. diam., brs. S.8^{1/2}°W.,
37 lks. dist., marked T32N R11W S36 BT.
- A pinyon, 12 ins. diam., brs. N.28^{3/4}°W.,
53 lks. dist., marked T32N R11W S25 BT.

Land, rolling and rough mountainous.

Soil, rocky, 4th rate.

Timber, cedar and pinyon.

Undergrowth, sagebrush, and black brush.

South bet. secs. 31 and 36.

Over mountainous land, through scattering timber and undergrowth.

Asc. 60 ft.

1.70

Ridge, brs. E. and W. Desc. 205 ft.

12.80

Gulch, course E. Asc. 125 ft.

21.70

Spur, slopes E. Desc. 265 ft.

31.40

Wash, 30 lks. wide, course E. Asc. 30 ft.

35.35

Spur, slopes E. Desc. 80 ft.

40.00

Set an iron post, 3 ft. long, 1 in. diam., 6 ins. in the ground, in a mound of stone, 4 ft. base, 30 ins. high, with stone marked cross (X) alongside, for ^{1/4} sec. cor., marked on brass cap

S36^{1/4} S31
1922

From which

- A cedar, 20 ins. diam., brs. S.65°E.,
41 lks. dist., marked ^{1/4}S31 BT.
- A pinyon, 18 ins. diam., brs. S.9^{1/2}°W.,
131 lks. dist., marked ^{1/4}S36 BT.

Continue descent.

40.32

Wash, 10 lks. wide, 10 ft. deep, course NE. Thence along E. slope.

Survey of the
West Boundary of T. 32 N., R. 10 W.

Chains.

41.30 Wash, 20 lks. wide, 20 ft. deep, course E. Asc. 260 ft.
 42.80 Top of cliff, 30 ft. high, brs. NE. and SW. Continue
 ascent.
 50.00 Desc. 20 ft.
 50.90 Draw, course NE. Asc. 340 ft.
 61.50 Spur, slopes E. Desc. 25 ft.
 68.50 Draw, course E. Asc. 160 ft.
 80.00 Set an iron post, 3 ft. long, 3 ins. diam., 4 ins. in the
 ground, in a mound of stone, 4 ft. base, 3 ft. high,
 with stone marked cross (X) alongside, for cor. of
 Ts. 31 and 32 N., Rs. 10 and 11 W., marked on brass
 cap

T32N	
R11W	R10W
S36	S31

S 11	S 6
T31N	
1922	

From which

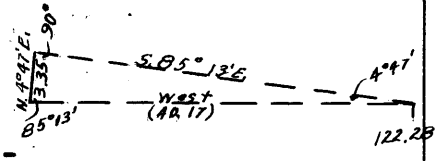
A pinyon, 26 ins. diam., brs. N.35 $\frac{1}{2}$ °E.,
 120 lks. dist., marked T32N R10W S31 BT.
 A pinyon, 14 ins. diam., brs. S.46°E.,
 56 lks. dist., marked T31N R10W S6 BT.
 A pinyon, 12 ins. diam., brs. S.55 $\frac{1}{2}$ °W.,
 79 lks. dist., marked T31N R11W S1 BT.
 A pinyon, 12 ins. diam., brs. N.87 $\frac{1}{2}$ °W.,
 73 lks. dist., marked T32N R11W S36 BT.
 Land, mountainous.
 Soil, rocky, 4th rate.
 Timber, cedar and pinyon.
 Undergrowth, black brush, sagebrush, dogwood, mescal.

Survey of the
South Boundary of T. 32 N., R. 10 W.

Chains.

From the cor. of Ts. 31 and 32 N., Rs. 9 and 10 W., which is an iron post, described in Book "K", West on a random line, along the S. bdy. of T. 32 N., R. 10 W., setting temp. $\frac{1}{4}$ sec. and sec. cors. at intervals of 40.00 chs.; at 122.28 chs., impassable cliffs prevent chaining; triangulate in the following manner:

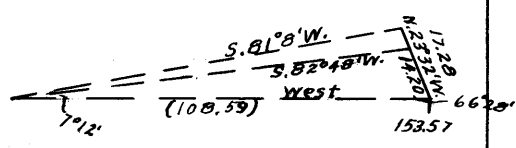
Set a flag ahead on line, from which I measure a base N. $4^{\circ}47'$ E. 3.35 chs.--impracticable to secure longer base--from the N. end of which, flag at the 122.28 ch. point brs. S. $85^{\circ}13'$ E. The three angles of the triangle are therefore 90° , $4^{\circ}47'$, and $85^{\circ}13'$, the sum of which is 180° . The distance triangulated is given by $3.35 \div \cos. 85^{\circ}13'$, or by logarithms:



$$\begin{array}{rcl} \log. 3.35 & = & 0.525045 \\ \log. \cos. 85^{\circ}13' & = & 8.921103 \\ \log. X & = & 1.603942 \\ X & = & 40.17 \text{ chs.} \end{array}$$

to 122.28 chs., gives 162.45 chs. Thence East 2.45 chs., and set temp. cor. of secs. 2, 3, 34 and 35.

As it is impossible to chain West from this cor., I triangulate as follows: Set a flag ahead on line. From a point 6.43 chs. East of the temp. pt. for cor. of secs. 2, 3, 34 and 35, measure a base N. $23^{\circ}32'$ W. 14.20 chs. to flag "A" and 17.28 chs. to flag "B". From "A", flag ahead on line brs. S. $82^{\circ}48'$ W.; from "B", same flag brs. S. $81^{\circ}8'$ W. In the smaller triangle, the three angles are $66^{\circ}28'$, $7^{\circ}12'$, and $106^{\circ}20'$, the sum of which is 180° ; in the larger triangle, the three angles are $104^{\circ}40'$, $66^{\circ}28'$, and $8^{\circ}52'$, the sum of which is 180° . In both cases, the distance triangulated is given by the sine proportion:



$$\frac{X}{14.20} = \frac{\sin. 106^{\circ}20'}{\sin. 7^{\circ}12'}$$

and

$$\frac{X}{17.28} = \frac{\sin. 104^{\circ}40'}{\sin. 8^{\circ}52'}$$

$$\begin{array}{rcl} \log. 14.20 & = & 1.152288 \\ \log. \sin. 7^{\circ}12' & = & 9.098066 \\ & & 2.054222 \\ \log. \sin. 106^{\circ}20' & = & 9.982109 \\ \log. X & = & 2.036331 \\ X & = & 108.73 \text{ chs.} \end{array}$$

$$\begin{array}{rcl} \log. 17.28 & = & 1.237544 \\ \log. \sin. 8^{\circ}52' & = & 9.187903 \\ & & 2.049641 \\ \log. \sin. 104^{\circ}40' & = & 9.985613 \\ \log. X & = & 2.035254 \\ X & = & 108.46 \text{ chs.} \end{array}$$

The mean of these two distances is 108.59 chs., which added to 153.57 chs., gives 262.16 chs.

In order to set the temp. cor. of secs. 3, 4, 33 and 34, and the temp. $\frac{1}{4}$ sec. cor. of secs. 3 and 34, I triangulate to the East as follows:

From the 262.16 ch. point, designated as point "A", set

Survey of the
South Boundary of T. 32 N., R. 10 W.

Chains.

From the cor. of Ts. 31 and 32 N., Rs. 10 and 11 W.,
N.89°59'E. on a true line, bet. secs. 6 and 31.
Over mountainous land, through heavy timber and scattering
undergrowth.
Desc. 85 ft.
10.20 Spur, slopes N. Continue descent, 360 ft.
27.00 Spur, slopes SE. Continue descent, 440 ft.
39.54 Set an iron post, 3 ft. long, 1 in. diam., 6 ins. in the
ground, in a mound of stone, 4 ft. base, 3 ft. high,
for 1/4 sec. cor., marked on brass cap

1/4 S31
S 6
1922

From which

- A pinyon, 8 ins. diam., brs. N.10°E.,
22 lks. dist., marked 1/4 S31 BT.
- A cedar, 12 ins. diam., brs. S.25°E.,
52 lks. dist., marked 1/4 S6 BT.

Continue descent.
43.30 Wash, 10 lks. wide, 20 ft. deep, course SE. Continue
descent, 685 ft.
68.00 Wash, 30 lks. wide, 25 ft. deep, course NE. Asc. 25 ft.
72.70 Spur, slopes NE. Desc. 35 ft.
76.90 Wash, 30 lks. wide, 20 ft. deep, course NE. Asc. 50 ft.
79.54 Set an iron post, 3 ft. long, 2 ins. diam., 10 ins. in the
ground, in a mound of stone, 4 ft. base, 26 ins. high,
for cor. of secs. 5, 6, 31 and 32, marked on brass cap

T32N R10W
S31 | S32
S 6 | S 5
T31N

From which

- A cedar, 18 ins. diam., brs. N.67 1/2°E.,
168 lks. dist., marked T32N R10W S32 BT.
- A pinyon, 14 ins. diam., brs. S.77°E.,
184 lks. dist., marked T32N R10W S5 BT.
- A pinyon, 8 ins. diam., brs. S.36 1/2°W.,
60 lks. dist., marked T31N R10W S6 BT.
- A pinyon, 16 ins. diam., brs. N.34 1/2°W.,
285 lks. dist., marked T32N R10W S31 BT.

Land, mountainous.
Soil, 3rd and 4th rates.
Timber, cedar and pinyon.
Undergrowth, black brush, sagebrush, mesquite, and dog-
wood.

N.89°59'E. on a true line, bet. secs. 5 and 32.
Over mountainous land, through scattering timber and
undergrowth.

Asc. 30 ft.
6.00 Spur, slopes NE. Desc. 150 ft.
24.90 Wash, 10 lks. wide, 4 ft. deep, course NE. Asc. 115 ft.
34.65 Spur, slopes NE. Desc. 25 ft.
40.00 Set an iron post, 3 ft. long, 1 in. diam., 6 ins. in the
ground, in a mound of stone, 4 ft. base, 30 ins. high,
with stone marked cross (X) alongside, for 1/4 sec. cor.,
marked on brass cap

1/4 S32
S 5
1922

Continue descent, 120 ft.
52.00 Wash, 20 lks. wide, 10 ft. deep, course NE. Asc. 25 ft.

Survey of the
South Boundary of T. 32 N., R. 10 W.

<p>Chains. 60.00 72.20 80.00</p>	<p>Desc. 50 ft. Wash, 10 lks. wide, 4 ft. deep, course SE. Asc. 10 ft. Set an iron post, 3 ft. long, 2 ins. diam., 14 ins. in the ground, in a mound of stone, 3 ft. base, 2 ft. high, with stone marked cross (X) alongside, for cor. of secs. 4, 5, 32 and 33, marked on brass cap</p> <p style="text-align: center;"> T32N R10W S32 S33 --- S 5 S 4 T31N 1922 </p> <p>Land, rough mountainous. Soil, rocky, 4th rate. Timber, pinyon and cedar. Undergrowth, black brush, sagebrush, dogwood, and mesquite.</p>
<p>22.50 30.00 35.00 40.00</p>	<p>N.89°59'E. on a true line, bet. secs. 4 and 33. Over rolling land, through scattering timber and undergrowth. Rim rock, 20 ft. high, brs. NE. and SW. Desc. 25 ft. Asc. 45 ft. Top of rim rock, 20 ft. high, brs. NW. and SE. Set an iron post, 3 ft. long, 1 in. diam., 8 ins. in the ground, in a mound of stone, with stone marked cross (X) alongside, for $\frac{1}{4}$ sec. cor., marked on brass cap</p> <p style="text-align: center;"> $\frac{1}{4}$ S33 --- S 4 1922 </p> <p>From which A pinyon, 12 ins. diam., brs. N.74$\frac{1}{4}$°W., 304 lks. dist., marked $\frac{1}{4}$S33 BT. A cedar, 14 ins. diam., brs. S.7°W., 455 lks. dist., marked $\frac{1}{4}$S4 BT.</p> <p>Desc. 15 ft. 46.50 Wash, 10 lks. wide, course SE. Continue descent, 90 ft. 57.88 Rim of cliff, 150 ft. high, brs. NE. and SW., facing SE. Thence by triangulation, as hereinbefore described, across Dansill Canyon. 80.00 Set an iron post, 3 ft. long, 2 ins. diam., on ledge rock, in a mound of stone, 5 ft. base, 3$\frac{1}{2}$ ft. high, over cross (X) on ledge, for cor. of secs. 3, 4, 33 and 34, marked on brass cap</p> <p style="text-align: center;"> T32N R10W S33 S34 --- S 4 S 3 T31N 1922 </p> <p>Land, rolling, broken and mountainous. Soil, rocky, 4th rate. Timber, cedar and pinyon. Undergrowth, black brush, cat claw, cactus.</p>
<p>4.00 32.00</p>	<p>N.89°59'E. on a true line, bet. secs. 3 and 34. Over mountainous land, through scattering timber and undergrowth. Rim of canyon, 100 ft. deep, brs. N.80°E. and S.80°W. Impracticable to chain from this point. Thence by triangulation, as hereinbefore described. Left rim of canyon, 300 ft. deep, course N.80°E. Rim brs. N.80°E. and S.80°W.</p>

BOOK 3028

Survey of the
South Boundary of T. 32 N., R. 10 W.

Chains. 40.00	Set an iron post, 3 ft. long, 1 in. diam., 10 ins. in the ground, in a mound of stone, 5 ft. base, 3½ ft. high, with stone marked cross (X) alongside, for ¼ sec. cor., marked on brass cap
	$\begin{array}{r} \frac{1}{4} \text{ S34} \\ \hline \text{S 3} \\ 1922 \end{array}$
42.10	Right rim of box canyon, 600 ft. deep, course SE. Rim brs. NW. and SE. Impossible to chain from this point. Triangulate as hereinbefore described.
80.00	The true point for cor. of secs. 2, 3, 34, and 35 falls on sloping cliff, 20 ft. high, where it cannot be established. Land, mountainous. Soil, rocky, 4th rate. Timber, cedar, and pinyon. Undergrowth, black brush, scrub oak, Spanish bayonet, and cactus.

	N. 89°59'E. on a true line, bet. secs. 2 and 35. Over mountainous land, through scattering timber and undergrowth.
1.20	Set an iron post, 3 ft. long, 2 ins. diam., 6 ins. in the ground, in a mound of stone, 4 ft. base, 3 ft. high, with stone marked cross (X) alongside, for witness cor. to cor. of secs. 2, 3, 34, and 35, marked on brass cap
	$\begin{array}{r} \text{T32N R10W} \\ \text{WC } \frac{\text{S34} \text{S35}}{\text{S 3} \text{S 2}} \\ \hline \text{T31N} \\ 1922 \end{array}$
2.00	Gulch, course S.
7.00	Cliffs, br. N.75°E. and S.75°W. Thence by triangulation as hereinbefore described.
37.72	Cliffs, br. N.80°W. and NE. Thence by chaining.
40.00	Set an iron post, 3 ft. long, 1 in. diam., on bed rock, in a mound of stone, 4 ft. base, 3 ft. high, with stone marked cross (X) alongside, for ¼ sec. cor., marked on brass cap
	$\begin{array}{r} \frac{1}{4} \text{ S35} \\ \hline \text{S 2} \\ 1922 \end{array}$
42.00	Desc. Draw, 30 lks. wide, 15 ft. deep, course SE. Asc. 175 ft.
49.00	Spur, slopes S. Desc. 35 ft.
53.60	Wash, 15 lks. wide, 10 ft. deep, course SW. Asc. 70 ft.
71.80	Wash, 10 lks. wide, 10 ft. deep, course NW. Continue ascent, 70 ft.
80.00	Set an iron post, 3 ft. long, 2 ins. diam., 6 ins. in the ground, in a mound of stone, 4 ft. base, 2 ft. high, with stone marked cross (X) alongside, for cor. of secs. 1, 2, 35 and 36, marked on brass cap
	$\begin{array}{r} \text{T32N R10W} \\ \text{S35} \text{S36} \\ \hline \text{S 2} \text{S 1} \\ \hline \text{T31N} \\ 1922 \end{array}$
	Land, mountainous. Soil, rocky, 4th rate. Timber, cedar and pinyon. Undergrowth, sagebrush, dogwood, mesquite, and cat claw.

Survey of the
South Boundary of T. 32 N., R. 10 W.

Chains.	N. 89° 59' E. on a true line, bet. secs. 1 and 36. Over rolling land, through scattering timber and undergrowth.
40.00	Set an iron post, 3 ft. long, 1 in. diam., 6 ins. in the ground, in a mound of stone, 3 ft. base, 2 ft. high, with stone marked cross (X) alongside, for $\frac{1}{4}$ sec. cor., marked on brass cap
	$\begin{array}{r} \frac{1}{4} \text{ S } 36 \\ \hline \text{S } 1 \\ 1922 \end{array}$
46.00	Leave rolling bench, brs. N. 75° E. and S. 75° W. Desc. 355 ft.
55.20	Wash, course N. 75° E. Continue descent.
63.20	Ledge, 20 ft. high, brs. NW. and SE. Continue descent.
71.40	Gulch, course N. Continue descent.
80.00	The cor. of Ts. 31 and 32 N., Rs. 9 and 10 W. Land, rolling and mountainous. Soil, rocky, 4th rate. Timber, cedar, and pinyon. Undergrowth, dogwood, sagebrush, mescal, and cat claw.

Boundaries of T. 32 N., R. 10 W.

Latitudes, departures and closing errors.

Line designated.	True bearing.	Dist. chs.	Latitudes.		Departures.	
			N. chs.	S. chs.	E. chs.	W. chs.
South Boundary.	S. 89° 59' W.	479.54		.14		479.54
West Boundary.	North.	480.00	480.00			
North Boundary. (8th Std. Par. N.)	East.	478.94			478.94	
East Boundary.	South.	480.00		480.00		
Convergency.					.53	
Totals.			480.00	480.14	479.47	479.54
				480.00		479.47
Error in latitude.				0.14		
Error in departure.						0.07

Survey of the
Subdivision of T: 32 N., R. 10 W.

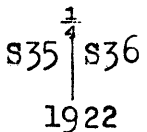
chains.

From the cor. of secs. 1, 2, 35 and 36, on the S. bdy. of Tp., which is an iron post, hereinbefore described, N.0°1'W. bet. secs. 35 and 36.
Over rolling land, through scattering timber and undergrowth.

Desc.

10.00 Asc. 100 ft.

40.00 Set an iron post, 3 ft. long, 1 in. diam., 4 ins. in the ground, in a mound of stone, 4 ft. base, 2 ft. high, with stone marked cross (X) alongside, for 1/4 sec. cor., marked on brass cap



From which

A cedar, 18 ins. diam., brs. S.48 1/2°E.,
168 lks. dist., marked 1/4 S36 BT.

No other trees within limits.

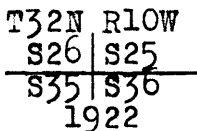
Continue over broken land.

Desc. 25 ft.

48.75 Asc. 30 ft.

53.80 Desc. 100 ft.

80.00 Set an iron post, 3 ft. long, 2 ins. diam., 27 ins. in the ground, for cor. of secs. 25, 26, 35 and 36, marked on brass cap



And raise a mound of stone, 3 ft. base, 2 1/2 ft. high, W. of cor.
Land, rolling and broken.
Soil, rocky, 4th rate.
Timber, cedar.
Undergrowth, black brush, cat claw, scrub oak, and cactus.

40.00 N.89°59'E. on a random line, bet. secs. 25 and 36.

Set temp. 1/4 sec. cor.

80.24 Fall 12 lks. N. of the cor. of secs. 25, 30, 31, and 36, on the E. bdy. of Tp., which is an iron post, described in Book 3628.

Thence

N.89°56'W. on a true line, bet. secs. 25 and 36.

Over mountainous land, through scattering timber and undergrowth.

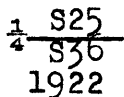
Desc. 10 ft.

4.25 Draw, course S.20°E. Asc. 235 ft.

13.25 Ridge, brs. N.38°W. and S.38°E. Desc. 165 ft.

19.15 Draw, course SE. Asc. 250 ft.

40.12 Set an iron post, 3 ft. long, 1 in. diam., 2 ins. in the ground, 34 ins. in a mound of stone, 5 ft. base, with stone marked cross (X) alongside, for 1/4 sec. cor., marked on brass cap



From which

A cedar, 14 ins. diam., brs. N.29°E.,
10 lks. dist., marked 1/4 S25 BT.

A cedar, 8 ins. diam., brs. S.24°W.,
54 lks. dist., marked 1/4 S36 BT.

Continue ascent, 60 ft.

44.95 Desc. 30 ft.

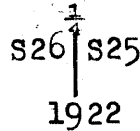
Survey of the
Subdivision of T. 32 N., R. 10 W.

Chains.

49.90 Draw, course N. Asc. 90 ft.
54.35 Spur, slopes N. Desc. 10 ft.
59.95 Asc. 30 ft.
69.45 Desc. 30 ft.
79.30 Ledge of rocks, brs. N. and S., 10 ft. high. Continue descent.
80.24 The cor. of secs. 25, 26, 35 and 36.
Land, broken and mountainous.
Soil, rocky, 4th rate.
Timber, cedar.
Undergrowth, black brush, dogwood, scrub oak, cat claw, Spanish bayonet, and cactus.

N.0°1'W. bet. secs. 25 and 26.
Over broken land, through scattering timber and undergrowth.

Desc. 100 ft.
22.50 Draw, course NE. Asc. 15 ft.
23.40 Desc. 50 ft.
40.00 Set an iron post, 3 ft. long, 1 in. diam., 6 ins. in the ground, in a mound of stone, 4 ft. base, 2½ ft. high, with stone marked cross (X) alongside, for ¼ sec. cor., marked on brass cap

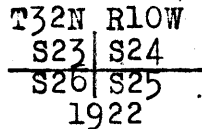


From which

- A cedar, 18 ins. diam., brs. N.11¼°E.,
153 lks. dist., marked ¼S25 BT.
- A cedar, 40 ins. diam., brs. N.86°W.,
241 lks. dist., marked ¼S26 BT.

Continue descent, 75 ft.

45.40 Asc. 45 ft.
49.00 Desc. 250 ft.
80.00 Set an iron post, 3 ft. long, 2 ins. diam., on solid rock, in a mound of stone, 4 ft. base, 3 ft. high, with stone marked cross (X) in mound, for cor. of secs. 23, 24, 25 and 26, marked on brass cap



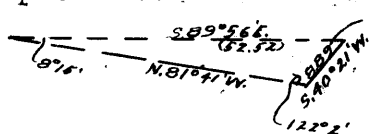
From which

- A cedar, 8 ins. diam., brs. N.2½°E.,
291 lks. dist., marked T32N R10W S24 BT.
- A cedar, 10 ins. diam., brs. N.61½°W.,
115 lks. dist., marked T32N R10W S23 BT.

No other trees within limits.

Land, broken.
Soil, rocky, 4th rate.
Timber, cedar and pinyon.
Undergrowth, black brush, dogwood, scrub oak, cat claw, Spanish bayonet, and cactus.

S.89°56'E. on a random line, bet. secs. 24 and 25.
Impracticable to chain this line; triangulate as follows



Set a flag ahead on a bearing S.89°56'E., from which I measure a base S.40°21'W. 8.89 chs.-- impracticable to secure longer base--from the S. end of which,

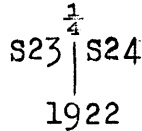
Survey of the
Subdivision of T. 32 N., R. 10 W.

Chains.	<p>flag at the cor. of secs. 23, 24, 25, and 26, brs. N.81°41'W. The three angles of the triangle are therefore 49°43', 122°2', and 8°15', the sum of which is 180°. The distance triangulated is given by the sine proportion:</p>																		
	$\frac{X}{8.89} = \frac{\sin. 122^{\circ}2'}{\sin. 8^{\circ}15'}$																		
	<table style="width: 100%; border-collapse: collapse;"> <tr> <td style="text-align: right;">log. 8.89</td> <td style="text-align: center;">=</td> <td style="text-align: left;">0.948902</td> </tr> <tr> <td style="text-align: right;">log. sin. 8°15'</td> <td style="text-align: center;">=</td> <td style="text-align: left;">9.156830</td> </tr> <tr> <td></td> <td></td> <td style="text-align: left; border-top: 1px solid black;">1.792072</td> </tr> <tr> <td style="text-align: right;">log. sin. 122°2'</td> <td style="text-align: center;">=</td> <td style="text-align: left;">9.928263</td> </tr> <tr> <td style="text-align: right;">log. X</td> <td style="text-align: center;">=</td> <td style="text-align: left; border-top: 1px solid black;">1.720335</td> </tr> <tr> <td style="text-align: right;">X</td> <td style="text-align: center;">=</td> <td style="text-align: left;">52.52 chs.</td> </tr> </table>	log. 8.89	=	0.948902	log. sin. 8°15'	=	9.156830			1.792072	log. sin. 122°2'	=	9.928263	log. X	=	1.720335	X	=	52.52 chs.
log. 8.89	=	0.948902																	
log. sin. 8°15'	=	9.156830																	
		1.792072																	
log. sin. 122°2'	=	9.928263																	
log. X	=	1.720335																	
X	=	52.52 chs.																	
	<p>I chain back N.89°56'W. 8.94 chs. to</p>																		
43.58	<p>Set temp. witness cor. to $\frac{1}{4}$ sec. cor. Thence S.89°56'E. on a random line, bet. secs. 24 and 25, continuing measurement.</p>																		
80.36	<p>Fall 19 lks. S. of the cor. of secs. 19, 24, 25, and 30, on the E. bdy. of Tp., which is an iron post, described in Book "K".</p>																		
	<p>Thence S.89°56'W. on a true line, bet. secs. 24 and 25. Over broken land, through scattering undergrowth. Desc. 25 ft.</p>																		
4.60	<p>Trail, brs. N. and S.</p>																		
7.50	<p>Wash, course NW. Continue descent, 20 ft.</p>																		
13.40	<p>Wash, 50 lks. wide, course N. Asc. 35 ft.</p>																		
18.00	<p>Desc. 25 ft.</p>																		
23.00	<p>Asc. 15 ft.</p>																		
27.85	<p>Desc. 105 ft.</p>																		
36.78	<p>Set an iron post, 3 ft. long, 1 in. diam., 6 ins. in the ground, in a mound of stone, 4 ft. base, 3 ft. high, with stone marked cross (X) alongside, for witness cor. to $\frac{1}{4}$ sec. cor., marked on brass cap</p>																		
	<p>W C $\frac{1}{4}$ $\frac{S24}{S25}$ 1922</p>																		
	<p>Cor. is set on edge of bluff, 100 ft. high, bearing N. and S.</p>																		
40.18	<p>Thence by triangulation, across canyon, course N... The true point for $\frac{1}{4}$ sec. cor. is inaccessible. The approximate topography is as follows: Desc. 300 ft.</p>																		
50.35	<p>Canyon, course N. Asc. 300 ft.</p>																		
68.35	<p>Ridge, brs. N.38°W. and S.38°E. Desc. 275 ft.</p>																		
74.61	<p>Center of wash in canyon, course N. Asc. 245 ft.</p>																		
80.36	<p>The cor. of secs. 23, 24, 25 and 26. Land, broken and mountainous. Soil, rocky, 4th rate. Timber, cedar. Undergrowth, black brush, scrub oak, cat claw, Spanish bayonet, mescal, and cactus.</p>																		
	<p>N.0°1'W. bet. secs. 23 and 24. Over mountainous land, through scattering timber and undergrowth. Desc. 390 ft.</p>																		
11.70	<p>Canyon, course N.20°W. Asc.</p>																		
20.20	<p>Desc. 210 ft.</p>																		
33.40	<p>Draw, course W. Asc. 180 ft.</p>																		
40.00	<p>Set an iron post, 3 ft. long, 1 in. diam., 4 ins. in the ground, in a mound of stone, 4 ft. base, 3 ft. high, with stone marked cross (X) alongside, for $\frac{1}{4}$ sec. cor.,</p>																		

Survey of the
Subdivision of T. 32 N., R. 10 W.

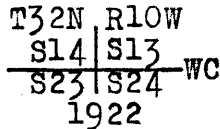
chains.

marked on brass cap



54.60
57.85
66.85
77.00
80.00

Continue ascent, 215 ft.
Spur, slopes NW. Desc.
Head of gulch, course N.30°W. Asc. 25 ft.
Desc. 280 ft.
Cliffs, br. E. and W. Continue descent.
The true point for cor. of secs. 13, 14, 23 and 24 falls on point of cliff, 100 ft. high, with perpendicular walls to N. and W. The cor. cannot be permanently established at the true point; therefore at a point 0.14 chs. West of the true point for cor. of secs. 13, 14, 23, and 24,
Set an iron post, 3 ft. long, 2 ins. diam., on bed rock, in a mound of stone, over cross (X) on bed rock, for witness cor. to cor. of secs. 13, 14, 23 and 24, marked on brass cap

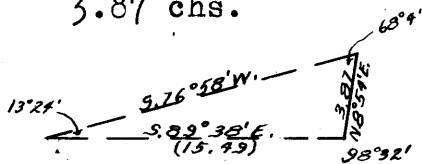


Land, mountainous.
Soil, rocky, 4th rate.
Timber, cedar and pinyon.
Undergrowth, black brush, dogwood, scrub oak, cat claw, Spanish bayonet, and cactus.

From the true point for cor. of secs. 13, 14, 23, and 24 N.89°56'E. on a random line, bet. secs. 13 and 24.

Impossible to chain or triangulate on this line; I proceed as follows:

From a flag 10 lks. N. and 23¹/₄ W. of the true point for cor. of secs. 13, 14, 23 and 24, set a flag on a bearing S.89°38'E., from which I measure a base N.8°54'E. 3.87 chs.



3.87 chs., from the N. end of which, flag brs. S.76°58'W. The three angles of the triangle are therefore 13°24', 68°4', and 98°32', the sum of which is 180°. The distance triangulated is given by the sine proportion:

$$\frac{X}{3.87} = \frac{\sin. 68^{\circ}4'}{\sin. 13^{\circ}24'}$$

$$\begin{aligned} \log. 3.87 &= 0.587711 \\ \log. \sin. 13^{\circ}24' &= 9.365016 \\ &= 1.222695 \\ \log. \sin. 68^{\circ}4' &= 9.967370 \\ \log. X &= 1.190065 \end{aligned}$$

X = 15.49 chs. Thence on traverse
N.72°E. 12.93 chs. to flag "I".
S.87¹/₂°E. 4.90 "
S.82¹/₂°E. 4.76 "
South .10 " Set temp. witness cor. to

¹/₄ sec. cor.
From "I", set flag "A" on a bearing N.17¹/₂°E. 3.47 chs.
From flag "A", set flag "B" on a bearing S.59°30'E.
From "A", measure a base N.17°30'E. 7.34 chs. to flag "C", from which flag "B" brs. S.40°7'E.

Survey of the
Subdivision of T. 32 N., R. 10 W.

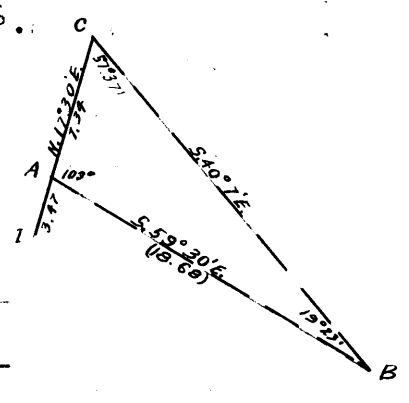
BOOK 3628

Chains

The three angles of the triangle are therefore 103°, 57°37', and 19°23', the sum of which is 180°. The distance triangulated is given by the sine proportion:

$$\frac{X}{7.34} = \frac{\sin. 57^{\circ}37'}{\sin. 19^{\circ}23'}$$

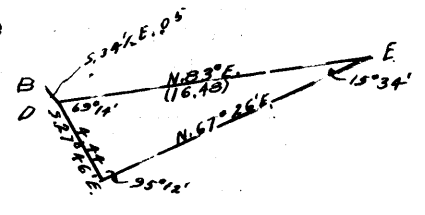
log. 7.34	=	0.865696
log sin. 57°37'	=	9.926591
		<u>0.792287</u>
log sin. 19°23'	=	9.520990
log. X	=	<u>1.271297</u>
X	=	18.68 chs.



From "B", measure S. 34½° E. 0.05 chs. to flag "D". From "D", set a flag "E" on a bearing N. 83° E. From "D", measure a base S. 27° 46' E., 4.44 chs., from the S. end of which, flag "E", brs. N. 67° 26' E. The three angles of the triangle are therefore 69° 14', 15° 34', and 95° 12', the sum of which is 180°. The distance triangulated is given by the sine proportion :

$$\frac{X}{4.44} = \frac{\sin. 95^{\circ}12'}{\sin. 15^{\circ}34'}$$

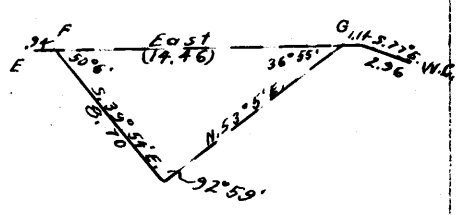
log. 4.44	=	0.647383
log sin. 15°34'	=	9.428717
		<u>1.218666</u>
log sin. 95°12'	=	9.998209
log. X	=	<u>1.216875</u>
X	=	16.48 chs.



Thence East 0.94 chs. to flag "F". From "F", set a flag "G" on a bearing East. From "F", measure a base S. 39° 54' E. 8.70 chs., from the S. end of which, flag "G", bears N. 53° 5' E. The three angles of the triangle are therefore 50° 0', 36° 55', and 92° 59', the sum of which is 180°. The distance triangulated is given by the sine proportion:

$$\frac{X}{8.70} = \frac{\sin. 92^{\circ}59'}{\sin. 36^{\circ}55'}$$

log. 8.70	=	0.939519
log sin. 36°55'	=	9.778624
		<u>1.160895</u>
log sin. 92°59'	=	9.999411
log. X	=	<u>1.160306</u>
X	=	14.46 chs.



Thence East 1.14 chs. to point "H". From "H", measure S. 77° E., 2.96 chs. to the witness cor. to the cor. of secs. 13, 18, 19 and 24, on the E. bdy. of Tp., which is an iron post, described in Book "K".

From a computation of the latitudes and departures of these courses and distances, the true course and distance between the true point for cor. of secs. 13, 18, 19 and 24, and the true point for cor. of secs. 13, 14, 20 and 24 are found to be N. 89° 48' W., 80.48 chs. From the true point for cor. of secs. 13, 18, 19 and 24, N. 89° 48' W., on a true line bet. secs. 13 and 24. Over mountainous land, through scattering timber and undergrowth, distance by traverse and triangulation as hereinbefore described.

Survey of the
Subdivision of T. 32 N., R. 10 W.

Chains

4.10 Frog Spring, bears N.57°15'W.
5.18 Top of cliff, 200 ft. high, bears N. and S.
40.24 The true point for 1/4 sec. cor. is inaccessible.
From the true point for 1/4 sec. cor., N.42°36'W., 4.52 chs.
and
Set an iron post, 3 ft. long, 1 in. in diam., in a mound
of stone, with stone marked cross (X) alongside for
witness cor. to the 1/4 sec. cor. marked on brass cap

1/4 S 13 W C
S 24
1922

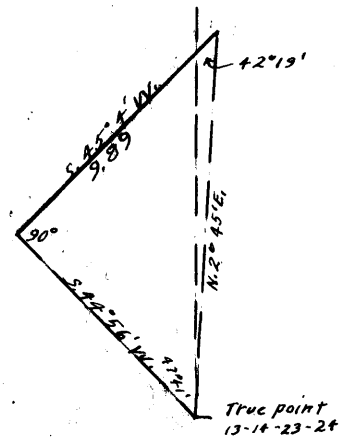
This cor. is at foot of cliffs bearing E. and W.
From the true point for 1/4 sec. cor.,
N.89°48'W., on a true line, bet. secs. 13 and 24, contin-
uing measurement.

65.10 Wash, in bottom of canyon, course N.80°W.
80.48 The true point for cor. of secs. 13, 14, 23 and 24.

Land; mountainous.
Soil; rocky, 4th. rate.
Timber; cedar and pinyon.
Undergrowth; sagebrush, black brush, dogwood, scrub oak,
catclaw, Spanish bayonet and cactus.

From the true point for cor. of secs. 13, 14, 23 and 24,
N.0°1'W., bet. secs. 13 and 14.
Over mountainous land, through scattering timber and
undergrowth.

Impossible to chain or triangulate from the true point
for cor. of secs. 13, 14, 23 and 24. From the witness
cor. to cor. of secs. 13, 14, 23 and 24, set a flag
ahead on a bearing N.2°45'E.,
from which I measure a base
S.45°4'W., 9.89 chs., from
the south end of which, flag
at the witness cor. to cor.
of secs. 13, 14, 23 and 24,
ors. S.44°56'E. The three
angles of the triangle are
therefore 47°41', 90°, and
42°19', the sum of which is
180°. The distance triangu-
lated is given by



$$\frac{9.89}{\cos. 42^\circ 19'} = X$$

log. 9.89	=	0.995196
log. cos. 42°19'	=	9.868900
log. X	=	1.126296
X	=	13.38 chs. to triangulation

point on N. side of canyon, at base of cliffs, facing
SW. From this point run traverse as follows:

- N.24°45'W. 11.09 chs.
- N.26°E. 8.90 "
- East 0.23 " to a point

31.43 chs. N.0°1'W. of the true point for cor. of secs.
13, 14, 23 and 24.

Thence N.0°1'W., bet. secs. 13 and 14, continuing measure-
ment. Asc. along broken SW. slope.

38.70 Set an iron post, 3 ft. long, 1 in. in diam., 15 ins. in
the ground, in a mound of stone, 4 ft. base, with stone
marked cross (X) alongside, for witness cor. to 1/4 sec.
cor., marked on brass cap

Survey of the
Subdivision of T. 32 N., R. 10 W.

Chains.

W C
 $\frac{1}{4}$
S14 | S13
1922

40.00 The true point for $\frac{1}{4}$ sec. cor. is inaccessible.
Continue ascent, 280 ft.
70.00 Desc. 75 ft.
75.00 Wash, 10 lks. wide, course W. Asc. 85 ft.
80.00 Set an iron post, 3 ft. long, 2 ins. diam., on ledge
rock, in a mound of stone, 5 ft. base, 3 ft. high, with
cross (X) at base of post, for cor. of secs. 11, 12,
13 and 14, marked on brass cap

T32N R10W
S11 | S12
S14 | S13
1922

From which
A pinyon, 12 ins. diam., brs. N. $71\frac{1}{2}^\circ$ E.,
298 lks. dist., marked T32N R10W S12 BT.
A pinyon, 18 ins. diam., brs. S. $28\frac{1}{4}^\circ$ E.,
510 lks. dist., marked T32N R10W S13 BT.
A pinyon, 8 ins. diam., brs. S. 43° W.,
110 lks. dist., marked T32N R10W S14 BT.
A pinyon, 16 ins. diam., brs. N. 2° W.,
346 lks. dist., marked T32N R10W S11 BT.

Land, mountainous.
Soil, rocky, 4th rate.
Timber, cedar and pinyon.
Undergrowth, black brush, dogwood, scrub oak, cat claw,
Spanish bayonet, and cactus.

40.00 S. $89^\circ 48'$ E. on a random line, bet. secs. 12 and 13.
Set temp. $\frac{1}{4}$ sec. cor.
80.30 Fall 34 lks. S. of the cor. of secs. 7, 12, 13 and 18, on
the E. bdy. of Tp., which is an iron post, hereinbe-
fore described.
Thence
S. $89^\circ 55'$ W. on a true line, bet. secs. 12 and 13.
Over mountainous land, through scattering timber and under-
growth.
Desc. 100 ft.
19.30 Wash, 10 lks. wide, course SE. Asc. 75 ft.
30.00 Thence over rolling land.
40.15 Set an iron post, 3 ft. long, 1 in. diam., 28 ins. in the
ground, for $\frac{1}{4}$ sec. cor., marked on brass cap

$\frac{1}{4}$ S12
S13
1922

And raise a mound of stone, 4 ft. base, 3 ft. high, N.
of cor.
Asc. 40 ft.
45.30 Desc. 50 ft.
50.30 Thence over rolling land.
80.30 The cor. of secs. 11, 12, 13, and 14.
Land, rolling and mountainous.
Soil, rocky, 4th rate.
Timber, cedar and pinyon.
Undergrowth, black brush, dogwood, scrub oak, cat claw,
Spanish bayonet, and cactus.

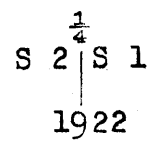
BOOK 8622

Survey of the
Subdivision of T. 32 N., R. 10 W.

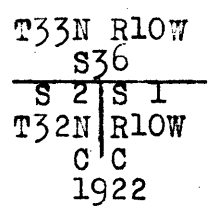
Chains.

A cedar, 24 ins. diam., brs. S.60½°W.,
226 lks. dist., marked ¼S12 BT.
Asc. 65 ft.
47.01 From this point, distance by traverse as hereinbefore
described.
50.22 Foot of cliff, bearing NW. and SE.
52.80 Foot of bluff, 30 ft. high, bearing N.65°W. and S.65°E.
Continue descent, 60 ft.
65.40 Asc. 100 ft.
80.30 The cor. of secs. 1, 2, 11, and 12.
Land, mountainous.
Soil, rocky, 4th rate.
Timber, cedar and pinyon.
Undergrowth, dogwood, sagebrush, mescal, and cactus.

N.0°1'W. on a true line, bet. secs. 1 and 2.
Over mountainous land, through scattering timber and under-
growth.
Asc. 150 ft.
12.20 Spur, slopes SW. Desc. 225 ft.
19.00 Wash, 10 lks. wide, course W. Asc. 290 ft.
40.00 Set an iron post, 3 ft. long, 1 in. diam., 8 ins. in the
ground, 26 ins. in a mound of stone, 5 ft. base, with
stone marked cross (X) alongside, for ¼ sec. cor.,
marked on brass cap



Continue ascent, 1100 ft.
78.30 Desc. 30 ft.
80.15 Intersect the N. bdy. of Tp. (8th Standard Parallel
North) 19.79 chs. East of the true point for standard
cor. of secs. 35 and 36, T. 33 N., R. 10 W., witnessed
2.50 chs. N.13°W. of true point for cor. as described
in Book "A".
At the point of intersection,
Set an iron post, 3 ft. long, 2 ins. diam., 14 ins. in the
ground, 16 ins. in a mound of stone, against a rock
in place marked cross (X), for closing cor. of secs. 1
and 2, marked on brass cap



From which
A cedar, 12 ins. diam., partly dead, brs. S.73½°E.,
75 lks. dist., marked BT.
A cedar, 18 ins. diam., partly dead, brs. S.39¼°W.,
81 lks. dist., marked BT.
Land, mountainous.
Soil, rocky, 4th rate.
Timber, cedar and pinyon.
Undergrowth, black brush, sagebrush, mescal, and cat
claw.

From the true point for cor. of secs. 2, 3, 34 and 35, on
the S. bdy. of Tp., witnessed at 1.20 chs. N.89°59'E.
as hereinbefore described;

Survey of the
Subdivision of T. 32 N., R. 10 W.

Chains.

N.0°1'W. bet. secs. 34 and 35.
Over broken land, through scattering timber and under-
growth.

Asc. 85 ft.

3.20 Draw, 50 lks. wide, 20 ft. deep, course SE. Continue
ascent, 50 ft.

20.00 Head of draw, course SW. Continue ascent, 45 ft.

32.36 Desc. 290 ft.

40.00 Set an iron post, 3 ft. long, 1 in. diam., 4 ins. in the
ground, in a mound of stone, 4 ft. base, 3 ft. high,
with stone marked cross (X) alongside, for $\frac{1}{4}$ sec.cor.
marked on brass cap

$\frac{1}{4}$
S34 | S35
1922

Continue descent, 295 ft.

53.50 Wash in canyon, 1 ch. wide, course S.75°W. Asc. 570 ft.

63.70 Foot of cliff, 300 ft. high, brs. E. and W. Continue
ascent.

65.44 Desc. 40 ft.

72.40 Draw, course SE. Asc. 45 ft.

80.00 Set an iron post, 3 ft. long, 2 ins. diam., 6 ins. in the
ground, in a mound of stone, 4 ft. base, 3 ft. high,
with stone marked cross (X) alongside, for cor. of
secs. 26, 27, 34 and 35, marked on brass cap

T32N R10W
S27 | S26
S34 | S35
1922

From which

A cedar, 10 ins. diam., brs. S.65 $\frac{1}{2}$ °E.,
245 lks. dist., marked T32N R10W S35 BT.

A cedar, 8 ins. diam., brs. N.26 $\frac{1}{2}$ °W.,
243 lks. dist., marked T32N R10W S27 BT.

No other trees within limits.

Land, broken and mountainous.

Soil, rocky, 4th rate.

Timber, cedar and pinyon.

Undergrowth, black brush, cat claw, scrub oak, cactus,
and dogwood.

40.00 N.89°59'E. on a random line, bet. secs. 26 and 35.

Set temp. $\frac{1}{4}$ sec. cor.

79.94 Intersect N. and S. line, 5 lks. N. of the cor. of secs.
25, 26, 35, and 36.

Thence

N.89°59'W. on a true line, bet. secs. 26 and 35.

Over broken land, through scattering timber and under-
growth.

Desc. 10 ft.

6.75 Draw, 20 lks. wide, 3 ft. deep, course NE. Asc. 10 ft.

11.05 Desc. 100 ft.

39.97 Set an iron post, 3 ft. long, 1 in. diam., on solid rock,
in a mound of stone, 4 ft. base, 3 ft. high, with stone,
marked cross (X) alongside, for $\frac{1}{4}$ sec. cor., marked on
brass cap

$\frac{1}{4}$ S26
S35
1922

From which

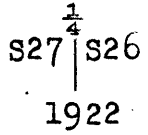
A cedar, 18 ins. diam., brs. N.40°W.,
217 lks. dist., marked $\frac{1}{4}$ S26 BT.

BOOK 102

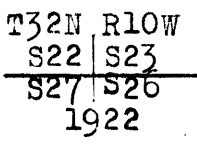
Survey of the
Subdivision of T. 32 N., R. 10 W.

Chains. A cedar, 8 ins. diam., brs. S.59 $\frac{1}{2}$ °W.,
166 lks. dist., marked $\frac{1}{2}$ S35 BT.
Desc. 210 ft.
58.25 Cliff, 15 ft. high; brs. N. and S. Continue descent.
79.94 The cor. of secs. 26, 27, 34 and 35.
Land, broken.
Soil, rocky, 4th rate.
Timber, cedar.
Undergrowth, black brush, cat claw, scrub oak, and cactus.

N.0°1'W. bet. secs. 26 and 27.
Over broken land, through scattering timber and under-
growth.
Asc. 70 ft.
11.90 Thence over rolling bench.
20.40 Rim of canyon, brs. NW. and SE. Desc. 100 ft.
32.80 Canyon, course NW. Asc. 70 ft.
40.00 Set an iron post, 3 ft. long, 1 in. diam., on solid rock,
in a mound of stone, 4 ft. base, 3 ft. high, with stone
marked cross (X) alongside, for $\frac{1}{4}$ sec. cor. marked on
brass cap

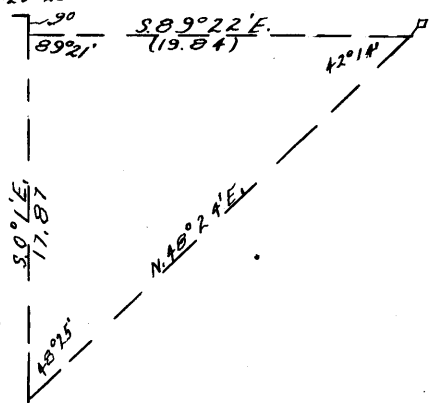


Continue ascent, 105 ft.
54.05 Desc. 765 ft.
61.27 Top of cliff, 60 ft. high, brs. E. and W. Continue de-
scent.
80.00 Set an iron post, 3 ft. long, 2 ins. diam., on solid rock,
in a mound of stone, 4 ft. base, 3 ft. high, with
stone marked cross (X) alongside, for cor. of secs.
22, 23, 26 and 27, marked on brass cap



Land, broken and rolling.
Soil, rocky, 4th rate.
Timber, cedar.
Undergrowth, black brush, cat claw, scrub oak, cactus,
and dogwood.

S.89°59'E. on a random line, bet. secs. 23 and 26.
Impossible to chain this line; triangulate as follows:
From a point 0.90 chs. S.0°1'E.
of the cor. of secs. 22, 23, ^{S.0°1'E. 0.90}
26 and 27, set a flag on a ^{89°21'}
bearing S.89°22'E. From a ^{42°14'}
point 18.77 chs. S.0°1'E.
of the same cor., the same
flag brs. N.48°24'E. The
three angles of the triangle
are therefore 48°25', 89°21',
42°14', the sum of which is
180°. The distance triangu-
lated on the course S.89°22'E.
is given by the sine propor-
tion as follows:



$$\frac{X}{17.83} = \frac{\sin. 48^{\circ}25'}{\sin. 42^{\circ}14'}$$

Survey of the
Subdivision of T. 32 N., R. 10 W.

Chains.

log. 17.83 = 1.251151
log. sin. 42°14' = 9.827467
1.423684
log. sin. 48°25' = 9.873896
log. X = 1.297580
X = 19.84 chs. From this point,

it being impossible to get on the random line, I traverse as follows:

N.86°30'E. 7.16 chs.

N.41°30'E. 1.10 chs.

East 52.44 " To the cor. of

secs. 23, 24, 25, and 26. A computation of these courses gives the true bearing between the cor. of secs. 23, 24, 25 and 26 and the cor. of secs. 22, 23, 26, and 27 as S.89°54'W. and the length 80.16 chs.

From the cor. of secs. 23, 24, 25 and 26, S.89°54'W. on a true line, bet. secs. 23 and 26.

Over broken and mountainous land, through scattering timber and undergrowth.

Asc. 100 ft.

6.40 Desc. 75 ft.

9.40 Draw, course NE. Asc. 215 ft.

31.40 Desc. 40 ft.

32.75 Draw, course N. Edge of cliff brs. N. 2 chs. dist.

Asc. 105 ft.

40.08 Set an iron post, 3 ft. long. 1 in. diam., on solid rock, in a mound of stone, 4 ft. base, 3 ft. high, with stone marked cross (X) alongside, for $\frac{1}{4}$ sec. cor., marked on brass cap

$$\frac{1}{4} \frac{S23}{S26} = 1922$$

Continue ascent, 85 ft.

52.60 Rim rock, 200 ft. high, brs. NE. and W. Thence by traverse and triangulation, as hereinbefore described.

80.16 The cor. of secs. 22, 23, 26 and 27.

Land, broken and mountainous.

Soil, rocky, 4th rate.

Timber, cedar and pinyon.

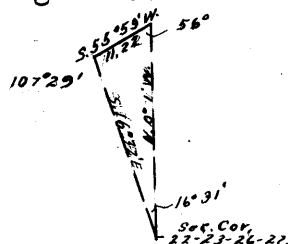
Undergrowth, black brush, cat claw, scrub oak, cactus, and dogwood.

N.0°1'W. bet. secs. 22 and 23.

Over mountainous land, through scattering timber and undergrowth.

Impossible to chain this line: triangulate as follows:

Set a flag ahead on line, from which I measure a base S.55°59'W. 11.22 chs., from the W. end of which, flag at the cor. of secs. 22, 23, 26 and 27 brs. S.16°32'E. The three angles of the triangle are therefore 56°, 16°31', and 107°29', the sum of which is 180°. The distance tri-



angulated is given by the sine proportion:

$$\frac{X}{11.22} = \frac{\sin. 107°29'}{\sin. 16°31'}$$

log. 11.22 = 1.049993

log. sin. 16°31' = 9.453768

1.596225

log. sin. 107°29' = 9.979459

log. X = 1.575684

X = 37.64 chs. The approximate

topography is as follows:

1000 862

Survey of the
Subdivision of T. 32 N., R. 10 W.

Chains.

2.00 Along precipitous ledge, facing E.
Gulch, 100 ft. deep, 75 lks. wide, course NW.
4.70 Point of rim rock, brs. NW. and SE. Thence across box canyon.
14.60 Right rim of box canyon, 300 ft. deep, course S.80°W. Rim brs. N.80°E. and S.80°W. Continue ascent.
37.30 Cliffs, br. East and S.58°W.
40.00 Set an iron post, 3 ft. long, 1 in. diam., in a mound of stone, 4 ft. base, 3 ft. high, with stone marked cross (X) alongside, for $\frac{1}{4}$ sec. cor., marked on brass cap

$\frac{1}{4}$
S22 | S23

1922

Continue ascent, 20 ft.
40.50 Desc. 240 ft.
76.00 Wash, 20 lks. wide, course SE. Thence along E. slope.
79.30 Wash, 20 lks. wide, course SE.
80.00 Set an iron post, 3 ft. long, 2 ins. diam., in a mound of stone, 3 ft. base, 3 ft. high, between boulders, with boulder marked cross (X), for cor. of secs. 14, 15, 22 and 23, marked on brass cap

T32N R10W
S15 | S14
S22 | S23

1922

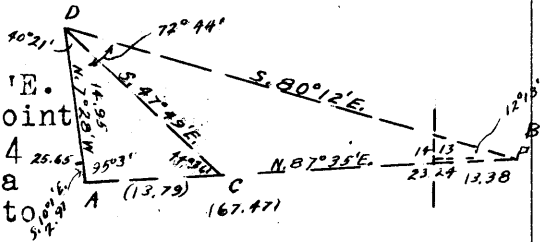
From which

- From A cedar, 16 ins. diam., brs. N.74°E., 109 lks. dist., marked T32N R10W S14 BT.
- A cedar, 10 ins. diam., brs. S.59°E., 136 lks. dist., marked T32N R10W S23 BT.
- A cedar, 8 ins. diam., brs. S.21 $\frac{1}{2}$ °W., 123 lks. dist., marked T32N R10W S22 BT.

No other trees within limits.
Land, mountainous.
Soil, rocky, 4th rate.
Timber, cedar.
Undergrowth, black brush, cat claw, mescal, scrub oak, and cactus.

From the cor. of secs. 14, 15, 22 and 23, flag at the true point for cor. of secs. 13, 14, 23 and 24 brs. S.89°51'E.
Therefore S.89°51'E. on a random line, bet. secs. 14 and 23.

25.65 Impossible to chain from this point on random line. Run traverse S.10°1'E. 2.97 chs. to flag "A". From "A", flag "B" set 13.38 chs. East of the true point for cor. of secs. 13, 14, 23 and 24 brs. N.87°35'E. Set flag "C" on a bearing N.87°35'E. at a point near the true point for $\frac{1}{4}$ sec. cor. of secs. 14 and 23. From "A" measure a base N.7°28'W. 14.95 chs. to flag "D", from which flag "C" brs. S.47°49'E. and flag "B" brs. S.80°12'E. In the triangle ADC, the three angles are therefore 40°21', 44°36', and 95°3', the sum of which is 180°. The distance triangulated is given by the sine proportion:



$$\frac{X}{14.95} = \frac{\sin. 40^{\circ}21'}{\sin. 44^{\circ}36'}$$

log. 14.95 = 1.174641
log. sin. 40°21' = 9.811210
log. sin. 44°36' = 9.846432
log. X = 1.139419
X = 13.79 chs. The latitude and

Survey of the
Subdivision of T. 32 N., R. 10 W.

Chains.	<p>departure of this line are respectively 0.58 chs. North and 13.77 chs. East. Thence North 2.31 chs. and East 0.06 chs. to point for temp. $\frac{1}{2}$ sec. cor. on random line.</p> <p>40.00 Set temp. $\frac{1}{4}$ sec. cor.</p> <p>In the triangle ADB, the three angles are $72^{\circ}44'$, $12^{\circ}13'$ and $95^{\circ}3'$, the sum of which is 180°. The distance triangulated on the bearing $N.87^{\circ}35'E.$ is given by the sine proportion:</p> $\frac{X}{14.95} = \frac{\sin. 72^{\circ}44'}{\sin. 12^{\circ}13'}$ <p>log. 14.95 = 1.174641 log. sin. $72^{\circ}44'$ = 9.979973 $\frac{1.154614}{9.325534}$ log. sin. $12^{\circ}13'$ = 9.325534 log. X = 1.829080 X = 67.47 chs. The latitude and departure of this line are respectively 2.84 chs. North and 67.41 chs. East. By a computation of this traverse, the true distance between the cor. of secs. 14, 15, 22. and 23, and the true point for cor. of secs. 13, 14, 23, and 24 is found to be 80.20 chs.</p> <p>80.20 The true point for cor. of secs. 13, 14, 23 and 24, witnessed at 0.14 chs. West.</p> <p>Thence $N.89^{\circ}51'W.$ on a true line, bet. secs. 14 and 23. Over mountainous land, through scattering timber and undergrowth, distance by triangulation.</p> <p>(0.14) The witness cor. to cor. of secs. 13, 14, 23 and 24.</p> <p>40.10 Set an iron post, 3 ft. long, 1 in. diam., on bed rock, in a mound of stone, with stone marked cross (X) alongside, for $\frac{1}{4}$ sec. cor., marked on brass cap</p> $\frac{1}{4} \frac{S14}{S23}$ <p>1922</p> <p>Desc. 80 ft.</p> <p>42.30 Wash, course SE., in bottom of canyon. Asc.</p> <p>54.55 Thence by chaining, as hereinbefore described.</p> <p>56.40 From this point, spring brs. $S.41^{\circ}W.$</p> <p>61.16 From this point, spring brs. $S.10^{\circ}E.$</p> <p>62.70 From this point, cor. No. 3, Copper Mountain Lode Mining Claim, Mineral Survey No. 1548, Copper Mountain Mining District, brs. $N.34^{\circ}27'W.$</p> <p>69.59 From this point, cor. No. 3, Copper Mountain Lode Mining Claim brs. $N.3^{\circ}8'W.$</p> <p>80.20 The cor. of secs. 14, 15, 22 and 23. Land, mountainous. Soil, rocky, 4th rate. Timber, cedar and pinyon. Undergrowth, black brush, cactus, mescal, cat claw, and scrub oak,</p> <hr/> <p>$N.0^{\circ}1'W.$ bet. secs. 14 and 15. Over mountainous land, through scattering timber and undergrowth. Asc. 60 ft.</p> <p>5.00 Desc. 285 ft.</p> <p>13.94 From this point, main shaft of Copper Mountain Mine brs. $N.70^{\circ}30'E.$</p> <p>14.25 Road to mine, brs. NW. and SE.</p> <p>17.35 Road, to mine, brs. NW. and SE.</p> <p>28.42 From this point, main shaft of Copper Mountain Mine brs. $S.60^{\circ}49'E.$</p> <p>40.00 Set an iron post, 3 ft. long, 1 in. diam., 18 ins. in the ground, in a mound of stone, 4 ft. base, 1 ft. high, with stone marked cross (X) alongside, for $\frac{1}{4}$ sec. cor., marked on brass cap</p> $\frac{1}{4} \frac{S15}{S14}$ <p>1922</p> <p>Continue descent, 205 ft.</p> <p>51.47 Wash, 50 lks. wide, course SE. Asc. 255 ft.</p> <p>65.00 Desc. 35 ft.</p>
---------	---

BOOK 3628

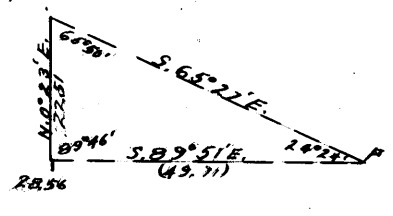
Survey of the
Subdivision of T. 32 N., R. 10 W.

Chains. 70.00 Thence over broken flat.
80.00 Set an iron post, 3 ft. long, 2 ins. diam., on ledge rock, in a mound of stone, 5 ft. base, 3 ft. high, with stone marked cross (X) alongside, for cor. of secs. 10, 11, 14 and 15, marked on brass cap

T32N R10W
S10 | S11
S15 | S14
1922

From which
A cedar, 10 ins. diam., brs. N.31³/₄°W.,
405 lks. dist., marked T32N R10W S10 BT.
No other trees within limits.
Land, mountainous.
Soil, rocky, 4th rate.
Timber, cedar and pinyon.
Undergrowth, black brush, cat claw, scrub oak, and cactus.

40.00 S.89°51'E. on a random line, bet. secs. 11 and 14.
Set temp. 1/4 sec. cor. Impossible to chain the remainder of this mile. I return to 28.56 chs. From this point, set a flag ahead on random line, near the cor. of secs. 11, 12, 13 and 14. From the 28.56 ch. point, measure a base N.0°23'E. 22.51 chs., from the N. end of which, flag brs. S.65°27'E. The three angles of the triangle are therefore 65°50', 24°24', and 89°46', the sum of which is 180°. The distance triangulated is given by the sine proportion:



$$\frac{X}{22.51} = \frac{\sin. 65^{\circ}50'}{\sin. 24^{\circ}24'}$$

log. 22.51	=	1.352375
log. sin. 24°24'	=	9.616060
log. sin. 65°50'	=	1.736315
log. X	=	9.960165
X	=	1.696480

28.56 chs., gives
78.27 Thence S.89°51'E. on a random line, bet. secs. 11 and 14, continuing measurement, distance by chaining.

79.94 Intersect N. and S. line, 9 lks. S. of the cor. of secs. 11, 12, 13 and 14.

Thence
N.89°55'W. on a true line, bet. secs. 11 and 14.
Over mountainous land, through scattering timber and undergrowth.

1.67 Thence by triangulation, as hereinbefore described.
39.97 Set an iron post, 3 ft. long, 1 in. diam., on bed rock, in a mound of stone, with stone marked cross (X) alongside, for 1/4 sec. cor., marked on brass cap

1/4 S11
S14
1922

Thence by chaining, ascending 25 ft.

45.00 Desc. 25 ft.
50.00 Asc. 45 ft.
55.00 Desc. 215 ft.
77.50 Wash, 10 lks. wide, course SE. Asc.
79.94 The cor. of secs. 10, 11, 14 and 15.
Land, mountainous.

Survey of the
Subdivision of T. 32 N., R. 10 W.

Chains.

Soil, rocky, 4th rate.
Timber, cedar and pinyon.
Undergrowth, black brush, cactus, mescal, cat claw, and scrub oak.

N.0°1'W. bet. secs. 10 and 11.
Over mountainous land, through scattering undergrowth and timber.

25.00 Asc. 245 ft.

30.00 Desc. 25 ft.

40.00 Asc. 75 ft.

Set an iron post, 3 ft. long, 1 in. diam., 28 ins. in the ground, for $\frac{1}{4}$ sec. cor., marked on brass cap

$\frac{1}{4}$
S10 | S11
1922

And raise a mound of stone, 4 ft. base, 3 ft. high, W. of cor.

49.60 Asc. 155 ft.

50.00 Cliff, 40 ft. high, brs. NW. and SE.

65.00 Thence along W. slope.

80.00 Asc. 175 ft.

Set an iron post, 3 ft. long, 2 ins. diam., 18 ins. in the ground, in a mound of stone, 3 ft. base, 1 ft. high, with cross (X) on rock in place, for cor. of secs. 2, 3, 10 and 11, marked on brass cap

T32N R10W
S 3 | S 2

S10 | S11
1922

And raise a mound of stone, 4 ft. base, 3 ft. high, W. of cor.

Land, mountainous.

Soil, rocky, 4th rate.

Timber, cedar and pinyon.

Undergrowth, black brush, dogwood, scrub oak, cat claw, Spanish bayonet, and cactus.

40.00 S.89°55'E. on a random line, bet. secs. 2 and 11.

79.88 Set temp. $\frac{1}{4}$ sec. cor.

Intersect N. and S. line, 16 lks. S. of the cor. of secs. 1, 2, 11, and 12.

Thence

S.89°58'W. on a true line, bet. secs. 2 and 11.

Over mountainous land, through scattering timber and undergrowth.

Desc. 190 ft.

Survey of the
Subdivision of T. 32 N., R. 10 W.

Chains.
4.50 Cliffs, br. NW. and SE. Continue descent.
8.90 Asc. 10 ft.
9.90 Desc. 170 ft.
37.60 Wash, 10 lks. wide, course S. Asc. 35 ft.
39.94 Set an iron post, 3 ft. long, 1 in. diam., 20 ins. in the ground, in a mound of stone, 2 ft. base, 1 ft. high, for $\frac{1}{4}$ sec. cor., marked on brass cap

$\frac{1}{4}$ S 2
S 11
1922

And raise a mound of stone, 4 ft. base, 3 ft. high, N. of cor.
Desc. 50 ft.
50.70 Wash, 10 lks. wide, course SE. Asc. 410 ft.
65.50 Wash, 10 lks. wide, course SE. Continue ascent.
79.88 The cor. of secs. 2, 3, 10 and 11.
Land, mountainous.
Soil, rocky, 4 thrate.
Timber, cedar and pinyon.
Undergrowth, sagebrush, Spanish bayonet, cactus,

N.0°1'W. on a true line, bet. secs. 2 and 3.
Over mountainous land, through scattering timber and undergrowth.
Asc. 1060 ft.
15.30 Cliffs, br. NW. and SE. Continue ascent.
30.00 Cliffs, br. E. and W. Continue ascent.
40.00 Set an iron post, 3 ft. long, 1 in. diam., 15 ins. in the ground, in a mound of stone, with stone marked cross (X) alongside, for $\frac{1}{4}$ sec. cor., marked on brass cap

S 3 $\frac{1}{4}$ S 2
1922

And raise a mound of stone, 4 ft. base, $3\frac{1}{2}$ ft. high, W. of cor.
Continue ascent, 480 ft.
56.30 Spur, slopes SE. Desc. 45 ft.
62.20 Thence along E. slope.
69.30 Asc. 40 ft.
79.72 Intersect N. bdy. of Tp., (8th Standard Parallel North) 20.07 chs. East of the standard cor. of secs. 34 and 35, T. 33 N., R. 10 W., described in Book "A".
At the point of intersection,
Set an iron post, 3 ft. long, 2 ins. diam., on solid rock, in a mound of stone, 6 ft. base, 3 ft. high, for closing cor. of secs. 2 and 3, marked on brass cap

T33N R10W
S35
C C
S 3 S 2
T32N R10W
1922

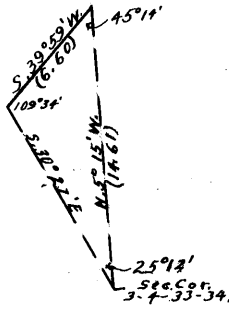
From which
A cedar, 10 ins. diam., brs. S.23°33'E.,
121 lks. dist., marked T32N R10W S2 CC BT.
A cedar, 12 ins. diam., brs. S.61°W.,
21 lks. dist., marked T32N R10W S3 CC BT.
Land, mountainous.
Soil, rocky, 4th rate.
Timber, cedar and pinyon.
Undergrowth, sagebrush, black brush, dogwood, scrub oak, cat claw, Spanish bayonet, and cactus.

Survey of the
Subdivision of T. 32 N., R. 10 W.

Chains.

From the cor. of secs. 3, 4, 33, and 34, on the S. bdy. of Tp., hereinbefore described, N.0°2'W. bet. secs. 33 and 34. Over mountainous land, through scattering timber and undergrowth.

Impossible to chain from this cor.; triangulate as follows:



Set a flag on a bearing N.5° 15'W. from the cor. of secs. 3, 4, 33 and 34, and from flag measure a base S.39°59'W. 6.60 chs., from the S. end of which, flag at the cor. of secs. 3, 4, 33 and 34 brs. S.30°27'E. The three angles of the triangle are therefore 109°34', 45°14', and 25°12', the sum of which is 180°. The distance triangulated on the bearing N.5° 15'W. is given by the sine

proportion:

$$\frac{X}{6.60} = \frac{\sin. 109^{\circ}34'}{\sin. 25^{\circ}12'}$$

$$\log. 6.60 = 0.819544$$

$$\log. \sin. 25^{\circ}12' = 9.629185$$

$$1.190359$$

$$\log. \sin. 109^{\circ}34' = 9.974167$$

$$\log. X = 1.164526$$

$$X = 14.61 \text{ chs.}$$

To point on cliff, on N. side of canyon, course N.80°E. Thence traverse N.14½°E. 5.41 chs.; thence 0.06 chs. West to a point 19.77 chs. N.0°2'W. of the cor. of secs. 3, 4, 33 and 34.

19.77 Thence N.0°2'W. bet. secs. 33 and 34, continuing measurement. Asc.

22.70 Spur, slopes E. Desc. 125 ft.

33.10 Draw, course E. Asc.

38.00 Spur, slopes SE. Desc.

40.00 Set an iron post, 3 ft. long, 1 in. diam., 8 ins. in the ground, in a mound of stone, 4 ft. base, 3 ft. high, with stone marked cross (X) alongside, for ¼ sec. cor., marked on brass cap

¼
S33 | S34
1922

From which

A pinyon, 14 ins. diam., brs. N.64°E., 110 lks. dist., marked ¼S34 BT.

A cedar, 20 ins. diam., brs. S.36½°W., 219 lks. dist., marked ¼S33 BT.

Desc. 40 ft.

46.00 Wash, 20 lks. wide, course E. Asc. 90 ft.

53.00 Spur, slopes SE. Desc. 495 ft.

56.00 Top of cliff, 60 ft. high, brs. NW. and SE. Continue descent.

80.00 Set an iron post, 3 ft. long, 2 ins. diam., 10 ins. in the ground, in a mound of stone, 5 ft. base, 3 ft. high, with stone marked cross (X) alongside, for cor. of secs. 27, 28, 33 and 34, marked on brass cap

T32N R10W
S28 | S27
S33 | S34
1922

Land, mountainous.
Soil, rocky, 4th rate.
Timber, cedar and pinyon.

BOOK 3823

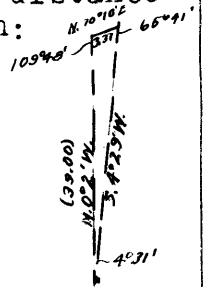
Survey of the
Subdivision of T. 32 N., R. 10 W.

Chains.

longer base--from the E. end of which, flag at the cor. of secs. 27, 28, 33 and 34 brs. S.4°20'W. The three angles of the triangle are therefore 65°41', 4°31', and 109°48', the sum of which is 180°. The distance triangulated is given by the sine proportion:

$$\frac{X}{3.37} = \frac{\sin. 65^{\circ}41'}{\sin. 4^{\circ}31'}$$

log. 3.37 = 0.527630
 log. sin. 4°31' = 8.896246
 log. sin. 65°41' = 9.959654
 log. X = 1.591038
 X = 39.00 chs.



39.00

Thence N.0°2'W. bet. secs. 27 and 28, continuing measurement, distance by chaining.

40.00

Set an iron post, 3 ft. long, 1 in. diam., 8 ins. in the ground, in a mound of stone, 4 ft. base, 3 ft. high, with stone marked cross (X) alongside, for 1/4 sec. cor., marked on brass cap

S28 1/4 S27

1922

Asc. 30 ft.

55.00

Desc. 25 ft.

65.00

Asc. 25 ft.

67.00

Desc. 95 ft.

72.00

Head of box canyon, course SE. Asc. 210 ft.

80.00

Set an iron post, 3 ft. long, 2 ins. diam., 27 ins. in the ground, with stone marked cross (X) alongside, for cor. of secs. 21, 22, 27 and 28, marked on brass cap

T32N R10W

S21 | S22

S28 | S27

1922

And raise a mound of stone, 5 ft. base, 3 ft. high, W. of cor.

Land, level and rolling.

Soil, rocky, 4th rate.

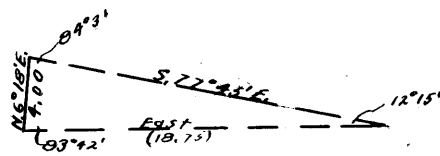
No timber.

Undergrowth, black brush.

6.97

East on a random line, bet. secs. 22 and 27.

Impossible to chain from this point; triangulate as follows



Set a flag ahead on line. From the 6.97 ch. point, measure a base N.6°18'E. 4.00 chs.--impracticable to secure longer base--from the N. end of which, flag brs. S.77°45'E. The three angles of the triangle are therefore 83°42', 84°3', and 12°15', the sum of which is 180°. The distance triangulated is given by the sine proportion:

$$\frac{X}{4.00} = \frac{\sin. 84^{\circ}3'}{\sin. 12^{\circ}15'}$$

log. 4.00 = 0.602060
 log. sin. 12°15' = 9.326700
 log. sin. 84°3' = 9.997654
 log. X = 1.273014
 X = 18.75

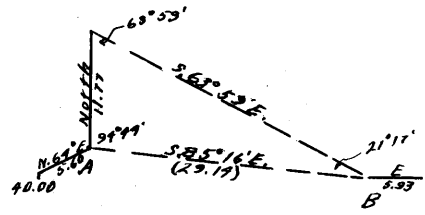
BOOK 3628
5007

Survey of the
Subdivision of T. 32 N., R. 10 W.

Chains.

25.72 18.75 chs. + 6.97 chs. =
40.00 Continue East on a random line, bet. secs. 22 and 27.
Set temp. $\frac{1}{4}$ sec. cor.
Impossible to continue chaining on random line. Traverse
as follows:

N.64°E. 5.60 chs. From this point,
"A", triangulate as follows:
Set flag "B" on a bearing S.85°16'E. From "A"
measure a base North 11.77
chs., from the N. end of
which, flag "B" brs. S.63°
59'E. The three angles of
the triangle are therefore
63°59', 21°17', and 94°44',
the sum of which is 180°.
The distance triangulated on
the bearing S.85°16'E. is
determined by the sine pro-
portion:



$$\frac{X}{11.77} = \frac{\sin. 63^{\circ}59'}{\sin. 21^{\circ}17'}$$

log. 11.77	=	1.070776
log. sin. 21°17'	=	9.559883
log. sin. 63°59'	=	1.510893
log. X	=	9.953599
X	=	1.464492

X = 29.14 chs., Thence East
5.93 chs., and intersect the cor. of secs. 22, 23, 26
and 27. By a computation of these courses and distan-
ces, the true bearing and distance of the line connect-
ing the cor. of secs. 22, 23, 26 and 27 with the cor.
of secs. 21, 22, 27 and 28, are S89°58'W. 80.00 chs.

From the cor. of secs. 22, 23, 26 and 27,
S89°58'W on a true line, bet. secs. 22 and 27.
Over mountainous land, through scattering undergrowth.
Asc. over cliffs, 60 ft.

3.00 Desc. 50 ft.
8.00 Rim of canyon, 300 ft. deep, course S.80°W. Rim brs.
N.80°E. and S.80°W. Thence by triangulation and trav-
erse, as hereinbefore described.

38.50 Right rim of canyon, course SW. Rim brs. NE. and SW.
40.00 Set an iron post, 3 ft. long, 1 in. diam., on ledge rock,
in a mound of stone, 4 ft. base, 3 ft. high, with stone
marked cross (X) alongside, for $\frac{1}{4}$ sec. cor., marked on
brass cap

$\frac{1}{4}$ S22
S27
1922

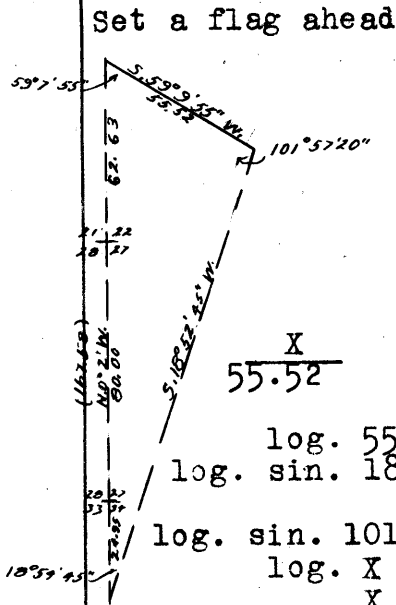
53.00 Asc. 315 ft.
Foot of rim rock, 40 ft. high, brs. NW. and SE.
54.00 Rim of canyon, course SE., 600 ft. deep. Rim brs. NW. and
SE. Thence by triangulation, as hereinbefore described.

73.03 Thence by chaining.
80.00 The cor. of secs. 21, 22, 27 and 28.
Land, mountainous.
Soil, rocky, 4th rate.
Timber, none.
Undergrowth, black brush, sagebrush, and Spanish bayonet.

N.0°2'W. bet. secs. 21 and 22.
Over mountainous land, through scattering undergrowth.
As it is impossible to chain this mile, I triangulate as
follows:

Survey of the
Subdivision of T. 32 N., R. 10 W.

chains.



Set a flag ahead on line, from which I measure a base S. 59° 9' 55" E. 55.52 chs., from the E. end of which, flag set 55.05 chs. N. 0° 2' W. of the cor. of secs. 3, 4, 33 and 34 brs. S. 18° 52' 45" W. The three angles of the triangle are therefore 59° 7' 55", 101° 57' 20", and 18° 54' 45", the sum of which is 180°.

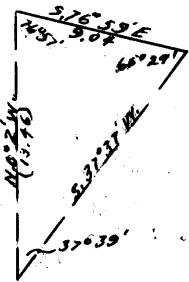
$$\frac{X}{55.52} = \frac{\sin. 101^{\circ}57'20''}{\sin. 18^{\circ}54'45''}$$

log. 55.52	=	1.744449
log. sin. 18° 54' 45"	=	9.510711
		2.233758
log. sin. 101° 57' 20"	=	9.990476
log. X	=	2.224214
X	=	167.58 chs.,

which added to 55.05 chs., gives 222.63 chs. N. 0° 2' W. of the cor. of secs. 3, 4, 33 and 34.

Thence by chaining, S. 0° 2' E. 17.51 chs. to a point 205.12 chs. N. 0° 2' W. of the cor. of secs. 3, 4, 33 and 34.

In order to locate the 1/4 sec. cor. of secs. 21 and 22, triangulate as follows:



Set a flag near the point for 1/4 sec. cor. of secs. 21 and 22, and from the 205.12 ch. point, measure a base S. 76° 59' E. 9.04 chs., from the East end of which, flag brs. S. 37° 39' W. The three angles of the triangle are therefore 76° 57', 65° 24', and 37° 39', the sum of which is 180°. The distance triangulated is given by the sine

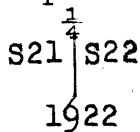
proportion:

$$\frac{X}{9.04} = \frac{\sin. 65^{\circ}24'}{\sin. 37^{\circ}39'}$$

log. 9.04	=	0.956168
log. sin. 37° 39'	=	9.785925
		1.170243
log. sin. 65° 24'	=	9.958677
log. X	=	1.128920
X	=	13.46 chs.,

or a point 191.66 chs. N. 0° 2' W. of the cor. of secs. 3, 4, 33 and 34, and 31.66 chs. N. 0° 2' W. of the cor. of secs. 21, 22, 27 and 28. The approximate topography from the cor. of secs. 21, 22, 27 and 28 to this triangulation point is as follows:

- 19.27 Rim of Dansill Canyon, course SE., 460 ft. deep, Rim brs. NW, and SE.
- 26.37 Center of Dansill Canyon, course SE. Asc.
- 31.66 Asc. 265 ft., distance by chaining.
- 40.00 Set an iron post, 3 ft. long, 1 in. diam., 6 ins. in the ground, in a mound of stone, 3 ft. base, 3 ft. high, with stone marked cross (X) alongside, for 1/4 sec. cor., marked on brass cap



- 45.12 Thence by triangulation, as hereinbefore described, to
- 62.63 Thence by chaining. ascending 190 ft.
- 80.00 Desc. 65 ft.

- 80.00 Set an iron post, 3 ft. long, 2 ins. diam., in a mound of stone, 4 ft. base, 3 ft. high, beside rock 9 X 6 X 3 ft., marked cross (X) on SE. end, for cor. of secs. 15, 16, 21 and 22, marked on brass cap

Survey of the
Subdivision of T. 32 N., R. 10 W.

BOOK 3028

Chains

T32N R10W
S 16 S 15
S 21 S 22
1922

Land, broken bench and rough mountainous.
Soil, rocky, 4th. rate.
Timber, cedar.
Undergrowth, black brush, catclaw, scrub oak, Spanish bayonet, and cactus.

40.00
79.94

N.89°58'E., on a random line bet. secs. 15 and 22.
Set temp. $\frac{1}{4}$ sec. cor.
Intersect N. and S. line 21 lks. S. of the cor. of secs. 14, 15, 22 and 23.

Thence
S.89°49'W., on a true line bet. secs. 15 and 22.
Over mountainous land, through scattering timber and undergrowth.

13.50
39.97

Asc. 270 ft. over E. slope.
Wash, 10 lks. wide, course SE. Continue ascent.
Set an iron post, 3 ft. long, 1 in. in diam., on solid rock, supported in a mound of stone, 4 ft. base, 3 ft. high, with stone marked cross (X) alongside, for $\frac{1}{4}$ sec. cor. marked on brass cap

$\frac{1}{4}$ S 15
S 22
1922

65.00
74.00
79.94

Over rolling land.
Asc. 47 ft.
Desc. 95 ft. over W. slope.
The cor. of secs. 15, 16, 21 and 22.
Land, rolling and mountainous.
Soil, rocky and sandy, 4th. rate.
Timber, cedar.
Undergrowth, black brush, scrub oak, catclaw, Spanish bayonet, and cactus.

.50
10.00
35.00
40.00

N.0°2'W., bet. secs. 15 and 16.
Over broken land, through scattering timber and undergrowth.
Desc.

Wash, course SW. Asc. 115 ft.
Thence over rolling flat, descending gradually, 40 ft.

Asc. 35 ft.
Set an iron post, 3 ft. long, 1 in. in diam., on ledge rock, in a mound of stone, 4 ft. base, 3 ft. high, with cross (X) on ledge at base of post, for $\frac{1}{4}$ sec. cor. marked on brass cap

$\frac{1}{4}$
S 16 S 15
1922

45.00
49.40
55.00
65.70
75.00
78.70
80.00

Continue ascent 35 ft.
Thence over rolling land.
Road to Copper Mountain Mine, bears N.30°W. and S.30°E.
Desc. 45 ft.
Wash, 10 lks. wide, 15 ft. deep, course NE. Asc. 15 ft.
Desc. 50 ft.
Wash, 10 lks. wide, course NE. Asc.
Set an iron post, 3 ft. long, 2 ins. in diam., 16 ins. in the ground, in a mound of stone, 4 ft. base, 1 $\frac{1}{2}$ ft. high

Survey of the
Subdivision of T. 32 N., R. 10 W.

Chains for cor. of secs. 9, 10, 15 and 16, marked on brass cap

T32N. R10W
S 9 | S 10
S 16 | S 15
1922

And raise a mound of stone, 4 ft. base, 4 ft. high W.
of cor.
Land; broken.
Soil; rocky, 4th. rate.
Timber; cedar and pinyon.
Undergrowth; black brush, scrub oak, catclaw, Spanish
bayonet, and cactus.

40.00 N.89°49'E., on a random line bet. secs. 10 and 15.
Set temp. $\frac{1}{4}$ sec. cor.
80.00 Intersect the cor. of secs. 10, 11, 14 and 15.
Thence
S.89°49'W., on a true line bet. secs. 10 and 15.
Over rolling land, through scattering timber and under-
growth.
Asc. gradual slope 45 ft.
14.20 Desc.
16.50 Wash, 50 lks. wide, course S. Asc.
20.10 Spur, slopes S. Desc. 130 ft.
27.80 Wash, 10 lks. wide, course SE. Asc. 155 ft.
32.90 Thence over rolling land.
39.95 Set an iron post, 3 ft. long, 1 in. in diam., on ledge
rock, in a mound of stone, 4 ft. base, 3 ft. high, with
cross (X) on ledge at base of post, for witness cor. to
the $\frac{1}{4}$ sec. cor. marked on brass cap

WC $\frac{1}{4}$ | S 10
S 15
1922

40.00 True point for $\frac{1}{4}$ sec. cor., at which the cor. cannot be
permanently established. Desc. 30 ft.
40.60 Wash, 10 lks. wide, course NE. Asc. 105 ft.
53.00 Thence over rolling land.
65.00 Desc. 25 ft.
66.80 Wash, 10 lks. wide, course NE., from W.
73.40 Wash, 10 lks. wide, course E., from N.80°W. Asc. 25 ft.
80.00 The cor. of secs. 9, 10, 15 and 16.
Land, rolling and broken.
Soil, rocky, 4th. rate.
Timber, cedar and pinyon.
Undergrowth, black brush, scrub oak, catclaw, Spanish
bayonet, and cactus.

N.0°2'W., bet. secs. 9 and 10.
Over mountainous land, through scattering timber and
undergrowth.
Asc. 360 ft.
24.00 Desc. gradual slope 20 ft.
40.00 Set an iron post, 3 ft. long, 1 in. in diam., 8 ins. in
the ground to bed rock, supported in a mound of stone,
with marked stone at base of post, for $\frac{1}{4}$ sec. cor. marked
on brass cap

$\frac{1}{4}$
S 9 | S 10
1922

Survey of the
Subdivision of T. 32 N., R. 10 W.

Chains. And raise a mound of stone, 4 ft. base, 3 ft. high, W. of cor.
 Desc. 70 ft.
 44.30 Draw, course E. Asc. 10 ft.
 48.40 Spur, slopes E. Desc. 40 ft.
 52.40 Draw, course SE. Asc. 100 ft.
 60.00 Desc. 30 ft.
 66.55 Asc. 155 ft.
 73.15 Desc. 15 ft.
 79.10 Draw, course E. Asc. 15 ft.
 80.00 Set an iron post, 3 ft. long, 2 ins. diam., 20 ins. in the ground, in a mound of stone, with stone marked cross (X) alongside, for cor. of secs. 3, 4, 9 and 10, marked on brass cap

T32N R10W
 S 4 | S 3
 S 9 | S 10
 1922

From which

A cedar, 36 ins. diam., brs. S.44 $\frac{3}{4}$ °E.,
 104 lks. dist., marked T32N R10W S10 BT.
 A cedar, 18 ins. diam., brs. S.49 $\frac{1}{4}$ °W.,
 224 lks. dist., marked T32N R10W S9 BT.
 No other trees within limits. Raise a mound of stone, 2 ft. base, 1 $\frac{1}{2}$ ft. high, W. of cor.
 Land, mountainous.
 Soil, rocky, 4th rate.
 Timber, cedar and pinyon.
 Undergrowth, black brush, scrub oak, cat claw, Spanish bayonet, and cactus.

40.00 N.89°49'E. on a random line, bet. secs. 3 and 10.
 Set temp. $\frac{1}{4}$ sec. cor.
 80.04 Intersect N. and S. line, 7 lks. S. of the cor. of secs. 2, 3, 10 and 11.
 Thence
 S.89°46'W. on a true line, bet. secs. 3 and 10.
 Over rolling mountainous land, through scattering timber and undergrowth.
 Desc. gradual slope, 165 ft.
 4.90 Draw, course S. Continue descent.
 13.00 Center of wash, 1 ch. wide, course S.
 35.50 Wash, 50 lks. wide, 6 ft. deep, course S. Continue descent.
 40.02 Set an iron post, 3 ft. long, 1 in. diam., on ledge rock, in a mound of stone, 4 ft. base, 3 $\frac{1}{2}$ ft. high, with stone marked cross (X) alongside, for $\frac{1}{4}$ sec. cor., marked on brass cap

$\frac{1}{4}$ S 3
 S 10
 1922

50.00 Desc. 30 ft.
 Draw, 50 lks. wide, course S.25°E. Asc. 265 ft.
 80.04 The cor. of secs. 3, 4, 9 and 10.
 Land, rolling mountainous.
 Soil, rocky, 4th rate.
 Timber, cedar.
 Undergrowth, black brush, dogwood, Spanish bayonet, and cactus.

N.0°2'W. on a true line, bet. secs. 3 and 4.

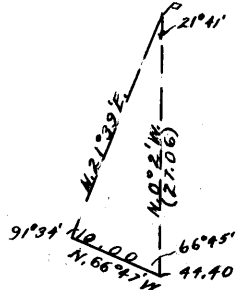
Survey of the
Subdivision of T. 32 N., R. 10 W.

Chains.

Over mountainous land, through scattering timber and undergrowth. Asc. 65 ft. over SE. slope.
10.30 Top of ascent, Desc. 75 ft.
16.50 Draw, course E. Asc.
40.00 Set an iron post, 3 ft. long, 1 in. diam., 12 ins. in the ground, in a mound of stone, 4 ft. base, 3 ft. high, with stone marked cross (X) alongside, for $\frac{1}{4}$ sec. cor., marked on brass cap

$\frac{1}{4}$
 S 4 | S 3
 1922

45.50 And raise a mound of stone, 4 ft. base, 3 ft. high, W. of cor.
Wash, 50 lks. wide, course SE. Impossible to chain from this point. Set a flag ahead on line. From the 44.40 ch. point, measure a base N. 66° 47' W. ^{10.00 chs.} from the W. end of which, flag brs. N. 21° 39' E. The three angles of the triangle are therefore 21° 41', 66° 45', and 91° 34', the sum of which is 180°. The distance triangulated is given by the sine proportion:



$$\frac{X}{10.00} = \frac{\sin. 91^{\circ}34'}{\sin. 21^{\circ}41'}$$

log. 10.00	=	1.000000
log. sin. 21° 41'	=	9.567587
log. sin. 91° 34'	=	1.432413
log. X	=	9.999838
X	=	1.432251

27.06 chs., which added to

44.40 chs., gives
71.46 Top of cliff, brs. E. and W. 730 ft. above wash. Continue ascent, 210 ft.
76.00 Desc. 30 ft.
79.00 Wash, 20 lks. wide, course SW. Asc. 20 ft.
80.09 Intersect N. bdy. of Tp. (8th Standard Parallel North) 19.93 chs. East of the standard cor. of secs. 33 and 34, T. 33 N., R. 10 W., which is an iron post, described in Book "A".
At the point of intersection, Set an iron post, 3 ft. long, 2 ins. diam., 20 ins. in the ground, in a mound of stone, with stone marked cross (X) alongside, for closing cor. of secs. 3 and 4, marked on brass cap

T33N R10W
 S34
 S 4 | S 3
 T32N R10W
 C C
 1922

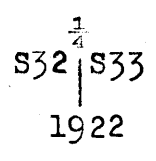
And raise a mound of stone, 4 ft. base, 3½ ft. high, S. of cor.
Land, mountainous.
Soil, rocky, 3rd and 4th rates.
Timber, cedar.
Undergrowth, sagebrush, Spanish bayonet, and cactus.

From the cor. of secs. 4, 5, 32 and 33, on the S. bdy. of Tp., which is an iron post, hereinbefore described, N. 0° 3' W. bet. secs. 32 and 33.
Over rolling land, through heavy undergrowth.

Survey of the
Subdivision of T. 32 N., R. 10 W.

Chains.

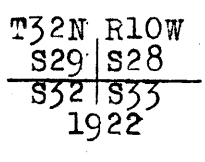
40.00 Set an iron post, 3 ft. long, 1 in. diam., 20 ins. in the ground, in a mound of stone, with stone marked cross (X) alongside, for $\frac{1}{4}$ sec. cor., marked on brass cap



And raise a mound of stone, 2 ft. base, $1\frac{1}{2}$ ft. high, W. of cor.

Desc. gradual slope.

80.00 Set an iron post, 3 ft. long, 2 ins. diam., 28 ins. in the ground, with stone marked cross (X) alongside, for cor. of secs. 28, 29, 32 and 33, marked on brass cap



And raise a mound of stone, 2 ft. base, $1\frac{1}{2}$ ft. high, W. of cor.

Land, rolling.

Soil, rocky, 3rd rate.

Timber, none

Undergrowth, black brush, sagebrush, Spanish bayonet, and cactus.

40.00 N. $89^{\circ}59'$ E. on a random line, bet. secs. 28 and 33. Set temp. $\frac{1}{4}$ sec. cor.

79.82 Intersect N. and S. line, 7 lks. N. of the cor. of secs. 27, 28, 33 and 34.

Thence

N. $89^{\circ}58'$ W. on a true line, bet. secs. 28 and 33.

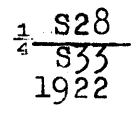
Over mountainous land, through scattering timber and undergrowth.

Asc. 520 ft.

20.00 Top of point of cliffs, brs. SW. and SE. Desc. 75 ft.

38.30 Draw, course N. 75° E. Asc. 50 ft.

39.91 Set an iron post, 3 ft. long, 1 in. diam., 8 ins. in the ground, in a mound of stone, 4 ft. base, 2 ft. high, with stone marked cross (X) alongside, for $\frac{1}{4}$ sec. cor., marked on brass cap



Continue ascent, 210 ft.

55.55 Top of cliffs, brs. NE. and SW. Desc. 60 ft.

60.90 Draw, course NE. Asc. 65 ft.

65.80 Top of cliffs, 50 ft. high, brs. N. and S. Desc. gradual slope, 15 ft.

79.82 The cor. of secs. 28, 29, 32 and 33.

Land, broken and mountainous.

Soil, rocky, 4th rate.

Timber, cedar.

Undergrowth, sagebrush, black brush, cactus, and Spanish bayonet.

N. $0^{\circ}3'$ W. bet. secs. 28 and 29.

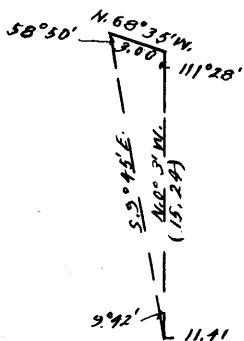
Over rolling land, through scattering timber and undergrowth.

11.41 Rim of box canyon, 150 ft. deep, course NE. Rim brs. NE. and SW. Impossible to chain across canyon; triangulate

Survey of the
Subdivision of T. 32 N., R. 10 W.

Chains.

as follows:



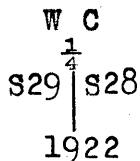
Set a flag ahead on line, from which I measure a base N. 68°35' W., 3.00 chs.--impracticable to secure longer base--from the W. end of which, flag at the 11.41 ch. point brs. S. 9°45' E. The three angles of the triangle are therefore 58°50', 111°28', and 9°42', the sum of which is 180°. The distance triangulated is given by the sine proportion:

$$\frac{X}{3.00} = \frac{\sin. 58^{\circ}50'}{\sin. 9^{\circ}42'}$$

log. 3.00 = 0.477121
 log. sin. 9°42' = 9.226573
 1.250548
 log. sin. 58°50' = 9.932304
 log. X = 1.182852
 X = 15.24 chs., which added to 11.41

26.65
39.26

chs., gives
 Spur, slopes E., on N. side of canyon. Desc. 95 ft.
 Set an iron post, 3 ft. long, 1 in. diam., 20 ins. in the ground, in a mound of stone, for witness cor. to $\frac{1}{4}$ sec. cor., marked on brass cap



From which

- A cedar, 6 ins. diam., brs. N. 10° E., 139 lks. dist., marked WC $\frac{1}{4}$ S28 BT.
- A pinyon, 12 ins. diam., brs. N. 52 $\frac{1}{2}$ ° W., 50 lks. dist., marked WC $\frac{1}{4}$ S29 BT.

40.00

Wash, 50 lks. wide, in bottom of canyon, course SE. Asc. 65 ft.

45.50

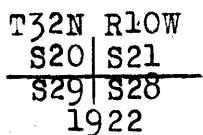
Desc. 155 ft.

46.40

Cliff, 40 ft. high, brs. N. 20° W. and S. 20° E. Continue descent.

80.00

Set an iron post, 3 ft long, 2 ins. diam., 20 ins. in the ground, in a mound of stone, for cor. of secs. 20, 21, 28 and 29, marked on brass cap



From which,

- A cedar, 20 ins. diam., half dead, brs. N. 70° E., 67 lks. dist., marked BT.
- A pinyon, 10 ins. diam., brs. S. 17 $\frac{1}{2}$ ° E., 219 lks. dist., marked T32N R10W S28 BT.
- A cedar, 14 ins. diam., brs. S. 77 $\frac{3}{4}$ ° W., 133 lks. dist., marked T32N R10W S29 BT.
- A pinyon, 24 ins. diam., brs. N. 29 $\frac{1}{2}$ ° W., 221 lks. dist., marked T32N R10W S20 BT.

Land, rolling and mountainous.

Soil, rocky, 4th rate.

Timber, cedar, and pinyon.

Undergrowth, black brush, sagebrush, cactus, and Spanish bayonet.

17.70

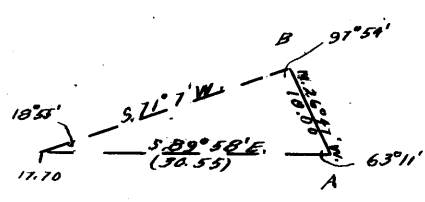
S. 89°58' E. on a random line, bet. secs. 21 and 28. Impossible to chain from this point; triangulate as

Survey of the
Subdivision of T. 32 N., R. 10 W.

Chains.

follows:

Set flag "A" ahead on line, from which I measure a base N.26°47'W. 10.00 chs. to "B", from which flag at the 17.70 ch. point brs. S.71°7'W. The three angles of the triangle are therefore 18°55', 97°54', and 63°11', the sum of which is 180°. The distance triangulated is given by the sine proportion:



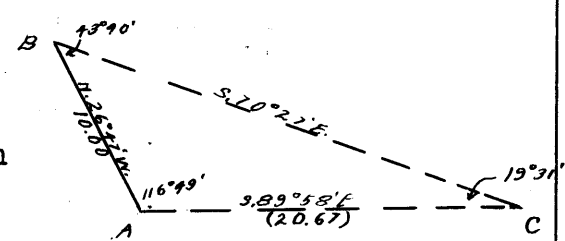
$$\frac{X}{10.00} = \frac{\sin. 97^{\circ}54'}{\sin. 18^{\circ}55'}$$

log. 10 = 1.000000
 log. sin. 18°55' = 9.510803
 1.489197
 log. sin. 97°54' = 9.995859
 log. X = 1.485056
 X = 30.55 chs., which added to 17.70 chs., gives 48.25 chs.

43.75
48.25

Thence N.89°58'W. 4.50 chs. to Set temp. witness cor. to 1/4 sec. cor. Thence S.89°58'E., continuing measurement.

Impossible to chain from flag "A". Set flag "C" ahead on line. From flag "B", "C" brs. S.70°27'E. The three angles of the triangle are therefore 43°40', 19°31', and 116°49', the sum of which is 180°. The distance triangulated is given by the sine proportion:



$$\frac{X}{10.00} = \frac{\sin. 43^{\circ}40'}{\sin. 19^{\circ}31'}$$

log. 10.00 = 1.000000
 log. sin. 19°31' = 9.523852
 1.476148
 log. sin. 43°40' = 9.839140
 log. X = 1.315288
 X = 20.67 chs., which added to 48.25 chs., gives

68.92

Thence by chaining, S.89°58'E. on a random line, continuing measurement.

79.94

Intersect N. and S. line, 14 lks. S. of the cor. of secs. 21, 22, 27 and 28.

Thence S.89°56'W. on a true line, bet. secs. 21 and 28. Over broken and mountainous land, through scattering timber and undergrowth.

11.02

Asc. 405 ft. Spur, slopes SE. Desc. 520 ft., distance by triangulation.

36.19

Rim of canyon, 200 ft. deep, course SE. Rim brs. NW. and SE. Set an iron post, 3 ft. long, 1 in. diam., on ledge rock, in a mound of stone, 5 ft. base, 3 1/2 ft. high, with stone marked cross (X) alongside, for witness cor. to 1/4 sec. cor., marked on brass cap

WC 1/4 S21
S28
1922

62.24

Thence by triangulation, across canyon. Right rim of canyon, course SE. Rim brs. NW. and SE. Desc.

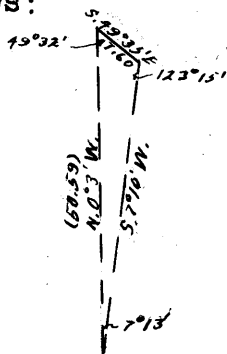
Survey of the
Subdivision of T. 32 N., R. 10 W.

Chains.

72.05 Draw, course N.20°W. Asc.
75.00 Desc.
79.94 The cor. of secs. 20, 21, 28 and 29.
Land, broken and mountainous.
Soil, rocky, 4th rate.
Timber, cedar and pinyon.
Undergrowth, black brush, cactus, and Spanish bayonet.

N.0°3'W. bet. secs. 20 and 21.
Over mountainous land, through scattering timber and undergrowth.
Along E. slope.

8.41 Rim of canyon, 500 ft. deep, course SE. Rim brs. NW. and SE. Impossible to chain from here; triangulate as follows:



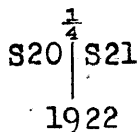
Set a flag ahead on line, from which I measure a base S.49°35'E. 7.60 chs., from the E. end of which, flag at the 8.41 ch. point brs. S.7°10'W. The three angles of the triangle are therefore 123°15', 7°13', and 49°32', the sum of which is 180°. The distance triangulated is given by the sine proportion:

$$\frac{X}{7.60} = \frac{\sin. 123^{\circ}15'}{\sin. 7^{\circ}13'}$$

log. 7.60	=	0.880814
log. sin. 7°13'	=	9.099065
		<u>1.781749</u>
log. sin. 123°15'	=	9.922355
log. X	=	<u>1.704104</u>
X	=	50.59 chs., which added to

8.41 chs., gives 59.00 chs.

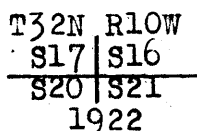
59.00 Thence S.0°3'E. 19.00 chs., distance by chaining.
40.00 Set an iron post, 3 ft. long, 1 in. diam., on ledge rock, in a mound of stone, 5 ft. base, 3 ft. high, with cross at base of post, for 1/4 sec. cor., marked on brass cap



59.00 Cor. stands on N. rim of canyon, course SE. Rim brs. E. and W. Asc. 280 ft. to
Continue N.0°3'W., bet. secs. 20 and 21, distance by chaining.

70.13 Rim of Dansill Canyon, course S.50°E. Rim brs. S.50°E. and N.50°W. Desc. 535 ft.

80.00 Set an iron post, 3 ft. long, 2 ins. diam., 6 ins. in the ground, on ledge rock, in a mound of stone, 5 ft. base, 3 ft. high, with stone marked cross (X) alongside, for cor. of secs. 16, 17, 20 and 21, marked on brass cap



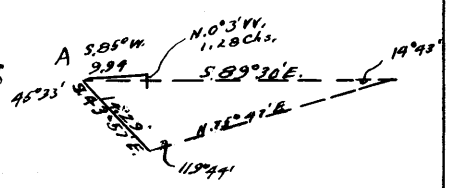
Land, rolling and mountainous.
Soil, rocky, 4th rate.
Timber, cedar and pinyon.
Undergrowth, black brush, yucca, Spanish bayonet, cactus, and cat claw.

BOOK 3620

Survey of the
Subdivision of T. 32 N., R. 10 W.

Chains.

N. 89° 56' E. on a random line, bet. secs. 16 and 21.
Impossible to chain across canyon; proceed as follows:
From the cor. of secs. 16, 17,
20 and 21, N. 0° 3' W. 1.28
chs. Thence S. 85° W. 9.94
chs. to flag "A", from which
I set a flag, "B", on a bearing
S. 89° 30' E. From "A", measure
a base S. 43° 57' E., 14.29 chs.,
to "C", from which flag "B"
brs. N. 75° 47' E. The three an-
gles of the triangle are there-
fore 14° 43', 119° 44', and
45° 33', the sum of which is
180°. The distance triangulated on the bearing S. 89°
30' E. is given by the sine proportion:



$$\frac{X}{14.29} = \frac{\sin. 119^{\circ}44'}{\sin. 14^{\circ}43'}$$

log. 14.29	=	1.155032
log. sin. 14° 43'	=	9.404901
		<u>1.750131</u>
log. sin. 119° 44'	=	9.938691
log. X	=	<u>1.688822</u>

X = 48.85 chs. By computa-
tion, this point is found to be 38.95 chs. East of the
cor. of secs. 16, 17, 20 and 21.

- Thence East on a random line, bet. secs. 16 and 21, continuing measurement.
- 40.00 Set temp. $\frac{1}{4}$ sec. cor.
- 80.00 Intersect the cor. of secs. 15, 16, 21 and 22.
- Thence West on a true line, bet. secs. 16 and 21.
- Over mountainous land, through scattering timber and undergrowth.
- Desc.
- 0.70 Wash, 20 lks. wide, course SW. Asc. 50 ft.
- 6.30 Desc. 50 ft.
- 11.20 Asc. 50 ft.
- 21.10 Desc. 65 ft.
- 25.90 Wash, 10 lks. wide, course SW. Asc. 105 ft.
- 30.90 Spur, slopes SW. Desc. 120 ft.
- 40.00 Set an iron post, 3 ft. long, 1 in. diam., on ledge rock, in a mound of stone, 4 ft. base, 3 ft. high, with cross (X)s on ledge at base of post, for $\frac{1}{4}$ sec. cor., marked on brass cap

$\frac{1}{4}$ S16
S21
1922

- Continue descent, 20 ft.
- 41.07 Thence by triangulation across Dansill canyon, as herein-
before described. Rim of canyon, course SE. Rim brs.
NW. and SE.
- 80.00 The cor. of secs. 16, 17, 20 and 21.
Land, mountainous and rolling.
Soil, rocky, 4th rate
Timber, cedar and pinyon.
Undergrowth, black brush, cactus, and Spanish bayonet.

- N. 0° 3' W. bet. secs. 16 and 17.
Over mountainous land, through scattering timber and undergrowth.
- Desc. 300 ft.
- 13.80 Dansill Canyon, course SE. Asc. 460 ft.

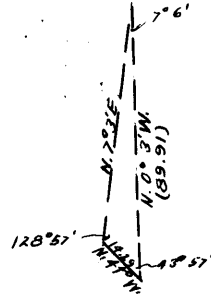
Survey of the
Subdivision of T. 32 N., R. 10 W.

Chains.
40.00

Set an iron post, 3 ft. long, 1 in. diam., 8 ins. in the ground, in a mound of stone, 4 ft. base, 3 ft. high, with stone marked cross (X) alongside, for $\frac{1}{4}$ sec. cor., marked on brass cap

$\frac{1}{4}$
 S17 | S16
 |
 1922

Imp practicable to chain from this point. Set a flag ahead on line, near the point for cor. of secs. 8, 9, 16 and 17. From a point 9.87 chs. S.0°3'E. of the cor. of secs. 16, 17, 20 and 21, measure a base N.44°W. 14.29 chs., from the N. end of which, flag near the cor. of secs. 8, 9, 16 and 17 brs. N.7°3'E. The three angles of the triangle are therefore 7°6', 43°57', and 128°57', the sum of which is 180°. The distance triangulated is given by the sine proportion:



$$\frac{X}{14.29} = \frac{\sin. 128^{\circ}57'}{\sin. 7^{\circ}6'}$$

$$\begin{aligned} \log. 14.29 &= 1.155032 \\ \log. \sin. 7^{\circ}6' &= 9.092024 \\ \log. \sin. 128^{\circ}57' &= 9.890809 \\ \log. X &= 1.953817 \\ X &= 89.91 \text{ chs., or } 0.04 \text{ chs.} \end{aligned}$$

N.0°3'W. of the cor. of secs. 8, 9, 16 and 17. Measure S.0°3'E. 0.04 chs. to

80.00

Set an iron post, 3 ft. long, 2 ins. diam., 10 ins. in the ground, in a mound of stone, with stone marked cross (X) alongside, for cor. of secs. 8, 9, 16 and 17, marked on brass cap

T32N R10W
 S 8 | S 9
 S17 | S16
 1922

And raise a mound of stone, 5 ft. base, 5 ft. high, W. of cor.
Land, broken and mountainous.
Soil, rocky, 4th rate.
Timber, cedar and pinyon.
Undergrowth, black brush.

40.00

East on a random line, bet. secs. 9 and 16.

80.00

Set temp. $\frac{1}{4}$ sec. cor.
Intersect N. and S. line, 5 lks. S. of the cor. of secs. 9, 10, 15 and 16.

Thence
S.89°58'W. on a true line, bet. secs. 9 and 16.
Over rolling land, through heavy undergrowth.
Desc. gradual slope, 60 ft.

40.00

Set an iron post, 3 ft. long, 1 in. diam., 8 ins. in the ground, in a mound of stone, 4 ft. base, 3 ft. high, with stone marked cross (X) alongside, for $\frac{1}{4}$ sec. cor., marked on brass cap

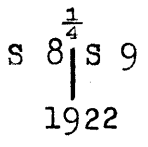
$\frac{1}{4}$ S 9
 S16
 1922

Survey of the
Subdivision of T. 32 N., R. 10 W.

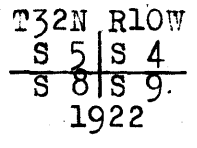
Chains.

41.95 Road, brs. SE. to Mine and NW. Desc. 25 ft.
51.00 Draw, 50 lks. wide, course SW., Continue descent, 185 ft.
57.30 Draw, course SW. Asc. 185 ft.
80.00 The cor. of secs. 8, 9, 16 and 17.
Land, rolling.
Soil, rocky, 4th rate.
Timber, none.
Undergrowth, black brush, and sagebrush.

N.0°3'W. bet. secs. 8 and 9.
Over rolling land, through scattering undergrowth.
Desc. 90 ft.
14.30 Draw, course W. Asc. 100 ft.
17.34 Spur, slopes E. Desc. 45 ft.
34.80 Road, brs. NW. and SE. to Mine. Asc. 95 ft.
40.00 Set an iron post, 3 ft. long, 1 in. diam., 8 ins. in the ground, in a mound of stone, 4 ft. base, 3 ft. high, with stone marked (X) alongside, for $\frac{1}{4}$ sec. cor., marked on brass cap



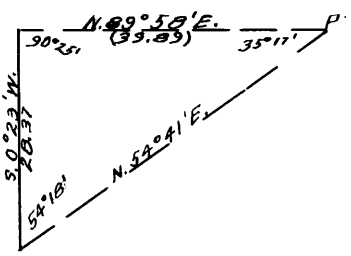
Desc. 80 ft.
44.50 Draw, course W. Asc. 160 ft.
51.30 Spur, slopes W. Desc. 110 ft.
65.60 Draw, course W. Asc. 175 ft.
80.00 Set an iron post, 3 ft. long, 2 ins. diam., 27 ins. in the ground, for cor. of secs. 4, 5, 8 and 9, marked on brass cap



And raise a mound of stone, 5 ft. base, 4 ft. high, W. of cor.
Land, rolling.
Timber, none.
Soil, 3rd and 4th rates.
Undergrowth, black brush, sagebrush, dogwood, cactus, and Spanish bayonet.

0.17 N.89°58'E. on a random line, bet. secs. 4 and 9.
Impracticable to chain from this point, because of cliffs.

Triangulate as follows:
Set a flag ahead on line,
and from the 0.17 ch. point,
measure a base S.0°23'W.
28.37 chs., from the S. end
of which, flag brs. N.54°41'E.
The three angles of the tri-
angle are therefore 35°17',
54°18', and 90°25', the sum
of which is 180°. The dist-
ance triangulated is given by the sine proportion:



$$\frac{X}{28.37} = \frac{\sin. 54^{\circ}18'}{\sin. 35^{\circ}17'}$$

Survey of the
Subdivision of T. 32 N., R. 10 W.

Chains.

log. 28.37 = 1.452859
 log. sin. 35°17' = 9.761642
1.691217
 log. sin. 54°18' = 9.909601
 log. X = 1.600818
 X = 39.89 chs., which added to
 0.17 chs., gives 40.06 chs. Thence S.89°58'W. 0.06
 chs. to

40.00 Set temp. $\frac{1}{4}$ sec. cor.
 Thence continue N.89°58'E. on a random line, continuing
 measurement.

80.06 Intersect N. and S. line, 2 lks. S. of the cor. of secs.
 3, 4, 9 and 10.

Thence
 S.89°57'W. on a true line, bet. secs. 4 and 9.
 Over mountainous land, through scattering timber and
 undergrowth.

Asc. 1135 ft.
 Spur, slopes S. Desc. 60 ft.

38.00
 40.03 Set an iron post, 3 ft. long, 1 in. diam., on ledge rock,
 in a mound of stone, 6 ft. base, $3\frac{1}{2}$ ft. high, for $\frac{1}{4}$
 sec. cor., marked on brass cap

$\frac{1}{4}$ S 4
 $\frac{1}{4}$ S 9
 1922

From which

A cedar, 14 ins. diam., brs. N.54 $\frac{1}{2}$ °W.,
 44 lks. dist., marked $\frac{1}{4}$ S4 BT.

A cedar, 8 ins. diam., brs. S.21 $\frac{3}{4}$ °E.,
 54 lks. dist., marked $\frac{1}{4}$ S9 BT.

Thence by triangulation, as hereinbefore described.

80.06 The cor. of secs. 4, 5, 8 and 9.

Land, mountainous.
 Soil, rocky, 4th rate.
 Timber, cedar.

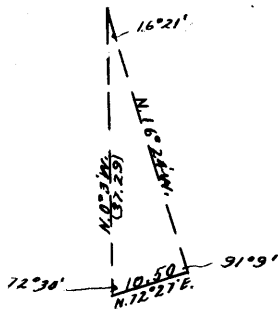
Undergrowth, black brush, rabbit brush, cactus, and
 Spanish bayonet.

N.0°3'W. on a true line, bet. secs. 4 and 5.

Over mountainous land, through scattering timber and
 undergrowth.

It being impossible to chain from this cor., I triangulate
 as follows:

Set a flag ahead on line. From the cor. of secs. 4, 5, 8
 and 9, measure a base N.72°27'E.
 10.50 chs., from the E. end of
 which, flag brs. N.16°24'W.
 The three angles of the tri-
 angle are therefore 16°21',
 91°9', and 72°30', the sum of
 which is 180°. The distance
 triangulated is given by the
 sine proportion:



$$\frac{X}{10.50} = \frac{\sin. 91^{\circ}9'}{\sin. 16^{\circ}21'}$$

log. 10.50 = 1.021189

log. sin. 16°21' = 9.449485

1.571704

log. sin. 91°9' = 9.999913

log. X = 1.571617

X = 37.29 chs.,

37.29 Spur, slopes W., 760 ft. above sec. cor. Continue ascent.

40.00 Set an iron post, 3 ft. long, 1 in. diam., 20 ins. in the
 ground, in a mound of stone, for $\frac{1}{4}$ sec. cor., marked on
 brass cap

BOOK 308

Survey of the
Subdivision of T. 32 N., R. 10 W.

Chains.

S 5 ¹/₄ S 4
1922

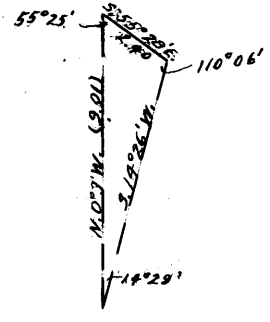
From which

- A pinyon, 10 ins. diam., brs. S.32¹/₂°E.,
155 lks. dist., marked ¹/₄S4 BT.
- A pinyon, 8 ins. diam., brs. S.9¹/₂°W.,
134 lks. dist., marked ¹/₄S5 BT.

Asc. 185 ft.

47.80

Impossible to chain from this point. Set a flag ahead on line, from which I measure a base S.55°28'E. 2.40 chs. --impracticable to secure longer base--from the E. end of which, flag at the 47.80 ch. point brs. S.14°26'W. The three angles of the triangle are therefore 55°25', 110°6', and 14°29', the sum of which is 180°. The distance triangulated is given by the sine proportion:

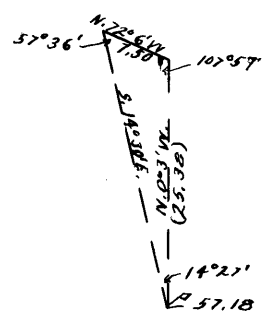


$$\frac{X}{2.40} = \frac{\sin. 110^{\circ}06'}{\sin. 14^{\circ}29'}$$

log. 2.40 = 0.380211
 log. sin. 14°29' = 9.398111
 0.982100
 log. sin. 110°6' = 9.972709
 log. X = 0.954809
 X = 9.01 chs., which added to 47.80 chs., gives 56.81 chs. The approximate topography is as follows:

52.00
56.81
57.18

Canyon, course S. 65°W., 150 ft. deep.
 Triangulation point. Thence by chaining. N.0°3'W. to Spur, slopes W. Impracticable to chain from this point. Set a flag ahead on line, from which I measure a base N.72°6'W. 7.50 chs. From W. end of base, flag at the 57.18 ch. point brs. S.14°30'E. The three angles of the triangle are therefore 57°36', 107°57', and 14°27', the sum of which is 180°. The distance triangulated is given by the sine proportion:



$$\frac{X}{7.50} = \frac{\sin. 57^{\circ}36'}{\sin. 14^{\circ}27'}$$

log. 7.50 = 0.875061
 log. sin. 14°27' = 9.397132
 1.477929
 log. sin. 57°36' = 9.926511
 log. X = 1.404440
 X = 25.38 chs., which added to 57.18 chs., gives 82.56 chs. The approximate topography is as follows:

65.00
77.36
79.85

Canyon, course W., 165 ft. deep. Asc. to Triangulation point. Thence S.0°3'E. 2.71 chs., distance by chaining. 82.56 - 2.71 =
 79.85 Intersect the N. bdy. of Tp., (8th Standard Parallel North) 19.78 chs. East of the standard cor. of secs. 32 and 33, which is an iron post, described in Book "A".
 At the point of intersection, Set an iron post, 3 ft. long, 2 ins. diam., 4 ins. in the ground, in a mound of stone, 4 ft. base, 3 ft. high,

Survey of the
Subdivision of T. 32 N., R. 10 W.

Chains.

for closing cor. of secs. 4 and 5, marked on brass cap

T33N R10W
S33
S 5 | S 4
T32N R10W
C C
1922

From which

A pinyon, 12 ins. diam., brs. S.10 $\frac{1}{4}$ °E.,
158 lks. dist., marked T32N R10W S4 CC BT.
A cedar, 8 ins. diam., brs. S.8°W.,
114 lks. dist., marked T32N R10W-S5 CC BT.

Land, mountainous.

Soil, rocky, 4th rate.

Timber, cedar and pinyon.

Undergrowth, black brush, cactus, Spanish bayonet.

From the cor. of secs. 5, 6, 31 and 32, on the S. bdy. of
Tp., which is an iron post, hereinbefore described.
N.0°3'W. bet. secs. 31 and 32.
Over rolling and broken land, through scattering timber
and undergrowth.

Desc.

1.50 Wash, 30 lks. wide, 10 ft. deep, course NE. Asc. 10 ft.
6.40 Spur, slopes NE. Desc. 80 ft.
15.60 Wash, 20 lks. wide, 10 ft. deep, course NE. Continue
descent, 80 ft.
28.84 Wash, 20 lks. wide, 25 ft. deep, course NE. Continue
descent, 40 ft.
35.80 Wash, 10 lks. wide, 5 ft. deep, course NE. Continue
descent.
39.30 Wash, 10 lks. wide, 6 ft. deep, course E. Asc.
40.00 Set an iron post, 3 ft. long, 1 in. diam., 16 ins. in the
ground, in a mound of stone, for $\frac{1}{4}$ sec. cor., marked
on brass cap

$\frac{1}{4}$
S31 | S32
1922

From which

A pinyon, 16 ins. diam., brs. S.33 $\frac{3}{4}$ °E.,
332 lks. dist., marked $\frac{1}{4}$ S32 BT.
A cedar, 8 ins. diam., brs. S.63°W.,
132 lks. dist., marked $\frac{1}{4}$ S31 BT.

Asc. 50 ft.

43.40 Spur slopes NE. Desc. 125 ft.
51.90 Wash, 30 lks. wide, 8 ft. deep, course E. Asc. 125 ft.
62.90 Wash, 10 lks. wide, 6 ft. deep, course SE. Continue
ascent.
65.50 Wash, 10 lks. wide, 5 ft. deep, course SE. Continue
ascent, 65 ft.
70.00 Desc.
72.20 Wash, 20 lks. wide, 20 ft. deep, course E. Asc.
75.00 Desc.
76.80 Wash, 10 lks. wide, 10 ft. deep, course SE. Asc 55 ft.
79.50 Wash, 20 lks. wide, 25 ft. deep, course SE. Continue
ascent.
80.00 Set an iron post, 3 ft. long, 2 ins. diam., 8 ins. in the
ground, on ledge rock, in a mound of stone, 4 ft.
base, 30 ins. high, with stone marked cross (X) along-
side, for cor. of secs. 29, 30, 31 and 32, marked on
brass cap

T32N R10W
S30 | S29
S31 | S32
1922

Survey of the
Subdivision of T. 32 N., R. 10 W.

Chains.	
	<p>From which</p> <p>A cedar, 8 ins. diam., brs. N.35°E., 94 lks. dist., marked BT. (Tree partly dead.)</p> <p>A cedar, 6 ins. diam., brs. S.40°E., 53 lks. dist., marked T32N R10W S32 BT.</p> <p>A pinyon, 12 ins. diam., brs. S.52°W., 71 lks. dist., marked T32N R10W S31 BT.</p> <p>A pinyon, 6 ins. diam., brs. N.54°W., 191 lks. dist., marked T32N R10W S30 BT.</p> <p>Land, rolling and broken. Soil, rocky, 3rd and 4th rates. Timber, cedar and pinyon. Undergrowth, black brush, sagebrush, dogwood, mescal, and cactus.</p>
40.00 79.98	<p>N.89°59'E. on a random line, bet. secs. 29 and 32. Set temp. $\frac{1}{4}$ sec. cor. Intersect N. and S. line, 2 lks. N. of the cor. of secs. 28, 29, 32 and 33.</p> <p>Thence</p> <p>West on a true line, bet. secs. 29 and 32. Over rolling land, through scattering timber and under- growth. Desc. 65 ft.</p> <p>14.50 Box canyon, course NE. Asc. 100 ft.</p> <p>19.00 Left rim of canyon, brs. NE. and SW. Continue gradual ascent.</p> <p>39.99 Set an iron post, 3 ft. long, 1 in. diam., on ledge rock in a mound of stone, 4 ft. base, 3 ft. high, with stone marked cross (X) alongside, for $\frac{1}{4}$ sec. cor., marked on brass cap</p> <p style="text-align: center;"> $\begin{array}{r} \frac{1}{4} S29 \\ \frac{1}{4} S32 \\ \hline 1922 \end{array}$ </p>
79.98	<p>Asc. gradual slope, 460 ft. The cor. of secs. 29, 30, 31, and 32. Land, rolling and broken. Soil, rocky; 4th rate. Timber, cedar. Undergrowth, black brush, cactus, and Spanish bayonet.</p>
40.00 79.42	<p>S.89°59'W. on a random line, bet. secs. 30 and 31. Set temp. $\frac{1}{4}$ sec. cor. Fall 35 lks. N. of the cor. of secs. 25, 30, 31, and 36, on the W. bdy. of Tp., which is an iron post, here- inbefore described.</p> <p>Thence</p> <p>N.89°44'E. on a true line, bet. secs. 30 and 31. Over mountainous land, through scattering timber and undergrowth.</p> <p>Asc. 65 ft.</p> <p>10.00 Ridge, brs. NE. and SW. Desc. 330 ft.</p> <p>39.42 Set an iron post, 3 ft. long, 1 in. diam., 6 ins. in the ground, in a mound of stone, 5 ft. base, 3 ft. high, for $\frac{1}{4}$ sec. cor., marked on brass cap</p> <p style="text-align: center;"> $\begin{array}{r} \frac{1}{4} S30 \\ \frac{1}{4} S31 \\ \hline 1922 \end{array}$ </p>
	<p>From which</p> <p>A cedar, 14 ins. diam., brs. N.7°W., 56 lks. dist., marked $\frac{1}{4}$S30 BT.</p> <p>A cedar, 10 ins. diam., brs. S.65$\frac{1}{4}$°E., 56 lks. dist., marked $\frac{1}{4}$S31 BT.</p>

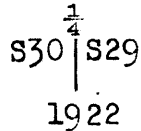
Survey of the
Subdivision of T. 32 N., R. 10 W.

Chains.

52.40 Continue descent, 255 ft.
79.42 Spur, slopes SE. Continue descent, 660 ft.
The cor. of secs. 29, 30, 31, and 32.
Land, mountainous.
Soil, rocky, 4th rate.
Timber, cedar and pinyon.
Undergrowth, black brush, sagebrush.

N.0°3'W. bet. secs. 29 and 30.
Over mountainous land, through scattering timber and undergrowth.

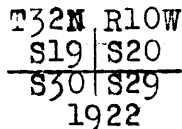
Asc. 15 ft.
2.00 Spur, slopes E. Desc. 65 ft.
5.20 Wash, 10 lks. wide, 8 ft. deep, course E. Asc. 30 ft.
8.40 Desc. 15 ft.
10.70 Wash, 15 lks wide, 10 ft. deep, course E. Asc. 65 ft.
19.00 Spur, slopes E. Desc. 200 ft.
40.00 Set an iron post, 3 ft. long, 1 in. diam., 20 ins. in the ground, in a mound of stone, for $\frac{1}{4}$ sec. cor., marked on brass cap



From which

- A pinyon, 24 ins. diam., brs. N.85 $\frac{1}{4}$ °E.,
121 lks. dist., marked $\frac{1}{4}$ S29 BT.
- A pinyon, 18 ins. diam., brs. S.68 $\frac{1}{4}$ °W.,
135 lks. dist., marked $\frac{1}{4}$ S30 BT.

Continue descent, 85 ft.
45.90 Wash, 20 lks. wide, 12 ft. deep, course NE. Continue descent, 40 ft.
57.60 Wash, 5 lks. wide, 4 ft deep, couse NE. Continue descent, 45 ft.
61.90 Wash, 10 lks. wide, 5 ft. deep, course NE. Continue descent, 80 ft.
80.00 Set an iron post, 3 ft. long, 2 ins. diam., 10 ins. in the ground, in a mound of stone, 4 ft. base, 2 $\frac{1}{2}$ ft. high, with stone marked (X) alongside, for cor. of secs. 19, 20, 29 and 30, marked on brass cap



From which

- A cedar, 12 ins. diam., brs. N.23 $\frac{1}{2}$ °E.,
167 lks. dist., marked T32N R10W S20 BT.
 - A cedar, 16 ins. diam., brs. S.44°E.,
73 lks. dist., marked T32N R10W S29 BT.
- No other trees within limits. Raise a mound of stone, 4 ft. base, 3 ft. high, W. of cor.
Land, mountainous.
Soil, rocky, 4th rate.
Timber, cedar, and pinyon.
Undergrowth, black brush, sagebrush, dogwood, mescal, and cat claw.

40.00 East on a random line, bet. secs. 20 and 29.
Set temp. $\frac{1}{4}$ sec. cor.

Survey of the
Subdivision of T. 32 N., R. 10 W.

Chains.

79.86

Intersect N. and S. line, 9 lks. S. of the cor. of secs. 20, 21, 28 and 29.

Thence

S. 89° 56' W. on a true line, bet. secs. 20 and 29.

Over mountainous land, through scattering timber and undergrowth.

Desc.

0.60

Draw, course N. 60° E.

7.00

Draw, course N. 80° E. Asc. 280 ft.

39.00

Desc.

39.93

Set an iron post, 3 ft. long, 1 in. diam., on ledge rock, in a mound of stone, 5 ft. base, 3 ft. high, for $\frac{1}{4}$ sec. cor., marked on brass cap

$\frac{1}{4}$ S20
 $\frac{1}{4}$ S29
1922

From which

A cedar, 24 ins. diam., brs. N. 35 $\frac{1}{4}$ ° W., 556 lks. dist., marked $\frac{1}{4}$ S20 BT.

A cedar, 18 ins. diam., brs. S. 60 $\frac{1}{4}$ ° E., 244 lks. dist., marked $\frac{1}{4}$ S29 BT.

Thence over rolling land.

51.60

Asc. 35 ft.

56.00

Desc. 30 ft.

69.60

Asc. 65 ft.

72.00

Desc. 110 ft.

78.50

Draw, course N. Asc. 10 ft.

79.86

The cor. of secs. 19, 20, 29 and 30.

Land, mountainous.

Soil, rocky, 4th rate.

Timber, cedar, and pinyon.

Undergrowth, black brush.

40.00

S. 89° 44' W. on a random line, bet. secs. 19 and 30.

79.05

Set temp. $\frac{1}{4}$ sec. cor.

Fall 37 lks. S. of the cor. of secs. 19, 24, 25, and 30, on the W. bdy. of Tp., which is an iron post, hereinbefore described.

Thence

East on a true line, bet. secs. 19 and 30.

Over rolling mountainous land, through scattering timber and undergrowth.

Desc.

39.05

Set an iron post, 3 ft. long, 1 in. diam., 20 ins. in the ground, in a mound of stone, 3 ft. base, 1 $\frac{1}{2}$ ft. high, with stone marked cross (X) alongside, for $\frac{1}{4}$ sec. cor., marked on brass cap

$\frac{1}{4}$ S19
 $\frac{1}{4}$ S30
1922

And raise a mound of stone, 4 ft. base, 3 ft. high, N. of cor.

Desc. 270 ft.

56.65

Spur, slopes S. Continue descent.

64.05

Wash, 20 lks. wide, course NE. Continue descent.

79.05

The cor. of secs. 19, 20, 29 and 30.

Land, rolling mountainous.

Soil, rocky, 3rd and 4th rates.

Timber, cedar, and pinyon.

Undergrowth, black brush, sagebrush, Spanish bayonet.

Survey of the
Subdivision of T. 32 N., R. 10 W.

chains.	
	N.0°3'W. bet. secs. 19 and 20. Over rolling mountainous land, through scattering timber and undergrowth. Desc. 35 ft.
10.00	Wash, 20 lks. wide, 5 ft. deep, course NE.
11.75	Wash, 20 lks. wide, 10 ft. deep, course NE. Asc. 15 ft.
15.00	Desc. 25 ft.
20.10	Wash, 5 lks. wide, 4 ft. deep, course NE.
21.50	Wash, 5 lks. wide, 4 ft. deep, course SE. Asc. 65 ft.
30.30	Trail, brs. N. and SW.
37.50	Ridge, brs. E. and W. Desc.
40.00	Set an iron post, 3 ft. long, 1 in. diam., 28 ins. in the ground, for $\frac{1}{4}$ sec. cor., marked on brass cap
	$\begin{array}{c} \frac{1}{4} \\ \uparrow \\ S19 \mid S20 \\ \downarrow \\ 1922 \end{array}$
	From which
	A cedar, 14 ins. diam., brs. N.81 $\frac{1}{2}$ °E., 180 lks. dist., marked $\frac{1}{4}$ S20 BT.
	A cedar, 12 ins. diam., brs. S.42°W., 374 lks. dist., marked $\frac{1}{4}$ S19 BT.
41.60	Trail, brs. NE. and S.
64.40	Desc. 30 ft.
67.10	Trail, brs. NW. and SE.
68.50	Wash, 10 lks. wide, 3 ft. deep, course NE. Asc. 30 ft.
76.00	Spur, slopes E. Desc. 45 ft.
80.00	Set an iron post, 3 ft. long, 2 ins. diam., 16 ins. in the ground, in a mound of stone, for cor. of secs. 17, 18, 19, and 20, marked on brass cap
	$\begin{array}{c} T32N \ R10W \\ \hline S18 \mid S17 \\ \hline S19 \mid S20 \\ \hline 1922 \end{array}$
	From which
	A cedar, 10 ins. diam., brs. N.43 $\frac{1}{4}$ °E., 134 lks. dist., marked T32N R10W S17 BT.
	A cedar, 14 ins. diam., brs. S.18 $\frac{1}{2}$ °E., 94 lks. dist., marked T32N R10W S20 BT.
	A cedar, 8 ins. diam., brs. S.15 $\frac{1}{2}$ °W., 84 lks. dist., marked T32N R10W S19 BT.
	A cedar, 24 ins. diam., brs. N.2 $\frac{1}{2}$ °W., 91 lks. dist., marked T32N R10W S18 BT.
	Land, rolling mountainous. Soil, rocky 4th rate. Timber, cedar and pinyon. Undergrowth, black brush, and sagebrush.
40.00	N.89°56'E. on a random line, bet. secs. 17 and 20. Set temp. $\frac{1}{4}$ sec. cor.
79.88	Intersect N. and S. line, 23 lks. S. of the cor. of secs 16, 17, 20, and 21. Thence
	S.89°46'W. on a true line, bet. secs. 17 and 20. Over mountainous land, through scattering timber and undergrowth.
	Asc. 375 ft.
9.94	Rim of cliffs, brs. N.54°W. and S.54°E. Desc. gradual slope, 70 ft.
28.30	Draw, course S. Asc.
39.94	Set an iron post, 3 ft. long, 1 in. diam., 10 ins. in the ground, on ledge rock, in a mound of stone, 4 ft. base, 2 $\frac{1}{2}$ ft. high, for $\frac{1}{4}$ sec. cor., marked on brass cap

Survey of the
Subdivision of T. 32 N., R. 10 W.

BOOK 100

Chains.

$\frac{1}{4}$ S17
 $\frac{1}{4}$ S20
1922

From which

A cedar, 14 ins. diam., brs. N.48°E.,
75 lks. dist., marked $\frac{1}{4}$ S17 BT.

A pinyon, 12 ins. diam., brs. S.11 $\frac{1}{2}$ °W.,
86 lks. dist., marked $\frac{1}{4}$ S20 BT.

Desc. 55 ft.

61.00 Draw, course S. Asc. 55 ft.

70.00 Desc. 160 ft.

79.60 Wash, 25 lks. wide, course N.20°W. Asc.

79.88 The cor. of secs. 17, 18, 19 and 20.

Land, mountainous.

Soil, rocky, 4th rate.

Timber, cedar, and pinyon.

Undergrowth, black brush, and dogwood.

40.00 West on a random line, bet. secs. 18 and 19.

78.98 Set temp. $\frac{1}{4}$ sec. cor.

Fall 12 lks. N. of the cor. of secs. 13, 18, 19 and 24,
on the W. bdy. of Tp., hereinbefore described.

Thence

N.89°55'E. on a true line, bet. secs. 18 and 19.

Over rolling and mountainous land, through scattering
timber and undergrowth.

Desc. 365 ft.

38.98 Set an iron post, 3 ft. long, 1 in. diam., 8 ins. in the
ground, in a mound of stone, 4 ft. base, 3 ft. high,
for $\frac{1}{4}$ sec. cor., marked on brass cap

$\frac{1}{4}$ S18
 $\frac{1}{4}$ S19
1922

From which

A pinyon, 14 ins. diam., brs. N.74°E.,
404 lks. dist., marked $\frac{1}{4}$ S18 BT.

A cedar, 36 ins. diam., brs. S.43 $\frac{3}{4}$ °E.,
217 lks. dist., marked $\frac{1}{4}$ S19 BT.

Continue descent, 280 ft.

55.20 Wash, 20 lks. wide, 10 ft. deep, course N.60°E. Asc.
70 ft.

66.20 Trail, brs. N. and S.

75.00 Desc. 70 ft.

78.98 The cor. of secs. 17, 18, 19, and 20.

Land, rolling and mountainous.

Soil, rocky, 4th rate.

Timber, cedar, and pinyon.

Undergrowth, sagebrush, black brush.

N.0°3'W. bet. secs. 17 and 18.

Over mountainous land, through scattering timber and
undergrowth.

Desc.

0.70 Wash, 20 lks. wide, 6 ft. deep, course NW. Asc. 135 ft.

10.00 Thence over rolling land.

30.00 Asc. 25 ft.

40.00 Set an iron post, 3 ft. long, 1 in. diam., 14 ins. in the
ground, in a mound of stone, for $\frac{1}{4}$ sec. cor., marked on
brass cap

Survey of the
Subdivision of T. 32 N., R. 10 W.

chains.

$\frac{1}{4}$
S18 | S17
1922

From which

- A cedar, 10 ins. diam., brs. S.59°E.,
70 lks. dist., marked $\frac{1}{4}$ S17 BT.
- A cedar, 10 ins. diam., brs. S.19 $\frac{3}{4}$ °W.,
42 lks. dist., marked $\frac{1}{4}$ S18 BT.

Desc. 40 ft.

55.00
57.00
63.00
78.20
80.00

- Asc. 20 ft.
- Spur, slopes NW. Desc. 75 ft.
- Draw, course NW. Asc. 85 ft.
- Spur, slopes W. Desc. 60 ft.
- Set an iron post, 3 ft. long, 2 ins diam., 16 ins. in the ground, in a mound of stone, with stone marked cross (X) alongside, for cor. of secs. 7, 8, 17 and 18, marked on brass cap

T32N R10W
S 7 | S 8
S18 | S17
1922

From which

- A cedar, 8 ins. diam., brs. N.78 $\frac{1}{2}$ °E.,
41 lks. dist., marked T32N R10W S8 BT.
- A cedar, 10 ins. diam., brs. S.7 $\frac{1}{2}$ °W.,
50 lks. dist., marked T32N R10W S18 BT.
- A cedar, 6 ins. diam., half dead,
brs. N.59°W., 24 lks. dist., marked
BT.

No other trees within limits.

Land, mountainous.
Soil, rocky, 4th rate.
Timber, cedar, and pinyon.
Undergrowth, black brush, sagebrush, dogwood, mescal,
and cactus.

40.00
79.86
15.50
28.80
39.93

- N.89°46'E. on a random line, bet. secs. 8 and 17.
- Set temp. $\frac{1}{4}$ sec. cor.
- Intersect the cor. of secs. 8, 9, 16 and 17.
- Thence
- S.89°46'W. on a true line, bet. secs. 8 and 17.
- Over rolling and mountainous land, through scattering timber and undergrowth.
- Desc. 245 ft.
- Canyon, course SW. Continue descent.
- Draw, course SW. Asc. 85 ft.
- Set an iron post, 3 ft. long, 1 in. diam., 8 ins. in the ground, in a mound of stone, 4 ft. base, 30 ins. high, with cross (X) on ledge of rock beside post, for $\frac{1}{4}$ sec. cor., marked on brass cap

$\frac{1}{4}$ S 8
S17
1922

41.60
46.90
47.40
79.86

- Desc. 165 ft.
- Draw, course SE. Asc. 90 ft.
- Spur, slopes S. Desc. 40 ft.
- Center of Dansill Canyon, 2 chs. wide, course S.25°E.
Asc. 80 ft.
- The cor. of secs. 7, 8, 17 and 18.
- Land, rolling and mountainous.
- Soil, rocky, 4th rate.
- Timber, cedar, and pinyon.
- Undergrowth, black brush, sagebrush, Spanish bayonet, and cactus.

Survey of the
Subdivision of T. 32 N., R. 10 W.

Chains.

40.00 S. 89°55' W. on a random line, bet. secs. 7 and 18.
Set temp. $\frac{1}{4}$ sec. cor.
78.94 Fall 12 lks. S. of the cor. of secs. 7, 12, 13 and 18, on
the W. bdy. of Tp., which is an iron post, hereinbefore
described.

Thence
East on a true line, bet. secs. 7 and 18.
Over mountainous land, through scattering timber and
undergrowth.

38.94 Desc. 315 ft.
Set an iron post, 3 ft. long, 1 in. diam., 6 ins. in the
ground, in a mound of stone, 4 ft. base, 30 ins. high,
with stone marked cross (X) alongside, for $\frac{1}{4}$ sec. cor.,
marked on brass cap

$\frac{1}{4}$ S 7
S 18
1922

From which
A cedar, 10 ins. diam., brs. S. 49° E.,
285 lks. dist., marked $\frac{1}{4}$ S 18 BT.

42.75 Continue descent, 240 ft.
Trail, brs. NE. and SW.
72.54 Center of wash, 2 chs. wide, 10 ft. deep, course N. Asc.
175 ft.

78.94 The cor. of secs. 7, 8, 17 and 18.
Land, mountainous.
Soil, rocky, 4th rate.
Timber, cedar, and pinyon.
Undergrowth, blaak brush, sagebrush, Spanish bayonet, and
cactus.

N. 0°3' W. bet. secs. 7 and 8.
Over mountainous land, through scattering timber and
undergrowth.

7.20 Desc. 125 ft.
12.00 Gulch, course NE. Asc. 75 ft.
21.40 Spur, slopes W. Desc. 195 ft. (420 ft.)
30.70 Wash, 50 lks. wide, in Dansill Canyon, course E. Asc.
Top of cliff, 100 ft. high, brs. E. and W. Continue
ascent.

38.87 Spur, slopes E. Desc.
40.00 Set an iron post, 3 ft. long, 1 in. diam., on ledge rock,
in a mound of stone, 4 ft. base, 3 ft. high, with cross
on ledge rock, 1 lks. W. of post, for $\frac{1}{4}$ sec. cor.,
marked on brass cap

$\frac{1}{4}$
S 7 | S 8
1922

55.00 Continue descent, 60 ft.
64.90 Head of draw, course E. Asc. 45 ft.
65.80 Desc.
77.00 Wash, 10 lks. wide, 5 ft. deep, course SW. Asc. 155 ft.
80.00 Spur, slopes W. Desc. 75 ft.

Set an iron post, 3 ft. long, 2 ins. diam., 28 ins. in the
ground, with stone marked cross (X) alongside, for cor.
of secs. 5, 6, 7 and 8, marked on brass cap

T32N R10W
S 6 | S 5
S 7 | S 8
1922

And raise a mound of stone, 5 ft. base, $3\frac{1}{2}$ ft. high,
W. of cor.

Survey of the
Subdivision of T. 32 N., R. 10 W.

Chains.

Land, mountainous.
Soil, rocky, 4th rate.
Timber, cedar, and pinyon.
Undergrowth, sagebrush, black brush, mescal, and cat claw.

40.00 N. 89° 46' E. on a random line, bet. secs. 5 and 8.
79.84 Set temp. $\frac{1}{4}$ sec. cor.
Intersect N. and S. line, 2 lks. N. of the cor. of secs.
4, 5, 8, and 9.

Thence
6.85 S. 89° 47' W. on a true line, bet. secs. 5 and 8.
34.85 Over mountainous land, through scattering undergrowth.
Asc. 80 ft.
39.92 Spur, slopes S. Desc. 355 ft.
Draw, course SW. Asc. 55 ft.
Set an iron post, 3 ft. long, 1 in. diam., 24 ins. in the
ground, for $\frac{1}{4}$ sec. cor., marked on brass cap

$$\begin{array}{r} \frac{1}{4} S 5 \\ \hline S 8 \\ 1922 \end{array}$$

And raise a mound of stone, 4 ft. base, 3 ft. high, N.
of cor.
55.85 Cor. falls on spur, slope S. Desc. 140 ft.
Draw, course SW. Road, brs. NW. and SE. to Copper Mountain
Mine. Asc. 35 ft.
74.85 Spur slopes S. Desc. 150 ft.
79.84 The cor. of secs. 5, 6, 7 and 8.

Land, mountainous.
Soil, rocky, 4th rate.
Timber, none.
Undergrowth, black brush, and sagebrush.

40.00 West on a random line, bet. secs. 6 and 7.
78.76 Set temp. $\frac{1}{4}$ sec. cor.
Fall 7 lks. S. of the cor. of secs. 1, 6, 7 and 12, on
the W. bdy. of Tp., which is an iron post, hereinbe-
fore described.

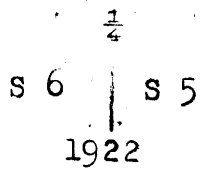
Thence
14.00 S. 89° 57' E. on a true line, bet. secs. 6 and 7.
38.76 Over mountainous land, through scattering timber and
undergrowth.
Desc. 210 ft.
Dansill Canyon, course SE. Asc. 250 ft.
Set an iron post, 3 ft. long, 1 in. diam., 18 ins. in the
ground, in a mound of stone, 3 ft. base, 2 ft. high,
for $\frac{1}{4}$ sec. cor., marked on brass cap

$$\begin{array}{r} \frac{1}{4} S 6 \\ \hline S 7 \\ 1922 \end{array}$$

And raise a mound of stone, 4 ft. base, 3 ft. high, N.
of cor.
42.80 Continue ascent, 75 ft.
57.90 Spur, slopes N. Desc. 330 ft.
63.75 Draw, 20 lks. wide, course S. Asc. 75 ft.
67.90 Desc. 45 ft.
78.76 Wash, 20 lks. wide, 6 ft deep, course SW. Asc.
The cor. of secs. 5, 6, 7 and 8.
Land, mountainous.
Soil, rocky, 4th rate.
Timber, cedar.
Undergrowth, black brush, sagebrush, cactus, Spanish
bayonet, and dogwood.

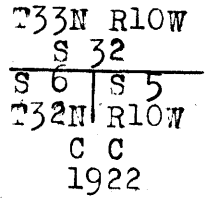
Survey of the
Subdivision of T. 32 N., R.10 W.

Chains N.0°3'W., on a true line bet. secs. 5 and 6.
Over mountainous land, through scattering timber and
undergrowth.
Desc.
7.40 Wash, 20 lks. wide, 5 ft. deep, course SW. Asc. 155 ft.
23.35 Spur, slopes W. Continue ascent 105 ft.
26.50 Road, bears NW. and SE. to Copper Mountain Mine.
40.00 Set an iron post, 3 ft. long, 1 in. in diam., 16 ins. in
the ground to bed rock, supported in a mound of stone,
for $\frac{1}{4}$ sec. cor. marked on brass cap



And raise a mound of stone, 4 ft. base, 3 ft. high W.
of cor.

53.00 Continue ascent 80 ft.
Wash, 15 lks. wide, 5 ft. deep, course SW. Continue ascent
350 ft.
71.00 Ridge, bears NE. and SW. Desc. 120 ft.
78.80 Wash, 10 lks. wide, 6 ft. deep, course SW. Asc.
80.00 Intersect N. bdy. of Tp. (8th. Standard Parallel North)
at a point 19.79 chs. East of the standard cor. of secs.
31 and 32, T.33 N., R.10 W., which is an iron post, de-
scribed in Book "A".
At the point of intersection, set an iron post, 3 ft. long,
2 ins. in diam., 30 ins. in the ground, for closing cor.
of secs. 5 and 6, marked on brass cap



From which,
A cedar, 14 ins. in diam., bears S.1 $\frac{1}{2}$ °E.,
307 lks. dist., marked T32N R10W S5 CC BT
A cedar, 10 ins. in diam., bears S.19 $\frac{1}{2}$ °W.,
369 lks. dist., marked T32N R10W S6 CC BT

Land, mountainous.
Soil; rocky, 4th. rate.
Timber, cedar and pinyon.
Undergrowth, sagebrush, black brush, dogwood, catclaw,
and mesal.

Final Field Tests of Instruments Nos. 10125 and 9977.

February 25, 1922: We examine the adjustments of the instruments and find them correct; then to test the solar apparatus, by comparing their indications, resulting from observations made during a.m. and p.m. hours, with a meridian established by Polaris observations, we proceed as follows:

At our camp in sec. 26, T.32 N., R.11 W., G. & S. R. B. and M., in latitude $36^{\circ}8\frac{1}{2}'$ N., long. $113^{\circ}26'$ W., at 9 hrs. 8.3 m., p.m., l.m.t., we observe Polaris at western elongation, making four observations, two each with the telescope in direct and reversed positions, and mark the mean point in the line thus determined on a peg driven firmly in the ground, 5 chs. N.

Azimuth of Polaris at western elongation is $1^{\circ}22'20''$.

February 26, 1922; At 8 hrs. 0m., a.m., l.m.t., we lay off the azimuth of Polaris, $1^{\circ}22\frac{1}{2}'$ to the east, and mark the meridian thus determined by a tack in a peg set firmly in the ground 5 chs. N.

At 9 hrs. 0m., a.m., l.m.t., we set off $36^{\circ}8\frac{1}{2}'$ N., on the latitude arcs, $8^{\circ}48'$ S., on the declination arcs, and determine a meridian with each solar, which we find to agree with the true meridian.

At apparent noon, with the latitude arcs unchanged, we observe the sun on the meridian with each solar. The resulting readings of the declination arcs are $8^{\circ}46'$ S., which agrees with the computed declination of the sun.

At 3 hrs. 0m., p.m., l.m.t., with the latitude arcs unchanged, we set off $8^{\circ}43'$ S., on the declination arcs and determine a meridian with each solar, which we find to agree with the true meridian.

As all of the solar observations during the usual hours of solar work come within $1'30''$ of the true meridian, we conclude that the adjustments of the instruments during the survey of this township have been satisfactory.

GENERAL DESCRIPTION

This township consists of mountainous, broken and rolling land, cut by two deep canyons, Dansill Canyon from the northwest, and a canyon from the northeast, which uniting in sec. 27, flow thence south to the Colorado River. A scattering growth of cedar and pinyon timber, and sagebrush, black brush, Spanish bayonet, and cactus undergrowth is found over the township. The soil is rocky 4th. rate. There are no settlers. A road entering the township through the W. bdy. of sec. 6, leads to the Copper Mountain Mine in sec. 14.

BOOK 3828

4-680

FIELD ASSISTANTS. to
Dupree R. Averill and William E. Hiester, U.S. Surveyors.

NAMES.	CAPACITY.
Walter Thomas	First Chainman.
Henry Hiester	First Chainman.
Hale Pierce	Second Chainman.
Joseph Pierce	Second Chainman.
Harry Pearce	Second Chainman.
George M. Ducker	Flagman.
Richard Taylor	Flagman.
Lowell McAllister	Cornerman.
Thomas I. Ison	Cornerman.
Henry McKelvey	Axman.
Thomas Lund	Axman.
Howard Engle	Axman.

62 BOOK 3628

CERTIFICATE OF UNITED STATES SURVEYOR.

I, Dupree R. Averill, U. S. Surveyor, hereby certify upon honor that, in pursuance of special instructions received from the U. S. Surveyor General, for Group 72, Arizona bearing date of the 17th day of March, 1917, I have well, faithfully, and truly in my own proper person, and in strict conformity with said instructions, the Manual of Surveying Instructions, and the laws of the United States, surveyed all those parts or portions of _____

The West Boundary,

The South Boundary and

The Subdivision of

T. 32 N., R. 10 W.

_____ of the Gila and Salt River Base and _____ Meridian, in the State of Arizona, which are represented in the foregoing field notes ^{and by diagram on page 1 hereof} as having been executed by me, and under my direction; and that all the corners of said survey have been established and perpetuated in strict accordance with the Manual of Surveying Instructions, and the special written instructions of the U. S. Surveyor General, for Group 72, Arizona and in the specific manner described in the field notes, and that the foregoing are the original field notes of such survey.

Phoenix Arizona
January 3, 1924

Dupree R. Averill
U. S. Surveyor.

~~APPROVAL~~

~~OFFICE OF THE UNITED STATES SURVEYOR GENERAL,~~

~~The foregoing field notes of the survey of _____~~

~~_____ executed by _____~~

~~_____ under his special instructions dated _____, 19 _____, having been~~

~~critically examined, and the necessary corrections and explanations made, the said field notes, and the surveys~~

~~they describe, are hereby approved.~~

~~_____ U. S. Surveyor General.~~

~~I certify that the foregoing transcript of the field notes of the above-described surveys in _____~~

~~_____ has been correctly copied from the original notes on file in this office.~~

~~_____ U. S. Surveyor General.~~

BOOK 8628

4-680

FIELD ASSISTANTS. to
Dupree R. Averill and William E. Hiester, U.S. Surveyors.

NAMES.	CAPACITY.
<i>See page 61 of this book</i>	

BOOK 3628

64

BOOK 3628

CERTIFICATE OF UNITED STATES SURVEYOR.

I, William E. Hiester, U. S. Surveyor, hereby certify upon honor that, in pursuance of special instructions received from the U. S. Surveyor General, for Group 72, Arizona bearing date of the 17th day of March, 1917, I have well, faithfully, and truly in my own proper person, and in strict conformity with said instructions, the Manual of Surveying Instructions, and the laws of the United States, surveyed all those parts or portions of The Subdivision of T.32 N., R.10 W.

of the Gila and Salt River Base and Meridian, in the State of Arizona, which are represented in the foregoing field notes and by diagram on page 1 hereof as having been executed by me, and under my direction; and that all the corners of said survey have been established and perpetuated in strict accordance with the Manual of Surveying Instructions, and the special written instructions of the U. S. Surveyor General, for Group 72, Arizona and in the specific manner described in the field notes, and that the foregoing are the original field notes of such survey.

Wolf Hole Arizona
March 14, 1924

William E. Hiester
U. S. Surveyor.

APPROVAL.

OFFICE OF THE UNITED STATES SURVEYOR GENERAL,

Phoenix, Arizona, May 15, 1924

The foregoing field notes of the survey of The West Boundary, The South Boundary and The Subdivision of T. 32 N., R. 10 W., G. & S. R. B. & M., in The State of Arizona

executed by Dupree R. Averill and William E. Hiester, U.S. Surveyors under special instructions dated March 17, 1917 for Group 72, Arizona, having been critically examined, and the necessary corrections and explanations made, the said field notes, and the surveys they describe, are hereby approved.

Charles M. Donohoe
U. S. Surveyor General.

I certify that the foregoing transcript of the field notes of the above described surveys in has been correctly copied from the original notes on file in this office.

U. S. Surveyor General.