

FIELD NOTES

OF THE SURVEY OF THE

Eighth Standard Parallel North, thru. Range 11 West,

North and West boundaries and

Subdivision Lines of

TOWNSHIP 33 NORTH, RANGE 11 WEST,

Of the Gila and Salt River Base and Meridian,

the State of Arizona.

EXECUTED BY

William H. Thorn, U. S. Surveyor,

and

Loyd E. Sechrist, U. S. Transitman,

In the capacity of U. S. Surveyors, under Special Instructions dated Oct. 12, 1916, issued by the United States Surveyor General to govern surveys included in Group No. 73, Arizona, which were approved by the Commissioner of the General Land Office, October 24, 1916, and Assignment Instructions dated Apl. 19, 1917.

Survey commenced May 19, 1917.

Survey completed July 17, 1917.

3630

3630

1A

3630

Book "A"

Group 73 - - Arizona.

BOOK 3630

INDEX DIAGRAM.

	Township 10		11		12		13	
9	53	44	38	28	21	1		
	52	43	36	27	20			
9	51	43	35	27	20	12		
8	51	42	35	27	19	19		
	50	42	35	26	19	19		
8	49	41	34	26	19	13		
	48	41	34	25	18	18		
7	48	39	32	24	17	24		
	47	39	32	24	17	24		
	47	38	32	31	24	17	16	
6	46	38	30	23	16	25		
	45	37	29	22	15	25		
	45	37	29	22	15	25		
6	44	37	29	21	15	36		
	44	36	28	21	15	36		
	5	5	4	4	3	3		

T. 33 N. R. 11 W.

8th. Standard Parallel North.

- Lines surveyed under this group.
- - - - - Lines unsurveyed.
- Lines surveyed under current Group No. 72.
- Lines surveyed under current Group 74.

Book "A"
Group 73, Arizona

DATE DIAGRAM

TOWNSHIP 33 NORTH RANGE 11 WEST

1917

BOOK 8880

	5-30	5-31	5-31	6-1	6-1	6-1
5-30	6 6-19	5 6-23	4 7-13	3 7-15	2 7-17	1 7-17
5-30	7 6-18	8 6-25	9 6-22	10 7-12	11 7-16	12 7-16
5-29	18 6-18	17 6-20	16 6-21	15 6-30	14 7-11	13 7-10
5-29	19 6-9	20 6-16	21 6-15	22 6-27	23 6-29	24 6-29
5-29	30 6-4	29 6-8	28 6-14	27 6-26	26 6-28	25 6-28
5-29	31 6-4	32 6-8	33 6-14	34 6-26	35 6-28	36 6-28
	5-25	5-25	5-23	5-22	5-21	5-19

8th Standard Parallel North

Surveyed in May 1917 under Group 72

————— Indicates surveys executed by William H. Thorn, U.S. Surveyor on dates shown thereon.

————— Indicates surveys executed by Loyd E. Sechrist, U.S. Transitman on dates shown thereon.

Surveys herein described were executed by Wm.H.Thorn,U.S. Surveyor and Loyd E. Sechrist,U.S.Transitman, on dates shown on diagram on page 1 hereof, using respectively Young and Sons light mountain transit No.8592 and Buff solar transit No.10,125, each instrument being equipped with Smith solar attachment. The instruments are provided with two double verniers, placed opposite to each other, reading to single minutes of arc, which is also the least count of the verniers of the latitude and declination arcs.

These instruments were approved April 19, 1917, by the Assistant Supervisor of Surveys for Arizona and California, for field use under this Group, conditional upon satisfactory field tests.

We examine the adjustments of the transits, correcting all errors; then, to test the solar apparatus, by comparing their indications, resulting from solar observations made during a.m. and p.m.hours, with a meridian determined by observations on Polaris at elongation, we proceed with each instrument as follows:

May 16, 1917: At our camp, near the $\frac{1}{4}$ sec.cor.of secs.26 and 27,T.33 N.,R.12 W.,in lat. $36^{\circ}13\frac{1}{2}'N.$,long. $113^{\circ}34'W.$, at 3 hrs.58.5 m.,a.m.,l.m.t.,by our watches,which are set to correct local mean time, we observe Polaris at eastern elongation, making four observations, two each with the telescope in direct^{and} reversed positions, and mark the mean point in the line thus determined by a tack in a stake, 5 chs. N. Azimuth of Polaris at eastern elongation = $1^{\circ}24'37''$.

At 7 hrs.45 m.,a.m.,l.m.t.,lay off the azimuth of Polaris, $1^{\circ}24\frac{1}{2}'$ to the west, and mark a point in the line thus determined by a tack in a stake, 5 chs.N.

At 8 hrs.0 m.,a.m.,l.m.t.,set off $36^{\circ}13\frac{1}{2}'N.$ on the lat.arc. $19^{\circ}4\frac{1}{2}'N.$ on the decl.arc. and determine a meridian with the solar, which agrees with the true meridian.

At apparent noon, set off $19^{\circ}6\frac{1}{2}'N.$ on the decl.arc., and observe the sun on the meridian. The resulting reading of the lat.arc. is $36^{\circ}13\frac{1}{2}'N.$

At 4 hrs.0 m.,p.m.,l.m.t.,set off $36^{\circ}13\frac{1}{2}'N.$ on the lat.arc. $19^{\circ}8'N.$ on the decl.arc., and determine a meridian with the solar, which agrees with the true meridian.

As all of the solar observations made during the usual hours of solar work come within $1'30''$ of the true meridian, conclude that the instruments are in satisfactory adjustment. Unless otherwise specified all measurements are made with Lufkin steel tapes, 5 chs. in length, compared with a Chesterman standard steel tape and found correct. The measurements are made on the slope, the vertical angles determined, and the slope measurements properly reduced to true horizontal distances.

~~The standard corner of T.33 N.,R.10 and 11 W. on the 8th Std.Par. N.established under current Group No.72, is an iron post, 3 ins. in diam.,projecting 12 ins. above ground, firmly set, properly marked on brass cap and witnessed by a mound of stone N.of cor. No bearing trees: Thence west on true line on S. bdy. of sec. 36. Over mountainous land, through scattering timber and undergrowth.~~

~~3.00 Center of wash, 4 chs.wide,in large canyon,course S.45°E.~~

~~7.77 Leave wash, course S.45°E. Asc.348 ft.to $\frac{1}{4}$ sec.cor.~~

~~13.50 Gulch, 60 lks. wide, 8 ft. deep, course N.70°E.~~

~~19.79 Spur, slopes S.75°E.~~

~~40.00 Set an iron post, 3 ft. long, 1 in.diam.,26 ins.in the~~

Survey of Eighth Std. Parallel North, thru. Range 11 West. 3

Chains.

The std. cor. of Ts. 33 N., Rs. 10 and 11 W., on the 8th Std. Par. N., established under current Group No. 72 is an iron post, 3 ins. in diam., projecting 12 ins. above ground, firmly set, properly marked on brass cap, and witnessed by a mound of stone, N. of cor. No bearing trees. Thence West, on true line on S. bdy. of sec. 36. Over nearly level land in bottom of Andrus Canyon, thru scattering timber and undergrowth.

- 3.90 Center of wash, 4 chs. wide, course S. 45° E.
- 7.77 Leave nearly level bottom of canyon. Enter mountainous land. Asc. 348 ft. to 1/4 sec. cor.
- 13.50 Gulch, 80 lks. wide, 8 ft. deep, course N. 70° E.
- 19.79 Spur, slopes S. 75° E.
- 40.00 Set an iron post, 3 ft. long, 1 in. in diam., 26 ins. in ground, for std. 1/4 sec. cor. of sec. 36, mkd. on brass cap,

S C
S 36
1917

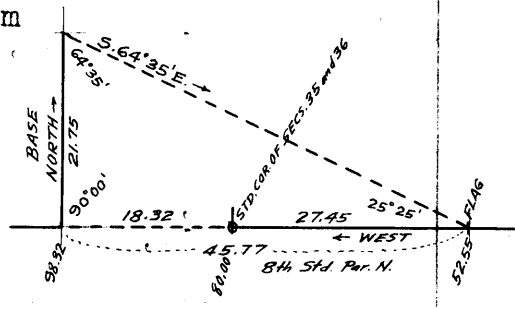
- No bearing trees available. Raise a mound of stone 2 ft. base, 1 1/2 ft. high, N. of cor. Asc. 645 ft. to sec. cor.
- 52.55 Set flag on line for triangulated measurement of part of S. bdy. of sec. 35, as hereinafter described.
- 53.89 Spur, slopes S. 60° E.
- 68.12 Ravine, 20 lks. wide, 20 ft. deep, course S. 60° E.
- 80.00 Set an iron post, 3 ft. long, 2 ins. dia., 24 ins. in ground for std. cor. of secs. 35 and 36, mkd. on brass cap,

S C
T33N | R11W
S35 | S36
1917

No bearing trees available. Raise a mound of stone, 2 ft. base, 1 1/2 ft. high, N. of cor. Land, mountainous. Soil, rocky, 4th rate. Timber, cedar and pinyon. Undergrowth, cactus, rabbit brush and scrub cedar. Fair growth of grass.

West, on true line, on S. bdy. of sec. 35. Over mountainous land, thru scattering timber & undergrowth. Impracticable to chain from this cor.

Measure a base North, 21.75 chs. from the N. end of which the flag set at the 52.55 ch. point on S. bdy. of sec. 36, brs. S. 64° 35' E. The dist. triangulated is given by tan. 64° 35' x 21.75 = 2.10442 x 21.75 = 45.77 chs., which added to 52.55 chs. gives 98.32 chs., or 18.32 chs. W. of the std. cor. of secs. 35 and 36.



- 18.32 Triangulation point on top of cliffs, 840 ft. above the std. cor. of secs. 35 and 36. Asc. 5 ft. to
- 20.32 Ridge brs. N: 25° W. and S. 20° E. Desc. 480 ft., over W. slope, to
- 49.90 Set an iron post, 3 ft. long, 1 in. in dia., on bedrock, in mound of stone; for std. 1/4 sec. cor. of sec. 35, mkd. on brass cap,

S C
S 35
1917

- No bearing trees available. Raise mound of stone, 2 ft. base, 1 1/2 ft. high, N. of cor. Desc. 16 ft. over W. slope, to
- 41.18 Gulch, course S. 30° W. Asc. 25 ft., over SE. slope.
- 44.00 Point of spur, slopes S. Desc. 55 ft., over SW. slope.
- 50.75 Wash, in bottom of canyon, course S. 65° E. Asc. 530 ft., over steep NE. slope, to
- 70.50 Right rim of canyon, brs. N. 45° W. and S. 45° E. Enter rolling land. Asc. 15 ft., over NE. slope, to
- 80.00 Set an iron post, 3 ft. long, 2 ins. in dia., 24 ins. in ground, for std. cor. of secs. 34 and 35, mkd. on brass cap,

S C
T33N | R11W
S34 | S35
1917

4 Survey of Eighth Std. Parallel North, thru. Range 11 West.

Chains.

from which,
 A cedar, 10 ins. in dia., brs. N. 26 $\frac{1}{2}$ ° E., 365 fks.
 dist., mkd. SC T33N R11W S35 BT.
 A cedar, 11 ins. in dia., brs. N. 2 $\frac{1}{2}$ ° W., 153 lks.
 dist., mkd. SC T33N R11W S34 BT.

Land, mountainous and rolling. Soil, rocky, 3rd rate.
 Timber, scattering cedar and pinyon. Undergrowth, sage brush
 and live oak. Fair growth of bunch grass.

West, on true line, on S. bdy. of sec. 34.
 Over rolling land, thru. scattering timber and undergrowth.
 Descend 20 ft., over SW. slope.

6.94
 19.96
 27.76
 34.95
 37.30
 40.00

Draw, course S. 20° E. Ascend 60 ft.
 Flat spur, slopes S. Descend 10 ft.
 Small draw, course S. 10° E. Ascend 33 ft.
 Low spur, slopes S. 20° E. Descend 6 ft.
 Draw, course S. 30° E. Ascend slightly to
 Set an iron post, 3 ft. long, 1 in. in diam., 26 ins. in the
 ground, for std. $\frac{1}{4}$ sec. cor. of sec. 34, mkd. on brass cap,

S C
 T33N R11W
 S34
 1917

from which,
 A cedar, 12 ins. dia., brs. N. 77° E. 21 lks. dist.,
 mkd. SC T33N R11W S34 BT.
 A cedar, 10 ins. dia., brs. N. 85° W., 18 lks. dist.,
 mkd. SC T33N R11W S34 BT.

44.95
 46.95
 52.43
 66.70
 71.00
 80.00

Ascend 46 ft., to
 Enter wash, 20 lks. wide, course SE. from W. Asc. 7 ft. to
 Leave wash, course E. from NW. Enter mountainous land.
 Ascend 100 ft., over NE. slope, to
 Same wash, 40 lks. wide, course N. 70° E. Asc. 150 ft. over SE. slope.
 Point of spur, slopes S. Descend 10 ft.
 Wash, 10 lks. wide, course S. 60° E. Asc. 155 ft. over E. slope, to
 Set an iron post, 3 ft. long, 2 ins. in diam., 24 ins. in the
 ground, for std. cor. of secs. 33 & 34, mkd. on brass cap,

S C
 T33N R11W
 S33 S34
 1917

from which,
 A cedar, 14 ins. in diam., brs. N. 60° E., 107 lks.
 dist., mkd. SC T33N R11W S34 BT.
 A cedar, 10 ins. in diam., brs. N. 80° W., 93 lks.
 dist., mkd. SC T33N R11W S33 BT.

Land, rolling & mountainous. Soil, rocky, 3rd rate.
 Timber, cedar and pinyon. Undergrowth, cactus, sagebrush
 and live oak.

West, on true line, on S. bdy. of sec. 33.
 Over mountainous land, thru. heavy timber and scattering
 undergrowth. Asc. 45 ft., over NE. slope.

3.54
 8.54
 14.30
 24.30
 40.00

Point of spur, slopes N. Desc. 11 ft., over NW. slope.
 Head of wide draw, course N. 10° E. Asc. 165 ft. over E. slope, to
 Rim of bench, brs. N. and S. Thence over nearly level bench.
 Leave bench. Enter rolling land. Asc. 55 ft., over E. slope, to
 Set an iron post, 3 ft. long, 1 in. in diam., 26 ins. in ground,
 for std. $\frac{1}{4}$ sec. cor. of sec. 33, mkd. on brass cap,

S C
 T33N R11W
 S33
 1917

from which,
 A pine, 10 ins. dia., brs. N. 5° E., 26 lks. dist. mkd. SC T33N R11W S33 BT.
 A cedar, 14 ins. dia., brs. N. 40° W., 25 lks. dist. mkd. SC T33N R11W S33 BT.
 Ascend 51 ft., over E. slope.

54.96
 80.00

Low ridge, brs. N. and S. Desc. 80 ft., over W. slope, to
 Set an iron post, 3 ft. long, 2 ins. dia., 24 ins. in ground,
 for std. cor. of secs. 32 & 33, mkd. on brass cap,

S C
 T33N R11W
 S32 S33
 1917

from which,

Survey of Eighth Standard Parallel North, thru Range 11 West.

Chains.

A cedar, 16 ins. dia., brs. N. 82° E., 13 lks. dist.,
 mkd., SC T33N R11W S33 BT.
 A cedar, 18 ins. dia., brs. N. 24° W., 39 lks. dist.,
 mkd. SC T33N R11W S32 BT.
 Land, mountainous, nearly level and rolling.
 Soil, rocky, 3rd rate. Timber, cedar & pinyon.
 Undergrowth, cactus. Fair growth of bunch grass.

 West, on true line, on S. bdy. of sec. 32.
 Over rolling land, thru. heavy timber & scattering under-
 growth. Desc. 102 ft., over W. slope, to
 40.00 Set an iron post, 3 ft. long, 1 in. in diam., 26 ins. in ground,
 for std. 1/4 sec. cor. of sec. 32, mkd. on brass cap,

S C
 1/4 S 32
 1917

from which,
 A cedar, 18 ins. dia., brs. N. 47° E. 12 lks. dist., mkd. SC 1/4 S32 BT.
 A cedar, 24 ins. dia., brs. N. 52° 30' W., 15 lks. dist. mkd. SC 1/4 S32 BT.
 Descend 110 ft., over W. slope, to

74.95 Top of cliffs, bearing N. & S. facing W. Enter mountainous
 land. Desc. 75 ft., over W. slope, to

79.80 Foot of same cliffs. Enter rolling land. Desc. slightly to

80.00 Set an iron post, 3 ft. long, 2 ins. dia., 24 ins. in ground, for
 std. cor. of secs. 31 & 32, mkd. on brass cap,

S C
 T33N R11W
 S31 | S32

1917

from which,
 A cedar, 10 in. dia., brs. N. 70° E. 47 lks. dist.,
 mkd. SC T33N R11W S32 BT.

A cedar, 12 ins. dia., brs. N. 69° 10' W., 20 lks. dist.,
 mkd. SC T33N R11W S31 BT.

Land, rolling & mountainous. Soil, heavy loam & adobe, 3rd rate.
 Timber, cedar, pine & pinyon. Undergrowth, live oak & cactus.

 West, on true line, on S. bdy. of sec. 31. Over rolling land,
 thru. heavy timber & scattering undergrowth.
 Descend 195 ft., over W. slope to bottom of valley.

0.92 Brush fence, brs. N. 45° W. and S. 45° E.
 2.30 Same brush fence, brs. N. 45° E. and S. 45° W.

15.76 Enter bottom of Penn Valley, brs. NW. & SE. Leave timber.
 Descend 40 ft. to 1/4 sec. cor.

18.31 Wash, 15 lks. wide, 3 ft. deep, course N. 50° W.

24.91 Same wash, 20 lks. wide, 4 ft. deep, course S. 45° W. Enter nearly
 level land.

40.00 Set an iron post, 3 ft. long, 1 in. in diam., 26 ins. in the
 ground, for std. 1/4 sec. cor. of sec. 31, mkd. on brass cap,

S C
 1/4 S 31
 1917

from which,
 A cedar, 16 ins. dia., brs. N. 13° E. 480 lks. dist. mkd. SC 1/4 S31 BT.

A cedar, 18 ins. dia., brs. N. 5° 10' W. 423 lks. dist. mkd. SC 1/4 S31 BT.
 Enter wash, 5 lks. wide, 2 ft. deep, course W. from SE.

53.75 Leave wash, course N. 20° W. from E.
 56.35 Wash, 15 lks. wide, 4 ft. deep, course N. 5° E.

61.05 Road, brs. N. and S.
 62.15 Leave Penn Valley. Enter rolling land & timber, brs. N. & S.

63.90 Ascend 135 ft. to

80.00 Set an iron post, 3 ft. long, 3 ins. dia., 24 ins. in ground, for
 std. cor. of Ts. 33 N., Rs. 11 & 12 W., mkd. on brass cap,

T33N
 R12W R11W
 S C
 S36 | S31

1917

from which,
 A cedar, 8 ins. dia., brs. N. 44 1/2° E., 33 lks. dist. mkd.
 SC 1/4 S33 N R11W S31 BT.

A cedar, 18 ins. dia., brs. N. 30° W., 9 lks. dist., mkd.
 SC 1/4 S33 N R12W S36 BT.

Land rolling, nearly level. Soil, heavy loam, 1st rate &
 rocky loam, 2nd rate. Timber, cedar and pinyon.
 Undergrowth, live oak & cactus. Fair growth of grass.

6 Survey of West hdy. of Township 33 North, Range 11 West.

Chains.

From the std.cor.of Ts. 33 N.,Rs.11 and 12 W.,on the 8th
Std.Parallel North, hereinbefore described,
North,on true line, bet. secs.31 and 36.
Over mountainous land, thru. heavy timber and scattering
undergrowth. Ascend 120 ft., over S.slope, to
12.24 Point of spur, slopes S.60°E. Desc.230 ft.,over NE.slope, to
40.00 Set an iron post, 3 ft.long, 1 in. in diam.,26 ins.in
the ground, for $\frac{1}{4}$ sec.cor., marked on brass cap,

$$\begin{array}{c} \frac{1}{4} \\ \hline S36 | S31 \end{array}$$

1917

from which,

A cedar,14 ins.in diam.,brs.S.38°E.,21 lks.
dist., marked $\frac{1}{4}$ S 31 BT.

A pine,16 ins.in diam.,brs.N.62 $\frac{1}{2}$ °W.,19 lks.
dist., marked $\frac{1}{4}$ S36 BT.

Descend 23 ft., over NE.slope.

43.65 Leave timber, brs.N.60°W. and S.60°E.

45.00 Enter level land in Penn Valley.

45.19 Road, brs.N.55°W. and S.55°E.

64.09 Large wash,75 lks.wide, 4 ft. deep, course N.60°W.

70.00 Leave Penn Valley, brs.N.60°W. and S.60°E.

Ascend 12 ft.to

80.00 Set an iron post, 3 ft.long, 2 ins. in diam., 24 ins.in
the ground, for cor.of secs.25,30,31 and 36, marked on
brass cap,

$$\begin{array}{c} T33N \\ R12W, R11W \\ \hline S25 | S30 \\ \hline S36 | S31 \\ 1917 \end{array}$$

from which,

A cedar,10 ins. in diam.,brs.N.89°E.,143
lks.dist., marked T33N R11W S30 BT.

A cedar,12 ins. in diam.,brs.S.60 $\frac{1}{2}$ °E.,145
lks.dist., marked T33N R11W S31 BT.

A cedar, 16 ins. in diam.,brs.S.83 $\frac{3}{4}$ °W.,429
lks.dist., marked T33N R12W S36 BT.

A cedar,12 ins.in diam.,brs.N.16°W.,53 lks.
dist., marked T33 N R12W S25 BT.

Land,mountainous,rolling and level.

Soil,rocky adobe,3rd rate; and heavy loam,1st rate.

Timber, cedar, pine and pinyon.

Undergrowth, sagebrush,algerita and cactus.

Fair growth of grass.

North,on true line, bet. secs.25 and 30.

Over rolling land, thru.scattering timber and undergrowth.

Ascend 100 ft., over SW.slope, to

40.00 Set an iron post, 3 ft.long, 1 in. in diam., 26 ins. in
the ground, for $\frac{1}{4}$ sec.cor., marked on brass cap,

$$\begin{array}{c} \frac{1}{4} \\ \hline S25 | S30 \end{array}$$

1917

from which,

A cedar,18 ins.in diam.,brs.N.9 $\frac{1}{2}$ °E.,165 lks.
dist., marked $\frac{1}{4}$ S 30 BT.

A cedar,10 ins.in diam.,brs.N.57 $\frac{1}{2}$ °W.,129 lks.
dist., marked $\frac{1}{4}$ S 25 BT.

Ascend 50 ft.,over SW.and S.slopes.

75.00 Ridge, brs.E.and W. Desc.10 ft.,over N.slope, to

80.00 Set an iron post, 3 ft.long, 2 ins. in diam.,24 ins.in
the ground, for cor.of secs.19,24, 25 and 30, marked
on brass cap,

Survey of West boundary of Township 33 North, Range 11 West. 7

Chains.

T33N	
R12W	R11W
S24	S19
S25	S30
1917	

from which,
 A cedar, 12 ins. in dia., brs. N. $29\frac{1}{2}^{\circ}$ E., 144 lks.
 dist., marked T33N R11W S19 BT.
 A cedar, 20 ins. in dia., brs. S. $70\frac{1}{4}^{\circ}$ E., 79 lks.
 dist., marked T33N R11W S30 BT.
 A cedar, 18 ins. in dia., brs. S. $32\frac{3}{4}^{\circ}$ W., 126 lks.
 dist., marked T33N R12W S25 BT.
 A cedar, 30 ins. in dia., brs. N. $32\frac{1}{2}^{\circ}$ W., 31 lks.
 dist., marked T33N R12W S24 BT.

Land, rolling.
 Soil, heavy loam and adobe, rocky, 2nd rate.
 Timber, cedar and pinyon.
 Undergrowth, sagebrush, algerita and cactus.

North, on true line, bet. secs. 19 and 24.
 Over gently rolling land, thru scattering timber and undergrowth.

10.00 Descend 28 ft., over N. slope.
 29.99 Draw, course N. 75° W. Ascend 26 ft., over S. slope.
 40.00 Low ridge, brs. E. and W. Desc. 35 ft., over N. slope, to
 Draw, course W. Set an iron post, 3 ft. long, 1 in. in
 diam., 26 ins. in the ground, for $\frac{1}{4}$ sec. cor., marked
 on brass cap,

S24 S19	
1917	

from which,
 A cedar, 10 ins. in diam., brs. N. $54\frac{3}{4}^{\circ}$ E., 78
 lks. dist., marked S 19 BT.
 A cedar, 20 ins. in dia., brs. S. $82\frac{1}{2}^{\circ}$ W., 16
 lks. dist., marked S 24 BT.

60.00 Thence over nearly level land. Asc. 18 ft., over S. slope.
 80.00 Descend 12 ft., over NW. slope, to
 Swale, draining NW. Set an iron post, 3 ft. long, 2 ins.
 in diam., 24 ins. in the ground, for cor. of secs. 13, 18,
 19 and 24, marked on brass cap,

T33N	
R12W	R11W
S13	S18
S24	S19
1917	

from which,
 A cedar, 10 ins. in diam., brs. N. $70\frac{1}{2}^{\circ}$ E., 27
 lks. dist., marked T33N R11W S18 BT.
 A cedar, 18 ins. in diam., brs. S. $22\frac{3}{4}^{\circ}$ E., 100
 lks. dist., marked T33N R11W S19 BT.
 A cedar, 10 ins. in diam., brs. S. 10° W., 26
 lks. dist., marked T33N R12W S24 BT.
 A cedar, 10 ins. in diam., brs. N. $17\frac{3}{4}^{\circ}$ W., 64
 lks. dist., marked T33N R12W S13 BT.

Land, gently rolling and nearly level.
 Soil, adobe, volcanic rock, 2nd rate,
 Timber, cedar and pinyon.
 Undergrowth, sagebrush, algerita and cactus.

8 Survey of West boundary of Township 33 North, Range 11 West.

Chains.

North, on true line, bet. secs. 13 and 18.
 Over gently rolling land, thru. scattering timber and
 undergrowth.
 Ascend 35 ft., over S. slope.
 16.38 Road brs. N. 85° E. and S. 85° W.
 30.00 Low spur, slopes S. 85° W.
 Descend 12 ft., over NW. slope, to
 40.00 Set an iron post, 3 ft. long, 1 in. in diam., 26 ins. in
 the ground, for $\frac{1}{4}$ sec. cor., marked on brass cap,

1	+	1
S13		S18

1917

from which,

A cedar, 10 ins. in diam., brs. N. 15 $\frac{1}{2}$ ° E., 81
 lks. dist., marked $\frac{1}{4}$ S 18 BT.

A cedar, 14 ins. in diam., brs. S. 80 $\frac{1}{4}$ ° W., 80
 lks. dist., marked $\frac{1}{4}$ S 13 BT.

53.67 Descend 46 ft., over NW. slope, to
 Top of cliffs, 20 ft. high, bearing E. and W., facing N.
 Enter mountainous land. Desc. 228 ft., over N. slope.
 63.71 Gulch, course N. 25° E.
 Ascend 10 ft., over SE. slope.
 65.31 Point of low spur, slopes N. 45° E.
 Descend 85 ft., over N. slope.
 72.55 Gulch, course N. 45° E.
 Ascend 25 ft., over SE. slope, to
 80.00 Set an iron post, 3 ft. long, 2 ins. in diam., 24 ins. in
 the ground, for cor. of secs. 7, 12, 13 and 18, marked on
 brass cap,

T33N		
R12W		R11W
S12		S 7

S13		S18
-----	--	-----

1917

from which,

A pinyon, 8 ins. in diam., brs. N. 63° 15' E., 58 lks.
 dist., marked T33N R11W S7 BT.

A cedar, 10 ins. in diam., brs. S. 32 $\frac{1}{2}$ ° E., 45 lks.
 dist., marked T33N R11W S18 BT.

A pinyon, 8 ins. in diam., brs. S. 38 $\frac{1}{2}$ ° W., 28 lks.
 dist., marked T33N R12W S13 BT.

A cedar, 8 ins. in diam., brs. N. 87 $\frac{1}{2}$ ° W., 44 lks.
 dist., marked T33N R12W S12 BT.

Land, gently rolling and mountainous.
 Soil, heavy loam, very rocky, 3rd rate.
 Timber, cedar and pinyon.
 Undergrowth, sagebrush, live oak and dogwood.

North, on a true line, bet. secs. 7 and 12.
 Over mountainous land, thru. scattering timber and under-
 growth. Asc. 7 ft., over SE. slope.
 3.30 Spur, slopes N. 45° E. Desc. 82 ft., over N. slope.
 6.89 Gulch, course N. 80° E. Asc. 56 ft., over S. slope.
 9.54 Narrow spur, slopes E. Desc. 90 ft., over N. slope.
 15.78 Canyon, course S. 70° E. Asc. 37 ft., over S. slope, to
 34.14 Top of cliff, 20 ft. high, bearing E. and W., facing S.
 Ascend slightly to
 34.45 Narrow spur, slopes E. Desc. slightly to
 34.78 Top of cliff, 30 ft. high, bearing E. and W. facing N.
 Descend 160 ft., over N. slope, to
 40.00 Set an iron post, 3 ft. long, 1 in. in diam., 26 ins. in the
 ground, for $\frac{1}{4}$ sec. cor., marked on brass cap,

1	+	1
S12		S 7

1917

Survey of West boundary of Township 33 North Range 11 West. 9

Chains.

from which,
 A cedar, 8 ins. dia., brs. N. 22 $\frac{1}{2}$ ° E., 58 lks. dist.,
 mkd. $\frac{1}{4}$ S 7 BT.
 A cedar, 10 ins. dia. brs. S. 60 $\frac{3}{4}$ ° W., 32 lks. dist.,
 mkd. S 12 BT.
 Descend 46 ft., over N. slope.
 44.95 Draw, course N. 30° W. Enter rolling land. Ascend slightly
 over W. slope, to
 47.25 Descend 55 ft., over NW. slope.
 55.91 Draw, course N. 35° W. Asc. 10 ft., over W. slope.
 58.31 Descend 25 ft., over NW. slope.
 63.19 Wash, 20 lks. wide, course N. 35° E. Asc. 12 ft., over SE. slope.
 67.38 Descend 25 ft., over NE. slope, to
 78.22 Wash, 120 lks. wide., course N. 40° E.
 Descend slightly over NE. slope, to
 80.00 Set an iron post, 3 ft. long, 2 ins. dia., 24 ins. in ground,
 for cor. of secs. 1, 6, 7 and 12, mkd. on brass cap,

T33N
 R12W | R11W
 S 1 | S 6
 S 12 | S 7
 1917

from which;
 A cedar, 16 ins. dia., brs. N. 57 $\frac{1}{4}$ ° E., 41 lks.
 dist., mkd. T33N R11W S6 BT.
 A cedar, 15 ins. dia., brs. S. 59° E., 80 lks.
 dist., mkd. T33N R11W S7 BT.
 A pinyon, 15 ins. dia., brs. S. 87 $\frac{3}{4}$ ° W., 58 lks.
 dist., mkd. T33N R12W S12 BT.
 A cedar, 20 ins. dia., brs. N. 46 $\frac{3}{4}$ ° W., 62 lks.
 dist., mkd. T33N R12W S1 BT.
 Land, mountainous & rolling. Soil, rocky, heavy loam, 3rd rate.
 Timber, cedar and pinyon.
 Undergrowth, algerita, live oak, dogwood and cactus.

 North, on true line, bet. secs. 1 and 6.
 Over gently rolling land, thru. scattering timber and
 undergrowth. Desc. 27 ft., over NE. slope.
 20.00 Ascend 17 ft., over S. slope.
 25.00 Low ridge, brs. E. and W. Desc. 20 ft., over N. slope.
 39.90 Leave scattering timber, brs. N. 45° E. and S. 70° W. Enter
 nearly level land in Jagway Valley.
 40.00 Set an iron post, 3 ft. long, 1 in. dia., 26 ins. in ground,
 for $\frac{1}{4}$ sec. cor., mkd. on brass cap,

$\frac{1}{4}$
 S 1 | S 6
 1917

from which,
 A cedar, 6 ins. dia., brs. N. 71° 30' E., 275 lks.
 dist., mkd. $\frac{1}{4}$ S 6 BT.
 A cedar, 8 ins. dia., brs. S. 3° W., 180 lks. dist.,
 mkd. S 1 BT.
 Descend slightly, over N. and NE. slope, to
 80.00 Set an iron post, 3 ft. long, 3 ins. dia., 24 ins. in ground, for
 cor. of Ts. 33 and 34 N., Rs. 11 and 12 W., mkd. on brass
 cap,

T34N.
 R12W | R11W
 S 36 | S 31
 S 1 | S 6
 T33N
 1917

No bearing trees available. Dig pits, 24x24x12 ins., one
 each N., E. and W. 4 ft., and S. of post, 8 ft. dist.
 Land, gently rolling and nearly level. Soil, S $\frac{3}{4}$, heavy loam,
 rocky, 2nd rate; N. $\frac{3}{4}$, heavy loam, 1st rate.
 Timber, cedar and pinyon.
 Undergrowth, sagebrush, dogwood, algerita and cactus.
 Fair growth of grass.

10 Survey of North boundary of Township 33 North Range 11 West.

Chains.

The cor. of Ts. 33 and 34 N., Rs. 10 and 11 W., established under current Group No. 72 is an iron post, 3 ins. in diam., projecting 12 ins. above ground, firmly set, properly marked on brass cap, and witnessed by two properly marked juniper bearing trees, one each NE and NW of cor.

Thence, West, on a random line, along the N. bdy. of T. 33 N., R. 11 W., setting temp. & sec. cor., and sec. cors. at intervals of 40.00 chs.; and at 479.17 chs. fall 51 lks. S. of the cor. of Ts. 33 and 34 N., Rs. 11 and 12 W., hereinbefore described. The falling answers to a correction of 0° 4' or 9 lks. N. per mile, counting from the NE. cor. of the Tp.; therefore,

S. 89° 56' E., on a true line, bet. secs. 6 and 31. Over nearly level land, in Jagway Valley, thru. scattering undergrowth.

18.60
20.00
39.17

Descend slightly over NE. slope. Road, brs. N. 45° W. and S. 45° E. Ascend slightly over SW. slope, to Set an iron post, 3 ft. long, 1 in. in diam., 16 ins. in the ground, to bed rock, supported in a mound of stone, for 1/2 sec. cor., marked on brass cap,

S 31
S 6
1917

No bearing trees available. Raise a mound of stone, 2 1/2 ft. base, 2 ft. high, N. of cor.

66.47
70.47
79.17

Descend slightly over SE. and S. slopes to sec. cor. Enter scattering timber, brs. N. and S. Leave scattering timber, brs. N. and S. Set an iron post, 3 ft. long, 2 ins. in diam., 24 ins. in the ground, for cor. of secs. 5, 6, 31 and 32, marked on brass cap,

T34N | R11W
S31 | S32
S 6 | S 5
T33N
1917

from which, A cedar, 18 ins. in dia., brs. N. 20 1/2° W., 826 lks. dist., marked T34N R11W S31 BT.

No other bearing trees available. Dig pits, 18x18x12 ins. one each NE, SE, SW, and NW of cor. 5 1/2 ft. dist. Land, nearly level. Soil, gravelly, limestone formation; 1st rate. Timber, cedar and pinyon. Undergrowth, sagebrush and cactus. Short growth of grass.

S. 89° 56' E., on a true line, bet. secs. 5 and 32. Over nearly level land, in Jagway Valley, thru. scattering undergrowth. Asc. slightly over S. slope.

15.30
32.60
40.00

New road, brs. N. 15° E. and S. 15° W. Leave Jagway Valley, and enter rolling land and scattering timber, brs. N. 45° W. and S. 45° E. Asc. 15 ft. over SW. slope, to Set an iron post, 3 ft. long, 1 in. in diam., 16 ins. in ground to bed rock, supported in a mound of stone for 1/2 sec. cor., marked on brass cap,

S 32
S 5
1917

from which, A cedar, 10 ins. dia., brs. S. 76° E., 71 lks. dist., mkd. S 5 BT.

A cedar, 14 ins. dia., brs. N. 1° W., 64 lks. dist. mkd. S 32 BT.

75.24
80.00

Ascend 114 ft. over SW. slope. Spur, slopes N. 45° W. Desc. 6 ft. over N. slope, to Set an iron post, 3 ft. long, 2 ins. dia., 18 ins. in ground to bedrock, supported in mound of stone, for cor. of secs. 4, 5, 32 and 33, marked on brass cap,

Survey of the North boundary of Township 33 North Range 11 West. 11

Chains.

T34N	R11W
S32	S33
S 5	S 4
T33N	
1917	

from which,
 A cedar, 18 ins. in diam., brs. N. 69 $\frac{1}{2}$ ° E., 52 lks.
 dist., marked T34N R11W S33 BT.
 A pinyon, 8 ins. in diam., brs. S. 58 $\frac{1}{4}$ ° E., 162 lks.
 dist., marked T33N R11W S4 BT.
 A cedar, 10 ins. in diam., brs. S. 68 $\frac{1}{2}$ ° W., 87 lks.
 dist., marked T33N R11W S5 BT.
 A cedar, 10 ins. in diam., brs. N. 27° W., 29 lks.
 dist., marked T34N R11W S32 BT.

Land, nearly level and rolling.
 Soil, heavy loam, slightly rocky, 2nd rate.
 Timber, cedar and pinyon.
 Undergrowth, algerita, dogwood, sagebrush and cactus.

15.02 S. 89° 56' E., on a true line, bet. secs. 4 and 33.
 Over rolling land, thru. scattering timber and under-
 growth. Desc. 48 ft., over N. and NE. slopes, to
 40.00 Wash, 20 lks. wide, in gulch, course N. 30° W. Enter mountain-
 ous land. Asc. 178 ft., over SW. slope, to
 Set an iron post, 3 ft. long, 1 in. in diam., 26 ins. in the
 ground, for $\frac{1}{4}$ sec. cor., marked on brass cap,

S 33	
S 4	
1917	

from which,
 A cedar, 18 ins. in diam., brs. N. 68 $\frac{1}{2}$ ° E., 155 lks.
 dist., marked $\frac{1}{4}$ S 33 BT.
 A cedar, 12 ins. in diam., brs. S. 54 $\frac{1}{2}$ ° W., 30 lks.
 dist., marked $\frac{1}{4}$ S 4 BT.

56.78 Ascend 247 ft., over SW. slope, to
 63.72 Head of gulch, course S. 55° W. Asc. 84 ft., over W. slope.
 78.60 Ridge, brs. N. 20° W. and S. 20° E. Desc. 200 ft., over NE. slope.
 Wash, 20 lks. wide, in gulch, course N. 25° E.
 Asc. 7 ft., over NW. slope.
 80.00 Set an iron post, 3 ft. long, 2 ins. in diam., 18 ins. in the
 ground to bed rock, supported in a mound of stone, for
 cor. of secs. 3, 4, 33 and 34, marked on brass cap,

T34N	R11W
S33	S34
S 4	S 3
T33N	
1917	

from which,
 A cedar, 16 ins. in diam., brs. N. 82° E., 106 lks.
 dist., marked T34N R11W S34 BT.
 A pinyon, 8 ins. in diam., brs. S. 84° E., 31 lks.
 dist., marked T33N R11W S3 BT.
 A pinyon, 8 ins. in diam., brs. S. 3 $\frac{3}{4}$ ° W., 30 lks.
 dist., marked T33N R11W S4 BT.
 A cedar, 8 ins. in diam., brs. N. 69° W., 83 lks.
 dist., marked T34N R11W S33 BT.

Land, rolling and mountainous.
 Soil, adobe, very rocky, 3rd rate.
 Timber, cedar and pinyon.
 Undergrowth, algerita, live oak, and sagebrush.
 Fair growth of bunch grass.

S. 89° 56' E., on a true line, bet. secs. 3 and 34.
 Over mountainous land, thru. scattering timber and under-
 growth.

12 Survey of North boundary of Township 33 North Range 11 West.

Chains.

Ascend 74 ft., over NW. slope.
 10.25 Spur, slopes N. 10° E. Desc. 225 ft., over E. slope.
 26.25 Wash, 20 lks. wide, in gulch, course N. 45° E. Asc. 135 ft.
 40.00 Spur, slopes N. from SW.
 Set an iron post, 3 ft. long, 1 in. in diam., 26 ins. in
 the ground, for $\frac{1}{4}$ sec. cor., marked on brass cap,
 $\frac{1}{4}$ S 34
 S 3
 1917
 from which,
 A cedar, 14 ins. in diam., brs. N. 26 $\frac{1}{2}$ ° E., 9 lks.
 dist., marked $\frac{1}{4}$ S 34 BT,
 A cedar, 16 ins. in diam., brs. S. 28 $\frac{1}{2}$ ° W., 35 lks.
 dist., marked $\frac{1}{4}$ S 3 BT.
 Descend 61 ft., over E. slope, to
 56.55 Top of cliffs, 10 ft. high, bearing NW. and SE. facing NE.
 Descend 175 ft., over NE. slope, to
 71.30 Leave mountainous, and enter rolling land.
 Descend 37 ft., over NE. slope, to
 80.00 Set an iron post, 3 ft. long, 2 ins. in diam., 24 ins. in
 the ground, for cor. of secs. 2, 3, 34 and 35, marked on
 brass cap,
 T34N | R11W
 S34 | S35
 S 3 | S 2
 T33N
 1917
 from which,
 A cedar, 8 ins. in diam., brs. N. 34° E., 182 lks.
 dist., marked T34N R11W S35 BT,
 A cedar, 10 ins. in diam., brs. S. 19 $\frac{1}{2}$ ° E., 102 lks.
 dist., marked T33N R11W S2 BT.
 A cedar, 12 ins. in diam., brs. S. 81 $\frac{1}{2}$ ° W., 319 lks.
 dist., marked T33N R11W S3 BT.
 A cedar, 12 ins. in diam., brs. N. 35 $\frac{1}{2}$ ° W., 442 lks.
 dist., marked T34N R11W S34 BT.
 Land, mountainous and rolling.
 Soil, rocky adobe, 3rd rate.
 Timber, cedar and pinyon.
 Undergrowth, algerita, live oak and sagebrush.
 Fair growth of grass.

S. 89° 56' E., on a true line, bet. secs. 2 and 35.
 Over gently rolling land, thru. scattering timber and
 undergrowth.
 Descend 118 ft., over NE. slope to $\frac{1}{4}$ sec. cor.
 36.76 New road, brs. N. 55° W. and SE.
 40.00 Set an iron post, 3 ft. long, 1 in. in diam., 26 ins. in
 the ground, for $\frac{1}{4}$ sec. cor., marked on brass cap,
 $\frac{1}{4}$ S 35
 S 2
 1917
 from which,
 A cedar, 36 ins. in diam., brs. N. 6 $\frac{1}{2}$ ° W., 169 lks.
 dist., marked $\frac{1}{4}$ S 35 BT.
 A cedar, 30 ins. in diam., brs. S. 34 $\frac{3}{4}$ ° E., 543 lks.
 dist., marked $\frac{1}{4}$ S 2 BT.
 Descend slightly over NE. slope.
 41.55 Wash, 18 lks. wide, course N. 10° W. Asc. 40 ft., over W. slope.
 55.28 Spur, slopes N. Desc. 50 ft., over E. slope.
 66.60 Draw, course N. 15° W. Asc. 80 ft., over W. slope, to
 80.00 Set an iron post, 3 ft. long, 2 ins. in diam., 14 ins. in
 the ground to bedrock, supported in a mound of stone,
 for cor. of secs. 1, 2, 35 and 36, marked on brass cap,

Survey of North boundary of Township 33 North Range 11 West. 13
Chains.

T34N R11W
S35 | S36
S 2 | S 1
T33N
1917

from which,

- A cedar, 8 ins. diam., brs. N. 76 $\frac{1}{2}$ ° E., 441 lks.
dist., marked T34N R11W S36 BT.
- A cedar, 8 ins. in diam., brs. S. 36 $\frac{1}{2}$ ° E., 191 lks.
dist., marked T33N R11W S1 BT.
- A cinchona, 4 ins. in diam., brs. S. 12 $\frac{1}{2}$ ° W., 360 lks.
dist., marked BT.
- A cedar, 15 ins. in diam., brs. N. 12 $\frac{1}{2}$ ° W., 225 lks.
dist., marked T34N R11W S35 BT.

Land, gently rolling.
Soil, heavy loam, slightly rocky, 2nd rate.
Timber, cedar and pinyon.
Undergrowth, sage brush, live oak, algerita and cactus.
Fair growth of bunch grass.

S. 89° 56' E., on a true line, bet. secs. 1 and 36.
Over gently rolling land, thru. scattering timber and undergrowth.

Ascend 77 ft., over W. slope, to
40.00 Set an iron post, 3 ft. long, 1 in. in diam., 4 ins. in the ground, to bed rock, supported in a mound of stone for $\frac{1}{4}$ sec. cor., marked on brass cap,

$\frac{1}{4}$ S 36
S 1
1917

from which,

- A cedar, 8 ins. in diam., brs. N. 77 $\frac{1}{2}$ ° W., 297 lks.
dist., marked $\frac{1}{4}$ S 36 BT.
- A cedar, 18 ins. in diam., brs. S. 69 $\frac{1}{2}$ ° E., 240 lks.
dist., marked $\frac{1}{4}$ S1 BT.

Ascend 6 ft., over W. slope, to
45.30 Low ridge, brs. N. and S.
Descend 32 ft., over E. slope, to
65.30 Head of draw, course N. 70° E.
Descend 68 ft., over NE. slope, to
80.00 The cor. of Ts. 33 and 34 N., Rs. 10 and 11 W., described in field notes of current Group No. 72.

Land, gently rolling.
Soil, limestone formation, slightly rocky, 2nd rate.
Timber, cedar and pinyon.
Undergrowth, algerita, sagebrush, live oak and cactus.
Fair growth of bunch grass.

84
3616

Boundaries of Township 33 North, Range 11 West.
 Latitudes, departures, and closing errors.

Line designated.	True bearing.	Dist.	Latitudes.		Departures.	
			N.	S.	E.	W.
South boundary, (8th. Std. Par. N.)	West,	480.00				80.00
West boundary,	North,	480.00	480.00			
North boundary,	S. 89° 56' E.	479.17		.51	479.17	
East boundary,	South,	480.00		480.00		
Convergency,					.53	
<u>Totals.</u>			480.00	480.51	479.70	480.00
				480.00		479.70
<u>Error in latitude.</u>			0.51			
<u>Error in departure.</u>					0.30	

Survey of Subdivision lines of Township 33 North Range 11 West, 15

Chains.

From the standard cor. of secs. 35 and 36, on the S. bdy. of Tp., (8th. Std. Par. N.), hereinbefore described, N.0°1'W., bet. secs. 35 and 36. Over mountainous land, along W. side of Andrus Canyon, thru. scattering timber and undergrowth. Ascend 37 ft., over SE. slope. Spur, slopes E. Desc. 270 ft., over NE. slope. Gulch, course N.85°E. Asc. 250 ft., over SE. slope. Spur, slopes N.80°E. Desc. 98 ft., over N. slope, to Set an iron post, 3 ft. long, 1 in. in diam., 14 ins. in the ground, to bed rock, supported in a mound of stone for $\frac{1}{4}$ sec. cor., marked on brass cap,

3.96
18.76
34.09
40.00

S35 | S36
1917

No bearing trees available. Raise a mound of stone, 2 ft. base, $1\frac{1}{2}$ ft. high, W. of cor. Descend 158 ft., over N. slope. Gulch, course N.45°E. Asc. 61 ft., over SE. slope. Spur, slopes N. 45°E. Desc. 350 ft., over N. and NE. slopes, to Set an iron post, 3 ft. long, 2 ins. in diam., 24 ins. in the ground, for cor. of secs. 25, 26, 35 and 36, marked on brass cap,

45.91
51.75
80.00

T33N | R11W
S26 | S25
S35 | S36
1917

No bearing trees available. Raise a mound of stone, $2\frac{1}{2}$ ft. base, $1\frac{1}{2}$ ft. high, W. of cor. Land, mountainous. Soil, 4th rate, red sandstone formation. Timber, cedar and pinyon. Undergrowth, sagebrush, dogwood and cactus. Fair growth of bunch grass.

40.00
80.02

East, on a random line, bet. secs. 25 and 36. Set temp. $\frac{1}{4}$ sec. cor. Intersect E. bdy. of Tp., 6 lks. S. of the cor. of secs. 25, 30, 31 and 36, which is an iron post, described in the field notes of current Group No. 72.

Thence, S.89°57'W., on a true line, bet. secs. 25 and 36. Over mountainous land, thru. very scattering timber and scattering undergrowth. Descend 195 ft., over SW. slope.

13.64
16.30
21.50
27.60
37.20
40.01

Gulch, course S. Asc. 61 ft., over E. slope. Spur, slopes S.10°E. Desc. 134 ft., over SW. slope. Head of gulch, course S.15°W. Asc. 35 ft., over SE. slope. Spur, slopes S.20°W. Desc. 260 ft., over W. slope. Gulch, course S.10°W. Asc. 7 ft., over E. slope, to Set an iron post, 3 ft. long, 1 in. in diam., 26 ins. in the ground, for $\frac{1}{4}$ sec. cor., marked on brass cap,

S 25
S 36
1917

No bearing trees available. Raise a mound of stone, 2 ft. base, $1\frac{1}{2}$ ft. high, N. of cor. Asc. 65 ft. over E. slope. Spur, slopes S. Desc. 155 ft., over SW. slope. Bottom of Andrus Canyon, course S.45°E. Ascend 165 ft., over NE. slope to sec. cor.

44.00
60.60
65.65
80.02

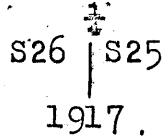
Road brs. N.75°W. and S.75°E. The cor. of secs. 25, 26, 35 and 36. Land, mountainous. Soil, 3rd rate, red and white sandstone formation. Timber, cedar and pinyon. Undergrowth, catclaw & sagebrush. Fair growth of bunch grass.

16 Survey of Subdivision of lines of Township 33 North Range 11 West.

Chains.

N.0° 1'W., bet. secs. 25 and 26.
 Over mountainous land, thru. very scattering timber and scattering undergrowth,
 Descend 98 ft., over NE. slope.
 26.45 Bottom of Andrus Canyon, course S. 45° E. Road, brs. N.45° W. and S.45° E.

Ascend 140 ft. over SW. slope, to
 40.00 Set an iron post, 3 ft. long, 1 in. in diam., 26 ins. in the ground, for $\frac{1}{4}$ sec. cor., marked on brass cap,

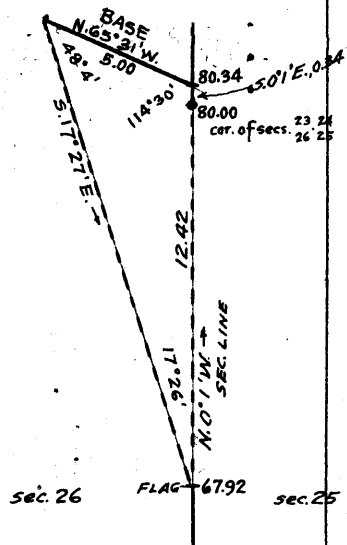


No bearing trees available. Raise a mound of stone, 2 ft. base, 1 1/2 ft. high, W. of cor.
 Ascend 628 ft., over SW. slope, to
 67.92 Impracticable to chain farther because of cliffs; therefore, triangulate as follows: Set a flag here:

From a point ahead on line, measure a Base N.65° 31' W., 5.00 chs., (longer base impracticable).
 From the NW. end of base, flag brs. S.17° 27' E. Vertical angle from flag to SE. end of Base is +17 1/2°. The included angles of the triangle are 48° 4', 114° 30' and 17° 26', the sum of which is 180° 00'. The distance triangulated is obtained by

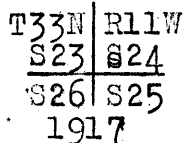
$$\frac{\text{Base} \times \sin 48^\circ 4'}{\sin 17^\circ 26'}$$

or $\frac{5.00 \times .74392}{.29960} = 12.42 \text{ chs.}$



which added to 67.92 chs., gives 80.34 chs., N.0° 1' W. from cor. of secs. 25, 26, 35 and 36 for position of the triangulation point. Chain measurement S.0° 1' E., 0.34 chs. to

80.00 Set an iron post, 3 ft. long, 2 ins. in diam., 16 ins. in the ground to bed rock, supported in a mound of stone, for cor. of secs. 23, 24, 25 and 26, marked on brass cap,



No bearing trees available. Raise a mound of stone, 2 ft. base, 1 1/2 ft. high, W. of cor. This cor. is on steep SW. slope at top of cliffs on NE. side of Andrus Canyon, about 260 ft. above 67.92 ch. station.

Land, mountainous.
 Soil, rocky, 4th rate; red and white sandstone formation.
 Timber, cedar and pinyon.
 Undergrowth, sagebrush and cactus.
 Fair growth of bunch grass.

40.00 East, on a random line, bet. secs. 24 and 25.
 80.10 Set temp. $\frac{1}{4}$ sec. cor.

Intersect E. bd. of Sp. 16 lks. N. of the cor. of secs. 19, 24, 25 and 30, which is an iron post, described in the field notes of current Group No. 72.

Thence,
 N.89° 53' W., on a true line, bet. secs. 24 and 25.
 Over mountainous land, thru. scattering timber and undergrowth.

Survey of Subdivision lines of Township 33 North, Range 11 West. 17

Chains.

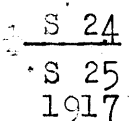
16.40
30.10
40.05

52.55
61.85
80.10

0.34
1:28
2.65
28.58
40.00

45.00
50.00
55.91
69.98
76.00
80.00

Descend 135 ft., over SW. slope.
Gulch, course S.45°E. near head.
Ascend 125 ft., over E. slope.
Ridge, brs. N. and S. Desc. 17 ft., over W. slope, to
Set an iron post, 3 ft. long, 1 in. in diam., 26 ins. in the ground, for $\frac{1}{4}$ sec. cor., marked on brass cap,



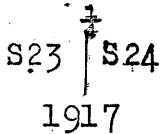
from which,
A cedar, 10 ins. in diam., brs. N. 69 $\frac{1}{2}$ ° E., 65 lks. dist., marked S 24 BT.
A cedar, 8 ins. in diam., brs. S. 63° W., 20 lks. dist., marked $\frac{1}{4}$ S 25 BT.

Descend 46 ft., over W. slope, to
Head of gulch, course N. 25° W. Desc. 16 ft., over NW. slope, to
NE. or left rim of Andrus Canyon, brs. NW. and SE.
Descend 511 ft., over steep SW. slope, to
The cor. of secs. 23, 24, 25 and 26.
Land, mountainous.
Soil, 2nd and 4th rate; limestone and sandstone formation.
Timber, cedar and pinyon.
Undergrowth, live oak, sagebrush and caetus.
Fair growth of bunch grass.

N. 0° 1' W., bet. secs. 23 and 24.
Over mountainous land, on NE. side of Andrus Canyon, thru. scattering timber and undergrowth.

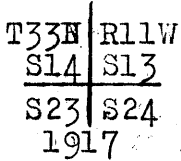
Ascend 13 ft., over SW. slope.
Triangulation point of the triangulation used in measurement of part of line, bet. secs. 25 and 26, as hereinbefore described.

Descend 18 ft.
Gulch, course S. 30° W.
Ascend 583 ft., over steep SE. slope, to
NE. or left rim of Andrus Canyon, brs. N. 80° E. and S. 80° W.
Leave canyon; enter rolling land.
Ascend 24 ft., over SW. slope, to
Set an iron post, 3 ft. long, 1 in. in diam., 6 ins. in the ground, to bed rock, supported in a mound of stone for $\frac{1}{4}$ sec. cor., marked on brass cap,



No bearing trees available. Raise a mound of stone, 2 $\frac{1}{2}$ ft. base, 1 $\frac{1}{2}$ ft. high, W of cor.

Ascend 6 ft., over SW. slope.
Descend 20 ft., over NW. slope.
Wild horse trap corral, brs. W. 7 chs. dist. A little water seeps out below the corral.
Draw, course S. 30° W. Asc. 52 ft., over SW. slope.
Descend 17 ft., over NW. slope.
Ascend 10 ft., over SW. slope, to
Set an iron post, 3 ft. long, 2 ins. in diam., 10 ins. in the ground to bed rock, supported in a mound of stone, for cor. of secs. 13, 14, 23 and 24, marked on brass cap,



from which,
A cedar, 16 ins. diam., brs. N. 54 $\frac{1}{2}$ ° E., 204 lks. dist., marked T33N R11W S13 BT.
A cedar, 10 ins. in diam., brs. S. 37 $\frac{1}{2}$ ° E., 380 lks. dist., marked T33N R11W S24 BT.

18 Survey of Subdivision lines of Township 33 North, Range 11 West.

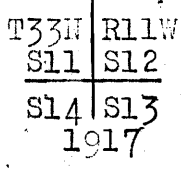
Chains.

	<p>A cedar, 34 ins. in diam., brs. S. $48\frac{3}{4}^{\circ}$ W., 242 lks. dist., marked T33N R11W S23 BT.</p> <p>A cedar, 12 ins. in diam., brs. N. $12\frac{1}{2}^{\circ}$ W., 390 lks. dist., marked T33N R11W S14 BT.</p> <p>Land, mountainous, and rolling. Soil, rocky, 2nd and 3rd rate; limestone formation. Timber, cedar and pinyon. Undergrowth, sagebrush, dogwood and cactus. Fair growth of bunch grass.</p>
40.00	East, on a random line, bet. secs. 13 and 24.
79.94	Set temp. $\frac{1}{4}$ sec. cor. Intersect E. bdy. of Tp., 11 lks. N. of the cor. of secs. 13, 18, 19 and 24, which is an iron post, described in the field notes of current Group No. 72.
	Thence, N. $89^{\circ}55'$ W., on a true line, bet. secs. 13 and 24. Over rolling land, thru. very scattering timber and scattering undergrowth. Ascend 14 ft., over E. slope.
3.00	Low ridge, brs. N. and S. Desc. 40 ft., over W. slope.
14.20	Draw, course S. Asc. 25 ft., over E. slope.
23.00	Low ridge, brs. N. and S. Desc. 60 ft., over W. slope.
32.00	Draw, course S. 15° E. Asc. 68 ft., over E. slope, to
39.97	Set an iron post, 3 ft. long, 1 in. in diam., on bed rock, supported in a mound of stone, for $\frac{1}{4}$ sec. cor., marked on brass cap,
	$\frac{1}{4}$ S 13 S 24 1917
	from which, A cedar, 8 ins. in diam., brs. N. 26° E., 207 lks. dist., marked $\frac{1}{4}$ S13 BT. A cedar, 8 ins. in diam., brs. S. 76° E., 130 lks. dist., marked $\frac{1}{4}$ S 24 BT.
45.00	Ascend 6 ft., over E. slope.
52.30	Low ridge, brs. N. and S. Desc. 33 ft., over W. slope.
69.95	Draw, course S. 15° E. Asc. 56 ft., over E. slope.
79.94	Spur, slopes S. 10° W. Desc. 17 ft., over SW. slope, to The cor. of secs. 13, 14, 23 and 24. Land, rolling. Soil, 2nd rate; limestone formation. Timber, cedar and pinyon. Undergrowth, sagebrush, dogwood and cactus. Fair growth of bunch grass.
10.00	N. $0^{\circ}1'$ W., bet. secs. 13 and 14. Over rolling land, thru. scattering timber and undergrowth. Ascend 34 ft., over SW. slope.
31.61	Low spur, slopes N. 75° W. Desc. 110 ft., over N. slope.
34.91	Draw, course E. Asc. 10 ft., over S. slope.
40.00	Spur, slopes S. 80° E. Desc. 18 ft., over NE. slope, to Set an iron post, 3 ft. long, 1 in. in diam., 18 ins. in the ground to bed rock, supported in a mound of stone, for $\frac{1}{4}$ sec. cor., marked on brass cap,
	$\frac{1}{4}$ S14 S13 1913
	from which, A cedar, 14 ins. in diam., brs. S. 29° E., 132 lks. dist., marked $\frac{1}{4}$ S 13 BT. A cedar, 12 ins. in diam., brs. N. 67° W., 74 lks. dist., marked $\frac{1}{4}$ S14 BT.
46.54	Descend 25 ft., over NE. slope. Draw, course N. 70° E. Asc. 40 ft., over SE. slope.

Survey of Subdivision lines of Township 33 North, Range 11 West. 19

Chains.

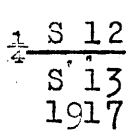
77.88 Top of ascent, brs. N.80°W. and S.80°E. Desc. 25 ft., over NW. slope, to
 80.00 Set an iron post, 3 ft. long, 2 ins. in diam., 20 ins. in the ground, to bed rock, supported in a mound of stone, for cor. of secs. 11, 12, 13 and 14, marked on brass cap,



No bearing trees available. Raise a mound of stone, 3 ft. base, 2½ ft. high, W. of cor.
 Land, rolling.
 Soil, 2nd rate; granite and sandstone formation.
 Timber, cedar and pinyon.
 Undergrowth, sagebrush, live oak and cactus.
 Fair growth of bunch grass.

40.00 East, on a random line, bet. secs. 12 and 13. Set temp. sec. cor.
 79.92 Intersect E. bdy. of Tp., 22 lks. N. of the cor. of secs. 7, 12, 13 and 18, which is an iron post, described in the field notes of current Group No. 72.

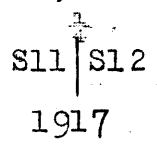
Thence, N.89°51'W., on a true line, bet. secs. 12 and 13. Over rolling land, thru. scattering timber and undergrowth. Ascend 46 ft., over E. slope.
 24.93 Point of low spur, slopes N.10°W. Desc. 10 ft., over W. slope.
 29.95 Center of draw, 8 chs. wide, course N.40°E. Ascend 22 ft., over E. slope, to
 39.96 Set an iron post, 3 ft. long, 1 in. in diam., 26 ins. in the ground, for sec. cor., marked on brass cap,



from which,
 A cedar, 12 ins. in diam., brs. N.18½°E., 134 lks. dist., marked ¼ S. 12 BT.
 A cedar, 16 ins. in diam., brs. S.83½°W., 140 lks. dist., marked ¼ S. 13 BT.

Ascend 138 ft., over E. slope.
 66.73 Spur, slopes N.30°E. from W.
 Descend 30 ft., over NW. slope, to
 79.92 The cor. of secs. 11, 12, 13 and 14.
 Land, rolling.
 Soil, granite and adobe formations, 2nd rate.
 Timber, cedar and pinyon.
 Undergrowth, sagebrush, live oak, cinchona and cactus.
 Fair growth of bunch grass.

N.0°1'W., bet. secs. 11 and 12. Over rolling land, thru. scattering timber and undergrowth. Descend 88 ft., over NW. slope.
 6.40 Wash, 60 lks. wide, course N.80°E.
 Ascend 120 ft., over S. slope.
 23.16 Long spur, slopes S.70°E. Desc. 113 ft., over NE. slope, to
 40.00 Set an iron post, 3 ft. long, 1 in. in diam., 26 ins. in the ground, for sec. cor., marked on brass cap,



from which,

20 Survey of Subdivision lines of Township 33 North Range 11 West.

Chains.

A cedar, 14 ins. in diam., brs. N.19 $\frac{1}{2}$ °E., 124 lks. dist., marked $\frac{1}{2}$ S12 BT.
 A cedar, 20 ins. in diam., brs. S.70°W., 98 lks. dist., marked $\frac{1}{2}$ S11 BT.
 Ascend 17 ft., over SE. slope.
 45.00 Point of short spur, slopes S.60°E. Desc. 25 ft. over NE. slope.
 51.38 Wash, 40 lks. wide, course S.70°E. Asc. 18 ft. over S. slope.
 64.98 Top of ascent, brs. N.75°E. and S.75°W.
 Descend 23 ft. over N. slope.
 66.38 Four strand barb wire fence, brs. N.85°W. and S.85°E.
 79.75 Wash, course E. Asc. slightly over S. slope, to
 80.00 Set an iron post, 3 ft. long, 2 ins. in diam., 12 ins. in the ground to bed rock, supported in a mound of stone, for cor. of secs. 1, 2, 11 and 12, marked on brass cap,

T33N	R11W
S 2	S 1
S11	S12
1917	

from which,

A cedar, 14 ins. in diam., brs. N.75°E., 149 lks. dist., marked T33N R11W S1 BT.
 A cedar, 12 ins. in diam., brs. S.52°E., 148 lks. dist., marked T33N R11W S12 BT.
 A cedar, 10 ins. in diam., brs. S.62°W., 87 lks. dist., marked T33N R11W S11 BT.
 A cedar, 28 ins. in diam., brs. N.28 $\frac{1}{2}$ °W., 50 lks. dist., marked T33N R11W S2 BT.

Land, rolling.

Soil, granite and sandstone formations, 2nd rate.

Timber, cedar and pinyon.

Undergrowth, sagebrush, live oak and cactus.

Fair growth of bunch grass.

40.00 East, on a random line, bet. secs. 1 and 12.
 Set temp. $\frac{1}{2}$ sec. cor.
 79.96 Intersect E. bdy. of Tp., 21 lks. N. of the cor. of secs. 1, 6, 7 and 12, which is an iron post, described in the field notes of current Group No. 72.
 Thence,
 N.89°51'W., on a true line, bet. secs. 1 and 12.
 Over rolling land, thru. scattering timber and undergrowth.
 Ascend 23 ft., over E. slope.
 5.00 Point of low spur, slopes N.45°E. Desc. 25 ft. over NW. slope.
 18.00 Draw, course N.70°E. Asc. 70 ft., over SE. slope.
 35.00 Low ridge, brs. N. and SE. Desc. 29 ft., over SW. slope, to
 39.98 Set an iron post, 3 ft. long, 1 in. in diam., 18 ins. in the ground, to bed rock, supported in a mound of stone, for $\frac{1}{2}$ sec. cor., marked on brass cap,

$\frac{1}{2}$	S 1
	S 12
1917	

from which,

A pinyon, 14 ins. in diam., brs. N.55°W., 128 lks. dist., marked $\frac{1}{2}$ S 1 BT.
 A pinyon, 15 ins. in diam., brs. S.13 $\frac{1}{2}$ °E., 100 lks. dist., marked $\frac{1}{2}$ S12 BT.

46.20 Descend 48 ft., over SW. slope.
 Wash, 20 lks. wide, course S.40°E.
 Ascend 96 ft., over SE. and S. slopes, to
 79.96 The cor. of secs. 1, 2, 11 and 12.
 Land, rolling. Soil, granite & sandstone formation, 2nd rate.
 Timber, cedar and pinyon.
 Undergrowth, sagebrush, live oak and cactus.
 Fair growth of bunch grass.

40.00 N.0°1'W., on a random line, bet. secs. 1 and 2.
 Set temp. $\frac{1}{2}$ sec. cor.
 79.72 Intersect N. bdy. of Tp., 20 lks. E. of the cor. of secs.

Survey of the Subdivision lines of Township 33 North Range 11 West. 21

Chains.

1, 2, 35 and 36, hereinbefore described.

Thence, S. 0° 10' E., on a true line, bet. secs. 1 and 2. Over gently rolling land, thru. scattering timber and undergrowth. Desc. 40 ft., over W. slope.

20.00 Ascend 11 ft., over NW. slope.

25.00 Descend 18 ft., over SE slope.

39.72 Set an iron post, 3 ft. long, 1 in. in diam., 26 ins. in the ground, for $\frac{1}{4}$ sec. cor., marked on brass cap,

S 2 | S 1

1917 from which,

A cedar, 16 ins. dia., brs. N. 77° E., 169 lks. dist., mkd. $\frac{1}{4}$ S1BT.

A cedar, 12 ins. dia., brs. S. 82 $\frac{1}{2}$ ° W., 49 lks. dist., mkd. $\frac{1}{4}$ S2BT.

Descend 20 ft., over SE slope.

56.44 Wash, 20 lks. wide, 2 ft. deep, course N. 75° E.

Ascend 22 ft., over NE slope.

73.72 Top of ascent, brs. N. 80° W. and E. Desc. 22 ft., over S. slope, to

79.72 The cor. of secs. 1, 2, 11 and 12.

Land, gently rolling.

Soil, sandstone and granite formations; 2nd rate.

Timber, cedar, pinyon, and cinchona.

Undergrowth, sagebrush, live oak and cactus.

Fair growth of bunch grass.

From the standard cor. of secs. 34 and 35, on S. bdy. of Tp. (8th. Std. Par. N.) hereinbefore described, N. 0° 1' W., bet. secs. 34 and 35.

Over mountainous land, thru. scattering timber and undergrowth. Desc. 67 ft., over gradual NE slope, to

11.64 Descend 80 ft., over steep NE slope, to

16.38 Gulch, course S. 70° E. Asc. 110 ft., over S. slope.

26.86 Descend 41 ft., over NE slope.

33.27 Draw, course S. 70° E. Asc. 36 ft., over S. slope, to

40.00 Set an iron post, 3 ft. long, 1 in. dia., on bed rock, supported in a mound of stone, for $\frac{1}{4}$ sec. cor., marked on brass cap,

S34 | S35

1917 from which,

A cinchona, 8 ins. dia., brs. S. 76 $\frac{1}{2}$ ° E., 97 lks. dist. mkd. $\frac{1}{4}$ S35BT.

A cinchona, 8 ins. dia., brs. N. 66 $\frac{1}{2}$ ° W., 49 lks. dist. mkd. $\frac{1}{4}$ S34BT.

Ascend 51 ft., over S. slope.

49.96 Spur, slopes S. 45° E. Desc. 245 ft., over NE slope.

69.26 Gulch, course N. 30° W. Asc. 52 ft., over SW slope, to

80.00 Set an iron post, 3 ft. long, 2 ins. in diam., on bed rock, supported in a mound of stone, for cor. of secs. 26, 27, 34 and 35, marked on brass cap,

T33N | R11W

S27 | S26

S34 | S35

1917

No bearing trees available. Raise a mound of stone, 2 ft. base, 1 $\frac{1}{2}$ ft. high, W of cor.

Land, mountainous.

Soil, rocky, 4th rate, red clay and limestone formation.

Timber, cedar, pinyon and cinchona.

Undergrowth, sagebrush, live oak, dogwood and cactus.

Fair growth of bunch grass.

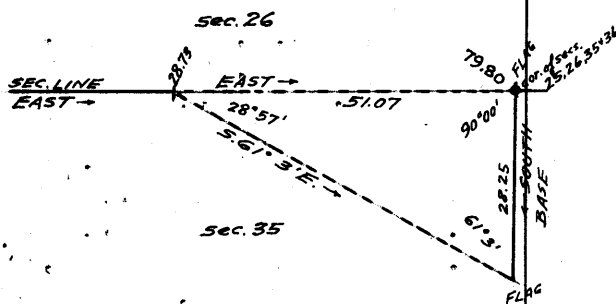
East, on a random line, bet. secs. 26 and 35.

28.73 Impracticable to chain farther, owing to precipitous broken descent. From this point, a flag at the cor. of secs. 25, 26, 35 and 36, is visible, and brs. due East; vertical angle, - 24 $\frac{1}{2}$ °; also a flag at a point 28.25 chs. S. of the same sec. cor., brs. S. 61° 3' E.

22 Survey of Subdivision lines of Township 33 North, Range 11 West.

Chains.

- The triangulated distance to the cor. of secs. 25, 26, 35 and 36 is obtained by cot. $28^{\circ}57'$ x base, or 1.80777 x 28.25 = 51.07 chs., which added to 28.73 chs. gives 79.80 chs.
- 79.80 Intersect the cor. of secs. 25, 26, 35 and 36. Thence West on a true line, bet. secs. 26 and 35. Over mountainous land, on SW. side of Andrus Canyon, thru. scattering timber and undergrowth. Measurement of 51.07 chs. by triangulation, as hereinbefore described.
- Ascend 1535 ft. to True point for $\frac{1}{4}$ sec. cor. is inaccessible.
- 39.90
51.07 Triangulation point at top of cliffs, 40 ft. high, bearing NW. and SE. facing NE. on SW. or right rim of Andrus Canyon. Set an iron post, 3 ft. long, 1 in. in diam., on bedrock, supported in a mound of stone, for witness cor. to $\frac{1}{4}$ sec. cor., marked on brass cap,
- $\frac{1}{4}$ S 26 WC
S 35
1917
- from which,
A cedar, 12 ins. in diam., brs. N. $28\frac{1}{2}^{\circ}$ W., 170 lks. dist., marked WC $\frac{1}{4}$ S 26 BT.
A pinyon, 8 ins. in diam., brs. S. 37° E., 28 lks. dist., marked WC $\frac{1}{4}$ S 35 BT.
- Continue line and measurement by chaining.
- Ascend 20 ft., over NE. slope.
- 57.80
79.80 Spur, slopes NW. Desc. 295 ft., over SW. slope, to the cor. of secs. 26, 27, 34 and 35. Land, mountainous. Soil, sandstone formation, 4th rate. Timber, cedar and pinyon. Undergrowth, sagebrush, and catclaw. Fair growth of bunch grass.
-
- N. $0^{\circ}1'$ W., bet. secs. 26 and 27. Over mountainous land, thru. scattering timber and undergrowth. Asc. 180 ft. over SW. slope.
- 14.87
29.12
40.00 Spur, slopes N. 30° W. Desc. 69 ft., over NE. slope. Descend 265 ft., over steep NW. slope, to Set an iron post, 3 ft. long, 1 in. in diam., on bed rock supported in a mound of stone, for $\frac{1}{4}$ sec. cor., marked on brass cap,
- $\frac{1}{4}$ S 27 S 26
1917
- from which,
A pinyon, 10 ins. dia., brs. S. 9° E., 30 lks. dist., marked $\frac{1}{4}$ S 26 BT.
A pinyon, 8 ins. dia., brs. S. 66° W., 45 lks. dist., marked $\frac{1}{4}$ S 27 BT.
- Descend 50 ft., over NW. slope, to
- 43.00 Edge of perpendicular cliff, 300 ft. high, brs. NE and SW. facing NW. forming SW. or right rim of Andrus Canyon. Impracticable to chain beyond this point. Set a flag ahead on line, designated on the accompanying diagram as "C;" from the $\frac{1}{4}$ sec. cor. of secs. 26 and 27, designated on diagram as "A," measure a base N. $74^{\circ}14'$ E., 9.93 chs. to point "B"--impossible to obtain longer base--vertical angle from "A" to "C" = $-12\frac{1}{2}^{\circ}$. Bearing from "B" to "C" is N. $20^{\circ}17'$ W. Included angles of triangle "A, -B-C" are $74^{\circ}15'$; $85^{\circ}29'$ and $20^{\circ}16'$, the sum of



Survey of Subdivision lines of Township 33 North, Range 11 West. 23

Chains.

which is 180°. The triangulated dist. "A-C" is obtained by

$$\frac{\text{Base} \times \sin. 85^{\circ} 29'}{\sin. 20^{\circ} 16'}$$

$$\frac{9.93 \times .99689}{.34639} = 28.58 \text{ chs.}$$

which, added to 40.00 chs. gives 68.58 chs., N. 0° 1' W., from cor. of secs. 26, 27, 34 and 35 for the position of the triangulation point.

57.00 (Approximate) Bottom of ravine, course NE. Asc. over steep SE. slope, to

68.58 Triangulation point "C" on steep, rocky spur, slopes NE. about 420 ft. below sec. cor. Impracticable to chain from here; therefore, continue triangulation.

From a point ahead on line on NE. side of Andrus Canyon, designated on diagram as "D" measure a Base N. 71° 31' W., 8.40 chs. to point "E", impracticable to obtain longer base--Vertical angle from "C" to "D" is - 28° 35'. Bearing from "E" to "C" is S. 20° 26' E.

Included angles of triangle "C-D-E" are 20° 25', 108° 30' and 51° 05', the sum of which is 180°. The triangulated dist. "C-D" is obtained by $\frac{\text{Base} \times \sin. 51^{\circ} 5'}{\sin. 20^{\circ} 25'}$ or $\frac{8.40 \times .77806}{.34884} = 18.74$ chs., which added to 68.58 chs., gives 87.32 chs. N. 0° 1' W. from cor. of secs. 26, 27, 34 and 35, for position of triangulation point. Chain measurement of 7.32 chs. S. 0° 1' E. to

80.00 Set an iron post, 3 ft. long, 2 ins. in diam., on bed rock, supported in a mound of stone for cor. of secs. 22, 23, 26 and 27, marked on brass cap,

T33N	R11W
S22	S23
S27	S26
1917	

No bearing trees available. Raise a mound of stone, 2 ft. base, 1 1/2 ft. high, W. of cor. This cor. is about 610 ft. below 1/4 sec. cor.

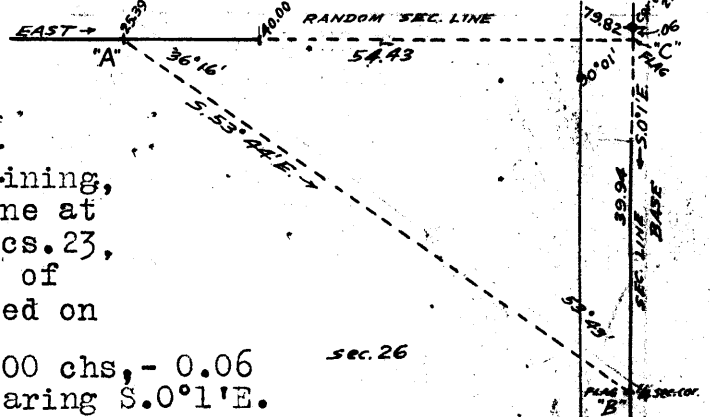
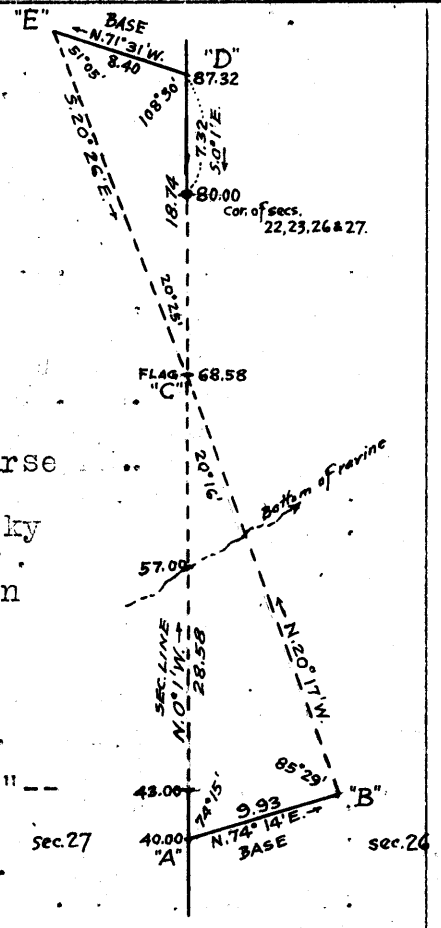
Land, mountainous.
Soil, very rocky, clay and sandstone, 4th rate.
Timber, cedar and pinyon.
Undergrowth, sagebrush and cactus.
Fair growth of bunch grass.

25.39 East, on a random line, bet. secs. 23 and 26. Triangulation point, designated as "A" on accompanying diagram, from which flag at the sec. cor. of secs. 25 and 26, designated as "B" on diagram, brs. S. 53° 44' E.

40.00 Continue line and measurement by chaining. Set temp. 1/4 sec. cor.

Discontinue chaining owing to precipitous slopes ahead on the NE. side of Andrus Canyon. Continue transit line without chaining, and intersect N. and S. line at 6 lks. S. of the cor. of secs. 23, 24, 25 and 26, which point of intersection is designated on diagram as "C".

Base "C-B" is therefore 40.00 chs., - 0.06 chs. = 39.94 chs. with bearing S. 0° 1' E.



24 Survey of Subdivision lines of Township 33 North, Range 11 West.

Chains.

Included angles of the triangle "A-B-C" are $36^{\circ}16'$, $53^{\circ}43'$ and $90^{\circ}01'$, the sum of which is $180^{\circ}00'$. The triangulated distance "A-C" is obtained by

$$\frac{\text{Base} \times \sin. 53^{\circ}43'}{\sin. 36^{\circ}16'} \text{ or } \frac{39.94 \times .80610}{.59154} = 54.43 \text{ chs.},$$

79.82 which, added to 25.39 chs., gives 79.82 chs.
 Fall 6 lks. S. of the cor. of secs. 23, 24, 25 and 26. Thence, $S.89^{\circ}57'W.$, on a true line, bet. secs. 23 and 26. Over mountainous land, on NE. side of Andrus Canyon, thru. scattering timber and undergrowth, measurement to $\frac{1}{4}$ sec. cor. by triangulation, as hereinbefore described. Descend 720 ft., over precipitous broken SW. slope to $\frac{1}{4}$ sec. cor..

39.00 (Approx.) Gulch, course S. from NE. Ascend to.
 39.91 Set an iron post, 3 ft. long, 1 in. in dia., 26 ins. in ground for $\frac{1}{4}$ sec. cor., marked on brass cap,

$\frac{1}{4}$ S 23
 S 26
 1917

46.90 No bearing trees available. Raise mound of stone, 2 ft. base, $1\frac{1}{2}$ ft. high, N. of cor. Continue line and measurement by chaining. Asc. 23 ft., over SE. slope.
 67.56 Descend 285 ft., over SW. slope.

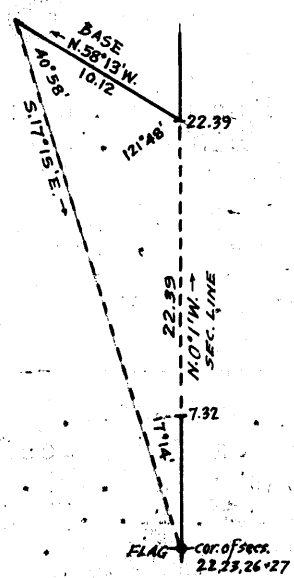
69.14 Bottom of Andrus Canyon, course $S.35^{\circ}E.$
 79.82 Ascend 155 ft., over NE. and N. slopes to sec. cor.

Road, brs. $N.35^{\circ}W.$ and $S.35^{\circ}E.$
 The cor. of secs. 22, 23, 26 and 27.
 Land, mountainous. Soil, white sandstone formation, 3rd and 4th rate. Timber, cedar and pinyon. Undergrowth, sagebrush and cactus. Fair growth of bunch grass.

2.77 $N.0^{\circ}1'W.$, bet. secs. 22 and 23.
 Over mountainous land, thru. scattering timber and undergrowth. Desc. 112 ft., over steep N. slope.

7.32 Bottom of Andrus Canyon, course $S.35^{\circ}E.$ Road, brs. $N.35^{\circ}W.$ and $S.35^{\circ}E.$ Asc. 50 ft., over SW. slope, to

Triangulation point "D" of the triangulation hereinbefore described in notes of line bet. secs. 26 and 27. Chaining beyond this point is impracticable, owing to precipitous ascent over NE. side of Andrus Canyon. Triangulate as described as follows:



Set flag on the cor. of secs. 22, 23, 26 and 27. From a point ahead on sec. line at NE. or left rim of Andrus Canyon, measure a Base, $N.58^{\circ}13'W.$, 10.12 chs. (longest base practicable to chain)

From NW. end of Base, the flag on sec. cor. brs. $S.17^{\circ}15'E.$ Vertical angle from sec. cor. to triangulation point on sec. line is $+16^{\circ}6'$.

Included angles of triangle are $17^{\circ}14'$, $40^{\circ}58'$ and $121^{\circ}48'$, the sum of which is $180^{\circ}00'$.

The dist. triangulated is obtained by

$$\frac{\text{Base} \times \sin. 40^{\circ}58'}{\sin. 17^{\circ}14'} \text{ or } \frac{10.12 \times .65562}{.29626}$$

22.39 = 22.39 chs.
 Triangulation point on NE. or right rim of Andrus Canyon, bearing NW. and SE., 425 ft. above sec. cor.

40.00 Ascend 280 ft., over S. slope, to
 Set an iron post, 3 ft. long, 1 in. in dia., on bedrock, supported in a mound of stone, for $\frac{1}{4}$ sec. cor., mkd. on brass cap,

$\frac{1}{4}$ S 23

1917 from which,

Survey of Subdivision lines of Township 33 North, Range 11 West. 25

Chains.

from which,
A cedar, 8 ins. in diam., brs. S. 62° E., 32 lks.
dist., marked $\frac{1}{4}$ S 23 BT.
A cedar, 10 ins. in diam., brs. S. 87° W., 13 lks.
dist., marked $\frac{1}{4}$ S 22 BT.

Ascend 49 ft., over SE. slope.
52.27 Descend 60 ft., over NE. slope.
57.19 Gulch, course E. At 2.00 chs. E., this gulch joins a gulch,
course S. 10° E. from N. 10° E.
Ascend 406 ft., over steep SE. slope, to
80.00 Set an iron post, 3 ft. long, 2 ins. in diam., on bed rock,
supported in a mound of stone, for cor. of secs. 14, 15, 22
and 23, marked on brass cap,

T33N R11W
S15 S14
S22 S23
1917

from which,
A pinyon, 8 ins. in diam., brs. N. 19° E., 73 lks.
dist., marked T33N R11W S14 BT.
A pinyon, 10 ins. in diam., brs. S. 26 $\frac{1}{2}$ ° E., 49 lks.
dist., marked T33N R11W S23 BT.
A cedar, 12 ins. in diam., brs. S. 58 $\frac{1}{2}$ ° W., 27 lks.
dist., marked T33N R11W S22 BT.
A cedar, 8 ins. in diam., brs. N. 78 $\frac{1}{2}$ ° W., 70 lks.
dist., marked T33N R11W S15 BT.

Land, mountainous.
Soil, very rocky, sandstone & limestone formation; 4th rate.
Timber, cedar and pinyon.
Undergrowth, live oak and algerita.
Fair growth of bunch grass.

East, on a random line, bet. secs. 14 and 23.
40.00 Set temp. $\frac{1}{4}$ sec. cor.
79.68 Intersect N. and S. line, 2 lks. S. of the cor. of secs. 11,
12, 13 and 14.

Thence, S. 89° 59' W., on a true line, bet. secs. 14 and 23.
Over rolling land, thru scattering timber, and undergrowth.
Descend 70 ft., over SW. slope.
29.98 Draw, course S. 15° E. Asc. 23 ft., over E. slope, to
39.84 Set an iron post, 3 ft. long, 1 in. in diam., 26 ins. in
the ground, for $\frac{1}{4}$ sec. cor., marked on brass cap,

$\frac{1}{4}$ S 14
S 23
1917

No bearing trees available. Raise a mound of stone, 2 $\frac{1}{2}$ ft.
base, 1 $\frac{1}{2}$ ft. high, N. of cor.
Ascend 57 ft., over E. slope.
54.97 Ridge, brs. N. 25° E. and S. 25° W. Desc. 59 ft., over NW. slope, to
62.21 Rim, brs. N. and S. Enter mountainous land.

Descend 273 ft., over steep W. slope.
71.92 Gulch, course S. 10° E. Asc. 232 ft., over steep S. slope, to
79.68 The cor. of secs. 14, 15, 22 and 23.

Land, rolling and mountainous.
Soil, limestone formation, 2nd and 3rd rate.
Timber, cedar and pinyon.
Undergrowth, sagebrush, cinchona and cactus.
Fair growth of bunch grass.

N. 0° 1' W., bet. secs. 14 and 15.
Over mountainous land, thru scattering timber and under-
growth. Desc. 53 ft., over NE. slope.
10.77 Draw, course S. 25° E. Asc. 84 ft., over S. slope.
21.29 Ridge, brs. N. 45° E. and S. 45° W. Desc. 50 ft. over NW. slope, to
40.00 Set an iron post, 3 ft. long, 1 in. in diam., 20 ins. in the
ground to bedrock, supported in a mound of stone, for
 $\frac{1}{4}$ sec. cor., marked on brass cap,

26 Survey of Subdivision lines of Township 33 North, Range 11 West.

Chains.

S15 | S14

1917

from which,

A cedar, 6 ins. in diam., brs. S. 45° E., 62 lks.
dist., marked $\frac{1}{4}$ S 14 BT.

A cedar, 8 ins. in diam., brs. S. 37 $\frac{3}{4}$ ° W., 71 lks.
dist., marked $\frac{1}{4}$ S 15 BT.

Descend 91 ft., over NW. slope, to

51.58 Gulch, course S. 20° W. Asc. 57 ft., over SE. slope.

55.89 Descend 18 ft., over NE. slope.

58.98 Same gulch, course S. 20° E. Asc. 230 ft., over SW. slope, to

80.00 Set an iron post, 3 ft. long, 2 ins. in diam., 10 ins. in the
ground to bed rock, supported in a mound of stone, for
cor. of secs. 10, 11, 14 and 15, marked on brass cap,

T33N R11W

S10 | S11

S15 | S14

1917

from which,

A pinyon, 8 ins. in diam., brs. N. 50° E., 21 lks.
dist., marked T33N R11W S11 BT.

A cedar, 10 ins. in diam., brs. S. 31° E., 44 lks.
dist., marked T33N R11W S14 BT.

A cedar, 14 ins. in diam., brs. S. 61 $\frac{1}{2}$ ° W., 71 lks.
dist., marked T33N R11W S15 BT.

A cedar, 16 ins. in diam., brs. N. 45° W., 25 lks.
dist., marked T33N R11W S10 BT.

Land, mountainous.

Soil, limestone formation, 3rd rate.

Timber, cedar and pinyon.

Undergrowth, sagebrush and canchona.

Fair growth of bunch grass.

East, on a random line, bet. secs. 11 and 14.

40.00 Set temp. $\frac{1}{4}$ sec. cor.

79.66 Intersect N. and S. line, 2 lks. S. of the cor. of secs. 11,
12, 13 and 14.

Thence;

S. 89° 59' W., on a true line, bet. secs. 11 and 14.

Over rolling land, thru. scattering timber and undergrowth.

Descend 65 ft., over NW. slope.

9.22 Draw, course N. 50° E. Asc. 50 ft., over NE. slope.

18.49 Point of short spur, slopes N. 15° W.

Descend 31 ft., over NW. slope.

22.08 Wash, 20 lks. wide, course N. 45° E. Asc. 68 ft. over SE. slope, to

39.83 Set an iron post, 3 ft. long, 1 in. in diam., 26 ins. in the
ground, for $\frac{1}{4}$ sec. cor., marked on brass cap,

S 11

S 14

1917

from which,

A cedar, 8 ins. in diam., brs. N. 29° W., 35 lks.
dist., marked $\frac{1}{4}$ S 11 BT.

A cedar, 10 ins. in diam., brs. S. 75° 45' E., 11 lks.
dist., marked $\frac{1}{4}$ S 14 BT.

Ascend 240 ft., over SE. slope.

71.21 Spur, slopes S. from NW. Desc. 80. ft., over SW. slope, to

79.66 The cor. of secs. 10, 11, 14 and 15.

Land, rolling.

Soil, granite formation, 2nd rate.

Timber, cedar and pinyon.

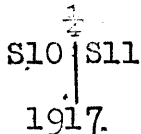
Undergrowth, sagebrush, live oak, greasewood and cactus.

Fair growth of bunch grass.

Survey of Subdivision lines of Township 33 North, Range 11 West. 27

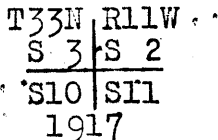
Chains.

N.0°1'W., bet. secs. 10 and 11.
 Over mountainous land, thru scattering timber and undergrowth. Asc. 49 ft., over SW. slope, to
 4.78 Spur, slopes SE. Asc. 68 ft., over E. and SE. slopes.
 19.73 Ridge, brs. E. and NW. Desc. 57 ft., over NE. slope.
 32.24 Draw, course S. 55° E. Enter heavy timber.
 Ascend 63 ft., over SW. slope, to
 40.00 Set an iron post, 3 ft. long, 1 in. in diam., 26 ins. in the ground, for $\frac{1}{4}$ sec. cor., marked on brass cap,



from which,
 A cedar, 12 ins. in diam., brs. S. 82 $\frac{1}{2}$ ° E., 34 lks. dist., marked $\frac{1}{4}$ S 11 BT.
 A cedar, 18 ins. in diam., brs. N. 66 $\frac{1}{2}$ ° W., 51 lks. dist., marked $\frac{1}{4}$ S10 BT.

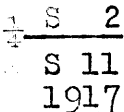
Ascend 35 ft., over SW. slope.
 45.68 Spur, slopes S. 80° E. Descend 105 ft., over N. slope.
 64.06 Gulch, course N. 80° E. Asc. 66 ft., over SE. slope.
 68.97 Brush drift fence, brs. N. 75° E. and S. 75° W.
 74.24 Spur, slopes N. 65° E. Desc. 61 ft., over N. slope, to
 80.00 Set an iron post, 3 ft. long, 2 ins. in diam., 24 ins. in the ground, for cor. of secs. 2, 3, 10 and 11, marked on brass cap,



No bearing trees available. Raise a mound of stone, 2 ft. base, 1 $\frac{1}{2}$ ft. high, W. of cor.
 Land, mountainous.
 Soil, adobe clay, mixed with volcanic rock, 4th rate.
 Timber, cedar and pinyon.
 Undergrowth, sagebrush.

40.00 East, on a random line, bet. secs. 2 and 11.
 Set temp. $\frac{1}{4}$ sec. cor.
 79.52 Intersect N. and S. line, 24 lks. S. of the cor. of secs. 1, 2, 11 and 12.

Thence,
 S. 89° 50' W., on a true line, bet. secs. 2 and 11.
 Over rolling land, thru scattering timber and undergrowth.
 Ascend 5 ft., over S. slope, to
 4.55 Wash, 30 lks. wide, course S. 80° E. Asc. 24 ft. over NE. slope, to
 11.70 Same wash, 40 lks. wide, course N. 80° E.
 Ascend 27 ft., over S. slope, to
 21.30 Same wash, 30 lks. wide, in bend, course S. 70° E. from S. 75° W.
 Ascend 62 ft., over SE. slope, to
 39.76 Set an iron post, 3 ft. long, 1 in. in diam., 20 ins. in the ground, to bed rock, supported in a mound of stone, for $\frac{1}{4}$ sec. cor., marked on brass cap,



No bearing trees available. Raise a mound of stone, 2 $\frac{1}{2}$ ft. base, 1 $\frac{1}{2}$ ft. high, N. of cor.
 Ascend 11 ft., over SE. slope, to
 41.10 Same wash, 40 lks. wide, course S. 80° E.
 Ascend 21 ft., over NE. slope, to
 48.70 Same wash, 20 lks. wide, course N. 85° E.
 Ascend 36 ft., over S. slope, to
 57.60 Same wash, course S. 80° E. Enter mountainous land.
 Ascend 255 ft., over NE. and N. slopes to
 79.52 The cor. of secs. 2, 3, 10 and 11.
 Land, rolling and mountainous.

28 Survey of Subdivision lines of Township 33 North, Range 11 West.

Chains.

Soil, rocky, clay and adobe, 3rd rate.
 Timber, cedar and pinyon.
 Undergrowth, sagebrush, live oak and cactus.
 Fair growth of bunch grass.

40.00 N.0°1'W., on a random line, bet. secs. 2 and 3.
 Set temp. sec. cor.
 79.75 Intersect N. bdy. of Tp., 33 lks. E. of the cor. of secs. 2,
 3, 34 and 35, hereinbefore described.
 Thence,
 S.0°15'E., on a true line, bet. secs. 2 and 3.
 Over rolling land, thru. scattering timber and undergrowth.
 Ascend 66 ft., over NE. and E. slopes, to
 19.90 Draw, course N.45°E. Enter mountainous land.
 Ascend 256 ft., over NE. slope, to
 39.75 Set an iron post, 3 ft. long, 1 in. in diam., 26 ins. in the
 ground, for $\frac{1}{4}$ sec. cor., marked on brass cap,

S 3 | S 2

1917

from which,

A cedar, 12 ins. in diam., brs. N.83 $\frac{1}{2}$ °E., 75 lks.
 dist., marked $\frac{1}{4}$ S 2 BT.
 A cedar, 20 ins. in diam., brs. S.71°W., 34 lks.
 dist., marked $\frac{1}{4}$ S 3 BT.

Ascend 30 ft., over NE. slope.
 43.55 Spur, slopes E. Desc. 28 ft., over S. slope.
 45.40 Ascend 41 ft., over NE. slope.
 56.35 Point of spur, slopes SE. Desc. 45 ft., over S. slope.
 60.80 Draw, course S.80°E. Asc. 56 ft., over NE. slope.
 65.30 Point of spur, slopes E. Desc. 10 ft., over S. slope.
 71.00 Ascend 22 ft., over NE. slope.
 74.70 Descend 29 ft., over S. slope.
 78.75 Small draw, course N. 80°E. from W.
 Ascend 29 ft., over N. slope, to
 79.75 The cor. of secs. 2, 3, 10 and 11.
 Land, rolling and mountainous.
 Soil, adobe clay, 2nd rate; volcanic formation.
 Timber, cedar and pinyon.
 Undergrowth, manzanita, sagebrush, live oak, algerita, cinchona
 and cactus. Fair growth of bunch grass.

From the std. cor. of secs. 33 and 34, on the S. bdy. of the
 Tp. (8th. Std. Par. N.), hereinbefore described,

N.0°2'W., bet. secs. 33 and 34.

Over mountainous land, thru. scattering undergrowth and
 heavy timber.

Desc. 95 ft., over E. and NE. slopes, to

8.96 Draw, course E. Thence along E. slope. Desc. slightly, to
 29.96 Head of draw, course N.60°E. Asc. 70 ft. over NE. slope, to
 40.00 Spur, slopes NE,

Set an iron post, 3 ft. long, 1 in. in diam., 26 ins. in the
 ground, for $\frac{1}{4}$ sec. cor., marked on brass cap,

S 33 | S 34

1917

from which,

A cedar, 12 ins. in diam., brs. N.57 $\frac{1}{2}$ °E., 14 lks.
 dist., marked $\frac{1}{4}$ S 34 BT.
 A pinyon, 8 ins. in diam., brs. S.37 $\frac{1}{2}$ °W., 16 lks.
 dist., marked $\frac{1}{4}$ S 33 BT.

Descend 25 ft., over NW. slope.

Survey of Subdivision lines of Township 33 North Range 11 West. 29

Chains.

44.99 Bottom of shallow draw, course N.70°E.
Ascend 10 ft., over SE. slope.
47.28 Short spur, slopes N.75°E. Desc. 62 ft. over NW. slope.
49.38 Gulch, course N.60°E. Asc. 95 ft., over SE. slope.
66.63 Spur. slopes N.80°E. Desc. 144 ft., over N. slope.
72.30 Ascend 20 ft. over E. slope, to
80.00 Set an iron post, 3 ft. long, 2 ins. in diam., 24 ins. in the
the ground, for cor. of secs. 27, 28, 33 and 34, marked on
brass cap,

T33N	R11W
S28	S27
S33	S34
1917	

from which,

- A pinyon, 10 ins. in diam., brs. N.78 $\frac{1}{2}$ °E., 19 lks. dist., marked T33N R11W S27 BT.
- A pinyon, 14 ins. in diam., brs. S.62 $\frac{1}{4}$ °E., 50 lks. dist., marked T33N R11W S34 BT.
- A cedar, 8 ins. in diam., brs. S.44°W., 14 lks. dist., marked T33N R11W S33 BT.
- A pinyon, 12 ins. in diam., brs. N.89 $\frac{1}{2}$ °W., 56 lks. dist., marked T33N R11W S28 BT.

Land, mountainous.
Soil, limestone and volcanic formation, 3rd rate.
Timber, cedar and pinyon.
Undergrowth, manzanita, sagebrush and dogwood.

East, on a random line, bet. secs. 27 and 34.

40.00 Set temp. $\frac{1}{4}$ sec. cor.
80.02 Intersect N. and S. line, 8 lks. N. of the cor. of secs. 26,
27, 34 and 35. Thence,
N.89°57'W., on a true line, bet. secs. 27 and 34.
Over mountainous land, thru. scattering timber and under-
growth. Desc. 102 ft., over SW. slope.

4.76 Gulch, course N.45°W. Asc. 12 ft. over NE. slope.
6.85 Descend 37 ft., over NW. slope.
9.08 Gulch, course N. 25°E. Asc. 280 ft., over NE. slope, to
22.71 Draw, course N.65° E. Asc. 104 ft., over SE. & E. slopes, to
40.01 Set a granite stone--no iron post available--16x10x8 ins.,
10 ins. in the ground, for $\frac{1}{4}$ sec. cor., marked $\frac{1}{4}$ on N. face,
from which,

- A cedar, 16 ins. in dia., brs. N.54 $\frac{1}{2}$ °W., 24 lks. dist., marked $\frac{1}{4}$ S 27 BT.
- A cedar, 12 ins. in dia., brs. S.36 $\frac{1}{2}$ °E., 16 lks. dist., marked $\frac{1}{4}$ S 34 BT.

Ascend 14 ft., over E. slope.
41.99 Spur, slopes N. from SW. Desc. 35 ft., over W. slope.
51.97 Low saddle, brs. N.15°E. and SW. Asc. 170 ft., over E. slope.
72.26 Desc. 26 ft., over NW. slope.
73.71 Draw, course N.15°E. Asc. 98 ft., over E. slope, to
80.02 The cor. of secs. 27, 28, 33 and 34.

Land, mountainous.
Soil, clay and limestone formation, 4th rate.
Timber, cedar and pinyon.
Undergrowth, dogwood, sagebrush, live oak and cactus.
Fair growth of bunch grass.

N.0°2'W., bet. secs. 27 and 28.
Over mountainous land, thru. scattering timber and under-
growth. Desc. 60 ft., over NE. slope.
2.63 Gulch, course N.70°E. Asc. 42 ft., over SE. slope.
13.22 Spur, slopes N.80°E. Desc. 230 ft., over N. and NE. slopes, to
40.00 Set an iron post, 3 ft. long, 1 in. in diam., 20 ins. in the
ground to bed rock, supported in a mound of stone, for
 $\frac{1}{4}$ sec. cor., marked on brass cap,

S28	S27
-----	-----

1917

from which,

- A cedar, 8 ins. dia., brs. N.36°E., 66 lks. dist., marked $\frac{1}{4}$ S27 BT.

30 Survey of Subdivision lines of Township 33 North, Range 11 West.

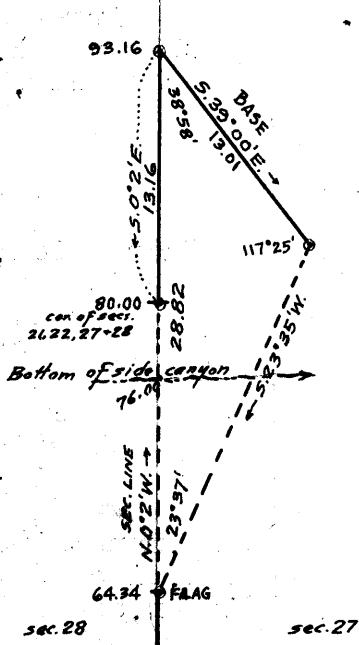
Chains.

64.34 A cedar, 1.2 ins. in dia., brs. N. 36° W., 49 lks. dist., marked S28 BT. Descend 103 ft., over NE. slope, to Right or, S. rim of side canyon, brs. NE. and SW. Precipitous descent into canyon renders chaining beyond this point impracticable. Therefore, triangulate as follows: Leave flag at this point, and from a point ahead on sec. line on N. side of canyon; measure a base S. 39° E., 13.01 chs. (impracticable to obtain longer base). From SE. end of Base, flag at the 64.34 ch. station brs. S. 23° 35' W. Vertical angle from flag to NW. end of Base is ± 4°. The included angles of the triangle are 23° 37', 38° 58' and 117° 25', the sum of which is 180° 00'. The dist. triangulated is obtained by

$$\frac{\text{Base} \times \sin. 117^\circ 25'}{\sin. 23^\circ 37'} \text{ or}$$

$$\frac{13.01 \times .88768}{.40062} = 28.82 \text{ chs.,}$$

which added to 64.34 chs., gives 93.16 chs. N. 0° 2' W. from cor. of secs. 27, 28, 33 and 34, for the position of the triangulation point.



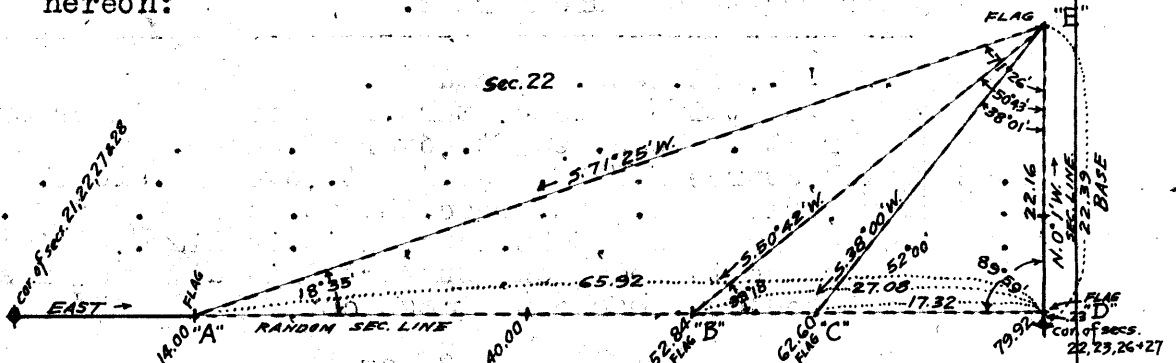
76.00 (Approx.) Bottom of side canyon, course E. joins Andrus Canyon in sec. 22. This point is about 500 ft. below S. rim. Ascend about 465 ft., over precipitous SW. slope to sec. cor. From triangulation point, chain measurement S. 0° 2' E., 13.16 chs. to

80.00 Set an iron post, 3 ft. long, 2 ins. in diam., on bed rock, supported in a mound of stone, for cor. of secs. 21, 22, 27 and 28, marked on brass cap,

T33N R11W
S21 | S22
S28 | S27
1917

No bearing trees available. Raise mound of stone, 2 ft. base, 1 1/2 ft. high, W. of cor.
Land, mountainous. Soil, rocky, 4th rate.
Timber, cedar and pinyon.
Undergrowth, scrub oak, dogwood, manzanita and cactus.

14.00 East, on random line, bet. secs. 22 and 27. Top of cliff, 60 ft. high, brs. N. 15° E. and S. 30° W. facing SE. forming N. or left rim of a side canyon, course N. 70° E. into Andrus Canyon. The remainder of this line passes over the precipitous slopes of the side canyon, merging into the SW. side of Andrus Canyon, and it is impracticable to chain any other portion of the line. Triangulate as described as follows, and as shown on the diagram hereon:



Set a flag "A" at this point, and flags "B" "C" and "D" ahead on line, on prominent points all visible from "A." The point at which flag "D" is set is 23 lks. N. of the cor.

Survey of Subdivision lines of Township 33 North, Range 11 West. 31

Chains.

of secs. 22, 23, 26 and 27. From the 22.39 ch. station on sec. line, bet. secs. 22 and 23, designated on diagram as "E," flags A, B, C and D are all visible; therefore, use "D-E" as a base for this triangulation. The point "E" is on the NE. or left rim of Andrus Canyon, and was previously used as a triangulation point in measuring the sec. line bet. secs. 22 and 23, as hereinbefore described.

The length of Base (D-E) is 22.39 chs. - .23 chs. = 22.16 chs. with a bearing N. 0° 1' W.

Vertical angle "A-B" is - 13° 38'. Vertical angle "B-C" is + 1° 20'. Vertical angle "C-D" is - 28° 57'.

From N. end of Base, the flag "A" bears S. 71° 25' W., flag "B" brs. S. 50° 42' W. and flag "C" brs. S. 38° 00' W.

Included angles of triangle "A-D-E" are 18° 35', 89° 59' and 71° 26', the sum of which is 180° 00'.

Triangulated measurement of "A-D" is obtained by $\frac{\text{Base} \times \sin. 71^\circ 26'}{\sin. 18^\circ 35'}$ or $\frac{22.16 \times .94795}{.31868} = 65.92 \text{ chs.}$,

which added to 14.00 chs. gives 79.92 chs. as the length of sec. line bet. secs. 22 and 27.

Included angles of triangle "B-D-E" are 39° 18', 89° 59' and 50° 43', the sum of which is 180° 00'.

Triangulated measurement of "B-D" is obtained by $\frac{\text{Base} \times \sin. 50^\circ 43'}{\sin. 39^\circ 18'}$ or $\frac{22.16 \times .77402}{.63338} = 27.08 \text{ chs.}$,

which, subtracted from 79.92 chs. gives 52.84 chs. E. from cor. of secs. 21, 22, 27 and 28, for the position of triangulation point "B" on random sec. line.

Included angles of triangle "C-D-E" are 52° 00', 89° 59', and 38° 01', the sum of which is 180° 00'.

Triangulated measurement of "C-D" is obtained by $\frac{\text{Base} \times \sin. 38^\circ 01'}{\sin. 52^\circ 00'}$ or $\frac{22.16 \times .61589}{.78801} = 17.32 \text{ chs.}$,

which subtracted from 79.92 chs. gives 62.60 chs. E. from cor. of secs. 21, 22, 27 and 28, for the position of triangulation point "C."

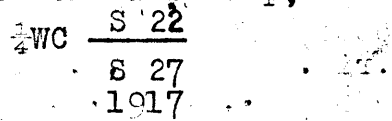
40.00 Point for temp. $\frac{1}{4}$ sec. cor. is inaccessible.
52.84 Triangulation point "B." Set temp. witness cor. to $\frac{1}{4}$ sec. cor.

62.60 Triangulation point "C."
79.92 Triangulation point "D" which is 23 lks. N. of the cor. of secs. 22, 23, 26 and 27.

From said cor., N. 89° 50' W., on true line, bet. secs. 22 and 27. Over mountainous land, on SW. side of Andrus Canyon, thru. scattering timber and undergrowth. Measurement by triangulation, as hereinbefore described.

17.32 Ascend 232 ft., over precipitous NE. slope, to Triangulation point "C" on sharp rocky point, sloping NE. Descend 15 ft. to

27.08 Triangulation point "B" on sharp rocky point, sloping NE. Set an iron post, 3 ft. long, $\frac{1}{4}$ in. in diam., on bed rock, supported in a mound of stone, for witness cor. to $\frac{1}{4}$ sec. cor., marked on brass cap,



No bearing trees available.. Raise a mound of stone, 2 ft. base, $\frac{1}{2}$ ft. high, N. of cor..

Thence over precipitous broken N. slope on the S. wall of a side canyon. Descend to

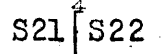
39.96 True point for $\frac{1}{4}$ sec. cor. is inaccessible. Desc. to
60.00 (Approx.) Bottom of side canyon, course N. 65° E. into Andrus Canyon. Asc. over precipitous SE. slope on N. wall of side canyon.

65.92 Triangulation point "A" on N. or left rim of side canyon, 622 ft. above witness cor. to $\frac{1}{4}$ sec. cor. Continue line and measurement by chaining. Descend 75 ft., over S. and SW. slopes, to

32 Survey of Subdivision lines of Township 33 North, Range 11 West.

Chains.
 76.10 Same canyon rim, brs. NW. and SE. Desc. 112 ft., over steep SW. slope, to
 79.92 The cor. of secs. 21, 22, 27 and 28.
 Land, very mountainous.
 Soil, adobe clay, volcanic formation, 4th rate.
 Timber, cedar and pinyon.
 Undergrowth, sagebrush, manzanita, algerita, dogwood and cactus.

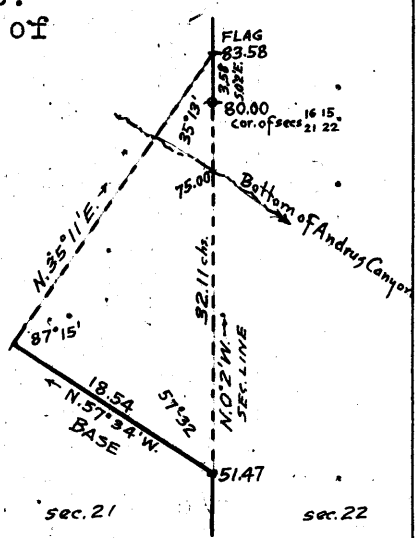
 N. 0° 2' W., bet. secs. 21 and 22.
 Over mountainous land, in side canyon, breaking into Andrus Canyon, thru. scattering timber and undergrowth.
 Ascend 96 ft., over SW. slope, to
 2.05 Gulch, course S. 10° W. Asc. 17 ft., over SE. slope.
 6.70 Point of spur, slopes E. Desc. 15 ft., over NE. slope.
 8.30 Same gulch, course S. 20° E. Asc. 71 ft., over SW. slope, to
 13.16 Triangulation point of the triangulation used for measurement of part of the line bet. secs. 27 and 28, as hereinbefore described. This point is on the N. or left rim of side canyon, brs. NW. and SE.
 Ascend 65 ft., over S. slope.
 31.09 Ridge, brs. E. and W. Desc. 175 ft., over N. slope.
 36.75 Gulch, course N. 85° E. Asc. 98 ft., over SE. slope, to
 40.00 Set an iron post, 3 ft. long, 1 in. in diam., 4 ins. in ground, to bed rock, supported in a mound of stone, for $\frac{1}{4}$ sec. cor., marked on brass cap,



1917 from which,
 A cedar, 10 ins. dia., brs. N. 75° E., 63 lks. dist., mkd. $\frac{1}{4}$ S22 BT.
 A cedar, 8 ins. dia., brs. S. 88° W., 107 lks. dist., mkd. $\frac{1}{4}$ S21 BT.
 Ascend 120 ft., over SE. slope, to
 51.47 Top of cliff, 50 ft. high, brs. N. 60° W. and S. 60° E. on SW. or right rim of Andrus Canyon. Precipitous descent into canyon renders chaining beyond this point impracticable; therefore, triangulate as follows:

Set a flag ahead on line on NE. side of Andrus Canyon, vertical angle - 17 $\frac{1}{2}$ °. From the 51.47 ch. point, measure a Base N. 57° 34' W., 18.54 chs. (impracticable to obtain longer base); from NW. end of Base flag brs. N. 35° 11' E. Included angles of the triangle are 87° 15', 57° 32' and 35° 13', the sum of which is 180° 00'. The dist. triangulated is obtained by

$$\frac{\text{Base} \times \sin. 87^\circ 15'}{\sin. 35^\circ 13'} \text{ or } \frac{18.54 \times .99885}{.57667} = 32.11 \text{ chs.},$$

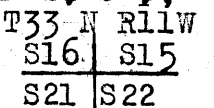


which added to 51.47 chs., gives 83.58 chs. N. 0° 2' W., from cor. of secs. 21, 22, 27 and 28, for the position of the triangulation point.

75.00 (Approx.) Bottom of Andrus Canyon, course SE. about 800 ft. below SW. rim. Road brs. N. 45° W. and S. 45° E. Ascend about 50 ft., over S. slope to sec. cor.

From triangulation point at 83.58 ch. station, chain measurement S. 0° 2' E., 3.58 chs. to

80.00 Set an iron post, 3 ft. long, 2 ins. in diam., on bed rock, supported in a mound of stone, for cor. of secs. 15, 16, 21 and 22, marked on brass cap,



1917 from which,
 A cedar, 10 ins. dia., brs. N. 66° E., 84 lks. dist., marked T33N R11W S15 BT.
 A cedar, 18 ins. dia., brs. S. 32° E., 75 lks. dist., marked T33N R11W S22 BT.

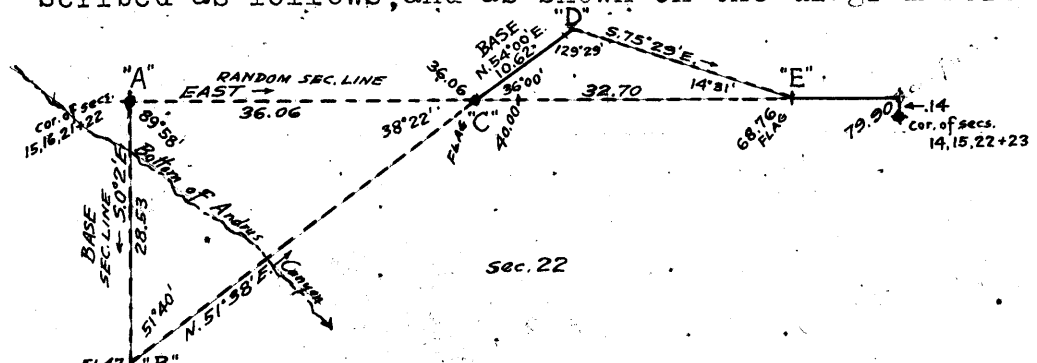
Survey of Subdivision lines of Township 33 North, Range 11 West. 33

Chains.

A cedar, 16 ins. dia., brs. S. 68 1/2° W., 86 lks. dist., marked T33N R11W S21 BT.
A cedar, 10 ins. dia., brs. N. 26 1/2° W., 116 lks. dist., marked T33N R11W S16 BT.

This cor. is about 750 ft. below 51.47 ch. station.
Land, mountainous. Soil, rocky limestone formation, 4th rate.
Timber, cedar and pinyon.
Undergrowth, sagebrush, dogwood and algerita.

East, on a random line, bet. secs. 15 and 22.
Across precipitous broken slopes on the NE. side of Andrus Canyon. Chaining being impracticable, triangulate as described as follows, and as shown on the diagram hereon:



From cor. of secs. 15, 16, 21 and 22, designated as "A" on diagram, line in flags "C" and "E" East therefrom. Vertical angle "A-C" is + 12°. Vertical angle "C-E" is + 4 1/4°.

The 51.47 ch. station on sec. line, bet. secs. 21 and 22 designated on diagram as "B" is taken as the S. end of the Base "A-B" for part of this triangulation. This Base is therefore 80.00 chs. - 51.47 ch. = 28.53 chs. in length, and the bearing is S. 0° 2' E.

The bearing "B-C" is N. 51° 38' E.
Included angles of the triangle "A-B-C" are 89° 58', 51° 40' and 38° 22', the sum of which is 180° 00'.

Triangulated measurement of "A-C" is obtained by
Base x sin. 51° 40' or 28.53 x .78442 = 36.06 chs.
sin. 38° 22' .62069

36.06 Triangulation point "C" on sharp spur sloping S. 15° W. Set temp. witness cor. to sec. cor.

Continue line and measurement by triangulation. Measure a Base N. 54° 00' E., 10.62 chs. (longer Base impracticable) to point "D." From point "D" the flag "E" on random line brs. S. 75° 29' E.

Included angles of the triangle "C-D-E" are 36° 00'; 129° 29' and 14° 31', the sum of which is 180° 00'.

Triangulated measurement of "C-E" is obtained by
Base x sin. 129° 29' or 10.62 x .77181 = 32.70 chs.,
Sin: 14° 31' .25066

which, added to 36.06 chs., gives 68.76 chs. E. from sec. cor. for the position of triangulation point "E."

40.00 Point for temp. sec. cor. is inaccessible.
68.76 Triangulation point "E" on NE. or left rim of Andrus Canyon. Continue line and measurement by chaining.

79.90 Intersect N. and S. line, 14 lks. N. of the cor. of secs. 14, 15, 22 and 23.

Thence, N. 89° 54' W., on true line, bet. secs. 15 and 22. Over mountainous land, thru scattering timber and undergrowth. Asc. 53 ft., over E. slope.

6.39 Ridge, brs. N. 10° E., and S. 10° W. Desc. 16 ft., over W. slope, to
11.14 Top of cliffs, 60 ft. high, brs. N. 10° E. and S. 10° W. facing W. and forming NE. or left rim of Andrus Canyon.

Discontinue chaining. Measurement of remainder of line by triangulation hereinbefore described.

30.00 Descend about 700 ft. over W. slope.
(Approx.) Bottom of side canyon, course S. 10° W.

39.95 Ascend about 540 ft., over SE. slope.
Point for sec. cor. is inaccessible.

43.84 Triangulation point "C" on narrow spur, sloping S. 15° W.,

34. Survey of Subdivision lines of Township 33 North, Range 11 West.

Chains.

Set an iron post, 3 ft. long, 1 in. in diam., 8 ins. in the ground, to bed rock, supported in a mound of stone, for witness cor. to $\frac{1}{4}$ sec. cor., marked on brass cap,

$\frac{1}{4}$ S 15 WC

S 22

1917 from which,

A cedar, 10 ins. in diam., brs. N. $72\frac{1}{2}^\circ$ W., 36 lks. dist., marked WC $\frac{1}{4}$ S 15 BT.

A cedar, 10 ins. in diam., brs. S. $6\frac{1}{2}^\circ$ W., 53 lks. dist., marked WC $\frac{1}{4}$ S 22 BT.

Continue line and measurement by triangulation.

Over NE. side of Andrus Canyon.

Descend 505 ft., over SW. and S. slopes, to

79.90

The cor. of secs. 15, 16, 21 and 22.

Land, mountainous. Soil, rocky, limestone formation, 4th rate. Timber, cedar and pinyon. Undergrowth, sagebrush.

N. $0^\circ 2' W$, bet. secs. 15 and 16.

Over mountainous land, on NE. side of Andrus Canyon, thru scattering timber and undergrowth.

Ascend 91 ft., over S. slope, to

3.58

Triangulation point used in measurement of part of line bet. secs. 21 and 22, as hereinbefore described.

Precipitous ascent beyond this point renders chaining impracticable; therefore, triangulate as follows:

Set flag ahead on sec. line, at NE. or

left rim of Andrus Canyon. As a

base for this triangulation, use the

same one used in the triangulation

bet. secs. 21 and 22, viz:

N. $57^\circ 34' W$, 18.54 chs. from 51.47 ch.

point on line bet. secs. 21 and 22,

which was measured along the SW.

or right rim of Andrus Canyon. From

the NW. end of base, the flag ahead

brs. N. $21^\circ 26' E$.

From the SE. end of base the vertical

angle to flag is $\ast 4\frac{1}{2}^\circ$.

The included angles of the triangle

are $57^\circ 32'$, $101^\circ 00'$ and $21^\circ 28'$

the sum of which is $180^\circ 00'$; the

dist. triangulated is obtained by

$\frac{\text{Base} \times \text{Sin. } 101^\circ 00'}{\text{sin. } 21^\circ 28'}$ or $\frac{18.54 \times .98163}{.36569} = 49.73$ chs.

which, added to 51.47 chs. gives 101.20 chs. N. $0^\circ 2' W$.

from cor. of secs. 21, 22, 27 and 28, or 21.20 chs. N. $0^\circ 2' W$

from cor. of secs. 15, 16, 21 and 22.

21.20

Triangulation point at NE. of left rim of Andrus Canyon

about 1000 ft. above cor. of secs. 15, 16, 21 and 22.

Continue line and measurement by chaining.

Ascend 262 ft., over SW. slope, to

40.00

Set an iron post, 3 ft. long, 1 in. in diam., 20 ins. in the ground, to bed rock, supported in a mound of stone, for $\frac{1}{4}$ sec. cor., marked on brass cap,

S 16 | S 15

1917

from which,

A pinyon, 10 ins. in diam., brs. N. $84\frac{1}{2}^\circ E$, 26 lks. dist., marked $\frac{1}{4}$ S 15 BT.

A cedar, 16 ins. in diam., brs. N. $21\frac{3}{4}^\circ W$, 31 lks. dist., marked $\frac{1}{4}$ S 16 BT.

Ascend 265 ft., over SW. slope.

65.80

Descend 38 ft., over NW. slope.

74.16

Ascend 86 ft., over SW. slope, to

80.00

Set an iron post, 3 ft. long, 2 ins. in dia., 8 ins. in the ground to bed rock, supported in a mound of stone, for cor. of secs. 9, 10, 15 and 16, marked on brass cap,

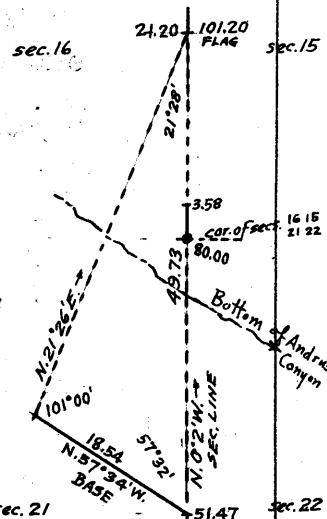
T 33 N R 11 W

S 9 | S 10

S 16 | S 15

1917

from which,



Survey of Subdivision lines of Township 33 North Range 11 West 35

Chains

- A cedar, 10 ins. dia., brs. N. 79 1/4° E., 66 lks. dist., marked T33N R11W S10 BT.
- A cedar, 8 ins. dia., brs. S. 17 1/8° E., 76 lks. dist., marked T33N R11W S15 BT.
- A pinyon, 8 ins. in diam., brs. S. 14 3/4° W., 57 lks. dist., marked T33N R11W S16 BT.
- A cedar, 8 ins. dia., brs. N. 41 1/2° W., 26 lks. dist., marked T33N R11W S9 BT.

Land, mountainous.
 Soil, very rocky, sandstone formation; 4th rate.
 Timber, cedar and pinyon; undergrowth, sage brush & cactus.
 Fair growth of bunch grass.

40.00 East, on a random line. bet. secs. 10 and 15.
 79.76 Set temp. sec. cor.
 Intersect N. and S. line, 19 lks. N. of the cor. of secs. 10, 11, 14 and 15.

39.88 Thence, N. 89° 52' W., on a true line, bet. secs. 10 and 15.
 Over mountainous land, thru. heavy timber and scattering undergrowth. Asc. 375 ft., over S. and SE. slopes, to
 Set an iron post, 3 ft. long, 1 in. in dia., 26 ins. in the ground, for 1/4 sec. cor., marked on brass cap,

1/4 S 10
 S 15
 1917

61.33 No bearing trees available. Raise a mound of stone, 2 1/2 ft. base, 1 1/2 ft. high, N. of cor. Asc. 230 ft., over SE. slope.
 68.71 Leave heavy timber and enter scattering timber.
 79.76 Spur, slopes S. 30° W. Desc. 240 ft. over SW. slope, to
 The cor. of secs. 9, 10, 15 and 16.

Land, mountainous.
 Soil, rocky, limestone formation, 3rd rate.
 Timber, cedar and pinyon.
 Undergrowth, sagebrush, manzanita, algerita, live oak and cactus. Fair growth of bunch grass.

25.93 N. 0° 2' W., bet. secs. 9 and 10.
 35.36 Over mountainous land, thru. scattering timber and undergrowth. Asc. 307 ft. over SW. slope.
 37.69 Spur, slopes N. 85° W. Desc. 133 ft., over NW. slope.
 40.00 Gulch, course W. Asc. 40 ft., over SW. slope.
 Point of spur slopes W. Desc. 33 ft., over NW. slope, to
 Set an iron post, 3 ft. long, 1 in. in diam., 20 ins. in the ground, supported in a mound of stone, for 1/4 sec. cor., marked on brass cap,

1/4 S 9 | S 10
 1917 from which,

- A pinyon, 6 ins. in dia., brs. N. 63 1/4° E., 31 lks. dist., marked 1/4 S 10 BT.
- A pinyon, 10 ins. dia., brs. S. 52 1/2° W., 44 lks. dist., marked 1/4 S 9 BT.

42.85 Descend 7 ft., over NW. slope.
 58.54 Draw, course S. 45° W. Asc. 200 ft., over SW. slope, to
 Rim brs. NW. and SE. Thence over rolling top of Grassy Mountain, sloping W. and NW. Desc. 17 ft.

63.53 Ascend 23 ft.
 68.52 Descend 17 ft.
 73.51 Ascend 14 ft. to
 80.00 Set an iron post, 3 ft. long, 2 ins. in diam., on bed rock, supported in a mound of stone, for cor. of secs. 3, 4, 9 and 10, marked on brass cap,

T33N R11W
 S 14 | S 3
 S 9 | S 10
 1917 from which,

- A cedar, 12 ins. in dia., brs. N. 76 1/4° E., 92 lks. dist., marked T33N R11W S3 BT.
- A cedar, 12 ins. in dia., brs. S. 2 1/2° E., 42 lks. dist., marked T33N R11W S10 BT.

Survey of Subdivision lines of Township 33 North, Range 11 West.

Chains.

70.00
80.00

Ascend 27 ft., over .W. and SW. slopes.
Descend 12 ft., over N. slope, to
Set an iron post, 3 ft. long, 2 ins. in diam., 24 ins. in the ground, for cor. of secs. 28, 29, 32 and 33, marked on brass cap.

T33N | R11W
S29 | S28
S32 | S33
1917

- from which,
- A cedar, 18 ins. in dia., brs. N. 57° E., 59 lks. dist., marked T33N R11W S28 BT.
- A cedar, 16 ins. in dia., brs. S. 56° E., 73 lks. dist., marked T33N R11W S33 BT.
- A cedar, 10 ins. in dia., brs. S. 65 1/2° W., 26 lks. dist., marked T33N R11W S32 BT.
- A cedar, 15 ins. in diam., brs. N. 5° W., 3 lks. dist., marked T33N R11W S29 BT.

Land, gently rolling.
Soil, adobe and clay, volcanic formation, 2nd rate.
Timber, cedar and pinyon. Undergrowth, sagebrush and cactus.

40.00
79.96

East, on a random line, bet. secs. 28 and 33.
Set temp. 1/4 sec. cor.
Intersect N. and S. line, 10 lks. S. of the cor. of secs. 27, 28, 33 and 34.

Thence,
S. 89° 56' W., on a true line, bet. secs. 28 and 33.
Over mountainous land, thru. heavy timber and scattering undergrowth. Asc. 250 ft., over NE. slope.

26.08
27.63

Descend 46 ft.
Small gulch, course N. 15° W. Asc. 230 ft. over steep NE. slope, to

39.61

Top of cliffs, 35 ft. high, bearing N. 65° W. and S. 65° E. facing NE. and forming rim of mesa. Thence over gently rolling land on mesa. Asc. 5 ft., over NE. slope, to

39.98

Set an iron post, 3 ft. long, 1 in. in diam., on bedrock, supported in a mound of stone, for 1/4 sec. cor., marked on brass cap,

1/4 S 28
S 33
1917

- from which,
- A cedar, 10 ins. in dia., brs. S. 56° E., 41 lks. dist., marked 1/4 S 33 BT.

No other bearing trees available. Raise a mound of stone 2 1/2 ft. base, 1 1/2 ft. high, N. of cor.
Ascend 47 ft., over NE. slope, to
The cor. of secs. 28, 29, 32 and 33.
Land, mountainous and gently rolling.
Soil, E. half, rocky, limestone formation; W. half, adobe and clay, 3rd rate. Timber, cedar and pinyon.
Undergrowth, scrub oak, dogwood, manzanita and cactus.

79.96

N. 0° 3' W., bet. secs. 28 and 29:
Over gently rolling land, thru. heavy timber and scattering undergrowth. Desc. 10 ft., over NE. slope.

15.00
30.00
35.00
40.00

Ascend 15 ft., over SE. slope.
Descend 6 ft., over NE. slope.
Ascend 6 ft., over SE. slope, to
Set an iron post, 3 ft. long, 1 in. in dia., 24 ins. in the ground, for 1/4 sec. cor., marked on brass cap,

S29 | S28

- 1917 from which,
 - A cedar, 36 ins. dia., brs. S. 67 1/2° E., 32 lks. dist., marked 1/4 S 28 BT.
 - A cedar, 16 ins. dia., brs. N. 20° W., 73 lks. dist., marked 1/4 S 29 BT.
- Ascend 6 ft., over SE. slope.

38 Survey of Subdivision lines of Township 33 North, Range 11 West.

Chains.

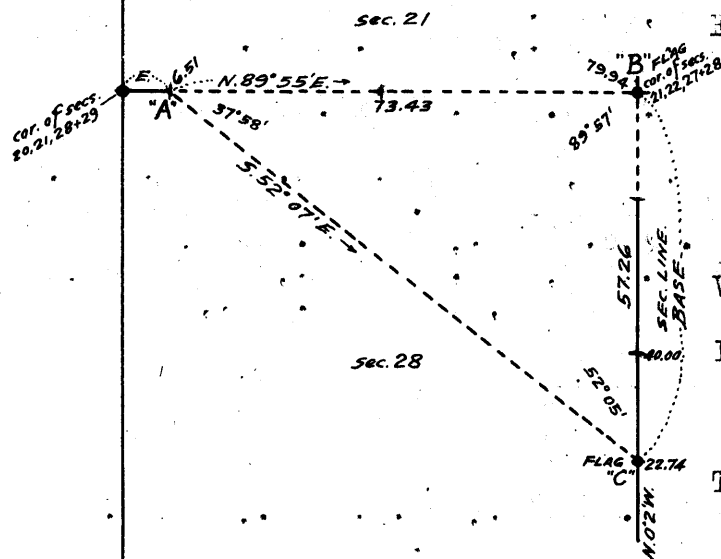
- 45.00 Descend 12 ft., over NE. slope.
- 55.00 Ascend 34 ft., over SE. slope.
- 75.00 Descend slightly over NE. slope, to
- 80.00 Set an iron post, 3 ft. long, 2 ins. in dia., 24 ins. in the ground, for cor. of secs. 20, 21, 28 and 29, marked on brass cap,

T33N	R11W
S20	S21
S29	S28

1917 from which,

- A cedar, 12 ins. in dia., brs. N. 7½° E., 28 lks. dist., marked T33N R11W S21 BT.
 - A cedar, 32 ins. dia., brs. S. 81° E., 10 lks. dist., marked T33N R11W S28 BT.
 - A cedar, 16 ins. in dia., brs. S. 11° W., 39 lks. dist., marked T33N R11W S29 BT.
 - A cedar, 24 ins. in diam., brs. N. 15° W., 144 lks. dist., marked T33N R11W S20 BT.
- Land, gently rolling. Soil, rocky, 4th rate.
 Timber, cedar, and scattering pinyon.
 Undergrowth, sagebrush, live oak and cactus.

- 6.51 East, on a random line, bet. secs. 21 and 28. Top of cliff, 30 ft. high, bearing N. and S. facing E. Beyond this point precipitous descent renders chaining impracticable; therefore, triangulate the measurement of the remainder of the random line, as described as follows, and as shown on the diagram here on:



From this point on random sec. line, designated as "A" on diagram, flag "B" on the cor. of secs. 21, 22, 27 and 28 brs. N. 89° 55' E., and flag "C" at 22.74 ch. station on sec. line bet. secs. 27 and 28, brs. S. 52° 07' E. Vertical angle "A" to "B" is -9° 55'.

Included angles of triangle "A-B-C" are 37° 58', 89° 57' and 52° 05', the sum of which is 180° 00'.

The length of base "B-C" is 80.00 chs. - 22.74 chs. = 57.26 chs., with a bearing of S. 0° 2' E.

The triangulated measurement of "A-B" is obtained by $\frac{\text{Base} \times \sin. 52^\circ 05'}{\sin. 37^\circ 58'}$ or $\frac{57.26 \times .78891}{.61520} = 73.43$ chs., which, added to 6.51 chs. gives 79.94 chs. as the length of the sec. line bet. secs. 21 and 28. The bearing of "A-B" being N. 89° 55' E., the random line extended East from "A" would fall 11 lks. S. of the cor. of secs. 21, 22, 27 and 28.

- 79.94 Intersect N. and S. line, 11 lks. S. of the cor. of secs. 21, 22, 27 and 28.

Thence, S. 89° 55' W., on a true line, bet. secs. 21 and 28. Over mountainous land, on N. wall of a side canyon, course E., thru. heavy timber and undergrowth. Measurement to ¼ sec. cor. by chaining.

- 0.25 Descend 5 ft., over SW. slope.
- 5.87 Gulch, course S. 10° W. Asc. 137 ft., over SE. slope.
- 14.26 Point of spur, slopes S. 45° E. Desc. 26 ft., over SW. slope.
- 39.97 Draw, course S. Bottom of side canyon, brs. S. 2.00 chs. dist. Ascend 268 ft., over SE. slope, to Set an iron post, 3 ft. long, 1 in. in diam., 20 ins. in the ground, to bed rock, supported in a mound of stone, for ¼ sec. cor., marked on brass cap,

S 21
S 28

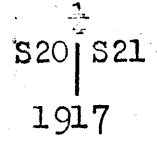
1917 from which,

Survey of Subdivision lines of Township 33 North Range 11 West, 39

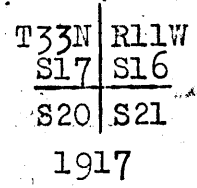
Chains.

A cedar, 4 ins. in dia., brs. N. $58\frac{1}{2}^{\circ}$ W., 24 lks. dist. marked BT.
 A cedar, 10 ins. in dia., brs. S. $47\frac{1}{2}^{\circ}$ W., 19 lks. dist., marked S 28 BT.
 From this cor., vertical angle to triangulation point "A" is $+12^{\circ}$.
 Discontinue chaining. Continue line and measurement by triangulation, as hereinbefore described.
 Ascend 470 ft., over SE. and E. slopes, to
 73.43 Triangulation point "A." on rim of mesa, brs. N. and S. Continue line and measurement by chaining. Over gently rolling mesa. Asc. 16 ft., over NE. slope, to
 79.94 The cor. of secs. 20, 21, 28 and 29.
 Land, mountainous and gently rolling.
 Soil, adobe and clay, volcanic formation, 4th rate.
 Timber, cedar and pinyon.
 Undergrowth, live oak sagebrush, manzanita and dogwood.

N. $0^{\circ}3'$ W., bet. secs. 20 and 21.
 Over gently rolling land on mesa, thru. heavy timber and undergrowth. Desc. 32 ft., over NE. slope, to
 17.53 Rim of mesa, brs. N. 80° W. and S. 80° E. Leave mesa; enter mountainous land.
 Descend 347 ft., over N. slope, to
 40.00 Set an iron post, 3 ft. long, 1 in. in diam., 20 ins. in the ground, to bed rock, supported in a mound of stone, for $\frac{1}{2}$ sec. cor., marked on brass cap,



from which;
 A cedar, 10 ins. in dia., brs. N. $87\frac{1}{2}^{\circ}$ E., 34 lks. dist., marked S21 BT.
 A pinyon, 14 ins. in diam., brs. N. $44\frac{1}{2}^{\circ}$ W., 14 lks. dist., marked S20 BT.
 Descend 270 ft., over N. slope.
 61.62 Gulch, course N. 80° E.
 Ascend 30 ft., over SE. slope.
 63.98 Descend 80 ft., over N. slope.
 72.97 Gulch, course N. 80° E. Leave timber.
 Ascend 30 ft., over SE. slope.
 77.95 Spur, slopes N. 80° E.
 Descend 23 ft., over N. slope, to
 80.00 Set an iron post, 3 ft. long, 2 ins. in dia., 24 ins. in the ground, for cor. of secs. 16, 17, 20 and 21, marked on brass cap,

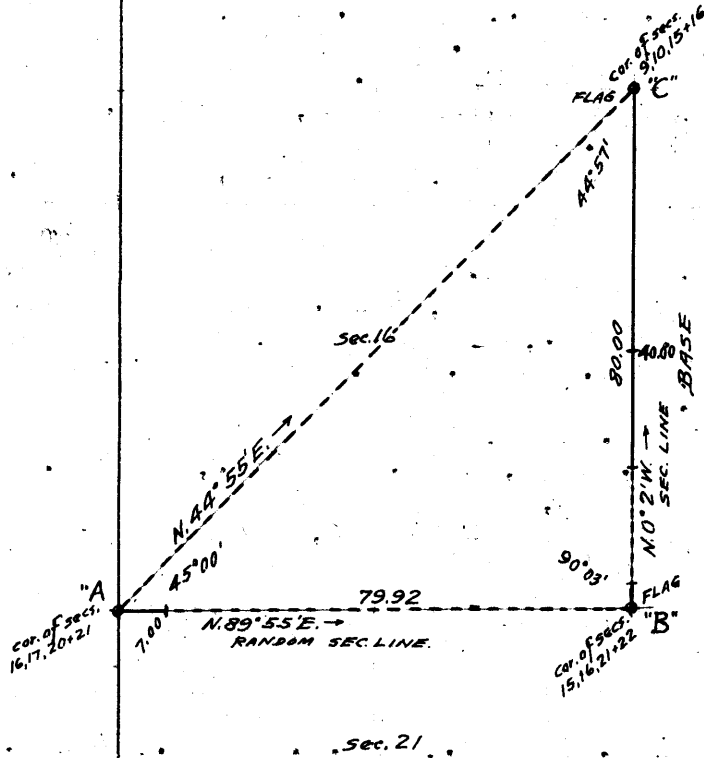


from which,
 A cedar, 8 ins. in dia., brs. S. $49\frac{1}{2}^{\circ}$ E., 108 lks. dist., marked T33N R11W S21 BT.
 A cedar, 14 ins. in dia., brs. N. 85° W., 64 lks. dist., marked T33N R11W S17 BT.
 No other bearing trees available. Raise a mound of stone, 2 ft. base, $1\frac{1}{2}$ ft. high, W. of cor.
 Land, gently rolling and mountainous.
 Soil rocky, limestone formation, 3rd rate.
 Timber, cedar and pinyon.
 Undergrowth, sagebrush and dogwood.
 Fair growth of bunch grass.

40 Survey of Subdivision lines of Township 33 North, Range 11 West.

Chains.

7.00 N. 89° 55' E., on a random line, bet. secs. 16 and 21, toward flag on the cor. of secs. 15, 16, 21 and 22, which is visible.
 SW. or right rim of Andrus Canyon, brs. NW. and SE. Beyond this point, precipitous slopes render chaining impracticable; therefore, triangulate as described as follows, and as shown on the diagram hereon:



From cor. of secs. 16, 17, 20 and 21, designated on diagram as "A", flag on the cor. of secs. 15, 16, 21 and 22 designated as "B" brs. N. 89° 55' E., and flag on the cor. of secs. 9, 10, 15 and 16 designated as "C" brs. N. 44° 55' E. Vertical angle "A" to "B" is - 14° 50'. The included angles of the triangle "A-B-C" are 45° 00', 90° 03' and 44° 57', the sum of which is 180° 00'.

The triangulated measurement of the random sec. line (A-B) using the sec. line bet. secs. 15 and 16 (B-C) as a Base is obtained by

$$\frac{\text{Base} \times \sin. 44^\circ 57'}{\sin. 45^\circ 00'}$$
 or

$$\frac{80.00 \times .70649}{.70711} = 79.92$$
 chs.

79.92 Intersect the cor. of secs. 15, 16, 21 and 22. Thence, S. 89° 55' W., on a true line, bet. secs. 16 and 21. Over mountainous land in Andrus Canyon, thru. scattering timber and undergrowth. Chaining measurement to W.C. to 1/4 sec. cor.
 8.07 Descend 67 ft., over S. and SW. slopes. Bottom of Andrus Canyon, course S. 45° E.
 8.48 Ascend 99 ft., over NE. slope. Road, brs. N. 45° W. and S. 45° E.
 12.98 Descend 11 ft., over N. slope.
 17.87 Ascend 163 ft., over NE. slope, to
 34.55 Set an iron post, 3 ft. long, 1 in. in diam., 26 ins. in the ground, for witness cor. to 1/4 sec. cor., marked on brass cap,

$$\begin{array}{r} \text{WC } \frac{1}{4} \quad \text{S } 16 \\ \quad \quad \quad \text{S } 21 \\ \hline \quad \quad \quad 1917 \end{array}$$

from which,
 A cedar, .8 ins. in diam., brs. N. 59° W., 72 lks. dist., marked WC 1/4 S 16 BT.
 A pinyon; 18 ins. in diam., brs. S. 39 1/2° E., 64 lks. dist., marked WC 1/4 S 21 BT.

Vertical angle from this cor. to point on sec. line at SW. or right rim of Andrus Canyon is + 25°. Discontinue chaining. Measurement to rim of canyon by triangulation hereinbefore described.

Ascend over steep NE. slope, to
 39.96 The true point for 1/4 sec. cor. is inaccessible.
 50.00 (Approx.) Descend over steep NW. slope.
 60.00 (Approx.) Gulch, course NE.
 Ascend over steep E. slope, to
 72.92 SW. or right rim of Andrus Canyon, brs. NW. and SE. 1180 ft. above WC to 1/4 sec. cor. Continue line and measurement by chaining.

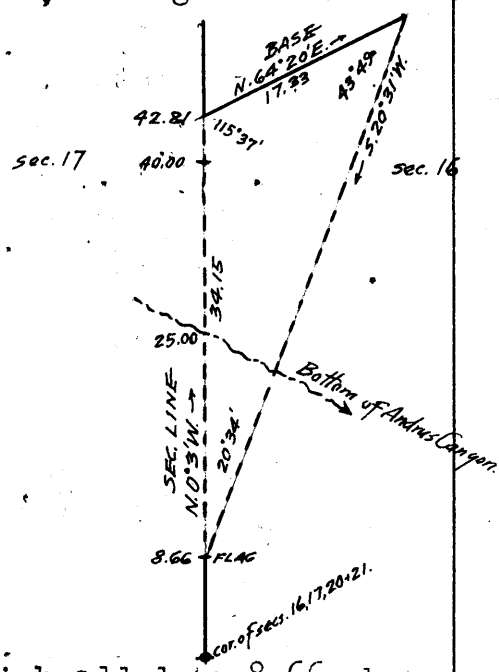
Survey of Subdivision lines of Township 33 North, Range 11 West. 41

Chains.
79.92
1.85
8.66
25.00
40.00
42.81
61.80
75.36
80.00

Ascend 30 ft., over NE. and N. slopes, to
The cor. of secs. 16, 17, 20 and 21.
Land, mountainous.
Soil, adobe and sandstone, 4th rate.
Timber, cedar and pinyon.
Undergrowth; algerita, dogwood, sagebrush and cactus.

N.0°3'W., bet. sec. 16 and 17.
Over mountainous land, thru scattering timber and under-
growth. Desc. 6 ft., over N. slope.
Draw, course E. near head. Asc. 43 ft., over SE. slope.
Top of cliff, 40 ft. high, bearing N. 85°W. and S. 85°E., fac-
ing N. on SW. or right rim of Andrus Canyon. Beyond
this point, the sec. line crosses said canyon, and chain-
ing is impracticable; therefore, triangulate from this
station as follows:

Set flag at this point.
From a point ahead on sec. line at
NE. or left rim of canyon,
measure a base, N. 64° 20' E.,
17.33 chs. (longer base im-
practicable), from the NE.
end of which flag brs. S. 20°
31' W. The vertical angle
from flag to SW. end of Base
is - 43°.
Included angles of the triangle
are 20° 34', 115° 37' and 43°
49', the sum of which is
180° 00'.



The distance triangulated is
obtained by
Base x sin. 43° 49' or
 $\frac{17.33 \times .69235}{.35130} = 34.15$ chs., which added to 8.66 chs.

gives 42.81 chs., N. 0° 3' W., from cor. of secs. 16, 17, 20
and 21, for the position of the triangulation point.
25.00 (Approx.) Bottom of Andrus Canyon, course S. 60° E., about
850 ft. below SW. or right rim. Road brs. N. 60° W. and
S. 60° E.

Ascend about 670 ft., over steep SW. slope to left rim of
canyon.
40.00 True point for 1/4 sec. cor. is inaccessible; therefore, at
42.81 Triangulation point on NE. or left rim of Andrus Canyon,
bearing NW. and SE.

Set an iron post, 3 ft. long, 1 in. in diam., 6 ins. in the
ground, to bed rock, supported in a mound of stone, for
witness cor. to 1/4 sec. cor., marked on brass cap,

S17 | S16
W | C
1917

from which,
A pinyon, 10 ins. in diam., brs. N. 84° 40' E., 126 lks.
dist., marked WC 1/4 S16 BT.
A cedar, 12 ins. in dia., brs. S. 82° W., 50 lks.
dist., marked WC 1/4 S17 BT.

Continue line and measurement by chaining.
Descend 132 ft., over NW slope.
61.80 Ascend 36 ft., over W. and SW slopes to sec. cor.
75.36 Road, brs. N. 30° E. and S. 30° W..
80.00 Set an iron post, 3 ft. long, 2 ins. in diam., 6 ins. in the
ground to bed rock, supported in a mound of stone, for
cor. of secs. 8, 9, 16 and 17, marked on brass cap,

T33N | R11W
S 8 | S 9
S17 | S16
1917

42 Survey of Subdivision lines of Township 33 North, Range 11 West.

Chains.

from which,

- A pinyon, 24 ins. in dia., brs. N. $44\frac{1}{2}^{\circ}$ E., 597
lks. dist., marked T33N R11W S9 BT.
A cedar, 10 ins. in dia., brs. S. $62\frac{1}{2}^{\circ}$ E., 299
lks. dist., marked T33N R11W S16 BT.
A cedar, 10 ins. in diam., brs. S. 36° W., 156
lks. dist., marked T33N R11W S17 BT.
A cedar, 14 ins. in diam., brs. N. $18\frac{1}{2}^{\circ}$ W., 239
lks. dist., marked T33N R11W S8 BT.

Land, mountainous.

Soil, very rocky, limestone formation, 4th rate.

Timber, cedar and pinyon.

Undergrowth, sagebrush and cactus.

Fair growth of bunch grass.

40.00

East, on a random line, bet. secs. 9 and 16.

79.92

Set temp. $\frac{1}{4}$ sec. cor.Intersect N. and S. line, 15 lks. S. of the cor. of secs. 9,
10, 15 and 16.

Thence,

S. $89^{\circ}54'$ W., on a true line, bet. secs. 9 and 16.

Over mountainous land, thru. scattering timber and undergrowth.

Descend 295 ft., over SW. slope, to

39.96

Set an iron post, 3 ft. long, 1 in. in diam., on bed rock,
supported in a mound of stone, for $\frac{1}{4}$ sec. cor., marked
on brass cap,

$$\frac{1}{2} \frac{S \ 9}{S \ 16} \\ 1917$$

from which,

- A pinyon, 12 ins. in diam., brs. N. 22° E., 31 lks.
dist., marked $\frac{1}{4}$ S 9 BT.
A cedar, 16 ins. in diam., brs. S. $78\frac{1}{2}^{\circ}$ W., 36 lks.
dist., marked $\frac{1}{4}$ S 16 BT.

Descend 166 ft., over SW. slope.

45.56

Draw, course S. Grassy Spring, with troughs, brs. N. 1 ch.
dist. Corral around spring. Asc. 102 ft., over E. slope.

54.25

Spur, slopes S. Desc. 420 ft., over SW. slope to sec. cor.

77.57

Enter round corral.

78.17

Leave round corral.

79.22

Road, brs. N. 30° W. and S.

79.92

The cor. of secs. 8, 9, 16 and 17.

Land, mountainous.

Soil, rocky, adobe, clay and sandstone; 4th rate.

Timber; cedar and pinyon.

Undergrowth, sagebrush, dogwood and cactus.

N. $0^{\circ}3'$ W., bet. secs. 8 and 9.Over mountainous land, thru. scattering timber and under-
growth.

Ascend 28 ft., over SW. slope.

1.90

Road, brs. N. 45° W. and S. 45° E.

8.18

Point of spur, slopes W.

Descend 12 ft., over NW. slope.

14.88

Wash, 20 lks. wide, course S. 45° W.Ascend 118 ft., over SW. slope to $\frac{1}{4}$ sec. cor.

21.96

Same road, brs. N. 15° E. and S. 15° W.

32.62

Same road, brs. N. 80° W. and S. 80° E.

40.00

Set an iron post; 3 ft. long, 1 in. in diam., 26 ins. in
the ground, for $\frac{1}{4}$ sec. cor., marked on brass cap;

Survey of Subdivision lines of Township 33 North, Range 11 West. 43

Chains.

S 8 1/2 S 9
1917

from which,

A pinyon, 10 ins. diam., brs. N. 82 1/2° E., 40 lks.
dist., marked 1/4 S 9 BT.

A pinyon, 12 ins. in diam., brs. N. 52 1/2° W., 37 lks.
dist., marked 1/4 S 8 BT.

59.06 Ascend 230 ft., over SW. and S. slopes.
Ridge, brs. N. 70° E. and S. 70° W. Enter rolling land.

73.58 Descend 70 ft., over NW. slope.
Large draw, course S. 88° W.

80.00 Ascend 50 ft., over SE. slope, to

Set an iron post, 3 ft. long, 2 ins. in diam., 24 ins. in the
ground, for cor. of secs. 4, 5, 8 and 9, marked on brass
cap,

T33N R11W
S 5 S 4
S 8 S 9
1917

from which,

A cedar, 12 ins. in diam., brs. N. 81 1/2° E., 16 lks..
dist., marked T33N R11W S4 BT.

A cedar, 12 ins. in diam., brs. S. 83 1/2° E., 56 lks.
dist., marked T33N R11W S9 BT.

A cedar, 10 ins. in diam., brs. S. 72 1/2° W., 19 lks.
dist., marked T33N R11W S8 BT.

A cedar, 10 ins. in diam., brs. N. 85° W., 109 lks.
dist., marked T33N R11W S5 BT.

Land, mountainous and rolling.
Soil, red clay and shale rock, 3rd rate.
Timber, cedar and pinyon.
Undergrowth, sage brush and cactus.

40.00 East, on a random line, bet. secs. 4 and 9.
Set temp. 1/4 sec. cor.

79.86 Intersect N. and S. line, 27 lks. S. of the cor. of secs. 3, 4,
9 and 10.

Thence
S. 89° 48' W., on a true line, bet. secs. 4 and 9.

Over rolling land on top of Grassy Mountain, thru. scat-
tering undergrowth and heavy timber.

14.90 Descend 110 ft., over W. slope.
Ascend 17 ft., over NE. slope.

19.89 Descend 47 ft., over SW. slope, to

27.65 Rim, brs. NW. and SE. Leave top of Grassy Mountain. Enter
mountainous land.

34.28 Descend 246 ft., over SW. slope, to 1/4 sec. cor.

39.93 Top of cliffs, 30 ft. high, brs. NW. and SE. facing SW.

Set an iron post, 3 ft. long, 1 in. in diam.; 26 ins. in
the ground, for 1/4 sec. cor., marked on brass cap,

1/4 S 4
S 9
1917

No bearing trees available, Raise a mound of stone, 3
ft. base, 2 ft. high, N. of cor.

74.03 Descend 445 ft., over SW. slope.
Draw, course S. 25° W. Enter rolling land.

79.96 Ascend 6 ft., over SE. slope, to

The cor. of secs. 4, 5, 8 and 9.

Land, rolling and mountainous.
Soil, limestone and volcanic formation; 3rd rate.
Timber, cedar and pinyon.
Undergrowth, sagebrush, live oak, greasewood and cactus.
Fair growth of bunch grass.

N. 0° 3' W., on a random line, bet. secs. 4 and 5.

44 Survey of Subdivision lines of Township 33 North, Range 11 West.

Chains.

40.00 Set temp. $\frac{1}{4}$ sec. cor.
 79.88 Intersect N. bdy. of Tp., 37 lks. E. of the cor. of secs. 4,
 5, 32 and 33, hereinbefore described.
 Thence,
 S. $0^{\circ}19'$ E., on a true line, bet. secs. 4 and 5.
 Over mountainous land, thru. scattering timber and under-
 growth. Asc. 38 ft., over NE. slope.
 13.15 Spur, slopes NW. Desc. 26 ft., over SW. slope.
 17.65 Draw, course N. 85° W. Asc. 16 ft., over N. slope.
 33.80 Descend 40 ft., over SW. slope, to
 39.88 Set an iron post, 3 ft. long, 1 in. in diam., 26 ins. in
 the ground, for $\frac{1}{4}$ sec. cor., marked on brass cap,

$$\begin{array}{c} \frac{1}{4} \\ S\ 5\ S\ 4 \\ \frac{1}{4} \end{array}$$

1917

from which,

A pinyon, 12 ins. in diam., brs. N. $74\frac{1}{2}^{\circ}$ E., 137 lks.
 dist., marked $\frac{1}{4}$ S 4 BT.

A pinyon, 10 ins. in diam., brs. S. 30° W., 40 lks.
 dist., marked $\frac{1}{4}$ S 5 BT.

Ascend 52 ft., over NW. and N. slopes.

51.62 Spur, slopes W. Desc. 155 ft., over S. and SE. slopes, to
 79.88 The cor. of secs. 4, 5, 8 and 9.

Land, mountainous.

Soil, very rocky, sandstone and shale, 3rd rate.

Timber, cedar and pinyon.

Undergrowth, sagebrush and cactus.

Fair growth of bunch grass.

From the standard cor. of secs. 31 and 32, on the S. bdy. of
 Tp. (8th. Std. Par. N.), hereinbefore described,

N. $0^{\circ}3'$ W., bet. secs. 31 and 32.

Over rolling land, thru. heavy timber and undergrowth.

Ascend 145 ft., over SW. slope.

30.88 Spur, slopes NW. Desc. 64 ft., over N. slope, to

40.00 Set an iron post, 3 ft. long, 1 in. in diam., 14 ins. in
 the ground, on bed rock, supported in a mound of stone,
 for $\frac{1}{4}$ sec. cor., marked on brass cap,

$$\begin{array}{c} \frac{1}{4} \\ S31\ S32 \\ \frac{1}{4} \end{array}$$

1917

from which,

A pine, 32 ins. in diam., brs. N. $34\frac{1}{2}^{\circ}$ E., 133 lks.
 dist., marked $\frac{1}{4}$ S 32 BT.

A cedar, 10 ins. in diam., brs. S. $23\frac{1}{2}^{\circ}$ W., 57 lks.
 dist., marked $\frac{1}{4}$ S 31 BT.

Descend 26 ft., over N. slope.

41.24 Wash, 15 lks. wide, course S. 80° W.

Ascend 94 ft., over SW. slope.

49.93 Spur, slopes N. 75° W. Desc. 20 ft., over N. slope.

55.97 Draw, course S. 60° W. Asc. 90 ft., over SW. slope, to

80.00 Set an iron post, 3 ft. long, 2 ins. in diam., 18 ins. in the
 ground, to bed rock, supported in a mound of stone, for
 cor. of secs. 29, 30, 31 and 32, marked on brass cap,

$$\begin{array}{c} T33N\ R11W \\ S30\ S29 \\ S31\ S32 \end{array}$$

$$\begin{array}{c} S30\ S29 \\ S31\ S32 \end{array}$$

1917

from which,

A cedar, 24 ins. in diam., brs. N. $32\frac{1}{2}^{\circ}$ E., 56 lks.
 dist., marked T33N R11W S29 BT.

A cedar, 16 ins. in diam., brs. S. $54\frac{1}{2}^{\circ}$ E., 155 lks.
 dist., marked T33N R11W S32 BT.

Chains

A cedar, 38 ins. dia., brs. S. 5° W., 300 lks.
dist., marked T33N R11W S31 BT.

A pinyon, 10 ins. dia., brs. N. 38½° W., 215 lks.
dist., marked T33N R11W S30 BT.

Land, rolling.

Soil, adobe and volcanic rock; 3rd rate.

Timber, cedar, pinyon and yellow pine.

Undergrowth, live oak, algerita, sagebrush and cactus.

40.00 East, on a random line, bet. secs. 29 and 32.
Set temp. ¼ sec. cor.

80.10 Intersect N. and S. line, 18 lks. S. of the cor. of secs. 28,
29, 32 and 33.

Thence,

S. 89° 52' W., on a true line, bet. secs. 29 and 32.

Over gently rolling land, thru. heavy timber and undergrowth.

Ascend 38 ft., over NE. slope.

30.00 Descend 10 ft., over SW. slope, to

40.05 Set an iron post, 3 ft. long, 1 in. in diam., 26 ins. in the
ground, for ¼ sec. cor., marked on brass cap,

¼ S 29
S 32
1917

from which,

A cedar, 12 ins. in dia., brs. N. 16½° W., 59 lks. dist.,
marked ¼ S 29 BT.

A cedar, 10 ins. in dia., brs. S. 21½° W., 34 lks. dist.,
marked ¼ S 32 BT.

80.10 Descend 50 ft., over SW. slope, to
The cor. of secs. 29, 30, 31 and 32.

Land, gently rolling.

Soil, heavy adobe and clay, 2nd rate.

Timber, cedar and pinyon.

Undergrowth, sagebrush.

40.00 West, on a random line, bet. secs. 30 and 31.
Set temp. ¼ sec. cor.

79.99 Intersect W. bdy. of Tp., 7 lks. N. of the cor. of secs. 25, 30,
31 and 36, hereinbefore described.

Thence,

N. 89° 57' E., on a true line, bet. secs. 30 and 31.

Over gently rolling land, thru. heavy timber and scattering
undergrowth.

Ascend 112 ft., over SW. slope.

35.00 Low spur slopes S. 15° E.

Descend 6 ft., over SE. slope, to

39.99 Set an iron post, 3 ft. long, 1 in. in diam., 4 ins. in the
ground, to bedrock, supported in a mound of stone, for
¼ sec. cor., marked on brass cap,

¼ S 30
S 31
1917

from which,

A pinyon, 10 ins. in dia., brs. N. 15° E., 153
lks. dist., marked ¼ S 30 BT.

A pinyon, 8 ins. in dia., brs. S. 40½° E., 59
lks. dist., marked ¼ S 31 BT.

Descend 10 ft., over SE. slope, to

45.50 Draw, course S. 40° W. Asc. 200 ft., over SW. slope to sec. cor.

79.76 A cedar tree, 30 ins. dia., on line,

79.99 The cor. of secs. 29, 30, 31 and 32.

Land, gently rolling.

Soil, adobe and lava rock, 3rd rate.

Timber, cedar and pinyon.

Undergrowth, sagebrush, live oak and cactus.

46 Survey of Subdivision lines of Township 33 North, Range 11 West.

Chains.

N.0°3'W., bet. secs. 29 and 30.
Over rolling land, thru heavy timber and undergrowth.
Ascend 60 ft., over SW. slope.
32.18 Descend 60 ft., over NE. slope.
39.12 Draw, course N.20°W. Asc. slightly over SW. slope, to
40.00 Set an iron post, 3 ft. long, 1 in. in diam., 26 ins. in the
ground, for $\frac{1}{4}$ sec. cor., marked on brass cap,

$$\begin{array}{c} \frac{1}{4} \\ S30 \mid S29 \end{array}$$

1917

from which,

A cedar, 18 ins. in diam., brs. S.36°E., 8 lks.
dist., marked $\frac{1}{4}$ S29 BT.

A cedar, 28 ins. in diam., brs. N.62 $\frac{1}{2}$ °W., 91 lks.
dist., marked $\frac{1}{4}$ S 30 BT.

Ascend 7 ft. over SW. slope.

43.20 Descend 40 ft., over NW. slope.

48.16 A point 40 lks. E. of bottom of draw, course NW. from S.

Ascend 20 ft., over SW. slope.

51.02 Spur, slopes N.45°W.

Descend 70 ft., over NW. slope, to

80.00 Set an iron post, 3 ft. long, 2 ins. in diam., 24 ins. in
the ground, for cor. of secs. 19, 20, 29 and 30,, marked
on brass cap,

$$\begin{array}{c} T33N \mid R11W \\ S19 \mid S20 \end{array}$$

$$\begin{array}{c} S30 \mid S29 \\ 1917 \end{array}$$

from which,

A cedar, 20 ins. in diam., brs. N.32 $\frac{1}{4}$ ° E., 133 lks.
dist., marked T33N R11W S20 BT.

A pinyon, 16 ins. in diam., brs. S.2 $\frac{1}{2}$ °E., 61 lks.
dist., marked T33N R11W S29 BT.

A cedar, 12 ins. in diam., brs. S.51 $\frac{1}{2}$ °W., 76 lks.
dist., marked T33N R11W S30 BT.

A pinyon, 14 ins. in diam., brs. N.68 $\frac{1}{2}$ °W., 66 lks.
dist., marked T33N R11W S19 BT.

Land, rolling.

Soil, heavy adobe, volcanic rocks, 3rd rate.

Timber, cedar and pinyon, .

Undergrowth, sagebrush and live oak.

40.00 East, on a random line, bet. secs. 20 and 29.

80.12 Set temp. $\frac{1}{4}$ sec. cor.Intersect N. and S. line, 14 lks. S. of the cor. of secs. 20, 21,
28 and 29.

Thence,

S.89°54'W., on a true line, bet. secs. 20 and 29.

Over nearly level land, on mesa, thru heavy timber and
undergrowth,

Ascend slightly over NE. slope.

30.00 Descend slightly over N. slope, to

40.06 Set an iron post, 3 ft. long, 1 in. in diam., 20 ins. in
the ground to bed rock, supported in a mound of stone,
for $\frac{1}{4}$ sec. cor., marked on brass cap,

$$\begin{array}{c} \frac{1}{4} S 20 \\ S 29 \end{array}$$

1917

from which,

A cedar, 10 ins. in diam., brs. N.22 $\frac{1}{2}$ °E., 40 lks.
dist., marked $\frac{1}{4}$ S 20 BT.

A cedar, 12 ins. in diam., brs. S.14°W., 56 lks.
dist., marked $\frac{1}{4}$ S 29 BT.

Enter rolling land.

Descend 55 ft., over NW. slope.

49.20 Draw, course N.10°W. Asc. 35 ft., over E. slope.

54.94 Spur, slopes N. Desc. 135 ft., over NW. slope, to

80.12 The cor. of secs. 19, 20, 29 and 30.

Survey of Subdivision lines of Township 33 North, Range 11 West. 47

Chains.

Land, level and rolling.
Soil, adobe clay, volcanic formation, very rocky, 3rd rate.
Timber, cedar and pinyon.
Undergrowth, sagebrush, dogwood and cactus.

40.00 West, on a random line, bet. secs. 19 and 30.
Set temp. 1/4 sec. cor.
79.92 Intersect W. bdy. of Tp., 2 lks. N. of the cor. of secs. 19, 24, 25, and 30, hereinbefore described.

Thence,
N. 89° 59' E., on a true line, bet. secs. 19 and 30.
Over rolling land on mesa, thru. heavy timber and undergrowth.
Ascend 15 ft., over N. slope.
19.95 Descend 80 ft., over NE. slope, to.
39.92 Set an iron post, 3 ft. long, 1 in. in diam., 16 ins. in the ground to bed rock, supported in a mound of stone, for 1/4 sec. cor., marked on brass cap,

1/4 S 19
S 30
1917

from which,
A pinyon, 10 ins. in diam., brs. N. 49 1/2° E., 12 lks. dist., marked 1/4 S 19 BT.
A cedar, 12 ins. in diam., brs. S. 6° W., 12 lks. dist., marked 1/4 S 30 BT.

50.00 Descend 99 ft., over NE. slope.
Wash, course N.
Ascend 150 ft., over NW. slope, to
79.92 The cor. of secs. 19, 20, 29 and 30.

Land, rolling.
Soil, adobe clay and volcanic rock; 3rd rate.
Timber, cedar and pinyon.
Undergrowth, sagebrush, live oak, algerita and cactus.

N. 0° 3' W., bet. secs. 19 and 20.
Over rolling land, on mesa, thru. heavy timber and undergrowth.

20.55 Descend 30 ft., over NW. slope, to
Rim of mesa, brs. N. 55° W. and S. 55° E. Leave mesa. Enter mountainous land.

25.14 Descend 522 ft., over NE. slope.
Top of cliff, 40 ft. high, brs. NW. and SE. facing NE.
29.04 Upper Andrus Spring, brs. E. 3 chs. dist.
37.63 Lower Andrus Spring, in corral, brs. E. 3.20 chs. dist.
38.70 Stream of water, from Andrus Springs, 5 lks. wide, 2 ins. deep, course W. in bottom of deep ravine.

40.00 Descend 37 ft., over W. slope, to
Set an iron post, 3 ft. long, 1 in. in diam., 20 ins. in the ground, to bed rock, supported in a mound of stone, for 1/4 sec. cor., marked on brass cap,

1/4 S 19 | S 20
1917

from which,
A cedar, 12 ins. in dia., brs. N. 81° E., 67 lks. dist., marked 1/4 S 20 BT.
An oak, 14 ins. in diam., brs. S. 81° W., 73 lks. dist., marked 1/4 S 19 BT.

At 25 lks. E. of this cor. is a road bearing nearly N. and S.
41.97 Descend 23 ft., over NW. slope.
Same stream of water, 5 lks. wide, 2 ins. deep, course N. 20° E. Asc. 45 ft., over SE. slope.

44.99 Point of spur, slopes N. 65° E. Desc. 72 ft., over NE. slope.

48 Survey of Subdivision lines of Township 33 North, Range 11 West.

Chains.

54.42 Gulch, N. 70°E. Asc. 32 ft., over SE. slope.
 57.61 Old log cabin and corral, bear E. 2.50 chs. dist.
 66.49 Spur, slopes N. 30°E. Desc. 80 ft., over N. slope.
 71.34 Ascend 34 ft., over SE. slope.
 77.42 Descend 25 ft., over N. slope.
 79.75 Gulch, course E. Asc. slightly over SE. slope, to
 80.00 Set an iron post, 3 ft. long, 2 ins. in diam., 15 ins. in
 the ground to bed rock, supported in a mound of stone,
 for cor. of secs. 17, 18, 19 and 20, marked on brass cap,

T33N	R11W
S18	S17
S19	S20
1917	

from which,

- A pinyon, 12 ins. in diam., brs. N. 63°E., 185 lks. dist., marked T33N R11W S17 BT.
- A pinyon, 10 ins. in diam., brs. S. 60°E., 77 lks. dist., marked T33N R11W S20 BT.
- A pinyon, 14 ins. in diam., brs. S. 7°W., 58 lks. dist., marked T33N R11W S19 BT.
- A pinyon, 8 ins. in diam., brs. N. 70°W., 27 lks. dist., marked T33N R11W S18 BT.

Land, rolling and mountainous.

Soil, adobe, sandstone formation, 4th rate.

Timber, cedar and pinyon.

Undergrowth, sagebrush, live oak and scrub oak.

40.00 East, on a random line, bet. secs. 17 and 20.
 80.08 Set temp. $\frac{1}{4}$ sec. cor.
 Intersect N. and S. line, 30 lks. S. of the cor. of secs. 16,
 17, 20 and 21.
 Thence,
 S. 89° 47' W., on a true line, bet. secs. 17 and 20.
 Over mountainous land, thru. scattering timber and under-
 growth.
 Ascend 40 ft., over N. and NE. slopes.
 9.50 Spur, slopes N. Desc. 51 ft., over NW. slope, to
 19.40 Top of limestone cliff, 60 ft. high, brs. N. 15°E. and S. 15°
 W. facing NW.
 Descend 320 ft., over NW. slope.
 30.45 Gulch, course N. 15°W. Asc. 80 ft., over NE. slope.
 38.70 Spur, slopes N. 15°E. Desc. 40 ft., over W. slope, to
 40.04 Set an iron post, 3 ft. long, 1 in. in diam., 26 ins. in
 the ground, for $\frac{1}{4}$ sec. cor., marked on brass cap,

$\frac{1}{4}$ S 17
S 20
1917

from which,

- A pinyon, 16 ins. in diam., brs. N. 54°W., 29 lks. dist., marked $\frac{1}{4}$ S 17 BT.
- A cedar, 6 ins. in diam., brs. S. 36°W., 26 lks. dist., marked $\frac{1}{4}$ S 20 BT.

Descend slightly over W. slope.

40.45 Gulch, course N. near head. Enter heavy timber.

Ascend 92 ft., over E. slope.

44.50 Spur, slopes N.

Descend 90 ft., over NW. slope.

57.20 Ascend. 20 ft., over N. slope, to

67.20 Bottom of ravine, course N. 50°E.

Ascend 100 ft., over SE. slope, to sec. cor.

69.85 Road, brs. NE. and SW.

80.08 The cor. of secs. 17, 18, 19 and 20.

Land, mountainous.

Soil, limestone, and volcanic formations, 3rd rate.

Timber, cedar and pinyon.

Undergrowth, sagebrush, and dogwood.

Fair growth of bunch grass.

Survey of Subdivision lines of Township 33 North Range 11 West. 49

Chains.

West, on a random line, bet. secs. 18 and 19.
 40.00 Set temp. $\frac{1}{4}$ sec. cor.
 79.97 Intersect W. bdy. of Tp., 9 lks. S. of the cor. of secs. 13, 18, 19 and 24, hereinbefore described.
 Thence
 S. $89^{\circ}56'E.$, on a true line, bet. secs. 18 and 19.
 Over nearly level land, on mesa, thru. heavy timber and undergrowth.
 Ascend 18 ft. over W. slope.
 21.15 Ascend 6 ft. over E. slope, to
 26.15 Top of cliff, 70 ft. high, brs. N. and S., facing E. Leave nearly level mesa. Enter mountainous land.
 Descend 244 ft., over E. slope, to
 39.97 Set an iron post, 3 ft. long, 1 in. in diam., 26 ins. in the ground, for $\frac{1}{4}$ sec. cor., marked on brass cap,

$\frac{1}{4}$ S 18
 S 19
 1917

from which,
 A cedar, 12 ins. in diam., brs. N. $85^{\circ}W.$, 6 lks. dist., marked $\frac{1}{4}$ S 18 BT.
 A pinyon, 8 ins. in diam., brs. S. $26^{\circ}W.$, 44 lks. dist., marked $\frac{1}{4}$ S 19 BT.

50.50 Descend 140 ft., over E. slope, to Draw, course N. $75^{\circ}E.$
 67.06 Descend 172 ft., over NE. slope, to Gulch, course S. $70^{\circ}E.$
 79.97 Descend 98 ft., over SE. slope, to The cor. of secs. 17, 18, 19 and 20.
 Land, nearly level and mountainous.
 Soil, limestone and volcanic formations; 4th rate.
 Timber, cedar and pinyon.
 Undergrowth, live oak, sagebrush and cactus.

N. $0^{\circ}3'W.$, bet. secs. 17 and 18.
 Over mountainous land, thru. heavy timber and undergrowth, along E. slope.
 Ascend 47 ft.
 1.87 Descend 46 ft.
 6.82 Ascend 70 ft.
 11.71 Descend 93 ft., over NE. slope.
 27.55 Draw, course S. $80^{\circ}E.$ Asc. 48 ft., over SE. slope.
 36.60 Descend 13 ft., over NE. slope.
 38.95 Road, brs. S. $80^{\circ}W.$ and N. $80^{\circ}E.$
 Ascend slightly over SE. slope, to
 40.00 Set an iron post, 3 ft. long, 1 in. in diam., 26 ins. in the ground, for $\frac{1}{4}$ sec. cor., marked on brass cap,

S18 | S17
 |
 1917

from which,
 A cedar, 12 ins. in diam., brs. N. $51\frac{1}{2}^{\circ}E.$, 51 lks. dist., marked $\frac{1}{4}$ S17 BT.
 A cedar, 14 ins. in diam., brs. N. $42^{\circ}W.$, 27 lks. dist., marked $\frac{1}{4}$ S 18 BT.

Ascend 32 ft., over SE. slope.
 54.09 Spur, slopes E. Desc. 95 ft. over N. slope.
 64.75 Gulch, course N. $75^{\circ}E.$ Asc. 56 ft. over SE. slope, to
 80.00 Set an iron post, 3 ft. long, 2 ins. in diam., 24 ins. in the ground, for cor. of secs. 7, 8, 17 and 18, marked on brass cap,

T33N | R11W
 S 7 | S 8
 S18 | S17
 1917

from which,

50. Survey of Subdivision lines of Township 33 North Range 11 West.

Chains.

- A cedar, 8 ins. in diam., brs. N. 66° E., 40 lks.
dist., marked T33N R11W S8 BT.
A cedar, 8 ins. in diam., brs. S. 50½° E., 7 lks.
dist., marked T33N R11W S17 BT.
A cedar, 12 ins. in diam., brs. S. 74° W., 24 lks.
dist., marked T33N R11W S18 BT.
A cedar, 10 ins. in diam., brs. N. 52½° W., 9 lks.
dist., marked T33N R11W S7 BT.

Land, mountainous.

Soil, limestone and volcanic formations; 3rd rate.

Timber, cedar and pinyon.

Undergrowth, sagebrush, live oak and cactus.

- 40.00 East, on a random line, bet. secs. 8 and 17.
Set temp. ¼ sec. cor.
80.08 Intersect N. and S. line, 32 lks. S. of the cor. of secs. 8,
9, 16 and 17.
Thence,
S. 89° 46' W., on a true line, bet. secs. 8 and 17.
Over mountainous land, thru. scattering timber and under-
growth. Desc. 48 ft., over W. slope.
5.96 Draw, course S. Asc. 105 ft., over E. slope.
12.97 Spur, slopes S. Desc. 90 ft., over W. slope.
22.22 Draw, course S. 10° W. Asc. 70 ft., over E. slope.
26.41 Spur, slopes S. 20° E. Desc. 6 ft., over SW. slope.
31.41 Ascend 33 ft., over SE. slope.
38.58 Descend 5 ft., over SW. slope, to
40.04 Set an iron post, 3 ft. long, 1 in. in diam., 10 ins. in
the ground, to bed rock, supported in a mound of stone,
for ¼ sec. cor., marked on brass cap,

$$\frac{1}{4} \text{ S } 8$$

$$\text{S } 17$$

$$1917$$

from which,

- A cedar, 10 ins. in diam., brs. North, 40 lks. dist.,
marked ¼ S 8 BT.
A cedar, 12 ins. in diam., brs. S. 60¾° W., 52 lks.
dist., marked ¼ S 17 BT.
Descend 107 ft., over SW. slope.
47.14 Gulch, course S. 10° W. Asc. 105 ft., over E. slope.
58.42 Spur, slopes S. 25° E. Desc. 167 ft., over SW. slope.
61.65 Old road, brs. N. 30° E. and S. 30° W.
68.19 Gulch, course S. 15° E. Asc. 95 ft., over SE. slope, to
80.08 The cor. of secs. 7, 8, 17 and 18.

Land, mountainous.

Soil, red clay and limestone formations, 3rd rate.

Timber: cedar and pinyon.

Undergrowth, sagebrush, dogwood and cactus.

- 40.00 West, on a random line, bet. secs. 7 and 18.
Set temp. ¼ sec. cor.
79.91 Intersect the cor. of secs. 7, 12, 13 and 18, on W. bdy. of Tp.
hereinbefore described.
Thence,
East, on a true line, bet. secs. 7 and 18.
Over mountainous land, thru. scattering timber and under-
growth.
Descend 72 ft., over SE. slope.
5.25 Gulch, course N. 25° E.
Ascend 32 ft., over NW. slope.
9.40 Descend 102 ft., over NE. slope.
24.65 Draw, course N. 15° E.
Ascend 10 ft., over NW. slope.
27.55 Descend 76 ft., over NE. slope.
36.65 Wash, 15 lks. wide, in gulch, course S. 45° E.
Ascend 42 ft., over SW. slope, to

Survey of Subdivision Lines of Township 33 North, Range 11 West. 51

Chains.

39.91 Set an iron post, 3 ft. long, 1 in. in diam., 24 ins. in the ground, for $\frac{1}{4}$ sec. cor., marked on brass cap,

$$\begin{array}{c} \frac{1}{4} \text{ S } 7 \\ \text{S } 18 \\ 1917 \end{array}$$

from which,

A cedar, 14 ins. in diam., brs. N. $78\frac{1}{2}^{\circ}$ E., 106 lks. dist., marked $\frac{1}{4}$ S 7 BT.

A cedar, 10 ins. in diam., brs. S. $44\frac{3}{4}^{\circ}$ W., 231 lks. dist., marked $\frac{1}{4}$ S 18 BT.

Ascend 59 ft., over SW. slope.

54.80 Descend 27 ft., over SE. slope.

57.40 Ascend 34 ft., over SW. slope.

67.25 Spur, slopes S. 40° E.

Descend 198 ft., over E. and SE. slopes, to

79.91 The cor. of secs. 7, 8, 17 and 18.

Land, mountainous.

Soil, limestone and adobe, 3rd rate.

Timber, cedar and pinyon.

Undergrowth, live oak, dogwood, sagebrush and cactus.

N. 0° 3' W., bet. secs. 7 and 8.

Over mountainous land, thru. scattering timber and undergrowth.

Ascend 173 ft., over SE. slope, to

40.00 Set an iron post, 3 ft. long, 1 in. in diam., 4 ins. in the ground, to bed rock, supported in a mound of stone, for $\frac{1}{4}$ sec. cor., marked on brass cap,

$$\begin{array}{c} \frac{1}{4} \text{ S } 7 \text{ S } 8 \\ | \\ 1917 \end{array}$$

from which,

A pinyon, 8 ins. in diam., brs. S. 76° E., 53 lks. dist., marked $\frac{1}{4}$ S 8 BT.

A pinyon, 8 ins. in diam., brs. N. $73\frac{1}{2}^{\circ}$ W., 62 lks. dist., marked $\frac{1}{4}$ S 7 BT.

Ascend 9 ft., over SE. slope.

41.89 Descend 86 ft., over NE. slope.

44.59 Gulch, course S. 80° E.

Ascend 110 ft., over S. slope.

54.59 Spur, slopes S. 60° E.

Descend 85 ft., over NE. slope.

63.12 Gulch, course S. 15° E. Asc. 56 ft., over SW. slope.

66.29 Descend 30 ft., over NW. slope.

69.45 Bend in same gulch, course S. 15° W. from N. 25° W.

Ascend 92 ft., over SW. slope, to

80.00 Set an iron post, 3 ft. long, 2 ins. in diam., 24 ins. in the ground, for cor. of secs. 5, 6, 7 and 8, marked on brass cap,

$$\begin{array}{c} \text{T33N} \mid \text{R11W} \\ \text{S } 6 \mid \text{S } 5 \\ \text{S } 7 \mid \text{S } 8 \\ 1917 \end{array}$$

from which,

A cedar, 14 ins. in diam., brs. N. $29\frac{1}{2}^{\circ}$ E., 124 lks. dist., marked T33N R11W S5 BT.

A cedar, 10 ins. in diam., brs. S. $3\frac{3}{4}^{\circ}$ E., 57 lks. dist., marked T33N R11W S8 BT.

A cedar, 8 ins. in diam., brs. S. 19° W., 31 lks. dist., marked T33N R11W S7 BT.

A cedar, 12 ins. in diam., brs. N. 37° W., 72 lks. dist., marked T33N R11W S6 BT.

Land, mountainous.

Soil, adobe and limestone, 3rd rate.

Timber, cedar and pinyon.

Undergrowth, sagebrush, algerita and cactus.

52. Survey of the Subdivision lines of Township 33 North, Range 11 West.

Chains.

- East, on a random line, bet. secs. 5 and 8.
 40.00 Set temp. $\frac{1}{4}$ sec. cor.
 79.96 Intersect N. and S. line, 9 lks. S. of the cor. of secs. 4,
 5, 8 and 9.
 Thence,
 S. $89^{\circ} 56'$ W., on a true line, bet. secs. 5 and 8.
 Over rolling land, thru. heavy timber and undergrowth.
 Ascend 21 ft., over SE. slope.
 2.58 Descend 187 ft., over SW. slope, to.
 39.98 Set an iron post, 3 ft. long, 1 in. in diam., 26 ins. in
 the ground, for $\frac{1}{4}$ sec. cor., marked on brass cap,

$$\begin{array}{r} \frac{1}{4} \text{ S } 5 \\ \text{S } 8 \\ \hline 1917 \end{array}$$

from which,

- A cedar, 12 ins. in diam., brs. N. 50° E., 95 lks.
 dist., marked $\frac{1}{4}$ S 5 BT.
 A cedar, 14 ins. in diam., brs. S. 52° W., 65 lks.
 dist., marked $\frac{1}{4}$ S 8 BT.
 Descend 10 ft., over SW. slope.
 40.52 Road, brs. N. 20° W. and S. 20° E.
 44.10 Wash, 30 lks. wide, course S. 40° W.
 Ascend 37 ft., over SE. slope.
 50.77 Short spur, slopes S. 10° W.
 Descend 73 ft., over SW. slope.
 53.30 Gulch, course S. 25° W.
 Ascend 57 ft., over SE. slope.
 71.52 Spur, slopes S. 20° W.
 Descend 70 ft., over W. slope, to
 79.96 The cor. of secs. 5, 6, 7 and 8.
 Land, rolling.
 Soil, adobe and clay, sandstone formation, 3rd rate.
 Timber, cedar and pinyon.
 Undergrowth, sagebrush and cactus.

- West, on a random line, bet. secs. 6 and 7.
 40.00 Set temp. $\frac{1}{4}$ sec. cor.
 79.86 Intersect W. bdy. of Tp., 24 lks. S. of the cor. of secs. 1, 6,
 7 and 12, hereinbefore described.
 Thence,
 S. $89^{\circ} 50'$ E., on a true line, bet. secs. 6 and 7.
 Over rolling land, thru. scattering timber and undergrowth.
 Descend 22 ft., over E. slope.
 9.85 Draw, course N. 45° E.
 Ascend 23 ft., over NW. slope.
 29.85 Descend 23 ft., over NE. slope, to
 39.86 Set an iron post, 3 ft. long, 1 in. in diam., 8 ins. in
 the ground, to bed rock, supported in a mound of stone,
 for $\frac{1}{4}$ sec. cor., marked on brass cap,

$$\begin{array}{r} \frac{1}{4} \text{ S } 6 \\ \text{S } 7 \\ \hline 1917 \end{array}$$

from which,

- A cedar, 6 ins. in diam., brs. N. 30° E., 21 lks.
 dist., marked $\frac{1}{4}$ S 6 BT.
 A pinyon, 24 ins. in diam., brs. S. 40° W., 226 lks.
 dist., marked $\frac{1}{4}$ S 7 BT.
 Descend 150 ft., over NE. slope.
 73.15 Gulch, course S. 45° E.
 Ascend 47 ft., over SW. slope.
 76.45 Descend 20 ft., over SE. slope.
 79.50 Draw, course S. 35° W.
 Ascend slightly over W. slope, to
 79.86 The cor. of secs. 5, 6, 7 and 8.
 Land, rolling.
 Soil, limestone formation, 3rd rate. Timber, cedar and
 pinyon. Undergrowth, sagebrush and cactus.

Survey of Subdivision lines of Township 33 North, Range 11 West. 53

Chains.

40.00
80.00

2.95
4.75
20.00

40.00

53.40
65.20

75.15
79.90
80.00

N.0° 3'W., on a random line, bet. secs.5 and 6.
Set temp. sec.cor.
Intersect N. bdy. of Tp., 40 lks.E.of the cor.of secs.
5,6,31 and 32, hereinbefore described.
Thence,
S.0°20'E., on a true line, bet.secs.5 and 6.
Over nearly level land in Jagway Valley, thru.scattering
timber and undergrowth.
Descend slightly over S.slope.
New road, brs.N.45° E. and S.45°W.
Ascend slightly over NW.slope.
Leave Jagway Valley. Enter gently rolling land.
Descend 32 ft., over S.slope, to
Set an iron post, 3 ft.Long, 1 in. in diam., 26 ins.in
the ground, for 1/4 sec.cor., marked on brass cap,

S 6 | S 5
1917

from which,
A pinyon, 12 ins. in diam., brs. S 54°E.,
126 lks.dist., marked 1/4 S 5 BT.
A cedar, 36 ins. in diam., brs.S. 13 1/4°W., 75
lks.dist., marked 1/4 S 6 BT.

Continue over gently rolling land.
Descend 53 ft., over S.slope.
Road brs.N.40°W. and S.40° E.
Draw, course S.85°W. Enter rolling land.
Ascend 43 ft., over NW.slope.
Descend 45 ft., over S.slope.
Draw, course S.30°W. Ascend slightly over W slope, to
The cor.of secs.5,6,7 and 8.
Land, rolling, nearly level.
Soil, adobe, limestone formation, 2nd rate.
Timber, cedar and pinyon.
Undergrowth, sagebrush and algerita.

The continued satisfactory adjustment of the solar appa-
ratus during the survey of this township is indicated
from field tests described in Books "B" and "D".

GENERAL DESCRIPTION.

The surface of this township is mountainous and rolling.
Grassy Mountain, in secs.3,4,9,10,14 and 15, is an isolated
mountain, rising about 500 ft. above the general level
of the surrounding land. The mountain has a border-
ing rim rock and a rolling top. Andrus Canyon proper
starts near the 1/4 sec.cor. of secs.16 and 17, and runs
southeasterly thru. the township, leaving at the SE.
cor. Jagway Valley in secs.5 and 6, and Penn Valley
in sec.31 have a nearly level and gently rolling sur-
face.
The drainage of most of the township is into Andrus Can-
yon.
The soil of the north half of secs.5 and 6 is a good
clayey loam, 1st and 2nd rate. The soil in the rest of
the Tp. is a rocky gravel-filled adobe clay, 6 to 36
ins.deep, 2nd and 3rd rate.
A heavy growth of scrub cedar or juniper, covers the SW.
portion of the township. Elsewhere, including the top
of Grassy Mountain, a medium growth of cedar and pin-
yon pine is found. A sparse growth of grass is in
the NE.cor., and sagebrush covers the NW. corner. Some
cinchona or wild quinine, various cacti, and other

51 Survey of Subdivision Lines of Township 33 North, Range 11 West.

Chains.

small plants and shrubs grow wherever they obtain a foothold.

In sec. 20, Andrus Springs of good drinking, but very hard water, is piped from two short tunnels driven in the hill side. Each spring furnishes a one inch pipe about half full. Near the springs is the site of a charcoal burning smelter, as evidenced by slag, old cabins, etc. Grassy Spring, in sec. 9, also piped from a tunnel, is very alkali. A large number of range cattle and horses water at Andrus and Grassy Springs.

Large outcroppings of gypsum near the cor. of secs. 8, 9, 16 and 17, are the only evidences of mineral found.

A road follows the bottom of Andrus Canyon, forking into three branches in sec. 17, the middle fork extending westerly about 5 miles to Parashont Ranch, the north fork extending northwesterly to Jagway Valley, and the south fork southwesterly to Andrus Springs. Another road traverses Penn Valley.

Round up corrals and brush, pole or wire drift fences are found near the springs, and several other parts of the township.

There is an undeveloped seepage in sec. 23.

There are no settlers in the township.

56

BOOK 56 3630

CERTIFICATE OF UNITED STATES SURVEYOR, TRANSITMAN

I, Loyd E. Sechrist, U.S. Surveyor, hereby certify upon honor that, in pursuance of special instructions received from the U. S. Surveyor General, for Group 73, Arizona bearing date of the 12th day of October, 1916, I have well, faithfully, and truly in my own proper person, and in strict conformity with said instructions, the Manual of Surveying Instructions, and the laws of the United States, surveyed all those parts or portions of the North and West boundaries and Subdivision lines of TOWNSHIP 33 NORTH RANGE 11 WEST of the Gila and Salt River Base and Meridian, in the State of Arizona, which are represented in the foregoing field notes and by diagram on page 1 hereof as having been executed by me, and under my direction; and that all the corners of said survey have been established and perpetuated in strict accordance with the Manual of Surveying Instructions, and the special written instructions of the U. S. Surveyor General, for Group 73, Arizona and in the specific manner described in the field notes, and that the foregoing are the original field notes of such survey.

Place: Phoenix, Arizona
Date: May 29, 1924.

Loyd E. Sechrist (deceased)

U.S. Transitman

By

[Signature]

Asst. Supervisor of Surveys.

APPROVAL.

Office of the United States Surveyor General

191

The foregoing field notes of the survey of

executed by

under his special instructions dated 191, having been critically examined, and the necessary corrections and explanations made, the said field notes, and the surveys they describe, are hereby approved.

U.S. Surveyor General

I certify that the foregoing transcript of the field notes of the above described surveys in

has been correctly copied from the original notes on file in this office

U.S. Surveyor General

BOOK 3630
58

CERTIFICATE OF UNITED STATES SURVEYOR.

I, William H. Thorn, U. S. Surveyor, hereby certify upon honor that, in pursuance of special instructions received from the U. S. Surveyor General, for Group 73, Arizona, bearing date of the 12th day of October, 1916, I have well, faithfully, and truly in my own proper person, and in strict conformity with said instructions, the Manual of Surveying Instructions, and the laws of the United States, surveyed all those parts or portions of the
8th Standard Parallel North, in Range 11 West,

TOWNSHIP 33 NORTH, RANGE 11 WEST,

of the Gila and Salt
River Base and Meridian, in the State of Arizona, which are represented in the foregoing field notes and by diagram on page 1 here of as having been executed by me, and under my direction; and that all the corners of said survey have been established and perpetuated in strict accordance with the Manual of Surveying Instructions, and the special written instructions of the U. S. Surveyor General, for Group 73, Arizona, and in the specific manner described in the field notes, and that the foregoing are the original field notes of such survey.

Place - Redlands Calif
Date - June 5 1924
William H. Thorn
U. S. Surveyor.

APPROVAL.

OFFICE OF THE UNITED STATES SURVEYOR GENERAL,

Phoenix, Arizona, Sept. 20, 1924.

The foregoing field notes of the survey of the
8th Standard Parallel North, thru Range 11 West, and
North and West boundaries and subdivision lines of
TOWNSHIP 33 NORTH, RANGE 11 WEST,

of the Gila and Salt River Base and Meridian, in the State of Arizona,

executed by William H. Thorn, U.S. Surveyor, and Loyd E. Sechrist, U.S. Transitman under his special instructions dated Oct. 12, 1916, for Group 73, Arizona, 191, having been critically examined, and the necessary corrections and explanations made, the said field notes, and the surveys they describe, are hereby approved.

Charles W. Donohoe
U. S. Surveyor General.

~~I certify that the foregoing transcript of the field notes of the above described surveys in~~
~~has been correctly copied from the original notes on file in this office.~~

~~U. S. Surveyor General.~~