

3633

Book "D"

4-679

175  
ORIG

BOOK 3633

# FIELD NOTES

OF THE SURVEY OF THE

Eighth Standard Parallel North, thru. Range 13 West,

North and West boundaries, and

Subdivision lines of

TOWNSHIP 33 NORTH, RANGE 13 WEST,

Of the Gila and Salt River Base and Meridian,

In the State of Arizona.

EXECUTED BY

William H. Thorn, U. S. Surveyor,

and

Loyd E. Sechrist, U. S. Transitman,

In the capacity of U. S. Surveyors, under Special Instructions dated Oct. 12, 1916,

issued by the United States Surveyor General to govern surveys included in Group

No. 73, Arizona, which were approved by the Commissioner of the General Land

Office, October 24, 1916, and Assignment Instructions dated Apr. 19, 1917

Survey commenced July 23, 1917

Survey completed Nov. 14, 1917

3633

3633

1A

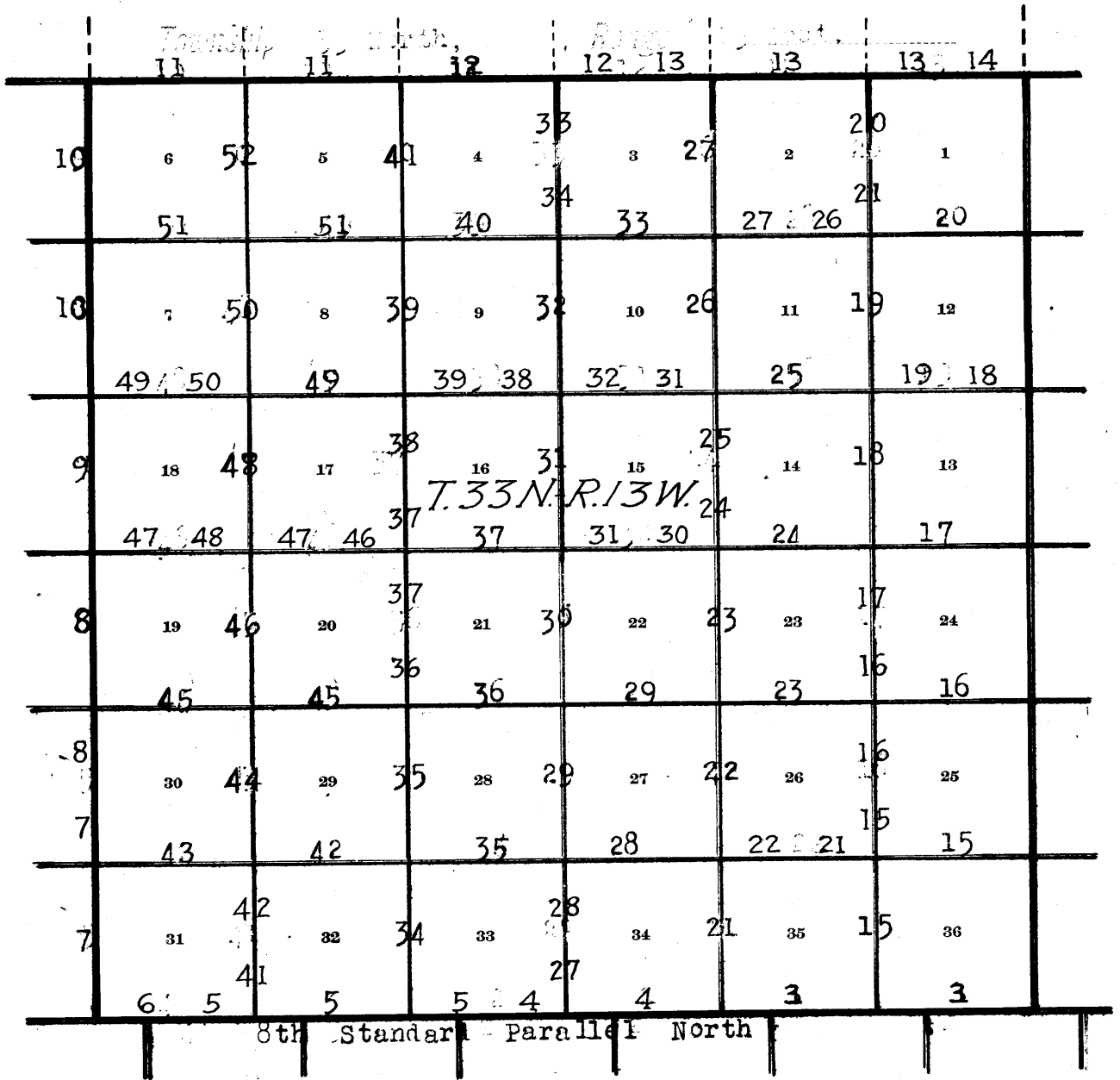
3633

BOOK 3633

Book "D"

Group 73 - - Arizona.

# INDEX DIAGRAM.



- Lines surveyed under this group.
- Lines unsurveyed.
- Lines surveyed under current group No. 74.

Book "D"

Group 73 Arizona

TOWNSHIP 33 NORTH RANGE 13 WEST

DATE DIAGRAM

1917

	11-5	11-12	11-13	11-13	11-13	11-13
11-5	6 11-14	5 11-12	4 11-10	3 8-8	2 8-3	1 8-3
11-3	7 11-14	8 11-9	9 11-9	10 8-2	11 7-31	12 7-26
11-2	18 11-13	17 11-8	16 9-25	15 8-2	14 7-31	13 7-26
11-2	19 11-1	20 9-24	21 9-24	22 8-1	23 7-31	24 7-25
11-1	30 9-19	29 9-20	28 9-20	27 8-1	26 7-30	25 7-24
9-19	31 8-14	32 7-28	33 7-28	34 7-27	35 7-27	36 7-23
	8th	Standard	Parallel	North		

For dates of execution of survey of this line see Book "B"

— Indicates surveys executed by William H. Thorn, U.S. Surveyor, on dates shown thereon.

— Indicates surveys executed by Loyd E. Sechrist, U.S. Transitman, on dates shown thereon.

Surveys herein described were executed by Wm. H. Thorn, U.S. Surveyor and Loyd E. Sechrist, U.S. Transitman, on dates shown on diagram on page 1 hereof, using respectively, Young and Sons light mountain transit No. 8592, and Buff solar transit No. 10125, each instrument being equipped with Smith solar attachment. The instruments are provided with two double verniers, placed opposite to each other, reading to single minutes of arc, which is also the least count of the verniers of the latitude and declination arcs.

These instruments were approved April 19, 1917, by the Assistant Supervisor of Surveys for Arizona and California, for field use under this Group, conditional upon satisfactory field tests.

We examine the adjustments of the transits, correcting all errors; then, to test the solar apparatus, by comparing their indications, resulting from solar observations made during a.m. and p.m. hours, with a meridian determined by observations on Polaris at elongation, we proceed with each instrument as follows:

July 21, 1917: At our camp, near center of sec. 24, T. 33 N., R. 13 W., in lat.  $36^{\circ}14\frac{1}{2}'$  N.; long.  $113^{\circ}39'$  W., at 11h. 37.2m. p.m., l.m.t., by our watches, which are set to correct local mean time, we observe Polaris at eastern elongation, making four observations, two each with the telescope in direct and reversed positions, and mark the mean point in the line thus determined by a tack in a stake, 5 chs. N.

Azimuth of Polaris at eastern elongation =  $1^{\circ}24'43''$ .

July 22, 1917: At 7h. 45m. a.m., l.m.t., lay off the azimuth of Polaris,  $1^{\circ}24\frac{1}{2}'$  to the W., and mark a point in the line thus determined by a tack in a stake, 5 chs. N.

At 8h. 0m. a.m., l.m.t., set off  $36^{\circ}14\frac{1}{2}'$  N. on the lat. arc;  $20^{\circ}19\frac{1}{2}'$  N. on the decl. arc, and determine a meridian with the solar, which agrees with the true meridian.

At apparent noon, set off  $20^{\circ}17\frac{1}{2}'$  N. on the decl. arc, and observe the sun on the meridian. The resulting reading of the lat. arc is  $36^{\circ}14\frac{1}{2}'$  N.

At 4h. 0m. p.m., l.m.t., set off  $36^{\circ}14\frac{1}{2}'$  N. on the lat. arc;  $20^{\circ}15\frac{1}{2}'$  N. on the decl. arc, and determine a meridian with the solar, which agrees with the true meridian.

As all of the solar observations made during the usual hours of solar work come within  $1'30''$  of the true meridian, conclude that the instruments are in satisfactory adjustment. Unless otherwise specified all measurements are made with Lufkin steel tapes, 5 chs. in length, compared with a Chesterman standard steel tape and found correct. The measurements are made on the slope, the vertical angles determined, and the slope measurements properly reduced to true horizontal distances.

Book 3638

Survey of Eighth Standard Parallel North thru Range 13 West. 3

Chains.

From the standard cor. of Ts. 33 N., Rs. 12 and 13 W., on the 8th Std. Parallel N., described in Book "B," West, on true line, on S. bdy. of sec. 36.  
 Over nearly level land, thru scattering timber and dense undergrowth.  
 Ascend slightly over E. slope, to  
 40.00 Set an iron post, 3 ft. long, 1 in. in diam., 26 ins. in the ground, for standard  $\frac{1}{4}$  sec. cor. of sec. 36, marked on brass cap,

S C  
 $\frac{1}{4}$ S 36  
 1917

from which,  
 A cedar, 24 ins. diam., brs. N. 17° E., 88 lks. dist., marked SC  $\frac{1}{4}$ S 36 BT.  
 A cedar, 22 ins. in diam., brs. N. 18 $\frac{1}{2}$ ° W., 91 lks. dist., marked SC  $\frac{1}{4}$ S 36 BT.

Ascend slightly over E. slope, to  
 55.00 Leave nearly level, and enter gently rolling land.  
 Ascend 43 ft., over E. slope, to  
 80.00 Set an iron post, 3 ft. long, 2 ins. in diam., 18 ins. in the ground, to bed rock, supported in a mound of stone for standard cor. of secs. 35 and 36, marked on brass

S C  
 T33N R13W  
 S35 S36  
 1917

from which,  
 A cedar, 24 ins. diam., brs. N. 19 $\frac{1}{2}$ ° E., 159 lks. dist., marked SC T33N R13W S36 BT.  
 A cedar, 10 ins. in diam., brs. N. 9 $\frac{1}{2}$ ° W., 58 lks. dist., marked SC T33N R13W S35 BT.

Land, nearly level and gently rolling.  
 Soil, limestone formation, gravelly loam, 3rd rate.  
 Timber, cedar and pinyon.  
 Undergrowth, dense sagebrush, scattering algerita and cinchona.

West, on true line, on S. bdy. of sec. 35.  
 Over gently rolling land, thru heavy timber and dense undergrowth.  
 Ascend 20 ft., over E. slope.  
 15.00 Descend 24 ft., over W. slope.  
 30.00 Ascend 28 ft., over E. slope, to  
 40.00 Set an iron post, 3 ft. long, 1 in. in diam., 26 ins. in the ground, for standard  $\frac{1}{4}$  sec. cor. of sec. 35, marked on brass cap,

S C  
 $\frac{1}{4}$ S 35  
 1917

from which,  
 A cedar, 14 ins. in diam., brs. N. 68 $\frac{1}{2}$ ° E., 88 lks. dist., marked SC  $\frac{1}{4}$ S 35 BT.  
 A cedar, 16 ins. diam., brs. N. 89 $\frac{1}{2}$ ° W., 50 lks. dist., marked SC  $\frac{1}{4}$ S 35 BT.

Ascend 6 ft., over E. slope.  
 50.00 Descend 11 ft., over NW. slope:  
 60.00 Ascend 35 ft., over E. slope, to  
 80.00 Set an iron post, 3 ft. long; 2 ins. in diam., 24 ins. in the ground, for standard cor. of secs. 34 and 35, marked on brass cap,

## 4 Survey of Eighth Std. Parallel North, thru. Range 13 West.

Chains.

S	C
T33N	R13W
S34	S35

1917

from which,

A cedar, 8 ins. in diam., brs. N. 65° E., 38 lks.  
dist., marked SC T33N R13W S35 BT.A cedar, 8 ins. in diam., brs. N. 4° W., 6 lks.  
dist., marked SC T33N R13W S34 BT.

Land, gently rolling.

Soil, heavy adobe and clay, 3rd rate.

Timber, cedar and pinyon.

Undergrowth, sagebrush, algerita and cinchona.

-----  
West, on true line, on S. bdy. of sec. 34.Over gently rolling land, thru. scattering timber and  
dense undergrowth.

Ascend 63 ft. over E. and NE. slopes, to

40.00 Top of ascent, brs. N. and S. Set an iron post, 3 ft. long,  
1 in. in diam., 26 ins. in the ground, for standard  $\frac{1}{4}$   
sec. cor. of sec. 34, marked on brass cap,

S	C
<del>S</del> 34	

1917

from which,

A cedar, 16 ins. diam., brs. N. 61 $\frac{1}{2}$ ° E., 124 lks.  
dist., marked SC  $\frac{1}{4}$ S 34 BT.A cedar, 14 ins. diam., brs. N. 24 $\frac{1}{2}$ ° W., 77 lks.  
dist., marked SC  $\frac{1}{4}$ S 34 BT.

Descend 28 ft., over W. slope.

44.42 Small draw, course N. 10° W.

Ascend 78 ft., over NE. slope, to

80.00 Set an iron post, 3 ft. long, 2 ins. in diam., 24 ins. in  
the ground, for standard cor. of secs. 33 and 34, marked  
on brass cap,

S	C
T33N	R13W
S33	S34

1917

from which,

A cedar, 10 ins. in diam., brs. N. 4 $\frac{1}{2}$ ° E., 27 lks.  
dist., marked SC T33N R13W S34 BT.A pinyon, 10 ins. in diam., brs. N. 49° W., 26 lks.  
dist., marked SC T33N R13W S33 BT.

Land, gently rolling.

Soil, gravelly loam and adobe, 3rd rate.

Timber, scattering cedar and pinyon.

Undergrowth, scattering sagebrush, algerita, cinchona and  
scrub white oak.-----  
West, on true line, on S. bdy. of sec. 33.Over gently rolling land, thru. scattering timber and  
undergrowth.

Ascend slightly over N. slope.

4.50 Descend 25 ft., over NW. slope.

11.59 Small draw, course N.

Ascend 8 ft., over E. slope.

14.85 Descend 17 ft., over NW. slope.

20.00 Ascend 30 ft., over E. slope.

26.10 Descend 12 ft., over NW. slope.

34.95 Ascend 11 ft., over SE. slope, to

40.00 Set an iron post, 3 ft. long, 1 in. in diam., 26 ins. in

Chains.

the ground, for std. 1/4 sec. cor. of secs. 33, marked on brass cap,

S C  
1/4 S 33  
1917

from which,

A cedar, 16 ins. in diam., brs. N. 22° E., 136 lks. dist., marked SC 1/4 S 33 BT.

A pinyon, 12 ins. in diam., brs. N. 25 1/4° W., 81 lks. dist., marked SC 1/4 S 33 BT.

Ascend 46 ft., over SE. slope.

Descend 34 ft., over NW. slope.

Ascend 38 ft., over SE. slope, to

Set an iron post, 3 ft. long, 2 ins. in diam., 24 ins. in the ground, for standard cor. of secs. 32 and 33, marked on brass cap,

49.95  
69.93  
80.00

S C  
T33N R13W  
S32 S33  
1917

from which,

A pinyon, 10 ins. in diam., brs. N. 33 1/2° E., 111 lks. dist., marked SC T33N R13W S33 BT.

A cedar, 8 ins. in diam., brs. N. 15° W., 86 lks. dist., marked SC T33N R13W S32 BT.

Land, gently rolling.

Soil, heavy loam and clayey adobe, 3rd rate.

Timber, cedar and pinyon.

Undergrowth, dense sagebrush, cinchona and algerita, scattering black lotus, sarvis and scrub white oak.

-----  
West, on true line, on S. bdy. of sec. 32.

Over gently rolling land, thru. scattering timber and dense undergrowth. Asc. 85 ft., over NE. slope, to

40.00

Set an iron post, 3 ft. long, 1 in. in diam., on bedrock, supported in a mound of stone for std. 1/4 sec. cor., of sec. 32, marked on brass cap,

S C  
1/4 S 32  
1917

from which,

A cedar, 12 ins. in diam., brs. N. 58° E., 91 lks. dist., marked SC 1/4 S 32 BT.

A cedar, 16 ins. in diam., brs. N. 9 1/2° W., 140 lks. dist., marked SC 1/4 S 32 BT.

Ascend 23 ft., over NE. slope.

Descend 27 ft., over NW. slope.

Draw, course N. 30° W. Asc. 14 ft., over NE. slope.

Descend 24 ft., over W. slope, to

Set an iron post, 3 ft. long, 2 ins. in diam., 24 ins. in the ground, for std. cor. of secs. 31 and 32, marked on brass cap,

55.00  
67.09  
68.90  
80.00

S C  
T33N R13W  
S31 S32  
1917

from which,

A cedar, 8 ins. in diam., brs. N. 29 1/2° E., 106 lks. dist., marked SC T33N R13W S32 BT.

A cedar, 10 ins. in diam., brs. N. 22 1/2° W., 22 lks. dist., marked SC T33N R13W S31 BT.

Land, gently rolling.

Soil, gravelly loam, and clayey adobe, 3rd rate.

Timber, scattering cedar and pinyon.

Undergrowth, dense sagebrush, cinchona and algerita; scattering sarvis and manzanita.

-----  
West, on true line, on S. bdy. of sec. 31.

Over rolling land, thru. scattering timber and undergrowth.

6 Survey of Eighth Std. Parallel North, thru. Range 13 West.

Chains.

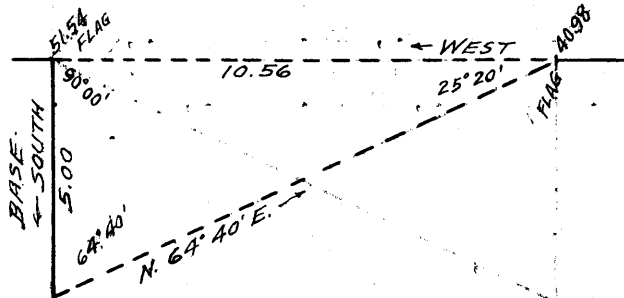
- 11.87 Descend 48 ft., over W. slope, to Edge of break, brs. N. and S. Enter mountainous land.
- 23.43 Descend 200 ft., over steep SW. slope, to Head of steep gulch, course S. 45° W., 5 chs. N. of cliffs, 250 ft. high. Ascend 70 ft., over SE. slope.
- 33.86 Point of spur, slopes S. Descend 161 ft., over SW. slope, to
- 40.00 Set an iron post, 3 ft. long, 1 in. in diam., 10 ins. in the ground, to bed rock, supported in a mound of stone for std.  $\frac{1}{4}$  sec. cor. of sec. 31, marked on brass cap,

S C  
1/4 S 31  
1917

No bearing trees available. Raise a mound of stone, 3 ft. base, 2  $\frac{1}{2}$  ft. high, N. of cor.

Cor. stands on SW. slope, 50 lks. N. of top of cliffs, 400 ft. high, brs. N. 45° W. and S. 45° E., facing SW.

- 40.98 Descend 16 ft., over SW. slope, to Top of same cliffs, 300 ft. high, bear NW. and SE. Impracticable to chain from here. Set a flag at this point and another flag ahead on line; vertical angle 38° 54'. From second flag measure a base South, 5.00 chs. -- impracticable to obtain longer base -- from the S. end of base, first flag brs. N. 64° 40' E. The dist. triangulated is given by  $5.00 \times \tan 64^\circ 40'$  or  $5.00 \times 2.11233 = 10.56$  chs., which added to 40.98 chs., gives



Set a flag at this point and another flag ahead on line; vertical angle 38° 54'. From second flag measure a base South, 5.00 chs. -- impracticable to obtain longer base -- from the S. end of base, first flag brs. N. 64° 40' E. The dist. triangulated is given by  $5.00 \times \tan 64^\circ 40'$  or  $5.00 \times 2.11233 = 10.56$  chs., which added to 40.98 chs., gives

- 51.54 Triangulation point, 560 ft., below top of cliffs. Continue line and measurement by chaining.
- 52.59 Descend 40 ft., over SW. slope, to (80.00 chs. - 27.41 chs. convergency) Set an iron post, 3 ft. long, 3 ins. in diam., 26 ins. in the ground, for closing cor. of Ts. 32 N., Rs. 13 and 14 W., marked on brass cap,

T33N R13W  
S31  
S 1 S 6  
R14W R13W  
T32N  
CC  
1917

No bearing trees available. Raise a mound of stone, 3 ft. base, 3 ft. high, 22 lks. S. of corner, set on top of mound, where mound would not stay.

- 80.00 Descend 522 ft., over SW. and W. slopes, to Set an iron post, 3 ft. long, 3 ins. in diam., 12 ins. in the ground to bed rock, supported in a mound of stone for std. cor. of Ts. 33 N., Rs. 13 and 14 W., marked on brass cap,

S C  
T33N  
R14W R13W  
S36 S31  
1917

from which,

A pinyon, 10 ins. in diam., brs. N. 51  $\frac{1}{2}$ ° E., 260 lks. dist., marked SC T33N R13W S31 BT.

A cedar, 5 ins. in diam., brs. N. 62° W., 270 lks. dist., marked SC T33N R14W S36 BT.

Land, rolling and mountainous.

Soil, rocky, 4th rate. Timber, cedar and pinyon.

Undergrowth, cinchona, rabbit brush, Spanish dagger and Brigham brush.



Survey of West boundary of Township 33 North, Range 13 West. 7

Chains.

From std. cor. of Ts. 33 N., Rs. 13 & 14 W. on 8th Std. Par. N., hereinbefore described,  
 North, on true line, bet. secs. 31 and 36.  
 Over mountainous and broken land, thru. scattering timber and undergrowth, along steep W. slope. Desc. 10 ft.  
 2.70 Gulch, course W. Ascend 15 ft.  
 4.98 Spur, slopes W. Descend 21 ft.  
 10.00 Ascend 58 ft.  
 15.16 Spur, slopes S. 85° W. Descend 27 ft.  
 16.81 Wash in gulch, course S. 85° W. Asc. 39 ft.  
 23.76 Descend 57 ft.  
 30.13 Wash in gulch, course W. Asc. 82 ft.  
 35.61 Spur, slopes W. Desc. 57 ft.  
 39.42 Wash in gulch, course W. Asc. 8 ft. to  
 40.00 Set an iron post, 3 ft. long, 1 in. dia., 20 ins. in ground to bedrock, supported in a mound of stone, for  $\frac{1}{4}$  sec. cor., mkd. on brass cap,

$\begin{array}{c} \uparrow \\ S36 \end{array} | \begin{array}{c} \uparrow \\ S31 \end{array}$

1917 from which,

A pinyon, 14 ins. dia., brs. S. 62 $\frac{1}{4}$ ° E., 164 lks. dist., mkd.  $\frac{1}{4}$  S 31 BT.  
 A cedar, 8 ins. dia., brs. S. 12 $\frac{1}{4}$ ° W., 43 lks. dist., mkd.  $\frac{1}{4}$  S 36 BT.  
 Ascend 24 ft.  
 41.59 Spur slopes S. 85° W. Set flag for triangulation of measurement on line bet. secs. 30 and 31, T 33 N., R. 13 W.  
 Descend 35 ft.  
 44.59 Wash, course S. 85° W. Asc. 44 ft.  
 48.24 Spur, slopes S. 85° W. Desc. 32 ft.  
 52.29 Wash in gulch, course S. 80° W. Asc. 83 ft.  
 58.25 Spur, slopes S. 85° W. Desc. 35 ft.  
 62.88 Wash in gulch, course S. 85° W. Asc. 51 ft.  
 68.24 Spur, slopes S. 85° W. Desc. 95 ft.  
 76.45 Ascend 5 ft. to  
 80.00 Set an iron post, 3 ft. long, 2 ins. dia., 24 ins. in ground, for cor. of secs. 25, 30, 31 and 36, mkd. on brass cap,

$\begin{array}{c} T33N \\ R14W | R13W \\ S25 | S30 \\ S36 | S31 \end{array}$

1917 from which,

A cedar, 4 ins. dia., brs. N. 1 $\frac{1}{2}$ ° E., 290 lks. dist., mkd. BT.  
 A pinyon, 14 ins. dia., brs. S. 34 $\frac{1}{4}$ ° E., 350 lks. dist., mkd. T33N R13W S31 BT.  
 A pinyon, 12 ins. dia., brs. S. 5 $\frac{1}{2}$ ° W., 430 lks. dist., mkd. T33N R14W S36 BT.  
 No other bearing trees available. Raise a mound of stone, 2 ft. base, 1 $\frac{1}{2}$  ft. high, W. of cor.  
 Land, mountainous & broken. Soil, rocky, 4th rate.  
 Timber, cedar and pinyon.  
 Undergrowth, black brush, cinchona, Spanish dagger and rabbit brush. Fair growth of bunch grass.

-----  
 North, on true line, bet. secs. 25 and 30.  
 Over mountainous and broken land, sloping steeply W. into Snap Canyon, thru. scattering timber & undergrowth.  
 Ascend 5 ft.  
 3.40 Descend 16 ft.  
 10.90 Wash, course S. 75° W. Asc. 245 ft.  
 33.92 Spur, slopes S. 70° W. Set flag for triangulation of measurement of line bet. secs. 30 and 31, T. 33 N., R. 13 W.  
 Descend 6 ft.  
 38.92 Ascend 17 ft. to  
 40.00 Set an iron post, 3 ft. long, 1 in. in diam., 26 ins. in the ground, for  $\frac{1}{4}$  sec. cor., marked on brass cap,

$\begin{array}{c} \uparrow \\ S25 \end{array} | \begin{array}{c} \uparrow \\ S30 \end{array}$

1917 from which,

A pinyon, 9 ins. dia., brs. S. 2 $\frac{1}{2}$ ° W., 108 lks. dist. mkd.  $\frac{1}{4}$  S 25 BT.

8 Survey of West bdy. of Township 33 North, Range 13 West.

Chains.

No other bearing trees available, Raise a mound of stone, 2½ ft. base, 2 ft. high, W. of cor.  
 Ascend 770 ft., over steep broken SW. slope to sec. cor.  
 41.00 Wash in gulch, course S. 45° W.  
 52.24 Wash in gulch, course S. 80° W.  
 80.00 Set an iron post, 3 ft. long, 2 ins. in diam., 24 ins. in the ground, for cor. of secs. 19, 24, 25 and 30, marked on brass cap,

T33N	
R14W	R13W
S24	S19
S25	S30
1917	

from which,

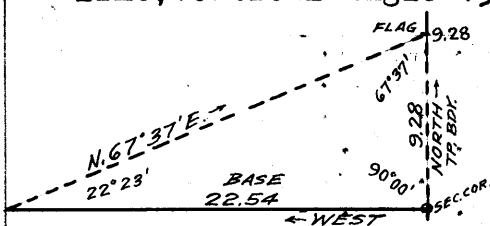
A pinyon, 10 ins. dia., brs. N. 85½° W., 295 lks. dist., mkd. T33N R14W S24 BT.

No other bearing trees available. Raise a mound of stone, 3 ft. base, 2 ft. high, W. of cor.  
 Land, mountainous and broken. Soil, rocky, 4th rate.  
 Timber, cedar and pinyon.  
 Undergrowth, black brush, sagebrush, cinchona, Spanish dagger and Brigham brush. Fair growth of bunch grass.

-----  
North, on true line, bet. secs. 19 and 24.

Over mountainous land, sloping steeply to the SW. into Snap Canyon, thru. scattering timber & undergrowth.

Impracticable to chain from this cor. Set a flag ahead on line, vertical angle +39¼°. From the cor. of secs. 19, 24,



25 & 30, measure a base west 22.54 chs., from the W. end of which, flag brs. N. 67° 37' E. The dist. triangulated is given by 22.54 x cot. 67° 37' or 22.54 x .41183 = 9.28 chs.

9.28 Triangulation point, on top of cliffs, bearing N. 17° W. & S. 18° E. facing SW., 390 ft. above sec. cor. This is also top of divide, same bearing. Continue line and measurement by chaining. Desc. 202 ft. over NE. slope.

22.15 Ascend 35 ft., over SE. slope.

27.12 Descend 213 ft., over NE. slope, to

40.00 Set an iron post, 3 ft. long, 1 in. in dia., on limestone rock, supported in a mound of stone, for ¼ sec. cor., mkd. on brass cap,

S24	
S19	
1917	

from which,

A pinyon, 14 ins. dia., brs. S. 79° E., 21 lks. dist. mkd. ¼ S19 BT.

A pinyon, 8 ins. dia., brs. N. 59° W., 29 lks. dist. mkd. ¼ S 24 BT.

Descend 300 ft., over N. and NW. slopes, to

57.22 Wash, 10 lks. wide, in gulch, course N. 15° E.

Ascend 95 ft. along E. slope, to

77.40 Descend 6 ft., over NE. slope, to

80.00 Set an iron post, 3 ft. long, 2 ins. dia., 20 ins. in ground to bedrock, supported in a mound of stone, for cor. of secs. 13, 18, 19 and 24, mkd. on brass cap,

T33N	
R14W	R13W
S13	S18
S24	S19
1917	

from which,

A pinyon, 6 ins. dia., brs. N. 5° E., 40 lks. dist., mkd.

T33N R13W S18 BT.

A pinyon, 11 ins. dia. brs. S. 7½° E., 104 lks. dist., mkd.

T33N R13W S19 BT.

A pinyon, 12 ins. dia., brs. S. 7° W., 96 lks. dist., mkd.

T33N R14W S24 BT.

A pinyon, 12 ins. dia., brs. N. 29½° W., 108 lks. dist., mkd.

T33N R14W S13 BT.

Land, mountainous. Soil, rocky, 4th rate.

E. 100 000

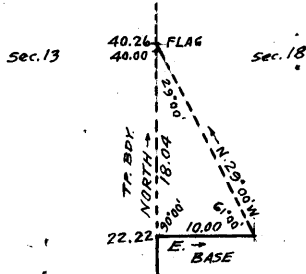
Survey of West bdy. of Township 33 North, Range 13 West. 9

Chains. Timber, cedar and pinyon.  
Undergrowth, sagebrush, cinchona, scrub oak, black brush,  
Spanish dagger and sarvis.

North, on true line, bet. secs. 13 and 18.  
Over mountainous land, thru. scattering timber and under-  
growth. Desc. 347 ft.; over NE. slope.

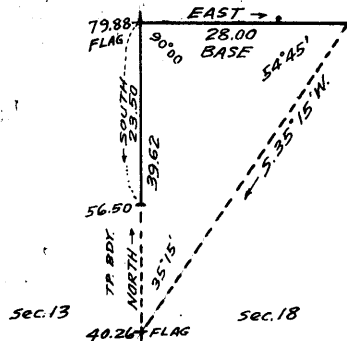
19.92 Wash, 40 lks. wide, in gulch, course N. 80° E. Asc. 14 ft. over  
SE. slope, to

22.22 Impracticable to chain farther because of slide rock and  
cliffs. Set a flag ahead on  
line; vertical angle +26 1/2°;  
From 22.22 ch. point, measure a  
base East 10.00 chs. -- imprac-  
ticable to secure longer base--  
from E. end of which, flag brs.  
N. 29° W. The dist. triangulated  
is given by 10.00 x cot. 29° or  
10.00 x 1.80405 = 18.04 chs., which  
added to 22.22 chs., gives 40.26 chs. N. from sec. cor.  
for position of triangulation point.



40.00 True point for 1/4 sec. cor. is inaccessible.

40.26 Triangulation point. Narrow ledge on E. slope of pinnacle,  
with cliff 300 to 500 ft. high, on S., E. and N. sides. No  
suitable point on this ledge for establishment of  
witness cor. to 1/4 sec. cor. is available. Impracticable  
to chain measurement N. of this point. Leave flag here  
and set another flag ahead on line-- vertical angle--  
10 1/4° -- from which measure a  
base East, 28.00 chs. -- imprac-  
ticable to secure longer base--  
from E. end of which, flag brs. S. 35°  
15' W. The dist. triangulated  
is given by 28.00 x cot. 35° 15'  
or 28.00 x 1.41497 = 39.62 chs.,  
which added to 40.26 chs. gives  
79.88 chs. N. from cor. of secs. 13,  
18, 19 & 24 as the position of  
the triangulation point.



56.50 From 79.88 ch. station, chain measurement, South 23.50 chs. to  
The nearest point on line at which it is practicable to  
establish witness cor. to the 1/4 sec. cor. This point is  
about 500 ft. below the 40.26 ch. station on Tp. bdy.  
Set an iron post, 3 ft. long, 1 in. in dia., 26 ins. in ground  
for witness cor. to 1/4 sec. cor., mkd. on brass cap,

S13 | S18  
W | C

1917 from which,

A pinyon, 6 ins. dia., brs. N. 87° E., 35 lks. dist. mkd. WC 1/4 S18 BT.

A cedar, 8 ins. dia., brs. S. 12 1/2° W., 24 lks. dist. mkd. WC 1/4 S13 BT.

Thence,

North, on true line, bet. secs. 13 and 18, continuing measure-  
ment from cor. of secs. 13, 18, 19 and 24.

Descend 121 ft., over NE. slope.

65.24 Wash, 50 lks. wide, in gulch, course N. 75° E.  
Ascend 126 ft. over SE. & E. slopes to sec. cor.

79.88 Triangulation point. Continue measurement by chaining.  
Ascend slightly over E. slope, to

80.00 Set an iron post, 3 ft. long, 2 ins. dia., 18 ins. in ground  
to bed rock, supported in a mound of stone, for cor. of  
secs. 7, 12, 13 and 18, mkd. on brass cap,

T33N  
R14W | R13W  
S12 | S 7  
S13 | S18

1917 from which,

A pinyon, 8 ins. dia., brs. N. 10° E., 112 lks.  
dist., mkd. T33N R13W S7 BT.

A pinyon, 5 ins. dia., brs. N. 27 1/2° W., 92 lks.  
dist., mkd. T33N R14W S12 BT.

## 10 Survey of West boundary of Township 33 North, Range 13 West.

Chains.	No other bearing trees available. Raise mound of stone, 3 ft. base, 2 ft. high, W. of cor. This cor. is 495 ft. below 40.26 ch. station Land, mountainous. Soil, limestone formations; 4th rate. Timber, pinyon & cedar. Undergrowth, black brush, sagebrush, cinchona, scrub oak, manzanita, Spanish dagger, rabbit brush and Brigham brush.
10.44	North, on true line, bet. secs. 7 and 12. Over mountainous land, thru. scattering timber & undergrowth. Ascend 65 ft., along E. slope.
40.00	Descend 345 ft., over E. and NE. slopes, to Set an iron post, 3 ft. long, 1 in. dia., 18 ins. in ground to bed rock, supported in a mound of stone, for $\frac{1}{4}$ sec. cor., mkd. on brass cap, $\begin{array}{c} S12   S7 \\ 1917 \end{array}$ from which, A pinyon, 5 ins. dia., brs. N. 67° E., 12 lks. dist., mkd. $\frac{1}{4}$ S7 BT. A pinyon, 8 ins. dia., brs. N. 56° W., 58 lks. dist., mkd. $\frac{1}{4}$ S12 BT.
41.50	Descend 52 ft., over NE. slope.
46.09	Wash, 20 lks. wide, in gulch, course NW. Asc. 130 ft. over SW. slope.
53.53	Descend 145 ft., over NW. slope, to Same wash, 40 lks. wide, in gulch, course N. 10° E.
58.99	Descend 47 ft., over NE. slope, to Same wash, 80 lks. wide, in gulch, course NW.
75.40	Descend 53 ft., over NW. slope, to Same wash, 30 lks. wide, in gulch, course N. 15° E.
80.00	Ascend 6 ft., over SE. slope, to Set an iron post, 3 ft. long, 2 ins. in diam., 24 ins. in ground, for cor. of secs. 1, 6, 7 and 12, mkd. on brass cap, $\begin{array}{c} T33N \\ R14W   R13W \\ S1   S6 \\ S12   S7 \\ 1917 \end{array}$ from which, A cedar, 9 ins. dia. brs. S. 72° E., 32 lks. dist., mkd. T33NR13WS7 BT. A pinyon, 12 ins. dia. brs. S. 13° W., 140 lks. dist., mkd. T33NR14WS12 BT. No other bearing trees available. Raise mound of stone, 3 ft. base, 2 $\frac{1}{2}$ ft. high, W. of cor. Land, mountainous. Soil, rocky, limestone formations; 4th rate. Timber, cedar and pinyon. Undergrowth, black brush, sagebrush, cinchona, Spanish dagger, scrub oak, manzanita & sarvis brush.
0.70	North, on true line, bet. secs. 1 and 6. Over mountainous land, thru. scattering timber & undergrowth. Ascend 8 ft., over E. slope.
40.00	Descend 165 ft., over NW. slope, to Set an iron post, 3 ft. long, 1 in. dia., on sandstone ledge, supported in mound of stone, for $\frac{1}{4}$ sec. cor. mkd. on brass cap, $\begin{array}{c} S1   S6 \\ 1917 \end{array}$ from which, A cedar, 14 ins. dia., brs. S. 51° E., 59 lks. dist., mkd. $\frac{1}{4}$ S6 BT. A cedar, 8 ins. dia., brs. N. 89° W., 12 lks. dist., mkd. $\frac{1}{4}$ S1 BT.
42.80	Descend 10 ft., over N. slope, to
46.97	Wash, 80 lks. wide, course N. 45° W. Asc. 24 ft.
62.64	Low ridge, brs. NW. and SE. Desc. 65 ft.
71.23	Wash, 40 lks. wide, course N. 45° W. Asc. 25 ft.
80.00	Descend 30 ft. over NW. slope, to Set an iron post, 3 ft. long, 3 ins. dia., 24 ins. in ground, for cor. of Ts. 33 & 34 N., Rs. 13 and 14 W., mkd. on brass cap, $\begin{array}{c} T34N \\ R14W   R13W \\ S36   S31 \\ S1   S6 \\ T33N \\ 1917 \end{array}$ from which, A cedar, 16 ins. dia. brs. S. 27 $\frac{1}{2}$ ° W., 470 lks. dist., mkd. T33NR14WS1 BT. No other bearing trees available. Raise mound of stone, 3 ft. base, 2 ft. high, S. of cor. Land, mountainous. Soil, sandy & gravelly; 2nd and 4th rate. Timber, cedar & pinyon. Undergrowth, black brush, rabbit brush, cinchona, spanish dagger. Undergrowth of bunch grass.

Survey of North boundary of Township 33 North, Range 13 West. 11

Chains.

From cor. of Ts. 33 and 34 N., Rs. 12 and 13 W., described in Book "B," West, on random line, setting temp. 1/4 sec. and sec. cors. at intervals of 40.00 chs., and at 479.47 chs., fall 14 lks. S. of cor. of Ts. 33 and 34 N., Rs. 13 and 14 W., herein before described. The falling answers to a correction of 0° 1', or 2 lks. N. per mile, counting from the NE. cor. of the Tp.

12.13  
21.75  
38.15  
39.47

From the cor. of Ts. 33 and 34 N., Rs. 13 and 14 W., S. 89° 59' E., on true line, bet. secs. 6 and 31. Over rolling land, thru. scattering timber and undergrowth. Ascend 50 ft., over NW. slope.

Spur, slopes N. Desc. 68 ft., over NE. slope.  
Wash, 45 lks. wide, course N. 20° W. Asc. 93 ft.  
Low ridge, brs. N. 15° W. and S. 15° E. Desc. 5 ft. to  
Set an iron post, 3 ft. long, 1 in. in dia., 12 ins. in ground to bed rock, supported in a mound of stone, for 1/4 sec. cor., marked on brass cap,

1/4 S 31

S 6

1917

No bearing trees available. Raise a mound of stone, 2 1/2 ft. base, 1 1/2 ft. high, N. of cor.

56.25

Descend 35 ft., over NE. slope.  
Wash, 45 lks. wide, in draw, course N. 35° W.  
Ascend 175 ft., over SW. slope, to

79.47

Set an iron post, 3 ft. long, 2 ins. in diam., 10 ins. in the ground, to bed rock, supported in a mound of stone for cor. of secs. 5, 6, 31 and 32, marked on brass cap,

T34N | R13E

S31 | S32

S 6 | S 5

T33N

1917

No bearing trees available. Raise a mound of stone, 3 ft. base, 2 ft. high, W. of cor.

Land, rolling.

Soil, sandstone formation, 4th rate. Timber, cedar and pinyon. Undergrowth, sagebrush, algerita, manzanita, greasewood and cactus.

Fair growth of bunch grass.

S. 89° 59' E., on true line, bet. secs. 5 and 32. Over mountainous land, thru. scattering timber and undergrowth.

17.00  
19.75  
24.72  
35.05  
40.00

Ascend 200 ft., over SW. slope.  
Ridge, brs. N. 70° W. and S. 70° E. Desc. 26 ft., over NE. slope.  
Ascend 40 ft., over W. slope.  
Spur, slopes N. 30° W. Descend 210 ft., over NE. slope.  
Head of draw, course N. 15° W. Asc. 46 ft., over W. slope, to  
Set an iron post, 3 ft. long, 1 in. in diam., 20 ins. in the ground to bedrock, supported in a mound of stone, for 1/4 sec. cor., mkd. on brass cap,

1/4 S 32

S 5

1917

No bearing trees available. Raise a mound of stone, 3 1/2 ft. base, 3 ft. high, N. of cor.

49.67  
55.73  
60.46  
75.00  
80.00

Ascend 238 ft., over W. slope.  
Short ridge, brs. N. 45° W. and S. 45° E. Desc. 45 ft. over NE. slope.  
Saddle. Asc. 108 ft. over W. slope.  
High peak. Desc. 300 ft., over E. slope.  
Asc. 17 ft., over NW. slope, to  
Set an iron post, 3 ft. long, 2 ins. in diam., 12 ins. in ground to bed rock, supported in a mound of stone, for cor. of secs. 4, 5, 32 and 33, mkd. on brass cap,

12 Survey of North boundary of Township 33 North, Range 13 West.

Chains.

T34N	R13W
S32	S33
S 5	S 4

T33N

1917 from which,

A pinyon, 7 ins. dia., brs. S. 39° W., 246 lks. dist. mkd. T33N R13W S5 BT.

A pinyon, 6 ins. dia., brs. N. 1 1/4° W., 214 lks. dist., mkd. T34N R13W S32 BT.

No other bearing trees available. Raise a mound of stone, 2 1/2 ft. base, 1 1/2 ft. high, W. of cor.

Land, mountainous. Soil, rocky, 4th rate.

Timber, cedar and pinyon.

Undergrowth, sagebrush, algerita, manzanita, greasewood and cactus. Fair growth of bunch grass.

S. 89° 59' E., on true line, bet. secs. 4 and 33.

Over mountainous land, on S. side of Pidgeon Canyon, thru. scattering timber and undergrowth.

Ascend 18 ft., over NW. slope.

5.80 Descend 34 ft., over NE. slope.

10.65 Wash, 10 lks. wide, course N. 20° W. Asc. 200 ft., over W. slope.

19.53 Narrow spur, slopes N. 45° W. Desc. 96 ft., over NE. slope.

32.50 Ascend 32 ft., over NW. slope, to

40.00 Set an iron post, 3 ft. long, 1 in. in diam., 20 ins. in the ground to bed rock, supported in a mound of stone, for 1/4 sec. cor., marked on brass cap,

1/4 S 33
----------

S 4
-----

1917

No bearing trees available. Raise a mound of stone, 3 ft. base, 2 ft. high, N. of cor. Desc. 6 ft., over N. slope.

42.60 Ascend 17 ft., over N. slope.

47.57 Descend 7 ft., over N. slope.

48.66 Ascend 34 ft., over NW. slope.

53.63 Descend 26 ft., over NE. slope.

57.13 Lower Pigeon Spring and water tank on N. side of Pigeon Canyon, brs. N. 20 chs. dist.

60.31 Wash, 6 lks. wide, course N. 15° W. Asc. 93 ft., over NW. slope.

69.15 Descend 13 ft., over N. slope.

71.85 Ascend 44 ft., over NW. slope, to

80.00 Set an iron post, 3 ft. long, 2 ins. dia., 26 ins. in ground, for cor. of secs. 3, 4, 33 and 34, mkd. on brass cap,

T34N	R13W
S33	S34
S 4	S 3

S 4	S 3
-----	-----

T33N

1917

No bearing trees available. Raise a mound of stone, 3 ft. base, 2 ft. high, W. of cor.

Land, mountainous. Soil, 4th rate.

Timber, cedar and pinyon.

Undergrowth, algerita, sarvis, manzanita, sagebrush, greasewood and cactus. Fair growth of bunch grass.

S. 89° 59' E., on true line, bet. secs. 3 and 34.

Over mountainous land, on S. side of Pigeon Canyon, thru. scattering timber and undergrowth. Asc. 30 ft. over NW. slope.

11.07 Descend 110 ft., over NE. slope.

35.00 Draw, course N. Asc. 6 ft., over NW. slope, to

40.00 Set an iron post, 3 ft. long, 1 in. in dia., 28 ins. in ground, for 1/4 sec. cor., mkd. on brass cap,

1/4 S 34
----------

S 3
-----

1917

No bearing trees available. Raise a mound of stone, 3 ft. base, 2 ft. high, N. of cor.

Ascend 96 ft., over NW. and N. slopes.

45.74 Road brs. N. 70° W. to St. Thomas, Nev. and S. 70° E. to Parashont Ranch.

Survey of North boundary of Township 33 North, Range 13 West. 13

## Chains.

- 61.54 Same road, brs. S. 80°W. and N. 80°E.  
 70.00 Descend 12 ft., over NE. slope.  
 74.04 Same road, brs. N. 80°W. and S. 80°E.  
 75.25 Wash, 90 lks. wide, in bottom of Pigeon Canyon, course N. 80°  
 W. Asc. 11 ft., over SW. slope, to  
 80.00 Set an iron post, 3 ft. long, 2 ins. in diam., 26 ins. in  
 ground, for cor. of secs. 2, 3, 34 and 35, mkd. on brass cap

T34N | R13W  
 S34 | S35  
 S 3 | S 2  
 T33N  
 1917

No bearing trees available. Raise a mound of stone, 3 ft.  
 base, 2 ft. high, W. of cor.

Land, mountainous. Soil, rocky, 4th rate.

Timber, cedar and pinyon.

Undergrowth, sagebrush, algerita, manzanita, greasewood and  
 cactus. Fair growth of bunch grass.

S. 89°59'E., on true line, bet. secs. 2 and 35.  
 Over mountainous land, on N. side of Pigeon Canyon, thru.  
 scattering timber and undergrowth. Asc. 92 ft. over SW.  
 slope, to

- 24.27 Wash, 30 lks. wide, course S. 30°W.  
 Ascend 390 ft., over steep broken W. slope, to  
 38.21 Ascend 11 ft., over NW. slope, to  
 40.00 Set an iron post, 3 ft. long, 1 in. in dia., 12 ins. in  
 ground to bedrock, supported in a mound of stone, for  $\frac{1}{4}$   
 sec. cor., mkd. on brass cap,

$\frac{1}{4}$  S 35

S 2

1917

from which,

A pinyon, 8 ins. dia., brs. N. 55°W., 89 lks. dist., mkd.  $\frac{1}{4}$  S35 BT.

A pinyon, 6 ins. dia., brs. S. 30°W., 25 lks. dist., mkd.  $\frac{1}{4}$  S2 BT.

Ascend slightly over NW. slope, to

- 41.12 Descend 5 ft., over N. slope.  
 45.12 Ascend 37 ft., over NW. slope.  
 50.79 Descend 20 ft., over NE. slope.  
 52.97 Bottom of ravine, course N. 55°W. Asc. 195 ft.  
 62.40 Spur, slopes N. 45°W. Descend 135 ft.  
 70.58 Gulch, course N. 45°W. Asc. 180 ft., over SW. slope, to  
 80.00 Set an iron post, 3 ft. long, 2 ins. dia., 12 ins. in ground,  
 to bedrock, supported in a mound of stone, for cor. of  
 secs. 1, 2, 35 and 36, mkd. on brass cap,

T34N | R13W

S35 | S36

S 2 | S 1

T33N

1917

No bearing trees available. Raise a mound of stone, 2  $\frac{1}{2}$   
 ft. base, 1  $\frac{1}{2}$  ft. high, W. of cor.

Land, mountainous. Soil, rocky, 4th rate.

Timber, cedar and pinyon.

Undergrowth, sagebrush, algerita, manzanita, greasewood and  
 cactus. Fair growth of bunch grass.

S. 89°59'E., on true line, bet. secs. 1 and 36.  
 Over mountainous land, thru. scattering timber and under-  
 growth. Asc. 79 ft., over SW. slope, to

- 4.05 Spur, slopes N. 45°W. from E. Ascend.  
 11.75 Leave top of spur, slopes W. from SE. Asc. 31 ft. to  
 15.62 Spur, slopes N. Desc. 22 ft., over NE. slope.  
 23.00 Head of draw, course N. 15°W. Enter rolling land.  
 Ascend 31 ft., over NW. slope, to  
 40.00 Set an iron post, 3 ft. long, 1 in. in diam., 26 ins. in  
 ground, for  $\frac{1}{4}$  sec. cor., mkd. on brass cap,

$\frac{1}{4}$  S 36

S 1

1917

from which,

14 Survey of North bdy. of Township 33 North, Range 13 West.

Chains. A cedar, 14 ins. dia., brs. N.  $41\frac{3}{4}^{\circ}$  W., 44 lks. dist.,  
 mkd.  $\frac{1}{4}$  S36 BT.  
 A cedar, 16 ins. dia., brs. S.  $71\frac{3}{4}^{\circ}$  E., 77 lks. dist.,  
 mkd.  $\frac{1}{4}$  S1 BT.  
 Descend 6 ft., over N. slope.  
 Ascend 10 ft., over NW. slope.  
 45.00 Descend 50 ft., over N. slope, to  
 53.00 The cor. of Ts. 33 and 34 N., Rs. 12 and 13 W., described in  
 80.00 Book "B."  
 Land, mountainous and rolling. Soil, rocky, 4th rate.  
 Timber, cedar and pinyon.  
 Undergrowth, sagebrush, algerita, manzanita, greasewood and  
 cactus. Fair growth of bunch grass.

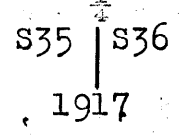
Boundaries of Township 33 North, Range 13 West.  
 Latitudes, departures and closing errors.

Line designated,	True bearing.	Dist.	Latitudes.		Departures.	
			N.	S.	E.	W.
South boundary, (8th. Std. Par. N.)	West,	480.00				480.00
West boundary,	North,	480.00	480.00			
North boundary,	S. $89^{\circ}59'$ E.	479.47		.14	479.47	
East boundary,	South,	480.00		480.00		
Convergency,					.53	
<u>Totals.</u>			480.00	480.14	480.00	480.00
				480.00		480.00
<u>Error in latitude.</u>			0.14			
<u>Error in departure;</u>					0.00	



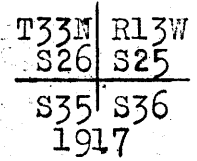
Chains.

From the standard cor. of secs. 35 and 36, on the S. bdy. of the Tp. (8th. Std. Par. N.), hereinbefore described, N. 0° 1' W., bet. secs. 35 and 36.  
 Over gently rolling land, thru. scattering timber and dense undergrowth. Desc. 40 ft.  
 24.98 Shallow draw, course N. 70° E. Asc. 32 ft. to  
 40.00 Set an iron post, 3 ft. long, 1 in. in diam., 26 ins. in the ground, for  $\frac{1}{4}$  sec. cor., marked on brass cap,



from which,  
 A cedar, 18 ins. in diam., brs. S. 32° E., 40 lks. dist., marked  $\frac{1}{4}$  S36 BT.  
 A cedar, 10 ins. in diam., brs. S. 74 $\frac{1}{2}$ ° W., 69 lks. dist., marked  $\frac{1}{4}$  S 35 BT.

Ascend 27 ft.  
 70.00 Descend 9 ft., to  
 80.00 Set an iron post, 3 ft. long, 2 ins. in diam., 26 ins. in the ground, for cor. of secs. 25, 26, 35 and 36, marked on brass cap,

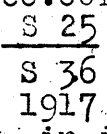


from which,  
 A cedar, 10 ins. in diam., brs. N. 67° E., 28 lks. dist., marked T33N R13W S25 BT.  
 A cedar, 20 ins. in diam., brs. S. 80 $\frac{1}{2}$ ° E., 135 lks. dist., marked T33N R13W S36 BT.  
 A cedar, 12 ins. in diam., brs. S. 51 $\frac{1}{2}$ ° W., 78-lks. dist., marked T33N R13W S35 BT.  
 A cedar, 22 ins. in diam., brs. N. 33 $\frac{1}{2}$ ° W., 39 lks. dist., marked T33N R13W S26 BT.

Land, gently rolling.  
 Soil, gravelly loam, limestone formation, 3rd rate.  
 Timber, cedar and pinyon.  
 Undergrowth, sagebrush, algerita and cinchona.

40.00 East, on a random line, bet. secs. 25 and 36,  
 79.84 Set temp.  $\frac{1}{4}$  sec. cor.  
 Intersect E. bdy. of Tp., 14 lks. S. of the cor. of secs. 25, 30, 31 and 36, described in Book "B."  
 Thence,  
 S. 89° 54' W., on a true line, bet. secs. 25 and 36.  
 Over nearly level land, thru. scattering timber and dense undergrowth. Desc. 10 ft.

9.85 Ascend 43 ft., to  
 39.92 Set an iron post, 3 ft. long, 1 in. in diam., 26 ins. in the ground, for  $\frac{1}{4}$  sec. cor., marked on brass cap,



from which,  
 A cedar, 14 ins. in diam., brs. N. 34 $\frac{1}{2}$ ° E., 161 lks. dist., marked  $\frac{1}{4}$  S 25 BT.  
 A pinyon, 14 ins. in diam., brs. S. 23 $\frac{1}{2}$ ° E., 90 lks. dist., marked  $\frac{1}{4}$  S 36 BT..

55.00 Descend 16 ft., to  
 79.84 The cor. of secs. 25, 26, 35 and 36.  
 Land, nearly level and gently rolling.  
 Soil, heavy adobe and clay, 3rd rate.  
 Timber, cedar and pinyon.  
 Undergrowth, sagebrush, cinchona and algerita.

N. 0° 1' W., bet. secs. 25 and 26.  
 Over nearly level land, thru. scattering timber and dense undergrowth. Descend 9 ft.  
 5.00 Ascend 32 ft. to

## 16 Survey of the Subdivision lines of Township 33 North Range 13 West.

Chains.

40.00 Set an iron post, 3 ft. long, 1 in. in diam., 26 ins. in the ground, for  $\frac{1}{4}$  sec. cor., marked on brass cap,

S26 | S25

1917 from which,

A cedar, 18 ins. in diam., brs. N.  $21\frac{1}{4}^{\circ}$  E., 61 lks. dist., marked  $\frac{1}{4}$  S 25 BT.

A cedar, 12 ins. in diam., brs. S.  $67^{\circ}$  W., 68 lks. dist., marked S 26 BT.

Ascend 26 ft.

65.00 Descend 66 ft., to

80.00 Set an iron post, 3 ft. long, 2 ins. in diam., 28 ins. in the ground, for cor. of secs. 23, 24, 25 and 26, marked on brass cap,

T33N | R13W

S23 | S24

S26 | S25

1917

from which,

A cedar, 10 ins. in diam., brs. N.  $79\frac{1}{2}^{\circ}$  E., 77 lks. dist., marked T33N R13W S24 BT.

A cedar, 20 ins. in diam., brs. S.  $38\frac{1}{2}^{\circ}$  E., 85 lks. dist., marked T33N R13W S25 BT.

A cedar, 10 ins. in diam., brs. S.  $36\frac{1}{2}^{\circ}$  W., 148 lks. dist., marked T33N R13W S26 BT.

A cedar, 14 ins. in diam., brs. N.  $28^{\circ}$  W., 546 lks. dist., marked T33N R13W S23 BR.

Land, nearly level and gently rolling.

Soil, adobe and clay, limestone formation, 3rd rate.

Timber, cedar and pinyon.

Undergrowth, sagebrush, cinchona and algerita.

East, on a random line, bet. secs. 24 and 25.

40.00 Set temp.  $\frac{1}{4}$  sec. cor.

79.96 Intersect E: bdy. of Tp., 12 lks. S. of the cor. of secs. 19, 24, 25 and 30, described in Book "B."

Thence,

S.  $89^{\circ}55'$  W., on a true line, bet. secs. 24 and 25.

Over gently rolling land, thru. scattering timber and dense undergrowth.

Descend 11 ft.

5.00 Wide draw, course N.  $35^{\circ}$  E. Ascend 28 ft.

14.95 Thence, over nearly level land,

24.95 Descend 21 ft., to  $\frac{1}{4}$  sec. cor.

34.95 Road, brs. N.  $30^{\circ}$  W. and S.  $30^{\circ}$  E.

39.98 Set an iron post, 3 ft. long, 1 in. in diam., 26 ins. in the ground, for  $\frac{1}{4}$  sec. cor., marked on brass cap,

$\frac{1}{4}$  S 24

S 25

1917

from which,

A cedar, 26 ins. in diam., brs. N.  $59\frac{3}{4}^{\circ}$  E., 325 lks. dist., marked  $\frac{1}{4}$  S 24 BT.

A cedar, 16 ins. in diam., brs. S.  $50\frac{3}{4}^{\circ}$  W., 171 lks. dist., marked  $\frac{1}{4}$  S 25 BT.

Ascend 29 ft.

55.00 Descend 11 ft.

59.95 Small draw, course N.  $15^{\circ}$  E. Ascend 27 ft.

75.00 Descend 11 ft. to

79.96 The cor. of secs. 23, 24, 25 and 26.

Land, gently rolling and nearly level.

Soil, adobe, and clay and gravelly loam, 2nd rate.

Timber, cedar and pinyon.

Undergrowth, sagebrush, cinchona and algerita.

N.  $0^{\circ}1'$  W., bet. secs. 23 and 24.

Over rolling land, thru. scattering timber and scattering undergrowth.

Survey of Subdivision lines of Township 33 North, Range 13 West. 17

Chains.

2.35 Descend 7 ft.  
 14.98 Large draw, course N.65°E. Ascend 42 ft..  
 22.12 Descend 53 ft.  
 27.17 Draw, course N.50°E. Ascend 35 ft.  
 33.18 Ridge, brs. N.35°E. and S.35°W. Descend 65 ft.  
 40.00 Draw, course N.80°E. Ascend 30 ft., to  
 Set an iron post, 3 ft, long, 1 in. in diam., 26 ins. in  
 the ground, for  $\frac{1}{4}$  sec.cor., marked on brass cap,

$\frac{1}{4}$   
 S23 | S24  
 1917

from which,  
 A pinyon, 10 ins. in diam., brs. N.42°W., 82 lks..  
 dist., marked  $\frac{1}{4}$  S23 BT.  
 A cedar, 16 ins. in diam., brs. S.54 $\frac{1}{2}$ °E., 75 lks..  
 lks. dist., marked  $\frac{1}{4}$  S24 BT.

Descend 160 ft.  
 56.40 Main draw, course N.15°W. Ascend 30 ft.  
 61.13 Descend 18 ft.  
 65.12 Ascend 13 ft.  
 72.12 Long spur, slopes N.70°W. Descend 80 ft.  
 76.14 Wash, 40 lks. wide, 3 ft. deep, in large draw, course N.70°  
 W. Ascend 55 ft.  
 76.68 Road, brs. N.70°W. and S.70°E.  
 80.00 Set an iron post, 3 ft. long, 2 ins. in diam., on surface  
 rock, supported in a mound of stone, for cor. of secs. 13,  
 14, 23 and 24, marked on brass cap,

T33N | R13W  
 S14 | S13  
 S23 | S24  
 1917

from which,  
 A cedar, 8 ins. in diam., brs. N.51°E., 39 lks. dist.,  
 marked T33N R13W S13 BT.  
 A pinyon, 10 ins. in diam., brs. S.44 $\frac{1}{2}$ °E., 68 lks. dist.,  
 marked T33N R13W S24 BT.  
 A pinyon, 8 ins. in diam., brs. S.78 $\frac{1}{2}$ °W., 76 lks. dist.,  
 marked T33N R13W SP3 BT.  
 A cedar, 12 ins. in diam., brs. N.62°W., 542 lks. dist.,  
 marked T33N R13W S14 BT.

Land, rolling.  
 Soil, limestone formation, 3rd rate.  
 Timber, cedar and pinyon.  
 Undergrowth, sagebrush, cinchona and algerita.

East, on a random line, bet. secs. 13 and 24.  
 40.00 Set temp.  $\frac{1}{4}$  sec. cor.  
 80.06 Intersect E. bdy. of Tp., 24 lks. S. of the cor. of secs. 13, 18,  
 19 and 24, described in Book "B."  
 Thence,  
 S.89°50'W., on a true line, bet. secs. 13 and 24.  
 Over-rolling land, thru scattering timber and undergrowth.  
 Descend 30 ft.  
 16.90 Shallow draw, course N. 30°E. Ascend 75 ft., to  
 40.03 Set an iron post, 3 ft. long, 1 in. in diam., 26 ins. in the  
 ground, for  $\frac{1}{4}$  sec. cor., marked on brass cap,

$\frac{1}{4}$  S 13  
 S 24  
 1917

from which,  
 A cedar, 10 ins. in diam., brs. N.65°E., 143 lks..  
 dist., marked  $\frac{1}{4}$  S13 BT.  
 A cedar, 16 ins. in diam., brs. S.4°W., 74 lks..  
 dist., marked  $\frac{1}{4}$  S24 BT.

Ascend 34 ft.  
 49.95 Ridge, brs. N. and S. Desc. 35 ft. to

18 Survey of Subdivision lines of Township 33 North Range 13 West

Chains.

64.95 Enter mountainous land. Desc. 172 ft., to  
 80.06 The cor. of secs. 13, 14, 23 and 24.  
 Land, rolling and mountainous.  
 Soil, adobe and clay; limestone formation, 3rd rate.  
 Timber, cedar and pinyon.  
 Undergrowth, sagebrush, cinchona and algerita.

-----  
 N. 0° 1' W., bet. secs. 13 and 14.  
 Over mountainous land, thru scattering timber and under-  
 growth. Ascend 77 ft.

12.91 Short spur, slopes N. 45° W. Desc. 150 ft.  
 23.64 Small ravine, course N. 45° W. Ascend 85 ft.  
 32.48 Long spur, slopes N. 45° W. Descend 129 ft.  
 40.00 Wash, in bottom of large draw, course N. 45° W.  
 Set an iron post, 3 ft. long, 1 in. in diam., 32 ins. in the  
 ground, for  $\frac{1}{4}$  sec. cor., marked on brass cap,

S14	S13
-----	-----

1917

from which,  
 A cedar, 10 ins. in diam., brs. S. 55° E., 50 lks.  
 dist. marked  $\frac{1}{4}$  S13 BT,  
 A cedar, 8 ins. in diam., brs. N. 17° W., 140 lks. dist.  
 marked  $\frac{1}{4}$  S14 BT

45.65 Spur, slopes W. Desc. 70 ft.  
 51.46 Large draw, course S. 75° W. Asc. 84 ft., to  
 56.65 Spur, slopes S. 45° W. Asc. 23 ft. to  
 61.64 Spur, slopes W. Desc. 107 ft.  
 70.94 Draw, course S. 65° W. Asc. 130 ft.  
 77.21 Descend 42 ft. to  
 80.00 Set an iron post, 3 ft. long, 2 ins. in diam., 14 ins. in  
 the ground, to bed rock, in a mound of stone, 1 $\frac{1}{2}$  ft. high,  
 for cor. of secs. 11, 12, 13 and 14, marked on brass  
 cap,

T33N	R13W
S11	S12

S14	S13
-----	-----

1917

from which,  
 A cedar, 12 ins. in diam., brs. N. 85 $\frac{1}{2}$ ° W., 102 lks.  
 dist., marked T33N R13W S11 BT.

No other trees within limits; raise a mound of stone, 3 ft. base, 2 ft. high, W. of cor.

Land, mountainous.  
 Soil, adobe and clay; limestone formation, 3rd rate.  
 Timber, cedar and pinyon.  
 Undergrowth, sagebrush; cinchona and algerita.  
 Fair growth of bunch grass.

40.00 East, on a random line, bet. secs. 12 and 13;  
 Set temp.  $\frac{1}{4}$  sec. cor.  
 79.94 Intersect E. bdy. of Tp., 19 lks. S. of the cor. of secs. 7,  
 12, 13 and 18, described in Book "B."

Thence,  
 S. 89° 52' W. on a true line, bet. secs. 12 and 13.  
 Over mountainous land, thru scattering timber and dense  
 undergrowth.

8.45 Descend 40 ft.  
 Wide draw, course S. 45° W. Asc. 43 ft.  
 15.35 Descend 125 ft.  
 31.20 Wash, 10 lks. wide, in ravine, course N. 45° W. Asc. 50 ft.  
 33.90 Small spur, slopes N. 15° W. Desc. 23 ft.  
 36.55 Small draw, course N. 10° W. Asc. 55 ft. to  
 39.97 Set an iron post, 3 ft. long, 1 in. in diam., 26 ins. in the  
 ground, for  $\frac{1}{4}$  sec. cor., marked on brass cap,

S	12
---	----

S	13
---	----

1917

Survey of Subdivision lines of Township 33 North Range 13 West. 19

Chains.

from which,  
 A pinyon, 10 ins. in diam., brs. N. 31 1/2° W., 433 lks.  
 dist., marked S12 BT.  
 A cedar, 20 ins. in diam., brs. S. 36 1/2° W., 35 lks.  
 dist., marked S13 BT.

Ascend 22 ft.  
 42.55 Small spur, slopes N. 30° W. Desc. 105 ft.  
 48.95 Ravine, course N. Asc. 155 ft.  
 62.20 Ridge, brs. N. and S. Desc. 170 ft.  
 72.45 Main draw, course S. 45° W. Asc. 108 ft., to  
 79.94 The cor. of secs. 11, 12, 13 and 14.  
 Land, mountainous,  
 Soil, rocky loam, limestone formation, 3rd rate.  
 Timber, cedar and pinyon.  
 Undergrowth, sagebrush, cinchona, algerita and scrub white oak.

N. 0° 1' W., bet. secs. 11 and 12.  
 Over mountainous land, thru scattering timber and undergrowth.

Ascend 83 ft.  
 13.12 Large spur, slopes S. 45° W. Descend 157 ft.  
 28.97 Small draw, course N. 45° E. Ascend 45 ft. to  
 40.00 Set an iron post, 3 ft. long, 1 in. in diam., 8 ins. in  
 the ground to bed rock, supported in a mound of stone  
 for sec. cor., marked on brass cap,

S11 | S12  
 1917

from which,  
 A pinyon, 8 ins. in diam., brs. N. 5° E., 83 lks.  
 dist., marked S. 12 BT.  
 A cedar, 8 ins. in diam., brs. S. 18 1/2° W., 73 lks.  
 dist., marked S11 BT.

Ascend 7 ft.  
 43.50 Spur, slopes E. Descend 205 ft.  
 59.15 Draw, course N. 50° W.  
 Ascend 47 ft.  
 63.40 Spur, slopes W.  
 Descend 102 ft.  
 68.77 Main draw, course N. 20° E.  
 Ascend 45 ft.  
 75.83 Spur, slopes N. 40° E.  
 Descend 32 ft. to  
 80.00 Set an iron post, 3 ft. long, 2 ins. in diam., on surface  
 rock, supported in a mound of stone, for cor. of secs.  
 1, 2, 11 and 12, marked on brass cap,

T33N | R13W  
 S 2 | S 1  
 S11 | S12  
 1917

from which,  
 A cedar, 10 ins. in diam., brs. S. 25 1/2° E., 124 lks.  
 dist., marked T33N R13W S12 BT.  
 A cedar, 8 ins. in diam., brs. S. 17 1/2° W., 165 lks.  
 dist., marked T33N R13W S11 BT.

No other trees within limits. Raise a mound of stone,  
 2 1/2 ft. base, 3 1/2 ft. high, W. of cor.  
 Land, mountainous.  
 Soil, heavy adobe and clay, rocky, 3rd rate.  
 Timber, cedar and pinyon.  
 Undergrowth, sage brush, algerita, cinchona and scrub white oak.

## 20. Survey of Subdivision lines of Township 33 North Range 13 West

Chains.	East, on a random line, bet. secs. 1 and 12. Set temp. $\frac{1}{4}$ sec. cor.
40.00	Intersect E. bdy. of Tp., 26 lks. S. of the cor. of secs. 1, 6,
79.94	7 and 12; described in Book "B." Thence, S. $89^{\circ}49'W.$ , on a true line, bet. secs. 1 and 12. Over mountainous land, thru. scattering timber and under- growth.
10.80	Descend 192 ft. Gulch, course S. $10^{\circ}W.$ Ascend 187 ft.
24.60	Spur, slopes S. into Pigeon Canyon. Descend 300 ft., to
39.97	Set an iron post, 3 ft. long, 1 in. in diam., 26 ins. in the ground, for $\frac{1}{4}$ sec. cor., marked on brass cap,  $\frac{1}{4} \begin{array}{r} S \ 1 \\ S \ 12 \\ 1917 \end{array}$
	from which, A pinyon, 20 ins. in diam., brs. N. $10\frac{1}{4}^{\circ}E.$ , 248 lks. dist., marked $\frac{1}{4}S \ 1 \ BT.$ A cedar, 10 ins. in diam., brs. S. $66\frac{1}{2}^{\circ}W.$ , 86 lks. dist., marked $\frac{1}{4}S \ 12 \ BT.$
40.35	Descend 10 ft. Wash, 15 lks. wide, in gulch, course S. $15^{\circ}W.$ Ascend 165 ft.
50.70	Spur, slopes S. Descend 300 ft.
70.40	Road, brs. N. $45^{\circ}W.$ to Grand Gulch, mine, and St. Thomas, Nevada, and S. $45^{\circ}E.$ to Parashont Ranch.
71.45	Wash, 60 lks. wide, in bottom of Pigeon Canyon, course N. Ascend 130 ft., to
79.94	The cor. of secs. 1, 2, 11 and 12. Land, mountainous. Soil, heavy loam, rocky; limestone, 3rd rate. timber, cedar and pinyon. Undergrowth, sagebrush, algerita and white oak.
-----	
40.00	N. $0^{\circ}1'W.$ , on a random line, bet. secs. 1 and 2. Set temp. $\frac{1}{4}$ sec. cor.
80.28	Intersect N. bdy. of Tp., 5 lks. E. of the cor. of secs. 1, 2, 35 and 36, hereinbefore, described. Thence, S. $0^{\circ}3'E.$ , on a true line, bet. secs. 1 and 2. Over mountainous land, thru. scattering timber and dense undergrowth.
7.50	Descend 92 ft. Gulch, course N. $55^{\circ}W.$ Ascend 145 ft.
13.80	Spur, slopes W. Descend 115 ft.
20.80	Gulch, course S. $30^{\circ}W.$ Ascend 43 ft.
28.10	Descend 85 ft., to.
40.28	Set an iron post, 3 ft. long, 1 in. in diam., 10 ins. in the ground, to bed rock, supported in a mound of stone for $\frac{1}{4}$ sec. cor., marked on brass cap,  $\frac{1}{4} \begin{array}{r} S \ 2 \ S \ 1 \\ 1917 \end{array}$
46.25	No bearing trees available. Raise a mound of stone, 3 ft. base, $2\frac{1}{2}$ ft. high, W. of cor. Cor. stands in head of gulch, course S. $30^{\circ}W.$ Ascend 70 ft. Ridge, brs. N. $30^{\circ}E.$ and S. $30^{\circ}W.$

Survey of Subdivision Lines of Township 33 North, Range 13 West. 21

Chains.

57.48 Descend 89 ft., to  
Right rim of Pigeon Canyon, brs. E. and W.  
72.60 Descend 267 ft., to  
Wash, 60 lks. wide, in bottom of Pigeon Canyon, course N. 50° W.  
Road in canyon, brs. N. 50° W. to Grand Gulch Mine and and  
St. Thomas, Nevada, and S. 50° E. to Parashont Ranch.  
80.28 Ascend 170 ft., to  
The cor. of secs. 1, 2, 11 and 12.  
Land, mountainous.  
Soil, rocky, limestone formation; 3rd rate.  
Timber, cedar and pinyon.  
Undergrowth, sagebrush, algerita and cinchona.

-----  
From the standard cor. of secs. 34 and 35, on the S. bdy.  
of Tp. (8th. Std. Par. N.) hereinafore described,  
N. 0° 1' W.; bet. secs. 34 and 35.  
Over gently rolling land, thru. scattering timber and dense  
undergrowth.

40.00 Descend 43 ft. to  
Set an iron post, 3 ft. long, 1 in. in diam., 26 ins. in  
the ground, for  $\frac{1}{4}$  sec. cor., marked on brass cap,

S34 | S35

1917

from which,  
A cedar, 18 ins. in diam., brs. N. 77 $\frac{1}{2}$ ° E., 30  
lks. dist., marked  $\frac{1}{4}$  S35 BT.  
A cedar, 10 ins. in diam., brs. N. 56 $\frac{1}{2}$ ° W., 118  
lks. dist., marked  $\frac{1}{4}$  S 34 BT.

73.00 Descend 45 ft.  
Ascend 19 ft., to  
80.00 Set an iron post, 3 ft. long, 2 ins. in diam., 24 ins. in  
the ground, for cor. of secs. 26, 27, 34 and 35, marked  
on brass cap,

T33N | R13W  
S27 | S26

S34 | S35  
1917

from which,  
A cedar, 12 ins. in diam., brs. N. 63 $\frac{1}{2}$ ° E., 89 lks.  
dist., marked T33N R13W S26 BT.  
A cedar, 10 ins. in diam., brs. S. 79° E., 68, lks.  
dist., marked T33N R13W S35 BT.  
A cedar, 10 ins. in diam., brs. N. 67 $\frac{1}{2}$ ° W., 89 lks.  
dist., marked T33N R13W S27 BT.  
A cedar, 6 ins. in diam., brs. S. 58 $\frac{1}{2}$ ° W., 119 lks.  
dist., marked T33N R13W S34 BT.

Land, gently rolling.  
Soil, heavy adobe clay and gravel, 3rd rate.  
Timber, cedar and pinyon.  
Undergrowth, sagebrush, cinchona and algerita.

-----  
40.00 East, on a random line, bet. secs. 26 and 35.  
79.84 Set temp.  $\frac{1}{4}$  sec. cor.  
Intersect N. and S. line, 12 lks. S. of the cor. of secs. 25, 26,  
35 and 36.  
Thence,  
S. 89° 55' W., on a true line, bet. secs. 26 and 35.  
Over gently rolling land, thru. scattering timber and dense  
undergrowth.

15.00 Descend 10 ft.  
39.92 Ascend 41 ft., to  
Set an iron post, 3 ft. long, 1 in. in diam., 20 ins. in the

## S 22 Survey of Subdivision lines of Township 33 North Range 13 West.

Chains.

ground to bed rock, supported in a mound of stone, for  
 $\frac{1}{4}$  sec.cor., marked on brass cap,

S 26  
 S 35  
 1917

from which,

A pinyon, 20 ins. in diam., brs. N.78°E., 91 lks.  
 dist., marked  $\frac{1}{4}$ S26 BT.

A cedar, 8 ins. in diam., brs. S.70°E., 50 lks.  
 dist., marked  $\frac{1}{4}$ S35 BT.

Ascend 23 ft.

55.00

Descend 25 ft. to

79.84

The cor. of secs. 26, 27, 34 and 35.

Land, gently rolling.

Soil, heavy adobe and clay, gravelly loam, 3rd rate.

Timber, cedar and pinyon.

Undergrowth, sagebrush, cinchona, algerita and white oak.

N.0°1'W., bet. secs. 26 and 27.

Over nearly level land, thru scattering timber and dense  
 undergrowth. Descend 10 ft. to

25.00

Enter rolling land. Descend 74 ft. to

40.00

Set an iron post, 3 ft. long, 1 in. in diam., 26 ins. in  
 the ground, for  $\frac{1}{4}$  sec.cor., marked on brass cap,

S27 | S26

1917

from which,

A cedar, 6 ins. in diam., brs. S.50°E., 26 lks.  
 dist., marked  $\frac{1}{4}$ S26 BT.

A cedar, 36 ins. in diam., brs. N.1°10'W., 323 lks.  
 dist., marked  $\frac{1}{4}$ S 27 BT.

Corner stands in bottom of draw, course N.10°E.

Descend 63 ft.

55.46

Wash, 10 lks. wide, in large draw, course N.65°E.

Ascend 87 ft.

78.74

Large spur, slopes N.45°E.

Descend 6 ft. to

80.00

Set an iron post, 3 ft. long, 2 ins. in diam., 24 ins. in  
 the ground, for cor. of secs. 22, 23, 26 and 27, marked  
 on brass cap.

T33N R13W

S22 | S23

S27 | S26

1917

from which,

A cedar, 10 ins. in diam., brs. N.33 $\frac{1}{2}$ °E., 44 lks.  
 dist., marked T33N R13W S23 BT.

A cedar, 8 ins. in diam., brs. S.25 $\frac{1}{2}$ °E., 97 lks.  
 dist., marked T33N R13W S26 BT.

A cedar, 12 ins. in diam., brs. S.58°W., 17 lks.  
 dist., marked T33N R13W S27 BT.

A cedar, 14 ins. in diam., brs. N.38 $\frac{1}{2}$ °W., 61 lks..  
 dist., marked T33N R13W S22 BT.

Land, nearly level and rolling.

Soil, adobe, clay and gravelly loam, 3rd rate.

Timber, cedar and pinyon.

Undergrowth, sagebrush, cinchona, algerita and scrub white  
 oak.

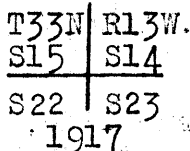


Chains.	East, on a random line, bet. secs. 23 and 26.
40.00	Set temp. $\frac{1}{4}$ sec. cor.
79.84	Intersect N. and S. line, 10 lks. N. of the cor. of secs. 23, 24, 25 and 26.
	Thence
	N. $89^{\circ}56'$ W., on a true line, bet. secs. 23 and 26.
	Over rolling land, thru scattering timber and dense undergrowth.
5.55	Descend slightly to Wash, 5 lks. wide, in draw, course N. $30^{\circ}$ E.
	Ascend 68 ft.
26.50	Long spur, slopes N. $30^{\circ}$ E.
	Descend 127 ft., to
39.92	Set an iron post, 3 ft. long, 1 in. in diam., on surface rock, supported in a mound of stone, for $\frac{1}{4}$ sec. cor., marked on brass cap,
	$\frac{1}{4}$ S 23 S 26 1917
	from which,
	A cinchona, 8 ins. in diam., brs. N. $39^{\circ}$ W., 133 lks. dist., marked $\frac{1}{4}$ S 23 BT.
	A cinchona, 8 ins. in diam., brs. S. $70^{\circ}$ E., 69 lks. dist., marked $\frac{1}{4}$ S 26 BT.
	Descend 34 ft.
41.65	Draw, course N. $15^{\circ}$ E.
	Ascend 90 ft.
51.80	Spur, slopes N. $20^{\circ}$ E.
	Descend 78 ft.
66.85	Large draw, course N. $35^{\circ}$ E.
	Ascend 115 ft.
74.85	Long spur, slopes N. $45^{\circ}$ E.
	Descend 11 ft. to
79.84	The cor. of secs. 22, 23, 26 and 27.
	Land, rolling.
	Soil, adobe, clay and heavy loam, rocky, 3rd rate.
	Timber, cedar, pinyon, and cinchona.
	Undergrowth, sage brush, algerita and scrub oak.
	-----
	N. $0^{\circ}$ 1' W., bet. secs. 22 and 23.
	Over rolling land, thru scattering timber and dense undergrowth.
	Descend 74 ft.
7.12	Draw, course N. $55^{\circ}$ E.
	Ascend 143 ft.
34.85	Spur, slopes E.
	Descend 14 ft. to
40.00	Set an iron post, 3 ft. long, 1 in. in diam., 26 ins. in the ground, for $\frac{1}{4}$ sec. cor., marked on brass cap,
	$\frac{1}{4}$ S 22   S 23 1917
	from which,
	A cedar, 12 ins. in diam., brs. N. $16^{\circ}$ E., 53 lks. dist., marked $\frac{1}{4}$ S 23 BT.
	A cedar, 14 ins. in diam., brs. S. $87^{\circ}$ W., 56 lks. dist., marked $\frac{1}{4}$ S 22 BT.
	Descend 29 ft.
44.98	Ascend 12 ft.
52.78	Descend 66 ft., to
80.00	Set an iron post, 3 ft. long, 2 ins. in diam., on surface rock, supported in a mound of stone, for cor. of secs.

24 Survey of Subdivision Lines of Township 33 North Range 13 West.

Chains.

14, 15, 22 and 23, marked on brass cap,



No bearing trees available. Raise a mound of stone, 3 ft. base, 2 1/2 ft. high, W. of cor.

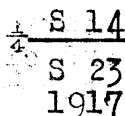
Land, rolling.

Soil, gravelly loam and adobe, 3rd rate.

Timber, cedar and pinyon.

Undergrowth, sagebrush, algerita and scrub oak.

- 40.00 East, on a random line, bet. secs. 14 and 23.
- 79.80 Set temp. sec. cor.
- Intersect the cor. of secs. 13, 14, 23 and 24, Thence,
- West, on a true line, bet. secs. 14 and 23.
- Over rolling and mountainous land, thru. scattering timber and dense undergrowth.
- 7.20 Descend 74 ft., to
- Draw, course N. 45° W. Road brs. N. 45° W. and S. 45° E.
- 12.00 Descend 10 ft. to
- Wash, 15 lks. wide, course N. 10° E.
- 16.00 Ascend 130 ft.
- Spur, slopes N. 15° E.
- 20.60 Descend 77 ft.
- Gulch, course N. 25° E.
- 32.05 Ascend 160 ft.
- Long spur, slopes N. 20° E.
- 39.90 Descend 94 ft., to
- Set an iron post, 3 ft. long, 1 in. in diam., 26 ins. in the ground, for 1/4 sec. cor., marked on brass cap,



from which,

A cedar, 18 ins. in diam., brs. N. 76 1/2° E., 111 lks. dist., marked 1/4 S 14 BT.

A cedar, 18 ins. in diam., brs. S. 41° E., 224 lks. dist., marked 1/4 S 23 BT.

- 42.30 Descend 10 ft.
- Draw, course N. 20° E.
- 65.15 Ascend 176 ft.
- Long spur, slopes N. 40° E.
- 74.37 Descend 105 ft.
- Draw, course N. 10° E.
- 79.80 Ascend 90 ft., to
- The cor. of secs. 14, 15, 22 and 23.
- Land, rolling and mountainous.
- Soil, heavy, gravelly loam, 3rd rate.
- Timber, cedar and pinyon.
- Undergrowth, sagebrush, algerita and scrub white oak.

- 4.96 N. 0° 1' W., bet. secs. 14 and 15.
- 9.35 Over rolling and mountainous land, thru. scattering timber and dense undergrowth. Desc. 40 ft.
- 27.92 Ascend 20 ft.
- 40.00 Long ridge, brs. N. 25° E. and S. 25° W. Desc. 215 ft.
- Gulch, course N. 45° E. Asc. 117 ft., to
- Set an iron post, 3 ft. long, 1 in. in diam., 10 ins. in the ground to bed rock, supported in a mound of stone for 1/4 sec. cor., marked on brass cap,

Survey of Subdivision lines of Township 33 North Range 13 West. 25

Chains.

1/4  
S15 | S14  
1917

from which,  
A cedar, 8 ins. in diam., brs. N. 30° E., 60 lks. dist.,  
marked S 14 BT.  
A cedar, 10 ins. in diam., brs. S. 23 1/2° W., 72 lks.  
dist., marked S 15 BT.

Ascend 36 ft.  
44.47 Spur, slopes N. 45° E. Descend 22 ft.  
53.26 Head of draw, course N. 50° E. Ascend 35 ft.  
60.93 Ridge, brs. N. 40° E. and S. 40° W. Desc. 175 ft.  
77.63 Ascend 20 ft., to  
80.00 Set an iron post, 3 ft. long, 2 ins. in diam., on surface rock,  
supported in a mound of stone, for cor. of secs. 10, 11,  
14 and 15, marked on brass cap.

T33N | R13W  
S10 | S11  
S15 | S14  
1917

from which,  
A pinyon, 10 ins. in diam., brs. N. 79 1/2° W., 163  
lks. dist., marked T33N R13W S10 BT.  
No other trees within limits. Raise a mound of stone, 3 ft.  
base, 2 1/2 ft. high, W. of cor.  
Land, rolling and mountainous.  
Soil, heavy loam, limestone formation, 3rd rate.  
Timber, cedar and pinyon.  
Undergrowth, sagebrush, algerita and scrub white oak.

40.00 East, on a random line, bet. secs. 11 and 14.  
79.82 Set temp. sec. cor.  
Intersect. N. and S. line, 1 lk. N. of the cor. of secs.  
11, 12, 13 and 14.

Thence,  
West, on a true line, bet. secs. 11 and 14.  
Over mountainous land, thru scattering timber and dense  
undergrowth.  
Ascend 25 ft.  
2.35 Spur, slopes S. Descend 310 ft.  
26.50 Gulch, course N. 65° W. Road, brs. N. 65° W. to Grand Gulch  
Mine and St. Thomas, Nevada, and S. 65° E.

Ascend 88 ft. to  
39.91 Set an iron post, 3 ft. long, 1 in. in diam., 26 ins. in  
the ground, for 1/4 sec. cor., marked on brass cap.

S 11  
S 14  
1917

from which,  
A pinyon, 12 ins. in diam., brs. N. 83 1/2° E.,  
101 lks. dist., marked S 11 BT.  
A cedar, 18 ins. in diam., brs. S. 20° W., 24  
lks. dist., marked S 14 BT.

Ascend 192 ft.  
55.70 Spong spur, slopes N. 45° E. Desc. 65 ft.  
62.05 Gulch, course N. 30° E. Asc. 183 ft.  
71.15 Ridge, brs. N. and S. Desc. 160 ft., to  
79.82 The cor. of secs. 10, 11, 14 and 15.  
Land, mountainous.  
Soil, gravelly loam, and adobe, 3rd rate.  
Timber, cedar and pinyon.  
Undergrowth, sagebrush, algerita, scrub white oak, and cactus.

26 Survey of Subdivision lines of Township 33 North Range 13 West

Chains.

N.0° 1'W., bet.secs. 10 and 11.  
 Over rolling hills, thru scattering timber and dense undergrowth.  
 Ascend 75 ft.  
 7.17 Spur, slopes N.15°W. Desc. 300 ft.  
 30.29 Wash, 10 lks.wide, course N. 35°E. Asc. 70 ft., to  
 40.00 Set an iron post, 3 ft.long, 1 in. in diam., 10 ins. in the ground to bed rock, supported in a mound of stone for 1/4 sec.cor., marked on brass cap,

1/4  
 S10 | S11  
 1917

from which,  
 A pinyon, 14 ins. in diam., brs.S. 34 1/2°E., 56 lks.dist., marked 1/4 S 11 BT.  
 A pinyon, 14 ins. in diam., brs.S. 38 1/2°W., 30 lks.dist., marked 1/4 S10 BT.

Ascend 214 ft.  
 58.53 Ridge, brs.N.10°E. and S.10°W. Desc. 73 ft.  
 64.82 Ascend 45 ft.  
 69.67 Descend 167 ft., to  
 80.00 Set an iron post, 3 ft.long, 2 ins. in diam., 8 ins. in the ground, to bed rock, supported in a mound of stone, for cor.of secs., 2, 3, 10 and 11, marked on brass cap,

T33N | R13W  
 S 3 | S 2  
 S10 | S11  
 1917

from which,  
 A pinyon, 10 ins. in diam., brs.N. 73°E., 84 lks.dist., marked T33N R13W S2 BT.  
 A pinyon, 8 ins.in diam., brs.S.8 1/2°E., 29 lks. dist., marked T33N R13W S11 BT.  
 A pinyon, 8 ins. in diam., brs.S.17 1/2°W., 162 lks.dist., marked T33N R13W S10 BT.  
 A pinyon, 10 ins.in diam., brs.N.56 1/2°W., 320 lks.dist., marked T33N R13W S3 BT.

Land, mountainous.  
 Soil, heavy loam, limestone formation, rocky, 4th rate.  
 Timber, cedar and pinyon.  
 Undergrowth, sagebrush, algerita and greasewood.

40.00 East, on a random line, bet. secs. 2 and 11.  
 79.90 Set temp. 1/4 sec.cor..  
 Intersect N. and S line. 8 lks. N.of the cor.of secs.1, 2, 11 and 12.  
 Thence,  
 N.89°57'W., on a true line, bet. secs.2 and 11.  
 Over mountainous land, thru. scattering timber and undergrowth.  
 Ascend 203 ft.  
 16.90 N.end of ridge, brs.N.15°W. and S.15°E. Desc.455 ft.  
 34.08 Wash, 30 lks.wide, in bottom of canyon, course N.15°E. Road brs. N.15°E.and S.15° W. Asc. 138 ft. to  
 39.95 Set an iron post, 3 ft. long, 1 in. in diam., 6 ins. in the ground, to bed rock, supported in a mound of stone, for 1/4 sec.cor., marked on brass cap,

1/4 S 2  
 S 11  
 1917

No bearing trees available. Raise a mound of stone, 3 ft. base, 2 ft. high, N.of cor.  
 Asc.313 ft.

## Survey of Subdivision lines of Township 33 North, Range 13 West. 27

Chains.	
57.88	Ridge, brs. N. and S. Desc. 170 ft.
64.80	Gulch, course N.10°E. Ascend 90 ft.
68.91	Descend 51 ft.
73.85	Ascend 70 ft.
77.27	Spur, slopes N.10°E. Desc. 25 ft., to
79.90	The cor. of secs. 2, 3, 10 and 11. Land, mountainous. Soil, heavy loam, limestone formation, 4th rate. Timber, cedar and pinyon. Undergrowth, sagebrush, algerita and cinchona.
40.00	N.0°1' W. on a random line, bet. secs. 2 and 3. Set temp. $\frac{1}{4}$ sec. cor.
80.16	Intersect-N. bdy. of Tp., 14 lks. E. of the cor. of secs. 2, 3, 34 and 35, established as hereinbefore described. Thence, S.0°7'E., on a true line, bet. secs. 2 and 3. Over mountainous land, thru. scattering timber and undergrowth. Thence, S.0°7'E., on a true line, bet. secs. 2 and 3. Over mountainous land, thru. scattering timber and undergrowth. Descend 7 ft.
1.75	Wash, 45 lks. wide, in bottom of Pigeon Canyon, course N. 85°W, Asc. 461 ft., to $\frac{1}{4}$ sec. cor.
4.15	Road, brs. N. 70°W, to Grand Gulch Mine and St. Thomas, Nev., and S. 70°E. to Parashont Ranch.
11.60	Large water tank, brs. E. 5 chs. dist. Water is piped from Upper Pigeon Spring, 3 chs. up draw.
14.45	Upper Pigeon Spring, brs. E. 6 chs. dist.
40.16	Set an iron post, 3 ft. long, 1 in. in diam., on surface rock, supported in a mound of stone, for $\frac{1}{4}$ sec. cor., marked on brass cap,  <div style="text-align: center;"> <math>\frac{1}{4}</math>  S 3   S 2  1917 </div>
	from which, A cedar, 10 ins. in diam., brs. S. 63 $\frac{1}{2}$ °E., 27 lks. dist., marked $\frac{1}{4}$ S 2 BT. A cedar, 6 ins. in diam., brs. S. 5 $\frac{1}{2}$ °W., 201 lks. dist., marked $\frac{1}{4}$ S 3 BT.
	Ascend 67 ft.
44.30	Spur, slopes N. 80°E. Desc. 37 ft., to
54.80	Begin steep descent, brs. E. and W. Desc. 221 ft.
60.70	Wash, 15 lks. wide, 3 ft. deep, in gulch, course N. 70°E. Ascend 80 ft. to
64.10	Same wash, course W. Ascend 45 ft.
65.75	Point of spur, slopes E. Descend 15 ft.
68.00	Same wash, course N. 45°E. Asc. 300 ft. to
80.16	The cor. of secs. 2, 3, 10 and 11. Land, mountainous. Soil, rocky, 4th rate. Timber, cedar and pinyon. Undergrowth, sagebrush and cinchona.
--	From the standard cor. of secs. 33 and 34, on the S. bdy. of the Tp. (8th. Std. Par. N.), hereinbefore described, N.0°2'W., bet. secs. 33 and 34. Over nearly level land, thru. scattering timber and undergrowth. Descend 60 ft.
35.00	Ascend 17 ft. to
40.00	Set an iron post, 3 ft. long, 1 in. in diam., 26 ins. in the ground, for $\frac{1}{4}$ sec. cor., marked on brass cap,

20 Survey of Subdivision lines of Township 33 North, Range 13 West.

Chains.

1/4  
S33 | S34  
1917

from which,  
A cedar, 14 ins. in diam., brs. S. 26° E., 11 lks. dist., marked 1/4 S 34 BT.  
A cedar, 16 ins. in diam., brs. S. 81° W., 24 lks. dist., marked 1/4 S 33 BT.

Ascend slightly to  
45.00 Enter rolling land. Descend 100 ft.  
61.83 Wash, 5 lks. wide, in draw, course N. 80° E. Asc. 57 ft.  
67.38 Descend 35 ft.  
71.14 Ascend 70 ft. to  
80.00 Set an iron post, 3 ft. long, 2 ins. in diam., 8 ins. in the ground to bed rock, supported in a mound of stone, for cor. of secs. 27, 28, 33 and 34, marked on brass cap,

T33N | R13W  
S28 | S27  
S33 | S34  
1917

from which,  
A cedar, 16 ins. in diam., brs. N. 53 1/4° E., 100 lks. dist., marked T33N R13W S27 BT.  
A cedar, 14 ins. in diam., brs. S. 29° E., 11 lks. dist., marked T33N R13W S34 BT.  
A pinyon, 12 ins. in diam., brs. S. 81° W., 19 lks. dist., marked T33N R13W S33 BT.  
A cedar, 10 ins. in diam., brs. N. 30° W., 15 lks. dist., marked T33N R13W S28 BT.

Land, nearly level and rolling.  
Soil, rocky, 3rd rate.  
Timber, cedar and pinyon.  
Undergrowth, sagebrush, algerita and white oak.

40.00 East, on a random line, bet. secs. 27 and 34.  
80.16 Set temp. 1/4 sec. cor.  
Intersect N. and S. line, 20 lks. N. of the cor. of secs. 26, 27, 34 and 35.

Thence,  
N. 89° 31' W., on a true line, bet. secs. 27 and 34.  
Over rolling land, thru. scattering timber and dense undergrowth.

Descend 40 ft.  
5.30 Draw, course N. 15° E. Asc. 40 ft.  
15.40 Spur, slopes N. 40° E. Desc. 30 ft.  
25.10 Small draw, course N. 25° E. Ascend 55 ft.  
40.08 Low spur, slopes N. 50° E.  
Set an iron post, 3 ft. long, 1 in. in diam., 26 ins. in the ground, for 1/4 sec. cor., marked on brass cap,

1/4 S 27  
S 34  
1917

from which,  
A cedar, 10 ins. in diam., brs. N. 47 3/4° E., 89 lks. dist., marked 1/4 S 27 BT.  
A cinchona, 8 ins. in diam., brs. S. 11° E., 75 lks. dist., marked 1/4 S 34 BT.

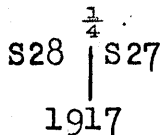
Descend 6 ft.  
43.15 Ascend 9 ft.  
49.90 Descend 55 ft.  
65.10 Wash, 5 lks. wide, in draw, course N. 15° E. Asc. 140 ft.  
80.16 The cor. of secs. 27, 28, 33 and 34.

Land, rolling.  
Soil, heavy loam, limestone formation, 3rd rate.  
Timber, cedar and pinyon.  
Undergrowth, sagebrush, algerita and scrub white oak.

Survey of Subdivision lines of Township 33 North, Range 13 West. 29

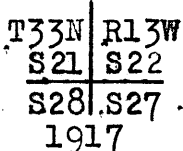
Chains.

N.0°2'W., bet.secs.27 and 28.  
 Over gently rolling land, thru scattering timber and  
 undergrowth, Ascend 30 ft.  
 25.00 Top of ascent, brs.E. and W. Desc.40 ft.  
 35.48 Small draw, course E. Asc. 26 ft., to  
 40.00 Set an iron post, 3 ft. long, 1 in. in diam., 26 ins. in  
 the ground, for  $\frac{1}{4}$  sec.cor., marked on brass cap,



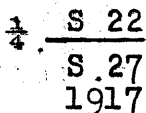
from which,  
 A cedar, 16 ins. in diam., brs.N.10°E., 30 lks.  
 dist., marked  $\frac{1}{4}$ S27 BT.  
 A cedar, 10 ins. in diam., brs.S.47 $\frac{1}{4}$ °W., 37 lks.  
 dist., marked  $\frac{1}{4}$ S28 BT.

Ascend 22 ft.  
 50.00 Spur, slopes S.80°W. Desc. 30 ft.  
 55.97 Ascend 13 ft.  
 59.67 Descend 160 ft., to  
 80.00 Set an iron post, 3 ft. long, 2 ins. in diam., 24 ins.  
 in the ground, for cor.of secs.21, 22, 27 and 28, marked  
 on brass cap,



No bearing trees available. Raise a mound of stone, 3 ft.  
 base, 2 ft. high, W.of cor.  
 Land, gently rolling.  
 Soil, heavy loam, 3rd rate.  
 Timber, cedar and pinyon.  
 Undergrowth, sagebrush, algerita and scrub white oak.

-----  
 East, on a random line, bet.secs.22 and 27.  
 40.00 Set temp. $\frac{1}{4}$  sec.cor.  
 80.14 Intersect N. and S line; 26 lks.N. of the cor.of secs.  
 22, 23, 26 and 27.  
 Thence,  
 N.89°49'W., on a true line, bet.secs. 22 and 27.  
 Over rolling land, thru scattering timber and undergrowth.  
 Descend 12 ft.  
 2.75 Ascend 17 ft.  
 10.80 Descend 52 ft.  
 19.90 Draw, course N.55°E. Asc, 157 ft., to  
 40.07 Set an iron post, 3 ft. long, 1 in. in diam., 10 ins. in  
 the ground to bed rock, supported in a mound of stone  
 for  $\frac{1}{4}$  sec.cor., marked on brass cap,



from which,  
 A pinyon, 8 ins. in diam., brs.N.32°W., 39 lks.  
 dist., marked  $\frac{1}{4}$ S 22 BT.  
 A cedar, 10 ins. in diam., brs.S.24°W., 13 lks.  
 dist., marked  $\frac{1}{4}$ S 27 BT.

Ascend 16 ft.  
 41.90 Spur, slopes N.30°E. Desc. 60 ft.  
 54.90 Draw, course N.25°E. Ascend 105 ft.  
 67.00 Ridge, brs.N.40°W. and S.40°E. Desc.148 ft., to  
 80.14 The cor.of secs.21, 22, 27 and 28.  
 Land, rolling.  
 Soil, heavy loam, limestone formation, 3rd rate.  
 Timber, cedar and pinyon.  
 Undergrowth, sagebrush, algerita and scrub white oak.

## 30 Survey of Subdivision lines of Township 33 North, Range 13 West.

Chains.

N.0°2'W., bet. secs. 21 and 22.  
 Over rolling land, thru scattering timber and undergrowth.  
 Ascend 28 ft.  
 23.00 Descend 65 ft.  
 35.25 Draw, course N.75°E. Asc. 33 ft. to  
 40.00 Set an iron post, 3 ft. long, 1 in. in diam., 18 ins. in the  
 ground to bed rock, supported in a mound of stone, for  
 $\frac{1}{4}$  sec. cor., marked on brass cap,

$$\begin{array}{c} \frac{1}{4} \\ S21 | S22 \\ 1917 \end{array}$$

from which,

A cedar, 16 ins. in diam., brs. East, 2 lks. dist.,  
marked  $\frac{1}{4}$ S 22 BT.A cedar, 14 ins. in diam., brs. N.73°W., 58 lks. dist.,  
marked  $\frac{1}{4}$ S21 BT.

Ascend 34 ft.  
 44.97 Spur, slopes N.45°E. Desc. 65 ft.  
 52.39 Draw, course N.45°E. Asc. 65 ft..  
 62.89 Descend 37 ft.  
 72.37 Ascend 32 ft.  
 75.84 Descend 24 ft. to  
 80.00 Set an iron post, 3 ft. long, 2 ins. in diam., 8 ins. in  
 the ground, to bed rock, supported in a mound of stone,  
 for cor. to secs. 15, 16, 21 and 22, marked on brass cap,

$$\begin{array}{c} T33N | R13W \\ S16 | S15 \\ S21 | S22 \\ 1917 \end{array}$$

from which,

A pinyon, 10 ins. in diam., brs. N.25°E., 177  
lks. dist., marked T33N R13W S15 BT.A cedar, 8 ins. in diam., brs. S.65°E., 32 lks.  
dist., marked T33N R13W S22 BT.A cedar, 14 ins. in diam., brs. S.73 $\frac{1}{2}$ °W., 201 lks.  
dist., marked T33N R13W S21 BT.A cedar, 12 ins. in diam., brs. N.25 $\frac{1}{2}$ °W., 244  
lks. dist., marked T33N R13W S16 BT.

Land, rolling.

Soil, heavy loam, rocky, 3rd rate.

Timber, cedar and pinyon.

Undergrowth, sagebrush, algerita, scrub white oak, and  
cactus.

East, on a random line, bet. secs. 15 and 22.  
 40.00 Set temp.  $\frac{1}{4}$  sec. cor.  
 80.18 Intersect N. and S. line, 17 lks. N. of the cor. of secs.  
 14, 15, 22 and 23.  
 Thence,  
 N.89°53'W., on a true line, bet. secs. 15 and 22.  
 Over rolling land, thru scattering timber and under-  
 growth.  
 Ascend 25 ft.  
 6.80 Long ridge, brs. N.45°E. and S.45°W. Desc. 150 ft.  
 21.90 Wash, 15 lks. wide, course N.25°E. Asc. 60 ft.  
 27.70 Spur, slopes N.15°E. Desc. 37 ft., to  
 40.09 Set an iron post, 3 ft. long, 1 in. in diam., 26 ins. in  
 the ground, for  $\frac{1}{4}$  sec. cor., marked on brass cap,

$$\begin{array}{c} \frac{1}{4} S 15 \\ S 22 \\ 1917 \end{array}$$

from which,

A cedar, 10 ins. in diam., brs. N.3°E., 343  
lks. dist., marked  $\frac{1}{4}$ S 15 BT.

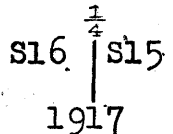


Survey of Subdivision lines of Township 33 North, Range 13 West. 31

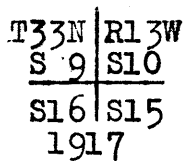
Chsind.

A cedar, 6 ins. in diam., brs. S. 23 1/2° E., 109  
 lks. dist., marked 1/4 S22 BT.  
 Descend 15 ft.  
 42.70 Wash, 6 lks. wide, in draw, course N. 45° E. Asc. 105 ft.  
 51.10 Spur slopes N. 40° E. Desc. 34 ft.  
 55.30 Asc. 145 ft. to N. 40° E. Desc. 31 ft.  
 80.18 The cor. of secs. 15, 16, 21 and 22.  
 Land, rolling.  
 Soil, heavy loam, rocky, 3rd rate.  
 Timber, cedar and pinyon.  
 Undergrowth, sagebrush, algerita, scrub white oak and  
 cactus.

N. 0° 2' W., bet. secs. 15 and 16.  
 Over rolling and mountainous land, thru. scattering timber  
 and undergrowth.  
 Ascend 20 ft.  
 3.49 Descend 15 ft.  
 10.38 Ascend 31 ft.  
 17.46 Ridge, brs. N. 40° E. and S. 40° W. Desc. 220 ft. to  
 40.00 Head of draw, course W. Set an iron post, 3 ft. long, 1  
 in. in diam., 26 ins. in the ground, for 1/4 sec. cor.,  
 marked on brass cap,



No bearing trees available. Raise a mound of stone, 3 ft.  
 base, 2 1/2 ft. high, W. of cor.  
 Ascend 68 ft.  
 58.46 Spur, slopes N. 75° W. Desc. 210 ft., to  
 80.00 Set an iron post, 3 ft. long, 2 ins. in diam., 24 ins. in  
 the ground, for cor. of secs. 9, 10, 15 and 16, marked on  
 brass cap,



from which,  
 A cedar, 10 ins. in diam., brs. N. 31° E., 123  
 lks. dist., marked T33N R13W S10 BT.  
 A cedar, 8 ins. in diam., brs. S. 68 1/2° E., 349  
 lks. dist., marked T33N R13W S15 BT.  
 A pinyon, 14 ins. in diam., brs. S. 49 1/4° W., 635  
 lks. dist., marked T33N R13W S16 BT.  
 A cedar, 10 ins. in diam., brs. N. 13° W., 368  
 lks. dist., marked T33N R13W S 9 BT.

Land, rolling and mountainous.  
 Soil, heavy loam, rocky, 3rd rate.  
 Timber cedar and pinyon.  
 Undergrowth, sagebrush, algerita, white oak and cactus.

East, on a random line, bet. secs. 10 and 15.  
 40.00 Set temp. 1/4 sec. cor.  
 80.12 Intersect N. and S. line, 19 lks. N. of the cor. of secs. 10,  
 11, 14 and 15.  
 Thence,  
 N. 89° 52' W., on a true line, bet. secs. 10 and 15.  
 Over mountainous land, thru. scattering timber and dense  
 undergrowth,  
 Descend 145 ft.  
 7.00 Wash, 15 lks. wide, in gulch, course N. 20° W.  
 Ascend 228 ft.  
 18/60 Descend 115 ft.

32 Survey of Subdivision lines of Township 33 North, Range 13 West.

Chains.

- 23.65 Gulch, course N.30°E.  
Ascend 150 ft.
- 30.80 Spur, slopes N.45°E.  
Descend 65 ft.
- 40.06 Gulch, course N.50°E.  
Set an iron post, 3 ft. long, 1 in. in diam., 20 ins. in the ground to bed rock, supported in a mound of stone, for ¼ sec. cor., marked on brass cap,

$\frac{1}{4} S 10$   
 $S 15$   
 1917

from which,  
 A cedar, 20 ins. in diam., brs. N.4½°E., 85 lks. dist., marked ¼S 10 BT.  
 A pinyon, 10 ins. in diam., brs. S.52°E., 124 lks. dist., marked ¼S 15 BT.

- 52.65 Ascend 200 ft.  
Ridge, brs. N.10°W. and S.10°E.  
Descend 170 ft.
- 61.40 Gulch, course N.20°W.  
Ascend 150 ft.
- 69.45 Spur, slopes N.45°W. Desc. 220 ft., to
- 80.12 The cor. of secs. 9, 10, 15 and 16.  
Land, mountainous.  
Soil, rocky, 4th rate.  
Timber, cedar and pinyon.  
Undergrowth, sagebrush, algerita and scrub white oak.

-----  
 N.0°2'W., bet. secs. 9 and 10.  
 Over rolling and mountainous land, thru. scattering timber and dense undergrowth.

- 9.95 Descend 57 ft.  
Wash, 10 lks. wide, in gulch, course N.45°E. Asc. 215 ft.
- 35.18 Spur, slopes E. Desc. 17 ft. to
- 40.00 Set an iron post, 3 ft. long, 1 in. in diam., 10 ins. in the ground to bed rock, supported in a mound of stone, for ¼ sec. cor., marked on brass cap,

$\frac{1}{4}$   
 $S 9 \mid S 10$   
 1917.

from which,  
 A cedar, 12 ins. in diam., brs. S.31°E., 47 lks. dist., marked ¼S 10 BT.  
 A cedar, 10 ins. in diam., brs. N.3½°W., 106 lks. dist., marked ¼S 9 BT.

- 42.39 Ascend 14 ft.  
Descend 170 ft.
- 50.46 Gulch, course N.55°E.  
Ascend 225 ft.
- 74.10 Long spur, slopes N.45°E.  
Descend 118 ft., to
- 80.00 Set an iron post, 3 ft. long, 2 ins. in diam., 10 ins. in the ground to bed rock, supported in a mound of stone for cor. of secs. 3, 4, 9 and 10., marked on brass cap,

$T33N \mid R13W$   
 $S 4 \mid S 3$   
 $S 9 \mid S 10$   
 1917.

from which,  
 A cedar, 10 ins. in diam., brs. N.6½°E., 212 lks. dist., marked T33N R13W S3 BT.

Survey of Subdivision lines of Township 33 North, Range 13 West. 33

Chains.

- A cinchona, 10 ins. in diam., brs. S. 11° E., 69 lks. dist., marked T33N R13W S10 BT.
- A cinchona, 6 ins. in diam., brs. S. 47° W., 17 lks. dist., marked T33N R13W S9 BT.
- A cedar, .14 ins. in diam., brs. N. 48<sup>3</sup>/<sub>4</sub>° W., 250 lks. dist., marked T33N R13W S4 BT.

Land, rolling.  
 Soil, heavy loam, rocky, 3rd rate.  
 Timber, cedar and pinyon.  
 Undergrowth, sagebrush, algerita, scrub white oak and cactus.

- 40.00
- 80.12
- 17.00
- 20.80
- 24.70
- 28.45
- 32.15
- 40.06

East, on a random line, bet. secs. 3 and 10.  
 Set temp. <sup>1</sup>/<sub>4</sub> sec. cor.  
 Intersect N. and S. line, 7 lks. N. of the cor. of secs. 2, 3, 10 and 11.  
 Thence,  
 N. 89° 57' W., on a true line, bet. secs. 3 and 10.  
 Over mountainous land, thru. scattering timber and dense undergrowth.  
 Descend 255 ft.  
 Wash, 15 lks. wide, in gulch, course N. 15° E.  
 Ascend 75 ft.  
 Point of spur, slopes S. 10° E.  
 Descend 45 ft.  
 Wash, 15 lks. wide, course SE.  
 Ascend 75 ft.  
 Spur, slopes S.  
 Descend 15 ft.  
 Ascend 120 ft., to  
 Set an iron post, 3 ft. long, 1 in. in diam., on surface rock, supported in a mound of stone, for <sup>1</sup>/<sub>4</sub> sec. cor., marked on brass cap,

  S  3  
 S 10  
 1917

- from which,
- A pinyon, 12 ins. in diam., brs. N. 54° E., 69 lks. dist., marked <sup>1</sup>/<sub>4</sub> S 3 BT.
  - A cedar, 8 ins. in diam., brs. S. 80° W., 153 lks. dist., marked <sup>1</sup>/<sub>4</sub> S 10 BT.

- 70.20
- 75.15
- 80.12

Ascend 310 ft.  
 Long spur, slopes N. 40° E.  
 Descend 60 ft.  
 Ascend 11 ft. to  
 The cor. of secs. 3, 4, 9 and 10.  
 Land, mountainous.  
 Soil, loam, limestone formation, rocky, 3rd rate.  
 Timber, cedar and pinyon.  
 Undergrowth, sagebrush, algerita and cactus.

- 40.00
- 80.00
- 27.94
- 32.50
- 40.00

N. 0° 2' W., on a random line, bet. secs. 3 and 4.  
 Set temp. <sup>1</sup>/<sub>4</sub> sec. cor.  
 Intersect N. bdy. of Tp., 5 lks. W. of the cor. of secs. 3, 4, 33 and 34, hereinbefore described.  
 Thence,  
 South, on a true line, bet. secs. 3 and 4.  
 Over mountainous land, thru. scattering timber and undergrowth.  
 Ascend 680 ft., over cliffs, to  
 Top of cliffs, brs. N. 15° E. and S. 15° W. Asc. 40 ft. to  
 Short spur, slopes W. Desc. 13 ft. to  
 Set an iron post, 3 ft. long, 1 in. in diam., 18 ins. in the ground to bed rock, supported in a mound of stone, for <sup>1</sup>/<sub>4</sub> sec. cor., marked on brass cap,

34 Survey of Subdivision lines of Township 33 North, Range 13 West.

Chains.

S. 4 | S 3

1917

from which,

A pinyon, 8 ins. in diam., brs. S. 29 1/2° E., 36 lks. dist., marked 1/4 S 3 BT.

A pinyon, 6 ins. in diam., brs. N. 73° W., 113 lks. dist., marked 1/4 S 4 BT.

Descend 16 ft.

47.25 Ascend 34 ft.

52.20 Descend 15 ft.

54.80 Ascend 195 ft.

68.35 Long spur, slopes N. 25° E. Descend 87 ft.

79.45 Narrow draw, course N. 65° E. Asc. 17 ft. to

80.00 The cor. of secs. 3, 4, 9 and 10.

Land, mountainous.

Soil, loam, limestone formation, 4th rate.

Timber, cedar and pinyon.

Undergrowth, sagebrush, algerita and white oak.

From the standard cor. of secs. 32 and 33, on S. bdy. of Tp., (8th. Std. Par. N.) hereinbefore described, N. 0° 3' W., bet. secs. 32 and 33.

Over gently rolling land, thru. scattering timber and dense undergrowth. Asc. 6 ft.

5.00 Descend 17 ft.

9.98 Draw, course N. 75° E. Desc. slightly to

40.00 Set an iron post, 3 ft. long, 1 in. in diam., 14 ins. in the ground to bed rock, supported in a mound of stone, for 1/4 sec. cor., marked on brass cap,

S 32 | S 33

1917

from which,

A cedar, 10 ins. in diam., brs. N. 54° E., 32 lks. dist., marked 1/4 S 33 BT.

A cedar, 6 ins. in diam., brs. N. 37 3/4° W., 57 lks. dist., marked 1/4 S 32 BT.

Descend 37 ft.

57.19 Wash, 5 lks. wide, course N. 70° E. Asc. 30 ft. to

80.00 Set an iron post, 3 ft. long, 2 ins. in diam., 24 ins. in the ground, for cor. of secs. 28, 29, 32 and 33, marked on brass cap,

T 33 N | R 13 W

S 29 | S 28

S 32 | S 33

1917

from which,

A cedar, 8 ins. in diam., brs. N. 59 3/4° E., 133 lks. dist., marked T 33 N R 13 W S 28 BT.

A cedar, 10 ins. in diam., brs. S. 42 1/4° E., 58 lks. dist., marked T 33 N R 13 W S 33 BT.

A cedar, 16 ins. in diam., brs. S. 19 3/4° W., 172 lks. dist., marked T 33 N R 13 W S 32 BT.

A cedar, 6 ins. in diam., brs. N. 41 1/4° W., 49 lks. dist., marked T 33 N R 13 W S 29 BT.

Land, gently rolling.

Soil, heavy adobe and clay, 3rd rate.

Timber, cedar and pinyon.

Undergrowth, sagebrush, cinchona, algerita and white oak.

East, on a random line; bet. secs. 28 and 33.

40.00 Set temp. 1/4 sec. cor.

79.86 Intersect N. and S. line. 10 lks. N. of the cor. of secs. 27, 28, 33 and 34.

Survey of Subdivision lines of Township 33 North, Range 13 West. 35

Chains.

Thence  
 N.89°56'W., on a true line, bet.secs.28 and 33.  
 Over rolling land, thru.heavy timber and dense undergrowth.  
 Descend 55 ft.  
 9.55 Enter draw, 1 ch.wide, course S.45°E. from W.  
 12.55 Leave draw, course E. from NW. Asc.93 ft.  
 24.85 Descend 20 ft.  
 29.85 Ascend 31 ft., to  
 39.93 Set an iron post, 3 ft.long, 1 in. in diam., 15 ins. in  
 the ground, to bed rock, supported in a mound of stone,  
 for 1/4 sec.cor., marked on brass cap.

1/4 S 28  
 S 33  
 1917

from which,  
 A cedar, 12 ins. in diam., brs.N.84°W., 66 lks.  
 dist., marked 1/4 S 28 BT.  
 A pinyon, 4 ins. in diam., brs.S.87°W., 66 lks.  
 dist., marked BT.

Descend 66 ft.  
 52.70 Wash, 6 lks.wide, course N.25° E.  
 Ascend 63 ft.  
 57.60 Low spur, slopes S. 40°W. Desc. 40 ft.  
 64.90 Wash, 5 lks.wide, course S.40°E.  
 Ascend 52 ft.to  
 79.86 The cor.of secs.28,29, 32 and 33.  
 Land, rolling.  
 Soil, 1st and 4th rates.  
 Timber, cedar and pinyon.  
 Undergrowth, sagebrush, cinchona, white oak, manzanita,  
 live oak and rabbit brush.

N.0°2'W., bet. secs.28 and 29.  
 Over gently rolling land, thru. medium timber and dense  
 undergrowth.  
 Ascend 30 ft.  
 25.00 Low divide, brs.NE. and SW. Desc.105 ft.  
 33.67 Wash, 10 lks.wide, course W, near head. Asc.30 ft.  
 38.80 Low spur, slopes W. Desc.5 ft.to  
 40.00 Set an iron post, 3 ft.long: 1 in: in diam., 18 ins.in  
 the ground, to bedrock, supported in a mound of stone  
 for 1/4 sec.cor., marked on brass cap,

1/4 S29 | S28  
 1917

from which,  
 A cedar, 5 ins. in diam., brs.N. 88°E., 163  
 lks.dist., marked 1/4 S 28 BT.  
 A cinchona, 4 ins. in diam., brs.S. 27 1/2°W., 102  
 lks.dist., marked BT.

Descend 16 ft.  
 42.29 Wash, 5 lks.wide, course S.45°W. Asc.114 ft.  
 59.78 Divide, brs.NW. and SE. Desc.120 ft.  
 76.75 Draw, near head, course N.45°E. Asc.7 ft.to  
 80.00 Set an iron post, 3 ft.long, 2 ins. in diam., 20 ins. in  
 the ground, to bed rock, supported in a mound of stone  
 for cor.of secs.20,21, 28 and 29, marked on brass cap,

T33N | R13W  
 S20 | S21  
 S29 | S28  
 1917

36 Survey of Subdivision lines of Township 33 North, Range 13 West.

Chains,

from which,  
 A cedar, 6 ins.in diam., brs.N.23°E., 124  
 lks.dist., marked T33N R13W S21 BT.  
 A cedar, 16 ins.in diam., brs. S.18½°E., 114  
 lks.dist., marked T33N R13W S28 BT.  
 A cedar, 5 ins.in diam., brs.S.22°W., 96  
 lks.dist., marked T33N R13W S29 BT.  
 A pinyon, 4 ins.in diam., brs.N.54¼°W., 65  
 lks. dist., marked BT.

Soil, gently rolling,  
 Soil, clay, rock and gravel, 4th rate,  
 Timber, cedar and scattering pinyon.  
 Undergrowth, cinchona, and white oak.

40.00  
79.86

East, on a random line, bet. secs.21 and 28.  
 Set temp.¼ sec.cor.  
 Intersect N. and S. line, 5 lks.N.of the cor.of secs.21,  
 22, 27 and 28,

Thence,  
 N.89° 58'W., on a true line, bet. secs. 21 and 28.  
 Over rolling land, thru scattering timber and under-  
 growth.

27.00  
37.05  
39.93

Ascend 180.ft.  
 Descend 81 ft.  
 Center of draw, 1 ch.wide, course N.Asc. 16 ft. to  
 Set an iron post, 3 ft.long, 1 in. in diam., 8 ins. in  
 the ground, to bed rock, supported in a mound of stone,  
 for ¼ sec.cor., marked.on brass cap,

    S 21  
 ¼  
 S 28  
 1917

from which,  
 A cedar, 12 ins. in diam., brs.N.54° W., 175  
 lks.dist., marked ¼S 21 BT.  
 A cedar, 12 ins. in diam., brs.S.45°E., 20  
 lks.dist., marked ¼ S 28 BT.

59.85  
76.85  
79.86

Ascend 95 ft.  
 Descend 30 ft.  
 Center of draw, 1 ch.wide, course N.45° E. Asc.25 ft.to  
 The cor.of secs.20,21, 28 and 29.  
 Land, rolling.  
 Soil, shallow clay, rocky, 3rd rate.  
 Timber, cedar and pinyon.  
 Undergrowth, sagebrush, cinchona and cactus.

5.00  
16.73  
29.95  
40.00

N.0°3'W., bet. secs.20 and 21.  
 Over rolling land, thru scattering timber and undergrowth.  
 Ascend 17 ft.  
 Descend 73 ft.  
 Wash, 10 lks.wide, course N.45° E. Asc. 27 ft.  
 Spur, slopes N.25° E. Desc. 51 ft.to  
 Set an iron post, 3 ft. long, 1 in. in diam., 6 ins. in  
 the ground, to bed rock, supported in a mound of stone,  
 for ¼ sec.cor., marked on brass cap,

    ¼  
 S20 | S21  
 1917

from which,  
 A cedar, 30 ins.in diam., brs.S.19½°E., 179 lks.  
 dist., marked ¼S21 BT.  
 A cedar, 16 ins.in diam., brs.S.73½°W., 328 lks.  
 dist., marked ¼S 20 BT.  
 Descend 35 ft.

E 0005 000

## Survey of Subdivision lines of Township 33 North, Range 13 West. 37

Chains.  
 42.75 Wash, 25 lks. wide, course N. 60° E., Asc. 55 ft.  
 53.05 Spur, slopes NE. Desc. 68 ft.  
 60.78 Wash, 12 lks. wide, course N. 45° E. Asc. 31 ft.  
 68.00 Descend 25 ft.  
 70.97 Wash, 10 lks. wide, course S. 75° E. Asc. 76 ft., to  
 80.00 Spur, slopes N. 75° E. Set an iron post, 3 ft. long, 2 ins. in the ground, for cor. of secs. 16, 17, 20 and 21, marked on brass cap,

T33N	R13W
S17	S16
S20	S21
1917	

from which,

A pinyon, 12 ins. in diam., brs. N. 50° E., 196 lks. dist., marked T33N R13W S16 BT.  
 A cedar, 4 ins. in diam., brs. S. 49½° E., 131 lks. dist., marked BT.  
 A cedar, 5 ins. in diam., brs. S. 57° W., 84 lks. dist., marked T33N R13W S20 BT.  
 A pinyon, 5 ins. in diam., brs. N. 83¾° W., 86 lks. dist., marked T33N R13W S17 BT.

Land, rolling.

Soil, shallow, rock filled adobe, 3rd rate.

Timber, cedar and pinyon.

Undergrowth, sagebrush, cinchona, white oak and algerita.

40.00 East, on a random line, bet. secs. 16 and 21.  
 79.94 Set temp. ¼ sec. cor.  
 Intersect N. and S. line, 7 lks. N. of the cor. of secs. 15, 16, 21 and 22.  
 Thence,  
 N. 89° 57' W., on a true line, bet. secs. 16 and 21.  
 Over rolling and mountainous land, thru. scattering timber and undergrowth.  
 Ascend 31 ft.  
 8.40 Ridge, brs. N. and S. Descend 112 ft.  
 17.25 Gulch, course N. 10° E. Ascend 56 ft.  
 24.25 Descend 117 ft.  
 32.40 Wash, 40 lks. wide, course N. Asc. 57 ft. to  
 39.97 Set an iron post, 3 ft. long, 1 in. in diam., 4 ins. in the ground, to bed rock, supported in a mound of stone, for ¼ sec. cor., marked on brass cap,

¼ S 16	
S 21	
1917	

from which,

A cedar, 9 ins. in diam., brs. N. 89° E., 91 lks. dist., marked ¼ S 16 BT.  
 A cedar, 8 ins. in diam., brs. S. 35¼° E., 111 lks. dist., marked ¼ S 21 BT.

Ascend 8 ft., to

42.25 Draw, course N. 75° E. near head. Asc. 63 ft.  
 52.20 Spur, slopes N. 25° E. Desc. 22 ft.  
 56.25 Gulch, course N. Asc. 83 ft.  
 63.25 Spur, slopes N. from SW. Desc. 10 ft.  
 70.85 Ascend 72 ft. to  
 79.94 The cor. of secs. 16, 17, 20 and 21.

Land, rolling, and mountainous.

Soil, shallow clay, mixed with rock and gravel, 3rd rate.

Timber, cedar and pinyon.

Undergrowth, sagebrush and cinchona.

N. 0° 3' W., bet. secs. 16 and 17.

Over rolling and mountainous land, thru. medium timber and scattering undergrowth.

Descend 115 ft.

## 38 Survey of Subdivision lines of Township 33 North, Range 13 West.

Chains.

13.48 Draw, course N.65°E. Ascend 128 ft.  
 25.96 Spur, slopes N.70°E. Desc. 70 ft.  
 33.68 Draw, course N.65°E. Asc. 57 ft., to  
 40.00 Set an iron post, 3 ft. long, 1 in. in diam., 10 ins. in  
 the ground, on bed rock, supported in a mound of stone,  
 for  $\frac{1}{4}$  sec.cor., marked on brass cap,

$$\begin{array}{c} \frac{1}{4} \\ \hline S17 \quad S16 \\ \hline 1917 \end{array}$$

No bearing trees available. Raise a mound of stone,  $2\frac{1}{2}$  ft.  
 base,  $1\frac{1}{2}$  ft. high, W.of cor.

Ascend 16 ft.

42.29 Spur, slopes E. Descend 45 ft.  
 46.65 Draw, course N.45°E. Ascend 30 ft.  
 51.63 Spur, slopes N.45°E. Descend 145 ft.  
 65.13 Draw, course N.80°E. Ascend 88 ft.  
 71.19 Spur, slopes E. Desc. 127 ft.  
 78.82 Draw, course E. Ascend 20 ft. to  
 80.00 Set an iron post, 3 ft. long, 2 ins. in diam., 26 ins. in  
 the ground, for cor. of secs. 8, 9, 16 and 17, marked on  
 brass cap,

$$\begin{array}{c} T33N \quad R13W \\ \hline S8 \quad S9 \\ \hline S17 \quad S16 \\ \hline 1917 \end{array}$$

from which,

A cedar, 8 ins. in diam., brs. N.68°E., 78 lks.  
 dist., marked T33N R13W S9 BT.  
 A cedar, 12 ins. in diam., brs. S.37°E., 269 lks.  
 dist., marked T33N R13W S16 BT.  
 A pinyon, 6 ins. in diam., brs. S.80 $\frac{1}{2}$ °W., 65 lks.  
 dist., marked T33N R13W S17 BT.  
 A cedar, 6 ins. in diam., brs. N.53 $\frac{1}{4}$ °W., 134 lks.  
 dist., marked T33N R13W S8 BT.

Land, rolling and mountainous.

Soil, rocky, 3rd rate.

Timber, cedar and pinyon.

Undergrowth, sagebrush, algerita and cactus.

-----  
East, on a random line, bet. sec's. 9 and 16.40.00 Set temp.  $\frac{1}{4}$  sec. cor.80.02 Intersect N. and S. line, 5 lks. S. of the cor. of secs. 9,  
10, 15 and 16.

Thence,

S.89°58'W., on a true line, bet. secs. 9 and 16.

Over rolling land, thru. scattering timber and undergrowth.

Descend 34 ft.

6.85 Draw, 20 lks. wide, course N.20°E. Asc. 70 ft.

12.75 Long spur, slopes N.45°E. Descend 6 ft.

17.75 Draw, course N.15°E. Asc. 187 ft.

33.65 Spur, slopes N.45°E. Desc. 58 ft. to

40.01 Set an iron post, 3 ft. long, 1 in. in diam., 12 ins. in  
the ground, to bed rock, supported in a mound of stone,  
for  $\frac{1}{4}$  sec. cor., marked on brass cap,

$$\begin{array}{c} S9 \\ \hline S16 \\ \hline 1917 \end{array}$$

from which,

A cedar, 6 ins. in diam., brs. N.35 $\frac{1}{2}$ °E., 312  
 lks. dist., marked  $\frac{1}{4}$ S 9 BT.  
 A cinchona, 4 ins. in diam., brs. S.26 $\frac{3}{4}$ °E., 180  
 lks. dist., marked BT.

Descend 28 ft.



Survey of the Subdivision lines of Township 33 North Range 13 West 39

Chains.

- 41.55 Draw, course N. Ascend 40 ft.
- 45.15 Small spur, slopes N. Descend 60 ft.
- 50.10 Small draw, course N. Ascend 45 ft.
- 55.05 Small spur, slopes N. Descend 35 ft.
- 63.65 Draw, course N. 60° E. Asc. 33 ft., over NE. slope, to
- 70.00 Draw, course N. 85° E. Asc. 43 ft. over S. slope, to
- 80.02 The cor. of secs. 8, 9, 16 and 17.

Land, rolling.  
 Soil, rocky, 3rd rate.  
 Timber, cedar and pinyon.  
 Undergrowth, sagebrush and cinchona.

N. 0° 3' W., bet. secs. 8 and 9.  
 Over rolling land, thru. scattering timber and undergrowth.  
 Ascend 125 ft.

- 15.82 Long spur, slopes E. Enter dense timber. Desc. 70 ft.
- 19.26 Draw, course N. 60° E. Ascend 35 ft.
- 24.21 Small spur, slopes E. Desc. 45 ft.
- 27.65 Draw, course S. 65° E. Ascend 95 ft.
- 37.02 Short spur, slopes SE. Desc. 10 ft., to
- 40.00 Head of draw, course SE. Set an iron post, 3 ft. long, 1 in. in diam., 26 ins. in the ground, for  $\frac{1}{4}$  sec. cor., marked on brass cap,

$\frac{1}{4}$   
 S 8 | S 9  
 1917

from which,  
 A cedar, 8 ins. in diam., brs. S. 25 $\frac{1}{2}$ ° E., 105 lks. dist., marked  $\frac{1}{4}$  S 9 BT.  
 A cedar, 10 ins. in diam., brs. N. 74° W., 68 lks. dist., marked  $\frac{1}{4}$  S 8 BT.

Ascend 65 ft.

- 44.38 Ridge, brs. E. and W. Desc. 210 ft.
- 52.03 Drawn course E. Ascend 200 ft.
- 61.38 Spur, slopes E. Desc. 260 ft.
- 70.45 Gulch, course N. 45° E. near head. Asc. 40 ft. to
- 80.00 Set an iron post, 3 ft. long, 2 ins. in diam., on surface rock, and raise a mound of stone around post, for cor. of secs. 4, 5, 8 and 9, marked on brass cap,

T33N | R13W  
 S 5 | S 4  
 S 8 | S 9  
 1917

from which,  
 A pinyon, 10 ins. in diam., brs. N. 4° E., 377 lks. dist., marked T33N R13W S4 BT.  
 A pinyon, 6 ins. in diam., brs. S. 61 $\frac{1}{4}$ ° E., 70 lks. dist., marked T33N R13W S9 BT.  
 A pinyon, 7 ins. in diam., brs. S. 26 $\frac{3}{4}$ ° W., 100 lks. dist., marked T33N R13W S8 BT.  
 A pinyon, 6 ins. in diam., brs. N. 47 $\frac{1}{2}$ ° W., 76 lks. dist., marked T33N R13W S5 BT.

Land, rolling.  
 Soil, rocky, 3rd rate.  
 Timber, pinyon, and cedar.  
 Undergrowth, sagebrush, cinchona and Spanish dagger.

- 1.50 East, on a random line, bet. secs. 4 and 9.  
 Rim of canyon. Discontinue chaining and triangulate measurement across the canyon, as described as follows, and as shown on the diagram hereon:

70 Survey of Subdivision lines of Township 33 North, Range 13 West.

Chains.

Set flag ahead on random sec. line.

Vertical angle from the cor. of secs. 4, 5, 8 and 9, to the flag is  $3\frac{1}{4}^\circ$ .

From said sec. cor., measure a Base S.  $0^\circ 3' E.$ , 18.62 chs. along the sec. line, bet. secs. 8 and 9.

From S. end of this Base, the flag brs. N.  $67^\circ 24' E.$

The included angles of the triangle are  $67^\circ 27'$ ,  $89^\circ 57'$  and  $22^\circ 36'$ , the sum of which is  $180^\circ 00'$ . The dist. triangulated is obtained by

$$\frac{\text{Base} \times \sin. 67^\circ 27'}{\sin. 22^\circ 36'} \text{ or } \frac{18.62 \times .92355}{.38430} = 44.75 \text{ chs.}$$

From triangulation point, chain measurement West, 4.75 chs. to Set temp.  $\frac{1}{4}$  sec. cor. Thence East, chaining measurement of remainder of random line.

40.00

44.75

80.06

Triangulation point.

Intersect N. and S. line, 9 lks. N. of the cor. of secs. 3, 4, 9 and 10.

Thence, N.  $89^\circ 56' W.$ , on a true line, bet. secs. 4 and 9.

Over mountainous land, thru. scattering timber and undergrowth. Desc. 9 ft., over NW. slope.

1.40

12.65

20.15

22.35

26.40

35.31

Wash, course N.  $65^\circ E.$  Asc. 155 ft.

Ridge, brs. N.  $15^\circ E.$  and S.  $15^\circ W.$  Desc. 155 ft.

Draw, course N.  $15^\circ W.$  Asc. 20 ft.

Spur, slopes N. Desc. 65 ft.

Draw, course N.  $15^\circ E.$  Asc. 190 ft.

Spur, slopes N. Triangulation point. Continue chaining. Descend 135 ft., over W. slope, to

40.03

Set an iron post, 3 ft. long, 1 in. in diam., 26 ins. in the ground, for  $\frac{1}{4}$  sec. cor., marked on brass cap,

$\frac{1}{4}$  S 4  
S 9  
1917

from which,

A pinyon, 8 ins. in diam., brs. N.  $58\frac{3}{4}^\circ W.$ , 91 lks. dist., marked  $\frac{1}{4}$  S 4 BT.

No other trees within limits. Raise a mound of stone,  $2\frac{1}{2}$  ft. base,  $1\frac{1}{2}$  ft. high, N. of cor.

41.00

Descend 20 ft., over W. slope, to East rim of canyon brs. N. and S. Discontinue chaining.

60.00

Descend about 800 ft., over W. slope, to

(Approx.) Bottom of canyon, course N.

78.56

Ascend about 800 ft., over E. slope, to

Top of perpendicular cliff, 200 ft. high, brs. N. and S. facing E., and forming W. rim of canyon.

80.06

Ascend 15 ft., over E. slope, to

The cor. of secs. 4, 5, 8 and 9.

Land, mountainous. Soil, rocky, 4th rate.

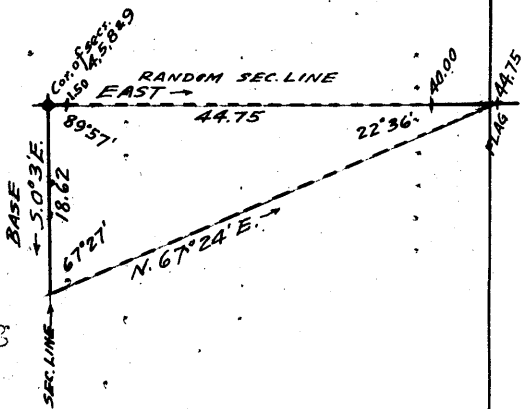
Timber, cedar and pinyon.

Undergrowth, sagebrush, algerita and cinchona.

4.68

N.  $0^\circ 3' W.$ , on a random line, bet. secs. 4 and 5.

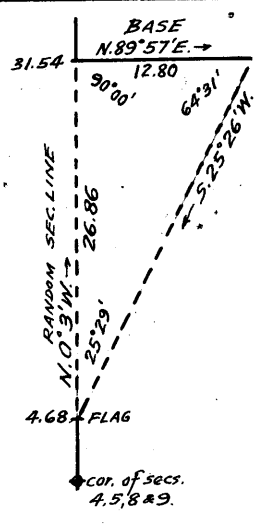
Impracticable to chain farther on this line, owing to precipitous descent over cliffs; therefore, triangulate as follows:



Survey of Subdivision lines of Township 33 North, Range 13 West. 41

Chains.

Set flag at this point.  
 From a point ahead on random line, measure a Base N.89° 57'E. 57'E., 12.80 chs. (impracticable to secure longer base).  
 From E. end of Base, flag brs. S.25° 26'W.



Vertical angle from W. end of Base to flag is +26° 50'.  
 Included angles of the triangle are 25° 29', 90° 00' and 64° 31', the sum of which is 180° 00'. The distance triangulated is obtained by Base x tang. 64° 31' or 12.80 x 2.09811 = 26.86 chs., which, added to 4.68 gives 31.54 chs. N.0° 3'W. from cor. of secs. 4, 5, 8 and 9 for the position of the triangulation point.

31.54

Triangulation point. Continue line and measurement by chaining.

40.00

Set temp. sec. cor.

79.86

Intersect N. bdy. of Tp., 2 lks. E. of the cor. of secs. 4, 5, 32 and 33, established as hereinbefore described.

Thence, S.0° 4'E., on a true line, bet. secs. 4 and 5, Over mountainous land, thru scattering timber and undergrowth. Asc. 215 ft., over NW. slope.

33.75

Low ridge, brs. East, and N.80° W. Desc. 55 ft. over S. slope.

37.50

Draw, course W. Asc. 22 ft., over N. slope, to

39.86

Set an iron post, 3 ft. long, 1 in. in diam., 14 ins. in the ground, to bed rock, supported in a mound of stone, for sec. cor., marked on brass cap,

S 51 S 4  
1917

48.32

No bearing trees available. Raise mound of stone, 2 1/2 ft. base, 1 1/2 ft. high, W. of cor. Asc. 39 ft., over N. slope, to Triangulation point, at foot of steep N. slope. Discontinue chaining. Measurement of 26.86 chs. by triangulation, as hereinbefore described. Asc. about 900 ft. to

75.18

Triangulation point, at top of cliff 200 ft. high, bearing E. and W. facing N. at point of spur, sloping N. Continue line and measurement by chaining. Asc. 8 ft. over E. slope, to

79.86

the cor. of secs. 4, 5, 8 and 9.  
 Land, mountainous.  
 Soil, rocky, 4th rate.  
 Timber, cedar and pinyon.  
 Undergrowth, black brush and Spanish dagger.

From the std. cor. of secs. 31 and 32. on the S bdy. of the Tp. (8th. Std. Par. N.) hereinbefore described, N.0° 3'W., bet. secs. 31 and 32. Over rolling land, thru scattering timber, and undergrowth. Descend 90 ft., over W. and NW slopes.

16.47

Wash, 6 lks. wide, course N.45° W: Asc. 80 ft., over SW. slope.

27.64

Spur, slopes NW. Enter mountainous land.

40.00

Descend 141 ft. over N. slope, to Set an iron post, 3 ft. long, 1 in. in diam., 26 ins. in the ground, for sec. cor., marked on brass cap,

S 31 S 32  
1917

from which,  
 A cedar, 10 ins. in diam., brs. S. 63 1/2° E., 67 lks. dist., marked S 32 BT.  
 A cedar, 6 ins. in diam., brs. S. 63° W., 18 lks. dist., marked S 31 BT.

43.39

Descend 57 ft., over N. slope. Wash, 16 lks. wide, course N. 60° W.

## 42. Survey of Subdivision lines of Township 33 North, Range 13 West.

Chains.

Ascend 73 ft., over SW. slope,  
 54.02 Descend 110 ft., over W. and NW. slopes.  
 62.50 Gulch, course N.45°W. Ascend 75 ft., over SW. slope.  
 69.68 Point of spur, slopes W. Desc. 97 ft., over NW. slope.  
 73.44 Wash, 5 lks. wide, in gulch, course N.80°W.  
 Ascend 50 ft., over SW. slope.  
 76.87 Point of spur, slopes W. Desc. 28 ft., over NW. slope, to  
 80.00 Set an iron post, 3 ft. long, 2 ins. in diam., 24 ins. in  
 the ground, for cor. of secs. 29, 31 and 32, marked on  
 brass cap,

T33N	R13W
S30	S29
S31	S32
1917	

from which,

- A cedar, 7 ins. in diam., brs. N.24½°E., 23 lks.  
dist., marked T33N-R13W S29 BT.
- A cedar, 9 ins. in diam., brs. S.73½°E., 38 lks.  
dist., marked T33N-R13W S32 BT.
- A cedar, 8 ins. in diam., brs. S.83½°W., 100 lks.  
dist., marked T33N R13W S31 BT.
- A cedar, 10 ins. in diam., brs. N.60°W., 13 lks.  
dist., marked T33N R13W S30 BT.

Land, rolling and mountainous.

Soil, rocky, 3rd rate.

Timber, cedar and pinyon.

Undergrowth, sagebrush, cinchona, white oak, manzanita, live  
oak, and rabbit brush.

40.00 East, on a random line, bet. secs. 29 and 32.  
 Set temp. sec. cor.  
 80.02 Intersect N. and S. line, 4 lks. S. of the cor. of secs. 28,  
 29, 32, 32 and 33.  
 Thence,  
 S.89° 58' W., on a true line, bet. secs. 29 and 32.  
 Over rolling land, thru scattering timber and dense under-  
 growth.  
 Ascend 50 ft., over E. and NE. slopes.  
 25.00 Descend 55 ft., over NW. slope.  
 37.24 Wash, 20 lks. wide, course N.45°E. Asc. 37 ft., over E. slope, to  
 40.01 Set an iron post, 3 ft. long, 1 in. in diam., 26 ins. in the  
 ground, for sec. cor., marked on brass cap,

S 29

S 32

1917

from which,

- A cedar, 10 ins. in diam., brs. N.31°E., 66 lks.  
dist., marked S 29 BT.
- A cedar, 16 ins. in diam., brs. S.27°E., 41 lks.  
dist., marked S 32 BT.

Ascend 80 ft., over E. and NE. slopes.

58.95 Descend 17 ft., over NW. slope.

63.94 Ascend 17 ft., over NE. slope.

66.93 Spur, slopes NW. Enter mountainous land. Descend 232 ft.  
over W. and NW. slopes, to

80.02 The cor. of secs. 29, 30, 31 and 32.

Land, rolling and mountainous.

Soil, 3rd and 4th rate.

Timber, cedar and pinyon.

Undergrowth, sagebrush, cinchona, white oak, manzanita, scrub  
oak, rabbit brush and black locust.

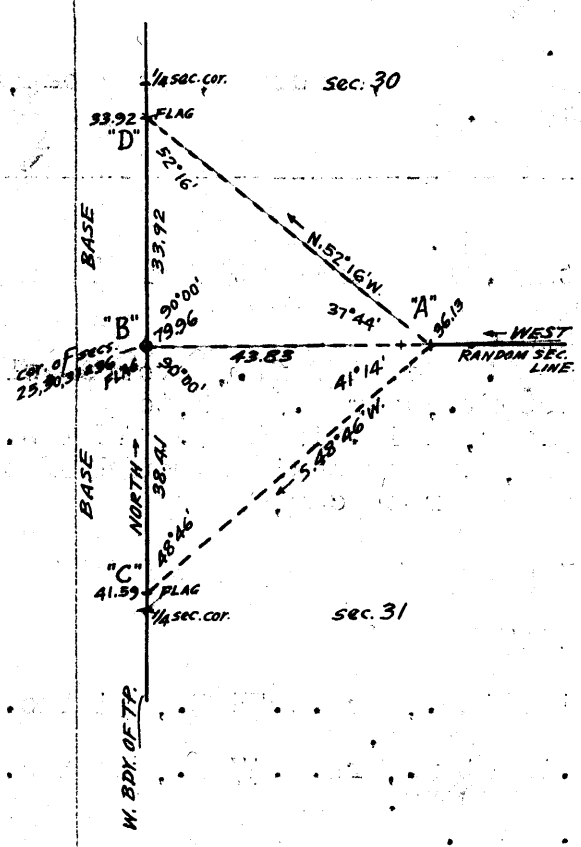
36.13 West, on random line, bet. secs. 30 and 31.

Top of cliffs. Set temp. witness cor. to sec. cor. Discon-  
tinue chaining, and triangulate the measurement of  
the remainder of this line, as described as follows,

Survey of Subdivision of Township 33 North, Range 13 West.

Chains.

and as shown on the diagram hereon:.



From this point, designated as "A" on diagram, a flag on cor. of secs. 25, 30, 31 and 36, on W. bdy. of Tp., designated as "B" hrs. due West.

A flag at 41.59 ch. station on W. bdy. of sec. 31 designated as "C" hrs. S. 48° 46' W.

A flag at 33.92 ch. station on W. bdy. of sec. 30, designated as "D", hrs. N. 52° 16' W.

Vertical angle from "A" to "B" is 21°.

Included angles of triangle "A-B-C" are 41° 14', 90° 00' and 48° 46', the sum of which is 180° 00'.

Included angles of triangle "A-B-D" are 37° 44', 90° 00' and 52° 16', the sum of which is 180° 00'.

Triangulated measurement of "A-B" using "B-C" as a Base is obtained by

Base x tang. 48° 46' or 38.41 x 1.14095 = 43.824 chs.

Triangulated measurement of "A-B" using "B-D" as a Base is obtained by

Base x tang. 52° 16' or 33.92 x 1.29229 = 43.834 chs.

The mean of the measurements of "A-B" by solution of the two triangles is 43.83 chs., which, added to 36.13 chs. gives 79.96 chs. as the length of the line, bet. secs. 30 and 31.

79.96 Intersect the cor. of secs. 25, 30, 31 and 36 on W. bdy. of the Tp., hereinbefore described.

Thence, East, on true line, bet. secs. 30 and 31.

Over mountainous land, thru. scattering timber and undergrowth.

Measurement of the W. 43.83 chs., of this line by triangulation hereinbefore described.

Ascend 1110 ft., over precipitous broken SW. slope to W.C. to 1/4 sec. cor.

39.96 The true point for 1/4 sec. cor. is inaccessible; therefore, at

43.83 Triangulation point of top; of cliffs. bearing N. 26 1/2° W. and S. 10° W., facing SW.

Set an iron post, 3 ft. long, 1 in. in diam., 10 ins. in the ground, on surface rock, supported in a mound of stone for witness cor. to 1/4 sec. cor., marked on brass cap,

WC 1/4 S. 30  
S. 31  
1917

from which,

A cedar, 8 ins. in diam., hrs. N. 12 1/2° E., 153 lks. dist., marked WC 1/4 S 30 BT.

A pinyon, 14 ins. in diam., hrs. S. 89° E., 153 lks. dist., marked WC 1/4 S 31 BT.

Continue line and measurement by chaining.

Ascend 87 ft., over W. slope.

46.55 Descend 9 ft., over NE. slope.

48.35 Ascend 92 ft., over W. slope.

55.40 Spur, slopes N. Desc. 98 ft., over NE. slope.

63.35 Ascend 21 ft., over NW. slope.

68.35 Point of spur, slopes N. Desc. 15 ft., over NE. slope.

44 Survey of Subdivision Lines of Township 33 North, Range 13 West.

Chains.

69.95 Wash, 8 lks. wide, in gulch, course N.45°W. Asc. 95 ft., over NW. slope, to

79.96 The cor. of secs. 29, 30, 31 and 32.

Land, mountainous.

Soil, 3rd and 4th rate.

Timber, cedar and pinyon.

Undergrowth, sagebrush, black brush, cinchona, scrub oak, algerita and Spanish dagger.

N.0°3'W., bet. secs. 29 and 30.

Over mountainous land, thru. scattering timber and undergrowth.

Descend 7 ft., over NW. slope.

0.33 Wash, 5 lks. wide, course W. Asc. 152 ft., over SW. slope.

19.53 Spur, slopes NW. Desc. 166 ft., over N. slope, to

40.00 Set an iron post, 3 ft. long, 1 in. in diam., 12 ins. in the ground, to bed rock, supported in a mound of stone, for 1/4 sec. cor., marked on brass cap,

S30 | S29

1917

from which,

A pinyon, 5 ins. in diam., brs. S.73°E., 54 lks. dist., marked 1/4 S 29 BT.

A pinyon, 5 ins. in diam., brs. N.47°W., 64 lks. dist., marked 1/4 S30 BT.

Descend 158 ft., over N. slope.

48.36 Draw, course NW. Asc. 75 ft., over SW. slope.

53.67 Descend 160 ft., over W. and NW. slopes to

70.42 Rim of canyon, brs. E. and W.

Descend 305 ft., over N. slope, to

77.24 Wash, 20 lks. wide in gulch, course N.45°E.

Ascend 50 ft., over E. slope, to

80.00 Set an iron post, 3 ft. long, 2 ins. in diam., on surface rock, supported in a mound of stone, for cor. of secs. 19, 20, 29 & 30, marked on brass cap,

T33N | R13W

S19 | S20

S30 | S29

1917

No bearing trees available. Raise a mound of stone, 2 1/2 ft. base, 1 1/2 ft. high, W. of cor.

Land, mountainous.

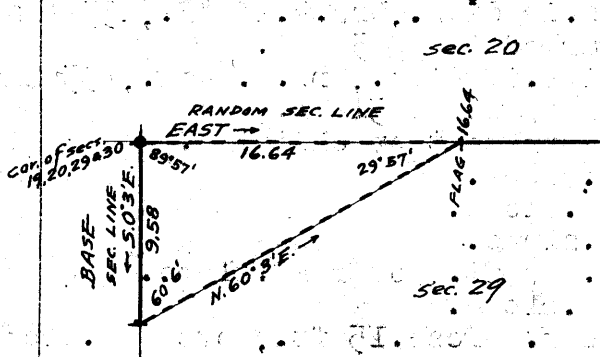
Soil, rocky, 3rd rate.

Timber, cedar and pinyon.

Undergrowth, sagebrush, cinchona and algerita.

East, on a random line, bet. secs. 20 and 29.

The West part of this line crosses precipitous slopes in a canyon, and chaining is impracticable. Triangulate measurement from sec. cor. to E. rim of canyon, as described as follows, and as shown on the diagram hereon:



Set a flag ahead on line, vertical angle, + 21°. From sec. cor., measure a Base S. 0°3'E., 9.58 chs. on the sec. line, bet. secs. 29 and 30.

From S. end of base, the flag brs. N. 60°3'E. The included angles of the triangle are 89°57', 29°57' and 60°06', the sum of which is 180°00'. The distance triangulated is obtained by

Survey of Subdivision lines of Township 33 North, Range 13 West. 45

Chains,

Base  $\times \frac{\sin 60^\circ 06'}{\sin 29^\circ 57'}$  or  $\frac{9.58 \times .86690}{.49924} = 16.64$  chs.  
 16.64 Triangulation point. Continue line and measurement by chaining.  
 40.00 Set temp.  $\frac{1}{4}$  sec. cor.  
 79.92 Intersect N. and S. line, 15 lks. N. of the cor. of secs. 20, 21, 28 and 29.  
 Thence, N.  $89^\circ 54' W.$ , on a true line, bet. secs. 20 and 29.  
 Over mountainous land, thru scattering timber and undergrowth.  
 Ascend 65 ft., over NE slope.  
 14.45 Ridge, brs. NW. and SE. Desc. 255 ft., over SW slope, to  
 34.29 Head of gulch, course S.  $50^\circ W.$  Thence along S. slope.  
 Descend 11 ft. to  
 39.96 Set an iron post, 3 ft. long, 1 in. in diam., 8 ins. in the ground to bed rock, supported in a mound of stone, for  $\frac{1}{4}$  sec. cor., marked on brass cap,

$\frac{1}{4}$  S 20  
 S 29  
 1917

from which,  
 A cedar, 9 ins. in diam., brs. N.  $62\frac{1}{2}^\circ W.$ , 50 lks. dist., marked  $\frac{1}{4}$  S 20 BT,  
 A pinyon, 4 ins. in diam., brs. S.  $19\frac{1}{2}^\circ W.$ , 55 lks. dist., marked BT.

Ascend 5 ft., over S. slope.  
 43.90 Descend 50 ft., over SW slope.  
 48.15 Gulch, course S.  $10^\circ E.$  near head.  
 Ascend 92 ft., over SE slope.  
 53.13 Descend 120 ft., over SW slope, to  
 63.28 Triangulation point, on E. or right rim of canyon, bearing N. and S. Discontinue chaining. Triangulate to sec. cor., as hereinbefore described.  
 Descend about 500 ft., over W. slope, to  
 78.00 (Approx.) Bottom of canyon, course N.  $15^\circ W.$   
 Ascend 75 ft., over E. slope, to  
 79.92 The cor. of secs. 19, 20, 29 and 30.  
 Land, rolling and mountainous.  
 Soil, very rocky, 4th rate.  
 Timber, scattering cedar and pinyon.  
 Undergrowth, sagebrush and cinchona.

West, on a random line, bet. secs. 19 and 30.  
 40.00 Set temp.  $\frac{1}{4}$  sec. cor.  
 79.91 Intersect W. bdy. of Tp., 6 lks. N. of the cor. of secs. 19, 24, 25 and 30, hereinbefore described.  
 Thence, N.  $89^\circ 57' E.$ , on a true line, bet. secs. 19 and 30.  
 Over rolling and mountainous land, thru scattering timber and undergrowth.  
 Ascend 370 ft., over precipitous SW slope, to  
 4.10 Rim, brs. NW. and SE. Desc. 115 ft., over N. slope, to  
 18.70 Spur, slopes N.  $60^\circ E.$  Desc. 175 ft., over S. slope, to  
 39.91 Set an iron post, 3 ft. long, 1 in. in diam., 6 ins. in the ground to bedrock, supported in a mound of stone, for  $\frac{1}{4}$  sec. cor., marked on brass cap,

$\frac{1}{4}$  S 19  
 S 30  
 1917

No bearing trees available. Raise a mound of stone,  $2\frac{1}{2}$  ft. base,  $1\frac{1}{2}$  ft. high, N. of cor.  
 Descend 305 ft., over SE slope, to  
 77.45 Top of cliff, 175 ft. high, bearing N. and S. facing E., and forming W. or left rim of canyon.  
 Descend 205 ft., over precipitous E. slope, to

46. Survey of Subdivision lines of Township 33 North, Range 13 West.

chains.

79.91 The cor. of secs.19,20,29 and 30.  
Land, mountainous.  
Soil, rocky, 4th rate.  
Timber, pinyon.  
Undergrowth, black brush, and Spanish dagger.

---

N.0°3' W., bet.secs.19 and 20.  
Over mountainous land, along sides of a canyon, course northerly, thru. scattering timber and undergrowth.  
Descend 105 ft.

3.70 Bottom of canyon, course N. 15°W. Ascend 200 ft.

20.24 Traverse point at Base of impassable cliff. To avoid cliffs, run traverse in sec.19, as follows:  
N. 61°W., 0.82 chs.  
Thence,  
N.45°E., 1.01 chs., returning to sec.line at

21.36 Traverse point. Thence N.0°3'W., on sec,line, continuing measurement.  
Descend 227 ft., over NW.slope.

34.68 Gulch, course S.80°W. Asc.251 ft., over SW.slope, to

40.00 Set an iron post, 3 ft.long, 1 in. in diam., 20 ins.in the ground to bed rock, supported in a mound of stone, for  $\frac{1}{4}$  sec.cor., marked on brass cap,

S19 | S20  
|  
.1917.

No bearing trees available. Raise a mound of stone,  $2\frac{1}{2}$  base,  $1\frac{1}{2}$  ft.high, W.of cor.  
Ascend 34 ft., over SW.slope.

44.87 Descend 150 ft., over NW.slope.

53.57 Gulch, course W.. Asc.12 ft., over SW.slope.

55.56 Descend 26 ft., over W.slope.

58.84 Ascend 14 ft., over W.slope..

62.92 Descend 126 ft., over NW.slope, to

80.00 Set an iron post, 3 ft.long, 2 ins. in diam., on surface rock, supported in a mound of stone, for cor.of secs. 17,18,19 and 20, marked on brass cap,

T33N | R13W  
S18 | S17  
S19 | S20  
1917

---

from which,  
A pinyon, 10 ins.in diam., brs.S.57 $\frac{1}{2}$ °E., 67 lks. dist., marked T33N R13W S20 BT.  
A pinyon, 8 ins. in diam., brs.S.39°W., 245 lks. dist., marked T33N R13W S19 BT.

No other trees within limits; raise a mound of stone, 3 ft.base,  $2\frac{1}{2}$  ft. high, W.of cor.  
Land, mountainous.  
Soil, rocky, 4th rate.  
Timber, cedar and pinyon.  
Undergrowth, sagebrush and black brush.

---

40.00 East, on a random line, bet. secs.17 and 20,  
Set temp. $\frac{1}{4}$  sec.cor.

80.04 Intersect the cor.of secs.16,17,20 and 21.  
Thence,  
West, on a true line, bet. secs. 17 and 20.  
Over mountainous land, thru. scattering timber and undergrowth.  
Descend 45 ft., over NW. slope.

14.00 Draw, course N.60°E. Asc.117.ft., over E.slope.

38.95 Ridge, brs.N. and S. Desc.5 ft., over W.slope, to

40.02 Set an iron post, 3 ft.long, 1 in.in diam., on surface rock, supported in a mound of stone, for  $\frac{1}{4}$  sec.cor., marked on



Survey of Subdivision lines of Township 33 North Range 13 West. 47

Chains.

brass cap,  
S 17  
S 20  
1917

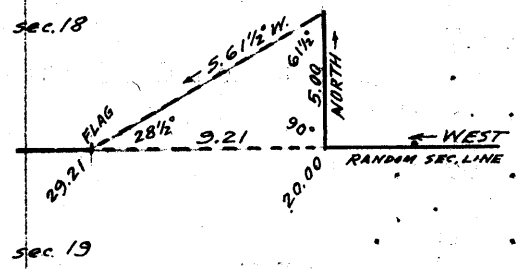
from which,  
A pinyon, 8 ins. in diam., brs. N. 5 1/2° W., 128 lks.  
dist., marked S 17 BT.  
A pinyon, 10 ins. in diam., brs. S. 8 1/2° E., 94 lks.  
dist., marked S 20 BT.

40.10 E. or right rim of canyon, brs. N. and S.  
Descend 927 ft., over steep NW. slope to sec. cor.

55.10 Head of gulch, course N. 45° W.

80.04 The cor. of secs. 17, 18, 19 and 20.  
Land, mountainous.  
Soil, rocky, 3rd and 4th rate.  
Timber, cedar and pinyon.  
Undergrowth, black brush, cinchona and Spanish dagger.

20.00 West, on random line, bet. secs. 18 and 19.  
Foot of cliffs, bearing N. and S. facing E. Discontinue  
chaining, and triangulate measurement to top of cliffs  
as described as follows, and as shown on the diagram  
herenn:



Measure a Base, North, 5.00 chs.  
(longer base impracticable).  
Set flag ahead on random line  
at top of cliffs.  
Vertical angle to flag is  
36°.  
From N. end of Base, flag brs.  
S. 61 1/2° W.  
Included angles of triangle  
are 61 1/2°, 90° and 28 1/2°; the  
sum of which is 180° 00'.

Triangulated measurement on random sec. line is obtained  
by Base x tang. 61 1/2° or 5.00 x 1.84177 = 9.21 chs.;  
which, added to 20.00 chs., gives 29.21 chs. West from  
cor. of secs. 17, 18, 19 and 20, for the position of the  
triangulation point.

29.21 Triangulation point. Continue line and measurement by  
chaining.

40.00 Set temp. sec. cor.

79.80 Intersect W. bdy. of Tp., 10 lks. N. of the cor. of secs. 13,  
18, 19 and 24, hereinbefore described.

Thence  
N. 89° 56' E., on a true line, bet. secs. 18 and 19.  
Over mountainous land, thru scattering timber and under-  
growth.

Descend 420 ft., over NE. slope.

12.20 Wash, in gulch, course N. 20° E. Asc. 435 ft., over NW. slope.

26.00 Spur, slopes N. 25° E. Desc. 175 ft., over E. slope.

32.35 Gulch, course N. Asc. 100 ft., over W. slope.

38.05 Spur, slopes N. 20° E. Desc. 16 ft., over E. slope, to

39.80 Set an iron post, 3 ft. long, 1 in. in diam., on surface rock,  
supported in a mound of stone, for 1/4 sec. cor., marked  
on brass cap,

S 18  
S 19  
1917

from which,  
A pinyon, 8 ins. in diam., brs. N. 55° W., 137 lks.  
dist., marked S 18 BT.  
A cedar, 16 ins. in diam., brs. S. 29° E., 32 lks.  
dist., marked S 19 BT.

Descend 98 ft., over E. slope, to

50.59 Triangulation point. Top of cliffs, bearing N. and S.,  
facing E., and forming W. rim of canyon. Discontinue

48 Survey of Subdivision lines of Township 33 North Range 13 West chains,

59.80 chaining. Measurement to foot of cliffs by triangulation, hereinbefore described. Desc. 442 ft. W.  
 74.10 Triangulation point at foot of cliffs. Continue line and measurement by chaining. Desc. 200 ft., over E. slope.  
 79.80 Wash, 25 lks. wide, in bottom of canyon, course N. 10° W.  
 Ascend 81 ft., over NW. slope, to  
 The cor. of secs. 17, 18, 19 and 20.  
 Land, mountainous.  
 Soil, limestone and sandstone formation, 4th rate.  
 Timber, cedar and pinyon.  
 Undergrowth, black brush, sagebrush, rabbit brush, cinchona and Spanish dagger.

N. 0° 3' W., bet. secs. 17 and 18.  
 Over mountainous land, thru. scattering timber and undergrowth.  
 24.19 Descend 150 ft., over NW. slope.  
 Wash, 20 lks. wide, course N. 45° W. Asc. 15 ft., over SW. slope.  
 25.87 Descend 45 ft., over NW. slope.  
 40.00 Wash, 30 lks. wide, course W.  
 Set an iron post, 3 ft. long, 1 in. in diam., 26 ins. in the ground, for  $\frac{1}{4}$  sec. cor., marked on brass cap,

S18 | S17

1917

No bearing trees available. Raise a mound of stone, 2  $\frac{1}{2}$  ft. base, 1  $\frac{1}{2}$  ft. high, W. of cor.  
 43.49 Ascend 57 ft., over SW. slope.  
 49.46 Descend 36 ft., over NW. slope.  
 51.63 Ascend 24 ft., over SW. slope.  
 75.58 Descend 136 ft., over N. slope.  
 78.65 Gulch, course N. 75° W. Asc. 40 ft., over S. slope.  
 80.00 Point of spur, slopes N. 75° W. Desc. 9 ft., over NW. slope, to Set an iron post, 3 ft. long, 2 ins. in diam., 6 ins. in the ground, to bedrock, supported in a mound of stone for cor. of secs. 7, 8, 17 and 18, marked on brass cap,

T33N | R13W

S 7 | S 8

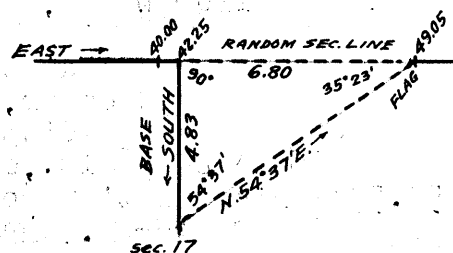
S18 | S17

1917

from which,  
 A pinyon, 10 ins. in diam., brs. N. 79  $\frac{1}{2}$ ° E., 55 lks. dist., marked T33N R13W S8 BT.  
 No other trees within limits. Raise a mound of stone, 2  $\frac{1}{2}$  ft. base, 1  $\frac{1}{2}$  ft. high, W. of cor.  
 Land, mountainous.  
 Soil, rocky, 4th rate.  
 Timber, cedar and pinyon.  
 Undergrowth, black brush, cinchona and Spanish dagger.

40.00 East, on random line, bet. secs. 8 and 17.  
 42.25 Set temp.  $\frac{1}{4}$  sec. cor.  
 Beyond this point, precipitous ascent over cliffs renders chaining impracticable; therefore, triangulate as described, as follows, and as shown on the diagram hereon:

Measure a Base, South 4.83 chs. (longer base impracticable).  
 Set flag ahead on line at top of cliff.  
 Vertical angle to flag is 40°.  
 From S. end of Base, flag brs. N. 54° 37' E.



Included angles of the triangle are 54° 37', 90° 00' and 35° 23', the sum of which is 180°

Survey of Subdivision lines of Township 33 North, Range 13 West. 49

chains.

00'.  
 Triangulated measurement on random sec. line is obtained by  
 Base x tang.  $54^{\circ}37'$  or  $4.83 \times 1.40800 = 6.80$  chs., which  
 added to 42.25 chs. gives 49.05 chs. East from the cor.  
 of secs. 7, 8, 17 and 18, for the position of the triangu-  
 lation point.

49.05 Triangulation point. Continue line and measurement by  
 chaining.

80.02 Intersect N. and S. line, 14 lks. N. of the cor. of secs. 8, 9,  
 16 and 17.

Thence,  
 N.  $89^{\circ}54'$  W., on a true line, bet. secs. 8 and 17.  
 Over mountainous land, thru scattering timber and under-  
 growth.

Descend slightly, over SW. slope.

2.75 Draw, course S.  $85^{\circ}$  E. Ascend 80 ft., over NE. slope.

15.18 Descend 22 ft., over NW. slope.

17.75 Draw, course N.  $45^{\circ}$  E, near head.  
 Ascend 30 ft., over NE. slope.

23.15 Ridge, brs. N. and S. Desc. 153 ft., over W. slope, to

30.98 Top of cliff, 200 ft. high, brs. N. and S. facing W. Discon-  
 tinue chaining. Measurement to foot of cliffs by  
 triangulation hereinbefore described.

Descend 376 ft. to

37.78 Triangulation point at foot of cliffs. Continue line and  
 measurement by chaining.

Descend 55 ft., over NW. slope, to

40.01 Set an iron post, 3 ft. long, 1 in. in diam., 26 ins. in  
 the ground, for  $\frac{1}{4}$  sec. cor., marked on brass cap,

S 8  
 S 17  
 1917

No bearing trees available. Raise a mound of stone,  $2\frac{1}{2}$  ft.  
 base,  $1\frac{1}{2}$  ft. high, N. of cor.  
 Descend 400 ft., over NW. slope.

75.00 Ascend 17 ft., over NE. slope, to

80.02 The cor. of secs. 7, 8, 17 and 18.  
 Land, mountainous.  
 Soil, rocky, 3rd rate.  
 Timber, piñon and cedar.  
 Undergrowth, black brush, sagebrush, cinchona and Spanish  
 dagger.

---

West, on a random line, bet. secs. 7 and 18.

40.00 Set temp.  $\frac{1}{4}$  sec. cor.

79.75 Intersect W. bdy. of Tp., 6 lks. N. of the cor. of secs.  
 7, 12, 13 and 18, hereinbefore described.

Thence,  
 N.  $89^{\circ}57'$  E., on a true line, bet. secs. 7 and 18.  
 Over mountainous land, thru scattering timber and under-  
 growth. Desc. 333 ft., over E. slope, to

28.10 Top of sandstone ledge, brs. N. and S. Thence across ledge, to

28.42 Leave ledge; desc. 117 ft., over E. slope.

28.90 Seepage from red sandstone, brs. S. 2 chs. dist.

34.75 Foot of descent, brs. NW. and SE. Leave mountainous, and  
 enter nearly level land.

Descend slightly over NE. slope, to

39.75 Set an iron post, 3 ft. long, 1 in. in diam., 26 ins. in  
 the ground, for  $\frac{1}{4}$  sec. cor., marked on brass cap,

S 7  
 S 18  
 1917

from which,  
 A cedar, 10 ins. in diam., brs. N.  $16\frac{1}{2}^{\circ}$  W., 115  
 lks. dist., marked S 7 BT.  
 A cedar, 12 ins. in diam., brs. S.  $68\frac{1}{2}^{\circ}$  E., 125  
 lks. dist., marked S 18 BT.

Continue over nearly level land.  
 Descend 20 ft., over NE. slope, to

50 Survey of Subdivision lines of Township 33 North Range 13 West.

Chains.

53.00 Draw, course N.10°E. Enter gently rolling land. Ascend 20 ft., over NW. slope.  
 58.60 Descend 16 ft., over NE. slope.  
 61.30 Wash, course N.10°W. Enter mountainous land. Ascend 65 ft., over NW. slope, to  
 73.95 Gulch, course N.45°W. Asc. 92 ft., over NW. slope, to  
 79.75 The cor. of secs. 7, 8, 17 and 18.  
 Land, mountainous, gently rolling and nearly level. Soil, rocky, limestone and sandstone formation; 3rd rate. Timber, pinyon and cedar. Undergrowth, black brush and Spanish dagger.

N.0°3'W., bet. secs. 7 and 8.  
 Over mountainous land, thru scattering timber and under growth.

Descend 103 ft., over N. slope:  
 9.45 Gulch, course W. Ascend 65 ft., over S. slope.  
 13.45 Enter rolling land. Desc. 142 ft., over NW. slope, to  
 40.00 Set an iron post, 3 ft. long, 1 in. in diam., 24 ins. in the ground, for 1/4 sec. cor., marked on brass cap,

S 7 | S 8  
 1917

No bearing trees available. Dig pits, 18x18x12 ins., one each N. and S. of post, 3 ft. dist.

Ascend 30 ft., over SW. slope.  
 43.68 Descend 120 ft., over NW. and W. slopes, to  
 80.00 Set an iron post, 3 ft. long, 2 ins. in diam., 12 ins. in the ground, to bed rock, supported in a mound of stone, for cor. of secs. 5, 6, 7 and 8, marked on brass cap,

T33N | R13W  
 S 6 | S 5  
 S 7 | S 8  
 1917

No bearing trees available. Dig pits, 18x18x12 ins., one each NE., SE., SW. and NW. of post, 5 1/2 ft. dist.

Land, mountainous and rolling. Soil, very shallow and rocky; decomposed rock and clay, 4th rate.

Timber, pinyon and cedar. Undergrowth, black brush, Spanish dagger and cinchona.

East, on a random line, bet. secs. 5 and 8.

40.00 Set temp. 1/4 sec. cor.  
 58.33 Foot of cliffs. Discontinue chaining, and triangulate measurement across the cliffs, as described as follows, and as shown on the diagram hereon:

Measure a Base, South, 4.47 chs.

(longer base impracticable).

Set flag ahead on random line.

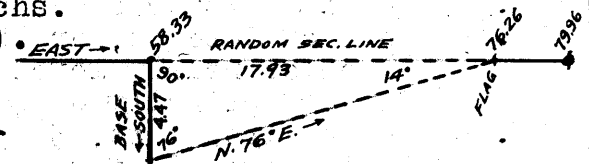
Vertical angle to flag is 29°.

From S. end of Base, flag brs. N.76°E.

Included angles of the triangle are 76°00', 90°00' and 14°00', the sum of which is 180°00'.

The dist. triangulated on random line is obtained by Base x tang. 76° or 4.47 x 4.01078 = 17.93 chs., which added to 58.33 chs. gives 76.26 chs. East from the cor. of secs. 5, 6, 7 and 8, for the position of the triangulation point.

76.26 Triangulation point. Continue line and measurement by chaining.



Survey of Subdivision lines of Township 33 North, Range 13 West. 51

Chains.  
 79.96 Intersect N. and S. line, 12 lks. N. of the cor. of secs. 4, 5, 8 and 9.  
 Thence,  
 N. 89° 55' W., on true line, bet. secs. 5 and 8.  
 Over mountainous land, thru scattering timber and undergrowth.  
 Ascend 18 ft., over E. slope.  
 3.28 Spur, slopes N. Desc. 7 ft., over W. slope, to  
 3.70 Top of cliff, 100 ft. high, bearing N. and S. facing W. Discontinue chaining. Measurement across cliffs by triangulation, as hereinbefore described.  
 Descend 655 ft., to  
 21.63 Triangulation point at foot of cliffs. Continue line and measurement, by chaining.  
 Descend 178 ft., over NW. slope.  
 33.07 Gulch, course N. 15° W. Asc. 22 ft., over NE. slope.  
 39.06 Spur, slopes N. 40° W.  
 Descend 9 ft., over W. slope, to  
 39.98 Set an iron post, 3 ft. long, 1 in. in diam., 12 ins. in the ground to bed rock, supported in a mound of stone, for  $\frac{1}{4}$  sec. cor., marked on brass cap,

$\frac{S}{S} \frac{5}{8}$   
 1917

No bearing trees available. Raise a mound of stone, 2 $\frac{1}{2}$  ft., 1 $\frac{1}{2}$  ft. high, N. of cor.  
 Descend 121 ft., over W. slope, to  
 50.23 Draw, course N. 45° W. Enter rolling land.  
 Descend 82 ft., over N. slope, to  
 62.05 Low ridge, brs. N. 40° W. and S. 40° E.  
 Descend 88 ft., over W. slope, to  
 79.96 The cor. of secs. 5, 6, 7 and 8.  
 Land, mountainous and rolling.  
 Soil, rocky, 4th rate.  
 Timber, pinyon and cedar.  
 Undergrowth, black brush, Spanish dagger and cinchona.

West, on a random line, bet. secs. 6 and 7.  
 40.00 Set temp.  $\frac{1}{4}$  sec. cor.  
 79.68 Intersect W. bdy. of Tp., 10 lks. N. of the cor. of secs. 1, 6, 7 and 12, hereinbefore described.  
 Thence,  
 N. 89° 56' E., on a true line, bet. secs. 6 and 7.  
 Over mountainous land, thru scattering timber and undergrowth. Desc. 22 ft., over E. slope.  
 1.57 Wash, 40 lks. wide, in gulch, course N. 10° E.  
 Ascend 70 ft., over W. slope, to  
 6.75 Top of sandstone cliff, 20 ft. high, brs. N. and S. facing W.  
 Ascend 10 ft., over W. slope.  
 8.24 Spur, slopes N. Desc. 115 ft., over E. slope.  
 17.35 Wash, 12 lks. wide, course N. 5° E. Enter rolling land.  
 Ascend 57 ft., over W. slope.  
 21.40 Spur, slopes N. Desc. 52 ft., over E. slope.  
 36.37 Wash, 60 lks. wide, course NW. Asc. 10 ft., over NW. slope, to  
 39.68 Set an iron post, 3 ft. long, 1 in. in diam., 26 ins. in the ground, for  $\frac{1}{4}$  sec. cor., marked on brass cap,

$\frac{S}{S} \frac{6}{7}$   
 1917

from which,  
 A cedar, 10 ins. in diam., brs. N. 58° E., 229 lks. dist., marked  $\frac{1}{4}$ S 6 BT.  
 A pinyon, 16 ins. in diam., brs. S. 68° W., 308 lks. dist., marked  $\frac{1}{4}$ S 7 BT.

Ascend 88 ft., over NW. slope, to  
 72.86 Wash, 10 lks. wide, course NW.  
 Ascend 44 ft., over W. slope, to  
 79.68 The cor. of secs. 5, 6, 7 and 8.

## 52' Survey of Subdivision lines of Township 33 North, Range 13 West.

Chains.

Land, mountainous and rolling.  
Soil, 3rd and 4th rate.  
Timber, pinyon and cedar.  
Undergrowth, black brush, sagebrush, cinchona, rabbit brush  
and live oak.

-----

40.00 N.0° 3'W., on a random line, bet. secs. 5 and 6.  
Set temp.  $\frac{1}{4}$  sec. cor.  
79.91 Intersect N. bdy. of Tp., 9 lks. E. of the cor. of secs. 5, 6,  
31 and 32, hereinbefore described.  
Thence,  
S.0° 7'E., on a true line, bet. secs. 5 and 6.  
Over rolling land, thru scattering timber and undergrowth.  
Descend 60 ft., over SW. slope.  
7.14 Ascend 17 ft., over NW. slope.  
12.13 Descend 68 ft., over SW. slope.  
18.77 Draw, 20 lks. wide, course W. Asc. 24 ft., over N. slope.  
25.16 Low spur, slopes N.45°W. Desc. 10 ft., over SW. slope.  
30.85 Draw, 20 lks. wide, course N.45°W.  
Ascend 71 ft., over N. slope, to  
39.91 Set an iron post, 3 ft. long, 1 in. in diam., 8 ins. in the  
ground, to bed rock, supported in a mound of stone, for  
 $\frac{1}{4}$  sec. cor., marked on brass cap,

1  
S 6 | S. 5  
1917

No bearing trees available.. Raise a mound of stone, 2 $\frac{1}{2}$  ft.  
base, 1 $\frac{1}{2}$  ft. high, W. of cor.  
Ascend 7 ft., over NW. slope.  
41.95 Descend 31 ft., over SW. slope.  
44.60 Ascend 117 ft., over NE. slope, to  
64.90 Low ridge, brs. NW. and SE. Asc. 36 ft., over W. slope, to  
79.91 The cor. of secs. 5, 6, 7 and 8.  
Land, rolling.  
Soil, very shallow and rocky, 4th rate.  
Timber, cedar and pinyon.  
Undergrowth, black brush, Spanish dagger and cinchona.

-----

Final Field Test of Buff Solar Transit No. 10125, by  
Lloyd E. Sechrist, U. S. Transitman.

-----

Nov. 14, 1917: Examine the adjustment of the transit, and  
correct all errors; then, to test the solar apparatus,  
by comparing its indications, resulting from solar  
observations made during a.m. and p.m. hours, with  
the true meridian determined July 21, 1917 by Polaris  
observations at camp, near the center of sec. 24, T. 33  
N., R. 13 W., lat. 36° 14 $\frac{1}{2}$ ' N.; long. 113° 39' W., proceed as  
follows:  
At 8h. 0m., a.m., l.m.t., set off 36° 14 $\frac{1}{2}$ ' N. on the lat.  
arc; 18° 9' S. on the decl. arc, and determine a meridian  
with the solar, which agrees with the true meridian.  
At apparent noon, set off 18° 13' S. on the decl. arc, and ob-  
serve the sun on the meridian. The resulting reading  
of the lat. arc is 36° 14 $\frac{1}{2}$ ' N.  
At 4h. 0m. p.m., l.m.t., set off 36° 14 $\frac{1}{2}$ ' N. on the lat. arc;  
18° 14' S. on the decl. arc, and determine a meridian  
with the solar, which agrees with the true meridian.  
From the results of the above described field tests, con-  
clude that the solar apparatus has been in continued  
satisfactory adjustment throughout the surveys executed  
as described in the foregoing field notes.

-----

Survey of Subdivision lines of Township 33 North, Range 13 West. 53  
Chains.

The continued satisfactory adjustment of the solar apparatus of Young & Sons light mountain transit No. 8592 used by William H. Thorn, U.S. Surveyor, in the execution of the surveys hereinbefore described is indicated from field tests described in Book "E."

GENERAL DESCRIPTION.

The surface of this township is mountainous and rolling. The greater part of the surface drains northeasterly into Pigeon Canyon, which traverses the NE. part of the township, course NW. The West two ranges of sections drain west and northwest, from a line of cliffs extending N. and S. thru. the township. The soil in some parts is a heavy loam, adobe and clay, 2nd and 3rd rate, while in others, the soil is rocky, 4th rate. There is a scattering growth of cedar and pinyon timber in all sections, and either a scattering or dense growth of sage brush, algerita, cinchona and scrub oak is found in all sections, and cactus in some parts. A fair growth of grass is prevalent over the greater part of the township.

There are no indications of valuable mineral deposits. There are no permanent streams of running water, the only permanent water in the township being at Upper Pigeon Spring in bottom of Pigeon Canyon in sec. 2.

There are no settlers, and the only improvement in the township consists of a tank for water storage at Upper Pigeon Spring. A road follows the bottom of Pigeon Canyon, which is joined in sec. 2 by another road, extending northerly and southerly, thru. the eastern part of the township. These two roads are the only ones in the township.





BOOK 3633

CERTIFICATE OF UNITED STATES TRANSITMAN.

I, Loyd E. Sechrist, U.S. Transitman, hereby certify upon honor that, in pursuance of special instructions received from the U. S. Surveyor General, for Group 73, Arizona, bearing date of the 12th day of October, 1916, I have well, faithfully, and truly in my own proper person, and in strict conformity with said instructions, the Manual of Surveying Instructions, and the laws of the United States, surveyed all those parts or portions of the Northern Boundary and Subdivision lines of

TOWNSHIP 33 NORTH, RANGE 13 WEST,

of the Gila and Salt River Base & Meridian, in the State of Arizona, and by diagram on page 1 hereof the foregoing field notes as having been executed by me, and under my direction; and that all the corners of said survey have been established and perpetuated in strict accordance with the Manual of Surveying Instructions, and the special written instructions of the U. S. Surveyor General, for Group 73, Arizona, and in the specific manner described in the field notes, and that the foregoing are the original field notes of such survey.

Place: Phoenix, Arizona.

Date: May 29, 1924.

Loyd E. Sechrist (deceased)

U. S. Surveyor

By

Asst. Supervisor of Surveys.

APPROVAL.

Office of the United States Surveyor General,

101

The foregoing field notes of the survey of

executed by

under his special instructions dated, 191, having been critically examined, and the necessary corrections and explanations made, the said field notes, and the surveys they describe, are hereby approved.

U. S. Surveyor General.

I certify that the foregoing transcript of the field notes of the above described surveys in

has been correctly copied from the original notes on file in this office.

U. S. Surveyor General.



CERTIFICATE OF UNITED STATES SURVEYOR.

BOOK 3633

I, William H. Thorn, U. S. Surveyor, hereby certify upon honor that, in pursuance of special instructions received from the U. S. Surveyor General, for Group 73, Arizona, bearing date of the 12th day of October, 1916, I have well, faithfully, and truly in my own proper person, and in strict conformity with said instructions, the Manual of Surveying Instructions, and the laws of the United States, surveyed all those parts or portions of the 8th Standard Parallel North, thru Range 13 West, and West boundary and subdivision lines of TOWNSHIP 33 NORTH, RANGE 13 WEST, of the Gila and Salt River Base and Meridian, in the State of Arizona, which are represented in and by diagram on page hereof the foregoing field notes/as having been executed by me, and under my direction; and that all the corners of said survey have been established and perpetuated in strict accordance with the Manual of Surveying Instructions, and the special written instructions of the U. S. Surveyor General, for Group 73, Arizona, and in the specific manner described in the field notes, and that the foregoing are the original field notes of such survey.

Place - Redlands Calif
Date - June 5th 1924

William H. Thorn
U. S. Surveyor.

APPROVAL.

OFFICE OF THE UNITED STATES SURVEYOR GENERAL,

Phoenix, Arizona, Sept 20, 1924.

The foregoing field notes of the survey of the 8th Standard Parallel North, through Range 13 West, and the North and West boundaries, and Subdivision lines of TOWNSHIP 33 NORTH, RANGE 13 WEST,

of the Gila and Salt River Base and Meridian, in the State of Arizona, executed by William H. Thorn, U.S. Surveyor, & Loyd E. Sechrist, U.S. Transitman, under his special instructions dated Oct. 12, 1916, for Group 73, Arizona, having been critically examined, and the necessary corrections and explanations made, the said field notes, and the surveys they describe, are hereby approved.

Charles M. Donohue
U. S. Surveyor General.

I certify that the foregoing transcript of the field notes of the above-described surveys in has been correctly copied from the original notes on file in this office.