

3634

Book "E"

4-679

BOOK 3634

FIELD NOTES

OF THE SURVEY OF THE

8th Standard Parallel North, thru. Range 14 West,

The West boundary,

The North boundary, and

The Subdivision lines of

TOWNSHIP 33 NORTH, RANGE 14 WEST.

Of the Gila and Salt River Base and Meridian,

In the State of Arizona.

EXECUTED BY

William H. Thorn, Ray D. Armstrong, Dupree R.

Averill and William E. Hiester, U.S. Surveyors, and

Lemuel R. Mercer, U. S. Transitman,

In the capacity of U. S. Surveyors, under Special Instructions dated October 12, 1916, issued by the United States Surveyor General to govern surveys included in Group No. 73, which were approved by the Commissioner of the General Land Office, October 24, 1916, and Assignment Instructions dated April 19, 1917.

Nov. 18	, 1919
Dec. 1	, 1919
Aug. 11	, 1921.

Survey commenced Nov. 14, 1917.

Survey completed March 24, 1922.

3634

3634

3634

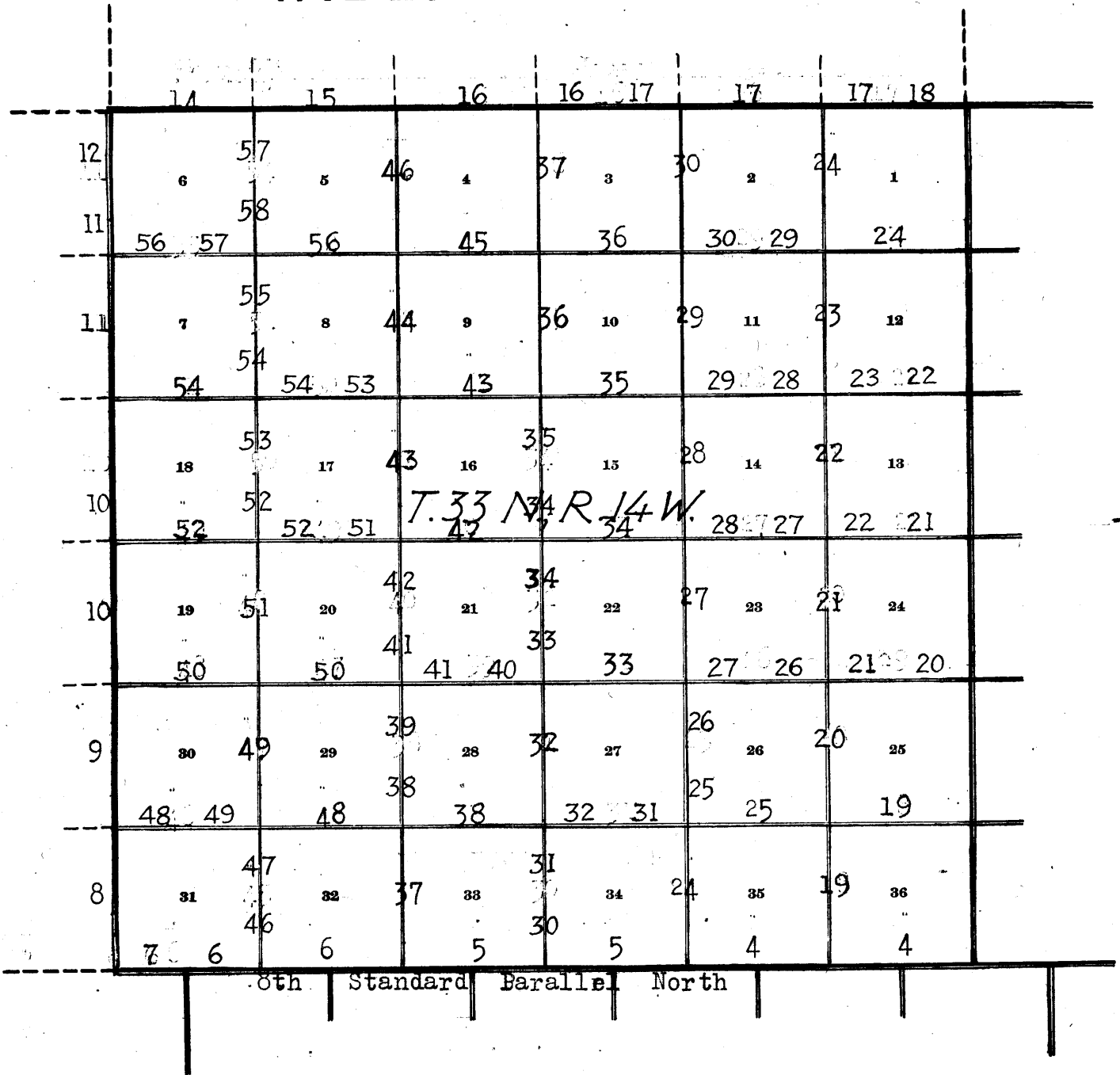
Book "E"

Group 73 - - Arizona.

1A

BOOK 3634

INDEX DIAGRAM.



Book "E"
 Group 73 - - Arizona.
 Township 33 North, Range 14 West.

DATE DIAGRAM.

	3-20-22	3-20-22	3-20-22	3-21-22	3-21-22	3-21-22
2-2-20	6	5	4	3	2	1
1-30-20	7	8	9	10	11	12
1-26-20	18	17	16	15	14	13
1-26-20	19	20	21	22	23	24
1-24-20	30	29	28	27	26	25
1-21-20	31	32	33	34	35	36
	3-24-22	3-24-22	3-21-22	3-22-22	2-4-20	12-17-19
	3-23-22	3-23-22	1-30-20	2-4-20	1-12-20	1-8-20
	3-22-22	3-23-22	1-30-20	1-27-20	1-12-20	1-8-20
	3-22-22	1-27-20	1-28-20	2-4-20	1-12-20	11-17-17
	1-25-20	1-22-20	1-22-20	1-22-20	1-22-20	11-17-17
	1-21-20	1-20-20	1-19-20	1-15-20	1-9-20	11-14-17
	3-24-22	3-24-22	3-21-22	3-22-22	3-22-22	3-22-22
	3-24-22	3-24-22	3-21-22	3-20-22	1-10-20	12-16-19
	3-23-22	3-23-22	1-30-20	1-29-20	1-10-20	12-16-19
	3-22-22	3-23-22	1-30-20	1-27-20	1-9-20	12-16-19
	3-22-22	1-27-20	1-27-20	1-9-20	1-9-20	11-17-17
	1-25-20	1-23-20	1-25-20	1-17-20	1-9-20	11-17-17
	1-21-20	1-21-20	1-19-20	1-17-20	1-9-20	11-16-17

8th Standard Parallel North

For dates of execution of survey of this line see Book "D"

- Indicates lines surveyed by William H. Thorn, U.S. Surveyor, on dates shown thereon.
- Indicates lines surveyed by Ray D. Armstrong, U.S. Surveyor, on dates shown thereon.
- Indicates lines surveyed by Dupree R. Averill, U.S. Surveyor, on dates shown thereon.
- Indicates lines surveyed by William E. Hiester, U.S. Surveyor, on dates shown thereon.
- Indicates lines surveyed by Lemuel R. Mercer, U.S. Transitman, on dates shown thereon.

Surveys herein described were executed on dates shown on diagram on page 1 hereof by William H.Thorn, Ray D. Armstrong, Dupree R.Averill and William E. Hiester, U.S.Surveyors, and Lemuel R.Mercer,U.S.Transitman, using respectively, Young and Sons light mountain transit No.8592, Buff transit No.9223, Young and Sons transits Nos.8489,8541 and 8487, each being equipped with a Smith Solar attachment.

Field Test of Instrument No.8592 by William H.Thorn:

- Nov.14,1917: Examine the adjustment of the instrument, correct all errors, and test the solar as follows:
 At camp, near center of sec.24,T.33 N.,R.13 W., lat: $36^{\circ}14\frac{1}{2}'$ N., longitude, $113^{\circ}39'$ W., at 8h.0m., a.m.,l.m.t., set off $36^{\circ}14\frac{1}{2}'$ N. on the lat.arc; $18^{\circ}9'$ S. on the decl. arc, and determine a meridian with the solar, which agrees with the true meridian determined at this point by Polaris observations on July 21, 1917.
 At apparent noon, set off $18^{\circ}13'$ S. on the decl.arc, and observe the sun on the meridian. The resulting reading of the lat. arc is $36^{\circ}14\frac{1}{2}'$ N.
 At 4h.0m. p.m., l.m.t., set off $36^{\circ}14\frac{1}{2}'$ N. on the lat. arc; $18^{\circ}14'$ S. on the decl.arc, and determine a meridian with the solar, which agrees with the true meridian.

Field Test of Instrument No.8487 by Lemuel R.Mercer.

Examine the adjustment of the instrument and correct all errors; then, to test the adjustment of the solar apparatus by comparing its indications resulting from solar observations made during a.m. and p.m. hours, with a meridian established by observations on Polaris, proceed as follows:

Dec. 7,1919:

At the Grand Gulch Mine, which is located in approximately the NE. $\frac{1}{4}$ of sec.4,T.34 N., R.14 W.,G.& S.R.B. and M., in latitude $36^{\circ}22\frac{1}{2}'$ N., longitude $113^{\circ}48\frac{1}{2}'$ W. of Greenwich, at 2h.29m. a.m., l.m.t., observe Polaris at western elongation, making four observations, two each with the telescope in direct and reversed positions, and mark a point in the line thus determined by a tack in a stake driven firmly in the ground, 5 chs. north.

At 8h.0m.a.m.l.m.t. lay off the azimuth of Polaris $1^{\circ}23'$ to the east, and mark a point in the meridian thus determined by a tack in a stake 5 chs.N.

Dec.9: At 9h.0m.a.m.,app.t., set off $36^{\circ}22\frac{1}{2}'$ N.on the latitude arc, $22^{\circ}44\frac{1}{2}'$ S. on the decl. arc, and determine a meridian with the solar, which agrees with the meridian established from observation on Polaris.

At app.noon with the lat.arc unchanged, observe the sun on the meridian; the resulting reading of the decl. arc is $22^{\circ}45\frac{1}{2}'$ S., which agrees with the computed decl. of the sun.

At 3h.0m.p.m.app.t. with the latitude arc unchanged, set off $22^{\circ}45'$ S. on the decl.arc, and determine a meridian with the solar, which agrees with the true meridian.

Field Test of Buff Transit No.9223 by Ray D.Armstrong.

Dec.14, 1919: Examine the adjustment of the instrument, correct all errors, and test the solar apparatus, as follows:

At 9h.0m. a.m. app. t.

At the same station described above, set off $36^{\circ}22\frac{1}{2}'$ N. on the latitude arc; $23^{\circ}8\frac{1}{2}'$ S. on the declination arc, and determine a meridian with the solar which agrees with the true meridian established by L.R. Mercer, Dec. 7, 1919.

At app. noon, with the latitude arc unchanged, observe the sun on the meridian; the resulting reading of the decl. arc is $23^{\circ}10'$ S., which agrees with the computed declination of the sun.

At 3h. 0m., p.m., app. time. with the latitude arc unchanged, set off $23^{\circ}9\frac{1}{2}'$ S. on the decl. arc, and determine a meridian with the solar, which agrees with the true meridian.

Field Tests of Instruments Nos. 9223, 8489 and 8541, by Dupree R. Averill and William E. Hiester.

We examine the adjustment of the instruments and correct all errors, then test the solar apparatus as follows:

March 18, 1922: At camp, which is located near the cor. of secs. 9, 10, 15 and 16, T. 33 N., R. 14 W., Gila and Salt River Base and Meridian, in lat. $36^{\circ}16'$ N., long. $113^{\circ}48'$ W., at 6h. 12m. p.m., l.m.t., we make an hour angle observation of Polaris west of the meridian, making four observations, two each with telescope in direct and reversed positions and mark the mean point in the line thus determined on a stake 5 chs. N.
Mean time of four readings = 6h. 12m., p.m., l.m.t.

March 19: At 8h. a.m., lay off the azimuth of Polaris $1^{\circ}16'$ to the east, and mark a point in the meridian thus determined on a stake 5 chs. N.

At 9h. 00m. a.m. app. time, set off $36^{\circ}16'$ N., on the latitude arcs; $0^{\circ}40'$ S. on the declination arcs, and determine meridians with the solars, which agree with the true meridian.

At app. noon with the latitude arcs unchanged, observe the sun on the meridian; the resultant readings of the decl. arcs are $0^{\circ}37'$ S., which agrees with the computed declination of the sun.

At 3h. 00m. p.m. app. time, with the latitude arcs unchanged we set off $0^{\circ}34'$ S. on the decl. arcs, and determine a meridians with the solars, which agree with the true meridian.

Unless otherwise specified all measurements are made with 5 ch. steel tapes, compared with a standard steel tape, and found correct. The measurements are made on the slope, the slope angles determined with clinometers and the slope distances reduced to the horizontal equivalent for entry in the field notes.

4 Survey of 8th. Standard Parallel North, thru. Range 14 West.

Chains.

- From the standard cor. of Ts. 33 N., Rs. 13 and 14 W., which is an iron post, described in Book "D," West, on S. bdy. of sec. 36.
Over mountainous land, thru. scattering timber and dense undergrowth.
Descend 180 ft.
- 26.30 Wash, course NW.
- 40.00 Ascend 145 ft., over NE. slope, to
Set an iron post, 3 ft. long, 1 in. in diam., 26 ins. in the ground, for std. $\frac{1}{4}$ sec. cor., marked on brass cap,
- S C
 $\frac{1}{4}$ S 36
1917
- from which,
A pinyon, 5 ins. in diam., brs. N. $2\frac{1}{2}^{\circ}$ E., 59 lks. dist., marked $\frac{1}{4}$ S 36 SC BT.
A pinyon, 5 ins. in diam., brs. N. 24° W., 112 lks. dist., marked $\frac{1}{4}$ S 36 SC BT.
- 40.30 Ascend slightly to
Spur, slopes NW.
- 60.40 Descend 325 ft. over W. slope.
Wash, course N. 5° W.
- 74.10 Ascend 155 ft., over E. slope.
Ridge brs. S. and N. 45° W.
- 80.00 Descend 180 ft., over W. slope, to
Set an iron post, 3 ft. long, 2 ins. in diam., 12 ins. in the ground, to bed rock, supported in a mound of stone, for standard cor. of secs. 35 and 36, marked on brass cap,
- S C
T33N R14W
S35 | S36
1917
- from which,
A pinyon, 5 ins. in diam., brs. N. $7\frac{1}{4}^{\circ}$ E., 214 lks. dist., marked T33N R14W S36 SC BT.
A pinyon, 5 ins. in diam., brs. N. 12° W., 188 lks. dist., marked T33N R14W S35 SC BT.
- Land, mountainous.
Soil, rocky, 3rd and 4th rate.
Timber, pinyon and cedar.
Undergrowth, black brush, sagebrush, scrub oak, Spanish dagger, algerita and bunch grass.
-
- West, on S. bdy. of sec. 35.
Over rolling land, thru. scattering timber and undergrowth.
Descend 112 ft., over SW. slope.
- 31.70 Wash, 20 lks. wide, course N. 20° W. in bottom of Snap Canyon.
- 40.00 Ascend gradually to
Set an iron post, 3 ft. long, 1 in. in diam., 10 ins. in the ground to bed rock, deposit a stone marked with a cross (x) at base of post, and raise a mound of stone around post for standard $\frac{1}{4}$ sec. cor., marked on brass cap,
- S C
 $\frac{1}{4}$ S 35
1920
- 80.00 No bearing trees available.
Ascend 100 ft. over E. slope, to
Set an iron post, 3 ft. long, 2 ins. in diam., 12 ins. in the ground to bed rock, deposit a stone marked with a cross (x) at base of post, and raise a mound of stone around post, for standard cor. of secs. 34 and 35, marked on brass cap,
- S C
T33N R14W
S34 | S35
1920
- No bearing trees available.

Survey of the 8th. Standard Parallel North, thru. Range 14 West. 5

Chains.

- Land, rolling.
- Soil, red sandy clay, mixed with gravel and small stones, 2nd and 3rd rates.
- Timber, pinyon and cedar.
- Undergrowth, black brush, sagebrush and yucca.

40.00

West, on S. bdy. of sec. 34.
 Over rolling land, thru. scattering undergrowth.
 Ascend 190 ft. to
 Set an iron post, 3 ft. long, 1 in. in diam., 18 ins. in the ground to bed rock, deposit a stone marked with a cross (x) at base of post, and raise a mound of stone around post, for standard $\frac{1}{4}$ sec. cor., marked on brass cap,

S C
 $\frac{1}{4}$ S 34
 1920

50.00

No bearing trees available.
 Ascend 50 ft.

61.00

Descend 64 ft.
 Ascend 90 ft., to

80.00

Set an iron post, 3 ft. long, 2 ins. in diam., 14 ins. in the ground to bed rock, deposit a stone, marked with a cross (x) at base of post, and raise a mound of stone, around post, for standard cor. of secs. 33 and 34, marked on brass cap,

S C
 T33N R14W
 S33 S34
 1920

No bearing trees available.
 Land, rolling.
 Soil, clay, sand and gravel, 3rd rate.
 Timber, none.
 Undergrowth, black brush.

20.00

West, on S. bdy. of sec. 33.
 Over rolling land, thru. scattering undergrowth.
 Ascend 40 ft.

37.80

Descend 30 ft.
 Draw, 20 lks. wide, course N. 20° E. Asc. 20 ft. to

40.00

Set an iron post, 3 ft. long, 1 in. in diam., 20 ins. in the ground to bed rock, supported in a mound of stone for standard $\frac{1}{4}$ sec. cor., marked on brass cap,

S C
 $\frac{1}{4}$ S 33
 1920

69.80

No bearing trees available. Raise a mound of stone, 2 ft. base, $1\frac{1}{2}$ ft. high, N. of cor.
 Thence over mountainous land.
 Ascend 525 ft.

80.00

Short ridge, brs. N. and S. Desc. 220 ft. to
 Set an iron post, 3 ft. long, 2 ins. in diam., 16 ins. in the ground to bed rock, supported in a mound of stone, for standard cor. of secs. 32 and 33, marked on brass cap,

S C
 T33N R14W
 S32 S33
 1920

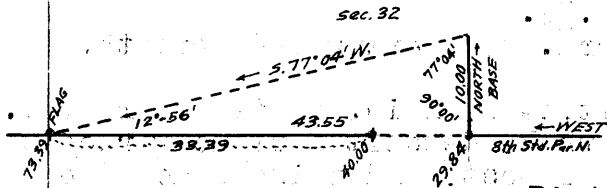
No bearing trees available. Raise a mound of stone, 3 ft. base, 3 ft. high, N. of cor.
 Land, rolling and mountainous.
 Soil, shallow clay loam, 2nd rate.
 Timber, none. Undergrowth, black brush.

6 Survey of 8th Standard Parallel North, thru. Range 14 West.

Chains.

West, on S. bdy. of sec. 32.
Over mountainous land, thru. scattering undergrowth.
Descend 110 ft.

9.86 Draw, course S. Thence over rolling land. Asc. 20 ft. to
29.84 Rim of canyon, brs. N. and S. Enter mountainous land. Dis-
continue chaining owing to precipitous descent into
canyon. Triangulate as follows:



Measure a Base, North 10.00 chs.

Set flag ahead on line on opposite side of canyon. From N. end of Base, the flag brs. S. 77° 04' W.

Dist. on line = 29.84 chs.
Dist. triangulated = 43.55 chs.
Total dist. = 73.39 chs.

By return measurement 33.39 chs. to

40.00 Set an iron post, 3 ft. long, 1 in. in diam., on surface rock, deposit a stone marked with a cross (x) at base of post, and raise a mound of stone around post for standard 1/4 sec. cor., marked on brass cap,

S C
1/4 S 32

1920

No bearing trees available. Cor. falls in bottom of canyon, course N. 60° W. about 1000 ft. below 29.84 ch. sta. Continue line and measurement by chaining.

Ascend about 700 ft.

73.39 Triangulation point on spur, sloping N. Desc. 95 ft. to

80.00 Set an iron post, 3 ft. long, 2 ins. in diam., over a cross (x) marked on surface rock, and raise a mound of stone around post, for standard cor. of secs. 31 and 32, marked on brass cap,

S C
T33N R14W
S31 | S32

1920

No bearing trees available. Cor. stands on N. side of ledge 50 ft. long, 10 ft. high, extending N. 70° E. and S. 70° W.

Land, mountainous.

Soil, rocky, 3rd and 4th rate.

Timber, none.

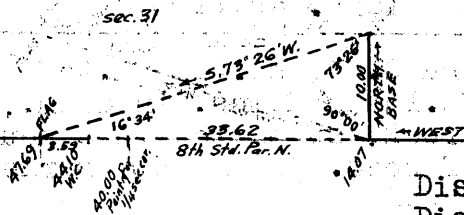
Undergrowth, black brush.

West, on S. bdy. of sec. 31.
Over mountainous land, thru. scattering undergrowth.
Descend 95 ft.

9.80 Head of gulch, course N. 20° W. Asc. 47 ft.

11.70 Spur, slopes N. Desc. 12 ft. to

14.07 NE. rim of canyon, brs. N. 20° W. and S. 20° E. Discontinue chaining, and triangulate across canyon as follows:



Measure a Base, North, 10.00 chs.

Set flag ahead on line beyond opposite rim of canyon.

From N. end of base, the flag brs. S. 73° 26' W.

Dist. on line = 14.07 chs.
Dist. triangulated = 33.62 chs.
Total dist. = 47.69 chs.

By return measurement = 3.59 chs.
44.10 chs.

30.00 (Approx.) Bottom of canyon, course NW. about 400 ft. below 14.07 ch. station. Asc. about 400 ft.

40.00 True point for std. 1/4 sec. cor. of sec. 31 is inaccessible.

44.10 SW. rim of canyon, brs. NW and SE. Set an iron post, 3 ft. long, 1 in. in diam., on surface rock, deposit a stone

Survey of 8th Standard Parallel North, thru. Range 14 West. 7

Chains.

marked with a cross (x) at base of post, and raise a mound of stone around post, for witness cor. to std. 1/4 sec. cor., marked on brass cap,

S C
1/4 S 31 WC
1920

No bearing trees available. Continue line and measurement by chaining.

Ascend over steep NE. slope.

47.69 Triangulation point. Continue chaining. Thence over broken N. slope. Desc. 43 ft. to

65.00 Same canyon rim, brs. NE and SW. Desc. 410 ft., over W. and NW. slopes, to

80.00 Set an iron post, 3 ft. long, 3 ins. in diam., over a cross (x) marked on ledge of rock, and raise a mound of stone around post, for standard cor. of Ts. 33 N., Rs. 14 and 15 W., marked on brass cap,

S C
T33N
R15W | R14W
S36 | S31
1920

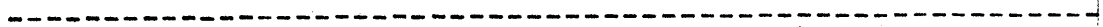
No bearing trees available:

Land, mountainous.

Soil, rocky, 4th rate.

Timber, none.

Undergrowth, blackbrush.



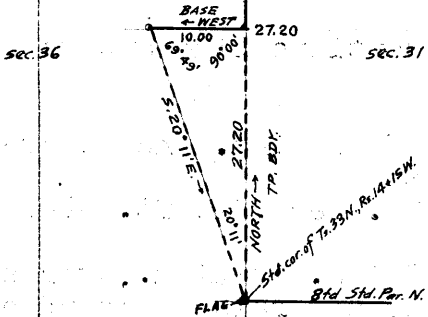
8 Survey of West boundary of Township 33 North, Range 14 West.

Chains.

From the standard cor. of Ts. 33 N., Rs. 14 and 15 W., on the 8th. Std. Par. N., hereinbefore described, North, bet. secs. 31 and 36.

Over mountainous land, in canyon, thru. scattering undergrowth.

Chaining is impracticable; therefore, triangulate measurement to N. rim of canyon, as follows:



Set flag on the std. cor. of Ts. 33 N., Rs. 14 and 15 W. From a point ahead on line at N. rim of canyon, measure a Base, West 10.00 chs. From W. end of base, the flag brs. S. 20° 11' E. Dist. triangulated = 27.20 chs.

12.00 (Approx.) Wash, course SW. in bottom of canyon about 400 ft. below Tp. cor.

Ascend about 500 ft. to

27.20 Triangulation point at N. rim of canyon on ridge, bearing E. and W. Continue line and measurement by chaining.

Descend 325 ft., over N. slope.

39.60 Gulch, 10 lks. wide, course N. 45° E.

Ascend slightly to

40.00 Set an iron post, 3 ft. long, 1 in. in diam., 24 ins. in the ground, for 1/4 sec. cor., marked on brass cap,

$\frac{1}{4}$
 S36 | S31
 1920

No bearing trees available.

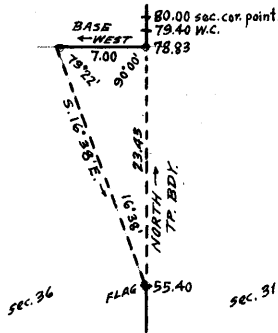
Raise a mound of stone, 3 ft. base, 2 ft. high, W. of cor.

46.50 Ascend 52 ft., over SE. slope, to Rim of gulch, brs. NE. and SW.

Ascend 15 ft., over SE. slope.

49.50 Descend 48 ft., over E. slope, to

55.40 Ridge, brs. N. 35° E. and S. 45° W., forming part of S. rim of Snap Canyon. Discontinue chaining owing to precipitous descent into canyon. Triangulate as follows:



Set flag at this point. From a point ahead on line near bottom of canyon, measure a Base, West, 7.00 chs. From W. end of Base, the flag brs. S. 16° 38' E. Dist. on line = 55.40 chs. Dist. triangulated = 23.43 " Total dist. = 78.83 chs.

78.83 Triangulation point near bottom of Snap Canyon. Continue line and measurement by chaining.

Descend slightly over N. slope, to

79.40 Top of S. or left bank of wash, brs. E and W. Set an iron post, 3 ft. long, 2 ins. in diam., 4 ins. in the ground, to bed rock, deposit a stone marked with a cross (x) at base of post, and raise a mound of stone, around post, for witness cor. to the cor. of secs. 25, 30, 31 and 36, marked on brass cap,

T33N
 R15W | R14W
 W | C
 S25 | S30
 S36 | S31
 1920

No bearing trees available.

Thence across wash, course W.

80.00 True point for cor. of secs. 25, 30, 31 and 36, falls in wash, 4 chs. wide, course W. in bottom of Snap

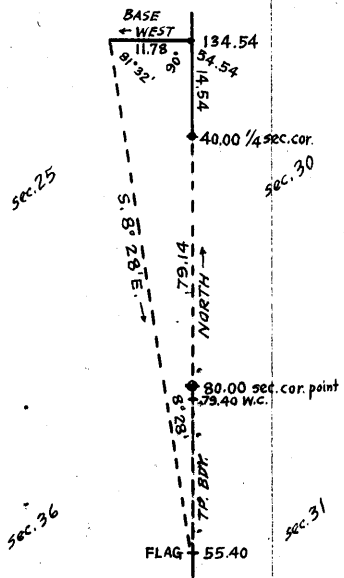
Survey of West boundary of Township 33 North, Range 14 West. 9

Chains.

Canyon. Impracticable to monument the cor. here.
Land, mountainous.
Soil, rocky, 4th rate.
Timber, none.
Undergrowth, black brush.

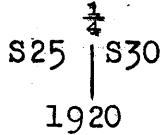
From true point for cor. of secs. 25, 30, 31 and 36.
North, bet. secs. 25 and 30.
Over mountainous land, in Snap Canyon, thru. scattering undergrowth.
Owing to precipitous ascent on N. side of canyon, chaining is impracticable; therefore, triangulate as follows:

From a point ahead on line at N. rim of Snap Canyon, measure a Base W., 11.78 chs.
From W. end of Base, a flag at 55.40 ch. point on Tp. bdy. bet. secs. 31 and 36, which is the S. rim of same canyon, brs. S. 8° 28' E.



A longer Base is impracticable.
Dist. triangulated = 79.14 chs.
Dist. on line to flag = 55.40 "
Totals dist. = 134.54 chs.
Line bet. secs. 31 and 36 = 80.00 chs.
Dist. bet. secs. 25 & 30 = 54.54 chs.
Dist. by return measurement, = 14.54 chs.
40.00 chs.

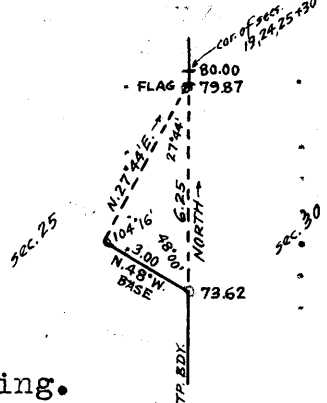
40.00 Set an iron post, 3 ft. long, 1 in. in diam., on surface rock, deposit a stone, marked with a cross (x) at base of post, and raise a mound of stone around post, for 1/4 sec. cor., marked on brass cap,



No bearing trees available.
Continue line and measurement by chaining.
Ascend over steep SW. slope, to
54.54 Triangulation point at N. rim of Snap Canyon on ridge, brs. SE. and NW.

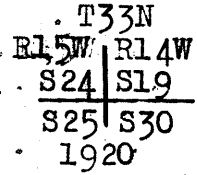
73.62 Descend 250 ft., over NE. slope, to Top of cliffs, brs. E. and W. Precipitous descent over the cliffs renders chaining impracticable; therefore, triangulate as follows:

Measure a Base N. 48° W., 3.00 chs.
A longer base is impracticable.
Set a flag ahead on line at foot of cliffs.
From NW. end of Base, the flag brs. N. 27° 44' E.
Dist. on line, = 73.62 chs.
Dist. by triangulation = 6.25 chs.
Total dist. = 79.87 chs.



79.87 Triangulation point at foot of cliffs.
Continue line and measurement by chaining.
Descend slightly to

80.00 Set an iron post, 3 ft. long, 2 ins. in diam., 10 ins. in the ground to bed rock, deposit a stone marked with a cross (x) at base of post, and raise a mound of stone around post for cor. of secs. 19, 24, 25 and 30, marked on brass cap,



10 Survey of West hdy. of Township 33 North Range 14 West.

Chains.

No bearing trees available.
 Land, mountainous.
 Soil, rocky, 4th rate.
 Timber, none.
 Undergrowth, black brush.

5.00 North, bet. secs. 19 and 24.
 Over rolling land, thru. scattering undergrowth.
 Descend 40 ft. to
 Draw, course NW.
 40.00 Descend 150 ft., to
 Set an iron post, 3 ft. long, 1 in. in diam., 18 ins. in
 the ground to bed rock, deposit a stone marked with
 a cross (x) at base of post, and raise a mound of stone
 around post, for $\frac{1}{4}$ sec. cor., marked on brass cap,

S24	S19
-----	-----

1920

50.00 No bearing trees available.
 Thence over nearly level land.
 65.00 Enter mountainous land. Ascend 145 ft.
 70.00 Spur, slopes W. Desc. 90 ft., over NW. slope, to
 75.00 Enter rolling land. Desc. 23 ft.
 79.00 Ascend 10 ft.
 80.00 Spur, slopes SW. Desc. 6 ft. to
 Set an iron post, 3 ft. long, 2 ins. in diam., 10 ins. in
 the ground, to bed rock, deposit a stone marked with
 a cross (x) at base of post, and raise a mound of stone
 around post, for cor. of secs. 13, 18, 19 and 24, marked
 on brass cap,

T33N	
R15W	R14W
S13	S18

S24	S19
-----	-----

1920

No bearing trees available.
 Land, rolling, nearly level and mountainous.
 Soil, sand and clay loam, 2nd rate.
 Timber, none.
 Undergrowth, black brush.

9.00 North, bet. secs. 13 and 18.
 Over rolling land, thru. scattering undergrowth.
 Descend 20 ft.
 14.50 Wash, course W. Enter mountainous land.
 18.00 Ascend 125 ft., over SE. slope.
 24.50 Spur, slopes SW. Desc. slightly across top of spur.
 28.00 Leave top of spur. Desc. 125 ft.
 32.00 Draw, course SW. Ascend 50 ft.
 40.00 Spur, slopes SW. Descend 20 ft.
 Draw, course SW. Ascend 65 ft. to
 Set an iron post, 3 ft. long, 1 in. in diam., 8 ins. in
 the ground, to bed rock, deposit a stone marked with
 a cross (x) at base of post, and raise a mound of stone
 around post, for $\frac{1}{4}$ sec. cor., marked on brass cap,

S13	S18
-----	-----

1920

45.00 No bearing trees available.
 52.10 Ascend 85 ft., over SE. slope.
 Spur, slopes SW. Desc. 70 ft., over NW. slope.
 Gulch, course SW. Road follows gulch.
 Ascend 250 ft., over SE. slope,

Survey of West boundary of Township 33 North, Range 14 West. 11

Chains.
 66.50 Spur, slopes SW. Thence along W. slope.
 Descend 15 ft.
 70.00 Ascend 80 ft.
 79.00 Spur, slopes SW. Desc. 40 ft., over N. slope, to
 80.00 Set an iron post, 3 ft. long, 2 ins. in diam., 10 ins. in
 the ground to bed rock, deposit a stone marked with
 a cross (x) at base of post, and raise a mound of
 stone around post, for cor. of secs. 7, 12, 13 and 18,
 marked on brass cap,
 T33N
 R15W | R14W
 S12 | S 7
 S13 | S18
 1920

Land, rolling and mountainous.
 Soil, sandy and rocky, 2nd to 4th rate.
 Timber, none.
 Undergrowth, black brush.

North, bet. secs. 7 and 12.
 Over mountainous land, thru. scattering undergrowth.
 Descend 87 ft., over NW. slope.
 4.00 Gulch, course SW. Asc. 224 ft., over SE. slope.
 17.00 Spur, slopes SW. Desc. 125 ft.
 25.30 Gulch, course SW. Asc. 185 ft. to
 40.00 Set an iron post, 3 ft. long, 1 in. in diam., 10 ins. in
 the ground to bed rock, deposit a stone, marked with
 a cross (x) at base of post, and raise a mound of stone
 around post, for $\frac{1}{4}$ sec. cor., marked on brass cap,
 $\frac{1}{4}$
 S12 | S 7
 1920

No bearing trees available.
 Ascend 75 ft., over SE. slope.
 43.00 Thence along W. slope. Desc. gradually to
 55.00 Spur, slopes NW.
 Descend 435 ft., over broken NW. slope, to
 80.00 Set an iron post, 3 ft. long, 2 ins. in diam., 12 ins. in the
 ground to bedrock, deposit a stone marked with a cross
 (x) at base of post, and raise a mound of stone around
 post, for cor. of secs. 1, 6, 7 and 12, marked on brass
 cap,
 T33N
 R15W | R14W
 S 1 | S 6
 S12 | S 7
 1920

No bearing trees available.
 Land, mountainous.
 Soil, rocky, 3rd and 4th rate.
 Timber, none.
 Undergrowth, black brush.

North, bet. secs. 1 and 6.
 Over mountainous land, thru. scattering undergrowth,
 Descend 166 ft., over NW. slope.
 7.60 Draw, course NE. Thence along E. slope.
 Ascend gradually.
 12.50 Descend 55 ft., over E. slope, to
 27.80 Point of spur, sloping NE., forming part of S, of left rim
 of Pigeon Canyon.
 Descend 165 ft., over N. slope, to
 40.00 Set an iron post, 3 ft. long, 1 in. in diam., 12 ins. in the
 ground, to bed rock, deposit a stone, marked with a

12 Survey of West boundary of Township 33 North, Range 14 West.

chains.

cross (x) at base of post, and raise a mound of stone around post, for $\frac{1}{4}$ sec. cor., marked on brass cap,

S 1 | S 6
1920

No bearing trees available,

54.00 Descend 110 ft., to Bottom of Pigeon Canyon, 3 chs. wide, course W. Thence over rolling W. slope. Asc. 68 ft., to

80.00 Set an iron post, 3 ft. long, 3 ins. in diam., on surface rock, deposit a stone, marked with a cross (x) at base of post, and raise a mound of stone around post, for cor. of Ts. 33 and 34 N., Rs. 14 and 15 W., marked on brass cap,

T34N
R15W | R14W
S36 | S31
S 1 | S 6
T33N
1920

No bearing trees available.

Land, mountainous.

Soil, rocky, 4th rate.

Timber, none.

Undergrowth, black brush.



Survey of North boundary of Township 33 North, Range 14 West. 13

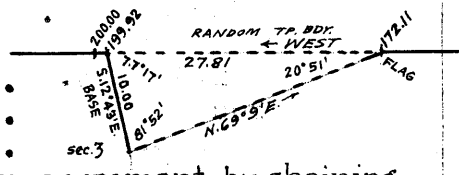
Chains.

From the cor. of Ts. 33 and 34 N., Rs. 13 and 14 W., described in Book "D,"

West, on a random line, setting temp. $\frac{1}{4}$ sec. and sec. cors. at intervals of 40.00 chs.; until at

172.11 E. or right rim of canyon, across which it is impossible to chain. Set flag here for triangulation, and proceed to point ahead on line at W. or left rim of canyon, and measure a Base S. $12^{\circ}43'E.$, 10.00 chs. to a point from which the flag brs. N. $69^{\circ}9'E.$

Dist. on random line = 172.11 chs.
Dist. triangulated = 27.81 chs.
Total dist., = 199.92 chs.

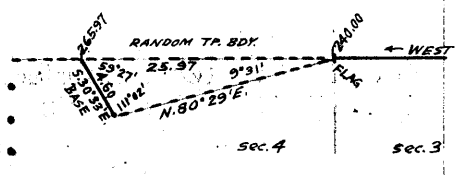


199.92 Triangulation point. Continue line and measurement by chaining.
200.00 Set temp. $\frac{1}{4}$ sec. cor. of secs. 3 and 34. rim of canyon. continue
240.00 Set temp. cor. of secs. 3, 4, 33 and 34 line.

Discontinue chaining owing to precipitous slopes of a canyon beyond this point.

Set flag here for triangulation, and proceed to point ahead on line on spur, sloping N. between two canyons, and measure a Base S. $30^{\circ}33'E.$, 4.60 chs. dist. to a point from which the flag brs. N. $80^{\circ}29'E.$ A longer base is impracticable.

Dist. on random line = 240.00 chs.
Dist. triangulated = 25.97 chs.
Total distance = 265.97 chs.

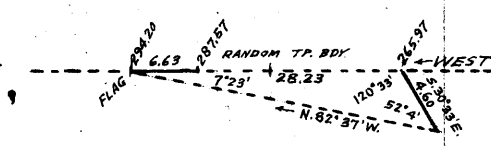


265.97 Triangulation point on spur sloping N. Beyond this point another canyon renders chaining impracticable. Therefore triangulate as follows:

Set a flag ahead on line on spur sloping S.

From the S. end of the Base measured from the 265.97 ch. station as described above, the flag brs, N. $82^{\circ}37'W.$

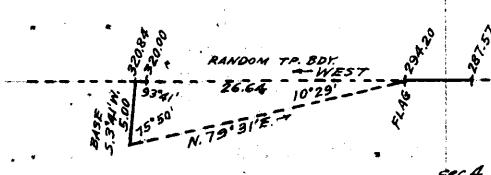
Dist. on random line = 265.97 chs.
Dist. triangulated = 28.23 chs.
Total distance = 294.20 chs.
By return measurement = 6.63 "



287.57 Set temp. W.C. to $\frac{1}{4}$ sec. cor. Chain measurement West to
294.20 Triangulation point, on spur sloping S. Beyond this point another canyon renders chaining impracticable; therefore, triangulate as follows:

Leave the flag here, and proceed to a point ahead on line, and measure a Base S. $3^{\circ}41'W.$, 5.00 chs. to a point from which the flag brs. N. $79^{\circ}31'E.$ A longer base is impracticable.

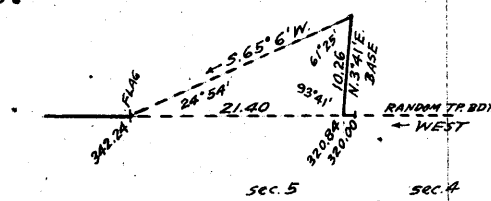
Dist. on random line = 294.20 chs.
Dist. triangulated = 26.64 chs.
Total distance = 320.84 chs.
By return measurement = 0.84 chs.



320.00 Set temp. cor. of secs. 4, 5, 32 and 33. Chain measurement West, 0.84 chs. to

320.84 Triangulation point on E. or left rim of another canyon. Chaining being impracticable across this canyon, triangulate as follows:

Measure a Base N. $3^{\circ}41'E.$, 10.26 chs. Set flag ahead on line at West or right rim of said canyon. From NE. end of Base, the flag brs. S. $65^{\circ}6'W.$



14 Survey of North boundary of Township 33 North Range 14 West.

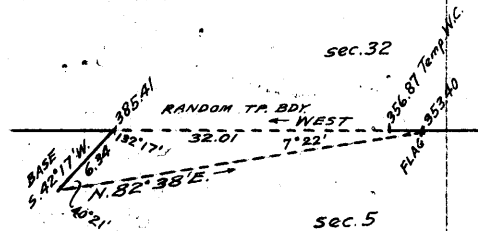
Chains.

Dist. on random line = 320.84 chs.
 Dist. triangulated = 21.40 chs.
 Total distance = 342.24 chs.

342.24 Triangulation point on west or right rim of canyon. Continue line and measurement by chaining.

353.40 Set flag for triangulation, and continue chaining to
 356.87 Set temp. witness cor. to 1/4 sec. cor. at east or left rim of canyon. Discontinue chaining owing to precipitous slopes of the canyon beyond this point. Triangulate from 353.40 ch. station as follows:

Proceed to a point ahead on line on top of spur on opposite side of canyon, and measure a Base S. 42° 17' W., 6.34 chs. to point from which flag brs. N. 82° 38' E. Impracticable to secure a longer base.



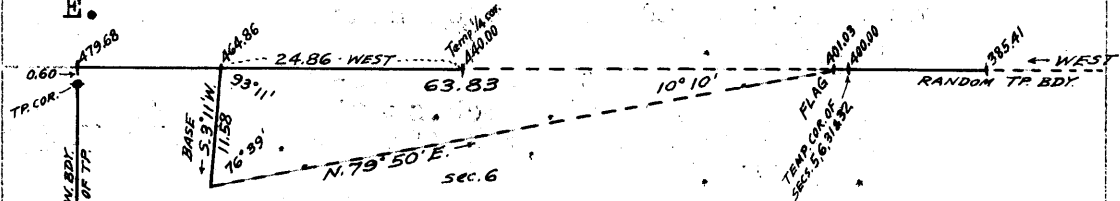
Dist. on random line = 353.40 chs.
 Dist. triangulated = 32.01 chs.
 Total distance = 385.41 chs.

385.41 Triangulation point. Continue line and measurement by chaining.

400.00 Set temp. cor. of secs. 5, 6, 31 & 32.

401.03 Top of cliffs bearing N. and S. facing W. Discontinue chaining, and triangulate measurement across the face of cliffs as follows:

Set flag at this point. Proceed to point ahead on line beyond foot of cliffs, and measure a Base S. 3° 11' W., 11.58 chs. to a point from which the flag brs. N. 79° 50' E.



Dist. on random line = 401.03 chs.
 Triangulated dist. = 63.83 chs.
 Total distance = 464.86 chs.
 By return measurement = 24.86 chs.
 440.00 chs.

440.00 Set temp. 1/4 sec. cor. Chain measurement West 24.86 chs. to

464.86 Triangulation point, Continue line and measurement by chaining to

479.68 Fall 60 lks. N. of the cor. of Ts. 33 and 34 N., Rs. 14 and 15 W., hereinbefore described. This falling answers to a correction of 4' or 10 lks. S. per mile counting from the NE. cor. of the Tp.

Thence, N. 89° 56' E., on a true line, bet. secs. 6 and 31.

Over mountainous land, thru. scattering undergrowth.

10.90 Ascend 450 ft., over W. slope to 1/4 sec. cor.

14.82 Triangulation point. Continue chaining.

39.68 Set an iron post, 3 ft. long, 1 in. in diam., 6 ins. in the ground to bed rock, deposit a stone, marked with a cross (x) at base of post, and raise a mound of stone around post, for 1/4 sec. cor., marked on brass cap,

1/4 S 31
 S 6
 1922

No bearing trees available.

Thence by triangulated measurement, as hereinbefore described.

Ascend 1100 ft. over precipitous cliffs.

78.65 Triangulation point at top of cliffs. Continue line and measurement by chaining.

79.68 Set an iron post, 3 ft. long, 2 ins. in diam., on ledge of

Survey of North boundary of Township 33 North, Range 14 West. 15

Chains.

rock, deposit a stone, marked with a cross (x) at base of post, and raise a mound of stone around post, for cor. of secs. 5, 6, 31 and 32, marked on brass cap,

T34N | R14W
S31 | S32
S 6 | S 5
T33N
1922

No bearing trees available.
Land, mountainous.
Soil, rocky, 4th rate.
Timber, none.
Undergrowth, black brush.

N. 89° 56' E., on a true line, bet. secs. 5 and 32.
Over mountainous land, thru scattering undergrowth.
Descend 30 ft.
Ascend 180 ft.

- 6.00
- 14.75 Triangulation point on spur, slopes SW. Discontinue chaining. Thence across canyon, measurement by triangulation, as hereinbefore described.
- 34.00 (Approx.) Bottom of canyon, course S.
Ascend over precipitous W. slope.
- 40.00 True point for 1/4 sec. cor. is inaccessible; therefore, at
- 43.13 Triangulation point. Set an iron post, 3 ft. long, 1 in. in diam., 6 ins. in the ground, to bed rock, deposit a stone, mkd. with a cross (x) at base of post, and raise a mound of stone around post, for witness cor. to the 1/4 sec. cor., marked on brass cap,

WC 1/4 S 32
S 5
1922

No bearing tree available.
Continue line and measurement by chaining.
Ascend 46 ft., over W. slope.
Spur, slopes S. Desc. 40 ft., over SE. slope, to
Triangulation point at west or right rim of canyon, brs. N. and S. Discontinue chaining. Measurement across canyon by triangulation, hereinbefore described.

- 46.60
- 57.76
- 68.00 Descend 600 ft. to (Approx.) Bottom of canyon, course S.
Ascend 600 ft. to
- 79.16 Triangulation point at East or left rim of same canyon, bearing N. and S. Continue line and measurement by chaining. Ascend to
- 80.00 Spur, slopes S.
Set an iron post, 3 ft. long, 2 ins. in diam., 6 ins. in the ground to bed rock, deposit a stone marked with a cross (x) at base of post, and raise a mound of stone around post for cor. of secs. 4, 5, 32 and 33, marked on brass cap,

T34N | R14W
S32 | S33
S 5 | S 4
T33N
1922

No bearing trees available.
Land, mountainous.
Soil, rocky, 4th rate.
Timber, none.
Undergrowth, black brush.

16 Survey of North boundary of Township 33 North Range 14 West

Chains..

- N.89°56'E., on a true line, bet. secs. 4 and 33.
Over mountainous land, thru. scattering undergrowth.
Across canyon, measurement by triangulation, as hereinbefore described.
- 15.00 (Approx.) Bottom of canyon, course S.
Ascend over precipitous W.slope, to
- 25.80 Triangulation point on spur, sloping S. Continue line and measurement by chaining.
Descend over steep E.slope.
- 29.50 Bottom of canyon, course S.10°E.
Ascend over steep W.slope, to
- 32.43 This point on line falls on face of cliff, and as no suitable point on line is available for W.C., establish same at 17 lks.N. of this point, or 7.57 chs.N.88°43' W. from true point for $\frac{1}{4}$ sec.cor. as follows:
Set an iron post, 3 ft.long, 1 in. in diam., on ledge of rock, deposit a stone marked with a cross (x) at base of post, and raise a mound of stone around post, for witness cor.to $\frac{1}{4}$ sec.cor., marked on brass cap,

$\frac{1}{4}$ S 33 WC
S 4
1922

- No bearing trees available.
Discontinue chaining. Asc. over cliffs on E. or left wall of canyon, measurement by triangulation as hereinbefore described.
- 54.03 Triangulation point on spur, sloping N. Continue measurement by triangulation across another canyon, as hereinbefore described.
Descend over precipitous NE.slope.
- 65.00 (Approx.) Wash, 40 lks.wide, course NW. in bottom of canyon.
Ascend over precipitous W.slope, to
- 80.00 (Triangulation point) Set an iron post, 3 ft.long, 2 ins. in diam., 6 ins. in the ground, to bed rock, deposit a stone, marked with a cross (x) at base of post, and raise a mound of stone around post, for cor.of secs.3,4, 33 and 34, marked on brass cap,

T34N | R14W
S33 | S34
S 4 | S 3
T33N
1922

No bearing trees available.
Land, mountainous. Soil, rocky, 4th rate.
Timber, none. Undergrowth, black brush.

- N.89°56'E., on a true line, bet. secs. 3 and 34.
Over mountainous land, thru. scattering undergrowth, in canyon, course NW.
Ascend 335 ft., over W.slope, to
- 9.20 East, or right rim of canyon, brs. SE. and NW. Leave canyon. Thence over nearly level bench land.
- 40.00 Set an iron post, 3 ft.long, 1 in. in diam., 18 ins. in ground, to bed rock, deposit a stone, marked with a cross (x) at base of post, and raise mound of stone around post, for $\frac{1}{4}$ sec.cor., marked on brass cap,

$\frac{1}{4}$ S 34
S 3
1922

- No bearing trees available.
- 40.08 Triangulation point at west or left rim of canyon, bearing N. and S. Discontinue chaining. Thence across said canyon, measurement by triangulation, as hereinbefore described. Desc. about 500 ft.
- 58.00 (Approx.) Wash, 30 lks.wide, in bottom of canyon, course N.
Ascend about 500 ft. to
- 67.89 Triangulation point at east or right rim of same canyon, bearing N. and S. Leave canyon. Thence over nearly

Survey of North boundary of Township 33 North, Range 14 West. 17

Chains.

level bench land. Continue line and measurement by chaining.
 80.00 Set an iron post, 3 ft. long, 2 ins. in diam., 12 ins. in the ground, to bed rock, deposit a stone marked with a cross (x) at base of post, and raise a mound of stone around post for cor. of secs. 2, 3, 34 and 35, marked on brass cap,

T34N	R14W
S34	S35
S 3	S 2
T33N	
1922	

from which,
 A pinyon, 14 ins. in diam., brs. N. $3\frac{1}{4}^{\circ}$ E., 429 lks. dist., marked T34N R14W S35 BT.
 A cedar, 16 ins. in diam., brs. S. 49° E., 333 lks. dist., marked T33N R14W S 2 BT.
 A cedar, 14 ins. in diam., brs. S. $51\frac{1}{2}^{\circ}$ W., 124 lks. dist., marked T33N R14W S3 BT.

No other bearing trees available.
 Land, mountainous and nearly level. Soil, rocky, 4th rate.
 Timber, cedar and pinyon.
 Undergrowth, black brush and Spanish bayonet.

N. $89^{\circ}56'$ E., on a true line, bet. secs. 2 and 35.
 Over nearly level bench land, thru. scattering timber and undergrowth.

10.00 Leave nearly level, and enter rolling land. Asc. 23 ft.
 15.00 Spur, slopes N. Desc. 114 ft., over E. slope, to
 40.00 Set an iron post, 3 ft. long, 1 in. in diam., 10 ins. in the ground, to bed rock, supported in a mound of stone, for $\frac{1}{4}$ sec. cor., marked on brass cap,

$\frac{1}{4}$ S	S 35
S	2
1922	

from which,
 A cedar, 14 ins. in diam., brs. N. 15° E., 38 lks. dist., marked $\frac{1}{4}$ S 35 BT.
 A cedar, 16 ins. in diam., brs. S. 64° W., 89 lks. dist., marked $\frac{1}{4}$ S 2 BT.

Descend 63 ft. to
 53.70 Wash, 20 lks. wide, in gulch, 20 ft. deep, course NE. Asc. 22 ft.
 57.20 Descend 90 ft.
 65.80 Wash, 30 lks. wide in gulch, 30 ft. deep, course NW. Asc. 75 ft. to
 80.00 Set an iron post, 3 ft. long, 2 ins. in diam., 30 ins. in the ground, for cor. of secs. 1, 2, 35 and 36, marked on brass cap,

T34N	R14W
S35	S36
S 2	S 1
T33N	
1922	

from which,
 A pinyon, 12 ins. in diam., brs. N. $65\frac{1}{2}^{\circ}$ E., 55 lks. dist., marked T34N R14W S36 BT.
 A pinyon, 12 ins. in diam., brs. S. $51\frac{1}{2}^{\circ}$ E., 112 lks. dist., marked T33N R14W S1 BT.
 A cedar, 24 ins. in diam., brs. S. 14° W., 36 lks. dist., marked T33N R14W S2 BT.
 A cedar, 16 ins. in diam., brs. N. $5\frac{1}{2}^{\circ}$ W., 67 lks. dist., marked T34N R14W S35 BT.

Land, nearly level and rolling.
 Soil, gravelly and rocky, 3rd and 4th rate.
 Timber, cedar and pinyon.
 Undergrowth, black brush and sagebrush.

N. $89^{\circ}56'$ E., on a true line, bet. secs. 1 and 36.
 Over rolling land, thru. scattering timber and dense undergrowth. Asc. 32 ft.

12.30 Ridge, brs. N. 10° W. and S. 75° E. Desc. 77 ft. to
 25.00 Wash in gulch, 30 ft. deep, course N. near head.

18 Survey of Subdivision lines of Township 33 North, Range 14 West.

Chains.
 40.00 Descend 55 ft., over NE. slope, to
 Set an iron post, 3 ft. long, 1 in. in diam., 18 ins. in the
 ground, to bed rock, supported in a mound of stone, for
 Sec. cor., marked on brass cap,
 $\frac{1}{4}$ S 36
 $\frac{1}{4}$ S 1
 1922
 from which,
 A cedar, 18 ins. in diam., brs. N. $1\frac{1}{4}$ ° W., 49 lks.
 dist., marked $\frac{1}{4}$ S 36 BT.
 A cedar, 16 ins. in diam., brs. S. $77\frac{1}{4}$ ° W., 22 lks.
 dist., marked $\frac{1}{4}$ S 1 BT.
 Descend 34 ft.
 44.20 Wash, 20 lks. wide, course N. Asc. 20 ft.
 45.80 Road, brs. NE. and SW.
 66.30 Wash, 50 lks. wide, course NW. Asc. 40 ft. to
 80.00 The cor. of Ts. 33 and 34 N., Rs. 13 and 14 W., described
 in Book "D."
 Land, rolling.
 Soil, sand and clay loam, 1st and 2nd rate.
 Timber, cedar and pinyon.
 Undergrowth, sagebrush, black brush, Spanish dagger and
 manzanita.

Boundaries of Township 33 North, Range 14 West.
 Latitudes, departures, and closing errors.

Line designated.	True bearing.	Dist.	Latitudes.		Departures.	
			N.	S.	E.	W.
South boundary, (8th. Std. Par. N.)	West,	480.00				480.00
West boundary,	North,	480.00	480.00			
North boundary,	N. $89^{\circ}56'$ E.	479.68	.60		479.68	
East boundary,	South,	480.00		480.00		
Convergency,					.53	
Totals,			480.60	480.00	480.21	480.00
			480.00		480.00	
<u>Error in latitude,</u>			0.60			
<u>Error in departure,</u>					0.21	

Survey of Subdivision lines of Township 33 North, Range 14 West. 19

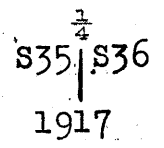
Chains.

From the standard cor. of secs. 35 and 36, on S. bdy. of Tp., (8th. Std. Par. N.), hereinbefore described, N.0°01'W., bet. secs. 35 and 36. Over mountainous land, thru. scattering timber and dense undergrowth.

9.00 Ascend 100 ft., over SW. slope. Ridge, brs. N.45°W. and S.45°E.

33.60 Descend 260 ft., over NE. slope.

40.00 Wash, 50 lks. wide, course NW. Enter rolling land. Asc. to Set an iron post, 3 ft. long, 1 in. in diam., 12 ins. in the ground to bed rock, supported in a mound of stone, for $\frac{1}{4}$ sec. cor., marked on brass cap,



from which,
 A pinyon, 10 ins. in diam., brs. N.70°E., 235 lks. dist., marked $\frac{1}{4}$ S 36 BT.
 A pinyon, 12 ins. in diam., brs. N.22°W., 305 lks. dist., marked $\frac{1}{4}$ S 35 BT.

Descend 30 ft.

47.90 Wash, 30 lks. wide, course N.75°W. Asc. 20 ft.

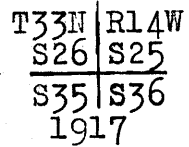
51.90 Spur, slopes W. Desc. 24 ft.

54.70 Wash, 10 lks. wide, course S.80°W. Asc. 50 ft.

65.58 Descend 44 ft.

73.50 Wash, 25 lks. wide, course S.80°W. Asc. 20 ft. to

80.00 Set an iron post, 3 ft. long, 2 ins. in diam., 18 ins. in the ground to bed rock, supported in a mound of stone, for cor. of secs. 25, 26, 35 and 36, marked on brass cap,



from which,
 A cedar, 24 ins. in diam., brs. N.68°W., 522 lks. dist., marked T33N R14W S26 BT.
 No other bearing trees available. Raise a mound of stone, 3 ft. base, 2 ft. high, W. of cor.

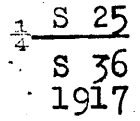
Land, mountainous and rolling.
 Soil, rocky, 4th rate.
 Timber, pinyon and cedar.
 Undergrowth, black brush, cinchona and Spanish dagger.

40.00 East, on a random line, bet. secs. 25 and 36. Set temp. $\frac{1}{4}$ sec. cor.

80.02 Intersect the cor. of secs. 25, 30, 31 and 36 on E. bdy. of Tp., described in Book "D."

Thence,
 West, on a true line, bet. secs. 25 and 36. Over rolling land, thru. dense undergrowth.

40.01 Descend 290 ft., over gradual W. slope, to Set an iron post, 3 ft. long, 1 in. in diam., 20 ins. in the ground to bed rock, supported in a mound of stone, for $\frac{1}{4}$ sec. cor., marked on brass cap,



No bearing trees available. Raise a mound of stone, 3 ft. base, 2 ft. high, N. of cor.
 Descend 10 ft.

40.70 Wash, 1 ch. wide, course S.60°W.
 Descend 83 ft., over SW. slope, to

58.15 Wash, 15 lks. wide, course S.60°W.
 Descend 105 ft. to

80.02 The cor. of secs. 25, 26, 35 and 36.
 Land; rolling.

20 Survey of Subdivision lines of Township 33 North, Range 14 West.

Chains.

Soil, sandy loam, 2nd rate.
Timber, none.
Undergrowth, black brush, Spanish dagger and cinchona.

N.0°1'W., bet.secs. 25 and 26.
Over rolling land, thru. dense undergrowth.
Descend.

2.60 Wash, 30 lks. wide, course SW.

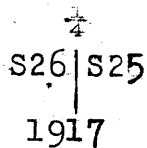
Ascend 165 ft.

31.30 Spur. slopes S.60°W.

Descend 65 ft.

39.70 Wash, 30 lks. wide, course S.60°W. Ascend slightly to

40.00 Set an iron post, 3 ft. long, 1 in. in diam., 20 ins. in the ground to bed rock, supported in a mound of stone, for $\frac{1}{4}$ sec. cor., marked on brass cap,

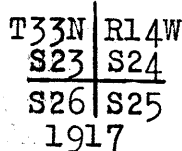


No bearing trees available. Raise a mound of stone, 3 ft. base, 2 ft. high, W. of cor.

Ascend 55 ft., over gradual S. slope.

70.67 Descend 10 ft. to

80.00 Set an iron post, 3 ft. long, 2 ins. in diam., 12 ins. in the ground, to bed rock, supported in a mound of stone, for cor. of secs. 23, 24, 25 and 26, marked on brass cap,



from which,

A pinyon, 18 ins. in diam., brs. N.2 $\frac{1}{2}$ °W., 372 lks. dist., marked T33N R14W S23 BT.

No other bearing trees available. Raise a mound of stone, 2 $\frac{1}{2}$ ft. base, 2 ft. high, W. of cor.

Land, rolling.

Soil, sandy loam, 2nd rate.

Timber, none.

Undergrowth, black brush, cinchona and Spanish dagger.

East, on a random line, bet. secs. 24 and 25.

40.00 Set temp. $\frac{1}{4}$ sec. cor.

79.92 Fall 2 lks. N. of the cor. of secs. 19, 24, 25 and 30, on E. bdy. of Tp., described in Book "D."

Thence,

N.89°59'W., on a true line, bet. secs. 24 and 25.

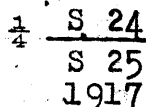
Over mountainous land, thru. scattering timber and dense undergrowth.

Descend 790 ft., over SW. slope.

25.00 Wash, course S.60°W.

Descend 220 ft. to

39.96 Set an iron post, 3 ft. long, 1 in. in diam., 18 ins. in the ground, to bed rock, supported in a mound of stone for $\frac{1}{4}$ sec. cor., marked on brass cap,



from which,

A pinyon, 8 ins. in diam., brs. N.48°E., 110 lks. dist., marked $\frac{1}{4}$ S 24 BT.

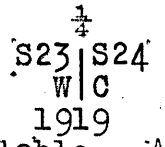
A pinyon, 6 ins. in diam., brs. S.82°W., 176 lks. dist., marked $\frac{1}{4}$ S 25 BT.

Survey of Subdivision lines of Township 33 North, Range 14 West. 21

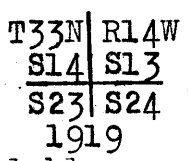
Chains.

49.55 Descend 135 ft., to
 50.20 Wash in ravine, course N.80°W. Asc. 15 ft.
 61.30 Descend 100 ft.
 79.92 Wash, course N.75°W. Desc. 125 ft., over NW. slope, to
 The cor. of secs. 23, 24, 25 and 26.
 Land, mountainous and rolling.
 Soil, rocky, 3rd rate. Timber, pinyon and cedar.
 Undergrowth, black brush, cinchona and Spanish dagger.

N.0°01'W., bet. secs. 23 and 24.
 Over rolling and mountainous land, thru. dense undergrowth.
 Descend slightly to
 5.00 Descend 65 ft.
 15.00 Wash, course W. Asc. 155 ft. to
 21.60 Top of ascent, brs. E. and W. Thence over SW. slope.
 27.30 Descend 60 ft.
 40.00 True point for $\frac{1}{4}$ sec. cor. falls in wash, course SW. Ascend.
 41.00 Set an iron post, 3 ft. long, 1 in. in diam., 14 ins. in the
 ground to bed rock, deposit a stone marked with a cross
 (x) at base of post, and raise a mound of stone around
 post, for witness cor. to the $\frac{1}{4}$ sec. cor., marked on brass
 cap,

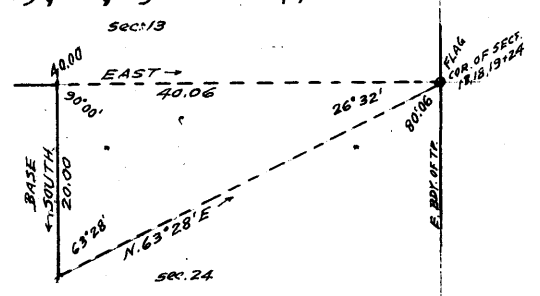


No bearing trees available. Ascend 20 ft.
 45.50 Descend 30 ft.
 52.40 Draw, 10 lks. wide, course W. Asc. 125 ft. to
 57.00 Thence over W. and NW. slopes. Desc. 25 ft.
 70.00 Wash, course SW. Asc. 33 ft. to
 80.00 Set an iron post, 3 ft. long, 2 ins. in diam., 6 ins. in the
 ground to bed rock, deposit a stone marked with a
 cross (x) at base of post, and raise a mound of stone
 around post, for cor. of secs. 13, 14, 23 and 24, marked
 on brass cap,



No bearing trees available.
 Land, rolling and mountainous.
 Soil, rocky and sandy loam, 3rd rate.
 Timber, pinyon and cedar. Undergrowth, sage brush.

East, on a random line, bet. secs. 13 and 24 (objective
 cor. visible.)
 40.00 Set temp. $\frac{1}{4}$ sec. cor.
 Measure a Base south 20.00 chs. dist. to a point from which
 which flag on the cor. of secs. 13, 18, 19 and 24, on E.
 bdy. of Tp., brs. N. 63° 28' E.
 Dist. on random line = 40.00 chs.
 Triangulated dist. = 40.06 chs.
 Total distance = 80.06 chs.



80.06 Intersect the cor. of secs. 13, 18,
 19 and 24, on E. bdy. described
 in Book "D."
 Thence,
 West, on a true line, bet. secs. 13 and 24.
 Over mountainous land, thru. scattering timber and dense
 undergrowth.
 Measurement of 40.06 chs, by triangulation hereinbefore
 described.

Ascend over steep broken NE. slope, to
 30.00 (Approx.) Top of sandstone cliff, 200 ft. high, brs. N. and
 S. facing W. From foot of cliff, descend over steep
 broken W. slope to $\frac{1}{4}$ sec. cor.
 From triangulation point at 40.06 ch. station, chain meas-
 urement East 0.03 chs. to

40.03 Set an iron post 3 ft. long, 1 in. in diam., on ledge of rock,
 deposit stone marked with a cross (x) at base of post.

22 Survey of Subdivision lines of Township 33 North, Range 14 West.

Chains.

and raise a mound of stone around post, for $\frac{1}{4}$ sec. cor., marked on brass cap,

$\frac{1}{4}$ S 13
S 24
1920

- 40.06 No bearing trees available. Triangulation point. Continue line and measurement by chaining.
- 57.25 Descend 215 ft., over W. slope. Draw, 5 lks. wide, course S. 50° W.
- 80.06 Descend 155 ft., over gradual SW. slope, to The cor. of secs. 13, 14, 23 and 24. Land, mountainous. Soil, sandy and rocky, 2nd to 4th rate. Timber, pinyon and cedar. Undergrowth, sagebrush and blackbrush.

N. $0^\circ 01'$ W., bet. secs. 13 and 14. Over rolling and mountainous land, thru scattering timber and dense undergrowth.

- 11.50 Ascend 157 ft.
- 17.75 Top of ascent. Desc. 63 ft.
- 39.90 Draw, 5 lks. wide, course W. Ascend.
- 40.00 Mark a cross (x) on rock ledge at cor. point, and over same set an iron post, 3 ft. long, 1 in. in diam., supported in a mound of stone, for $\frac{1}{4}$ sec. cor., marked on brass cap,

$\frac{1}{4}$
S14 | S13
1919

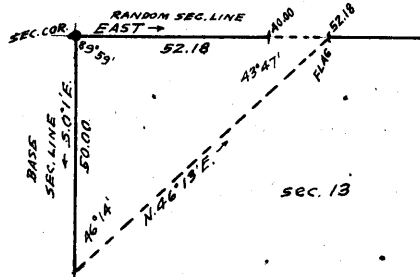
from which,
A pinyon, 14 ins. in diam., brs. S. $76\frac{3}{4}^\circ$ E., 94 lks. dist., marked $\frac{1}{4}$ S 13 BT.
A pinyon, 6 ins. in diam., brs. N. $89\frac{1}{4}^\circ$ W., 57 lks. dist., marked $\frac{1}{4}$ S 14 BT.

- 80.00 Ascend 220 ft., over rolling SW. slope, to Set an iron post, 3 ft. long, 2 ins. in diam., on ledge of rock, deposit a stone marked with a cross (x) at base of post, and raise a mound of stone around post, for cor. of secs. 11, 12, 13 and 14, marked on brass cap,

T33N | R14W
S11 | S12
S14 | S13
1919

No bearing trees available. Raise a mound of stone, 3 ft. base, 3 ft. high, W. of cor. Land, rolling and mountainous. Soil, sandy and rocky, 3rd rate. Timber, pinyon and cedar. Undergrowth, sagebrush.

- 40.00 East, on a random line, bet. secs. 12 and 13. Set temp. $\frac{1}{4}$ sec. cor. Discontinue chaining owing to precipitous ascent over cliffs E. of this point. Triangulate as follows:



Set flag ahead on line at top of cliffs. From cor. of secs. 11, 12, 13 and 14, measure a Base S. $0^\circ 1'$ E. 50.00 chs. on the sec. line, bet. secs. 13 and 14. From S. end of this Base, the flag brs. N. $46^\circ 13'$ E. Dist. triangulated = 52.18 chs.

- 52.18 Triangulation point. Continue line and measurement by chaining.
- 80.16 Fall 10 lks. N. of the cor. of secs. 7, 12, 13 and 18 on E. bdy. of Tp., described in Book "D." Thence N. $89^\circ 56'$ W., on a true line, bet. secs. 12 and 13.

Survey of Subdivision lines of Township 33 North Range 14 West 23

Chains.

Over mountainous land, thru scattering timber and dense undergrowth. Asc. 855 ft., over broken E. slope.
 25.75 Spur, slopes N. Desc. 100 ft., over W. slope, to
 27.98 Triangulation point at top of cliff, 110 ft. high, bearing N. 15° E. and S. 15° W. facing W. Discontinue chaining.
 Measurement to $\frac{1}{4}$ sec. cor. by triangulation, as hereinbefore described. From foot of cliff, descend over steep W. slope, to
 40.08 Set an iron post, 3 ft. long, 1 in. in diam., 30 ins. in the ground, for $\frac{1}{4}$ sec. cor., marked on brass cap,

$\frac{1}{4}$ S 12
 S 13
 1920

No bearing trees available. Raise a mound of stone, 3 ft. base, 3 ft. high, N. of cor.
 Continue line and measurement by chaining.
 80.16 Descend 416 ft., over broken W. and SW. slopes, to
 The cor. of secs. 11, 12, 13 and 14.
 Land, mountainous.
 Soil, rocky, 4th rate.
 Timber, cedar and pinyon.
 Undergrowth, sagebrush.

N. 0° 01' W., bet. secs. 11 and 12.
 Over rolling land, thru scattering timber and undergrowth.
 2.00 Spur, slopes W. Enter mountainous land.
 Descend 135 ft., over N. slope, to
 7.00 Foot of descent. Enter rolling land.
 Descend gradually over W. slope, to
 40.00 Set an iron post, 3 ft. long, 1 in. in diam., 6 ins. in the ground, to bed rock, supported in a mound of stone, for $\frac{1}{4}$ sec. cor., marked on brass cap,

S 11 | S 12
 |
 1919.

from which,
 A pinyon, 6 ins. in diam., brs. N. 57 $\frac{1}{2}$ ° E., 124 lks. dist., marked $\frac{1}{4}$ S 12 BT.
 A pinyon, 12 ins. in diam., brs. N. 74 $\frac{1}{2}$ ° W., 79 lks. dist., marked $\frac{1}{4}$ S 11 BT.

Enter mountainous land.
 Descend 60 ft., over N. slope.
 45.00 Head of draw, course N. 45° W. Asc. 60 ft.
 55.00 Spur, slopes S. 20° W. Desc. 275 ft.
 67.00 Draw, course N. 10° W. Asc. 26 ft. along W. slope, to
 80.00 Set an iron post, 3 ft. long, 2 ins. in diam., 6 ins. in the ground, to bed rock, supported in a mound of stone, for cor. of secs. 1, 2, 11 and 12, marked on brass cap,

T33N | R14W
 S 2 | S 1
 S 11 | S 12
 1919

from which,
 A pinyon, 14 ins. in diam., brs. N. 40° E., 89 lks. dist., marked T33N R14W S1 BT.
 A pinyon, 24 ins. in diam., brs. S. 75 $\frac{1}{2}$ ° E., 104 lks. dist., marked T33N R14W S12 BT.
 A pinyon, 12 ins. in diam., brs. S. 2 $\frac{1}{4}$ ° W., 60 lks. dist., marked T33N R14W S11 BT.
 A pinyon, 14 ins. in diam., brs. N. 3 $\frac{3}{4}$ ° W., 75 lks. dist., marked T33N R14W S2 BT.

Land, rolling and mountainous.
 Soil, clay loam, 2nd rate.
 Timber, juniper and pinyon.
 Undergrowth, black brush, sagebrush and greasewood.

S. 89° 56' E., on a random line, bet. secs. 1 and 12.
 40.00 Set temp. $\frac{1}{4}$ sec. cor.

24 Survey of Subdivision lines of Township 33 North, Range 14 West.

Chains

80.10 Fall 2 lks. S. of the cor. of secs. 1, 6, 7 and 12, on E. bdy. of Tp., described in Book "D."

Thence;

N. 89° 57' W., on a true line, bet. secs. 1 and 12.

Over mountainous land, thru scattering timber and undergrowth. Asc. 124 ft., over NE. slope:

28.25 Descend 25 ft., over N. slope, to

40.05 Set an iron post, 3 ft. long, 1 in. in diam., 12 ins. in the ground to bed rock, deposit a stone marked with a cross (x) at base of post, and raise a mound of stone around post, for $\frac{1}{4}$ sec. cor., marked on brass cap,

$$\frac{1}{4} \begin{array}{c} S \ 1 \\ S \ 12 \\ 1919 \end{array}$$

62.00 No bearing trees available. Desc. 110 ft., over N. & NW. slopes. Draw, 100 lks. wide, course N. Asc. 117 ft. over NE. & N. slopes.

78.00 Descend 43 ft. to

80.10 The cor. of secs. 1, 2, 11 and 12.

Land, mountainous.

Soil, rocky, 3rd rate.

Timber, juniper and pinyon.

Undergrowth, sagebrush, black brush and greasewood.

40.00 N. 0° 01' W., on a random line, bet. secs. 1 and 2.

Set temp. $\frac{1}{4}$ sec. cor.

79.90 Fall 11 lks. E. of the cor. of secs. 1, 2, 35 and 36, on N. bdy. of Tp., hereinbefore described.

Thence,

S. 0° 06' E., on a true line, bet. secs. 1 and 2.

Over rolling land, thru scattering timber and undergrowth.

Descend 15 ft., over W. slope, to

8.50 Wash, 5 lks. wide, course N. 80° W. Asc. 65 ft. over NW. slope.

16.50 Road to Grand Gulch Mine, brs. N. 75° E. and S. 75° W.

25.90 Descend 35 ft., over SW. slope.

39.75 Wash, 50 lks. wide, course N. 15° W. Asc. slightly to

39.90 Set an iron post, 3 ft. long, 1 in. in diam., 12 ins. in the ground to bed rock, supported in a mound of stone, for $\frac{1}{4}$ sec. cor., marked on brass cap,

$$\begin{array}{c} S \ 2 \ \uparrow \ S \ 1 \\ 1922 \end{array}$$

from which,

A cedar, 14 ins. in diam., brs. S. 8° E., 50 lks. dist., marked $\frac{1}{4}$ S 1 BT.

A cedar, 14 ins. in diam., brs. S. 69 $\frac{1}{2}$ ° W., 40 lks. dist., marked $\frac{1}{4}$ S 2 BT.

Ascend 28 ft., to

49.10 Wash, 5 lks. wide, course N. 30° W. Asc. 147 ft. over NW. & W. slopes, to

79.90 The cor. of secs. 1, 2, 11 and 12.

Land, rolling. Soil, red clay loam, mixed with rock, 2nd rate.

Timber, pinyon, juniper and cedar.

Undergrowth, sagebrush, black brush and greasewood.

From the standard cor. of secs. 34 and 35, on S. bdy. of Tp., (8th. Std. Par. N.), hereinbefore described,

N. 0° 01' W., bet. secs. 34 and 35.

Over rolling land, thru scattering undergrowth.

Descend gradually over E. slope, to

40.00 Set an iron post, 3 ft. long, 1 in. in diam., 24 ins. in the ground, for $\frac{1}{4}$ sec. cor., marked on brass cap,

$$\begin{array}{c} S \ 34 \ \uparrow \ S \ 35 \\ 1920 \end{array}$$

No bearing trees available. Dig pits, 18x18x12 ins., one each N. and S. of cor., 3 ft. dist.

Descend gradually over NE. slope, to

74.00 Rim of canyon, brs. N. and SE. Enter mountainous land.

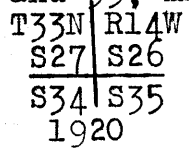
Descend 92 ft., over E. slope, to

80.00 Set an iron post, 3 ft. long, 2 ins. in diam., on surface

Survey of Subdivision lines of Township 33 North, Range 14 West. 25

Chains.

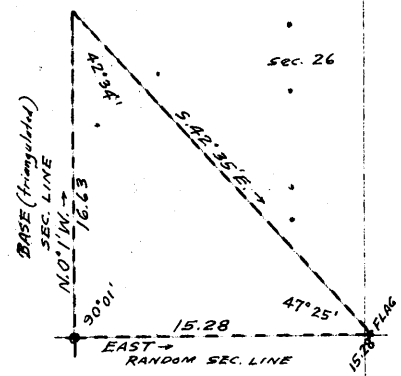
rock, deposit a stone marked with a cross (x) at base of post, and raise a mound of stone around post, for cor. of secs. 26, 27, 34 and 35, marked on brass cap,



No bearing trees available. Raise a mound of stone, 3 ft. base, 2 ft. high, W. of cor. Land, rolling, and mountainous. Soil, sandy clay loam, 2nd rate. Timber, none. Undergrowth, black brush.

East, on a random line, bet. secs. 26 and 35. Owing to precipitous sides of Snap Canyon, it is impracticable to chain measurement of the western extremity of the random sec. line; therefore, triangulate across the canyon as follows:

Measure a Base N. 0° 1' W., 16.63 chs. along the sec. line, bet. secs. 26 and 27 by triangulation, as hereinafter described.



Set flag ahead on random sec. line at E. or right rim of Snap Canyon.

From N. end of Base, the flag brs. S. 42° 35' E.

Dist. triangulated = 15.28 chs.

15.28 Triangulation point. Continue line and measurement by chaining.

40.00 Set temp. 1/4 sec. cor.

79.86 Intersect the N. and S. line, 14 lks. N. of the cor. of secs. 25, 26, 35 and 36.

Thence, N. 89° 54' W., on a true line, bet. secs. 26 and 35. Over rolling land, thru. scattering undergrowth.

14.90 Road, brs. S. 10° E. and N. 10° W.

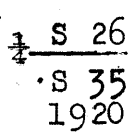
30.90 NE. rim of gulch, brs. SE. and NW. Enter mountainous land.

Descend 85 ft., over SW. slope.

39.00 Wash, 20 lks. wide, in bottom of gulch, course N. 55° W.

Ascend 46 ft. to

39.93 Set an iron post, 3 ft. long, 1 in. in diam., 4 ins. in the ground, to bed rock, deposit a stone, marked with a cross (x) at base of post, and raise a mound of stone around post, for 1/4 sec. cor., marked on brass cap,



47.26 No bearing trees available. Asc. 90 ft., over NE. slope, to SW. rim of gulch, brs. NW. and SE. Leave gulch.

64.58 Descend gradually over N. slope, to E. or right rim of Snap Canyon, brs. N. and S. Discontinue chaining. Measurement to sec. cor. by triangulation, as hereinbefore described.

Descend about 400 ft.

72.00 (Approx.) Bottom of Snap Canyon, course N:

Ascend about 400 ft. to

79.86 The cor. of secs. 25, 27, 34 and 35.

Land, rolling and broken.

Soil, sandy clay loam, 2nd to 4th rate.

Timber, none.

Undergrowth, black brush.

N. 0° 01' W., bet. secs. 26 and 27.

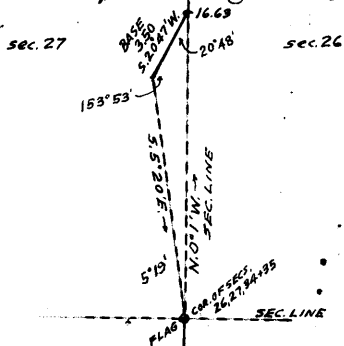
Over mountainous land, thru. scattering undergrowth.

The southern extremity of this line passes over precipitous slope on W. side of Snap Canyon near the W. or

26 Survey of Subdivision lines of Township 33 North Range 14 West.

Chains.

left rim of same and chaining is impracticable; therefore, triangulate as follows:



Set flag on the cor. of secs. 26, 27, 34 and 35.
 From a point ahead on line, measure a Base S. 20° 47' W., 3.50 chs. Impracticable to secure a longer base.
 From SW. end of Base, the flag brs. S. 5° 20' E.

Dist. triangulated = 16.63 chs.

- 3.00 (Approx.) Gulch, course NE.
- 10.00 (Approx.) Gulch, course E. Ascend steep SE. slope.
- 16.63 Triangulation point on West or left rim of Snap Canyon, bearing NE. and SW. Continue line and measurement by chaining. Descend gradually over E. slope, to West or left rim of Snap Canyon, brs. N. 1° W. and SE. Descend 394 ft., over NE. slope.
- 35.20 Wash, 40 lks. wide, in bottom of Snap Canyon, in bend, course NE. from SE. Ascend 93 ft., over SE. slope.
- 39.10 Point of spur, slopes E. Desc. 84 ft. to
- 40.00 Set an iron post, 3 ft. long, 1 in. in diam., 30 ins. in the ground for $\frac{1}{4}$ sec. cor., marked on brass cap,

S27 | S26

1920

No bearing trees available. Raise a mound of stone 3 ft. base, 2 ft. high, W. of cor.

- 41.55 Descend 10 ft. Wash, 40 lks. wide in bottom of Snap Canyon, in bend, course NE. from SE. Asc. 40 ft.
- 45.00 Point of spur, slopes NE. Desc. 150 ft.
- 48.00 Wash, 50 lks. wide, in bottom of Snap Canyon, course W. Ascend 200 ft., over SE. slope.
- 55.00 Thence along E. slope, ascending gradually to
- 75.00 Wash, 40 lks. wide, course SE. Asc. 100 ft. to
- 80.00 Set an iron post, 3 ft. long, 2 ins. in diam., on ledge of rock, deposit a stone marked with a cross (x) at base of post, and raise a mound of stone around post, for cor. of secs. 22, 23, 26 and 27, marked on brass cap,

T33N | R14W
 S22 | S23
 S27 | S26

1920

No bearing trees available.
 Land, mountainous.
 Soil, sandy clay loam and rocky cliffs, 2nd to 4th rate.
 Timber, none.
 Undergrowth, black brush, willows, cacti and Spanish bayonet.

- 40.00 S. 89° 54' E., on a random line, bet. secs. 23 and 26. Set temp. $\frac{1}{4}$ sec. cor..
- 80.00 Fall 14 lks. S. of cor. of secs, 23, 24, 25 and 26. Thence, West, on true line, bet. secs. 23 and 26. Over rolling land, thru. scattering undergrowth. Descend 81 ft., over NW. slope.
- 15.00 Foot of descent; ascend 56 ft., over SE. slope.
- 29.80 Detached spur, slopes S. Desc. 125 ft., over SW. slope.
- 38.00 Wash, course SW. Ascend 15 ft. over SE. slope to $\frac{1}{4}$ sec. cor.
- 39.60 Old road, brs. SE. and NW.
- 40.00 Set an iron post, 3 ft. long, 1 in. in diam., 18 ins. in the

Survey of Subdivision lines of Township 33 North, Range 14 West. 27

Chains.

ground to bed rock, deposit a stone marked with a cross (x) at base of post, and raise a mound of stone around post for 1/4 sec.cor., marked on brass cap,

1/4 S 23
S 26
1920

from which,
A cedar, 20 ins. in diam., brs.S.39°E., 411 lks. dist., marked S 26 BT.

No other bearing tree available.
76.00 Descend gradually over SW. slope, to East, or left rim of gulch, brs.N. and S. Enter mountainous land.

80.00 Descend 185 ft., to The cor.of secs.22,23,26 and 27. Land, rolling and mountainous. Soil, sandy loam and rocky, 2nd to 4th rate. Timber, cedar. Undergrowth, black brush and sagebrush.

N.0°1'W., bet. secs.22 and 23:
Over mountainous land, thru.scattering undergrowth in gulch, Desc.40 ft., over NW.slope.

5.00 Wash, 40 lks.wide, in bottom of gulch, in bend, course SW. from NW. Asc.100 ft.over SW.slope.

10.00 Descend 20 ft., over NW.slope.

13.00 Same wash, 50 lks.wide, in bottom of gulch, course SW. Ascend 130 ft., over SE.slope, to

21.00 W. rim of gulch, brs.NE. and SW. Leave gulch. Enter rolling land. Asc. 40 ft.to

39.00 Thence over E. slope. Asc.slightly to

40.00 Set an iron post, 3 ft.long, 1 in. in diam., 10 ins. in the ground, to bed rock, deposit a stone, marked with a cross (x) at base of post, and raise a mound of stone around post, for 1/4 sec.cor., marked on brass cap,

1/4
S22 | S23
1920

No bearing trees available.
80.00 Ascend gradually over E. and SE. slopes, to Set an iron post, 3 ft.long, 2 ins. in diam., 10 ins. in the ground, to bed rock, deposit a stone, marked with a cross (x) at base of post, and raise a mound of stone around post, for cor.of secs. 14,15,22 and 23, marked on brass cap,

T33N | R14W
S15 | S14
S22 | S23
1920

No bearing trees available.
Land, mountainous and rolling.
Soil, sandy loam and rocky, 2nd to 4th rate.
Timber, none.
Undergrowth, sage brush.

40.00 East, on a random line, bet.secs.14 and 23. Set temp.1/4 sec.cor.

79.98 Fall 10 lks.S.of the cor.of secs.13,14,23 and 24. Thence,

S.89°56'W., on a true line, bet.secs.14 and 23. Over rolling land, thru. scattering undergrowth. Descend 160 ft.

21.20 Wash, 30 lks.wide, course S.40°W. Asc.23 ft.

29.70 Spur, slopes SW. Desc.80 ft.to

39.99 Set an iron post, 3 ft.long, 1 in. in diam., 26ins. in the ground for 1/4 sec.cor., marked on brass cap,

28 Survey of Subdivision lines of Township 33 North, Range 14 West.

Chains.

$\frac{1}{4}$ S 14.
S 23
1920

No bearing trees available. Raise a mound of stone, 3 ft. base, 3 ft. high, N. of cor.
Descend slightly to
41.00 Wash, 30 lks. wide, course S. 65° W.
Ascend 50 ft.
57.40 Descend 75 ft.
68.00 Road, brs. N. and S.
70.00 Draw, course S. 20° W. Asc. 35 ft. to
79.98 The cor. of secs. 14, 15, 22 and 23.
Land, rolling.
Soil, sandy clay loam, 2nd rate.
Timber, none.
Undergrowth, black brush.

N. 0° 1' W., bet. secs. 14 and 15.
Over rolling land, thru. scattering undergrowth.
Ascend gradually over SW. slope to $\frac{1}{4}$ sec. cor.
15.20 Road brs. SE. and NW.
40.00 Set an iron post, 3 ft. long, 1 in. in diam., 6 ins. in the ground to bed rock, deposit a stone, marked with a cross (x) at base of post, and raise a mound of stone around post, for $\frac{1}{4}$ sec. cor., marked on brass cap,

$\frac{1}{4}$
S15 | S14
1920

No bearing trees available.
70.00 Ascend 60 ft., over SW. slope, to
Enter mountainous land. Asc. 62 ft., over S. slope.
74.30 Spur, slopes W. Desc. 98 ft., over N. slope, to
80.00 Set an iron post, 3 ft. long, 2 ins. in diam., 10 ins., in the ground to bed rock, supported in a mound of stone, for cor. of secs. 10, 11, 14 and 15, marked on brass cap,

T33N	R14W
S10	S11
S15	S14
1920	

from which,
A cedar, 16 ins. in diam., brs. N. 26 $\frac{1}{2}$ ° E., 419 lks. dist., marked T33N R14W S11 BT.
A pinyon, 14 ins. in diam., brs. S. 77 $\frac{1}{2}$ ° E., 66 lks. dist., marked T33N R14W S14 BT.
A cedar, 14 ins. in diam., brs. S. 21° W., 97 lks. dist., marked T33N R14W S15 BT.
A cedar, 24 ins. in diam., brs. N. 82° W., 490 lks. dist., marked T33N R14W S10 BT.
Land, rolling and mountainous.
Soil, rocky and sandy loam, 2nd to 4th rate.
Timber, cedar and pinyon.
Undergrowth, black brush.

N. 89° 56' E., on a random line, bet. secs. 11 and 14.
40.00 Set temp. $\frac{1}{4}$ sec. cor.
80.04 Fall 2 lks. N. of the cor. of secs. 11, 12, 13 and 14, Thence,
S. 89° 57' W., on a true line, bet. secs. 11 and 14.
Over rolling and mountainous land, thru. scattering undergrowth.
Descend 390 ft., over W. slope.
39.80 Head of draw, 10 lks. wide, course N. 85° W. at foot of cliff, 75 ft. high, bearing NE. and SW. facing W.
40.02 Set an iron post, 3 ft. long, 1 in. in diam., on surface rock, deposit a stone, marked with a cross (x) at base

Survey of Subdivision lines of Township 33 North, Range 14 West. 29

Chains.

of post, and raise a mound of stone around post, for $\frac{1}{4}$ sec. cor., marked on brass cap,

$\frac{1}{4}$ S 11
S 14
1920

No bearing trees available. Raise a mound of stone, 3 ft. base, 2 ft. high, N. of cor.

58.86 Thence across small flat. Enter mountainous land. Descend 66 ft., over N. and NW. slopes, to

80.04 The cor. of secs. 10, 11, 14 and 15. Land, rolling, level and mountainous. Soil, sandy and rocky, 2nd and 4th rate. Timber, none. Undergrowth, black brush.

N. 0° 01' W., bet. secs. 10 and 11. Over rolling land, thru. scattering timber and undergrowth. Descend gradually over NW. slope.

11.000 Dim road, brs. NE. and SW.

25.00 Wash, 10 lks. wide, course W.

Ascend gradually over W. slope, to

40.00 Set an iron post, 3 ft. long, 1 in. in diam., 14 ins. in the ground to bed rock, supported in a mound of stone, for $\frac{1}{4}$ sec. cor., marked on brass cap,

$\frac{1}{4}$ S 10 | S 11
1920

from which,

A cedar, 17 ins. in diam., brs. N. 46° E., 100 lks. dist., marked $\frac{1}{4}$ S 11 BT.

A cedar, 8 ins. in diam., brs. S. 83° W., 96 lks. dist., marked $\frac{1}{4}$ S 10 BT.

Ascend 60 ft., over W. slope.

55.00 Descend 50 ft., over W. and NW. slopes, to sec. cor.

79.50 Road, brs. NE. and SW.

80.00 Set an iron post, 3 ft. long, 2 ins. in diam., 20 ins. in the ground to bed rock, supported in a mound of stone for cor. of secs. 2, 3, 10 and 11, marked on brass cap,

T 33 N | R 14 W
S 3 | S 2
S 10 | S 11
1920

from which,

A cedar, 24 ins. in diam., brs. N. 19 $\frac{3}{4}$ ° E., 48 lks. dist., marked T 33 N R 14 W S 2 BT.

A cedar, 20 ins. in diam., brs. S. 21 $\frac{3}{4}$ ° E., 187 lks. dist., marked T 33 N R 14 W S 11 BT.

A cedar, 24 ins. in diam., brs. S. 30 $\frac{1}{2}$ ° W., 195 lks. dist., marked T 33 N R 14 W S 10 BT.

A cedar, 30 ins. in diam., brs. N. 78° W., 129 lks. dist., marked T 33 N R 14 W S 3 BT.

Land, rolling.

Soil, sand and clay loam, 2nd rate.

Timber, cedar.

Undergrowth, black brush, sagebrush and yucca.

40.00 N. 89° 57' E., on a random line, bet. secs. 2 and 11. Set temp. $\frac{1}{4}$ sec. cor.

79.98 Fall 7 lks. N. of the cor. of secs. 1, 2, 11 and 12. Thence,

West, on a true line, bet. secs. 2 and 11.

Over mountainous land, thru. scattering timber and undergrowth. Desc. 65 ft.; over W. slope.

8.50 Draw, course N. Enter rolling land.

Ascend 60 ft., over E. slope.

BOOK 3634

30 Survey of Subdivision lines of Township 33 North Range 14 West.

Chains.

301.00 Ridge, brs. N. and S. Desc. 40 ft., over W. slope, to
39.99 Set an iron post, 3 ft. long, 1 in. in diam., 30 ins. in
the ground, for $\frac{1}{4}$ sec. cor., marked on brass cap,

$\frac{1}{4}$ S 2
S 11
1920

No bearing trees available. Dig pits, 18x18x12 ins., one
each E. and W. of cor., 3 ft. dist.
79.30 Descend gradually over W. and NW. slopes to sec. cor.
Road, brs. NE. and SW. joined by dim road from SE.
79.98 The cor. of secs. 2, 3, 10 and 11.
Land, mountainous and rolling.
Soil, sand and clay loam, 2nd rate.
Timber, cedar.
Undergrowth, black brush.

40.00 N. 0° 06' W., on a random line, bet. secs. 2 and 3.
Set temp. $\frac{1}{4}$ sec. cor.
80.03 Fall 4 lks. E. of the cor. of secs. 2, 3, 34 and 35, on N.
bdy. of Tp., hereinbefore described.
Thence
S. 0° 08' E., on a true line, bet. secs. 2 and 3.
Over rolling land, thru. scattering timber and undergrowth.
Ascend gradually over W. slope.
20.00 Descend gradually over SW. slope, to
40.03 Set an iron post, 3 ft. long, 1 in. in diam., 12 ins. in
the ground to bed rock, deposit a stone, marked with
a cross (x) at base of post, and raise a mound of stone
around post, for $\frac{1}{4}$ sec. cor., marked on brass cap,

S 3 | S 2
1922

No bearing trees available.
Descend gradually over SW. slope.
44.40 Rim of gulch, brs. NE. and SW. Desc. 70 ft.
47.50 Bottom of gulch, course S. 75° W.
Ascend 42 ft. to
49.40 Rim of same gulch, brs. NE. and SW.
Ascend gradually over W. slope, to
56.00 Rim of gulch, brs. NW. and SE. Desc. 30 ft.
61.10 Bottom of gulch, course N. 50° W. Asc. 30 ft. to
63.00 Rim of same gulch, brs. NW. and SE. Leave gulch. Asc.
gradually over NW. slope, to
80.03 The cor. of secs. 2, 3, 10 and 11.
Land, rolling.
Soil, sand and clay loam, mixed with rock, 3rd rate.
Timber, juniper.
Undergrowth, black brush, sagebrush and yucca.

From the standard cor. of secs. 33 and 34, on S. bdy. of
Tp. (8th. Std. Par. N.) hereinbefore described,
N. 0° 2' W., bet. secs. 33 and 34.
Over rolling land, thru. scattering undergrowth.
Ascend 15 ft.
3.20 Descend 34 ft.
8.20 Ascend 53 ft.
20.00 Spur, slopes E. Desc. 80 ft.
33.10 Bottom of gulch, 5 lks. wide, course N. 25° W. Asc. 25 ft. to
40.00 Set an iron post, 3 ft. long, 1 in. in diam., 10 ins. in
the ground, to bed rock, deposit a stone, marked with
a cross (x) at base of post, and raise a mound of stone
around post, for $\frac{1}{4}$ sec. cor., marked on brass cap,

Survey of Subdivision lines of Township 33 North, Range 14 West, 31

Chains.

S33 | S 34

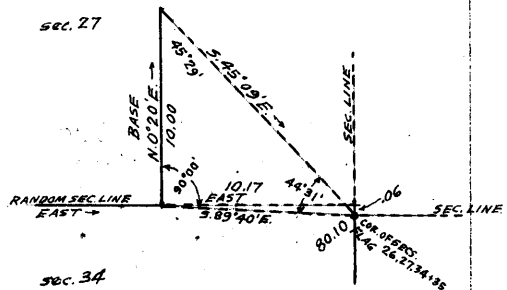
1920

- No bearing trees available.
- Descend 60 ft., along W. slope, nearly parallel to and E. of the E. rim of a canyon, about 100 lks. W. of line.
- 59.25 East or right rim of canyon, brs. N.1°E. and S.1°W. Enter mountainous land in canyon. Desc. 50 ft.
- 68.00 Ascend 100 ft. to
- 70.90 Same canyon rim brs. N.20°W. and S.5°E. Leave canyon. Enter rolling land. Desc. gradually over W. slope, to
- 80.00 Set an iron post, 3 ft. long, 2 ins. in diam., 10 ins. in the ground, to bed rock; deposit a stone marked with a cross (x) at base of post, and raise a mound of stone around post, for cor. of secs. 27, 28, 33 and 34, marked on brass cap,

T33N | R14W
 S28 | S27
 S33 | S34
 1920

No bearing trees available.
 Land, rolling and mountainous.
 Soil, sandstone, 3rd rate.
 Timber, none.
 Undergrowth, black brush.

- 40.00 East, on a random line, bet. secs. 27 and 34.
- 69.93 Set temp. $\frac{1}{4}$ sec. cor.
- Discontinue chaining owing to precipitous sides of a deep gulch, crossing the line beyond this point, and over which it is impracticable to chain. Triangulate the measurement of the remainder of the line as follows:
 Measure a Base N.0°20'E., 10.00 chs.
 Set flag on the cor. of secs. 26, 27, 34 and 35.
 From N. end of Base, the flag brs. S.45°09'E.
 From S. end of Base the flag brs. S.89°40'E.



- Dist. on random line = 69.93 chs.
- Dist. triangulated = 10.17 chs.
- Totals distance, = 80.10 chs.
- The southing of the line S.89°40'E., 10.17 chs. is 6 lks.; therefore, the random line projected East would at
- 80.10 Fall 6 lks. N. of the cor. of secs. 26, 27, 34 and 35.
- Thence, N.89°57' W., on a true line, bet. secs. 27 and 34.
- Over mountainous land, thru scattering undergrowth.
- Across deep gulch, measurement by triangulation, herein before described. Desc. steep NW. slope.
- 5.00 (Approx.) Bottom of gulch, course NE. Asc. over steep SE. slope, to
- 10.17 West rim of gulch, brs. N.80°E. and S.80°W. Leave gulch, Continue line and measurement by chaining. Leave mountainous and enter rolling land.
- Ascend 100 ft., over SE. slope, to
- 40.05 Set an iron post, 3 ft. long, 1 in. in diam., 18 ins. in the ground to bed rock, deposit a stone marked with a cross (x) at base of post, and raise a mound of stone around post, for $\frac{1}{4}$ sec. cor., marked on brass cap,

$\frac{1}{4}$ S 27
 S 34
 1920

No bearing trees available. Desc. 25 ft., over SW. slope.

32 Survey of Subdivision lines of Township 33 North, Range 14 West.

Chains.

45.00 Draw, 5 lks. wide, course S. Asc. slightly over SE. slope.
 50.00 Descend slightly over SW. slope.
 60.00 Descend gradually over N. and NW. slopes, to
 80.10 The cor. of secs. 27, 28, 33 and 34.
 Land, mountainous and rolling.
 Soil, sandy loam, and rocky, 3rd rate.
 Timber, none.
 Undergrowth, black brush.

N.0° 02' W., bet. secs. 27 and 28.
 Over rolling land, thru. scattering undergrowth.
 Descend 37 ft., over NW. slope.
 13.70 SW. rim of gulch, brs. NW. and SE. Leave rolling, and
 enter mountainous land.
 Descend 160 ft., over NE. slope.
 20.00 Wash, 25 lks. wide, course NW. in bottom of gulch.
 Ascend 150 ft., over steep broken SW. slope, to
 40.00 Set an iron post, 3 ft. long, 1 in. in diam., 6 ins. in
 the ground to bed rock, deposit a stone marked with a
 cross (x) at base of post, and raise a mound of stone
 around post, for 1/4 sec. cor., marked on brass cap,

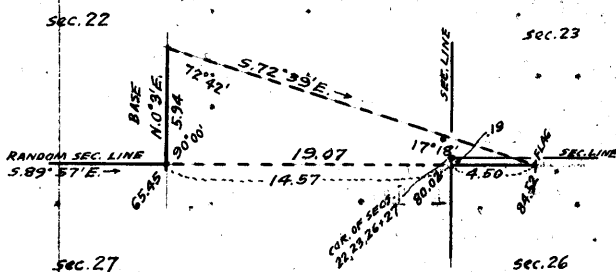
S28 | S27
 1920

No bearing trees available. Asc. 20 ft., over SW. slope.
 43.00 Spur, slopes NW. Desc. 140 ft. over N. slope, to
 64.00 S. or left rim of Snap Canyon, brs. E. and W. Desc. 280 ft.
 72.00 Bottom of Snap Canyon, course W.
 Ascend 265 ft. to
 80.00 Set an iron post, 3 ft. long, 2 ins. in diam., on surface
 rock, deposit a stone, marked with a cross (x) at base of
 post, and raise a mound of stone around post, for cor. of
 secs. 21, 22, 27 and 28, marked on brass cap,

T33N | R14W
 S21 | S22
 S28 | S27
 1920

No bearing trees available.
 Land, rolling and mountainous.
 Soil, rocky, 4th rate.
 Timber, none.
 Undergrowth, black brush.

40.00 S. 89° 57' E., on a random line, bet. secs. 22 and 27.
 Set temp. 1/4 sec. cor.
 65.45 Top of cliffs. Discontinue chaining. As the remainder
 of this line passes over a deep gulch, the sides of
 which are precipitous and chaining is impracticable,
 triangulate as follows:



Measure a Base, N.0°3'E.,
 5.94 chs.
 A longer base is impracticable.
 Set flag ahead on line projected beyond the cor. of
 secs. 22, 23, 26 and 27, at
 E. or left rim of gulch.
 From N. end of Base, the flag
 brs. S.72°39'E.

Dist. on random line = 65.45 chs.
 Dist. by triangulation = 19.07 chs.
 Total distance = 84.52 chs.
 By return measurement = 4.50 chs.
 80.02 chs.

Survey of Subdivision lines of Township 33 North, Range 14 West. 33

Chains.

80.02 Fall 19 lks. S. of the cor. of secs. 22, 23, 26 and 27, Thence, S. 89° 55' W., on a true line, bet. secs. 22 and 27. Over mountainous land, thru. scattering undergrowth. Measurement to W. or right rim of gulch, by triangulation as hereinbefore described. Descend steep W. slope.

5.00 (Approx.) Bottom of gulch, in bend, course SE. from NE. Ascend over cliffs, facing E.

14.57 Triangulation point at W. or right rim of gulch, brs. N. and S. Continue line and measurement by chaining. Enter rolling land. Ascend gradually over SE. slope, to

40.01 Set an iron post, 3 ft. long, 1 in. in diam., 6 ins. in the ground to bed rock, deposit a stone, marked with a cross (x) at base of post, and raise a mound of stone around post, for 1/4 sec. cor., marked on brass cap,

1/4 S 22
S 27
1920

No bearing trees available. Descend gradually over SW. slope, to

64.60 North or right rim of Snap Canyon, brs. N: 80° W. and S. 80° E. Enter mountainous land.

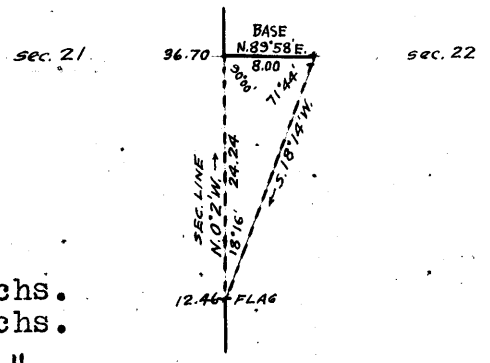
80.02 Descend 200 ft., over S. slope, to the cor. of secs. 21, 22, 27 and 28. Land, mountainous and rolling. Soil, clay loam and rocky cliffs, 2nd to 4th rate. Timber, none. Undergrowth, black brush.

N. 0° 02' W., bet. secs. 21 and 22. Over mountainous land, on N. side of Snap Canyon, thru. scattering undergrowth. Ascend 200 ft., over cliffs, facing S.

5.50 N. or right rim of Snap Canyon, brs. E. and W. Leave canyon. Enter rolling land. Ascend gradually over W. slope.

12.46 S. or left rim of side canyon, brs. NE and SW. Discontinue chaining owing to precipitous sides of this canyon, which are impracticable to chain across. Triangulate as follows:

Set flag at this point. From point ahead on sec. line, at N. or right rim of canyon, measure a base N. 89° 58' E., 8.00 chs. From E. end of Base, the flag brs. S. 18° 14' W.



Dist. on sec. line = 12.46 chs.
Dist. triangulated = 24.24 chs.
Total distance = 36.70 "

29.00 (Approx.) Bottom of side canyon, course W.

36.70 Triangulation point on N. or right rim of side canyon, bearing E. and W. Leave side canyon. Continue line and measurement by chaining. Enter rolling land. Ascend slightly over W. slope, to

40.00 Set an iron post, 3 ft. long, 1 in. in diam. 15 ins. in the ground, to bed rock, supported in a mound of stone for 1/4 sec. cor., marked on brass cap,

1/4 S 21 | S 22
1920

No bearing trees available. Raise a mound of stone, 3 ft. base, 2 ft. high, W. of cor.

45.00 Descend 23 ft., over W. slope, to S. rim of gulch, brs. E. and W. Enter mountainous land. Descend 140 ft. over N. slope.

34. Survey of Subdivision lines of Township 33 North, Range 14 West.

Chains.

- 49.80 Bottom of gulch, course W. into Cunningham Canyon, about 20 chs. dist.
- 62.50 Ascend 165 ft., over SW. slope, to N. rim of gulch, brs. NW. and SE., merging into E. or left rim of Cunningham Canyon. Leave gulch; enter rolling land.
- 67.00 Ascend gradually over W. slope, to East or left rim of Cunningham Canyon, brs. N. 2° E. and S. 2° W. Enter mountainous land on E. side of said canyon.
- 80.00 Ascend over steep W. slope, to Set an iron post, 3 ft. long, 2 ins. in diam., on ledge of rock, deposit a stone, marked with a cross (x) at base of post, and raise a mound of stone, around post for cor. of secs. 15, 16, 21 and 22, marked on brass cap,

T33N | R14W
 S16 | S15
 S21 | S22
 1920

No bearing trees available. Raise a mound of stone, 4 ft. base, 3 ft. high, W. of cor.
 Land, mountainous and rolling.
 Soil, rocky, 4th rate.
 Timber, none.
 Undergrowth, black brush.

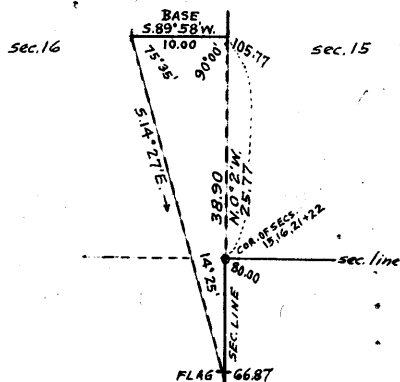
- 40.00 N. 89° 55' E., on a random line, bet. secs. 15 and 22. Set temp. $\frac{1}{4}$ sec. cor.
- 79.88 Fall 19 lks. N. of the cor. of secs. 14, 15, 22 and 23. Thence, N. 89° 57' W., on a true line, bet. secs. 15 and 22. Over gently rolling land, thru. scattering undergrowth. Descend gradually over SW. slope, to
- 39.94 Set an iron post, 3 ft. long, 1 in. in diam., 24 ins. in the ground, to bed rock, deposit a stone, marked on a cross (x) at base of post; and raise a mound of stone, around post, for $\frac{1}{4}$ sec. cor., marked on brass cap,

$\frac{1}{4}$ S 15
 S 22
 1920

No bearing trees available. Desc. gradually over SW. and W. slopes, to

- 76.95 E. or left rim of Cunningham Canyon, brs. N. 5° E. and S. 2° W. Enter mountainous land in said canyon.
- 79.88 Descend 150 ft., over steep W. slope, to The cor. of secs. 15, 16, 21 and 22. Land; gently rolling and mountainous. Soil, sandy and clay loam, 2nd rate. Timber, none. Undergrowth, black brush.

N. 0° 02' W., bet. secs. 15 and 16. Over mountainous land, thru. scattering undergrowth, in Cunningham Canyon. Impracticable to chain owing to precipitous slopes. Triangulate as follows:



From a point ahead on sec. line, at W. or right rim of Cunningham Canyon, measure a Base S. 89° 58' W., 10.00 chs. Set flag at 66.87 ch. station on line, bet. secs. 21 and 22, which is near the E. or left rim of this canyon. From W. end of Base, the flag brs. S. 14° 27' E.

Survey of Subdivision lines of Township 33 North, Range 14 West. 35

Chains.

Dist. on line bet. secs. 21 and 22 = 66.87 chs.
 Dist. by triangulation = 38.90 chs.
 Total distance = 105.77 chs.
 Distance bet. secs. 21 and 22, = 80.00 chs.
 Distance bet. secs. 15 and 16, = 25.77 chs.
 20.00 (Approx.) Bottom of Cunningham Canyon, course SW.
 25.77 Triangulation point on W. or right rim of Cunningham Canyon, brs. NE. and SW. Leave canyon. Continue line and measurement by chaining. Enter gently rolling land.

40.00 Ascend gradually over SE. slope, to
 Set an iron post, 3 ft. long, 1 in. in diam., 12 ins. in the ground to bed rock, deposit a stone marked with a cross (x) at base of post, and raise a mound of stone around post, for $\frac{1}{4}$ sec. cor., marked on brass cap,

$\frac{1}{4}$
 S16 | S15
 1920

80.00 No bearing trees available.
 Set an iron post, 3 ft. long, 2 ins. in diam., 6 ins. in the ground to bed rock, deposit a stone marked with a cross (x) at base of post, and raise a mound of stone around post, for cor. of secs. 9, 10, 15 and 16, marked on brass cap,

T33N | R14W
 S 9 | S10
 S16 | S15
 1920

from which,

A cedar, 18 ins. in diam., brs. S. $77\frac{1}{2}^{\circ}$ E., 190 lks. dist., marked T33N R14W S15 BT.

A cedar, 18 ins. in diam., brs. S. $59\frac{1}{4}^{\circ}$ W., 251 lks. dist., marked T33N R14W S16 BT.

No other bearing trees available.

Land, mountainous and gently rolling.

Soil, rocky, 3rd rate.

Timber, none.

Undergrowth, black brush.

40.00 S. $89^{\circ}57'$ E., on a random line, bet. secs. 10 and 15.
 Set temp. $\frac{1}{4}$ sec. cor.

80.00 Fall 7 lks. S. of the cor. of secs. 10, 11, 14 and 15.

Thence,

West, on a true line, bet. secs. 10 and 15.

Over rolling land, thru. scattering timber and undergrowth.

Descend 65 ft.

5.50 Dim road, brs. N. and S.

38.50 Head of gulch, course SE. Asc. slightly over SE. slope, to

40.00 Set an iron post, 3 ft. long, 1 in. in diam., 12 ins. in the ground, to bed rock, deposit a stone marked with a cross (x) at base of post, and raise a mound of stone around post, for $\frac{1}{4}$ sec. cor., marked on brass cap,

$\frac{1}{4}$ S 10
 S 15
 1920

from which,

A twin cedar, 10 ins. in diam., brs. N. $58\frac{1}{2}^{\circ}$ E., 98 lks. dist., marked $\frac{1}{4}$ S 10 BT.

A cedar, 15 ins. in diam., brs. S. $7\frac{1}{4}^{\circ}$ W., 174 lks. dist., marked $\frac{1}{4}$ S 15 BT.

80.00 Ascend 220 ft., over SE. slope, to
 The cor. of secs. 9, 10, 15 and 16.

Land, rolling.

Soil, sandy and rocky, 3rd rate.

Timber, cedar. Undergrowth, black brush.

36 Survey of Subdivision lines of Township 33 North Range 14 West.

Chains.

18.70 N.0°2'W., bet.secs. 9 and 10.
 Over rolling land, thru scattering timber and undergrowth.
 Ascend 95 ft., over SE.slope to $\frac{1}{4}$ sec.cor.
 40.00 Road, brs.NE and SW.
 Set an iron post, 3 ft.long, 1 in.in diam., 30 ins. in the
 ground for $\frac{1}{4}$ sec.cor., marked on brass cap,

S 9 | S 10
 1922

55.00 No bearing trees available. Raise a mound of stone, 3 ft.
 base, 3 ft.high, W of cor.
 Ascend gradually over E.slope.
 70.00 Descend 90 ft., over N.slope.
 Head of gulch, course N.30°E. Enter mountainous land.
 Ascend 26 ft, over E.slope, to
 80.00 Set an iron post, 3 ft.long, 2 ins.in diam., 6 ins.in the
 ground to bed rock, deposit a stone, marked with a
 cross (x) at base of post, and raise a mound of stone
 around post, for cor.of secs. 3,4,9 and 10, marked on
 brass cap,

T33N | R14W
 S 4 | S 3
 S 9 | S 10
 1922

from which,
 A cedar, 14 ins.in diam., brs.S.61 $\frac{1}{2}$ °E., 208 lks.
 dist., marked T33N R14W S10 BT.
 A cedar, 8 ins.in diam., brs.S.10 $\frac{1}{2}$ °W., 94 lks.
 dist., marked T33N R14W S9 BT.

No other bearing trees available.
 Land, rolling and mountainous.
 Soil, sandy and rocky, 3rd rate.
 Timber, cedar.
 Undergrowth, black brush.

40.00 East, on a random line, bet. secs.3.and 10.
 Set temp. $\frac{1}{4}$ sec.cor.
 80.00 Fall 9 lks.N. of the cor.of secs.2,3,10 and 11.
 Thence,
 N.89°56'W., on a true line, bet. secs.3 and 10.
 Over gently rolling land, thru. scattering timber and
 undergrowth.
 Descend slightly over NW.slope.
 5.00 Ascend 80 ft., over E.slope, to
 40.00 Set an iron post, 3 ft.long, 1 in. in diam., 28 ins.in
 the ground, for $\frac{1}{4}$ sec.cor., marked on brass cap,

$\frac{1}{4}$ S 3
 S 10
 1922

from which,
 A cedar, 24 ins. in diam., brs.N.15°E., 375 lks.
 dist., marked $\frac{1}{4}$ S 3 BT,
 A cedar, 12 ins.in diam., brs.S.1 $\frac{1}{2}$ °W., 155 lks.
 dist., marked $\frac{1}{4}$ S 10 BT.

67.50 Ascend 50 ft., over E.slope.
 Low ridge, brs.N.and S. Enter mountainous land.
 Descend 100 ft.
 77.50 Gulch; course N.2°W.
 Ascend 55 ft., over E.slope, to
 80.00 The cor.of secs. 3,4,9 and 10.
 Land, rolling and mountainous.
 Soil, sandy and rocky, 3rd rate.
 Timber, cedar.
 Undergrowth, black brush.

Survey of Subdivision lines of Township 33 North, Range 14 West. 37

Chains.

40.00 N.0° 08'W., on a random line, bet. secs. 3 and 4.
Set temp. $\frac{1}{4}$ sec. cor.

80.16 Fall 31 lks. W. of the cor. of secs. 3, 4, 33 and 34, on N. bdy. of Tp., hereinbefore described.
Thence,
S.0° 5'W., on a true line, bet. secs. 3 and 4.
Over mountainous land, thru. scattering undergrowth, along E. side of canyon.
Descend 20 ft. to:

5.00 Descend 160 ft., over SW slope.

12.20 Gulch, course SW. Ascend 80 ft., over NW slope.

28.00 Top of ascent, Descend 30 ft. to

40.16 Set an iron post, 3 ft. long, 1 in. in diam., 30 ins. in crevice on ledge of rock, deposit a stone, marked with a cross (x) at base of post for $\frac{1}{4}$ sec. cor., marked on brass cap,

$\frac{1}{4}$
S 4 | S 3
1922

No bearing trees available.

73.50 Ascend 316 ft., over broken NW. and W. slopes, to Wash, 20 lks. wide, in gulch, course N. 5°W.

80.16 Ascend 140 ft., over NE. and E. slopes, to The cor. of secs. 3, 4, 9 and 10.
Land, mountainous.
Soil, rocky, 4th rate.
Timber, none.
Undergrowth, black brush.

From the Standard cor. of secs. 32 and 33 on S. bdy. of Tp. (8th. Std. Par. N.) hereinbefore described,
N.0° 03'W., bet. secs. 32 and 33.
Over mountainous land, thru. scattering undergrowth.

14.00 Ascend 96 ft., over SW. slope.
Ridge, brs. NW. and SE.

34.16 Descend 180 ft., over NW. and W. slopes, to Spur, slopes N. 15°W.

40.00 Descend 180 ft., over NE. slope, to Mark a cross (x) on rock in place, exposed 2 $\frac{1}{2}$ x2x2 ft. above ground, and alongside of same set an iron post, 3 ft. long, 1 in. in diam., 10 ins. in the ground to bed rock, supported in a mound of stone, for $\frac{1}{4}$ sec. cor., marked on brass cap,

$\frac{1}{4}$
S32 | S33
1920

No bearing trees available.

52.10 Descend 330 ft., over NE. slope.
Bottom of canyon, course NW.

76.60 Ascend 270 ft., over SW slope.
Point of spur, slopes W. Leave canyon.

80.00 Descend 15 ft., over NW slope, to Set an iron post, 3 ft. long, 2 ins. in diam., on surface rock, at N. side of rock ledge, deposit a stone, marked with a cross (x) at base of post, and raise a mound of stone around post, for cor. of secs. 28, 29, 32 and 33, marked on brass cap,

T33N | R14W
S29 | S28
S32 | S33
1920

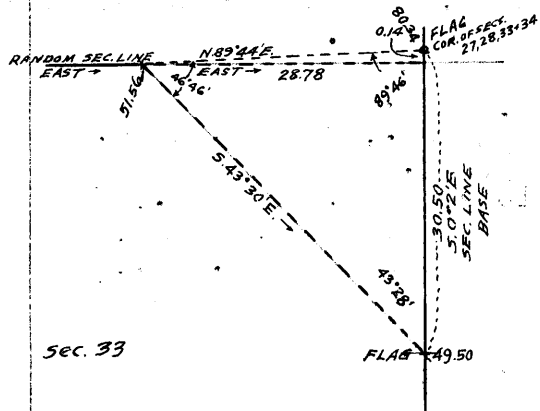
No bearing trees available.
Land, mountainous.
Soil, rocky, 4th rate.
Timber, none.
Undergrowth, black brush.

38 Survey of Subdivision lines of Township 33 North, Range 14 West.

Chains

40.00
51.56

East, on a random line, bet. secs. 28 and 33.
Set temp. $\frac{1}{4}$ sec. cor.
West or left rim of canyon. Impracticable to chain further on the random sec. line, owing to precipitous slopes in the canyon; therefore, triangulate measurement of remainder of line, as follows:



A flag on the cor. of secs. 27, 28, 33 and 34, brs. N. 89° 44' E.
A flag at 49.50 ch. station on the sec. line, bet. secs. 33 and 34, brs. S. 43° 30' E.
The base for this triangulation is therefore S. 0° 2' E., 30.50 chs. on the sec. line bet. secs. 33 and 34.
Dist. on random line = 51.56 chs.
Dist. triangulated = 28.78"
Total dist. = 80.34"

80.34 The northing of the triangulated portion of the random sec. line is 14 lks.; therefore, the random line projected East, would at Fall 14 lks. S. of the cor. of secs. 27, 28, 33 and 34. Thence, S. 89° 54' W., on a true line, bet. secs. 28 and 33. Over mountainous land, thru. scattering undergrowth, across canyon.

14.00 Descend over precipitous W. slope. Measurement by triangulation, as hereinbefore described. (Approx.) Bottom of canyon, course NW.
28.78 Ascend over precipitous NE. slope, to Triangulation point at W. or left rim of canyon, course N. 20° W. and S. 20° E. Leave canyon. Enter rolling land. Continue line and measurement by chaining.
31.00 Ascend 17 ft.
40.17 Descend 38 ft. to Set an iron post, 3 ft. long, 1 in. in diam., 16 ins. in the ground to bed rock, deposit a stone, marked with a cross (x) at base of post, and raise a mound of stone around post, for $\frac{1}{4}$ sec. cor., marked on brass cap,

$\frac{1}{4}$ S 28
S 33
1920

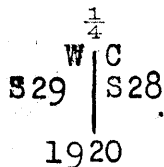
No bearing trees available. Enter mountainous land.
44.20 Descend 55 ft. to Gulch, 5 lks. wide, course N.
50.60 Ascend 105 ft. Descend 65 ft.
57.25 Gulch, 5 lks. wide, course N.
70.00 Ascend 80 ft. Top of ridge, brs. N. and S.
80.34 Descend 285 ft., over W. slope, to The cor. of secs. 28, 29, 32 and 33. Land, mountainous and rolling. Soil, rocky, 4th rate. Timber, none. Undergrowth, black brush.

15.00 N. 0° 03' W., bet. secs. 28 and 29. Over mountainous land, thru. scattering undergrowth. Along broken W. slope.
37.20 S. or left rim of Snap Canyon, brs. NE. and SW. Descend 465 ft., over NW. slope, to Gulch, 10 lks. wide, course N. 5° W. near head.
39.54 Descend 23 ft., over NW. slope, to Top of cliffs, bearing NE. and SW. Set an iron post, 3 ft. long, 1 in. in diam., 8 ins. in the ground to bed rock, deposit a stone marked with

Survey of Subdivision lines of Township 33 North, Range 14 West. 39

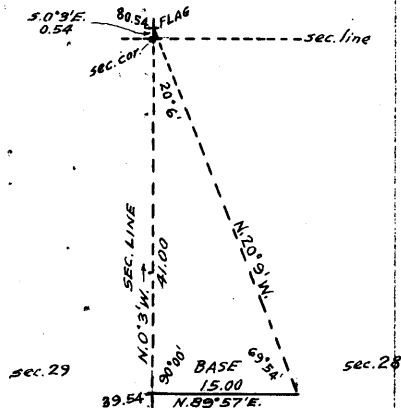
Chains.

a cross (x) at base of post, and raise a mound of stone around post, for witness cor. to the 1/4 sec. cor., marked on brass cap,



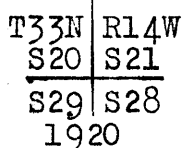
No bearing trees available. Beyond this point chaining is impracticable, as the line crosses Snap Canyon, with precipitous sides; therefore, triangulate the remainder of the line as follows:

Measure a Base N. 89° 57' E., 15.00 chs. Set flag ahead on sec. line. From E. end of Base, the flag brs. N. 20° 9' W.



- Dist. on sec. line = 39.54 chs.
- Dist. triangulated = 41.00 chs.
- Total dist. = 80.54 chs.
- By return measurement, 0.54 chs.
- 80.00 chs.

- 40.00 True point for 1/4 sec. cor. falls on face of cliffs, and is inaccessible.
- 48.00 (Approx.) Bottom of Snap Canyon, course SW. Ascend over SE. face of cliffs.
- 54.00 (Approx.) Top of cliffs, bearing NE. and SW. facing SE. Ascend over precipitous S. slope, to
- 73.00 (Approx.) Top of cliffs, bearing NE. and SW. facing SE. Ascend over steep SE. slope, to
- 80.00 Set an iron post, 3 ft. long, 2 ins. in diam., on surface rock, deposit a stone, marked with a cross (x) at base of post, and raise a mound of stone around post, for cor. of secs. 20, 21, 28 and 29, marked on brass cap,



No bearing trees available. Land, mountainous. Soil, rocky, 4th rate. Timber, none. Undergrowth, black brush.

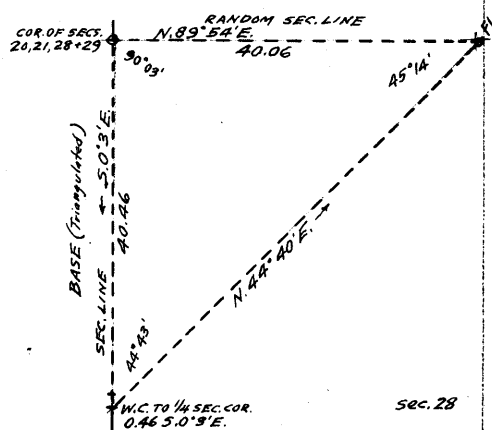
N. 89° 54' E., on a random line, bet. secs. 21 and 28. Owing to precipitous slopes, it is impracticable to chain measurement; therefore, triangulate as follows: Set flag ahead on random sec. line.

From the witness cor. to 1/4 sec. cor. of secs. 28 and 29, the flag brs. N. 44° 40' E.

The Base for this triangulation is therefore S. 0° 3' E., 40.46 chs. on the sec. line, bet. secs. 28 and 29. Triangulated dist. = 40.06 chs.

- 40.06 Triangulation point on ledge on E. side of Cunningham Canyon, brs. N. and S.

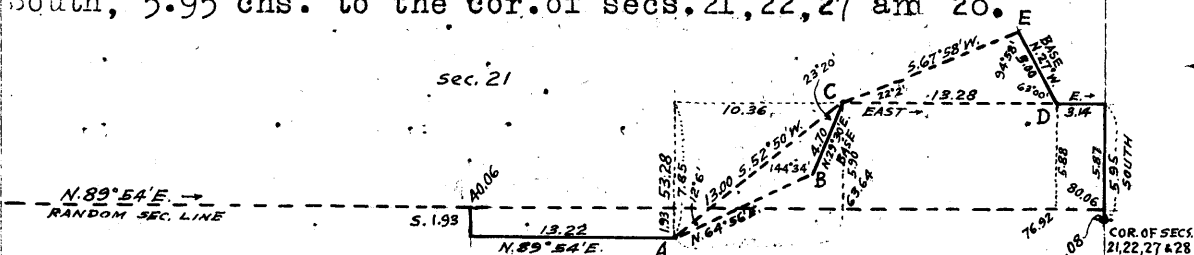
Precipitous broken slopes prevent chaining on random line E. from this point. Set temp. 1/4 sec. cor. Offset South, 1.93 chs. Thence, N. 89° 54' E., 13.22 chs. on offset line in sec. 28 to a point



. 40 Survey of Subdivision lines of Township 33 North, Range 14 West.

chains.

1.93 chs. S. of 53.28 ch. station on random line. It is impossible to return to the random sec. line at this point, or continue the offset line; therefore, triangulate the measurement of the remainder of the random sec. line, described as follows, & as shown on diagram hereon:
 Set flag at this point designated "A" on diagram.
 Set flag N. 64° 56' E., designated "B" on diagram.
 From flag "B" measure a base N. 29° 30' E., 4.70 chs. to point designated as "C" on diagram.
 From NE. end of Base ("C") flag "A" brs. S. 52° 50' W. Triangulated dist. of "A-C" = 13.00 chs. N. 52° 50' E.
 Latitude of line "A-C" = 7.85 chs. N.
 Departure of line "A-C" = 10.36 chs. E.
 Dist. on random sec. line to point 1.93 chs. N. of flag "A." = 53.28 chs.
 Dist. triangulated East, = 10.36 chs.
 Dist. to point on random sec. line, 5.90 chs. S. of point "C," = 63.64 chs.
 From "C" set a flag East, designated "D" on diagram.
 From "D", measure a Base, N. 27° W., 5.00 chs. to point designated "E" on diagram.
 From NW. end of "Base ("E") flag "C" brs. S. 67° 58' W. Dist. on random sec. line to point 5.90 chs. S. of triangulation point "C" = 63.64 chs.
 Dist. triangulated East = 13.28 chs.
 Dist. to point 5.88 chs. S. of flag "D" = 76.92 chs.
 From triangulation point "D" East, 3.14 chs. on offset line in sec. 21. Thence, South, 5.95 chs. to the cor. of secs. 21, 22, 27 and 28.

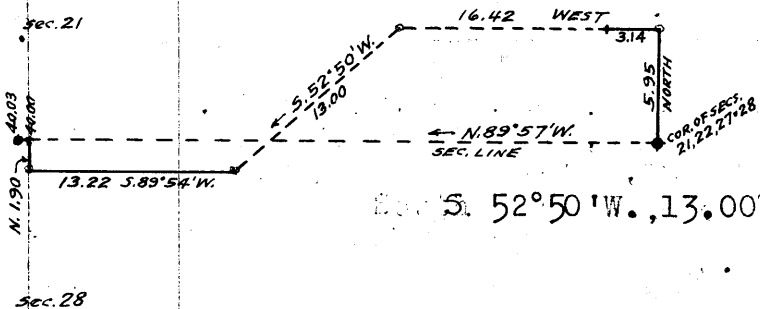


By computation of the above described triangulations and offsets, the random sec. line projected, would at 80.06 Fall 8 lks. N. of the cor. of secs. 21, 22, 27 and 28.

80.06

Thence, N. 89° 57' W., on a true line, bet. secs. 21 and 28. Over mountainous land, thru. scattering undergrowth. Measurement by offset as follows:

North, 5.95 chs.; thence West, 16.42 chs. in sec. 21, measurement by chaining



for 3.14 chs. to junction of N. rim of Snap Canyon with E. rim of Cunningham Canyon; thence by triangulation to offset point. Thence by triangulation S. 52° 50' W., 13.00 chs. to point in sec. 28 at top of cliffs on N. side of Snap Canyon, bearing E. and W.

Thence, S. 89° 54' W., 13.22 chs. on offset line in sec. 28, chaining measurement along top of cliffs, on N. side of Snap Canyon.

Thence; North, 1.90 chs. on offset line in sec. 28, along ledge, chaining measurement and at

40.00 Intersect true line, bet. secs. 21 and 28: Chain measurement, N. 89° 57' W., 0.03 chs. to

40.03 Triangulation point on ledge of rock, on East side of Cunningham Canyon. Mark a cross (x) on surface rock, and over same set an iron post, 3 ft. long, 1 in. in diam., and

Survey of Subdivision lines of Township 33 North, Range 14 West. 41

chains.

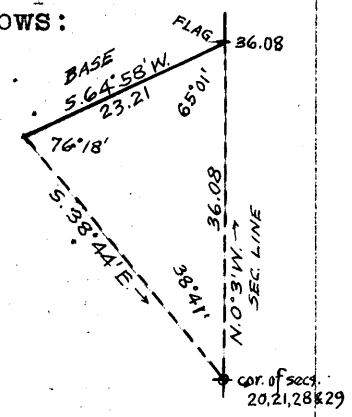
raise a mound of stone around post, for 1/4 sec.cor., marked on brass cap,

1/4 S 21
S 28
1920

No bearing trees available.
Continue line and measurement by triangulation, hereinbefore described.
Descend over cliffs, to
43.50 (Approx.) Bottom of Cunningham Canyon, course South into Snap Canyon about 7 chs.dist.
Ascend over cliffs.
48.00 (Approx.) Top of cliffs bears N.and S.
Ascend over steep broken SE.slope to sec.cor.
66.00 (Approx.) Gulch, course SE.
72.00 (Approx.) Top of cliffs, bearing NE. and SW.
80.06 The cor.of secs.20,21, 28 and 29.
Land, mountainous.
Soil,rocky, 4th rate.
Timber, none.
Undergrowth, black brush.

N.0° 03'W., bet.secs. 20 and 21.
Over mountainous land, thru.scattering undergrowth, on right side of Snap Canyon.
On account of precipitous slopes, it is impracticable to chain. Therefore, triangulate as follows:

Set flag on the cor.of secs.20,21, 28 and 29.
From a point ahead on sec.line, measure a base S.64°58'W., 23.21 chs. chs.
From SW.end of Base, the flag brs.S.38°44'E.
From the flag to NE.end of Base the vertical angle is 17°.
Dist.triangulated = 36.08 chs.



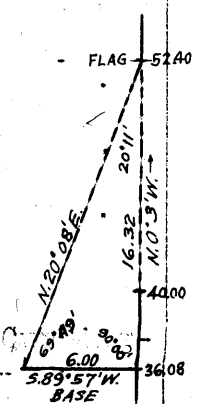
36.08 Triangulation point at N.or right rim of Cunningham and Snap Canyons, brs.NW. and SW. This point is 725 ft. above the cor. of secs.20,21,28 and 29. Continue line and measurement by chaining. Enter a side canyon, course SE.

Descend 70 ft.to
40.00 Set an iron post, 3 ft.long, 1 in. in diam., on ledge of rock, deposit a stone, marked with a cross (x) at base of post, and raise a mound of stone around post, for 1/4 sec.cor., marked on brass cap,

S20 | S21
1920

No bearing trees available.
Discontinue chaining at this cor.,owing to precipitous slopes in a short side canyon, which crosses the line N. of this point. Triangulate as follows:

Set a flag ahead on sec.line at N.or left rim of side canyon.
From the 36.08 ch.station on sec.line measure a base S.89°57'W., 6.00 chs.
From W.end of Base, the flag brs.N.20°08'E.
Dist.on sec.line = 36.08 chs.
Distance triangulated = 16.32 chs.
Total distance = 52.40 chs.



47.00 (Approx.) Bottom of side canyon, course SE. into Cunningham Canyon.

42 Survey of Subdivision Lines of Township 33 North Range 14 West.

Chains.

52.40 Ascend over precipitous S. slope, to
Triangulation point at N. or left rim of side canyon, brs. E. and W. Leave canyon: Enter rolling land. Continue line and measurement by chaining.

80.00 Ascend gradually to
Set an iron post, 3 ft. long, 2 ins. in diam., 6 ins. in the ground to bed rock, deposit a stone marked with a cross (x) at base of post, and raise a mound of stone around post for cor. of secs. 16, 17, 20 and 21, marked on brass cap,

T33N	R14W
S17	S16
S20	S21
1920	

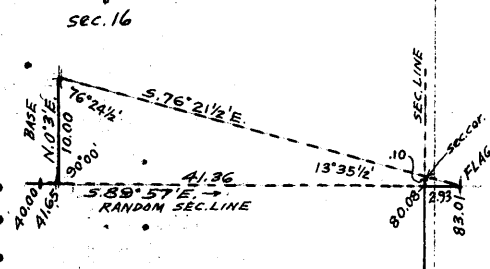
No bearing trees available.
Land, mountainous and rolling.
Soil, rocky, 4th rate.
Timber, none.
Undergrowth, black brush.

40.00 S. 89° 57' E., on a random line, bet. secs. 16 and 21.
Set temp. $\frac{1}{4}$ sec. cor.

41.65 West, or right rim of Cunningham Canyon, brs. NE. and SW. The remainder of the line is in the canyon, and chaining is impracticable; therefore, triangulate as follows:

Measure a Base N. 0° 3' E., 10.00 chs.
Set flag, S. 89° 57' E., on East or left rim of canyon, beyond the cor. of secs. 15, 16, 21 and 22.
From N. end of Base, the flag brs. S. 76° 21 $\frac{1}{2}$ ' E.

Dist. on random line	= 41.65 chs.
Dist. by triangulation	= 41.36 chs.
Total dist.,	83.01 chs.
By return measurement	= 2.93 chs.
	80.08 chs.



80.08 Fall 10 lks. S. of the cor. of secs. 15, 16, 21 and 22. Thence, S. 89° 59' W., on a true line, bet. secs. 16 and 21. Over mountainous land, thru. scattering undergrowth, in Cunningham Canyon. Measurement by triangulation as hereinbefore described.

10.00 Descend 400 ft. (Approx.) Bottom of Cunningham Canyon, course SW. Ascend 400 ft. to

38.43 Triangulation point at W. or right rim of Cunningham Canyon, brs. NE. and SW. Continue line and measurement by chaining.

40.04 Descend slightly over S. slope, to Mark a cross (x) on ledge of rock, and over same set an iron post, 3 ft. long, 1 in. in diam., supported in a mound of stone, for $\frac{1}{4}$ sec. cor., marked on brass cap,

$\frac{1}{4}$ S 16
S 21
1920

No bearing trees available.
Descend 30 ft., over SW. slope.
43.00 Head of gulch, course SE.
Ascend 95 ft., over SE. slope, to
55.00 Top of ascent. Thence over gently rolling land.
Ascend slightly over E. slope, to
80.08 The cor. of secs. 16, 17, 20 and 21.
Land, mountainous and gently rolling.
Soil, rocky, 4th rate.
Timber, none.
Undergrowth, black brush.

Survey of Subdivision Lines of Township 33 North, Range 14 West. 43

Chains.

N. 0° 3' W., bet. secs. 16 and 17.
 Over gently rolling land, sloping slightly to the E.
 Ascend slightly to
 40.00 Set an iron post, 3 ft. long, 1 in. in diam., 6 ins. in the
 ground, to bed rock, deposit a stone, marked with a cross
 (x) at base of post, and raise a mound of stone around
 post, for $\frac{1}{4}$ sec. cor., marked on brass cap,

S17 | S16
 1920

No bearing trees available.
 From this cor., a tent at Cunningham Mine, brs. N. 76° E.
 Continue over gently rolling land, descending slightly
 over E. slope, to
 80.00 Set an iron post, 3 ft. long, 2 ins. in diam., 6 ins. in
 the ground, to bed rock. deposit a stone, marked with
 a cross (x) at base of post, and raise a mound of
 stone around post, for cor. of secs. 8, 9, 16 and 17,
 marked on brass cap,

T33N | RL4W
 S 8 | S 9
 S17 | S16
 1920

No bearing trees available.
 From this cor., tent at Cunningham Mine, brs. S. 57° E.
 Land, gently rolling.
 Soil, sandy and rocky loam, 3rd rate.
 Timber, none.
 Undergrowth, black brush.

N. 89° 59' E., on a random line, bet. secs. 9 and 16.
 40.00 Set temp. $\frac{1}{4}$ sec. cor.
 80.00 Fall 23 lks. N. of the cor. of secs. 9, 10, 15 and 16.
 Thence,
 N. 89° 51' W., on a true line, bet. secs. 9 and 16.
 Over rolling land, thru. scattering undergrowth.
 Ascend 85 ft., over SE. and S. slopes.
 18.50 Road, brs. SE. and NW. Extends southwesterly to Cunningham
 Mine about 30 chs. dist.
 23.50 Rim of gulch, brs. N. and S. Enter mountainous land.
 Descend 75 ft., over W. slope.
 26.70 Road to Bronzel Mine, brs. NE and SW.
 27.60 Head of gulch, course NW.
 Ascend 110 ft., over NE. slope to point for $\frac{1}{4}$ sec. cor.
 37.27 Set an iron post, 3 ft. long, 1 in. in diam., on surface
 rock, deposit a stone, marked with a cross (x) at base
 of post, and raise a mound of stone around post, for
 witness cor. to $\frac{1}{4}$ sec. cor., marked on brass cap,

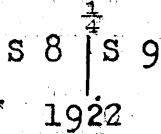
WC $\frac{1}{4}$ S 9
 S 16
 1920

No bearing trees available.
 40.00 True point for $\frac{1}{4}$ sec. cor. falls on cliff, and is inaccess-
 ible.
 Ascend 40 ft. to
 44.00 Spur, slopes NW. Road to Bronzel Mine, brs. NW and SE.
 Descend 200 ft., over W. slope.
 56.00 Gulch, course NW.
 Ascend 210 ft., over E. slope, to
 67.00 West rim of gulch, brs. N. and S. Thence over gently rolling
 land.
 Ascend 35 ft. to
 80.00 The cor. of secs. 8, 9, 16 and 17.
 Land, mountainous and rolling.
 Soil, rocky, 4th rate.
 Timber, none.
 Undergrowth, black brush.

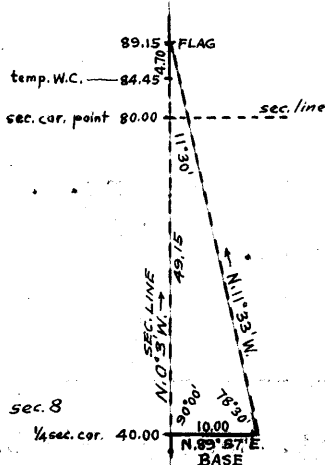
44 Survey of the Subdivision lines of Township 33 North Range 14 West.

Chains.

N.0°3'W., bet. secs.8 and 9.
 Over rolling land, thru. scattering undergrowth.
 Descend 23 ft., over E.slope.
 5.00 Ascend 74 ft., over SE.slope, to
 27.50 Rim of canyon, brs.E.and W. Enter mountainous land in
 canyon.
 Descend 150 ft., over broken N.slope, to
 40.00 Set an iron post, 3 ft.long, 1 in. in diam., 4 ins. in
 the ground to bed rock, deposit a stone marked with a
 cross (x) at base of post, and raise a mound of stone
 around post, for $\frac{1}{4}$ sec.cor., marked on brass cap,



No bearing trees available. Beyond this cor., the remainder of the sec.line cannot be chained, owing to precipitous slopes; therefore, triangulate as follows:



Measure a Base N.89°57'E., 10.00 chs.

Set flag ahead on sec.line, beyond top of cliffs on NE. or right side of canyon.

From E. end of Base, the flag brs. N.11°33'W.

Dist. on sec. line = 40.00 chs.
 Dist. triangulated = 49.15 chs.
 Total distance = 89.15 chs.
 By return measurement = 4.70 chs.
 84.45 chs.

or 4.45 chs. N.0°3' W. from true point for cor. of secs. 4, 5, 8 and 9.

It is impracticable to make return measurement to the sec. cor. point; therefore, at 4.45 chs. N.0°3'W. therefrom set temp. W.C. to cor. of secs. 4, 5, 8 and 9.

53.00 (Approx.) Road to Bronzel Mine, brs. E. and W.
 63.00 (Approx.) Bottom of Canyon; course W. from SE., about 1500 ft. below $\frac{1}{4}$ sec. cor.

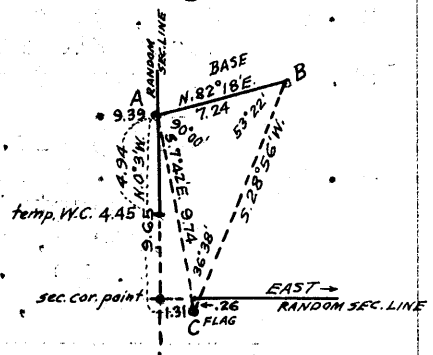
80.00 Ascend over precipitous cliffs, facing SW.
 True point for cor. of secs. 4, 5, 8 and 9 falls on face of cliffs, and is inaccessible; therefore, a witness cor. is established at 4.45 chs. N.0°1'W. herefrom, as hereinafter described.

Land, rolling and mountainous.
 Soil, rocky, 4th rate.
 Timber, none.
 Undergrowth, black brush.

From true point for cor. of secs. 4, 5, 8 and 9, East, on a random line, bet. secs. 4 and 9. Said sec. cor. point being inaccessible, and the western extremity of the random sec. line being impassable, a triangulation is made and by computation, a point on the random line E. of the sec. cor. is secured, as described as follows, and as shown on the diagram hereon:

From a point designated as "A" on diagram which is 4.94 chs. N.0°3'W. of the temp. W.C. to the cor. of secs. 4, 5, 8 and 9, of 9.39 chs. N.0°3'W. from true point for sec. cor., measure a base N.82°18'E., 7.24 chs. to point "B."

Set flag at point "C".
 From "A" the flag brs. S.7°42'E.



Survey of Subdivision lines of Township 33 North, Range 14 West. 45

Chains.

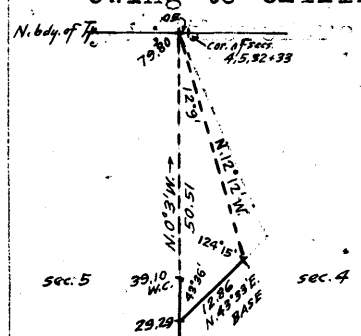
From "B" the flag brs. S. 28° 56' W.
 Triangulated measurement of "A-C"
 = 9.74 chs., S. 7° 42' E.
 Latitude of "A-C" = 9.65 chs. S.
 Departure of "A-C" = 1.31 chs. E.
 Point "C" is therefore 9.65 chs. - 9.39 chs. = 0.26 chs. S.
 of random sec. line.
 Point "C" is therefore S. of point on random sec. line
 1.31 chs. E. from sec. cor. point,
 From "C" measure North, 0.26 chs. to point on random sec.
 line at

- 1.31 Thence, East on a random line, bet. secs. 4 and 9, continuing measurement by chaining.
- 40.00 Set temp. $\frac{1}{4}$ sec. cor.
- 80.18 Intersect N. and S. line, 26 lks. N. of the cor. of secs. 3, 4, 9 and 10.
 Thence,
 N. 89° 49' W., on a true line, bet. secs. 4 and 9.
 Over mountainous land, thru. scattering undergrowth.
 Ascend 130 ft.; over E. slope, to
- 10.00 W. or left rim of gulch, brs. N. and S. Enter gently rolling land.
 Ascend gradually over E. slope.
- 35.00 Descend gradually over SW. slope, to
- 40.09 Set an iron post, 3 ft. long, 1 in. in diam., 12 ins. in the ground to bed rock, deposit a stone, marked with a cross (x) at base of post, and raise a mound of stone around post, for $\frac{1}{4}$ sec. cor., marked on brass cap.

$\frac{1}{4}$ S 4
 S 9
 1922

- No bearing trees available.
 Pigeon Spring brs. N. 14° E. about 45 chs. dist.
 Descend gradually over SW. slope, to
- 61.50 NE. or right rim of canyon, brs. NW. and SE. Enter mountainous land.
 Descend over steep SW. slope, to
- 78.87 A point 26 lks. N. of triangulation point; hereinbefore described. Discontinue chaining. Measurement to sec. cor. point by triangulation, hereinbefore described.
 Descend over cliffs to
- 80.18 True point for cor. of secs. 4, 5, 8 and 9, on face of cliff.
 Land, mountainous and gently rolling.
 Soil, rocky, 4th rate.
 Timber, none.
 Undergrowth, black brush.

-
- From the true point for cor. of secs. 4, 5, 8 and 9,
 N. 0° 3' W., on a random line, bet. secs. 4 and 5.
 Measurement by triangulation to
 - 4.45 Temp. W.C. to sec. cor. Continue line and measurement by chaining.
 - 9.15 Triangulation point. Continue chaining.
 - 29.29 Triangulation point of triangulated measurement, herein-after described. Continue chaining at
 - 39.10 Set temp. witness cor. to $\frac{1}{4}$ sec. cor. at top of precipitous cliffs. Beyond this point, chaining is impracticable owing to cliffs and precipitous slopes in Pigeon Canyon.



Triangulate as follows:
 From the 29.29 ch. point on random sec. line; measure a Base, N. 43° 33' E., 12.86 chs.
 Set flag ahead on line at a point 5 lks. W. of the cor. of secs. 4, 5, 32 and 33 on the N. bdy. of the Tp.
 From the end of Base, the flag brs. N. 12° 12' W.

Survey of
 16 Subdivision lines of Township 33 North, Range 14 West.

Chains.

Dist. on random line = 29.29 chs.
 Dist. triangulated = 50.51 chs.
 Total distance, = 79.80 chs.

79.80 Fall 5 lks. W. of the cor. of the cor. of secs. 4, 5, 32 and 33 on the N. bdy. of the Tp., hereinbefore described.

Thence,
 S. 0° 1' E., on a true line, bet. secs. 4 and 5.
 Over mountainous land, thru. scattering undergrowth.
 Measurement by triangulation, as hereinbefore described.

12.00 Descend along top of spur, sloping south.
 (Approx.) Point of same spur.

27.00 Descend over precipitous S. slope, to
 (Approx.) Top of cliffs, brs. NE. and SW.

35.00 Descend.
 (Approx.) Bottom of Pigeon Canyon, course SW.

39.80 Ascend over cliffs.
 True point for $\frac{1}{4}$ sec. cor. falls on face of cliffs, and is inaccessible.

40.70 Top of cliffs, bearing NE. and SW. Set an iron post, 3 ft. ft. long, 1 in. in diam., on surface rock, deposit a stone marked with a cross (x) at base of post, and raise a mound of stone around post, for witness cor. to the $\frac{1}{4}$ sec. cor., marked on brass cap,

W C
 $\frac{1}{4}$
 S 5 | S 4
 1922

No bearing trees available. Continue line and measurement by chaining.

50.51 Ascend 325 ft., over NW. slope.
 Triangulation point; continue chaining.

61.30 Point of spur, slopes W.
 Descend 195 ft., over SW. slope to WC.

70.65 Triangulation point. Continue chaining.

75.35 Top of cliffs, bearing NW. and SE. Set an iron post, 3 ft. long, 2 ins. in diam., on ledge of rock, deposit a stone, marked with a cross (x) at base of post, and raise a mound of stone around post, for witness cor. to cor. of secs. 4, 5, 8 and 9, marked on brass cap,

T33N | R14W
 S 5 | S 4
 S 8 | S 9
 W C
 1922

No bearing trees available. Discontinue chaining. Measurement to sec. cor. point by triangulation as hereinbefore described.

79.80 Descend over cliffs to
 True point for cor. of secs. 4, 5, 8 and 9 on face of cliff.
 Land, mountainous.
 Soil, rocky, 4th rate.
 Timber, none.
 Undergrowth, black brush.

From the std. cor. of secs. 31 and 32 on S. bdy. of Tp. (8th. Std. Par. N.), hereinbefore described,
 N. 0° 3' W., bet. secs. 31 and 32.
 Over mountainous land, thru. scattering undergrowth.
 Precipitous broken sides of a canyon render chaining impracticable; therefore, triangulate as follows:

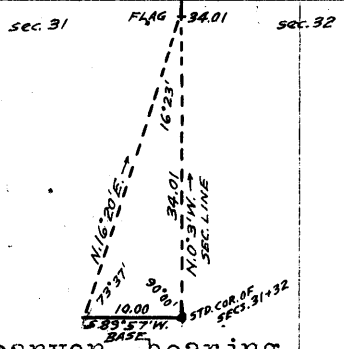
Measure a base S. 89° 57' W., 10.00 chs.
 Set flag ahead on sec. line at N. or

Survey of Subdivision lines of Township 33 North, Range 14 West. 47

Chains.

right rim of canyon.
From W. end of base, the flag brs.
N.16°20'E.

Distance triangulated = 34.01
chs.



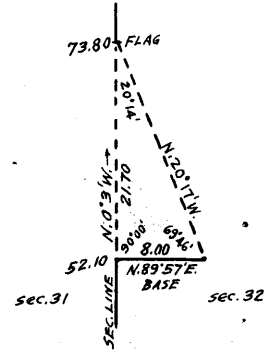
- 16.00 (Approx.) Bottom of canyon, course NW.
- Ascend over precipitous SW. slope, to
- 34.01 Triangulation point at N. or right rim of canyon, bearing NW. and SE. Leave canyon. Continue line and measurement by chaining. Enter rolling land.
- Ascend 28 ft., over SW. slope, to
- 40.00, Set an iron post, 3 ft. long, 1 in. in diam., 10 ins. in the ground to bed rock, deposit a stone marked with a cross (x) at base of post, and raise mound of stone around post, for 1/4 sec. cor., marked on brass cap,

S31 | S32
1920

No bearing trees available.
Descend 60 ft., over NW. slope, to
52,10 South, or left rim of canyon, brs. NW. and E. Enter mountainous land. Precipitous sides of canyon render chaining beyond this point impracticable. Triangulate across the canyon as follows:

Measure a Base N.89°57'E., 8.00 chs.
A longer base is impracticable.
Set flag ahead on sec. line.
From E. end of Base, the flag
brs. N., 20°17'W.

Dist. on sec. line; = 52.10 chs.
Dist, triangulated, = 21.70 chs.
Total distance, = 73.80 chs.



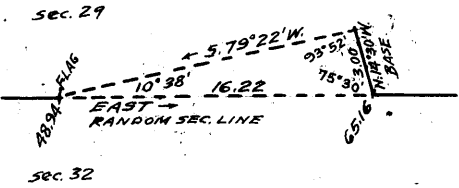
- 63.00 (Approx.) Bottom of canyon, course NW.
- Ascend over precipitous S. slope.
- 73.80 Triangulation point on top of spur, sloping W. Continue line and measurement by chaining.
- Descend 215 ft., over NW. slope, to
- 80.00 Set an iron post, 3 ft. long, 2 ins. in diam., on surface rock, deposit a stone, marked with a cross (x) at base of post, and raise mound of stone around post, for cor. of secs. 29, 30, 31 and 32, marked on brass cap,

T33N | R14W
S30 | S29
S31 | S32
1920

No bearing trees available.
Land, mountainous and rolling.
Soil, rocky, 4th rate.
Timber, none.
Undergrowth, black brush.

- 40.00 East, on a random line, bet. secs. 29 and 32.
- Set temp. 1/4 sec. cor.
- 48.94 Beyond this point, chaining is impracticable, owing to precipitous sides of a canyon; therefore, triangulate as follows:

Set flag at this point.
From a point ahead on random
sec. line at E. rim of canyon,
measure a Base N.14°30'W., 3.00
chs.



18 Survey of subdivision lines of Township 33 North, Range 14 West.

Chains.	
	A longer base is impracticable. From NE. end of base, the flag brs. S. 79° 22' W.
	Dist. on random line = 48.94 chs. Distance triangulated = 16.22 chs. Total distance = 65.16 chs.
65.16	Triangulation point at E. or right rim of canyon. Continue line and measurement by chaining.
80.00	Intersect the cor. of secs. 28, 29, 32 and 33. Thence, West, on true line, bet. secs. 29 and 32. Over mountainous land, thru. scattering undergrowth. Descend 182 ft., over W. slope, to
14.84	Triangulation point at E. or right rim of canyon, bearing NW. and SE. Discontinue chaining. Measurement across canyon by triangulation, as hereinbefore described. Descend over precipitous SW. slope.
22.00	(Approx.) Bottom of canyon, course NW. into Snap Canyon. Ascend over precipitous NE. slope, to
31.06	Triangulation point on point of spur, sloping N. Leave canyon. Continue line and measurement by chaining. Descend 342 ft., over steep NW. and W. slopes, to
40.00	Mark a cross (x) at exact cor. point on W. face of sloping cliff and alongside of same, set an iron post, 3 ft. long, 1 in. in diam., 18 ins. in crevice of cliff, supported in a mound of stone for $\frac{1}{4}$ sec. cor., marked on brass cap, S 29 S 32 1920
	No bearing trees available. Raise a mound of stone, NW. of post, 4 ft. dist.
45.85	Descend 165 ft., over rocky W. slope. Bottom of gulch, course N. for 5 chs., thence NW. into Snap Canyon.
62.00	Ascend 150 ft., over NE. slope. Top of ascent.
80.00	Descend 385 ft., over NW. slope, to The cor. of secs. 29, 30, 31 and 32. Land, mountainous. Soil, rocky, 4th rate. Timber, none. Undergrowth, black brush.
40.00	West, on a random line, bet. secs. 30 and 31. Set temp. $\frac{1}{4}$ sec. cor.
79.94	Fall 2 lks. S. of the true point for cor. of secs. 25, 30, 31 and 36 on W. bdy. of Tp., witnessed 60 lks. S., as hereinbefore described. Thence, S. 89° 59' E., on a true line, bet. secs. 30 and 31. Over mountainous land, thru. scattering undergrowth in wash 4.00 chs. wide, course W. in bottom of Snap Canyon.
10.00	Ascend 25 ft. to Leave wash, course W. from SE. Ascend 100 ft. to
14.30	Enter top of knoll on N. side of canyon.
15.65	Leave top of knoll. Descend 60 ft.
20.56	Enter same wash, course SW. from E. in bottom of Snap Canyon. Ascend 25 ft. in wash, to
30.56	Leave same wash, course W. from NE. at junction of a canyon from SE. with Snap Canyon. Ascend 95 ft., over NW. slope, to
39.94	Set an iron post, 3 ft. long, 1 in. in diam., 8 ins. in the ground to bed rock, deposit a stone, marked with a cross (x) at base of post, and raise a mound of stone

Survey of Subdivision lines of Township 33 North, Range 14 West. 49

Chains.

around post, for 1/4 sec. cor., marked on brass cap,

1/4 S 30
S 31
1920

- 43.10 No bearing trees available. Ascend 100 ft., over NW. slope, to Point of spur, sloping N. 80° W.
- 50.85 Descend 95 ft., over NE. slope. Gulch, course N. near head.
- 73.65 Ascend 275 ft., over NW. slope, to S. or left rim of Snap Canyon, brs. NE. and SW. Leave said canyon.
- 79.94 Ascend 35 ft., over NW. slope, to The cor. of secs. 29, 30, 31 and 32. Land, mountainous. Soil, rocky, 4th rate. Timber, none. Undergrowth, black brush.

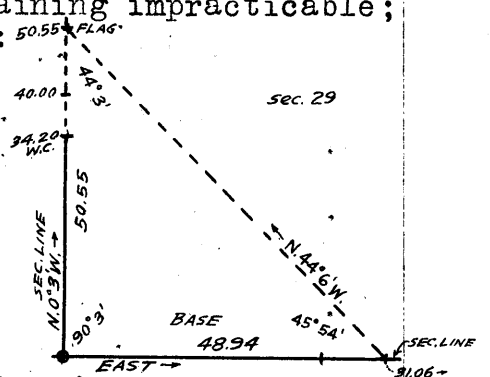
N. 0° 3' W., bet. secs. 29 and 30. Over mountainous land, thru. scattering undergrowth.

- 6.75 Descend 50 ft., over NW. slope, to South or left rim of Snap Canyon, brs. NE. and SW.
- 22.70 Descend 190 ft., over NW. slope. Wash, 20 lks. wide, course SW. in bottom of Snap Canyon.
- 34.20 Ascend 70 ft., over SE. slope, to Set an iron post, 3 ft. long, 1 in. in diam., on surface rock, supported in a mound of stone, for witness cor. to 1/4 sec. cor., marked on brass cap,

W C
1/4
S 30 | S 29
1920

No bearing trees available. Cor. stands at foot of cliff, and against same. Mark a cross (x) on face of cliff alongside post. Beyond this W.C. precipitous broken ascent over cliffs, on N. side of Snap Canyon, renders chaining impracticable; therefore, triangulate as follows:

Set flag ahead on sec. line at top of cliffs. From 31.06 ch. station on sec. line bet. secs. 29 and 32, the flag brs. N. 44° 6' W. This gives a Base on said sec. line of East, 48.94 chs. Dist. triangulated = 50.55 chs.



- 40.00 True point for 1/4 sec. cor. falls on face of cliffs, and is inaccessible.
- 50.55 Triangulation point at top of cliffs, bearing NE. and SW. Continue line and measurement by chaining.
- 80.00 Ascend 300 ft., over SE. slope, to Set an iron post, 3 ft. long, 2 ins. in diam., 12 ins. in the ground to bed rock, deposit a stone, marked with a cross (x) at base of post, and raise a mound of stone around post, for cor. of secs. 19, 20, 29 and 30, marked on brass cap,

T33N | R14W
S19 | S20
S30 | S29
1920

No bearing trees available. Land, mountainous.

50 Survey of Subdivision lines of Township 33 North, Range 14 West.

chains.

Soil, rocky, 4th rate.
 Timber, none.
 Undergrowth, black brush.

40.00 East, on a random line, bet. secs. 20 and 29.
 Set temp. $\frac{1}{4}$ sec. cor.
 80.00 Fall 5 lks. S. of the cor. of secs 20, 21, 28 and 29.
 Thence,
 S. $89^{\circ} 58' W.$, on a true line, bet. secs. 20 and 29.
 Over mountainous land, thru. scattering undergrowth, along
 N. side of Snap Canyon.
 40.00 Descend gradually along steep broken S. and SW. slopes, to
 Set an iron post, 3 ft. long, 1 in. in diam., 6 ins. in
 the ground to bed rock, deposit a stone marked with a
 cross (x) at base of post, and raise a mound of stone
 around post, for $\frac{1}{4}$ sec. cor., marked on brass cap,

$$\frac{1}{4} \frac{S \ 20}{S \ 29}$$

1920

No bearing trees available.
 This cor. is at East or left rim of gulch, bearing N. and
 SE.

47.00 Descend 200 ft.
 Bottom of gulch, course S. into bottom of Snap Canyon.
 Ascend 115 ft., over E. slope, to
 52.00 West, or right rim of gulch, brs. N. and S. Leave gulch.
 Continue over N. side of Snap Canyon.
 Ascend 250 ft., over SE. slope, to
 80.00 The cor. of secs. 19, 20, 29 and 30.
 Land, mountainous.
 Soil, rocky, 4th rate.
 Timber, none.
 Undergrowth, black brush.

40.00 N. $89^{\circ} 59' W.$, on a random line, bet. secs. 19 and 30.
 Set temp. $\frac{1}{4}$ sec. cor.
 80.34 Fall 21 lks. S. of the cor. of secs. 19, 24, 25 and 30, on W. bdy.
 of Tp., hereinbefore described.
 Thence,
 S. $89^{\circ} 50' E.$, on a true line, bet. secs. 19 and 30.
 Over rolling land, thru. scattering undergrowth.
 Ascend 20 ft., over N. slope, to
 4.50 Head of draw, course NW. Enter mountainous land.
 Ascend 675 ft., over W. slope, to
 36.30 Foot of cliffs, brs. SE. and NW. facing SW.
 Ascend 330 ft. to
 39.34 Top of same cliffs, Asc. 15 ft., over SW. slope, to
 40.34 Set an iron post, 3 ft. long, 1 in. in diam., in crevice
 bet. two boulders, supported in a mound of stone, for
 $\frac{1}{4}$ sec. cor., marked on brass cap,

$$\frac{1}{4} \frac{S \ 19}{S \ 30}$$

1922

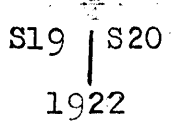
No bearing trees available. Mark a cross (x) on boulder
 exposed 5x3x3 ft. above ground alongside of post.
 Ascend 40 ft., to
 40.60 Top of cliff, bearing NW. and SE.
 Ascend 435 ft., over SW. and W. slopes.
 71.75 Ridge, brs. N. $15^{\circ} E.$ and S. $20^{\circ} W.$ forming part of North or
 right rim of Snap Canyon. Thence in Snap Canyon.
 Descend 130 ft., over SE. slope, to
 80.34 The cor. of secs. 19, 20, 29 and 30.
 Land, rolling and mountainous.
 Soil, rocky, 4th rate.

Survey of Subdivision lines of Township 33 North Range 14 West. 51

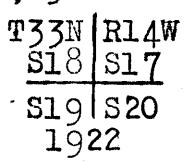
Chains.

Timber, none.
Undergrowth, black brush.

N.0°03'W., bet. secs.19 and 20.
Over mountainous land, on N. side of Snap Canyon, thru. scattering undergrowth.
Ascend 300 ft., over SE. slope, to
15.80 Enter top of ridge, brs. NE. and SW. forming part of North or right rim of Snap Canyon. Leave said canyon. Thence across top of ridge.
19.00 Leave top of ridge. Desc. 300 ft., over NW. slope.
30.00 Ascend 60 ft., over SW. slope.
35.00 Spur, slopes W. Desc. 340 ft., over N. slope, to
40.00 Set an iron post, 3 ft. long, 1 in. in diam., on surface rock, deposit a stone, marked with a cross (x) at base of post, and raise a mound of stone around post, for $\frac{1}{4}$ sec. cor., marked on brass cap,

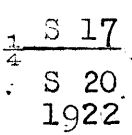


No bearing trees available.
Descend 90 ft., over N. slope.
44.00 Gulch, course W.
Ascend 180 ft., over S. slope.
49.00 Spur, slopes W.
Descend 150 ft., over NW. slope.
55.00 Head of gulch, course W.
Ascend 315 ft., over SW. and W. slopes, to
80.00 Set an iron post, 3 ft. long, 2 ins. in diam., on surface rock, deposit a stone, marked with a cross (x) at base of post, and raise a mound of stone around post for cor. of secs. 17, 18, 19 and 20, marked on brass cap,



No bearing trees available.
Land, mountainous.
Soil, rocky, 4th rate.
Timber, none.
Undergrowth, black brush, sagebrush, cactus, catclaw and Spanish bayonet.

N.89°58'E., on a random line, bet. secs. 17 and 20.
40.00 Set temp. $\frac{1}{4}$ sec. cor.
79.56 Fall 11 lks. S. of the cor. of secs. 16, 17, 20 and 21. Thence, S.89°53'W., on a true line, bet. secs. 17 and 20.
Over gently rolling land, thru. scattering undergrowth.
Ascend gradually over E. slope, to
30.00 Rim brs. N. and S. Enter mountainous land.
Descend 320 ft. over W. slope, to $\frac{1}{4}$ sec. cor.
38.00 Top of cliff, 40 ft. high, brs. N. and S. facing W.
39.78 Set an iron post, 3 ft. long, 1 in. in diam., 10 ins. in the ground to bed rock, deposit a stone marked with a cross (x) at base of post, and raise a mound of stone around post, for $\frac{1}{4}$ sec. cor., marked on brass cap,



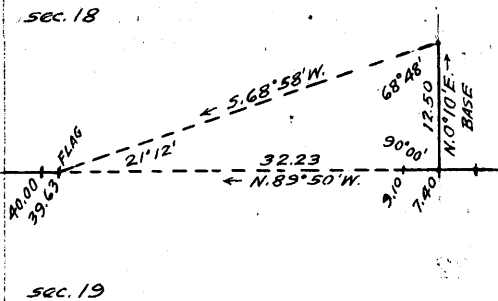
No bearing trees available.
Descend 400 ft., over broken W. and NW. slopes, to

52 Survey of Subdivision lines of Township 33 North, Range 14 West.

Chains.

79.56 The cor. of secs. 17, 18, 19 and 20.
Land, gently rolling and mountainous.
Soil, rocky, 3rd and 4th rate.
Timber, none.
Undergrowth, black brush, greasewood and cactus.

7.40 N. 89° 50' W., on a random line, bet. secs. 18 and 19.
Triangulation point.
9.10 Top of cliffs. Beyond this point precipitous descent renders chaining impracticable; therefore, triangulate as follows:



Measure a base N. 0° 10' E.
12.50 chs. from 7.40 ch.
station,
Set flag ahead on random sec.
line.
Vertical angle to flag is -
23°.
From N. end of Base, the flag
brs. S. 68° 58' W.
Dist. on random line = 7.40 chs.
Dist. triangulated = 32.23 chs.
Total distance = 39.63 chs.

39.63 Triangulation point. Continue line and measurement by chaining.
40.00 Set temp. 1/4 sec. cor.
79.99 Fall 23 lks. N. of the cor. of secs. 13, 18, 19 and 24 on W. bdy. of Tp., hereinbefore described.

Thence,
East, on a true line, bet. secs. 18 and 19.
Over rolling land, thru. scattering undergrowth.
Ascend 10 ft. to

1.00 Spur, slopes SW. from E.
Ascend 45 ft., along top of spur.
7.50 Leave top of spur, slopes W. from SE. Enter mountainous land.

Ascend 130 ft., over N. slope, to
30.00 Wash, course NW.
Ascend 115 ft. to

39.99 Set an iron post, 3 ft. long, 1 in. in diam., 4 ins. in the ground to bed rock, deposit a stone marked with a cross (x) at base of post, and raise a mound of stone around post, for 1/4 sec. cor., marked on brass cap;

1/4 S 18
S 19
1922

40.36 No bearing trees available.
Triangulation point. Discontinue chaining. Measurement by triangulation, as hereinbefore described.

Ascend 900 ft., over steep W. slope, to
70.89 Top of cliffs, bearing N. and S. facing W.
Ascend 110 ft., over W. slope to sec. cor.
Continue line and measurement by chaining.

72.59 Triangulation point. Continue chaining.

79.99 The cor. of secs. 17, 18, 19 and 20.
Land, rolling and mountainous.
Soil, rocky, 4th rate.
Timber, none.
Undergrowth, black brush, greasewood and cactus.

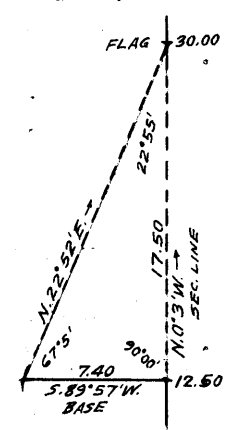
N. 0° 3' W., bet. secs. 17 and 18.
Over mountainous land, thru. scattering undergrowth.
Descend 140 ft., over NW. and N. slopes, to
12.50 South, or left rim of canyon, brs. E. and W. Discontinue

Survey of Subdivision lines of Township 33 North, Range 14 West. 53

Chains.

chaining owing to precipitous sides of canyon, and triangulate as follows:

Measure a Base, S.89°57'W., 7.40 chs.
 A longer Base is impracticable.
 Set flag ahead on sec. line at N. rim of canyon.
 Vertical angle to flag is + 8½°.
 From W. end of Base, the flag brs. N.22°52'E.
 Dist. on sec. line = 12.50 chs.
 Dist. triangulated = 17.50 chs.
 Total distance, = 30.00 chs.



- 22.00 (Approx.) Bottom of canyon, course W. Ascend over precipitous S. slope, to
- 30.00 Triangulation point at N. or right rim of canyon, bearing E. and W. 170 ft. above S. rim. Leave canyon. Continue line and measurement by chaining. Ascend slightly to
- 31.00 Point of spur, slopes W.
- 40.00 Descend 310 ft., over NW. slope, to Head of gulch, course SW. Set an iron post, 3 ft. long, 1 in. in diam., 12 ins. in the ground to bed rock, deposit a stone marked with the cross (x) at base of post, and raise a mound of stone around post, for ¼ sec. cor., marked on brass cap,

$\frac{1}{4}$
 S18 | S17
 1922

- 80.00 No bearing trees available. Ascend 250 ft., over broken SW. and W. slopes, to Set an iron post, 3 ft. long, 2 ins. in diam., 10 ins. in the ground to bed rock, deposit a stone marked with a cross (x) at base of post, and raise a mound of stone around post, for cor. of secs. 7, 8, 17 and 18, marked on brass cap,

T33N | R14W
 S 7 | S 8
 S18 | S17
 1922

No bearing trees available.
 Land, mountainous.
 Soil, rocky, 4th rate.
 Timber, none.
 Undergrowth, black brush, greasewood and cactus.

- 40.00 N.89°53'E., on a random line, bet. secs. 8 and 17. Set temp. ¼ sec. cor.
- 79.92 Fall 11 lks. N. of the cor. of secs. 8, 9, 16 and 17. Thence S.89°58'W., on a true line, bet. secs. 8 and 17. Over gently rolling land, thru. scattering undergrowth. Ascend 104 ft., over E. slope.
- 20.40 Rim, brs. NE. and SW. Enter mountainous land. Descend 285 ft., over NW. slope.
- 30.40 Wash, 25 lks. wide, in gulch, course NW. near head. Ascend 177 ft., over NE. slope, to
- 39.96 Spur, slopes N. Set an iron post, 3 ft. long, 1 in. in diam., 12 ins. in the ground to bed rock, deposit a stone marked with a cross (x) at base of post, and raise a mound of stone around post, for ¼ sec. cor., marked on brass cap,

$\frac{1}{4}$ S 8
 S 17
 1922

54. Survey of Subdivision lines of Township 33 North, Range 14 West.

Chains.

79.92 No bearing trees available.
 Descend 1040 ft., over steep NW. slope, to
 The cor. of secs. 7, 8, 17 and 18.
 Land, gently rolling and mountainous.
 Soil, rocky, 4th rate.
 Timber, none.
 Undergrowth, black brush, greasewood and cactus.

40.00 West, on a random line, bet. secs. 7 and 18.
 Set temp. $\frac{1}{4}$ sec. cor.
 80.00 Fall 21 lks. N. of the cor. of secs. 7, 12, 13 and 18, on W.
 bdy. of Tp., hereinbefore described.
 Thence,
 N. 89° 51' E., on a true line, bet. secs. 7 and 18.
 Over mountainous land, thru. scattering undergrowth.
 Ascend 45 ft., over NW. slope.
 3.00 Spur, slopes SW. from SE.
 Descend 40 ft., over NE. slope.
 10.00 Ascend 190 ft., over NW. slope.
 29.60 Spur, slopes SW.
 Descend 107 ft., over SE. slope.
 38.90 Gulch, course SW. Road brs. NE. and SW.
 Ascend 20 ft. to
 40.00 Set an iron post, 3 ft. long, 1 in. in diam., 10 ins. in
 the ground, to bed rock, deposit a stone, marked with
 a cross (x) at base of post, and raise a mound of stone
 around post, for $\frac{1}{4}$ sec. cor., marked on brass cap,

$\frac{1}{4}$ S 7
 S 18
 1922

49.00 No bearing trees available.
 Ascend 180 ft., over NW. slope.
 Spur, slopes SW.
 Descend 235 ft., over S. and SE. slopes.
 67.00 Gulch, course SW.
 Ascend 300' ft., over W. slope, to
 80.00 The cor. of secs. 7, 8, 17 and 18.
 Land, mountainous.
 Soil, rocky, 4th rate.
 Timber, none.
 Undergrowth, black brush, greasewood, Spanish bayonet and
 and cactus.

N. 0° 03' W., bet. secs. 7 and 8.
 Over mountainous land, thru. scattering undergrowth.
 Descend 280 ft., over NW. slope.
 35.00 Bottom of gulch, 40 lks. wide, course S. 30° W.
 Ascend 57 ft., to
 40.00 Set an iron post, 3 ft. long, 1 in. in diam., 6 ins. in
 the ground to bed rock, deposit a stone, marked with
 a cross (x) at base of post, and raise a mound of stone
 around post, for $\frac{1}{4}$ sec. cor., marked on brass cap,

$\frac{1}{4}$
 S 7 | S 8.
 1922

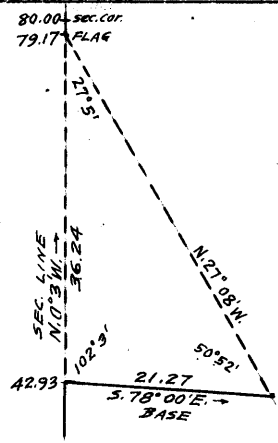
42.93 No bearing trees available.
 Ascend 58 ft., over SW. slope, to
 Ridge, brs. N. 78° W. and S. 78° E. Road, same bearing. Dis-
 continue chaining owing to precipitous broken slopes
 beyond this point, and triangulate as follows:

Survey of Subdivision lines of Township 33 North, Range 14 West. 55

chains.

Measure a base, S, 78°00'E., 21.27 chs.
 Set flag ahead on sec. line.
 From SE. end of Base, the flag
 brs. N. 27°08'W.

Dist. on sec. line = 42.93 chs.
 Dist. triangulated = 36.24 chs.
 Total distance, = 79.17 chs.



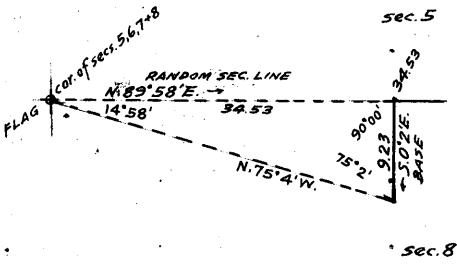
- 65.00 (Approx.) Bottom of gulch, course NE. Ascend over steep SE. slope to sec. cor.
- 79.17 Triangulation point. Continue line and measurement by chaining.
- 80.00 Set an iron post, 3 ft. long, 2 ins. in diam., 6 ins. in the ground to bed rock, deposit a stone marked with a cross (x) at base of post, and raise a mound of stone around post for cor. of secs. 5, 6, 7 and 8, marked on brass cap,

T33N R14W
 S 6 | S 5
 S 7 | S 8
 1922

No bearing trees available.
 Land, mountainous.
 Soil, rocky, 4th rate.
 Timber, none.
 Undergrowth, black brush, greasewood, cactus and Spanish bayonet.

N. 89°58'E., on a random line, bet. secs. 5 and 8.
 On account of precipitous slopes ahead, it is impracticable to chain measurement; therefore, triangulate as follows:

From a point ahead on random sec. line, measure a Base S. 0°2'E., 9.23 chs.
 Set flag on the cor. of secs. 5, 6, 7 and 8.
 From S. end of base, the flag brs. N. 75°4'W.
 Dist. triangulated = 34.53 chs.

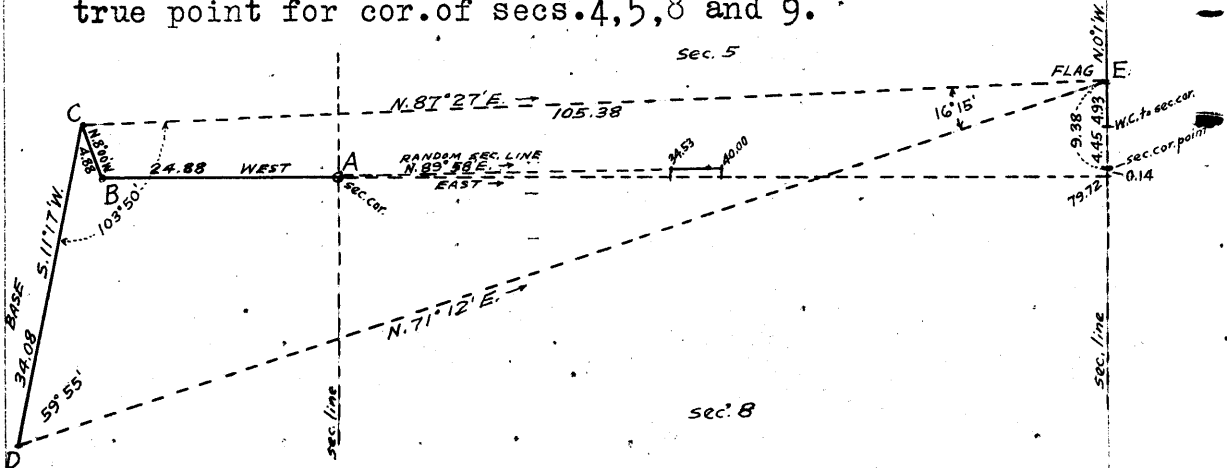


- 34.53 Triangulation point. Continue line and measurement by chaining.
- 40.00 Set temp. 1/4 sec. cor. Precipitous slopes ahead prevent chaining beyond this point; therefore, triangulate as follows:
 From cor. of secs. 5, 6, 7 and 8, indicated on diagram at "A" chain measurement, West 24.88 chs. to point "B" on top of ridge; thence chain measurement N. 8°00'W., 4.88 chs. along top of ridge to point "C," thence chain measurement of a Base S. 11°17'W., 34.08 chs. to point "D."
 The true point for cor. of secs. 4, 5, 8 and 9, designated as "F" on diagram is inaccessible; therefore, from the witness cor. thereto, which is 4.45 chs. N. 0°1'W. from said cor. point, chain measurement N. 0°1'W. 4.93 chs. to point "E," and set flag which is visible from both ends of the Base "C-D."
 The flag is therefore 4.45 chs. + 4.93 chs. = 9.38 chs. N. 0°1'W. from sec. cor. point.
 Bearing of line "C-E" is N. 87°27'E.
 Bearing of line "D-E" is N. 71°12'E.
 Triangulated measurement of "C-E" = 105.38 chs.
 The latitude of "A-B-C-E-F" = 14 lks. North.
 The departure of "A-B-C-E-F" = 79.72 chs. East.

56 Survey of Subdivision lines of Township 33 North, Range 14 West.

Chains.

Therefore a line projected due East from the cor. of secs. 5, 6, 7 and 8, would, at 79.72 chs. fall 14 lks. S. of the true point for cor. of secs. 4, 5, 8 and 9.



79.72 The random sec. line projected N. 89° 58' E. would at Fall 9 lks. S. of the true point for cor. of secs. 4, 5, 8 and 9.

Thence, S. 89° 54' W., on a true line, bet. secs. 5 and 8. Over mountainous land, thru. scattering undergrowth, on the right side of a deep canyon, measurement by triangulation hereinbefore described.

39.72 Descend over precipitous broken SW. slope. Triangulation point. Continue line and measurement by chaining.

39.86 Set an iron post, 3 ft. long, 1 in. in diam., on surface rock, deposit a stone, marked with a cross (x) at base of post, and raise a mound of stone around post, for 1/4 sec. cor., marked on brass cap,

$\frac{1}{4}$ S 5
S 8
1922

No bearing trees available. Descend over steep S. slope, to 45.19 Triangulation point. Discontinue chaining. Measurement of remainder of line by triangulation, hereinbefore described.

60.00 Descend over precipitous SW. slope. (Approx.) Bottom of canyon, course NW, into Pigeon Canyon. 73.00 Ascend over precipitous N. slope, to (Approx.) Gulch, course N. 79.72 Ascend about 200 ft. over E. slope, to The cor. of secs. 5, 6, 7 and 8. Land, mountainous. Soil, rocky, 4th rate. Timber, none. Undergrowth, black brush, cactus, greasewood and catclaw.

40.00 S. 89° 51' W., on a random line, bet. secs. 6 and 7. Set temp. 1/4 sec. cor. 79.99 Fall 21 lks. S. of the cor. of secs. 1, 6, 7 and 12, on W. bdy. of Tp., hereinbefore described. Thence, East, on a true line, bet. secs. 6 and 7. Over mountainous land, thru. scattering undergrowth. Ascend 10 ft., over NW. slope. 1.00 Point of short spur, slopes N. Descend 15 ft. 3.00 Ascend 20 ft. 5.50 Spur, slopes N. Descend 95 ft. 10.80 Gulch, 50 lks. wide, course N. Ascend 60 ft. 15.80 Spur, slopes N. Descend 95 ft.

Survey of Subdivision lines of Township 33 North, Range 14 West. 57

Chains.

- 20.40 Small wet weather seep, brs.south, 25 lks.dist.
 20.60 Wash, 60 lks.wide, course N.
 Ascend slightly over NW.slope, to
 21.90 Wash, course NW.
 Ascend 170 ft.
 34.90 Spur, slopes NW.
 Descend 22 ft.
 35.20 Wash, course NW.
 Ascend 170 ft. to
 39.99 Set an iron post, 3 ft. long, 1 in. in diam., 10 ins. in
 the ground to bed rock, deposit a stone, marked with
 a cross (X) at base of post, and raise a mound of
 stone around post, for $\frac{1}{4}$ sec.cor., marked on brass cap,

$$\begin{array}{r} \frac{S}{S} \frac{6}{7} \\ 1922 \end{array}$$

- No bearing trees available.
 Ascend 440 ft. to head of gulch.
 41.80 Top of cliff, brs.NW. and SE. facing SW.
 52.70 Head of gulch, course S.85°W.
 Ascend 64 ft.
 55.00 Ridge, brs.N. and S.
 Descend 640 ft., over E.slope, to
 79.99 The cor. of secs. 5, 6, 7 and 8.
 Land, mountainous.
 Soil, rocky, 4th rate.
 Timber, none.
 Undergrowth, black brush, greasewood, cactus and Spanish
 bayonet.

N.0°3'W., on a random line, bet.secs. 5 and 6.
 Owing to precipitous broken slopes, chaining is imprac-
 ticable; therefore, triangulate the measurement of part
 of this sec.line, as follows:

From the $\frac{1}{4}$ sec.cor. of secs. 7 and
 8, designated on accompanying
 diagram as "A" measure a Base
 N.81°48'E., 27.23 chs. to point "B."
 Set flags ahead on random line, bet.
 secs. 5 and 6, at points designated
 on diagram as "C" and "D."
 Bearing of "B-C" is N.27°40'W.
 Bearing of "B-D" is N.17°02'W.

Dist. triangulated from "A" to
 "C" = 55.38 chs.

Dist. on sec. line
 bet. secs. 7 & 8 = 40.00 chs.

From sec. cor. to
 flag "C" = 15.38 chs. N.0°
 3' W.

Dist. triangulated
 from "A" to "D" = 92.12 chs.

Dist. on sec. line
 bet. secs. 7 & 8 = 40.00 chs.

From sec. cor. to
 flag "D" = 52.12 chs. N.0°3'W.

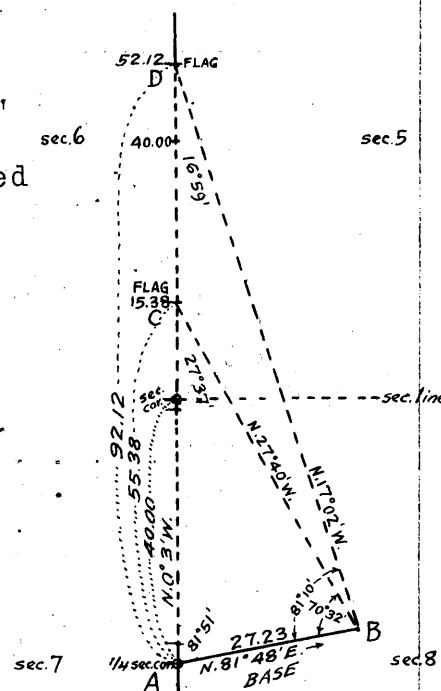
15.38 Triangulation point. Continue line and measurement by
 triangulation.

40.00 Point for temp. $\frac{1}{4}$ sec. cor. falls on face of cliff, and is
 inaccessible.

52.12 Triangulation point at N. or right rim of Pigeon Canyon.
 Set temp, witness cor. to $\frac{1}{4}$ sec. cor., and continue line
 and measurement by chaining.

79.92 Fall 4 lks. W. of the cor. of secs. 5, 6, 31 and 32, on the N.
 bdy. of the Tp., hereinbefore described.

Thence
 S.0°1'E., on a true line, bet. secs. 5 and 6.



58 Survey of Subdivision lines of Township 33 North, Range 14 West.

Chains.

- Over mountainous land; thru scattering undergrowth.
Ascend 57 ft., over NW. slope.
- 4.92 Descend 360 ft., over steep W. and SW. slopes, to
27.80 Triangulation point at North or right rim of Pigeon Canyon, brs. E. and W.
Set an iron post, 3 ft. long, 1 in. in diam., on ledge of rock, deposit a stone marked with a cross (x) at base of post, and raise a mound of stone around post, for witness cor. to $\frac{1}{4}$ sec. cor., marked on brass cap.
- $\frac{1}{4}$
S 6 | S 5
W | C
1922
- No bearing trees available.
Discontinue chaining. Measurement of remainder of line by triangulation hereinbefore described.
Descend about 1000 ft.; over cliffs and precipitous slopes to bottom of canyon.
- 39.92 Point for $\frac{1}{4}$ sec. cor. falls on face of cliff, and is inaccessible.
- 50.00 (Approx.) Bottom of Pigeon Canyon, course NW.
- Ascend over cliffs and ledges to
64.54 Triangulation point on spur, sloping E.
Descend over precipitous S. slope, to
73.00 (Approx.) Gulch, course SE.
Ascend over steep broken NE. slope, to
79.92 The cor. of secs. 5, 6, 7 and 8.
Land, mountainous.
Soil, rocky, 4th rate.
Timber, none.
Undergrowth, black brush, greasewood, cactus and Spanish dagger.

Final Field Test of Instrument No. 8592, by William H. Thorn, U. S. Surveyor.

Nov. 18, 1917: Examine the adjustment of the instrument, correct all errors, and test the solar as follows:
At camp, near center of sec. 24, T. 33 N., R. 13 W., lat. $36^{\circ} 14\frac{1}{2}'$ N., longitude, $113^{\circ} 39'$ W., at 8h. 00m. a.m., l.m.t., set off $36^{\circ} 14\frac{1}{2}'$ N. on the lat. arc; $19^{\circ} 8\frac{1}{2}'$ S. on the decl. arc, and determine a meridian with the solar, which agrees with the true meridian determined at this point by Polaris observations on July 21, 1917.
At apparent noon, set off $19^{\circ} 13'$ S. on the decl. arc, and observe the sun on the meridian. The resulting reading of the lat. arc is $36^{\circ} 14\frac{1}{2}'$ N.
At 4h. 0m. p.m., l.m.t., set off $36^{\circ} 14\frac{1}{2}'$ N. on the lat. arc; $19^{\circ} 13'$ S. on the decl. arc, and determine a meridian with the solar, which agrees with the true meridian.
As all of the solar observations during the usual hours of solar work come within $1' 30''$ of the true meridian, conclude that the adjustment of the instrument during the survey of this township has been satisfactory.

Final Field Tests of Instruments Nos. 9223 and 8487, by R. D. Armstrong and L. R. Mercer.

Feb. 3, 1920: Examine the adjustments of the instruments, correct all errors, and test the solar as follows:
At camp, near center of sec. 16, T. 33 N., R. 14 W., lat. $36^{\circ} 15\frac{1}{2}'$ N., long. $113^{\circ} 48\frac{1}{2}'$ W. at 10h. 36.2m. p.m., l.m.t., observe Polaris at western elongation, making four

observations, two each with the telescope in direct and reversed positions, and mark a point in the line thus determined by a tack in a stake driven firmly in the the, 5 chs. North.

Azimuth of Polaris at Western elongation = 1°23'20".

Feb. 4, 1920: At 7h.30m., a.m., l.m.t., lay off the azimuth of Polaris 1°23' to the east, and mark a point in the meridian thus determined on a stake 5. chs. N.

At 8h.0m. a.m., l.m.t., set off 36° 15' N. on the lat. arcs; 16° 25' S. on the decl. arcs, and determine meridians with the solars, which agree with the true meridian.

At apparent noon, set off 16° 24' S. on the decl. arcs, and observe the sun on the meridian. The resulting reading of the lat. arcs is 36° 15' N.

At 4h.0m. p.m., l.m.t., set off 36° 15' N. on the lat. arcs; 16° 19' S. on the decl. arcs, and determine meridians with the solars, which agree with the true meridian.

As all of the solar observations during the usual hours of solar work come within 1'30" of the true meridian, we conclude that the adjustments of the instruments during the survey of this township have been satisfactory.

The continued satisfactory adjustment of Young & Sons transits Nos. 8489 and 8541 is indicated from field tests described in Book "F."

GENERAL DESCRIPTION.

The surface of this township varies from nearly level to mountainous. The west half is mountainous, with the exception of the gently rolling surface of a mesa between Snap and Pigeon Canyons. The east half has a rolling surface, with the exception of mountainous land in part of the east range of sections, and gently rolling, nearly level, and level surface over small areas in scattered locations.

The soil varies from 1st to 4th rate, rocky 4th rate soil predominating over the W. half of the township, and sandy and gravelly clay loam, 2nd and 3rd rate in the east half. There is some sandy 1st rate soil in sec. 1.

The timber consisting of a scattering growth of cedar and pinyon is confined to the east range of sections, and the northeast quarter of the township. Elsewhere, there is no timber.

The undergrowth, consisting of black brush, sagebrush, greasewood, cinchona, catclaw, Spanish bayonet and cacti, is scattering over the whole township, except in the east range of sections, where it is generally dense.

Pigeon Canyon, course west, about 1400 ft. deep, passes thru. secs. 4, 5 and 6. Snap Canyon, course west, about 500 ft. deep, enters the township on the S. bdy. of sec. 35, and leaves at the cor. of secs. 25, 30, 31 and 36 on the West bdy. of the Tp. Cunningham Canyon, course SW., passes thru. secs. 15, 16, and 21, and joins Snap Canyon in sec. 28.

Pigeon Spring in sec. 4 is the only permanent surface water supply in the Tp.

There are indications of valuable mineral deposits in sec. 16 as evidenced by the workings of a mine therein known as Cunningham Mine. No other evidence of mineral deposits was observed in the township.

There are no settlers, and the only improvements are tents at the Cunningham Mine,

A road bearing NE. and SW. from Grand Gulch Mine to Bronzel Mine enters the township on the N. boundary

of sec. 1, and leaves on the West boundary of sec.18.
Another road, bearing N. and S. traverses the middle of
the E. half of the township. These two roads are the
only ones in the township.

CERTIFICATE OF UNITED STATES SURVEYOR.

I, William H. Thorn, U. S. Surveyor, hereby certify upon honor that, in pursuance of special instructions received from the U. S. Surveyor General, for Group 73, Arizona bearing date of the 12th day of October, 1916, I have well, faithfully, and truly in my own proper person, and in strict conformity with said instructions, the Manual of Surveying Instructions, and the laws of the United States, surveyed all those parts or portions of the 8th Standard Parallel North, in Range 14 West, and Subdivision lines of

TOWNSHIP 33 NORTH, RANGE 14 WEST,

of the Gila and Salt River Base and Meridian, in the State of Arizona, which are represented in and by diagram on page 1 hereof the foregoing field notes as having been executed by me, and under my direction; and that all the corners of said survey have been established and perpetuated in strict accordance with the Manual of Surveying Instructions, and the special written instructions of the U. S. Surveyor General, for Group 73, Arizona and in the specific manner described in the field notes, and that the foregoing are the original field notes of such survey.

Place - Redlands Calif William H Thorn
Date - June 5 1924 U. S. Surveyor.

~~APPROVAL:~~

~~OFFICE OF THE UNITED STATES SURVEYOR GENERAL,~~

~~191~~

~~The foregoing field notes of the survey of~~

~~executed by~~

~~under his special instructions dated~~ 191 ~~having been~~
~~critically examined, and the necessary corrections and explanations made, the said field notes, and the surveys~~
~~they describe, are hereby approved.~~

~~U. S. Surveyor General.~~

~~I certify that the foregoing transcript of the field notes of the above described surveys in~~

~~has been correctly copied from the original notes on file in this office.~~

~~U. S. Surveyor General.~~

BOOK 1117

4-680

FIELD ASSISTANTS. to
Ray D. Armstrong, U.S. Surveyor and Lemuel R. Mercer, U.S. Transitman

NAMES.	CAPACITY.
Harry R. McFadden,	1st chainman,
Norman DeKay.	1st chainman,
Ollie L. Thomas,	2nd chainman,
James Shine,	2nd chainman,
Joseph S. Patterson,	cornerman,
William A. Bryon,	cornerman,
George Potter.	cornerman,
W. C. Urb,	cornerman,
Raymond Batch,	axman,
B. F. Rance,	axman,
William T. Hannum,	flagman,
Lloyd Keys,	flagman.

BOOK 303A

CERTIFICATE OF UNITED STATES SURVEYOR.

We, Ray D. Armstrong, U.S. Surveyor and Lemuel R. Mercer, U.S. Transitman, do hereby certify upon honor that, in pursuance

of special instructions received from the U. S. Surveyor General, for Group 73, Arizona

bearing date of the 12th day of October, 1916, we have well, faithfully, and truly

in our own proper persons, and in strict conformity with said instructions, the Manual of Surveying Instructions, and the laws of the United States, surveyed all those parts or portions of the

8th Standard Parallel North, in Range 14 West,

West boundary, and

Subdivision lines of

TOWNSHIP 33 NORTH, RANGE 14 WEST,

of the Gila and Salt

River Base 2nd Meridian, in the State of Arizona, which are represented in

the foregoing field notes and by diagram on page 1 hereof as having been executed by us, and under our direction; and that all the corners of

said survey have been established and perpetuated in strict accordance with the Manual of Surveying Instruc-

tions, and the special written instructions of the U. S. Surveyor General, for Group 73, Arizona

and in the specific manner described in the field notes, and that the foregoing are the original field notes of such survey.

Place - Rupert, Idaho
Date - June 11, 1924

Ray D. Armstrong
U.S. Surveyor
and Chief of Party.

APPROVAL.

OFFICE OF THE UNITED STATES SURVEYOR GENERAL,

191

The foregoing field notes of the survey of

executed by

under his special instructions dated 1916, having been critically examined, and the necessary corrections and explanations made, the said field notes, and the surveys they describe, are hereby approved.

U. S. Surveyor General

I certify that the foregoing transcript of the field notes of the above described surveys in

has been correctly copied from the original notes on file in this office.

U. S. Surveyor General

BOOK 363A

CERTIFICATE OF UNITED STATES SURVEYOR.

I, Dupree P. Averill, U. S. Surveyor, hereby certify upon honor that, in pursuance of special instructions received from the U. S. Surveyor General, for Group 73, Arizona bearing date of the ... day of ..., 191 ..., I have well, faithfully, and truly in my own proper person, and in strict conformity with said instructions, the Manual of Surveying Instructions, and the laws of the United States, surveyed all those parts or portions of the

Subdivision lines of

TOWNSHIP 33 NORTH, RANGE 14 WEST,

of the Gila and Salt

River Base & Meridian, in the State of Arizona, which are represented in and by diagram on page 1 hereof the foregoing field notes as having been executed by me, and under my direction; and that all the corners of said survey have been established and perpetuated in strict accordance with the Manual of Surveying Instructions, and the special written instructions of the U. S. Surveyor General, for Group 73, Arizona and in the specific manner described in the field notes, and that the foregoing are the original field notes of such survey.

Place - Redlands, Calif. Dupree P. Averill
Date - May 31, 1927 U. S. Surveyor.

APPROVAL

OFFICE OF THE UNITED STATES SURVEYOR GENERAL

191

The foregoing field notes of the survey of

executed by

under his special instructions dated ..., 191 ..., having been critically examined, and the necessary corrections and explanations made, the said field notes, and the surveys they describe, are hereby approved.

U. S. Surveyor General

I certify that the foregoing transcript of the field notes of the above-described surveys in ... has been correctly copied from the original notes on file in this office.

U. S. Surveyor General

CERTIFICATE OF UNITED STATES SURVEYOR.

I, William E. Hiester, U. S. Surveyor, hereby certify upon honor that, in pursuance of special instructions received from the U. S. Surveyor General, for Group 73, Arizona, bearing date of the 12th day of October, 19 16, I have well, faithfully, and truly in my own proper person, and in strict conformity with said instructions, the Manual of Surveying Instructions, and the laws of the United States, surveyed all those parts or portions of the North boundary, and Subdivision lines of

TOWNSHIP 33 NORTH, RANGE 14 WEST,

of the Gila and Salt River Base & Meridian, in the State of Arizona, which are represented in and by diagram on page 1 hereof the foregoing field notes as having been executed by me, and under my direction; and that all the corners of said survey have been established and perpetuated in strict accordance with the Manual of Surveying Instructions, and the special written instructions of the U. S. Surveyor General, for Group 73, Arizona, and in the specific manner described in the field notes, and that the foregoing are the original field notes of such survey.

Place: Phoenix Arizona
Date: May 15 1924

William E. Hiester
U. S. Surveyor.

APPROVAL.

OFFICE OF THE UNITED STATES SURVEYOR GENERAL,

Phoenix, Arizona, Sept. 20, 1924.

The foregoing field notes of the survey of the 8th Standard Parallel North, thru. Range 14 West, West boundary, North boundary, and Subdivision lines of TOWNSHIP 33 NORTH, RANGE 14 WEST, of the Gila and Salt River Base and Meridian, in the State of Arizona, executed by William H. Thorn, Ray D. Armstrong, Dupree R. Averill & William E. Hiester, U.S. Surveyors, and Lemuel R. Mercer, U.S. Transitman, under ~~his~~ special instructions dated October 12, 1916, for Group 73, Arizona, having been critically examined, and the necessary corrections and explanations made, the said field notes, and the surveys they describe, are hereby approved.

Charles M. Doolittle
U. S. Surveyor General.

~~I certify that the foregoing transcript of the field notes of the above described surveys in~~ has been correctly copied from the original notes on file in this office.