

3643

3643 BOOK

81

Book "D"

4-679

BOOK 3643

1

FIELD NOTES

OF THE SURVEY OF THE

East Boundary,

South Boundary and

Subdivision lines of

TOWNSHIP 31 NORTH, RANGE 11 WEST

Of the Gila and Salt River Base and Meridian,

In the State of Arizona

EXECUTED BY

William E. Hiester, U.S. Surveyor,

and

Benjamin J. Kinsey, U.S. Transitman,

In the capacity of U. S. Surveyors, under Special Instructions dated October 12., 1916, issued by the United States Surveyor General to govern surveys included in Group No. 74, Arizona, which were approved by the Commissioner of the General Land Office, October 24., 1916, and Assignment Instructions dated August 11., 1921 and March 30, 1922.

Survey commenced June 23., 1922.

Survey completed June 6., 1923.

3643

3643

(1A)

BOOK 3643

BOOK 3643




Book "D"

Group 74 - Arizona

INDEX DIAGRAM.

Township				Range							
6	57	5	16	4	36	3	29	2	22	1	4
56		56		45	36	35	29	28		22	
7	55	8		9	35	10	28	11	2	12	
55		54	44	44		34		28	27	21	20
18	54	17	43	16	34	15	27	14	20	13	5
53		53		43	42	33		26		20	19
19	52	20		21		22		23	19	24	6
51	51	51	41	41	40	32	31	25	25	18	
20	50		40					25		17	6
48	49	48	47	39	38	30		24	24	16	7
31	46	32	37	38		34		35	15	36	7
			36		29			22			
9	10	10	11	11		12		12	13	14	

T. 31 N. R. 11 W.

-  Lines surveyed under this group.
-  Lines surveyed under group No. 72.
-  Unsurveyed.

16

Book "D".

Group 74 - - - Arizona.

Township 31 North, Range 11 West.

DATE DIAGRAM.

For dates of execution of survey of this line see Book "B"

	6 6-6-23	5 6-6-23	4 7-30-22	3 7-13-22	2 7-8-22	1 7-7-22	
	7 7-14-22	8 7-14-22	9 7-14-22	10 7-12-22	11 7-8-22	12 7-7-22	
	13 7-14-22	14 7-14-22	15 7-18-22	16 7-12-22	17 7-11-22	18 7-6-22	
	19 7-28-22	20 7-26-22	21 7-27-22	22 7-10-22	23 6-29-22	24 6-29-22	
	25 7-28-22	26 7-19-22	27 7-11-22	28 7-3-22	29 7-11-22	30 7-2-22	
	31 7-19-22	32 7-4-22	33 7-3-22	34 7-1-22	35 7-1-22	36 7-2-22	
	7-19-22	7-19-22	7-1-22	7-1-22	7-1-22	6-28-22	

For dates of execution of survey of this line see Book "C"

— Indicates surveys executed by William E. Hiester,
U.S. Surveyor, on dates shown thereon,

— Indicates surveys executed by Benjamin J. Kinsey,
U.S. Transitman, on dates shown thereon.

Surveys hereinafter described were executed by William E. Piester, U.S. Surveyor and Benjamin J. Kinsey, U.S. Transitman, on dates shown on diagram on page 1, hereof, using Buff and Buff light mountain transits Nos. 9977 and 10125, respectively. The instruments are equipped with full vertical circles and the Smith solar attachments. Unless otherwise specified all azimuth determinations are accomplished with the solar attachments.

Field test of instrument No. 10125, by
Benjamin J. Kinsey.

June 22, 1922: I examine the adjustments of the transit and find no errors, then to test the solar apparatus by comparing its indications resulting from solar observations made during a.m. and p.m. hours, with a meridian determined from observations on Polaris, proceed as follows:

At camp which is located near the $\frac{1}{4}$ sec. cor. of secs. 9 and 16, T.31 N., R.11 W., Gila and Salt River Base and Meridian, Arizona, in lat. $36^{\circ}52'N.$, longitude $113^{\circ}29'W.$, at 37.2m. a.m., l.m.t., observe Polaris at eastern elongation, making four observations, two each with telescope in direct and reversed positions and mark the line thus determined by a tack in a stake driven firmly in the ground 5 chs. N.

Azimuth of Polaris at eastern elongation = $1^{\circ}22'53\frac{1}{2}''$.

At 7hrs. a.m., l.m.t. lay off the azimuth of Polaris $1^{\circ}23'$ to the west, and mark a point in the meridian thus determined by a tack in a stake driven firmly in the ground 5 chs. N.

June 25: At the same station described above, at 8h 0m a.m., l.m.t., set off $35^{\circ}52'N.$ on the latitude arc, $23^{\circ}25'N.$ on the declination arc and determine a meridian with the solar which agrees with the true meridian.

At app. noon with the latitude arc unchanged, observe the sun on the meridian, the resulting reading of the declination arc is $23^{\circ}24\frac{1}{2}'N.$ which agrees with the computed declination of the sun.

At 4h 0m p.m. l.m.t., with the latitude arc unchanged, set off $23^{\circ}24\frac{1}{2}'N.$ on the declination arc and determine a meridian with the solar which agrees with the true meridian.

As all of the solar observations made during the usual hours of solar work define meridians within $1\pm$ of the meridian obtained from observation on Polaris, I conclude that the adjustments of the instrument are satisfactory.

Field test of Instrument No. 9977 by
William E. Piester.

June 5, 1923: I examine the adjustments of the transit and correct all errors, then to test the solar apparatus by comparing its indications resulting from solar observations made during a.m. and p.m. hours, with a meridian determined from observations on Polaris, proceed as follows:

At camp which is located in the NE. quarter of sec. 6, T.31 N., R.11 W., Gila & Salt River Base & Meridian, Ariz., in latitude $36^{\circ}7'N.$, longitude $113^{\circ}31'W.$ of Greenwich at 2h 45m a.m., l.m.t., observe Polaris at eastern elongation making four observations, two each with telescope

in direct and reversed positions, and mark the mean point of the line thus determined by a tack in a stake driven firmly in the ground, 5 chs.N.

Azimuth of Polaris at eastern elongation = $1^{\circ}22'31''$.

At 7h.0m., a.m., l.m.t., lay off the azimuth of Polaris $1^{\circ}22\frac{1}{2}'$ to the West, and mark a point in the meridian thus determined by a tack in a stake driven firmly in the ground, 5 chs.N.

At 8h. 0m. a.m., l.m.t., set off $36^{\circ}7'N.$ on the latitude arc; $22^{\circ}29\frac{1}{2}' N.$ on the decl. arc, and determine a meridian with the solar, which agrees with the true meridian.

At app. noon, with the latitude arc unchanged, observe the sun on the meridian; the resulting reading of the declination arc is $22^{\circ}30' N.$, which agrees with the computed declination of the sun.

At 4h.0m.p.m., l.m.t., with the latitude arc unchanged, set off $22^{\circ}31\frac{1}{2}' N.$ on the decl. arc, and determine a meridian with the solar, which agrees with the true meridian.

As all of the solar observations made during the usual hours of solar work define meridians within 1' of the meridian obtained from observations on Polaris, I conclude that the adjustments of the instrument are satisfactory.

The measurements are made with a Lufkin steel tape, 5 chs. in length, compared with a Lufkin standard steel tape and found correct. The measurements are made on the slope, the slope angles determined with a clinometer, and the slope distances reduced to the horizontal equivalent for entry in the field notes.

BOOK 3643

A Survey of East boundary of Township 31 North, Range 11 West, Chains.

The cor. of Ts. 31 and 32 N., Rs. 10 and 11 W., established under Group 72 is an iron post, 3 ins. in diam., projecting 32 ins. above ground, firmly set in a mound of stone, properly marked on brass cap, and witnessed by four properly marked bearing trees, one each NE., SE., SW. and NW. of cor.

Thence,
 South, on true line, bet. secs. 1 and 6.
 Over mountainous land, thru dense timber and undergrowth.
 Ascend 23 ft., over E. slope.
 5.00 Descend 100 ft., over E. and SE. slopes.
 23.45 Bottom of gulch, 10 lks. wide, course E.; heads 5 chs. W.
 Ascend 56 ft., over N. slope.
 32.40 Spur, slopes E.
 Descend 40 ft., over SE. slope.
 38.85 Shallow draw, course E.
 Ascend 5 ft., over NE. slope, to
 40.00 Set an iron post, 3 ft. long, 1 in. in diam., 8 ins. in the ground to bed rock, supported in a mound of stone, for $\frac{1}{4}$ sec. cor., marked on brass cap,

$\frac{1}{4}$
 S 1 | S 6
 1922

from which,
 A cedar, 8 ins. in diam., brs. S. 48° E., 9 lks. dist., marked $\frac{1}{4}$ S 6 BT.
 A cedar, 6 ins. in diam., brs. S. 15° W., 4 lks. dist., marked $\frac{1}{4}$ S 1 BT.

Ascend 265 ft., over NE. slope.
 78.00 Ridge, brs. E. and W.
 Descend 10 ft., over S. slope, to
 80.00 Set an iron post, 3 ft. long, 2 ins. in diam., 12 ins. in the ground to bed rock, supported in a mound of stone, for cor. of secs. 1, 6, 7 and 12, marked on brass cap,

T31N
 R11W | R10W
 S 1 | S 6
 S12 | S 7
 1922

from which,
 A cedar, 6 ins. in diam., brs. N. 41° E., 52 lks. dist., marked T31N R10W S6 BT.
 A pinyon, 12 ins. in diam., brs. S. 85° E., 453 lks. dist., marked T31N R10W S7 BT.

Ascend 245 pinyon, 8 ins. in diam., brs. S. 4° W., 57 lks. dist., marked T31N R11W S12 BT.
 78.00 Ridge, brs. E. and W.
 Descend 10 ft., over S. slope, to
 80.00 Set an iron post, 3 ft. long, 2 ins. in diam., 12 ins. in the ground to bed rock, supported in a mound of stone, for cor. of secs. 1, 6, 7 and 12, marked on brass cap,
 Land, mountainous, to bed rock, supported in a mound of soil, rocky, 4th rate, secs. 1, 6, 7
 Timber, cedar and pinyon.
 Undergrowth, scrub oak and manzanita.

South, on true line, bet. secs. 7 and 12.
 Over mountainous land, thru dense timber and undergrowth.
 Descend 306 ft., over S. and SE. slopes, to
 32.40 Shallow draw, course SE.
 Ascend 80 ft., over NE. slope, to
 40.00 Set an iron post, 3 ft. long, 1 in. in diam., 6 ins. in the ground to bed rock, supported in a mound of stone, for $\frac{1}{4}$ sec. cor., marked on brass cap,

$\frac{1}{4}$
 S12 | S 7
 1922

Survey of East Boundary of Township 31 North Range 12 West. 5

Chains.

from which,
A cedar, 14 ins. in diam., brs. N. 70° E., 4 lks.
dist., marked 1/4 S 7 BT.
A cedar, 6 ins. in diam., brs. N. 47° W., 40 lks.
dist., marked 1/4 S 12 BT.

- 48.10 Ascend 84 ft., over NE. slope.
- Point of rocky spur, slopes E.
- 64.70 Descend 38 ft., over SE. slope.
- Shallow draw, course E.
- 78.85 Ascend 160 ft., over NE. slope.
- Top of rocky knoll.
- 80.00 Descend 20 ft., over S. slope, to
- Set an iron post, 3 ft. long, 2 ins. in diam., 8 ins. in the ground to bed rock, supported in a mound of stone, for cor. of secs. 7, 12, 13 and 18, marked, on brass cap,

T31N
R11W | R10W
S12 | S 7
S13 | S18
1922

from which,
A pinyon, 6 ins. in diam., brs. N. 65° E., 63 lks.
dist., marked T31N R10W S7 BT.
A cedar, 12 ins. in diam., brs. S. 25° E., 38 lks.
dist., marked T31N R10W S18 BT.
A cedar, 6 ins. in diam., brs. S. 23° W., 84 lks.
dist., marked T31N R11W S13 BT.
A cedar, 8 ins. in diam., brs. N. 34° W., 24 lks.
dist., marked T31N R11W S12 BT.

Land, mountainous.
Soil, rocky, 4th rate.
Timber, cedar and pinyon.
Undergrowth, scrub oak, and manzanita.

-
- 0.83 South, on true line, bet. secs. 13 and 18.
 - Over mountainous land, thru dense timber and undergrowth.
 - Descend 10 ft., over S. slope.
 - Draw, course SE.
 - 7.00 Ascend 15 ft., over NE. slope.
 - Low spur, slopes E.
 - 13.15 Descend 42 ft., over S. slope.
 - Shallow draw, 10 lks. wide, course SE., heads 3 chs. NW.
 - 28.15 Ascend 110 ft., over NE. slope.
 - Rim, brs. SE. and NW. Leave mountainous, and enter nearly level bench land.
 - 40.00 Set an iron post, 3 ft. long, 1 in. in diam., 6 ins. in the ground to bed rock, supported in a mound of stone, for 1/4 sec. cor., marked on brass cap,

1/4
S13 | S18
1922

from which,
A cedar, 12 ins. in diam., brs. S. 20° E., 12 lks.
dist., marked 1/4 S 18 BT.
A cedar, 6 ins. in diam., brs. S. 37° W., 20 lks.
dist., marked 1/4 S 13 BT.

- 80.00 Continue over nearly level bench land, thru dense timber & undergrowth.
- Set an iron post, 3 ft. long, 2 ins. in diam., 6 ins. in the ground to bed rock, supported in a mound of stone for cor. of secs. 13, 18, 19 and 24, marked on brass cap,

T31N
R11W | R10W
S13 | S18
S24 | S19
1922

6. Survey of East boundary of Township 31 North Range 21 West.
Chains.

from which,

A cedar, 24 ins. in diam., brs. N. 85° E., 87 lks.
dist., marked T31N R10W S18 BT.

A cedar, 8 ins. in diam., brs. S. 88° E., 60 lks.
dist., marked T31N R10W S19 BT.

A cedar, 24 ins. in diam., brs. S. 44° W., 95 lks.
dist., marked T31N R11W S24 BT.

A cedar, 6 ins. in diam., brs. N. 45° W., 67 lks.
dist., marked T31N R11W S13 BT.

Land, N. 28 chs., mountainous; remainder, nearly level.

Soil, rocky, 4th rate.

Timber, cedar and pinyon.

Undergrowth, scrub oak and manzanita.

South, on true line, bet. secs. 19 and 24.

Over nearly level bench land, thru dense timber and undergrowth.

40.00 Set an iron post, 3 ft. long, 1 in. in diam., 26 ins. in the ground for $\frac{1}{4}$ sec. cor., marked on brass cap,

S24 | S19

1922

from which,

A cedar, 14 ins. in diam., brs. S. 80° E., 9 lks.
dist., marked $\frac{1}{4}$ S 19 BT.

A cedar, 14 ins. in diam., brs. N. 54° W., 36 lks.
dist., marked $\frac{1}{4}$ S 24 BT.

Continue over nearly level bench land, thru dense timber and undergrowth.

80.00 Set an iron post, 3 ft. long, 2 ins. in diam., 20 ins. in the ground to bed rock, supported in a mound of stone for cor. of secs. 19, 24, 25 and 30, marked on brass cap,

T31N
R11W R10W

S24 | S19

S25 | S30

1922

from which,

A cedar, 4 ins. in diam., brs. N. 56° E., 104 lks.
dist., marked BT.

A cedar, 14 ins. in diam., brs. S. 28° E., 36 lks.
dist., marked T31N R10W S30 BT.

A cedar, 14 ins. in diam., brs. S. 11° W., 85 lks.
dist., marked T31N R11W S25 BT.

A cedar, 4 ins. in diam., brs. N. 29° W., 31 lks.
dist., marked BT.

Land, nearly level.

Soil, rocky, 3rd rate.

Timber, cedar, pinyon and yellow pine.

Undergrowth, scrub oak and sagebrush.

South, on true line, bet. secs. 25 and 30.

Over nearly level bench land, thru dense timber and undergrowth.

10.00 Descend slightly over S. slope.
Center of draw, 2 chs. wide, course SW.

40.00 Descend slightly over SW. slope, to
Set an iron post, 3 ft. long, 1 in. in diam., 26 ins. in the ground for $\frac{1}{4}$ sec. cor., marked on brass cap,

S25 | S30

1922

from which,

Survey of East boundary of Township 31 North, Range 11 West. 7

Chains.

- A cedar, 14 ins. in diam., brs. N. 86° E., 72 lks. dist., marked $\frac{1}{4}$ S 30 BT.
- A cedar, 14 ins. in diam., brs. S. 26° W., 45 lks. dist., marked $\frac{1}{4}$ S 25 BT.

Continue over nearly level bench land, thru. dense timber and undergrowth.

51.80 Descend slightly over SW. slope, to Rim, brs. S. 70° E. and W. Leave nearly level, and enter mountainous land.

60.50 Descend 305 ft., over SW. slope. Head of gulch, course SW.

64.50 Descend 20 ft., over NW. slope, to Spur, slopes S. 70° W.

80.00 Descend 550 ft., over steep broken SE. and S. slopes, to Set a limestone, 14x8x4 ins., 10 ins. in the ground for cor. of secs. 25, 30, 31 and 36, marked with 1 notch on S. edge and 5 notches on N. edge; from which,

- A cedar limb, 10 ins. in diam., brs. S. 38 $\frac{1}{2}$ ° E., 73 lks. dist., marked T31N R10W S31 BT.
- A pinyon, 8 ins. in diam., brs. S. 2° W., 71 lks. dist., marked T31N R11W S36 BT.

No other bearing trees available. Raise a mound of stone 2 ft. base, 1 $\frac{1}{2}$ ft. high, W. of cor.

Land, nearly level and mountainous.

Soil, rocky, 4th rate.

Timber, cedar, pinyon and yellow pine.

Undergrowth, scrub oak and sagebrush.

South, on true line, bet. secs. 31 and 36.

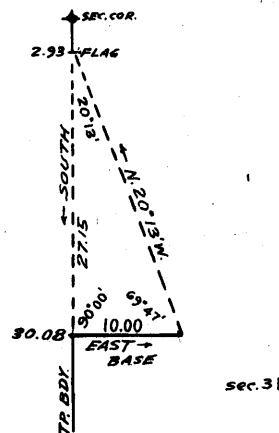
Over mountainous land, thru. scattering timber and dense undergrowth.

2.93 Descend 70 ft., over steep S. slope, to Top of cliff, about 500 ft. high, brs. NE and SW., facing S. E.

Precipitous descent beyond this point renders chaining impracticable; therefore, triangulate as described as follows:

- Set flag at this point.
- From a point ahead on Tp. bdy. measure a Base E. 10.00 chs.
- From E. end of Base, the flag brs. N. 20° 13' W.
- From W. end of Base, the vertical angle to flag is + 26°.

- Dist. on Tp. bdy. = 2.93 chs. South.
- Dist. triangulated = 27.15 chs. South.
- Total distance = 30.08 chs. South.



30.08 Triangulation point, 872 ft. below 2.93 ch. station. Continue line and measurement by chaining.

40.00 Descend 103 ft., over S. slope, to Set an iron post, 3 ft. long, 1 in. in diam., 8 ins. in the ground to bed rock, deposit a stone marked with a cross (x) at base of post, and raise a mound of stone around post, for $\frac{1}{4}$ sec. cor., marked on brass cap,

$\frac{1}{4}$
 S36 | S31
 1922

80.00 No bearing trees available. Descend 420 ft., over S. slope, to Set an iron post, 3 ft. long, 3 ins. in diam., 10 ins. in the ground to bed rock, deposit a stone, marked with a cross (x) at base of post, and raise a mound of

BOOK 3643

BOOK 3643

8 Survey of East Boundary of Township 31 North, Range 11 West.

Chains.

stone around post, for cor. of Ts. 30 and 31 N., Rs. 10 and 11 W., marked on brass cap,

T31N	
R11W	R10W
S36	S31
S 1	S 6
T30N	
1922	

from which,

A pinyon, 10 ins. in diam., brs. N. $20\frac{3}{4}^{\circ}$ E., 108 lks. dist., marked T31N R10W S31 BT.

A cedar, 18 ins. in diam., brs. S. $41\frac{1}{2}^{\circ}$ E., 135 lks. dist., marked T30N R10W S6 BT.

No other bearing trees available.

Land, mountainous.

Soil, rocky, 3rd and 4th rate.

Timber, cedar and pinyon.

Undergrowth, sagebrush, black brush, cactus and yucca.

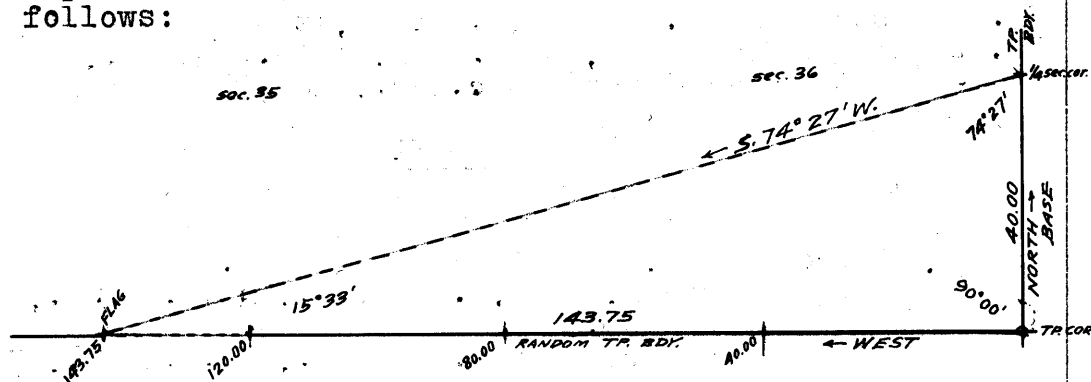
Survey of South boundary of Township 31 North Range 11 West. 9

Chains.

From cor. of Ts. 30 and 31 N., Rs. 10 and 11 W., hereinbefore described, West, on random line, setting temp. cors. at intervals of 40.00 chs.

120.00

Set temp. $\frac{1}{4}$ sec. cor. of secs. 2 and 35. Beyond this point, precipitous ascent renders chaining impracticable; therefore, triangulate as described, as follows:



Set flag ahead on random Tp. bdy. at top of precipitous slopes.

Use as a Base for this triangulation, that portion of the E. bdy. of T. 31 N., R. 11 W., bet. the SE. cor. of the Tp., and the $\frac{1}{4}$ sec. cor. of secs. 31 and 36 (North 40.00 chs.)

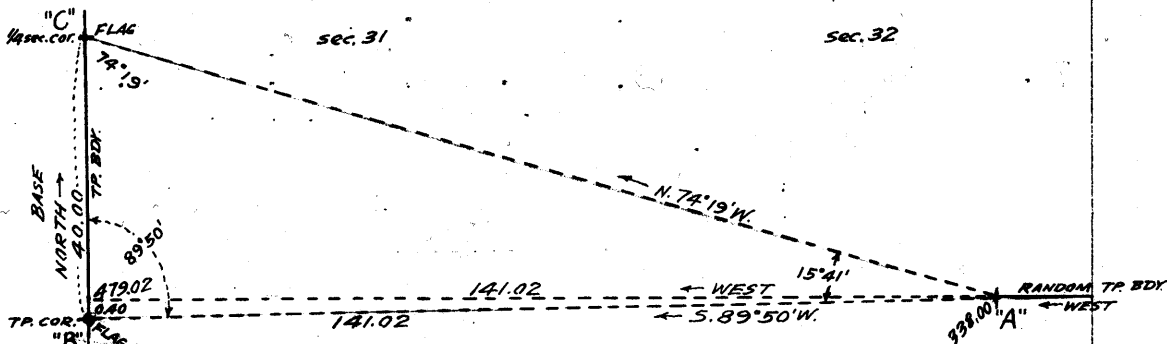
From said $\frac{1}{4}$ sec. cor.; the flag brs. S. 74° 27' W. Distance triangulated = 143.75 chs. West.

143.75

Triangulation point. Continue line and measurement by chaining.

338.00

East, or left rim of Green Spring Canyon, brs. NE. and SW. Precipitous descent beyond this point renders chaining impracticable; therefore, triangulate as described as follows, and as shown on the diagram hereon:



Set a flag on the cor. of Ts. 30 and 31 N., Rs. 11 and 12 W., indicated on diagram at "B," which brs. S. 89° 50' W. from 338.00 ch. station on random Tp. bdy., indicated on diagram at "A."

Another flag on the $\frac{1}{4}$ sec. cor. of secs. 31 and 36 on the W bdy. of Tp. 31 N., R. 11 W., indicated on diagram at "C" brs. N. 74° 19' W. from "A."

Use as a Base for this triangulation that portion of the W. bdy. of T. 31 N., R. 11 W. (B-C) bet. the SW. cor. of the Tp. and the $\frac{1}{4}$ sec. cor. of secs. 31 and 36 (North 40.00 chs.)

Triangulated measurement of "A-B" = 141.02 chs. S. 89° 50' W.

Latitude of "A-B" = 0.40 chs. S.

Departure of "A-B" = 141.02 chs. W.

Dist. on random Tp. bdy. = 338.00 chs. West.

Dist. triangulated = 141.02 chs. West.

Total length of random Tp. bdy. = 479.02 chs. West.

479.02

The random Tp. bdy. projected due West would therefore, at Fall 40 lks. N. of the cor. of Ts. 30 and 31 N., Rs. 11 and 12 W., described in Book "C" of this group.

Thence, N. 89° 57' E., on a true line, bet. secs. 6 and 31.

BOOK 3643

10 Survey of South bdy. of Township 31 North, Range 11 West.

Chains.

Over mountainous land, thru dense timber and undergrowth.
 Descend slightly over S. slope, to
 0.20 Point of spur, slopes SE.
 Descend 250 ft., over E. slope.
 18.50 Center of wash, 4 chs. wide, course S. 10° E.
 Ascend 135 ft., over W. slope.
 24.00 Spur, slopes S.
 Descend 86 ft., over SE. slope.
 35.00 Ascend 15 ft., over SW. slope, to
 39.02 Set an iron post, 3 ft. long, 1 in. in diam., 26 ins. in
 the ground for $\frac{1}{4}$ sec. cor., marked on brass cap,

$\frac{1}{4}$ S 31
 S 6
 1922

from which,

A cedar, 12 ins. in diam., brs. N. 10 $\frac{1}{2}$ ° W., 14 lks.
 dist., marked $\frac{1}{4}$ S 31 BT.
 A cedar, 14 ins. in diam., brs. S. 15° W., 37 lks.
 dist., marked $\frac{1}{4}$ S 6 BT.
 Descend 52 ft., over SE. slope.
 45.30 Wash, 20 lks. wide, course S.
 Ascend 23 ft., over SW. slope.
 50.00 Descend 55 ft., over SE. slope.
 54.00 Rocky gulch, 30 lks. wide, course S.
 Ascend 130 ft., over W. slope.
 60.50 Spur, slopes S.
 Descend 33 ft., over E. slope, to
 63.40 Top of cliff, 60 ft. high, brs. NE and SW., facing SE.
 Descend 135 ft. to
 70.00 Center of Green Spring Wash, 3 chs. wide, course S. 40° W.
 in bottom of canyon of same name.
 Ascend 120 ft., to
 76.50 Top of cliff, 60 ft. high, brs. NE and SW., facing NW., and
 point of spur, sloping NW.
 Ascend slightly over steep N. slope, to
 79.02 Set an iron post, 3 ft. long, 2 ins. in diam., 26 ins. in
 the ground for cor. of secs. 5, 6, 31 and 32, marked on
 brass cap,

T31N | R11W
 S31 | S32
 S 6 | S 5
 T30N
 1922

from which,

A cedar, 8 ins. in diam., brs. N. 83° E., 51 lks.
 dist., marked T31N R11W S32 BT.
 A pinyon, 8 ins. in diam., brs. S. 46° E., 48 lks.
 dist., marked T30N R11W S5 BT.
 A pinyon, 8 ins. in diam., brs. S. 28 $\frac{1}{2}$ ° W., 75 lks.
 dist., marked T30N R11W S6 BT.
 A pinyon, 16 ins. in diam., brs. N. 81 $\frac{1}{2}$ ° W., 108 lks.
 dist., marked T31N R11W S31 BT.

Land, mountainous.

Soil, rocky, 4th rate.

Timber, cedar and pinyon.

Undergrowth, scrub oak and manzanita.

N. 89° 57' E., on a true line, bet. secs. 5 and 32.
 Over mountainous land, thru dense timber and undergrowth.
 Ascend 20 ft., over N. slope, to
 3.00 Enter bottom of gulch, course N. 80° W. from E.
 Ascend 94 ft. along bottom of gulch, to
 10.00 Leave bottom of gulch, course W. from S. 80° E.
 49.99 Ascend 730 ft., over steep SW. and W. slopes, to
 40.00 Set an iron post, 3 ft. long, 1 in. in diam., 6 ins. in
 the ground to bed rock, deposit a stone, marked with

South Boundary
 Survey of Subdivision Lines of Township 31 North, Range 11 West. 11
 Chains.

a cross (x) at base of post, and raise a mound of stone, around post, for $\frac{1}{4}$ sec. cor., marked on brass cap,

$\frac{1}{4}$ S 32
 S 5
 1922

No bearing trees available.

A cross (x) cut in outcropping ledge, brs. S. 77 lks. dist.

Discontinue chaining at this $\frac{1}{4}$ sec. cor. owing to precipitous ascent.

Measurement to top of cliffs by triangulation, hereinbefore described.

62.00 Triangulation point at top of cliff about 350 ft. high, brs. NE. and SW., facing NW., and forming E. or left rim of Green Spring Canyon. Leave canyon and mountainous land, and enter rolling land.

Continue line and measurement by chaining.

Ascend 67 ft., over W. slope, to

78.00 Head of draw, course SW. Asc. 20 ft., over SW. slope, to

80.00 Set an iron post, 3 ft. long, 2 ins. in diam., 12 ins. in the ground to bed rock, supported in a mound of stone for cor. of secs. 4, 5, 32 and 33, marked on brass cap,

T31N | R11W
 S32 | S33
 S 5 | S 4
 T30N
 1922

from which,

A cedar, 24 ins. in diam., brs. N. $73\frac{1}{2}^\circ$ E., 29 lks. dist., marked T31N R11W S33 BT.

A cedar, 14 ins. in diam., brs. S. $65\frac{1}{2}^\circ$ E., 140 lks. dist., marked T30N R11W S4 BT.

A cedar, 16 ins. in diam., brs. S. 29° W., 81 lks. dist., marked T30N R11W S5 BT.

A cedar, 14 ins. in diam., brs. N. $30\frac{1}{2}^\circ$ W., 46 lks. dist., marked T31N R11W S32 BT.

Land, mountainous and rolling.

Soil, rocky, 4th rate.

Timber, cedar and pinyon.

Undergrowth, scrub oak, sagebrush and cactus.

N. $89^\circ 57' E.$, on a true line, bet. secs. 4 and 33.

Over rolling land, thru. dense timber and undergrowth.

Ascend 50 ft., over W. slope.

9.10 Spur, slopes SW.

Descend 90 ft., over SE. slope.

23.80 Draw, 10 lks. wide, course SW.

Ascend 100 ft., over W. slope, to

30.00 Thence across nearly level top of ridge, bearing N. and S.

35.00 Leave top of ridge.

Descend 10 ft., over E. slope, to

40.00 Set an iron post, 3 ft. long, 1 in. in diam., 6 ins. in the ground to bed rock, supported in a mound of stone, for $\frac{1}{4}$ sec. cor., marked on brass cap,

$\frac{1}{4}$ S 33
 S 4
 1922

from which,

A cedar, 12 ins. in diam., brs. N. $5\frac{1}{2}^\circ$ E., 30 lks. dist., marked $\frac{1}{4}$ S 33 BT.

A cedar, 10 ins. in diam., brs. S. 67° E., 10 lks. dist., marked S 4 BT.

Descend 124 ft., over SE. slope, to

80.00 Set an iron post, 3 ft. long, 2 ins. in diam., 20 ins. in the ground to bed rock, supported in a mound of stone for cor. of secs. 3, 4, 33 and 34, marked on brass cap,

South Boundary
 12. Survey of Subdivision Lines of Township 31 North, Range 11 West.

Chains.

T31N	R11W
S33	S34

S 4 S 3
 T30N
 1922

from which,
 A cedar, 12 ins. in diam., brs. N. 70 $\frac{1}{2}$ ° E., 216
 lks. dist., marked T31N R11W S34 BT.
 A cedar, 4 ins. in diam., brs. S. 31° E., 146
 lks. dist., marked BT.
 A cedar, 20 ins. in diam., brs. S. 32° W., 253
 lks. dist., marked T30N R11W S34 BT.
 A cedar, 4 ins. in diam., brs. N. 59° W., 78
 lks. dist., marked BT.

Land, rolling.
 Soil, sandy loam and rocky, 2nd to 4th rate.
 Timber, cedar and pinyon.
 Undergrowth, scrub oak, sagebrush and cactus.

N. 89° 57' E., on a true line; bet. secs. 3 and 34.
 Over gently rolling land, thru dense timber and undergrowth.
 Descend slightly over SE slope, to
 Shallow draw, 5 lks. wide, course SW. Enter nearly level
 land.

5.00
 26.00
 30.28
 38.50
 40.00

Leave timber, brs. SE. and NW.
 Dim road, brs. N. and S.
 Enter dense timber, brs. N. and S.
 Set an iron post, 3 ft. long, 1 in. in diam., 6 ins. in
 the ground to bed rock, supported in a mound of stone
 for $\frac{1}{4}$ sec. cor., marked on brass cap,

$\frac{1}{4}$ S 34
S 3

1922

from which,
 A cedar, 12 ins. in diam., brs. N. 75° E., 133
 lks. dist., marked $\frac{1}{4}$ S 34 BT.
 A cedar, 14 ins. in diam., brs. S. 5 $\frac{1}{2}$ ° E., 165
 lks. dist., marked $\frac{1}{4}$ S 3 BT.

Continue over nearly level land, thru dense timber and
 undergrowth.

72.80
 80.00

Shallow draw, 10 lks. wide, course S.
 Set an iron post, 3 ft. long, 2 ins. in diam., 24 ins. in
 the ground for cor. of secs. 2, 3, 34 and 35, marked on
 brass cap,

T31N	R11W
S34	S35

S 3 S 2
 T30N
 1922

from which,
 A cedar, 8 ins. in diam., brs. N. 51 $\frac{1}{4}$ ° E., 45 lks.
 dist., marked T31N R11W S35 BT.
 A cedar, 10 ins. in diam., brs. S. 36 $\frac{1}{2}$ ° E., 526 lks.
 dist., marked T30N R11W S2 BT.
 A cedar, 14 ins. in diam., brs. S. 32° W., 174 lks.
 dist., marked T30N R11W S3 BT.
 A cedar, 14 ins. in diam., brs. N. 70 $\frac{1}{4}$ ° W., 66 lks.
 dist., marked T31N R11W S34 BT.

Land, W. 5 chs., gently rolling; remainder, nearly level.
 Soil, gravelly loam, 2nd and 3rd rate.
 Timber, cedar. Undergrowth, scrub oak, sagebrush and cactus.

N. 89° 57' E., on true line; bet. secs. 2 and 35.
 Over nearly level land, thru dense timber & scattering
 undergrowth.

16.25

Triangulation point at rim, bearing N. 10° E. and S. 20° E.
 Discontinue chaining, and triangulate over precipitous E.
 and SE slopes to $\frac{1}{4}$ sec. cor., as hereinbefore described.
 Enter mountainous land & scattering timber.
 Descend about 450 ft. to

Survey of South boundary of Township 31 North, Range 11 West. 13

chains.

40.00 Set an iron post, 3 ft. long, 1 in. in diam., 26 ins. in the ground for $\frac{1}{4}$ sec. cor., marked on brass cap,

$\frac{1}{4}$ S 35
S 2
1922

from which,

A pinyon, 8 ins. in diam., brs. N. $46\frac{1}{2}^{\circ}$ W., 174 lks. dist., marked $\frac{1}{4}$ S 35 BT.

A pinyon, 8 ins. in diam., brs. S. 32° E., 260 lks. dist., marked $\frac{1}{4}$ S 2 BT.

Continue line and measurement by chaining.

52.95 Ascend 235 ft., over S. and SW. slopes, to Spur, slopes SE.

61.60 Descend 330 ft., over steep, E. slope, to Bottom of gulch, course SE.

79.00 Descend 240 ft., over S. slope, to Spur, slopes SE.

Descend 15 ft., over E. slope, to

Spur, slopes SE.

Descend 15 ft., over E. slope, to

Spur, slopes SE.

80.00 Mark a cross (x) on surface rock, and over same set an iron post, 3 ft. long, .2 ins. in diam., supported in a mound of stone, for cor. of secs. 1, 2, 35 and 36, marked on brass cap,

T31N | R11W
S35 | S36
S 2 | S 1
T30N
1922

from which,

A pinyon, 4 ins. in diam., brs. N. 50° E., 76 lks. dist., marked BT.

A pinyon, 8 ins. in diam., brs. S. 18° W., 44 lks. dist., marked T30N R11W S2 BT.

A pinyon, 6 ins. in diam., brs. N. $32\frac{1}{2}^{\circ}$ W., 120 lks. dist., marked T31N R11W S35 BT.

No other bearing tree available.

Land, W. 16 $\frac{1}{2}$ chs. nearly level; remainder, mountainous.

Soil, rocky, 4th rate.

Timber, cedar and pinyon.

Undergrowth, scrub oak and manzanita.

N. $89^{\circ}57'E.$, on a true line, bet. secs. 1 and 36.

Over mountainous land, thru. scattering timber and dense undergrowth,

15.00 Descend 238 ft., over E. slope, to Enter wash, course E. from N. 80° W.

23.30 Descend 115 ft. in wash, to Leave wash, course SE. from W.

25.50 Ascend 42 ft., over SW. slope, to Spur, slopes S. 70° E.

40.00 Descend 142 ft., over NE. slope, to Set an iron post, 3 ft. long, 1 in. in diam., 8 ins. in the ground to bed rock, deposit a stone, marked with a cross, (x) at base of post, and raise a mound of stone around post, for $\frac{1}{4}$ sec. cor., marked on brass cap,

$\frac{1}{4}$ S 36
S 1
1922

No bearing trees available.

46.10 Descend 140 ft., over NE. slope. Wash, 20 lks. wide, course SE.

49.50 Ascend 30 ft., over SW. slope. Point of spur, slopes S. from NW.

54.50 Descend 85 ft., over E. slope, to Lower rim brs. SE. and NW.

BOOK 3643

BOOK 3643

14 Survey of South boundary of Township 31 North, Range 11 West.

Chains.

57.00 Descend 143 ft., over steep NE. slope, to Wash, 100 lks. wide, course S. 30° E. in bottom of canyon.

61.20 Ascend 135 ft., over steep SW. slope, to Lower rim, brs. SE. and NW.

80.00 Ascend 130 ft., over SW. slope, to The cor. of Ts. 30 and 31 N., Rs. 10 and 11 W., hereinbefore described.

Land, mountainous.
Soil, rocky, 4th rate.
Timber and pinyon.
Undergrowth, sagebrush, black brush, cactus and yucca.

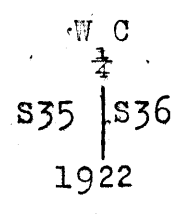
Boundaries of Township 31 North, Range 11 West.
Latitudes, departures and Closing errors.

Line designated.	True course.	Dist.	Latitudes.		Departures.	
			N.	S.	E.	W.
South boundary.	S. 89° 57' W.	479.02		.40		479.02
West boundary,	North,	480.00	480.00			
North boundary,	N. 89° 57' E.	478.23	.40		478.23	
East boundary,	South,	480.00		480.00		
Convergency,					.53	
<u>Totals</u>			480.40	480.40	478.76	479.02
				480.40		478.76
<u>Error in latitude.</u>			0.00			
<u>Error in departure.</u>					0.26	

Survey of Subdivision lines of Township 31 North Range 11 West. 15

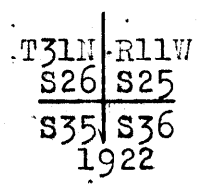
Chains.

- From the cor. of secs. 1, 2, 35 and 36, on S. bdy. of Tp., hereinbefore described, N.0°1'W., bet. secs. 35 and 36. Over mountainous land, thru scattering timber and undergrowth.
- Ascend 85 ft., over E. and SE. slopes.
- 55.95 Spur, slopes S.70°E.
- Descend 136 ft., over NE. slope, to
- 18.90 Wash, 30 lks. wide, course N.70°E.
- Ascend 80 ft., over SE. slope, to
- 25.00 Rocky wash, 20 lks. wide, course SE.
- Ascend 32 ft., over S. slope.
- 28.45 Descend 68 ft., over NE. slope.
- 29.00 Bottom of gulch, 30 lks. wide, course SE.
- Ascend 137 ft., over SW. slope.
- 38.40 Spur, slopes SE.
- Descend 18 ft., over NE. slope, to
- 39.00 Set an iron post, 3 ft. long, 1 in. in diam., 26 ins. in the ground for witness cor. to the $\frac{1}{4}$ sec. cor., marked on brass cap,



- from which,
- A cedar, 8 ins. in diam., brs. N.14°E., 64 lks. dist., marked WC $\frac{1}{4}$ S 36 BT.
- A cedar, 14 ins. in diam., brs. S.27 $\frac{1}{2}$ °W., 80 lks. dist., marked WC $\frac{1}{4}$ S 35 BT.

- Descend slightly over NE. slope, to
- 40.00 The true point for $\frac{1}{4}$ sec. cor. falls in bottom of gulch, course E. Asc. slightly over bottom of gulch, to
- 41.50 Leave bottom of gulch, course S. and E. from NW.
- Ascend 215 ft., over SE. slope, to
- 63.00 Thence along E. slope.
- Descend 30 ft., to
- 68.00 Ascend 165 ft., over SW. slope.
- 78.00 Spur, slopes SE.
- Descend 16 ft., over NE. slope, to
- 80.00 Set an iron post, 3 ft. long, 2 ins. in diam., 12 ins. in the ground to bed rock, deposit a stone, marked with a cross (x) at base of post, and raise a mound of stone around post, for cor. of secs. 25, 26, 35 and 36, marked on brass cap,



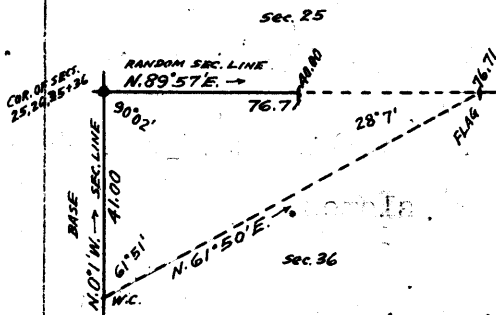
- from which,
- A cedar, 12 ins. in diam., brs. N.59 $\frac{1}{2}$ °E., 14 lks. dist., marked T31N R11W S25 BT.
- A cedar, 12 ins. in diam., brs. S.6°W., 130 lks. dist., marked T31N R11W S35 BT.
- A cedar, 8 ins. in diam., brs. N.60°W., 50 lks. dist., marked T31N R11W S26 BT.

No other bearing trees available.
 Land, mountainous.
 Soil, rocky, 4th rate.
 Timber, cedar and pinyon.
 Undergrowth, sagebrush and cactus.

- 40.00 N.89°57'E., on random line, bet. secs. 25 and 36. Set temp. $\frac{1}{4}$ sec. cor. Precipitous slopes beyond this point render chaining impracticable; therefore, triangulate as described, as follows:

16 Survey of Subdivision lines of Township 31 North, Range 11 West.

Chains.



Set flag ahead on random sec. line.

Use as a Base, that portion of the sec. line, bet. secs. 35 and 36, from the W.C. to $\frac{1}{4}$ sec. cor. to the cor. of secs. 25, 26, 35 and 36. (N. 0° 1' W., 41.00 chs.) From the S. end of Base, the flag brs. N. 61° 50' E.

The vertical angle from N. end of Base to flag is + 12°. Distance triangulated = 76.71 chs. N. 89° 57' E.

76.71 Triangulation point at top of cliffs. From this point, the vertical angle to point on random sec. line in bottom of gulch about 9 chs. E. of temp. $\frac{1}{4}$ sec. cor. is - 28°, and to point at foot of cliffs about 33 chs. E. of temp. $\frac{1}{4}$ sec. cor. is - 36°.

79.92 Continue line and measurement by chaining. Fall 5 lks. N. of the cor. of secs. 25, 30, 31 and 36, on E. bdy. of the Tp., hereinbefore described.

Thence, S. 89° 59' W., on true line, bet. secs. 25 and 36.

Over mountainous land, thru. scattering timber and dense undergrowth.

3.21 Descend slightly over S. slope, to Triangulation point at top of cliffs, bearing N. and S., facing W.

Discontinue chaining. Measurement to $\frac{1}{4}$ sec. cor. by triangulation, as hereinbefore described.

7.00 Descend about 180 ft. to (Approx.) Foot of cliffs, brs. N. and S.

16.00 Descend about 300 ft., over precipitous SW. slope, to (Approx.) Bottom of gulch, course SW.

31.00 Descend about 500 ft., over precipitous SW. slope, to (Approx.) Bottom of gulch, 50 lks. wide, course S. 20° W.

39.96 Descend about 465 ft., over precipitous SW. slope, to Set an iron post, 3 ft. long, 1 in. in diam., 8 ins. in the ground to bed rock, supported in a mound of stone, for $\frac{1}{4}$ sec. cor., marked on brass cap,

$\frac{1}{4}$ S 25
S 36
1922

No bearing trees available. Raise a mound of stone, 4 ft. base, 2 ft. high, N. of cor.

Continue line and measurement by chaining.

46.50 Descend 47 ft., over W. slope, to Center of wash, 200 lks. wide, course S. 20° E. in bottom of canyon.

63.00 Ascend 420 ft., over E. slope.

Spur, slopes S.

Descend 175 ft., over SW. slope.

72.50 Bottom of gulch, 30 lks. wide, course SE.

Ascend 55 ft., over SE. slope, to

76.80 Bottom of gulch, 25 lks. wide, course SE.

Ascend 110 ft., over NE. slope, to

79.92 The cor. of secs. 25, 26, 35 and 36.

Land, mountainous.

Soil, rocky, 4th rate.

Timber, cedar and pinyon.

Undergrowth, sagebrush, black brush and cacti.

N. 0° 1' W., bet. secs. 25 and 26.

Over mountainous land, thru. scattering timber and undergrowth.

Descend 35 ft., over NE. slope.

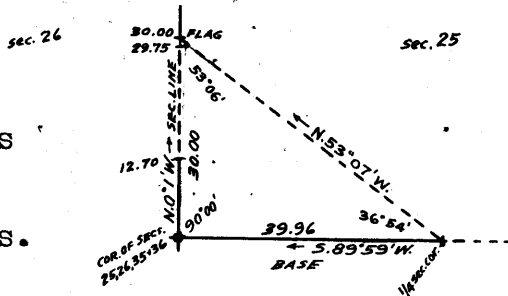
1.00 Bottom of gulch, 25 lks. wide, course SE.

5.00 Ascend 137 ft. over S. slope. Point of spur, slopes SE.

Survey of Subdivision lines of Township 31 North Range 11 West 17 Chains.

12.70 Descend 65 ft., over NE. slope. Bottom of gulch, 20 lks. wide, course SE. Beyond this point, precipitous ascent on SW. slope of spur renders chaining impracticable; therefore, triangulate to top of spur, as described as follows:

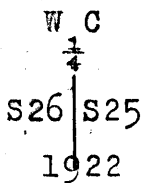
Set flag ahead on sec. line. Use the W. 1/4 of line bet. secs. 25 and 36 as a Base for this triangulation (S. 89° 59' W., 39.96 chs.). From E. end of Base, the flag brs. N. 53° 07' W.



Distance triangulated = 30.00 chs. N. 0° 1' W. Dist. by return measurement = 0.25 chs. S. 0° 1' E. 29.75 chs. N. 0° 1' W.

29.75 Top of cliff, about 300 ft. high, bearing NW and SE. facing SW, about 860 ft. above bottom of gulch at 12.70 ch. station. Continue line and measurement by chaining across narrow top of spur, sloping SE.

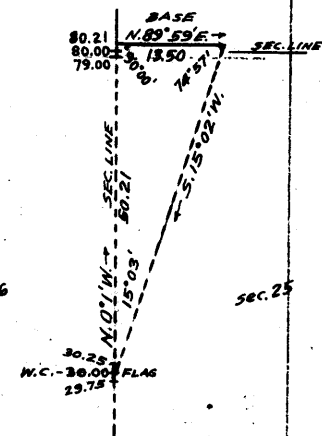
30.00 Triangulation point. The point for 1/4 sec. cor. falls on precipitous broken NE. slope, and is inaccessible; therefore, this triangulation point being at the nearest accessible point thereto on the sec. line, establish witness cor. here as described as follows: Set an iron post, 3 ft. long, 1 in. in diam., on surface rock, supported in a mound of stone, for witness cor. to the 1/4 sec. cor., marked on brass cap,



- from which, A pinyon, 8 ins. in diam., brs. N. 62° E., 33 lks. dist., marked WC 1/4 S 25 BT. A pinyon, 12 ins. in diam., brs. S. 65° W., 22 lks. dist., marked WC 1/4 S 26 BT.

30.25 Continue across narrow top of spur, chaining measurement to Top of cliff about 300 ft. high, bearing NW. and SE., facing NE. Leave top of spur. Chaining beyond this point is impracticable owing to precipitous broken slopes; therefore, triangulate as described as follows:

From a point ahead on sec. line, measure a Base N. 89° 59' E., 13.50 chs. From E. end of Base flag at the witness cor. to 1/4 sec. cor. of secs. 25 and 26 brs. S. 15° 02' W.



Dist. on sec. line = 30.00 chs. N. 0° 1' W. Dist. triangulated = 50.21 chs. N. 0° 1' W. Total distance = 80.21 chs. N. 0° 1' W. Dist. by return measurement, 1.21 chs. S. 0° 1' E.

79.00 chs. N. 0° 1' W. to point on sec. line at rim of canyon.

40.00 True point for 1/4 sec. cor. on precipitous NE. slope, where it is inaccessible.

50.00 (Approx.) Bottom of rocky gulch, 50 lks. wide, course SE., about 760 ft. below W.C. to 1/4 sec. cor.

60.00 Ascend over precipitous SW. slope, to (Approx.) Spur, slopes SE. Ascend over steep, broken E. slope, to

BOOK 3643

18 Survey of Subdivision lines of Township 31 North, Range 11 West.

Chains.

- 70.00 (Approx.) Bottom of gulch, course SE.
Ascend over precipitous S. slope, to
79.00 Top of precipitous ascent, brs. E. and W. at head of canyon, about 150 ft. above WC. to $\frac{1}{4}$ sec. cor. of secs. 25 and 26. Leave mountainous, and enter gently rolling bench land. Continue line and measurement by chaining.
Ascend slightly over S. slope, to
80.00 Set an iron post, 3 ft. long, 2 ins. in diam., on surface rock, supported in a mound of stone, for cor. of secs. 23, 24, 25 and 26, marked on brass cap,

T31N	R11W.
S23	S24
S26	S25
1922	

from which,

- A pinyon, 12 ins. in diam., brs. N. 1° E., 176 lks. dist., marked T31N R11W S24 BT.
 - A cedar, 10 ins. in diam., brs. S. 27° E., 59 lks. dist., marked T31N R11W S25 BT.
 - A cedar, 14 ins. in diam., brs. S. 48° W., 30 lks. dist., marked T31N R11W S26 BT.
 - A cedar, 6 ins. in diam., brs. N. 47 $\frac{1}{2}$ ° W., 30 lks. dist., marked T31N R11W S23 BT.
- Land, S. 79 chs., mountainous; N. 1.00 ch. gently rolling.
Soil, rocky, 4th rate.
Timber, cedar and pinyon.
Undergrowth, sagebrush and cactus.

- 40.00 N. 89° 59' E., on a random line, bet. secs. 24 and 25.
Set temp. $\frac{1}{4}$ sec. cor.
80.02 Fall 16 lks. S. of the cor. of secs. 19, 24, 25 and 30, on E. bdy. of Tp., hereinbefore described.
Thence,
S. 89° 52' W., on a true line, bet. secs. 24 and 25.
Over nearly level land, thru dense timber and undergrowth.
2.75 Enter gently rolling land.
Descend 52 ft., over W. slope.
10.00 Draw, 10 lks. wide, course SW.
Ascend 68 ft., over SE. slope.
30.00 Descend gradually over S. slope, to
40.01 Set an iron post, 3 ft. long, 1 in. in diam., 12 ins. in the ground to bed rock, supported in a mound of stone, for $\frac{1}{4}$ sec. cor., marked on brass cap,

$\frac{1}{4}$ S 24
S 25
1922

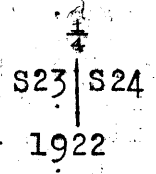
from which,

- A cedar, 8 ins. in diam., brs. N. 13° W., 10 lks. dist., marked $\frac{1}{4}$ S 24 BT.
 - A cedar, 12 ins. in diam., brs. S. 10° W., 29 lks. dist., marked $\frac{1}{4}$ S 25 BT.
- Continue over gently rolling land, thru dense timber and undergrowth.
Descend gradually over SW. slope, to
66.60 Descend 43 ft., over SW. slope, to
76.70 Draw, course S. into head of canyon, about 1.00 ch. S.
Ascend 37 ft., over SE. slope, to
80.02 The cor. of secs. 23, 24, 25 and 26.
Land, gently rolling.
Soil, rocky, 3rd and 4th rate.
Timber, cedar and pinyon.
Undergrowth, scrub oak, sagebrush, manzanita and black brush.

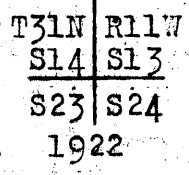
Survey of Subdivision lines of Township 31 North Range 11 West 19

Chains.

N.0° 1'W., bet. secs. 23 and 24.
Over gently rolling land, thru dense timber and undergrowth.
Ascend gradually over SE. and E. slopes, to
30.00 Shallow draw, 10 lks. wide, course E.
Ascend gradually over SE. slope, to
40.00 Set an iron post, 3 ft. long, 1 in. in diam., 12 ins. in the ground to bed rock, supported in a mound of stone, for $\frac{1}{4}$ sec. cor., marked on brass cap,



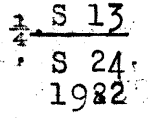
from which,
A pinyon, 10 ins. in diam., brs. N.8° W., 18 lks. dist., marked $\frac{1}{4}$ S 23 BT.
A cedar, 14 ins. in diam., brs. S.35° E., 54 lks. dist., marked $\frac{1}{4}$ S 24 BT.
Ascend gradually over SE. slope, to
44.40 Shallow draw, course SE.
Ascend gradually over SE. slope, to
70.00 Low divide, brs. NE. and SW.
Descend gradually over NW. slope, to
80.00 Set an iron post, 3 ft. long, 2 ins. in diam., 8 ins. in the ground to bed rock, supported in a mound of stone, for cor. of secs. 13, 14, 23 and 24, marked on brass cap,



from which,
A cedar, 20 ins. in diam., brs. N.24° E., 93 lks. dist., marked T31N R11W S13 BT.
A cedar, 16 ins. in diam., brs. S.30° E., 93 lks. dist., marked T31N R11W S24 BT.
A cedar, 14 ins. in diam., brs. S.52° W., 161 lks. dist., marked T31N R11W S23 BT.
A cedar, 14 ins. in diam., brs. N.73 $\frac{1}{2}$ ° W., 113 lks. dist., marked T31N R11W S14 BT.
Land, gently rolling.
Soil, rocky loam, 3rd rate.
Timber, cedar and pinyon.
Undergrowth, scrub oak and sagebrush.

N.89° 52' E., on a random line, bet. secs. 13 and 24.
40.00 Set temp. $\frac{1}{4}$ sec. cor.
79.86 Fall 5 lks. S. of the cor. of secs. 13, 18, 19 and 24, on E. bdy. of Tp., hereinbefore described.

Thence,
S.89° 50' W., on a true line, bet. secs. 13 and 24.
Over nearly level land, thru dense timber and undergrowth.
Ascend slightly over SE. slope, to
39.93 Set an iron post, 3 ft. long, 1 in. in diam., 26 ins. in the ground for $\frac{1}{4}$ sec. cor., marked on brass cap,



from which,
A cedar, 6 ins. in diam., brs. N.33 $\frac{1}{2}$ ° W., 21 lks. dist., marked $\frac{1}{4}$ S 13 BT.
A cedar, 24 ins. in diam., brs. S.39° W., 30 lks. dist., marked $\frac{1}{4}$ S 24 BT.
Thence, over gently rolling land.
Ascend gradually over SE. slope.
70.00 Low divide, brs. NE. and SW.

20 Survey of Subdivision lines of Township 31 North, Range 11 West.

Chains.

- 79.86 Descend gradually over NW.slope, to
The cor.of secs. 13,14, 23 and 24.
Land, nearly level and gently rolling.
Soil rocky, 4th rate.
Timber, cedar and pinyon.
Undergrowth, scrub oak, sagebrush and manzanita,
-
- N.0° 1' W., bet. secs. 13 and 14.
Over gently rolling land, thru.dense timber and under-
growth.
Descend gradually over NW.slope.
25.00 Ascend gradually over SW.slope, to
40.00 Set an iron post, 3 ft.long, 1 in. in diam., 26 ins. in
the ground, for $\frac{1}{4}$ sec.cor., marked on brass cap,
- | | |
|------|-----|
| S14 | S13 |
| 1922 | |
- from which,
A pinyon, 6 ins.in diam., brs.N.58°E., 62
lks.dist., marked $\frac{1}{8}$ S 13 BT.
A cedar, 30 ins. in diam., brs.N.43°W., 34
lks.dist.; marked $\frac{1}{8}$ S 14 BT.
- 68.00 Ascend gradually over SW.slope to sec.cor.
80.00 Shallow draw, 10 lks.wide, course SW.
Set an iron post, 3 ft. long, 2 ins. in diam., 6 ins.in
the ground to bed rock, supported in a mound of stone,
for cor.of secs.11,12,13 and 14, marked on brass
cap,
- | | |
|------|------|
| T31N | R11W |
| S11 | S12 |
| S14 | S13 |
| 1922 | |
- from which,
A pinyon, 4 ins.in diam., brs.N.8°E., 94
lks.dist., marked BT.
A pinyon, limb, 8 ins.in diam., brs.S.88°E., 100
lks.dist., marked T31N R11W S13 BT.
A cedar, 10 ins. in diam., brs.S.80°W., 35
lks.dist., marked T31N R11W S14 BT.
A cedar, 20 ins.in diam., brs.N.18°W., 184
lks.dist., marked T31N R11W S11 BT.
- Land, gently rolling.
Soil, rocky, 3rd rate.
Timber, cedar and pinyon.
Undergrowth, scrub oak and sagebrush and ironwood.
-
- 40.00 N.89° 50'E., on a random line, bet. secs.12 and 13.
Set temp. $\frac{1}{4}$ sec.cor.
79.80 Fall 14 lks.N. of the cor.of secs. 7,12,13 and 18, on E.
bdy.of Tp., hereinbefore described.
- Thence,
S.89°56'W., on a true line, bet. secs.12 and 13.
Over mountainous land, thru.dense timber and undergrowth.
Descend 15 ft., over SW. slope.
- 1.40 Draw, course SE.
Ascend 136 ft., over NE.slope, to
- 10.70 Rim, brs.SE and NW.
Thence over gently rolling land.
Ascend gradually over E.slope, to
- 39.90 Set an iron post, 3 ft.long, 1 in. in diam., 10 ins.in the
ground to bed rock, supported in a mound of stone,

Survey of Subdivision lines of Township 31 North Range 11 West. 21

Chains.

for $\frac{1}{4}$ sec.cor., marked on brass cap,

$\frac{1}{4}$ S 12
S 13
1922

from which,

A cedar, 6 ins.in diam., brs.N.82°W., 45 lks.
dist., marked $\frac{1}{4}$ S 12 BT.

A cedar, 16 ins.in diam., brs.S.32°E., 67 lks.
dist., marked $\frac{1}{4}$ S 13 BT.

Continue over gently rolling land, thru.dense timber and undergrowth.

Ascend gradually over E.slope.

52.00 Descend gradually over SW.slope, to
79.80 The cor.of secs.11, 12, 13 and 14.

Land, mountainous and gently rolling.

Soil, rocky, 3rd rate.

Timber, cedar and pinyon.

Undergrowth, scrub oak and sagebrush.

N.0° 1'W., bet..secs.11 and 12..

Over gently rolling land, thru.dense timber and undergrowth.

30.00 Ascend 120 ft., over SW.slope to
Low divide, brs.SE. and NW.

40.00 Descend gradually over NE.and E.slopes, to

Set an iron post, 3 ft.long, 1 in.in diam., 26 ins.in
the ground for $\frac{1}{4}$ sec.cor., marked on brass cap,

$\frac{1}{4}$
S11 | S12
1922

from which,

A cedar, 14 ins.in diam., brs.N.32°E., 93. lks.
dist., marked $\frac{1}{4}$ S 12 BT.

A cedar, 12 ins. in diam., brs.N.55°W., 20 lks.
dist., marked $\frac{1}{4}$ S 11 BT.

Thence over E.slope from hill, the top of which brs. W.
about 20 chs.dist.

50.00 Ascend 28 ft., to
Shallow draw, course SE.

65.00 Ascend 55 ft., over SE.slope.

Low divide, brs.NE and SW.

80.00 Descend gradually over NW.slope, to

Set an iron post, 3 ft.long, 2 ins.in diam., 14 ins.in
the ground to bed rock, supported in a mound of stone,
for cor.of secs.1, 2, 11 and 12, marked on brass cap,

T31N | R11W
S 2 | S 1
S11 | S12
1922

from which,

A cedar, 4 ins.in diam., brs.N.29°E., 59 lks+
dist., marked BT.

A cedar, 18 ins.in diam., brs.S.85°E., 25 lks.
dist., marked T31N R11W S12 BT.

A cedar, 22 ins.in diam., brs.S.1°W., 123 lks.
dist., marked T31N R11W S11 BT.

A cedar, 10 ins.in diam., brs.N.38°W., 60 lks+
dist., marked T31N R11W S2 BT.

Land, gently rolling.

Soil, rocky, 3rd rate.

Timber, cedar and pinyon.

Undergrowth, scrub oak and sagebrush.

22 Survey of Subdivision lines of Township 31 North, Range 11 West.

Chains.

40.00 N. 89° 56' E., on a random line, bet. secs. 1 and 12.
Set temp. $\frac{1}{4}$ sec. cor.

79.88 Fall 12 lks. S. of the cor. of secs. 1, 6, 7 and 12, on E. bdy. of Tp., hereinbefore described.

Thence,
S. 89° 51' W., on a true line, bet. secs. 1 and 12.
Over mountainous land, thru. dense timber and undergrowth.
Ascend 135 ft., over S. slope, to

10.00 Rim, brs. NE. and SW. Enter gently rolling land.
Ascend gradually over E. slope, to

39.94 Set an iron post, 3 ft. long, 1 in. in diam., 24 ins. in the ground for $\frac{1}{4}$ sec. cor., marked on brass cap,

$\frac{1}{4}$ S 1
 S 12
 1922

from which,
A cedar, 8 ins. in diam., brs. N. 32° W., 10 lks. dist., marked $\frac{1}{4}$ S 1 BT.
A cedar, 8 ins. in diam., brs. S. 35° W., 20 lks. dist., marked $\frac{1}{4}$ S 12 BT.

Ascend gradually over E. slope.

70.00 Top of low divide, brs. NE. and SW.
Descend gradually over NW. slope, to

79.88 The cor. of secs. 1, 2, 11 and 12.
Land, E. 10 chs. mountainous; remainder, gently rolling.
Soil, sand and clay loam, rocky, 2nd and 3rd rate.
Timber, cedar, pinyon and oak.
Undergrowth, sagebrush, scrub oak, locust and ironwood.

40.00 N. 0° 1' W., on a random line, bet. secs. 1 and 2.
Set temp. $\frac{1}{4}$ sec. cor.

80.20 Fall 20 lks. E. of the cor. of secs. 1, 2, 35 and 36, on N. bdy. of Tp., described in Book "B" of this group.

Thence,
S. 0° 10' E., on a true line, bet. secs. 1 and 2.
Over gently rolling land, thru. dense timber and undergrowth.
Ascend gradually over NW. and W. slopes, to

17.00 Shallow draw, course NW.
Ascend gradually over NE. slope.

30.00 Descend gradually over SW. slope, to

40.20 Set an iron post, 3 ft. long, 1 in. in diam., 26 ins. in the ground, for $\frac{1}{4}$ sec. cor., marked on brass cap,

S 2 | S 1
 1922

from which,
An oak, 6 ins. in diam., brs. S. 49° E., 133 lks. dist., marked $\frac{1}{4}$ S 1 BT.
A cedar, 6 ins. in diam., brs. N. 47° W., 41 lks. dist., marked $\frac{1}{4}$ S 2 BT.

Descend gradually over SW. slope, to

45.20 Head of draw, course SW.
Ascend gradually over NW. slope, to

80.20 The cor. of secs. 1, 2, 11 and 12.
Land, gently rolling.
Soil, gravelly and rocky, 2nd and 3rd rate.
Timber, cedar and pinyon.
Undergrowth, scrub oak, sagebrush and algerita.

From the cor. of secs. 2, 3, 34 and 35. on S. bdy. of Tp., hereinbefore described,
N. 0° 1' W., bet. secs. 34 and 35.
Over rolling land, thru. dense timber and undergrowth.

Survey of Subdivision lines of Township 31 North, Range 11 West. 23

Chains.

- 5.00 Ascend gradually over S. slope.
- 10.00 Descend 29 ft., over NW. slope,
- 10.00 Ascend 35 ft., over SW. slope, to
- 28.00 Shallow draw, 10 lks. wide, course SW.
- Ascend slightly over SE. slope, to
- 30.40 Same draw, course SE.
- Ascend 15 ft., over SW. slope, to
- 40.00 Set an iron post, 3 ft. long, 1 in. in diam., 18 ins. in the ground to bed rock, supported in a mound of stone, for $\frac{1}{4}$ sec. cor., marked on brass cap,

$\frac{1}{4}$
S34 | S35
1922

from which,
 A cedar, 14 ins. in diam., brs. S. 63° E., 191 lks. dist., marked $\frac{1}{4}$ S 35 BT.
 A cedar, 12 ins. in diam., brs. S. 30° W., 40 lks. dist., marked $\frac{1}{4}$ S 34 BT.

- 45.00 Ascend 17 ft. over SW. slope.
- Low ridge, brs. NW. and SE.
- 50.60 Descend 11 ft., over NE. slope, to
- Shallow draw, course SE.
- Ascend 30 ft., over SE. slope.
- 65.00 Low spur, slopes E.
- Descend 10 ft., over N. slope.
- 66.60 Shallow draw, 5 lks. wide, course E.
- Ascend gradually over E. slope, to
- 80.00 Set an iron post, 3 ft. long, 2 ins. in diam., 26 ins. in the ground for cor. of secs. 26, 27, 34 and 35, marked on brass cap,

T31N | R11W
S27 | S26
S34 | S35
1922

from which,
 A cedar, 10 ins. in diam., brs. N. 56° E., 103 lks. dist., marked T31N R11W S26 BT.
 A cedar, 14 ins. in diam., brs. S. 78° E., 135 lks. dist., marked T31N R11W S35 BT.
 A cedar, 10 ins. in diam., brs. S. 38° W., 73 lks. dist., marked T31N R11W S34 BT.
 A cedar, 8 ins. in diam., brs. N. 48° W., 170 lks. dist., marked T31N R11W S27 BT.

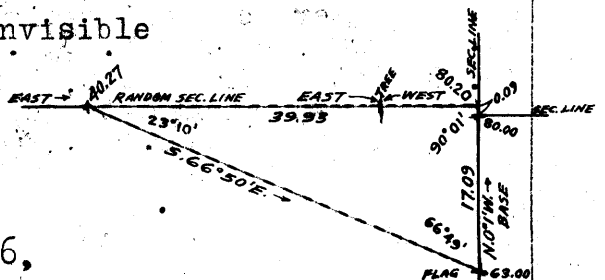
Land, rolling.
 Soil, sandy and rocky loam, 2nd rate.
 Timber, cedar and pinyon.
 Undergrowth, sagebrush and scrub oak.

- 40.00 East, on random line, bet. secs. 26 and 35.
- 40.00 Set temp. $\frac{1}{4}$ sec. cor.
- 40.27 Top of cliff, about 200 ft. high, bearing N. 30° E. and S. 10° E. facing E.

Beyond this point, the remainder of the random sec. line passes over cliffs and broken slopes, where chaining is impracticable; therefore, triangulate as described as follows:

The objective sec. cor. being invisible from this point, take a bearing East on a tree at top of sharp rocky spur, about 10 chs. W. of the sec. cor.

From a point 9 lks. N. of the cor. of secs. 25, 26, 35 and 36, the same tree brs. W. therefore the random sec. line projected E. would fall 9 lks.



24 Survey of Subdivision lines of Township 31 North, Range 11 West.

Chains.

N. of said sec. cor.
 From 40.27 ch. station on random sec. line, a flag at 63.00
 ch. station on sec. line, bet. secs. 35 and 36, brs. S. 66°
 50' E.
 The Base for this triangulation is therefore 80.00 chs. -
 63.00 chs. + 0.09 chs. = 17.09 chs. N. 0° 1' W.
 Dist. on random sec. line = 40.27 chs. East.
 Dist. triangulated = 39.93 chs. East.
 Total length of random
 line = 80.20 chs. East.

80.20 Fall 9 lks. N. of the cor. of secs. 25, 26, 35 and 36.
 Thence
 N. 89° 56' W., on true line, bet. secs. 26 and 35.
 Over mountainous land, thru. scattering timber and under-
 growth.
 Measurement of 39.94 chs. by triangulation, as hereinbefore
 described.

10.00 Ascend about 340 ft., over precipitous NE. slope.
 (Approx.) Rocky spur, sloping SE.; also the NW. end of a
 cliff, bearing NW and SE, facing SW.

24.00 Descend about 150 ft., over steep broken SW. slope, to
 (Approx.) Bottom of gulch, 30 lks. wide, course SE. at foot
 of a waterfall in same about 100 ft. high.

39.93 Ascend about 790 ft., over cliffs, facing E.
 Triangulation point at top of cliff about 200 ft. high,
 bearing N. 30° E. and S. 10° E. facing E. Leave mountain-
 ous and enter rolling land.

40.10 Ascend slightly over E. slope, to
 Set an iron post, 3 ft. long, 1 in. in diam., 8 ins. in the
 ground to bed rock, supported in a mound of stone, for
 1/4 sec. cor., marked on brass cap,

S 26
 S 35
 1922

from which,
 A cedar, 10 ins. in diam., brs. N. 25° E., 103
 lks. dist., marked 1/4 S 26 BT.
 A cedar, 15 ins. in diam., brs. S. 37° E., 175
 lks. dist., marked 1/4 S 35 BT.

41.20 Ascend slightly over E. slope.
 Low ridge, brs. N. 20° E. and S. 20° W. Enter dense timber and
 undergrowth.

55.20 Descend 56 ft., over NW. slope.
 Shallow wash, 10 lks. wide, course SW.

69.80 Descend gradually over SW. slope.
 Shallow wash, 10 lks. wide, course SE.

80.20 Ascend gradually over E. slope, to
 The cor. of secs. 26, 27, 34 and 35.
 Land, E. 1/2, mountainous; W. 1/2, rolling.
 Soil, rocky, 4th rate.
 Timber, cedar, pinyon and yellow pine.
 Undergrowth, scrub oak, sagebrush and manzanita.

N. 0° 1' W., bet. secs. 26 and 27.
 Over rolling land, thru. dense timber and undergrowth.
 Ascend gradually over E. slope.

20.00 Descend slightly over NE. slope.

28.00 Enter scattering timber and undergrowth, brs. NW. and SE.

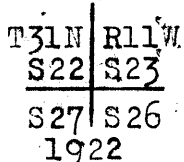
30.00 Draw, course S. 30° E. Enter nearly level land.

40.00 Set an iron post, 3 ft. long, 1 in. in diam., 12 ins. in
 the ground to bed rock, supported in a mound of stone,
 for 1/4 sec. cor., marked on brass cap,

Survey of Subdivision lines of Township 31 North Range 11 West. 25

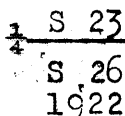
Chains.

from which,
 A cedar, 20 ins. in diam., brs. N. 16° E., 40
 lks. dist., marked $\frac{1}{4}$ S 26 BT.
 A cedar, 28 ins. in diam., brs. N. 80° W., 110
 lks. dist., marked $\frac{1}{4}$ S 27 BT.
 Enter gently rolling land.
 Ascend gradually over SE. slope to sec. cor.
 45.00 Enter dense timber and undergrowth, brs. NW. and SE.
 80.00 Set an iron post, 3 ft. long, 2 ins. in diam., 26 ins. in
 the ground, for cor. of secs. 22, 23, 26 and 27, marked
 on brass cap,



from which,
 A pinyon, 10 ins. in diam., brs. N. 26° E., 226
 lks. dist., marked T31N R11W S23 BT.
 A pinyon, 14 ins. in diam., brs. S. 47° E., 156
 lks. dist., marked T31N R11W S26 BT.
 A pinyon, 10 ins. in diam., brs. S. 73 $\frac{1}{2}$ ° W., 76
 lks. dist., marked T31N R11W S27 BT.
 A pinyon, 14 ins. in diam., brs. N. 55° W., 205
 lks. dist., marked T31N R11W S22 BT.
 Land, rolling, nearly level and gently rolling.
 Soil, rocky, 3rd and 4th rate.
 Timber, cedar and pinyon.
 Undergrowth, scrub oak, sagebrush, manzanita and black
 brush.

40.00 S. 89° 56' E., on a random line, bet. secs. 23 and 26.
 Set temp. $\frac{1}{4}$ sec. cor.
 79.94 Fall 2 lks. S. of the cor. of secs. 23, 24, 25 and 26.
 Thence,
 N. 89° 55' W., on a true line, bet. secs. 23 and 26.
 Over gently rolling land, thru. dense timber and undergrowth.
 Ascend 75 ft., over SE. slope, to
 39.97 Set an iron post, 3 ft. long, 1 in. in diam., 12 ins. in
 the ground to bed rock, supported in a mound of stone,
 for $\frac{1}{4}$ sec. cor., marked on brass cap,



from which,
 A cedar, 12 ins. in diam., brs. N. 77° E., 142
 lks. dist., marked $\frac{1}{4}$ S 23 BT.
 A cedar, 6 ins. in diam., brs. S. 34° E., 75
 lks. dist., marked $\frac{1}{4}$ S 26 BT.
 Continue over gently rolling land, thru. dense timber and
 undergrowth.
 Ascend gradually over SE. slope, to
 79.94 The cor. of secs. 22, 23, 26 and 27.
 Land, gently rolling.
 Soil, rocky, 3rd and 4th rate.
 Timber, cedar and pinyon.
 Undergrowth, scrub oak, sagebrush, manzanita and black
 brush.

N. 0° 1' W., bet. secs. 22 and 23.
 Over gently rolling land, thru. dense timber and under-
 growth.
 Ascend gradually over SE. slope.
 5.00 Low divide, brs. NE. and SW.
 Descend 76 ft., over NW. slope.
 27.75 Draw, 20 lks. wide, course SW.

26 Survey of Subdivision lines of Township 31 North, Range 11 West.

Chains.

40.00 Ascend 53 ft., over S. slope, to
Set an iron post, 3 ft. long, 1 in. in diam., 8 ins. in the ground to bed rock, supported in a mound of stone, for $\frac{1}{4}$ sec. cor., marked on brass cap,

$$\begin{array}{c} \frac{1}{4} \\ | \\ \text{S22} | \text{S23} \end{array}$$

1922

from which,

A cedar limb, 6 ins. in diam., brs. N. 16° E., 88 lks. dist., marked $\frac{1}{4}$ S 23 BT.

A cedar, 6 ins. in diam., brs. S. 20° W., 141 lks. dist., marked $\frac{1}{4}$ S 22 BT.

Ascend gradually over SW. slope to sec. cor.

73.50 Draw, course SW.

80.00 Set an iron post, 3 ft. long, 2 ins. in diam., 6 ins. in the ground to bed rock, supported in a mound of stone for cor. of secs. 14, 15, 22 and 23, marked on brass cap,

$$\begin{array}{c} \text{T31N} | \text{R11W} \\ \text{S15} | \text{S14} \\ \text{S22} | \text{S23} \end{array}$$

1922

from which,

A cedar, 20 ins. in diam., brs. N. 16° E., 196 lks. dist., marked T31N R11W S14 BT.

A cedar, 12 ins. in diam., brs. S. 23° E., 89 lks. dist., marked T31N R11W S23 BT.

A cedar, 16 ins. in diam., brs. S. 49° W., 88 lks. dist., marked T31N R11W S22 BT.

A cedar, 14 ins. in diam., brs. N. 36° W., 107 lks. dist., marked T31N R11W S15 BT.

Land, gently rolling.

Soil, rocky, 3rd rate.

Timber, cedar and pinyon.

Undergrowth, scrub oak, sagebrush and manzanita.

40.00 S. 89° 55' E., on a random line, bet. secs. 14 and 23.
Set temp. $\frac{1}{4}$ sec. cor.

79.96 Fall 14 lks. S. of the cor. of secs. 13, 14, 23 and 24.

Thence,

S. 89° 59' W., on a true line, bet. secs. 14 and 23.

Over gently rolling land, thru. dense timber and undergrowth.

39.98 Descend gradually over NW. and W. slopes, to
Set an iron post, 3 ft. long, 1 in. in diam., 26 ins. in the ground for $\frac{1}{4}$ sec. cor., marked on brass cap,

$$\begin{array}{c} \frac{1}{4} \text{ S } 14 \\ | \\ \text{S } 23 \\ | \\ 1922 \end{array}$$

from which,

A pinyon, 20 ins. in diam., brs. N. 20° W., 148 lks. dist., marked $\frac{1}{4}$ S 14 BT.

An oak, 6 ins. in diam., brs. S. 81 $\frac{1}{2}$ ° E., 81 lks. dist., marked $\frac{1}{4}$ S 23 BT.

67.80 Descend gradually over W. slope, to
Shallow draw, course SW.

79.96 Descend gradually over SW. slope, to
The cor. of secs. 14, 15, 22 and 23.

Land, gently rolling.

Soil, rocky, 4th rate.

Timber, cedar and pinyon.

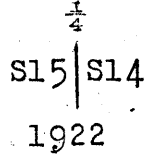
Undergrowth, scrub oak, sagebrush and manzanita.

Survey of Subdivision lines of Township 31 North, Range 11 West. 27

Chains.

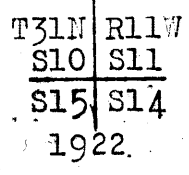
N.0° 1'W., bet. secs. 14 and 15.
Over gently rolling land, thru dense timber and undergrowth.

- 35.00 Ascend gradually over SW. slope.
- Trail, brs. NE. and SW.
- 37.40 Shallow draw, 30 lks.wide, course SW.
- Ascend gradually over SE.slope; to
- 40.00 Set an iron post, 3 ft.long, 1 in.in diam., 14 ins. in the ground to bed rock, supported in a mound of stone, for $\frac{1}{4}$ sec.cor., marked on brass cap,



- from which,
- A cedar, 12 ins.in diam., brs.N.10°E., 67 lks.dist., marked $\frac{1}{4}$ S14 BT.
 - A cedar, 12 ins. in diam., brs.S.13°W., 101 lks.dist., marked $\frac{1}{4}$ S 15 BT.

- Ascend gradually over SE.slope.
- 70.00 Ascend gradually over SW.slope, to
- 80.00 Set an iron post, 3 ft.long, 2 ins. in diam., 26 ins.in the ground for cor.of secs.10,11,14 and 15, marked on brass cap,



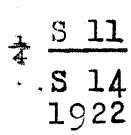
- from which,
- A cedar, 16 ins. in diam., brs.N.33°E., 145 lks.dist., marked T31N R11W S11 BT.
 - A cedar, 16 ins.in diam., brs.S.58°E., 153 lks.dist., marked T31N R11W S14 BT.
 - A cedar, 6 ins.in diam., brs.S.12 $\frac{1}{2}$ °W., 25 lks.dist., marked T31N R11W S15 BT.
 - A cedar, 10 ins.in diam., brs.N.59 $\frac{1}{2}$ °W., 40 lks.dist., marked T31N R11W S10 BT.

Land, gently rolling.
Soil, rocky, 3rd rate.
Timber, cedar and pinyon.
Undergrowth, scrub oak and sagebrush.

- 40.00 N.89°59'E., on a random line, bet. secs.11 and 14.
- 79.94 Set temp. $\frac{1}{4}$ sec.cor.
Intersect the cor.of secs.11,12,13 and 14.

Thence,
S.89°59'W., on a true line, bet.secs.11 and 14.
Over gently rolling land, thru dense timber and undergrowth.

- 7.15 Descend 22 ft., over SW.slope, to Shallow draw, course SW.
- 14.75 Descend gradually over SW.slope, to Shallow draw, 10 lks.wide, course S.
- 25.00 Ascend slightly over SE.slope. Low spur, slopes SW.
- 35.00 Descend 30 ft., over W.slope.
- 39.97 Descend 17 ft., over S.slope, to Set an iron post, 3 ft.long, 1 in. in diam., 24 ins.in the ground for $\frac{1}{4}$ sec.cor., marked on brass cap,

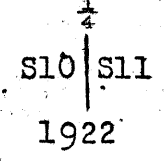


- from which,
- A cedar, 14 ins.in diam., brs:N.69°W., 179 lks.dist., marked $\frac{1}{4}$ S 11 BT.

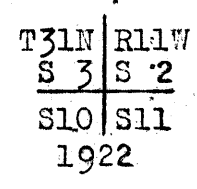
28 Survey of Subdivision lines of Township 31 North, Range 11 West.
 chains.

50.00 A cedar, 16 ins. in diam., brs. S. 86 $\frac{1}{2}$ ° E., 115
 lks. dist., marked $\frac{1}{4}$ S 14 BT.
 Descend 22 ft., over S. slope.
 61.00 Descend 25 ft., over NW. slope.
 Shallow draw, course SW.
 79.94 Descend gradually over SW. slope, to
 The cor. of secs. 10, 11, 14 and 15.
 Land, gently rolling.
 Soil, rocky, 3rd rate.
 Timber, cedar and pinyon.
 Undergrowth, scrub oak and sagebrush.

N. 0° 1' W., bet. secs. 10 and 11.
 Over gently rolling land, thru. dense timber and under-
 growth.
 40.00 Ascend gradually over SW. and W. slopes, to
 Set an iron post, 3 ft. long, 1 in. in diam., 12 ins. in
 the ground to bed rock, supported in a mound of stone,
 for $\frac{1}{4}$ sec. cor., marked on brass cap,



from which,
 A cedar, 12 ins. in diam., brs. S. 65° E., 82
 lks. dist., marked $\frac{1}{4}$ S 11 BT.
 A cedar limb, 10 ins. in diam., brs. S. 73° W., 138
 lks. dist., marked $\frac{1}{4}$ S 10 BT.
 45.00 Ascend slightly over W. slope.
 60.00 Descend 33 ft., over NW. slope, to
 Head of draw, course NW.
 70.00 Descend 35 ft., over NW. slope, to
 Foot of descent, brs. NE. and SW. Leave timber, brs. NE.
 and SW. Enter sagebrush flat.
 80.00 Set an iron post, 3 ft. long, 2 ins. in diam., 26 ins. in
 the ground for cor. of secs. 2, 3, 10 and 11, marked on
 brass cap,



from which,
 A pine, 14 ins. in diam., brs. N. 69° E., 547 lks.
 dist., marked T31N R11W S2 BT.
 A pine, 4 ins. in diam., brs. S. 54 $\frac{1}{2}$ ° E., 155 lks.
 dist., marked BT.
 A pine, 24 ins. in diam., brs. S. 65 $\frac{1}{2}$ ° W., 758 lks.
 dist., marked T31N R11W S10 BT.
 A pine, 6 ins. in diam., brs. N. 1 $\frac{1}{2}$ ° W., 554 lks.
 dist., marked T31N R11W S3 BT.
 Land, S. 70 chs., gently rolling; N. 10 chs. level.
 Soil, sandy and rocky, 2nd to 4th rate.
 Timber, cedar, pinyon and oak.
 Undergrowth, scrub oak, sagebrush and cactus.

40.00 N. 89° 59' E., on a random line, bet. secs. 2 and 11.
 Set temp. $\frac{1}{4}$ sec. cor.
 79.84 Intersect the cor. of secs. 1, 2, 11 and 12.
 Thence,
 S. 89° 59' W., on a true line, bet. secs. 2 and 11.
 Over gently rolling land, thru. dense timber and under-
 growth.
 18.30 Descend 100 ft., over NW. slope, to
 Draw, 20 lks. wide, course NW.
 Ascend 15 ft., over NE. slope.

Survey of Subdivision lines of Township 31 North, Range 11 West. 29

Chains.

- 25.00 Spur, slopes NW.
- 39.92 Descend 45 ft., over W. slope, to
Set an iron post, 3 ft. long, 1 in. in diam., 6 ins. in the ground to bed rock, supported in a mound of stone, for $\frac{1}{4}$ sec. cor., marked on brass cap,

$\frac{1}{4}$ S 2
 S 11
 1922

from which,

- A cedar, 24 ins. in diam., brs. N. 68° W., 49 lks. dist., marked $\frac{1}{4}$ S 2 BT.
- A cedar, 10 ins. in diam., brs. S. 58° E., 67 lks. dist., marked $\frac{1}{4}$ S 11 BT.
- 51.00 Descend 34 ft., over W. slope, to
- 59.00 Descend 67 ft., over SW. slope, to
- 59.00 Wash, 10 lks. wide, course NW. Enter sagebrush flat. Leave timber, brs. NE and SW.
- 79.84 The cor. of secs. 2, 3, 10 and 11.
Land, E. 59 chs., gently rolling; remainder, level.
Soil, loam and rocky, 2nd and 3rd rate.
Timber, cedar, pinyon and oak.
Undergrowth, sagebrush, scrub oak, locust and ironwood.

- 40.00 N. 0° 10' W., on a random line, bet. secs. 2 and 3.
Set temp. $\frac{1}{4}$ sec. cor.
- 80.00 Fall 5 lks. E. of the cor. of secs. 2, 3, 34 and 35, on N. bdy. of Tp., described in Book "B" of this group.
Thence
S. 0° 12' E., on a true line, bet. secs. 2 and 3.
Over gently rolling land, thru. dense timber and undergrowth.
- 15.00 Descend 45 ft., over SW. slope, to
Head of draw, course SW.
- 20.00 Descend 17 ft., over W. slope, to
Low spur, slopes SW.
- 39.80 Descend 68 ft., over S. slope.
Shallow draw, 20 lks. wide, course W.
- 40.00 Ascend slightly over NW. slope, to
Set an iron post, 3 ft. long, 1 in. in diam., on surface rock, supported in a mound of stone, for $\frac{1}{4}$ sec. cor., marked on brass cap,

$\frac{1}{4}$
 S 3 | S 2
 1922

from which,

- A pinyon, 24 ins. in diam., brs. S. 69° E., 73 lks. dist., marked $\frac{1}{4}$ S 2 BT.
- A pinyon, 10 ins. in diam., brs. N. 10° W., 8 lks. dist., marked $\frac{1}{4}$ S 3 BT.
- 45.00 Ascend slightly over NW. slope.
- 47.00 Descend gradually over SW. slope.
- 48.00 Trail, brs. NE and SW.
- 48.00 Small draw, 5 lks. wide, course SW.
- 50.30 Ascend slightly over NW. slope, to
Leave timber, brs. SE. and NW. Enter sagebrush flat.
- 80.00 The cor. of secs. 2, 3, 10 and 11.
Land, gently rolling and level.
Soil, sandy and rocky loam, 3rd rate.
Timber, cedar, pinyon and scrub oak.
Undergrowth, scrub oak, sagebrush and cactus.

From the cor. of secs. 3, 4, 33 and 34 on S. bdy. of Tp. hereinbefore described,
N. 0° 2' W., bet. secs. 33 and 34.

30 Survey of Subdivision lines of Township 31 North, Range 11 West.

Chains.

Over gently rolling land, thru. dense timber and undergrowth.

15.00

Ascend gradually over SE. slope, to

40.00

Leave timber, brs. SE. and NW. Enter level land.
Set an iron post, 3 ft. long, 1 in. in diam., 24 ins. in the ground for $\frac{1}{4}$ sec. cor., marked on brass cap,

*
S33 | S34
1922

from which,

A cedar, 6 ins. in diam., brs. N. 74° E., 59 lks.
dist., marked $\frac{1}{4}$ S 34 BT.

A cedar, 6 ins. in diam., brs. N. 13° W., 182 lks.
dist., marked $\frac{1}{4}$ S 33 BT.

70.00

Enter dense timber, brs. NE. and SW.

80.00

Set an iron post, 3 ft. long, 2 ins. in diam., 26 ins. in the ground, for cor. of secs. 27, 28, 33 and 34, marked on brass cap,

T31N | R11W
S28 | S27
S33 | S34
1922

from which,

A cedar, 24 ins. in diam., brs. N. 10° E., 58 lks.
dist., marked T31N R11W S27 BT.

A cedar, 12 ins. in diam., brs. S. 54° E., 108 lks.
dist., marked T31N R11W S34 BT.

A cedar, 12 ins. in diam., brs. S. 36° W., 91 lks.
dist., marked T31N R11W S33 BT.

A cedar, 17 ins. in diam., brs. N. 39° W., 43 lks.
dist., marked T31N R11W S28 BT.

Land, S. 15 chs. gently rolling; remainder, level.

Soil, sandy loam, 2nd rate.

Timber, cedar.

Undergrowth, sagebrush.

40.00

N. 89° 57' E., on a random line, bet. secs. 27 and 34.

80.02

Set temp. $\frac{1}{4}$ sec. cor.

Fall 5 lks. S. of cor. of secs. 26, 27, 34 and 35.

Thence,

S. 89° 55' W., on a true line, bet. secs. 27 and 34.

Over gently rolling land, thru. dense timber and undergrowth.

20.00

Ascend 73 ft., over E. slope.

Low ridge, brs. N. 20° E. and S. 20° E.

40.01

Descend 45 ft., over W. slope, to

Set an iron post, 3 ft. long, 1 in. in diam., 4 ins. in the ground to bed rock, supported in a mound of stone for $\frac{1}{4}$ sec. cor., marked on brass cap,

$\frac{1}{4}$ S 27
S 34
1922

from which,

A cedar, 6 ins. in diam., brs. N. 69° W., 84 lks.
dist., marked $\frac{1}{4}$ S 27 BT.

A cedar, 8 ins. in diam., brs. S. 1° W., 78 lks.
dist., marked $\frac{1}{4}$ S 34 BT.

Continue over gently rolling land, thru. dense timber and undergrowth.

69.00

Descend 72 ft., over W. slope, to

72.80

Leave timber, brs. NE. and SW. Enter level land.

78.20

Old road, brs. N. and S.

Enter dense timber, brs. N. and S.

Survey of Subdivision lines of Township 31 North, Range 11 West. 31

Chains.

80.02 The cor. of secs. 27, 28, 33 and 34.
Land, E. 69 chs., gently rolling; remainder, level.
Soil, sandy loam and rocky, 2nd to 4th rate.
Timber, cedar and pinyon.
Undergrowth, sagebrush, scrub oak and ironwood.

40.00 N. 0° 2' W., bet. secs. 27 and 28.
Over level land, thru dense timber and undergrowth.
Set an iron post, 3 ft. long, 1 in. in diam., 24 ins. in
the ground for $\frac{1}{4}$ sec. cor., marked on brass cap,

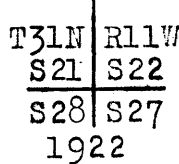


from which,
A cedar, 8 ins. in diam., brs. S. 44° E., 29
lks. dist., marked $\frac{1}{4}$ S 27 BT.
A cedar, 6 ins. in diam., brs. N. 29° W., 17
lks. dist., marked $\frac{1}{4}$ S 28 BT.

45.00 Leave level, and enter gently rolling land.
Ascend gradually over S. slope.

65.00 Top of low divide, brs. E. and W.
Descend gradually over N. slope, to

80.00 Set an iron post, 3 ft. long, 2 ins. in diam., 12 ins. in
the ground to bed rock, supported in a mound of stone
for cor. of secs. 21, 22, 27 and 28, marked on brass
cap,



from which,
A cedar, 8 ins. in diam., brs. N. 83 $\frac{1}{2}$ ° E., 66
lks. dist., marked T31N R11W S22 BT.
A cedar, 10 ins. in diam., brs. S. 57 $\frac{1}{2}$ ° E., 23
lks. dist., marked T31N R11W S27 BT.
A pinyon, 8 ins. in diam., brs. S. 51 $\frac{1}{2}$ ° W., 30
lks. dist., marked T31N R11W S28 BT.
A cedar, 10 ins. in diam., brs. N. 31° W., 23
lks. dist., marked T31N R11W S21 BT.

Land, S. 45 chs. level; N. 35 chs., gently rolling.
Soil, rocky, clay loam, 2nd rate.
Timber, cedar and pinyon.
Undergrowth, scrub oak and sagebrush.

40.00 N. 89° 55' E., on a random line, bet. secs. 22 and 27.
Set temp. $\frac{1}{4}$ sec. cor.

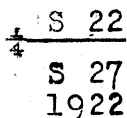
80.00 Fall 16 lks. N. of the cor. of secs. 22, 23, 26 and 27.
Thence,

N. 89° 58' W., on true line, bet. secs. 22 and 27.
Over gently rolling land, thru dense timber and under-
growth.

10.00 Ascend gradually over SE. slope.
Top of low divide, brs. NE. and SW.

Descend gradually over NW. slope, to

40.00 Set an iron post, 3 ft. long, 1 in. in diam., 12 ins. in the
ground, to bed rock, supported in a mound of stone,
for $\frac{1}{4}$ sec. cor., marked on brass cap,



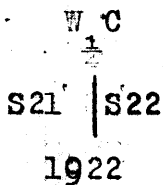
from which,

32 Survey of Subdivision lines of Township 31 North, Range 11 West.

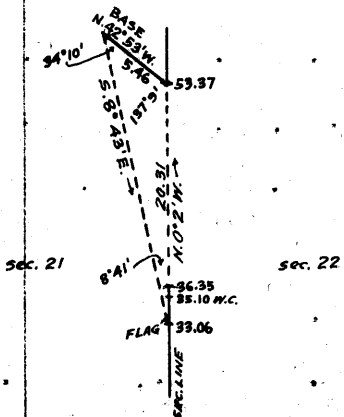
Chains.

A cedar, 6 ins. in diam., brs. N. 50° E., 17 lks. dist.; marked $\frac{1}{4}$ S 22 BT.
 A cedar, 20 ins. in diam., brs. S. 73° W., 173 lks. dist., marked $\frac{1}{4}$ S 27 BT.
 Descend gradually over N. slope to sec. cor.
 65.00 Old road, brs. NE. and SW.
 Penn's Corral, brs. N. 30° E., about 15 chs. dist.
 76.20 Trail, brs. SE. and NW.
 80.00 The cor. of secs. 21, 22, 27 and 28.
 Land, gently rolling.
 Soil, rocky clay loam, 2nd rate.
 Timber, cedar and pinyon.
 Undergrowth, scrub oak and sage brush.

N. 0° 2' W., bet. secs. 21 and 22.
 Over gently rolling land, thru. dense timber and undergrowth.
 Descend gradually over N. slope, to
 33.06 South or left rim of canyon, brs. NE. and SW. Set flag at this point for triangulation hereinafter described.
 Enter mountainous land.
 Descend 75 ft., over steep N. slope, to
 35.10 Set an iron post, 3 ft. long, 1 in. in diam., on surface rock, supported in a mound of stone, for witness cor. to the $\frac{1}{4}$ sec. cor., marked on brass cap,



from which,
 A cedar, 24 ins. in diam., brs. S. 9° W., 23 lks. dist., marked WC $\frac{1}{4}$ S 21 BT.
 No other bearing trees available.
 Mark a cross (x) in face of rock wall, S. 65° E., 15 lks. dist., and WC $\frac{1}{4}$ S 22 above cross.
 Descend 85 ft., over steep N. slope to bottom of canyon.
 35.15 Trail, brs. N 70° E. and S. 70° W.
 A corral brs. E. about 8 chs. dist.
 36.35 Bottom of canyon, 60 lks. wide, course W. A water tank, known as Penn's Pocket brs. East 10 chs. dist. at head of this canyon.
 Owing to precipitous ascent over cliffs on the N. side of Canyon, it is impracticable to chain measurement on the sec. line beyond the bottom of the canyon; therefore triangulate as described, as follows:



From a point ahead on sec. line, at N. or right rim of canyon, measure a Base N. 42° 53' W., 5.46 chs. along rim.
 From NW. end of Base, the flag at 33.06 ch. station on sec. line at S. rim of canyon, brs. S. 8° 43' E.
 From SE. end of Base, the vertical angle to flag is - 2°.

Dist. on sec. line = 33.06 chs. N. 0° 2' W.
 Dist. triangulated = 20.31 chs. N. 0° 2' W.

Total distance = 53.37 chs. N. 0° 2' W.
 40.00 True point for $\frac{1}{4}$ sec. cor. falls on nearly perpendicular S. slope, where it is inaccessible.
 45.00 (Approx.) Point of sharp rocky spur, sloping SW. Continue ascent over precipitous broken W. and SW. faces of cliffs to
 53.37 Triangulation point at top of cliff about 200 ft. high,

Survey of Subdivision lines of Township 31 North, Range 11 West. 33

Chains.

bearing N.70°W. and S.30°E. facing SW., and forming N. or right rim of canyon. Leave mountainous, and enter gently rolling land. Continue line and measurement by chaining.
 Ascend gradually over SW.slope, to
 80.00 Set an iron post, 3 ft.long, 2 ins.in diam., 26ins.in the ground for cor.of secs.15,16,21 and 22, marked on brass cap,

T31NR11W
 S16 | S15
 S21 | S22
 1922

from which,
 A cedar, 6 ins.in diam., brs.N.18°E., 84 lks. dist., marked T31N R11W S15 BT.
 A cedar, 30 ins.in diam., brs.S.38°E., 47 lks. dist., marked T31N R11W S22 BT.
 A cedar, 12 ins.in diam., brs.S.35°W., 93 lks. dist., marked T31N R11W S21 BT.
 A cedar, 14 ins.in diam., brs.N.59°W., 200 lks. dist., marked T31N R11W S16 BT.

Land, gently rolling and mountainous.
 Soil, rocky, 4th rate.
 Timber, cedar and pine.
 Undergrowth, scrub oak and sagebrush.

S.89°58'E., on a random line, bet. secs.15 and 22.
 40.00 Set temp. 1/4 sec.cor.
 80.02 Fall 5 lks.S.of the cor.of secs. 14,15,22 and 23.
 Thence,
 West, on a true line, bet. secs.15 and 22.
 Over gently rolling land, thru. dense timber and undergrowth.

Descend gradually over SW.slope, to
 16.20 Wash, 40 lks.wide, course N.70°W.
 Descend slightly over NW.slope, to
 21.80 Same wash, course SW.
 Descend over S.slope, to
 28.80 Same wash, course NW.
 Descend gradually over SW.slope, to
 37.20 Same wash, course SW.
 Descend gradually over SW.slope, to
 40.01 Set an iron post, 3 ft.long, 1 in.in diam., 12 ins. in the ground to bed rock, supported in a mound of stone for 1/4 sec.cor., marked on brass cap,

1/4 S. 15
 S 22
 1922

from which,
 A cedar, 6 ins.in diam., brs.N.9°E., 41 lks. dist., marked 1/4 S 15 BT.
 A cedar, 20 ins.in diam., brs.S.9°W., 85 lks. dist., marked 1/4 S 22 BT.

Continue over gently rolling land, thru.dense timber and undergrowth.

Descend gradually over SW. slope to sec.cor.
 49.00 Old road, brs.N.and S.
 79.20 Old brush and log fence, brs.N and S.
 80.02 The cor.of secs.15,16,21 and 22.

Land, gently rolling.
 Soil, sandy loam, 2nd rate.
 Timber, cedar, pinyon and yellow pine.
 Undergrowth, scrub oak and sagebrush.

N.0°2'W., bet. secs. 15 and 16.
 Over gently rolling land, thru.dense timber and

34 Survey of Subdivision lines of Township 31 North Range 11 West.

Chains.

undergrowth.
Ascend gradually over SW. and W. slopes to $\frac{1}{4}$ sec.cor.
Brush fence brs. SE. and NW.
5.70
40.00 Set an iron post, 3 ft.long, 1 in.in diam., 12 ins.in
the ground to bed rock, supported in a mound of stone,
for $\frac{1}{4}$ sec.cor., marked on brass cap,

$\frac{1}{4}$
S16 | S15
1922

from which,
A cedar, 12 ins.in diam., brs.N.52°E., 41 lks.
dist., marked $\frac{1}{4}$ S 15 BT.
A cedar, 14 ins.in diam., brs.S.43°W., 85 lks.
dist., marked $\frac{1}{4}$ S 16 BT.
Continue over gently rolling land, thru.dense timber and
undergrowth.
Descend gradually over NW.slope to sec.cor.
67.10 Old road, brs.SE. and NW.
80.00 Set an iron post, 3 ft.long, 2 ins. in diam., 18 ins.in
the ground to bed rock, supported in a mound of stone,
for cor.of secs. 9,10,15 and 16, marked on brass cap,

T31N | R11W
S 9 | S10
S16 | S15
1922

from which,
A pinyon, 10 ins. in diam., brs.N.58 $\frac{1}{2}$ °E., 113
lks.dist., marked T31N R11W S10 BT.
A cedar, 24 ins.in diam., brs.S.39°E., 80
lks.dist., marked T31N R11W S15 BT.
A pinyon, 8 ins.in diam., brs.S.32°W., 85 lks.
lks.dist., marked T31N R11W S16 BT.
A pinyon, 20 ins. in diam., brs.N.33°W., 118
lks.dist., marked T31N R11W S9 BT.

Land, gently rolling.
Soil, rocky loam, 2nd rate.
Timber, cedar and pinyon.
Undergrowth, sagebrush, scrub oak and cactus.

40.00 East, on a random line, bet. secs.10 and 15.
Set temp. $\frac{1}{4}$ sec.cor.
80.04 Intersect the cor.of secs. 10,11,14 and 15.
Thence,
West, on a true line, bet. secs. 10 and 15.
Over gently rolling land, thru.dense timber and under-
growth.
Descend gradually over SW. slope.
16.40 Shallow draw, 10 lks.wide, course NW.
Ascend 10 ft., over NE.slope.
20.00 Low spur, slopes NW.
Descend 45 ft., over W.slope, to
40.02 Set an iron post, 3 ft.long, 1 in.in diam., 12 ins. in the
ground to bed rock, supported in a mound of stone, for
 $\frac{1}{4}$ sec.cor., marked on brass cap,

$\frac{1}{4}$ S 10
S 15
1922

from which,
A cedar, 12 ins.in diam., brs.N.62°E., 76
lks.dist., marked $\frac{1}{4}$ S 10 BT.
A cedar, 6 ins.in diam., brs.S.19°W., 89
lks.dist., marked $\frac{1}{4}$ S 15 BT.
Continue over gently rolling land, thru.dense timber and
undergrowth.
76.40 Descend 100 ft., over W.slope, to
Draw, 20 lks.wide, course NW.

Survey of Subdivision lines of Township 31 North Range 11 West, 35

Chains.

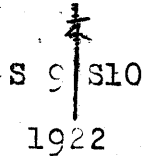
80.04 Descend slightly over N. slope, to
The cor. of secs. 9, 10, 15 and 16.
Land, gently rolling.
Soil, loam and rocky, 3rd rate.
Timber, cedar and pinyon.
Undergrowth, sagebrush, scrub oak and cactus.

N. 0° 2' W., bet. secs. 9 and 10.
Over gently rolling land, thru dense timber and undergrowth.

6.70 Descend 30 ft., over N. slope.
Center of rocky wash, 200 lks. wide, course W.
Ascend gradually over SE. slope, to

28.40 Old road, brs. NE. and SW.

40.00 Set an iron post, 3 ft. long, 1 in. in diam., 6 ins. in
the ground to bed rock, supported in a mound of stone,
for $\frac{1}{4}$ sec. cor., marked on brass cap,



from which,

A pinyon, 12 ins. in diam., brs. N. 19° E., 26 lks.
dist., marked $\frac{1}{4}$ S 10 BT.

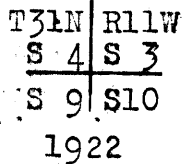
A cedar, 6 ins. in diam., brs. N. 21° W., 15 lks.
dist., marked $\frac{1}{4}$ S 9 BT.

Continue over gently rolling land, thru dense timber and undergrowth.

78.60 Ascend gradually over SE. slope to sec. cor.

80.00 Old road, brs. E. and W.

Set an iron post, 3 ft. long, 2 ins. in diam., 8 ins. in
the ground to bed rock, supported in a mound of stone,
for cor. of secs. 3, 4, 9 and 10, marked on brass cap,



from which,

A cedar, 12 ins. in diam., brs. N. 89° E., 60 lks.
dist., marked T31N R11W S3 BT.

A cedar, 10 ins. in diam., brs. S. 20° E., 76 lks.
dist., marked T31N R11W S10 BT.

A cedar, 14 ins. in diam., brs. S. 25° W., 101 lks.
dist., marked T31N R11W S9 BT.

A cedar, 8 ins. in diam., brs. N. 72° W., 75 lks.
dist., marked T31N R11W S4 BT.

Land, gently rolling.

Soil, loam and rock, 2nd to 4th rate.

Timber, cedar and pinyon.

Undergrowth, sagebrush, scrub oak and cactus.

40.00 East, on a random line, bet. secs. 3 and 10.

80.22 Set temp. $\frac{1}{4}$ sec. cor.

Intersect the cor. of secs. 2, 3, 10 and 11.

Thence,

West, on a true line, bet. secs. 3 and 10.

Over level land, thru dense undergrowth.

4.70 Wash, 10 lks. wide, course NW. near head.

15.40 Wash, 50 lks. wide, course SW. Leave level, and enter gently
rolling land. Enter scattering timber.

26.60 Ascend gradually over E. slope.

Low spur, slopes SE. Log and brush fence, brs. NW. and SE.

36 Survey of Subdivision lines of Township 31 North Range 11 West.

Chains.

- NW. end of William Shanley's house, brs. S. 44° 50' W.
Corral brs. S. 26° W.
Descend 20 ft., over SW. slope, to
35.00 Enter level land, brs. NW. and SE.
40.11 Set an iron post, 3 ft. long, 1 in. in diam., 24 ins. in
the ground for $\frac{1}{4}$ sec. cor., marked on brass cap,
- $$\begin{array}{r} \frac{1}{4} \quad S \quad 3 \\ \hline S \quad 10 \\ 1922 \end{array}$$
- from which,
A yellow pine, 36 ins. in diam., brs. N. 70° W., 408
lks. dist., marked $\frac{1}{4}$ S 3 BT.
A pinyon, 6 ins. in diam., brs. S. 84° E., 225
lks. dist., marked $\frac{1}{4}$ S 10 BT.
William Shanley's house, brs. S. 6° W.
Corral brs. S. 12° E.
Continue over level land, thru. scattering timber and dense
undergrowth.
- 43.40 Log and brush fence, brs. NE. and SW.
Enter dense timber, brs. N. and S., and gently rolling land.
Ascend 85 ft., over SE. slope, to
80.22 The cor. of secs. 3, 4, 9 and 10.
Land, level and gently rolling.
Soil, sandy loam and stony, 2nd to 3rd rate.
Timber, cedar and pinyon.
Undergrowth, sagebrush and scrub oak.
-
- 40.00 N. 0° 13' W., on a random line, bet. secs. 3 and 4.
Set temp. $\frac{1}{4}$ sec. cor.
79.90 Fall 9 lks. W. of the cor. of secs. 3, 4, 33 and 34, on N. bdy.
of Tp., described in Book "B" of this group.
Thence,
S. 0° 9' E., on a true line, bet. secs. 3 and 4.
Over gently rolling, thru. dense timber and undergrowth.
Ascend slightly over NE. slope.
- 6.50 Descend gradually over SE. slope, to
34.00 Enter sagebrush flat, brs. NE. and SW. Leave timber.
39.90 Set an iron post, 3 ft. long, 1 in. in diam., 26 ins. in
the ground for $\frac{1}{4}$ sec. cor., marked on brass cap,
- $$\begin{array}{r} \frac{1}{4} \\ S \quad 4 \quad | \quad S \quad 3 \\ 1922 \end{array}$$
- from which,
A pinyon, 30 ins. in diam., brs. S. 55° E., 51
lks. dist., marked $\frac{1}{4}$ S 3 BT.
A cedar, 16 ins. in diam., brs. S. 18° W., 10
lks. dist., marked $\frac{1}{4}$ S 4 BT.
- 41.90 Enter dense timber.
Log fence brs. NE. and SW. Leave level, and enter gently
rolling land.
Ascend 35 ft., over NW. slope.
50.00 Low ridge, brs. NE. and SW.
Descend gradually over SE. slope, to
79.90 The cor. of secs. 3, 4, 9 and 10.
Land, gently rolling and level.
Soil, sandy and rocky loam, 2nd rate.
Timber, cedar and pinyon.
Undergrowth, scrub oak, sagebrush and locust.
-
- From the cor. of secs. 4, 5, 32 and 33, on S. bdy. of Tp.,
hereinbefore described,
N. 0° 3' W., bet. secs. 32 and 33.
Over rolling land, thru. dense timber and undergrowth.
Ascend 25 ft., over SW. and W. slopes, to

Survey of Subdivision lines of Township, 31 North, Range 11 West. 37

Chains.

10.00 East, or left rim of Green Spring Canyon, brs. NE. and SW. Leave rolling, and enter mountainous land on E. side of said canyon.
 Descend 35 ft., over NW. slope.
 17.00 Ascend 45 ft., over SW. slope, to
 24.82 Same canyon rim, brs. NW. and SE. Leave canyon. Enter rolling land.
 Ascend slightly over W. slope, to
 31.30 Same canyon rim, brs. NE. and SW. Leave rolling, and enter mountainous land on E. side of Green Spring Canyon.
 Descend 35 ft., over NW. slope, to
 36.20 Beyond this point, the sec. line passes over face of cliff; therefore, offset 25 lks. E. to a ledge at top of cliff; Thence,
 N. 0° 3' W., 3.80 chs. on offset line, parallel to and 25 lks. E. of sec. line, descending 14 ft. along ledge to a point 25 lks. E. of the true point for $\frac{1}{4}$ sec. cor.
 40.00 True point for $\frac{1}{4}$ sec. cor. on NW. face of cliff, 100 ft. high, bearing NE. and SW., where it is inaccessible; therefore on ledge at top of cliff 25 lks. E. of said cor. point, set an iron post, 3 ft. long, 1 in. in diam., on surface rock, supported in a mound of stone for witness cor. to $\frac{1}{4}$ sec. cor., marked on brass cap,

$\frac{1}{4}$
 WCS32 | S33
 1922

from which,
 A cedar, 10 ins. in diam., brs. S. 35° E., 33 lks. dist., marked WC $\frac{1}{4}$ S 33 BT.
 A pinyon, 10 ins. in diam., brs. S. 37° W., 37 lks. dist., marked WC $\frac{1}{4}$ S 33 BT.

It is impracticable to return to sec. line here or continue the offset line N. 0° 3' W. from this W.C. on account of cliff; therefore, from the W.C. offset East 1.40 chs. to point on E. or left rim of Green Spring Canyon.

Thence,
 N. 0° 3' W., 2.36 chs. on offset line, parallel to and 1.65 chs. E. of sec. line.

42.36 Thence,
 West, 1.65 chs., returning to sec. line at East, or left rim of Green Spring Canyon, brs. NW. and SE. Set flag here for triangulation hereinafter described.
 Thence, N. 0° 3' W. on sec. line, continuing measurement from cor. of secs. 4, 5, 32 and 33.

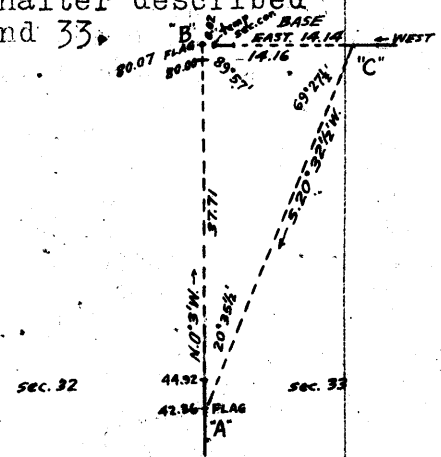
Over rolling land, near canyon rim.
 44.92 Descend gradually over NW. slope, to Same canyon rim, brs. NE. and SW. Beyond this point, the remainder of the sec. line passes over precipitous broken slopes in the canyon, and chaining is impracticable; therefore, triangulate as described as follows, and as shown on the accompanying diagram:

It being impracticable to chain a Base for this triangulation, survey the random line bet. secs. 28 and 33, West, 80.00 chs., and set temp. cor. of secs. 28, 29, 32 and 33 in canyon. The west 14.14 chs. of this random line falls in the Green Spring Canyon, and a measurement of 13.10 chs. W. from the E. rim of the canyon was obtained by triangulation, as hereinafter described in the notes of line bet. secs. 28 and 33.

From 42.36 ch. station on sec. line indicated on diagram at "A" a flag "B" 2 lks. W. of the temp. cor. of secs. 28, 29, 32 and 33 brs. N. 0° 3' W.

From said temp. sec. cor., measure East 14.14 chs., as hereinafter described to point "C" on the E. rim of Green Spring Canyon.

The Base (B-C) is therefore 14.14 chs. + 0.02 chs. = 14.16 chs. East.



38 Survey of Subdivision lines of Township 31 North Range 11 West.

Chains

From "C" the flag "A" brs. S. 20° 32' 1/2" W.
 Dist. on sec. line = 42.36 chs. N. 0° 3' W.
 Dist. triangulated = 37.71 chs. N. 0° 3' W.
 Total distance = 80.07 chs. N. 0° 3' W.
 The temp. cor. of secs. 28, 29, 32 and 33 is therefore 7 lks. N. and 2 lks. E. of the point for the permanent cor. of said secs.
 (Approx.) Bottom of gulch, course W. about 350 ft. below 44.92 chs. sta. on sec. line. Asc. about 100 ft., over SW. slope, to
 (Approx.) Spur, slopes W.
 Descend about 200 ft., over precipitous broken W. slope to
 A point 7 lks. S. and 2 lks. W. of the temp. cor. of secs. 28, 29, 32 and 33 set at 80.00 chs. W. of the cor. of secs. 27, 28, 33 and 34, as hereinafter described.
 Set an iron post, 3 ft. long, 2 ins. in diam., 12 ins. in the ground to bed rock, supported in a mound of stone for cor. of secs. 28, 29, 32 and 33. marked on brass cap,

52.00
 62.00
 80.00

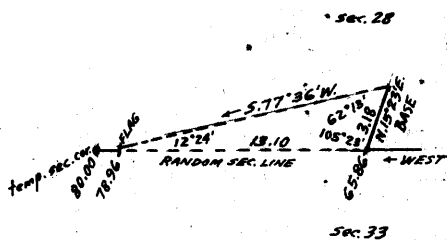
T31N	R11W
S29	S28
S32	S33
1922	

No bearing trees available.
 Raise a mound of stone, 3 ft. base, 2 ft. high, W. of cor. Land, mountainous.
 Soil, rocky, 4th rate.
 Timber, cedar and pinyon.
 Undergrowth, scrub oak, sagebrush and manzanita.

Being unable to complete the survey of line, bet. secs. 32 and 33, prior to survey of line bet. secs. 28 and 33, begin at the cor. of secs. 27, 28, 33 and 34. Thence, west, on random line, bet. secs. 28 and 33.

40.00
 65.86

Set temp. 1/4 sec. cor.
 Top of cliffs, about 200 ft. high, bearing N. and S. facing W., and forming East or left rim of Green Spring Canyon. Precipitous descent beyond this point prevents continuation of chaining on random sec. line; therefore, triangulate as follows:



Measure a Base N. 15° 23' E., 3.18 chs.
 It is impracticable to chain a longer Base.
 Set flag ahead on random sec. line at foot of precipitous descent.
 From NE end of Base, the flag brs. S. 77° 36' W.
 From SW. end of Base, the vertical angle to flag is - 31°.

Dist. on random sec. line = 65.86 chs. W.
 Dist. triangulated = 13.10 chs. W.
 Total distance = 78.96 chs. W.

78.96
 80.00

Triangulation point.. Continue line and measurement by chaining.
 Set temp. cor. of secs. 28, 29, 32 and 33. After completion of survey of line bet. secs. 32 and 33, the point for permanent cor. of said secs. is located at 7 lks. S. and two links W. of this temp. cor.; therefore, the true course and length of line, bet. secs. 28 and 33 are S. 89° 57' W., 80.02 chs.
 Return to cor. of secs. 27, 28, 33 and 34.
 Thence, S. 89° 57' W., on true line, bet. secs. 28 and 33.
 Over level land, thru dense timber and undergrowth.

Survey of Subdivision lines of Township 31 North Range 11 West. 39

Chains

- 7.00 Leave timber, brs.N and S.
- 13.00 Enter dense timber, brs.N and S.
- 27.00 Enter nearly level land.
- Ascend slightly over E.slope, to
- 40.01 Set an iron post, 3 ft.long, 1 in.in diam., 26ins.in the ground, for $\frac{1}{4}$ sec.cor., marked on brass cap,

S 28
S 33
1922

from which,

- A cedar, 10 ins.in diam., brs.N.41°E., 44 lks. dist., marked $\frac{1}{4}$ S 28 BT.
- A cedar limb, 10 ins.in diam., brs.S.50°E., 19 lks. dist., marked $\frac{1}{4}$ S 33 BT.

Thence, over gently rolling land, thru.dense timber and undergrowth.

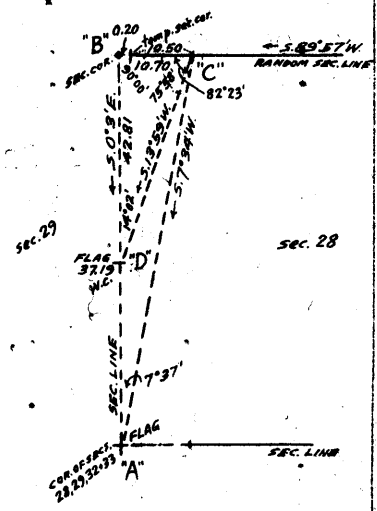
- Ascend 80 ft., over E.slope, to
- 60.00 Ridge, brs.N.and S.
- Descend 35 ft., over W.slope, to
- 65.86 Triangulation point at top of cliff about 200 ft.high, brs.N.and S., facing W., and forming the E.or left rim of Green Spring Canyon. Discontinue chaining. Measurement of 13.10 chs.by triangulation, hereinbefore described.
- Descend about 515 ft., over precipitous W.slope, to
- 78.96 Triangulation point at foot of precipitous descent. Continue line and measurement by chaining.
- Descend 10 ft., over W.slope, to
- 80.02 The cor.of secs.28, 29, 32 and 33. Land, level; nearly level, gently rolling and mountainous. Soil, gravelly and rocky, 2nd and 4th rate. Timber, cedar and pinyon. Undergrowth, scrub oak and sagebrush.

N.0°3'W., bet. secs.28 and 29.
Over mountainous land, thru.scatterng timber and undergrowth.

This line for its entire length, crosses precipitous slopes on the E. side of Green Spring Canyon, and few points on the line are accessible; therefore, it is impracticable to obtain a point on the line from which a Base for triangulation can be chained. To secure a Base for the triangulation of this line, proceed to the cor.of secs. 21, 22, 27 and 28, and survey a random line S.89°57'W. (parallel to line bet.secs.28 and 33) 80.00 chs.bet.secs.21 and 28, and set temp.cor.of secs. 20, 21, 28 and 29.

Triangulate measurement of the sec.line, bet. secs.28 and 29, and also, measurement to witness cor.to $\frac{1}{4}$ sec.cor. on said line, as described as follows, and as shown on the diagram hereon:

- Set flag on the cor.of secs.28, 29, 32 and 33, indicated on diagram at "A."
- From a point "B" 20 lks.S.89°57'W.of the temp.cor.of secs.20, 21, 28 and 29, the flag "A" brs.S.0°3'E.
- From said temp.sec.cor., measure N.89°57'E., 10.50 chs.on random sec.line to point "C."
- The Base(B-C) is therefore 10.50 chs. + 0.20 chs.=10.70 chs.N.89°57'E.
- From point "C" the flag "A" brs.S.7°34' W.
- From point "B" line in a flag S.0°3' E., at the nearest accessible point to the $\frac{1}{4}$ sec.cor.indicated on diagram at "D."
- From "C" the flag "D" brs.S.13°59'W.



BOOK 3643

40 Survey of Subdivision lines of Township 31 North Range 11 West.

Chains.

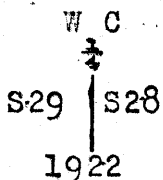
The vertical angle from "C" to "D" is - 25°.

Triangulated measurement of sec. line = 80.00 chs. N. 0° 3' W., therefore, the point for the permanent cor. of secs. 20, 21, 28 and 29 is 20 lks. S. 89° 57' W. from the temp. cor. of said secs.

Triangulated measurement "B-D" = 42.81 chs. S. 0° 3' E.; therefore, the point for witness cor. to $\frac{1}{4}$ sec. cor. is at 2.81 chs. S. 0° 3' E. from cor. point or at 37.19 ch. station on the sec. line, bet. secs. 28 and 29.

37.19 On steep SW. slope at foot of cliffs, bearing NW. and SE., facing SW.

Set an iron post, 3 ft. long, 1 in. in diam., 10 ins. in the ground to bed rock, supported in a mound of stone for witness cor. to $\frac{1}{4}$ sec. cor., marked on brass cap,



No bearing trees available. Raise a mound of stone, 2 ft. base, $1\frac{1}{2}$ ft. high, W. of cor.

40.00 Ascend about 670 ft., over cliffs. Point for $\frac{1}{4}$ sec. cor. on SW. face of cliff. Inaccessible.

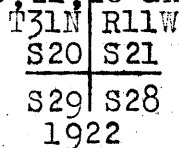
50.00 (Approx.) Rocky spur, sloping W.

60.00 Descend about 200 ft., over precipitous NW. slope, to (Approx.) Bottom of gulch, 20 lks. wide, course W.

78.00 Ascend about 200 ft. over precipitous W. slope, to (Approx.) Bottom of gulch, 20 lks. wide, course W.

80.00 Ascend about 300 ft. over almost perpendicular S. slope, to

Set an iron post, 3 ft. long, 2 ins. in diam., 12 ins. in the ground to bed rock, supported in a mound of stone, for cor. of secs. 20, 21, 28 and 29, marked on brass cap,



No bearing trees available. Raise a mound of stone, 3 ft. base, 2 ft. high, W. of cor.

Land, mountainous.

Soil, rocky, 4th rate.

Timber, cedar and pinyon.

Undergrowth, scrub oak and sagebrush.

Being unable to survey line bet. secs. 28 and 29 prior to survey of line bet. secs. 21 and 28, begin at the cor. of secs. 21, 22, 27 and 28.

Thence, S. 89° 57' W., on a random line, bet. secs. 21 and 28.

40.00 Set temp. $\frac{1}{4}$ sec. cor.

80.00 Set temp. cor. of secs. 20, 21, 28 and 29. After triangulation of line bet. secs. 28 and 29, the point for cor. of secs. 20, 21, 28 and 29 is located at 20 lks. S. 89° 57' W. of this temp. sec. cor.; therefore, the true course and length of sec. line, bet. secs. 28 and 33 are S. 89° 57' W., 80.20 chs.

Return to cor. of secs. 21, 22, 27 and 28.

Thence, S. 89° 57' W., on a true line, bet. secs. 21 and 28.

Over gently rolling land, thru dense timber and undergrowth.

40.10 Ascend gradually over N. slope, to Set an iron post, 3 ft. long, 1 in. in diam., 12 ins. in the ground to bed rock, supported in a mound of stone for $\frac{1}{4}$ sec. cor., marked on brass cap,

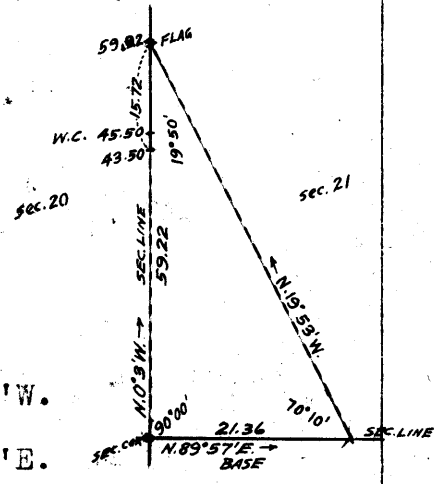
Survey of Subdivision lines of Township 31 North, Range 11 West. 41 Chains.

$\frac{1}{4}$ S 21
S 28
1922

from which,
A cedar, 12 ins. in diam., brs. N. 12° E., 24 lks. dist., marked $\frac{1}{4}$ S 21 BT.
A cedar, 10 ins. in diam., brs. S. 7° W., 55 lks. dist., marked $\frac{1}{4}$ S 28 BT.
Continue over gently rolling land, thru. dense timber and undergrowth.
Ascend gradually over N. slope.
52.00 Top of hill, brs. S. about 20 chs. dist.
Descend gradually over NW. slope, to
58.84 E. or left rim of Green Spring Canyon, brs. SE. and NW. Enter mountainous land in canyon, over a series of cliffs, 50 to 200 ft. high, facing W.
Descend 560 ft. to
80.20 The cor. of secs. 20, 21, 28 and 29.
Land, gently rolling and mountainous.
Soil, rocky, 3rd and 4th rate.
Timber, cedar and pinyon.
Undergrowth, scrub oak, manzanita, sagebrush and cactus.

N. 0° 3' W., bet. secs. 20 and 21.
Over mountainous land, in Green Spring Canyon, thru. scattering timber and undergrowth. The bottom of the canyon, course SW., crosses the sec. line near the point for $\frac{1}{4}$ sec. cor., and the S. $\frac{1}{2}$ of the sec. line passes over cliffs facing W., preventing chain measurement of such portion of the sec. line; therefore, triangulate as described as follows:

From cor. of secs. 20, 21, 28 and 29, measure a Base, N. 89° 57' E., 21.36 chs. along the sec. line, bet. secs. 21 and 28 to E. rim of Green Spring Canyon.
Set a flag on sec. line, bet. secs. 20 and 21, at top of spur, on the W. side of Green Spring Canyon.
From E. end of Base, the flag brs. N. 19° 53' W.



Dist. triangulated = 59.22 chs. N. 0° 3' W.
Dist. by return measurement = 15.72 chs. S. 0° 3' E.
43.50 chs. N. 0° 3' W. to point on sec. line in center of bottom of Green Spring Canyon.

40.00 True point for $\frac{1}{4}$ sec. cor. falls on face of cliff, and is inaccessible.
43.50 Center of bottom of Green Spring Canyon, 100 lks. wide, course S. 10° W.
Small corral brs. S. 50° W., about 7 chs. dist.
Continue line and measurement by chaining.
Ascend gradually across canyon bottom to
45+50 W. or right edge of bottom of canyon, brs. N. 10° E. and S. 10° W.
Set an iron post, 3 ft. long, 1 in. in diam., 26 ins. in the ground, for witness cor. to $\frac{1}{4}$ sec. cor., marked on brass cap.

$\frac{1}{4}$
S 20 | S 21
W C
1922

No bearing trees available.
Raise a mound of stone, 2 ft. base, 1 1/2 ft. high, W. of cor.
Ascend 500 ft., over steep SE. slope.

BOOK 3643

42 Survey of Subdivision lines of Township 31 North, Range 11 West.

Chains.

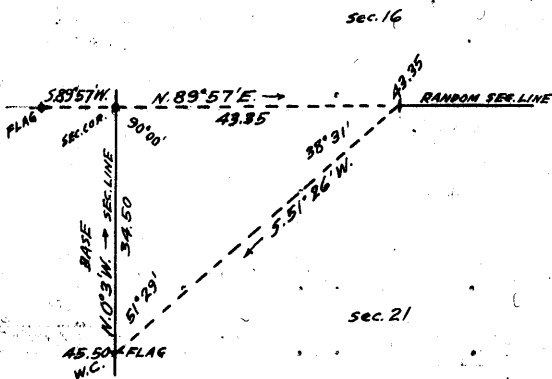
- 50.00 Trail, brs. NE. and SW.
- 59.22 Triangulation point on top of spur, sloping E. Enter side canyon, course SE., into Green Spring Canyon. Continue line and measurement by chaining.
- 62.00 Descend 396 ft., over steep NE. and E. slopes.
- 62.00 Trail, brs. E. and W.
- 79.80 Bottom of side canyon, 30 lks. wide, course SE.
- Ascend slightly over SW. slope, to
- 80.00 Set an iron post, 3 ft. long, 2 ins. in diam., 24 ins. in the ground for cor. of secs. 16, 17, 20 and 21, marked on brass cap,

T31N | R11W.
 S17 | S16
 S20 | S21
 1922

from which,
 A pinyon, 12 ins. in diam., brs. N. 22° E., 34 lks. dist., marked T31N R11W S16 BT.
 A cedar, 8 ins. in diam., brs. S. 2½° E., 126 lks. dist., marked T31N R11W S21 BT.
 An oak, 6 ins. in diam., brs. S. 66° W., 33 lks. dist., marked T31N R11W S20 BT.
 No other bearing tree available.
 A boulder, 5x5x2 ft. above ground, brs. N. 38° W., 8 lks. dist., marked cross (x) on top.

Land, mountainous.
 Soil, rocky, 4th rate.
 Timber, cedar and pinyon.
 Undergrowth, scrub oak and sagebrush.

N. 89° 57' E., on random line, bet. secs. 16 and 21.
 Cliffs and precipitous slopes prevent chaining on the W. ¼ of this line; therefore, triangulate as described as follows:



Set flag on W. rim of side canyon S. 89° 57' W. from the cor. of secs. 16, 17, 20 & 21. Set another flag on the witness cor. to ¼ sec. cor. of secs. 20 and 21. From a point on the random line bet. secs. 16 and 21, at E. or left rim of Green Spring Canyon, the first flag brs. S. 89° 57' W., and the second flag brs. S. 51° 26' W.

The Base for this triangulation is that portion of the sec. line, bet. secs. 20 and 21 from the W.C. to ¼ sec. cor., to the cor. of secs. 16, 17, 20 and 21 (N. 0° 3' W., 34.50 chs.)

- Distance triangulated = 43.35 chs. N. 89° 57' E.
- 40.00 Point for temp. ¼ sec. cor. falls on cliffs and is inaccessible.
- 43.35 Triangulation point at E. rim of Green Spring Canyon. Continue line and measurement by chaining.
- 43.50 Set temp. witness cor. to ¼ sec. cor.
- 80.14 Fall 14 lks. S. of the cor. of secs. 15, 16, 21 and 22. Thence, S. 89° 51' W., on true line, bet. secs. 16 and 21. Over gently rolling land, thru. dense timber and undergrowth. Descend gradually over SW. slope to rim of canyon.
- 36.60 Set an iron post, 3 ft. long, 1 in. in diam., 26 ins. into crack between two boulders, for witness cor. to ¼ sec. cor., marked on brass cap,

W.C. ¼ | S 16
 S 21
 1922

Survey of Subdivision lines of Township 31 North, Range 11 West. 43

Chains.

- from which,
 - A cedar, 8 ins. in diam., brs. N. 17° E., 121 lks. dist., marked WC 1/4 S 16 BT.
 - A cedar, 6 ins. in diam., brs. S. 88° E., 109 lks+ dist., marked WC 1/4 S 21 BT.
- Descend gradually.
- 36.79 Triangulation point at top of cliff 300 ft. high, bearing N. 10° W. and S. 10° E., forming E. or left rim of Green Spring Canyon. Discontinue chaining. Enter mountainous land. Remainder of mile triangulated, as hereinbefore described.
- Descend about 515 ft., over precipitous W. slope to bottom of Green Spring Canyon.
- 40.07 True point for 1/4 sec. cor. is inaccessible.
- 47.00 (Approx.) Center of bottom of Green Spring Canyon, 100 lks. wide, course S.
- Ascend about 300 ft., over steep broken SE. slope, to
- 70.00 (Approx.) Spur, slopes S.
- Descend about 280 ft., over steep SW. slope, to
- 80.14 The cor. of secs. 16, 17, 20 and 21. Land, gently rolling and mountainous. Soil, rocky, 3rd and 4th rate. Timber, cedar and pinyon. Undergrowth, scrub oak and sagebrush.

-
- N. 0° 3' W., bet. secs. 16 and 17.
 - Over mountainous land in side canyon, thru. scattering timber and dense undergrowth.
 - Ascend 648 ft., over steep broken SW. slope, to
 - 25.08 E. or left rim of side canyon, brs. SE. and NW. Leave canyon. Enter nearly level land and dense timber.
 - Ascend slightly over SE. slope, to
 - 40.00 Set an iron post, 3 ft. long, 1 in. in diam., 12 ins. in the ground to bed rock, supported in a mound of stone for 1/4 sec. cor., marked on brass cap,

$\frac{1}{4}$
 S17 | S16
 1922

- from which,
 - A cedar, 14 ins. in diam., brs. S. 12° E., 32 lks. dist., marked 1/4 S. 16 BT.
 - A cedar, 14 ins. in diam., brs. S. 85° W., 67 lks. dist., marked 1/4 S 17 BT.
- Continue over nearly level land, thru. dense timber and undergrowth.
- Ascend slightly over SE. slope, to
- 80.00 Set an iron post, 3 ft. long, 2 ins. in diam., 14 ins. in the ground to bed rock, supported in a mound of stone, for cor. of secs. 8, 9, 16 and 17, marked on brass cap,

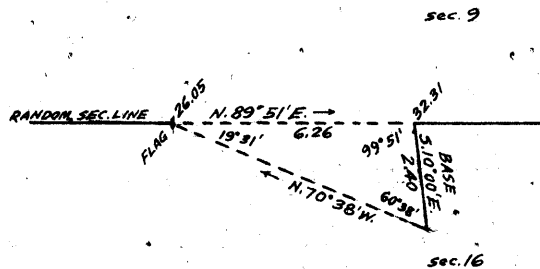
T31N | R11W.
 S 8 | S 9
 S17 | S16
 1922

- from which,
 - A cedar, 30 ins. in diam., brs. N. 59° E., 113 lks+ dist., marked T31N R11W S9 BT.
 - A cedar, 14 ins. in diam., brs. S. 62° E., 89 lks. dist., marked T31N R11W S16 BT.
 - A cedar, 8 ins. in diam., brs. S. 65° W., 66 lks. dist., marked T31N R11W S17 BT.
 - A cedar, 14 ins. in diam., brs. N. 13° W., 83 lks. dist., marked T31N R11W S8 BT.
- Land, mountainous and nearly level.
- Soil, rocky, 3rd and 4th rate.
- Timber, cedar and pinyon.
- Undergrowth, scrub oak, sagebrush and cactus.

BOOK 3643

44 Survey of Subdivision lines of Township 31 North, Range 11 West
Chains.

- 26.05 N.89°51'E., on random line, bet. secs.9 and 16.
West or right rim of Green Spring Canyon, brs.N. and S. Dis-
continue chaining, and triangulate across canyon, as
described as follows:



Set flag at this point.
From a point ahead on ran-
dom sec. line at opposite
rim of canyon, measure a
Base S.10°E., 2.40 chs.
From SE. end of Base, the
flag brs. N.70°38'W.
From NW. end of Base, the
vertical angle to flag is
+ 6°, and to point on ran-
dom line in bottom of
canyon is -41°.

- Dist. on random sec. line = 26.05 chs. N.89°51'E.
Dist. triangulated = 6.26 chs. N.89°51'E.
Total distance, = 32.31 chs. N.89°51'E.
32.31 Triangulation point at E. rim of canyon. Continue line
and measurement by chaining.
40.00 Set temp. $\frac{1}{4}$ sec. cor.
80.20 Fall 2 lks. N. of the cor. of secs. 9, 10, 15 and 16.
Thence,
S.89°52'W., on true line, bet. secs. 9 and 16.
Over gently rolling land, thru. dense timber and undergrowth.
Descend 50 ft., over NW. slope, to
14.50 Draw, 20 lks. wide, in bend, course NW. from NE.
Ascend 28 ft., over NE. slope, to
20.00 Descend gradually over NW. slope to $\frac{1}{4}$ sec. cor.
25.20 Old road, brs. NW. and SE.
35.30 Brush and log fence, brs. N. and S. At 1.00 chs. N. this fence
turns to NW.
40.10 Set an iron post, 3 ft. long, 1 in. in diam., 16 ins. in the
ground to bed rock, supported in a mound of stone, for
 $\frac{1}{4}$ sec. cor., marked on brass cap,

$\frac{1}{4}$ S 9
S 16
1922

from which,

- A pinyon, 12 ins. in diam., brs. N.20°E., 60 lks.
dist., marked $\frac{1}{4}$ S 9 BT.
A cedar, 14 ins. in diam., brs. S.1°W., 26 lks.
dist., marked $\frac{1}{4}$ S 16 BT.
47.89 Descend gradually over NW. slope, to
Triangulation point at E. or left rim of Green Spring Can-
yon, brs. N. and S. Discontinue chaining. Thence over
mountainous land in head of said canyon. Measurement
to W. rim by triangulation, as hereinbefore described.
Descend about 170 ft.
Corrals and shed bear N. about 7 chs. dist.
51.00 (Approx.) Bottom of Green Spring Canyon, course S. Green
Spring brs. N. about 3 chs. dist.
Ascend about 210 ft., over steep E. slope, to
54.15 Triangulation point at W. or right rim of Canyon, brs. N.
and S. Leave canyon. Enter nearly level land.
Continue line and measurement by chaining.
Ascend slightly over SE. slope, to
80.20 The cor. of secs. 8, 9, 16 and 17.
Land, gently rolling, mountainous and nearly level.
Soil, rocky, 4th rate.
Timber, cedar and pinyon.
Undergrowth, scrub oak and sagebrush.

- N.0°3'W., bet. secs. 8 and 9.
Over nearly level land, thru. dense timber and undergrowth.
Ascend slightly over SE. slope to $\frac{1}{4}$ sec. cor.
35.00 Shallow wash, 5 lks. wide, course SE.

Survey of Subdivision lines of Township 31 North, Range 11 West. 45

Chains.	
36.60	Road, brs. SE. and NW.
40.00	Set an iron post, 3 ft. long, 1 in. in diam., 26 ins. in the ground for $\frac{1}{4}$ sec. cor., marked on brass cap,
	$\begin{array}{c} \frac{1}{4} \\ \hline S\ 8\ \ S\ 9 \\ \hline 1922 \end{array}$
	from which,
	A cedar, 10 ins. in diam., brs. S. $63\frac{1}{2}^{\circ}$ E., 32 lks. dist., marked $\frac{1}{4}$ S9 BT.
	A cedar, 8 ins. in diam., brs. S. $12\frac{1}{2}^{\circ}$ W., 26 lks. dist., marked $\frac{1}{4}$ S8 BT.
	Continue over nearly level land, thru. dense timber and undergrowth.
80.00	Ascend slightly over SE. and E. slopes, to Set an iron post, 3 ft. long, 2 ins. in diam., 26 ins. in the ground for cor. of secs. 4, 5, 8 and 9, marked on brass cap,
	$\begin{array}{c} T31N\ R11W \\ \hline S\ 5\ \ S\ 4 \\ \hline S\ 8\ \ S\ 9 \\ \hline 1922 \end{array}$
	from which,
	A yellow pine, 30 ins. in diam., brs. N. 16° E., 138 lks. dist., marked T31N R11W S4 BT.
	A yellow pine, 24 ins. in diam., brs. S. 89° E., 126 lks. dist., marked T31N R11W S9 BT.
	A yellow pine, 24 ins. in diam., brs. S. 28° W., 71 lks. dist., marked T31N R11W S8 BT.
	A cedar, 10 ins. in diam., brs. N. 7° W., 39 lks. dist., marked T31N R11W S5 BT.
	Land, nearly level. Soil, rocky loam, 2nd rate. Timber, cedar and pinyon. Undergrowth, scrub oak and sagebrush.
40.00	N. $89^{\circ}52'$ E., on a random line, bet. secs. 4 and 9. Set temp. $\frac{1}{4}$ sec. cor.
80.18	Intersect the cor. of secs. 3, 4, 9 and 10. Thence, S. $89^{\circ}52'$ W., on a true line, bet. secs. 4 and 9. Over gently rolling land, thru. dense timber & undergrowth. Ascend gradually over SE. and S. slopes.
25.00	Descend gradually over SW. slope to $\frac{1}{4}$ sec. cor.
37.60	Rail fence, brs. N. 20° E. and S. 10° W.
40.09	Set an iron post, 3 ft. long, 1 in. in diam., 12 ins. in the ground to bed rock, supported in a mound of stone, for $\frac{1}{4}$ sec. cor., marked on brass cap,
	$\begin{array}{c} \frac{1}{4} \ S\ 4 \\ \hline S\ 9 \\ \hline 1922 \end{array}$
	from which,
	A cedar, 8 ins. in diam., brs. N. 11° W., 17 lks. dist., marked $\frac{1}{4}$ S4 BT.
	A cedar, 10 ins. in diam., brs. S. 28° E., 57 lks. dist., marked $\frac{1}{4}$ S9 BT.
	Descend gradually over SW. slope.
41.60	Road, brs. S. 30° E. and N. 30° W.
49.60	Wash; 50 lks. wide; course S. 30° E.
	Ascend gradually over NE. slope.
55.00	Enter nearly level land.
	Ascend slightly over E. slope, to
80.18	The cor. of secs. 4, 5, 8 and 9. Land, gently rolling and nearly level. Soil, rocky loam, 2nd rate. Timber, cedar and pinyon. Undergrowth, scrub oak and sagebrush.
40.00	N. $0^{\circ}10'$ W., on a random line, bet. secs. 4 and 5. Set temp. $\frac{1}{4}$ sec. cor.

46 Survey of Subdivision lines of Township 31 North, Range 11 West.

Chains.

80.08 Intersect the cor. of secs. 4, 5, 32 and 33, on N. bdy. of Tp., described in Book "B" of this Group.

Thence, S. 0° 10' E., on a true line, bet. secs. 4 and 5. Over nearly level land, thru. dense timber and scattering undergrowth.

40.08 Descend slightly over S. and SE. slopes, to Set an iron post, 3 ft. long, 1 in. in diam., 10 ins. in the ground to bed rock, supported in a mound of stone for 1/4 sec. cor., marked on brass cap,

S 5 | S 4
1922

from which, A cedar, 10 ins. in diam., brs. N. 3° E., 93 lks. dist., marked 1/4 S 4 BT.

A pinyon, 8 ins. in diam., brs. S. 77° W., 40 lks. dist., marked 1/4 S 5 BT.

Continue over nearly level land, thru. dense timber and scattering undergrowth.

Descend slightly over SE. slope, Road, brs. S. 80° E. and N. 80° W.

69.50 Shallow draw, course S. 80° E.

69.80 Ascend slightly over E. slope, to

80.08 The cor. of secs. 4, 5, 8 and 9.

Land, nearly level. Soil, rocky loam, 2nd rate. Timber, cedar and pinyon. Undergrowth, scrub oak and sagebrush.

From the cor. of secs. 5, 6, 31 and 32, on S. bdy. of Tp., hereinbefore described, N. 0° 3' W., bet. secs. 31 and 32. Over mountainous land in Green Spring Canyon, thru. scattering timber and undergrowth.

.70 Descend 25 ft., over N. slope. Bottom of gulch, course W. from S. 70° E.

3.50 Ascend 43 ft., over SW. slope. Point of spur, slopes NW.

5.50 Descend 75 ft., over N. slope. Gully, 20 lks. wide, course W.

8.50 Ascend 8 ft., over S. slope. Point of spur, slopes W.

14.50 Descend 50 ft., over NW. slope. Trail, brs. N. 10° E. and S. 10° W.

16.00 Enter bottom of Green Spring Canyon, course S. 35° W. from N. Ascend gradually in canyon bottom to

21.00 Leave bottom of canyon, course S. from N. 30° E. Ascend 85 ft., over SE. slope, to

35.30 Point of spur, slopes SE. Ascend 46 ft., over E. slope, to

40.00 Set an iron post, 3 ft. long, 1 in. in diam., 26 ins. in the ground for 1/4 sec. cor., marked on brass cap,

S 31 | S 32
1922

from which, A cedar, 20 ins. in diam., brs. N. 33° E., 181 lks. dist., marked 1/4 S 32 BT.

A cedar, 10 ins. in diam., brs. N. 18° W., 117 lks. dist., marked 1/4 S 31 BT.

Ascend 268 ft., over E. slope, to Bottom of gulch, 40 lks. wide, course SE. Asc. 270 ft. over SW. slope.

61.60 Spur, slopes SE, Asc. 124 ft. over E. slope.

70.00 Bottom of gulch, course SE. Asc. 14 ft. over S. slope, to

79.00 Set an iron post, 3 ft. long, 2 ins. in diam., 26 ins. in the ground for cor. of secs. 29, 30, 31 and 32, marked on brass cap,

80.00 Set an iron post, 3 ft. long, 1 in. in diam., 26 ins. in the ground for cor. of secs. 29, 30, 31 and 32, marked on brass cap,

S 30 | S 29
S 31 | S 32
1922

Survey of Subdivision lines of Township 31 North, Range 11 West. 47

Chains.

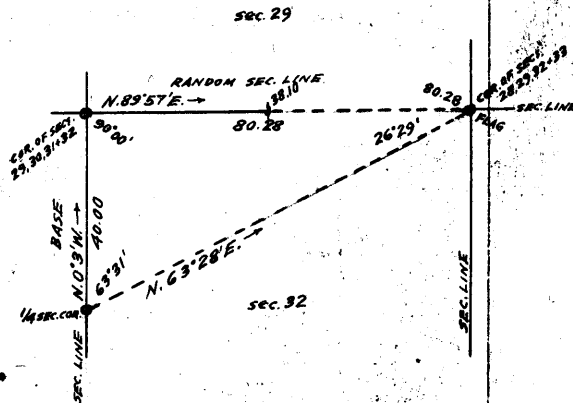
from which,
 A cedar, 6 ins. in diam., brs. N. 37° E., 18 lks.
 dist., marked T31N R11W S29 BT.
 A cedar, 4 ins. in diam., brs. S. 34° E., 22 lks.
 dist., marked BT.
 A cedar, 4 ins. in diam., brs. S. 44° W., 27 lks.
 dist., marked BT.
 A cedar, 6 ins. in diam., brs. N. 48 1/2° W., 23 lks.
 dist., marked T31N R11W S30 BT.

Land, mountainous.
 Soil, rocky, 4th rate.
 Timber, cedar and pinyon.
 Undergrowth, scrub oak and sagebrush.

37.30
 38.10

N. 89° 57' E., on a random line, bet. secs. 29 and 32.
 Set temp. witness cor. to 1/4 sec. cor.
 Discontinue chaining. Precipitous cliffs prevent chaining
 remainder of line. Triangulate as described, as fol-
 lows:

From the cor. of secs. 29, 30,
 31 and 32, a flag on the
 cor. of secs. 28, 29, 32 and
 33, brs. N. 89° 57' E. From the
 1/4 sec. cor. of secs. 31 and
 32, the same flag brs. N. 63°
 28' E.



Use as a Base, the N. 1/2 of line
 bet. secs. 31 and 32 (N. 0° 3'
 W., 40.00 chs.)

Vertical angle from cor. of secs.
 29, 30, 31 and 32 to cor. of
 secs. 28, 29, 32 and 33 is 0°.

80.28

Dist. by triangulation = 80.28 chs.
 Intersect the cor. of secs. 28, 29, 32 and 33.
 Thence,

S. 89° 57' W., on a true line, bet. secs. 29 and 32.
 Over mountainous land, in Green Spring Canyon, thru scat-
 tering timber and undergrowth. Measurement of 42.18
 chs. by triangulation, hereinbefore described.
 Descend about 585 ft., over precipitous W. slope to bot-
 tom of canyon.

40.14
 42.18

True point for 1/4 sec. cor. on face of cliffs.
 Foot of cliff brs. N. and S. and E. edge of wash in bottom
 of Green Spring Canyon. Thence across wash, course S.

42.98

Continue line and measurement by chaining.
 West edge of wash, brs. N. and S. Set an iron post, 3 ft.
 long, 1 in. in diam., 26 ins. in the ground for witness
 cor. to 1/4 sec. cor., marked on brass cap,

WC 1/4 S 29
 S 32
 1922

from which,
 An oak, 6 ins. in diam., brs. N. 20° W., 19 lks.
 dist., marked WC 1/4 S 39. BT.
 An oak, 4 ins. in diam., brs. S. 12° W., 16 lks.
 dist., marked BT.

51.00
 55.00
 59.70
 61.00

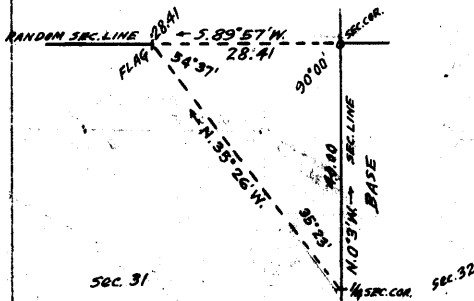
Ascend 90 ft., over E. slope.
 Descend 70 ft., over SW. slope.
 Bottom of gulch; 4 lks. wide, course SE.
 Ascend 80 ft., over E. slope.
 Descend 21 ft., over SW. slope.
 Bottom of gulch, 20 lks. wide, course SE.
 Ascend 83 ft., over SE. slope, to

48 Survey of Subdivision lines of Township 31 North, Range 11 West.

Chains.

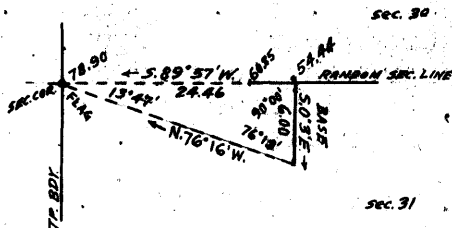
- 66.00 Bottom of gulch, 20 lks. wide, course SE.
Ascend 87 ft., over SE. slope, to
- 70.20 Bottom of gulch, 20 lks. wide, course S 70° E.
Ascend 179 ft., over E. slope.
- 76.80 Spur, slopes SE.
Ascend 65 ft., over S. slope, to
- 80.28 The cor. of secs. 29, 30, 31 and 32.
Land, mountainous.
Soil, rocky, 4th rate.
Timber, cedar and pinyon.
Undergrowth, scrub oak and sagebrush.

S. 89° 57' W., on random line, bet. secs. 30 and 31.
Precipitous ascent from sec. cor. to W. rim of Green Spring
Canyon prevents chaining; therefore, triangulate to said
rim as described as follows:



Set flag ahead on random sec.
line at canyon rim, the vertical
angle to which is + 28°.
From sec. cor. of secs. 31 and
32, the flag brs. N. 35° 26' W.
Use the N. $\frac{1}{2}$ of sec. line bet.
secs. 31 and 32 as a Base (N. 0°
3' W., 40.00 chs.)

- 28.41 Distance triangulated = 28.41 chs. S. 89° 57' W.
Triangulation point on W. rim of canyon. Continue line and
measurement by chaining.
- 40.00 Set temp. + sec. cor.
- 54.44 E. rim of side canyon, brs. N. and S.
- 60.85 Top of cliffs, bearing N. and S. Precipitous descent pre-
vents chaining of the remainder of the random sec. line;
therefore, triangulate as described as follows:



From 54.44 ch. station, measure
a Base S 0° 3' E., 6.00 chs.
Set flag ahead on the cor. of
secs. 25, 30, 31 and 36 on the
W. bdy. of the Tp., the vertical
angle to which is - 32°.
From S. end of Base, the flag
brs. N. 76° 16' W.
From N. end of base the flag
brs. S. 89° 57' W.

- Dist. on random sec. line = 54.44 chs. S. 89° 57' W.
Dist. by triangulation = 24.46 chs. S. 89° 57' W.
- Totals length of random
line = 78.90 chs. S. 89° 57' W.
- 78.90 Intersect the cor. of secs. 25, 30, 31 and 36, described in
Book "C" of this group.

- Thence,
N. 89° 57' E., on true line, bet. secs. 30 and 31.
Over mountainous land, in side canyon, thru. scattering tim-
ber and undergrowth.
- 0.20 Descend slightly over SE. slope, to
Bottom of side canyon, course SW. Discontinue chaining,
and triangulate as hereinbefore described.
- 18.05 Ascend 850 ft., over precipitous W. slope, to
Top of cliff, 400 ft. high, brs. N. and S. facing W. Continue
line and measurement by chaining.
- 24.46 Ascend 160 ft., over steep W. slope, to
Triangulation point at E. or left rim of side canyon, brs.
N. 20° W. and S. Thence over nearly level land, sloping
slightly to the S. Continue chaining.
- 38.90 Set an iron post, 3 ft. long, 1 in. in diam., 8 ins. in the
ground to bed rock, supported in a mound of stone, for

Survey of Subdivision lines of Township 31 North, Range 11 West, 49 Chains.

1/4 sec.cor., marked on brass cap,

1/4 S 30
S 31
1922

from which,

A cedar, 14 ins.in diam., brs.N.14°E., 17 lks.
dist., marked 1/4 S 30 BT.

A cedar, 12 ins.in diam., brs.S.30°W., 25 lks.
dist., marked 1/4 S 31 BT.

Continue over nearly level land, thru.scattering timber and undergrowth.

39.40 West rim of small canyon, brs.N. and S. Continue chaining. Enter mountainous land.

Descend 210 ft., to

40.70 Bottom of canyon, 40 lks.wide, course S.

Ascend 210 ft.to

43.90 East rim of canyon, brs.N.and S. Leave canyon. Enter nearly level land .

50.49 Triangulation point at W.or right rim of Green Spring Canyon, brs.NE and SW. Discontinue chaining. Enter mountainous land in canyon. Measurement to sec.cor. by triangulation, hereinbefore described.

Descend 995ft. over precipitous SE.slope, to

78.90 The cor.of secs.29,30, 31 and 32.
Land, mountainous and nearly level.

Soil, rocky, 4th rate.

Timber, cedar and pinyon.

Undergrowth, scrub oak and sage brush.

N.0° 3' W., bet. secs. 29 and 30.

Over mountainous land in Green Spring Canyon, thru. scattering timber and undergrowth. Precipitous broken ascent from sec.cor. to rim of canyon prevents chaining; therefore, triangulate as described as follows:

Set flag ahead on sec.line at W.or right rim of Green Spring Canyon, the vertical angle θ which is + 30°.

From W.C. to 1/4 sec.cor.of secs.29 and 32 the flag brs.N.45°13'W.

Use as a Base that part of the sec.line bet.secs.29 and 32 from the W.C.to 1/4 sec.cor.S.89° 57'W.to the cor.of secs.29,30,31 and 32 (37.30 chs.).

Dist. triangulated = 37.08 chs.N.0°3'W.

30.00 (Approx.) Sharp rocky spur, slopes SE.about 1275 ft. above sec.cor.

Ascend about 135 ft. to

37.08 Triangulation point at West or right rim of Green Spring Canyon, brs.E and W. Leave canyon. Enter nearly level land, dense timber and undergrowth. Continue line and measurement by chaining.

Ascend slightly over S.slope, to

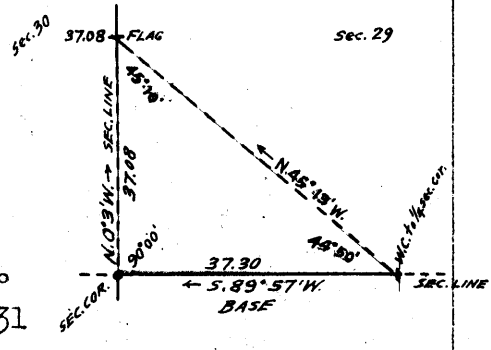
40.00 Set an iron post, 3 ft.long, 1 in.in diam., 12 ins.in the ground to bed rock, supported in a mound of stone, for 1/4 sec.cor., marked on brass cap,

1/4
S30 | S29
1922

from which,

A cedar, 24 ins. in diam., brs.N.61°E., 70 lks.
dist., marked 1/4 S 29 BT.

A cedar, 14 ins.in diam. brs.S.70°W., 26 lks.
dist., marked 1/4 S 30 BT.



BOOK 3643

50 Survey of Subdivision lines of Township 31 North, Range 11 West.

Chains.

Continue over nearly level land, thru dense timber and undergrowth.

80.00 Ascend slightly over S. slope, to Set an iron post, 3 ft. long, 2 ins. in diam., 12 ins. in the ground to bed rock, supported in a mound of stone, for cor. of secs. 19, 20, 29, and 30, marked on brass cap,

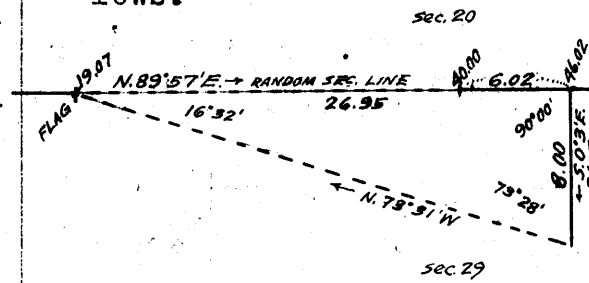
T31N	R11W
S19	S20
S30	S29
1922	

from which,

- A cedar, 14 ins. in diam., brs. N.50° E., 56 lks. dist., marked T31N R11W S20 BT.
- A cedar, 4 ins. in diam., brs. S.11½° E., 450 lks. dist., marked BT.
- A cedar, 8 ins. in diam., brs. S.44° W., 41 lks. dist., marked T31N R11W S30 BT.
- A cedar, 20 ins. in diam., brs. N.65° W., 90 lks. dist., marked T31N R11W S19 BT.

Land, S.37 chs., mountainous; remainder, nearly level. Soil, rocky, 3rd and 4th rate. Timber, cedar and pinyon. Undergrowth, scrub oak and sagebrush.

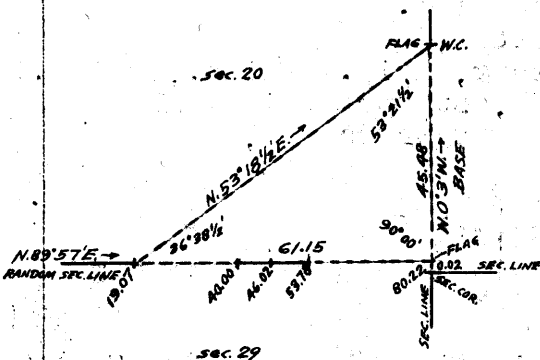
19.07 N.89°57'E., on random line, bet. secs. 20 and 29. West, or right rim of Green Spring Canyon, brs. NE. and S. Beyond this point the line crosses Green Spring Canyon, precipitous slopes in which prevent chaining; therefore, triangulate to temp. ¼ sec. cor., as described as follows.



Set flag at this point. From a point ahead on random sec. line, measure a Base, S.0°3'E., 8.00 chs. From S. end of Base, the flag brs. N.73°31'W. From N. end of Base the vertical angle to flag is + 29°.

Distance on random sec. line = 19.07 chs. N.89°57'E.
 Distance triangulated = 26.95 chs. N.89°57'E.
 Total distance, = 46.02 chs. N.89°57'E.
 Dist. by return measurement = 6.02 chs. S.89°57'W.
 40.00 chs. N.89°57'E.

40.00 Set temp. ¼ sec. cor. Continue line and measurement by chaining.
 46.02 Triangulation point. Continue chaining.
 53.78 Bottom of Green Spring Canyon, course S.10° W. Discontinue chaining owing to precipitous ascent over cliffs. Triangulate measurement of remainder of line, as described, as follows:



From 19.07 ch. station a flag on the W.C. to ¼ sec. cor. of secs. 20 and 21, brs. N.53°18½'E. From same station, a flag set 2 lks. N. of the cor. of secs. 20, 21, 28 and 29, brs. N.89°57'E.; therefore the random line extended would fall 2 lks. N. of said sec. cor. The vertical angle from 19.07 ch. station to cor. of secs. 20, 21, 28 and 29 is -2½°.

Dist. on random sec. line = 19.07 chs. N.89°57'E.
 Dist. triangulated = 61.15 chs. N.89°57'E.
 Total length of random line = 80.22 chs. N.89°57'E.

Subdivision lines of Township 31 North, Range 11 West. 51

Chains.

- 80.22 Fall 2 lks. N. of the cor. of secs. 20, 21, 28 and 29.
Thence,
S. 89° 58' W., on true line, bet. secs. 20 and 29.
Over mountainous land, in Green Spring Canyon, thru scattering timber and undergrowth.
Measurement to bottom of canyon by triangulation, hereinbefore described.
- 26.44 Descend about 1015 ft., over precipitous broken W. slope, to Bottom of Green Spring Canyon, 75 lks. wide, course S. 10° W. Continue line and measurement by chaining.
- 34.20 Ascend 383 ft., over steep NE. slope to $\frac{1}{4}$ sec. cor.
- 40.11 Triangulation point. Continue chaining to Set an iron post, 3 ft. long, 1 in. in diam., 18 ins. in the ground to bed rock, supported in a mound of stone, for $\frac{1}{4}$ sec. cor., marked on brass cap,

$\frac{1}{4}$ S 20
S 29
1922

- from which,
A cedar, 12 ins. in diam., brs. N. 45° E., 20 lks. dist., marked $\frac{1}{4}$ S 20 BT.
A pinyon, 10 ins. in diam., brs. S. 30° E., 80 lks. dist., marked $\frac{1}{4}$ S 29 BT.

- Discontinue chaining. Measurement to W. rim of canyon by triangulation, hereinbefore described.
- 61.15 Ascend about 800 ft., over precipitous NE. and E. slopes, to Triangulation point at W. or right rim of Green Spring Canyon, bearing NE. and S. Leave canyon. Enter nearly level land, dense timber and scattering undergrowth. Continue line and measurement by chaining.
- 80.22 The cor. of secs. 19, 20, 29 and 30.
Land, mountainous and nearly level.
Soil, rocky, 3rd and 4th rate.
Timber, cedar and pinyon.
Undergrowth, scrub oak and sagebrush.

-
- 40.00 S. 89° 57' W., on a random line, bet. secs. 19 and 30.
Set temp. $\frac{1}{4}$ sec. cor.
 - 78.76 Fall 19 lks. S. of the cor. of secs. 19, 24, 25 and 30, on W. bdy. of Tp., described in Book "C" of this group.
Thence,
S. 89° 55' E., on a true line, bet. secs. 19 and 30.
Over nearly level land, thru dense timber and undergrowth.
Descend slightly over S. slope.
 - 2.00 Wash, 40 lks. wide, course S.
 - 38.76 Ascend slightly over SW. slope, to Set an iron post, 3 ft. long, 1 in. in diam., 6 ins. in the ground to bed rock, supported in a mound of stone for $\frac{1}{4}$ sec. cor., marked on brass cap,

$\frac{1}{4}$ S 19
S 30
1922

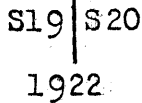
- from which,
A cedar, 20 ins. in diam., brs. N. 9° W., 200 lks. dist., marked $\frac{1}{4}$ S 19 BT.
A cedar, 14 ins. in diam., brs. S. 40° E., 41 lks. dist., marked $\frac{1}{4}$ S 30 BT.

- Ascend slightly over S. slope, to sec. cor.
- 63.75 Shallow draw, course S.
- 78.76 The cor. of secs. 19, 20, 29 and 30.
Land, nearly level.
Soil, rocky loam, 3rd rate.
Timber, cedar and pinyon.
Undergrowth, scrub oak, sagebrush and manzanita.

52 Survey of Subdivision lines of Township 31 North Range 11 West.

Chains. N.0°3'W., bet. secs. 19 and 20.
Over nearly level land, thru. dense timber and scattering undergrowth.

40.00 Ascend slightly over S. and SW. slopes, to
Set an iron post, 3 ft. long, 1 in. in diam., 12 ins. in the ground to bed rock, supported in a mound of stone, for $\frac{1}{4}$ sec. cor., marked on brass cap,



from which,

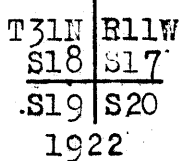
A cedar, 24 ins. in diam., brs. S.13°E., 26 lks. dist., marked $\frac{1}{4}$ S 20 BT.

A cedar, 8 ins. in diam., brs. S.76 $\frac{1}{2}$ °W., 77 lks. dist., marked $\frac{1}{4}$ S 19 BT.

Continue over nearly level land, thru. dense timber and undergrowth.

61.40 Ascend slightly over W. slope, to
Shallow wash, 40 lks. wide, course W.

80.00 Ascend slightly over S. slope, to
Set an iron post, 3 ft. long, 2 ins. in diam., 12 ins. in the ground to bed rock, supported in a mound of stone, for cor. of secs. 17, 18, 19 and 20, marked on brass cap,



from which,

A cedar, 18 ins. in diam., brs. N.4°E., 64 lks. dist., marked T31N R11W S17 BT.

A cedar, 4 ins. in diam., brs. S.42 $\frac{1}{2}$ °E., 90 lks. dist., marked BT.

A cedar, 16 ins. in diam., brs. S.24°W., 181 lks. dist., marked T31N R11W S19 BT.

A cedar, 14 ins. in diam., brs. N.22°W., 115 lks. dist., marked T31N R11W S18 BT.

Land, nearly level.

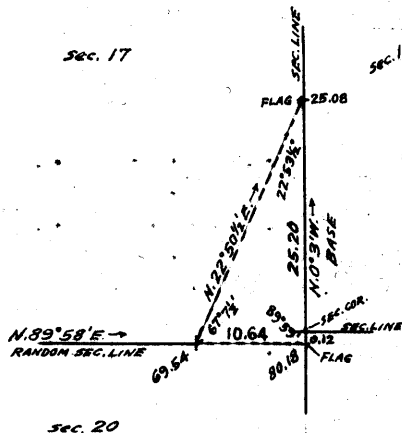
Soil, clay loam, 2nd rate.

Timber, cedar and pinyon.

Undergrowth, sagebrush and scrub oak.

40.00 N.89°58'E., on random line, bet. secs. 17 and 20.
Set temp. $\frac{1}{4}$ sec. cor.

69.54 West rim of side canyon, brs. N. and S. Precipitous descent beyond this point prevents chaining; therefore, triangulate as described as follows:



From this point a flag at 25.08 ch. station on sec. line, bet. secs. 16 and 17 at E. rim of this canyon, brs. N.22°50 $\frac{1}{2}$ 'E., and a flag at 12 lks. S.0°3'E. from the cor. of secs. 16, 17, 20 and 21 brs. N.89°58'E.

The vertical angle from 69.54 ch. station to the sec. cor. is - 41°.

The Base for this triangulation is 25.08 chs. + 0.12 chs. = 25.20 chs. N.0°3'W.

Dist. on random sec. line = 69.54 chs. N.89°58'E.
Dist. triangulated = 10.64 chs. N.89°58'E.
Total length of random line = 80.18 chs. N.89°58'E.

Survey of Subdivision lines of Township 31 North, Range 11 West. 53

Chains.	
80.18	Fall 12 lks. S. of the cor. of secs. 16, 17, 20 and 21. Thence, S 89°53' W., on true line, bet. secs. 17 and 20. Over mountainous land, in side canyon, thru scattering timber and undergrowth. Descend slightly over SW. slope.
0.20	Bottom of side canyon, 30 lks. wide, course SE. Discontinue chaining, and triangulate to W. rim of canyon, as hereinbefore described.
10.64	Ascend about 600 ft., over precipitous E. slope, to Triangulation point at W. or right rim of side canyon, brs. N. and S. Leave canyon. Enter nearly level land, dense timber and undergrowth. Continue line and measurement by chaining.
40.09	Set an iron post, 3 ft. long, 1 in. in diam., 26 ins. in the ground for $\frac{1}{4}$ sec. cor., marked on brass cap, $\frac{1}{4}$ S 17 S 20 1922 from which, A cedar, 8 ins. in diam., brs. N. 37° W., 80 lks. dist., marked $\frac{1}{4}$ S 17 BT. A cedar, 8 ins. in diam., brs. S. 47° W., 35 lks. dist., marked $\frac{1}{4}$ S 20 BT. Continue over nearly level land, sloping slightly to the S., thru dense timber and undergrowth.
41.45	Trail, brs. N. 20° E. and S. 20° W.
47.45	Wash, 20 lks. wide, course S. 30° W.
70.00	Trail, brs. NE. and SW.
80.18	The cor. of secs. 17, 18, 19 and 20. Land, mountainous and nearly level. Soil, rocky, 2nd to 4th rate. Timber, cedar and pinyon. Undergrowth, scrub oak and sagebrush.

40.00	N. 89°55' W., on a random line, bet. secs. 18 and 19. Set temp. $\frac{1}{4}$ sec. cor.
78.70	Fall 23 lks. N. of the cor. of secs. 13, 18, 19 and 24, on W. bdy. of Tp., described in Book "C" of this group. Thence, N. 89° 55' E., on a true line, bet. secs. 18 and 19. Over nearly level land, thru dense timber and undergrowth. Descend slightly over SE. slope.
1.00	Wash, 30 lks. wide, course SW.
38.70	Ascend slightly over SW. slope, to Set an iron post, 3 ft. long, 1 in. in diam., 12 ins. in the ground to bed rock, supported in a mound of stone, for $\frac{1}{4}$ sec. cor., marked on brass cap, $\frac{1}{4}$ S 18 S 19 1922 from which, A cedar, 12 ins. in diam., brs. N. 23 $\frac{1}{2}$ ° E., 26 lks. dist., marked $\frac{1}{4}$ S 18 BT. A pinyon, 8 ins. in diam., brs. S. 4° E., 55 lks. dist., marked $\frac{1}{4}$ S 19 BT. Continue over nearly level land, thru dense timber and undergrowth.
78.70	Ascend slightly over SW. and S. slopes, to The cor. of secs. 17, 18, 19 and 20. Land, nearly level. Soil, rocky clay loam, 2nd rate. Timber, cedar and pinyon. Undergrowth, sagebrush and scrub oak.

54 Survey of Subdivision lines of Township 31 North, Range 11 West.

Chains.

N.0° 3'W., bet. secs. 17 and 18.
Over nearly level land, thru dense timber and scattering undergrowth.
Ascend slightly over S. slope, to
40.00 Set an iron post, 3 ft. long; 1 in. in diam., 4 ins. in the ground to bed rock, supported in a mound of stone, for $\frac{1}{4}$ sec. cor., marked on brass cap,

$$\begin{array}{c} \frac{1}{4} \\ \uparrow \\ \text{S18} \quad | \quad \text{S17} \end{array}$$

1922

from which,

A cedar, 20 ins. in diam., brs. S. 54° E., 25 lks.
dist., marked $\frac{1}{4}$ S 17 BT.

A cedar, 10 ins. in diam., brs. S. 70° W., 69 lks.
dist., marked $\frac{1}{4}$ S 18 BT.

Continue over nearly level land, thru dense timber and undergrowth.

Ascend slightly over SW. slope, to
80.00 Set an iron post, 3 ft. long, 2 ins. in diam., 8 ins. in the ground to bed rock, supported in a mound of stone, for cor. of secs. 7, 8, 17 and 18, marked on brass cap,

$$\begin{array}{c} \text{T31N} \quad | \quad \text{R11W} \\ \hline \text{S 7} \quad | \quad \text{S 8} \\ \hline \text{S18} \quad | \quad \text{S17} \\ 1922 \end{array}$$

from which,

A cedar, 12 ins. in diam., brs. N. 79° E., 67 lks.
dist., marked T31N R11W S8 BT.

A cedar, 14 ins. in diam., brs. S. 32° E., 100 lks.
dist., marked T31N R11W S17 BT.

Continue over nearly level land, thru dense timber and undergrowth.
A cedar, 20 ins. in diam., brs. S. 18° W., 58 lks.
dist., marked T31N R11W S18 BT.

Ascend slightly over SW. slope, to
80.00 Set an iron post, 3 ft. long, 2 ins. in diam., 8 ins. in the ground to bed rock, supported in a mound of stone, for cor. of secs. 7, 8, 17 and 18, marked on brass cap,
Land, nearly level, soil, rocky clay loam, 2nd rate. Timber, cedar and pinyon.
Undergrowth, scrub oak, sagebrush and cactus.

40.00 N. 89° 53' E., on a random line, bet. secs. 8 and 17.
Set temp. $\frac{1}{4}$ sec. cor.

80.18 Fall 7 lks. S. of the cor. of secs. 8, 9, 16 and 17.
Thence,

S. 89° 50' W., on a true line, bet. secs. 8 and 17.

Over nearly level land, sloping slightly to the SE. and S., thru dense timber and undergrowth.

16.30 Trail, brs. N. and S.

40.09 Set an iron post, 3 ft. long, 1 in. in diam., 20 ins. in the ground to bed rock, supported in a mound of stone for $\frac{1}{4}$ sec. cor., marked on brass cap,

$$\begin{array}{c} \frac{1}{4} \quad \text{S} \quad 8 \\ \hline \text{S} \quad 17 \\ 1922 \end{array}$$

from which,

A yellow pine, 8 ins. in diam., brs. N. 7 $\frac{1}{2}$ ° E., 16 lks. dist., marked $\frac{1}{4}$ S 8 BT.

A yellow pine, 30 ins. in diam., brs. S. 33° W., 85 lks. dist., marked $\frac{1}{4}$ S 17 BT.

Continue over nearly level land, thru dense timber and undergrowth.

40.35 Wash, 50 lks. wide, course S. 20° W.

41.70 Trail, brs. N. and S.

80.18 The cor. of secs. 7, 8, 17 and 18.

Survey of Subdivision lines of Township 31 North, Range 11 West. 55 chains.

Land, nearly level.
Soil, rocky clay loam, 2nd rate.
Timber, cedar and pinyon.
Undergrowth, scrub oak, sagebrush and cactus.

40.00 S. 89° 55' W., on a random line, bet. secs. 7 and 18.
78.78 Set temp. $\frac{1}{4}$ sec. cor.
Fall 5 lks. N. of the cor. of secs. 7, 12, 13 and 18, on W. bdy. of Tp., described in Book "C" of this group.

Thence,
38.78 N. 89° 53' E., on a true line, bet. secs. 7 and 18.
Over gently rolling land, thru. dense timber & undergrowth. Descend gradually over S. and SE. slopes, to Set an iron post, 3 ft. long, 1 in. in diam., 26 ins. in the ground for $\frac{1}{4}$ sec. cor., marked on brass cap,

$\frac{1}{4}$ S 7
S 18
1922

from which,
A cedar, 8 ins. in diam., brs. N. 53 lks. dist., marked $\frac{1}{4}$ S 7 BT.
A cedar, 8 ins. in diam., brs. S. 48° E., 78 lks. dist., marked $\frac{1}{4}$ S 18 BT.

64.28 Descend gradually over SE. slope.
65.00 Wash, 30 lks. wide, course S.
78.78 Wash, 20 lks. wide, course S. 80° W. Enter nearly level land. Ascend slightly over SW. slope, to The cor. of secs. 7, 8, 17 and 18.
Land, gently rolling and nearly level.
Soil, rocky clay loam, 2nd rate.
Timber, cedar and pinyon.
Undergrowth, sagebrush, scrub oak and cactus.

40.00 N. 0° 3' W., bet. secs. 7 and 8.
Over gently rolling land, thru. dense timber and undergrowth. Ascend slightly over SW. slope, to Set an iron post, 3 ft. long, 1 in. in diam., 12 ins. in the ground to bed rock, supported in a mound of stone, for $\frac{1}{4}$ sec. cor., marked on brass cap,

$\frac{1}{4}$ S 7 | S 8
1922

from which,
A cedar, 8 ins. in diam., brs. N. 43° E., 61 lks. dist., marked $\frac{1}{4}$ S 8 BT.
A cedar, 10 ins. in diam., brs. N. 134° W., 45 lks. dist., marked $\frac{1}{4}$ S 7 BT.

79.50 Ascend gradually over SE. slope.
Fence cor. brs. W. 50 lks. dist., from which fence extends W. and N.
80.00 Set an iron post, 3 ft. long, 2 ins. in diam., 26 ins. in the ground for cor. of secs. 5, 6, 7 and 8, marked on brass cap,

T31N | R11W
S 6 | S 5
S 7 | S 8
1922

from which,
A cedar, 14 ins. in diam., brs. N. 34° E., 27 lks. dist., marked T31N R11W S5 BT.
A cedar, 10 ins. in diam., brs. S. 45° E., 10 lks. dist., marked T31N R11W S8 BT.
A pinyon, 14 ins. in diam., brs. S. 66° W., 105 lks. dist., marked T31N R11W S7 BT.
A cedar, 24 ins. in diam., brs. N. 66° W., 63 lks. dist., marked T31N R11W S6 BT.

56 Survey of Subdivision lines of Township 31 North, Range 11 West.

Chains.

Land, gently rolling.
Soil, rocky clay loam, 2nd rate.
Timber, cedar and pinyon.
Undergrowth, sagebrush, scrub oak and cactus.

40.00 N. $89^{\circ}50'E.$, on a random line, bet. secs. 5 and 8.
Set temp. $\frac{1}{4}$ sec. cor.
79.94 Fall 7 lks. N. of the cor. of secs. 4, 5, 8 and 9.
Thence,
S. $89^{\circ}53'W.$, on a true line, bet. secs. 5 and 8.
Over gently rolling land, thru dense timber and undergrowth.
Ascend gradually over E. and SE. slopes to $\frac{1}{4}$ sec. cor.
35.00 Road, brs. SE. and NW.
39.97 Set an iron post, 3 ft. long, 1 in. in diam., 12 ins. in
the ground to bed rock, supported in a mound of stone,
for $\frac{1}{4}$ sec. cor., marked on brass cap,

$\frac{1}{4}$ S 5
S 8
1922

from which,

A cedar, 8 ins. in diam., brs. N. $55^{\circ}W.$, 37 lks.
dist., marked $\frac{1}{4}$ S 5 BT.

A cedar, 10 ins. in diam., brs. S. $33^{\circ}W.$, 83 lks.
dist., marked $\frac{1}{4}$ S 8 BT.

79.94 Ascend gradually over SE. slope, to
The cor. of secs. 5, 6, 7 and 8.
Land, gently rolling.
Soil, rocky loam, 2nd rate.
Timber, cedar and pinyon.
Undergrowth, sagebrush and scrub oak.

40.00 S. $89^{\circ}53'W.$, on a random line, bet. secs. 6 and 7.
Set temp. $\frac{1}{4}$ sec. cor.
78.86 Fall 5 lks. N. of the cor. of secs. 1, 6, 7 and 12, on W. bdy.
of Tp., described in Book "C" of this group.
Thence,
N. $89^{\circ}51'E.$, on a true line, bet. secs. 6 and 7.
Over gently rolling land, thru dense timber and scattering
undergrowth.
0.30 Wash, course SE.
Ascend gradually over SW. slope to $\frac{1}{4}$ sec. cor.
0.50 Fence, brs. N. and S. Fence cor. brs. S. 50 lks. dist., from
which fence extends N. and E.
38.86 Set an iron post, 3 ft. long, 1 in. in diam., 18 ins. in
the ground to bed rock, supported in a mound of stone,
for $\frac{1}{4}$ sec. cor., marked on brass cap,

$\frac{1}{4}$ S 6
S 7
1922

from which,

A cedar, 10 ins. in diam., brs. N. $5^{\circ}E.$, 10 lks.
dist., marked $\frac{1}{4}$ S 6 BT.

A cedar, 6 ins. in diam., brs. S. $85^{\circ}W.$, 33 lks.
dist., marked $\frac{1}{4}$ S 7 BT.

Continue over gently rolling land, thru dense timber and
undergrowth, parallel to and 50 lks. N. of fence.
Ascend gradually over SW. slope.
60.00 Descend gradually over SE. slope.
78.35 Fence brs. N. and S. Fence cor. brs. S. 50 lks. dist., from
which fence extends N. and W.
78.86 The cor. of secs. 5, 6, 7 and 8.
Land, gently rolling.
Soil, rocky loam, 2nd rate.
Timber, cedar and pinyon.
Undergrowth, sagebrush, scrub oak and cactus.

Survey of Subdivision lines of Township 31 North Range 11 West. 57

Chains.

- 40.00 N.0° 10' W., on a random line, bet. secs.5 and 6.
- Set temp. $\frac{1}{4}$ sec.cor.
- 80.00 Fall 23 lks.E. of the cor.of secs.5,6,31 and 32, on N.bdy. of Tp., described in Book "B" of this group.
- Thence,
- S.0°20'E., on a true line, bet. secs.5 and 6.
- Over gently rolling land, thru. dense timber and undergrowth.
- 0.50 Fence cor. brs.W. 50 lks.dist., from which fences extend W. and S. Thence parallel to fence, 50 lks.W. of line.
- 20.00 Garrett's log cabin, brs. W. about 10 chs.dist.
- 30.00 Road, brs. SE. and NW.
- Ascend slightly over NE. slope, to
- 40.00 Set an iron post, 3 ft.long, 1 in.in diam., 8 ins.in the ground to bedrock, supported in a mound of stone, for $\frac{1}{4}$ sec.cor., marked on brass cap,

$\frac{1}{4}$
 S 6 | S 5

1922

from which,

A yellow pine, 24 ins.in diam., brs.N.88 $\frac{1}{2}$ °E., 113 lks.dist., marked $\frac{1}{4}$ S 5 BT.

A yellow pine, 24 ins. in diam., brs.N.60°W., 112 lks.dist., marked $\frac{1}{4}$ S 6 BT.

Continue over gently rolling land, thru.dense timber and undergrowth, parallel to fence 50 lks.W.of line.

- 80.00 Descend gradually over E.and SE.slopes, to

The cor.of secs.5,6,7 and 8.

Land,gently rolling.

Soil,rocky clay loam, 2nd rate.

Timber, cedar and pinyon.

Undergrowth,sagebrush,scrub oak and cactus.

The continued satisfactory adjustment of the solar apparatus of the instruments used in the execution of the surveys described in the foregoing notes is indicated from field tests described in Books "E."and "H."

GENERAL DESCRIPTION.

This township contains level, nearly level, gently rolling, rolling and mountainous surface. The mountainous surface is confined to Green Spring Canyon, and its side canyons, a canyon in the SE. part and a narrow strip along the north one-half of the east boundary. The greater part of the land outside the canyons is gently rolling. There is some rolling land in the southern part, a small area of nearly level land along the east boundary and a large area of nearly level land W. of Green Spring Canyon. In Secs. 2, 3, 10 and 11, and in Secs. 27, 28, 33 and 34 there are small areas of level land.

Green Spring Canyon course southerly heads in Sec. 9 and leaves the township in the south boundaries of Secs. 31 and 32.

Another canyon, unnamed, course southerly, heads near the cor. of secs. 23, 24, 25 and 26, and leaves the township on south boundary of Sec. 36.

A short canyon, course SE. heads in Sec. 17 and joins Green Spring Canyon in Sec. 21. The head of this canyon is known as Peter's Pocket.

Another short canyon course W., heads in Sec. 22 and joins Green Spring Canyon in Sec. 21. The head of this canyon is known as Penns Pocket.

A small valley bearing NE. and SW., is located in Sec.

6, known as Horse Valley.

There are no watercourses carrying a permanent flow of water.

The water supply consists of Green Spring in Sec. 9, at the head of Green Spring Canyon, and a water hole at Penns Pocket in Sec. 22.

The soil in the mountainous land is rocky, 4th rate, and the remainder of the township has a sandy and gravelly clay loam, 2nd rate soil, and a gravelly and rocky 3rd rate soil over about equal areas.

The timber consisting mainly of cedar and pinyon is dense over all parts except in the canyons where it is scattering, and in parts of Secs. 2, 3, 4, 10 and 11, where there is no timber. There is a small proportion of oak and yellow pine timber in scattered locations.

The undergrowth, consisting of sagebrush, scrub oak, black brush, manzanita and cactus is dense except in parts of the canyons and the northwestern part of the township where it is scattering.

There are no indications of valuable mineral deposits.

Three settlers are at present located in this township, Garrett in Sec. 6; William Shanley in Sec. 10; and Penn in Sec. 22.

The improvements are as follows:

Garrett's log cabin in Sec. 6 and fence enclosing all of said section. Corrals and shed at Green Spring in Sec. 9. Shanley's house, corral and fenced tract of land of about 40 acres in Sec. 10. Small corral in bottom of Green Spring Canyon in Sec. 20. Two corrals in Sec. 22. A brush, log and rail fence extending northwesterly from Penns Pocket into section 9, thence northeasterly into Sec. 3, thence northwesterly, leaving the township on north boundary of Sec. 3.

A road enters the township on the south boundary of Sec. 34, bearing northerly to Green Spring, thence northwesterly, leaving the township on the north boundary of Sec. 5. This road has two branch roads extending to Shanleys place in Sec. 10.

There are no other roads, but there are several trails in the west half of the township.

CERTIFICATE OF UNITED STATES TRANSITMAN.

I, Benjamin J. Kinsey, U.S. Transitman, hereby certify upon honor that, in pursuance of special instructions received from the U. S. Surveyor General, for Group 74, Arizona, bearing date of the 12th day of October, 1916, I have well, faithfully, and truly in my own proper person, and in strict conformity with said instructions, the Manual of Surveying Instructions, and the laws of the United States, surveyed all those parts or portions of the East and South boundaries, and Subdivision lines of

TOWNSHIP 31 NORTH, RANGE 11 WEST,

of the Gila and Salt River Base and Meridian, in the State of Arizona, and by diagram on page 1 hereof the foregoing field notes/as having been executed by me, and under my direction; and that all the corners of said survey have been established and perpetuated in strict accordance with the Manual of Surveying Instructions, and the special written instructions of the U. S. Surveyor General, for Group 74, Arizona, and in the specific manner described in the field notes, and that the foregoing are the original field notes of such survey.

Place: Phoenix, Ariz.
Date: Nov. 1, 1924

Benjamin J. Kinsey
U.S. Transitman

APPROVAL

OFFICE OF THE UNITED STATES SURVEYOR GENERAL,

_____, 19

The foregoing field notes of the survey of _____

executed by _____ under his special instructions dated _____, 19 _____, having been critically examined, and the necessary corrections and explanations made, the said field notes, and the surveys they describe, are hereby approved.

U. S. Surveyor General.

I certify that the foregoing transcript of the field notes of the above-described surveys in _____, has been correctly copied from the original notes on file in this office.

U. S. Surveyor General.

CERTIFICATE OF UNITED STATES SURVEYOR.

I, William E. Hiester,, U. S. Surveyor, hereby certify upon honor that, in pursuance of special instructions received from the U. S. Surveyor General, for Group 74, Arizona, bearing date of the 12th day of October,, 1916, I have well, faithfully, and truly in my own proper person, and in strict conformity with said instructions, the Manual of Surveying Instructions, and the laws of the United States, surveyed all those parts or portions of the Subdivision lines of TOWNSHIP 31 NORTH, RANGE 11 WEST,

of the Gila and Salt River Base and Meridian, in the State of Arizona, which are represented in and by diagram on page 1 hereof the foregoing field notes as having been executed by me, and under my direction; and that all the corners of said survey have been established and perpetuated in strict accordance with the Manual of Surveying Instructions, and the special written instructions of the U. S. Surveyor General, for Group 74, Arizona, and in the specific manner described in the field notes, and that the foregoing are the original field notes of such survey.

Place: Hurricane Lake. William E. Hiester
Date: Jan. 24, 1925. U. S. Surveyor.

APPROVAL.

OFFICE OF THE UNITED STATES SURVEYOR GENERAL,

Phoenix, Arizona, FEB 16 1925, 1925

The foregoing field notes of the survey of the East and South boundaries, and Subdivision lines of TOWNSHIP 31 NORTH, RANGE 11 WEST,

of the Gila and Salt River Base and Meridian, in the State of Arizona,

executed by William E. Hiester, U. S. Surveyor, and Benjamin J. Kinsey, U. S. Transitman, under his special instructions dated October 12, 1916, for Grp. 74, Arizona, having been critically examined, and the necessary corrections and explanations made, the said field notes, and the surveys they describe, are hereby approved.

Charles M. Donohue
U. S. Surveyor General.

~~I certify that the foregoing transcript of the field notes of the above described surveys in~~
~~has been correctly copied from the original notes on file in this office.~~