

3645

Book "F"

4-679

OR 16
1

BOOK 3645

FIELD NOTES

OF THE SURVEY OF THE

3645

Seventh Standard Parallel North, thru. part of Range 11 West,

East boundary,

Part of the West boundary, and

Part of the Subdivision lines of

TOWNSHIP 29 NORTH, RANGE 11 WEST,

Of the Gila and Salt River Base and Meridian,

In the State of Arizona,

3645

EXECUTED BY

William E. Hiester, U. S. Surveyor,

Benjamin J. Kinsey, U.S. Transitman,

In the capacity of U. S. Surveyors, under Special Instructions dated October 12., 1916, issued by the United States Surveyor General to govern surveys included in Group No. 74, Arizona, which were approved by the Commissioner of the General Land Office, October 24., 1916, and Assignment Instructions dated August 11., 1921. and March 30, 1922

Survey commenced December 23., 1922

Survey completed May 30., 1923.

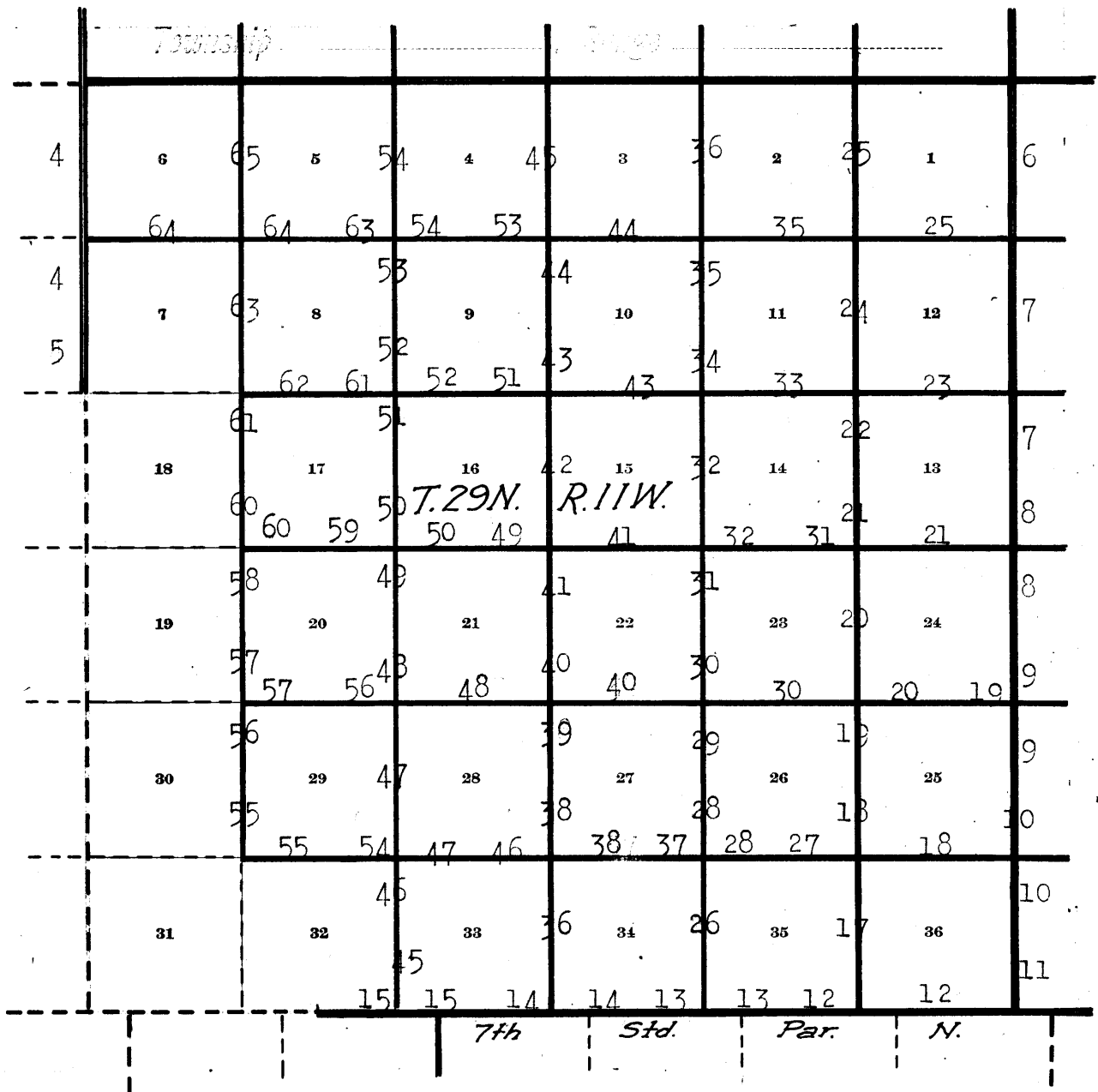
1A

Book "F"

Group 74 - Arizona

BOOK 3645

INDEX DIAGRAM.



———— Lines surveyed under this group.

----- Unsurveyed.

BOOK 3645

Book "F"

Group 74 - - Arizona.

Township 29 North, Range 11 West.

DATE DIAGRAM.

For dates of execution of survey of this line see Book "E"

6	5-30-23	5-26-23	3-22-23	5-25-23	3-16-23	3-14-23
7	5-16-23	5-14-23	5-24-23	5-17-23	5-20-23	4-25-23
18	5-14-23	5-18-23	5-21-23	12-24-22	12-24-22	12-26-22
19	4-30-23	4-12-23	4-4-23	4-27-23	1-9-23	1-3-23
30	4-12-23	4-28-23	4-4-23	4-4-23	4-16-23	4-16-23
31	3-31-23	3-31-23	3-30-23	3-30-23	3-27-23	3-27-23

7th Standard Parallel North

Indicates surveys executed by William E. Hiester, U.S. Surveyor. on dates shown thereon.

Indicates surveys executed by Benjamin J. Kinsey, U. S. Transitman. on dates shown thereon.

BOOK 3645

Surveys herein described were executed on dates shown on diagram on page 1 hereof, by Benjamin J. Kinsey, U. S. Transitman, and William E. Hiester, U. S. Surveyor, using respectively, Buff and Buff light mountain transits No. 10125 and No. 9977, each equipped with full vertical circles and Smith solar attachment.

Field test of instrument No. 10125 by Benjamin J. Kinsey, U.S. Transitman

December 21, 1922: I examine the adjustments of the transit and correct all errors; then, to test the solar apparatus, by comparing its indications, resulting from observations made during a.m. and p.m. hours with a meridian established by Polaris observation, I proceed as follows:

At camp in the center of sec. 23, T29N R11W., G. and S. R., B. and M., Arizona, lat. $35^{\circ}54'N.$, long. $113^{\circ}27'W.$, at 1h 34.4m. a.m. l.m.t., I observe Polaris at Western elongation, making four observations, two each with the telescope in direct and reversed positions, and mark the mean point in the line thus determined on a peg driven firmly in the ground 5 chs. N.

Azimuth of Polaris at western elongation, $1^{\circ}21'44''$.

December 22, 1922: At 7h 30m a.m., l.m.t. I lay off the azimuth of Polaris, $1^{\circ}21'$ to the east and mark the meridian thus determined by a tack in a peg driven firmly in the ground 5 chs. N.

At 8h 0m a.m., l.m.t., I set off $35^{\circ}54'N.$ on the lat. arc and $23^{\circ}22'S.$ on the decl. arc and determine a meridian with the solar, which I find to agree with the true meridian.

At apparent noon, with the lat. arc unchanged, I observe the sun on the meridian; the resulting reading of the decl. arc is $23^{\circ}25'S.$, which agrees with the computed decl. of the sun.

At 4h 0m p.m., l.m.t., with the lat. arc unchanged, I set off $23^{\circ}22'S.$ on the decl. arc and determine a meridian with the solar, which I find to agree with the true meridian.

As all of the solar observations during the usual hours of solar work come within $1'30''$ of the true meridian I conclude that the adjustments of the instrument are satisfactory.

Unless otherwise specified, all measurements are made with a Lufkin steel tape 5 chs. in length, compared with a Lufkin 1 ch. standard steel tape and found correct. The measurements are made on the slope, the vertical angle determined and the slope measurements properly reduced to the true horizontal distances.

Field test of Instrument No. 9977 by William E. Hiester, U. S. Surveyor

Survey conducted by William E. Hiester, U. S. Surveyor

February 23, 1923: I examine the adjustments of the transit and correct all errors; then to test the solar apparatus, by comparing its indications, resulting from observations made during a.m. and p.m. hours with a meridian established by polaris observation, I proceed as follows:

February 23, 1923: At camp in the center of sec. 23, T29N, R11W., G. and S.R.B. and M., Arizona, lat. $35^{\circ}54'$, long. $113^{\circ}27'W.$, on meridian previously established by Benjamin J. Kinsey and described above. At 8h 0m a.m. l.m.t. I set off $35^{\circ}54'N.$ on the lat. arc; $10^{\circ}0\frac{1}{2}'$ on the decl. arc and determine a meridian with the solar, which I find to agree with the true meridian.

At apparent noon, with the lat. arc unchanged, I observe the sun on the meridian; the resulting reading of the

decl. arc is $9^{\circ} 58' S$, which agrees with the computed declination of the sun.

At 4h.0m.p.m., l.m.t., with the lat. arc unchanged, set off $9^{\circ} 54' S$. on the decl. arc, and determine a meridian, which I find to agree with the true meridian.

As all of the solar observations during the usual hours of solar work come within $1' 30''$ of the true meridian, conclude that the adjustments of the instrument are satisfactory.

Unless otherwise specified, all measurements are made with a Lufkin steel tape, 5 chs. in length, compared with a Lufkin 1 ch. standard steel tape, and found correct. The measurements are made on the slope, the vertical angles determined, and the slope measurements properly reduced to true horizontal distances.

BOOK 3645

(4) Survey of part of the West bdy. of Township 29 North, Range 11 West.

chains.

- From the cor. of Ts. 29 and 30 N., Rs. 11 and 12 W., described in Book "E" of this group.
 South, on true line, bet. secs. 1 and 6.
 Over rolling land, thru. dense timber and undergrowth.
 Ascend slightly over NW. slope, to
- 1.20 Right rim of canyon, brs. N. 80° W. and S. 80° E. Enter mountainous land in canyon.
 Descend 253 ft., over S. slope.
- 10.33 Wash, 20 lks. wide, course SW. in bottom of canyon.
 Ascend 422 ft., over NW. slope, to
- 19.20 Left rim of canyon, brs. NE and SW. Leave canyon. Enter rolling land.
 Ascend 53 ft., over NW. slope, to
- 26.35 Spur, slopes NE.
 Descend gradually over SE. slope.
- 37.55 Ascend gradually over NW. slope, to
- 40.00 Set an iron post, 3 ft. long, 1 in. in diam., 26 ins. in the ground, for $\frac{1}{4}$ sec. cor., marked on brass cap,

S	1		S	6
---	---	--	---	---

1923

from which,

A pinyon, 12 ins. in diam., brs. S. $44\frac{1}{2}^{\circ}$ W., 53 lks. dist., marked $\frac{1}{4}$ S 6 BT.

A cedar, 12 ins. in diam., brs. S. $3\frac{3}{4}^{\circ}$ W., 57 lks. dist., marked $\frac{1}{4}$ S 1 BT.

Continue over rolling land, thru. dense timber and undergrowth.

- 79.00 Ascend 85 ft., over NW. slope, to
 Enter mountainous land.
- 80.00 Ascend 15 ft., over NW. slope, to
 Set an iron post, 3 ft. long, 2 ins. in diam., on surface rock, supported in a mound of stone, for cor. of secs. 1, 6, 7 and 12, marked on brass cap,

T29N	
R12W	R11W
S	1 S
6	6

S12		S	7
-----	--	---	---

1923

from which,

A cedar, 8 ins. in diam., brs. N. $58\frac{1}{2}^{\circ}$ E., 82 lks. dist., marked T29N R11W S6 BT.

A cedar, 8 ins. in diam., brs. S. $89\frac{1}{2}^{\circ}$ E., 46 lks. dist., marked T29N R11W S7 BT.

A cedar, 4 ins. in diam., brs. S. $63\frac{1}{2}^{\circ}$ W., 54 lks. dist., marked BT.

A pinyon, 8 ins. in diam., brs. N. 64° W., 33 lks. dist., marked T29N R12W S1 BT.

Land, rolling and mountainous.

Soil, sandy and gravelly, 3rd rate.

Timber, pinyon and cedar.

Undergrowth, sagebrush, black brush and cacti.

- South, on true line, bet. secs. 7 and 12.
 Over mountainous land, thru. dense timber and undergrowth.
 Ascend 87 ft., over NW. slope, to
- 7.00 Wash, 10 lks. wide, course NW.
 Ascend 83 ft., over NW. slope, to
- 11.30 Rim, brs. NE and SW. Enter rolling land.
 Ascend 60 ft., over NW. slope, to
- 34.96 Right rim of canyon, brs. E and W. Enter mountainous land.
 Descend 106 ft., over S. slope, to
- 40.00 Set an iron post, 3 ft. long, 1 in. in diam., on surface rock, supported in a mound of stone, for $\frac{1}{4}$ sec. cor., marked on brass cap,

BOOK 3645

Part of survey of West bdy. of Township 29 North, Range 11 West. 5

Chains.

$$\frac{1}{4}$$

S12	S 7
1923	

from which,

A pinyon, 10 ins. in diam., brs. N. 63° E., 106 lks. dist., marked $\frac{1}{4}$ S 7 BT.A cedar, 10 ins. in diam., brs. S. $54\frac{1}{2}^{\circ}$ W., 177 lks. dist., marked $\frac{1}{4}$ S 12 BT.

Descend 224 ft., over S. slope.

48.10 Wash, 20 lks. wide, course SW. in bottom of canyon.

Ascend 147 ft., over NW. slope.

54.51 Point of spur; slopes W.

Descend 40 ft., over SW. slope.

60.10 Descend 95 ft., over S. slope.

65.30 Wash, 10 lks. wide in gulch, course W.

Ascend 92 ft., over NW. slope.

69.43 Point of spur, slopes W.

Descend 30 ft., over SW. slope.

77.30 Ascend 35 ft., over NW. slope, to

80.00 Set an iron post, 3 ft. long, 2 ins. in diam., 12 ins. in the ground to bed rock, supported in a mound of stone, for cor. of secs. 7, 12, 13 and 18, marked on brass cap,

T29N	
R12W	R11W
S12	S 7
S13	S18
1923	

from which,

A cedar, 12 ins. in diam., brs. N. 69° E., 50 lks. dist., marked T29N R11W S7 BT.A cedar, 14 ins. in diam., brs. S. $28\frac{3}{4}^{\circ}$ E., 42 lks. dist., marked T29N R11W S18 BT.A pinyon, 8 ins. in diam., brs. S. 40° W., 43 lks. dist., marked T29N R12W S13 BT.A cedar, 18 ins. in diam., brs. N. $54\frac{1}{2}^{\circ}$ W., 46 lks. dist., marked T29N R12W S12 BT.

Land, mountainous and rolling.

Soil, sandy and rocky, 3rd rate.

Timber, cedar and pinyon.

Undergrowth, sagebrush, black brush and cactus.

About 17 chs. south of the above described sec. cor., is a vertical cliff about 600 ft. high, bearing E. and W., facing S., and forming the main or upper rim of the Colorado River Canyon. The remainder of the range line passes over cliffs and precipitous slopes, which prevent chaining or triangulation; therefore, discontinue the survey of this range line at the cor. of secs. 7, 12, 13 and 18.

The same canyon rim bearing NE. and SW. is about $16\frac{1}{2}$ chs. E. from the same sec. cor.

BOOK 3645

6 Survey of East bdy. of Township 29 North, Range 11 West.

Chains.

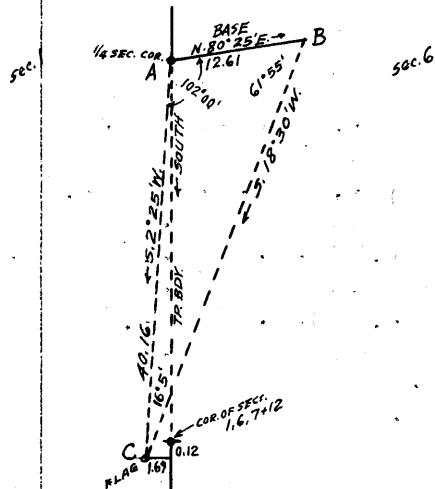
- From the cor. of Ts. 29 and 30 N., Rs. 10 and 11 W., described in Book "E" of this Group, South, on true line, bet. secs. 1 and 6. Over mountainous land, thru scattering timber and undergrowth.
- 5.00 Ascend slightly over W. slope, to Right rim of canyon, brs. NW. and SE.
- 28.08 Descend 270 ft., over SW. slope. Rocky wash, 30 lks. wide, course NW. in bottom of canyon.
- 40.00 Ascend 144 ft., over N. slope, to Set an iron post, 3 ft. long, 1 in. in diam., 6 ins. in the ground to bed rock, supported in a mound of stone, for $\frac{1}{4}$ sec. cor., marked on brass cap,

$\frac{1}{4}$
 S 1 | S 6
 1923

from which,

- A pinyon, 10 ins. in diam., brs. S. 49° E., 67 lks. dist., marked $\frac{1}{4}$ S 6 BT.
- A cedar, 8 ins. in diam., brs. N. 5° W., 115 lks. dist., marked $\frac{1}{4}$ S 1 BT.

Beyond this $\frac{1}{4}$ sec. cor., precipitous slopes and cliffs prevent chaining; therefore, triangulate as described as follows, and as shown on the diagram hereon:



- From $\frac{1}{4}$ sec. cor. (A) measure a Base N. 80° 25' E., 12.61 chs. to point (B).
- Set flag (C) ahead on a bearing of S. 2° 25' W., as no accessible point ahead on Tp. bdy. is visible from "A."
- The vertical angle from (A) to (C) is + 29 $\frac{1}{2}$ °.
- From NE. end of Base (B) the bearing to flag (C) is S. 18° 30' W.
- Dist. (A-C) triangulated = 40.16 chs. S. 2° 25' W.
- Lat. of (A-C) = 40.12 chs. S.
- Dep. of (A-C) = 1.69 chs. W.

Therefore from flag point (C) measure East 1.69 chs. to Tp. bdy.; thence North 0.12 chs. to point for cor. of secs. 1, 6, 7 and 12.

- 45.00 (Approx.) Spur, slopes NW.
- Ascend over precipitous W. slope, to
- 53.00 (Approx.) Bottom of gulch, course NW.
- Ascend over cliffs and precipitous NE. slope, to
- 80.00 Set an iron post, 3 ft. long, 2 ins. in diam., 26 ins. in the ground for cor. of secs. 1, 6, 7 and 12, marked on brass cap,

T29N
 R11W | R10W
 S 1 | S 6
 S12 | S 7
 1923

No bearing trees available. Raise a mound of stone, 3 ft. base, 2 ft. high, W. of cor. This cor. is about 1415 ft. above the $\frac{1}{4}$ sec. cor. of secs. 1 and 6.

Land, mountainous.
 Soil, rocky and gravelly, 4th rate.
 Timber, pinyon and cedar.
 Undergrowth, sagebrush and cacti.

Chains.

- South, on true line, bet. secs. 7 and 12.
Over mountainous land, thru. dense timber and undergrowth.
Ascend 140 ft., over steep NE. slope, to
5.71 Rim, brs. NW. and SE.
Ascend 10 ft., over NE. slope.
9.00 Spur, slopes NW.
Descend 67 ft., over SW. slope.
12.00 Wash, 10 lks. wide, course NW.
Ascend 30 ft., over NE. slope, to
15.00 Rim of mesa, brs. NW. and SE. Thence across level land.
30.68 Rim of mesa, brs. NW. and SE. Leave mesa. Enter mountainous
land.
Descend 232 ft., over SW. slope, to
40.00 Set an iron post, 3 ft. long, 1 in. in diam., 6 ins. in the
ground to bed rock, supported in a mound of stone, for
 $\frac{1}{4}$ sec. cor., marked on brass cap,

$$\begin{array}{c} \frac{1}{4} \\ \hline S12 | S 7 \\ \hline \end{array}$$

1923.

from which,

A cedar, 4 ins. in diam., brs. N. 70° E., 65 lks.
dist., marked BT.

A pinyon, 6 ins. in diam., brs. S. 72° W., 70 lks.
dist., marked $\frac{1}{4}$ S 12 BT.

- Descend 86 ft., over SW. slope.
43.00 Rocky wash, 10 lks. wide, course W.
Ascend 145 ft., over N. slope.
45.00 Spur, slopes W. Enter scattering timber and undergrowth.
Descend 671 ft., over S. slope.
71.39 Rocky wash, 30 lks. wide, course NW.
Ascend 316 ft., over NE. slope, to
80.00 Set an iron post, 3 ft. long, 2 ins. in diam., 12 ins. in
the ground to bed rock, deposit a stone, marked with a
cross (x) at base of post, and raise a mound of stone
around post for cor. of secs. 7, 12, 13 and 18, marked
on brass cap,

$$\begin{array}{c} T29N \\ R11W | R10W \\ \hline S12 | S 7 \\ \hline S13 | S18 \\ 1923 \end{array}$$

No bearing trees available.
Land, mountainous and level.
Soil, sandy and rocky, 3rd rate.
Timber, pinyon and cedar.
Undergrowth, scrub oak and sagebrush.

- South, on true line, bet. secs. 13 and 18.
Over mountainous land, thru. scattering timber and under-
growth.
Ascend 240 ft., over NE. slope, to
5.40 Ascend 67 ft., over E. slope, to
20.00 Head of wash, course NE.
Ascend 30 ft., over N. slope.
24.00 Rim of mesa, brs. E. and W.; thence over level land on mesa.
Enter dense timber and undergrowth.
36.22 Rim of mesa, brs. E. and W. Leave mesa. Enter mountainous
land.
Descend 87 ft., over S. slope, to
40.00 Set an iron post, 3 ft. long, 1 in. in diam., 6 ins. in the
ground to bed rock, supported in a mound of stone, for
 $\frac{1}{4}$ sec. cor., marked on brass cap,

BOOK 3645

8 Survey of East bdy. of Township 29 North, Range 11 West.

Chains.

$$\frac{1}{4}$$

S13	S18
-----	-----

1923

from which,

A cedar, 20 ins. in diam., brs. N. 39° E., 40 lks.
dist., marked $\frac{1}{4}$ S 18 BT.A cedar snag, 10 ins. in diam., brs. N. 9° W., 70 lks.
dist., marked $\frac{1}{4}$ S 13 BT.

Descend 265 ft., over S. slope.

46.43 Rocky wash, 20 lks. wide, course W.

Ascend 174 ft., over NW. slope.

51.80 Ascend 150 ft., over W. slope.

65.47 Descend 17 ft., over SW. slope.

66.95 Rocky wash, 30 lks. wide, course NW.

Ascend 175 ft., over NE. slope.

74.00 Point of spur, slopes E.

Descend 73 ft., over SE. slope.

77.28 Same wash, 20 lks. wide, course NE.

Ascend 142 ft., over N. slope, to

80.00 Set an iron post, 3 ft. long, 2 ins. in diam., 12 ins. in
the ground to bed rock, supported in a mound of stone,
for cor. of secs. 13, 18, 19 and 24, marked on brass cap,

T29N

R11W	R10W
------	------

S13	S18
-----	-----

S24	S19
-----	-----

1923

from which,

A pinyon, 8 ins. in diam., brs. N. 45° E., 110 lks.
dist., marked T29N R10W S18 BT.An oak, 4 ins. in diam., brs. S. 11° E., 53 lks. dist.,
marked BT.A cedar, 8 ins. in diam., brs. S. 60° W., 81 lks.
dist., marked T29N R11W S24 BT.A pinyon, 8 ins. in diam., brs. N. 82 $\frac{1}{2}$ ° W., 36 lks.
dist., marked T29N R11W S13 BT.

Land, mountainous and level.

Soil, sandy and rocky, 4th rate.

Timber, cedar and pinyon.

Undergrowth, sagebrush, scrub oak and cactus.

South, on true line, bet. secs. 19 and 24.

Over mountainous land, thru. dense timber and undergrowth.

Ascend 174 ft., over N. slope, to

18.17 Spur, slopes NW. from S. Thence along top of spur, ascending
75 ft. to $\frac{1}{4}$ sec. cor.

27.97 Trail, brs. NE. and SW.

40.00 Set an iron post, 3 ft. long, 1 in. in diam., 12 ins. in the
ground to bed rock, supported in a mound of stone, for
 $\frac{1}{4}$ sec. cor., marked on brass cap,
$$\frac{1}{4}$$

S24	S19
-----	-----

1923

from which,

A pinyon, 4 ins. in diam., brs. N. 81° E., 10 lks.
dist., marked BT.A cedar, 6 ins. in diam., brs. N. 48 $\frac{1}{2}$ ° W., 12 lks.
dist., marked $\frac{1}{4}$ S 24 BT.

Continue along top of spur, sloping N.

Ascend 40 ft., to

45.00 Top of ridge, brs. NE. and SW.

BOOK 3645

Survey of East bdy. of Township 29 North, Range 11 West. 9

Chains.

50.00 Descend 20 ft., over SE.slope.
 Ascend 30 ft., over E.slope, to
 60.00 Head of wash, course NE.
 Ascend gradually over NE.slope.
 65.00 Ascend 70 ft., over E.slope.
 75.00 Spur, slopes SE.
 Descend 90 ft., over SW.slope, to
 80.00 Set an iron post, 3 ft. long, 2 ins. in diam., 10 ins. in the ground to bed rock, supported in a mound of stone for cor. of secs. 19, 24, 25 and 30, marked on brass cap,

T29N
 R11W | R10W
 S24 | S19
 S25 | S30
 1923

from which,

A cedar, 4 ins. in diam., brs. N. 1° 30' E., 67 lks. dist., marked BT.
 A cedar, 12 ins. in diam., brs. S. 81° E., 75 lks. dist., marked T29N R10W S30 BT.
 A cedar, 11 ins. in diam., brs. S. 7° W., 270 lks. dist., marked T29N R11W S25 BT.
 A pinyon, 6 ins. in diam., brs. N. 69° W., 61 lks. dist., marked T29N R11W S24 BT.

Land, mountains.

Soil, sandy and rocky, 4th rate.

Timber, cedar and pinyon.

Undergrowth, sagebrush and cactus.

 South, on true line, bet. secs. 25 and 30.
 Over mountainous land, thru dense timber and undergrowth.
 Descend 10 ft., over SW.slope, to
 1.00 Wash, 10 lks. wide, course E. from NW.
 Ascend 63 ft., over N.slope.
 6.97 Spur, slopes E.
 Descend 154 ft., over SE.slope.
 13.00 Wash, 30 lks. wide, course NE.
 Ascend 142 ft., over NW.slope.
 21.76 Spur, slopes NE.
 Descend 15 ft., over SE.slope.
 24.50 Ascend 247 ft., over E.slope, to
 36.00 Wash, 10 lks. wide, course E.
 Ascend 45 ft., over N.slope, to
 40.00 Spur, slopes E. Set an iron post, 3 ft. long, 1 in. in diam., 12 ins. in the ground to bed rock, supported in a mound of stone, for 4 sec. cor., marked on brass cap,

$\frac{1}{4}$
 S25 | S30
 1923

from which,

A pinyon, 8 ins. in diam., brs. N. 9° E., 120 lks. dist., marked $\frac{1}{4}$ S 30 BT.
 A cedar, 8 ins. in diam., brs. S. 89° W., 23 lks. dist., marked $\frac{1}{4}$ S 25 BT.

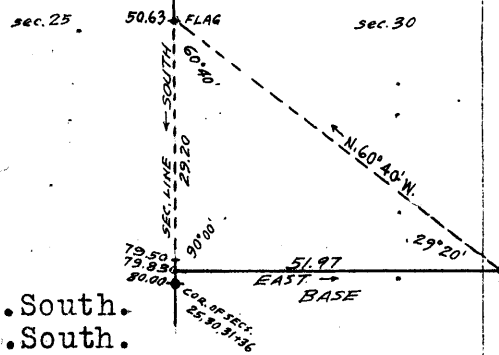
43.85 Descend 73 ft., over S.slope.
 Wash, 10 lks. wide, course E.
 Ascend 140 ft., over N.slope, to
 50.63 Rim of canyon, brs. E. and W. Discontinue chaining owing to cliffs and precipitous slopes beyond this point.
 Triangulate as described as follows:

BOOK 3645

10 Survey of East bdy. of Township 29 North, Range 11 West.

Chains.

Set flag at this point.
 From a point ahead on range line, the vertical angle to which is -30° , measure a Base east 51.97 chs.
 From E. end of Base, the flag brs. $N.60^\circ 40' W.$



Dist. on range line = 50.63 chs. South.
 Dist. triangulated = 29.20 chs. South.
 Total distance, = 79.83 chs. South.
 Dist. by return measurement = 0.33 chs. North.
 79.50 chs. South.

79.50 Wash, 20 lks. wide, course SE. about 1105 ft. below 50.63 ch. station. Continue line and measurement by chaining.

Descend slightly over SE. slope to sec. cor.

79.83 Triangulation point. Continue chaining.

80.00 Set an iron post, 3 ft. long, 2 ins. in diam., 12 ins. in the ground to bed rock, supported in a mound of stone for cor. of secs. 25, 30, 31 and 36, marked on brass cap,

T29N
 R11W | R10W
 S25 | S30
 S36 | S31
 1923

from which,

A cedar limb, 8 ins. in diam., brs. $S.75^\circ E.$, 40 lks. dist., marked T29N R11W S31 BT.

No other bearing trees available.

Raise a mound of stone 3 ft. base, 2 ft. high, W. of cor. Land, mountainous.

Soil, rocky, 4th rate.

Timber, pinyon and cedar.

Undergrowth, sagebrush, black brush and cactus.

South, on true line, bet. secs. 31 and 36.

Over mountainous land, thru. scattering timber and dense undergrowth.

Descend 103 ft., over SE. slope.

10.00 Ascend 56 ft., over NE. slope.

12.20 Spur, slopes $S.70^\circ E.$

Descend 115 ft., over S. slope, to

30.00 Top of cliff, 40 ft. high, bearing NE. and SW. facing SE.

Descend 95 ft., over SE. slope, to

40.00 Set an iron post, 3 ft. long, 1 in. in diam., 26 ins. in the ground, for $\frac{1}{4}$ sec. cor., marked on brass cap,

$\frac{1}{4}$
 S36 | S31
 1923

from which,

A pinyon, 8 ins. in diam., brs. $S.46^\circ E.$, 65 lks. dist., marked $\frac{1}{4}$ S 31 BT.

A pinyon, 6 ins. in diam., brs. $S.50^\circ W.$, 60 lks. dist., marked $\frac{1}{4}$ S 36 BT.

Ascend 28 ft., over NE. slope.

41.50 Descend 20 ft., over E. slope, to

50.00 Spur, slopes SE.

Descend 205 ft., over S. slope.

60.00 Rocky wash, 20 lks. wide, course SE.

Ascend 20 ft., over NE. slope.

64.40 Descend 40 ft., over E. slope.

69.35 Ascend 5 ft., over NE. slope.

71.00 Descend 44 ft., over S. slope.

BOOK 3645

Survey of East bdy. of Township 29 North, Range 11 West. 11

Chains.

73.00 Wash, 30 lks. wide, course S. 80° E.
Ascend 40 ft., over NE. slope.

75.00 Descend 15 ft., over SE. slope, to

79.70 Wash, 30 lks. wide, course N. 80° E.
Ascend slightly over E. slope, to

80.00 Set an iron post, 3 ft. long, 3 ins. in diam., 14 ins. in
the ground to bed rock, deposit a stone, marked with a
cross (x) at base of post, and raise a mound of stone
around post for standard cor. of Ts. 29 N., Rs. 10 and 11
W., on the 7th Standard Parallel North, marked on brass
cap,

S C
T29N
R11W R10W
S36 S31

1923

from which,

A pinyon, 12 ins. in diam., brs. N. 40° E., 53 lks. +
lks. dist., marked T29N R10W S31 SC BT.

A pinyon, 10 ins. in diam., brs. N. 29° W., 78 lks.
dist., marked T29N R11W S36 SC BT.

Land, mountainous.

Soil, sandy and rocky, 3rd and 4th rate.

Timber, pinyon and cedar.

Undergrowth, sagebrush, yucca and cactus.

BOOK 3645

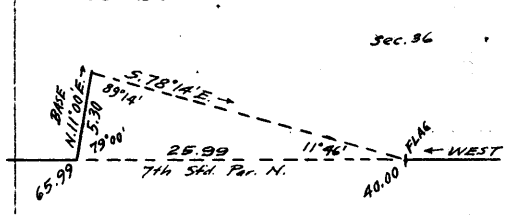
12 Survey of Seventh Standard Parallel North, thru. part of R. 11 W. Chains.

From the standard cor. of Ts, 29 N., Rs. 10 and 11 W., on the 7th Std. Par. N., hereinbefore described, West, on true line, on S. bdy. of sec. 36. Over mountainous land, thru. scattering timber and undergrowth.
 Ascend 355 ft., over E. slope, to
 17.40 Ascend 140 ft., over SE. slope.
 29.27 Spur, slopes NE.
 Ascend gradually over N. slope, to
 37.54 Wash, 20 lks. wide, course NE.
 Ascend 50 ft., over E. slope, to
 40.00 Set an iron post, 3 ft. long, 1 in. in diam., 20 ins. in the ground to bed rock, deposit a stone marked with a cross (x) at base of post, and raise a mound of stone around post, for standard $\frac{1}{4}$ sec. cor., marked on brass cap,

S C
 $\frac{1}{4}$ S 36

1923

No bearing trees available. Beyond this point, precipitous ascent over cliffs prevents chaining; therefore, triangulate as described as follows:



Set flag at this standard $\frac{1}{4}$ sec. cor.

From a point ahead on line, measure a Base N. 11° 00' E., 5.30 chs. along top of cliffs.

From NE. end of Base, the flag brs. S. 78° 14' E.

From SW. end of Base, the vertical angle to flag is - 32 $\frac{1}{2}$ °

Dist. on Std. Parallel = 40.00 chs. West.
 Dist. triangulated = 25.99 chs. West.
 Total distance, = 65.99 chs. West.

Ascent from $\frac{1}{4}$ sec. cor. to top of cliffs = 1090 ft.
 65.99 Triangulation point at top of cliff about 200 ft. high, bearing N. 11° E. and S. 11° W., facing E. Continue line and measurement by chaining. Leave mountainous and enter rolling land, dense timber and undergrowth.

Descend 52 ft. over NW. slope to sec. cor.
 72.30 Trail, brs. NW. and SE.

80.00 Set an iron post, 3 ft. long, 2 ins. in diam., 26 ins. in the ground, for standard cor. of secs. 35 and 36, marked on brass cap,

S C
 T29N | R11W
 S35 | S36

1923

from which,

A cedar, 8 ins. in diam., brs. N. 15° E., 69 lks. dist., marked T29N R11W S36 SC BT.

A cedar, 12 ins. in diam., brs. N. 25° W., 103 lks. dist., marked T29N R11W S35 SC BT.

Land, mountainous and rolling.
 Soil, rocky and sandy, 3rd and 4th rate.
 Timber, oak, cedar and pinyon.
 Undergrowth, scrub oak, black brush and cactus.

West, on true line, on S. bdy. of sec. 35+
 Over rolling land, thru. dense timber and undergrowth.
 Descend gradually over NW. slope.

4.75 Wash, 10 lks. wide, course N. 5° E.
 Ascend 130 ft., over SE. slope.

Survey of Seventh Standard Par.N., thru part of Range 11 W. 13

Chains.

- 28.80 Descend 32 ft., over SW. slope.
 35.87 Wash, 20 lks. wide, course SW.
 Ascend 30 ft., over SE. slope, to
 40.00 Set an iron post, 3 ft. long, 1 in. in diam., 20 ins. in
 the ground to bedrock, supported in a mound of stone,
 for standard $\frac{1}{4}$ sec. cor., marked on brass cap,

S C
 $\frac{1}{4}$ S 35
 1923

from which,

- A pinyon, 6 ins. in diam., brs. N. $53\frac{1}{2}^{\circ}$ E., 55 lks.
 dist., marked $\frac{1}{4}$ S 35 SC BT.
 A pinyon, 6 ins. in diam., brs. N. $86\frac{1}{2}^{\circ}$ W., 46 lks.
 dist., marked $\frac{1}{4}$ S 35 SC BT.
 Ascend 25 ft., over SE. slope.
 44.58 Spur, slopes SW. Enter mountainous land.
 Descend 140 ft., over W. slope.
 58.52 Draw, course N.
 Ascend 40 ft., over E. slope.
 62.57 Short spur, slopes NW.
 Descend 29 ft., over W. slope.
 76.00 Wash, 10 lks. wide, course NW.
 Ascend 25 ft., over E. slope, to
 80.00 Set an iron post, 3 ft. long, 2 ins. in diam., 11 ins. in
 the ground to bed rock, supported in a mound of stone,
 for standard cor. of secs. 34 and 35, marked on brass
 cap,

S C
 T29N R11W
 S34 S35
 1923

from which,

- A pinyon, 12 ins. in diam., brs. N. 15° E., 26 lks.
 dist., marked T29N R11W S35 SC BT.
 A cedar, 8 ins. in diam., brs. N. 39° W., 64 lks.
 dist., marked T29N R11W S34 SC BT.
 Land, rolling and mountainous.
 Soil, sandy and rocky, 3rd rate.
 Timber, cedar and pinyon.
 Undergrowth, scrub oak, sagebrush and manzanita.

- West, on true line, on S. bdy. of sec. 34.
 Over mountainous land, thru dense timber and scattering
 undergrowth.
 Ascend 97 ft., over E. slope, to
 9.55 E. rim of mesa, brs. N. and S. Thence over level land on
 mesa.
 40.00 Set an iron post, 3 ft. long, 1 in. in diam., on surface
 rock, supported in a mound of stone, for standard $\frac{1}{4}$
 sec. cor., marked on brass cap,

S C
 $\frac{1}{4}$ S 34
 1923

from which,

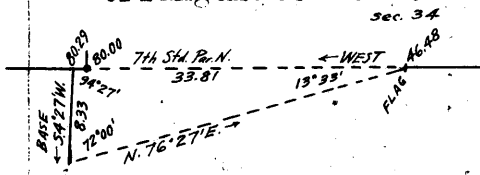
- A pinyon, 12 ins. in diam., brs. N. $45\frac{1}{2}^{\circ}$ E., 88 lks.
 dist., marked $\frac{1}{4}$ S 34 SC BT.
 A cedar, 10 ins. in diam., brs. N. $31\frac{1}{2}^{\circ}$ W., 84 lks.
 dist., marked $\frac{1}{4}$ S 34 SC BT.
 Continue over level land on mesa, thru dense timber and
 scattering undergrowth.
 46.48 Top of cliff about 200 ft. high, bearing NW. and SE., facing
 SW., and forming W. rim of mesa. Leave mesa, and enter
 mountainous land. Precipitous descent over cliffs, facing
 SW., prevents chaining beyond this point; therefore,

BOOK 3645

14 Survey of Seventh Std. Par. N., thru. part of Range 11 West.

Chains.

triangulate as described as follows:



Set flag at this point.
From a point ahead on line, the vertical angle to which is -34° , measure a Base S. $4^\circ 27' W.$, 8.33 chs.
From SW. end of Base, the flag brs. N. $76^\circ 27' E.$

Dist. on standard Parallel = 46.48 chs. West.
Distance triangulated = 33.81 chs. West.
Total distance, = 80.29 chs. West.
Dist. by return measurement = 0.29 chs. East.
80.00 chs. West.

Descent from 46.48 ch. station to std. cor. of secs. 33 and 34 = 1490 ft.

80.00 Set an iron post, 3 ft. long, 2 ins. in diam., 28 ins. in the ground, for standard cor. of secs. 33 and 34, marked on brass cap,

S C
T29N | R11W
S33 | S34
1923

from which,

- A pinyon, 10 ins. in diam., brs. N. $89\frac{1}{2}^\circ E.$, 71 lks. dist., marked T29N R11W S34 SC BT.
- A cedar, 6 ins. in diam., brs. N. $20\frac{1}{4}^\circ W.$, 27 lks. dist., marked T29N R11W S33 SC BT.

Land, mountainous and level.
Soil, sandy and rocky, 3rd rate.
Timber, cedar and pinyon.
Undergrowth, sage brush, scrub oak, black brush and cat-claw.

West, on true line, on S. bdy. of sec. 33.
Over mountainous land, thru. dense timber and scattering undergrowth.

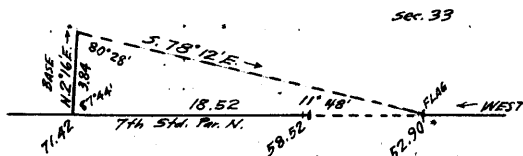
3.50 Descend 40 ft., over W. slope.
Wash, 50 lks. wide, course NW.
Ascend 31 ft., over NE. slope, to
8.65 Enter rolling land.
Descend 190 ft. over N. and NW. slopes, to
40.00 Set an iron post, 3 ft. long, 1 in. in diam., 26 ins. in the ground, for $\frac{1}{4}$ sec. cor., marked on brass cap,

S C
 $\frac{1}{4}$ S 33
1923

from which,

- A pinyon, 8 ins. in diam., brs. N. $35\frac{1}{2}^\circ E.$, 49 lks. dist., marked $\frac{1}{4}$ S 33 SC BT.
- A pinyon, 12 ins. in diam., brs. N. $77\frac{1}{2}^\circ W.$, 87 lks. dist., marked $\frac{1}{4}$ S 33 SC BT.

52.90 Descend gradually over W. slope, to
Top of cliff, 150 ft. high, bearing NW. and SE., facing SW., and forming right rim of canyon. Leave timber and rolling land, and enter mountainous land in canyon. Precipitous descent renders chaining impracticable; therefore, triangulate as described as follows:



Set flag at this point.
From a point ahead on line, the vertical angle to which is $-18\frac{1}{2}^\circ$, measure a Base N. $2^\circ 16' E.$, 3.84 chs.
From NE. end of Base, the flag brs. S. $78^\circ 12' E.$

Dist. on std. par. = 59.52 chs. East.

Chains.

Dist. on Std. Parallel = 52.90 chs. West.

Dist. triangulated = 18.52 chs. West.

Total distance = 71.42 chs. West.

Dist. by return measurement = 12.90 chs. East.

58.52 chs. West.

58.52 Theoretical point for closing cor. of secs. 4 and 5, T. 28 N., R. 11W., monumented as described in Book "G" of this group.

This point is about 230 ft. below 52.90 ch. station on parallel.

Continue line and measurement by chaining.

Descend 180 ft. over steep S. slope, to

71.42 Triangulation point on spur, sloping SW. Continue chaining.

Descend 242 ft., over W. and SW. slopes, to

80.00 Set an iron post, 3 ft. long, 2 ins. in diam., 14 ins. in the ground to bed rock, deposit a stone, marked with a cross (x) at base of post, and raise a mound of stone around post, for std. cor. of secs. 32 and 33, marked on brass cap,

S	C
T29N	R11W
S32	S33

1923

No bearing trees available.

Land, rolling and mountainous.

Soil, rocky, 4th rate.

Timber, cedar and pinyon.

Undergrowth, black brush, yucca, catclaw and cactus.

West, on true line, on S. bdy. of sec. 32 (E. $\frac{1}{2}$).

Over mountainous land, in canyon, thru scattering undergrowth.

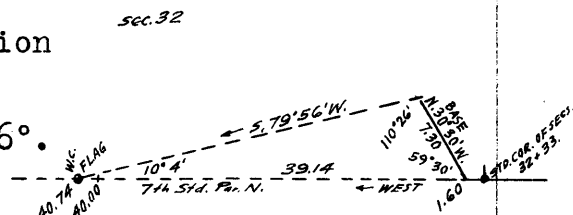
Descend 21 ft., over SW. slope, to

1.60 Discontinue chaining as the slopes beyond this point are too precipitous to chain.

Triangulate as described as follows:

Measure a Base, N. $30^{\circ}30'W.$,

7.30 chs. from 1.60 ch. station on parallel.

Set flag ahead on line, the vertical angle to which is -6° .From NW. end of Base, the flag brs: S. $79^{\circ}56'W.$ 

Dist. on Std. Par. = 1.60 chs. West.

Dist. triangulated = 39.14 chs. West.

Total distance = 40.74 chs. West.

8.00 (Approx.) Bottom of gulch, course NW. about 200 ft. below std. cor. of secs. 32 and 33.

Ascend about 150 ft., over NE. slope, to

15.00 (Approx.) Descend over precipitous broken N. and NW. slopes.

40.00 Point for std. $\frac{1}{4}$ sec. cor. falls on vertical cliff, where it is inaccessible.

40.74 Triangulation point on narrow ledge, bearing NE. and SW., about 270 ft. below the standard cor. of secs. 32 and 33.

This being the nearest accessible point to the point for standard $\frac{1}{4}$ sec. cor., establish W.C. here as follows:Set an iron post, 3 ft. long, 1 in. in diam., on surface rock, deposit a stone marked with a cross (x) at base of post, and raise a mound of stone around post, for witness cor. to std. $\frac{1}{4}$ sec. cor., marked on brass cap,

BOOK 3645

16 Survey of Seventh Std. Par. N., thru part of Range 11 West.

Chains.

S C
1/4 S 32 WC

1923

No bearing trees or bearing objects available.
Beyond this point, the Std. Parallel passes over extremely mountainous surface, which is impracticable to survey; therefore, discontinue survey at this W.C.

Land, mountainous.

Soil, rocky, 4th rate.

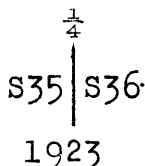
Timber, none.

Undergrowth, black brush, cactus and sagebrush.

Survey of part of Subdivision lines of Township 29 N., R. 11 W. 17

Chains.

From Sta. cor. of secs. 35 and 36, on the S. bdy. of the Tp., (7th. Std. Par. N.) hereinbefore described, N.0°1'W., on true line, bet. secs. 35 and 36. Over rolling land, thru. dense timber and undergrowth. Descend 75 ft., over NW. slope.
 15.15 Wash, 30 lks. wide, course NE.
 Ascend 60 ft., over SE. slope.
 32.57 Point of spur, slopes SE. Enter mountainous land.
 Descend 51 ft. over NE. slope to $\frac{1}{4}$ sec. cor.
 38.00 Draw, course NE. near head.
 40.00 Set an iron post, 3 ft. long, 1 in. in diam., 6 ins. in the ground to bed rock, supported in a mound of stone, for $\frac{1}{4}$ sec. cor., marked on brass cap,



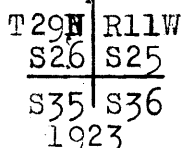
from which,

A cedar, 4 ins. in diam., brs. N.29 $\frac{1}{2}$ °W., 44 lks. dist., marked BT.

A cedar, 8 ins. in diam., brs. S.33°E., 96 lks. dist., marked $\frac{1}{4}$ S 36 BT.

Continue over mountainous land, thru. dense timber and undergrowth.

Descend 83 ft., over NE. slope.
 46.80 Trail to Kelly Spring, brs. NW. and SE.
 47.98 Wash, 40 lks. wide, course NW. Enter rolling land.
 Ascend 60 ft., over SW. slope.
 58.37 Point of spur, slopes W.
 Descend 70 ft., over NW. slope.
 68.73 Wash, 30 lks. wide, course SW. Enter mountainous land.
 Ascend 53 ft., over S. slope, to
 72.50 Enter rolling land.
 Ascend 30 ft., over SW. slope, to
 80.00 Set an iron post, 3 ft. long, 2 ins. in diam., 14 ins. in the ground to bed rock, supported in a mound of stone, for cor. of secs. 25, 26, 35 and 36, marked on brass cap,



from which,

A cedar, 8 ins. in diam., brs. N.32 $\frac{1}{2}$ °E., 35 lks. dist., marked T29N R11W S25 BT.

A cedar, 12 ins. in diam., brs. S.61 $\frac{1}{2}$ °E., 46 lks. dist., marked T29N R11W S36 BT.

A cedar, 6 ins. in diam., brs. S.22°W., 34 lks. dist., marked T29N R11W S35 BT.

A cedar, 6 ins. in diam., brs. N.54 $\frac{1}{2}$ °W., 43 lks. dist., marked T29N R11W S26 BT.

Land, rolling and mountainous.

Soil, sandy and rocky, 3rd rate.

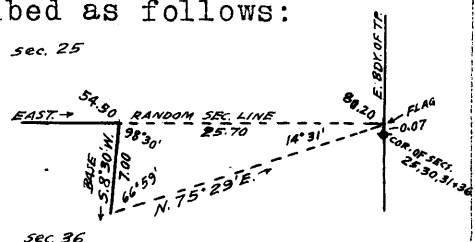
Timber, cedar and pinyon.

Undergrowth, manzanita, scrub oak and sagebrush.

40.00 East, on random line, bet. secs. 25 and 36.
 Set temp. $\frac{1}{4}$ sec. cor.
 54.50 Top of cliff, brs. N. 8°E. and S. 8°W., facing E. Precipitous descent over cliffs beyond this point renders chaining impracticable. Triangulate the measurement of the remainder of this line as described as follows:

Measure a Base, S.8°30'W., 7.00 chs. along top of cliff.

Set flag ahead on random line at a point 7 lks. N. of the cor. of secs. 25, 30, 31 and 36, on the E. bdy. of the Tp., the vertical angle to which is -19°.



BOOK 3645

18 Survey of part of the Subdivision lines of T.29 N., R.11 W.

Chains.

From SW.end of Base, the flag brs. N.75° 29'E.
 Dist. on random sec.line =54.50 chs. East.
 Dist. triangulated =25.70 chs. East.
 Total distance =80.20 chs. East.

80.20 The random sec.line extended East would therefore, at
 Fall 7 lks. N. of the cor. of secs. 25, 30, 31 and 36, on the
 E. bdy. of the Tp., hereinbefore described.
 Thence,
 N.89°57'W+, on true line, bet. secs. 25 and 36.
 Over mountainous land, in canyon, thru. scattering timber
 and undergrowth.
 Measurement of 25.70 chs. by triangulation, as hereinbe-
 fore described.

25.70 Ascend 585 ft., over precipitous SE. slope, to
 Triangulation point at top of cliff, 400 ft. high, bearing
 N.8°E. and S.8°W., facing E.
 Continue line and measurement by chaining.

31.46 Ascend 176 ft., over steep E. slope, to
 Spur, sloping S. and W. rim of canyon. Leave mountainous
 and enter rolling land, dense timber and undergrowth.

40.10 Descend 65 ft., over SW. slope, to
 Set an iron post, 3 ft. long, 1 in. in diam., on surface rock,
 supported in a mound of stone, for $\frac{1}{4}$ sec. cor., marked
 on brass cap,

$\frac{1}{4}$ S 25
 $\frac{1}{4}$ S 36
 1923

from which,

A pinyon, 12 ins. in diam., brs. N.58°E., 24 lks.
 dist., marked $\frac{1}{4}$ S 25 BT.

A pinyon, 12 ins. in diam., brs. S.15°E., 89 lks.
 dist., marked $\frac{1}{4}$ S 36 BT.

Descend slightly over SW. slope.
 42.00 Draw, course SW.
 Ascend 46 ft., over SE. slope, to
 46.58 Point of spur, sloping SW. Enter mountainous land.
 Descend 103 ft., over SW. slope.
 56.50 Head of wash, 20 lks. wide, course SW. Enter rolling land.
 Descend gradually, over S. and SW. slopes, to
 80.20 The cor. of secs. 25, 26, 35 and 36.
 Land, mountainous and rolling.
 Soil, sandy and rocky, 4th rate.
 Timber, pinyon and cedar.
 Undergrowth, buck brush, scrub oak and cactus.

N.0°01'W., bet. secs. 25 and 26.
 Over rolling land, thru. dense timber and undergrowth.
 Ascend gradually over SW. and W. slopes.

12.42 Wash, 10 lks. wide, course W.
 19.22 Wash, 10 lks. wide, course W.
 Ascend 40 ft., over S. slope.

25.00 Spur, slopes W. Enter mountainous land.
 Descend 77 ft., over N. slope.

29.04 Wash, 10 lks. wide, course NW.
 Ascend 84 ft., over SW. slope, to

37.00 Enter rolling land on top of ridge, bearing NW. and SE.
 Ascend slightly to

40.00 Set an iron post, 3 ft. long, 1 in. in diam., 18 ins. in
 the ground to bed rock, supported in a mound of stone,
 for $\frac{1}{4}$ sec. cor., marked on brass cap,

$\frac{1}{4}$
 S26 | S25
 1923

from which,

Survey of part of Subdivision lines of Township 29 North, Range 11 W. 19

Chains.

A cedar, 12 ins. in diam., brs. S. 75° E., 38 lks. dist., marked $\frac{1}{4}$ S 25 BT.

A pinyon, 12 ins. in diam., brs. N. 74° W., 81 lks. dist., marked $\frac{1}{4}$ S 26 BT.

43.50 Descend slightly across top of ridge, bearing NW. and SE. Leave top of ridge.

46.85 Descend 28 ft., over NE. slope. Wash, 10 lks. wide, course NW. Ascend 40 ft., over SW. slope.

50.12 Spur, slopes NW. Descend 44 ft., over N. slope, to

56.79 Wash, 10 lks. wide, course NW. Descend 32 ft., over W. slope.

65.00 Enter mountainous land. Descend 64 ft., over NW. slope.

69.32 Wash, 20 lks. wide, course SW. Ascend 95 ft., over S. slope, to

72.50 Enter rolling land. Ascend 30 ft., over S. slope, to

80.00 Set an iron post, 3 ft. long, 2 ins. in diam., 24 ins. in the ground for cor. of secs. 23, 24, 25 and 26, marked on brass cap,

T29N	R11W
S23	S24
S26	S25

1923

from which,

A cedar, 12 ins. in diam., brs. N. 8° E., 158 lks. dist., marked T29N R11W S24 BT.

A pinyon, 14 ins. in diam., brs. S. 22° E., 140 lks. dist., marked T29N R11W S25 BT.

A cedar, 14 ins. in diam., brs. S. 62 $\frac{1}{2}$ ° W., 84 lks. dist., marked T29N R11W S26 BT.

A cedar, 12 ins. in diam., brs. N. 62° W., 105 lks. dist., marked T29N R11W S23 BT.

Land, rolling and mountainous.
 Soil, sandy and rocky, 3rd rate.
 Timber, pinyon and cedar.
 Undergrowth, buck brush, scrub oak, manzanita and cactus.

40.00 S. 89° 57' E., on random line, bet. secs. 24 and 25. Set temp. $\frac{1}{4}$ sec. cor.

79.98 Intersect the E. bdy. of the Tp., at the cor. of secs. 19, 24, 25 and 30, hereinbefore described.

Thence,
 N. 89° 57' W., on true line, bet. secs. 24 and 25. Over mountainous land, thru dense timber and undergrowth. Descend slightly, over SW. slope, to

1.20 Wash, 20 lks. wide, course SE. Ascend 137 ft., over E. slope.

9.77 Top of ridge, brs. N. and S. Enter rolling land, Descend 89 ft., over W. slope.

34.71 Trail, brs. N. and S. in wash, course S. near head. Descend gradually, over S. slope, to

39.99 Set an iron post, 3 ft. long, 1 in. in diam., 24 ins. in the ground, for $\frac{1}{4}$ sec. cor., marked on brass cap,

S 24
S 25

1923

from which,

A cedar, 6 ins. in diam., brs. N. 61° E., 20 lks. dist., marked $\frac{1}{4}$ S 24 BT.

A cedar, 10 ins. in diam., brs. S. 12° W., 48 lks. dist., marked $\frac{1}{4}$ S 25 BT.

Continue over rolling land, thru dense timber and undergrowth.

BOOK 3645

20 Survey of part of Subdivision lines of T. 29 N., R. 11 W.

Chains.

50.00 Descend gradually over S. slope, to
Spur, slopes SW. Enter mountainous land.
Descend 60 ft., over NW. slope.
59.40 Wash, 10 lks. wide, course SW.
Ascend 141 ft., over SE. slope.
65.00 Point of spur, slopes S. Enter rolling land.
Descend 20 ft., over SW. slope.
69.90 Wash, 10 lks. wide, course SE.
Ascend 46 ft., over SE. slope.
75.00 Descend gradually over S. slope, to
79+98 The cor. of secs. 23, 24, 25 and 26.
Land, mountainous and rolling.
Soil, sandy and rocky, 3rd rate.
Timber, cedar and pinyon.
Undergrowth, sagebrush, scrub oak and cactus.

N. 0° 01' W., bet. secs. 23 and 24.
Over gently rolling land, thru. dense timber and undergrowth.
Ascend gradually over S. and SW. slopes.
15.00 Trail, brs. E. and W. Thence over W. and NW. slopes, to
35.00 Ascend gradually, over SE. slope, to
40.00 Set an iron post, 3 ft. long, 1 in. in diam., 6 ins. in the
ground to bed rock, supported in a mound of stone, for
sec. cor., marked on brass cap,

S23	S24
-----	-----

1923

from which,

A cedar, 6 ins. in diam., brs. N. 58° E., 35 lks.
dist., marked $\frac{1}{4}$ S 24 BT.

A cedar, 6 ins. in diam., brs. S. 83° W., 44 lks.
dist., marked $\frac{1}{4}$ S 23 BT.

Continue over gently rolling land, thru. dense timber and
undergrowth.

Ascend 29 ft., over SE. slope.
45.00 Descend 80 ft., over N. slope.
47.00 Wash, 20 lks. wide, course NE.
Ascend 60 ft., over SE. slope.
56.00 Descend gradually over E. slope, to sec. cor.
60.00 Old road, brs. E. and W.
80.00 Set an iron post, 3 ft. long, 2 ins. in diam., 10 ins. in
the ground to bed rock, supported in a mound of stone,
for cor. of secs. 13, 14, 23 and 24, marked on brass
cap,

T29N	R11W
S14	S13

S23	S24
-----	-----

1923

from which,

A cedar, 15 ins. in diam., brs. N. 62° E., 146 lks.
dist., marked T29N R11W S13 BT.

A pinyon, 8 ins. in diam., brs. S. 74° E., 87 lks.
dist., marked T29N R11W S24 BT.

A cedar, 40 ins. in diam., brs. S. 61° W., 108 lks.
dist., marked T29N R11W S23 BT.

A cedar, 8 ins. in diam., brs. N. 80° W., 34 lks.
dist., marked T29N R11W S14 BT.

Land, gently rolling.

Soil, clay, 3rd rate.

Timber, cedar and pinyon.

Undergrowth, scrub oak and cactus.

Survey of part of Subdivision lines of T. 29 N., R. 11 W. 21

Chains. S. 89° 57' E., on random line, bet. secs. 13 and 24.
 40.00 Set temp. $\frac{1}{4}$ sec. cor.
 80.00 Intersect the E. bdy. of the Tp., 7 lks. S. of the cor. of secs. 13, 18, 19 and 24, hereinbefore described.
 Thence,
 West, on true line, bet. secs. 13 and 24.
 Over mountainous land, thru. dense timber and undergrowth.
 Descend 132 ft., over NW. slope.
 6.50 Rocky wash, 20 lks. wide, course NE.
 Ascend 228 ft., over E. slope.
 26.71 Ridge, brs. N. and S.
 Descend 90 ft., over W. slope.
 35.02 Wash, 10 lks. wide, course NW. Enter rolling land.
 Ascend 30 ft., over NE. slope, to
 40.00 Set an iron post, 3 ft. long, 1 in. in diam., 12 ins. in the ground to bed rock, supported in a mound of stone, for $\frac{1}{4}$ sec. cor., marked on brass cap,

$\frac{1}{4}$ S 13
 S 24
 1923

from which,
 A cedar, 8 ins. in diam., brs. N. 34 $\frac{1}{2}$ ° E., 65 lks. dist., marked $\frac{1}{4}$ S 13 BT.
 A cedar, 10 ins. in diam., brs. S. 77° W., 92 lks. dist., marked $\frac{1}{4}$ S 24 BT.

Ascend slightly over NE. slope.
 40.47 Spur, slopes NW.
 Descend 66 ft., over W. slope.
 48.00 Wash, 10 lks. wide, course N. Enter mountainous land.
 Ascend 37 ft., over E. slope.
 50.45 Spur, slopes N.
 Descend 55 ft., over W. slope.
 55.17 Wash, 20 lks. wide, course N.
 Ascend 111 ft., over E. slope.
 62.53 Ridge, brs. N. and S. Enter rolling land.
 Descend 54 ft., over W. slope.
 72.51 Wash, 20 lks. wide, course N.
 Ascend 27 ft., over E. slope, to
 80.00 The cor. of secs. 13, 14, 23 and 24.
 Land, rolling and mountainous.
 Soil, sandy and rocky, 3rd and 4th rate.
 Timber, pinyon and cedar.
 Undergrowth, scrub oak.

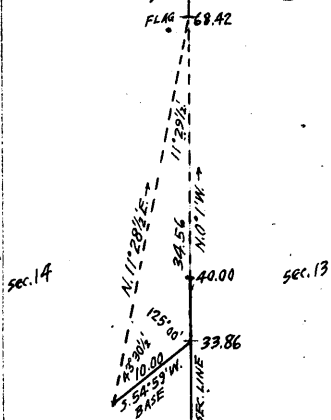
N. 0° 01' W., bet. secs. 13 and 14.
 Over rolling land, thru. scattering timber and dense undergrowth.
 Descend 70 ft., over E. and NE. slopes.
 12.42 Wash, 10 lks. wide, course NE.
 Ascend 35 ft., over SE. slope.
 15.94 Point of spur, slopes E. Enter mountainous land.
 Descend 67 ft., over NE. slope.
 24.86 Same wash, 10 lks. wide, course NW.
 Ascend 40 ft., over SE. slope.
 28.31 Point of spur, slopes W.
 Descend 12 ft., over NW. slope.
 29.80 Ascend 32 ft. over SW. slope.
 33.30 Descend 42 ft., over NW. slope.
 33.86 Triangulation point for measurement of part of N. $\frac{1}{2}$ of this line, as hereinafter described.
 34.70 Ascend 96 ft., over steep W. slope, to
 40.00 Set an iron post, 3 ft. long, 1 in. in diam., on surface rock, deposit a stone marked with a cross (x) at base of post, and raise a mound of stone around post, for $\frac{1}{4}$ sec. cor., marked on brass cap,

$\frac{1}{4}$
 S14 | S13
 1923

BOOK 3645

22 Survey of part of Subdivision lines of T. 29 N., R. 11 W.
Chains.

No bearing trees or bearing objects available.
Beyond this cor., the sec. line passes over precipitous broken W. slope, where chaining is impracticable; therefore, triangulate as described as follows:



Set flag ahead on sec. line.
From 33.86 ch. station on sec. line, measure a Base S. 54° 59' W., 10.00 chs.
From SW. end of Base, the flag brs. N. 11° 28 1/2' E.

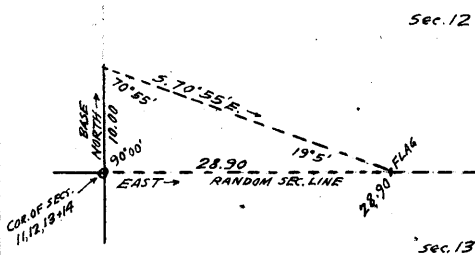
Dist. on sec. line = 33.86 chs. N. 0° 1' W.
Dist. triangulated = 34.56 chs. N. 0° 1' W.
Total distance = 68.42 chs. N. 0° 1' W.

- 68.42 Triangulation point at right rim of canyon, bearing NE. and SW. Continue line and measurement by chaining.
- 80.00 Descend 497 ft., over steep NW. slope, to Set an iron post, 3 ft. long, 2 ins. in diam., 4 ins. in the ground to bed rock, deposit a stone, marked with a cross (x) at base of post, and raise a mound of stone around post for cor. of secs. of secs. 11, 12, 13 and 14, marked on brass cap, . .

T29N. R11W
S11 | S12
S14 | S13
1923

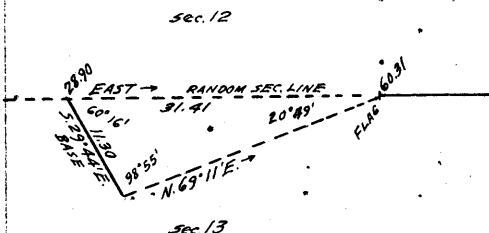
No bearing trees or bearing objects available.
Land, rolling and mountainous.
Soil, rocky, 4th rate.
Timber, cedar and pinyon.
Undergrowth, scrub oak.

East, on a random line, bet. secs: 12 and 13.
Precipitous slopes prevent chaining; therefore, triangulate as described as follows:



Set flag ahead on random line on sharp spur sloping N., the vertical angle to which is + 19°.
From cor. of secs. 11, 12, 13 and 14, measure a Base North, 10.00 chs.
From N. end of Base, the flag brs. S. 70° 55' E.

- 28.90 Distance triangulated = 28.90 chs. East. Triangulation point on sharp spur, sloping N. Precipitous slopes E. and W. of this point prevent any chaining on the random sec. line; therefore, triangulate as described as follows:



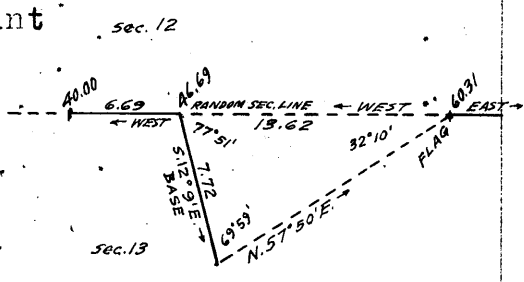
Measure a Base, S. 29° 44' E., 11.30 chs.
Set flag ahead on random sec. line.
From SE. end of Base, the flag brs. N. 69° 11' E.
From NW. end of Base, the vertical angle to flag is 0°.

Dist. by previous triangulation = 28.90 chs. East.
Dist. by this triangulation = 31.41 chs. East.
Total distance = 60.31 chs. East to triangulation point at top of cliff, bearing N. and S. facing.

Chains.

W., near right rim of canyon. Return measurement West from this point by chaining is impracticable; therefore, triangulate as described as follows:

Leave flag at triangulation point at 60.31 ch. station.
From a point on random sec. line West from flag, measure a Base S.12°09'E., 7.72 chs.
From SE end of Base, the flag brs. N.57°50'E.
From NW end of Base, the vertical angle to flag is + 42°.



Dist. by two previous triangulations = 60.31 chs. East.
Dist. by this triangulation = 13.62 chs. West.
46.69 chs. East.

- 40.00 From triangulation point at 46.69 ch. station, chain measurement West, 6.69 chs. to Set temp. 1/4 sec. cor. Thence, East, on random line, bet. secs. 12 and 13, chaining measurement.
- 46.69 Triangulation point. Continue chaining to
- 48.02 Bottom of canyon, course N. Discontinue chaining. Measurement by triangulation to
- 60.31 Triangulation point. Continue line and measurement by chaining.
- 80.02 Fall 9 lks. N. of the cor. of secs. 7, 12, 13 and 18 on the E. bdy. of the Tp., hereinbefore described. Thence, N. 89° 56' W., on true line, bet. secs. 12 and 13. Over mountainous land, thru. scattering timber and undergrowth. Ascend 20 ft., over NE. slope. Descend 178 ft., over steep N. slope. Ascend 150 ft., over NE. slope. 17.91 Point of spur, slopes NW. Descend 67. ft., over NW. slope, to 19.71 Triangulation point at top of cliff, about 200 ft. high, bearing N. and S. facing W. Enter canyon. Discontinue chaining. Measurement to bottom of canyon by triangulation as hereinbefore described. Descend about 840. ft. to 32.00 Wash, 20. lks. wide, course N. in bottom of canyon. Continue line and measurement by chaining. Ascend 214 ft., over steep E. slope, to 40.01 Set an iron post, 3 ft. long, 1 in. in diam., 6 ins. in the ground to bed rock, deposit a stone marked with a cross (x) at base of post, and raise a mound of stone around post, for 1/4 sec. cor., marked on brass cap, 1/4 S 12 S. 13 1923
- No bearing trees or bearing objects available. Discontinue chaining. Measurement to W. rim of canyon by triangulation.
- 51.12 Ascend about 625 ft., over precipitous E. and NE. slopes, to Triangulation point on sharp spur, sloping N. between canyons. Continue line and measurement by triangulation.
- 66.00 Descend about 800 ft., over precipitous W. slope. (Approx.) Wash, course NW in bottom of canyon. Ascend about 280 ft., over NE. slope.
- 75.00 (Approx.) Descend about 80 ft., over NW. slope, to
- 80.02 The cor. of secs. 11, 12, 13 and 14. Land, mountainous. Soil, rocky, 4th rate. Timber, cedar and pinyon. Undergrowth, black brush, catclaw and scrub oak.

BOOK 3645

24

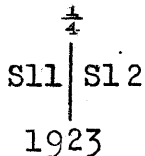
Survey of part of Subdivision lines of T.29 N., R. 11 W.

Chains.

N.0°01'W., bet. secs.11 and 12.
Over mountainous land, thru scattering timber and dense undergrowth.

12.77 Descend 398 ft., over NW.slope, to Wash, 20 lks.wide, course NW.

40.00 Descend 328 ft., over NW.slope, to Set an iron post, 3 ft.long, 1 in.in diam., 14 ins.in the ground to bed rock, supported in a mound of stone for $\frac{1}{4}$ sec.cor.; marked on brass cap,



from which,

A cedar, 6 ins.in diam., brs.S.20 $\frac{1}{2}$ °E., 77 lks. dist., marked $\frac{1}{4}$ S 12 BT.

A cedar, 6 ins.in diam., brs.S.27 $\frac{1}{2}$ °W., 68 lks. dist., marked S 11 BT.

41.00 Descend slightly over NW.slope, to Rocky wash, 100 lks.wide, course NE.

53.00 Ascend 63 ft., over SE.slope.

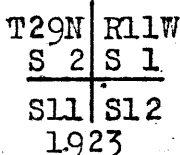
64.00 Descend 40 ft., over NE.slope.

64.00 Wash, 50 lks.wide, course NE.

Ascend 109 ft., over SE. slope.

75.00 Descend 68 ft., over NE.slope, to

80.00 Set an iron post, 3 ft.long, 2 ins. in diam., 12 ins. in the ground to bedrock, deposit a stone, marked with a cross (x) at base of post, and raise a mound of stone around post, for cor.of secs. 1, 2, 11 and 12; marked on brass cap,



from which,

A cedar, 14 ins. in diam., brs.S.11 $\frac{3}{4}$ °W., 43 lks. dist., marked T29N R11W S11 BT.

A pinyon, 8 ins.in diam., brs.N.63 $\frac{1}{4}$ °W., 60 lks. dist., marked T29N R11W S2 BT.

No other bearing trees available.

Land, mountainous.

Soil, rocky, 4th rate.

Timber, cedar and pinyon.

Undergrowth, black brush and scrub oak.

40.00 East, on random line, bet. secs.1 and 12. Set temp. $\frac{1}{4}$ sec.cor. Discontinue chaining owing to precipitous ascent over cliffs beyond this point.

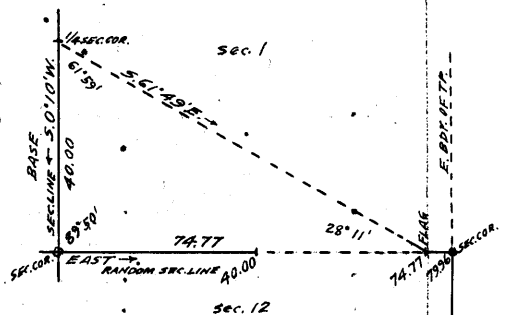
Triangulate as described as follows:

Set flag ahead on random sec. line at top of cliffs.

Use as a Base the S. $\frac{1}{2}$ of the sec. line bet.secs.1 and 2 (S.0°10'W. 40.00 chs.)

From N.end of Base the flag brs. S.61°49'E.

From S.end of Base the vertical angle to flag is + 21 $\frac{1}{2}$ °.



74.77 Dist. triangulated on random sec.line = 74.77 chs.East. Triangulation point. Continue line and measurement by chaining.

79.96 Intersect the cor.of secs.1, 6, 7 and 12, on the E. bdy. of Tp., hereinbefore described.

Chains.

Thence,
West, on true line, bet. secs. 1 and 12.
Over mountainous land, thru. scattering timber and under-
growth.
Ascend 180 ft., over precipitous NE. slope, to
5.19 Triangulation point on sharp spur, sloping N. Discontinue
chaining. Thence over cliffs, facing W. Measurement to
 $\frac{1}{4}$ sec. cor. by triangulation, hereinbefore described.
Descend about 1350 ft., to
39.98 Set an iron post, 3 ft. long, 1 in. in diam., 16 ins. in
the ground to bed rock, deposit a stone marked with
a cross (x) at base of post, and raise a mound of stone
around post, for $\frac{1}{4}$ sec. cor., marked on brass cap,

$\frac{1}{4}$ S 1
S 12
1923

No bearing trees or bearing objects available.
Continue line and measurement by chaining.
Descend 580 ft., over W. slope.
76.00 Center of rocky wash, 100 lks. wide, course N. in bottom of
Canyon.
Ascend 58 ft., over NE. slope, to
79.96 The cor. of secs. 1, 2, 11 and 12.
Land, mountainous.
Soil, rocky, 4th rate.
Timber, cedar and pinyon.
Undergrowth, black brush.

North, on random line, bet. secs. 1 and 2.
40.00 Set temp. $\frac{1}{4}$ sec. cor.
79.99 Intersect the N. bdy. of the Tp., 23 lks. W. of the cor. of
secs. 1, 2, 35 and 36, described in Book "E" of this
Group.
Thence,
S. 0° 10' W., on true line, bet. secs. 1 and 2.
Over mountainous land, in canyon, thru. scattering timber
and undergrowth.
Descend 105 ft. over SE. slope, to
19.00 Left rim of side canyon, brs. E. and W.
Descend 212 ft., over steep S. slope.
25.57 Rocky wash, 30 lks. wide, course E. in bottom of side canyon.
Ascend 260 ft., over steep NE. slope, to
32.50 Right rim of side canyon, brs. NW. and SE. Leave side
canyon. Continue in main canyon.
Ascend gradually over NE. slope, to
39.99 Set an iron post, 3 ft. long, 1 in. in diam., 14 ins. in the
ground to bed rock, supported in a mound of stone, for
 $\frac{1}{4}$ sec. cor., marked on brass cap,

$\frac{1}{4}$
S 2 | S 1
1923

from which,
A cedar, 8 ins. in diam., brs. S. 22° E., 29 lks.
dist., marked $\frac{1}{4}$ S 1 BT.
A pinyon, 10 ins. in diam., brs. S. 5° W., 21 lks.
dist., marked $\frac{1}{4}$ S 2 BT.
Continue along W. side of main canyon.
Ascend 190 ft., over E. slope.
72.00 Descend gradually over SE. slope.
79.00 Wash, 10 lks. wide, course E.
Ascend 14 ft., over NE. slope, to
79.99 The cor. of secs. 1, 2, 11 and 12.
Land, mountainous. Timber, cedar and pinyon.
Soil, rocky, 4th rate.
Undergrowth, black brush, cactus, and catclaw.

BOOK 3645

26 Survey of part of Subdivision lines of T. 29 N., R. 11 W.

Chains.

From the standard cor. of secs. 34 and 35, on the S. bdy. of the Tp. (7th. Std. Parallel North), hereinbefore described,

N. $0^{\circ}01'W.$, bet. secs. 34 and 35.

Over mountainous land, thru. dense timber and undergrowth. Descend 87 ft., over E. and NE. slopes.

11.50 Wash, 10 lks. wide, course NW. Enter rolling land.

Ascend 47 ft., over SW. slope.

19.80 Ascend 70 ft., over W. slope, to

30.88 Head of wash, 10 lks. wide, course W.

Ascend gradually over SW. slope, to

40.00 Set an iron post, 3 ft. long, 1 in. in diam., 12 ins. in the ground to bed rock, supported in a mound of stone, for $\frac{1}{4}$ sec. cor., marked on brass cap,

S34 | S35

1923

from which,

A pinyon, 8 ins. in diam., brs. S. $42\frac{1}{2}^{\circ}E.$, 18 lks. dist., marked $\frac{1}{4}$ S 35 BT.

A pinyon, 16 ins. in diam., brs. S. $12^{\circ}W.$, 33 lks. dist., marked $\frac{1}{4}$ S 34 BT.

Ascend 46 ft., over SW. slope, to

46.24 Left rim of gulch, brs. NW. and SE. Discontinue chaining owing to precipitous slopes in gulch, and triangulate as described as follows:

Set flag on line at this point.

From a point ahead on sec. line at opposite rim of gulch, measure a Base, S. $58^{\circ}36'E.$, 5.00 chs.

From SE. end of Base, the flag brs. S. $28^{\circ}40'W.$

From NW. end of Base, the vertical angle to flag is -5° .

From flag to point on sec. line in bottom of gulch, the vertical angle is -35° .

Dist. on sec. line = 46.24 chs. N. $0^{\circ}1'W.$

Dist. triangulated = 10.41 chs. N. $0^{\circ}1'W.$

Total distance = 56.65 chs. N. $0^{\circ}1'W.$

51.24 (Approx.) Bottom of gulch, course NW., about 230 ft. below 46.24 ch. station:

Ascend about 290 ft., over steep SW. slope, to

56.65 Triangulation point at right rim of gulch, bearing NW. and SE.

Continue line and measurement by chaining.

Ascend 18 ft., over SW. slope, to

60.00 South, or left rim of canyon, brs. E. and W. Discontinue chaining.

Triangulate across canyon, as described as follows:

Set flag at this point on sec. line.

From a point ahead on sec. line

at opposite rim of canyon, measure a Base S. $54^{\circ}59'E.$, 12.00 chs.

From SE. end of Base, the flag brs. S. $22^{\circ}42'W.$

From NW. end of Base, the vertical angle to flag is 0° .

From flag to point ahead on sec. line in bottom of canyon, the vertical angle is -38° .

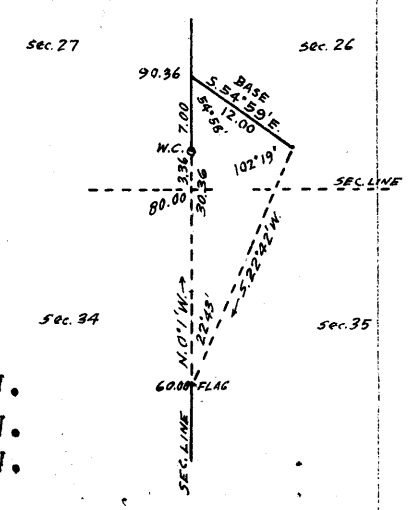
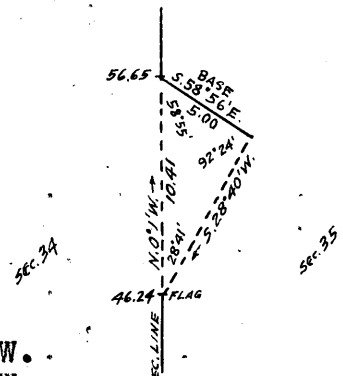
Dist. on sec. line = 60.00 chs. N. $0^{\circ}1'W.$

Dist. triangulated = 30.36 chs. N. $0^{\circ}1'W.$

Total dist. = 90.36 chs. N. $0^{\circ}1'W.$

Dist. by return measurement = 7.00 chs. S. $0^{\circ}1'E.$

83.36 chs. to point on N. side of canyon at top of cliffs, bearing NW. and SE., facing SW.

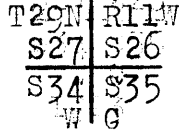


Survey of part of Subdivision lines of T. 29 N., R. 11 W. 27

Chains

70.00 This is the nearest accessible point to the sec.cor.point.
 (Approx.) Bottom of canyon, course W., about 515 ft. below
 S.rim. Asc.about 315 ft., over precipitous broken S.and SW
 SW.slopes, to top of cliffs.

80.00 True point for cor.of secs.26,27,34 & 35, on face of cliff,
 where it is inaccessible; therefore at top of cliffs at
 83.36 ch.station or 3.36 chs.N.0°1'W.from sec.cor.point,
 Set an iron post, 3 ft.long, 2 ins.in diam., 14 ins.in the
 ground to bed rock, supported in a mound of stone, for wit-
 ness cor.to cor.of secs.26,27,34 & 35, marked on brass cap,

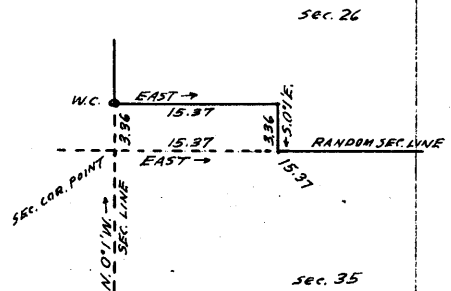


- 1923 from which, A cedar, 8 ins.in diam., brs.N.32°E., 35 lks.
dist., marked T29N R11W S26 WC BT.
- A cedar, 12 ins.in diam., brs.S.61½°E., 46 lks.
dist., marked T29N R11W S35 WC BT.
- A cedar, 6 ins. in diam., brs.S.22°W., 34 lks.
dist., marked T29N R11W S34 WC BT.
- A cedar, 6 ins.in diam., brs.N.54°W., 43 lks.
dist., marked T29N R11W S27 WC BT.

Land, mountainous and rolling.
 Soil, sandy and rocky, 3rd and 4th rate.
 Timber, cedar.
 Undergrowth, manzanita, scrub oak and sagebrush.

From true point for cor.of secs. 26,27, 34 and 35,
 East, on random line, bet. secs.26 and 35.
 The sec.cor.point being inaccessible, and part of the W.
 half of sec.line falling on precipitous cliffs on N.
 side of canyon where chaining is impracticable, obtain
 the measurement of such portion of the random line by
 offset line, as described as follows:

From true point for cor.of
 secs.26,27,34 & 35,
 N.0°1'W., 3.36 chs.to W.C.
 measuring by triangulation,
 as hereinbefore described.
 Thence chaining measurement
 East, 15.37 chs.on offset line
 in sec.26, parallel to and
 3.36 chs.N.of random sec.
 line, to offset point.
 Thence, chaining measurement
 S.0°1'E., 3.36 chs.on offset line,
 returning to random sec.line
 at



- 15.37 Offset point at rim of canyon, bearing NW. and SE.
Thence, East, on random sec.line, continuing measurement
by chaining.
- 40.00 Set temp.¼ sec.cor.
- 80.32 Fall 23 lks.N. of the cor.of secs. 25,26, 35 and 36.
Thence,
N.89°50'W., on true line, bet. secs.26 and 35.
Over rolling land, thru.dense timber and undergrowth.
Descend 65 ft., over SW.slope.
- 4.00 Trail, brs.N. and S.
- 23.70 Rim of gulch, brs.NW. and SE. Enter mountainous land.
Descend 41 ft., over SW.slope.
- 26.63 Head of wash, 10 lks.wide, course SW. into canyon.
- 34.08 Ascend 143 ft., over SE.slope, to
Rim brs.NE and NW.
- 36.70 Descend gradually over SW.slope.
Wash, 10 lks.wide, course S. into canyon.
- 40.16 Ascend gradually over SE. and S.slopes, to
Set an iron post, 3 ft.long, 1 in. in diam., 6 ins.in the
ground to bed rock, supported in a mound of stone, for
for ¼ sec.cor., marked on brass cap,

BOOK 3645

8 Survey of part of Subdivision lines of T. 29 N., R. 11 W.

Chains.

$\frac{1}{4}$ S 26
S 35
1923

from which,

A pinyon, 8 ins. in diam., brs. S. 28° W., 40 lks. dist., marked $\frac{1}{2}$ S 35 BT.

A cedar, 8 ins. in diam., brs. N. 73° E., 43 lks. dist., marked $\frac{1}{2}$ S 26 BT.

41.26 Ascend 22 ft., over SE. slope, to North, or right rim of canyon, brs. NE. and SW. Leave mountainous, and enter rolling land.

59.23 Ascend 44 ft., over SE. slope. Descend gradually over SW. slope, to

64.95 North, or right rim of canyon, brs. NW. and SE. Enter mountainous land in canyon. Cliffs and precipitous slopes prevent continuation of chaining on sec. line; therefore, complete the survey by offset line, as described as follows:

N. 0° 1' W., 3.36 chs. to offset point, ascending gradually over SW. slope.

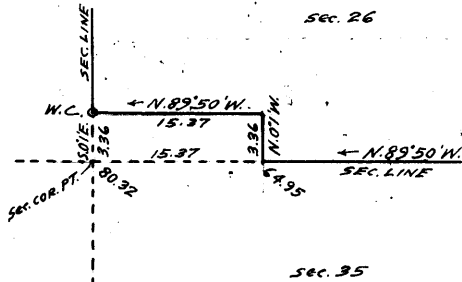
Thence,

N. 89° 50' W., 15.37 chs. to W.C. to sec. cor.

Descend slightly over SW. slope to 4.10 ch. station where offset line intersects the N. rim of canyon bearing NW. and SE.; thence desc. 215 ft., over steep broken SW. slope to canyon to the W.C. to sec. cor.

Thence

S. 0° 1' E., 3.36 chs., measurement by triangulation, hereinbefore described, on sec. line bet. secs. 26 and 27, descending over SW. face of cliffs, to



80.32 True point for cor. of secs. 26, 27, 34 and 35 on face of cliffs on N. side of canyon. Land, rolling and mountainous. Soil, sandy and rocky, 3rd and 4th rate. Timber, cedar and pinyon. Undergrowth, sagebrush and black brush.

From true point for cor. of secs. 26, 27, 34 and 35, N. 0° 1' W., bet. secs. 26 and 27. Over mountainous land, in canyon, thru. scattering timber and undergrowth.

3.36 Ascend over SW. face of cliffs. Measurement by triangulation, hereinbefore described, to Witness cor. to cor. of secs. 26, 27, 34 and 35 at top of cliff, bearing NW. and SE. facing SW. Continue line and measurement by chaining.

10:36 Ascend 200 ft., over steep SW. slope, to Triangulation point at N. or right rim of canyon, brs. NW. and SE. Leave mountainous land and canyon. Enter rolling land, dense timber and undergrowth. Continue chaining.

28.26 Descend gradually over W. slope, to Rim of canyon, brs. NE. and SW. Enter mountainous land in canyon.

38.50 Descend 177 ft., over N. slope, to Gulch; course NW.

40.00 Ascend 22 ft., over SW. slope, to Set an iron post, 3 ft. long, 1 in. in diam., 26 ins. in

Survey of part of the Subdivision lines of T.29 N. R.11 W. 29
Chains.

the ground for $\frac{1}{4}$ sec.cor., marked on brass cap,

S27 | S26
1923

from which,

- A cedar, 8 ins.in diam., brs.S.3 $\frac{1}{2}$ °E., 28 lks. dist., marked $\frac{1}{4}$ S 26 BT.
- A pinyon, 12 ins. in diam., brs.S.71°W., 51 lks. dist., marked $\frac{1}{4}$ S 27 BT.

Beyond this point, precipitous broken slopes in the canyon prevent chaining of any part of the N. $\frac{1}{2}$ of the sec.line; therefore, triangulate as described as follows, and as shown on the diagram hereon:

Set flag ahead on sec.line indicated on diagram at (D), and another flag (A) on the W.C. to cor.of secs. 26, 27, 34 and 35.

From a point (B) due West from (A), measure a Base S.17° 26'E., 10.00 chs. to point (C).

From (C) the bearing to flag (A) is N.74° 49'E.

Vertical angle from (B) to (A) is + 18 $\frac{3}{4}$ °.

By solution of triangle (A-B-C) the length of A-B is 38.15 chs.

From (B) the bearing to flag (D) is N.25° 25'E.

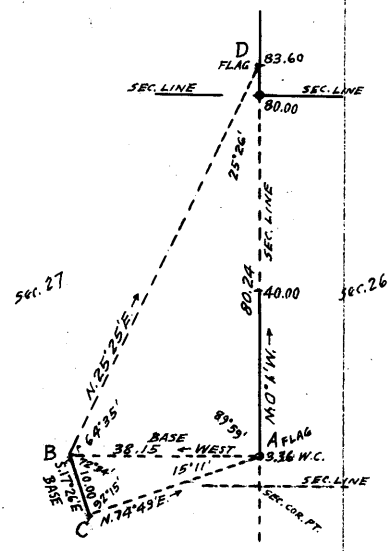
The vertical angle from (A) to (D) is - 3 $\frac{1}{2}$ °.

Dist.on sec.line = 3.36 chs.N.0° 1'W.

Dist.triangulated (A-D) = 80.24 chs.N.0° 1'W.

Total distance = 83.60 chs.N.0° 1'W.

Dist.by return measurement = 3.60 chs.S.0° 1'E.
80.00 chs.N.0° 1'W.



- From $\frac{1}{4}$ sec.cor.,
- 44.00 Descend over steep W.slope, to (Approx.) spur, slopes NW.
- 52.00 Descend over steep NE.slope, to (Approx.) Gulch, course NW.
- 62.00 Descend over steep broken NW. slope, to (Approx.) Bottom of canyon, course W., about 900 ft., below $\frac{1}{4}$ sec.cor.
- 80.00 Ascend about 420 ft., over steep broken SW.slope, to Set an iron post, 3 ft.long, 2 ins. in diam., 16 ins.in the ground to bed rock, deposit a stone, marked with a cross (x) at base of post, and raise a mound of stone around post, for cor.of secs. 22, 23, 26 and 27, marked on brass cap,

T29N | R11W
S22 | S23
S27 | S26
1923

from which,

- A pinyon, 14 ins. in diam., brs.S.39°E., 131 lks. dist., marked T29N R11W S26 BT.
- A pinyon, 12 ins. in diam., brs.N.44 $\frac{1}{2}$ °W., 134 lks. dist., marked T29N R11W S22 BT.

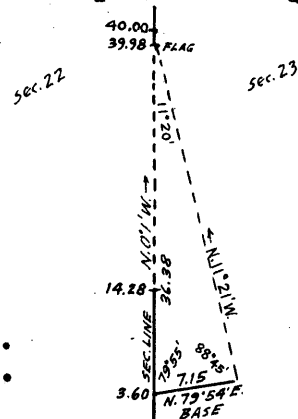
No other bearing trees available.
Land, mountainous and rolling.
Soil, rocky, 4th rate.
Timber, cedar and pinyon.
Undergrowth, sagebrush and black brush.

BOOK 3645

30 Survey of part of Subdivision lines of T.29 N., R.11 W.

Chains.	S. 89°50'E., on random line, bet. secs. 23 and 26.
40.00	Set temp. $\frac{1}{4}$ sec. cor.
80.14	Fall 18 lks. S. of the cor. of secs. 23, 24, 25 and 26.
	Thence
	N. 89°58' W., on true line, bet. secs. 23 and 26.
	Over rolling land, thru. dense timber and undergrowth.
	Descend 310 ft., over S. and SW. slopes.
31.14	Trail, brs. N. and S.
34.56	Wash, 10 lks. wide, course S.
	Ascend 26 ft., over SE. slope.
35.56	Point of spur, slopes S.
	Descend 23 ft., over SW. slope.
37.60	Wash, 10 lks. wide, course SE.
	Ascend gradually over SE. slope.
40.07	Set an iron post, 3 ft. long, 1 in. in diam., 20 ins. in the ground to bed rock, supported in a mound of stone, for $\frac{1}{4}$ sec. cor., marked on brass cap,
	$\frac{1}{4}$ S 23 S 26 1923
	from which,
	A cedar, 8 ins. in diam., brs. N. 11° W., 24 lks. dist., marked $\frac{1}{4}$ S 23 BT.
	A pinyon, 6 ins. in diam., brs. S. 59° W., 49 lks. dist., marked $\frac{1}{4}$ S 26 BT.
	Ascend 80 ft., over SE. slope.
42.50	Log fence brs. NE. and SE.
48.00	Descend gradually over S. slope, to
76.50	North, or right rim of canyon, brs. NW. and SE. Enter mountainous land, scattering timber and undergrowth in canyon.
	Descend 100 ft., over SW. slope, to
80.14	The cor. of secs. 22, 23, 26 and 27.
	Land, rolling and mountainous.
	Soil, gravelly and rocky, 3rd and 4th rate.
	Timber, cedar and pinyon.
	Undergrowth, sagebrush, scrub oak and cactus.

	N. 0° 1' W., bet. secs. 22 and 23.
	Over mountainous land, in canyon, thru. scattering timber and undergrowth.
	Ascend 120 ft., over SW. slope, to
3.60	Point of spur, sloping W. at N. rim of canyon, bearing SW. and SE.
	Descend 160 ft., over NW. slope, to
14.28	S. or left rim of another canyon, brs. NE. and SW. Discontinue chaining owing to precipitous slopes in canyon.
	Triangulate as described, as follows:
	Set flag ahead on sec. line.
	From 3.60 ch. station on sec. line, measure a Base, N. 79° 54' E., 7.15 chs.
	From NE. end of Base, the flag brs. N. 11° 21' W.
	From SW. end of Base, the vertical angle to flag is - 7°.
	Dist. on sec. line = 3.60 chs. N. 0° 1' W.
	Dist. triangulated = <u>36.38</u> chs. N. 0° 1' W.
	Total distance, = 39.98 chs. N. 0° 1' W.
30.00	(Approx.) Bottom of canyon, course W, about 570 ft. below S. rim.
39.98	Ascend about 430 ft., over precipitous SW. slope, to Triangulation point on steep SW. slope on N. side of canyon. Continue line and measurement by chaining.
	Ascend slightly to



Chains.

40.00 Set an iron post, 3 ft. long, 1 in. in diam., 8 ins. in the ground to bed rock, supported in a mound of stone for $\frac{1}{4}$ sec. cor., marked on brass cap,

S22 | S23
1923

from which,
A cedar, 12 ins. in diam., brs. N. 65° E., 16 lks. dist., marked $\frac{1}{4}$ S 23 BT.
A cedar, 8 ins. in diam., brs. N. 69 $\frac{1}{2}$ ° W., 17 lks. dist., marked $\frac{1}{4}$ S 22 BT.

45.50 Ascend 250 ft., over steep S. slope, to North, or right rim of canyon, brs. NW; and SE. Leave canyon. Enter rolling land.

80.00 Ascend gradually over SW. slope, to Set an iron post 3 ft. long, 2 ins. in diam., 8 ins. in the ground, to bed rock, supported in a mound of stone, for cor. of secs. 14, 15, 22 and 23, marked on brass cap,

T29N | R11W
S15 | S14
S22 | S23
1923

from which,
A cedar, 8 ins. in diam., brs. N. 48° E., 21 lks. dist., marked T29N R11W S14 BT.
A cedar, 6 ins. in diam.; brs. S. 10° E., 32 lks. dist., marked T29N R11W S23 BT.
A cedar, 6 ins. in diam., brs. S. 55 $\frac{1}{2}$ ° W., 58 lks. dist., marked T29N R11W S22 BT.
A cedar, 6 ins. in diam., brs. N. 25° W., 65 lks. dist., marked T29N R11W S15 BT. ✓

Land, mountainous and rolling.
Soil, rocky, 4th rate.
Timber, cedar and pinyon.
Undergrowth, sagebrush and scrub oak.

40.00 S. 89° 58' E., on random line, bet. secs. 14 and 23. Set temp. $\frac{1}{4}$ sec. cor.
80.00 Fall 5 lks. S. of the cor. of secs. 13, 14, 23 and 24. Thence, West, on true line, bet. secs. 14 and 23. Over rolling land, thru. dense timber and undergrowth. Ascend 75 ft., over E. slope.

10.00 Ridge, brs. NW. and SE.
15.00 Descend 20 ft., over SW. slope, to Wash, 10 lks. wide, course NW.
30.00 Descend 70 ft., over N. slope, to Spur, slopes NW.
36.00 Descend 45 ft., over W. slope to $\frac{1}{4}$ sec. cor. Kelly Spring and corral, bear S. about $\frac{1}{4}$ mile dist.
40.00 Set an iron post, 3 ft. long, 1 in. in diam., 18 ins. in the ground to bed rock; supported in a mound of stone, for $\frac{1}{4}$ sec. cor., marked on brass cap,

$\frac{1}{4}$ S 14
S 23
1923

from which,
A pinyon, 10 ins. in diam., brs. S. 58° W., 46 lks. dist., marked $\frac{1}{4}$ S 23 BT.
A cedar, 8 ins. in diam., brs. N. 2° W., 28 lks. dist., marked $\frac{1}{4}$ S 14 BT.

Descend 90 ft., over W. slope.

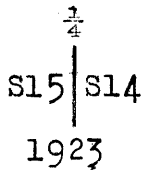
BOOK 3645

32 Survey of part of Subdivision lines of T.29 N., R. 11 W.

Chains.

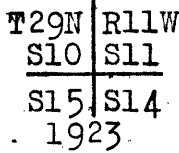
57.52 Wash, 20 lks. wide, course NE.
Ascend 45 ft., over NE. slope.
71.80 Old road, brs. NW, and SE. on low divide, brs. NW. and SE.
Descend gradually over SW. slope, to
80.00 The cor. of secs. 14, 15, 22 and 23.
Land, rolling.
Soil, clay and rocky, 3rd rate.
Timber, cedar and pinyon.
Undergrowth, black brush and scrub oak.

N. 0° 1' W., bet. secs. 14 and 15.
Over rolling land, thru dense timber and undergrowth.
Ascend gradually over SW. slope, to
7.00 Old road, brs. NW. and SE. on low divide, same beating.
Descend 47 ft., over NE. slope, to
25.00 Rim of gulch, brs. NE. and SW. Enter mountainous land.
Descend 380 ft., over steep NW. slope.
36.90 Rocky wash, 20 lks. wide, in gulch, course NE.
Ascend 110 ft., over SE. slope, to
40.00 Set an iron post, 3 ft. long, 1 in. in diam., 24 ins. in
the ground, for $\frac{1}{4}$ sec. cor., marked on brass cap,



from which,
A pinyon, 8 ins. in diam., brs. N. 85° E., 110 lks.
dist., marked $\frac{1}{4}$ S 14 BT.
A pinyon, 8 ins. in diam., brs. N. 13° W., 240 lks.
dist., marked $\frac{1}{4}$ S 15 BT.

Ascend 76 ft., over SE. slope.
48.45 Point of spur, slopes E.
Descend 131 ft., over NE. slope.
58.72 Rocky wash, 20 lks. wide, in gulch, course SE.
Ascend 350 ft., over steep S. slope, to
68.35 Rim of gulch, brs. E. and W. Leave gulch, Enter rolling
land.
Ascend gradually over SE. slope, to
80.00 Set an iron post, 3 ft. long, 2 ins. in diam., 6 ins. in
the ground to bed rock, supported in a mound of stone,
for cor. of secs. 10, 11, 14 and 15, marked on brass
cap,



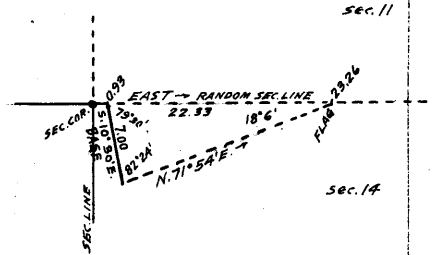
from which,
A pinyon, 12 ins. in diam., brs. N. 64° E., 21 lks.
dist., marked T29N R11W S11 BT.
A cedar limb, 4 ins. in diam., brs. S. 47° E., 48 lks.
dist., marked BT.
A cedar, 8 ins. in diam., brs. S. 6° W., 80 lks.
dist., marked T29N R11W S15 BT.
A pinyon, 10 ins. in diam., brs. N. 89° W., 559 lks.
dist., marked T29N R11W S10 BT.

This cor. is at the SW. or right rim of a gulch, bearing
NW. and SE.
Land, rolling and mountainous.
Soil, clay and rocky, 3rd rate.
Timber, cedar and pinyon.
Undergrowth, black brush and scrub oak.

Chains.

0.93 East, on random line, bet. secs. 11 and 14.
 Top of cliff, bearing NW. and SE., facing NE. Discontinue chaining owing to precipitous broken slopes in a gulch. Triangulate measurement of the random sec. line across gulch, as described as follows:

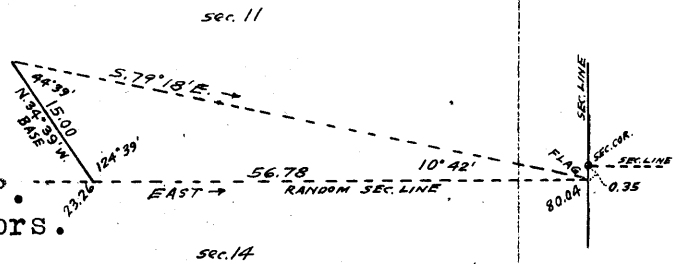
From this point, measure a base S. 10° 30' E., 7.00 chs. Set flag ahead on random sec. line on sharp spur, sloping SE. at opposite rim of gulch. Vertical angle to flag is -4°, and to point ahead in bottom of gulch is -35°. From SE. end of Base, the flag brs. N. 71° 54' E.



Dist. on random sec. line = 0.93 chs. East.
 Distance triangulated = 22.33 chs. East.
 Total distance, = 23.26 chs. East.

23.26 Triangulation point on sharp spur, sloping SE. Chaining on random line beyond this point is impracticable owing to precipitous descent over cliffs into canyon; therefore, triangulate the measurement of the remainder of the random sec. line, as described as follows:

Measure a Base, N. 34° 39' W., 15 chs. along top of spur. Set a flag ahead on random sec. line at a point 35 lks. S. of the cor. of secs. 11, 12, 13 and 14. Vertical angle to flag is -8°. From NW. end of Base, the flag brs. S. 79° 18' E.



Dist. on random sec. line = 23.26 chs. East.
 Distance triangulated = 56.78 chs. East.
 Total length of random sec. line = 80.04 chs. East.

80.04 Fall 35 lks. S. of the cor. of secs. 11, 12, 13 and 14. Thence, S. 89° 45' W., on true line, bet. secs. 11 and 14. Over mountainous land, in canyon, thru. scattering timber and undergrowth.

Chain measurement to 1/4 sec. cor. Descend 490 ft., over steep broken NW. slope, to Wash, 30 lks. wide, course NE. in bottom of canyon. Ascend 125 ft., over E. slope, to

40.02 Set an iron post, 3 ft. long, 1 in. in diam., 10 ins. in the ground to bed rock, deposit a stone marked with a cross (x) at base of post, and raise a mound of stone around post, for 1/4 sec. cor., marked on brass cap.

S 11
 S 14
 1923

No bearing trees or bearing objects available. Discontinue chaining. Measurement by triangulation, hereinafter described.

56.78 Ascend about 890 ft., over cliffs, to Triangulation point on sharp spur, sloping SE. Continue measurement by triangulation across gulch. Descend about 360 ft., over precipitous SW. slope, to (Approx.) Bottom of gulch, 50 lks. wide, course SE.

70.00 Ascend about 460 ft., over cliffs, to
 79.11 Triangulation point at top of cliffs, bearing NW. and SE. facing NE.

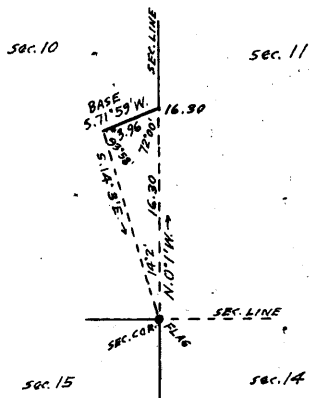
BOOK 3645

34 Survey of part of Subdivision lines of T.29 N., R. 11 W.

Chains.

80.04 Continue line and measurement by chaining.
Ascend 20 ft., over NE. slope, to
The cor. of secs. 10, 11, 14 and 15, at W. rim of gulch, bearing
NW. and SE.
Land, mountainous.
Soil, rocky, 4th rate.
Timber, pinyon and cedar.
Undergrowth, black brush, sagebrush and cactus.

N. 0° 1' W., bet. secs. 10 and 11.
Over mountainous land, thru dense timber and undergrowth.
Chaining is impracticable, owing to precipitous slopes in
gulch; therefore, triangulate across gulch, as described
as follows:



Set flag on the cor. of secs. 10,
11, 14 and 15.
From a point ahead on sec. line,
measure a Base S. 71° 59' W., 3.96
chs.
From SW. edge of Base, the flag brs.
S. 14° 3' E.
From NE. end of Base, the vertical
angle to flag is - 9°.
From flag to point on sec. line
in bottom of gulch the vertical
angle is - 28°.

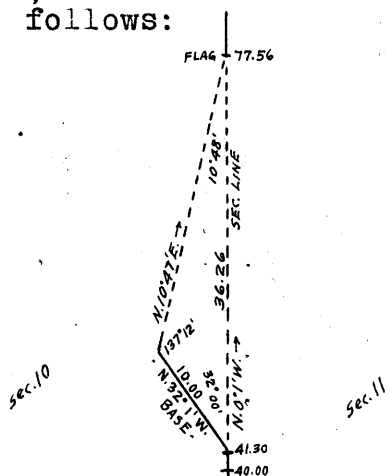
8.00 Distance triangulated = 16.30 chs. N. 0° 1' W.
(Approx.) Bottom of gulch, 50 lks. wide, course SE., about
280 ft. below the cor. of secs. 10, 11, 14 and 15.
Ascend about 450 ft., over precipitous S. slope.
16.30 Triangulation point on spur, sloping E. Continue line
and measurement by chaining.
Descend 193 ft., over NE. slope.
27.32 Rocky wash, 40 lks. wide, course E.
Ascend 180 ft., over S. slope.
39.50 Spur, slopes E.
Descend slightly over E. slope, to
40.00 Set an iron post, 3 ft. long, 1 in. in diam., 6 ins. in
the ground, to bed rock, supported in a mound of stone,
for $\frac{1}{4}$ sec. cor., marked on brass cap,

S10 | S11

1922

from which,
A cedar, 10 ins. in diam., brs. N. 42° E., 47 lks.
dist., marked $\frac{1}{4}$ S 11 BT.
A pinyon, 6 ins. in diam., brs. N. 10° W., 125 lks.
dist., marked $\frac{1}{4}$ S 10 BT.

41.30 Descend gradually over E. slope, to
Right rim of gulch; brs. NW and SE. Discontinue chaining
owing to precipitous slopes in gulch, and triangulate
measurement of sec. line across gulch, as described as
follows:



From 41.30 ch. station on sec.
line, measure a Base N. 32°
01' W., 10.00 chs. along
right rim of gulch.
Set flag ahead on sec. line at
left rim of gulch.
From NW. end of Base, the flag
brs. N. 10° 47' E.
From SE. end of Base, the verti-
cal angle to flag is 0°, and
to point ahead on sec. line
in bottom of gulch is - 22°.

Chains.

Dist. on sec. line = 41.30 chs. N. 0° 1' W.

Dist. triangulated = 36.26 chs. N. 0° 1' W.

Total dist. = 77.56 chs. N. 0° 1' W.

55.00 (Approx.) Bottom of gulch, 50 lks. wide, course SE., about 365 ft. below $\frac{1}{4}$ sec. cor.

77.56 Ascend about 365 ft. over precipitous S. slope, to Triangulation point at left rim of gulch, bearing E. and W. Continue line and measurement by chaining. Enter nearly level land.

80.00 Ascend slightly over SE. slope, to Set an iron post, 3 ft. long, 2 ins. in diam., 8 ins. in the ground to bed rock, supported in a mound of stone, for cor. of secs. 2, 3, 10 and 11, marked on brass cap,

T29N	R11W
S 3	S 2
S10	S11
1922	

from which,

A cedar, 4 ins. in diam., brs. N. 6 $\frac{1}{2}$ ° E., 31 lks. dist., marked BT.A cedar, 10 ins. in diam., brs. S. 39 $\frac{3}{4}$ ° E., 18 lks. dist., marked T29N R11W S11 BT.A cedar, 12 ins. in diam., brs. S. 61 $\frac{1}{2}$ ° W., 26 lks. dist., marked T29N R11W S10 BT.

A cedar, 8 ins. in diam., brs. N. 57° W., 38 lks. dist., marked T29N R11W S3 BT.

Land, mountainous and nearly level.

Soil, rocky, 4th rate.

Timber, cedar and pinyon.

Undergrowth, sagebrush, black brush, and cactus.

40.00 East, on random line, bet. secs. 2 and 11.

80.16 Set temp. $\frac{1}{4}$ sec. cor.

Fall 9 lks. N. of the cor. of secs. 1, 2, 11 and 12.

Thence,

N. 89° 56' W., on true line, bet. secs. 2 and 11.

Over mountainous land, in canyon, thru scattering timber and undergrowth.

40.08 Ascend 723 ft., over E. slope, to

Set an iron post, 3 ft. long, 1 in. in diam., 12 ins. in the ground to bed rock, deposit a stone, marked with a cross (x) at base of post, and raise a mound of stone around post, for $\frac{1}{4}$ sec. cor., with brass cap, marked

$\frac{1}{4}$ S	2
S 11	
1923	

No bearing trees or bearing objects available.

63.93 Ascend 1023 ft., over steep E. slope and cliffs to

West or left rim of canyon, brs. N. and S. Leave canyon. Enter nearly level land, dense timber and undergrowth.

80.16 Ascend slightly over SE. slope, to

The cor. of secs. 2, 3, 10 and 11.

Land, mountainous and nearly level.

Soil, rocky and sandy, 4th rate.

Timber, cedar and pinyon.

Undergrowth, sagebrush and cactus.

40.00 N. 0° 10' E., on random line, bet. secs. 2 and 3.

79.93 Set temp. $\frac{1}{4}$ sec. cor.

Intersect the N. bdy. of the Tp., 7 lks. E. of the cor. of secs. 2, 3, 34 and 35, described in Book "E" of this group.

BOOK 3645

36 Survey of part of the Subdivision lines of T.29 N., R.11 W.

Chains.

Thence,
S.0°7'W., on true line, bet. secs. 2 and 3.
Over rolling land, thru dense timber and undergrowth.
Descend 45 ft., over E. and SE. slopes.

17.47 Wash, 10 lks. wide, course E.

Ascend 11 ft., over N. slope, to

18.23 Thence over nearly level land.

Descend slightly over E. and SE. slopes, to

39.93 Set an iron post, 3 ft. long, 1 in. in diam., on surface rock, supported in a mound of stone, for $\frac{1}{4}$ sec. cor., marked on brass cap,

$\frac{1}{4}$
 S 3 | S 2
 1923

from which,

A cedar, 10 ins. in diam., brs. S.0°30'E., 61 lks. dist., marked $\frac{1}{4}$ S 2 BT.

A pinyon, 4 ins. in diam., brs. N.33°W., 13 lks. dist., marked BT.

Continue over nearly level land, thru dense timber and undergrowth.

Descend slightly over SE. slope to sec. cor.

43.10 Draw, 20 lks. wide, course SE.

79.93 The cor. of secs. 2, 3, 10 and 11.

Land, rolling and nearly level.

Soil, sandy and clay, 3rd rate.

Timber, cedar and pinyon.

Undergrowth, scrub oak and cactus.

From the standard cor. of secs. 33 and 34, on the S. bdy. of the Tp. (7th. Std. Par. N.) hereinbefore described, N.0°2'W., bet. secs. 33 and 34.

Over mountainous land, thru scattering timber and undergrowth.

40.00 Ascend 264 ft., over steep broken W. and SW. slopes, to

Set an iron post, 3 ft. long, 1 in. in diam., 14 ins. in the ground to bed rock, supported in a mound of stone for $\frac{1}{4}$ sec. cor., marked on brass cap,

$\frac{1}{4}$
 S33 | S34
 1923

from which,

A pinyon, 12 ins. in diam., brs. S.40 $\frac{1}{2}$ °E., 290 lks. dist., marked $\frac{1}{4}$ S 34 BT.

A pinyon, 8 ins. in diam., brs. S.34 $\frac{1}{2}$ °W., 447 lks. dist., marked $\frac{1}{4}$ S 33 BT.

Ascend 335 ft., over steep broken SW. slope.

74.50 Spur, slopes W.

Descend 165 ft., over NW. slope.

79.80 Wash, course NW.

Ascend slightly over SW. slope, to

80.00 Set an iron post, 3 ft. long, 2 ins. in diam., 6 ins. in the ground to bed rock, deposit a stone marked with a cross (x) at base of post, and raise a mound of stone around post for cor. of secs. 27, 28, 33 and 34, marked on brass cap,

T29N | R11W
 S28 | S27
 S33 | S34
 1923

from which,

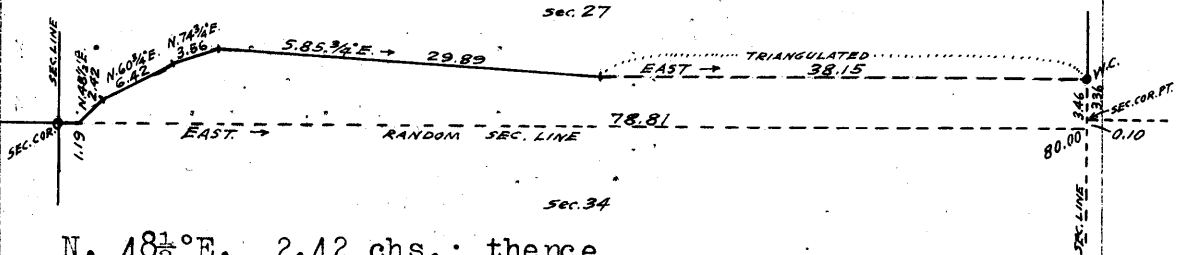
A cedar, 6 ins. in diam., brs. N.68°E., 20 lks. dist., marked T29N R11W S27 BT.

Survey of part of Subdivision lines of T. 29 N., R. 11 W. 37

Chains.

A pinyon, 6 ins. in diam., brs. S. 84° W., 190 lks. dist., marked T29N R11W S33 BT.
 No other bearing trees available.
 Land, mountainous.
 Soil, rocky, 4th rate.
 Timber, pinyon and cedar.
 Undergrowth, sagebrush, scrub cedar and cactus.

1.19 East, on random line, bet. secs. 27 and 34.
 Discontinue chaining on random sec. line at this point, and avoid cliffs by traverse thru. sec. 27, as described as follows, and as shown on the diagram hereon:



N. 48 1/2° E., 2.42 chs.; thence
 N. 60° E., 6.42 chs.; thence
 N. 74° E., 3.56 chs.; thence
 S. 85° E., 29.89 chs. to triangulation point. Discontinue chaining; thence by triangulated measurement, as hereinbefore described in notes of line, bet. secs. 26 and 27.

East, 38.15 chs. to W.C. to cor. of secs. 26, 27, 34 and 35; thence,
 S. 0° 1' E., 3.36 chs. (measured by triangulation, as described in notes of line bet. secs. 34 and 35) to true point for cor. of secs. 26, 27, 34 and 35.

The latitude of the above described traverse is 10 lks. North, and the departure is 78.81 chs. East.

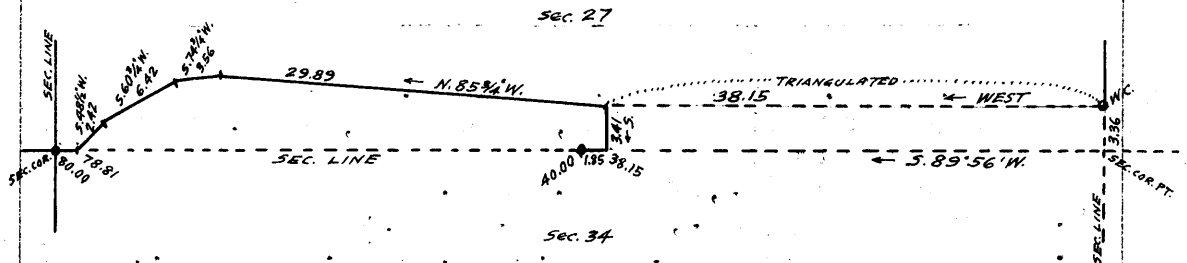
Dist. chained on random sec. line = 1.19 chs. East.
 Departure of traverse = 78.81 chs. East.

Total length of random sec. line = 80.00 chs. East.

80.00 The random sec. line extended East would therefore at Fall 10 lks. S. of the true point for cor. of secs. 26, 27, 34 and 35, which falls on face of cliff, and is inaccessible.

Thence, S. 89° 56' W., on true line, bet. secs. 27 and 34. Over mountainous land in canyon, thru scattering timber and undergrowth.

Owing to cliffs, the sec. line is inaccessible for the greater part of its length; therefore, measure by traverse as described as follows, and as shown on the diagram hereon:



From true point for cor. of secs. 26, 27, 34 and 35, N. 0° 1' W., 3.36 chs. (triangulated) to W.C. to cor. of secs. 26, 27, 34 and 35 at top of cliffs, bearing NW. and SE., facing SW.

Thence, West, 38.15 chs. (triangulated) thence chaining measurement.

South, 3.41 chs. to 38.15 ch. station on sec. line; thence chaining measurement.

S. 89° 56' W. 1.85 chs. on sec. line to 40.00 ch. station and establish 1/4 sec. cor.

BOOK 3645

part of
38 Survey of Subdivision lines of T. 29 N., R. 11 W.

Chains.

- 27.50 (Approx.) Wash, 40 lks. wide, course NW. in bottom of canyon, about 900 ft. below W.C.
Ascend about 100 ft., over NE. slope, to
35.00 (Approx.) Descend over precipitous N. and NW. slopes, to
38.15 Traverse point. Thence S. $89^{\circ}56'W.$, on true line, bet. secs. 27 and 34, continuing measurement from sec. cor. point, by chaining.
Descend 23 ft., over NW. slope, to
40.00 Set an iron post, 3 ft. long, 1 in. in diam., 26 ins. in the ground, for $\frac{1}{4}$ sec. cor., marked on brass cap,

$$\frac{1}{4} \text{ S } 27$$

$$\text{S } 34$$

$$1923$$

from which,

- A pinyon, 8 ins. in diam., brs. S. $13\frac{3}{4}^{\circ}E.$, 152 lks. dist., marked $\frac{1}{4}$ S 34 BT.
A pinyon, 6 ins. in diam., brs. N. $31\frac{1}{2}^{\circ}W.$, 44 lks. dist., marked $\frac{1}{4}$ S 27 BT.
Beyond this $\frac{1}{4}$ sec. cor., chaining is impracticable on the sec. line owing to precipitous slopes and cliffs; therefore, return to the traverse point 38.15 chs. West from W.C. and traverse
N. $85\frac{3}{4}^{\circ}W.$, 29.89 chs., descending 106 ft. over NW. slope to gulch, course N. at 9.80 ch. station; then ascending 410 ft., over NE. slope to angle point on spur sloping NW.
Thence,
S. $74\frac{3}{4}^{\circ}W.$, 3.56 chs. descending 50 ft. over W. slope to angle point.
Thence,
S. $60\frac{3}{4}^{\circ}W.$, 6.42 chs. descending 115 ft. over W. slope to angle point.
Thence,
S. $48\frac{1}{2}^{\circ}W.$, 2.42 chs. descending 72 ft., over SW. slope to 78.81 ch. station on sec. line.

- 47.50 (Approx.) Gulch, course N.
Ascend about 600 ft., over precipitous NE. slope.
60.00 (Approx.) Spur, slopes N.
Descend about 200 ft., over steep broken W. and SW. slopes to sec. cor.
78.81 Traverse point. Thence on sec. line, chaining measurement to
80.00 The cor. of secs. 27, 28, 33 and 34.
Land, mountainous.
Soil, rocky, 4th rate.
Timber, cedar.
Undergrowth, black brush.

- N. $0^{\circ}2'W.$, bet. secs. 27 and 28.
Over mountainous land, in canyon, thru. scattering timber and undergrowth.
Ascend 80 ft., over SW. slope.
4.00 Descend 650 ft., over NW. slope, to
40.00 Set an iron post, 3 ft. long, 1 in. in diam., 26 ins. in the ground, for $\frac{1}{4}$ sec. cor., marked on brass cap,

$$\frac{1}{4}$$

$$\text{S } 28 \text{ | } \text{S } 27$$

$$1923$$

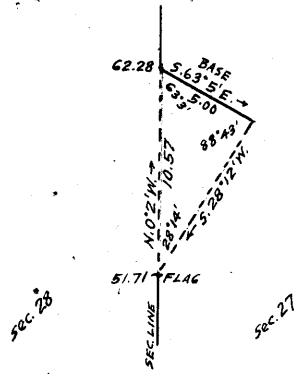
from which,

- A pinyon, 6 ins. in diam., brs. N. $36\frac{1}{4}^{\circ}E.$, 35 lks. dist., marked $\frac{1}{4}$ S 27 BT.
A pinyon, 6 ins. in diam., brs. N. $40\frac{1}{2}^{\circ}W.$, 130 lks. dist., marked $\frac{1}{4}$ S 28 BT.

Chains.

51.71 Descend 144 ft., over NW. slope, to Top of cliffs, brs. NE. & SW. facing NW. Chaining on sec. line beyond this point is impracticable owing to precipitous slopes; therefore, triangulate, as described as follows:

Set flag at this point on sec. line.
 From a point ahead on sec. line, measure a Base S. 63° 5' E., 5.00 chs.
 From SE end of Base, the flag brs. S. 28° 12' W.
 From NW end of Base, the vertical angle to flag is 0°.
 A spring is located at the SE. end of the base.



Dist. on sec. line = 51.71 chs. N. 0° 2' W.
 Dist. triangulated = 10.57 chs. N. 0° 2' W.
 Total distance = 62.28 chs. N. 0° 2' W.

57.00 (Approx.) Bottom of canyon, course W. about 200 ft. below 51.71 ch. station.

62.28 Ascend about 200 ft., over SW. face of cliffs to Triangulation point at top of cliffs, bearing NW. and SE. facing SW.

Continue line and measurement by chaining.
 Ascend 125 ft., over SW. slope.

76.00 Spur, slopes W.

Descend 95 ft., over NW. slope, to

80.00 Set an iron post, 3 ft. long, 2 ins. in diam., 26 ins. in the ground, for cor. of secs. 21, 22, 27 and 28, marked on brass cap,

T29N	R11W
S21	S22
S28	S27
1923	

from which,

- A pinyon, 8 ins. in diam., brs. N. 63° E., 2.00 chs. dist., marked T29N R11W S22 BT.
- A pinyon, 10 ins. in diam., brs. S. 83° E., 45 lks. dist., marked T29N R11W S27 BT.
- A pinyon, 12 ins. in diam., brs. S. 75° W., 75 lks. dist., marked T29N R11W S28 BT.
- A pinyon, 8 ins. in diam., brs. N. 33° W., 130 lks. dist., marked T29N R11W S21 BT.

Land, mountainous.
 Soil, rocky, 4th rate.
 Timber, pinyon and cedar.
 Undergrowth, black brush, cactus and yucca.

40.00 East, on random line, bet. secs. 22 and 27.

44.00 Set temp. sec. cor.

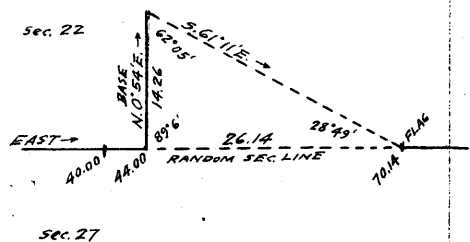
Discontinue chaining owing to precipitous ascent over cliffs. Triangulate as described, as follows:

Measure a Base, N. 0° 54' E., 14.26 chs.

Set flag ahead on random sec. line.

From N. end of Base, the flag brs. S. 61° 11' E.

From S. end of Base, the vertical angle to flag is + 29°.



Dist. on random sec. line = 44.00 chs. East.
 Dist. triangulated = 26.14 chs. East.
 Total distance = 70.14 chs. East.

BOOK 3645

40. Survey of part of Subdivision lines of T. 29 N., R. 11 W.

Chains.

- 70.14 Triangulation point. Continue line and measurement by chaining.
- 79.96 Fall 23 lks. N. of the cor. of secs. 22, 23, 26 and 27. Thence, N. $89^{\circ}50'$ W., on true line, bet. secs. 22 and 27. Over mountainous land, in canyon, thru. scattering timber and undergrowth. Descend 92 ft., over steep S. slope, to
- 9.82 Triangulation point at right rim of canyon, brs. NE. and SW. Leave canyon. Discontinue chaining. Measurement of 26.14 chs. by triangulation, hereinbefore described. Descend about 200 ft., over SW. slope, to
- 20.00 (Approx.) Left rim of another canyon, brs. NE. and S. Enter canyon. Descend about 550 ft., over W. face of cliffs to
- 35.96 Triangulation point at foot of cliffs. Continue line and measurement by chaining. Descend 32 ft., over W. slope, to
- 39.98 Set an iron post, 3 ft. long, 1 in. in diam., 16 ins. in the ground to bed rock, supported in a mound of stone, for $\frac{1}{4}$ sec. cor., marked on brass cap,
- $\frac{1}{4}$ S 22
S 27
1923
- from which,
A cedar, 6 ins. in diam., brs. S. $20\frac{1}{4}^{\circ}$ E., 40 lks. dist., marked $\frac{1}{4}$ S 27 BT.
A cedar, 8 ins. in diam., brs. N. $44\frac{1}{2}^{\circ}$ W., 130 lks. dist., marked $\frac{1}{4}$ S 22 BT.
- Descend 40 ft., over W. slope,
- 48.21 Wash, 20 lks. wide, course S. in bottom of canyon. Ascend 142 ft., over SE. slope.
- 65.00 Spur, slopes S. Descend 175 ft., over W. and NW. slopes, to
- 79.96 The cor. of secs. 21, 22, 27 and 28. Land, mountainous. Soil, rocky, 4th rate. Timber, cedar and pinyon. Undergrowth, black brush, cactus and catclaw.
-
- N. $0^{\circ}2'$ W., bet. secs. 21 and 22. Over mountainous land, thru. scattering timber and undergrowth. Descend 46 ft., over NW. slope.
- 1.87 Wash, 10 lks. wide, course SW. Ascend 28 ft.
- 4.57 Spur, slopes W. Descend 74 ft., over NW. slope.
- 18.40 Wash, 20 lks. wide, course SW. near head of canyon. Thence over slide rock and cliffs. Ascend 531 ft., over precipitous SW. slope, to
- 40.00 Set an iron post, 3 ft. long, 1 in. in diam., 14 ins. in the ground to bed rock, deposit a stone marked with a cross (x) at base of post, and raise a mound of stone around post, for $\frac{1}{4}$ sec. cor., marked on brass cap,
- $\frac{1}{4}$
S 21 | S 22
1923
- No bearing trees or bearing objects available. Ascend 515 ft., over precipitous SW. slope, to
- 48.22 Spur, slopes SE. Enter dense timber and canyon. Ascend 231 ft., over E. slope, to
- 65.00 Descend 27 ft., over NE. slope.
- 67.30 Wash, 20 lks. wide, course SE. Ascend 76 ft., over SE. slope.
- 78.00 Descend 15 ft., over NE. slope, to

Survey of part of Subdivision lines of T. 29 N., R. 11 W.

41

Chains.

80.00 Set an iron post, 3 ft. long, 2 ins. in diam., 8 ins. in the ground to bed rock, supported in a mound of stone, for cor. of secs. 15, 16, 21 and 22, marked on brass cap,

T29N	R11W
S16	S15
S21	S22
1923	

from which,

- A cedar, 8 ins. in diam., brs. N. 57° E., 16 lks. dist., marked T29N R11W S15 BT.
- A pinyon, 6 ins. in diam., brs. S. 57° E., 25 lks. dist., marked T29N R11W S22 BT.
- A pinyon, 8 ins. in diam., brs. S. 25° W., 22 lks. dist., marked T29N R11W S21 BT.
- A cedar, 10 ins. in diam., brs. N. 43½° W., 50 lks. dist., marked T29N R11W S16 BT.

Land, mountainous.

Soil, sandy and rocky, 3rd rate.

Timber, cedar and pinyon.

Undergrowth, black brush, scrub oak, cactus and yucca.

40.00 S. 89° 50' E., on random line, bet. secs. 15 and 22.

Set temp. ¼ sec. cor.

80.00 Fall 23 lks. S. of the cor. of secs. 14, 15, 22 and 23.

Thence,

West, on true line, bet. secs. 15 and 22.

Over rolling land, thru dense timber and undergrowth.

Descend 113 ft., over SW. slope.

26.53 Wash, 20 lks. wide, course NW.

Ascend 43 ft., over SE. slope.

35.85 Point of spur, slopes NW. Enter mountainous land.

Descend 34 ft., over W. slope, to

40.00 Set an iron post, 3 ft. long, 1 in. in diam., 26 ins. in the ground, for ¼ sec. cor., marked on brass cap,

S 15
S 22
1923

from which,

- A cedar, 12 ins. in diam., brs. S. 53° W., 28 lks. dist., marked ¼ S 22 BT.
- A cedar, 14 ins. in diam., brs. N. 58½° W., 51 lks. dist., marked ¼ S 15 BT.

Descend 45 ft., over W. slope, to

42.00 Wash, 30 lks. wide, in gulch, course SW.

Descend 10 ft., over S. slope, to

42.30 Same wash, course NW.

Descend 58 ft., over NW. slope, to

45.00 Same wash, course SW.

Ascend 105 ft., over SE. slope.

55.00 Spur, slopes SW. Enter canyon.

Descend 52 ft., over W. slope.

60.00 Wash, 10 lks. wide, course SW.

Ascend 22 ft., over SE. slope.

62.00 Point of spur, slopes S.

Descend 134 ft. over SW. slope.

65.50 Wash, 20 lks. wide, in bottom of canyon, course SE.

Ascend 48 ft., over SE. slope, to

68.90 Wash, 20 lks. wide, course SE.

Ascend 40 ft., over E. slope.

75.00 Point of spur, slopes SE.

Descend 73 ft., over SW. slope, to

78.50 Wash, 10 lks. wide, course SE.

Ascend 27 ft., over NE. slope, to

80.00 The cor. of secs. 15, 16, 21 and 22.

Land, rolling and mountainous.

BOOK 3645

42 Survey of part of Subdivision lines of T. 29 N., R. 11 W.

Chains.

Soil, sandy and rocky, 3rd rate.
 Timber, cedar and pinyon.
 Undergrowth, scrub oak, cactus and catclaw.

-
- N.0° 2'W., bet. secs. 15 and 16.
 Over mountainous land in canyon, thru. dense timber and undergrowth.
- .50 Descend 20 ft., over NE.slope, to
 Wash, 10 lks.wide, in gulch, course SE. from W.
 Ascend 71 ft., over S.slope.
- 4.50 Spur, slopes SE. from W.
 Descend 136 ft., over N.slope.
- 7.00 Wash, 10 lks.wide in gulch, course E.
 Ascend 56 ft., over SE.slope, to E.slope.
- 10.00 Point of spur, slopes E.
 Descend 46 ft., over NE.slope.
- 16.00 Wash, 10 lks.wide, course E.
 Ascend 55 ft., over S.slope.
- 20.00 Point of spur, slopes E.
 Descend 70 ft., over NE.slope.
- 30.00 Wash, 10 lks.wide, course SE.
 Ascend 75 ft., over SE.slope, to
- 35.00 Rim of canyon, brs.NE. and SW. Leave canyon. Enter gently rolling land.
 Ascend slightly over SE.slope, to
- 40.00 Set an iron post, 3 ft.long, 1 in. in diam., 26 ins. in the ground, for $\frac{1}{4}$ sec.cor., marked on brass cap,

S16 | S15

1923

from which,

A pinyon, 12 ins. in diam., brs.N.56°E., 30 lks. dist., marked $\frac{1}{4}$ S 15 BT.

A pinyon, 14 ins. in diam., brs.N.82°W., 39 lks. dist., marked $\frac{1}{4}$ S 16 BT.

Continue over gently rolling land, thru.dense timber and undergrowth.

- 50.00 Ascend gradually over E.slope, to
 Descend 38 ft., over N.slope.
- 51.74 Wash, 10 lks.wide, course E.
 Ascend 65 ft., over SW.slope, to
- 80.00 On low ridge, bearing NW. and SE. Set an iron post, 3 ft.long, 2 ins. in diam., 24 ins.in the ground, for cor.of secs. 9, 10, 15 and 16, marked on brass cap,

T29N | R11W

S 9 | S10

S16 | S15

1923

from which,

A pinyon, 8 ins. in diam., brs.N.7°E., 45 lks. dist., marked T29N R11W S10 BT.

A cedar, 12 ins. in diam., brs.S.10°E., 105 lks. dist., marked T29N R11W S15 BT.

A cedar, 10 ins. in diam., brs.S.50°W., 19 lks. dist., marked T29N R11W S16 BT.

A cedar, 12 ins. in diam., brs.N.16°W., 64 lks. dist., marked T29N R11W S9 BT.

Land, mountainous and gently rolling.
 Soil, gravelly and sandy, 3rd rate.
 Timber, cedar and pinyon.
 Undergrowth, black brush and scrub oak.

-
- 40.00 East, on random line, bet. secs.10 and 15.
 Set temp. $\frac{1}{4}$ sec.cor.

Survey of part of Subdivision lines of T. 29 N., R. 11 W. 43

Chains.

- 79.92 Fall 2 lks. N. of the cor. of secs. 10, 11, 14 and 15.
Thence,
N. $89^{\circ}59'W.$, on true line, bet. secs. 10 and 15.
Over rolling land, thru dense timber and undergrowth.
Ascend 90 ft., over E. slope.
- 13.40 Spur, slopes SE. Enter mountainous land.
Descend 122 ft., over SW. slope.
- 16.53 Rocky wash, 20 lks. wide, in gulch, course SE.
Ascend 85 ft., over NE. slope, to
- 20.00 Rim, brs. NW. and SE. Enter rolling land.
Ascend gradually over NE. slope, to
- 25.80 Point of low spur, slopes N.
Descend 36 ft., over NW. slope.
- 32.88 Wash, 40 lks. wide, course NE. Road brs. N. and S.
Ascend 45 ft., over NE. slope, to
- 39.92 Set an iron post, 3 ft. long, 1 in. in diam., 24 ins. in
the ground for $\frac{1}{4}$ sec. cor., marked on brass cap,

 $\frac{1}{4}$ S 10

S 15

1923

from which,

A cedar, 8 ins. in diam., brs. N. $16^{\circ}E.$, 49 lks.
dist., marked $\frac{1}{4}$ S 10 BT.A pinyon, 8 ins. in diam., brs. S. $60^{\circ}W.$, 25 lks.
dist., marked $\frac{1}{4}$ S 15 BT.Thence, over gently rolling land, thru dense timber and
undergrowth.

Ascend 125 ft., over NE. slope, to

- 79.92 The cor. of secs. 9, 10, 15 and 16 on low ridge, bearing NW.
and SE.

Land, mountainous, rolling and gently rolling.

Soil, gravel and sand, 3rd rate.

Timber, cedar and pinyon.

Undergrowth, buck brush and scrub oak.

N. $0^{\circ}2'W.$, bet. secs. 9 and 10.

Over rolling land, thru dense timber and undergrowth.

Descend 60 ft., over NE. slope.

- 7.10 Wash, 30 lks. wide, course E.

Ascend 57 ft., over SW. slope.

- 15.00 Point of low spur, slopes W.

Descend 25 ft., over NW. slope, to

- 18.04 Wash, 10 lks. wide, course SW.

Ascend 23 ft., over SE. slope.

- 20.00 Descend 15 ft., over NE. slope, to

- 23.82 Same wash, 10 lks. wide, course SE.

Ascend 25 ft., over SW. slope.

- 35.00 Ridge, brs. W. and S. $60^{\circ}E.$

Descend 17 ft., over N. slope, to

- 40.00 Set an iron post, 3 ft. long, 1 in. in diam., 10 ins. in
the ground to bed rock, supported in a mound of stone
for $\frac{1}{4}$ sec. cor., marked on brass cap,

 $\frac{1}{4}$
S 9 | S 10

1923

from which,

A cedar, 6 ins. in diam., brs. N. $19^{\circ}E.$, 59 lks.
dist., marked $\frac{1}{4}$ S 10 BT.A cedar, 8 ins. in diam., brs. N. $16^{\circ}W.$, 69 lks.
dist., marked $\frac{1}{4}$ S 9 BT.

Descend 34 ft., over N. slope, to

- 45.00 Wash, 10 lks. wide, course NE.

Descend 40 ft., over NE. slope.

- 50.00 Enter mountainous land.

Descend 65 ft., over N. slope, to

BOOK 3645

44 Survey of part of Subdivision lines of T.29 N., R.11 W.

Chains.

- 53.68 Rocky wash, 20 lks. wide, course E.
Ascend 67 ft., over S. slope, to
57.50 Enter rolling land.
Ascend 70 ft., over SE. slope, to
80.00 Set an iron post, 3 ft. long, 2 ins. in diam., 26 ins. in
the ground, for cor. of secs. 3, 4, 9 and 10, marked on
brass cap,

T29N	R11W
S 4	S 3
S 9	S 10
1923	

from which,

- A cedar, 10 ins. in diam., brs. N. 32° E., 154 lks.
dist., marked T29N R11W S3 BT.
A cedar, 14 ins. in diam., brs. S. 87° E., 110 lks.
dist., marked T29N R11W S10 BT.
A cedar, limb, 6 ins. in diam., brs. S. 57½° W., 25 lks.
dist., marked T29N R11W S9 BT.
A cedar, 24 ins. in diam., brs. N. 40° W., 138 lks.
dist., marked T29N R11W S4 BT.
Land, rolling and mountainous.
Soil, gravelly and sandy, 3rd rate.
Timber, cedar and pinyon.
Undergrowth, scrub oak, black brush and cactus.

- 40.00 S. 89° 59' E., on random line, bet. secs. 3 and 10.
Set temp. ¼ sec. cor.
80.10 Fall 7 lks. N. of the cor. of secs. 2, 3, 10 and 11.
Thence,
N. 89° 56' W., on true line, bet. secs. 3 and 10.
Over nearly level land, thru. dense timber and undergrowth.
Ascend slightly over SE. and S. slopes, to
16.25 Enter rolling land.
Descend 32 ft., over SW. slope.
18.96 Wash, 20 lks. wide, course SE.
Ascend 40 ft., over E. slope.
26.30 Low spur, slopes SE.
Descend 10 ft., over SW. slope.
30.00 Wash, 20 lks. wide, course SE.
Ascend 37 ft., over E. slope to ¼ sec. cor.
35.28 Road, brs. N. and S.
40.05 Set an iron post, 3 ft. long, 1 in. in diam., 12 ins. in
the ground to bed rock, supported in a mound of stone,
for ¼ sec. cor., marked on brass cap,

¼ S	3
S 10	
1923	

from which,

- A cedar, 28 ins. in diam., brs. S. 48½° W., 76 lks.
dist., marked ¼ S 10 BT.
A cedar, 12 ins. in diam., brs. N. 43½° W., 30 lks.
dist., marked ¼ S 3 BT.
Ascend 89 ft., over E. slope.
54.32 Spur, slopes SE.
Descend 92 ft., over SW. slope.
62.57 Wash, 30 lks. wide, course SE.
Ascend 74 ft., over E. and SE. slopes, to
80.10 The cor. of secs. 3, 4, 9 and 10.
Land, nearly level and rolling.
Soil, rocky, 4th rate.
Timber, cedar and pinyon.
Undergrowth, scrub oak, sage brush and manzanita.

- 40.00 N. 0° 8' E., on a random line, bet. secs. 3 and 4.
Set temp. ¼ sec. cor.

Survey of part of Subdivision lines of T. 29 N., R. 11 W. 45

Chains.

80.00 Intersect the N. bdy. of the Tp., 23 lks. E. of the cor. of secs. 3, 4, 33 and 34, described in Book "E," of this group.
 Thence,
 S. 0° 2' E., on true line, bet. secs. 3 and 4.
 Over mountainous land, thru. dense timber and undergrowth, on SE. slope from Blue Mountain.
 Descend 115 ft., to
 15.00 Enter rolling land. Desc. 20 ft., over SE. slope, to
 25.00 Head of wash, 10 lks. wide, course E. Enter gently rolling land.
 Ascend gradually over NE. slope.
 35.00 Low ridge, brs. S. 70° E. and N. 70° W.
 Descend gradually over SE. slope, to
 40.00 Set an iron post, 3 ft. long, 1 in. in diam., 26 ins. in the ground, for $\frac{1}{4}$ sec. cor., marked on brass cap,

$\frac{1}{4}$
 S 4 | S 3
 1923

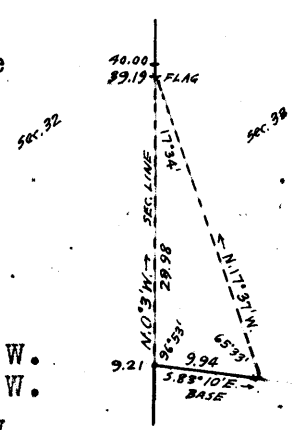
from which,
 A cedar, 4 ins. in diam., brs. S. 17° E., 130 lks. dist., marked BT.
 A cedar, 6 ins. in diam., brs. S. 48° W., 20 lks. dist., marked $\frac{1}{4}$ S 4 BT.

Continue over gently rolling land, thru. dense timber and undergrowth.
 Descend 124 ft., over SE. slope, to
 80.00 The cor. of secs. 3, 4, 9 and 10.
 Land, mountainous, rolling and gently rolling.
 Soil, sandy and gravelly. 3rd rate.
 Timber, cedar and pinyon.
 Undergrowth, scrub oak, black brush and cactus.

 From the std. cor. of secs. 32 and 33, on S. bdy. of Tp. (7th Std. Parallel N.) hereinbefore described,
 N. 0° 3' W., bet. secs. 32 and 33.
 Over mountainous land, in canyon, thru. scattering undergrowth.

Ascend 245 ft., over SW. slope.
 9.21 Sharp spur, slopes W. Beyond this point, the sec. line crosses another deep canyon, and chaining is impracticable; therefore, triangulate as described as follows:

Measure a Base, S. 83° 10' E., 9.94 chs.
 Set flag ahead on sec. line at opposite rim of canyon, the vertical angle to which is 0°.
 From SE. end of Base, the flag brs. N. 17° 37' W.
 From NW. end of Base, the vertical angle to point on sec. line in bottom of canyon is 32°.



Dist. on sec. line = 9.21 chs. N. 0° 3' W.
 Dist. triangulated = 29.98 chs. N. 0° 3' W.
 Total distance = 39.19 chs. N. 0° 3' W.

30.00 (Approx.) Bottom of canyon, course SW., about 750 ft. below 9.21 ch. station.
 Ascend about 750 ft., over precipitous S. slope, to
 39.19 Triangulation point at North or right rim of canyon, bearing E. and W. Leave canyon.
 Continue line and measurement by chaining.
 Ascend gradually to
 40.00 Spur, slopes W. Set an iron post, 3 ft. long, 1 in. in diam., 10 ins. in the ground to bed rock, deposit a stone

BOOK 3645

46 Survey of Subdivision lines of T. 29 N., R. 11 W.

Chains.

marked with a cross (x) at base of post, and raise a mound of stone around post, for $\frac{1}{4}$ sec. cor., marked on brass cap,

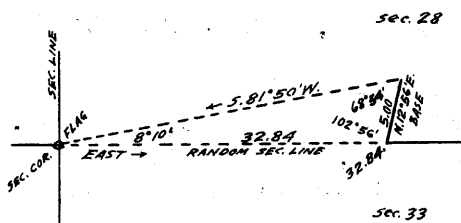
$$\begin{array}{c} \frac{1}{4} \\ \hline \text{S32} | \text{S33} \\ \hline 1923 \end{array}$$

- No bearing trees or bearing objects available.
Descend 30 ft., over NW. slope, to
- 44.20 Rim of canyon, bearing NE. and SW. Enter canyon.
Descend 325 ft., over broken NW. slope, to
- 59.19 Wash, 10 lks. wide, in gulch, course W. near head.
Ascend 127 ft., over S. slope.
- 67.46 Rocky spur, slopes W.
Descend 385 ft., over steep broken NW. slope, to
- 80.00 Set an iron post, 3 ft. long, 2 ins. in diam., 12 ins. in the ground to bed rock, deposit a stone marked with a cross (x) at base of post, and raise a mound of stone around post, for cor. of secs. 28, 29, 32 and 33, marked on brass cap,

$$\begin{array}{c} \text{T29N} | \text{R11W} \\ \hline \text{S29} | \text{S28} \\ \hline \text{S32} | \text{S33} \\ \hline 1923 \end{array}$$

No bearing trees or bearing objects available.
Land, mountainous.
Soil, rocky, 4th rate.
Timber, none.
Undergrowth, black brush.

East, on random line, bet. secs. 28 and 33.
Cliffs and precipitous slopes prevent chaining; therefore, triangulate as described as follows:



Set flag on the cor. of secs. 28, 29, 32 and 33.

From a point ahead on random sec. line, measure a Base N. $12^{\circ}56'E.$, 5.00 chs.

From NE. end of Base, the flag brs. $S.81^{\circ}50'W.$

From SW. end of Base, the vertical angle to flag is -22° .

- Dist. by triangulation = 32.84 chs. East.
- 32.84 Triangulation point. Continue line and measurement by chaining.
- 40.00 Set temp. $\frac{1}{4}$ sec. cor.
- 79.86 Fall 18 lks. N. of the cor. of secs. 27, 28, 33 and 34. Thence, $N.89^{\circ}52'W.$, on true line, bet. secs. 28 and 33. Over mountainous land, thru. scattering timber and dense undergrowth.
- 1.40 Descend 14 ft., over SW. slope, to Wash, 10 lks. wide, course NW.
- 39.93 Descend 727 ft., over steep NW. slope, to Set an iron post, 3 ft. long, 1 in. in diam., 20 ins. in the ground to bed rock, supported in a mound of stone, for $\frac{1}{4}$ sec. cor., marked on brass cap,

$$\begin{array}{c} \text{S 28} \\ \hline \text{S 33} \\ \hline 1923 \end{array}$$

from which,

Survey of part of Subdivision lines of T. 29 N. R. 11 W. 77

Chains.

- A pinyon, 6 ins. in diam., brs. N. 75 1/2° E., 46 lks. dist., marked 1/4 S 28 BT.
- A pinyon, 6 ins. in diam., brs. S. 39 1/2° W., 62 lks. dist., marked 1/4 S 33 BT.
- 47.02 Descend 125 ft., over NW. slope, to Triangulation point at rim of canyon, bearing N. and SW. Discontinue chaining. Measurement to sec. cor. by triangulation, hereinbefore described.
- 67.00 Descend about 500 ft., over precipitous W. slope, to (Approx.) Gulch, course NW.
- 79.86 Descend about 350 ft., over precipitous NW. slope, to The cor. of secs. 28, 29, 32 and 33. Land, mountainous. Soil, rocky, 4th rate. Timber, cedar and pinyon. Undergrowth, black brush, cactus and catclaw.

-
- N. 0° 3' W., bet. secs. 28 and 29. Over mountainous land in canyon, thru. scattering timber and dense undergrowth.
 - 2.00 Descend 18 ft., over NW. slope. Wash, 70 lks. wide, course SW.
 - 5.47 Ascend 95 ft., over S. slope. Rocky spur, slopes SW.
 - 9.85 Descend 113 ft., over NW. slope. Wash, 70 lks. wide, course SW.
 - 18.63 Ascend 129 ft., over S. slope, to Spur, slopes SW.
 - 40.00 Ascend 135 ft., over W. slope, to Set an iron post, 3 ft. long, 1 in. in diam., 6 ins. in the ground to bed rock, deposit a stone, marked with a cross (x) at base of post; and raise a mound of stone around post, for 1/4 sec. cor., marked on brass cap,

†
 S29 | S28
 1923

- 60.00 No bearing trees or bearing objects available. Ascend 286 ft., over W. slope, to
- 78.50 Ascend 474 ft., over SW. slope, to Rim of canyon, brs. NW and SE. Leave canyon. Enter rolling land.
- 80.00 Ascend 26 ft., over S. slope, to Set an iron post, 3 ft. long, 2 ins. in diam., 20 ins. in the ground to bed rock, supported in a mound of stone, for cor. of secs. 20, 21, 28 and 29, marked on brass cap,

T29N | R11W
 S20 | S21
 S29 | S28
 1923

- from which,
- A pinyon, 8 ins. in diam., brs. N. 78 3/4° E., 253 lks. dist., marked T29N R11W S21 BT.
- A pinyon, 6 ins. in diam., brs. S. 58 1/2° E., 212 lks. dist., marked T29N R11W S28 BT.
- A cedar, 12 ins. in diam., brs. N. 35 1/2° W., 190 lks. dist., marked T29N R11W S20 BT.

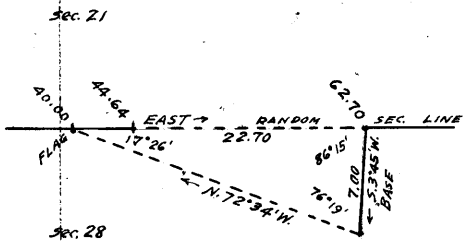
No other bearing tree available.
 Land, mountainous and rolling.
 Soil, rocky, 4th rate.
 Timber, cedar and pinyon.
 Undergrowth, sagebrush, black brush, cactus and yucca.

BOOK 3645

48 Survey of part of Subdivision lines of T. 29 N., R. 11 W.

Chains.

40.00 East, on random line, bet. secs. 21 and 28.
 Set temp. $\frac{1}{4}$ sec. cor.
 44.64 Rim of canyon, across which chaining is impracticable owing to precipitous slopes. Triangulate as described as follows:



Set flag on the temp. $\frac{1}{4}$ sec. cor.
 From a point ahead on random sec. line at opposite rim of canyon, measure a Base, S. $3^{\circ}45'W.$, 7.00 chs.
 From SW. end of Base, the flag brs. N. $72^{\circ}34'W.$
 From NE. end of Base, the vertical angle to flag is 0° , and to point on line in bottom of canyon - 32° .

Dist. on random sec. line = 40.00 chs. East.
 Dist. by triangulation = 22.70 chs. East.
 Total distance = 62.70 chs. East.
 62.70 Triangulation point. Continue line and measurement by chaining.

79.82 Fall 7 lks. N. of the cor. of secs. 21, 22, 27 and 28. Thence, N. $89^{\circ}57'W.$, on true line, bet. secs. 21 and 28. Over mountainous land, thru. scattering timber and undergrowth.

17.12 Descend 60 ft., over NW. slope, to Triangulation point at E. or left rim of canyon, bearing NE. and SW. Discontinue chaining. Measurement across canyon by triangulation, hereinbefore described.

26.00 Descend about 370 ft., over cliffs. (Approximate) Bottom of canyon, course SW.

35.18 Ascend about 350 ft., over cliffs, to West, or right rim of canyon, brs. NE. and SW. Leave canyon, Continue line and measurement by chaining. Enter rolling land.

39.91 Ascend 20 ft., over SE. slope, to Set an iron post, 3 ft. long, 1 in. in diam., 26 ins. in the ground, for $\frac{1}{4}$ sec. cor., marked on brass cap,

$\frac{1}{4}$ S 21
 $\frac{1}{4}$ S 28
 1923

from which,

A pinyon, 10 ins. in diam., brs. S. $44^{\circ}E.$, 272 lks. dist., marked $\frac{1}{4}$ S 28 BT.

A pinyon, 8 ins. in diam., brs. N. $44^{\circ}W.$, 370 lks. dist., marked $\frac{1}{4}$ S 21 BT.

Continue over rolling land, thru. scattering timber and undergrowth.

48.00 Ascend 50 ft., over SE. slope.
 79.82 Descend gradually over S. slope, to The cor. of secs. 20, 21, 28 and 29.

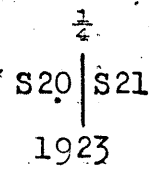
Land, mountainous and rolling.
 Soil, rocky, 4th rate.
 Timber, cedar and pinyon.
 Undergrowth, black brush.

 N. $0^{\circ}3'W.$, bet. secs. 20 and 21.
 Over rolling land, thru. scattering timber and undergrowth,
 Ascend 115 ft., over S. slope, to
 19.40 Enter mountainous land.
 Ascend 144 ft., over SE. slope, to
 24.96 Spur, slopes SW.
 Descend 111 ft., over NW. slope.
 33.90 Wash, 20 lks. wide, course W.
 Ascend 90 ft., over SW. slope, to

Survey of part of Subdivision lines of T. 29 N. R. 11 W. 49

Chains

40.00 Set an iron post, 3 ft. long, 1 in. in diam., 18 ins. in the ground to bed rock, supported in a mound of stone, for 4 sec. cor., marked on brass cap,



from which,
 A pinyon, 12 ins. in diam., brs. S. $61\frac{1}{4}^{\circ}$ E., 106 lks. dist., marked S 21 BT.
 A pinyon, 8 ins. in diam., brs. N. $32\frac{1}{4}^{\circ}$ W., 223 lks. dist., marked S 20 BT.

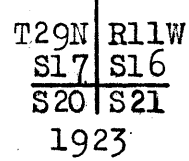
49.20 Ascend 200 ft., over SW. slope, to Enter rolling land.

64.10 Ascend 30 ft., over W. slope, to Wash, 20 lks. wide, course W.

76.40 Ascend 72 ft., over SW. slope. Enter mountainous land.

80.00 Ascend 80 ft., over steep W. slope, to

Set an iron post, 3 ft. long, 2 ins. in diam., 18 ins. in the ground to bed rock, supported in a mound of stone for cor. of secs. 16, 17, 20 and 21, marked on brass cap,



from which,
 A cedar, 8 ins. in diam., brs. N. $22\frac{3}{4}^{\circ}$ E., 179 lks. dist., marked T29N R11W S16 BT.
 A cedar, 8 ins. in diam., brs. S. $58\frac{3}{4}^{\circ}$ E., 163 lks. dist., marked T29N R11W S21 BT.
 A cedar, 6 ins. in diam., brs. S. 26° W., 126 lks. dist., marked T29N R11W S20 BT.

No other bearing tree available.
 Land, rolling and mountainous.
 Soil, sandy and rocky, 4th rate.
 Timber, cedar and pinyon.
 Undergrowth, black brush.

East, on random line, bet. secs. 16 and 21.
 Chaining is impracticable owing to precipitous ascent over cliffs; therefore, triangulate as described, as follows:

Set flag on the cor. of secs. 16, 17, 20 and 21.

From a point ahead on random sec. line at top of cliffs, measure a Base, South, 5.00 chs.

From S. end of Base, the flag brs. N. $72^{\circ}41'$ W.

From N. end of Base, the vertical angle to flag is $-39\frac{1}{2}^{\circ}$.

Dist. by triangulation = 16.04 chs. East.

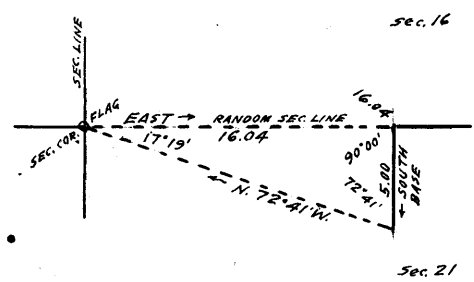
16.04 Triangulation point. Continue line and measurement by chaining.

40.00 Set temp. $\frac{1}{4}$ sec. cor.

79.80 Fall 37 lks. S. of the cor. of secs. 15, 16, 21 and 22.

Thence,
 S. $89^{\circ}44'$ W., on a true line, bet. secs. 16 and 21.
 Over mountainous land in canyon, thru dense timber and undergrowth.

10.40 Ascend 158 ft., over NE. slope, to West or right rim of canyon, brs. NW and SE. Leave canyon; enter level land.



BOOK 3645

50 Survey of part of Subdivision lines of T.29 N., R. 11 W.

- Chains.
- 19.87 Draw, course SE. Continue over level land.
 - 27.20 Leave level, and enter gently rolling land. Descend 60 ft., over NW.slope, to
 - 38.00 Rim of gulch, brs. N. and S. Enter mountainous land. Descend 48 ft., over W.slope, to
 - 39.90 Set an iron post, 3 ft. long, 1 in. in diam., 26 ins. in the ground, for $\frac{1}{4}$ sec.cor., marked on brass cap,

$\frac{1}{4}$ S 16
 S 21
 1923

from which,
 A pinyon, 8 ins. in diam., brs. S. 30° E., 51 lks. dist., marked $\frac{1}{4}$ S 21 BT.
 A pinyon, 10 ins. in diam., brs. N. 3° W., 89 lks. dist., marked $\frac{1}{4}$ S 16 BT.

- 41.50 Descend 35 ft., over W. slope, to Bottom of gulch, course N. Ascend 10 ft., over NE.slope.
- 42.95 Descend 16 ft., over NW.slope.
- 44.90 Wash, 10 lks. wide, in gulch, course SW. Ascend 128 ft., over SE'slope, to
- 51.70 Rim of gulch, brs. NE. and SW. Leave gulch. Enter gently rolling land. Ascend gradually over SE.slope.
- 58.40 Descend gradually over SW.slope, to
- 61.09 Rim brs. N. and S. Enter mountainous land. Descend 132 ft., over steep W.slope, to
- 63.76 Triangulation point at top of cliffs, bearing N. and S., facing W. Discontinue chaining. Measurement to sec.cor. by triangulation, hereinbefore described.
- 79.80 Descend 880 ft., over cliffs, to The cor. of secs. 16, 17, 20 and 21. Land, mountainous, level and gently rolling. Soil, sandy and rocky, 3rd and 4th rate. Timber, cedar and pinyon. Undergrowth, black brush and cactus.

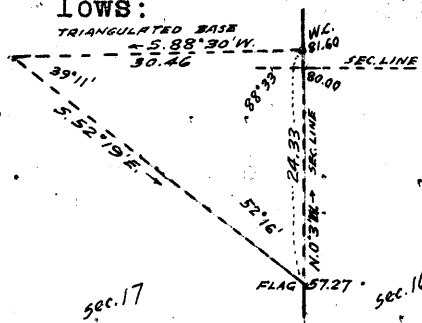
N. $0^{\circ} 3' W.$, bet. secs. 16 and 17.
 Over mountainous land, thru. scattering timber and undergrowth.

- 40.00 Ascend 350 ft., over steep W.slope, to Set an iron post, 3 ft. long, 1 in. in diam., 20 ins. in the ground to bed rock, supported in a mound of stone, for $\frac{1}{4}$ sec.cor., marked on brass cap,

$\frac{1}{4}$
 S17 | S16
 1923

from which,
 A pinyon, 14 ins. in diam., brs. N. $14\frac{1}{2}^{\circ}$ E., 140 lks. dist., marked $\frac{1}{4}$ S 16 BT.
 A cedar, 18 ins. in diam., brs. N. $59\frac{1}{2}^{\circ}$ W., 35 lks. dist., marked $\frac{1}{4}$ S 17 BT.

- 57.27 Ascend 180 ft., over steep SW.slope, to Beyond this point, precipitous ascent over cliffs prevents chaining; therefore, triangulate as follows:



Set flag at this point.
 From a point ahead on sec. line at top of cliffs, the vertical angle to which is $+ 23^{\circ}$, triangulate a Base, S. $88^{\circ} 30' W.$, 30.46 chs. as hereinafter described in notes of line, bet. secs. 8 and 17.
 From W. end of base, the flag brs. S. $52^{\circ} 19' E.$

Chains.

Dist. on sec. line = 57.27 chs. N.0°3'W.
 Dist. triangulated = 24.33 chs. N.0°3'W.
 Total distance, = 81.60 chs. N.0°3'W.

80.00 Ascent in the triangulated dist. on sec. line = 680 ft.
 True point for cor. of secs. 8, 9, 16 and 17 falls on face of cliff, and is inaccessible; therefore, at the triangulation point at top of cliffs bearing NW and SE., facing SW., at 1.60 chs. N.0°3'W., from sec. cor. point, establish witness cor. as follows:

Set an iron post, 3 ft. long, 2 ins. in diam., on surface rock, deposit a stone marked with a cross (x) at base of post, and raise a mound of stone around post, for witness cor. to cor. of secs. 8, 9, 16 and 17, with brass cap, marked

T29N	R11W
S 8	S 9
S17	S16
W C	
1923	

from which,

A pinyon, 6 ins. in diam., brs. N.71½°E., 130 lks. dist., marked T29N R11W S9 WC BT.

A pinyon, 6 ins. in diam., brs. N.6½°W., 120 lks. dist., marked T29N R11W S8 WC BT.

No other bearing trees available.

Land, mountainous.

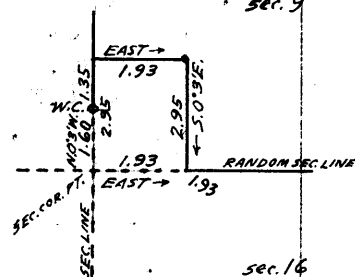
Soil, rocky, 4th rate.

Timber, cedar and pinyon.

Undergrowth, black brush, cactus and yucca.

From true point for cor. of secs. 8, 9, 16 and 17, East, on random line, bet. secs. 9 and 16. The sec. cor. point being inaccessible, and part of the random sec. line being impassable on account of cliffs, obtain measurement by offset as described as follows:

From sec. cor. point, N.0°3'W., 1.60 chs. to W. C., measurement by triangulation hereinbefore described. Thence, N.0°3'W., 1.35 chs. chaining measurement to offset point 2.95 chs. N.0°3'W. from sec. cor. point.



Thence, East, 1.93 chs. parallel to and 2.95 chs. N. of random sec. line to offset point in sec. 9.

Thence, S.0°3'E., 2.95 chs. to point on random sec. line at Offset point. Thence, East, on random line, bet. secs. 9 and 16, continuing measurement from sec. cor. point:

1.93
 40.00
 79.80

Set temp. sec. cor. Fall 18 lks. S. of the cor. of secs. 9, 10, 15 and 16.

Thence, S.89°52'W., on true line, bet. secs. 9 and 16. Over gently rolling land, thru. dense timber and undergrowth.

26.87 Descend gradually over SW. slope, to Rim of gulch, brs. NE. and SW. Enter mountainous land.
 35.83 Descend 103 ft., over W. slope, to Wash, 10 lks. wide, in gulch, course SW.
 39.90 Ascend 70 ft., over SE. slope, to Set an iron post, 3 ft. long, 1 in. in diam., 6 ins. in the ground, to bed rock, supported in a mound of stone, for sec. cor., marked on brass cap,

BOOK 3645

52 Survey of part of Subdivision lines of T.29 N., R. 11 W.

Chains.

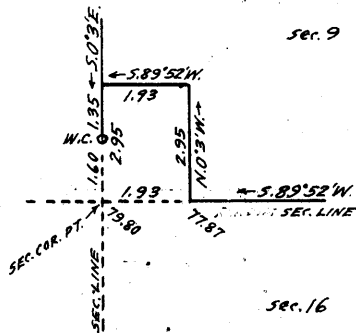
S 9
S 16
1923

from which,

A cedar, 4 ins. in diam., brs. N.32°E., 51 lks. dist., marked BT.

A cedar, 4 ins. in diam., brs. S.52°W., 16 lks. dist., marked BT.

- 41.70 Ascend 15 ft., over SE. slope.
- Point of spur, slopes S.
- 45.78 Descend 75 ft., over SW. slope.
- Wash, 10 lks. wide, in gulch, course S.
- Ascend 150 ft., over E. slope.
- 53.35 Spur, slopes S. Thence over gently rolling land.
- Descend gradually over W. slope.
- 58.30 Ascend gradually over S. slope.
- 60.50 Descend 50 ft., over S. slope.
- 70.50 Ascend 15 ft., over SE. slope.
- 72.20 Descend gradually over S. slope, to
- 77.87 Top of cliffs, bearing NW. and SE. facing SW. Measurement to sec. cor. point by offset line, as described as follows:



N.0°3'W., 2.95 chs. ascending gradually over S. slope, to offset point in sec. 9.

Thence,

S.89°52'W., 1.93 chs., descending 30 ft., over NW. slope, to offset point on sec. line, bet. secs. 8 and 9.

Thence,

S.0°3'E., 2.95 chs. on sec. line, bet. secs. 8 and 9, chaining measurement of 1.35 chs. to W. C.; thence by triangulated measurement of 1.60 chs. S.0°3'E., as hereinbefore described, to

- 79.80 True point for cor. of secs. 8, 9, 16 and 17, on face of cliffs, where it is inaccessible.
- Land, gently rolling and mountainous.
- Soil, rocky, 4th rate.
- Timber, cedar and pinyon.
- Undergrowth, sagebrush and scrub oak.

From true point for cor. of secs. 8, 9, 16 and 17, N.0°3'W., bet. secs. 8 and 9.

Over mountainous land, thru. scattering undergrowth.

Ascend over SW. face of cliffs, measurement by triangulation, as hereinbefore described, to

- 1.60 Witness cor. to cor. of secs. 8, 9, 16 and 17 at top of cliffs, bearing NW. and SE., facing SW. Continue line and measurement by chaining. Enter dense timber and undergrowth.

- 13.45 Descend 66 ft., over NW. slope, to Rim of gulch, brs. NE. and SW.
- 19.80 Descend 150 ft., over NW. slope.
- Wash, 20 lks. wide, in gulch, course W.
- 24.02 Ascend 152 ft., over S. slope.
- Rim of gulch, brs. E. and W. Leave gulch.
- 31.10 Ascend gradually over W. slope.
- Rim of gulch, brs. E. and W.
- 37.10 Descend 78 ft., over N. slope.
- Wash, 10 lks. wide, in gulch, course W.
- 40.00 Ascend 70 ft., over S. slope, to Set an iron post, 3 ft. long, 1 in. in diam., 26 ins. in the ground for 1/4 sec. cor., marked on brass cap,

Chains.

$\frac{1}{4}$
S 8 | S 9

1923

from which,

- A cedar, 6 ins. in diam., brs. S. 42 $\frac{1}{2}$ ° E., 25 lks. dist., marked $\frac{1}{4}$ S 9 BT.
- A cedar, 6 ins. in diam., brs. N. 30° W., 86 lks. dist., marked $\frac{1}{4}$ S 8 BT.

- Ascend 48 ft., over S. slope.
- 43.42 Spur, slopes W.
- Descend 76 ft., over N. slope.
- 47.77 Wash, 50 lks. wide, in gulch, course SW.
- Ascend 200 ft., over SE. slope.
- 53.11 Spur, slopes SW.
- Descend 130 ft., over NW. slope.
- 58.78 Wash, 10 lks. wide in gulch, course SW.
- Ascend 185 ft., over SE. slope, to
- 66.38 Rim of gulch, brs. NE. and SW. Leave gulch, Enter gently rolling land.
- Ascend gradually over SW. slope, to
- 80.00 Set an iron post, 3 ft. long, 2 ins. in diam., 14 ins. in the ground to bed rock, supported in a mound of stone, for cor. of secs. 4, 5, 8 and 9, marked on brass cap,

T29N | R11W
S 5 | S 4
S 8 | S 9

1923

from which,

- A cedar, 10 ins. in diam., brs. N. 44° E., 34 lks. dist., marked T29N R11W S4 BT.
- A cedar, 18 ins. in diam., brs. S. 14 $\frac{1}{4}$ ° E., 51 lks. dist., marked T29N R11W S9 BT.
- A cedar, 24 ins. in diam., brs. S. 38 $\frac{1}{2}$ ° W., 68 lks. dist., marked T29N R11W S8 BT.
- A cedar, 10 ins. in diam., brs. N. 13 $\frac{1}{2}$ ° W., 136 lks. dist., marked T29N R11W S5 BT.

Land, mountainous and gently rolling.
Soil, rocky, 4th rate.
Timber, cedar and pinyon.
Undergrowth, sagebrush and scrub oak.

- East, on random line, bet. secs. 4 and 9.
- 40.00 Set temp. $\frac{1}{4}$ sec. cor.
- 79.76 Fall 28 lks. S. of the cor. of secs. 3, 4, 9 and 10.
- Thence,
- S. 89° 48' W., on true line, bet. secs. 4 and 9.
- Over gently rolling land, thru. dense timber and undergrowth.
- Ascend gradually over SE. slope, to
- 10.31 Wash, 20 lks. wide, course SE.
- Ascend 56 ft., over SE. slope.
- 25.00 Spur, slopes SW.
- Descend 30 ft., over SW. slope, to
- 39.88 Set an iron post, 3 ft. long, 1 in. in diam., 6 ins. in the ground to bed rock, supported in a mound of stone, for $\frac{1}{4}$ sec. cor., marked on brass cap,

$\frac{1}{4}$ S 4
S 9
1923

from which,

- A cedar, 8 ins. in diam., brs. S. 76° E., 111 lks. dist., marked $\frac{1}{4}$ S 9 BT.
- A cedar, 8 ins. in diam., brs. N. 3° W., 84 lks. dist., marked $\frac{1}{4}$ S 4 BT.

- 54.65 Descend 75 ft., over SW. slope, to

BOOK 3645

54 Survey of part of Subdivision lines of T. 20 N., R. 11 W.

Chains.

54.66 Wash, 10 lks. wide, course SW. near head.
 Descend gradually over SW. slope, to
 79.76 The cor. of secs. 4, 5, 8 and 9.
 Land, gently rolling.
 Soil, sandy and rocky, 4th rate.
 Timber, cedar and pinyon.
 Undergrowth, sagebrush and scrub oak.

40.00 N. 0° 2' W., on random line, bet. secs. 4 and 5.
 Set temp. $\frac{1}{4}$ sec. cor.
 79.88 Intersect the N. bdy. of Tp., 16 lks. E. of the cor. of secs.
 4, 5, 32 and 33, described in Book "E," of this group.
 Thence,
 S. 0° 9' E., on true line, bet. secs. 4 and 5.
 Over gently rolling land, thru. dense timber and under-
 growth.
 Ascend 45 ft., over W. slope, to
 11.90 Wash, 10 lks. wide, course W.
 Ascend 65 ft., over W. and NW. slopes, to
 39.88 Set an iron post, 3 ft. long, 1 in. in diam., 6 ins. in
 the ground to bed rock, supported in a mound of stone,
 for $\frac{1}{4}$ sec. cor., marked on brass cap,

$\frac{1}{4}$
 S 5 | S 4
 1923

from which,

A cedar, 12 ins. in diam., brs. S. 41 $\frac{1}{2}$ ° E., 96
 lks. dist., marked $\frac{1}{4}$ S 4 BT.

A cedar, 6 ins. in diam., brs. S. 0° 30' W., 23
 lks. dist., marked $\frac{1}{4}$ S 5 BT.

Continue over gently rolling land, thru. dense timber and
 undergrowth.

79.88 Descend gradually over W. and SW. slopes, to
 The cor. of secs. 4, 5, 8 and 9.
 Land, gently rolling.
 Soil, sandy and rocky, 4th rate.
 Timber, cedar and pinyon.
 Undergrowth, sagebrush and black brush.

The line, bet. secs. 31 and 32 being unsurveyable, begin
 at the cor. of secs. 28, 29, 32 and 33, and survey the
 line bet. secs. 29 and 32, as described as follows:

West, on true line, bet. secs. 29 and 32.

Over mountainous land, thru. dense undergrowth.

6.00 Descend 124 ft. over steep NW. slope, to
 Wash, 50 lks. wide, course SW. Discontinue chaining owing
 to precipitous broken slopes beyond this point.
 Triangulate as described as follows:

Set flag on the cor. of secs. 28,
 29, 32 and 33.
 From a point ahead on sec. line,
 measure a Base N. 27° 22' E.,
 9.87 chs.
 From NE. end of Base, the flag
 brs. S. 73° 38' E.
 From SW. end of Base the verti-
 cal angle to flag is + 15°.

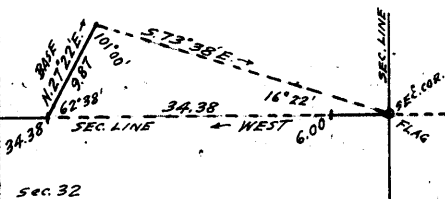
Distance triangulated on sec. line = 34.38 chs. West.

18.00 (Approx.) Wash, in bottom of canyon, course S.

Ascend about 400 ft., over cliffs.

34.38 Triangulation point at W. rim of canyon, bearing NE. and
 SW. Continue line and measurement by chaining. Across
 top of spur, sloping S.

35.88 Top of cliffs, bearing N. and S. facing W., and forming E.



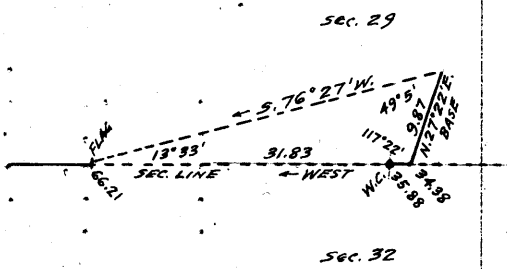
Chains.

rim of canyon.
Set an iron post, 3 ft. long, 1 in. in diam., on surface rock, deposit a stone marked with a cross (x) at base of post, and raise a mound of stone around post, for witness cor. to 1/4 sec. cor., marked on brass cap,

WC 1/4 S 29
S 32
1923

No bearing trees or bearing objects available.
Chaining on sec. line beyond this point is impracticable, owing to precipitous slopes and cliffs in canyon; therefore triangulate as described as follows:

Set flag ahead on sec. line at W. rim of canyon, the vertical angle to which is + 9°. The vertical angle to point ahead on sec. line in bottom of canyon is -28°.



From NE. end of same Base used in the triangulation of part of the E. 1/4 of this sec. line, the flag brs. S. 76° 27' W.

Dist. by previous triangulation = 34.38 chs. West.
Dist. by this triangulation = 31.83 chs. West.
Total distance = 66.21 chs. West.

- 40.00 True point for 1/4 sec. cor. falls on cliffs, where it is inaccessible.
- 48.00 (Approx.) Bottom of canyon, course S. 10° E. about 420 ft. below W.C. to 1/4 sec. cor.
- Ascend about 735 ft., over cliffs, facing E.
- 66.21 Triangulation point at top of cliffs, bearing N. and S., and forming W. rim of canyon. Leave canyon. Continue line and measurement by chaining.
- Ascend 71 ft., over E. slope, to
- 70.50 Leave mountainous and enter rolling land on bench.
- Descend 40 ft., over S. and SW. slopes, to
- 80.00 Set an iron post, 3 ft. long, 2 ins. in diam., on surface rock, deposit a stone, marked with a cross (x) at base of post, and raise a mound of stone around post, for cor. of secs. 29, 30, 31 and 32, marked on brass cap,

T29N | R11W
S30 | S29
S31 | S32
1923

from which,
A pinyon, 6 ins. in diam., brs. S. 83 1/4° E., 2.40 chs. dist., marked T29N R11W S32 BT.
A pinyon, 10 ins. in diam., brs. N. 52° E., 2.90 chs. dist., marked T29N R11W S31 BT.

No other bearing trees available.
Land, mountainous and rolling.
Soil, rocky, 4th rate.
Timber, cedar and pinyon.
Undergrowth, black brush, cactus, yucca and catclaw.

- N. 0° 3' W., bet. secs. 29 and 30.
- Over gently rolling land, thru. scattering timber and undergrowth.
- Ascend 87 ft., over SW. slope, to
- 40.00 Set an iron post, 3 ft. long, 1 in. in diam., 14 ins. in the ground to bed rock, supported in a mound of stone, for 1/4 sec. cor., marked on brass cap,

BOOK 3645

56 Survey of part of Subdivision lines of T. 29 N. R. 11 W.

Chains.

1/4
S30 | S29

1923

from which,

A cedar, 6 ins. in diam., brs. S. 35° E., 298 lks.
dist., marked 1/4 S 29 BT.

A cedar, 10 ins. in diam., brs. S. 79° W., 126 lks.
dist., marked 1/4 S 30 BT.

Continue over gently rolling bench land, thru. scattering timber and undergrowth.

Ascend 52 ft., over W. slope, to

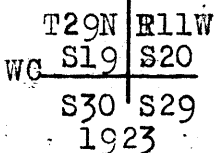
65.79 Top of cliffs, bearing NE. and SW. facing N? Beyond this point the sec. line crosses the head of a canyon, course W., and cliffs prevent continuation of chaining. Measure the remainder of sec. line by traverse along top of cliffs in sec. 29, as described as follows:

- N. 89° E., 2.39 chs.
- N. 30° E., 3.50 chs.
- N. 30 1/2° E., 3.00 chs.
- N. 8° W., 5.00 chs.
- N. 40° W., 4.70 chs.

to a point at top of cliffs 1.94 chs. E. of

80.00 The true point for cor. of secs. 19, 20, 29 and 30. This sec. cor. point falls on face of cliff, and is inaccessible, and the nearest accessible point is the terminus of the traverse described above; therefore, at 1.94 chs. E. of sec. cor. point,

Set an iron post, 3 ft. long, 2 ins. in diam., 10 ins. in the ground to bed rock, deposit a stone marked with a cross (x) at base of post, and raise a mound of stone around post, for witness cor. to cor. of secs: 19, 20, 29 and 30, marked on brass cap,



No bearing trees or bearing objects available.
Land, gently rolling and mountainous.
Soil, sandy and rocky, 3rd rate.
Timber, cedar and pinyon.
Undergrowth, scrub oak and black brush.

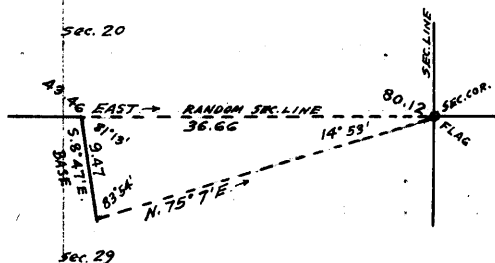
From true point for cor. of secs. 19, 20, 29 and 30, East, on random line, bet. secs. 20 and 29. Measurement of 1.94 chs. by traverse from point on line, bet. secs. 29 and 30, as hereinbefore described.

1.94 Witness cor. to cor. of secs. 19, 20, 29 and 30. Continue line and measurement by chaining.

40.00 Set temp. 1/4 sec. cor.

43.46 West or right rim of canyon, brs. N. 9° W. and S. 9° E.

Beyond this point, precipitous slopes in canyon prevent chaining; therefore, triangulate as described as follows:



Measure a Base, S. 8° 47' E., 9.47 chs.
Set flag on the cor. of secs. 20, 21, 28 and 29, which brs. East from 43.46 ch. station on random sec. line.
From SE end of Base, the flag brs. N. 75° 07' E.
From NW end of Base, the vertical angle to flag is 0°, and to point ahead on random line in bottom is - 32°.
Dist. on random sec. line = 43.46 chs. East+
Dist. triangulated = 36.66 chs. East+
Total length of sec. line, = 80.12 chs. East.

Chains.

80.12 Intersect the cor. of secs. 20, 21, 28 and 29. Thence, West, on true line, bet. secs. 20 and 29. Over rolling land, thru. scattering timber and undergrowth. Descend slightly over S. slope. Chain measurement, to
 1.50 East, or left rim of canyon, brs. NW: and SE. Discontinue chaining.
 Measurement across canyon by triangulation hereinbefore described, Enter mountainous land in canyon. Descend about 690 ft., over precipitous SW. slope.
 20.00 (Approx.) Wash, course S. in bottom of canyon.
 36.66 Ascend about 690 ft., over precipitous E. slope, to Triangulation point at West or right rim of canyon, bearing N. 9° W. and S. 9° E. Leave canyon. Enter gently rolling land.
 Continue line and measurement by chaining.
 40.06 Ascend gradually over SE. slope, to Set an iron post, 3 ft. long, 1 in. in diam., 14 ins. in the ground to bed rock, supported in a mound of stone, for $\frac{1}{4}$ sec. cor., marked on brass cap,

S 20
 $\frac{1}{4}$
 S 29
 1923

from which,

- A pinyon, 10 ins. in diam., brs. S. 37 $\frac{1}{2}$ ° W., 68 lks. dist., marked $\frac{1}{4}$ S 29 BT.
- A pinyon, 14 ins. in diam., brs. N. 26° W., 51 lks. dist., marked $\frac{1}{4}$ S 20 BT.

Continue over gently rolling land, thru. scattering timber and undergrowth.

63.00 Ascend gradually over SE. and S. slopes.
 75.00 Descend gradually over S. and SW. slopes, to Rim of canyon, brs. NW and SE. Enter mountainous land in head of canyon.

78.18 Descend 44 ft., over SW. slope, to The witness cor. to cor. of secs. 19, 20, 29 and 30, at top of cliff, bearing NW and SE. facing SW. Discontinue chaining.

Measurement to sec. cor. point by computation of traverse from point on sec. line, bet. secs. 29 and 30, as hereinbefore described.

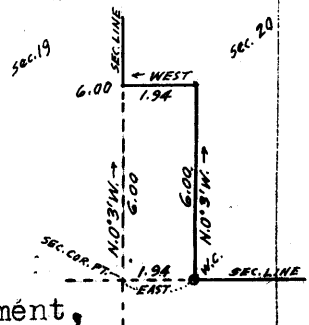
80.12 Descend over face of cliff, to The true point for cor. of secs. 19, 20, 29 and 30, on face of cliff, where it is inaccessible. Land, rolling, mountainous and gently rolling. Soil, sandy and rocky, 3rd and 4th rate. Timber, cedar and pinyon. Undergrowth, black brush.

From true point for cor. of secs. 19, 20, 29 and 30, N. 0° 3' W., bet. secs. 19 and 20. Over mountainous land, in head of canyon, thru. scattering timber and undergrowth. Ascend over SW. face of cliffs. The sec. cor. point being inaccessible, and a portion of the sec. line being impassable on account of cliffs, obtain measurement from cor. point by offset line as follows:

From sec. cor. point, East, 1.94 chs. by computed measurement of traverse to W.C., as hereinbefore described. Thence chaining measurement,

N. 0° 3' W., 6.00 chs. to offset point in sec.

20. Thence chaining measurement,



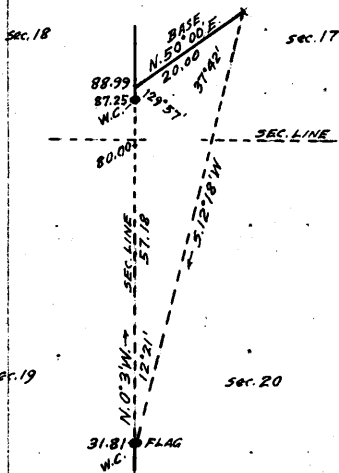
BOOK 3645

58 Survey of part of Subdivision lines of T.29 N., R.11 W.

Chains,
 West, 1.94 chs. to point on sec. line, 6.00 chs. N.0°3'W. from sec. cor. point.
 2.00 (Approx.) Top of cliff, bearing NW' and SE., facing SW. Ascend about 55 ft., over steep SW. slope, to
 6.00 Offset point at rim of canyon, bearing NW' and SE. Leave canyon.
 Thence, N.0°3'W., on sec. line, continuing measurement by chaining.
 Over gently rolling land, thru. scattering timber and undergrowth.
 Ascend gradually over SW. and W. slopes, to
 31.81 Top of cliff about 200 ft. high, bearing NE and SW., facing NW. Discontinue chaining, as the remainder of the line falls in a canyon, the sides of which are precipitous and broken. As the point for $\frac{1}{4}$ sec. cor. is inaccessible, establish witness cor. at the 31.81 ch. station on the sec. line, as follows:
 Set an iron post, 3 ft. long, 1 in. in diam., 14 ins. in the ground to bed rock, supported in a mound of stone, for witness cor. to $\frac{1}{4}$ sec. cor., marked on brass cap,

W C
 $\frac{1}{4}$
 S19 S20
 1923

from which,
 A pinyon, 8 ins. in diam., brs. S.75°E., 62 lks. dist., marked WC $\frac{1}{4}$ S20 BT.
 A pinyon, 14 ins. in diam., brs. S.74°W., 52 lks. dist., marked WC $\frac{1}{4}$ S 19 BT.
 Triangulate as described, as follows:



Set flag on the W.C. to $\frac{1}{4}$ sec. cor.
 From a point ahead on sec. line, measure a Base N.50°00'E., 20.00 chs.
 From NE end of Base, the flag brs. S.12°18'W.
 From SW. end of Base, the vertical angle to flag is 0° and to point on sec. line in bottom of canyon is - 29 $\frac{1}{2}$ °.

Dist. on sec. line = 31.81 chs. N.0°3'W.
 Dist. triangulated = 57.18 chs. N.0°3'W.
 Total dist. = 88.99 chs. N.0°3'W.

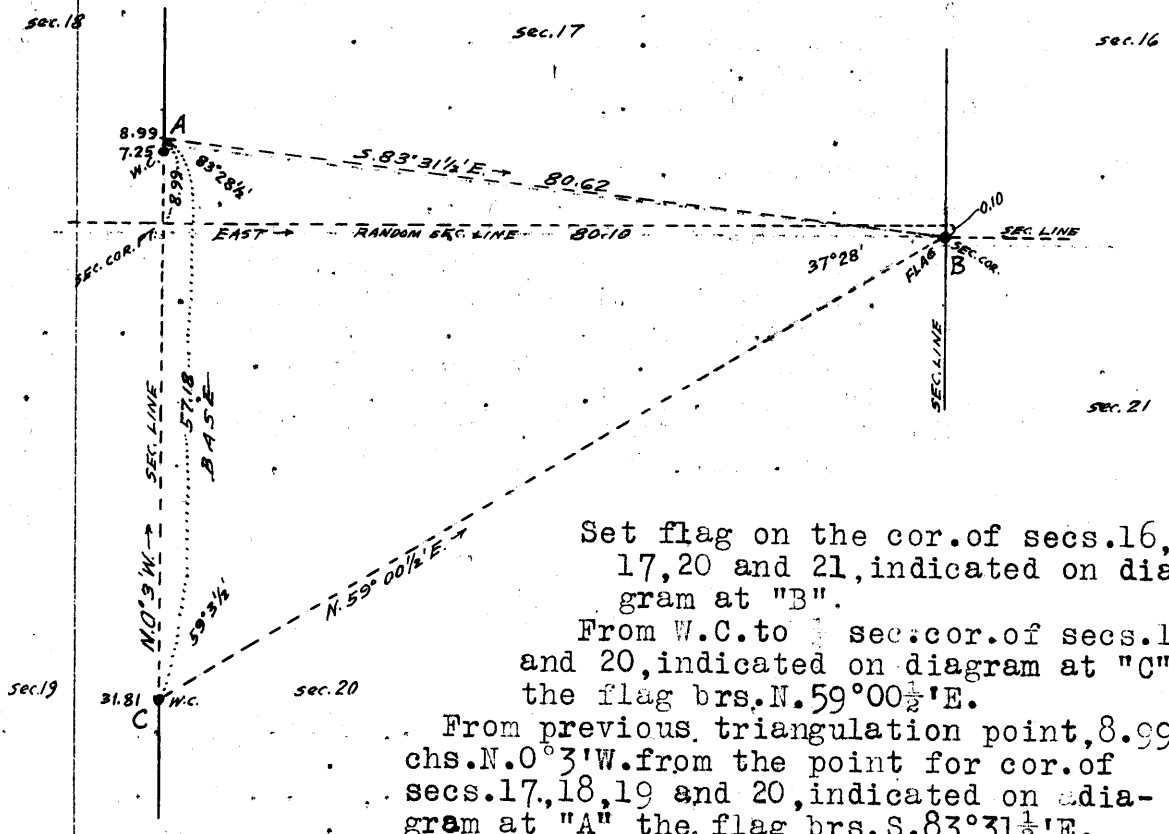
40.00 True point for $\frac{1}{4}$ sec. cor. falls on cliffs, where it is inaccessible.
 57.00 (Approx.) Bottom of canyon, course SW., about 1200 ft. below W.C. to $\frac{1}{4}$ sec. cor.
 Ascend over precipitous SE. slope and cliffs, to
 80.00 True point for cor. of secs. 17, 18, 19 and 20 falls on cliffs, where it is inaccessible.
 From triangulation point, 8.99 chs., N.0°3'W. herefrom, chain measurement S.0°3'E., 1.74 chs. to point at top of cliffs, 7.25 chs. N.0°3'W. from sec. cor. point. This being as close to the sec. cor. point as it is possible to chain, establish witness cor. here as described as follows:
 Mark a cross (x) on top of a rock in place, WC and 3 notches to the S. of cross and 5 notches to the E. of cross, for witness cor. to cor. of secs. 17, 18, 19 and 20, from which,
 A pinyon, 10 ins. in diam., brs. N.5°E., 141 lks. dist., marked T29M R11W S17 WC BT.
 A pinyon, 8 ins. in diam., brs. N.49 $\frac{1}{2}$ °W., 60 lks. dist., marked T29M R11W S18 WC BT.
 No other bearing trees available.
 Raise a mound of stone, 2 ft. base, 1 $\frac{1}{2}$ ft. high, W. of cor.
 Land, mountainous and gently rolling.

Survey of part of Subdivision lines of T. 29 N. R. 11 W. 59

Chains.

Soil, rocky, 4th rate.
Timber, cedar and pinyon.
Undergrowth, black brush.

From true point for cor. of secs. 17, 18, 19 and 20, East, on random line, bet. secs. 17 and 20. The sec. cor. point being inaccessible, and the West half of the random sec. line being impassable owing to cliffs and precipitous slopes in canyon, triangulate the measurement of the entire line, as described as follows, and as shown on the diagram hereon:



Set flag on the cor. of secs. 16, 17, 20 and 21, indicated on diagram at "B".
From W.C. to sec. cor. of secs. 19 and 20, indicated on diagram at "C" the flag brs. N. 59° 00 1/2' E.

From previous triangulation point, 8.99 chs. N. 0° 3' W. from the point for cor. of secs. 17, 18, 19 and 20, indicated on diagram at "A" the flag brs. S. 83° 31 1/2' E., with a vertical angle of 0°.

The Base (C-A) for this triangulation is 57.18 chs. N. 0° 3' W., previously triangulated, as hereinbefore described in notes of line bet. secs. 19 and 20.

Distance "A-B" by triangulation = 80.62 chs. S. 83° 31 1/2' E.
Latitude of "A-B" = 9.09 chs. South.
Departure of "A-B" = 80.10 chs. East.

80.10 The random sec. line East from true point for cor. of secs. 17, 18, 19 and 20 would therefore, at Fall 10 lks. N. of the cor. of secs. 16, 17, 20 and 21. Thence,

N. 89° 56' W., on true line, bet. secs. 17 and 20. Over mountainous land, thru. scattering timber and undergrowth.

31.45 Chain measurement to the W.C. to 1/4 sec. cor. Descend 400 ft., over W. slope, to SE. or left rim of canyon, brs. NE and SW. Set a granite stone, 20x8x6 ins., 14 ins. in a mound of stone, for witness cor. to 1/4 sec. cor., marked 1/4 S 17 WC on N. face and S 20 on S. face, from which,
A pinyon, 15 ins. in diam., brs. N. 41 1/2° E., 37 lks. dist., marked 1/4 S 17 WC BT.
A pinyon, 8 ins. in diam., brs. S. 66° E., 2.90 chs. dist., marked 1/4 S 20 WC BT.

40.05 Discontinue chaining. Measurement of remainder of line by triangulation, hereinbefore described. Descend about 600 ft., over precipitous NW slope and cliffs to bottom of canyon.

True point for 1/4 sec. cor. falls on cliffs and is inaccessible.

BOOK 3645

60 Survey of part of S. division lines of T. 29 N., R. 11 W.

Chains.
 50.00 (Approx.) Bottom of canyon, course SW.
 Ascend about 800 ft., over precipitous SE. slope and cliffs to
 80.10 True point for cor. of secs. 17, 18, 19 and 20 on cliffs, where it is inaccessible.
 Witness cor. 7.25 chs. N. 0° 3' W.
 Land, mountainous.
 Soil, rocky, 4th rate.
 Timber, cedar and pinyon.
 Undergrowth, black brush and cactus.

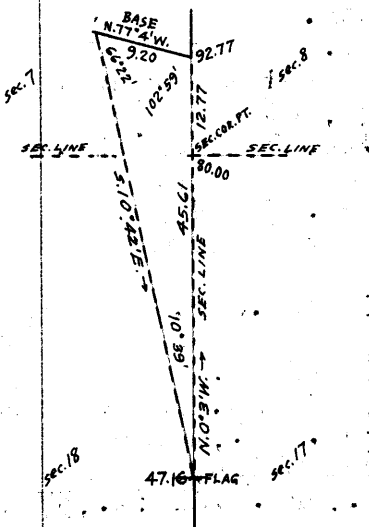
From true point for cor. of secs. 17, 18, 19 and 20, N. 0° 3' W., bet. secs. 17 and 18.
 Over mountainous land, in canyon. Measurement of 8.99 chs, by triangulation, as hereinbefore described, and return measurement of 1.74 chs. S. 0° 3' E. by chaining to the witness cor.

Ascend about 200 ft., over SE. face of cliffs, bearing NE. and SW.
 7.25 Witness cor. to cor. of secs. 17, 18, 19 and 20, at top of cliffs, bearing NE and SW., facing SE., and forming NW. or right rim of canyon. Leave canyon. Continue line and measurement by chaining, over mountainous land, thru. scattering timber and undergrowth.
 Ascend 200 ft., over SW. and W. slopes to $\frac{1}{4}$ sec. cor.
 8.99 Triangulation point. Continue chaining.
 40.00 Set an iron post, 3 ft. long, 1 in. in diam., 20 ins. in the ground to bed rock, supported in a mound of stone, for $\frac{1}{4}$ sec. cor., marked on brass cap,

$\frac{1}{4}$
 S18 | S17
 1923

from which,
 A pinyon, 6 ins. in diam., brs. N. 78 $\frac{1}{2}$ ° E., 43 lks. dist., marked $\frac{1}{4}$ S 17 BT.
 A pinyon, 12 ins. in diam., brs. S. 14 $\frac{1}{2}$ ° W., 25 lks. dist., marked $\frac{1}{4}$ S 18 BT.

Ascend 140 ft., over W. slope, to
 47.16 Left rim of canyon, brs. E and W. Beyond this point, chaining is impracticable, owing to cliffs and precipitous slopes in canyon; therefore, triangulate as described as follows:



Set flag at this point.
 From a point ahead on sec. line, measure a Base N. 77° 04' W., 9.20 chs.
 From NW. end of Base, the flag brs. S. 10° 42' E.
 From SE. end of Base, the vertical angle to flag is - 19°.
 Dist. on sec. line, bet. secs.
 17 and 18 = 47.16 chs. N. 0° 3' W.
 Dist. triangulated = 45.61 " " " "
 .. Total distance = 92.77 chs. N. 0° 3' W.
 Dist. bet. secs. 17 & 18 = 80.00 " " " "
 Dist. bet. secs. 7 and 8 = 12.77 chs. N. 0° 3' W.

The triangulation point is therefore on the sec. line, bet. secs. 7 and 8, at 12.77 chs. N. 0° 3' W. from the true point for the cor. of secs. 7, 8, 17 and 18. Cliffs and precipitous slopes prevent chaining any return measurement on sec. line toward said cor. point, and as the distance to the triangulation point is in excess of allowable limits for a witness cor., establish the W.C. on the line bet. secs. 8 and 17, as hereinafter described.

Survey of part of Subdivision lines of T.29 N., R.11 W. 61

Chains

63.00 (Approx.) Bottom of gulch, course W. Continue in canyon, ascending over steep SW. and W. slopes, to

80.00 True point for cor. of secs. 7, 8, 17 and 18 on precipitous W. slope, where it is inaccessible. Witness cor. established at 9.29 chs. N. $89^{\circ}52'E.$, as hereinafter described.

Land, mountainous.
Soil, rocky, 4th rate.
Timber, cedar and pinyon.
Undergrowth, black brush, cactus and catclaw.

From true point for cor. of secs. 7, 8, 17 and 18, East, on random line, bet. secs. 8 and 17. The sec. cor. point being inaccessible, and the western part of the random sec. line falling on cliffs, chaining is impracticable; therefore, triangulate as described as follows, and as shown on the diagram hereon:

Set flag at top of cliffs, approximately E. from sec. cor. point, indicated on diagram at "A."

From 12.77 ch. point on sec. line, bet. secs. 7 and 8, indicated on diagram at "B" the flag brs. $S.35^{\circ}38\frac{1}{2}'E.$ with a vertical angle of -9° .

Point "C" is the NW end of Base "B-C" previously measured N. $77^{\circ}04'W.$, 9.20 chs. for triangulation of line bet. secs. 17 and 18, as hereinbefore described.

From "C" the flag brs. $S.50^{\circ}33'E.$ Distance "B-A" by triangulation = 15.96 chs. $S.35^{\circ}38\frac{1}{2}'E.$ Latitude of "B-A" = 12.97 chs. South. Departure of "B-A" = 9.30 chs. East.

The latitude of the sec. line from point "B" to sec. cor. point is 12.77 chs. South and its departure is .01 chs. E.; therefore, point "A" is 0.20 chs. S. of 9.29 ch. point on random sec. line.

From flag point "A" measure North, 0.20 chs. to point on random line at

9.29 Set temp. witness cor. to cor. of secs. 7, 8, 17 and 18. Thence, East on random line, bet. secs. 8 and 17, continuing measurement from sec. cor. point.

40.00 Set temp. $\frac{1}{4}$ sec. cor.

49.63 West, or right rim of canyon; brs. N. and S. Remainder of random sec. line falls in canyon; where precipitous slopes prevent chaining; therefore, triangulate the measurement of the remainder of the line, as described as follows, and as shown on the diagram hereon:

From this point on random line, indicated on diagram at "A" measure N. 0.99 chs. to point "B" and set flag.

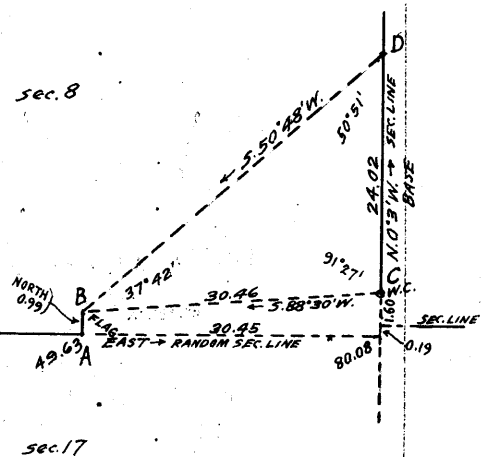
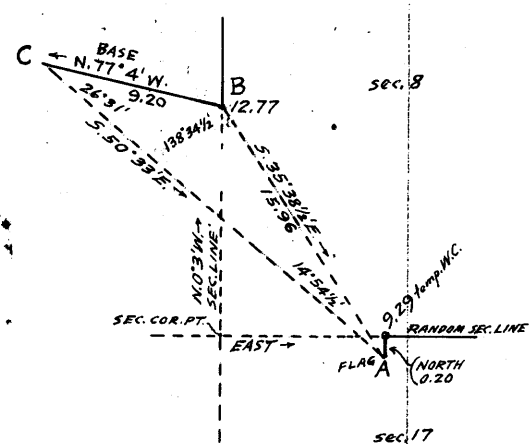
From the witness cor. to cor. of secs. 8, 9, 16 and 17, indicated on diagram at "C" the flag brs. $S.88^{\circ}30'W.$ with a vertical angle of -1° .

From "C" the vertical angle $S.88^{\circ}30'W.$ to point in bottom of canyon is $-43\frac{1}{2}^{\circ}$.

From "C" measure a Base N. $0^{\circ}3'W.$, 24.02 chs. along sec. line, bet. secs. 8 and 9 to point "D."

From "D" the flag "B" brs. $S.50^{\circ}48'W.$

Triangulated dist. "B-C" = 30.46 chs. N. $88^{\circ}30'E.$



BOOK 3645

62 Survey of part of Subdivision lines of T.29 N. R.11 W.

Chains.

Latitude of "B-C" = 0.80 chs. North.
 Departure of "B-C" = 30.45 chs. East.

Dist. on random sec. line = 49.63 chs. East.
 Departure of "B-C" = 30.45 chs. East.

Total length of random line = 80.08 chs. East.

The latitude of "A-B-C" being 1.79 chs. North, and the dist. from "C" to sec. cor. point being 1.60 chs. S. 0° 3' E., the random sec. line extended would at

80.08 Fall 19 lks. S. of the true point for cor. of secs. 8, 9, 16 and 17.

Thence,
 S. 89° 52' W., on true line, bet. secs. 8 and 17:

Over mountainous land, in canyon, measurement by triangulation from W.C. 1.60 chs. N. 0° 3' W. across canyon, as hereinbefore described, to point on W. rim of canyon, 0.87 chs. N. of true sec. line; thence chain measurement south 0.87 chs. to 30.45 ch. station on sec. line.

15.00 (Approx.) Bottom of canyon, course S. about 940 ft. below W.C. to cor. of secs. 8, 9, 16 and 17.

30.45 Ascend about 900 ft. over precipitous E. slope, to West, or right rim of canyon, brs. N. and S. Leave canyon. Enter rolling land, dense timber and undergrowth. Continue line and measurement by chaining.

40.04 Ascend 68 ft., over SE. slope, to Set an iron post, 3 ft. long, 1 in. in diam., 12 ins. in the ground to bed rock, supported in a mound of stone, for $\frac{1}{4}$ sec. cor., marked on brass cap,

$\frac{1}{4}$ S 8
 S 17
 1923

from which,
 A pinyon, 6 ins. in diam., brs. N. 7 $\frac{1}{2}$ ° E., 40 lks. dist., marked $\frac{1}{4}$ S 8 BT:
 A cedar, 8 ins. in diam., brs. S. 34 $\frac{1}{2}$ ° E., 67 lks. dist., marked $\frac{1}{4}$ S 17 BT.

Continue over rolling land, thru. dense timber and undergrowth. Asc. gradually over S. slope.

48.70 Descend gradually over SW. slope, to
 54.60 E. rim of gulch, brs. N. and S. Enter mountainous land. Leave timber.

59.76 Descend 103 ft., over W. slope.
 Wash, 20 lks. wide, in bottom of gulch, course S.

64.80 Ascend 208 ft., over E. slope, to
 W. rim of gulch, brs. N. and S. Leave gulch,
 Ascend 48 ft., over SE. slope.

67.80 Spur, slopes SW.
 Descend 15 ft., over W. slope, to
 70.79 Rim of canyon, brs. N. and S.
 Mark a cross (x) on rock in place, WC West, 5 notches East, and 4 notches south of cross, for witness cor. to cor. of secs. 7, 8, 17 and 18.

No bearing trees or bearing objects available.
 Raise a mound of stone, 2 ft. base, 12 ft. high, E. of cor.
 Precipitous descent over cliffs prevents raising mound W. of cor.

Discontinue chaining. Measurement to sec. cor. point by triangulation, hereinbefore described.

Descend over cliffs to
 80.08 True point for cor. of secs. 7, 8, 17 and 18, falls on face of cliff near bottom of canyon, where it is inaccessible.

Land, mountainous and rolling.
 Soil, rocky, 4th rate.
 Timber, pinyon and cedar.
 Undergrowth, blackbrush, sagebrush and scrub oak.

Chains.

From true point for cor. of secs. 7, 8, 17 and 18,
 N. 0° 3' W., bet. secs. 7 and 8.
 Over mountainous land, in canyon; measurement of 12.77 chs.
 by triangulation, hereinbefore described.
 Descend over cliffs; to
 3.00 (Approx.) Bottom of canyon, course SW.
 Ascend about 600 ft., over cliffs to
 12.77 Triangulation point at right rim of canyon, bearing E. and
 W. Leave canyon.
 Continue line and measurement by chaining.
 Over mountainous land; thru. scattering timber and under-
 growth.
 Ascend 280 ft., over steep S. slope.
 29.50 Spur, slopes SE. Enter rolling land.
 Descend 70 ft., over NE. slope, to
 40.00 Set an iron post, 3 ft. long, 1 in. in diam., 26 ins. in
 the ground, for $\frac{1}{4}$ sec. cor., marked on brass cap,

$\frac{1}{4}$
 S 7 | S 8
 1923

from which,
 A cedar, 12 ins. in diam., brs. N. 65 $\frac{1}{2}$ ° E., 108
 lks. dist., marked $\frac{1}{4}$ S 8 BT.
 A cedar, 12 ins. in diam., brs. S. 84° W., 41 lks.
 dist., marked $\frac{1}{4}$ S 7 BT.
 Descend 35 ft., over NE. slope.
 44.13 Wash, 20 lks. wide, course E. Enter mountainous land.
 Ascend 115 ft., over SE and S. slopes.
 56.58 Spur, slopes SE.
 Descend 30 ft., over NE. slope.
 61.99 Wash, 30 lks. wide, course SE.
 Ascend 80 ft., over S. slope, to
 69.50 Leave mountainous and enter gently rolling land.
 Descend slightly over E. slope, to
 80.00 Set an iron post, 3 ft. long, 2 ins. in diam., 24 ins. in
 the ground for cor. of secs. 5, 6, 7 and 8, marked on
 brass cap,

T29N | R11W
 S 6 | S 5
 S 7 | S 8
 1923

from which,
 A cedar, 14 ins. in diam., brs. N. 42 $\frac{1}{2}$ ° E., 68
 lks. dist., marked T29N R11W S5 BT.
 A pinyon, 6 ins. in diam., brs. S. 80° E., 49 lks.
 dist., marked T29N R11W S8 BT.
 A cedar, 14 ins. in diam., brs. S. 49 $\frac{1}{2}$ ° W., 25
 lks. dist., marked T29N R11W S7 BT.
 A cedar, 24 ins. in diam., brs. N. 74° W., 20
 lks. dist., marked T29N R11W S6 BT.
 Land, mountainous, rolling and gently rolling.
 Soil, rocky, 4th rate.
 Timber, cedar and pinyon.
 Undergrowth, sagebrush and scrub oak. ✓

40.00 East, on random line, bet. secs. 5 and 8.
 Set temp. $\frac{1}{4}$ sec. cor.
 79.86 Fall 23 lks. N. of the cor. of secs. 4, 5, 8 and 9.
 Thence,
 N. 89° 50' W., on true line, bet. secs. 5 and 8.
 Over gently rolling land, thru. dense timber and undergrowth.
 Descend gradually over SW. slope, to
 6.70 Rim of gulch, brs. N. and S. Enter mountainous land.
 Descend 110 ft., over W. slope, to
 12.06 Wash, 20 lks. wide in gulch, course SW.

BOOK 3645

64. Survey of part of Subdivision lines of T.29 N., R.11 W.

Chains.

- 14.40 Ascend 66 ft., over SE. slope.
 Descend 33 ft., over W. slope.
 15.30 Wash, 20 lks. wide, in gulch, course SW.
 Ascend 90 ft., over SE slope, to
 17.90 Rim of gulch, hrs. NE and SW. Leave gulch. Enter gently
 rolling land.
 Ascend gradually over SE. slope, to
 28.73 Wash, 10 lks. wide, course SE. Enter rolling land.
 Ascend 53 ft., over NE. slope, to
 38.40 Same wash, 10 lks. wide, course NE.
 Ascend 10 ft., over E. slope, to
 39.93 Set an iron post, 3 ft. long, 1 in. in diam., 12 ins. in
 the ground, to bed rock, supported in a mound of stone
 for $\frac{1}{4}$ sec. cor., marked on brass cap,

$$\begin{array}{r} \frac{1}{4} \text{ S } 5 \\ \text{S } 8 \\ 1923 \end{array}$$

from which,

A cedar, 10 ins. in diam., hrs. N. $17\frac{1}{4}^{\circ}$ E., 17
 lks. dist., marked $\frac{1}{4}$ S 5 BT.

A cedar, 12 ins. in diam., hrs. S. $12\frac{1}{2}^{\circ}$ W., 29
 lks. dist., marked $\frac{1}{4}$ S 8 BT.

Continue over rolling land, thru. dense timber and under-
 growth.

- 53.60 Ascend 64 ft., over E. slope.
 Spur, slopes SE.
 Descend 25 ft., over SW. slope.
 62.46 Wash, 10 lks. wide, course SE. Enter gently rolling land.
 Ascend 56 ft., over E. slope, to
 79.86 The cor. of secs. 5, 6, 7 and 8.
 Land, gently rolling, mountainous and rolling.
 Soil, rocky and sandy, 3rd rate.
 Timber, cedar and pinyon.
 Undergrowth, sagebrush and scrub oak.

- 40.00 West, on random line, bet. secs. 6 and 7.
 Set temp. $\frac{1}{4}$ sec. cor.
 79.24 Intersect the W. bdy. of the Tp., 18 lks. N. of the cor. of
 secs. 1, 6, 7 and 12, hereinbefore described.
 Thence,
 N. $89^{\circ}52'$ E., on true line, bet. secs. 6 and 7.
 Over mountainous land, thru. dense timber and undergrowth.
 Ascend 40 ft., over NW. slope.
 2.85 Enter rolling land.
 Ascend gradually over N. slope.
 14.30 Descend 95 ft., over NE. slope, to
 39.24 Set an iron post, 3 ft. long, 1 in. in diam., on surface
 rock, supported in a mound of stone, for $\frac{1}{4}$ sec. cor.,
 marked on brass cap,

$$\begin{array}{r} \frac{1}{4} \text{ S } 6 \\ \text{S } 7 \\ 1923 \end{array}$$

from which,

A cedar, 10 ins. in diam., hrs. N. $37\frac{1}{4}^{\circ}$ E., 71
 lks. dist., marked $\frac{1}{4}$ S 6 BT.

A pinyon, 8 ins. in diam., hrs. S. $35\frac{3}{4}^{\circ}$ W., 64
 lks. dist., marked $\frac{1}{4}$ S 7 BT.

Continue over rolling land, thru. dense timber and under-
 growth.

- 79.24 Descend 133 ft., over NE. and E. slopes, to
 The cor. of secs. 5, 6, 7 and 8.
 Land, mountainous and rolling.
 Soil, sandy and rocky, 3rd and 4th rate.
 Timber, pinyon and cedar.
 Undergrowth, sage brush and scrub oak.

Chains

- N.0°9'W., on random line, bet.secs.5 and 6.
 40.00 Set temp. $\frac{1}{4}$ sec.cor.
 79.75 Intersect the N.bdy. of the Tp., 10 lks.E.of the cor.of
 secs. 5,6,31 and 32, described in Book "E"of this
 group.
 Thence,
 S.0°13'E., on true line, bet. secs.5 and 6.
 Over rolling land, thru.dense timber and undergrowth.
 Ascend 13 ft., over E.slope,to
 1.60 Wash,10 lks.wide, course E.
 Ascend 70 ft.,over E. and NE. slopes.
 11.00 Trail, brs.NE and SW.
 28.80 Descend 25 ft.,over SE.slope.
 33.85 Wash,20 lks.wide, course E.
 Ascend 15 ft.,over E.slope,to
 39.75 Set an iron post, 3 ft.long, 1 in. in diam., 14 ins. in
 the ground to bed rock, supported in a mound of stone,
 for $\frac{1}{4}$ sec.cor., marked on brass cap,

$\frac{1}{4}$
 S 6 | S 5
 1923

from which,

- A pinyon, 12 ins. in diam., brs.S.41°E., 55 lks.
 dist., marked $\frac{1}{4}$ S 5 BT.
 A cedar, 10 ins. in diam., brs.N.64°W., 6 lks.
 dist., marked $\frac{1}{4}$ S 6 BT.
 Ascend slightly over E.slope,to
 40.20 Wash,30 lks.wide, course NE.
 Ascend 150 ft., over NE.slope,to
 61.70 Thence over gently rolling land, along E.slope.
 Ascend slightly to
 79.75 The cor.of secs.5,6,7 and 8.
 Land, rolling.
 Soil,rocky and sandy,4th rate.
 Timber, cedar and pinyon.
 Undergrowth, sagebrush and scrub oak.

The continued satisfactory adjustment of the solar appa-
 ratus of the instruments used in the execution of the
 surveys described in the foregoing notes is indicated
 from field tests described in Books "G" and "H".

BOOK 3645

66

Boundaries of that part of T.29 N., R.11 W. surveyed.
under Group 74, Arizona.

Latitudes, departures, and closing errors.

Lines designated.	True course.	Dist..	Latitudes.		Departures	
			N.	S.	E.	W.
South boundary, (7th.Std.Par.N.)	West,	320.00				320.00
Subdivisional boundary,	N.0°3'W.	80.00	80.00			.07
	West,	80.00				80.00
	N.0°3'W. S.89°52'W.	320.00 79.24	320.00		.18	.07 79.24
West boundary,	North,	80.00	80.00			
North boundary,	East,	479.16			479.16	
East boundary,	South,	480.00		480.00		
Convergency.,					.44	
<u>Totals.</u>			480.00	480.18	479.60	479.38
				480.00	479.38	
Error in latitude,			0.18			
Error in departure,					0.22	

GENERAL DESCRIPTION.

The surface of this township is mostly mountainous, cut by canyons in all parts. Secs.18,19,30,31 and 32, and the S.½ of sec.7, are unsurveyable by reason of cliffs and precipitous slopes in canyons. Between the canyons, the benches and mesas have a rolling and gently rolling surface. Some small areas in scattered locations have a level or nearly level surface.

The soil over all of the township is rocky, 3rd and 4th rate. There is timber in every section, consisting of cedar and pinon, in dense and scattering growths in about equal proportion of areas.

The undergrowth, consisting of black brush, sagebrush, scrub oak, catclaw, cactus and yucca in both dense and scattering growths, is prevalent in all sections.

There are no water courses carrying a permanent flow of water. Kelly Spring near center of sec.23, and a spring in the NW.¼ of sec.27 constitute the only permanent water supply.

There are no settlers, but a corral in sec.23, and a log fence in secs.23 and 26 give evidence of a previous or periodical use of this portion of the township for grazing purposes.

There are no other improvements and no indications of valuable mineral deposits.

A road extends from Kelly Spring in sec.23, northwesterly into sec.15, thence northerly, leaving the township on N.bdy. of sec.3. In sec.23, a road branches off from the Kelly Spring road, and extends easterly into sec.24

There are no other roads, but there are several trails in the township.

CERTIFICATE OF UNITED STATES TRANSITMAN.

I, Benjamin J. Kinsey, U.S. Transitman, hereby certify upon honor that, in pursuance of special instructions received from the U. S. Surveyor General, for Group 74, Arizona, bearing date of the 12th day of October, 1916, I have well, faithfully, and truly in my own proper person, and in strict conformity with said instructions, the Manual of Surveying Instructions, and the laws of the United States, surveyed all those parts or portions of the East boundary, and

Subdivision lines of

TOWNSHIP 29 NORTH, RANGE 11 WEST,

of the Gila and Salt

River Base and Meridian, in the State of Arizona, and by diagram on page 1 hereof the foregoing field notes as having been executed by me, and under my direction; and that all the corners of said survey have been established and perpetuated in strict accordance with the Manual of Surveying Instructions, and the special written instructions of the U. S. Surveyor General, for Group 74, Arizona, and in the specific manner described in the field notes, and that the foregoing are the original field notes of such survey.

Place: Phoenix, Ariz.
Date: Nov. 1, 1924.

Benjamin J. Kinsey
U. S. Transitman.

APPROVAL

OFFICE OF THE UNITED STATES SURVEYOR GENERAL,

, 19

The foregoing field notes of the survey of

executed by

under his special instructions dated, 19, having been critically examined, and the necessary corrections and explanations made, the said field notes, and the surveys they describe, are hereby approved.

U. S. Surveyor General

I certify that the foregoing transcript of the field notes of the above-described surveys in, has been correctly copied from the original notes on file in this office.

U. S. Surveyor General

4-680

FIELD ASSISTANTS. to

William E. Hiester, U. S. Surveyor.

NAMES.	CAPACITY.
John Boggs,	1st chainman,
Frank Vaile,	2nd chainman,
Thomas Tennison,	2nd chainman & flagman,
Cray Fullerton,	2nd chainman & cornerman,
James Arthur,	cornerman,
Lowell McAllister,	cornerman,
Guy Semple,	axman,
Earl Laub,	axman,
Reed Hunt,	flagman,
Clarence Laub,	flagman.

BOOK 3645

70

CERTIFICATE OF UNITED STATES SURVEYOR.

I, William E. Hiester, U. S. Surveyor, hereby certify upon honor that, in pursuance of special instructions received from the U. S. Surveyor General, for Group 74, Arizona,

bearing date of the 12th day of October, 1916, I have well, faithfully, and truly in my own proper person, and in strict conformity with said instructions, the Manual of Surveying Instructions, and the laws of the United States, surveyed all those parts or portions of the
7th Standard Parallel North, in Range 11 West; and the
North, East and West boundaries, and
Subdivision lines of

TOWNSHIP 29 NORTH, RANGE 11 WEST,

of the Gila and Salt

River Base & Meridian, in the State of Arizona, which are represented in and by diagram on page 1 hereof the foregoing field notes/as having been executed by me, and under my direction; and that all the corners of said survey have been established and perpetuated in strict accordance with the Manual of Surveying Instructions, and the special written instructions of the U. S. Surveyor General, for Group 74, Arizona, and in the specific manner described in the field notes, and that the foregoing are the original field notes of such survey.

Place: Suricome Stat. *William E. Hiester*
Date: June 24, 1925 *U. S. Surveyor.*

APPROVAL.

OFFICE OF THE UNITED STATES SURVEYOR GENERAL,

Phoenix, Arizona, FEB 16 1925, 1925

The foregoing field notes of the survey of the
Seventh Standard Parallel North, thru part of Range 11 West,
East boundary,
Part of the West boundary, and
Part of the Subdivision lines of

TOWNSHIP 29 NORTH, RANGE 11 WEST,

of the Gila and Salt River Base and Meridian, in the State of Arizona,

executed by William E. Hiester, U.S. Surveyor, and Benjamin J. Kinsey, U.S. Transitman, under his special instructions dated October 12, 1916, for Group 74, Arizona, having been critically examined, and the necessary corrections and explanations made, the said field notes, and the surveys they describe, are hereby approved.

Charles M. Donohue
U. S. Surveyor General.

~~I certify that the foregoing transcript of the field notes of the above described surveys in~~
~~has been correctly copied from the original notes on file in this office.~~